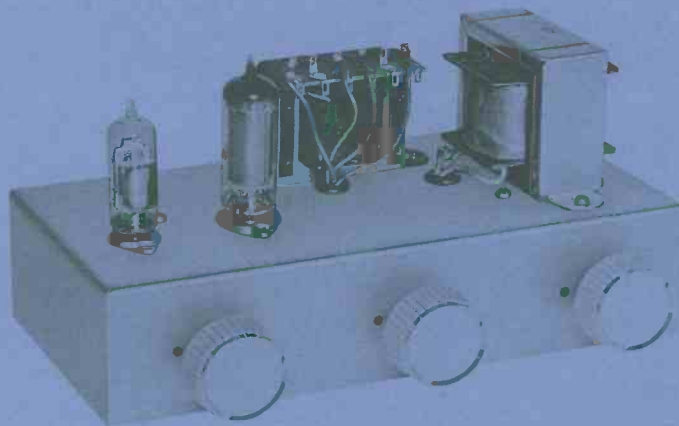


WORKSHOP PLANS

for the

NE PHYTE AUDIO AMPLIFIER



PRESENTED FREE WITH

OCTOBER 1969

issue of

THE
RADIO CONSTRUCTOR

Open out for Point to Point Wiring Diagram,
Drilling Plan, Tables, etc.

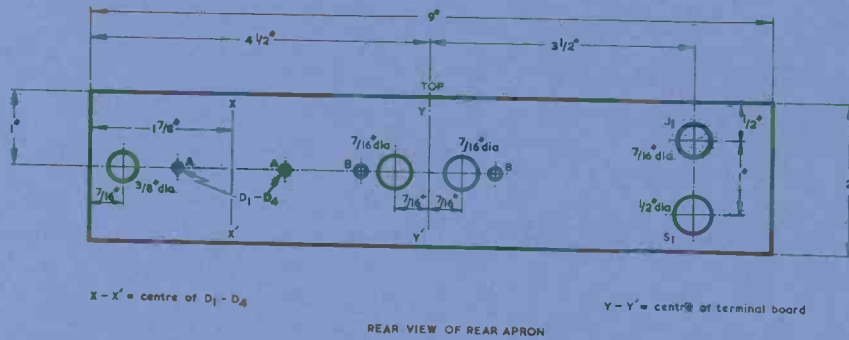
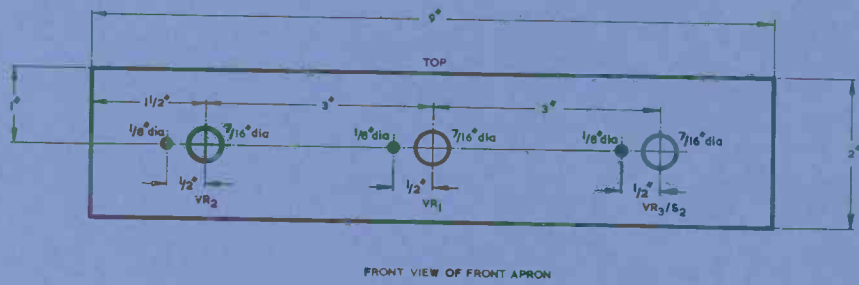
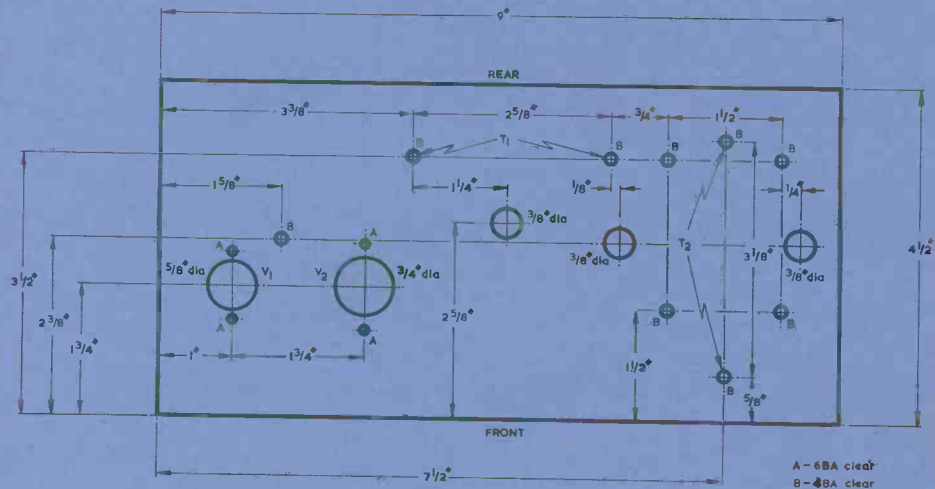
VOLTAGE TESTS TABLE

The voltage readings given below are with respect to chassis, and were obtained with a 20,000 ohm per volt meter switched to appropriate ranges. Mains voltage was 240V. It should be noted that these readings are typical only and that circuit tolerances may result in variations of up to some + 10%.

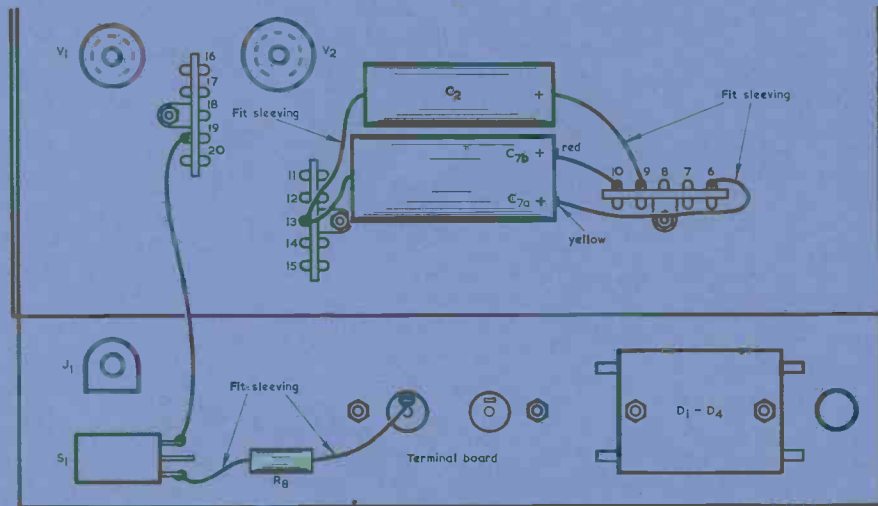
Circuit Point	Chassis Position	Voltage
V1 cathode	Pin 2, V1	1.6V
V1 anode	Pin 7, V1	140V
V2 cathode	Pin 3, V2	11V
V2 screen-grid	Pin 8, V2	240V
V2 anode	Pin 7, V2	230V
Junction R2, R3	Tag 19	0.15V
H.T. voltage (C7A)	Tag 6	250V
H.T. voltage (C7B)	Tag 10	260V

Point to Point Wiring Diagram inside

DRILLING INSTRUCTIONS



FINAL WIRING STEPS



THE RADIO CONSTRUCTOR

Make sure of your copy each month.
Place a regular order with your newsagent or
direct from the Publishers,
Data Publications Ltd.,
57 Maida Vale, London, W.9.

© Data Publications Ltd. 1969

Printed by Hanbury, Tomsett & Co. Ltd., London, E.C.1

WIRING DETAILS

