

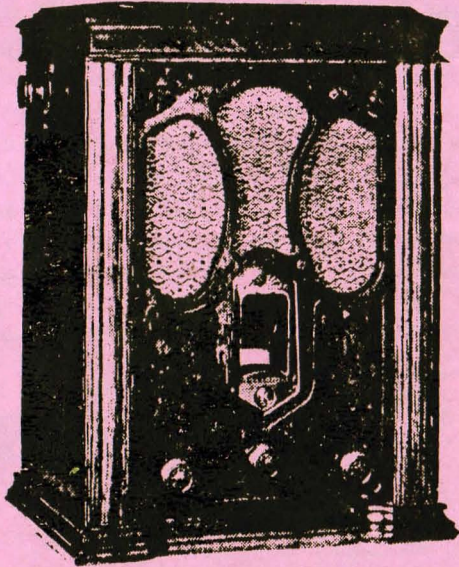


CALL LETTERS

VOLUME 14

JANUARY 1988

NUMBER 1



1940-1945-1950-1955-1960-1965

R5-D3

ELECTRONIC SURPLUS

6111 S.E. 82 ND AVE.

OPEN: 10:00 AM. TO 6:00 P.M.

TUESDAY — SATURDAY

RADIO, TELEPHONE, TEST GEAR,
COMPONENTS, TUBES, X-FORMERS

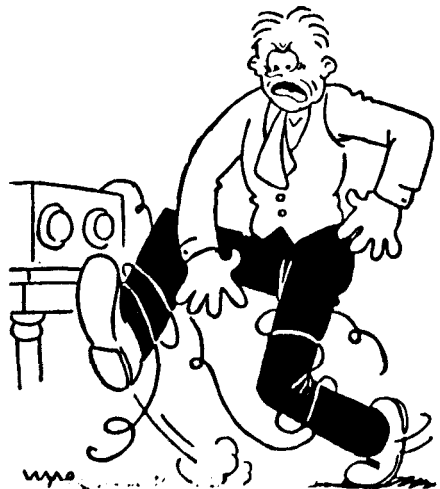
TRADE—SALE—CONSIGNMENT

BOB LEE BUS.(503) 774-6560

1920-1925-1930-1935

1970-1975-1980-1985

AN EFFECTIVE LEAD-IN



"Now I know why they quit calling it wireless and call it Radio!"



▼ Contents

ITEM	PAGE
GENERAL ELECTRIC JZ-822	1
R5-D3	2
1988 OFFICERS AND STAFF	3
ATMOSPHERICA FROM NOVEMBER 1976	4
CONTEST JANUARY 1988	5
DECEMBER 1987 MEETING MINUTES	6
U.S. ARMY TUBE CROSS REFERENCE	7
UN-COMMON TUBES	8,9,10
EDITORIAL	11
SWAP SHOP	12
ACCESSION	13
CALENDAR	13
JA MAC	14
BOB BILBIE'S A.K. 84 FROM NOV. '76	14
MEMBERSHIP APPLICATION FOR 1988	15
WAVE LENGTH TO FREQUENCY CONVERSION TABLES	16

CALL LETTERS

The **CALL LETTER**, is published monthly, as the only official publication of the Northwest Vintage Radio Society which is a nonprofit organization incorporated in the State of Oregon. Meetings are held on the 2nd Saturday of each month (July and August omitted) at the Buena Vista Clubhouse in Oregon City. **TIME : 11:00**

NWVRS OFFICERS & STAFF

PRESIDENT.....DAN HOWARD.....503-761-7799
 VICE PRESIDENT.....SONNY CLUTTER..503-254-9296
 TREASURER.....ED CHARMAN.....503-654-7387
 RECORDING SECRETARY...NORRIS JACKSON.503-642-5625
 LIBRARIAN.....CHUCK KIBLER...503-678-5066
 EDITOR IN CHIEF.....EDWIN BUHITE...503-288-8714
 CORRESPOND. SECRETARY..BOB EWING.....UNLISTED





ATMOSPHERICA

By *J*

TOM JAMES

ALLEY CAT

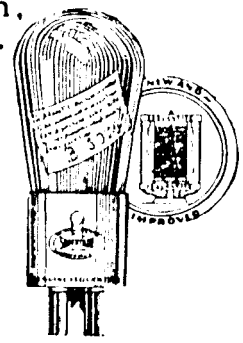
A vintage collector though tight,
Reeled out of the house one nite,
Made a quick sally,
Down through the alley,
And landed a "PUP", in full flight!

THE FIRST CHAPTER

I put on 2¢ stamp on the letter
Requesting a catalog from Sears.
And it won't take a brilliant man,
To note the passing of the years.

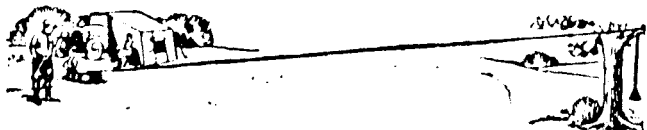
I'd get 50¢ for an hours work,
As a radio service boy.
It was an honest living, sir,
Though not a laughing joy.

But I quit the ruddy racket,
In the early thirties, man,
Nothing creates liars quicker
Than PUBLIC relations can!



HOARSE & BUGGY

My fine finished cabinet G.E.,
Was about as high-toned as you'd see.
But the circuit had bugs,
So one needed jugs,
of the well known cure-all, DDT.



JANUARY 9 1988

CONTEST

1. BATTERY SETS

PRE- 1930 WITH FOUR OR MORE TUBES

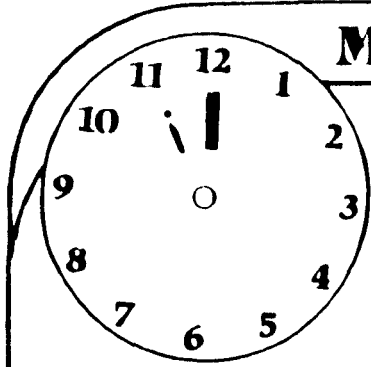
2. PLASTIC SETS

POST WWII, TUBE TYPE RADIOS

NOTE: THERE IS A LIMIT OF TWO ENTRIES PER PERSON
IN EACH CATEGORY



Meeting Minutes



NWRS MEETING DECEMBER 12, 1987
WAS CALLED TO ORDER AT 11:12 AM
BY PRESIDENT RAY NELSON. THE
MINUTES OF THE NOVEMBER 14, 1987
MEETING WERE APPROVED AS PUBLISHED
IN THE CALL LETTER.
THE TREASURER'S REPORT WAS GIVEN
AND ACCEPTED WITH A CURRENT BALANCE
OF \$920.42.

GOOD AND WELFARE: NONE

OLD BUSINESS: NONE

NEW BUSINESS: ELECTION OF OFFICERS WAS HELD. THE

RESULTS AS FOLLOWS:

PRESIDENT: DAN HOWARD
VICE PRESIDENT: SONNY CLUTTER
TREASURER: ED CHARMAN
RECORDING SECRETARY: NORRIS JACKSON
CORRESPONDING SECRETARY: BOB EWING

DAN HOWARD IS PREPARING A LIST OF "ORPHAN" COMPONENTS-
CHASSIS WITHOUT CABINETS, CABINETS WITHOUT CHASSIS,
HORNS WITHOUT DRIVERS ETC., TO ASSIST IN MAKING MATCHES.
MEMBERS ARE URGED TO GIVE LISTS OF SUCH ITEMS WHICH THEY
MAY HAVE TO DAN. PSARA WILL BE INCLUDED.

LEADS AND NEEDS: WERE GIVEN, AND THE MEETING ADJOURNED.

Happy

Jim Mason
JIM MASON,
ACTING SECRETARY



New Year

U. S. ARMY STANDARD TUBE TYPES & THEIR NEAREST COMMERCIAL (RMA) EQUIVALENTS

Army Type	Equivalent Commercial Type
VT-1	None
VT-2	None
VT-4-B	211
VT-4-C	None
VT-5	WE215A
VT-7	WX-12
VT-17	860
VT-19	861
VT-22	204A
VT-24	884
VT-25	10
VT-26	22
VT-27	30
VT-28	24A, 24
VT-29	27
VT-30	01A, 01
VT-31	31
VT-33	33
VT-34	207
VT-35	35, 51
VT-36	36A, 36
VT-37	37, 37A
VT-38	38, 38A
VT-39-A	869A
VT-40	40
VT-41	851
VT-42-A	872A
VT-43	845
VT-44	32
VT-45	45
VT-46-A	866A, 868
VT-47	47
VT-48	41
VT-49	39, 44
VT-50	50, 585, 588
VT-51	841
VT-52	45-Special
VT-54	34
VT-55	865
VT-56	56
VT-57	87
VT-58	58
VT-60	850
VT-62	801
VT-63	46
VT-64	800
VT-65	6C5
VT-66	6F6
VT-67	Special 80
VT-68	8B7
VT-69	6D8
VT-70	6F7
VT-72	842
VT-73	843
VT-74	524
VT-75	75
VT-76	76
VT-77	77
VT-78	78
VT-80	80
VT-83	83
VT-84	84, 88, 624
VT-86	6K7
VT-86A	6K7G
VT-87	6L7
VT-87A	6L7G
VT-88	6R7
VT-88A	6R7G
VT-89	89

Army Type	Equivalent Commercial Type
VT-90	6H6
VT-91	6J7
VT-91-A	6J7GT
VT-92	6Q7
VT-93	6B8
VT-94	6J5
VT-94A	6I5G
VT-96	6N7
VT-97	5W4
VT-98	6U5, 6G5
VT-99	6F8G
VT-100	807
VT-101	837
VT-103	6SQ7
VT-104	12SQ7
VT-105	6SC7
VT-106	803
VT-107A	6V6GT
VT-107	6V6
VT-108	Eimac 450th
VT-109	2051
VT-111	5BP4
VT-112	6AC7
VT-114	5T4
VT-115	6L8
VT-116	6SJ7
VT-117	6BK7
VT-118	832
VT-119	879
VT-120	934
VT-121	955
VT-124	1A5GT
VT-125	1C5GT
VT-126	6X5
VT-127	Eimac 100T8
VT-128	A 5588
VT-129	304TL
VT-130	250TL
VT-131	129K7
VT-132	12K8
VT-133	12SR7
VT-134	12A6
VT-135	12J5GT
VT-136	1625
VT-137	1626
VT-138	1629

Army Type	Equivalent Commercial Type
VT-139	VR-150-30
VT-140	R-1628
VT-141	531
VT-144	813
VT-145	523
VT-146	1N5GT
VT-148	1D8GT
VT-149	3A8GT
VT-150	6SA7
VT-151	6A8G
VT-152	6K8GT
VT-153	12C8 Special
VT-154	GL814
VT-155	Reserved for Special Types
VT-156	
VT-157	
VT-158	
VT-159	
VT-160	
VT-161	12SA7
VT-162	12SJ7
VT-163	6C8G
VT-164	1619
VT-165	1624
VT-166	371A
VT-167	6K8
VT-168	—
VT-169	1208
VT-170	1E5QP
VT-171	1R5
VT-172	1R5
VT-173	1T4
VT-174	3S4
VT-175	1613
VT-177	1LH4
VT-178	1LC8
VT-179	1LN5
VT-180	3LE4
VT-181	7Z4
VT-182	1291
VT-183	1294

*National Union Radio Corp.
Engineering Dept.*



"SUPPLEMENTARY" RECEIVING TUBE CHARACTERISTICS CHART

Tube Type No.	Basing Code	Fil. Volts	Replaceable By Type No.	Remarks	Mfr.
BX	4D	3.3	99		
PA	5E	6.3			Arcturus
OIC	4D	5.0			Canadian Wh's'e
1A6S	6L	2.0	1A6*	*Plus external shield	Rogers
1C6S	6L	2.0	1C6*	*Plus external shield	Rogers
1C7M	7Z	2.0			Rogers
1F5	6X	2.0			Rogers
1F7M	7AD	2.0			Rogers
1H4	5S	2.0	1H4G		Rogers
1T5	6AF	1.4	1T5GT		
2A6S	6G	2.5	2A6*	*Plus external shield	
DV2	4D	5.0	01A		RCA
HZ-10	4AB	2.5	2X2/879		Sylvania
2S/4S	5D	2.5			Sylvania Raytheon
2X3	4X	2.5			Rogers
2X3G	4X	2.5			
2Y3	4X	2.5			Rogers
2Y4	5D	2.5			
3AP1	7AN	2.5		Picture tube	
3AP4	7AN	2.5		Picture tube	
4S	5D	2.5	2S/4S		
5BP1	10A	6.3		Picture tube	
5BP4	10A	6.3		Picture tube	
DV5	4D	5.0	01A		RCA
5Y3	5T	5.0	5Y3G		Sylvania
5Y4	5Q	5.0	5Y4G		Sylvania
6A7M	8A	6.3	6A8*	*Replacement recommended by RCA	Rogers
6AC5	6Q	6.3	6AC5G		Hytron
6AF7	8AG	6.3			
6AF7G		6.3			
6AG6G	7S	6.3			
6B6	7V	6.3	6B6G		Sylvania
6B6M	7V	6.3	6B6*	*Replacement recommended by RCA	Rogers
6B7M	8E	6.3	6B8*	*Replacement recommended by RCA	Rogers
6F5M	5M	6.3			Rogers
6F6M	7S	6.3	6F6*	*Replacement recommended by RCA	Rogers
6F7M	X1	6.3			Rogers
6H7M	X2	6.3			Rogers
6H7S	7P	6.3			Rogers
6H8	8E	6.3			
6H8G		6.3			
6J5M	6Q	6.3			Rogers
6J5MG	6Q	6.3	6J5GT		Hytron
6J7M	7R	6.3	77M		Rogers
6J8M	8A	6.3			Rogers
6K6MG	7S	6.3	6K6GT		RCA
6K7M	7R	6.3	6K7*	*Replacement recommended by RCA	Rogers

Tube Type No.	Basing Code	Fil. Volts	Replaceable By Type No.	Remarks	Mfr.
6M6G	7S	6.3			
6M7G	7R	6.3			
6M8GT		6.3			
6N6	7W	6.3	6N6G		RCA
6P7	7U	6.3	6P7G		RCA Sylvania
6PBG	7Q	6.3			
6C06	7V	6.3	6T7G		Sylvania
6R7M	7V	6.3			Rogers
6S5	6R	6.3			
6T6		6.3			
6V7M	7V	6.3	85M		Rogers
6X6	X3	6.3			Rogers
6X6G	7AL	6.3			
6Y5S	6J	6.3	6Y5*	*Plus external shield	
9AP4	6AL	2.5		Picture tube	
9CP4	4AF	2.5		Picture tube	
10S	X6	7.5			Triod
12A7GT	7K	12.5	12A7G		Hytron
12AP4	6AL	2.5		Picture tube	
12B6	6Y	12.6			
12CP4	4AF	2.5		Picture tube	
12G7	7V	12.6			
12G7G	7V	12.6	12G7		
12J5G	6Q	12.6	12J5GT		
13	4C	5.0	80		RCA-Sylv
13B	4C	5.0	80		RCA
16	4B	7.5	81		RCA-Sylv
16B	4B	7.5	81		RCA-Sylv
KR18	6B	14.0	2A5 or 42*	*Obsolete change fil. supply	Kenrad
R20	X5	2.8			Rogers
22 (Spec)	4K	14.0			Arcturus
24	5E	2.5	24A		Tung-Sol
24 (Octal)	X11	2.5			Arcturus Coronet
RK24	4D	2.0			Raytheon
25A7	8F	25.0	25A7GT		
25C6	7AC	14.0			RCA
27 (Octal)	6Q	2.5			Arcturus Coronet
R30	5A	2.8			Rogers
30S	4D	2.0	30*	*Plus external shield	Rogers
30 (Spec)	4D	14.0			Arcturus
R32	X5	2.8			Rogers
32S	4K	2.0	32*	*Plus external shield	Rogers
32 (Spec)	4K	14.0			Arcturus
RK33	X9	6.3			Raytheon
33S	5K	2.0	33*	*Plus external shield	Rogers
34 (Octal)	5R	2.0			Arcturus Coronet
34M	5R	2.0			Rogers
34S	4M	2.0	34*	*Plus external shield	Rogers
35Z5	6AD	35.0	35Z5GT		Hytron
40 (Spec)	4D	14.0			Arcturus
41M	7S	6.3			Rogers

"Rogers" is trademark of Canadian Radio Corp. Lt'd.



"SUPPLEMENTARY" RECEIVING TUBE CHARACTERISTICS CHART — (Cont'd)

Tube Type No	Basing Code	Fil Volts	Replaceable By Type No	Remarks	Mfr's.
415	6B	6.3	41*	*Plus external shield	Rogers
425	6B	6.3	42*	*Plus external shield	Rogers
43 (Octal)	7AE	25.0	Arcturus Coronet
465	5C	2.5	46*	*Plus external shield	Rogers
475	5B	2.5	47*	*Plus external shield	Rogers
4B (Spec)	6A	14.0	Arcturus
KR4B	5B	2.5	47	Obsolete	Kenrad
50L6G	7AC	5.0	50L6GT	Hytron
51 (Octal)	X11	2.5	Arcturus Coronet
55 (Octal)	7V	2.5	Arcturus Coronet
56 (Octal)	6Q	2.5	Arcturus Coronet
57 (Octal)	7R	2.5	Arcturus Coronet
58 (Octal)	7R	2.5	Arcturus Coronet
595	7A	2.5	59*	*Plus external shield	Rogers
75 (Octal)	7V	6.3	Arcturus Coronet
75M	7V	6.3	6B6G*	*Replacement recommended by RCA	Rogers
77 (Octal)	7R	6.3	Arcturus Coronet
77M	7R	6.3	6J7M	Rogers
78 (Octal)	7R	6.3	Arcturus Coronet
785	6F	6.3	78*	*Plus external shield	Rogers
80 (Octal)	5T	5.0	Arcturus Coronet
82V	4L	2.5	82
84M	6S	6.3	Rogers
845	5D	6.3	84*	*Plus external shield	Rogers
85 (Octal)	7V	6.3	Arcturus Coronet
85L7	8AB
85M	7V	6.3	Rogers
86	5A	6.3	Rogers
86M	6Q	6.3	Rogers
865	5A	6.3	86*	*Plus external shield	Rogers
875	6F	6.3	6C6	Rogers
88 (Octal)	7R	5.0	Arcturus Coronet
88M	7R	6.3	Rogers
885	6F	6.3	6D6	Rogers
89RS	7N	6.3	6G7S	Rogers
895	6F	6.3	89*	*Plus external shield	Rogers
91	6N
R100	4B	5.0	Rogers
101A	4D	5.0	01A	RCA
101F	4D	4.15	Western Electric

Tube Type No	Basing Code	Fil Volts	Replaceable By Type No	Remarks	Mfr's.
VR105-30	4W	Diode (Voltage Regulator)	RCA Sylvania
110	4D	7.5	10	RCA
112	4D	5.0	12A	RCA
112A	4D	5.0	12A	RCA
117Z6CC	7AR	58.5/117	117Z6GT if C. T. is not used	Original 117Z6GT with center-tap	Sylvania
120	4D	3.3	20	RCA
121B	4D	5.0	Canadian Wh'ess.
122	4K	3.3	22	RCA
124	5E	2.5	24A	RCA
126	4D	1.5	26	RCA
127	5A	2.5	27	RCA
130	4D	2.0	30	RCA
131	4U	2.0	31	RCA
132	4K	2.0	32	RCA
133	5K	2.0	33	RCA
134	4M	2.0	34	RCA
135	5E	2.5	35	RCA
136A	5E	6.3	36	RCA
137A	5A	6.3	37	RCA
138A	5F	6.3	38	RCA
139A	5F	6.3	39/44	RCA
X140	4D	5.0	40
143D	4AB	2.5	2X2/879	RCA
145	4D	2.5	45	RCA
147	5B	2.5	47	RCA
150	4D	7.5	50	RCA
VR150-30	4W	Diode (Voltage Regulator)	RCA Sylvania
171A	4D	5.0	71A	RCA
180	4C	5.0	80	RCA
UV199	4E	3.3	V99
UX199	4D	3.3	X99
200	4D	5.0	00A	RCA
200A	4D	5.0	00A	RCA
R200	4B	5.0	Rogers
201	4D	5.0	01A	RCA
201A	4D	5.0	01A	RCA
205D	4D	4.5	Western Electric
210	4D	7.5	10	RCA
210T	4D	7.5	10	Triode Sylvania
213B	4C	5.0	80	Obsolete RCA
216B	4B	7.5	81	Obsolete RCA
220	4D	3.3	20	RCA
222	4K	3.3	22	RCA
224A	5E	2.5	24A	RCA
226	4D	1.5	26	RCA
227	5A	2.5	27	RCA
230	4D	2.0	30	RCA
232	4K	2.0	32	RCA
233	5K	2.0	33	RCA
234	4M	2.0	34	RCA
235	5E	2.5	35	RCA
236	5E	6.3	36	RCA
237	5A	6.3	37	RCA

(Cont'd over)



"SUPPLEMENTARY" RECEIVING TUBE CHARACTERISTICS CHART—(Cont'd)

Tube Type No.	Basing Code	Fil. Volts	Replaceable By Type No.	Remarks	Mfn'r.
238	5F	6.3	38	RCA
240	4D	5.0	40	RCA
245	4D	2.5	45	RCA
247	5B	2.5	47	RCA
250	4D	7.5	50	RCA
280	4C	5.0	60	RCA
281	4B	7.5	81	RCA
288	4AD	5.0	83V	Sylvania
C299	4E	3.3	V99
CX299	4D	3.3	X99
300	4D	5.0	00A	RCA
300A	4D	5.0	00A	RCA
301	4D	5.0	01A	RCA
301A	4D	5.0	01A	RCA
310	4D	7.5	10	RCA
313	4C	5.0	80	RCA
313B	4C	5.0	80	RCA
316	4B	7.5	81	RCA
316B	4B	7.5	81	RCA
322	4K	3.3	22	RCA
324A	5E	2.5	24A	RCA
326	4D	1.5	26	RCA
327	5A	2.5	27	RCA
330	4D	2.0	30	RCA
331	4D	2.0	31	RCA
332	4K	2.0	32	RCA
333	5R	2.0	33	RCA
334	4M	2.0	34	RCA
335	5E	2.5	35	RCA
336	5E	6.3	36	RCA
337	5A	6.3	37	RCA
338	5F	6.3	38	RCA
340	4D	5.0	40	RCA
345	4D	2.5	45	RCA
347	5B	2.5	47	RCA
350	4D	7.5	50	RCA
371A	4D	5.0	71A	RCA
374	874	Voltage regulator	RCA
376	876	Ballast	RCA
380	4C	5.0	80	RCA
381	4B	7.5	81	RCA
386	886	Ballast	RCA
400A	4D	5.0	00A	RCA
410	4D	7.5	10	RCA
412A	4D	5.0	12A	RCA
415	RCA
420	4D	3.3	20	RCA
422	4K	3.3	22	RCA
424A	5E	2.5	24A	RCA
426	4D	1.5	26	RCA
427	5A	2.5	27	RCA
430	4D	2.0	30	RCA
431	4D	2.0	31	RCA
432	4K	2.0	32	RCA
433	5R	2.0	33	RCA
434	4M	2.0	34	RCA
435	5E	2.5	35	RCA
436	5E	6.3	36	RCA
437	5A	6.3	37	RCA

(Cont'd)

Tube Type No.	Basing Code	Fil. Volts	Replaceable By Type No.	Remarks	Mfn'r.
438	5F	6.3	38	RCA
439	5F	6.3	39/44	RCA
440	4D	5.0	40	RCA
441	6B	6.3	41	RCA
442	6B	6.3	42	RCA
444	5F	6.3	39/44	RCA
445	4D	2.5	45	RCA
446	5C	2.5	46	RCA
447	5B	2.5	47	RCA
456	5A	2.5	56	RCA
457	6F	2.5	57	RCA
458	6F	2.5	58	RCA
471A	4D	5.0	71A	RCA
480	4C	5.0	80	RCA
481	4B	7.5	81	RCA
482	4C	2.5	82	RCA
551	5E	2.5	35	RCA
801	4D	7.5	RCA
802	X7	6.3	RCA
803	5J	10.0	RCA
804	5J	7.5	RCA
807	X8	6.3	RCA
841	4D	7.5	RCA
842	4D	7.5	RCA
843	5A	2.5	RCA
866A/866	4P	2.5	866	RCA
879	4AB	2.5	2X2/879
884	6Q	6.3	Raytheon
885	5A	2.5	Roytheon
1221	6F	6.3	Pentode	Sylvania
1223	7R	6.3	Pentode	Sylvania
1231	8V	6.3	Pentode	Sylvania
1232	8V	6.3	7G7/1232	Sylv-Ray
1602	4D	7.5	RCA
1603	6F	6.3	RCA
1612	7T	6.3	Heptode	RCA
1613	7S	6.3	RCA
1614	7AC	6.3	RCA
1620	7R	6.3	RCA
1622	7AC	6.3	RCA
1631	7AC	12.6	Beam Pw'r. Amp	RCA
1632	7AC	12.6	Beam Pw'r. Amp	RCA
1633	25	Twin-Triode Amp	RCA
1634	8S	12.6	Twin-Triode Amp	RCA
1852	8N	6.3	6AC7/1852	Raytheon
1853	8N	6.3	6AB7/1853	Raytheon
7000	7R	6.3	Kenrad
7700	6F	6.3	Kenrad
9001	7-pin mini-ature	6.3	Det. Amp. Pentode	RCA
9002	7-pin mini-ature	6.3	Det. Amp. Pentode	RCA
9003	7-pin mini-ature	6.3	Amp. Pentode	RCA





EDITORIAL

1987 WAS A BUSY YEAR FOR NWVRS. PRESIDENT NELSON'S ABLE LEADERSHIP HAS SUCCESSFULLY TURNED AROUND EVERY PROBLEM WHICH CAME UP. THE DISPLAY AT WFS IS THE FINEST WE'VE HAD. WE ARE STILL MEETING AT OUR REGULAR PLACE AND THE CALL LETTER IS BEGINNING ITS 14th YEAR WITHOUT MISSING A SINGLE MONTHLY ISSUE.

RAY NELSON TURNED THE GAVEL OVER TO DAN HOWARD AT THE DECEMBER MEETING. I'M SURE DAN WILL BE VERY SUCCESSFUL BUILDING ON THE FOUNDATION WHICH RAY HAS LAID.

ED CHARMAN CONTINUES AS OUR TREASURER, HE HAS BEEN DOING A FINE JOB FOR MANY YEARS. THE CALL LETTER IS VERY DEPENDANT ON OUR TREASURER.

MANY OF OUR MEMBERS HAVE ALREADY PAID DUES FOR 1988, THOSE WHO HAVN'T SHOULD SEND THEM IN SOON SO THAT YOUR EDITOR CAN CONTINUE SENDING THIS FINE PUBLICATION TO YOU EACH MONTH. EVERY ONE WHO HAS PAID THEIR DUES CAN ADVERTISE FREE IN THE SWAP SHOP.

THE CLUB HOUSE IS PRETTY COLD THESE DAYS. IT HAS BEEN SUGGESTED THAT WE BRING FIREWOOD TO THE JANUARY 9 MEETING.



SWAP SHOP

CONSOLIDATED N.W.V.R.S. / P.S.A.R.A. ADS

WANTED

POWER SUPPLY LID AND FRONT PANEL FOR A.C. SUPERWASP
ALSO, DRUM DIAL FOR NATIONAL SW5, AUDIO TRANS-
FORMERS FOR NATIONAL S101 AND NATIONAL IMPEDA-
FORMER. DAN HOWARD 503-761-7799, 2940 SE 118th
PORTLAND, OREGON 97266.

TWO OR THREE #45 TUBES, PURCHASE OR TRADE OTHER
RARE TUBES OR TWO FOR ONE. *FRANK I. GRAY*
OLD TUBES FOR SALE *3300 F ST.*

503-523-5001

BAKER, OR. 97814



RCA NIPPER DOG AND RELATED ITEMS. FRANK BANKS
206-824-8956, 1851 S. 244th PLACE KENT, WASHINGTON
98032

EARLY COLLINS TRANSMITTERS, CRYSTAL SETS

JIM BARROWS 206-337-4880, 15121 41st AVE. SE
BOTHELL, WASHINGTON, 98012

MILITARY OR GOVERNMENT RADIO EQUIPMENT, MANUALS,
ACCESSORIES, OLD FOREST SERVICE SHORTWAVE
EQUIPMENT, ANCIENT OR SIMPLE SHORTWAVE SETS,
REGENERATIVE RECEIVERS. HUGH MILLER, 6400 MALTBY
ROAD, WOODINVILLE, WASHINGTON 98072,
206-451-5334.

PHILCO 37-61 CHASSIS, ANY CONDITION. AERO COILS,
SINGLES OR SETS. S-METER FOR HALLICRAFTERS SX-16
OR SX-17. ANY SIZE TRANSCRIPTION DISCS, 14"
BRUNSWICK RECORDS. MAX KAPLAN, 206-851-4187,
14902 84th AVE., CT. NW, GIG HARBOR WA 98335.

TUBES 6L6GC, 1614, 6BJ6, KT66, KT88; NEW MIL-SPEC
OR EXCELLENT CONDITION USED. STEVE VON TALGE,
206-527-2829 OR 783-2543, THE OLD TECHNOLOGY
SHOP 333 NW 74th ST. SEATTLE, WA 98117

SIX VOLT RADIO TO FIT 1947 CHEVROLET PICKUP.
SPARTON 484 & 585 TUBES. JERRY BRANNON
206-854-4234

BLUE 01A, AK 84 CHASSIS, CATALIN RADIOS, MAGNIFIER
FOR PILOT 3" TV, CROSLEY 59 CHASSIS, GRILLE CLOTH
FOR PHILCO CATHEDRAL. KEN KORHONEN 206-932-9363
4022 41st AVE SW SEATTLE, WASHINGTON 98116



AC • CES • SION /ik-'sesh-en, ak-/

1. acquisition of additional property
2. to record in order of acquisition

JIM MASON

ENGLISH "IVALEK" CRYSTAL SET IN ORIGINAL BOX
WITH MARCONIPHONE HEADSET.

1940 PHILCO CONSOLE WITH REMOTE CONTROL.

SUN MON TUE WED THU FRI SAT

January 1988

					1	2
3	4	5	6	7	8	9 NWVRS 11 A.M. CONTEST
10	11	12	13	14	15	16
17 PSARA 10 A.M. CONTEST	18	19	20	21	22	23
24	25	26	27	28	29	30
31						



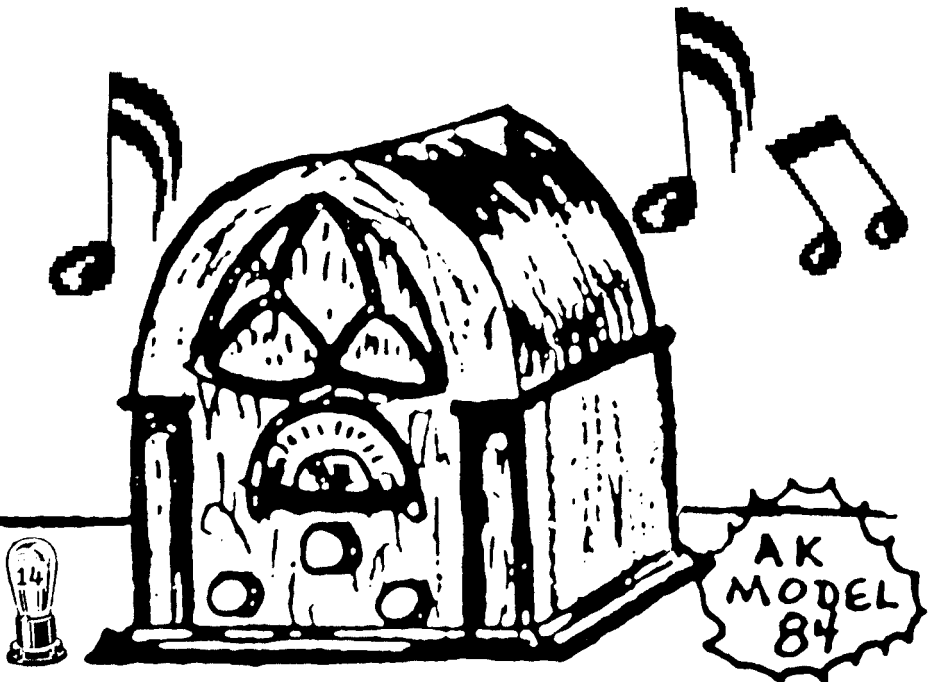
JA MAC PRODUCTS

SPEAKER RECONING ALL MAKES

8600 NE Sandy Blvd

Portland, Or 97220

503-252-2929



NORTHWEST VINTAGE RADIO SOCIETY

1988 Membership

Regular membership	\$15.00
Associate Membership	\$12.00

Associate memberships are accepted from persons outside 100 miles distance of the Portland Metropolitan area.

NAME _____

ADDRESS _____

CITY, STATE _____

PHONE _____

Call Letters _____

SPECIAL INTERESTS _____

Check here for renewal _____

Mail membership information and dues to the Northwest Vintage Radio Society P.O. Box 02379, Portland Oregon, 97202

Membership includes monthly newsletters, ten monthly meetings (all except July & August), two swap meets and two auctions each year, as well as a trading roster of members, and unlimited "unclassified" ads in the CALL LETTER.



WAVE-LENGTH—FREQUENCY CONVERSION TABLES

Wave Length (Meters)	Frequency (Kilo- cycles)	Wave Length (Meters)	Frequency (Kilo- cycles)	Wave Length (Meters)	Frequency (Kilo- cycles)
1	300,000	135	2,222	310	967
2	150,000	140	2,144	320	937
3	100,000	145	2,069	330	909
4	75,000	150	2,000	340	882
5	60,000	155	1,935	350	857
6	50,000	160	1,875	360	833
7	42,860	165	1,818	370	810
8	37,500	170	1,765	380	789
9	33,333	175	1,714	390	769
10	30,000	180	1,667	400	750
15	20,000	185	1,622	410	731
20	15,000	190	1,579	420	714
25	12,000	195	1,538	430	697
30	10,000	200	1,500	440	681
35	8,571	205	1,463	450	666
40	7,500	210	1,429	460	652
45	6,667	215	1,395	470	638
50	6,000	220	1,364	480	625
55	5,454	225	1,333	490	612
60	5,000	230	1,304	500	600
65	4,615	235	1,277	510	588
70	4,286	240	1,250	520	576
75	4,000	245	1,225	530	566
80	3,750	250	1,200	540	555
85	3,529	255	1,177	550	545
90	3,333	260	1,154	560	535
95	3,158	265	1,132	570	526
100	3,000	270	1,111	580	517
105	2,857	275	1,091	590	508
110	2,727	280	1,071	600	500
115	2,609	290	1,034	610	491
120	2,500	295	1,017	620	483
125	2,400	300	1,000	630	476
130	2,308			640	468
				650	461