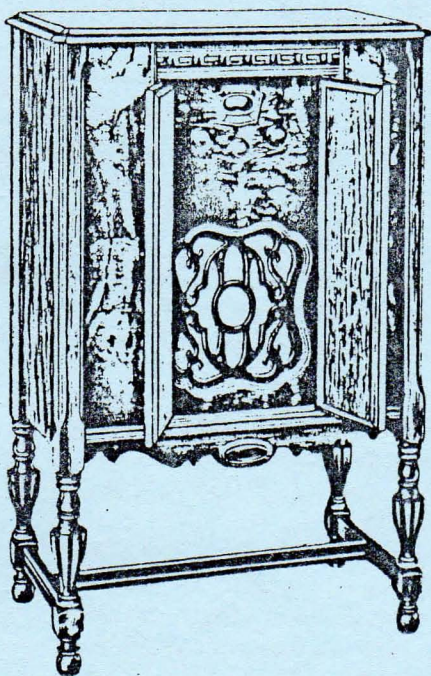


VOL. 6
NO. 3



MARCH
1980

CALL LETTER



ROLA 92
Sold in Western
states only.
Electro-dynamic
speaker.
Price, \$125.00
With Tubes

Craig Hoaglin has lined up a speaker to give us a talk and demo on cabinet restoration at the March meeting. How about bringing your favorite cabinet restoration to show to the rest of the folks!

▼ Contents

POWER SUPPLY.....3
 ATMOSPHERICA.....4
 OUR PEOPLE.....5,6
 LETTERS.....7
 1923 WARDS CATALOG.....8,9
 BITS AND PIECES.....10,11
 RIGHT OR WRONG.....12
 Ol'e.....13
 CARTOON CLIPPINGS.....14
 I.Q. TRIMMER.....15
 SWAP SHOP.....16

CALL LETTER

The Call Letter is a monthly publication of the Northwest Vintage Radio Society, a non-profit organization, incorporated in the state of Oregon. Meetings of the Society are held on the second Saturday of each month, normally, at the Buena Vista clubhouse located at 16th and Jackson Streets, Oregon City, Oregon. Meetings convene at 10 o'clock A.M.

Editor-in-chief.....Bill De Vey
 16969 S.W. Tracy Ave.
 Lake Grove, Or., 97034
 Ph: 635-6746

Contributing Writer.....Tom James
 Power Supply.....Bobbie Kibler
 Our People.....Hugh Ranken
 Advertising Mgr.....Bob Hay

Feature articles are contributed by members under various by-lines. Please send all contributions to the editor.

Call Letter Address: P.O. Box 02379,
 Portland, Oregon, 97202

POWER SUPPLY

Those of you who attended our February meeting were soon aware that we had a couple of slight inconveniences--no water and no restroom facilities! I put in a call to one of the Civic Club members to find out who took care of maintenance at the club house. I was told "no one" was in charge. It seems that the county is dragging its feet in releasing the allotted funds to renovate the building, so money would have to come out of private donations to do the repairing. However, I was told that hopefully before our next meeting in March the pipes would be fixed and the restroom would be usable. How about that!

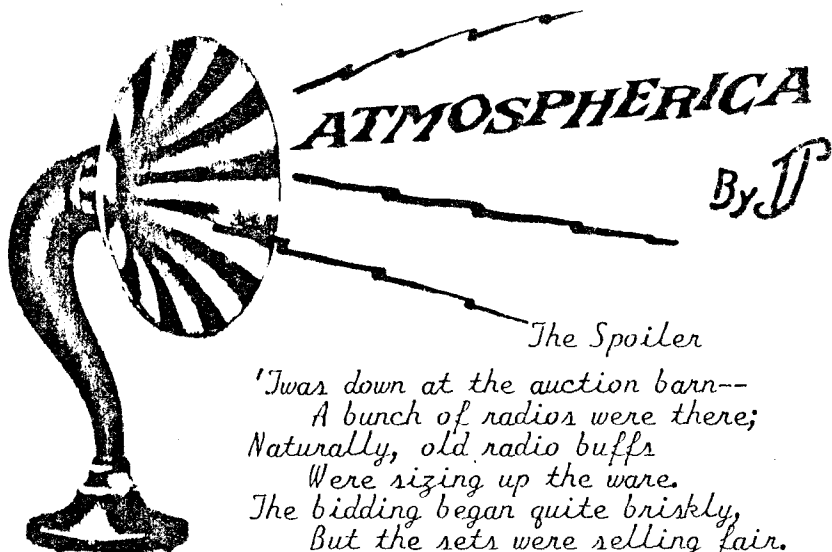
This month I thought I'd digress from Aunt Sammy's Recipes and list some helpful hints from Reliable Recipes, published in 1918 by the Calumet Baking Powder Company. Some of them are quite amusing.

When cooking green vegetables, a small particle of soda added to the boiling water just before putting in the vegetables will keep them in fresh color.

To prevent the smell of cooking from getting into the house, sprinkle a little cedar sawdust on the top of the stove.

If you set a dish of water in the oven when a cake is baking, you will find that there will be no scorching. (This is good for fruit cakes.)

To mend a crack on the inside of a range, use a filling made of equal parts of wood ashes and common salt moistened with water. This will prove hard and lasting.



The Spoiler

'Twas down at the auction barn--
A bunch of radios were there;
Naturally, old radio buffs
Were sizing up the ware.
The bidding began quite briskly,
But the sets were selling fair.

Then they put up the package deals--
Old chassis', tubes and stuff;
When a late-comer elbowed in
With a slight trace of huff,
And started nodding at the calls;
The bids started getting rough!

Well, this jasper ended up
Out three hundred clams, they say,
With boxes of the kind of junk
That Joe Tompkins throws away!
Most wondered why in thunder
He bid so dang high that day.

If you'd known, you'd felt compassion,
At this crazy happenstance;
For up from California,
Came this buyer Rosencrantz,
Plagued with a sorry condition,
Known as St. Vitus dance!

** ** * ** *

"If winter comes",
The old-time poem ran,
"Can spring be far behind?"
--You Darned Right It Can!

OUR PEOPLE

While attendance at our meeting of February 9th was only moderate, none-the-less several members brought items of communications gear and some old time equipment. The display of communications receivers was originally set for January meeting, but because of the bad weather and re-scheduling of the meeting date, it was decided to continue this display in February.

John McConnell brought a Howard communication receiver and a Link speaker. Bill DeVey showed a Collins Model 75A1 in excellent condition and Ed Charman had an SX25 Hallicrafter. He just got this and hadn't had time to clean it up, but plans on restoring it. It will make a nice addition to his collection.

Alan Shadduck showed two 5 tube TRF receivers. There was nothing on either set to indicate a manufacturer or make. They appear to be about 1922 to 1925 vintage. I'm only guessing but maybe they were kit sets. Many components are the same in both.

Jim Mason brought a 1922 one tube portable with the name of "Pocket Radio". (It would take a pretty sturdy pocket to accommodate it). It was made by the Auto Indicator Company of Grand Rapids, Michigan. Reminds one of an outsize walkie-talkie or CB unit.

Mark Moore has suggested a club picnic at the Trolley Car Park near Forest Grove. Seems a fine idea and something to plan on when picnic time comes around. I remember spending a pleasant day there a few years back, looking over the old street cars in process of restoration and riding one like those that ran on the Broadway line in Portland.

CONTD.

Business type cards were distributed to those present at the February meeting. These contain the club logo and space for the individual to insert his name and phone. They should be valuable for use at flea markets and shows like OMSI where there were inquiries from many visitors. Too, they can serve as a sort of invitation to visit the club for there is space on the back to write the club address, meeting time, etc. Ten cards have been allotted to each club member at no charge --- additional cards may be had at cost.

Channel 2 has displayed some interest in presenting a story on old radios on the "Sunday Morning" program. If this comes to pass we will need someone from the club who has a fair knowledge of old radios and the old programs and who is, shall we say, loquacious, and feels comfortable being interviewed. Any volunteers?

Remember the "Big Bands" of the 30's and 40's? Nick Diamond of KEX is presenting a new hour long program of the big bands each Sunday at 6 P.M. The initial show was on February 3rd and he planned to present the program on the first Sunday of each month, but there has been such favorable response it was decided to make it a weekly show. For a "touch of class", warm up the old Sparton, Majestic, Brunswick or whatever and take a pleasant trip down memory lane with such bands as Art Mooney, Ted Weems (with Elmo Tanner), the Dorsey brothers and, of course, perennial favorites Glenn Miller and Benny Goodman.

Put a big X on Saturday, April 12th, the date of our Spring Swap Meet, at the club house, after the business meeting. For those wishing to participate a \$2.00 table space donation will be appreciated.

by

HUGH RANKEN

LETTERS

DEXTER S. BARTLETT
7405 North Wall Avenue
Portland, Oregon 97203

Dec. 24, 1979

Mr. Bill DeVey
16969 SW Tracy Ave.
Lake Grove
OR 97034

Dear Bill;

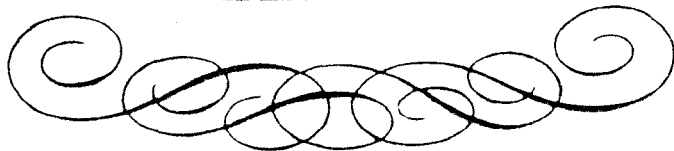
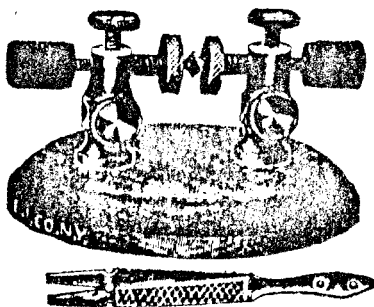
That picture of a straight gap in the last issue, plus an Electre Imperting Co. crystal detector, started me out as a ham in 1910.

For your information, there is a nice writeup of Gernsbach in the January Radio-Electronics. Gernsbach was the founder of Electre Imperting Co.

Sorry I can't get out to your meetings, but I am 85 and I don't do much traveling. Anyway I enjoy your call letters.

73s

Dexter S. Bartlett



Three-Circuit Regenerative Tuner



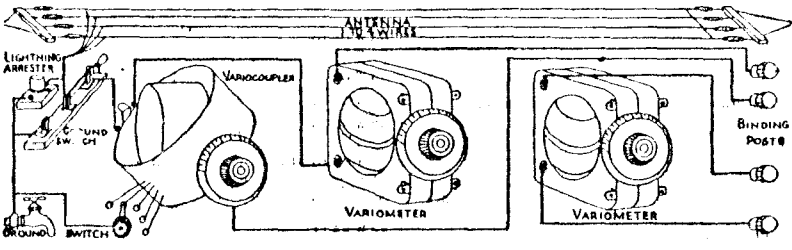
You Can Build This Set

This set is so easy to put together that almost before you realize it you will have it all finished. All the work that is really hard to do has been done for you. The panel is drilled so that you need only to slip the screws into place and fasten the instruments in position; then a few simple connections and the job is done. All the instruments are selected as being the best for use in this particular set and the quality and workmanship are above the average. Why pay high prices for an inferior set when at a very small cost you can have a splendidly designed Three-Circuit Tuner that is equal in results to some of the most expensive sets on the market? The little time you spend pleasantly in putting the set together saves you the usual radio profits. And remember, you have no holes to drill. Everything is easy with the complete instructions furnished with the set. Any boy can do it.

A Long Distance Receiver

Some of the longest distance receiving records in the country have been made on sets of this type, and many of these were made on instruments greatly inferior to this one. Almost any expert radio man will tell you that the Three-Circuit Tuner is one of the best circuits for long distance reception, and that the set brings in the stations louder and clearer than the usual home made set. The three-circuit tuner is very selective. Did you ever tune out nearby broadcasting stations and listen to the faraway stations that the other fellows can not hear. Consists of a beautifully finished cabinet in hard rubbed, dark mahogany finish; a polished, hard rubber control panel 6 by 16 inches; two modified variometers; a high grade 180 degree variocoupler; three polished dials with white engraved figures; two attractive switch levers with switch studs and switch points; necessary binding posts and connecting wires; also instructions. Wavelength range, 180 to 500 meters.

463 W 663 Postage, 24¢ extra **\$17.85**



How It Looks When Finished

The illustration below gives you an idea of the beautiful appearance of the completed instrument. If you could only see it in your own home with its beautiful cabinet and shining panel you would be proud to say, "That is my set and I made it all myself." That is a great satisfaction. When you tune in some faraway station you have the advantage of knowing that you have one of the best sets that can be built, and that you, and you alone, are responsible for its fine work. Notice how the cabinet is arranged for short, easy connection to the Detector Two-Stage Amplifier shown on the next page. The two cabinets fit together without any unsightly space in between and the two sets match perfectly in size and appearance. Just notice how the dials and switch levers match in appearance with the chassis knobs on the Detector Amplifier Unit. A better looking, better built and better working set would be hard to find. Decide now what this is the set you want for your own.



View of Tuner from Rear With Cabinet Removed



This illustration shows the cabinet removed so you can get a clear view of the interior of the set after it is put together. Notice how the instruments are spaced for best results. (Can you imagine how easy it is to mount the parts on the drilled panel and what fun it would be to watch the set grow into a beautiful finished product? See how businesslike it looks, how the wires are run in straight, even lines to the proper connections. And yet it is all so simple that anyone can build a set that looks as if it came from the best radio factory in the country. Remember that you can really follow our instructions and everything is arranged to make easy, quick and pleasant work for you. A real professional set that you can easily build yourself.

The simple tools that you have around the house are all you need. Everything is planned for the greatest simplicity. Hundreds of our customers have assembled this tuner, many of whom have written to tell us how easily it was done.

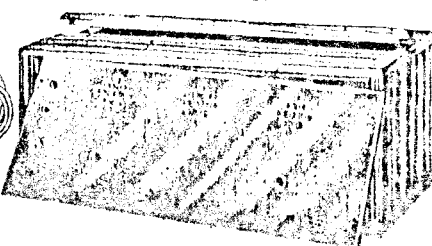
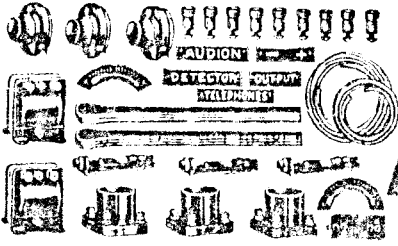
All purchases shown on this page shipped from **Bozland, Ore.**

The Montgomery Ward Co.

FROM 1923 MONTGOMERY

WARD & Co. CATALOG

Detector Two-Stage Amplifier

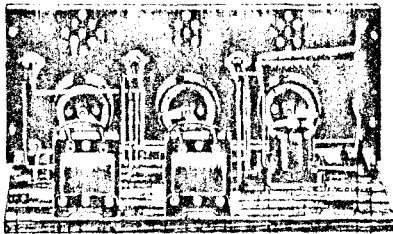
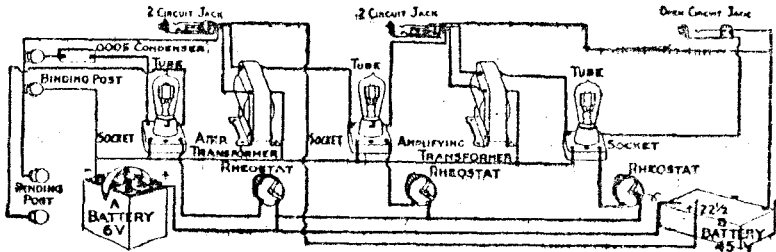


Designed for Use with Tuner Shown on Opposite Page

This is the Detector Two-Stage Amplifier to use with the Three-Circuit Tuner shown on opposite page. The two units belong together and make up a set that will equal any other in the far distant stations so long that you can use a loudspeaker and furnish entertainment for the whole family. Match the Tuner on opposite page perfectly in size and finish. The unit contains a vacuum tube detector and a two-stage audio frequency amplifier. Jacks are provided so that you can "plug in" on either the detector alone or on one of two stages of amplification. Such an arrangement is ideal and is found only in the best sets. All connections are brought out to convenient binding posts for easy connection to the tuner and the batteries. The outfit consists of a beautifully finished cabinet to fit a 4 by 14 inch panel hand rubbed dark mahogany finish, a hard rubber compound panel that is drilled with the necessary holes when you receive it, three duplex bakelite tube sockets that fit C-200, UV-200, C-12, WD-12, C-201A and UV-201A tubes, one single circuit jack, two double

circuit jacks, three high grade rheostats with black composition knobs to match the dial's speed on the tuner, two high grade air-cored tuning transformers that are selected for best results, silver plated plate with letters in black to mark the various rheostats, etc.; all necessary black composition binding posts, connection wire and switches; grid condensers and wood enclosure. We also include a complete instruction sheet showing how to assemble the Detector-Amplifier Unit in a very short time. No special tools are necessary, so anyone can do the work. Remember that this instrument is a high grade product in every way and is not to be compared with some of the poorly designed outfits that are offered at what appear to be low prices. Remember that it always pays to buy the best. A good radio set will last for years. So on the safe side

443 W 688—Complete outfit \$17.95
Postage, complete, 24¢ extra

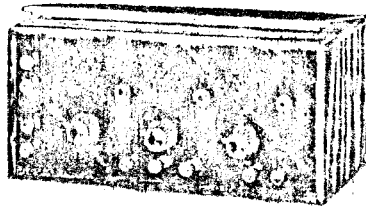


How It Looks When Completed

Notice the two illustrations of the completed set. It looks as if it were made in the biggest radio factory in the country. When you put the set together it will look just like this. You can not go wrong or make a mistake, for the panel is drilled and all you need to do is to follow the simple instructions and the set almost builds itself. Anyone can do it. Who can use a screw driver and handle a pair of pliers. The outlines of the unit and the three-circuit tuner are designed so they fit closely together and the connections are short and direct. This prevents losses and gives all around high efficiency. You can use either dry cell equipment or storage battery sets, as the sockets furnished will take any standard tube except the C-11 and WD-11, C-200 and UV-199 dry cell tubes. These tubes may be used with adapters shown on Page 22. Everything has been planned for your convenience.

How to Order Equipment

At the price quoted here we do not furnish tubes, batteries, antenna equipment or leads. Read the descriptions of the tubes on Pages 18 and 19 and decide what type is best suited to your use. Then refer to Page 27 and select the batteries you will need. If you intend to use a loudspeaker you will want at least 45 volts of "B" battery for the amplifier, and it is much better to use 90 volts. You will also want antenna equipment, see Pages 36 and 37. Select a headset from Page 29 and be sure to order a plug. One plug is included with the outfit, but you will want this plug for the loudspeaker. Loudspeakers are shown on Pages 20 and 21. Remember that a loudspeaker makes the set useful to all the family and is a good investment. Order the low loudspeaker you can afford—a little distance in price often means a big difference in the results you will obtain.



Advertisement for the product.

All merchandise shown on this page shipped from Portland, Ore.

15

CONTRIBUTED BY
WOODY WOODRUFF

9

Bits and Pieces

RECENT ADDITIONS TO THE LIBRARY

The NWVRS library has received several new books, manuals and pamphlets which are available to club members. These were donated by Glen Gonshorowski and are listed below. Material may be checked out by members for a reasonable length of time at each club meeting. For further information concerning the library, call Chuck Kibler at 678-5066 or write the NWVRS at the club address.

- Automatic Record Changer Service Manual, Vol. 3 (1949-1950), Howard W. Sams
- Complete Index For Perpetual Trouble Shooters Manual, Vol. 1-10, John F. Rider
- General Dry Batteries Specifications Manual, General Batt. Company
- Most Often Needed 1926-1938 Radio Diagrams, M. N. Beitman
- New World of Entertainment Simplified World Wide Radio Guide, Stewart-Warner
- Radio Amateur's Handbook, The, (1949 and 1961) Editions, American Radio Relay League
- Radio Industry Red Book Replacement Parts Buyers Guide, Howard W. Sams
- Radio Set Socket Layout Guide 1921 to 1935, RCA
- RMS Radio & Phono Cabinets Catalog, Series 1946 & 1947, Radio Merchandise Sales
- Vibrator Replacement Guide, P. R. Mallory & Co. Inc.
- Volume Control Guide, Eleventh Edition, Centralab
- Volume Control Replacement Manual, Edition No. 4, IRC

Glen also donated a large number of CALL LETTER issues which has helped complete the library set started with the help of Bob Campbell and the newsletter editors.

CONTRIBUTED BY

CHUCK KIBLER

I have a slight modification to make to Hugh's statement on page 6 that the Club's Swap Meet will occur on April 12th. Well, it's true that this is the regularly scheduled day for the meet. However, I understand that this date conflicts with the antique auto swap meet in Portland. This conflict would affect several members in the club who have diversified interests. In order to avoid this situation, your editor would like to make a suggestion for all to consider and discuss at our March meeting. How about moving the Swap Meet up one week to April 5th to eliminate this conflict.

##

Craig Hoaglin has called our attention to an interesting looking book which is available from the Government Printing Office. The book is History of Communication and Electronics in the U. S. Navy by Howeth, 1963. If you would like one, send a check for \$10.25 and a request for Stock No. 008-052-00025-5 to:

Sup't. of Documents
U. S. Government Printing Off.
Washington, D.C. 20402

##

Many of the McMahon's publications are still available as follows:

4 "Progress in Electronics" Prints		\$3.75
Vintage Radio	Hard	10.95
	Soft	8.95
Flick of the Switch	Hard	10.95
	Soft	8.95
1927 Radio Encyclopedia	Hard	14.95
	Soft	10.95

Send orders to:

McMahon's Vintage Radio
Box 1331
North Highlands, Ca., 95660

RIGHT OR WRONG?

PROPOSITIONS

1. A diode rectifier is nonlinear on low-voltage ranges and linear on high-voltage ranges because the behavior of the tube is different when the loading is increased, thereby obliterating the capacity and inductance effects otherwise present, which contribute the impurity that results in low-scale crookedness of the characteristic curve.
2. The test of whether a resistor is of too small a wattage rating for the purpose used is that the resistance changes when current is passed through the resistor, therefore the circuit performance is upset, and results are poor.
3. The present trend among broadcasting stations is to erect vertical type antennas and to introduce some directivity so that the service areas will be increased or there will be more nearly uniform distribution of radiated energy consistent with the distribution of population.
4. The radio method used for stopping airplanes in flight is to radiate a modulated wave that is automatically detected by the dissimilar metals of which the plane is made, and to have the modulation frequency variable, until the frequency of the propeller revolutions is duplicated, whereupon by out-phasing of the modulation pulses, the motor revolutions are neutralized, and the plane falls to earth.
5. Iron is suitable for an antenna, including an upright iron pole, and it is likewise satisfactory to use iron or steel wire, vertically or horizontally, the necessary precaution being taken to safeguard the iron or steel from the elements with best of insulation, to avoid rust, etc.
6. A tube is said to be saturated when all the electrons emitted by the cathode are drawn over to the anode, and therefore the emission type of tube tester is one which tests the tube under the condition of saturation.

ANSWERS

1. Wrong. The results appear nonlinear for low voltages and linear for high voltages not because the tube behaves any differently but because for high voltages the non-linearity is masked by the smallness of the effect of the tube as a current-limiting agency, compared to the greatness of the current limitation by the load resistance. Where a great part of the current is due to the tube's own resistance there is curvature. Where a small part of the current is due to the tube there is linearity. But the tube characteristic is the same in both instances.
2. Wrong. Most resistors change their resistance when current is passed through them. Roughly, the wattage of the resistor is too low if the resistor gets entirely too hot. The technical definition relates the heat dissipation to a certain degree of freedom from surrounding objects.
3. Right. More and more stations are using the vertical antenna, and the heights are becoming increasingly greater.
4. Wrong. There is no known method of stopping airplanes in flight by radio.
5. Right. The use of iron pipe aerials on roofs, with coupling transformers to a transmission line, and line-to-set transformers at the receiver end, is growing.
6. Right. The saturated tube, since its current can not be increased, represents a suitable condition for test purposes.

Ole!

by

T.J.

In spite of the fact that member Bob Campbell spent several days in ye old hospital, he picked up quite a few good items over the month, to wit: a Crosley 5-50 regenerative J.R.F., a Crosley 122 Super Buddy Boy superhet., Ryders 1948 Public-Address Manual, Ryder's Special Automotive Radio Manual Vol. 2 (mint cond.), has his ear to the ground on an A.K. factory repair manual too, and I believe he found a 1940 Hickok tube checker for \$3.00. I'm told Bob is on the mend at this writing, but maybe this is the sort of handicap we need to catch up on him with our collecting, Hi!

Dick Howard picked up a "freeby" in the form of a Sonar-radio, a radio-phono combo, made by Sonora, has a Meyer and Frank decal on cabinet. Also he found a Consolette 3 tube neotrodyne with good 199's

One we forgot to mention from a few weeks back was Hugh Ranken's table model Brandes 5 tube AC. This happens now and then, be sure to remind me if I skipped anything.

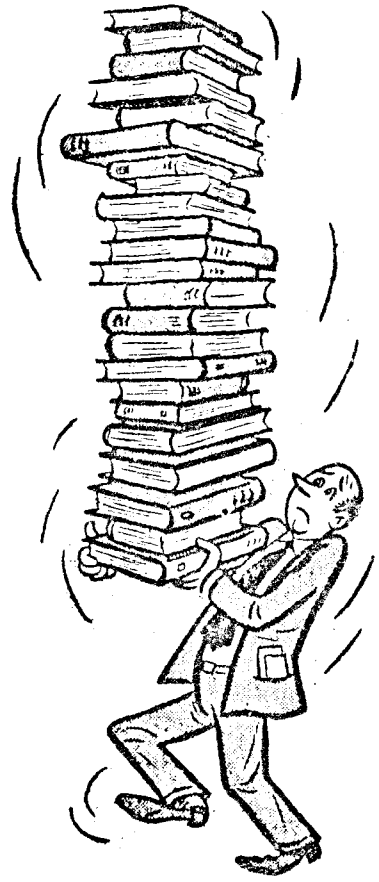
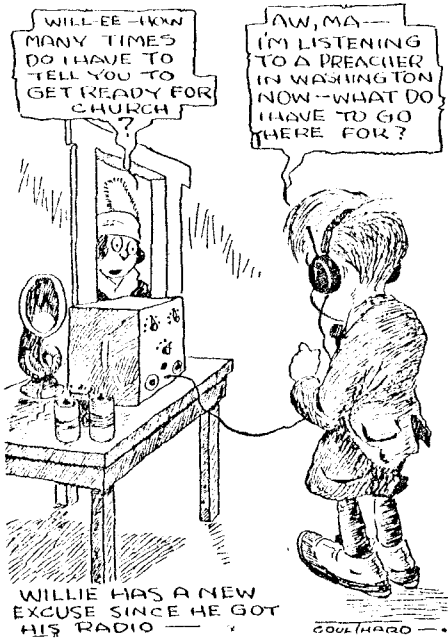
Joe Tompkins writes that he took seventeen consoles to the Flea Mart in Salem, didn't say how many of these he carted home! However he found a large table model Zenith, a Freed-Eisemann with a drop front cabinet (Mod. N.R.6) in rather bad shape but restorable. An A.K. mod. 48, an Air-Line 5 tube J.R.F., A Crosley battery set (no I.D.), A bunch of new friends and prospective members, we hope.

Jim Mason also went to the Salem Flea Mart and found a few good items. A nice Freshman Masterpeice 6 tube batt. set (01-As), single dial and Jim says it's one of the few such sets that worked the first time he hooked it up! Also he found a Silvertone console battery set, mod. E, and to round out his luck he got a Philco metal box sprk. balanced armature type for batt. and early A.C. sets--needs a little refinishing otherwise good.

This seems to be about all for this time. Be sure and get your Ole's in before the 25th of the month if you want them in the current Call Letter. Call 235-0581, or mail to Tom James, 5024 S.E. Clay St., Portland, Or. 97215.

CARTOON CLIPPINGS

RADIO TERM ILLUSTRATED



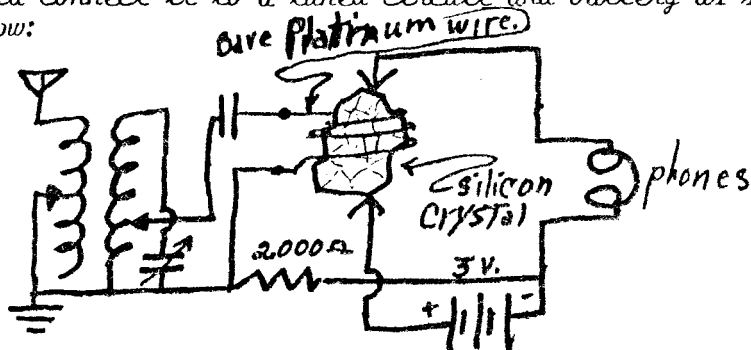
Volume Control



I Q Primer...

by THE PROF.

In the winter of nineteen twenty two, in central Idaho, old W.C.B. Dunn, (known locally as "Alphabet Dunn") invented the "Sil-co-dyne" radio receiver circuit. It was the real forerunner of the transistors as your writer sees it. He took a length of ordinary platinum wire and wrapped it around a silicon crystal, that had first been boiled in salt water for several hours, then he would connect it to a tuned circuit and battery as shown below:



When the input polarity to the platinum wire was clockwise and the upper turn +, the juice from the battery flowed around thru the 2000 ohm resistor, but when the polarity reversed, it flowed thru the phones. Thus the system acted as an amplifier-rectifier.

"Alphabet Dunn" died in 1923, but a well known tube company bought up all the rights to Sil-co-dyne from his widow for a mere pittance, and that is the last I heard of this device. If anyone out there knows more about it, lets hear from you.

** ** *

The circuit last month was Hugo Gernsbach's Megadyne. I never tried it out when I lived remotely from a broadcast station, it won't operate well when a station is too close. From the look of the circuit, it appears to be a modified super-regenerative, using a crystal as a detector. Hugo never marketed this circuit complete, only as a kit, and further, there was very little comment on the actual operation. Maybe Armstrong's patent on super-regens was a factor (?)

SWAP SHOP

COMPILED
by BILL
DEVY

WANTED: One 3LF4 tube and schematic for
a Majestic Model #25 super;
R. L. Hunt, 3 N. Cascade #2,
Kennewick, Wa., 99336

** ** * * * * *

FOR SALE: Tubes. Types 27, 24A and 6D6.
One dollar each, Tested. Types
80 and 45. Two dollars each,
Tested. Art Redman,
Ph: 503-774-9913.

** ** * * * * *

WANTED: Volume control for A-K Model 70,
Chassis L1 (5600 ohms, P.N. 16270)
C. R. Kibler, Rt. 2, Box 694,
Aurora, Or., 97002, Ph: 678-5066

** ** * * * * *

WANTED: Tuning dial and friction drive
knob, brown, for A-K Model 35 or
thereabouts. C. E. Charman,
Ph: 654-7387 or 243-4409

** ** * * * * *

WANTED: Crystal sets, tubes, spark-gap
components, disc scanner type TV,
any parts. Don Iverson
10115 N.W. St. Helens Rd.,
Portland, Or., Ph: 286-1144

** ** * * * * *

WANTED: Knobs for RCA Radiola 80. Info.
on RCA RE45. Alan Shadduck,
3541 S.W. 170th Ave., Beaverton,
Or., 97006, Ph: 649-4473