

FRIENDS

The SHORT WAVE BROADCAST Journal - Since 1962

NORTH AMERICAN SHORT WAVE ASSOCIATION
P.O. BOX 989 ALTOONA, PA. 16603



AUGUST 1972



1



2

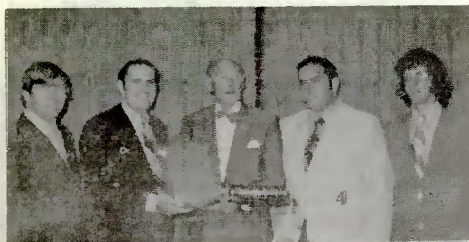


3

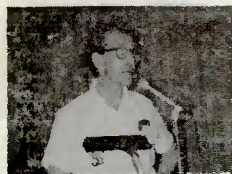
1972

ANARC

CONVENTION



4



5



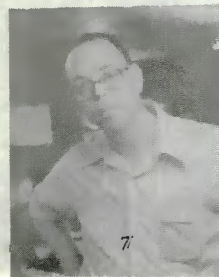
8



9



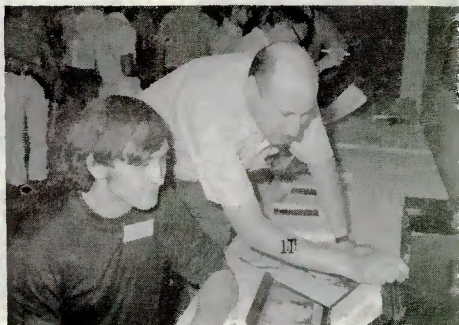
6



7



10



11

AUGUST 1972



12



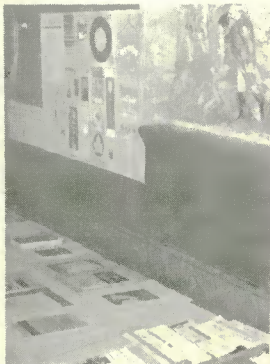
13



14



15



16



17



18



19



20



21

B O S T O N

M A S S .



22

1972 A.N.A.R.C. CONVENTION - BOSTON, MASSACHUSETTS

1. STEVE d'ADOLF PRESENTS THE OPENING REMARKS - COLONIAL HILTON INN.
2. VICTOR JAAR - VETERAN CARIBBEAN AND CANADIAN DXER.
3. CONVENTIONNAIRES EXAMINING THE RECEIVER DISPLAY. AMONG THEM WERE EDDYSTONES, HALLICRAFTERS, HEATHKITS, ALLIED, NATIONAL, BARLOW-WADLEY.
4. THE CONVENTION COMMITTEE PRESENTS EDDY STARTZ WITH A SOUVENIER PLAQUE.
5. PERRY FERRELL OF GILFER TELLS WHAT'S OLD AND NEW IN EQUIPMENT.
6. SPEEDX's BILL FLYNN & ASWLC's WOODY SEYMOUR ON THE PANEL PROGRAM.
7. HANK SLADE - IMPRESSED WITH HIS FIRST CONVENTION.
- 8, 9, 15 & 18. VARIOUS CLUB MEMBERS REPRESENTING CIDX, CURLS, REALISTIC, SPEEDX, WTV-FMDXA, NRC, ASWLC, AND OUR OWN NASWA.
10. GORDON NELSON LECTURES ON PREDICTABLE PROPAGATION.
11. NASWA'S "RALPHUS" AND GEORGE SCHNABEL EXAMINE A BCC-221.
12. EDDY STARTZ - KEYNOTE SPEAKER FOR THE CONVENTION.
13. JEFF NASADOWSKI - ENJOYING THE FIRST DAY'S PROCEEDINGS.
14. A PANEL DISCUSSES THE MERITS OF DX CLUBS TODAY.
16. DISPLAY OF BULLETINS FROM DX CLUBS AROUND THE WORLD.
17. JEANNE FERRELL ENTERTAINS EDDY STARTZ.
19. YES VIRGINIA, THERE IS
20. CONFUSED AND LOST ON THE QUARTER-MILE HIKE TO THE INN.
21. MAX FUCHS OF NATIONAL RADIO DESCRIBES HIS COMPANY'S EQUIPMENT.
22. HANK MICHALENKA ADMIRES A VINTAGE SX-100.



ANARC CONVENTION REPORT - The 1972 Association of North American Radio Clubs convention is history! And by any measure, it was the best yet! For that we owe a great measure of thanks to the four hosts and convention planners, Jerry Berg, Steve d'Adolf, Chris Lobdell and Mike Macken.

With some attending for the full period, 4 pm Friday to 11 am Sunday, others for only a portion of the time, the attendance varied. But at its peak, Saturday night, July 15, there were 87 persons at the Colonial Hilton Inn complex at Wakefield, Mass., just outside Boston.

The 87 persons attending made this the largest convention ever staged by ANARC. Unofficial tallies show that some 25 NASWA members were present. A number of other clubs were represented. A partial list would include ASWLC, NNRC, NRC, SPEEDX, WTFDA, CIDXC and others. They came from as far west as California, as far north as Northern Ontario, as far south as North Carolina. Other states and provinces represented included Illinois, Indiana, Wisconsin, Michigan, Ohio, Pennsylvania, New York, Maine, New Hampshire, Massachusetts, Maryland, Virginia, West Virginia, Tennessee, Quebec and undoubtedly others. Some flew into Boston's Logan airport from such places as San Francisco, Los Angeles, Chicago, Memphis and Raleigh. Others drove up to two days.

The convention site, the Colonial Hilton, was an elaborate complex including a large motel, with domed pool, a golf course, and up a hill, a ten minute walk or a two minute ride by motel buss away, was an attractive restaurant building. Friday and Sunday's convention sessions were held in the motel area; Saturday's events, including the banquet, were in the restaurant area. The site, except for some air conditioning breakdowns, was delightful, and since the actual convention activities were held in areas where the air conditioning was operating fully, discomfort was minimal. In fact, there were those who facetiously suggested it was planned by the convention hosts to guarantee the group would stick close to the comfortable convention rooms.

With DXers arriving at different times Friday afternoon and evening, the start of the '72 convention was rather informal. Steve d'Adolf opened with some introductory remarks. After supper there was an impressive equipment display that kept DXers busy, actually trying out such elaborate and expensive receivers as the National HRO's 500 and 600, and a British-made Eddystone. Other gear on display, and for the most part working, were the Allied-Radio Shack SX-190, the Barlow-Wadley portable, various preselectors, frequency meters, and antennas, courtesy of National Radio, Gilfer Associates and various individuals.

During the late hours, the usual happened. Many conventioners broke off for informal club get togethers and eyeball QSOs in various motel rooms. For many veteran convention goers, these are a highlight; the chance to see others QSL collections and talk about DX conditions and catches, past and present, the memorable loggings and the might-have-beens. How long these sessions lasted varied greatly. Some hit the sack as early as 10 pm, it was rumored; others didn't stumble off to bed till about 5 am. An educated guess is that the typical bedtime might have been around 1 or 1:30 am.

But it was early to rise on Saturday. After breakfast, we gathered in the New England Room in the restaurant area. The first order of business at 9 am was a presentation by an ANARC committee of a proposed unified country list for ANARC. The pros and cons were discussed. It was intended merely as an introduction to the list. It may be submitted to ANARC representatives for possible action later. At 9:45 am, there was the showing of the Army training film, "The Effects of the Ionosphere on Radio Wave Propagation," a basic introduction to a subject studied and presented more fully by NRC expert Gordon P. Nelson, who spoke and delivered a slide showing of one phase of propagation, "Auroral Disturbances."

The wrap-up of the morning session were talks by Max Fuchs, National Radio Co., who discussed manufacturers problems in designing and marketing products suitable for the DXer, and by Oliver "Perry" Ferrell, Gilfer Associates, Inc., who reviewed new DXing products of the past year, gave a glimpse of his predictions for the future, and concluded that, overall, there were some significant gains and some losses in the SWL equipment picture.

After Saturday's lunch break, we regrouped at 1:30 pm, to hear Steve d'Adolf speak on "Everything You Always Wanted to Know About Utility DXing, but Were Afraid to Ask." Steve outlined various aspects of ute DXing and explained techniques for hearing and verifying these stations.

A panel discussion, "What--If Anything-- Is Wrong With DX Clubs", with six panelists from various clubs, including NASWA members Dan Ferguson and Don Jensen, followed at about 3 pm. After the panelists touched on some points, a lively floor discussion followed with many viewpoints expressed. Some of the topics raised and

debated were not new, others had not been covered in previous conventions. In overall it was clear that there are nearly as many views of DXing and club roles as there are listeners. But the satisfaction and effectiveness of person-to-person contacts with other listeners and would-be listeners was a common ground of agreement.

At 4 pm, there were several contests, involving the identification of interval signals. It was broken into two parts, for beginners and for more experienced DXers. Two young members of the hitherto unknown club, the Realistic DX Club, made up of some 15 owners of Realistic model receivers, tied for first place in the novice section. North Carolina's Woody Seymour of ASWLC, topped the pro category by correctly identifying all 15 IS's. The trio won prizes. There also were drawings for other prizes throughout the convention. Prizes included Gilfer's A-20 preselector, antennas by Hi-Gain and Mosley, mint stamps and various books and magazine subscriptions.

Just before 5 pm, Saturday, the afternoon program ended. DXers went back to their rooms to rest and dress for the banquet. Others adjourned to the nearest bar or coffee shop for refreshment and some hit the Colonial Hilton's pool for a refreshing swim.

The full 87 attending were on hand back in the New England Room at 7 pm for the big event, the banquet. The menu included New England clam chowder, salad and roast turkey with all the trimmings. Dan Ferguson, chairman of the ANARC Awards Committee, announced the awarding of ANARC's 1972 Man of the Year plaque to the dean of North American DXing, August Balbi. Unfortunately, August was not in attendance and the plaque was mailed to him. Jerry Berg then introduced the keynote speaker, Eddy Startz, the 73 year old former host of Radio Nederland's "Happy Station Program" Startz, who recently began his visit to North America, hosted the very popular show for some 41 years.

His talk on the "Future of Shortwave Broadcasting" was colorful, dramatic and inspiring. Decrying the chaos on the bands today, largely because of jamming, he urged a greater degree of friendship and brotherhood.

After the address, Startz answered many questions and stayed around most of the evening, displaying his collection of broadcasting memorabilia and recalling stories of his past broadcasting activities. Many DXers snapped photos of Eddy and came away with autographs of the popular "Holland Dutchman" who made the phrase "a nice cuppa tea" his trademark.

Again the later hours were filled with the informal sorts of get togethers that are so popular at conventions. One group gathered for a rather informal but highly technical discussion of propagation. Others used the time for showing QSLs, talking about DX in general. Again it was about 5 am Sunday before the last went to bed.

Even so there was a sizeable group that met for breakfast at 8 am in the Statler Room of the motel section. This was a more nuts-and-bolts meeting; ANARC committee reports, a report from the convention committee, and a call for volunteers to host the '73 convention. It is hoped that before long various localized groups will respond with offers to stage next year's ANARC convention. A SPEEDX representative outlined that organization's new program to assist handicapped persons become SWLs.

The convention's wrap-up was a color film, "NHK Topics", showing how Japanese programs are produced with the aid of computerization.

The program was officially over before Sunday noon, and depending on plane schedules and distances to be driven, the convention goers began to say their good-byes and drift away. A number remained through the afternoon, though, engaging in the usual talk sessions.

If you were there, this convention wrap-up is unnecessary. You'll also recognize that there is no way to report all the meetings, conversational exchanges and the informal eyeballers that occurred. But these may prove to be as memorable to you as those official program events mentioned here.

If you weren't there, this report may be sufficient to make you wish you had been, and to resolve here and now to begin planning-- and saving -- for the 1973 ANARC convention, wherever it may be held!

There were those who have attended a number of conventions before and those for whom Boston '72 was their first ANARC gathering. There were teens as young as 14, and several who began listening in the '20's or '30's; a good mix of youth and experience. Yet everyone I talked to agreed that it was a top flight convention and many departed saying, "See you again next year."

MAIL CALL!

LETTERS TO THE CORRESPONDING SECRETARY

Deadline: 20th of the month
Edward C. Shaw
621 Burleigh Avenue
Norfolk, Virginia 23505

THE ANARC CONVENTION

Yes, he was there - somewhere. Obviously hiding behind curtains, under tables, in the closets - but, always keeping out of sight. Yet, he managed to meet nearly every man attending the fantastic 1972 ANARC convention a couple weeks ago. A record 87 persons joined us for one of the most exciting and satisfying weekends I have ever witnessed. Yes, Charlie Loudeno and I were there.... I, openly, but, true to his sneaky nature, Charlie remained anonymous and clandestine. The keynote address was delivered by one of Radio Nederland's foremost figures in international broadcasting - Eddy Startz - former host of Radio Nederland's "Happy Station" program (now ably managed by Tom Meyer). GILFER Associates, caterers to the hobby, and National Radio had some very fine receivers on display. NASWA members again made up quite the largest contingent from any one participant club, and sample materials were on hand for any interested DXers with SWBC on his mind. Elsewhere in FRENEX you will find several pages of photographs and a concise report on the convention. Congratulations to the hosts from Boston!! And now, on to a few questions for Mail Call.

Dear Ed: What is a pirate station? When may I hear one? What frequencies are used?

Answer: Let's take the last question first. Lately, reports have been received of the reactivation of "Voice of the Purple Pumpkin". There are others various calls these pirates use on both SW and AM - notably "Wonderful World of W-Y-N-O", and "W-I-L-D". Frequencies heard vary. The best times are early evening until way after darkness. If you stick to the 41 and 75 meter bands, you may be lucky to stumble across one some day. Most recently, this editor has heard hard rock and moody blues on 3,885 KHz, and according to the HAMS on the air commenting about it at the time, it undoubtedly originated from around the Boston area. Others have been reported from around the Chicago area. Now, as to who these broadcaster are - they are probably unlicensed, or formerly licensed HAMS, operating most often just above or just below the legitimate amateur bands. The reasons probably revolve around amateurish adventure rather than any bonafide desire to get into licensed broadcasting. These stations are not widely heard, and they probably employ small amateur rigs of the 25-100 watt range. I would not be surprised to learn that one or more "Pirates" are quite familiar with NASWA.

Dear Uncle Ed: I have sometimes come across the expression... "Prepared QSL". Just what is this, and could it be of any use to me?

Answer: All too often, and particularly in Latin America and the Middle East, bonafide QSL cards are not printed by the myriad of small, poorly-staffed radio stations. Many stations do not even have letterhead stationery to use in correspondence. To make it as easy as possible to obtain a QSL, many DXers have found it expedient to construct a ready-made, but blank, QSL card which they enclose with their reception reports. All the broadcaster has to do then is to fill in a few blanks and apply his signature. You may or may not desire to fill in the date, time and frequency yourself, leaving nothing for the station to do except sign it and mail it. Even postage stamps of the country involved may be sent with your report. A price list of these stamps may be obtained from DX STAMP SERVICE, 83 Roder Parkway, Ontario, N.Y. 14519.

Dear Ed: I ordered some equipment from a SWL equipment dealer in New York, but have received neither equipment nor any answers to my inquiries after several months.

Dear Ed: Somebody ought to clue-in the NASWA members about what seems to be a big swindle operation in a SWL equipment mail order business in New York.

Answer: Without mentioning names involved, this editor has personal knowledge of, and several letters on hand from NASWA members, about this business. The general complaints are: Non-delivery, accepting and cashing various checks without sending goods, and refusal to give adequate account to the customer. Several months ago, NASWA advised the membership to be wary of such a dealership. Avoid the unknown. NASWA knows of ONE reputable source of business catering exclusively to the SWL hobby, and is happy to mention GILFER Associates. The persons owning GILFER are personally known - having met them, and knowing something of their business dealings both past and present. GILFER is located at Box 239, Park Ridge, N.J. 07656.

Dear Ed: A frequently discussed point questions the difference between SWL and DXer. What is your interpretation?

Answer: Generally speaking, we all are, or at least were at one time, SWLers. These SWLers prefer to listen to the more powerful, well-heard stations for entertainment purposes, education, news, etc. All too often, however, the bug bites, and the SWL becomes aware of a gnawing desire to catch just one more country, and then just one more. In the end, many of the SWLers have taken their hobby very seriously, indeed, and prefers to seek out the rare, low-powered, distant, and difficult to hear stations, and to keep adding to his totals of countries and stations heard. No matter what your preference, it takes both categories to make up our hobby. Without one or the other, we could not exist as the top-notch, number #1 club.

Dear Ed: How is one expected to submit an adequate reception report for QSLs when the program heard was broadcast in - say, Greek or Arabic? What kind of details does the broadcaster want from us?

Answer: Very good questions. First of all, be reasonably certain the suspected station is actually supposed to be on the air. Check WRTH and recent loggings in FRENDX. Be sure that propagation is possible between him and you (see the monthly propagation time charts in Short Wave Center). Third, take note of peculiarities around periods on the exact hour and half-hour. These may be gongs, time pips, change of announcers from male to female, change in programming from variety or music to news or comments. If you can manage it, try to stick with the station until sign-off to note any special announcements or anthems. Make some effort to identify the language heard. Give names of songs heard if you recognize them. If you can afford it, send a small tape recording of the program heard (7-1/2 i.p.s. on one side only). The engineer of the station is interested in strength of his signal, interference from other stations, electrical noises, fading, etc. Unless the station is familiar with the SINPO system, I would stick to written descriptions.

Dear Ed: What is the advantage of having an expensive SWV-7 (vertical) over the less expensive SWL-7 (horizontal) antenna - both made by Moseley? I have both.

Answer: To begin with, you are lucky to have the horizontal space to string up the SWL-7. The advantage lies in the SWV-7's utility for persons having small lots, or who live in apartments but have a porch or balcony. The vertical is certainly omnidirectional, but more susceptible to street noises. The horizontal is more directional, but may pick up street noises or more power line noises. The vertical will not efficiently resonate for lower frequency stations, and the horizontal may have some null reception angles. The advantages or disadvantages are for you to examine. Keep in mind that there is no substitute for honest length to gather in low frequency. Short antennas, whether vertical or horizontal, and despite the coil traps to make them resonate more efficiently, may not perform as well as a good long wire. They are fine for higher frequencies - say, above 31 meters.

And a big 73 and good DX to all. Keep the questions coming.

Edward Shaw

SHORTWAVE CENTER

Editor: Ralph W. "Ralphus" Perry
 1436 Bristol Avenue
 Westchester, IL. 60153

Deadline: the 15th of each month!

NASWA/SWC
EXCLUSIVE

NASWA INTERVIEWS
 G.A. WESTON, CHIEF MONITOR

NASWA/SWC
EXCLUSIVE

SPECIAL LISTENING SECTION, THE BBC MONITORING SERVICE

This month, the Shortwave Center is speaking with a man in what we might call a "dream job" -- listening to shortwave for a living! Mr. G.A. Weston, on the BBC MS.

NASWA: To start things off, Mr. Weston, do you think you could give us an idea of what your average day at the Monitoring Service is like? Do you spend all of your time behind a receiver, hi!

Weston: I do not spend much time at a receiver myself, but of my small staff, who work a shift rotation, there is usually one monitor on duty at any one time. They normally work eight hours a day - most of which is taken up by checking schedules, trying to find the best frequency for receiving a station which has suddenly become important in the news or just "cruising" to find anything new. All the information found by listening is assembled by myself and any item of importance is passed to my chief and it is then decided if we wish to cover the item on a regular basis. The information provided by monitors goes toward the construction of the Special Listening Section schedules and "Reception Notes" which are becoming familiar to DXers.

NASWA: How many people are employed in all by the MS?

Weston: Just over 400.

NASWA: Are they all engaged in some form of "professional SWling", if I may call it that?

Weston: By no means! In fact, the only full-time DXers, perhaps a better term than SWlers, are on my own team of four. The others are over a hundred foreign language monitors, a dozen or so English language monitors, about 50 editors, 30 engineers, plus a lot of ancillary occupations, clerks, typists, teletype operators, drivers, cooks (the Service works 24 hours a day and we have to eat!), gardeners (Caversham Park where we work has about 90 acres of ground) and so on. By the way, you talk of shortwave listeners, but we use all wavebands, long, medium, short, even on occasions VHF...

NASWA: I see. What type of equipment set-up do you use at the MS, Mr. Weston? Brand names, models, antenna arrays...

Weston: At the S.L.S. desk we use three communication-type receivers - two Racal RA 17 KS and an Eddystone EC956, but for the language monitors Eddystone EB36As and SPR4s are used. At Caversham Park we use a fairly simple "Zeppelin" type system of aeriels, but we have an out-station at Crowsley Park - some four miles away that carries out the majority of the reception work. At this station there are approximately 60 communications receivers (Racal RA 17K's, BRT 400s, and several special pieces of apparatus). The aerial arrays comprise a series of "Beverages", at about every 20 degrees around the compass (except in the northern sector), Rhombics cut and designed for specific station reception and some inverted "V"s. From Crowsley Park, which is manned by Engineers only, the audio output from the receivers is fed to Caversham Park by means of a 38-pair cable. Not only voice broadcasts are fed in this manner but the teletype services as well. The latter are usually passed to Caversham Park by means of "phantom" lines and so conserve the available direct circuits for the voice transmissions. The lines are then distributed to the various listening positions in the main Listening Room at Caversham Park via a switchboard console.

BBC MS

NASWA: Do monitors for the MS set up their work schedules according to the times at which the EC's in each's special linguistic area are on the air? If so, how do you cope with time changes for transmissions, etc. ?

Weston: We start from a coverage schedule, which includes these programme slots - news bulletins, political commentaries, press reviews etc. - which we know from experience are most likely to be useful. The Monitors work regular shifts, and, according to their languages, are allocated their quota of programming, day by day. Shift times are, however, adjusted whenever special events or changes in transmission times make it necessary.

NASWA: Are all monitors engaged in lis-

tening to broadcasts for news sake alone, or do some specifically monitor for frequency changes, etc. ??

Weston: All the monitors except my own section have the job of reporting what foreign broadcasters say, news, propaganda, political speeches, economic information and so on. The Service's concern is primarily with content and my job of keeping track of frequencies etc. is really directed to enable us to know what is being broadcast, when, to whom, and on what frequencies so that we can always find anything we want. But this in practice means keeping pretty complete schedules of all the main stations of the world, and an awful lot of the not-so-important ones.

NASWA: Of the people employed by the Monitoring Service, were most of you SWLs or DXers prior to coming to the MS?

Weston: Very few, I think. If you are at it all and every working day, you want to relax with something else.

NASWA: To get onto another topic, could you tell us just how the MS determines which broadcasts to listen to?

Weston: Basically there are three criteria: first the importance of the country in the international scene (e.g., the Soviet Union gets heavy coverage while Burundi normally gets very little), secondly its importance in relation to British interests (e.g. we pay more attention to the Middle East than to Vietnam), and thirdly the availability of other sources of information about it (e.g. our coverage of Western Europe is slight, and of the USA nil). We are however flexible and temporary developments may cause us to pay much more than normal attention to a country (during the recent crisis in Burundi we covered everything we could hear from it).

NASWA: How would I, for example, go about getting a job as a "professional SWL/DXer" for the BBC Monitoring Service?

Weston: You should watch the advertisements in British newspapers, and then if we wanted to give you a job, probably satisfy the Home Office that there was no one living in the UK who could do it! Most of the jobs we advertise are for professional linguists.

NASWA: Where else does the MS maintain listening posts besides the British Isles? Could you briefly tell us about them?

Weston: We have a few small outposts in other countries monitoring transmissions not audible in the UK. The biggest and oldest is in Nairobi, Kenya, which provides coverage of the eastern half of Africa from the Sudan southwards.

NASWA: There is often talk of the understood cooperation between the MS and the FBIS (Foreign Broadcast Monitoring Service) in the USA. Could you elaborate?

Weston: Yes indeed. We have an arrangement with the FBIS which provides for a complete exchange of everything we each monitor, including frequency and programme information. It is this which enables both Services to give nearly world-wide coverage, regularly of about 120 countries and broadcasts in about 50 languages.

NASWA: Tell me -- after a hard day at Caversham, do you go home and turn on a SW, hi?

Weston: Not very often, we can usually get all the satisfaction we want from the day's work but occasionally a monitor will check something at home that he is interested in. The language monitors who are expatriates from an overseas country will often listen to their home radio service if it is audible in this country, but mostly they will have heard most of the interesting items while on duty.

NASWA: What happens to all the information that is compiled at the BBC MS?

Weston: As I think I have noted, we use all wave bands, and are concerned with content. The 50 editors I mentioned pass on the content - or rather what of it is relevant to our customers - in two ways. First, we have a News Bureau which sends a round-the-clock teletype service of news to the BBC news rooms - domestic radio, TV, and probably more familiar to SW listeners in the States, the external services including the World Service in English. Then there is Publications Department which produces a voluminous series of daily reports called the Summary of World Broadcasts.

NASWA: Is your information distributed to official customers only, or can anyone get it?

Weston: It is available to anyone who pays for it. I produce weekly Reception Notes, a sort of DX-Bulletin, and a 100 or more detailed programme schedules over the year. The Summary of World Broadcasts contains a wide selection of items, often in verbatim translation, broadcast from all over the world. It is meant for those following developments in foreign countries and international relations but shortwave enthusiasts who pick up the Voice of the Arabs from Cairo, the Soviet Radio Peace and Progress in Chinese, or the clandestine Voice of the Free Yemeni South - to take ran-

dom examples - may find it interesting to see what these stations are actually saying
 NASWA: How can we get more information about what you supply?

Weston: By writing to the Head of the BEC Monitoring Service, Caversham Park, Reading
 RG4, 8TZ, England.

NASWA: Does the MS pursue a policy of flexibility then, as to which stations are to
 be monitored on any given day? Say there's just been a Latin American coup -- would
 most of the MS's attention be rivetted to transmissions emanating from that area?

Weston: Well, I've partly covered this when I described how we decide which countries
 to cover. The coup situation is the one really calling for flexibility. If you stage
 a coup, the first thing you do is to seize the radio, and the next, to put a stop on
 all outgoing press messages. You come to the microphone whenever you have anything to
 say, denunciation of your predecessor, announcement of your plans for the splendid
 new era now dawning, imposition of curfews, etc. So monitoring becomes the only
 source of information for the outside world, and we come into our own!

NASWA: That's very interesting. In wrapping this up, Mr. Weston, could you give us a
 brief rundown on the history and development of the MS?

Weston: It started shortly before (a few days before, in fact) the outbreak of WWII
 in 1939. Throughout the war it served as a valuable source of information about what
 was happening in enemy countries and the countries they occupied, and their propagan-
 da. After the war, the emphasis switched to the cold war between the Soviet Union
 and its satellites, and the West. The emergence of the independent countries of Af-
 rica and Asia and their often acute problems among themselves, and more recently the
 Sino-Soviet Split, have brought further changes. One way or another, the internation-
 al scene (and the fantastic growth of broadcasting as a domestic medium and as a ma-
 jor international propaganda instrument) has kept us busy !!

THE SNC GIVES SPECIAL THANKS TO MR. WESTON FOR GRANTING US THIS INTERVIEW, AND ALSO
 ACKNOWLEDGES MR. SHERINGHAM, ASS'T. HEAD OF THE BECOMS FOR HELPING ARRANGE AND MAKE
 POSSIBLE THE PRECEDING INTERVIEW.

In reference to a recent SNC article on the history of Radio Telefis Eireann on SW,
 the following information has been received at SNC Hdqtrs. First of all, via Texan
 John Campbell: "...the study of possible SWBC activity came to a final halt last
 November. In the Dail (Irish Parliament), Mr. Collins, Min. of BCing and Commu., gave
 the following speech: '..In the course of the debate on my department's estimate for
 '70-'71, reference was made to a SW radio station for this country and I promised to
 have the question re-examined. The reasons for not proceeding w/the SW service in the early 1950's were the dif-
 ficulty of getting a suitable wavelength, the negligible amount of international SWling throughout the world due
 to poor listening conditions, the general absence of SW bands on receiving sets in the USA, and the appeal of
 television. I am advised that the position remains substantially the same. The cost of providing a SW
 service would be very heavy, and in all the circumstances I have come to the conclusion that the provision of such a ser-
 vice could not be justified at present.'" John also notes that Northern Ireland is now represented by a clandestine
 SWBCer: "...the anarchist pirate 'Gnomes of Ulster' has been heard loud, clear, and somewhat distorted on 6080 KHz
 in Belfast. Schedule is 2000-2200 on Wed.'s, Fri.'s, and Sat.'s. The management is prepared to make QSL-cards if
 some artist can be found who'll donate a free drawing of a gnome or leprechaun. There is vague talk of an Internat-
 ional Service", too...". And lastly, in a letter to ur editor from Michael W. Barraclough, QSL-Ed. WDXC, UK, he
 notes that one of his Irish correspondents mentioned that "...the transmitter and aerial mentioned in the article
 were smashed for scrap less than two years ago, per info

from an ARO living just a few miles from Athlone. He said it was a shame to see such
 valuable equipment destroyed this way..." And THAT, my fellow NASWAers, is THAT! The
 "rumors" mentioned in postscript to the RTE saga (cf. SNC-April '72) may be laid to
 rest. It looks as if another SWBCer has bitten the dust for good.

UPDATE...

R. TELEFIS EIREANN

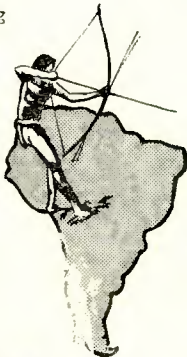


ECUADORIAN
DX:

...A Look at Radio Rio Amazonas, HCGM, 4870 KHz

Part I...by Al Sizer

HCGM, Radio Rio Amazonas (also called La Voz de Macume) is one of the less often heard Ecuadorian stations, operating with 2000 watts on 4870 kHz under an abbreviated schedule. I recently received an interesting letter of verification from Jim Hedlund, station director, in which he said he thinks I hold the record for distance between xmtr and rx QTH among the reception reports received at HCGM. This puzzled me since it didn't seem that difficult a catch and I assumed listeners at farther distance must have caught this 2-kilowatt. However, it is probably accounted for by the fact that the station is usually blocked off by the Venezuelan, Radio Tropical, on the same frequency and by the fact that the Ecuadorian signs off early--6.30 p.m. Ecuadorian time, to be exact. As a matter of fact, about the only chance to hear it at present is to catch it just after its sign/on time of 1045 GMT during the winter.



Radio Rio Amazonas broadcasts in three languages to the Ecuadorian eastern jungle area which is its prime target area. Spanish and Jivaro are programmed two hours daily in each, and Quecha one hour per day. Hedlund says the portion I heard on the morning of Feb. 5 was the end of the 5:45-6:16 Quecha program and the beginning of the 6:15-7:15 Jivaro broadcast. "The flute music at 6:22 is the characteristic of the Jivaro program and the time you indicated tells me the operator was seven minutes late for work that morning."

Radio Rio Amazonas is one of three stations in Ecuador operated by the Gospel Missionary Union, headquartered in Smithville, Missouri. It began operation in February of 1962 with 500 watts on 1120 kHz, medium wave. It was soon discovered that at this frequency signals were audible for only about 10 miles from the station. Permission was obtained from the Ecuadorian government to change to 4870 kHz and there the station has remained.

"Our goal is local service," writes Hedlund, "and we do not attempt to cover other than the eastern side of the Andes from Colombia to the northern part of Peru. During the time you heard our signal in New Haven conditions here close to the station were less favorable. However, the Quecha audience in northern Ecuador is able to hear at that hour. Also, I presume that Quechans in Peru & Bolivia may also hear our signal during this time of longer skip condx.

As the sun rises, local reception becomes superb throughout Ecuador.

"At present we are operating on 2000 watts and very soon hope to increase our output to 5000 watts with the arrival of a larger Diesel generator which is stuck in customs at this time. I would be interested to hear from you again indicating whether our signal presence there was an isolate incident or a regular occurrence at this time in the morning. We presently program in the afternoon from 3 to 6:30 pm, with anticipated extension to 9:30 pm as the new plant becomes available. I know nothing of the long range skip on 60 meters after sundown on 60 meters, so any comments on this would be appreciated.

The station's address is Casilla 7, Shell, Pastaza, Ecuador.

Part II...by Jim Hedlund, Manager

"...HCGM lies in the south central portion of the 'Oriente'...The Oriente is isolated from the rest of Ecuador by such barriers as the high Andes and extreme lack of communications and roads, and a general belief that if one enters the area he may not return--at least not under his own power!..At present, HCGM has a full-time staff of 5."
...excerpted from ICB via Richard Anderson

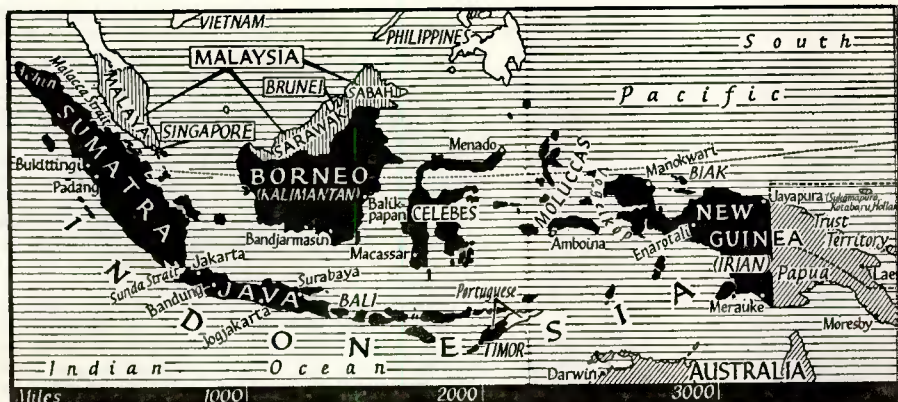
Radio
LA VOZ DE MACUMA
HCGM
LA VOZ DE MACUMA
Rio
LA VOZ DE MACUMA
Amazonas
LA VOZ DE MACUMA
4870 MHZ 60 METROS ONDA CORTA

RADIO REPUBLIK INDONESIA --- PALEMBANG,

SUMATRA

YDK-10 kW
1855 kHz

...by Slamet-Poedjono (Director)

YDK2-.01 kW
3555 kHz

Our station is actually a regional one, which has to only cover South Sumatra, but we are really very lucky in that a lot of DX-Listeners have sent us their reception reports. Most of them have come from Sweden and Finland, besides those from Japan, Australia and New Zealand.

Our transmitter is a 10 kW Gates, linked with a two-wire folded dipole antenna at the height of circa 19 meters and stretched from NW to SE. This xmtr was installed in 1954. Our daily pgms run from 2230-0100 GMT & 0500-0700 GMT, while in the evening, from 2300-0700 GMT. (Sked sic, rwp) It consists of National as well as Regional news bulletins, talks on politics and social events, sports items, drama, poetry, children's pgms, women's sessions, church and mosque services, and rural being.

The RRI is gov't-owned and our main tasks are:

- To give sufficient information to the Indonesian people what is going on in Indonesia and abroad; what the Government is doing to smoothen welfare and prosperity in the present five-year development scheme.
- To transmit educational guidance to the people in various types of programmes.
- To entertain people with good and healthy music and songs.

Indonesia, which consists of more than 3,000 islands is covered with 45 RRI stations, scattered about all over the country, using transmitters ranging from 1 to 125 Kilowatts. We also have non-RRI stations, but generally they only use very small transmitters.

Palembang is the capital of South Sumatra Province. The population is estimated at about 650 thousand people, but it is still increasing, because of urbanization. The city is tending to become an industrial as well as trade center. We now have two oil refineries, the biggest in the SouthEast; a fertilizer factory, which supplies 1,000 tons of Urea Fertilizer annually. We also have a tire factory, a spinning mill and many rubber factories. A huge electric station is now being built at the Musi River bank, the biggest river in Sumatra.

The main produce is rubber, tea, coffee, pepper and wood, beside mining industries such as oil, tin and coal, which we export to neighboring countries.

...via NASWA's Ace Asian DXer, Danny Jamison, Va.

(Editor's Note: the schedule presented above seems incomplete or incorrect, w/ Palembang often noted around 1100 or 1200 GMT, but is verbatim, per Mr. Poedjono.)

**DEPARTEMEN PENERANGAN
DIREKTORAT RADIO REPUBLIK INDONESIA
STUDIO: PALEMBANG.**

Brownout '72...Revisited

by Larry Magne

In addition to using batteries to power one's gear during periods of insufficient line voltage (cf. SWC 10, June), it is possible to use voltage regulating devices to accomplish the same results, plus a few extra side benefits.

A couple of summers ago, I was frustrated w/the poor performance of my Drake R4B on hot days when the local line voltage would routinely hover arnd 100 vac, give or take 5 volts. Sensitivity dropped, stability was less, and the xtal calibrator wouldn't work, among other things. Further, then or any other time of year, if the XYL turned on her iron on the same line-- a weekly occurrence--the voltage would fluctuate wildly and I was forced to keep retuning the set when it was in the exalted carrier mode. Finally, there were moment-to-moment fluctuations due to external causes which also affected rx stability and performance in general.

Solution? I picked up a \$15 Raytheon voltage regulating transformer good for 120 watts that gave an absolutely steady (to within

better than 1/2 volt) 112 vac output from any outlet varying from arnd 90-130 vac.

The results were most gratifying. Not only was it possible to forget about the brownouts, but the XYL could iron to her heart's content w/out incurring my impatient glares. Stability during selectable sideband reception became so good that I could walk away from the rx for long stretches w/out having to retune, something heretofore impossible.

In fact, I liked the results so much I decided to go one step further and to transform the steady 112 vac input to the input recommended by Drake: 120 vac. A VARIAC variable voltage transformer was bought for about \$20 which allowed the voltage to be varied from 0-140 vac. While I was at it, I picked up a couple of line monitoring meters (RCA WV-120A, \$17 @) to read RMS voltage in and out. Because the voltage stabilizing transformers alter the AC sine slightly, peak to peak AC meters, such as are used w/VOM's & VTVM's, gives false readings, whereas RMS meters give true readings

in or out).

Sure enough, for the last time since the R4B was purchased, it really came to life. And it was also possible to turn down the voltage when not using the rx, rather than turn it off, thus keeping the tube filaments warm; this eliminated warmup problems, as well as lengthened component life by keeping out moisture and eliminating turn-on surge voltage.

So now I sit here watching the outlet voltage bouncing around like a yo-yo between 100-107 vac, yet I can afford to be blasé--for the other meter, monitoring the VARIAC output, stands stiff as cement on the 120 vac hairline.

If the idea interests you, check arnd surplus outlets and industrial bargain stores, as some voltage stabilizers are available at such places for a song. And don't forget the next time you align your rx to keep it plugged in to the regulated source so that your alignment will be truly optimum. Personally, I've found these units a boon to MY DXing. --30--

AFRODX.....A Short Look at the Beginnings of Radio Cordac, Burundi.....

Often, when one mentions missionary stations, immediately visions come to mind of such powerhouses as HCJC, FEBEC, etc. Such is not the case with R.Cordac. Running 2.5 KW's on 3985 and 4900 kHz, Radio Cordac represents DX-supreme for the Afro-DX enthusiast.

Radio Cordac was awarded its franchise to operate on September 3, 1963 through the government of Burundi. It was considered imperative that they occupy the allocated 60 mb frequency by Christmas Day of that year. Cordac eventually wound up utilizing a used Navy transmitter with a potential of 250 watts.

In a very interesting article, Dr. Robert D. Kellum, the first dir-

ector of the then newly-organized Central Africa Broadcasting Co., notes that the use of a mere 250 watts, altho unchosen, turned out to be quite a break. In fact, Kellum now encourages missionary groups to massively inaugurate new stations of low power, the time being opportune, and their qualities desirable.

Desirable qualities? It is easier to be awarded a transmitting franchise in a small country if the power is modest; the initial cost is modest; operational cost is low; and so forth.

In fact, the tone of this article is "strike while the iron is hot", and if it is heeded, we may well be seeing many small, new DX-outlets popping up in the future.

---adapted frm ICB, via Richard Anderson

SHORTWAVESHORTS.....Random Notes from the World of International Shortwave Broadcasting.....Jensen's Believe It or Not

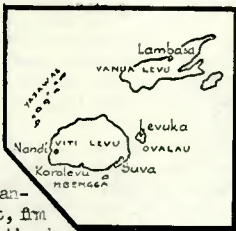
The Longest Day -- and not the movie!!!
 "On Friday, June 30th, 1972, the world's time was adjusted, with an additional second being added. In truth, it was the world's longest day! WWV marked this w/ an additional silent second just prior to 0000 GMT Saturday, July 1st. I sent a report for reception at 23 Hours, 59 Min.'s and 60 Seconds --- as I said, an interesting novelty, no?" per Don Jensen, Misc.

More Broadcast Row

(Helsinki) 6/17/72, UPI---Finland's radio and television editors today began a three-day strike to protest the compulsory six-month vacation imposed on chief radio manager Eino Repo. Repo was suspended for a leftist program broadcast in May. direct from wire service via our own Gerry Dexter, Misc.

Fiji Revamps Programming

The Fiji Broadcasting Commission recently announced changes in its programme format along the lines recommended by the Taylor Report on Broadcasting in the colony. FEC's new General Manager, Mr. John Hunt, from the BBC, said that the object of the changes was to mix the three languages over the two networks as a means of bringing Fiji's multi-lingual population closer together. Radio 1 will carry Fijian and English, and Radio 2 will carry Hindustani and English. FEC has three multi-lingual announcers at present. Among Mr. Hunt's ideas for improving the FEC's output includes inaugurating separate daily breakfast programmes in all 3 languages. The lang. changes on Radio 1 & 2 were scheduled to go into effect on the first of July. via NZRDXL, in the New Zealand DX Times.

How to Lose Friends and Influence Enemies Department

Mea Culpa! Your editor bungled a few items in the June '72 SWC, so let's see if I can straighten a few things out. First of all, re the Heathkit Fgy Counter, the unit which John Kolb mentioned was NOT // the unit rapped by John Walenter--JK's comments were in reference to a new product. And in regard to JW's counter(the IBL01), Bob Bundy informs us that it CAN be used if, per a recent NRC, one zero beats a signal generator with the station whose fgy is desired, then measuring the sig. generator. However, the mere rx output is still too unstable and feeble to power the IBL01 directly. (WheW!!) And the other error in June SWC was re the price for the SouthWest Tech. Products Fgy Counter kit -- I said \$64.90, but should have been \$89.00. I guess those gremlins have gotten into the works again, hi! Sorry.

International Waters SWEC: Red Sea?

The June 26th Time Magazine, Pp.12-13 carries a story about a 41-yr. old, ex-restauranteur, Abie Nathan. Read on: "...The Dutch delivered the vessel, which Nathan now calls the 'Peace Ship', to him in New York harbor two and a half years ago, and he began to buy electronic equipment and furnishings w/ more than \$100,000 he had received from selling all he owned. W/help from charitable organizations, Nathan has now converted the vessel into a floating radio station. His dream is to sail back to the Middle East, anchor off the coast of Sinai and try to reduce tensions in the ME by broadcasting impartial news reports and commentary. 'I need just \$50,000 more -- 2% of the cost of a fighter plane,' he says." Info via Gerry Dexter. Gerry noted that it is still unknown whether this will be MW, SW, or LW.

Co-Opting Vandalism for DX Fun & Profit

(hi!) Certainly you've seen the results of when kids are mixed w/BB guns. If you need to make an antenna lead-in, use a BB pellet and a drinking straw. Hold it an inch from the window and... the pellet will hit and fall back on your side & a conical chip of glass will fall off the other. Home w/Carborundum.

Latin-DX Odds and Ends...

Emisoras Paraguay's offices are at Edificio Av. Rodriguez de Francia 338-343, Asuncion, transmitters at Av. Kubitschek y Sol. They use 5 kilowatts on 6015 KHz, and carry the slogan "Voz Nativa del Corazon".

DOMINICANDX:--- RADIO ANTILLAS ---

...by Cesar Objio

Radio Antillas' first signal went on the air on October 15, 1962, from a homemade transmitter constructed by Dominican electrical engineer Andres Infante, operating on the frequency of 1120 kHz. This was a happy day for Mr. Manuel Zaglul, owner of the new station, which, after the killing of Dominican dictator Rafael Trujillo, was another one on the list of stations emerging in the new freedom in the country. At that time the station was housed in an apartment of Edificio Jaar, at the corner of Calle El Conde (Santo Domingo's main street on the colonial and business district) and Calle Espaillat. There was a moment in which four of these new stations were located in the same building: Radio Programas Quisqueya, Radio Mil, Radio Union, and Radio Antillas. In '62, Antillas' power was 1000 watts, and schedule of operation was from 1100 to 0500 GMT. Sometime during the following year a 500 watt shortwave xmttr was put into operation on 1960 kHz in the 60 m.b., parallel to 1120 kHz. Both transmitters were on the eastern outskirts of the city, across the Ozama river.

Mr. Zaglul, the owner, is a man who can be included in the group of radio pioneers in this country as he was an enthusiastic helper to Mr. Fausto Donastorg, owner of the 1st radio station to operate at San Pedro de Macoris in 1935: HILJ, on the frequency of 6025 kHz in the 49 mb. Zaglul also became a director of this trailblazing station, holding this position until about 1944.

1965, a fateful year for all of Santo Domingan stations, for apart from the damages inflicted to equipment by the civil war, it was also an economic catastrophe. Because of this the shortwave transmitter ceased operation. Right after the civil war, Radio Antillas moved to a third floor just built at Calle Mercedes 102, where the station was more comfortable located. Later on they introduced news services, with UPI and EFE teletypes for world news releases, including national & local information. At present, the press dept. is headed by Francisco Alvarez Castellanos, a distinguished newsmen, assisted by Rafael Soriano, Francisco Montilla, Hector Pena and Nelson Valerio. Fernando Gonzalez Tirado and Luis Marinéz are in charge of the sports department. Valentin Gonzalez handles the race track news. Newsreels are presented from 1100 to 1230, 1700 to 1730, and 2200 to 2300 GMT, with the most important news of the moment being presented every 30 minutes till close/down at 0500.

Actual director is Mr. Freddy Mondesi, experienced sports speaker, both on the Dominican and USA baseball season. During the latter, a group of them travel to the USA to broadcast big league games back to enthusiastic Dominican fans, eager to hear about their countrymen's exploits. Many of them were long-time fans even before Dominicans went to play in the "Big Show". This work is accomplished through telephone lines running directly to Santo Domingo the capital city of the Dominican Republic -- as I am sure that all NASWA members well know.

On March 15, 1971, the MW power was increased to 5 kW. Around October 1971 the shortwave transmitter was again reactivated on the old frequency of 1960 kHz, but due to some malfunction it is being widely heard on 1960 kHz producing a shower of reports from the United States, Europe and South America, including recorded tapes. But all DXers seem to be wondering just what is the matter with those reports as nobody seems to have received a reply. Only a New York DXer can say that he is the happy owner of the sole QSL given to him by the station during his recent trip to this country. The trouble is that they don't have the personnel for this kind of work nor time available to reply to letters from listeners abroad. But this is being alleviated via my constant talks with the owner who is now preparing QSLs with beautiful Dominican landscapes and city street views for everybody, which I hope will have been received by the time you are reading this article.

So far Radio Antillas operates with these two transmitters but the addition of an FM transmitter is being planned to operate on 107.7 MHz with different programs, some instrumental music--as is the actual trend in this country. The address is still the same: Calle Mercedes 102, 3er. Piso, or P.O. Box 389...both in Santo Domingo, of course. You may send your reports to either, where they will be surely verified, if they are correct.

PHENOMENON OF THE DARKNESS PATTERN...EXPLAINED

---by Edward Shaw

In this the fifth part of the series, we will give example configurations for determining sunrise and sunset times for La Grande, Oregon and Luanda, Angola. The western African countries are a bit more difficult for Western North Americans, particularly during the summer, because of the short periods of time when both target and hunter are in darkness, or near-darkness. As with each segment, the cardinal points are repeated:

1. Low frequency transmissions will only propagate between two points in darkness.
2. Exact GMT for any longitude on the globe may be easily figured by adding 4 minutes of time for each degree West of 0° Greenwich, or subtracting that amount of time for East of 0° Greenwich. This is the Sidereal Time difference.*
3. The accompanying chart tells when sunrise and sunset will occur (within a few minutes) in local time for most latitudes. Nearly exact estimates may be interpolated for latitudes between those listed.

RECEPTION OF TRANSMISSIONS BELOW 7,000 kHz

Lat.	Reception unlikely after...					Reception unlikely before...				Lat.
	SUNRISE (Local Time)*					SUNSET (Local Time)*				
	9/17	9/26	10/7	10/17		9/17	9/26	10/7	10/17	
60	0532	0553	0622	0644		1816	1749	1713	1646	60
58	0533	0553	0619	0639		1814	1749	1715	1651	58
56	0535	0552	0616	0635		1813	1749	1718	1655	56
54	0536	0552	0614	0631		1812	1749	1720	1659	54
52	0537	0552	0612	0628		1811	1750	1722	1702	52
50	0538	0552	0610	0625	N	1810	1750	1724	1705	50
45	0541	0551	0606	0618	O	1808	1751	1728	1712	45
40	0542	0551	0603	0612	R	1806	1751	1732	1718	40
35	0544	0551	0600	0607	T	1805	1752	1735	1723	35
30	0545	0550	0557	0603	H	1803	1752	1738	1727	30
20	0548	0550	0553	0555		1801	1753	1742	1735	20
10	0550	0549	0548	0548		1759	1754	1747	1742	10
0-----	0551	0548	0544	0542	-----Equator-----	1758	1755	1751	1749	-----0
10	0553	0547	0540	0535		1756	1756	1755	1755	10
20	0554	0546	0536	0528		1755	1757	1800	1803	20
30	0556	0545	0530	0520	S	1753	1758	1805	1811	30
35	0557	0544	0527	0515	O	1753	1759	1809	1816	35
40	0558	0543	0524	0510	U	1752	1800	1812	1822	40
45	0559	0542	0520	0504	T	1751	1801	1816	1828	45
50	0600	0541	0515	0456	H	1749	1803	1822	1836	50

(*)..Must add Sidereal Time difference for desired longitude to this figure!

EXAMPLE CONFIGURATIONS for 9/26/72 between:

La Grande, OR: 118°W 45°N
Luanda, Angola: 13°W 9°S

- La Grande: 118°W x 4 Mins equals 07 hrs 52 Mins Sidereal Time difference, added to:
 - 45° N local sunrise (0551) equaling 1343 GMT
 - 45° N local sunset (1756) equaling 0243 GMT
- Luanda: 13° E x 4 Mins equals 52 Mins. Sidereal Time Difference, subtracted from:
 - 09° S local sunrise (0547) equaling 0455 GMT
 - 09° S local sunset (1756) equaling 1704 GMT

From the above, we can see that there is only a short period of darkness between sunset in La Grande at 0243 GMT and sunrise in Luanda at 0455 GMT. A catch from Angola will be difficult since most Angolan stations only begin to sign-on with Interval Signals or other Anthems and announcements around 0455 or 0500 GMT. The listener is only likely to catch the first few moments of Angola's broadcasting day before sunrise in Luanda tapers off the propagation and the signals begin to sink in the noise level. Next month, the signal path between Bluegrass and Brisbane. Best 73, Uncle Ed



-- THE RESEARCH DEPT. OF AIR'S ENGINEERING SERVICE --

If you are-to-date on your old adages, you will undoubtedly recall that "behind every successful man stands a good woman". Well, in a parallel plane, underlying every successful SWC'er is a proficient engineering department. All India Radio, AIR, is no exception.

The Research Dept. division of the engineering department which was established in 1937 to investigate problems concerning development and maintenance of the broadcasting network, has since expanded its activities in a variety of areas directly useful to the AIR network. The Department is also responsible for planning of frequency skeds for all internal and external SW services of All India Radio and has a Receiving Center at Todapur, New Delhi. Work on different types of sound and TV broadcasting equipment is assuming greater importance in the Department now mainly for the purpose of import substitution.

Among the activities undertaken by the Department may be mentioned the measurements of the ionosphere by vertical sounding at New Delhi, Bombay, Madras, and Tiruchirapalli; recordings of Calcutta MW signals; preliminary observations on the long distance transmissions in connection with the Asian Broadcasting Union's measurement campaign; measurement of sensitivity, linearity, directivity, and other characteristics of several indigenous microphones; routine measurements on networks' microphones; renovation of the Srinigar studios; production of standard tapes for testing the frequency response of recorders at AIR studios; and so forth.

Info direct, from India Ministry of Inf. and BC.

MAILBOX

MYSTERIES...by Gerry Dexter

I think my friendly post-man knows that much of my outlook on life is dependent upon my daily mail deliveries--either that, or else he must think that I am a secret agent type. Gives me something to think about on rainy days.

Consider some of the things I've recvd during just the past

few months. For instance, a reception report was sent to Petrozavodsk last November. It came back to me with a sticker on the envelope (in French) saying, in essence, return to sender. The envelope had been slit, the letter had been read, and not very carefully re-folded. But why, and by whom and why a sticker in French when the thing had been destined for Russia??? I haven't unravelled that one yet...

One thing I did solve after an hour or two of puzzlement was a parcel which had arrived from ORTF Cayenne. I thought, "...that's strange," since I had no report out to those people. Inside? Three amateur cards. I must admit that once every year or two I let myself get involved on 20 meters for a couple of weeks and do send some reports. But, the cards (one sample, one from Tunisia and one from Zaire) were not stations to which I'd sent reports! On the back of the Tunisia card, a brief note to the effect that my report was correct, and then a brief, hand-written sked for the ORTF Cayenne. Signer? One Mr. M. Nicole, whose name also appeared on the two ham cards. And then came the dawn! --M. Nicole is the same name I used as veri signer in my last report to Lubumbashi. Apparently he is an engineer for ORTF and sort of hits all the bases giving technical assistance.

So I wrote to M. Nicole at ORTF, Cayenne, explaining what I needed. Presto! Eleven days later a nice letter veri in French for Lubumbashi, specifically: end of that mystery.

But, getting back to the hams. An LU6 QSL from a ham in Argentina showed up one

YOUR DX-CALENDAR

August:

- (10) Ecuador: Independence Day
- (11) Chad: Independence Day
- Jordan: Hussein's Anniv.
- (15) Catholic: Ascension
- (16) Dom. Rep.: Restoration Rep.
- (17) Gabon: Independence Day
- Indonesia: Indep. Day
- (23-25) Afghanistan: Indep.
- (24) Liberia: Flag Day
- (25) ~~Iran~~ Iran: New Constit.
- Uruguay: Indep. Day
- (30) Peru: St. Rosa de Lima
- Turkey: Victory Day
- (31) Afghanistan: Pashtoonistan
- Malaysia: National Day

September:

- (01) Libya: National Day
- Mexico: Pres. Report
- (04) Rwanda: National Holiday
- (06) Iran: Prophet's Mission
- Pakistan: Defence Day
- (07) Brazil: Independence
- (08) Uganda: Republic Day
- (9, 10) Israel: New Yr's Days
- (11) Ethiopia: New Yr's Day



Mailbox Mysteries...Cont'd

day. That was unusual about it were the 50-odd other LU cards in back of it.... all neatly wrapped up with rubber bands. No envelope...no postage! The cds were for hams all over the W9 area. Now someone thinks I run a QSL Bureau! A quick visit to one of the local hams took all the extras off my hands.

The last of the odd ones which have kept me puzzled over the past 8 months or so was a simple, handwritten letter in Portuguese from some fellow in Teresina, Brazil, who apparently wanted to

correspond. Problem: the envelope was one of my own, used as an SASE for a report to a Brazilian station. From the style of stamps used, I know that I haven't sent any reports to Teresina since I got that particular set of stamps! Maybe a translation will provide a clue.

Well, it's time to go check the mail. Who knows what strange gifts may lurk inside this time???

---Gerry Dexter, Wisconsin

SUPPORT NASWA/FRENDX!!!!
--"THE SJC JOURNAL"--

ECONOMY OF WATTAGE: VAC/QRP

This month we have offerings from Ed Shaw. To quickly sum up the VAC/QRP concept: log and verify 6 stations, one from each "radio-continent", which is VAC. Add up the total power used for these xmtrs (QRP), and... Of course, the lower your total QRP, the better!

N.AMERICA	-----CFKX, Vancouver; 6080 kHz	0.01 kW
S.AMERICA	-----Radio Litoral, Bolivia; 5025 kHz	1.00 kW
AFRICA	-----R. Clube de Melange, Angola; 7115 kHz	0.50 kW
EUROPE	-----OEY-52/21, Austria; 6255 kHz	1.00 kW
ASIA	-----Radio Hong Kong; 3940 kHz	2.50 kW
OCEANIA	-----Radio Fiji; 7195 kHz	0.50 kW

TOTAL QRP: 5510 watts!

Well done, Ed; especially considering that these have all been accumulated since 1965. Whose is next? How about YOURS???

-- The Finnish Broadcasting Co.: Oy Yleisradio Ab --

In Finland, radio and TV activity is centered in a single company, Oy. Yleisradio Ab. (The Finnish BC Co.). It is almost entirely state-owned and has as its highest ruling organ the Advisory Council, which is chosen by Parliament and which appoints the executives as well as defines the outlines of the program activity. The daily programming is, however, independent of Parliament, the Cabinet, and other departments of the government; in practice, Yleisradio is quite an independent communications establishment. The presentation of the greatest possible variety of opinion has been adopted as the task of radio and television in Finland--a task which levels in part the prevalent ideological slant found in the press.

A smaller private commercial TV network, Mainos-TV, operates alongside the state-owned company. It leases program time from the Yleisradio broadcasting network, but submits its program policies to the same Advisory Council decisions as does the Yleisradio Company...

The main financial source for the operation of Yleisradio are radio and TV licenses. The radio repertoire of Yleisradio consists of upwards of 315 hours per week. Of this amount, 15% are programs in Swedish, 8% are local pgms, and the remainder of programs are in the Finnish language, divided into two channels: Program One and Program Two. ...from Mass Communication Research in Finland, by Kaarle Nordenstreng, Research for Long-Range Planning, Oy. Yleisradio Ab.

CLOSING REMARKS: Your editor would like to acknowledge the superlative job done by the 1972 A.N.A.R.C. Convention Committee -- a real 1st class job by Steve d'Adolf, Jerry Berg, Chris Lobdell, and Mike Macken. Look elsewhere in this FRENDX for coverage of the convention. And to all the initials and names which finally became faces over that July 14-16th 73s, confab...it was nice to see ya!!!

QSL Report

Gregg A. Calkin
Rio Balsas 35-702
Colonia Cuauhtemoc
Mexico 5, D.F. MEXICO

Deadline: 12th-USE AIRMAIL

NEW TELEPHONE NUMBER!!!

After 14 months of trying your editor now has a private telephone line in his residence. This phone is answered only by yours truly, and any DXer who wishes to phone in last minute reports or generally discuss DX matters is most welcome to call. Mexico City is available on direct dial from all areas of the U.S.A. and Canada. The number is 511-6270 and you have only to check with your local operator to obtain the Area Code.

QSLs RECEIVED

A large number of excellent and rare QSLs have been reported this month. In particular, I would draw your attention to those from Afars and Issas, Burundi, two rare Clandestines in Germany and Northern Ireland, the New Hebrides, Union of Arab Emirates, Radio Bukavu in Zaire, as well as several rare Latins in El Salvador, Bolivia, Honduras, Mexico and Nicaragua. And on we go...

→ AFARS AND ISSAS: O.R.T.F.-Djibouti, white folder in 2 months, airmail for 2 IRCs and French report on 4780 kHz. Signed by J. Sourd, Le Chef des Services par interim. (Kamp)

ALBANIA: Radio Tirana, 9780, black and white folder card with all data except time, together with schedule. 23 weeks sea (Alexander) 7300, 7 months sea w/sked. Data on QSL not legible. No IRCs sent (Linsenneyer) 9780, folder in 4 months sea for 3 IRCs. (Dildine)

ALGERIA: Radiodiffusion-Télévision Algérienne, Algiers, 6145, card, sked and report forms, seamail in 10 weeks. (Padula)

ARGENTINA: R.A.E., Buenos Aires, 11710/9690, card in 4 weeks for 2 IRCs. (Draut)

ARMENIAN S.S.R. Radio Yerevan, 15130, small plain card with full data. No site. 43 days air. No return postage sent. (Johnson)

ASCENSION ISLAND: BBC Atlantic relay, 15260, Thames card and letter, in 35 days air for taped report and mint stamps. V/S: Miss V. R. Pressman. (Dildine)

AUSTRALIA: VLW9, Perth, 9610, card in 13 weeks air w/sked. 2 IRCs. (Linsenneyer) map card in three weeks for 1 IRC. (Helms)

Radio Australia, Shepparton, 21740 kHz, Ayers Rock color card w/sked in 288 days!! Seamail with no IRCs. (Alexander) two large full data cards for Lyndhurst on 5995 kHz and Shepparton on 21740. No return postage. (Howard) Shepparton/9580 kHz in 33 days air for 4 IRCs. Full data card, together with rpt forms and 50 page book on Radio Australia and their history. (Wiseberg) card in 103 days for Shepparton by seamail (Geir) 66 days for 15320 kHz (Donnelly) 3 months (Bril) Darwin/11760, sent monolith card in 9 weeks seamail. Full data including site (L. Marshall) Lyndhurst, card in 28 days airmail. 2 IRCs (Webb)

AUSTRIA: Austrian Radio, Vienna, 6155 kHz, card in 7 weeks for no return postage. Has full data. (L. Marshall)

BANGLADESH: Radio Bangladesh, card in 3 weeks for 17935. Still using Pakistani only stamps. (Reeves) two cards for one report, sked and some Bangladesh stamps as well as personal letter from M. Habibullah, Station Engineer. 16 days air for 1 IRC and some souvenir postage stamps. (Sykes) Dacca, 17935, card in 14 days air (Webb) 6 wks air (Padula)

BELGIUM: RTV Belge, Brussels, 15110, card airmail in 2 weeks w/sked. (Padula) 2 cards in 3 weeks w/sked and letter air for 1 IRC (Linsenneyer) 24-28 days (Helms, Donnelly)

- BOLIVIA:** Radio Fides, 4845, form letter with verie statement and pennant in 27 days; replying twice, once in S.A.S.E. and once in regular station envelope. (Slowey)
- BOUGAINVILLE IS:** Radio Bougainville, 3322.5, data sheet folder w/full data in 2 wks for 2 IRCs. (Slowey) folder from V/S: Keith Jackson, Station Manager. 4 IRCs sent; reply by airmail in 19 days; Whopse! (Avery)
- BRAZIL:** Radio Brasil Central, 4995, form letter in English/Portuguese w/full data. 3 months for English report and mint stamps. (Slowey)
- Radio Inconfidencia, Belo Horizonte, 6000, letter in English in 47 days air. Reported in English w/mint stamps. V/S: Newton Motta, Superintente. (Henderson)
- Radio Nacional de Brasilia, 15445, letter from V/S: Luther Toledo w/verie statement but no data. 16 days for 5 IRCs. (Hunt)
- BULGARIA:** Radio Sofia, 9700 kHz, Sofia University card together with blue cloth pennant and schedule. 80 days air w/no IRCs. (Alexander)
- BURMA:** B.B.S., 5040, full data letter from V/S: Pe Kyaing in 6 weeks (Howard)
- BURUNDI:** La Voix de la Révolution, 3300, b/w antenna tower card for French report, pic of shack and used US stamps, together with 2 IRCs. Reply via air w/sked on the reverse. Date and frequency given. (Jamison)
- BYELORUSSIAN S.S.R.** Radio Moscow, Orsha, 9650 kHz, card w/site in 2 months airmail. (Plum)

CANADA: CJCX, Sydney, N.S., 6010, card w/date and frequency in 5 days for mint Cdn stamps. (Wiseberg)

CHNX, Halifax, N.S., 6130, plain card w/no data except frequency in 5 days, for mint stamps. (Wiseberg)

CFRX, Toronto, Ont., 6070, nice card of Toronto skyline in 5 days for mint stamps. V/S: Clive Eastwood (Wiseberg) 16 days giving date and frequency (Donnelly)

CHU Time Signal, Ottawa, Ont., 14670 kHz, blue/white card in 15 days. No IRCs. (Hunt) 10 days first class mail. No IRCs (Alexander) card in 10 days w/info on the time service facilities. (Donnelly)

Radio Canada International, Montreal, 17855, 'Foggy City' card in 15 days air (Johnson) 11720, card of transmitters in 20 days w/mint stamps sent (Megyesy) 11945, 15 days with card of downtown Montreal (Self) 11 days (Donnelly) 12 days (Geir)

CANARY ISLANDS: Radio Nacional de España, 11800/15365, detailed antenna card, w/the rubber stamp of the Canary relay. Received from Madrid in 45 days sea (Webb)

CEYLON: VOA/Colombo, 11835, antenna anniversary card in 1 month (Marks) 6 days from Washington (L. Marshall)

Radio Ceylon, 9720, Flowers of Ceylon card in 1 month air (Taylor)

CHAD: Radio National Tchadienne, Ft.-Lamy, 4904, regular card w/date and time in 5 weeks for French report and 3 IRCs. (Howard)

CHINA (PEOPLE'S REPUBLIC OF): Radio Peking, Sunrise card in 35 days; no data. No IRCs sent (Megyesy) no data card in 2 months air together with many magazines) 15060 w/card of Women's Detachment, w/sked in 19 days (Self)

COLOMBIA: Radio Nacional de Colombia, 4955 kHz, color card of waterfront at port of Cartagena, with date and frequency on reverse. V/S: Andrés Pardo Tovar. 10½ weeks for an English report and 2 IRCs. (Howard)

CONGO: Radiodiffusion-Télévision Congolaise, 6115, card w/all details airmail in 4 weeks for French report with 1 IRC (Padula) 3 months for 2 IRCs and French language report on 4765 kHz (Kamp)

O.R.T.F., Brazzaville, 15190 kHz, card and schedule. Full details, and reply by air for 3 IRCs. (Webb)

COSTA RICA: Faro del Caribe, T.I.F.C., San José, 9645, card and form letter in English w/sked from V/S: Sharon Saylor, Secretary. 14 days air for English report and 3 IRCs. Full veri data (Calkin) card and sked in 2 weeks airmail for 1 IRC (Linsensmeyer) card in 25 days, no IRCs. (Hunt)

- CLANDESTINE:** Radio Free Russia, card and letter with full details in 7 months. QSL was late due to illness of usual V/S. Card with mobile transmitter site sketched on one side and Devil's pitchfork symbols (NTS) on front and back. Sked also enclosed. Veri for 11490 kHz and signed by V/S: M. Balmaschow, who mentions station power is planned to be increased when they get sufficient funds. (Magne) See QSL-4 for view. Station operates from the G.F.R. (Ed.)

Gnomes of Ulster, 6080 kHz, Belfast, Northern Ireland, letter with full

new GNU radio 1972

Vill_s Disraeli.

Professor Dr. John Campbell
Department of Computer Science
University of Texas.

Dear Sir/Professor/John,

Gnomes of Ulster take pleasure in receiving a listener's letter. Thank you for your instructions on how to answer a reception report. We verify your report on 6080, G.M.T. 19.45, for our premature Inaugural Broadcast on June 20th. from Belfast 9. You ask for our Effective Radiated Power. Sad to say, we cannot tell you. We have faith that the power at ground (kitchen table) level is indeed 200 watts, but we think that an unknown amount of it got lost on the way up the chimney. Rest assured, Sir, that what you said about distortion touches us deeply, and some day we will take steps to improve matters. The highest of fidelity in every field is our goal. The interval signal makes us all happy, but now can you suggest an anthem?

Respectfully;



Peadar

for GNU

PAR AVION
AERPHOST

PAR AVION
AERPHOST



Professor John Campbell,
Department of Computer Science,
University of Texas,
Texas, 78712, USA.

GNQMES of ULSTER

details in 9 days. Reported from Londonderry, where station was logged, but reply from Dublin address which was announced during the program. V/S: Peadar.

(Campbell) Excellent OM!! (Ed.)
CYPRUS: BBC/Limassol, 11955 kHz, Thames card w/full veri and site! 35 days air for taped report and mint stamps. (Dildine) 15420 kHz, Thames card in 28 days; air for 2 IRCs. (Webb)

CZECHOSLOVAKIA: Radio Pragua, 42 days for 11990 kHz, w/card of Prague buildings (Self) 44 days, for 9630, w/sked, booklet, and station information. (Johnson)

DAHOMEY: Radiodiffusion du Dahomey, Cotonou, 4870, 6-color p/card QSL in 65 days for French report and 2 IRCs. (Campbell)

DENMARK: Radio Denmark, 15165, all data radio tower card in 22 days for 3 IRCs (Avery) 5 weeks, (Schubert)

DOMINICAN REPUBLIC: Radio HIN, 4910 kHz, red/white/blue card w/verie statement, p/card and letter from V/S: Hector E. Quesada; 67 days for Spanish report w/mint stamps. (Slowey)



„Свободная Россия“

radio-station

„FREE RUSSIA“

QSL FROM RADIO FREE RUSSIA. SEE QSL-2.

ECUADOR: La Voz de los Andes, HCJB, 15115 kHz, card of albatross in 19 days air; 2 IRCs (Plum) 23 days for 2 U.S. mint stamps (Schubert)

Radio Iris, Esmeraldas, 3381, letter from V/S: Daniel Alvarez Tenerio, Gerente-Proprietario, airmail in 3 weeks for Spanish report with mint stamps. Valued, as first 90 mb Ecuadorian ever verified here! (Padula)

Radio Luz y Vida, 4825, Spanish letter from Sor Amada Campos D., w/date & verie statement and 5th anniversary pennant. 18 days for Spanish report w/mint Ecuador stamps. (Slowey)

Radio Rio Amazonas replied w/nice confirmation letter from V/S: Jim Hedlund, station engineer, in English for English report on 4870 kHz with mint stamps. Took 2½ months. Wants reports and says mine is longest distance to date. (Sizer)

EGYPTIAN ARAB REPUBLIC: Radio Cairo sent black/white print card for 9475 kHz, p/p/c, sked and personal letter in 37 days air for no IRCs. (Helms) 30 days; no IRCs. Card has Egyptian hieroglyphics. (Peters) 31 days for 2 IRCs. (Wiseberg)

EL SALVADOR: Radio Nacional de El Salvador, YSS, 5980, no data card w/small blue and white pennant, together with tourist pamphlet. Reported with mint stamps and a local post card. Reply by air. (Avery)

La Voz del Comercio, YSV, 9576, card of El Tazumal ruins in Chalchuapa, air in 2 weeks from V/S: Alejandro Calderon Vides, for Spanish report and 4 IRCs. Card incorrectly gives frequency as 9545 kHz, which is what is announced, although error was pointed out in report. (Calkin)

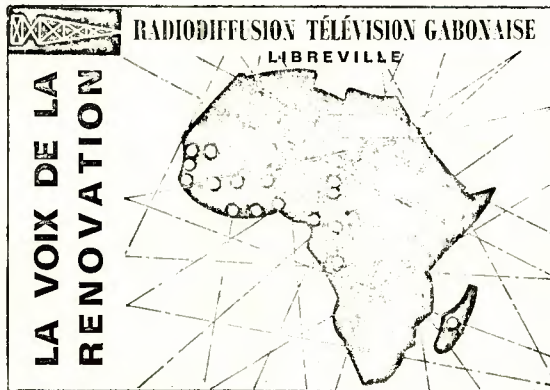
ENGLAND: Voice of America relay, Wofferton, 7200 kHz, card from Washington in 7 days with full data except time. (L. Marshall)

BBC, 6110, Thames/Parliament card in 21 days with skeds and WRC membership. Reply distinguishes between QSL cards, which the BBC does not issue, and verification cards, one of which was enclosed. (Donnelly) Hmma... (Ed.) 9580, 17 days air (Self) . 2 months, no IRCs. (Megesy)

FRANCE: O.R.T.F./Paris, 15315, card and sked in 10 weeks air for 2 IRCs. (Linsenmeyer) orange card in 43 days for 2 IRCs. 15120 kHz. (Dushane)

FRENCH GUIANA: O.R.T.F./Cayenne, 3385, form letter w/verie statement and skeds from V/S: H. Lebegue. 40 days after f/up, 4½ months total. 2 IRCs sent. (Slowey) card & French form letter in 5 months for French report and mint stamps. (Howard)

FINLAND: Helsinki, 21605, test transmission, card airmail in 3 weeks w/sked. (Padula) sked and QSL card in 20 days air for 1 IRC. 15185 kHz reported. (Sykes) 2 weeks, air with sked. No return postage (Seymour) 26 days (Schubert) 12 days w/sked for 2 IRCs. (Donnelly)



GABON: La Voix de la Rénovation, Libreville, 4777 kHz, brown and yellow revised OCORA card in 45 days for French report and 2 IRCs. (Campbell)

GAMBIA: Radio Gambia, 4820 kHz, form letter QSL w/full data except time. Airmail in 3 months, 2 days, for 3 IRCs. (Avery) form letter from Bathurst in 3 months airmail, for 1 IRC. (Dildine)

GERMAN DEMOCRATIC REPUBLIC: Radio Berlin International, 11890, Tower card w/full QSL data; 3 months seammil, with sked, magazine and personal letter (Johnson) 23 days, no IRC (Megyesy) 21475, card and RBI journal in 3 months (Conner) 68 days seammil, (Austin) 2 months (Donnelly) 9730, card in 2 months, 28 days (Avery) 50 days air, w/card of flags (Carey) 9730, 2½ months seammil. No IRCs (Lobdell) "Potsdam" card in 2 months seammil; no IRCs. (Lobdell)

GERMAN FEDERAL REPUBLIC: Südwestfunk, 7265 kHz, colored map/antenna QSL card w/all data but time; 45 days seammil for English report and 1 IRC. (Watman)

Deutsche Welle, Köln, 6075, Olympic card, w/sked and 2 magazines in 93 days seammil (Austin) 6040, all data card for Julich sight. 2 IRCs, air in 18 days. (Avery)

GHANA: Radio Ghana, 11850 kHz, bordered card w/full data in 3 months seammil for 3 IRCs. Shortly after QSL received, a 'penpal' aerogram letter from the Accra mail office was received. They are still busy. (Johnson) Appears they never heard of privacy of the mails. Many people have been bothered with these, and occasionally it appears reports have been lost en route in this office (Ed.) card w/sked in 50 days! (Austin) 64 days w/full data (Peters)

GREECE: NHBI, 15345, all data white card, seammil in 1 month, 18 days for 3 IRCs. (Avery)

GUAM: U.S. Naval Time Station, 21760 kHz, blue card w/full data direct from Agana, Guam, in 3 weeks. Sent mint U.S. stamp. (L. Marshall)

GUATEMALA: Radio Chortis, 3380, Spanish letter from Prof. Raul Amilcar Casasola P., with verie statement. 15 weeks for Spanish report w/mint stamps (Slowey) personal letter from same V/S with pennant; air in 4 weeks for Spanish report w/2 IRCs. First 90 mb Guatemalan verified. (Padula)

La Voz de Guatemala, 6180, blue-white card in 9 days for Spanish report. Mint stamps sent and used. V/S: Rodolfo Chenal Luna, Subdirector. Printer's date on card is 12-67 - why have they apparently been reluctant to verify until recently? (Campbell) Only vague reasons were given when Dr. Wood and I visited the station last

December, but it appears our visit has inspired them to verify regularly now. (Ed.)

HAITI: 4VEH, 11835, map card w/sked, info on station and religious pamphlets in 93 days; 1 IRC sent (Avery) 3 weeks for 2 IRCs, w/ball point pen. (Seymour) 6 wks air (Alexander) 92 days w/map card 9Schubert) 40 days (Geir) 1 month (Orcutt)

HAWAII: WVVH, 15000, native and map card in 9 days (Hunt) 2 weeks (Donnelly) folder card in 2 wks (Linsenmeyer) 15000 kHz (Richards)

HONDURAS: La Voz Evangélica, HRVC, 4820 kHz, black/pink/white card w/all data in 5 wks air for 2 IRCs. (Orcutt) card, sked and personal letter from Mrs. Cally Erickson, who answers reception reports; 12 days air for 3 IRCs and an English rpt (Calkin) 21 days (Donnelly) 39 days for 1 IRC (Bril) 1 month (L. Marshall)

La Voz del Junco, HRMH5, Santa Barbara, 6075 kHz, personal letter in Spanish, plus an attractive 5-color pennant in 32 days airmail from V/S: Antonio Salvador Hasbun Yacamán, Director. Reported in Spanish w/4 IRCs. (Calkin)

La Voz de Honduras, 5875 kHz, Spanish form letter w/date and freq. from Carlos E. Riedel, 24 days for Spanish report w/mint stamps. (Slowey)

La Voz de Occidente, 5960, 2-page personal letter w/veri statement & date, and invitation to visit station, plus small color photo of town. V/S: Miriam Audely de Maldonado, Depto. de Reportajes. Mint stamps, local p/card sent. (Avery)

Radio América, HRLP, 6050, form letter QSL giving frequency only, plus an attractive 4-color pennant from V/S: Rodrigo Wong Arévalo, Encargado Correspondencia Internacional. 5½ months after original rpt and 1½ months after f/up; by air for a total of 6 IRCs. (Calkin) 4 weeks (Williamson) 1 month by air w/pennant. (Lobdell)

Radio Juticalpa, HRRZ, 4780 kHz, a personal letter in Spanish from V/S: Victor Rubi Zapata, Gerente-Proprietario, in 4 weeks airmail, for Spanish rpt and 4 IRCs (Calkin) letter by air in 1 month for mint stamps, Sp report and local p/card (Avery) 13 weeks for mint stamps (Slowey)

Radio Progreso, 4920 kHz, letter veri from V/S: Jerry Tolle in 3 months. Mint stamps and Spanish rpt sent. (Williamson)

Radio Suyapa, 6125, two sided color card w/full data, plus personal letter from: Francisco Ellortegui I., Gerente. 1 IRC sent and reply by air in 20 days. (Jamison)

HUNGARY: Radio Budapest, 9833, card of city skyline in 2 months. No IRCs. (Peters) full data card in 2 months (Megyesy, L. Marshall) 53 days sesmail, no IRCs (Hunt) 24 days for 6165 kHz (Donnelly) 22 days air. (Ferguson).

INDIA: AIR/11810, "Red Fort" card in 5 mos., for 2 IRCs (Conner) card and personal letter in 15 months after f/up (Estand) 3 months; 1 IRC sent for 11810 kHz (Stuart)

INTERNATIONAL WATERS: Radio Nordsee International, 6205 kHz, Mebo II ship card in 3½ months for 2 IRCs. Reported in English to RNI's Zürich address. (Drant) souvenir book showing photographs and descriptions of RNI's operations. (Calkin)



CALLY and HOWARD ERICKSON

Apartado 145-C

Tegucigalpa, Honduras, C. A.



A VIEW OF RNI'S MEBO II



THE REVOLUTIONARY GOVERNMENT OF THE UNION OF BURMA

MINISTRY OF INFORMATION

No. 44 Pa-Kha 71

Rangoon, the 18th March 1971.

Received with thanks your reception report on our Burma Broadcasting Service Radio Broadcast dated the 30th December 1970.

We appreciate your interest in our radio broadcasts and after checking with our broadcast programme for 30th December 1970 we are glad to confirm your reception report.

Yours sincerely,

(THAN PE) 18/3/71

(Than Pe, Deputy Secretary.)

✓ Mr. Leon J. Segal,
Apartment IC,
45 Grace Court,
Brooklyn, New York, 11201,
United States of America.

---ooOoo---

- Copy to :- (1) Ministry of Foreign Affairs with reference to his letter No.CU(FO)/12/03, dated the 26th January 1971.
- (2) Director of Broadcasting Service with reference to his U.O.No.1 Tha-Hta 71 (805) dated the 16th March 1971.

(A rare reply direct from the Burma Broadcasting Service, Rangoon)

IRAQ: Radio Baghdad, 15400 kHz, card w/map of Iraq and suspension bridge. Full veri details in 23 days surface for English report and 3 IRCs. (Dildine)

ISRAEL: IBA, 9725 kHz, Jerusalem card with full data in 3 months seemail; no IRCs. (Orcutt)

ITALY: RAI, map/antenna card in 79 days (Schubert) 2 weeks w/full data (Megyesy) 14 days for 2 IRCs for 6010 kHz (Donnelly) 42 days air, no IRCs. (Carey)

IVORY COAST: Radio Abidjan, 11920 kHz, card in 6½ months airmail for 2 IRCs, on 4th attempt. (Taylor)

JAPAN: Nippon Hoso Kyokai, Tokyo, 15105 kHz, nice card plus additional pic/p/card w/full data except time in 2 weeks for no IRCs. (Perdue) 17785, card in 17 days return ing 2 IRCs. Also sent pennant and sked, report foras and RJ News. (Wiseberg) 17825, card in 20 days air (Austin) 11 days air (Austin) 16 days (Donnelly) kimono print, for 9505 kHz. 19 days air (Helms)

JORDAN: Hashemite BS, Amman, 7155, Jerusalem card with date, time and frequency plus veri statement in 16 days, air for English report and IRC (Watman)

KOREA (Rep.): Voice of Free Korea, 15430 kHz, masked dancer card with date, meter-band and incorrect time in 52 days after f/up. 128 days total. Airmail for 1 IRC and an English report. (Watman) 9640, detailed Pagoda card w/sked, report fern, in 31 d. 3 IRCs sent. (Webb)

KUWAIT: Radio Kuwait, 11845, National dress folder giving full verification, in 2 m. airmail for registered English report and 4 IRCs. (Dildine) 42 days; no IRCs (Schubert) 40 days airmail, w/sked (Austin) 60 days air for 3 IRCs (Webb) 2 months for 1 IRC and report on 15345 kHz. (Stuart)

LEBANON: Radio Lebanon, Beirut, 11955 kHz, sent colorful full data QSL in 162 days, by registered airmail. (Sykes) 9545, color card, full data, via registered mail in 11 weeks for mint stamps. Second try for this one! (Howard) 9545, colorful artist's impression card of radio building, w/schedules, in 106 days registered airmail for 1 IRC. (Campbell) registered seemail in 3 months. (Richards) 6 months (Padula) 3 mos., 13 days for 3 IRCs. (Avery)

LIBERIA: E.L.W.A., Monrovia, 4770 kHz, drummer card in 6 weeks air for 2 IRCs. All QSL data. (Taylor)

LIBYA: L.B.S., 8630 kHz, form letter with date, freq. and power filled in; 7 weeks for 3 IRCs and an English report. V/S: Nouri El Sharif. (Howard) Tripoli, 11795 kHz, printed form-letter QSL with details typed in. Reports should be sent to Box 119, El Beida. (Padula) 6½ months seemail for English report and 2 IRCs. (Dildine)

LITHUANIAN S.S.R. Radio Moscow, Kaunas, 11870 kHz, card in 4 weeks air from Moscow. Full data, including transmitter site. (Plum)

LUXEMBOURG: Radio Luxembourg, 6090 kHz, all data antenna card, air in 2 months for 2 IRCs. (Avery) 3 months seemail for 3 IRCs. All data (Orcutt) 102 days (Schubert) 83 days (Austin) 27 days air for 2 IRCs (Dushane)

MALAGASY REPUBLIC: Radio Nederland, 15260 kHz, card airmail in 2 weeks. No return postage sent. (Draut)

MALAYSIA: BBC/Tebrun, 9580 kHz, Thames card w/full details in 35 days for taped rpt. and mint stamps. (Dildine)

MALI: Radio Mali replied in 34 days with yellow/brown OCORA card. Reported in Eng. with 3 IRCs. For 17895 kHz. (Sykes) 5995, card in 18 weeks since last f/up in both French and English. Full data. (Howard)

MARTINIQUE: O.R.T.F., Fort-de-France, 3315 kHz, beach scene card w/date only in 3 months for French report w/2 IRCs. No V/S. (Slowey) 83 days for French report and 2 IRCs. (Campbell)

MEXICO: Radio México, XERMX, 9705, QSL letter, sked and pennant via registered mail, in 6 months. No return postage. (Draut) 11770, letter, questionnaire, tourist info, & pennant registered in 9 weeks air (Conner) 21705, personal letter in Spanish from VS' Lic. Victoria E. Perez de Leon, together with questionnaire on programming, tourist pamphlet and pennant. 7½ months after original rpt and 2 visits to station. (Calkin)

- MEXICO: XECMT, Cd. Mante, 6090 kHz, friendly letter from V/S: Waldo Lopez Herrera, Gerente General, in 5 days after f/up, and in 2 months total. Mint stamps sent with original report and SASE (used) sent w/f/up - both in Spanish. Frequency and verification statement only given. (Calkin)
- XEBR, Hermosillo, Son., 11820 kHz, nice letter from V/S: Luis Obregon, with full details. Letterhead shows pink panther at microphone. (Richards)
- MONACO: Trans-World Radio, Monte-Carlo, complete verie card for experimental freq. of 6150 kHz plus religious material. (Schubert) 7290 kHz, card w/all data in 3 mos. for 2 IRCs. (Draut) 7135 kHz, pic card of antenna with incorrect date; 48 days via seamaile for French report and IRC. (Watman)
- MOZAMBIQUE: Radio Clube de Moçambique, 11780 kHz, Broadcasting House card in 37 days airmail for 2 IRCs. (Johnson)

NETHERLANDS ANTILLES: Radio Curom, Curaçao, 17514, verified transmissions broadcast by "mistake" by the utility station from which they buy time. Station normally operates only on 855 kHz medium-wave. QSL by form letter with date and veri statement in 12 days air for English report and IRC. V/S: W. N. Claessens, Secretary. Count as a station? (Watman) Not as an SWBC station for NASWA, unfortunately, but interesting nevertheless. (Ed.)

Radio Nederland, Bonaire, 11730 kHz, 25th Anniversary card in 29 days for 2 IRCs. (Donnelly) Happy Station card in 3 weeks. (Richards)

NEW BRITAIN: Radio Rabaul, VL9ER, 3385 kHz, folder QSL w/full verie statement. V/S: Paul Cox. Reply in 12 days air for 2 IRCs. (Hardester)

NEW GUINEA: Radio Wewak, 3335 kHz, data sheet QSL w/full data from V/S: Christine Kowor in 2½ months for 2 IRCs. (Slowey)

- NEW HEBRIDES: Radie Vila, 3945 kHz, card and personal letter from V/S: John McNeil, Broadcasting Officer, airmail in 2 weeks after f/up with fresh report. Advised that my report had been temporarily mislaid, but was, in fact, first from Melbourne since this new frequency was introduced. 2 IRCs sent. (Padula)

NICARAGUA: Radiodifusora Nacional de Nicaragua, Managua, YNM, 11875 kHz, personal letter, pennant, tourist brochure and programme schedule in 15 minutes when report presented in person at station to V/S: Douglas Amaya, Director Artistico. (Calkin) letter and small blue-white pennant in 10 days from same V/S. Mint stamps sent and used. (Campbell)

➤ Radio Mar, Puerto Cabezas, YNTP, 9581.5 kHz, friendly personal letter in 12 days airmail for Spanish report and 4 IRCs. V/S: Ricardo Perez Ulloa, who advises station operates with only 1 kW. (Calkin) Veri shown on QSL-10 (Ed.)

NIGERIA: Voice of Nigeria, 7275 kHz, green/white flag card in 3½ months air (Orcutt)

NBC-Calabar, English letter in 2½ months for 2 IRCs. V/S: D. A. Bassey, who wonders how I got his name. (Kamp)

NORWAY: Radio Norway, LLN, 17825 kHz, color scene card with full data and schedule after 2 months. No IRCs. (Bril) 21730 kHz, color card, w/full data in 2 months for English report and no return postage. (Howard) 3 weeks for 1 IRC. (Linsenmeyer)

PAPUA: VLK3, Port Moresby, 3925 kHz, blue/gold map card w/full data, except freq., in 15 days airmail. No return postage. (Hardester) 2 weeks airmail for 2 IRCs, all data. (Perdue)

PERU: Radio Atlantida, verified with letter and pennant for reception on 4787 kHz, nominal 4840 kHz, in 3 weeks for Spanish report and mint stamps. (Williamson)

PHILIPPINES: FEBC, 11920 kHz, green card in 1 month airmail for 3 IRCs. Full data. (Taylor)

Voice of America relay, Tinang, 15345 kHz, 30th Anniversary card in 19 days seamaile; no return postage. (Hardester)

Voice of Philippines, Malolos, 9580, card and letter from V/S: Ernesto G. Madrid, Manager. Letter in English w/sked in 40 days for 2 IRCs. (Marks)

POLAND: Polskie Radio Warsaw, 11815, card w/sked, letter and info on contest in 36 days airmail. (Austin) 15120, map card, sked, report form and personal letter.

(Cenner) 7285 kHz, 1st in map series (Reeves) 6135, map card in 2 months, 26 days. (Avery) 11840, card in 3 months airmail together with personal letter. (Johnson) 3½ months for no return postage. (L. Marshall)

RICARDO PEREZ ULLOA

"RADIO MAR"

TELEFONO D 19 APARTADO No. 10
PUERTO CABEZAS
NICARAGUAVenta de Maderas aserradas
de Pino y Caoba acepillada
y Machihembrada.Motonave
"KARIM DEL CARMEN"
Transportamos carga de
Managua a cualquier punto
del Atlántico de Nicaragua

Puerto Cabezas, 7 de julio de 1972

Sr. Gregg A. Calkin
Melchor Ocampo 463-7
México 5, D. F.
M E X I C O

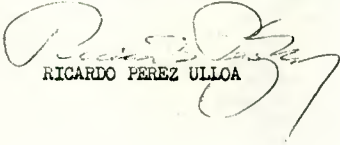
Estimado Señor;

He recibido su carta con fecha del 27 de Junio de 1972, me dió mucho placer leer su reportaje, comprendo que dió todos los detalles que pudo, los cuales coinciden con los de nuestra programación de ese día. Le hacemos saber que usted realmente escucho Radio Mar.

Lo felicito por el esfuerzo que hizo para poder escribir su reportaje en un idioma que no es el suyo, su carta es una de las mejores que hemos recibido de personas que no han español, está muy bien redactada.

Creo que la debilidad de la fuerza de señal es debida a nuestra poca potencia (1,000 Watts) y la muy poca entendibilidad la justifican las condiciones atmosféricas y la interferencia de las otras emisoras.

Sin más a que referirme me despido de Ud. muy agradecido.


RICARDO PEREZ ULLOA

PORTUGAL: Voice of the West, 11935, map "world discovery" card in 20 days, for 2 IRCs (Donnelly) 11930, beautiful card in 1 week. This is so good I had it framed! (Richards)

ROMANIA: Bucharest, 11940 kHz, card, multi-colored, in 90 days w/sked and personal letter. 9570, card with sketch of towers also. (Clawson) 90 days together with sked and info about Listener's Club. (Austin) 3 months, 8 days (Avery) 8 weeks for 9570, w/all data (Linsenmeyer) 2 months (Reeves) 10 weeks seasmall (L. Marshall)

RUSSIAN S.F.S.R. Radio Moscow, 7300, card, p/cards, rpt forms and small paperback in 20 days airmail (Austin) 11920, letter in Spanish for Cuban service from V/S: Elena Ivanova; 1 month air for Spanish rpt (Dildine) 5 weeks air for 12050 (Richards) 17 days for 7250 kHz (Austin)

Radio Moscow, Nikolavevsk-on-Amur, 9735 kHz, card with site in 30 days. (L. Marshall)

Radio Moscow, Kazan, 7300 kHz, card with site in 28 days (L. Marshall).

Radio Moscow, Khabarovsk, 12050, card with site in 40 days. (L. Marshall)

Radio Moscow, Vladivostok, 11690, card with data but no site in 22 days; then I returned it, asked for site; total time: 8 weeks. (L. Marshall)

Radio Peace and Progress, 9470 kHz, card w/sked and station info. in 67 days seasmall. (Austin)

RWANDA: Radiodiffusion-Télévision de la République Rwandaise, Kigali, 6055 kHz, card in French and English, w/sked in 4 months seasmall. (Lobdell)

SABAH: Radio Malaysia, Kota Kinabalu, 5980, card, sked and personal letter by air in 3 weeks for on IRC. V/S: Henry Kimujim, for the Director of Broadcasting. (Padula)

SARAWAK: Radio Malaysia, Kuching, 4950, Broadcasting House card w/full data in 55 d. air for 2 IRCs (Johnson) 66 days air for 1 IRC; 4950 kHz. (Carey)

SAUDI ARABIA: 11655, card in 2½ months, registered airmail. (Taylor)

SEYCHELLES: FEBA verified with blue/white card, letter and literature for 11950 kHz, in 1 month (Williamson) 135 days for 1 IRC. V/S: Brenda Bacon (Sykes) 16½ weeks for 1 IRC (Howard) 15265, 30 days air w/sked and handouts. 2 IRCs. (Johnson)

SIERRA LEONE: RSL, Freetown, 3316 kHz, letter w/full data, in 98 days air for mint stamps w/sked and stating it wants more reports. (Henderson)

SINGAPORE: Radio Singapore, 11940, color card of "Singapore Housing and Development" plus letter from G.O. D'Souza, Dir. of Broadcasting. 15 days for 3 IRCs. (Hunt) 80 days seasmall with no data card (Carey)

SOLOMON ISLANDS: SIBS, white card for VQ04/3995 kHz in 3½ months for 3 IRCs (Kamp) 3995, map card with full data; 15 days air for 2 IRCs (Hardester)

SOUTH AFRICA: Radio RSA, 11970, all data card, magazines and sked. (Avery) 9695, 28 days air (Helms) 25 days air for 4945 kHz (L. Marshall) 8 days air (Megyesy) 2 month for 1 IRC (Draut) 2 weeks (Donnelly)

SOUTH YEMEN: PDRYBCS, Aden, 5060, pink antenna card in 52 days air for mint stamps and an English report. (Henderson)

SPAIN: RNE, 6140, paper thin card in 9 weeks for no IRCs. Full data. (L. Marshall) card with studio view of transmitter locales; 14 days air (Alexander) 11925, 18 days w/full data. (Wiseberg) 126 days (Schubert)

Radio Liberty, 7295, card specifying site, w/programme schedule and folder; airmail in 1 week. (Dexter)

SUDAN: Radio Omdurman, 11835 kHz, form letter and tourist information in 3 weeks air (Conner)

SWEDEN: Radio Sweden, 6175 kHz, abstract art card, in 1 month (Donnelly) 15295, 25 days air (Helms) 11805, card specifying Grimeton site. 1 week after they failed to include site on two earlier cards. (Dexter) 15 days air (Austin) card enlargement of Swedish postage stamp, special for the UN Environmental Conference and issued only during the 2-week conference. 4 weeks air (Seymour) 18 days for 2 IRCs (Wiseberg)

SWITZERLAND: ICRC, 7210, mike card in 3 wks for 1 IRC (Conner) air in 4 weeks for test on 7210 kHz (Padula)

S.B.C., Berne, 11715, letter from Mrs. Judy A. Chishelm, 3 weeks air w/Alpe card (Richards) 3½ months (Howard, Donnelly) card of aerials in 62 d. (Self)

TAHITI: Radio Tahiti, 15170 kHz, mermaid card, in 60 days air for 1 IRC and French report. Full verie data given. (Watman)

TAIWAN: VOFC, card in 36 days for 2 IRCs (Schubert) 29 days for 17890 kHz (Stuart) 1 month for 15125 kHz (Draut)

TANZANIA: Radio Tanzania, 15435 kHz, drab card without time for report in 91 days seamail, plus two pen-pal requests from clerks at station. (Sykes)

THAILAND: Radio Thailand, 7115 kHz, yellow/blue card in 2 months, 1½ wks. (Jamison)
Thai Educational Station, 3203 kHz, airmail letter in 18 days after f/up
from Mom Luang Chintana Navawongs, Director, Division of Educational Information.
(Dexter)

TRUCIAL STATES: Voice of the Coast, Dubai, 6040, card with dates of report and its receipt indicated; air in 4 weeks for 1 IRC. (Padula)

TUNISIA: Tunis, 6195 kHz, verified w/attractive post card in 1 month for 1 IRC and an English report. (Williamson) Mosque card in 1 month for 3 IRCs (Conner) 2 months for 6195 kHz (Reeves)

TURKEY: Voice of Turkey, 15195, dancers card in 3 months (Reeves) 18 months for 3 frequencies plus booklets on station (Padula) 2 months (Conner, Sykes)

UKRAINIAN S.S.R. Radio Kiev program, 11900, map card in 25 days (Donnelly)

U.S.A. WNYW, 11855, blue card w/sked in 2 weeks (Conner) 18 days for 17755 (Webb) 15 days for mint stamps (Donnelly)

WV Time Signal, indian card in 27 days for mint stamps. Full data (Megyesy)

➤ **UNION OF ARAB EMIRATES:** Abu Dhabi, 9695, replied with thank-you letter in 2 months for English report, from V/S: Farouk Jarrar, Director of Radio and Television, Ministry of Info. and Tourism, Govt. of Abu Dhabi. Returned by IRCs, says not needed. Letter not regarded as legit. QSL however, and wrote back requesting verification. (Sizer)

VATICAN: Vatican Radio, 5995, color p/card of trans. site in 15 days (Donnelly)

VENEZUELA: Radio Puerto La Cruz, 9680, letter, decals, two placemats; airmail in 2 weeks after follow-up. Signer: Rodolfo E. Fuentes. (Dexter)

VIETNAM (DEM. REP.): VOV, Hanoi, 10040, paper QSL w/all data in 81 days. (Draut)

ZAIRE: La Voiz du Zaire, Kinshasa, 15245 kHz, letter in 133 days seamail from V/S: Nikuna Diavloka, Le Directeur Technique. 2 IRCs sent (Henderson) 2 months from the Ministère de l'Information, B.P. 3164, Kinshasa (Conner) 5 months, in French (Marks)
➤ Radio Bukavu, 4839 kHz, mimeo form letter from V/S: Nawezi-Nawej-a-Kaumb. By airmail in ½ months (Dexter)

And, finally, with special thanks to this month's supporters:

Frank ALEXANDER, NC
Marty AUSTIN, CT
Joseph R. AVERY, NC
Gerdy BRIL, WI
G. A. CALKIN, MEXICO
Tom CAREY, CA
Dick CLAWSON, MD
Charles CONNER, LA
Gerry L. DEXTER, WI
R. Stephen DILLINE, VA
Gerald DONNELLY, NC
Eric DRAUT, IL
John CAMPEBELL, TX
Richard DUSHANE, MI
Bob ESTAND, TX
Dan FERGUSON, WV

Harry HELMS, NC
Dan HENDERSON, MD
Ron HOWARD, MD
Ken HUNT, CA
Dan JAMISON, VA
Den C. JOHNSON, CA
Steve KAMP, CA
Albert LINSSENMEYER, IL
Larry MAGNE, PA
Anthony MARKS, OH
Larry MARSHALL, CA
Dave MEGYESY, NJ
Frank ORCUTT, NY
Bob PADULA, AUSTRALIA
Neal PERDUE, TN
Harold PETERS, SC
Michael HARDESTER, CA

Karl SCHUBERT, MD
Charles SELF III, MN
Woody SEYMOUR, NC
Alvin SIZER, CT
Bob SLOWEY, IL
Jerry M. STUART, OK
Steven E. SYKES, OH
Peter TAYLOR, ONTARIO
Mike WATMAN, NH
Corky WEBB, TX
Tom WILLIAMSON, ONTARIO
Michael WISEBERG, ONT.
Ralph RICHARDS, CA
Scott REEVES, MD
W. J. PLUM, NJ
Leslie GEIR, ND

And don't forget, the Scoreboard spotlight is on S. AMERICA in Sept. Best 736

LISTENER'S NOTEBOOK

Dan Ferguson, 1521 Smith Road, Apt. 7, Charleston, W.Va. 25314 Phone (304) 346-5738

After taking time out for the Boston ANARC convention, then a few days at the beach, and then editing the top half of the Log Report this month, this section may be more disorganized than usual, if that be possible!

VoA Inconsistencies Albert Miller sends some notes on VoA operations which show actual operations to differ considerably from the published schedules. I.e., VoA Delano s/on 1130, 6125, 10 June, sked shows 0745-1400. VoA Dixon off fqy at 9567 instead of 9565 at 1218, 10 June. Dixon on 11865 s/on 1130, 11 June, sked shows 0745-1645. Dixon, 21630 sked to s/off 0000, but carried Vietnamese past 0000, 13 June. Dixon s/on 1200, 9656, 17 June. Sked shows 1100-1600. Logged 29 May at 1119. Different skeds for different days?/.....Bethany 11890 s/on 1200, 18 June, sked says 0945-1500. Gvl 21670 s/off 2315, 28 June, sked says 0000 s/off. VoA on 21535 at 1928, 1 July, fqy not listed.(AA Miller) Yes, the VoA tx often differ from the sked, partially because the sked is submitted to the IFRB several months in advance. Another reason might be recommendations for changes made by the IFRB. And, of course, at times they extend coverage for special events. The most likely cause of the differences in this case seems to be changes made after the skeds were prepared.

BURUNDI A last minute telephone call from John Tuchscherer brings news from Radio Cordac. According to their newsletter, all private broadcasting in the nation was terminated 25 May 1972. This includes hams, Radio Cordac, everyone. The charter for Radio Cordac required that the station refrain from involvement in politics, and they have done so. They were ordered off the air simply because all private broadcasting was stopped. According to John, it is not clear from the newsletter whether the gov't station, La Voix de la Revolution, is still on the air, or not. However, the reference to Burundi by Mr. Weston, on page SWC-2 this month, seems to indicate they are still broadcasting. A check of the BBC MS material here shows no reference to the station...What is clear is that if Burundi is going to be heard, it will have to be the gov't station, at least in the immediate future. The gov't station is scheduled, or was scheduled - the last anyone knew, on 3300 and 6140 kHz at 0330-0600, with another transmission running to 2100, and possibly audible ECNA, on the lower fqy, that is. The 6140 outlet is unlikely due to the other high power transmitters on the frequency at the times of operation...We will continue to keep an eye on the situation in Burundi & relay any changes.

BANGLADESH Some have indicated they were having troubles receiving R. Bangladesh in recent weeks. However, John Tuchscherer indicates they continue to be heard daily, each morning, on 11935v.

VERIE SIGNERS LIST The July LN section was typed before the list was printed. There were some over-estimates on the cost. The list will cost only US\$1.00 for NASWA members, via First Class mail in NA, and AIRMAIL overseas at the same rate(US\$1.00 - that overseas rate is subsidized!). For non-members, cost is US\$1.50, anywhere, First class mail in NA, airmail overseas. Verie signers are given for over 280 stations, around the world. Space is provided at the back of the booklet for stapling in updaters which will be issued. Orders should be sent to Dan Ferguson, and payment can be made in US mint stamps if desired(low denomination please!).

CHINA SKEDS FROM BBC MS The BBC MS has just issued new schedules for the Radio Peking External Services, excluding Russian. A copy of this schedule is available for an SASE to this editor. NASWA members only!

UZBEK SSR Tashkent has replaced 15115 by the new freq, 15415 kHz for transmissions in the 1200-1530 period(excluding 1230 and 1430 Uighur).(BBC Monitoring Service)

MOZAMBIQUE RCM annod 15 July a new schedule for the "A" program, which would supercede the schedule given last month. It reads: 15295 at 0600-1530, 11820 at 0400-1600, 9620 at 0700-1500, 6115 at 0400-1700, 4855 at 0400-0530 and 1600-2210, 3210 at 1630-2210, and 737(MW) at 0400-2210.(BBC Monitoring Service)

URUGUAY According to R. El Espectador, from 16 July Uruguay local time will be GMT - 3 hours. (BBC Monitoring Service)

RADIO FINLAND Transmission schedule

May 7th - September 3rd

EUROPE	1800-1830 GMT	9555 kHz	15 kW
		11755 kHz	15 kW
		15185 kHz	100 kW
SOUTH AMERICA (test transmission)		21605 kHz	1 kW
NORTH AMERICA	2300-2330 GMT	15185 kHz	100 kW

September 3rd - November 5th

EUROPE	1800-1830 GMT	9555 kHz	15 kW
		11755 kHz	15 kW
		15185 kHz	100 kW
SOUTH AMERICA (test transmission)		21605 kHz	1 kW
NORTH AMERICA	0200-0230 GMT	9585 kHz	100 kW

Weekly schedule

Sundays.....LETTERBOX
 Mondays.....CURRENT EVENTS & FINNPOP
 Tuesdays.....SPOTLIGHT ON FINLAND (twice a month)
 HELSINKI CALLING (once a month)
 FACE THE MUSIC (once a month)
 Wednesdays.....FINLAND IN FOCUS
 Thursdays.....PRESSREVIEW & FINNPOP
 Fridays.....Repeat from Tuesdays
 Saturdays.....IT'S SATURDAY

CHARLIE LOUDENBOOMER will be reprinted! However Charlie feels someone else should have the privilege of typing all the stencils for the reprint job. (The reprints will be mimeographed.) If you are interested in typing some or all of the CL reports(they go back to January 1966), please contact your LN editor.

ISRAEL IBA has expanded the Russian tx; it now runs 0345-0415. The evening RR svc has been retimed, and is now best at 2210-2250.....
 During the 2035-2200 period(with EE 2035, FF 2115), 6170 has been dropped, and replaced by 7225 kHz. (BBC Monitoring Service)

WHAT? YOU DIDN'T MAKE IT TO THE BOSTON ANARC CONVENTION? CHARLIE LOUDENBOOMER DID!!!!!!

AUGUST BALBI NAMED ANARC MAN OF THE YEAR As chairman of the ANARC Awards Committee, this editor had the privilege of announcing to the ANARC convention the committee's selection of August Balbi as the 1972 ANARC MAN OF THE YEAR. Certainly a well deserved honor to a man often referred to as the "dean of North American DXers".

UGANDA According to the EBC MS, the current frequency schedule for Radio Uganda's two home service channels is believed to be:
 Red Channel...3340 at 0300-0545, 0600-1130, 1315-2110(Su 0300-2110). 4976 at 0300-0545, 1415-2110. 7195 at 0600-1130, 1315-1400(Su 0600-1400).
 Blue Channel... 5026 at 0300-0545, 1415-2110. 7110 at 0600-1130, 1325-1400(Su at 0600-1400). (BBC Monitoring Service "Reception Notes")

PROPAGATION Discussions at the Boston ANARC meeting between NRC's Gordon Nelson, Don Jensen and myself have excited both Don and I over the possibility of extending MW propagation prediction techniques to SWBC. Anyone interested in working on projects to find sharper predicting tools for low frequency SW reception should contact this editor for details. We believe we are on the verge of some very useful discoveries, to paraphrase Don's comment in a letter received here today.

BELIZE plans return to 3300 kHz late July or early August.(Gregg Calkin)

ANARC Awards committee reminds DXers that nominations are always welcome for the merit awards. Full details on why you believe an individual should receive an ANARC Merit Award should be sent to the chairman of the committee(this editor).

SUPPORT NASWA!!!! LET YOUR EDITORS HEAR FROM YOU!!!!SUPPORT NASWA!!!!!!TODAY!!!!!!

GHANA BROADCASTING CORPORATION

Telegraphic Address:
BROADCAST, ACCRA

P.O. Box 1633
Accra, Ghana

Thanks to Harold Peters for this
Radio Ghana schedule.

HIGH FREQUENCY TRANSMISSION SCHEDULE
EFFECTIVE MARCH 6, 1972.

<u>SERVICE</u>	<u>TARGET AREA</u>	<u>PERIOD</u> (GMT)	<u>FREQUENCY</u> (kHz)	<u>WAVELENGTH</u> (M)	<u>ANTENNA</u> DIRECTION	<u>TX. POWER</u> (Kw)
ENGLISH	NORTH AMERICA	2000-2100	11850	25.32	313°	250
	CARRIBEAN		15285			
	SOUTH AFRICA	1445-1530	17870	16.79	133°	250
	CENTRAL AFRICA		15285			
	AUSTRALIA	1445-1530	21545	13.92	130°	100
	WEST AFRICA	1400-2215	6130	48.94	ND	100
	EUROPE	2045-2215	9545	31.43	010°	100
	EAST AFRICA	1400-1430	17870 15285	16.79	091°	250
		1445-1530	21720	13.81	091°	250
1645-1730		15285	19.63	091°	250	
1815-1900		15285	19.63	091°	250	
FRENCH	WEST AFRICA	1700-1745 1900-2215	6070	49.42	ND	100
	EUROPE	1900-1945				
PORTUGUESE	ANGOLA	1400-1445 1700-1745	21545	13.92	130°	100
	MOZAMBIQUE					
HAUSA	WEST AFRICA	1800-1900	6070	49.42	ND	100
ARABIC	MIDDLE EAST	1600-1645	21545	13.92	045°	100
	SUDAN, U.A.R.	2000-2045	9545	31.43	010°	100
SWAHILI	EAST AFRICA	1545-1630	21720	13.81	091°	250
		1730-1815	15285	19.63	091°	250

A note just in from Gerry Wood of South Africa says there is a new station now on the air in Malawi. Called Lakeland Radio, it operates on 6000 kHz, with s/on 1900, pops to 2000, religious programming to 2100, at which time it is blocked by Rome in South Africa. Address is P.O. Box 30211, Chikerri, Blantyre, Malawi. Estimated 20-50 kw. Checks in the 0300-0500 period for an early AM pgm have proved fruitless here in W.Va. Only thing heard is a Latin stn. (DF)

Larry Magne
 NASWA Log Report
 P.O. Box 2133
 Mid-City Station
 Philadelphia, PA 19103

LOG REPORT

DEADLINE: Here by 12 August

0100 s/on; 0100 s/off; // parallel; a approximate; EE English; EGFP exc-good-fair-poor; "EIR" "East Is Red"; Indo Indonesian; "Int" "Internationale"; IS Interval Signal, Island(s); lbx letterbox; LL language lesson; LM light music; M man; mx music; NA National Anthem, North Am; NF new fq; nx news; px programming; rel religious; RF reactivated fq; t tentative; TC time check; v varies; w/ with; W woman; wx weather.

Effective next month, Log Report will be edited by both Dan Henderson and myself. This will not change either the format or the address to which you send reports; I will divide up the reports and forward the "upper half" (the cutoff point will vary from month-to-month) to Dan.

Many of you already know Dan and are doubtless as excited by his presence at Log Report as I am.

The two-man editorial arrangement should provide several benefits, including quicker processing and more time for the editing (as opposed to the "mechanical") function.

Reporters should note, please, that this change makes it imperative that loggings be submitted in frequency order. A report that has to be immediately cut into little slivers is nearly impossible to edit. Thanks!

Partly in anticipation of the new arrangement, and partly because I have been unusually tied up this July, Dan Ferguson was kind enough to edit the upper half (Part 2) for this issue.

On to the loggings. Despite poor conditions in NA, there have been numerous excellent catches by several contributors, including our Pacific members, thus making for an unusually interesting August LR.

1605 - 2300 kHz

1700 UNID 1257-1402 CC, CC mx, 4 chime IS, nx, not Hong Kong (BBy)
 2120 UNID 1423-1435 CC harm //1060 fund, fanfares, Taiwan?, F (BBy)

120 Meter Band

2350 JAVA RRI Jogjakarta 1250 //5047, Indo mx, CC QRM, P (BBy)
 2390 MEXICO R Huayacocotla M-F 0300* & Sa 0210v* (irr) (GC)

2498 - 3200 kHz

2617 N KOREA (Wonson list FBIS, "Chosun Chungang Pangsongguk"-Ed) w/Pyongyang HSl px, KK talks & mx //2850, 6600, etc, P (BBy)
 2637 INDONESIA Unid 1325 Indo, talks & pops, P (BBy)
 2665 UNID (Sariwon, N Korea, list FBIS) 1335, not Indo, As vocals, P (BBy)
 2745 N KOREA (Chongjin list FBIS-Ed) w/Pyongyang HSl px, KK 1340 //2850, 2617, 6600, etc, P (BBy)
 2760 CHINA Unid (Tsingtao? "Chingtao JKT"-Ed) 1625 CC harm //1380 fund, talks, F (BBy)
 2775 N KOREA (Hahmung list FBIS-Ed) w/Pyongyang HS 1 px, 1350 //2850, 2617, 2745, 2850, 6600, etc, P (BBy)
 3120 INDONESIA RRI, QTH unk, 0945-1002 Indo, EE pops, talks, RRI IS, Poor ID, "barely audible w/o A-20, S9+ with A-20!" (BBy)
 3140 PHILIPPINES DZHH Philippine AF Stn 2x1570 1542-1620 EE (BBy)

90 Meter Band

- 3204½ JAVA RRI Bandung 1100-1110 Indo, loc nx/ID, P (BBy)
 3210 DOM REP R Libertad 0400, slow mx, IDs, ads (FH) Do 0140, F (CC)
 3220 N GUINEA R Morobe 1057-1130, EE pops, ID, F (RBO)
 3227 LIBERIA ELWA 2052, loc mx, anns (RFB)
 3230 FIJI (Soon to leave SW altogether - SCDX) Fiji Radio One, new ID, *1730-1750 //3284 & 0915-1100* Fijian, F (BBy) 0902-0931 EE, BBC/RA/loc nx, loc mx, P (MSH) EE? Oh well, get this while you can; Steve Bohac recently got their QSL! (Ed)
 3239¾ PERU R America 0320-0420+ SS, pops, ID "RA, LV del Nuevo Mundo" UTEs, P (LM) t 0402*, apparent ID, NA (FH)
 3240 IRAQ R Baghdad 2108 AA (RFB)
 3245 VENEZ R Libertador 0100 SS, nx, ads, G (EJD)
 3250 S AF SABC ANS 0230 EE, horn, nx, F (CC) 0500 EE, wx, ads (DCJ)
 3255 VENEZ LV del Tigre 0200 SS, ID, mx, G (CC, FH)
 3255 BRAZIL RC de Marilia 0832 PP, Braz folk songs (GS) ID? (Ed)
 3264 CONGO RTVC 2103, loc mx (RFB)
 3268t TIMOR Rdiv de Timor 1350-1405*, PP vocals (maybe, but surely not Indo), no anns 1400, abrupt off, P, "read several months ago that Liberation forces took over and proclaimed Timor a Republic...anybody know anything else?"(BBy)
 3275 VENEZ R Mara 0235 SS, ID, mx, G (CC)
 3285 S AF SABC 2200 EE, G (RFB)
 3290 GUYANA Action R 0930 EE, G (EJD)
 3300 GRENADA RG 0105 EE, W ancr, BBC feature, //11975, F (CC) Belize soon to return to SW, maybe here (GC)
 3305½ UNID LA 0833-0840, doubt YV (BBy) Likely R Ed do Cairi (Ed)
 3315 BRAZIL R Gazeta de Alagoas 0840-0915, ads, ID, F, Sl w/o A-20, S7 w/A-20 (BBy) t 0035 PP, sound effects, mx, F (CC)
 3315¼ ECUADOR R Pastaza, Puyo, 0405*, ID, NA, E (FH) t 0425-0507* SS, Andean mx, "Ec" thot hrd, TC/IDs seemed "...a travejo R Pastaza", guitar theme and off, P (LM)
 3320t BOLIVIA R Pirai 0415-0445 Dialect, talks, mx, F (FH)
 3320 S AF SABC 0414-0454 Afr, talks, mx, G (BDG, SK)
 3325 VENEZ R Monagas, Maturin, 1025, relay Continente, nx (DWF)
 3325 ECUADOR Ondas Quevedeñas 0408-0533, ID, mx, s/off or lost, P (MAF) 0850* SS, anns, LA mx, Ec mx, abrupt off (BP) Unid 0430 w/Andean mx, RTTY (FH)
 3330 CANADA CHU 0200-0400 (DEM)
 3335 N GUINEA R Wewak 0900 Pidgin, ID, nx, mx, talk, P (CMD)
 3344 INDONESIA Unid 1045 (BBy)
 3345 BRAZIL R Alvorada de Londrina 0802-0830 PP, talks, mx, no ID but "Brazil" & "Londrina" hrd, G (BBy) Personally, I'd consider "Londrina" an adequate ID for a Brazilian...(Ed)
 3346 PHILIPPINES FEBC 1045 (BBy)
 3347 BORNEO RRI Pontianak (presumed by Ed) 1045 (BBy)
 3350 GHANA RG 0600 EE //3366,4915,4980, nx, F (DCJ)
 3360 PAPUA R Milne Bay 0830 Pidgin, mx, talk (CMD)
 3360 GUATEMALA LV de Nahuala 1150-1230 SS, ID 1200, Marimba mx (BP)
 3365 DOM REP R Exitos 0255-0346 SS, ID, LA mx, ads (CC, AAM)
 3366 GHANA Accra 2050, loc mx (RFB)
 3380 GUATEMALA R Chortis 0300 SS, ID, mx, G (CC) *1100a SS, loc mx, anns, hets Iris (BP)
 3381 ECUADOR R Iris 0445 SS, ID, ads, G (FH)
 3385 N BRITAIN R Rabaul 0700-0730 Pidgin, M talk, P (MSH) 1100-1130 lang, chorals, oldies, IDs, G (RBO,CC) t (CC)
 3390 ECUADOR R Zaracay 0425 SS, mx, UTEs (DF) 1100-1200 SS, nx (BP)
 3396 RHODESIA Gwelo 0403-0414 EE, nx, LM, wk (SK) t pops, wk, RTTY (FH) Times, OM (Ed)

3400 -3900 kHz

- 3440 PHILIPPINES Unid harm (4x860?) 0910,1000,1100, talks (BBy)
 3515 INDONESIA Unid 0918-1332 Indo, pops, talk, overmod, likely

W Irian or Moluccas, P (BBy)
 3520 UNID 1110 CC, talks, not Fukien Front, 4 x 880?, P (BBy)
 3607½ JAPAN NHK Hiroshima HS2 0940-1059*, no ID 1000 where MW stns
 gave call letters, F (BBy)
 3885v PIRATE (US) Unid 0230, rock & pops, M ancr, QSB, bad mod (ECS)

75 Meter Band

3910 JAPAN FEN 0959-1020, "Interlude", G (MSH)
 3925 PAPUA ABC Port Moresby 0925 EE, nx, cmt, F (BDG) 1505 late //
 4920, 4890 etc, QRM NSB, P (BBy)
 3930 CAPE VERDE IS R Barlavento 0030 PP, ID, mx, F (FH)
 3935 JAVA RRI Semarang 1020-1033 EE, nx, Indo mx, chimes, G (BBy)
 3939 PAKISTAN Cf July LR-2. Is Peshawar, not Lahore. 1605-1620(BBy)
 3940 CHINA Wu-han, Hupeh, 1555-1605* CC, CC mx, pips, ID, long vocal
 "Internationale", G, "Hupeh JKT" (BBy)
 3950 CHINA Sining, Tsinghai, 1318 CC, talks, opera, //HS1 fq, F (BBy)
 3958 FALKLAND IS Cf July LR-2. FIBS says this isn't them. "Ugh!"
 (ARN) Rumored around 3952v, but 3958 had me fooled! (Ed)
 3965 S AF SABC 0435, pops, nx, under AROS (BDG)
 3970 JAPAN NHK HSI Matsuyama 0923, 1315 JJ, talk, mx, P (BBy)
 3970 JAPAN NHK HSI Sapporo 1101 JJ, anns, P (BBy) Again, warm thanks
 to Hiro Matsuura for this NHK HS info. Anybody QSLed yet? (Ed)
 3975 W IRIAN Cf July LR-2. Now gone.
 3980 S AF RSA 0440 EE, cmt, under AROS, PF (BDG)
 3985NFvN VIETNAM Viet Bac 1230 VV ex-4028v, talks, vocals, IDs //6708,
 F, fq bounces around quite a bit (e.g., 4023), now gone (BBy)
 3995 SOLOMON IS SIBS 0920-1115* EE, ID, nx, pops, QSTQ, not on 4000
 as rptd elsewhere (ARN, BBy, BDG)
 3997 S AF SABC/Springbok 2215, EE pops (RFB) Do 0430-0500 (BDG)

4000 - 4750 kHz

4023v N VIETNAM Viet Bac 1310 VV ex-3985, ex-4027, etc //6708, F (BBy)
 4035 TIBET Lhasa 1450-1505 CC, opera, EIR IS, ID, overmod, G (BBy)
 "Hsi Tsang JKT" is CC, Bob, not Tibetan (Ed)
 4060 ESPIONAGE (N KOREA) 1515 dict KK //655, not // KK dict 6251(BBy)
 4140NF CHINA Fukien Front Station 1527 CC //3900 etc, G (BBy) Take yr
 resume and send it to Langley, hi. FBIS sked (via BBC MS) of
 July 1972 doesn't list this fq or any possible funds (Ed)
 4283 BOLIVIA R Riberalta 0140-0250* SS, vocals, M talk, off w/no
 fanfare, P w/QRN, UTE QRM (GLD, LM)
 4485 RSPSR Vladivostok (list) 0820 RR, talk, opera, F (MSH)
 4602v BOLIVIA Rdif Mamore, Guauamerin, 0243-0300+, mostly mx, weak
 (GLD) Seems *1000v-0330v* (Ed)
 4679 ECUADOR R Nac de Espejo 0115-0640 SS, LA mx, talks, IDs, is
 24h, G (DCJ, DF, FAX, CC, DWF)
 4700 BOLIVIA R San Miguel 0142, mx, talk, P w/QRN (GLD)

60 Meter Band

4754 UNID LA 0315-0335*, mx seems mix of flamenco & Mexican folk,
 vocals, P (LM)
 4754½ BOLIVIA R Em Bolivia 0225 SS, ads, pops, het (TLA)
 4755 COLOMBIA Em Nuevo Mundo 0445 SS, talk, EE pops, F (BDG) Cara-
 col 0640 SS, mx, runs 24h (DF)
 4755½ BRAZIL Rdif Maranhao 0000-0115, *0754 PP, s/on w/lively orch
 mx, IDs, many ads, Braz mx, no trace of R Brasil, F (LM)
 4760 VENEZ R Frontera 0322, ID, mx (MAF) t 0100 SS, "Venez" hrd(CC)
 4765 ECUADOR CRE 0140-0355av* SS, LA mx, ID "HCAJ2" (TLA, DF, AAM, CC)
 4765 CONGO RTVC 1925 FF, anns (RFB) 0438-0530 FF (DF, DCJ) t 0431-
 0448+ (NAP)
 4770 LIBERIA ELWA 0630 lang, IS, EE ID, nx or sermon in lang, G(CC)
 4774½ DOM REP Onda Musical 0056 SS, slow LA mx, ads, F (AAM) 0404-
 0436* SS, ID, TC after each selection, G (CP)
 4775 AFGHANISTAN 1400-1430 EE, nx, mx, ID, P (BBy)

- 4776% GABON RTVG 1930 FF, talk (RFB) 0435-0500 FF, Af mx (NAP,DF)
 4780 HONDURAS R Juticalpa 1115-1145 SS, mx, IDs, ads (GC,BP)
4780 AFARS & ISSAS ORTF 0518-0531 vern, radio play, G (SK) ID?
 NA? How was this identified? (Ed)
 4784% PERU R Atlantida 0520-0505+ SS, sports, talks, mx, IDs (TLA,
 DF,MAF) 0448* (BP) 0905-1200 (BP,LM)
 4785a HONDURAS R Juticalpa 1100 SS, ID (CP)
 4790 VENEZ Ondas Portenas 0451 SS (BDG)
 4790 ECUADOR Sistema de Em Atalaya 0515*SS,
 sports nx, ID, NA (CG)
 4794% ECUADOR LV de los Caras 0350-0500, mx,
 ID, G (MAF,DF)
 4800 VENEZ R Lara 0254-0400* SS, LA pops,
 LM, NA (AAM,TLA,MAF,DF,PH)
 4800 LESOTHO RL 0401-0500, BBC nx 0500, mx,
 weak, PF (DF,BDG)
 4806% BRAZIL Rdf de Amazonas, Manaus, 0925-
 0940 PP, IDs, F (LM)
 4807 REUNION ORTF 1415 FF, LM, anns (DWF)
 4807 ECUADOR R Popular, Cuenca, 0215-0550 SS, Ec songs, ID (DF,DWF,
 DCJ)
 4810% VENEZ R Popular, Maracaibo, 0337-0356* SS, pops, clas mx, IDs,
 anns, NA, F (DF,AAM,JDT)
 4814% UPPER VOLTA RTVV 0640, neo-Af mx (DF)
 4815 PERU Cf June LR-2. S/b R Amazonas, not R Atlantida (MAF) NAP)
 4820 HONDURAS HRVC 0250-0430* SS/EE, rel px, QSL info, NA (AAM,DCJ/
 4820 GAMBIA RG 0700-0745 EE, BBC nx, ID, loc mx, P (EJD,BBy)
 4832v COSTA RICA R Capital 0105-0530* SS, baseball, mambos, IDs,
 sambas (AAM,DEM,MD,CP,NAP,GC,JA)
4832v COSTA RICA R Reloj *0530 after Capital px finished over same
 tx (GC) So, they're at this again. Used to be //6006% (Ed)
 4835t SARAWAK RMS 1120-1130 lang, LL?, ID, FG (CC)
 4839 ZAIRE R Bukavu 2010, loc mx, G (RFB)
 4840 VENEZ R Valera 0330-0400* SS, mx, QRN (DF)
 4845 BOLIVIA R Fides 0320, mx, ID "en Bolivia, R Fides", G (GLD)
 4845 BOTSWANA Gaborones 0415, Af mx, P w/RTTY (FH)
 4846 HONDURAS R San Isidro 0215, clas mx, brief talk, G (GLD)
 4854% MOZAMBIQUE ROM 1955, LM (RFB) 0425-0505 PP, pops, fados, LM,
 W ancr, TC/chimes, P (TLA,DF,LM)
 4860 VENEZ R Maracaibo 0200-0407* SS, nx, IDs, relay Rumbos (CC,NAP/
 4865 INDIA AIR Delhi 2222 EE, loc mx, anns (RFB)
 4865v BRAZIL RC do Para, Belem, 0905-0942 PP, Coke ads, ID, mx, much
 talk, P (JDT,CP,AAM)
 4871 W IRIAN RRI Sorong 0900-0915, relay Djajapura nx, F (BBy)
4873NF MAURITIUS Forest Side (ex-4850 likely-Ed) 1405 FF (DWF) Doubt
 this will ever make NA with present (presumed) sked of *1300-
 1830*...maybe *1300 WCNA early or late winter during unusual
 late opening...certainly worth keeping an eye out for (Ed)
 4875 AUSTRALIA Cf July LR-3. I doubt it. Certainly not hrd here (BBy)
 Ditto. Suspect Papua 4890, which gives loc IDs often (Ed)
 4875 BOLIVIA La Cruz del Sur *0957 SS, NA, ID, rel px, F w/QRN (CC)
 4880v DOM REP R Comercial 0430-0530 SS, ID, lively LA mx, FG (MRL,DCJ)
 4884% COLOMBIA Ondas del Meta 0330-0347 SS, ID, a "mess" (DF,PH)
 4885 KENYA Nairobi 1927, loc mx, P (RFB)
 4888%v BRAZIL R Pioneira de Teresina *0802? PP, Pepsi, bad tx, F (LM)
 4890 SENEGAL Dakar 1945, pops (RFB)
 4890 PAPUA ABC Port Moresby 0830-1125 EE/Pidgin, nx, sports, re-
 quests, IDs "ABC bcasting for Papua/NG" (MSH,JDT,FO,CP,AAM,CC)
 4890 VENEZ Rdf Ven 0340-0407* SS, US pops, talk, F (NAP)
 4890 PERU PERU R San Juan, Tarma, 0425*-0445* (varies), closing
 anns, no NA, PF, looking for Lux (GC)
 4895 BRAZIL R Bare, Manaus, 0435-0451 PP, talk & some Bz mx, P (CP)
 4900 VENEZ R Juventud 0432* SS (DF,DCJ,JDT) 0949 SS (AAM)
 4905a COLOMBIA Em Atlantico 0206-0231 SS, mx, ID (JDT)



- 4908v VENEZ R Carora 0138-0300 SS, ID, mx, hets, F (FH,MD) Carora
60 miles from Barquisimeto, Mark (Ed)
- 4911 ECUADOR Em Gran Colombia 0510 SS, LA mx, E (DF)
- 4914½ BRAZIL Unid 0830-0850 PP, Braz mx, M ancr, IDs, P w/QRN (LM)
- 4915 BRAZIL Unid 0830-0850 PP, useless (LM)
- 4915 GHANA Accra *0530-0630 EE/lang, nx, rel mx (DWF,NAP) t (NAP)
- 4915 KENYA VoK 1932, loc mx, G (RFB)
- 4916 COLOMBIA R Guatapuri 0358-0445 SS, ID, nx, singing ads, LA mx,
(AAM,RBO,SK,MRL,DF) 1030 TC/ID (DWF) all-nx w/time ticks in
backgd, 1 TC per minute (FH) Time, pse (Ed)
- 4920 HONDURAS R Progreso 0125-0402* SS, ads, LA mx, IDs, G (AAM,DF,
JDT,FH,JA) 1020-1210 SS, anns, mx, under ABC Brisbane (DWF)
- 4920 AUSTRALIA ABC Brisbane 0840-0915, nx, sports (MSH) 1100 EE (EJD)
- 4926 EQ GUINEA R Bata 1940, loc mx (RFB)
- 4930v DOM REP R Mil 0119-0521 SS, LA mx, ads (AAM,JDT,BLY,IVJ,BDG)
- 4930 VENEZ R Junin, San Cristobal, *1000, march, ID, YV mx (DWF)
- 4930 ECUADOR Rdif Casa de la Cultura 0250-0333 SS, IDs, clas mx(JDT)
- 4936 PERU R Tropical, Tarapoto, 0215 SS, LA mx (ARN) 1115 Do (DWF)
- 4938 BOLIVIA R Norte 0150, mx, talk, "Presidente de Bolivia"hrd(GLD)
- 4939 ECUADOR R Nac 0450*, ID (MAF)
- 4940 IVORY COAST Abidjan 2240 FF, anns (RFB) 0545 IS *0600 FF (DWF)
- 4940 VENEZ R Yaracuy 0300, mx, F (BLY)
- 4945 BRAZIL R Educ Braganca 0855 PP, clas mx, W talk, under HJ (LM)
- 4945 COLOMBIA R Colosal, Neiva, 0124-0703 SS, LA mx, IDs, Toledar
IS/ID (AAM,BDG,DCJ,NAP,RBO)
- 4950 SARAWAK RM-Kuching 1142-1200 EE, M&W ancrs, nx, orch mx (MSH)
- 4955 COLOMBIA R Nac, Bogota, 0044-0500* SS (AAM,WT,BLY,NAP,FAx)
- 4958 AZERBAIJAN SSR R Baku 2045 RR, mx, anns (RFB)
- 4962 DOM REP R Antillas 0132, ID, lively mx, G (FH)
- 4965 COLOMBIA R Santa Fe, Bogota, 0221-0745 SS, ads, LA mx (AAM,NAP)
- 4969½ VENEZ R Rumbos 0015, E (FH) 0544* new s/off time (LM)
- 4970 SABAH RM-Kota Kinabalu 1400 EE, mx, nx, F (DCJ)
- 4976 UGANDA RU 1945 EE, talk (RFB)
- 4978 UNID LA SS, anns, R Internacional drifting? (FH) Time...(Ed)
- 4980 GHANA RG 2040 EE, rel px (RFB)
- 4980 VENEZ Ecos del Torbes 0043-0356* SS, LA mx, ads (AAM,NAP,CP)
- 4985 UNID 0417 PP, variety of mx, incl US standards, noted once (GLD)
- 4990 VENEZ R Barquisemeto 0041-0400 SS, LA mx, ads (AAM,DEM,RBO,NAP)
- 4995 BRAZIL R Brasil Central 2330-0130 PP, IDs, sports (FH,RFB,MRL)
- 4995½ PERU R Andina 0315-0415 SS, Andean mx, best 0415 (DF)
- 5000 NEPAL RN 1247-1325 Nepali, talks, mx, TC/ID "Yo RN Ho", F (BBy)
- 5000 USA WVV 0300 (DEM)
- 5010t CAMEROON R Garoua 2000 FF, nx (RFB)
- 5010 DOM REP R Cristal 0307-0720 SS, LA mx, pops (FAx,KAS,DCJ,BDG,NAP)
- 5015 GRENADA RG 0000 EE, mx, loc nx, ads (EH)
- 5020v COLOMBIA Trans Caldas 0300-1000 SS, mx, ISs ea ½ hr (FH,NAP,MSH)
- 5026½v BRAZIL Unid 0810 PP, IA, M ancr, "Sao"hrd, P (LM)
- 5030NF CHINA RP 1801 GG, ID "Hier Ist RP" after EIR, //7780,7010,4020
(BBy) Yup, plus 11445 in brand-new BBC MS sked (Ed)
- 5030 VENEZ R Reloj Continente 0330-0507* SS, nx, ads, mx, IDs, NA
(BLY,JD,CP,AAM,NAP)
- 5038 CENT AF REP Bangui 1845 FF, talk (RFB) 0532-0610 FF, Af mx (FO)
- 5039 SUDAN Huna Omdurman *0255-0315 AA, chants //11835 (LM,DF)
- 5040 BURMA BBS 0245 EE, mx, P (BLY)
- 5043v PORT GUINEA Bissau 0810 PP, local pops (TLA)
- 5044½RFBOLIVIA LV del Altiplano 0200-0910 SS, LA mx, IDs, pops, oft
24h, short talks, ad "Banco Nac de Bol" (MRL,ARN,DF,LM,GLD,DWF,
CC,BBy) "Guess higher power" (GLD) Dunno, WRTH says 5 kw (Ed)
- 5045a COOK IS Cf June LR-3. Nary a trace of Cook Is Radio ever (BBy)
Holy harmonics! Are they off SW, too?!? (Ed)
- 5045 UNID 0745, not LA mx or lang, feeble (AVS) I get something
150v Hz above Altiplano 0700-0730, think BBy does, too (Ed)
- 5047 TOGO RT 2050 FF, talk (RFB) *0530 FF, IS (JWP,NAP,DCJ)
- 5050 PERU R Loreto 0550-0653*, ads, TCs off 7', LA mx, ID, fqs,

- VW ads (DWF, BP) t 0320-0645, maybe ID for Loreto (DF)
 5053x INDONESIA Cf May LR-4 & July LR-4. RRI, QTH unk, 0920, 1200*
 Indo, mx & talk, E, should make WCNA or better (BBy) That makes
 good sense; hrd here during exc As opening (Ed)
 5055 UNID 1100 SS, nx (CC)
 5060 ANGOLA RC do Huambo 2300*, nx, NA (RFB)

5060 - 5950 kHz

- 5062 ECUADOR R Catolica, Quito, 1135-1250, nonstop nx, gongs be-
 tween items (DWF)
 5063v ALBANIA R Tirana HS 0340, chorals, M ancr, mix UTE, GF (ECS)
 5075v COLOMBIA R Sutatenza 0000 SS, ID, mx, not //5095v (CC) 0350,
 pol cmty, nx, ID, E (FH)
 5095v COLOMBIA R Sutatenza 0000 SS, ID, talks, not //5075v (CC) 0314
 SS, pops, E (KAS) 1048 SS, rel talk, mx, F (AAM)
 5559 INDONESIA Unid 1015, 1222, Indo mx, M host, F (BBy)
 5825a ESPIONAGE 0130 SS, mx to 0135, then 4-number groups (CC) M or
 W reading the numbers, Charles? (Ed)
 5875 HONDURAS LV de Honduras 0300 SS, ID "HRN", ads (CC) 0430, mx,
 few IDs, E (GC)

49 Meter Band

- 5950 PERU R Arequipa 0135, ID, mx, weak (GC) 0305-0400, ads?, ID,
 vy weak-audible only w/A-20 preselector (MAF)
 5950NF ARE R Cairo 2220-2258* AA, ID/TC (BP)
 5955 BRAZIL R Gazeta de Sao Paulo 0905 PP, nx (DWF)
 5955 GUATEMALA R Cultural TGNA 0300-0430* EE, rel (DCJ, LG, EJD, FO, AR)
 5955 S AF SABC 1445 EE, RSA ID, drama (DWF) Anybody know how come
 SABC IDing as of late as RSA in Afr and EE HSs? (Ed)
 5962 HONDURAS LV de Occidente 2300, ID, fgs oft to 2330, G (GC)
 5962 COLOMBIA LV de Bogota 0243, ID, mx, G (FH)
 5965 BRAZIL R Guaiba 0245-0300, ID, mx, lost under VoA 0300 (MAF)
 PP, talks, ads, US LM, G (BDG) Time, pse (Ed)
 5970 PERU R El Sol 0650, SS guitar mx, G (BDG) 1045 Andean mx (CC)
 5975 BRAZIL R Guarujá, Florianopolis, 2235-2255, vy weak (DWF)
 5975 ENGLAND BBC 0315 SS/LA, interview (FH)
 5980 EL SALVADOR R Nac 0130-0350 SS, ID, LA mx, EE ID (MD, DCJ, WWS)
 0347*, clas mx, ID "La Em Nac de Dif de San Salv", NA (FH)
 0457* SS, clas mx, NA (JDT) Gregg, have you figured this sked?
 5985 TANZANIA RT HS 1445 Swahili, songs, anns (DWF) *1430-2000* //
 5050, 836MW (BBC MS)
 5987 CELEBES RRI-Manado 1055 Indo, nx, mx, G (CC)
 5990 VENEZ R Machiques 0005 SS, ID, ann for mx px, F (MRL)
 5999 BRAZIL R Inconfidencia, Belo Horizonte, 2320-0215 PP, songs,
 ads, soccer (DWF, AAM, MRL, ECS, MSH) 0808-0840 PP, ID (GS, JDT)
 6003 UNID 0240-0300, strong, seems LA (DF) Meas 6002 4/4, hi (Ed)
 6005 CANADA CFCX Montreal 1615 EE, nx, mx, E (MWI)
 6006x COSTA RICA R Reloj 0305-0625 SS (DF, JA, WWS) 1112 SS, ID (AAM)
 6010 CANADA CJCX 0300 EE, nx, mx, G (DF)
 6015NF HCJB *0530-1000* ex-6010, still 6010 *0400-0530* (DWF)
 6015 COLOMBIA R Mira 0035 SS, ID (CC) 1137, ads, instr mx, ID "en
 Colombia...R Mira" (DWF) 1200-1300 SS, nx, Thai QRM (BP)
 6020 RHODESIA Gwelo 1450-1500 EE, anns, LA rhythms, ID/TC (DWF)
 Formerly *0620-1450*, new sked? (Ed)
 6020 MEXICO XEUW 0000 SS, ID, mx, P (CC)
 6025 BRAZIL R Em de Pirarininga 0806 PP, talk on nx rptg (GS)
 6035 POLAND PR 0300 EE, talk (DF)
 6037 COSTA RICA Faro del Caribe TIFC 0040 SS, rel (CC) 0300 EE, ID,
 rel px, P (FH)
 6040 COLOMBIA LV del Tolima 0045 SS, IDs (CC) 0255, Dubai unhrd (TLA)
 6045 PERU R Santa Rosa 0127-0305 SS, nx, ID (ARN, DCJ, TLA) 1100 (BP)
 6050 MOZAMBIQUE RCM 1420 EE/Afr, coml px, F (DWF)
 6055 RWANDA Rdif de la Rep Rwandaise 0335-0420, Af mx (MAF, TLA)
 6065 BRAZIL R Nac Brasilia 2330-2351 PP HS, IDs, LA mx (MRL, AAM)

- 065 COLOMBIA R Super 0600-0632 SS (RBO,WWS) 0955-1109 SS (JDT,AAM)
 070 CANADA CFRX Toronto 2100-0700 EE (FH,AAM,CMD,TLA,WWS,WFH)
 070 UNID 0915+ CC, talks, weak thru CFRX, may be *0915 (SK) Doubt
 Nx & Mx bland, Steve, which seems off for months, but Ch'ang-
 ch'un, Kirin Province, might s/on here about then (Ed)
 075 COLOMBIA R Sutatenza 1044 SS //5075v, nx, LM, F (AAM)
 075 URUGUAY R Ariel, Montevideo, 0815-0900 SS, discussion, mx (DWF)
 076 HONDURAS LV del Junco 0100* daily, mx, anns (GC)
 080RF N ZEALAND RNZ 0600-0740 EE //9540, nx, mx, FG (DCJ,CMD)
 082 PERU R Nac, Lima, 2220, LA songs, bad het 6080 (DWF)
 085 ESTONIAN SSR Tallinn, cf July LR-5. Also 6055 for yrs(DF)?(Ed)
 085 ZAIRE R Kisangani *0400 FF, IS, NA, QRN (TLA)
 090 AUSTRALIA ABC Sydney 0825 EE, interview (TLA)
 090 NIGERIA RTV Kaduna 0530 EE, nx, F (DCJ)
 090 ARGENTINA R Belgrano 0220-0252 SS, variety of mx, QRM (JDT)
 090 LUX RL 2357-0204* GG/EE, pops (AAM,EH,DEM,RD)
 092 CAMBODIA Cf July LR-5. Gone 7/9, on another fq? (BBy) Where?(Ed)
 095 POLAND PR 0520 Polish HS, mix HJ (DF)
 095 COLOMBIA LV del Centro, Espinal, 0422, clas arias (FH) 1008 SS,
 LA pops, PF (AAM)
 095 BRAZIL Rdif Sao Paulo 0853 PP, band mx, ID (JDT)
 100 VENEZ Senales Horarios 0521, time ticks, G (FH)
 100 NICARAGUA R Hernandez de Cordoba 2330-0000*, drama, ID, P (GC)
 100 MALAYSIA RM-KL FS (VoM) *1315, IDs, not //6175 (DWF) Thai *1315
 -1345*, no //'s (BBC MS)
 105 COLOMBIA R Vision, Medellin, 1037 SS, ads, ID, LA mx, F (AAM)
 110 AZERBAIJAN SSR R Baku 0300 RR HS, under BBC (DF) BBC MS sked
 lists regional FS skeds only, save Alma Ata HS, Dan (Ed)
 110 NETH ANT TWR 0830 PP, rel px (JDT)
 115 BRAZIL R Tupi 2350 PP, ID, ad (MRL) t 2329 PP, talks, P (FH)
 115 COLOMBIA LV del Llano 0315-0345 SS, mx, talks (DF,TLA) *0910,
 NA, ID (DWF)
 115 PERU R Union 0415 SS, SS mx, ads, ID "o-o-nyon" (RBO)
 115 MEXICO R Univ de Sonora XEUDS 0000 SS, opera (DCJ) 1330 (Bly)
 115 CONGO RTVC 2305*, drums, NA (ECS) 0520-0710 FF, ID (CC,BBy)
 120 HAITI 4VE de 4VEH 1025 lang, hymns, P (JDT)
 120 ARGENTINA R El Mundo, B Aires, 2303, calls, fqs, chimes/ID(BP)
 125 HONDURAS R Suyapa 2230 f/i, E (GC)
 125 UNID Cf July LR-5. No longer hrd (BBy) Ditto (Ed)
 130 CANADA CHNX, Halifax, 2352-0729 EE, ads, wx (AAM,DF,WWS,JD)
 133½ UNID Suspect RRI-Samarinda (Borneo), 1016-1035, oldies (BBy)
 134½v ALBANIA R Peking *2300 SS ex-11855 //7120,9500, P w/het (LM)
 135 TAHITI ORTF 0400, mx, IDs, P (Bly)
 140 COLOMBIA R El Sol, Cali, 0030-1031, IDs, nx, mx, chimes, pops,
 Toledar ID, IS g-e-c, singing ads (EJD,RBO,WWS,JD,AAM,FH)
 144t ECUADOR R Vision de Manta 0415-0425, Ec mx, no anns, DW off(BP)
 144 NIGERIA NBC-Calabar 2250 EE, pops to 2302*, NA, ID (BP)
 145 INDIA Cf July LR-5. 1551 not good time for loc IDs (BBy)
 150 COSTA RICA R Atenea 0039 SS, ID, mx (FH)
 150v AUSTRALIA ABC Melbourne 1058 EE, pops, then VoA on 1100 (BDG)
 150v ROMANIA R Bucharest 0015 SS/SA (DF) 0209-0228* EE/NA (JA,AAM)
 155 SWAZILAND Swazi R 0430-0501 EE/lang, pops, ads (DCJ,MAF,TLA,KH)
 160 COLOMBIA Em Nueva Granada, Bogota, 2220, LA mx, ads, "never hrd
 this & CKZN on same day, reason?" (DWF) 0525, LA mx (DF)
 165 BRAZIL R Cultura 0030 PP, drama, F (MRL)
 170 VENEZ R Nac 0200 SS, nx, mx (DEM)
 175 BRAZIL R Guarani, Belo Horizonte, 0802 PP, bella musica (GS).
 175 MALAYSIA VoM 1045 Indo, mx, nx, chimes (JDT)
 179¼ VENEZ R Turismo *1007 SS, NA, IDs by M, F (LM)
 180 GUATEMALA LV de Guatemala 0200-0401 SS, mx, talk, ID (CMD,JDT)
 185 W GERMANY DW 0610 EE, talk, P (CMD)
 185 BRAZIL R Bandeirantes, Sao Paulo, 2300 PP, anns (DWF)
 195 S AF SABC/Springbok EE/Afr 1400, under BBC-FES (DWF)
 195 BRAZIL Em Continental 0020, sports, F (GLD)

6200 - 7100 kHz

- 6206 INT WATERS RNI 2328-2341 EE, pops (KAS,AAM) *0500 DD, ex-6204%
but moved slightly due to new tx, pops, stronger (LM,EJD)
- 6250 EQ GUINEA R Santa Isabel 1945, loc mx, CW QRM (RFB) 0524 SS,
Af mx, anns, G (FH)
- 6250 N KOREA KCBS HS2 1107 KK/S Korea, cmt, FG (BDG)
- 6580 N KOREA KCBS 1900 EE (RFB) *1800-2000* EE/ME/Af //9515,3560
(BBC MS) Cf July LR-6. Zero here 1115 7/9; JJ 6539 & KK 6600(BBy)
- 6793 UNID Cf July LR-6. Is Thai lang stn (BBy)
- 6900t TURKEY VoMeteorology 1915-1930*, TT mx, CW QRM (RFB) *0455-
0700*, *0800-0940*, *1200-1615*, *1800-1930* (Ed)

41 Meter Band

- 7125 GUINEA R Conakry 0103, hi life mx, F (AVS)
- 7140NF FRANCE ORTF 0530 EE/Af, strong (BP) Is "ex" known, Bob? (Ed)
- 7140 AUSTRALIA RA 1100-1130 EE/Pac //9570,11710, nx (WT,AAM,AR)
- 7180 SABAH RMS 1100 EE //7240, nx, 7240 weaker (GC)
- 7185 PHILIPPINES VoA *0900 VV //11815Ph,9740Di,11725De, new svc (BP)
- 7215 BRUNEI RB 1230 EE, mx, nx, F (DCJ)
- 7225NF NIGERIA VoN 0600 EE/Eu, nx, cmt, mx, IDs (MWi) //7275? (Ed)
- 7230 ENGLAND BBC-Skelton 0500 Polish, after EE ID (DF) BDG,TC)
- 7233v NIGERIA ECBS, Bnugu, *0500-0512 EE, drums, rel px (DF,FH,MAF/
- 7245 AUSTRIA ORF 0520 GG/Eu, clas mx (FH)
- 7250 VATICAN VR 0515, ID, loud (MAF) Lang? (Ed)
- 7260 ENGLAND BBC 0400 SS/LA, IS, QRM Rapid City Disaster Net! (RBO)
- 7275 NIGERIA VoN 0600-0630, Af mx, nx (DEM) 0130 (FO) C'mon! (Ed)

7300 - 9500 kHz

- 7320 BYELORUSSIAN SSR Minsk (list) 2218 EE/Eu, G w/poor mod (AVS)
- 7335 CANADA CHU 0200-0330 EE/FF (DEM)
- 7416 CAMBODIA SVN Liberation R 1120 lang, talks by W, G (CC)
- 7520 CHINA Cf July LR-7. "Jammer" gone. (LM,BBy)
- 7520 BLACK CLANDESTINE (USSR) Cf July LR-7. Fighters no longer oper-
ative, nor is sister stn Voice of the Liberation Army (LM) Not
noted in Sri Lanka, either (UADX)
- 7998% UNID 1235, trace of talk & perhaps As mx, under UTE/jammers(BBy)
- 8600 LAOS R of the Patriotic Neutralist Forces *1055-1200*, *1255-
1400* Laotian, IS, NA, talk, IDs, CW QRM, P (BBy)
- 8609t LAOS R of the Patriotic Neutralist Forces (presumed, but could
be something new) 1350-1401* Thai/lang, talks, As vocals, Thai
ID "Thini Sathani Vithayu Krachaisiang...", anthem, 8600 vacant,
CW marker QRM (BBy) Could be Laotian ID, Bob. Ideas, Glenn?(Ed)
- 8630 LIBYA 1840 AA, chants (RFB)
- 8775t CHINA Pei-hai, Kwangsi, 1200*, vocal "Int", ID, UTE QRM, not
hrd later checks (BBy) Certainly isn't Israeli Forces! (Ed)
- 8893 MONGOLIA R Ulan Bantor 1246* EE, G but hard to read (BBy)
- 9009 ISRAEL IBA 2100-2200, nx, cmt (DEM) Lang(s)? (Ed) 0410, *2210
RR, mercileasly jammed by Soviets, new (LM) Good grief...
- 9375 USSR R Khabarovsk (list) HS 1110 RR, relay Mayak, flutter (LM)
- 9430v BLACK CLANDESTINE (S VIETNAM) Vo the Patriotic Militiamen's
Front de CIA 1010-1055av* VV, M&W talk, some VV mx, P (LM)

31 Meter Band

- 9505 JAPAN NHK 0800-0815 EE //15195, nx, F (NAP)
- 9505 DOM REP RTVD 1140 SS (AAM) 1305 SS (MD) 2105 SS (RD)
- 9510 VENEZ R Barquisimeto 0200 SS, talk, mx (EJD)
- 9520 N ZEALAND RNZ 1020-1149 EE/Pac, Poly chorals, ID (NM,AAM)
- 9520 PAPUA ABC Port Moresby 0700-0800* EE, pops (DCJ,AVS,KH,LM)
0745* EE, pops (NAP) ? Not noted 0745* here for some time (Ed)
- 9525 INDIA AIR Aligarh 1755 EE, As mx, P (EJD)
- 9535 ANGOLA Em Official 0615 PP, talk by M, E (DF)
- 9540 POLAND PR 2145 EE, lbx, P (JD)
- 9540 N ZEALAND RNZ 0458(CMD) *0600-0811 EE (KAS,CG,JA,NAP,GS)

- 9545v GHANA RG 2133-2212 EE, loc mx, G (FO)
 9545RF MEXICO LV de Veracruz to 2130 after 6 mos silence, but is still sporadic, G until band opens to Eu (GC)
- 9550 AUSTRALIA RA 1330 Thai, IS, EE ID, F (NAP)
 9550 BELGIUM RTB *2305-2315* EE, E (KAS) 2320 IS (EH) 0052 EE (WT)
 9652 PERU R Nac Lima 0844 SS, folk mx, jam QRM (GS)
- 9573v CHILE R Portales 0000, sports, ID "Esta es Portales" (GC)
 9576 EL SALVADOR LV de Comercio 1645, rel px, ID, nom 9545! (GC)
 9582v PHILIPPINES VoP, Malolos, cf July LR-8. Definitely 0710 f/i-0900 EE (RBO,DWW,KH) *0900 (SK) 0945 EE, same stn as PBS 6170? (AVS) Same owner/tx, but is not FS. Tnx Richard on sked (Ed)
- 9585 BRAZIL R Excelsior, Sao Paulo, 0927 PP, ads, weak (GS)
 9590 AUSTRALIA RA 1209 EE, mx, talk, F (CMD)
 9590 NETH ANT RN 0150*, *0200 DD/SS, G (CAW)
 9595 JAPAN NSB 0830 JJ, ID by W, G (RBO)
- 9600 MEXICO R Universidad Nac de Mexico, cf April LR-8. Now daily *1300-0700*, G (GC) 0357 SS, nx, "Mexico" oft (ECS)
- 9600 ASCENSION IS BBC 0800 EE, ID, pips, WRC DX 0815 (RBO)
 9610 AUSTRALIA - ABC Perth 1000-1600* EE HS, usual (MWi,AAM,WWS)
 9615t MOROCCO MRT, Tangier, 0300* AA, chants, talk, NA (CC)
 9619 UNITED ARAB AMIRATES Abu Dhabi 1830 AA, nx, over Belgrade (BP)
 Gone *0255-0605*, is now only on MW then (BBC MS) ! (Ed)
- 9620 FRANCE ORTF *2030 EE, G (EJD)
 9620 YUGOSLAVIA R Belgrade *2200 EE, IS, ID, nx (KAS,CAW,WT)
 9625 ISRAEL IBA *2035-2115* EE/Eu, nx (MWi,WT,PH) 100 kw //9725 (7% kw), 9009 (to Af, 50 kw), 7225 (300 kw) (BBC MS) Cf 9009 (Ed)
- 9625 CANADA DW-Sackville *0200, IS, G (JWP)
 9635 COLOMBIA R Nac, Bogota, LL, FG (AAM)
 9640 S KOREA VoFK *1200 EE, IS, ID "This is Seoul, Korea", PF (WWS)
 9645 COSTA RICA TIFC Faro del Caribe 0300-0430 EE rel px //6037 (KH, TLA,CG,LG,GC) 1131 SS, rel px, mx, P (AAM)
- 9654x THAILAND RT 0945-1035 VV/Khmer, EE etc IDs, //11904, GF (BBy)
 9660 BRAZIL R Nac Brasilia 0848 PP, talk, swing mx, E (GS)
 9680 AUSTRALIA ABC Melbourne HS 1200 EE, nat nx, F (AAM)
 9690v ARGENTINA R Nac 0320-0345, EE/SS vocals, IDs, QRM (CP,DCJ)
 9695 BRAZIL R Rio Mar, Manaus, 1048-1130 PP, ID "R Rio Mar" (CP,AAM)
 9705 MEXICO RM-XERMV 1414 SS, ID, pretty LA mx, F (AAM)
 9710 ITALY RAI 0147 II/LA (CG)
 9730 ETHIOPIA ETLF *0400-0425* EE, nx, orch mx, sked (DCJ,DWW)
 9730 E GERMANY RBI 0316* EE, address & sked (GB)
 9740t TAHITI ORTF "Radio Tahiti" 0625, seems //15170, but strange fluttery het, fq varies?, bad tx? (RBO)
- 9745 W IRIAN RRI Djajapura 0042-0117* Indo, irr talks, test (BBy)
 9755 BRAZIL R Brasil Central, Goiana, 0841 PP, lbr (GS)
 9760 AUSTRALIA RA 1145 lang, IS, talk, F (AAM)
 9770a HAITI 4VEH de 4VEH 1137 EE, Bible hour, FG (AAM) 2145-2155+ SS //11835, LA mx, IDs, FG (NAP)

9775 - 11700 kHz

- 9790 ALBANIA R Tirana 0101 SS, IS, ID, W talk, E (AAM)
 9795 USSR RM 2055 FF, talk, P (AVS)
 9805 ARE R Cairo 2100 GG, E w/no QRM (EJD)
 9860 CHINA Cf July LR-8. Is RP EE, not Hakka (BBy) Sure is. My error, sorry (Ed)
- 9920 CHINA RP 1140 FF/SEA, G (AVS) *1130-1200*//15060,11660,8490; *1300-1355* //15060,11455,8450RCD5B,1300 MW (BBC MS-6/72)

WE'VE ARRIVED DEPT: The local "McGovern for President" organization is issuing a flyer asking for volunteer "TV/Radio/Press Monitors"!

A big thanks to all the contributors this month. The unusually good showing meant the blue pencil had to be used rather heavily. Remember, all reports here by 8/12 in freq order. Best 73 de LM.

Editor for this portion of LR this month is Dan Ferguson. In future Dan Henderson will edit the high frequency section of the LR. All reports should continue to be sent to Larry Magne, at the usual address.

- 10010 VIETNAM Liberation Army, 1430 English nx, mx, mail(Sunday), good(DCJ)
 10216v CLANDESTINE Liberation Radio, s/on 0659(new s/on time for this Viet HS); IS/
 anthem & 0700 VV tk. Later much better reception & //7416. ID: "Day la Dai
 Phat Thanh Giai-Phong(BBy)
- 10042 N.VIETNAM VoV at 1530 English nx, mx(DCJ) out of order, sorry -df
 10498 cf July LR, time was 1000(BBy) Thanks -df
 11080 CANAL ZONE NEA, 2315 //17697, CW time sigs(MD)
 11347v ESPIONAGE(TAIWAN) Chinese mx, lady reading numbers? in CC, jammed, *1116;
 poor 15 June(LM)
- 11575 W.GERMANY RFE 2340-0025 Czechoslovak feeder, usual pgm USB to 0000*, Sat
 nite show on LSB; fair USB, good LSB(LM)
- 11620 INDIA AIR vocals, instrumentals, lang ID 2140(FH) ? EE sked -df
 11630 EGYPT Cairo, strong 0145 AA ID(ARN)0200 AA GS, bad tx(PP)
 11650v BANGLADESH R.Bangladesh, Dacca; *1713-1759* EE nx, cmtry, mx. 11643-11658.
 (BBy, DCJ)
- 11680 ENGLAND BBC, 0333-0345, YL w/nx in FF or Afr dialect; can't find fqy listed.
 (NAP) It is used for various services, but I can't find my BBC skeds-df
- 11700a UNID 2135-2148 EE, possibly a Soviet outlet?(RD) They operate here-df
 11705 NEW ZEALAND RNZ end EE & s/off 1145(AAM)
 11705 VATICAN VR, IS, bells, s/on lang 2145(RD)
 11705 SWEDEN RS, EE 0330-0400, Sw 0400-0430, to WCNA(BLY, AAM, BDG, DCJ, CG) Has
 special Sat nite px for under-30's, very different(BDG)s/on 2143(RD)
- 11710 NEW CALEDONIA Noumea, FF 0730, pop ms, FG(WWS)1033-1100* rock & cl mx, FF,
 fair(AAM)
- 11710 INDIA AIR EE nx, poor 2300(MRL)Good 2305 w/ Eng nx(ARN)
 11710 AUSTRALIA RA at 1115 EE to NA, IS(PP)
 11715 INDIA AIR, 0915 EE nx, dictation speed, from Delhi(BP)
 11715 SWITZERLAND SBC, EE 0145-0215, then SS; EE 0430(DCJ, EH, MAB, GB, CG)
 11715 PHILIPPINES VoA Tinang list, 1635-1700 t/o w/all instr mx, poor(MSH)
- 11720.2 BRAZIL R.Nac Brasilia Intl Svc, 0915 EE, terrible modulation, seems stronger
 than 15449, good but for mod(LM)
- 11720 CANADA RCI 1110 EE GS(PP)0510 EE tk, FF 0515, No. Svc, //9700, 15190(MSH)
 11725 VENEZ. R. Nac., Spanish 1100(MAB)
- 11725NF INDIA AIR Delhi, s/on 1115 FF to Asia, prob ex 21660(BP)
 11725 VATICAN VR 0050-0110 EE to NA, good; nx(PP, DCJ, CAW, AAM) 2310 PP(ARN), AAM
 NETHERLANDS RN Lopk; 2130 N:EE to ECNA, cmtry, mx, to 2250*(EH, GB) FF 2043
 11730 NETH.ANT. RN Bonaire, 0200 EE nx, mx, concert hall, to 0320(CAW, FAX, MAB)
 11737 INDONESIA RRI Dja'apura 0115-0135 t/o, now here; Indo sermon, ID 0131, then
 EE folk mx, 9 July, not noted 10 July(BBy)
- 11740 VATICAN VR, cl mx, s/off 2100 in EE(AR) 2045-2058* EE rel tk(RD, AAM)
 11745 FRANCE ORTF, US & Fr pop songs to Eur; FF anmts, fair(AAM)
 11745 ECUADOR HCJB 0030 DXPL, ANARC convention details 13 June(MAF, MAB) Nx, mx,
 0100-0200(DEM) Woody Seymour will have taped convention report on an up-
 coming DXPL, probably the weekend of the 30th, tho maybe later-df
- 11750 ENGLAND BBC, N:EE 1105(PP) Whoops, my mistake, that's Malaya(Tebrau)-df
 Radio Newsreel at 0015(MAB) And that is England-df
- 11760 CUBA RHC, SS 0000(MAB) 0403 EE tk on S.Afr(CAW)
 11765 AUSTRALIA RA-Shep., 0750-0830-, Eng nx, mx, tk; fair-good(WWS, NAP, CMD)
 11765 USSR RM 0410 EE on Mars probe, fair(WT)
 11770 MEXICO RM, XERMX, 1320 SS, mx, few anmts(MD)SS, mx, fqy anmts(GT)1510 Mex mx
 (AAM) 0333 Mex ballads, s/off 0400, strong(BP)
- 11775 SPAIN RNE, 2150 SS, cl mx(WT) SS nx 0350(AAM)
 11780 MOZAMBIQUE RCM, 0720 EE songs, ads, fair(WWS)
 11785 BRAZIL R. Guaiba, 0129 long talk, ID, ads, poor(AAM)
 11785 NETH.ANT. TWR, Bonaire; *0350 EE ID, into RR, good(CG, LG)
 11790 S.AFRICA SABC Internal Svc, 0635 EE anmts, pops, often strong(BP)
 11800 ETHIOPIA ETLF, 0515 N:DF)
 11800 CAMARY ISLANDS RNE, 2044 SS interview(RD) pop concert 0045, ID 0100(FH) Mx,
 ID, tk, 0200, //15365(DCJ)
- 11800 CEYLON Ceylon BC Svc, 1640 Hindi com'1 svc; mx(MD) Hindi mx 1202(AAM)
 11800 CUBA Rebelde noted here several dates, 0124-0201, what harmonic?(MSH)

- 11805 BRAZIL R. Globo, N&P 0003, poor(AAM) PP ads, TC, mx 0030(FH)
 11810 ALGERIA RTVA 2120-2138 chants, tlk, poor-fair(RD) PP, DCJ, MAB
 11810 ITALY RAI 0030 It, opera(AAM) 0146 N&I(CG)0100-0120 EE nx, cmtry(WT, CAW)
 11810 INDIA AIR 1330 EE to SEA, weak(PP)(KAS) 1400 ID, nx, mx, GRM NHK(KH)
 11815 NETH.ANT. TWR 0100-0130 Eng(PP, GB)1135 Eng rel pgn, nx, past 1205(AAM, CAW)
 11815 POLAND Warsaw, s/on EE 0258 after IS; mx(DWw)
 11820 E.GERMANY RBI *2315 PP to Brasil, additional fqy, believe additional tx now
 in use here. Hrd earlier June w/ relay of GG HS this hour(BP)*0215 SS(AR)
 11825 JAPAN NHK 1055 N&E(PP)
 11825 E.GERMANY RBI 0332 EE nx, mx, fair(CAW)
 11835 HAITI R.4VEH; EE rel nx 1125; nx, mx, rel px past 1600(CAW, MML, FO, PP,
 WWS, MD)2300 EE mx, rel pgn(DCJ)0031 Gospel mx, EE(AAM)
 11835T SUDAN Omdurman, 0402-0430+, AA tlk, US mx; fine lvl till GRM 0430(NAP)
 11840 POLAND Warsaw, 0200 EE to NA; nx, mx; poor(EH)
 11845 CANADA CBC 1900-1915 EE to Afr, FF 1915(PP)2115 EE, poor(QRM)(EH)
 11845 NETHERLANDS RN(Lopik-df), opens SS 2300(ARN)
 11850 GHANA RG 2000-2100 EE nx, mx(PP)(DCJ)
 11850 ENGLAND BBC w/ EE GS 1101(PP) Unlisted here - have CBC & Delano list.
 Presume by "GS" you mean "General Svo" - but BBC now uses the handle "World
 Svo", GOS no longer exists -df
 11850 NORWAY RN 0000-0030 EE, Sunday(MAF, CAW) 0600 EE nx(DCJ)
 11850 UKRAINIAN SSR Vinnitsa(per ITU) "R.Vilnius" w/ EE 2230 & 0030(DCJ, CAW, JDT)
 11855 EGYPT Cairo in EE 2108-2113, very poor(RD)
 11855 USA WNYW 0207 EE movie review(AAM)
 11855 BRAZIL R. America, 2235 PP M&W w/nx(JDT)
 11855 USSR RM 1815 FF to Afr, good; no sign of Djeddah(MD)
 11855 CZECH RP 0703 EE to ANZ, poor(JDT)
 11860 ASCENSION IS. BBC 0750 EE mx, R.Newsreel 0800(JDT)
 11860 FRANCE ORTF 0515 EE to Afr(WWS)
 11865 BRAZIL RC Pernambuco, ID, R&R mx, PP, poor 2200(MRL)mx px, ID 0030(MAF)
 11865 W.GERMANY DW-Wertachtal(per ITU), jass, GG, 0050, good to exc(AAM)
 11870 INDIA AIR Delhi(per ITU) Hindi mx, amts 1128 t/i(BDG)
 11875 ANGOLA Em.Official, Luanda, 0650 pops, PP amts, f/o 0815 rare this time(BP)
 1500 PP, FF on a Sat, mx, amts to 1634 s/eff(CC)
 11875 NICARAGUA R.Nac., 0340 FF lang lessons(BP)0518-0532 t/o SS(JDT)1206 SS, ID
 (AAM)1400 mx, SS tk(DCJ)1430 mx, SS(NAP)1620 EE pops(MD)1757 SS, US pops(F&x)
 11880 RSFSR(Eur) Moscow w/ "Vilnius" 1730-1830; nx, mx, cmtry(DEM)
 11885 PORTUGAL RFE Lisbon(df) Czech nx, ID 0430(BDG)
 11890 PHILIPPINES FEBC 0909-0959 EE rel pgn, ID, poor to fair(FO)
 11890 ETHIOPIA ETLF 0530 EE, drum IS, ID, nx(WWS)
 11890 E.GERMANY RBI, 0100 N&E, 0115 press review(WT, MAB)
 11900 TUNISIA RTVT, Sfax; AA(I believe) nx to f/o 0653, //11970(Tunis)(MAF)
 11900 MALAYA RM-Kajang, 0800 EE tk, nx 0830, past 0855, //15280(DCJ, KH)
 11900 UKRAINIAN SSR Lvov w/ "R.Kiev" 0030-0100, RM 0100, all EE(AAM, DCJ, MAB)(KH)
 11905 RWANDA DW-Kigali 0945 s/on EE, ID, pop mx(KH)
 11910 HUNGARY RB, EE 0300-0330, also 0400-0430(CAW, KAS, TC)
 11910 ETHIOPIA ETLF, 1930 EE nx(EJD)
 11915 BRAZIL RTV Gueba, 1430 PP ID, then world nx(MD) HCJB gone(df)
 11920 ALGERIA V of the Storm, long AA tlk, over Abidjan, 1835(JDT, MD)
 11920 IVORY COAST Abidjan, 0725 FF, Af nx(JDT)1831-40 t/o EE nrx, mentions of
 Abidjan, no def. ID noted, QRM Moscow AA Svo(BBY)1900 N&E(AAM, DCJ, EJD)
 11920 PHILIPPINES FEBC, EE rel pgn, mailbag, nx, 1200 past 1945(BLY, KH, EJD, WWS)
 11925 E.GERMANY RBI, N&E 0335(AAM)
 11925 UZBEK SSR Tashkent, 1200 & 1400 w/ EE nx(AAM, EJD, GLD)
 11925 SPAIN RNE, EE to NA 0100-0340(CAW, DCJ, AAM, PP, MAB)
 11925 CYPRUS BBC Limassol, 1840 EE in WS, nx(MD)
 11925 ???? R.Nederland, 2129 SS, IS, lite mx, 2155 cl nx(JDT)
 11930 CUBA RHC, 0100 EE nx, letter session(LG, MAB)
 11930 FRANCE ORTF, 0515 EE to Afr, poor(KH)
 11935 PORTUGAL RP 0200 EE nx, cmtry, mx, DX mag(DEM, DCJ, CAW)
 11935 S.AFRICA Springbok Radio, after RP 0700*, this in Afr play, Afr/EE, pops,
 ads, past 0820(BP, NAP)
 11940 SINGAPORE RS 1345 EE pops, nx 1400(BLY)1530-1630 EE, ID, nx, mx(KH)
 11940 LIBERIA KLWA, 2015-2100* EE nx, rel px(MWI, AAM, WT)

11940. ROMANIA R.Bucharest; 0430 N:R, mx, cmtry(DCJ)2100 EE nx, mx to Eur(AAM,MAB)
 11945 CANADA CBC, N:E 0100(MAB)
 11950 LIBERIA ELWA; *0615 EE, QRM BBC 11945(NAP)0635 EE rel px(DCJ) df
 11950 USSR Mayak px in RR 1955, RS Rodina 2000(CC)Kharkov, UKRAINIAN SSR list ITU-
 11955 LEBANON Beirut; EE to NA 0230-0300, nx, mx; QRM BBC(DCJ,WT, PP, EH)
 11955 CYPRUS BBC at 0230 in WS(PP)
 11955 SEYCHELLES FEBA end EE to ME 1800*(AAM, RFB)
 11965 RWANDA DW-Kigali(per ITU) German 2130(PP)
 11965 FRANCE ORTF-Allouis, SS, mx, to 0200*(AAM)
 11975 GRENADA WIBS; 0130 EE mx, nx,fair(DCJ)
 11980 USSR RP&P 0000 EE condemnations(AR)
 11990 CZECHOSLOVAKIA RP, 0100 & 0300 EE to NA, nx, mx, cmtry(KAS,MAB,GB,WT,WPH, PP)
 12000 AUSTRALIA VNG, Lyndhurst; 0629 EE, pips, EE ID, weak, but readable(JWP)
 12000 USSR "R.Kiev", EE 0057, poor to fair(AAM)
 12025A N.VIETNAM Voice of Vietnam; 1530 EE, very poor(EJD)
 12040 USSR RM in EE w/(believe it or not!)rock mx(AAM)
 12042 UNID 0255-0315+, SS tlk, app beamed to SA(NAP) Moscow?df
 12045 USSR RM, Moscow(list) weak in RR 1935, list 10 kw, mistake?(AVS)
 12092.2 E.GERMANY DSD espionage 2205 GG, numbers by Lady(LM)
 12140v ROMANIA R.Ind.Espana, 1945 SS tlk, jammer off suddenly during px(MD)
 12175 USSR RP&P 2210-2340, CC USB feeder, IS, IDs, under Iceland, poor(LM)
 12240 USSR R.Magadan 1030-1100* w/RR HS, not 1300*as in WRTH, fair(LM)
 13250A CLANDESTINE R.Euzkadi, 2250 Basque, SS talks(CC)
 13315 PORTUGAL Em.Nac., 2245-0005 sudden s/off, down from nominal 15315, //11840, then back to 15315 from s/on 0008, good(LM)
 14670 CANADA CHU, time sigs, best ever hrd 2325(RFB)
 15000 USA WWVH, 0625 EE under WWV(JWP)
 15005 N.VIETNAM Hanoi; EE 2000(RFB)
 15030 CHINA Peking 2015-2030 EE tlk, sports(ping-pong, what else?), annod // 9965 and 11615(MSH)BBC MS shows 8345 & 6550(SSB) in addition, at 1930-2030 to Afr-
 15070 ENGLAND BBC 1930 EE nx in the WS(EH)2030 EE mx(PP)
 15084 IRAN R.Iran; 1455 Farsi, no ID(MD)1748-1820 native mx & Farsi drama(FO)2030 lang(EH)2136 Farsi, Iranian mx(WT)
 15092 of July LR, right Khmer at 1010, today couldn't make much out of anything at 1030 tho(BBy)
 15095 CHINA R.Peking, 1205-1235+ EE nx of Asia, letterbox(NAP)
 15105 JAPAN NHK, 1600-1615, also 1700, 1800, 1900, 2000, 2100, EE nx(NAP, AR) And add to that EE at 0600-0615, 0700-0715(NAP)
 15105 GRENADA WIBS, 2035 EE request px(CC)2109 EE greetings to listeners(AAM)
 15110 VATICAN VR 2306 PP rel tlk(AAM)0030 SS cmtry(WT, EH)
 15110 BELGIUM RTB; 0630 FF nx, recent NF, blocked 0700 by AFRTS-Phil s/on(BP)
 15120 SRI LANKA R.Ceylon; EE mx, nx, rel(DCJ)1615-1630 Hour of Decision, then US pops to 1700, poor, QSB(MSH)
 15120 POLAND Warsaw; 0100 EE(LG)0225 EE, believe is old, old fqy, reacted(ARN) Yes(df)0214 EE folk dance mx, Polish 0220(JDT)0300 EE to NA(JA, EJD, DCJ)
 15120 FRANCE ORTF 2325-2355* FF variety px to NA(MWJ, FAX)
 15120 NIGERIA VoN; 0700 EE home nx(JD)
 15125 KUWAIT RK 1945 AA px, poor(df)
 15125 MEXICO RMexico; 0125 SS mx(Bly) 0047 SS, fair(KAS)
 15135 FRANCE ORTF, EE to Afr //15295, 0515(MRL)0140-0200* SS, mx, bulletins(JDT)
 14145 SPAIN RNE 0200-0232 t/o SS nx, mx(JDT)
 15145 UNID M&W 0250-0300*, fair sig, mostly SS tlk. ID at s/off as "LV de America de Espana" ?(MSH) Prob RNE(df)
 15150 CHILE R.Corporacion 0220 SS mx, tk, IDs(DCJ)0420 SS nx, good mx(CG)
 15150 N.KOREA Pyongyang, 0800-0830 EE nx, cmtry, mx, requested reports(CMD, DCJ)
 15150 W.GERMANY DW Wertachtal; Test to Afr for Olympics, //11785, EE 1630-1715, IS & into FF, good(GT)
 15155 BRAZIL R.Tupi; 0030 past 0340 w/PP nx, pops, talks(LAM, JDT, BDG, Bly)
 15160 AUSTRALIA RA 0455 Eng(CG)0500 EE nx, fair(KAS)
 15160 MEXICO LV de America Latina; 1405 past 2140 w/SS sports, mx,ads, talks; good in AM(AAM), QRM de VoA till VoA s/off 2000(MAF) Back here(CC)
 15160NF S.AFRICA R.RSA EE to Australia 1010, ex 11900, faded by 1035. Not hrd often since(DWF)1000, ex 11900, NF at my suggestion(BP)

- 15165 BRAZIL Ceara R. Clube, 2035 Sports, 25 June(MAF)
 15165 DENMARK RD, 1130 EE ID, then Danish to Greenland, weak but clear(PP)
 15170 TAHITI RT, 0230 BBC EbyR pgm(BLy)0230 FF lang less(DCJ)0300, IS ID, s/on Tahitian, best ever(JWP)0336 Tahitian nx, Polynesian mx(AAM)0335-0422 lcl mx, Tahitian talks(FO)
- 15175 NORWAY RN; Norwegian 2100, EE 2200-2230(JWP)(WT)EE 0000(MD)EE ID, NN px 0102 (NAP) 2326 Norwegian px, EE ID(AAM)
- 15176 MEXICO XEWW 1828 SS tlk, IDs, TCs, etc(BDG)
- 15185 FINLAND FBC, EE 2300-2330, //9555, 11755(RD, JWP, PP)1250 Finnish tlk by 2 men(AAM)EE 1800(CAW, DWW, DCJ) 1600 EE to NA, fair(MWI)
- 15185 NIGERIA VoN, 0555 IS, pgm notes, drums, ID, N+E(KH, JWP, DWW)Past 0700(NAP)
 15185 USA WINE, 2115 past 2230 EE on this new fqy(CC, JWP, ARN, PP, CAW)
 15190 BRAZIL R. Inconfidencia; 2240 Sports(MAF)
 15190 CANADA CBC No.Svc.; *0100-0446* EE/FF/Esk; nx, mx, tlk(WFH, JWP)
 15190 CONGO R.Brazzaville, EE 0515-0545, nx, mx, tlk(DWW, JWP, DCJ)
 15190 TURKEY Ankara *2200 EE nx, fair(AR)not 15195?
 15195 TURKEY Ankara, 2200 EE nx, to 2230(KH, JD, EJD, JA, FO, KAS, WT, AEL, DCJ)!
 15200 VATICAN VR, 2229 EE, bells IS, nx(NAP)
 15205 USA VoA-Gvl; EE nx to Eur(FAX)
 15210 VATICAN VR, 1705 EE, fair lvl, but QRM/N(TC)
 15215 USSR "R.Kiev" 0055 EE to 0100*(TC)
 15216 TUNISIA RTVT; 0429 lang 0430, chants 0444, //11900(JWP)0428 s/on AA, new s/on time for summer, ex 0528, fair(LM)(JDT)
- 15220 S.AFRICA R.RSA 0630 EE to Afr(JWP)0805-0820 EE nx, mx, //17815 but not as per WRTH(NAP) WRTH went to press last fall-df
- 15230 AUSTRALIA RA at 0605 EE nx, cmtry(CMD)
 15235 BELGIUM, RTB; EE 0050-0056½(when NHK s.on) w/ fair sig, first time hrd(MSH) 2327 Dutch(JWP)2315 FF(BDG)2305 EE nx(DCJ)0050-0100 EE(PP)(DWW)
- 15240 AUSTRALIA RA 0600 EE nx, ID, //15160(JWP)0700 EE nx, mx(JD)
 15240 ITALY RAI 0115 SS, operetta, good(CG)(PP)
 15245 ZAIRE Kinshasa 0311-0331 t/o in lang w/tlk, Afro mx, no FF hrd(JDT)
 15250 ETHIOPIA ETLF 0426 AA, EE ID, IS, then AA pgm(RBo)0445 AA tlk, hymns(CC)
 15250 ROMANIA R.Bucharest, 0215 EE to NA(EJD)1317-1328* EE, rock mx(JDT)
 15260 MALAGASY REP R.Nederland; 1500 Dutch by Radio, poor(BLy)
 15260 cf July LR, ITU still shows Ascension here-df
 15265 AFGHANISTAN Kabul w/German 1730, English 1800-1830*, poor-fair(DCJ, AAM, WWS)
 15270 NETH.ANT. TWR EE amnt as test fqy, then rel mx, s/on 2130-2140 s/off, very good reception(MRL)
- 15280 USA KGEI 0500 ID, end best to LA(JWP)0029 EE lesson in SS(AAM)
 15285 CUBA RHC; SS cmtry 1834(FAX)0208 SS nx, cmtry(NM)
 15290 SYRIA? 0305 AA mx, unskd WRTH(WWS)
 15295 MOZAMBIQUE Lourenco Marques, PP songs, amnts, fair 0950, f/o by 1015(DWF)
 15295 SWEDEN RS, EE 0030-0100, then Swedish; 0200 EE(PP, MD, WWS, MWI, CAW)
 15300 JAPAN NHK 1305 EE nx, cmtry, good lvl(MD)
 15305 SWITZERLAND SBC 0345 Italian nx, good(CG)0150 EE to NA(PP)DX px 0200(BLy) 1400 EE to NA/S.Pacific, anned //15240 unhrd(JWP)
- 15315 ITALY RAI; 0148 Italian nx, unuseable(CG)
 15320 AUSTRALIA RA 0235 EE nx, good(CG)Begin FF 0430 after IS(CAW)
 15320 RWANDA DW-Kigali, German 1800, good(EJD)
 15325 CANADA CBC Polish to Bur 1700(FAX)
 15330 ITALY RAI *0535-0555* lang, IS, nx, AA listed(NAP)
 15335 AUSTRIA ORF, 1830 EE nx(DCJ)
 15335 S.KOREA VoFK; 0300 EE nx, cmtry, fair(DCJ)
- 15344 GREECE HNBI; 1728 IS, anthem, ID, Greek mx, lots of flutes(AAM)1927 flute IS s/on Greek mx, EE ID, EE nx 1938(WWS)1945 N+E, 2220 N+E9each time 5 minutes (AEL) local mx, Greek; persistent humm(MD)
- 15345 KUWAIT RK, 0515 EE tx, nx 0530, lite mx(WWS)0500 N+E(JA)1617 EE, mx(KAS) 1645 AA, mx, what happened to the EE(WWS)1730 pops(RFB)1810-1830* EE(NAP) (JD)1700 AA nx, 1717*(MWI)The WWS logging was 8 July
- 15345 NETH.ANT. TWR 0115 GG, rel mx(CAW)
 15345 PHILIPPINES VoA Tinang in EE w/"now sound" 1449-1500 t/o, fair(MSH)
 15360 INDIA AIR-Delhi, 0915 EE nx, dictation speed, recent NF(EP)
 15365 CANARY IS RNE; 1945 s/on SS to LA(GT)0320 SS, good(MSH)0400 SS(EJD)

- 15400 IRAQ Baghdad, 0400 AA mx, ME & jazz mx(BLY)
 15415 BRAZIL R.Ribeirao Preto, US songs w/PP words 0206, poor to fair(AAM)15416,
 0155 PP mx, IDs, TCs, tlks(BDG)
 15420 VATICAN VR 0050-0110 EE, FF 0110, excellent(DWW, CAW, ARN)
 15430 E,GERMANY RBI; 0500 EE mx, cmtry(DCJ)0535 GG mx to E.Afr, add'l fgy(BP)
 15434v E,GERMANY RBI 0400-0444 Af lang, 0445 EE to Af over what appears to be a
 new transmitter which has bugs & is very unstable, nominal 15430, IDs, IS,
 new fgy, new lang svc, hets Moscow, poor but strong 2 July(LM)
 15435 TANZANIA R.Tanzania; English 1815, good(RFB)
 15435 USSR R.Moscow HS 1, 0402-0450 RR, new fgy//15480, ID; hetting RBI(LM)
 15440 USA WNYW, 2320 financial news, s/off 2330(AAM)
 15449v BRAZIL R.Nacional Brasilia hrd w/EE pgmg initially 3 June, upon checks
 0125, 0133, so on. Asking for reports. In reply to my report, which Luthero
 Toledo QSLd in 24 days total lapsed time via airmail, said that to advise
 those wanting QSL confirmation that 5 IRCs must be included. Anncd 15445 is
 well hrd, //11720 is mostly R.Canada(ARN) 0000-0240 IDs, LA mx, request rpts,
 in EE(KH) 0300 EE svc, short tlks9BLY)0100 nx, mx, short items(DCJ)0039 Br.
 mx, ID after each song(AAM)
 15460 USSR R.Moscow HS 2(Mayak) 1145-1205, new fgy //15505, IS, ID, RR, fair(LM)
 15480 USSR R.Moscow, Moscow(list), fair w/RR talk 0210(AVS)
 15499# CHINA Afriad Mongolian ID doesn't fit now that I can hear the stn tx to
 A20....Is perhaps A Russian dialect tho sounds Mongolian to me(BBY)
 15505 UNID 0510-0535, //15360, RR(NAP) Mayak acc to BBC MS, cf 15460 above-df
 15520 BANGLADESH R.Bangladesh, 0230 EE nx(DCJ)
 15520 PAKISTAN R.Pak.; 1745 EE slow nx(DCJ)2000 EE to UK, Urdu 2030(GT)
 15525 PAKISTAN R.Pak.; 2000 EE, Urdu 2030(AEL) app varies.
 16320 N.KOREA Pyongyang 0000 w/KK, SS changeover(AR)
 17504 CHINA CPA 1510 CC dictation speed nx still here(CC)
 17648 CHINA R.Peking 1115-1127*,*1130 Italian, NF ex 11375, usual fare(LM)
 17673 CHINA R.Peking s/on Cantonese 0300, NF(LM)
 17680 CHINA R.Peking s/on 0300 EE to WCNA, NF fair(LM)
 17715 GUBA RHC 2135 EE VN war cmtry, to CA/SA(PP)
 17720 USSR RM 0445 EE, ID & mx to 0500(RBo)
 17730 FRANCE ORTF 0515 EE nx, mx, 15295, 11930 were //s(DCJ)(DWW) 1340-1402 t/o
 w/FF mx, tlk, ID 1400(JDT) 1105 English nx, FF songs, s/off 1114(AAM)
 17740 ENGLAND BBC 2130 EE(PP)
 17745 JAPAN NHK 0230 EE(PP)
 17745 CHINA R.Peking *0100 SS nx to LA(JDT)
 17755 ITALY RAI 1415-1425 Italian, lite mx, ID, IS(returned fgy)(JDT)
 17770 NEW ZEALAND RNZ; 0125-0310,EE nx at 0300(PP)
 17795 AUSTRALIA RA 0118 EE w/mailbag(AAM)0300* EE to NA(NAP)(PP)
 17795 ITALY RAI 0355 EE nx, mx, mx 0405(JDT)
 17795 NORWAY RN 2222 EE DX px(JDT)
 17800 USSR RP&P 1545 EE(JDT)
 17805 SPAIN RNE in SS 1308, excellent(AAM) 1355-1503* variety px(JDT)
 17805 VATICAN VR 2340 SS rel tlk(AAM)
 17815 ECUADOR HCJB 1930 EE rel px to Eur(EH)
 17820 AUSTRALIA RA 0403 EE nx(CAW)0412 EE(WT)
 17825 JAPAN NHK 2344 EE nx, cmtry(JDT)
 17825 NORWAY RN, 1401 EE cmtry(JDT) 1459 EE ID, Norwegian(AAM)
 17830 SRI LANKA R.Ceylon, local mx, EE tk, fair 1110(AVS)
 17830 PAKISTAN R.Pak 0445 EE nx//21590(DCJ)
 17840 NETH ANT RN *2300 DD to SA, RNF ex 17835(BP)
 17865 USSR R.Brivan 0305-0328* Armenian to 0323, then EE, over jammers(LM)
 17885 CYPRUS BBC 1220 EE, cricket(JDT)
 17895 MALI R.Mali, *1500-1600* EE to NA Tue; nx, mx(AAM, MWI)
 17935v BANGLADESH RB 1230-1300 EE mx, cmtry(DCJ, EJD, WWS, CC, JDT)
 18600 ALBANIA Tirana, 3x6200, 0336-0345; 1st harmonic for me(SM)
 21485 AUSTRALIA RA Darwin 0236 EE nx, poor-fair(SK)
 21535 S.AFRICA R.RSA 1603 EE nx(AAM)
 21545 GHANA RG 1445 EE nx, mx(DCJ)
 21555 ALGERIA RTVA, AA 1608, nx(AAM)
 21560 ITALY RAI, 1850 Italian to LA, sports(Fax)

21570 JAPAN NHK 0642 IS, *0645 Bur svc, Swiss GG, FF, It followed(RBO)(AVS)
 21570 NETHERLANDS RN-Lopik; 1933 EE tlk on prison rules(AAM)
 21590 PAKISTAN Karachi; EE ID, ns 1333, fair to good(AAM)
 21605 FINLAND FBC, *1800 EE, //15185(EJD)
 21645 FRANCE ORTF s/on 1027 to ECNA, "France Culture" HS relay 1130-1141, "France Inter" HS relay 1145-1710v s/off, includes EE for tourists 1506-1508 w/nx, wx & traffic cx for months of July/Aug only(also annes EE 0806-0808, otherwise all in FF, excellent(LM))
 21655 NORWAY R.Norway 1942 EE ID, //21730, Norwegian px(AAM)
 21660 INDIA AIR-Delhi, YL w/nx in FF to E.Asia, 1122 weak(AVS)
 21680 AUSTRALIA RA now here w/EE to Afr 0330 s/on(AVS)
 21680 FRANCE ORTF 1030 s/on to 1115 s/off EE "Paris Intl", new s/on time, ex 1100, new pgms & pgm title, includes letterbox w/letters from NA listeners, no longer has strictly African orientation, //21500E, 15295, 15190B(LM)
 21705 MEXICO XERMX, R.Mex.; Mex mx, EE ID, px in SS, from 1532(AAM)0100 SS px on regional mx, EE & FF IDs hrd(AR)0115 Mex mx(ES)
 21740 AUSTRALIA RA w/EE tlk on medicine, good 0121(AAM)
 21725 USSR RP&P here w/EE to India at 1550, fair, QTH unknown, possibly Tashkent (AVS) Unlist ITU-df

THOSE WHO MADE IT POSSIBLE:

AAM Al Miller, OH/HRO500	GT Gary Tonore, FL/DX150A
ABL A.Linsenmeyer, IL/SW4A	JA John Alcock, FL/SX43
AR Al Reynolds, TN/SPR4, SX130	JD Jeff Dubin, PA/DX150A
ARN Al Niblack, IN/SX100II	JDT John Tuchscherer, WI/HQ100A
AVS Al Sizer, CT/HQ180, SPR4	JWP John Perry, IL/S-85
BDG Bruce Greene, MI/SX190	KAS Karl Schubert, MD/SX25
Bly Brian Lym, CA/??	KH Ken Hunt, CA/T-0
BP Bob Padula, Australia/CRI100	LG Leslie Geir, ND/SB310
CAW Craig Wicks, MI/DX150A	LM Larry Magne, PA/R4E
CC Charles Conner, LA/SW4A, DX150	MAB Marc Beerman, /DX150A
CG Cairo Guarducci, BC/HA600A	MAF Marlin Field, MI/SX100
CMD Chris Drake, BC, SW4A, Eddy 960	MD Mark Duba, VT/SX190, S76
DCJ Don Johnson, CA/	MM Mildred Marshall, ND/SX122
DEM Dave Megyesy, NJ/	MSH Mike Harvester, CA/HQ129X
DF Dan Ferguson, WV/SB310	MWl Michael Wiseberg, Ont/SX190
DWF David Foster, Australia/9R59DS	NAP Neal Perdue, TN/SW4A
DWM David Whaley, CA/SW4A, DX150A	NM Nelson Mayne, OH/RCA GR-10
SCS Ed Shaw, VA/SX190	PP Paul Palmer, LA/??
EH Eric Herson, OH/SX110	RBO Richard Odlin, WA/R4E(sorry I can't read, used RBO in several places-df
EJD Eric Draut, IL/T/O	RD Richard D'Angelo, NY/NC190
FAx Frank Alexander, NC/DX150A	RFB Robert Bruce, Scotland, Eddy 830/7
FO Frank Orcutt, NY/DX150A	SK Steve Kamp, CA/HQ140X
FH Fred Heutte, DC/HQ129X	SM Stan Mayo, /
GAC Gregg Calkin, Mexico, SW4A	TC Tom Carey, CA/Drake 2-B
GB Gordy Brill, WI/S120A	WT Walt Trkula, PA/SPR4
GLD Gerry Dexter, WI/HQ180	WWS Woody Seymour, NC/SX190
GS George Schnabel, NY/SW4	

Items credited to BBC MS are copyright information supplied by the BBC Monitoring Service and reproduced by their permission. Items credited to BADX are copyright information supplied by the British Association of DXers and reproduced with their permission. Of course, NASWA cannot confer republishing rights to material from either of these sources.

In order to ease the workload on Larry Magne the Log Report will be done in two sections in the future. Larry will continue with the lower half, and Dan Henderson will be doing the upper half. The cut-off point will vary some with the season. This will NOT mean two places to send reports. ALL REPORTS should be sent to Larry. They MUST be in order by frequency, and it is preferred that you use the NASWA LR report forms, as these are designed to make the editing job easier & get FRENDX to you more quickly.

FREQ: Kcs

FLASHSHEET

TIME: GMT

AL NIBLACK, EDITOR; 420 Shelby Street, Vincennes, Indiana 47591...DEADLINE 20-TH

AFGHANISTAN Kabul heard on 15265 with EE to Europe at 1800-1830 S/off; with news, commentary, and music Reception at strain lvl, some QRM de VOA. (Michael Wiseberg)

ALASKA (FLASH - FLASH) While traveling in Alaska we learned that Billy Graham is planning a SW station on the Kenai Peninsula, to replace the one planned previously for Hawaii. (Glenn Hauser) (What a boon this would be to SW DXers, Editor)

ANGOLA Emisora Oficial, 9660, new fqy, heard in FF 1545; PP at 1615, same as previously heard on 11875. (August Balbi)...11875 Am I hearing Angola?? IS of bells with 18 or 19 notes, into song at 1500. Good sigs when R. Nacional is not overpowering. (Ed Insinger, N. J.) (IS used to be on a native instrument, Editor)

ARGENTINA LRA33, Buenos Aires, heard 1805-1828 with ID in SS on 15345, very good listening lvl. Moscow took the spot at 1830. (Grady Ferguson)...RAE logged on 9690 from 0300-0400 in EE to ECNA's Prming of news, IDs, music, and talks. (Michael Wiseberg)

AUSTRALIA 11760 DARWIN Relay, 250kW, S/on at 0930; EE to 1130, good signals here!! 15395, also Darwin, EE News 0800...15405 In EE News at 0800, Shepparton, 50kW. (August...VIMA, Brisbane Regional, at 0715 with news and music, rather poor strain / Balbi) lvl. (Joe Helm) (4920)

BOLIVIA 5045 CP38, La Paz at 0825, poor/fair, native music, an ID. (Joe Helm)

BRAZIL Unidentified in June FRENDX on 4835, heard 6/14 with clear ID is, "R. Dif. Roxaima de Boa Vista", playing pops. (Cesar Objio)... Radio Nacional de Brasilia on 15450A at 2240 with its EE experimental sv to Europe. Requested reception reports, said would QSL. (Michael Wiseberg) (Luthero Toledo in QSLing says that all reports that desire confirmation should include 5 IRCs for return postage, Editor)...R. Nacional, 15450 heard at 0100 EE ID; seldom audible on 11720; QRM. (August Balbi)

BANGLADESH On the QSL just received from RB, appears their new sked of the GOS, as follows: 0230-0300 on 15520; 1230-1300 on 17935; 1715-1800 on 11650, says Ed Insinger... Checks indeed indicate RB on new 17935, at 1230. Nice but not robust lvl. (Ed Insinger)

BELGIUM BR1, Brussels observed on new 15110, at 0630 S/on in FF and Dutch. (Dr. R. E. Wood)

BRUNEL 7215 This one FB daily with EE News 1315, heard all year around. S/off at 1430 with GSTQ. (August Balbi)

BURUNDI Dan Jamison is quite happy and surprised with a QSL from LV Bujumbura. (Congrats, Editor)

CANADA 6160 CKZU, Vancouver, in the clear at 1330, EE talk, good lvl. (August Balbi)

...CBC Northern Svo, 11720, heard at 0200 in EE to Northern Canada. (Michael Wiseberg)

COLOMBIA Report in June FRENDX (Logging Report Column) as unidentified, as, "La Voz del ...". Checks indicate this one on 4865 with an actual ID as, "La Voz del Cinaruco"... (Cinaruco is a river running both in Venezuela and Colombia) (Cesar Objio)

COSTA RICA R. Reloj, THBG, San Jose, heard IDing at 1225 on 7/9, with pops, good lvl, but on 6007, not on usual 6005. (Cesar Objio)

CYPRUS 15420 BBC Relay with ID at 0545; news 0600, fair, some QRM. (August Balbi)

DOMINICAN REP Radio Clarin, HILR, Santo Domingo, operating so far only on 860 kcs, MW, is planning a new shortwaves xmitter to operate on the 60 MB, no fqy has been mentioned and Telecomunicaciones has not assigned a fqy as yet. News said it to be 50kW, but I think more like 5kW. You be on the watch!! (Cesar Objio) (Who will be the first to locate this new FLASH, Editor?)...Radio Cristal, 5010, logged 0800, vy good lvl. (Joe Helm)...9505 Station H1SD, heard in SS at 0300, with news, music, etc, and talk. (Joe Helm)

FAULKLAND IS ID as, "This is the Falkland Is. Bosting Station", variously, music, and anncs, BBC radio drama, etc, off with GSTQ. Frequency varies to 3943, but not on 3958 or 3945 as reported FLASHES G. Victor Goonetilleke, Ceylon, via Don Jensen)

FRANCE 11910 (FLASH) ORTF to LA noted Sugar-9 lvl, with FF songs, Chevalier et All, from 0125 tme, on 7/16, in PP and SS. (John Tuohscherey)...21645 ORTF, Paris; in FF beamed to Africa at 1615, music, etc, fair to good lvl. (Joe Helm)

GERMANY(W) DW, Wertachtal; announced test on 6170, 0130 to NA, asking for reports, super sigs here, amazing clarity. (Ed Insinger)...Wertachtal in GG, 500kW, 2300 S/on, 9700/11925, irregular 11865. EE at 0600 on 15150/15275/11785. (August Balbi)

INDONESIA DjaJapura station of RRI noted on 6070 FLASHES Dr. R.E. Wood. ID at 0930 after news in clearly-spoken Indonesian as, "Siaran Regional Iran Barat" (West Iranian Regional Service). At 0934 identified as, "Inilah R.R.I. DjaJapura"...4754 YDQ4, Makassar, heard 0708, in native language, music and news. (Joe Helm)

INDIA 9575 AIR strong lvl in language at 1400, excellent on 11810 in EE. (August Balbi)

IRAN 15084 Radio Teheran in FF 2040, good lvl; Report in to them for two months (Joe Helm)

JAPAN NHK to Europe 0645-0845, GG/FF/EE, on 21570/17825 heard regularly. (August Balbi)

KOREA(N) Radio Pyongyang noted on new 9515 at various times; e.g., in Russian 0900; in Korean 2030. (Dr. R. E. Wood)

LUXEMBOURG 15336 RL heard good to gruesome, splash from 15340 station. Austria also here, off 1 kc, from 1922 time yesterday, with nice concert music. (John Tuchscherer)

MADAGASCAR RN Relay S/on 1530 on 11785, in Dutch, clear ID for Tananarive. (August Balbi)

MALI Radio Mali, EE to NA Tuesdays 1500-1600, music, stories, historical talk, on 17895, with fair sigs-though QRN, QSB present. (Ed Insinger)

MALAYSIA 7270 Strong in lingo at 1330 with ID as, "Kuala Lumpur". (August Balbi)...

BBCFES, 11740, new sig, at 1600, //11740/9740//9580. (August Balbi)

MEXICO XERMX, 15125, at 0245 in SS. Many IDs in SS, native songs. (Michael Wiseberg)

MOZAMBIQUE 11780 IM with an ID at 0600 now as, "Shortwave Svc of Mozambique". (August Balbi)

NEPAL (FLASH - FLASH) Bob Bundy suggests tuning to 5000 kcs as Nepal being heard with strong signals well over JYJ/VVWH, around 1230-1400. Taped 45 minutes with little QRN.

NICARAGUA 6120 Radio Atlantico, seldom heard, noted 1001-1005, several SS IDs. (Al Niblack)

NIGERIA 15120 Legos (NBC) heard with native music, fair-good lvl, 0015. (Joe Helm)

PAKISTAN 11885A RP, IS at 1957, into EE news at 2000 for UK, nice lvl. (Ed Insinger)

PANAMA Panama de Radiofonos, David, very good in native SS. Amcd three times within period of 10 minutes, latest 0630. (Joe Helm) (Suggest sincerely, that this is not a Panamanian, if so, is indeed a FLASH, and I owe an apology, Editor) (Freq 9710 kcs)

PAPUA 9520 Port Moresby with Mail Bag, music and news, excellent lvl, 0735. (Joe Helm)

PERU 4785 OAXEF, Atlantida, Iquitos, here, a move from 4840, heard now 6/14, 0255; Sometimes amcs as, "Nueva Atlantida". Confirms E.S. Behr report to June FS. (Cesar Objio)

PHILIPPINES 9583 Voice of Philippines, ID at 0730 in EE, amcing parallel of 11950, not heard as yet. S/off 1400. AFRES Relay, on 15110, various times, 0900-1000. (Dr. R.E. Wood)

SAUDI ARABIA 15440, EE 1330-1400, best ever heard here. (Ed Insinger)

SAUDI ARABIA "The BC Svc of the Kingdom of SA", finally heard here beneath QRN. Pops and news in EE at 1945, poor lvl on 11855. (Ed Insinger)

SOUTH AFRICA SABC ID'ing simply as, "Radio South Africa" home svc S/en 0632 on 11790 says Dr. R.E. Wood.

SPANISH SAHARA In April RNE's E. Pascual Souto stated that I would get a QSL from Radio Sahara. When no QSL received wrote Souto again, but reply from Luis De Diego, RNE, Madrid, stating, "We are informing you that this station (R. Sahara) in your case of receiving no reply, is not the only one, and we presume that this station probably has not a QSL service, and there is nothing we can do". Current Director: D. Eduardo Gonzalez (Al Niblack)

SRI LANKA 15120 Noted at 1730 with ID of, "Ceylon Boasting Corp.", of Republic of Sri Lanka", on 7/13th. (August Balbi)

TAIWAN Radio Liberty via Munich, GFR, postal QTH, informed that I was hearing them from Taiwan on 17720, around 1830 when in RR, over intense jamming. (Ed Insinger)

TUNISIA R. Diffusion TV Tunisienne, 6195, 2213-2350, native music, no EE. Reported in EE, QSLed in short order, vy nice card from the External Relations Dept. (Ed Insinger)

USSR 15350 R. Peace and Progress heard 1430-1500 in EE//11900, in EE. (Michael Wiseberg)

VENEZUELA R. Occidente on 9755, 7/9, at 1255. A move from 9750 listing?? (Cesar Objio)

VIENTIAN(N) Hanot heard on 15010//15005 at 1400, 1600; EE, 2000 poor lvl. (August Balbi)

JUNE 1972: SUNSPOT COUNT AS FURNISHED BY THE ZURICH OBSERVATORY, 7-5-72- 1-78, 2-96, 3-102, 4-116, 5-132, 6-103, 7-95, 8-87, 9-76, 10-68, 11-63, 12-48, 13-43, 14-60, 15-88, 16-98, 17-101, 18-86, 19-83, 20-92, 21-96, 22-87, 23-84, 24-79, 25-77, 26-73, 27-66, 28-78, 29-73, 30-73 MEAN-83.4 PREDICTED: JUL-59 AUG-57 SEP-55 OCT-53 NOV-51 DEC-49 (GRA-)

LAST MINUTE FLASHES FROM BOB BUNDY: QATAR 9570 Doha being heard here / dy Ferguson, S.C. from 1500 (RA S/off) to 1600 (Peking S/off). Chance of WCNA reception this time?? PAKISTAN (M) 4055A Bawalpindi here to 1900 S/off with Indian-like music; 1859 language talks.

ACKNOWLEDGEMENTS (To those who so ably supplied reports during the dull summer listening season): August Balbi, Calif; Bob Bundy, Truk; Grady Ferguson, So. Carolina; Glenn Hauser, Alaska (temporarily); G. Victor Goonetilleke, Ceylon, via Don Jensen, Wiscy Joe Helm, Ind; Al Niblack, Ind; Ed Insinger, N.J; Dan Jamison, Va; Cesar Objio, Dominican Rep; John Tuchscherer, Wisc; Michael Wiseberg, Canada; Dr. R. E. Wood, Ore. (temporarily)

In closing, must mention that Editor Ralpus Perry and Keith Russell visted with us rather recently. We did not twist Ralpus's arm into buying an SX-100, the receiver sold itself. Keep 'em coming, phone last minute items to 882-3976. 73, AL

COVER PHOTO this month - 1972 ANARC convention host Jerry Berg presents ANARC plaque to Eddy Startz, the long time host of the Radio Nederland Happy Station Program, and banquet speaker at the convention.

IF THE BLANK is stamped with a date, read this.... NASWA records show that your membership in the club will expire with the _____ issue of FRENEX.

It is the hope of the bulletin staff that you have found your membership useful and enjoyable, and we look forward to having you with us for another year. It will help us if you renew early, so we can be sure you continue receiving FRENEX without any interruption. Dues for members in North America are still US\$10, for first class delivery of the bulletins(US\$11 for airmail). Checks and money orders should be made payable to NRTH AMERICAN SHORTWAVE ASSOCIATION, or simply NASWA, and should be sent to the HQ address, on the front of the bulletin....OVERSEAS members: Due to slowness of seammil, many overseas members prefer to receive FRENEX via AIRMAIL. The cost for delivery via sea-mail is the same as in NA, US\$10, but AIRMAIL will cost only _____ per year.

ALL MEMBERS OUTSIDE THE UNITED STATES should remit via International Money Order only, payable to NASWA....When renewing, take advantage of the opportunity to let us have your comments regarding the club & the bulletin....And when writing, please mention date of expiration. Thank you.

LATE FLASH - Ralph Perry has found it necessary to resign as editor of the SWC section. All material for that section should be temporarily sent to Dan Ferguson. Further announcements next month on a new editor.

Return to:
Dan Ferguson-NASWA
1521 Smith Road, Apt.
Charleston, W.Va. 25314
U. S. A.



FIRST CLASS MAIL