

FACTBOOK®

TV STATIONS 1991

The Authoritative Reference for the Television, Cable & Electronics Industries

Published by Warren Publishing, Inc., 2115 Ward Court, N.W., Washington, D.C. 20037

Stations Volume No. ● 59 ● 1991 Edition

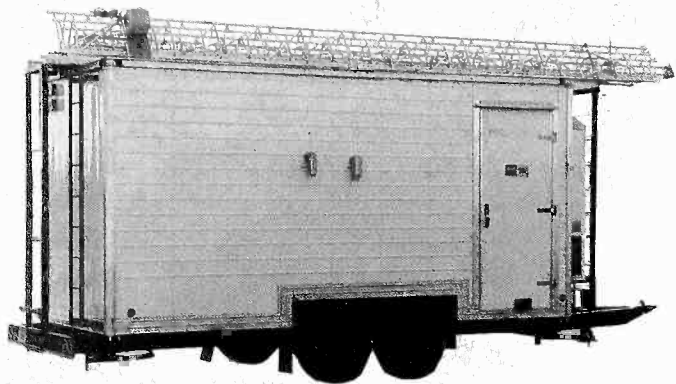
**Recognized For
Outstanding Achievement
In Engineering Development**



COMARK COMMUNICATIONS, INC. 1990®
A Thomson-CSF Company

Rt. 309 and Advance Lane, Colmar, PA 18915
Tel. (215) 822-0777 • Fax (215) 822-9129 • Telex 846075

MOBILE COMMUNICATION BUILDING

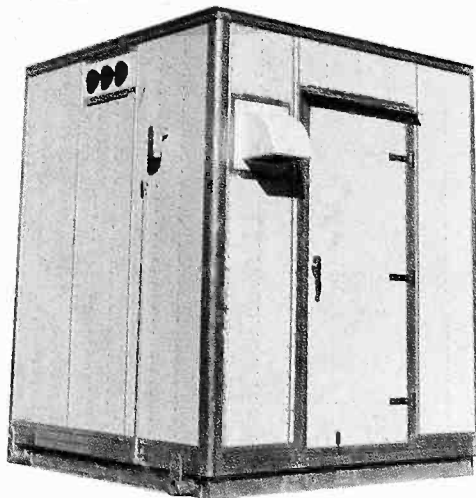
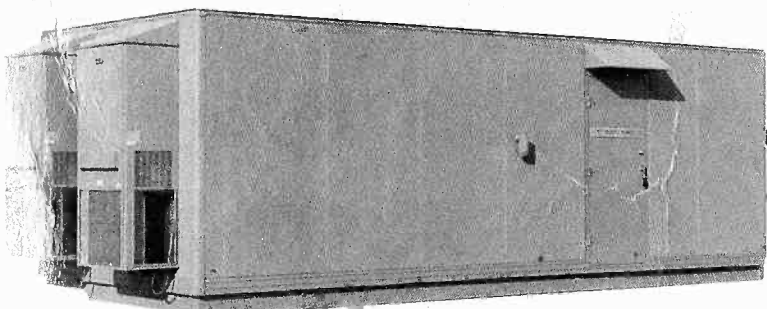


SPECIAL USES

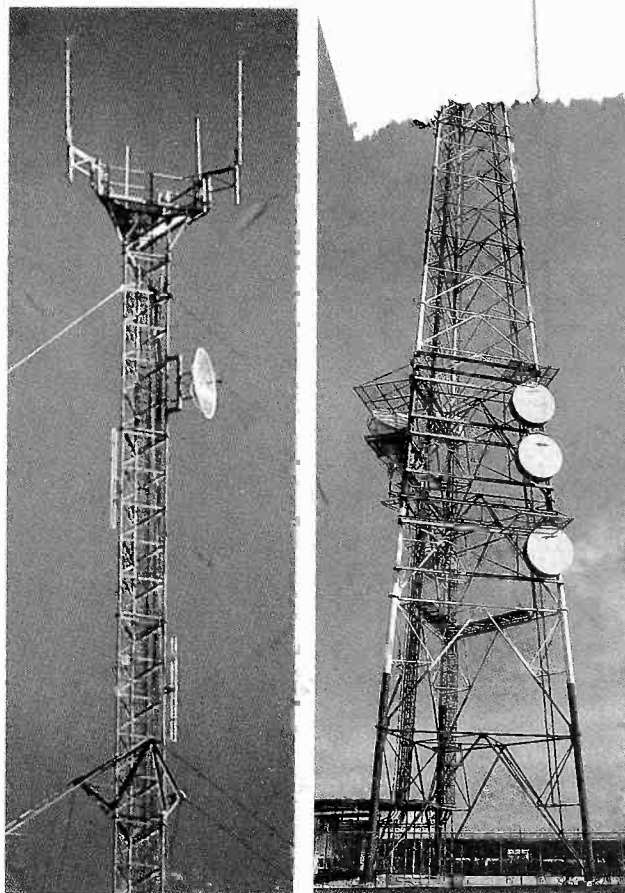
- *Temporary Emergency Restoration Within Hours, Not Days*
- *Special Event Communications ** Temporary Cellular Paging*
- *2-Way Communications ** Testing ** Television*

BUILDINGS

Aluminum, Fiberglass,
or Aggregate



TO Self-Su and



FIBER OPTICS SPLICING TRAILER



SPECIAL USES

- *Remote Site Repair Facility W/Self Contained Power Source*
- *Testing * Laboratory * Office * Emergency Restoration*

FOR MORE INFORMATION CALL OR WRITE:



FORT WORTH TOWER COMPANY, INC.

P.O. Box 8597/Fort Worth, Texas 76124-0597 A/C 817-457-3060
TOLL FREE: 1-800 433-1816 (Except Texas) • FAX 817-429-6010

Television Market Rankings

Listing 211 markets according to Arbitron Area of Dominant Influence Television Households

Asterisk (*) indicates no Prime Time ranking. Arbitron ADI & Prime, TV Household information & rank are based on the 1989 to 1990 Arbitron Television Markets and Rankings Guide.

| Market | Arbitron ADI TV Households | Rank | Market Area Commercial TV Stations |
|---|----------------------------|------|--|
| New York, NY | 7,043,900 | 1 | WABC-TV (7), WCBS-TV (2), WHAI-TV (43), WHSE (68), WHSI (67), WJIG (55), WNBC-TV (4), WNJU (47), WNYW (5), WPIX (11), WTBY (54), WTZA (62), WWOR-TV (9), WXTV (41) |
| Los Angeles, CA | 4,939,400 | 2 | KABC-TV (7), KADY-TV (63), KAGL (30), KCAL (9), KCBS-TV (2), KCOP (13), KDOC-TV (56), KHSC (46), KMEX-TV (34), KNBC-TV (4), KRCA (62), KSCI (18), KTNB-TV (40), KTLA (5), KTTV (11), KVEA (52), KVVU-TV (64), KWHY-TV (22) |
| Chicago, IL | 3,124,800 | 3 | WBBM-TV (2), WCFC-TV (38), WCIU-TV (26), WEHS (60), WFLD (32), WGBQ-TV (66), WGN-TV (9), WHKE (55), WLS-TV (7), WMAQ-TV (5), WPWR-TV (50), WSNS-TV (44), WWTO-TV (35) |
| Philadelphia, PA | 2,704,400 | 4 | KYW-TV (3), WCAU-TV (10), WFMZ-TV (69), WGBS-TV (57), WHSP (65), WMGM-TV (40), WPHL-TV (17), WPVI-TV (6), WTGI-TV (61), WTVE (51), WTXF-TV (29), WWAC-TV (53) |
| San Francisco, CA | 2,200,700 | 5 | KBHK-TV (44), KDTV (14), KFBC (42), KFTY (50), KFWU (8), KGO-TV (7), KICU-TV (36), KLXV-TV (65), KNTV (11), KOFY-TV (20), KPXI (5), KPST-TV (66), KRON-TV (4), KSTS (48), KTSF (26), KTVU (2), KWBB (38) |
| Boston, MA | 2,105,800 | 6 | WBZ-TV (4), WCVB-TV (5), WFXT (25), WGOT (60), WHDH-TV (7), WHLL (27), WHRC (46), WHSH (66), WJVI-TV (56), WMFP (62), WMUR-TV (9), WNDX (50), WQTV (68), WSBK-TV (38) |
| Dallas-Fort Worth, TX | 1,728,900 | 7 | KDAF (33), KDFI-TV (27), KDFW-TV (4), KDTX-TV (58), KFWD (52), KHGX (49), KTVT (11), KTXA (21), KUVN (23), KXAS-TV (5), KXTX-TV (39), WFAA-TV (8) |
| Detroit, MI | 1,723,500 | 8 | WADL (38), WBSX (31), WDIV (4), WGPR-TV (62), WJLB-TV (2), WKBD-TV (50), WXON (20), WXYZ-TV (7) |
| Washington, DC | 1,701,700 | 9 | WDCATV (20), WFTY (50), WJLA-TV (7), WRC-TV (4), WTKK (66), WTTG (5), WUSA (9) |
| Houston, TX | 1,453,200 | 10 | KHOU-TV (11), KHSH (67), KHTV (39), KPRC-TV (2), KRIV (26), KRTW (57), KTFH (49), KTMD (48), KTRK-TV (13), KTXH (20), KXLN-TV (45) |
| Cleveland, OH | 1,442,000 | 11 | WAKC-TV (23), WBNX-TV (55), WCOM (68), WDLI (17), WEWS (5), WJW-TV (8), WKYC-TV (3), WOAC (67), WOIO (19), WQHS (61), WUAB (43) |
| Atlanta, GA | 1,374,900 | 12 | WAGA-TV (5), WATL (36), WAWA-TV (14), WGNX (46), WNGM-TV (34), WSB-TV (2), WTBS (17), WVEU (69), WXIA-TV (11) |
| Minneapolis-St. Paul, MN | 1,333,200 | 13 | KARE (11), KCCO-TV (7), KCCW-TV (12), KITN (29), KMSP-TV (9), KRWF (43), KSAX (42), KSTP-TV (5), KTMA-TV (23), WCCO-TV (4) |
| Tampa-St. Petersburg, FL | 1,323,000 | 14 | WBHS (50), WCLF (22), WFLA-TV (8), WFTS (28), WTMV (32), WTOG (44), WTSP-TV (10), WTVT (13), WWSB (40) |
| Seattle-Tacoma, WA | 1,296,500 | 15 | KBGE (33), KCPQ (13), KING-TV (5), KIRO-TV (7), KOMO-TV (4), KSTW (11), KTBW-TV (20), KTZZ-TV (22), KVOS-TV (12) |
| Miami, FL | 1,288,800 | 16 | WBFS-TV (33), WCIX (6), WDLZ (39), WHFT (45), WLTN (23), WPLG (10), WSCV (51), WSVN (7), WTVJ (4), WYHS (69) |
| Pittsburgh, PA | 1,165,500 | 17 | KDKA-TV (2), WPCB-TV (40), WPGH-TV (53), WPTT-TV (22), WPXI (11), WTAE-TV (4) |
| St. Louis, MO | 1,121,500 | 18 | KDNL-TV (30), KMOV (4), KNLC (24), KPLR-TV (11), KSDK (5), KTVI (2), WCEE (13), WHSL (46) |
| Denver, CO | 1,047,400 | 19 | KCNC-TV (4), KDVR (31), KMGH-TV (7), KREG-TV (3), KSBP-TV (24), KTVD (20), KUBD (59), KUSA-TV (9), KWGN-TV (2), KWHD (53) |
| Phoenix, AZ | 1,004,100 | 20 | KMOH-TV (6), KNXV-TV (15), KPAZ-TV (21), KPHO-TV (5), KPNX (12), KTSP-TV (10), KTVK (3), KTVW-TV (33), KUSK (7), KUTP (45) |
| Sacramento-Stockton, CA | 995,800 | 21 | KCMY (29), KCRA-TV (3), KCSO (19), KFTL (64), KOVR (13), KRBK-TV (31), KSCH-TV (58), KTXL (40), KXTV (10) |
| Baltimore, MD | 937,400 | 22 | WBAL-TV (11), WBFF (45), WJTV (13), WMAR-TV (2), WNUV-TV (54) |
| Hartford-New Haven, CT | 901,000 | 23 | WFSB (3), WHCT-TV (18), WTIC-TV (61), WTNH-TV (8), WTWS (26), WTXN (20), WVIT (30) |
| San Diego, CA | 867,500 | 24 | KFMB-TV (8), KGTV (10), KNSD (39), KTTY (69), KUSI-TV (51), XETV (6), XEWT-TV (12) |
| Orlando-Daytona Beach-Melbourne, FL | 862,800 | 25 | WACX (55), WAYK (56), WAYQ (26), WBSF (43), WCPX-TV (6), WESH (2), WFTV (9), WKCF (68), WOFL (35), WTGL-TV (52) |
| Indianapolis, IN | 851,000 | 26 | WCLJ (42), WHMB-TV (40), WIIB (63), WISH-TV (8), WMCC (23), WRTV (6), WTHR (13), WTTK (29), WTTV (4), WXIN (59) |
| Portland, OR | 804,100 | 27 | KATU (2), KBSP-TV (22), KGW-TV (8), KNMT (24), KOIN-TV (6), KPDX (49), KPTV (12), KUTF (32) |
| Milwaukee, WI | 762,100 | 28 | WCGV-TV (24), WDJF-TV (58), WISN-TV (12), WITI-TV (6), WTMJ-TV (4), WVCY-TV (30), WVTM (18) |
| Kansas City, MO | 755,900 | 29 | KCTV (5), KMBC-TV (9), KMCI (38), KSHB-TV (41), KYFC (50), KZKC (62), WDAF-TV (4) |
| Cincinnati, OH | 744,600 | 30 | WCPO-TV (9), WKRC-TV (12), WLWT (5), WSTR-TV (64), WXIX-TV (19) |
| Charlotte, NC | 729,500 | 31 | WBTN (3), WCCB (18), WCNC-TV (36), WHKY-TV (14), WJZY (46), WSOC-TV (9) |
| Nashville, TN | 720,600 | 32 | WHTN (39), WJFB (66), WKRN-TV (2), WMTT (28), WSMV (4), WTVF (5), WXMT (30), WZTV (17) |
| Raleigh-Durham, NC | 693,600 | 33 | WFCT (62), WFXB (47), WKFT (40), WLFL-TV (22), WPTF-TV (28), WRAL-TV (5), WTVD (11), WYED (17) |
| Columbus, OH | 685,500 | 34 | WBNS-TV (10), WCMH-TV (4), WSFJ (51), WSYX (6), WTTE (28), WWAT (53) |
| Greenville-Spartanburg, SC-Asheville, NC | 646,900 | 35 | WASV-TV (62), WAXA (40), WGGG-TV (16), WHNS (21), WLOS (13), WNEG-TV (32), WSPA-TV (7), WYFF-TV (4) |
| New Orleans, LA | 640,800 | 36 | WWCL (49), WDSU-TV (6), WGNO (26), WNOL-TV (38), WVUE (8), WWL-TV (4) |
| Grand Rapids-Kalamazoo-Battle Creek, MI | 623,200 | 37 | WLLA (64), WOTV (8), WTLJ (54), WUHQ-TV (41), WWMT (3), WXMI (17), WZZM-TV (13) |
| Buffalo, NY | 611,600 | 38 | WGRZ-TV (2), WIVB-TV (4), WKBW-TV (7), WNYB-TV (49), WTJA (26), WUTV (29) |
| Memphis, TN | 605,400 | 39 | WHBQ-TV (13), WLMT (30), WMC-TV (5), WPTY-TV (24), WREG-TV (3) |
| Oklahoma City, OK | 600,200 | 40 | KAUT (43), KFOR-TV (4), KGMC (34), KOCO-TV (5), KOKH-TV (25), KSBI (52), KTBO-TV (14), KWTN (9) |
| Salt Lake City, UT | 598,200 | 41 | KCCZ (4), KOOG-TV (30), KSL-TV (5), KSTU (13), KTVX (4), KUTV (2), KXIV (14) |
| Norfolk-Portsmouth-Newport News-Hampton, VA | 575,400 | 42 | WAVY-TV (10), WGNT (27), WJCB (49), WTKR-TV (3), WTVZ (33), WVEC-TV (13) |
| San Antonio, TX | 573,200 | 43 | KABB (29), KENS-TV (5), KMOL-TV (4), KRRT (35), KSAT-TV (12), KVDA (60), KWEX-TV (41) |
| Providence, RI-New Bedford, MA | 556,900 | 44 | WCVX (58), WJAR (10), WLNE (6), WNAC-TV (64), WPRI-TV (12) |
| Harrisburg-York-Lancaster-Lebanon, PA | 552,300 | 45 | WGAL-TV (8), WGBB-TV (49), WHP-TV (21), WHTM-TV (27), WLYH-TV (15), WPMT (43) |

Television Market Rankings

| Market | Arbitron ADI TV Households | Rank | Market Area Commercial TV Stations |
|--|-------------------------------|------|--|
| Louisville, KY | 546,400 | 46 | WAVE (3), WBNA (21), WDRB-TV (41), WGRB (34), WHAS-TV (11), WLKY-TV (32) |
| Birmingham, AL | 525,300 | 47 | WBMG (42), WBRC-TV (6), WCAJ (68), WNAL-TV (44), WTJP (60), WTTD (21), WVTM-TV (13) |
| Charleston-Huntington, WV | 518,800 | 48 | WCBS-TV (8), WOWK-TV (13), WSAZ-TV (3), WTSF (61), WVAH-TV (11) |
| Greensboro-Winston Salem-High Point, NC | 515,100 | 49 | WAPP (16), WEJC (20), WFMY-TV (2), WGGT (48), WGHP-TV (8), WLXI-TV (61), WNRW (45), WXII (12) |
| West Palm Beach-Fort Pierce-Vero Beach, FL | 513,700 | 50 | WFLX (29), WPBF (25), WPEC (12), WPTV (5), WTVX (34) |
| Albuquerque, NM | 503,900 | 51 | KBIM-TV (10), KCHF (11), KGGM-TV (13), KGSW-TV (14), KKTO (2), KLUZ-TV (41), KNAT (23), KOAT-TV (7), KOB-TV (4), KOB-TV (12), KOB-TV (8), KRPV (27), KVIO-TV (6), KWNM-TV (10) |
| Dayton, OH | 501,300 | 52 | WDTN (2), WHIO-TV (7), WKEF (22), WKOI (43), WRGT-TV (45), WTJC (26) |
| Albany-Schenectady-Troy, NY | 489,500 | 53 | WCDC (19), WNYT (13), WOCD (55), WRGB (6), WTEN (10), WXXA-TV (23) |
| Wilkes Barre-Scranton, PA | 489,200 | 54 | WBRE-TV (28), WNEP-TV (16), WOLF-TV (38), WWLF-TV (56), WYOU (22) |
| Mobile, AL-Pensacola, FL | 467,900 | 55 | WALA-TV (10), WEAR-TV (3), WFGX (35), WHBR (33), WJTC (44), WKRG-TV (5), WMPV-TV (21), WPAN (53), WPMI (15) |
| Jacksonville, FL | 464,100 | 56 | WAWS-TV (30), WBSG-TV (21), WJKS (17), WJXT (4), WNFT (47), WTLV (12) |
| Little Rock, AR | 461,500 | 57 | KARK-TV (4), KASN (38), KATV (7), KLRT (16), KRZB-TV (26), KTHV (11), KVTN (25) |
| Tulsa, OK | 460,200 | 58 | KDOR (17), KJRH (2), KOKI-TV (23), KOTV (6), KTUL-TV (8), KWHB (47) |
| Flint-Saginaw-Bay City, MI | 452,900 | 59 | WAQP (49), WEYI-TV (25), WJRT-TV (12), WNEM-TV (5), WSMH (66) |
| Richmond, VA | 442,800 | 60 | WRIC-TV (8), WRLH-TV (35), WTVR-TV (6), WWBT (12), WZZK (65) |
| Wichita-Hutchinson, KS | 434,700 | 61 | KAAS-TV (18), KAKE-TV (10), KBSD-TV (6), KBSH-TV (7), KBSL-TV (10), KLBY (4), KSAS-TV (24), KSNC (2), KSNG (11), KSNK (8), KSNW (3), KUPK-TV (13), KWCH-TV (12) |
| Fresno-Visalia, CA | 427,400 | 62 | KAIL (53), KFVS-TV (30), KFTV (21), KJEO (47), KMPH (26), KMSG-TV (59), KSEE (24) |
| Toledo, OH | 409,700 | 63 | WGGN-TV (52), WNWO-TV (24), WTOL-TV (11), WTVG (13), WUPW (36) |
| Knoxville, TN | 407,200 | 64 | WATE-TV (6), WBIR-TV (10), WINT-TV (20), WKCH-TV (43), WKXN-TV (8) |
| Shreveport, LA-Texarkana, TX | 406,000 | 65 | KMSS-TV (33), KSLA-TV (12), KRAL-TV (6), KTBS-TV (3) |
| Des Moines, IA | 382,400 | 66 | KCCI-TV (8), KDSM-TV (17), WHO-TV (13), WOI-TV (5) |
| Green Bay-Appleton, WI | 381,600 | 67 | WBAY-TV (2), WFRV-TV (5), WGBA (26), WJMN-TV (3), WLUK-TV (11), WSCO (14), WXGZ-TV (32) |
| Syracuse, NY | 371,500 | 68 | WIXT (9), WSNR-TV (43), WSTM-TV (3), WSYT (68), WTVH (5) |
| Roanoke-Lynchburg, VA | 368,200 | 69 | WDBJ (7), WEFC (38), WJPR (21), WSET-TV (13), WSLS-TV (10), WVFT (27) |
| Lexington, KY | 366,900 | 70 | WDKY-TV (56), WKYT-TV (27), WLEX-TV (18), WLJC-TV (65), WTVQ-TV (36), WYMT-TV (57) |
| Austin, TX | 357,800 | 71 | KBVO-TV (42), KTBC-TV (7), KVUE-TV (24), KXAN-TV (36) |
| Rochester, NY | 353,000 | 72 | WHEC-TV (10), WOKR (13), WROC-TV (8), WUHF (31) |
| Omaha, NE | 351,300 | 73 | KETV (7), KMTV (3), KPTM (42), WOWT (6) |
| Portland-Poland Spring, ME | 336,000 | 74 | WCSH-TV (6), WGME-TV (13), WMTW-TV (8), WPXT (51) |
| Springfield-Decatur-Champaign, IL | 335,000 | 75 | WAND (17), WCCU (27), WCFN (49), WCIA (3), WFHL (23), WICD (15), WICS (20), WRSP-TV (55) |
| Paducah, KY-Cape Girardeau, MO-Harrisburg-Marion, IL | 328,100 | 76 | KBSI (23), KFVS-TV (12), KPOB-TV (15), WPSD-TV (6), WSIL-TV (3), WTCT (27) |
| Spokane, WA | 320,500 | 77 | KAYU-TV (28), KCWT (27), KHQ-TV (6), KREM-TV (2), KXLY-TV (4) |
| Davenport, IA-Rock Island-Moline, IL | 315,500 | 78 | KJMH (26), KLJB-TV (18), KWQC-TV (6), WHBF-TV (40), WQAD-TV (8) |
| Tucson, AZ | 307,900 | 79 | KGUN (9), KMSB-TV (11), KOLD-TV (13), KPOL (4), KTTU-TV (18), KVOA-TV (4) |
| Huntsville-Decatur-Florence, AL | 307,000 | 80 | WAFF (48), WHNT-TV (19), WOWL-TV (15), WTRT (26), WZDX (54) |
| Cedar Rapids-Waterloo-Dubuque, IA | 305,800 | 81 | KCRG-TV (9), KDUB-TV (40), KGAN (2), KWVL (7) |
| Columbia, SC | 299,200 | 82 | WACH (57), WIS-TV (10), WLTX (19), WOLO-TV (25) |
| Springfield, MO | 296,500 | 83 | KDEB-TV (27), KOLR (10), KSPR (33), KYTT (3) |
| Chattanooga, TN | 295,100 | 84 | WDEF-TV (12), WDSI-TV (61), WFLI-TV (53), WRCB-TV (3), WTVN (8) |
| South Bend-Elkhart, IN | 294,500 | 85 | WHME-TV (46), WNDU-TV (16), WSBT-TV (22), WSJV (28) |
| Jackson, MS | 292,900 | 86 | WAPT (16), WDBD (40), WJTV (12), WLBT-TV (3) |
| Bristol, VA-Kingsport-Johnson City, TN | 282,900 | 87 | WCYB-TV (5), WEMT (39), WJHL-TV (11), WKPT-TV (19) |
| Johnstown-Altoona, PA | 280,400 | 88 | WATM-TV (23), WJAC-TV (6), WKBS-TV (47), WTAJ-TV (10), WWCP-TV (8) |
| Youngstown, OH | 277,000 | 89 | WFMJ-TV (21), WKBN-TV (27), WYTV (33) |
| Madison, WI | 274,700 | 90 | WISC-TV (3), WKOW-TV (27), WMSN-TV (47), WMTV (15) |
| Las Vegas, NV | 270,600 | 91 | KBLR (39), KFBT (33), KLAS-TV (8), KRLR (21), KTNV (13), KVBC (3), KVVU-TV (5) |
| Burlington, VT-Plattsburgh, NY | 265,100 | 92 | WCAX-TV (3), WNNE-TV (31), WPTZ (5), WVNY (22) |
| Evansville, IN | 263,900 | 93 | WEHT (25), WEVV (44), WFIE-TV (14), WLCN (19), WTVW (7) |
| Baton Rouge, LA | 253,600 | 94 | WAFB (9), WBRZ (2), WVLA (33) |
| Lincoln-Hastings-Kearney, NE | 253,400 | 95 | KCAN (8), KGIN (11), KHAS-TV (5), KHGI-TV (13), KOLN (10), KSNB-TV (4), KWNB-TV (6) |
| Fort Myers-Naples, FL | 247,500 | 96 | WBBH-TV (20), WEVU (26), WFTX (36), WINK-TV (11) |
| Waco-Temple, TX | 247,200 | 97 | KBTX-TV (3), KCEN-TV (6), KWKT (44), KWTX-TV (10), KXXV (25) |
| Springfield, MA | 244,700 | 98 | WGGB-TV (40), WWLP (22) |
| Colorado Springs-Pueblo, CO | 237,900 | 99 | KKTV (11), KOAA-TV (5), KRDO-TV (13), KXRM-TV (21) |
| Sioux Falls-Mitchell, SD | 235,900 | 100 | KABY-TV (9), KDLO-TV (3), KDLT (5), KELO-TV (11), KPLO-TV (6), KPRY-TV (4), KSFY-TV (13), KTTW (17) |
| Fort Wayne, IN | 230,900 | 101 | WANE-TV (15), WFFT-TV (55), WINM (63), WKJG-TV (33), WPTA (21) |
| Savannah, GA | 229,800 | 102 | WJCL (22), WSAV-TV (3), WTGS (28), WTOG-TV (11) |
| Lansing, MI | 225,000 | 103 | WILX-TV (10), WLNS-TV (6), WSYM-TV (47) |
| El Paso, TX | 224,300 | 104 | KCIC (14), KDBC-TV (4), KINTV (26), KTSMT-TV (9), KVIAT-TV (7), KZIA (48), XEJ-TV (5), XEPM-TV (2), XHJ-TV (44) |
| Greenville-New Bern-Washington, NC | 224,200 | 105 | WCTI (12), WFXI (8), WITN-TV (7), WNCT-TV (9) |
| Charleston, SC | 221,300 | 106 | WCBD-TV (2), WCIV (4), WCSC-TV (5), WTAT-TV (24) |
| Montgomery-Selma, AL | 218,900 | 107 | WAKA (8), WCOV-TV (20), WHOA-TV (32), WMCF-TV (45), WSFA (12) |
| Fargo, ND | 218,000 | 108 | KBRR (10), KJRR (7), KNRR (12), KTHI-TV (11), KVRR (15), KXJB-TV (4), WDAY-TV (6), WDAZ-TV (8) |
| Salinas-Monterey, CA | 210,600 | 109 | KCBA (35), KMST (46), KSBW (8), KSMS-TV (67) |
| Augusta, GA | 209,300 | 110 | WAGT (26), WJBF (6), WRDW-TV (12) |
| Peoria-Bloomington, IL | 208,200 | 111 | WEEK-TV (25), WHOI (19), WMBD-TV (31), WYZZ-TV (43) |
| Santa Barbara-Santa Maria-San Luis Obispo, CA | 205,500 | 112 | KADE (33), KCOY-TV (12), KEYT-TV (3), KSBY-TV (6) |
| McAllen-Brownsville, TX | 198,400 | 113 | KGBT-TV (4), KRGV-TV (5), KVEO (23), XHRIO (2) |
| Lafayette, LA | 195,900 | 114 | KADN (15), KATC (3), KLFY-TV (10) |
| Fort Smith, AR | 194,400 | 115 | KFSM-TV (5), KHBS (40), KHOG-TV (29), KPOM-TV (24) |
| Tallahassee, FL-Thomasville, GA | 188,500 | 116 | WCTV (6), WTLH (49), WTWC (40), WTXL-TV (27) |
| Reno, NV | 187,300 | 117 | KAME-TV (21), KOLO-TV (8), KREN-TV (27), KRNV (4), KTVN (2) |
| Amarillo, TX | 185,100 | 118 | KAMR-TV (4), KCIT (14), KFDA-TV (10), KVIH-TV (12), KVIH-TV (7), KVIJ-TV (8) |
| Columbus, GA | 184,700 | 119 | WLTZ (38), WRBL (3), WWSW (66), WTVM (9), WXTX (54) |
| Monroe, LA-El Dorado, AR | 183,200 | 120 | KARD (14), KMCT-TV (39), KNOE-TV (8), KTVE (10) |
| Eugene, OR | 182,400 | 121 | KCBY-TV (11), KEZI (9), KMTR-TV (16), KPIC (4), KVAL-TV (13) |
| Corpus Christi, TX | 174,000 | 122 | KIII (3), KORO (28), KRIS-TV (6), KZTV (10) |

TELEVISION DIGEST With Consumer Electronics

Late-breaking news and exclusives in broadcasting, cable, pay TV, consumer electronics and related industries *along with* industry surveys and statistics not available anywhere else.

For information, call (202) 872-9200.

| Market | Arbitron ADI TV Households | Rank | Market Area Commercial TV Stations |
|---|-------------------------------|------|---|
| Macon, GA | 174,000 | 122 | WGXA (24), WMAZ-TV (13), WMGT (41) |
| Tyler-Longview, TX | 170,600 | 124 | KETR-TV (56), KLMG-TV (51), KLTU (7), KTRE-TV (9) |
| Duluth, MN-Superior, WI | 170,200 | 125 | KBJR-TV (6), KDLH-TV (3), WDIO-TV (10), WIRT (13) |
| Yakima, WA | 169,300 | 126 | KAPP (35), KEPR-TV (19), KIMA-TV (29), KLEW-TV (3), KNDO (23), KNDU (25), KVEW (42) |
| La Crosse-Eau Claire, WI | 165,700 | 127 | WEAU-TV (13), WKBT (8), WLAX (25), WQOW-TV (18), WXOW-TV (19) |
| Beaumont-Port Arthur, TX | 164,500 | 128 | KBMT (12), KFDM-TV (6), KJAC-TV (4) |
| Columbus-Tupelo, MS | 164,400 | 129 | WCBI-TV (4), WTVA (9), WWSB-TV (27) |
| Wausau-Rhineland, WI | 163,000 | 130 | WAOW-TV (9), WJFW-TV (12), WSAW-TV (7) |
| Traverse City-Cadillac, MI | 162,100 | 131 | WGKI (33), WGTQ (8), WGTU (29), WPBN-TV (7), WTOM-TV (4), WWTV (9), WWUP-TV (10) |
| Wichita Falls, TX-Lawton, OK | 161,900 | 132 | KAUZ-TV (6), KFDX-TV (3), KJTL (18), KSWO-TV (7) |
| Terre Haute, IN | 161,800 | 133 | WBAK-TV (38), WTHI-TV (10), WTWO (2) |
| Binghamton, NY | 158,600 | 134 | WBNG-TV (12), WICZ-TV (40), WMGC-TV (34) |
| Boise, ID | 156,700 | 135 | KBCI-TV (2), KIVI (6), KTRV (12), KTVB (7) |
| Rockford, IL | 156,300 | 136 | WIFR-TV (23), WQRF-TV (39), WREX-TV (13), WTVO (17) |
| Wheeling, WV-Steubenville, OH | 156,100 | 137 | WTOV-TV (9), WTRF-TV (7) |
| Sioux City, IA | 155,800 | 138 | KCAU-TV (9), KMEG (14), KTIV (4) |
| Erie, PA | 154,000 | 139 | WETG (66), WICU-TV (12), WJET-TV (24), WSEE-TV (35) |
| Florence, SC | 153,800 | 140 | WBTW (13), WGSE (43), WPDE-TV (15) |
| Chico-Redding, CA | 153,100 | 141 | KCPM (24), KHSL-TV (12), KRCR-TV (7) |
| Bakersfield, CA | 152,100 | 142 | KBAK-TV (29), KDOB-TV (45), KERO-TV (23), KGET (17) |
| Topeka, KS | 151,300 | 143 | KSNT (27), KTKA-TV (49), WIBW-TV (13) |
| Bluefield-Beckley-Oak Hill, WV | 150,200 | 144 | WOAY-TV (4), WVVA (6) |
| Minot-Bismarck-Dickinson, ND—Glendive, MT | 144,600 | 145 | KBMY (17), KFVR-TV (5), KMCY (14), KMOT (10), KQCD-TV (7), KUMV-TV (8), KXGN-TV (5), KXMA-TV (2), KXMB-TV (12), KXMC-TV (13), KXMD-TV (11) |
| Odessa-Midland, TX | 143,300 | 146 | KMID-TV (2), KMLM (42), KOSA-TV (7), KPEJ (24), KTPX (9), KWAB-TV (4) |
| Wilmington, NC | 143,300 | 146 | WECT (6), WJKA (26), WWAY (3) |
| Joplin, MO-Pittsburg, KS | 143,000 | 148 | KFAA (51), KOAM-TV (7), KODE-TV (12), KSNF (16) |
| Rochester, MN-Mason City, IA-Austin, MN | 142,000 | 149 | KAAL (6), KIMT (3), KTTC (10) |
| Lubbock, TX | 137,500 | 150 | KAMC (28), KCBD-TV (11), KJTV (34), KLBK-TV (13) |
| Albany, GA | 137,200 | 151 | WALB-TV (10), WFXL (31), WSST-TV (55), WVGA (44) |
| Medford, OR | 133,500 | 152 | KDKF (31), KDRV (12), KOBI (5), KOTI (2), KTVL (10) |
| Columbia-Jefferson City, MO | 133,400 | 153 | KMIZ (17), KNLJ (25), KOMU-TV (8), KRCG (13) |
| Quincy, IL-Hannibal, MO | 121,200 | 154 | KHQA-TV (7), WGEM-TV (10), WTJR (16) |
| Bangor, ME | 116,300 | 155 | WABI-TV (5), WLBS-TV (2), WVII-TV (7) |
| Abilene-Sweetwater, TX | 115,800 | 156 | KRBC-TV (9), KTAB-TV (32), KTXS-TV (12) |
| Clarksburg-Weston, WV | 111,500 | 157 | WBOY-TV (12), WDTV (5), WLYJ (46) |
| Dothan, AL | 104,500 | 158 | WDHN (18), WTVY (4) |
| Utica, NY | 103,600 | 159 | WFXV (33), WKTV (2), WUTR (20) |
| Idaho Falls-Pocatello, ID | 101,600 | 160 | KIDK (3), KIFI-TV (8), KPVI (6) |
| Salisbury, MD | 93,400 | 161 | WBOC-TV (16), WMDT (47) |
| Laurel-Hattiesburg, MS | 91,000 | 162 | WDAM-TV (7), WHLT (22) |
| Alexandria, LA | 88,200 | 163 | KALB-TV (5), KLAX-TV (31) |
| Gainesville, FL | 87,700 | 164 | WCJB (20), WOGX (51) |
| Rapid City, SD | 86,400 | 165 | KCLO-TV (15), KEVN-TV (7), KHSD-TV (11), KIVV-TV (5), KOTA-TV (3), KSGW-TV (12) |
| Billings-Hardin, MT | 85,000 | 166 | KOUS-TV (4), KTVQ (2), KULR-TV (8), KYUS-TV (3) |
| Elmira, NY | 84,100 | 167 | WENY-TV (36), WETM-TV (18) |
| Greenwood-Greenville, MS | 82,200 | 168 | WABG-TV (6), WXVT (15) |
| Panama City, FL | 82,000 | 169 | WJHG-TV (7), WMBB (13), WPGX (28) |
| Watertown-Carthage, NY | 81,900 | 170 | WWNY-TV (7), WWTI (50) |
| Missoula, MT | 79,200 | 171 | KCFW-TV (9), KECI-TV (13), KPAX-TV (8) |
| Lake Charles, LA | 75,800 | 172 | KPLC-TV (7), KVHP (29) |
| Ardmore-Ada, OK | 73,800 | 173 | KTEN (10), KXII (12) |
| Jonesboro, AR | 73,100 | 174 | KAIT-TV (8) |
| Palm Springs, CA | 67,900 | 175 | KESQ-TV (42), KMIR-TV (36) |
| Meridian, MS | 67,300 | 176 | WLBM-TV (30), WTOK-TV (11), WTZH (24) |
| Biloxi-Gulfport-Pascagoula, MS | 66,700 | 177 | WLOX-TV (13), WXXV-TV (25) |
| El Centro, CA-Yuma, AZ | 65,200 | 178 | KECY-TV (9), KYEL-TV (13), KYMA (11), XHBC-TV (3) |
| Great Falls, MT | 64,800 | 179 | KFBB-TV (5), KRTV (3), KTFG (16) |
| Grand Junction-Durango, CO | 64,700 | 180 | KJCT-TV (8), KREX-TV (5), KREY-TV (10), KREZ-TV (6) |
| Jackson, TN | 58,800 | 181 | WBBJ-TV (7), WMTU (16) |
| Marquette, MI | 55,300 | 182 | WLUC-TV (6) |
| Tuscaloosa, AL | 54,900 | 183 | WCFT-TV (33), WDBB (17) |
| Eureka, CA | 52,100 | 184 | KAEF (23), KIEM-TV (3), KVIQ-TV (6) |
| Butte, MT | 48,600 | 185 | KCTZ (7), KTVM (6), KXLF-TV (4) |
| San Angelo, TX | 48,200 | 186 | KACB-TV (3), KIDY (6), KLST (8) |

Television Market Rankings

| Market | Arbitron ADI TV Households | Rank | Market Area Commercial TV Stations |
|---|-------------------------------|------|--|
| St. Joseph, MO | 47,500 | 187 | KQTV (2), KTAJ (16) |
| Anniston, AL | 45,400 | 188 | WJSU-TV (40) |
| Cheyenne, WY-Scottsbluff, NE-Sterling, CO | 44,400 | 189 | KDUH-TV (4), KGWN-TV (5), KKTU (33), KSTF (10), KTVS (3) |
| Bowling Green, KY | 44,200 | 190 | WBKO (13) |
| Lafayette, IN | 43,300 | 191 | WLFI-TV (18) |
| Hagerstown, MD | 42,100 | 192 | WHAG-TV (25), WJAL (68) |
| Casper-Riverton, WY | 42,000 | 193 | KGWC-TV (14), KGWL-TV (5), KGWR-TV (13), KTWO-TV (2) |
| Lima, OH | 41,200 | 194 | WLIO (35), WTLW (44) |
| Charlottesville, VA | 40,900 | 195 | WVIR-TV (29) |
| Parkersburg, WV | 36,200 | 196 | WTAP-TV (15) |
| Laredo, TX | 36,100 | 197 | KGNS-TV (8), KLDO-TV (27), KVTU (13), XEFE-TV (2) |
| Harrisonburg, VA | 35,900 | 198 | WHSV-TV (3) |
| Zanesville, OH | 32,000 | 199 | WHIZ-TV (18) |
| Twin Falls, ID | 30,000 | 200 | KKVI (35), KMVT (11) |
| Presque Isle, ME | 29,300 | 201 | WAGM-TV (8) |
| Flagstaff, AZ | 28,700 | 202 | KNAZ-TV (2) |
| Ottumwa, IA-Kirksville, MO | 28,600 | 203 | KOIA-TV (15), KTVO (3) |
| Bend, OR | 26,300 | 204 | KTVZ (21) |
| Victoria, TX | 26,100 | 205 | KAVU-TV (25), KVCT (19) |
| Mankato, MN | 23,100 | 206 | KEYC-TV (12) |
| Helena, MT | 19,400 | 207 | KTVH (12) |
| North Platte, NE | 18,000 | 208 | KNOP-TV (2) |
| Alpena, MI | 15,500 | 209 | WBKB-TV (11) |

Alphabetical List of TV Markets—Arbitron 1990

Arbitron ADI TV Households Ranking

| Market | Rank | Market | Rank | Market | Rank | Market | Rank |
|--------------------------------------|------|------------------------------------|------|----------------------------------|------|-----------------------------------|------|
| Abilene-Sweetwater, TX | 156 | Des Moines, IA | 66 | Laurel-Hattiesburg, MS | 162 | Rochester, MN-Mason City, IA- | |
| Albany, GA | 151 | Detroit, MI | 8 | Lexington, KY | 70 | Austin, MN | 149 |
| Albany-Schenectady-Troy, NY | 53 | Dothan, AL | 158 | Lima, OH | 194 | Rochester, NY | 72 |
| Albuquerque, NM | 51 | Duluth, MN-Superior, WI | 125 | Lincoln-Hastings-Kearney, NE | 95 | Rockford, IL | 136 |
| Alexandria, LA | 163 | El Centro, CA-Yuma, AZ | 178 | Little Rock, AR | 57 | Sacramento-Stockton, CA | 21 |
| Alpena, MI | 209 | El Paso, TX | 104 | Los Angeles, CA | 2 | St. Joseph, MO | 187 |
| Amarillo, TX | 118 | Elmira, NY | 167 | Louisville, KY | 46 | St. Louis, MO | 18 |
| Anniston, AL | 188 | Erie, PA | 139 | Lubbock, TX | 150 | Salinas-Monterey, CA | 109 |
| Ardmore-Ada, OK | 173 | Eugene, OR | 121 | Macon, GA | 122 | Salisbury, MD | 161 |
| Atlanta, GA | 12 | Eureka, CA | 184 | Madison, WI | 90 | Salt Lake City, UT | 41 |
| Augusta, GA | 110 | Evansville, IN | 93 | Mankato, MN | 206 | San Angelo, TX | 186 |
| Austin, TX | 71 | Fargo, ND | 108 | Marquette, MI | 182 | San Antonio, TX | 43 |
| Bakersfield, CA | 142 | Flagstaff, AZ | 202 | McAllen-Brownsville, TX | 113 | San Diego, CA | 24 |
| Baltimore, MD | 22 | Flint-Saginaw-Bay City, MI | 59 | Medford, OR | 152 | San Francisco, CA | 5 |
| Bangor, ME | 155 | Florence, SC | 140 | Memphis, TN | 39 | Santa Barbara-Santa Maria- | |
| Baton Rouge, LA | 94 | Fort Myers-Naples, FL | 96 | Meridian, MS | 176 | San Luis Obispo, CA | 112 |
| Beaumont-Port Arthur, TX | 128 | Fort Smith, AR | 115 | Miami, FL | 16 | Savannah, GA | 102 |
| Bend, OR | 204 | Fort Wayne, IN | 101 | Milwaukee, WI | 28 | Seattle-Tacoma, WA | 15 |
| Billings-Hardin, MT | 166 | Fresno-Visalia, CA | 62 | Minneapolis-St. Paul, MN | 13 | Shreveport, LA-Texarkana, TX | 65 |
| Biloxi-Gulfport-Pascagoula, MS | 177 | Gainesville, FL | 164 | Minot-Bismarck-Dickinson, ND- | | Sioux City, IA | 138 |
| Binghamton, NY | 134 | Grand Junction-Durango, CO | 180 | Glendive, MT | 145 | Sioux Falls-Mitchell, SD | 100 |
| Birmingham, AL | 47 | Grand Rapids-Kalamazoo- | | Missoula, MT | 171 | South Bend-Elkhart, IN | 85 |
| Bluefield-Beckley-Oak Hill, WV | 144 | Battle Creek, MI | 37 | Mobile, AL-Pensacola, FL | 55 | Spokane, WA | 77 |
| Boise, ID | 135 | Great Falls, MT | 179 | Monroe, LA-El Dorado, AR | 120 | Springfield, MA | 98 |
| Boston, MA | 6 | Green Bay-Appleton, WI | 67 | Montgomery-Selma, AL | 107 | Springfield, MO | 83 |
| Bowling Green, KY | 190 | Greensboro-Winston Salem- | | Nashville, TN | 32 | Springfield-Decatur-Champaign, IL | 75 |
| Bristol, VA-Kingsport- | | High Point, NC | 49 | New Orleans, LA | 36 | Syracuse, NY | 68 |
| Johnson City, TN | 87 | Greenville-New Bern-Washington, NC | 105 | New York, NY | 1 | Tallahassee, FL-Thomasville, GA | 116 |
| Buffalo, NY | 38 | Greenville-Spartanburg, SC- | | Norfolk-Portsmouth-Newport News- | | Tampa-St. Petersburg, FL | 14 |
| Burlington, VT-Plattsburgh, NY | 92 | Asheville, NC | 35 | Hampton, VA | 42 | Terre Haute, IN | 133 |
| Butte, MT | 185 | Greenwood-Greenville, MS | 168 | North Platte, NE | 208 | Toledo, OH | 63 |
| Casper-Riverton, WY | 193 | Hagerstown, MD | 192 | Odessa-Midland, TX | 146 | Topeka, KS | 143 |
| Cedar Rapids-Waterloo-Dubuque, IA | 81 | Harrisburg-York-Lancaster- | | Oklahoma City, OK | 40 | Traverse City-Cadillac, MI | 131 |
| Charleston, SC | 106 | Lebanon, PA | 45 | Omaha, NE | 73 | Tucson, AZ | 79 |
| Charleston-Huntington, WV | 48 | Harrisonburg, VA | 198 | Orlando-Daytona Beach- | | Tulsa, OK | 58 |
| Charlotte, NC | 31 | Hartford-New Haven, CT | 23 | Melbourne, FL | 25 | Tuscaloosa, AL | 183 |
| Charlottesville, VA | 195 | Helena, MT | 207 | Ottumwa, IA-Kirksville, MO | 203 | Twin Falls, ID | 200 |
| Chattanooga, TN | 84 | Houston, TX | 10 | Paducah, KY-Cape Girardeau, MO- | | Tyler-Longview, TX | 124 |
| Cheyenne, WY-Scottsbluff, NE- | | Huntsville-Decatur-Florence, AL | 80 | Harrisburg-Marion, IL | 76 | Utica, NY | 159 |
| Sterling, CO | 189 | Idaho Falls-Pocatello, ID | 160 | Palm Springs, CA | 175 | Victoria, TX | 205 |
| Chicago, IL | 3 | Indianapolis, IN | 26 | Panama City, FL | 169 | Waco-Temple, TX | 97 |
| Chico-Redding, CA | 141 | Jackson, MS | 86 | Parkersburg, WV | 196 | Washington, DC | 9 |
| Cincinnati, OH | 30 | Jackson, TN | 181 | Peoria-Bloomington, IL | 111 | Watertown-Carthage, NY | 170 |
| Clarksburg-Weston, WV | 157 | Jacksonville, FL | 56 | Philadelphia, PA | 4 | Wausau-Rhineland, WI | 130 |
| Cleveland, OH | 11 | Johnstown-Altoona, PA | 88 | Phoenix, AZ | 20 | West Palm Beach-Fort Pierce- | |
| Colorado Springs-Pueblo, CO | 99 | Jonesboro, AR | 174 | Pittsburgh, PA | 17 | Vero Beach, FL | 50 |
| Columbia, SC | 82 | Joplin, MO-Pittsburg, KS | 148 | Portland, OR | 27 | Wheeling, WV-Steubenville, OH | 137 |
| Columbia-Jefferson City, MO | 153 | Kansas City, MO | 29 | Portland-Poland Spring, ME | 74 | Wichita Falls, TX-Lawton, OK | 132 |
| Columbus, GA | 119 | Knoxville, TN | 64 | Presque Isle, ME | 201 | Wichita-Hutchinson, KS | 61 |
| Columbus, OH | 34 | La Crosse-Eau Claire, WI | 127 | Providence, RI-New Bedford, MA | 44 | Wilkes Barre-Scranton, PA | 54 |
| Columbus-Tupelo, MS | 129 | Lafayette, IN | 191 | Quincy, IL-Hannibal, MO | 154 | Wilmington, NC | 146 |
| Corpus Christi, TX | 122 | Lafayette, LA | 114 | Raleigh-Durham, NC | 33 | Yakima, WA | 126 |
| Dallas-Fort Worth, TX | 7 | Lake Charles, LA | 172 | Rapid City, SD | 165 | Youngstown, OH | 89 |
| Davenport, IA-Rock Island-Moline, IL | 78 | Lansing, MI | 103 | Reno, NV | 117 | Zanesville, OH | 199 |
| Dayton, OH | 52 | Laredo, TX | 197 | Richmond, VA | 60 | | |
| Denver, CO | 19 | Las Vegas, NV | 91 | Roanoke-Lynchburg, VA | 69 | | |

Call Letters

KUTF Salem, OR (32)
 KUTP Phoenix, AZ (45)
 KUTV Salt Lake City, UT (2)
 KUVN Garland, TX (23)

KVAL-TV Eugene, OR (13)
 *KVAW Eagle Pass, TX (16)
 KVBC Las Vegas, NV (3)
 *KVBV-TV Minneapolis, MN (45)
 †KVCR-TV San Bernardino, CA (24)
 KVCT Victoria, TX (19)
 KVDA San Antonio, TX (60)
 KVEA Corona, CA (52)
 KVED Brownsville, TX (23)
 KVEW Kennewick, WA (42)
 KVHF Kailua-Kona, HI (6)
 KVHP Lake Charles, LA (29)
 KVIA-TV El Paso, TX (7)
 †KVIE Sacramento, CA (6)
 KVIH-TV Clovis, NM (12)
 KVII-TV Amarillo, TX (7)
 KVIJ-TV Sayre, OK (8)
 KVIO-TV Carlsbad, NM (6)
 KVIQ-TV Eureka, CA (6)
 †KVMD Twentynine Palms, CA (31)
 †KVME Billings, MT (20)
 †KVMG Merced, CA (51)
 KVOA-TV Tucson, AZ (4)
 KVOS-TV Bellingham, WA (12)
 †KVPT Fresno, CA (18)
 KVRR Fargo, ND (15)
 KVTN Pine Bluff, AR (25)
 KVTV Laredo, TX (13)
 KVUE-TV Austin, TX (24)
 KVVU-TV Henderson, NV (5)
 KVVV Barstow, CA (64)

KWAB-TV Big Spring, TX (4)
 KWBB San Francisco, CA (38)
 †KWBI-TV Denver, CO (41)
 KWCH-TV Hutchinson, KS (12)
 †KWCM-TV Appleton, MN (10)
 *KWCV Wichita, KS (33)
 †KWET Cheyenne, OK (12)
 *KWWEW Coalinga, CA (27)
 KWEX-TV San Antonio, TX (41)
 KWGN-TV Denver, CO (2)
 KWHB Tulsa, OK (47)
 KWHI Castle Rock, CO (53)
 KWHE Honolulu, HI (14)
 KWHH Hilo, HI (14)
 KWHY-TV Los Angeles, CA (22)
 *KWIY Brady, TX (13)
 KWKT Waco, TX (44)
 KWNB-TV Hayes Center, NE (6)
 KWNM-TV Silver City, NM (10)
 KWQC-TV Davenport, IA (6)
 †KWSE Williston, ND (4)
 †KWSU-TV Pullman, WA (10)
 KWTW Oklahoma City, OK (9)
 KWTX-TV Waco, TX (10)
 KWWL Waterloo, IA (7)

KXAN-TV Austin, TX (36)
 KXAS-TV Fort Worth, TX (5)
 KXGN-TV Glendive, MT (5)
 *KXGR Green Valley, AZ (46)
 KXII Ardmore, OK (12)
 KXIV Salt Lake City, UT (14)
 KXJB-TV Valley City, ND (4)
 KXLF-TV Butte, MT (4)
 *KXLI St. Cloud, MN (41)
 KXLN-TV Rosenberg, TX (45)
 *KXLTV Rochester, MN (47)
 KXLY-TV Spokane, WA (4)
 KXMA-TV Dickinson, ND (2)
 KXMB-TV Bismarck, ND (12)
 KXMC-TV Minot, ND (13)
 KXMD-TV Williston, ND (11)
 †KXNE-TV Norfolk, NE (19)
 †KXON-TV Claremore, OK (35)
 KXRM-TV Colorado Springs, CO (21)
 KXTV Sacramento, CA (10)
 KXTX-TV Dallas, TX (39)
 KXXV Waco, TX (25)

KYMA Yuma, AZ (11)
 KYES Anchorage, AK (5)
 KYEL-TV Yuma, AZ (13)
 KYFC Kansas City, MO (50)
 †KYIN Mason City, IA (24)
 †KYNE-TV Omaha, NE (26)
 KYTV Springfield, MO (3)
 †KYUK-TV Bethel, AK (4)
 KYUS-TV Miles City, MT (3)
 †KYVE Yakima, WA (47)
 KYW-TV Philadelphia, PA (3)

*KZAR-TV Provo, UT (16)
 KZIA Las Cruces, NM (48)
 *KZJA Eureka, CA (29)
 *KZJB Newton, IA (39)
 *KZJC Flagstaff, AZ (4)
 *KZJE Clovis, CA (43)
 *KZJF Paris, TX (36)
 *KZJG Longmont, CO (25)
 *KZJI Victoria, TX (31)
 *KZJL Houston, TX (61)
 KZKC Kansas City, MO (62)
 †KZSD-TV Martin, SD (8)
 KZTV Corpus Christi, TX (10)

W

WAAP Burlington, NC (16)
 WAAY-TV Huntsville, AL (31)
 WABC-TV New York, NY (7)
 WABG-TV Greenwood, MS (6)
 WABI-TV Bangor, ME (5)
 †WABW-TV Pelham, GA (14)
 WACH Columbia, SC (57)
 *WACI Atlantic City, NJ (62)
 †WACS-TV Dawson, GA (25)
 WACX Leesburg, FL (55)
 WADL Mount Clemens, MI (38)
 WAFB Baton Rouge, LA (9)
 WAFF Huntsville-Decatur, AL (48)
 WAGA-TV Atlanta, GA (5)
 WAGM-TV Presque Isle, ME (8)
 WAGT Augusta, GA (26)
 †WAIQ Montgomery, AL (26)
 *WAJM-TV Palatka, FL (63)
 WAKA Selma, AL (8)
 WAKC-TV Akron, OH (23)
 WALA-TV Mobile, AL (10)
 WALB-TV Albany, GA (10)
 WAND Decatur, IL (17)
 WANE-TV Fort Wayne, IN (15)
 WAOW-TV Wausau, WI (9)
 WAPA-TV San Juan, PR (4)
 WAPT Jackson, MS (16)
 WAQP Saginaw, MI (49)
 WASV-TV Asheville, NC (62)
 *WATC Atlanta, GA (57)
 WATE-TV Knoxville, TN (6)
 WATL Atlanta, GA (36)
 WATM-TV Altoona, PA (23)
 WAVE Louisville, KY (3)
 WAVY-TV Portsmouth, VA (10)
 WAWA-TV Rome, GA (14)
 *WAWD Fort Walton Beach, FL (58)
 WAWS-TV Jacksonville, FL (30)
 *WAXA Anderson, SC (40)
 WAYK Melbourne, FL (56)
 WAYQ Daytona Beach, FL (26)

WBAK-TV Terre Haute, IN (38)
 WBAL-TV Baltimore, MD (11)
 WBAY-TV Green Bay, WI (2)
 WBBH-TV Fort Myers, FL (20)
 WBBJ-TV Jackson, TN (7)
 WBBM-TV Chicago, IL (2)
 WBFF Baltimore, MD (45)
 WBFS-TV Miami, FL (33)
 †WBGU-TV Bowling Green, OH (27)
 WBHS Tampa, FL (50)
 †WBIQ Birmingham, AL (10)
 WBIR-TV Knoxville, TN (10)
 WBKB-TV Alpena, MI (11)
 WBKO Bowling Green, KY (13)
 WBMG Birmingham, AL (42)

WBNA Louisville, KY (21)
 WBNB-TV Charlotte Amalie, VI (10)
 WBNG-TV Binghamton, NY (12)
 WBNS-TV Columbus, OH (10)
 WBNX-TV Akron, OH (55)
 WBOC-TV Salisbury, MD (16)
 WBOY-TV Clarksburg, WV (12)
 *WBPH-TV Bethlehem, PA (60)
 †WBRA-TV Roanoke, VA (15)
 WBRC-TV Birmingham, AL (6)
 WBRE-TV Wilkes-Barre, PA (28)
 WBRZ Baton Rouge, LA (2)
 WBSF Melbourne, FL (43)
 WBSG-TV Brunswick, GA (21)
 *WBSV-TV Venice, FL (62)
 WBSX Ann Arbor, MI (31)
 WBTX Charlotte, NC (3)
 WBTW Florence, SC (13)
 *WBUI Indianapolis, IN (69)
 *WBUY Holly Springs, MS (40)
 WBZ-TV Boston, MA (4)

WCAJ Birmingham, AL (68)
 WCAU-TV Philadelphia, PA (10)
 WCAX-TV Burlington, VT (3)
 †WCBB Augusta, ME (10)
 WCBD-TV Charleston, SC (2)
 WCBI-TV Columbus, MS (4)
 WCBS-TV New York, NY (2)
 WCCB Charlotte, NC (18)
 WCCL New Orleans, LA (49)
 WCCO-TV Minneapolis, MN (4)
 WCCU Urbana, IL (27)
 WCCV-TV Arecibo, PR (54)
 WCDC Adams, MA (19)
 WCEE Mount Vernon, IL (13)
 †WCES-TV Wrens, GA (20)
 †WCET Cincinnati, OH (48)
 †WCFL-TV New Smyrna Beach, FL (15)
 WCFB-TV Chicago, IL (38)
 †WCFE-TV Plattsburgh, NY (57)
 WCFN Springfield, IL (49)
 WCFR-TV Tuscaloosa, AL (33)
 WCGV-TV Milwaukee, WI (24)
 WCHS-TV Charleston, WV (8)
 WCIA Champaign, IL (3)
 †WCIQ Mt. Cheaha State Park, AL (7)
 WCIU-TV Chicago, IL (26)
 WCIV Charleston, SC (4)
 WCIX Miami, FL (6)
 WCJB Gainesville, FL (20)
 WCLF Clearwater, FL (22)
 WCLJ Bloomington, IN (42)
 †WCLP-TV Chatsworth, GA (18)
 WCMH-TV Columbus, OH (4)
 †WCMU-TV Alpena, MI (6)
 †WCMV Cadillac, MI (27)
 †WCMW Manistee, MI (21)
 WCNC-TV Charlotte, NC (36)
 †WCNY-TV Syracuse, NY (24)
 *WCOM Mansfield, OH (68)
 WCOV-TV Montgomery, AL (20)
 †WCPB Salisbury, MD (28)
 WCPQ-TV Cincinnati, OH (9)
 WCPX-TV Orlando, FL (6)
 *WCRD Myrtle Beach, SC (32)
 WCSC-TV Charleston, SC (5)
 WCSH-TV Portland, ME (6)
 †WCTE Cookeville, TN (22)
 WCTI New Bern, NC (12)
 WCTV Tallahassee, FL

WCVB-TV Boston, MA (5)
 †WCVE-TV Richmond, VA (23)
 †WCVN Covington, KY (54)
 †WCVW Richmond, VA (57)
 WCVX Vineyard Haven, MA (58)
 WCYB-TV Bristol, VA (5)

WDAF-TV Kansas City, MO (4)
 WDAM-TV Laurel, MS (7)
 *WDAU Ozark, AL (34)
 WDAY-TV Fargo, ND (6)
 WDAZ-TV Devils Lake, ND (8)

WDBB Tuscaloosa, AL (17)
 WDBD Jackson, MS (40)
 WDBJ Roanoke, VA (7)
 WDCA-TV Washington, DC (20)
 †WDCN Nashville, TN (8)
 †WDCO-TV Cochran, GA (29)
 WDEF-TV Chattanooga, TN (12)
 WDHN Dothan, AL (18)
 WDIO-TV Duluth, MN (10)
 †WDIQ Dozier, AL (2)
 WDIV Detroit, MI (4)
 WDJT-TV Milwaukee, WI (58)
 *WDKA Paducah, KY (49)
 WDKY-TV Danville, KY (56)
 WDLI Canton, OH (17)
 †WDPB Seaford, DE (64)
 WDRB-TV Louisville, KY (41)
 *WDRU Bunnell, FL (58)
 †WDSE-TV Duluth, MN (8)
 WDSI-TV Chattanooga, TN (61)
 WDSU-TV New Orleans, LA (6)
 WDTN Dayton, OH (2)
 WDTV Weston, WV (5)
 *WDWL Bayamon, PR (36)
 *WDOZ Carolina, PR (52)
 *WDZI Manteo, NC (4)
 WDZL Miami, FL (39)

†WEAO Akron, OH (49)
 WEAR-TV Pensacola, FL (3)
 WEAU-TV Eau Claire, WI (13)
 †WEBA-TV Allendale, SC (14)
 WECC Naranjito, PR (64)
 WECT Wilmington, NC (6)
 *WEED-TV Berlin, NH (40)
 †WEDH Hartford, CT (24)
 †WEDN Norwich, CT (53)
 †WEDU Tampa, FL (3)
 †WEDW Bridgeport, CT (49)
 †WEDY New Haven, CT (65)
 WEEK-TV Peoria, IL (25)
 WEFC Roanoke, VA (38)
 WEHS Aurora, IL (60)
 WEHT Evansville, IN (25)
 †WEIQ Mobile, AL (42)
 †WEIU-TV Charleston, IL (51)
 WEJC Lexington, NC (20)
 †WEKJ-TV Keene, NH (52)
 *WELF Dalton, GA (23)
 *†WELU Aguadilla, PR (32)
 WEMT Greeneville, TN (39)
 †WENH Durham, NH (11)
 WENY-TV Elmira, NY (36)
 WESH Daytona Beach, FL (2)
 †WETA-TV Washington, DC (26)
 WETG Erie, PA (66)
 †WETK Burlington, VT (33)
 WETM-TV Elmira, NY (18)
 †WETV Key West, FL (13)
 WEVU Naples, FL (26)
 WEVV Evansville, IN (44)
 *WEUX Chippewa Falls, WI (48)
 WEWS Cleveland, OH (5)
 WEYI-TV Saginaw, MI (25)

WFAA-TV Dallas, TX (8)
 WFCT Fayetteville, NC (62)
 †WFET Marathon, FL (16)
 WFFT-TV Fort Wayne, IN (55)
 WFGX Fort Walton Beach, FL (35)
 WFHL Decatur, IL (23)
 WFIE-TV Evansville, IN (14)
 *WFIL Florence, SC (21)
 †WFIQ Florence, AL (36)
 WFLA-TV Tampa, FL (8)
 WFLD Chicago, IL (32)
 WFLI-TV Cleveland, TN (53)
 WFLX West Palm Beach, FL (29)
 *†WFME-TV West Milford, NJ (66)
 WFMJ-TV Youngstown, OH (21)
 WFMV-TV Greensboro, NC (2)
 WFMZ-TV Allentown, PA (69)
 †WFPT Frederick, MD (62)
 WFRV-TV Green Bay, WI (5)
 WFSB Hartford, CT (3)
 †WFSG Panama City, FL (56)

COMMUNICATIONS DAILY

The daily executive information service of telecommunications.

For information, call (202) 872-9200.

- | | | | |
|---|---|--|--|
| <p>†WFSU-TV Tallahassee, FL (11) WFTS Tampa, FL (28) WFTV Orlando, FL (9) WFTX Cape Coral, FL (36) WFTY Washington, DC (50) †WFUM Flint, MI (28) †WFWA Fort Wayne, IN (39) WFXB Rocky Mount, NC (47) *WFXG Augusta, GA (54) WFXI Morehead City, NC (8) WFXL Albany, GA (31) WFXT Boston, MA (25) WFXV Utica, NY (33) †WFIY Indianapolis, IN (20)</p> <p>WGAL-TV Lancaster, PA (8) WGBA Green Bay, WI (26) †WGBH-TV Boston, MA (2) WGBO-TV Joliet, IL (66) WGBS-TV Philadelphia, PA (57) †WGBX-TV Boston, MA (44) †WGBY-TV Springfield, MA (57) WGCB-TV Red Lion, PA (49) WGEN-TV Quincy, IL (10) *†WGF High Springs, FL (53) WGGF-TV Springfield, MA (40) WGGN-TV Sandusky, OH (52) WGGT-TV Greenville, SC (16) WGGT-TV Greensboro, NC (48) WGHF-TV High Point, NC (8) †WGIQ Louisville, AL (43) WGKI Cadillac, MI (33) WGME-TV Portland, ME (13) WGN-TV Chicago, IL (9) WGNV New Orleans, LA (26) WGNT Portsmouth, VA (27) WGNX Atlanta, GA (46) WGT Merrimack, NH (60) WGPB-TV Detroit, MI (62) †WGP Oakland, MD (36) WGRB Campbellsville, KY (34) WGRZ-TV Buffalo, NY (2) WGSE Myrtle Beach, SC (43) †WGTE-TV Toledo, OH (30) *WGTJ Greenville, NC (38) WGTQ Sault Ste. Marie, MI (8) WGTU Traverse City, MI (29) †WGTV Athens, GA (8) *WGTW Burlington, NJ (48) †WGVK Kalamazoo, MI (52) †WGVU-TV Grand Rapids, MI (35) WGX Macon, GA (24)</p> <p>†WHA-TV Madison, WI (21) WHAG-TV Hagerstown, MD (25) WHAI-TV Bridgeport, CT (43) WHAS-TV Louisville, KY (11) WHBF-TV Rock Island, IL (4) *WHBI Lake Worth, FL (67) WHBQ-TV Memphis, TN (13) WHBR Pensacola, FL (33) WHCT-TV Hartford, CT (18) WHDH-TV Boston, MA (7) WHEC-TV Rochester, NY (10) †WHD-TV Hanover, NH (15) WHFT Miami, FL (45)</p> | <p>WHIO-TV Dayton, OH (7) †WHIQ Huntsville, AL (25) WHIZ-TV Zanesville, OH (18) WHKE Kenosha, WI (55) WHKY-TV Hickory, NC (14) †WHLA-TV La Crosse, WI (31) WHLL Worcester, MA (27) WHLT Hattiesburg, MS (22) WHMB-TV Indianapolis, IN (40) †WHMC Conway, SC (23) WHME-TV South Bend, IN (46) †WHMM Washington, DC (32) WHNS Asheville, NC (21) WHNT-TV Huntsville, AL (19) WHO-TV Des Moines, IA (13) WHOA-TV Montgomery, AL (32) WHOI Peoria, IL (19) WHP-TV Harrisburg, PA (21) *WHPI Ashland, KY (50) *WHRC Norwell, MA (46) †WHRM-TV Wausau, WI (20) †WHRO-TV Hampton, VA (15) WHSE New York, NY Newark, NJ (68) *WHSG Monroe, GA (63) WSH Marlborough, MA (66) WHSI Smithtown, NY (67) WHS East St. Louis, IL (46) WHSP Vineland, NJ (65) WHSV-TV Harrisonburg, VA (3) WHSW Baltimore, MD (24) *WHTA Calumet, MI (5) †WHTJ Charlottesville, VA (41) WHTM-TV Harrisburg, PA (27) WHTN Murfreesboro, TN (39) *WHTV Jackson, MI (18) †WHWC-TV Menomonee, WI (28) †WHYY-TV Wilmington, DE (12)</p> <p>WIBW-TV Topeka, KS (13) WICD Champaign, IL (15) WICS Springfield, IL (20) WICU-TV Erie, PA (12) WICZ-TV Binghamton, NY (40) *WIDP Guayama, PR (46) *WIEC Ponce, PR (48) WIFR-TV Freeport, IL (23) WIIB Bloomington, IN (63) *WIIM-TV Iron Mountain, MI (8) †WIQ Demopolis, AL (41) *WILF Williamsport, PA (53) †WILL-TV Champaign-Urbana, IL (12) WILX-TV Lansing, MI (10) WINK-TV Fort Myers, FL (11) WINM Angola, IN (63) WINT-TV Crossville, TN (20) †WIPB Muncie, IN (49) †WIPM-TV Mayaguez, PR (3) †WIPR-TV San Juan, PR (6) *WIRS Yauco, PR (42) WIRT Hibbing, MN (13) WIS-TV Columbia, SC (10) WISC-TV Madison, WI (3) WISH-TV Indianapolis, IN (8) WISN-TV Milwaukee, WI (12) †WITF-TV Harrisburg, PA (33) WITI-TV Milwaukee, WI (6)</p> | <p>WITN-TV Washington, NC (7) †WITV Charleston, SC (7) WIVB-TV Buffalo, NY (4) WIXT Syracuse, NY (9)</p> <p>WJAC-TV Johnstown, PA (6) *WJAE Jacksonville, NC (35) WJAL Hagerstown, MD (68) WJAR Providence, RI (10) WJBF Augusta, GA (6) WJBK-TV Detroit, MI (2) WJCB Norfolk, VA (49) WJCL Savannah, GA (22) †WJCT Jacksonville, FL (7) WJET-TV Erie, PA (24) WJFB Lebanon, TN (66) WJFW-TV Rhinelander, WI (12) WJHG-TV Panama City, FL (7) WJHL-TV Johnson City, TN (11) WJJA Racine, WI (49) WJKA Wilmington, NC (26) WJKS Jacksonville, FL (17) WJLA-TV Washington, DC (7) WJMN-TV Escanaba, MI (3) *WJMY Marquette, MI (19) *WJNW Janesville, WI (57) †WJPM-TV Florence, SC (33) WJPR Lynchburg, VA (21) WJRT-TV Flint, MI (12) †WJSP-TV Columbus, GA (28) WJSU-TV Anniston, AL (40) WJTC Pensacola, FL (44) WJTV Jackson, MS (12) WJW-TV Cleveland, OH (8) †WJWJ-TV Beaufort, SC (16) WJWN-TV San Sebastian, PR (38) WJXT Jacksonville, FL (4) *WJYS Hammond, IN (62) WJZ-TV Baltimore, MD (13) WJZY Belmont, NC (46)</p> <p>WKAQ-TV San Juan, PR (2) †WKAR-TV East Lansing, MI (23) †WKAS Ashland, KY (25) *WKAY Kannapolis, NC (64) WKBD-TV Detroit, MI (50) WKBN-TV Youngstown, OH (27) WKBS-TV Altoona, PA (47) WKBT La Crosse, WI (8) WKBW-TV Buffalo, NY (7) WKCF Clermont, FL (68) WKCH-TV Knoxville, TN (43) *†WKEB Islamorada, FL (9) WKEF Dayton, OH (22) WKFT Fayetteville, NC (40) †WKGTV Bowling Green, KY (53) †WKHA Hazard, KY (35) WKJG-TV Fort Wayne, IN (33) *WKKTFV Hopkinsville, KY (51) †WKLE Lexington, KY (46) †WKMA Madisonville, KY (35) †WKMJ Louisville, KY (68) †WKMR Morehead, KY (38) †WKMU Murray, KY (21) †WKNO-TV Memphis, TN (10) †WKOH Owensboro, KY (31)</p> | <p>WKOI Richmond, IN (43) †WKON Owenton, KY (52) †WKOP-TV Knoxville, TN (15) WKOW-TV Madison, WI (27) †WKPC-TV Louisville, KY (15) †WKPD Paducah, KY (29) †WKPI Pikeville, KY (22) WKPT-TV Kingsport, TN (19) WKPV Ponce, PR (20) WKRC-TV Cincinnati, OH (12) WKRG-TV Mobile, AL (5) WKRN-TV Nashville, TN (2) *WKRPTV Charleston, WV (29) †WKSO-TV Somerset, KY (29) WKTV Utica, NY (2) WKXT-TV Knoxville, TN (8) WKYC-TV Cleveland, OH (3) WKYTV Lexington, KY (27) †WKYU-TV Bowling Green, KY (24) †WKZTV Elizabethtown, KY (23)</p> <p>†WLAETV New Orleans, LA (32) *WLAJ Lansing, MI (53) WLAX La Crosse, WI (25) WLBM-TV Meridian, MS (30) WLBT-TV Jackson, MS (3) WLBS-TV Bangor, ME (2) *†WLCB-TV Leesburg, FL (45) WLGN Madisonville, KY (19) †WLED-TV Littleton, NH (49) †WLEF-TV Park Falls, WI (36) WLEX-TV Lexington, KY (18) *WLF Bluefield, WV (40) *WLF Grundy, VA (68) WLF-TV Lafayette, IN (18) WLF-TV Raleigh, NC (22) WLG Riverhead, NY (55) WLII Caguas, PR (11) WLIO Lima, OH (35) †WLIW Garden City, NY (21) WLJC-TV Beattyville, KY (65) †WLJTV Lexington, TN (11) WLKY-TV Louisville, KY (32) WLLA Kalamazoo, MI (64) WLMT Memphis, TN (30) WLNE Providence, RI New Bedford, MA (6) WLNS-TV Lansing, MI (6) WLOS Asheville, NC (13) WLOX-TV Biloxi, MS (13) †WLPB-TV Baton Rouge, LA (27) †WLRN-TV Miami, FL (17) WLS-TV Chicago, IL (7) WLT Miami, FL (23) WLT Columbia, SC (19) WLTZ Columbus, GA (38) WLUK-TV Marquette, MI (6) WLUK-TV Green Bay, WI (11) WLVI-TV Cambridge, MA (56) †WLVTV Allentown, PA (39) WLWT Cincinnati, OH (5) WLYH-TV Greensboro, NC (61) WLYH-TV Lancaster, PA (15) WLYJ Clarksburg, WV (46)</p> <p>†WMAB-TV Mississippi State, MS (2) †WMAE-TV Booneville, MS (12)</p> |
|---|---|--|--|

Call Letters

| | | | |
|--|---------------------------------------|-------------------------------------|---|
| †WMAH-TV Biloxi, MS (19) | WNYB-TV Buffalo, NY (49) | WRC-TV Washington, DC (4) | WTIN Ponce, PR (14) |
| †WMAO-TV Greenwood, MS (23) | †WNYC-TV New York, NY (31) | WRCB-TV Chattanooga, TN (3) | †WTIU Bloomington, IN (30) |
| WMAQ-TV Chicago, IL (5) | †WNYE-TV New York, NY (25) | WRDW-TV Augusta, GA (12) | WTJA Jamestown, NY (26) |
| WMAR-TV Baltimore, MD (2) | WNYT Albany, NY (13) | WREG-TV Memphis, TN (3) | WTJC Springfield, OH (26) |
| †WMAU-TV Bude, MS (17) | WNYW New York, NY (5) | †WRES Cocoa, FL (18) | WTJP Gadsden, AL (60) |
| †WMAV-TV Oxford, MS (18) | | †WRETTV Spartanburg, SC (49) | WTJR Quincy, IL (16) |
| †WMAW-TV Meridian, MS (14) | | WREX-TV Rockford, IL (13) | †WTJX-TV Charlotte Amalie, VI (12) |
| WMAZ-TV Macon, GA (13) | WOAC Canton, OH (67) | WRGB Schenectady, NY (6) | WTKK Manassas, VA (66) |
| WMBB Panama City, FL (13) | WOAY-TV Oak Hill, WV (4) | WRGT-TV Dayton, OH (45) | WTKR-TV Norfolk, VA (3) |
| WMBD-TV Peoria, IL (31) | WOCD Amsterdam, NY (55) | WRIC-TV Petersburg, VA (8) | WTLH Bainbridge, GA (49) |
| WMC-TV Memphis, TN (5) | WOFI Orlando, FL (35) | †WRJA-TV Sumter, SC (27) | WTLJ Muskegon, MI (54) |
| WMCC Marion, IN (23) | WOGX Ocala, FL (51) | *WRJM-TV Troy, AL (67) | *WTLI Live Oak, FL (57) |
| WMCFTV Montgomery, AL (45) | WOIO Shaker Heights, OH (19) | *WRKJ Dothan, AL (60) | WTLV Jacksonville, FL (12) |
| WMDT Salisbury, MD (47) | WOI-TV Ames, IA (5) | WRLH-TV Richmond, VA (35) | WTLW Lima, OH (44) |
| †WMEA-TV Biddeford, ME (26) | WOKR Rochester, NY (13) | †WRLK-TV Columbia, SC (35) | WTMJ-TV Milwaukee, WI (4) |
| †WMEB-TV Orono, ME (12) | WOLE-TV Aguadilla, PR (12) | WROC-TV Rochester, NY (8) | WTMV Lakeland, FL (32) |
| †WMEC Macomb, IL (22) | WOLF-TV Scranton, PA (38) | *WROZ Owensboro, KY (61) | *WTMW Arlington, VA (14) |
| †WMED-TV Calais, ME (13) | WOLO-TV Columbia, SC (25) | WRSP-TV Springfield, IL (55) | WTNH-TV New Haven, CT (8) |
| *WMEI Arecibo, PR (60) | WORA-TV Mayaguez, PR (5) | WRTV Indianapolis, IN (6) | WTOC-TV Savannah, GA (11) |
| †WMEM-TV Presque Isle, ME (10) | *WOST-TV Block Island, RI (69) | *WRUA Fajardo, PR (34) | WTOG St. Petersburg, FL (44) |
| †WMFE-TV Orlando, FL (24) | †WOSU-TV Columbus, OH (34) | WRWR-TV San Juan, PR (30) | WTOK-TV Meridian, MS (11) |
| WMFP Lawrence, MA (62) | WOTV Grand Rapids, MI (8) | *WRXY-TV Tice, FL (49) | WTOL-TV Toledo, OH (11) |
| WMGC-TV Binghamton, NY (34) | †WOUR-TV Athens, OH (20) | | WTOM-TV Cheboygan, MI (4) |
| WMGM-TV Wildwood, NJ (40) | †WOUK-TV Cambridge, OH (44) | WSAV-TV Savannah, GA (3) | WTOV-TV Steubenville, OH (9) |
| WMGT Macon, GA (41) | WOWK-TV Huntington, WV (13) | WSAW-TV Wausau, WI (7) | WTRA Mayaguez, PR (16) |
| †WMHT Schenectady, NY (17) | WOWL-TV Florence, AL (15) | WSAZ-TV Huntington, WV (3) | WTRF-TV Wheeling, WV (7) |
| †WMHX Albany-Schenectady, NY (45) | WOWT Omaha, NE (6) | WSB-TV Atlanta, GA (2) | WTRT Florence, AL (26) |
| †WMPB Baltimore, MD (67) | | †WSBE-TV Providence, RI (36) | WTSF Ashland, KY (61) |
| WMPN-TV Jackson, MS (29) | WPAN Fort Walton Beach, FL (53) | WSBK-TV Boston, MA (38) | WTSP-TV Tampa-St. Petersburg, FL (10) |
| †WMPY-TV Annapolis, MD (22) | †WPBA Atlanta, GA (30) | †WSBN-TV Norton, VA (47) | *WTTA St. Petersburg, FL (38) |
| WMPV-TV Mobile, AL (21) | WPBN-TV Traverse City, MI (7) | WSBT-TV South Bend, IN (22) | WTTG Columbus, OH (28) |
| WMSN-TV Madison, WI (47) | WPBF Tequesta, FL (25) | WSCO Suring, WI (14) | WTTG Washington, DC (5) |
| †WMSY-TV Marion, VA (52) | †WPBO-TV Portsmouth, OH (42) | WSCV Fort Lauderdale, FL (51) | WTTK Kokomo, IN (29) |
| †WMTJ Fajardo, PR (40) | †WPBT Miami, FL (2) | †WSEC Jacksonville, IL (14) | WTTO Birmingham, AL (21) |
| WMTT Cookeville, TN (28) | †WPBY-TV Huntington, WV (33) | WSEE-TV Erie, PA (35) | WTTV Bloomington, IN (4) |
| WMTU Jackson, TN (16) | WPCB-TV Greensburg, PA (40) | WSET-TV Lynchburg, VA (13) | †WTTW Chicago, IL (11) |
| WMTV Madison, WI (15) | WPDE-TV Florence, SC (15) | WSFA Montgomery, AL (12) | WTVB Tupelo, MS (9) |
| WMTW-TV Poland Spring, ME (8) | WPEC West Palm Beach, FL (12) | WSFJ Newark, OH (52) | WTVG Chattanooga, TN (9) |
| WMUR-TV Manchester, NH (9) | *WPGD Hendershottville, TN (50) | †WSFP-TV Fort Myers, FL (30) | WTVD Durham, NC (11) |
| †WMVS Milwaukee, WI (10) | WPGH-TV Pittsburgh, PA (53) | WSIL-TV Harrisburg, IL (3) | WTVF Reading, PA (51) |
| †WMVT Milwaukee, WI (36) | WPGX Panama City, FL (28) | †WSIU-TV Carbondale, IL (8) | WTVF Nashville, TN (5) |
| | WPHL-TV Philadelphia, PA (17) | †WSJK-TV Sneedville, TN (2) | WTVG Toledo, OH (13) |
| | WPIX New York, NY (11) | WSJN-TV San Juan, PR (24) | WTVH Syracuse, NY (5) |
| *WNAB Nashville, TN (58) | WPLG Miami, FL (10) | WSJU San Juan, PR (18) | †WTVI Charlotte, NC (42) |
| WNAC-TV Providence, RI (64) | *WPMC Jellicoe, TN (54) | WSJV Elkhart, IN (28) | WTVJ Miami, FL (4) |
| WNAL-TV Gadsden, AL (44) | WPMI Mobile, AL (15) | †WSKG Binghamton, NY (46) | WTVM Columbus, GA (9) |
| WNBC-TV New York, NY (4) | WPMT York, PA (43) | WSLS-TV Roanoke, VA (10) | WTVU Rockford, IL (17) |
| WNCT-TV Greenville, NC (9) | †WPNE Green Bay, WI (38) | WSMH Flint, MI (66) | †WTVV Peoria, IL (47) |
| WNDS Derry, NH (50) | *†WPPB-TV Boca Raton, FL (63) | WSMV Nashville, TN (4) | WTVQ-TV Lexington, KY (36) |
| WNDU-TV South Bend, IN (16) | WPRI-TV Providence, RI (12) | WSNR-TV Syracuse, NY (43) | WTVR-TV Richmond, VA (6) |
| †WNEO-TV Buffalo, NY (17) | WPRV-TV Fajardo, PR (13) | WSNS-TV Chicago, IL (44) | †WTVS Detroit, MI (56) |
| WNEG-TV Toccoa, GA (32) | WPSD-TV Paducah, KY (6) | WSOC-TV Charlotte, NC (9) | WTVT Tampa, FL (13) |
| †WNEH Greenwood, SC (38) | †WPSX-TV Clearfield, PA (3) | WSPA-TV Spartanburg, SC (7) | *WTVU New Haven, CT (59) |
| WNEM-TV Bay City, MI (5) | WPTA Fort Wayne, IN (21) | †WSRE Pensacola, FL (23) | WTVW Evansville, IN (7) |
| †WNEO Alliance, OH (45) | †WPTD Dayton, OH (16) | WSST-TV Cordele, GA (55) | WTVX Fort Pierce, FL (34) |
| WNEP-TV Scranton, PA (16) | WPTF-TV Durham, NC (28) | WSTE Ponce, PR (7) | WTVY Dothan, AL (4) |
| †WNEQ-TV Buffalo, NY (23) | *WPTJ Johnstown, PA (19) | WSTM-TV Syracuse, NY (3) | WTVZ Norfolk, VA (33) |
| †WNET New York, NY-Newark, NJ (13) | †WPTO Oxford, OH (14) | WSTR-TV Cincinnati, OH (64) | WTWC Tallahassee, FL (40) |
| WNFT Jacksonville, FL (47) | WPTT-TV Pittsburgh, PA (22) | WSUR-TV Ponce, PR (9) | WTWO Terre Haute, IN (2) |
| WNGM-TV Athens, GA (34) | WPTV Palm Beach, FL (5) | WSVI Christiansted, VI (8) | WTWS New London, CT (26) |
| *WNHT Concord, NH (21) | WPTY-TV Memphis, TN (24) | WSVN Miami, FL (7) | WTFX-TV Philadelphia, PA (29) |
| †WNIN Evansville, IN (9) | WPTZ Plattsburgh, NY (5) | *WSWB-TV Scranton, PA (64) | WTXL-TV Tallahassee, FL (27) |
| †WNITV South Bend, IN (34) | WPVI-TV Philadelphia, PA (6) | †WSWP-TV Grandview, WV (9) | WTXX Waterbury, CT (20) |
| †WNJB New Brunswick, NJ (58) | WPWR-TV Gary, IN (50) | WSWS Opelika, AL (66) | WTZA Kingston, NY (62) |
| †WNJM Montclair, NJ (50) | WPXI Pittsburgh, PA (11) | WSYM-TV Lansing, MI (47) | WTZH Meridian, MS (24) |
| †WNJS Camden, NJ (23) | WPXT Portland, ME (51) | WSYT Syracuse, NY (68) | |
| †WNJT Trenton, NJ (52) | | WSYX Columbus, OH (6) | |
| WNJU New York, NY-Newark, NJ (47) | WQAD-TV Moline, IL (8) | | WUAB Lorain, OH (43) |
| WNJX-TV Mayaguez, PR (22) | †WQEC Quincy, IL (27) | WTAE-TV Pittsburgh, PA (4) | †WUCM-TV University Center, MI (19) |
| †WNMU-TV Marquette, MI (13) | †WQED Pittsburgh, PA (13) | WTAJ-TV Altoona, PA (10) | †WUCX-TV Bad Axe, MI (35) |
| WNNE-TV Hartford, VT (31) | †WQEX Pittsburgh, PA (16) | WTAP-TV Parkersburg, WV (15) | †WUFT Gainesville, FL (5) |
| WNOL-TV New Orleans, LA (38) | *WQHB Sumter, SC (63) | WTAFTV Charleston, SC (24) | WUHF Rochester, NY (31) |
| †WNPB-TV Morgantown, WV (24) | WQHS Cleveland, OH (61) | *WTAU Albany, GA (19) | WUHQ-TV Battle Creek, MI (41) |
| †WNPE-TV Watertown, NY (16) | †WQLN Erie, PA (54) | WTBS Atlanta, GA (17) | †WUJA Caguas, PR (58) |
| | WQOW-TV Eau Claire, WI (18) | WTBY Poughkeepsie, NY (54) | †WUNC-TV Chapel Hill, NC (4) |
| | †WQPT-TV Moline, IL (24) | †WTCE Fort Pierce, FL (21) | †WUND-TV Columbia, NC (2) |
| | *WQQB Bowling Green, KY (40) | †WTCI Chattanooga, TN (45) | †WUNE-TV Linville, NC (17) |
| | WQRF-TV Rockford, IL (39) | WTCT Marion, IL (27) | †WUNF-TV Asheville, NC (33) |
| †WNPI-TV Norwood, NY (18) | †WQTO Ponce, PR (26) | WTEN Albany, NY (10) | †WUNG-TV Concord, NC (58) |
| *WNPL-TV Naples, FL (46) | WQTV Boston, MA (68) | WTGL-TV Wilmington, DE (61) | †WUNJ-TV Wilmington, NC (39) |
| WNRW Winston-Salem, NC (45) | | WTGL-TV Cocoa, FL (52) | †WUNL-TV Greenville, NC (25) |
| †WNST-TV Rock Hill, SC (30) | | WTGS Hardeeville, SC (28) | †WUNM-TV Winston-Salem, NC (26) |
| †WNTV Greenville, SC (29) | | WTHI-TV Terre Haute, IN (10) | †WUNN-TV Jacksonville, NC (19) |
| WNUV-TV Baltimore, MD (54) | | WTHR Indianapolis, IN (13) | †WUNP-TV Roanoke Rapids, NC (36) |
| †WNVC Fairfax, VA (56) | *WRAH-TV Sturgeon Bay, WI (42) | *WTHX-TV Manitowoc, WI (16) | WUPW Toledo, OH (36) |
| †WNVT Goldsboro, VA (53) | WRAL-TV Raleigh, NC (5) | WTIC-TV Hartford, CT (61) | WUSA Washington, DC (9) |
| WNWO-TV Toledo, OH (24) | WRBL Columbus, GA (3) | | †WUSF-TV Tampa, FL (16) |
| | *WRBW Orlando, FL (65) | | |

Call Letters

†WUSI-TV Olney, IL (16)
 WUTR Utica, NY (20)
 WUTV Buffalo, NY (29)
 *WUXA Portsmouth, OH (30)

WVAH-TV Charleston, WV (11)
 †WVAN-TV Savannah, GA (9)
 *WVBT Virginia Beach, VA (43)
 WVCY-TV Milwaukee, WI (30)
 WVEC-TV Hampton, VA (13)
 *WVEO Aguadilla, PR (44)
 †WVER Rutland, VT (28)
 WVEU Atlanta, GA (69)
 WVFT Roanoke, VA (27)
 WVGA Valdosta, GA (44)
 †WVIA-TV Scranton, PA (44)
 WVII-TV Bangor, ME (7)
 WVIR-TV Charlottesville, VA (29)
 WVIT New Britain, CT (30)
 †WVIZ-TV Cleveland, OH (25)
 WVLA Baton Rouge, LA (33)
 WVNY Burlington, VT (22)
 †WVPT Staunton, VA (51)
 WWSB-TV West Point, MS (27)
 †WVTA Windsor, VT (41)
 †WVTB St. Johnsbury, VT (20)
 WVTM-TV Birmingham, AL (13)

WVTV Milwaukee, WI (18)
 WVUE New Orleans, LA (8)
 †WVUT Vincennes, IN (22)
 WVVA Bluefield, WV (8)

WWAC-TV Atlantic City, NJ (53)
 WWAT Chillicothe, OH (53)
 WWAY Wilmington, NC (3)
 WWBT Richmond, VA (12)
 WWCP-TV Johnstown, PA (8)
 WWL-TV New Orleans, LA (4)
 *WWLA Lewiston, ME (35)
 WWLF-TV Hazleton, PA (58)
 WWLP Springfield, MA (22)
 WWMT Kalamazoo, MI (3)
 WWHY-TV Carthage, Watertown, NY (7)
 WWOR-TV New York, NY- Secaucus, NJ (9)
 †WWPB Hagerstown, MD (31)
 *WWOR Morganton, NC (23)
 *WWRD Wilson, NC (30)
 *WWRS Mayville, WI (52)
 WWSB Sarasota, FL (40)
 WWTI Watertown, NY (50)
 WWTD-TV La Salle, IL (35)

WWTV Cadillac, MI (9)
 WWUP-TV Sault Ste. Marie, MI (10)

†WXEL-TV West Palm Beach, FL (42)
 †WXGA-TV Waycross, GA (8)
 WXGZ-TV Appleton, WI (32)
 WXIA-TV Atlanta, GA (11)
 WXII Winston-Salem, NC (12)
 WXIN Indianapolis, IN (59)
 WXIX-TV Cincinnati, OH- Newport, KY (19)
 *WXJP Memphis, TN (50)
 WXKR Grand Rapids, MI (17)
 WXMT Nashville, TN (30)
 WXOH Detroit, MI (20)
 WXOW-TV La Crosse, WI (19)
 WKTU Paterson, NJ (41)
 WKTU Columbus, GA (34)
 WKTV Greenville, MS (15)
 WOKA-TV Albany, NY (23)
 †WOOB-TV Rochester, NY (21)
 WOPV-TV Gulfport, MS (25)
 WKYZ-TV Detroit, MI (7)

†WYBE Philadelphia, PA (35)
 †WYCC Chicago, IL (20)

*WYDC Corning, NY (48)
 *WYDD Blacksburg, VA (65)
 *WYDH Key West, FL (22)
 *WYDI Fond du Lac, WI (68)
 *WYDL Union City, TN (41)
 *WYDM Batavia, NY (51)
 *WYDN Worcester, MA (48)
 *WYDO Greenville, NC (14)
 *WYDP Orange Park, FL (29)
 WYED Goldsboro, NC (17)
 †WYES-TV New Orleans, LA (12)
 WYFF-TV Greenville, SC (4)
 WYHS Hollywood, FL (99)
 *WYHM Ocala, FL (29)
 †WYHN Gary, IN (56)
 WYMTV Hazard, KY (57)
 WYOU Scranton, PA (22)
 WYTV Youngstown, OH (32)
 *WYVH Martinsburg, WV (51)
 WYZZ-TV Bloomington, IL (42)

WZDK Huntsville, AL (54)
 WZTV Nashville, TN (17)
 WZTX Ashland, VA (69)
 WZZM-TV Grand Rapids, MI (12)
 *WZZW Roanoke, VA (68)

Canadian TV Station Call Letters

Dagger (†) indicates non-commercial/educational station.

| | | | |
|---|---|--|--|
| CBAFT.....Moncton, N.B. (11) | CBMUT.....Harrington-Harbour, Que. (13) | CFCN-TV-4.....Burmis, Alta. (5) | CICC-TV.....Yorkton, Sask. (10) |
| CBCA-TV-1.....Etzikom, Alta. (12) | CBMVT.....Old Fort Bay, Que. (13) | CFCN-TV-5.....Lethbridge, Alta. (13) | CICC-TV-1.....Wynyard, Sask. (12) |
| CBCD-TV-4.....Taylor, B.C. (12) | CBMYT.....Iles de la Madeleine, Que. (7) | CFCN-TV-8.....Medicine Hat, Alta. (8) | CICC-TV-2.....Norquay, Sask. (7) |
| CBCH-TV-1.....Houston, B.C. (2) | CBNAT.....Grand Falls, Nfld. (11) | CFEM-TV.....Rouyn-Noranda, Que. (13) | CICI-TV.....Sudbury, Ont. (5) |
| CBCH-TV-2.....Burns Lake, B.C. (4) | CBNBT.....Nain, Nfld. (9) | CFER-TV.....Rimouski, Que. (11) | CICI-TV-1.....Elliot Lake, Ont. (3) |
| CBCH-TV-3.....Smithers, B.C. (5) | CBNLT.....Labrador City/Wabush, Nfld. (13) | CFER-TV-2.....Sept. Iles-Gaspé Nord, Que. (5) | †CICO-TV-9.....Thunder Bay, Ont. (9) |
| CBCO-TV-1.....Moosonee, Ont. (9) | CBNT.....St. John's, Nfld. (8) | CFFB-TV.....Frobisher Bay, N.W.T. (8) | †CICO-TV-18.....London, Ont. (18) |
| CBCP-TV-1.....Shaunavon, Sask. (7) | CBOFT.....Ottawa, Ont.-Hull, Que. (9) | CFGS-TV.....Hull, Que.-Ottawa, Ont. (49) | †CICO-TV-19.....Sudbury, Ont. (19) |
| CBCP-TV-3.....Ponteix, Sask. (3) | CBOT.....Ottawa, Ont. (4) | CFJC-TV.....Kamloops, B.C. (4) | †CICO-TV-20.....Sault Ste. Marie, Ont. (20) |
| CBCQ-TV-1.....Temagami, Ont. (15) | CBRT.....Calgary, Alta. (16) | CFJP-TV.....Montreal, Que. (35) | †CICO-TV-24.....Ottawa, Ont. (24) |
| CBCT.....Charlottetown, P.E.I. (13) | CBRT.....Calgary, Alta. (9) | CFKM-TV.....Trois Rivières, Que. (16) | †CICO-TV-28.....Kitchener-Paris, Ont. (28) |
| CBDBT.....Faro, Y.T. (8) | CBSAT.....Clermont, Que. (21) | CFLA-TV.....Goose Bay, Nfld. (8) | †CICO-TV-32.....Windsor, Ont. (32) |
| CBDDT.....Dawson, Y.T. (7) | CBSET.....Sept Iles, Que. (3) | CFMT-TV.....Toronto, Ont. (47) | †CICO-TV-59.....Chatham, Ont. (59) |
| CBEAT.....Fort Smith, N.W.T. (8) | CBSNT.....Notre Dames des Monts, Que. (40) | CFRN-TV-1.....Oyen, Alta. (2) | CIET-TV.....Estevan-Weyburn, Sask. (7) |
| CBECT.....Rankin Inlet, N.W.T. (9) | CBSPT.....St. Pamphile, Que. (3) | CFPL-TV.....London, Ont. (10) | CIFG-TV.....Prince George, B.C. (12) |
| CBEDT.....Norman Wells, N.W.T. (9) | CBST.....Sept Iles, Que. (13) | CFQC-TV.....Saskatoon, Sask. (8) | CIHF-TV.....Halifax, N.S. (20) |
| CBEFT.....Windsor, Ont. (54) | CBUAT.....Trail, B.C. (11) | CFQC-TV-1.....Stranraer, Sask. (3) | CIHF-TV-1.....Fredericton, N.B. (11) |
| CBEGT.....Fort Simpson, N.W.T. (9) | CBUBT-7.....Cranbrook, B.C. (10) | CFQC-TV-2.....North Battleford, Sask. (6) | CIHF-TV-2.....Saint John, N.B. (12) |
| CBEHT.....Eskimo Point, N.W.T. (9) | CBUCT.....Nelson, B.C. (9) | CFRE-TV.....Regina, Sask. (11) | CIHF-TV-3.....Moncton, N.B. (27) |
| CBEIT.....Baker Lake, N.W.T. (9) | CBUDT.....Bonnington Falls, B.C. (13) | CFRN-TV.....Edmonton, Alta. (3) | CIHF-TV-5.....Wolfville, N.S. (20) |
| CBEJT.....Cape Dorset, N.W.T. (9) | CBUET.....Cassiar, B.C. (7) | CFRN-TV-1.....Grande Prairie, Alta. (13) | CIIT-TV.....Toronto-Paris, Ont. (6) |
| CBEKT.....Pangnirtung, N.W.T. (9) | CBUFT.....Vancouver, B.C. (26) | CFRN-TV-2.....Peace River, Alta. (3) | CIIT-TV-2.....Bancroft, Ont. (2) |
| CBELT.....Pond Inlet, N.W.T. (9) | CBUGT.....Fort Nelson, B.C. (8) | CFRN-TV-3.....Whitecourt, Alta. (12) | CIIT-TV-4.....Owen Sound, Ont. (4) |
| CBEMT.....Resolute Bay, N.W.T. (9) | CBUHT.....Tabor Mountain, B.C. (78) | CFRN-TV-4.....Ashmont, Alta. (12) | CIIT-TV-22.....Uxbridge/Toronto, Ont. (41) |
| CBENT.....Cambridge Bay, N.W.T. (9) | CBUIT-1.....Bella Bella, B.C. (13) | CFRN-TV-5.....Lac La Biche, Alta. (2) | CIIT-TV-29.....Sarnia, Ont. (29) |
| CBEOT.....Coppermine, N.W.T. (9) | CBUIT-3.....Bella Coola, B.C. (13) | CFRN-TV-6.....Red Deer, Alta. (8) | CIMT-TV.....Riviere du Loup, Que. (9) |
| CBEPT.....Tuktoyaktuk, N.W.T. (8) | CBUIT-4.....Hagensborg, B.C. (11) | CFRN-TV-7.....Lougheed, Alta. (7) | CIPA-TV.....Prince Albert, Sask. (9) |
| CBEQT.....Spence Bay, N.W.T. (9) | CBUT.....Vancouver, B.C. (2) | CFRS-TV.....Jonquiere, Que. (4) | CIPA-TV-1.....Alticane, Sask. (10) |
| CBET.....Windsor, Ont. (9) | CBVD-TV.....Malarctic, Que. (5) | CFSK-TV.....Saskatoon, Sask. (4) | CISA-TV.....Lethbridge, Alta. (7) |
| CBFAT.....Chibougamau, Que. (5) | CBVT.....Quebec City, Que. (11) | CFSS-TV.....Estevan-Weyburn-Regina, Sask. (3) | CISR-TV.....Santa Rosa, B.C. (83) |
| CBFGT.....Fort George, Que. (9) | CBWAT.....Kenora, Ont. (8) | CFTF-TV.....Riviere du Loup, Que. (29) | CITL-TV.....Lloydminster, Alta. (4) |
| CBFHT.....Fort Rupert, Que. (9) | CBWBW.....Flin Flon, Man. (10) | CFTK-TV.....Terrace, B.C. (3) | CITM-TV.....100 Mile House, B.C. (3) |
| CBFMT.....Mistassini Post, Que. (9) | CBWBT.....Fort Frances, Ont. (5) | CFTM-TV.....Montreal, Que. (10) | CITO-TV.....Timmins, Ont. (3) |
| CBFNT-1.....Port au Port, Nfld. (13) | CBWCT.....Dryden, Ont. (9) | CFTO-TV.....Toronto, Ont. (9) | CITO-TV-3.....Kearns, Ont. (11) |
| CBFRT.....Radisson, Que. (8) | CBWDT.....Red Lake, Ont. (10) | CFTU-TV.....Montreal, Que. (29) | CITO-TV-4.....Kapusksing, Ont. (10) |
| CBFST-2.....Temiscaming, Que. (12) | CBWFT.....Winnipeg, Man. (3) | CFVS-TV.....Val d'Or, Que. (20) | CITV-TV.....Edmonton, Alta. (13) |
| CBFT.....Montreal, Que. (2) | CBWGT.....Fisher Branch, Man. (10) | CFWH-TV.....Whitehorse, Y.T. (6) | CITY-TV.....Toronto, Ont. (57) |
| CBFWT.....Nouveau Comptoir, Que. (9) | CBWHT.....Grand Rapids, Man. (8) | CFYK-TV.....Yellowknife, N.W.T. (8) | CITY-TV-2.....Woodstock, Ont. (31) |
| CBGAT.....Matane, Que. (6) | CBWIT.....The Pas, Man. (7) | CHAK-TV.....Inuvik, N.W.T. (6) | †CIVA.....Abitibi-Temiscamingue, Que. (12) |
| CBHFT.....Halifax, N.S. (13) | CBWJT.....Ear Falls, Ont. (13) | CHAN-TV.....Vancouver, B.C. (8) | †CIVA-TV-1.....Abitibi-Temiscamingue, Que. (8) |
| CBHT.....Halifax, N.S. (3) | CBWKT.....Snow Lake, Man. (8) | CHAN-TV-4.....Courtenay, B.C. (11) | †CIVB-TV.....Rimouski, Que. (22) |
| CBIMT.....Iles de la Madeleine, Que. (12) | CBWLT.....Gillam, Man. (8) | CHATV.....Medicine Hat, Alta. (6) | †CIVC-TV.....Trois-Rivières, Que. (45) |
| CBIT.....Sydney, N.S. (5) | CBWMT.....Wabowden, Man. (10) | CHATV-1.....Pivot, Alta. (4) | †CIVF-TV.....Baie-Trinite, Que. (12) |
| CBJET.....Chicoutimi, Que. (58) | CBWNT.....Cross Lake, Man. (12) | CHAU-TV.....Carleton, Que. (5) | †CIVK-TV.....Carleton, Que. (15) |
| CBKAT.....Uranium City, Sask. (8) | CBWOT.....Norway House, Man. (9) | CHAU-TV-1.....Ste. Marguerite-Marie, Que. (3) | †CIVG-TV.....Sept-Iles, Que. (9) |
| CBKBT.....Beauval, Sask. (7) | CBWPT.....Nelson House, Man. (11) | CHAU-TV-5.....Perce, Que. (13) | †CIVK-TV-1.....Anse-aux-Gascons, Que. (32) |
| CBKCT.....Ile a la Crosse, Sask. (9) | CBWQT.....Leaf Rapids, Man. (13) | CHBC-TV.....Kelowna, B.C. (2) | †CIVM-TV.....Montreal, Que. (17) |
| CBKDT.....Buffalo Narrows, Sask. (11) | CBWRT.....Lynn Lake, Man. (8) | CHBX-TV.....Sault Ste. Marie, Ont. (2) | †CIVO-TV.....Hull, Que. (30) |
| CBKFT.....Regina, Sask. (13) | CBWT.....Winnipeg, Man. (6) | CHCH-TV.....Hamilton, Ont. (11) | †CIVQ-TV.....Quebec, Que. (15) |
| CBKGT.....Gravelbourg, Sask. (45) | CBWTT.....Thompson, Man. (7) | CHCN-TV.....New Castle, N.B. (6) | †CIVS-TV.....Estrie, Que. (24) |
| CBKHT.....Keno Hill, Y.T. (13) | CBWUT.....McCusker Lake, Man. (10) | CHCR-TV.....Bathurst-Campbellton-Dalhousie, N.B. (4) | †CIVV-TV.....Saguenay-Lac St. Jean, Que. (8) |
| CBKST.....Saskatoon, Sask. (11) | CBWWT.....Waasagomach, Man. (9) | CHEK-TV.....Victoria, B.C. (6) | CJAP-TV.....Argentia, Nfld. (3) |
| CBKT.....Regina, Sask. (9) | CBWXT.....Gods Lake Narrows, Man. (13) | CHEM-TV.....Trois Rivières, Que. (8) | CJBN-TV.....Kenora, Ont. (13) |
| CBLAT.....Geraldton, Ont. (13) | CBWYT.....Mafeking, Man. (2) | CHEX-TV.....Peterborough, Ont. (12) | CJBR-TV.....Rimouski, Que. (2) |
| CBLCT.....Fraserdale, Ont. (7) | CBXAT.....Grande Prairie, Alta. (10) | CHFC-TV.....Churchill, Man. (8) | CJCB-TV.....Sydney, N.S. (4) |
| CBLDT.....Fort Albany, Ont. (8) | CBXBT.....Fort Chipewyan, Alta. (10) | CHFD-TV.....Thunder Bay, Ont. (4) | CJCB-TV-1.....Inverness, N.S. (6) |
| CBLET.....Attawapiskat, Ont. (12) | CBXFT.....Edmonton, Alta. (11) | CHKL-TV.....Kelowna, B.C. (5) | CJCB-TV-2.....Antigonish, N.S. (9) |
| CBLFT.....Toronto, Ont. (25) | CBXT.....Edmonton, Alta. (5) | CHKL-TV-1.....Penticton, B.C. (10) | CJCH-TV.....Halifax, N.S. (5) |
| CBLHT.....Fort Hope, Ont. (12) | CBYAT.....Deer Lake, Nfld. (12) | CHKM-TV.....Kamloops, B.C. (6) | CJCH-TV-1.....Canning, N.S. (10) |
| CBLT.....Toronto, Ont. (5) | CBYT.....Corner Brook, Nfld. (5) | CHLFTV.....Sherbrooke, Que. (7) | CJCH-TV-6.....West Caledonia, N.S. (6) |
| CBMCT.....Chibougamau, Que. (4) | CFAP-TV.....Quebec City, Ont. (2) | CHMI-TV.....Portage la Prairie, Man. (13) | CJCH-TV-7.....Yarmouth, N.S. (40) |
| CBMDT.....Mistassini Post, Que. (12) | CFCF-TV.....Montreal, Que. (12) | CHMT-TV.....Moncton, N.B. (7) | CJCN-TV.....Grand Falls, Nfld. (4) |
| CBMET.....La Tuque, Que. (9) | CFCL-TV.....Timmins, Ont. (6) | CHNB-TV.....North Bay, Ont. (4) | CJDC-TV.....Dawson Creek, B.C. (5) |
| CBMGT.....Fort George, Que. (12) | CFCL-TV-2.....Kearns, Ont. (2) | CHOTTV.....Hull-Ottawa, Que. (40) | CJDG-TV.....Lithium Mines, Que. (7) |
| CBMHT.....Fort Rupert, Que. (12) | CFCL-TV-3.....Kapusksing, Ont. (2) | CHRO-TV.....Ottawa-Pembroke, Ont. (5) | CJFB-TV.....Swift Current, Sask. (5) |
| CBMIT.....Baie Comeau, Que. (28) | CFCL-TV-6.....Chapleau, Ont. (7) | CHSJ-TV.....Saint John, N.B. (12) | CJFB-TV-3.....Riverhurst, Sask. (10) |
| CBMLT.....La Tabatière, Que. (10) | CFCM-TV.....Quebec City, Que. (4) | CHSS-TV-1.....Bon Accord, N.B. (6) | CJIC-TV.....Sault Ste. Marie, Ont. (5) |
| CBMMT.....Murdochville, Que. (21) | CFCN-TV.....Calgary, Alta. (4) | CHSS-TV.....Wynyard, Sask. (6) | CJMA-TV.....Marystown, Nfld. (11) |
| CBMNT.....Nouveau Comptoir, Que. (12) | CFCN-TV-1.....Hand Hills-Drumheller, Alta. (12) | †CICA-TV.....Toronto, Ont. (19) | CJOH-TV.....Ottawa, Ont. (13) |
| CBMRT.....Fermont, Que. (9) | | †CICA-TV-13.....Huntsville, Ont. (13) | CJOH-TV-6.....Deseronto, Ont. (6) |
| CBMST.....Blanc Sablon, Que. (5) | | | CJOH-TV-8.....Cornwall, Ont. (8) |
| CBMT.....Montreal, Que. (6) | | | |
| CBMT-1.....Trois Rivières, Que. (28) | | | |

| | | | |
|--|--|---|--|
| CJON-TV.....St. John's, Nfld. (6) | CKCK-TV-1.....Colgate, Sask. (12) | CKMI-TV.....Quebec City, Que. (5) | CKSA-TV.....Lloydminster, Alta. (2) |
| CJOX-TV-1.....Grand Bank, Nfld. (2) | CKCK-TV-2.....Willow Bunch, Sask. (6) | CKMJ-TV.....Marquis (Moose Jaw), Sask. (7) | CKSA-TV-2.....Bonnyville, Alta. (9) |
| CJPM-TV.....Chicoutimi, Que. (6) | CKCO-TV.....Kitchener, Ont. (13) | CKNC-TV.....Sudbury, Ont. (9) | CKSH-TV.....Sherbrooke, Que. (9) |
| CJPM-TV-1.....Chambord- Roberval, Que. (10) | CKCO-TV-2.....Georgian Bay (Wiarton), Ont. (2) | CKNC-TV-1.....Elliot Lake, Ont. (7) | CKTM-TV.....Trois Rivières, Que. (13) |
| CJRR-TV.....Red Rocks, Nfld. (11) | CKCO-TV-3.....Sarnia-Chatham, Ont. (42) | CKND-TV.....Winnipeg, Man. (9) | CKTN-TV.....Trail-Rossland, B.C. (8) |
| CJSV-TV.....Stephenville, Nfld. (4) | CKCO-TV-4.....The Muskokas, Ont. (11) | CKNX-TV.....Wingham, Ont. (8) | CKVR-TV.....Barrie, Ont. (3) |
| CJWB-TV.....Bonavista, Nfld. (10) | CKCW-TV.....Moncton, N.B. (2) | CKNY-TV.....North Bay, Ont. (10) | CKVU-TV.....Vancouver, B.C. (10) |
| CJWN-TV.....Corner Brook, Nfld. (10) | CKCW-TV-1.....Charlottetown, P.E.I. (8) | CKOS-TV.....Yorkton, Sask. (5) | CKWS-TV.....Kingston, Ont. (11) |
| CKAM-TV.....Upsalquitch Lake, N.B. (12) | CKKM-TV.....Oliver-Osoyoos, B.C. (3) | CKPG-TV.....Prince George, B.C. (2) | CKX-TV.....Brandon, Man. (5) |
| CKBI-TV.....Prince Albert, Sask. (5) | CKKX-TV.....Calgary, Alta. (2) | CKPR-TV.....Thunder Bay, Ont. (2) | CKX-TV-1.....Birtle-Foxwarren, Man. (11) |
| CKBI-TV-1.....Nipawin, Sask. (10) | CKLFTV.....Saint John/ Fredericton, N.B. (9) | CKRD-TV.....Red Deer, Alta. (6) | CKY-TV.....Winnipeg, Man. (7) |
| CKBI-TV-2.....North Battleford, Sask. (7) | CKLFTV-1.....Florenceville/ Woodstock, N.B. (3) | CKRD-TV-1.....Coronation, Alta. (10) | CKYA-TV.....Fisher Branch, Man. (8) |
| CKBI-TV-3.....Greenwater Lake, Sask. (4) | CKMC-TV.....Swift Current, Sask. (12) | CKRN-TV.....Rouyn-Noranda, Que. (4) | CKYB-TV.....Brandon, Man. (4) |
| CKBQ-TV.....Star City-Melfort, Sask. (2) | CKMC-TV-1.....Golden Prairie, Sask. (10) | CKRN-TV-3.....Bearn/Fabre, Que. (3) | CKYD-TV.....Dauphin, Man. (12) |
| CKCD-TV.....Campbellton, N.B. (7) | | CKRS-TV.....Jonquiere, Que. (12) | CKYF-TV.....Flin Flon, Man. (13) |
| CKCK-TV.....Regina, Sask. (2) | | CKRT-TV.....Riviere-du-Loup, Que. (7) | CKYP-TV.....The Pas, Man. (12) |
| | | | CKYTFV.....Thompson, Man. (9) |

U.S. Television Station Directory

Data updated to October 1, 1990 unless otherwise indicated. Includes rate digests, personnel, facilities and other data.

THE STATE PAGES

Following the map of each state, rankings for Arbitron's Area of Dominant Influence Television Households are shown. ADI Household Rank is established by Arbitron.

The state pages also carry additional cross-reference material, indicating for example, those stations within the state that are identified with two or more cities, or with cities in another state.

Operating commercial and educational TV stations by VHF and UHF are shown for each state in a status report as of October 1, 1990.

| | |
|----------------------------|-------|
| Alabama | A-17 |
| Alaska | A-47 |
| Arizona | A-59 |
| Arkansas | A-80 |
| California | A-96 |
| Colorado | A-179 |
| Connecticut | A-203 |
| Delaware | A-212 |
| District of Columbia | A-214 |
| Florida | A-223 |
| Georgia | A-282 |
| Hawaii | A-338 |
| Idaho | A-358 |
| Illinois | A-370 |
| Indiana | A-425 |
| Iowa | A-455 |
| Kansas | A-476 |
| Kentucky | A-495 |
| Louisiana | A-514 |
| Maine | A-540 |
| Maryland | A-549 |
| Massachusetts | A-561 |
| Michigan | A-578 |
| Minnesota | A-618 |
| Mississippi | A-639 |
| Missouri | A-657 |
| Montana | A-692 |
| Nebraska | A-708 |
| Nevada | A-726 |
| New Hampshire | A-739 |
| New Jersey | A-743 |
| New Mexico | A-747 |
| New York | A-766 |
| North Carolina | A-819 |

| | |
|--|--------|
| North Dakota | A-851 |
| Ohio | A-870 |
| Oklahoma | A-911 |
| Oregon | A-932 |
| Pennsylvania | A-951 |
| Rhode Island | A-988 |
| South Carolina | A-993 |
| South Dakota | A-1012 |
| Tennessee | A-1028 |
| Texas | A-1060 |
| Utah | A-1156 |
| Vermont | A-1165 |
| Virginia | A-1169 |
| Washington | A-1192 |
| West Virginia | A-1214 |
| Wisconsin | A-1227 |
| Wyoming | A-1256 |
| Guam | A-1266 |
| Puerto Rico | A-1268 |
| Virgin Islands | A-1287 |
| U.S. Public/Educational Stations | A-1289 |

STATION PAGES

Rates, personnel and other data supplied by stations.

RATE DIGESTS: These show only the highest one-time rate charged by the stations. Most rates are also subject to frequency discounts, separate or additional rehearsal charges, talent & production charges, etc. For further details and for contract conditions, specifications etc., consult complete station rate cards, available from the stations on request.

STATION POWER: Powers shown are Effective Radiated Powers (ERP).

NETWORK SYMBOLS (registered trademarks)



The individual station tables show a complete listing of all counties grouped by Arbitron Net Weekly Circulation levels, with Total Households, and TV Penetration in each county individually. For definitions of Arbitron terms, see Introduction.

SATELLITE STATIONS are shown with a dash line pattern in relation to the parent listing. In the satellite listing the parent station is shown with a dash line pattern.