

B R E A K E R B R E A K E R !

Reba

S.T.R.A.N.G.E.

JUSTIN MOORE

SMALL TOWN USA

### INSIDE

Page One: A User's Guide To Being A Better Interviewer

●  
Questions Like 'Boxers Or Briefs?' Officially Deemed Lame

●  
Haley-Rockhill-Redmond: Like Three Amigos, Minus Funny Outfits

●  
Radio Listening: It's Not Just For Breakfast Anymore

●  
Page Five: Atkins Takes The Fifth With 'It's America'

*In the Caribbean there are oysters that can climb trees.*

Real news needed!  
rcurtis@radioandrecords.com  
323-954-3444

## When Preparation Meets Opportunity

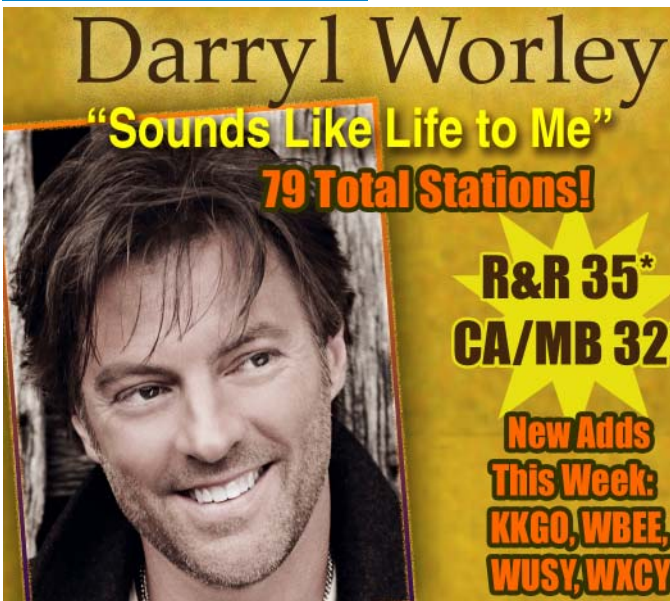
Two weeks ago, while in Las Vegas for the activities surrounding the ACM Awards, which included the Westwood One radio remotes, I ran into one of the artists who made the rounds that afternoon. Jokingly, I asked her, "What's the worst question you were asked today?" She answered that it wasn't really a question, but more of a statement: "So, you have red hair." A short awkward silence followed, she said, when the artist wasn't sure if an actual question would follow.

### A Big Tuneout?

One of the fundamental things which sets country apart from other genres is the access granted to radio by artists. A cornerstone of that relationship-building process has been the station visit with a trip to the control room or, just like in Vegas, a broadcast event where artists visit dozens of stations in the course of several hours. Recently, however, as Arbitron has rolled out its PPM methodology, there is data indicating that on-air interviews can sometimes have a drastic effect on listening levels and not in a good way. This has led to some caution as it relates to artist interviews on the air, particularly when it comes to new and unfamiliar acts, as programmers continue to master the fundamentals of creating more listening appointments while simultaneously reducing any possible reason for tuneouts.

### A Simple Guide To Conversing

In this week's issue (April 24) of R&R, I spoke to industry pros in both radio and labels, and most agree: There's plenty of room for improvement when it comes to the current state of interviewing skills for radio's on-air talent. This week's column will offer some suggestions from consultants, programmers and label pros, As John Paul, PD for CBS Radio's KUPL/Portland, Ore., told R&R, "I don't



**Darryl Worley**  
"Sounds Like Life to Me"  
**79 Total Stations!**

**R&R 35\***  
**CA/MB 32\***

**New Adds This Week:**  
**KKGO, WBEE, WUSY, WXCX**



**RICHIE McDONALD**  
★ **SIX-FOOT TEDDYBEAR** ★  
**MOST ADDED!**

**First Week Adds:**  
WPOC, KBWF,  
KWNR, KNTY,  
KSKS, WWQM,  
KUBL, WYNK,  
KSOP, WMAD,  
KIXZ, WGTY

**click here to listen**

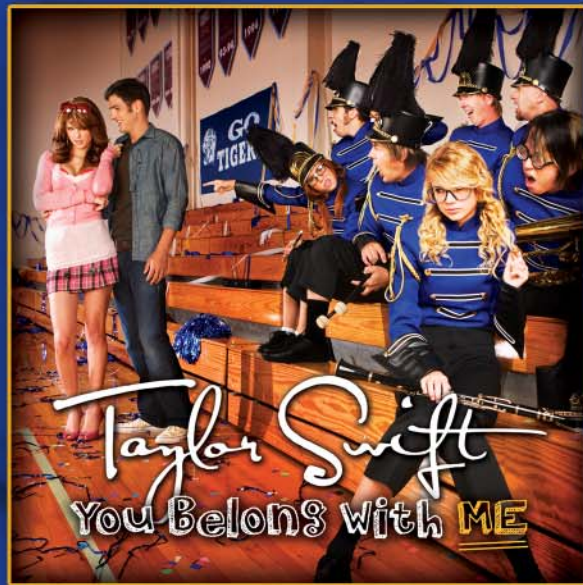
# Taylor Swift

## You Belong With Me

32\* HOT SHOT DEBUT/GREATEST GAINER RR/BB

41\* DEBUT USA TODAY/CA/MB

# #1 MOST ADDED!!!



Taylor Kicks Off Her FEARLESS 2009 North American Tour this Thursday in Evansville!!!

'Congrats Taylor on more than  
7 million albums sold!!!'



think it matters what size market you're in, what station you're at or how long you've been doing this ... most people just don't know how to interview guests. It's frustrating." Lack of preparation, poor listening skills and the belief by many jocks that simply relying on their sparkling personality and charm — in other words, winging it — are the most common offenses cited when poor interviewing skills are mentioned.

### It Takes Two

Jaye Albright of Albright & O'Malley suggests that anything much longer than two and a half minutes is a problem: "Anything longer better be really great, if the artist is big enough." But Albright puts much of the responsibility on the artist's shoulders too, and warns, "Artists who do these things need to be aware that they can't be boring." A universal piece of advice is to make sure there's a great story to be told. And just as the on-air talent who is doing the interview needs to do sufficient prep work, so too does the artist. As Albright points out, "If you were an artist and had a chance to perform in front of 10-15,000 people, would you just show up and ad-lib?" In many cases, when an artist jumps into the studio, the listening audience at any given time could be as many — and often — many more people than would be at a show.

### Agree On The Agenda

Talent coach Steve Reynolds of the Reynolds Group says there are agendas in play when you do an interview. The guest is coming on to sell something — a book, an album, a concert, etc. "Ours is to create fun and entertainment," says Reynolds. He's heard what Arbitron has said about interviews and is aware of the longtime collaborative process with country radio and artists. Reynolds suggests sticking to artists who are known and to do something with them "that takes prep, and you can't wing it. It can't be all about the agenda of the person you are interviewing." You can get to that eventually, says Reynolds, but the bigger

## This Week At Callout America<sup>®</sup>

"She's Country" from Jason Aldean moves to the No. 1 slot, up from No. 2, and ranks as the No. 2 passion song. Men are at No. 1, females are at No. 5.

Carrie Underwood spends her third consecutive week as the No. 1 passion song with "I Told You So." Females are at No. 1 passion, and, to underscore the female strength, this song is the No. 1 passion song in all demos.

Rodney Atkins' "It's America" continues to develop ranking at No. 6 overall, up from No. 8 over the last two weeks. Men are the driving force at No. 3, men 25-44 are at No. 4, and core 35-44 females are at No. 8.

The Eli Young Band is outperforming the radio spin chart with "Always the Love Songs" at No. 7 overall. Core 35-44 listeners are at No. 5, and younger 25-34s are at No. 3. Men are at No. 2, and females 25-44 are at No. 12.

Jason Michael Carroll sees strong gains with "Where I'm From" at No. 9, up from No. 15. Females are the strength with core 35-44s at No. 9. Men see powerful growth with younger 18-24s at No. 9, up from No. 16; 25-34s are at No. 4.

Toby Keith is showing solid appeal with "Lost You Anyway" at No. 13. Core 35-44s are at No. 16, adults 35-54 are at No. 10. Females are the strength at No. 11, females 18-34 are at No. 16, and 35-54s are at No. 10.

"It Happens" from Sugarland is at No. 14 overall and No. 5 passion. The numbers are well-balanced with younger 25-34 females at No. 5 and No. 4 passion; core 35-44 males are at No. 5 both positive and passion.

— **John Hart**, Bullseye Marketing Research  
Email: [hart@bullsi.com](mailto:hart@bullsi.com)

goal is "to entertain the broader audience of people." As a morning guy once said to Reynolds, "Do the interview for the person in your audience least interested in the person you are talking to." That makes sense, believes Reynolds: "With our content choices inside the interview, make them relevant and entertaining to the person who

© 2009 The Nielsen Company. All Rights Reserved No part of this material may be reproduced in any form or incorporated in any information retrieval system without written permission of the Publisher.



"Megan Mullins is one of the most multi-talented female artists I have seen in a long time!" Joel Burke / KYGO

The debut single from  
**megan mullins** and Stoney Creek Records  
**LONG PAST GONE**

On your desk now... Impacting May 11th

Stoney Creek Records

would ordinarily shrug their shoulders.” After you’ve made the decision to bring an artist into the control room, Reynolds asks, “What work will you do to make them relevant and entertaining to 100% of the audience?” If personalities just talk to the artists fan base about whatever the artist is coming on for, Reynolds says, “To me, that limits its appeal and accessibility to the other sectors of the audience who you have a responsibility to entertain.” The column in Friday’s print version of **R&R** contains 10 quick ideas on how to make an artist’s on-air conversation better. In the interest of helping you make an appointment to read it, I’m going to leave you with just five of those tips today: 1. Always prepare in advance, no matter how famous or familiar the artist is.

2. Structure questions so guests answer by telling a story. 3. Ask something topical, something everyone is talking about. 4. Overall, shorter segments are better, spread out over the course of an hour. 5. Whenever possible, prerecord interviews. I hope you’re able to take some time to read this week’s **R&R**; I also hope you’ll find this information helpful.

**Much Better Than Red-Rock-Haley**

Or, say, Haley Hillmond. Yes, Edgehill certainly rolls right off the tongue, so already you can say that David Haley, Rick Rockhill and Joe Redmond are doing it right. The three promo vets who, between them, have a gazillion years of experience and a long list of successes in record promotion have come together to create a company called Edgehill Music Media, described as nontraditional, but one that will combine traditional airplay promotion and the new social media outlets. Haley spent 17 years with MCA Nashville and worked with George Strait, Reba and many other artists; Rockhill most recently worked with Curb Records, but has also worked promotion for Dreamworks and Capricorn Records; Redmond was part of the Warner Bros. team and recently exited Robbins Nashville as it started

**COUNTRY DATES**

- April 25, 2009:** Country Music Marathon and Half-Marathon; Nashville.
- April 25-26, 2009:** Stagecoach Music Festival; Indio, Calif.
- May 21, 2009:** CMA Songwriter Series; New York.
- June 6, 2009:** George Strait, Reba McEntire, Blake Shelton & Julianne Hough in concert; Dallas Cowboys Stadium, Dallas.
- June 11-14, 2009:** CMA Music Festival; Nashville.
- June 17, 2009:** CMA Music Awards; Nashville.

reorganizing. Here is the contact info for the Edgehill team: David Haley, 615-973-0132 or [david@edgehillmusic.com](mailto:david@edgehillmusic.com); Joe Redmond, 615-414-5488 or [joe@edgehillmusic.com](mailto:joe@edgehillmusic.com); Rick Rockhill, 615-351-3679 or [rick@edgehillmusic.com](mailto:rick@edgehillmusic.com).

**The All-New WXTU**

No, that’s not the new on-air slogan, but Beasley’s WXTU/Philadelphia sure has a different look to it these days, eh? Leo Baldwin is settling in as the PD, handling double-duty with rhythmic sister WRDW (Wired 96.5) and getting his team together. One member will be very familiar to him: A man known simply as Kannon, who already handles APD chores for Wired, but suddenly finds himself “gone country,” as it were, as he adds APD stripes for ‘XTU. Next, WXTU afternoon jock Guy Razz will take on MD duties, while ‘XTU morning show producer Greg Laventure — who also goes by the name Millhouse — will be the programming coordinator of both Wired and WXTU, assisting in programming, production and promotions.

**Now This From The Research Department**

For those of you slackers who not only couldn’t make CRS this year, didn’t read diligently the

© 2009 The Nielsen Company. All Rights Reserved No part of this material may be reproduced in any form or incorporated in any information retrieval system without written permission of the Publisher.

**BREAKER BREAKER**

**Reba**  
 STRANGE

**SMALL TOWN USA**  
**JUSTIN MOORE**

**BREAKER!!!!**  
 Biggest Mover On The Chart!!  
 98 Monitored Stations In Just 2 Weeks!  
 R&R 39\* - 28\* • CA/MB 45\* - 31\*

**BREAKER!!!!**  
 Top 40 Both Charts!!  
 Singles Sales Up AGAIN!  
 +26% (2,300 units)

**SPINS = REACTION**  
 Conversions in Houston, San Jose and San Francisco  
 Result in IMMEDIATE BigChampagne Increases  
 Bay Area Jumps #61 - #26!  
 Houston #37 - #27!

Reba.com | TheValoryMusicCo.com | MooreJustinMusic.com

many hours' worth of hardcore after-the-fact analysis provided right here in the pages of **R&R** and, further, were simply too lazy to view the damn thing online, the CMA has put together a special presentation of its Country Music Segmentation Study. Remember that? The giant sample size, core vs. low-funding fans and a new buzzword for 2009: digitally dominant. There's a town hall meeting scheduled for April 28 in the Boone Crockett Room at the Hilton Hotel in downtown Music City, where the study will once again be presented. Open to CMA members and their guests, a Q&A session follows this encore presentation. The entire event will be recorded, then made available at [www.my.cma-world.com](http://www.my.cma-world.com) for anyone unable to make the trip. As an added incentive, the CMA is offering invited guests a one-time opportunity to join the CMA for half-price.

### 'So Much Better Online'

According to Arbitron and Edison Media Research, which released their 17th annual Infinite Dial study on April 16, the number of Americans that tune-in weekly to online radio grew to 42 million, up from 33 million in 2008. 27% of the population — which translates to 69 million people — listens online monthly. As astounding 125 million, which is nearly half the U.S. population, have listened to online radio. The study was conducted earlier this year between Jan. 16 and Feb. 15 with 1,858 participants and also showed that the demographics of online radio listeners don't skew as young as they once did, more closely resembling the audience composition of traditional radio. Twenty percent of adults 25-54 said they listened to Web radio in the last week, up from 15% a year earlier.

### Afternoon Delight

According to a new study by Research Director, Inc. radio's hour-by-hour listening levels are strong

## Pros On The Loose

### RADIO:

**Lobo:** Afternoons, KKWF (the Wolf)/Seattle; [seth@inorbitproductions.com](mailto:seth@inorbitproductions.com) or 206-979-5578.

**Deanne Saffren:** OM, "After Midnite"; [deannesaffren@hotmail.com](mailto:deannesaffren@hotmail.com).

**Darren Tandy:** Evenings, WFMS/Indianapolis; [darren\\_tandy@yahoo.com](mailto:darren_tandy@yahoo.com) or 317-847-9788.

**Dee Kelly:** MD/middays, KUBB/Modesto, Calif.; [djdeekelly@yahoo.com](mailto:djdeekelly@yahoo.com).

### RECORDS:

**Kim Marovchick:** VP of sales & marketing, Country Thunder Records; [kmarkovchi@bellsouth.net](mailto:kmarkovchi@bellsouth.net) or 615-438-7537.

**Jeff Davis:** Southeast promo rep, Country Thunder Records; [hirejeffdavis@bellsouth.net](mailto:hirejeffdavis@bellsouth.net) or 615-260-4975.

**Rosey Fitchpatrick:** Midwest rep, Country Thunder Records; [rosefitch50@aol.com](mailto:rosefitch50@aol.com) or 405-255-1001.

**Seth Necessary:** Manager of promotion, Country Thunder Records; [sethnecessary@gmail.com](mailto:sethnecessary@gmail.com) or 615-642-1854.


**Doug Baker:** RCA/Nashville; 615-496-5236.

**Tony Benken:** Robbins Nashville; [tunegoon@comcast.net](mailto:tunegoon@comcast.net) or 615-478-9056.

**Phyllis Stark:** Robbins Nashville; [p.stark@comcast.net](mailto:p.stark@comcast.net) or 615-260-7321.

throughout the day, not just in mornings. Using Arbitron's PPM data from the 10 major markets where PPM is currency, the Research Director crunched numbers using the Persons Using Measured Media (PUMM) for New York, Los Angeles, Chicago, San Francisco, Dallas, Houston, Atlanta, Philadelphia, Washington and Detroit, from September 2008-January 2009. Results showed radio's finest hour among persons 6+ came in afternoon drive, specifically Monday-Friday, 3-4 p.m., where the average PUMM was 13.1%. Next came

© 2009 The Nielsen Company. All Rights Reserved. No part of this material may be reproduced in any form or incorporated in any information retrieval system without written permission of the Publisher.



**SINCE YOU BROUGHT IT UP**

Who had the MOST PLAYED SINGLE of 2008?

Monday-Friday, 4-5 p.m., with levels at 12.9%. The 7-8 a.m. Monday-Friday hour followed, with average PUMM numbers at 12.7%. In terms of targeted demos, the Monday-Friday 3-4 p.m. and 4-5 p.m. hours were also strongest for adults 25-54.

— R.J. Curtis/R&R Country Editor 323-954-3444  
Email: [rcurtis@radioandrecords.com](mailto:rcurtis@radioandrecords.com)

## ON THE CHARTS

### After Two Weeks Atop R&R Country Indicator List, Atkins Rules R&R Country

**Rodney Atkins** claims his fifth No. 1 on the R&R Country chart, his first since “Cleaning This Gun (Come on In Boy)” led for two weeks in February 2008, as “It’s America” (Curb) leaps 4-1. He also topped the chart with “If You’re Going Through Hell” (four weeks in 2006), “Watching You” (four weeks in 2007) and “These Are My People” (one week in September 2007). The new No. 1 is the lead single and title track from Atkins’ third studio album, released March 31. “It’s America” led the R&R Country Indicator chart for two weeks before being displaced last week by Rascal Flatts’ “Here Comes Goodbye” (Lyric Street).

Speaking of the R&R Country Indicator list, **Jason Aldean**’s “She’s Country” (Broken Bow) gains 117 plays and skips 3-1, his best rank on that chart since 2006. The new chart-topper bests Aldean’s “Johnny Cash,” which rose to No. 5 on the chart dated July 20, 2007.

The R&R Country Indicator panel also extends a warm welcome to **Taylor Swift**’s “You Belong With Me” (Big Machine), where the new track from “Fearless” claims Most Added honors with 50 reports and debuts at No. 34. With 43 commitments, Swift’s song also takes Most Added on the R&R Country

panel, where it becomes the artist’s second-highest debut at No. 32. So far, Swift’s highest bow on the R&R Country chart happened when “Love Story” popped on at No. 25 (Sept. 19, 2008).

**Keith Urban** and **Brad Paisley** freshen up the R&R Country top 10, as Urban’s “Kiss a Girl” (Capitol Nashville) gains 1.8 million impressions and rises 12-9, and Paisley’s “Then” (Arista Nashville) improves 2.9 million and shifts 15-10. The new top 10s are the 20th for Urban and Paisley’s 21st to compete at that level. Although the two new songs are unrelated, Urban and Paisley shared their 20th and 18th top 10s, respectively, when their No. 1 duet “Start a Band” first cracked the top 10 back in November.

**Katie Armiger**’s “Trail of Lies” (Cold River) continues to dominate the R&R Country Indicator Exclusives list (38-38), ahead of **Julia Burton**’s “What a Woman Wants” (Emerald River/Spinville), which steps 44-43. **Tracy Lawrence** pops on at No. 51 with “Up to Him” (Rocky Comfort/Nine North), while **Williams Riley Band**’s “I’m Still Me” (Golden/Nine North), shifts 58-55, ahead of a 60-56 spike by **Matt Stillwell**’s “Rain” (Still 7/Spinville/Nine North). **Darren Kozelsky**’s “Good Day to Get Gone” (Major 7th/Spinville/Nine North) slides 55-57, and **Richie McDonald**’s “Six-Foot Teddybear” (Stroudavarious) opens at No. 58. Concurrently, **Emily West**’s “That Kind of Happy” (Capitol Nashville) dips 54-59, followed by a No. 60 debut by **Sarah Darling**’s “Jack of Hearts” (Black River). Get the entire slate of R&R Country Indicator features in this week’s R&R print edition, dated April 24.

— **Wade Jessen**/Director of Charts & Operations, Nashville  
615-641-6080 Email: [wjessen@radioandrecords.com](mailto:wjessen@radioandrecords.com)

© 2009 The Nielsen Company. All Rights Reserved No part of this material may be reproduced in any form or incorporated in any information retrieval system without written permission of the Publisher.

*Nathan Lee Jackson*  
Small Town Rain  
PURE UPLIFTING COUNTRY  
NATION WIDE RADIO  
TOUR IN PROGRESS  
MAKING FRIENDS AND NEW BELIEVERS

Star City  
Recording Company  
C O 5

**MUSICNOTES**

Compared to hosting the entire three-hour ACM Awards show earlier this month, just presenting an award will be a snap for Reba McEntire when she makes an appearance on the TV Land Awards. Live from Los Angeles, the show takes place this Sunday (April 26) at 8 p.m. CT.

It turns out that Taylor Swift has the perfect name when it comes to selling tickets. Last Friday (April 17), Swift sold out her show in Nashville in just one minute.

Famous for having a variety of noted musicians on his tour, look who Kenny Chesney just invited to his Sun City Carnival tour: Drummie Zeb, who played for years with the reggae band the Wailers. And you'll never guess what instrument [ahem] Drummie plays....

Shortly before Toby Keith takes off for USO trip No. 7 to entertain U.S. troops in the Persian Gulf, he'll stop by the National Press Club for a speaking engagement on Tuesday, April 21 in Washington, D.C. Toby will spend 11 days with U.S. troops.

**VIDEO ADDS**

**CMT**

**DIERKS BENTLEY** Sideways  
**RODNEY CARRINGTON f/TOBY KEITH, NICK SEARCY & JENNIFER ASPEN** If I'm The Only One

**GAC**

**DIERKS BENTLEY** Sideways  
**WILLIAMS RILEY BAND** I'm Still Me



**promosquad**  
**HitPredictor**

**SONGS WITH HIT POTENTIAL**

	CHART RANK
<b>RASCAL FLATTS</b> <i>Here Comes Goodbye</i> (Lyric Street) (81.2)	2
<b>JASON ALDEAN</b> <i>She's Country</i> (Broken Bow) (88.0)	3
<b>CARRIE UNDERWOOD F. R. TRAVIS</b> <i>I Told...</i> (Arista Nashville) (88.1)	4
<b>TIM MCGRAW</b> <i>Nothing To Die For</i> (Curb) (84.1)	5
<b>SUGARLAND</b> <i>It Happens</i> (Mercury) (79.2)	6
<b>KEITH URBAN</b> <i>Kiss A Girl</i> (Capitol Nashville) (84.9)	9
<b>BRAD PAISLEY</b> <i>Then</i> (Arista Nashville) (88.3)	10
<b>MONTGOMERY GENTRY</b> <i>One In Every Crowd</i> (Columbia) (82.7)	11
<b>KENNY CHESNEY</b> <i>Out Last Night</i> (BNA) (91.6)	12
<b>DIERKS BENTLEY</b> <i>Sideways</i> (Capitol Nashville) (84.2)	13
<b>TRACE ADKINS</b> <i>Marry For Money</i> (Capitol Nashville) (84.2)	16
<b>ALAN JACKSON</b> <i>Sissy's Song</i> (Arista Nashville) (82.7)	17
<b>LADY ANTEBELLUM</b> <i>I Run To You</i> (Capitol Nashville) (80.1)	19
<b>TOBY KEITH</b> <i>Lost You Anyway</i> (Show Dog Nashville) (86.8)	23
<b>KELLIE PICKLER</b> <i>Best Days Of Your Life</i> (BNA) (76.3)	24
<b>BILLY CURRINGTON</b> <i>People Are Crazy</i> (Mercury) (89.5)	27
<b>BLAKE SHELTON</b> <i>I'll Just Hold On</i> (Warner Bros./WRN) (84.8)	29
<b>ERIC CHURCH</b> <i>Love Your Love The Most</i> (Capitol Nashville) (86.8)	33
<b>CHUCK WICKS</b> <i>Man Of The House</i> (RCA) (77.9)	34
<b>DARRYL WORLEY</b> <i>Sounds Like Life To Me</i> (Stroudavarious) (79.9)	35
<b>MILEY CYRUS</b> <i>The Climb</i> (Lyric Street) (84.6)	38

Copyright 2009, Think Fast, LLC. For more information and testing methodology, please visit HitPredictor.com or Promosquad.com.



WE'RE ALL IN!



# GLORIANA

"WILD AT HEART"

CA/MB 29

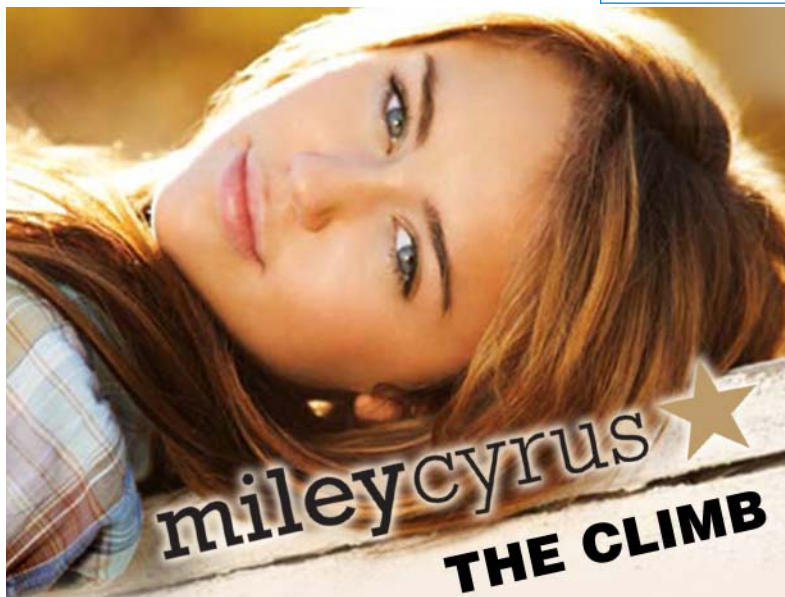
R&R 30





LW	TW	ARTIST Title Label(s)	Tot. Aud. (00)	+/- Aud. (00)	Total Plays	+/- Plays	Wks On	Sta On/ Adds TW
4	1	<b>RODNEY ATKINS</b> It's America ( <i>Curb</i> )	319019	+24150	4731	+350	23	121/0
1	2	<b>RASCAL FLATTS</b> Here Comes Goodbye ( <i>Lyric Street</i> )	313191	+7616	4596	+41	13	121/0
3	3	<b>JASON ALDEAN</b> She's Country ( <i>Broken Bow</i> )	302079	+3963	4601	+126	22	121/0
5	4	<b>CARRIE UNDERWOOD FEAT. ...</b> I Told You So ( <i>19/Arista Nashville</i> )	282347	+10001	4315	+318	14	120/0
6	5	<b>TIM MCGRAW</b> Nothin' To Die For ( <i>Curb</i> )	264759	+536	3923	-121	18	121/0
8	6	<b>SUGARLAND</b> It Happens ( <i>Mercury</i> )	255773	+20095	3783	+288	10	121/0
2	7	<b>JAKE OWEN</b> Don't Think I Can't Love You ( <i>RCA</i> )	248859	-50853	3773	-557	36	121/0
7	8	<b>DARIUS RUCKER</b> It Won't Be Like This For Long ( <i>Capitol Nashville</i> )	213922	-30614	2913	-476	27	121/0
12	9	<b>KEITH URBAN</b> Kiss A Girl ( <i>Capitol Nashville</i> )	208932	+18715	3080	+269	6	121/0
15	10	<b>BRAD PAISLEY</b> Then ( <i>Arista Nashville</i> )	202565	+29079	2876	+419	5	119/4
13	11	<b>MONTGOMERY GENTRY</b> One In Every Crowd ( <i>Columbia</i> )	200485	+21164	3110	+248	13	120/0
16	12	<b>KENNY CHESNEY</b> Out Last Night ( <i>BNA</i> )	194894	+28214	2862	+490	4	120/3
18	13	<b>DIERKS BENTLEY</b> Sideways ( <i>Capitol Nashville</i> )	178427	+24921	2689	+301	8	121/4
19	14	<b>ELI YOUNG BAND</b> Always The Love Songs ( <i>Republic/Universal South</i> )	161315	+9266	2382	+78	33	119/1
14	15	<b>JOHN RICH</b> Shuttin' Detroit Down ( <i>Warner Bros./WRN</i> )	159533	-13976	2574	-114	12	121/0
17	16	<b>TRACE ADKINS</b> Marry For Money ( <i>Capitol Nashville</i> )	158106	+744	2538	-60	16	117/0
21	17	<b>ALAN JACKSON</b> Sissy's Song ( <i>Arista Nashville</i> )	139334	+15555	2383	+307	10	111/5
23	18	<b>ZAC BROWN BAND</b> Whatever It Is ( <i>Home Grown/Atlantic/Big Picture</i> )	138207	+20568	2116	+213	15	113/4
22	19	<b>LADY ANTEBELLUM</b> I Run To You ( <i>Capitol Nashville</i> )	134740	+11631	2215	+109	14	114/3
20	20	<b>JIMMY WAYNE</b> I Will ( <i>Valory</i> )	130120	-365	2313	-30	28	117/0
24	21	<b>JASON MICHAEL CARROLL</b> Where I'm From ( <i>Arista Nashville</i> )	129925	+13297	2381	+138	22	115/0
25	22	<b>LOST TRAILERS</b> How 'Bout You Don't ( <i>BNA</i> )	114720	+205	1944	+12	28	112/0
26	23	<b>TOBY KEITH</b> Lost You Anyway ( <i>Show Dog Nashville</i> )	106080	+17517	1742	+266	7	107/9
27	24	<b>KELLIE PICKLER</b> Best Days Of Your Life ( <i>19/BNA</i> )	76880	+8750	1352	+120	23	96/5
29	25	<b>RANDY HOUSER</b> Boots On ( <i>Universal South</i> )	62785	+4412	1191	+70	9	92/3
28	26	<b>DEAN BRODY</b> Brothers ( <i>Broken Bow</i> )	61539	-158	1262	-54	26	93/0
30	27	<b>BILLY CURRINGTON</b> People Are Crazy ( <i>Mercury</i> )	59753	+13978	1107	+191	7	84/9
<b>Breaker</b>	28	<b>REBA</b> Strange ( <i>Starstruck/Valory</i> )	49308	+24756	730	+389	2	80/37
33	29	<b>BLAKE SHELTON</b> I'll Just Hold On ( <i>Warner Bros./WRN</i> )	48855	+7306	982	+82	9	84/7
32	30	<b>GLORIANA</b> Wild At Heart ( <i>Emblem/New Revolution</i> )	45356	+3365	882	+80	13	71/7

© 2009 The Nielsen Company



mileycyrus ★  
**THE CLIMB**

**R&R 38 & MB 38**  
**10 NEW ADDS!**

**AMERICA'S #1 STAR**  
**AMERICA'S #1 MOVIE**  
**AMERICA'S #1 SOUNDTRACK**

**A SONG MOTHERS & DAUGHTERS AGREE ON!**



LW	TW	ARTIST Title Label(s)	Tot. Aud. (00)	+/- Aud. (00)	Total Plays	+/- Plays	Wks On	Sta On/ Adds TW
	<b>31</b>	<b>CRAIG MORGAN</b> God Must Really Love Me (BNA)	43943	-247	912	+3	16	78/2
<b>Debut</b>	<b>32</b>	<b>TAYLOR SWIFT</b> You Belong With Me (Big Machine)	32234	+29103	407	+357	1	51/43
38	<b>33</b>	<b>ERIC CHURCH</b> Love Your Love The Most (Capitol Nashville)	31652	+6916	686	+130	10	64/6
35	<b>34</b>	<b>CHUCK WICKS</b> Man Of The House (RCA)	31611	+980	703	+32	14	72/3
34	<b>35</b>	<b>DARRYL WORLEY</b> Sounds Like Life To Me (Stroudavarious)	31290	-8	752	+33	12	66/3
37	<b>36</b>	<b>TRENT TOMLINSON</b> That's How It Still Oughta Be (Carolwood)	28777	+874	639	+5	16	59/0
36	37	<b>PAT GREEN</b> Country Star (BNA)	27343	-1345	611	+35	10	52/4
41	<b>38</b>	<b>MILEY CYRUS</b> The Climb (Walt Disney/Hollywood/Lyric Street)	25496	+5534	511	+95	8	53/6
40	<b>39</b>	<b>JAMEY JOHNSON</b> High Cost Of Living (Mercury)	23153	+2043	548	+81	11	50/2
<b>Breaker</b>	<b>40</b>	<b>JUSTIN MOORE</b> Small Town USA (Valory)	22205	+3074	617	+44	11	69/4
44	<b>41</b>	<b>CHRIS YOUNG</b> Gettin' You Home (The Black Dress Song) (RCA)	21011	+5434	357	+50	10	40/1
56	<b>42</b>	<b>DARIUS RUCKER</b> Alright (Capitol Nashville)	20418	+15875	356	+288	2	46/32
43	<b>43</b>	<b>LOVE AND THEFT</b> Runaway (Carolwood)	18719	+661	464	+49	8	56/4
46	<b>44</b>	<b>JACK INGRAM</b> Barefoot And Crazy (Big Machine)	18153	+5368	303	+73	5	41/13
45	<b>45</b>	<b>CARRIE UNDERWOOD</b> The More Boys I Meet (19/Arista Nashville)	13090	-323	91	+1	14	3/1
60	<b>46</b>	<b>HANK WILLIAMS JR.</b> Red White & Pink-Slip Blues (Curb)	13083	+9478	203	+156	2	6/4
48	<b>47</b>	<b>TRAILER CHOIR</b> What Would You Say (Show Dog Nashville)	11119	+16	347	+6	12	40/1
49	<b>48</b>	<b>BOMSHEL</b> Fight Like A Girl (Curb)	9767	+84	343	+28	10	39/2
52	<b>49</b>	<b>JESSICA HARP</b> Boy Like Me (Warner Bros./WRN)	8748	+1353	232	+31	6	30/6
51	<b>50</b>	<b>CAITLIN &amp; WILL</b> Address In The Stars (Columbia)	8124	+469	329	+38	6	37/0
53	<b>51</b>	<b>DAVID NAIL</b> Red Light (MCA Nashville)	7817	+884	312	-19	8	44/2
47	52	<b>BILLY RAY CYRUS</b> Back To Tennessee (Walt Disney/Lyric Street)	7640	-3679	329	-87	8	45/2
<b>Debut</b>	<b>53</b>	<b>JOE NICHOLS</b> Believers (Universal South)	6488	+5376	100	+67	1	19/17
54	54	<b>JONATHAN SINGLETON &amp; ...</b> Livin' In Paradise (Universal South)	5899	-583	201	-10	5	25/0
-	<b>55</b>	<b>PAT GREEN</b> What I'm For (BNA)	4256	+707	27	+1	4	0/0
-	<b>56</b>	<b>LEE ANN WOMACK</b> Solitary Thinkin' (MCA Nashville)	4206	+2516	130	+90	2	19/8
55	57	<b>PHIL VASSAR</b> Prayer Of A Common Man (Universal South)	3129	-1964	31	-27	7	2/0
50	58	<b>TRACE ADKINS</b> Til The Last Shot's Fired (Capitol Nashville)	3067	-5365	40	-38	2	1/1
<b>Debut</b>	<b>59</b>	<b>MIRANDA LAMBERT</b> Dead Flowers (Columbia)	3062	+2446	47	+38	1	3/2
58	60	<b>HOLLY WILLIAMS</b> Keep The Change (Mercury)	2505	-1610	157	-80	7	20/0

© 2009 The Nielsen Company

# OVER 4,000 LISTENERS REACT HUGE TO "RED WHITE & PINK SLIP BLUES"



Let Hank Know Your 2 Cents On The New Song!

On a scale of 1-10 (10 being the best), rank "Red White & Pink-Slip Blues"



For more information how your winner can get a job with Hank Jr. check out [www.BocephusBailout.com](http://www.BocephusBailout.com)



## "FIGHT LIKE A GIRL"

FIRST WEEK OVER 2,000 downloads!

The REACTION song every Mom wants her daughter to hear!

[www.bomshel.com](http://www.bomshel.com)

**COUNTRY**

**MOST ADDED**

ARTIST Title Label(s)	Adds
<b>TAYLOR SWIFT</b> You Belong With Me ( <i>Big Machine</i> )	43
<b>REBA</b> Strange ( <i>Starstruck/Valory</i> )	37
<b>DARIUS RUCKER</b> Alright ( <i>Capitol Nashville</i> )	32
<b>JOE NICHOLS</b> Believers ( <i>Universal South</i> )	17
<b>BUCKY COVINGTON</b> I Want My Life Back ( <i>Lyric Street</i> )	16
<b>JACK INGRAM</b> Barefoot And Crazy ( <i>Big Machine</i> )	13
<b>TOBY KEITH</b> Lost You Anyway ( <i>Show Dog Nashville</i> )	9
<b>BILLY CURRINGTON</b> People Are Crazy ( <i>Mercury</i> )	9
<b>LEE ANN WOMACK</b> Solitary Thinkin' ( <i>MCA Nashville</i> )	8
<b>BLAKE SHELTON</b> I'll Just Hold On ( <i>Warner Bros./WRN</i> )	7
<b>GLORIANA</b> Wild At Heart ( <i>Emblem/New Revolution</i> )	7

**MOST INCREASED AUDIENCE**

ARTIST Title Label(s)	Total Play Increase
<b>TAYLOR SWIFT</b> You Belong With Me ( <i>Big Machine</i> )	+29103
<b>BRAD PAISLEY</b> Then ( <i>Arista Nashville</i> )	+29079
<b>KENNY CHESNEY</b> Out Last Night ( <i>BNA</i> )	+28214
<b>DIERKS BENTLEY</b> Sideways ( <i>Capitol Nashville</i> )	+24921
<b>REBA</b> Strange ( <i>Starstruck/Valory</i> )	+24756
<b>RODNEY ATKINS</b> It's America ( <i>Curb</i> )	+24150
<b>MONTGOMERY GENTRY</b> One In Every Crowd ( <i>Columbia</i> )	+21164
<b>ZAC BROWN BAND</b> Whatever ... ( <i>Home Grown/Atlantic/Big Picture</i> )	+20568
<b>SUGARLAND</b> It Happens ( <i>Mercury</i> )	+20095
<b>KEITH URBAN</b> Kiss A Girl ( <i>Capitol Nashville</i> )	+18715

**MOST INCREASED PLAYS**

ARTIST Title Label(s)	Total Play Increase
<b>KENNY CHESNEY</b> Out Last Night ( <i>BNA</i> )	+490
<b>BRAD PAISLEY</b> Then ( <i>Arista Nashville</i> )	+419
<b>REBA</b> Strange ( <i>Starstruck/Valory</i> )	+389
<b>TAYLOR SWIFT</b> You Belong With Me ( <i>Big Machine</i> )	+357
<b>RODNEY ATKINS</b> It's America ( <i>Curb</i> )	+350
<b>CARRIE UNDERWOOD FEAT. ...</b> I Told You So ( <i>19/Arista Nashville</i> )	+318
<b>ALAN JACKSON</b> Sissy's Song ( <i>Arista Nashville</i> )	+307
<b>DIERKS BENTLEY</b> Sideways ( <i>Capitol Nashville</i> )	+301
<b>SUGARLAND</b> It Happens ( <i>Mercury</i> )	+288
<b>DARIUS RUCKER</b> Alright ( <i>Capitol Nashville</i> )	+288

**COUNTRY INDICATOR**

**MOST ADDED**

ARTIST Title Label(s)	Adds
<b>TAYLOR SWIFT</b> You Belong With Me ( <i>Big Machine</i> )	50
<b>DARIUS RUCKER</b> Alright ( <i>Capitol Nashville</i> )	40
<b>REBA</b> Strange ( <i>Starstruck/Valory</i> )	36
<b>BUCKY COVINGTON</b> I Want My Life Back ( <i>Lyric Street</i> )	12
<b>JACK INGRAM</b> Barefoot And Crazy ( <i>Big Machine</i> )	11
<b>KELLIE PICKLER</b> Best Days Of Your Life ( <i>19/BNA</i> )	10
<b>BILLY CURRINGTON</b> People Are Crazy ( <i>Mercury</i> )	9
<b>TOBY KEITH</b> Lost You Anyway ( <i>Show Dog Nashville</i> )	8
<b>ZAC BROWN BAND</b> Whatever It Is ( <i>Home Grown/Atlantic/Big Picture</i> )	7
<b>MIRANDA LAMBERT</b> Dead Flowers ( <i>Columbia</i> )	7

**MOST INCREASED AUDIENCE**

ARTIST Title Label(s)	Total Play Increase
<b>REBA</b> Strange ( <i>Starstruck/Valory</i> )	+11534
<b>KENNY CHESNEY</b> Out Last Night ( <i>BNA</i> )	+10515
<b>TAYLOR SWIFT</b> You Belong With Me ( <i>Big Machine</i> )	+10441
<b>KEITH URBAN</b> Kiss A Girl ( <i>Capitol Nashville</i> )	+9760
<b>DARIUS RUCKER</b> Alright ( <i>Capitol Nashville</i> )	+9158
<b>SUGARLAND</b> It Happens ( <i>Mercury</i> )	+8462
<b>BRAD PAISLEY</b> Then ( <i>Arista Nashville</i> )	+7540
<b>ZAC BROWN BAND</b> Whatever It Is ( <i>Home Grown/Atlantic/Big Picture</i> )	+7248
<b>LADY ANTEBELLUM</b> I Run To You ( <i>Capitol Nashville</i> )	+6032
<b>CARRIE UNDERWOOD FEAT. ...</b> I Told You So ( <i>19/Arista Nashville</i> )	+5876

**MOST INCREASED PLAYS**

ARTIST Title Label(s)	Total Play Increase
<b>TAYLOR SWIFT</b> You Belong With Me ( <i>Big Machine</i> )	+556
<b>REBA</b> Strange ( <i>Starstruck/Valory</i> )	+539
<b>KENNY CHESNEY</b> Out Last Night ( <i>BNA</i> )	+480
<b>DARIUS RUCKER</b> Alright ( <i>Capitol Nashville</i> )	+462
<b>KEITH URBAN</b> Kiss A Girl ( <i>Capitol Nashville</i> )	+403
<b>SUGARLAND</b> It Happens ( <i>Mercury</i> )	+393
<b>CARRIE UNDERWOOD FEAT. ...</b> I Told You So ( <i>19/Arista Nashville</i> )	+321
<b>ZAC BROWN BAND</b> Whatever It Is ( <i>Home Grown/Atlantic/Big Picture</i> )	+308
<b>BRAD PAISLEY</b> Then ( <i>Arista Nashville</i> )	+299
<b>TOBY KEITH</b> Lost You Anyway ( <i>Show Dog Nashville</i> )	+280

THE NATURE OF A HERO REQUIRES A LEAP OF FAITH



"Mac's voice is what real life sounds like - at least the way I'd want to live it."

- Kenny Chesney

"Mac is back, but I want to know where he went to write such a good song. I want to go there too."

- Jimmy Buffet

IMPACTING RADIO NOW!!!

[click here](#)



**COUNTRY NEW AND ACTIVE**

- TRACY LAWRENCE** Up To Him (*Rocky Comfort/Nine North*)  
 Total Audience: 2498, Total Stations: 7, Adds: 2
- KATE & KACEY** Dreaming Love (*Big Machine*)  
 Total Audience: 2417, Total Stations: 5, Adds: 4
- BUCKY COVINGTON** I Want My Life Back (*Lyric Street*)  
 Total Audience: 2377, Total Stations: 20, Adds: 16
- WILLIAMS RILEY BAND** I'm Still Me (*Golden/Nine North*)  
 Total Audience: 2071, Total Stations: 9, Adds: 2
- MARK CHESNUTT** She Never Got Me Over You (*Big 7/Lofton Creek*)  
 Total Audience: 1908, Total Stations: 3, Adds: 0
- CARTER TWINS** Heart Like Memphis (*CMT/Meteor 17/CO5*)  
 Total Audience: 1707, Total Stations: 10, Adds: 0

**COUNTRY INDICATOR NEW AND ACTIVE**

- RICK HUCKABY** She Gets Me High (*HeadCoach*)  
 Total Plays: 110, Total Stations: 11, Adds: 1
- STEPHEN COCHRAN** Wal-Mart Flowers (*Aria Nashville*)  
 Total Plays: 105, Total Stations: 13, Adds: 3
- RANDY ROGERS BAND** Buy Myself A Chance (*Mercury*)  
 Total Plays: 70, Total Stations: 2, Adds: 0
- JOEY + RORY** Play The Song (*Vanguard/Sugar Hill/Nine North*)  
 Total Plays: 57, Total Stations: 4, Adds: 0
- GRETCHEN WILSON** The Earrings Song (*Columbia*)  
 Total Plays: 57, Total Stations: 2, Adds: 0
- DARYLE SINGLETARY** Love You With The Lights On (*E1*)  
 Total Plays: 53, Total Stations: 3, Adds: 0
- WADE BOWEN** If We Ever Make It Home (*Sustain*)  
 Total Plays: 51, Total Stations: 4, Adds: 0
- BELLAMY BROTHERS** Lord Help Me Be The Kind Of Person  
 (My Dog Thinks I Am) (*Curb*)  
 Total Plays: 50, Total Stations: 4, Adds: 0
- HANK WILLIAMS JR.** Red White & Pink-Slip Blues (*Curb*)  
 Total Plays: 49, Total Stations: 2, Adds: 2
- TELLURIDE** Pencil Marks (*American Roots/Quarterback*)  
 Total Plays: 45, Total Stations: 8, Adds: 0

**R&R Going For Adds**

- 4/27  
**DUE WEST** I Get That All The Time (*Bigger Than Me/Nine North*)
- KATE & KACEY** Dreaming Love (*Big Machine*)
- KRISTA MARIE** Jeep Jeep (*Holeshot/Broken Bow*)
- MAC MCANALLY** You First (*Show Dog Nashville*)
- STEVE AZAR** Moo La Moo (*Ride*)
- 5/4  
**LUKE BRYAN** Do I (*Capitol Nashville*)
- 5/11  
**MEGAN MULLINS** Long Past Gone (*Stoney Creek*)
- ZONA JONES** Bluer Than Blue (*Rocky Comfort*)

**TOP 10 RECURRENTS**

ARTIST	Title	Label(s)	Total Aud. (00)
GEORGE STRAIT	River Of Love	(MCA Nashville)	171454
MARTINA MCBRIDE	Ride	(RCA)	169841
TOBY KEITH	God Love Her	(Show Dog Nashville)	144808
TAYLOR SWIFT	White Horse	(Big Machine)	142703
ZAC BROWN BAND	Chicken Fried	(Home Grown/Atlantic/Big Picture)	124432
KEITH URBAN	Sweet Thing	(Capitol Nashville)	124277
BROOKS & DUNN FEAT. R. MCENTIRE	Cowgirls Don't Cry	(Arista Nashville)	117796
DIERKS BENTLEY	Feel That Fire	(Capitol Nashville)	115974
KENNY CHESNEY WITH MAC MCANALLY	Down The Road	(Blue Chair/BNA)	114024
BLAKE SHELTON	She Wouldn't Be Gone	(Warner Bros./WRN)	102414



121 Country reporters. Songs ranked by total audience for the airplay week of 4/13-4/19. Bullets appear on songs gaining audience or remaining flat from previous week. A song will also receive a bullet if its percentage loss in audience does not exceed the percentage of monitored station downtime for the format. Country titles that decline in audience but increase in detections will also receive a bullet if the total audience erosion for the week does not exceed 3%. If two songs are tied in total audience, the song with the larger increase in audience is placed first. Descending, non-bulleted titles below No. 10 in either audience or detections are moved to recurrent after 20 weeks. Most Added is the total number of new adds officially reported to R&R by each reporting station or by automatic add thresholds for stations not allowed to report adds. Songs unreported as adds do not count toward overall total stations playing a song. Most Increased Audience lists the songs with the greatest week-to-week increases in total audience. Audience totals on the chart are derived, in part, using certain Arbitron Inc. copyrighted Persons 12+ audience estimates, under license (© 2009, Arbitron Inc.) © 2009 The Nielsen Company.

**The story continues...**

Undefeated Champ Williams Riley KO's Taylor Swift, Reba McEntire, Mac McAnally, Heidi Newfield, Miranda Lambert, and Lee Ann Womack on GAC Nights!

**GAC NIGHT'S NEWEST HALL OF FAME WINNER!**

**"I'M STILL ME" IMPACTING NOW**

**DMDS**  
DOWNLOAD NOW!

LW	TW	ARTIST Title Label(s)	Total Plays	+/- Plays	Tot. Aud. (00)	+/- Aud. (00)	Wks On	Sta On/ Adds TW
3	1	<b>JASON ALDEAN</b> She's Country ( <i>Broken Bow</i> )	4701	+117	96425	+2196	22	116/0
1	2	<b>RASCAL FLATTS</b> Here Comes Goodbye ( <i>Lyric Street</i> )	4673	+39	94528	+390	13	117/0
4	3	<b>CARRIE UNDERWOOD FEAT. ...</b> I Told You So ( <i>19/Arista Nashville</i> )	4493	+321	90851	+5876	14	117/0
6	4	<b>SUGARLAND</b> It Happens ( <i>Mercury</i> )	4300	+393	89947	+8462	10	115/1
2	5	<b>RODNEY ATKINS</b> It's America ( <i>Curb</i> )	4298	-303	87943	-6356	22	111/0
5	6	<b>TIM MCGRAW</b> Nothin' To Die For ( <i>Curb</i> )	3603	-493	72081	-10072	16	110/0
7	7	<b>JAKE OWEN</b> Don't Think I Can't Love You ( <i>RCA</i> )	3533	-346	70233	-6023	34	100/1
12	8	<b>KEITH URBAN</b> Kiss A Girl ( <i>Capitol Nashville</i> )	3495	+403	70865	+9760	6	120/3
9	9	<b>MONTGOMERY GENTRY</b> One In Every Crowd ( <i>Columbia</i> )	3485	+210	71331	+4754	13	115/2
10	10	<b>TRACE ADKINS</b> Marry For Money ( <i>Capitol Nashville</i> )	3262	+24	63963	+977	16	118/1
13	11	<b>DIERKS BENTLEY</b> Sideways ( <i>Capitol Nashville</i> )	3193	+258	64005	+5586	9	119/0
15	12	<b>BRAD PAISLEY</b> Then ( <i>Arista Nashville</i> )	3039	+299	64326	+7540	5	119/1
19	13	<b>KENNY CHESNEY</b> Out Last Night ( <i>BNA</i> )	2980	+480	62722	+10515	4	117/2
14	14	<b>LADY ANTEBELLUM</b> I Run To You ( <i>Capitol Nashville</i> )	2977	+226	62077	+6032	14	116/0
16	15	<b>ALAN JACKSON</b> Sissy's Song ( <i>Arista Nashville</i> )	2934	+258	60131	+5511	10	111/2
11	16	<b>JOHN RICH</b> Shuttin' Detroit Down ( <i>Warner Bros./WRN</i> )	2618	-510	51256	-11484	12	96/0
17	17	<b>ELI YOUNG BAND</b> Always The Love Songs ( <i>Republic/Universal South</i> )	2578	+16	53790	+321	30	103/0
21	18	<b>ZAC BROWN BAND</b> Whatever It Is ( <i>Home Grown/Atlantic/Big Picture</i> )	2508	+308	52329	+7248	14	113/7
20	19	<b>JASON MICHAEL CARROLL</b> Where I'm From ( <i>Arista Nashville</i> )	2393	+68	51617	+2488	23	112/1
22	20	<b>TOBY KEITH</b> Lost You Anyway ( <i>Show Dog Nashville</i> )	2214	+280	43479	+5278	7	112/8
25	21	<b>BILLY CURRINGTON</b> People Are Crazy ( <i>Mercury</i> )	1803	+246	37654	+5726	8	101/9
23	22	<b>LOST TRAILERS</b> How 'Bout You Don't ( <i>BNA</i> )	1701	-4	38986	+225	26	87/1
24	23	<b>RANDY HOUSER</b> Boots On ( <i>Universal South</i> )	1664	+88	33845	+1444	10	97/4
27	24	<b>KELLIE PICKLER</b> Best Days Of Your Life ( <i>19/BNA</i> )	1282	+123	25957	+2740	21	77/10
28	25	<b>BLAKE SHELTON</b> I'll Just Hold On ( <i>Warner Bros./WRN</i> )	1138	+106	23518	+3742	9	79/5
37	26	<b>REBA</b> Strange ( <i>Starstruck/Valory</i> )	1133	+539	22043	+11534	2	85/36
29	27	<b>GLORIANA</b> Wild At Heart ( <i>Emblem/New Revolution</i> )	959	+67	20899	+2791	13	62/1
30	28	<b>CRAIG MORGAN</b> God Must Really Love Me ( <i>BNA</i> )	950	+67	19914	+1516	16	61/1
31	29	<b>DARRYL WORLEY</b> Sounds Like Life To Me ( <i>Stroudavarious</i> )	943	+106	19662	+1927	14	59/6
43	30	<b>DARIUS RUCKER</b> Alright ( <i>Capitol Nashville</i> )	845	+462	17064	+9158	2	74/40

© 2009 The Nielsen Company

*"Best Days Of Your Life"*

*Kellie Pickler*

This record IS connecting with your listeners.

Over 47,000 single downloads and 6,200 CDs sold last week!!!!

**BNA**  
BNA RECORDS LABEL

**DMDS**  
DOWNLOAD NOW!

LW	TW	ARTIST Title Label(s)	Total Plays	+/- Plays	Tot. Aud. (00)	+/- Aud. (00)	Wks On	Sta On/ Adds TW
32	<b>31</b>	MILEY CYRUS The Climb (Walt Disney/Hollywood/Lyric Street)	802	+76	15901	+1218	7	60/2
35	<b>32</b>	PAT GREEN Country Star (BNA)	765	+122	14661	+3499	10	51/5
34	<b>33</b>	ERIC CHURCH Love Your Love The Most (Capitol Nashville)	715	+47	13802	+762	11	48/4
<b>Debut</b>	<b>34</b>	TAYLOR SWIFT You Belong With Me (Big Machine)	656	+556	12674	+10441	1	59/50
33	35	TRENT TOMLINSON That's How It Still Oughta Be (Carolwood)	638	-56	12578	-821	15	45/0
40	<b>36</b>	JACK INGRAM Barefoot And Crazy (Big Machine)	630	+194	13046	+5454	4	50/11
36	37	CHUCK WICKS Man Of The House (RCA)	603	-38	13155	+757	12	48/1
38	38	KATIE ARMIGER Trail Of Lies (Cold River)	538	-21	8407	+68	13	38/1
39	<b>39</b>	LOVE AND THEFT Runaway (Carolwood)	482	+19	8616	+315	9	37/1
41	<b>40</b>	JUSTIN MOORE Small Town USA (Valory)	463	+42	7895	-294	11	27/1
42	41	JAMEY JOHNSON High Cost Of Living (Mercury)	392	-11	6996	-628	10	32/3
45	<b>42</b>	TRAILER CHOIR What Would You Say (Show Dog Nashville)	350	+17	7815	+141	14	26/0
44	43	JULIA BURTON What A Woman Wants (Emerald River/Spinville)	344	-35	6495	-321	14	24/0
46	44	BILLY RAY CYRUS Back To Tennessee (Walt Disney/Lyric Street)	288	-9	4644	-115	10	22/1
47	<b>45</b>	MARK CHESNUTT She Never Got Me Over You (Big 7/Lofton Creek)	266	+32	3824	+728	6	18/0
48	<b>46</b>	JONATHAN SINGLETON & ... Livin' In Paradise (Universal South)	230	+29	3656	+390	5	22/2
57	<b>47</b>	JOE NICHOLS Believers (Universal South)	197	+72	3297	+1386	2	18/5
49	48	JESSICA HARP Boy Like Me (Warner Bros./WRN)	186	-5	3468	-36	7	17/1
<b>Debut</b>	<b>49</b>	LEE ANN WOMACK Solitary Thinkin' (MCA Nashville)	165	+74	2258	+1288	1	14/6
<b>Debut</b>	<b>50</b>	BUCKY COVINGTON I Want My Life Back (Lyric Street)	154	+84	2881	+1589	1	22/12
<b>Debut</b>	<b>51</b>	TRACY LAWRENCE Up To Him (Rocky Comfort/Nine North)	153	+46	1687	+429	1	15/1
50	52	BOMSHEL Fight Like A Girl (Curb)	153	-10	2896	-692	8	14/1
56	<b>53</b>	CAITLIN & WILL Address In The Stars (Columbia)	141	+14	1967	+99	4	16/1
<b>Debut</b>	<b>54</b>	MIRANDA LAMBERT Dead Flowers (Columbia)	134	+76	3699	+1637	1	10/7
58	<b>55</b>	WILLIAMS RILEY BAND I'm Still Me (Golden/Nine North)	126	+7	1042	+21	5	10/0
60	<b>56</b>	MATT STILLWELL Rain (Still 7/Spinville/Nine North)	124	+15	2121	+703	3	10/0
55	57	DARREN KOZELSKY Good Day ... (Major 7th/Spinville/Nine North)	123	-9	2072	-348	7	13/0
<b>Debut</b>	<b>58</b>	RICHIE McDONALD Six-Foot Teddybear (Stroudavarious)	119	+28	1518	+633	1	9/5
54	59	EMILY WEST That Kind Of Happy (Capitol Nashville)	117	-17	2079	-345	3	9/1
<b>Debut</b>	<b>60</b>	SARAH DARLING Jack Of Hearts (Black River)	116	+15	2090	+387	1	12/1

© 2009 The Nielsen Company

**PROMOTE YOUR COMPANY, TEAM, ANNOUNCEMENT OR SPECIAL EVENT!**

Cost effective and reusable.  
Durable for indoor and outdoor use.  
Ideal at concerts and remotes.  
Great for co-sponsored events.

CALL TODAY TO LEARN ABOUT  
**NO SET-UP FEES**  
WITH INITIAL ORDER!

**TOLLFREE 1.800.231.6074**

Rollasign™  
www.rollasign.com

Now available with Perforations!

18" 18"  
24" 24"  
36" 36"

ARTIST Title (Label)	TOTAL PASSION	POSITIVE	INDEX	NEUTRAL	DISLIKE	STRONGLY DISLIKE
JASON ALDEAN She's Country (Broken Bow)	36.0%	73.2%	4.02	20.2%	6.0%	0.7%
BRAD PAISLEY Then (Arista Nashville)	24.8%	71.7%	3.91	22.8%	5.2%	0.3%
JAKE OWEN Don't Think I Can't Love You (RCA)	30.5%	71.0%	3.93	21.2%	7.0%	0.8%
CARRIE UNDERWOOD FEAT. R. TRAVIS I Told You So (19/Arista Nashville)	37.2%	69.7%	3.95	20.5%	7.5%	2.3%
KEITH URBAN Kiss A Girl (Capitol Nashville)	21.7%	69.3%	3.85	24.8%	5.2%	0.7%
RODNEY ATKINS It's America (Curb)	26.0%	67.7%	3.87	25.8%	6.3%	0.2%
ELI YOUNG BAND Always The Love Songs (Republic/Universal South)	15.0%	66.8%	3.76	28.2%	3.7%	1.3%
ALAN JACKSON Sissy's Song (Arista Nashville)	29.3%	65.7%	3.79	22.0%	9.0%	3.3%
JASON MICHAEL CARROLL Where I'm From (Arista Nashville)	20.3%	62.8%	3.73	28.7%	7.2%	1.3%
TIM MCGRAW Nothin' To Die For (Curb)	22.7%	62.3%	3.76	29.5%	6.8%	1.3%
MARTINA MCBRIDE Ride (RCA)	18.0%	62.2%	3.70	28.5%	8.3%	1.0%
TOBY KEITH Lost You Anyway (Show Dog Nashville)	18.2%	62.0%	3.69	28.0%	9.0%	1.0%
JOHN RICH Shuttin' Detroit Down (Warner Bros./WRN)	22.5%	62.0%	3.72	27.0%	9.0%	2.0%
SUGARLAND It Happens (Mercury)	28.3%	61.8%	3.71	23.0%	11.0%	4.2%
LOST TRAILERS How 'Bout You Don't (BNA)	12.2%	61.7%	3.66	31.3%	5.7%	1.3%
MONTGOMERY GENTRY One In Every Crowd (Columbia)	16.0%	60.8%	3.68	31.0%	7.3%	0.8%
ZAC BROWN BAND Whatever It Is (Home Grown/Atlantic/Big Picture)	16.2%	60.5%	3.68	31.7%	6.8%	1.0%
KENNY CHESNEY Out Last Night (BNA)	19.5%	60.3%	3.68	29.0%	9.5%	1.3%
DIERKS BENTLEY Sideways (Capitol Nashville)	14.7%	58.2%	3.58	29.5%	9.7%	2.7%
RASCAL FLATTS Here Comes Goodbye (Lyric Street)	24.7%	57.8%	3.67	29.2%	10.5%	2.5%
JIMMY WAYNE I Will (Valory)	17.3%	57.2%	3.62	31.3%	10.2%	1.3%
RANDY HOUSER Boots On (Universal South)	17.8%	56.8%	3.58	28.5%	12.8%	1.8%
LADY ANTEBELLUM I Run To You (Capitol Nashville)	14.7%	56.7%	3.60	33.3%	9.0%	1.0%
KELLIE PICKLER Best Days Of Your Life (19/BNA)	12.0%	55.7%	3.52	30.7%	12.0%	1.7%
BILLY CURRINGTON People Are Crazy (Mercury)	16.0%	55.5%	3.53	29.0%	12.8%	2.7%
CRAIG MORGAN God Must Really Love Me (BNA)	11.8%	55.3%	3.55	33.7%	9.8%	1.2%
TRACE ADKINS Marry For Money (Capitol Nashville)	20.0%	54.3%	3.45	22.5%	17.3%	5.8%
LOVE AND THEFT Runaway (Carolwood)	11.0%	53.2%	3.54	37.5%	8.8%	0.5%
PAT GREEN Country Star (BNA)	10.0%	53.0%	3.49	33.5%	13.0%	0.5%
DEAN BRODY Brothers (Broken Bow)	12.3%	53.0%	3.52	34.8%	10.8%	1.3%
DARRYL WORLEY Sounds Like Life To Me (Stroudavarious)	9.5%	50.7%	3.48	39.2%	8.5%	1.7%
GLORIANA Wild At Heart (Emblem/New Revolution)	10.3%	48.5%	3.45	38.5%	12.2%	0.8%
CHUCK WICKS Man Of The House (RCA)	7.2%	44.5%	3.39	44.0%	10.5%	1.0%
TRENT TOMLINSON That's How It Still Oughta Be (Carolwood)	9.0%	42.0%	3.25	36.3%	17.0%	4.7%
BLAKE SHELTON I'll Just Hold On (Warner Bros./WRN)	8.0%	41.5%	3.29	41.0%	14.5%	3.0%

The Callout America sample is 600 persons in each weekly report, made up of a three week rolling average of 200 persons weekly. Sample is 50% Male / Female and taken from 20 U.S. Markets. Demos are evenly balanced in 18-24, 25-34, 35-44 and 45-54 cells. Song scores are on a 1 to 5 differential with "1" meaning strong dislike and "5" meaning like it a lot. The positive index is an average of all 1 to 5 scores. Total Positive is the combined 4 and 5 scores. Market breakouts by geographical region are; **MIDWEST:** Cincinnati, Indianapolis, Kansas City, Omaha and Wichita. **SOUTH:** Atlanta, Charleston, Charlotte, Mobile / Pensacola and Nashville. **EAST:** Philadelphia, Pittsburgh, Providence RI, Rochester, Virginia Beach. **WEST:** Colorado Springs, Houston, Modesto, Phoenix and Portland OR.

©2009 The Nielsen Company. All Rights Reserved No part of this material may be reproduced in any form or incorporated in any information retrieval system without written permission of the Publisher.

**STEVE AZAR**

**Moo La Moo**

**Breaking Moo's !!**

**7 days till "Moo Day"**  
**Monday 04.27.09**