

COUNTRY MUSIC'S
BIGGEST VOICE...

TOBY KEITH

"CRASH HERE
TONIGHT"



Artist News: Underwood Holds Court At No. 1

Second Chart-Topper Makes Chart History

With more than 37 million audience impressions, **Carrie Underwood** logs her second No. 1 on the **Nielsen Broadcast Data Systems**-driven **R&R Country** chart with "Before He Cheats" (Arista/Arista Nashville). With spins detected at each of the 114 monitored stations used to tabulate this week's list, Underwood gains 2.9 million impressions and plows into the No. 1 box with the Most Increased Audience.

Since winning *American Idol*, Underwood's star has been shooting upward, and her pair of No. 1 singles marks the first time in more than five years that a solo female has landed a pair of No. 1 singles on the Nielsen BDS-driven chart from a debut album. That hasn't happened since **Jamie O'Neal** did it with "There Is No Arizona" (February 2001) and "When I Think About Angels" (August 2001).

To put an even finer point on Underwood's audience thrust, it is compelling to note that "Before He Cheats" aggregates roughly two million more impressions than last week's No. 1 did during its peak week — with 17 fewer stations on the panel. The previously announced panel changes (**R&R Country Update**, Oct. 9) took effect during the Oct. 23-29 tracking week, reducing the panel from 133 to 115 stations (one station, WYRK/ Buffalo, N.Y., is on temporary hiatus from the panel due to technical issues). Although only 379,000 impressions separated the No. 1 and No. 2 titles on last week's chart, the margin between the top two songs this week suggests that Underwood could be camped

atop the chart for more than one week — Underwood tops the No. 2 song by 4.3 million impressions.

Underwood's "Jesus, Take the Wheel" topped the Nielsen BDS-driven chart for six weeks starting in mid-January, and "Don't Forget to Remember Me" peaked at No. 2 on that chart in August.

Top audience contributors for "Cheats" are WUSN/Chicago (1.3 million impressions), KILT/Houston (1.1 million), WKHX/Atlanta (1.0 million), KEYE/Minneapolis (884,000) and WYCD/Detroit (849,000). In terms of detections, the leading stations are WWNU/Columbia, S.C. (70 detections); WNKT/Charleston, S.C. (56); WOGI/Pittsburgh (55); KTTS/Springfield, Mo. (55); and WDAF/Kansas City (54).

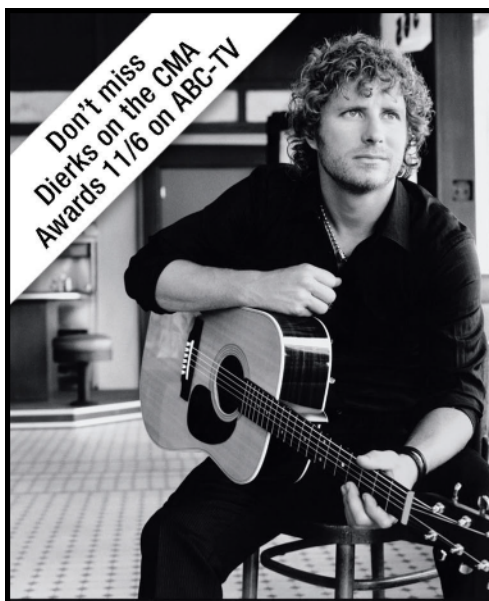
According to **Nielsen SoundScan**, Underwood's *Some Hearts* album has scanned approximately 3.6 million copies since its release in November 2005.

In other chart news, Arista Nashville claims this week's Most Added honors on the R&R Country chart with **Jason Michael Carroll's** "Alyssa Lies." That track makes 6.7 million audience impressions (up 1.5 million) at 87 monitored reporters and aggregates 18 adds this week. Nielsen BDS reports a net gain of eight stations showing detections during the tracking week.

Sony BMG Nashville also claims a pair of Breaker titles this week, led by **Keith Anderson's** "Podunk" (Arista Nashville) with spins detected at 72 monitored

If you experienced transmission problems ... please call our Circulation Department at 310-788-1625.

© 2006 Radio & Records. All Rights Reserved. No part of this material may be reproduced in any form or incorporated in any information retrieval system without written permission of the Publisher.



Don't miss
Dierks on the CMA
Awards 11/6 on ABC-TV

dierks bentley

"long trip alone"

The follow up to the **#1** hit single, "Every Mile A Memory"
from the **#1** selling album

On your desk this week / Going for IMMEDIATE Airplay



The new album,
Long Trip Alone
in stores and
online NOW!

Official add date 11/13

www.capitolnashville.com
www.dierks.com



George Strait

“It Just Comes Natural”

- Being Inducted to the CMA Hall of Fame this Week!
- Top 15 in 5 Weeks and All Systems Are Go



Houston
We have NO Problems!

Caution:
Extremely Hot! Avoid Direct Contact with Single

Vince Gill

“The Reason Why”



Stage Two Rockets Initiated
Top 30 Today!

12 Explosive Adds Today at:
KYGO, KMLE, KSON, WKLB,
WYGY, WMIL, WLXX, WRBT,
WDAF, WMSI, KAJA,
WDXB



Liftoff!!

Gonna Torch the Sky with this one!!!
Get on Board Now

Gary Allan

“A Feelin’ Like That”

- Over 35 First Week Stations On Board



reporters (46-45). Also getting the Breaker nod is **Chris Young's** "Drinkin' Me Lonely" (RCA), which bullets at No. 45 with plays detected at 74 monitored signals. Young's labelmate **Sara Evans** reaps the week's Hot Shot Debut at No. 56 with "Missing Missouri," which starts with 1.1 million impressions at three monitored ports.

At press time, the **R&R Country Indicator** chart had not been completed due to internet connection issues earlier in the day (Monday). Please check Tuesday's **R&R Country Daily** for a complete rundown of the chart's biggest news.

Radio News: Stocks & Revenue

After an up and down day where the Dow Index made several runs at a record high, the most-watched index of 30 industrials finished a second straight day down, in the red by 3.76, at 12,086.50. The NASDAQ was up by 13.15 to close at 2,363.77, and the S&P 500 was improved by only 0.59 to finish at 1,377.93.

The lackluster performance on Wall Street came as Wal-Mart delivered a so-so sales report, and the government reported that consumer sales were not just flat in September, but their weakest in 10 months.

David Field-run Entercom led winners on the R&R Index as the company jumped more than 6%, or \$1.68 a share, to \$28.42, followed by Cox Radio gaining 80 cents to \$16.96. Just before 10 a.m. Monday morning, Cox reached \$17 a share, 5% above its Friday close. Almost 747,000 shares of CXR traded hands on Monday. Cumulus earned 34 cents to \$10.85, and Entravision grew 21 cents to \$7.49. Sage picked up 19 cents to \$8.30. Twenty issues on the R&R Index were in the green, and only nine finished in the red.

Losers were led by Harris, which dropped \$1.18 a share to \$41.82; Sirius lost 6 cents to \$3.79; Spanish Broadcasting System fell 6 cents to \$4.73; and Clear Channel, which reported Q3 revenues of about \$1.8 billion — a 7% increase from the \$1.7 billion reported for Q3 2005 — earlier in the day, closed off 23 cents at \$34.47.

Lower revenues in its Philadelphia and Miami clusters coupled with higher costs caused Beasley Broad-

This Week At Callout America

Bullseye President John Hart brings our weekly analysis of country callout research to you. View more complete information at <http://data.bullseye.com.bullseye/radioandrecords>.

"**Dierks Bentley** repeats as the No. 1 song overall this week with 'Every Mile a Memory.' This song is No. 1 with men and younger 25-34 listeners, the No. 3 song with females and No. 3 with 35-44 listeners.

"**Sugarland's** 'Want To' is just 13 weeks old and already the No. 2 song overall and the No. 3 passion song. Men rank this song at No. 3, while women rank it at No. 4 overall. Younger listeners 25-34 rank the song at No. 3 for the week, up from No. 6.

"**Rascal Flatts** are new to the top five song with 'My Wish,' ranking as the No. 5 song — up strong from No. 11 last week and No. 15 two weeks ago. Men rank this song at No. 2 and women at No. 5. The strength is with younger 25-34 listeners, who rank it at No. 2.

"**Carrie Underwood** moves into the top 10 with 'Before He Cheats' at No. 10, up from No. 15 last week. It is also the No. 7 passion song, up from No. 9. Strong growth with both male and female listeners; men rank this song at No. 11, up from No. 16, while women rank it at No. 8, up from No. 14.

"**Trent Tomlinson** moves into the top 20 with 'One Wing in the Fire' at No. 18, up from No. 22 (also the No. 18 passion song, up from No. 21). Men rank this song at No. 14, while younger 25-34s rank it at No. 15."

cast Group to report a 3.1% drop to \$31.1 million in third quarter revenues, the Naples, FL-based group announced Monday (Oct. 30).

Beasley also said it took a 37.1% hit on net income for the period ending Sept. 30, claiming \$2.4 million as compared to \$3.8 million received during the same period in 2005. Per share net income was a dime, off a nickel from last year's 15 cents per share earnings. The losses came despite

If you experienced transmission problems ... please call our Circulation Department at 310-788-1625.

© 2006 Radio & Records. All Rights Reserved. No part of this material may be reproduced in any form or incorporated in any information retrieval system without written permission of the Publisher.



IT'S HUGE!

Rodney Atkins "Watching You"

**2nd
Most
Added!!**

RR: #1 Most Increased Spins
#3 Most Increased Audience
MB: #1 Most Increased Points
#2 Most Increased Spins

Adds Include: KSCS, KILT, WFMS, WQYK, WFUS, KNIX, WDAF, WOGI, WKDF, WKKT, WWYZ, WCTO, WQDR, KTEX, WBBS, WSJR, WGNE

MB: 24 to 20 +354

RR: 25 to 23 +2.5 mil. aud.

CURB
circulation

double-digit gains in the company's fast-growing Las Vegas cluster.

—**Jeffrey Yorke**, Washington, D.C.

On The Row: Publishing

In a development that could potentially have reverberations along Nashville's Music Row, EMI Group is offering a joint venture opportunity to EMI Music Publishing chairman **Marty Bandier**, who officially tendered his resignation on Monday morning (Oct. 30), Billboard.biz has learned.

During a meeting in New York City of EMI Music Publishing worldwide managing directors and other executives, Bandier announced his resignation. He also told the group that he is considering offers from "the usual suspects," as well as "unusual" ones, according to a source in the room.

Among them is one from EMI Group chairman **Eric Nicoli**, who initiated discussions with Bandier to form a publishing joint venture. Bandier said he would have an equity stake, according to the source. The venture would be under the EMI Group umbrella, but separate from EMI Music Publishing. EMI Music Publishing co-CEO **Roger Faxon** confirmed the joint venture discussion to the group.

After Bandier spoke to the group, telling them how great it has been to be a part of EMI, Bandier received a standing ovation.

Bandier tells Billboard.biz that he needs some time to consider various opportunities that have been presented to him. He declined to discuss any specifics. Talks between Bandier and Warner Music Group chairman **Edgar Bronfman Jr.** are still ongoing, says a source close to the discussions. EMI Group declined to comment at this time.

—**Susan Butler**, New York

In Memoriam: Nashville Songwriters Hall of Fame member and pioneering businesswoman **Marijohn Wilkin** died Saturday morning (Oct. 28) of heart disease. She was 86.

Wilkin was best known as the co-writer of **Lefty Frizzell's** 1959 hit "Long Black Veil," which she penned with **Danny Dill**. Numerous artists in a variety of styles have covered that composition. She is also credited with widely known country hits including "One Day at a Time" (**Marilyn Sellars, Cristy Lane**), a song written with **Kris Kristofferson**; and "Waterloo" (**Stonewall Jackson**), written with **John D. Loudermilk**.

Wilkin was also an accomplished music publisher in Nashville and recorded for Columbia, Myrrh and other smaller imprints. A son, John Buck Wilkin, survives her. Services were slated for Monday afternoon (Oct. 30) in Nashville.

ACM Names New Board

The Los Angeles-based Academy of Country Music has elected its new board of directors for the 2006-2007 term, drawn from 15 qualifying professional categories elected by the ACM membership. In addition to those elected, at-large positions have been appointed by Chairman **Gayle Holcomb** and President **Rod Essig**. Two directors are elected from each category, and each director serves staggered two-year terms, with half the board membership changing each year.

"One of the most remarkable things about our board of directors is how involved they are in our day-to-day operations," remarked ACM executive director **Bob Romeo**. "With a working board, we are able to achieve goals laid out in a timely manner and keep up-to-date with the ever-changing face of our industry. I am extremely excited to welcome our new board of directors and welcome back our continuing board."

The complete board of directors includes **John Briggs** (ASCAP), **Karen Clark** (SunTrust Bank), **Richie McDonald** (Lonestar), **Eddie Montgomery** (Montgomery Gentry), **Judy Alberti** (Dodge Theatre), **Richard Egan** (Graham Bros. Entertain-

If you experienced transmission problems ... please call our Circulation Department at 310-788-1625.

© 2006 Radio & Records. All Rights Reserved. No part of this material may be reproduced in any form or incorporated in any information retrieval system without written permission of the Publisher.

**It's about Honor, Inspiration
and Hope...**

IMMEDIATE LISTENER RESPONSE:
*"Any song that can give me goose bumps from beginning to end
definitely deserves more than an A+!"*
— KFDI Listener 10/30/06

RUSHLOW HARRIS *Bagpipes Cryin'*

**KDRK, KHKI, KIXZ, KJJY, KJUG, KSOP, KUBL,
WGNE, WIVK, WQBE, WQHK, WRNS, WTNR, WXBQ**

ment), **Rick Giles** (Composer), **Craig Wiseman** (Big Loud Shirt), **Clint Higham** (Morris Management), **Clarence Spalding** (Spalding Entertainment), **Brent Rowan** (Musician/Bandleader), **Marty Stuart** (Musician/Bandleader), **Dale Bobo** (Warner Chappell Music), **Pat Higdon** (Universal Music Publishing), **Coyote Calhoun** (WAMZ/Louisville), **Bob Kingsley** (KKCS Productions), **Wade Jessen** (Billboard/Radio & Records), **David Ross** (Music Row), **Schatzi Hageman** (Hot Schatz PR), **Jeff Walker** (AristoMedia), **Charlie Cook** (Cumulus), **Bob Moody** (Regent), **Jim Yerger** (Broken Bow), **Butch Vaughn** (Sony BMG Nashville), **Gayle Holcomb** (William Morris), **Paul Moore** (William Morris), **John Juliano** (Eastern States Exposition), **Fran Romeo** (TBA Entertainment), **R.A. "Rac" Clark** (ACM Awards Producer), **Sarah Trahern** (GAC), **Rod Essig** (CAA), **Steve Dahl** (MPA), **John Dennis** (Vector), **John Dorris** (Hallmark Direction), **Tim DuBois** (Universal South), **Mike Dungan** (Capitol Nashville), **Pete Fisher** (WSM Grand Ole Opry), **Jay Frank** (Yahoo!), **Randy Goodman** (Lyric Street), **John Grady**, **Gary Haber** (Haber Corp.), **Mark Hartley** (Fitzgerald-Hartley), **Greg Hill** (Red Light), **Jerry Hufford** (Buck Owens Ent.), **T.K. Kimbrell** (TKO), **Mike Kraski** (Equity), **Bill Lardie** (Anderson Merch.), **Tracy Lawrence** (TLE, Inc.), **Joey Lee** (Buddy Lee), **Dennis Lord** (SESAC), **Bill Mayne** (903), **Jim Murphy** (Jones Media), **Doug Nichols** (Turner & Nichols), **Danny O'Brian** (Erv Woolsey Co.), **Brian O'Connell** (Live Nation), **Chris Parr** (CMT), **Joe Don Rooney** (Rascal Flatts), **Jon Small** (Picture Vision), **Gary Smith** (Pollstar), **Jonathan Stone** (Windswept Pacific), **James Stroud** (Universal Music Group Nashville), **Dwight Wiles** (Smith, Wiles & Co.) and **Jody Williams** (BMI).

In addition, the ACM offices have relocated to 5500 Balboa Blvd., Suite 200, Encino, CA 91316. Effective Nov. 2, the new telephone number is 818-788-8000 (fax 818-788-0999).

BILLBOARD BOXSCORE

ARTIST VENUE/CITY/DATES	ATTENDANCE	GROSS
Rascal Flatts, Gary Allan, Eric Church Verizon Wireless Amphitheater Virginia Beach Sept. 8	19,644	\$605,640
Rascal Flatts, Gary Allan, Eric Church Thompson-Boling Arena Knoxville Sept. 14	10,851	\$593,469
Brad Paisley, Carrie Underwood, Jake Owen Riverbend Music Center Cincinnati Sept. 30	10,994	\$453,441
Willie Nelson, Nitty Gritty Dirt Band Red Rocks Amphitheatre Denver Sept. 3	9,504	\$406,170
Alan Jackson, The Wreckers, Rodney Atkins DTE Energy Music Center Detroit Sept. 23	11,577	\$363,706

Billboard Boxscore tracks recent country concert grosses and attendance figures. Copyright 2006, VNU Business Media. More concert grosses available at www.billboard.biz.

NIelsen MONITOR-PLUS

OVERALL		COUNTRY
FOR THE WEEK OF SEPT. 17 2006 - SEPT. 23 2006		
GENERAL ELECTRIC CO	1	WALT DISNEY CO
WALT DISNEY	2	BERKSHIRE HATHAWAY
NATL AMUSEMENTS	3	GENERAL ELECTRIC
BERKSHIRE HATHAWAY	4	NATL AMUSEMENTS
GENERAL MOTORS	5	DAIMLERCHRYSLER
DAIMLERCHRYSLER	6	NEWS CORP
NEWS CORP	7	WAL-MART STORES
MCDONALDS	8	CNG FINANCIAL
TOYOTA	9	GENERAL MOTORS
VERIZON	10	WESTERN STONE & METAL

Nielsen Monitor-Plus tracks commercial occurrence data on radio, and is ranked by total units detected for the period indicated. Copyright 2006, Nielsen Media Research. Details at www.nielsenmedia.com.

If you experienced transmission problems ... please call our Circulation Department at 310-788-1625.

© 2006 Radio & Records. All Rights Reserved. No part of this material may be reproduced in any form or incorporated in any information retrieval system without written permission of the Publisher.

Count Down to a SWEET Nov!

SugarLand "want to"

"Want To" heads into Top 5! "Enjoy The Ride" in stores Nov 7th

Good Morning America Nov 6th LIVE from Nashville

Watch them rock the CMA's Nov 6th

Call Out America #2. Top 5 call out Nationally.



CD GALLERY

Here are this week's new album releases, in stores on Oct. 31:

Kellie Pickler *Small Town Girl (BNA)*

Producer: Blake Chancey



Since her days as a popular finalist on *American Idol*, **Kellie Pickler** has been tirelessly extending the goodwill she fostered on television to the folks out in the radio hinterland. Programmers have perhaps been seeing qualities in Pickler that the often-prickly *Idol*

judges were too blinded by the television glare to appreciate. That's not a slam against the judges — sometimes, country music star quality is lost on folks who have never gotten their feet muddy on the back roads. That said, Pickler's personality is far more evident on *Small Town Girl* than it ever was on the television show, so she gets the last laugh with solid efforts like "Red High Heels" and "I'm on My Way."

The folks choosing singles at the label will likely opt for tempo fare when choosing future radio tracks, but hopefully they'll step out and get behind ballads like "Didn't You Know How Much I Loved You," "I Wonder" and "Wild Ponies." The bottom line is Pickler is already a star, so quibbling over singles is really beside the point.

—Wade Jessen

Also being released Oct. 31:

Willie Nelson *Songbird* (Lost Highway)

T. Graham Brown *The Present* (Aspirion)

Cross Canadian Ragweed *Back to Tulsa: Live and Loud at Cain's Ballroom* (Universal South)

Rushlow Harris *Bagpipes Cryin'* (Show Dog Nashville)

Craig Morgan *Little Bit of Life* (Broken Bow)

Jason Boland *The Bourbon Legend* (Sustain)

Zachary Hunter *In Your Dreams* (Wolf/Aspirion)

The Roys *Elaine & Lee* (Pedestal/Aspirion)

Dates & Deadlines:

Nov. 1: A 50-Year Musical Journey with Steve Cropper, Nashville. Details at www.tjmartellfoundation.com.

Nov. 2: Music 4 TN Kids Auction, Nashville. Details at www.music4tnkids.com.

Nov. 4: 54th annual BMI Country Awards, Nashville. Details at www.bmi.com.

Nov. 5: Music City Walk of Fame Inductions, Nashville. Details at www.nashvillecvb.com.

Nov. 5: Annual SESAC Country Awards, Nashville. Details at www.sesac.com.

Nov. 6: 40th annual Country Music Association Awards, Nashville. Details at www.cmaworld.com.

Nov. 9: 12th annual Inspirational Country Music Awards, Nashville. Details at www.ccmacc.com.

Nov. 20: 10th annual Christmas for Kids Benefit Concert, Nashville. Details at www.christmas4kids.org.

Jan. 28-31, 2007: Country In The Rockies, Steamboat Springs, CO. Details at www.citr.org.

Feb. 28-March 2, 2007: Country Radio Seminar 38, Nashville. Details at www.crb.org.

March 26-31, 2007: 15th annual Tin Pan South Songwriters Festival. Details at www.tinpansouth.com.

April 16, 2007: CMT Music Awards, Nashville. Details at www.cmt.com.

April 25, 2007: GMA Music Awards, Nashville. Details at www.gospelmusic.org.

June 7-10, 2007: CMA Music Festival, Nashville. Details at www.cmaworld.com.

If you experienced transmission problems ... please call our Circulation Department at 310-788-1625.

© 2006 Radio & Records. All Rights Reserved. No part of this material may be reproduced in any form or incorporated in any information retrieval system without written permission of the Publisher.

What's working on your show?
Why not let your audience tell you,
so you can do more of it?

Listener feedback.
Regularly. Affordably. Quickly.

media  EKGSM

www.mediaEKG.com
sammilkman@mediaEKG.com

MUSICNOTES

↖ Pickler Hits The Big Stage Her Way

BNA artist **Kellie Pickler** made her **WSM Grand Ole Opry** debut Oct 27. In an unusual — but thoroughly “Pickler” twist — she performed “My Angel” while seated on the circle of wood cut from the Ryman Auditorium stage where all the country giants have stood to perform since 1925.

↖ **Keith Urban's** “Be Here” album (Capitol Nashville) has been certified quadruple-platinum by the RIAA (four million units shipped).

↖ The **WSM Grand Ole Opry** marks its seasonal return to the Ryman Auditorium beginning Oct. 31 and will continue through Feb. 24, 2007. In addition to two Saturday night shows at 6:30 and 9:30 p.m. CT, the Opry will host two Friday night shows Nov. 24 through Dec. 15 at 7 p.m. and 9:30 p.m. CT.

↖ Four weeks after the release of *Last Man Standing*, **Jerry Lee Lewis'** first studio album in over a decade, CMT will broadcast the premiere of the album's “Pink Cadillac” music video on Nov. 2.

↖ **Jason Aldean; The Wreckers; and Vince Gill** with **Sheryl Crow, Jenny Gill** and **Amy Grant** have been added to the list of performers at the CMA Awards Nov. 6 on ABC-TV.

VIDEO ADDS

CMT

BRAD PAISLEY She's Everything
KENNY ROGERS The Last Ten Years

CMT PURE COUNTRY

JERRY LEE LEWIS & BRUCE SPRINGSTEEN Pink Cadillac
KENNY ROGERS The Last Ten Years

GREAT AMERICAN COUNTRY

KENNY ROGERS The Last Ten Years



promosquad
HitPredictor

SONGS WITH HIT POTENTIAL

	CHART RANK
KENNY CHESNEY You Save Me (BNA) (92.5)	3
RASCAL FLATTS My Wish (Lyric Street) (91.9)	5
SUGARLAND Want To (Mercury) (93.2)	6
KEITH URBAN Once In A Lifetime (Capitol) (80.5)	7
TIM MCGRAW My Little Girl (Curb) (88.3)	8
MONTGOMERY GENTRY Some People Change (Columbia) (83.7)	11
BRAD PAISLEY She's Everything (Arista Nashville) (84.9)	13
TAYLOR SWIFT Tim McGraw (Big Machine) (76.1)	14
LONESTAR Mountains (BNA) (89.6)	15
TOBY KEITH Crash Here Tonight (Show Dog) (92.3)	17
GEORGE STRAIT It Just Comes Natural (MCA Nashville) (91.8)	18
JASON ALDEAN Amarillo Sky (Broken Bow) (81.0)	19
RODNEY ATKINS Watching You (Curb)(93.0)	23
TRENT TOMLINSON One Wing In The Fire (Lyric Street) (89.4)	25
JASON MICHAEL CARROLL Alyssa Lies (Arista Nashville)(85.4)	28(new)
JOE NICHOLS I'll Wait For You (Universal) (91.5)	29
SARA EVANS You'll Always Be My Baby (RCA) (89.5)	30
PHIL VASSAR The Woman In My Life (Arista Nashville) (94.4)	31
TRACE ADKINS Ladies Love Country Boys (Capitol) (90.4)	33
DARYL WORLEY I Just Came Back From A War (903 Music) (84.2)	36(new)
KELLIE PICKLER Red High Heels (BNA) (75.9)	39
CHRIS YOUNG Drinkin' Me Lonely (RCA) (76.8)	46
BILLY CURRINGTON Good Directions (Mercury) (90.7)	48
JAKE OWEN Startin' With Me (RCA) (88.2)	50

Copyright 2006, Think Fast, LLC. For more information and testing methodology, please visit HitPredictor.com or Promosquad.com.

— **Wade Jessen/Country Editor** 615-321-4291
Email: wjessen@radioandrecords.com

— **Ken Tucker/Radio Editor** 615-321-4286
Email: ktucker@radioandrecords.com

If you experienced transmission problems ... please call our Circulation Department at 310-788-1625.

© 2006 Radio & Records. All Rights Reserved. No part of this material may be reproduced in any form or incorporated in any information retrieval system without written permission of the Publisher.

GO TO YOUR HAPPY PLACE

Relax and catch some rays. We'll handle all of the details when it comes to printing your decals and labels. Call today.

Communication Graphics Inc
THE DECAL COMPANY
(800) 331-4438 WWW.CGILINK.COM



DECALS STATICS LABELS POCKET FOLDERS

LW	TW	ARTIST Title Label(s)	Tot. Aud. (00)	+/- Aud. (00)	Total Plays	+/- Plays	Wks On	Sta On/ Adds TW
2	1	CARRIE UNDERWOOD Before He Cheats (Arista/Arista Nashville)	370029	+34855	4599	+320	15	112/3
1	2	DIERKS BENTLEY Every Mile A Memory (Capitol Nashville)	327088	-7250	4207	-115	18	114/0
5	3	KENNY CHESNEY You Save Me (BNA)	326461	+23534	4086	+233	13	113/3
3	4	HEARTLAND I Loved Her First (Lofton Creek)	314329	-14028	3899	-226	18	110/3
4	5	RASCAL FLATTS My Wish (Lyric Street)	311489	+14534	3904	+315	12	113/3
7	6	SUGARLAND Want To (Mercury)	304010	+24450	3846	+429	14	114/3
6	7	KEITH URBAN Once In A Lifetime (Capitol Nashville)	292055	+3174	3824	+150	11	112/2
9	8	TIM MCGRAW My Little Girl (Curb)	278843	+32952	3451	+355	13	113/3
8	9	JOSH TURNER Would You Go With Me (MCA Nashville)	243430	-32456	2968	-515	27	114/0
11	10	RODNEY ATKINS If You're Going Through Hell ... (Curb)	210157	+8722	2460	+95	42	114/0
12	11	MONTGOMERY GENTRY Some People Change (Columbia)	208336	+19585	2635	+234	16	113/1
10	12	GEORGE STRAIT Give It Away (MCA Nashville)	193844	-22234	2403	-242	19	112/0
14	13	BRAD PAISLEY She's Everything (Arista Nashville)	184666	+17250	2607	+216	10	109/4
17	14	TAYLOR SWIFT Tim McGraw (Big Machine)	178103	+19732	2276	+122	18	110/2
15	15	LONESTAR Mountains (BNA)	174750	+13726	2369	+136	19	112/0
13	16	JACK INGRAM Love You (Big Machine)	172972	-3035	2444	+30	21	112/0
16	17	TOBY KEITH Crash Here Tonight (Show Dog Nashville)	164456	+6781	2375	+74	12	112/2
19	18	GEORGE STRAIT It Just Comes Natural (MCA Nashville)	161011	+28434	2012	+283	5	110/11
20	19	JASON ALDEAN Amarillo Sky (Broken Bow)	141906	+11273	2216	+149	17	108/1
18	20	ALAN JACKSON Like Red On A Rose (Arista Nashville)	120586	-27750	1795	-367	16	114/1
21	21	RASCAL FLATTS Life Is A Highway (Walt Disney/Lyric Street)	109394	+3943	1296	+3	18	68/0
22	22	EMERSON DRIVE A Good Man (Midas/New Revolution)	108306	+9853	1684	+80	28	94/2
25	23	RODNEY ATKINS Watching You (Curb)	105211	+25932	1506	+356	7	88/14
23	24	CRAIG MORGAN Little Bit Of Life (Broken Bow)	102768	+7651	1697	+143	13	99/3
24	25	TRENT TOMLINSON One Wing In The Fire (Lyric Street)	98940	+12457	1719	+143	18	99/3
26	26	ERIC CHURCH Two Pink Lines (Capitol Nashville)	80302	+7896	1319	+124	11	87/9
27	27	WRECKERS My, Oh My (Maverick/Warner Bros./WRN)	80087	+15555	1184	+214	8	84/9
32	28	JASON MICHAEL CARROLL Alyssa Lies (Arista Nashville)	66630	+16219	927	+294	6	67/18
29	29	JOE NICHOLS I'll Wait For You (Universal South)	66050	+10774	1156	+143	13	81/5
30	30	SARA EVANS You'll Always Be My Baby (RCA)	64681	+10469	1047	+114	11	76/3

© 2006 Radio & Records

THE NEW SINGLE FROM
Martina McBride
"Anyway"

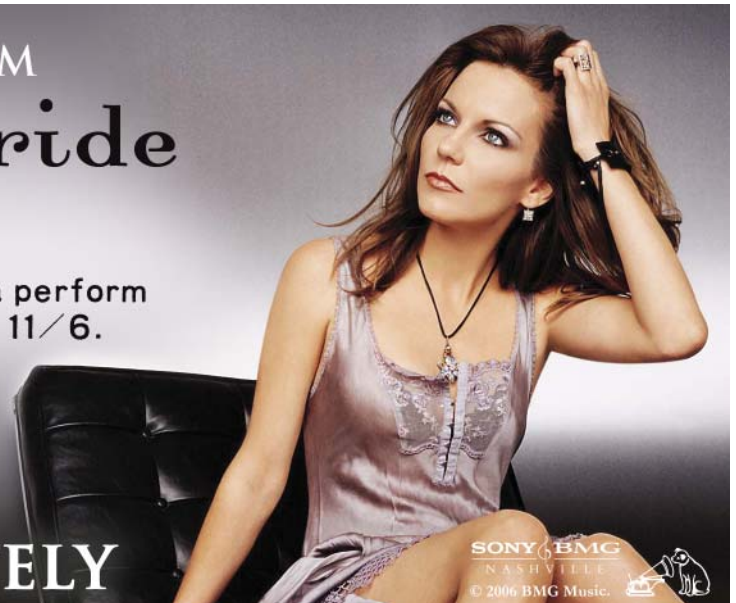
Your listeners will see & hear Martina perform
it on the CMA Awards this Monday, 11/6.

CD single on your desk
the next morning, 11/7.

If you want it before 11/7,
call your RCA Representative.

AIRPLAY IMMEDIATELY

RCA RECORDS LABEL



SONY BMG
NASHVILLE
© 2006 BMG Music.

LW	TW	ARTIST Title Label(s)	Tot. Aud. (00)	+/- Aud. (00)	Total Plays	+/- Plays	Wks On	Sta On/ Adds TW
31	31	PHIL VASSAR The Woman In My Life (Arista Nashville)	59236	+7914	1063	+103	13	83/0
28	32	CAROLINA RAIN Get Outta My Way (Equity)	56061	+404	901	+43	24	71/2
33	33	TRACE ADKINS Ladies Love Country Boys (Capitol Nashville)	55207	+8867	908	+152	8	69/9
35	34	VINCE GILL The Reason Why (MCA Nashville)	46446	+6608	763	+115	13	68/12
34	35	SARAH BUXTON Innocence (Lyric Street)	43010	+236	746	-12	13	59/1
39	36	DARRYL WORLEY I Just Came Back From A War (903 Music)	39452	+5376	628	+132	7	50/11
42	37	CLAY WALKER 'Fore She Was Mama (Asylum-Curb)	37953	+11726	481	+93	7	42/5
41	38	LITTLE BIG TOWN Good As Gone (Equity)	37783	+7616	474	+43	7	43/4
37	39	KELLIE PICKLER Red High Heels (BNA)	36056	+1604	679	+75	7	55/5
40	40	LEANN RIMES Some People (Asylum-Curb)	32799	-20	662	-21	13	63/1
38	41	LEE ANN WOMACK Finding My Way Back Home (Mercury)	31843	-4461	533	-40	13	54/1
36	42	JO DEE MESSINA It's Too Late To Worry (Curb)	31123	-5807	691	-99	15	66/1
43	43	FAITH HILL Stealing Kisses (Warner Bros.)	23188	-295	457	+40	5	39/7
44	44	RANDY ROGERS BAND Kiss Me In The Dark (Mercury)	22121	-1	211	-1	13	14/0
Breaker	45	KEITH ANDERSON Podunk (Arista Nashville)	19797	-593	416	+47	10	41/3
Breaker	46	CHRIS YOUNG Drinkin' Me Lonely (RCA)	19447	+1078	351	+1	9	40/2
54	47	GARY ALLAN A Feelin' Like That (MCA Nashville)	18822	+10138	213	+102	2	24/11
53	48	BILLY CURRINGTON Good Directions (Mercury)	17682	+7532	306	+106	4	30/5
50	49	KATRINA ELAM Love Is (Universal South)	17388	+2001	376	+7	9	38/0
48	50	JAKE OWEN Startin' With Me (RCA)	16107	+1265	274	+23	4	32/1
51	51	TRACY LAWRENCE Find Out Who ... (Rocky Comfort/CO5 Nashville)	15935	-628	273	+10	9	17/0
49	52	STEVE AZAR You Don't Know A Thing (Dang/Midas/New Revolution)	14801	-883	334	-12	11	30/0
47	53	ASHLEY MONROE W/RONNIE DUNN I Don't Want To (Columbia)	14406	-2479	328	-1	8	38/4
57	54	PAT GREEN Dixie Lullaby (BNA)	12562	+3939	151	+26	3	19/4
52	55	LINDSEY HAUN Broken (Show Dog Nashville)	12453	-959	260	-1	6	29/2
Debut	56	SARA EVANS Missing Missouri (RCA)	10571	+1552	92	+9	1	3/0
56	57	KENNY ROGERS The Last Ten Years (Capitol Nashville)	10171	+1208	103	-3	4	10/0
55	58	JOSH GRACIN I Keep Coming Back (Lyric Street)	9493	-505	161	+79	3	15/7
59	59	JIMMY WAYNE That's All I'll Ever Need (Big Machine)	9470	+2146	221	+25	2	20/2
Debut	60	BLAKE SHELTON Don't Make Me (Warner Bros.)	7568	+2294	142	+37	1	20/8

© 2006 Radio & Records



This song **IS** our Format!

"I Get To" Blue County

Test it on the Air and Watch the Reaction!

On Your Desk Now.....Impacting Monday 11/13



COUNTRY

MOST ADDED

ARTIST Title Label(s)	Adds
JASON MICHAEL CARROLL Alyssa Lies (Arista Nashville)	18
RODNEY ATKINS Watching You (Curb)	14
VINCE GILL The Reason Why (MCA Nashville)	12
GEORGE STRAIT It Just Comes Natural (MCA Nashville)	11
DARRYL WORLEY I Just Came Back From A War (903 Music)	11
GARY ALLAN A Feelin' Like That (MCA Nashville)	11
ERIC CHURCH Two Pink Lines (Capitol Nashville)	9
WRECKERS My, Oh My (Maverick/Warner Bros./WRN)	9
TRACE ADKINS Ladies Love Country Boys (Capitol Nashville)	9

MOST INCREASED AUDIENCE

ARTIST Title Label(s)	Total Aud. Increase
CARRIE UNDERWOOD Before He Cheats (Arista/Arista Nashville)	+34855
TIM MCGRAW My Little Girl (Curb)	+32952
GEORGE STRAIT It Just Comes Natural (MCA Nashville)	+28434
RODNEY ATKINS Watching You (Curb)	+25932
SUGARLAND Want To (Mercury)	+24450
KENNY CHESNEY You Save Me (BNA)	+23534
TAYLOR SWIFT Tim McGraw (Big Machine)	+19732
MONTGOMERY GENTRY Some People Change (Columbia)	+19585
BRAD PAISLEY She's Everything (Arista Nashville)	+17250
JASON MICHAEL CARROLL Alyssa Lies (Arista Nashville)	+16219

MOST INCREASED PLAYS

ARTIST Title Label(s)	Total Play Increase
SUGARLAND Want To (Mercury)	+429
RODNEY ATKINS Watching You (Curb)	+356
TIM MCGRAW My Little Girl (Curb)	+355
CARRIE UNDERWOOD Before He Cheats (Arista/Arista Nashville)	+320
RASCAL FLATTS My Wish (Lyric Street)	+315
JASON MICHAEL CARROLL Alyssa Lies (Arista Nashville)	+294
GEORGE STRAIT It Just Comes Natural (MCA Nashville)	+283
MONTGOMERY GENTRY Some People Change (Columbia)	+234
KENNY CHESNEY You Save Me (BNA)	+233
BRAD PAISLEY She's Everything (Arista Nashville)	+216

COUNTRY INDICATOR

MOST ADDED

ARTIST Title Label(s)	Adds
GARY ALLAN A Feelin' Like That (MCA Nashville)	22
JASON MICHAEL CARROLL Alyssa Lies (Arista Nashville)	18
BROOKS & DUNN Hillbilly Deluxe (Arista)	12
RUSHLOW HARRIS Bagpipes Cryin' (Show Dog Nashville)	11
FAITH HILL Stealing Kisses (Warner Bros.)	8
BLAKE SHELTON Don't Make Me (Warner Bros.)	8
CLAY WALKER 'Fore She Was Mama (Asylum-Curb)	6
RODNEY ATKINS Watching You (Curb)	5
JOE NICHOLS I'll Wait For You (Universal South)	5
STEVE HOLY Come On Rain (Curb)	5
JOSH GRACIN I Keep Coming Back (Lyric Street)	5

MOST INCREASED AUDIENCE

ARTIST Title Label(s)	Total Aud. Increase
JASON MICHAEL CARROLL Alyssa Lies (Arista Nashville)	+8996
RODNEY ATKINS Watching You (Curb)	+8076
GEORGE STRAIT It Just Comes Natural (MCA Nashville)	+6303
SUGARLAND Want To (Mercury)	+6247
KENNY CHESNEY You Save Me (BNA)	+5455
BRAD PAISLEY She's Everything (Arista Nashville)	+5349
RASCAL FLATTS My Wish (Lyric Street)	+5105
EMERSON DRIVE A Good Man (Midas/New Revolution)	+3578
TRENT TOMLINSON One Wing In The Fire (Lyric Street)	+3391
FAITH HILL Stealing Kisses (Warner Bros.)	+3163

MOST INCREASED PLAYS

ARTIST Title Label(s)	Total Play Increase
JASON MICHAEL CARROLL Alyssa Lies (Arista Nashville)	+370
RODNEY ATKINS Watching You (Curb)	+357
SUGARLAND Want To (Mercury)	+276
GEORGE STRAIT It Just Comes Natural (MCA Nashville)	+245
RASCAL FLATTS My Wish (Lyric Street)	+241
BRAD PAISLEY She's Everything (Arista Nashville)	+216
KENNY CHESNEY You Save Me (BNA)	+192
TRACE ADKINS Ladies Love Country Boys (Capitol Nashville)	+152
TRENT TOMLINSON One Wing In The Fire (Lyric Street)	+150
WRECKERS My, Oh My (Maverick/Warner Bros./WRN)	+138

DONOVAN CHAPMAN
His debut HIT single
“House Like That”

Building our foundation one week at a time!

“We're adding it.....Stellar vocal performance, strong lyrics and this guy has the background which will make him very relatable to country fans”.
Mark Phillips, PD-WWGR-Ft. Myers

“I want to hear House Like That by Donovan Chapman! I can't get enough of that song!! Thanks so much” :)
WBEE-Rochester listener!

Already in the “House”:
WIVK, WWGR, WIRK, KTOM, KKNQ, WTQR, WBEE, KUBL, WPKX, WFBE, KHKI, KKCS, KRRV, WTNT and more!
Add “House Like That” today!

Category 5

COUNTRY NEW & ACTIVE

- GRETCHEN WILSON** Come To Bed (*Columbia*)
Total Audience: 5949, Total Stations: 18, Adds: 5
- GARY NICHOLS** I Can't Love You Anymore (*Mercury*)
Total Audience: 5908, Total Stations: 17, Adds: 2
- BROOKS & DUNN** Hillbilly Deluxe (*Arista*)
Total Audience: 4549, Total Stations: 8, Adds: 7
- DANIELLE PECK** Isn't That Everything (*Big Machine*)
Total Audience: 4140, Total Stations: 13, Adds: 7
- STEVE HOLY** Come On Rain (*Curb*)
Total Audience: 3860, Total Stations: 17, Adds: 2
- LONESTAR** Nothing To Prove (*BNA*)
Total Audience: 3136, Total Stations: 0, Adds: 0

COUNTRY INDICATOR NEW & ACTIVE

- CLAY WALKER** 'Fore She Was Mama (*Asylum-Curb*)
Total Plays: 401, Total Stations: 37, Adds: 6
- BILLY CURRINGTON** Good Directions (*Mercury*)
Total Plays: 400, Total Stations: 36, Adds: 3
- ASHLEY MONROE W/RONNIE DUNN** I Don't Want To (*Columbia*)
Total Plays: 354, Total Stations: 36, Adds: 0
- BLAKE SHELTON** Don't Make Me (*Warner Bros.*)
Total Plays: 314, Total Stations: 39, Adds: 8
- GRETCHEN WILSON** Come To Bed (*Columbia*)
Total Plays: 277, Total Stations: 24, Adds: 3
- CHRIS YOUNG** Drinkin' Me Lonely (*RCA*)
Total Plays: 243, Total Stations: 23, Adds: 1
- STEVE HOLY** Come On Rain (*Curb*)
Total Plays: 235, Total Stations: 27, Adds: 5
- JAKE OWEN** Startin' With Me (*RCA*)
Total Plays: 233, Total Stations: 24, Adds: 2
- LINDSEY HAUN** Broken (*Show Dog Nashville*)
Total Plays: 206, Total Stations: 25, Adds: 1
- GARY ALLAN** A Feelin' Like That (*MCA Nashville*)
Total Plays: 194, Total Stations: 29, Adds: 22

R&R Going For Adds®

- 11/6
BROOKS & DUNN Hillbilly Deluxe (*Arista*)
- ROCKIE LYNNE** More (*Universal South*)
- 11/13
BLUE COUNTY I Get To (*Asylum-Curb*)
- DIERKS BENTLEY** Long Trip Alone (*Capitol*)
- TODD FRITSCH** What's Wrong With Me (*Diamond*)
- 11/20
No Adds

TOP 10 RECURRENTS

ARTIST Title Label(s)	Total Aud. (00)
WRECKERS Leave The Pieces (<i>Maverick/Warner Bros./WRN</i>)	168157
STEVE HOLY Brand New Girlfriend (<i>Curb</i>)	161969
BRAD PAISLEY The World (<i>Arista Nashville</i>)	139300
BROOKS & DUNN Building Bridges (<i>Arista Nashville</i>)	104541
LITTLE BIG TOWN Bring It On Home (<i>Equity</i>)	99162
RASCAL FLATTS What Hurts The Most (<i>Lyric Street</i>)	89256
BON JOVI Who Says You Can't Go Home (<i>Island/Mercury</i>)	83295
TOBY KEITH A Little Too Late (<i>Show Dog Nashville</i>)	82436
JOSH TURNER Your Man (<i>MCA Nashville</i>)	81347
PHIL VASSAR Last Day Of My Life (<i>Arista Nashville</i>)	79993

Nielsen Broadcast Data Systems 114 Country reporters. Songs ranked by total audience for the airplay week of 10/23-10/29. Bullets appear on songs gaining audience or remaining flat from previous week. A song will also receive a bullet if its percentage loss in audience does not exceed the percentage of monitored station downtime for the format. Country titles that decline in audience but increase in detections will also receive a bullet if the total audience erosion for the week does not exceed 3%. If two songs are tied in total audience, the song with the larger increase in audience is placed first. Descending, non-bulleted titles below No. 15 in either audience or detections are moved to recurrent after 20 weeks. Most Added is the total number of new adds officially reported to R&R by each reporting station or by automatic add thresholds for stations not allowed to report adds. Songs unreported as adds do not count toward overall total stations playing a song. Most Increased Audience lists the songs with the greatest week-to-week increases in total audience. Audience totals on the chart are derived, in part, using certain Arbitron Inc. copyrighted Persons 12+ audience estimates, under license (© 2006, Arbitron Inc.) © 2006 Radio & Records.



Jason Aldean
"Amarillo Sky"
Looks like another RESEARCH MONSTER!

Mediabase:
#1 Net Positives Adults All Ages
#5 Net Positives Females All Ages
#1 Males All Ages
#6 Females All Ages

Conversions Include: KASE, KNIX, WWGR, WIOV, WGNE, KDRK, KXKT, WKXC, WKSF...

Over 1.2 Million NEW MB Audience Impressions!
Performing LIVE on the CMA Awards Show!



Craig Morgan
"Little Bit Of Life"
The Tempo You Are Needing From An Artist That Always Researches!

Conversions include: KYGO, KNIX, KUZZ, KRYS, WXCX, WSTH, KDRK, KBUL...

Media Base 17* R&R 24

Nearly 1 Million NEW MB Audience Impressions!
Album "Little Bit of Life" Hits Stores TODAY!



October 30, 2006

LW	TW	ARTIST Title Label(s)	Total Plays	+/- Plays	Tot. Aud. (00)	+/- (00)	Wks On	Total Stations
2	1	CARRIE UNDERWOOD Before He Cheats (<i>Arista/Arista Nashville</i>)	3860	+94	92733	+2883	12	96/0
3	2	KENNY CHESNEY You Save Me (<i>BNA</i>)	3702	+192	88778	+5455	13	97/0
6	3	RASCAL FLATTS My Wish (<i>Lyric Street</i>)	3643	+241	86888	+5105	10	96/0
1	4	DIERKS BENTLEY Every Mile A Memory (<i>Capitol Nashville</i>)	3542	-291	85323	-7250	18	96/0
4	5	KEITH URBAN Once In A Lifetime (<i>Capitol Nashville</i>)	3427	-4	81686	-570	11	96/0
7	6	SUGARLAND Want To (<i>Mercury</i>)	3418	+276	81732	+6247	14	96/0
8	7	TIM MCGRAW My Little Girl (<i>Curb</i>)	3227	+113	77990	+2424	13	95/0
5	8	HEARTLAND I Loved Her First (<i>Lofton Creek</i>)	2854	-630	67481	-15322	20	84/0
10	9	BRAD PAISLEY She's Everything (<i>Arista Nashville</i>)	2631	+216	63075	+5349	9	95/0
9	10	MONTGOMERY GENTRY Some People Change (<i>Columbia</i>)	2627	+115	62395	+2765	17	96/1
11	11	TOBY KEITH Crash Here Tonight (<i>Show Dog Nashville</i>)	2411	+45	58685	+2002	11	95/0
12	12	JACK INGRAM Love You (<i>Big Machine</i>)	2361	+127	55917	+2295	21	95/1
13	13	JASON ALDEAN Amarillo Sky (<i>Broken Bow</i>)	2215	+93	54836	+2606	18	94/0
16	14	TAYLOR SWIFT Tim McGraw (<i>Big Machine</i>)	2178	+120	52639	+2429	19	94/0
15	15	LONESTAR Mountains (<i>BNA</i>)	2162	+89	51287	+1509	19	90/0
17	16	GEORGE STRAIT It Just Comes Natural (<i>MCA Nashville</i>)	2160	+245	51601	+6303	5	95/1
18	17	TRENT TOMLINSON One Wing In The Fire (<i>Lyric Street</i>)	2032	+150	47942	+3391	21	94/1
19	18	CRAIG MORGAN Little Bit Of Life (<i>Broken Bow</i>)	1832	+89	43460	+2996	9	91/3
20	19	EMERSON DRIVE A Good Man (<i>Midas/New Revolution</i>)	1721	+118	41446	+3578	27	83/0
22	20	RODNEY ATKINS Watching You (<i>Curb</i>)	1621	+357	38665	+8076	6	85/5

© 2006 Radio & Records

COM QUEST CALLOUT
619.659.3600



We're the ones
that actually
TELL YOU
who we're
researching

Callout.com

October 30, 2006

LW	TW	ARTIST Title Label(s)	Total Plays	+/- Plays	Tot. Aud. (00)	+/- (00)	Wks On	Total Stations
21	21	WRECKERS My, Oh My (Maverick/Warner Bros./WRN)	1550	+138	36664	-2436	7	86/3
23	22	ERIC CHURCH Two Pink Lines (Capitol Nashville)	1368	+63	32518	+1343	8	75/1
14	23	ALAN JACKSON Like Red On A Rose (Arista Nashville)	1368	-734	31984	-18539	16	64/0
24	24	GEORGE STRAIT Give It Away (MCA Nashville)	1219	-364	31565	-7935	19	60/0
27	25	TRACE ADKINS Ladies Love Country Boys (Capitol Nashville)	1116	+152	24733	+2742	6	72/3
26	26	JOE NICHOLS I'll Wait For You (Universal South)	1112	+85	27048	+2494	13	75/5
25	27	SARA EVANS You'll Always Be My Baby (RCA)	1097	+72	23932	+1788	7	75/3
28	28	PHIL VASSAR The Woman In My Life (Arista Nashville)	1055	+48	26595	+1123	15	71/2
31	29	FAITH HILL Stealing Kisses (Warner Bros.)	885	+118	19069	+3163	4	62/8
32	30	SARAH BUXTON Innocence (Lyric Street)	769	+33	15213	+547	7	66/1
33	31	RASCAL FLATTS Life Is A Highway (Walt Disney/Lyric Street)	756	+28	16347	+413	16	36/0
29	32	JO DEE MESSINA It's Too Late To Worry (Curb)	734	-153	17466	-3957	16	52/0
Debut	33	JASON MICHAEL CARROLL Alyssa Lies (Arista Nashville)	700	+370	16606	+8996	1	58/18
37	34	DARRYL WORLEY I Just Came Back From A War (903 Music)	694	+98	14847	+2021	2	54/3
34	35	KELLIE PICKLER Red High Heels (BNA)	688	+60	16101	+672	4	50/2
30	36	LEANN RIMES Some People (Asylum-Curb)	671	-162	15441	-4269	10	53/0
38	37	CAROLINA RAIN Get Outta My Way (Equity)	642	+8	14334	-289	6	44/1
36	38	LITTLE BIG TOWN Good As Gone (Equity)	621	+49	15934	+1318	5	46/4
39	39	VINCE GILL The Reason Why (MCA Nashville)	563	+33	14381	+997	6	49/4
40	40	KEITH ANDERSON Podunk (Arista Nashville)	476	+40	11525	+1091	3	45/2

© 2006 Radio & Records

Promote your company, product, or event with Roll-a-Sign's versatile disposable banners

Cost-effective and reusable

Many sizes and colors available

Durable enough for indoor or outdoor use

Advertise your message in any color

Call today for more information!
1-800-231-6074 www.rollasign.com



October 30, 2006

Table with 8 columns: ARTIST Title (Label), PASSION, TOTAL POSITIVE, INDEX, NEUTRAL, FAMILIARITY, DISLIKE, STRONGLY DISLIKE. Lists artists like Dierks Bentley, Sugarland, Heartland, etc.

Total sample size is 400 persons weekly with a margin of error of plus or minus 5%. Scoring is done each week using live interviewers conducting an interview with each respondent. Scores are: 5) I like it a lot, in fact it's one of my favorites; 4) I like it; 3) It's OK, just so-so; 2) I don't like it; 1) I strongly dislike it. The index score is an average of all 1-to-5 scores. The total positive score is an aggregate of the 4 and 5 scores. To be included in the weekly callout, songs must have entered the top 40 positions on R&R's Country airplay chart. The sample is composed of 400 25-54-year-olds who identify country as their favorite music and who listen daily to competitive Country radio in the sample markets. The sample is 50% male/female and evenly distributed in the 25-34, 35-44, and 45-54 demos. The sample is balanced by region and markets within that region. Bullseye Callout is conducted in these regions and markets. SOUTH: Charleston SC; Charlotte; Baton Rouge; Nashville; Atlanta. MIDWEST: Flint, MI; Indianapolis; Madison; Omaha; Cincinnati. EAST: Harrisburg; Rochester, NY; Springfield, MA; Providence; Washington, DC. WEST: Modesto, CA; Salt Lake City; Colorado Springs, CO; Portland, OR; Houston. © 2006 Radio & Records © 2006 Bullseye Marketing Research Inc..

If you experienced transmission problems ... please call our Circulation Department at 310-788-1625.

© 2006 Radio & Records. All Rights Reserved. No part of this material may be reproduced in any form or incorporated in any information retrieval system without written permission of the Publisher.

R&R Packages The Reach & Frequency You Need!

Complete



Classified Advertising

R&R Today:

The leading management daily fax

radioandrecords.com

Radio's Premiere Web Site

R&R:

The Industry's Newspaper with the largest help wanted section

Contact Karen Mumaw at kmumaw@radioandrecords.com or 310.788.1621 for information.