

**"Keith Bryant got the phones ringing and they never stopped! *Ridin' With The Legend* won 'The Nightly Fights' for 2 weeks in a row." Brooks O'Brian KWNR Las Vegas, Nevada**



## What Happened In Vegas....

The best thing about the Academy of Country Music Awards taking place in Las Vegas on the last Wednesday in May is having the long Memorial Day holiday weekend to recuperate. And, judging from the number of people I saw in the casino at 6am Thursday morning still dressed in their Wednesday-night show clothes (I was leaving to catch a 7:45am flight home, thank you), there are lots of Country radio and record folks hoping the "What Happens in Vegas" ads are true.

But the confluence of the Academy of Country Music Awards show; the Country Radio Broadcaster's half-day educational sessions, which attracted almost 300 people; and Westwood One's remote radio broadcasts proved to be the "Perfect Storm" last week. Las Vegas, of course, proved to be the perfect setting. Throw in a rather surreal, rum-coated Mandalay Bay Beach Party; Sizzlin' Country's annual star-studded event, which raised over \$200,000 for cystic fibrosis; the CRB's new-artist showcase; the ACM Golf Tourney; a number of excellent artist showcases in suites and surrounding the CRS events; and a mind-numbing Muzik Mafia finale that I can tell you firsthand rocked from midnight-4am Wednesday night (and Thursday morning), and you have a fabulous country celebration and one helluva great party. You know how much fun it is to go to Vegas and blow it out with a few friends? This was like going to Vegas with 1,000 good buddies.

## Now Playing On GFA:

### Tony, Kris And A Wronged Woman

Have you listened to R&R's Going For Adds Country Radio yet? You can find a link in the Country Format Room at [www.radioandrecords.com](http://www.radioandrecords.com), or go right to

<http://gfa.radioandrecords.com/gfaradio/country.htm>. There you'll hear new music and audio highlights from radio stations across the U.S.A. This month we have excerpts from KUSS/San Diego morning maniacs **Tony Randall & Kris Rochester**. They do a bit called "War of the Roses" you must hear to believe. I'll give you the setup: They call a married man offering to send free roses to the woman of his choice. What you hear is what happens when the man gives a name other than that of his wife — while his wife is listening in on the conversation. Part Two of the bit comes when a woman calls T&K asking them to make the fake flowers offer to *her* husband.

The 13 songs on GFA Country Radio this month include the debut single from 2004 *Nashville Star* winner **Brad Cotter**, "I Meant To," and the new release from 2003 *Nashville Star* winner **Buddy Jewell**, "One Step at a Time."

At last week's CRB/Las Vegas event, the reunited **Restless Heart** sang a few songs, and the guys sounded better than ever. Check out "Feel My Way to You" on GFA Country Radio to see what I mean.

Also this month, GFA Country Radio has the latest release from an artist who has written more top 20 tunes than just about anybody the last few years. Lofton Creek has the new single from **Jeffrey Steele**, "20 Years Ago."

This week's R&R (June 4) will recap the CRB sessions and wrap up the parties and suites in pictures.

*If you experienced transmission problems ... please call our Circulation Department at 310/788-1625.*

© 2004 Radio & Records, Inc. All Rights Reserved No part of this material may be reproduced in any form or incorporated in any information retrieval system without written permission of the Publisher.

# Julie Roberts

## "Break Down Here"

Radio, Retail, the Critics, and Media are coming together

**R&R 35**

### Radio

WKDF researching Top 10  
Bullseye #10 overall  
WWQM researching Top 10  
Phones ringing everywhere  
28 stations over 100 spins

### Media and Critics

CMT "In The Moment": airing now.  
Tuesday: USA Today: "3 Stars"  
Tuesday: Good Morning America  
June 10: "Jay Leno"  
"One of the most auspicious debuts in years,"  
Alanna Nash, Entertainment Weekly

### Retail

Projecting 1st week LP  
sales of over 24,000  
2 months atop single  
sales chart

**Talk about critical mass...This is the Perfect Storm...Mercury Rising**



### Heritage Oversees CC/Little Rock Country

KSSN/Little Rock PD **Chad Heritage** has been promoted to Director/Country Programming for Clear Channel's Country combo in the market, which also includes Classic Country KHKN. Heritage will remain KSSN's afternoon driver. **Charlie Fox** will continue as PD/morning personality for KHKN.

Heritage tells **R&R**, "This is an exciting opportunity that will allow me to stay focused on the Country product, imaging and promotion, making sure that it all flows together. It really ensures that the two stations are on the same page and working together."

Heritage joined KSSN sister KMKV for middays in 1993. He was named APD for KSSN & KMKV in April 1997, became PD of KDDK (formerly KMKV) when Clear Channel bought KSSN & KMKV in October 1997 and was elevated to KDDK PD in September 1998. He was named PD of KSSN in October 2002. (Country Format Room at [www.radioandrecords.com](http://www.radioandrecords.com), 5/28.)

### Wagner Joins Equity

Former Columbia/Nashville VP/Promotion **Ted Wagner** has joined the Equity Music Group promotion team. All the labels' promoters carry the Director/National Promotion title, with a focus on a particular region. Wagner will replace the recently exited **Darlene Starr** and will be responsible for the Southwest.

Wagner joined Columbia in March 1996 after 12 years with RCA/Nashville. He was elevated from Director to VP/National Promotion in February 1998. He left the label in July of last year.

### Marsh Moves To South Bend

WMDH-AM & FM/Muncie, IN OM/PD **Clint Marsh** is the new PD at Federated Media's WBYT/South

Bend, IN. His last day at WMDH is June 5. After that, and until he starts his new gig a couple of weeks later, he can be reached at his personal e-mail, [clint\\_marshall@hotmail.com](mailto:clint_marshall@hotmail.com). (Country Format Room at [www.radioandrecords.com](http://www.radioandrecords.com), 5/27.)

### Radio News

**Format:** Clear Channel flips Smooth Jazz WELV/Macon, GA to Country as "WEBL 102.5 The Bull." The PD post is open; T&Rs to Clear Channel, 7080 Industrial Highway, Macon, GA 31216.

**Programming:** Former KIIM/Tucson APD/MD **John Collins** has joined Nashville-based Bullseye Marketing and Research in sales. He's also doing a weekend shift at Oldies WMAK.

**Personalities:** **Jason Taylor** is the new WKSJ/Mobile, AL afternoon driver.

### Music News

Mercury will release **Terri Clark's** *Greatest Hits* on July 27. The collection includes current single "Girls Lie Too," one other new track and every top 10 hit of her career.

American Roots Publishing and Emergent Music are releasing *Beautiful Dreamer: The Songs of Stephen Foster* on Aug. 24. **David Ball**, **John Prine** and **Raul Malo** are among the artists performing songs from the famous composer's catalog, which includes "Oh Susanna," "Camptown Races" and "Old Folks at Home."

Oh Boy Records has signed **Shawn Camp**. His label debut, *Live at the Station Inn*, is set for an Aug. 31 release.

### Alan & George & Jimmy, Oh My

Can there be any better place in the Country radio universe to work than Dallas? Granted, last weekend was hardly your typical weekend by any means. But I saw KPLX (The Wolf) PD **Paul Williams**

If you experienced transmission problems ... please call our Circulation Department at 310/788-1625.

© 2004 Radio & Records, Inc. All Rights Reserved No part of this material may be reproduced in any form or incorporated in any information retrieval system without written permission of the Publisher.

## AMY DALLEY

### "Men Don't Change"

Just Added  
KPLX WKDF WYUU  
KWJJ WCKT  
KZLA converts to POWER!  
#3 Passion Current Overall!  
KMLE in Power!  
KZBR CONVERTS!  
RR 31-29 BB 34\*

## BILLY DEAN

### "Thank God I'm A Country Boy"

#3 Song Overall at  
MediaBase 2 Weeks  
in A Row!  
Repeat Performances -  
Repeat Numbers -  
Repeat After Me- Hit Record!  
RR 32-30  
BB 35\*-32\*

**CURB**  
RECORDS  
[curb.com](http://curb.com)

## STEVE HOLY

### "Put Your Best Dress On"

"3:30 minutes of foreplay...  
what's not to love!?!" MoJo / KATM  
Just Added  
KZBR WYCD WSOC  
KUPL KWJJ KBEQ  
RR 50-44  
BB 53\*-49\*  
BB #5 Most Airplay Adds

in Las Vegas last week, and he told me about his upcoming weekend. Yesterday (6/1), I asked for a quick recap. Here's what he wrote back, headlined "The Biggest Weekend in Texas Country Concert History."

"Brian McComas actually kicked off the 'biggest weekend in Texas Country history' Friday night with a show at Gilley's Dallas. Newcomer Trent Willmon performed on the Wolf stage outside Texas Stadium Saturday afternoon as folks filed in for George Strait, Alan Jackson and Jimmy Buffett at 'Wolfapalooza.' Trent was the star of the post-Wolfapalooza party at Gilley's Dallas that night.

"Alan Jackson took the stage first, about 5:15pm, in a 'Parrothead-approved' Hawaiian shirt. He was joined by Jimmy Buffett for 'It's 5 O'Clock Somewhere' and George Strait came out to sing 'Designated Drinker' during Alan's set.

"King George took the stage around 7pm and performed a string of smashes before Jimmy Buffett joined him for 'All My Exes Live in Texas' and Alan came out to commit 'Murder on Music Row.'

"Jimmy Buffett thanked Texas for 'keeping him alive' when he had some successful gigs 'way back' in Commerce, TX. He started his set with the perfect lyrical greeting, 'Hello, Texas.' His first song was an acoustic solo, and then he was joined by Mac McAnally and the rest of The Coral Reefers. The video cameras were rolling when Alan and George joined Jimmy for his new RCA single, 'Hey Good Lookin.'

"Sunday there was no rest for the WolfFans as about 15,000 flocked to Sundance Square in Fort Worth for WolfDance! The Wolf's tribute to the Texas singer-songwriter featured 10 bands on two stages starting at noon, with folks like Robert Earl

Keen, Charlie Robison, Jack Ingram, Kevin Fowler and more."

*Editor's note:* In his best "branding-is-my-mantra" mode, Williams refers to the Jackson-Strait-Buffett show as "Wolfapalooza." While eyewitness accounts do indeed indicate an extremely heavy Wolf presence at the concert, for the record it should be noted that the show was not officially affiliated with any Dallas radio station. Any attempts by Williams to indicate ownership of the show for either Dallas Country fans for the Country industry in general are strictly, and typically, his.

Other highlights from the show include the Dallas Cowboys Cheerleaders making an appearance during Jackson's performance of "Where I Come From" and Jackson joining Buffett for a first-ever performance of "Boats to Build" from Buffett's new RCA album, *License to Chill*. Radio pros seen backstage include KSCS/Dallas APD/MD **Chris Huff**; WAMZ/Louisville PD **Coyote Calhoun**; KBQI/Albuquerque OM **Steve Giuttari**; KTEX/McAllen, TX PD **Jo Jo Cerda** and MD **Jim Paczkowski**; and KMDL/Lafayette, LA PD **Mike James**.

Word is that Alan, George and Jimmy had so much fun hangin', they may be considering taking the show on the road in 2005.

### Industry News

Revival at the Ryman, a concert series celebrating the 10th anniversary of the building's renovation and reopening, kicks off Sept. 10 with subsequent dates of Oct. 10, Nov. 10 and Dec. 10. Admission price for the series is \$10, and artists won't be announced until they take the stage. Tickets go on sale Saturday, July 10 at 10am. The Ryman opened in 1892, and a full restoration was completed in 1994.

*If you experienced transmission problems ... please call our Circulation Department at 310/788-1625.*

© 2004 Radio & Records, Inc. All Rights Reserved No part of this material may be reproduced in any form or incorporated in any information retrieval system without written permission of the Publisher.

**Big Red Fights For Your Right To Party!**  
**Beer Man** The Columbia hit from

**TRENT WILLMON**

How can we say it's a HIT?

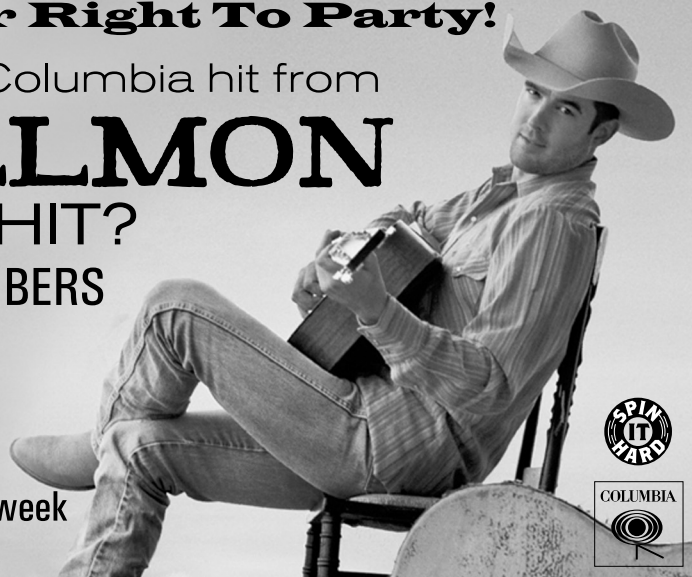
TOP TEN 35-49 ADULT PASSION NUMBERS

Bullseye 3-Week Trend:

35-49 Men: 26 - 17 - 8 (!!!)

35-49 Women: 29 - 26 - 8 (!!!)

Back in positive spins at BDS and Mediabase this week  
We're not walkin', so SPIN IT HARD!



**Janet Bozeman** and Bozeman Media are moving to 4841 Manassas Drive, Brentwood, TN 37027. New phone is 615-376-2246, fax is 615-376-6380, and e-mail remains [bozemanmedia@comcast.net](mailto:bozemanmedia@comcast.net).

### Life Notes

Best wishes to WPUR/Atlantic City, NJ middayer **Tina Owen**, who will marry Joe Kelly this Saturday. Poor Tina. She will now have a husband and a PD — two different guys — who have the same name!

Congrats to Sony/Nashville Supervisor/A&R **Deb Castle** and husband Tony on the birth of their first child, Chloe McCrea Castle. Their daughter debuted in good health on May 29 at eight pounds, two ounces.

Songwriter Hall of Famer **Merle Kilgore** was released from the hospital last week and is back at his Paris, TN home, where he will continue with back and cardiac rehab.

### R&R/Bullseye: Presidential Preferences; The Word On War

Once again this week R&R's Country Callout America by Bullseye posed two political questions to a sample of Country listeners that hit 850 total with this second phase.

The first question asked whom the respondent would vote for if the presidential election were held today. Once again proving Country listeners are to the right of mainstream America, (national polls show the race to be almost a dead heat), incumbent George Bush ran away with the race at 55%, followed by John Kerry with 27% and undecided/other at 18%. Among P1s, 56% chose Bush, 27% chose Kerry, and 17% were undecided. P2s were a bit more

uncertain, at 22% undecided, with 52% for Bush and 26% for Kerry. Bush took 54% of the men and 56% of the women, with Kerry taking 27% of men and 27% of women. The youngest age group (25-34) chose Bush over Kerry 56% to 26%, with 35-44-year-olds taking the President 55% to 28%. Kerry also garnered 28% of the boomers aged 45-54, while Bush posted a lower but still dominating 53%.

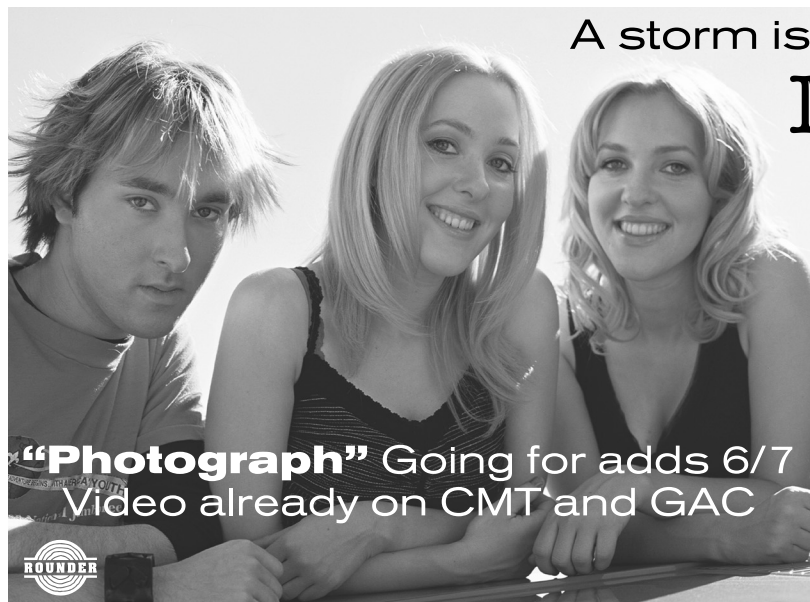
The second question asked how respondents feel about the U.S. involvement in Iraq. Overall, 22% strongly support the effort, 31% support it, 14% object and 9% strongly object, with 24% replying "I don't know." Combined "support" scores topped combined "object" scores among P1s 54% to 29%, and among P2s 55% to 22%. Among men the margin was 56% to 23%, and with women it was 52% to 22%. Broken out by age, 25-34-year-olds supported 52% vs. 21% objecting, 35-44 checked in at 58% over 21%, and 45-54 notched 47% to 28%.

For complete breakouts — including men and women, 25-34, 35-44 and 45-54 — check out the R&R Country Callout America by Bullseye research page in the June 4 issue of R&R.

By the way, the callout page also contains the R&R Country Callout America by Bullseye research for the top 35 titles on the R&R Country chart. You'll see percentages for "like a lot," "total positives," "neutral," "familiarity," "dislike" and "burn," based on a 400-person-per-week sample. Plus, there's a new password allowing you to access regional and demo breakouts of the callout music research at Bullseye's web page, [www.bullsi.com](http://www.bullsi.com). A reminder: When you go to the website, use your station call letters as the user name, then enter the new password.

*If you experienced transmission problems ... please call our Circulation Department at 310/788-1625.*

© 2004 Radio & Records, Inc. All Rights Reserved No part of this material may be reproduced in any form or incorporated in any information retrieval system without written permission of the Publisher.



A storm is brewing at country radio,

## Malibu Storm...

"Malibu Storm has a much needed sound for today's country radio. They've just blown us away....and its feeling like they'regoing to blow our listeners away as well"

- Greg Frye - APD/MD, KSON/San Diego

"'Photograph' is a superb snapshot of a band on the verge of success... Every time we spin it, the phones light up. Great vocals, classic song, beautiful performance- An absolute perfect record!"

- Rick "RJ" Jordan - PD, WPOR/Portland

**Early adds from  
KSON, KUBL, WGGY, WPOR,  
KHKI, KATM and KTOM**

**"Photograph"** Going for adds 6/7  
Video already on CMT and GAC



In those pages, you'll also find results from RateTheMusic.com's online music testing from a very large sample of heavy Country radio listeners. And if you would like to submit a question, e-mail me at [lhelton@radioandrecords.com](mailto:lhelton@radioandrecords.com) or Bullseye's John Hart at [hart@bullsi.com](mailto:hart@bullsi.com).

— Lon Helton/Country Editor (615) 244-8822  
Email: [lhelton@radioandrecords.com](mailto:lhelton@radioandrecords.com)

— Chuck Aly/R&R Asst. Country Editor (615) 244-8822  
Email: [caly@radioandrecords.com](mailto:caly@radioandrecords.com)

## MUSICNOTES

↳ **Toby Keith's** Big Throwdown Tour kicks off July 24 in Foxboro, MA, sponsored by the 2005 Ford Super Duty truck. **Terri Clark** and **Scotty Emerick** open the 80-city tour. Keith is currently on a USO tour of Italy, Germany, Kosovo and the Persian Gulf, performing for and meeting with servicemen and -women in those regions. Rocker **Ted Nugent** is joining Keith on the tour.

↳ Lifetime Television has acquired the rights to air **Reba McEntire's** *Reba* sitcom in syndication, beginning in the fall of 2006.

↳ Rest, splinting and medication failed to relieve **Willie Nelson's** symptoms from carpal tunnel, forcing surgery on his left wrist. Following the successful procedure, Nelson will recuperate for a month before resuming his touring schedule July 3 in Roswell, NM. His annual Fourth of July picnic event will go on as planned at the Ft. Worth Stockyards.

↳ **Terri Clark** was invited to join the Grand Ole Opry during her May 15 Opry performance. Steve

Wariner and Clark's mother, Linda Clark, surprised the artist onstage and informed Terri of her June 12 induction date.

↳ Fans are turning out by the thousands at **Gretchen Wilson** concert stops and in-stores. Sony reports more 3,500 at an in-store in Oldsmar, FL and 8,000-plus for a performance on Speed Street in Charlotte, NC.

↳ **Chris Cagle's** first performance after a long break for vocal rest will be June 4 in Sparta, KY. He kicks off the Capitol Records Summer Concert Series at Nashville Superspeedway prior to the Federated Auto Parts 300 NASCAR Busch Series race on June 12.

↳ ABC Television has picked up *Rodney*, the sitcom starring Capitol/Nashville comedian **Rodney Carrington**. Produced by Touchstone Television, the show portrays Carrington in the title role of a family man from Tulsa, OK who gives up his blue-collar job to pursue his dream of being a stand-up comic. **Eddie Montgomery** plays a bartender in the pilot.

↳ **Big & Rich**, **Rachel Proctor** and **SHeDAISY** have been added to the lineup for the fourth annual **Chely Wright** and Friends benefit concert at Nashville's Wildhorse Saloon on June 8. They join already scheduled performers including **Jenny Gill**, **Blake Shelton**, **Josh Turner**, **Jimmy Wayne** and **Martina McBride**. Two VIP all-access passes to the event are now up for auction on eBay, item number 2247430069. The concert and silent auction benefit Wright's foundation, which raises funds for music education in public schools.

If you experienced transmission problems ... please call our Circulation Department at 310/788-1625.

© 2004 Radio & Records, Inc. All Rights Reserved No part of this material may be reproduced in any form or incorporated in any information retrieval system without written permission of the Publisher.

**Tempo + Hot Bods + Sunscreen + "Beverages" = A Summer Smash!**

**The Girl's Gone Wild the Columbia smash from**

# Travis Tritt

**BIG MOVES:**

**45 - 37 +221 R&R**  
**44\* - 36\* +217 BB**

**New airplay today:**

**KPLX, WXTU, WQDR,  
WYPY, WSLC, WFLS,  
KXKC, KMDL, WKCN**

**Crank it up so your P-1s can RIP THE KNOB OFF!**



👉 **Joe Nichols and Sara Evans** will co-host CMT's 100 Greatest Love Songs concert and television taping, scheduled for June 9 in Nashville. Attendees will see the top 12 songs performed by **Dolly Parton, Kenny Rogers, Randy Travis, Brad Paisley, Lee Ann Womack, Buddy Jewell, Julie Roberts, Lonestar, Dierks Bentley** with **The Del McCoury Band, Josh Turner, Evans and Nichols**. A six-hour special culminating in the concert event debuts June 13 on CMT.

👉 **Montgomery Gentry** covered 10,000 miles in 10 days to set up their new album, *You Do Your Thing*. After a performance in Dallas, the duo flew to L.A. for their first *Tonight Show* performance, on May 21. Immediately after their performance they hit the airport for an overnight flight to New York and an appearance on the *CBS Saturday Early Show*. Then it was off to Vegas for ACM rehearsals, a quick trip back to L.A. for an appearance on *The Jimmy Kimmel Show*, followed by a return to Vegas, where they opened the ACM Awards on May 26. They guys then flew to Montgomery, AL to resume their tour. Tack on another few thousand miles for their June 2 appearance on Ryan Seacrest's *On-Air*.

**VIDEO ADDS**

**CMT**

- JEFF BATES** I Wanna Make You Cry
- JOSH TURNER** What It Ain't
- JEDD HUGHES** High And Lonesome

**GREAT AMERICAN COUNTRY**

- SHANIA TWAIN** When You Kiss Me
- RACHEL PROCTOR** Me And Emily
- LORETTA LYNN** Miss Being Mrs.
- BLAINE LARSEN** In My High School

**RANDOM FAX®**

**Wednesday, 6/2**

**BIRTHDAYS:** the late **Carl Butler, Fletcher Foster, John Howard** (Sixwire), **Clay Bradley, Lee Durham, Brooke Williams**

**On TV:** FOX: **Montgomery Gentry, On-Air With Ryan Seacrest**; GAC: **Jedd Hughes, CRL\***; Jim Lauderdale, *GAC Classic*; **Craig Morgan, Celebrity Kitchen\***; **Toby Keith, Clay Walker, Kenny Rogers, Blake Shelton**, more, *Country Across America*

**Thursday, 6/3**

**BIRTHDAYS:** **Boots Randolph, Too Slim** (Riders In The Sky), **Tiffany Johns**

**On TV:** CMT: **Reba McEntire, CMT Total Release**; **Julie Roberts, In the Moment**; **Bill Anderson, Celebrity Kitchen\***

**Friday, 6/4**

**BIRTHDAYS:** **Freddy Fander, Bill Mack, Dave Nichols**,

**On TV:** CMT: **Alan Jackson, Big & Rich, George Strait, Gretchen Wilson**, more, *CMT Insider\**; **Chalee Tennison, Celebrity Kitchen\***; NBC: **Reba McEntire, The Today Show**

**Saturday, 6/5**

**BIRTHDAYS:** **Brett James, Don Reid** (Statler Brothers), **Larry Hughes, Bill Kinder, Nancy Knight**

**On TV:** CMT: **39th Annual ACM Awards**; **Alan Jackson, Big & Rich, George Strait, Gretchen Wilson**, more, *CMT Insider*; **Dierks Bentley, CMT Got Me in With the Band\***; GAC: **Jeannie Seely, Billy Currington, John Michael Montgomery & Del McCoury Band, The Grand Ole Opry Live**; **Bill Anderson, Celebrity Kitchen**

**Sunday, 6/6**

**BIRTHDAYS:** **Robb Houston** (Sixwire), **Joe Stampley, Curtis Wright, Tonya Derry, Mike Hyland, Tony Morreale**

**On TV:** GAC: **Chalee Tennison, Celebrity Kitchen**

**Monday, 6/7**

**BIRTHDAYS:** **Larry Boone, Debbie Bellin, Chuck Geiger, Joby Phillips, Greg Sax, Tony Stevens, Vanessa Ryan**

**On TV:** ABC: **Sara Evans, The View**; CMT: **Kenny Rogers, CMT Inside Fame**; **Garth Brooks, CMT Inside Fame**; GAC: **Trent Willmon, CRL**

\*Premiere airing

*If you experienced transmission problems ... please call our Circulation Department at 310/788-1625.*

© 2004 Radio & Records, Inc. All Rights Reserved No part of this material may be reproduced in any form or incorporated in any information retrieval system without written permission of the Publisher.

**PI's across the COUNTRY...**

**SCORE "A Beautiful Day for Goodbye" as follows:**

Adults All Ages = **81% TOTAL POSITIVE** (Tunecom)

Females All Ages = **82% TOTAL POSITIVE** (Tunecom)

Males All Ages = **80% TOTAL POSITIVE** (Tunecom)

**Upon initial listen...**

**\* R&R Rate the Music predicts Top 20 Callout Potential!**

**\*74% of FEMALES Ages 25-54 EXPECT**

To hear this song on their favorite country radio station!





LW	TW	ARTIST Title Label(s)	Total Points	+/- Points	Total Plays	+/- Plays	Tot. Aud. (00)	+/- Aud. (00)	Wks On	Total Station
1	1	GRETCHEN WILSON Redneck Woman (Epic)	14382	8	4530	+39	434852	-1816	14	110/0
2	2	JOHN MICHAEL MONTGOMERY Letters From Home (Warner Bros.)	13839	-323	4292	-88	423319	-10614	20	110/0
3	3	TOBY KEITH Whiskey Girl (DreamWorks)	11688	249	3632	+147	344053	12861	12	110/0
7	4	LONESTAR Let's Be Us Again (BNA)	11319	854	3542	+315	320260	9375	15	110/0
5	5	MONTGOMERY GENTRY If You Ever Stop Loving Me (Columbia)	11274	265	3634	+127	335416	19957	18	110/0
9	6	BROOKS & DUNN That's What She Gets For Loving Me (Arista)	9338	468	3108	+187	257977	1537	18	110/0
8	7	DAVID LEE MURPHY Loco (Koch)	9235	370	2790	+131	276659	15370	21	109/0
10	8	CLAY WALKER I Can't Sleep (RCA)	7539	61	2291	-33	211187	750	24	110/1
11	9	SHEDAISY Passenger Seat (Lyric Street)	7331	251	2261	+96	205406	6247	19	107/1
15	10	KENNY CHESNEY I Go Back (BNA)	6884	1553	2104	+506	208134	36507	6	105/5
12	11	REBA MCENTIRE Somebody (MCA)	6595	-2	2132	+41	189700	4223	21	107/1
14	12	BRAD PAISLEY f/ALISON KRAUSS Whiskey Lullaby (Arista)	6361	362	2017	+166	170850	13171	9	99/0
13	13	BILLY CURRINGTON I Got A Feelin' (Mercury)	6264	-30	2030	+36	170701	-1324	20	98/2
29	14	TIM MCGRAW Live Like You Were Dying (Curb)	5734	3181	1633	+920	195287	103968	2	102/27
16	15	JOSH GRACIN I Want To Live (Lyric Street)	5545	277	1798	+103	145874	8675	13	99/0
23	16	JIMMY BUFFETT f/CLINT BLACK Hey Good Lookin' (RCA/Mailboat)	5338	1330	1603	+470	156161	25029	3	97/16
17	17	ANDY GRIGGS She Thinks She Needs Me (RCA)	5050	4	1636	+12	132559	-1340	14	99/1
19	18	RACHEL PROCTOR Me And Emily (BNA)	4526	72	1339	+31	122800	2470	14	96/2
21	19	MARTINA MCBRIDE How Far (RCA)	4467	180	1396	+77	119549	5044	8	97/4
20	20	EMERSON DRIVE Last One Standing (DreamWorks)	4450	158	1404	+50	118671	4116	20	97/0
18	21	SHANIA TWAIN It Only Hurts When I'm Breathing (Mercury/IDJMG)	4420	-459	1475	-185	113931	-13592	17	95/0
22	22	JOE DIFFIE Tougher Than Nails (BBR)	4330	183	1496	+85	120327	7461	17	89/0
24	23	TERRI CLARK Girls Lie Too (Mercury)	4027	190	1331	+55	116838	8061	8	92/11
25	24	LEE ANN WOMACK The Wrong Girl (MCA)	3487	-137	1088	-76	83759	-4200	16	92/1
<b>Breaker</b>	<b>25</b>	<b>BIG &amp; RICH Save A Horse, Ride A Cowboy (Warner Bros.)</b>	<b>3389</b>	<b>296</b>	<b>995</b>	<b>+111</b>	<b>95999</b>	<b>10364</b>	<b>8</b>	<b>70/9</b>

© 2004 Radio & Records, Inc.

# jeff "I WANNA MAKE YOU CRY" BATES

Video just added to CMT!

Mediabase Research-#13 Country Song Overall, with ONLY 66.4% Familiarity

Add/Convert TODAY!



LW	TW	ARTIST	Title	Label(s)	Total Points	+/- Points	Total Plays	+/- Plays	Tot. Aud. (00)	+/- Aud. (00)	Wks On	Total Station
28	26	JOE NICHOLS	If Nobody Believed In You	(Universal South)	3162	393	1024	+109	80081	9895	10	86/4
27	27	JEFF BATES	I Wanna Make You Cry	(RCA)	3064	141	1034	+45	75689	821	20	85/1
30	28	TRENT WILLMON	Beer Man	(Columbia)	2357	-112	730	-43	55657	-2836	10	79/0
31	29	AMY DALLEY	Men Don't Change	(Curb)	2304	129	808	+39	62337	5811	17	69/2
32	30	BILLY DEAN	Thank God I'm A Country Boy	(View2/Curb)	2274	235	752	+70	63431	7629	15	50/1
34	31	PHIL VASSAR	In A Real Love	(Arista)	2096	206	569	+57	62138	5944	5	65/6
37	32	SARA EVANS	Suds In The Bucket	(RCA)	1998	231	583	+67	54849	4902	6	58/7
33	33	TRACE ADKINS	Rough & Ready	(Capitol)	1989	47	690	+18	51914	2393	6	62/3
35	34	JENKINS	Blame It On Mama	(Capitol)	1915	25	607	+17	45179	1221	12	70/0
36	35	JULIE ROBERTS	Break Down Here	(Mercury)	1886	70	713	+37	42368	1300	13	68/1
39	36	JIMMY WAYNE	You Are	(DreamWorks)	1695	120	500	+30	46611	4963	7	58/4
45	37	TRAVIS TRITT	The Girl's Gone Wild	(Columbia)	1613	633	592	+221	37241	12778	5	53/4
40	38	CHELY WRIGHT	Back Of The Bottom Drawer	(Vivaton)	1434	-35	503	+8	37064	-1002	11	43/1
38	39	HANK WILLIAMS, JR.	Why Can't We All Just ...	(Asylum/Curb)	1288	-308	465	-95	23875	-6905	11	42/0
42	40	CRAIG MORGAN	Look At Us	(BBR)	1262	36	458	+27	26620	564	6	62/4
41	41	BRAD COTTER	I Meant To	(Epic)	1180	-2	407	-8	31633	-695	4	37/2
43	42	JOSH TURNER	What It Ain't	(MCA)	1061	33	398	+13	20274	850	7	61/5
48	43	KELLIE COFFEY	Dance With My Father	(BNA)	956	192	357	+78	26177	2712	2	22/3
50	44	STEVE HOLY	Put Your Best Dress On	(Curb)	899	144	292	+54	22042	2369	2	49/4
46	45	DIERKS BENTLEY	How Am I Doin'	(Capitol)	880	72	303	+26	20624	3434	3	46/8
47	46	RUSHLOW	Sweet Summer Rain	(Lyric Street)	788	-7	284	-4	17491	-438	4	44/4
<b>Debut</b>	47	CLINT BLACK	The Boogie Man	(Equity)	665	49	223	+18	14581	1852	1	34/0
49	48	SHERRIE AUSTIN	Son Of A Preacher Man	(BBR/C4)	623	-133	233	-13	17390	-243	2	21/3
<b>Debut</b>	49	BLUE COUNTY	That's Cool	(Asylum/Curb)	606	92	248	+45	12967	360	1	40/8
-	50	KID ROCK	Single Father	(Top Dog/Warner Bros. Nashville)	396	-1	73	+4	11021	-775	2	4/1

© 2004 Radio &amp; Records, Inc.

# LORETTA LYNN

*"Miss Being Mrs."*

**ON YOUR DESK NOW!**

Ms. Lynn's ACM rendition of "Miss Being Mrs." immediately became a treasured stitch in the fabric of country music history. It put the audience on edge. It was risky. A magical TV moment.

**Music Row**

**IMPACTING NOW!!**



© 2004 Radio & Records, Inc.

**COUNTRY**

**MOST ADDED**

ARTIST Title Label(s)	Adds
TIM MCGRAW Live Like You Were Dying (Curb)	27
JIMMY BUFFETT f/CLINT BLACK Hey Good Lookin' (RCA/Mailboat)	16
TERRI CLARK Girls Lie Too (Mercury)	11
RYAN TYLER The Last Thing She Said (Arista)	11
BIG & RICH Save A Horse, Ride A Cowboy (Warner Bros.)	9
DIERKS BENTLEY How Am I Doin' (Capitol)	8
BLUE COUNTY That's Cool (Asylum/Curb)	8
SARA EVANS Suds In The Bucket (RCA)	7
KENNY ROGERS w/ WHITNEY DUNCAN My World Is Over (Capitol)	7
PHIL VASSAR In A Real Love (Arista)	6

**MOST INCREASED POINTS**

ARTIST Title Label(s)	Total Pt. Increase
TIM MCGRAW Live Like You Were Dying (Curb)	+3181
KENNY CHESNEY I Go Back (BNA)	+1553
JIMMY BUFFETT f/CLINT BLACK Hey Good Lookin' (RCA/Mailboat)	+1330
LONESTAR Let's Be Us Again (BNA)	+854
TRAVIS TRITT The Girl's Gone Wild (Columbia)	+633
BROOKS & DUNN That's What She Gets For Loving Me (Arista)	+468
JOE NICHOLS If Nobody Believed In You (Universal South)	+393
DAVID LEE MURPHY Loco (Koch)	+370
BRAD PAISLEY f/ALISON KRAUSS Whiskey Lullaby (Arista)	+362
BIG & RICH Save A Horse, Ride A Cowboy (Warner Bros.)	+296

**MOST INCREASED PLAYS**

ARTIST Title Label(s)	Total Play Increase
TIM MCGRAW Live Like You Were Dying (Curb)	+920
KENNY CHESNEY I Go Back (BNA)	+506
JIMMY BUFFETT f/CLINT BLACK Hey Good Lookin' (RCA/Mailboat)	+470
LONESTAR Let's Be Us Again (BNA)	+315
TRAVIS TRITT The Girl's Gone Wild (Columbia)	+221
BROOKS & DUNN That's What She Gets For Loving Me (Arista)	+187
BRAD PAISLEY f/ALISON KRAUSS Whiskey Lullaby (Arista)	+166
TOBY KEITH Whiskey Girl (DreamWorks)	+147
DAVID LEE MURPHY Loco (Koch)	+131
MONTGOMERY GENTRY If You Ever Stop Loving Me (Columbia)	+127

**COUNTRY INDICATOR**

**MOST ADDED**

ARTIST Title Label(s)	Adds
TIM MCGRAW Live Like You Were Dying (Curb)	56
JIMMY BUFFETT f/CLINT BLACK Hey Good Lookin' (RCA/Mailboat)	17
BRAD COTTER I Meant To (Epic)	10
DIERKS BENTLEY How Am I Doin' (Capitol)	9
BUDDY JEWELL One Step At A Time (Columbia)	7
PHIL VASSAR In A Real Love (Arista)	6
SARA EVANS Suds In The Bucket (RCA)	5
BIG & RICH Save A Horse, Ride A Cowboy (Warner Bros.)	5
TRAVIS TRITT The Girl's Gone Wild (Columbia)	5
KEN MELLONS Climb My Tree (Curb)	5

**MOST INCREASED POINTS**

ARTIST Title Label(s)	Total Pt. Increase
TIM MCGRAW Live Like You Were Dying (Curb)	+1172
JIMMY BUFFETT f/CLINT BLACK Hey Good Lookin' (RCA/Mailboat)	+908
KENNY CHESNEY I Go Back (BNA)	+444
LONESTAR Let's Be Us Again (BNA)	+308
BROOKS & DUNN That's What She Gets For Loving Me (Arista)	+242
BILLY CURRINGTON I Got A Feelin' (Mercury)	+234
BIG & RICH Save A Horse, Ride A Cowboy (Warner Bros.)	+233
REBA MCENTIRE Somebody (MCA)	+228
TERRI CLARK Girls Lie Too (Mercury)	+194
MARTINA MCBRIDE How Far (RCA)	+176

**MOST INCREASED PLAYS**

ARTIST Title Label(s)	Total Play Increase
TIM MCGRAW Live Like You Were Dying (Curb)	+945
JIMMY BUFFETT f/CLINT BLACK Hey Good Lookin' (RCA/Mailboat)	+711
KENNY CHESNEY I Go Back (BNA)	+328
LONESTAR Let's Be Us Again (BNA)	+258
BROOKS & DUNN That's What She Gets For Loving Me (Arista)	+199
BILLY CURRINGTON I Got A Feelin' (Mercury)	+180
BIG & RICH Save A Horse, Ride A Cowboy (Warner Bros.)	+173
TERRI CLARK Girls Lie Too (Mercury)	+163
REBA MCENTIRE Somebody (MCA)	+156
DAVID LEE MURPHY Loco (Koch)	+145

Just in time for Father's Day...

**KID ROCK "single father"**

**IMPACT DATE: JUNE 7**

"'Single Father' is one of KILT's biggest songs in 04!!! Real LIFE ...REAL SONG."

-jeff garrison, pd-KILT




**COUNTRY INDICATOR NEW & ACTIVE**

**SCOTTY EMERICK** The Watch (*DreamWorks*)  
Total Plays: 157, Total Stations: 16, Adds: 2

**BUDDY JEWELL** One Step At A Time (*Columbia*)  
Total Plays: 99, Total Stations: 12, Adds: 7

**CAROLYN DAWN JOHNSON** Die Of A Broken Heart (*Arista*)  
Total Plays: 92, Total Stations: 11, Adds: 2

**KEN MELLONS** Climb My Tree (*Curb*)  
Total Plays: 52, Total Stations: 10, Adds: 5



6/7

**KEITH BRYANT** Ridin' With The Legend (*Lofton Creek*)

**KID ROCK** Single Father (*Top Dog/Warner Bros. Nashville*)

**MALIBU STORM** Photograph (*Rounder*)

**RON WILLIAMS** I'm Tired Of Being Something (That Means Nothing ...)  
(*Black Patch/CBuJ*)

**SHANNON LAWSON** Just Like A Redneck (*Equity*)

**TRACY LAWRENCE** It's All How You Look At It (*DreamWorks*)

6/14

**GARY ALLAN** Nothin' On But The Radio (*MCA*)

**KATRINA ELAM** I Wont Say Goodbye (*Universal South*)

**NORAH JONES w/DOLLY PARTON** Creepin' In (*Blue Note/EMC*)

**SISTERS WADE** Troublemaker (*Seraph*)

6/21

No adds

**COUNTRY NEW & ACTIVE**

**BUDDY JEWELL** One Step At A Time (*Columbia*)  
Total Plays: 98, Total Stations: 17, Adds: 3

**CAROLYN DAWN JOHNSON** Die Of A Broken Heart (*Arista*)  
Total Plays: 89, Total Stations: 20, Adds: 2

**SCOTTY EMERICK** The Watch (*DreamWorks*)  
Total Plays: 75, Total Stations: 16, Adds: 3

**RYAN TYLER** The Last Thing She Said (*Arista*)  
Total Plays: 69, Total Stations: 16, Adds: 11

**JEDD HUGHES** High Lonesome (*MCA*)  
Total Plays: 65, Total Stations: 15, Adds: 3

*Songs ranked by total plays*

**MOST PLAYED RECURRENTS**

ARTIST Title Label(s)	Total Plays
<b>RASCAL FLATTS</b> Mayberry ( <i>Lyric Street</i> )	2958
<b>KENNY CHESNEY f/UNCLE KRACKER</b> When The Sun Goes Down ( <i>BNA</i> )	2919
<b>GEORGE STRAIT</b> Desperately ( <i>MCA</i> )	2835
<b>KEITH URBAN</b> You'll Think Of Me ( <i>Capitol</i> )	2619
<b>TRACY LAWRENCE</b> Paint Me A Birmingham ( <i>DreamWorks</i> )	2267
<b>ALAN JACKSON</b> Remember When ( <i>Arista</i> )	1981
<b>BUDDY JEWELL</b> Sweet Southern Comfort ( <i>Columbia</i> )	1815
<b>TOBY KEITH</b> American Soldier ( <i>DreamWorks</i> )	1473
<b>DIERKS BENTLEY</b> What Was I Thinkin'? ( <i>Capitol</i> )	1211
<b>KENNY CHESNEY</b> There Goes My Life ( <i>BNA</i> )	1191

**POWERED BY  
MEDIABASE**

110 Country reporters. Songs ranked by total points for the airplay week of 5/23-5/29. Bullets appear on songs gaining points and/or plays or remaining flat from previous week. If two songs are tied in total points, the song with the larger increase in points is placed first. Songs below No. 1 and down in points and plays for three consecutive weeks are moved to recurrent. Most Added is the total number of new adds officially reported to R&R by each reporting station. Songs unreported as adds do not count toward overall total stations playing a song. Most Increased Points lists the songs with the greatest week-to-week increases in total points. Station Weight = AQH Persons + (Market rank X 10) divided by 4180. Total Audience equals Average Quarter Hour Persons times number of plays (times 100). Each daypart on each station is assigned an AQH number. Average Quarter Hour Persons used herein with permission from the Arbitron Company (© 2004, The Arbitron Company). © 2004, R&R, Inc.

# Tracy Lawrence

**“IT’S ALL HOW YOU LOOK AT IT”**

The follow-up to the Top 5 single

**“PAINT ME A BIRMINGHAM”**

**On your desk! Airplay/Add Date June 7th**



**We Believe!**

June 2, 2004

LW	TW	ARTIST Title Label(s)	Total Points	+/- Points	Total Plays	+/- Plays	Tot. Aud. (00)	+/- Aud. (00)	Wks On	Total Station
1	1	<b>GRETCHEN WILSON</b> Redneck Woman ( <i>Epic</i> )	5808	-12	4332	-32	134237	-355	12	110/0
2	2	<b>JOHN MICHAEL MONTGOMERY</b> Letters From Home ( <i>Warner Bros.</i> )	5707	-108	4206	-90	131894	-2375	20	110/0
3	<b>3</b>	<b>MONTGOMERY GENTRY</b> If You Ever Stop Loving Me ( <i>Columbia</i> )	5555	121	4163	+98	126814	2227	18	109/0
4	<b>4</b>	<b>LONESTAR</b> Let's Be Us Again ( <i>BNA</i> )	5334	308	4020	+258	121494	6909	15	110/0
5	<b>5</b>	<b>TOBY KEITH</b> Whiskey Girl ( <i>DreamWorks</i> )	5153	156	3878	+121	117760	3260	10	111/0
7	<b>6</b>	<b>BROOKS &amp; DUNN</b> That's What She Gets For Loving Me ( <i>Arista</i> )	4721	242	3558	+199	107862	6593	18	110/0
10	<b>7</b>	<b>DAVID LEE MURPHY</b> Loco ( <i>Koch</i> )	4140	168	3088	+145	95124	4064	21	108/0
11	<b>8</b>	<b>CLAY WALKER</b> I Can't Sleep ( <i>RCA</i> )	4006	98	2975	+83	90786	2500	25	108/1
14	<b>9</b>	<b>REBA MCENTIRE</b> Somebody ( <i>MCA</i> )	3538	228	2635	+156	79516	5472	22	106/1
13	<b>10</b>	<b>BRAD PAISLEY f/ALISON KRAUSS</b> Whiskey Lullaby ( <i>Arista</i> )	3477	137	2602	+117	80022	2797	11	107/0
12	<b>11</b>	<b>SHEDAISY</b> Passenger Seat ( <i>Lyric Street</i> )	3472	97	2589	+80	78007	2869	18	106/1
15	<b>12</b>	<b>BILLY CURRINGTON</b> I Got A Feelin' ( <i>Mercury</i> )	3388	234	2596	+180	76881	5708	21	103/2
16	<b>13</b>	<b>JOSH GRACIN</b> I Want To Live ( <i>Lyric Street</i> )	2969	88	2216	+68	68653	3014	12	105/0
18	<b>14</b>	<b>KENNY CHESNEY</b> I Go Back ( <i>BNA</i> )	2895	444	2246	+328	66751	10854	5	108/2
19	<b>15</b>	<b>ANDY GRIGGS</b> She Thinks She Needs Me ( <i>RCA</i> )	2470	90	1887	+101	56871	1818	13	90/2
22	<b>16</b>	<b>TERRI CLARK</b> Girls Lie Too ( <i>Mercury</i> )	2448	194	1856	+163	55955	4400	7	103/3
29	<b>17</b>	<b>JIMMY BUFFETT f/CLINT BLACK</b> Hey Good Lookin' ( <i>RCA/Mailboat</i> )	2406	908	1859	+711	55640	22152	3	100/17
23	<b>18</b>	<b>MARTINA MCBRIDE</b> How Far ( <i>RCA</i> )	2399	176	1834	+126	55298	4558	9	99/2
21	<b>19</b>	<b>JOE DIFFIE</b> Tougher Than Nails ( <i>BBR</i> )	2342	51	1714	+48	52468	823	17	94/0
20	20	<b>EMERSON DRIVE</b> Last One Standing ( <i>DreamWorks</i> )	2313	-48	1718	-36	51932	-597	21	86/1
25	<b>21</b>	<b>RACHEL PROCTOR</b> Me And Emily ( <i>BNA</i> )	2067	144	1579	+127	47209	3307	11	96/4
24	<b>22</b>	<b>LEE ANN WOMACK</b> The Wrong Girl ( <i>MCA</i> )	2016	-1	1554	+1	44567	186	16	82/1
17	23	<b>SHANIA TWAIN</b> It Only Hurts When I'm Breathing ( <i>Mercury/IDJMG</i> )	1769	-846	1271	-728	43782	-17260	17	68/0
26	<b>24</b>	<b>JOE NICHOLS</b> If Nobody Believed In You ( <i>Universal South</i> )	1711	15	1315	+4	37480	364	11	78/1
45	<b>25</b>	<b>TIM MCGRAW</b> Live Like You Were Dying ( <i>Curb</i> )	1672	1172	1329	+945	38668	26687	2	93/56

© 2004 Radio &amp; Records, Inc.



## SHOW SOME LOVE!

**EAGER? ECCENTRIC? ENERGETIC?**

Man's best friend might not be able to help you during ratings, but his owner sure can. Reward him with a station decal from Communication Graphics and watch your ratings grow.

**Communication Graphics Inc**  
**THE DECAL COMPANY**  
 800.331.4438 - www.cgilink.com

Preferred by more radio stations since 1973.



June 2, 2004

LW	TW	ARTIST Title Label(s)	Total Points	+/- Points	Total Plays	+/- Plays	Tot. Aud. (00)	+/- Aud. (00)	Wks On	Total Station
27	26	JEFF BATES I Wanna Make You Cry (RCA)	1658	-24	1247	-10	38257	-955	21	78/0
28	27	TRACE ADKINS Rough & Ready (Capitol)	1531	19	1180	+16	32914	634	9	79/2
32	28	BIG & RICH Save A Horse, Ride A Cowboy (Warner Bros.)	1173	233	896	+173	26774	5165	5	62/5
30	29	CHELY WRIGHT Back Of The Bottom Drawer (Vivaton)	1170	17	923	-4	25649	599	12	69/1
31	30	JIMMY WAYNE You Are (DreamWorks)	1076	70	832	+40	23005	1634	11	62/0
35	31	SARA EVANS Suds In The Bucket (RCA)	1047	150	832	+122	23438	3283	6	62/5
33	32	JULIE ROBERTS Break Down Here (Mercury)	1026	93	818	+63	21131	2117	14	55/1
34	33	JENKINS Blame It On Mama (Capitol)	921	-8	719	-6	19673	-272	10	56/1
40	34	PHIL VASSAR In A Real Love (Arista)	871	152	635	+94	20451	3860	6	55/6
36	35	BILLY DEAN Thank God I'm A Country Boy (View2/Curb)	865	43	639	+13	22904	1489	15	43/0
37	36	AMY DALLEY Men Don't Change (Curb)	817	26	637	+19	16849	460	17	50/1
38	37	JOSH TURNER What It Ain't (MCA)	778	-2	627	-5	17002	38	7	56/0
39	38	TRENT WILLMON Beer Man (Columbia)	718	-15	511	-5	17005	-476	7	43/0
43	39	BRAD COTTER I Meant To (Epic)	713	112	548	+112	15578	2306	4	49/10
42	40	TRAVIS TRITT The Girl's Gone Wild (Columbia)	692	57	495	+49	16388	1257	5	46/5
41	41	HANK WILLIAMS, JR. Why Can't We All Just ... (Asylum/Curb)	591	-47	479	-19	13302	-318	10	35/1
47	42	DIERKS BENTLEY How Am I Doin' (Capitol)	563	160	449	+122	11029	3149	4	42/9
46	43	CRAIG MORGAN Look At Us (BBR)	475	17	364	+14	11043	404	6	34/1
48	44	RUSHLOW Sweet Summer Rain (Lyric Street)	401	19	334	+27	9301	77	4	35/4
49	45	CLINT BLACK The Boogie Man (Equity)	322	1	243	+10	7433	-122	6	26/1
<b>Debut</b>	46	STEVE HOLY Put Your Best Dress On (Curb)	251	54	184	+46	6292	1239	1	19/3
<b>Debut</b>	47	BLUE COUNTY That's Cool (Asylum/Curb)	248	40	196	+30	5538	971	1	21/2
<b>Debut</b>	48	JEDD HUGHES High Lonesome (MCA)	244	6	179	+11	5613	114	1	19/1
50	49	RODNEY ATKINS Someone To Share It With (Curb)	222	-98	162	-77	5482	-2042	7	22/0
<b>Debut</b>	50	SHERRIE AUSTIN Son Of A Preacher Man (BBR/C4)	192	26	130	+21	4556	192	1	12/4

© 2004 Radio &amp; Records, Inc.

## WORKING YOUR RECORDS! TO RADIO PROGRAMMERS VIA...

**EPK**  
ELECTRONIC PROMOTION KITS

**HOTFAX UPDATE**

**RR Going for Adds**

FOR MORE INFORMATION CONTACT:  
**GABRIELLE GRAF (615) 244-8822**

**PROMO E-MAIL**

**GOING FOR ADDS**

Artist Title (Label)	TW	LW	Fam.	Burn	P 25-54	W 25-54	M 25-54
<b>JOHN MICHAEL MONTGOMERY</b> Letters From Home (Warner Bros.)	4.32	4.42	99%	25%	4.37	4.32	4.41
<b>KEITH URBAN</b> You'll Think Of Me (Capitol)	4.24	4.25	98%	30%	4.25	4.42	4.12
<b>BRAD PAISLEY f/ALISON KRAUSS</b> Whiskey Lullaby (Arista)	4.21	4.12	86%	9%	4.18	4.15	4.20
<b>KENNY CHESNEY</b> I Go Back (BNA)	4.21	—	75%	7%	4.20	4.36	4.07
<b>TRACY LAWRENCE</b> Paint Me A Birmingham (DreamWorks)	4.18	4.21	97%	25%	4.22	4.22	4.23
<b>GRETCHEN WILSON</b> Redneck Woman (Epic)	4.17	4.27	99%	27%	4.17	4.20	4.14
<b>GEORGE STRAIT</b> Desperately (MCA)	4.14	4.07	95%	21%	4.16	4.29	4.07
<b>MONTGOMERY GENTRY</b> If You Ever Stop Loving Me (Columbia)	4.12	4.16	96%	17%	4.13	4.13	4.13
<b>REBA MCENTIRE</b> Somebody (MCA)	4.12	4.14	96%	18%	4.15	4.17	4.14
<b>JOE NICHOLS</b> If Nobody Believed In You (Universal South)	4.12	4.12	62%	7%	4.13	4.13	4.12
<b>ANDY GRIGGS</b> She Thinks She Needs Me (RCA)	4.11	4.08	80%	8%	4.08	4.18	4.01
<b>RASCAL FLATTS</b> Mayberry (Lyric Street)	4.08	4.12	100%	32%	4.06	4.21	3.94
<b>TOBY KEITH</b> Whiskey Girl (DreamWorks)	4.05	4.02	98%	20%	4.03	4.08	3.99
<b>BILLY CURRINGTON</b> I Got A Feelin' (Mercury)	4.04	4.07	85%	13%	4.01	4.13	3.92
<b>CLAY WALKER</b> I Can't Sleep (RCA)	4.03	4.08	92%	18%	4.00	4.18	3.87
<b>MARTINA MCBRIDE</b> How Far (RCA)	4.01	4.08	73%	10%	4.04	4.07	4.01
<b>LONESTAR</b> Let's Be Us Again (BNA)	4.00	4.08	94%	20%	4.05	4.29	3.86
<b>BROOKS &amp; DUNN</b> That's What She Gets For Loving Me (Arista)	3.98	4.02	96%	20%	3.98	4.10	3.89
<b>JOSH GRACIN</b> I Want To Live (Lyric Street)	3.97	3.92	65%	8%	4.00	4.07	3.95
<b>DAVID LEE MURPHY</b> Loco (Koch)	3.96	4.05	88%	14%	3.98	4.04	3.94
<b>LEE ANN WOMACK</b> The Wrong Girl (MCA)	3.96	3.97	72%	11%	3.94	3.92	3.95
<b>JOE DIFFIE</b> Tougher Than Nails (BBR)	3.95	3.93	68%	10%	4.01	3.90	4.07
<b>TERRI CLARK</b> Girls Lie Too (Mercury)	3.93	3.97	79%	11%	3.96	4.06	3.89
<b>EMERSON DRIVE</b> Last One Standing (DreamWorks)	3.91	3.86	85%	16%	3.94	4.08	3.84
<b>JEFF BATES</b> I Wanna Make You Cry (RCA)	3.91	3.95	71%	13%	3.96	4.02	3.92
<b>SHEDAISY</b> Passenger Seat (Lyric Street)	3.76	3.90	95%	24%	3.75	3.77	3.73
<b>RACHEL PROCTOR</b> Me And Emily (BNA)	3.75	3.82	68%	14%	3.68	3.59	3.74
<b>TRENT WILLMON</b> Beer Man (Columbia)	3.64	—	46%	10%	3.55	3.61	3.52
<b>SHANIA TWAIN</b> It Only Hurts When I'm Breathing (Mercury/IDJMG)	3.49	3.53	97%	39%	3.56	3.64	3.51

Total sample size is 428 respondents. Total average favorability estimates are based on a scale of 1-5. (1=dislike very much, 5 = like very much). Total familiarity represents the percentage of respondents who recognized the song. Total burn represents the number of respondents who said they are tired of hearing the song. Songs must have 40% familiarity to appear on survey. Sample composition is based on persons 12+. Persons are screened via the Internet. Once passed, they can take the music test based on the format/music preference. RateTheMusic.com results are not meant to replace callout research. The results are intended to show opinions of participants on the the Internet only. RateTheMusic is a registered trademark of RateTheMusic.com. The RTM system, is available for local radio stations by calling 818-377-5300. RateTheMusic.com data is provided by Mediabase Research, a division of Premiere Radio Networks.

**If you experienced transmission problems ... please call our Circulation Department at 310/788-1625.**

© 2004 Radio & Records, Inc. All Rights Reserved No part of this material may be reproduced in any form or incorporated in any information retrieval system without written permission of the Publisher.