

# TOP 40 AIRPLAY Monitor

• We Listen To Radio •

August 8, 1997 \$4.95 Volume 5 • No. 32

## TOP 40 HIGHLIGHTS

### MAINSTREAM

#1

OMC

How Bizarre (MERCURY)

★★★ AIRPOWER ★★★

THE WALLFLOWERS • The Difference (INTERSCOPE)

### GOING FOR AIRPLAY

LAUREN CHRISTY • Breed (MERCURY)  
AMY GRANT • Takes A Little Time (A&M)  
TREY LORENZ • Make You Happy (COLUMBIA)  
RIC OCASEK • Hang On Tight (COLUMBIA)  
PEACH UNION • On My Own (EPIC)  
ADAM SANDLER • The Lonesome Kicker (WARNER BROS.)

### RHYTHMIC TOP 40

#1

WILL SMITH

Men In Black (COLUMBIA)

★★★ AIRPOWER ★★★

MARIAH CAREY • Honey (COLUMBIA)

### CROSSOVER

#1

THE NOTORIOUS B.I.G. (FEAT. PUFF DADDY & MASE)

Mo Money Mo Problems (BAD BOY/ARISTA)

★★★ AIRPOWER ★★★

JOE • The Love Scene (JIVE)  
MARIAH CAREY • Honey (COLUMBIA)  
INOJ • Love You Down (SO SO DEF/COLUMBIA)  
MAGOO AND TIMBALAND • Up Jumps Da Boogie (BLACKGROUND/ATLANTIC)  
R. KELLY • Gotham City (JIVE)

### GOING FOR AIRPLAY

4.0 • Have A Little Mercy (SAVYI/PERSPECTIVE/A&M)  
DAFT PUNK • Around The World (SOMA/VIRGIN)  
SHAGGY FEAT. MASE • Piece Of My Heart (VIRGIN)

### ADULT TOP 40

#1

SISTER HAZEL

All For You (UNIVERSAL)

★★★ AIRPOWER ★★★

NO RECORDS QUALIFIED FOR AIRPOWER THIS WEEK

### ADULT CONTEMPORARY

#1

SHAWN COLVIN

Sunny Came Home (COLUMBIA)

★★★ AIRPOWER ★★★

BILLY JOEL • To Make You Feel My Love (COLUMBIA)  
BACKSTREET BOYS • Quit Playing Games (With My Heart) (JIVE)

### GOING FOR AIRPLAY

LAUREN CHRISTY • Breed (MERCURY)  
AMY GRANT • Takes A Little Time (A&M)  
DARYL HALL & JOHN OATES • Promise Ain't Enough (PUSH)  
TREY LORENZ • Make You Happy (COLUMBIA)  
RAY OBIEDO FEAT. PEABO BRYSON WITH SHEILA E. • Sweet Summer Days (WINDHAM HILL)  
RIC OCASEK • Hang On Tight (COLUMBIA)  
ADAM SANDLER • The Lonesome Kicker (WARNER BROS.)  
STEVE WINWOOD • Plenty Lovin' (VIRGIN)

## Station Dirty Tricks: Alive And Well, But Still Providing A Competitive Edge?

by Phyllis Stark and  
Kevin Carter

Radio has never been an industry known for playing nice. For as long as there has been competition, stations have been pulling dirty tricks on one another. And just because you haven't read much about the topic since the late '80s/early '90s, when dirty tricks came to the fore—spurred by a lawsuit between stations that brought the topic to public attention—doesn't mean they have stopped. Judging from country and top 40 PDs speaking anonymously, who still had no shortage of stories.

*A special editor's note to readers: Don't try these at home. As far as you know, many of the persons mentioned in this story are serving lengthy prison sentences or are enrolled in the Federal Witness Protection Program.*

Nearly everyone has heard the story about a PD calling the new weekender at a rival posing as an engineer and telling him, "We're going to be doing some work on the transmitter. I need you to turn it off until I call you back on the hot live." Whether that has happened or is just radio folklore, it is typical of the stories we heard.

One PD boasts, "I've made a living" out of playing tricks on the competi-

Continued on page 5

**DRU HILL**

*"Never Make A Promise"*

THE HIDDEN #1 TO THE PLATINUM SINGLE "IN MY BED" FROM THE PLATINUM PLUS SELF-TITLED ALBUM

**10** ★★★HOT SHOT DEBUT★★★  
BILLBOARD HOT 100 SINGLES

**4** BILLBOARD HOT 100 SINGLES SALES

**1** BILLBOARD HOT R&B SINGLES

**9** TOP 40 MONITOR CROSSOVER AIRPLAY

**1** R&B MONITOR MAINSTREAM

OVER 73,000 SINGLES SCANNED THIS WEEK!  
GREAT SINGLE SALES

#1 NEW YORK	#3 LOS ANGELES
#9 CHICAGO	#2 SAN FRANCISCO
#1 BALTIMORE	#3 PHILADELPHIA
#5 DALLAS	#3 WASHINGTON, DC
#9 SACRAMENTO	#9 HOUSTON

ISLAND BLACK MUSIC  
just off the coast of PolyGram

MUSIC TELEVISION  
ACTIVE

The Rape, Abuse & Incest National Network 24 hour helpline 1-800-658-HOPE

EXECUTIVE PRODUCED BY MIRIAM HICKS



**WRONG  
WAY**



# sublime

The New Single From

The Now **DOUBLE PLATINUM** Album

"Great sales in market. Sounds like a STAR 94 song."  
J.R. Ammons/MD, STAR 94

"This is the best single yet off this album. This should  
go everywhere."  
Brian Burns/PD, WDCG

2144 Total Plays  
Audience Reach Approaching 15 Million



Heavy  
Top 5 Most Played

Already On:

WSTR  
KMXV  
G105  
WKRZ  
WZYP  
WXLK  
WZST  
WRHT  
WXIS  
WLSS  
WQSL

and many more

©1997 MCA Records, Inc.

MCA

GASOLINE ALLEY



Produced by Paul Leary • Management: Jon Phillips & Jason Westfall • Get AMPed: [www.mcarecords.com](http://www.mcarecords.com)

World Radio History

## Somerstein To East Coast Account Spot

Billboard Magazine Group sales manager Jeff Somerstein is named Eastern U.S. advertising account manager for Top 40 Monitor and Rock Airplay Monitor. His first day in the new post will be Aug. 18.



A three-year veteran of Billboard, Somerstein was handling the sale of group subscriptions for Billboard magazine and the four Airplay Monitors. He previously worked four years at sister company Competitive Media Reporting. He is a graduate of the State University of New York College at Oneonta.

## Z100 Celebrates 14th With On-Air Reunion

**W**HTZ (Z100) New York celebrated its 14th birthday Aug. 1 with a who's who of former jocks either in the studio or on the phone, among them **Ross Brittain, Claire Stevens, Gary Bryan, John Lander, WPLJ PD Scott Shannon**, who signed on the station in '83, **Jack Da Wack, Shadow Steele, the Jammer, Susan Lee Taylor, Christopher Reed, Hollywood Hamilton** from rival **WKAT, Magic Matt Alan, Janet Dean, Chio the Hitman**, and ex-morning producer **Adam Goodman** (now **WMMX** Baltimore PD).

When **WFLZ** Tampa, Fla., morning team **M.J.** and **B.J.** learned that **Lisa Marie Presley** had purchased an oceanfront mansion in nearby Clearwater, Fla., they dispatched **Buffoon Boys Froggy** and **Uncle Fester** by rented rowboat. On landing on Presley's dock, the boys were involved in an altercation with guards and were detained for questioning by authorities. Litigation is pending, reports grinning PD **Jeff Kapugi**.

### BUSINESS: NEW ARBITRON FRACAS

Arbitron met with several L.A. GMs last week to discuss the alleged undersampling of several zip codes in that market during the spring. Arbitron won't reissue the book but will reportedly send a letter of explanation to the ad community.

**Michael Powell**, chief of staff of the Justice Department's Antitrust Division, and the son of retired Army Gen. **Colin Powell**, has been nominated to the FCC. He'd succeed **Rachelle Chong**.

Chancellor Media, owners of top 40 **KALC** (Alice 106) AC **KIMN** Denver, will acquire crosstown adult modern **KXPX** (the Peak) for a reported \$26 million. Look for an LMA to begin Sept. 1 and for **KALC/KIMN GM Graham Satherlie** to add GM duties at the Peak.

Citadel expands its presence in Little Rock, Ark., picking up adult top 40 **KURB** and AC **KVLO** and its AM for \$12 million. Also, GM **Gordon Heiges** adds VP/station manager stripes for Citadel top 40 **KESR** (Star 102) and R&B sister **KIPR**. Former **KESR/KIPR** owner **Cal Arnold** becomes VP/GM for Citadel/Little Rock.

**KLUC** Las Vegas brings radio vet **Rick Dames** out of retirement as its new GM, as **Tom Humm** concentrates on AMs **KXNO** and **KXNT**.

Former **WFKS** Daytona Beach, Fla., GM **Bill Files** becomes station manager for **WSTO** Evansville, Ind., replacing **Mitch Smith**.

### PROGRAMMING: FEATHER EXITS

After posting a 6.2 in the spring book, **KQKS** (KS107.5) Denver PD **Mark Feather** exits; morning host **Rick Stacy** is named acting PD.

Adult top 40 **WMTX** (Mix 96) Tampa, Fla., shifts to modern AC as Star 95.7. The station has dropped the syndicated **Scott and Todd** show, as well as local morning newswoman **Pat Brooks**, longtime middayer **Marvelous Marvin Boone**, and afternooner **Mike Reeves**.

**Steve Young**, former PD of **WNEW** New York, is consulting dance **CING** (Energy 108) Toronto, as PD **Scot Turner** becomes MD. New owner **Shaw** transfers **Paul Fockler** to the GM post.

Former **WGTZ** Dayton, Ohio, PD **Mary Franco** is named PD of crosstown **ARS** hot AC **WMMX** (Mix 107.7). OM **Jeff Ballentine** will concentrate on R&B sister **WBTT** (the Beat).

**WHZZ** Lansing, Mich., morning host **Woody Houston** is named PD, replacing **Chris Kerr**. **KSEQ** (Q97) Visalia, Calif., flips from soft AC to top 40, under PD/mornings **Charlie Wolf**.

**KIXY** San Angelo, Texas, OM/PD **J.J. Morgan** takes the APD/MD job at his hometown's **KQKQ** (Sweet 98) Omaha, Neb., replacing **Jimi Jamm**.

At **WKXJ** Chattanooga, Tenn., PD **Roy Jaynes** is upped to station manager. APD/MD **Bobby Corona** is now PD... Suburban Birmingham, Ala., top 40 **WZJT** (Z92.5) signs on.

**WINQ** Winchendon, Mass., begins a segue from hot AC to top 40... Top 40 **WJUS** (Z96) Ft. Walton Beach, Fla., signs on under consultant **Jan Jeffries** and PD/afternoons **Rick Taylor** from **KHTT** Tulsa, Okla.

**PEOPLE: WXYV SETS LINEUP**  
Longtime **WPGC** Washington, D.C.,

MD/p.m. driver **Albie Dee** segues to MD/mornings at sister **WXYV** Baltimore. Also, at **WXYV**, **Dakota** is now doing afternoons. **De-Lite** stays on for middays from the morning producer slot at **WXYV**'s previous R&B format. And with **Dan Vallie** no longer working with **WXYV**, **Jerry Clifton** reassumes the main consultant duties. **Dee's** **WPGC** shift is filled by late-nighter **Adimu**.

After 16 years, **WEZB** (B97) New Orleans MD **Joey Giovingo** exits following the elimination of the off-air MD position. **Giovingo** also programmed classic hits **WRNO**. Call 504-889-0896.

**WWLD** (Wild 106) Tallahassee, Fla., night jock **Ken the Boy Scout** exits, replaced by **Lugnut**, from mornings at **KRCS** (Hot 93.1) Rapid City, S.D. **WWLD** ups P/T **Rasha** to late nights.

**KRBE** Houston assistant promotion director **Wendy Craven** is named promotion director, as **Mark Shecterle** moves up to marketing director. **Tasha Coney** joins as promotions assistant.

**WKSI** (the Point) Greensboro, N.C., completes its air staff by hiring **Mike Baker** from **Jacor's** **WLRS** Louisville, Ky., as news director.

With **J. Davis** joining **WFMZ** Allentown, Pa., from **WLEV**, his old morning partner, **Samantha Lane**, joins for middays. **Randy Katz** moves from **WLEV** p.m. drive to the same at **WFMZ**.

Following last week's news that **WKRQ** (Q102) Cincinnati marketing director **Von Freeman** is joining **KHIS** L.A. comes news that his wife **Amy** will fill the **KHIS** local sales manager position.

**WKSS** Hartford, Conn., ups **Gina J.** from P/T to split middays with MD **Mike McGowan**.

**WNCI** Columbus, Ohio, ups intern **Robin Egelhoff** to programming assistant, replacing **LauraLee Brigode**, now promotions assistant.

Northwest native **Ted Striker** (not the guy from "Airplane!") returns to radio as morning producer at **KBKS** (Kiss 106.1) Seattle.

**KFFM** Yakima, Wash., morning co-host/promotions director **Misty Dawn** will exit her full-time duties Aug. 12 but may do P/T... **KCLD** St. Cloud, Minn., PD **Steve Hunter** moves from afternoons to mornings, teaming with **Tammy Moore** from country **KIKN** Sioux Falls, S.D.

At modern AC **KTNP** Omaha, Neb., APD/afternoon jock **Carrie Benjamin** and middayer **Tony Matteo** team for mornings, replacing **Kim and Terry**. P/T **Rachel Adams** moves into middays and former **KZIO** Duluth, Mich., morning jock **Chris Holland** comes aboard for afternoons.



## TOP 40 TOPICS BY SEAN ROSS

212-536-5264 • sross@billboard.com

## Did U.K. Radio Americanize Or Vice Versa?

**W**hen I made my first trip to London in 1982, its radio had just started fragmenting. **BBC Radio 1** and **Capital FM**, the market's major FM players, had been joined by a dance station, a jazz/blues hybrid, and an R&B FM. Since then, the market has added a hot AC, a soft AC/easy listening outlet, a classic rock/modern AC hybrid, and now a modern rock outlet. In 1992, **Capital FM** might follow **K.W.S.** with an office request for a block of three from **James Taylor**. At that time, it seemed like a safe assumption that fragmentation would force them to change.

Well, thanks to my exhaustively documented **RealAudio/Internet** addiction, I've been spending a lot of time with European radio lately, but it's **Capital FM** that has become my at-work radio station. So has time undone the traditional programming anarchy in the U.K.?

Sorta. **Capital FM** is indeed a little less broad than it was five years ago. A lot of the older gold has been moved to its oldies AM, which recently extended its reach into the late '80s. Musically, you can still hear the occasional **Bob Marley** oldie on **Capital**, but British top 40 radio is now a lot more identifiably top 40, with **Puff Daddy**, **Will Smith**, the **Notorious B.I.G.**, and other pop/rap titles playing throughout the day at many stations.

Otherwise, whether British top 40 is still broad depends on how you look at it. When friends stop by the office, they're still surprised to hear a radio station that can follow **Teenage Fanclub** with the **Brand New Heavies**. Myself, I think that's becoming common at home.

Like top 40 PDs here, British PDs seem to feel that the music available to them is better than it was several years ago. Other similarities? There are British chart hits that never get widespread top 40 airplay, no matter what they sell. There's also been a long-standing emphasis on how high records debut that's only now becoming epidemic here. Records go to radio in advance of their street date, then enter the charts high and usually work their way down, which makes for an odd view of what constitutes a hit. Before its release, the new **Oasis** al-

bum was often called an event on the order of "Sgt. Pepper" in the U.K. But recently a British trade trashed "D'You Know What I Mean" because it only spent one week at No. 1.

I'd figured that listening to British radio would mean a continuous parade of new music. Actually, I'm still hearing a lot of the same currents on **Capital** that I did on the first day I bookmarked them. And since a lot of songs tend to be released in the U.K. about the time they're coming out of power here, I've lived through "Don't Speak," "Lovefool," "Bitch," and "Where Have All The Cowboys Gone?" twice. And "You Were Meant For Me" is on the way.

A couple of differences are dramatic, though. One is that the jocks on **Capital** are all identifiably adults, although another British group PD assures me that his jocks sound younger, noting, "They've got jocks in their 30s and 40s over there!" Another is that there's still news on the hour. I heard about the **Versace** murder on **Capital FM**. Since I don't listen to news radio during the day, largely because of AM reception in midtown Manhattan, I wouldn't have known otherwise until that evening.

There are also some formatic differences. **Capital's** p.m. driver has a drop-in that declares, "Martin Collins rocks London." While U.K. listeners may love their Britpop, we went through a rock phase here for two years and no top 40 PD thought to use the word "rock" on the air. You'll also hear records cut short for time on U.K. radio, although the other formatic no-no that we all grew up with, dead-seguing records into commercials, is now as common here as it is there.

It's a lot easier to analyze British top 40 than the other European radio I've heard, because of the language similarity. All I really know about French top 40 is that most of them are leaning rhythmic now and that the best-testing oldie in Europe must be "7 Seconds" by **Yousou N'Dour** and **Neneh Cherry**. Beyond that, the surprises are not how different international radio sounds but that it often doesn't. Whether they've caught up with us or vice versa is open for discussion.



## WHAT'S NEWS

by Theda Sandiford-Waller

212-536-5053 • theda@billboard.com

## PolyGram To Reorganize Motown?

**M**USICAL CHAIRS: In addition to the recent restructuring at Island, PolyGram is reportedly planning to reorganize Motown. According to *The Wall Street Journal*, Mercury's **Danny Goldberg** will be elevated to a broader corporate role within PolyGram Group Distribution, and Motown will be overseen by Mercury.

**Mariah Carey** is makin' more moves. She's split from her manager of seven years, **Randy Hoffman**, and is now represented by **Sandy Gallin**.

Within two weeks, look for several Red Ants to migrate to MCA in **Nancy Levin's** wake. **Steve Zap** skips over to MCA as VP of promotion. Also, Red Ant's director of alternative promotion, **Michelle St. Clair**, and national crossover promotion, **Debby Petterson**, are expected to move to MCA in similar capacities... MCA Minneapolis regional **Cherise Gambino** heads to Mercury in the same capacity.

**Trish Merelo** exits her MCA Los Angeles regional gig Aug. 8 to pursue other opportunities. Reach her at 818-883-2270... Island's New England rep, **Lori Rischer Backus**, adds New York to her territory... **David Field** joins Work's A&R department from Capitol, where he was VP of A&R for six years. Another former Capitol A&R staffer, **Matt Aberle**, lands at Reprise as VP of A&R.

**LIVE: Shawn Colvin** takes a break from her *With a Mission* tour with **Duncan Sheik** to hop on a few dates with the ladies of the *Lilith Fair*, Aug. 12 in Pittsburgh, Aug. 13 in Scranton, Pa., and Aug. 14 in Detroit... **Jive's Backstreet Boys** commemorate the Aug. 12 release of their album with a live performance at New York's *Virgin Megastore*. For those who can't make it to the city, check the band's World Wide Web site ([www.backstreetboys.com](http://www.backstreetboys.com)) in a couple of days to see it's performance.



## Station Dirty Tricks: Alive And Well, But Still Providing A Competitive Edge?

Continued from page 1

tion. As an ongoing incentive, he pays staffers \$10 out of his own pocket any time they hear the competition doing live phones and can get an explosive or their own calls on the air at their rival.

One enterprising PD admits to secretly putting an employee of his competitor on his payroll. "We were able to put all of their promos on-air the day before they did, and ours were better."

Another PD brags of subscribing to pornographic magazines and having them delivered to a rival station, hiring private investigators to track the competing PD, hiring people to picket the rival station, having his rival's van impounded, and putting up billboards on the routes home of the competing GM and PD "just to freak them out." He even put a fake "sold" sign in the competing PD's yard when he was away on vacation. (Another broadcaster once responded to rumors that a competitor was leaving town by inviting all the local real-estate agents to the rival PD's house to list it.)

The PD responsible for the string of transgressions above also once hired a bus company to round up homeless people and deliver them to his competitor's listener-appreciation concert with the promise of free food and drink inside. He's also hired strippers to attend his competitor's parties and jump up on a table and do their thing at an inopportune moment. Similarly, a marketing director has made fake copies of the invitation to his competitor's party and gave them to hookers and homeless people. Many listeners were turned away from the event because the venue was already filled with uninvited guests.

One station was planning to drop 10,000 Ping-Pong balls from a helicopter onto a football field full of people. Some of the balls were labeled with the names of prizes, but only one had the grand prize of a car written on it. That is, until the competitor made up 10 more balls listing the car as the prize and hired a kid to sneak into the heliport and put the extra balls inside. The end result was 11 people who thought they won the car.

### BEWARE THE AUDS OF MARCH

A competitor's auditorium test seems to be a popular location for intra-market hi-jinks. "We found out about a competitor doing their auditorium test," says one PD. "We knew the exact location, the time, everything. We didn't want to stoop to messing up their \$20,000 project, but we wanted to have some fun, so after all the respondents were inside the auditorium, we posted fliers on the windshields of their cars, inviting them to play a secret contest, only for the people there that night. They were instructed to listen for us to play a certain song the next morning, and the first caller would win \$107. Meanwhile, someone from the research company came out, caught us, and removed all the fliers. After they went back inside, our people sped off to Kinko's, ripped off a few hundred more copies, and did it again."

"The next day, when we played the secret auditorium test song, just about every person who had been there called in to win."

Another marketing director had no such qualms about ruining a competitor's test. His staff stood outside the hotel giving out T-shirts and stickers to people going into the music test.

### FUN WITH FAXES

Then there are the fax tricks. One PD admits to taking the header off his fax machine, inserting a white piece of paper, and programming the fax machine to continuously send the blank sheet to the competitor's fax machine while they were having a fax in and win contest. Told of this trick, another radio marketing director scoffs at its amateurishness. Using black paper instead, he points out, uses up both the paper and toner of the competitor's fax machine.

This one happened back in the days when PDs hung out at the post office for the 4 a.m. delivery of the Arbitron book. "One PD had a friend inside Arbitron who would call him just as the book was being mailed to let him know how his station did," recalls one programmer. His friend called and told him to expect an 11 share. "Needless to say, there was much rejoicing in the hallways. The PD decided to share this special moment with his

'friends' across the street by sending over a large, black funeral wreath as a condolence on their 'demise.' You can imagine the look on his face when the book was actually delivered, showing his 11 share—and his competitor with an 11.1. Shortly thereafter, the wreath was returned to the senders with their condolences as well."

During the first go-round of the Birch rating system, one station beat his competitor for the first time ever, with a 9 share to his rival's 5. Needless to say, the 5-share station was extremely unhappy and wasted no time trashing the 9-share station on the air and on the street. So Mr. 9-share took a copy of the Birch printout, wrote a convincing looking numeral one in front of his competitor's 5, then faxed the new numbers to all the record labels. Of course, they were calling up his competitor all day to congratulate him on his 15 share, which only made his misery worse.

### THE STEALTH MEMO

Some PDs admit to being a party to "less than authentic" memos that are timed with military precision to fall into the wrong hands.

One medium-market MD recalls a heated battle with his competitor. They discovered that the other station's GM was away for corporate meetings. Somehow, they managed to get their hands on one of his old memos and copied his signature. A memo was then drafted, allegedly from the GM, announcing that the station would be heading in "a more adult direction" the following Monday and promising air-staff changes. The memo was sent on a Friday, giving recipients that all-important weekend to dwell on it.

Apparently, one of the other station's weekenders received the fax, panicked, and proceeded to call all the other air staffers to tell them the bad news. Unfortunately, the GM was unreachable, and the PD was vacationing in Mexico. When the GM called in for his messages on Monday morning, he was greeted by a hysterical staff and a sales manager demanding to know why he wasn't included in "the big decision," which the GM knew nothing about.

Another station typed a letter on a competitor's corporate letterhead, addressed to the station GM, stating that because the station had lost so much ground to the competition, the company was seriously considering a format change and giving the date of an emergency corporate meeting to decide between two potential new formats. The competitor sent an intern over with the letter in his pocket, posing as a listener. He asked to use the restroom and left the letter on the floor.

Revenge seems to be a recurring theme in market warfare. One PD says, "We really wanted revenge for our competitor raiding our station concert earlier in the year. We sent one of our promotion guys to the concert stage, buddied up to the sound guy, and told him we were 'with the station.' (We didn't say which one, of course.) We handed him a cassette and instructed him to play this 'background music' between sets." Of course, the first five minutes of the tape consisted of harmless jazz music, but suddenly (and twice as loud) came a specially recorded song mocking the presenting station. And because the sound guy had gone for a beer between sets, the other station couldn't get the tape to stop playing.

"The incident made the local news, but, of course, we denied everything," he says. "We also gave away prizes in the parking lot, but when they tried to chase us off, we pulled out a permit we got from the city to do it. (The city also didn't know it was another station's concert.)"

Several PDs claim they take the high road and never play tricks on the competition. Notes one, "I really think it's a waste of time to focus on the competition. That's when you end up losing ultimately, and that momentary glory is just not worth you being obsessed with the competition. I don't think it's worth pissing off the competition unless it has a major payback."

And for some, the resulting stress may not be worth the glory. The PD responsible for many of the stories above admits to being "Mr. Paranoid" and "always looking over my shoulder. I'm a nervous wreck." Why do it then? He says it gives him a "competitive mental edge."

## MONITOR PROFILE

### WSNX PD John Thomas Takes No Prisoners In Grand Rapids Assault

**I**t wasn't until I'd been here about two weeks [that] I realized I had to lean this station away from the rock side," says John Thomas, PD of WSNX Grand Rapids, Mich.

WSNX was up 6.0-7.2 12-plus, third in the market, and up from seventh to third 18-34. It also grabbed the No. 1 cumc title for the first time in the spring Arbitron. All this while its 18-34 time spent listening rose from 5 1/2 to nine hours. When Thomas had a good book last year as PD of WDUZ/WQLH Green Bay, Wis., Thomas says, a consultant told him not to put that info on his resumé, "because it'll look like you got kissed." I now feel a sense of vindication that last year's book wasn't a fluke."

Despite Grand Rapids' one-time reputation as a rock market, Thomas received a wake-up call soon after his arrival in September '96. Classic rock WLAV was sitting across the street, along with modern rock outlet WGRD and active rock WKIQ, as well as modern-leaning AC



**John Thomas**  
Program Director  
WSNX Grand Rapids, Mich.

*'Everyone says you shouldn't mention your competition, but who are we kidding?'*

WVTL. "The rock angle was pretty tied up," says Thomas. "I figured for me to play Counting Crows and Wallflowers as our core sound was not the way to go. We needed to play the fun, uptempo stuff like Gina G, Hanson, and Spice Girls." WSNX does play Counting Crows, but Thomas and MD Keith Curry didn't add the Wallflowers' "One Headlight" until it hit top five nationally. "Why should I help drive the cure for four competitors?" he says.

Given that there's no full-time R&B outlet in town (sister WKWM is a daytimer) Thomas was able to own the biggest crossover titles. "Just this week, in this market, artists like Rome sold 290 pieces, Notorious B.I.G. sold 557, and Missy Elliott debuted with 968. Puff Daddy has sold 12,600 singles to date at \$7 a pop. All this in a market that's only 6% minority," he says. "That's where I think other PDs sometimes misread the tastes of their audience."

Here's a sample 5 p.m. hour on WSNX: various artists, "The Jock Jam"; Will Smith, "Men In Black"; Chic, "Le Freak"; Robyn,

"Show Me Love"; Quad City DJ's, "C'mon N' Ride It (The Train)"; Puff Daddy, "I'll Be Missing You"; Hanson, "Mmmmbop"; Third Eye Blind, "Semi-Charmed Life"; INOJ, "Love You Down"; OMC, "How Bizarre"; Boys II Men, "Motownphilly"; Gina G, "Ooh Aah . . . Just A Little Bit"; and Backstreet Boys, "Quit Playing Games (With My Heart)."

Growing up in Chicago, Thomas spent his broadcasting wonder years in Christian radio, but was a fan of top 40s WYTZ (Z95) and WBBM-FM (B96). "I was in love with the chemistry of that station," says Thomas. "[PD Dave] Shakes never seemed to do anything wrong when he executed day-to-day station format, and that generated repeat business." His first foray into secular radio was a real neck-snapper: P/T at hard rock WWBZ (the Blaze). Another pit stop as a production guy at WMVP put him in daily, face-to-face contact with Steve Dahl, Kevin Matthews, and Mancow Muller, "which helped me understand the psychology of managing talent," he says. "I observed how Mancow would attack Dahl sitting right across the hall and get into his head; I figured if I could use those skills to get into the head of the PD across the street, half my battle would be over."

Funny he should mention that. A large part of WSNX's reimagining process from the old "Sunny FM" was Thomas' newfound freedom to take potshots at pretty much everyone within earshot—including himself. "Someone needed to come in here and bitch-slap some people in this market," says Thomas. "I'm not afraid to say on the air that WGRD sucks," he says. "Everyone says you shouldn't mention your competition, but who are we kidding? We share 33% of our audience with WGRD; our listeners know they're down there. If I can take a quick shot and open a wound, I'm going to do it. For me to ignore their existence is stupid."

Taking a page from Evergreen's Jimmy de Castro on the success of WKTU New York, Thomas assesses his own spring-book victory. "We executed flawlessly," he says. "The game plan was skew the music a bit older than our core, while promoting to the younger side of our target."

"It bothers me that some people say they treat their radio like an appliance, like a toaster," Thomas adds. "I certainly didn't get into radio for that; I got in because I heard guys like Steve Dahl, Jonathan Brandmeier, Gary Spears, Larry Lujack, and George McFly. These guys had an impact on people's lives. They were able to push emotional buttons, could draw hundreds of people to their appearances. It was theater. They had that kind of power. I certainly didn't come here to program an appliance." **KEVIN CARTER**

EDITOR IN CHIEF: HESTON HOSTEN  
EDITOR: SEAN ROSS  
MANAGING EDITOR: KEVIN CARTER  
DIRECTOR OF CHARTS: THEDA SANDIFORD-WALLER  
ASSOCIATE DIRECTOR OF CHARTS: STEVEN GRAYBOW  
WRITER/REPORTER: DANA HALL  
CHART PRODUCTION MANAGER: MICHAEL CUSSON  
ASST. CHART PRODUCTION MANAGER: ALEX VITOLUIS  
EDITORIAL PRODUCTION MANAGERS: BARRY BISHIN, MARCIA REPINSKI  
EDITORIAL PRODUCTION: SUSAN CHICOLA, MARC GIAQUINTO  
SARAH JOHNSON, MARIA MANLICIC  
COPY EDITOR: CARL ROSEN  
ADVERTISING PRODUCTION MANAGER: LYDIA MIKULKO  
ASSOC. ADVERTISING PRODUCTION MANAGER: CINDEE WEISS  
ADVERTISING ART DIRECTOR: RAY CARLSON  
ADVERTISING PRODUCTION ARTIST: SHIRA HALFON

GENERAL MANAGER: JON GUYNN  
ACCOUNT MANAGER: GARY NIELL  
ADVERTISING SERVICES MANAGER: ALYSE ZIGMAN  
SALES ASSISTANTS: EVELYN ASZODI, ERICA BENGTON,  
TODD MAYER

EDITORIAL ADVISER: TIMOTHY WHITE  
PRODUCTION DIRECTOR: MARIE GOMBERT  
DIRECTOR OF MARKETING: ELISSA TOMASETTI  
CIRCULATION DIRECTOR: JEANNE JAMIN



PRESIDENT: HOWARD LANDER  
SENIOR VP/GENERAL COUNSEL: GEORGINA CHALLIS  
VICE PRESIDENTS: KAREN OERTLEY, ADAM WHITE  
DIRECTOR OF STRATEGIC DEVELOPMENT: KEN SCHLAGER  
BUSINESS MANAGER: JOELLEN SOMMER

©1997 BPI Communications  
1515 Broadway, New York, NY 10036 212-764-7300  
5055 Wilshire Blvd., 7th floor, Los Angeles, CA 90036 213-525-2300  
For subscriptions call: 800-722-2346

Airplay Monitor reporting panels are based solely on a station's musical content.



# LeAnn Rimes

## "How Do I Live"



**This Week  
LeAnn  
Debuts  
On The  
Billboard  
Monitor  
Top 40  
Mainstream  
Chart**

**SoundScan  
Up Again  
70,500+ units  
sold in the  
past 7 days...**

**Single Sales  
To Date:  
335,000+**

**Billboard Hot 100  
9**

**Billboard Monitor  
A/C Chart  
9**

KVIL	Dallas	#1
KRBE	Houston	#1
KHOM	New Orleans	#1
B97	New Orleans	#1
WAPE	Jacksonville	#1
KRUF	Shreveport	#1
WKXJ	Chattanooga	#1
WLSS	Baton Rouge	#1
KHTO	Springfield	#1

**CURB**  
RECORDS







POWER PLAYLISTS

For Week Ending August 3, 1997



Playlists supplied by Broadcast Data Systems Radio Track service. Songs ranked by number of plays in monitored week. Playlists are listed in order of TRM weekly score, beginning with the highest scoring station. Scores are updated twice weekly following the release of the Spring and Fall Arbitron surveys. The number of stations shown each week varies depending upon space.

Grid of 24 radio station playlists including G105, KISS 95.1, PRO-FM, ALICE 106, MIX 93.3, MIX 104.1, WXYV, WIXX, WZPL, Q106, WBLI, KISS 98.5, KHFI, WSTW, FLY 92, KJ103, 98PXY, and Z93. Each station listing includes station name, PD, and a list of songs with their TRM scores.

POWER PLAYLISTS

For Week Ending August 3, 1997



Playlists compiled by NMM's Data Systems Radio Track service. Songs ranked by number of plays as monitored week. Playlists are listed in order of CBS week, beginning with the highest-ranking station. Current as updated (once daily) following the release of the Spring and Fall Arbitron surveys. The number of stations shown each week varies depending upon space.

93Q WNTQ Syracuse PD: Tom Mitchell MD: Jimmy Olsen. Top 40 list including Sister Hazel, Meredith Brooks, OMC, etc.

WKRZ Wilkes-Barre PD: Tony Banks APD/MD: Jerry Padden. Top 40 list including Tonic, Sublime, Sister Hazel, etc.

WVKS Toledo VP/Pgm: Mike Wheeler APD/MD: Bill Michaels. Top 40 list including Will Smith, Sister Hazel, OMC, etc.

B104 WAEB Allentown PD: Brian Check MD: Chuck McGee. Top 40 list including The Wallflowers, Sister Hazel, OMC, etc.

WDJX Louisville PD: C.C. Matthews APD/MD: Karen Rite. Top 40 list including Az Yet, Hard To Say I'm Sorry, Mark Morrison, etc.

B93.7 WFBC Greenville, SC PD: Rob Wagman MD: J. Love. Top 40 list including Puff Daddy & Faith Evans, Third Eye Blind, etc.

WAPE Jacksonville PD: Cat Thomas APD/MD: Tony Mann. Top 40 list including LaVonne Rimes, Meredith Brooks, etc.

B104 KBFM McAllen OM: Billy Santiago PD/MD: Jeff DeWitt. Top 40 list including Shawn Colvin, Puff Daddy & Faith Evans, etc.

WSNX Grand Rapids PD: John Thomas MD: Keith Curry. Top 40 list including Puff Daddy & Faith Evans, Mark Morrison, etc.

WZYP Huntsville PD: Marc Summers MD: Chris Callaway. Top 40 list including Mark Morrison, OMC, etc.

WHOT Youngstown PD: Tom Pappas MD: Mike Thomas. Top 40 list including Meredith Brooks, The Verve Pipe, etc.

KHTT Tulsa VP/Pgm: Sean Phillips PD/MD: Carly Rush. Top 40 list including Will Smith, OMC, etc.

WINK 104 WNNK Harrisburg PD: John O'Dea MD: Scott Shaw. Top 40 list including Third Eye Blind, Spice Girls, etc.

SWEET 98 KOKQ Omaha PD: Michael Steele MD: Jimi Jamm. Top 40 list including Robyn, Third Eye Blind, etc.

KRQ Tucson PD: Tim Richards MD: Dino. Top 40 list including Will Smith, Mark Morrison, etc.

Q94 WRVQ Richmond PD: Lisa McKay APD/MD: Billy Surf. Top 40 list including Meredith Brooks, Various Artists, etc.

WABB Mobile PD: Wayne Coy APD/MD: Darrin Stone. Top 40 list including Meredith Brooks, Robyn, etc.

K92 WXLK Roanoke PD: Russ Brown MD: Lisa Jo Elliott. Top 40 list including Third Eye Blind, Backstreet Boys, etc.



★ ★ ★ **AIRPOWER** ★ ★ ★  
(Minimum 1500 detections for the first time)

**Total Plays/Gain**

**THE WALLFLOWERS 1541/167**  
*The Difference (Interscope)*  
Total Stations: 77/Chart Move: 28-27  
Heavy (40+ plays): 3 KKLQ, WXIS, WXXS  
Medium (20-39): 40 KESR, KHTQ, KMXV, KQKQ, KRUF, KSMB, WABB, WBHT, WBZZ, WCIL, WDCG, WDDJ, WFBC, WHOT, WIXX, WJBO, WKRO, WKSE, WLAN, WNKS, WNNK, WNOK, WNTQ, WPRO, WPST, WPXY, WQSL, WRVQ, WSSX, WSTR, WSTW, WTWR, WWSR, WWCK, WXLK, WXXL, WYCR, WYOY, WZPL, WZST  
Light (Under 20): 34  
New Airplay This Week: 4 WAEB, WFLY, WKSZ, WVKX

**AIRPOWER BOUND**

**Total Plays/Gain**

**98 DEGREES 1477/164**  
*Invisible Man (Motown)*  
Total Stations: 80/Chart Move: 30-28  
Heavy (40+): 2 KIIS, WLKT  
Medium (20-39): 36 KBFM, KDWB, KESR, KKM, KKRZ, KQKQ, KRUF, KZHT, KZZU, WABB, WBLL, WCIL, WDCG, WDDJ, WGTZ, WHOT, WHTZ, WKRZ, WKSE, WNNK, WPRO, WQSL, WSNX, WSSX, WTWR, WVKX, WWSR, WWHT, WWZZ, WXXB, WXLK, WXXL, WYOY, WZJM, WZST  
Light (Under 20): 42  
New Airplay This Week: 5 KHFI, KRQQ, WKRZ, WLAN, WNCI

**TONIC 1263/105**  
*If You Could Only See (Polydor/A&M)*  
Total Stations: 84/Chart Move: 31-29  
Heavy (40+): 5 WABB, WBHT, WFBC, WKRO, WKRZ  
Medium (20-39): 25 KALC, KDWB, KESR, KHTQ, KKLQ, KKRZ, WFLZ, WHOT, WHTZ, WKSE, WKSZ, WNKS, WNNK, WNTQ, WPST, WQSL, WSSX, WSTR, WWSR, WWCK, WYCR, WZNY, WZPL, WZST  
Light (Under 20): 54  
New Airplay This Week: 6 KKM, WJBO, WKSS, WLAN, WWST, WXXB

**BLESSID UNION OF SOULS 1215/112**  
*I Wanna Be There (EMI/Capitol)*  
Total Stations: 78/Chart Move: 35-31  
Heavy (40+): 9 KKRZ, KQKQ, WABB, WAEB, WFBC, WGTZ, WKRO, WNCI, WZPL  
Medium (20-39): 20 KESR, KHTO, KMXV, WAPE, WBHT, WDDJ, WIXX, WJBO, WKRZ, WNNK, WPST, WPXY, WQSL, WSTR, WTWR, WVKX, WXXS, WXLK, WZJM, WZYP  
Light (Under 20): 49

★ **MARIAH CAREY 1120/1096**  
*Honey (Columbia)*  
Total Stations: 69/Chart Move: Debut 32  
Heavy (40+): 6 KHKS, KHOM, KHHT, KKLQ, KZZU, WKSZ  
Medium (20-39): 18 KDWB, KHFI, KIIS, KJYO, KKRZ, KKRZ, WFLZ, WHOT, WHTZ, WHYI, WKSE, WKSZ, WNOK, WPXY, WRVQ, WWZZ, WXXL, WZYP  
Light (Under 20): 45  
New Airplay This Week: 45 KBFM, KDWB, KHFI, KHKS, KHOM, KHHT, KIIS, KJYO, KKLQ, KKM, KKRZ, KKRZ, KMXV, KQKQ, KRBE, KRQQ, KRUF, WABB, WBZZ, WDJX, WFLY, WFLZ, WHOT, WHTZ, WHYI, WKSE, WKSZ, WKSZ, WLKT, WNCI, WNOK, WPRO, WQSL, WRVQ, WSNX, WSTR, WSTW, WWHT, WWZZ, WXXB, WXXL, WYCR, WYOY, WZJM, WZYP

**THE MIGHTY MIGHTY BOSSTONES 992/247**  
*The Impression That I Get (Big Rig/Mercury)*  
Total Stations: 73/Chart Move: Debut 34  
Heavy (40+): 4 KKLQ, WKRO, WKSZ, WXXS  
Medium (20-39): 16 KALC, KESR, WAPE, WBHT, WDCG, WDDJ, WIXX, WJBO, WKRZ, WNKS, WPRO, WQSL, WSSX, WTWR, WWSR, WXXX  
Light (Under 20): 53  
New Airplay This Week: 9 KKRZ, KZHT, WFBC, WLKT, WLSS, WSTW, WWHT, WXXB, WXLK

**PAULA COLE 960/172**  
*I Don't Want To Wait (Imago/Warner Bros.)*  
Total Stations: 64/Chart Move: 39-35  
Heavy (40+): 2 KSMB, WKSZ  
Medium (20-39): 15 KALC, KHTO, KQKQ, WDCG, WJBO, WNKS, WNNK, WPXY, WQSL, WSTR, WWCK, WXLK, WXXX, WYOY, WZST  
Light (Under 20): 47  
New Airplay This Week: 8 KRBE, WABB, WBHT, WDDJ, WLKT, WNKS, WWHT, WXXL

**NO MERCY 871/97**  
*When I Die (Arista)*  
Total Stations: 65/Chart Move: 40-39  
Heavy (40+): 5 KBFM, KHOM, WHYI, WQSL, WTWR  
Medium (20-39): 11 KHTO, KRUF, WFLY, WJBO, WLKT, WNNK, WPRO, WWCK, WXIS, WXLK, WZJM  
Light (Under 20): 49  
New Airplay This Week: 4 KMXV, WCIL, WPST, WSSX

**LEANN RIMES 833/106**  
*How Do I Live (Curb)*  
Total Stations: 54/Chart Move: Debut 40  
Heavy (40+): 5 KHOM, KRBE, KSMB, WAPE, WXXX  
Medium (20-39): 11 KESR, KHFI, KHTO, KRUF, WCIL, WFLY, WIXX, WLSS, WNKS, WNOK, WZNY  
Light (Under 20): 38  
New Airplay This Week: 3 KBFM, KKRZ, KQKQ

**CHART BOUND**

**SARAH MCLACHLAN 767/344**  
*Building A Mystery (Arista)*  
Total Stations: 50  
Heavy (40+): 1 WDCG  
Medium (20-39): 16 KALC, KHFI, KKRZ, KMXV, KQKQ, WBHT, WDDJ, WJBO, WKRO, WKSZ, WNTQ, WPST, WSSX, WSTR, WZPL, WZST  
Light (Under 20): 33  
New Airplay This Week: 14 KKLQ, KZHT, WCIL, WDDJ, WDJX, WKCI, WKRO, WKSZ, WNNK, WPXY, WQSL, WXIS, WXLK, WZYP

**GOD'S PROPERTY 674/107**  
*Stomp (B-Rite/Interscope)*  
Total Stations: 42  
Heavy (40+): 1 KZZU  
Medium (20-39): 11 KHHT, KRUF, WDJX, WGTZ, WLKT, WQSL, WQZQ, WWSR, WWZZ, WXIS, WXLK  
Light (Under 20): 30  
New Airplay This Week: 6 KESR, WBHT, WDDJ, WHOT, WVKX, WZST

**AQUA 630/268**  
*Barbie Girl (MCA)*  
Total Stations: 52  
Heavy (40+): 4 KHOM, KSMB, WQSL, WWZZ  
Medium (20-39): 8 KDWB, KRBE, WABB, WHYI, WKSE, WKSZ, WRHT, WXXL  
Light (Under 20): 40  
New Airplay This Week: 12 KDWB, KHHT, KKRZ, WGTZ, WHTZ, WKSZ, WKSZ, WNNK, WRVQ, WSNX, WWHT, WXXS

**LIVE 535/126**  
*Turn My Head (Radioactive/MCA)*  
Total Stations: 43  
Heavy (40+): 0

**MOST NEW AIRPLAY THIS WEEK**

	No. Of Stations
<b>MARIAH CAREY</b> <i>Honey (Columbia)</i>	45
<b>SARAH MCLACHLAN</b> <i>Building A Mystery (Arista)</i>	14
<b>AQUA</b> <i>Barbie Girl (MCA)</i>	12
<b>MONACO</b> <i>What Do You Want From Me? (Polydor/A&amp;M)</i>	12
<b>ALLURE FEAT. 112</b> <i>All Cried Out (Track Masters/Crave)</i>	9
<b>SAMANTHA COLE</b> <i>Happy With You (Universal)</i>	9
<b>THE MIGHTY MIGHTY BOSSTONES</b> <i>The Impression That I Get (Big Rig/Mercury)</i>	9
<b>SUBLIME</b> <i>Wrong Way (Gasoline Alley/MCA)</i>	9

**MOST NEW AIRPLAY LAST WEEK**

	No. Of Stations
<b>SARAH MCLACHLAN</b> <i>Building A Mystery (Arista)</i>	18
<b>JEWEL</b> <i>Foolish Games (Atlantic)</i>	12
<b>LIVE</b> <i>Turn My Head (Radioactive/MCA)</i>	12
<b>98 DEGREES</b> <i>Invisible Man (Motown)</i>	10
<b>PAULA COLE</b> <i>I Don't Want To Wait (Imago/Warner Bros.)</i>	10
<b>SAMANTHA COLE</b> <i>Happy With You (Universal)</i>	10

Medium (20-39): 8 KSMB, WBHT, WCIL, WDDJ, WKRO, WKRZ, WPRO, WSTW  
Light (Under 20): 35  
New Airplay This Week: 6 KALC, KKLQ, KRUF, WNTQ, WXXS, WXXX

**WILD ORCHID 527/92**  
*Supernatural (RCA)*  
Total Stations: 42  
Heavy (40+): 0  
Medium (20-39): 6 KESR, KIIS, KKM, WKSZ, WXIS, WXLK  
Light (Under 20): 36  
New Airplay This Week: 6 KBFM, KHOM, KZHT, WDDJ, WWSR, WXLK

**TRIO 515/56**  
*Da, Da, Da... (Mercury)*  
Total Stations: 51  
Heavy (40+): 1 KHOM  
Medium (20-39): 11 KHKS, KKM, KSMB, WBHT, WGTZ, WIXX, WPST, WRHT, WRVQ, WSNX, WZPL  
Light (Under 20): 39  
New Airplay This Week: 4 KHOM, WDCG, WNNK, WNTQ

**DIANA KING 466/116**  
*I Say A Little Prayer (Work)*  
Total Stations: 38  
Heavy (40+): 0  
Medium (20-39): 10 KHTO, WBLI, WFLY, WKSE, WNNK, WPRO, WQSL, WRVQ, WWZZ, WZJM  
Light (Under 20): 28  
New Airplay This Week: 2 KESR, WSTW

**MONACO 435/144**  
*What Do You Want From Me? (Polydor/A&M)*  
Total Stations: 37  
Heavy (40+): 0  
Medium (20-39): 8 KKLQ, WDJX, WFLZ, WKRO, WNNK, WPRO, WXXL, WYCR  
Light (Under 20): 29  
New Airplay This Week: 12 KESR, KHTO, KHTQ, KJYO, KSMB, KZHT, WCIL, WDCG, WKRZ, WLKT, WSTW, WWSR

**SAMANTHA COLE 328/198**  
*Happy With You (Universal)*  
Total Stations: 34  
Heavy (40+): 0  
Medium (20-39): 2 KSMB, WFLZ  
Light (Under 20): 32  
New Airplay This Week: 9 KKRZ, KSMB, WFLZ, WKSS, WLKT, WSTW, WWCK, WZJM, WZST

**COOLIO FEAT. 40 THEVZ 285/40**  
*C U When U Get There (Tommy Boy)*  
Total Stations: 29  
Heavy (40+): 0  
Medium (20-39): 4 WGTZ, WKSE, WRVQ, WXIS  
Light (Under 20): 25  
New Airplay This Week: 4 KRQQ, WBHT, WTWR, WZST

**CRUSH 256/26**  
*Jellyhead (Robbins)*  
Total Stations: 50  
Heavy (40+): 0  
Medium (20-39): 1 WPXY  
Light (Under 20): 49

**DUNCAN SHEIK 255/84**  
*She Runs Away (Atlantic)*  
Total Stations: 24  
Heavy (40+): 0  
Medium (20-39): 5 KJYO, WKRO, WSSX, WSTW, WXLK  
Light (Under 20): 19  
New Airplay This Week: 4 KQKQ, WJBO, WNKS, WNTQ

**THE NOTORIOUS B.I.G. (FEAT. PUFF DADDY & MASE) 242/104**  
*Mo Money Mo Problems (Bad Boy/Arista)*  
Total Stations: 28  
Heavy (40+): 0  
Medium (20-39): 6 KHOM, KRQQ, KZZU, WGTZ, WKSE, WXIS

Light (Under 20): 22  
New Airplay This Week: 4 WFLY, WGTZ, WTWR, WXIS

**SQUIRREL NUT ZIPPERS 238/45**  
*Hell (Mammoth)*  
Total Stations: 23  
Heavy (40+): 1 WKRO  
Medium (20-39): 3 KALC, WJBO, WRHT  
Light (Under 20): 19  
New Airplay This Week: 2 KRUF, KSMB

★ **ALLURE FEAT. 112 210/123**  
*All Cried Out (Track Masters/Crave)*  
Total Stations: 22  
Heavy (40+): 1 KHKS  
Medium (20-39): 1 KRUF  
Light (Under 20): 20  
New Airplay This Week: 9 KHTO, KKRZ, WHTZ, WHYI, WQSL, WTWR, WWSR, WWCK, WXIS

**SUGAR RAY 206/85**  
*Fly (Lava/Atlantic)*  
Total Stations: 29  
Heavy (40+): 1 WDCG  
Medium (20-39): 1 KRUF  
Light (Under 20): 27  
New Airplay This Week: 4 KQKQ, WFLY, WQSL, WSSX

★ **SUBLIME 188/123**  
*Wrong Way (Gasoline Alley/MCA)*  
Total Stations: 34  
Heavy (40+): 0  
Medium (20-39): 2 WDCG, WXLK  
Light (Under 20): 32  
New Airplay This Week: 9 KRUF, WCIL, WLSS, WRHT, WSTR, WTWR, WXIS, WXLK, WXXX

**SNEAKER PIMPS 158/6**  
*6 Underground (Clean Up/Virgin)*  
Total Stations: 11  
Heavy (40+): 1 KKLQ  
Medium (20-39): 2 KALC, KIIS  
Light (Under 20): 8  
New Airplay This Week: 1 WPST

★ **VANESSA WILLIAMS 152/110**  
*Happiness (Mercury)*  
Total Stations: 22  
Heavy (40+): 0  
Medium (20-39): 1 WXIS  
Light (Under 20): 21  
New Airplay This Week: 8 KRUF, WBLI, WHOT, WJBO, WWSR, WWCK, WYCR, WZST

★ **BILLY JOEL 135/46**  
*To Make You Feel My Love (Columbia)*  
Total Stations: 20  
Heavy (40+): 0  
Medium (20-39): 0  
Light (Under 20): 20  
New Airplay This Week: 7 WHOT, WHYI, WKCI, WQSL, WTWR, WWCK, WXIS

**CULTURE BEAT 124/10**  
*Take Me Away (Interhit)*  
Total Stations: 25  
Heavy (40+): 0  
Medium (20-39): 2 WNNK, WZJM  
Light (Under 20): 23

★ **LIVIN' JOY 107/51**  
*Dreamer (Undiscovered/MCA)*  
Total Stations: 12  
Heavy (40+): 1 WXYV  
Medium (20-39): 0  
Light (Under 20): 11  
New Airplay This Week: 1 WXYV

★ **U2 103/6**  
*Last Night On Earth (Island)*  
Total Stations: 13  
Heavy (40+): 0  
Medium (20-39): 0  
Light (Under 20): 13  
New Airplay This Week: 1 WXLK

★ **BONE THUGS-N-HARMONY 102/12**  
*Look Into My Eyes (Ruthless/Relativity)*  
Total Stations: 4  
Heavy (40+): 1 KHOM  
Medium (20-39): 0  
Light (Under 20): 3

Airpower awarded to those records which attain 1500 detections for the first time. New airplay lists those stations registering six or more detections per week on a record for the first time. ★ Initial impact: records appearing on this page for the first time.

MAINSTREAM

SONG ACTIVITY REPORTS

For Week Ending August 3, 1997

Radio Data Systems Broadcast Data Systems

10,000 MANIACS 1651/89

Table with columns: Station, TW, LW, ZW, IP, and song title 'More Than This (Geffen)'. Lists top stations and their performance metrics.

98 DEGREES 1477/164

Table with columns: Station, TW, LW, ZW, IP, and song title 'Invisible Man (Motown)'. Lists top stations and their performance metrics.

AQUA 630/268

Table with columns: Station, TW, LW, ZW, IP, and song title 'Barbie Girl (MCA)'. Lists top stations and their performance metrics.

BLESSID UNION OF SOULS 1215/112

Table with columns: Station, TW, LW, ZW, IP, and song title 'I Wanna Be There (EMI/Capitol)'. Lists top stations and their performance metrics.

MARIAH CAREY 1120/1096

Table with columns: Station, TW, LW, ZW, IP, and song title 'Honey (Columbia)'. Lists top stations and their performance metrics.

PAULA COLE 960/172

Table with columns: Station, TW, LW, ZW, IP, and song title 'I Don't Want To Wait (Imago/Mercury)'. Lists top stations and their performance metrics.

SAMANTHA COLE 328/198

Table with columns: Station, TW, LW, ZW, IP, and song title 'Happy With You (Universal)'. Lists top stations and their performance metrics.

GOD'S PROPERTY 674/107

Table with columns: Station, TW, LW, ZW, IP, and song title 'Stomp (B-Rite/Interscope)'. Lists top stations and their performance metrics.

HANSON 3067/282

Table with columns: Station, TW, LW, ZW, IP, and song title 'Where's The Love (A&M)'. Lists top stations and their performance metrics.

JEWEL 1999/383

Table with columns: Station, TW, LW, ZW, IP, and song title 'Foolish Games (Atlantic)'. Lists top stations and their performance metrics.

DIANA KING 466/116

Table with columns: Station, TW, LW, ZW, IP, and song title 'I Say A Little Prayer (Work)'. Lists top stations and their performance metrics.

LIVE 535/126

Table with columns: Station, TW, LW, ZW, IP, and song title 'Turn My Head (Radioactive/MCA)'. Lists top stations and their performance metrics.

MATCHBOX 20 1879/216

Table with columns: Station, TW, LW, ZW, IP, and song title 'Push (Lava/Atlantic)'. Lists top stations and their performance metrics.

DAVE MATTHEWS BAND 1752/132

Table with columns: Station, TW, LW, ZW, IP, and song title 'Crash Into Me (RCA)'. Lists top stations and their performance metrics.

SARAH MCLACHLAN 767/344

Table with columns: Station, TW, LW, ZW, IP, and song title 'Building A Mystery (Arista)'. Lists top stations and their performance metrics.

MAINSTREAM

SONG ACTIVITY REPORTS

For Week Ending August 3, 1997

AMM Broadcast Data Systems

Detailed song tracking information for the last 3 weeks for all songs showing increased play this week. Total plays and gain do not include video play. Markets listed in order of population.

Table with columns for song title, artist, and station data for MONACO (435/144), MR. PRESIDENT (1701/187), NO MERCY (871/97), and OMC (3941/127).

PUFF DADDY & FAITH EVANS (FEAT. 112) 2570/167

LEANN RIMES 833/106

SAVAGE GARDEN 1564/62

WILL SMITH 3489/318

SPICE GIRLS 3231/185

Table with columns for song title, artist, and station data for PUFF DADDY & FAITH EVANS, LEANN RIMES, SAVAGE GARDEN, WILL SMITH, and SPICE GIRLS.

THIRD EYE BLIND 3915/313

TONIC 1263/105

TRIO 515/56

THE WALLFLOWERS 1541/167

WILD ORCHID 527/92

Table with columns for song title, artist, and station data for THIRD EYE BLIND, TONIC, TRIO, THE WALLFLOWERS, and WILD ORCHID.

POWER PLAYLISTS

For Week Ending August 3, 1997



Playlists compiled by Broadcast Data Systems' Radio Track and... Songs ranked by number of plays in monitored week...

WKTU

Table with 2 columns: Song Title, TW/LW. Station: WKTU New York. PD: Frankie Blue, MD: Andy Shane.

B96

Table with 2 columns: Song Title, TW/LW. Station: W3BM Chicago. PD: Todd Cavanah, MD: Erik Bradley.

Q102

Table with 2 columns: Song Title, TW/LW. Station: WIOQ Philadelphia. PD: Glenn Kalina, MD: Jay Towers.

JAM'N 94.5

Table with 2 columns: Song Title, TW/LW. Station: WJMN Boston. PD: Cadillac Jack, APD/MD: Cat Collins.

WILD 94.9

Table with 2 columns: Song Title, TW/LW. Station: KYLD San Francisco. PD: Michael Martin, MD: "Jazzy" Jim Archer.

POWER 96

Table with 2 columns: Song Title, TW/LW. Station: WPOW Miami. PD: Kid Curry, MD: Phil Jones.

B100

Table with 2 columns: Song Title, TW/LW. Station: KIBB Los Angeles. PD: Tony Coles, MC: Leigh Ann Adam.

KUBE

Table with 2 columns: Song Title, TW/LW. Station: KUBE Seattle. PD: Mike Tierney, MD: Bobby O.

WDRQ

Table with 2 columns: Song Title, TW/LW. Station: WDRQ Detroit. PD: Lisa Rodman, MD: Jimi Jamm.

FM102

Table with 2 columns: Song Title, TW/LW. Station: KSFM Sacramento. PD: Bob West, APD/MD: Tejo.

POWER 92

Table with 2 columns: Song Title, TW/LW. Station: KKFR Phoenix. PD: Don Parker, MD: Mikey Freeman.

KGGI

Table with 2 columns: Song Title, TW/LW. Station: KGGI Riverside. PD: Diana Laird, APD: Jesse Duran, MC: Ricky Fuentes.

Z90

Table with 2 columns: Song Title, TW/LW. Station: XHTZ San Diego. OM/MD: Lisa Vazquez, MD: Dale Soliven.

KTFM

Table with 2 columns: Song Title, TW/LW. Station: KTFM San Antonio. PD: Cliff Tredway, MD: Steve Chavez.

B95

Table with 2 columns: Song Title, TW/LW. Station: KBOS Fresno. PD: Mark Adams, MD: Marcus D.

Z104

Table with 2 columns: Song Title, TW/LW. Station: WNVZ Norfolk. PD: Don London, MD: Jay West.

KS107.5

Table with 2 columns: Song Title, TW/LW. Station: KQKS Denver. Acting PD: Rick Stacy, MD: Lee Cagle.

POWER 102

Table with 2 columns: Song Title, TW/LW. Station: KPRR El Paso. PD: John Candelaria.



**★ ★ ★ AIRPOWER ★ ★ ★**  
(Minimum 600 detections for the first time)

Total Plays/Gain

★ **MARIAH CAREY 790/758**  
*Honey (Columbia)*  
Total Stations: 28/Chart Move: Debut 10  
Heavy (40+ plays): 7 KBOS, KKFR, KLUC, KPRR, KQMQ, KUBE, WJMN  
Medium (20-39): 13 KGGI, KKSS, KOKS, KTFM, KYLZ, KZFM, WBBM, WDRQ, WIOQ, WJJS, WNVZ, WWKX, XHTZ  
Light (Under 20): 8  
New Airplay This Week: 22 KCAQ, KDON, KGGI, KIKI, KKFR, KKSS, KPRR, KQKS, KQMQ, KUBE, KYLD, KYLZ, KZFM, WBBM, WDRQ, WHHH, WIOQ, WJJS, WJMN, WNVZ, WWKX, XHTZ

**AIRPOWER BOUND**

Total Plays/Gain

**GINUWINE 552/-2**  
*When Doves Cry (550 Music)*  
Total Stations: 28/Chart Move: 16-17  
Heavy (40+ plays): 3 KDON, KUBE, WNVZ  
Medium (20-39): 7 KGGI, KIKI, KQKS, KQMQ, KTFM, WJJS  
Light (Under 20): 18  
New Airplay This Week: 2 KPRR, KQKS

**MISSY "MISDEMEANOR" ELLIOTT 538/92**  
*The Rain (Supa Dupa Fly) (EastWest/EEG)*  
Total Stations: 22/Chart Move: 22-18  
Heavy (40+): 2 WHHH, WKXJ  
Medium (20-39): 10 KDGS, KKFR, KLUC, KQKS, KUBE, KYLZ, WJJS, WPOW, WWKX, XHTZ  
Light (Under 20): 10

**LAURNEA 522/-11**  
*Can't Let Go (Yab Yum/Epic)*  
Total Stations: 23/Chart Move: 17-19  
Heavy (40+): 4 KDON, KIKI, KLUC, KUBE  
Medium (20-39): 9 KDGS, KSFM, KZFM, WFHN, WHHH, WJJS, WJMN, WWKX, XHTZ  
Light (Under 20): 10

**LIL' KIM 484/64**  
*Not Tonight (Undeas/Atlantic/Tommy Boy)*  
Total Stations: 28/Chart Move: 25-20  
Heavy (40+): 1 KUBE  
Medium (20-39): 11 KCAQ, KKFR, KQKS, KYLD, KYLZ, WHHH, WJMN, WKXJ, WPOW, WWKX, XHTZ  
Light (Under 20): 16  
New Airplay This Week: 1 WKXJ

**NO MERCY 453/21**  
*When I Die (Arista)*  
Total Stations: 17/Chart Move: 24-21  
Heavy (40+): 6 KIKI, KZFM, WFHN, WNVZ, WPOW, WWKX  
Medium (20-39): 4 KTFM, KYLD, KYLZ, WDRQ  
Light (Under 20): 7

**COOLIO FEAT. 40 THEVZ 448/59**  
*C U When U Get There (Tommy Boy)*  
Total Stations: 15/Chart Move: 27-23  
Heavy (40+): 5 KQKS, WHHH, WKXJ, WNVZ, WWKX  
Medium (20-39): 4 KKFR, KQMQ, WJJS, WPOW  
Light (Under 20): 6

**JOE 416/99**  
*The Love Scene (Jive)*  
Total Stations: 20/Chart Move: 32-25  
Heavy (40+): 1 KSFM  
Medium (20-39): 10 KBOS, KDGS, KDON, KIKI, KKFR, KLUC, KTFM, KYLZ, WJJS, XHTZ  
Light (Under 20): 9  
New Airplay This Week: 2 KQMQ, WNVZ

**CORINA 400/6**  
*Summertime Summertime (So So Def/Columbia)*  
Total Stations: 21/Chart Move: 26-26  
Heavy (40+): 2 KDON, KYLD  
Medium (20-39): 6 KPRR, KTFM, KYLZ, KZFM, WFHN, XHTZ  
Light (Under 20): 13  
New Airplay This Week: 1 KIBB

**ANGELINA 359/-9**  
*The Tide Is High (Upstairs)*  
Total Stations: 21/Chart Move: 28-29  
Heavy (40+): 4 KDON, KIKI, KLUC, KZFM  
Medium (20-39): 2 KKSS, KQMQ  
Light (Under 20): 15

**JON B. 357/29**  
*Don't Say (Yab Yum/550 Music)*  
Total Stations: 23/Chart Move: 30-30  
Heavy (40+): 1 KIKI  
Medium (20-39): 7 KBOS, KDON, KGGI, KLUC, KTFM, WHHH, WNVZ  
Light (Under 20): 15  
New Airplay This Week: 2 KPRR, WJJS

**MR. PRESIDENT 354/47**  
*Coco Jambo (Warner Bros.)*  
Total Stations: 17/Chart Move: 34-31  
Heavy (40+): 3 WFHN, WNVZ, WWKX  
Medium (20-39): 3 KDON, KQKS, WKTU  
Light (Under 20): 10  
New Airplay This Week: 2 KZFM, WBBM

**NASTYBOY KLICK FEAT. ROGER TROUTMAN 345/83**  
*Down For Yours (NastyBoy/GlassNote/Mercury)*  
Total Stations: 17/Chart Move: Debut 32  
Heavy (40+): 2 KKSS, KYLZ  
Medium (20-39): 4 KCAQ, KKFR, KOHT, KQMQ  
Light (Under 20): 11  
New Airplay This Week: 2 WKXJ, WWKX

**FOXY BROWN FEAT. DRU HILL 342/58**  
*Big Bad Mamma (Violator/Def Jam/Mercury)*  
Total Stations: 23/Chart Move: 38-34  
Heavy (40+): 1 KKFR  
Medium (20-39): 6 KCAQ, KYLD, KYLZ, WHHH, WWKX, XHTZ  
Light (Under 20): 16  
New Airplay This Week: 2 KDGS, KZFM

**MARY J. BLIGE 340/106**  
*Everything (MCA)*  
Total Stations: 17/Chart Move: Re-Entry 35  
Heavy (40+): 2 KQKS, WJMN  
Medium (20-39): 3 KBOS, WFHN, WJJS  
Light (Under 20): 12  
New Airplay This Week: 7 KDGS, KGGI, KIBB, KKFR, KTFM, WHHH, XHTZ

**BLACKSTREET 325/20**  
*Fix (Interscope)*  
Total Stations: 20/Chart Move: 35-36  
Heavy (40+): 2 KDON, KQKS  
Medium (20-39): 3 KDGS, KUBE, WJJS  
Light (Under 20): 15

**NU FLAVOR 321/86**  
*Heaven (Reprise)*  
Total Stations: 12/Chart Move: Debut 37  
Heavy (40+): 4 KIKI, KSFM, KYLZ, WPOW  
Medium (20-39): 3 KKFR, KKSS, KTFM  
Light (Under 20): 5  
New Airplay This Week: 3 KIKI, KZFM, XHTZ

**DIANA KING 290/14**  
*I Say A Little Prayer (Work)*  
Total Stations: 17/Chart Move: Debut 40  
Heavy (40+): 1 WKTU  
Medium (20-39): 6 KBOS, KGGI, KOHT, KZFM, WFHN, WIOQ  
Light (Under 20): 10

**CHART BOUND**

Total Plays/Gain

**SWV (FEAT. PUFF DADDY) 265/17**  
*Someone (RCA)*  
Total Stations: 20  
Heavy (40+): 0  
Medium (20-39): 6 KBOS, KDGS, WHHH, WJJS, WKXJ, WWKX  
Light (Under 20): 14  
New Airplay This Week: 1 KKSS

**LOS UMBRELLAS 229/32**  
*No Tengo Dinero (EMI/Virgin)*  
Total Stations: 12  
Heavy (40+): 3 KOHT, KPRR, KZFM  
Medium (20-39): 2 KTFM, WPOW  
Light (Under 20): 7

**OMC 224/20**  
*How Bizarre (Huh!/Mercury)*  
Total Stations: 14  
Heavy (40+): 1 KLUC  
Medium (20-39): 5 KQKS, KZFM, WDRQ, WFHN, WIOQ  
Light (Under 20): 8

**LIL SUZY 217/9**  
*Can't Get You Out Of My Mind (Metropolitan)*  
Total Stations: 20  
Heavy (40+): 0  
Medium (20-39): 4 KBOS, KPRR, WIOQ, XHTZ  
Light (Under 20): 16  
New Airplay This Week: 1 KIBB

**DRU HILL 177/6**  
*Never Make A Promise (Island)*  
Total Stations: 14  
Heavy (40+): 0  
Medium (20-39): 5 KDGS, KDON, WHHH, WJJS, WWKX  
Light (Under 20): 9

**ALLURE FEAT. 112 158/69**  
*All Cried Out (Track Masters/Crave)*  
Total Stations: 14  
Heavy (40+): 1 WJMN  
Medium (20-39): 1 KKSS  
Light (Under 20): 12  
New Airplay This Week: 5 KDGS, KIKI, KTFM, WNVZ, XHTZ

**RAMPAGE FEAT. BILLY LAWRENCE 134/27**  
*Take It To The Streets (Violator/Elektra/EEG)*  
Total Stations: 11  
Heavy (40+): 0  
Medium (20-39): 2 KCAQ, WKXJ  
Light (Under 20): 9  
New Airplay This Week: 3 KPRR, WKXJ, WPOW

**PUFF DADDY (FEAT. THE NOTORIOUS B.I.G. & MASE) 123/8**  
*Been Around The World (Bad Boy/Arista)*  
Total Stations: 7  
Heavy (40+): 1 KKFR  
Medium (20-39): 1 KUBE  
Light (Under 20): 5  
New Airplay This Week: 1 KYLZ

**AQUA 122/72**  
*Barbie Girl (MCA)*  
Total Stations: 6  
Heavy (40+): 1 WNVZ  
Medium (20-39): 1 WIOQ  
Light (Under 20): 4  
New Airplay This Week: 3 WDRQ, WIOQ, WKTU

★ **SAMANTHA COLE 121/74**  
*Happy With You (Universal)*  
Total Stations: 13  
Heavy (40+): 0  
Medium (20-39): 1 WNVZ  
Light (Under 20): 12  
New Airplay This Week: 7 KDGS, KKSS, WBBM, WFHN, WJJS, WKXJ, WWKX

**MAXWELL 118/31**  
*Whenever Wherever Whatever (Columbia)*  
Total Stations: 14  
Heavy (40+): 0  
Medium (20-39): 0  
Light (Under 20): 14  
New Airplay This Week: 5 KCAQ, WHHH, WJMN, WKTU, WPOW

**WILD ORCHID 115/1**  
*Supernatural (RCA)*  
Total Stations: 10  
Heavy (40+): 0  
Medium (20-39): 2 WFHN, WNVZ  
Light (Under 20): 8

**SHAGGY FEAT. MARSHA 106/20**  
*Piece Of My Heart (Virgin)*  
Total Stations: 4  
Heavy (40+): 1 WJMN  
Medium (20-39): 1 WWKX  
Light (Under 20): 2

★ **VANESSA WILLIAMS 97/61**  
*Happiness (Mercury)*  
Total Stations: 10  
Heavy (40+): 0  
Medium (20-39): 2 KTFM, WJJS  
Light (Under 20): 8  
New Airplay This Week: 3 KDGS, KIBB, KTFM

**702 96/13**  
*All I Want (Biv 10/Motown)*  
Total Stations: 10  
Heavy (40+): 0  
Medium (20-39): 2 WHHH, WJJS  
Light (Under 20): 8  
New Airplay This Week: 1 KYLD

**SNOOP DOGGY DOGG FEAT. JD 96/19**  
*We Just Wanna Party With You (Columbia)*  
Total Stations: 13  
Heavy (40+): 0  
Medium (20-39): 2 KCAQ, KKFR  
Light (Under 20): 11  
New Airplay This Week: 1 WHHH

**MARK MORRISON 94/7**  
*Crazy (Atlantic)*  
Total Stations: 6  
Heavy (40+): 0  
Medium (20-39): 2 WFHN, WJMN  
Light (Under 20): 4  
New Airplay This Week: 1 KDGS

**HANSON 91/19**  
*Where's The Love (Mercury)*  
Total Stations: 7  
Heavy (40+): 1 WNVZ  
Medium (20-39): 1 WFHN  
Light (Under 20): 5

**MARY J. BLIGE 91/22**  
*I Can Love You (MCA)*  
Total Stations: 4  
Heavy (40+): 2 KDGS, WWKX  
Medium (20-39): 0  
Light (Under 20): 2

**PATTI LABELLE 89/22**  
*When You Talk About Love (MCA)*  
Total Stations: 9  
Heavy (40+): 0  
Medium (20-39): 1 KDGS  
Light (Under 20): 8  
New Airplay This Week: 2 WJJS, WKTU

**USHER 84/15**  
*You Make Me Wanna... (LaFace/Arista)*  
Total Stations: 8  
Heavy (40+): 1 KUBE  
Medium (20-39): 0  
Light (Under 20): 7  
New Airplay This Week: 1 KDGS

**ROCKELL 81/4**  
*I Fell In Love (Robbins)*  
Total Stations: 11  
Heavy (40+): 0  
Medium (20-39): 0  
Light (Under 20): 11

**MOST NEW AIRPLAY THIS WEEK** No. Of Stations

<b>MARIAH CAREY</b> <i>Honey (Columbia)</i>	<b>22</b>
<b>MARY J. BLIGE</b> <i>Everything (MCA)</i>	<b>7</b>
<b>SAMANTHA COLE</b> <i>Happy With You (Universal)</i>	<b>7</b>
<b>ALLURE FEAT. 112</b> <i>All Cried Out (Track Masters/Crave)</i>	<b>5</b>
<b>MAXWELL</b> <i>Whenever Wherever Whatever (Columbia)</i>	<b>5</b>

**LIVIN' JOY 77/7**  
*Don't Stop Movin' (Undiscovered/MCA)*  
Total Stations: 7  
Heavy (40+): 1 WKTU  
Medium (20-39): 0  
Light (Under 20): 6

★ **PUFF DADDY 75/45**  
*Senorita (Bad Boy/Arista)*  
Total Stations: 5  
Heavy (40+): 1 WPOW  
Medium (20-39): 1 KYLZ  
Light (Under 20): 3  
New Airplay This Week: 1 KYLZ

**LISA STANSFIELD 69/4**  
*Never, Never Gonna Give You Up (Arista)*  
Total Stations: 7  
Heavy (40+): 0  
Medium (20-39): 1 WJJS  
Light (Under 20): 6

★ **ROBYN 62/25**  
*Show Me Love (RCA)*  
Total Stations: 1  
Heavy (40+): 1 WBBM  
Medium (20-39): 0  
Light (Under 20): 0

**BEE GEES 61/6**  
*Alone (Polydor/A&M)*  
Total Stations: 1  
Heavy (40+): 1 WKXJ  
Medium (20-39): 0  
Light (Under 20): 0

★ **MILESTONE 61/35**  
*I Care 'bout You (LaFace/Arista)*  
Total Stations: 6  
Heavy (40+): 1 KSFM  
Medium (20-39): 0  
Light (Under 20): 5  
New Airplay This Week: 1 KIKI

**CAGNET 57/6**  
*Deeper And Deeper (Hyperdisc/EMI)*  
Total Stations: 7  
Heavy (40+): 0  
Medium (20-39): 2 KGGI, XHTZ  
Light (Under 20): 5

★ **MARY J. BLIGE 57/14**  
*Missing You (MCA)*  
Total Stations: 2  
Heavy (40+): 0  
Medium (20-39): 1 KSFM  
Light (Under 20): 1  
New Airplay This Week: 1 KLUC

★ **MIA X FEAT. MASTER P & FOXY BROWN 53/31**  
*The Party Don't Stop (No Limit/Priority)*  
Total Stations: 9  
Heavy (40+): 0  
Medium (20-39): 0  
Light (Under 20): 9  
New Airplay This Week: 3 KKFR, WKXJ, WWKX

Airpower awarded to those records which attain 600 detections for the first time. New airplay lists those stations registering six or more detections per week on a record for the first time. ★ Initial impact: records appearing on this page for the first time.



# RHYTHMIC TOP 40



# SONG ACTIVITY REPORTS



For Week Ending August 3, 1997

Detailed song tracking information for the last 3 weeks for all songs showing increased play this week. Total plays and gain do not include video play. Markets listed in order of population.

Total Plays/Gain		Total Plays/Gain		Total Plays/Gain		Total Plays/Gain		Total Plays/Gain					
<b>98 DEGREES</b>	<b>730/29</b>	<b>ALLURE FEAT. 112</b>	<b>158/69</b>	<b>AQUA</b>	<b>122/72</b>	<b>BLACKSTREET</b>	<b>325/20</b>	<b>MARY J. BLIGE</b>	<b>340/106</b>				
<i>Invisible Man (Motown)</i>		<i>All Cried Out (Track Masters/Crave)</i>		<i>Barbie Girl (MCA)</i>		<i>Fix (Interscope)</i>		<i>Everything (MCA)</i>					
Total Stations: 27		Total Stations: 14		Total Stations: 6		Total Stations: 20		Total Stations: 17					
Chart Move: 13-11		Chart Move: 13-11		Chart Move: 13-11		Chart Move: 35-36		Chart Move: Re-Entry 35					
BET	19	12	10	Norfolk	WNVZ	19	12	10	Norfolk	WNVZ	19	12	10
BET	19	12	10	Norfolk	WNVZ	19	12	10	Norfolk	WNVZ	19	12	10
BET	19	12	10	Norfolk	WNVZ	19	12	10	Norfolk	WNVZ	19	12	10
BET	19	12	10	Norfolk	WNVZ	19	12	10	Norfolk	WNVZ	19	12	10
BET	19	12	10	Norfolk	WNVZ	19	12	10	Norfolk	WNVZ	19	12	10
<b>FOXY BROWN FEAT. DRU HILL</b>	<b>342/58</b>	<b>MARIAH CAREY</b>	<b>790/758</b>	<b>CHANGING FACES</b>	<b>976/56</b>	<b>COOLIO FEAT. 40 THEVZ</b>	<b>448/59</b>	<b>CORINA</b>	<b>400/6</b>				
<i>Big Bad Mamma (Violator/Def Jam/Mercury)</i>		<i>Honey (Columbia)</i>		<i>G.H.E.T.T.O.U.T. (Big Beat/Atlantic)</i>		<i>C U When U Get There (Tommy Boy)</i>		<i>Sumertime Summertime (So So Def/Columbia)</i>					
Total Stations: 23		Total Stations: 28		Total Stations: 30		Total Stations: 15		Total Stations: 21					
Chart Move: 38-34		Chart Move: Debut 10		Chart Move: 7-7		Chart Move: 27-23		Chart Move: 26-26					
BET	19	12	10	Norfolk	WNVZ	19	12	10	Norfolk	WNVZ	19	12	10
BET	19	12	10	Norfolk	WNVZ	19	12	10	Norfolk	WNVZ	19	12	10
BET	19	12	10	Norfolk	WNVZ	19	12	10	Norfolk	WNVZ	19	12	10
BET	19	12	10	Norfolk	WNVZ	19	12	10	Norfolk	WNVZ	19	12	10
BET	19	12	10	Norfolk	WNVZ	19	12	10	Norfolk	WNVZ	19	12	10
<b>DRU HILL</b>	<b>177/6</b>	<b>MISSY "MISDEMEANOR" ELLIOT</b>	<b>538/92</b>	<b>INOJ</b>	<b>881/182</b>	<b>JOE</b>	<b>416/99</b>	<b>JON B.</b>	<b>357/29</b>				
<i>Never Make A Promise (Island)</i>		<i>The Rain (Supa Dupa Fly) (EastWest/EEG)</i>		<i>Love You Down (So So Def/Columbia)</i>		<i>The Love Scene (Jive)</i>		<i>Don't Say (Yab Yum/550 Music)</i>					
Total Stations: 14		Total Stations: 22		Total Stations: 29		Total Stations: 20		Total Stations: 23					
Chart Move: 22-18		Chart Move: 22-18		Chart Move: 14-9		Chart Move: 32-25		Chart Move: 30-30					
BET	19	12	10	Norfolk	WNVZ	19	12	10	Norfolk	WNVZ	19	12	10
BET	19	12	10	Norfolk	WNVZ	19	12	10	Norfolk	WNVZ	19	12	10
BET	19	12	10	Norfolk	WNVZ	19	12	10	Norfolk	WNVZ	19	12	10
BET	19	12	10	Norfolk	WNVZ	19	12	10	Norfolk	WNVZ	19	12	10
BET	19	12	10	Norfolk	WNVZ	19	12	10	Norfolk	WNVZ	19	12	10
<b>DIANA KING</b>	<b>290/14</b>	<b>LIL SUZY</b>	<b>217/9</b>	<b>LIL' KIM</b>	<b>484/64</b>	<b>LOS UMBRELLAS</b>	<b>229/32</b>	<b>MR. PRESIDENT</b>	<b>354/47</b>				
<i>I Say A Little Prayer (Work)</i>		<i>Can't Get You Out Of My Mind (Metropolitan)</i>		<i>Not Tonight (Undeas/Atlantic/Tommy Boy)</i>		<i>No Tengo Dinero (EMI/Virgin)</i>		<i>Coco Jambo (Warner Bros.)</i>					
Total Stations: 17		Total Stations: 20		Total Stations: 28		Total Stations: 12		Total Stations: 16					
Chart Move: Debut 40		Chart Move: Debut 20		Chart Move: 25-20		Chart Move: 12		Chart Move: 34-31					
BET	19	12	10	Norfolk	WNVZ	19	12	10	Norfolk	WNVZ	19	12	10
BET	19	12	10	Norfolk	WNVZ	19	12	10	Norfolk	WNVZ	19	12	10
BET	19	12	10	Norfolk	WNVZ	19	12	10	Norfolk	WNVZ	19	12	10
BET	19	12	10	Norfolk	WNVZ	19	12	10	Norfolk	WNVZ	19	12	10
BET	19	12	10	Norfolk	WNVZ	19	12	10	Norfolk	WNVZ	19	12	10
<b>NASTYBOY KLICK FEAT. ROGER TROUTMAN</b>	<b>345/83</b>	<b>NO MERCY</b>	<b>453/21</b>	<b>THE NOTORIOUS B.I.G. (FEAT. PUFF DADDY &amp; MASE)</b>	<b>1284/124</b>	<b>NU FLAVOR</b>	<b>321/86</b>	<b>OMC</b>	<b>224/20</b>				
<i>Down For Yours (NastyBoy/GlassNote/Mercury)</i>		<i>When I Die (Arista)</i>		<i>Mo Money Mo Problems (Bad Boy/Arista)</i>		<i>Heaven (Reprise)</i>		<i>How Bizarre (Huh!/Mercury)</i>					
Total Stations: 17		Total Stations: 17		Total Stations: 33		Total Stations: 12		Total Stations: 14					
Chart Move: Debut 32		Chart Move: 24-21		Chart Move: 4-3		Chart Move: Debut 37		Chart Move: 14					
BET	19	12	10	Norfolk	WNVZ	19	12	10	Norfolk	WNVZ	19	12	10
BET	19	12	10	Norfolk	WNVZ	19	12	10	Norfolk	WNVZ	19	12	10
BET	19	12	10	Norfolk	WNVZ	19	12	10	Norfolk	WNVZ	19	12	10
BET	19	12	10	Norfolk	WNVZ	19	12	10	Norfolk	WNVZ	19	12	10
BET	19	12	10	Norfolk	WNVZ	19	12	10	Norfolk	WNVZ	19	12	10
<b>PUFF DADDY (FEAT. THE NOTORIOUS B.I.G. &amp; MASE)</b>	<b>123/8</b>	<b>RAMPAGE FEAT. BILLY LAWRENCE</b>	<b>134/27</b>	<b>WILL SMITH</b>	<b>1959/57</b>	<b>SPICE GIRLS</b>	<b>962/169</b>	<b>SWV (FEAT. PUFF DADDY)</b>	<b>265/17</b>				
<i>Been Around The World (Bad Boy/Arista)</i>		<i>Take It To The Streets (Violator/Elektra/EEG)</i>		<i>Men In Black (Columbia)</i>		<i>2 Become 1 (Virgin)</i>		<i>Someone (RCA)</i>					
Total Stations: 7		Total Stations: 11		Total Stations: 34		Total Stations: 29		Total Stations: 20					
Chart Move: 1-1		Chart Move: 1-1		Chart Move: 1-1		Chart Move: 9-8		Chart Move: 1-1					
BET	19	12	10	Norfolk	WNVZ	19	12	10	Norfolk	WNVZ	19	12	10
BET	19	12	10	Norfolk	WNVZ	19	12	10	Norfolk	WNVZ	19	12	10
BET	19	12	10	Norfolk	WNVZ	19	12	10	Norfolk	WNVZ	19	12	10
BET	19	12	10	Norfolk	WNVZ	19	12	10	Norfolk	WNVZ	19	12	10
BET	19	12	10	Norfolk	WNVZ	19	12	10	Norfolk	WNVZ	19	12	10



POWER PLAYLISTS

For Week Ending August 3, 1997

AAA Broadcast Data Systems logo and copyright notice.

AIRPLAY Monitor logo.

HOT 97 table with columns for station (WQHT), PD (Steve Smith), and a list of 30 songs with their TW and LW ratings.

POWER 106 table with columns for station (KPWR), PD (Michelle Mercer), and a list of 30 songs with their TW and LW ratings.

THE BEAT table with columns for station (KKBT), OM (Harold Austin), and a list of 30 songs with their TW and LW ratings.

WGCI table with columns for station (WGCI), PD (Elroy R.C. Smith), and a list of 30 songs with their TW and LW ratings.

POWER 99 table with columns for station (WUSL), OM (Helen Little), and a list of 30 songs with their TW and LW ratings.

KMEL table with columns for station (KMEL), PD (Michelle Santosuosso), and a list of 30 songs with their TW and LW ratings.

WPGC table with columns for station (WPGC), PD (Jay Stevens), and a list of 30 songs with their TW and LW ratings.

WJLB table with columns for station (WJLB), PD (Michael Saunders), and a list of 30 songs with their TW and LW ratings.

THE BOX table with columns for station (MBXX), PD (Robert Scorpio), and a list of 30 songs with their TW and LW ratings.

WKYS table with columns for station (WKYS), PD (Damon Williams), and a list of 30 songs with their TW and LW ratings.

K104 table with columns for station (KKDA), PD (Skip Cheatham), and a list of 30 songs with their TW and LW ratings.

WE-JAM 950 table with columns for station (WEJM), PD (Jay Alan), and a list of 30 songs with their TW and LW ratings.

HOT 97.5 table with columns for station (WHTA), PD (Sean Taylor), and a list of 30 songs with their TW and LW ratings.

PHILLY 103.9 table with columns for station (WPHI), PD (Mic Fox), and a list of 30 songs with their TW and LW ratings.

92Q table with columns for station (WERQ), PD (Tom Calococi), and a list of 30 songs with their TW and LW ratings.

Q93 table with columns for station (WQUE), PD (Angela Harrison), and a list of 30 songs with their TW and LW ratings.

102 JAMZ table with columns for station (WJHM), PD (Russ Allen), and a list of 30 songs with their TW and LW ratings.

POWER 98 table with columns for station (WPEG), PD (Andre Carson), and a list of 30 songs with their TW and LW ratings.

102 JAMZ table with columns for station (WJHM), PD (Brian Douglas), and a list of 30 songs with their TW and LW ratings.

K97.5 table with columns for station (WQOK), PD (Hozie Mack), and a list of 30 songs with their TW and LW ratings.

V100 table with columns for station (WKKV), PD (Nate Bell), and a list of 30 songs with their TW and LW ratings.

THE WIZ table with columns for station (WIZF), PD (Lauri Jones), and a list of 30 songs with their TW and LW ratings.

95.7 JAMZ table with columns for station (WBHJ), PD (Mickey Johnson), and a list of 30 songs with their TW and LW ratings.

107.3 JAMZ table with columns for station (WJMZ), PD (Marv Hankston), and a list of 30 songs with their TW and LW ratings.

SONG ACTIVITY REPORTS

For Week Ending August 3, 1997



Database song tracking information for the last 3 weeks for all songs showing increased play this week. Total play and gain do not include video play. Markets listed in order of population.

98 DEGREES Invisible Man (Motown) 500/9, BACKSTREET BOYS Quit Playing Games (With My Heart) (Jive) 523/8, BLACKSTREET Fix (Interscope) 839/93, MARY J. BLIGE Everything (MCA) 991/190, FOXY BROWN FEAT. DRU HILL Big Bad Mamma (Violator/Def Jam/Mercury) 1058/117

MARIAH CAREY Honey (Columbia) 776/741, CHANGING FACES G.H.E.T.T.O.U.T. (Big Beat/Atlantic) 1813/10, COOLIO FEAT. 40 THEVZ C U When U Get There (Tommy Boy) 452/51, DRU HILL Never Make A Promise (Island) 1236/110, MISSY "MISDEMEANOR" ELLIOTT The Rain (Supa Dupa Fly) (EastWest/EEG) 1600/68

GINUWINE I'll Do Anything/I'm Sorry (550 Music/Epic) 651/35, INOJ Love You Down (So So Def/Columbia) 721/111, JOE The Love Scene (Jive) 800/183, R. KELLY Gotham City (Jive) 705/24, PATTI LABELLE When You Talk About Love (MCA) 441/16

LIL' KIM Not Tonight (Undeas/Tommy Boy/Atlantic) 1515/79, MAGOO AND TIMBALAND Up Jumps Da Boogie (Blackground/Atlantic) 717/118, THE NOTORIOUS B.I.G. (FEAT. PUFF DADDY & MASE) Mo Money Mo Problems (Bad Boy/Arista) 2186/84, PUFF DADDY & THE FAMILY It's All About The Benjamins (Bad Boy/Arista) 892/20, USHER You Make Me Wanna... (LaFace/Arista) 598/78



POWER PLAYLISTS

For Week Ending August 3, 1997

Playlists supplied by Broadcast Data Systems... Radio Track service...

Grid of 20 radio station playlists including WPLJ, STAR 104.5, Q95.5, WPNT, MIX 96.5, MIX 107.3, KS95, MIX 106.5, Q104, KYKY, STAR 101.5, VARIETY 96, MIX 105.1, 94WKTI, KISS 106, THE RIVER, MIX 99.1, MIX 96, WSNE, KISS FM, KISN 97, FM100, MAGIC 105, and THE EAGLE.











POWER PLAYLISTS

THE BUZZ

Table with columns: WDBZ, PD: Steve Weed, APD/MD: Linda Silver, TW, LW, and a list of 30 songs with their chart positions.

STAR 98.7

Table with columns: KYSR, PD: Angela Perelli, APD/MD: Chris Ebbott, TW, LW, and a list of 30 songs with their chart positions.

MIX 101.9

Table with columns: WTMX, VP/Pgm: Barry James, APD/MD: Jaime Kartak, Chicago, TW, LW, and a list of 30 songs with their chart positions.

MIX 98.5

Table with columns: WBWX, PD: Greg Strassel, MD: Michelle Buczynski, Boston, TW, LW, and a list of 30 songs with their chart positions.

THE PLANET

Table with columns: WPLT, PD: Garrett Michaels, APD/MD: Alex Tear, Detroit, TW, LW, and a list of 30 songs with their chart positions.

ALICE 97.3

Table with columns: KLLC, PD: Louis Kaplan, MD: Julie Stoekel, San Francisco, TW, LW, and a list of 30 songs with their chart positions.

MIX 102.9

Table with columns: KDMX, APD: Kim Ashley, MD: Lisa Thomas, Dallas, TW, LW, and a list of 30 songs with their chart positions.

96.5 TIC

Table with columns: WTIC, OW: Steve Sathany, NB: David Simpson, Hartford, TW, LW, and a list of 30 songs with their chart positions.

ALICE 104

Table with columns: WALC, PD: Bob Davis, APD/MD: Tommy Mattern, St. Louis, TW, LW, and a list of 30 songs with their chart positions.

Main chart table with columns: THIS WEEK, LAST WEEK, WKS ON CHART, TITLE/LABEL/PROMOTION LABEL, ARTIST, TW, LW, and DETECTIONS. Includes a 'NO. 1' starburst and 'AIRPOWER' starburst.

Records showing an increase in detections over the previous week, regardless of chart movement. A record which has been on the chart for more than 20 weeks will not receive a bullet, even if it registers an increase in detections.

THE PLANET

Table with columns: WPLL, PD/MD: Dave Stewart, Miami, TW, LW, and a list of 30 songs with their chart positions.

KZZP

Table with columns: PD: Dan Persighi, MD: Dave Cooper, Phoenix, TW, LW, and a list of 30 songs with their chart positions.

STAR 100.7

Table with columns: KFMB, OM/PD: Tracy Johnson, MD: Greg Simms, San Diego, TW, LW, and a list of 30 songs with their chart positions.

THE LINK

Table with columns: WLNK, PD: Stacy Cantrell, APD: Josh Goodman, Charlotte, TW, LW, and a list of 30 songs with their chart positions.

THE POINT

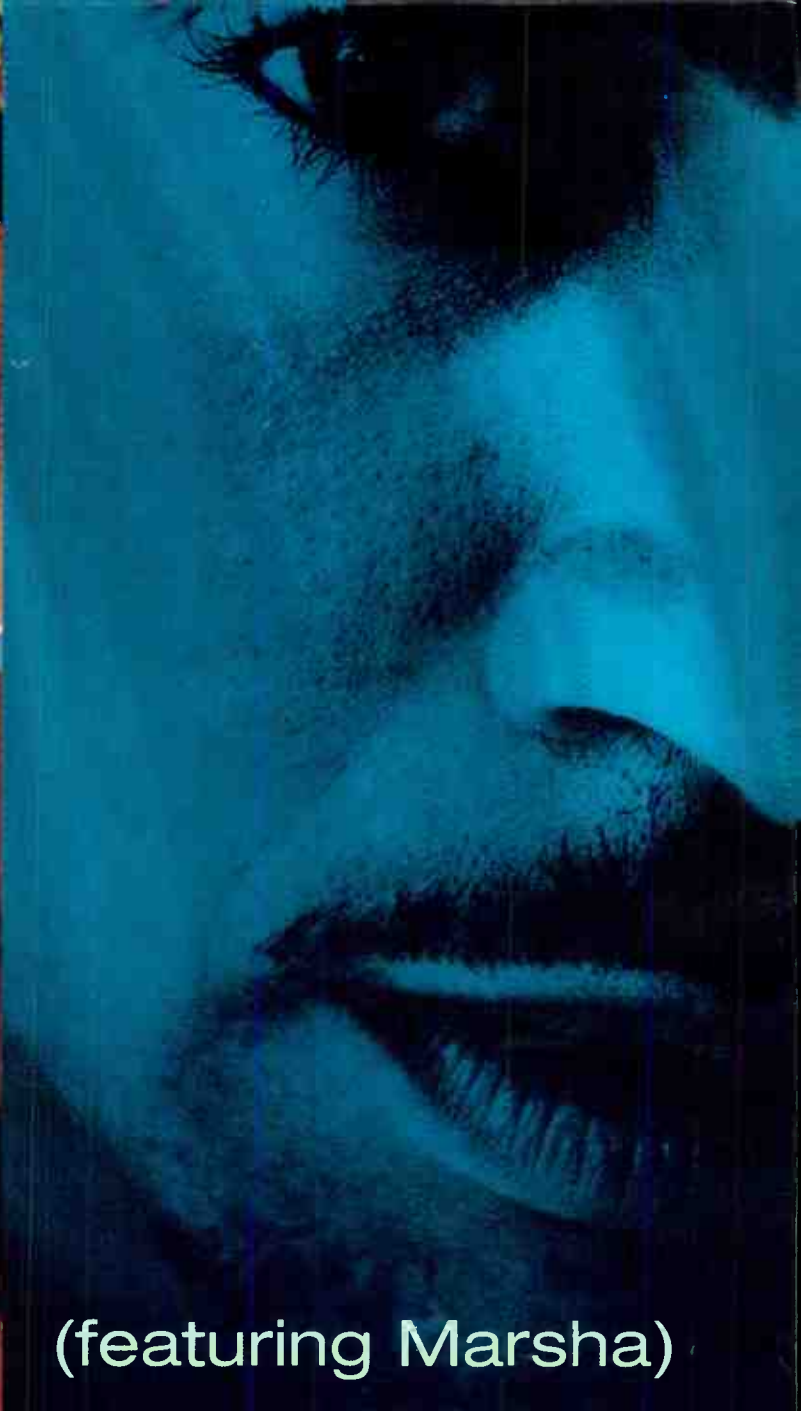
Table with columns: WHPT, PD: Chuck Beck, MD: Chris Taylor, Tampa, TW, LW, and a list of 30 songs with their chart positions.

THE RIVER

Table with columns: WVRV, PD: Scott Strong, MD: Mike Richer, St. Louis, TW, LW, and a list of 30 songs with their chart positions.



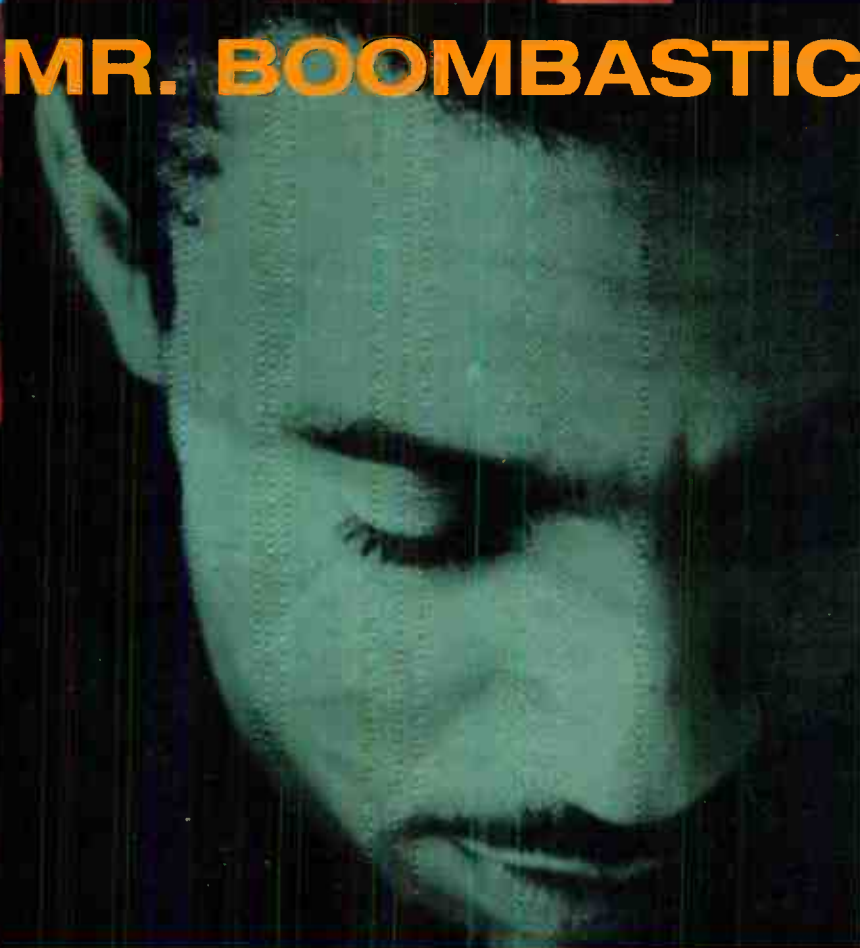
the first single  
from the new album  
**MIDNITE LOVER**,  
the follow-up  
to the platinum album  
**BOOMBASTIC**



**SHAGGY** "Piece Of My Heart" (featuring Marsha)



**MR. BOOMBASTIC IS BACK!**



**POWER 96/MIAMI ADD**

<b>WJMN</b>	<b>51x</b>
<b>WWKX</b>	<b>27x</b>
<b>WJHM</b>	<b>27x</b>
<b>WOCQ</b>	<b>15x</b>
<b>KBOS</b>	<b>13x</b>
<b>WJJS</b>	<b>15x</b>
<b>KHTN</b>	
<b>WEOW</b>	

**IMPACTING  
NOW!**



Produced by Robert Livingston and Shaun "Sting" Pizzonia  
for Big Yard Music Group Ltd.

 © 1997 Virgin Records Ltd.

World Radio History

THIS WEEK	LAST WEEK	WKS. ON CHART	MAINSTREAM		DETECTIONS		
			TITLE/LABEL/PROMOTION LABEL	ARTIST	TW	LW	
			★★★★ No. 1 ★★★★★				
1	2	19	HOW BIZARRE	OMC	3941	3814	
2	3	13	SEMI-CHARMED LIFE	THIRD EYE BLIND	3915	3602	
3	1	14	BITCH	MEREDITH BROOKS	3833	3936	
4	6	8	MEN IN BLACK	WILL SMITH	3489	3171	
5	5	11	QUIT PLAYING GAMES (WITH MY HEART)	BACKSTREET BOYS	3414	3422	
6	4	14	DO YOU KNOW (WHAT IT TAKES)	ROBYN	3406	3560	
7	9	6	2 BECOME 1	SPICE GIRLS	3231	3046	
8	12	4	WHERE'S THE LOVE	HANSON	3067	2785	
9	8	20	SUNNY CAME HOME	SHAWN COLVIN	3053	3103	
10	10	15	ALL FOR YOU	SISTER HAZEL	2944	3035	
11	7	19	RETURN OF THE MACK	MARK MORRISON	2850	3161	
12	11	16	THE FRESHMEN	THE VERVE PIPE	2699	2927	
13	13	7	I'LL BE MISSING YOU	PUFF DADDY & FAITH EVANS (FEATURING 112)	2570	2403	
14	14	27	ONE HEADLIGHT	THE WALLFLOWERS	2086	2317	
15	23	3	FOOLISH GAMES	JEWEL	1999	1616	
16	16	20	SAY YOU'LL BE THERE	SPICE GIRLS	1964	2145	
17	21	5	PUSH	MATCHBOX 20	1879	1663	
18	17	18	HARD TO SAY I'M SORRY	AZ YET FEATURING PETER CETERA	1868	2142	
19	15	19	MMMBOP	HANSON	1830	2278	
20	18	11	A CHANGE WOULD DO YOU GOOD	SHERYL CROW	1821	1972	
21	22	8	CRASH INTO ME	DAVE MATTHEWS BAND	1752	1620	
22	25	5	COCO JAMBOO	MR. PRESIDENT	1701	1514	
23	19	26	I WANT YOU	SAVAGE GARDEN	1688	1898	
24	24	7	MORE THAN THIS	10,000 MANIACS	1651	1562	
25	20	21	YOUR WOMAN	WHITE TOWN	1564	1708	
26	26	9	TO THE MOON AND BACK	SAVAGE GARDEN	1564	1502	
			★★★★ AIRPOWER ★★★★★				
27	28	4	THE DIFFERENCE	THE WALLFLOWERS	1541	1374	
28	30	4	INVISIBLE MAN	98 DEGREES	1477	1313	
29	31	3	IF YOU COULD ONLY SEE	TONIC	1263	1158	
30	29	24	FOR YOU I WILL	MONICA	1233	1326	
31	35	15	I WANNA BE THERE	BLESSID UNION OF SOULS	1215	1103	
32	NEW		HONEY	MARIAH CAREY	1120	24	
33	33	8	RHYTHM OF LOVE	DJ COMPANY	1052	1129	
34	NEW		THE IMPRESSION THAT I GET	THE MIGHTY MIGHTY BOSSTONES	992	745	
35	39	2	I DON'T WANT TO WAIT	PAULA COLE	960	788	
36	32	25	WHERE HAVE ALL THE COWBOYS GONE?	PAULA COLE	943	1129	
37	36	18	DON'T LEAVE ME	BLACKSTREET	933	1085	
38	27	8	GOTHAM CITY	R. KELLY	931	1376	
39	40	3	WHEN I DIE	NO MERCY	871	774	
40	NEW		HOW DO I LIVE	LEANN RIMES	833	727	

THIS WEEK	LAST WEEK	WKS. ON CHART	RHYTHMIC TOP 40		DETECTIONS		
			TITLE/LABEL/PROMOTION LABEL	ARTIST	TW	LW	
			★★★★ No. 1 ★★★★★				
1	1	9	MEN IN BLACK	WILL SMITH	1959	1902	
2	2	12	I'LL BE MISSING YOU	PUFF DADDY & FAITH EVANS (FEATURING 112)	1669	1711	
3	4	13	MO MONEY MO PROBLEMS	THE NOTORIOUS B.I.G. (FEAT. PUFF DADDY & MASE)	1284	1160	
4	3	16	I BELONG TO YOU (EVERY TIME I SEE YOUR FACE)	ROME	1216	1311	
5	5	11	QUIT PLAYING GAMES (WITH MY HEART)	BACKSTREET BOYS	1007	1015	
6	6	28	RETURN OF THE MACK	MARK MORRISON	979	983	
7	7	12	G.H.E.T.T.O.U.T.	CHANGING FACES	976	920	
8	9	4	2 BECOME 1	SPICE GIRLS	962	793	
9	14	4	LOVE YOU DOWN	INOJ	881	699	
			★★★★ AIRPOWER ★★★★★				
10	NEW		HONEY	MARIAH CAREY	790	32	
11	13	6	INVISIBLE MAN	98 DEGREES	730	701	
12	10	14	DO YOU KNOW (WHAT IT TAKES)	ROBYN	723	786	
13	8	11	WHATEVER	EN VOGUE	692	807	
14	12	27	DON'T LEAVE ME	BLACKSTREET	683	707	
15	11	17	CUPID	112	667	730	
16	15	8	STOMP	GOD'S PROPERTY	602	645	
17	16	4	WHEN DOVES CRY	GINUWINE	552	554	
18	22	6	THE RAIN (SUPA DUPA FLY)	MISSY "MISDEMEANOR" ELLIOTT	538	446	
19	17	9	CAN'T LET GO	LAURNEA	522	533	
20	25	6	NOT TONIGHT	LIL' KIM FEAT. DA BRAT, LEFT EYE, MISSY ELLIOTT AND ANGIE MARTINEZ	484	420	
21	24	5	WHEN I DIE	NO MERCY	453	432	
22	18	18	SAY YOU'LL BE THERE	SPICE GIRLS	449	498	
23	27	3	C U WHEN U GET THERE	COOLIO FEATURING 40 THEVZ	448	389	
24	21	23	HYPNOTIZE	THE NOTORIOUS B.I.G.	419	458	
25	32	2	THE LOVE SCENE	JOE	416	317	
26	26	9	SUMMERTIME SUMMERTIME	CORINA	400	394	
27	19	20	SWEET SEXY THING	NU FLAVOR FEATURING ROGER	392	478	
28	20	24	CAN WE	SWV	391	466	
29	28	8	TIDE IS HIGH	ANGELINA	359	368	
30	30	2	DON'T SAY	JON B.	357	328	
31	34	2	COCO JAMBOO	MR. PRESIDENT	354	307	
32	NEW		DOWN FOR YOURS	NASTYBOY KLIK FEATURING ROGER TROUTMAN	345	262	
33	23	10	LOOK INTO MY EYES	BONE THUGS-N-HARMONY	344	435	
34	38	3	BIG BAD MAMMA	FOXY BROWN FEATURING DRU HILL	342	284	
35	RE-ENTRY		EVERYTHING	MARY J. BLIGE	340	234	
36	35	2	FIX	BLACKSTREET WITH SPECIAL GUESTS OL' DIRTY BASTARD & SLASH	325	305	
37	NEW		HEAVEN	NU FLAVOR	321	235	
38	37	24	GET IT TOGETHER	702	310	285	
39	33	3	(FREAK) AND U KNOW IT	ADINA HOWARD	291	315	
40	NEW		I SAY A LITTLE PRAYER	DIANA KING	290	276	

Records showing an increase in detections over the previous week, regardless of chart movement. A record which has been on either chart for more than 20 weeks will not receive a bullet, even if it registers an increase in detections. Airpower awarded to those records which attain 1500 detections (mainstream) or 600 detections (rhythm) for the first time. If two records are tied in number of plays, the record being played on more stations is placed first. Records below the top 20 are removed from the chart after 26 weeks.

**Research is a powerful thing.**

# crash into me

D a v e M a t t h e w s B a n d

...on the **Top 40 Adult Monitor Chart** for **25 weeks** (Still in the Top 10)  
 ...on the **AAA Monitor Chart** for **9 months!** (Still in the Top 10)  
 ...debuted on **MTV** Oct. 1996 (still in double digit spins)

...on the **Modern Adult Monitor Chart** for **25 weeks** (Still in the Top 10)  
 ...on the **Modern Rock Monitor Chart** for **8 months!** (a former Top 5)  
 ...one of the **biggest research records** of the year!

**This week: (22) - (21) Top 40 Mainstream Monitor (+132)**

Huge research at Z100, WXKS, KMXV, KDWB, WFLZ, KALC, WSTW, G105, WPXY, WSTW + more!