

# TOP 40 AIRPLAY Monitor

• We Listen To Radio •

August 1, 1997 \$4.95 Volume 5 • No. 31

## TOP 40 HIGHLIGHTS

### MAINSTREAM

#1

**MEREDITH BROOKS**

*Bitch* (CAPITOL)

★★★ AIRPOWER ★★★

MATCHBOX 20 • *Push* (LAVA/ATLANTIC)  
JEWEL • *Foolish Games* (ATLANTIC)  
10,000 MANIACS • *More Than This* (Geffen)  
MR. PRESIDENT • *Coco Jambo* (WARNER BROS.)  
SAVAGE GARDEN • *To The Moon And Back* (COLUMBIA)

### GOING FOR AIRPLAY

JON BON JOVI • *Janie, Don't Take Your Love To Town* (MERCURY)  
MARIAH CAREY • *Honey* (COLUMBIA)  
FOREST FOR THE TREES • *Dream* (DREAMWORKS/Geffen)  
REEL BIG FISH • *Sell Out* (MOJO/UNIVERSAL)  
SUGAR RAY • *Fly* (LAVA/ATLANTIC)  
VANESSA WILLIAMS • *Happiness* (MERCURY)

### RHYTHMIC TOP 40

#1

**WILL SMITH**

*Men In Black* (COLUMBIA)

★★★ AIRPOWER ★★★

INOJ • *Love You Down* (SO SO DEF/COLUMBIA)

### CROSSOVER

#1

**PUFF DADDY & FAITH EVANS (FEATURING 112)**

*I'll Be Missing You* (BAD BOY/ARISTA)

★★★ AIRPOWER ★★★

MARY J. BLIGE • *Everything* (MCA)  
BLACKSTREET WITH SPECIAL GUESTS OL' DIRTY BASTARD & SLASH • *Fix* (INTERSCOPE)

### GOING FOR AIRPLAY

MARIAH CAREY • *Honey* (COLUMBIA)  
NU FLAVOR • *Heaven* (REPRISE)  
QUEEN LATIFAH • *It's Alright* (TOMMY BOY)  
VANESSA WILLIAMS • *Happiness* (MERCURY)

### ADULT TOP 40

#1

**SHAWN COLVIN**

*Sunny Came Home* (COLUMBIA)

★★★ AIRPOWER ★★★

SARAH MCLACHLAN • *Building A Mystery* (ARISTA)  
THE WALLFLOWERS • *The Difference* (INTERSCOPE)  
MATCHBOX 20 • *Push* (LAVA/ATLANTIC)  
PAULA COLE • *I Don't Want To Wait* (IMAGO/WARNER BROS.)

### ADULT CONTEMPORARY

#1

**SHAWN COLVIN**

*Sunny Came Home* (COLUMBIA)

★★★ AIRPOWER ★★★

NO RECORDS QUALIFIED FOR AIRPOWER THIS WEEK

### GOING FOR AIRPLAY

JON BON JOVI • *Janie, Don't Take Your Love To Town* (MERCURY)  
MARIAH CAREY • *Honey* (COLUMBIA)  
FOREST FOR THE TREES • *Dream* (DREAMWORKS/Geffen)  
REEL BIG FISH • *Sell Out* (MOJO/UNIVERSAL)  
SUGAR RAY • *Fly* (LAVA/ATLANTIC)  
VANESSA WILLIAMS • *Happiness* (MERCURY)

## How Do Listeners Respond To Lyrical Downers? Who Says They Notice?

by Sean Ross  
and Kevin Carter

It's always been an axiom among radio programmers that when the economy is strong, the national mood is positive, and top 40 does well. It's also a commonly held belief that top 40's recent rebound is a response to what some saw as the negativism of hip-hop and modern rock.

So has anybody noticed that there are at least three current hits with death-related themes? Morbidity stalks the Verve Pipe's college suicide

saga ("The Freshmen"), Puff Daddy and Faith Evans' elegy to slain rapper the Notorious B.I.G. ("I'll Be Missing You"), and Babyface's call to action on behalf of battered women ("How Come, How Long").

And those aren't the only songs with dark back stories at the moment. An abused wife burns down her house in Shawn Colvin's oblique "Sunny Came Home." And Third Eye Blind's "Semi-Charmed Life" is described by the group's Stephen Jenkins as being "about this girl turning into a speed

Continued on page 18

# 10,000 Maniacs

## MORE than THIS

The FIRST SINGLE from  
the NEW ALBUM  
*LOVE AMONG the RUINS*

Produced by FRED MAHER Mixed by CHRIS LORD-ALGE  
Management by PETER LEAK for THE NEW YORK END, LTD.

### TOP 40

★★★ AIRPOWER ★★★

BDS - 1562 (+187)

MONITOR CHART - (26) - (24)

### ADULT TOP 40

BDS - 1185 (+142)

#5 GREATEST GAINER

MONITOR CHART - (17) - (14)

### MODERN ADULT

BDS - 789 (+119)

#1 GREATEST GAINER

MONITOR CHART - (16) - (13)

1 LARGE  
MUSIC FIRST



QUEEN LATIFAH IT'S ALRIGHT

THE NEW SINGLE FROM

**NOTHING  
TO LOSE**

MUSIC FROM AND INSPIRED  
BY THE MOTION PICTURE

ADD DATE AUGUST 4



## Top 40 Loses Santa Barbara, Adds St. Louis?

**J**acor buys religious WCBW St. Louis at 104.9 FM from Continental Broadcasting for a reported \$13.2 million. That would give Jacor a third FM (joining R&B combo **KMJM/KATZ-FM**) in one of the few remaining markets that has no top 40. Then again, **KMGQ** (Magic 106) Santa Barbara, Calif., currently living a double life—rhythmic top 40 by day and smooth jazz at night—will flip entirely to jazz Aug. 3. PD **Vince Garcia** and the air staff will remain aboard. The move again leaves Santa Barbara without top 40, something it really hasn't had since **KHTY** segued to modern several years ago.

In other Jacor news, buried in a July 26 New York Times article on **Richard Jewell** is news that the former security guard has settled his lawsuit with album **WLKS** (96 Rock) Atlanta over their unauthorized use of his likeness on a billboard. Monitor hadn't heard back from the station at press time; the Times reported that there was a "no public comment" clause as part of the settlement.

**Keith Yarber**, GM of album/modern/R&B combo **WKQQ/WXZZ/WTKT** Lexington, Ky., adds GM duties at Jacor's other newly acquired properties in the market, including top 40 **WLKT** (the Cat) and adult top 40 **WMXL** (Mix 94.5). He replaces consultant **Jay Meyers**, who had been handling the job temporarily.

### PROGRAMMING: B100 SPINS INCREASE

Look for rhythmic top 40 **KIBB** (B100) Los Angeles to increase the weekly spins on its powers from 55 to about 72, says PD **Tony Coles**. Also, **Gary Spears** exits the "B100 Breakfast Jam" for afternoons at crosstown **KIIS**, replacing **Magic Matt Alan**. Local comedian **Gilbert Esquivel** joins existing B100 co-host **Patty Lotz** and producer **Wayne "Wankuss" Lewis**.

**Chuck Geiger**, OM of top 40 **WLSS** (Loose 102) Baton Rouge, La., as well as AC **KRVE** and other duop partners, will exit at the end of August, when GulfStar eliminates his position. APD/MD **Robert Elfman** is upped to PD of Loose 102. Geiger continues to consult **WMGI** Terre Haute, Ind., where the PD search continues. Call 504-231-1860 or E-mail [cgeiger@hotmail.com](mailto:cgeiger@hotmail.com).

Recent adult top 40 convert **WMLO** Tallahassee, Fla., changes calls to **WFLV** (Live 105) and picks up the syndicated **Scott Shannon** and **Todd Pettengill** morning show from **WPLJ** New York. PD **Mike Edwards** is doing afternoons, while APD/MD **Kevin Kasey** is in middays.

In the face of reports that modern **WKDF** Nashville had softened to modern AC this week, PD **Kidd Reed** says that the station has added some softer material, but denies that any wholesale change has taken place. P.m. driver **Joe Elvis** exits.

Top 40 **KDRE** (Z101) Little Rock, Ark., is temporarily being simulcast on rhythmic top 40 sister **KMZXX** (Laser 106) for several weeks, while the latter undergoes technical repairs. It will return with its original format shortly. Also, **Bob Brown** (ex-WMYK Norfolk, Va.) joins the morning team.

Make your own **Dionne Warwick** joke here: The folks who bring you TV's "Psychic Friends Network" have announced plans for a N/T radio version.

### CORPORATE: HERITAGE HELD UP

Heritage Media has granted the Department of Justice Antitrust Division an extension of the time the DOJ is given to examine its sale to **Rupert Murdoch**. If DOJ challenges that deal, it would have ramifications for the spin-off of Heritage's radio stations to Sinclair Broadcasting.

Arbitron is reissuing the spring book for Santa Rosa, Calif., after 63 diaries were discovered to have been incorrectly credited to Sonoma County, instead of Solano County. The new market report mails July 31.

LSM **Richard Wexler** is upped to GSM at **WQHT** (Hot 97) New York.

Veteran programmer turned equity partner **Michael St. John** takes possession of classic hits **WCRQ** Huntsville, Ala., this week. Look for a new format by Sept. 1... Atlantic Star Communications, a division of Capstar, has completed its acquisition of rhythmic top 40 **WJJS/WJXX** Roanoke, Va., and its duopoly partners.

### PEOPLE: LETTER PAYS OFF

Remember a year ago, when **WYCR** York, Pa., p.m. driver **Jason Strovel** wrote Top 40 Airplay Monitor a letter bemoaning the lack of top 40 in his hometown of Baltimore? This week, Strovel gets the night job at new top 40 **WXYV** Baltimore, where he'll be known as **Jason Kidd**.

**WDRQ** Detroit PD **Lisa Rodman** taps **KQKQ** (Sweet 98) Omaha, Neb., APD/MD **Jimi Jamm** to fill the MD slot recently vacated by **Jay Towers**, now MD at **WIOQ** (Q102) Philadelphia.

**Just Plain Mark** and **Zippy**, the morning team on modern AC **WSHE** Orlando, Fla., make an unusual career move, exiting to become the afternoon hosts for ABC's new Radio Disney syndicated children's format. The team was already doing a Friday-night show for Disney.

**WQZQ** (the Party) Nashville, returns P/T **Lulu** to nights as **R.J.** moves to afternoons, for now. PD **Bryan Krysz** is looking for a permanent APD/afternoon person.

After filling the shift for a month, **Ken Carr** exits mornings at **KHTN** (Hot 105) Stockton, Calif. Producer **Ryan Cota** is soloing until a replacement is found. P.S.: Mix-show coordinator

**René Roberts** is seeking tapes from mixers.

**WJET** (Jet 102) Erie, Pa., MD/afternoon jock **J.J. Foxx** is named corporate production director for Jet Broadcasting, covering **WJET-FM**, **WFGO** (Froggy 94), and **WJET-TV**. PD **Dana London** needs a replacement. Foxx replaces **Jay Bohannon**,

now creative services director for Jacor/Cleveland.

Modern adult **KMXB** (Mix 94.1) Las Vegas hires **WDEK** Dekalb, Ill., afternoon jock **Paul Gant** to fill the long-vacant midday slot.

After filling the shift for a few months, former overnight jock **Randy Fox** is now permanent in middays at **KPRR** (Power 102) El Paso, Texas, replacing **Christopher Lance**.

**WAOA** (WATA) Melbourne, Fla., brings back market vet **Rob Selkow** as news director. Selkow is currently working for National Public Radio in Los Angeles.

Former **WZEE** (Z104) Madison, Wis., PD **John "Woody" Harrison-Flint** has moved back to Lafayette, Ind., to conduct his job search. Call 608-835-8109 or 765-447-4425, or E-mail [jwharrison@aol.com](mailto:jwharrison@aol.com).

### PROMOTIONS: PEAKE PICKS PETROVIC

**KRBE** Houston nabs **Jeff Petrovic** from crosstown **KKRW** (Arrow) as promo coordinator, replacing **Clint Wright**, who crosses to N/T **KTRH**. Petrovic and **KRBE** PD **John Peake** formerly worked together at **KRQQ** Tucson, Ariz.

**WXKS-FM** (Kiss 108) Boston inks **Trish Gillis** from the Sports Channel as promotion director, replacing **Melissa Beatrice**, now at **KHKS** Dallas. Gillis is also a radio vet of crosstown **WCLB** and **WCDJ**. And Kiss ups **Mike Connor** from P/T to utility production/swing, replacing **Jeff Clark**, now production director at modern AC **WMBX** (Mix 102.3) West Palm Beach, Fla. That station is auditioning afternoon host **Taylor Morgan** and night jock **Scott Davidson** in mornings. Morning talent **John Taylor** moves to afternoons.

Former **WMTX** Tampa, Fla., MD **Yvonne Bass** has been named marketing coordinator for Clear Channel's crosstown country/R&B combo **WRBQ-AM-FM**. Bass had been working P/T in the promotions department before being elevated to her newly created position.

## Von And JohnJay Face Stiff Competition



Vice President Al Gore was the unwitting recipient of an official "Brian & JohnJay" T-shirt (perfect for those informal state dinners) from **WKRQ** (Q102) Cincinnati during a recent swing through town. Pictured seconds before being wrestled to the ground by alert Secret Service agents, from left, are former marketing director Von Freeman, morning co-host JohnJay, and Gore.



## TOP 40 TOPICS BY SEAN ROSS

212-536-5264 • [sross@billboard.com](mailto:sross@billboard.com)

## Imago Scenario Plays Out 'One More Time'

**R**emember the Imago label? Now it exists primarily as a logo deal on other labels' releases. But in the early '90s, Imago tried to change the way labels promoted records, announcing its intention to work just a few acts for as long as it took, coming back week after week on **Baby Animals** and **Nickolaj Steen**.

If you remember much about Imago, you probably remember it mostly as the home of **Paula Cole**, as well as **Rollins Band** and **Captain Hollywood Project**. But the label's strategy was clearly ahead of its time, judging from the number of projects that now need a year or more to break. Even at a time when top 40 does have some records that combust instantly, (i.e., "Bitch," "I'll Be Missing You," etc.), there are still acts like **Third Eye Blind** or **Verve Pipe** that make lengthy multifaceted journeys to mainstream top 40 success.

The industry has already adjusted, sometimes grudgingly, to the longer amount of time it takes a record to break. But there are still some situations where records finally kicked in when it was too late for labels to do anything about them. **Babyface's** "Every Time I Close My Eyes" began testing for some PDs just in time to get in the way of its follow-up, "How Come, How Long." Now, the scenario is repeating itself in some markets on **Real McCoy's** "One More Time."

When that song peaked at No. 19 on the mainstream top 40 chart last April, some PDs said it didn't test. Some were worried about the Euro-dance sound in general. In any event, the general assumption at the time was that "One More Time" was no "Another Night," a record that had helped define eternal life through call-out.

But in late July, "One More Time" was the No. 3 most-played record on **WKTU** New York. It was back on rival **WHTZ** (Z100) several times a day. And it was top 10 at **WIOQ** (Q102) Philadelphia and had been a power at **WPXY** Rochester, N.Y. Now it's researching, at least for those who continued to take the song's pulse once its chart life was over.

Arista took radio's word on "One More Time" and moved on to another single. Now, some PDs are going "Oops." While it's always a good thing that PDs find the records that are right for their stations, rather than restrict themselves to what's being worked to them, in this environment, it's harder than ever for a label to have any kind of game plan.

One potential strategy is to adapt the Imago

rule. Labels and stations could just assume any record that doesn't break in six weeks will require a year. Time, after all, helps most songs test better, meaning that we could have even more posthumous success stories. Rather than sending a follow-up out to be sacrificed as radio decides it really *did* like the previous single, labels could just wait for PDs to come around.

Another option is to return to the '80s, when game plans were gospel and PDs cheerfully discarded—at least on paper—any song that wasn't being worked anymore. PDs who felt a song wasn't a hit would no longer leave it in call-out, so if they were wrong, they'd never have to know. Of course, top 40 churned through its hits for years and (barely) lived to regret it. And it's not working so well for country now.

The only other option is for the industry to modify its expectations for certain types of records. In most cases, pop/dance records and poppier ballads are adult balance records. They rarely explode instantly, and while most PDs have finally reached the point where they won't drop those records right away for not getting requests, those songs may still end up in a research Catch-22. They can't reasonably be expected to test until 300 spins, but they take forever to get to 300 spins because, well, they don't test. A bad week in call-out usually leads to a record being backed down, thus ensuring another bad week due to unfamiliarity.

So perhaps the move is for PDs to choose only a few records in which they have great confidence, pound them right away, *then* feel secure in the decision to move on if those songs don't perform. While it's hard to come to grips with letting a record that's not performing just sit there, any record on a station should bring something to the party from the outset—whether it's tempo or artist image or adult balance—that justifies its place on the radio even if it doesn't come home. PDs who only want proven hits on the air should probably just wait on songs until they *do* feel secure in committing to them. And labels that are tired of riding the roller coaster should respect that choice.

After 20-plus years of call-out, it's not so hard to predict which songs will research well and when they'll kick in, at least on a level playing field. Even an industry that's learning to live with records for a year is still being faked out by the hits occasionally. Maybe that's because, by moving records up and down each week based on unrealistic expectations, stations are also faking out their own research.



## WHAT'S NEWS

by Theda Sandiford-Waller

212-536-5053 • theda@billboard.com

### Red Ant, Under Fire, Loses Two

**M**USICAL CHAIRS: Former Reprise promotion maven and Red Ant senior VP of promotion Nancy Levin jumps ship to claim senior VP of promotion stripes at MCA... Red Ant's Randy Miller has reportedly exited his executive VP of marketing/GM post for a similar gig at Seymour Stein's Sire Records Group. The Delicious Vinyl label has filed a \$25 million-plus lawsuit against Red Ant, alleging breach of contract, fraud, negligent misrepresentation, and conspiracy, reports Billboard Bulletin.

At Sony/550 Music, Hillary Shaev announces several regional promotion staff appointments. Former Mercury regional Mark Neiderhauser joins 550 for regional duties, based in Texas. Former MCA Seattle rep Mark Rose picks up San Francisco promotion duties beginning Aug. 1, and Phyllis Jones is upped from a retail and marketing gig at Sony to the Chicago-based regional promotion position.

Capitol's Aimee Saiger moves from the Carolinas to fill the Atlanta region promotion chair recently vacated by Jim Payne. Capitol college promo rep Mike Snow takes Saiger's Carolina regional promotion gig.

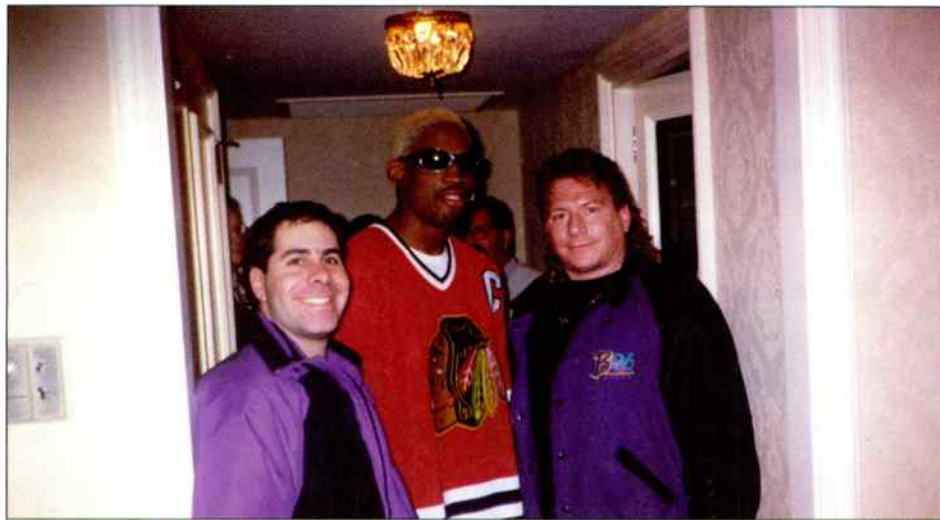
Former EMI Kansas City local Don Pratt picks up Minneapolis local promotion duties for A&M... RCA taps former Revolution regional Artie Gentile as its Denver local... Josie DiChiara, former label director for John Tesh's GTSP Records, joins Allegro Music as upper-Atlantic retail account manager.

This fall, look for Virgin executive VP of A&R Kaz Utsunomiya to take a similar position at Epic... Virgin's Minneapolis promotion rep Bobby Bland is out because of downsizing. His territory has been absorbed by the Chicago and Denver regionals.

**ARTIST MONITOR:** Jamiroquai tops list of nominees for the 1997 MTV Video Music Awards with 10 nominations. So far, U2, Beck, and Spice Girls are slated to perform at the Sept. 4 awards show. By the way, British newspaper The Sun reports that Meat Loaf will take over the role of the Spice Girls' limo driver from British boxer Frank Bruno in the Girls' movie.

♣ has announced his Jam of the Year world tour that will keep him on the road until 1999. No Doubt, Santana, Lenny Kravitz, Chaka Khan, and George Clinton will be sitting in as his special guests on the tour... Meredith Brooks starts her tour Aug. 3 in Portland, Ore., then heads east the following week for a few mid-Atlantic tour dates starting Aug. 8 in Washington, D.C.... Not surprisingly, teen bluesman Jonny Lang and blues veteran Eric Clapton have been asked to appear in the "Blues Brothers 2000" movie.

### Suddenly, Dennis Gets A Bright Idea



That wacky Dennis Rodman is at it again: His latest attempt to shock the public consisted of walking around in men's clothing. Pictured seconds before changing clothes (with one another), from left, are WBBM (B96) Chicago morning producer Jeff Andrews, alleged new Chicago Blackhawks captain Rodman, and B96 morning co-host Eddie Volkman.

EDITOR IN CHIEF: HESTON HOSTEN  
 EDITOR: SEAN ROSS  
 MANAGING EDITOR: KEVIN CARTER  
 DIRECTOR OF CHARTS: THEDA SANDIFORD-WALLER  
 ASSOCIATE DIRECTOR OF CHARTS: STEVEN GRAYBOW  
 WRITER/REPORTER: DANA HALL  
 CHART PRODUCTION MANAGER: MICHAEL CUSSON  
 ASST. CHART PRODUCTION MANAGER: ALEX VITOULIS  
 EDITORIAL PRODUCTION MANAGERS: BARRY BISHIN, MARCIA REPINSKI  
 EDITORIAL PRODUCTION: SUSAN CHICOLA, MARC GIAQUINTO  
 SARAH JOHNSON, MARIA MANLICIC  
 COPY EDITOR: CARL ROSEN  
 ADVERTISING PRODUCTION MANAGER: LYDIA MIKULKO  
 ASSOC. ADVERTISING PRODUCTION MANAGER: CINDIE WEISS  
 ADVERTISING ART DIRECTOR: RAY CARLSON  
 ADVERTISING PRODUCTION ARTIST: SHIRA HALFON

GENERAL MANAGER: JON GUYNN  
 ACCOUNT MANAGER: GARY NUJELL  
 ADVERTISING SERVICES MANAGER: ALYSE ZIGMAN  
 SALES ASSISTANTS: EVELYN ASZODI, ERICA BENGTON,  
 TODD MAYCHER  
 EDITORIAL ADVISER: TIMOTHY WHITE  
 PRODUCTION DIRECTOR: MARIE GOMBERT  
 DIRECTOR OF MARKETING: ELISSA TOMASETTI  
 CIRCULATION DIRECTOR: JEANNE JAMIN



PRESIDENT: HOWARD LANDER  
 SENIOR VP/GENERAL COUNSEL: GEORGINA CHALLIS  
 VICE PRESIDENTS: KAREN OERTLEY, ADAM WHITE  
 DIRECTOR OF STRATEGIC DEVELOPMENT: KEN SCHLAGER  
 BUSINESS MANAGER: JOELLEN SOMMER

©1997 BPI Communications  
 1515 Broadway, New York, NY 10036 212-764-7300  
 5055 Wilshire Blvd., 7th floor, Los Angeles, CA 90036 213-525-2300  
 For subscriptions call: 800-722-2346

Airplay Monitor reporting panels are based solely on a station's musical content.

### M Street Format Monitor

### Top 40, Hot AC, AC Station Counts Decline In July

RANK		The M Street FORMAT MONITOR	STATION COUNT		
THIS MONTH	LAST MONTH		JULY '97	JUNE '97	NET GAIN OR LOSS
1	1	Country	2,507	2,500	7
2	2	News/Talk	1,106	1,116	-10
3	3	Adult Contemporary	922	927	-5
4	4	Oldies	752	759	-7
5	5	Religion (Music)	632	632	0
6	6	Adult Standards	536	531	5
7	7	Spanish	479	477	2
8	8	Religion (Talk)	420	421	-1
9	9	Soft AC/Easy Listening	390	388	2
10	10	Classic Rock/Hits	379	373	6
11	11	Top-40/Mainstream/Rhythm	357	357	0
12	12	Mainstream Rock	265	268	-3
13	13	Top-40/Adult	255	256	-1
14	14	Sports	206	201	5
15	15	R&B Adult/Oldies	179	177	2
16	16	R&B	172	175	-3
17	17	Miscellaneous	159	159	0
18	18	Modern Rock	150	151	-1
19	19	Triple-A	149	145	4
20	20	Jazz	88	86	2
21	21	Classical	47	45	2
Total commercial operating stations			10,150	10,144	
Stations off the air			167	166	

M Street Corp., is a Nashville-based provider of radio station information to the radio and music industries. Call 615-865-1525 for more information.

## RADIO CONCERT MONITOR

DATE	CALL LETTERS	EVENT	SCHEDULED TO APPEAR
Aug. 1	KUBE Seattle	Summer Jam	112, Aaliyah, BLACKstreet, Ginuwine, Laurnea, Billy Lawrence, Rome, Salt-N-Pepa, Wyclef Jean & Refugee Allstars, more
Aug. 9	KMEL San Francisco	Summer Jam	112, Aaliyah, BLACKstreet, Foxy Brown, Faith Evans, Ginuwine, Dru Hill, Billy Lawrence, Mint Condition, Nuyorican Soul, Redman/Method Man, Richie Rich, Scarface, Ultra Nate w/ Glide Church Choir.
Aug. 10	KKBT Los Angeles	Fourth Summer Jam	112, Aaliyah, BLACKstreet, Foxy Brown, Comrads, DJ Quik, Warren G, Ginuwine, Dru Hill, Adina Howard, Shaquille O'Neal, Suga Free, Whoridas, more
Aug. 23	WKRQ Cincinnati	One Earth 3	10,000 Maniacs, Meredith Brooks, Del Amitri, Abra Moore, more
Aug. 27	WBLI Long Island, N.Y.	End of Summer Jam	TBA
Aug. 30	WQZQ Nashville	First Birthday	TBA
Sept. 6	WZJM Cleveland	Summer Extension Jam 8	DJ Company, Nu Flavor, 3rd Party, more
Sept. 20	KVSR Fresno, Calif.	First Birthday	Mexico 70, more TBA
Oct. 3	KRQQ Tucson, Ariz.	20th Birthday	TBA
Oct. 19	KBXX (the Box) Houston	Car Show	TBA

Let us monitor your event! Kevin Carter: 213-525-2303 or E-mail KCarter@billboard.com

## ON THE AIR

### NEW STATIONS AND OTHER REPORTER CHANGES FROM BDS & AIRPLAY MONITOR

Effective this week, WLUP Chicago is dropped from both adult top 40 and modern adult, and WLEV Allentown, Pa., is no longer an AC reporter. The changes are due to format changes. There are now 65 adult top 40, 54 AC, and 35 modern adult reporters.

SPRING '97 ARBITRONS

12-plus overall average quarter hour shares (#) indicates Arbitron market rank. Copyright 1997, Arbitron Ratings Co. May not be quoted or reproduced without the prior written permission of Arbitron.

Table for Atlanta (12) with columns for Call, Format, and shares for '96, '97, '98, '99, '00.

Table for Seattle (13) with columns for Call, Format, and shares for '96, '97, '98, '99, '00.

Table for Portland, Ore. (24) with columns for Call, Format, and shares for '96, '97, '98, '99, '00.

Table for Kansas City (27) with columns for Call, Format, and shares for '96, '97, '98, '99, '00.

Table for Milwaukee (29) with columns for Call, Format, and shares for '96, '97, '98, '99, '00.

Table for Norfolk, Va. (33) with columns for Call, Format, and shares for '96, '97, '98, '99, '00.

Table for San Antonio, Texas (34) with columns for Call, Format, and shares for '96, '97, '98, '99, '00.

Table for Call and Format with columns for '96, '97, '98, '99, '00.

Table for Rochester, N.Y. (46) with columns for Call, Format, and shares for '96, '97, '98, '99, '00.

Table for Raleigh, N.C. (48) with columns for Call, Format, and shares for '96, '97, '98, '99, '00.

Table for Louisville, Ky. (50) with columns for Call, Format, and shares for '96, '97, '98, '99, '00.

Table for Oklahoma City (52) with columns for Call, Format, and shares for '96, '97, '98, '99, '00.

Table for Jacksonville, Fla. (53) with columns for Call, Format, and shares for '96, '97, '98, '99, '00.

Table for Dayton, Ohio (54) with columns for Call, Format, and shares for '96, '97, '98, '99, '00.

Table for Birmingham, Ala. (55) with columns for Call, Format, and shares for '96, '97, '98, '99, '00.

Table for Richmond, Va. (56) with columns for Call, Format, and shares for '96, '97, '98, '99, '00.

Table for Call and Format with columns for '96, '97, '98, '99, '00.

Table for Albany, N.Y. (57) with columns for Call, Format, and shares for '96, '97, '98, '99, '00.

Table for Honolulu (58) with columns for Call, Format, and shares for '96, '97, '98, '99, '00.

Table for Tulsa, Okla. (61) with columns for Call, Format, and shares for '96, '97, '98, '99, '00.

Table for Wilkes Barre, Pa. (62) with columns for Call, Format, and shares for '96, '97, '98, '99, '00.

Table for Grand Rapids, Mich. (66) with columns for Call, Format, and shares for '96, '97, '98, '99, '00.

Table for Knoxville, Tenn. (68) with columns for Call, Format, and shares for '96, '97, '98, '99, '00.

Table for Nashville (44) with columns for Call, Format, and shares for '96, '97, '98, '99, '00.

Table for Nashville (44) with columns for Call, Format, and shares for '96, '97, '98, '99, '00.

Table for Call and Format with columns for '96, '97, '98, '99, '00.

Table for Omaha, Neb. (72) with columns for Call, Format, and shares for '96, '97, '98, '99, '00.

Table for Harrisburg, Pa. (73) with columns for Call, Format, and shares for '96, '97, '98, '99, '00.

Table for Fort Myers, Fla. (76) with columns for Call, Format, and shares for '96, '97, '98, '99, '00.

Table for Mobile, Ala. (84) with columns for Call, Format, and shares for '96, '97, '98, '99, '00.

Table for Youngstown, Ohio (92) with columns for Call, Format, and shares for '96, '97, '98, '99, '00.

Table for Daytona Beach, Fla. (93) with columns for Call, Format, and shares for '96, '97, '98, '99, '00.

Table for Melbourne, Fla. (96) with columns for Call, Format, and shares for '96, '97, '98, '99, '00.

Table for Melbourne, Fla. (96) with columns for Call, Format, and shares for '96, '97, '98, '99, '00.

# AIRPLAY Monitor GREATEST GAINERS

Broadcast Data Systems

Strongest Increase In Airplay This Week

## MAINSTREAM

INCREASE  
IN PLAYS

<b>HANSON • Where's The Love (MERCURY)</b>	<b>+514</b>
KHOM +31, WQZQ +27, WCIL +21, KHTO +19, WAPE +19, KKMG +17, WZST +16, KBFM +16, WHOT +16, WLAN +16	
<b>JEWEL • Foolish Games (ATLANTIC)</b>	<b>+513</b>
KHOM +41, KKLO +30, WGTZ +20, WAPE +18, WSTW +17, WZJM +17, WBZZ +17, WNOK +16, KKMG +15, WFLY +14	
<b>WILL SMITH • Men In Black (COLUMBIA)</b>	<b>+377</b>
WDJX +37, WRVQ +21, WWHT +19, WFBC +19, WXYV +18, WXLX +17, WQZQ +16, KHFI +16, WQSL +14, WKCI +14	
<b>SPICE GIRLS • 2 Become 1 (VIRGIN)</b>	<b>+352</b>
WFLZ +33, WTWR +25, WWCK +19, WZST +16, KIIS +16, WWZZ +14, WSNX +14, KMXV +13, WSTR +13, KZHT +13	
<b>PUFF DADDY &amp; FAITH EVANS (FEAT. 112) • I'll Be Missing You (BAD BOY/ARISTA)</b>	<b>+296</b>
WFBC +33, WXIS +24, WKSS +21, WFLZ +16, WWHT +15, WDJX +13, WSNX +12, WRVQ +12, KHKS +11, KZZU +11	
<b>MATCHBOX 20 • Push (LAVA/ATLANTIC)</b>	<b>+288</b>
WBHT +23, WSNX +18, WZST +17, WKXS +16, KRUF +15, WQSL +15, KMXV +13, KJYO +13, KHOM +12, WXKB +12	
<b>98 DEGREES • Invisible Man (MOTOWN)</b>	<b>+285</b>
WNNK +20, WSSX +18, KKRZ +17, WHOT +16, WYOY +15, WZST +15, KKMG +14, KZZU +13, WJBO +11, KIIS +11	
<b>MR. PRESIDENT • Coco Jamboo (WARNER BROS.)</b>	<b>+260</b>
WXYV +28, WWZZ +22, WNOK +18, WBHT +15, WLKT +12, WDDJ +12, KHHT +12, KSMB +11, KHOM +11, WJBO +10	
<b>SARAH MCLACHLAN • Building A Mystery (ARISTA)</b>	<b>+257</b>
WBHT +21, WNTQ +18, WSSX +17, KQKQ +16, WHTZ +16, KKRD +15, KHOM +14, WYOY +13, WXXX +13, KMXV +13	
<b>THE WALLFLOWERS • The Difference (INTERSCOPE)</b>	<b>+251</b>
WHTZ +17, KRUF +14, WJBO +13, WGTZ +13, KSMB +10, WZPY +10, WQSL +9, WHOT +9, KHFI +9, WCIL +8	

## RHYTHMIC TOP 40

INCREASE  
IN PLAYS

<b>INOJ • Love You Down (SO SO DEF/COLUMBIA)</b>	<b>+193</b>
KUBE +37, KYLZ +29, KQKS +28, KBOS +16, WDRQ +14, KLUC +13, WIOQ +13, KZFM +11, WHHH +11, KIBB +10	
<b>THE NOTORIOUS B.I.G. (FEAT. PUFF DADDY &amp; MASE) • Mo Money Mo Problems (BAD BOY/ARISTA)</b>	<b>+156</b>
WWKX +37, WKXJ +30, WBBM +19, KLUC +17, KQKS +15, KYLD +13, KYLZ +11, WNVZ +9, KKKX +8, KIBB +6	
<b>MR. PRESIDENT • Coco Jamboo (WARNER BROS.)</b>	<b>+94</b>
KDON +25, WWKX +21, WNVZ +13, WKTU +10, WIOQ +8, XHTZ +7, KZFM +4, KDGS +2, KKKX +2, KTFM +2	
<b>ALLURE FEATURING 112 • All Cried Out (TRACK MASTERS/CRAVE)</b>	<b>+78</b>
WJMN +39, KKSS +19, KIBB +9, KDGS +5, KIKI +1, KZFM +1, KOHT +1, KYLD +1, KLUC +1, XHTZ +1	
<b>PUFF DADDY FEAT. THE NOTORIOUS B.I.G. &amp; MASE • Been Around The World (BAD BOY/ARISTA)</b>	<b>+78</b>
KKFR +41, KCAQ +14, KSFM +11, KYLD +9, KUBE +3	
<b>JON B. • Don't Say (YAB YUM/550 MUSIC)</b>	<b>+78</b>
KIKI +30, KZFM +12, KTFM +11, KDON +9, WNVZ +8, KYLZ +7, KGGI +7, WJMN +7, WHHH +6, KKSS +6	
<b>SPICE GIRLS • 2 Become 1 (VIRGIN)</b>	<b>+76</b>
KDON +27, KSFM +21, KUBE +16, WKTU +12, WPOW +11, KKSS +9, KIKI +7, KBOS +6, KZFM +5, KGGI +5	
<b>NU FLAVOR • Heaven (REPRISE)</b>	<b>+73</b>
KTFM +21, KKSS +17, KSFM +17, KKFR +13, WPOW +3, XHTZ +2, KQKS +2, WHHH +1	
<b>BLACKSTREET WITH SPECIAL GUESTS OL' DIRTY BASTARD &amp; SLASH • Fix (INTERSCOPE)</b>	<b>+72</b>
KQKS +27, KYLZ +18, KDON +14, KLUC +13, KZFM +11, KCAQ +8, XHTZ +8, KDGS +5, WWKX +4, KGGI +4	
<b>JOE • The Love Scene (JIVE)</b>	<b>+70</b>
KIKI +15, KTFM +15, KKFR +15, KBOS +6, KPRR +6, WFHN +5, WWKX +4, WHHH +3, KLUC +3, KDGS +2	

# VIDEO PLAYLISTS



	TW	LW		TW	LW
1	38	37	1	34	36
2	34	33	2	32	20
3	34	33	3	32	33
4	33	32	4	30	29
5	30	34	5	24	26
6	28	17	6	24	28
7	26	13	7	22	4
8	25	27	8	21	28
9	23	14	9	20	12
10	18	16	10	19	18
11	18	15	11	18	16
12	16	15	12	18	11
13	15	7	13	17	12
14	15	9	14	17	21
15	15	6	15	16	29
16	14	8	16	16	23
17	14	11	17	16	21
18	13	4	18	15	19
19	12	16	19	14	5
20	12	16	20	14	17
21	12	25	21	14	13
22	11	13	22	13	12
23	10	16	23	13	16
24	10	10	24	13	15
25	10	18	25	13	9
26	10	1	26	13	7
27	9	14	27	13	8
28	9	9	28	13	16
29	9	0	29	12	10
30	8	4	30	12	15
31	8	3	31	12	9
32	8	9	32	12	6
33	8	15	33	11	11
34	8	8	34	11	11
35	8	7	35	11	13
			36	11	12
			37	11	9
			38	10	9
			39	9	10
			40	8	5
			41	7	10
			42	7	0
			43	7	9
			44	6	7
			45	6	4
			46	6	1
			47	5	3
			48	5	3
			49	5	3
			50	5	2

## ADULT CONTEMPORARY

INCREASE  
IN PLAYS

<b>BILLY JOEL • To Make You Feel My Love (COLUMBIA)</b>	<b>+173</b>
WASH +31, KIOI +26, WSLQ +15, WGSY +12, WTCB +11, WRVF +11, KGBX +9, WINK +8, KLYF +8, WARM +7	
<b>BACKSTREET BOYS • Quit Playing Games (With My Heart) (JIVE)</b>	<b>+109</b>
WMJQ +21, WALK +12, WLIF +12, WTCB +11, KIOI +10, WNNK +9, KTDY +7, WBEB +7, WLIT +5, WRMF +5	
<b>JEWEL • Foolish Games (ATLANTIC)</b>	<b>+107</b>
KURB +28, WINK +17, WDEF +12, KESZ +12, WDOK +10, KTDY +9, WNNK +8, KGBY +6, WLIF +4, WEZF +1	
<b>LEANN RIMES • How Do I Live (CURB)</b>	<b>+101</b>
WMJQ +23, WMGS +13, KMGA +10, WBEB +9, WLIF +8, WTCB +6, KOSI +5, KUDL +4, WARM +4, WLHT +4	
<b>AMY GRANT • Takes A Little Time (A&amp;M)</b>	<b>+84</b>
WSLQ +14, KTDY +13, KEZK +11, KLYF +9, WRVF +8, WLIF +7, WMYI +6, WDEF +5, WMJQ +5, KUDL +3	
<b>ADULT TOP 40</b>	<b>INCREASE IN PLAYS</b>
<b>JEWEL • Foolish Games (ATLANTIC)</b>	<b>+295</b>
KSTP +23, WKDD +22, WPLJ +21, WIOG +20, KVSR +17, KLLC +16, KBBT +16, WRVW +15, WVTY +14, WMMX +13	
<b>PAULA COLE • I Don't Want To Wait (IMAGO/WARNER BROS.)</b>	<b>+215</b>
WIOG +19, WMMX +17, KVSR +15, WKDD +14, WMMX +12, KZZO +12, WBMX +12, KLLC +11, WEZB +11, WTMX +11	
<b>SARAH MCLACHLAN • Building A Mystery (ARISTA)</b>	<b>+177</b>
KMXB +22, WALC +22, KVSR +17, KTNP +17, WJDX +16, WMMX +14, WDBZ +14, WEZB +12, KHMV +8, KSMG +7	
<b>TONIC • If You Could Only See (POLYDOR/A&amp;M)</b>	<b>+143</b>
WMMX +17, WKZL +15, WMMX +13, WRVW +12, WLNK +11, WSHE +10, WPLL +8, KZZP +6, KTNP +6, WMTX +6	
<b>10,000 MANIACS • More Than This (Geffen)</b>	<b>+142</b>
WMMX +22, KVSR +17, KSTZ +17, KPLZ +16, WTIC +13, KVSR +11, WBMX +11, KFMB +10, WMTX +9, KSII +8	

Where it matters. When it counts.



MAINSTREAM

POWER PLAYLISTS

For Week Ending July 27, 1997

AAA Broadcast Data Systems logo and disclaimer text regarding playlist accuracy and copyright.

AIRPLAY Monitor logo with 'TOP 40' and 'AIRPLAY' text.

Z100 station playlist for WHZT New York, PD: Tom Poleman, MD: Paul Bryant. Top 40 list including Backstreet Boys, Puff Daddy & Faith Evans, etc.

KIIS station playlist for KHS Los Angeles, PD: Dan Kieley, APD/MD: Tracy Austin. Top 40 list including Puff Daddy & Faith Evans, etc.

KISS 108 station playlist for WXKS Boston, PD: John Ivey, MD: Kid David Corey. Top 40 list including Third Eye Blind, etc.

KISS 106.1 station playlist for KHKS Dallas, PD: Mr. Ed Lambert, MD: John Reynolds. Top 40 list including OMC, etc.

Z104 station playlist for WWZZ Washington, DC, PD: Dale O'Brian, APD/MD: Ron Ross. Top 40 list including The Wallflowers, etc.

KRBE station playlist for KRBE Houston, PD: John Peake, APD: Scott Sparks, MD: Jay Michaels. Top 40 list including Will Smith, etc.

WFLZ station playlist for WFLZ Tampa, OM: B.J. Harris, PD: Jeff Kapugi, MD: Domino. Top 40 list including Will Smith, etc.

STAR 94 station playlist for WSTR Atlanta, PD: Dan Bowen, MD: J.R. Ammons. Top 40 list including The Wallflowers, etc.

KDWB station playlist for KDWB Minneapolis, APD/MD: Rob Morris. Top 40 list including Mark Morrison, etc.

B94 station playlist for WBZZ Pittsburgh, OM: Keith Clark, APD: David Edgar, MD: John Cline. Top 40 list including Spice Girls, etc.

WPST station playlist for WPST Trenton, Sr. VP/Prog.: Michelle Stevens, PD: Dave McKay. Top 40 list including The Verve Pipe, etc.

Y100 station playlist for WHYI Miami, PD: Rob Roberts, MD: Al Chio. Top 40 list including Robyn, etc.

KISS 95.7 station playlist for WKSS Hartford, PD: Jay Beau Jones, MD: Mike McGowan. Top 40 list including Will Smith, etc.

WNCI station playlist for WNCI Columbus, PD: John Dimick, APD/MD: Neal Sharpe. Top 40 list including Sister Hazel, etc.

Q102 station playlist for WKRC Cincinnati, PD/MD: Jimmy Steal, APD: Race Taylor. Top 40 list including Meredith Brooks, etc.

Z100 station playlist for KKRZ Portland, PD: Ken Benson, APD/MD: Tommy Austin. Top 40 list including Robyn, etc.

JAMMIN' 92 station playlist for WZJM Cleveland, PD: Dave Eubanks, MD: Action Jackson. Top 40 list including Meredith Brooks, etc.

XL106.7 station playlist for WOXL Orlando, OM/MD: Adam Cook, APD/MD: Pete deGraaf. Top 40 list including Meredith Brooks, etc.

POWER PLAYLISTS

For Week Ending July 27, 1997



Playlists supplied by Broadcast Data Systems Radio Track service. Songs ranked by number of plays in monitored week. Playlists are listed in order of TSA weekly count, beginning with the highest-counting station. Counts are updated twice yearly following the release of the Spring and Fall Arbitron surveys. The number of stations shown each week varies depending upon space.

Grid of 24 radio station playlists including G105, KISS 95.1, PRO-FM, ALICE 106, MIX 93.3, MIX 104.1, WXYV, WIXX, WZPL, Q106, WBLI, KISS 98.5, KHFI, WSTW, FLY 92, KJ103, 98PXY, and Z93. Each station listing includes song titles, artist names, and weekly play counts.





AIRPOWER

(Minimum 1500 detections for the first time)

Matchbox 20 1663/288, Jewel 1616/513, 10,000 Maniacs 1562/187, Mr. President 1514/260, Savage Garden 1502/103

AIRPOWER BOUND

The Wallflowers 1374/251, 98 Degrees 1313/285

LeAnn Rimes 727/77, Aerosmith 665/1, God's Property 567/134

Sarah McLachlan 423/257, Nu Flavor feat. Roger 422/-12, Live 409/179

Coolio feat. 40 Thevz 245/79, Crush 230/-3, Squirrel Nut Zippers 193/37

Most New Airplay This Week: Jewel 19, Paula Cole 13, Wild Orchid 13

Tonic 1158/134, Paula Cole 788/194

Jocelyn Enriquez 586/-23, Trio 459/1

Aqua 362/211, Diana King 350/75

Duncan Sheik 171/30, Sneaker Pimps 152/54

Craivin' Melon 121/15, Lisa Stansfield 114/2

Paula Cole 788/194, The Mighty Mighty Bosstones 745/124

Wild Orchid 435/179, Le Click 452/-7

Monaco 291/94, Night Ranger 258/38

Beenie Man feat. Chevelle Franklyn 142/16, Samantha Cole 130/113

Culture Beat 114/23, Kim Richey 103/0

The Mighty Mighty Bosstones 745/124

Wild Orchid 435/179

Night Ranger 258/38

Samantha Cole 130/113, Sugar Ray 121/56

Barenaked Ladies 101/0

Airpower awarded to those records which attain 1500 detections for the first time. New airplay lists those stations registering six or more detections per week on a record for the first time.

WORLDSONG ACTIVITY REPORTS

For Week Ending July 27, 1997



Detailed song tracking information for the last 3 weeks for all songs showing increased play this week. Total plays and gain do not include video play. Markets listed in order of population.

10,000 MANIACS 1562/187

More Than This (Geffen) Total Stations: 85 Chart Move: 26-24

Table with columns for station, week 1, week 2, week 3, week 4, and total plays. Includes stations like Allentown, Gr.Rap, Syracuse, etc.

98 DEGREES 1313/285

Invisible Man (Motown) Total Stations: 74 Chart Move: 36-30

Table with columns for station, week 1, week 2, week 3, week 4, and total plays. Includes stations like Allentown, Gr.Rap, Syracuse, etc.

AEROSMITH 665/1

Hole In My Soul (Columbia) Total Stations: 39

Table with columns for station, week 1, week 2, week 3, week 4, and total plays. Includes stations like Allentown, Gr.Rap, Syracuse, etc.

AQUA 362/211

Barbie Girl (MCA) Total Stations: 37

Table with columns for station, week 1, week 2, week 3, week 4, and total plays. Includes stations like Allentown, Gr.Rap, Syracuse, etc.

BACKSTREET BOYS 3422/47

Quit Playing Games (With My Heart) (Jive) Total Stations: 87 Chart Move: 5-5

Table with columns for station, week 1, week 2, week 3, week 4, and total plays. Includes stations like Allentown, Gr.Rap, Syracuse, etc.

PAULA COLE 788/194

I Don't Want To Wait (Imago/Warner Bros.) Total Stations: 53 Chart Move: Debut 39

Table with columns for station, week 1, week 2, week 3, week 4, and total plays. Includes stations like Allentown, Gr.Rap, Syracuse, etc.

GOD'S PROPERTY 567/134

Stomp (B-Rite/Interscope) Total Stations: 37

Table with columns for station, week 1, week 2, week 3, week 4, and total plays. Includes stations like Allentown, Gr.Rap, Syracuse, etc.

HANSON 2785/514

Where's The Love (Mercury) Total Stations: 87 Chart Move: 16-12

Table with columns for station, week 1, week 2, week 3, week 4, and total plays. Includes stations like Allentown, Gr.Rap, Syracuse, etc.

JEWEL 1616/513

Foolish Games (Atlantic) Total Stations: 77 Chart Move: 34-23

Table with columns for station, week 1, week 2, week 3, week 4, and total plays. Includes stations like Allentown, Gr.Rap, Syracuse, etc.

DIANA KING 350/75

I Say A Little Prayer (Work) Total Stations: 30

Table with columns for station, week 1, week 2, week 3, week 4, and total plays. Includes stations like Allentown, Gr.Rap, Syracuse, etc.

LIVE 409/179

Turn My Head (Radioactive/MCA) Total Stations: 43

Table with columns for station, week 1, week 2, week 3, week 4, and total plays. Includes stations like Allentown, Gr.Rap, Syracuse, etc.

MATCHBOX 20 1663/288

Push (Lava/Atlantic) Total Stations: 82 Chart Move: 27-21

Table with columns for station, week 1, week 2, week 3, week 4, and total plays. Includes stations like Allentown, Gr.Rap, Syracuse, etc.

DAVE MATTHEWS BAND 1620/68

Crash Into Me (RCA) Total Stations: 72 Chart Move: 23-22

Table with columns for station, week 1, week 2, week 3, week 4, and total plays. Includes stations like Allentown, Gr.Rap, Syracuse, etc.

SARAH MCLACHLAN 423/257

Building A Mystery (Arista) Total Stations: 41

Table with columns for station, week 1, week 2, week 3, week 4, and total plays. Includes stations like Allentown, Gr.Rap, Syracuse, etc.

THE MIGHTY MIGHTY BOSSTONES 745/124

The Impression That I Got (Big Rig/Mercury) Total Stations: 56

Table with columns for station, week 1, week 2, week 3, week 4, and total plays. Includes stations like Allentown, Gr.Rap, Syracuse, etc.

SONG AIRPLAY MONITOR

For Week Ending July 27, 1997

Forecast Data Systems logo and detailed song tracking information for the week.

MONACO 291/94: What Do You Want From Me? (Polydor/A&M) Total Stations: 25. Includes stations like MTV, WHI, KHS, etc.

MR. PRESIDENT 1514/263: Coco Jambo (Warner Bros.) Total Stations: 81. Includes stations like MTV, WHI, KHS, etc.

NIGHT RANGER 258/38: Forever All Over Again (Legacy/Columbia) Total Stations: 16. Includes stations like MTV, WHI, KHS, etc.

OMC 3814/103: How Bizarre (Huh!/Mercury) Total Stations: 88. Includes stations like MTV, WHI, KHS, etc.

PUFF DADDY & FAITH EVANS (FEAT. 112) 2403/296: I'll Be Missing You (Bad Boy/Arista) Total Stations: 84. Includes stations like MTV, WHI, KHS, etc.

LEANN RIMES 727/77: How Do I Live (Curb) Total Stations: 42. Includes stations like MTV, WHI, KHS, etc.

SAVAGE GARDEN 1502/103: To The Moon And Back (Columbia) Total Stations: 81. Includes stations like MTV, WHI, KHS, etc.

SISTER HAZEL 3035/151: All For You (Universal) Total Stations: 85. Includes stations like MTV, WHI, KHS, etc.

WILL SMITH 3171/377: Men In Black (Columbia) Total Stations: 84. Includes stations like MTV, WHI, KHS, etc.

SPICE GIRLS 3046/352: 2 Become 1 (Virgin) Total Stations: 86. Includes stations like MTV, WHI, KHS, etc.

THIRD EYE BLIND 3602/177: Semi-Charmed Life (Elektra/EEG) Total Stations: 87. Includes stations like MTV, WHI, KHS, etc.

TONIC 1158/134: If You Could Only See (Polydor/A&M) Total Stations: 84. Includes stations like MTV, WHI, KHS, etc.

TRIO 459/1: Da, Da, Da... (Mercury) Total Stations: 49. Includes stations like MTV, WHI, KHS, etc.

THE WALLFLOWERS 1374/251: The Difference (Interscope) Total Stations: 78. Includes stations like MTV, WHI, KHS, etc.

WILD ORCHID 435/179: Supernatural (RCA) Total Stations: 42. Includes stations like MTV, WHI, KHS, etc.



POWER PLAYLISTS

AIRPLAY Monitor

For Week Ending July 27, 1997

FM102 KSFM Sacramento PD: Bob West APD/MD: Trejo. Top 40 list including Changing Faces, G.H.E.T.T.O.U.T., Will Smith, Men In Black, Rome, I Belong To You.

POWER 92 KKFR Phoenix PD: Don Parker APD: Brian Douglas MD: Mikey Freeman. Top 40 list including Will Smith, Men In Black, The Notorious B.I.G., Mo Money Mo Problems.

KGGI Riverside PD: Diana Laird APD: Jesse Duran MC: Ricky Fuentes. Top 40 list including Will Smith, Men In Black, SWV, Can We.

Z90 XHTZ San Diego OM/PD: Lisa Vazquez MD: Dale Soliven. Top 40 list including The Notorious B.I.G., Missy "Misdemeanor" Elliott, The Rain.

KTFM San Antonio PD: Cliff Tredway MD: Steve Chavez. Top 40 list including Rome, I Belong To You, Spice Girls, 2 Become 1.

B95 KBOS Fresno PD: Mark Adams MD: Marcus D. Top 40 list including Rome, I Belong To You, Puff Daddy & Faith Evans Feat., I'll Be.

Z104 WNVZ Norfolk PD: Don London MD: Jay West. Top 40 list including Robyn, Do You Know What It Takes, Backstreet Boys, Out Playing Games.

KS107.5 KQKS Denver PD: Mark Feather MD: Lee Cagle. Top 40 list including 702, Get It Together, Rome, I Belong To You.

POWER 102 KPRR El Paso PD: John Candelaria. Top 40 list including Will Smith, Men In Black, Puff Daddy & Faith Evans Feat., I'll Be.



DEBUT 30 RHYTHMIC TOP 40 MONITOR!

"don't say"



the brand new single from

Produced by Jon John for Yab Yum Entertainment and Marc Nelson for Penthouse 21 Productions. Management: Gallin Agency Management.



SONG ACTIVITY REPORTS

For Week Ending July 27, 1997

98 DEGREES Invisible Man (Motown) Total Stations: 27 Chart Move: 13-13

701/64 BACKSTREET BOYS Qult Playing Games (With My Heart) (Jive) Total Stations: 31 Chart Move: 5-5

305/72 BLACKSTREET Fix (Interscope) Total Stations: 19 Chart Move: Debut 35

234/34 MARY J. BLIGE Everything (MCA) Total Stations: 11 Chart Move: Debut 35

284/21 FOXY BROWN FEAT. DRU HILL Big Bad Mamma (Def Jam/Mercury) Total Stations: 17 Chart Move: 40-38

920/66 CHANGING FACES G.H.E.T.T.O.U.T. (Big Beat/Atlantic) Total Stations: 30 Chart Move: 8-7

389/54 COOLIO FEAT. THE 40 THEVZ C U When U Get There (Tommy Boy) Total Stations: 15 Chart Move: 33-27

446/16 MISSY "MISDEMEANOR" ELLIOT The Rain (Supa Dupa Fly) (EastWest/EEG) Total Stations: 24 Chart Move: 23-22

554/32 GINUWINE When Doves Cry (550 Music) Total Stations: 27 Chart Move: 20-16

645/24 GOD'S PROPERTY Stomp (B-Rite/Interscope) Total Stations: 26 Chart Move: 14-15

315/43 ADINA HOWARD [Break] And U Know It (Mecca Doni/EastWest/EEG) Total Stations: 14 Chart Move: 38-33

699/193 INOJ Love You Down (So So Def/Columbia) Total Stations: 26 Chart Move: 21-14

317/69 JOE The Love Scene (Jive) Total Stations: 20 Chart Move: Debut 32

328/78 JON B. Don't Say (Yab Yum/550 Music) Total Stations: 21 Chart Move: Debut 30

276/68 DIANA KING I Say A Little Prayer (Work) Total Stations: 15 Chart Move: Debut 30

533/8 LAURNEA Can't Let Go (Yab Yum/Epic) Total Stations: 24 Chart Move: 19-17

208/17 LIL SUZY Can't Get You Out of Mind (Metropolitan) Total Stations: 25 Chart Move: 29-25

420/51 LIL' KIM Not Tonight (Undeas/Atlantic/Tommy Boy) Total Stations: 25 Chart Move: 29-25

307/94 MR. PRESIDENT Coco Jambo (Warner Bros.) Total Stations: 18 Chart Move: Debut 34

262/57 NASTYBOY KLICK FEAT. ROGER TROUTMAN Down For Yours (NastyBoy/GlassNote/Mercury) Total Stations: 15 Chart Move: Debut 34

432/43 NO MERCY When I Die (Arista) Total Stations: 16 Chart Move: 27-24

1160/156 THE NOTORIOUS B.I.G. (FEAT. PUFF DADDY & MASE) Mo Money Mo Problems (Bad Boy/Arista) Total Stations: 31 Chart Move: 4-4

235/73 NU FLAVOR Heaven (Reprise) Total Stations: 9 Chart Move: Debut 34

204/53 OMC How Bizarre (Huh!/Mercury) Total Stations: 13 Chart Move: Debut 34

1711/6 PUFF DADDY & FAITH EVANS (FEAT. 112) I'll Be Missing You (Bad Boy/Arista) Total Stations: 34 Chart Move: 2-2

786/8 ROBYN Do You Know (What It Takes) (RCA) Total Stations: 23 Chart Move: 9-10

283/37 SCARFACE FEAT. 2PAC & JOHNNY P Smile (Rap-A-Lot/Noo Trybe/Virgin) Total Stations: 16 Chart Move: Re-Entry 39

1902/69 WILL SMITH Men In Black (Columbia) Total Stations: 34 Chart Move: 1-1

793/76 SPICE GIRLS 2 Become 1 (Virgin) Total Stations: 28 Chart Move: 12-9

248/47 SWV (FEAT. PUFF DADDY) Someone (RCA) Total Stations: 19 Chart Move: 12-9





# VIRGIN'S RHYTHM METHOD

## LOS UMBRELLOS



The #1 requested record after 1 week on the air. Power Rotation after 2 weeks. The record stores won't leave us alone... don't wait like you did on "Macarena."

—Charles Chavez (APD/MD: KHYS)

A cross between "Macarena," Spice Girls and Shaggy. This record is already a power in San Antonio. Top 5 phones.

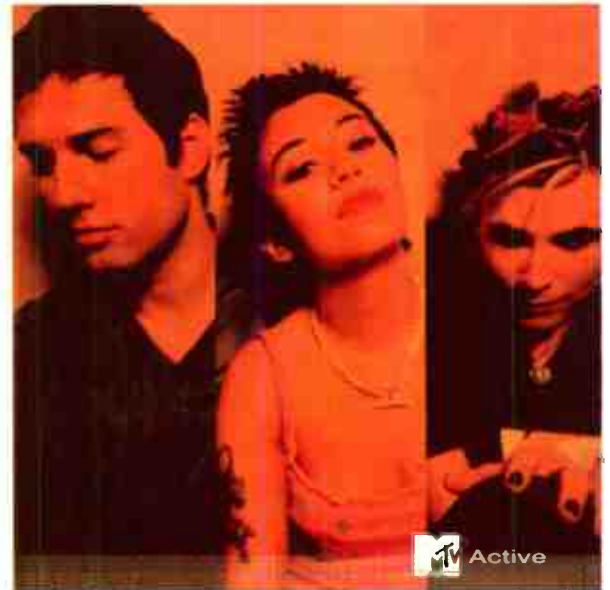
—Steve Chavez (MD: KTFM)

KHYS	70X	KPRR	46X	KBFM	23X
WPOW	31X	KTFM	35X	KZFM	38X
		KOHT	32X		



## "NO TENGO DINERO"

## SNEAKER PIMPS



8 Months Old and Still Building True Hits Don't Go Away!

7 Modern Rock Monitor

22 Modern AC Monitor  
\*\*\*AIRPOWER\*\*\*

Flawless Research!  
Sales of 120,000!  
Great Phones!

KIIS	KHTQ	WALC	KFMB	KLLC
WPTE	KKPN	STAR 98.7	WBMX	WSHE
Q106	WTMX	KAMX	KALC	KJ103

G105 and many more!



## "6 UNDERGROUND"

## "PIECE OF MY HEART"



You can quote me on this... one of the Top 5 songs of the Summer! —Wookie (PD: WOCQ)

Shaggy has the mass appeal sound that works well for WJMN. "Piece Of My Heart" is getting Top 5 phones after 2 weeks of airplay.

—Cat Collins (APD/MD: WJMN)

WJMN	40X	KBOS	15X
WWKX	Add/15X	WOCQ	12X
WJJS	15X	Groove Radio	Add

## SHAGGY



## "AROUND THE WORLD"



A club anthem that came from the mixshows and went straight to regular rotation. This song is a radio record, I don't care what my brother says. —Charles Chavez (APD/MD: KHYS)

A huge record in all the bay area clubs. Huge in the mixshows. This is something we are going to deal with.

—"Jazzy" Jim Archer (MD: KYLD)

WKTU	ADD	KPTY	61X
KHYS	55X	WPOW	
Groove Radio	50X		

2 Billboard Dance Chart

The Biggest Mix Show Record In The Country!

## DAFT PUNK



# SATISFACTION GUARANTEED

<http://www.virginrecords.com> AOL Keyword: Virgin Records

©1997 Virgin Records America, Inc.



POWER PLAYLISTS

AIRPLAY Monitor

For Week Ending July 27, 1997

Playlists supplied by Broadcast Data Systems' Radio Track service. Songs ranked by number of plays in monitored week. Playlists are listed in order of this weekly count, beginning with the highest-counting station. Counts are updated twice weekly following the release of the Spring and Fall Arbitron surveys. The number of stations shown each week varies depending upon space.

Table for HOT 97.5 (WHTA Atlanta) with columns for station, PD, MD, and a list of 30 songs with their TW and LW ratings.

Table for PHILLY 103.9 (WPHI Philadelphia) with columns for station, PD, MD, and a list of 30 songs with their TW and LW ratings.

Table for 92Q (WERQ Baltimore) with columns for station, PD, MD, and a list of 30 songs with their TW and LW ratings.

Table for Q93 (WQVE New Orleans) with columns for station, PD, MD, and a list of 30 songs with their TW and LW ratings.

Table for 102 JAMZ (WJHM Orlando) with columns for station, PD, MD, and a list of 30 songs with their TW and LW ratings.

Table for POWER 98 (WPEG Charlotte) with columns for station, PD, MD, and a list of 30 songs with their TW and LW ratings.

Table for 102 JAMZ (WJMH Greensboro) with columns for station, PD, MD, and a list of 30 songs with their TW and LW ratings.

Table for K97.5 (WQOK Raleigh) with columns for station, PD/MD, and a list of 30 songs with their TW and LW ratings.

Table for V100 (WKKV Milwaukee) with columns for station, PD, MD, and a list of 30 songs with their TW and LW ratings.

Table for THE WIZ (WIZF Cincinnati) with columns for station, PD/MD, and a list of 30 songs with their TW and LW ratings.

Table for 95.7 JAMZ (WBHJ Birmingham) with columns for station, PD, APD/MD, and a list of 30 songs with their TW and LW ratings.

Table for 107.3 JAMZ (WJMZ Greenville) with columns for station, PD, MD, and a list of 30 songs with their TW and LW ratings.



MYRON

"We Can Get Down"

OVER 700 DETECTIONS AUDIENCE 6.5 MILLION TOP 5 PHONES: WHRK WQVE WCHB WQOK WMNX (50) - (42) R&R U/C CHART

CROSSOVER IMPACT DATE AUGUST 4th & 5th

"Make room for Myron. He makes a strong and lingering first impression... R&B ears will dig the plush, old-school soul texture, rhythm-crossover minds will embrace the sing-along chorus... a steamy vocal without overselling the lyric - the mark of an artist with a smart interpretive approach. If his forthcoming debut album has at least one or two more jams as juicy as this... expect to be hearing lots of Myron in the coming months."

- Larry Flick, Billboard, June 21, 1997

Executive Producers: Hiram Hicks and Stanley Brown

Logos for THE BOX, ISLAND JAZZ MUSIC, and other branding, along with text: TOP 50 REQUESTS, Unity in the Community, just off the coast of PolyGram.

Monitor AIRPLAY SONG ACTIVITY REPORTS For Week Ending July 27, 1997



Detailed song tracking information for the last 4 weeks for all songs showing increased play this week. Total plays and gains do not include video play. Markets listed in order of population.

Total Plays/Gain

BACKSTREET BOYS 515/29 Quit Playing Games (With My Heart) (Jive) Total Stations: 17 Chart Move: 39-39

BLACKSTREET 746/144 Fix (Interstreet) Total Stations: 44 Chart Move: 30-25

MARY J. BLIGE 1267/107 I Can Love You (MCA) Total Stations: 39 Chart Move: 11-9

MARY J. BLIGE 801/111 Everything (MCA) Total Stations: 34 Chart Move: 27-20

FOXY BROWN FEAT. DRU HILL 941/115 Big Bad Mamma (Def Jam/Mercury) Total Stations: 46 Chart Move: 23-14

DRU HILL 1126/57 Never Make A Promise (Island) Total Stations: 44 Chart Move: 12-10

MISSY "MISDEMEANOR" ELLIOTT 1532/97 The Rain (Supa Dupa Fly) (EastWest/EEG) Total Stations: 51 Chart Move: 7-6

GINUWINE 616/121 I'll Do Anything/I'm Sorry (550 Music/Epic) Total Stations: 25 Chart Move: 37-30

INOJ 610/173 Love You Down (So So Def/Columbia) Total Stations: 24 Chart Move: Debut 31

WYCLEF JEAN FEAT. REFUGEE ALLSTARS 585/38 We Tryin' To Stay Alive (Ruffhouse/Columbia) Total Stations: 44 Chart Move: 33-33

JOE 617/105 The Love Scene (Jive) Total Stations: 37 Chart Move: 35-29

R. KELLY 681/13 Gotham City (Jive) Total Stations: 35 Chart Move: 28-28

LAURNEA 583/6 Can't Let Go (Yab Yum/Epic) Total Stations: 32 Chart Move: 31-35

LIL' KIM 1436/144 Not Tonight (Undeas/Tommy Boy/Anti) Total Stations: 52 Chart Move: 8-8

MAGOO AND TIMBALAND 599/96 Up Jumps Da Boogie (Blackground/Anti) Total Stations: 29 Chart Move: 36-32

THE NOTORIOUS B.I.G. (FEAT. PUFF DADDY & MASE) 2102/170 Mo Money Mo Problems (Bad Boy/Arista) Total Stations: 52 Chart Move: 3-3

PUFF DADDY & THE FAMILY 872/90 It's All About The Benjamins (Bad Boy/Arista) Total Stations: 42 Chart Move: 25-19

WILL SMITH 2202/129 Men In Black (Columbia) Total Stations: 51 Chart Move: 2-2

SWV (FEAT. PUFF DADDY) 923/43 Someone (RCA) Total Stations: 47 Chart Move: 18-16

USHER 520/221 You Make Me Wanna... (LaFace/Arista) Total Stations: 32 Chart Move: Debut 38





ADULT TOP 40

10,000 MANIACS 1185/142

Table with columns: Station, Song, Weeks on Chart, Peak Position, and Total Plays/Gain. Includes stations like WHI, WDBZ, WPLJ, etc.

MEREDITH BROOKS 1144/17

Table with columns: Station, Song, Weeks on Chart, Peak Position, and Total Plays/Gain. Includes stations like WHI, WDBZ, WPLJ, etc.

PAULA COLE 778/215

Table with columns: Station, Song, Weeks on Chart, Peak Position, and Total Plays/Gain. Includes stations like WHI, WDBZ, WPLJ, etc.

AZ YET FEAT. PETER CETERA 464/15

Table with columns: Station, Song, Weeks on Chart, Peak Position, and Total Plays/Gain. Includes stations like WHI, WDBZ, WPLJ, etc.

BACKSTREET BOYS 324/109

Table with columns: Station, Song, Weeks on Chart, Peak Position, and Total Plays/Gain. Includes stations like WHI, WDBZ, WPLJ, etc.

JEWEL 1202/295

Table with columns: Station, Song, Weeks on Chart, Peak Position, and Total Plays/Gain. Includes stations like WHI, WDBZ, WPLJ, etc.

MATCHBOX 20 780/121

Table with columns: Station, Song, Weeks on Chart, Peak Position, and Total Plays/Gain. Includes stations like WHI, WDBZ, WPLJ, etc.

SARAH McLACHLAN 823/177

Table with columns: Station, Song, Weeks on Chart, Peak Position, and Total Plays/Gain. Includes stations like WHI, WDBZ, WPLJ, etc.

PAUL CARRACK 648/36

Table with columns: Station, Song, Weeks on Chart, Peak Position, and Total Plays/Gain. Includes stations like WHI, WDBZ, WPLJ, etc.

PETER CETERA 639/6

Table with columns: Station, Song, Weeks on Chart, Peak Position, and Total Plays/Gain. Includes stations like WHI, WDBZ, WPLJ, etc.

OMC 1628/48

Table with columns: Station, Song, Weeks on Chart, Peak Position, and Total Plays/Gain. Includes stations like WHI, WDBZ, WPLJ, etc.

SISTER HAZEL 2357/79

Table with columns: Station, Song, Weeks on Chart, Peak Position, and Total Plays/Gain. Includes stations like WHI, WDBZ, WPLJ, etc.

THIRD EYE BLIND 1942/107

Table with columns: Station, Song, Weeks on Chart, Peak Position, and Total Plays/Gain. Includes stations like WHI, WDBZ, WPLJ, etc.

NATALIE COLE 536/46

Table with columns: Station, Song, Weeks on Chart, Peak Position, and Total Plays/Gain. Includes stations like WHI, WDBZ, WPLJ, etc.

BILLY JOEL 292/173

Table with columns: Station, Song, Weeks on Chart, Peak Position, and Total Plays/Gain. Includes stations like WHI, WDBZ, WPLJ, etc.

TONIC 883/143

Table with columns: Station, Song, Weeks on Chart, Peak Position, and Total Plays/Gain. Includes stations like WHI, WDBZ, WPLJ, etc.

THE VERVE PIPE 1713/30

Table with columns: Station, Song, Weeks on Chart, Peak Position, and Total Plays/Gain. Includes stations like WHI, WDBZ, WPLJ, etc.

THE WALLFLOWERS 787/127

Table with columns: Station, Song, Weeks on Chart, Peak Position, and Total Plays/Gain. Includes stations like WHI, WDBZ, WPLJ, etc.

KENNY LOGGINS 242/50

Table with columns: Station, Song, Weeks on Chart, Peak Position, and Total Plays/Gain. Includes stations like WHI, WDBZ, WPLJ, etc.

LEANN RIMES 561/101

Table with columns: Station, Song, Weeks on Chart, Peak Position, and Total Plays/Gain. Includes stations like WHI, WDBZ, WPLJ, etc.

BDS IMPACT

AIRPOWER (Minimum 400 detections for the first time) NO RECORDS QUALIFIED FOR AIRPOWER THIS WEEK

AIRPOWER BOUND

BACKSTREET BOYS 324/109 Quit Playing Games (With My Heart) (Jive)
BILLY JOEL 292/173 To Make You Feel My Love (Columbia)
KENNY LOGGINS 242/50 I Am Not Hiding (Columbia)

Savage Garden 188/-2 I Want You (Columbia)
Sister Hazel 186/23 All For You (Universal)
Amy Grant 173/84 Takes A Little Time (A&M)
Michael Lington 87/24 Tell It Like It Is (NuGroove)
R. Kelly 77/23 Gotham City (Jive)
Spice Girls 73/6 2 Become 1 (Virgin)

CHART BOUND

THE WALLFLOWERS 202/6 One Headlight (Interscope)
Jewel 189/107 Foolish Games (Atlantic)

MOST NEW AIRPLAY THIS WEEK

Billy Joel 11 To Make You Feel My Love (Columbia)
Amy Grant 6 Takes A Little Time (A&M)
Backstreet Boys 4 Quit Playing Games (With My Heart) (Jive)
Jewel 4 Foolish Games (Atlantic)
10,000 Maniacs 71/2 More Than This (Geffen)
Night Ranger 65/-2 Forever All Over Again (Legacy/Columbia)
Celine Dion 64/3 To Love You More (Sony International)
K.D. Lang 57/4 The Joker (Warner Bros.)
Styx 57/22 Paradise (CMC International)
Fleetwood Mac 52/50 Silver Springs (Reprise)

Table with columns: THIS WEEK, LAST WEEK, WEEKS ON, TITLE/LABEL/PROMOTION LABEL, ARTIST, TW, LW. Contains chart data for various songs and artists.

Records showing an increase in detections over the previous week, regardless of chart movement. A record which has been on the chart for more than 20 weeks will not receive a bullet, even if it registers an increase in detections.

ADULT CONTEMPORARY POWER PLAYLISTS

Grid of 12 radio station playlists including 106.7 LITE FM, KOST, KBIG, 93.9 LITE FM, B101, KVIL, K101, SOFT ROCK 97.1, WDOK, SOFT ROCK 102.5, WLTE, and WALK. Each station lists top 20 songs and artists.

Airpower awarded to those records which attain 400 detections for the first time. New airplay lists those stations recording six or more detections per week on a record for the first time.





POWER PLAYLISTS

THE BUZZ

Table with columns: Station (WDBZ), PD (Steve Weed), APD/MD (Linda Silver), and song list with TW and LW columns.

STAR 98.7

Table with columns: Station (KYSR), PD (Angela Perelli), APD/MD (Chris Ebbott), and song list with TW and LW columns.

MIX 101.9

Table with columns: Station (WTMX), VP/Pgm (Barry James), APD/MD (Jaime Kartak), and song list with TW and LW columns.

MIX 98.5

Table with columns: Station (WBXM), PD (Greg Strassell), MD (Michelle Buczynski), and song list with TW and LW columns.

THE PLANET

Table with columns: Station (WPLT), PD (Garett Michaels), APD/MD (Alex Tear), and song list with TW and LW columns.

ALICE 97.3

Table with columns: Station (KLLC), PD (Louis Kaplan), MD (Julie Stoeckel), and song list with TW and LW columns.

MIX 102.9

Table with columns: Station (KDMX), APD (Kim Ashley), MD (Lisa Thomas), and song list with TW and LW columns.

96.5 TIC

Table with columns: Station (WTIC), OM (Steve Salhany), MD (David Simpson), and song list with TW and LW columns.

ALICE 104

Table with columns: Station (WALC), PD (Bob Davis), APD/MD (Tommy Mattern), and song list with TW and LW columns.

THE PLANET

Table with columns: Station (WPLL), PD/MD (Dave Stewart), and song list with TW and LW columns.

KZZP

Table with columns: Station (KZZP), PD (Dan Persigehl), MD (Dave Cooper), and song list with TW and LW columns.

STAR 100.7

Table with columns: Station (KFMB), OM/PP (Tracy Johnson), MD (Greg Simms), and song list with TW and LW columns.

THE LINK

Table with columns: Station (WLNK), PD (Stacy Cantrell), APD (Josh Goodman), and song list with TW and LW columns.

THE POINT

Table with columns: Station (WHPY), PD (Chuck Beck), MD (Chris Taylor), and song list with TW and LW columns.

THE RIVER

Table with columns: Station (WVRY), PD (Scott Strong), MD (Mike Richter), and song list with TW and LW columns.

Main chart table with columns: THIS WEEK, LAST WEEK, WKS ON CHART, TITLE/LABEL/PROMOTION LABEL, ARTIST, TW, LW, and DETECTIONS.

Records showing an increase in detections over the previous week, regardless of chart movement. A record which has been on the chart for more than 20 weeks will not receive a bullet, even if it registers an increase in detections.





**HOW AC RADIO  
JUMP STARTS  
THE WEEKENDS...**

**...AND DOZENS MORE AIR**

**weekend  
morning**

with Jim Brickman  
& Valerie Smaldone

For more information  
call Radio Today at  
(212) 581-3962



abc **ABC RADIO NETWORKS**

Compiled from a national sample of airplay reported by Broadcast Data Systems' Radio Traxx service to Top 40 Airplay Monitor. All Top 40 detections and 24 highest Top 40 stations are electronically monitored 24 hours a day, 7 days a week. Songs are ranked by number of detections. © 1997, Broadcast Data Systems

THIS WEEK	LAST WEEK	WKS. ON CHART	MAINSTREAM		
			TITLE/LABEL/PROMOTION LABEL	ARTIST	DETECTIONS TW LW
			<b>★ ★ ★ No. 1 ★ ★ ★</b>		
1	1	13	<b>BITCH</b> CAPITOL <small>4 weeks at No. 1</small>	MEREDITH BROOKS	3936 4039
2	2	18	HOW BIZARRE HUH!/MERCURY	OMC	3814 3711
3	4	12	SEMI-CHARMED LIFE ELEKTRA/VEG	THIRD EYE BLIND	3602 3425
4	3	13	DO YOU KNOW (WHAT IT TAKES) RCA	ROBYN	3560 3610
5	5	10	QUIT PLAYING GAMES (WITH MY HEART) JIVE	BACKSTREET BOYS	3422 3375
6	11	7	MEN IN BLACK COLUMBIA	WILL SMITH	3171 2794
7	6	18	RETURN OF THE MACK ATLANTIC	MARK MORRISON	3161 3224
8	7	19	SUNNY CAME HOME COLUMBIA	SHAWN COLVIN	3103 3211
9	12	5	2 BECOME 1 VIRGIN	SPICE GIRLS	3046 2694
10	9	14	ALL FOR YOU UNIVERSAL	SISTER HAZEL	3035 2884
11	8	15	THE FRESHMEN RCA	THE VERVE PIPE	2927 3114
12	16	3	WHERE'S THE LOVE MERCURY	HANSON	2785 2271
13	18	6	I'LL BE MISSING YOU BAD BOY/ARISTA <small>PUFF DADDY &amp; FAITH EVANS (FEATURING 112)</small>		2403 2107
14	13	26	ONE HEADLIGHT INTERSCOPE	THE WALLFLOWERS	2317 2439
15	10	18	MMMBOP MERCURY	HANSON	2278 2835
16	14	19	SAY YOU'LL BE THERE VIRGIN	SPICE GIRLS	2145 2395
17	15	17	HARD TO SAY I'M SORRY LAFACE/ARISTA <small>AZ YET FEATURING PETER CETERA</small>		2142 2295
18	19	10	A CHANGE WOULD DO YOU GOOD A&M	SHERYL CROW	1972 2035
19	17	25	I WANT YOU COLUMBIA	SAVAGE GARDEN	1898 2119
20	20	20	YOUR WOMAN BRILLIANT/CHRYSALIS/EMI	WHITE TOWN	1708 1884
			<b>★ ★ ★ AIRPOWER ★ ★ ★</b>		
21	27	4	PUSH LAVA/ATLANTIC	MATCHBOX 20	1663 1375
22	23	7	CRASH INTO ME RCA	DAVE MATTHEWS BAND	1620 1552
			<b>★ ★ ★ AIRPOWER ★ ★ ★</b>		
23	34	2	FOOLISH GAMES ATLANTIC	JEWEL	1616 1103
			<b>★ ★ ★ AIRPOWER ★ ★ ★</b>		
24	26	6	MORE THAN THIS GEFREN	10,000 MANIACS	1562 1375
			<b>★ ★ ★ AIRPOWER ★ ★ ★</b>		
25	29	4	COCO JAMBOO WARNER BROS.	MR. PRESIDENT	1514 1254
			<b>★ ★ ★ AIRPOWER ★ ★ ★</b>		
26	25	8	TO THE MOON AND BACK COLUMBIA	SAVAGE GARDEN	1502 1399
27	21	7	GOATHAM CITY JIVE	R. KELLY	1376 1603
28	33	3	THE DIFFERENCE INTERSCOPE	THE WALLFLOWERS	1374 1123
29	24	23	FOR YOU I WILL ROWDY/WARNER SUNSET/ATLANTIC	MONICA	1326 1471
30	36	3	INVISIBLE MAN MOTOWN	98 DEGREES	1313 1028
31	37	2	IF YOU COULD ONLY SEE POLYDOR/A&M	TONIC	1158 1024
32	30	24	WHERE HAVE ALL THE COWBOYS GONE? IMAGO/WARNER BROS.	PAULA COLE	1129 1251
33	32	7	RHYTHM OF LOVE CRAVE	DJ COMPANY	1129 1191
34	22	10	WHATEVER EASTWEST/VEG	EN VOGUE	1118 1578
35	38	14	I WANNA BE THERE CAPITOL	BLESSID UNION OF SOULS	1103 1002
36	31	17	DON'T LEAVE ME INTERSCOPE	BLACKSTREET	1085 1231
37	35	8	HOW COME, HOW LONG EPIC	BABYFACE	921 1029
38	28	10	GIMME SOME LOVE ETERNAL/WARNER BROS.	GINA G	863 1334
39	<b>NEW</b>		I DON'T WANT TO WAIT IMAGO/WARNER BROS.	PAULA COLE	788 594
40	40	2	WHEN I DIE ARISTA	NO MERCY	774 823

THIS WEEK	LAST WEEK	WKS. ON CHART	RHYTHMIC TOP 40		
			TITLE/LABEL/PROMOTION LABEL	ARTIST	DETECTIONS TW LW
			<b>★ ★ ★ No. 1 ★ ★ ★</b>		
1	1	8	<b>MEN IN BLACK</b> COLUMBIA <small>2 weeks at No. 1</small>	WILL SMITH	1902 1833
2	2	11	I'LL BE MISSING YOU BAD BOY/ARISTA <small>PUFF DADDY &amp; FAITH EVANS (FEATURING 112)</small>		1711 1705
3	3	15	I BELONG TO YOU (EVERY TIME I SEE YOUR FACE) GRAND JURY/RCA	ROME	1311 1322
4	4	12	MO MONEY MO PROBLEMS BAD BOY/ARISTA <small>THE NOTORIOUS B.I.G. (FEAT. PUFF DADDY &amp; MASE)</small>		1160 1004
5	5	10	QUIT PLAYING GAMES (WITH MY HEART) JIVE	BACKSTREET BOYS	1015 981
6	6	27	RETURN OF THE MACK ATLANTIC	MARK MORRISON	983 960
7	8	11	G.H.E.T.T.O.U.T. BIG BEAT/ATLANTIC	CHANGING FACES	920 854
8	7	10	WHATEVER EASTWEST/VEG	EN VOGUE	807 895
9	12	3	2 BECOME 1 VIRGIN	SPICE GIRLS	793 717
10	9	13	DO YOU KNOW (WHAT IT TAKES) RCA	ROBYN	786 778
11	11	16	CUPID BAD BOY/ARISTA	112	730 767
12	10	26	DON'T LEAVE ME INTERSCOPE	BLACKSTREET	707 773
13	13	5	INVISIBLE MAN MOTOWN	98 DEGREES	701 637
			<b>★ ★ ★ AIRPOWER ★ ★ ★</b>		
14	21	3	LOVE YOU DOWN SO SO DEF/COLUMBIA	INOJ	699 506
15	14	7	STOMP B-RITE/INTERSCOPE	GOD'S PROPERTY	645 621
16	20	3	WHEN DOVES CRY 550 MUSIC	GINUWINE	554 522
17	19	8	CAN'T LET GO YAB YUM/EPIC	LAURNEA	533 525
18	15	17	SAY YOU'LL BE THERE VIRGIN	SPICE GIRLS	498 591
19	17	19	SWEET SEXY THING REPRISE <small>NU FLAVOR FEATURING ROGER</small>		478 548
20	16	23	CAN WE JIVE	SWV	466 554
21	22	22	HYPNOTIZE BAD BOY/ARISTA	THE NOTORIOUS B.I.G.	458 490
22	23	5	THE RAIN (SUPA DUPA FLY) EASTWEST/VEG <small>MISSY "MISDEMEANOR" ELLIOTT</small>		446 430
23	18	9	LOOK INTO MY EYES RUTHLESS/RELATIVITY <small>BONE THUGS-N-HARMONY</small>		435 528
24	27	4	WHEN I DIE ARISTA	NO MERCY	432 389
25	29	5	NOT TONIGHT UNDEAS/ATLANTIC/TOMMY BOY <small>UL' KIM FEAT. DA BRAT, LEFT EYE, MISSY ELLIOTT AND ANGIE MARTINEZ</small>		420 369
26	24	8	SUMMERTIME SUMMERTIME SO SO DEF/COLUMBIA	CORINA	394 428
27	33	2	C U WHEN U GET THERE TOMMY BOY <small>COOLIO FEATURING 40 THEVZ</small>		389 335
28	30	7	TIDE IS HIGH UPSTAIRS	ANGELINA	368 359
29	25	7	GOATHAM CITY JIVE	R. KELLY	362 408
30	<b>NEW</b>		DON'T SAY YAB YUM/550 MUSIC	JON B.	328 250
31	26	12	MMMBOP MERCURY	HANSON	327 399
32	<b>NEW</b>		THE LOVE SCENE JIVE	JOE	317 248
33	38	2	[FREAK] AND U KNOW IT MECCA DON/EASTWEST/VEG	ADINA HOWARD	315 272
34	<b>NEW</b>		COCO JAMBOO WARNER BROS.	MR. PRESIDENT	307 213
35	<b>NEW</b>		FIX INTERSCOPE <small>BLACKSTREET WITH SPECIAL GUESTS OL' DIRTY BASTARD &amp; SLASH</small>		305 233
36	34	4	YOU BRING ME UP MCA	K-CI & JOJO	304 329
37	28	23	GET IT TOGETHER BIV IQ/MOTOWN	702	285 383
38	40	2	BIG BAD MAMMA DEF JAM/MERCURY <small>FOXY BROWN FEATURING DRU HILL</small>		284 263
39	<b>RE-ENTRY</b>		SMILE NOO TRYBE/RAP-A-LOT/VIRGIN <small>SCARFACE FEATURING 2PAC &amp; JOHNNY P</small>		283 246
40	32	9	SERENADE MOTOWN	SHADES	279 345

Records showing an increase in detections over the previous week, regardless of chart movement. A record which has been on either chart for more than 20 weeks will not receive a bullet, even if it registers an increase in detections. Airpower awarded to those records which attain 1500 detections (mainstream) or 600 detections (rhythm) for the first time. If two records are tied in number of plays, the record being played on more stations is placed first. Records below the top 20 are removed from the chart after 26 weeks.

YOU SHOULDN'T HAVE TO WAIT EITHER.

"I DON'T WANT TO WAIT" Paula Cole

DEBUT (39)  
TOP 40 MAINSTREAM MONITOR  
#4 MOST NEW AIRPLAY  
#11 GREATEST GAINER

(25) - (23)  
TOP 40 ADULT MONITOR  
★★★★AIRPOWER★★★★  
#1 MOST NEW AIRPLAY  
#2 GREATEST GAINER

