

TOP 40 ■ AIRPLAY Monitor

• We Listen To Radio •

May 3, 1996 \$ 4.95 Volume 4 • No. 19

TOP 40 HIGHLIGHTS

MAINSTREAM

#1

ALANIS MORISSETTE

(IRONIC MAVERICK/REPRISE)

★★★ AIRPOWER ★★★

LA BOUCHE • Sweet Dreams (RCA)
COLOR ME BADD • The Earth, The Sun, The Rain (GIANT)
GEORGE MICHAEL • Fastlove (DREAMWORKS/GEFFEN)
JANN ARDEN • Insensitive (A&M)

NEW RELEASES

COOLIO WITH LAKESIDE • All The Way Live (TOMMY BOY/HOLLYWOOD/ISLAND)
EVERYTHING BUT THE GIRL • Wrong (ATLANTIC)
SPIN DOCTORS • She Used To Be Mine (EPIC)

RHYTHM-CROSSOVER

#1

FUGEES

Killing Me Softly (RUFFHOUSE/COLUMBIA)

★★★ AIRPOWER ★★★

NO RECORDS QUALIFIED FOR AIRPOWER THIS WEEK

NEW RELEASES

COOLIO WITH LAKESIDE • All The Way Live (TOMMY BOY/HOLLYWOOD/ISLAND)
EVERYTHING BUT THE GIRL • Wrong (ATLANTIC)
LIL SUZY • When I Fall In Love (METROPOLITAN)

ADULT TOP 40

#1

CELINE DION

Because You Loved Me (550 MUSIC)

★★★ AIRPOWER ★★★

NO RECORDS QUALIFIED FOR AIRPOWER THIS WEEK

ADULT CONTEMPORARY

#1

CELINE DION

Because You Loved Me (550 MUSIC)

★★★ AIRPOWER ★★★

NO RECORDS QUALIFIED FOR AIRPOWER THIS WEEK

NEW RELEASES

EVERYTHING BUT THE GIRL • Wrong (ATLANTIC)
SPIN DOCTORS • She Used To Be Mine (EPIC)

Top 40 Has Biggest Gain, Best-Ever Performance In Power Ratio Study

by Marc Schiffman

The massive defections in top 40 radio during the '90s may not be good news for the format, but they're good news for the stations that stayed with top 40, according to this year's study of the various formats' earning power.

Top 40's growth outpaced that of all other formats in the 1995 "Power Ratios" format study from the North Hollywood, Calif.-based accounting firm of Miller, Kaplan, Arase & Co., which compares revenues to ratings shares.

Top 40's 1.18 showing, up from 1.09 last year, was the best the format had done in the 10 years in which the study has been conducted, placing top 40 eighth overall.

Power ratios are an indication of a format's earning power. If a single rating point is worth \$1 million in a given market, then a top 40 station's 1.18 power ratio number means that the average top 40 station could be expected to earn \$1.18 million for that

1 share.

Miller, Kaplan partner George Nadel Rivin attributes the format's increased strength to its more adult focus of recent years and its market exclusivity in many cases. He says, "Top 40 has reinvented itself from the rap-dominated [format] it became during the late '80s and early '90s. A lot of top 40 stations fell by the wayside during the early '90s, and so the stronger top 40s are the ones that are still there."

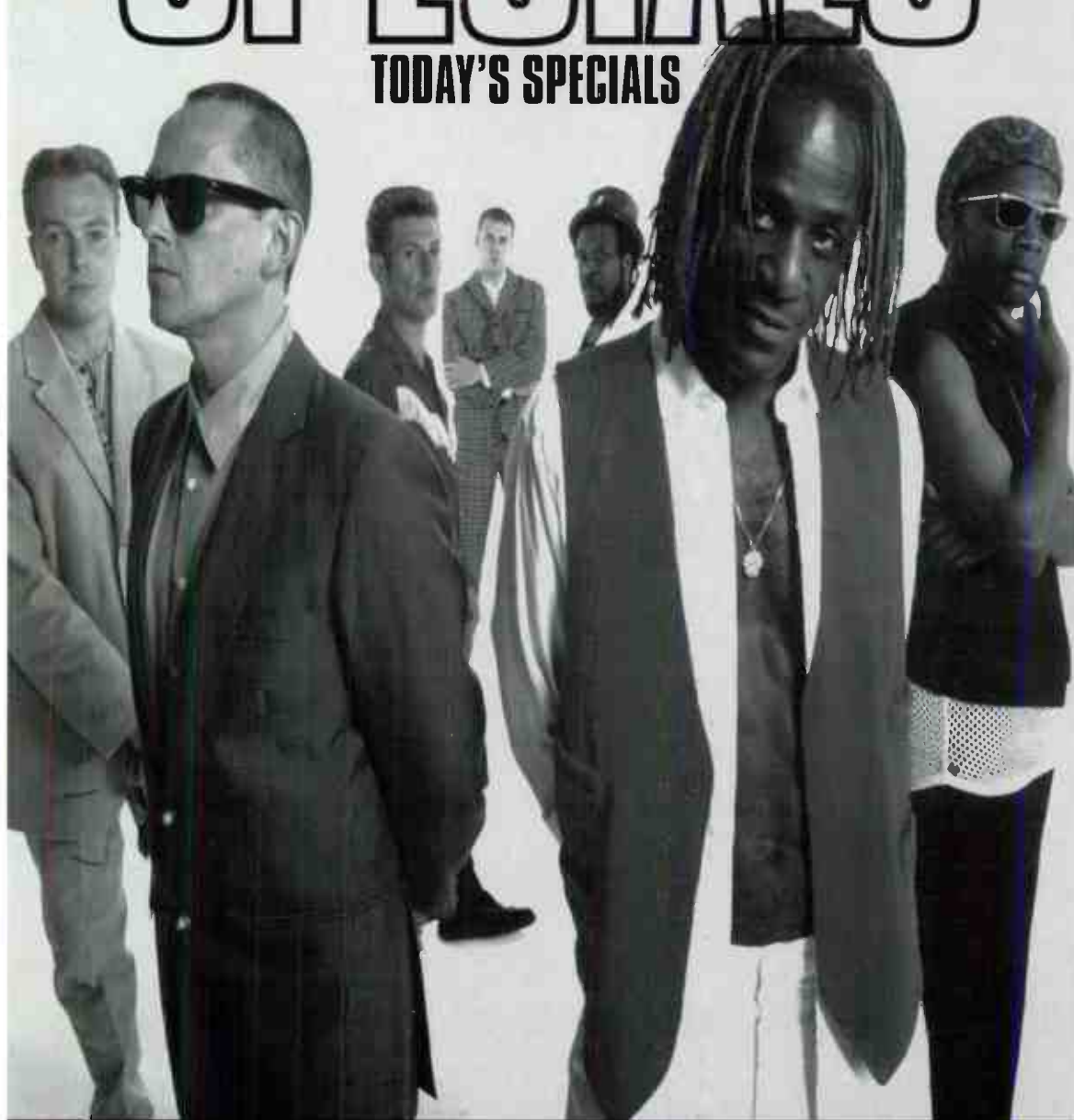
That pattern—more market exclusivity equals more dollars—means that more than one "declining" format was up this year, and vice versa. Country, despite its relative ratings strength, has fallen from 1.49 in 1988, when it led the power ratios, to 1.30 in 1994 and 1.24 in the 1995 study. Album rock, however, was up from 1.04 in 1986 to 1.33 this year. AC, despite its widely publicized problems, remained the No. 1 format, going 1.48-1.49.

In addition to power ratios, Miller, Kaplan includes information on the

Continued on page 6

THE SPECIALS

TODAY'S SPECIALS



the new album featuring

"A Little Bit Me, A Little Bit You"



"A Little Bit Me, A Little Bit You" produced by Neville Staple/Tom Lowry

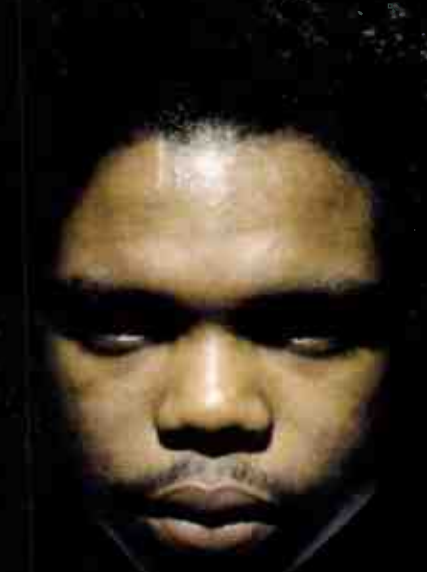
©1996 Kuff Records, Ltd.

SEE YA AT "THA CROSSROADS"

GOING FOR ADDS AT TOP 40 MAINSTREAM RADIO ON 4/29
 (9) - (5) MONITOR TOP 40 RHYTHM-CROSSOVER CHART

BONE

thugs-n-harmony



C R O S S
 R
 A
 D
 S

WPGC
 KBXX
 KMEL
 KYLD
 KPWR
 WWKX
 WJJS
 WHHH
 WJMH
 KKSS
 KPRR
 KTFM
 KDON
 KZHT
 XHTZ

HEAR IT:

WASHINGTON, D.C. 59
 HOUSTON 67
 SAN FRANCISCO 45
 SAN FRANCISCO 56
 LOS ANGELES 47 (+10 SPINS)
 PROVIDENCE 90
 ROANOKE 36 (+10 SPINS)
 INDIANAPOLIS 56
 GREENSBORO 71
 ALBUQUERQUE 49
 EL PASO 58
 SAN ANTONIO 40
 MONTEREY 60 (+37 SPINS)
 SALT LAKE CITY 42 (+17 SPINS)
 SAN DIEGO 44

*KGGI SAN BERNARDINO + 14 SPINS
 *KQKS DENVER + 14 SPINS

RANK #1
 RANK #1
 RANK #6
 RANK #8
 RANK #6
 RANK #3
 RANK #13
 RANK #1
 RANK #2
 RANK #6
 RANK #5
 RANK #9
 RANK #13
 RANK #12
 RANK #1

SEE IT:



Peake Reaches Summit As KRBE PD

John Peake, PD of Jefferson-Pilot's KWMX (Mix 107.5) Denver, exits after three years to accept the PD post at Susquehanna's modern rock-leaning top 40 KRBE Houston.

Peake is the replacement for Tom Poleman, who was recently named PD of WHTZ (ZI 00) New York. Peake, who previously programmed

KRQQ Tucson, Ariz. and the late WAPI Birmingham, Ala., will begin his duties May 6.

Programmers interested in filling Peake's Denver position should contact KWMX VP/GM Bob Call or Jefferson-Pilot VP of programming Don Benson at WSTR (Star 94) Atlanta. **KEVIN CARTER**

Uncle Sam Takes Field Trip To Turkish Prison



WPXY Rochester, N.Y., spent April 15 playing "Beat The Taxman." Listeners won lottery tickets after beating the bejesus out of some poor intern dressed as Uncle Sam. Shown, from left, are "Uncle Sam," frustrated listener, and morning guy Scott Spezzano.



RADIOACTIVE BY KEVIN CARTER

Live On Hard Drive From Four States Away

At Pilot's WMME (92 Moose) Augusta, Maine, every shift but mornings and evenings is now on hard-drive automation. Same goes for every shift but mornings and afternoons on country sister WEBB. That's not unusual today, but WMME and WEBB's automated programming is coming out of sister stations WAQX/WNTQ (93Q) Syracuse, N.Y., and being downloaded to the stations four states away via digital ISDN lines. Various WAQX and 93Q jocks fill the shifts on the two Augusta stations.

After long speculation, Evergreen Media, owners of KMEL/KIOI San Francisco, buys KMEL's top 40/rhythm rival KYLD for \$44 million and will LMA it by the time you read this. Meanwhile, KYLD was hit with what was called a 5(b) note for ratings bias (a page 13 note in the new winter Arbitron book). Arbitron says Wild's morning team said Feb. 1, "We have gone No. 1... and because you guys marked us down, we beat [a competitor] straight across the board in the morning." Also, AC KKBH (the Beach) San Diego was flagged for saying on-air, "Always bright and sunny at the Beach, the home of San Diego's easy listening favorites—KKBH, the Beach, if you need to tell somebody about it."

Elsewhere in San Diego, KIOZ/KKLQ (Q106) OM Al Peterson resigns to restart Peterson Media consultancy. KKLQ will hire a PD to replace him. Across town, longtime KFMB-AM-FM GM Paul Palmer returns to radio as GM of Nationwide's pending acquisition, classical KFSD.

Heritage top 40 WHHY-FM Montgomery, Ala., flipped to country after 27 years. The format went away noon, April 26; then a countdown clock ticked until 7:15 a.m., April 30, when new PD/morning DJ Darlene Dixon kicked off 10,000 songs in a row. WHHY-AM, which was simulcasting the FM, is now on the bird with ABC Pure Gold. Scott Hamilton remains OM.

KQKS (KS104) Denver names Cindy Rose PD and ups board-op Alex Jordann to APD. The station is still jockless. Rose will commute from her home in Columbus, Ohio.

As expected, Jerry Clifford's top 40/rock KBZR (the Blaze) Phoenix flipped to a rhythmic format and is playing old-school music. Observers have heard sweepers in Clifford's voice, including "We've landed in the desert; where are you, Steve?"—an apparent reference to Steve Smith, consultant of rival KKFR (Power 92).

Album WTAO Carbondale, Ill., PD Tony Waitkus returns to top 40 as PD of WHTS (All Hit 98.9) Davenport, Iowa, replacing Chuck O'Brien, now PD of oldies sister KUUL.

What's up with the Baka Boyz? Eric and Nick Vidal went AWOL from their top five morning show at KPWR (Power 106) Los Angeles last week. The brothers later made an in-studio appearance with Riki Rachtman at cross-town talker KLSX April 26 and took calls from fans but offered no specifics about their departure. Emmis VP of programming Rick Cummings says he hopes the two sides can work things out amicably. The Boyz recently taped a TV pilot for Warner Bros. All this happens the same week as the station's 10th anniversary Powerhouse concert, featuring an artist from each of the 10 years of Power 106, including Lisa

Lisa, Stevie B., Sweet Sensation, Frost, Candyman, Technotronic, Masta Ace, House Of Pain, Coolio, and Artie The One-Man Party.

Speaking of mega-shows, WXKS-FM Boston presents Kiss Concert 17, June 1. Here's the lineup: Bryan Adams, All-4-One, Tina Arena, Bass Is Base, Blessid Union Of Souls, Bo-Deans, Color Me Badd, Harry Connick Jr., Deborah Cox, Deep Blue Something, Gloria Estefan, Melissa Etheridge, Sophie B. Hawkins, Jars Of Clay, Lenny Kravitz, La Bouche, Lisa Loeb, Billy Mann, Ziggy Marley & the Melody Makers, Joan Osborne, CeCe Peniston, the Tony Rich Project, and Seal.

WQSL Wilmington, N.C., hires Mike Steinhilper as GM, replacing Bill Hennes... WQBE Charleston, W.Va., GM John Gush adds GM duties for new top 40 duopoly partner WVSR.

Jack Da Wack's long-pending Ocean City, Md., station, WZSK (the Shark, 103.5), which will be top 40/rhythm, hits the air May 6 or 13, depending on when its tower is finished. Mr. Da Wack will do mornings with his former morning partner from the market's late WKHI, Michael O'Brien, who will be APD/MD and do afternoons through hard-drive. KKBH Los Angeles overnights. Jesse Collins will do nights on hard-drive from L.A.

In its apparent quest to own every FM in New Jersey, Nassau Broadcasting adds country/AC/AC combo WJLK-AM-FM/WQNJ Monmouth/Ocean, N.J. Other sales: WMEE Fort Wayne, Ind., and country sister WQHK pick up two more duop partners in separate deals—album WBYY and classic hits WFWL. Also, P/T Mark Stevens moves to nights at WMEE.

AC KOST L.A. has dropped the slogan "Today's hits, yesterday's favorites" as the result of a court ruling giving slogan rights to rival KBIG.

WDJX Louisville, Ky., MD Jill Meyer exits after nearly 20 years there... KHTQ Spokane, Wash., inks Kit Mann from KRBL Albuquerque, N.M., and Tripp Rogers from crosstown KEZE for mornings.

KLRZ New Orleans loses night jock Hooter McMillan to country WHMD in Hammond, La. P/T Jimmy Jamm is upped to nights. Ron Nauquin (ex-crosstown WTIK-FM) is aboard for overnights, replacing Speed Racer. KLRZ still needs middays.

WYXR (Star 104.5) Philadelphia P/T Craig Allen moves to overnights, replacing Jerry Ahear, who goes into TV.

WJBT (the Beat) Jacksonville, Fla., board-op Jose DeLaRosa, out of the hospital after being shot several weeks ago, is doing a weekend mix show for the Beat under the name Jose DeLaSoul. Also, Randy Clark from sister WHJX (now WSOL-FM) joins in the morning team.

WDDJ Paducah, Ky., PD "Rockin'" Rod Phillips goes to WKSZ Green Bay, Wis., for mornings, replacing Keith Kelly... WWSN Charlotte, N.C., night jock Ron Riley crosses to AC WLYT for afternoons.

Following the Stone Temple Pilots recent press conference on lead singer Scott Weiland's alleged drug abuse, WKBQ St. Louis banned all STP music. PD Michael St. John recorded an editorial explaining the station's position, which prompted supportive calls from parents.



TOP 40 TOPICS BY SEAN ROSS

Use Your Newscasts Or Lose Your Newscasts

For the last year or so, consultant Mike Joseph—one of the drivers behind top 40's early '80s resurgence—has been pitching the major groups on his newest format idea: a 24-hour "tabloid" all-news station. Same principle as all-news radio. Different subject matter.

Even in a world where news/talk stations are growing exponentially, and even in our year of O.J.-mania, Joseph has had a hard time finding takers. All-news is an expensive proposition, and the N/T format's growth can be, in many cases, traced to the availability of inexpensive syndicated programming. Some major groups have shown interest, then been sold before a deal was struck.

That's too bad. I don't watch tabloid TV. I spend just enough time with New York's existing N/T stations to get the weather in the morning. But I'd listen to Joseph's format, if only because it sounds like an updated version of "20/20 News," the high-strung, blood-and-guts newscasts that used to run on the RKO top 40s, most infamously CKLW Detroit, in the '60s and '70s. In that era, newscasters "jocked" the news—delivering it with the same drama that DJs used. Few newscasters have been able (or inclined) to do that in the last 15 years.

Few top 40 newscasters, in fact, have been inclined to do much at all recently. One widely used pejorative term from the '70s, "rip and read," referring to those radio stations that just read wire copy without doing any actual reporting, is a distant memory, since many music stations no longer bother subscribing to a wire service. Those stations that didn't dispense with news altogether in the deregulated era stopped hiring news directors and started hiring morning sidekicks. Now, it's hard to hear a top 40 newscast that is anything more than a barely rewritten version of the morning paper, or more than a staging area for morning-show bits. In the '90s, we have "clip and read" news.

So why, when we talk about the importance of sounding like our market, do so

many stations depend so much on USA Today? Why, when we try to convince our advertisers that nobody under 40 reads a daily paper anymore, do we spend so much time reading the daily paper on the air? All this reliance on daily papers creates a certain homogeneity across the dial. It also means that your Shadow Traffic person is trying really hard to sound like he or she hasn't heard the same newspaper clipping from their last four morning hosts.

Music stations in other formats are starting to try to recapture the "service elements" image. Country powerhouse WUBE Cincinnati sells its traffic and weather, despite the lock you'd expect N/T powerhouse WLW to have on those images. And during a severe winter, when other country stations seemed to get pounded by N/T outlets, WUBE was one of that format's few success stories. As top 40 continues to gear itself to an increasingly adult audience, the idea of competing for service images isn't far-fetched.

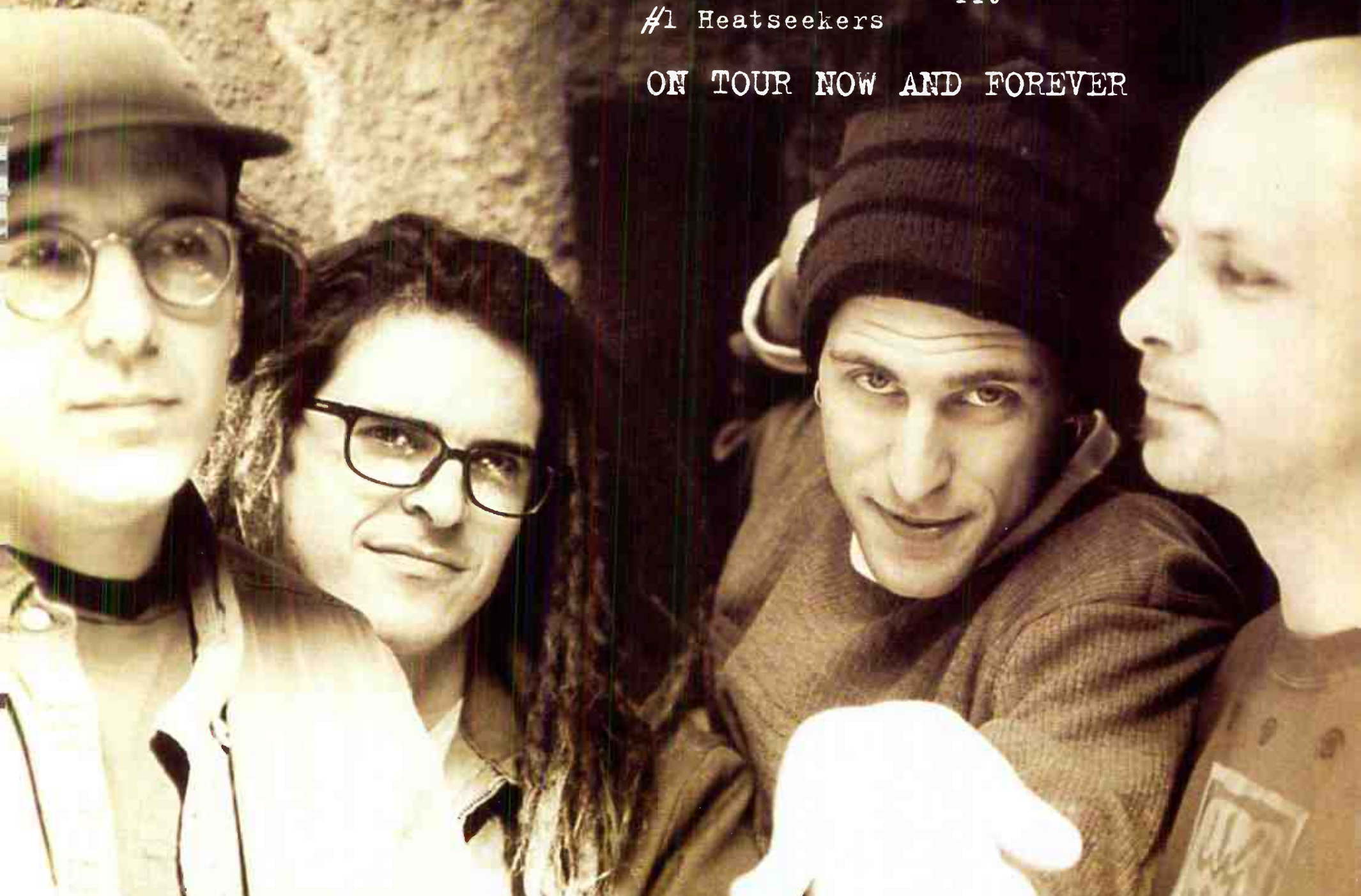
This isn't a call for top 40 stations to beef up the quantity of news or service elements on their stations. Just to make them count and try to give them some entertainment value that matches the rest of the station. Many top 40s have eliminated news altogether. And those that aren't willing to put any effort into news may as well spike it. Those that keep news should probably think about letting their news directors spend the remainder of their mornings trying to generate some actual news that's unique to their radio station. Even where news exists only to let the morning host do shtick, it would be different shtick.

One more piece of unsolicited advice on the topic: If you're going to clip the newspaper, try subscribing to a few newspapers from other cities. Even if your morning team is reading from the paper, they'll at least be reading something that's not available on the local newsstands and seven other places on the dial. Even if it's not local news, most daily papers have enough that's sufficiently anecdotal to let your morning team do bits. If that's what newscasts are really for.

dog's eye view

everything falls apart
From the album "happy nowhere"
#1 Heatseekers

ON TOUR NOW AND FOREVER



THE RESEARCH IS IN:

TOP 10 CALL-OUT:

99X WEDJ KDGE KALC
G105 KWBQ WPST. KHMx

TOP FIVE CALL-OUT: R&R CALLOUT AMERICA WOMEN 25-34
Z100/NEW YORK: OPENING UP TO ALL DAYPARTS. STRONG SCORES WITH
WOMEN 18-34, CONTINUING TO GROW EACH WEEK.
#1 AAA MONITOR CHART, 4 WEEKS IN A ROW

(12) - (11) TOP 40/MAINSTREAM MONITOR

Produced by James "Jimbo" Barton and Peter Stuart.
<http://www.columbia.com/cgi-bin/cmb/artistinfo/DogsEyeView/index.html>

"Columbia" Reg. U.S. Pat. & Tm. Off. © 1996 Sony Music Entertainment Inc. COLUMBIA

photo: Chris Stroth

MAINSTREAM



POWER PLAYLISTS

For Week Ending April 28, 1996

Playlists supplied by Broadcast Data Systems... Radio Track service... Stations selected from panel of leading broadcasters...

Z100 WHYZ New York PD: Tom Poleman APD: Ryan Chase MD: Paul "Cubby" Bryant

KIIS Los Angeles PD: Steve Perun APD/MD: Tracy Austin

Q102 Philadelphia OM: Dave Allan PD: Glenn Kalina MD: DeDe McGuire

KISS 108 Boston PD: John Ivey MD: Tad Bonvie

KISS 106.1 Dallas PD: John Cook APD/MD: Mr. Ed Lambert

KRBE Houston PD: John Peake APD: Scott Sparks

KDWB Minneapolis PD: Dan Kietley APD/MD: Rob Morris AMD: Rick Thomas

STAR 94 Atlanta PD: Kevin Peterson MD: J.R. Ammons

B94 Pittsburgh PD: Keith Clark APD: David Edgar MD: John Cline

WFLZ Tampa PD: B.J. Harris APD: Jeff Kapugi MD: Tom Steele

WPST Trenton PD: Michelle Stevens APD: Dave McKay

WHYI Miami PD: Rob Roberts MD: Al Chio

KISS 95.7 Hartford PD: Jay Beau Jones MD: Dave Vayda

WNCI Columbus PD: John Dimick APD/MD: Dan Bowen

WTIC Hartford PD: Paul Cannon

Q102 Cincinnati PD: Jimmy Steal APD: Race Taylor MD: Brian Douglas

PRO-FM Providence PD: Chris Shebel MD: Tony Mascaro

Q104 St. Louis PD: Michael St. John MD: Tommy Mattern

Tina Arena

PHONES:

- KDWB - TOP 15 PHONES
- KWMX - 18-35 FEMALE PHONES!
- WZPL - TOP 15 PHONES!
- WXXL - TOP 20 PHONES!
- KPLZ - TOP 5 PHONES!
- Y100 - PHONES!
- POWER 96 - PHONES!
- WRVQ - TOP 5 PHONES!
- KLRZ - TOP 10 PHONES!
- WTIC - TOP 15 PHONES!
- WMXV - TOP 15 PHONES!
- WMJQ - TOP 10 PHONES!
- KHOM - TOP 10 PHONES!
- WHY - TOP 10 PHONES!

CALL OUT:

WZPL - INDIANAPOLIS: CORE AUDIENCE 12TH BEST TESTING RECORD!
FEMALES 23-27, 9TH BEST TESTING RECORD!

POWER 96 - MIAMI: TOP 10 RESEARCHING RECORD WITH 25+ FEMALES!

WPRO - PROVIDENCE: 80% FAMILIARITY! 14TH BEST TESTING RECORD!

KPLZ - SEATTLE: 8TH BEST TESTING OVERALL!

WSTR - ATLANTA: 77% FAMILIARITY! #19 OVERALL!

Chains

The worldwide hit from a dazzling new star.


ALBUM IN STORES NOW!!!

Discover what the rest
of the world already has.

Written by Tina Arena, Steve Werfel
and Pam Reswick.

Produced by David Tyson.
Management: Ralph Carr for RCM International

6 533
<http://www.sony.com>

Epic and  Reg. U.S. Pat. & Tm. Off. Marca Registrada. © 1996 Sony Music Entertainment (Australia) PTY Ltd.



World Radio History



Playlists supplied by Broadcast Data Systems... Radio Track service. Stations selected from panel of leading broadcasters in 125 radio markets...

Table for G105 station, listing songs and artists such as Tracy Chapman, Smashing Pumpkins, Alanis Morissette, etc.

Table for Z100 station, listing songs and artists such as Fugees, The Tony Rich Project, Celine Dion, etc.

Table for ALICE 106 station, listing songs and artists such as Alanis Morissette, Folk Implosion, Tracy Chapman, etc.

Table for THE RIVER station, listing songs and artists such as Tracy Chapman, Celine Dion, Ace Of Base, etc.

Table for JAMMIN' 92 station, listing songs and artists such as Celine Dion, Alanis Morissette, Everything But The Girl, etc.

Table for XL106.7 station, listing songs and artists such as Alanis Morissette, Celine Dion, Mariah Carey, etc.

Table for KJ103 station, listing songs and artists such as Bodeans, Closer To Free, Alanis Morissette, etc.

Table for KISS 98.5 station, listing songs and artists such as Alanis Morissette, Everything But The Girl, The Tony Rich Project, etc.

Table for WZPL station, listing songs and artists such as Alanis Morissette, Mariah Carey, Celine Dion, etc.

Table for THE EDGE station, listing songs and artists such as Alanis Morissette, Celine Dion, Mariah Carey, etc.

Table for Z93 station, listing songs and artists such as Alanis Morissette, Celine Dion, The Tony Rich Project, etc.

Table for FLY 92 station, listing songs and artists such as Fugees, Alanis Morissette, Bodeans, etc.

Table for Z104 station, listing songs and artists such as Mariah Carey, Alanis Morissette, Celine Dion, etc.

Table for MIX 93.3 station, listing songs and artists such as Celine Dion, Alanis Morissette, The Tony Rich Project, etc.

Table for MIX 107.5 station, listing songs and artists such as Alanis Morissette, Collectiv Soul, Tracy Chapman, etc.

Table for WIXX station, listing songs and artists such as Celine Dion, Natalie Merchant, Color Me Badd, etc.

Table for WKRZ station, listing songs and artists such as Alanis Morissette, Celine Dion, Mariah Carey, etc.

Table for WVKs station, listing songs and artists such as Celine Dion, Hootie & The Blowfish, 3T, etc.

**the song that sounds
like nothing else, is
breaking everywhere**



**ROBERT
MILES
CHILDREN**

**HIS #1 WORLDWIDE SMASH HIT...
NOW CREATING MAJOR HAVOC
ON THE PHONES WITH RETAIL
DEMAND SOARING!!!
THE FAST-BREAKING PREMIERE
SINGLE FROM HIS FORTHCOMING
ARISTA DEBUT ALBUM **DREAMLAND****

E-Mail us at: Arista90@aol.com
Visit us at: <http://www.aristarec.com>



"Great adult phone response. Big reaction record. Top 5 requests."
- **Charlie Huero, KTFM/San Antonio**

"No question, this song will be huge for us. It blows out the phones on every play and it's all demos."
- **Don Parker, KKFR/Phoenix**

"Top 5 requests. Lots of curiosity calls. This record will be huge."
- **Hitman, KBFM/McAllen**

"Robert Miles is the biggest buzz record on KPRR. 34 plays in one week. This is a winner."
- **John Candeleria, KPRR/El Paso**

"We got instant reaction from airplay! 'Children' is Top 10 requests. It's a huge song for us!
The big bonus... women absolutely love it!"
- **Scott Seipel, CK105/Flint**

"'Children' is the most active record on WKT1. It lights up the phones like a contest every time we play it!"
- **Danny Clayton, WKT1/Milwaukee**

POWER PLAYLISTS

For Week Ending April 28, 1996



Playlists supplied by Broadcast Data Systems. Radio Track service. Stations selected from panel of leading broadcasters in 125 radio markets, electronically monitored 24 hours a day, 7 days a week. Songs ranked by number of plays in monitored week.

98PXY

Table with 2 columns: Song Title and TW LW. Station: WPMY Rochester. PD: Clarke Ingram. APD/MD: J.J. Rice.

WDJX

Table with 2 columns: Song Title and TW LW. Station: WDJX Louisville. PD: C.C. Matthews.

WAPE

Table with 2 columns: Song Title and TW LW. Station: WAPE Jacksonville. PD: Cat Thomas. APD/MD: Tony Mann.

KHFI

Table with 2 columns: Song Title and TW LW. Station: KHFI Austin. PD: John Roberts. MD: Fernando Ventura.

93Q

Table with 2 columns: Song Title and TW LW. Station: WNTQ Syracuse. PD: Tom Mitchell. MD: Jimmy Olson.

B104

Table with 2 columns: Song Title and TW LW. Station: KBFM McAllen. PD: Billy Santiago. MD: Jeff DeWitt.

SUNNY 104.5

Table with 2 columns: Song Title and TW LW. Station: WSNX Grand Rapids. PD: Mark McGill. MD: Keith Curry.

WINK 104

Table with 2 columns: Song Title and TW LW. Station: WNNK Harrisburg. PD: John O'Dea. MD: Scott Shaw.

Q94

Table with 2 columns: Song Title and TW LW. Station: WRVQ Richmond. PD: Lisa McKay. APD/MD: Billy Surf.

WHOT

Table with 2 columns: Song Title and TW LW. Station: WHOT Youngstown. PD/MD: Tom Pappas.

B93.7

Table with 2 columns: Song Title and TW LW. Station: WFBC Greenville, S.C. PD: Rob Wagman. MD: Hawk Harrison.

WZYP

Table with 2 columns: Song Title and TW LW. Station: WZYP Huntsville. PD: Marc Summers. MD: Kramer.

SWEET 98

Table with 2 columns: Song Title and TW LW. Station: KQKQ Omaha. PD: Michael Steele. MD: Jimi Jamm.

MIX 104.1

Table with 2 columns: Song Title and TW LW. Station: KHOM New Orleans. PD: Bill Thorman.

Q99

Table with 2 columns: Song Title and TW LW. Station: KUTQ Salt Lake City. PD: Ken Carr. MD: Dr. Doug Dodd.

MIX 94.5

Table with 2 columns: Song Title and TW LW. Station: WMMQ Birmingham. PD: Jeff Tyson. MD: Gail O'Brien.

KRQ

Table with 2 columns: Song Title and TW LW. Station: KRQ Tucson. PD: Mark Todd. MD: Valerie Knight.

KC101

Table with 2 columns: Song Title and TW LW. Station: WKCI New Haven. PD: Tony Bristol. MD: Jeff McCartney.

MONITOR TOP 40 PANELS

TOP 40 MAINSTREAM STATIONS (84)

Albany, NY	WFLY	McAllen/Brownsville, TX	KBFM
Atlanta, GA	WSTR	Miami, FL	WHYI
Augusta, GA	WZNY	Minneapolis, MN	KDWB
Austin, TX	KHFI	Mobile, AL	WABB
Baton Rouge, LA	WFMF	Montgomery, AL	WHHY
Birmingham, AL	WXXQ	Nashville, TN	WRVW
Boston, MA	WXKS	New Bedford, MA	WFHN
Buffalo, NY	WKSE	New Haven, CT	WKCI
Burlington, VT	WXXX	New Orleans, LA	KHOM
Charleston, SC	WSSX		KLRZ
Charleston, WV	WVSR	New York, NY	WHTZ
Charlotte, NC	WEDJ	Norfolk, VA	WNVZ
Chattanooga, TN	WKXJ	Oklahoma City, OK	KJYO
	WZST	Omaha, NE	KQKQ
Cincinnati, OH	WKRQ	Orlando, FL	WXXL
Cleveland, OH	WZJM	Paducah, KY	WDDJ
Colorado Springs, CO	KKMG	Philadelphia, PA	WIOQ
Columbia, SC	WNOK	Pittsburgh, PA	WBZZ
Columbus, OH	WNCI	Portland, OR	KKRZ
Dallas, TX	KHKS	Providence, RI	WPRO
Dayton, OH	WGTZ	Raleigh, NC	WDCG
Denver, CO	KALC	Richmond, VA	WRVQ
	KVMX	Roanoke, VA	WLK
Des Moines	KKDM	Rochester, NY	WPXY
Flint, MI	WWCK	St. Louis, MO	WBQB
Fl. Myers, FL	WXKB	Salt Lake City, UT	KUTQ
Grand Rapids, MI	WSNX	Santa Barbara, CA	KHTY
Green Bay, WI	WIXX	Spokane, WA	KZZU
Greenville, SC	WFBC	Springfield, MO	KHTO
Harrisburg, PA	WNNK	Syracuse, NY	WNTQ
Hartford, CT	WKSS	Tampa, FL	WFLZ
	WTIC	Toledo, OH	WTWR
Houston, TX	KRBE		WVKS
Huntsville, AL	WZYP	Trenton, NJ	WPST
Indianapolis, IN	WZPL	Tucson, AZ	KRQQ
Jacksonville, FL	WAPE	Tulsa, OK	KHTT
Johnson City, TN	WXIS	Wichita, KS	KKRD
Kansas City, MO	KMXV	Wilkes-Barre, PA	WBHT
Knoxville, TN	WWST		WKRZ
Lancaster, PA	WLAN	Wilmington, DE	WSTW
Los Angeles, CA	KIIS	York, PA	WYCR
Louisville, KY	WDJX	Youngstown, OH	WHOT

TOP 40/RHYTHM-CROSSOVER STATIONS (31)

Albuquerque, NM	KKSS	New York, NY	WKTU
Bakersfield, CA	KKXX		WQHT
Baltimore, MD	WERQ	Oxnard, CA	KCAQ
Boston, MA	WJMN	Phoenix, AZ	KKFR
Chicago, IL	WBBM	Providence, RI	WVKX
Corpus Christi, TX	KZFM	Riverside, CA	KGGI
Denver, CO	KQKS	Roanoke, VA	WJXX
El Paso, TX	KPRR	Sacramento, CA	KSFM
Fresno, CA	KBOS	Salt Lake City, UT	KZHT
Greensboro, NC	WJMH	San Antonio, TX	KTFM
Houston, TX	KBXX	San Antonio, UT	XHTZ
Indianapolis, IN	WHHH	San Diego, CA	KMEL
Las Vegas, NV	KLUC	San Francisco, CA	KYLD
Las Angeles, CA	KPWR		KUBE
Miami, FL	WPOW	Seattle, WA	WPGC
Monterey, CA	KDON	Washington, DC	

ADULT TOP 40 STATIONS (42)

Akron, OH	WKDD	Memphis, TN	WMC
Albuquerque, NM	KKOB	Milwaukee, WI	WKTJ
Baltimore, MD	WVMX	Minneapolis, MN	KSTP
Boston, MA	WBMX	New York, NY	WMXV
Charleston, WV	WVAF		WPLJ
Charlotte, NC	WWSN	Philadelphia, PA	WYXR
Chicago, IL	WPNT	Pittsburgh, PA	WVTY
	WTMX	Portland, ME	WCSO
Cleveland, OH	WQAL		WZPK
Dallas, TX	KDMX	Richmond, VA	WMXB
Des Moines, IA	KSTZ	Saginaw, MI	WIOG
Detroit, MI	WKQI	St. Louis, MO	KYKY
El Paso	KSII	Salt Lake City, UT	KISN
Green Bay, WI	WQLH	San Diego, CA	KFMB-FM
Greensboro, NC	WKZL		KKLQ
Greenville, SC	WMIY	Savannah, GA	WAEV
Houston, TX	KHMX	Seattle, WA	KPLZ
Jacksonville, FL	WIVY	Syracuse, NY	WYYY
Lexington, KY	WMLL	Tampa, FL	WMTX
Long Island, NY	WBLL	Washington, DC	WRQX
Los Angeles, CA	KYSR	West Palm Beach, FL	WRMF

ADULT CONTEMPORARY STATIONS (37)

Baltimore, MD	WLIF	Long Island, NY	WALK
Buffalo, NY	WMJQ	Los Angeles, CA	KBIG
Burlington, VT	WEZF	Minneapolis, MN	WLTE
Chattanooga, TN	WDEF	Nashville, TN	WLAC
Chicago, IL	WLIT	Philadelphia, PA	WBEB
Cleveland, OH	WLTF	Phoenix, AZ	KESZ
Colorado Springs, CO	KVUU	Pittsburgh, PA	WSHH
Columbus, GA	WGSY	Portland, OR	KKCW
Des Moines, IA	KLYF	Roanoke, VA	WSLQ
Fresno, CA	KTHT	Sacramento, CA	KGBY
Grand Rapids, MI	WLHT	San Francisco, CA	KIOI
Greensboro, NC	WMAG	San Jose, CA	KEZR
Harrisburg, PA	WARM	Spokane, WA	KISC
Huntsville, AL	WAHR	Springfield, MO	KGBX
Jackson, MS	WJDX	Toledo, OH	WRVF
Jahson City, TN	WTFM	Washington, DC	WASH
Kansas City, MO	KUDL		WEBR
Las Vegas, NV	KMZQ	Wilkes Barre, PA	WMGS
Little Rock, AR	KURB		

What a Deal!

1996

Billboard &

AIRPLAY Monitor

Radio Seminar & Awards...

We're giving you more for less:

- Panels on key industry issues
- Special guest speakers
- Live artist showcases
- Great parties
- And, our finale Annual Radio Awards Show

Special Radio Early-bird Rate **Only \$999**

(Rate good until June 28)

Call our Radio Seminar & Awards hotline for registration information: 212-536-6450. You can't afford to miss this opportunity!

AIRPLAY
Monitor

BDS IMPACT

DETECTIONS



*** AIRPOWER ***
(Minimum 1500 detections for the first time)

Total Plays/Gain	Total Plays/Gain	Total Plays/Gain	Total Plays/Gain
LA BOUCHE 1727/347 <i>Sweet Dreams (RCA)</i> Total Stations: 78/Chart Move: 22-18 Heavy (40+ plays): 10 KBFM, KHFI, KIIS, KRQQ, KZZU, WFHN, WNVZ, WPMX, WRVQ, WXXL Medium (20-39): 30 KDWB, KHKS, KHOM, KHTO, KKRZ, KLRZ, KQKQ, WBHT, WBZZ, WFLY, WFLZ, WIOQ, WJXX, WKRO, WKSE, WKSS, WKXJ, WNNK, WNOK, WNTQ, WPRO, WSSX, WTVR, WWSR, WWCK, WXS, WXSX, WYCR, WZJM, WZST Light (Under 20): 38 New Airplay This Week: 4 WABB, WAPE, WFMF, WKRZ	COLOR ME BADD 1595/196 <i>The Earth, The Sun, The Rain (Giant)</i> Total Stations: 75/Chart Move: 21-20 Heavy (40+): 4 KKRZ, WFHN, WTVR, WZPL Medium (20-39): 45 KBFM, KDWB, KHTO, KIIS, KJYO, KKMZ, KKRZ, KLRZ, KMXV, KQKQ, KRQQ, KZZU, WAPE, WBZZ, WFBC, WFLY, WFLZ, WFMF, WHOT, WHYI, WJXX, WKRO, WKXJ, WMMX, WNCI, WNNK, WNOK, WPRO, WRVW, WSNW, WSSX, WSTR, WSTW, WYKS, WYSR, WWCK, WWST, WXIS, WXXB, WXLK, WXXL, WYCR, WZJM, WZNY, WZST Light (Under 20): 26 New Airplay This Week: 1 WBZZ, KBFM, WXS	GEORGE MICHAEL 1504/505 <i>Fastlove (DreamWorks/Geffen)</i> Total Stations: 76/Chart Move: 29-22 Heavy (40+): 0 Medium (20-39): 45 KBFM, KHFI, KHTO, KJYO, KKRZ, KKRZ, KLRZ, KMXV, KRQQ, KZZU, WABB, WAPE, WFBC, WFHN, WFLY, WFMF, WIOQ, WKBO, WKRO, WKRZ, WKSE, WKSS, WKXJ, WMMX, WNCI, WNNK, WNOK, WNVZ, WPRO, WSSX, WSTR, WSTW, WTVR, WTVR, WYKS, WYSR, WWCK, WWST, WXLK, WXXX, WYCR, WZJM, WZNY, WZPL, WZST Light (Under 20): 31 New Airplay This Week: 10 KDWB, KHFI, KKMZ, WBZZ, WDDJ, WHOT, WHYI, WRVQ, WSNX, WXXL	JANN ARDEN 1501/60 <i>Insensitive (A&M)</i> Total Stations: 80/Chart Move: 20-23 Heavy (40+): 5 KHTO, WBHT, WDJX, WLAN, WMMX Medium (20-39): 33 KALC, KHHT, KKRZ, KVMX, WABB, WAPE, WDDJ, WFBC, WFLY, WFMF, WHHY, WJXX, WKCI, WKRO, WKRZ, WKXJ, WNCI, WNOK, WPRO, WSSX, WSTW, WTVR, WWSR, WWCK, WWST, WXS, WXLK, WXXL, WXXX, WYCR, WZJM, WZNY, WZST Light (Under 20): 42 New Airplay This Week: 1 WRVW, WZST

MOST NEW AIRPLAY THIS WEEK	No. Of Stations
ADAM CLAYTON & LARRY MULLEN <i>Theme From Mission: Impossible (Mother/Island)</i>	28
FUGEES <i>Killing Me Softly (Ruffhouse/Columbia)</i>	14
THE CRANBERRIES <i>Salvation (Island)</i>	12
GEORGE MICHAEL <i>Fastlove (DreamWorks/Geffen)</i>	10
OASIS <i>Champagne Supernova (Epic)</i>	10

AIRPOWER BOUND

Total Plays/Gain

FUGEES 1488/485
Killing Me Softly (Ruffhouse/Columbia)
Total Stations: 70/Chart Move: 28-24
Heavy (40+ plays): 10 KHFI, KHOM, KIIS, KKRZ, KZZU, WFHN, WFLY, WNVZ, WXS, WZPL
Medium (20-39): 23 KBFM, KDWB, KHKS, KKMZ, KQKQ, WFLZ, WHOT, WHYI, WIOQ, WKBO, WKRO, WKSE, WKSS, WPRO, WPMX, WRVQ, WSSX, WTVR, WYKS, WYSR, WXS, WXXL, WZJM
Light (Under 20): 37
New Airplay This Week: 14 KHKS, KKRZ, KLRZ, KMXV, WFBC, WHHY, WLAN, WMMX, WNNK, WNOK, WWST, WXXB, WYCR, WZNY

COOLIO 918/134
1,2,3,4 (Sumpin' New) (Tommy Boy)
Total Stations: 67/Chart Move: 34-30
Heavy (40+): 2 KZZU, WNVZ
Medium (20-39): 21 KBFM, KHKS, KIIS, KJYO, KKRZ, KKRZ, KQKQ, WBHT, WFBC, WFHN, WFLY, WFLZ, WGTZ, WIOQ, WKBO, WKSE, WRVQ, WWSR, WXXB, WZNY, WZPL
Light (Under 20): 44
New Airplay This Week: 4 KDWB, WBZZ, WLAN, WXXB

WHITNEY HOUSTON & CECE WINANS 857/106
Count On Me (Arista)
Total Stations: 75/Chart Move: 35-32
Heavy (40+): 2 KHOM, WNVZ
Medium (20-39): 11 KHTO, KKRZ, WFHN, WFLY, WLAN, WMMX, WNNK, WTVR, WYKS, WYSR, WYCR
Light (Under 20): 62
New Airplay This Week: 4 WKSS, WNCI, WWSR, WXXL

RED HOT CHILI PEPPERS 777/26
Aeroplane (Warner Bros.)
Total Stations: 51/Chart Move: 36-34
Heavy (40+): 0
Medium (20-39): 13 KHTO, KHTY, KKMZ, KLRZ, WDCG, WHTZ, WPRO, WPST, WWCK, WXS, WYCR, WZPL, WZST
Light (Under 20): 38
New Airplay This Week: 3 WHOT, WMMX, WSNX

VOICE OF THE BEEHIVE 773/93
Scary Kisses (Discovery)
Total Stations: 51/Chart Move: 40-35
Heavy (40+): 0
Medium (20-39): 18 KHFI, KHTO, KKDM, KKRZ, KLRZ, KQKQ, KRBE, KRQQ, KUTQ, WABB, WFHN, WKRO, WKXJ, WPRO, WRVW, WXS, WYCR, WZST
Light (Under 20): 33
New Airplay This Week: 2 WTVR, WYKS

LOS DEL RIO 769/134
Macarena (Bayside Boys Mix) (RCA)
Total Stations: 57/Chart Move: Debut 36
Heavy (40+): 2 KHOM, WRVQ
Medium (20-39): 14 KALC, KKDM, KLRZ, KQKQ, WAPE, WEDJ, WFHN, WFLZ, WSNX, WSSX, WXXB, WXXL, WZJM, WZPL
Light (Under 20): 41
New Airplay This Week: 2 WHOT, WZNY

EVERCLEAR 679/95
Santa Monica (Watch The World Die) (Tim Kerr/Capitol)
Total Stations: 63/Chart Move: Debut 37
Heavy (40+): 3 KRBE, WBHT, WPST
Medium (20-39): 9 KALC, KHTY, KLRZ, WDCG, WDDJ, WHHY, WHTZ, WKRO, WXS
Light (Under 20): 51

THE CRANBERRIES 662/202
Salvation (Island)
Total Stations: 54/Chart Move: Debut 38
Heavy (40+): 0
Medium (20-39): 11 KHTY, KKDM, KLRZ, KRBE, KUTQ, WBHT, WDCG, WHTZ, WKXJ, WPST, WSSX
Light (Under 20): 43
New Airplay This Week: 12 KKRZ, KVMX, WFLY, WFLZ, WGTZ, WHHY, WKBO, WNOK, WYSR, WXXX, WYCR, WZJM

JARS OF CLAY 653/111
Flood (Essential/Silvertone/Jive)
Total Stations: 51/Chart Move: Debut 39
Heavy (40+): 0
Medium (20-39): 12 KHFI, KKDM, KLRZ, KRBE, WDCG, WPRO, WPST, WRVW, WYKS, WWCK, WXS, WYCR
Light (Under 20): 39
New Airplay This Week: 8 KHFI, KHOM, WDJX, WKCI, WKXJ, WSTW, WXXX, WZJM

CHART BOUND

Total Plays/Gain

OASIS 627/146
Champagne Supernova (Epic)
Total Stations: 42
Heavy (40+): 3 KUTQ, WHTZ, WPST
Medium (20-39): 10 KHTY, KKDM, KLRZ, KRBE, WBHT, WKBO, WKRO, WKXJ, WXS, WXXX
Light (Under 20): 29
New Airplay This Week: 10 WDCG, WEDJ, WFBC, WFLZ, WKRZ, WNTQ, WPRO, WSSX, WYKS, WXXX

DAVE MATTHEWS BAND 600/84
Too Much (RCA)
Total Stations: 39
Heavy (40+): 1 KUTQ
Medium (20-39): 16 KALC, KHTY, KKDM, KLRZ, KRBE, WBHT, WDCG, WDDJ, WKBO, WPST, WSSX, WSTR, WWCK, WXS, WYCR, WZST
Light (Under 20): 22
New Airplay This Week: 4 WKXJ, WRVQ, WSTW, WZJM

ADAM CLAYTON & LARRY MULLEN 591/431
Theme From Mission: Impossible (Mother/Island)
Total Stations: 68
Heavy (40+): 1 KZZU
Medium (20-39): 9 KHTO, KJYO, KKDM, KLRZ, WIOQ, WNTQ, WRVQ, WSTW, WYSR
Light (Under 20): 58
New Airplay This Week: 28 KHOM, KHTO, KHHT, KJYO, KKRZ, KKRZ, KLRZ, WDCG, WFLY, WGTZ, WHTZ, WKBO, WKSS, WKXJ, WLAN, WNCI, WNNK, WNOK, WNTQ, WPST, WSTW, WTVR, WYSR, WWCK, WXS, WXSX, WYCR, WZNY

DEEP BLUE SOMETHING 571/44
Halo (RainMaker/Interscope)
Total Stations: 47
Heavy (40+): 0
Medium (20-39): 8 KLRZ, WABB, WFBC, WKRZ, WKXJ, WNOK, WPRO, WZST
Light (Under 20): 39
New Airplay This Week: 4 WFLZ, WJXX, WNCI, WPST

ROBERT MILES 551/158
Children (deconstruction/Arista)
Total Stations: 54
Heavy (40+): 0
Medium (20-39): 11 KBFM, KHOM, KHTO, KLRZ, WFLY, WHYI, WJXX, WKXJ, WNNK, WNOK, WWCK
Light (Under 20): 43
New Airplay This Week: 6 KJYO, KQKQ, WLAN, WSSX, WXXL, WYCR

GLORIA ESTEFAN 550/47
Reach (Epic)
Total Stations: 61
Heavy (40+): 0
Medium (20-39): 9 KBFM, KHOM, KHTO, KLRZ, WFLY, WFLZ, WGTZ, WHHY, WKBO, WNOK, WYCR
Light (Under 20): 52
New Airplay This Week: 2 WDJX, WKBO

BILLIE RAY MARTIN 487/135
Your Loving Arms (Sire/EEG)
Total Stations: 41
Heavy (40+): 1 KIIS
Medium (20-39): 7 KBFM, KHFI, WFHN, WIOQ, WKSE, WPMX, WWCK
Light (Under 20): 33
New Airplay This Week: 7 KHKS, KKRZ, KRQQ, WHOT, WPMX, WSNX, WSSX

LENNY KRAVITZ 476/77
Can't Get You Off My Mind (Virgin)
Total Stations: 36
Heavy (40+): 0
Medium (20-39): 6 KHOM, KHTO, WFBC, WKXJ, WYSR, WZNY
Light (Under 20): 30
New Airplay This Week: 5 KJYO, WBHT, WFBC, WHHY, WZYP

GARBAGE 415/4
Only Happy When It Rains (Almo Sounds/Geffen)
Total Stations: 29
Heavy (40+): 1 KUTQ
Medium (20-39): 7 KKDM, KLRZ, KRBE, WBHT, WKXJ, WPST, WXS
Light (Under 20): 21
New Airplay This Week: 1 WTVR

SWV 397/83
You're The One (RCA)
Total Stations: 31
Heavy (40+): 1 KZZU
Medium (20-39): 4 KLRZ, KQKQ, WFHN, WFLY
Light (Under 20): 26
New Airplay This Week: 6 KJYO, KKMZ, WKSE, WNNK, WPMX, WWCK

MADONNA 374/21
Love Don't Live Here Anymore (Maverick/Warner Bros.)
Total Stations: 33
Heavy (40+): 0
Medium (20-39): 6 KHTO, WFHN, WKXJ, WNNK, WXXX, WZST
Light (Under 20): 27
New Airplay This Week: 3 KMXV, WFLZ, WFMF

DISHWALLA 340/65
Counting Blue Cars (A&M)
Total Stations: 30
Heavy (40+): 1 KHTY
Medium (20-39): 4 KLRZ, KRBE, WPST, WXS
Light (Under 20): 25
New Airplay This Week: 5 KHOM, KUTQ, WABB, WKXJ, WNNK

MTS 274/4
I'll Be Alright (Summit)
Total Stations: 13
Heavy (40+): 1 WPMX
Medium (20-39): 4 WFLZ, WIOQ, WKSE, WZJM
Light (Under 20): 8

JEWEL 274/108
Who Will Save Your Soul (Atlantic)
Total Stations: 31
Heavy (40+): 1 KRBE
Medium (20-39): 2 KLRZ, WSTR
Light (Under 20): 28
New Airplay This Week: 3 KVMX, WNOK, WZYP

STABBING WESTWARD 271/3
What Do I Have To Do? (Columbia)
Total Stations: 23
Heavy (40+): 1 KUTQ
Medium (20-39): 0
Light (Under 20): 22

THE NIXONS 264/76
Sister (MCA)
Total Stations: 28
Heavy (40+): 1 KUTQ
Medium (20-39): 4 KLRZ, WHTZ, WPST, WXS
Light (Under 20): 23
New Airplay This Week: 4 KQKQ, KRBE, WABB, WWCK

ALANIS MORISSETTE 257/87
You Learn (Maverick/Reprise)
Total Stations: 26
Heavy (40+): 1 WHTZ
Medium (20-39): 5 KALC, KHTY, WDCG, WFLZ, WPST
Light (Under 20): 20
New Airplay This Week: 3 WAPE, WBHT, WEDJ

CHANTAY SAVAGE 237/6
I Will Survive (RCA)
Total Stations: 23
Heavy (40+): 1 WNVZ
Medium (20-39): 4 KHTO, WTVR, WYKS, WXS
Light (Under 20): 18

ANGELINA 205/41
Release Me (Upstairs)
Total Stations: 20
Heavy (40+): 1 KZZU

Medium (20-39): 4 KBFM, KIIS, WFHN, WFLY
Light (Under 20): 15
New Airplay This Week: 2 WKSS, WXS

ALL-4-ONE 193/21
These Arms (Blitz/Atlantic)
Total Stations: 17
Heavy (40+): 0
Medium (20-39): 3 KBFM, WFLY, WWCK
Light (Under 20): 14
New Airplay This Week: 1 WZPL

BUSH 192/16
Machinehead (Trauma/Interscope)
Total Stations: 19
Heavy (40+): 1 KUTQ
Medium (20-39): 2 KKDM, WPST
Light (Under 20): 16
New Airplay This Week: 1 WBHT

REAL MCCOY 178/75
Ooh Boy (Arista)
Total Stations: 16
Heavy (40+): 1 WAPE
Medium (20-39): 4 KBFM, KRQQ, WHYI, WNTQ
Light (Under 20): 11
New Airplay This Week: 3 KRQQ, WNTQ, WXS

JOAN JETT & THE BLACKHEARTS 156/11
Love Is All Around (Blackheart/Warner Bros.)
Total Stations: 19
Heavy (40+): 0
Medium (20-39): 3 WKCI, WPST, WRVW
Light (Under 20): 16
New Airplay This Week: 1 KHOM

MARRY ME JANE 149/10
Twenty One (550 Music)
Total Stations: 13
Heavy (40+): 0
Medium (20-39): 2 KUTQ, WPST
Light (Under 20): 11

MICHAEL JACKSON 147/136
They Don't Care About Us (Epic)
Total Stations: 37
Heavy (40+): 0
Medium (20-39): 2 WFHN, WXS
Light (Under 20): 35
New Airplay This Week: 6 KLRZ, WFHN, WGTZ, WSNX, WTVR, WXS

LE CLICK 145/10
Tonight Is The Night (Logic)
Total Stations: 10
Heavy (40+): 1 WKSE
Medium (20-39): 2 WFLY, WIOQ
Light (Under 20): 7

PUFF JOHNSON 129/59
Forever More (Work)
Total Stations: 29
Heavy (40+): 0
Medium (20-39): 1 WHYI
Light (Under 20): 28
New Airplay This Week: 5 KHKS, KKMZ, WFLY, WXS, WZST

“In The Summertime”

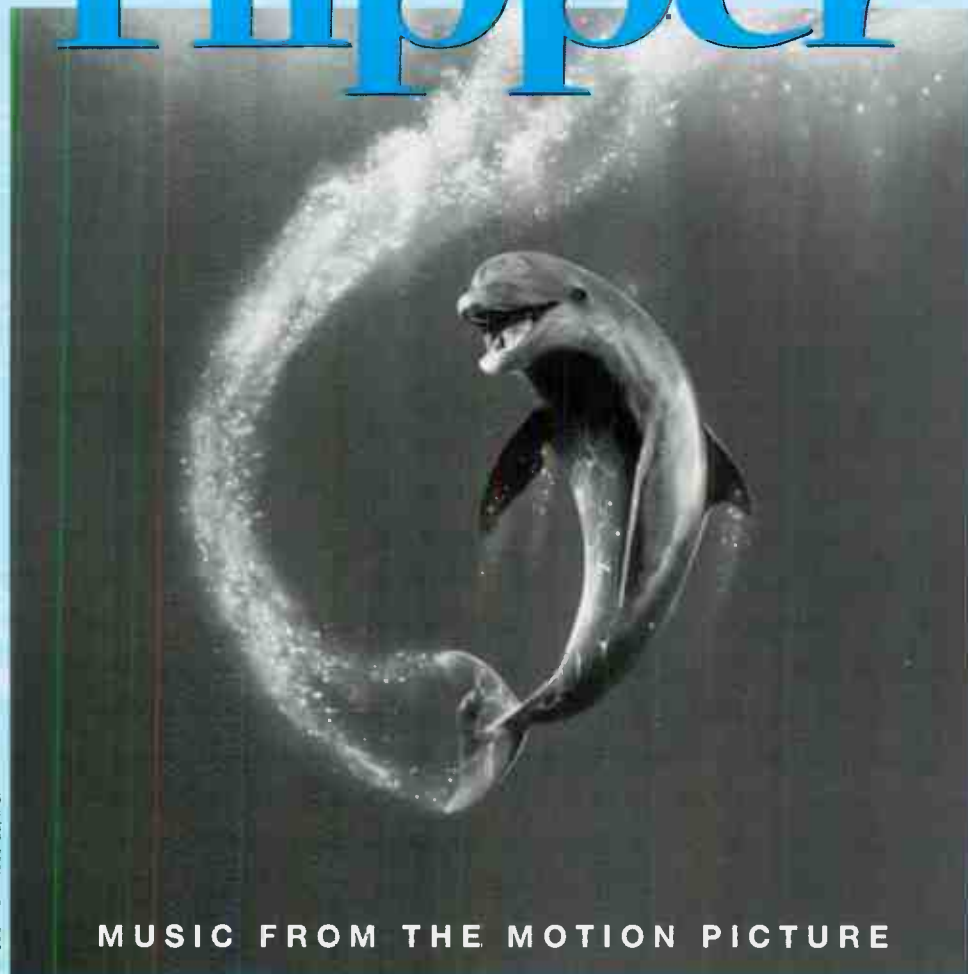
by Grammy Award Winner

Shaggy

featuring **Rayvon**

from

flipper



© 1996 MCA Records, Inc.

MUSIC FROM THE MOTION PICTURE

Album Produced By Tim Sexton
Get AMPed: http://www.mca.com/mca_records



Monitor AIRPLAY SONG ACTIVITY REPORTS For Week Ending April 28, 1996

Broadcast Data Systems... Detailed song tracking information for the last 8 weeks...

JANN ARDEN 1501/60 Insensitive (A&M) Total Stations: 60 Chart Move: 20-23

MARIAH CAREY 3753/25 Always Be My Baby (Columbia) Total Stations: 79 Chart Move: 3-3

TRACY CHAPMAN 2518/329 Give Me One Reason (Elektra/EEG) Total Stations: 83 Chart Move: 10-7

ADAM CLAYTON & LARRY MULLEN 591/431 Theme From Mission: Impossible (Mother/Island) Total Stations: 68

COLOR ME BADD 1595/196 The Earth, The Sun, The Rain (Giant) Total Stations: 75 Chart Move: 21-20

COOLIO 918/134 1,2,3,4 (Sumpin' New) (Tommy Boy) Total Stations: 67 Chart Move: 34-30

THE CRANBERRIES 662/202 Salvation (Island) Total Stations: 54 Chart Move: Debut 38

DEEP BLUE SOMETHING 571/44 Halo (RainMaker/Interscope) Total Stations: 47

DISHWALLA 340/65 Counting Blue Cars (A&M) Total Stations: 30

DOG'S EYE VIEW 2103/44 Everything Falls Apart (Columbia) Total Stations: 82 Chart Move: 12-11

GLORIA ESTEFAN 550/47 Reach (Epic) Total Stations: 61

EVERCLEAR 679/95 Santa Monica (Watch The World Die) (Tim Kerr/Capitol) Total Stations: 63 Chart Move: Debut 37

FOO FIGHTERS 1866/162 Big Me (Roswell/Capitol) Total Stations: 84 Chart Move: 18-17

FUGEEES 1488/485 Killing Me Softly (Ruffhouse/Columbia) Total Stations: 70 Chart Move: 28-24

GARBAGE 415/4 Only Happy When It Rains (Aimo Sounds/Geffen) Total Stations: 29

SONG ACTIVITY REPORTS

For Week Ending April 28, 1996



Detailed song tracking information for the last 3 weeks for all songs showing increased play this week. Total plays and gain do not include video play. Markets listed in order of population.

Grid of song activity reports for Hootie & The Blowfish, Whitney Houston & Cece Winans, Jars of Clay, Lenny Kravitz, and La Bouche. Each entry includes station, song title, and chart position.

Grid of song activity reports for Los Del Rio, Madonna, Billie Ray Martin, Dave Matthews Band, and George Michael. Each entry includes station, song title, and chart position.

Grid of song activity reports for Robert Miles, Oasis, Red Hot Chili Peppers, SWV, and Voice of the Beehive. Each entry includes station, song title, and chart position.



POWER PLAYLISTS

For Week Ending April 28, 1996

Playlists supplied by Broadcast Data Systems. Radio Track service. Stations selected from panel of leading broadcasters in 125 radio markets, electronically monitored 24 hours a day, 7 days a week. Songs ranked by number of plays in monitored week.

Grid of 24 radio station playlists including HOT 97, POWER 106, B96, WKTU, JAM'N 94.5, KMEL, WILD 107, WPGC, THE BOX, POWER 96, KUBE, POWER 92, FM102, KGGI, Z90, KTFM, 92Q, and KS104. Each station listing includes song titles, artists, and play counts.

POWER PLAYLISTS



AIRPLAY
Monitor

For Week Ending
April 28, 1996

Playlists compiled by Broadcast Data Systems' Radio Track service. Stations selected from pane of leading broadcasters in 125 radio markets, electronically monitored 24 hours a day, 7 days a week. Songs ranked by number of plays in monitored week.

B95		102 JAMZ		KDON	
PD: Mark Adams MD: Mikey Freeman		PD: Brian Douglas MD: Mary K.		PD: Michael Newman MD: Jennifer Wilde	
KBO3 Fresno		WJMH Greensboro		KDON Monterey/Salinas	
TW	LW	TW	LW	TW	LW
1	58	1	72	1	75
2	58	2	67	2	74
3	56	3	66	3	71
4	54	4	63	4	72
5	52	5	64	5	67
6	49	6	58	6	69
7	45	7	54	7	65
8	43	8	51	8	62
9	42	9	50	9	61
10	41	10	49	10	61
11	38	11	45	11	66
12	37	12	46	12	65
13	35	13	45	13	60
14	34	14	42	14	64
15	33	15	39	15	52
16	33	16	39	16	51
17	32	17	33	17	47
18	32	18	32	18	47
19	29	19	31	19	36
20	29	20	28	20	26
21	27	21	28	21	24
22	26	22	28	22	22
23	25	23	28	23	26
24	23	24	27	24	20
25	23	25	22	25	19
26	22	26	21	26	19
27	22	27	21	27	18
28	22	28	24	28	17
29	20	29	21	29	17
30	19	30	20	30	16
31	19	31	19	31	16
32	18	32	18	32	16
33	18	33	17	33	15
34	17	34	17	34	14
35	16	35	16	35	13
36	15	36	15	36	12
37	14	37	16	37	11
38	14	38	15	38	14
39	12	39	15	39	12
40	12	40	9	40	12

POWER 102		KLUC		KIX 106	
PD: John Candelara MD: Charlie Huero		PD: Jerry Dean MD: Cat Thomas		PD: Joe Dawson MD: B.B. Good	
KPRR El Paso		KLUC Las Vegas		WKX Providence	
TW	LW	TW	LW	TW	LW
1	81	1	74	1	92
2	80	2	74	2	91
3	58	3	76	3	90
4	59	4	63	4	85
5	55	5	65	5	83
6	53	6	69	6	83
7	53	7	62	7	49
8	44	8	58	8	39
9	46	9	50	9	38
10	41	10	45	10	36
11	40	11	42	11	35
12	40	12	40	12	37
13	37	13	40	13	40
14	37	14	39	14	40
15	36	15	34	15	29
16	36	16	34	16	28
17	35	17	33	17	22
18	34	18	33	18	21
19	33	19	32	19	20
20	33	20	31	20	20
21	27	21	30	21	18
22	24	22	30	22	18
23	24	23	29	23	18
24	23	24	29	24	17
25	22	25	29	25	17
26	22	26	28	26	16
27	20	27	28	27	16
28	20	28	27	28	16
29	19	29	27	29	16
30	18	30	26	30	16
31	18	31	25	31	15
32	17	32	25	32	15
33	17	33	24	33	15
34	17	34	24	34	15
35	14	35	23	35	14
36	14	36	22	36	14
37	13	37	22	37	13
38	12	38	21	38	13
39	12	39	21	39	13
40	12	40	17	40	13

HOOSIER 96.3		HOT 94.9		KKSS	
PD: Scott Wheeler MD: Carl Fryer		PD: Chet Buchanan MD: Dr. Doug Dodd		PD: Roy Jaynes MD: Jacque James	
WHHH Indianapolis		KZHT Salt Lake City		KKSS Albuquerque	
TW	LW	TW	LW	TW	LW
1	56	1	78	1	61
2	52	2	75	2	63
3	51	3	75	3	62
4	51	4	70	4	62
5	51	5	62	5	52
6	48	6	54	6	48
7	48	7	53	7	48
8	47	8	52	8	48
9	38	9	52	9	48
10	36	10	45	10	42
11	35	11	43	11	42
12	32	12	42	12	37
13	30	13	42	13	36
14	30	14	38	14	36
15	30	15	38	15	35
16	30	16	35	16	35
17	29	17	34	17	34
18	29	18	34	18	34
19	28	19	32	19	30
20	24	20	29	20	29
21	22	21	28	21	29
22	22	22	27	22	28
23	22	23	27	23	26
24	21	24	25	24	26
25	21	25	25	25	26
26	21	26	24	26	25
27	21	27	24	27	25
28	21	28	23	28	25
29	20	29	23	29	25
30	16	30	22	30	24
31	15	31	21	31	24
32	14	32	21	32	23
33	14	33	20	33	23
34	13	34	20	34	22
35	13	35	19	35	22
36	12	36	18	36	22
37	12	37	18	37	22
38	12	38	17	38	22
39	12	39	17	39	22
40	11	40	16	40	21

FROM THE ORIGINAL MOTION PICTURE SOUNDTRACK **SUNSET PARK**

MC XSCAPE
THE MOVIE
KEEP ON, KEEPIN' ON
Produced by Jermaine Dupri for So So Def Productions



MONITOR RHYTHM - CROSSOVER DEBUT (39)!
SOUNSCAN RAP SINGLE SALES (2)!
SOUNSCAN SINGLE SALES (15)!
BILLBOARD HOT 100 SINGLES (28)!
REQUESTIN' AND RESEARCHIN'
AT THESE HIGHLY RATED RADIO STATIONS:

KBXX/HOUSTON	59 PLAYS! #5
WERQ/BALTIMORE	34 PLAYS! #9
WHHH/INDIANAPOLIS	22 PLAYS!
KZHT/SALT LAKE CITY	21 PLAYS!
WQHT/NEW YORK	18 PLAYS!
XHTZ/SAN DIEGO	18 PLAYS!
KMEL/SAN FRANCISCO	14 PLAYS!
KYLD/SAN FRANCISCO	14 PLAYS!
WWKX/PROVIDENCE	14 PLAYS!
WPGC/WASHINGTON	11 PLAYS!
KKSS/ALBUQUERQUE	10 PLAYS!
KLUC/LAS VEGAS	ADD!

SOUNDTRACK DEBUTING THIS WEEK IN SOUNSCAN!
MOVIE NOW SHOWING!

TOP REQUESTS! #1 REQUESTS! #1 PLAYED!

MC Lyte appears courtesy of First Priority Music/Eastwest Records.
On Flavor Unit/Eastwest Records America compact discs and cassettes. <http://www.elektra.com>

© 1996 Elektra Entertainment Group, a division of Warner Communications Inc. A Time Warner Company.
Motion Picture Photography and Artwork: © 1986 TriStar Pictures, Inc. All rights reserved.



★ ★ ★ **AIRPOWER** ★ ★ ★

(Minimum 600 detections for the first time)

NO RECORDS QUALIFIED FOR AIRPOWER THIS WEEK

AIRPOWER BOUND

Total Plays/Gains

WHITNEY HOUSTON & CECE WINANS 475/97
Count On Me (Arista)
Total Stations: 22/Chart Move: 23-18
Heavy (40+ plays): 3 KSFM, WERQ, WJJS
Medium (20-39): 9 KBOS, KBXX, KKSS, KLUC, KQKS, KZFM, KZHT, WJMH, WWKX
Light (Under 20): 10

COLOR ME BADD 467/29
The Earth, The Sun, The Rain (Giant)
Total Stations: 22/Chart Move: 20-19
Heavy (40+): 3 KDON, KLUC, KZHT
Medium (20-39): 8 KGGI, KKFR, KPRR, KQKS, KZFM, WHHH, WJJS, WJMN
Light (Under 20): 11

ALANIS MORISSETTE 400/178
Ironie (Maverick/Reprise)
Total Stations: 13/Chart Move: 33-23
Heavy (40+): 5 KLUC, KTFM, KUBE, WBBM, WPOW
Medium (20-39): 3 KBOS, KKFR, KZFM
Light (Under 20): 5
New Airplay This Week: 4 KKFR, KKSS, KSFM, KTFM

PUFF JOHNSON 348/43
Forever More (Work)
Total Stations: 22/Chart Move: 27-25
Heavy (40+): 1 XHTZ
Medium (20-39): 4 KLUC, KTFM, KZFM, WJJS
Light (Under 20): 17
New Airplay This Week: 5 KGGI, KPRR, KZFM, KZHT, WWKX

DELINQUENT HABITS 331/12
Tres Delinquentes (PMP/Loud/RCA)
Total Stations: 13/Chart Move: 29-26
Heavy (40+): 3 KKSS, KPWR, KYLD
Medium (20-39): 3 KDON, KMEL, KPRR
Light (Under 20): 7
New Airplay This Week: 1 WPOW

MONICA 293/53
Why I Love You So Much (Rowdy/Arista)
Total Stations: 16/Chart Move: 39-30
Heavy (40+): 3 WERQ, WJMH, WPGC
Medium (20-39): 3 KQKS, WHHH, WQHT
Light (Under 20): 10
New Airplay This Week: 1 KBXX

BILLIE RAY MARTIN 290/48
Your Loving Arms (Sire/EEG)
Total Stations: 15/Chart Move: 37-31
Heavy (40+): 2 KTFM, WKTU
Medium (20-39): 5 KCAQ, KGGI, KKFR, KUBE, WWKX
Light (Under 20): 8
New Airplay This Week: 1 KGGI

QUAD CITY DJ'S 277/50
C'mon 'n Ride It (Qudrasound/Big Beat/Atlantic)
Total Stations: 16/Chart Move: Re-Entry 33
Heavy (40+): 2 KLUC, WJJS
Medium (20-39): 3 KKSS, KPRR, KTFM
Light (Under 20): 11
New Airplay This Week: 1 KMEL

FUGEES 266/23
Ready Or Not (Ruffhouse/Columbia)
Total Stations: 8/Chart Move: 36-34
Heavy (40+): 4 KBXX, WERQ, WJMH, WPGC
Medium (20-39): 1 WQHT
Light (Under 20): 3
New Airplay This Week: 1 KUBE

ARTIE THE 1 MAN PARTY 255/22
Esa Nena Linda (Groove Nation/Scotti Bros./All American)
Total Stations: 16/Chart Move: 40-36
Heavy (40+): 2 KPWR, KYLD
Medium (20-39): 2 KTFM, XHTZ
Light (Under 20): 12
New Airplay This Week: 2 KGGI, WPOW

GEORGE MICHAEL 252/98
Fastlove (DreamWorks/Geffen)
Total Stations: 17/Chart Move: Debut 37
Heavy (40+): 1 KKFR
Medium (20-39): 5 KDON, KGGI, KQKS, KTFM, KZFM
Light (Under 20): 11
New Airplay This Week: 2 KDON, KZFM

H-TOWN 252/22
A Thin Line Between Love & Hate (Jac-Mac/Warner Bros.)
Total Stations: 17/Chart Move: Debut 38
Heavy (40+): 1 KBXX
Medium (20-39): 6 KLUC, WHHH, WJJS, WJMH, WPGC, WWKX
Light (Under 20): 11
New Airplay This Week: 1 KLUC

MC LYTE FEAT. XScape 246/49
Keep On, Keepin' On (Flavor Unit/EastWest/EEG)
Total Stations: 15/Chart Move: Debut 39
Heavy (40+): 1 KBXX
Medium (20-39): 3 KZHT, WERQ, WHHH
Light (Under 20): 11
New Airplay This Week: 1 KYLD

CHART BOUND

Total Plays/Gains

SHAI 227/35
I Don't Wanna Be Alone (Gasoline Alley/MCA)
Total Stations: 16
Heavy (40+): 1 XHTZ
Medium (20-39): 3 KBOS, KCAQ, KMEL
Light (Under 20): 12
New Airplay This Week: 1 KPRR

ROBERT MILES 223/79
Children (deconstruction/Arista)
Total Stations: 14
Heavy (40+): 2 KKFR, KPRR
Medium (20-39): 3 KTFM, WBBM, WPOW
Light (Under 20): 9
New Airplay This Week: 1 KBOS

TOTAL 217/20
Kissin' You (Bad Boy/Arista)
Total Stations: 10
Heavy (40+): 1 KBXX
Medium (20-39): 5 KCAQ, KMEL, WERQ, WQHT, WWKX
Light (Under 20): 4
New Airplay This Week: 1 WHHH

MOST NEW AIRPLAY THIS WEEK

No. Of Stations

PUFF JOHNSON 5
Forever More (Work)
ALANIS MORISSETTE 4
Ironie (Maverick/Reprise)
CASE FEAT. MARY J. BLIGE & FOXXY BROWN 3
Touch Me, Tease Me (Def Jam/Mercury)
JODECI 3
Get On Up (Uptown/MCA)

LOS DEL RIO 201/32
Macarena (Bayside Boys Mix) (RCA)
Total Stations: 16
Heavy (40+): 0
Medium (20-39): 4 KQKS, KZHT, WHHH, WKTU
Light (Under 20): 12

JODECI 196/84
Get On Up (Uptown/MCA)
Total Stations: 15
Heavy (40+): 1 WJMH
Medium (20-39): 2 WHHH, WJJS
Light (Under 20): 12
New Airplay This Week: 3 KBXX, KMEL, WWKX

RAPPIN' 4-TAY 173/9
Ain't No Playa (Chrysalis/EMI)
Total Stations: 10
Heavy (40+): 2 KDON, KKSS
Medium (20-39): 1 KLUC
Light (Under 20): 7

CASE FEAT. MARY J. BLIGE & FOXXY BROWN 163/60
Touch Me, Tease Me (Def Jam/Mercury)
Total Stations: 10
Heavy (40+): 1 WJMH
Medium (20-39): 2 KBXX, WQHT
Light (Under 20): 7
New Airplay This Week: 3 KLUC, WERQ, XHTZ

MACK 10 FEAT. ICE CUBE 158/82
Hoo-Bangin' (Priority)
Total Stations: 12
Heavy (40+): 2 KPWR, KYLD
Medium (20-39): 1 KMEL
Light (Under 20): 9
New Airplay This Week: 2 KKSS, WWKX

THA DOGG POUND 140/5
New York, New York (Death Row/Interscope)
Total Stations: 8
Heavy (40+): 2 KMEL, KYLD
Medium (20-39): 0
Light (Under 20): 6

ART N' SOUL 135/25
Ever Since You Went Away (Nature Boy/Big Beat/Atlantic)
Total Stations: 7
Heavy (40+): 1 KMEL
Medium (20-39): 2 KCAQ, WERQ
Light (Under 20): 4

EVERYTHING BUT THE GIRL 128/70
Wrong (Atlantic)
Total Stations: 11
Heavy (40+): 1 KPRR
Medium (20-39): 1 KYLD
Light (Under 20): 9
New Airplay This Week: 1 KKFR

RHYTHMCENTRIC 127/9
You Don't Have To Worry (Tazmania/Metropolitan)
Total Stations: 21
Heavy (40+): 0
Medium (20-39): 2 KKFR, KTFM
Light (Under 20): 19
New Airplay This Week: 2 KCAQ, KPRR

N-TRANCE 125/8
Stayin' Alive (Avex-Critique)
Total Stations: 8
Heavy (40+): 0
Medium (20-39): 2 KKSS, KLUC
Light (Under 20): 6

TINA ARENA 124/2
Chains (Epic)
Total Stations: 12
Heavy (40+): 0
Medium (20-39): 3 KZFM, KZHT, WJJS
Light (Under 20): 9

2PAC 117/46
2 Of Amerikaz Most Wanted (Death Row/Interscope)
Total Stations: 10
Heavy (40+): 0
Medium (20-39): 2 KMEL, KPWR
Light (Under 20): 8
New Airplay This Week: 2 WJMH, XHTZ

GLORIA ESTEFAN 109/16
Reach (Epic)
Total Stations: 14
Heavy (40+): 0
Medium (20-39): 2 KZFM, WWKX
Light (Under 20): 12
New Airplay This Week: 1 KZHT

MICHAEL JACKSON 107/44
They Don't Care About Us (Epic)
Total Stations: 7
Heavy (40+): 1 WPGC
Medium (20-39): 1 WJMH
Light (Under 20): 5
New Airplay This Week: 1 KCAQ

KE' 102/8
Strange World (RCA)
Total Stations: 14
Heavy (40+): 0
Medium (20-39): 2 WBBM, WPOW
Light (Under 20): 9
New Airplay This Week: 1 WJJS

2PAC 99/29
I Ain't Mad At Cha (Death Row/Interscope)
Total Stations: 3
Heavy (40+): 1 WJMH
Medium (20-39): 1 KBXX
Light (Under 20): 1
New Airplay This Week: 1 WPGC

KATALINA 96/47
DJ Girl (Thump)
Total Stations: 9
Heavy (40+): 1 KUBE
Medium (20-39): 1 KTFM
Light (Under 20): 7

PLANET SOUL 89/10
Feel The Music (Strictly Rhythm)
Total Stations: 10
Heavy (40+): 0
Medium (20-39): 2 KCAQ, KPWR
Light (Under 20): 8

XScape FEAT. MC LYTE 88/12
Can't Hang (So So Def/Columbia)
Total Stations: 10
Heavy (40+): 0
Medium (20-39): 1 WQHT
Light (Under 20): 9
New Airplay This Week: 1 WWKX

LIVIN' JOY 87/4
Dreamer (MCA)
Total Stations: 9
Heavy (40+): 0

Medium (20-39): 1 WKTU
Light (Under 20): 8

ALL-4-ONE 87/13
These Arms (blitz/Atlantic)
Total Stations: 5
Heavy (40+): 0
Medium (20-39): 2 KZFM, WJJS
Light (Under 20): 3

ENERGY 86/27
Take Me Higher (Upstairs)
Total Stations: 9
Heavy (40+): 1 KYLD
Medium (20-39): 1 KMEL
Light (Under 20): 7
New Airplay This Week: 1 KCAQ

★ TOO SHORT 76/37
Gettin' It (Jive)
Total Stations: 5
Heavy (40+): 1 KYLD
Medium (20-39): 0
Light (Under 20): 4
New Airplay This Week: 1 XHTZ

SMASHING PUMPKINS 70/4
1979 (Virgin)
Total Stations: 7
Heavy (40+): 1 KZFM
Medium (20-39): 0
Light (Under 20): 6

LOS ILEGALES 69/4
La Morena (BMG U.S. Latin)
Total Stations: 3
Heavy (40+): 1 KPRR
Medium (20-39): 1 WPOW
Light (Under 20): 1

SKIN DEEP 66/8
No More Games (Loose Cannon/Island)
Total Stations: 4
Heavy (40+): 0
Medium (20-39): 2 KCAQ, WQHT
Light (Under 20): 2

★ ADAM CLAYTON & LARRY MULLEN 66/30
Theme From Mission: Impossible (Mother/Island)
Total Stations: 13
Heavy (40+): 0
Medium (20-39): 1 WJJS
Light (Under 20): 12
New Airplay This Week: 1 KUBE

★ GEORGE CLINTON 59/24
If Anybody Gets Funked Up (550 Music)
Total Stations: 3
Heavy (40+): 0
Medium (20-39): 2 WJJS, WJMN
Light (Under 20): 1

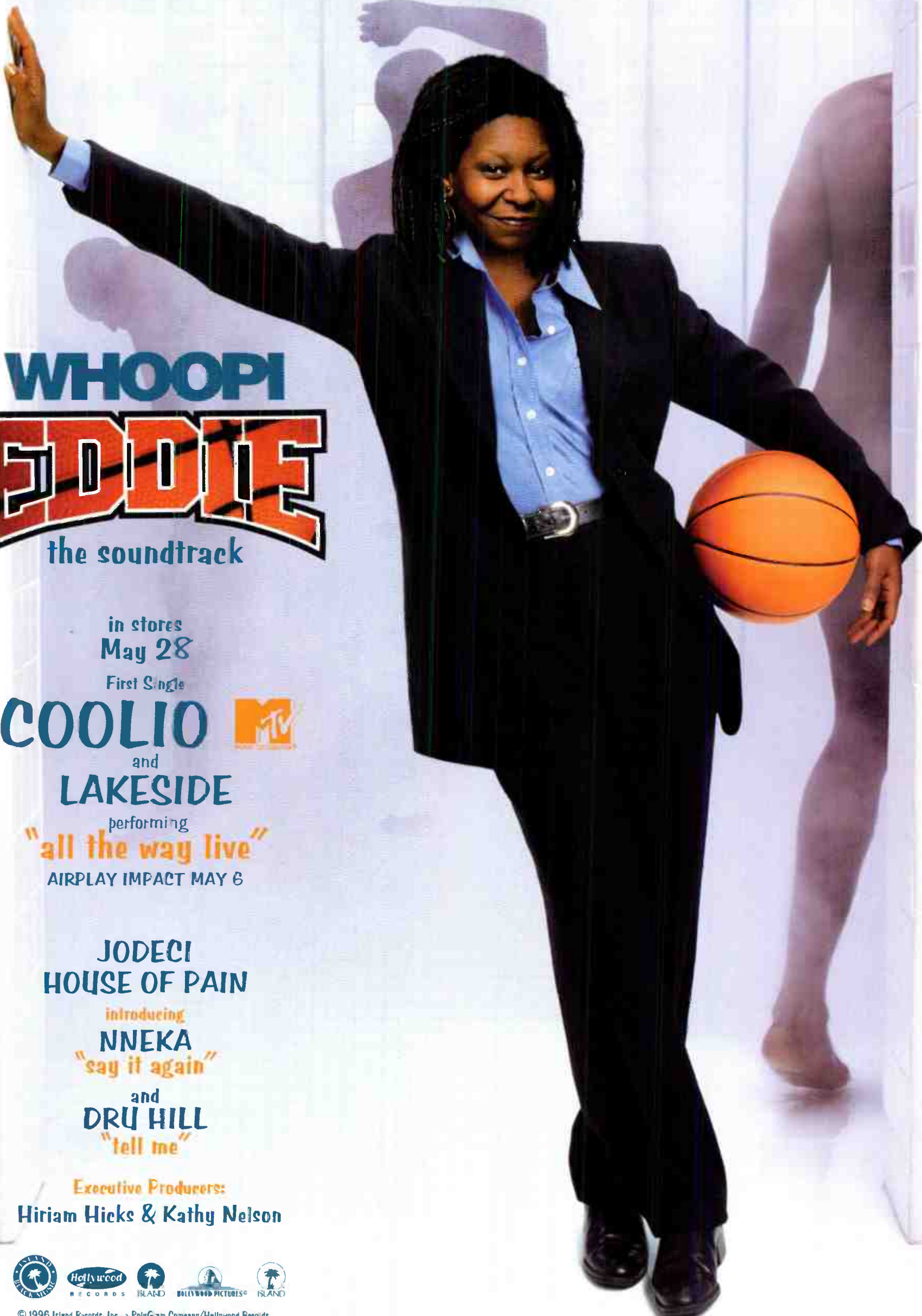
★ R. KELLY 59/52
I Can't Sleep Baby (Jive)
Total Stations: 3
Heavy (40+): 0
Medium (20-39): 2 WERQ, WQHT
Light (Under 20): 1
New Airplay This Week: 1 WQHT

★ THE TONY RICH PROJECT 56/26
Leavin' (LaFace/Arista)
Total Stations: 1
Heavy (40+): 1 KUBE
Medium (20-39): 0
Light (Under 20): 0

★ JAYZ 54/5
Ain't No Nigga (Priority)
Total Stations: 5
Heavy (40+): 0
Medium (20-39): 1 WQHT
Light (Under 20): 4

★ WC & THE MAAD CIRCLE 51/6
The One (Payday/London/Island)
Total Stations: 7
Heavy (40+): 0
Medium (20-39): 1 KPWR
Light (Under 20): 6
New Airplay This Week: 1 WWKX

Airpower awarded to those records which attain 600 detections for the first time. New airplay lists those stations registering six or more detections per week on a record for the first time. ★ Initial impact: records appearing on this page for the first time.




WHOOPI EDDIE

the soundtrack

in stores
May 28

First Single

COOLIO 

and
LAKESIDE

performing

"all the way live"

AIRPLAY IMPACT MAY 6

JODECI
HOUSE OF PAIN

introducing

NNEKA
"say it again"

and

DRU HILL
"tell me"

Executive Producers:

Hiriam Hicks & Kathy Nelson



© 1996 Island Records, Inc., a PolyGram Company/Hollywood Records.

SONG ACTIVITY REPORTS For Week Ending April 28, 1996



Updated song tracking information for the last 3 weeks for all songs showing increased play this week. Total plays and gain do not include video play. Markets listed in order of population.

Grid of 48 chart reports for artists including ANGELINA, ART N' SOUL, ARTIE THE 1 MAN PARTY, BONE THUGS-N-HARMONY, CASE FEAT. MARY J. BLIGE & FOXXY BROWN, COLOR ME BADD, DELINQUENT HABITS, CELINE DION, THA DOGG POUND, EVERYTHING BUT THE GIRL, FUGEES, H-TOWN, WHITNEY HOUSTON & CECE WINANS, JODECI, JOE, PUFF JOHNSON, LA BOUCHE, LOS DEL RIO, MACK 10, BILLIE RAY MARTIN, MC LYTE FEAT. XSCAPE, GEORGE MICHAEL, ROBERT MILES, MONICA, ALANIS MORISSETTE, QUAD CITY DJ'S, SHAI, SWV, and TOTAL.

POWER PLAYLISTS

For Week Ending April 28, 1996



Playlists supplied by Broadcast Data Systems. Radio... Stations selected from panel of leading... monitored 24 hours a day, 7 days a week. Songs ranked by number of plays in monitored week.

Main table containing 24 columns of radio station playlists (e.g., WPLJ, MIX 105, STAR 98.7, STAR 104.5, MIX 101.9, WPNT, MIX 107.3, Q95.5, MIX 98.5, MIX 96.5, KS95, Q104, MIX 102.9, KYKY, STAR 101.5, Q106, MIX 106.5, MIX 96, VARIETY 96, WBLI, WKTI, SUNNY 107.9, WRMF, MY102.5) with columns for station name, PD, MD, and a list of songs with their respective play counts.

BDS IMPACT

★ ★ ★ **AIRPOWER** ★ ★ ★
(Minimum 300 detections for the first time)

NO RECORDS QUALIFIED FOR AIRPOWER THIS WEEK

AIRPOWER BOUND

Total Plays/Gain

HOOTIE & THE BLOWFISH 212/23
Old Man & Me (When I Get To Heaven) (Atlantic)

Total Stations: 19/Chart Move: 24-22
Heavy (21+): 6 KBIG, KEZR, KURB, KVUU, WLAC, WMJQ
Medium (14-20): 2 WJDX, WTFM
Light (Under 14): 11

TRACY CHAPMAN 200/57
Give Me One Reason (Elektra/EEG)

Total Stations: 19/Chart Move: 27-23
Heavy (21+): 6 KURB, KVUU, WALK, WGSY, WLAC, WMJQ
Medium (14-20): 1 WEBR
Light (Under 14): 12
New Airplay This Week: 1 WEBR

GEORGE MICHAEL 157/62
Fastlove (DreamWorks/Geffen)

Total Stations: 20/Chart Move: Debut 25
Heavy (21+): 0
Medium (14-20): 5 KEZR, KGBY, KLYF, WJDX, WSLQ
Light (Under 14): 15
New Airplay This Week: 6 KEZR, WARM, WDEF, WJDX, WLIF, WTFM

SELENA 144/44
I'm Getting Used To You (EMI Latin/EMI)

Total Stations: 17/Chart Move: Debut 26
Heavy (21+): 3 WAHR, WJDX, WMJQ
Medium (14-20): 2 KESZ, WARM
Light (Under 14): 12
New Airplay This Week: 4 WDEF, WMGS, WSSH, WSLQ

TONI BRAXTON 132/54

Let It Flow (Arista)

Total Stations: 15/Chart Move: Debut 28
Heavy (21+): 1 WDEF
Medium (14-20): 3 KUJDL, WASH, WLIT
Light (Under 14): 11
New Airplay This Week: 5 WASH, WJDX, WLTE, WMJQ, WTFM

DIANA ROSS 130/17

Voice Of The Heart (Motown)

Total Stations: 18/Chart Move: Debut 29
Heavy (21+): 0
Medium (14-20): 4 WAHR, WARM, WJDX, WLTE
Light (Under 14): 14
New Airplay This Week: 2 WDEF, WJDX

CHART BOUND

Total Plays/Gain

MADONNA 113/35
Love Don't Live Here Anymore (Maverick/Warner Bros.)

Total Stations: 17
Heavy (21+): 1 WRVF
Medium (14-20): 2 WJDX, WTFM
Light (Under 14): 14
New Airplay This Week: 2 WDEF, WSSH

JACKSON BROWNE 108/17
Some Bridges (Elektra/EEG)

Total Stations: 16
Heavy (21+): 0
Medium (14-20): 2 WAHR, WSLQ
Light (Under 14): 14

SORAYA 83/23
Suddenly (Island)

Total Stations: 16
Heavy (21+): 0
Medium (14-20): 1 WRVF
Light (Under 14): 15
New Airplay This Week: 3 KESZ, WDEF, WTFM

MOST NEW AIRPLAY THIS WEEK

No. Of Stations

GEORGE MICHAEL 6
Fastlove (DreamWorks/Geffen)

TONI BRAXTON 5
Let It Flow (Arista)

SELENA 4
I'm Getting Used To You (EMI Latin/EMI)

SORAYA 3
Suddenly (Island)

MADONNA 2
Love Don't Live Here Anymore (Maverick/Warner Bros.)

DIANA ROSS 2
Voice Of The Heart (Motown)

WYNONNA 2
To Be Loved By You (Curb/MCA)

ALL-4-ONE 81/21
These Arms (Blitz/Arista)

Total Stations: 9
Heavy (21+): 0
Medium (14-20): 2 WAHR, WJDX
Light (Under 14): 7

ACE OF BASE 66/1
Lucky Love (Arista)

Total Stations: 8
Heavy (21+): 0
Medium (14-20): 3 KLYF, KURB, WTFM
Light (Under 14): 5

★ **WYNONNA** 65/29
To Be Loved By You (Curb/MCA)

Total Stations: 7
Heavy (21+): 0
Medium (14-20): 2 KKCW, WDEF
Light (Under 14): 5
New Airplay This Week: 2 WLAC, WLIT

GIN BLOSSOMS 56/28
Follow You Down (A&M)

Total Stations: 10
Heavy (21+): 1 KBIG
Medium (14-20): 1 WLAC
Light (Under 14): 8
New Airplay This Week: 1 WLAC

THIS WEEK	LAST WEEK	WEEKS ON	TITLE/LABEL		ARTIST	DETECTIONS	
			TW	LW			
			★★★★ NO. 1 ★★★★★				
1	1	11	BECAUSE YOU LOVED ME	CELINE DION	1063	1077	
2	2	15	NOBODY KNOWS	THE TONY RICH PROJECT	812	851	
3	3	8	ALWAYS BE MY BABY	MARIAH CAREY	777	726	
4	4	9	COUNT ON ME	WHITNEY HOUSTON & CECE WINANS	710	725	
5	5	16	SO FAR AWAY	ROD STEWART	644	681	
6	6	23	DON'T CRY	SEAL	632	664	
7	9	7	DON'T WANNA LOSE YOU	LIONEL RICHIE	627	608	
8	7	26	ONE SWEET DAY	MARIAH CAREY & BOYZ II MEN	582	658	
9	8	30	BLESSED	ELTON JOHN	553	623	
10	10	40	BACK FOR GOOD	TAKE THAT	519	560	
11	13	5	REACH	GLORIA ESTEFAN	492	412	
12	11	24	MISSING	EVERYTHING BUT THE GIRL	430	431	
13	12	17	INSENSITIVE	JANN ARDEN	419	420	
14	14	46	KISS FROM A ROSE	SEAL	373	389	
15	15	51	AS I LAY ME DOWN	SOPHIE B. HAWKINS	324	352	
16	19	10	BY HEART	JIM BRICKMAN	289	292	
17	16	27	YOU'LL SEE	MADONNA	279	328	
18	17	10	GROW OLD WITH ME	MARY CHAPIN CARPENTER	276	305	
19	20	43	ONLY WANNA BE WITH YOU	HOOTIE & THE BLOWFISH	271	281	
20	18	10	FAITHFULLY	PETER CETERA	249	293	
21	21	6	CHAINS	TINA ARENA	248	248	
22	24	2	OLD MAN AND ME (WHEN I GET TO HEAVEN)	HOOTIE & THE BLOWFISH	212	189	
23	27	2	GIVE ME ONE REASON	TRACY CHAPMAN	200	143	
24	23	20	DREAMING OF YOU	SELENA	189	200	
25	NEW		FASTLOVE	GEORGE MICHAEL	157	95	
26	NEW		I'M GETTING USED TO YOU	SELENA	144	100	
27	28	21	WONDER	NATALIE MERCHANT	141	137	
28	NEW		LET IT FLOW	TONI BRAXTON	132	78	
29	NEW		VOICE OF THE HEART	DIANA ROSS	130	113	
30	26	26	NAME	GOO GOO DOLLS	126	143	

Records showing an increase in detections over the previous week, regardless of chart movement. A record which has been on the chart for more than 20 weeks will not receive a bullet, even if it registers an increase in detections. Airpower awarded to those records which attain 300 detections for the first time. If two records are tied in number of plays, the record being played on more stations is placed first. Records below the top 20 are removed from the chart after 26 weeks. © 1996, Billboard/BPI Communications.

ADULT CONTEMPORARY POWER PLAYLISTS

KBIG		WLIT		B101		K101		SOFT ROCK 97.1		WLTE	
PD: Dave Ervin		PD/MD: Mark Edwards		PD: Jim Ryan		PD: Casey Keating		PD: Steve Streit		PD/MD: Gary Nolan	
Los Angeles		Chicago		Philadelphia		San Francisco		Washington, DC		Minneapolis	
TW	LW	TW	LW	TW	LW	TW	LW	TW	LW	TW	LW
1	1	1	1	1	1	1	1	1	1	1	1
2	2	2	2	2	2	2	2	2	2	2	2
3	3	3	3	3	3	3	3	3	3	3	3
4	4	4	4	4	4	4	4	4	4	4	4
5	5	5	5	5	5	5	5	5	5	5	5
6	6	6	6	6	6	6	6	6	6	6	6
7	7	7	7	7	7	7	7	7	7	7	7
8	8	8	8	8	8	8	8	8	8	8	8
9	9	9	9	9	9	9	9	9	9	9	9
10	10	10	10	10	10	10	10	10	10	10	10
11	11	11	11	11	11	11	11	11	11	11	11
12	12	12	12	12	12	12	12	12	12	12	12
13	13	13	13	13	13	13	13	13	13	13	13
14	14	14	14	14	14	14	14	14	14	14	14
15	15	15	15	15	15	15	15	15	15	15	15
16	16	16	16	16	16	16	16	16	16	16	16
17	17	17	17	17	17	17	17	17	17	17	17
18	18	18	18	18	18	18	18	18	18	18	18
19	19	19	19	19	19	19	19	19	19	19	19
20	20	20	20	20	20	20	20	20	20	20	20

Airpower awarded to those records which attain 300 detections for the first time. New airplay lists those stations registering six or more detections per week on a record for the first time. ★ Initial impact: records appearing on this page for the first time.

AIRPLAY Monitor MODERN ROCK AIRPLAY

For Week Ending April 28, 1996



POWER PLAYLISTS™

WXRK New York OM: Sam Milkman PD: Andre Gardner		KROQ Los Angeles PD: Kevin Weatherly APD: Gene Sanbblow		WKQX Chicago PB: Bill Gamble APD/MD: Mary Shumlin	
TW	LW	TW	LW	TW	LW
1	40	1	40	1	59
2	38	2	37	2	52
3	37	3	36	3	42
4	35	4	35	4	32
5	33	5	34	5	26
6	32	6	33	6	26
7	32	7	33	7	18
8	32	8	31	8	15
9	32	9	25	9	15
10	27	10	27	10	32
11	29	11	24	11	32
12	28	12	23	12	30
13	27	13	23	13	32
14	27	14	21	14	29
15	26	15	20	15	29
16	26	16	19	16	27
17	24	17	18	17	27
18	23	18	18	18	27
19	23	19	16	19	25
20	21	20	15	20	22
21	21	21	14	21	22
22	18	22	14	22	17
23	19	23	14	23	16
24	19	24	14	24	16
25	17	25	13	25	14
26	17	26	13	26	13
27	16	27	12	27	13
28	16	28	12	28	13
29	16	29	12	29	13
30	16	30	12	30	13

WPLY Philadelphia PD: John Knapp APD/MD: Chuck Tisa		WBCN Boston VP/Prgrm: Oedipus MD: Carter Alan		WHFS Washington, DC PD: Robert Benjamin APD: Bob Waugh	
TW	LW	TW	LW	TW	LW
1	45	1	38	1	36
2	43	2	36	2	37
3	41	3	34	3	31
4	38	4	33	4	32
5	37	5	32	5	31
6	36	6	30	6	34
7	32	7	28	7	27
8	31	8	28	8	26
9	30	9	25	9	25
10	29	10	25	10	28
11	28	11	24	11	22
12	27	12	23	12	22
13	27	13	22	13	21
14	27	14	21	14	21
15	27	15	19	15	20
16	27	16	18	16	20
17	27	17	18	17	18
18	26	18	18	18	17
19	26	19	16	19	15
20	26	20	16	20	15
21	26	21	15	21	14
22	26	22	15	22	15
23	24	23	15	23	15
24	24	24	15	24	15
25	23	25	14	25	15
26	22	26	14	26	15
27	22	27	14	27	15
28	22	28	14	28	15
29	22	29	14	29	15
30	22	30	14	30	15

KITS San Francisco VP/Prgrm: Richard Santos MD: Roland West		KDGE Dallas PD: Joel Folger MD: Jay Michaels		WNNX Atlanta PD: Brian Phillips APD: Leslie Fram	
TW	LW	TW	LW	TW	LW
1	28	1	39	1	32
2	26	2	38	2	32
3	26	3	38	3	29
4	26	4	34	4	26
5	25	5	34	5	27
6	24	6	33	6	28
7	22	7	32	7	28
8	22	8	32	8	27
9	22	9	32	9	27
10	22	10	32	10	27
11	22	11	32	11	27
12	22	12	32	12	27
13	22	13	32	13	27
14	22	14	32	14	27
15	22	15	32	15	27
16	22	16	32	16	27
17	22	17	32	17	27
18	22	18	32	18	27
19	22	19	32	19	27
20	22	20	32	20	27
21	22	21	32	21	27
22	22	22	32	22	27
23	22	23	32	23	27
24	22	24	32	24	27
25	22	25	32	25	27
26	22	26	32	26	27
27	22	27	32	27	27
28	22	28	32	28	27
29	22	29	32	29	27
30	22	30	32	30	27

THIS WEEK	LAST WEEK	WKS. ON CHART	TITLE/LABEL/DISTRIBUTING LABEL	ARTIST	DETECTIONS	
					TW	LW
1	2	5	SALVATION ISLAND	THE CRANBERRIES	2272	2208
2	1	12	CHAMPAGNE SUPERNOVA EPIC	OASIS	2226	2307
3	3	8	BIG BANG BABY ATLANTIC	STONE TEMPLE PILOTS	2094	2186
4	4	12	MACHINEHEAD TRAUMA/INTERSCOPE	BUSH	1984	1980
5	6	6	MOTHER MOTHER ISLAND	TRACY BONHAM	1892	1716
6	7	5	TOO MUCH RCA	DAVE MATTHEWS BAND	1774	1683
7	NEW		PRETTY NOOSE A&M	SOUNDGARDEN	1667	599
8	9	7	PHOTOGRAPH RCA	THE VERVE PIPE	1564	1408
9	10	6	COUNTING BLUE CARS A&M	DISHWALLA	1526	1382
10	5	16	BIG ME ROSWELL/CAPITOL	FOO FIGHTERS	1492	1762
11	8	23	IN THE MEANTIME HIFI/SIRE/EEG	SPACEHOG	1349	1530
12	19	5	HERE IN YOUR BEDROOM MCA/UNIVERSAL	GOLDFINGER	1246	1117
13	12	13	ZERO VIRGIN	SMASHING PUMPKINS	1240	1327
14	11	27	SANTA MONICA (WATCH THE WORLD DIE) TIM KERR/CAPITOL	EVERCLEAR	1224	1351
15	18	9	SISTER MCA	THE NIXONS	1196	1127
16	15	4	THE 13TH FICTION/ELEKTRA/VEEG	THE CURE	1195	1271
17	14	15	WHAT DO I HAVE TO DO? COLUMBIA	STABBING WESTWARD	1182	1273
18	13	9	SWEET LOVER HANGOVER BEGGARS BANQUET/AMERICAN/REPRISE	LOVE & ROCKETS	1128	1313
19	17	11	FLOOD ESSENTIAL/SILVERTONE/LIVE	JARS OF CLAY	1085	1186
20	24	4	BULLS ON PARADE EPIC	RAGE AGAINST THE MACHINE	1069	959

Records showing an increase in detections over the previous week, regardless of chart movement. A record which has been on the chart for more than 20 weeks will not receive a bullet, even if it registers an increase in detections. Airpower awarded to those records which attain 1,100 detections for the first time. If two records are tied in number of plays, the record being played on more stations is placed first. ©1996 Billboard/BPI Communications.

Experience The Power!

Brought to you by Billboard and Monitor, the most comprehensive guide to radio and record promotion — THE POWER BOOK — March 1996 Edition

The most important tool for music, radio and promotion executives to use every day! Order your copy now for just \$75 (plus \$5 shipping and handling, \$12 for international orders). **"2 Directory Package Deal!"** — The Power Book March 1996 Edition AND The Power Book September 1996 Edition for just \$119. Order now & SAVE more than 20% on the September '96 Edition! (September '96 Edition will automatically mail in September).

To order, or for more information, call (800) 344-7119 or (800) 223-7524. In NY call (212) 536-5174. In NJ call (908) 363-4156. Or mail this ad with your payment to: Billboard Directories, P.O. Box 2016, Lakewood, NJ 08701. Please add appropriate sales tax in NY, NJ, PA, CA, TN, MA, IL & DC. Orders payable in U.S. funds only. All sales are final.

Updated for the Spring!

JAM-PACKED WITH LISTINGS:

- Radio Stations — Country, Rock, R&B, Top 40
- Record Company Promotion Personnel
- Radio Syndicators
- Top 100 Arbitron Markets

BDPB3036

COMBINED TOP 40 AIRPLAY											AIRPLAY THIS WEEK BY FORMAT														
TW	LW	WKS	TITLE (LABEL)	ARTIST	THIS WEEK			LAST WEEK			MAINSTREAM		RHYTHM		ADULT TOP 40		AC		MODERN						
					Audience (millions)	Detections No.	Rank	Audience (millions)	Detections No.	Rank	Audience (millions)	Detections No.	Rank	Audience (millions)	Detections No.	Rank	Audience (millions)	Detections No.	Rank	Audience (millions)	Detections No.	Rank			
1	1	8	BECAUSE YOU LOVED ME (550 MUSIC)	CELINE DION	77.9498	7704	1	79.0871	7704	1	32.8108	4030	2	14.9579	1050	4	20.0485	1561	1	10.1326	1063	1	—	—	—
2	2	12	ALWAYS BE MY BABY (COLUMBIA)	MARIAH CAREY	72.4768	7056	2	73.3751	6938	2	31.3942	3753	3	21.5528	1424	2	12.2843	1102	2	7.2455	777	3	—	—	—
3	3	15	IRONIC (MAVERICK/REPRISE)	ALANIS MORISSETTE	61.9105	6413	3	61.5216	6426	3	33.9308	4119	1	7.1133	400	23	13.0149	897	8	0.1397	44	—	7.7118	953	24
4	4	16	NOBODY KNOWS (LAFACE/ARISTA)	THE TONY RICH PROJECT	54.4363	5676	4	55.4098	5764	4	27.4698	3080	4	11.4414	897	8	8.7606	887	9	6.7645	812	2	—	—	—
5	6	8	KILLING ME SOFTLY (RUFFHOUSE/COLUMBIA)	FUGEES	47.3187	3228	14	44.7456	2690	18	14.9054	1488	24	32.3156	1691	1	0.0691	46	—	0.0286	3	—	—	—	—
6	5	26	MISSING (ATLANTIC)	EVERYTHING BUT THE GIRL	45.7937	4368	5	48.9521	4586	5	20.5933	2227	9	9.2216	708	11	11.4639	906	7	3.8229	430	12	0.6920	97	—
7	7	13	FOLLOW YOU DOWN (A&M)	GIN BLOSSOMS	37.3542	4245	6	38.4401	4386	6	18.2847	2750	5	0.1096	13	—	15.1554	976	5	1.3088	56	—	2.4957	450	—
8	8	11	CLOSER TO FREE (SLASH/REPRISE)	BODEANS	35.9396	3920	8	37.4800	3913	8	17.7891	2620	6	0.1230	14	—	16.6249	1092	3	0.3375	44	—	1.0651	150	—
9	12	4	OLD MAN & ME (WHEN I GET TO HEAVEN) (ATLANTIC)	HOOTIE & THE BLOWFISH	33.7925	4158	7	32.3950	3964	7	15.9118	2460	8	0.2269	18	—	11.9680	851	11	1.9656	212	22	3.7202	617	—
10	10	20	WONDER (ELEKTRA/EEG)	NATALIE MERCHANT	33.3650	3480	11	33.6643	3516	11	14.8939	1941	14	0.1033	11	—	15.5590	1071	4	0.7330	141	27	2.0758	316	—
11	9	35	NAME (METAL BLADE/WARNER BROS.)	GOO GOO DOLLS	33.3639	3352	12	36.6874	3599	10	17.0721	1895	16	0.1092	14	—	11.7018	871	10	1.5999	126	30	2.8809	446	—
12	14	4	GIVE ME ONE REASON (ELEKTRA/EEG)	TRACY CHAPMAN	33.2658	3845	9	29.4538	3334	14	18.0917	2518	7	0.0708	11	—	11.4258	802	13	1.3532	200	23	2.3243	314	—
13	11	15	SITTIN' UP IN MY ROOM (ARISTA)	BRANDY	31.8791	3087	17	33.1525	3129	16	18.0447	1993	13	13.4122	987	6	0.4222	107	38	—	—	—	—	—	—
14	13	7	BIG ME (ROSWELL/CAPITOL)	FOO FIGHTERS	29.9255	3667	10	30.4709	3737	9	13.7270	1866	17	0.0676	11	—	6.1097	285	29	0.0517	13	—	9.9695	1492	10
15	15	22	THE WORLD I KNOW (ATLANTIC)	COLLECTIVE SOUL	28.0721	3101	16	29.1420	3281	15	16.7621	2104	10	0.0902	9	—	6.4673	419	22	0.1084	26	—	4.6441	543	—
16	19	6	1,2,3,4 (SUMPIN' NEW) (TOMMY BOY)	COOLIO	25.5940	2067	34	25.2427	1939	39	6.5161	918	30	19.0779	1149	3	—	—	—	—	—	—	—	—	—
17	17	24	1979 (VIRGIN)	SMASHING PUMPKINS	24.5338	3177	15	25.5853	3352	13	14.4163	2057	12	0.3439	70	—	2.9003	222	31	0.0076	4	—	6.8657	824	30
18	20	5	EVERYTHING FALLS APART (COLUMBIA)	DOG'S EYE VIEW	23.3673	3269	13	23.6100	3366	12	13.7062	2103	11	0.0959	11	—	4.3253	334	26	0.0832	14	—	5.1567	807	32
19	18	20	BE MY LOVER (RCA)	LA BOUCHE	23.0130	2466	22	25.4729	2615	21	17.5670	1937	15	5.2688	434	—	0.1558	93	—	0.0025	1	—	0.0189	1	—
20	24	3	INSENSITIVE (A&M)	JANN ARDEN	22.8538	2572	20	21.9464	2498	23	8.5291	1501	23	0.0655	10	—	9.6406	638	18	4.5934	419	13	0.0252	4	—
21	16	29	ONE SWEET DAY (COLUMBIA)	MARIAH CAREY & BOYZ II MEN	22.0921	2115	33	27.2318	2427	24	6.7284	720	—	3.1780	252	—	6.2278	560	20	5.9509	582	8	0.0070	1	—
22	26	6	CHAMPAGNE SUPERNOVA (EPIC)	OASIS	22.0340	2857	19	21.2937	2788	17	6.4215	627	—	—	—	—	0.0532	4	—	—	—	—	15.5593	2226	2
23	25	14	I WANT TO COME OVER (ISLAND)	MELISSA ETHERIDGE	21.5959	1879	41	21.8121	2003	37	7.6381	946	29	0.0105	3	—	13.1057	826	12	0.7592	87	—	0.0824	17	—
24	29	3	SALVATION (ISLAND)	THE CRANBERRIES	21.2811	2934	18	20.2666	2668	19	4.8381	662	38	—	—	—	—	—	—	—	—	—	16.4430	2272	1
25	22	18	HOOK (A&M)	BLUES TRAVELER	20.7596	2261	27	22.1944	2377	26	13.7316	1574	21	0.0902	11	—	5.1290	372	24	0.2013	32	—	1.6075	272	—
26	23	15	DON'T CRY (ZTTI/WARNER BROS.)	SEAL	20.3563	2223	30	22.1381	2385	25	4.1939	641	—	0.4298	27	—	10.1252	912	6	5.5806	632	6	0.0268	11	—
27	21	24	TIME (ATLANTIC)	HOOTIE & THE BLOWFISH	19.5653	1934	38	22.8742	2089	34	6.6071	915	—	0.0545	13	—	10.5563	760	14	1.9147	195	—	0.4327	51	—
28	30	7	BIG BANG BABY (ATLANTIC)	STONE TEMPLE PILOTS	19.3049	2412	23	20.2557	2514	22	2.9759	318	—	—	—	—	—	—	—	—	—	—	16.3290	2094	3
29	NEW		SWEET DREAMS (RCA)	LA BOUCHE	19.2971	2409	24	16.1060	2014	35	12.9831	1727	18	6.2133	649	15	0.0759	30	—	0.0248	3	—	—	—	—
30	31	50	RUN-AROUND (A&M)	BLUES TRAVELER	18.9984	1814	44	19.3107	1831	41	5.7012	761	—	—	—	—	9.6688	686	15	2.5954	171	—	1.0330	196	—
31	NEW		COUNT ON ME (ARISTA)	WHITNEY HOUSTON & CECE WINANS	18.4686	2398	25	16.3546	2164	30	4.0937	857	32	5.3491	475	18	2.6770	356	25	6.3488	710	4	—	—	—
32	35	45	KISS FROM A ROSE (ZTTI/SIRE/WARNER BROS.)	SEAL	18.3375	1632	49	18.8309	1666	46	5.5690	623	—	0.8387	98	—	7.0697	503	—	4.5601	373	14	0.3000	35	—
33	34	39	ROLL TO ME (A&M)	DEL AMITRI	18.2420	1763	46	19.2308	1827	42	5.9272	779	—	—	—	—	9.2807	674	16	2.5790	243	—	0.4551	67	—
34	38	2	MACHINEHEAD (TRAUMAI/INTERSCOPE)	BUSH	18.2317	2176	31	17.9625	2157	31	1.4250	192	—	—	—	—	—	—	—	—	—	—	16.8067	1984	4
35	39	15	ANYTHING (MJJ/550 MUSIC)	3T	17.7972	1659	48	17.7126	1740	45	10.3890	1062	28	6.1214	440	—	1.2868	157	36	—	—	—	—	—	—
36	NEW		DOWN LOW (NOBODY HAS TO KNOW) (JIVE)	R. KELLY FEAT. RONALD ISLEY	17.4160	1110	79	17.4455	1155	76	0.6023	188	—	16.8137	922	7	—	—	—	—	—	—	—	—	—
37	32	13	NOT GON' CRY (ARISTA)	MARY J. BLIGE	17.3953	1371	57	18.8764	1538	50	4.0876	540	—	13.2189	804	10	0.0888	27	—	—	—	—	—	—	—
38	33	3	CHAINS (EPIC)	TINA ARENA	17.2757	2553	21	19.2275	2627	20	9.7380	1697	19	1.0096	124	—	4.9251	484	21	1.6030	248	21	—	—	—
39	37	10	SANTA MONICA (WATCH THE WORLD DIE) (TIM KERR/CAPITOL)	EVERCLEAR	17.2123	1909	40	18.2844	1940	38	5.1059	679	37	0.0052	2	—	0.0427	4	—	—	—	—	12.0585	1224	14
40	NEW		THA CROSSROADS (MULTIPLE RELATIVITY)	BONE THUGS-N-HARMONY	17.2054	1023	86	16.8712	942	90	0.1268	18	—	17.0786	1005	5	—	—	—	—	—	—	—	—	—

Records showing an increase in audience over the previous week, regardless of chart movement. Rankings by format (on right side of this page) correspond to 40-position charts printed in this week's Monitor (30 positions for adult contemporary); therefore rankings do not exist for re-entrants and records below No. 40 (No. 30 for adult contemporary). Audience computed by cross-referencing exact times of airplay with Arbitron listener data. ©1996, Billboard/BPI Communications.

1ST WEEK DEBUT **36** **MONITOR TOP 40 MAINSTREAM**

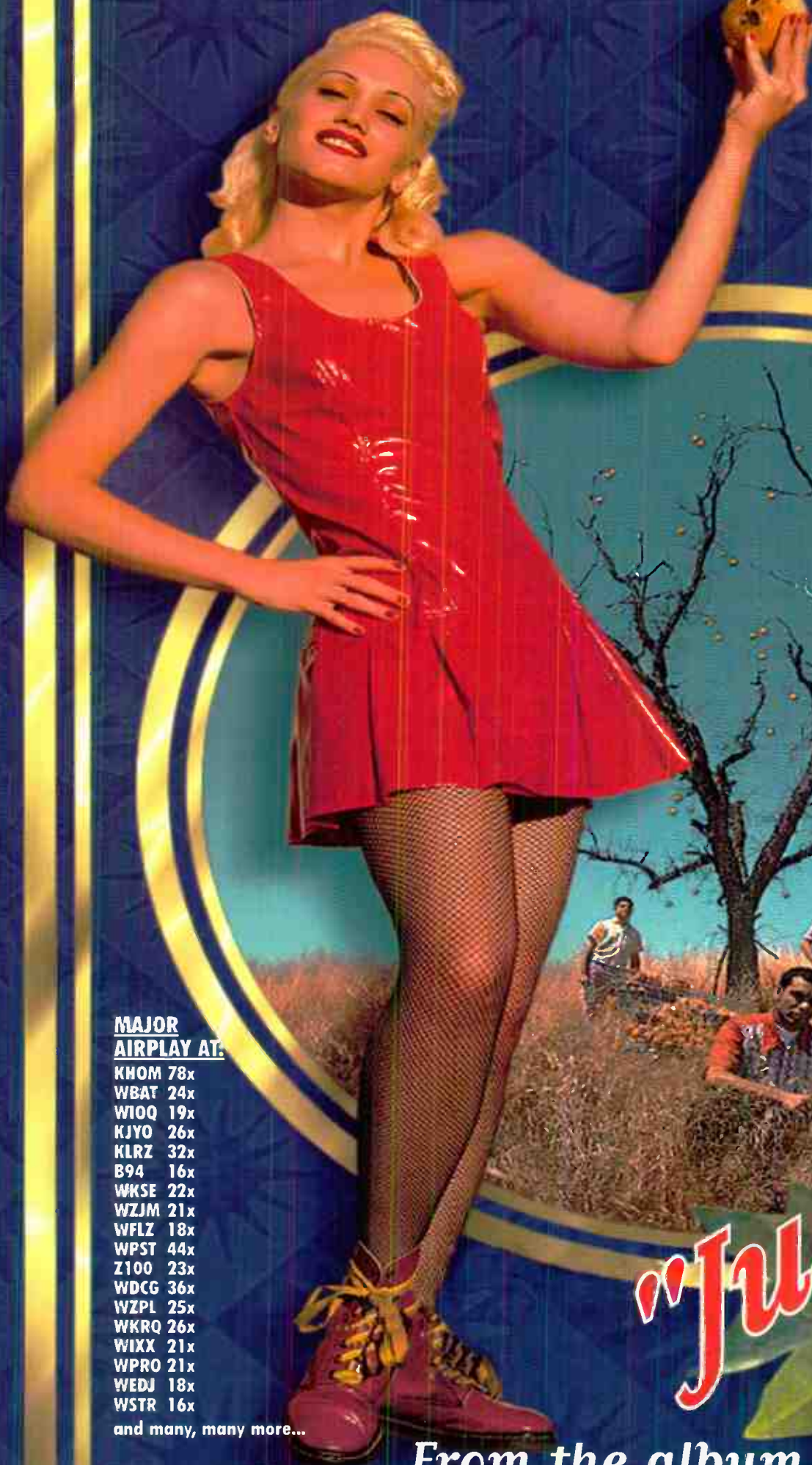
Let's "Macarena" again like we did last summer.

LOS DEL RIO
Macarena
BAYSIDE BOYS MIX
FROM THE CLUB CUTZ L.P.

club cutz

THE RCA RECORDS LABEL

NO DOUBT



BILLBOARD HOT 100: 23
BILLBOARD MAINSTREAM MONITOR: 25
BILLBOARD 200: 30
SOUNDCAN TOP SINGLES: 21
TOP 10 MOST REQUESTED AT TOP 40!!

NEW ADDS INCLUDE:

B94/Pittsburgh
Q102/Cincinnati
WKSS/Hartford
WXKB/Ft. Myers
WSTW/Wilmington

THE
BOX

ON TOUR WITH BUSH

**MAJOR
AIRPLAY AT:**

KHOM 78x
WBAT 24x
WIOQ 19x
KJYO 26x
KLRZ 32x
B94 16x
WKSE 22x
WZJM 21x
WFLZ 18x
WPST 44x
Z100 23x
WDCC 36x
WZPL 25x
WKRQ 26x
WIXX 21x
WPRO 21x
WEDJ 18x
WSTR 16x

and many, many more...

"Just a Girl"

From the album "Tragic Kingdom" 92580

Produced by Matthew Wilder Mixed by Holman & Paul Palmer

©1995 Trauma/Interscope Records. All rights reserved.

Trauma
RECORDS



THIS WEEK	LAST WEEK	WKS. ON CHART	MAINSTREAM		DETECTIONS		
			TITLE/LABEL/DISTRIBUTING LABEL	ARTIST	TW	LW	
			★★★ NO. 1 ★★★				
1	1	13	IRONIC MAVERICK/REPRISE	ALANIS MORISSETTE	4119	4167	
2	2	10	BECAUSE YOU LOVED ME 550 MUSIC	CELINE DION	4030	4082	
3	3	11	ALWAYS BE MY BABY COLUMBIA	MARIAH CAREY	3753	3728	
4	4	19	NOBODY KNOWS LAFACE/ARISTA	THE TONY RICH PROJECT	3080	3172	
5	5	13	FOLLOW YOU DOWN A&M	GIN BLOSSOMS	2750	2914	
6	6	15	CLOSER TO FREE SLASH/REPRISE	BODEANS	2620	2678	
7	10	7	GIVE ME ONE REASON ELEKTRA/VEEG	TRACY CHAPMAN	2518	2189	
8	8	4	OLD MAN & ME (WHEN I GET TO HEAVEN) ATLANTIC	HOOTIE & THE BLOWFISH	2460	2291	
9	7	24	MISSING ATLANTIC	EVERYTHING BUT THE GIRL	2227	2472	
10	9	21	THE WORLD I KNOW ATLANTIC	COLLECTIVE SOUL	2104	2195	
11	12	9	EVERYTHING FALLS APART COLUMBIA	DOG'S EYE VIEW	2103	2059	
12	11	15	1979 VIRGIN	SMASHING PUMPKINS	2057	2143	
13	14	13	SITTIN' UP IN MY ROOM ARISTA	BRANDY	1993	2015	
14	15	21	WONDER ELEKTRA/VEEG	NATALIE MERCHANT	1941	2008	
15	13	22	BE MY LOVER RCA	LA BOUCHE	1937	2040	
16	16	32	NAME METAL BLADE/WARNER BROS.	GOO GOO DOLLS	1895	2007	
17	18	5	BIG ME ROSWELL/CAPITOL	FOO FIGHTERS	1866	1704	
			★★★ AIRPOWER ★★★				
18	22	4	SWEET DREAMS RCA	LA BOUCHE	1727	1380	
19	17	7	CHAINS EPIC	TINA ARENA	1697	1766	
			★★★ AIRPOWER ★★★				
20	21	4	THE EARTH, THE SUN, THE RAIN GIANT	COLOR ME BADD	1595	1399	
21	19	22	HOOK A&M	BLUES TRAVELER	1574	1642	
			★★★ AIRPOWER ★★★				
22	29	2	FASTLOVE DREAMWORKS/GEFFEN	GEORGE MICHAEL	1504	999	
			★★★ AIRPOWER ★★★				
23	20	8	INSENSITIVE A&M	JANIS ARDEN	1501	1441	
24	28	2	KILLING ME SOFTLY RUFFHOUSE/COLUMBIA	FUGEES	1488	1003	
25	24	8	JUST A GIRL TRAUMA/INTERSCOPE	NO DOUBT	1333	1334	
26	23	17	WONDERWALL EPIC	OASIS	1184	1341	
27	25	24	ONE OF US BLUE GORILLA/MERCURY	JOAN OSBORNE	1090	1238	
28	26	16	ANYTHING MJJ/550 MUSIC	3T	1062	1148	
29	27	16	I WANT TO COME OVER ISLAND	MELISSA ETHERIDGE	946	1101	
30	34	2	1, 2, 3, 4 (SUMPIN' NEW) TOMMY BOY	COOLIO	918	784	
31	31	12	LUCKY LOVE ARISTA	ACE OF BASE	885	895	
32	35	3	COUNT ON ME ARISTA	WHITNEY HOUSTON & CECE WINANS	857	751	
33	32	10	WHO DO U LOVE ARISTA	DEBORAH COX	844	880	
34	36	2	AEROPLANE WARNER BROS.	RED HOT CHILI PEPPERS	777	751	
35	40	2	SCARY KISSES DISCOVERY	VOICE OF THE BEEHIVE	773	680	
36	NEW		MACARENA (BAYSIDE BOYS MIX) RCA	LOS DEL RIO	769	635	
37	NEW		SANTA MONICA (WATCH THE WORLD DIE) TIM KERR/CAPITOL	EVERCLEAR	679	584	
38	NEW		SALVATION ISLAND	THE CRANBERRIES	662	460	
39	NEW		FLOOD ESSENTIAL/SILVERTONE/JIVE	JARS OF CLAY	653	542	
40	37	5	IN THE MEANTIME HIFI/SIRE/EEG	SPACEHOG	644	744	

THIS WEEK	LAST WEEK	WKS. ON CHART	RHYTHM-CROSSOVER		DETECTIONS		
			TITLE/LABEL/DISTRIBUTING LABEL	ARTIST	TW	LW	
			★★★ NO. 1 ★★★				
1	1	10	KILLING ME SOFTLY RUFFHOUSE/COLUMBIA	FUGEES	1691	1659	
2	2	15	ALWAYS BE MY BABY COLUMBIA	MARIAH CAREY	1424	1493	
3	3	9	1, 2, 3, 4 (SUMPIN' NEW) TOMMY BOY	COOLIO	1149	1155	
4	4	7	BECAUSE YOU LOVED ME 550 MUSIC	CELINE DION	1050	1027	
5	9	5	THA CROSSROADS RUTHLESS/RELATIVITY	BONE THUGS-N-HARMONY	1005	923	
6	5	22	SITTIN' UP IN MY ROOM ARISTA	BRANDY	997	1024	
7	6	14	DOWN LOW (NOBODY HAS TO KNOW) JIVE	R. KELLY FEAT. RONALD ISLEY	972	943	
8	7	22	NOBODY KNOWS LAFACE/ARISTA	THE TONY RICH PROJECT	897	888	
9	13	7	YOU'RE THE ONE RCA	SWV	873	673	
10	8	20	NOT GON' CRY ARISTA	MARY J. BLIGE	804	853	
11	11	26	MISSING ATLANTIC	EVERYTHING BUT THE GIRL	708	671	
12	12	8	RELEASE ME UPSTAIRS	ANGELINA	704	669	
13	10	17	CALIFORNIA LOVE DEATH ROW/INTERSCOPE	2PAC (FEAT. DR. DRE AND ROGER TROUTMAN)	686	738	
14	15	12	ALL THE THINGS (YOUR MAN WON'T DO) ISLAND	JOE	659	631	
15	16	7	SWEET DREAMS RCA	LA BOUCHE	649	619	
16	14	37	TELL ME EPIC	GROOVE THEORY	531	598	
17	17	14	LADY EMI	D'ANGELO	487	529	
18	23	5	COUNT ON ME ARISTA	WHITNEY HOUSTON & CECE WINANS	475	378	
19	20	5	THE EARTH, THE SUN, THE RAIN GIANT	COLOR ME BADD	467	438	
20	18	27	HEY LOVER DEF JAM/MERCURY	LL COOL J	441	452	
21	21	17	DOIN IT DEF JAM/MERCURY	LL COOL J	409	441	
22	24	16	WHO DO U LOVE ARISTA	DEBORAH COX	405	414	
23	33	3	IRONIC MAVERICK/REPRISE	ALANIS MORISSETTE	400	222	
24	25	6	WOO-HAH!! GOT YOU ALL IN CHECK ELEKTRA/VEEG	BUSTA RHYMES	375	391	
25	27	2	FOREVER MORE WORK	PUFF JOHNSON	348	305	
26	29	3	TRES DELINQUENTES PMP/LOUD/RCA	DELINQUENT HABITS	331	319	
27	22	16	FEELS SO GOOD (SHOW ME YOUR LOVE) GROOVE NATION/UNIVERSAL	LINA SANTIAGO	321	395	
28	31	4	GET MONEY UNDEAS/BIG BEAT/ATLANTIC	JUNIOR M.A.F.I.A.	309	315	
29	32	10	I WILL SURVIVE RCA	CHANTAY SAVAGE	296	302	
30	39	2	WHY I LOVE YOU SO MUCH ROWDY/ARISTA	MONICA	293	240	
31	37	2	YOUR LOVING ARMS SIRE/EEG	BILLIE RAY MARTIN	290	242	
32	30	10	FU-GEE-LA RUFFHOUSE/COLUMBIA	FUGEES	284	318	
33	RE-ENTRY		C'MON N' RIDE IT (THE TRAIN) QUADRASOUND/BIG BEAT/ATLANTIC	QUAD CITY DJ'S	277	227	
34	36	3	READY OR NOT RUFFHOUSE/COLUMBIA	FUGEES	266	243	
35	28	13	DO YOU WANT TO SO SO DEF/COLUMBIA	XSCAPE	262	318	
36	40	4	ESA NENA LINDA GROOVE NATION/SCOTTI BROS./ALL AMERICAN	ARTIE THE 1 MAN PARTY	255	233	
37	NEW		FASTLOVE DREAMWORKS/GEFFEN	GEORGE MICHAEL	252	154	
38	NEW		A THIN LINE BETWEEN LOVE & HATE JAC-MAC/WARNER BROS.	H-TOWN	252	230	
39	NEW		KEEP ON, KEEPIN' ON FLAVDR UNIT/EASTWEST/EEG	MC LYTE FEATURING XSCAPE	246	197	
40	26	11	TAKE A LOOK HOLLYWOOD	J'SON	236	309	

Records showing an increase in detections over the previous week, regardless of chart movement. A record which has been on either chart for more than 20 weeks will not receive a bullet, even if it registers an increase in detections. Airpower awarded to those records which attain 1500 detections (mainstream) or 600 detections (rhythm) for the first time. If two records are tied in number of plays, the record being played on more stations is placed first. Records below the top 20 are removed from the chart after 26 weeks.

RED HOT CHILI PEPPERS
"AEROPLANE"
FROM THE ALBUM **ONE HOT MINUTE**
36 - **34** MAINSTREAM AIRPLAY CHART
HUGE NATIONAL REQUEST STORY CONTINUES...

Z100	25x	G105	30x
STAR 94	14x	WAPE	14x
WKBQ	19x	WZPL	21x
Q102	11x	KJYO	15x
Q99	18x	PRO-FM	23x
WKSS	11x	WXKS	11x

SELLING NEARLY 20,000 PIECES A WEEK!
DOUBLE PLATINUM!

© 1996 WARNER BROS. RECORDS

H-TOWN featuring Roger & Shirley Murdock
"A THIN LINE BETWEEN LOVE & HATE"
from the motion picture
A THIN LINE BETWEEN LOVE & HATE
#1 BOX OFFICE - PER SCREEN AVERAGE - 4th WEEK!
DEBUT **38** RHYTHM-CROSSOVER AIRPLAY CHART
5 R&B MAINSTREAM AIRPLAY CHART **17** R&B ADULT AIRPLAY CHART
2.286 TOTAL SPINS
WHERE IT'S PLAYED, IT SELLS!
#1 REQUESTS 4th WEEK IN A ROW!
19 SOUNDSCAN SINGLES 22 SOUNDSCAN ALBUMS
NOW GOLD!

© 1996 WARNER BROS. RECORDS