

TOP 40 AIRPLAY Monitor

• We Listen To Radio •

March 8, 1996 \$ 4.95 Volume 4 • No. 11

TOP 40 HIGHLIGHTS

MAINSTREAM

#1

EVERYTHING BUT THE GIRL

Missing (ATLANTIC)

★★★ AIRPOWER ★★★

BRANDY • *Sittin' Up In My Room* (ARISTA)

NEW RELEASES

♀ & THE NPG • *Girl 6* (PAISLEY PARK/WARNER BROS.)

ALL-4-ONE • *These Arms* (BLITZZ/ATLANTIC)

TINA ARENA • *Chains* (EPIC)

JACKSON BROWNE • *Some Bridges* (ELEKTRA/EEG)

THE BOTTLE ROCKETS • *I'll Be Comin' Around* (ESD/TAG/ATLANTIC)

GARBAGE • *Only Happy When It Rains* (ALMO SOUNDS/GEFFEN)

RED HOT CHILI PEPPERS • *Aeroplane* (WARNER BROS.)

LIONEL RICHIE • *Don't Wanna Lose You* (MERCURY)

STONE TEMPLE PILOTS • *Big Bang Baby* (ATLANTIC)

BONNIE TYLER • *Two Out Of Three Ain't Bad* (ATLANTIC)

RHYTHM CROSSOVER

#1

BRANDY

Sittin' Up In My Room (ARISTA)

★★★ AIRPOWER ★★★

R. KELLY FEAT. RONALD ISLEY • *Down Low (Nobody Has To Know)* (JIVE)

D'ANGELO • *Lady* (EMI)

NEW RELEASES

♀ & THE NPG • *Girl 6* (PAISLEY PARK/WARNER BROS.)

69 BOYZ • *Hoop In Yo Face* (FLAVOR UNIT/EASTWEST/EEG)

TINA ARENA • *Chains* (EPIC)

LIONEL RICHIE • *Don't Wanna Lose You* (MERCURY)

SILK • *Don't Rush* (ELEKTRA/EEG)

ADULT TOP 40 & ADULT CONTEMPORARY

#1

MARIAH CAREY & BOYZ II MEN

One Sweet Day (COLUMBIA)

★★★ AIRPOWER ★★★

NO RECORDS QUALIFIED FOR AIRPOWER THIS WEEK

NEW RELEASES

ALL-4-ONE • *These Arms* (BLITZZ/ATLANTIC)

TINA ARENA • *Chains* (EPIC)

THE BOTTLE ROCKETS • *I'll Be Comin' Around* (ESD/TAG/ATLANTIC)

BILLY MANN • *Turn Down The World* (A&M)

ALANNAH MYLES • *You Love Who You Love* (TVT)

CHYNNA PHILLIPS • *Remember Me* (EMI)

LIONEL RICHIE • *Don't Wanna Lose You* (MERCURY)

MICHAEL STANLEY • *Sha La La La* (INTERSOUND)

BONNIE TYLER • *Two Out Of Three Ain't Bad* (ATLANTIC)

Foreground Personality: Now It's For Afternoon Drive, Too

by Kevin Carter

Outside morning drive, top 40 radio has traditionally kept the music logs full and its DJs tight. But several mutant morning-show offspring, in markets from New York to L.A. to Harrisburg, Pa., are infusing afternoons with an a.m. sensibility, generating ratings and revenue with less music and more bits.

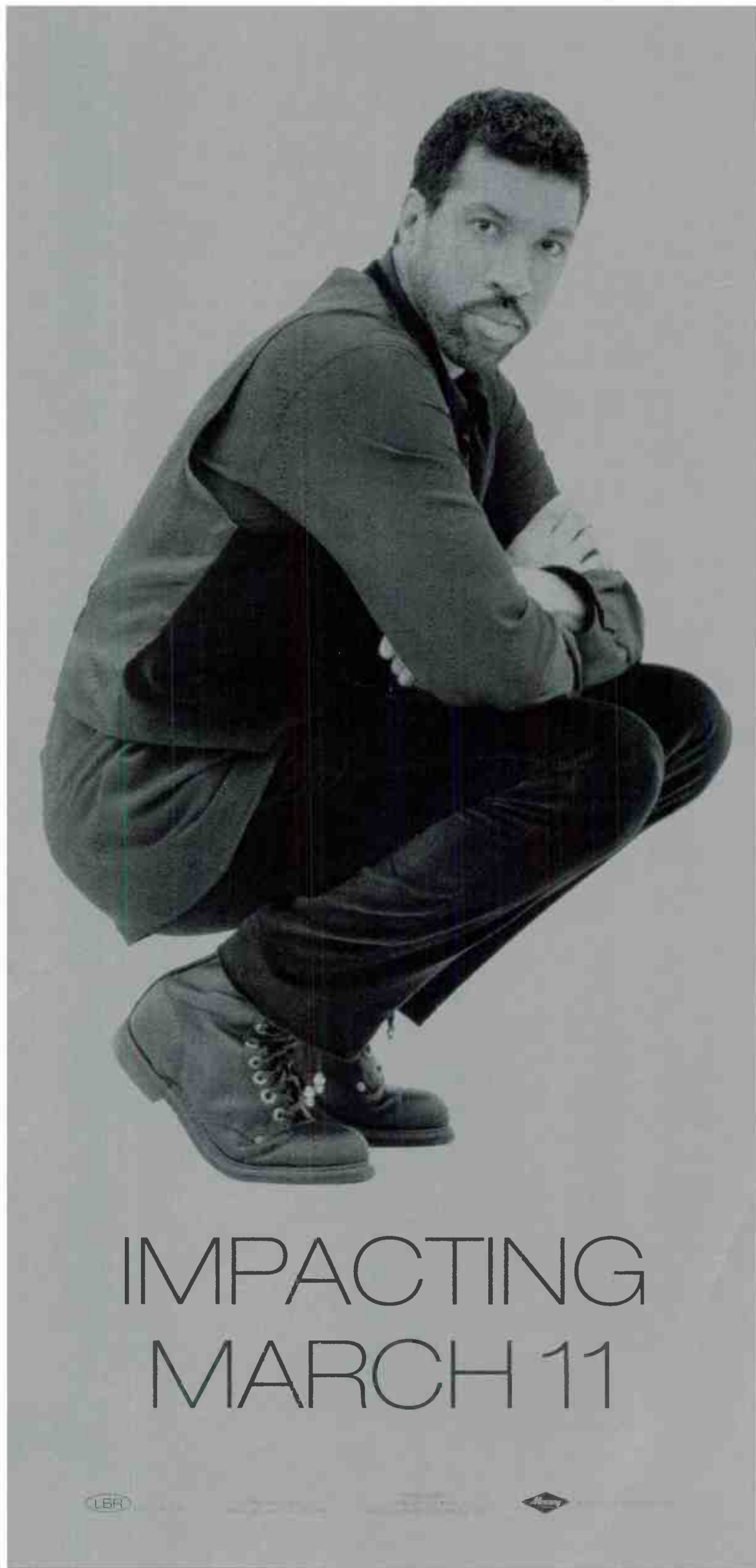
WPLJ New York's "Rocky Allen Showgram" has become the model for the high-profile afternoon show since former morning man Allen rejoined the station from WPRO-FM Providence, R.I., three years ago. According to the latest ratings, Allen is No. 1 25-54 and No. 2 18-34, just a .4 share behind crosstown WHQT (Hot 97). "Even be-

fore I came back, I had no doubt this concept would work," says Allen. "People just want to be entertained."

The afternoon "Showgram" debuted with a heavy music log, but as Allen found his niche, the music was gradually whittled down. "If stuff is happening, we'll play less music," Allen says. "Right now, my music log contains eight songs an hour, just in case I need that many."

WPLJ PD Scott Shannon adds, "Rocky is an expert at integrating the music flow of the station into what he does. We have never let the actual song count dictate the flow of his show, which happens to sound nothing like my [morning] show or the rest of the sta-

Continued on page 4



IMPACTING MARCH 11

Tina Arena

Chains

The worldwide hit from a dazzling new star.

Discover what the rest
of the world already has.

Written by Tina Arena, Steve Werfel
and Pam Reswick.

Produced by David Tyson.
Management: Ralph Carr for RCM International

67133
<http://www.sony.com>

*Epic and Reg. U.S. Pat. & Tm. Off. Marca Registrada. © 1998 Sony Music Entertainment Australia PTY Ltd.



World Radio History



TOP 40 TOPICS BY SEAN ROSS

Top 40 Radio: America's Mood Ring

One more column, with your indulgence, prompted by the debut of New York's new WKTU.

When WKTU signed on last month, group PD Steve Rivers commented that his competitors, WHTZ (Z100), WPLJ, and WQHT (Hot 97) were "all outstanding radio stations, but I feel the overall tone of the market seems a little angry right now. This is a good opportunity for us to be a positive, fun, upbeat radio station." Since then, WKTU's promos have emphasized the slogan "A new way to feel good," a variant on the "picks you up and makes you feel good" line that consultant Guy Zapoleon has used at his hot AC clients.

So if top 40 radio in the mid-'90s is angry, what has it been historically?

Until the early '70s, the mood of top 40 radio was clearly happy. There were the sardonic guys—Dan Ingram, Dale Dorman, Dave Diamond, Robert W. Morgan—but they're remembered now as the exceptions. When the early progressive stations made their first run at top 40 in the late '60s/early '70s, it was at least partially on the premise, correct or not, that shiny happy DJs were no longer relevant in an era of massive social upheaval.

In recognition of this, the mood at top 40 then became "heavy," in the early '70s sense of the word. The energy level didn't change; where album rock jocks sounded spliffed or luded out, top 40 jocks were meant to sound coked up. But the context changed, and while top 40 jocks never embraced hippie culture—well, maybe the free-love part—they did manage to co-opt it. "Keep on truckin'" became a liner for hundreds of top 40s. Jocks no longer gave the weather, they told you the "environment" for your market. It was still top 40 as we knew it, it was just heavy with portent. Or the appearance of portent.

The mood at top 40 in the late '70s was earnest. Jocks suddenly sounded more like their album rock counterparts. They made a point of not talking over intros, then reminding you at length that they weren't talking over intros. It wasn't that much of a stretch from there to the mood of early '80s top 40, which was one of total indifference. How excited, after all, could you sound about playing "Every Woman In The World" by Air Supply?

The early '80s top 40 revival? Depends what you see as the cornerstone. The guys who imitated Z100's Scott Shannon were more sardonic. The ones who imitated KIIS L.A.'s Rick Dees were friendly (almost to the point of earnest). Those who came on after 10 a.m. were imitating the relentlessly upbeat jocks of Mike Joseph's "Hot Hits." And by the mid-'80s, those jocks who came on after 10 a.m. weren't getting to do more than four breaks an hour anyway.

Even before WFLZ (the Power Pig) Tampa, Fla., the mood of late-'80s top 40 was

nasty, in both senses of the word. Around 1986, a friend of mine sent me a tape of the three Dallas top 40s trying to out-porn one another. The night jock on KTKS (now KHKS) was having listeners fake orgasm to win. Crosstown KHYI (Y95) was doing a school-spirit contest and ran a phone call from one teen who commented that a rival high school "sucks out the ass." Sometimes it was reflected in the music. I remember one PD commenting in a trade article that songs like "Push It" and "Touch Me (I Want Your Body)" were signs of an unwell society.

By the early '90s, nasty had given way to outright abusive. Top 40 stations didn't just beat on one another at great length. They beat on the listener: witness the "don't be a dickhead" liners of that era. Listeners were no longer just come. They were co-dependents.

So is "angry" the current mood in New York radio, where one top 40 reporter is predominantly modern rock and the other bills itself as hip-hop? That might be how somebody from outside those formats sees it. Listeners who bemoan the anger of hip-hop are usually not referring to the hip-hop songs they know. (Unless you hear something inherently angry in "Bust A Move," "Shoop," "You Can't Touch This," and "Whoomp! There It Is.") Instead, they're usually thinking of something they heard for 15 seconds blaring from a passing car. Or their perception of the audience. With hip-hop's reputation being what it is, most young-end R&B stations spend a lot of time between the records being as relentlessly pro-social as possible. How many AC stations have to promote "peace on the street" just to justify their own existence?

As for modern-leaning top 40, I'd call the MTV-influenced presentation more offhand than angry. And more self-consciously offhand than truly offhand. Like the late '70s, stations spend a lot of time hyping you on how unhyped they are. As for the music, the texture might be angry. Lyrically, its artists who are more likely to be "Sick Of Myself," to quote Matthew Sweet, than other people.

All of this just shows how top 40 reflects society, right? But the format tends to do better when it doesn't try so hard to reflect society. When the national mood is down, listeners don't look for a station to match their own desperation. They search for the "good times, great oldies" station and try to recapture the vibe of "irrelevant" '60s top 40 as best they can. When listeners have embraced top 40 for an extended period, it has usually been when top 40 was indeed friendly and upbeat.

Being friendly and upbeat is a challenge in these times. There's plenty to be scared of in the outside world. There's plenty to be scared about in the ever-changing industry. (Everybody owned by someone different this week, please raise your hand.) Happy is a challenge these days. And it's for that reason that Rivers is right to recognize that as a hole.

Airplay Monitor Revamps AC Section: Splits Adult Contemporary And Adult Top 40 Charts

Beginning this week, Top 40 Airplay Monitor announces an expanded adult contemporary/adult top 40 section. The previous top 40/adult chart, which encompassed both mainstream AC stations and their top 40/adult counterparts, has been replaced by two new charts: Adult Top 40 on page 22 and Adult Contemporary on page 24.

The division of top 40/adult into two charts recognizes that recent years have seen "hot AC" or "adult top 40" stations introduce new modern rock, dance, and R&B acts into their ranks, as the scope of "adult" music broadens. At the same time, traditional mainstream acts have continued to thrive and achieve notable levels of success at traditional AC stations that were often not represented enough in the top 40/adult reporter panel to allow those records' stories to emerge. While the two formats still share many acts and records, each format has developed its own distinct personality, which will be recognized by our expanded section and new charts.

The mainstream AC section features its own Power Playlist and Song Activity Report sections reflecting the 33 mainstream AC panelists, only a handful of whom moved from the top 40/adult section. The Adult Top 40 chart is similar to the Top 40/Adult chart and includes 43 reporting stations.

The Weeks On column for both charts will reflect the number of weeks that a record has already logged on the previous Top 40/Adult chart. However, each chart carries Last Week chart positions from test charts that were run internally. The lineage of chart histories compiled on the Top 40/Adult chart will continue through the Adult Contemporary chart.

Both mainstream AC and adult top 40 stations will be reflected in Airplay Monitor's The Big Picture chart on page 26 and in the radio panel of Billboard's Hot 100. Both charts are compiled solely from actual monitored airplay provided by Broadcast Data Systems.

STEVE GRAYBOW



RADIOACTIVE BY KEVIN CARTER

Infinity Buys Granum Outlets As Sales Grow

As the sales glut continues, Infinity picks up the Granum stations for \$410 million, netting it outlets in Dallas, Baltimore, Atlanta, Boston, and Orlando, Fla. It also acquires Shadow Broadcast Services. Also, Osborn sells WAYV Atlantic City, N.J., to SW Networks' Gary Fisher and partner Steve Gormley for \$3.1 million.

The San Jose (Calif.) Mercury-News reports that a 21-year-old college student was beaten to death in a Feb. 22 scuffle at a local club during a gig sponsored by KYLD (Wild 107.9) San Francisco. KYLD PD Michael Martin says that, despite the presence of a KYLD jock, the club night was not station-sponsored. He also denies the paper's claim that morning man J.V. made an on-air offer of \$107 for punching a listener wearing a T-shirt from rival KMEL. Police say the incident was not related to the alleged comment and that the victim was not wearing a KMEL shirt.

PROGRAMMING: KS104 CREW JAMS

EXCL Communications' newly acquired KNRX (92X) Denver flips from album rock to top 40/rhythm as Jammin' 92.1 and picks up PD Mark Feather and his staff from 92X's former duopoly partner KQKS (KS104). Former KNRX owner Century Broadcasting was operating KS104 under an LMA with owner Western Cities that expires March 31. Former KWIN Stockton, Calif., owner Mike Murphy is named GM. Dave Shakes is now consulting Jammin' 92.1, which has applied for the calls KJMN. Century is operating KQKS jockless, but taps 92X's Mike Wilson for morning news.

KPWR (Power 106) L.A.'s GSM, Marie Kordus, is upped to GM, replacing Doyle Rose. Also, Pete Manriquez becomes assistant MD.

Consultant Jerry Clifton's new company, NPR LLC, officially LMA'd KBZR (the Blaze) Phoenix March 1. Rather than use Clifton's trademark rhythmic format, the Blaze will remain a mainstream top 40 that also plays hit-based alternative music, according to GM Jim Seemiller.

KUTQ/KZHT Salt Lake City OM Brian deGeus has resigned.

Suburban Washington, D.C., top 40 WINX Rockville, Md., was the one-time home of many D.C. notables: Steve Kingston, Barry Richards, Bob Duckman, Jack Alix, etc. Now the legendary calls move to FM, as WINX—now an oldies station—enters into an LMA-to-buy with Northern Virginia outlet WQRA Warrenton, Va.

Former Viacom group PD Bob Kaake launch-

es his own consultancy... WJHM (102 Jamz) Orlando, Fla., VP/GM Dave Donahue transfers to new Beasley property WKIS Miami as VP/GM

PEOPLE: SAY HELLO TO HOLLYWOOD

The stunting continues on WKTU New York this week: Hollywood Hamilton (ex-KGGI Riverside, Calif.) is guest-hosting mornings this week with celebrity co-hosts including New York mayor Rudy Giuliani, wrestler "Macho Man" Randy Savage, Donna Summer, MTV's Idalis, Tony Rich, and the Village People.

WKQI (Q95) Detroit morning man Dick Purtan's last day at that station is March 15. Local rumors have him showing up at oldies WOMC a month later... Cleveland Wheeler joins oldies WYUU Tampa, Fla., in mornings... Manny Pacheco, currently with Original Sound Records, returns to R&B oldies KRLA Los Angeles for afternoons; it's his fourth stint there.

KYSR (Star 98.7) L.A. inks Ryan Seacrest for nights. Seacrest (ex-WSTR Atlanta DJ and host of the syndicated "Gladiators 2000" and the Family Channel's "Wild Animal Games") replaces Bill Alexander, who moves to overnights.

WKSS Hartford, Conn., inks Kathy "Wild" West from WPRO Providence, R.I., for middays, filling the late Tina Simonet's air shift.

With the sale of top 40 WWST (Star 93.1) Knoxville, Tenn. from Jacor to Heritage, former PD Todd Shannon has been spotted at Jacor's country WQIK Jacksonville, Fla., along with WWST production director Dave Savage. Former OM Jim Richards has been with Marc Chase at Jacor flagship WEBN Cincinnati for now. Newsmeister Dain Weister segues to Jacor's WFLA/WFLZ Tampa, Fla.

WIOQ Philly PD Glenn Kalina goes from middays to mornings, replaced by Tony Carlo.

WSTW Wilmington, Del., morning co-host Scott Porter exits. P.m. driver John Wilson replaces him, teaming up with Jill Quale. P/T Dana McDonald is now doing 1-4 p.m., with PD Mike Sommers doing 4-6 p.m. Kelly Green of WPOC Baltimore is new to weekends.

AC CKFM (Mix 99.9) Toronto night jock Bob Callahan moves to middays. Punch Andrews goes from overnights to nights. Dave Reynolds, previously with CKIS Montreal, joins for P/T... AC WNAP Indianapolis needs an MD; Darla Coop Armbruster leaves for her own business.

Chris Knight (ex-WVAQ Morgantown, W.Va.) takes his job quest to his new Web site (<http://www.mountain.net/hp/knight>).

PUBLISHER: MICHAEL ELLIS
 EDITOR: SEAN ROSS
 MANAGING EDITOR: KEVIN CARTER
 DIRECTOR OF CHARTS: JERRY MCKENNA
 TOP 40/ADULT CHART MANAGER: STEVEN GRAYBOW
 CHART PRODUCTION MANAGER: MICHAEL CUSSON
 ASST. CHART PRODUCTION MANAGER: PAUL PAGE
 EDITORIAL PRODUCTION MANAGER: BARRY BISHIN
 ASSOC. EDITORIAL PRODUCTION MANAGER: MARCIA REPINSKI
 EDITORIAL PRODUCTION: MARC GIAQUINTO, MORRIS KUEGEMAN
 COPY EDITOR: CARL ROSEN
 ADVERTISING PRODUCTION MANAGER: LYDIA MIKULKO
 ADVERTISING PRODUCTION ASST.: CINDEE WEISS
 ADVERTISING ART DIRECTOR: RAY CARLSON

NATIONAL ADVERTISING MANAGER: JON GYNN
 ADVERTISING SALES: ART PHILLIPS, ANDREA THOMPSON
 CLASSIFIED ADVERTISING: LAURA RVCHUN
 ADVERTISING SERVICES MGR.: MICHELE JACANGLO
 SALES ASSISTANTS: EVELYN ASZODI, ERICA BENGSTON,
 ALEX VITOUILIS, ALYSE ZIGMAN

EDITORIAL ADVISOR: TIMOTHY WHITE
 PRODUCTION DIRECTOR: MARIE GOMBERT
 DIRECTOR OF MARKETING: ELISSA TOMASETTI
 CIRCULATION MANAGER: JEANNE JAMIN



PRESIDENT: HOWARD LANDER

©1996 BPI Communications, 1515 Broadway, New York, NY 10036
 212-536-5039 For subscriptions call: 800-722-2346

Foreground Personality: It Isn't Just For Morning Drive Anymore

Continued from page 1

tion." Says Allen, "During morning drive, there has to be more news and information; listeners still have their whole workday ahead of them. But our show only has three stopsets an hour, two traffic breaks, and no news. That leaves a ton of time for entertainment and lifestyle content."

In recognition of WPLJ listeners' unique commuting habits, Allen's show runs from 4 to 8 p.m. "We realize that's not a normal afternoon-drive shift," says Allen. "But we figure no one is leaving work until 4 or 5 p.m."

Shannon adds, "I never believed in putting a night jock on at 6 p.m., when adults are stuck in traffic. What adult is going to want to hear Johnny Holiday screaming the top five countdown and putting 9-year-olds on the air?"

"Showgram" accomplices include co-host Blaine Ensley, who has been with Allen for nine years. He handles the production, creative, and writing, along with producer Al Reinoso, in-studio producer Harry Kapsalis, and the infamous Onions, master of character voices and assorted outdoor capers.

Allen and company meet weekly to discuss upcoming events they can tie into promotionally, like Valentine's Day, during which they gave away matching "His & Hers" tattoos. After reading about an alleged "fertility statue" in Florida, Allen, on short notice, flew a barren woman to Florida to rub the statue. Having his own promo budget, Allen can react quickly to the headlines and purchase fun stuff. "We still go to [VP of programming] Tom Cuddy for any big-ticket items," says Allen. "Since Tom is a radio guy, and he's right down the hall, we don't have to wait for the corporate wheels to turn to get an answer."

IN-HOUSE COMPETITION

Because "Showgram" was designed as a morning show in the afternoon, Allen often finds himself in competition with Shannon's morning show. "Sometimes, it's almost as if Scott and [co-host Todd Pettengill] are on another radio station," says Allen. "When we are booking guests, whoever gets them, gets them. To be fair, we will pass along guests if we really can't use them, and vice versa."

Given the industry trend to clone any successful concept, Allen says, "I'm surprised it hasn't happened here yet. Look at Gary Burbank at WLW Cincinnati—he's a giant talent in afternoons. He just kicked ass, and everybody talked about him."

"When I worked at the old Z100, I used to listen to WNBC when Howard Stern was doing afternoons," says Shannon. "Guys like Joey Reynolds were doing their version of a morning show in afternoon drive. As a guy who was actually outside the target demo of Z100, that type of radio entertained me as much as Rocky does today."

Allen says the industry's lack of true afternoon-drive shows may reflect a shortage of available talent. "It's tough enough finding decent morning talent today, let alone [having] the luxury of finding a full-blown afternoon show."

As for the threat of competition, Allen notes that "Showgram" enjoys a three-year head start. "Luckily, we've generated the revenue to warrant the expense of doing this type of show," he says. "It takes time, patience, and a management team who gets it and is willing to let you find your niche. [GM] Mitch Dolan and Tom Cuddy were willing to take a chance on me. They put their money up and hung in there. By doing a show of this nature, we are going against conventional wisdom. Remember, we're not breaking format, we're creating a new format that complements the other dayparts."

STACY: SOUND REAL

Rick Stacy left the PD spot at KKFR Phoenix last year for a full-service afternoon show in L.A. at Viacom's adult top 40, KYSR (Star 98.7). Stacy, who had done mornings for 90% of his career, says, "[Former PD Randy Lane] had the idea, based on Rocky Allen's success in New York. He realized morning radio in this market is much too cluttered. While afternoons may not be the most viable daypart revenue-wise, we figured [that] in order to build a benchmark show, we could make an impact much more quickly in afternoons."

The fall book shows Stacy making gains, up 4.0-5.4 in 18-34, ahead of KHS-FM (5.0), as well as

Star's midday shift (4.8) and mornings (3.7), which have been music-intensive for several months.

Stacy had been off the air for two years before joining Star. "My first goal was to stop sucking and to find a rhythm. Luckily, after doing middays at Wendy's for a year, I felt I was ready." Stacy's sidekick, Leah Brandon, was doing afternoon traffic when he started. "She would only speak when spoken to, but it was obvious she had personality, so I began integrating her into the show," he says. PD Dave Beasing says that when Stacy and Brandon first hit the air, the fact that they were talking at all disturbed many AC core listeners. Now, having tweaked audience expectations, the duo has graduated to such regular bits as "The Battle Of The Sexual Orientations," a quiz with straight and gay participants, which has earned a commendation from GLAAD, the gay/lesbian media-watch group.

"One major reason more stations have not attempted big afternoon shows is research," Beasing notes. "When [you research the audience's wants] before building a morning show, music is usually near the top of the list. But once the show is running and develops other content, the audience enjoys it. It's difficult to research entertainment value before the fact. If you tell respondents up front that a new show will be doing jokes and phone bits, they'll probably say, 'Just shut up and play the hits.'"

Beasing adds, "Hopefully, as Rick and Leah's show grows, we'll feel more comfortable doing more and more of what seems to be working."

Stacy also sees the show as a work in progress. He runs a 12-song music log between 3 and 5 p.m. From 5 to 7 p.m., the music drops to nine songs. "The most important thing is for us to exercise patience and wait for the resources to build a bigger show. Ideally, we need an experienced morning-show producer, a ministaff, and a separate budget like Rocky Allen [has] so we'll be able to react quickly." In order for that to happen, Stacy says, his show will have to reach the point where clients specifically request to be involved in his time slot.

"We have to get past the old top 40 mentality that [believes] when a jock starts talking, people start tuning out," says Stacy. "We were taught to speed up our talk breaks, which made us sound unnatural. The key to being successful in this type of radio is to sound like a real person . . . If you're confident enough to sound like you're supposed to be talking for four minutes, they'll listen to you. Remember, just like in real life, everything you say is not always going to be profound or a home run, but we still listen. Just look at Pat Buchanan."

3-SONG-AN-HOUR SUCCESS

WNNK Harrisburg, Pa., p.m. driver (and former PD) Bruce Bond began his less music/more talk shift in 1985. Unlike Allen or Stacy, Bond is not a transplanted morning jock, although he did make a brief career detour to do mornings in New Orleans, returning in 1993. "Bruce is the first jock I know of who started doing a fully produced afternoon show," says WNNK PD John O'Dea. "It's not new for this market, but it appears to be a fairly new phenomenon for most of the country."

Bond, along with co-host Bubbles, news guy John Paul Shaffer, intern Stretch, and assorted guests is No. 1 12-plus in afternoons with an 11.3 share. Bond plays about three songs an hour. O'Dea admits that the musical drought during mornings and afternoons may hurt WNNK's music image, but he adds, "we heavily promote the 'more music' aspect of middays between 9 a.m. and 3 p.m., as well as the other dayparts and weekend programming, which is music-intensive."

Last year, the station gave Bond some new tools: producer Frank Schofield, a phone screener, and a delay system. Bond also has more uptempo music, including an eclectic crop of bumper music out of stopsets, ranging from funky oldies to new alternative songs. "Sometimes I'll hear [a cut] the station isn't playing yet, and I'll ask [O'Dea for it] to test it as bumper music," Bond says.

Like Allen, Bond feels friendly competition from the morning team of Tim Burns and Sue Campbell. "Their show is heavy on information," Bond says. "Our show is a little more hip in approach."

"This is what I do," he adds. "I find it difficult to talk up a record after doing it for 18 years. I'm a personality, not a generic radio DJ."

MONITOR PROFILE

Back In Top 40, Parker Finds Rhythm, Turns Up The Power At Phoenix's KKFR

It's a wonder that Don Parker isn't suffering from a debilitating case of format whiplash. The PD of top 40/rhythm KKFR (Power 92) Phoenix has spent the last few years shuttling between rhythmic top 40 and modern rock. But then again, so has Power 92, which has gone 5.2-5.4-6.4-7.0 over the last three books.

Parker succeeded Rick Stacy seven months ago, shortly after KKFR began the transition from a modern-leaning mainstream top 40 back to its traditional rhythmic bent. Parker had just spent a year programming Shamrock's modern rock KTBZ (the Buzz) Houston, formerly KRQT (the Rocket). Before that, Parker had done two tours of duty as PD of top 40/rhythm KBOS (B95) in his hometown of Fresno, Calif., separated by stints as PD of modern rockers KEDG (the Edge) Las Vegas and KKDJ Fresno.

So what was it like making the dance-to-modern transition at a time when modern was just starting to explode? Well, there was the vocal reaction of the core audience to get used to. Parker came in with "a tight list . . . and a lot of top 40 formatics," he says. "People started calling to say how much they hated us . . . After a bunch of

I've known," says Parker. "He knows this market and is able to separate the different needs of a New York and a Phoenix audience. He knows he's not in this market every day, and he's able to defer to my judgment."

Parker cites the success of such new dance acts as Lina Santiago and Planet Soul as evidence of listeners' ever-changing tastes. "Many Hispanic listeners have become disenchanted with the negative connotations of some rap music . . . We have found that rap has evolved into its own format and that people who are into hip-hop won't even accept an artist like Janet Jackson, who they feel has no street credibility. Rap and hip-hop excludes more than it includes, and when dealing with any genre of music that has the potential to exclude that many people, you must be extremely careful which ones you play, if any."

Parker is also careful about any mainstream records Power 92 plays, such as Hootie & the Blowfish or Sophie B. Hawkins. "They must sound compatible to our audience," he says, adding that no mainstream or fringe hip-hop record hits the air without being researched. "It's become clear that what they don't want is hardcore hip-hop or rock." There are plenty of rock outlets in Phoenix, he notes.

Here's a recent 2 p.m. hour of Power 92: Mariah Carey, "Always Be My Baby"; Montell Jordan, "This Is How We Do It"; Chantay Savage, "I Will Survive"; UB40, "Here I Am (Come And Take Me)"; La Bouche, "Be My Lover"; TLC, "Diggin' On You"; Sophie B. Hawkins, "Only Love"; Boyz II Men, "Water Runs Dry"; En Vogue, "Hold On"; Max-A-Million, "Sexual Healing"; Adina Howard, "Freak Like Me"; Selena, "I'm Getting Used To You"; and Johnny Gill, "Rub You The Right Way."

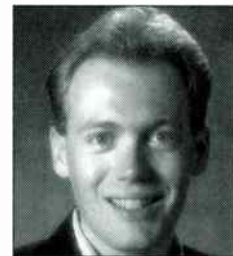
The latest KKFR perceptual shows the station has a well-defined musical image, according to Parker. "People are getting exactly what they want and expect from this radio station and are no longer listening by default," he says. "They're now listening to Power 92 because they want to."

A major reason Parker came to Power 92 was the great staff already in place: market legend Bruce Kelly does mornings with co-host Maggie Brock; afternoon driver Supersnake has been with KKFR for five years and "knows everybody in town," says Parker; midday talent Jackie West has been on board for four years; MD/night jock Brian Douglas was hired by Stacy from WPST Trenton, N.J., "and I can't thank him enough," says Parker; and overnighter Roxanne Steele is "talented enough to do any shift," Parker says.

Power 92's marketing efforts are spearheaded by promotion queen Nancy Stevens. "She's plugged into the market, has no ego, just dives in, and gets things done," says Parker, who also enjoys the advantage of having owner Fred Weber on-site. "There are no management layers in between, so I can go directly to Fred so he can green-light a project," says Parker.

In recent weeks, Phoenix has become one of the most volatile radio markets in the country, with PD changes at Nationwide's top 40/adult KVRV and modern rock KEDJ (the Edge), and rumors of an coming format change at KVRV. There are also rumors of an impending head-to-head rhythm battle between KKFR and KBZR (the Blaze), now co-owned by consultant Jerry Clifton. Parker remains philosophical: "[KBZR] may try to come after us, but they have a .8 share, and we have a 7 share. We're going to remain focused. This is the type of situation that makes everybody scrutinize everything they do; it gets jocks pumped for every break. This is no time to get complacent."

KEVIN CARTER



Don Parker
Program Director
KKFR Phoenix

"Today, I realize you must play the hits, regardless of format"

'you suck' phone calls, it's easy to start second-guessing yourself—'Am I screwing this up?'"

Once Parker saw that each successive trend was going up, he realized he'd been dealing with a vocal minority. "Today, I realize you must play the hits, regardless of format," he says. "But there were certainly those times when I didn't even hang a shower curtain in the bathroom, because I figured I wouldn't be here that long."

Despite the modern rock purists, Parker says it was much easier going from top 40 to alternative than coming back. "I kept feeling like I was starting over again, trying to get reacquainted with each format's music," he says. "The top 40 audience is not as vocally passionate as the modern rock audience, plus top 40 music seems to be more disposable, and thus it changes a lot more often. In the two years since I had left this format, there was a good chunk of the music that I wasn't as familiar with as I would've liked."

To cram for his new gig, Parker spent a week listening to everything in the radio station. He even went through the older station playlists, listening to hits he wasn't familiar with, regardless of whether the station still played them.

Parker came away with a positive feeling after his initial meeting with owner/GM Fred Weber and consultant Steve Smith. "[Our visions] for Power 92 all coincided, and the perceptual research confirmed it," says Parker. "The station must have a rhythmic feel to it, without leaning quite so street, like in the old days, when it was fighting with [KOY-FM] Y95. The station had to have a pop feel, be uptempo, and sound fun." Although Smith specializes in hip-hop at WQHT (Hot 97) New York, KKFR plays little hip-hop. "Steve is one of the best programmers

THE MUCH-ANTICIPATED FOLLOW-UP
TO THEIR TRIPLE PLATINUM SUCCESS

SWV

SISTERS WITH VOICES



SINGLETON MANAGEMENT
[HTTP://WWW.PEEPS.COM](http://www.peeps.com)



"YOU'RE THE ONE"

THE FIRST SINGLE FROM
"NEW BEGINNING"

DIGITAL DOWNLOAD MARCH 13!

HELP WANTED

SEAN ROSS IS ON A QUEST FOR HIMSELF

Airplay Monitor editor Sean Ross and his hard-working staff have now added editorial to all four Airplay Monitor publications. Since that's kinda time consuming, and they'd all like to go home once in a while, Monitor is looking for "The Next Sean", a New York-based writer/reporter with a knowledge of radio programming, a familiarity with multiple formats, and a genuine love of the business. Ability to copy-edit and proof read would be helpful too. Fax resume + writing samples to:

(212) 536-5286
or mail to:
AIRPLAY MONITOR • 1515 BROADWAY
NEW YORK, NY 10036
EOE



POSITION WANTED

REFUSE TO LOSE!
How's that for a programming philosophy? Radio pro with 6+ years in small and medium markets looking for first gig.
TOM: (804) 273-0807

First Nancy, then Rod, and now me! Group W sacrifice and KCBS-FM air talent seeks gig w/rock station, prefer mornings.
DAVE WHITE
(310) 379-3777

CHR/HOT AC, PD/air talent.
Available now!
SAM ZEMA:
(800) 462-8075

Rockin' female AT
available now. APD/MD/promotions experience, public appearance pro!
Prefer West.
C.J.: (520) 323-8495

Jim's Back! He's already taken the Midwest and South. Where will he hit next? You decide!
JIM: (312) 866-2135

Attention Phoenix: veteran on-air talent residing in the Valley seeks weekends/fill-in. All formats
DEREK: (602) 892-7001

Multi-talented PD/MD/AT is seeking opportunity to impress you.
SHELBY T:
(918) 245-3907

CALL LAURA RIVCHUN for Airplay Monitor Classifieds
Ph (212) 536-5058 • Fax (212) 536-5055

BULLETIN BOARD

WREN - I don't know how you did it, man. I'll never touch another cymbal again. Walla Wally

MAURICE B. DIXON - Guy or girl? From your Friends, J.B., J.C., & D.F.

T - We could make beautiful music together. Let's get with the rhythm.

SANTELMO - Good luck with your tour. Call me when you get back in town. Disco Diva

MY LITTLE CABBAGE - What do you think you know? A concerned friend.

KELLY - Good luck with Motor Mouth and remember to switch ears every 10 minutes. Joe B.

SERVICES

VOICEOVERS

You get what you pay for

Sean Caldwell
PRODUCTIONS

New Country KRBB-FM
Sweet 96 KKEP 5-96
KPM108 WEEF Coast

Country CHR Rock Hot AC
voice-over • production effects
(813) 926-1250

SUPER SWEEPERS *by Mike Carta*

LINERS • PROMOS • ID'S
512-218-0878

GLEN B. MORGAN
PROMOS, ID'S & LINERS
Call NOW for FREE Demo
(412) 449-9777

To order a BILLBOARD DIRECTORY
Call
Toll Free
1 (800) 223-7524



TOP RATED CHR LOOKING FOR MORNING SHOW HOST ... CREATIVE TEAM PLAYER WITH A SENSE OF HUMOR. SLACKERS NEED NOT APPLY. SEND T&R TO:
MICHAEL NEWMAN, PD
55 PLAZA CIRCLE
SALINAS, CA 93901
NO CALLS PLEASE

SERVICES

COMEDY

I HAD NO FRIENDS in high school, so I passed the time by developing a sense of humor to amuse myself. Now, **WNNX** in Atlanta uses me to write copy that's unique and fun. If you could use copy like that, call for a reel of my spots, promos and sweepers. If you like them, we can do business. If not-- **free tape**. You can't lose. Brian Sack (404)815-4646

TeleJoke!
by Alan Ray
Topical One Liners faxed or e-mailed daily!
Now in 250 markets!
(209) 476-1511 phone (209) 476-1211 fax
web site: <http://www.telejoke.com>
Call or fax for a free sample!

Tune in to Britain's music. Music Monitor

Incisive editorial coverage of the U.K. music scene addressing the key issues in music, marketing, programming and promotion • Unique charts based on BDS airplay and Gallup retail data • Radio station playlists • Summaries of each record's performance • Top 20 greatest air-play gainers • The latest music news from around the globe.
Call Sue Dowman at (0171) 323-6686 to subscribe. (In the U.S. call (212) 536-5261.)
Part of the Billboard Music Group.

CLASSIFIED ADVERTISING RATES

HELP WANTED:
1 WEEK \$75.00 per inch
2 WEEKS \$65.00 per inch

POSITION WANTED AND BULLETIN BOARD:
\$45.00 per inch

BOX NUMBER: Add \$20.00

SERVICES:
1 WEEK \$75.00 per inch
6 WEEKS \$65.00 per inch
13 WEEKS \$60.00 per inch
26 WEEKS \$55.00 per inch
51 WEEKS \$50.00 per inch

DEADLINE (ALL CLASSIFIED):
Each Wednesday 3pm EST, 9 day leadtime.

• Classified ads are non-commissionable •

SUBMIT ALL AD COPY TO:
Laura Rivchun
Airplay Monitor Classified
1515 Broadway
New York, NY 10036
Phone: 212-536-5058
Fax: 212-536-5055

AIRPLAY Monitor GREATEST GAINERS

Broadcast Data Systems

Strongest Increase In Airplay This Week

MAINSTREAM

INCREASE
IN PLAYS

ALANIS MORISSETTE • <i>Ironic</i> (MAVERICK/REPRISE)	+506
KHOM +33, WBHT +26, WIOQ +24, KKRD +23, KKRZ +21, WHOT +20, WLAN +19, WYCR +17, WWST +16, WFLZ +16	
MARIAH CAREY • <i>Always Be My Baby</i> (COLUMBIA)	+444
KKRD +26, WVSR +24, WWST +22, WEDJ +21, WTWR +19, KHKS +18, KKMG +16, WDCG +16, KWMX +16, WZJM +15	
BODEANS • <i>Closer To Free</i> (SLASH/REPRISE)	+315
KHTO +21, WNOK +19, WHHY +17, WZJM +17, WXKS +16, WEDJ +15, KDWB +13, KRBE +13, KQKQ +12, WRVQ +12	
BRANDY • <i>Sittin' Up In My Room</i> (ARISTA)	+293
WWST +21, WWCK +20, WBHT +19, WXKB +17, KHOM +14, WNVZ +14, WNCI +14, KHKS +13, WXXL +12, WLAN +11	
ACE OF BASE • <i>Lucky Love</i> (ARISTA)	+262
WBZZ +27, WRVW +25, WPRO +24, KHKS +18, KKMG +15, WHYI +12, WSNX +10, WFLY +10, WLAN +9, WIXX +9	
CELINE DION • <i>Because You Loved Me</i> (550 MUSIC)	+256
WZNY +16, WNNK +16, WZPL +15, WXLK +14, WFLZ +14, KALC +14, KKRD +13, WNCI +13, WFBC +11, WVKS +10	
DOG'S EYE VIEW • <i>Everything Falls Apart</i> (COLUMBIA)	+254
KLRZ +24, WDCG +23, KKRD +16, WXXX +12, WKCI +11, WFBC +11, WDDJ +10, WHYI +10, WKRZ +10, WFLZ +10	
GIN BLOSSOMS • <i>Follow You Down</i> (A&M)	+236
WDCG +27, WNCI +25, WHTZ +19, WSSX +16, WTIC +16, WTWR +14, WWCK +14, WRVW +14, KKRD +13, KALC +13	
THE PRESIDENTS OF THE UNITED STATES • <i>Peaches</i> (COLUMBIA)	+232
KHOM +25, WVSR +20, KLRZ +18, WHOT +18, WZPL +17, WSSX +10, WXXL +10, WDJX +9, WXXX +8, WLAN +7	
SMASHING PUMPKINS • <i>1979</i> (VIRGIN)	+228
WDCG +32, KHFI +21, WFBC +19, WPST +17, WRVW +13, WHTZ +13, WEDJ +12, WFLZ +11, WKSE +10, KJYO +10	

RHYTHM-CROSSOVER

INCREASE
IN PLAYS

COOLIO • <i>1,2,3,4 (Sumpin' New)</i> (TOMMY BOY)	+177
KBXX +27, KYLD +25, KPWR +22, KQKS +17, WHHH +15, KMEL +14, KZFM +10, KKSS +9, KSFM +8, KUBE +8	
FUGEES • <i>Killing Me Softly</i> (RUFFHOUSE/COLUMBIA)	+155
KYLD +51, KMEL +36, KTFM +26, WJMH +23, KBXX +13, WERQ +8, WJMN +3, WPOW +2, WHHH +1, KKSS +1	
MARIAH CAREY • <i>Always Be My Baby</i> (COLUMBIA)	+117
WHHH +27, WJMN +21, WJJS +17, KYLD +16, WJMH +16, KBOS +12, KGGI +12, KDON +10, KBXX +10, KUBE +10	
EVERYTHING BUT THE GIRL • <i>Missing</i> (ATLANTIC)	+83
KDON +20, KYLD +20, KCAQ +13, KUBE +13, XHTZ +12, WBBM +7, KKSS +4, KGGI +4, KQKS +4, KJMZ +3	
D'ANGELO • <i>Lady</i> (EMI)	+75
KBXX +18, WERQ +15, KZHT +14, KZFM +9, KDON +7, KQKS +7, WJJS +6, WQHT +6, KLUC +4, WWKX +3	
R. KELLY FEAT. RONALD ISLEY • <i>Down Low (Nobody Has To Know)</i> (JIVE)	+75
WERQ +16, KZFM +15, WWKX +12, WPGC +12, KKSS +11, KDON +9, KQKS +9, WBBM +4, KJMZ +3, XHTZ +3	
ANGELINA • <i>Release Me</i> (UPSTAIRS)	+72
KPWR +21, KYLD +20, KUBE +19, KDON +8, KMEL +3, XHTZ +2, WPOW +1	
SELENA • <i>I'm Getting Used To You</i> (EMI LATIN/EMI)	+69
KLUC +22, KIOX +20, KZFM +14, KBOS +6, KYLD +2, KPRR +2, WWKX +2, KKFR +1	
JOE • <i>All The Things (Your Man Won't Do)</i> (ISLAND)	+68
WJMH +21, KTFM +19, XHTZ +11, WHHH +8, KCAQ +7, KZFM +5, KDON +4, WJMN +4, WPGC +4, WJJS +3	
LOST BOYZ • <i>Renee</i> (ISLAND)	+65
WQHT +34, WPGC +17, WERQ +14, KBXX +4, WHHH +3	

VIDEO PLAYLISTS



1
VH
MUSIC FIRST

	TW	LW
1 Mariah Carey & Boyz II Men, One Sweet Day	38	36
2 Joan Osborne, One Of Us	36	31
3 Hootie & The Blowfish, Time	33	26
4 Whitney Houston, Exhale (Shoop Shoop)	32	35
5 Melissa Etheridge, I Want To Come Over	32	27
6 Beatles, Real Love	27	0
7 Collective Soul, The World I Know	24	22
8 Seal, Don't Cry	21	20
9 Deep Blue Something, Breakfast At Tiffany's	21	18
10 Natalie Merchant, Wonder	21	21
11 Everything But The Girl, Missing	19	10
12 Madonna, You'll See	18	22
13 Blues Traveler, Hook	15	16
14 The Tony Rich Project, Nobody Knows	13	9
15 Seal, Kiss From A Rose	12	5
16 Blues Traveler, Run Around	12	9
17 TLC, Waterfalls	12	8
18 Janet Jackson, Runaway	11	13
19 Son Volt, Drown	11	12
20 Sting, Let Your Soul Be Your Pilot	11	8
21 Celine Dion, Because You Loved Me	11	10
22 Sophie B. Hawkins, Only Love	11	7
23 Hootie & The Blowfish, Let Her Cry	10	6
24 Mariah Carey, Fantasy	10	6
25 Oasis, Wonderwall	10	10
26 Whitney Houston & Cece Winans, Count On Me	10	10
27 Gin Blossoms, Follow You Down	10	8
28 Natalie Merchant, Carnival	9	10
29 Alanis Morissette, Hand In My Pocket	9	4
30 Alanis Morissette, Ironic	8	4
31 Rod Stewart, So Far Away	8	5
32 Tom Petty, You Don't Know How It Feels	7	4
33 John Mellencamp, Wild Night	6	4
34 Sophie B. Hawkins, As I Lay Me Down	6	4
35 The Rembrandts, I'll Be There For You	6	3
1 2Pac, California Love	37	36
2 Alanis Morissette, Ironic	31	24
3 Smashing Pumpkins, 1979	31	29
4 Red Hot Chili Peppers, Aeroplane	31	25
5 Foo Fighters, Big Me	28	23
6 Green Day, Brain Stew	28	24
7 Coolio, 1, 2, 3, 4	28	21
8 Presidents Of The United States, Peaches	27	22
9 Brandy, Sittin' Up In My Room	24	25
10 Oasis, Wonderwall	23	30
11 Mary J. Blige, Not Gon' Cry	23	15
12 The Tony Rich Project, Nobody Knows	22	20
13 No Doubt, Just A Girl	18	14
14 Goo Goo Dolls, Naked	17	13
15 Collective Soul, The World I Know	17	19
16 Everclear, Santa Monica	16	11
17 Alice In Chains, Heaven Beside You	16	17
18 Bush, Glycerine	15	24
19 Seven Mary Three, Cumbersome	15	13
20 Dog's Eye View, Everything Falls Apart	15	13
21 Blues Traveler, Hook	14	15
22 Monica, Before You Walk Out Of My Life	14	19
23 Kris Kross, Tonite's The Night	13	11
24 Gin Blossoms, Follow You Down	13	10
25 Spacehog, In The Meantime	12	9
26 Radiohead, High And Dry	12	7
27 D'angelo, Lady	12	5
28 LL Cool J, Hey Lover	10	11
29 Garbage, Only Happy When It Rains	9	9
30 Melissa Etheridge, I Want To Come Over	9	8
31 Pete Dinklage, Beautiful Girl	9	9
32 Immature, We Got It	9	9
33 3T, Anything	8	11
34 George Michael, Jesus To A Child	8	5
35 La Bouche, Be My Lover	8	10
36 The Dogg Pound, New York, New York	8	4
37 Adam Sandler, Steve Polychronopolous	8	0
38 Whitney Houston & Cece Winans, Count On Me	7	6
39 Mariah Carey, Always Be My Baby	7	0
40 Silverchair, Israel's Son	5	4
41 Son Volt, Drown	5	4
42 Tori Amos, Caught A Lite Sneeze	5	4
43 Busta Rhymes, Woo-Hah!! Got You All In...	5	0
44 Dr. Dre, Keep Their Heads Ringin'	5	3
45 Joan Osborne, Right Hand Man	5	0
46 Bruce Springsteen, Dead Man Walkin'	5	2
47 Lenny Kravitz, Are You Gonna Go My Way	4	3
48 Snoop Doggy Dogg, Gin And Juice	4	1
49 Beastie Boys, Sabotage	4	1
50 Stone Temple Pilots, Interstate Love Song	4	2

ADULT CONTEMPORARY

INCREASE
IN PLAYS

CELINE DION • <i>Because You Loved Me</i> (550 MUSIC)	+234
KEZR +23, WJDX +22, KGBX +16, WMAG +16, WMJQ +16, WSLQ +15, WLTF +14, WLAC +14, WLHT +13, KISC +12	
WHITNEY HOUSTON & CECE WINANS • <i>Count On Me</i> (ARISTA)	+139
WASH +23, WJDX +15, KESZ +13, WGSY +11, KIOI +9, WMGS +8, WRVW +8, KKCW +7, KGBX +6, WMJQ +6	
THE TONY RICH PROJECT • <i>Nobody Knows</i> (LAFACE/ARISTA)	+85
KMZQ +20, WJDX +18, WAHR +12, WLTF +9, WMGS +7, WTFM +7, WSLQ +5, WARM +4, WLHT +3, WALK +2	
MARIAH CAREY • <i>Always Be My Baby</i> (COLUMBIA)	+64
WMJQ +20, WGSY +18, WLAC +16, KGBY +6, WALK +4, WSLQ +4	
SEAL • <i>Don't Cry</i> (ZTT/WARNER BROS.)	+49
WMGS +16, WJDX +14, WRVW +8, WLTF +6, WSLQ +4, KGBX +3, WGSY +3, WBEB +2, KURB +2, WDEF +1	

ADULT TOP 40

INCREASE
IN PLAYS

CELINE DION • <i>Because You Loved Me</i> (550 MUSIC)	+185
WMXL +24, KHMX +23, WQLH +20, KDMX +18, WPNT +16, WYYY +13, WVAF +11, WQAL +11, WMTX +8, WRMF +6	
MARIAH CAREY • <i>Always Be My Baby</i> (COLUMBIA)	+95
KKLQ +20, WVTY +16, KPLZ +12, WBMX +11, WQLH +9, WIVY +7, WMTX +7, WKDD +7, WMXL +5, WWSN +5	
HOOTIE & THE BLOWFISH • <i>Time</i> (ATLANTIC)	+92
WAEV +36, WQAL +21, WVAF +20, WPNT +14, KHMX +9, WRQX +9, WIVY +8, WZPK +7, WWMX +6, WRMF +5	
BODEANS • <i>Closer To Free</i> (SLASH/REPRISE)	+87
WWSN +15, KSTP +13, WBMX +11, KHMX +10, WPLJ +10, KSTZ +8, WVTY +7, WYYY +6, WKTI +6, WRQX +6	
MELISSA ETHERIDGE • <i>I Want To Come Over</i> (ISLAND)	+84
WVTY +19, WCSO +18, WZPK +15, WIVY +15, KHMX +11, WRQX +9, WKDD +8, WKZL +8, WVAF +6, WQLH +6	

TOP 5 PHONES AT: KUBE, B96, 92Q, KPRR, WWKX

TOP 10 PHONES AT: KTFM, KJMN, WJMH, WJMN

ALSO ON: HOT 97 41x WHHH 20x KPWR 23x KLUC 19x
Z90 17x WJJS 20x WPGC 13x KSFM 12x KYLD 21x
KMEL 17x KDON 13x KCAQ 13x KGGI 8x & MORE!

NEW AT: WPOW 7x

20 - (18) TOP 40/RHYTHM-CROSSOVER MONITOR
DEBUT (28) ★★★HOT SHOT DEBUT★★★ BILLBOARD HOT 100

© 1995 Def Jam Records, Inc.



POWER PLAYLISTS

For Week Ending March 3, 1996



Playlists supplied by Broadcast Data Systems' Radio Track service. Stations selected from panel of leading broadcast stations in 125 radio markets, electronically monitored 24 hours a day, 7 days a week. Songs ranked by number of plays in monitored week.

Table for G105 station WDCG Raleigh, PD: Brian Burns, MD: Kip Taylor. Top 40 playlist including Alanis Morissette, Irons, Smashing Pumpkins, etc.

Table for Z100 station KKRZ Portland, PD: Ken Benson, APD/MD: Chet Buchanan. Top 40 playlist including Goo Goo Dolls, Name, Blues Traveler, Hook, etc.

Table for ALICE 106 station KALC Denver, PD: Greg Cassidy, MD: Jim Lawson. Top 40 playlist including Blues Traveler, Hook, Bodeans, Closer To Free, etc.

Table for THE RIVER station WRVW Nashville, PD: Charlie Quinn, APD: Tom Peace, MD: Jim McDonald. Top 40 playlist including Goo Goo Dolls, Name, Natalie Merchant, Carnival, etc.

Table for JAMMIN' 92 station WZJM Cleveland, PD: Lisa Rodman, MD: Dave Eubanks. Top 40 playlist including Goo Goo Dolls, Name, Alanis Morissette, Irons, etc.

Table for XL106.7 station WXXL Orlando, PD/MD: Adam Cook. Top 40 playlist including The Tony Rich Project, Nobody Knows, Everything But The Girl, Missing, etc.

Table for KJ103 station KYJO Oklahoma City, PD: Mike McCoy, MD: Joe Friday. Top 40 playlist including Everything But The Girl, Missing, Hootie & The Blowfish, Time, etc.

Table for KISS 98.5 station WKSE Buffalo, PD: Sue O'Neil, MD: Dave Universal. Top 40 playlist including Alanis Morissette, Irons, Mariah Carey, Always Be My Baby, etc.

Table for WZPL station WZPL Indianapolis, PD: Tom Gjerdrum, MD: Ron Blair. Top 40 playlist including Deep Blue Something, Breakfast At Tiffan, 3T, Anything, etc.

Table for THE EDGE station WEDJ Charlotte, PD: Brian Bridgman, MC: Marcie Crescente. Top 40 playlist including Alanis Morissette, Irons, TLC, Waterfalls, etc.

Table for Z93 station WGTZ Dayton, PD: Louis Kaplan, MD: Gretchen Corbett. Top 40 playlist including Hootie & The Blowfish, Time, Joan Osborne, One Of Us, etc.

Table for FLY 92 station WFLY Albany, PD/MD: Mike Morgan. Top 40 playlist including Everything But The Girl, Missing, Joan Osborne, One Of Us, etc.

Table for Z104 station WNVZ Norfolk, PD: Don London, MD: Sean Sellers. Top 40 playlist including Brandy, Sittin' Up In My Room, Planet Soul, Set U Free, etc.

Table for MIX 93.3 station KMXV Kansas City, OM: Tom Land, PD/MD: Jon Zellner. Top 40 playlist including Joan Osborne, One Of Us, Natalie Merchant, Wonder, etc.

Table for MIX 107.5 station KWMX Denver, PD: John Peake, MD: Lee Cagle, APD: Steve Douglas. Top 40 playlist including Toad The Wet Sprocket, Good Intentions, Hootie & The Blowfish, Time, etc.

Table for WIXX station WIXX Green Bay, PD/MD: Dan Stone. Top 40 playlist including Collective Soul, The World I Know, Hootie & The Blowfish, Time, etc.

Table for WKRZ station WKRZ Wilkes-Barre, PD: Ken Medek, MD: Jerry Padden. Top 40 playlist including Natalie Merchant, Wonder, Melissa Etheridge, I Want To Come Over, etc.

Table for WKKS station WKKS Toledo, PD: Mike Wheeler, MD: Curt Kruse. Top 40 playlist including Brandy, Sittin' Up In My Room, Joan Osborne, One Of Us, etc.

What A Difference A Chance Makes!



Y.E.S. TO JOBS Interns 1987

Look where they are now!

- Racquel Caldwell** • Real Estate Administrator
- Jai Cannon** • Independent Producer/Owner, Oktav Productions & Studio
- José Castellon** • Assistant Engineer, A&M Studios
- Marsha Cole** • Program Coordinator, Y.E.S. TO JOBS
- Kisha Cravin** • Administrative Services Manager, Perspective Records
- Morgan Fouch** • Account Coordinator, Burrell Communications Group
- Sergio Gonzales** • Assistant Data Processing Production Manager, WEA
- Stan Kurianski** • Owner/Commercial Artist, Stan Kurianski Advertising & Design
- Heidi Othmer** • Promotions Director, KLAX FM & KXED AM Los Angeles
- Eric Reed** • Jazz Pianist, Impulse! Records
- James Staten** • Field Director, Rock the Vote
- Derrick Wade** • Business and Legal Affairs Assistant, Hanna Barbera

“People Can’t Be What They Don’t Know Exists”

To give a chance to a 16-18 year old minority, high-school student, contact:
Y.E.S. TO JOBS • JALEESA HAZZARD • 213 • 469 • 2411 x3598



POWER PLAYLISTS

For Week Ending March 3, 1996



Playlists supplied by Broadcast Data Systems. Radio Track service. Stations selected from panel of leading broadcasters in 128 radio markets, electronically monitored 24 hours a day, 7 days a week. Songs ranked by number of plays in monitored week.

98PXY WPMX Rochester PD: Clarke Ingram APD/MD: J.J. Rice. Playlist table with 40 rows and 2 columns (Rank, Song Name).

WDJX Louisville PD: C.C. Matthews MD: Jill Meyer. Playlist table with 40 rows and 2 columns (Rank, Song Name).

WAPE Jacksonville PD: Cat Thomas APD/MD: Tony Mann. Playlist table with 40 rows and 2 columns (Rank, Song Name).

KHFI Austin PD: John Roberts MD: Fernando Ventura. Playlist table with 40 rows and 2 columns (Rank, Song Name).

93Q WNTQ Syracuse PD: Tom Mitchell MD: Jimmy Olson. Playlist table with 40 rows and 2 columns (Rank, Song Name).

B104 KBFM McAllen PD: Billy Santiago MD: Jeff DeWitt. Playlist table with 40 rows and 2 columns (Rank, Song Name).

SUNNY 104.5 WSNX Grand Rapids PD: Mark McGill MD: Keith Curry. Playlist table with 40 rows and 2 columns (Rank, Song Name).

WINK 104 WNNK Harrisburg PD: John O'Dea MD: Scott Shaw. Playlist table with 40 rows and 2 columns (Rank, Song Name).

Q94 WRVQ Richmond PD: Lisa McKay APD/MD: Billy Surf. Playlist table with 40 rows and 2 columns (Rank, Song Name).

WHOT Youngstown PD/MD: Tom Pappas. Playlist table with 40 rows and 2 columns (Rank, Song Name).

B93.7 WFBC Greenville, S.C. PD: Rob Wagman MD: Hawk Harrison. Playlist table with 40 rows and 2 columns (Rank, Song Name).

WZYP Huntsville PD: Marc Summers MD: Kramer. Playlist table with 40 rows and 2 columns (Rank, Song Name).

SWEET 98 KQKQ Omaha PD: Michael Steele MD: Jimi Jamm. Playlist table with 40 rows and 2 columns (Rank, Song Name).

MIX 104.1 KHOM New Orleans PD: Bill Thorman. Playlist table with 40 rows and 2 columns (Rank, Song Name).

Q99 KUTQ Salt Lake City PD: Brian deGeus MD: Geronimo. Playlist table with 40 rows and 2 columns (Rank, Song Name).

MIX 94.5 WMXQ Birmingham PD: Jeff Tyson MD: Gail O'Brien. Playlist table with 40 rows and 2 columns (Rank, Song Name).

KRQ KRQQ Tucson PD: Mark Todd MD: Valerie Knight. Playlist table with 40 rows and 2 columns (Rank, Song Name).

KC101 WKCI New Haven Acting PD/MD: Jeff McCartney. Playlist table with 40 rows and 2 columns (Rank, Song Name).



★ ★ ★ AIRPOWER ★ ★ ★

(Minimum 1500 detections for the first time)

Total Plays/Gain

BRANDY 1694/293

Sittin' Up In My Room (Arista)

Total Stations: 75/Chart Move: 20-19
Heavy (40+ plays): 10 KHFI, KKRZ, KZQU, KQKQ, KZZU, WFHN, WNVZ, WRVQ, WTVR, WVKX, WZPL
Medium (20-39): 26 KBFM, KDWB, KHOM, KHOT, KIIS, KJYO, KKM, KRQ, WFBC, WFLY, WFLZ, WFMF, WIOQ, WKRO, WKSE, WKSS, WNCI, WNOK, WWSR, WWCK, WWST, WXIS, WXLK, WXXL, WZNY, WZST
Light (Under 20): 39
New Airplay This Week: 6 KHKS, WEHT, WKBO, WLAN, WWCK, WXXB

AIRPOWER BOUND

Total Plays/Gain

3T 1490/95

Anything (MJJ/550 Music)

Total Stations: 75/Chart Move: 21-21
Heavy (40+ plays): 11 KHFI, KHKS, KIIS, KQKQ, WFBC, WFHN, WHOT, WIOQ, WNVZ, WWSR, WZPL
Medium (20-39): 23 KBFM, KJYO, KKRZ, KMXV, KZZU, WFLY, WFLZ, WHYI, WKRO, WLAN, WNCI, WNNK, WPRO, WRVQ, WSSX, WSTW, WTVR, WVKX, WWCK, WXXB, WXXL, WYCR, WZJM
Light (Under 20): 41
New Airplay This Week: 3 KZZU, WPRO, WZYP

SOPHIE B. HAWKINS 1478/145

Only Love (The Ballad Of Sleeping Beauty) (Columbia)

Total Stations: 78/Chart Move: 22-22
Heavy (40+): 1 WIXX
Medium (20-39): 38 KALC, KDWB, KHOT, KLRZ, KMXV, KRQ, WABB, WBZZ, WFBC, WFLZ, WHYI, WKCI, WKRO, WKSI, WKXJ, WKXJ, WMLX, WNCI, WNNK, WNTQ, WNVZ, WPRO, WPXY, WSTR, WSTW, WVIC, WVKX, WWSR, WXXL, WZJM, WZNY, WZPL, WZST, WZYP
Light (Under 20): 39
New Airplay This Week: 1 WDDJ

ACE OF BASE 1441/262

Lucky Love (Arista)

Total Stations: 76/Chart Move: 25-23
Heavy (40+): 5 KBFM, KHFI, KHOT, KLRZ, WZNY
Medium (20-39): 33 KJYO, KKM, KKRZ, KMXV, KQKQ, WBZZ, WFBC, WFHN, WFLY, WHYI, WKCI, WKRO, WKSI, WKXJ, WKXJ, WMLX, WNCI, WNNK, WNTQ, WNVZ, WPRO, WPXY, WSTR, WSTW, WVIC, WVKX, WWSR, WXXL, WZJM, WZNY, WZPL, WZYP
Light (Under 20): 38
New Airplay This Week: 6 KHKS, WBZZ, WFLZ, WIXX, WMXQ, WPRO

MARIAH CAREY 1405/444

Always Be My Baby (Columbia)

Total Stations: 64/Chart Move: 30-24
Heavy (40+): 6 KIIS, KKRZ, KZZU, WFLY, WIOQ, WKSE
Medium (20-39): 26 KDWB, KHFI, KKM, KKRZ, KQKQ, KRQ, WBZZ, WEDJ, WFHN, WGTZ, WHOT, WHYI, WKRO, WKSI, WKXJ, WKXJ, WMLX, WNCI, WNNK, WNTQ, WNVZ, WPRO, WPXY, WSTR, WVIC, WTVR, WWSR, WWST, WXXS, WXXL, WZJM, WZNY, WZPL
Light (Under 20): 32
New Airplay This Week: 15 KHKS, KJYO, KKRZ, KMXV, KWMX, WDCG, WEDJ, WFMF, WIXX, WKCI, WNTQ, WRVQ, WVKX, WWCK, WXXX

BLESSID UNION OF SOULS 1365/76

Oh Virginia (EMI)

Total Stations: 78/Chart Move: 24-25
Heavy (40+): 3 KLRZ, WKXJ, WWCK
Medium (20-39): 31 KHOM, KHOT, KHOT, KHOT, KKRZ, KMXV, KQKQ, WDDJ, WFBC, WFLY, WHOT, WIXX, WKCI, WKRO, WKZ, WNCI, WNNK, WNTQ, WPRO, WRVQ, WSTW, WVIC, WTVR, WVKX, WWSR, WXIS, WXLK, WYCR, WZNY, WZPL, WZST
Light (Under 20): 44

THE PRESIDENTS OF THE UNITED STATES OF AMERICA 1128/232

Peaches (Columbia)

Total Stations: 74/Chart Move: 31-26
Heavy (40+): 3 WHOT, WPST, WXIS
Medium (20-39): 25 KHOM, KHOT, KJYO, KKM, KKRZ, KLRZ, KRBE, WDCG, WFBC, WFMF, WHYI, WHTZ, WKBO, WKRO, WKSE, WNOK, WSNX, WWSR, WWCK, WXXL, WXXX, WYCR, WZNY, WZPL, WZST
Light (Under 20): 46
New Airplay This Week: 5 WDJX, WKSS, WLAN, WWSR, WZPL

BUSH 1045/26

Glycerine (Trauma/Interscope)

Total Stations: 78/Chart Move: 28-30
Heavy (40+): 3 WHYI, WHTZ, WPST
Medium (20-39): 19 KHOM, KHOT, KJYO, KLRZ, KQKQ, KRBE, KUTQ, WBHT, WDCG, WDDJ, WEDJ, WFBC, WKXJ, WPRO, WXIS, WXLK, WZNY, WZPL, WZST
Light (Under 20): 56
New Airplay This Week: 3 WMXQ, WXXB, WXXS

CELINE DION 859/256

Because You Loved Me (550 Music)

Total Stations: 60/Chart Move: 39-32
Heavy (40+): 0
Medium (20-39): 19 KHFI, KHOT, KHOT, KLRZ, KQKQ, WAPE, WFLZ, WHYI, WIXX, WMXQ, WNNK, WFRV, WTVR, WVKX, WWCK, WXLK, WZNY, WZST
Light (Under 20): 41
New Airplay This Week: 11 KALC, KDWB, KKRZ, WDDJ, WDJX, WFBC, WGTZ, WKRZ, WNCI, WSNX, WZPL

DEBORAH COX 742/41

Who Do U Love (Arista)

Total Stations: 50/Chart Move: 36-34
Heavy (40+): 3 KHOT, KLRZ, WNVZ
Medium (20-39): 12 KBFM, KDWB, KKM, KKRZ, WFHN, WFLY, WGTZ, WKRO, WNNK, WTVR, WVKX, WWCK, WXXS
Light (Under 20): 35
New Airplay This Week: 2 WWSR, WXXS

DOG'S EYE VIEW 740/254

Everything Falls Apart (Columbia)

Total Stations: 56/Chart Move: Debut 35
Heavy (40+): 0
Medium (20-39): 15 KLRZ, WAPE, WDCG, WDDJ, WIXX, WKXJ, WPST, WSTR, WTVR, WVKX, WWCK, WXIS, WYCR, WZNY
Light (Under 20): 41
New Airplay This Week: 16 KHOM, KHOT, KKRZ, KLRZ, KWMX, WBHT, WFBC, WFLZ, WHTZ, WHYI, WKCI, WKRZ, WMXQ, WVIC, WXLK, WXXX

2PAC (FEAT. DR. DRE & ROGER TROUTMAN) 654/69

California Love (Death Row/Interscope)

Total Stations: 61/Chart Move: 40-39
Heavy (40+): 1 KZZU
Medium (20-39): 11 KBFM, KHFI, KIIS, KKRZ, KQKQ, WFHN, WFLZ, WGTZ, WKSE, WXIS, WZPL
Light (Under 20): 49
New Airplay This Week: 3 KHKS, WXXB, WXXL

MOST NEW AIRPLAY THIS WEEK

No. Of Stations

DOG'S EYE VIEW <i>Everything Falls Apart (Columbia)</i>	16
MARIAH CAREY <i>Always Be My Baby (Columbia)</i>	15
TRACY CHAPMAN <i>Give Me One Reason (Elektra/EEG)</i>	11
CELINE DION <i>Because You Loved Me (550 Music)</i>	11
WHITNEY HOUSTON & CECE WINANS <i>Count On Me (Arista)</i>	10

CHART BOUND

Total Plays/Gain

JANN ARDEN 610/64

Insensitive (A&M)

Total Stations: 41
Heavy (40+): 0
Medium (20-39): 9 KALC, KHOT, WABB, WDDJ, WKRZ, WKXJ, WMXQ, WVIC, WZST
Light (Under 20): 32
New Airplay This Week: 6 KKM, WHOT, WHYI, WKRO, WLAN, WNCI

NO DOUBT 594/70

Just A Girl (Trauma/Interscope)

Total Stations: 46
Heavy (40+): 1 WPST
Medium (20-39): 10 KHOT, KJYO, KLRZ, KUTQ, WDCG, WHTZ, WKXJ, WWCK, WXIS, WZNY
Light (Under 20): 35
New Airplay This Week: 6 WEDJ, WFHN, WFLY, WHOT, WNTQ, WYCR

MARY J. BLIGE 560/183

Not Gon' Cry (Arista)

Total Stations: 64
Heavy (40+): 2 KHOM, WNVZ
Medium (20-39): 10 KHFI, KHOT, KJYO, KQKQ, WFHN, WFLY, WKSE, WRVQ, WTVR, WWSR
Light (Under 20): 52
New Airplay This Week: 5 KHFI, KZZU, WHOT, WKSE, WZPL

SEVEN MARY THREE 540/27

Cumbersome (Mammoth/Atlantic)

Total Stations: 39
Heavy (40+): 2 WDDJ, WPST
Medium (20-39): 6 KHOT, KLRZ, KUTQ, WHTZ, WWCK, WZST
Light (Under 20): 31
New Airplay This Week: 1 KQKQ

EVERCLEAR 421/19

Santa Monica (Watch The World Die) (Tim Kerr/Capitol)

Total Stations: 39
Heavy (40+): 0
Medium (20-39): 6 KHOT, KLRZ, KUTQ, WDDJ, WHTZ, WPST
Light (Under 20): 33
New Airplay This Week: 2 WKRO, WWST

HOOTIE & THE BLOWFISH 411/28

I Go Blind (Atlantic/Reprise)

Total Stations: 15
Heavy (40+): 4 WBHT, WDDJ, WFBC, WKRO
Medium (20-39): 4 KMXV, WEDJ, WKRZ, WWST
Light (Under 20): 7
New Airplay This Week: 1 WDCG

SPACEHOG 409/73

In The Meantime (HiFi/Sire/EEG)

Total Stations: 49
Heavy (40+): 1 KUTQ

Medium (20-39): 3 KRBE, WHTZ, WPST
Light (Under 20): 45
New Airplay This Week: 8 KHOM, KHOT, KKRZ, WDCG, WFLZ, WFMF, WXXX, WYCR

DIANA KING 403/25

Ain't Nobody (Work)

Total Stations: 21
Heavy (40+): 3 KHOT, WNVZ, WXIS
Medium (20-39): 4 KBFM, KLRZ, WWST, WZJM
Light (Under 20): 14
New Airplay This Week: 1 KQKQ

LINA SANTIAGO 368/9

Feels So Good (Show Me Your Love) (Groove Nation/Universal)

Total Stations: 43
Heavy (40+): 2 KBFM, KIIS
Medium (20-39): 3 KHFI, WFHN, WNVZ
Light (Under 20): 38
New Airplay This Week: 5 KDWB, KHOM, KKRZ, WGTZ, WKSS

J'SON 332/36

Take A Look (Hollywood)

Total Stations: 32
Heavy (40+): 0
Medium (20-39): 5 KHOT, KLRZ, WFHN, WFLY, WNVZ
Light (Under 20): 27
New Airplay This Week: 3 WFBC, WIOQ, WVKX

GOO GOO DOLLS 328/74

Naked (Metal Blade/Warner Bros.)

Total Stations: 33
Heavy (40+): 1 KUTQ
Medium (20-39): 7 KHOT, KLRZ, KRBE, WHTZ, WKSE, WPST, WZST
Light (Under 20): 25
New Airplay This Week: 4 KLRZ, WDDJ, WWCK, WXLK

RADIOHEAD 291/21

High And Dry (Capitol)

Total Stations: 29
Heavy (40+): 0
Medium (20-39): 5 KHOT, KLRZ, KUTQ, WPST, WWCK
Light (Under 20): 24
New Airplay This Week: 3 WFBC, WKXJ, WZST

★ TRACY CHAPMAN 280/222

Give Me One Reason (Elektra/EEG)

Total Stations: 37
Heavy (40+): 0
Medium (20-39): 3 WKXJ, WWCK, WZST
Light (Under 20): 34
New Airplay This Week: 11 KHOM, KLRZ, WAPE, WKXJ, WMXQ, WRRV, WSTR, WTVR, WVKX, WZST, WZYP

EDWIN MCCAIN 261/13

Sorry To A Friend (Lava/Atlantic)

Total Stations: 25
Heavy (40+): 0
Medium (20-39): 5 KLRZ, WDCG, WFBC, WKRZ, WNOK
Light (Under 20): 20
New Airplay This Week: 3 KJYO, WRRV, WWCK

THE CORRS 229/1

The Right Time (143/Lava/Atlantic)

Total Stations: 21
Heavy (40+): 0
Medium (20-39): 3 KHOT, KLRZ, WTVR
Light (Under 20): 18
New Airplay This Week: 3 KHOT, WNCI, WSTW

ENYA 203/27

Anywhere Is (Reprise)

Total Stations: 21
Heavy (40+): 0
Medium (20-39): 4 KLRZ, KRBE, WWCK, WXIS
Light (Under 20): 17
New Airplay This Week: 2 WDCG, WKXJ

RED HOT CHILI PEPPERS 197/51

Aeroplane (Warner Bros.)

Total Stations: 34
Heavy (40+): 0
Medium (20-39): 2 KHOT, KUTQ
Light (Under 20): 32
New Airplay This Week: 2 WDCG, WKBO

STING 188/33

Let Your Soul Be Your Pilot (A&M)

Total Stations: 28
Heavy (40+): 0
Medium (20-39): 1 WKXJ
Light (Under 20): 27
New Airplay This Week: 5 KHOT, KHOT, WKXJ, WVKX, WZST

★ WHITNEY HOUSTON & CECE WINANS 187/131

Count On Me (Arista)

Total Stations: 22
Heavy (40+): 1 KZZU
Medium (20-39): 1 WFHN
Light (Under 20): 20
New Airplay This Week: 10 KKRZ, WFHN, WFLY, WHYI, WSSX, WTVR, WVKX, WWCK, WXIS, WYCR

SELENA 182/22

A Boy Like That (RCA Victor)

Total Stations: 11
Heavy (40+): 1 KHFI
Medium (20-39): 4 KBFM, KHOT, WFHN, WFLY
Light (Under 20): 6
New Airplay This Week: 1 WNNK

TOADIES 164/18

Possum Kingdom (Interscope)

Total Stations: 11
Heavy (40+): 1 WDDJ
Medium (20-39): 3 KHOT, KUTQ, WPST
Light (Under 20): 7

★ GROOVE THEORY 141/33

Keep Tryin' (Epic)

Total Stations: 16
Heavy (40+): 1 WNVZ
Medium (20-39): 2 KZZU, WXIS
Light (Under 20): 13

LENNY KRAVITZ 139/20

Can't Get You Off My Mind (Virgin)

Total Stations: 17
Heavy (40+): 0
Medium (20-39): 1 KLRZ
Light (Under 20): 16
New Airplay This Week: 1 WZJM

★ TORI AMOS 134/31

Caught A Lite Sneeze (Atlantic)

Total Stations: 19
Heavy (40+): 0
Medium (20-39): 2 KRBE, WPST
Light (Under 20): 17
New Airplay This Week: 2 KHOM, WZST

SO BIG ACTIVITY REPORTS

For Week Ending March 3, 1996

AMM Broadcast Data Systems Detailed song tracking information for the last 3 weeks for all songs showing increased play this week. Total plays and gain do not include video play. Markets listed in order of population.

2PAC (FEAT. DR. DRE & ROGER TROUTMAN) California Love (Death Row/Interscope) 654/69

Table with columns: Station, IP, TW, LW, 2W, 2P. Lists stations and their activity for California Love.

3T Anything (MJJ/550 Music) 1490/95

Table with columns: Station, IP, TW, LW, 2W, 2P. Lists stations and their activity for Anything.

ACE OF BASE Lucky Love (Arista) 1441/262

Table with columns: Station, IP, TW, LW, 2W, 2P. Lists stations and their activity for Lucky Love.

JANN ARDEN Insensitive (A&M) 610/64

Table with columns: Station, IP, TW, LW, 2W, 2P. Lists stations and their activity for Insensitive.

BLESSID UNION OF SOULS Oh Virginia (EMI) 1365/76

Table with columns: Station, IP, TW, LW, 2W, 2P. Lists stations and their activity for Oh Virginia.

MARY J. BLIGE Not Gon' Cry (Arista) 560/183

Table with columns: Station, IP, TW, LW, 2W, 2P. Lists stations and their activity for Not Gon' Cry.

BLUES TRAVELER Hook (A&M) 2559/41

Table with columns: Station, IP, TW, LW, 2W, 2P. Lists stations and their activity for Hook.

BODEANS Closer To Free (Slash/Reprise) 1858/315

Table with columns: Station, IP, TW, LW, 2W, 2P. Lists stations and their activity for Closer To Free.

BRANDY Sittin' Up In My Room (Arista) 1694/293

Table with columns: Station, IP, TW, LW, 2W, 2P. Lists stations and their activity for Sittin' Up In My Room.

BUSH Glycerine (Trauma/Interscope) 1045/26

Table with columns: Station, IP, TW, LW, 2W, 2P. Lists stations and their activity for Glycerine.

MARIAH CAREY Always Be My Baby (Columbia) 1405/444

Table with columns: Station, IP, TW, LW, 2W, 2P. Lists stations and their activity for Always Be My Baby.

COLLECTIVE SOUL The World Is Know (Atlantic) 2383/82

Table with columns: Station, IP, TW, LW, 2W, 2P. Lists stations and their activity for The World Is Know.

DEBORAH COX Who Do U Love (Arista) 742/41

Table with columns: Station, IP, TW, LW, 2W, 2P. Lists stations and their activity for Who Do U Love.

CELINE DION Because You Loved Me (550 Music) 859/256

Table with columns: Station, IP, TW, LW, 2W, 2P. Lists stations and their activity for Because You Loved Me.

DOG'S EYE VIEW Everything Falls Apart (Columbia) 740/254

Table with columns: Station, IP, TW, LW, 2W, 2P. Lists stations and their activity for Everything Falls Apart.

MONITOR SONG ACTIVITY REPORTS

For Week Ending March 3, 1996

Detailed song tracking information for the last 3 weeks for all songs showing increased play this week. Total plays and gain do not include video play. Markets listed in order of population.

MELISSA ETHERIDGE			EVERCLEAR			GIN BLOSSOMS			SOPHIE B. HAWKINS			HOOTIE & THE BLOWFISH		
1880/92			421/19			2137/236			1478/145			411/28		
I Want To Come Over (Island)			Santa Monica (Watch The World Die) (Tim Kerr/Capitol)			Follow You Down (A&M)			Only Love (The Ballad Of Sleeping Beauty) (Columbia)			I Go Blind (Atlantic/Reprise)		
Total Stations: 82			Total Stations: 39			Total Stations: 83			Total Stations: 78			Total Stations: 15		
Chart Move: 17-16			Chart Move: 15-13			Chart Move: 22-22			Chart Move: 11-11			Chart Move: 11-11		

MELISSA ETHERIDGE			EVERCLEAR			GIN BLOSSOMS			SOPHIE B. HAWKINS			HOOTIE & THE BLOWFISH									
1880/92			421/19			2137/236			1478/145			411/28									
I Want To Come Over (Island)			Santa Monica (Watch The World Die) (Tim Kerr/Capitol)			Follow You Down (A&M)			Only Love (The Ballad Of Sleeping Beauty) (Columbia)			I Go Blind (Atlantic/Reprise)									
Total Stations: 82			Total Stations: 39			Total Stations: 83			Total Stations: 78			Total Stations: 15									
Chart Move: 17-16			Chart Move: 15-13			Chart Move: 22-22			Chart Move: 11-11			Chart Move: 11-11									
MTV	9	8	47	Albany	WFLY	54	56	54	Albany	WFLY	18	23	18	Albany	WFLY	60	60	61	715		
VH1	3	2	32	Green	WFCB	17	15	16	Green	WFCB	44	38	32	Green	WFCB	55	46	36	137		
WBHT	14	12	11	Scranton	WBHT	14	12	11	Scranton	WBHT	14	12	11	Scranton	WBHT	14	12	11	99		
KHIS	3	3	13	Tulsa	KHIS	3	3	13	Tulsa	KHIS	3	3	13	Tulsa	KHIS	3	3	13	221		
WHDQ	1	1	1	Tucson	WHDQ	1	1	1	Tucson	WHDQ	1	1	1	Tucson	WHDQ	1	1	1	30		
KHKS	1	1	1	Tucson	KHKS	1	1	1	Tucson	KHKS	1	1	1	Tucson	KHKS	1	1	1	1		
WWSX	9	8	34	Gr.Rap.	WWSX	36	30	22	100	WWSX	36	30	22	100	WWSX	36	30	22	682		
KRBE	7	3	11	Syracuse	KRBE	7	3	11	Syracuse	KRBE	7	3	11	Syracuse	KRBE	7	3	11	7		
WHYI	20	25	123	McAllen	KBFM	1	2	10	McAllen	KBFM	17	18	13	46	McAllen	KBFM	17	18	13	46	
WSTR	36	37	314	Omaha	KOKO	2	2	1	Omaha	KOKO	19	15	17	78	Omaha	KOKO	19	15	17	78	
KDWB	1	1	2	Knovw	WWST	13	27	34	157	Knovw	WWST	13	27	34	157	Knovw	WWST	13	27	34	157
WKBO	1	1	13	Roanoke	WNNK	34	29	31	147	Roanoke	WNNK	34	29	31	147	Roanoke	WNNK	34	29	31	147
WBZZ	24	23	125	Toledo	WTRW	9	13	13	35	Toledo	WTRW	9	13	13	35	Toledo	WTRW	9	13	13	35
WFLZ	14	18	135	Wilmington	WWSX	34	32	177	Wilmington	WWSX	34	32	177	Wilmington	WWSX	34	32	177	11		
WZJM	4	1	5	Wilmington	WSTW	12	11	6	29	Wilmington	WSTW	12	11	6	29	Wilmington	WSTW	12	11	6	29
KALC	41	34	288	B.Rouge	WFMM	22	12	87	B.Rouge	WFMM	22	12	87	B.Rouge	WFMM	22	12	87	1		
WZLW	39	45	40	Charl., SC	WZLW	39	45	40	Charl., SC	WZLW	39	45	40	Charl., SC	WZLW	39	45	40	138		
WYZZ	2	2	1	Youngst.	WHOT	16	20	17	114	Youngst.	WHOT	16	20	17	114	Youngst.	WHOT	16	20	17	114
KRRZ	2	2	2	Wichita	KRRZ	26	23	183	Wichita	KRRZ	26	23	183	Wichita	KRRZ	26	23	183	19		
KMXV	23	17	92	Mobile	WABB	29	32	39	235	Mobile	WABB	29	32	39	235	Mobile	WABB	29	32	39	235
WFHN	15	18	115	Col., SC	WNOK	34	32	310	Col., SC	WNOK	34	32	310	Col., SC	WNOK	34	32	310	6		
WPRD	39	34	317	New Haven	WKCI	41	34	312	New Haven	WKCI	41	34	312	New Haven	WKCI	41	34	312	9		
WNVZ	2	2	3	Johns.C.	WXIS	21	20	224	Johns.C.	WXIS	21	20	224	Johns.C.	WXIS	21	20	224	1		
WHVZ	50	31	145	Spokane	KZZU	1	1	8	Spokane	KZZU	1	1	8	Spokane	KZZU	1	1	8	1		
KUTQ	7	1	61	Chattann.	WKWJ	31	29	372	Chattann.	WKWJ	31	29	372	Chattann.	WKWJ	31	29	372	155		
WZPL	2	2	1	Chattann.	WZST	28	30	208	Chattann.	WZST	28	30	208	Chattann.	WZST	28	30	208	1		
WZLJ	1	1	1	Lancaster	WLAN	35	34	144	Lancaster	WLAN	35	34	144	Lancaster	WLAN	35	34	144	1		
KHOM	19	11	6	Roanoke	WLXL	36	37	329	Roanoke	WLXL	36	37	329	Roanoke	WLXL	36	37	329	1		
KLRL	45	56	291	York	WYCR	49	51	41	260	York	WYCR	49	51	41	260	York	WYCR	49	51	41	260
WKSE	38	37	408	Col.Spr.	KMGM	27	20	23	148	Col.Spr.	KMGM	27	20	23	148	Col.Spr.	KMGM	27	20	23	148
WXKL	14	28	16	Hunts.	WZYP	25	24	174	Hunts.	WZYP	25	24	174	Hunts.	WZYP	25	24	174	1		
WSSS	14	11	41	Flint/Sag.	WWSX	28	32	235	Flint/Sag.	WWSX	28	32	235	Flint/Sag.	WWSX	28	32	235	1		
WTKC	30	31	30	Aug., GA	WZNY	32	29	370	Aug., GA	WZNY	32	29	370	Aug., GA	WZNY	32	29	370	1		
WRBE	18	21	145	Fl. Myers	WKXB	17	20	99	Fl. Myers	WKXB	17	20	99	Fl. Myers	WKXB	17	20	99	1		
WRVW	15	12	24	Trenton	WPST	18	17	19	345	Trenton	WPST	18	17	19	345	Trenton	WPST	18	17	19	345
WGTV	13	10	74	Montgom.	WHYY	26	25	30	146	Montgom.	WHYY	26	25	30	146	Montgom.	WHYY	26	25	30	146
WJAX	10	21	146	Charl., WV	WVSR	40	38	36	72	Charl., WV	WVSR	40	38	36	72	Charl., WV	WVSR	40	38	36	72
KLYO	12	9	46	Spring, MO	KHTO	44	44	216	Spring, MO	KHTO	44	44	216	Spring, MO	KHTO	44	44	216	1		
WDJX	29	27	128	Santa Barb.	KHTY	22	21	142	Santa Barb.	KHTY	22	21	142	Santa Barb.	KHTY	22	21	142	1		
WDUR	20	19	145	Gr. Bay	WIXX	27	25	140	Gr. Bay	WIXX	27	25	140	Gr. Bay	WIXX	27	25	140	100		
Birming.	WMXQ	14	14	Burling.	WXXX	11	11	36	Burling.	WXXX	11	11	36	Burling.	WXXX	11	11	36	1		
Austin	KHFI	1	1	Paducah	WDDJ	31	22	88	Paducah	WDDJ	31	22	88	Paducah	WDDJ	31	22	88	1		
Richmond	WRVQ	1	1	1	1	1	1	1	1	1	1	1	1	1	1	1	1	1	1		

DIANA KING			NATALIE MERCHANT			ALANIS MORISSETTE			NO DOUBT			OASIS		
403/25			2410/54			2728/506			594/70			2385/111		
Ain't Nobody (Work)			Wonder (Elektra/EEG)			Ironic (Maverick/Reprise)			Just A Girl (Trauma/Interscope)			Wonderwall (Epic)		
Total Stations: 21			Total Stations: 83			Total Stations: 82			Total Stations: 46			Total Stations: 82		
Chart Move: 9-10			Chart Move: 9-10			Chart Move: 12-7			Chart Move: 11-11			Chart Move: 11-11		

DIANA KING			NATALIE MERCHANT			ALANIS MORISSETTE			NO DOUBT			OASIS									
403/25			2410/54			2728/506			594/70			2385/111									
Ain't Nobody (Work)			Wonder (Elektra/EEG)			Ironic (Maverick/Reprise)			Just A Girl (Trauma/Interscope)			Wonderwall (Epic)									
Total Stations: 21			Total Stations: 83			Total Stations: 82			Total Stations: 46			Total Stations: 82									
Chart Move: 9-10			Chart Move: 9-10			Chart Move: 12-7			Chart Move: 11-11			Chart Move: 11-11									
MTV	9	8	47	Albany	WFLY	54	56	54	Albany	WFLY	18	23	18	Albany	WFLY	60	60	61	715		
VH1	3	2	32	Green	WFCB	17	15	16	Green	WFCB	44	38	32	Green	WFCB	55	46	36	137		
WBHT	14	12	11	Scranton	WBHT	14	12	11	Scranton	WBHT	14	12	11	Scranton	WBHT	14	12	11	99		
KHIS	3	3	13	Tulsa	KHIS	3	3	13	Tulsa	KHIS	3	3	13	Tulsa	KHIS	3	3	13	221		
WHDQ	1	1	1	Tucson	WHDQ	1	1	1	Tucson	WHDQ	1	1	1	Tucson	WHDQ	1	1	1	30		
KHKS	1	1	1	Tucson	KHKS	1	1	1	Tucson	KHKS	1	1	1	Tucson	KHKS	1	1	1	1		
WWSX	9	8	34	Gr.Rap.	WWSX	36	30	22	100	WWSX	36	30	22	100	WWSX	36	30	22	682		
KRBE	7	3	11	Syracuse	KRBE	7	3	11	Syracuse	KRBE	7	3	11	Syracuse	KRBE	7	3	11	7		
WHYI	20	25	123	McAllen	KBFM	1	2	10	McAllen	KBFM	17	18	13	46	McAllen	KBFM	17	18	13	46	
WSTR	36	37	314	Omaha	KOKO	2	2	1	Omaha	KOKO	19	15	17	78	Omaha	KOKO	19	15	17	78	
KDWB	1	1	2	Knovw	WWST	13	27	34	157	Knovw	WWST	13	27	34	157	Knovw	WWST	13	27	34	157
WKBO	1	1	13	Roanoke	WNNK	34	29	31	147	Roanoke	WNNK	34	29	31	147	Roanoke	WNNK	34	29	31	147
WBZZ	24	23	125	Toledo	WTRW	9	13	13	35	Toledo	WTRW	9	13	13	35	Toledo	WTRW	9	13	13	35
WFLZ	14	18	135	Wilmington	WWSX	34	32	177	Wilmington	WWSX	34	32	177	Wilmington	WWSX	34	32	177	11		
WZJM	4	1	5	Wilmington	WSTW	12	11	6	29	Wilmington	WSTW	12	11	6	29	Wilmington	WSTW	12	11	6	29
KALC	41	34	288	B.Rouge	WFMM	22	12	87	B.Rouge	WFMM	22	12	87	B.Rouge	WFMM	22	12	87	1		
WZLW	39	45	40	Charl., SC	WZLW	39	45	40	Charl., SC	WZLW	39	45	40	Charl., SC	WZLW	39	45	40	138		
WYZZ	2	2	1	Youngst.	WHOT	16	20	17	114	Youngst.	WHOT	16	20	17	114	Youngst.	WHOT	16	20	17	114
KRRZ	2	2	2	Wichita	KRRZ	26	23	183	Wichita	KRRZ	26	23	183	Wichita	KRRZ	26	23	183	19		
KMXV	23	17	92	Mobile	WABB	29	32	39	235	Mobile	WABB	29	32	39	235	Mobile	WABB	29	32	39	235
WFHN	15	18	115	Col., SC	WNOK	34	32	310	Col., SC	WNOK	34	32	310	Col., SC	WNOK	34	32	310	6		
WPRD	39	34	317	New Haven	WKCI	41	34	312	New Haven	WKCI	41	34	312	New Haven	WKCI	41	34	312	9		
WNVZ	2	2	3	Johns.C.	WXIS	21	20	224	Johns.C.	WXIS	21	20	224	Johns.C.	WXIS	21	20	224	1		
WHVZ	50	31	145	Spokane	KZZU</																



POWER PLAYLISTS For Week Ending March 3, 1996

Playlist supplied by Broadcast Data Systems' Radio Track service. Stations selected from panel of leading broadcasters in 125 radio markets, electronically monitored 24 hours a day, 7 days a week. Songs ranked by number of plays in monitored week.

HOT 97 WQHT New York PD: Steve Smith APD/MD: Tracy Cloherly. Playlist with 40 songs including 'Total, No One Else', 'Fugees, Killing Me Softly', 'Mona Lisa, Can't Be Wasting My Time'.

POWER 106 KPWR Los Angeles PD: Michelle Mercer MD: Bruce St. James. Playlist with 40 songs including '2Pac, California Love', 'Mariah Carey, Always Be My Baby', 'LL Cool J, Hey Lover'.

B96 WBBM Chicago PD: Todd Cavanah MD: Erik Bradley. Playlist with 40 songs including 'Big Sister, Around We Go', 'The Tony Rich Project, Nobody Knows', '3T, Anything'.

JAM'N 94.5 WJMN Boston PD: Cadillac Jack MD: Cat Collins. Playlist with 40 songs including 'Mariah Carey, Always Be My Baby', 'LL Cool J, Hey Lover', '3T, Anything'.

KMEL San Francisco PD: Michelle Santosuosso MD: Joey Arbagey. Playlist with 40 songs including 'Mariah Carey, Always Be My Baby', 'Brandy, Sittin' Up In My Room', 'Fugees, Killing Me Softly'.

WPGC Washington, DC PD: Jay Stevens APD: Bob Holmcrans MD: Albie Dew. Playlist with 40 songs including 'Joe, All The Things', 'Brandy, Sittin' Up In My Room', 'Fugees, Killing Me Softly'.

WILD 107 KYLD San Francisco PD: Michael Martin AMD: Jose Mein. Playlist with 40 songs including 'Everything But The Girl, Missing', 'Mariah Carey, Always Be My Baby', 'LL Cool J, Hey Lover'.

THE BOX KBXX Houston PD: Rob Scorpio MD: Greg Head. Playlist with 40 songs including 'Fugees, Killing Me Softly', 'Brandy, Sittin' Up In My Room', 'LL Cool J, Hey Lover'.

POWER 96 WPOW Miami Interim MD: Phil Jones. Playlist with 40 songs including 'The Tony Rich Project, Nobody Knows', '3T, Anything', 'Mariah Carey & Boyz II Men, One Sweet Day'.

KUBE Seattle PD: Mike Tierney. Playlist with 40 songs including 'Brandy, Sittin' Up In My Room', 'The Tony Rich Project, Nobody Knows', 'Mary J. Blige, Not Gon' Cry'.

POWER 92 KKKF Phoenix PD: Don Parker MD: Brian Douglas. Playlist with 40 songs including 'Mariah Carey, Always Be My Baby', 'Brandy, Sittin' Up In My Room', 'Fugees, Killing Me Softly'.

FM 102 KSFM Sacramento PD: Rick Thomas MD: Trejo. Playlist with 40 songs including 'La Bouche, Be My Lover', 'Lina Santiago, Feels So Good', 'Brandy, Sittin' Up In My Room'.

KGGI Riverside PD/MD: Bob Lewis. Playlist with 40 songs including 'Groove Theory, Tell Me', 'Monica, Before You Walk Out Of My Life', 'L.V., Throw Your Hands Up'.

Z90 XHTZ San Diego OM/MD: Lisa Vazquez APD/MD: Jeff Nelson. Playlist with 40 songs including 'Brandy, Sittin' Up In My Room', 'R. Kelly, Down Low', 'Mary J. Blige, Not Gon' Cry'.

KTFM San Antonio PD: Cliff Tredway APD/MD: Charles Chavez. Playlist with 40 songs including 'Mary J. Blige, Not Gon' Cry', 'The Tony Rich Project, Nobody Knows', 'Mariah Carey & Boyz II Men, One Sweet Day'.

92Q WERQ Baltimore MD: Camille Cashwell. Playlist with 40 songs including 'Fugees, Killing Me Softly', 'Total, No One Else', 'Xscape, Do You Want To'.

KS104 KQKS Denver. Playlist with 40 songs including 'TLC, Kich Your Game', 'The Tony Rich Project, Nobody Knows', 'Brandy, Sittin' Up In My Room'.

B95 KBOS Fresno PD: Mark Adams MD: Mikey Freeman. Playlist with 40 songs including 'Max-A-Million, Sexual Healing', 'Monica, Before You Walk Out Of My Life', '3T, Anything'.

POWER PLAYLISTS

AIRPLAY Monitor

For Week Ending March 3, 1996

Playlists supplied by Broadcast Data Systems' Radio Track service. Stations selected from panel of leading broadcasters in 128 radio markets, electronically monitored 24 hours a day, 7 days a week. Songs ranked by number of plays in monitored week.

102 JAMZ
WJMH Greensboro PD: Brian Douglas MD: Horse Raney

	TW	LW
1 R. Kelly, Down Low	67	68
2 Fugees, Killing Me Softly	66	43
3 Mariah Carey, Always Be My Baby	66	50
4 Last Boyz, Remoe	63	70
5 2Pac, California Love	60	71
6 LL Cool J, Don't	58	58
7 Fugees, Fu-Gee-La	56	41
8 Brandy, Sittin' Up In My Room	56	69
9 Mary J. Blige, Not Gon' Cry	53	65
10 R. Kelly, Freak Tonight	49	50
11 Mariah Carey & Boyz II Men, One Sweet Day	46	43
12 Xscape, Do You Want To	42	51
13 Total, No One Else	41	42
14 Ari's Soul, Ever Since You Went Away	40	0
15 LL Cool J, Hey Lover	40	48
16 Faith Evans, Soon As I Get Home	40	33
17 Joe, All The Things	39	18
18 Kris Kross, Tonite's The Night	36	44
19 Pharcyde, Drop	31	2
20 Monica, Like This And Like That	28	21
21 D'Angelo, Lady	28	39
22 Junior M.A.F.I.A., Get Money	27	30
23 Prince, Get U	26	7
24 Whitney Houston, Exhale	23	28
25 Mona Lisa, Can't Be Washing My Time	23	28
26 Groove Theory, Tell Me	22	25
27 Nonchalant, 5 O'clock	22	15
28 Immatere, We Got It	19	13
29 Kilo, Nasty Dancer	19	9
30 2Pac, All Eyez On Me	19	15
31 TLC, Digg'n' On You	17	23
32 Faith Evans, You Used To Love Me	17	17
33 Chantay Savage, I Will Survive	16	7
34 Domini, Physical Funk	15	1
35 Fugees, How Many Mics	15	18
36 Coolio Feat. L.V., Gangsta's Paradise	14	19
37 Mariah Carey, Fantasy	14	15
38 Jodeci, Love U 4 Life	14	20
39 The Notorious B.I.G., One More Chance	14	12
40 Blahzay Blahzay, Danger	12	7

KLUC
Las Vegas PD: Jerry Dean MD: Cat Thomas

	TW	LW
1 The Tony Rich Project, Nobody Knows	64	65
2 2Pac, California Love	63	56
3 Everything But The Girl, Missing	61	62
4 Mary J. Blige, Not Gon' Cry	61	53
5 Groove Theory, Tell Me	60	71
6 Brandy, Sittin' Up In My Room	59	58
7 Mariah Carey, Always Be My Baby	58	68
8 J'son, Take A Look	58	64
9 Whitney Houston, Exhale	52	43
10 Monica, Before You Walk Out Of My Life	51	45
11 Lina Santiago, Feels So Good	51	46
12 LL Cool J, Hey Lover	50	60
13 Devone, Energy	47	42
14 Jon B., Pretty Girl	46	46
15 Xscape, Who Can I Run To	45	45
16 Silk, Hocked On You	45	50
17 Quincy Jones, Brandy & Heavy D, Rock Wit	43	55
18 3T, Anything	42	48
19 R. Kelly, Down Low	39	38
20 Coolio, I, 2, 3, 4	38	37
21 Joe, All The Things	37	36
22 Planet Soul, Set U Free	37	31
23 Selena, I'm Getting Used To You	35	13
24 OutHere Brothers, Boom Boom Boom	33	38
25 Max-A-Million, Sexual Healing	30	36
26 Barrio Boyzz, How We Roll	30	28
27 D'Angelo, Lady	27	23
28 Tony Thompson, I Wanna Love Like That	26	28
29 Deborah Cox, Who Do U Love	25	24
30 Mariah Carey, Fantasy	21	11
31 Naughty By Nature, Funk Me Flow	21	18
32 Raphael Saadiq, Ask Or You	20	21
33 Frost, La Familia	20	23
34 Total, No One Else	20	12
35 Kris Kross, Tonite's The Night	19	20
36 LL Cool J, Don't	19	23
37 Los Del Rio, Macarena Bayside Boys Mix	15	11
38 Mariah Carey & Boyz II Men, One Sweet Day	15	47
39 Rappin' 4-Tay, Ain't No Playa	14	0
40 Quad City DJ's, C'mon 'N' Ride It	14	0

94.1 JAMZ
KIMZ Las Vegas PD: Mike Marino APD: M.C. Scrappy MD: Kid Stevenc

	TW	LW
1 3T, Anything	69	69
2 Mariah Carey & Boyz II Men, One Sweet Day	65	60
3 The Tony Rich Project, Nobody Knows	65	60
4 Whitney Houston, Exhale	60	58
5 Everything But The Girl, Missing	48	45
6 Selena, I Could Fall In Love	46	33
7 Monica, Before You Walk Out Of My Life	45	42
8 Mariah Carey, Always Be My Baby	44	43
9 Groove Theory, Tell Me	44	57
10 LL Cool J, Hey Lover	44	46
11 Mariah Carey, Open Arms	42	25
12 Brandy, Sittin' Up In My Room	42	31
13 Jon B., Pretty Girl	41	18
14 Mariah Carey, Fantasy	41	34
15 Selena, Dreaming Of You	38	36
16 Jon B. Feat. Babyface, Someone To Love	36	35
17 Xscape, Who Can I Run To	36	35
18 Planet Soul, Set U Free	36	39
19 Mary J. Blige, Not Gon' Cry	36	46
20 All-4-One, I Can Love You Like That	35	45
21 Sophie B. Hawkins, As I Lay Me Down	34	34
22 J'son, Take A Look	33	39
23 Seal, Kiss From A Rose	32	27
24 Janet Jackson, Runaway	31	30
25 Madonna, You'll See	29	46
26 Lina Santiago, Feels So Good	27	25
27 Intrigue, Dance With Me	26	0
28 2Pac, California Love	25	10
29 K7, Move It Like This	24	24
30 TLC, Waterfalls	24	22
31 Monica, Don't Take It Personal	23	21
32 Soul For Real, Every Little Thing I Do	21	17
33 Notorious B.I.G., Only Wanna Be Wit	20	13
34 Coolio Feat. L.V., Gangsta's Paradise	17	12
35 Soul For Real, Candy Kane	16	15
36 Boyz II Men, Water Runs Dry	16	16
37 Adina Howard, Freak Like Me	15	10
38 Brownstone, If You Love Me	14	16
39 R. Kelly, Your Body's Callin'	12	14
40 Boyz II Men, I'll Make Love To You/You To	12	11

KDON
KDON Monterey/Salinas PD: Michael Newman MD: Jennifer Wilde

	TW	LW
1 L.V., Throw Your Hands Up	77	67
2 Mary J. Blige, Not Gon' Cry	74	65
3 2Pac, California Love	74	64
4 Mariah Carey, Always Be My Baby	73	63
5 The Tony Rich Project, Nobody Knows	73	59
6 Ruffneck Feat. Yvonne, Everybody Be Some	71	58
7 Immatere, We Got It	70	62
8 Brandy, Sittin' Up In My Room	66	65
9 Lina Santiago, Feels So Good	61	26
10 Diana King, Ain't Nobody	59	60
11 Jon B., Isn't It Scary	58	46
12 Deborah Cox, Who Do U Love	54	58
13 Joe, All The Things	50	46
14 Xscape, Do You Want To	50	45
15 Quincy Jones, Brandy & Heavy D, Rock Wit	49	20
16 Everything But The Girl, Missing	44	24
17 J'son, Take A Look	28	24
18 Mokenstaf, He's Mine	27	18
19 Adina Howard, Freak Like Me	25	18
20 Soul For Real, Every Little Thing I Do	24	14
21 Angelina, Release Me	24	16
22 Devone, Energy	23	13
23 Total, Can't You See	22	20
24 TLC, Waterfalls	22	12
25 TLC, Digg'n' On You	22	21
26 Soul For Real, If You Want I	21	22
27 4hero, Mr. Kurk	21	16
28 R. Kelly, Down Low	21	12
29 Montell Jordan, This Is How We Do It	20	14
30 Yvette Michelle, Everyday & I verryright	19	18
31 Max-A-Million, Take Your Time	17	14
32 D'Angelo, Lady	17	10
33 Groove Theory, Tell Me	17	19
34 Kris Kross, Tonite's The Night	17	14
35 Janet Jackson, Runaway	15	11
36 3T, Anything	15	10
37 La Bouche, Fallin' In Love	15	14
38 After 7, 'Til You Do Me Right	14	15
39 Janet Jackson, Twenty Foreplay	14	67
40 Slow Pain, Money Maid	14	14

KIX 106
WWIX Providence PD: Joe Dawson MD: B.B. Good

	TW	LW
1 Mary J. Blige, Not Gon' Cry	88	93
2 Brandy, Sittin' Up In My Room	86	90
3 2Pac, California Love	83	80
4 Fugees, Fu-Gee-La	80	56
5 Kris Kross, Tonite's The Night	83	37
6 3T, Anything	62	91
7 LL Cool J, Don't	45	51
8 Deborah Cox, Who Do U Love	45	39
9 D'Angelo, Lady	42	39
10 Mariah Carey & Boyz II Men, One Sweet Day	40	23
11 The Tony Rich Project, Nobody Knows	39	72
12 R. Kelly, Down Low	37	26
13 Coolio, I, 2, 3, 4	35	28
14 George Michael, Jesus To A Child	35	23
15 Immatere, We Got It	30	19
16 Junior M.A.F.I.A., Get Money	28	41
17 Yvette Michelle, Everyday & Everright	28	43
18 Lina Santiago, Feels So Good	26	21
19 Selena, I'm Getting Used To You	25	23
20 Groove Theory, Keep Tunn'	21	12
21 Planet Soul, Set U Free	19	19
22 Real McCoy, Automatic Lover	18	9
23 Total, No One Else	19	25
24 La Bouche, Be My Lover	18	44
25 Mariah Carey, Always Be My Baby	18	18
26 Dreamworld, Movin' Up	17	9
27 Ace Of Base, Beautiful Life	17	17
28 Busta Rhymes, Woo-Hah! Got You All In C	17	11
29 Me & My Coesie, Smooth	17	15
30 Groove Theory, Tell Me	16	16
31 Jodeci, Love U 4 Life	15	13
32 Max-A-Million, Sexual Healing	15	16
33 Blahzay Blahzay, Danger	15	15
34 Bone Thugs-N-Harmony, 1st Of The Month	14	14
35 Selena, Dreaming Of You	14	14
36 Coolio Feat. L.V., Gangsta's Paradise	14	13
37 Ace Of Base, Lucky Love	14	21
38 AZ, Sugar Hill	13	14
39 MC Lyte, Keep On Keepin' On	13	6
40 Mariah Carey, Fantasy	13	13

KZHT
KZHT Salt Lake City OM: Brian deGeus PD/MD: Geronimo

	TW	LW
1 Brandy, Sittin' Up In My Room	64	53
2 LL Cool J, Hey Lover	62	48
3 The Tony Rich Project, Nobody Knows	52	40
4 Groove Theory, Tell Me	52	47
5 Coolio Feat. L.V., Gangsta's Paradise	51	43
6 La Bouche, Be My Lover	49	49
7 Mariah Carey & Boyz II Men, One Sweet Day	45	50
8 3T, Anything	44	42
9 Everything But The Girl, Missing	43	40
10 2Pac, California Love	43	44
11 Selena, Dreaming Of You	41	37
12 L.A.D., Ridin' Low	39	47
13 Ace Of Base, Lucky Love	34	47
14 Real McCoy, Sleeping With An Angel	34	19
15 D'Angelo, Lady	34	20
16 Monica, Before You Walk Out Of My Life	32	23
17 Rappin' 4-Tay, Ain't No Playa	30	18
18 Seal, Don't Cry	26	18
19 George Michael, Jesus To A Child	25	15
20 L.B.C. Crew, Beware Of My Crew	25	24
21 Lina Santiago, Feels So Good	22	25
22 Deborah Cox, Who Do U Love	22	17
23 Mariah Carey, Always Be My Baby	22	17
24 Barrio Boyzz, How We Roll	21	26
25 Mariah Carey, Fantasy	21	27
26 Yvette Michelle, Everyday & Everright	20	18
27 J'son, Take A Look	20	32
28 Kris Kross, Tonite's The Night	19	23
29 Montell Jordan, This Is How We Do It	17	12
30 Max-A-Million, Everybody's Groovin'	15	1
31 TLC, Digg'n' On You	15	28
32 Janet Jackson, Runaway	14	14
33 Diana King, Ain't Nobody	20	13
34 Diana King, Shy Guy	13	5
35 Sa-Deuca, Don't Waste My Time	13	12
36 Devone, Energy	12	15
37 Adina Howard, Freak Like Me	12	9
38 Soul For Real, Every Little Thing I Do	12	7
39 Jon B., Isn't It Scary	12	13
40 Coolio, Too Hot	11	26

POWER 102
KPRR El Paso PD: John Candelaria

	TW	LW
1 3T, Anything	63	56
2 2Pac, California Love	62	61
3 The Tony Rich Project, Nobody Knows	58	59
4 Mariah Carey & Boyz II Men, One Sweet Day	58	56
5 L.A.D., Ridin' Low	54	56
6 La Bouche, Be My Lover	54	58
7 Mariah Carey, Always Be My Baby	49	51
8 Planet Soul, Set U Free	48	44
9 Groove Theory, Tell Me	47	46
10 Everything But The Girl, Missing	47	48
11 Mary J. Blige, Not Gon' Cry	46	46
12 N-Trance, Stayin' Alive	45	45
13 Ace Of Base, Lucky Love	44	50
14 Brandy, Sittin' Up In My Room	41	31
15 Arista The 1 Man Party, A Mover In A Coifa	40	41
16 Monica, Before You Walk Out Of My Life	39	33
17 Whitney Houston, Exhale	34	30
18 LL Cool J, Hey Lover	32	38
19 Selena, I'm Getting Used To You	32	30
20 R. Kelly, Down Low	26	26
21 Barry, Got A	26	26
22 Mighty Dub Katz, Magic Carpet Ride	25	20
23 C+C Music Factory, Rhythm Is My Best Friend	22	21
24 Lina Santiago, Feels So Good	21	38
25 Montell Jordan, This Is How We Do It	20	24
26 Mariah Carey, Fantasy	20	24
27 Shaggy, Boom-Bastic	18	21
28 Adina Howard, Freak Like Me	18	17
29 Seal, Kiss From A Rose	18	14
30 Janet Jackson, Runaway	17	18
31 Jon B., Pretty Girl	17	17
32 Devone, Energy	16	19
33 LL Cool J, Don't	16	18
34 George Michael, Jesus To A Child	16	13
35 Ruffneck Feat. Yvonne, Everybody Be Some	15	22
36 TLC, Crazy	13	14
37 Coolio, I, 2, 3, 4	13	12
38 Xscape, Do You Want To	12	1
39 Frost, La Familia	11	14
40 Boyz II Men, I'll Make Love To You/You To	11	13

HOOSIER 96.3
WHHH Indianapolis PD: Scott Wheeler MD: Carl Frye

	TW	LW
1 2Pac, California Love	54	58
2 Brandy, Sittin' Up In My Room	51	53
3 The Tony Rich Project, Nobody Knows	50	38
4 Deborah Cox, Who Do U Love	49	53
5 Mary J. Blige, Not Gon' Cry	47	51
6 Mariah Carey, Always Be My Baby	46	19
7 Xscape, Do You Want To	44	50
8 Yvette Michelle, Everyday & Everright	30	30
9 D'Angelo, Lady	37	35
10 Jon, All The Things	37	29
11 Mariah Carey & Boyz II Men, One Sweet Day	38	43
12 R. Kelly, Down Low	37	26
13 LL Cool J, Hey Lover	36	26
14 Coolio, I, 2, 3, 4	35	20
15 Groove Theory, Keep Tunn'	31	39
16 Planet Soul, Set U Free	34	31
17 La Bouche, Be My Lover	32	28
18 Total, No One Else	31	31
19 Kris Kross, Tonite's The Night	21	35
20 Faith Evans, Soon As I Get Home	21	35
21 L.A.D., Ridin' Low	24	31
22 Chantay Savage, I Will Survive	22	19
23 TLC, Rock Your Game	22	1
24 Diana King, Ain't Nobody	21	15
25 LL Cool J, Don't	20	17
26 Rappin' 4-Tay, Ain't No Playa	19	12
27 The Dogg Pound, Let's Play House	18	17
28 Monica, Before You Walk Out Of My Life	18	14
29 Coolio Feat. L.V., Gangsta's Paradise	17	17
30 N-Trance, Stayin' Alive	16	20
31 Selena, Where Do U Want Me To Put It	15	13
32 Montell Jordan, This Is How We Do It	15	13
33 Mariah Carey, Fantasy	15	19
34 TLC, Digg'n' On You	15	20
35 TLC, Waterfalls	15	11
36 Click, Humaine	14	14
37 Coolio, Too Hot	14	16
38 Tony Thompson, I Wanna Love Like That	14	8
39 3T, Anything	14	29
40 Whitney Houston & Cece Winans, Count On	14	15

KISS 97.3
KKSS Albuquerque PD: Roy Jaymes MD: Jackie James

	TW	LW
1 The Tony Rich Project, Nobody Knows	91	91
2 Brandy, Sittin' Up In My Room	72	65
3 Lina Santiago, Feels So Good	67	61
4 2Pac, California Love	67	61
5 Frost, La Familia	62	26
6 Mary J. Blige, Not Gon' Cry	62	72
7 Kris Kross, Tonite's The Night	55	54
8 3T, Anything	51	52
9 La Bouche, Be My Lover	50	57
10 Everything But The Girl, Missing	46	42
11 Rappin' 4-Tay, Ain't No Playa	45	32
12 The Dogg Pound, Let's Play House	44	43
1		



COMBINED TOP 40 AIRPLAY										AIRPLAY THIS WEEK BY FORMAT															
TW	LW	WKS	TITLE (LABEL)	ARTIST	THIS WEEK			LAST WEEK			MAINSTREAM			RHYTHM			ADULT TOP 40			AC			MODERN		
					Audience (millions)	Detections No.	Rank	Audience (millions)	Detections No.	Rank	Audience (millions)	Detections No.	Rank	Audience (millions)	Detections No.	Rank	Audience (millions)	Detections No.	Rank	Audience (millions)	Detections No.	Rank	Audience (millions)	Detections No.	Rank
1	2	18	MISSING (ATLANTIC)	EVERYTHING BUT THE GIRL	64.1893	5848	1	64.5981	5915	2	33.5262	3457	1	12.5718	950	6	14.8808	1009	5	2.2004	342	15	1.0101	90	—
2	1	21	ONE SWEET DAY (COLUMBIA)	MARIAH CAREY & BOYZ II MEN	61.2030	5649	2	68.0049	6074	1	24.5964	2708	8	11.4289	820	11	17.3038	1284	1	7.8569	836	1	0.0170	1	—
3	3	27	NAME (METAL BLADE/WARNER BROS.)	GOO GOO DOLLS	50.0104	5003	4	51.2347	5085	3	26.5510	3105	3	0.0990	15	—	16.7037	1192	2	1.6721	122	30	4.9846	569	—
4	4	16	TIME (ATLANTIC)	HOOTIE & THE BLOWFISH	45.4441	4400	6	46.1210	4427	5	24.2904	2774	6	0.1099	15	—	17.1999	1188	3	3.0703	325	17	0.7736	98	—
5	6	7	IRONIC (MAVERICK/REPRISE)	ALANIS MORISSETTE	42.0879	4779	5	38.4925	4244	8	22.0193	2728	7	0.0416	11	—	5.7599	238	32	0.0001	1	—	14.2670	1801	1
6	5	8	NOBODY KNOWS (LAFACE/ARISTA)	THE TONY RICH PROJECT	41.6554	5190	3	40.8814	4847	4	23.9261	3163	2	13.6420	1253	5	1.9691	351	27	2.1012	422	13	0.0170	1	—
7	10	4	ALWAYS BE MY BABY (COLUMBIA)	MARIAH CAREY	40.3622	2955	19	35.8620	2239	27	13.6066	1405	24	24.3093	1254	4	1.2273	176	36	1.2190	120	—	—	—	—
8	9	7	SITTIN' UP IN MY ROOM (ARISTA)	BRANDY	39.0189	3222	17	35.6087	2883	18	11.8197	1694	19	27.1668	1508	1	0.0324	20	—	—	—	—	—	—	—
9	8	17	ONE OF US (BLUE GORILLA/MERCURY)	JOAN OSBORNE	37.4244	4226	8	35.8890	4345	7	24.6858	3017	4	0.1092	15	—	9.1973	687	16	0.1356	26	—	3.2965	481	—
10	7	14	WONDERWALL (EPIC)	OASIS	35.7841	4345	7	36.6740	4420	6	16.4252	2385	11	0.0528	9	—	4.3998	281	30	0.0001	1	—	14.9062	1669	5
11	14	16	1979 (VIRGIN)	SMASHING PUMPKINS	35.7750	3918	10	33.4124	3759	10	15.5654	1977	15	0.1499	30	—	2.4913	157	37	0.0001	1	—	17.5683	1753	3
12	11	14	THE WORLD I KNOW (ATLANTIC)	COLLECTIVE SOUL	35.5201	3805	11	34.9641	3705	13	17.9355	2383	12	0.0593	12	—	7.6336	394	24	0.0390	18	—	9.8527	998	23
13	12	12	BE MY LOVER (RCA)	LA BOUCHE	34.0400	3618	13	33.9439	3683	14	25.4865	2824	5	8.3720	695	13	0.1645	98	—	—	—	—	0.0170	1	—
14	16	12	WONDER (ELEKTRA/EEG)	NATALIE MERCHANT	32.5192	3787	12	31.6457	3711	12	17.2092	2410	10	0.0951	16	—	10.6523	750	15	0.5649	166	25	3.9977	445	—
15	17	5	FOLLOW YOU DOWN (A&M)	GIN BLOSSOMS	31.7651	3975	9	30.0372	3763	9	16.2531	2137	13	0.0560	10	—	5.7641	278	31	0.0001	1	—	9.6918	1549	9
16	13	19	EXHALE (SHOOP SHOOP) (ARISTA)	WHITNEY HOUSTON	31.3837	3262	16	36.1889	3752	11	15.4254	1641	20	6.2649	517	20	4.9583	571	18	4.7046	528	5	0.0305	5	—
17	15	22	BREAKFAST AT TIFFANY'S (RAINMAKER/INTERSCOPE)	DEEP BLUE SOMETHING	31.1871	3430	14	34.0310	3627	15	15.8632	1990	14	0.0528	9	—	12.5441	1037	4	1.6959	184	22	1.0311	210	—
18	19	33	AS I LAY ME DOWN (COLUMBIA)	SOPHIE B. HAWKINS	29.0849	2487	23	30.6952	2668	20	12.4448	1084	—	0.8799	81	—	11.0725	893	7	4.6859	426	11	0.0018	3	—
19	26	3	CLOSER TO FREE (SLASH/REPRISE)	BODEANS	28.7423	2643	22	23.7312	2246	25	16.8898	1858	17	0.0483	11	—	9.2515	507	21	0.1297	30	—	2.4230	237	—
20	22	7	CALIFORNIA LOVE (DEATH ROW/INTERSCOPE)	2PAC	28.0551	1986	36	25.5608	1855	42	5.0537	654	39	22.9710	1328	2	—	—	—	—	—	—	0.0304	4	—
21	18	10	HOOK (A&M)	BLUES TRAVELER	26.9577	3329	15	27.7540	3297	16	18.4918	2559	9	0.0828	14	—	5.5388	364	25	0.0020	2	—	2.8423	390	—
22	24	6	I WANT TO COME OVER (ISLAND)	MELISSA ETHERIDGE	26.5819	2879	20	24.7694	2734	19	11.7848	1880	16	0.0626	11	—	13.2830	809	12	1.0621	106	—	0.3894	73	—
23	20	25	TELL ME (EPIC)	GROOVE THEORY	25.6001	1953	38	27.1620	2043	36	11.3332	1066	28	14.2088	837	10	0.0506	49	—	—	—	—	0.0075	1	—
24	23	7	DON'T CRY (ZTT/WARNER BROS.)	SEAL	24.9227	3191	18	26.2487	3180	17	11.5660	1819	18	0.5116	76	—	10.4504	858	11	2.3824	434	10	0.0123	4	—
25	38	37	KISS FROM A ROSE (ZTT/SIRE/WARNER BROS.)	SEAL	24.6857	2188	27	22.0302	2000	38	7.4567	798	—	2.1436	221	—	9.2285	682	17	5.3310	425	12	0.5259	62	—
26	29	5	NOT GON' CRY (ARISTA)	MARY J. BLIGE	24.6314	1836	46	23.3116	1631	56	2.9834	560	—	21.6480	1276	3	—	—	—	—	—	—	—	—	—
27	25	7	ANYTHING (MJJ/550 MUSIC)	3T	24.5922	2442	24	23.8141	2370	23	13.9338	1490	21	10.4929	901	8	0.1451	48	—	—	—	—	0.0204	3	—
28	28	31	ROLL TO ME (A&M)	DEL AMITRI	24.4027	2294	25	25.9962	2372	22	8.3717	1032	—	0.0098	3	—	11.7735	892	8	3.8408	285	—	0.4069	82	—
29	31	35	ONLY WANNA BE WITH YOU (ATLANTIC)	HOOTIE & THE BLOWFISH	23.2851	2053	33	25.3994	2208	28	7.5108	796	—	0.6262	45	—	10.2886	786	13	4.1127	327	16	0.7468	99	—
30	30	32	TIL I HEAR IT FROM YOU (A&M)	GIN BLOSSOMS	23.0996	2056	32	25.0440	2356	24	6.1399	774	—	2.6445	206	—	13.2321	882	10	2.6445	206	—	1.0831	194	—
31	27	28	FANTASY (COLUMBIA)	MARIAH CAREY	22.4008	1957	37	23.7816	2156	31	10.2628	1077	—	8.9922	539	17	2.8318	262	—	0.3051	77	—	0.3602	2	—
32	21	17	HEY LOVER (DEF JAM/RAL/ISLAND)	LL COOL J	22.1633	1435	58	26.7973	1639	54	5.7663	495	—	16.3000	929	7	0.0497	6	—	0.0202	2	—	0.0271	3	—
33	40	29	BACK FOR GOOD (ARISTA)	TAKE THAT	21.8736	2130	29	21.7153	2068	33	5.0876	619	—	—	—	—	10.3065	891	9	6.4795	620	4	—	—	—
34	32	32	CARNIVAL (ELEKTRA/EEG)	NATALIE MERCHANT	21.2616	2015	35	21.8298	2122	32	9.6540	1125	—	0.0381	10	—	8.4086	519	—	0.8662	66	—	2.2947	295	—
35	34	42	RUN-AROUND (A&M)	BLUES TRAVELER	21.2598	2085	31	22.4591	2163	30	6.6788	874	—	—	—	—	10.8728	768	14	—	—	—	1.5920	286	—
36	REENTRY		BLESSED (ROCKET/ISLAND)	ELTON JOHN	19.9244	1884	44	20.1372	1923	41	2.1265	242	—	2.1162	157	—	11.2471	963	6	6.5508	679	2	—	—	—
37	37	2	SANTA MONICA (WATCH THE WORLD DIE) (TIM KERR/CAPITOL)	EVERCLEAR	19.8047	1943	39	19.0490	2049	35	3.3420	421	—	—	—	—	—	—	—	—	—	—	16.4627	1522	10
38	33	13	BEFORE YOU WALK OUT OF MY LIFE (ROWDY/ARISTA)	MONICA	19.1514	1581	53	21.1474	1726	48	4.5840	765	33	14.5286	789	12	0.0283	26	—	—	—	—	0.0105	1	—
39	36	4	BRAIN STEW/JADED (REPRISE)	GREEN DAY	18.6229	1893	43	19.6124	1951	40	2.5678	184	—	—	—	—	—	—	—	—	—	—	16.0551	1709	4
40	39	2	IN THE MEANTIME (HIFI/SIRE/EEG)	SPACEHOG	18.5343	2162	28	18.1112	2052	34	3.7204	409	—	—	—	—	—	—	—	—	—	—	14.8139	1753	2

Records showing an increase in audience over the previous week, regardless of chart movement. Rankings by format (on right side of this page) correspond to 40-position charts printed in this week's Monitor (30 positions for adult contemporary); therefore rankings do not exist for reentries and records below No. 40 (No. 30 for adult contemporary). Audience computed by cross-referencing exact times of airplay with Arbitron listener data. ©1996, Billboard/BPI Communications.

LINA SANTIAGO

New Airplay This Week:

- KBXX Houston
- KDWB Minneapolis
- WKBO St. Louis
- KKRZ Portland
- WKSS Hartford
- KHTQ Spokane
- WKSE Buffalo

And More!!!

Rotations:

- KYLD 56x
- KPWR 54x
- KIIS 45x
- B96 26x
- KHKS 12x

9 Monitor Rhythm-Crossover Chart

“FEELS SO GOOD” (Show Me Your Love)

The first single and video from the debut LINA SANTIAGO album.

Produced by DJ Juanito for Groove Nation

A UNIVERSAL ARTIST

LDS/6894

JANN ARDEN

InSensitive

THE NEW SINGLE FROM LIVING UNDER JUNE

LISTEN TO WHAT THEY'RE SAYING...

"BELIEVE WHAT THEY TELL YOU - THE SONG'S A HIT! THE PHONES GO CRAZY! EVERYBODY CAN RELATE TO THIS SONG."
ANGELA PERELLI, KYSR

"COULD BE THE SLEEPER RECORD OF THE QUARTER! WE GET ADULT CALLS EVERYTIME WE PLAY IT."
KEN MEDEK, WKRZ

"THE FIRST TIME WE PUT JANN ON THE AIR, WE GOT FIVE OR SIX CALLS FROM 18-34 FEMALES ASKING WHO SANG 'INSENSITIVE'. THAT WAS SIX WEEKS AGO, AND IT'S BEEN TOP 5 PHONES EVERY WEEK SINCE! THIS IS A HIT RECORD!"
JERI BANTA, WYKS

"FOR THE PAST MONTH, JANN ARDEN HAS CONSISTENTLY BEEN TOP 3 IN CALLOUT WITH SEVERAL WEEKS AT #1. STRONG SALES ALONG WITH #1 REQUESTS."
RICH ANHORN, KHMV

"IF YOU ARE A WOMAN BETWEEN THE AGE OF 25-44, YOU'RE GONNA LOVE THIS SONG... IT'S A HIT - THERE'S NO QUESTION ABOUT IT!"
KIM ASHLEY, KDMX

"IT'S A BIG RECORD FOR US... #2 PHONES AFTER 4 WEEKS OF AIRPLAY. IF YOU'RE TRYING TO TARGET WOMEN 25-34, THIS RECORD REALLY HITS HOME!"
TOM LAND, KMXV

"'INSENSITIVE' REACTS VERY WELL WITH OUR FEMALE AUDIENCE. WE RECEIVE CURIOSITY CALLS EACH TIME IT'S PLAYED."
LEE CAGLE, KWMX

"YOUR LISTENERS AREN'T 'INSENSITIVE' TO A HIT - TOP TEN PHONES 18-34 FEMALES!"
DANA LONDON, Z104

"JANN ARDEN IS AN AMAZINGLY ACTIVE RECORD AND SOUNDS GREAT ON THE AIR."
LINDA SILVER, WMXV



PRODUCED AND MIXED BY BO CHANNON. DISTRIBUTED BY JIVE MUSIC.
RECORDED BY BO CHANNON AND BLAKE BETHUNE. ENGINEER: BOB WILSON. FOR MORE INFO,
CONTACT: (800) 451-4511. WWW.JIVE.COM

© 1998 JIVE RECORDS. A DIVISION OF THE POLYGRAM GROUP. COLUMBIA, THE WEA/ARISTA GROUP AND MCA/RECORDS ARE ALL TRADEMARKS OF ALL RIGHTS RESERVED.

THIS WEEK	LAST WEEK	WKS. ON CHART	MAINSTREAM		DETECTIONS		
			TITLE/LABEL/DISTRIBUTING LABEL	ARTIST	TW	LW	
			★ ★ ★ NO. 1 ★ ★ ★				
1	1	16	MISSING ATLANTIC 4 weeks at No. 1	EVERYTHING BUT THE GIRL	3457	3552	
(2)	5	11	NOBODY KNOWS LAFACE/ARISTA	THE TONY RICH PROJECT	3163	2948	
3	2	24	NAME METAL BLADE/WARNER BROS.	GOO GOO DOLLS	3105	3115	
4	3	16	ONE OF US BLUE GORILLA/MERCURY	JOAN OSBORNE	3017	3074	
5	7	14	BE MY LOVER RCA	LA BOUCHE	2824	2835	
6	6	19	TIME ATLANTIC	HOOTIE & THE BLOWFISH	2774	2865	
(7)	12	5	IRONIC MAVERICK/REPRISE	ALANIS MORISSETTE	2728	2222	
8	4	19	ONE SWEET DAY COLUMBIA	MARIAH CAREY & BOYZ II MEN	2708	3006	
(9)	8	14	HOOK A&M	BLUES TRAVELER	2559	2518	
(10)	9	13	WONDER ELEKTRA/EEG	NATALIE MERCHANT	2410	2356	
(11)	11	9	WONDERWALL EPIC	OASIS	2385	2274	
(12)	10	13	THE WORLD I KNOW ATLANTIC	COLLECTIVE SOUL	2383	2301	
(13)	15	5	FOLLOW YOU DOWN A&M	GIN BLOSSOMS	2137	1901	
14	13	31	BREAKFAST AT TIFFANY'S RAINMAKER/INTERSCOPE	DEEP BLUE SOMETHING	1990	2215	
(15)	18	7	1979 VIRGIN	SMASHING PUMPKINS	1977	1749	
(16)	17	8	I WANT TO COME OVER ISLAND	MELISSA ETHERIDGE	1880	1790	
(17)	19	7	CLOSER TO FREE SLASH/REPRISE	BODEANS	1858	1543	
18	16	13	DON'T CRY ZTT/WARNER BROS.	SEAL	1819	1876	
			★ ★ ★ AIRPOWER ★ ★ ★				
(19)	20	5	SITTIN' UP IN MY ROOM ARISTA	BRANDY	1694	1401	
20	14	18	EXHALE (SHOOP SHOOP) ARISTA	WHITNEY HOUSTON	1641	1965	
(21)	21	8	ANYTHING MJJ/550 MUSIC	3T	1490	1395	
(22)	22	4	ONLY LOVE (THE BALLAD OF SLEEPING BEAUTY) COLUMBIA	SOPHIE B. HAWKINS	1478	1333	
(23)	25	4	LUCKY LOVE ARISTA	ACE OF BASE	1441	1179	
(24)	30	3	ALWAYS BE MY BABY COLUMBIA	MARIAH CAREY	1405	961	
(25)	24	6	OH VIRGINIA EMI	BLESSID UNION OF SOULS	1365	1289	
(26)	31	3	PEACHES COLUMBIA	THE PRESIDENTS OF THE UNITED STATES OF AMERICA	1128	896	
27	23	22	HAND IN MY POCKET MAVERICK/REPRISE	ALANIS MORISSETTE	1096	1321	
28	27	17	TELL ME EPIC	GROOVE THEORY	1066	1097	
29	26	21	DIGGIN' ON YOU LAFACE/ARISTA	TLC	1059	1155	
(30)	28	6	GLYCERINE TRAUMA/INTERSCOPE	BUSH	1045	1019	
31	29	23	GOOD INTENTIONS COLUMBIA/REPRISE	TOAD THE WET SPROCKET	875	977	
(32)	39	2	BECAUSE YOU LOVED ME 550 MUSIC	CELINE DION	859	603	
33	33	6	BEFORE YOU WALK OUT OF MY LIFE ROWDY/ARISTA	MONICA	765	886	
(34)	36	2	WHO DO U LOVE ARISTA	DEBORAH COX	742	701	
(35)	NEW		EVERYTHING FALLS APART COLUMBIA	DOG'S EYE VIEW	740	486	
36	34	19	YOU'LL SEE MAVERICK/WARNER BROS.	MADONNA	734	823	
37	35	5	SATELLITE RCA	DAVE MATTHEWS BAND	694	743	
38	37	6	SET U FREE STRICTLY RHYTHM	PLANET SOUL	683	700	
(39)	40	2	CALIFORNIA LOVE DEATH ROW/INTERSCOPE	2PAC (FEAT. DR. DRE AND ROGER TROUTMAN)	654	585	
40	38	25	GANGSTA'S PARADISE MCA SOUNDTRACKS/MCA	COOLIO FEATURING L.V.	621	647	

THIS WEEK	LAST WEEK	WKS. ON CHART	RHYTHM-CROSSOVER		DETECTIONS		
			TITLE/LABEL/DISTRIBUTING LABEL	ARTIST	TW	LW	
			★ ★ ★ NO. 1 ★ ★ ★				
(1)	1	14	SITTIN' UP IN MY ROOM ARISTA 4 weeks at No. 1	BRANDY	1508	1446	
(2)	2	9	CALIFORNIA LOVE DEATH ROW/INTERSCOPE	2PAC (FEAT. DR. DRE AND ROGER TROUTMAN)	1328	1265	
(3)	3	12	NOT GON' CRY ARISTA	MARY J. BLIGE	1276	1253	
(4)	5	7	ALWAYS BE MY BABY COLUMBIA	MARIAH CAREY	1254	1137	
(5)	4	14	NOBODY KNOWS LAFACE/ARISTA	THE TONY RICH PROJECT	1253	1222	
(6)	10	18	MISSING ATLANTIC	EVERYTHING BUT THE GIRL	950	867	
7	6	19	HEY LOVER DEF JAM/RAL/ISLAND	LL COOL J	929	1032	
8	8	24	ANYTHING MJJ/550 MUSIC	3T	901	920	
(9)	11	8	FEELS SO GOOD (SHOW ME YOUR LOVE) GROOVE NATION/UNIVERSAL	LINA SANTIAGO	881	864	
10	9	29	TELL ME EPIC	GROOVE THEORY	837	896	
11	7	22	ONE SWEET DAY COLUMBIA	MARIAH CAREY & BOYZ II MEN	820	1001	
12	12	22	BEFORE YOU WALK OUT OF MY LIFE ROWDY/ARISTA	MONICA	789	823	
13	13	19	BE MY LOVER RCA	LA BOUCHE	695	771	
			★ ★ ★ AIRPOWER ★ ★ ★				
(14)	15	6	DOWN LOW (NOBODY HAS TO KNOW) JIVE	R. KELLY FEAT. RONALD ISLEY	660	585	
			★ ★ ★ AIRPOWER ★ ★ ★				
(15)	18	6	LADY EMI	D'ANGELO	603	528	
(16)	22	4	ALL THE THINGS (YOUR MAN WON'T DO) ISLAND	JOE	547	479	
17	19	28	FANTASY COLUMBIA	MARIAH CAREY	539	525	
(18)	20	9	DOIN IT DEF JAM/RAL/ISLAND	LL COOL J	537	523	
19	16	23	SET U FREE STRICTLY RHYTHM	PLANET SOUL	536	538	
20	14	20	EXHALE (SHOOP SHOOP) ARISTA	WHITNEY HOUSTON	517	596	
21	17	12	TONITE'S THA NIGHT RUFFHOUSE/COLUMBIA	KRIS KROSS	492	531	
22	21	8	WHO DO U LOVE ARISTA	DEBORAH COX	468	480	
(23)	25	5	DO YOU WANT TO SO SO DEF/COLUMBIA	XSCAPE	447	421	
(24)	35	2	KILLING ME SOFTLY RUFFHOUSE/COLUMBIA	FUGEES	429	274	
(25)	NEW		1, 2, 3, 4 (SUMPIN' NEW) TOMMY BOY	COOLIO	409	232	
26	26	12	WE GOT IT MCA	IMMATURE (FEATURING SMOOTH)	402	415	
27	23	7	EVERYDAY & EVERYNIGHT LOUD/RCA	YVETTE MICHELLE	389	455	
28	24	19	RIDIN' LOW HOLLYWOOD	L.A.D. FEATURING DARVY TRAYLOR	375	447	
(29)	30	7	NO ONE ELSE BAD BOY/ARISTA	TOTAL	353	343	
(30)	31	4	KEEP TRYIN' EPIC	GROOVE THEORY	351	338	
31	29	4	LUCKY LOVE ARISTA	ACE OF BASE	333	344	
32	32	23	SEXUAL HEALING S.O.S./ZOO	MAX-A-MILLION	312	321	
33	27	24	DIGGIN' ON YOU LAFACE/ARISTA	TLC	305	411	
34	28	26	WHO CAN I RUN TO SO SO DEF/COLUMBIA	XSCAPE	300	347	
(35)	37	2	I WILL SURVIVE RCA	CHANTAY SAVAGE	294	257	
(36)	39	2	FU-GEE-LA RUFFHOUSE/COLUMBIA	FUGEES	287	250	
37	33	7	ENERGY AQUA BOOGIE/WING/MERCURY	DEVONE	277	297	
(38)	NEW		AIN'T NO PLAYA CHRYSALIS/EMI	RAPPIN' 4-TAY	276	243	
39	38	3	TAKE A LOOK HOLLYWOOD	J'SON	251	256	
(40)	NEW		LA FAMILIA RUTHLESS/RELATIVITY	FROST	244	212	

Records showing an increase in detections over the previous week, regardless of chart movement. A record which has been on either chart for more than 20 weeks will not receive a bullet, even if it registers an increase in detections. Airpower awarded to those records which attain 1500 detections (mainstream) or 600 detections (rhythm) for the first time. If two records are tied in number of plays, the record being played on more stations is placed first. Records below the top 20 are removed from the chart after 26 weeks.

THE NEW SINGLE FROM

COOLIO

1, 2, 3, 4 (SUMPIN' NEW)

Tommy Boy

#1 BIGGEST GAINER + 177 RHYTHM-CROSSOVER DEBUT AT # 25 MONITOR RHYTHM-CROSSOVER CHART

OVER 8 MILLION LISTENERS

OVER 470 TOP 40 DETECTIONS + 125

#5 WITH 29 DETECTIONS