

TOP 40 AIRPLAY Monitor

• We Listen To Radio •

February 9, 1996 \$ 4.95 Volume 4 • No. 7

TOP 40 HIGHLIGHTS

MAINSTREAM

#1

MARIAH CAREY & BOYZ II MEN
One Sweet Day (COLUMBIA)

★ ★ ★ AIRPOWER ★ ★ ★

OASIS • *Wonderwall* (EPIC)

NEW RELEASES

MARY J. BLIGE • *No! Gon' Cry* (ARISTA)
THE CORRS • *The Right Time* (143/LAVA/ATLANTIC)
CELINE DION • *Because You Love Me* (From "Up Close & Personal") (550 MUSIC)
FRANCES DUNNERY • *Too Much Saturn* (ATLANTIC)
EDWIN MCCAIN • *Sorry To A Friend* (LAVA/ATLANTIC)
POE • *Trigger Happy Jack* (MODERN/ATLANTIC)
RADIOHEAD • *High And Dry* (CAPITOL)
SAVATAGE • *Not What You See* (ATLANTIC)
STING • *Let Your Soul Be Your Pilot* (A&M)
TEARS FOR FEARS • *Secrets* (EPIC)

RHYTHM-CROSSOVER

#1

THE TONY RICH PROJECT
Nobody Knows (LAFACE/ARISTA)

★ ★ ★ AIRPOWER ★ ★ ★

NO RECORDS QUALIFIED FOR AIRPOWER THIS WEEK

NEW RELEASES

ART N' SOUL • *Ever Since You Went Away* (NATURE BOY/BIG BEAT/ATLANTIC)
DOMINO • *Physical Funk* (DEF JAM/RAL ISLAND)
QUAD CITY DJ'S • *Come N' Ride It* (Train Song) (BIG BEAT/ATLANTIC)

ADULT

#1

MARIAH CAREY & BOYZ II MEN
One Sweet Day (COLUMBIA)

★ ★ ★ AIRPOWER ★ ★ ★

NATALIE MERCHANT • *Wonder* (ELEKTRA/EEG)

NEW RELEASES

ACE OF BASE • *Lucky Love* (ARISTA)
CELINE DION • *Because You Love Me* (From "Up Close & Personal") (550 MUSIC)
STING • *Let Your Soul Be Your Pilot* (A&M)
TEARS FOR FEARS • *Secrets* (EPIC)

Reps: New Owner Rules Give More Clout To Fewer PDs

by Kevin Carter, John Loscalzo, Janine McAdams, Phyllis Stark & Sean Ross

What will the signing of the sweeping telecommunications bill mean for radio programming? More power in the hands of fewer owners, as well as fewer PDs, who will become increasingly unaccessible. Less format innovation. More syndicated shows.

Those were some of the predictions made by a panel of record execs who have followed the bill from its inception to its recent passage by Congress. President Clinton has promised to sign the bill into law (see story, page 3). Airplay Monitor asked reps in all formats how radio "megapolies" will affect them.

Most reps' outlooks on the pending changes were at least partly cloudy. Surprisingly, the most optimistic take on the legislation came from R&B reps, many of whom have been particularly vocal about the negative effects

of duopoly thus far.

"The impact of the telecommunications bill won't be felt only in broadcasting, of course. Most people don't yet realize how dramatic the effects of this bill's passage will be on our day-to-day life," says Geffen VP promo Bob Catania. "Conceivably, everyone can now be in everybody else's business, from cable TV [and telephone to] radio ownership. The ramifications are mind-boggling in this new free marketplace, where everyone is competing for consumer dollars. In theory, when you remove restrictions, you increase competition, which should translate to better service and lower prices."

MORE POWER, FEWER FOLKS

But in radio, more megapolies has meant less competition and, many reps fear, more power concentrated in a smaller number of people. Angering one station over a Christmas concert

Continued on page 6

6 GRAMMY NOMINATIONS!

D- (34) TOP 40/MAINSTREAM MONITOR

(6) - (3) MODERN ROCK MONITOR

OVER 3,000 TOTAL BDS DETECTIONS

ironic Alanis Morissette

The new single and video from her multi-platinum debut, **Jagged Little Pill**

ON TOUR NOW.

"IRONIC" limited-edition single & maxi-single with special live acoustic tracks in stores Feb. 27!



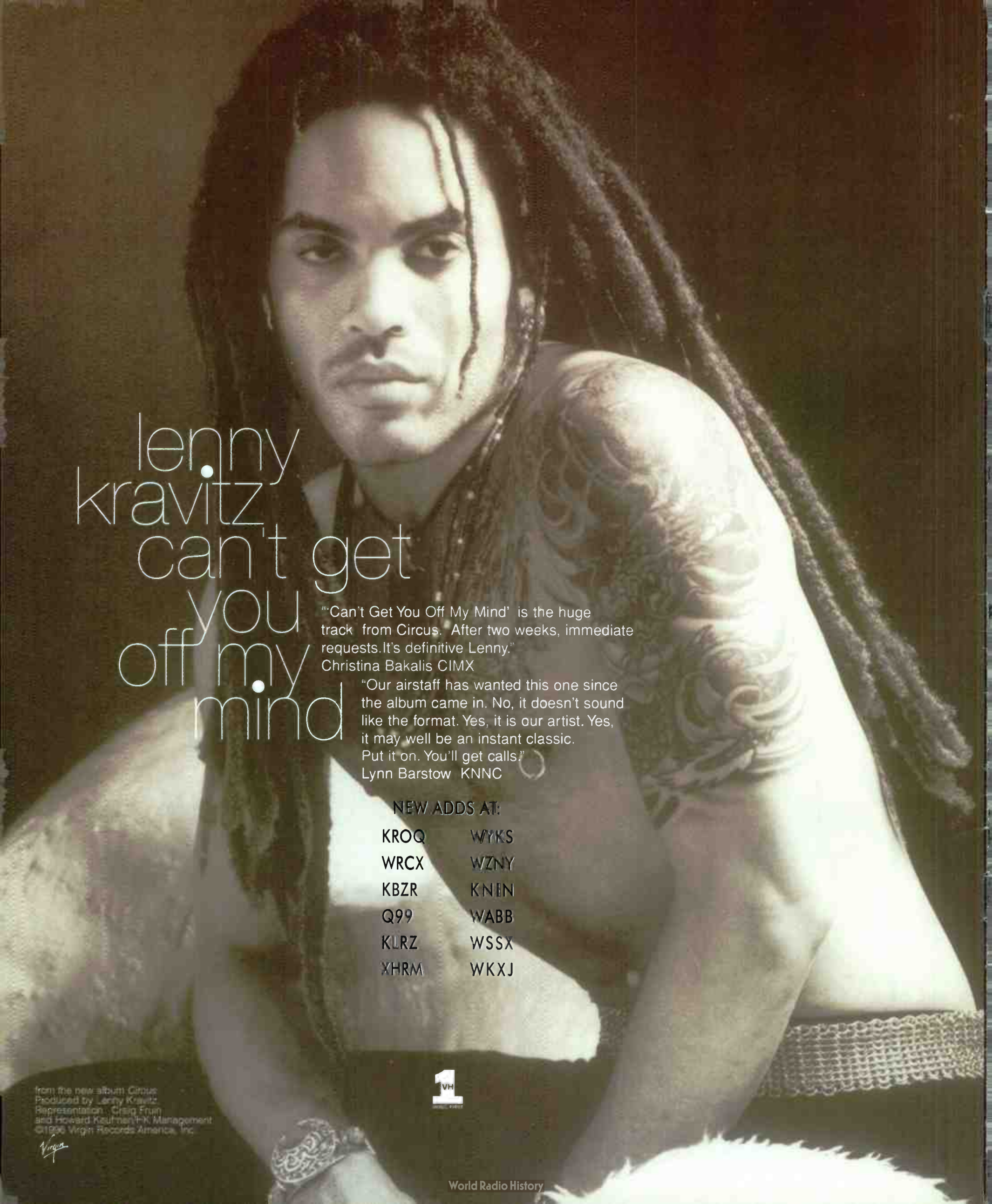
TM

CD PRO
ON YOUR DESK NOW.

Alanis E-mail address: FYIAW@AOL.com

Snail mail address: F.Y.I.A.W., P.O. Box 8873, Pedbank, NJ 07701

Management: Scott Welch and Bob Cavallo for Atlas/3rd Rail Management



lenny
kravitz
can't get
you
off my
mind

"Can't Get You Off My Mind" is the huge track from Circus. After two weeks, immediate requests. It's definitive Lenny."

Christina Bakalis CIMX

"Our airstaff has wanted this one since the album came in. No, it doesn't sound like the format. Yes, it is our artist. Yes, it may well be an instant classic.

Put it on. You'll get calls."

Lynn Barstow KNNC

NEW ADDS AT:

KROQ	WYKS
WRCX	WZNY
KBZR	KNIN
Q99	WABB
KLRZ	WSSX
XHRM	WKXJ

from the new album Circus
Produced by Lenny Kravitz
Representation: Craig Frum
and Howard Kauffman/HK Management
©1996 Virgin Records America, Inc.

Virgin

1
VH

World Radio History

Giant Telecom Act Will Rock The Industry

Adding uncharacteristic haste to a voyage that has been muddled with snags, President Clinton has vowed to sign the just-passed giant Telecommunications Act of 1996 at a ceremony next week, according to a White House aide.

Two years in the making, the landmark legislation was ratified overwhelmingly by Congress Feb. 2. Clinton is expected to sign it within 10 days.

The House vote was 414-6. Less than an hour later, the Senate passed the measure 91-5. The measure had been stalled on the Hill since before Christmas by political wrangling.

The new Telecom Act revamps the 1934 Communication Act, eliminates comparative license-renewal hearings, removes national radio-ownership caps, and relaxes local-market restrictions by applying a sliding market-share formula, based on the number of signals whose primary coverage areas include a given market.

In markets with 45 or more stations, there will be an eight-station limit, with a maximum of five of those stations on either the FM or AM dial; in markets with 30-44 stations, seven, with only four FMs or AMs; in markets with 15-29 stations, six, with no more than four FMs or AMs; and in markets with 14 or fewer stations, 50% of the market and no more than three FMs or AMs.

After the bill becomes law, the FCC must alter its current rules to accommodate the changes.

Eddie Friets, president of the National Assn. of Broadcasters, says the provisions "will enable radio broadcasters to compete in an increasingly crowded marketplace."

Scott Ginsburg, Evergreen Media chairman/CEO, says the bill "will lead to a tide of radio-ownership consolidation and improved economies of scale for radio broadcasters."

Evergreen and several other large groups, anticipating passage this year and confident of FCC waivers, already have acquired stations that pushed them beyond current limits. Evergreen will now be able to pursue additional acquisitions in all top 10 markets, Ginsburg says.

Some broadcasters, however, express worries

about the survival of smaller companies in the new environment. "If the major radio groups use this expanded opportunity to grow radio's share of the advertising pie," says Tom Milewski, COO of Greater Media's radio division, which owns 14 properties nationwide, "then I think medium and small owners may survive deregulation. [But] if those groups use their newly gained market power to grab revenue share away from medium and small owners... then there's cause for concern."

The bill also raises the national TV station-ownership cap from 25% to 35% audience share and lowers barriers that have kept long-distance phone companies and local phone companies out of each other's businesses; removes most cable rate controls; and mandates restrictions on indecency on the Internet and the creation of a "V-chip" in TV sets to allow consumers to block violent shows they deem unsuitable for children.

Once the legislation is in effect, M Street Journal publisher Robert Unmacht predicts that:

1. Everyone sitting on a contingency deal will file paperwork this week. These include pending deals that didn't qualify under the old rules and deals that were tied up pending waivers.

2. Many sales marketing agreements that allowed operators to circumvent the "two-to-a-market" provision of the old rules will be filed as sales.

3. There will be a round of swaps and sales similar to when the ownership rules were relaxed. Jacor's purchase of Noble Broadcasting, announced three days after the bill cleared, is an example.

"The last thing we're expecting to see is groups in medium and small markets put together regional services that cover a large region rather than a city [i.e., putting five or six transmitters together broadcasting one signal]. Those rules will make that easier to do. What all started with WYAI/WYAY Atlanta has taken off, and we've got hundreds of them now. We're seeing more than five a month coming on the air," Unmacht says.

BILL HOLLAND WITH PHYLLIS STARK

Five Stations Become First Dual Reporters

Effective with next week's editions of Airplay Monitor, you'll see the playlists of five R&B-leaning top 40/rhythm-crossover stations in two places: Top 40 Airplay Monitor and R&B Airplay Monitor.

WQHT (Hot 97) New York, WPGC-FM Washington, D.C., KBXX (the Box) Houston, WERQ (92Q) Baltimore, and WJMH Greensboro, N.C., have become Airplay Monitor's only dual reporters. Beginning in the Feb. 9 issue, their weekly airplay info will count toward both the Rhythm-Crossover chart and the R&B Mainstream chart.

The five new dual reporters—the most R&B-leaning of the 31 rhythm-crossover reporters—were among those at the heart of a format-definitions controversy that heated up last year with the proposal of format definitions by Airplay Monitor.

"After more than six months of soliciting comments from the industry, it became clear that there was no consensus on where stations like Hot 97 and WPGC-FM belonged, and no one solution

that would satisfy everybody," says Michael Ellis, publisher of Airplay Monitor. "Many in the promotion community concurred with some of the stations that they were top 40 stations for their markets and felt that they were key stations in triggering other top 40 airplay. Others saw them as almost identical to many of our other R&B reporters and, in the case of Houston and New York, the only outlets for mainstream R&B hits. Making these stations dual reporters acknowledges that divergence of opinion and allows us to publish a more definitive R&B chart and better serve the readers of both publications."

For now, these five stations will be Airplay Monitor's only dual reporters, although Ellis says that situation may be re-examined down the line. Like all top 40/crossover outlets, the five stations in question will continue to report to Billboard's Hot 100 Singles chart. Their information will also appear on The Big Picture chart in both publications in the top 40/crossover column. **SEAN ROSS**



RADIOACTIVE BY KEVIN CARTER

Mancow's Visit To WYNY; Jacor Buys Noble

Within his first hour of being simulcast on WYNY New York, after that station dropped its country format of the last nine years, WRCX Chicago morning man **Mancow Muller** had played a prank phone call from somebody answering a personal ad soliciting obese gay men. The call ended with, "Can I eat bacon and eggs off your buttocks?" Muller soon launched into the first of multiple attacks on **Howard Stern**, including having a cow delivered to Stern's WXRK headquarters, which, witnesses say, toppled over. Throughout the morning, there were also attacks on crosstown **WHTZ** (Z100) PD **Steve Kingston**, although Muller suggested that he could end up working for Z100 and claimed Stern had approached him for his forthcoming network. At present, WYNY is in a week of simulcasts with other Evergreen outlets, including **KKBT** Los Angeles and **WXKS-FM** (Kiss 108) Boston, before unveiling its real format, reportedly top 40/dance.

Jacor Communications will acquire the 12 Noble Broadcast stations for \$152 million. In other sales, there'll be a \$14 million frequency swap between Secret's modern **WXDX** Pittsburgh and Sheridan's **WAMO**. And Nationwide picks up 100kw classical **KFSD** San Diego from Lotus.

So what's up with **KIIS** Los Angeles PD **Steve Perun**? At press time, Perun and GM **Roy Laughlin** would say only that Perun was examining "many options," including a return to consulting.

Dave Shakes, most recently PD with **KIOI** (K101) San Francisco, has been named VP/consulting at Alan Burns & Associates. Burns was Shakes' consultant at **WBBM-FM** (B96) Chicago.

Modern **CKEY** Buffalo, N.Y., made radical changes to its format Feb. 5, adding dance product and going after top 40 **WKSE**.

Consultant **Jerry Clifton**, **Scott Fey** (former GM of **KSOL/KYLD** San Francisco), and **Albert Bracht** have formed NPR Phoenix L.L.C. to pur-

chase top 40 **KBZR** (the Blaze) Phoenix.

Former **WHTZ** (Z100) New York account exec **Terry Schoppmann** returns as director of sales from sales manager of crosstown **WQHT** (Hot 97). Meanwhile, Hot 97 ups programming assistant **Deneen Womack** to the newly created position of music coordinator. And is Z100's **Jojo Morales** leaving for Evergreen pastures?

A set of legendary top 40 calls go with God this week as '70s gold **KIXX** Colorado Springs, Colo., is sold to religious Salem Communications... **WFBC-FM** Greenville, S.C., night guy **J. Love** adds APD stripes... At **KUTQ** Salt Lake City, morning team **Cano** and **McCormick** exit. **Woodman** and **Barberi** move to mornings. **P/T Shoe** goes to nights... **KDON** Monterey, Calif., morning host **Scott Christopher** exits radio.

WNKI Elmira, N.Y., PD **Doug Guyer** exits... **KMVR** Las Cruces, N.M., APD/overnighter **Louie Trujillo** is upped to PD as **Rikki Reyez** segues to swing at **KSII** (93 Kiss FM) El Paso, Texas... At **KIXY** San Angelo, Texas, **J.J. Morgan**, middays at **KWTX** Waco, Texas, is the new PD/p.m. driver, replacing **Chris Kerr**.

WYHY (Y107) Nashville APD **Tom Peace** adds MD stripes... **KMEL** San Francisco ends its simulcast of **KKBT**'s **John London** morning show. APD Michael Erickson is filling in.

WWKX (K1X106) Providence, R.I., MD/night jock **Naughty Boy** exits; call 508-643-9402. **Real Deal Mike Neal** (KALC Denver) joins for nights.

Top 40 adult **WOMX** (Mix 105) Orlando, Fla., ups p.m. driver **Tim Baldwin** to MD.

For Sale: New **WHYT** Detroit PD **Garett Michaels** and wife **Ann** closed on their dream house in suburban Philly, coincidentally, the same day **Rick Gillette** exited **WHYT**. They never had a chance to move into this three bedroom ranch, complete with two-car garage, finished basement, new carpeting, in-ground pool, all on a wooded lot. This baby won't last long! Call 610-358-4495.

Bovine Intervention



WRCX (Rock 103.5) Chicago's Jeff "Turd" Renzetti and WYNY New York's Jim Ferguson, right, deliver a "Mancowgram" to Howard Stern's studio at WXRK (K-Rock) New York. The stunt was part of Mancow Muller's simulcast on WRCX and WYNY Feb. 5.

PUBLISHER: MICHAEL ELLIS
 EDITOR: SEAN ROSS
 MANAGING EDITOR: KEVIN CARTER
 DIRECTOR OF CHARTS: JERRY MCKENNA
 TOP 40/ADULT CHART MANAGER: STEVEN GRAYBOW
 CHART PRODUCTION MANAGER: MICHAEL CUSSON
 ASST. CHART PRODUCTION MANAGER: PAUL PAGE
 EDITORIAL PRODUCTION MANAGER: BARRY BISHIN
 ASSOC. EDITORIAL PRODUCTION MANAGER: MARCIA REPINSKI
 EDITORIAL PRODUCTION: MARC GIAQUINTO, MORRIS KLIEGMAN
 COPY EDITOR: CARL ROSEN
 ADVERTISING PRODUCTION MANAGER: LYDIA MIKULOW
 ADVERTISING PRODUCTION ASST.: CINDEE WEISS
 ADVERTISING ART DIRECTOR: RAY CARLSON

NATIONAL ADVERTISING MANAGER: JON GUYNIN
 ADVERTISING SALES: ART PHILLIPS, ANDREA THOMPSON
 CLASSIFIED ADVERTISING: LAURA RIVCHUN
 ADVERTISING SERVICES MGR.: MICHELE JACANGELLO
 SALES ASSISTANTS: EVELYN ASZODI, ERICA BENGTSON,
 ALEX VITOULIS, ALYSE ZIGMAN

EDITORIAL ADVISOR: TIMOTHY WHITE
 PRODUCTION DIRECTOR: MARIE GOMBERT
 DIRECTOR OF MARKETING: ELISSA TOMASETTI
 CIRCULATION MANAGER: JEANNE JAMIN



Billboard Music Group
 PRESIDENT: HOWARD LANDER

©1996 BPI Communications, 1515 Broadway, New York, NY 10036
 212-536-5039 For subscriptions call: 800-722-2346

Buttmaster Meets Beastmaster



One of these people has been using the Buttmaster. You be the judge. TV personality Suzanne Somers visited WPLJ New York to demonstrate her new cheek-squeezing apparatus during "The Rocky Allen Showgram." Shown, from left, are Allen's sidekick, Blaine Ensley; Somers; and Allen.

Gyno Make You Sweat



The sensitive, caring guys of WNCI Columbus, Ohio's Morning Zoo were challenged by partner Kim Zandy to share the joy women experience during a Pap smear. Matt Harris rides tall in the stirrups, while two nurses, left, and Zandy, in back, enjoy the show. Jimmy Jam, center, prays for the ground to open up and swallow him.

FALL '95 ARBITRONS

12-plus overall average quarter hour shares (#) indicates Arbitron market rank. Copyright 1996, Arbitron Ratings Co. May not be quoted or reproduced without the prior written permission of Arbitron.

Call	Format	Fa '94	W '94	Sp '94	Su '94	Fa '95	Call	Format	Fa '94	W '94	Sp '94	Su '94	F '95
JACKSONVILLE, FLA.—(53)													
WQJK	country	9.7	10.5	10.7	10.4	9.8	KSPZ	oldies	7.3	5.9	5.6	6.2	5.2
WFTY-FM	album	10.3	11.1	12.0	9.8	8.9	RDA	N/T	4.2	4.0	3.6	4.6	4.2
WVPE	top-40	7.1	7.9	6.4	6.2	6.9	RRDQ-FM	AC	4.7	4.0	3.6	3.0	3.5
WEIZ	AC	8.1	8.1	7.4	7.3	6.9	KVYZ	'70s oldies	3.0	3.5	3.3	2.8	2.9
WSOL	R&B	3.8	5.7	5.2	6.1	6.8	KVCC	country	1.3	2.4	3.1	4.6	2.5
WRDQ	country	6.4	6.8	7.2	6.5	5.8	KCMN	adult std	2.2	5.2	3.8	1.8	2.2
WFLA	modern	2.5	1.4	1.4	2.1	5.4	KBQL	religious	1.3	3.2	2.3	2.5	1.9
WQKY	N/T	3.9	3.4	4.0	4.6	5.0	KGFT	religious	3	1.2	1.0	1.2	1.2
WKQL	oldies	5.4	6.6	5.7	5.2	4.9	WRDQ-AM	sports	3	1.0	7	1.1	1.2
WJBT	R&B	7.5	5.2	5.5	5.7	4.8	WHLI	country	1.3	2.0	1.0	2.0	1.0
WVYV	AC	4.5	4.6	4.5	3.4	3.8							
WFSJ	jazz/AC	1.2	2.5	3.5	3.6	2.8	FORT WAYNE, IND.—(99)						
WHSZ	sports	1.9	1.1	1.3	1.2	2.3	WQHK-FM	country	8.6	—	10.1	—	13.1
WCLZ	religious	1.5	1.7	1.0	9	2.2	WBYR	album	7.2	—	7.0	—	8.7
WSTF	religious	1.9	1.4	1.9	2.5	2.2	WBTU	country	10.1	—	6.3	—	8.2
							WJAI	AC	9.9	—	11.5	—	7.0
							WQWO	oldies	7.4	—	5.4	—	7.0
							WJEZ	modern	—	—	1.7	—	5.2
							WDJB	top 40	6.6	—	4.3	—	4.9
							WLDE	oldies	5.8	—	5.2	—	4.9
							WFWI	'70s oldies	1.9	—	7.2	—	4.1
							WVRV	easy	2.7	—	3.1	—	3.6
							WVNE	AC	5.4	—	5.0	—	3.5
							WXCK/WXCI	album	4.0	—	5.0	—	3.5
							WGL-AM	N/T	3.7	—	3.1	—	2.5
							WJFX	R&B	1.4	—	3.1	—	2.5
							WGL-FM	N/T	2.7	—	2.0	—	2.2
							CHATTANOOGA, TENN.—(100)						
							WUSY	country	20.5	22.9	20.2	19.5	22.8
							WDEF-FM	AC	8.8	9.8	9.6	10.4	10.4
							WSKZ	cls rock	7.6	7.1	9.2	9.5	7.6
							WJTT	R&B	9.3	6.6	5.8	6.9	7.1
							WZST	top 40	1.9	5.0	5.3	3.8	5.0
							WDDO-FM	country	4.5	4.5	4.1	4.3	4.0
							WNDD	R&B adult	2.9	3.1	3.1	3.5	3.6
							WLMX	AC	4.5	4.0	4.6	3.0	3.3
							WOGT	oldies	3.9	2.1	2.4	3.3	3.3
							WFFS	N/T	3.0	2.3	1.4	2.6	3.1
							WDDO-AM	adult std	2.5	1.4	3.8	2.1	3.0
							WGWV	N/T	3.9	3.1	2.7	4.8	2.5
							WKDQ	top 40	3.2	3.4	3.2	3.2	2.3
							WBIX	religious	1.5	2.3	1.7	1.1	2.0
							WMPZ	R&B adult	—	2.3	1.2	1.7	1.5

COLORADO SPRINGS, COLO.—(98)

KKCS-AM/FM	country	9.5	9.9	12.0	9.1	12.2
KKFM	cls rock	7.2	9.3	9.7	8.2	8.6
KRWG	top 40	10.2	9.1	9.2	8.0	8.4
KLCO	album	8.2	5.9	5.6	8.0	6.1
KLLI	AC	7.0	4.0	5.7	4.6	5.9
KYOR	N/T	6.5	6.4	6.8	6.6	5.9
KYBU	AC	6.5	5.6	5.1	4.1	5.9



TOP 40 TOPICS BY SEAN ROSS

"The Big Picture" And A Modest Proposal

So, with dual reporters now a part of Airplay Monitor, will pop and R&B departments share custody of stations for the first time?

Some of the label reps I've talked to say their pop and R&B people are already working in tandem on some crossover outlets. Others wonder what will happen when the two departments' priorities differ. And the perceived differences in promotional tools remain at the core of the issue, as was the case during the format-definitions debate.

It isn't Monitor's place to tell labels how to work records. That's one reason we chose to impose a unilateral solution on the industry. But R&B and pop reps aren't the only folks who've had to grapple with this issue over the past year. Even without dual reporters, modern rock, top 40, and mainstream rock reps have had it thrust upon them.

So here's a modest proposal.

It is perhaps time to recognize that the current system of record promotion is still geared to a world that hasn't existed in almost 10 years: a pyramid with mainstream top 40 on top—the arbiter of a record's ultimate success or failure on Billboard's Hot 100 Singles chart—with all other formats feeding it from below.

That's not how it is now.

This is no longer a world in which every market has four top 40s and one of everything else. It's a world with four to six stations in most markets playing such pop/rock hits as "December" or "Wonderwall" and an almost similar number in some markets playing an R&B flavored record, say, "One Sweet Day." It's also a world in which you're lucky to find one station in any market playing "Wonderwall" and "One Sweet Day" together.

The feeder system, in which a record is expected to close out R&B before crossing to top 40, no longer makes sense when many markets are missing either a top 40 or R&B outlet. Or where one station is serving both functions.

The feeder system no longer makes sense in the video age. Just as MTV destroyed the once-traditional pattern of starting with small markets and working up to medium and larger markets, video play can put a record in front of any listener before a song has been worked to his or her favorite radio format.

The feeder system was designed for a world in which top 40 was the dominant contemporary format. Now, according to the latest Arbitron/Monitor national figures, it battles for fourth place with R&B.

The feeder system was designed in a day when modern rock stations were alternative and R&B stations played 65 records, while their crossover rivals played 35. It was designed at a time when different formats represented distinct points on a spectrum, instead of today's overlapping continuum.

The feeder system was designed back when only mainstream top 40 airplay could generate the sales needed to make a record explode on the Hot 100. Look at the Hot 100 action for "Glycerine" or "Hey Lover" and you'll see both on the upper reaches of the charts before mainstream top 40 airplay kicks in.

There is, in reality, no feeder system anymore. Rather, the formats are divided into two spheres of influence in which anything goes. On one side, there's the continuum between triple-A and mainstream top 40 that includes mainstream and modern rock and many adult top 40s. On the other, there's the continuum between adult R&B, mainstream R&B, rhythm-crossover, and top 40 mainstream. Some records still start at the most extreme end of either food

chain and work their way logically across., but it's also true that more than one record has broken in ways that nobody might have anticipated (i.e., 3T or the Tony Rich Project getting their first big bulge at crossover rather than R&B).

So, is it time to realign record promotion to recognize entire spheres of influence at one time? To recognize that the Loadies can break at album rock in Tampa, Fla., and modern rock in Orlando, Fla? Is it time to suggest that every format that might conceivably play a record be serviced simultaneously and for all departments involved to have equal tools?

Working entire spheres would eliminate a lot of the modern vs. album-type squabbles, and, indeed, most of the rock departments that aren't already thinking along those lines will be before Christmas concert season comes again. It would also encourage top 40 stations to start looking at other stations in their own market for records again, instead of waiting for the same records to reach starter top 40s in other markets.

Is it realistic to go to mainstream top 40 at the same time as modern or R&B with an extreme record? Well, if it's true that KIIS Los Angeles isn't going to go on a new R&B artist out of the box, it's also true that such active stations as KIIS don't wait until the entire R&B format is closed out on the records they do play. And for those stations that are conservative on extreme records from either genre, bringing a song to their attention early makes its success at another format part of the story, not something happening in the distance. There were babies conceived and born in the time it took for "Tell Me" or "This Is How We Do It" to make their way from R&B to mainstream top 40. That may reflect the conservatism of many mainstream top 40s, but it also reflects a system in which even label folks expect an R&B record to close out two formats before it's ready for the world, even when sales numbers are driving it upward on the Hot 100.

Working records simultaneously within like formats empowers local reps—instead of leaving them stuck while rival stations argue with each of their bosses. It also maximizes the number of choices each format has, reflecting the increasing reality that nobody can know just where a record will hit. Who, after all, anticipated "December" as an AC hit?

This leads to one more suggestion: the formation of a third sphere of influence that extends from mainstream top 40 through adult top 40 to AC and soft AC. With so many records coming from rock and R&B, the pure pop record is more of an orphan than ever—unless it's an Edwyn Collins or Alanis Morissette record that can be dressed up as modern rock. Top 40/adult stations are closer to mainstream top 40 than ever, yet the treatment of those formats remains disparate. Building a third wedge means that we might have more than one "As I Lay Me Down" or "House Of Stone And Light" every six months.

If this sounds like a suggestion that labels start to work Airplay Monitor's The Big Picture charts as a unit, well, it isn't called The Big Picture for nothing. Look at The Big Picture charts, and you'll see the megahits that usually become Hot 100 sales hits, too. You'll also see records that were a modest success in the component formats that become more formidable with multiformat airplay. In an environment in which the feeder system has been replaced by something more organic, The Big Picture shows that the hits will out, regardless of how one works them. Acknowledging it might help the hits along a little faster.

"WE'VE ^{STILL} GOT IT GOIN' ON"!

After 5 months, the first single by the BACKSTREET BOYS remains strong at TOP 40 radio in the US as the group continues to grow world-wide!

KDWB, PD - Dan Kieley: "Number 1 record in Minneapolis! Solid TOP 10 call-out ages 17 to 30 females for the past 12 weeks!"

WZJM, MD - Dave Eubanks: "Infectious hook that scores with all demo's. Not even a shot of penicillin would make this record go away!"

WSNX, MD - Keith Curry: "NUMBER ONE REQUESTS, TOP 5 SALES, and still KICKING ASS!"



WZPL, PD - Tom Gjerdrum: "Backstreet Boys 'We've Got It Goin' On' is like a Ford truck... this one's built to last - it won't go away! Strong upper demo call out... STILLLLLL!!!!!"

KHTO, MD - Ray Michaels: "The song's been on forever! Super strong with female demos & TOP 5 phones... it just won't die!"

KQKQ, PD - Michael Steele: "TOP 10 research & #7 females 25 to 34. They've got it goin' on!"

Currently - over **700** plays on pop radio on over **30** stations with **5** million listeners - AFTER 24 WEEKS!!

INTERNATIONALLY:



EUROPE: video ACTIVE rotation & **#7** on Top 20 Countdown!!

MUSIC & MEDIA EUROPEAN HOT 100 SINGLES: **#12** & former sales breaker!

MUSIC & MEDIA EUROPEAN HIT RADIO (airplay): debut **#35** - highest new entry

GERMANY - GOLD SINGLE!
- #4 pop single!
- voted #1 FAVORITE BOY BAND in VIVA magazine

ENGLAND - voted SMASH HITS BEST NEW BAND!
- single in HEAVIEST ROTATION on Radio-1
- video in "BOX TOPS"

CANADA - on Montreal radio at CKMF & CKOI!
- video in HEAVY ROTATION on Music Plus

BELGIUM - #6 pop single!

SWEDEN - #8 on airplay chart!

SWITZERLAND - debut #5 pop single

AUSTRIA - single in HEAVIEST ROTATION on national radio!

HOLLAND - #5 pop single!
- video "Superclip" on Music Factory

OTHERS COMING IN FAST: Hungary, Italy, Denmark, Finland & many more!

WATCH FOR THE NEW BACKSTREET BOYS SINGLE - COMING SOON!!!!



Reps: New Owner Rules Give More Clout To Fewer PDs

Continued from page 1

performance given to a rival now contains the potential for redistribution by entire chains or across several formats.

"The programmers would like to make you think it'll make life easy for you [as a record company]," says Capricorn senior VP of promotion and marketing Jeff Cook. "In my opinion, it will give them so much power that there won't be any negotiating ability, and there won't be any option other than what they want to do."

"This is a continuation of the trend that began with the introduction of duopolies, where fewer people are in control of more radio stations, making access to those people even more difficult," says Catania. "This process continues to make us in the record industry further removed from the radio decision makers than ever before. We can certainly sympathize with programmers being overwhelmed with label calls, but many key programmers have become increasingly inaccessible."

"We understand that these same people are now running four stations, rather than one [as] in the old days, but we still need to communicate. As today's programmers continue to gain more responsibility, they will ultimately be pulled further away from the music," Catania adds.

"We'll see the major broadcast groups, like Infinity and Evergreen, exercising greater political clout, which could complicate the cost of doing business in some markets," says Elektra senior VP/promotion Greg Thompson, who foresees labels increasingly doing business with radio at the corporate level. "We can also expect to see group PDs having more leverage with labels, possibly even surpassing what some of the larger consultants used to accomplish."

Catania notes that with the tendency of stations to buy rivals and move them into other formats, the likelihood of PDs being forced on a record by a competing station is less. A&M VP of alternative promotion Jack Isquith also worries about the smaller number of gatekeepers. "Music is an art form, as well as a product. But because it's an art form, the way people react to it is subjective. The more people who are actively involved in making decisions about what they think about music, the better. The [fewer] people involved, the worse. Particularly if something is innovative or different."

But, Isquith adds, "I'd rather have someone who is extremely smart and has great ears programming four stations than four mediocre people programming them."

Some reps were less worried about a smaller number of decision makers. "There probably will be a group PD or MD that we will have to talk to, but we do that quite a bit now, so it may not change [things] much," says Gerrie McDowell, Curb's director of national country promotion. Motown senior VP of promotion James Cochran adds, "I've noticed that, for instance, at WRKS and WQHT New York, Steve Smith is the main programmer [for both stations], but [WRKS PD] Vinnie Brown still has a say over his individual station. [Changes will] depend on the music I'm presenting and what a particular station needs."

For Rob Dalton, Epic senior director of national promotion and artist development, the possibility of a greater number of format monopolies has a silver lining. "Markets where there is more than one country station . . . owned by the same people are [easy] to work with. We don't get [dragged] into the middle of a radio war."

A DAMPENING EFFECT

Some broadcasters have said that megapoly might encourage more broadcasters to try niche formats, but few label folks see that coming. "Radio has become a much bigger business than ever, so the stakes are enormous and will only get bigger," says Geffen's Catania. "The first priority of today's PD is to protect that investment, so the tendency is to become more conservative, which makes it more difficult to expose new product."

"I can't help but think it's going to have a dampening effect on innovation in terms of programming. That's the real scary part. The more a station is worth, the less likely that it will be interestingly programmed," says EMI national director of alternative and triple-A promotion Todd Bisson. "Whenever big money is allowed to get

bigger, you don't see creativity coming to the fore."

Asked whether an owner with a lock on any given marketplace might feel freer to seek out niche formats, Bisson asks, "Why hasn't that resulted in the current competitive market? . . . Given the historical data regarding all industry, the consumer does not benefit from monopoly."

RADIOCARE INC.

"I liken this to the health-care industry," says Capricorn's Cook. "When health-care megacorporations started buying up hospitals in every city . . . the quality of care went down radically. My major concern is, when you have a major programming group coming into a city that it doesn't care about and [the group] isn't plugged into [the city's] lifestyle and peculiarities, all [the group] cares about is having [the city] generate money for [it], so the community suffers . . . You end up with cookie-cutter stations that don't reflect the sounds and tastes of the community."

"The thing that makes me most nervous is the ability to control editorial content on the airwaves," Cook adds. "[The airwaves] were intended to reflect public attitudes and taste, and it has come to [the point] where, in many cases, they're nothing more than a vehicle for political positioning."

Elektra's Thompson foresees "an increased use of syndicated personalities, like Infinity's Howard Stern or Evergreen's . . . Mancow [Muller] and Jonathon Brandmeier, etc. Companies will now invest the money to develop and syndicate talent. They already own the personality, and they own new stations, so it makes perfect business sense for them to expand. When all the pieces are put together, it's going to be massive."

HAS R&B CONCERN LESSENERED?

Even before the telecom bill passed, sounds of concern about duopoly were deafening in the R&B community. Duopoly had stripped New York and Houston of their only mainstream R&B stations, and minority owners were prime candidates for being swallowed by bigger fish.

Since then, some heritage stations, such as WBLK Buffalo, N.Y., have been sold by entrepreneurs to megacorporations. Then there was last week's stunning announcement that Sheridan Broadcasting was trading heritage R&B WAMO Pittsburgh for a suburban station that historically has had signal problems and [for] \$14 million.

But there has also been an expansion of minority ownership by Cathy Hughes, RoNita Hawe-Saunders, and Blue Chip Broadcasting, among others. Ardenia Brown, Warner Bros. VP of black music, says, "If we have some black owners able to get into the game, that will be a positive. If Wayne Brown [of Evergreen's WPEG/WBAV Charlotte, N.C.] can be a part [of expansion]—if Tony Gray is in there, if Barry Mayo and Cathy Hughes can be players—I'm all for it."

"The Emmis and Infnity and Evergreens will win regardless, but if we can get a piece of the rock . . . then we all win."

Larry Khan, senior VP of promotion for Jive, says, "I can't think of any way [duopoly] has hurt. I have more outlets for the 12-24 demo. An owner will come in and create a duopoly, and one station will be R&B adult and one will be younger, which has given me more younger outlets for my records, like WEJM Chicago or WKYS Washington, D.C. . . . WQUE New Orleans is more young-end since becoming a sister station to WYLD. I don't see deregulation as a problem."

Unlike many observers who also feared that duopoly would lead to a decreasing number of jobs for black broadcasters, Khan says, "With a few more urban outlets [owned by big chains], there should be more jobs . . . The only problem will be with syndication. If it's syndication, then there are fewer jobs and fewer new outlets."

Is Khan worried about R&B stations being trashed by group owners who don't see them as sufficiently lucrative? "I don't see it. The marketplace is the marketplace, [and] if all these companies are propelled by making money, then they will keep their urban outlets."

Perhaps the final word comes from Curb's McDowell, who notes, "I think it's great, because I invest in broadcasting, I bought a lot of stock."

MONITOR PROFILE

Liz Janik Helps KKDM Debut Big In Des Moines . . . But What Format Is It?

So what format is KKDM Des Moines, Iowa? Well, it calls itself "Iowa's new rock alternative."

So it's modern rock, right?

Well, mostly. But it plays "Be My Lover" by La Bouche and almost everything by Ace Of Base and Real McCoy.

So it's like KRBE Houston?

But almost everything else it plays is modern rock, although it did play "Free As A Bird" by the Beatles. And it doesn't talk over intros.

So it's like KRBE Houston?

Sort of. Although KRBE talks over intros now. More than anything, KKDM is like a Liz Janik station. Janik is the Brampton, Ontario-based consultant who, with GM/morning man J. Michael McKoy and MD Sophia John, was behind KKDM's spectacular debut this fall, up from a 1.2



Liz Janik
Liz Janik Associates
Brampton, Ontario

'Most of the audience is open-minded about mass-appeal records'

share 12-plus (which represented three weeks on the air) to 7.5. Janik has been one of U.S. radio's better-kept secrets, but her pattern has often been modern rockers with strong pop tendencies.

Janik, who began in Canadian radio at age 13 at CKKW Kitchener, Ontario, worked at a number of Toronto stations before joining pioneer modern rocker CFNY Toronto in 1977—spending 12 years there in a variety of positions and working her way up to director of Canadian music development. In 1989, she joined John Parikh's Joint Communications and was part of the launch of hot ACs KHMZ (Mix 96.5) Houston and WBMX (Mix 98.5) Boston.

During Joint's launch of what was intended as another rock-based hot AC, WKQX (Q101) Chicago, Janik suggested throwing some modern rock into the initial auditorium test. Q101 later became "Chicago's new rock alternative," a rock/AC/modern hybrid that evolved into that market's modern rocker.

When Parikh relocated to the U.S., Janik stayed involved with Joint but launched her own consultancy, Liz Janik Associates, working with CIMX (89X) Detroit, KKNB (the Planet) Lincoln, Neb., CKEY Buffalo, N.Y., and others.

KKDM, meanwhile, had become the brainchild of Rich Eychaner, the former owner of a local video chain, who spent eight years putting the station on the air. Originally, KKDM was meant to be a news/talk FM. That changed when McKoy, a Nebraska native with a history in Des Moines country radio, happened on KKNB during a drive to Des Moines via Lincoln last summer. He liked KKNB enough to call Johns, who was on the air at the time. Johns told him about Janik. In early August, McKoy and Janik decided that "there was nobody serving young adults, and there hadn't been anybody [doing so] for years. Clearly, there was an opportunity for [serving] 18- to 30-year-old listeners," says Janik. By late August, KKDM was on the air, segueing music while its studios were being finished.

In its first weeks on the air, KKDM was closer to

pure modern rock. But by the time the jocks hit, there was dance music in the mix, including techno titles by such acts as Moby and Apotheosis, which had been played at some modern rockers before the format turned toward the rock side.

"My experience at CFNY was that listeners don't pigeonhole music," Janik says. "Having grown up with CFNY and the wonderful songs by Modern English, Icicle Works, and New Order that were great pop songs and great dance songs, I knew they were compatible. Since then, I've seen a high compatibility between certain kinds of dance and rock in a number of studies."

"One of the biggest mistakes by programmers in this format has been to think of this as a rock-only format, which has happened since the success of Pearl Jam and the rush to sign more of the same. Modern isn't one audience but is made up of a number of audiences with diverse tastes. Certainly, there are some folks who won't tolerate anything dance- or pop-oriented, but they probably don't want to hear R.E.M. or U2 either. And that's a small percentage. Most of the audience is open-minded about mass-appeal records."

So what won't KKDM play? Candlebox (even "Far Behind"), Alice In Chains' "Grind," or the Toadies' "Possum Kingdom." To Janik, those songs might as well be the Rolling Stones or Aerosmith in terms of compatibility with the format. And despite the widespread belief that modern and album rock have melded, Janik says she's seen that in only a few markets, such as Chicago, where WRCX has spent several years selling the audience on the concept of "Triumph and the Toadies together. Otherwise, she says, there's a wall between the two camps that many stations scale at their peril. "We've abandoned mass-appeal artists like U2 to appeal to the hip types. And the audience just doesn't move that fast," she says.

That's one reason that KKDM has decided to represent itself to the industry as top 40, though Janik allows that "it's just a question of labels, [which] are arbitrary. The industry is driving modern rock in as narrow-minded a direction as any other format . . . You have young people now at radio stations who pick up the alternative charts and think that's what they're supposed to do."

"Based on the Billboard format descriptions," she says, "top 40 seemed to most accurately describe what we did. We're trying to embrace all the new music that's exciting to our listeners without worrying if it's alternative or not. Enya is a smash artist, but nobody will touch her, because she doesn't fit a format. It was the same with Enigma at first. That's what this format used to be all about: great-sounding records that wouldn't get airplay because of narrow-minded formats."

Here's KKDM in p.m. drive: Jann Arden, "Insensitive"; R.E.M., "Driver 8"; Presidents Of The United States Of America, "Lump"; Collective Soul, "December"; Enya, "Anywhere Is"; Ace Of Base, "Beautiful Life"; Toad The Wet Sprocket, "Fall Down"; Better Than Ezra, "Rosalia"; Cure, "Friday I'm In Love"; Rusted Root, "Send Me On My Way"; Universal Honey, "Just Before Mary Goes"; Smashing Pumpkins, "No Why"; and Pearl Jam, "Jeremy."

In the fall, KKDM's promotion included TV, billboards, and a cross-promo with Eychaner's old video chain in which 100,000 KKDM fliers went into video boxes. KKDM did no major contesting beyond the usual concert and album giveaways.

Now, Janik says, KKDM has the luxury of being broader than usual, as Des Moines has no other modern or top 40 outlet. Its success will change that; already, hot AC KSIZ (Star 102.5) is leaning younger. "Phase two is to strengthen ourselves internally," she says. "Building procedures is a lot of what's going on here. We've hired a lot of young people and are training them." **SEAN ROSS**

AND THE HITS KEEP COMING...



DEBORAH COX "Who Do U Love"

This is the one that's going all the way. From her critically acclaimed, self-titled debut album.

Baltimore, 92Q 28X

BALTIMORE
SOUNDCAN SINGLE (19) - (13)

WWKX	33X	WNVZ	24X
WKRQ	24X	WZJM	14X
WHHH	40X	KLUC	27X
KKFR	22X	Z90	52X
KKRZ	28X	FM102	27X

Brandy appears courtesy of Atlantic Recording Corporation



BRANDY "Sittin' Up In My Room"

The next #1 from the instant 4x Platinum soundtrack album *Waiting To Exhale*.

- Debut (38) Monitor Mainstream**
(4) - (2) Monitor Rhythm-Crossover
(10) - (9) Soundscan Single
(14) - (13) Billboard Hot 100



ACE OF BASE "Lucky Love"

Their hot new single, already exploding from coast to coast.



MOST ADDED!!

WAPE	19X	B96	40X
Y100	14X	WKRQ	24X
KHFI	45X	KMXV	31X
KRQQ	27X		

MARY J. BLIGE "Not Gon' Cry"

The country's #1 R&B record, just one week after release. It's explosive and Top 40 is still to come.
From *Waiting To Exhale*.

- (16) - (11) Monitor Rhythm-Crossover**
(21) - (6) Billboard Hot 100
(9) - (2) Soundscan Single
(1) Billboard R&B Single

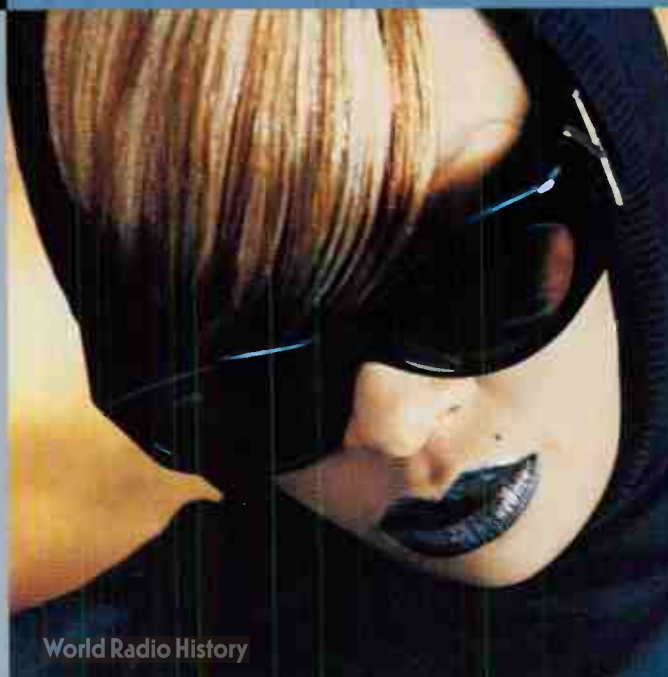


Photo: Greg Gorman/Arista Records



World Radio History

ARISTA

HELP WANTED

THE BEAT
92.3

America's Premiere Urban Radio Station has a unique opening for a Director of Marketing & Promotions.

This individual should be thoroughly knowledgeable in Urban music and have the ability to continue the aggressive presentation of the station's image to both the Los Angeles audience and the music industry.

Experience and skills should include attention to detail and organization, the ability to manage a staff of 20 or more, interface with programming and sales, produce large scale promotional events and maintain impeccable relationships within the entire music and entertainment industries.

Send resumes in care of:
Maxine Morrow
KKBT RADIO
6735 Yucca Street
Los Angeles, CA 90028

Evergreen Media, Inc. is an E.O.E.

SERVICES

VOICEOVERS

THE REVOLUTION
THE VOICE SOLUTION
HEAR IT NOW! **800-762-2397**

Uniquely Human Liners & Promos

MTW PRODUCTIONS
414-652-4707

POSITION WANTED

No more country! Prefer FT, AC small market. Will relocate. You won't be disappointed.
Ginger: (602) 952-2505

Morning show producer/comedy writer seeks mornings. Topical, quick witted, and more!

GREG: 916-962-3677

Morning vet with mediocre board work and production skills. All I do is communicate, relate, and win. I ain't cheap.
Tod: (614) 866-3166

SOUTH FLORIDA
Accomplished NYC-based ad space sales pro with extensive music industry, advertising and media planning experience seeks radio sales position in Fort Lauderdale or Miami.
P.O. Box 1941, NYC 10185

23 year's experience GM, SM, PD, on-air, PBP, sales; all formats.
Seeking N. West U.S.
John: (907) 747-8248

BULLETIN BOARD

DIRECTOR OF PROMOTION

KS95-FM a Twin Cities Adult Contemporary Station is looking for a Promotions/Marketing person. Ability to deal with the public; 4 years previous major market experience in promotion and marketing; knowledge of FCC rules and regulations as they pertain to contests; familiarity with programming concepts; applicant must be highly organized and able to prioritize own work; an understanding of television buying would be helpful. Please call Bob Davis at 612-642-4141 and submit resumes to:

AMY J. STEDMAN
KSTP-FM
Job #192-95
3415 UNIVERSITY AVE.
ST. PAUL, MN 55114

AN EQUAL OPPORTUNITY EMPLOYER

Q95.5 Seeks A Marketing/Promotions Manager

Candidates must be highly motivated, possess the ability to visualize then execute exciting promotions for an adult, female audience, generate business for our advertisers, and build brand awareness of the Motor City's HOT AC radio station.

Send resume and examples of your work to:

Tom O'Brien, WKQI
15401 W. Ten Mile Road
Oak Park, Michigan 48237

AN EVERGREEN MEDIA CORPORATION
STATION, WKQI IS AN EQUAL OPPORTUNITY EMPLOYER.

SHOW PREP

BRAD MESSER'S
PREP
Radio's Favorite Daily
Show Prep Sheet
CALL NOW • 24-hours
Sample 1 800 788-PREP

COMEDY

TeleJoke!
by Alan Ray
Topical One Liners faxed or e-mailed daily!
Now in 250 markets!
(209) 476-1511 phone (209) 476-1211 fax
web site: <http://www.telejoke.com>
Call or fax for a free sample!

EDDIE RIVERA - Your passing was untimely. You will never be forgotten. Thanks for all you have done to get Dance music on the map. Your Friends at Warlock Records.

TERRI H. - Congratulations on your promotion to staff reporter. Way to go, girl! LR at A.M.

PUSH - You always rock the house. Keep the music jammin'! ACB

SERVICES

VOICEOVERS

Z EUS

THE NEW VOICE FOR THE 21ST CENTURY. ALL FORMATS. FULL PRODUCTION AVAILABLE. CALL FOR A DEMO TODAY!
910-997-7192

THE LINER RANCH

LOOKING FOR A NEW STATION VOICE?
BIG MARKET VOICE FOR SMALL MARKET DOLLARS
STEPHAN KAUFMAN
509-292-8609
WELCOME KOLO-TV, RENO
KXO-AM/FM, EL CENTRO

POSITION WANTED

Rockin' female AT available now. APD/MD/promotions experience, public appearance pro! Prefer West.
C.J.: (520) 323-8495

Major market PM driver seeks Gold, Soft AC. Production, pipes, team player.

Richard: (314) 997-4190

N.C. FM seeks Radio Supreme Being for:

Operations, On Air (Mornings), Production. Digilink experience a must.
Send T/R:
GM • Box 910
Roanoke Rapids, NC 27870

PROGRAM DIRECTOR

Columbus, Georgia's country giant, KIX 106 is looking for an on-air program director. Minimum 3 years country experience required. Tape, resume and cover letter to:
BERNIE BARKER, GENERAL MANAGER
WSTH
1236 BROADWAY, COLUMBUS, GA 31901

CALL LAURA RIVCHUN for Airplay Monitor Classifieds

Ph (212) 536-5058 • Fax (212) 536-5055

CLASSIFIED ADVERTISING RATES

HELP WANTED:

1 WEEK \$75.00 per inch
2 WEEKS \$65.00 per inch

POSITION WANTED AND BULLETIN BOARD:
\$45.00 per inch

BOX NUMBER: Add \$20.00

SERVICES:

1 WEEK \$75.00 per inch
6 WEEKS \$65.00 per inch
13 WEEKS \$60.00 per inch
26 WEEKS \$55.00 per inch
51 WEEKS \$50.00 per inch

DEADLINE (ALL CLASSIFIED):

Each Wednesday 3pm EST, 9 day leadtime.

• Classified ads are non-commissionable •

SUBMIT ALL AD COPY TO:

Laura Rivchun
Airplay Monitor Classified
1515 Broadway
New York, NY 10036

Phone: 212-536-5058
Fax: 212-536-5055

AIRPLAY Monitor GREATEST GAINERS

Strongest Increase In Airplay This Week

MAINSTREAM

INCREASE
IN PLAYS

SOPHIE B. HAWKINS • <i>Only Love (The Ballad Of Sleeping Beauty)</i> (COLUMBIA)	+496
WPRO +24, WBZZ +22, WKSS +21, KKLQ +21, KLRZ +20, WMXQ +20, WPXY +19, WWCK +18, WNNK +18, WZJM +17	
GIN BLOSSOMS • <i>Follow You Down</i> (A&M)	+459
WPRO +24, WZJM +20, WHOT +19, WWCK +19, KHTY +18, WAPE +18, WDDJ +17, WKCI +17, WKXJ +15, WVSR +15	
THE TONY RICH PROJECT • <i>Nobody Knows</i> (LAFACE/ARISTA)	+459
KKLQ +22, KRQQ +18, WSNX +17, WXIS +16, WWST +16, WFHN +15, KIIS +15, WKCI +14, WGTZ +14, WMXQ +14	
OASIS • <i>Wonderwall</i> (EPIC)	+282
WFHN +19, WZJM +17, WABB +17, WKSS +14, WSTR +13, KZZU +12, WSSX +12, WNCI +11, WWST +10, WHOT +9	
LA BOUCHE • <i>Be My Lover</i> (RCA)	+262
KKRD +39, WBHT +21, KMXV +18, KRQQ +17, WKBQ +15, WAPE +14, WXIS +13, WHHY +13, WXXX +13, WKXJ +13	
ALANIS MORISSETTE • <i>Ironic</i> (MAVERICK/REPRISE)	+257
WZST +21, WDCG +19, WKSE +19, KHFI +17, WKXB +16, KUTQ +16, WNOK +16, WPRO +16, WWCK +15, WPXY +15	
BRANDY • <i>Sittin' Up In My Room</i> (ARISTA)	+255
WFBC +20, WTWR +19, WVKS +18, WKRQ +18, KZZU +14, WFMF +13, KBFM +12, KKMJ +10, KKRZ +10, WXLK -8	
SMASHING PUMPKINS • <i>1979</i> (VIRGIN)	+232
KHTO +18, WXXL +14, KLRZ +13, WZNY +13, WVSR +13, WKXJ +12, KZZU +10, WHTZ +10, WKBQ +9, KUTQ -8	
MELISSA ETHERIDGE • <i>I Want To Come Over</i> (ISLAND)	+189
WBZZ +22, WXIS +11, WVKS +11, WBHT +10, WKXB +9, WVSR +9, WHYI +9, WTWR +8, WKCI +8, KLRZ +7	

RHYTHM-CROSSOVER

INCREASE
IN PLAYS

MARIAH CAREY • <i>Always Be My Baby</i> (COLUMBIA)	+172
WJMN +20, KZFM +19, KLUC +19, KQKS +18, KUBE +18, WJMH +17, KKFR +12, KYLD +10, KMEL +10, XHTZ +7	
MARY J. BLIGE • <i>Not Gon' Cry</i> (ARISTA)	+169
WJMN +30, KMEL +30, WWKX +24, KYLD +23, KPRR +18, KTFM +11, KQKS +10, KUBE +9, WJJS +8, KKSS +8	
BRANDY • <i>Sittin' Up In My Room</i> (ARISTA)	+134
WWKX +27, KUBE +17, KMEL +17, KLUC +13, WPGC +13, KZFM +12, WJMH +11, KJMZ +10, WERQ +10, KYLD +7	
LL COOL J • <i>Do In It</i> (DEF JAM/RAL/ISLAND)	+105
WWKX +32, KBXX +27, KLUC +18, KYLD +14, WJJS +9, WERQ +9, WPGC +7, KUBE +4, WBBM +4, WHHH +3	
CHANTAY SAVAGE • <i>I Will Survive</i> (RCA)	+96
WERQ +19, WJJS +17, KMEL +13, KKSS +11, KCAQ +7, KKFR +6, WHHH +5, KPRR +5, KZFM +4, WWKX +4	
2PAC (FEATURING DR. DRE AND ROGER TROUTMAN) • <i>California Love</i> (DEATH ROW/INTERSCOPE)	+83
KPRR +21, WPOW +20, KZHT +12, KQKS +9, WWKX +8, KTFM +8, WBBM +6, KPWR +6, KSFM +5, KBXX +4	
D'ANGELO • <i>Lady</i> (EMI)	+73
KKSS +11, WWKX +10, KCAQ +9, KPRR +8, KZHT +8, WQHT +7, KKFR +5, WPGC +5, KLUC +4, KYLD +3	
THE TONY RICH PROJECT • <i>Nobody Knows</i> (LAFACE/ARISTA)	+73
WWKX +23, KKXX +12, KLUC +11, KQKS +10, WPOW +10, KDON +8, WJJS +8, KZFM +6, KKFR +6, KUBE +5	
R. KELLY • <i>Down Low (Nobody Has To Know)</i> (JIVE)	+62
KBXX +19, WJMH +19, WPGC +13, WJJS +10, WHHH +5, KSFM +4, KCAQ +3, KQKS +3, WQHT +3, KMEL +1	
EVERYTHING BUT THE GIRL • <i>Missing</i> (ATLANTIC)	+61
KYLD +45, KMEL +27, XHTZ +21, KGGI +6, KKXX +5, KKSS +5, WPGC +4, WPOW +3, KLUC +2, KJMZ +1	

VIDEO PLAYLISTS



		TW	LW
1	2Pac, California Love	46	44
2	LL Cool J, Hey Lover	37	26
3	Bush, Glycerine	35	27
4	Oasis, Wonderwall	33	30
5	Green Day, Brain Stew	30	27
6	Presidents Of The United States, Peaches	27	26
7	Collective Soul, The World I Know	24	25
8	Coolio, Too Hot	24	29
9	Seven Mary Three, Cumbersome	22	19
10	Rancid, Ruby Soho	22	19
11	Blues Traveler, Hook	21	13
12	Janet Jackson, Twenty Foreplay	21	20
13	Brandy, Sittin' Up In My Room	21	12
14	Smashing Pumpkins, 1979	21	0
15	Goo Goo Dolls, Naked	18	12
16	Alanis Morissette, Ironic	16	0
17	Whitney Houston, Exhale (Shoop Shoop)	16	17
18	Everclear, Santa Monica	15	17
19	No Doubt, Just A Girl	15	13
20	Seal, Don't Cry	14	11
21	Monica, Before You Walk Out Of My Life	14	15
22	Dave Matthews Band, Satellite	13	12
23	The Tony Rich Project, Nobody Knows	13	11
24	George Michael, Jesus To A Child	12	11
25	Joan Osborne, One Of Us	11	30
26	White Zombie, Super-Charger Heaven	11	9
27	Spacehog, In The Meantime	11	7
28	Gin Blossoms, Follow You Down	11	0
29	The Dogg Pound, Let's Play House	10	6
30	Radiohead, High And Dry	10	10
31	La Bouche, Be My Lover	10	4
32	Folk Implosion, Natural One	9	10
33	Mariah Carey & Boyz II Men, One Sweet Day	9	16
34	Smashing Pumpkins, Bullet With Butterfly	9	28
35	Melissa Etheridge, I Want To Come Over	9	0
36	Alice In Chains, Heaven Beside You	9	0
37	Natalie Merchant, Wonder	8	7
38	Kris Kross, Tonite's The Night	8	7
39	Mary J. Blige, Not Gon' Cry	8	3
40	For Squirrels, Mighty K.C.	7	6
41	Immature, We Got It	7	7
42	Soul Asylum, Promises Broken	6	4
43	Coolio Feat. L.V., Gangsta's Paradise	6	3
44	Foo Fighters, Big Me	6	0
45	Korn, Shoots And Ladders	5	4
46	Groove Theory, Tell Me	4	3
47	Goo Goo Dolls, Name	4	7
48	Presidents Of The United States, Lump	4	4
49	3T, Anything	4	4
50	Mariah Carey, Fantasy	4	1

ADULT

INCREASE
IN PLAYS

SOPHIE B. HAWKINS • <i>Only Love (The Ballad Of Sleeping Beauty)</i> (COLUMBIA)	+124
WQLH +33, KHMX +25, WKDD +13, KWMX +11, WRQX +11, WWSN +10, WKTI +8, KALC +6, WZPK +4, WDEF +3	
HOOTIE & THE BLOWFISH • <i>Time</i> (ATLANTIC)	+118
KVUU +19, WTMX +17, WJDX +13, WPLJ +10, WZPK +8, KHMX +8, WBMX +8, WPNT +7, WQAL +6, WVAF +5	
JOAN OSBORNE • <i>One Of Us</i> (BLUE GORILLA/MERCURY)	+105
KSTP +16, WTMX +15, WCSO +11, WYYY +9, WMXV +7, WAEV +6, WVAF +6, KHMX +6, WKZL +6, WBEB +5	
PHIL COLLINS • <i>Somewhere</i> (RCA VICTOR)	+96
WEZF +28, KYKY +19, WPNT +12, KGBX +12, WIOG +10, WRMF +5, WZPK +5, WKDD +5, WMJQ +4, WJDX +3	
GOO GOO DOLLS • <i>Name</i> (METAL BLADE/WARNER BROS.)	+89
KVUU +19, WVAF +14, WBLI +11, WWSN +9, WQLH +8, KALC +8, WMBX +7, WMC +6, WKTI +6, KKOJ +5	
NATALIE MERCHANT • <i>Wonder</i> (ELEKTRA/EEG)	+86
WAHR +18, WZPK +9, WKZL +8, WVAF +7, KKOJ +7, WMXV +7, KFMB +7, KHMX +6, WCSO +3, KWMX +3	
SEAL • <i>Don't Cry</i> (ZTT/WARNER BROS.)	+73
WPLJ +18, KISN +16, KALC +16, WTFM +15, KKOJ +8, WIOG +8, KGBX +6, WBLI +6, WEZF +5, WMBX +5	
BLESSID UNION OF SOULS • <i>Oh Virginia</i> (EMI)	+70
WPLJ +21, WTMX +15, WMBX +13, KSTZ +7, WVAF +6, WMXV +6, WBMX +4, WZPK +2, WBLI +2, WQLH +1	
GEORGE MICHAEL • <i>Jesus To A Child</i> (DREAMWORKS/GEFFEN)	+63
KEZR +22, WJDX +17, KKOJ +17, WEZF +14, KHMX +6, KGBY +5, WVAF +4, WMYI +4, WKTI +4, WAEV +3	
BLUES TRAVELER • <i>Hook</i> (A&M)	+61
KKOJ +19, WQLH +15, KSTP +13, KWMX +9, WYYY +5, KSTZ +5, WZPK +4, WAEV +3, WBLI +3, WMXV +2	



POWER PLAYLISTS

For Week Ending February 4, 1996



Playlists supplied by Broadcast Data Systems' Radio Track service. Stations selected from panel of leading broadcast stations in 125 radio markets electronically monitored 24 hours a day, 7 days a week. Songs ranked by number of plays in monitored week.

Z100 WHZZ New York PD: Steve Kingston MD: Andy Shane. Top 40 playlist including 'Everything But The Girl, Missing' and 'Goo Goo Dolls, Name'.

KIIS Los Angeles PD: Steve Perun APD/MD: Tracy Austin. Top 40 playlist including 'La Bouché, Be My Lover' and 'Whitney Houston, Exhale'.

KISS 108 WXKS Boston PD: John Ivey MD: Tad Bonvie. Top 40 playlist including 'Deep Blue Something, Breakfast At Tiffan' and 'Goo Goo Dolls, Name'.

Q102 WIOQ Philadelphia OM: Dave Allan PD: Glenn Kalina MD: DeDe McGuire. Top 40 playlist including 'Everything But The Girl, Missing' and 'Joan Osborne, One Of Us'.

KISS 106.1 KHKS Dallas PD: John Cook APD/MD: Mr. Ed Lambert. Top 40 playlist including 'Everything But The Girl, Missing' and 'Whitney Houston, Exhale'.

KRBE Houston PD: Tom Poleman APD: Scott Sparks MD: Paul "Cubby" Bryant. Top 40 playlist including 'Smashing Pumpkins, 1379' and 'Folk Implosion, Neutral One'.

KDWB Minneapolis PD: Dan Kielew APD/MD: Rob Morris AMD: Rick Thomas. Top 40 playlist including 'Backstreet Boys, We've Got It Goin' On' and 'Mariah Carey & Boyz II Men, One Sweet Day'.

STAR 94 WSTR Atlanta PD: Kevin Peterson MD: J.R. Ammons. Top 40 playlist including 'Natalie Merchant, Carnival' and 'Goo Goo Dolls, Name'.

B94 WBZZ Pittsburgh PD: Keith Clark APD: David Edgar MD: John Cline. Top 40 playlist including 'Mariah Carey & Boyz II Men, One Sweet Day' and 'Hootie & The Blowfish, Time'.

WFLZ Tampa PD: B.J. Harris APD: Jeff Kapugi MD: Tom Steele. Top 40 playlist including 'Everything But The Girl, Missing' and 'Joan Osborne, One Of Us'.

WPST Trenton PD: Michelle Stevens APD: Dave McKay. Top 40 playlist including 'Oasis, Wonderwall' and 'No Doubt, Just A Girl'.

Y100 WHYI Miami PD: Rob Roberts MD: Al Chio. Top 40 playlist including 'Deep Blue Something, Breakfast At Tiffan' and 'Goo Goo Dolls, Name'.

KISS 95.7 WKSS Hartford PD: Jay Beau Jones Acting MD: Dave Vadya. Top 40 playlist including 'Mariah Carey & Boyz II Men, One Sweet Day' and 'Deep Blue Something, Breakfast At Tiffan'.

WTIC Hartford PD: Paul Cannon MD: Tony Bristol. Top 40 playlist including 'Mariah Carey & Boyz II Men, One Sweet Day' and 'Gin Blossoms, Tell Me Be The On'.

WNCI Columbus PD: John Dimick APD/MD: Dan Bowen. Top 40 playlist including 'Deep Blue Something, Breakfast At Tiffan' and 'Goo Goo Dolls, Name'.

Q106 KKLO San Diego OM: Al Peterson APD: Ray Kalusa. Top 40 playlist including 'Hootie & The Blowfish, Time' and 'Goo Goo Dolls, Name'.

92PRO FM WPRO Providence PD: Chris Shebel MD: Tony Mascaro. Top 40 playlist including 'Selena, Dreaming Of You' and 'Whitney Houston, Exhale'.

Q104 WKBO St. Louis PD: Michael St. John. Top 40 playlist including 'Everything But The Girl, Missing' and 'Goo Goo Dolls, Name'.

POWER PLAYLISTS

AIRPLAY **Monitor**

For Week Ending
February 4, 1996

Playlists supplied by Broadcast Data Systems' Radio
Track service. Stations selected from panel of leading
broadcasters in 225 radio markets, electronically
monitored 24 hours a day, 7 days a week. Songs
ranked by number of plays in monitored week.

Q102

WKQR Cincinnati PD: Jimmy Steal APD: Race Taylor MD: Brian Douglas

	TW	LW	
1	Deep Blue Something, Breakfast At Tiffan	63	60
2	Joan Osborne, One Of Us	62	57
3	Collective Soul, December	62	58
4	Alanis Morissette, Hand In My Pocket	60	55
5	Go Go Dolls, Name	60	60
6	Hootie & The Blowfish, I Go Blind	59	58
7	Whitney Houston, Exhale	58	56
8	Everything But The Girl, Missing	54	42
9	Janet Jackson, Runaway	38	31
10	The Tony Rich Project, Nobody Knows	35	28
11	Ace Of Base, Beautiful Life	35	34
12	Blues Traveler, Hook	34	40
13	Natalie Merchant, Wonder	34	28
14	Mariah Carey, Fantasy	33	28
15	*, Gold	32	31
16	Bodeans, Closer To Free	31	31
17	TLC, Waterfalls	31	27
18	Del Amitri, Roll To Me	30	27
19	Seal, Don't Cry	29	29
20	Sophie B. Hawkins, As I Lay Me Down	28	34
21	Madonna, You'll See	28	30
22	Ace Of Base, Lucky Love	28	24
23	Blessid Union Of Souls, Let Me Be The On	28	31
24	Take That, Back For Good	28	31
25	Edwin McCain, Solitude	27	34
26	Gin Blossoms, Til I Hear It From You	27	29
27	Collective Soul, The World I Know	27	29
28	Deborah Cox, Who Do I Live	24	18
29	Presidents Of The United States, Lump	24	23
30	Gin Blossoms, Follow You Down	23	24
31	TLC, Duggin' On You	23	24
32	Mariah Carey & Boyz II Men, One Sweet Day	22	56
33	Brandy, Scrub Up In My Room	22	4
34	Seal, Kiss From A Rose	20	21
35	Alanis Morissette, You Oughta Know	17	11
36	Natalie Merchant, Carnival	16	21
37	All-4-One, I Can Love You Like That	16	8
38	Elton John, Blessed	14	17
39	Hootie & The Blowfish, Only Wanna Be Wit	13	8
40	George Michael, Jesus To A Child	13	20

G105

WDCC Raleigh PD: Brian Burns MD: Kip Taylor

	TW	LW	
1	Joan Osborne, One Of Us	58	51
2	Deep Blue Something, Breakfast At Tiffan	57	56
3	Alanis Morissette, Hand In My Pocket	53	56
4	Bodeans, Closer To Free	49	38
5	Natalie Merchant, Wonder	48	35
6	Hootie & The Blowfish, Time	43	40
7	Blues Traveler, Hook	42	28
8	Go Go Dolls, Name	38	40
9	Oasis, Wonderwall	38	35
10	Toad The Wet Sprocket, Good Intentions	33	34
11	Everything But The Girl, Missing	33	31
12	Collective Soul, The World I Know	32	27
13	Dave Matthews Band, Satellite	32	28
14	Alanis Morissette, Ironic	31	12
15	Folk Implosion, Natural One	29	28
16	Gin Blossoms, Follow You Down	28	28
17	Edwin McCain, Solitude	24	26
18	George Michael, Jesus To A Child	24	18
19	Smashing Pumpkins, Bullet With Butterfly	24	23
20	Seal, Glycerine	24	20
21	Blues Traveler, Run Around	23	20
22	Mariah Carey & Boyz II Men, One Sweet Day	20	15
23	Melissa Etheridge, I Want To Come Over	20	18
24	Smashing Pumpkins, 1979	19	18
25	Hootie & The Blowfish, Only Wanna Be Wit	18	21
26	Edwyn Collins, A Girl Like You	18	20
27	Gin Blossoms, Hey Jealousy	17	9
28	Seal, Don't Cry	17	1
29	Green Day, When I Come Around	17	14
30	Pearl Jam, Daughter	16	11
31	Go Go Dolls, Naked	15	6
32	Del Amitri, Roll To Me	13	14
33	Stone Temple Pilots, InterStates Love Song	13	15
34	Natalie Merchant, Carnival	13	6
35	Seven Mary Three, Cumberstone	13	13
36	The Cure, Friday I'm In Love	12	13
37	Dianne Farris, I Know	12	11
38	Collective Soul, December	12	13
39	Stone Temple Pilots, Push	12	17
40	Real McCoy, Another Night	11	10

THE EDGE

WEDJ Charlotte PD: Brian Bridgman MC: Marcie Crescente

	TW	LW	
1	Go Go Dolls, Name	62	54
2	Everything But The Girl, Missing	57	47
3	Mariah Carey & Boyz II Men, One Sweet Day	56	51
4	Joan Osborne, One Of Us	54	57
5	TLC, Waterfalls	46	45
6	Folk Implosion, Natural One	44	42
7	Alanis Morissette, Hand In My Pocket	43	40
8	Sophie B. Hawkins, As I Lay Me Down	39	31
9	Hootie & The Blowfish, I Go Blind	37	40
10	Del Amitri, Roll To Me	37	31
11	Hootie & The Blowfish, Time	35	41
12	Collective Soul, The World I Know	35	29
13	Natalie Merchant, Carnival	34	30
14	Oasis, Wonderwall	34	37
15	Edwin McCain, Solitude	31	26
16	Deep Blue Something, Breakfast At Tiffan	30	35
17	Presidents Of The United States, Lump	27	27
18	Live, Lightnig Crashes	24	25
19	Smashing Pumpkins, 1979	24	28
20	The Cranberries, Dreams	23	25
21	Blues Traveler, Run Around	23	27
22	Bodeans, Closer To Free	23	26
23	Collective Soul, December	22	24
24	Green Day, When I Come Around	22	17
25	Alanis Morissette, Ironic	22	29
26	Natalie Merchant, Wonder	22	23
27	Real McCoy, Another Night	21	18
28	Hootie & The Blowfish, Only Wanna Be Wit	21	24
29	Corona, Baby Baby	21	16
30	Blues Traveler, Hook	21	20
31	La Bouche, Be My Lover	21	19
32	2 Unlimited, Get Ready For This	20	15
33	Seal, Don't Cry	20	7
34	Seal, Kiss From A Rose	19	22
35	Fun Factory, Habano B With U	19	22
36	Des'ree, You Gotta Be	19	12
37	Pearl Jam, Better Man	18	21
38	Alanis Morissette, You Oughta Know	18	21
39	Planet Soul, Set U Free	18	0
40	Stone Temple Pilots, InterStates Love Song	17	19

Z100

KKRZ Portland PD: Ken Benson APD/MD: Chet Buchanan

	TW	LW	
1	Deep Blue Something, Breakfast At Tiffan	63	46
2	Monica, Don't Take It Personal	62	58
3	Mariah Carey & Boyz II Men, One Sweet Day	60	37
4	Sophie B. Hawkins, As I Lay Me Down	57	58
5	Go Go Dolls, Name	57	23
6	Everything But The Girl, Missing	46	60
7	Natalie Merchant, Carnival	46	42
8	Whitney Houston, Exhale	46	46
9	The Tony Rich Project, Nobody Knows	44	43
10	Blessid Union Of Souls, Let Me Be The On	44	58
11	Joan Osborne, One Of Us	42	48
12	Blues Traveler, Hook	38	39
13	TLC, Duggin' On You	38	44
14	Whitney Houston, Exhale	34	32
15	Fun Factory, I Wanna B With U	33	23
16	Gin Blossoms, Til I Hear It From You	32	17
17	Madonna, You'll See	31	44
18	Mariah Carey, Always Be My Baby	31	25
19	Hootie & The Blowfish, Time	29	27
20	Los Del Rio, Macarena Bayside Boys Mix	29	22
21	Del Amitri, Roll To Me	28	41
22	La Bouche, Be My Lover	28	31
23	Deborah Cox, Who Do I Live	28	28
24	Hootie & The Blowfish, Only Wanna Be Wit	27	30
25	Coolio Feat. L.V., Gangsta's Paradise	24	28
26	Seal, Don't Cry	22	12
27	Alanis Morissette, You Oughta Know	21	21
28	Diana King, Sry Guy	20	16
29	Oasis, Wonderwall	19	20
30	Planet Soul, Set U Free	18	7
31	Real McCoy, Another Night	18	14
32	Janet Jackson, Runaway	18	32
33	Xscape, Who Can I Run To	18	17
34	3T, Anything	17	10
35	Mariah Carey, Fantasy	16	18
36	Blues Traveler, Run Around	16	15
37	All-4-One, I Can Love You Like That	15	16
38	Blessid Union Of Souls, Oh Virginia	15	0
39	Dianne Farris, I Know	12	9
40	Jon B. Feat. Babyface, Someone To Love	11	15

XL106.7

WXXL Orlando PD/MD: Adam Cook

	TW	LW	
1	La Bouche, Be My Lover	61	62
2	Whitney Houston, Exhale	55	53
3	Real McCoy, Automatic Lover	54	55
4	Everything But The Girl, Missing	51	40
5	Deep Blue Something, Breakfast At Tiffan	46	44
6	Joan Osborne, One Of Us	45	53
7	Mariah Carey & Boyz II Men, One Sweet Day	43	56
8	TLC, Duggin' On You	41	37
9	Hootie & The Blowfish, Time	39	34
10	Groove Theory, Tell Me	38	35
11	Planet Soul, Set U Free	38	39
12	Ace Of Base, Beautiful Life	38	31
13	Go Go Dolls, Name	37	38
14	Madonna, You'll See	36	39
15	Sophie B. Hawkins, As I Lay Me Down	36	30
16	Fun Factory, Celebration	30	24
17	Oasis, Wonderwall	29	20
18	The Tony Rich Project, Nobody Knows	27	17
19	Denine, Ai Cried Out	26	22
20	Natalie Merchant, Carnival	26	27
21	Blues Traveler, Hook	24	22
22	Alanis Morissette, Hand In My Pocket	23	38
23	Alanis Morissette, Ironic	23	16
24	Blessid Union Of Souls, Let Me Be The On	21	11
25	Bodeans, Closer To Free	21	20
26	Natalie Merchant, Wonder	20	25
27	Collective Soul, The World I Know	20	20
28	Seal, Don't Cry	19	25
29	George Michael, Jesus To A Child	18	18
30	Mariah Carey, Fantasy	18	14
31	Hootie & The Blowfish, Only Wanna Be Wit	17	15
32	Melissa Etheridge, I Want To Come Over	16	15
33	Seal, Kiss From A Rose	16	14
34	Janet Jackson, Runaway	15	11
35	Blues Traveler, Run Around	14	16
36	3T, Anything	14	0
37	Smashing Pumpkins, 1979	14	0
38	Le Click, Tonight Is The Night	13	8
39	Coolio Feat. L.V., Gangsta's Paradise	13	21
40	Collective Soul, December	13	11

Z93

WGTZ Dayton PD: Louis Kaplan MD: Gretchen Corbett

	TW	LW	
1	Go Go Dolls, Name	60	48
2	Blues Traveler, Hook	60	40
3	Whitney Houston, Exhale	58	58
4	Deep Blue Something, Breakfast At Tiffan	58	54
5	Hootie & The Blowfish, Time	58	58
6	Mariah Carey & Boyz II Men, One Sweet Day	48	43
7	Blessid Union Of Souls, Let Me Be The On	44	36
8	TLC, Duggin' On You	39	38
9	Joan Osborne, One Of Us	38	33
10	Everything But The Girl, Missing	37	34
11	The Tony Rich Project, Nobody Knows	37	23
12	Toad The Wet Sprocket, Good Intentions	37	28
13	Groove Theory, Tell Me	35	36
14	Natalie Merchant, Carnival	31	30
15	Coolio Feat. L.V., Gangsta's Paradise	31	32
16	Alanis Morissette, You Oughta Know	30	27
17	La Bouche, Be My Lover	29	21
18	Diana King, Sry Guy	28	25
19	Real McCoy, Another Night	28	25
20	Gin Blossoms, Til I Hear It From You	27	29
21	Mariah Carey, Fantasy	26	33
22	Sophie B. Hawkins, As I Lay Me Down	25	22
23	Collective Soul, December	25	26
24	Blessid Union Of Souls, Oh Virginia	23	16
25	Jon B. Feat. Babyface, Someone To Love	21	37
26	Blues Traveler, Run Around	20	23
27	Mariah Carey, Always Be My Baby	19	8
28	Madonna, You'll See	18	30
29	Take That, Back For Good	18	19
30	Del Amitri, Roll To Me	17	18
31	Presidents Of The United States, Lump	17	19
32	Natalie Merchant, Wonder	14	12
33	Collective Soul, The World I Know	14	9
34	Smashing Pumpkins, 1979	14	6
35	George Michael, Jesus To A Child	13	18
36	Gin Blossoms, Follow You Down	13	5
37	2Pac, California Love	12	8
38	L.V., Gangsta's Paradise	12	19
39	3T, Anything	12	8
40	Oasis, Wonderwall	11	12

Y107

WYHY Nashville PD: Charlie Quinn APD/MD: Tom Peace

	TW	LW	
1	Go Go Dolls, Name	56	57
2	Hootie & The Blowfish, Time	56	64
3	Blessid Union Of Souls, Let Me Be The On	54	56
4	Mariah Carey & Boyz II Men, One Sweet Day	56	59
5	Gin Blossoms, Til I Hear It From You	49	55
6	Edwin McCain, Solitude	45	37
7	Collective Soul, December	40	41
8	Natalie Merchant, Carnival	40	40
9	Del Amitri, Roll To Me	33	43
10	George Michael, Jesus To A Child	37	42
11	Madonna, You'll See	36	40
12	Take That, Back For Good	35	40
13	Janet Jackson, Twenty Foreplay	35	47
14	Natalie Merchant, Wonder	34	40
15	Big Mountain, Get Together	34	35
16	Blues Traveler, Hook	32	22
17	Melissa Etheridge, I Want To Come Over	30	30
18	Tony Potty, Wasting For Tonight	30	28
19	Hootie & The Blowfish, Only Wanna Be Wit	21	30
20	Toad The Wet Sprocket, Good Intentions	27	16
21	Blues Traveler, Run Around	24	37
22	Elton John, Blessed	23	21
23	The Rembrandts, I'll Be There For You	23	20
24	Fun Factory, I Wanna B With U	22	24
25	Whitney Houston, Exhale	22	25
26	Seal, Kiss From A Rose	20	20
27	Dianne Farris, I Know	20	11
28	Green Day, When I Come Around	19	22
29	Everything But The Girl, Missing	19	23
30	Janet Jackson, Runaway	19	14
31	TLC, Waterfalls	18	24
32	Joan Osborne, One Of Us	18	13
33	Diana King, Sry Guy	17	14
34	Real McCoy, Another Night	15	14
35	Nicki French, Total Eclipse Of The	15	10
36	The Tony Rich Project, Nobody Knows	15	8
37	Michael Jackson, You Are Not Alone	14	11
38	Sheryl Crow, All I Wanna Do	14	17
39	Mariah Carey, Fantasy	13	12
40	Deep Blue Something, Breakfast At Tiffan	13	13

JAMMIN' 92

WZLW Cleveland PD: Lisa Rodman MD: Dave Eubanks

	TW	LW	
1	Blues Traveler, Hook	50	47
2	L.A.D., Rodn Low	47	32
3	Max-A-Million, Sexual Healing	46	44
4	Mariah Carey & Boyz II Men, One Sweet Day	46	40
5	Gin Blossoms, Til I Hear It From You	44	24
6	LL Cool J, Hey Lover	43	43
7	Go Go Dolls, Name	43	41
8	Monica, Don't Take It Personal	39	16
9	Alanis Morissette, Hand In My Pocket	38	39
10	Jon B., Pretty Girl	38	27
11	La Bouche, Be My Lover	34	31
12	The Tony Rich Project, Nobody Knows	31	30
13	Selena, Dismaying Of You	30	34
14	Edwin McCain, Solitude	28	0



Playlists supplied by Broadcast Data Systems. Radio Track service. Stations selected from panel of leading broadcasters in 125 radio markets, electronically monitored 24 hours a day, 7 days a week. Songs ranked by number of plays in monitored week.

WZPL Indianapolis PD: Tom Gjerdrum MD: Ron Blair. Top 40 playlist including songs like 'Deep Blue Something, Breakfast At Tiffan' and '3T, Anything'.

Z104 Norfolk PD: Don London MD: Sean Sellers. Top 40 playlist including songs like 'Planet Soul, Set U Free' and 'Hootie & The Blowfish, Time'.

KJ103 Oklahoma City PD: Mike McCoy MD: Joe Friday. Top 40 playlist including songs like 'Joan Osborne, One Of Us' and 'Hootie & The Blowfish, Time'.

MIX 93.3 Kansas City OM: Tom Land. Top 40 playlist including songs like 'Natalie Merchant, Wonder' and 'Joan Osborne, One Of Us'.

98PXY Rochester OM/PD: Clarke Ingram APD/MD: J.J. Rice. Top 40 playlist including songs like 'Mariah Carey & Boyz II Men, One Sweet Day' and 'Deep Blue Something, Breakfast At Tiffan'.

WKRZ Wilkes-Barre PD: Ken Medek MD: Jerry Padden. Top 40 playlist including songs like 'Toad The Wet Sprocket, Good Intentions' and 'Hootie & The Blowfish, Time'.

FLY 92 Albany PD: Mike Morgan MD: Shawn Scott. Top 40 playlist including songs like 'La Bouche, Be My Lover' and 'Everything But The Girl, Missing'.

WIXX Green Bay PD: Dan Stone. Top 40 playlist including songs like '1 Everything But The Girl, Missing' and 'Joan Osborne, One Of Us'.

KHFI Austin PD: John Roberts MD: Fernando Ventura. Top 40 playlist including songs like 'Goo Goo Dolls, Name' and 'Deep Blue Something, Breakfast At Tiffan'.

VVKS Toledo PD: Mike Wheeler MD: Curt Kruse. Top 40 playlist including songs like 'Everything But The Girl, Missing' and 'Mariah Carey & Boyz II Men, One Sweet Day'.

WDJX Louisville PD: C.C. Matthews MD: Jill Meyer. Top 40 playlist including songs like 'Joan Osborne, One Of Us' and 'Mariah Carey & Boyz II Men, One Sweet Day'.

K92 Roanoke OM: Sammy Simpson PD: Rich E. Cunningham. Top 40 playlist including songs like 'Mariah Carey & Boyz II Men, One Sweet Day' and 'Hootie & The Blowfish, Time'.

Q99 Salt Lake City PD: Brian DeGeus MD: Geronimo. Top 40 playlist including songs like 'Alanis Morissette, Ironic' and 'Smashing Pumpkins, 1979'.

KC101 New Haven PD: Steve Wilson MD: Jeff McCartney. Top 40 playlist including songs like 'Del Amitri, Roll To Me' and 'Dave Matthews Band, Ants Marching'.

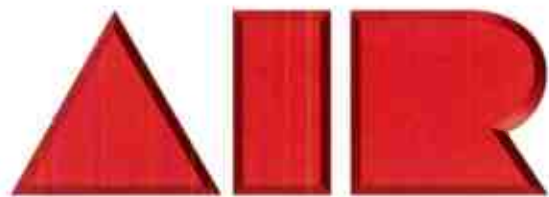
93Q Syracuse PD: Dave Edwards MD: Jimmy Olson. Top 40 playlist including songs like 'Mariah Carey & Boyz II Men, One Sweet Day' and 'Joan Osborne, One Of Us'.

B104 McAllen PD: Billy Santiago MD: Jeff DeWitt. Top 40 playlist including songs like 'La Bouche, Be My Lover' and '3T, Anything'.

SWEET 98 Omaha PD: Michael Steele MD: Jimi Jamm. Top 40 playlist including songs like '3T, Anything' and 'Whitney Houston, Exhale'.

Q94 Richmond PD: Lisa McKay APD/MD: Billy Surf. Top 40 playlist including songs like 'Mariah Carey & Boyz II Men, One Sweet Day' and 'Hootie & The Blowfish, Time'.

Lyric
Melody
RHYTHM
PRODUCTION
Artistry



A Commitment to Listening

Active Industry Research is a North American network of Program and Music Directors who assess Top 40 music for record companies, artists, managers and producers.

AIRPLAY
Monitor

BDS IMPACT

DETECTIONS



★ ★ ★ **AIRPOWER** ★ ★ ★

(Minimum 1500 detections for the first time)

OASIS 1763/282

Wonderwall (Epic)
Total Stations: 81/Chart Move: 19-15
Heavy (40+ plays): 4 KHTY, KZZU, WHTZ, WPST
Medium (20-39): 42 KHOM, KHTO, KKRD, KLRZ, KQKQ, KRBE, KRQQ, KUTO, WABB, WAPE, WBZZ, WDCG, WDDJ, WEDJ, WFBC, WFLZ, WFMF, WHHY, WHOT, WKBQ, WKCI, WKSS, WKXJ, WLAN, WNCI, WNTO, WPRO, WSNX, WSSX, WSTR, WTWB, WWSR, WWCK, WWST, WXIS, WXLK, WXXL, WXXX, WZPL, WZST, WZYP
Light (Under 20): 35
New Airplay This Week: 4 WFHN, WHYI, WKRQ, WZJM

Total Plays/Gain

AIRPOWER BOUND

Total Plays/Gain

MELISSA ETHERIDGE 1481/189

I Want To Come Over (Island)
Total Stations: 79/Chart Move: 24-17
Heavy (40+ plays): 0
Medium (20-39): 41 KHTY, KKLQ, KKRD, KLRZ, KRQQ, WABB, WBHT, WBZZ, WDCG, WDDJ, WFLY, WHHY, WHYI, WIXX, WKBQ, WKCI, WKRZ, WKSE, WKXJ, WNOK, WNTO, WPRO, WPXY, WSSX, WSTR, WSTW, WVIC, WTWB, WVKX, WWSR, WWCK, WWST, WXIS, WXLK, WXXX, WYCR, WYHY, WZJM, WZNY, WZST, WZYP
Light (Under 20): 38
New Airplay This Week: 4 KJYO, WBZZ, WSNX, WXXB

GEORGE MICHAEL 1395/26

Jesus To A Child (DreamWorks/Geffen)
Total Stations: 77/Chart Move: 22-20
Heavy (40+): 1 KZZU
Medium (20-39): 28 KBFM, KHOT, KJYO, KKLQ, KKRD, KLRZ, KRQQ, WDCG, WFHN, WFLY, WHYI, WIXX, WKXJ, WMXQ, WNNK, WNOK, WNTO, WSSX, WSTW, WTWB, WVKX, WWSR, WWCK, WXIS, WXXX, WYCR, WYHY, WZYP
Light (Under 20): 48
New Airplay This Week: 2 WFLZ, WXXB

GROOVE THEORY 1387/37

Tell Me (Epic)
Total Stations: 74/Chart Move: 23-21
Heavy (40+): 14 KBFM, KDWB, KHFI, KHKS, KHOT, KIIS, KKRZ, KZZU, WKSS, WNCI, WPRO, WRVQ, WWST, WZPL
Medium (20-39): 16 KJYO, KKMG, KQKQ, KRQQ, WFBC, WFHN, WFLY, WFMF, WGTZ, WNTO, WVKX, WWSR, WXIS, WXLK, WXXL, WYCR
Light (Under 20): 44

SMASHING PUMPKINS 1133/232

1979 (Virgin)
Total Stations: 73/Chart Move: 27-25
Heavy (40+): 2 KRBE, KUTQ
Medium (20-39): 19 KHOT, KHTY, KKRD, KLRZ, KMXV, KQKQ, WAPE, WBZZ, WEDJ, WFLZ, WHTZ, WKBQ, WKXJ, WNOK, WPST, WTWB, WSTR, WTWB, WYCR, WZJM
Light (Under 20): 52
New Airplay This Week: 8 KHOT, KKRZ, KZZU, WFMF, WKRQ, WWSR, WXXL, WYHY

GIN BLOSSOMS 1027/459

Follow You Down (A&M)
Total Stations: 64/Chart Move: DEBUT 26
Heavy (40+): 0
Medium (20-39): 20 KHTY, KLRZ, KRQQ, WABB, WBHT, WDCG, WFBC, WHOT, WHTZ, WKRQ, WKRZ, WNOK, WNTO, WPRO, WPST, WSNX, WSTR, WTWB, WYCR, WZJM
Light (Under 20): 44
New Airplay This Week: 24 KHOM, KHHT, KHTY, KKMG, KMXV, KQKQ, WAPE, WDDJ, WFLY, WFLZ, WGTZ, WHHY, WKCI, WKXJ, WLAN, WNNK, WPRO, WSSX, WWSR, WWCK, WWST, WXXX, WZJM, WZST

BLESSID UNION OF SOULS 983/163

Oh Virginia (EMI)
Total Stations: 64/Chart Move: 31-28
Heavy (40+): 0
Medium (20-39): 23 KDWB, KKMG, KLRZ, KMXV, KQKQ, WAPE, WFLY, WGTZ, WHOT, WIXX, WKXJ, WNVZ, WSTW, WTWB, WVKX, WWCK, WXIS, WXLK, WYCR, WZJM, WZPL, WZST, WZYP
Light (Under 20): 41
New Airplay This Week: 6 KJYO, KKRZ, WDJX, WFLZ, WFMF, WKCI

BODEANS 976/124

Closer To Free (Slash/Reprise)
Total Stations: 63/Chart Move: 29-29
Heavy (40+): 2 WDCG, WHTZ
Medium (20-39): 21 WABB, WAPE, WDDJ, WEDJ, WFBC, WIXX, WKCI, WKRQ, WKRZ, WXXJ, WNNK, WNTO, WPRO, WPST, WTWB, WWCK, WXIS, WXXL, WYCR, WZPL, WZST
Light (Under 20): 40
New Airplay This Week: 2 WHYI, WMXQ

3T 974/137

Anything (MJJ/550 Music)
Total Stations: 71/Chart Move: 30-30
Heavy (40+): 7 KBFM, KHFI, KHOT, KIIS, KQKQ, WNVZ, WZPL
Medium (20-39): 11 KDWB, KHKS, KLRZ, WFBC, WFHN, WFLY, WNNK, WTWB, WWCK, WXIS, WZJM
Light (Under 20): 53
New Airplay This Week: 4 WHYI, WNCI, WRVQ, WXXL

MONICA 891/135

Before You Walk Out Of My Life (Rowdy/Arista)
Total Stations: 63/Chart Move: 36-32
Heavy (40+): 6 KKRD, WKSE, WNVZ, WTWB, WVKX, WXIS
Medium (20-39): 13 KBFM, KHOM, KHOT, KQKQ, WFBC, WFHN, WFLY, WKSS, WPXY, WRVQ, WWSR, WYCR, WZPL
Light (Under 20): 44
New Airplay This Week: 2 KHHT, KZZU

BUSH 811/54

Glycerine (Trauma/Interscope)
Total Stations: 50/Chart Move: 35-33
Heavy (40+): 3 KRBE, WHTZ, WPST
Medium (20-39): 13 KHOM, KHTY, KJYO, KLRZ, KUTO, WABB, WBHT, WDCG, WDDJ, WFBC, WHHY, WKXJ, WXIS
Light (Under 20): 34
New Airplay This Week: 6 WHOT, WIXX, WLAN, WWSR, WWST, WZPL

ALANIS MORISSETTE 787/257

Ironie (Maverick/Reprise)
Total Stations: 51/Chart Move: DEBUT 34
Heavy (40+): 4 KRBE, KUTQ, WHTZ, WPST
Medium (20-39): 11 KHTY, WABB, WAPE, WDCG, WEDJ, WNOK, WVKX, WXXL, WXXX, WZNY, WZST
Light (Under 20): 36
New Airplay This Week: 13 KHFI, WBHT, WFLZ, WHHY, WIOQ, WKSE, WIXXJ, WPRO, WPXY, WSNX, WWCK, WXXB, WZST

PLANET SOUL 727/105

Set U Free (Strictly Rhythm)
Total Stations: 36/Chart Move: 39-35
Heavy (40+): 7 KHFI, KHKS, KIIS, KZZU, WIOQ, WKSE, WNVZ
Medium (20-39): 7 KDWB, KJYO, KRBE, WFHN, WFLZ, WXXL, WZPL
Light (Under 20): 22
New Airplay This Week: 5 KRQQ, WEDJ, WGTZ, WHOT, WSNX

BRANDY 684/255

Sittin' Up In My Room (Arista)
Total Stations: 59/Chart Move: DEBUT 38
Heavy (40+): 3 KHFI, KZZU, WNVZ
Medium (20-39): 12 KBFM, KDWB, KHOT, KQKQ, WFBC, WFHN, WFMF, WKRQ, WRVQ, WSSX, WVKX, WXIS
Light (Under 20): 44
New Airplay This Week: 9 KKMG, KKRD, KKRZ, WFBC, WHOT, WKRQ, WTWB, WXLK, WZYP

MOST NEW AIRPLAY THIS WEEK

No. Of Stations

SOPHIE B. HAWKINS <i>Only Love (The Ballad Of Sleeping Beauty) (Columbia)</i>	30
GIN BLOSSOMS <i>Follow You Down (A&M)</i>	24
ALANIS MORISSETTE <i>Ironie (Maverick/Reprise)</i>	13
BRANDY <i>Sittin' Up In My Room (Arista)</i>	9
JANN ARDEN <i>Insensitive (A&M)</i>	8
SMASHING PUMPKINS <i>1979 (Virgin)</i>	8

CHART BOUND

Total Plays/Gain

DAVE MATTHEWS BAND 652/31

Satellite (RCA)
Total Stations: 41
Heavy (40+): 0
Medium (20-39): 12 KHTY, WDCG, WDDJ, WFLY, WHTZ, WKRZ, WNOK, WPST, WSTR, WWCK, WXIS, WZNY
Light (Under 20): 29

FOLK IMPLOSION 620/71

Natural One (London/Island)
Total Stations: 47
Heavy (40+): 4 KRBE, KUTO, WEDJ, WPST
Medium (20-39): 6 KHTY, KLRZ, WBHT, WDCG, WDDJ, WXIS
Light (Under 20): 37
New Airplay This Week: 6 KBFM, WFBC, WFLZ, WKBQ, WKRZ, WVKX

★ **SOPHIE B. HAWKINS 577/496**

Only Love (The Ballad Of Sleeping Beauty) (Columbia)
Total Stations: 48
Heavy (40+): 0
Medium (20-39): 9 KKLO, KLRZ, WBZZ, WIOQ, WKSE, WKSS, WMXQ, WPRO, WYCR
Light (Under 20): 39
New Airplay This Week: 30 KKLO, KLRZ, KMXV, KQKQ, WABB, WBHT, WBZZ, WHHY, WIXX, WKRZ, WKSS, WKXJ, WLAN, WMXQ, WNNK, WNOK, WPRO, WPXY, WSNX, WSSX, WSTR, WSTW, WTWB, WWCK, WXLK, WXXL, WXXX, WZJM, WZNY, WZYP

LL COOL J 526/38

Hey Lover (Def Jam/RAL/Island)
Total Stations: 55
Heavy (40+): 2 KIIS, WZJM
Medium (20-39): 5 KHFI, KZZU, WFHN, WFLY, WKSE
Light (Under 20): 48
New Airplay This Week: 1 WVKX

ACE OF BASE 498/140

Lucky Love (Arista)
Total Stations: 42
Heavy (40+): 1 KHFI
Medium (20-39): 13 KBFM, KHOT, KLRZ, KMXV, KRQQ, WAPE, WFHN, WKRQ, WNTO, WTWB, WWCK, WZJM, WZYP
Light (Under 20): 28
New Airplay This Week: 5 KQKQ, WSNX, WSTW, WZJM, WZNY

DEBORAH COX 494/119

Who Do U Love (Arista)
Total Stations: 43
Heavy (40+): 0
Medium (20-39): 12 KBFM, KHOT, KKMG, KKRZ, KLRZ, KZZU, WFHN, WFLY, WKRQ, WNVZ, WWCK, WYCR
Light (Under 20): 31
New Airplay This Week: 5 KHFI, KKRD, WFMF, WNNK, WSSX

BACKSTREET BOYS 484/3

We've Got It Goin' On (Jive)
Total Stations: 27
Heavy (40+): 3 KDWB, WKSE, WWST
Medium (20-39): 8 KHOT, KKMG, KQKQ, WDJX, WPXY, WSNX, WZJM, WZPL
Light (Under 20): 16

SEVEN MARY THREE 407/24

Cumbersome (Mammoth/Atlantic)
Total Stations: 32
Heavy (40+): 0
Medium (20-39): 7 KHTY, KLRZ, KRBE, KUTO, WDDJ, WPST, WWCK
Light (Under 20): 25
New Airplay This Week: 2 KHOM, WFBC

2PAC (FEAT. DR. DRE & ROGER TROUTMAN) 332/84

California Love (Death Row/Interscope)
Total Stations: 26
Heavy (40+): 1 WXIS
Medium (20-39): 5 KIIS, KZZU, WFHN, WFLZ, WZPL
Light (Under 20): 20
New Airplay This Week: 5 KDWB, KRQQ, WKSE, WRVQ, WSNX

MARIAH CAREY 329/164

Always Be My Baby (Columbia)
Total Stations: 24
Heavy (40+): 2 KZZU, WKSE
Medium (20-39): 5 KKRZ, KRQQ, WHOT, WIOQ, WYCR
Light (Under 20): 17
New Airplay This Week: 4 WHOT, WPXY, WSNX, WXXL

LISA LOEB & NINE STORIES 297/64

Taffy (Geffen)
Total Stations: 33
Heavy (40+): 0
Medium (20-39): 6 KHTY, KLRZ, KUTO, WKXJ, WXIS, WZST
Light (Under 20): 27
New Airplay This Week: 4 KHOM, KJYO, WVKX, WXXX

FUN FACTORY 284/16

Celebration (Curb-edell/Curb)
Total Stations: 17
Heavy (40+): 1 KBFM
Medium (20-39): 5 KLRZ, WIOQ, WTWB, WXXL, WZJM
Light (Under 20): 11
New Airplay This Week: 1 KLRZ

MAX-A-MILLION 280/56

Sexual Healing (S.O.S./Zoo)
Total Stations: 39
Heavy (40+): 3 KHOT, WNVZ, WZJM
Medium (20-39): 2 WIOQ, WNNK
Light (Under 20): 34

D:REAM 278/63

Shoot Me With Your Love (Sire/EEG)
Total Stations: 61
Heavy (40+): 8
Medium (20-39): 4 KLRZ, WFHN, WFLY, WXIS
Light (Under 20): 57
New Airplay This Week: 1 WWST

THE PRESIDENTS OF THE UNITED STATES OF AMERICA 246/93

Peaches (Columbia)
Total Stations: 27
Heavy (40+): 0
Medium (20-39): 5 KJYO, KUTO, WHTZ, WPST, WXIS
Light (Under 20): 22
New Airplay This Week: 6 KHTY, KRBE, WABB, WDCG, WWCK, WWST

NO DOUBT 243/34

Just A Girl (Trauma/Interscope)
Total Stations: 19
Heavy (40+): 1 WPST

Medium (20-39): 3 KHTY, KUTO, WHTZ
Light (Under 20): 15
New Airplay This Week: 2 WFMF, WKXJ

JANN ARDEN 228/76

Insensitive (A&M)
Total Stations: 27
Heavy (40+): 0
Medium (20-39): 2 WKXJ, WVIC
Light (Under 20): 25
New Airplay This Week: 8 KMXV, WDDJ, WDJX, WFMF, WGTZ, WMXQ, WWCK, WZNY

SHAWN STOCKMAN 226/10

Visions Of A Sunset (Polydor/A&M)
Total Stations: 19
Heavy (40+): 0
Medium (20-39): 2 WNVZ, WWCK
Light (Under 20): 17
New Airplay This Week: 1 KKRD

N-TRANCE 181/13

Stayin' Alive (Radikal/Avex-Critique)
Total Stations: 26
Heavy (40+): 0
Medium (20-39): 1 KIIS
Light (Under 20): 25

DIANA KING 179/34

Ain't Nobody (Work)
Total Stations: 29
Heavy (40+): 0
Medium (20-39): 4 KHOT, WNVZ, WXIS, WZJM
Light (Under 20): 25

MEN WITHOUT HATS 178/23

The Safety Dance (Priority)
Total Stations: 46
Heavy (40+): 0
Medium (20-39): 0
Light (Under 20): 46
New Airplay This Week: 2 KHOT, WKCI

LE CLICK 172/16

Tonight Is The Night (Logic)
Total Stations: 16
Heavy (40+): 1 WIOQ
Medium (20-39): 2 WKSE, WRVQ
Light (Under 20): 13

GOO GOO DOLLS 158/12

Naked (Metal Blade/Warner Bros.)
Total Stations: 14
Heavy (40+): 0
Medium (20-39): 4 KHTY, KRBE, KUTO, WPST
Light (Under 20): 10

TOADIES 151/22

Possum Kingdom (Interscope)
Total Stations: 11
Heavy (40+): 0
Medium (20-39): 4 KHTY, KUTO, WDDJ, WPST
Light (Under 20): 7

★ **SPACEHOG 146/31**

In The Meantime (HiFi/Sire/EEG)
Total Stations: 18
Heavy (40+): 0
Medium (20-39): 3 KRBE, KUTO, WPST
Light (Under 20): 15
New Airplay This Week: 1 WZST

★ **EVERCLEAR 142/59**

Santa Monica (Watch The World Die) (Tim Korr/Capitol)
Total Stations: 20
Heavy (40+): 0
Medium (20-39): 3 KHTY, KUTO, WPST
Light (Under 20): 17
New Airplay This Week: 3 KHTY, WABB, WDCG

L.A.D. FEAT. DARVY TRAYLOR 140/9

Ridin' Low (Hollywood)
Total Stations: 9
Heavy (40+): 1 WZJM
Medium (20-39): 1 KIIS
Light (Under 20): 7

★ **ENYA 140/30**

Anywhere Is (Reprise)
Total Stations: 26
Heavy (40+): 0
Medium (20-39): 1 WXIS
Light (Under 20): 25
New Airplay This Week: 1 WSNX

★ **LINA SANTIAGO 126/48**

Feels So Good (Show Me Your Love) (Universal)
Total Stations: 23
Heavy (40+): 0
Medium (20-39): 3 KBFM, KHFI, KIIS
Light (Under 20): 20
New Airplay This Week: 1 WFHN

MAINSTREAM

SONG ACTIVITY REPORTS

For Week Ending February 4, 1996



Detailed song tracking information for the last 3 weeks for all songs showing increased play this week. Total plays and gain do not include video play. Markets listed in order of population.

3T Anything (MJJ/550 MUSIC) Total Stations: 71 Chart Move: 30-30

ACE OF BASE Lucky Love (Arista) Total Stations: 42

BLESSID UNION OF SOULS Oh Virginia (EMI) Total Stations: 64 Chart Move: 31-28

BLUES TRAVELER Hook (A&M) Total Stations: 81 Chart Move: 12-11

BODEANS Closer To Free (Slash/Reprise) Total Stations: 63 Chart Move: 29-29

BRANDY Sittin' Up In My Room (Arista) Total Stations: 59 Chart Move: Debut 38

BUSH Glycerine (Trauma/Interscope) Total Stations: 50 Chart Move: 35-33

COLLECTIVE SOUL The World I Know (Atlantic) Total Stations: 80 Chart Move: 16-16

DEBORAH COX Who Do U Love (Arista) Total Stations: 43

MELISSA ETHERIDGE I Want To Come Over (Island) Total Stations: 79 Chart Move: 24-17

EVERYTHING BUT THE GIRL Missing (Atlantic) Total Stations: 81 Chart Move: 2-2

FOLK IMPLOSION Natural One (London/Island) Total Stations: 47

GIN BLOSSOMS Follow You Down (A&M) Total Stations: 64 Chart Move: Debut 26

GROOVE THEORY Tell Me (Epic) Total Stations: 74 Chart Move: 23-21

SOPHIE B. HAWKINS Only Love (The Ballad of Sleeping Beauty) (Columbia) Total Stations: 48

MAINSTREAM

SONG ACTIVITY REPORTS For Week Ending February 4, 1996

WORLDWIDE AIRPLAY MONITOR Broadcast Data Systems Detailed song tracking information for the last 3 weeks for all songs showing increased airplay this week. Total plays and gain do not include video play. Markets listed in order of population.

HOOTIE & THE BLOWFISH 2987/113 Be My Lover (RCA) Total Stations: 80 Chart Move: 5-5

LA BUCHE 2456/262 Hey Lover (Def Jam/RAL/Island) Total Stations: 77 Chart Move: 8-8

LL COOL J 526/38 Dave Matthews Band 652/31 Satellite (RCA) Total Stations: 55 Chart Move: 5-5

DAVE MATTHEWS BAND 652/31 Satellite (RCA) Total Stations: 41 Chart Move: 1-1

NATALIE MERCHANT 2133/186 Wonder (Elektra/EEG) Total Stations: 82 Chart Move: 11-10

GEORGE MICHAEL 1395/26 Jesus To A Child (DreamWorks/Geffen) Total Stations: 77 Chart Move: 22-20

MONICA 891/135 Before You Walk Out Of My Life (Rowdy/Arista) Total Stations: 63 Chart Move: 36-32

ALANIS MORISSETTE 787/257 Ironic (Maverick/Reprise) Total Stations: 51 Chart Move: Debut 34

OASIS 1763/282 Wonderwall (Epic) Total Stations: 81 Chart Move: 19-15

JOAN OSBORNE 3237/22 One Of Us (Blue Gorilla/Mercury) Total Stations: 81 Chart Move: 4-4

PLANET SOUL 727/105 Set U Free (Strictly Rhythm) Total Stations: 36 Chart Move: 39-35

THE TONY RICH PROJECT 2139/459 Nobody Knows (LaFace/Arista) Total Stations: 78 Chart Move: 13-9

SEAL 1774/158 Don't Cry (Z Warner Bros.) Total Stations: 81 Chart Move: 15-14

SEVEN MARY THREE 407/24 Cumbersome (Mammoth/Antonic) Total Stations: 32 Chart Move: 1-1

SMASHING PUMPKINS 1133/232 1979 (Virgin) Total Stations: 73 Chart Move: 27-25



POWER PLAYLISTS

For Week Ending February 4, 1996



Playlists supplied by Broadcast Data Systems... Radio Track service...

HOT 97 table with columns for station (WQHT), PD (Steve Smith), and a list of 40 songs with their TW and LW ratings.

POWER 106 table with columns for station (KPWR), PD (Michelle Mercer), and a list of 40 songs with their TW and LW ratings.

B96 table with columns for station (WBBM), PD (Tood Cavanah), and a list of 40 songs with their TW and LW ratings.

KMEL table with columns for station (KMEL), PD (Michelle Santosuosso), and a list of 40 songs with their TW and LW ratings.

WPGC table with columns for station (WPGC), PD (Jay Stevens), and a list of 40 songs with their TW and LW ratings.

WILD 107 table with columns for station (KYLd), PD (Michael Martin), and a list of 40 songs with their TW and LW ratings.

JAM'N 94.5 table with columns for station (WJMN), PD (Cadillac Jack), and a list of 40 songs with their TW and LW ratings.

THE BOX table with columns for station (KBXX), PD (Rob Scarpio), and a list of 40 songs with their TW and LW ratings.

POWER 96 table with columns for station (WPOW), Acting PD (Mark Shands), and a list of 40 songs with their TW and LW ratings.

KUBE table with columns for station (KUBE), PD (Mike Tierney), and a list of 40 songs with their TW and LW ratings.

POWER 92 table with columns for station (KKFR), PD (Don Parker), and a list of 40 songs with their TW and LW ratings.

KGGI table with columns for station (KGGI), PD/MD (Bob Lewis), and a list of 40 songs with their TW and LW ratings.

FM 102 table with columns for station (KFSM), PD (Rick Thomas), and a list of 40 songs with their TW and LW ratings.

KTFM table with columns for station (KTFM), PD (Cliff Tredway), and a list of 40 songs with their TW and LW ratings.

92Q table with columns for station (WERQ), MD (Camille Cashwell), and a list of 40 songs with their TW and LW ratings.

KS104 table with columns for station (KQKS), PD (Mark Feather), and a list of 40 songs with their TW and LW ratings.

Z90 table with columns for station (XHTZ), OM/PD (Lisa Vazquez), and a list of 40 songs with their TW and LW ratings.

B95 table with columns for station (KBOS), PD (Mark Adams), and a list of 40 songs with their TW and LW ratings.



★ ★ ★ AIRPOWER ★ ★ ★

(Minimum 600 detections for the first time)

NO RECORDS QUALIFIED FOR AIRPOWER THIS WEEK

AIRPOWER BOUND

Total Plays/Gain

MARIAH CAREY 587/172
Always Be My Baby (Columbia)
Total Stations: 21/Chart Move: 23-16
Heavy (40+ plays): 6 KBXX, KDON, KJMZ, KMEL, KSFM, KUBE
Medium (20-39): 8 KKFR, KLUC, KQKS, WBBM, WERQ, WJMN, WPGC, XHTZ
Light (Under 20): 7
New Airplay This Week: 3 KYLD, KZFM, WJMH

LL COOL J 493/105
Doin It (Def Jam/RAL/Island)
Total Stations: 22/Chart Move: 25-20
Heavy (40+): 4 KBXX, KYLD, WJMH, WWKX
Medium (20-39): 4 KLUC, KMEL, WPGC, WQHT
Light (Under 20): 14
New Airplay This Week: 2 KLUC, WERQ

DEBORAH COX 460/39
Who Do U Love (Arista)
Total Stations: 22/Chart Move: 22-23
Heavy (40+): 4 KDON, WHHH, WWKX, XHTZ
Medium (20-39): 7 KCAQ, KKFR, KLUC, KSFM, KZFM, WERQ, WJJS
Light (Under 20): 11

TOTAL 359/36
No One Else (Bad Boy/Arista)
Total Stations: 18/Chart Move: 33-30
Heavy (40+): 6 KBXX, WERQ, WJMH, WPGC, WQHT, WWKX
Medium (20-39): 2 KMEL, WHHH
Light (Under 20): 10

R. KELLY 352/62
Down Low (Nobody Has To Know) (Jive)
Total Stations: 17/Chart Move: 37-31
Heavy (40+): 4 KBXX, WHHH, WJMH, XHTZ
Medium (20-39): 5 KCAQ, WERQ, WJJS, WPGC, WQHT
Light (Under 20): 8

D'ANGELO 349/73
Lady (EMI)
Total Stations: 23/Chart Move: 40-32
Heavy (40+): 0
Medium (20-39): 8 KCAQ, KZFM, WERQ, WHHH, WJJS, WJMH, WPGC, WWKX
Light (Under 20): 15
New Airplay This Week: 3 KQKS, KZHT, WQHT

THE BARRIO BOYZZ 322/1
How We Roll (SBK/EMI)
Total Stations: 11/Chart Move: 34-34
Heavy (40+): 2 KDON, KZFM
Medium (20-39): 7 KCAQ, KLUC, KPRR, KZHT, WHHH, WJJS, XHTZ
Light (Under 20): 2

XSCAPE 299/42
Do You Want To (So So Def/Columbia)
Total Stations: 21/Chart Move: Debut 36
Heavy (40+): 1 WERQ

Medium (20-39): 5 KBXX, WHHH, WJJS, WJMH, WPGC
Light (Under 20): 15
New Airplay This Week: 6 KJMZ, KKFR, KLUC, KYLD, WJMN, WWKX

DENINE W/COLLAJE'S ADAM MARANO 285/19
All Cried Out (Viper/Metropolitan)
Total Stations: 11/Chart Move: Re-Entry 37
Heavy (40+): 3 KTFM, KZFM, WJJS
Medium (20-39): 3 KBOS, KKFR, KPRR
Light (Under 20): 5

JANET JACKSON 270/7
Twenty Foreplay (A&M)
Total Stations: 17/Chart Move: Re-Entry 40
Heavy (40+): 2 KDON, KZHT
Medium (20-39): 4 KBOS, KKFR, KLUC, WJJS
Light (Under 20): 11

THE OUTHERE BROTHERS 265/18
Boom Boom Boom (Aureus)
Total Stations: 19
Heavy (40+): 3 KGGI, WJMN, WPOW
Medium (20-39): 1 KLUC
Light (Under 20): 15

GROOVE THEORY 263/34
Keep Tryin' (Epic)
Total Stations: 19
Heavy (40+): 0
Medium (20-39): 7 KCAQ, WERQ, WHHH, WJJS, WPGC, WQHT, XHTZ
Light (Under 20): 12
New Airplay This Week: 1 KUBE

FROST 235/2
La Familia (Ruthless/Relativity)
Total Stations: 11
Heavy (40+): 2 KPWR, KYLD
Medium (20-39): 2 KKSS, KMEL
Light (Under 20): 7

SHAWN STOCKMAN 223/29
Visions Of A Sunset (Polydor/A&M)
Total Stations: 19
Heavy (40+): 1 KMEL
Medium (20-39): 4 KCAQ, KDON, WERQ, WJJS
Light (Under 20): 14
New Airplay This Week: 1 KQKS

JOE 201/13
All The Things (Your Man Won't Do) (Island)
Total Stations: 14
Heavy (40+): 1 KBXX
Medium (20-39): 4 KCAQ, KZFM, WPGC, WQHT
Light (Under 20): 9
New Airplay This Week: 2 WQHT, WWKX

MOST NEW AIRPLAY THIS WEEK

No. Of Stations

XSCAPE <i>Do You Want To (So So Def/Columbia)</i>	6
MONA LISA FEAT. LOST BOYZ <i>Can't Be Wasting My Time (Island)</i>	4
MARY J. BLIGE <i>Not Gon' Cry (Arista)</i>	3
MARIAH CAREY <i>Always Be My Baby (Columbia)</i>	3
D'ANGELO <i>Lady (EMI)</i>	3
CHANTAY SAVAGE <i>I Will Survive (RCA)</i>	3

DIANA KING 184/13
Ain't Nobody (Work)
Total Stations: 13
Heavy (40+): 0
Medium (20-39): 5 KCAQ, KKFR, KZHT, WHHH, WJJS
Light (Under 20): 8
New Airplay This Week: 2 KKSS, KZFM

CHANTAY SAVAGE 183/96
I Will Survive (RCA)
Total Stations: 15
Heavy (40+): 0
Medium (20-39): 3 KTFM, WERQ, WJJS
Light (Under 20): 12
New Airplay This Week: 3 KMEL, KPRR, WERQ

MONIFAH 178/7
I Miss You (Come Back Home) (Uptown/Universal)
Total Stations: 10
Heavy (40+): 1 KDON
Medium (20-39): 2 WERQ, WQHT
Light (Under 20): 7

RAPPIN' 4-TAY 173/43
Ain't No Playa (Chrysalis/EMI)
Total Stations: 8
Heavy (40+): 2 KMEL, KYLD
Medium (20-39): 1 KPWR
Light (Under 20): 5
New Airplay This Week: 1 KPRR

4HERO 170/38
Mr. Kirk (Sm:)e/Profile
Total Stations: 10
Heavy (40+): 2 KMEL, KYLD
Medium (20-39): 1 KZFM
Light (Under 20): 7

MARIAH CAREY 149/29
Open Arms (Columbia)
Total Stations: 9
Heavy (40+): 0
Medium (20-39): 4 KJMZ, KPRR, KTFM, WPOW
Light (Under 20): 5
New Airplay This Week: 1 WPOW

FUGEES 143/32
Fu-Gee-La (Ruffhouse/Columbia)
Total Stations: 15
Heavy (40+): 1 WQHT
Medium (20-39): 1 WERQ
Light (Under 20): 13
New Airplay This Week: 2 KYLD, WWKX

MONA LISA FEAT. LOST BOYZ 138/46
Can't Be Wasting My Time (Island)
Total Stations: 13
Heavy (40+): 0

Medium (20-39): 2 WJMH, WQHT
Light (Under 20): 11
New Airplay This Week: 4 KCAQ, KQKS, WPGC, XHTZ

TERRY ELLIS 136/6
Where Ever You Are (EastWest/EEG)
Total Stations: 13
Heavy (40+): 0
Medium (20-39): 2 KMEL, WPGC
Light (Under 20): 11

L.B.C. CREW 131/6
Beware Of My Crew (Jac-MAC/Warner Bros.)
Total Stations: 9
Heavy (40+): 1 KPWR
Medium (20-39): 1 KGGI
Light (Under 20): 7
New Airplay This Week: 2 KZHT, WWKX

SA-DEUCE 123/43
Don't Waste My Time (Mecca Doni/Elektra/EEG)
Total Stations: 10
Heavy (40+): 0
Medium (20-39): 2 KBXX, WERQ
Light (Under 20): 8
New Airplay This Week: 2 WJJS, WWKX

ACE OF BASE 112/54
Lucky Love (Arista)
Total Stations: 16
Heavy (40+): 1 WBBM
Medium (20-39): 1 XHTZ
Light (Under 20): 14
New Airplay This Week: 2 KBOS, KPRR

TONI BRAXTON 110/11
Let It Flow (Arista)
Total Stations: 6
Heavy (40+): 1 KDON
Medium (20-39): 1 WPGC
Light (Under 20): 4

MAX-A-MILLION 92/23
Everybody's Groovin' (S.O.S./Zoo)
Total Stations: 7
Heavy (40+): 0
Medium (20-39): 2 KLUC, XHTZ
Light (Under 20): 5
New Airplay This Week: 2 KCAQ, WJJS

MC LYTE 81/5
Keep On Keepin' On (EastWest/EEG)
Total Stations: 5
Heavy (40+): 1 WJMH
Medium (20-39): 0
Light (Under 20): 4
New Airplay This Week: 2 KBXX, WQHT

BIG SISTER 78/1
'Round We Go (S.O.S./Zoo)
Total Stations: 6
Heavy (40+): 1 WBBM
Medium (20-39): 0
Light (Under 20): 5

★ **H-TOWN** 77/33
A Thin Line Between Love & Hate (Jac-MAC/Warner Bros.)
Total Stations: 3
Heavy (40+): 0
Medium (20-39): 2 KBXX, KTFM
Light (Under 20): 1
New Airplay This Week: 1 KTFM

BUSTA RHYMES 72/13
Woo-Hah!! Got You All In Check (Elektra/EEG)
Total Stations: 11
Heavy (40+): 0
Medium (20-39): 1 WJMH
Light (Under 20): 10
New Airplay This Week: 2 WPGC, WWKX

HELTAH SKELTAH/O.G.C. A.K.A. THE FAB 5 71/5
Lelfaur Leflah Eshkushka (Duck Down/Priority)
Total Stations: 4
Heavy (40+): 1 WQHT
Medium (20-39): 1 WJMH
Light (Under 20): 2

★ **FAITH EVANS** 69/31
Kissing You (Arista)
Total Stations: 4
Heavy (40+): 1 WPGC
Medium (20-39): 0
Light (Under 20): 3
New Airplay This Week: 1 WJMH

★ **PURE SOUL** 60/26
Stairway To Heaven (Step Sun/Interscope)
Total Stations: 2
Heavy (40+): 0
Medium (20-39): 2 WERQ, WPGC
Light (Under 20): 0
New Airplay This Week: 1 WPGC

FUN FACTORY 55/2
Celebration (Curb-edel/Curb)
Total Stations: 2
Heavy (40+): 0
Medium (20-39): 2 WBBM, WWKX
Light (Under 20): 0

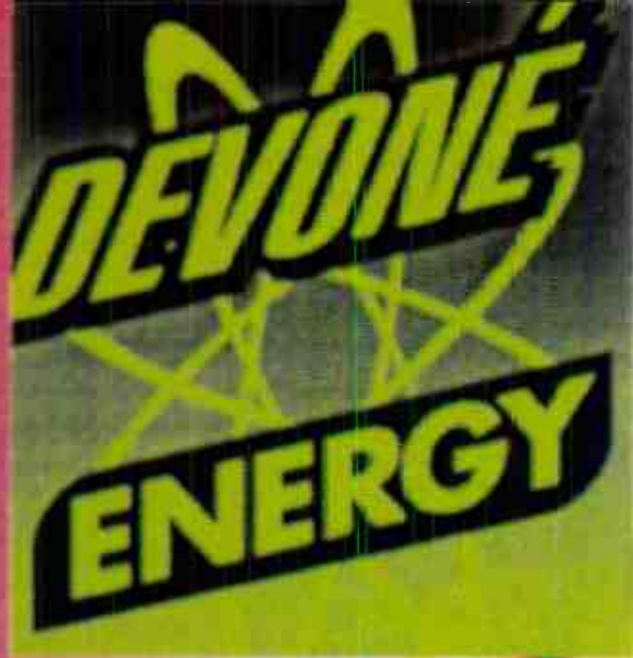
★ **GOO GOO DOLLS** 55/16
Name (Metal Blade/Warner Bros.)
Total Stations: 9
Heavy (40+): 0
Medium (20-39): 1 WBBM
Light (Under 20): 8

★ **EXPOSE** 55/32
I'll Say Good-Bye For The Two Of Us (Arista)
Total Stations: 2
Heavy (40+): 0
Medium (20-39): 2 KTFM, WPOW
Light (Under 20): 0
New Airplay This Week: 1 KTFM

★ **ME & MY COUSIN** 53/4
Smooth (Priority)
Total Stations: 4
Heavy (40+): 0
Medium (20-39): 1 KPWR
Light (Under 20): 3

★ **NONCHALANT** 53/25
5 O'clock (MCA)
Total Stations: 4
Heavy (40+): 0
Medium (20-39): 1 WJMH
Light (Under 20): 3
New Airplay This Week: 1 WJMH

Airpower awarded to those records which attain 600 detections for the first time. New airplay lists those stations registering six or more detections per week on a record for the first time. ★ Initial impact: records appearing on this page for the first time.



over 7 million

Top 40

l i s t e n e r s

over 400

p l a y s

KTFM	34X	WBBM	36X
KPWR	25X	KQKS	14X
KKFR	20X	KYLD	54X
KGGI	16X	WPOW	38X
KZFM	11X	KMEL	12X
KBOS	19X	WJJS	22X
XHTZ	20X		

#29 - Monitor Rhythm-Crossover Chart



SONG ACTIVITY REPORTS

For Week Ending February 4, 1996



Detailed song tracking information for the last 3 weeks for all songs showing increased play this week. Total plays and gain do not include video play. Markets listed in order of population.

4HERO Mr. Kirk (Sm:)e(Profile) Total Stations: 10

2PAC FEAT. DR. DRE & ROGER TROUTMAN California Love (Death Row/Interscope) Total Stations: 29

3T Anything (MJJ/550 Music) Total Stations: 28

THE BARRIO BOYZZ How We Roll (SBK/EMI) Total Stations: 11

MARY J. BLIGE Not Gon' Cry (Arista) Total Stations: 25

BRANDY Sittin' Up In My Room (Arista) Total Stations: 31

MARIAH CAREY Open Arms (Columbia) Total Stations: 9

MARIAH CAREY Always Be My Baby (Columbia) Total Stations: 21

DEBORAH COX Who Do U Love (Arista) Total Stations: 22

D'ANGELO Lady (EMI) Total Stations: 23

DENINE W/COLLAGE'S ADAM MARANO All Cried Out (Viper/Metropolitan) Total Stations: 11

EVERYTHING BUT THE GIRL Missing (Atlantic) Total Stations: 25

FROST La Familia (Ruthless/Relativity) Total Stations: 11

GROOVE THEORY Keep Tryin' (Epic) Total Stations: 19

JANET JACKSON Twenty Foreplay (A&M) Total Stations: 17

JOE All The Things (Your Man Won't Do) (Island) Total Stations: 14

R. KELLY Down Low (Nobody Has To Know) (Jive) Total Stations: 17

DIANA KING Ain't Nobody (Work) Total Stations: 13

LA BOUCHE Be My Lover (RCA) Total Stations: 26

LL COOL J Hey Lover (Def Jam/RAL/Island) Total Stations: 31

LL COOL J Def Jam/RAL/Island 493/105

MONIFAH I Miss You (Come Back Home) (Uptown/Universal) Total Stations: 10

THE OUTHERE BROTHERS Boom Boom Boom (Aureus) Total Stations: 19

RAPPIN' 4-TAY Ain't No Playa (Chrysalis/EMI) Total Stations: 8

THE TONY RICH PROJECT Nobody Knows (LaFace/Arista) Total Stations: 26

LINA SANTIAGO Feels So Good (Show Me Your Love) (Universal) Total Stations: 27

CHANTAY SAVAGE I Will Survive (RCA) Total Stations: 15

SHAWN STOCKMAN Visions Of A Sunset (Polydor/A&M) Total Stations: 19

TOTAL No One Else (Bad Boy/Arista) Total Stations: 18

XSCAPE Do You Want To (So So Def/Columbia) Total Stations: 21

Rhythm-Crossover
Impact Date:
February 12th

Early Adds:
KBXX 35x
KKBT 31x
WWKX

YO!



OutBurst
RECORDS

© 1996 OutBurst Records

domino

physical funk

Domino's back with the follow-up to his platinum debut. "Physical Funk" is the new smash single and album.



POWER PLAYLIST

For Week Ending February 4, 1996

Radio Data Systems logo and text: Playlists supplied by Broadcast Data Systems' Radio Track service...

Main table with 16 columns representing radio stations (WPLJ, MIX 105, STAR 98.7, STAR 104.5, B101, WPNT, MIX 101.9, Q95, MIX 107.3, MIX 98.5, K101, KS95, MIX 96.5, Q104, MIX 102.9, STAR 101.5, KYKY, WWMX, MIX 101.9, WALK, VARIETY 96, WKTI, WBLI, ALICE 106) and their respective top 30 song lists.

BDS IMPACT

AIRPOWER

(Minimum 600 detections for the first time)

Total Plays/Gain

NATALIE MERCHANT 663/86

Wonder (Elektra/EEG)

Total Stations: 42/Chart Move: 21-21
Heavy (30+ plays): 7 KALC, KFMB, KHM, KWMX, KYSR, WTMX, WZPK
Medium (15-29): 16 KDMX, KKOB, KPLZ, KYKY, WAHR, WBLI, WCSO, WKDD, WKZL, WMXV, WPLJ, WQLH, WRQX, WVTY, WWSN, WYYY
Light (Under 15): 19
New Airplay This Week: 1 WVAF

AIRPOWER BOUND

Total Plays/Gain

JOAN OSBORNE 599/105

One Of Us (Blue Gorilla/Mercury)

Total Stations: 41/Chart Move: 22-22
Heavy (30+ plays): 4 KFMB, KKOB, KSTP, WZPK
Medium (15-29): 14 KALC, KHM, KPLZ, KSTZ, KYSR, WAEV, WBMX, WKTI, WKZL, WPLJ, WTMX, WVTY, WWSN, WYYY
Light (Under 15): 23
New Airplay This Week: 3 WBEB, WCSO, WMXV

SELENA 458/7

Dreaming Of You (EMI Latin/EMI)

Total Stations: 29/Chart Move: 25-24
Heavy (30+): 5 KMZQ, KTHT, WJDX, WLHT, WMJQ
Medium (15-29): 9 KGBY, KIOI, WAHR, WDEF, WGSY, WKDD, WRMF, WYXR, WZPK
Light (Under 15): 15
New Airplay This Week: 1 WMXV

ROD STEWART 411/39

So Far Away (Lava/Atlantic)

Total Stations: 27/Chart Move: 27-25
Heavy (30+): 3 WEZF, WMJQ, WVTY
Medium (15-29): 10 KGBX, KGBY, WAHR, WBEB, WDEF, WJDX, WLHT, WMYI, WRMF, WTFM
Light (Under 15): 14
New Airplay This Week: 1 WCSO

THE TONY RICH PROJECT 334/57

Nobody Knows (LaFace/Arista)

Total Stations: 25/Chart Move: 30-27
Heavy (30+): 2 KKOB, WQLH
Medium (15-29): 9 KALC, KTHT, KWMX, WDEF, WEZF, WGSY, WKTI, WMLX, WZPK
Light (Under 15): 14
New Airplay This Week: 5 WBEB, WGSY, WMJQ, WMYI, WYXR

BLUES TRAVELER 332/61

Hook (A&M)

Total Stations: 19/Chart Move: 32-28
Heavy (30+): 1 KHM, KYSR, WZPK
Medium (15-29): 9 KALC, KFMB, KKOB, KSTP, KSTZ, WAEV, WMXV, WPLJ, WQLH
Light (Under 15): 7
New Airplay This Week: 1 WQLH

PHIL COLLINS 313/96

Somewhere (RCA Victor)

Total Stations: 24/Chart Move: 38-29
Heavy (30+): 1 KHM
Medium (15-29): 9 KGBY, KYKY, WDEF, WGSY, WJDX, WLHT, WMJQ, WPNT, WTFM
Light (Under 15): 14
New Airplay This Week: 6 KGBX, KYKY, WEZF, WIOG, WMLX, WRMF

JANN ARDEN 277/9

Insensitive (A&M)

Total Stations: 24/Chart Move: 33-32
Heavy (30+): 1 KHM
Medium (15-29): 8 KDMX, KPLZ, WBMX, WEZF, WKDD, WKTI, WMLX, WQLH
Light (Under 15): 15
New Airplay This Week: 1 KWMX

COLLECTIVE SOUL 249/32

The World I Know (Atlantic)

Total Stations: 23/Chart Move: 39-34
Heavy (30+): 4 KALC, KHM, KWMX, KYSR
Medium (15-29): 3 WMXV, WPLJ, WZPK
Light (Under 15): 16

MICHAEL BOLTON 246/8

A Love So Beautiful (Columbia)

Total Stations: 18/Chart Move: 36-35
Heavy (30+): 2 WJDX, WMJQ
Medium (15-29): 6 WAHR, WBEB, WDEF, WGSY, WLHT, WRMF
Light (Under 15): 10
New Airplay This Week: 1 KGBX

BODEANS 209/56

Closer To Free (Slash/Reprise)

Total Stations: 13/Chart Move: Debut 38
Heavy (30+): 2 KFMB, KYSR
Medium (15-29): 5 KALC, KHM, KSTP, WAEV, WKTI
Light (Under 15): 6
New Airplay This Week: 2 KALC, KSTZ

OASIS 202/28

Wonderwall (Epic)

Total Stations: 21/Chart Move: Debut 39
Heavy (30+): 2 KYSR, WTMX
Medium (15-29): 3 KALC, KFMB, KWMX
Light (Under 15): 16
New Airplay This Week: 2 KSTP, WCSO

SOPHIE B. HAWKINS 184/124

Only Love (The Ballad Of Sleeping Beauty) (Columbia)

Total Stations: 19/Chart Move: Debut 40
Heavy (30+): 1 WQLH
Medium (15-29): 3 KHM, WRQX, WWSN
Light (Under 15): 15
New Airplay This Week: 7 KALC, KHM, KWMX, WKDD, WKTI, WQLH, WYYY

CHART BOUND

Total Plays/Gain

BLESSID UNION OF SOULS 175/8

Let Me Be The One (EMI)

Total Stations: 16
Heavy (30+): 0
Medium (15-29): 5 KTHT, WKQI, WMJQ, WPNT, WZPK
Light (Under 15): 11

SMASHING PUMPKINS 166/8

1979 (Virgin)

Total Stations: 10
Heavy (30+): 2 KFM3, KYSR
Medium (15-29): 3 KALC, KWMX, WPLJ
Light (Under 15): 5
New Airplay This Week: 1 WBLI

GIN BLOSSOMS 152/40

Follow You Down (A&M)

Total Stations: 14
Heavy (30+): 0
Medium (15-29): 6 KALC, KHM, KWMX, WMLX, WMLX, WPLJ
Light (Under 15): 8
New Airplay This Week: 2 KYSR, WKTI

MOST NEW AIRPLAY THIS WEEK

No. Of Stations

SOPHIE B. HAWKINS 7

Only Love (The Ballad Of Sleeping Beauty) (Columbia)

BLESSID UNION OF SOULS 6

Oh Virginia (EMI)

PHIL COLLINS 6

Somewhere (RCA Victor)

SEAL 6

Don't Cry (ZTT/Warner Bros.)

ENYA 5

Anywhere Is (Reprise)

THE TONY RICH PROJECT 5

Nobody Knows (LaFace/Arista)

BLESSID UNION OF SOULS 134/70

Oh Virginia (EMI)

Total Stations: 15
Heavy (30+): 0
Medium (15-29): 3 WKTI, WPLJ, WTMX
Light (Under 15): 12
New Airplay This Week: 6 KSTZ, WMXB, WMXV, WPLJ, WTMX, WVAF

ALANIS MORISSETTE 131/8

Ironic (Maverick/Reprise)

Total Stations: 7
Heavy (30+): 3 KFMB, KHM, KYSR
Medium (15-29): 1 KWMX
Light (Under 15): 3

TOM PETTY & THE HEARTBREAKERS 127/10

Waiting For Tonight (MCA)

Total Stations: 13
Heavy (30+): 1 KYSR
Medium (15-29): 3 KFMB, WMLX, WTMX
Light (Under 15): 9
New Airplay This Week: 2 KSTZ, WMTX

MARY CHAPIN CARPENTER 93/12

Grow Old With Me (Hollywood)

Total Stations: 12
Heavy (30+): 0
Medium (15-29): 3 WAHR, WBEB, WDEF
Light (Under 15): 9

CURTIS STIGERS 84/4

Keep Me From The Cold (Arista)

Total Stations: 8
Heavy (30+): 0
Medium (15-29): 3 WAHR, WLHT, WMJQ
Light (Under 15): 5

BETTER THAN EZRA 84/6

Rosealia (Elektra/EEG)

Total Stations: 4
Heavy (30+): 1 KYSR
Medium (15-29): 2 WKTI, WZPK
Light (Under 15): 1

★ ACE OF BASE 68/33

Lucky Love (Arista)

Total Stations: 18
Heavy (30+): 1 WQLH
Medium (15-29): 0
Light (Under 15): 17

★ 3T 63/14

Anything (MJJ/550 Music)

Total Stations: 8
Heavy (30+): 0
Medium (15-29): 2 KTHT, WZPK
Light (Under 15): 6

★ MEN WITHOUT HATS 60/20

The Safety Dance (Priority)

Total Stations: 19
Heavy (30+): 0
Medium (15-29): 1 KALC
Light (Under 15): 18
New Airplay This Week: 1 WKDD

THIS WEEK	LAST WEEK	WEEKS ON	TITLE/LABEL	ARTIST	DETECTIONS	
					TW	LW
			★★★ No. 1 ★★★			
1	1	14	ONE SWEET DAY COLUMBIA	MARIAH CAREY & BOYZ II MEN	1781	1797
2	3	18	BLESSED ROCKET/ISLAND	ELTON JOHN	1376	1351
3	2	39	AS I LAY ME DOWN COLUMBIA	SOPHIE B. HAWKINS	1360	1488
4	4	28	BACK FOR GOOD ARISTA	TAKE THAT	1307	1331
5	7	15	YOU'LL SEE MAVERICK/WARNER BROS.	MADONNA	1230	1210
6	5	27	TIL I HEAR IT FROM YOU A&M	GIN BLOSSOMS	1227	1255
7	11	19	NAME METAL BLADE/WARNER BROS.	GOO GOO DOLLS	1207	1118
8	14	16	TIME ATLANTIC	HOOTIE & THE BLOWFISH	1183	1065
9	8	18	BREAKFAST AT TIFFANY'S RAINMAKER/INTERSCOPE	DEEP BLUE SOMETHING	1182	1187
10	6	27	ROLL TO ME A&M	DEL AMITRI	1181	1232
11	12	12	MISSING ATLANTIC	EVERYTHING BUT THE GIRL	1123	1095
12	9	31	ONLY WANNA BE WITH YOU ATLANTIC	HOOTIE & THE BLOWFISH	1113	1143
13	10	34	KISS FROM A ROSE ZTT/SIRE/WARNER BROS.	SEAL	1078	1136
14	13	16	EXHALE (SHOOP SHOOP) ARISTA	WHITNEY HOUSTON	1067	1074
15	15	37	RUN-AROUND A&M	BLUES TRAVELER	978	1010
16	16	11	DON'T CRY ZTT/WARNER BROS.	SEAL	891	818
17	17	4	JESUS TO A CHILD DREAMWORKS/GEFFEN	GEORGE MICHAEL	851	788
18	18	24	CARNIVAL ELEKTRA/EEG	NATALIE MERCHANT	780	748
19	19	7	I WANT TO COME OVER ISLAND	MELISSA ETHERIDGE	771	713
20	20	25	RUNAWAY A&M	JANET JACKSON	666	711
			★★★ AIRPOWER ★★★			
21	21	9	WONDER ELEKTRA/EEG	NATALIE MERCHANT	663	577
22	22	11	ONE OF US BLUE GORILLA/MERCURY	JOAN OSBORNE	599	494
23	23	19	GOOD INTENTIONS COLUMBIA/REPRISE	TOAD THE WET SPROCKET	475	488
24	25	8	DREAMING OF YOU EMI LATIN/EMI	SELENA	458	451
25	27	4	SO FAR AWAY LAVA/ATLANTIC	ROD STEWART	411	372
26	26	24	FANTASY COLUMBIA	MARIAH CAREY	367	408
27	30	3	NOBODY KNOWS LAFACE/ARISTA	THE TONY RICH PROJECT	334	277
28	32	2	HOOK A&M	BLUES TRAVELER	332	271
29	38	2	SOMEWHERE RCA VICTOR	PHIL COLLINS	313	217
30	34	12	HAND IN MY POCKET MAVERICK/REPRISE	ALANIS MORISSETTE	278	267
31	29	4	PROMISES BROKEN COLUMBIA	SOUL ASYLUM	278	280
32	33	5	INSENSITIVE A&M	JANN ARDEN	277	268
33	31	18	I WILL REMEMBER YOU ARISTA	SARAH McLACHLAN	274	273
34	39	2	THE WORLD I KNOW ATLANTIC	COLLECTIVE SOUL	249	217
35	36	6	A LOVE SO BEAUTIFUL COLUMBIA	MICHAEL BOLTON	246	238
36	35	24	FOREVER TONIGHT RIVER NORTH	PETER CETERA & CRYSTAL BERNARD	225	249
37	28	9	GET TOGETHER GIANT	BIG MOUNTAIN	211	298
38	NEW		CLOSER TO FREE SLASH/REPRISE	BODEANS	209	153
39	NEW		WONDERWALL EPIC	OASIS	202	174
40	NEW		ONLY LOVE (THE BALLAD OF SLEEPING BEAUTY) COLUMBIA	SOPHIE B. HAWKINS	184	60

Records showing an increase in detections over the previous week, regardless of chart movement. A record which has been on the chart for more than 20 weeks will not receive a bullet, even if it registers an increase in detections. Airpower awarded to those records which attain 600 detections for the first time. If two records are tied in number of plays, the record being played on more stations is placed first. Records below the top 20 are removed from the chart after 26 weeks. © 1996, Billboard/BPI Communications.

★ ENYA 59/35

Anywhere Is (Reprise)

Total Stations: 8
Heavy (30+): 0
Medium (15-29): 2 KFMB, WWSN
Light (Under 15): 6
New Airplay This Week: 5 KALC, KFMB, WAHR, WMXV, WWSN

★ MEAT LOAF 58/7

Not A Dry Eye In The House (MCA)

Total Stations: 7
Heavy (30+): 0
Medium (15-29): 2 WMLX, WMXV
Light (Under 15): 5

DAVE MATTHEWS BAND 56/6

Satellite (RCA)

Total Stations: 3
Heavy (30+): 1 KALC

Medium (15-29): 0
Light (Under 15): 2

★ AMY GRANT 55/46

The Things We Do For Love (Hollywood)

Total Stations: 8
Heavy (30+): 0
Medium (15-29): 1 WMJQ
Light (Under 15): 7
New Airplay This Week: 3 WDEF, WMJQ, WMLX

★ DOG'S EYE VIEW 52/40

Everything Falls Apart (Columbia)

Total Stations: 7
Heavy (30+): 0
Medium (15-29): 1 KHM
Light (Under 15): 6
New Airplay This Week: 3 KFMB, KHM, WZPK

SONG ACTIVITY REPORTS

For Week Ending February 4, 1996

Detailed song tracking information for the last 3 weeks for all songs showing increased play this week. Total plays and gain do not include video play. Markets listed in order of population.



Grid of charts for JANN ARDEN, BLUES TRAVELER, BODEANS, MICHAEL BOLTON, and COLLECTIVE SOUL. Each chart shows station names, song titles, and play counts.

Grid of charts for PHIL COLLINS, MELISSA ETHERIDGE, EVERYTHING BUT THE GIRL, GOO GOO DOLLS, and HOOTIE & THE BLOWFISH. Each chart shows station names, song titles, and play counts.

Grid of charts for ELTON JOHN, MADONNA, NATALIE MERCHANT, GEORGE MICHAEL, and OASIS. Each chart shows station names, song titles, and play counts.

Grid of charts for JOAN OSBORNE, THE TONY RICH PROJECT, SEAL, SELENA, and ROD STEWART. Each chart shows station names, song titles, and play counts.

KROQ		WKQX		WPLY	
Los Angeles PD: Kevin Weatherly APD: Gene Sandbloom		Chicago PD: Bill Gamble APD/MD: Mary Shuminas		Philadelphia Acting PD: Chuck Tisa	
TW	LW	TW	LW	TW	LW
1	Smashing Pumpkins, Zero	1	Pearl Jam, I Got It	1	Oasis, Wonderwall
2	Green Day, Brain Stew	2	Alice In Chains, Heaven Beside You	2	Blues Traveler, Hook
3	Smashing Pumpkins, 1979	3	Green Day, Brain Stew	3	Everything But The Girl, Missing
4	Oasis, Wonderwall	4	Smashing Pumpkins, 1979	4	Smashing Pumpkins, 1979
5	Pearl Jam, I Got It	5	Smashing Westward, What Do I Have To Do?	5	Bush, Glycerine
6	Bush, Glycerine	6	Oasis, Wonderwall	6	Go Go Dolls, Name
7	No Doubt, Just A Girl	7	No Doubt, Just A Girl	7	Pearl Jam, I Got It
8	Sonic Youth, The Diamond Sea	8	Red Hot Chili Peppers, Aeroplane	8	Natalie Merchant, Wonder
9	Spacehog, In The Meantime	9	Ruby, Tiny Meat	9	Presidents Of The United States, I Jump
10	Presidents Of The United States, Peaches	10	Nine Inch Nails, Terrible Lie	10	Alanis Morissette, Ironic
11	Foo Fighters, Big Me	11	Seven Mary Three, Cumbersome	11	Bodeans, Closer To Free
12	Folk Implosion, Natural One	12	Bush, Machinehead	12	Folk Implosion, Natural One
13	Toadies, Possum Kingdom	13	Folk Implosion, Natural One	13	Go Go Dolls, Naked
14	Oasis, Champagne Supernova	14	Go Go Dolls, Naked	14	Bush, Come Down
15	Everclear, Santa Monica	15	Everclear, Santa Monica	15	Toadies, Possum Kingdom
16	Everclear, Santa Monica	16	Toadies, Away	16	Collective Soul, The World I Know
17	Seven Mary Three, Cumbersome	17	Smashing Pumpkins, Zero	17	Smashing Pumpkins, Zero
18	Sponge, How Did I Get Here?	18	Collective Soul, The World I Know	18	Collective Soul, The World I Know
19	Garbage, Only Happy When It Rains	19	Load Lucy, In The Meantime	19	Load Lucy, In The Meantime
20	Stone Temple Pilots, Interstates Love Song	20	Korn, Shirts And Ladders	20	Korn, Shirts And Ladders
21	Nine Inch Nails, Terrible Lie	21	Presidents Of The United States, Peaches	21	Presidents Of The United States, Peaches
22	Red Hot Chili Peppers, My Friends	22	Garbage, Only Happy When It Rains	22	Garbage, Only Happy When It Rains
23	Bush, Machinehead	23	Oasis, Champagne Supernova	23	Oasis, Champagne Supernova
24	Collective Soul, The World I Know	24	Go Go Dolls, Naked	24	Wand'rst, I Walked
25	Bush, Come Down	25	Spacehog, In The Meantime	25	Spacehog, In The Meantime
26	The Cranberries, Zombie	26	Filter, Hey Man Nice Shot	26	Filter, Hey Man Nice Shot
27	Alanis Morissette, Ironic	27	Silverchair, Tomorrow	27	Silverchair, Tomorrow
28	Live, I Alone	28	Toadies, Possum Kingdom	28	Toadies, Possum Kingdom
29	Silverchair, Tomorrow	29	Live, Lightning Crashes	29	Red Hot Chili Peppers, My Friends
30	Ruby, Tiny Meat	30	Bush, Come Down	30	No Doubt, Just A Girl

WBCN		WHYT		KDGE	
Boston VP/Prgm: Oedipus MD: Carter Alan		Detroit PD: Garrett Michaels MD: Alex Tear		Dallas PD: Joel Folger MD: Jay Michaels	
TW	LW	TW	LW	TW	LW
1	Natalie Merchant, Wonder	1	Oasis, Wonderwall	1	Folk Implosion, Natural One
2	Alanis Morissette, Ironic	2	Alanis Morissette, Ironic	2	Bush, Glycerine
3	Alice In Chains, Heaven Beside You	3	Collective Soul, The World I Know	3	Oasis, Wonderwall
4	Green Day, Brain Stew	4	Everything But The Girl, Missing	4	Natalie Merchant, Wonder
5	Smashing Pumpkins, 1979	5	Everclear, Santa Monica	5	Smashing Pumpkins, 1979
6	Everclear, Santa Monica	6	Smashing Pumpkins, 1979	6	Green Day, Brain Stew
7	Red Hot Chili Peppers, Aeroplane	7	Joan Osborne, One Of Us	7	Everclear, Santa Monica
8	Pearl Jam, I Got It	8	No Doubt, Just A Girl	8	No Doubt, Just A Girl
9	Frank Black, Men In Black	9	Hootie & The Blowfish, Time	9	Collective Soul, The World I Know
10	311, All Mixed Up	10	Spacehog, In The Meantime	10	Toadies, Away
11	Oasis, Champagne Supernova	11	Bush, Glycerine	11	Seven Mary Three, Cumbersome
12	Presidents Of The United States, Peaches	12	Foo Fighters, Big Me	12	Alanis Morissette, Ironic
13	Salit, Bluster	13	Alice In Chains, Heaven Beside You	13	Spacehog, In The Meantime
14	Collective Soul, The World I Know	14	Natalie Merchant, Wonder	14	Go Go Dolls, Naked
15	Go Go Dolls, Naked	15	Go Go Dolls, Naked	15	Go Go Dolls, Naked
16	Bush, Glycerine	16	Tori Amos, Caught A Lite Sneeze	16	Tori Amos, Caught A Lite Sneeze
17	Oasis, Wonderwall	17	Presidents Of The United States, Peaches	17	Joan Osborne, One Of Us
18	Blues Traveler, Hook	18	Go Go Dolls, Naked	18	Pearl Jam, I Got It
19	Garbage, Only Happy When It Rains	19	Bodeans, Closer To Free	19	Tori Amos, Caught A Lite Sneeze
20	Tori Amos, Caught A Lite Sneeze	20	Red Hot Chili Peppers, Aeroplane	20	Everything But The Girl, Missing
21	For Squirrels, Mighty K.C.	21	Dog's Eye View, Everything Falls Apart	21	Toad The Wet Sprocket, Good Intentions
22	Seven Mary Three, Cumbersome	22	Salt, Bluster	22	Toadies, Possum Kingdom
23	Spacehog, In The Meantime	23	No Doubt, Just A Girl	23	Go Go Dolls, Naked
24	Ministry, Lay Lay Lay	24	Pearl Jam, I Got It	24	Natalie Merchant, Wonder
25	Toadies, Away	25	Toadies, Possum Kingdom	25	Bush, Come Down
26	Dave Matthews Band, Satellite	26	Soul Asylum, Promises Broken	26	Rancid, Ruby Soho
27	No Doubt, Just A Girl	27	For Squirrels, Mighty K.C.	27	Cracker, Low
28	Rancid, Ruby Soho	28	Weezer, Say It Ain't So	28	Go Go Dolls, Naked
29	Radiohead, High And Dry	29	Better Than Ezra, In The Blood	29	Presidents Of The United States, Peaches
30	Smashing Westward, What Do I Have To Do?	30	Blues Traveler, Run Around	30	Hootie & The Blowfish, Time

WHFS		KITS		WNNX	
Washington, DC PD: Robert Benjamin APD: Bob Waugh		San Francisco VP/Prgm.: Richard Sands MD: Roland West		Atlanta PD: Brian Philips APD: Leslie Fram	
TW	LW	TW	LW	TW	LW
1	Loud Lucy, Ticking	1	Everclear, Santa Monica	1	Alanis Morissette, Ironic
2	Alice In Chains, Heaven Beside You	2	Smashing Westward, What Do I Have To Do?	2	Spacehog, In The Meantime
3	Pearl Jam, I Got It	3	Spacehog, In The Meantime	3	Everclear, Santa Monica
4	Bush, Glycerine	4	Bush, Glycerine	4	Pearl Jam, I Got It
5	Everclear, Santa Monica	5	Radiohead, High And Dry	5	Oasis, Wonderwall
6	For Squirrels, Mighty K.C.	6	Oasis, Champagne Supernova	6	Smashing Pumpkins, Bullet With Butterfly
7	Garbage, Only Happy When It Rains	7	Radiohead, High And Dry	7	Eric Matthews, Fanfare
8	Green Day, Brain Stew	8	Chris Isaak, Go Walking Down There	8	Smashing Pumpkins, 1979
9	Smashing Pumpkins, 1979	9	Natalie Merchant, Wonder	9	Radiohead, High And Dry
10	Oasis, Wonderwall	10	Pulp, Common People	10	Tori Amos, Caught A Lite Sneeze
11	No Doubt, Just A Girl	11	Smashing Pumpkins, 1979	11	Red Hot Chili Peppers, Aeroplane
12	Salt, Bluster	12	Ruby, Tiny Meat	12	311, All Mixed Up
13	Spacehog, In The Meantime	13	Eric Matthews, Fanfare	13	Bodeans, Closer To Free
14	Joan Osborne, One Of Us	14	Garbage, Only Happy When It Rains	14	Eric Matthews, Fanfare
15	Oasis, Champagne Supernova	15	Whipping Boy, Twinkle	15	No Doubt, Just A Girl
16	Collective Soul, The World I Know	16	Foo Fighters, Big Me	16	Son Volt, Down
17	Alanis Morissette, Ironic	17	Alice In Chains, Heaven Beside You	17	Rancid, Ruby Soho
18	Red Hot Chili Peppers, Aeroplane	18	Go Go Dolls, Naked	18	Salt, Bluster
19	Ruby, Tiny Meat	19	Bush, Machinehead	19	Smashing Pumpkins, 1979
20	Seven Mary Three, Cumbersome	20	Smashing Pumpkins, Zero	20	Folk Implosion, Natural One
21	Go Go Dolls, Naked	21	Garbage, Only Happy When It Rains	21	For Squirrels, Mighty K.C.
22	Go Go Dolls, Naked	22	Bad Religion, A Walk	22	For Squirrels, Mighty K.C.
23	Dog's Eye View, Everything Falls Apart	23	Foo Fighters, I'm Stuck Around	23	Smashing Westward, What Do I Have To Do?
24	Tori Amos, Caught A Lite Sneeze	24	Jars Of Clay, Flood	24	Green Day, Brain Stew
25	Bodeans, Closer To Free	25	Toadies, Possum Kingdom	25	Tracy Chapman, Give Me One Reason
26	Ruth Ruth, Uninvited	26	No Doubt, Just A Girl	26	Go Go Dolls, Naked
27	Smashing Pumpkins, Zero	27	Green Day, Brain Stew	27	Ammonia, Drings
28	Live, I'm Over You	28	Folk Implosion, Natural One	28	Joan Osborne, Ladder
29	Radiohead, High And Dry	29	Alanis Morissette, Ironic	29	Poe, Trigger Happy Jack
30	Presidents Of The United States, Peaches	30	My Araya, Excuse Me	30	3 Lb. Thrill, Dana

THIS WEEK	LAST WEEK	WKS. ON CHART	TITLE/LABEL/DISTRIBUTING LABEL	ARTIST	TW	LW	DETECTIONS
1	1	13	WONDERWALL EPIC	OASIS	2098	2267	8 weeks at No. 1
2	2	13	1979 VIRGIN	SMASHING PUMPKINS	1987	2054	
3	6	7	IRONIC MAVERICK/REPRISE	ALANIS MORISSETTE	1822	1646	
4	4	9	BRAIN STEW/JADED REPRISE	GREEN DAY	1735	1735	
5	5	15	SANTA MONICA (WATCH THE WORLD DIE) *IM KERR/CAPITOL	EVERCLEAR	1682	1718	
6	3	15	GLYCERINE TRAUMA/INTERSCOPE	BUSH	1596	1747	
7	10	11	IN THE MEANTIME HIFI/SIRE/EEG	SPACEHOG	1584	1533	
8	14	6	HEAVEN BESIDE YOU COLUMBIA	ALICE IN CHAINS	1548	1430	
9	12	8	NAKED METAL BLADE/WARNER BROS.	GOO GOO DOLLS	1496	1471	
10	15	4	AEROPLANE WARNER BROS.	RED HOT CHILI PEPPERS	1495	1368	
11	7	14	THE WORLD I KNOW ATLANTIC	COLLECTIVE SOUL	1453	1638	
12	8	11	I GOT IT EPIC	PEARL JAM	1448	1619	
13	13	14	JUST A GIRL TRAUMA/INTERSCOPE	NO DOUBT	1396	1399	
14	16	2	FOLLOW YOU DOWN A&M	GIN BLOSSOMS	1392	1230	
15	9	18	NATURAL ONE LONDON/ISLAND	FOLK IMPLOSION	1362	1538	
16	19	3	PEACHES COLUMBIA	THE PRESIDENTS OF THE UNITED STATES OF AMERICA	1325	1060	
17	11	17	CUMBERSOME MAMMOTH/ATLANTIC	SEVEN MARY THREE	1305	1447	
18	20	4	BIG ME ROSWELL/CAPITOL	FOO FIGHTERS	1238	1066	
19	22	5	CAUGHT A LITE SNEEZE ATLANTIC	TORI AMOS	1122	1041	
20	21	9	HIGH AND DRY CAPITOL	RADIOHEAD	1076	1057	

Records showing an increase in detections over the previous week, regardless of chart movement. A record which has been on the chart for more than 20 weeks will not receive a bullet, even if it registers an increase in detections. Airpower awarded to those records which attain 900 detections for the first time. If two records are tied in number of plays, the record being played on more stations is placed first. ©1996, Billboard/BPI Communications.

KEGE		WMMS		KOME	
Minneapolis PD: John Lassman MD: Wade Linder		Cleveland VP/Ops: John Gorman APD/MD: Doug Kubinski		San Jose OM: Ron Nenni PD/MD: Jay Taylor	
TW	LW	TW	LW	TW	LW
1	Smashing Westward, What Do I Have To Do?	1	Toadies, Possum Kingdom	1	Pearl Jam, I Got It
2	Red Hot Chili Peppers, Aeroplane	2	Collective Soul, The World I Know	2	Bush, Glycerine
3	Go Go Dolls, Naked	3	Smashing Pumpkins, 1979	3	Green Day, Brain Stew
4	No Doubt, Just A Girl	4	Oasis, Wonderwall	4	Smashing Pumpkins, Zero
5	Go Go Dolls, Naked	5	Everclear, Santa Monica	5	Smashing Pumpkins, 1979
6	Presidents Of The United States, Peaches	6	Ben Folds Five, Underground	6	Nine Inch Nails, Terrible Lie
7	Salt, Bluster	7	Seven Mary Three, Cumbersome	7	Presidents Of The United States, Peaches
8	Garbage, Only Happy When It Rains	8	Spacehog, In The Meantime	8	Oasis, Wonderwall
9	Gren, She Shines	9	Alanis Morissette, Ironic	9	Toadies, Possum Kingdom
10	Ruby, Tiny Meat	10	Go Go Dolls, Don't Change	10	Seven Mary Three, Cumbersome
11	Toadies, Away	11	Smashing Westward, What Do I Have To Do?	11	Everclear, Santa Monica
12	Smashing Pumpkins, Zero	12	Dave Matthews Band, Satellite	12	Oasis, Champagne Supernova
13	Folk Implosion, Natural One	13	Go Go Dolls, Naked	13	Foo Fighters, I'm Stuck Around
14	Rancid, Ruby Soho	14	Tori Amos, Caught A Lite Sneeze	14	Spacehog, In The Meantime
15	Golden Smog, Red Headed Stepchild	15	Bush, Glycerine	15	No Doubt, Just A Girl
16	Spacehog, In The Meantime	16	No Doubt, Just A Girl	16	Rust, Not Today
17	Toadies, Possum Kingdom	17	Green Day, Brain Stew	17	Presidents Of The United States, Lump
18	Seven Mary Three, Cumbersome	18	Green Day, Jaded	18	Elastica, Stutter
19	Shoveljack, Unwind	19	Alice In Chains, Heaven Beside You	19	Sonic Youth, The Diamond Sea
20	Everclear, Santa Monica	20	Marilyn Manson, Sweet Dreams	20	Salt, Bluster
21	Oasis, Champagne Supernova	21	Alanis Morissette, All I Really Want	21	Folk Implosion, Natural One
22	Red Hot Chili Peppers, Aeroplane	22	Pearl Jam, I Got It	22	Rancid, Ruby Soho
23	3 Lb. Thrill, Diana	23	Dog's Eye View, Everything Falls Apart	23	Rancid, Time Bomb
24	Red Hot Chili Peppers, My Friends	24	Blues Traveler, The Mountains Win Again	24	Foo Fighters, Big Me
25	Limblifter, Screwed It Up	25	Nine Inch Nails, Hurt	25	Collective Soul, The World I Know
26	Smashing Pumpkins, 1979	26	For Squirrels, Mighty K.C.	26	Better Than Ezra, In The Blood
27	Poe, Trigger Happy Jack	27	Dave Matthews Band, Ants Marching	27	Ruby, Tiny Meat
28	Pearl Jam, I Got It	28	Presidents Of The United States, Peaches	28	No Doubt, Spiderwebs
29	Gravely Hills, Gully	29	Bush, Come Down	29	Bad Religion, Infected
30	Alice In Chains, Heaven Beside You	30	311, All Mixed Up	30	Alanis Morissette, Ironic

Experience The Power!

Brought to you by Billboard and Monitor, the most comprehensive guide to radio and record promotion -- **THE POWER BOOK - The New Fall Edition!**

JAMPACKED WITH LISTINGS: • Radio Stations - Country, Rock, R&B, Top 40 • Record Company Promoter Personnel • Radio Syndicators • Top 100 Arbitron Markets

The most important tool for music, radio and promotion executives to use every day.

Order your copy now for just \$75 (plus \$5 shipping and handling, \$12 for international orders).

2 DIRECTORY PACKAGE: The Power Book Fall 1995 Edition AND the Power Book Spring 1996 Edition for \$119 -

Order NOW & SAVE more than 40% on the Spring edition! (Spring Directory will automatically mail in March 1996).

Please add appropriate sales tax in NY, NJ, PA, CA, TN, MA, IL & DC. Orders payable in U.S. funds only. All sales are final.

To order, or for more information call (800) 344-7119 or (800) 223-7524. In NY call (212) 536-5174. In NJ call (908) 363-4156.

Or mail this ad with your payment to: Billboard Directories, P.O. Box 2016, Lakewood, NJ 08701.

BDPB3095

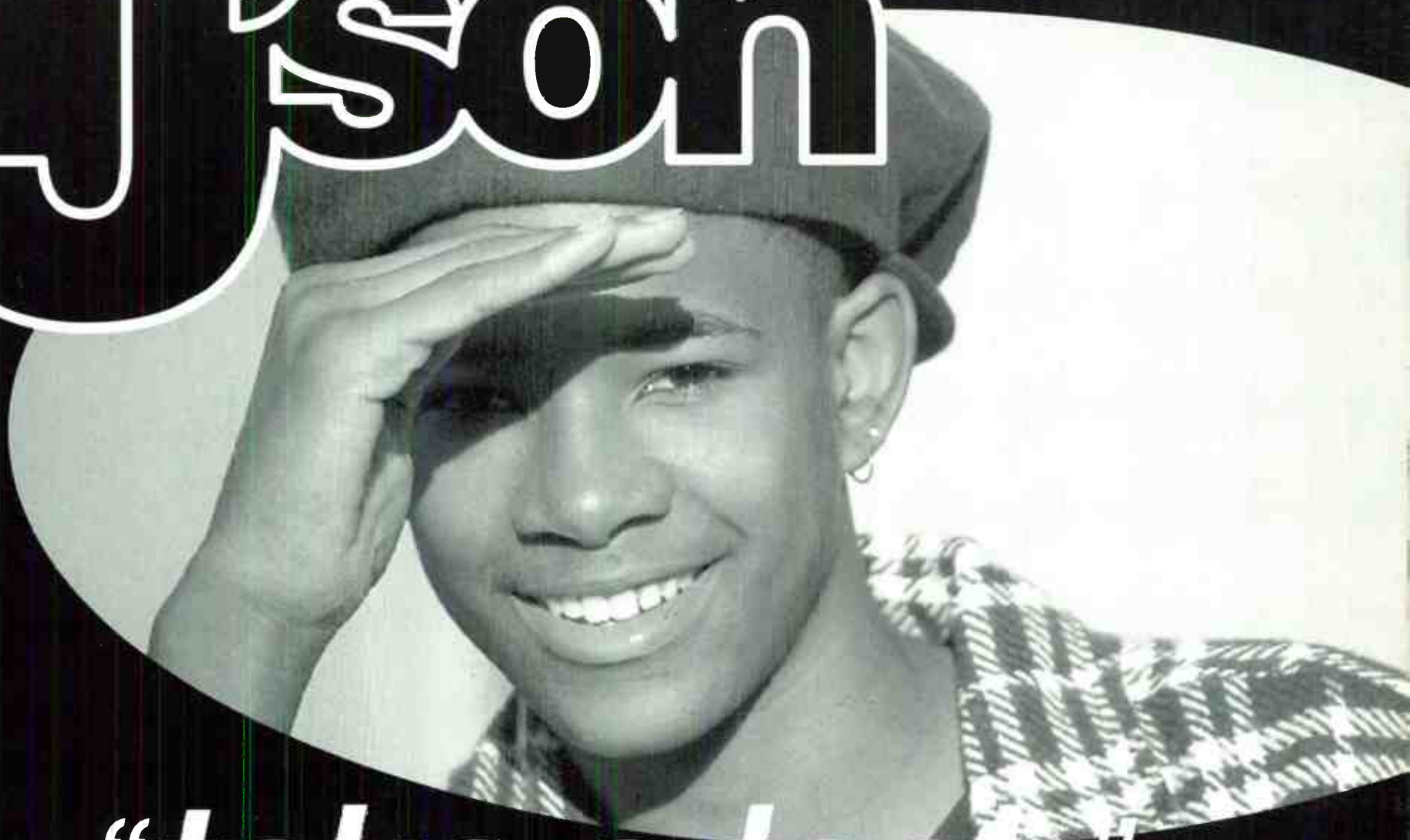
For Week Ending February 4, 1996

COMBINED TOP 40 MONITOR AIRPLAY														AIRPLAY THIS WEEK BY FORMAT								
TW	LW	WKS	TITLE (LABEL)	ARTIST	THIS WEEK			LAST WEEK			MAINSTREAM			RHYTHM		ADULT		MODERN				
					Audience (millions)	Detections No.	Rank	Audience (millions)	Detections No.	Rank	Audience (millions)	Detections No.	Rank	Audience (millions)	Detections No.	Rank	Audience (millions)	Detections No.	Rank	Audience (millions)	Detections No.	Rank
1	1	17	ONE SWEET DAY (COLUMBIA)	MARIAH CAREY & BOYZ II MEN	70.8362	6632	1	74.1094	6957	1	31.2256	3600	1	18.3464	1236	3	21.1218	1781	1	0.1424	15	—
2	2	14	MISSING (ATLANTIC)	EVERYTHING BUT THE GIRL	61.7936	5610	2	60.1423	5514	2	33.9008	3478	2	11.4658	766	12	13.7622	1123	11	2.6648	243	—
3	3	23	NAME (METAL BLADE/WARNER BROS.)	GOO GOO DOLLS	53.8079	5246	3	51.0022	5219	3	30.4478	3303	3	1.5938	55	—	15.7725	1207	7	5.9938	681	—
4	6	12	TIME (ATLANTIC)	HOOTIE & THE BLOWFISH	44.0682	4383	6	41.3543	4153	7	24.8451	2987	5	0.0984	15	—	17.0392	1183	8	2.0855	198	—
5	4	15	EXHALE (SHOOP SHOOP) (ARISTA)	WHITNEY HOUSTON	42.2961	4605	4	45.3527	4920	4	20.7257	2620	7	12.1266	912	10	9.3956	1067	14	0.0482	6	—
6	5	18	BREAKFAST AT TIFFANY'S (RAINFALL/INTERSCOPE)	DEEP BLUE SOMETHING	41.5764	4302	7	43.2850	4360	6	25.2601	2794	6	0.0799	14	—	14.4356	1182	9	1.8008	312	—
7	7	13	ONE OF US (BLUE GORILLA/MERCURY)	JOAN OSBORNE	37.8365	4588	5	37.2515	4586	5	25.2603	3237	4	0.1146	12	—	7.1051	599	22	5.3565	740	27
8	10	8	BE MY LOVER (RCA)	LA BOUCHE	32.5642	3426	12	30.7297	3145	13	21.5694	2456	8	10.9208	944	7	0.0570	25	—	0.0170	1	—
9	17	4	NOBODY KNOWS (LAFACE/ARISTA)	THE TONY RICH PROJECT	32.1414	3736	9	27.3276	3146	12	16.0646	2139	9	14.5869	1262	1	1.4824	334	27	0.0075	1	—
10	9	10	WONDERWALL (EPIC)	OASIS	31.9197	4071	8	30.6826	3925	8	12.3960	1763	15	0.0318	8	—	2.4555	202	39	17.0364	2098	1
11	8	29	AS I LAY ME DOWN (COLUMBIA)	SOPHIE B. HAWKINS	31.7734	2903	15	33.8029	3100	15	14.1913	1442	19	0.9555	89	—	16.5250	1360	3	0.1016	12	—
12	16	8	WONDER (ELEKTRA/EEG)	NATALIE MERCHANT	30.5803	3427	11	27.7454	3169	10	15.3132	2133	10	0.0636	11	—	9.1900	663	21	6.0135	620	32
13	14	10	THE WORLD I KNOW (ATLANTIC)	COLLECTIVE SOUL	29.7253	3440	10	28.5972	3463	9	12.4176	1728	16	0.0502	10	—	5.5381	249	34	11.7194	1453	11
14	12	24	FANTASY (COLUMBIA)	MARIAH CAREY	29.2921	2426	27	29.1852	2596	21	13.8322	1337	22	12.0365	721	13	3.4064	367	26	0.0170	1	—
15	15	12	1979 (VIRGIN)	SMASHING PUMPKINS	29.1298	3287	13	28.0576	3112	14	8.9072	1133	25	0.0008	1	—	3.0098	166	—	17.2120	1987	2
16	11	21	TELL ME (EPIC)	GROOVE THEORY	28.2196	2339	30	30.2519	2391	26	12.2267	1387	21	15.9652	913	9	0.0222	38	—	0.0055	1	—
17	20	13	HEY LOVER (DEF JAM/RALI/ISLAND)	LL COOL J	28.0279	1685	44	25.9017	1624	47	5.2528	526	—	22.7533	1151	5	0.0017	6	—	0.0201	2	—
18	30	3	SITTIN' UP IN MY ROOM (ARISTA)	BRANDY	26.9107	1951	39	22.0120	1556	51	3.9874	684	38	22.8821	1260	2	0.0303	6	—	0.0109	1	—
19	19	31	ONLY WANNA BE WITH YOU (ATLANTIC)	HOOTIE & THE BLOWFISH	26.6378	2434	26	26.4565	2487	24	10.7174	1117	—	0.8533	61	—	13.9494	1113	12	1.1177	143	—
20	18	27	ROLL TO ME (A&M)	DEL AMITRI	26.1801	2535	22	26.7596	2684	18	10.9426	1241	—	0.0279	8	—	14.5399	1181	10	0.6697	105	—
21	13	28	TIL I HEAR IT FROM YOU (A&M)	GIN BLOSSOMS	26.0055	2550	21	29.0423	2677	19	8.9736	1120	—	0.0538	11	—	16.0740	1227	6	0.9041	192	—
22	22	6	HOOK (A&M)	BLUES TRAVELER	25.2294	2459	16	25.3589	2792	17	15.3477	2007	11	0.0608	11	—	5.8572	332	28	3.9637	509	35
23	28	3	CALIFORNIA LOVE (DEATH ROW/INTERSCOPE)	2PAC	25.2055	1511	53	23.4972	1341	59	2.7171	332	—	22.4751	1176	4	—	—	—	0.0133	3	—
24	29	3	IRONIC (MAVERICK/REPRISE)	ALANIS MORISSETTE	25.1148	2741	17	22.5760	2300	29	9.9772	787	34	0.0016	1	—	2.4085	131	—	12.7275	1822	3
25	21	15	YOU'LL SEE (MAVERICK/WARNER BROS.)	MADONNA	24.3745	2427	14	25.6296	3166	11	9.5742	1444	18	1.6279	251	—	13.1463	1230	5	0.0261	2	—
26	25	28	CARNIVAL (ELEKTRA/EEG)	NATALIE MERCHANT	23.9211	2454	23	23.9452	2468	25	11.7029	1362	—	0.0475	9	—	9.6448	780	18	2.5259	303	—
27	24	17	DIGGIN' ON YOU (LAFACE/ARISTA)	TLC	23.0560	2636	19	24.3878	2883	16	15.4252	1991	12	7.4754	568	17	0.1384	76	—	0.0170	1	—
28	23	33	KISS FROM A ROSE (ZTT/SIRE/WARNER BROS.)	SEAL	22.8087	2151	33	25.0993	2294	30	7.7604	799	—	1.8355	224	—	12.8771	1078	13	0.3357	50	—
29	26	38	RUN-AROUND (A&M)	BLUES TRAVELER	22.7322	2413	31	23.9024	2370	27	7.5678	1016	—	—	—	—	13.1909	978	15	1.9735	319	—
30	35	3	DON'T CRY (ZTT/WARNER BROS.)	SEAL	22.5282	2725	18	19.2846	2521	22	12.1448	1774	14	0.2030	36	—	10.0850	891	16	0.0954	24	—
31	32	9	BEFORE YOU WALK OUT OF MY LIFE (ROWDY/ARISTA)	MONICA	21.9045	1908	40	21.7046	1793	41	4.2643	891	32	17.6127	1000	6	0.0082	15	—	0.0193	2	—
32	31	11	GLYCERINE (TRAUMA/INTERSCOPE)	BUSH	21.6801	2421	28	21.5292	2517	23	8.8049	811	33	0.0009	1	—	0.0303	13	—	12.8440	1596	6
33	27	25	BACK FOR GOOD (ARISTA)	TAKE THAT	21.5480	2164	32	23.6259	2348	28	6.6708	841	—	0.2045	15	—	14.6665	1307	4	0.0062	1	—
34	40	2	I WANT TO COME OVER (ISLAND)	MELISSA ETHERIDGE	20.6868	2436	25	17.4707	2205	34	9.2572	1481	17	0.0387	10	—	10.3748	771	19	1.0161	174	—
35	NEW		FOLLOW YOU DOWN (A&M)	GIN BLOSSOMS	20.6833	2571	20	16.8762	1910	38	7.7313	1027	26	—	—	—	3.5132	152	—	9.4388	1392	14
36	34	3	ANYTHING (MJJ/SSO MUSIC)	3T	19.8553	1957	38	19.7182	1774	42	10.0905	974	30	9.5341	917	8	0.2024	63	—	0.0283	3	—
37	36	12	SET U FREE (STRICTLY RHYTHM)	PLANET SOUL	19.6123	1341	60	18.7541	1258	65	8.7327	727	35	10.8796	614	15	—	—	—	—	—	—
38	33	25	RUNAWAY (A&M)	JANET JACKSON	18.2217	2086	34	20.2191	2236	33	8.3326	1018	27	4.0198	402	24	5.8693	666	20	—	—	—
39	NEW		NOT GON' CRY (ARISTA)	MARY J. BLIGE	17.9230	875	85	14.3819	671	117	0.5839	100	—	17.3391	775	11	—	—	—	—	—	—
40	39	2	JESUS TO A CHILD (DREAMWORKS/GEFFEN)	GEORGE MICHAEL	17.3859	2350	29	17.5728	2274	31	8.6630	1395	20	0.6712	100	—	8.0402	851	17	0.0115	4	—

Records showing an increase in audience over the previous week, regardless of chart movement. Rankings broken down by format (on right side of this page) correspond to 40-position charts printed in this week's Monitor and therefore rankings do not exist for recurrent, and records below No. 40. Audience computed by cross-referencing exact times of airplay with Arbitron listener data. ©1996, Billboard/BPI Communications.

4 audiences for the price of one
For the cost of one insertion, your ad appears in four different publications:
Rock Monitor, R&B Monitor, Top 40 Monitor and Country Monitor.
FOUR FOR ONE ... GOOD DEAL
CONTACT: LAURA RIVCHUN 212-536-5058
Monitor AIRPLAY

Jason



“take a look” the debut single

KIKI/Honolulu	74X	#9 SoundScan Singles Sales
KQMQ/Honolulu	58X	
KLUC/Las Vegas	59X	#25 SoundScan Singles Sales
KZFM/Corpus Christi	35X	
KKFR/Phoenix	27X	#43 SoundScan Singles Sales
WFHN/Providence	23X	
WNVZ/Norfolk	14X	
KZHT/Salt Lake City	10X	

AND MANY MORE!

ADDED AT:

WXXL	KWTX
WFLY	WKZW
KSMB	WERZ
WAOA	WWST
KFRX	KCDD
KMCK	KHTN



#16 MOST REQUESTED

Produced by Red Hot Lover Tone and Poke for Track Masters Productions, Inc.
Additional Production and Mix: Adebratt/Ekman for Lemon



It's About Tyme Productions
©1996 Hollywood Records

THIS WEEK	LAST WEEK	WKS. ON CHART	MAINSTREAM		DETECTIONS		
			TITLE/LABEL/DISTRIBUTING LABEL	ARTIST	TW	LW	
			*** No. 1 ***				
1	1	15	ONE SWEET DAY COLUMBIA 11 weeks at No. 1	MARIAH CAREY & BOYZ II MEN	3600	3757	
2	2	12	MISSING ATLANTIC	EVERYTHING BUT THE GIRL	3478	3470	
3	3	20	NAME METAL BLADE/WARNER BROS.	GOO GOO DOLLS	3303	3347	
4	4	12	ONE OF US BLUE GORILLA/MERCURY	JOAN OSBORNE	3237	3215	
5	5	15	TIME ATLANTIC	HOOTIE & THE BLOWFISH	2987	2874	
6	7	27	BREAKFAST AT TIFFANY'S RAINMAKER/INTERSCOPE	DEEP BLUE SOMETHING	2794	2783	
7	6	14	EXHALE (SHOOP SHOOP) ARISTA	WHITNEY HOUSTON	2620	2828	
8	8	10	BE MY LOVER RCA	LA BOUCHE	2456	2194	
9	13	7	NOBODY KNOWS LAFACE/ARISTA	THE TONY RICH PROJECT	2139	1680	
10	11	9	WONDER ELEKTRA/VEEG	NATALIE MERCHANT	2133	1947	
11	12	10	HOOK A&M	BLUES TRAVELER	2007	1892	
12	9	17	DIGGIN' ON YOU LAFACE/ARISTA	TLC	1991	2186	
13	10	18	HAND IN MY POCKET MAVERICK/REPRISE	ALANIS MORISSETTE	1779	2007	
14	15	9	DON'T CRY ZIT/WARNER BROS.	SEAL	1774	1616	
			*** AIRPOWER ***				
15	19	5	WONDERWALL EPIC	OASIS	1763	1481	
16	16	9	THE WORLD I KNOW ATLANTIC	COLLECTIVE SOUL	1728	1605	
17	24	4	I WANT TO COME OVER ISLAND	MELISSA ETHERIDGE	1481	1292	
18	14	15	YOU'LL SEE MAVERICK/WARNER BROS.	MADONNA	1444	1672	
19	18	31	AS I LAY ME DOWN COLUMBIA	SOPHIE B. HAWKINS	1442	1501	
20	22	4	JESUS TO A CHILD DREAMWORKS/GEFFEN	GEORGE MICHAEL	1395	1369	
21	23	13	TELL ME EPIC	GROOVE THEORY	1387	1350	
22	20	24	FANTASY COLUMBIA	MARIAH CAREY	1337	1456	
23	21	19	GOOD INTENTIONS COLUMBIA/REPRISE	TOAD THE WET SPROCKET	1206	1441	
24	17	11	GET TOGETHER GIANT	BIG MOUNTAIN	1148	1531	
25	27	3	1979 VIRGIN	SMASHING PUMPKINS	1133	900	
26	NEW		FOLLOW YOU DOWN A&M	GIN BLOSSOMS	1027	568	
27	25	25	RUNAWAY A&M	JANET JACKSON	1018	1121	
28	31	2	OH VIRGINIA EMI	BLESSID UNION OF SOULS	983	820	
29	29	3	CLOSER TO FREE SLASH/REPRISE	BODEANS	976	852	
30	30	4	ANYTHING MJJ/550 MUSIC	3T	974	837	
31	26	6	PROMISES BROKEN COLUMBIA	SOUL ASYLUM	958	962	
32	36	2	BEFORE YOU WALK OUT OF MY LIFE ROWDY/ARISTA	MONICA	891	756	
33	35	2	GLYCERINE TRAUMA/INTERSCOPE	BUSH	811	757	
34	NEW		IRONIC MAVERICK/REPRISE	ALANIS MORISSETTE	787	530	
35	39	2	SET U FREE STRICTLY RHYTHM	PLANET SOUL	727	622	
36	28	16	BEAUTIFUL LIFE ARISTA	ACE OF BASE	702	864	
37	33	22	GANGSTA'S PARADISE MCA SOUNDTRACKS/MCA	COOLIO FEATURING L.V.	702	780	
38	NEW		SITTIN' UP IN MY ROOM ARISTA	BRANDY	684	429	
39	34	12	DREAMING OF YOU EMI LATIN/EMI	SELENA	668	761	
40	RE-ENTRY		SOLITUDE LAVA/ATLANTIC	EDWIN MCCAIN	660	558	

THIS WEEK	LAST WEEK	WKS. ON CHART	RHYTHM-CROSSOVER		DETECTIONS		
			TITLE/LABEL/DISTRIBUTING LABEL	ARTIST	TW	LW	
			*** No. 1 ***				
1	2	10	NOBODY KNOWS LAFACE/ARISTA 1 week at No. 1	THE TONY RICH PROJECT	1262	1189	
2	4	10	SITTIN' UP IN MY ROOM ARISTA	BRANDY	1260	1126	
3	1	18	ONE SWEET DAY COLUMBIA	MARIAH CAREY & BOYZ II MEN	1236	1401	
4	5	5	CALIFORNIA LOVE DEATH ROW/INTERSCOPE 2PAC (FEAT. DR. DRE AND ROGER TROUTMAN)		1176	1093	
5	3	15	HEY LOVER DEF JAM/RAL/ISLAND	LL COOL J	1151	1131	
6	6	18	BEFORE YOU WALK OUT OF MY LIFE ROWDY/ARISTA	MONICA	1000	1027	
7	9	15	BE MY LOVER RCA	LA BOUCHE	944	930	
8	10	20	ANYTHING MJJ/550 MUSIC	3T	917	884	
9	8	25	TELL ME EPIC	GROOVE THEORY	913	1002	
10	7	16	EXHALE (SHOOP SHOOP) ARISTA	WHITNEY HOUSTON	912	1012	
11	16	8	NOT GON' CRY ARISTA	MARY J. BLIGE	775	606	
12	12	14	MISSING ATLANTIC	EVERYTHING BUT THE GIRL	766	705	
13	11	24	FANTASY COLUMBIA	MARIAH CAREY	721	728	
14	13	4	FEELS SO GOOD (SHOW ME YOUR LOVE) UNIVERSAL	LINA SANTIAGO	654	652	
15	14	19	SET U FREE STRICTLY RHYTHM	PLANET SOUL	614	636	
16	23	3	ALWAYS BE MY BABY COLUMBIA	MARIAH CAREY	587	415	
17	15	20	DIGGIN' ON YOU LAFACE/ARISTA	TLC	568	612	
18	17	8	TONITE'S THA NIGHT RUFFHOUSE/COLUMBIA	KRIS KROSS	526	528	
19	19	15	RIDIN' LOW HOLLYWOOD L.A.D. FEATURING DARVY TRAYLOR		507	514	
20	25	5	DOIN IT DEF JAM/RAL/ISLAND	LL COOL J	493	388	
21	20	8	WE GOT IT MCA IMMATURE (FEATURING SMOOTH)		491	494	
22	18	22	WHO CAN I RUN TO SO SO DEF/COLUMBIA	XSCAPE	468	515	
23	22	4	WHO DO U LOVE ARISTA	DEBORAH COX	460	421	
24	24	25	RUNAWAY A&M	JANET JACKSON	402	404	
25	21	17	YOU REMIND ME OF SOMETHING JIVE	R. KELLY	377	435	
26	27	19	SEXUAL HEALING S.O.S./ZOO	MAX-A-MILLION	369	381	
27	26	3	EVERYDAY & EVERYNIGHT LOUD/RCA	YVETTE MICHELLE	368	385	
28	29	25	DREAMING OF YOU EMI LATIN/EMI	SELENA	361	369	
29	28	3	ENERGY AQUA BOOGIE/WING/MERCURY	DEVONE	359	370	
30	33	3	NO ONE ELSE BAD BOY/ARISTA	TOTAL	359	323	
31	37	2	DOWN LOW (NOBODY HAS TO KNOW) JIVE	R. KELLY	352	290	
32	40	2	LADY EMI	D'ANGELO	349	276	
33	30	26	GANGSTA'S PARADISE MCA SOUNDTRACKS/MCA	COOLIO FEATURING L.V.	346	347	
34	34	4	HOW WE ROLL SBK/EMI	THE BARRIO BOYZ	322	321	
35	32	8	LET'S PLAY HOUSE DEATH ROW/INTERSCOPE	THA DOGG POUND FEAT. MICHEL'LE	320	335	
36	NEW		DO YOU WANT TO SO SO DEF/COLUMBIA	XSCAPE	299	257	
37	RE-ENTRY		ALL CRIED OUT VIPER/METROPOLITAN	DENINE WITH COLLAGE'S ADAM MARANO	285	266	
38	RE-ENTRY		TOO HOT TOMMY BOY	COOLIO	279	262	
39	31	7	STAYIN' ALIVE RADIKAL/AVEX-CRITIQUE	N-TRANCE	272	345	
40	RE-ENTRY		TWENTY FOREPLAY A&M	JANET JACKSON	270	263	

Records showing an increase in detections over the previous week, regardless of chart movement. A record which has been on either chart for more than 20 weeks will not receive a bullet, even if it registers an increase in detections. Airpower awarded to those records which attain 1500 detections (mainstream) or 600 detections (rhythm) for the first time. If two records are tied in number of plays, the record being played on more stations is placed first. Records below the top 20 are removed from the chart after 26 weeks.

20 - BDS Top 40/Mainstream
18* - R&R Mainstream/Pop
SINGLE IN STORE: February 6
MAJOR MARKET AIRPLAY:

GEORGE MICHAEL
jesus to a child

- | | | |
|------------------|-------------------|---------------------|
| WTKS Boston | WIOQ Philadelphia | WKBQ St. Louis |
| STAR94 Atlanta | WNCI Columbus | WTIC Hartford |
| B94 Pittsburgh | WVNZ Norfolk | WKSS Hartford |
| Y100 Miami | PRO-FM Providence | KZHT Salt Lake City |
| KDWB Minneapolis | WWKN Providence | WZPL Indianapolis |
| KKRZ Portland | KKFR Phoenix | PWRPIG Tampa |
| KUBE Seattle | Q106 San Diego | WZJM Cleveland |
| Q102 Cincinnati | WJJS Roanoke | AND MANY MORE!!!! |



Written, Arranged and Produced by George Michael. Engineered by Chris Porter.

© 1996 Big Gulf Overseas Ltd.