

TOP 40 AIRPLAY Monitor

• We Listen To Radio •

February 2, 1996 \$ 4.95 Volume 4 • No. 6

TOP 40 HIGHLIGHTS

MAINSTREAM

#1

MARIAH CAREY & BOYZ II MEN
One Sweet Day (COLUMBIA)

★ ★ ★ AIRPOWER ★ ★ ★

THE TONY RICH PROJECT • *Nobody Knows* (LAFACE/ARISTA)
COLLECTIVE SOUL • *The World I Know* (ATLANTIC)

NEW RELEASES

ACE OF BASE • *Lucky Love* (ARISTA)
EVERCLEAR • *Santa Monica* (Watch The World Die) (TIM KERR/CAPITOL)
CHRIS ISAAK • *Graduation Day* (ELEKTRA/REPRISE)

RHYTHM-CROSSOVER

#1

MARIAH CAREY & BOYZ II MEN
One Sweet Day (COLUMBIA)

★ ★ ★ AIRPOWER ★ ★ ★

LINA SANTIAGO • *Feels So Good* (Show Me Your Love) (UNIVERSAL)
MARY J. BLIGE • *Not Gon' Cry* (ARISTA)

NEW RELEASES

ACE OF BASE • *Lucky Love* (ARISTA)

ADULT

#1

MARIAH CAREY & BOYZ II MEN
One Sweet Day (COLUMBIA)

★ ★ ★ AIRPOWER ★ ★ ★

NO RECORDS QUALIFIED FOR AIRPOWER THIS WEEK

NEW RELEASES

DEBORAH COX • *Who Do U Love* (ARISTA)
BUDDY HOLLY & THE HOLLIES • *Peggy Sue Got Married* (DECCA/MCA)
MARTIN PAGE • *Light In Your Heart* (MERCURY)

New Top 40 Sign-Ons: Why Some Work And Others Don't

by Sean Ross

Why is it so hard to get numbers with a new top 40 station?

Stations which can get past the hurdle of convincing an owner to go top 40 have to contend with the fact that, even in a market where the format hole has been open for some time, it's hard to put together the same number of shares the format used to control, at least quickly. By contrast, a new R&B or modern rock outlet can force its way into contention in one book.

This can often be explained by the type of facilities involved. Increasingly, the new top 40 has been an outlet with signal problems, stepping in from outside a market to try to take advantage of a hole. Or it's been the weak sister in a duopoly, designed for strategic use against a rival, but never meant to have boxcar 12-plus numbers.

But all new top 40s aren't signal-disadvantaged or financially challenged. Even for some larger group operators, new top 40s are a slow build. KHKS (106.1 Kiss FM) Dallas took nearly two years to go from worst to first. Jacor's WWST Knoxville, Tenn., after several years with roughly half the shares of the market's heritage top 40, WOKI, has

been in the sixes in the last three books, putting it within reach of the sort of numbers that top 40 used to post in Knoxville.

Although the successes of a KHKS or WWST shows that top 40s can still win with tenacity and good financial backing, they're not the sort of success stories top 40 PDs are used to. Some of the classic early '80s top 40s were built gradually—for instance, KHIS Los Angeles grew steadily between summer '82 and spring '84—but students of the format are more likely to remember WHTZ (Z100) New York or WCAU-FM Philadelphia, stations that blasted into contention.

In the late '80s and early '90s, most of the new sign-ons were likely to be top 40 crossover outlets. Those stations, counting both top 40 and R&B listeners, were frequently coming into markets that had never had R&B radio before. When new crossover stations worked, they were almost always fast-builds.

By contrast, consider the wildly differing progress of some of the top 40 outlets that have signed on over the last year:

• KKDM Des Moines, Iowa—a modern rock/top 40 hybrid—signed on during the last 10 days of the summer book

Continued on page 5

One Year Ago

Columbia introduced Sophie B. Hawkins *As I Lay Me Down* to radio...

12 months later *As I Lay Me Down* Top 3 Hot 100 airplay...

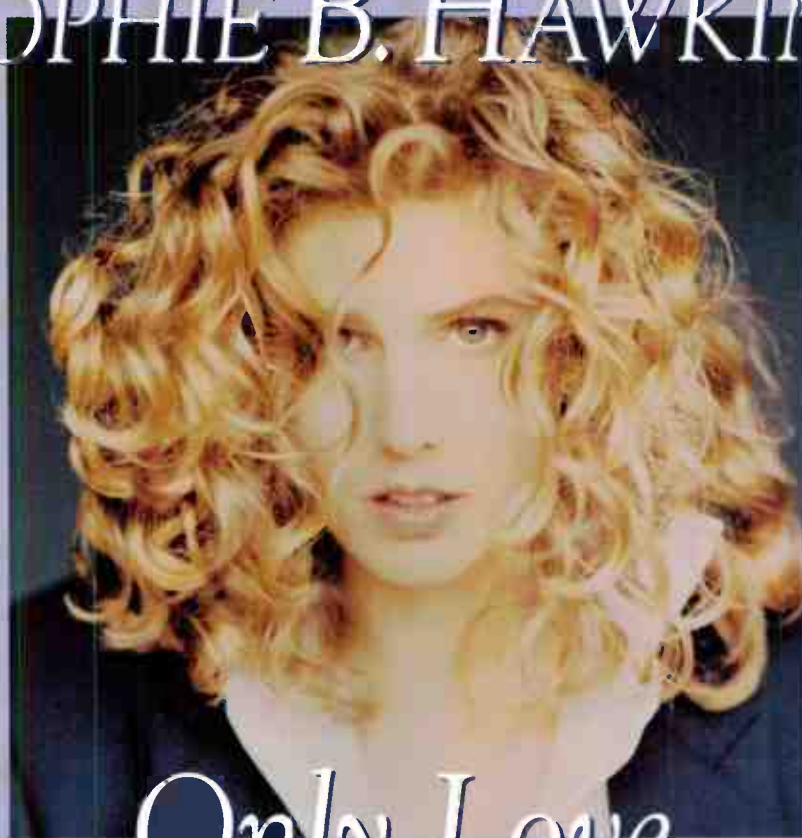
Top 10 Billboard Hot 100 single... Concluded its 6th week at #1

Adult/Top 40 airplay monitor... Heavy Rotation MTV & VH1...

Successful year long tour and multiple TV appearances

takes the album "Whaler" to gold.

SOPHIE B. HAWKINS



Only Love

Now

1 year later, Columbia presents the next smash hit *Only Love* to radio...

And you can probably guess the rest.

B94	WKSE	WIOQ	WKSS
WKBQ	KMXV	WRQX	Q106
KISS 108	XL106	WEDJ	PRO-FM

Produced by Stephen Lipson
Revised production: Sophie B. Hawkins & Randy Jackson
Management: Star Management

Columbia Reg. U.S. Pat. & Tm. Off. Music Republics © 1996 Sony Music Entertainment Inc. <http://www.sony.com>

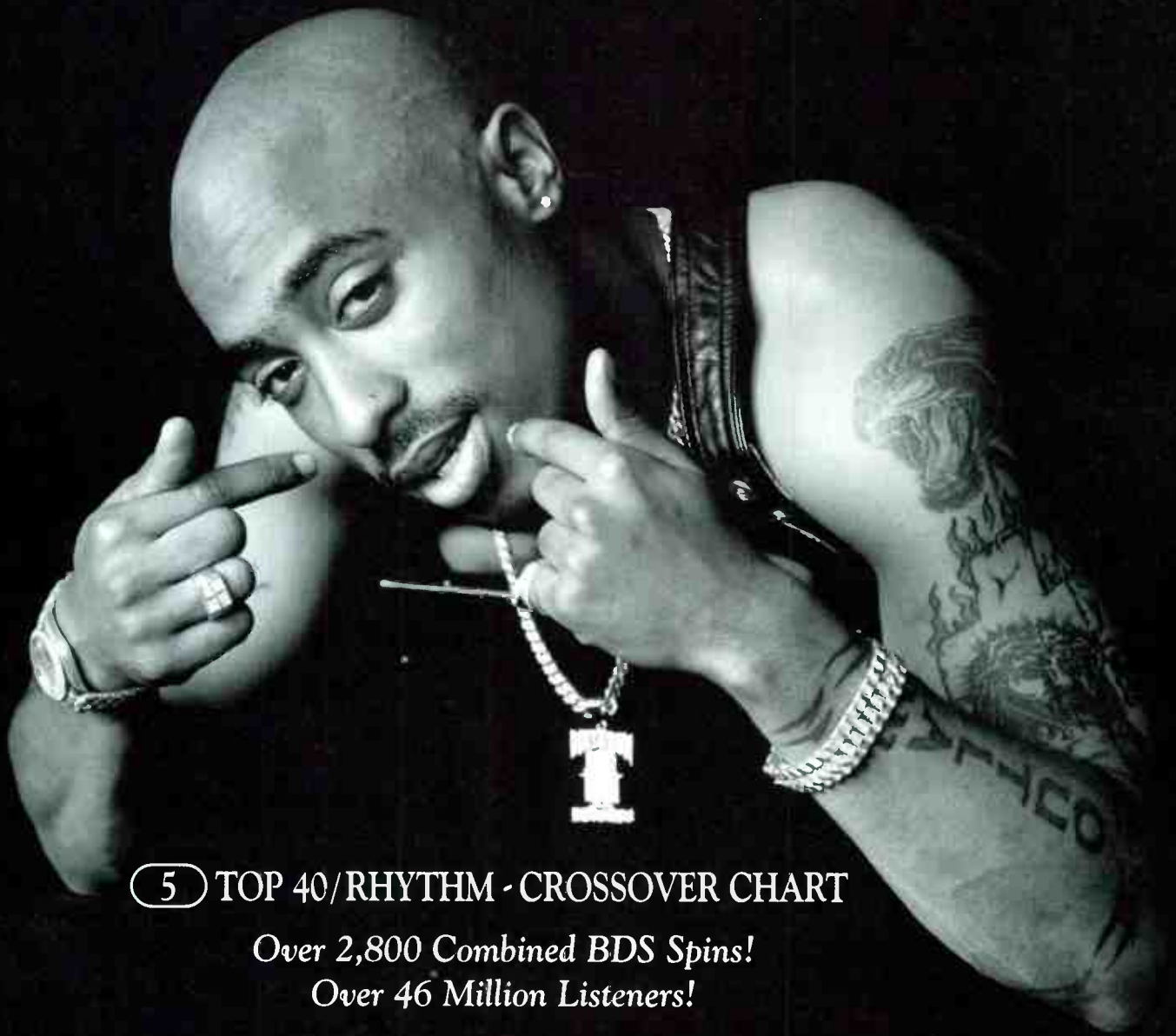
COLUMBIA

2PAC

“CALIFORNIA LOVE”

(FEATURING DR. DRE & ROGER TROUTMAN)

EXECUTIVE PRODUCER SUGE KNIGHT
PRODUCED AND MIXED BY DR. DRE



⑤ TOP 40/RHYTHM - CROSSOVER CHART

Over 2,800 Combined BDS Spins!

Over 46 Million Listeners!

THE FIRST SINGLE FROM 2PAC'S UPCOMING ALBUM

“ALL EYEZ ON ME”

FROM

DEATH ROW RECORDS

THE WORLD'S FIRST RAP DOUBLE CD



#1 MOST PLAYED



#1 MOST REQUESTED



©1996 Death Row Records/Interscope Records. All Rights Reserved.

World Radio History



TOP 40 TOPICS BY SEAN ROSS

No Help, Just Empathy, For Chart Nuts

My father says he has a tape recording of me, made at age 4, in which, he says, I told him that I wanted to be an MD when I grew up. It's entirely plausible, since my father was public affairs director for the owners of legendary R&B outlet WOL Washington, D.C., and it was my exposure to that station (and free promo singles) that started me down my present path. I am surprised, however, that I told him that music-call hours would be Thursdays only, from 2:30 p.m. to naptime.

I started fooling around with the concept of doing my own playlist at age 10 or so. I started doing it seriously at age 15, in the fall of '77, and have done it, on and off, in some form ever since. Those first lists were essentially just songs I liked—usually about 40 titles and 20 extras. As the years progressed, they started to show a little more programming judgment. By 1982, it was down to about 17 titles, inspired by WINZ-FM (195) Miami, which was similarly programmed.

At one point in the mid-'80s, I actually had four different mock stations going at once—top 40, R&B, modern rock, and an all-up-tempo country station (in 1985, when such a thing was unimaginable). The call letters were usually taken from classic defunct stations—my top 40 station, when I was living in L.A., was KHJ—although I also had an R&B station called "KKJM (K-Jam 100)" three years before the first of the real "jamz" stations materialized.

When I wasn't working on my list, I would usually spend time during the commute looking at other stations' playlists in the trades and doing mock versions of their lists for the following week. Now that few stations do numbered lists, I just do mock rotations instead. If your station appears in the Power Playlists, chances are that at some point I've started turning your powers around at 1:45 a.m. and taken all the dayparting off 2Pac and Coolio. I hope your GM doesn't mind.

Even in young adulthood, I somehow knew this wasn't something I should tell too many folks about, although if I had, perhaps somebody would have warned me I was wasting my entire 20s, introduced me to their sister, or something. Already I recognized this as a personal pathology that I couldn't possibly expect the other kids to understand, just like listening to tapes of radio stations with the middles of songs cut out.

Eventually, I did realize that there were others who shared my secret shame. Michael Ellis did his own national charts as a kid. Jerry McKenna did a chart. New Billboard radio editor Chuck Taylor still does one on a weekly basis. McKenna and Ellis got to play with real charts eventually. Taylor and I eventually had Billboard and Airplay Monitor as forums for our year-end list of faves. But every January, I hear from an increasing number of other people—sometimes in the business, sometimes tangentially connected with it—with their own top 100 for the year.

Having recently realized that there are enough of us for a support group, I've begun to suspect that there must be others. Jon Zellner did not, as I initially suspected, have his own playlist, but, besides memorizing several decades of Billboard No. 1 hits in order, he did, however, divide his own records into powers and secondaries when playing DJ as an eight-year-old.

In any event, somebody has to be the first one to come forward, and I'd be interested in hearing from anybody else with this affliction, er, hobby. While I can't personally vouch that it's possible to do your own playlist and lead a normal life, I'm sure there's somebody out there who can. (Hell, Zellner's even married. And when we were discussing chart trivia at the Airplay Monitor convention, his wife didn't get pissed off and leave.) Just remember the mantra of the chart junkie's support group: "At least we're not picking up teenage request line callers, like our jocks."

Butt Of Course



KYLD (Wild 107.7) San Francisco asked listeners to "freeze your ass off" for a trip to Minneapolis and the Mall of America for a private screening of Pauly Shore's "Bio-Dome." (Second prize: Two private screenings of "Bio-Dome"?) The eventual winner, Joe Ortiz (in plaid shirt), left, sat on a block of ice for four hours and five minutes. KYLD's Big Joe Lopez, third from left, lends moral support.

PUBLISHER: MICHAEL ELLIS
 EDITOR: SEAN ROSS
 MANAGING EDITOR: KEVIN CARTER
 DIRECTOR OF CHARTS: JERRY MCKENNA
 TOP 40/ADULT CHART MANAGER: STEVEN GRAYBOW
 CHART PRODUCTION MANAGER: MICHAEL CUSSON
 ASST. CHART PRODUCTION MANAGER: PAUL PAGE
 EDITORIAL PRODUCTION MANAGER: BARRY BISHIN
 ASSOC. EDITORIAL PRODUCTION MANAGER: MARCIA REPINSKI
 EDITORIAL PRODUCTION: MARC GIAGUINTO, MORRIS KLEJGMAN
 COPY EDITOR: CARL ROSEN
 ADVERTISING PRODUCTION MANAGER: LYDIA MIKULKO
 ADVERTISING PRODUCTION ASST.: CINDEE WEISS
 ADVERTISING ART DIRECTOR: RAY CARLSON

NATIONAL ADVERTISING MANAGER: JON GUYNIN
 ADVERTISING SALES: ART PHILLIPS, ANDREA THOMPSON
 CLASSIFIED ADVERTISING: LAURA RIVCHUN
 ADVERTISING SERVICES MGR.: MICHELE JACANGELO
 SALES ASSISTANTS: EVELYN ASZODI, ERICA BENGSTON,
 ALEX VITOULOS, ALYSE ZIGMAN

EDITORIAL ADVISOR: TIMOTHY WHITE
 PRODUCTION DIRECTOR: MARIE GOMBERT
 DIRECTOR OF MARKETING: ELISSA TOMASETTI
 CIRCULATION MANAGER: JEANNE JAMIN

Billboard Music Group

PRESIDENT: HOWARD LANDER

©1996 BPI Communications, 1515 Broadway, New York, NY 10036
 212-536-5039 For subscriptions call: 800-722-2346

A Lot Of Lava In This Room



KRBE Houston kept Lava/Atlantic recording artist Edwin McCain extremely busy when he performed live recently at an acoustic lunch for 300 listeners. Later that evening, McCain, in front row, had the honor of performing the national anthem at the Summit Arena before a sold-out Houston Rockets game. Shown in the back row, from left, are KRBE MD Paul "Cubby" Bryant, assistant promotions director Wendy Craven, Lava Records senior VP/promotion Val DeLong, and KRBE PD Tom Poleman.



RADIOACTIVE BY KEVIN CARTER

Evergreen To Debut New Format For WYNY

At press time, there was still no official announcement from Evergreen about the future of WYNY New York, still widely expected to be headed for a top 40/crossover format of some sort. But look for WYNY to play its last country record Feb. 4. Also, expect Evergreen's Steve Rivers to be involved in the new format. Evergreen is working on an official title for Rivers since acquiring his services through its merger with Pyramid; his working title is chief programming officer.

Longtime modern rock WPLY (Y100) Philadelphia PD Garrett Michaels has been named PD at similarly formatted WHYT Detroit, replacing Rick Gillette. Michaels starts Feb. 12. WPLY APD/MD Chuck Tisa is now acting PD.

In other modern rock news, KEDJ/KHOT (the Edge) Phoenix PD John Clay will exit soon to pursue consulting and other interim radio opportunities in the Phoenix area. He also manages the Zack Phillips Band (aka "Clockwork Universe"). Call him at 602-266-1360.

Jack Alix, OM of '70s gold WXTR (Xtra 104) Washington, D.C., adds OM responsibilities for top 40/adult WMBX (Mix 103.7) Richmond, Va., replacing Steve Davis, who inks the station as his first client for new employer Zapoleon Consulting. Call Davis at 804-353-4713.

WZYP Huntsville, Ala., was nailed with a page 5(h) note by Arbitron for an announcement that ran during the station's morning show simulcast on a local TV station. The announcement stated, "If you are keeping a ratings diary, you are watching 104.3 WZYP. Remember the phrase that pays, 'WZYP is my favorite radio station.'"

Neal Sullivan, PD of country WCLB (formerly top 40 WOVM) West Palm Beach, Fla., exits for southeast regional promotion duties for Critique Records. Meanwhile, former WOVM morning man Joe Mama joins WZJM (Jammin' 92) Cleveland for mornings, replacing Scott Free, who goes to middays.

Former KGDE Omaha, Neb., PD Michael Steele relocates to Fargo, N.D., where he'll switch AC WDAY-FM back to top 40 on behalf of consultant Alan Burns & Associates. WDAY-FM reclaims its old "Y94" handle through a sales agreement with crosstown KLTA/KPFX.

PD Jon Zellner has officially exited rhythmic

AC KTHT Fresno, Calif., following its recent takeover by Americom Broadcasting. Americom VP/programming Mike Bushey is now programming KTHT. Morning man Bruce Maiman is out; call 209-433-0756.

Jeff Kelly, PD of oldies WBBG Youngstown, Ohio, returns to top 40, adding OM stripes for that station and top 40 duopoly partner WHOT. Top 40/adult WZPK Portland, Maine, currently in receivership, is sold to crosstown modern/album combo WBLM/WCYD. WTDR/WLYT Charlotte, N.C., GM Pat Reedy is the new GM at KISN/KUMT Salt Lake City.

WXMK Brunswick, Ga., afternoon jock Chris Calloway is promoted to PD, replacing Marc Summers, now programming WZYP Huntsville, Ala. AC KRAV Tulsa, Okla., ups Steve Hunt to PD, as Brian Taylor exits. Chris Kelly joins from crosstown KCKI (Kick 99) for APD/middays.

Veteran Chicago morning man Fred Winston is now official in mornings at top 40/adult WPNT (FM100) Chicago, replacing Steve Cochran. Winston, known for his work on that market's WLS during its top 40 heyday, had auditioned in the slot last week.

Veteran programmer Bill Stairs signs on as research consultant for Bountiful Broadcasting's KUTQ/KZHT Salt Lake City.

Longtime KGGI Riverside, Calif., MD Sonia Jimenez exits. Call her at 818-888-7234.

WWCK (CK105) Flint, Mich., midday jock Dave Fuller exits after three years. He is now doing weekends at AC WKQI (Q95) Detroit while looking for fulltime work. Call him at 313-439-2966. CK105's Mike Scott moves from p.m. drive to middays. PD Jacko is now doing afternoons, and has hired WKFR Kalamazoo, Mich.'s Ron Brand for nights.

KWMX (Mix 107.5) Denver debuts "Passion Phones," weekdays, 9-11 p.m., with therapist Carolyn Bushong and night jock Rick O'Bryan, who still plays several songs an hour.

WMGI Terre Haute, Ind., hires Hot Shot Hamilton (ex-WBSS Atlantic City, N.J.) for afternoons/promotions. Jerry Liby from KGLI (KG95) Sioux City, Iowa, joins for nights. WLAN Lancaster, Pa., inks Jojo (ex-WGTZ Dayton, Ohio) for nights, replacing Dana Dana, now at WRXS Ocean City, Md.

FALL '95 ARBITRONS

12-plus overall average quarter hour shares (#) indicates Arbitron market rank. Copyright 1996, Arbitron Ratings Co. May not be quoted or reproduced without the prior written permission of Arbitron.

Table for NORFOLK, VA.—(33) listing radio stations like WOWI, WCMS-AM-FM, WFOR-AM-FM, etc., with columns for Call, Format, and ratings from '94 to '95.

Table for SALT LAKE CITY—(35) listing radio stations like KSFI, KSL, KNAT, KRSP, etc., with columns for Call, Format, and ratings from '94 to '95.

Table for CHARLOTTE, N.C.—(37) listing radio stations like WSDC-FM, WPEP, WLYT, etc., with columns for Call, Format, and ratings from '94 to '95.

Table for ORLANDO, FLA.—(39) listing radio stations like WWKA, WOXM-FM, WXL, etc., with columns for Call, Format, and ratings from '94 to '95.

Table for GREENSBORO, N.C.—(42) listing radio stations like WTRQ, WMAG, WKZL, etc., with columns for Call, Format, and ratings from '94 to '95.

Table for LAS VEGAS—(48) listing radio stations like KJUL, KLUC, KSNE, etc., with columns for Call, Format, and ratings from '94 to '95.

Table for RALEIGH/DURHAM, N.C.—(50) listing radio stations like WPTF, WQOK, etc., with columns for Call, Format, and ratings from '94 to '95.

Table for McALLEN, TEXAS—(63) listing radio stations like KBFM, KIWV, KGBT, etc., with columns for Call, Format, and ratings from '94 to '95.

Table for AUSTIN, TEXAS—(54) listing radio stations like KASE, KHFI, KLBZ-AM, etc., with columns for Call, Format, and ratings from '94 to '95.

Table for RICHMOND, VA.—(56) listing radio stations like WKHK, WDCX, WTVR-FM, etc., with columns for Call, Format, and ratings from '94 to '95.

Table for HONOLULU—(58) listing radio stations like KSKK-FM, KIKI-FM, KCCN-FM, etc., with columns for Call, Format, and ratings from '94 to '95.

Table for GREENVILLE, S.C.—(59) listing radio stations like WSSL, WESC-FM, WJMZ, etc., with columns for Call, Format, and ratings from '94 to '95.

Table for TULSA, OKLA.—(60) listing radio stations like KWEN, KRMG, KMDD, etc., with columns for Call, Format, and ratings from '94 to '95.

Table for WILKES BARRE/SCRANTON, PA.—(61) listing radio stations like WKRF, WGGY, WNGS, etc., with columns for Call, Format, and ratings from '94 to '95.

Table for FRESNO, CALIF.—(65) listing radio stations like KMI, KQDS, KJWL, etc., with columns for Call, Format, and ratings from '94 to '95.

Table for GRAND RAPIDS, MICH.—(66) listing radio stations like WBLT, WCAT, WDOO-FM, etc., with columns for Call, Format, and ratings from '94 to '95.

Table for KNOXVILLE, TENN.—(69) listing radio stations like WIVK-FM, WIMZ, WEZL/WJXB, etc., with columns for Call, Format, and ratings from '94 to '95.

Table for EL PASO, TEXAS—(70) listing radio stations like KPRR, KBNM-AM-FM, KLAQ, etc., with columns for Call, Format, and ratings from '94 to '95.

Table for ALBUQUERQUE, N.M.—(71) listing radio stations like KRST, KNOB-AM, KNOB-FM, etc., with columns for Call, Format, and ratings from '94 to '95.

Table for HARRISBURG, PA.—(73) listing radio stations like WNNK-FM, WRKZ, WFIP, etc., with columns for Call, Format, and ratings from '94 to '95.

Table for COLUMBIA, S.C.—(88) listing radio stations like WWDW, WCOS-AM-FM, WTCB, etc., with columns for Call, Format, and ratings from '94 to '95.

Table for COASTAL N.C.—(80) listing radio stations like WRNS-AM-FM, WIKS, WISL, etc., with columns for Call, Format, and ratings from '94 to '95.

Table for BATON ROUGE, LA.—(81) listing radio stations like WYWK-FM, KQXL, WGGZ, etc., with columns for Call, Format, and ratings from '94 to '95.

Table for LITTLE ROCK, ARK.—(82) listing radio stations like KSSN, KURB-AM-FM, KIPR, etc., with columns for Call, Format, and ratings from '94 to '95.

Table for MOBILE, ALA.—(84) listing radio stations like WBLX-FM, WRSJ-AM-FM, WGGK, etc., with columns for Call, Format, and ratings from '94 to '95.

Table for BAKERSFIELD, CALIF.—(86) listing radio stations like KUZZ-FM, KQOX-FM, KERN-AM, etc., with columns for Call, Format, and ratings from '94 to '95.

Table for CHARLESTON, S.C.—(87) listing radio stations like WVV, WAVF, WZLZ, etc., with columns for Call, Format, and ratings from '94 to '95.

Table for DES MOINES, IOWA—(89) listing radio stations like WWHO, WDDW, WCRN, etc., with columns for Call, Format, and ratings from '94 to '95.

Table for YOUNGSTOWN, OHIO—(90) listing radio stations like WQXK, WHDT-FM, WKBN, etc., with columns for Call, Format, and ratings from '94 to '95.

Table for WICHITA, KAN.—(91) listing radio stations like KZSN-FM, KFOJ-FM, KKRD, etc., with columns for Call, Format, and ratings from '94 to '95.

Table for SPOKANE, WASH.—(92) listing radio stations like KDRK, KZUZ, KMXZ, etc., with columns for Call, Format, and ratings from '94 to '95.

Table for DAYTONA BEACH, FLA.—(93) listing radio stations like WGNF-FM, WAGW, WACL, etc., with columns for Call, Format, and ratings from '94 to '95.

Table for TRI-CITIES VA./TENN.—(94) listing radio stations like WXBQ-FM, WTEM, WTFM, etc., with columns for Call, Format, and ratings from '94 to '95.

Table for MELBOURNE, FLA.—(96) listing radio stations like WMMB, WYWA, WHQT, etc., with columns for Call, Format, and ratings from '94 to '95.

Top 40 Sign-Ons: Why Some Work & Others Don't

Continued from page 1

in '95 and still managed a 1.2 share 12-plus. In the fall, it shot to fourth in the market with a 7.5 share.

- WSSX Charleston, S.C., which returned to its "95SX" identity after several years as a hot AC, shot forward 4.7-7.4, making it fifth in the market

- WMXQ (Mix 94.5) Birmingham, Ala., returned to top 40 in the spring. After falling 4.9-4.4 in its transition book, the station has rebounded to 4.7 and 5.2 in the summer and fall books, respectively. It's now sixth in the market.

- WFBC-FM (B93.7) Greenville, S.C., switched to top 40 from oldies last spring. It has gone 3.2-5.4-4.7 over the last two books.

- WHZZ Lansing, Mich., signed on last spring, when top 40 WVIC flipped to country. After debuting at 5.1, WHZZ has slipped to 4.0 and 3.4 in the two subsequent books.

- KWMX (Mix 107.5) Denver completed its evolution from hot AC to top 40 during the fall, entering a race that included rhythmic KQKS (KS104) and KALC (Alice 106), which considers itself a hot AC but works similar turf as KWMX. In the fall, KQKS was up 3.7-4.7. KALC was up 3.9-4.1. Mix was off 3.6-3.1 in its transition book.

- KHOM (Mix 104.1) New Orleans is one of two stations from outlying areas eyeing the five top 40 shares abdicated by former top 40 WEZB (B97). KHOM, which was off the air for much of the winter with technical problems, was up .4-1.3-2.1-2.4 over the last three books. Its rival, KLRZ (Z100), has only a .3 share but is upgrading its signal.

- KSII El Paso, Texas, one of the few medium-market outlets to switch to top 40 when one existed in the market, dropped classic rock and morning man Howard Stern this fall. KSII was up 3.4-4.5 and eighth in the market, even as KPRR (Power 102) reclaimed its market lead 13.6-14.3.

- KHTQ Spokane, Wash., was another instance of a station choosing to become the second top 40 in its market. KHTQ, which had been hot AC, was up 1.6-3.8, despite the fact that longtime market powerhouse KZZU remained virtually untouched in second place, 8.4-8.3.

- WXIS Johnson City, Tenn., which had, as a suburban album rocker, only a .3 share, switched to top 40 toward summer's end, making it the market's first top 40 in years, following WQUT's evolution to classic rock. It debuted at 1.8.

- WAKX (Mix 96) Grand Rapids, Mich., also signing on in a market with a top 40, spent its last three books as a hot country outlet below a 1 share. In its first top 40 book, it was up .6-1.2.

TWO CASE STUDIES

So what sets the high debuts apart from the slow builds? WSSX, in particular, seemed to have a lot going in its favor: It was heavily marketed this fall, running a direct-mail campaign which, PD Calvin Hicks says, generated a 4% return, compared to the 1-2% return that's considered respectable in direct mail. The station read names from the mailer for \$95 cash prizes. SX95 also had a TV campaign built around the Dave Matthews Band, Hootie & the Blowfish, and Melissa Etheridge.

Hicks doesn't think there's any more complex explanation than the fact that a hole existed in the market. "The growth came from the fact that there wasn't a mainstream adult top 40 station in town. We have a very good modern rock station [album WAVE] that was taking credit for being the only pop station in town, because they were the ones introducing that music. Women had to sit through all the modern rock artists to hear Hootie and Dave Matthews. All we did was come in and focus on being the mainstream station."

But SX95 had several other seeming advantages, including a group owner and a full-market signal. SX95 was a brand name in the market from more than a decade as a successful top 40 outlet. Its expectation, which it was unable to defy as a hot AC, was as a hit music station. And, as a hot AC, it had a pre-existing cume that would be amenable to something in a neighboring format.

Then again, KKDM had none of those things. Its frequency was brand new. Its owner was not a major group but Rich Eychaner, the former owner of a local video chain. Its marketing included some billboards but was built largely around fliers in the video chain's cassette boxes. What KKDM had, as consultant Liz Janik notes, was a market with no

youth-oriented station, allowing it to fill holes for both top 40 and modern rock.

NO MAGIC BULLET

So let's look at some of the other variables involved in the launch of a new top 40. In most cases, there's no one explanation but a combination of variables that a station had in its favor:

- Promotional resources: 95SX had them in the fall. So did WMXQ, which had TV and a \$1,000 song of the day in the fall and continues to run TV for its new morning host, Jack Murphy. So did WFBC-FM, which had a "phrase that pays" contest followed by another come-builder promotion. KWMX is doing TV now. WXIS had some TV trade and billboards in the fall, while KHTQ had some billboards and bus sides, but also depended heavily on stunting, such as a "teletthon" to raise money for KZZU.

- Pre-existing cume/top 40 heritage: By taking its old name back, 95SX seemed to get the biggest advantage from this one. By contrast, WMXQ, KWMX, and KSII were all former top 40 outlets, but they had all changed their calls and put at least some work into convincing the audience that they were no longer screaming-teen stations. (WMXQ and KWMX's predecessors were never really teen outlets anyway, but that's another story.) But the fact that WFBC-FM made a 180-degree change from oldies, and the fact that KHOM was starting with no cume after several months off the air, seems to have been an additional hurdle. KHOM PD Bill Thorman, in particular, feels his station has spent the last nine months working to the point where most new launches would be now.

- Teens vs. adults: Used to be that a new top 40 would start by targeting 12-24, the folks most likely to gravitate quickly to a new station, then build upward. But it's the '90s, so most of the new top 40 sign-ons bill themselves as "adult top 40" or even hot AC at their sign on and choose to work down. WFBC-FM OM Jim Kirkland sees his station's demographic profile as a classic top 40 build: "First we mastered the teens. Now, we're giving the historic 18-34 leaders a serious run for their numbers, and victory in that demo is within our grasp." But Kirkland is one of the few operators thinking that way.

So was KKDM, one of the most unapologetically youth-oriented of the new sign-ons. 95SX, for its part, claimed to be an adult top 40 at sign on and also used the hot AC-ish slogan, "Today's best music and your favorites from the '80s." But, unlike others that made the transition from AC, SX95 also played some acid test records, such as "Lump," that established it as a top 40 outlet right away.

By contrast, WAKX, WMXQ, KHOM, and KWMX all began the fall softer than where they finished. Not coincidentally, those stations also came into the format with the handle "Mix." While that name could as easily describe a variety format, such as top 40 or anything else, it has been used for the last several years to mean "not top 40."

THE AFTERTASTE ISSUE

New top 40 stations have one other major hurdle. In many cases, the market's previous top 40 left on bad terms. As consultant Bill Richards notes, "In markets where top 40 left a bad taste in people's mouths for whatever reason—it was too juvenile, or there was a blue morning show that pissed people off—sometimes listeners reject any form of that coming back into their lives."

Such stations as WMXQ (the former WAPI-FM) and KWMX (the old "Y108," KRXY) blew up their previous images largely because their owners considered the previous calls contaminated. KWMX reportedly researched the old Y108 name before making its switch and found little value left. That would tend to support the theory that mainstream top 40 was not well remembered in those markets.

WFBC-FM came into its market as the *second* replacement top 40 station. The first, WBBO, had shown itself unable to earn more than half the shares of its predecessor, WANS, on a sustained basis. WANS, for its part, had a messy death, including bankruptcy proceedings. Kirkland says, "There's a good portion of the cume that has not been exposed to a mainstream top 40 in their market, ever. So it really is a new animal."

MONITOR PROFILE

Star 94 PD Peterson Finds Olympian Growth In 18-34 Female Demo

Talk about the life raft capsizing. In September 1994, WSTR (Star 94) Atlanta PD Tony Novia brought in KDWB Minneapolis APD/MD Kevin Peterson for similar duties. Five weeks later, Novia left for an editorship at R&R. A month later, Jefferson-Pilot VP/programming Don Benson came to Star 94.

Could have been unnerving, but the programming department quickly found a working rhythm. Peterson and Benson brought in J.R. Ammons from WFMF Baton Rouge, La., to assist in the music department. Peterson, who had been APD at WABB-FM Mobile, Ala., and PD at KKXL-FM (XL93) Grand Forks, N.D., began to absorb more programming duties from Benson.

Peterson was upped to PD at the end of '95. When the fall Arbitrons came in, Star 94 was up 5.4-6.1 12-plus and fifth in the market. It was up 8.7-11.3 with females 18-34, second only to

hear it anywhere else previously can now [enjoy] it over here in a mainstream setting, without having to sit through the grunge."

Here's a recent 10 a.m. hour of Star 94: Jon Secada, "Do You Believe In Us?"; Gin Blossoms, "Til I Hear It From You"; Soul II Soul, "Back To Life"; Seal, "Don't Cry"; Toad The Wet Sprocket, "Something's Always Wrong"; Robert Palmer, "I Didn't Mean To Turn You On"; Everything But The Girl, "Missing"; Jimmy Cliff, "I Can See Clearly Now"; Goo Goo Dolls, "Name"; Johnny Gill, "Rub You The Right Way"; Melissa Etheridge, "I Want To Come Over"; Whispers, "Rock Steady"; and Deep Blue Something, "Breakfast At Tiffany's."

Peterson says Star 94's not-so-secret weapon is marketing operations director Alan Hennes. "He's always thinking ahead," says Peterson. "He reads and observes everything, always looking for the right promo opportunity, and understands the market."

Atlanta has been buzzing for four years about the Olympic Games, just six months away. Each station is busy solidifying its Olympic plans. "We'll be involved with the Olympics," Peterson says, "but we don't want to fall into the trap of overlooking our core audience in order to play to the tourists. It happens all the time in resort communities. [But] we'll do relatable things, like help our audience get through the traffic jams."

Rounding out the morning show is producer Shawn Dion and street guy Tom Sullivan. WSTR's former night jock, Midday DJ Kevin Steele, formerly of WBZZ (B94) Pittsburgh, ranks No. 1 among 25-34 females. P.m. driver Craig Hunt "is one of the best afternoon guys in the country," says Peterson. "He's not low maintenance—he's no maintenance."

Star 94 night guy "Downtown" Billy Brown also hails from B94. Brown also worked at Power 99, so he had name recognition in the market. Peterson says, "Instead of screaming at 15-year-olds, he's talking to 25-year-olds and still entertaining." Overnight jock Terry Belko attends law school. "He could qualify as one of the hardest-working men in show business."

Also up for that title is Ammons, who, after being at Star just nine months, was named MD, or, in Peterson's parlance, "VP of stuff . . . His sole duty in life is to make our music sound the best it can be. He understands the concept that any given quarter-hour should be an accurate representation of the station. He feels the flow and balance of the station."

Now that Peterson has his stripes, Benson can spend more time with other Jefferson-Pilot stations. "It's been a godsend to have him here," Peterson says. "Don's been [here] for years and can save me from potential mistakes. He treats Star like any other station in the chain. He could be very hands-on if he wanted to, but he's gone out of his way not to be that way, and I appreciate that." Much like Bolke, says Peterson, Benson is "secure enough to let me execute the format."

Then there's programming assistant Wendy White, "who came in as an intern. She literally learned radio from the bottom up. I know that anything I give her will get done right."

Peterson's other passion is "Sonrise," a three-hour contemporary Christian music show he developed in Minneapolis. He continues to host the show—which runs on KDWB, WFBC-FM Greenville, S.C., and WGSY Columbus, Ga.—and has plans to syndicate it.

Apparently a bit cocky about '95's events, Peterson and his wife actually bought a house. "My goal, now that Star 94 is back in the 6's, is to keep it there and improve on that," he says. "Stability's a good thing. I've a mortgage to pay and a baby due any moment." **KEVIN CARTER**



Kevin Peterson
Program Director
WSTR (Star 94) Atlanta

"We don't want to fall into the trap of overlooking our core audience in order to play to the tourists"

R&B WVEE (V103). In its target demo, 24-34 females, Star 94 jumped to third in the market, 7.4-9.8. "We're enjoying our highest cume in over two years, over 500,000," says Peterson.

Peterson credits former KDWB PD Mark Bolke for preparing him for his PD stripes. "When he moved up or out, he wanted the company to know I was the guy," he says. "He was secure enough to delegate responsibility and always treated me as an equal. I certainly owe him a debt of gratitude."

It's no secret that Star 94 had meandered between top 40 and AC for several years. Peterson's mission was to bring back some consistency. "There was a certain amount of image confusion, which we addressed with an aggressive marketing campaign," he says. "We used a ton of TV time to hammer home the image of Star 94 as a hit-driven station that was able to play a bigger variety of music."

The ad campaign focused on Star's artists and music, as well as morning hosts Steve McCoy and Vikki Locke, market vets who also worked together at the late WAPW (Power 99), now modern rock WNNX (99X).

So what is Star 94 musically? Peterson says, "Call us adult top 40, not hot AC. We have less in common with AC radio and more in common with top 40 radio, except we don't play to the low end of the format."

Star 94 shares audience with AC WSB-FM and 99X. "People listened to WSB-FM, because they didn't have a better option," he says. As for 99X, Peterson says, "we are able to borrow certain records once they warm them up, and some we just take away from them."

Peterson cites Hootie & the Blowfish, the Dave Matthews Band, and Blues Traveler as acts Star 94 has confiscated from 99X. "Once we get on them, their core audience then perceives them as not being true modern rock core artists," he says. "We're hoping that the people who truly like that type of music and couldn't

SERVICES

COMEDY

TeleJoke!

by Alan Ray
Topical One Liners faxed or e-mailed daily!
Now in 250 markets!
(209) 476-1511 phone (209) 476-1211 fax
web site: <http://www.telejoke.com>
Call or fax for a free sample!

VOICEOVERS

THE LINER RANCH

LOOKING FOR A NEW STATION VOICE?
BIG MARKET VOICE
FOR SMALL MARKET DOLLARS
STEPHAN KAUFMAN
509-292-8609
WELCOME KOLO-TV, RENO
KXO-AM/FM, EL CENTRO



FASTEST GROWING VOICE-OVER TALENT IN NORTH AMERICA. FEMALE ROSTER ALSO AVAILABLE. CALL 1-800-843-3933 FOR DEMO. WELCOME KRTS-HOUSTON, Q102-DALLAS, WGPR-DETROIT

CARTER DAVIS

VOICE AND PRODUCTION FOR RADIO AND TV
Tel/FAX: (901) 681-0650

You get what you pay for

Sean Caldwell PRODUCTIONS
Y100 Young Country
2104 KISS-FM 2100
KPM102 SWERT 98
Country CHR Rock Hot AC
voice-over • production effects
(941) 383-2828

JEFF DAVIS

IMAGE VOICE
ALL FORMATS • ISDN
310-288-7944

SOFTWARE

Radio station database prints mailing labels, searches on 25 formats, calls, addresses, markets, and lists phones/faxes/web sites! Only \$129.95 w/quarterly updates: 1-800-277-8224 or <http://www.acelinfo.com/bbh/info>
BBH SOFTWARE

HELP WANTED

THE BEAT
92.3

America's Premiere Urban Radio Station has a unique opening for a Director of Marketing & Promotions.

This individual should be thoroughly knowledgeable in Urban music and have the ability to continue the aggressive presentation of the station's image to both the Los Angeles audience and the music industry.

Experience and skills should include attention to detail and organization, the ability to manage a staff of 20 or more, interface with programming and sales, produce large scale promotional events and maintain impeccable relationships within the entire music and entertainment industries.

Send resumes in care of:
Maxine Morrow
KKBT RADIO
6735 Yucca Street
Los Angeles, CA 90028

Evergreen Media, Inc. is an E.O.E.

DIRECTOR OF PROMOTION

KS95-FM a Twin Cities Adult Contemporary Station is looking for a Promotions/Marketing person. Ability to deal with the public; 4 years previous major market experience in promotion and marketing; knowledge of FCC rules and regulations as they pertain to contests; familiarity with programming concepts; applicant must be highly organized and able to prioritize own work; an understanding of television buying would be helpful. Please call Bob Davis at 612-642-4141 and submit resumes to:

AMY J. STEDMAN
KSTP-FM
Job #192-95
3415 UNIVERSITY AVE.
ST. PAUL, MN 55114

AN EQUAL OPPORTUNITY EMPLOYER

WUSY (US-101)

ACCEPTING T/R'S FOR MORNING SHOW AIR TALENT AT "R&R" #5 RATED AM-DRIVE DRIVETIME DOMINATOR. WE WANT A PERSON WHO KNOWS MORNING SHOW HOT BUTTONS AND HOW TO PUSH THEM. IF YOU KNOW HOW TO ENTERTAIN MORNING SHOW AUDIENCES, ACT IMMEDIATELY!!! THIS IS NOT AN ENTRY LEVEL POSITION. WE WANT THE BEST TO WORK AT THE CMA MEDIUM MARKET STATION OF THE YEAR. PREVIOUS COUNTRY EXPERIENCE IS A NECESSITY!

NO CALLS!!!
TAPES & RESUMES TO:
US-101, BOB STERLING
P.O. BOX 8799
CHATTANOOGA, TN 37414
COLONIAL BROADCASTING/WUSY (US-101)
IS AN EQUAL OPPORTUNITY EMPLOYER.

WNDU AM/FM SOUTH BEND, INDIANA SEARCHING FOR COOL NEWS

DIRECTOR/PERSONALITY. NEWS GATHERING, WRITING, DELIVERY SKILLS, AND INTERACTION WITH TOP-RATED MORNING SHOW. LOCAL NEWS IS A PRIORITY HERE. EXCELLENT FACILITIES, COMPETITIVE PAY AND BENEFITS. T & R, ALONG WITH WRITING SAMPLES, TO:

WNDU STATIONS
Attn: Human Resources,
Position #00137
54516 Business U.S. 31 North
South Bend, Indiana 46637
FEMALES AND MINORITIES
ENCOURAGED TO APPLY.
EOE

PROGRAM DIRECTOR

Columbus, Georgia's country giant, KIX 106 is looking for an on-air program director. Minimum 3 years country experience required. Tape, resume and cover letter to:
BERNIE BARKER, GENERAL MANAGER
WSTH
1236 BROADWAY, COLUMBUS, GA 31901

N.C. FM seeks Radio Supreme
Being for:

Operations, On Air (Mornings), Production. Digilink experience a must.
Send T/R:
GM • Box 910
Roanoke Rapids, NC 27870

FM97 WLAN IS LOOKING FOR IT'S NEXT NIGHT STAR. LOTS OF PHONES AND MASSIVE SHOW PREP A MUST! CALL PD JORDAN WALSH @ (717) 295-9700!
FEMALES/MINORITIES ENCOURAGED
EOE

HELP WANTED

DOMINATING STATION U93 WNDU-FM SOUTH BEND, INDIANA SEARCHING FOR MORNING SHOW CO-HOST. CANDIDATES MUST BE RELATABLE TO FEMALE AUDIENCE AND HAVE RATINGS TO PROVE IT. STRONG PRODUCTION AND COMMUNITY INVOLVEMENT A MUST. EXCELLENT FACILITIES, COMPETITIVE PAY AND BENEFITS. T & R, RATINGS INFORMATION TO:
WNDU STATIONS
Attn: Human Resources,
Position #00123
54516 Business U.S. 31 North
South Bend, Indiana 46637
FEMALES AND MINORITIES
ENCOURAGED TO APPLY.
EOE

POSITION WANTED

Veteran broadcaster 25 years' on-air experience in South Africa. Music and talk formats. Will work for free for one month. Call:
COLLIN (805) 446-1469

Morning show producer/comedy writer seeks mornings. Topical, quick witted, and more!

GREG: 916-962-3677

POSITION WANTED

SOUTH FLORIDA

Accomplished NYC-based ad space sales pro with extensive music industry, advertising and media planning experience seeks radio sales position in Fort Lauderdale or Miami.
P.O. Box 1941, NYC 10185

The tide has turned.
Rush hour is over.
Experienced liberal talk show host. Call:
JOHN (954) 561-1792

BULLETIN BOARD

J.B. - Thanks for the wonderful birthday. Dinner was great and love that Antonia's. Now, next year I want ... Love, Muddah of pets.

KEVIN CARTER - You've been a HUGE help lately. Next time you come to New York it's my treat. Burger King is running a 99¢ Whopper special. Let's do it up! Big Spender

CW - Heard you visited your old digs last weekend. Did you have a problem finding it? Not to worry, the post office will help you out. SMART ALEC

CLASSIFIED ADVERTISING RATES

HELP WANTED:

1 WEEK \$75.00 per inch
2 WEEKS \$65.00 per inch

POSITION WANTED AND BULLETIN BOARD:
\$45.00 per inch

BOX NUMBER: Add \$20.00

SERVICES:

1 WEEK \$75.00 per inch
6 WEEKS \$65.00 per inch
13 WEEKS \$60.00 per inch
26 WEEKS \$55.00 per inch
51 WEEKS \$50.00 per inch

DEADLINE (ALL CLASSIFIED):
Each Wednesday 3pm EST, 9 day leadtime.

• Classified ads are non-commissionable •

SUBMIT ALL AD COPY TO:

Laura Rivchun
Airplay Monitor Classified
1515 Broadway
New York, NY 10036
Phone: 212-536-5058
Fax: 212-536-5055

POWER PLAYLISTS

For Week Ending January 28, 1996



Playlists supplied by Broadcast Data Systems Radio Track service. Stations selected from panel of leading broadcasters in 125 radio markets, electronically monitored 24 hours a day, 7 days a week. Songs ranked by number of plays in monitored week.



Z100 PD: Steve Kingston MD: Andy Shane. Table with 40 rows of song titles and play counts.

KIIS PD: Steve Perun APD/MD: Tracy Austin. Table with 40 rows of song titles and play counts.

KISS 108 PD: John Ivey MD: Tad Bonvie. Table with 40 rows of song titles and play counts.

Q102 OM: Dave Allan PD: Glenn Kalina MD: DeDe McGuire. Table with 40 rows of song titles and play counts.

KISS 106.1 PD: John Cook APD/MD: Mr. Ed Lambert. Table with 40 rows of song titles and play counts.

KRBE PD: Tom Poleman APD: Scott Sparks MD: Paul "Cubby" Bryant. Table with 40 rows of song titles and play counts.

KDWB PD: Dan Kiele APD/MD: Rob Morris AMD: Rick Thomas. Table with 40 rows of song titles and play counts.

STAR 94 PD: Kevin Peterson MD: J.R. Ammons. Table with 40 rows of song titles and play counts.

B94 PD: Keith Clark APD: David Edgar MD: John Cline. Table with 40 rows of song titles and play counts.

WFLZ PD: B.J. Harris APD: Jeff Kapugi MD: Tom Steele. Table with 40 rows of song titles and play counts.

WPST PD: Michelle Stevens APD: Dave McKay. Table with 40 rows of song titles and play counts.

Y100 PD: Rob Roberts MD: Al Chio. Table with 40 rows of song titles and play counts.

KISS 95.7 PD: Jay Beau Jones Acting MD: Dave Vadya. Table with 40 rows of song titles and play counts.

WTIC PD: Paul Cannon MD: Tony Bristol. Table with 40 rows of song titles and play counts.

WNCI PD: John Dimick APD/MD: Dan Bowen. Table with 40 rows of song titles and play counts.

Q106 OM: Al Peterson PD: Greg Stevens APD: Ray Kalusa. Table with 40 rows of song titles and play counts.

92PRO FM PD: Chris Shebel MD: Tony Mascaro. Table with 40 rows of song titles and play counts.

Q104 PD: Michael St. John. Table with 40 rows of song titles and play counts.

THE MOST POWERFUL SONG

Terry Ellis

"Wherever You Are"



Already Radioactive At:

- WJMN Boston
- KHOM New Orleans
- KLRZ New Orleans
- WPGC Washington DC
- KJYO Oklahoma City
- WZJM Cleveland
- KZHT Salt Lake City
- WVKS Toledo
- WWKX Providence

And more!



© 1996 Elektra Entertainment Group,
a division of Warner Communications Inc.
A Time Warner Company

Introducing the ^{new} ladies of hip hop soul...

SADUCE



Don't Waste My Time

The premiere single and video from their forthcoming debut album,
and the latest release from the team that brought you Adina Howard.

Produced by Darryl & Michael Allen for Flava Hood Productions & The Mecca Don Bros. for Mecca Don Entertainment
Executive Producers: The Mecca Don Bros. (Max Gousse & Roget Romain) for Mecca Don Records
Management: Tracy "Toi" Nash

On Elektra Records Air • All compact discs and cassette tapes
© 1996 Elektra Entertainment Group a division of Warner Communications Inc.
A Time Warner Company

#3 Most added at Crossover Radio **OUT OF THE BOX!**
One of the most added at Urban Radio!



Already Exploding On:

- | | | | |
|------|--------------|------|----------------|
| WERQ | Baltimore | KZHT | Salt Lake City |
| WHHH | Indianapolis | KHTN | Modesto |
| WOCQ | Ocean City | KHOM | New Orleans |

And more!

POWER PLAYLISTS

For Week Ending January 28, 1996

Playlists supplied by Broadcast Data Systems. Radio... Stations selected from panel of leading... monitored 24 hours a day, 7 days a week. Songs ranked by number of plays in monitored week.

Q102

Table for Q102 Cincinnati PD: Jimmy Steal APD: Race Taylor MD: Brian Douglas. List of 40 songs with TW and LW columns.

G105

Table for G105 Raleigh PD: Brian Burns MD: Kip Taylor. List of 40 songs with TW and LW columns.

THE EDGE

Table for THE EDGE Charlotte PD: Brian Bridgman MD: Tom Naylor. List of 40 songs with TW and LW columns.

Z100

Table for Z100 Portland PD: Ken Benson APD/MD: Chet Buchanan. List of 40 songs with TW and LW columns.

XL106.7

Table for XL106.7 Orlando PD: Adam Cook. List of 40 songs with TW and LW columns.

Z93

Table for Z93 Dayton PD: Louis Kaplan MD: Gretchen Corbett. List of 40 songs with TW and LW columns.

Y107

Table for Y107 Nashville PD: Charlie Quinn MD: Gator Harrison. List of 40 songs with TW and LW columns.

JAMMIN' 92

Table for JAMMIN' 92 Cleveland PD: Lisa Rodman MD: Dave Eubanks. List of 40 songs with TW and LW columns.

KISS 98.5

Table for KISS 98.5 Buffalo PD: Sue O'Neil MD: Dave Universal. List of 40 songs with TW and LW columns.

WZPL

Table for WZPL Indianapolis PD: Tom Gjerdrum MD: Ron Blair. List of 40 songs with TW and LW columns.

Z104

Table for Z104 Norfolk PD: Don London MD: Sean Sellers. List of 40 songs with TW and LW columns.

KJ103

Table for KJ103 Oklahoma City PD: Mike McCoy MD: Jimmy Barreda. List of 40 songs with TW and LW columns.

MIX 93.3

Table for MIX 93.3 Kansas City OM: Tom Land. List of 40 songs with TW and LW columns.

98PX

Table for 98PX Rochester OM/PD: Clarke Ingram APD/MD: J.J. Rice. List of 40 songs with TW and LW columns.

WKRZ

Table for WKRZ Wilkes-Barre PD: Ken Medek MD: Jerry Padden. List of 40 songs with TW and LW columns.

FLY 92

Table for FLY 92 Albany PD: Mike Morgan MD: Shawn Scott. List of 40 songs with TW and LW columns.

WIXX

Table for WIXX Green Bay PD: Dan Stone. List of 40 songs with TW and LW columns.

KHFI

Table for KHFI Austin PD: John Roberts MD: Fernando Ventura. List of 40 songs with TW and LW columns.

POWER PLAYLISTS

For Week Ending January 28, 1996



Playlists supplied by Broadcast Data Systems. Radio Track service. Stations selected from panel of leading broadcasters in 125 radio markets, electronically monitored 24 hours a day, 7 days a week. Songs ranked by number of plays monitored week.

Table for WVKS Toledo, PD: Mike Wheeler, MD: Curt Kruse. Top 40 playlist including 'Everything But The Girl, Missing' and 'Deep Blue Something, Breakfast At Tiffan'.

Table for WDJX Louisville, PD: C.C. Matthews, MD: Jill Meyer. Top 40 playlist including 'Everything But The Girl, Missing' and 'Mariah Carey & Boyz II Men, One Sweet Day'.

Table for K92 Roanoke, OM: Sammy Simpson, PD: Rich E. Cunningham. Top 40 playlist including 'Mariah Carey & Boyz II Men, One Sweet Day' and 'Hootie & The Blowfish, Time'.

Table for Q99 Salt Lake City, PD: Brian DeGeus, MD: Geronimo. Top 40 playlist including 'Folk Implosion, Natural One' and 'Smashing Pumpkins, 1979'.

Table for KC101 New Haven, PD: Steve Wilson, MD: Jeff McCartney. Top 40 playlist including 'Del Amitri, Roll To Me' and 'Go Go Dolls, Name'.

Table for 93Q Syracuse, PD: Dave Edwards, MD: Jimray Olson. Top 40 playlist including 'Go Go Dolls, Name' and 'Mariah Carey & Boyz II Men, One Sweet Day'.

Table for B104 McAllen, PD: Billy Santiago, MD: Jeff DeWitt. Top 40 playlist including 'La Bouche, Be My Lover' and 'Tony Rich Project, Nobody Knows'.

Table for SWEET 98 Omaha, PD: Michael Steele, MD: Jim Jamm. Top 40 playlist including 'Go Go Dolls, Name' and 'Mariah Carey & Boyz II Men, One Sweet Day'.

Table for Q94 Richmond, PD: Lisa McKay, APD/MD: Billy Surf. Top 40 playlist including 'Groove Theory, Tell Me' and 'Hootie & The Blowfish, Time'.

Table for WHOT Youngstown, PD/MD: Tom Pappas. Top 40 playlist including 'Joan Osborne, One Of Us' and 'Mariah Carey & Boyz II Men, One Sweet Day'.

Table for WAPE Jacksonville, PD: Cat Thomas, APD/MD: Tony Mann. Top 40 playlist including 'Everything But The Girl, Missing' and 'Go Go Dolls, Name'.

Table for WNNK Harrisburg, PD: John O'Dea, MD: Si-ott Shaw. Top 40 playlist including 'Everything But The Girl, Missing' and 'Go Go Dolls, Name'.

Table for STAR 93.1 Knoxville, OM: Jim Richards, PD: Todd Shannon. Top 40 playlist including 'Everything But The Girl, Missing' and 'Groove Theory, Tell Me'.

Table for WSNX Grand Rapids, PD: Mark McGill, MD: Keith Curry. Top 40 playlist including 'Joan Osborne, One Of Us' and 'Everything But The Girl, Missing'.

Table for WZYP Huntsville, PD: Marc Summers, MD: Ace Anthony. Top 40 playlist including 'Everything But The Girl, Missing' and 'Go Go Dolls, Name'.

Table for WABB Mobile, PD: Brett Dummer, MD: Crash. Top 40 playlist including 'Joan Osborne, One Of Us' and 'Go Go Dolls, Name'.

Table for WFMF Baton Rouge, PD: Johnny A. Top 40 playlist including 'Deep Blue Something, Breakfast At Tiffan' and 'Whitney Houston, Exhale'.

Table for KRQQ Tucson, PD: Mark Todd, MD: Valerie Knight. Top 40 playlist including 'Deep Blue Something, Breakfast At Tiffan' and 'Everything But The Girl, Missing'.



AIRPOWER

Total Plays/Gain

Total Plays/Gain

THE TONY RICH PROJECT 1680/305 Nobody Knows (LaFace/Arista) Total Stations: 72/Chart Move: 23-13 Heavy (40+ plays): 9 KBFM, KKRZ, KZZU, WFLZ, WIOG, WNVZ, WSSX, WTVR, WWCK Medium (20-39): 37 KDWB, KHTO, KIIS, KJYO, KKM, KLRZ, KMXV, KQKQ, WBZZ, WFBC, WFHN, WFLY, WGTZ, WHHY, WHOT, WIXX, WKRC, WKSS, WKXJ, WLAN, WNNK, WNOK, WNTQ, WSNX, WSTR, WSTW, WVK, WVSR, WVIS, WXLK, WYCR, WZJM, WZNY, WZPL, WZST, WZYP Light (Under 20): 26 New Airplay This Week: 6 KIIS, WHYI, WKSE, WMXQ, WNCI, WYHY

COLLECTIVE SOUL 1605/200 The World I Know (Atlantic) Total Stations: 77/Chart Move: 21-16 Heavy (40+): 6 KHFI, KHTY, KUTQ, WBZZ, WFBC, WSSX Medium (20-39): 35 KDWB, KJYO, KKM, KLRZ, KQKQ, KRQQ, WABB, WBHT, WDCG, WDDJ, WEDJ, WHOT, WHTZ, WIXX, WKBC, WKCI, WKRZ, WKXJ, WMXQ, WNNK, WNOK, WPRO, WSTW, WVSR, WWCK, WWST, WVIS, WXLK, WYCR, WZJM, WZNY, WZPL, WZST, WZYP Light (Under 20): 36 New Airplay This Week: 2 KQKQ, WFHN

AIRPOWER BOUND

Total Plays/Gain

OASIS 1481/201 Wonderwall (Epic)

Total Stations: 75/Chart Move: 25-19 Heavy (40+ plays): 2 KZZU, WPST Medium (20-39): 36 KHOM, KHTO, KHTY, KKRZ, KLRZ, KQKQ, KRBE, KRQQ, KUTQ, WAPE, WBHT, WBZZ, WDCG, WDDJ, WEDJ, WFBC, WFLZ, WHHY, WHTZ, WKBC, WKCI, WKXJ, WLAN, WSNX, WSSX, WTVR, WVSR, WWCK, WVIS, WXLK, WYCR, WZNY, WZPL, WZST Light (Under 20): 37 New Airplay This Week: 8 KHFI, KMXV, WKSS, WNNK, WPRO, WRVQ, WSTR, WXKS

GEORGE MICHAEL 1369/99 Jesus To A Child (DreamWorks/Geffen)

Total Stations: 75/Chart Move: 26-22 Heavy (40+): 2 KZZU, WYHY Medium (20-39): 29 KHFI, KHTO, KKLQ, KKRD, KKRZ, KLRZ, KRQQ, WABB, WAPE, WDJX, WFLY, WFMF, WHYI, WIOG, WKRC, WKXJ, WMXQ, WNNK, WNOK, WNTQ, WPRO, WSNX, WSSX, WTVR, WVSR, WWCK, WXLK, WYCR, WZNY, WZPL, WZST Light (Under 20): 44 New Airplay This Week: 3 WEDJ, WZPL, WZYP

MELISSA ETHERIDGE 1292/164 I Want To Come Over (Island)

Total Stations: 70/Chart Move: 29-24 Heavy (40+): 1 WKSE Medium (20-39): 34 KHTY, KKLQ, KKRD, KLRZ, KRQQ, WABB, WAPE, WDDJ, WFLY, WFLZ, WHHY, WIXX, WKBC, WKCI, WKRZ, WKXJ, WNOK, WNTQ, WPRO, WPXY, WSTR, WSTW, WTIC, WTVR, WWCK, WVIS, WXLK, WYCR, WYHY, WZJM, WZNY, WZST, WZYP Light (Under 20): 35 New Airplay This Week: 5 WDJX, WHTZ, WHYI, WNNK, WVSR

SOUL ASYLUM 962/42 Promises Broken (Columbia)

Total Stations: 80/Chart Move: 30-26 Heavy (40+): 0 Medium (20-39): 19 KHTO, KJYO, KLRZ, WABB, WBHT, WBZZ, WDDJ, WFLY, WFMF, WKRC, WKXJ, WNNK, WNOK, WPRO, WSSX, WSTW, WWCK, WVIS, WZST Light (Under 20): 61 New Airplay This Week: 3 KMXV, WHYI, WNTQ

SMASHING PUMPKINS 900/83 1979 (Virgin)

Total Stations: 52/Chart Move: 35-27 Heavy (40+): 2 KRBE, KUTQ Medium (20-39): 15 KHTY, KKRD, KLRZ, KQKQ, WBHT, WEDJ, WFLZ, WHTZ, WKBC, WKXJ, WPST, WTVR, WVIS, WZPL, WZST Light (Under 20): 35 New Airplay This Week: 4 WFLY, WHOT, WMXQ, WYCR

BODEANS 852/152 Closer To Free (Slash/Reprise)

Total Stations: 49/Chart Move: 39-29 Heavy (40+): 0 Medium (20-39): 23 KLRZ, WABB, WAPE, WDCG, WDDJ, WEDJ, WFBC, WHTZ, WIXX, WKCI, WKRC, WKRZ, WKXJ, WNNK, WNTQ, WPRO, WPST, WSNX, WTVR, WVIS, WXLK, WYCR, WZST Light (Under 20): 26 New Airplay This Week: 5 KHOM, KHTT, WHOT, WTIC, WZPL

3T 837/129 Anything (MJJ/550 Music)

Total Stations: 61/Chart Move: 38-30 Heavy (40+): 8 KBFM, KHFI, KHTO, KIIS, KQKQ, WFBC, WNVZ, WZPL Medium (20-39): 9 KDWB, KHKS, KLRZ, WFHN, WFLY, WTVR, WWCK, WVIS, WZJM Light (Under 20): 44 New Airplay This Week: 2 KKRZ, WVSR

BLESSID UNION OF SOULS 820/211 Oh Virginia (EMI)

Total Stations: 54/Chart Move: Debut 31 Heavy (40+): 0 Medium (20-39): 12 KLRZ, KQKQ, KRQQ, WIXX, WWCK, WVIS, WXLK, WYCR, WYHY, WZJM, WZST, WZYP Light (Under 20): 42 New Airplay This Week: 6 KHTY, KKM, KUTQ, WAPE, WHOT, WVK

BUSH 757/130 Glycerine (Trauma/Interscope)

Total Stations: 56/Chart Move: Debut 35 Heavy (40+): 2 WHTZ, WPST Medium (20-39): 11 KHOM, KHTY, KJYO, KLRZ, KRBE, KUTQ, WBHT, WDCG, WDDJ, WHHY, WZJM Light (Under 20): 43 New Airplay This Week: 5 KKRD, KQKQ, WFLZ, WHHY, WNTQ

MONICA 756/184 Before You Walk Out Of My Life (Rowdy/Arista)

Total Stations: 60/Chart Move: Debut 36 Heavy (40+): 3 WNVZ, WVIS, WZPL Medium (20-39): 13 KBFM, KHOM, KHTO, KJYO, KKRD, KQKQ, WFBC, WFHN, WFLY, WKSE, WTVR, WVK, WVSR Light (Under 20): 44 New Airplay This Week: 4 KHKS, KKM, KLRZ, WKSS

DAVE MATTHEWS BAND 621/46 Satellite (RCA)

Total Stations: 42/Chart Move: Debut 40 Heavy (40+): 0 Medium (20-39): 11 KHTY, WDCG, WDDJ, WFBC, WFLY, WHTZ, WKRC, WNOK, WPST, WVSR, WVIS Light (Under 20): 31 New Airplay This Week: 3 KHOM, WGTZ, WRVQ

CHART BOUND

Total Plays/Gain

GIN BLOSSOMS 568/458 Follow You Down (A&M)

Total Stations: 47 Heavy (40+): 0 Medium (20-39): 11 KLRZ, KRQQ, WABB, WDCG, WFBC, WHTZ, WKRC, WKRC, WKSE, WPST, WTVR Light (Under 20): 36 New Airplay This Week: 21 KLRZ, KRBE, KUTQ, WABB, WEDJ, WFBC, WHOT, WKRC, WKRC, WKSE, WNOK, WNTQ, WSNX, WSTW, WTVR, WVIS, WXLK, WYCR, WZNY, WZPL

FOLK IMPLOSION 549/26 Natural One (London/Island)

Total Stations: 36 Heavy (40+): 4 KRBE, KUTQ, WEDJ, WPST

MOST NEW AIRPLAY THIS WEEK

No. Of Stations

Table with 2 columns: Artist/Album and No. Of Stations. Includes GIN BLOSSOMS (21), LISA LOEB & NINE STORIES (11), MEAT LOAF (10), ACE OF BASE (9), DEBORAH COX (8), OASIS (8).

Medium (20-39): 5 KHTY, WBHT, WDCG, WDDJ, WTVR, WYHY Light (Under 20): 27 New Airplay This Week: 2 WKXJ, WWST

ALANIS MORISSETTE 530/120 Ironic (Maverick/Reprise)

Total Stations: 45 Heavy (40+): 4 KHTY, KRBE, WHTZ, WPST Medium (20-39): 5 KUTQ, WABB, WAPE, WEDJ, WXXX Light (Under 20): 36 New Airplay This Week: 6 WDCG, WKBC, WKRC, WNOK, WNTQ, WVIS

LL COOL J 488/27 Hey Lover (Def Jam/RAL/Island)

Total Stations: 54 Heavy (40+): 2 KIIS, WZJM Medium (20-39): 5 KZZU, WFHN, WKSE, WNVZ, WVIS Light (Under 20): 47 New Airplay This Week: 3 WFBC, WGTZ, WWST

JON B. 452/3 Pretty Girl (Yab Yum/550 Music)

Total Stations: 25 Heavy (40+): 2 WFBC, WNVZ Medium (20-39): 8 KIIS, KRQQ, WFLZ, WNNK, WRVQ, WSTR, WWST, WZJM Light (Under 20): 15

BRANDY 429/111 Sittin' Up In My Room (Arista)

Total Stations: 27 Heavy (40+): 2 KZZU, WNVZ Medium (20-39): 6 KDWB, KHFI, KQKQ, WFHN, WRVQ, WVIS Light (Under 20): 19 New Airplay This Week: 5 KHTO, KJYO, WFMF, WVK, WZNY

DENISE W/COLLEGE'S ADAM MARANO 418/67 All Cried Out (Viper/Metropolitan)

Total Stations: 21 Heavy (40+): 4 KHFI, WFLY, WKSE, WPXY Medium (20-39): 6 KIIS, WDJX, WFHN, WIOG, WWST, WXXX Light (Under 20): 10 New Airplay This Week: 3 KBFM, KHOM, KMXV

SEVEN MARY THREE 383/3 Cumbersome (Mammoth/Antenna)

Total Stations: 37 Heavy (40+): 0 Medium (20-39): 6 KHTY, KRBE, KUTQ, WDDJ, WPST, WWCK Light (Under 20): 31 New Airplay This Week: 2 KJYO, WFLY

DEBORAH COX 375/152 Who Do U Love (Arista)

Total Stations: 28 Heavy (40+): 0 Medium (20-39): 8 KBFM, KHTO, KKRZ, KZZU, WFHN, WNVZ, WTVR, WYCR Light (Under 20): 20 New Airplay This Week: 8 KKM, KQKQ, WGTZ, WHOT, WKRC, WSNX, WWCK, WWST

ACE OF BASE 358/144 Lucky Love (Arista)

Total Stations: 39 Heavy (40+): 1 KHFI

Medium (20-39): 6 KHTO, KMXV, KRQQ, WKRC, WTVR, WWCK Light (Under 20): 32 New Airplay This Week: 9 KBFM, KHTO, KLRZ, WFHN, WNTQ, WTVR, WVK, WVIS, WZYP

MEAT LOAF 288/107 Not A Dry Eye In The House (MCA)

Total Stations: 35 Heavy (40+): 0 Medium (20-39): 3 WNNK, WWCK, WZPL Light (Under 20): 32 New Airplay This Week: 10 KHTY, KLRZ, WBZZ, WFLZ, WFMF, WLAN, WNCI, WTIC, WVK, WXXX

FUN FACTORY 268/44 Celebration (Curb-edel/Curb)

Total Stations: 18 Heavy (40+): 1 KBFM Medium (20-39): 6 WFBC, WIOG, WKSE, WNNK, WXXL, WZJM Light (Under 20): 11 New Airplay This Week: 4 WGTZ, WTVR, WVIS, WYCR

2PAC FEAT. DR. DRE & ROGER TROUTMAN 248/129 California Love (Death Row/Interscope)

Total Stations: 30 Heavy (40+): 1 WVIS Medium (20-39): 4 KHFI, KIIS, KZZU, WFHN Light (Under 20): 25 New Airplay This Week: 6 KHFI, WFLY, WFLZ, WFMF, WGTZ, WIOG

SMASHING PUMPKINS 243/5 Bullet With Butterfly Wings (Virgin)

Total Stations: 39 Heavy (40+): 0 Medium (20-39): 4 KUTQ, WDCG, WHTZ, WPST Light (Under 20): 35

LISA LOEB & NINE STORIES 233/176 Taffy (Geffen)

Total Stations: 33 Heavy (40+): 0 Medium (20-39): 2 KUTQ, WVIS Light (Under 20): 31 New Airplay This Week: 11 KHTY, KLRZ, KRBE, WABB, WDDJ, WKXJ, WPST, WSSX, WTVR, WYCR, WZST

SHAWN STOCKMAN 216/6 Visions Of A Sunset (Polydor/A&M)

Total Stations: 19 Heavy (40+): 0 Medium (20-39): 2 WFHN, WNVZ Light (Under 20): 17 New Airplay This Week: 3 KBFM, WWCK, WVIS

D:REAM 215/26 Shoot Me With Your Love (Sire/EEG)

Total Stations: 26 Heavy (40+): 0 Medium (20-39): 3 WFHN, WFLY, WVIS Light (Under 20): 22 New Airplay This Week: 2 KHOM, KLRZ

NO DOUBT 209/18 Just A Girl (Trauma/Interscope)

Total Stations: 18 Heavy (40+): 1 WPST

Medium (20-39): 5 KHTY, KRBE, KUTQ, WHTZ, WTVR Light (Under 20): 12 New Airplay This Week: 1 WVIS

N-TRANCE 168/30 Stayin' Alive (Radikal/Avex-Critique)

Total Stations: 21 Heavy (40+): 0 Medium (20-39): 2 KIIS, WFHN Light (Under 20): 19 New Airplay This Week: 4 KQKQ, WBHT, WSNX, WWST

ROD STEWART 166/29 So Far Away (Lava/Antenna)

Total Stations: 15 Heavy (40+): 0 Medium (20-39): 1 WXLK Light (Under 20): 14 New Airplay This Week: 2 KKLQ, WHHY

TERRY ELLIS 166/50 Where Ever You Are (EastWest/EEG)

Total Stations: 16 Heavy (40+): 0 Medium (20-39): 2 KLRZ, WNVZ Light (Under 20): 14 New Airplay This Week: 3 KJYO, WHOT, WVK

MARIAH CAREY 165/103 Always Be My Baby (Columbia)

Total Stations: 12 Heavy (40+): 0 Medium (20-39): 3 KKRZ, KZZU, WIOG Light (Under 20): 9 New Airplay This Week: 6 KKRZ, KRQQ, WGTZ, WKSS, WWST, WYCR

MEN WITHOUT HATS 155/14 The Safety Dance (Priority)

Total Stations: 36 Heavy (40+): 0 Medium (20-39): 1 KMXV Light (Under 20): 35

THE PRESIDENTS OF THE UNITED STATES OF AMERICA 153/51 Peaches (Columbia)

Total Stations: 23 Heavy (40+): 0 Medium (20-39): 3 KJYO, WHTZ, WVIS Light (Under 20): 20 New Airplay This Week: 3 WHOT, WVIS, WZNY

JANN ARDEN 152/57 Insensitive (A&M)

Total Stations: 26 Heavy (40+): 0 Medium (20-39): 2 KLRZ, WZST Light (Under 20): 24 New Airplay This Week: 5 KHTY, WKXJ, WTIC, WVIS, WXXX

GOO GOO DOLLS 146/16 Naked (Metal Blade/Warner Bros.)

Total Stations: 16 Heavy (40+): 0 Medium (20-39): 4 KRBE, KUTQ, WKSE, WPST Light (Under 20): 12 New Airplay This Week: 1 KHTY

DIANA KING 145/85 Ain't Nobody (Work)

Total Stations: 15 Heavy (40+): 0 Medium (20-39): 3 KHTO, WVIS, WZJM Light (Under 20): 12 New Airplay This Week: 2 KLRZ, WNVZ

PEARL JAM 133/3 I Got Id (Epic)

Total Stations: 12 Heavy (40+): 0 Medium (20-39): 3 KUTQ, WHTZ, WPST Light (Under 20): 9

L.A.D. FEAT. DARVY TRAYLOR 131/10 Ridin' Low (Hollywood)

Total Stations: 9 Heavy (40+): 0 Medium (20-39): 2 KIIS, WZJM Light (Under 20): 7

Airpower awarded to those records which attain 1500 detections for the first time. New airplay lists those stations registering six or more detections per week on a record for the first time. * Initial impact: records appearing on this page for the first time.

Early
Believers:
KROQ
WRCX
KBZR
On Tour
Now!

Lenny Kravitz can't get you off my mind

"Can't Get You Off My Mind" is the huge track from *Circus*. After two weeks, immediate requests. It's definitive Lenny." Christina Bakalis CIMX

"Our airstaff has wanted this one since the album came in. No, it doesn't sound like the format. Yes, it is our artist. Yes, it may well be an instant classic. Put it on. You'll get calls." Lynn Barstow KNNC

from the new album *Circus*.
Produced by Lenny Kravitz.
Representation: Craig Fruin
and Howard Kaufman/HK Management
© 1996 Virgin Records America, Inc.



GAME ROOM PARTY ROOM

THE SMASHING PUMPKINS 1979

#2 ALTERNATIVE
OVER 5 MILLION SOLD!

Breaking At:

WPRO 894 Z100 KDWB KYSR KALC STAR 100.7
Q102 WPLJ WFLZ KROQ WRQX WZLZ WXXL

"1979" World Premiere On **M** Begins January 29th!

the new song from the double-platinum double album
Mellon Collie And The Infinite Sadness

Produced by Flood, Alan Moulder, and Billy Corgan
Management: Q Prime



© 1996 Virgin Records America, Inc.

WONTOUR SONG ACTIVITY REPORTS For Week Ending January 28, 1996

WHITNEY HOUSTON 2828/118 Exhale (Shoop Shoop) (Arista) Total Stations: 77 Chart Move: 7-6

LA BOUCHE 2194/235 Be My Lover (RCA) Total Stations: 76 Chart Move: 10-8

LL COOL J 488/27 Hey Lover (Def Jam/RAL/Island) Total Stations: 54 Chart Move: 10-8

DAVE MATTHEWS BAND 621/46 Satellite (RCA) Total Stations: 42 Chart Move: Debut 40

NATALIE MERCHANT 1947/178 Wonder (Elektra/EEG) Total Stations: 82 Chart Move: 12-11

GEORGE MICHAEL 1369/99 Jesus To A Child (DreamWorks/Geffen) Total Stations: 75 Chart Move: 26-22

MONICA 756/184 Before You Walk Out Of My Life (Rowdy/Arista) Total Stations: 60 Chart Move: Debut 36

ALANIS MORISSETTE 530/120 Ironic (Maverick/Reprise) Total Stations: 45 Chart Move: 25-19

OASIS 1481/201 Wonderwall (Epic) Total Stations: 75 Chart Move: 25-19

JOAN OSBORNE 3215/215 One Of Us (Blue Gorilla/Mercury) Total Stations: 81 Chart Move: 4-4

THE TONY RICH PROJECT 1680/305 Nobody Knows (LaFace/Arista) Total Stations: 72 Chart Move: 23-13

SEAL 1616/76 Don't Cry (ZTT/Warner Bros.) Total Stations: 81 Chart Move: 18-15

SEVEN MARY THREE 383/3 Cumbersome (Mammoth/Atlantic) Total Stations: 37 Chart Move: 18-15

SMASHING PUMPKINS 900/83 1979 (Virgin) Total Stations: 52 Chart Move: 35-27

SOUL ASYLUM 962/42 Promises Broken (Columbia) Total Stations: 80 Chart Move: 30-26



POWER PLAYLISTS

For Week Ending January 28, 1996



Playlists supplied by Broadcast Data Systems' Radio Track service. Stations selected from panel of leading broadcasters in 125 radio markets, electronically monitored 24 hours a day, 7 days a week. Songs ranked by number of plays in monitored week.

Grid of 24 radio station playlists including: HOT 97, POWER 106, B96, KMEL, WPGC, WILD 107, JAM'N 94.5, THE BOX, POWER 96, KUBE, POWER 92, KGGI, FM 102, KTFM, 92Q, KS104, Z90, and B95. Each station listing includes song titles, artists, and play counts.

AND THE HITS KEEP COMING...



DEBORAH COX "Who Do U Love"

This is the one that's going all the way. From her critically acclaimed, self-titled debut album.

(25) - (22) Monitor Rhythm-Crossover

	TP		TP
KKRZ	27	WNVZ	26
WWKX	24	WJJS	32
WFHN	24	WHHH	36
92Q	13	KLUC	28
WYCR	18	Z90	48
WPGC	15	FM102	35

New This Week Q102-Cincinnati

Brandy appears courtesy of Atlantic Recording Corporation



BRANDY

"Sittin' Up In My Room"

The next #1 from the instant 4x Platinum soundtrack album *Waiting To Exhale*.

(20) - (14) Billboard Hot 100

(11) - (10) Soundscan Single

AUDIENCE ALREADY OVER 20 MILLION



ACE OF BASE

"Lucky Love"

Their hot new single, already exploding from coast to coast.



Already On:

	TP		TP
WAPE	16	B96	21
Y100	13	Q102	28
KHFI	48	KMXV	35
KRQ	23		

Official Airplay Date:

FEBRUARY 5TH

MARY J. BLIGE

"Not Gon' Cry"

The country's #1 R&B record, just one week after release. It's explosive and Top 40 is still to come. From *Waiting To Exhale*.

**(59) - (21) ★★★ Greatest Gainer Sales ★★★
Billboard Hot 100**

Debut **(9) Soundscan Single**

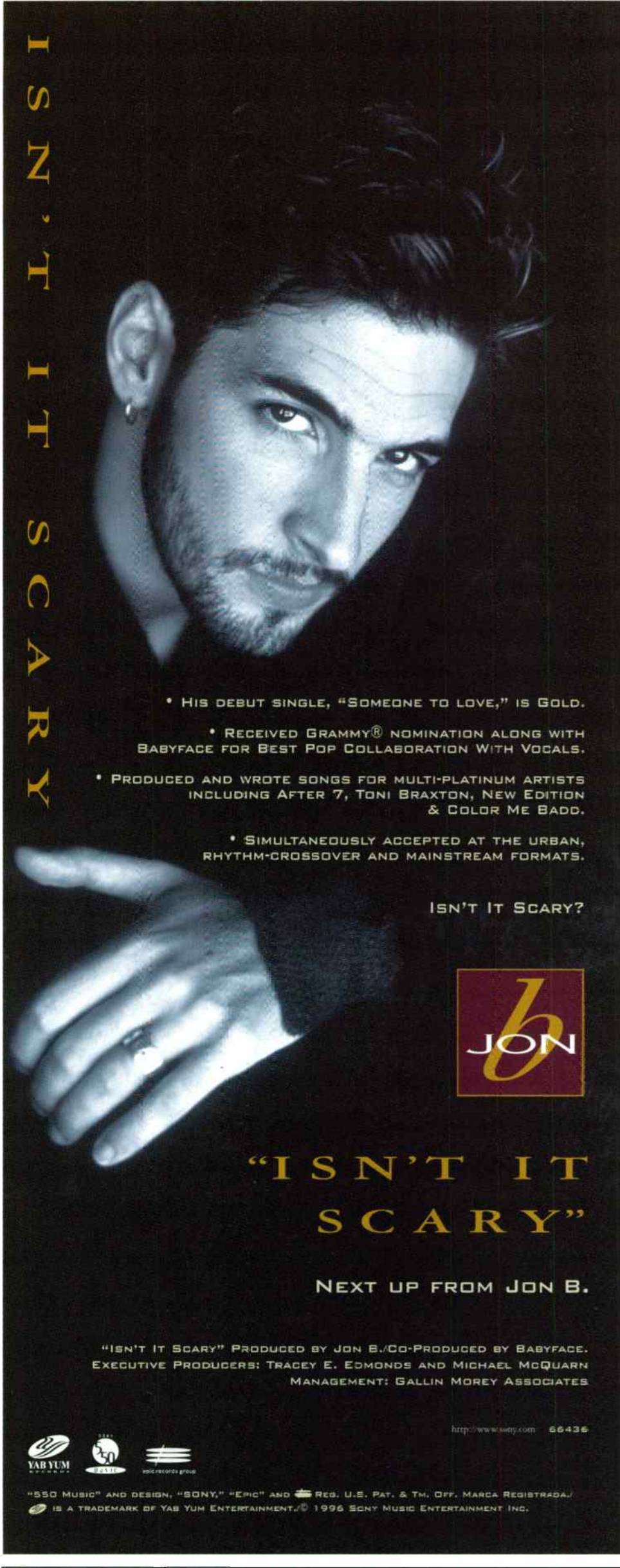
(1) Billboard R&B Single

(16) ★★★ Airpower ★★★ Monitor-Rhythm Crossover



Photo: (C) Universal Music Group / UMG





- HIS DEBUT SINGLE, "SOMEONE TO LOVE," IS GOLD.
- RECEIVED GRAMMY® NOMINATION ALONG WITH BABYFACE FOR BEST POP COLLABORATION WITH VOCALS.
- PRODUCED AND WROTE SONGS FOR MULTI-PLATINUM ARTISTS INCLUDING AFTER 7, TONI BRAXTON, NEW EDITION & COLOR ME BADD.
- SIMULTANEOUSLY ACCEPTED AT THE URBAN, RHYTHM-CROSSOVER AND MAINSTREAM FORMATS.

ISN'T IT SCARY?



"ISN'T IT SCARY"

NEXT UP FROM JON B.

"ISN'T IT SCARY" PRODUCED BY JON B./CO-PRODUCED BY BABYFACE.
EXECUTIVE PRODUCERS: TRACEY E. EDMONDS AND MICHAEL MCQUARN
MANAGEMENT: GALLIN MOREY ASSOCIATES

<http://www.sony.com> 66436



© 1996 SONY MUSIC ENTERTAINMENT INC. "ISN'T IT SCARY" IS A TRADEMARK OF Y&B ENTERTAINMENT.

RHYTHM-CROSSOVER

POWER PLAYLISTS



AIRPLAY Monitor[®]

For Week Ending
January 28, 1996

Playlists supplied by Broadcast Data Systems' Radio-Track service. Stations selected from panel of leading broadcasters in 133 radio markets, electronically monitored 24 hours a day, 7 days a week. Songs ranked by number of plays in monitored week.

102 JAMZ			POWER 102			KIX 106		
WJMH Greensboro		PD: Brian Douglas MD: Horse Raney	KPRR El Paso		PD: John Candelaria	WWXK Providence		PD: Joe Dawson MD: Naughty Bay
		TW LW			TW LW			TW LW
1	2Pac, California Love	70 68	1	Tony Rich Project, Nobody Knows	64 66	1	La Bouche, Be My Lover	92 85
2	Mary J. Blige, Not Gon' Cry	69 68	2	L.A.D., Ridin' Low	56 58	2	Mariah Carey & Boyz II Men, One Sweet Day	90 82
3	M.C. Hammer, Gon' Up Yonder	68 60	3	Mariah Carey, Fantasy	56 53	3	3T, Anything	67 46
4	LL Cool J, Don't It	68 71	4	Mariah Carey & Boyz II Men, One Sweet Day	55 58	4	Brandy, Sittin' Up In My Room	65 41
5	Lost Boyz, Renee	66 44	5	Everything But The Girl, Missing	53 54	5	LL Cool J, Hey Lover	65 61
6	Mariah Carey & Boyz II Men, One Sweet Day	53 62	6	Groove Theory, Tell Me	52 38	6	Whitney Houston, Exhale	62 76
7	LL Cool J, Hey Lover	51 64	7	Lina Santiago, Feels So Good	50 54	7	LL Cool J, Don't It	57 18
8	Kris Kross, Tonight's The Night	49 48	8	3T, Anything	49 51	8	Jodeci, Love U 4 Life	52 45
9	Total, No One Else	48 34	9	La Bouche, Be My Lover	48 44	9	Everything But The Girl, Missing	44 15
10	MC Lyte, Keep On Keepin' On	47 3	10	N-Trance, Stay'n' Alive	44 48	10	Tony Rich Project, Nobody Knows	43 34
11	Brandy, Sittin' Up In My Room	46 6	11	Mighty Dub Kats, Magic Carpet Ride	44 22	11	Kris Kross, Tonight's The Night	43 45
12	Immature, Please Don't Go	42 51	12	2Pac, California Love	44 24	12	Blahzay Blahzay, Danger	40 35
13	Busta Rhymes, Woo-Hah! Got You All In C	39 36	13	LL Cool J, Hey Lover	39 47	13	Immature, We Got It	39 28
14	Mona Lisa, Can't Be Wasting My Time	38 29	14	Buffy, Gve Me	37 39	14	Faith Evans, Soon As I Get Home	32 34
15	D'Angelo, Lady	35 52	15	Denine, All Cried Out	35 50	15	N-Trance, Stay'n' Alive	32 35
16	Whitney Houston, Exhale	35 40	16	Whistle, A Chance For Our Love	34 32	16	2Pac, California Love	27 28
17	R. Kelly, Baby, Baby, Baby, Baby	34 0	17	TLC, Oggin' On You	34 39	17	Planet Soul, Set U Free	24 20
18	Ascape, Do You Want To	34 40	18	Brandy, Sittin' Up In My Room	30 33	18	Slow Pain, Money Mad	24 27
19	Gangster Crew, Buy You Some	33 24	19	Whitney Houston, Exhale	29 29	19	Deborah Cox, Who Do U Love	22 20
20	Fragers, How Many Mics	28 34	20	Seal, Kiss From A Rose	28 16	20	Total, No One Else	21 13
21	Goodie Mob, Cell Therapy	27 32	21	Monica, Before You Walk Out Of My Life	26 10	21	Monica, Before You Walk Out Of My Life	20 51
22	Monica, Like This And Like That	26 24	22	Barrio Boyzz, How We Roll	25 10	22	O'Angelo, Lady	20 11
23	TLC, Oggin' On You	26 41	23	C+C Music Factory, Robi-Rob's Borquita An	23 21	23	Monifah, I Miss You	19 11
24	Groove Theory, Tell Me	26 33	24	Artie The 1 Man Party, A Mover La Colita	23 22	24	Groove Theory, Tell Me	16 15
25	R. Kelly, Down Low	25 26	25	Mariah Carey, Open Arms	22 10	25	Ac'e Of Base, Beautiful Life	16 25
26	R. Kelly, You Remind Me Of Something	25 26	26	K7, Move It Like This	20 20	26	Fun Factory, Celebration	16 4
27	Ivette Michelle, Everyday & Evernight	22 45	27	Real McCoy, Another Night	19 17	27	MilliBones, Where 2 Da Party At?	16 15
28	Sole, Where Do U Want Me To Put It	21 12	28	Planet Soul, Set U Free	19 33	28	R. Kelly, You Remind Me Of Something	16 2
29	Adina Howard, Freak Like Me	21 23	29	Janet Jackson, Runaway	18 17	29	Coolio, Too Hot	15 17
30	Heliah Skellah/O.G.C., Lettiah Leflour Es	20 3	30	Los Del Rio, Macarena Bayside Boys Mix	17 12	30	Barrio Boyzz, How We Roll	15 24
31	Coolio Feat. L.V., Gangsta's Paradise	18 20	31	Coolio Feat. L.V., Gangsta's Paradise	17 26	31	TLC, Waterfalls	15 16
32	Faith Evans, Soon As I Get Home	18 22	32	Devone, Energy	16 17	32	Max-A-Million, Sexual Healing	14 18
33	Faith Evans, You Used To Love Me	17 13	33	Shaggy, Boomastic	16 12	33	Seal, Don't Crv	14 8
34	Erick Sermon, Welcome	17 20	34	TLC, Creep	14 15	34	Yvette Michelle, Everyday & Evernight	14 11
35	Ghostface Killer, Masta Killa, Winter W	17 15	35	Robin S., Show Me Love	14 16	35	Outthere Brothers, Boom Boom Boom	14 18
36	Method Man, The Riddler	16 3	36	Mary J. Blige, Not Gon' Cry	14 38	36	Junior M.F.A., Get Money	13 12
37	P. I Hate U	14 32	37	TLC, Waterfalls	12 14	37	Az, Sugar Hill	13 11
38	Montell Jordan, This Is How We Do It	14 15	38	Jon B., Pretty Girl	12 14	38	Devone, Energy	13 10
39	Terry Ellis, Where Ever You Are	14 15	39	Max-A-Million, Fat Boy	12 9	39	Shal, Come With Me	13 15
40	Mariah Carey, Fantasy	14 21	40	Mekentel, He's Mine	11 11	40	Diana King, Am I Nobody	13 8

KLUC			KDON			KISS 97.3		
KLUC Las Vegas		PD: Jerry Deam MD: Cat Thomas	KDON Monterey/Salinas		PD: Michael Newman MD: Jennifer Wilde	KISS 97.3 Albuquerque		PD: Roy Jaynes MD: Jackie James
		TW LW			TW LW			TW LW
1	Groove Theory, Tell Me	68 69	1	TLC, Oggin' On You	81 74	1	2Pac, California Love	96 96
2	LL Cool J, Hey Lover	67 65	2	La Bouche, Be My Lover	75 80	2	Kris Kross, Tonight's The Night	84 75
3	J'son, Take A Look	60 61	3	Janet Jackson, Twenty Foreplay	71 77	3	Tony Rich Project, Nobody Knows	75 0
4	Silk, Hooked On You	60 63	4	Whitney Houston, Exhale	71 72	4	Mariah Carey & Boyz II Men, One Sweet Day	74 70
5	3T, Anything	60 62	5	Immature, We Got It	70 62	5	3T, Anything	61 52
6	Monica, Before You Walk Out Of My Life	58 58	6	Barrio Boyzz, How We Roll	68 69	6	The Dogg Pound, Let's Play House	59 55
7	Backstreet Boys, We've Got It Gon' On	58 55	7	Monica, Before You Walk Out Of My Life	68 78	7	R. Kelly, You Remind Me Of Something	58 58
8	Tony Rich Project, Nobody Knows	57 63	8	Monifah, I Miss You	67 26	8	Monica, Before You Walk Out Of My Life	50 17
9	After 7, 'Til You Do Me Right	56 52	9	Tony Rich Project, Nobody Knows	65 41	9	Whitney Houston, Exhale	48 51
10	Xscape, Who Can I Run To	53 48	10	Deborah Cox, Who Do U Love	60 71	10	TLC, Oggin' On You	44 50
11	Max-A-Million, Sexual Healing	53 58	11	Quincy Jones, Brandy & Heavy D, Rock Wit	59 60	11	Brandy, Sittin' Up In My Room	42 45
12	Jon B., Pretty Girl	51 46	12	Brandy, Sittin' Up In My Room	54 54	12	Coolio, Too Hot	42 51
13	Everything But The Girl, Missing	51 27	13	Ruffneck Feat. Yavahn, Everybody Be Some	52 76	13	La Bouche, Be My Lover	41 43
14	R. Kelly, You Remind Me Of Something	45 38	14	L.V., Throw Your Hands Up	50 89	14	LL Cool J, Hey Lover	34 63
15	Brandy, Sittin' Up In My Room	42 43	15	Mariah Carey, Always Be My Baby	47 28	15	Yvette Michelle, Everyday & Evernight	34 24
16	Mariah Carey & Boyz II Men, One Sweet Day	38 46	16	Toni Braxton, Let It Flow	45 10	16	Ac'e Of Base, Beautiful Life	27 33
17	2Pac, California Love	38 35	17	Shawn Stockman, Visions Of A Sunset	40 41	17	L.A.D., Ridin' Low	27 29
18	Madonna, You'll See	37 32	18	Nokenstel, He's Mine	25 22	18	Immature, We Got It	27 7
19	Quincy Jones, Brandy & Heavy D, Rock Wit	37 51	19	Soul For Real, If You Want It	24 22	19	Soul For Real, Candy Ram	23 23
20	Janet Jackson, Twenty Foreplay	34 40	20	Total, Can't You See	22 27	20	Groove Theory, Tell Me	22 44
21	Coolio, Too Hot	33 35	21	2Pac, California Love	22 18	21	TLC, Red Light Special	22 11
22	La Bouche, Be My Lover	33 45	22	Tony Thompson, I Wanna Love Like That	21 23	22	Click, Hurricane	21 25
23	Immature, We Got It	33 34	23	Xscape, Who Can I Run To	21 76	23	Mariah Carey, Fantasy	21 18
24	Janet Jackson, Runaway	29 27	24	Groove Theory, Tell Me	20 31	24	Frost, East Sid - Rendezvous	21 19
25	Max-A-Million, Everybody's Groovin'	29 28	25	Madonna, Human Nature	18 22	25	All-4-One, I Can Love You Like That	20 19
26	Whitney Houston, Exhale	27 29	26	Max-A-Million, Take Your Time	18 17	26	Boyz II Men, Water Runs Dry	20 23
27	Deborah Cox, Who Do U Love	27 24	27	Lina Santiago, Feels So Good	18 0	27	Jon B., Pretty Girl	20 18
28	Outthere Brothers, Boom Boom Boom	27 27	28	Dove Shack, Summertime In The Lbc	17 15	28	Janet Jackson, Runaway	20 24
29	Mariah Carey, Fantasy	26 27	29	LL Cool J, Hey Lover	16 12	29	Adina Howard, Freak Like Me	18 22
30	Tony Thompson, I Wanna Love Like That	25 27	30	LL Cool J, Don't It	16 14	30	Real McCoy, Rtn Away	18 15
31	Barrio Boyzz, How We Roll	25 22	31	-P., The Most Beautiful G	15 14	31	Brownstone, If You Love Me	18 18
32	Planet Soul, Set U Free	25 35	32	Mary J. Blige, Not Gon' Cry	15 0	32	Madonna, You'll See	18 21
33	Shadow, The Abyss	24 32	33	Mariah Carey & Boyz II Men, One Sweet Day	14 66	33	Blackstreet, Before I Let You Go	18 19
34	Yves, Warm Summer Daze	21 21	34	Xscape, Do You Want To	14 0	34	Los Del Rio, Macarena Bayside Boys Mix	18 25
35	Kris Kross, Tonight's The Night	21 2	35	Michael Jackson, You Are Not Alone	13 13	35	Mary J. Blige, I'm Gon' Down	18 13
36	Mariah Carey, Always Be My Baby	18 6	36	Selena, I Could Fall In Love	13 11	36	Seal, Kiss From A Rose	18 17
37	Tha Dogg Pound, Let's Play House	17 14	37	Shal, Come With Me	12 10	37	After 7, 'Til You Do Me Right	17 15
38	Montell Jordan, This Is How We Do It	16 10	38	Real McCoy, Another Night	12 17	38	Bone Thugs-N-Harmony, 1st Of The Month	17 14
39	Los Del Rio, Macarena Bayside Boys Mix	16 12	39	Jon B., Pretty Girl	12 11	39	Montell Jordan, This Is How We Do It	16 21
40	D'Angelo, Lady	15 15	40	After 7, 'Til You Do Me Right	11 12	40	Frost, La Faml'a	15 0

HOOSIER 96.3			94.1 JAMZ			KZFM		
WHHH Indianapolis		PD: Scott Wheeler MD: Carl Frye	KIMZ Las Vegas		PD: Mike Marino APD: M.C. Scrappy MD: Kid Stevenz	KZFM Corpus Christi		PD: Charlie Maxco MD: Tony Manero
		TW LW			TW LW			TW LW
1	2Pac, California Love	57 49	1	Mariah Carey & Boyz II Men, One Sweet Day	64 68	1	Tony Rich Project, Nobody Knows	55 58
2	Brandy, Sittin' Up In My Room	53 55	2	Hootie & The Blowfish, Only Wanna Be Wit	61 55	2	Mariah Carey & Boyz II Men, One Sweet Day	52 53
3	Mary J. Blige, Not Gon' Cry	52 56	3	Tony Rich Project, Nobody Knows	59 54	3	3T, Anything	51 45
4	Mariah Carey & Boyz II Men, One Sweet Day	50 48	4	Whitney Houston, Exhale	59 67	4	Barrio Boyzz, How We Roll	51 52
5	Faith Evans, Soon As I Get Home	49 50	5	Groove Theory, Tell Me	54 52	5	La Bouche, Be My Lover	50 49
6	LL Cool J, Hey Lover	43 48	6	Madonna, You'll See	50 33	6	R. Kelly, You Remind Me Of Something	49 28
7	Kris Kross, Tonight's The Night	39 37	7	Jon B., Pretty Girl	47 63	7	Immature, We Got It	46 43
8	Groove Theory, Tell Me	38 41	8	Monica, Before You Walk Out Of My Life	47 52	8	Monica, Before You Walk Out Of My Life	46 39
9	Xscape, Do You Want To	38 32	9	3T, Anything	45 48	9	Planet Soul, Set U Free	45 40
10	Tha Dogg Pound, Let's Play House	37 29	10	Everything But The Girl, Missing	44 39	10	Ac'e Of Base, Beautiful Life	45 47
11	Deborah Cox, Who Do U Love	37 33	11	All-4-One, I Can Love You Like That	42 48	11	Real McCoy, Automatic Lover	43 48
12	Whitney Houston, Exhale	36 36	12	Janet Jackson, Runaway	41 40	12	Shal, Come With Me	42 49
13	R. Kelly, Down Low	36 25	13	Mariah Carey, Always Be My Baby	40 37	13	Artie The 1 Man Party, A Mover La Colita	40 29
14	Total, No One Else	35 14	14	Selena, I Could Fall In Love	39 63	14	Silk, Hooked On You	40 41
15	3T, Anything	34 30	15	Sophie B. Hawkins, As I Lay Me Down	39 53	15	Jodeci, Love U 4 Life	38 36
16	L.A.D., Ridin' Low	33 32	16	Shal, Come With Me	38 38	16	Brandy, Sittin' Up In My Room	36 33
17	Coolio, Too Hot	33 43	17	Mariah Carey, Fantasy	36 39	17	Lina Santiago, Feels So Good	35 20
18	Planet Soul, Set U Free	32 32	18	Jon B., Pretty Girl	35 33	18	Max-A-Million, Sexual Healing	29 33
19	Quincy Jones, Brandy & Heavy D, Rock Wit	32 32	19	Planet Soul, Set U Free	32 36	19	D'Angelo, Lady	29 16
20	Monica, Before You Walk Out Of My Life	32 42	20	LL Cool J, Hey Lover	29 29	20	Denine, All Cried Out	28 30
21	Tony Rich Project, Nobody Knows	29 26	21	TLC, Waterfalls	28 25	21	Selena, A Boy Like That	28 28
22	Groove Theory, Keep Tryin'	28 17	22	Soul For Real, Every Little Thing I Do	25 24	22	J'son, Take A Look	27 36
23	Blahzay Blahzay, Danger	27 17	23	Seal, Kiss From A Rose	23 25	23	Joe, All The Things	27 1
24	Yvette Michelle, Everyday & Evernight	27 27	24	Art Of Noise, Moments In Love	23 25	24	2Pac, California Love	26 15
25	Barrio Boyzz, How We Roll	26 28	25	K7, Move It Like This	22 21	25	Everything But The Girl, Missing	24 20
26	Immature, We Got It	25 30	26	Boyz II Men, Water Runs Dry	20 19	26	Deborah Cox, Who Do U Love	23 24
27	D'Angelo, Lady	25 22	27	Xscape, Who Can I Run To	20 11	27	Mighty Dub Kats, Magic Carpet Ride	22 54
28	Click, Hurricane	24 29	28	Selena, Dreaming Of You	19 7	28	LL Cool J, Hey Lover	22 26
29	TLC, Oggin' On You	24 42	29	Coolio Feat. L.V., Gangsta's Paradise	18 16	29	Madonna, You'll See	21 25
30	N-Trance, Stay'n' Alive	20 23	30	Mariah Carey, Open Arms	19 9	30	Yvette Michelle, Everyday & Evernight	20 15
31	Mariah Carey, Fantasy	20 26	31	La Bouche, Be My Lover	18 17	31	Los Del Rio, Macarena Bayside Boys Mix	19 24
32	TLC, Waterfalls	16 13	32	Monica, Don't Take It Personal	16 19	32	Mariah Carey, Fantasy	18 17
33	Silk, Hooked On You	16 19	33	Boyz II Men, I'll Make Love To You/To Te	13 14	33		

AIRPLAY
Monitor

BDS IMPACT™ DETECTIONS



★ ★ ★ **AIRPOWER** ★ ★ ★
(Minimum 600 detections for the first time)

<i>Total Plays/Gain</i>	<i>Total Plays/Gain</i>
LINA SANTIAGO 652/113 <i>Feels So Good (Show Me Your Love) (Universal)</i> Total Stations: 22/Chart Move: 18-13 Heavy (40+ plays): 6 KGGI, KMEL, KPRR, KPWR, KUBE, KYLD Medium (20-39): 8 KBOS, KCAQ, KKFR, KSFM, KTFM, KZFM, WJJS, XHTZ Light (Under 20): 8 New Airplay This Week: 3 KDON, WPOW, WWKX	MARY J. BLIGE 606/25 <i>Not Gon' Cry (Arista)</i> Total Stations: 21/Chart Move: 16-16 Heavy (40+): 6 KBXX, KMEL, KTFM, WERQ, WHHH, WJMH Medium (20-39): 6 KCAQ, KUBE, KYLD, WJJS, WPGC, WQHT Light (Under 20): 9 New Airplay This Week: 2 KDON, WJMH

AIRPOWER BOUND

Total Plays/Gain

KRIS KROSS 528/48
Tonite's Tha Night (Ruffhouse/Columbia)
Total Stations: 25/Chart Move: 20-17
Heavy (40+ plays): 5 KBXX, KKSS, WJMH, WWKX, XHTZ
Medium (20-39): 6 KLUC, KMEL, KPWR, WHHH, WPGC, WQHT
Light (Under 20): 14
New Airplay This Week: 2 KLUC, KZHT

IMMATURE (FEAT. SMOOTH) 494/72
We Got It (MCA)
Total Stations: 21/Chart Move: 24-20
Heavy (40+): 4 KDON, KUBE, KZFM, WJJS
Medium (20-39): 8 KKSS, KLUC, KZHT, WERQ, WHHH, WJMN, WPGC, WWKX
Light (Under 20): 9
New Airplay This Week: 1 XHTZ

DEBORAH COX 421/2
Who Do U Love (Arista)
Total Stations: 20/Chart Move: 25-22
Heavy (40+): 2 KDON, XHTZ
Medium (20-39): 8 KCAQ, KKFR, KLUC, KSFM, KZFM, WHHH, WJJS, WWKX
Light (Under 20): 10
New Airplay This Week: 1 KQKS

MARIAH CAREY 415/121
Always Be My Baby (Columbia)
Total Stations: 14/Chart Move: 40-23
Heavy (40+): 4 KBXX, KDON, KJMZ, KSFM
Medium (20-39): 5 KMEL, KUBE, WBBM, WERQ, WPGC
Light (Under 20): 5
New Airplay This Week: 5 KKFR, KQKS, WJMN, WPGC, XHTZ

LL COOL J 388/80
Doin It (Def Jam/RAL/Island)
Total Stations: 19/Chart Move: 37-25
Heavy (40+): 3 KYLD, WJMH, WWKX
Medium (20-39): 4 KMEL, KPWR, WJMN, WQHT
Light (Under 20): 12
New Airplay This Week: 3 KBXX, KQKS, WJJS

YVETTE MICHELLE 385/50
Everyday & Everynight (Loud/RCA)
Total Stations: 16/Chart Move: 32-26
Heavy (40+): 2 WJMN, XHTZ
Medium (20-39): 9 KCAQ, KKSS, KZFM, KZHT, WERQ, WHHH, WJJS, WJMH, WQHT
Light (Under 20): 5

DEVONE 370/74
Energy (Aqua Boogie/Wing/Mercury)
Total Stations: 19/Chart Move: 39-28
Heavy (40+): 2 KYLD, WBBM
Medium (20-39): 5 KPWR, KTFM, WJJS, WPOW, XHTZ
Light (Under 20): 12

THA DOGG POUND FEAT. MICHEL'LE 335/27
Let's Play House (Death Row/Interscope)
Total Stations: 17/Chart Move: 36-32
Heavy (40+): 2 KKSS, KYLD
Medium (20-39): 4 KGGI, KMEL, KPWR, WHHH
Light (Under 20): 11

TOTAL 323/43
No One Else (Bad Boy/Arista)
Total Stations: 18/Chart Move: Re-Entry 33
Heavy (40+): 4 KBXX, WERQ, WJMH, WPGC
Medium (20-39): 3 WHHH, WQHT, WWKX
Light (Under 20): 11

BARRIO BOYZZ 321/2
How We Roll (SBK/EMI)
Total Stations: 14/Chart Move: 34-34
Heavy (40+): 2 KDON, KZFM
Medium (20-39): 5 KLUC, KPRR, KZHT, WHHH, WJJS
Light (Under 20): 7

R. KELLY 290/65
Down Low (Nobody Has To Know) (Jive)
Total Stations: 19/Chart Move: Debut 37
Heavy (40+): 1 XHTZ
Medium (20-39): 6 KBXX, WERQ, WHHH, WJJS, WJMH, WQHT
Light (Under 20): 12
New Airplay This Week: 2 WPOW, WWKX

D'ANGELO 276/65
Lady (EMI)
Total Stations: 17/Chart Move: Debut 40
Heavy (40+): 0
Medium (20-39): 7 KCAQ, KZFM, WERQ, WHHH, WJMH, WPGC, WWKX
Light (Under 20): 10
New Airplay This Week: 4 KKSS, KPRR, KTFM, XHTZ

CHART BOUND

Total Plays/Gain

XSCAPE 257/39
Do You Want To (So So Def/Columbia)
Total Stations: 19
Heavy (40+): 2 WERQ, WPGC
Medium (20-39): 3 KBXX, WHHH, WJMH
Light (Under 20): 14
New Airplay This Week: 3 KDON, KSFM, WJJS

THE OUTHERE BROTHERS 247/14
Boom Boom Boom (Aureus)
Total Stations: 18
Heavy (40+): 3 KGGI, WJMN, WPOW
Medium (20-39): 1 KLUC
Light (Under 20): 14

FROST 233/51
La Familia (Ruthless/Relativity)
Total Stations: 13
Heavy (40+): 2 KPWR, KYLD

MOST NEW AIRPLAY THIS WEEK

	<i>No. Of Stations</i>
CHANTAY SAVAGE <i>I Will Survive (RCA)</i>	6
MARIAH CAREY <i>Always Be My Baby (Columbia)</i>	5
GROOVE THEORY <i>Keep Tryin' (Epic)</i>	4
D'ANGELO <i>Lady (EMI)</i>	4

Medium (20-39): 1 KMEL
Light (Under 20): 10
New Airplay This Week: 2 KKSS, KPRR

GROOVE THEORY 229/135
Keep Tryin' (Epic)
Total Stations: 17
Heavy (40+): 0
Medium (20-39): 6 WERQ, WHHH, WJJS, WJMN, WPGC, XHTZ
Light (Under 20): 11
New Airplay This Week: 4 KKSS, KZFM, WPGC, WQHT

JOE 188/70
All The Things (Your Man Won't Do) (Island)
Total Stations: 12
Heavy (40+): 1 KBXX
Medium (20-39): 3 KZFM, WERQ, WPGC
Light (Under 20): 8
New Airplay This Week: 3 KZFM, KZHT, WPGC

MONIFAH 171/30
I Miss You (Come Back Home) (Uptown/Universal)
Total Stations: 9
Heavy (40+): 2 KDON, WQHT
Medium (20-39): 1 WERQ
Light (Under 20): 6

DIANA KING 171/39
Ain't Nobody (Work)
Total Stations: 14
Heavy (40+): 0
Medium (20-39): 5 KCAQ, KKFR, KTFM, WJJS, XHTZ
Light (Under 20): 9
New Airplay This Week: 2 WBBM, WHHH

SLOW PAIN 163/24
Money Maid (Thump)
Total Stations: 7
Heavy (40+): 0
Medium (20-39): 4 KMEL, KPWR, KYLD, WWKX
Light (Under 20): 3
New Airplay This Week: 1 XHTZ

BLAHZAY BLAHZAY 160/19
Danger (Fader/Mercury)
Total Stations: 14
Heavy (40+): 1 WWKX
Medium (20-39): 2 WERQ, WHHH
Light (Under 20): 11

WHISTLE 154/5
A Chance For Our Love (Select)
Total Stations: 10
Heavy (40+): 2 KQKS, KTFM
Medium (20-39): 1 KPRR
Light (Under 20): 7

4HERO 132/27
Mr. Kirk (Sm:e/Profile)
Total Stations: 11
Heavy (40+): 1 KYLD
Medium (20-39): 1 KMEL
Light (Under 20): 9
New Airplay This Week: 2 KUBE, KZFM

RAPPIN' 4-TAY 130/57
Ain't No Playa (Chrysalis/EMI)
Total Stations: 8
Heavy (40+): 1 KYLD
Medium (20-39): 2 KMEL, KPWR
Light (Under 20): 5
New Airplay This Week: 3 KMEL, KTFM, WWKX

WHITNEY HOUSTON 128/8
Why Does It Hurt So Bad (Arista)
Total Stations: 5
Heavy (40+): 2 KBXX, WERQ
Medium (20-39): 1 WPGC
Light (Under 20): 2

L.B.C. CREW 125/66
Beware Of My Crew (Warner Bros.)
Total Stations: 10
Heavy (40+): 1 KPWR
Medium (20-39): 2 KGGI, KYLD
Light (Under 20): 7
New Airplay This Week: 1 KGGI

THE CLICK 124/26
Scandalous (Sick Wid' It/Jive)
Total Stations: 4
Heavy (40+): 2 KMEL, KYLD
Medium (20-39): 0
Light (Under 20): 2

MARIAH CAREY 120/13
Open Arms (Columbia)
Total Stations: 11
Heavy (40+): 0
Medium (20-39): 2 KPRR, KTFM
Light (Under 20): 9

FUGEES 111/1
Fu-Gee-La (Ruffhouse/Columbia)
Total Stations: 13
Heavy (40+): 1 WQHT
Medium (20-39): 1 WERQ
Light (Under 20): 11

TONI BRAXTON 99/22
Let It Flow (Arista)
Total Stations: 7
Heavy (40+): 1 KDON
Medium (20-39): 1 WPGC
Light (Under 20): 5

LOST BOYZ 98/36
Renee (Island)
Total Stations: 8
Heavy (40+): 1 WJMH
Medium (20-39): 0
Light (Under 20): 7
New Airplay This Week: 1 WERQ

MONA LISA FEAT. LOST BOYZ 92/38
Can't Be Wasting My Time (Island)
Total Stations: 11
Heavy (40+): 0
Medium (20-39): 2 WJMH, WQHT
Light (Under 20): 9

★ **CHANTAY SAVAGE 87/85**
I Will Survive (RCA)
Total Stations: 11
Heavy (40+): 0
Medium (20-39): 1 KTFM
Light (Under 20): 10
New Airplay This Week: 6 KCAQ, KKFR, KKSS, KTFM, WHHH, WJJS

★ **SA-DEUCE 80/49**
Don't Waste My Time (Mecca Don/EastWest/EEG)
Total Stations: 7
Heavy (40+): 0
Medium (20-39): 0
Light (Under 20): 7
New Airplay This Week: 3 KBXX, KZHT, WHHH

BIG SISTER 77/10
'Round We Go (S.O.S./Zoo)
Total Stations: 6
Heavy (40+): 1 WBBM
Medium (20-39): 0
Light (Under 20): 5

★ **MC LYTE 76/51**
Keep On Keepin' On (EastWest/EEG)
Total Stations: 5
Heavy (40+): 1 WJMH
Medium (20-39): 0
Light (Under 20): 4
New Airplay This Week: 1 WJMH

M.C. HAMMER 69/9
Goin' Up Yonder (Giant)
Total Stations: 2
Heavy (40+): 1 WJMH
Medium (20-39): 0
Light (Under 20): 1

MAX-A-MILLION 69/13
Everybody's Groovin' (S.O.S./Zoo)
Total Stations: 6
Heavy (40+): 0
Medium (20-39): 2 KLUC, XHTZ
Light (Under 20): 4

★ **MELTAH SKELTAH/O.G.C. A.K.A. THE FAB 5 66/34**
Leflaur Leflah Eshkushka (Duck Down/Priority)
Total Stations: 3
Heavy (40+): 1 WQHT
Medium (20-39): 1 WJMH
Light (Under 20): 1
New Airplay This Week: 1 WJMH

★ **BUSTA RHYMES 59/12**
Woo-Hah!! Got You All In Check (Elektra/EEG)
Total Stations: 8
Heavy (40+): 0
Medium (20-39): 1 WJMH
Light (Under 20): 7

★ **ACE OF BASE 58/20**
Lucky Love (Arista)
Total Stations: 11
Heavy (40+): 0
Medium (20-39): 1 WBBM
Light (Under 20): 10
New Airplay This Week: 1 XHTZ

FUN FACTORY 55/3
Take Your Chance (Curb-edel/Curb)
Total Stations: 4
Heavy (40+): 0
Medium (20-39): 1 WJJS
Light (Under 20): 3

FUN FACTORY 53/27
Celebration (Curb-edel/Curb)
Total Stations: 2
Heavy (40+): 0
Medium (20-39): 1 WBBM
Light (Under 20): 1
New Airplay This Week: 1 WWKX

Airpower awarded to those records which attain 600 detections for the first time. New airplay lists those stations registering six or more detections per week on a record for the first time. ★ Initial impact: records appearing on this page for the first time.



SONG ACTIVITY REPORTS



For Week Ending January 28, 1996

Detailed song tracking information for the last 3 weeks for all songs showing increased play this week. Total plays and gain do not include video play. Markets listed in order of population.

4HERO Mr. Kirk (Sm)/e/Profile Total Stations: 11 Chart Move: 132/27

2PAC FEAT. DR. DRE & ROGER TROUTMAN 1092/115 California Love (Death Row/Interscope) Total Stations: 29 Chart Move: 8-5

BARRIO BOYZZ How We Roll (SBK/EMI) Total Stations: 14 Chart Move: 34-34

BLAHZAY BLAHZAY Danger (Fader/Mercury) Total Stations: 14 Chart Move: 160/19

MARY J. BLIGE Not Gon' Cry (Arista) Total Stations: 21 Chart Move: 606/25

BRANDY Sittin' Up In My Room (Arista) Total Stations: 30 Chart Move: 9-4

MARIAH CAREY Always Be My Baby (Columbia) Total Stations: 14 Chart Move: 415/121

DEBORAH COX Who Do U Love (Arista) Total Stations: 20 Chart Move: 421/2

D'ANGELO Lady (EMI) Total Stations: 17 Chart Move: 276/65

DEVONE Energy (Aqua Boogie/Wing/Mercury) Total Stations: 19 Chart Move: 370/74

THA DOGG POUND FEAT. MICHEL'LE This Play House (Death Row/Interscope) Total Stations: 17 Chart Move: 335/27

EVERYTHING BUT THE GIRL Missing (Atlantic) Total Stations: 22 Chart Move: 705/86

FROST La Familia (Ruthless/Relativity) Total Stations: 13 Chart Move: 233/51

GROOVE THEORY Keep Tryin' (Epic) Total Stations: 17 Chart Move: 229/135

WHITNEY HOUSTON Why Does It Hurt So Bad (Arista) Total Stations: 5 Chart Move: 128/8

IMMATURE (FEAT. SMOOTH) We Got It (MCA) Total Stations: 21 Chart Move: 494/72

R. KELLY Down Low (Nobody Has To Know) (Jive) Total Stations: 19 Chart Move: 290/65

DIANA KING Ain't Nobody (Work) Total Stations: 14 Chart Move: 171/39

KRIS KROSS Tonite's Tha Night (Ruffhouse/Columbia) Total Stations: 25 Chart Move: 528/48

LL COOL J Do In It (Def Jam/RAL/Island) Total Stations: 19 Chart Move: 388/80

YVETTE MICHELLE Everyday & Everynight (Loud/RCA) Total Stations: 16 Chart Move: 385/50

MONIFAH I Miss You (Come Back Home) (Uptown/Universal) Total Stations: 9 Chart Move: 171/30

THE OUTHERE BROTHERS Boom Boom Boom (Aureus) Total Stations: 18 Chart Move: 247/14

RAPPIN' 4-TAY Ain't No Playa (Chrysalis/EMI) Total Stations: 8 Chart Move: 130/57

THE TONY RICH PROJECT Nobody Knows (LaFace/Arista) Total Stations: 28 Chart Move: 1189/56

LINA SANTIAGO Feels So Good (Show Me Your Love) (Universal) Total Stations: 22 Chart Move: 652/113

SLOW PAIN Money Maid (Thump) Total Stations: 7 Chart Move: 163/24

TOTAL No One Else (Bad Boy/Arista) Total Stations: 18 Chart Move: 323/43

WHISTLE A Chance For Our Love (Select) Total Stations: 10 Chart Move: 154/5

XSCAPE Do You Want To (So So Def/Columbia) Total Stations: 19 Chart Move: 257/39

CAN'T BE WASTING MY TIME

**Island Black Music's
Debut Artist**

Mona Lisa
featuring Lost Boyz

**Soundtrack Sales
Nearing Gold**

FROM THE SOUNDTRACK

**DON'TA BE
MENACE**
TO SPARK DIALOGUE AND BRINGING THE WORDS

#20 The Billboard 200



HTTP://WWW.POLYGRAM.COM/POLYGRAM
OR ON COMPUSERVE: GO POLYGRAM

WJMH 38x, Top 10 Phones
HOT97 22x
92Q 16x
KCAQ 4x

Also Playing: WPGC, KBXX, WHHH, Z90, WJMN, KMEL, & More!

Over 100% Increase in Audience Size
World Radio History



©1996 Island Records Inc., A PolyGram Company



POWER PLAYLISTS

For Week Ending January 28, 1996



Playlists supplied by Broadcast Data Systems. Radio Track Service. Stations selected from panel of leading broadcasters in 125 radio markets electronically monitored 24 hours a day, 7 days a week. Songs ranked by number of plays in monitored week.

Grid of 48 radio station playlists including WPLJ, MIX 105, STAR 98.7, STAR 104.5, B101, WPNT, MIX 101.9, Q95, MIX 107.3, MIX 98.5, K101, KS95, MIX 96.5, Q104, MIX 102.9, STAR 101.5, KYKY, WMMX, MIX 101.9, WALK, VARIETY 96, WKTI, WBLI, and ALICE 106.

it's an amazing release.

k.d. lang

"sexuality"
the new single
off the album
all you can eat

produced by k.d. and ben mink
co-produced by marc tamaer
management: larry wanagas
for bumstead productions, ny

<http://www.wbr.com/radio>

Impact Date February 5th!

On Tour:

1/30	Minneapolis, MN
1/31	Madison, WI
2/2	Milwaukee, WI
2/3	Louisville, KY
2/4	Cincinnati, OH
2/6	Columbus, OH
2/7	Detroit, MI
2/9	Rosemont, IL
2/10	Cleveland, OH
2/12	Boston, MA
2/13	Washington DC
2/14	Upper Darby, PA
2/19-2/20	Oakland, CA
2/23-2/24	Universal City, CA
2/26	San Antonio, TX
2/27	Dallas, TX
2/28	New Orleans, LA
3/1	Atlanta, GA
3/2	Richmond, VA
3/7-3/9	New York, NY



BDS IMPACT

★ ★ ★ **AIRPOWER** ★ ★ ★
(Minimum 600 detections for the first time)

NO RECORDS QUALIFIED FOR AIRPOWER THIS WEEK

AIRPOWER BOUND

Total Plays/Gain

JOAN OSBORNE 494/70

One Of Us (Blue Gorilla/Mercury)
Total Stations: 31/Chart Move: 27-22
Heavy (30+ plays): 3 KFMB, KKOB, WZPK
Medium (15-29): 13 KALC, KDMX, KHM, KPLZ, KSTP, KSTZ, WAEV, WKDD, WKTI, WMTX, WPLJ, WVTY, WWSN
Light (Under 15): 15
New Airplay This Week: 4 KDMX, KPLZ, WKZL, WVAF

ROD STEWART 372/69

So Far Away (Lava/Atlantic)
Total Stations: 23/Chart Move: 31-27
Heavy (30+): 2 WEZF, WVTY
Medium (15-29): 13 KGBX, KGBY, WAHR, WBEB, WBMX, WDEF, WJDX, WKDD, WLHT, WMJQ, WMYI, WRMF, WTFM
Light (Under 15): 8
New Airplay This Week: 2 WAHR, WVAF

THE TONY RICH PROJECT 277/54

Nobody Knows (LaFace/Arista)
Total Stations: 16/Chart Move: 38-30
Heavy (30+): 1 WQLH
Medium (15-29): 9 KALC, KKOB, KTHT, KWMX, WDEF, WEZF, WKTI, WMXL, WZPK
Light (Under 15): 6
New Airplay This Week: 2 WKDD, WMXL

BLUES TRAVELER 271/91

Hook (A&M)
Total Stations: 19/Chart Move: Debut 32
Heavy (30+): 2 KALC, KYSR
Medium (15-29): 6 KFMB, KWMX, WKDD, WMXV, WPLJ, WZPK
Light (Under 15): 11
New Airplay This Week: 5 KKOB, KSTZ, WAEV, WKDD, WMXV

PHIL COLLINS 217/100

Somewhere (RCA)
Total Stations: 20/Chart Move: Debut 38
Heavy (30+): 0
Medium (15-29): 8 KGBY, WDEF, WGSY, WJDX, WLHT, WMJQ, WPNT, WTFM
Light (Under 15): 12
New Airplay This Week: 6 KTHT, WAHR, WJDX, WLHT, WMJQ, WPNT

COLLECTIVE SOUL 217/34

The World I Know (Atlantic)
Total Stations: 12/Chart Move: Debut 39
Heavy (30+): 4 KALC, KHM, KWMX, KYSR
Medium (15-29): 2 WPLJ, WZPK
Light (Under 15): 6
New Airplay This Week: 1 WMXV

DAVE MATTHEWS BAND 189/3

Ants Marching (RCA)
Total Stations: 10/Chart Move: 40-40
Heavy (30+): 3 KALC, KWMX, WQLH
Medium (15-29): 2 KFMB, WZPK
Light (Under 15): 5

CHART BOUND

Total Plays/Gain

OASIS 174/90

Wonderwall (Epic)
Total Stations: 18
Heavy (30+): 2 KFMB, KYSR
Medium (15-29): 1 WTMX
Light (Under 15): 15
New Airplay This Week: 5 KALC, KHM, KWMX, WKTI, WTMX

BLESSID UNION OF SOULS 167/5

Let Me Be The One (EMI)
Total Stations: 16
Heavy (30+): 0
Medium (15-29): 3 WKQI, WPNT, WZPK
Light (Under 15): 13
New Airplay This Week: 1 KTHT

SMASHING PUMPKINS 158/8

1979 (Virgin)
Total Stations: 11
Heavy (30+): 2 KFMB, KYSR
Medium (15-29): 3 KALC, KWMX, WPLJ
Light (Under 15): 6
New Airplay This Week: 2 WKTI, WPLJ

BODEANS 153/40

Closer To Free (Slash/Reprise)
Total Stations: 9
Heavy (30+): 0
Medium (15-29): 5 KFMB, KSTP, KYSR, WAEV, WKTI
Light (Under 15): 4
New Airplay This Week: 3 KHM, KYSR, WAEV

STEVE WINWOOD 127/17

Reach For The Light (MCA Soundtracks/MCA)
Total Stations: 12
Heavy (30+): 0
Medium (15-29): 4 WAHR, WJDX, WLHT, WMJQ
Light (Under 15): 8
New Airplay This Week: 1 WTFM

ALANIS MORISSETTE 123/3

Ironic (Maverick/Reprise)
Total Stations: 9
Heavy (30+): 2 KFMB, KYSR
Medium (15-29): 2 KHM, KWMX
Light (Under 15): 5
New Airplay This Week: 1 WZPK

MOST NEW AIRPLAY THIS WEEK

- | Artist | Title | No. Of Stations |
|-------------------|---|-----------------|
| PHIL COLLINS | <i>Somewhere (RCA)</i> | 6 |
| GEORGE MICHAEL | <i>Jesus To A Child (DreamWorks/Geffen)</i> | 6 |
| BLUES TRAVELER | <i>Hook (A&M)</i> | 5 |
| MELISSA ETHERIDGE | <i>I Want To Come Over (Island)</i> | 5 |
| OASIS | <i>Wonderwall (Epic)</i> | 5 |

★ GIN BLOSSOMS 112/66

Follow You Down (A&M)
Total Stations: 14
Heavy (30+): 0
Medium (15-29): 3 KALC, KHM, KWMX
Light (Under 15): 11
New Airplay This Week: 1 WMXL

MARY CHAPIN CARPENTER 81/20

Grow Old With Me (Hollywood)
Total Stations: 13
Heavy (30+): 0
Medium (15-29): 2 WAHR, WBEB
Light (Under 15): 11
New Airplay This Week: 1 WMJQ

BETTER THAN EZRA 78/0

Rosealia (Elektra/EEG)
Total Stations: 9
Heavy (30+): 0
Medium (15-29): 3 KYSR, WKTI, WZPK
Light (Under 15): 6

★ SOPHIE B. HAWKINS 60/60

Only Love (Columbia)
Total Stations: 23
Heavy (30+): 0
Medium (15-29): 0
Light (Under 15): 23
New Airplay This Week: 4 WEZF, WRQX, WWSN, WZPK

3T 49/9

Anything (MJJ/550 Music)
Total Stations: 4
Heavy (30+): 0
Medium (15-29): 2 KTHT, WZPK
Light (Under 15): 2

MEAT LOAF 49/16

Not A Dry Eye In The House (MCA)
Total Stations: 6
Heavy (30+): 0
Medium (15-29): 1 WMXL
Light (Under 15): 5
New Airplay This Week: 1 WMXV

BRIAN MCKNIGHT 41/12

Still In Love (Mercury)
Total Stations: 4
Heavy (30+): 0
Medium (15-29): 1 WDEF
Light (Under 15): 3

MICHAEL JACKSON 37/0

MJ Megamix (Epic)
Total Stations: 14
Heavy (30+): 0

THIS WEEK	LAST WEEK	WEEKS ON	TITLE/LABEL	ARTIST	TW	LW	DETECTIONS	
			★ ★ ★ No. 1 ★ ★ ★					
1	1	13	ONE SWEET DAY COLUMBIA	MARIAH CAREY & BOYZ II MEN	1797	1856		
2	2	38	AS I LAY ME DOWN COLUMBIA	SOPHIE B. HAWKINS	1488	1568		
3	4	17	BLESSED ROCKET/ISLAND	ELTON JOHN	1351	1356		
4	3	27	BACK FOR GOOD ARISTA	TAKE THAT	1331	1441		
5	6	26	TIL I HEAR IT FROM YOU A&M	GIN BLOSSOMS	1255	1319		
6	7	26	ROLL TO ME A&M	DEL AMITRI	1232	1243		
7	5	14	YOU'LL SEE MAVERICK/WARNER BROS.	MADONNA	1210	1309		
(8)	11	17	BREAKFAST AT TIFFANY'S RAINMAKER/INTERSCOPE	DEEP BLUE SOMETHING	1187	1136		
9	8	30	ONLY WANNA BE WITH YOU ATLANTIC	HOOTIE & THE BLOWFISH	1143	1255		
10	9	33	KISS FROM A ROSE ZTT/SIRE/WARNER BROS.	SEAL	1136	1162		
(11)	13	18	NAME METAL BLADE/WARNER BROS.	GOO GOO DOLLS	1118	1103		
(12)	14	11	MISSING ATLANTIC	EVERYTHING BUT THE GIRL	1095	1025		
13	10	15	EXHALE (SHOOP SHOOP) ARISTA	WHITNEY HOUSTON	1074	1134		
(14)	15	15	TIME ATLANTIC	HOOTIE & THE BLOWFISH	1065	950		
15	12	36	RUN-AROUND A&M	BLUES TRAVELER	1010	1112		
(16)	18	10	DON'T CRY ZTT/WARNER BROS.	SEAL	818	771		
(17)	19	3	JESUS TO A CHILD DREAMWORKS/GEFFEN	GEORGE MICHAEL	788	690		
18	16	23	CARNIVAL ELEKTRA/EEG	NATALIE MERCHANT	748	831		
(19)	21	6	I WANT TO COME OVER ISLAND	MELISSA ETHERIDGE	713	646		
20	17	24	RUNAWAY A&M	JANET JACKSON	711	760		
21	22	8	WONDER ELEKTRA/EEG	NATALIE MERCHANT	577	586		
(22)	27	10	ONE OF US BLUE GORILLA/MERCURY	JOAN OSBORNE	494	424		
23	23	18	GOOD INTENTIONS COLUMBIA/REPRISE	TOAD THE WET SPROCKET	488	579		
24	24	26	DECEMBER ATLANTIC	COLLECTIVE SOUL	485	550		
25	25	7	DREAMING OF YOU EMI LATIN/EMI	SELENA	451	484		
26	26	23	FANTASY COLUMBIA	MARIAH CAREY	408	465		
(27)	31	3	SO FAR AWAY LAVA/ATLANTIC	ROD STEWART	372	303		
28	29	8	GET TOGETHER GIANT	BIG MOUNTAIN	298	329		
29	30	3	PROMISES BROKEN COLUMBIA	SOUL ASYLUM	280	305		
(30)	38	2	NOBODY KNOWS LAFACE/ARISTA	THE TONY RICH PROJECT	277	223		
31	28	17	I WILL REMEMBER YOU ARISTA	SARAH MCLACHLAN	273	338		
(32)	NEW ▶		HOOK A&M	BLUES TRAVELER	271	180		
33	33	4	INSENSITIVE A&M	JANN ARDEN	268	283		
34	35	11	HAND IN MY POCKET MAVERICK/REPRISE	ALANIS MORISSETTE	267	271		
35	32	23	FOREVER TONIGHT RIVER NORTH	PETER CETERA & CRYSTAL BERNARD	249	285		
36	36	5	A LOVE SO BEAUTIFUL COLUMBIA	MICHAEL BOLTON	238	251		
37	34	9	(YOU MAKE ME FEEL LIKE) A NATURAL WOMAN LAVA/ATLANTIC	CELINE DION	223	264		
(38)	NEW ▶		SOMEWHERE RCA	PHIL COLLINS	217	117		
(39)	NEW ▶		THE WORLD I KNOW ATLANTIC	COLLECTIVE SOUL	217	183		
(40)	40	16	ANTS MARCHING RCA	DAVE MATTHEWS BAND	189	186		

Records showing an increase in detections over the previous week, regardless of chart movement. A record which has been on the chart for more than 20 weeks will not receive a bullet, even if it registers an increase in detections. Airpower awarded to those records which attain 600 detections for the first time. If two records are tied in number of plays, the record being played on more stations is placed first. Records below the top 20 are removed from the chart after 26 weeks. © 1996, Billboard/BPI Communications.

Medium (15-29): 0
Light (Under 15): 14

Medium (15-29): 1 WMJQ
Light (Under 15): 2

ALANIS MORISSETTE 36/5

You Learn (Maverick/Reprise)
Total Stations: 1
Heavy (30+): 1 KALC
Medium (15-29): 0
Light (Under 15): 0

ACE OF BASE 35/2

Lucky Love (Arista)
Total Stations: 7
Heavy (30+): 0
Medium (15-29): 1 WQLH
Light (Under 15): 6

THE REMBRANDTS 36/24

Drowning In Your Tears (Elektra/EEG)
Total Stations: 3
Heavy (30+): 0

FOLK IMPLOSION 35/5

Natural One (London/Island)
Total Stations: 2
Heavy (30+): 1 KALC
Medium (15-29): 0
Light (Under 15): 1

Monitor AIRPLAY SONG ACTIVITY REPORTS For Week Ending January 28, 1996

Detailed song tracking information for the last 3 weeks for all songs showing increased play this week. Total plays and gain do not include video play. Markets listed in order of population.

BLESSING UNION OF SOULS 167/5 Let Me Be The One (EMI) Total Stations: 16

BLUES TRAVELER 271/91 Hook (A&M) Total Stations: 19 Chart Move: Debut 32

BODEANS 153/40 Closer To Free (Slash/Reprise) Total Stations: 9

COLLECTIVE SOUL 217/34 The World I Know (Atlantic) Total Stations: 12 Chart Move: Debut 39

PHIL COLLINS 217/100 Somewhere (RCA) Total Stations: 20 Chart Move: Debut 38

DEEP BLUE SOMETHING 1187/51 Breakfast At Tiffany's (RainMaker/Interscope) Total Stations: 49 Chart Move: 11-8

MELISSA ETHERIDGE 713/67 I Want To Come Over (Island) Total Stations: 43 Chart Move: 21-19

EVERYTHING BUT THE GIRL 1095/70 Missing (Atlantic) Total Stations: 48 Chart Move: 14-12

GOO GOO DOLLS 1118/15 Name (Metal Blade/Warner Bros.) Total Stations: 46 Chart Move: 13-11

HOOTIE & THE BLOWFISH 1065/115 Time (Atlantic) Total Stations: 49 Chart Move: 15-14

DAVE MATTHEWS BAND 189/3 Ants Marching (RCA) Total Stations: 10 Chart Move: 40-40

GEORGE MICHAEL 788/98 Jesus To A Child (DreamWorks/Geffen) Total Stations: 50 Chart Move: 19-17

ALANIS MORISSETTE 123/3 Ironic (Maverick/Reprise) Total Stations: 9

OASIS 174/90 Wonderwall (Epic) Total Stations: 18

JOAN OSBORNE 494/70 One Of Us (Blue Gorilla/Mercury) Total Stations: 31 Chart Move: 27-22

THE TONY RICH PROJECT 277/54 Nobody Knows (LaFace/Arista) Total Stations: 16 Chart Move: 38-30

SEAL 818/47 Don't Cry (ZTT/Warner Bros.) Total Stations: 51 Chart Move: 18-16

SMASHING PUMPKINS 158/8 1979 (Virgin) Total Stations: 11

ROD STEWART 372/69 So Far Away (Lava/Atlantic) Total Stations: 23 Chart Move: 31-27

STEVE WINWOOD 127/17 Reach For The Light (MCA Soundtracks/MCA) Total Stations: 12

COMBINED TOP 40 MONITOR AIRPLAY												AIRPLAY THIS WEEK BY FORMAT										
TW	LW	WKS	TITLE (LABEL)	ARTIST	THIS WEEK			LAST WEEK			MAINSTREAM			RHYTHM		ADULT		MODERN				
					Audience (millions)	Detections No.	Rank	Audience (millions)	Detections No.	Rank	Audience (millions)	Detections No.	Rank	Audience (millions)	Detections No.	Rank	Audience (millions)	Detections No.	Rank	Audience (millions)	Detections No.	Rank
1	1	16	ONE SWEET DAY (COLUMBIA)	MARIAH CAREY & BOYZ II MEN	74.1094	6957	1	82.3967	7355	1	32.0174	3757	1	20.8417	1401	1	21.2317	1797	2	0.0186	1	--
2	2	13	MISSING (ATLANTIC)	EVERYTHING BUT THE GIRL	60.1473	5515	2	56.8431	5251	3	32.8491	3470	2	10.6674	705	12	13.5831	1095	12	3.0477	245	--
3	3	22	NAME (METAL BLADE/WARNER BROS.)	GOO GOO DOLLS	51.0370	5226	3	52.1852	5391	2	28.8649	3347	3	1.0780	39	--	14.2705	1118	11	6.8236	722	--
4	4	14	EXHALE (SHOOP SHOOP) (ARISTA)	WHITNEY HOUSTON	45.3527	4920	4	46.3384	4964	4	21.9054	2828	6	14.0519	1012	7	9.3504	1074	13	0.0450	6	--
5	5	17	BREAKFAST AT TIFFANY'S (RAINMAKER/INTERSCOPE)	DEEP BLUE SOMETHING	43.2850	4350	6	43.3657	4480	5	24.7938	2783	7	0.0866	13	--	15.6583	1187	8	2.7463	377	--
6	6	11	TIME (ATLANTIC)	HOOTIE & THE BLOWFISH	41.3543	4153	7	38.4809	3948	7	24.0753	2874	5	0.1067	15	--	14.9461	1065	14	2.2262	199	--
7	8	12	ONE OF US (BLUE GORILLA/MERCURY)	JOAN OSBORNE	37.3060	4596	5	35.3605	4455	6	24.8400	3215	4	0.0901	12	--	5.7040	494	22	6.6719	875	25
8	7	28	AS I LAY ME DOWN (COLUMBIA)	SOPHIE B. HAWKINS	33.8029	3100	15	36.6575	3324	10	14.9031	1501	18	1.0369	108	--	17.8541	1488	2	0.0088	3	--
9	12	9	WONDERWALL (EPIC)	OASIS	30.9512	3964	8	29.6180	3774	8	10.1362	1481	19	0.0148	3	--	2.4226	174	--	18.3776	2306	1
10	13	7	BE MY LOVER (RCA)	LA BOUCHE	30.7297	3145	13	29.2728	2960	18	20.1674	2194	8	10.5354	930	9	0.0200	20	--	0.0069	1	--
11	10	20	TELL ME (EPIC)	GROOVE THEORY	30.2519	2391	26	32.9388	2530	27	12.3767	1350	23	17.8516	1002	8	0.0236	39	--	--	--	--
12	9	23	FANTASY (COLUMBIA)	MARIAH CAREY	29.1852	2596	21	34.5469	2988	17	14.4613	1456	20	10.9475	728	11	3.7408	408	26	0.0356	4	--
13	11	27	TIL I HEAR IT FROM YOU (A&M)	GIN BLOSSOMS	29.0423	2577	19	31.9973	3111	14	10.9546	1214	--	0.0645	11	--	17.0399	1255	5	0.9833	197	--
14	20	9	THE WORLD I KNOW (ATLANTIC)	COLLECTIVE SOUL	28.5972	3463	9	26.6923	3255	11	11.2749	1605	16	0.0173	3	--	4.1033	217	39	13.2017	1638	7
15	19	11	1979 (VIRGIN)	SMASHING PUMPKINS	28.2173	3135	14	26.9627	3085	15	7.1144	900	27	--	--	--	2.8827	158	--	18.2202	2077	2
16	21	7	WONDER (ELEKTRA/JEGG)	NATALIE MERCHANT	27.8327	3183	10	26.6499	3112	13	13.8876	1947	11	0.0530	9	--	8.3155	577	21	5.5766	650	33
17	26	3	NOBODY KNOWS (LAFACE/ARISTA)	THE TONY RICH PROJECT	27.3276	3146	12	23.6881	2731	21	12.0188	1680	13	14.2152	1189	2	1.0936	277	30	--	--	--
18	17	26	ROLL TO ME (A&M)	DEL AMITRI	26.7596	2684	18	27.4784	2732	20	10.4397	1326	--	0.0491	9	--	15.5775	1232	6	0.6933	117	--
19	15	30	ONLY WANNA BE WITH YOU (ATLANTIC)	HOOTIE & THE BLOWFISH	26.4565	2487	24	29.0177	2781	19	11.4637	1098	--	0.9516	98	--	12.8190	1143	9	1.2222	148	--
20	16	12	HEY LOVER (DEF JAM/RALPH ISLAND)	LL COOL J	25.9017	1624	48	27.6588	1721	44	4.6833	488	--	21.1708	1131	3	0.0143	1	--	0.0333	1	--
21	14	14	YOU'LL SEE (MAVERICK/WARNER BROS.)	MADONNA	25.6296	3166	11	29.0747	3466	9	10.6853	1672	14	2.0308	281	38	12.8929	1210	7	0.0206	3	--
22	27	5	HOOK (A&M)	BLUES TRAVELER	25.3589	2792	17	23.0342	2631	23	15.5399	1892	12	0.0583	11	--	5.0351	271	32	4.7256	618	36
23	25	32	KISS FROM A ROSE (ZTT/SIRE/WARNER BROS.)	SEAL	25.1163	2296	30	24.9664	2370	31	9.5177	898	--	1.7802	213	--	13.4077	1136	10	0.4107	49	--
24	18	16	DIGGIN' ON YOU (LAFACE/ARISTA)	TLC	24.3878	2883	16	27.1287	3207	12	16.2346	2186	9	7.9319	612	15	0.1857	82	--	0.0356	3	--
25	24	27	CARNIVAL (ELEKTRA/JEGG)	NATALIE MERCHANT	23.9879	2475	25	25.8111	2669	22	11.7254	1387	--	0.0624	10	--	9.3142	748	18	2.8859	330	--
26	23	37	RUN-AROUND (A&M)	BLUES TRAVELER	23.9024	2370	27	26.3796	2565	24	8.2707	1045	--	0.0100	3	--	13.5969	1010	15	2.0248	312	--
27	22	24	BACK FOR GOOD (ARISTA)	TAKE THAT	23.6259	2348	28	26.6296	2552	25	9.1908	1005	--	0.0601	11	--	14.3678	1331	4	0.0072	1	--
28	32	2	CALIFORNIA LOVE (DEATH ROW/INTERSCOPE)	2PAC	23.4972	1341	59	20.8743	1096	71	2.2564	248	--	21.2408	1093	5	--	--	--	--	--	--
29	30	2	IRONIC (MAVERICK/REPRISE)	ALANIS MORISSETTE	22.6151	2310	29	20.9614	2055	35	8.2622	530	--	0.0016	1	--	2.4112	123	--	11.9401	1656	6
30	37	2	SITTIN' UP IN MY ROOM (ARISTA)	BRANDY	22.0120	1556	51	19.3625	1287	61	2.5934	429	--	19.4180	1126	4	--	--	--	0.0006	1	--
31	28	10	GLYCERINE (TRAUMA/INTERSCOPE)	BUSH	21.8096	2558	22	21.9428	2486	29	7.5396	757	35	--	--	--	0.0301	13	--	14.2399	1788	3
32	31	8	BEFORE YOU WALK OUT OF MY LIFE (ROWDY/ARISTA)	MONICA	21.7046	1793	41	20.9180	1632	47	3.5493	756	36	18.1375	1027	6	0.0017	8	--	0.0161	2	--
33	29	24	RUNAWAY (A&M)	JANET JACKSON	20.2191	2236	33	21.5992	2535	26	9.7111	1121	25	4.0592	404	24	6.4488	711	20	--	--	--
34	36	2	ANYTHING (MJJ/ISSO MUSIC)	3T	19.7182	1774	42	19.3665	1646	46	8.6201	837	30	10.9097	884	10	0.1576	49	--	0.0308	4	--
35	40	2	DON'T CRY (ZTT/WARNER BROS.)	SEAL	19.2846	2521	23	18.0220	2404	30	10.5751	1616	15	0.4481	65	--	8.1862	818	16	0.0752	22	--
36	34	11	SET U FREE (STRICTLY RHYTHM)	PLANET SOUL	18.7541	1258	65	19.8068	1323	59	8.0588	622	39	10.6953	636	14	--	--	--	--	--	--
37	33	22	HAND IN MY POCKET (MAVERICK/REPRISE)	ALANIS MORISSETTE	17.9661	2673	20	20.3966	2993	16	12.5389	2007	10	0.0852	12	--	2.1936	267	34	3.1484	387	--
38	35	37	DECEMBER (ATLANTIC)	COLLECTIVE SOUL	17.8392	1718	44	19.7409	1899	40	7.9661	903	--	--	--	--	7.2632	485	24	2.6099	330	--
39	NEW		JESUS TO A CHILD (DREAMWORKS/GEFFEN)	GEORGE MICHAEL	17.5728	2274	31	17.7055	2124	33	8.9281	1369	22	0.6949	115	--	7.9362	788	17	0.0136	2	--
40	NEW		I WANT TO COME OVER (ISLAND)	MELISSA ETHERIDGE	17.4707	2205	34	15.4604	1964	38	7.6526	1292	24	0.0151	3	--	8.8645	713	19	0.9385	197	--

Records showing an increase in audience over the previous week, regardless of chart movement. Rankings broken down by format (on right side of this page) correspond to 40-position charts printed in this week's Monitor and therefore rankings do not exist for recurrences and records below No. 40. Audience computed by cross-referencing exact times of airplay with Arbitron listener data. © 1996, Billboard/BPI Communications.

Did you read the Bulletin Board **this week?**

Know what's going on "behind the scenes."
Read the Airplay Monitor Bulletin Board.
Exclusively on the pages of

AIRPLAY Monitor

POWER PLAYLISTS™

Grid of Power Playlists for stations KROQ, WKQX, WPLY, WBCN, WHYT, KDGE, WHFS, KITS, WNNX, KEGE, WMMS, and KOME. Each station's chart lists song titles, artists, and chart positions.

Main chart and Power Playlists, reprinted from Rock Airplay Monitor. Includes columns for This Week, Last Week, Weeks on Chart, Title/Label/Distributing Label, Artist, and Detections (TW, LW).

Records showing an increase in detections over the previous week, regardless of chart movement. A record which has been on the chart for more than 20 weeks will not receive a bullet, even if it registers an increase in detections.

First there were credible charts. Now there's incredible news!

Airplay Monitor—everything you expected and news coverage too!



Top 40 Airplay Monitor • Country Airplay Monitor • R&B Airplay Monitor • Rock Airplay Monitor. The only radio publications based exclusively on electronically monitored airplay from Broadcast Data Systems. Call 1-800-722-2346 to subscribe or fax your order to 212-536-5294.

MAINSTREAM			DETECTIONS			
THIS WEEK	LAST WEEK	WKS. ON CHART	TITLE/LABEL/DISTRIBUTING LABEL	ARTIST	TW	LW
			★★★★ No. 1 ★★★★★			
1	1	14	ONE SWEET DAY COLUMBIA	MARIAH CAREY & BOYZ II MEN	3757	3902
(2)	3	11	MISSING ATLANTIC	EVERYTHING BUT THE GIRL	3470	3386
3	2	19	NAME METAL BLADE/WARNER BROS.	GOO GOO DOLLS	3347	3516
(4)	4	11	ONE OF US BLUE GDRILLA/MERCURY	JOAN OSBORNE	3215	3000
(5)	6	14	TIME ATLANTIC	HOOTIE & THE BLOWFISH	2874	2801
(6)	7	13	EXHALE (SHOOP SHOOP) ARISTA	WHITNEY HOUSTON	2828	2710
7	5	26	BREAKFAST AT TIFFANY'S RAINMAKER/INTERSCOPE	DEEP BLUE SOMETHING	2783	2915
(8)	10	9	BE MY LOVER RCA	LA BOUCHE	2194	1959
9	8	16	DIGGIN' ON YOU LAFACE/ARISTA	TLC	2186	2327
10	9	17	HAND IN MY POCKET MAVERICK/REPRISE	ALANIS MORISSETTE	2007	2264
(11)	12	8	WONDER ELEKTRA/EEG	NATALIE MERCHANT	1947	1769
(12)	14	9	HOOK A&M	BLUES TRAVELER	1892	1686
			★★★★ AIRPOWER ★★★★★			
(13)	23	6	NOBODY KNOWS LAFACE/ARISTA	THE TONY RICH PROJECT	1680	1375
14	11	14	YOU'LL SEE MAVERICK/WARNER BROS.	MADONNA	1672	1852
(15)	18	8	DON'T CRY ZTT/WARNER BRDS	SEAL	1616	1540
			★★★★ AIRPOWER ★★★★★			
(16)	21	8	THE WORLD I KNOW ATLANTIC	COLLECTIVE SOUL	1605	1405
17	15	10	GET TOGETHER GIANT	BIG MOUNTAIN	1531	1652
18	16	30	AS I LAY ME DOWN COLUMBIA	SOPHIE B. HAWKINS	1501	1634
(19)	25	4	WONDERWALL EPIC	OASIS	1481	1280
20	13	23	FANTASY COLUMBIA	MARIAH CAREY	1456	1707
21	17	18	GOOD INTENTIONS COLUMBIA/REPRISE	TOAD THE WET SPROCKET	1441	1600
(22)	26	3	JESUS TO A CHILD DREAMWORKS/GEFFEN	GEORGE MICHAEL	1369	1270
23	22	12	TELL ME EPIC	GROOVE THEORY	1350	1403
(24)	29	3	I WANT TO COME OVER ISLAND	MELISSA ETHERIDGE	1292	1128
25	24	24	RUNAWAY A&M	JANET JACKSON	1121	1353
(26)	30	5	PROMISES BROKEN COLUMBIA	SOUL ASYLUM	962	920
(27)	35	2	1979 VIRGIN	SMASHING PUMPKINS	900	817
28	28	15	BEAUTIFUL LIFE ARISTA	ACE OF BASE	864	1141
(29)	39	2	CLOSER TO FREE SLASH/REPRISE	BODEANS	852	700
(30)	38	3	ANYTHING MJJ/550 MUSIC	3T	837	708
(31)	NEW		OH VIRGINIA EMI	BLESSID UNION OF SOULS	820	609
32	31	11	WHEN LOVE & HATE COLLIDE MERCURY	DEF LEPPARD	800	915
33	33	21	GANGSTA'S PARADISE MCA SOUNDTRACKS/MCA	COOLIO FEATURING L.V.	780	885
34	34	11	DREAMING OF YOU EMI LATIN/EMI	SELENA	761	866
(35)	NEW		GLYCERINE TRAUMA/INTERSCOPE	BUSH	757	627
(36)	NEW		BEFORE YOU WALK OUT OF MY LIFE ROWDY/ARISTA	MONICA	756	572
37	36	4	TWENTY FOREPLAY A&M	JANET JACKSON	662	791
38	40	3	WAITING FOR TONIGHT MCA	TOM PETTY & THE HEARTBREAKERS	653	671
39	NEW		SET U FREE STRICTLY RHYTHM	PLANET SOUL	622	625
(40)	NEW		SATELLITE RCA	DAVE MATTHEWS BAND	621	575

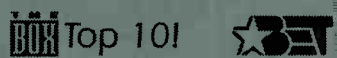
RHYTHM-CROSSOVER			DETECTIONS			
THIS WEEK	LAST WEEK	WKS. ON CHART	TITLE/LABEL/DISTRIBUTING LABEL	ARTIST	TW	LW
			★★★★ No. 1 ★★★★★			
1	1	17	ONE SWEET DAY COLUMBIA	MARIAH CAREY & BOYZ II MEN	1401	1595
(2)	3	9	NOBODY KNOWS LAFACE/ARISTA	THE TONY RICH PROJECT	1189	1133
3	2	14	HEY LOVER DEF JAM/RAL/ISLAND	LL COOL J	1131	1256
(4)	9	9	SITTIN' UP IN MY ROOM ARISTA	BRANDY	1126	969
(5)	8	4	CALIFORNIA LOVE DEATH ROW/INTERSCOPE	2PAC (FEAT. DR. DRE AND ROGER TROUTMAN)	1092	977
6	6	17	BEFORE YOU WALK OUT OF MY LIFE ROWDY/ARISTA	MONICA	1027	1052
7	4	15	EXHALE (SHOOP SHOOP) ARISTA	WHITNEY HOUSTON	1012	1114
8	5	24	TELL ME EPIC	GROOVE THEORY	1002	1090
9	7	14	BE MY LOVER RCA	LA BOUCHE	930	982
10	10	19	ANYTHING MJJ/550 MUSIC	3T	884	896
11	11	23	FANTASY COLUMBIA	MARIAH CAREY	728	812
(12)	14	13	MISSING ATLANTIC	EVERYTHING BUT THE GIRL	705	619
			★★★★ AIRPOWER ★★★★★			
(13)	18	3	FEELS SO GOOD (SHOW ME YOUR LOVE) UNIVERSAL	LINA SANTIAGO	652	539
14	13	18	SET U FREE STRICTLY RHYTHM	PLANET SOUL	636	698
15	12	19	DIGGIN' ON YOU LAFACE/ARISTA	TLC	612	733
			★★★★ AIRPOWER ★★★★★			
(16)	16	7	NOT GON' CRY ARISTA	MARY J. BLIGE	606	581
(17)	20	7	TONITE'S THA NIGHT RUFFHOUSE/COLUMBIA	KRIS KROSS	528	480
18	15	21	WHO CAN I RUN TO SO SO DEF/COLUMBIA	XSCAPE	515	592
19	17	14	RIDIN' LOW HOLLYWOOD	L.A.D. FEATURING DARVY TRAYLOR	514	578
(20)	24	7	WE GOT IT MCA	IMMATURE (FEATURING SMOOTH)	494	422
21	19	16	YOU REMIND ME OF SOMETHING JIVE	R. KELLY	435	538
(22)	25	3	WHO DO U LOVE ARISTA	DEBORAH COX	421	419
(23)	40	2	ALWAYS BE MY BABY COLUMBIA	MARIAH CAREY	415	294
24	23	24	RUNAWAY A&M	JANET JACKSON	404	422
(25)	37	4	DOIN IT DEF JAM/RAL/ISLAND	LL COOL J	388	308
(26)	32	2	EVERYDAY & EVERYNIGHT LDUD/RCA	YVETTE MICHELLE	385	335
27	22	18	SEXUAL HEALING S.D.S./ZOO	MAX-A-MILLION	381	435
(28)	39	2	ENERGY AQUA BOOGIE/WING/MERCURY	DEVONE	370	296
29	21	24	DREAMING OF YOU EMI LATIN/EMI	SELENA	369	437
30	27	25	GANGSTA'S PARADISE MCA SOUNDTRACKS/MCA	COOLIO FEATURING L.V.	347	393
31	28	6	STAYIN' ALIVE RADIKAL/AVEX-CRITIQUE	N-TRANCE	345	375
(32)	36	7	LET'S PLAY HOUSE DEATH ROW/INTERSCOPE	THA DOGG POUND FEAT. MICHEL'LE	335	308
(33)	RE-ENTRY		NO ONE ELSE BAD BOY/ARISTA	TOTAL	323	280
(34)	34	3	HOW WE ROLL SBK/EMI	THE BARRIO BOYZZ	321	319
35	26	9	ROCK WITH YOU QWEST/WARNER BROS.	QUINCY JONES FEATURING BRANDY & HEAVY D	320	404
36	29	13	BEAUTIFUL LIFE ARISTA	ACE OF BASE	293	374
(37)	NEW		DOWN LOW (NOBODY HAS TO KNOW) JIVE	R. KELLY	290	225
38	38	14	YOU'LL SEE MAVERICK/WARNER BROS.	MADONNA	281	303
39	30	10	LOVE U 4 LIFE UPTOWN/MCA	JODECI	276	368
(40)	NEW		LADY EMI	D'ANGELO	276	211

Records showing an increase in detections over the previous week, regardless of chart movement. A record which has been on either chart for more than 20 weeks will not receive a bullet, even if it registers an increase in detections. Airpower awarded to those records which attain 1500 detections (mainstream) or 600 detections (rhythm) for the first time. If two records are tied in number of plays, the record being played on more stations is placed first. Records below the top 20 are removed from the chart after 26 weeks.



Over 4 Million Top 40 Listeners
 With 300 Plays!!

- WPGC 43x WERO 42x
- WHHH 38x WJMH 34x
- KBXX 26x KCAQ 16x
- XHTZ 14x KDON 14x



Single In Stores Tuesday, Feb. 20th



- KKNS 84x XHTZ 49x WJMH 49x
- KBXX 44x WWKX 43x WHHH 39x
- WPGC 26x WQHT 25x KPWR 22x
- KLUC 21x KMEL 20x KUBE 18x
- WERQ 15x WZJM 13x KZFM 13x

NEW AIRPLAY: KTFM, KSFM, KDON, KJMZ
(20) - (17) MONITOR RHYTHM-CROSSOVER
MUSICLAND SINGLE #5 TO #4



SINGLE CERTIFIED GOLD!!!