

TOP 40 AIRPLAY Monitor

• We Listen To Radio •

January 26, 1996 \$ 4.95 Volume 4 • No. 5

TOP 40 HIGHLIGHTS

MAINSTREAM

#1

MARIAH CAREY & BOYZ II MEN
One Sweet Day (COLUMBIA)

★ ★ ★ AIRPOWER ★ ★ ★

BLUES TRAVELER • *Hook* (A&M)
SEAL • *Don't Cry* (ZTT/WARNER BROS.)

NEW RELEASES

BRANDY • *Sittin' Up In My Room* (ARISTA)
DENINE WITH COLLAGE'S ADAM MARANO • *All Cried Out* (VIPER/METROPOLITAN)
GIN BLOSSOMS • *Follow You Down* (A&M)
SOPHIE B. HAWKINS • *Only One* (COLUMBIA)
DIANA KING • *Ain't Nobody* (WORK)
LENNY KRAVITZ • *Can't Get You Off Of My Mind* (VIRGIN)
LISA LOEB & NINE STORIES • *Taffy* (Geffen)
OZZY OSBOURNE • *See You On The Other Side* (EPIC)

RHYTHM-CROSSOVER

#1

MARIAH CAREY & BOYZ II MEN
One Sweet Day (COLUMBIA)

★ ★ ★ AIRPOWER ★ ★ ★

EVERYTHING BUT THE GIRL • *Missing* (ATLANTIC)

NEW RELEASES

JON B. • *Isn't It Scary* (Y&B YUM/550 MUSIC)
DIANA KING • *Ain't Nobody* (WORK)
MONA LISA • *Can't Be Wasting My Time* (From "Don't Be A Menace") (ISLAND)

ADULT

#1

MARIAH CAREY & BOYZ II MEN
One Sweet Day (COLUMBIA)

★ ★ ★ AIRPOWER ★ ★ ★

GEORGE MICHAEL • *Jesus To A Child* (DREAMWORKS/GEFFEN)
MELISSA ETHERIDGE • *I Want To Come Over* (ISLAND)

NEW RELEASES

BLESSID UNION OF SOULS • *Oh Virginia* (EMI)
JONATHAN CAIN • *Little River* (INTER SOUND)
GIN BLOSSOMS • *Follow You Down* (A&M)
AMY GRANT • *The Things We Do For Love* (HOLLYWOOD)
SOPHIE B. HAWKINS • *Only One* (COLUMBIA)
LENNY KRAVITZ • *Can't Get You Off Of My Mind* (VIRGIN)

Attention PDs: You Too Can Become A GM In Your Ample Spare Time

by Kevin Carter

Time was when the road to the GM's plush corner office was a straight one from the sales department. But recently, more PDs have navigated the career slalom course to GM-land, the latest being WNCI Columbus, Ohio's Dave Robbins. This week, three PDs who made the transition from three vastly different directions.

ALLEN: I'M MY EIGHTH GM

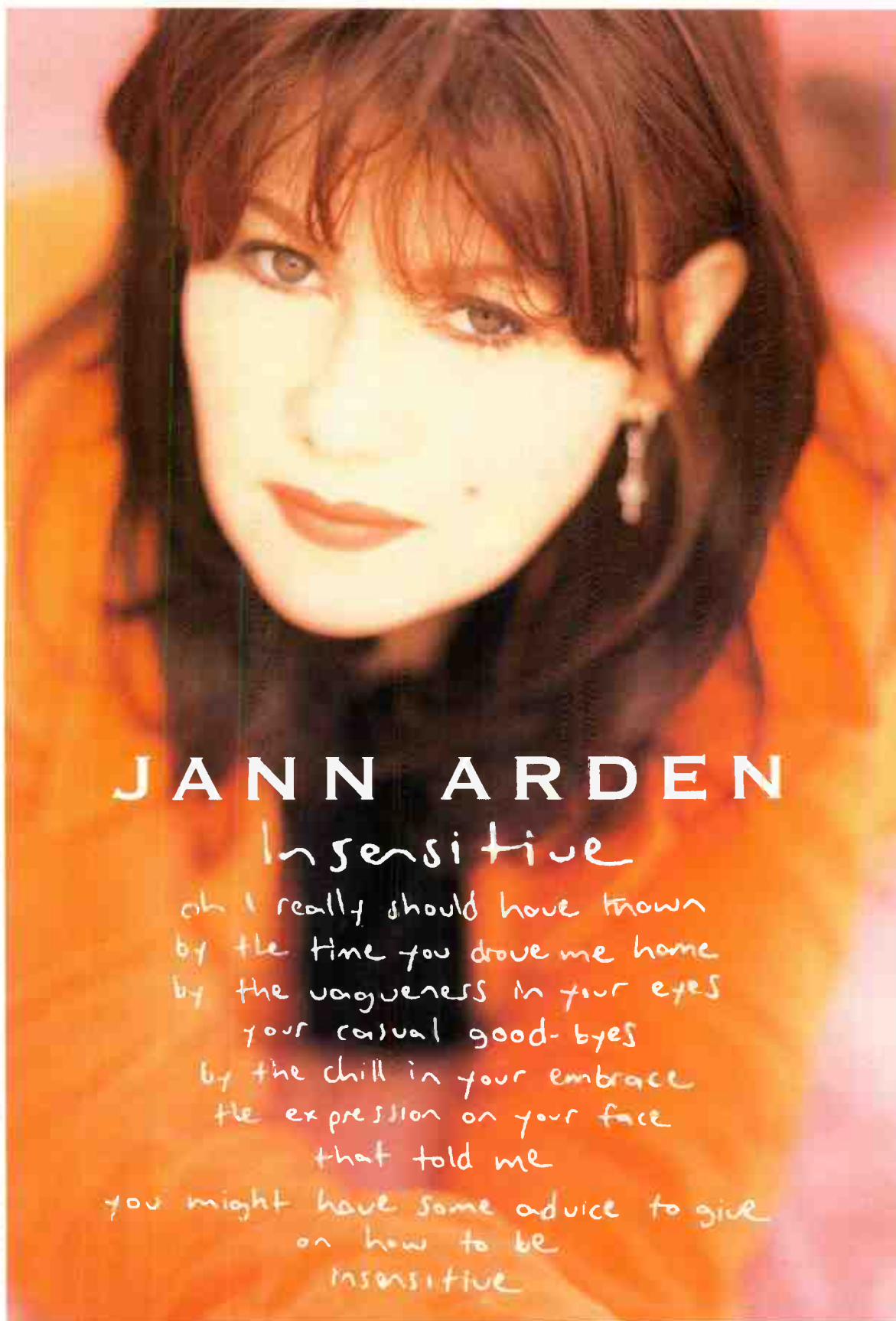
At KCHX Midland, Texas, GM/ PD Clayton Allen enjoys the rare thrill of holding two chairs simultaneously. Allen arrived in August 1991 as midday jock production director by way of KAEX Lufkin, Texas. KAEX PD Randy Street had been hired as KCHX PD and took Allen with him. Street lit the street after the station's sale in February 1992, leaving Allen behind as PD under new owner Sonance Communi-

cations. KCHX was not known for keeping GMs around for long, and that tradition was not about to quickly end.

In May 1994, KCHX GM Dale Hendry transferred to Killeen, Texas, handing the reins over to GSM Jim Martin. In January 1995, Martin also transferred to Killeen. With no one on staff ready to fill in, Scott Parsons from sister stations KFMN/KRLB Lubbock, Texas, took over GM duties by remote control, sending GSM Chuck Heinz the 115 miles to Midland several days a week to help run the show.

As Allen recalls, nine months later, in February 1995, Heinz was still actively looking for a new GM, and due to the increasing demands of his other stations, he began spending less time in Midland. "He started dumping more responsibility in my lap," says Allen. "He taught me different avenues to raise revenue, showed me

Continued on page 6



JANN ARDEN

In sensitive

oh I really should have known
by the time you drove me home
by the vagueness in your eyes
your casual good-byes
by the chill in your embrace
the expression on your face
that told me
you might have some advice to give
on how to be
insensitive

THE NEW SINGLE FROM LIVING UNDER JUNE

33 TOP 40/ADULT MONITOR

**MOST ADDED AT TOP 40 INCLUDING:
KKLQ, KJYO, WTWR, WRHT**

KHMX TOP 5 PHONES #7 CALL OUT
WBMX #3 PHONES
WKTI TOP 5 CALL OUT GREAT PHONES
WMXV TOP 10 PHONES
KDMX GREAT PHONES
WAYV #2 PHONES

PRODUCED AND MIXED BY ED CHERNEY, CO-PRODUCED BY JANN ARDEN
RECORDED BY ED CHERNEY AND DUANE SEYKORA, EXECUTIVE PRODUCER: NEIL MACGONIGILL FOR MUSICWORKS
MANAGEMENT / DIRECTION: NEIL MACGONIGILL / RUDI LEVALLEY, MUSICWORKS, INC.

©1994 POLYGRAM SONGS, INC. AND FRANKLY SHIRLEY MUSIC, CONTROLLED IN THE U.S. BY SONGS OF POLYGRAM INTERNATIONAL, INC. (BMI)
©1995 A&M RECORDS, A DIVISION OF POLYGRAM GROUP CANADA, INC. MANUFACTURED AND MARKETED BY A&M RECORDS, INC. ALL RIGHTS RESERVED.



Did you read the Bulletin Board this week?

Know what's going on "behind the scenes." Read the Airplay Monitor Bulletin Board. Exclusively on the pages of **AIRPLAY Monitor** CLASSIFIED

MAINSTREAM POWER PLAYLISTS™

Broadcast Data Systems
 AIRPLAY Monitor® For Week Ending January 21, 1996
 Playlists supplied by Broadcast Data Systems' Radio Track service. Stations selected from panel of leading broadcasters in 125 radio markets, electronically monitored 24 hours a day, 7 days a week. Songs ranked by number of plays in monitored week.

WZPL		Z104		KJ103	
PD: Tom Gjerdrum MD: Ron Blair		PD: Don London MD: Sean Sellers		PD: Mike McCoy MD: Jimmy Barreda	
Indianapolis		Norfolk		Dklahoma City	
TW	LW	TW	LW	TW	LW
1	67	1	66	1	60
2	62	2	53	2	56
3	66	3	57	3	54
4	60	4	60	4	49
5	46	5	40	5	47
6	48	6	38	6	43
7	44	7	38	7	42
8	40	8	38	8	42
9	33	9	38	9	42
10	23	10	38	10	42
11	23	11	38	11	42
12	23	12	38	12	42
13	23	13	38	13	42
14	23	14	38	14	42
15	23	15	38	15	42
16	23	16	38	16	42
17	23	17	38	17	42
18	23	18	38	18	42
19	23	19	38	19	42
20	23	20	38	20	42
21	23	21	38	21	42
22	23	22	38	22	42
23	23	23	38	23	42
24	23	24	38	24	42
25	23	25	38	25	42
26	23	26	38	26	42
27	23	27	38	27	42
28	23	28	38	28	42
29	23	29	38	29	42
30	23	30	38	30	42
31	23	31	38	31	42
32	23	32	38	32	42
33	23	33	38	33	42
34	23	34	38	34	42
35	23	35	38	35	42
36	23	36	38	36	42
37	23	37	38	37	42
38	23	38	38	38	42
39	23	39	38	39	42
40	23	40	38	40	42

MIX 93.3		98PXY		WKRZ	
DM: Tom Land		DM/PD: Clarke Ingram		PD: Ken Medek	
Kansas City		Rochester		Wilkes-Barre	
TW	LW	TW	LW	TW	LW
1	66	1	57	1	46
2	63	2	56	2	43
3	61	3	42	3	42
4	63	4	46	4	41
5	63	5	45	5	35
6	56	6	44	6	35
7	54	7	44	7	32
8	36	8	42	8	32
9	36	9	39	9	32
10	31	10	38	10	32
11	28	11	38	11	28
12	27	12	37	12	28
13	24	13	35	13	25
14	24	14	35	14	25
15	28	15	32	15	25
16	28	16	32	16	25
17	23	17	30	17	24
18	23	18	30	18	24
19	21	19	28	19	23
20	19	20	28	20	23
21	19	21	28	21	23
22	19	22	28	22	23
23	19	23	28	23	23
24	19	24	28	24	23
25	19	25	28	25	23
26	19	26	28	26	23
27	19	27	28	27	23
28	19	28	28	28	23
29	19	29	28	29	23
30	19	30	28	30	23
31	19	31	28	31	23
32	19	32	28	32	23
33	19	33	28	33	23
34	19	34	28	34	23
35	19	35	28	35	23
36	19	36	28	36	23
37	19	37	28	37	23
38	19	38	28	38	23
39	19	39	28	39	23
40	19	40	28	40	23

FLY 92		WIXX		KHFI	
PD: Mike Morgan MD: Shawn Scott		PD: Dan Stone		PD: John Roberts MD: Fernando Ventura	
Albany		Green Bay		Austin	
TW	LW	TW	LW	TW	LW
1	60	1	43	1	60
2	61	2	39	2	60
3	64	3	37	3	67
4	58	4	32	4	59
5	56	5	35	5	58
6	54	6	34	6	48
7	49	7	32	7	45
8	48	8	31	8	43
9	40	9	30	9	43
10	35	10	28	10	43
11	33	11	28	11	42
12	34	12	28	12	42
13	32	13	28	13	41
14	33	14	28	14	41
15	34	15	26	15	37
16	32	16	25	16	37
17	35	17	25	17	36
18	36	18	25	18	35
19	30	19	25	19	35
20	25	20	24	20	33
21	25	21	22	21	32
22	25	22	22	22	32
23	21	23	19	23	30
24	21	24	18	24	27
25	20	25	18	25	27
26	20	26	18	26	26
27	19	27	18	27	26
28	18	28	17	28	22
29	17	29	17	29	19
30	17	30	16	30	18
31	17	31	16	31	18
32	17	32	16	32	18
33	17	33	16	33	15
34	16	34	15	34	15
35	15	35	15	35	15
36	15	36	14	36	14
37	15	37	14	37	14
38	15	38	14	38	14
39	15	39	14	39	14
40	15	40	13	40	12

Playlists supplied by Broadcast Data Systems... Radio Trak service. Stations selected from panel of leading broadcasters in 125 radio markets...

Table for station WVKS, Toledo, PD: Mike Wheeler, MD: Curt Kruse. Lists top 40 songs with columns for rank, song title, and TW/LW.

Table for station WDJX, Louisville, PD: C.C. Matthews, MD: Jim Meyer. Lists top 40 songs with columns for rank, song title, and TW/LW.

Table for station K92, Roanoke, OM: Sammy Simpson, PD: Rich E. Cunningham. Lists top 40 songs with columns for rank, song title, and TW/LW.

Table for station Q99, Salt Lake City, PD: Brian DeGeus, MD: Geronimo. Lists top 40 songs with columns for rank, song title, and TW/LW.

Table for station KC101, New Haven, OM: Glenn Beck, PD: Steve Wilson, MD: Jeff McCartney. Lists top 40 songs with columns for rank, song title, and TW/LW.

Table for station 93Q, Syracuse, PD: Dave Edwards, MD: Jimmy Olson. Lists top 40 songs with columns for rank, song title, and TW/LW.

Table for station B104, McAllen, PD: Billy Santiago, MD: Jeff DeWitt. Lists top 40 songs with columns for rank, song title, and TW/LW.

Table for station SWEET 98, Omaha, PD: Michael Steele, MD: Jimi Jamm. Lists top 40 songs with columns for rank, song title, and TW/LW.

Table for station Q94, Richmond, PD: Lisa McKay, APD/MD: Billy Surf. Lists top 40 songs with columns for rank, song title, and TW/LW.

Table for station WHOT, Youngstown, PD/MD: Tom Pappas. Lists top 40 songs with columns for rank, song title, and TW/LW.

Table for station WAPE, Jacksonville, PD: Cat Thomas, APD/MD: Tony Mann. Lists top 40 songs with columns for rank, song title, and TW/LW.

Table for station WNNK, Harrisburg, PD: John O'Dea, MD: Scott Shea. Lists top 40 songs with columns for rank, song title, and TW/LW.

Table for station STAR 93.1, Knoxville, OM: Jim Richards, PD: Todd Shannon. Lists top 40 songs with columns for rank, song title, and TW/LW.

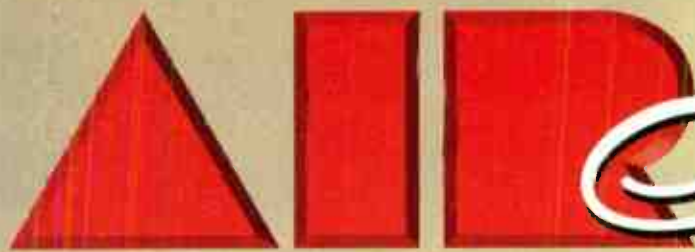
Table for station WSNX, Grand Rapids, PD: Mark McGill, MD: Keith Curry. Lists top 40 songs with columns for rank, song title, and TW/LW.

Table for station WZYP, Huntsville, PD: Marc Summers, MD: A.C. Anthony. Lists top 40 songs with columns for rank, song title, and TW/LW.

Table for station WABB, Mobile, PD: Brett Dumler, MD: Crash. Lists top 40 songs with columns for rank, song title, and TW/LW.

Table for station WFMF, Baton Rouge, PD: Johnny A. Lists top 40 songs with columns for rank, song title, and TW/LW.

Table for station KRQQ, Tucson, PD: Mark Todd, MD: Valerie Knight. Lists top 40 songs with columns for rank, song title, and TW/LW.



First Place

TOP 40 / MAINSTREAM COMPETITION TWENTY ONE

"What a way to kick off '96! I thrive on the competition of AIR. It's an honor to consistently finish high and an even bigger honor to cop the top prize, but AIR means more to me than just a competition to win prizes; it's the level of integrity and honesty in the information and research I get from Jonas, Dave and the whole AIR staff. I know that when a record is run through the AIR system, if it's a legitimate hit, it won't get lost in the shuffle no matter how heavy the traffic is. Thank you, Dave! Thank you, Jonas! Thank you for car #2!"



ANDY SHANE

Grand Prize

1996 BMW 318i Convertible



Congratulates Top

2nd Place \$7,500



DAVE MCKAY
WPST/Trenton, NJ

"Wow! What an honor it is to be among such a talented group of programmers. The information I get from Bob Brady at AIR each week has become an invaluable programming tool for us at 'PST. Special thanks to Bob and everyone at AIR and to Michelle Stevens."



3RD PLACE \$5,000

JOEY G.

B97 / NEW ORLEANS, LA

"AIR is such a great thing for both radio stations and record companies. The best music information I've ever seen comes from AIR, without any hype. I've come to depend on AIR for all of my music information."

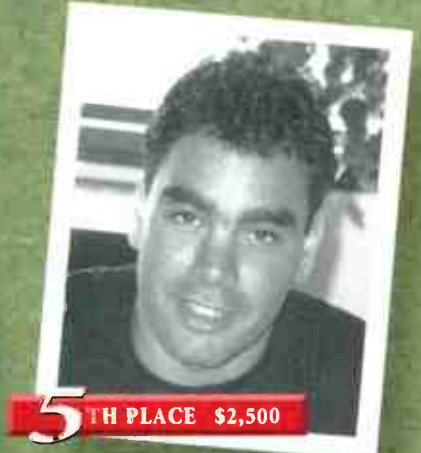


4TH PLACE \$3,000

JIM ALLEN

KQCR / CEDAR RAPIDS, IA

"From 24th to 14th to 4th, I'll always remember this as one of the true accomplishments of my career. Thanks Damien and the entire AIR staff for bringing the industry's important music to the forefront every week."

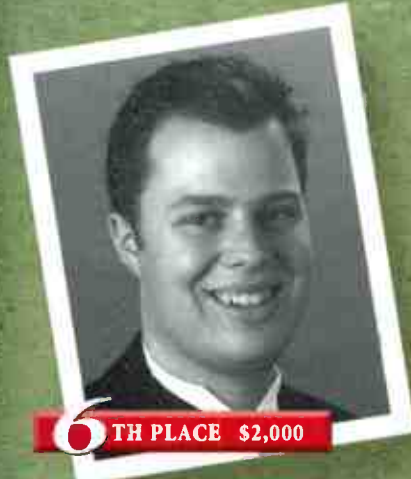


5TH PLACE \$2,500

CHUCK TISA

WPLY / PHILADELPHIA, PA

"AIR always keeps me on top of all the new music. It's an honor to finish in the Top 10, especially with all the talented programmers out there. Thanks to Bruce and everyone at AIR!"



6TH PLACE \$2,000

PAUL "CUBBY" BRYANT

KRBE / HOUSTON, TX

"Number 6 for the second year in a row... at least I'm consistent. Thanks Dave and everyone at AIR for always being true to the music."



7TH PLACE \$1,750

STEVE KINGSTON

Z100 / NEW YORK, NY

"Obviously, I spent way too many hours consulting Andy on his choices in the AIR Competition... because we all know I need another car. Congratulations Andy!"



8TH PLACE \$1,500

RICH DAVIS (JOE FRIDAY)

WYXR / PHILADELPHIA, PA

Formerly WAEB / ALLINTOWN, PA

"It's an honor for me to place anywhere in the AIR Competition, but to have placed in the Top 10 among other programmers I admire so much is a dream come true. Thanks to Damien and everyone at AIR for keeping me on top of my game. After all, hit music is what it's all about!"

**AIR'S CURRENT
MAINSTREAM
COMPETITION
IS UNDERWAY.
WINNERS WILL
BE ANNOUNCED
IN AUGUST 1996.**



9TH PLACE \$1,250

DENNIS DILLON

WXZZ / LEXINGTON, KY

Formerly WKXJ / SO. PITTSBURGH, IN

"It's a thrill to be included with the people that live to create great radio everyday. My thanks to Holly and the entire AIR staff. For music info, they're a number one pick every week."



10TH PLACE \$1,000

KEN BENSON

KKRZ / PORTLAND, OR

"AIR provides an excellent forum to preview today's hottest new music. My weekly call with Bruce is an integral part of our music decision making process. Thanks for the opportunity... and it's an honor to finish in the Top 10 again."

40 Mainstream Winners



11

TIM RICHARDS
WBMX / BOSTON, MA
Formerly KRQQ / TUCSON, AZ



12

DANNY OCEAN
WBHT / WILKES-BARRE, PA



13

MICHAEL DEAN
OK95 / KENNEWICK, WA

~~TIE~~



13

ROB MORRIS
KDWB / MINNEAPOLIS, MN



15

JEFF JOHNSON
CONSULTANT / OAKTON, VA



16

LEE CAGLE
KWMX / DENVER, CO



17

DANA LUNDON
Z104 / MADISON, WI



18

DAVY CROCKETT
WYCR / YORK, PA



19

PAUL CANNON
TIC-FM / HARTFORD, CT



20

RICK MCCAUSLIN
WYCR / YORK, PA



21

TONY BRISTOL
TIC-FM / HARTFORD, CT



22

LEE CHESNUT
VH-1 / NEW YORK, NY



23

TOM POLEMAN
KRBE / HOUSTON, TX



24

BOBBY NOVOSAD
KSMB / LAFAYETTE, LA



25

MICHAEL JACK KIRBY
KFFM / YAKIMA, WA



26

MIKE KASPER
KZMG / BOISE, ID



27

J.J. RICE
98PXY / ROCHESTER, NY



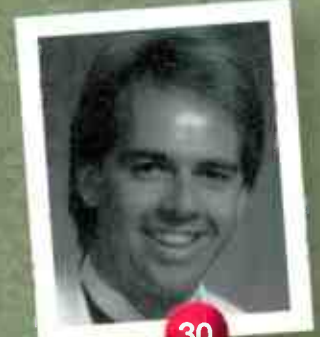
28

DAN RICHARDS
CONSULTANT / ORLANDO, FL



29

SEAN PHILLIPS
WILN / PANAMA CITY BEACH, FL



30

KEVIN PETERSON
STAR94 / ATLANTA, GA

WINNERS 11 THRU 30 SHARE IN A \$10,000 CASH POOL

2nd Half WINNERS

DAVE MCKAY
WPST
Trenton, NJ

First Place \$2,500



MICK FULGHAM
KISX
Tyler, TX

Second Place \$1,500



STEVE KINGSTON
Z100
New York, NY

Third Place \$1,000



MAINSTREAM

SONG ACTIVITY REPORTS

For Week Ending January 21, 1996

3T Anything (MJJ/550 Music)				708/86				BLESSID UNION OF SOULS Oh Virginia (EMI)				609/376				BLUES TRAVELER Hook (A&M)				1686/201				BODEANS Closer To Free (Slash/Reprise)				700/114				BUSH Glycerine (Trauma/Interscope)				627/125																															
Total Stations: 34				Chart Move: 39-38				Total Stations: 48				Total Stations: 81				Chart Move: 20-14				Total Stations: 43				Chart Move: Debut 39				Total Stations: 52																																							
MTV	W	L	W	W	W	W	W	MTV	W	L	W	W	W	W	W	W	W	MTV	W	L	W	W	W	W	W	MTV	W	L	W	W	W	W	W	MTV	W	L	W	W	W	W	W	MTV	W	L	W	W	W	W	W	MTV	W	L	W	W	W	W	W										
VH1	4	2	17	Albany	WFLY	11	10	11	VH1	1	1	1	1	1	1	1	1	VH1	12	10	99	Albany	WFLY	40	29	33	197	VH1	1	1	1	1	1	1	1	VH1	1	1	1	1	1	1	1	VH1	1	1	1	1	1	1	1	VH1	1	1	1	1	1	1	1	VH1	1	1	1	1	1	1	1

COLLECTIVE SOUL The World I Know (Atlantic)				1405/203				MELISSA ETHERIDGE I Want To Come Over (Island)				1128/303				EVERYTHING BUT THE GIRL Missing (Atlantic)				3386/98				FOLK IMPLOSION Natural One (London/Island)				523/50				GOO GOO DOLLS Name (Metal Blade/Warner Bros.)				3516/34																							
Total Stations: 76				Chart Move: 25-21				Total Stations: 64				Chart Move: 36-29				Total Stations: 80				Chart Move: 3-3				Total Stations: 34				Chart Move: 2-2				Total Stations: 82				Chart Move: 2-2																							
MTV	W	L	W	W	W	W	W	MTV	W	L	W	W	W	W	W	W	W	MTV	W	L	W	W	W	W	W	MTV	W	L	W	W	W	W	W	MTV	W	L	W	W	W	W	W	MTV	W	L	W	W	W	W	W	MTV	W	L	W	W	W	W	W		
VH1	23	27	23	216	Albany	WFLY	15	15	14	81	VH1	1	1	1	1	1	1	1	VH1	5	4	5	18	Albany	WFLY	59	64	52	37	VH1	7	11	10	73	Albany	WFLY	17	10	73	VH1	5	6	17	393	Albany	WFLY	29	30	282	VH1	5	5	2	75	Albany	WFLY	40	41	273

GROOVE THEORY Tell Me (Epic)				1403/65				HOOTIE & THE BLOWFISH Time (Atlantic)				2801/111				WHITNEY HOUSTON Exhale (Shoop Shoop) (Arista)				2710/133				JANET JACKSON Twenty Foreplay (A&M)				791/87				LA BOUCHE Be My Lover (RCA)				1959/232																					
Total Stations: 74				Chart Move: 23-22				Total Stations: 80				Chart Move: 6-6				Total Stations: 77				Chart Move: 7-7				Total Stations: 72				Chart Move: 38-36				Total Stations: 79				Chart Move: 13-10																					
MTV	W	L	W	W	W	W	W	MTV	W	L	W	W	W	W	W	W	W	MTV	W	L	W	W	W	W	W	MTV	W	L	W	W	W	W	W	MTV	W	L	W	W	W	W	W	MTV	W	L	W	W	W	W	W	MTV	W	L	W	W	W	W	W
VH1	3	3	1	13	Albany	WFLY	35	39	38	583	VH1	27	21	12	242	Albany	WFLY	55	54	37	485	VH1	24	26	20	243	Albany	WFLY	24	19	21	249	VH1	25	20	10	60	Albany	WFLY	1	6	15	VH1	5	4	2	14	Albany	WFLY	60	45	35	388				

MAINSTREAM

Monitor AIRPLAY SONGS KHTO For Week Ending January 21, 1996

Total Plays/Gain Total Plays/Gain Total Plays/Gain Total Plays/Gain Total Plays/Gain

LL COOL J 461/12 Hey Lover (Def Jam/RAL/Island) Total Stations: 59

DAVE MATTHEWS BAND 575/49 Satellite (RCA) Total Stations: 42

NATALIE MERCHANT 1769/246 Wonder (Elektra/EEG) Total Stations: 81

GEORGE MICHAEL 1270/238 Jesus To A Child (DreamWorks/Geffen) Total Stations: 75

MONICA 572/78 Before You Walk Out Of My Life (Rowdy/Arista) Total Stations: 60

ALANIS MORISSETTE 410/124 Ironic (Maverick/Warner Bros.) Total Stations: 48

OASIS 1280/303 Wonderwall (Epic) Total Stations: 77

JOAN OSBORNE 3000/225 One Of Us (Blue Gorilla/Mercury) Total Stations: 82

TOM PETTY 671/53 Waiting For Tonight (MCA) Total Stations: 56

PLANET SOUL 625/164 Set U Free (Strictly Rhythm) Total Stations: 36

THE TONY RICH PROJECT 1375/251 Nobody Knows (LaFace/Arista) Total Stations: 67

SEAL 1540/77 Don't Cry (ZTT/Warner Bros.) Total Stations: 80

SEVEN MARY THREE 380/71 Cumbersome (Mammoth/Atlantic) Total Stations: 38

SMASHING PUMPKINS 817/207 1979 (Virgin) Total Stations: 47

SOUL ASYLUM 920/50 Promises Broken (Columbia) Total Stations: 77



POWER PLAYLISTS



Playlists supplied by Broadcast Data Systems. Radio Track service. Stations selected from panel of leading broadcasters in 125 radio markets, electronically monitored 24 hours a day. 7 days a week. Songs ranked by number of plays in monitored week.

For Week Ending January 21, 1996

Grid of 20 radio station playlists including KUBE, POWER 92, KGGI, FM 102, KTFM, 92Q, KS104, Z90, B95, 102 JAMZ, POWER 102, KIX 106, KLUC, KDON, KISS 97.3, HOOSIER 96.3, 94.1 JAMZ, and KZFM. Each station listing includes song titles, artists, and play counts.

WJJS 9X	WJJS 9X	WJJS 9X	WJJS 9X	WJJS 9X	WJJS 9X
WJJS 9X	WJJS 9X	WJJS 9X	WJJS 9X	WJJS 9X	WJJS 9X
WJJS 9X	WJJS 9X	WJJS 9X	WJJS 9X	WJJS 9X	WJJS 9X

KEY AIRPLAY INCLUDES:

“DOWN LOW”
(NOBODY HAS TO KNOW)

- THE NEW SINGLE FROM HIS **CERTIFIED DOUBLE PLATINUM** ALBUM **R. KELLY**
- ALREADY OVER 7 MILLION LISTENERS AND OVER 230 DETECTIONS

R. KELLY



Monitor AIRPLAY SONG ACTIVITY REPORTS



Detailed song tracking information for the last 3 weeks for all songs showing increased play this week. Total plays and gain do not include video play. Markets listed in order of population.

For Week Ending January 21, 1996

2PAC (FEAT. DR. DRE & ROGER TROUTMAN) 977/308

California Love (Death Row/Interscope)

Table with columns: Total Stations: 29, Chart Move: 13-8, and station data for various markets like New York, Chicago, Wash., DC, etc.

3T 896/21

Anything (MJJ/550 Music)

Table with columns: Total Stations: 28, Chart Move: 9-10, and station data for various markets.

BARRIO BOYZ 319/4

How We Roll (SBK/EMI)

Table with columns: Total Stations: 14, Chart Move: 32-34, and station data for various markets.

MARY J. BLIGE 581/63

Not Gon' Cry (Arista)

Table with columns: Total Stations: 20, Chart Move: 18-16, and station data for various markets.

BRANDY 969/100

Sittin' Up In My Room (Arista)

Table with columns: Total Stations: 29, Chart Move: 10-9, and station data for various markets.

MARIAH CAREY 294/68

Always Be My Baby (Columbia)

Table with columns: Total Stations: 11, Chart Move: Debut 40, and station data for various markets.

DEBORAH COX 419/138

Who Do U Love (Arista)

Table with columns: Total Stations: 20, Chart Move: 35-25, and station data for various markets.

D'ANGELO 211/94

Lady (EMI)

Table with columns: Total Stations: 12, Chart Move: 2-2, and station data for various markets.

DENINE W/COLLAJE'S ADAM MARANO 324/54

All Cried Out (Viper/Metropolitan)

Table with columns: Total Stations: 11, Chart Move: 38-33, and station data for various markets.

DEVONE 296/87

Energy (Aqua Boogie/Wing/Mercury)

Table with columns: Total Stations: 21, Chart Move: Debut 39, and station data for various markets.

THA DOGG POUND 308/6

Let's Play House (Death Row/Interscope)

Table with columns: Total Stations: 21, Chart Move: 34-36, and station data for various markets.

FAITH EVANS 285/15

Soon As I Get Home (Bad Boy/Arista)

Table with columns: Total Stations: 14, Chart Move: 2-2, and station data for various markets.

EVERYTHING BUT THE GIRL 619/63

Missing (Atlantic)

Table with columns: Total Stations: 21, Chart Move: 17-14, and station data for various markets.

FROST 182/32

La Familia (Ruthless/Relativity)

Table with columns: Total Stations: 8, Chart Move: 1-3, and station data for various markets.

IMMATURE 422/23

We Got It (MCA)

Table with columns: Total Stations: 19, Chart Move: 26-24, and station data for various markets.

J'SON 167/19

Take A Look (Hollywood)

Table with columns: Total Stations: 8, Chart Move: 1-1, and station data for various markets.

JANET JACKSON 287/13

Twenty Foreplay (A&M)

Table with columns: Total Stations: 18, Chart Move: 2-1, and station data for various markets.

KRIS KROSS 480/146

Tonite's Tha Night (Ruffhouse/Columbia)

Table with columns: Total Stations: 23, Chart Move: 29-20, and station data for various markets.

L.V. 341/82

Throw Your Hands Up (Tommy Boy)

Table with columns: Total Stations: 17, Chart Move: 40-31, and station data for various markets.

LA BOUCHE 982/47

Be My Lover (RCA)

Table with columns: Total Stations: 26, Chart Move: 7-7, and station data for various markets.

LL COOL J 308/42

Do It (Def Jam/RAL/Island)

Table with columns: Total Stations: 15, Chart Move: 39-37, and station data for various markets.

YVETTE MICHELLE 335/84

Everyday & Everynight (Loud/RCA)

Table with columns: Total Stations: 15, Chart Move: Debut 32, and station data for various markets.

MONICA 1052/65

Before You Walk Out Of My Life (Rowdy/Arista)

Table with columns: Total Stations: 31, Chart Move: 6-6, and station data for various markets.

N-TRANCE 375/60

Stayin' Alive (Radikal/Avex-Critique)

Table with columns: Total Stations: 18, Chart Move: 31-28, and station data for various markets.

THE OUTHERE BROTHERS 233/1

Boom Boom Boom (Aureus)

Table with columns: Total Stations: 19, Chart Move: 2-2, and station data for various markets.

THE TONY RICH PROJECT 1133/75

Nobody Knows (LaFace/Arista)

Table with columns: Total Stations: 24, Chart Move: 5-3, and station data for various markets.

RUFFNECK FEAT. YAVAHN 278/29

Everybody Be Somebody (Maw/Strictly Rhythm)

Table with columns: Total Stations: 15, Chart Move: 2-2, and station data for various markets.

LINA SANTIAGO 539/229

Feels So Good (Show Me Your Love) (Universal)

Table with columns: Total Stations: 19, Chart Move: 33-18, and station data for various markets.

SLOW PAIN 139/35

Money Maid (Thump)

Table with columns: Total Stations: 7, Chart Move: 1-2, and station data for various markets.

TOTAL 280/55

No One Else (Bad Boy/Arista)

Table with columns: Total Stations: 18, Chart Move: 2-2, and station data for various markets.

POWER PLAYLISTS

AIRPLAY Monitor

For Week Ending January 21, 1996

WPLJ PD: Scott Shannon APD/MD: Mike Preston TW LW New York

MIX 105 PD: Steve Weed MD: Linda Silver TW LW New York

STAR 98.7 PD: Dave Beasing MD: Angela Perrelli TW LW Los Angeles

STAR 104.5 PD: Chuck Knight MD: Joe Proke TW LW Philadelphia

B101 PD: Jim Ryan TW LW Philadelphia

WPNT PD: Lurain Palagi MD: Lynne Murray TW LW Chicago

MIX 101.9 PD: Barry James APD/MD: Jaime Kartak TW LW Chicago

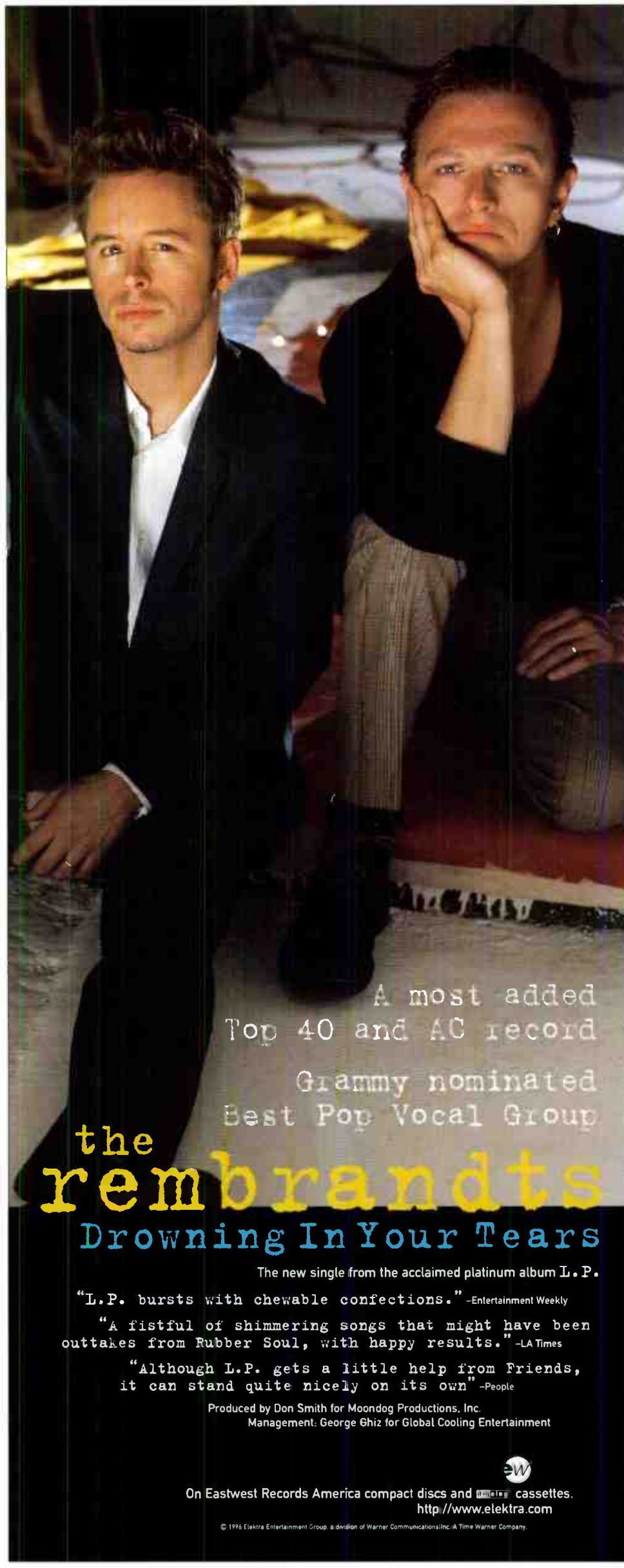
Q95 PD: Tom O'Brien MD: Fred Buchalter TW LW Detroit

MIX 107.3 OM/PD: Randy James MD: Carol Parker TW LW Washington, DC

MIX 98.5 PD: Greg Strassell MD: Tim Richards TW LW Boston

K101 PD: Casey Keating MD: Connie Lindell TW LW San Francisco

KS95 PD: Bob Davis MD: Leighton Peck TW LW Minneapolis



A most added Top 40 and AC record Grammy nominated Best Pop Vocal Group the rembrandts Drowning In Your Tears

The new single from the acclaimed platinum album L.P.

"L.P. bursts with chewable confections." -Entertainment Weekly

"A fistful of shimmering songs that might have been outtakes from Rubber Soul, with happy results." -LA Times

"Although L.P. gets a little help from Friends, it can stand quite nicely on its own" -People

Produced by Don Smith for Moondog Productions, Inc. Management: George Ghiz for Global Cooling Entertainment



On Eastwest Records America compact discs and cassette cassettes. http://www.elektra.com

© 1996 Elektra Entertainment Group, a division of Warner Communications/Inc. A Time Warner Company.

BDS IMPACT

★ ★ ★ **AIRPOWER** ★ ★ ★
(Minimum 600 detections for the first time)

GEORGE MICHAEL 689/212
Jesus To A Child (DreamWorks/Geffen)
Total Stations: 44/Chart Move: 25-19
Heavy (30+ plays): 1 KMZQ
Medium (15-29): 26 KDMX, KGBX, KGBY, KHMV, KIOI, KPLZ, KTHT, KYKY, WAEV, WBEB, WDEF, WEZF, WKTI, WKZL, WLHT, WMTX, WMXB, WMXL, WMXV, WQAL, WRMF, WRQX, WTFM, WWSN, WYXR, WYYY
Light (Under 15): 17
New Airplay This Week: 16 KDMX, KWMX, WAHR, WALK, WDEF, WIOG, WKDD, WLHT, WMC, WMJQ, WMXV, WMYI, WRMF, WTMX, WVAF, WYXR

MELISSA ETHERIDGE 619/90
I Want To Come Over (Island)
Total Stations: 36/Chart Move: 23-21
Heavy (30+): 2 KWMX, WEZF
Medium (15-29): 22 KALC, KDMX, KFMB, KHMV, KISN, KPLZ, KSTZ, KVUU, KYSR, WKDD, WKQI, WKTI, WKZL, WMC, WMXV, WPLJ, WPNT, WQAL, WQLH, WTMX, WWSN, WYYY
Light (Under 15): 12
New Airplay This Week: 4 KSTZ, WCSO, WMTX, WPNT

AIRPOWER BOUND

NATALIE MERCHANT 568/66
Wonder (Elektra/EEG)
Total Stations: 37/Chart Move: 24-22
Heavy (30+ plays): 6 KALC, KDMX, KPLZ, KWMX, KYSR, WTMX
Medium (15-29): 10 KFMB, KHMV, KYKY, WKDD, WMXV, WPLJ, WQLH, WRQX, WVTY, WYYY
Light (Under 15): 21
New Airplay This Week: 3 KYKY, WCSO, WKTI

SELENA 448/83
Dreaming Of You (EMI Latin/EMI)
Total Stations: 30/Chart Move: 28-25
Heavy (30+): 4 KMZQ, KTHT, WJDX, WMJQ
Medium (15-29): 11 KGBX, KGBY, KIOI, WAHR, WBMX, WDEF, WGSY, WKDD, WLHT, WRMF, WZPK
Light (Under 15): 15
New Airplay This Week: 2 WALK, WRMF

JOAN OSBORNE 392/98
One Of Us (Blue Gorilla/Mercury)
Total Stations: 23/Chart Move: 30-27
Heavy (30+): 1 KFMB
Medium (15-29): 13 KALC, KSTP, KSTZ, KWMX, KYSR, WAEV, WKDD, WKTI, WMTX, WPLJ, WVTY, WWSN, WZPK
Light (Under 15): 9
New Airplay This Week: 6 KHMV, WBLI, WBMX, WMC, WRQX, WWSN

SOUL ASYLUM 305/92
Promises Broken (Columbia)
Total Stations: 22/Chart Move: 40-30
Heavy (30+): 4 KALC, WEZF, WTMX, WVTY
Medium (15-29): 3 KHMV, KYSR, WPLJ
Light (Under 15): 15
New Airplay This Week: 7 KYSR, WAEV, WBLI, WKDD, WMXV, WRQX, WZPK

ROD STEWART 303/87
So Far Away (Lava/Atlantic)
Total Stations: 22/Chart Move: 39-31
Heavy (30+): 0
Medium (15-29): 11 KGBX, KGBY, WBMX, WDEF, WEZF, WJDX, WMJQ, WMYI, WRMF, WTFM, WVTY
Light (Under 15): 11
New Airplay This Week: 4 KMZQ, WBMX, WJDX, WTFM

JANN ARDEN 283/16
Insensitive (A&M)
Total Stations: 17/Chart Move: 34-33
Heavy (30+): 2 KHMV, WEZF
Medium (15-29): 8 KDMX, KPLZ, WBMX, WKDD, WKTI, WMXV, WQLH, WVAF
Light (Under 15): 7
New Airplay This Week: 1 WYYY

MICHAEL BOLTON 251/9
A Love So Beautiful (Columbia)
Total Stations: 30/Chart Move: 37-36
Heavy (30+): 2 WJDX, WMJQ
Medium (15-29): 5 WAHR, WBEB, WDEF, WGSY, WLHT
Light (Under 15): 23
New Airplay This Week: 1 KMZQ

THE TONY RICH PROJECT 206/70
Nobody Knows (LaFace/Arista)
Total Stations: 13/Chart Move: Debut 38
Heavy (30+): 1 WQLH
Medium (15-29): 5 KALC, KTHT, KWMX, WDEF, WEZF
Light (Under 15): 7
New Airplay This Week: 4 KMZQ, WKTI, WMC, WYYY

COLLECTIVE SOUL 183/59
The World I Know (Atlantic)
Total Stations: 9
Heavy (30+): 2 KALC, KHMV
Medium (15-29): 3 KWMX, KYSR, WPLJ
Light (Under 15): 4
New Airplay This Week: 3 WKTI, WRQX, WZPK

BLUES TRAVELER 179/16
Hook (A&M)
Total Stations: 17
Heavy (30+): 3 KALC, KFMB, KYSR
Medium (15-29): 2 KWMX, WPLJ
Light (Under 15): 12
New Airplay This Week: 2 KSTP, WBLI

SMASHING PUMPKINS 150/48
1979 (Virgin)
Total Stations: 9
Heavy (30+): 3 KALC, KFMB, KYSR

MOST NEW AIRPLAY THIS WEEK No. Of Stations

GEORGE MICHAEL 16
Jesus To A Child (DreamWorks/Geffen)
SOUL ASYLUM 7
Promises Broken (Columbia)
JOAN OSBORNE 6
One Of Us (Blue Gorilla/Mercury)
GIN BLOSSOMS 5
Follow You Down (A&M)
MELISSA ETHERIDGE 4
I Want To Come Over (Island)

Medium (15-29): 2 KHMV, KWMX
Light (Under 15): 4
New Airplay This Week: 1 WRQX

EDWIN MCCAIN 143/6
Solitude (Lava/Atlantic)
Total Stations: 11
Heavy (30+): 3 KALC, KSTP, WWSN
Medium (15-29): 1 WQLH
Light (Under 15): 7

TLC 130/7
Diggin' On You (LaFace/Arista)
Total Stations: 7
Heavy (30+): 3 KWMX, WQLH, WZPK
Medium (15-29): 0
Light (Under 15): 4

TOM PETTY 124/18
Waiting For Tonight (MCA)
Total Stations: 13
Heavy (30+): 1 KYSR
Medium (15-29): 2 WMXL, WTMX
Light (Under 15): 10
New Airplay This Week: 1 KFMB

ALANIS MORISSETTE 120/37
Ironic (Maverick/Reprise)
Total Stations: 8
Heavy (30+): 2 KFMB, KYSR
Medium (15-29): 1 KHMV
Light (Under 15): 5
New Airplay This Week: 2 KWMX, WPLJ

PHIL COLLINS 117/73
Somewhere (RCA)
Total Stations: 14
Heavy (30+): 0
Medium (15-29): 4 KGBY, WDEF, WGSY, WTFM
Light (Under 15): 10
New Airplay This Week: 3 WDEF, WMYI, WTFM

BODEANS 113/28
Closer To Free (Slash/Reprise)
Total Stations: 7
Heavy (30+): 0
Medium (15-29): 4 KFMB, KSTP, WKTI, WQLH
Light (Under 15): 3
New Airplay This Week: 1 KSTP

THIS WEEK	LAST WEEK	WEEKS ON	DETECTIONS	
			TW	LW
			★ ★ ★ No. 1 ★ ★ ★	
1	1	12	ONE SWEET DAY COLUMBIA 6 wks. at No. 1	MARIAH CAREY & BOYZ II MEN 1782 1693
2	2	37	AS I LAY ME DOWN COLUMBIA	SOPHIE B. HAWKINS 1511 1523
3	3	26	BACK FOR GOOD ARISTA	TAKE THAT 1382 1421
4	4	16	BLESSED ROCKET/ISLAND	ELTON JOHN 1327 1286
5	5	13	YOU'LL SEE MAVERICK/WARNER BROS.	MADONNA 1274 1262
6	8	25	TIL I HEAR IT FROM YOU A&M	GIN BLOSSOMS 1265 1203
7	7	25	ROLL TO ME A&M	DEL AMITRI 1203 1220
8	6	29	ONLY WANNA BE WITH YOU ATLANTIC	HOOTIE & THE BLOWFISH 1200 1226
9	9	32	KISS FROM A ROSE ZTT/SIRE/WARNER BROS.	SEAL 1102 1162
10	10	14	EXHALE (SHOOP SHOOP) ARISTA	WHITNEY HOUSTON 1101 1118
11	13	16	BREAKFAST AT TIFFANY'S RAINMAKER/INTERSCOPE	DEEP BLUE SOMETHING 1077 1005
12	11	35	RUN-AROUND A&M	BLUES TRAVELER 1053 1059
13	12	17	NAME METAL BLADE/WARNER BROS.	GOO GOO DOLLS 1040 1039
14	15	10	MISSING ATLANTIC	EVERYTHING BUT THE GIRL 993 898
15	14	14	TIME ATLANTIC	HOOTIE & THE BLOWFISH 911 941
16	17	22	CARNIVAL ELEKTRA/EEG	NATALIE MERCHANT 783 737
17	16	23	RUNAWAY A&M	JANET JACKSON 742 772
18	18	9	DON'T CRY ZTT/WARNER BROS.	SEAL 733 675
			★ ★ ★ AIRPOWER ★ ★ ★	
19	25	2	JESUS TO A CHILD DREAMWORKS/GEFFEN	GEORGE MICHAEL 689 477
20	20	37	I'LL BE THERE FOR YOU EASTWEST/EEG	THE REMBRANDTS 650 638
			★ ★ ★ AIRPOWER ★ ★ ★	
21	23	5	I WANT TO COME OVER ISLAND	MELISSA ETHERIDGE 619 529
22	24	7	WONDER ELEKTRA/EEG	NATALIE MERCHANT 568 502
23	21	17	GOOD INTENTIONS COLUMBIA/REPRISE	TOAD THE WET SPROCKET 556 610
24	22	25	DECEMBER ATLANTIC	COLLECTIVE SOUL 545 563
25	28	6	DREAMING OF YOU EMI LATIN/EMI	SELENA 448 365
26	26	22	FANTASY COLUMBIA	MARIAH CAREY 433 476
27	30	9	ONE OF US BLUE GORILLA/MERCURY	JOAN OSBORNE 392 294
28	27	16	I WILL REMEMBER YOU ARISTA	SARAH MCLACHLAN 338 369
29	29	7	GET TOGETHER GIANT	BIG MOUNTAIN 314 363
30	40	2	PROMISES BROKEN COLUMBIA	SOUL ASYLUM 305 213
31	39	2	SO FAR AWAY LAVA/ATLANTIC	ROD STEWART 303 216
32	33	22	FOREVER TONIGHT RIVER NORTH	PETER CETERA & CRYSTAL BERNARD 285 283
33	34	3	INSENSITIVE A&M	JANN ARDEN 283 267
34	32	8	(YOU MAKE ME FEEL LIKE) A NATURAL WOMAN LAVA/ATLANTIC	CELINE DION 264 286
35	35	10	HAND IN MY POCKET MAVERICK/REPRISE	ALANIS MORISSETTE 252 266
36	37	4	A LOVE SO BEAUTIFUL COLUMBIA	MICHAEL BOLTON 251 242
37	38	8	BEAUTIFUL LIFE ARISTA	ACE OF BASE 206 227
38	NEW		NOBODY KNOWS LAFACE/ARISTA	THE TONY RICH PROJECT 206 136
39	RE-ENTRY		YOU ARE NOT ALONE EPIC	MICHAEL JACKSON 194 180
40	RE-ENTRY		ANTS MARCHING RCA	DAVE MATTHEWS BAND 184 203

Records showing an increase in detections over the previous week, regardless of chart movement. A record which has been on the chart for more than 20 weeks will not receive a bullet, even if it registers an increase in detections. Airpower awarded to those records which attain 600 detections for the first time. If two records are tied in number of plays, the record being played on more stations is placed first. Records below the top 20 are removed from the chart after 26 weeks. © 1996, Billboard/BPI Communications.

OASIS 84/53
Wonderwall (Epic)
Total Stations: 14
Heavy (30+): 1 KFMB
Medium (15-29): 1 KYSR
Light (Under 15): 12
New Airplay This Week: 3 KYSR, WMXV, WZPK

MARY CHAPIN CARPENTER 61/4
Grow Old With Me (Hollywood)
Total Stations: 8
Heavy (30+): 0
Medium (15-29): 2 WAHR, WBEB
Light (Under 15): 6

BLESSID UNION OF SOULS 66/20
Oh Virginia (EMI)
Total Stations: 7
Heavy (30+): 0
Medium (15-29): 2 WEZF, WKTI
Light (Under 15): 5
New Airplay This Week: 1 WYYY

DAVE MATTHEWS BAND 59/16
Satellite (RCA)
Total Stations: 2
Heavy (30+): 1 KALC
Medium (15-29): 1 KWMX
Light (Under 15): 0



SONG ACTIVITY REPORTS



For Week Ending January 21, 1996

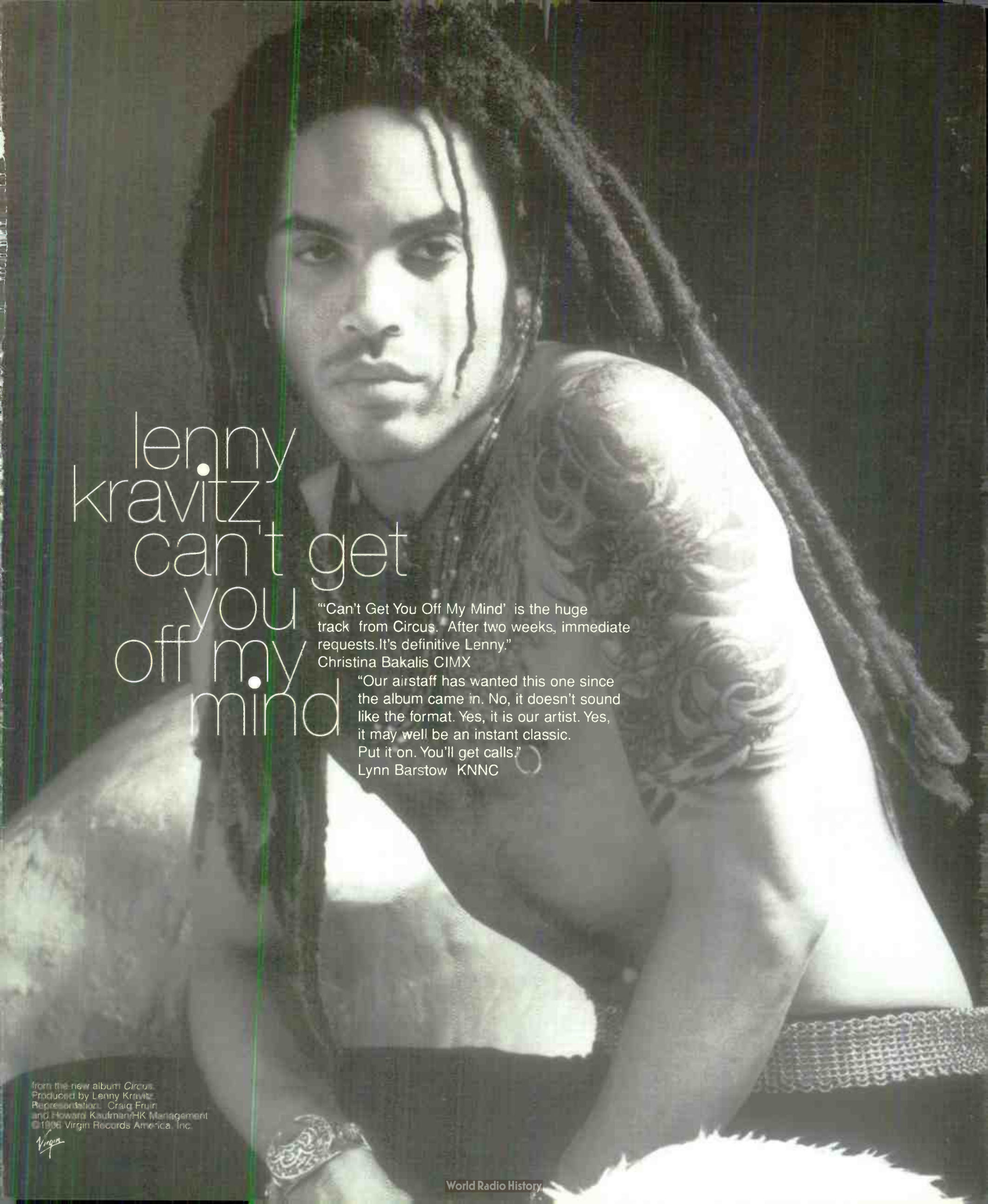
Detailed song tracking information for the last 3 weeks for all songs showing increased play this week. Total plays and gain do not include video play. Markets listed in order of population.

Grid of song activity reports for artists: JANN ARDEN, BLUES TRAVELER, MICHAEL BOLTON, MARIAH CAREY & BOYZ II MEN, COLLECTIVE SOUL.

Grid of song activity reports for artists: DEEP BLUE SOMETHING, MELISSA ETHERIDGE, EVERYTHING BUT THE GIRL, GOO GOO DOLLS, ELTON JOHN.

Grid of song activity reports for artists: MADONNA, NATALIE MERCHANT, GEORGE MICHAEL, JOAN OSBORNE, THE TONY RICH PROJECT.

Grid of song activity reports for artists: SEAL, SELENA, SMASHING PUMPKINS, SOUL ASYLUM, ROD STEWART.



lenny
kravitz
can't get
you
off my
mind

"'Can't Get You Off My Mind' is the huge track from *Circus*. After two weeks, immediate requests. It's definitive Lenny."

Christina Bakalis CIMX

"Our airstaff has wanted this one since the album came in. No, it doesn't sound like the format. Yes, it is our artist. Yes, it may well be an instant classic. Put it on. You'll get calls."

Lynn Barstow KNNC

from the new album *Circus*
Produced by Lenny Kravitz
Representation: Craig Fruin
and Howard Kaufman/HK Management
© 1998 Virgin Records America, Inc.

Virgin

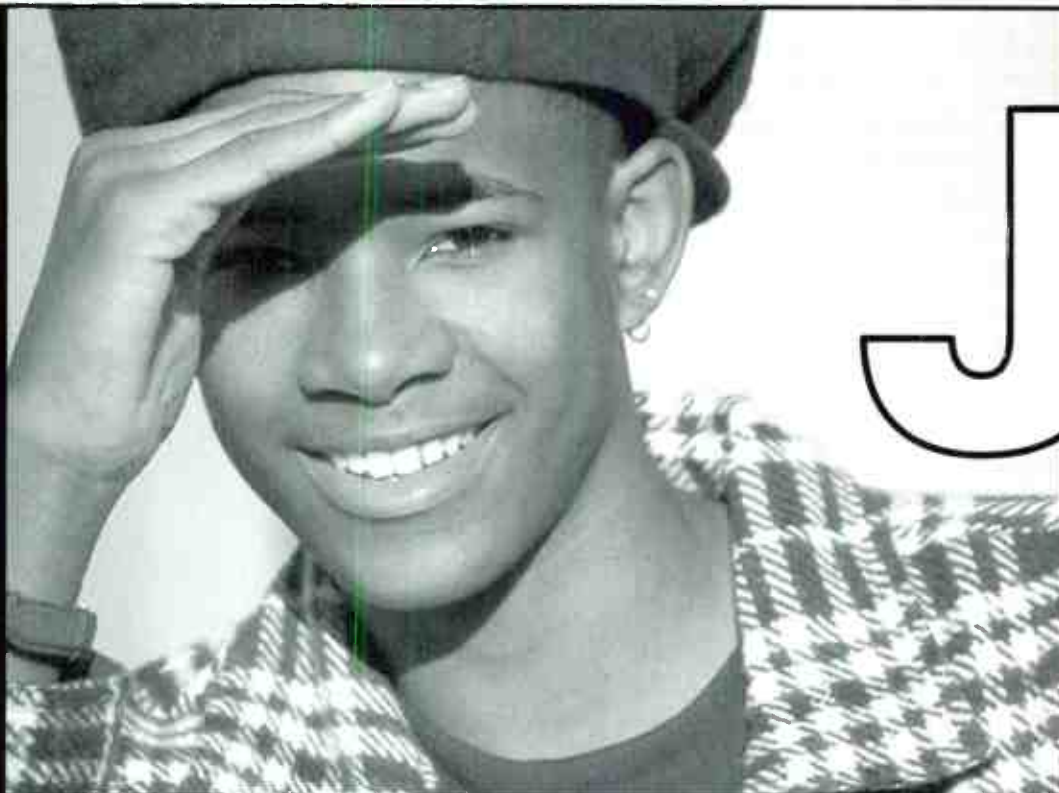
COMBINED TOP 40 MONITOR AIRPLAY										AIRPLAY THIS WEEK BY FORMAT									
TW	LW	WKS	TITLE (LABEL)	ARTIST	THIS WEEK			LAST WEEK			MAINSTREAM		RHYTHM		ADULT		MODERN		
					Audience (millions)	Detections No.	Rank	Audience (millions)	Detections No.	Rank	Audience (millions)	Detections No.	Rank	Audience (millions)	Detections No.	Rank	Audience (millions)	Detections No.	Rank
1	1	15	ONE SWEET DAY (COLUMBIA)	MARIAH CAREY & BOYZ II MEN	81.5701	7279	1	80.9406	7315	1	32.9831	3902	1	26.9216	1595	1	21.6654	1782	1
2	2	12	MISSING (ATLANTIC)	EVERYTHING BUT THE GIRL	56.6934	5219	3	53.3446	4936	3	32.3030	3386	3	8.0543	619	14	13.3623	993	14
3	3	21	NAME (METAL BLADE/WARNER BROS.)	GOO GOO DOLLS	51.5668	5328	2	51.4503	5382	2	30.9783	3516	2	0.1440	16	—	13.3269	1040	13
4	4	13	EXHALE (SHOOO SHOOO) (ARISTA)	WHITNEY HOUSTON	46.1864	4931	4	45.7641	4889	4	20.3718	2710	7	15.8810	1114	4	9.8898	1101	10
5	5	16	BREAKFAST AT TIFFANY'S (RAINMAKER/INTERSCOPE)	DEEP BLUE SOMETHING	42.7741	4421	6	42.4734	4531	5	25.0605	2915	5	0.1122	15	—	14.5485	1077	11
6	6	10	TIME (ATLANTIC)	HOOTIE & THE BLOWFISH	38.1915	3909	7	39.3978	3828	7	23.1745	2801	6	0.0959	15	—	13.2018	911	15
7	8	27	AS I LAY ME DOWN (COLUMBIA)	SOPHIE B. HAWKINS	35.9684	3267	10	36.1881	3353	11	16.2735	1634	16	1.1058	122	—	18.5891	1511	2
8	9	11	ONE OF US (BLUE GORILLA/MERCURY)	JOAN OSBORNE	35.2173	4423	5	32.8325	4179	6	22.8496	3000	4	0.0890	11	—	5.1786	392	27
9	7	22	FANTASY (COLUMBIA)	MARIAH CAREY	34.1627	2956	18	38.2543	3343	12	16.6958	1707	13	13.0054	812	11	4.4161	433	26
10	11	19	TELL ME (EPIC)	GROOVE THEORY	32.9388	2530	24	31.9413	2469	28	13.8304	1403	22	19.0938	1090	5	0.0146	37	—
11	10	26	TIL I HEAR IT FROM YOU (A&M)	GIN BLOSSOMS	31.4435	3057	15	32.2972	3194	14	13.2707	1525	19	0.0761	11	—	16.6670	1265	6
12	16	8	WONDERWALL (EPIC)	OASIS	29.6180	3774	8	28.6828	3386	10	10.0298	1280	25	0.0365	8	—	0.6690	84	—
13	19	6	BE MY LOVER (RCA)	LA BOUCHE	29.2728	2960	17	27.1490	2675	22	17.2648	1959	10	11.9481	982	7	0.0304	17	—
14	14	13	YOU'LL SEE (MAVERICK/WARNER BROS.)	MADONNA	28.9158	3431	9	30.5993	3685	8	11.9606	1852	11	2.1631	303	38	14.7740	1274	5
15	12	29	ONLY WANNA BE WITH YOU (ATLANTIC)	HOOTIE & THE BLOWFISH	28.3214	2726	19	30.7241	2927	16	12.2755	1270	—	0.9927	97	—	13.5826	1200	8
16	17	11	HEY LOVER (DEF JAM/RAL/ISLAND)	LL COOL J	27.6588	1721	44	27.4676	1721	40	3.9959	461	—	23.6274	1256	2	0.0355	4	—
17	13	15	DIGGIN' ON YOU (LAFACE/ARISTA)	TLC	27.1004	3191	12	30.6236	3506	9	16.2691	2327	8	10.4419	733	12	0.3725	130	—
18	15	25	ROLL TO ME (A&M)	DEL AMITRI	27.0390	2692	21	29.1845	2828	20	11.7882	1348	—	0.0300	6	—	14.5051	1203	7
19	22	10	1979 (VIRGIN)	SMASHING PUMPKINS	26.9627	3085	14	26.2350	2915	17	6.8960	817	35	—	—	—	1.6992	150	—
20	24	8	THE WORLD I KNOW (ATLANTIC)	COLLECTIVE SOUL	26.6923	3255	11	25.3347	3060	15	10.2332	1405	21	0.0206	4	—	2.6399	183	—
21	26	6	WONDER (ELEKTRA/EEG)	NATALIE MERCHANT	26.5784	3094	13	24.4660	2858	18	12.1463	1769	12	0.0858	15	—	8.2961	568	22
22	23	23	BACK FOR GOOD (ARISTA)	TAKE THAT	25.8814	2493	27	25.7526	2599	26	10.1529	1097	—	0.1328	13	—	15.5885	1382	3
23	18	36	RUN-AROUND (A&M)	BLUES TRAVELER	25.6206	2506	26	27.2562	2619	24	9.0742	1104	—	0.0306	7	—	14.5639	1053	12
24	21	26	CARNIVAL (ELEKTRA/EEG)	NATALIE MERCHANT	25.2633	2621	23	26.4447	2729	21	12.5184	1465	20	0.0639	10	—	9.6159	783	16
25	20	31	KISS FROM A ROSE (ZTT/SIRE/WARNER BROS.)	SEAL	24.2680	2310	31	26.7019	2606	25	9.8345	965	—	1.6266	199	—	12.4595	1102	9
26	32	2	NOBODY KNOWS (LAFACE/ARISTA)	THE TONY RICH PROJECT	23.6117	2714	20	20.3661	2318	30	8.4249	1375	23	14.4817	1133	3	0.7051	206	38
27	33	4	HOOK (A&M)	BLUES TRAVELER	23.0287	2630	22	20.2794	2467	29	13.8306	1686	14	0.0523	11	—	3.2370	179	—
28	27	9	GLYCERINE (TRAUMA/INTERSCOPE)	BUSH	21.9428	2486	28	22.6812	2511	27	7.3789	627	—	0.0413	11	—	—	—	—
29	25	23	RUNAWAY (A&M)	JANET JACKSON	21.5232	2517	25	24.5520	2853	19	10.5855	1353	24	4.0166	422	23	6.9211	742	17
30	NEW		IRONIC (MAVERICK/REPRISE)	ALANIS MORISSETTE	20.9614	2055	35	16.1141	1565	46	6.4890	410	—	0.0016	1	—	2.1529	120	—
31	35	7	BEFORE YOU WALK OUT OF MY LIFE (ROWDY/ARISTA)	MONICA	20.9180	1632	46	19.6143	1487	54	2.7656	572	—	18.1437	1052	6	0.0019	7	—
32	NEW		CALIFORNIA LOVE (DEATH ROW/INTERSCOPE)	2PAC	20.8743	1096	71	15.9953	693	117	0.7678	119	—	20.1065	977	8	—	—	—
33	28	21	HAND IN MY POCKET (MAVERICK/REPRISE)	ALANIS MORISSETTE	20.2573	2974	16	22.1673	3230	13	14.3880	2264	9	0.0898	12	—	2.1438	252	35
34	30	10	SET U FREE (STRICTLY RHYTHM)	PLANET SOUL	19.8068	1323	59	20.5417	1188	65	8.1439	625	—	11.6629	698	13	—	—	—
35	29	36	DECEMBER (ATLANTIC)	COLLECTIVE SOUL	19.6831	1894	40	21.2605	2062	34	8.8060	1013	—	0.0151	3	—	8.2491	545	24
36	NEW		ANYTHING (MJJ/550 MUSIC)	3T	19.3665	1646	45	15.2739	1539	50	6.3971	708	38	12.7601	896	10	0.1926	40	—
37	NEW		SITTIN' UP IN MY ROOM (ARISTA)	BRANDY	19.3625	1287	61	16.3152	1000	75	2.0040	318	—	17.3585	969	9	—	—	—
38	34	11	NATURAL ONE (LONDON/ISLAND)	FOLK IMPLOSION	18.8853	2272	32	20.4060	2267	32	4.4368	523	—	—	—	—	0.2480	30	—
39	31	13	GOOD INTENTIONS (COLUMBIA/REPRISE)	TOAD THE WET SPROCKET	18.2957	2483	29	20.4143	2636	23	8.6390	1600	17	0.0814	14	—	7.6095	556	23
40	NEW		DON'T CRY (ZTT/WARNER BROS.)	SEAL	17.7898	2366	30	16.2739	2232	33	10.1245	1540	18	0.5692	70	—	7.0232	733	18

Records showing an increase in audience over the previous week, regardless of chart movement. Rankings broken down by format (on right side of this page) correspond to 40-position charts printed in this week's Monitor and therefore rankings do not exist for recurrences and records below No. 40. Audience computed by cross-referencing exact times of airplay with Arbitron listener data. ©1996, Billboard/BPI Communications.

CAN'T BE WASTING MY TIME
 Island Black Music's Debut Artist
Mona Lisa
 featuring Lost Boyz
 Early Add: WJMH 29x
 In Rotation At: 92Q 10x, HOT 97 8x, KBXX 5x
 Additional Airplay At: WHHH, WPGC, WJBT, WFLZ

RHYTHM-CROSSOVER
 RADIO IMPACT DATE JANUARY 30TH.
 FROM THE SOUNDTRACK
DON'T BE A MENACE
 THE SOUTH CENTRAL AND BOSTON'S #1 MUSIC BY THE WEEK

ISLAND BLACK MUSIC
 HTTP://WWW.POLYGRAM.COM/POLYGRAM
 OR ON COMPUERVE: GO POLYGRAM
 ©1996 Island Records Inc., A PolyGram Company



J'son

"take a look"
the debut single

Produced by Red Hot Lower Tone and
Poke for Track Masters Productions, Inc.
Additional production and mix:
Adebratt/Ekman for Lamco
It's About Tyme Productions
HR-64003

Already Spinning On:

KLUC 64x
(#29 SoundScan Single)
KZFM 36x
KKFR 28x
KCAQ 20x
KZHT 11x
Z90 6x

Plus:

KQMQ 58x (#6 SoundScan Single)
KIKI 80x

NOW IMPACTING AT TOP 40 RADIO!



#12 MOST REQUESTED

available on hollywood records



compact discs and cassette tapes



FEATURING **DARVY TRAYLOR**

50 - 35* SoundScan
Single Overall



#6 Most Requested!

700 SPINS!

OVER 11.4 MILLION LISTENERS!

SPINNING ON:

POWER 106 62x (#4 SoundScan Single)
KGGI 59x
KPRR 58x
KUBE 55x (#20 SoundScan Single)
WJJS 44x (#18 SoundScan Single)
WILD 107 38x
KCAQ 36x
WZJM 34x
KQMQ 33x (#2 SoundScan Single)
WHHH 32x
KKFR 31x (#3 SoundScan Single)
KHS 27x
WFMF 20x
XHTZ 18x (#11 SoundScan Single)
KLUC 17x (#10 SoundScan Single)
KMEL 15x (#11 SoundScan Single)
KTFM 15x
WFLY 15x
KZHT 15x
KQKS 13x (#30 SoundScan Single)
WWKS 10x
KJYO 7x

AND MORE!

PRODUCED BY RICHARD "RIKKO" PREUSS

Ridin' Low

HR-64004
©1996 Hollywood Records

THIS WEEK	LAST WEEK	WKS. ON CHART	MAINSTREAM		DETECTIONS		
			TITLE/LABEL/DISTRIBUTING LABEL	ARTIST	TW	LW	
			*** No. 1 ***				
1	1	13	ONE SWEET DAY COLUMBIA <i>8 weeks at No. 1</i>	MARIAH CAREY & BOYZ II MEN	3902	3958	
(2)	2	18	NAME METAL BLADE/WARNER BROS	GOO GOO DOLLS	3516	3482	
(3)	3	10	MISSING ATLANTIC	EVERYTHING BUT THE GIRL	3386	3288	
(4)	5	10	ONE OF US BLUE GORILLA/MERCURY	JOAN OSBORNE	3000	2775	
5	4	25	BREAKFAST AT TIFFANY'S RAINMAKER/INTERSCOPE	DEEP BLUE SOMETHING	2915	3038	
(6)	6	13	TIME ATLANTIC	HOOTIE & THE BLOWFISH	2801	2690	
(7)	7	12	EXHALE (SHOOP SHOOP) ARISTA	WHITNEY HOUSTON	2710	2577	
8	8	15	DIGGIN' ON YOU LAFACE/ARISTA	TLC	2327	2536	
9	9	16	HAND IN MY POCKET MAVERICK/REPRISE	ALANIS MORISSETTE	2264	2469	
(10)	13	8	BE MY LOVER RCA	LA BOUCHE	1959	1727	
11	10	13	YOU'LL SEE MAVERICK/WARNER BROS	MADONNA	1852	2019	
(12)	19	7	WONDER ELEKTRA/EEG	NATALIE MERCHANT	1769	1523	
13	11	22	FANTASY COLUMBIA	MARIAH CAREY	1707	1947	
(14)	20	8	*** AIRPOWER ***		HOOK A&M	BLUES TRAVELER	
15	12	9	GET TOGETHER GIANT	BIG MOUNTAIN	1652	1773	
16	14	29	AS I LAY ME DOWN COLUMBIA	SOPHIE B. HAWKINS	1634	1723	
17	16	17	GOOD INTENTIONS COLUMBIA/REPRISE	TOAD THE WET SPROCKET	1600	1614	
(18)	21	7	*** AIRPOWER ***		DON'T CRY J&M	SEAL	
19	15	26	TIL I HEAR IT FROM YOU A&M	GIN BLOSSOMS	1525	1670	
20	18	26	CARNIVAL ELEKTRA/EEG	NATALIE MERCHANT	1465	1601	
(21)	25	7	THE WORLD I KNOW ATLANTIC	COLLECTIVE SOUL	1405	1203	
(22)	23	11	TELL ME EPIC	GROOVE THEORY	1403	1338	
(23)	27	5	NOBODY KNOWS LAFACE/ARISTA	THE TONY RICH PROJECT	1375	1124	
24	17	23	RUNAWAY A&M	JANET JACKSON	1353	1607	
(25)	32	3	WONDERWALL EPIC	OASIS	1280	977	
(26)	31	2	JESUS TO A CHILD DREAMWORKS/GEFFEN	GEORGE MICHAEL	1270	1032	
27	22	26	LET ME BE THE ONE EMI	BLESSID UNION OF SOULS	1220	1351	
28	24	14	BEAUTIFUL LIFE ARISTA	ACE OF BASE	1141	1337	
(29)	36	2	I WANT TO COME OVER ISLAND	MELISSA ETHERIDGE	1128	825	
(30)	34	4	PROMISES BROKEN COLUMBIA	SOUL ASYLUM	920	870	
31	30	10	WHEN LOVE & HATE COLLIDE MERCURY	DEF LEPPARD	915	1040	
32	29	26	YOU OUGHTA KNOW MAVERICK/REPRISE	ALANIS MORISSETTE	890	1044	
33	28	20	GANGSTA'S PARADISE MCA SOUNDTRACKS/MCA	COOLIO FEATURING L.V.	885	1057	
34	33	10	DREAMING OF YOU EMI LATIN/EMI	SELENA	866	926	
(35)	NEW		1979 VIRGIN	SMASHING PUMPKINS	817	610	
(36)	38	3	TWENTY FOREPLAY A&M	JANET JACKSON	791	704	
37	35	16	SOLITUDE LAVA/ATLANTIC	EDWIN MCCAIN	746	857	
(38)	39	2	ANYTHING MJJ/550 MUSIC	3T	708	622	
(39)	NEW		CLOSER TO FREE SLASH/REPRISE	BODEANS	700	586	
(40)	40	2	WAITING FOR TONIGHT MCA	TOM PETTY	671	618	

THIS WEEK	LAST WEEK	WKS. ON CHART	RHYTHM-CROSSOVER		DETECTIONS		
			TITLE/LABEL/DISTRIBUTING LABEL	ARTIST	TW	LW	
			*** No. 1 ***				
1	1	16	ONE SWEET DAY COLUMBIA <i>8 weeks at No. 1</i>	MARIAH CAREY & BOYZ II MEN	1595	1662	
2	2	13	HEY LOVER DEF JAM/RAL/ISLAND	LL COOL J	1256	1269	
(3)	5	8	NOBODY KNOWS LAFACE/ARISTA	THE TONY RICH PROJECT	1133	1058	
4	3	14	EXHALE (SHOOP SHOOP) ARISTA	WHITNEY HOUSTON	1114	1151	
5	4	23	TELL ME EPIC	GROOVE THEORY	1090	1100	
(6)	6	16	BEFORE YOU WALK OUT OF MY LIFE ROWDY/ARISTA	MONICA	1052	987	
(7)	7	13	BE MY LOVER RCA	LA BOUCHE	982	935	
(8)	13	3	CALIFORNIA LOVE DEATH ROW/INTERSCOPE	2PAC (FEAT. DR. DRE AND ROGER TROUTMAN)	977	669	
(9)	10	8	SITTIN' UP IN MY ROOM ARISTA	BRANDY	969	869	
(10)	9	18	ANYTHING MJJ/550 MUSIC	3T	896	875	
11	8	22	FANTASY COLUMBIA	MARIAH CAREY	812	912	
12	11	18	DIGGIN' ON YOU LAFACE/ARISTA	TLC	733	847	
13	12	17	SET U FREE STRICTLY RHYTHM	PLANET SOUL	698	727	
(14)	17	12	*** AIRPOWER ***		MISSING ATLANTIC	EVERYTHING BUT THE GIRL	
15	15	20	WHO CAN I RUN TO SO SO DEF/COLUMBIA	XSCAPE	592	621	
(16)	18	6	NOT GON' CRY ARISTA	MARY J. BLIGE	581	518	
17	16	13	RIDIN' LOW HOLLYWOOD	L.A.D. FEATURING DARVY TRAYLOR	578	600	
(18)	33	2	FEELS SO GOOD (SHOW ME YOUR LOVE) UNIVERSAL	LINA SANTIAGO	539	310	
19	14	15	YOU REMIND ME OF SOMETHING JIVE	R. KELLY	538	643	
(20)	29	6	TONITE'S THA NIGHT RUFFHOUSE/COLUMBIA	KRIS KROSS	480	334	
21	19	23	DREAMING OF YOU EMI LATIN/EMI	SELENA	437	508	
22	20	17	SEXUAL HEALING S.O.S./ZOO	MAX-A-MILLION	435	507	
23	22	23	RUNAWAY A&M	JANET JACKSON	422	474	
(24)	26	6	WE GOT IT MCA	IMMATURE	422	399	
(25)	35	2	WHO DO U LOVE ARISTA	DEBORAH COX	419	281	
(26)	28	8	ROCK WITH YOU QWEST/WARNER BROS.	QUINCY JONES FEAT. BRANDY & HEAVY D	404	358	
27	21	24	GANGSTA'S PARADISE MCA SOUNDTRACKS/MCA	COOLIO FEATURING L.V.	393	487	
(28)	31	5	STAYIN' ALIVE RADIKAL/AVEX-CRITIQUE	N-TRANCE	375	315	
29	23	12	BEAUTIFUL LIFE ARISTA	ACE OF BASE	374	468	
30	27	9	LOVE U 4 LIFE UPTOWN/MCA	JODECI	368	396	
(31)	40	6	THROW YOUR HANDS UP TOMMY BOY	L.V.	341	259	
(32)	NEW		EVERYDAY & EVERYNIGHT LOUD/RCA	YVETTE MICHELLE	335	251	
(33)	38	2	ALL CRIED OUT VIPER/METROPOLITAN	DENINE WITH COLLAGE'S ADAM MARANO	324	270	
(34)	32	2	HOW WE ROLL SBK/EMI	THE BARRIO BOYZZ	319	315	
35	24	11	TOO HOT TOMMY BOY	COOLIO	309	404	
(36)	34	6	LET'S PLAY HOUSE DEATH ROW/INTERSCOPE	THA DOGG POUND	308	302	
(37)	39	3	DOIN IT DEF JAM/RAL/ISLAND	LL COOL J	308	266	
38	25	13	YOU'LL SEE MAVERICK/WARNER BROS	MADONNA	303	402	
(39)	NEW		ENERGY AQUA BOOGIE/WING/MERCURY	DEVONE	296	209	
(40)	NEW		ALWAYS BE MY BABY COLUMBIA	MARIAH CAREY	294	226	

Records showing an increase in detections over the previous week, regardless of chart movement. A record which has been on either chart for more than 20 weeks will not receive a bullet, even if it registers an increase in detections. Airpower awarded to those records which attain 1500 detections (mainstream) or 600 detections (rhythm) for the first time. If two records are tied in number of plays, the record being played on more stations is placed first. Records below the top 20 are removed from the chart after 26 weeks.

The new single & video from the acclaimed solo debut

album Southern Gal

Terry Ellis

"Where Ever You Are"

Already on: WJMN-Boston, KHOM-New Orleans, KLRZ-New Orleans, WPGC-Washington, KJYO-Oklahoma City, WZJM-Cleveland, KZHT-Salt Lake



Produced by David Foster & Thomas McElroy in 1995. Distributed by Atlantic Records America compact disc & cassette. http://www.elektra.com