

# TOP 40 AIRPLAY Monitor

• We Listen To Radio •

January 5, 1996 \$ 4.95 Volume 4 • No. 2

## TOP 40 HIGHLIGHTS

### MAINSTREAM

#1

MARIAH CAREY & BOYZ II MEN

*One Sweet Day* (COLUMBIA)

★★★ AIRPOWER ★★★

NO RECORDS QUALIFIED FOR AIRPOWER THIS WEEK

### NEW RELEASES

JANET JACKSON • *Twenty Foreplay* (A&M)

GEORGE MICHAEL • *Jesus To A Child* (SKG DREAMWORKS/GEFFEN)

### RHYTHM-CROSSOVER

#1

MARIAH CAREY & BOYZ II MEN

*One Sweet Day* (COLUMBIA)

★★★ AIRPOWER ★★★

NO RECORDS QUALIFIED FOR AIRPOWER THIS WEEK

### NEW RELEASES

GEORGE MICHAEL • *Jesus To A Child* (SKG DREAMWORKS/GEFFEN)

### ADULT

#1

MARIAH CAREY & BOYZ II MEN

*One Sweet Day* (COLUMBIA)

★★★ AIRPOWER ★★★

EVERYTHING BUT THE GIRL • *Missing* (ATLANTIC)

### NEW RELEASES

JAMES INGRAM • *So This Is Love* (WALT DISNEY)

GEORGE MICHAEL • *Jesus To A Child* (SKG DREAMWORKS/GEFFEN)

## After Six Years, National Arbs Finally Show Good News For T40

by Sean Ross

After six years of steady decline, top 40 radio was up three-tenths of a share nationally this summer. And that's its biggest rise since the '80s, according to the latest Arbitron/Airplay Monitor national format rankings.

Powered by its traditional strong summer showing in middays, top 40 was up 9.1-9.4 12-plus in the exclusive Airplay Monitor study, which tracks stations in Arbitron's 94 continuous-measurement markets. That made top 40 the fifth-largest format in those markets, following N/T (15.8-15.5), AC (14.9-14.7), country (12.1-11.8), and R&B (9.1-9.5).

Trailing top 40 were album rock (8.3-8.3), oldies (7.5-7.6), Spanish (5.2-5.2), modern rock (3.6-3.8), classic rock (3.7-3.5), adult standards (3.2-3.3), jazz/AC (2.6-2.8), religious (2.2-2.1), classical (1.7-1.8), and easy listening (0.4-0.4).

### TOP 40'S WONDERFUL SUMMER

Top 40's 9.4 12-plus share was behind the 9.6 share it posted last summer, but after several years of steady erosion, it's also the biggest gain top 40 has posted at any one time in the past six years.

The bad news is that top 40's gain wasn't across the board but instead appears to stem from the format's customary midday boost during summer. With teens out of school, top 40 was up 7.4-8.5 during that daypart. It was, however, off in mornings (8.4-8.0) and nights (12.9-12.4) and flat in afternoons (9.9).

The good news is that top 40 nudged forward in adults this summer, up 13.6-13.9 18-34, 7.0-7.3 25-54, and 4.1-4.3 25-64, all of which would suggest that teens on their summer jobs were again responsible for some forced adult listening and that for the first time in several years, some adults found the format agreeable enough not to argue about it.

Despite the gains in adults, top 40's share of teens continues to decline. Six summers ago, it was still remarkable when that share slipped beneath the halfway point for the first time. Last spring, it slipped below the one-third mark, and this summer it continued down (33.0-32.0), a decline that may be due to the declining number of available top 40 outlets.

### MODERN ROCK DOESN'T ROLL OVER

In news from other formats, despite  
*Continued on page 6*



# GEORGE MICHAEL

jesus to a child

Written, Arranged and Produced by George Michael. Engineered by Chris Porter.

© 1996 Big Geoff Overseas Ltd.





**melissa etheridge**



**i want to come over**

from the album

**your little secret**

produced by hugh padgham and melissa etheridge  
management: w/ leopold ©1995 island records, inc. a polygram company  
i know you're home. you left your light on.



A PolyGram Company

**airplay impact date: january 8th**

## Fate Of Giant Telecom Bill Remains In Flux

As congress returns Jan. 3 for its second session, the fate of the giant telecommunications bill is still in doubt, as renegade House Republicans continue to withhold their approval.

Although radio ownership is not one of the major points of contention, the final bill will probably not offer full lifting of national caps, but rather a raised cap of 50 AMs and 50 FMs.

The controversial agreement, which won approval of the National Assn. of Broadcasters, was assailed by some House Republicans for not being deregulatory enough.

In broadcast areas, the bill would limit TV station national ownership as well and would keep in place some cross-ownership restrictions that prevent media overconcentration, according to bill sponsors.

The bill has been on ice since before the holiday recess, and efforts by bill sponsors and conferees to distribute sign-off lists have been unsuccessful. A source close to the conference committee said that there were doubts that the bill in any form would be brought up this week.

The last-minute wrangling by pro-deregulatory forces has served to burst the prediction by Vice President Al Gore that the bill had been hammered into shape and would be approved.

President Clinton had threatened to veto any bill that tilted so far toward deregulation that the public interest would not be served.

Even upon agreement, House conferees would still have to review the proposed conference report, the legislative template that would accompany a final version of the bill.

In related news, former Democrat Rep. Billy Tauzin, R-La., who would like to become the chairman of the House Telecommunications Subcommittee, finds himself in the position of having to withhold his bid, because Rep. Mike Oxley, R-Ohio, the current chairman, might still want the prestigious job this session.

Oxley was one of the Republicans who would not accept the tentative telecom compromise. He opposes the bill's section barring foreign companies from owning U.S. telephone companies. **BILL HOLLAND**



## RADIOACTIVE

by Kevin Carter

### WSTR Ups Peterson; Gillette Exits WHYT

**A**t WSTR (Star 94) Atlanta, APD/MD **Kevin Peterson** gets his long-promised promotion to PD, as Jefferson-Pilot corporate VP/operations **Don Benson** eschews day-to-day station operations. Music coordinator **J.R. Ammons** is upped to MD; promotion director **Alan Hennes** gets the spiffy new director of marketing operations title.

**WHYT** Detroit PD **Rick Gillette** exits after nine years. APD/MD **Alex Tear** has been named interim PD. WHYT, which has been the subject of format change rumors, has been overheard experimenting with several rap titles (**Coolio**, **House Of Pain**) in recent weeks. In other modern rock news, **WKQX** (Q101) Chicago's morning experiment with punk rockers **Lance** and **Stolly** ends after six months with the two members of the **Lupins** going to late nights. Sidekick **Brooke Hunter** becomes morning anchor. Also, **WHFS** Washington, D.C., GM **Alan Hay** leaves for the GM slot at **WQSR** Baltimore.

**WHYI** (Y100) Miami PD **Casey Keating** has been named PD at Evergreen's **KIOI** (K101) San Francisco, replacing **Dave Shakes**.

**Jeff Kapugi**, APD of **WFLZ** Tampa, Fla., adds PD stripes for easy listening duopoly partner **WDUV**, replacing **Dave Harrell**, who will stay on as production director. **WDUV** is evolving to an easy listening/standards hybrid. **WDUV** will move to 103.5 FM Jan. 15.

**WKXJ** Chattanooga, Tenn., PD/midday host **Art Sanders** will leave at the end of the month to take a sabbatical from radio. At crosstown **WZST** (Star 98) and its duopoly partners, GSM **Bill McKay** is upped to GM, replacing Wickes Radio president **Rex Tackett**, who relocates to the new corporate headquarters in San Antonio, Texas.

**John Loscalzo**, host of the SW Networks alternative show, "Static," is the new managing editor of Rock Airplay Monitor. Loscalzo, who will retain the SW Networks duties, was p.m. driver at **WDRE** Long Island, N.Y., and has served as an editor for the **Hard Report**. Loscalzo will oversee Rock Airplay Monitor's expansion to a full-service publication later this month.

Viacom VP/programming **Bob Kaake** exits. His job won't be filled. . . **WJMH** (102 Januz) Greensboro, N.C., GM **Gary Weiss** adds VP stripes for parent Max Radio.

**Gina Davis**, former DJ at **KPWR** (Power 106) Los Angeles, **KKXX** Bakersfield, Calif., and **KGGI** Riverside, Calif., was killed Dec. 19. Davis, 27, whose real name was **Theresa Tran**, also worked as a parachute instructor. She was "base jumping" from a platform several hundred feet high when her chute failed to open. She had been part-time at country **KZLA** Los Angeles.

After six months straddling modern rock and top 40, **WEDJ** (the Edge) Charlotte, N.C., re-adds some **TLC**, **Mariah Carey**, **Real McCoy**, etc.

Several weeks after getting the official PD nod at **WSKS** (Kiss 102) Utica, N.Y., **Shannon Steele** exits for morning co-host duties at **WBHT** (Hot 97) Wilkes-Barre, Pa., replacing **Renee**, who is on maternity leave. Steele's predecessor, **Sam Zema**, returns to **WPXY** Rochester, N.Y., for weekends.

**WTCF** (the Fox) Saginaw, Mich., PD/morning man **Steve Williams** exits. Call 517-797-4420. APD/night host **Greg Fry** is acting PD. **Jeanmarie Pavell** joins **Rick O'Shea** in mornings.

Longtime top 40 **KQHT** Grand Forks, N.D., has debuted its new '70s-leaning AC format under OM/PD **Brian Lee Rivers**. The station is live from 6 a.m.-6 p.m. with **Ken Morgan** from **KYYY** Bismarck, N.D., and **Paul Kelly** from album rock sister **KJKJ**. Nights feature the Jones Satellite Network's soft AC format.

**WFLY** Albany, N.Y. (see Programmer Profile, page 4), already has one duopoly partner, AC **WJYB** (B99.5). Now it adds another through a joint marketing agreement with crosstown satellite country outlet **WCDA** (CD Country).

**WAYV** Atlantic City, N.J., APD/p.m. driver **Bobby D.**, becomes PD of **WHTO** Williamsport, Pa., replacing **Woody**. **WAYV** PD **Tommy Frank** is consulting **WHTO**. Night jock **Paul Kelly** becomes MD/p.m. driver at **WAYV**.

SMN Z-Rock outlet **KZRQ** Albuquerque, N.M., flips to SMN hot AC as "Star 105." Also, **WZEE** (Z104) Madison, Wis., flips duopoly partner **WMXF** (Mix 96.3) to satellite soft AC as "Lite 96" . . . Top 40/adult **WNSN** (Sunny 101.5) South Bend, Ind., PD/morning co-host **Rob Poulin** exits to return to school. T&Rs to GM **Jack Swart**.

Former **WDJX** Louisville, Ky., GM **Bill Wells** resurfaces in the brokerage business, joining local broker **Ed Henson**.

Sunday night "Street Flava" host **Julian "Jumpin'" Perez** moves to nights at **WBBM-FM** (B96) Chicago. **Brian Middleton** goes to full-time swing. **Coco Cortez** moves from middays to late nights. The midday shift goes jockless as the "B96 At-Work Dance Party" and is now all mixes.

At **KYLD** San Francisco, mix show coordinator **Jose Mein** is named assistant MD. At rival **KMEL**, **Pete Manriquez**, of the late **KHQT** (Hot 97.7), joins the programming staff.

The Denver Post reports that **KNRX/KYBG** Denver has been sold. Sister top 40 **KQKS** (KS104) is now being simulcast on sports **KYBG**.

**WHTZ** (Z100) New York is named Rolling Stone's major market station of the year.

At '70s gold outlet **WBGG** (Big 106) Miami, **Mike Rivers**, better known as former **WPLJ**



## TOP 40 TOPICS

by Sean Ross

### What If The Beatles Had Gotten TLC From Remixers?

**C**HASING WATERFALLS: Maybe I've had too much time on my hands recently, but wouldn't it have been interesting if the Beatles' "Free As A Bird" had come with multiple remixes like so many other records? Perhaps one with some hip-hop beats that would bring it up to the same tempo as **TLC**'s "Waterfalls."

Beatles purists may consider this idea sacrilegious, but "Free As A Bird" is itself an act of revisionism. There was no note on **John Lennon's** box of unreleased demos instructing **Yoko Ono** to send them to producer **Jeff Lynne**. Lennon, you'll recall, wouldn't even let **Paul McCartney** drop by the Dakota unannounced at the time of his death, much less plan another Beatles record. As far as Lennon knew, "The Long And Winding Road" was the final Beatles single, and even if you like "Free As A Bird," it's no "Long And Winding Road," Senator.

One also likes to think that Lennon wouldn't have objected to a producer doing something funky or contemporary with his tracks. The last record he produced was Ono's new wave disco record "Walking On Thin Ice," and in his final interviews, he bragged that Ono was finally getting the attention she deserved for anticipating the **B-52's** and other new wave acts.

As for the others, McCartney shouldn't object. **Wings** got on the disco bandwagon with "Goodnight Tonight" after **Rod Stewart** and **Blondie** (and only seconds ahead of **Kiss**, **Cher**, and **Ethel Merman**).

**George Harrison** shouldn't object. His last solo hit, "Got My Mind Set On You," was an obscure R&B remake. And it was a desire to salute Motown, **Little Richard**,

and the like that brought the Beatles to us in the first place.

**Ringo Starr** can't credibly object. He appeared in a Pizza Hut commercial and the movie "Caveman."

Besides, today's R&B owes more to the Beatles than one might think. In 1980, immediately after "Coming Up," McCartney released an acoustic ballad called "Waterfalls," which had the opening lines "Don't go chasing waterfalls/Please keep to the lake/People who chase waterfalls/Sometimes make mistakes." McCartney's "Waterfalls" disappeared quickly in America, but the metaphor apparently proved durable.

Two months after its release, it's easier to enjoy "Free As A Bird" on its own merits, without thinking of it as the Beatles reunion single. And although it isn't an across-the-board hit yet, many PDs who, several months ago, didn't think they'd play "Free" have since changed their minds. Selling all those records in one week will do that for you.

But the question remains: Could the three surviving Beatles have made a record that would have again changed the face of rock'n'roll forever? Some folks are relieved they didn't try. Some feel cheated. Acts from **Crowded House** to **Julian Lennon** to **Klaatu** (the Canadian band that briefly convinced some reviewers that it was the Beatles) have invoked the Beatles legacy, and they've usually gone for the stately, orchestral aspect of the Fab Four's oeuvre that Lynne chose for Lennon's unreleased track. Invoking the Beatles' legacy is never unpleasant. Transcending it would have been something else.

### KGOT Tries To Spell 'Boyz II Men,' Runs Out Of Listeners



No, it's not an outtake from Jean-Claude Van Damme's "Sudden Death," it's just another wacky radio stunt. **KGOT** Anchorage, Alaska, solicited the services of 500 listeners to spell out its call letters at a local ice rink for a chance at 50 pairs of **Boyz II Men** concert tickets. No one was injured.

**WHTZ** (Z100) New York host **Willie B. Goode**, goes from overnights to afternoons. In other top 40 vet news, **Joey Reynolds** joins N/T **WOR** New York (and its national network) for overnights.

**Charlie Birdsell** (aka **Scott Mitchell** from the Lund Consultants) is the new PD, as the **KHYT** calls return to Tucson, Ariz., as country **KCUB-FM** flips to '70s gold.

**WLAN** Lancaster, Pa., needs a night jock to replace **Dana Dana**, who segues to modern rock **WRXS** Ocean City, Md. Package to PD **Jordan Walsh** . . . **WGIZ** Dayton night jock **Joe "Vedder" Steele** exits. Radio nomad **Mojo** is filling in.

**WMGI** (100.7 Mix FM) Terre Haute, Ind., p.m. driver **James Gregory** exits. T&Rs to PD **Beau Richards** . . . **WQSL** Wilmington, N.C., needs mornings (to replace **Gary Alexander**),

nights (to replace **Eric Davis**), and overnights. T&Rs to PD **Jake Edwards** . . . **WWFX** Bangor, Maine, night jock **Zak Ives** exits for a rival modern rocker. T&Rs to PD **Sky Taylor**.

Former **KZDG** Denver morning host **Big Ron O'Brien** should resurface in mornings at '70s gold **KKBH** (the Beach) San Diego by the time you read this. Also, former **KGGI** Riverside, Calif., morning host **Hollywood Hamilton** is in test rotation on talk **KLSX** (Real Radio 97.1) Los Angeles in afternoons this week.

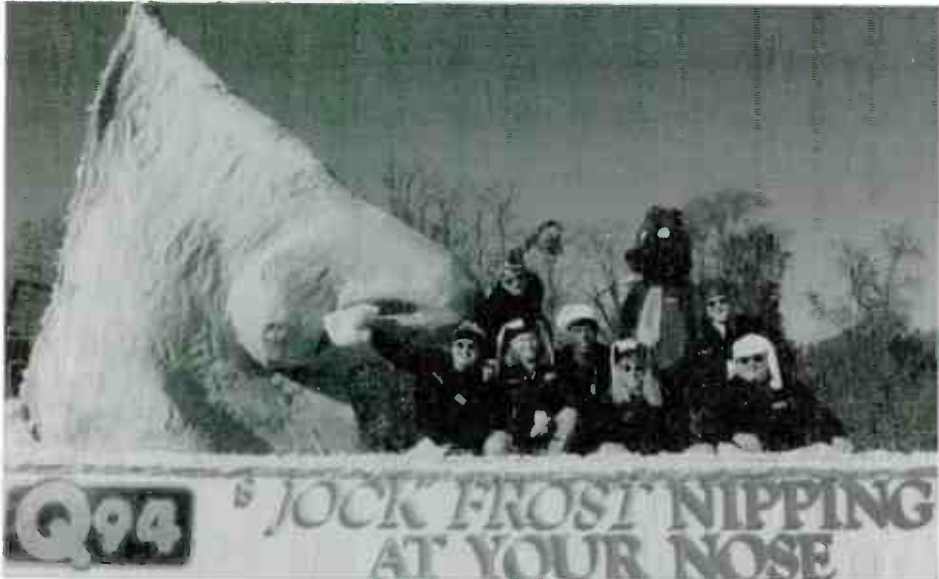
On behalf of the **Chicago** fan club, Raleigh, N.C., listener **Deborah Hulbert** is trying to arrange a nationwide tribute to lead singer **Terry Kath**, who would be 50 this month. Hulbert would like stations to play "Color My World" at 10 a.m. Jan. 31. For info, call 919-515-3383.

## KIIS-FM Throws A Party For 5,000 Close Friends



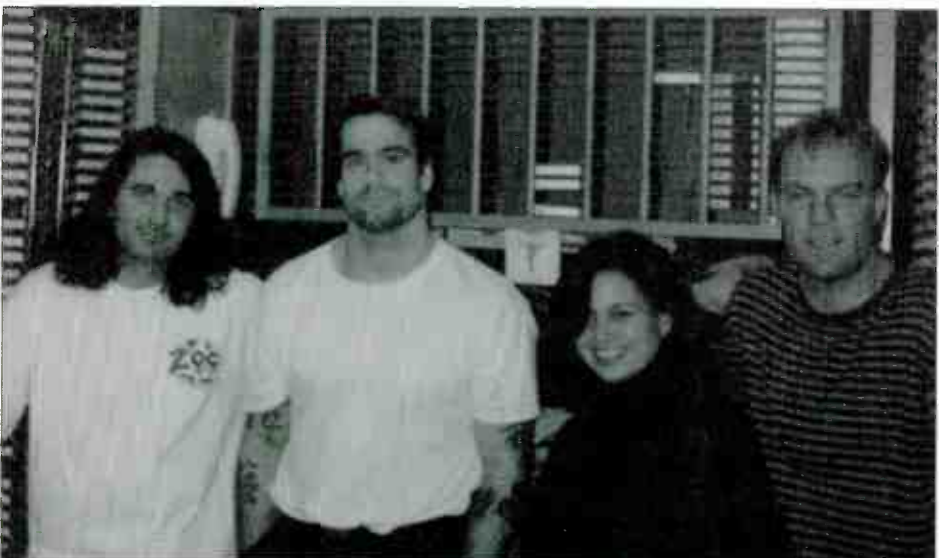
The third annual Rick Dees KIISmas Party was held at Sony Pictures Studios. Among those in attendance were, from left, KIIS Los Angeles sports director Vic "the Brick" Jacobs, "Nixon" writer/director Oliver Stone, KIIS-FM president/GM Roy Laughlin, and morning show sidekick Ellen K. KIIS shared the party with Internet users via live video and RealAudio feeds.

## Q94's Christmas Float Really Blows



WRVQ (Q94) Richmond, Va., "nose" a good idea when it smells one. Here's the station's entry in the recent Richmond Jaycees Christmas parade. Q94 personalities shown in the front row, from left, are Paul Anthony, MD Billy Surf, Kirby Carmichael, PD Lisa McKay, Kevin Carlson, and Shadow Murdock. In the back row are Pete McKenzie and station mascot Zeke.

## TV Party Tonight At Z100



From the "who would have imagined it 10 years ago" department: Former Black Flag leader Henry Rollins hangs out with the guys at WHTZ (Z100) New York's Morning Zoo before a recent spoken-word performance at the Beacon Theatre. Shown, from left, are Z100's Elliot Segal, Rollins, Z100's Patty Steele, and Freddie Vetter.

## Lembo Bemoans Lack Of Soul At T40/Adult

Is it just my imagination or is there a lack of "soul" at top 40/adult radio stations (i.e., WPLJ and WMXV New York, KYSR Los Angeles, WPNT and WTMX Chicago, WRQX (Mix 107.3) Washington, D.C., KSIP (KS95) Minneapolis)? Does this suggest that white people don't like R&B music? Why aren't more ACs playing Gerald & Eddie Levert, Quincy Jones Featuring Tamia, Xscape, D'Angelo, Solo, R. Kelly, Silk, Brandy, etc.? As society becomes more of a melting pot, radio gets more segregated.

Do stations playing Whitney Houston, Janet Jackson, Mariah Carey, TLC, Boyz II Men, etc. feel that songs by these artists fill the "crossover" quota?

Much of today's pop culture was influenced by artists of color. Ask your mainstream artists to whom they listened growing up and it's likely you will hear one of the following mentioned: Stevie Wonder, Ray Charles, Michael Jackson, the Four Tops, Earth, Wind & Fire, Lionel Richie, Curtis Mayfield, Otis Redding, Aretha Franklin, Fats Domino, Diana Ross, Sam Cooke, the Fifth Dimension, the Pointer Sisters, the Isley Brothers, Martha & the Vandellas, James Brown, the Temptations, Smokey Robinson, Jackie Wilson, the Drifters, Wilson Pickett, the Shirelles, Sly & the Family Stone, Marvin Gaye, Dionne Warwick,

Gladys Knight, Kool & the Gang, the Spinners, Al Green, the O'Jays, or the Marvelettes.

I would welcome any and all dialog on this topic.

Jerry Lembo  
VP/AC Promotion  
Columbia Records

*Airplay Monitor editor Sean Ross replies: While some of the stations Jerry Lembo cites—KYSR and WTMX in particular—have recently refocused themselves as rock-based stations, others, such as WRQX and WPNT, continue to have at least some representation from the rhythmic side, even if it's only Janet Jackson, TLC, Mariah Carey, etc.*

*In many cases, the lack of R&B crossovers at top 40/adult stations seems to follow the lack of R&B crossovers at top 40 in general. Since one of the things that differentiates most top 40/adult outlets from mainstream AC is an overall tendency to select only from product that has already been proven at top 40, the problems that other R&B records—those that aren't already mainstream top 40 hits—face at top 40/adult may be the same problem that artists indigenous to the AC format are having at top 40/adult now, as much as a function of musical segregation.*

*I'd also welcome any and all dialog on this topic from our readers.*

## 98PXY PD Ingram Wins 'Wacky Face' Contest



WPXY Rochester, N.Y., recently held its third annual Holiday Jam, featuring Los Del Mar, Bananarama, Sergio, Intonation, Technotronic, Max-A-Million, Denine, and Adam Moreno. Shown in top row, from left, are morning show producer Magicman, APD/MD J.J. Rice, three members of Intonation, Artie the One-Man Party, and PD Clarke Ingram. Kneeling, from left, are Pete "the Mayor" Kennedy, morning co-host Joan Brandenburg, overnighter Chris Cole, promotions director Tristano Korlou, and weekender Jay Murphy.

PUBLISHER: MICHAEL ELLIS  
EDITOR: SEAN ROSS  
MANAGING EDITOR: KEVIN CARTER  
DIRECTOR OF CHARTS: JERRY McKENNIA  
TOP 40/ADULT CHART MANAGER: STEVEN GRAYBOW  
CHART PRODUCTION MANAGER: MICHAEL CUSSON  
ASST. CHART PRODUCTION MANAGER: PAUL PAGE  
EDITORIAL PRODUCTION MANAGER: BARRY BISHIN  
ASSOC. EDITORIAL PRODUCTION MANAGER: MARCIA REPINSKI  
EDITORIAL PRODUCTION: MARC GIAQUINTO, MORRIS KLIEGMAN  
COPY EDITOR: CARL ROSEN  
ADVERTISING PRODUCTION MANAGER: LYDIA MIKULKO  
ADVERTISING PRODUCTION ASST.: CINDIE WEISS  
ADVERTISING ART DIRECTOR: RAY CARLSON

NATIONAL ADVERTISING MANAGER: JOIN GUYNN  
ADVERTISING SALES: ART PHILLIPS, ANDREA THOMPSON  
CLASSIFIED ADVERTISING: LAURA RIVCHUN  
ADVERTISING SERVICES MGR.: MICHELE JACANGILO  
SALES ASSISTANTS: EVELYN ASZODI, ERICA BERTSON,  
ALEX VITOULIS, ALYSE ZIGMAN

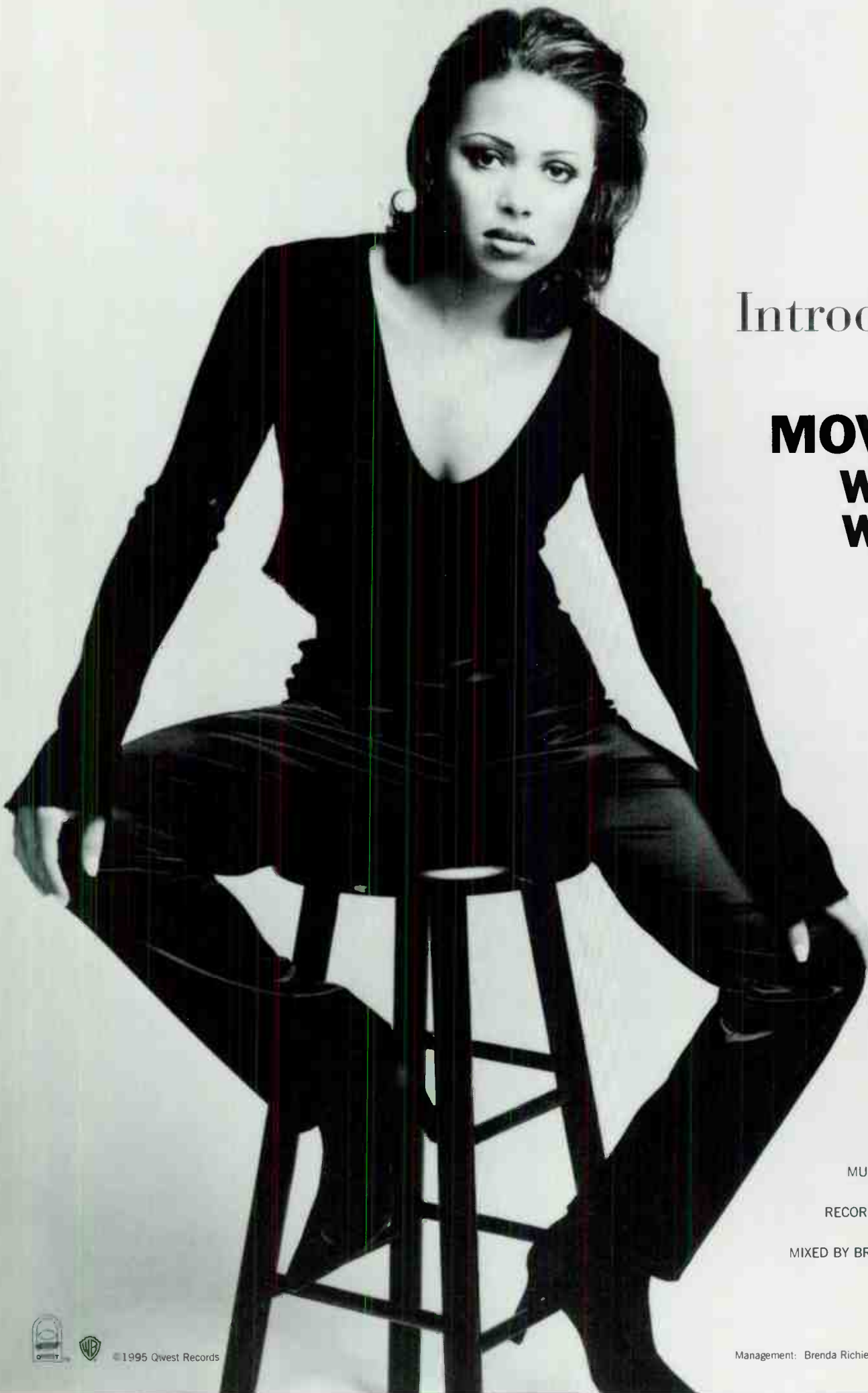
EDITORIAL ADVISOR: TIMOTHY WHITE  
PRODUCTION DIRECTOR: MARIE GOMBERT  
DIRECTOR OF MARKETING: ELISSA TOMASETTI  
CIRCULATION MANAGER: JEANNE JAMIN



Billboard Music Group  
PRESIDENT: HOWARD LANDER

©1995 BPI Communications, 1515 Broadway, New York, NY 10036  
212-536-5039 For subscriptions call 800-722-2346

QUINCY JONES  
"YOU PUT A MOVE ON MY HEART"



Introducing **TAMIA**

**MOVING EARLY ON:**

**WPGC (23 spins)**

**WVKS (17 spins)**

**WERQ, KQKS,**

**XHTZ, KZHT,**

**WHHH, WXIS**

THE FIRST SINGLE FROM:  **Q'S JOOK JOINT**

PRODUCED BY QUINCY JONES

MUSIC AND LYRICS BY ROD TEMPERTON

RECORDED BY FRANCIS BUCKLEY

MIXED BY BRUCE SWEDIEN



©1995 Qwest Records

Management: Brenda Richie Management

## After 6 Years, National Arbs Show Good News

*Continued from page 1*

the prevailing wisdom that summer was a bad book for modern rock and a good book for mainstream rockers, modern was up in virtually every daypart and demo except teens. In its 10th consecutive up book, modern rose in mornings (3.0-3.1), middays (3.2-3.7), afternoons (4.1-4.2), 18-34 (5.7-6.1), 25-54 (3.1-3.4), and men (3.9-4.2).

By contrast, modern rock was off slightly in teens (9.1-8.9), its first decline in 12-17 since the winter of '93. That allowed album rock to move back ahead of modern in that demo, 8.5-9.0. Album stations were up in mornings (8.4-8.6), flat in middays (8.5) and afternoons (8.9), and off at night (7.9-7.7). They were also off in 18-34 (14.9-14.4) and flat in 25-54 (9.7).

Classic rock stations, meanwhile, were down, by at least a tenth of a share, virtually across the board. (Classic rock has been known to fluctuate in that manner every few books; it would be due for a rebound in the fall, even without the event value of the Beatles' "Anthology 1.")

Modern's growth is relatively modest after the first two books of 1995, in which it picked up nearly a half-share each time. Given the number of heavily publicized off books, the format's growth may be coming more from those stations still joining the format.

It's also interesting that modern is up in the upper demos but off slightly among teens, where album rock showed the reverse. That might have something to do with album radio's continued march toward the harder rockin' modern crossovers, at a time when modern itself, worried about a grunge backlash, began reaching out for more triple-A crossovers: Blues Traveler, Hootie & the Blowfish, etc.

### 'JAM, I WISH I HAD YOUR NUMBERS'

The format with the most good news across the board, however, had to be R&B, up 9.1-9.5 for its best book since a 10.7 in summer '92 and showing its best-ever numbers in numerous dayparts and demos, including middays (7.3-7.9), afternoons (9.1-9.2), 25-54 (9.2-9.5), 35-64 (7.7-7.9), 18-plus men (7.4-7.6), and 18-plus women (9.4-9.9). R&B radio, including mainstream and R&B adult outlets, was also up in mornings (7.6-7.8), nights (13.7-14.2), teens (18.5-18.8), and 18-34 (11.4-11.8).

R&B generally rises in middays during the

summer, too, but that redistribution of listening from nights to middays doesn't always translate into a 12-plus rise overall or affect the format's numbers across the board. And R&B also had to contend with the ongoing rise of the jazz/AC format, the "smooth jazz" outlets that share more than a few core artists with R&B adult stations and whose audiences are typically one-third black.

Jazz/AC was up 2.6-2.8 12-plus—its best book ever—and up in all demos and dayparts: mornings (1.9-2.1), middays (2.8-2.9), afternoons (2.8-3.1), nights (2.9-3.2), 18-34 (1.9-2.1), 25-54 (3.5-3.8), 35-64 (3.9-4.1), women (2.7-2.9), and men (2.9-3.1).

So why the good news for R&B stations, even in the wake of jazz/AC? One guess would be the ongoing strength of the R&B adult format and the handful of new R&B adult start-ups. It's also true that the format had its strongest music in years this spring and fall, and much of it got little or no support from top 40, assuming there was even a top 40 station in the market. In many places, R&B radio was the only place to hear Brandy, Montell Jordan, Total, Adina Howard, Soul For Real, and the Notorious B.I.G.

### DID O.J. DO IT (FOR N/T)?

One other scenario is that R&B may have reclaimed some listening that that went to N/T radio in the wake of the O.J. Simpson trial. While we won't know the impact of the O.J. verdict on radio listening until the fall book comes back, we do know that N/T was down 16.2-15.8-15.5 over the last two books. While N/T was up slightly in mornings (19.9-20.1), it was off in middays (17.2-16.4) and afternoons (14.4-14.0). At night, it was flat at 14.3, thanks to baseball.

It should also be noted that AC and country had expected to reclaim some listening from N/T. But country didn't, and neither did AC, which fell 17.1-16.7 in middays, even as N/T itself slipped. AC was also off 18-34 (14.6-14.2), 25-54 (17.1-16.8), 35-64 (17.5-17.4), afternoons (15.2-15.1), and nights (13.0-12.5).

With all demos down for AC, there's no sign that the younger, more rock-based AC now heard at many stations, especially those in the adult top 40 camp, made an appreciable difference for the format. That situation will bear careful watching in the fall, when stations' new auditorium tests were factored into the mix and changes became particularly noticeable.

## PROGRAMMER PROFILE

### Morgan Plays To The Masses, 'FLYs To New Heights In Albany

**M**uch like the college student who moves back home with his parents, Mike Morgan is in his second tour of duty at WFLY Albany, N.Y. He did nights there from '81-'88 and was named MD under PD Todd Pettengill. He later segued to WMJQ Buffalo, N.Y., as APD and in 1991 returned to the 'FLY nest, where he was promoted to PD when Pettengill left for WPLJ New York.

'FLY's owner, Albany Broadcasting, also operates AC duopoly partner WYJB and N/T WROW but recently sold crosstown WPTR-AM to new owners who flipped it to religion. "We're still sharing the building with them," says Morgan. "It's strange hearing one side of the building playing religious music, while the other side is playing Alanis Morissette." The company is building a new facility which will be ready in a few months.

In the past 18 months, Albany has been the



**Mike Morgan**  
Program Director  
WFLY, Albany, NY

*'We're establishing an image as the place to turn for serious news when it's warranted.'*

home of as many as four modern rockers, including WQBK (the Edge) and Z-Rock affiliate WZRQ. "We know the audience is not coming to 'FLY to hear deep tracks on the Bush album; that's not our heritage," says Morgan. While Morissette, Bush, the Presidents Of The United States Of America, and Collective Soul have a place on WFLY, Morgan says, "rhythmic product has always been our bread and butter at this station."

Albany has no urban or dance outlets, so for dance/pop artists, such as Real McCoy and Crystal Waters, Morgan says, "we not only play them, we own them." He adds, "We hope the record labels won't forget dance music in 1996." In today's overly niched top 40, conventional wisdom says you can't play Montell Jordan next to Hootie next to the Presidents. But Morgan says, "'FLY has been the No. 1 cume station in the market for years, and I'm convinced our variety is the key. We haven't niched ourselves into a corner, so we can swing whichever way the format leads."

Morgan has also noticed an increasing top 40 listener need for news and information. To that end, he has been keeping his eye on the resurgence of full-service WGY. "They've put in the time, energy, and money to put out a very viable product. However, we're establishing [an] image as the place to turn for serious news when it's warranted." People in the Albany area take school closings seriously. 'FLY shares a computer system with its AM to deliver information about closings as quickly as possible. "Why open the door for listeners to switch stations, when we can deliver the same info just as well, if not better," says Morgan. "We're not afraid to go to the ABC Network when the situation warrants, like the O.J. verdict or the Oklahoma City bombing. I'm a big supporter of having a strong in-house news service to draw upon."

Unlike many top 40s, WFLY continues to live in the stratosphere of double-digit numbers. In the summer, WFLY was No. 1 18-34, with a 15.7. (That share increased to a 16.2 in the latest trend.) WFLY generated a 9 share 12-plus, No. 3 in the market, and has been a perennial top three finisher 25-54. Like many top 40s, 'FLY once played the "fake AC game" in a quest for upper demos. "If there is an AC in the market, you're not going to fool the audience. You just go off expectation and end up hurting your core." Now, Morgan says, "we're stronger 18-34 than we were three years ago," says Morgan. "We also ended up No. 1 with teens and top three 25-54."

'FLY has been playing hit music in some form since 1976, so as 1996 gets under way, the station will be celebrating "20 years of hits." "This month, we'll dig out the big station hits from the last 20 years and spike them in," says Morgan, who won't forsake 'FLY's current-intensive music policy in favor of one of heritage. "Listeners have such a short attention span; it's the 'what-have-you-done-for-me-lately' mentality," he says.

Here's a recent 4 p.m. hour: Dave Matthews Band, "Ants Marching"; Hootie & the Blowfish, "Time"; Mariah Carey and Boyz II Men, "One Sweet Day"; Snap, "Rhythm Is A Dancer"; Adina Howard, "Freak Like Me"; Monica, "Before You Walk Out Of My Life"; Madonna, "You'll See"; Edwin McCain, "Solitude"; Bell Biv DeVoe, "Poison"; Alanis Morissette, "Hand In My Pocket"; Michael Jackson, "You Are Not Alone"; the Beatles, "Free As A Bird"; Everything But The Girl, "Missing"; and C+C Music Factory, "Do You Want To Get Funky With Me."

On Labor Day, with the help of consultant Bill Cahill, WFLY kicked off its "hot new fall season." "We added new sweepers to the station, as well as some new syndicated programming . . . It was the perfect time to brighten up the sound of the station," says Morgan. "We figured since every TV station advertised their [new fall lineup] on our air, we decided to take a piece of their action."

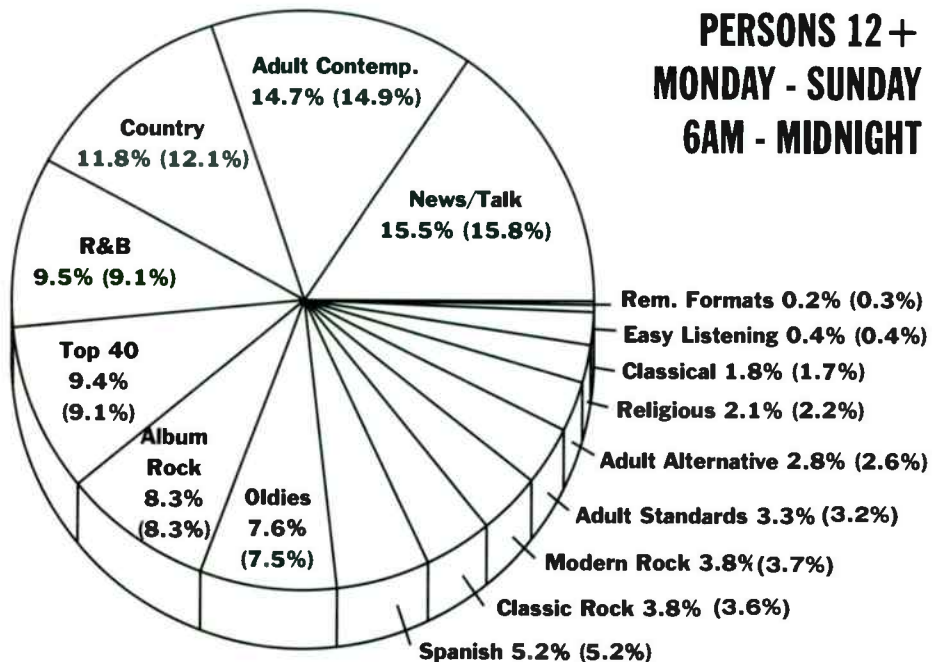
Morgan is using that same philosophy this month to update the station for 1996. "We have new jingles and sweepers all ready to go," he says. "We want to sound new and improved to catch any other stations who might be sleeping during the holidays."

The station recently implemented a database marketing system containing more than 10,000 names. "We use it to generate birthday cards for listeners," says Morgan. The station also does a quarterly newsletter, The Fly Paper, and has its own World Wide Web site. Promotions director Lisa Sacco also tied in with the Carol Wright mailer, which has been successfully used by KIIS Los Angeles, KKRZ Portland, Ore., and WPLJ New York, among others. "We sponsored the cover of the mailer and used it to do some contesting and to urge new listeners to sample the station," he says.

"Our GM, John Kelley, and our owner, Jim Morrell, were smart enough to stick with the format during those lean times when top 40 wasn't popular," says Morgan. "It's important, especially in medium markets, to be less niched and remain true to mainstream top 40." Above all, says Morgan, "sound like you're having fun on the air. That's the winning combination. WFLZ in Tampa, Fla., has proven that time and time again—you can be a successful top 40 by playing mass-appeal music and having fun. We're in this format for the long haul." **KEVIN CARTER**

## ARBITRON FORMAT SHARE SUMMER '95

**PERSONS 12+  
MONDAY - SUNDAY  
6AM - MIDNIGHT**



(Numbers in parentheses represent Spring '95 shares.)

GAME ROOM PARTY ROOM

SHUTTING  
UP THE  
1970s

the new song from the **double** platinum **double** album  
**Mellon Collie And The Infinite Sadness**

Produced by Flood, Alan Moulton and Billy Corgan  
Management: Q Prime



©1995 Virgin Records America, Inc.

World Radio History

## SERVICES

### AIRCHECKS

**NYC RADIO COMPILATIONS**  
Each tape is from 1995, 90 min. stereo, \$7.  
specify: mornings; midday; pm drive;  
evening; late nite; overnite. 2 or more \$6  
each. Free catalogs.  
**CJA**  
Box 126 • Lincroft, NJ 07738  
airchecks@aol.com

### BOOKS/PUBLICATIONS

**Do you do voice-overs?**  
Voice-Over Book  
"Killer Marketing Techniques"  
for the free lance talent.  
FREE Report shows you how to  
increase your income.  
Call 1-216-892-8509

### VOICEOVERS

You get what you pay for  
▲  
.....  
● **Sean Caldwell**  
**PRODUCTIONS**  
Y100 Young Country ● Country CHR Rock Hot AC  
2104 KISS-FM 2100 ● voice-over • production effects  
KPM102 SWEET 95 ● (941) 383-2828

**CARTER DAVIS**  
VOICE AND  
PRODUCTION  
FOR RADIO AND TV  
Tel/FAX:  
(901) 681-0650

  
**FASTEST GROWING VOICE-  
OVER TALENT IN NORTH  
AMERICA. FEMALE ROSTER  
ALSO AVAILABLE. CALL  
1-800-843-3933 FOR DEMO.**  
WELCOME KRTS-HOUSTON,  
Q102-DALLAS, WGPR-DETROIT

### SOFTWARE

Radio station database prints  
mailing labels, searches on 25  
formats, calls, addresses, markets,  
and lists phones/faxes/web sites!  
Only \$129.95 w/quarterly updates:  
1-800-277-8224 or  
http://www.aceinfo.com/bbh/info  
**BBH SOFTWARE**

## POSITION WANTED

**MIKE GREEN**  
Production Director  
KSEG, Sacramento; KROY,  
Sacramento; KXXR, Kansas City;  
KSFM, Sacramento;  
(916) 921-1471 or (916) 641-6241  
nqmb25a@prodigy.com

**Diamond in the rough.**  
Modern music lover with  
medium market experience  
seeks Alternative/Progressive/  
NAC AT or sales.  
**PAUL COLBY:**  
(806) 852-2005

**12-YEAR VET**  
available. On-air, MD, remotes,  
production, sports; computer  
experience. Northeast  
preferred.  
**LAURA: (518) 943-5635**

**KDIA/Oakland on-call**  
weekender seeks Stockton-  
Santa Rosa News/music sports  
gig. Contact Contra Costa  
College Sports voice **FRANK:**  
(510) 223-1534

My husband's job has moved us  
to Atlanta. 5 years' on-air  
experience seeking parttime  
airshift.  
**JENNIFER:**  
(770) 592-7521

**Want it done right the first**  
time? Will trade 10 years'  
experience and an  
extraordinary work ethic for a  
warm climate.  
(612) 428-4795

**CYNICAL AND PSYCHOTIC AT**  
ready to go CRAZY in your  
market! Straitjacket not  
included.  
**MIKE:**  
(407) 636-9918

15-year PD/MD vet seeking  
long-term commitment to help  
you grow.  
**MIKE:**  
(512) 582-0572

Las Vegas - to dump those NY  
blues, don't gamble on AT. All  
shifts, all formats. 12 years'  
experience.  
**JIMMY DIELE:**  
(718) 257-3158

Choose any three: great  
personality, wonderful voice,  
terrific attitude. Seeks weekend  
PT on-air position in northern  
NJ/NY metro area.  
**DONALD:**  
(201) 796-8102

**Versatile host ready to move**  
your AC/AOR/NR or Country  
station. Great production. All  
markets.  
**JIM:**  
(609) 884-5022

Professional female Morning  
Co-host/News with Major  
market track record. Have the  
numbers & talent to back it  
up. Available and ready to go.  
Large Markets only. Save  
your quarter, serious  
inquiries only please!  
(770) 954-1287

Republicans and  
conservatives stink, and NRA  
types stink worse. Liberal  
radio talk show host.  
**JOHN:**  
(305) 561-1792

**To order a  
BILLBOARD  
DIRECTORY  
Call  
Toll Free  
1 (800) 223-7524**

**SPFAT**  
seeks fulltime commitment at  
FM station. I'll care for a  
production room. My skills are  
on top!  
**MARGIE:**  
(513) 367-5740

### "Non-Stop Phones! Great Response! A Hit!"

I'm NOT talking about a new record ... This describes the success of my start-up company "Urban Air-Check" thanks to advertising with Airplay Monitor. I've only been in business for six months, and the past few weeks of advertising with your magazine has increased interest in my company tremendously. Profits from the first two weeks alone have already paid for my entire 6 week run with your magazine!

Thanks for providing an effective, cost conscious means of reaching more radio professionals than any other magazine I've advertised with."

Derrick Jonzun  
Urban Air-Check  
President

## TOP 40 AIRPLAY MONITOR COUNTRY AIRPLAY MONITOR R&B AIRPLAY MONITOR ROCK AIRPLAY MONITOR

The only radio publications based exclusively on electronically monitored airplay from Broadcast Data Systems.

- Airplay Charts • Power Playlists • Biggest Gainers
- New Releases • Song Activity Reports • Impact Pages
- Monitored Video Playlists • Plus all the latest radio and music industry news every week.

**Call 1-800-722-2346 to subscribe.**

Part of the Billboard Music Group.

## CLASSIFIED ADVERTISING RATES

### HELP WANTED:

1 WEEK \$75.00 per inch  
2 WEEKS \$65.00 per inch

**POSITION WANTED AND BULLETIN BOARD:**  
\$45.00 per inch

**BOX NUMBER:** Add \$20.00

### SERVICES:

1 WEEK \$75.00 per inch  
6 WEEKS \$65.00 per inch  
13 WEEKS \$60.00 per inch  
26 WEEKS \$55.00 per inch  
51 WEEKS \$50.00 per inch

### DEADLINE (ALL CLASSIFIED):

Each Wednesday 3pm EST, 9 day leadtime.

• Classified ads are non-commissionable •

### SUBMIT ALL AD COPY TO:

Laura Rivchun  
Airplay Monitor Classified  
1515 Broadway  
New York, NY 10036

Phone: 212-536-5058  
Fax: 212-536-5055



# AIRPLAY Monitor® GREATEST GAINERS™

## STRONGEST INCREASE IN AIRPLAY

### MAINSTREAM

INCREASE  
IN PLAYS

<b>DEL AMITRI • Roll To Me (A&amp;M)</b>	<b>+244</b>
WPRO +32, KHFI +25, WFLY +19, KJYO +15, WKCI +14, WNCI +11, WKXJ +9, WSSX +8, WTIC +8, KKRZ +8	
<b>HOOTIE &amp; THE BLOWFISH • Only Wanna Be With You (ATLANTIC)</b>	<b>+175</b>
WKQR +36, KZZU +17, WRVQ +14, WKCI +13, KKRZ +11, WPRO +11, WTWR +10, KJYO +8, KHFI +8, WNCI +8	
<b>MARIAH CAREY • Fantasy (COLUMBIA)</b>	<b>+150</b>
KIIS +33, KLRZ +17, WLAN +17, WKRQ +13, WDCG +11, WNCI +10, WKBQ +10, KZZU +9, WGTZ +9, KBFM +8	
<b>THE TONY RICH PROJECT • Nobody Knows (LAFACE/ARISTA)</b>	<b>+126</b>
WKSS +22, WIOQ +15, KZZU +14, WKXJ +11, WSTW +11, WZJM +11, WGTZ +7, WPXY +7, WXIS +5, KHTO +5	
<b>SEAL • Don't Cry (ZTT/WARNER BROS.)</b>	<b>+112</b>
KZZU +16, KLRZ +14, WFLZ +13, KJYO +11, WKXJ +8, WIXX +7, WXIS +6, WNNK +6, WPXY +6, WBZZ +6	
<b>LA BOUCHE • Be My Lover (RCA)</b>	<b>+105</b>
WZJM +13, WXIS +12, WFLZ +11, WAPE +11, WNVZ +10, WXXX +8, WWST +8, KKLQ +8, WTWR +6, WZPL +6	
<b>WHITNEY HOUSTON • Exhale (Shoop Shoop) (ARISTA)</b>	<b>+104</b>
WFLZ +17, WKXJ +14, KHHT +14, WFBC +13, WXIS +11, WVKX +11, WWSR +9, WFHN +9, WKSS +9, WXXL +9	
<b>SOPHIE B. HAWKINS • As I Lay Me Down (COLUMBIA)</b>	<b>+88</b>
WKCI +13, WNCI +13, WDCG +10, WSSX +10, WBZZ +10, WGTZ +9, KHKS +8, WJKB +8, WZYP +7, WPXY +7	
<b>JOAN OSBORNE • One Of Us (BLUE GORILLA/MERCURY)</b>	<b>+83</b>
WFLY +19, WZYP +13, WZJM +12, WRVQ +12, WVKX +10, KHXY +9, WWCK +9, WKSS +8, WNTQ +6, KQKQ +6	
<b>SELENA • Dreaming Of You (EMI LATIN/EMI)</b>	<b>+81</b>
WPRO +26, WXIS +19, WNNK +12, WHOT +9, KHHT +8, WZJM +7, WPXY +7, WKSS +5, KBFM +4, KRQQ +4	

### RHYTHM-CROSSOVER

INCREASE  
IN PLAYS

<b>LINA SANTIAGO • Feels So Good (UNIVERSAL)</b>	<b>+107</b>
KYL D +52, KPWR +19, KMEL +13, XHTZ +9, KTFM +7, KGGI +6, KZHT +1	
<b>2PAC • California Love (DEATH ROW/INTERSCOPE)</b>	<b>+105</b>
KYL D +41, KPWR +25, KMEL +17, WPOW +6, XHTZ +5, KBXX +3, WJMH +3, WQHT +2, WHHH +1, KSFM +1	
<b>BRANDY • Sittin' Up In My Room (ARISTA)</b>	<b>+97</b>
KUBE +33, WHHH +21, WJMH +17, KCAQ +6, WERQ +6, KBXX +6, WWKX +6, KTFM +6, KKFR +5, WJMN +5	
<b>LA BOUCHE • Be My Lover (RCA)</b>	<b>+96</b>
KKSS +32, WBBM +19, WWKX +13, KLUC +9, KCAQ +8, KDON -8, KYLD +8, KMEL +8, KPRR +6, KKFR +6	
<b>WHITNEY HOUSTON • Exhale (Shoop Shoop) (ARISTA)</b>	<b>+88</b>
KKSS +35, WBBM +33, KKFR +16, KPRR +13, KJMJ +12, WPGC +9, WJMH +7, KBOS +6, KDON +5, KZHT +5	
<b>PLANET SOUL • Set U Free (STRICTLY RHYTHM)</b>	<b>+76</b>
KGGI +21, KKFR +18, KPRR +15, WBBM +15, WWKX +13, KJMJ +9, KCAQ +9, KQKS +7, KXXX +6, WHHH +4	
<b>BOYZ II MEN • I Remember (MOTOWN)</b>	<b>+65</b>
KKSS +32, WQHT +21, KKFR +18, WWKX +9	
<b>EVERYTHING BUT THE GIRL • Missing (ATLANTIC)</b>	<b>+61</b>
KKFR +25, WWKX +14, KGGI +12, KZHT +8, KJMJ +7, KBOS +7, WPOW +6, KTFM +4, KXXX +2, KCAQ +1	
<b>COOLIO FEAT. L.V. • Gangsta's Paradise (MCA SOUNDTRACKS/MCA)</b>	<b>+60</b>
KSFM +11, KJMJ +10, WBBM +10, KTFM +8, KZFM +6, WHHH +6, KCAQ +5, KYLD +5, WJMN +5, WJJS +4	
<b>MARIAH CAREY • Always Be My Baby (COLUMBIA)</b>	<b>+54</b>
KGGI +26, KBXX +14, KSFM +9, KMEL +5	

# VIDEO PLAYLISTS



	TW	LW		TW	LW
1	28	10	41	4	2
2	24	13	42	4	2
3	23	13	43	4	4
4	22	13	44	4	2
5	20	14	45	4	4
6	20	11	46	4	0
7	19	6	47	4	2
8	19	11	48	3	1
9	18	12	49	3	2
10	18	14	50	3	1
11	17	8			
12	17	7			
13	15	6			
14	13	7			
15	11	9			
16	11	4			
17	11	6			
18	10	5			
19	9	4			
20	9	5			
21	9	3			
22	8	8			
23	8	6			
24	8	3			
25	7	5			
26	7	1			
27	6	3			
28	6	3			
29	6	5			
30	6	3			
31	6	4			
32	6	1			
33	5	1			
34	5	2			
35	5	2			
36	5	3			
37	5	3			
38	5	2			
39	5	5			
40	5	3			



### ADULT

INCREASE  
IN PLAYS

<b>ALL-4-ONE • I Can Love You Like That (BLITZZ/ATLANTIC)</b>	<b>+61</b>
KSTP +16, WVTY +10, KEZR +8, KGBX +7, WMC +7, KYKY +6, WKQI +5, WRQX +5, WBMX +4, WJDX +3	
<b>THE REMBRANDTS • I'll Be There For You (EASTWEST/EEG)</b>	<b>+45</b>
WIVY +12, WWSN +7, WMC +6, WMJQ +5, WRQX +5, WVTY +4, WQLH +4, WKZL +4, KISN +4, WKTI +4	
<b>SELENA • I Could Fall In Love (EMI LATIN/EMI)</b>	<b>+44</b>
WLHT +9, WBEB +8, WMTX +8, WPNT +6, WGSY +4, WQLH +4, WMC +4, WBMX +4, KVUU +3, KGBY +3	
<b>PETER CETERA &amp; CRYSTAL BERNARD • Forever Tonight (RIVER NORTH)</b>	<b>+30</b>
WMC +10, WDEF +5, KMZQ +5, WGSY +5, WJDX +4, WYYY +4, WMYI +4, WBEB +2, WCSO +2, WRMF +2	
<b>EVERYTHING BUT THE GIRL • Missing (ATLANTIC)</b>	<b>+28</b>
WMJQ +20, WKZL +14, WBMX +7, WYYY +6, WKDD +5, WMC +5, WCSO +3, WALK +2, KYSR +2, WQAL +2	
<b>HEART • Alone (CAPITOL)</b>	<b>+27</b>
WQLH +4, WGSY +3, KDMX +3, WIOG +3, WBEB +2, WMXL +2, WAEV +2, KEZR +2, WPNT +1, WALK +1	
<b>TAKE THAT • Back For Good (ARISTA)</b>	<b>+25</b>
WKZL +17, WDEF +16, WMC +11, KISN +9, WPNT +8, WZPK +8, KPLZ +5, WGSY +4, KYKY +4, WQLH +4	
<b>BETTER THAN EZRA • Rosealia (ELEKTRA/EEG)</b>	<b>+23</b>
WKTI +14, WTMX +3, KYSR +3, WEZF +1, WZPK +1, WMC +1	
<b>BETTER THAN EZRA • Good (ELEKTRA/EEG)</b>	<b>+20</b>
KFMB +8, WTMX +5, KYSR +5, KALC +4, WZPK +1	
<b>JOAN OSBORNE • One Of Us (BLUE GORILLA/MERCURY)</b>	<b>+20</b>
KSTP +13, WMTX +6, KWMX +4, WTMX +3, KEZR +2, KYSR +1, WMC +1	
<b>SARAH MCLACHLAN • I Will Remember You (ARISTA)</b>	<b>+20</b>
WKTI +11, KDMX +4, WMXV +4, WMC +3, KMZQ +2, KFMB +2, WBLI +2, WAHR +1	
<b>MARIAH CAREY • Fantasy (COLUMBIA)</b>	<b>+18</b>
WMC +9, WIVY +6, WQAL +5, WALK +3, WVAF +3, WVTY +3, KYKY +3, WQLH +3, WBLI +3, WMXL +2	

**SAVE THESE DATES** **BILLBOARD AIRPLAY MONITOR** **RADIO SEMINAR & AWARDS** **SEPTEMBER 5-7 1996** **LOCATION TO BE ANNOUNCED & STAY TUNED FOR DETAILS**

POWER PLAYLISTS

For Week Ending December 31, 1995



Playlists supplied by Broadcast Data Systems' Radio Track service. Stations selected from panel of leading broadcasters in 125 radio markets, electronically monitored 24 hours a day, 7 days a week. Songs ranked by number of plays in monitored week.

Z100 PD: Steve Kingston MD: Andy Shane. Playlist for WHTZ New York with 40 numbered tracks.

KIIS PD: Steve Perun APD/MD: Tracy Austin. Playlist for KIIS Los Angeles with 40 numbered tracks.

KISS 108 PD: John Ivey MD: Tad Bonnie. Playlist for WXKS Boston with 40 numbered tracks.

Q102 OM: Dave Allan PD: Glenn Kalina MD: DeDe McGuire. Playlist for WIOQ Philadelphia with 40 numbered tracks.

KISS 106.1 PD: John Cook APD/MD: Mr. Ed Lambert. Playlist for KHKS Dallas with 40 numbered tracks.

KRBE PD: Tom Poleman APD: Scott Sparks MD: Paul 'Cubby' Bryant. Playlist for KRBE Houston with 40 numbered tracks.

KDWB PD: Dan Kieley APD/MD: Rob Morris AMD: Rick Thomas. Playlist for KDWB Minneapolis with 40 numbered tracks.

STAR 94 PD: Kevin Peterson MD: J.R. Ammons. Playlist for WSTR Atlanta with 40 numbered tracks.

B94 PD: Keith Clark APD: David Edgar MD: John Cline. Playlist for WBZZ Pittsburgh with 40 numbered tracks.

WFLZ PD: B.J. Harris APD: Jeff Kapugi MD: Tom Steele. Playlist for WFLZ Tampa with 40 numbered tracks.

WPST PD: Michelle Stevens APD: Dave McKay. Playlist for WPST Trenton with 40 numbered tracks.

Y100 PD: Casey Keating MD: Al Chio. Playlist for WHYI Miami with 40 numbered tracks.

KISS 95.7 PD: Jay Beau Jones Acting MD: Dave Vadya. Playlist for WKSS Hartford with 40 numbered tracks.

WTIC PD: Paul Cannon MD: Tony Bristol. Playlist for WTIC Hartford with 40 numbered tracks.

WNCI PD: Dave Robbins APD/MD: Dan Bowen. Playlist for WNCI Columbus with 40 numbered tracks.

Q106 OM: Al Peterson PD: Greg Stevens APD: Ray Kalusa. Playlist for KKLQ San Diego with 40 numbered tracks.

92PRO FM PD: Chris Shebel MD: Tony Mascaro. Playlist for WPRO Providence with 40 numbered tracks.

Q104 PD: Michael St. John MD: Kenny Knight. Playlist for WKQB St. Louis with 40 numbered tracks.

# BETTER THAN EZRA

Exploding on 80+ Top 40s including:

KDWB Minneapolis	WKBQ St. Louis	WPRO Providence
WFLZ Tampa	KUTO Salt Lake City	KHOM New Orleans
KRBE Houston	WZJM Cleveland	WFLY Albany
WZEE Madison	KJYO Oklahoma City	WDCG Raleigh
WDJX Louisville	WYHY Nashville	KHTY Santa Barbara

# Rosealia



120 MINUTES

A certified platinum record  
and a sold out tour!!



Dan Rothchild produced it.  
Shalom Aberle mixed it.

Management: Jeffrey Levinson/Themz Twoz

On Elektra compact discs and analog cassettes.

<http://www.elektra.com>

© 1995 Elektra Entertainment Group, a division of Warner Communications Inc. A Time Warner Company.

# NATALIE MERCHANT



Album sales exceeding 1.75 million!

Mainstream Monitor **27**

Modern Rock Monitor **17**

Increasing ratings at over 100 Top 40s including:

WHTZ New York	WNCI Columbus	WHYI Miami
WAPE Jacksonville	WXXL Orlando	KUTQ Salt Lake City
KMXV Kansas City	KRBE Houston	WZJM Cleveland
WFLZ Tampa	WKBQ St. Louis	WBZZ Pittsburgh
KBZR Phoenix	KKLQ San Diego	WSTR Atlanta
WSTW Wilmington	WAYV Atlantic City	KHOM New Orleans
KJYO Oklahoma City	WZEE Madison	

# WONDER

On Elektra compact discs and **digital** cassettes.



<http://www.elektra.com>



© 1995 Elektra Entertainment Group, a division of Warner Communications Inc. A Time Warner Company.

## D:REAM "Shoot Me With Your Love"

Officially debuting at radio this week!



## SA DEUCE "Don't Waste My Time"

Official crossover radio debut on December 14!





POWER PLAYLISTS

For Week Ending December 31, 1995



Playlists supplied by Broadcast Data Systems' Radio Track service. Stations selected from panel of leading broadcasters in 125 radio markets, electronically monitored 24 hours a day, 7 days a week. Songs ranked by number of plays in monitored week.

Q102 WKRC Cincinnati PD: Jimmy Steal APD/MD: Brian Douglas. Top 40 list including 'Collective Soul, December' and 'Gin Blossoms, Til I Hear It From You'.

G105 WDCG Raleigh PD: Brian Burns MD: Kip Taylor. Top 40 list including 'Deep Blue Something, Breakfast At Tiffan' and 'Hootie & The Blowfish, Time'.

THE EDGE WEDJ Charlotte PD: Brian Bridgman MD: Tom Naylor. Top 40 list including 'Goo Goo Dolls, Name' and 'Mariah Carey & Boyz II Men, One Sweet Day'.

Z100 KKRZ Portland PD: Ken Benson APD/MD: Chet Buchanan. Top 40 list including 'Mariah Carey, Fantasy' and 'Mariah Carey & Boyz II Men, One Sweet Day'.

XL106.7 WXXL Orlando PD: Adam Cook. Top 40 list including 'Coolio Feat. L.V., Gangsta's Paradise' and 'Mariah Carey & Boyz II Men, One Sweet Day'.

Z93 WGTZ Dayton PD: Louis Kaplan MD: Gretchen Corbett. Top 40 list including 'Mariah Carey, Fantasy' and 'Mariah Carey & Boyz II Men, One Sweet Day'.

Y107 WYHY Nashville PD: Charlie Quinn MD: Gator Harrison. Top 40 list including 'Hootie & The Blowfish, Only Wanna Be Wit' and 'TLC, Waterfalls'.

JAMMIN' 92 WZJM Cleveland PD: Lisa Rodman MD: Dave Eubanks. Top 40 list including 'Selena, Dreaming Of You' and 'Goo Goo Dolls, Name'.

KISS 98.5 WKSE Buffalo PD: Sue O'Neil MD: Dave Universal. Top 40 list including 'Goo Goo Dolls, Name' and 'Mariah Carey & Boyz II Men, One Sweet Day'.

WZPL Indianapolis PD: Tom Gjerdrum MD: Ron Blair. Top 40 list including 'Mariah Carey, Fantasy' and 'Mariah Carey & Boyz II Men, One Sweet Day'.

Z104 WNVZ Norfolk PD: Don London MD: Sean Sellers. Top 40 list including 'Mariah Carey & Boyz II Men, One Sweet Day' and 'TLC, Digg'n' On You'.

KJ103 KJYO Oklahoma City PD: Mike McCoy MD: Jimmy Barreda. Top 40 list including 'Alanis Morissette, Hand In My Pocket' and 'Goo Goo Dolls, Name'.

MIX 93.3 KMXV Kansas City OM: Tom Land. Top 40 list including 'Madonna, You'll See' and 'Mariah Carey & Boyz II Men, One Sweet Day'.

98PXY WXPY Rochester OM/PD: Clarke Ingram APD/MD: J.J. Rice. Top 40 list including 'Mariah Carey & Boyz II Men, One Sweet Day' and 'Sophie B. Hawkins, As I Lay Me Down'.

WKRZ Wilkes-Barre PD: Ken Medek MD: Jerry Padden. Top 40 list including 'Goo Goo Dolls, Name' and 'Toad The Wet Sprocket, Good Intentions'.

FLY 92 WFLY Albany PD: Mike Morgan MD: Shawn Scott. Top 40 list including 'Alanis Morissette, Hand In My Pocket' and 'Everything But The Girl, Missing'.

WIXX Green Bay PD: Dan Stone. Top 40 list including 'Mariah Carey & Boyz II Men, One Sweet Day' and 'Deep Blue Something, Breakfast At Tiffan'.

KHFI Austin PD: John Roberts MD: Fernando Ventura. Top 40 list including 'Deep Blue Something, Breakfast At Tiffan' and 'TLC, Digg'n' On You'.



Billboard Music Group

*Complete*  
coverage of  
the music  
and  
entertainment  
industries  
worldwide.

Billboard  
online

B I N



Amsterdam

Chicago

London

Los Angeles

Nashville

New York

Tokyo

Washington DC

World Radio History

POWER PLAYLISTS

For Week Ending December 31, 1995



Radio Track service. Stations selected from panel of leading broadcasters in 125 radio markets, electronically monitored 24 hours a day, 7 days a week. Songs ranked by number of plays in monitored week.

Table for WVKS Toledo, PD: Mike Wheeler, MD: Curt Kruse. Lists top 40 songs with TW and LW columns.

Table for WDJX Louisville, PD: C.C. Matthews, MD: Jill Meyer. Lists top 40 songs with TW and LW columns.

Table for K92 Roanoke, OM: Sammy Simpson, PD: Rich E. Cunningham. Lists top 40 songs with TW and LW columns.

Table for Q99 Salt Lake City, PD: Brian DeGues, MD: Geronimo. Lists top 40 songs with TW and LW columns.

Table for KC101 New Haven, OM: Glenn Beck, PD: Steve Wilson, MD: Jeff McCartney. Lists top 40 songs with TW and LW columns.

Table for 93Q Syracuse, PD: Dave Edwards, MD: Jimmy Olson. Lists top 40 songs with TW and LW columns.

Table for B104 McAllen, PD: Billy Santiago, MD: Jeff DeWitt. Lists top 40 songs with TW and LW columns.

Table for SWEET 98 Omaha, PD: Michael Steele, MD: Jimi Jamm. Lists top 40 songs with TW and LW columns.

Table for Q94 Richmond, PD: Lisa McKay, MD: Billy Surf. Lists top 40 songs with TW and LW columns.

Table for WHOT Youngstown, PD/MD: Tom Pappas. Lists top 40 songs with TW and LW columns.

Table for WAPE Jacksonville, PD: Cat Thomas, APD: Tony Mann, MD: Damon Cox. Lists top 40 songs with TW and LW columns.

Table for WNNK Harrisburg, PD: John O'Dea, MD: Scott Shaw. Lists top 40 songs with TW and LW columns.

Table for STAR 93.1 Knoxville, OM: Jim Richards, PD: Todd Shannon. Lists top 40 songs with TW and LW columns.

Table for WSNX Grand Rapids, PD: Mark McGill, MD: Keith Curry. Lists top 40 songs with TW and LW columns.

Table for WZYP Huntsville, MD: Ace Anthony. Lists top 40 songs with TW and LW columns.

Table for WABB Mobile, PD: Brett Dumer, MD: Crash. Lists top 40 songs with TW and LW columns.

Table for WFME Baton Rouge, PD: Johnny A. Lists top 40 songs with TW and LW columns.

Table for KRQQ Tucson, PD: Mark Todd, MD: Valerie Knight. Lists top 40 songs with TW and LW columns.

AIRPLAY  
**Monitor**

**BDS IMPACT**

DETECTIONS



★ ★ ★ AIRPOWER ★ ★ ★  
(Minimum 1500 detections for the first time)

NO RECORDS QUALIFIED FOR AIRPOWER THIS WEEK

AIRPOWER BOUND

Total Plays/Gain

**LA BOUCHE** 1222/105  
*Be My Lover (RCA)*

Total Stations: 64/Chart Move: 24-23  
Heavy (40+ plays): 6 KHFI, KZZU, WIOQ, WKSE, WNVZ, WXXL  
Medium (20-39): 20 KBFM, KDWB, KHTO, KIIS, KLRZ, WAPE, WFHN, WFLY, WFLZ, WKSS, WXXJ, WPRO, WPXY, WSSX, WTVR, WWCK, WWST, WXIS, WZJM, WZPL  
Light (Under 20): 38  
New Airplay This Week: 1 KKLQ

**GROOVE THEORY** 1120/33  
*Tell Me (Epic)*

Total Stations: 49/Chart Move: 25-24  
Heavy (40+): 8 KHKS, KHTO, KIIS, KKRZ, KZZU, WFHN, WNVZ, WPRO  
Medium (20-39): 16 KDWB, KHFI, KLRZ, KQKQ, WFBC, WFLY, WFMF, WGTZ, WKSS, WNNK, WTVR, WVKs, WWST, WXIS, WXXL, WZPL  
Light (Under 20): 25  
New Airplay This Week: 1 KHHT

**SEAL** 1110/112  
*Don't Cry (ZTT/Warner Bros.)*

Total Stations: 63/Chart Move: 31-25  
Heavy (40+): 2 KLRZ, WFLZ  
Medium (20-39): 24 KHTO, KJYO, KKLQ, KKMg, KKRD, KQKQ, KZZU, WAPE, WBZZ, WFBC, WHHY, WIXX, WKRO, WKSE, WXXJ, WNNK, WNOK, WNTQ, WSTR, WSTW, WWCK, WXIS, WXXL, WYCR  
Light (Under 20): 37  
New Airplay This Week: 2 KDWB, KHTT

**BLUES TRAVELER** 1106/49  
*Hook (A&M)*

Total Stations: 53/Chart Move: 28-26  
Heavy (40+): 0  
Medium (20-39): 30 KDWB, KHTY, KJYO, KLRZ, KUTQ, WABB, WBHT, WDDJ, WEDJ, WFBC, WFLY, WHTZ, WKBO, WKRO, WKRZ, WXXJ, WNNK, WNOK, WPST, WSTR, WTVR, WWCK, WWST, WXIS, WXXJ, WYHY, WZJM, WZNY, WZPL, WZYP  
Light (Under 20): 23  
New Airplay This Week: 1 WDCG

**NATALIE MERCHANT** 1100/30  
*Wonder (Elektra/EEG)*

Total Stations: 66/Chart Move: 27-27  
Heavy (40+): 1 KLRZ  
Medium (20-39): 24 KHFI, KKLQ, KKRD, KRBE, WAPE, WBZZ, WDCG, WDDJ, WEDJ, WFBC, WFLY, WFLZ, WIXX, WKRZ, WKSE, WXXJ, WNOK, WNTQ, WPST, WSTR, WTVR, WVKs, WXXJ  
Light (Under 20): 41  
New Airplay This Week: 2 KQKQ, WKRO

**SELENA** 896/81  
*Dreaming Of You (EMI Latin/EMI)*

Total Stations: 41/Chart Move: 36-32  
Heavy (40+): 6 KIIS, KRQQ, WPRO, WWCK, WXIS, WZJM

Medium (20-39): 12 KHFI, KHKS, KLRZ, KMXV, WHOT, WHYI, WXXJ, WPXY, WRVQ, WWST, WXXL, WYCR  
Light (Under 20): 23  
New Airplay This Week: 2 WNNK, WTIC

**DEF LEPPARD** 892/10  
*When Love & Hate Collide (Mercury)*

Total Stations: 48/Chart Move: 34-33  
Heavy (40+): 3 WABB, WPRO, WXXJ  
Medium (20-39): 19 KDWB, KQKQ, WDDJ, WFBC, WFLY, WFLZ, WHOT, WIXX, WKCI, WKRZ, WXXJ, WTVR, WVKs, WVSR, WWCK, WYCR, WYHY, WZNY, WZYP  
Light (Under 20): 26

**THE TONY RICH PROJECT** 717/126  
*Nobody Knows (LaFace/Arista)*

Total Stations: 45/Chart Move: 40-36  
Heavy (40+): 1 KZZU  
Medium (20-39): 12 KHTO, KLRZ, WFBC, WFHN, WKSS, WNOK, WNVZ, WSTR, WWCK, WXIS, WZJM, WZNY  
Light (Under 20): 32  
New Airplay This Week: 7 KJYO, KKRZ, WIOQ, WKSS, WXXJ, WPXY, WSNX

**SOUL ASYLUM** 609/53  
*Promises Broken (Columbia)*

Total Stations: 47/Chart Move: Debut 39  
Heavy (40+): 0  
Medium (20-39): 8 KHTO, WBZZ, WHTZ, WKRZ, WNOK, WPRO, WWCK, WXXJ  
Light (Under 20): 39  
New Airplay This Week: 4 WLAN, WSNX, WZJM, WZYP

CHART BOUND

**OASIS** 589/10  
*Wonderwall (Epic)*

Total Stations: 41  
Heavy (40+): 1 KUTQ  
Medium (20-39): 10 KHFI, KLRZ, KRBE, WHTZ, WXXJ, WXXQ, WPST, WWCK, WXIS, WZPL  
Light (Under 20): 30  
New Airplay This Week: 1 KQKQ

**JANET JACKSON** 556/61  
*Twenty Foreplay (A&M)*

Total Stations: 42  
Heavy (40+): 8  
Medium (20-39): 9 KJYO, KKMg, KLRZ, KQKQ, KRQQ, WFHN, WKRZ, WVKs, WYHY  
Light (Under 20): 33  
New Airplay This Week: 4 KDWB, WFBC, WFLY, WKSS

**TOM PETTY** 516/55  
*Waiting For Tonight (MCA)*

Total Stations: 34  
Heavy (40+): 0

MOST NEW AIRPLAY THIS WEEK

No. Of Stations

<b>THE TONY RICH PROJECT</b> <i>Nobody Knows (LaFace/Arista)</i>	7
<b>FUN FACTORY</b> <i>Celebration (Curb edel/Curb)</i>	4
<b>JANET JACKSON</b> <i>Twenty Foreplay (A&amp;M)</i>	4
<b>SOUL ASYLUM</b> <i>Promises Broken (Columbia)</i>	4
<b>MELISSA ETHERIDGE</b> <i>I Want To Come Over (Island)</i>	3
<b>DAVE MATTHEWS BAND</b> <i>Satellite (RCA)</i>	3
<b>SEVEN MARY THREE</b> <i>Cumbersome (Mammoth/Atlantic)</i>	3
<b>SMASHING PUMPKINS</b> <i>1979 (Virgin)</i>	3

Medium (20-39): 10 KLRZ, KQKQ, WAPE, WFBC, WKRZ, WKSE, WNOK, WVKs, WWCK, WXXL  
Light (Under 20): 24  
New Airplay This Week: 2 KJYO, WNNK

**HOOTIE & THE BLOWFISH** 451/28  
*I Go Blind (Atlantic/Reprise)*

Total Stations: 13  
Heavy (40+): 6 KMXV, WABB, WEDJ, WFBC, WKRO, WWST  
Medium (20-39): 3 KKMg, WPST, WSNX  
Light (Under 20): 4

**3T** 417/30  
*Anything (MJJ/550 Music)*

Total Stations: 26  
Heavy (40+): 2 KHTO, KQKQ  
Medium (20-39): 8 KBFM, KHFI, KLRZ, KRQQ, WFHN, WNVZ, WXIS, WZJM  
Light (Under 20): 16

**BODEANS** 411/1  
*Closer To Free (Slash/Reprise)*

Total Stations: 32  
Heavy (40+): 0  
Medium (20-39): 6 WIXX, WKRO, WXXJ, WPST, WTVR, WXIS  
Light (Under 20): 26  
New Airplay This Week: 1 WHTZ

**MICHAEL JACKSON** 379/0  
*Earth Song (Epic)*

Total Stations: 27  
Heavy (40+): 2 WVKs, WXIS  
Medium (20-39): 4 KHTO, KKRZ, WFHN, WFMF  
Light (Under 20): 21

**PLANET SOUL** 372/15  
*Set U Free (Strictly Rhythm)*

Total Stations: 26  
Heavy (40+): 1 KIIS  
Medium (20-39): 6 KBFM, KHFI, KHKS, WIOQ, WNVZ, WXXL  
Light (Under 20): 19

**PAULA ABDUL** 359/36  
*Ain't Never Gonna Give You Up (Captive/Virgin)*

Total Stations: 22  
Heavy (40+): 2 KHTO, KMXV  
Medium (20-39): 5 KLRZ, WFHN, WTVR, WXIS, WZPL  
Light (Under 20): 15  
New Airplay This Week: 1 WVKs

**MONICA** 353/28  
*Before You Walk Out Of My Life (Rowdy/Arista)*

Total Stations: 25  
Heavy (40+): 1 WNVZ  
Medium (20-39): 5 KBFM, KHTO, WFHN, WFLY, WXIS  
Light (Under 20): 19  
New Airplay This Week: 1 WVSR

**DAVE MATTHEWS BAND** 346/24  
*Satellite (RCA)*

Total Stations: 31  
Heavy (40+): 1 WPST  
Medium (20-39): 3 KLRZ, WMXQ, WXIS  
Light (Under 20): 27  
New Airplay This Week: 3 WDCG, WNNK, WZYP

**MELISSA ETHERIDGE** 316/80  
*I Want To Come Over (Island)*

Total Stations: 24  
Heavy (40+): 0  
Medium (20-39): 7 WKRZ, WNOK, WNTQ, WPRO, WPST, WTIC, WZNY  
Light (Under 20): 17  
New Airplay This Week: 3 WFBC, WPRO, WXIS

**LL COOL J** 293/3  
*Hey Lover (Def Jam/RAL/Island)*

Total Stations: 19  
Heavy (40+): 0  
Medium (20-39): 5 KIIS, KZZU, WFHN, WXIS, WZJM  
Light (Under 20): 14  
New Airplay This Week: 1 KHFI

**SMASHING PUMPKINS** 292/21  
*1979 (Virgin)*

Total Stations: 29  
Heavy (40+): 2 KUTQ, WPST  
Medium (20-39): 3 KHFI, KRBE, WHTZ  
Light (Under 20): 24  
New Airplay This Week: 3 WFBC, WKRZ, WXIS

**SMASHING PUMPKINS** 262/12  
*Bullet With Butterfly Wings (Virgin)*

Total Stations: 22  
Heavy (40+): 1 WHTZ  
Medium (20-39): 5 KHFI, KJYO, KUTQ, WDCG, WPST  
Light (Under 20): 16

**SIMPLY RED** 252/2  
*Fairground (EastWest/EEG)*

Total Stations: 17  
Heavy (40+): 1 WNVZ  
Medium (20-39): 6 KKRZ, KMXV, KRBE, WFLY, WWCK, WXIS  
Light (Under 20): 10

**BUSH** 249/21  
*Glycerine (Trauma/Interscope)*

Total Stations: 21  
Heavy (40+): 2 KUTQ, WPST  
Medium (20-39): 4 KHFI, KRBE, WDCG, WHTZ  
Light (Under 20): 15  
New Airplay This Week: 1 WVKs

**DENINE** 228/28  
*All Cried Out (Metropolitan)*

Total Stations: 10  
Heavy (40+): 1 WPXY  
Medium (20-39): 4 WFHN, WFLY, WIOQ, WKSE  
Light (Under 20): 5  
New Airplay This Week: 2 KHFI, WXXL

**R. KELLY** 224/8  
*You Remind Me Of Something (Jive)*

Total Stations: 17  
Heavy (40+): 1 WNVZ  
Medium (20-39): 2 KHFI, KQKQ  
Light (Under 20): 14

**ALANIS MORISSETTE** 201/22  
*Ironic (Maverick/Reprise)*

Total Stations: 8  
Heavy (40+): 2 KRBE, WPST  
Medium (20-39): 2 KHFI, KUTQ  
Light (Under 20): 4  
New Airplay This Week: 1 WZNY

**SEVEN MARY THREE** 197/36  
*Cumbersome (Mammoth/Atlantic)*

Total Stations: 17  
Heavy (40+): 0  
Medium (20-39): 3 KHFI, KUTQ, WWCK  
Light (Under 20): 14  
New Airplay This Week: 3 WDCG, WPST, WTVR

★ **FUN FACTORY** 163/75  
*Celebration (Curb edel/Curb)*

Total Stations: 14  
Heavy (40+): 1 KBFM  
Medium (20-39): 2 WIOQ, WZJM  
Light (Under 20): 11  
New Airplay This Week: 4 WFBC, WHOT, WKRZ, WNNK

★ **COOLIO** 153/4  
*Too Hot (Tommy Boy)*

Total Stations: 16  
Heavy (40+): 0  
Medium (20-39): 1 KHTO  
Light (Under 20): 15

**ROD STEWART** 153/6  
*So Far Away (Lava/Atlantic)*

Total Stations: 15  
Heavy (40+): 0  
Medium (20-39): 2 KLRZ, WXXL  
Light (Under 20): 13

★ **L.A. FEAT. DARVY TRAYLOR** 131/15  
*Ridin' Low (Hollywood)*

Total Stations: 10  
Heavy (40+): 0  
Medium (20-39): 2 WFMF, WZJM  
Light (Under 20): 8

Airpower awarded to those records which attain 1500 detections for the first time. New airplay lists those stations registering six or more detections per week on a record for the first time ★ Initial impact: records appearing on this page for the first time.

SONIC ACTIVITY REPORTS

For Week Ending December 31, 1995



Broadcast Data Systems

3T 417/30

Anything (MJJ/550 Music)

Table with columns: Station, TW, LW, 2W, IP, and list of stations and their respective values.

PAULA ABDUL 359/36

Ain't Never Gonna Give You Up (Capitol/Virgin)

Table with columns: Station, TW, LW, 2W, IP, and list of stations and their respective values.

BIG MOUNTAIN 1706/44

Get Together (Giant)

Table with columns: Station, TW, LW, 2W, IP, and list of stations and their respective values.

BLUES TRAVELER 1106/49

Hook (A&M)

Table with columns: Station, TW, LW, 2W, IP, and list of stations and their respective values.

BODEANS 411/1

Closer To Free (Slash/Reprise)

Table with columns: Station, TW, LW, 2W, IP, and list of stations and their respective values.

MARIAH CAREY 2207/15

Fantasy (Columbia)

Table with columns: Station, TW, LW, 2W, IP, and list of stations and their respective values.

MARIAH CAREY & BOYZ II MEN 3572/32

One Sweet Day (Columbia)

Table with columns: Station, TW, LW, 2W, IP, and list of stations and their respective values.

DEF LEPPARD 892/10

When Love & Hate Collide (Mercury)

Table with columns: Station, TW, LW, 2W, IP, and list of stations and their respective values.

MELISSA ETHERIDGE 316/80

I Want To Come Over (Island)

Table with columns: Station, TW, LW, 2W, IP, and list of stations and their respective values.

EVERYTHING BUT THE GIRL 2523/43

Missing (Atlantic)

Table with columns: Station, TW, LW, 2W, IP, and list of stations and their respective values.

GROOVE THEORY 1120/33

Tell Me (Epic)

Table with columns: Station, TW, LW, 2W, IP, and list of stations and their respective values.

HOOTIE & THE BLOWFISH 2055/54

Time (Atlantic)

Table with columns: Station, TW, LW, 2W, IP, and list of stations and their respective values.

HOOTIE & THE BLOWFISH 451/28

I Go Blind (Atlantic/Reprise)

Table with columns: Station, TW, LW, 2W, IP, and list of stations and their respective values.

WHITNEY HOUSTON 2180/100

Exhale (Shoop Shoop) (Arista)

Table with columns: Station, TW, LW, 2W, IP, and list of stations and their respective values.

JANET JACKSON 1812/75

Runaway (A&M)

Table with columns: Station, TW, LW, 2W, IP, and list of stations and their respective values.



MAINSTREAM

SONG ACTIVITY REPORTS

For Week Ending December 31, 1995



Detailed song tracking information for the last 3 weeks for all songs showing increased play this week. Total plays and gain do not include sales data. Markets listed in order of population.

Table for Janet Jackson: Twenty Foreplay (A&M). Total Stations: 42. Chart Move: 556/61.

Table for Michael Jackson: Earth Song (Epic). Total Stations: 27. Chart Move: 379/0.

Table for La Bouche: Be My Lover (RCA). Total Stations: 64. Chart Move: 1222/105.

Table for Dave Matthews Band: Satellite (RCA). Total Stations: 31. Chart Move: 346/24.

Table for Natalie Merchant: Wonder (Elektra/EEG). Total Stations: 66. Chart Move: 1100/30.

Table for Monica: Before You Walk Out Of My Life (Rowdy/Arista). Total Stations: 25. Chart Move: 353/28.

Table for Oasis: Wonderwall (Epic). Total Stations: 41. Chart Move: 589/10.

Table for Joan Osborne: One Of Us (Blue Gorilla/Mercury). Total Stations: 73. Chart Move: 1964/83.

Table for Tom Petty: Waiting For Tonight (MCA). Total Stations: 34. Chart Move: 516/55.

Table for Planet Soul: Set U Free (Strictly Rhythm). Total Stations: 26. Chart Move: 372/15.

Table for The Tony Rich Project: Nobody Knows (LaFace/Arista). Total Stations: 45. Chart Move: 717/126.

Table for Seal: Don't Cry (ZTT/Warner Bros.). Total Stations: 63. Chart Move: 1110/112.

Table for Selena: Dreaming Of You (EMI Latin/EMI). Total Stations: 41. Chart Move: 896/81.

Table for Soul Asylum: Promises Broken (Columbia). Total Stations: 47. Chart Move: 609/53.

Table for TLC: Diggin' On You (LaFace/Arista). Total Stations: 71. Chart Move: 2334/32.



POWER PLAYLISTS

For Week Ending December 31, 1995



Playlists supplied by Broadcast Data Systems' Radio Track service. Stations selected from panel of leading broadcasters in 125 radio markets, electronically monitored 24 hours a day, 7 days a week. Songs ranked by number of plays in monitored week.

KUBE

Table with 2 columns: Song Title, Rank. Station: KUBE Seattle. PD: Mike Tierney, MD: Shellie Hart.

POWER 92

Table with 2 columns: Song Title, Rank. Station: KFKR Phoenix. PD: Don Parker, MD: Brian Douglas.

KGGI

Table with 2 columns: Song Title, Rank. Station: KGGI Riverside. PD: Bob Lewis, MD: Sonia Jimenez.

FM 102

Table with 2 columns: Song Title, Rank. Station: KSFM Sacramento. PD: Rick Thomas, MD: Trejo.

KTFM

Table with 2 columns: Song Title, Rank. Station: KTFM San Antonio. PD: Cliff Tredway, APD/MD: Charles Chavez.

92Q

Table with 2 columns: Song Title, Rank. Station: WERQ Baltimore. PD: Russ Allen, MD: Camille Cashwell.

KS104

Table with 2 columns: Song Title, Rank. Station: KQKS Denver. PD: Mark Feather, APD: Michael Hayes, MD: John Dickenson.

Z90

Table with 2 columns: Song Title, Rank. Station: XHTZ San Diego. OM/ PD: Lisa Vazquez, APD/MD: Jeff Nelson.

B95

Table with 2 columns: Song Title, Rank. Station: KBOS Fresno. PD: Mark Adams, MD: Nikey Freeman.

102 JAMZ

Table with 2 columns: Song Title, Rank. Station: WJMH Greensboro. PD: Brian Douglas, MD: Horse Raney.

POWER 102

Table with 2 columns: Song Title, Rank. Station: KPRR El Paso. PD: John Candelaria.

KIX 106

Table with 2 columns: Song Title, Rank. Station: WWCX Providence. PD: Joe Dawson, MD: Naughty Boy.

KLUC

Table with 2 columns: Song Title, Rank. Station: KLUC Las Vegas. PD: Jerry Dean, MD: Cat Thomas.

KDON

Table with 2 columns: Song Title, Rank. Station: KDON Monterey/Salinas. PD: Michael Newman, MD: Jennifer Wilde.

KISS 97.3

Table with 2 columns: Song Title, Rank. Station: KKSS Albuquerque. PD: Roy Jaynes, MD: Jackie James.

HOOSIER 96.3

Table with 2 columns: Song Title, Rank. Station: WHHH Indianapolis. PD: Scott Wheeler, MD: Carl Frye.

94.1 JAMZ

Table with 2 columns: Song Title, Rank. Station: KJMZ Las Vegas. PD: Mike Marino, APD: M.C. Scrapy, MD: Kid Stevz.

KZFM

Table with 2 columns: Song Title, Rank. Station: KZFM Corpus Christi. PD: Charlie Maxx.

★ ★ ★ **AIRPOWER** ★ ★ ★  
(Minimum 600 detections for the first time)

NO RECORDS QUALIFIED FOR AIRPOWER THIS WEEK

**AIRPOWER BOUND**

Total Plays/Gain

**L.A.D. FEAT. DARVY TRAYLOR** 528/24  
*Ridin' Low (Hollywood)*  
Total Stations: 20/Chart Move: 16-16  
Heavy (40+ plays): 3 KPRR, KYLD, WHHH  
Medium (20-39): 9 KCAQ, KGGI, KKSS, KLUC, KMEL, KPWR, KUBE, WJJS, XHTZ  
Light (Under 20): 8

**EVERYTHING BUT THE GIRL** 492/61  
*Missing (Atlantic)*  
Total Stations: 18/Chart Move: 23-18  
Heavy (40+): 5 KGGI, KKFR, KPRR, WBBM, WJJS  
Medium (20-39): 6 KBOS, KJMZ, KXX, KUBE, KZHT, WWKX  
Light (Under 20): 7

**BRANDY** 479/97  
*Sittin' Up In My Room (Arista)*  
Total Stations: 22/Chart Move: 24-19  
Heavy (40+): 4 KDON, WJMH, WJMN, XHTZ  
Medium (20-39): 8 KBXX, KMEL, KTFM, KUBE, WERQ, WHHH, WJJS, WQHT  
Light (Under 20): 10  
New Airplay This Week: 3 KQKS, KUBE, WHHH

**JODECI** 428/51  
*Love U 4 Life (Uptown/MCA)*  
Total Stations: 17/Chart Move: 25-23  
Heavy (40+): 3 KMEL, WJMN, WPGC  
Medium (20-39): 6 KCAQ, KTFM, KZFM, KZHT, WQHT, WWKX  
Light (Under 20): 8

**MADONNA** 361/22  
*You'll See (Maverick/Warner Bros.)*  
Total Stations: 20/Chart Move: 27-25  
Heavy (40+): 1 KKSS  
Medium (20-39): 7 KBOS, KJMZ, KKFR, KLUC, KZHT, WJJS, XHTZ  
Light (Under 20): 12

**MARY J. BLIGE** 313/32  
*Not Gon' Cry (Arista)*  
Total Stations: 13/Chart Move: 32-28  
Heavy (40+): 4 KBXX, WERQ, WJMH, WPGC  
Medium (20-39): 2 WQHT, WWKX  
Light (Under 20): 7  
New Airplay This Week: 3 KMEL, KPRR, WHHH

**JANET JACKSON** 282/44  
*Twenty Foreplay (A&M)*  
Total Stations: 15/Chart Move: 40-30  
Heavy (40+): 1 KDON  
Medium (20-39): 7 KLUC, KPRR, KZFM, KZHT, WJJS, WPOW, WWKX  
Light (Under 20): 7

**L.V.** 268/22  
*Throw Your Hands Up (Tommy Boy)*  
Total Stations: 16/Chart Move: 37-31  
Heavy (40+): 3 KKSS, KPWR, KYLD  
Medium (20-39): 1 WJMN  
Light (Under 20): 12

**N-TRANCE** 246/6  
*Stayin' Alive (Radikal/Avex-Critique)*  
Total Stations: 10/Chart Move: 39-35  
Heavy (40+): 1 KUBE  
Medium (20-39): 3 KPRR, WBBM, WWKX  
Light (Under 20): 6

**THE CLICK** 226/4  
*Hurricane (Sick Wid' It/Jive)*  
Total Stations: 13/Chart Move: Debut 40  
Heavy (40+): 2 KKSS, WJMH  
Medium (20-39): 2 KYLD, WHHH  
Light (Under 20): 9

**CHART BOUND**

Total Plays/Gain

**FROST** 226/1  
*East Side Rendezvous (Ruthless/Relativity)*  
Total Stations: 11  
Heavy (40+): 1 KKSS  
Medium (20-39): 5 KGGI, KPWR, KYLD, KZFM, WHHH  
Light (Under 20): 5

**R. KELLY** 210/0  
*Down Low (Nobody Hes To Know) (Jive)*  
Total Stations: 8  
Heavy (40+): 3 KBXX, WJMH, WPGC  
Medium (20-39): 2 KYLD, WERQ  
Light (Under 20): 3  
New Airplay This Week: 1 KYLD

**TOTAL** 210/23  
*No One Else (Arista)*  
Total Stations: 16  
Heavy (40+): 1 WERQ  
Medium (20-39): 4 KMEL, WJMH, WPGC, WQHT  
Light (Under 20): 11

**DENINE** 203/19  
*All Cried Out (Metropolitan)*  
Total Stations: 9  
Heavy (40+): 3 KPRR, KTFM, XHTZ  
Medium (20-39): 0  
Light (Under 20): 6  
New Airplay This Week: 2 KUBE, KZHT

**MOST NEW AIRPLAY THIS WEEK**

No. Of Stations

<b>LINA SANTIAGO</b> <i>Feels So Good (Universal)</i>	6
<b>MARY J. BLIGE</b> <i>Not Gon' Cry (Arista)</i>	3
<b>BRANDY</b> <i>Sittin' Up In My Room (Arista)</i>	3
<b>DEVONE</b> <i>Energy (Aqua Boogie)</i>	3
<b>DENINE</b> <i>All Cried Out (Metropolitan)</i>	2
<b>SHAWN STOCKMAN</b> <i>Visions Of A Sunset (Polydor)</i>	2

**RUFFNECK FEAT. YAVAHN** 194/24  
*Everybody Be Somebody (Maw/Strictly Rhythm)*  
Total Stations: 15  
Heavy (40+): 2 KDON, KYLD  
Medium (20-39): 0  
Light (Under 20): 13

**YVETTE MICHELLE** 193/5  
*Everyday & Everynight (Loud/RCA)*  
Total Stations: 13  
Heavy (40+): 1 WJMH  
Medium (20-39): 2 WHHH, WQHT  
Light (Under 20): 10  
New Airplay This Week: 1 WERQ

**LL COOL J** 185/20  
*Doin It (Def Jam/RAL/Island)*  
Total Stations: 9  
Heavy (40+): 2 KYLD, WJMH  
Medium (20-39): 1 KMEL  
Light (Under 20): 6

**MARIAH CAREY** 176/42  
*Open Arms (Columbia)*  
Total Stations: 7  
Heavy (40+): 2 KUBE, WBBM  
Medium (20-39): 2 KJMZ, KTFM  
Light (Under 20): 3  
New Airplay This Week: 1 KPRR

**★ 2PAC** 171/105  
*California Love (Death Row/Interscope)*  
Total Stations: 11  
Heavy (40+): 1 KYLD  
Medium (20-39): 2 KMEL, KPWR  
Light (Under 20): 8  
New Airplay This Week: 1 WPOW

**BOYZ II MEN** 156/65  
*I Remember (Motown)*  
Total Stations: 7  
Heavy (40+): 1 KKFR  
Medium (20-39): 3 KKSS, KXX, WQHT  
Light (Under 20): 3

**DEVONE** 134/4  
*Energy (Aqua Boogie)*  
Total Stations: 12  
Heavy (40+): 1 KPWR  
Medium (20-39): 0  
Light (Under 20): 11  
New Airplay This Week: 3 WBBM, WJJS, XHTZ

**DEBORAH COX** 127/29  
*Who Do U Love (Arista)*  
Total Stations: 9  
Heavy (40+): 0

Medium (20-39): 4 KZFM, WERQ, WPGC, XHTZ  
Light (Under 20): 5

**R. KELLY** 120/13  
*(You To Be) Be Happy (Jive)*  
Total Stations: 5  
Heavy (40+): 1 WJMH  
Medium (20-39): 2 WPGC, WQHT  
Light (Under 20): 2

**★ MARIAH CAREY** 107/54  
*Always Be My Baby (Columbia)*  
Total Stations: 4  
Heavy (40+): 2 KGGI, KSFM  
Medium (20-39): 1 KBXX  
Light (Under 20): 1

**★ LINA SANTIAGO** 107/107  
*Feels So Good (Universal)*  
Total Stations: 7  
Heavy (40+): 1 KYLD  
Medium (20-39): 0  
Light (Under 20): 6  
New Airplay This Week: 6 KGGI, KMEL, KPWR, KTFM, KYLD, XHTZ

**MONIFAH** 106/31  
*I Miss You (Come Back Home) (Uptown/MCA)*  
Total Stations: 10  
Heavy (40+): 0  
Medium (20-39): 2 WERQ, WQHT  
Light (Under 20): 8  
New Airplay This Week: 1 KDON

**L.B.C. CREW** 101/1  
*Beware Of My Crew (Jac-Mac/Warner Bros.)*  
Total Stations: 6  
Heavy (40+): 1 KPWR  
Medium (20-39): 1 KYLD  
Light (Under 20): 4

**ACE OF BASE** 93/21  
*Lucky Love (Arista)*  
Total Stations: 5  
Heavy (40+): 1 KUBE  
Medium (20-39): 2 KTFM, WBBM  
Light (Under 20): 2

**FROST** 84/15  
*La Familia (Ruthless/Relativity)*  
Total Stations: 3  
Heavy (40+): 0  
Medium (20-39): 3 KMEL, KPWR, KYLD  
Light (Under 20): 0

**LOST BOYZ** 84/21  
*Jeeps, Lex Coups, Bimaz & Benz (Uptown/MCA)*  
Total Stations: 4  
Heavy (40+): 0  
Medium (20-39): 2 WJMH, WPGC  
Light (Under 20): 2  
New Airplay This Week: 1 WERQ

**IMMATURE** 76/29  
*Please Don't Go (MCA)*  
Total Stations: 9  
Heavy (40+): 0  
Medium (20-39): 1 WPGC  
Light (Under 20): 8  
New Airplay This Week: 1 KMEL

**SLOW PAIN** 75/3  
*Money Meid (Thump)*  
Total Stations: 6  
Heavy (40+): 0  
Medium (20-39): 2 KPWR, WWKX  
Light (Under 20): 4

**BACKSTREET BOYS** 74/12  
*We've Got It Goin' On (Jive)*  
Total Stations: 8  
Heavy (40+): 1 KLUC  
Medium (20-39): 0  
Light (Under 20): 7

**ALEX PARTY** 70/10  
*Don't Give Me Your Life (ffrr/London)*  
Total Stations: 3  
Heavy (40+): 0  
Medium (20-39): 2 KKFR, KZHT  
Light (Under 20): 1

**TWINZ** 63/2  
*Eastside LB (G-Funk/RAL/Island)*  
Total Stations: 6  
Heavy (40+): 0  
Medium (20-39): 1 KPWR  
Light (Under 20): 5  
New Airplay This Week: 1 KDON

**★ SOLO** 57/12  
*Where Do U Want Me To Put It (Perspective/A&M)*  
Total Stations: 2  
Heavy (40+): 0  
Medium (20-39): 2 KBXX, WPGC  
Light (Under 20): 0

**★ THE CLICK** 56/26  
*Scandalous (Sick Wid' It/Jive)*  
Total Stations: 5  
Heavy (40+): 0  
Medium (20-39): 1 KYLD  
Light (Under 20): 4  
New Airplay This Week: 1 KYLD

**★ JOE** 53/20  
*All The Things (Island)*  
Total Stations: 4  
Heavy (40+): 0  
Medium (20-39): 1 WERQ  
Light (Under 20): 3

**★ TLC** 51/22  
*This Is How It Works (Arista)*  
Total Stations: 4  
Heavy (40+): 0  
Medium (20-39): 1 WQHT  
Light (Under 20): 3

Airpower awarded to those records which attain 600 detections for the first time. New airplay lists those stations registering six or more detections per week on a record for the first time. ★ Initial impact: records appearing on this page for the first time.

SONG ACTIVITY REPORTS For Week Ending December 31, 1995

Monitor AIRPLAY Broadcast Data Systems

2PAC 171/105 California Love (Death Row/Interscope) Total Stations: 11

MARY J. BLIGE 313/32 Not Gon' Cry (Arista) Total Stations: 13

BOYZ II MEN 156/65 I Remember (Motown) Total Stations: 7

BRANDY 479/97 Sittin' Up in My Room (Arista) Total Stations: 22

MARIAH CAREY 1024/24 Fantasy (Columbia) Total Stations: 31

MARIAH CAREY 176/42 Open Arms (Columbia) Total Stations: 7

THE CLICK 226/4 Hurricane (Slick Wid It/Jive) Total Stations: 13

DEBORAH COX 127/29 Who Do U Love (Arista) Total Stations: 9

DENINE 203/19 All Cried Out (Metropolitan) Total Stations: 9

DEVONE 134/4 Energy (Aqua Boogie) Total Stations: 12

EVERYTHING BUT THE GIRL 492/61 Missing (Atlantic) Total Stations: 18

FROST 226/1 East Side Rendezvous (Ruthless/Relativity) Total Stations: 11

WHITNEY HOUSTON 1181/88 Exhale (Shoop Shoop) (Arista) Total Stations: 29

JANET JACKSON 282/44 Twenty Foreplay (A&M) Total Stations: 15

JODECI 428/51 Love U 4 Life (Uptown/MCA) Total Stations: 17

R. KELLY 120/13 (You To Be) Be Happy (Jive) Total Stations: 5

R. KELLY 210/0 Down Low (Nobody Has To Know) (Jive) Total Stations: 8

L.A.D. FEAT. DARVY TRAYLOR 528/24 Ridin' Low (Hollywood) Total Stations: 20

L.V. 268/22 Throw Your Hands Up (Tommy Boy) Total Stations: 16

LA BOUCHE 770/96 Be My Lover (RCA) Total Stations: 21

ILL COOL J 1239/8 Hey Lover (Def Jam/RAL/Island) Total Stations: 31

LL COOL J 185/20 Doin It (Def Jam/RAL/Island) Total Stations: 9

MADONNA 361/22 You'N See (Maverick/Warner Bros.) Total Stations: 29

YVETTE MICHELLE 193/5 Everyday & Everynight (Loud/RCA) Total Stations: 13

MONICA 989/53 Before You Walk Out Of My Life (Rowdy/Arista) Total Stations: 29

N-TRANCE 246/6 Stayin' Alive (Radikal/Avex-Critique) Total Stations: 10

PLANET SOUL 789/76 Set U Free (Strictly Rhythm) Total Stations: 24

RUFFNECK FEAT. YAVAHN 194/24 Everybody Be Somebody (Maw/Strictly Rhythm) Total Stations: 15

TLC 897/35 Diggin' On You (LaFace/Arista) Total Stations: 27

TOTAL 102/23 No One Else (Arista) Total Stations: 16



POWER PLAYLISTS

For Week Ending December 31, 1995



Playlists supplied by Broadcast Data Systems' Radio Track service...

Main table containing 24 columns of radio station playlists (e.g., WPLJ, MIX 105, STAR 98.7, STAR 104.5, B101, WPNT, MIX 101.9, Q95, MIX 107.3, MIX 98.5, K101, KS95, MIX 96.5, Q104, MIX 102.9, STAR 101.5, KYKY, MIX 96, WALK, VARIETY 96, WKTI, WBLI, ALICE 106, STAR 100.7) with columns for station name, PD, MD, and a list of songs with their respective TW and LW values.

**BDS IMPACT**

**AIRPOWER**  
(Minimum 600-detections for the first time)

**EVERYTHING BUT THE GIRL** 622/28  
*Missing (Atlantic)*  
Total Stations: 31/Chart Move: 19-19  
Heavy (30+ plays): 5 KALC, KDMX, KPLZ, KYSR, WQLH  
Medium (15-29): 15 KFMB, KHM, KSTP, KTHT, WBLI, WBMX, WEZF, WKDD, WKTI, WKZL, WMC, WMJQ, WMTX, WPLJ, WYXR  
Light (Under 15): 11  
New Airplay This Week: 3 WKZL, WMJQ, WYYY  
Airplay Leaders: 1 WZPK

**AIRPOWER BOUND**

Total Plays/Gain

**NATALIE MERCHANT** 380/10  
*Wonder (Elektra/EEG)*  
Total Stations: 22/Chart Move: 25-24  
Heavy (30+ plays): 5 KALC, KWMX, KYSR, WQLH, WTMX  
Medium (15-29): 7 KDMX, KFMB, KHM, KPLZ, WKDD, WVTY, WWSN  
Light (Under 15): 10  
New Airplay This Week: 1 WAHR

**MELISSA ETHERIDGE** 322/9  
*I Want To Come Over (Island)*  
Total Stations: 21/Chart Move: 31-28  
Heavy (30+): 1 KYSR  
Medium (15-29): 11 KDMX, KFMB, KHM, KPLZ, KWMX, WKQI, WKTI, WMXV, WQAL, WQLH, WWSN  
Light (Under 15): 9  
New Airplay This Week: 1 WBLI

**BIG MOUNTAIN** 318/14  
*Get Together (Giant)*  
Total Stations: 16/Chart Move: 33-29  
Heavy (30+): 1 WZPK  
Medium (15-29): 11 KDMX, KIOI, KTHT, KWMX, WEZF, WKTI, WMXV, WMYI, WQLH, WWSN, WYXR  
Light (Under 15): 4  
New Airplay This Week: 1 WALK

**PETER CETERA & CRYSTAL BERNARD** 278/30  
*Forever Tonight (River North)*  
Total Stations: 31/Chart Move: Re-Entry 30  
Heavy (30+): 0  
Medium (15-29): 8 KGBY, KISN, WBEB, WLHT, WMC, WMTX, WMLX, WTFM  
Light (Under 15): 23

**SELENA** 271/10  
*Dreaming Of You (EMI Latin/EMI)*  
Total Stations: 19/Chart Move: 37-31  
Heavy (30+): 2 KIOI, KTHT  
Medium (15-29): 5 KGBX, KGBY, WDEF, WMJQ, WZPK  
Light (Under 15): 12  
New Airplay This Week: 2 WAHR, WBEB

**CELINE DION** 261/6  
*(You Make Me Feel Like) A Natural Woman (Lava/Atlantic)*  
Total Stations: 15/Chart Move: 40-34  
Heavy (30+): 3 WJDX, WMJQ, WYXR  
Medium (15-29): 5 WAHR, WBEB, WDEF, WGSY, WLHT  
Light (Under 15): 7

**JOAN OSBORNE** 213/20  
*One Of Us (Blue Gorilla/Mercury)*  
Total Stations: 14/Chart Move: Re-Entry 36  
Heavy (30+): 1 WZPK  
Medium (15-29): 7 KFMB, KSTP, KWMX, KYSR, WKDD, WKTI, WVTY  
Light (Under 15): 6

**JANN ARDEN** 168/4  
*Insensitive (A&M)*  
Total Stations: 13  
Heavy (30+): 0  
Medium (15-29): 5 KDMX, WBMX, WEZF, WKTI, WMXV  
Light (Under 15): 10

**BRUCE HORNSBY** 135/5  
*Swing Street (RCA)*  
Total Stations: 13  
Heavy (30+): 0  
Medium (15-29): 3 WKTI, WLHT, WMJQ  
Light (Under 15): 10  
New Airplay This Week: 2 KGBX, WEZF

**EDWIN MCCAIN** 125/13  
*Solitude (Lava/Atlantic)*  
Total Stations: 8  
Heavy (30+): 0  
Medium (15-29): 5 KSTP, KWMX, WQLH, WWSN, WZPK  
Light (Under 15): 3

**BLUES TRAVELER** 116/0  
*Hook (A&M)*  
Total Stations: 6  
Heavy (30+): 2 KALC, KYSR  
Medium (15-29): 0  
Light (Under 15): 4

**MOST NEW AIRPLAY THIS WEEK**

<b>EVERYTHING BUT THE GIRL</b> 3 <i>Missing (Atlantic)</i>	<b>BRUCE HORNSBY</b> 2 <i>Swing Street (RCA)</i>	<b>SELENA</b> 2 <i>Dreaming Of You (EMI Latin/EMI)</i>	<b>SMASHING PUMPKINS</b> 2 <i>1979 (Virgin)</i>
---------------------------------------------------------------	-----------------------------------------------------	-----------------------------------------------------------	----------------------------------------------------

**SOUL ASYLUM** 107/0  
*Promises Broken (Columbia)*  
Total Stations: 9  
Heavy (30+): 1 WTMX  
Medium (15-29): 1 WEZF  
Light (Under 15): 7

**BETTER THAN EZRA** 87/23  
*Rosealia (Elektra/EEG)*  
Total Stations: 6  
Heavy (30+): 1 KYSR  
Medium (15-29): 1 WKTI  
Light (Under 15): 4

**BETTER THAN EZRA** 86/20  
*Good (Elektra/EEG)*  
Total Stations: 5  
Heavy (30+): 1 KFMB  
Medium (15-29): 2 KALC, WTMX  
Light (Under 15): 2

**★ SMASHING PUMPKINS** 67/9  
*1979 (Virgin)*  
Total Stations: 4  
Heavy (30+): 0  
Medium (15-29): 2 KALC, KFMB  
Light (Under 15): 2  
New Airplay This Week: 2 KHM, KWMX

**THE PRESIDENTS OF THE UNITED STATES** 63/5  
*Lump (Columbia)*  
Total Stations: 5  
Heavy (30+): 0  
Medium (15-29): 1 KFMB  
Light (Under 15): 4

**★ BODEANS** 59/4  
*Closer To Free (Slash/Reprise)*  
Total Stations: 6  
Heavy (30+): 0  
Medium (15-29): 2 KFMB, WQLH  
Light (Under 15): 4

**REGINA BELLE** 44/12  
*Could It Be I'm Falling In Love (Columbia)*  
Total Stations: 2  
Heavy (30+): 1 WYXR  
Medium (15-29): 0  
Light (Under 15): 1  
New Airplay This Week: 1 WBEB

**MARY CHAPIN CARPENTER** 41/8  
*Grow Old With Me (Hollywood)*  
Total Stations: 4  
Heavy (30+): 0  
Medium (15-29): 2 WAMR, WBEB  
Light (Under 15): 2

THIS WEEK	LAST WEEK	WEEKS ON	TITLE/LABEL	ARTIST	TW	LW	DETECTIONS
1	1	9	★★★ No. 1 ★★★ <b>ONE SWEET DAY</b> COLUMBIA 3 wks at No. 1	MARIAH CAREY & BOYZ II MEN	1446	1506	
2	2	34	<b>AS I LAY ME DOWN</b> COLUMBIA	SOPHIE B. HAWKINS	1369	1413	
3	3	23	<b>BACK FOR GOOD</b> ARISTA	TAKE THAT	1320	1295	
4	4	29	<b>KISS FROM A ROSE</b> ZTT/SIRE/WARNER BROS.	SEAL	1138	1160	
5	5	26	<b>ONLY WANNA BE WITH YOU</b> ATLANTIC	HOOTIE & THE BLOWFISH	1123	1154	
6	6	13	<b>BLESSED</b> ROCKET/ISLAND	ELTON JOHN	1116	1139	
7	7	10	<b>YOU'LL SEE</b> MAVERICK/WARNER BROS.	MADONNA	1094	1121	
8	8	22	<b>ROLL TO ME</b> A&M	DEL AMITRI	1090	1119	
9	9	22	<b>TIL I HEAR IT FROM YOU</b> A&M	GIN BLOSSOMS	1087	1080	
10	10	32	<b>RUN-AROUND</b> A&M	BLUES TRAVELER	997	1066	
11	11	11	<b>EXHALE (SHOOP SHOOP)</b> ARISTA	WHITNEY HOUSTON	951	985	
12	12	14	<b>NAME</b> METAL BLADE/WARNER BROS.	GOO GOO DOLLS	837	855	
13	14	20	<b>RUNAWAY</b> A&M	JANET JACKSON	835	831	
14	15	19	<b>CARNIVAL</b> ELEKTRA/EEG	NATALIE MERCHANT	814	827	
15	13	13	<b>BREAKFAST AT TIFFANY'S</b> RAINMAKER/INTERSCOPE	DEEP BLUE SOMETHING	807	843	
16	16	11	<b>TIME</b> ATLANTIC	HOOTIE & THE BLOWFISH	722	712	
17	17	34	<b>I'LL BE THERE FOR YOU</b> EASTWEST/EEG	THE REMBRANDTS	685	640	
18	18	32	<b>I CAN LOVE YOU LIKE THAT</b> BLITZZ/ATLANTIC	ALL-4-ONE	674	613	
19	19	7	★★★ AIRPOWER ★★★ <b>MISSING</b> ATLANTIC	<b>EVERYTHING BUT THE GIRL</b>	622	594	
20	21	22	<b>DECEMBER</b> ATLANTIC	COLLECTIVE SOUL	544	531	
21	20	14	<b>GOOD INTENTIONS</b> COLUMBIA/REPRISE	TOAD THE WET SPROCKET	541	558	
22	22	19	<b>FANTASY</b> COLUMBIA	MARIAH CAREY	483	465	
23	23	6	<b>DON'T CRY</b> ZTT/WARNER BROS.	SEAL	439	444	
24	25	4	<b>WONDER</b> ELEKTRA/EEG	NATALIE MERCHANT	380	370	
25	30	25	<b>I COULD FALL IN LOVE</b> EMI LATIN/EMI	SELENA	374	330	
26	28	13	<b>I WILL REMEMBER YOU</b> ARISTA	SARAH MCLACHLAN	364	344	
27	26	6	<b>FREE AS A BIRD</b> APPLE/CAPITOL	THE BEATLES	333	365	
28	31	2	<b>I WANT TO COME OVER</b> ISLAND	MELISSA ETHERIDGE	322	313	
29	33	4	<b>GET TOGETHER</b> GIANT	BIG MOUNTAIN	318	304	
30	RE-ENTRY		<b>FOREVER TONIGHT</b> RIVER NORTH	PETER CETERA & CRYSTAL BERNARD	278	248	
31	37	3	<b>DREAMING OF YOU</b> EMI LATIN/EMI	SELENA	271	261	
32	38	24	<b>WATERFALLS</b> LAFACE/ARISTA	TLC	262	255	
33	36	7	<b>HAND IN MY POCKET</b> MAVERICK/REPRISE	ALANIS MORISSETTE	262	264	
34	40	5	<b>(YOU MAKE ME FEEL LIKE) A NATURAL WOMAN</b> LAVA/ATLANTIC	CELINE DION	261	255	
35	39	15	<b>RUNAWAY</b> 143/LAVA/ATLANTIC	THE CORRS	231	255	
36	RE-ENTRY		<b>ONE OF US</b> BLUE GORILLA/MERCURY	JOAN OSBORNE	213	193	
37	RE-ENTRY		<b>LET ME BE THE ONE</b> EMI	BLESSID UNION OF SOULS	196	184	
38	RE-ENTRY		<b>YOU ARE NOT ALONE</b> EPIC	MICHAEL JACKSON	195	183	
39	NEW		<b>A LOVE SO BEAUTIFUL</b> COLUMBIA	MICHAEL BOLTON	190	192	
40	RE-ENTRY		<b>ANTS MARCHING</b> RCA	DAVE MATTHEWS BAND	183	182	

Records showing an increase in detections over the previous week, regardless of chart movement. A record which has been on the chart for more than 20 weeks will not receive a bullet, even if it registers an increase in detections. Airpower awarded to those records which attain 600 detections for the first time. If two records are tied in number of plays, the record being played on more stations is placed first. Records below the top 20 are removed from the chart after 26 weeks. © 1996, Billboard/BPI Communications.

**MICHAEL JACKSON** 37/14  
*MJ Megamix (Epic)*  
Total Stations: 14  
Heavy (30+): 0  
Medium (15-29): 0  
Light (Under 15): 13  
New Airplay This Week: 1 WIVY

**JOHN HIATT** 28/5  
*Cry Love (Capitol)*  
Total Stations: 4  
Heavy (30+): 0  
Medium (15-29): 1 WTMX  
Light (Under 15): 3  
New Airplay This Week: 1 WKTI

**CHRIS ISAAK** 33/12  
*Go Walking Down There (Reprise)*  
Total Stations: 1  
Heavy (30+): 1 KYSR  
Medium (15-29): 0  
Light (Under 15): 0

**GERALD & EDDIE LEVERT, SR.** 28/8  
*Already Missing You (EastWest/EEG)*  
Total Stations: 3  
Heavy (30+): 0  
Medium (15-29): 1 WJDX  
Light (Under 15): 2

For Week Ending December 31, 1995

Detailed song tracking information for the last 3 weeks for all songs showing increased play this week. Total plays and gain do not include video play. Markets listed in order of population.

Grid of song activity reports for JANN ARDEN, BETTER THAN EZRA, BIG MOUNTAIN, and BLUES TRAVELER. Each entry includes station codes, week numbers, and play counts.

Grid of song activity reports for BODEANS, PETER CETERA & CRYSTAL BERNARD, CELINE DION, MELISSA ETHERIDGE, and EVERYTHING BUT THE GIRL. Each entry includes station codes, week numbers, and play counts.

Grid of song activity reports for HOOTIE & THE BLOWFISH, BRUCE HORNSBY, JANET JACKSON, EDWIN MCCAIN, and NATALIE MERCHANT. Each entry includes station codes, week numbers, and play counts.

Grid of song activity reports for JOAN OSBORNE, THE PRESIDENTS OF THE UNITED STATES, SELENA, SMASHING PUMPKINS, and SOUL ASYLUM. Each entry includes station codes, week numbers, and play counts.



POWER PLAYLISTS

Los Angeles KROQ, Chicago WKQX, Philadelphia WPLY. Lists top 30 songs for each station with artist and chart position.

Boston WBCN, Detroit WHYT, Dallas KDGE. Lists top 30 songs for each station with artist and chart position.

Washington, DC WHFS, San Francisco KITS, Atlanta WNNX. Lists top 30 songs for each station with artist and chart position.

Main chart listing top 20 songs with columns for THIS WEEK, LAST WEEK, WKS. ON CHART, TITLE/LABEL/DISTRIBUTING LABEL, ARTIST, and DETECTIONS (TW, LW).

Records showing an increase in detections over the previous week, regardless of chart movement. A record which has been on the chart for more than 20 weeks will not receive a bullet, even if it registers an increase in detections.

Additional charts for Minneapolis KEGE, Cleveland WMMS, and San Jose KOMA. Lists top 30 songs for each station with artist and chart position.

Large promotional graphic for Monitor AIRPLAY with text: 20,000 READERS STRONG CLASSIFIED Monitor AIRPLAY



②1 Soundscan Album

164,000 units soundscanned last week

③0 Top 40/Rhythm-Crossover Airplay Chart

②6 R&B Mainstream Airplay Chart

③2 R&B Adult Airplay Chart

KLUC	35x	WXXL	18x
WYHY	24x	KQKS	18x
WPOW	24x	WFLZ	16x
KRQQ	22x	WGTZ	14x
KZHT	22x	WNVZ	13x
WWKX	21x		

"Feel your love spread throughout me  
When you kiss my lips more than words can say, oh  
Seeing your face glow is the nicest of hellos"

janet jackson

*Twenty  
foreplay*

the new single from  
DESIGN OF A DECADE 1986/1996



©1995 Black & Blue Publishing, BMI/ASCAP Music, Inc./The Music Trust/ASCAP. Produced and arranged by Janet Jackson & Jimmy Lewis for Five Four Productions, Inc. and Janet Jackson for Black Dot, Inc. Management: Bruce Davies. ©1995 A&M Records, Inc. All rights reserved.

World Radio History

Compiled from a national sample of airplay stations by Broadcast Data Systems. Radio tracks ranked by Top 40 Airplay Monitor. All Top 40 detections and Top 40 Rhythmic Monitor detections are automatically included on charts 1 through 7 days a week. Songs are ranked by number of detections. © 1995, Broadcast Data Systems.

THIS WEEK	LAST WEEK	WKS. ON CHART	DETECTIONS	
			TW	LW
<b>MAINSTREAM</b>				
★★★ No. 1 ★★★				
1	1	10	3572	3540
2	2	15	3173	3260
3	3	22	2678	2717
4	4	7	2523	2480
5	6	12	2334	2302
6	5	13	2292	2429
7	9	19	2207	2057
8	8	9	2180	2076
9	10	10	2055	2001
10	7	10	2052	2106
11	11	7	1964	1881
12	12	26	1932	1844
13	13	20	1812	1737
14	14	23	1738	1666
15	15	6	1706	1662
16	20	27	1591	1347
17	18	27	1587	1412
18	17	23	1554	1495
19	16	14	1541	1641
20	19	11	1378	1401
21	21	23	1279	1289
22	23	24	1229	1210
23	24	5	1222	1117
24	25	8	1120	1087
25	31	4	1110	998
26	28	5	1106	1057
27	27	4	1100	1070
28	29	17	1081	1025
29	26	25	1062	1070
30	30	23	1039	1023
31	32	4	924	957
32	36	7	896	815
33	34	7	892	882
34	35	11	856	848
35	37	13	781	812
36	40	2	717	591
37	38	4	705	724
38	39	18	685	667
39	<b>NEW</b>		609	556
40	<b>RE-ENTRY</b>		589	488

THIS WEEK	LAST WEEK	WKS. ON CHART	DETECTIONS	
			TW	LW
<b>RHYTHM-CROSSOVER</b>				
★★★ No. 1 ★★★				
1	1	13	1598	1607
2	2	10	1239	1231
3	4	11	1181	1093
4	3	20	1117	1123
5	5	19	1024	1000
6	6	13	989	936
7	8	15	897	862
8	7	15	874	890
9	9	5	833	847
10	12	14	789	713
11	13	10	770	674
12	11	17	727	748
13	10	12	708	785
14	17	21	547	487
15	14	14	535	544
16	16	10	528	504
17	15	20	509	525
18	23	9	492	431
19	24	5	479	382
20	20	20	475	466
21	18	9	469	469
22	21	5	430	444
23	25	6	428	377
24	19	8	409	467
25	27	10	361	339
26	29	24	327	320
27	28	11	315	326
28	32	3	313	281
29	26	10	312	359
30	40	2	282	238
31	37	4	268	246
32	<b>RE-ENTRY</b>		267	237
33	34	14	265	261
34	33	3	259	276
35	39	2	246	240
36	35	3	244	260
37	30	20	237	307
38	36	3	236	253
39	<b>RE-ENTRY</b>		233	192
40	<b>NEW</b>		226	222

Records showing an increase in detections over the previous week, regardless of chart movement. A record which has been on either chart for more than 20 weeks will not receive a bullet, even if it registers an increase in detections. Airpower awarded to those records which attain 1500 detections (mainstream) or 600 detections (rhythm) for the first time. If two records are tied in number of plays, the record being played on more stations is placed first. Records below the top 20 are removed from the chart after 26 weeks.

**1996 FLAVA' OF THE YEAR • THE SOUNDTRACK**

JODECI, GHOSTFACE KILLA featuring WU-TANG, R. KELLY, ISLEY BROTHERS, LOST BOYZ, JUNIOR M.A.F.I.A.'S LIL KIM, MONA LISA, and MANY MORE.

Featuring:

JOE "ALL THE THINGS (YOUR MAN WON'T DO)" IMPACT DATE: JANUARY 16TH  
AND INTRODUCING MONA LISA "CAN'T BE WASTING MY TIME" IMPACT DATE: JANUARY 30TH  
SOUNDTRACK IN STORES JANUARY 9, 1996  
FILM OPENS JANUARY 12, 1996

EXECUTIVE PRODUCER: MURRAY CLOSE  
MUSICAL SUPERVISOR: "SUTTKIN" TIM DAWG

