

# TOP 40 ■ AIRPLAY Monitor

• We Listen To Radio •

November 24, 1995 \$ 4.95 Volume 3 • No. 48

## TOP 40 HIGHLIGHTS

### MAINSTREAM

#1

MARIAH CAREY

*Fantasy* (COLUMBIA)

★★★★ AIRPOWER ★★★★★

TOAD THE WET SPROCKET • *Good Intentions* (COLUMBIA/REPRISE)

### NEW RELEASES

BODEANS • *Closer To Free* (SLASH/REPRISE)

EAST 17 • *Stay Another Day* (LONDON)

CYNDI LAUPER • *I'm Gonna Be Strong* (EPIC)

QUEEN • *Too Much Love Will Kill You* (HOLLYWOOD)

LUTHER VANDROSS • *Every Year, Every Christmas* (LV/EPIC)

### RHYTHM-CROSSOVER

#1

MARIAH CAREY

*Fantasy* (COLUMBIA)

★★★★ AIRPOWER ★★★★★

LA BOUCHE • *Be My Lover* (RCA)

R. KELLY • *You Remind Me Of Something* (JIVE)

### NEW RELEASES

EAST 17 • *Stay Another Day* (LONDON)

RUFFNECK FEATURING YAVAHN • *Everybody Be Somebody* (MAW/STRICTLY RHYTHM)

LUTHER VANDROSS • *Every Year, Every Christmas* (LV/EPIC)

### ADULT

#1

SOPHIE B. HAWKINS

*As I Lay Me Down* (COLUMBIA)

★★★★ AIRPOWER ★★★★★

NO RECORDS QUALIFIED FOR AIRPOWER THIS WEEK

### NEW RELEASES

CYNDI LAUPER • *I'm Gonna Be Strong* (EPIC)

AARON NEVILLE • *Everyday Of My Life* (A&M)

STING • *Moonlight* (A&M)

LUTHER VANDROSS • *Every Year, Every Christmas* (LV/EPIC)

## Sexual Harassment Still A Live Issue On Music Day, Say Female Label Reps

by Kevin Carter, Janine McAdams,  
Phyllis Stark, and Sean Ross

Sexual harassment of female record reps at the radio level may not be as blatant as it was a decade ago, but it still exists as more than an isolated problem, according to a survey of female local and national promoters.

Awareness of sexual harassment has been in the foreground since the early '90s. It has become a hot topic again this week following reports that the recent firings of two station personnel may have stemmed from sexual harassment allegations by a local rep. Neither the station nor the label reportedly involved will comment on the issue. Neither the rep allegedly involved nor one of the radio people contacted would return phone calls. But many female reps in all the Airplay Monitor formats—while insisting on

anonymity—had plenty to say on the overall issue.

The consensus is that "ever since Anita Hill, it's gone underground," as one regional puts it, but harassment has hardly gone away, even if it's only a matter of being constantly propositioned by PDs and MDs. "The situation still goes on. I find the attitude toward women in this industry is still very old school," adds a counterpart.

Sometimes the harassment is blatant. "I had one particular programmer who always came on too strong and was always offensive to me," says one pop regional rep. "I told him to stop, but he just kept it up, so I told my superiors I couldn't deal with it anymore. No add is worth dealing with that situation."

"It's deep," says one R&B regional. "When I first started, there was one programmer who never took my

*Continued on page 5*

# NOW MORE THAN EVER.

# GET TOGETHER



# BIG MOUNTAIN

The debut single from their new album RESISTANCE

## WHAT A DEBUT WEEK!

MAINSTREAM

#1 Most New Airplay! - 30 Stations

#2 Greatest Airplay Gainer - 558 Spins, Up 464!

RHYTHMICROSSOVER

87 New Spins, On Over 10 Stations Including:  
Z90, KKFR, KZHT, KDON, KCAQ, WJJS, KIKI, KHTN

OVER 4.2 MILLION COMBINED  
AUDIENCE REACH!

Produced by Aaron Zigman. Co-Produced by Jeff Aldrich & Bruce Caplin  
Management: Euro Rec Entertainment • ©1995 Giant Records

giant

# return of THE RENTALS

FEATURING

## "Friends of P."

**#7 - MODERN ROCK MONITOR**

**Z100 KRBE  
TOP 10 REQUESTS**

**ALREADY SPINNING ON:**

**WEDJ KUTQ  
WDCG KHTY  
WZNY WBHT  
WJET WRQK**



**BUZZ CLIP**

**ON TOUR WITH  
ALANIS MORISSETTE  
NOW!**

**ON YOUR DESK NOW!**

For more information on THE RENTALS write to:  
The Data Lab, 9311 South East Foster Road Box 922, Portland, OR 97268

Visit THE RENTALS Web Site at <http://www.RepriseRec.com/>

Management: Pat Magnarella and Bob Cavallo for Atlas/Third Rail



## Promos Announced By Nationwide; Woods Is In

Nationwide Communications has announced a slew of promotions following the recent death of NCI president Mickey Franko.

WNCI Columbus, Ohio, PD/group PD Dave Robbins is upped to GM, replacing Dan Morris, a 35-year veteran of Columbus radio, who is promoted to Nationwide VP/radio, responsible for all company properties east of the Mississippi.

Current WHTZ (Z100) New York GM Clancy Woods returns to the Nationwide family as VP/radio for stations west of the Missis-

issippi. Woods formerly ran Nationwide's KRQQ Tucson, Ariz., and KHMx Houston.

WNCI APD/MD/promotions director/11-year station veteran Dan Bowen is named interim PD at WNCI. Assistant promotions director Ross Kuhns is covering the promotions department.

Robbins, a 20-year radio veteran, has been with Nationwide since 1988. He was named medium market OM/PD of the year at last month's Billboard/Airplay Monitor Radio Awards. Bowen and WNCI won national awards. **KEVIN CARTER**

## Surf Undresses For Needy; Needy Mull Offer



In response to a recent cold snap, WRVQ (Q94) Richmond, Va., MD/night jock Billy Surf removed an article of clothing on the air for every 25 coats donated to charity by listeners. Surf, right, and PD Lisa McKay are shown at the 125-coat mark.

## TOP 40 TOPICS

by Sean Ross

### The Format's Mid-'80s Heritage Lives On!

**H**eritage top 40. The phrase seems like an oxymoron these days. When it is used, it's often a way of describing a station that's switching to country or hot AC or anything else. Until recently, top 40 has increasingly been the province of class-A FMs that were not part of the market 10 years ago. The sounds of the glory days of 1983-86 seem like the most distant of echoes.

There are still heritage top 40s changing format. **KQHT** Grand Forks, N.D., is in the process of doing so. **WEZB** (B97) New Orleans just made the transition to talk. But there's little comfort in knowing that one has time to count format changes today, as opposed to two years ago, when changes came so rapidly that there was no time to reflect on one heritage top 40's demise before the next was rumored.

Although *M Street Journal* shows that two-thirds of the format have bailed since 1989, most of the stations now in the format are genuine heritage top 40s.

Of the 112 top 40/mainstream and top 40/rhythm reporters represented in *Top 40 Airplay Monitor*, 58 stations, or about 60%, were top 40 with the same call letters on this day in 1985. Another 16 were either top 40 with different calls or have been in and out of the format since 1985. Only 38—a little more than one-third—were something different.

Who was top 40 10 years ago? **WHTZ** (Z100) New York; **KIIS** Los Angeles; **WBBM-FM** (B96) Chicago; **WXKS-FM** (Kiss 108) Boston; **WBZZ** (B94) Pittsburgh; **WKRQ** (Q102) Cincinnati; **KUBE** Seattle; **KMEL** San Francisco; **KSFM** (FM102) Sacramento, Calif.; **KKRZ** (Z100) Portland, Ore.; **WPRO-FM** Providence, R.I.; **WZPL** Indianapolis; **WKSE** (Kiss 98.5) Buffalo, N.Y.; **WKSS** and **WTIC-FM** Hartford, Conn.; **WPXY** Rochester, N.Y.; **KJYO** (KJ103) Oklahoma City; **WRVQ** (Q94) Richmond, Va.; **WKRZ** Wilkes-Barre, Pa.; and **KQKQ** (Sweet 98) Omaha, Neb. And that's just a few of the stations with continuous service in the format.

**KHKS** (Kiss 106.1) Dallas; **WSTR** (Star 94) Atlanta; **WXXL** (XL106.7) Orlando, Fla.; and **WMXQ** (Mix 94.5) Birmingham, Ala., were all top 40 10 years ago, although you knew them as **KTKS**, **WQXI-FM** (94Q), **WHLY** (Y106), and **WAPI-FM** (195), respectively.

WNCI Columbus, Ohio; **WSSX** (95SX) Charleston, S.C.; and **WHOT** Youngstown, Ohio, were also top 40 a decade ago. They were heritage stations at the time, so their subsequent brief stints in AC (WNCI and WSSX) and rock (WHOT) seem long forgotten. **KRBE** Houston was in the format 10 years ago. It could claim a 20-year top 40 legacy, except that in 1985 it had just returned to top 40 after a three-year dalliance with AC.

Some entrenched top 40s feel like they've

been around for a decade but haven't. **KKLQ** (Q106) San Diego featured classic hits 10 years ago. **WFLZ** Tampa, Fla., was going through a rapid succession of formats, including AC, when it was known, ironically, as "OJ93"—it probably should have fought O.J. Simpson's lawyers to keep those O.J. billboards up. **KPWR** (Power 106) Los Angeles will celebrate its 10th anniversary in January, but in November 1985, it was hot AC **KMGG** (Magic 106).

Then there are the stations that were very different 10 years ago. **KJMZ** Las Vegas was easy listening. **WIOQ** (Q102) Philadelphia was triple-A before triple-A was recognized as a format. **KBXX** (the Box) Houston was **KFMK**, a '70s oldies station, before anybody recognized that as a format. **WERQ** (92Q) Baltimore was AC **WYST-FM** (92 Star). **WQHT** (Hot 97) New York was AC **WYNY**. (The station that would come to be known as "Hot 103.5" before swapping frequencies with WYNY was the then-rockin' **WAPP**.) **WWCK** Flint, Mich., was a rock station; it became one of the last stations to see such promise in top 40 that it gave up strong 12-plus numbers in another format to make the switch.

**KKXX** Bakersfield, Calif., existed 10 years ago, but it was on the frequency of what is now country **KUZZ**. In 1985, **KUZZ** dominated its market as a country AM. It became one of the first stations to see the country franchise as so promising that it gave up strong 12-plus numbers as a top 40. **WKBO** (Q104) St. Louis just misses the heritage label, even if you don't count its frequency flip. Ten years ago, it was at 106.5 and known as **KWK**.

It feels like more, but only 18 of the 57 stations now in the format were once heritage top 40s, although their numbers include such heavyweights as **WPLJ** New York; **WRQX** Washington, D.C. (then Q107); **WKTI** Milwaukee; **WMJQ** Buffalo; **KSTZ** Des Moines, Iowa (née **KRNQ**); **WBLL** Long Island, N.Y.; and **WMC-FM** (FM100) Memphis. (In fairness, it should be pointed out that **WBLL**, **FM100**, and even **WKTI** were very much adult top 40 stations at the time.)

One of the reasons that there are more heritage top 40s than you might think is that the really frightening shrinkage took place in smaller markets, often affecting stations that were unknown to most of us. Losing two-thirds of a format may not be good news, but more of top 40's mid-'80s heritage exists than one might think. Utilizing this heritage for the future is the hard part.

**STATION LOG:** With the departure of **WEZB** New Orleans and the return of **KDLE** Wichita, Kan., to R&B, the count of top 40/rhythm and top 40/mainstream reporters goes to 80 and 32, respectively. New to the modern rock panel this week are **KEZE** Spokane, Wash.; **WVGO** Richmond, Va.; and **KCXX** San Bernardino, Calif., bringing the panel to 69 stations.

## RADIOACTIVE

by Kevin Carter

### Big Week For Big Groups; New Fox Laffer

**W**hat a week it was on the corporate level: After CBS stockholders approved the \$5.4 billion purchase by Group W, it was announced that the combined group would be known as CBS Radio, not Group W. SFX Broadcasting bought Liberty Broadcasting for \$223 million. SFX's Providence, R.I., Hartford, Conn., Richmond, Va., and Albany, N.Y., stations go to Multi-Market Radio. Also, the merger between Citicasters and OmniAmerica has collapsed. Looking for some national exposure for a promotion or morning-show bit? Fox-TV will launch "What's So Funny," a digest of the week in comedy, next year. The show will air Sundays at 9:30 p.m. ET. The show's **John Taylor** wants to include bits and stunts from local radio; he can be reached at 818-763-2862.

What kind of bits? Well, at **KTFM** San Antonio, Texas, what was billed as a Macarena look-alike contest at a local nightclub has resulted in a lawsuit by a disgruntled listener. **KTFM** PD **the Janitor** says the club handed out bananas, culminating in a nonwinning contestant filing a lawsuit alleging mental anguish for being asked to do the "banana dance." We hear **Zuchini Night** has been postponed.

Following word that **WLS-FM** Chicago is dropping its news/talk simulcast before the new year, the station has begun stunting for a change to take place between now and year's end, according to *The Chicago Sun-Times*.

**KISF** (Kiss 107.3) Kansas City PD **Chuck Geiger** exits. MD **Booker Madison**, who had left for **WNRQ** Pittsburgh, may now stay.

Former **WXXL** (XL106.7) Orlando, Fla., GM **Randy Rahe** is the new national sales manager at R&B rival **WJHM** (102 Jamz).

PD **Clarke Ingram** is upped to OM at top 40 **WPXY** Rochester, N.Y., and sister AC **WVOR** following the exit of **WVOR** PD **C.C. Matthews** for the PD slot at top 40 **WDJX** Louisville, Ky. Matthews worked at **WDJX** when it was top 40/album rock **WKJJ** (KJ100). MD **J.J. Rice** adds APD stripes at **WPXY**. APD **Dave LeFrois** is upped to PD at **WVOR**.

**KDON** Salinas, Calif., GM/group VP of programming **Jeff Salgo** transfers to Henry Broadcasting's new property, AC **KYMX** Sacramento, Calif. **KHQT** (Hot 97.7) San Jose GM **Dayton Phillips** segues to **KDON**.

Album **WAPL** Green Bay, Wis., flips its new duopoly partner; country **WJLW**, to modern-

leaning top 40 as **WKSZ** (Kiss 95.9) under OM **Garrett Hart**. WAPL p.m. driver **Miles Ryker** will be APD/MD. **Keith Kelly** from **WMXP** (Mix 93.3) Peoria, Ill., is the new morning host. **Ace Adams** from **WLET** Gainesville, Ga., is the new night jock. **Michael T.**, formerly PD of crosstown AC **WQLH**, is GSM. Meanwhile, **WQLH** becomes "Mix 98.5" under new PD **John Thomas** from sports **WMVP** Chicago.

Former **WKDY** Utica, N.Y., PD **Wally McCarthy** resurfaces as OM at sports/country combo **WHEN-AM-FM** Syracuse, N.Y.

**KSTZ** Des Moines, Iowa OM **Kipper McGee** exits for the PD slot at oldies **KBZT** (K-Best 95) San Diego. **KSTZ** segues from AC to a rock-based top 40/adult approach.

At press time, **Greg Williams** was still the PD, at least in name, at **KDLE** (Power 93.9) Wichita, Kan. **Chance Logan** is named OM.

Suburban Columbus, Ga., top 40 **WKJZ** has been LMA'ed to Davis Broadcasting's **WFXE** Columbus and will switch to R&B. PD **James Steele** is looking; call 334-480-8571.

WNCI Columbus, Ohio, ups five-year Morning Zoo "Street Stunts" guy **Jimmy Jamm** to morning partner, replacing **Dave Calin**, now bound for **WBZZ** Pittsburgh.

**WBBM-FM** (B96) Chicago MD **Erik Bradley** signs a new two-year contract this week. Look for an announcement where acting night jock **Brian Middleton** and acting late-nighter **Julian "Jumpin'" Perez** become permanent by this time next week.

**WIVY** (Coast 102.9) Jacksonville, Fla., moves from top 40/adult to rock-based AC. APD/MD/midday host **Jeff Donovan** goes to mornings. Also, production director **John Daniel** exits for **WROQ** Greenville, S.C.

New top 40 **WAKX** (Mix 96) Grand Rapids, Mich., taps **WAYV** Atlantic City, N.J., PD **Mark Hunter** for nights. **Kim St. James** from **WKPK** Gaylord, Mich., joins for middays. New PD **Jay Towers** is doing afternoons.

AC **WJRZ** Ocean County, N.J., MD/p.m. driver **Jim Kelly** joins **WPLY** (Y100) Philadelphia for overnights. **WJRZ** P/T **Rich Kaminski** is upped to afternoons... **KWNZ** Reno, Nev., brings in new morning sidekick **Curtis Sawyer** from **KFTZ** Idaho Falls, Idaho.

**WFHN** (Fun 107) New Bedford, Mass., ups P/T **Kevin Matthews** to middays... **WAEB-FM** (B104) Allentown, Pa., ups P/T **Jennifer Knight** to nights.

## Munsters, M\*A\*S\*H, And More



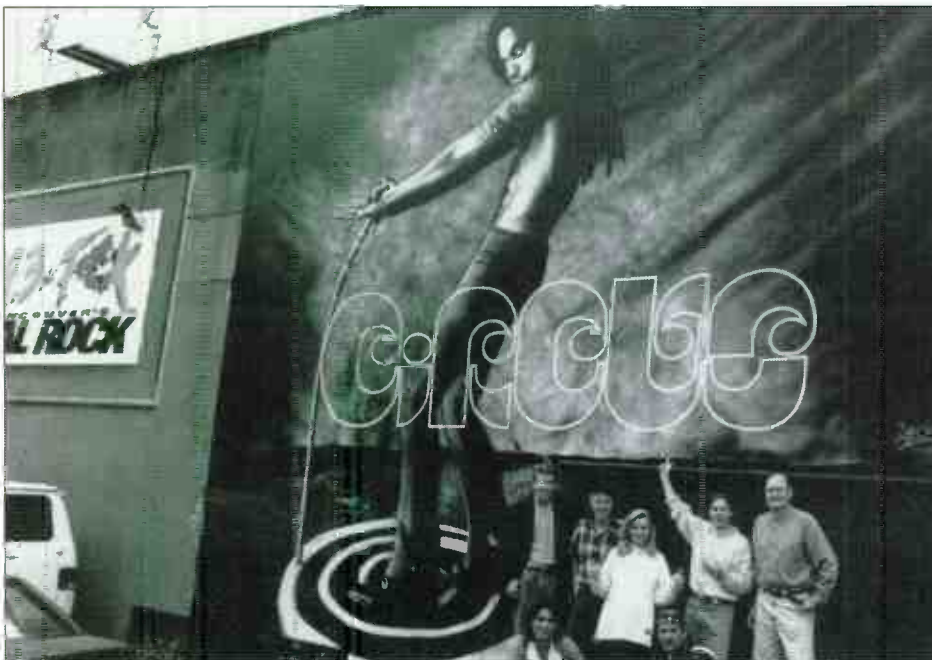
WPLJ New York brought the stars of "M\*A\*S\*H," "The Munsters," "Barney Miller," and even Porch Boy from the movie "Deliverance" for their latest T.V. Reunion Cruise on the Spirit of New York. Shown in back row, from left, are "M\*A\*S\*H's" Jamie Farr, "Barney Miller's" Abe Vigoda, "Deliverance's" Billy Reddin, and WPLJ's Blain Ensley, Theresa Angela, Rocky Allen, and Kevin Seal. In front row, from left, are WPLJ's Heidi Dagnese, Kristie McIntyre, Andy Siegel, and Butch "Eddie Munster" Patrick.

## Bette Loves WKTI—From A Distance



Maybe it was OK up close, too. In any event, Atlantic's legendary Bette Midler spent an hour on the air at top 40/adult WKTI Milwaukee. Shown, from left, are WIFC Wausau, Wis., PD Kevin Kollins; WKTI assistant MD Leslie Loewus and GM Kris Foate; Atlantic's Rick Sudakoff; Midler; and WKTI PD Danny Clayton, MD Leonard Peace, p.m. driver Jim LaBelle, APD John Reynolds, and morning producer Gino Salamone.

## Circus Of The Stars



To launch Lenny Kravitz's latest album, Virgin Records tied in with album rocker CFOX Vancouver to erect a giant Kravitz mural on the side of the station's building. Shown in back, from left, are Virgin's Bill Banham, CFOX's Bob Mills and Mary Ann Mackenzie, Virgin's Paul Shaver, and CFOX's Rob Robson. In front are artists Paul Archer and David Archer.

## M.C. Howard?



M.C. Hammer's recent promotional tour brought him to the hip-hop capital of the world, New York, for a guest appearance with jam master Howard Stern. Shown, from left, are Hammer, Robin Quivers, Stern, and Giant's Bryan Geronimo.

## Work This World



Work Group artist Heather Nova promotes her "Walk This World" single on WHTZ (Z100) New York's Morning Zoo. Shown, from left, are Z100's Freddie Vetter, Nova, and Z100's Elliot Segal and Patty Steele.

## One Hand On My Muppet



WMXL (Mix 94.5) Lexington, Ky., hosted a recent appearance of "Sesame Street Live." Shown, from left, are promotion director Marc Owens (in Mix T-shirt), PD Dale O'Brian, and marketing director Janine Grover, surrounded by Muppets Roxy and Zoe and some young Mix 94.5 listeners.

PUBLISHER: MICHAEL ELLIS  
 EDITOR: SEAN ROSS  
 MANAGING EDITOR: KEVIN CARTER  
 DIRECTOR OF CHARTS: JERRY MCKENNA  
 TOP 40/ADULT CHART MANAGER: STEVEN GRAYBOW  
 CHART PRODUCTION MANAGER: MICHAEL CUSSON  
 ASST. CHART PRODUCTION MANAGER: PAUL PAGE  
 EDITORIAL PRODUCTION MANAGER: BARRY BISHIN  
 ASSOC. EDITORIAL PRODUCTION MANAGER: MARCIA REPINSKI  
 EDITORIAL PRODUCTION: MARC GIAQUINTO, MORRIS KUEGEMAN  
 COPY EDITOR: CARL ROSEN  
 ADVERTISING PRODUCTION MANAGER: LYDIA MIKULKO  
 ADVERTISING PRODUCTION ASST.: CINDEE WEISS  
 ADVERTISING ART DIRECTOR: RAY CARLSON

NATIONAL ADVERTISING MANAGER: JON GUYN  
 ADVERTISING SALES: ART PHILLIPS, ANDREA THOMPSON  
 CLASSIFIED ADVERTISING: LAURA RIVCHUN  
 ADVERTISING SERVICES MGR.: MICHELE JACANGELO  
 SALES ASSISTANTS: EVELYN ASZODI, ERICA BENGTSO  
 ALEX VITOULIS, ALYSE ZIGMAN

EDITORIAL ADVISOR: TIMOTHY WHITE  
 PRODUCTION DIRECTOR: MARIE GOMBERT  
 DIRECTOR OF MARKETING: ELISSA TOMASETTI  
 CIRCULATION MANAGER: JEANNE JAMIN

©1995 BPI Communications, 1515 Broadway, New York, NY 10036  
 212-536-5039 For subscriptions call: 800-722-2346

Billboard Music Group  
 PRESIDENT: HOWARD LANDER

## Sexual Harassment Remains Live Issue

*Continued from page 1*

calls. Then, when he did, he would shout to his MD, 'Has anybody seen [what she looks like?]' Then, when we met, he said, 'Oh, you're cute! We'll be fine then.' Not a thing about whether you have hit records or whether you're doing your job.

"He was all right with me for a while, then he treated me bad. He wouldn't add a record, and I kept calling him. He said, 'If you're going to call me and talk about . . . business all the time, then don't call me.' I said, 'Look, last time I checked, your job was to program the station, and until I get what I want, I'll continue to call.' This record was top 10 sales in his [city], and he was being an asshole. Now he wants to hug on me all the time."

### 'A TOTAL PERVERT'

"I have one PD who is a total pervert," says the same rep. "He tells me what they do at strip clubs. He tells disgusting stories. Do I want to hear it? No. But I have to, because I would be excluding myself if I stop him. He told me he was looking forward to one of my female artists coming into the market; he told me she was a real 'lap spinner.' But at least he's upfront about it. He's disgusting, and that's his whole vibe."

"I was talking to a guy this morning who's taken a liking to me," says one promoter who is in the process of switching jobs. "I took him out to dinner once, and he kept asking me to come back to his hotel room. This morning he said, 'I really hate that you're leaving without us having gotten married or having [had] sex.'"

"I've had programmers make reference to when I come visit, wanting me to bring sexy lingerie, and other programmers ask me to send them photographs, [and] I don't think they mean pictures of me baking cookies," says a country regional. "There's a lot of innuendo about wanting to know each other better, or 'my wife's out of town' . . . It's tough to know how to handle it."

"I definitely think it's out there," says another country regional. "There are a lot of guys in my region, and they definitely don't care what they say as far as treating us regionals like ladies . . . When you say, 'Is there anything I can do for you this week,' they'll go into [something] sexual."

### 'IT SHOULD HAVE BEEN MY BABY'

"I've had some PDs say things about my pregnancies," says an R&B regional. "One said, 'It should have been my baby, if I had known you were f-ing around.'" The same regional tells another story of a PD who wouldn't take her calls, so she began working another person at the station. Then the same PD called her, accused her of sleeping with that employee, and refused to play her records for that reason. "Regardless of if it was true, and it wasn't, what has that got to do with taking care of business?" she asks.

"I get so tired of people telling me how good I look when I'm trying to get an add," says one R&B regional. "Do I get insulted if someone calls me attractive? No, but now let's talk about my record," says a pop counterpart.

Not surprisingly, regional reps tended to have more stories than nationals, since they have more day-to-day contact. "The single local female reps are the ones constantly under the gun," says one rep. Another pop national says the further women rise up the ladder, the more seriously they're taken. And one pop local says that many of the worst problems take place in smaller markets, because new PDs and MDs "are like kids in a candy store. Everything is new and available to them."

One R&B regional feels that "a man gets a certain amount of equitable respect just by being a man . . . When I bring a record to a PD, if I don't bring a softer attitude or a smile, I don't stand out. I'm more playful and friendly, but I keep it from going too far. A man going in could talk about baseball or a [strip] bar; they can bond, and he might get priority over me because he's a man, but I'm just another piece of a— to the PD. That in itself is another degree of sexual harassment."

### 'THEY ARE ALL GENTLEMEN'

It's important to note there were several reps contacted by Airplay Monitor who felt they had never encountered harassment. Or that the situ-

ation had dissipated over the last 10 years. One country regional worked top 40 in the '80s and says a PD called her boss and told him she was a bad rep after she refused his suggestion that "I would get a lot further if I pulled my skirt up a little higher."

But, she says, "in country, I can honestly say that, to a man, in the Southeast region, they are all gentlemen. Maybe it's because a lot of them are older. I think there is a more professional air, and I haven't encountered anything like that."

Another country regional adds, "In all honesty, I haven't experienced anything but respect, not only for my position but the fact that I'm a woman. I think a lot of people go the extra distance to make sure there is nothing but respect."

One former country regional, now at a national level, says, "I've been doing promotion for 15 years . . . It has always amazed me how well behaved [PDs are]." But she says that she has gotten one or two complaints from her female regionals. And, she adds, "there have been suggestive people, but I have found that in very short order those MDs and PDs are out, because their management finds out. If they're doing it to the regionals, they're doing it at the station, too."

"I don't feel I've ever been discriminated against, never had a feeling I had to give out any favors," says one pop promoter. "Sure, I've heard comments from some programmers, but if I took to heart every comment that had a sexual connotation to it, I'd be suing the world."

### LIKE A KID SISTER

Most reps felt they were able to avoid trouble by setting the proper tone early on. "I position myself as their little sister, so they watch over me," says one R&B regional. "If the guy is a little older, then I'm your daughter: I make a joke of it that way, so if something happens, it's like they're disrespecting their own family."

"It's all a matter of how you carry yourself," says the pop rep who stopped calling a station because of a PD. "Personally, I just don't allow it. I refuse to put myself in that environment. If a problem happens, I choose to deal with it right then and there."

Female reps also say they try to avoid situations where there's drinking. "Alcohol lowers people's inhibitions, and their guard comes down. It's always tough dealing with the infamous convention mentality, where everyone seems to have this need to get drunk and get laid," says one pop rep.

"I don't drink or do drugs myself, and I don't put myself in those social settings. I will not stay out until 3-4 a.m. alone with a PD. If I am out late, I always make sure somebody else is with me, so I don't leave myself open to any problems."

### SUPPORTED OR EXPLOITED?

Most reps felt that if they did encounter problems, they would have the support of their home office. "My company would back me up 100%," says a country regional. "My bosses ask me when we do reviews if anybody has made sexual remarks to me, so it's out in the open."

"They are not oblivious to what happens," says another regional, who notes that when one programmer propositioned her, "I think he was talked to, and the next week it was not as bad."

A country national says that if a female rep came to her with a problem, "If I felt that we couldn't handle it together—because I wouldn't have any problems confronting someone—I'm sure our legal department would be on the phone in a minute. Not one of my people would have to put up with this for a minute."

But another regional complains that her bosses "believe that if you're an attractive woman, you can get more records played. That's why you're hired . . . If you start complaining about getting hit on, the VPs say, 'What are you complaining about? That's why you have that job.'"

And another female promoter says women who complain about being harassed at a particular station are often told not to go back to that station. Other times, she says, "women who go to the human resources department and complain about something like this are marked. They'll move you somewhere, and within a year, you're out of the company."

## PROGRAMMER PROFILE

### KJ103's McCoy Achieves Double-Digit Bond With Oklahoma City Listeners

**F**ocus groups have shown that listeners perceive this station as having huge promotions and giving away the biggest prizes," says Mike McCoy, six-year PD of top 40 KJYO (KJ103) Oklahoma City, as well as PD of country sister station KEBC. "In fact, I'm willing to bet that we have the smallest promotion budget of any of the top 10 stations in the city."

So how does Clear Channel's KJ103, which was up 10.1-10.3 12-plus in the first fall Arbitron, enforce that image? With a lot of touchy-feelie promotion, McCoy says. "The term 'forced listening' just doesn't apply here. What other stations accomplish by buying the audience, we continue to accomplish through emotion."

Nowhere was that more clear than immediately after the bombing of the Murrah Federal Building this spring. Although most stations have emergency plans for tornadoes, earthquakes, and the like, "we never dreamed we'd

and they wanted lots of '80s stuff, I think to make up for a lot of the disposable artists we were playing in the early '90s." That's why McCoy started experimenting with Garth Brooks, Bonnie Raitt, Melissa Etheridge, etc. "That was considered a [risky] move back then, but we were able to expand and immediately saw our cume start growing by leaps and bounds."

The top 40 tastes in Oklahoma City are unique, McCoy says. "We play everything from Counting Crows to Aretha Franklin's 'Respect.'" In its ongoing quest to expose new acts, the station instituted a new music hour every night at 11 p.m., and it is generating positive feedback in focus groups. "We don't hype new music as fresh and new," says McCoy. "We prefer to sell it creatively, give the artist information, and let the listeners decide how hot it really is. It's easy to get caught up in the label game."

Here's a recent 4 p.m. hour of music: Blues Traveler, "Run-Around"; Coolio, "Gangsta's Paradise"; Martin Page, "In The House Of Stone And Light"; Hootie & the Blowfish, "Only Wanna Be With You"; Natural Selection, "Do Anything"; Deep Blue Something, "Breakfast At Tiffany's"; Duran Duran, "Ordinary World"; Mariah Carey, "Fantasy"; Collective Soul, "Shine"; TLC, "Waterfalls"; and Journey, "Don't Stop Believing."

The KJ103 morning show features Bob and Josh, formerly of WWSR Charleston, W.Va. "I knew them before they were hired, and they had a real feel for this station." Midday DJ Joe Friday was upped from weekends and was awarded MD stripes when Billy the Kid left five months ago. "Joe has that natural curiosity I like to surround myself with," says McCoy. (Billy the Kid is now out of the radio business and living in Albuquerque, N.M.) Afternoons/AM is market vet Ronnie Rocket. "He knows this market and reflects it and is consistently No. 1 or 2."

KJ103 currently has a night opening, as Dylan recently exited. Overnights is being handled by Brian Kelly, "a 21-year-old, and you know how young bucks are. We're trying to break him in." Teresa Maxwell is doing morning and afternoon traffic, as well as weekends, and the most recent hire is production director Craig Buffington from KHTT Tulsa, Okla. Running more than one radio station leaves McCoy little time to sit behind a desk. "Most of our best aircheck sessions have taken place in the hallway. There's too much pressure and not enough time for a formal session."

Although McCoy has been sitting relatively still for six years at KJ103, his career has taken him through the doors of such legendary stations as WBZZ (B94) Pittsburgh, WNCI Columbus, Ohio, and KLUC Las Vegas, and he's had programming stints at KNMQ (Q106) Albuquerque and WMGZ (Z96) Youngstown, Ohio.

McCoy oversees two full-time air staffs and two separate sales departments. This is his first time programming a country station, which has borrowed many top 40 formatics, including hotter clocks, foreground jocks, and jingles, which KJ103 doesn't use. In McCoy's opinion, "KEBC now sounds more like a traditional top 40 station than KJ does."

KJ103 recently issued "Listener Club" cards, designed to reward listeners with deals at local sponsors. "These cards are a real hot item, and I expect them to fuel tremendous growth for us in 1996," says McCoy. "It's easier to get someone who already likes you to love you, rather than attempting to build a new relationship from scratch. They end up listening longer, and it makes this station a bigger part of their lives. No matter where our listeners go, they know there's going to be a benefit."

KEVIN CARTER



**Mike McCoy**  
Program Director  
KJYO Oklahoma City

*'[After the Oklahoma City bombing,] people just wanted to talk, so we let them express their emotions'*

have to go through what we did," says McCoy. "We ascertained where our listeners were, and it became evident that almost everybody who called us knew someone in the building."

"People just wanted to talk, so we let them express their emotions. When we later went through the diaries from the spring book, there were so many comments from listeners who were grateful to us. It really built an emotional bond, and now we are a friend forever," he says. "It was surprising how many stations were afraid to break format during the spring book. Letting people vent was part of the healing process. Playing a hit song just didn't relate."

This summer, to help the city's healing process, all three Clear Channel outlets (KJ103, KEBC, and news/talk KTOK) staged the Heartland concert, with Tony Bennett, the Rembrandts, Collective Soul, 4 P.M., Sophie B. Hawkins, and a number of country acts. McCoy credits Mike Wahl, OM of both stations, as largely responsible for the concert's success. Wahl serves primarily as liaison between sales and programming, but is also KJ103's "street warfare" guy and, McCoy says, its "secret weapon."

McCoy also works closely with consultant Jim Sumpter, whom he first worked for at the late WCKS (CK101) Cocoa Beach, Fla., in 1979. "Jim is right there with me every day, fighting in the trenches," says McCoy. "I've worked with consultants who spend most of their time trying to find blame. It's one thing to be a problem solver; it's another entirely to be a problem preventer, and that's Jim."

KJ103 was always in double digits, and was one of the last top 40s to be found there, but started slipping several years ago, especially when the market again had access to an R&B station. When McCoy examined the situation from the listeners' standpoint, he decided to broaden the music. "They still want to hear the occasional Aretha Franklin or Foreigner,

## SERVICES

### AIRCHECKS

**URBAN AIR-CHECK**  
 \* Full-Service Aircheck company!  
 \* Personalized airchecks & radio resumes!  
 \* National Airchecks: Major to small markets  
 \* Free Aircheck evaluation!  
 Volume 1 Now Available! features WPEG, WHTA, WGCI, WJLB, WVEE, WRKS, WQQK & WFXA! Send \$12 to: P.O. Box 7808, N. Augusta, SC 29841  
**Call for FREE DEMO & brochure**  
**706-481-1821**

### VOICEOVERS

  
**FASTEST GROWING VOICE-OVER TALENT IN NORTH AMERICA. FEMALE ROSTER ALSO AVAILABLE. CALL 1-800-843-3933 FOR DEMO. WELCOME KRTS-HOUSTON, Q102-DALLAS, WGPR-DETROIT**

**CARTER DAVIS**  
**VOICE AND PRODUCTION**  
**FOR RADIO AND TV**  
 Tel/FAX:  
**(901) 681-0650**

*When Excellence Matters*  
  
 Y100 Young Country • Country CHR Rock Hot AC  
 H 96 KISS FM WLLZ • voice-over • production effects  
 New Country KISS108 • (610) 640-5899 FAX 892-7890

**DON'T MISS OUT!**  
**SPECIAL**  
**END-OF-YEAR**  
**CLASSIFIED OFFER**  
**PICK UP THE PHONE**  
**AND CALL ME ...**  
**NOW!**  
**LAURA RIVCHUN**  
**(212) 536-5058 (PH)**  
**(212) 536-5055 (FAX)**

## HELP WANTED

San Jose radio station looking for experienced announcer to take over midday shift. We're consistently in Top 4 (25-54) and we're planning to continue winning. Must have some Country experience. T&R to:  
**Julie Stevens**  
**KRTY, P.O. Box 995**  
**San Jose, CA 95108**  
**(EOE)**

**WIBW-FM Topeka, KS 97 COUNTRY** is looking for 7-Midnight personality. Heavy use of phones and lots of public appearances. Send Tape & Resume to:  
**Personnel Dept.**  
**WIBW-FM, Box 1818**  
**Topeka, KS 66601**  
**Deadline 12/1/95**  
**EOE**

The music matters most, but it's what happens in-between that makes the difference. Nation's top two Rock/ACs seeking talent for future openings and acquisitions. If you understand preparation, concentration and moderation, rush your T&R to: Tom Benson, Dame Media, WRVV/WRVE, P.O. Box 6477, Harrisburg, PA 17112.  
**EOE**

## POSITION WANTED

**WAKE UP** with a great chick. Witty, creative female talent will add spice to your mornings, with no regrets!  
**KAREN (702) 458-6143**

Trapped in a musical nightmare? This humorous, topical, community-minded AC/CHR MD/AT gives you pleasant dreams.  
**CHRIS: (717) 285-4975**

Hard working professional, dependable willing to relocate. Prefer Missouri. Complete production skills, good control operation.  
**SCOTT: (417) 864-7503**

## POSITION WANTED

**"WHAT, AND GIVE UP SHOW BIZ?" IF YOU STILL BELIEVE IN THE MUSIC, MADNESS AND MAGIC OF OUR BUSINESS, SO DO !! AIR TALENT STILL ON STAGE IN SAN FRANCISCO, SEATTLE AC, NAC AIRWAVES NEEDS FULL-TIME.**  
**DIANE CARTWRIGHT.**  
**(209) 523-0380**

**DUNCAN PAYTON**  
**(818) 556-5250** 16 years radio mgmt, consulting, programming, marketing, promotions & on-air experience ... **KOST 103/L.A., Power106/L.A., 99.1KGGI/Riverside.**

Seeking a hungry young AT? PT for 3 years, and ready for FT Rock/CHR gig. Will relocate east coast, south preferred.  
**CHRIS: (914) 473-4961**

**SHANA LIVIGNI**, best-known as a veteran L.A. Broadcaster, seeks career opportunity in Radio/T.V./Film projects. Exceptional skills working closely with entertainers, media and public. **(818) 249-6701.**

## BULLETIN BOARD

**JAYE**-We still love you and our thoughts are with you. Best Wishes.

**HUMAN FIREBALL.** The most eligible bachelor in the Northeast. Although I work for Virgin, I am not. But I am clean, well-groomed and full of good humor. No rock stars need apply. Call Chuck @ 212-332-0421

**HAPPY THANKSGIVING** to all our friends in Radio. Bob Kingsley, Robin Rhodes and the entire staff of American Country Countdown.

**FREE BULLETIN BOARD LISTINGS!**  
 Call Laura Rivchun  
**212-536-5058**  
 or Jon Guynn  
**213-525-2306**

## BULLETIN BOARD

**DAVE RICHARDS WRGX**- I'll see you in Los Angeles December 2nd for food, drink, and fun??? From S.I.D.

Hey Duane Doherty @ The Eagle. How's your nipple? Just wondering, Stacy.

Oh That fateful night in New Orleans: We ran around the city with Road Map Boy You fell; Your zipper broke; We fell in love I believe alcohol was involved

Oh that fateful night in Nashville We three ran around for more wine I fell, I lost my lunch then had the mashed potatoes, We kissed. True love I believe alcohol was involved.

**PAULIE P**, Let's meet at Shoney's at 2:00 a.m. I hear their mashed potatoes are real. Love ya, Babe

**Fax us your FREE Bulletin Board listing! Attention Monitor Classified 212-536-5055 or 213-525-2395**

**CJM**- Bp sends his love, says be sure to bet on Seven and look out for the Monkee . . . happy holidays . . . go cowboys! RA

**FRANKIE** . . . Boop, Boop, Bee Doop . . . Boop! Luv Ya, Miss Ya, Mean It! Betty

**HEY Alan Sneed** Heard any good train wrecks lately? Your friend, Pumpkin Naumann.

**E-Mail us your FREE Bulletin Board listing! Send to guynn@aol.com or guynn@msn.com**

**LIPMAN**, So what are you going to call the football game next year? The Rising Tidy Bowl?

**YO!** John Roberts KHFI Has your phone been broken for the past two months? If it is, I'll pay to fix it. Please respond. Mean Ed.

**HELP!** My name is Greg Evigan, formerly of B.J. & the Bear. I would like to consult Modern Rock Radio and help get it back on course. God knows, traveling the road with a monkey has given me the radio skills needed to win the ratings game. Contact my agent via e-mail cookooNYC@aol.com

## CLASSIFIED ADVERTISING RATES

**HELP WANTED:**  
 1 WEEK \$75.00 per inch  
 2 WEEKS \$65.00 per inch  
**POSITION WANTED AND BULLETIN BOARD:**  
 \$45.00 per inch  
**BOX NUMBER:** Add \$20.00  
**SERVICES:**  
 1 WEEK \$75.00 per inch  
 6 WEEKS \$65.00 per inch  
 13 WEEKS \$60.00 per inch  
 26 WEEKS \$55.00 per inch  
 51 WEEKS \$50.00 per inch  
**DEADLINE (ALL CLASSIFIED):**  
 Each Wednesday 3pm EST, 9 day leadtime.  
 • Classified ads are non-commissionable •  
**SUBMIT ALL AD COPY TO:**  
**Laura Rivchun**  
**Airplay Monitor Classified**  
**1515 Broadway**  
**New York, NY 10036**  
**Phone: 212-536-5058**  
**Fax: 212-536-5055**

# AIRPLAY Monitor® GREATEST GAINERS

## STRONGEST INCREASE IN AIRPLAY

### MAINSTREAM

INCREASE  
IN PLAYS

<b>MARIAH CAREY &amp; BOYZ II MEN • One Sweet Day (COLUMBIA)</b>	<b>+513</b>
KRQQ +24, WWST +22, WKXJ +21, WMXQ +20, KHTO +16, WZNY +16, WLAN +16, WBZZ +16, WVKS +15, WNOK +15	
<b>BIG MOUNTAIN • Get Together (GIANT)</b>	<b>+464</b>
KHTO +22, WPRO +22, WBZZ +22, WZNY +21, WXLK +20, KRQQ +20, WNVZ +20, WNOK +18, WMXQ +18, KKRD +17	
<b>EVERYTHING BUT THE GIRL • Missing (ATLANTIC)</b>	<b>+290</b>
KIIIS +24, KQKQ +21, WPRO +21, WIOQ +20, KRQQ +16, WGTZ +16, KKRZ +16, WAPE +14, WHTZ +14, WKSE +13	
<b>SEAL • Don't Cry (ZTT/SIRE/WARNER BROS.)</b>	<b>+245</b>
WSTR +19, WZNY +18, WBZZ +17, WWSR +16, WZJM +15, WNOK +15, WDDJ +13, WEDJ +10, WFHN +10, KKLQ +10	
<b>♀ • Gold (NPG/WARNER BROS.)</b>	<b>+238</b>
WPRO +25, WFHN +18, WFLY +15, WZYP +14, WWCK +13, WABB +11, KMXV -10, KKLQ +10, WSTW +9, WGTZ +9	
<b>TLC • Diggin' On You (LAFACE/ARISTA)</b>	<b>+227</b>
WXIS +27, WDJX +19, KMXV +17, KKRD +15, WYCR +15, WSSX +13, WFBC +13, KLRZ +12, WIXX +12, WVKS +11	
<b>MADONNA • You'll See (MAVERICK/WARNER BROS.)</b>	<b>+213</b>
WFLY +23, WZYP +21, KLRZ +19, KZZU +18, WYHY +17, WIXX +13, WXIS +11, WXKB +11, WZJM +11, WABB +11	
<b>WHITNEY HOUSTON • Exhale (Shoop Shoop) (ARISTA)</b>	<b>+210</b>
WNVZ +31, WFMF +16, KKRZ +16, WIOQ +15, WWCK +13, WKSE +12, WYCR +10, WXXL +10, KLRZ +9, WXKB +9	
<b>HOOTIE &amp; THE BLOWFISH • Time (ATLANTIC)</b>	<b>+193</b>
WZYP +18, WSTR +17, WBZZ +16, WBHT +15, KRQQ +15, WRVQ +14, KKRD +13, WHYI +10, WKBQ +10, WLAN +9	
<b>JOAN OSBORNE • One Of Us (BLUE GORILLA/MERCURY)</b>	<b>+171</b>
WDCC +21, WZPL +19, WBZZ +17, WXXX +16, WXXL +15, WFLZ +11, WHTZ +11, WYCR +9, WXKS +9, KMXV +8	

### RHYTHM-CROSSOVER

INCREASE  
IN PLAYS

<b>MARIAH CAREY &amp; BOYZ II MEN • One Sweet Day (COLUMBIA)</b>	<b>+158</b>
XHTZ +30, KCAQ +29, WWKX +22, KJMJ +20, KPWR +19, KLUC +18, WJMH +13, KSFM +12, KBXX +11, KMEL +8	
<b>L.L. COOL J • Hey Lover (DEF JAM/RAL/ISLAND)</b>	<b>+157</b>
XHTZ +30, WWKX +23, KGGI +19, KQKS +13, KKSS +10, WJMN +9, KMEL +9, KCAQ +8, WPGC -8, KUBE +7	
<b>BRANDY • Sittin' Up In My Room (ARISTA)</b>	<b>+152</b>
WERQ +36, KTFM +29, WPGC +25, WJMN +23, KYLD +17, KMEL -15, WQHT +4, KCAQ +2, KBXX +1	
<b>THA DOGG POUND • Let's Play House (DEATH ROW/INTERSCOPE/PRIORITY)</b>	<b>+98</b>
KPWR +27, WJMH +26, WWKX +10, KYLD +9, KBXX +7, WERQ +4, XHTZ +4, WHHH +3, WJMN +2, KMEL +2	
<b>QUINCY JONES FEAT. BRANDY AND HEAVY D • Rock With You (QWEST/WARNER BROS.)</b>	<b>+87</b>
KQKS +22, WPGC +21, KBXX +15, KMEL +15, KZFM +7, KSFM +7	
<b>R. KELLY • Down Low (JIVE)</b>	<b>+82</b>
WPGC +24, KBXX +23, WJMH +22, WERQ +8, KYLD +4, KMEL +1	
<b>TLC • Diggin' On You (LAFACE/ARISTA)</b>	<b>+78</b>
KDON +52, KBXX +28, KTFM +27, WHHH +13, KCAQ +12, WJMH +10, KKSS +8, KZHT +5, WQHT -4, WPOW +3	
<b>TONI BRAXTON • Let It Flow (ARISTA)</b>	<b>+76</b>
WERQ +29, WJMN +17, KBXX +16, WJMH +10, KYLD +2, WPGC +1, KMEL +1	
<b>RUFFNECK FEAT. YAVAHN • Everybody Be Somebody (MAW/STRICTLY RHYTHM)</b>	<b>+74</b>
KYLD +67, KMEL +2, WBBM +2, KTFM +1, KUBE +1, WPOW +1	
<b>WHITNEY HOUSTON • Exhale (Shoop Shoop) (ARISTA)</b>	<b>+71</b>
KDON +41, XHTZ +29, WWKX +18, KPRR +12, KMEL +11, WPOW +8, WBBM +7, WJJS +6, WJMH +5, KBOS +4	

# VIDEO PLAYLISTS

Broadcast Data Systems  
Video Playlists Service



	TW	LW		TW	LW
1	33	27	41	7	8
2	31	24	42	6	5
3	30	28	43	6	5
4	30	22	44	6	13
5	29	32	45	6	4
6	28	31	46	5	5
7	28	26	47	5	10
8	24	26	48	5	10
9	19	21	49	5	5
10	17	26	50	5	5
11	17	20			
12	16	12			
13	16	15			
14	16	12			
15	16	13			
16	16	15			
17	15	17			
18	15	16			
19	15	16			
20	15	10			
21	15	0			
22	14	17			
23	12	11			
24	12	13			
25	12	9			
26	12	7			
27	10	9			
28	10	7			
29	10	17			
30	10	11			
31	10	11			
32	10	16			
33	10	11			
34	9	14			
35	9	7			
36	8	12			
37	8	9			
38	8	0			
39	7	6			
40	7	4			



### ADULT

INCREASE  
IN PLAYS

<b>MARIAH CAREY &amp; BOYZ II MEN • One Sweet Day (COLUMBIA)</b>	<b>+284</b>
WQLH +38, KALC +22, WALK +21, WAEV +21, KEZR +21, WKDD +17, WQAL +16, KWMX +15, WJDX +10, WMTX +10	
<b>WHITNEY HOUSTON • Exhale (Shoop Shoop) (ARISTA)</b>	<b>+136</b>
WQLH +24, WGSY +16, WJDX +15, KMZQ +13, WKQI +13, WAHR +12, WVAF +9, WWSN +8, KALC +7, WRQX +6	
<b>MADONNA • You'll See (MAVERICK/WARNER BROS.)</b>	<b>+135</b>
WQLH +25, WMXL +15, WMYI +15, KFMB +13, KHMV +12, KEZR +8, WALK +7, WMJQ +7, WRMF +6, WKZL +6	
<b>SEAL • Don't Cry (ZTT/SIRE/WARNER BROS.)</b>	<b>+131</b>
KYSR +32, KHMV +21, KPLZ +15, WWSN +13, WJDX +12, KWMX +12, KTHT +11, WZPK +9, WKTI +3, WAHR +1	
<b>EVERYTHING BUT THE GIRL • Missing (ATLANTIC)</b>	<b>+127</b>
WQLH +42, WYXR +24, KDMX +14, WBLI +10, KHMV +9, WMTX +5, WKTI +5, KPLZ +5, WBMX +5, WBEB +4	
<b>HOOTIE &amp; THE BLOWFISH • Time (ATLANTIC)</b>	<b>+65</b>
WQLH +41, KFMB +15, KHMV +11, WPLJ +11, WMLX +5, WBLI +5, WZPK +4, KYKY +4, WKZL +4, KWMX +2	
<b>DEF LEPPARD • When Love &amp; Hate Collide (MERCURY)</b>	<b>+62</b>
KHMV +18, WMXV +14, WKDD +14, WMTX +8, WZPK +4, WMC +4, WBLI +2	
<b>BONNIE RAITT WITH BRYAN ADAMS • Rock Steady (CAPITOL)</b>	<b>+60</b>
WPNT +19, KYSR +14, KGBY +8, WTFM +6, KDMX +5, WTMX +4, WAEV +4, WAHR +4, WMBX +3, KYKY +3	
<b>DEEP BLUE SOMETHING • Breakfast At Tiffany's (RAINMAKER/INTERSCOPE)</b>	<b>+60</b>
WVTY +18, KHMV +9, KWMX +8, WPLJ +8, WMTX +7, WBLI +7, WEZF +6, WYYY +5, WAEV +4, KSTP +2	
<b>JANN ARDEN • Insensitive (A&amp;M)</b>	<b>+45</b>
KHMV +23, KDMX +12, KALC +5, WYYY +3, WKTI +2, WBLI +1	

# Paula Abdul

## "Ain't Never Gonna Give You Up"

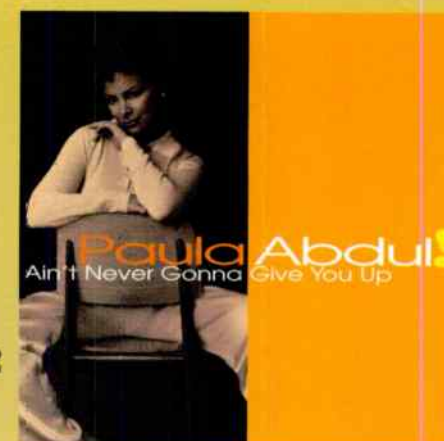
from the new album *Head Over Heels*

© 1995 Virgin Records, America, Inc.



**#1** Requests at KMXV/Kansas City 3 weeks in a row!  
**#3** Researching Record/Female 25-34 (3.8 out of 4.0)  
**#6** Researching Record/Female 18-24 (3.6 out of 4.0)  
 1% Dislike

**KMXV • KZHT • Z90 • WZJM**  
**KLRZ • Q106 • WFHN • Q102**  
**WBMX • WFLZ • WNCI**







POWER PLAYLISTS



For Week Ending November 19, 1995

Playlists supplied by Broadcast Data Systems Radio Track service. Stations selected from panel of leading broadcast stations in 125 radio markets, electronically monitored 24 hours a day, 7 days a week. Songs ranked by number of plays in monitored week.

WFLZ Tampa PD: B.J. Harris APD: Jeff Kapugi MD: Tom Steele. Top 40 list including Mariah Carey, Fantazy, Diana King, Shy Guy, Janet Jackson, Runaway, etc.

WPST Trenton PD: Michelle Stevens APD: Dave McKay. Top 40 list including Goo Goo Dolls, Name, Alanis Morissette, Hand In My Pocket, etc.

Y100 Miami PD: Casey Keating MD: Al Chio. Top 40 list including Hootie & The Blowfish, Only Wanna Be Wit, Sophie B. Hawkins, As I Lay Me Down, etc.

KISS 95.7 Hartford PD: Jay Beau Jones MD: Tina Simonet. Top 40 list including Mariah Carey, Fantazy, Seal, Kiss From A Rose, etc.

WTIC Hartford PD: Paul Cannon MD: Tony Bristol. Top 40 list including TLC, Waterfalls, Sophie B. Hawkins, As I Lay Me Down, etc.

WNCI Columbus PD: Dave Robbins APD/MD: Dan Bowen. Top 40 list including Gin Blossoms, Til I Hear It From You, Sophie B. Hawkins, As I Lay Me Down, etc.

Q106 San Diego OM: Al Peterson PD: Greg Stevens APD: Ray Kalusa. Top 40 list including TLC, Digg'n On You, Janet Jackson, Runaway, etc.

92PRO FM Providence PD: Chris Shebel MD: Tony Mascaro. Top 40 list including Mariah Carey, Fantazy, Gin Blossoms, Til I Hear It From You, etc.

Q104 St. Louis PD: Michael St. John MD: Kenny Knight. Top 40 list including Deep Blue Something, Breakfast At Tiffan, Gin Blossoms, Til I Hear It From You, etc.

The FOLLOW-UPS to HIS record-breaking #1 SMASH "You Are Not Alone"...

"This Time Around" Featuring remixes by: Dallas Austin, David Morales, Maurice Joshua

"Earth Song" Featuring a stellar interpretation from Hani! 1. Radio Edit 4:58 2. Album Version 6:46 3. Hani's Radio Experience 3:33

- 1. Dallas Clean Album Remix 4:12
2. David Mitson Clean Edit 4:21
3. Dallas Radio Remix 4:31
4. Dallas Radio Remix w/o Rap 4:31
5. Maurice's Hip Hop Around Mix (w/Drop) 4:18
6. Maurice's Hip Hop Around Mix w/o Rap 4:25
7. Maurice's Club Around Radio Mix 4:00
8. D.M. Radio Mix 4:05

Make sure to check out Michael and his HBO special, Dec. 10th at 8PM. Simulcast available through WESTWOOD ONE ENTERTAINMENT.



HIStory continues....

Produced by Dallas Austin for DARE, Inc. and Michael Jackson for MJJ Productions, Inc. http://www.sony.com/Music/MichaelJackson.html

Produced by Michael Jackson for MJJ Productions, Inc. and David Foster for Chartmaker, Inc. Co-Produced by Bill Bottrell.

POWER PLAYLISTS

For Week Ending November 19, 1995



Playlists supplied by Broadcast Data Systems. Radio Track service. Stations selected from panel of leading broadcasters in 125 radio markets, electronically monitored 24 hours a day, 7 days a week. Songs ranked by number of plays in monitored week.

Q102 PD: Jimmy Steal APD/MD: Brian Douglas. WKRC Cincinnati. Top 40 list including Del Amitri, Gin Blossoms, Hootie & The Blowfish, etc.

G105 PD: Brian Burns MD: Kip Taylor. WDCG Raleigh. Top 40 list including Alannis Morissette, Edwin McCain, Mariah Carey, etc.

THE EDGE PD: Brian Bridgman MD: Tom Naylor. WEDJ Charlotte. Top 40 list including Edwin McCain, Gin Blossoms, Mariah Carey, etc.

Z100 PD: Ken Benson APD/MD: Chet Buchanan. KKRZ Portland. Top 40 list including Gin Blossoms, Mariah Carey, Whitney Houston, etc.

XL106.7 PD: Adam Cook. WXXL Orlando. Top 40 list including Everything But The Girl, Alannis Morissette, Mariah Carey, etc.

Z93 PD: Louis Kaplan MD: Gretchen Corbett. WGTZ Dayton. Top 40 list including Janet Jackson, Runaway, Mariah Carey, etc.

Y107 PD: Charlie Quinn MD: Gator Harrison. WYHY Nashville. Top 40 list including TLC, Waterfalls, Janet Jackson, Runaway, etc.

JAMMIN' 92 PD: Lisa Rodman MD: Dave Eubanks. WZJM Cleveland. Top 40 list including Makenzief, He's Mine, Selena, etc.

KISS 98.5 PD: Sue O'Neill MD: Dave Universal. WKSE Buffalo. Top 40 list including Gin Go Dolls, Name, Take That, Back For Good, etc.

WZPL PD: Tom Gjerdrum MD: Ron Blair. WZPL Indianapolis. Top 40 list including Mariah Carey & Boyz II Men, Whitney Houston, etc.

Z104 PD: Don London MD: Sean Sellers. WNVZ Norfolk. Top 40 list including Coolio Feat. L.V., Gangsta's Paradise, TLC, Digg'n' On You, etc.

KJ103 PD: Mike McCoy MD: Billy The Kid. KIYO Oklahoma City. Top 40 list including Janet Jackson, Runaway, Mariah Carey, etc.

MIX 93.3 PD/MD: Steve Wall. KMKV Kansas City. Top 40 list including TLC, Digg'n' On You, Blessid Union Of Souls, etc.

98PXY OM/PD: Clarke Ingram APD/MD: J.J. Rice. WPXY Rochester. Top 40 list including Coolio Feat. L.V., Gangsta's Paradise, etc.

WKRZ PD: Ken Medek MD: Jerry Padden. WKRZ Wilkes-Barre. Top 40 list including Mariah Carey, Fantasy, Hootie & The Blowfish, etc.

FLY 92 PD: Mike Morgan MD: Shawn Scott. WFLY Albany. Top 40 list including Janet Jackson, Runaway, Take That, Back For Good, etc.

WIXX PD: Dan Stone. WIXX Green Bay. Top 40 list including Ace Of Base, Beautiful Life, Gin Blossoms, etc.

KHFI PD: John Roberts MD: Fernando Ventura. KHFI Austin. Top 40 list including Mariah Carey, Fantasy, Sophie B. Hawkins, etc.

# NATALIE MERCHANT

**ALREADY  
EXPLODING AT:**

**Z100 NEW YORK  
WPST PHILADELPHIA  
G105 RALEIGH  
KRBE HOUSTON  
KUTQ SALT LAKE CITY  
KHTY SANTA BARBARA  
WKSS HARTFORD  
KHOM NEW ORLEANS**

**ALREADY:**

**A #1 ON THE BDS  
AAA CHART!**

**#20 MODERN ROCK CHART!**

# WONDER

The new single and video from her platinum solo debut **TIGERLILY**  
and the follow-up to the #1 AAA & Top 10 Pop, Alternative & AC hit  
“Carnival.”

On tour now.

Management: Jon Landau and Barbara Carr / Jon Landau Management

On Elektra compact discs and  cassettes.

<http://www.elektra.com>

1100

© 1995 Elektra Entertainment Group, a division of Warner Communications Inc. A Time Warner Company.

World Radio History



AIRPLAY Monitor

BDS IMPACT

DETECTIONS



AIRPOWER

(Minimum 1500 detections for the first time)

Total Plays/Gain

TOAD THE WET SPROCKET 1504/143

Good Intentions (Columbia/Reprise)

Total Stations: 78/Chart Move: 24-21

Heavy (40+ plays): 5 KLRZ, KRQQ, WDDJ, WPRO, WVSR

Medium (20-39): 35 KHTO, KHTY, KKLO, KKRD, KMXV, KUTO, WABB, WBHT, WDJX, WFBC, WFLY, WHHY, WIXX, WKBO, WKCI, WKRZ, WKSE, WKXJ, WLAN, WNCI, WNNK, WNOK, WNTQ, WPST, WRVQ, WSSX, WSTR, WWCK, WWST, WXIS, WXLK, WXXX, WYCR, WZNY, WZYP

Light (Under 20): 38

New Airplay This Week: 3 KJYO, WNTQ, WXXL

AIRPOWER BOUND

Total Plays/Gain

HOOTIE & THE BLOWFISH 1414/193

Time (Atlantic)

Total Stations: 74/Chart Move: 28-23

Heavy (40+ plays): 8 WBHT, WDDJ, WFBC, WNOK, WSTR, WXXX, WZNY, WZYP

Medium (20-39): 23 KKRZ, KQKQ, KRBE, KRQQ, WBZZ, WFLY, WHHY, WHTZ, WKBO, WKRZ, WKSE, WKXJ, WPST, WRVQ, WSSX, WSTR, WSTR, WVSR, WWCK, WWST, WXIS, WXLK, WYCR, WZPL

Light (Under 20): 43

New Airplay This Week: 3 WHYI, WKCI, WLAN

WHITNEY HOUSTON 1377/210

Exhale (Shoop Shoop) (Arista)

Total Stations: 74/Chart Move: 32-24

Heavy (40+): 1 WZJM

Medium (20-39): 35 KHKS, KHTO, KIIS, KJYO, KKLQ, KKRD, KKRZ, KLRZ, KMXV, KQKQ, KRQQ, KZZU, WDJX, WFNH, WFLZ, WFMF, WHOT, WIOQ, WIXX, WKXJ, WMXQ, WNOK, WNTQ, WNVZ, WPRO, WSSX, WSTW, WTIC, WVKX, WWSR, WWCK, WWST, WYCR, WZNY, WZPL

Light (Under 20): 38

New Airplay This Week: 10 KKMG, WFBC, WKRZ, WKSE, WLAN, WSNX, WXBK, WXXL, WXXX, WYHY

THE PRESIDENTS OF THE UNITED STATES OF AMERICA 1217/29

Lump (Columbia)

Total Stations: 76/Chart Move: 31-27

Heavy (40+): 2 WEDJ, WHTZ

Medium (20-39): 28 KHFI, KJYO, KKRZ, KLRZ, KQKQ, KRBE, KUTO, WAPE, WBHT, WBZZ, WDDJ, WFMF, WGTZ, WHOT, WIXX, WKBO, WKRZ, WNTQ, WPRO, WPST, WSNX, WWSR, WWCK, WXIS, WXXL, WZNY, WZPL

Light (Under 20): 46

New Airplay This Week: 2 KHKS, WNNK

EDWIN MCCAIN 1081/29

Solitude (Lava/Antenna)

Total Stations: 73/Chart Move: 34-29

Heavy (40+): 9 WBHT, WDCG, WEDJ, WFBC, WNOK, WPST, WYCR, WZNY, WZYP

Medium (20-39): 15 KHTY, KLRZ, WDDJ, WFLY, WFMF, WKRQ, WKRZ, WKXJ, WNNK, WPRO, WSSX, WSTW, WTW, WVKX, WXLK

Light (Under 20): 49

New Airplay This Week: 1 WNCI

GROOVE THEORY 1004/77

Tell Me (Epic)

Total Stations: 67/Chart Move: 37-33

Heavy (40+): 5 KHFI, KKRZ, WFLY, WFMF, WNVZ

Medium (20-39): 18 KDWB, KHTO, KIIS, KMXV, KQKQ, KRQQ, KZZU, WFNH, WKSS, WKXJ, WPRO, WRVQ, WTW, WVKX, WWSR, WXIS, WZJM, WZPL

Light (Under 20): 44

New Airplay This Week: 2 WDJX, WVKX

JOAN OSBORNE 979/171

One Of Us (Blue Gorilla/Mercury)

Total Stations: 61/Chart Move: Debut 34

Heavy (40+): 0

Medium (20-39): 19 KHTY, KKRZ, KLRZ, KRQQ, KUTO, WBZZ, WDCG, WDDJ, WEDJ, WFLZ, WHTZ, WKBO, WLAN, WNTQ, WPST, WSTR, WTKS, WXXX, WYCR

Light (Under 20): 42

New Airplay This Week: 5 KMXV, WBZZ, WDCG, WXXL, WZPL

EVERYTHING BUT THE GIRL 954/290

Missing (Atlantic)

Total Stations: 55/Chart Move: Debut 36

Heavy (40+): 7 KHFI, KHKS, KIIS, KKRZ, KRBE, WIOQ, WXXL

Medium (20-39): 12 KBFM, KDWB, KQKQ, WAPE, WHYI, WKSS, WPRO, WWCK, WWST, WXXB, WXXX, WZJM

Light (Under 20): 36

New Airplay This Week: 15 KKLQ, KQKQ, KRQQ, WABB, WFBC, WGTZ, WHTZ, WKBO, WKSE, WPRO, WPST, WPXY, WSNX, WSSX, WZNY

SELENA 835/79

Dreaming Of You (EMI Latin/EMI)

Total Stations: 62/Chart Move: Debut 39

Heavy (40+): 4 KHKS, KIIS, KRQQ, WZJM

Medium (20-39): 13 KHFI, KJYO, KKLQ, KLRZ, KMXV, WFLZ, WHYI, WKXJ, WPRO, WPXY, WTW, WWCK, WYCR

Light (Under 20): 45

New Airplay This Week: 6 WABB, WHOT, WKSS, WNVZ, WPRO, WRVQ

DEF LEPPARD 764/100

When Love & Hate Collide (Mercury)

Total Stations: 44/Chart Move: Debut 40

Heavy (40+): 1 WDDJ

Medium (20-39): 19 KQKQ, WFNH, WFLZ, WGTZ, WIXX, WKCI, WKRQ, WKRZ, WKXJ, WNOK, WPRO, WWSR, WWCK, WWST, WXIS, WXXX, WYCR, WZNY, WZYP

Light (Under 20): 24

New Airplay This Week: 5 KDWB, KHHT, KKRZ, WFMF, WVKX

CHART BOUND

Total Plays/Gain

Gold (NPG/Warner Bros.) 614/238

Total Stations: 44

Heavy (40+): 0

Medium (20-39): 13 KDWB, KMXV, WKRQ, WNOK, WPRO, WSTR, WTW, WXLK, WXXL, WYCR, WZJM, WZNY, WZYP

Light (Under 20): 31

New Airplay This Week: 11 KKLQ, WABB, WFNH, WFLY, WFMF, WKBO, WPRO, WSTW, WVKX, WWCK, WXXX

BONNIE RAITT WITH BRYAN ADAMS 578/45

Rock Steady (Capitol)

Total Stations: 59

Heavy (40+): 1 WDDJ

Medium (20-39): 9 WKXJ, WPRO, WSSX, WTIC, WVKX, WWCK, WXIS, WYCR, WZYP

Light (Under 20): 49

MOST NEW AIRPLAY THIS WEEK

No. Of Stations

BIG MOUNTAIN 30

Get Together (Giant)

SEAL 17

Don't Cry (ZTT/Sire/Warner Bros.)

EVERYTHING BUT THE GIRL 15

Missing (Atlantic)

OASIS 12

Wonderwall (Epic)

Gold (NPG/Warner Bros.) 11

RED HOT CHILI PEPPERS 570/37

My Friends (Warner Bros.)

Total Stations: 54

Heavy (40+): 1 KHTO

Medium (20-39): 7 KHTY, KUTO, WBHT, WDCG, WDDJ, WHTZ, WKXJ

Light (Under 20): 46

New Airplay This Week: 5 KKRZ, KMXV, WKSE, WKSS, WNTQ

BIG MOUNTAIN 558/464

Get Together (Giant)

Total Stations: 51

Heavy (40+): 0

Medium (20-39): 10 KHTO, KKLQ, KKRZ, KRQQ, WBZZ, WHYI, WNVZ, WPRO, WXLK, WZNY

Light (Under 20): 41

New Airplay This Week: 30 KHTO, KJYO, KKRZ, KLRZ, KMXV, KRQQ, WABB, WAPE, WDDJ, WEDJ, WFLZ, WGTZ, WHHY, WIXX, WKBO, WKXJ, WLAN, WMXQ, WNNK, WNOK, WNVZ, WPRO, WSSX, WSTW, WTW, WWSR, WXIS, WXLK, WYCR, WZYP

LA BOUCHE 544/146

Be My Lover (RCA)

Total Stations: 50

Heavy (40+): 0

Medium (20-39): 9 KBFM, KHTO, KZZU, WFNH, WIOQ, WKSE, WWSR, WXXL, WZJM

Light (Under 20): 41

New Airplay This Week: 7 KKRZ, KQKQ, KZZU, WFMF, WMXQ, WRVQ, WZPL

BETTER THAN EZRA 504/88

Rosealia (Elektra/EEG)

Total Stations: 39

Heavy (40+): 1 WPST

Medium (20-39): 6 KHTY, KLRZ, WDCG, WFBC, WKXJ, WZJM

Light (Under 20): 32

New Airplay This Week: 7 WFLZ, WHHY, WHOT, WKSS, WXLK, WYCR, WZYP

COLLECTIVE SOUL 449/62

The World I Know (Atlantic)

Total Stations: 37

Heavy (40+): 0

Medium (20-39): 7 KRBE, KUTO, WDDJ, WFBC, WKRZ, WPST, WWST

Light (Under 20): 30

New Airplay This Week: 6 KKLQ, WABB, WKBO, WNNK, WSTW, WZYP

XSCAPE 416/144

Who Can I Run To (So So Def/Columbia)

Total Stations: 53

Heavy (40+): 2 WFMF, WNVZ

Medium (20-39): 5 KHTO, KKRZ, KLRZ, WFNH, WZJM

Light (Under 20): 46

New Airplay This Week: 8 KHTO, KJYO, KKRZ, KKRZ, WGTZ, WSSX, WWCK, WZNY

SIMPLY RED 378/55

Fairground (EastWest/EEG)

Total Stations: 42

Heavy (40+): 1 WXIS

Medium (20-39): 7 KLRZ, WFLY, WMXQ, WNNK, WNVZ, WSSX, WWCK

Light (Under 20): 34

New Airplay This Week: 3 KMXV, KRBE, WABB

GARBAGE 331/20

Queer (Almo Sounds/Geffen)

Total Stations: 32

Heavy (40+): 1 KHTY

Medium (20-39): 5 KRBE, KUTO, WHTZ, WPST, WWCK

Light (Under 20): 26

New Airplay This Week: 2 WSSX, WYCR

SEAL 277/245

Don't Cry (ZTT/Sire/Warner Bros.)

Total Stations: 38

Heavy (40+): 0

Medium (20-39): 3 WBZZ, WNOK, WZNY

Light (Under 20): 35

New Airplay This Week: 17 KKLQ, KMXV, KRBE, WBZZ, WDDJ, WEDJ, WFNH, WGTZ, WHHY, WNNK, WSTR, WTW, WWSR, WWST, WXIS, WXLK, WZJM

ELTON JOHN 275/1

Blessed (Rocket/Island)

Total Stations: 35

Heavy (40+): 0

Medium (20-39): 1 WDDJ

Light (Under 20): 34

New Airplay This Week: 4 KJYO, WABB, WSTR, WSTW

FOLK IMPLOSION 240/75

Natural One (London/Island)

Total Stations: 27

Heavy (40+): 0

Medium (20-39): 5 KHTY, KRBE, KUTO, WEDJ, WHTZ

Light (Under 20): 22

New Airplay This Week: 4 WBHT, WWCK, WXXX, WZNY

SMASHING PUMPKINS 231/14

Bullet With Butterfly Wings (Virgin)

Total Stations: 22

Heavy (40+): 1 WHTZ

Medium (20-39): 3 KUTQ, WBHT, WDCG

Light (Under 20): 18

New Airplay This Week: 1 WNOK

OASIS 230/169

Wonderwall (Epic)

Total Stations: 25

Heavy (40+): 0

Medium (20-39): 3 KLRZ, KRBE, KUTO

Light (Under 20): 22

New Airplay This Week: 12 KHTY, KLRZ, WDDJ, WEDJ, WFBC, WFLY, WKRZ, WPST, WTW, WWCK, WXIS, WXXX

3T 224/72

Anything (MJJ/550 Music)

Total Stations: 17

Heavy (40+): 0

Medium (20-39): 4 KLRZ, KQKQ, WFNH, WNVZ

Light (Under 20): 13

New Airplay This Week: 2 WFLY, WXIS

MONICA 216/103

Before You Walk Out Of My Life (Rowdy/Arista)

Total Stations: 34

Heavy (40+): 1 WNVZ

Medium (20-39): 2 KHTO, WFNH

Light (Under 20): 31

New Airplay This Week: 5 WKSE, WPXY, WWST, WXIS, WXLK

P.M. DAWN 216/119

Sometimes I Miss You So Much (Gee Street/Island)

Total Stations: 26

Heavy (40+): 1 KZZU

Medium (20-39): 2 KMXV, WXIS

Light (Under 20): 23

New Airplay This Week: 8 KLRZ, KRQQ, WFMF, WKXJ, WTW, WVKX, WXIS, WXXX

PAULA ABDUL 203/145

Ain't Never Gonna Give You Up (Captive/Virgin)

Total Stations: 21

Heavy (40+): 1 KMXV

Medium (20-39): 2 KHTO, WFNH

Light (Under 20): 18

New Airplay This Week: 7 KHTO, KHHT, KLRZ, WNCI, WTW, WWST, WXIS

MAX-A-MILLION 202/21

Sexual Healing (S.O.S./Zoo)

Total Stations: 38

Heavy (40+): 1 KBFM

Medium (20-39): 2 KZZU, WZJM

Light (Under 20): 35

BON JOVI 170/49

Lie To Me (Mercury)

Total Stations: 29

Heavy (40+): 0

Medium (20-39): 0

Light (Under 20): 29

New Airplay This Week: 6 KHHT, KLRZ, WGTZ, WHTZ, WKRZ, WNNK

THE RENTALS 169/8

Friends Of P. (Maverick/Reprise)

Total Stations: 30

Heavy (40+): 0

Medium (20-39): 4 KHTY, KRBE, K

**AIR***First Place*

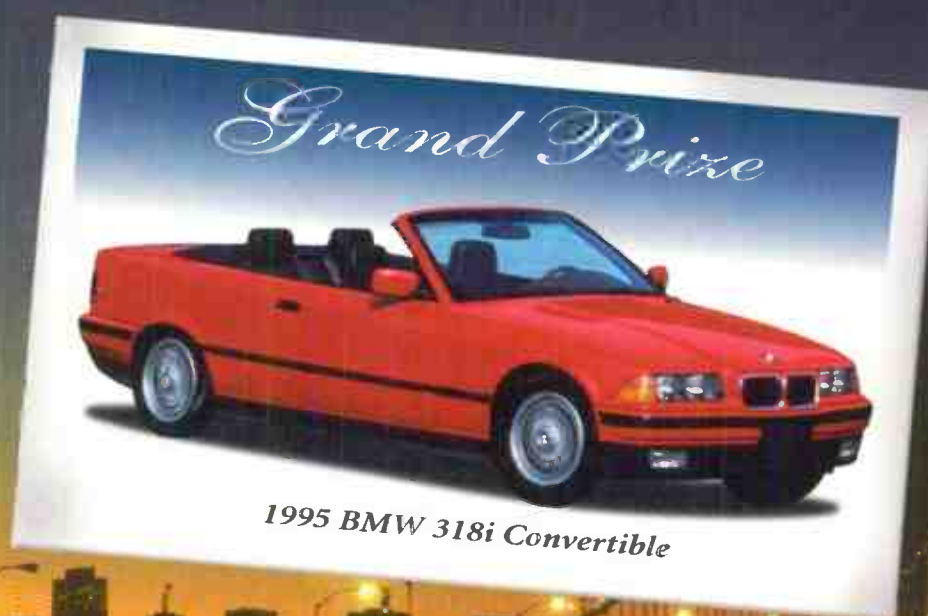
TOP 40 / RHYTHM - CROSSOVER COMPETITION SIX



## JOEY ARBAGEY

KMEL / San Francisco, CA

*"What can I say but... Fire! It's an incredible honor to join the prestigious group of past AIR Competition winners such as Keith Naftaly, Kevin Weatherly, Eric Bradley, and other radio professionals who I have looked up to so much. I can't thank Bruce Tyler and the rest of the AIR staff enough for the incredible amount of information and music tips that I have received from their entire team. I especially want to thank some of the many talented individuals who I've had the pleasure to work with: Dick Kelley, Keith Naftaly, Michelle Santosuosso, Hosh Gureli, Michael Erickson, Alex Mejia, and Dave Shakes. Most importantly, I have to thank the artists and labels for fueling my passion!"*



ACTIVE INDUSTRY RESEARCH

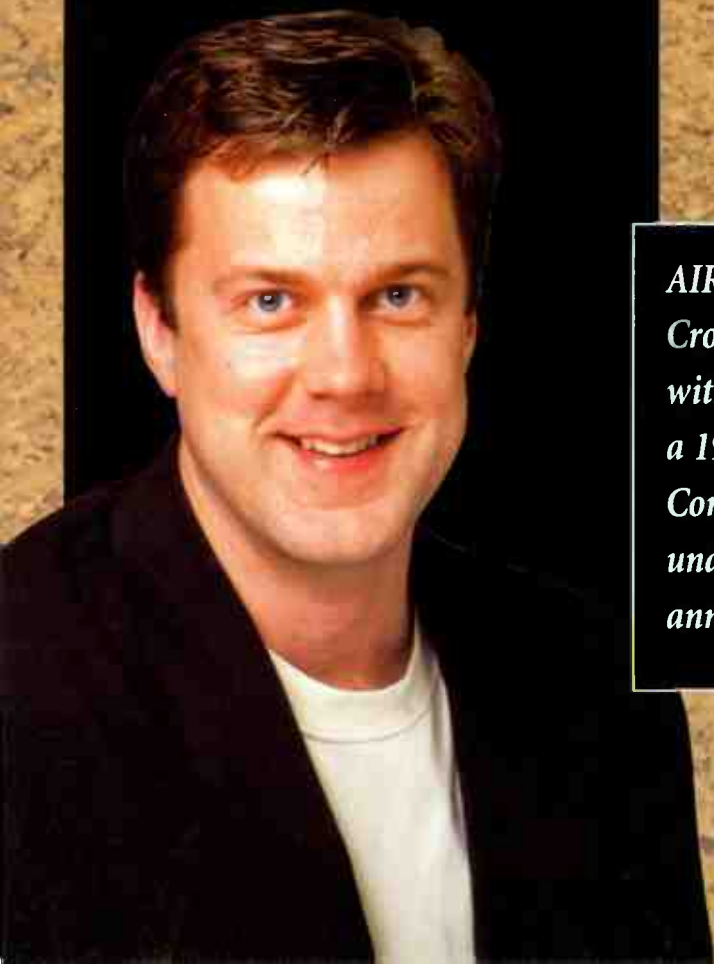
# AIR

# *Congratulates all our*

**2<sup>nd</sup> Place \$7,500**

**CADILLAC JACK**  
WJMN/Boston, MA

*"Unbelievable! Finishing well in two consecutive AIR competitions is truly an honor! My thanks go to everyone here at JAM'N for their consistent, daily dedication and hard work to a station that's quickly becoming the hottest thing in Boston! Thanks also to Bruce, Jonas and everyone at AIR for their own hard work in providing us with big-picture information to help us pick and play the hits, all the hits and nothing but the hits! (so help me God)."*



**3<sup>rd</sup> PLACE \$5,000**

**JAY STEVENS**  
WPGC / WASHINGTON, DC

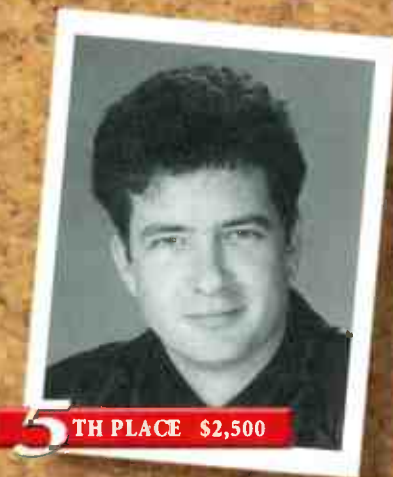
*"Thanks again to Bruce, Jonas and all of my friends at AIR. It's once again an honor to have placed so high in the competition. AIR continues to force programmers like myself to pay close attention to potential hit music... and that's still what it's all about!"*



**4<sup>th</sup> PLACE \$3,000**

**MICHELLE SANTOSUOSSO**  
KMEL / SAN FRANCISCO, CA

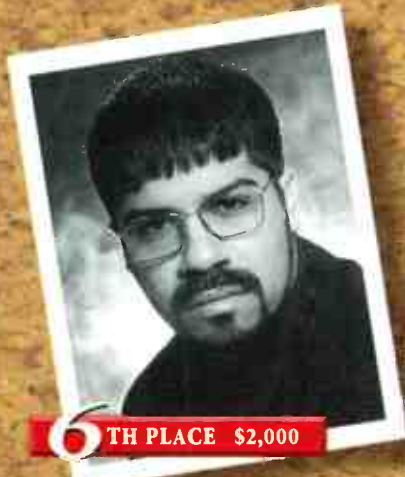
*"Thank you Bruce and everyone at AIR for continuing to provide a cool way to get into new music, and a direct way to communicate with the record labels. I'm honored to be able to compete, and shocked that I was able to place!"*



**5<sup>th</sup> PLACE \$2,500**

**CARL FRYE**  
WHHH / INDIANAPOLIS, IN

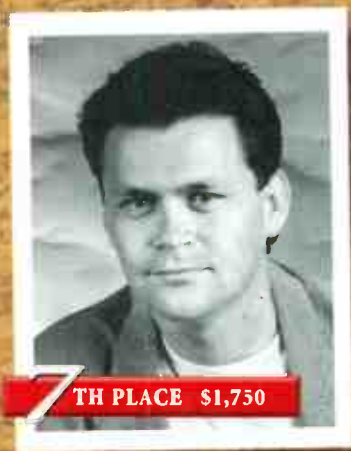
*"Since I've been in the AIR Competitions, Bruce and I have tracked hundreds of records determining their hit potential. Without his feedback, some of those hits from new as well as established artists may have been missed... and AIR makes sure you don't miss the hits."*



**6<sup>th</sup> PLACE \$2,000**

**HAROLD AUSTIN**  
KKBT / LOS ANGELES, CA

*"AIR has become a part of my Monday routine. I value and enjoy the challenges of AIR now more than ever. It keeps me on top of my game. As usual, it's always a great honor to place Top Ten. Major thanks to Bruce Tyler for his friendship and always watching my back. Peace."*



**7<sup>th</sup> PLACE \$1,750**

**MICHAEL MARTIN**  
KYLD / SAN FRANCISCO, CA

*"AIR is the first and only choice for accurate information on all the new music. It's nice to call Bob Brady each week and get clear-cut facts about what gives me ratings... the music!"*



**8<sup>th</sup> PLACE \$1,500**

**BOB PERRY**  
Formerly at  
HOT97.7 / SAN JOSE, CA

*"Finding the real hits... that's what it's all about. AIR is another tool I can use to find out what the real hits are! Bob Brady and AIR help me to stay focused on what really matters - the music!"*

*AIR's current Rhythm-Crossover Competition, with a Grand Prize of a 1996 BMW 318i Convertible, is currently underway. Winners will be announced in July 1996.*



**9<sup>th</sup> PLACE \$1,250**

**LUCY B.**  
KCAQ / OXNARD-VENTURA, CA

*"I'm proud to have placed among some of the best ears in the business. AIR is a valuable tool for us... I want to say to everyone at AIR, especially Bruce, thank you and keep up the good work!"*



**10<sup>th</sup> PLACE \$1,000**

**THE JANITOR**  
KTFM / SAN ANTONIO, TX

*"The best musical education that can occur during a 15 minute weekly phone conversation. My thanks to Bob Brady and the entire AIR staff."*

# Rhythm-Crossover Winners



11

**ALBIE DEE**  
WPGC / WASHINGTON, DC



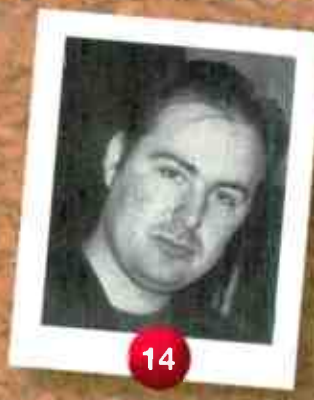
12

**ROOSTER RHODES**  
KCAQ / OXNARD-VENTURA, CA



13

**PETE JONES**  
HOT105 / MODESTO-MERCED, CA



14

**ROB SCORPIO**  
KBXX / HOUSTON, TX



15

**CAMILLE CASHWELL**  
92Q / BALTIMORE



16

**SHELLIE HART**  
KUBE / SEATTLE, WA



17

**SONIA JIMENEZ**  
KGGI / RIVERSIDE, CA



18

**CAT COLLINS**  
WJMN / BOSTON, MA



19

**CHARLES CHAVEZ**  
KTFM / SAN ANTONIO, TX



20

**SCOTT WHEELER**  
WHHH / INDIANAPOLIS, IN



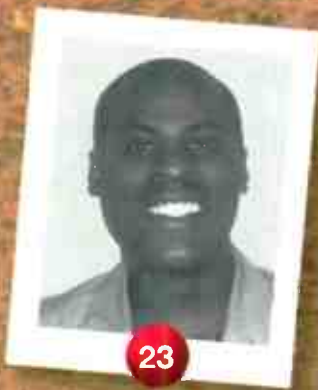
21

**CHARLIE MAXX**  
KZFM / CORPUS CHRISTI, TX



22

**JENNIFER WILDE**  
KDON / SALINAS-MONTEREY, CA



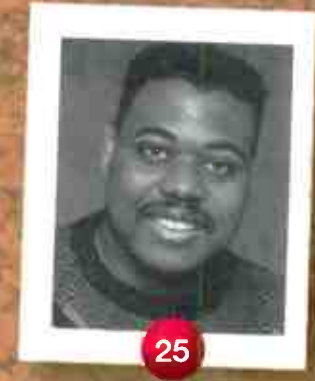
23

**MICKEY JOHNSON**  
WSOL / JACKSONVILLE, FL  
Formerly WHJX



24

**TRACY CLOHERTY**  
HOT97 / NEW YORK, NY



25

**KEVIN "KOOLIN" FOX**  
WIBB / MACON, GA



26

**MICHAEL NEWMAN**  
KDON / SALINAS-MONTEREY, CA



27

**MARK MEDINA**  
KWIN / STOCKTON, CA



28

**FRANKIE BLUE**  
THE BOX / MIAMI, FL



29

**RUSS ALLEN**  
92Q / BALTIMORE, MD



30

**SCOTT CHASE**  
Formerly at  
WOVV / W. PALM BEACH, FL

**WINNERS 11 THRU 30 SHARE IN A \$10,000 CASH POOL**

**AIR**  
**2nd Half**  
**WINNERS**

**FIRST PLACE**  
\$2,500

**JAY STEVENS**  
WPGC  
Washington, DC



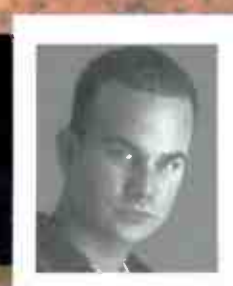
**SECOND PLACE**  
\$1,500

**MICHAEL MARTIN**  
KYLD  
San Francisco, CA



**THIRD PLACE**  
\$1,000

**JOEY ARBAGEY**  
KMEL  
San Francisco, CA



SONG ACTIVITY REPORTS

For Week Ending November 19, 1995

Monitor Broadcast Data Systems logo and detailed song tracking information for the last 3 weeks.

Table for ACE OF BASE - Beautiful Life (Arista). Includes station codes, song titles, and activity data.

Table for BETTER THAN EZRA - Rosealia (Elektra/EEG). Includes station codes, song titles, and activity data.

Table for BIG MOUNTAIN - Get Together (Giant). Includes station codes, song titles, and activity data.

Table for MARIAH CAREY & BOYZ II MEN - One Sweet Day (Columbia). Includes station codes, song titles, and activity data.

Table for COLLECTIVE SOUL - The World I Know (Atlantic). Includes station codes, song titles, and activity data.

Table for DEEP BLUE SOMETHING - Breakfast At Tiffany's (RainMaker/Interscope). Includes station codes, song titles, and activity data.

Table for DEF LEPPARD - When Love & Hate Collide (Mercury). Includes station codes, song titles, and activity data.

Table for EVERYTHING BUT THE GIRL - Missing (Atlantic). Includes station codes, song titles, and activity data.

Table for FOLK IMPLOSION - Natural One (London/Island). Includes station codes, song titles, and activity data.

Table for GARBAGE - Queer (Almo Sounds/Geffen). Includes station codes, song titles, and activity data.

Table for GOO GOO DOLLS - Name (Metal Blade/Warner Bros.). Includes station codes, song titles, and activity data.

Table for GROOVE THEORY - Tell Me (Epic). Includes station codes, song titles, and activity data.

Table for HOOTIE & THE BLOWFISH - Time (Atlantic). Includes station codes, song titles, and activity data.

Table for WHITNEY HOUSTON - Exhale (Shoop Shoop) (Arista). Includes station codes, song titles, and activity data.

Table for GARBAGE - Queer (Almo Sounds/Geffen). Includes station codes, song titles, and activity data.



SONG ACTIVITY REPORTS

For Week Ending November 19, 1995



Detailed song tracking information for the last 3 weeks for all songs showing increased play this week. Total plays and gain do not include video play. Markets listed in order of population.

ELTON JOHN 275/1
Blessed (Rocket/Island)
Total Stations: 35
Table with columns for station, week, and play count.

LA BOUCHE 544/146
Be My Lover (RCA)
Total Stations: 50
Table with columns for station, week, and play count.

MADONNA 2121/213
You'll See (Maverick/Warner Bros.)
Total Stations: 77
Chart Move: 16-13
Table with columns for station, week, and play count.

EDWIN MCCAIN 1081/29
Solitude (Lava/Antic)
Total Stations: 73
Chart Move: 34-29
Table with columns for station, week, and play count.

ALANIS MORISSETTE 2268/150
Hand In My Pocket (Maverick/Reprise)
Total Stations: 80
Chart Move: 10-9
Table with columns for station, week, and play count.

JOAN OSBORNE 979/171
One Of Us (Blue Gorilla/Mercury)
Total Stations: 61
Chart Move: Debut 34
Table with columns for station, week, and play count.

THE PRESIDENTS OF THE UNITED STATES 1217/29
Lump (Columbia)
Total Stations: 76
Chart Move: 31-27
Table with columns for station, week, and play count.

BONNIE RAITT/BRYAN ADAMS 578/45
Rock Steady (Capitol)
Total Stations: 59
Table with columns for station, week, and play count.

RED HOT CHILI PEPPERS 570/37
My Friends (Warner Bros.)
Total Stations: 54
Table with columns for station, week, and play count.

SEAL 277/245
Don't Cry (ZTT/Sire/Warner Bros.)
Total Stations: 38
Table with columns for station, week, and play count.

SELENA 835/79
Dreaming Of You (EMI Latin/EMI)
Total Stations: 62
Chart Move: Debut 39
Table with columns for station, week, and play count.

SIMPLY RED 378/55
Fairground (EastWest/EEG)
Total Stations: 42
Table with columns for station, week, and play count.

TLC 2269/227
Diggin' On You (LaFace/Arista)
Total Stations: 72
Chart Move: 14-8
Table with columns for station, week, and play count.

TOAD THE WET SPROCKET 1504/143
Good Intentions (Columbia/Reprise)
Total Stations: 78
Chart Move: 24-21
Table with columns for station, week, and play count.

XSCAPE 416/144
Who Can I Run To (So So Def/Columbia)
Total Stations: 53
Table with columns for station, week, and play count.



POWER PLAYLISTS

For Week Ending November 19, 1995

Playlist supplied by Broadcast Data Systems Radio Track service...

Grid of 24 radio station playlists including HOT 97, POWER 106, B96, KMEL, WPGC, WILD 107, JAM'N 94.5, THE BOX, POWER 96, KUBE, POWER 92, KGGI, FM 102, KTFM, 92Q, KS104, Z90, and B95. Each station listing includes song titles, artist names, and a Top 10 chart with TW and LW columns.

# EAZY-E

JUST T4H LET

# KNOW

NWA  
was HERE

~~THE NWA~~  
-E.W.

1523

D  
RC

BeeyATCH

6  
4  
2  
5 FEET  
10  
8

T4H POLICE

# THE NEW SINGLE

EAZY Info Line  
1-900-226-5006  
ERIC WRIGHT  
**RIP**  
1 9 2 3

World Radio History

**RUTHLESS**  
RECORDS  
Ruthless @ aol.com  
1995 Ruthless Records

**R**  
RESTRICTED



★ ★ ★ AIRPOWER ★ ★ ★

(Minimum 600 detections for the first time)

**LA BOUCHE** 630/46  
*Be My Lover (RCA)*  
Total Stations: 21/Chart Move: 18-15  
Heavy (40+ plays): 5 KPRR, KUBE, KYLD, WBBM, WOVB  
Medium (20-39): 8 KBOS, KKFR, KZFM, KZHT, WJJS, WPOW, WWKX, XHTZ  
Light (Under 20): 8  
New Airplay This Week: 1 KDON

**R. KELLY** 601/66  
*You Remind Me Of Something (Jive)*  
Total Stations: 25/Chart Move: 19-16  
Heavy (40+): 4 KBXX, KSFM, KZFM, WHHH, WJJS, WJMH  
Medium (20-39): 8 KLUC, KMEL, KPRR, KQKS, KZHT, WJMN, WQHT, WWKX  
Light (Under 20): 11

**AIRPOWER BOUND**

Total Plays/Gain

**MONICA** 573/9  
*Before You Walk Out Of My Life (Rowdy/Arista)*  
Total Stations: 26/Chart Move: 17-17  
Heavy (40+ plays): 5 KBXX, WERQ, WJJS, WJMN, WPGC  
Medium (20-39): 6 KBOS, KCAQ, KDON, KMEL, WHHH, WWKX  
Light (Under 20): 15

**ACE OF BASE** 490/21  
*Beautiful Life (Arista)*  
Total Stations: 20/Chart Move: 25-20  
Heavy (40+): 3 KQKS, KZFM, KZHT  
Medium (20-39): 10 KBOS, KKFR, KQKS, KPRR, KTFM, KUBE, WBBM, WJJS, WOVB, WWKX  
Light (Under 20): 7  
New Airplay This Week: 1 KDON

**D'ANGELO** 487/39  
*Cruisin' (EMI)*  
Total Stations: 24/Chart Move: 22-21  
Heavy (40+): 3 KCAQ, WHHH, XHTZ  
Medium (20-39): 8 KKSS, KPRR, KTFM, KZFM, KZHT, WERQ, WJJS, WJMH  
Light (Under 20): 13  
New Airplay This Week: 1 KKFR

**L.A.D. FEAT. DARVY TRAYLOR** 461/36  
*Ridin' Low (Hollywood)*  
Total Stations: 17/Chart Move: 27-23  
Heavy (40+): 4 KKSS, KLUC, KPRR, KYLD  
Medium (20-39): 6 KCAQ, KGGI, KPWR, KZFM, WHHH, WWKX  
Light (Under 20): 7  
New Airplay This Week: 3 KJMJ, KKFR, XHTZ

**REAL MCCOY** 370/44  
*Automatic Lover (Call For Love) (Arista)*  
Total Stations: 25/Chart Move: 35-29  
Heavy (40+): 2 KPRR, KZHT  
Medium (20-39): 7 KBOS, KKSS, KZFM, WJJS, WOVB, WPOW, WWKX  
Light (Under 20): 16  
New Airplay This Week: 2 KGGI, KPWR

**THE OUTHERE BROTHERS** 361/7  
*Boom Boom Boom (Aureus)*  
Total Stations: 24/Chart Move: 33-30  
Heavy (40+): 1 KPWR  
Medium (20-39): 6 KCAQ, KGGI, KJMJ, KPRR, WPOW, WWKX  
Light (Under 20): 17

**SHAI** 352/19  
*Come With Me (Gasoline Alley/MCA)*  
Total Stations: 20/Chart Move: 32-31  
Heavy (40+): 4 KDON, KZFM, KZHT, WJMH  
Medium (20-39): 3 KGGI, WERQ, WWKX  
Light (Under 20): 13  
New Airplay This Week: 1 KJMJ

**BLAHZAY BLAHZAY** 348/24  
*Danger (Fader/Mercury)*  
Total Stations: 18/Chart Move: 36-32  
Heavy (40+): 1 KYLD  
Medium (20-39): 7 KKSS, KPWR, WERQ, WJMH, WPGC, WQHT, WWKX  
Light (Under 20): 10  
New Airplay This Week: 1 WJJS

**COOLIO** 341/16  
*Too Hot (Tommy Boy)*  
Total Stations: 23/Chart Move: 38-33  
Heavy (40+): 0  
Medium (20-39): 6 KBXX, KPRR, KPWR, KZHT, WHHH, WWKX  
Light (Under 20): 17  
New Airplay This Week: 5 KCAQ, KDON, KQKS, WJMN, WOVB

**EVERYTHING BUT THE GIRL** 321/19  
*Missing (Atlantic)*  
Total Stations: 16/Chart Move: 40-36  
Heavy (40+): 4 KKFR, KPRR, KUBE, WBBM  
Medium (20-39): 3 KQKS, KTFM, WOVB  
Light (Under 20): 9

**DEBORAH COX** 259/15  
*Sentimental (Arista)*  
Total Stations: 18/Chart Move: Re-Entry 40  
Heavy (40+): 2 WJJS, WWKX  
Medium (20-39): 3 WERQ, WJMH, WPGC  
Light (Under 20): 13

**CHART BOUND**

Total Plays/Gain

**THE PHARCYDE** 257/23  
*Runnin' (Delicious Vinyl/Capitol)*  
Total Stations: 19  
Heavy (40+): 1 WQHT  
Medium (20-39): 5 KKSS, KYLD, WERQ, WWKX, XHTZ  
Light (Under 20): 13

**JODECI** 250/21  
*Love U 4 Life (Uptown/MCA)*  
Total Stations: 14  
Heavy (40+): 2 WERQ, WPGC  
Medium (20-39): 2 WHHH, WQHT  
Light (Under 20): 10

**FAITH EVANS** 242/47  
*Soon As I Get Home (Bad Boy/Arista)*  
Total Stations: 9  
Heavy (40+): 3 KBXX, WERQ, WPGC  
Medium (20-39): 2 WJMH, WQHT  
Light (Under 20): 4

**P.M. DAWN** 211/50  
*Sometimes I Miss You So Much (Gee Street/Island)*  
Total Stations: 14  
Heavy (40+): 1 KUBE  
Medium (20-39): 3 KKFR, KZFM, WJJS  
Light (Under 20): 10  
New Airplay This Week: 2 WHHH, XHTZ

**TRIBE** 191/24  
*So In Love (TiAmo/Metropolitan)*  
Total Stations: 7  
Heavy (40+): 1 KTFM  
Medium (20-39): 3 KQKS, KPRR, KSFM  
Light (Under 20): 3  
New Airplay This Week: 1 KZFM

**Gold (NPG/Warner Bros.)** 155/20  
Total Stations: 7  
Heavy (40+): 1 KLUC  
Medium (20-39): 4 KZHT, WJJS, WOVB, XHTZ  
Light (Under 20): 2

**MOST NEW AIRPLAY THIS WEEK**

No. Of Stations

**BRANDY** 6  
*Sittin' Up In My Room (Arista)*

**COOLIO** 5  
*Too Hot (Tommy Boy)*

**QUINCY JONES FEAT. BRANDY & HEAVY D** 5  
*Rock With You (Qwest/Warner Bros.)*

**THA DOGG POUND** 5  
*Let's Play House (Death Row/Interscope/Priority)*

**TONI BRAXTON** 4  
*Let It Flow (Arista)*

**R. KELLY** 4  
*Down Low (Jive)*

**KOOL G RAP** 4  
*Fast Life (Cold Chillin'/Epic Street/Epic)*

**SILK** 4  
*Hooked On You (Elektra/EEG)*

★ **BRANDY** 152/152  
*Sittin' Up In My Room (Arista)*  
Total Stations: 9  
Heavy (40+): 0  
Medium (20-39): 4 KTFM, WERQ, WJMN, WPGC  
Light (Under 20): 5  
New Airplay This Week: 6 KMEL, KTFM, KYLD, WERQ, WJMN, WPGC

**BACKSTREET BOYS** 144/9  
*We've Got It Go'in' On (Jive)*  
Total Stations: 14  
Heavy (40+): 1 KLUC  
Medium (20-39): 2 KZHT, WJJS  
Light (Under 20): 11

**L.V.** 138/34  
*Throw Your Hands Up (Tommy Boy)*  
Total Stations: 15  
Heavy (40+): 1 KPWR  
Medium (20-39): 1 KMEL  
Light (Under 20): 13  
New Airplay This Week: 3 KYLD, WWKX, XHTZ

**WC & THE MAAD CIRCLE** 135/13  
*West Up! (Payday/London/Island)*  
Total Stations: 8  
Heavy (40+): 1 KYLD  
Medium (20-39): 1 WHHH  
Light (Under 20): 6  
New Airplay This Week: 1 KSFM

**MONICA** 130/14  
*Like This And Like That (Rowdy/Arista)*  
Total Stations: 15  
Heavy (40+): 2 WERQ, WJMH  
Medium (20-39): 0  
Light (Under 20): 13  
New Airplay This Week: 1 WPOW

**GOODIE MOB** 118/17  
*Cell Therapy (LaFace/Arista)*  
Total Stations: 10  
Heavy (40+): 0  
Medium (20-39): 3 KBXX, WJMH, WPGC  
Light (Under 20): 7  
New Airplay This Week: 1 XHTZ

★ **KRIS KROSS** 110/64  
*Tonite's Tha Night (Ruffhouse/Columbia)*  
Total Stations: 16  
Heavy (40+): 0  
Medium (20-39): 1 WJMH  
Light (Under 20): 15  
New Airplay This Week: 2 WJMH, XHTZ

★ **THA DOGG POUND** 102/98  
*Let's Play House (Death Row/Interscope/Priority)*  
Total Stations: 14  
Heavy (40+): 0  
Medium (20-39): 2 KPWR, WJMH  
Light (Under 20): 12  
New Airplay This Week: 5 KBXX, KPWR, KYLD, WJMH, WWKX

**XSCAPE** 99/23  
*Do You Want To (So So Def/Columbia)*  
Total Stations: 4  
Heavy (40+): 1 WPGC  
Medium (20-39): 1 WJMH  
Light (Under 20): 2  
New Airplay This Week: 1 KBXX

★ **QUINCY JONES FEAT. BRANDY & HEAVY D** 99/87  
*Rock With You (Qwest/Warner Bros.)*  
Total Stations: 6  
Heavy (40+): 0  
Medium (20-39): 3 KMEL, KQKS, WPGC  
Light (Under 20): 3  
New Airplay This Week: 5 KBXX, KQKS, KSFM, KZFM, WPGC

★ **BIG MOUNTAIN** 87/57  
*Get Together (Giant)*  
Total Stations: 9  
Heavy (40+): 0  
Medium (20-39): 1 KKFR  
Light (Under 20): 8  
New Airplay This Week: 3 KCAQ, KZHT, XHTZ

**RAW STYLUS** 85/31  
*Believe In Me (Geffen)*  
Total Stations: 18  
Heavy (40+): 8  
Medium (20-39): 1 KCAQ  
Light (Under 20): 17  
New Airplay This Week: 3 KSFM, WJJS, WWKX

★ **R. KELLY** 82/82  
*Down Low (Jive)*  
Total Stations: 6  
Heavy (40+): 0  
Medium (20-39): 3 KBXX, WJMH, WPGC  
Light (Under 20): 3  
New Airplay This Week: 4 KBXX, WERQ, WJMH, WPGC

**LE CLICK** 81/7  
*Tonight Is The Night (Logic)*  
Total Stations: 9  
Heavy (40+): 1 WBBM  
Medium (20-39): 0  
Light (Under 20): 8

**L.B.C. CREW** 80/16  
*Beware Of My Crew (Warner Bros.)*  
Total Stations: 8  
Heavy (40+): 0  
Medium (20-39): 1 KPWR  
Light (Under 20): 7

★ **KOOL G RAP** 79/40  
*Fast Life (Cold Chillin'/Epic Street/Epic)*  
Total Stations: 16  
Heavy (40+): 0

Medium (20-39): 0  
Light (Under 20): 16  
New Airplay This Week: 4 KKSS, WERQ, WJMH, WWKX

**QUINCY JONES INTRODUCING TAMIA** 77/4  
*You Put A Move On My (Qwest/Warner Bros.)*  
Total Stations: 12  
Heavy (40+): 0  
Medium (20-39): 0  
Light (Under 20): 12  
New Airplay This Week: 1 WHHH

★ **TONI BRAXTON** 76/76  
*Let It Flow (Arista)*  
Total Stations: 7  
Heavy (40+): 0  
Medium (20-39): 1 WERQ  
Light (Under 20): 6  
New Airplay This Week: 4 KBXX, WERQ, WJMH, WJMN

**LOST BOYZ** 75/7  
*Jeeps, Lex Coups, Bimaz & Benz (Uptown/MCA)*  
Total Stations: 4  
Heavy (40+): 1 WJMH  
Medium (20-39): 0  
Light (Under 20): 3  
New Airplay This Week: 1 WPGC

★ **RUFFNECK FEAT. YAVAHN** 75/74  
*Everybody Be Somebody (Maw/Strictly Rhythm)*  
Total Stations: 6  
Heavy (40+): 1 KYLD  
Medium (20-39): 0  
Light (Under 20): 5  
New Airplay This Week: 1 KYLD

**FUN FACTORY** 71/10  
*Take Your Chance (Curb-edel)*  
Total Stations: 6  
Heavy (40+): 0  
Medium (20-39): 1 WWKX  
Light (Under 20): 5

**KAUSION** 69/1  
*What You Wanna Do? (Lench Mob/Priority)*  
Total Stations: 3  
Heavy (40+): 0  
Medium (20-39): 2 KMEL, KYLD  
Light (Under 20): 1

★ **MARY J. BLIGE** 59/55  
*Not Gon' Cry (Arista)*  
Total Stations: 3  
Heavy (40+): 1 WPGC  
Medium (20-39): 0  
Light (Under 20): 2  
New Airplay This Week: 2 WERQ, WPGC

**INTRO** 58/0  
*Funny How Time Flies (Atlantic)*  
Total Stations: 3  
Heavy (40+): 0  
Medium (20-39): 1 WQHT  
Light (Under 20): 2

**ALEX PARTY** 55/4  
*Don't Give Me Your Life (FFRR/London)*  
Total Stations: 5  
Heavy (40+): 0  
Medium (20-39): 1 KKFR  
Light (Under 20): 4  
New Airplay This Week: 1 KZHT

★ **TLC** 54/47  
*This Is How It Works (Arista)*  
Total Stations: 2  
Heavy (40+): 0  
Medium (20-39): 2 KUBE, WPGC  
Light (Under 20): 0  
New Airplay This Week: 2 KUBE, WPGC

**J'SON** 52/1  
*Take A Look (Hollywood)*  
Total Stations: 8  
Heavy (40+): 0  
Medium (20-39): 1 XHTZ  
Light (Under 20): 7

SONG ACTIVITY REPORTS

For Week Ending November 19, 1995



Grid of 40 charts for various artists including Gold (NPG/Warner Bros.), BRANDY, MARIHA CAREY & BOYZ II MEN, ACE OF BASE, COOLIO, DEBORAH COX, BLAHZAY BLAHZAY, D'ANGELO, FAITH EVANS, EVERYTHING BUT THE GIRL, GROOVE THEORY, WHITNEY HOUSTON, JODECI, R. KELLY, L.A.D. FEAT. DARVY TRAYLOR, L.V., LA BOUCHE, LL COOL J, MONICA, THE OUTHERE BROTHERS, P.M. DAWN, THE PHARCYDE, PLANET SOUL, REAL MCCOY, SHAI, TLC, TRIBE, WC & THE MAAD CIRCLE.



POWER PLAYLISTS



For Week Ending November 19, 1995

Playlists supplied by Broadcast Data Systems' Radio Track service. Stations selected from panel of leading broadcasters in 125 radio markets, electronically monitored 24 hours a day, 7 days a week. Songs ranked by number of plays in monitored week.

Grid of 24 radio station playlists including WPLJ, MIX 105, STAR 98.7, STAR 104.5, B101, WPNT, MIX 101.9, Q95, MIX 107.3, MIX 98.5, K101, KS95, MIX 96.5, Q104, MIX 102.9, STAR 101.5, KYKY, MIX 96, WALK, VARIETY 96, WKTI, WBLI, ALICE 106, STAR 100.7.

**BDS IMPACT**

**AIRPOWER**  
(Minimum 600 detections for the first time)

**NO RECORDS QUALIFIED FOR AIRPOWER THIS WEEK**

**AIRPOWER BOUND**

Total Plays/Gain

**GOO GOO DOLLS 505/45**  
*Name (Metal Blade/Warner Bros.)*  
Total Stations: 29/Chart Move: 25-21  
Heavy (30+ plays): 4 KALC, KWMX, KYSR, WQAL  
Medium (15-29): 14 KDMX, KFMB, KSTP, WBLI, WEZF, WKDD, WKTl, WMXV, WPLJ, WQLH, WRQX, WTMX, WVTY, WZPK  
Light (Under 15): 11  
New Airplay This Week: 4 KISN, KSTZ, WCSO, WQLH

**MEAT LOAF 480/8**  
*I'd Lie For You (And That's The Truth) (MCA)*  
Total Stations: 42/Chart Move: 23-22  
Heavy (30+): 4 KGBY, WEZF, WQAL, WZPK  
Medium (15-29): 11 KALC, KDMX, KIOI, KSTZ, WCSO, WKQI, WMTX, WMXV, WPLJ, WRQX, WTMX  
Light (Under 15): 27  
New Airplay This Week: 2 KALC, WKQI

**TOAD THE WET SPROCKET 479/9**  
*Good Intentions (Columbia/Reprise)*  
Total Stations: 37/Chart Move: 24-23  
Heavy (30+): 3 KALC, KWMX, KYSR  
Medium (15-29): 11 KDMX, KFMB, KHMx, KPLZ, WAHR, WEZF, WKDD, WMXL, WQAL, WRQX, WZPK  
Light (Under 15): 23  
New Airplay This Week: 2 WKZL, WPLJ

**DEEP BLUE SOMETHING 411/60**  
*Breakfast At Tiffany's (RainMaker/Interscope)*  
Total Stations: 24/Chart Move: 31-25  
Heavy (30+): 5 KALC, KFMB, KYSR, WPLJ, WZPK  
Medium (15-29): 9 KHMx, KWMX, WBLI, WKTl, WMTX, WMXL, WMXV, WTMX, WVTY  
Light (Under 15): 10  
New Airplay This Week: 3 KSTP, WEZF, WVTY

**HOOTIE & THE BLOWFISH 408/65**  
*Time (Atlantic)*  
Total Stations: 29/Chart Move: 32-26  
Heavy (30+): 2 WMTX, WQLH  
Medium (15-29): 12 KDMX, KFMB, KHMx, KSTZ, KWMX, KYSR, WKDD, WKZL, WMXL, WPLJ, WRQX, WWSN  
Light (Under 15): 15  
New Airplay This Week: 1 WQLH

**SARAH MCLACHLAN 380/25**  
*I Will Remember You (Arista)*  
Total Stations: 31/Chart Move: 30-30  
Heavy (30+): 0  
Medium (15-29): 11 KDMX, KFMB, KHMx, KPLZ, WAHR, WEZF, WJDX, WKTl, WLHT, WMJQ, WPLJ  
Light (Under 15): 16  
New Airplay This Week: 2 KFMB, WALK

**BONNIE RAITT WITH BRYAN ADAMS 362/60**  
*Rock Steady (Capitol)*  
Total Stations: 31/Chart Move: 35-31  
Heavy (30+): 2 KYKY, KYSR  
Medium (15-29): 8 KSTZ, WAEV, WCSO, WKTl, WMXV, WPNT, WTMX, WWSN  
Light (Under 15): 21  
New Airplay This Week: 5 KDMX, KGBY, WMTX, WPNT, WTFM

**TLC 347/22**  
*Waterfalls (LaFace/Arista)*  
Total Stations: 20/Chart Move: 34-33  
Heavy (30+): 4 KSTP, KTHT, WRQX, WYXR  
Medium (15-29): 5 KIOI, KWMX, WKTl, WMTX, WZPK  
Light (Under 15): 11  
New Airplay This Week: 1 WAEV

**EVERYTHING BUT THE GIRL 245/127**  
*Missing (Atlantic)*  
Total Stations: 15/Chart Move: Debut 35  
Heavy (30+): 3 KHMx, KPLZ, WQLH  
Medium (15-29): 4 KDMX, WBMX, WPLJ, WYXR  
Light (Under 15): 8  
New Airplay This Week: 5 WBEB, WBLI, WMTX, WQLH, WYXR

**ALANIS MORISSETTE 209/30**  
*Hand In My Pocket (Maverick/Reprise)*  
Total Stations: 18/Chart Move: 38-36  
Heavy (30+): 1 KFMB  
Medium (15-29): 5 KWMX, WKTl, WPLJ, WTMX, WZPK  
Light (Under 15): 12  
New Airplay This Week: 1 WRQX

**ACE OF BASE 206/4**  
*Beautiful Life (Arista)*  
Total Stations: 19/Chart Move: 36-37  
Heavy (30+): 0  
Medium (15-29): 7 KTHT, KWMX, WEZF, WKDD, WMXV, WQLH, WYXR  
Light (Under 15): 12  
New Airplay This Week: 1 WQLH

**JOAN OSBORNE 179/36**  
*One Of Us (Blue Gorilla/Mercury)*  
Total Stations: 14/Chart Move: Debut 38  
Heavy (30+): 2 KALC, KYSR  
Medium (15-29): 3 KFMB, KWMX, WZPK  
Light (Under 15): 9  
New Airplay This Week: 1 WVTY

**CELINE DION 167/13**  
*(You Make Me Feel Like) A Natural Woman (Lava/Atlantic)*  
Total Stations: 14/Chart Move: Debut 40  
Heavy (30+): 0  
Medium (15-29): 7 KGBX, WDEF, WGSY, WJDX, WLHT, WMJQ, WMYI  
Light (Under 15): 7

**CHART BOUND**

Total Plays/Gain

**EDWYN COLLINS 145/17**  
*A Girl Like You (Bar None/A&M)*  
Total Stations: 13  
Heavy (30+): 2 KFMB, KYSR  
Medium (15-29): 2 KALC, KSTP  
Light (Under 15): 9

**DEF LEPPARD 133/62**  
*When Love & Hate Collide (Mercury)*  
Total Stations: 11  
Heavy (30+): 0  
Medium (15-29): 4 KHMx, WMTX, WPLJ, WZPK  
Light (Under 15): 7  
New Airplay This Week: 3 KHMx, WKDD, WMXV

**MOST NEW AIRPLAY THIS WEEK**

- SEAL 8**  
*Don't Cry (ZTT/Sire/Warner Bros.)*
- EVERYTHING BUT THE GIRL 5**  
*Missing (Atlantic)*
- BONNIE RAITT WITH BRYAN ADAMS 5**  
*Rock Steady (Capitol)*
- GOO GOO DOLLS 4**  
*Name (Metal Blade/Warner Bros.)*
- JUDE COLE 3**  
*Believe In You (Island)*
- DEEP BLUE SOMETHING 3**  
*Breakfast At Tiffany's (RainMaker/Interscope)*
- DEF LEPPARD 3**  
*When Love & Hate Collide (Mercury)*
- MELISSA ETHERIDGE 3**  
*I Want To Come Over (Island)*

★ **SEAL 132/131**  
*Don't Cry (ZTT/Sire/Warner Bros.)*  
Total Stations: 12  
Heavy (30+): 1 KYSR  
Medium (15-29): 2 KHMx, KPLZ  
Light (Under 15): 9  
New Airplay This Week: 8 KHMx, KPLZ, KTHT, KWMX, KYSR, WJDX, WWSN, WZPK

**SELENA 107/24**  
*Dreaming Of You (EMI Latin/EMI)*  
Total Stations: 16  
Heavy (30+): 1 KTHT  
Medium (15-29): 1 WJDX  
Light (Under 15): 14  
New Airplay This Week: 2 KIOI, WBMX

★ **JANN ARDEN 87/45**  
*Insensitive (A&M)*  
Total Stations: 9  
Heavy (30+): 0  
Medium (15-29): 2 KHMx, WKTl  
Light (Under 15): 7  
New Airplay This Week: 2 KDMX, KHMx

**JON B. 83/9**  
*Pretty Girl (Yab Yum/550 Music)*  
Total Stations: 5  
Heavy (30+): 0  
Medium (15-29): 3 KTHT, WKTl, WZPK  
Light (Under 15): 2

**STEVE WINWOOD 80/17**  
*Reach For The Light (MCA)*  
Total Stations: 8  
Heavy (30+): 0  
Medium (15-29): 2 WMJQ, WMXV  
Light (Under 15): 6

**BETTER THAN EZRA 78/7**  
*Good (Elektra/EEG)*  
Total Stations: 5  
Heavy (30+): 0  
Medium (15-29): 2 KALC, KFMB  
Light (Under 15): 3

**EDWIN MCCAIN 74/34**  
*Solitude (Lava/Atlantic)*  
Total Stations: 7  
Heavy (30+): 0  
Medium (15-29): 2 KALC, WWSN  
Light (Under 15): 5  
New Airplay This Week: 2 KWMX, WWSN

THIS WEEK	LAST WEEK	WEEKS ON	TITLE/LABEL	ARTIST	DETECTIONS	
					TW	LW
			★★★★ NO. 1 ★★★★★			
1	1	28	AS I LAY ME DOWN COLUMBIA	3 wks at No. 1 SOPHIE E. HAWKINS	1718	1804
2	2	23	KISS FROM A ROSE ZTT/SIRE/WARNER BROS.	SEAL	1615	1714
3	4	20	ONLY WANNA BE WITH YOU ATLANTIC	HOOTIE & THE BLOWFISH	1557	1620
4	3	17	BACK FOR GOOD ARISTA	TAKE THAT	1544	1637
5	5	16	ROLL TO ME A&M	DEL AMITRI	1438	1433
6	6	26	RUN-AROUND A&M	BLUES TRAVELER	1256	1286
7	7	14	RUNAWAY A&M	JANET JACKSON	1218	1252
8	9	13	CARNIVAL ELEKTRA/EEG	NATALIE MERCHANT	1152	1110
9	8	16	TIL I HEAR IT FROM YOU A&M	GIN BLOSSOMS	1115	1132
10	10	26	I CAN LOVE YOU LIKE THAT BLITZZ/ATLANTIC	ALL-4-ONE	1074	1065
11	11	7	BLESSED ROCKET/ISLAND	ELTON JOHN	970	948
12	17	3	ONE SWEET DAY COLUMBIA	MARIAH CAREY & BOYZ II MEN	963	679
13	13	5	EXHALE (SHOOP SHOOP) ARISTA	WHITNEY HOUSTON	927	791
14	15	4	YOU'LL SEE MAVERICK/WARNER BROS.	MADONNA	914	779
15	12	13	FANTASY COLUMBIA	MARIAH CAREY	781	885
16	14	28	I'LL BE THERE FOR YOU EASTWEST/EEG	THE REMBRANDTS	762	784
17	16	16	DECEMBER ATLANTIC	COLLECTIVE SOUL	741	741
18	19	53	IN THE HOUSE OF STONE AND LIGHT MERCURY	MARTIN PAGE	643	664
19	18	19	I COULD FALL IN LOVE EMI LATIN/EMI	SELENA	605	672
20	20	9	RUNAWAY 143/LAVA/ATLANTIC	THE CORRS	582	590
21	25	8	NAME METAL BLADE/WARNER BROS.	GOO GOO DOLLS	505	460
22	23	8	I'D LIE FOR YOU (AND THAT'S THE TRUTH) MCA	MEAT LOAF	480	472
23	24	8	GOOD INTENTIONS COLUMBIA/REPRISE	TOAD THE WET SPROCKET	475	470
24	21	24	COLORS OF THE WIND HOLLYWOOD	VANESSA WILLIAMS	457	524
25	31	7	BREAKFAST AT TIFFANY'S RAINMAKER/INTERSCOPE	DEEP BLUE SOMETHING	411	351
26	32	5	TIME ATLANTIC	HOOTIE & THE BLOWFISH	408	343
27	27	9	ANTS MARCHING RCA	DAVE MATTHEWS BAND	395	430
28	26	14	FOREVER TONIGHT RIVER NORTH	PETER CETERA & CRYSTAL BERNARD	395	441
29	22	17	YOU ARE NOT ALONE EPIC	MICHAEL JACKSON	390	495
30	30	7	I WILL REMEMBER YOU ARISTA	SARAH MCLACHLAN	380	355
31	35	3	ROCK STEADY CAPITOL	BONNIE RAITT WITH BRYAN ADAMS	362	302
32	29	13	LET ME BE THE ONE EMI	BLESSID UNION OF SOULS	361	381
33	34	18	WATERFALLS LAFACE/ARISTA	TLC	347	325
34	33	7	DO YOU SLEEP? GEFEN	LISA LOEB & NINE STORIES	274	334
35	NEW ▶		MISSING ATLANTIC	EVERYTHING BUT THE GIRL	245	118
36	38	2	HAND IN MY POCKET MAVERICK/REPRISE	ALANIS MORISSETTE	209	179
37	36	3	BEAUTIFUL LIFE ARISTA	ACE OF BASE	206	202
38	NEW ▶		ONE OF US BLUE GORILLA/MERCURY	JOAN OSBORNE	179	143
39	37	6	BELIEVE IN YOU ISLAND	JUDE COLE	171	195
40	NEW ▶		(YOU MAKE ME FEEL LIKE) A NATURAL WOMAN LAVA/ATLANTIC	CELINE DION	167	154

Records showing an increase in detections over the previous week, regardless of chart movement. A record which has been on the chart for more than 20 weeks will not receive a bullet, even if it registers an increase in detections. Airpower awarded to those records which attain 600 detections for the first time. If two records are tied in number of plays, the record being played on more stations is placed first. Records below the top 20 are removed from the chart after 26 weeks. © 1995, Billboard/BPI Communications.

**THE PRESIDENTS OF THE UNITED STATES 63/4**  
*Lump (Columbia)*  
Total Stations: 10  
Heavy (30+): 0  
Medium (15-29): 1 KFMB  
Light (Under 15): 9

**GROOVE THEORY 55/9**  
*Tell Me (Epic)*  
Total Stations: 4  
Heavy (30+): 1 KTHT  
Medium (15-29): 1 WZPK  
Light (Under 15): 2

**ALANIS MORISSETTE 55/2**  
*You Oughta Know (Maverick/Reprise)*  
Total Stations: 6  
Heavy (30+): 0  
Medium (15-29): 1 KALC  
Light (Under 15): 5  
New Airplay This Week: 1 KFMB

**JIM BRICKMAN 53/2**  
*If You Believe (Windham Hill)*  
Total Stations: 8  
Heavy (30+): 0  
Medium (15-29): 2 KGBX, WDEF  
Light (Under 15): 6



SONG ACTIVITY REPORTS



For Week Ending November 19, 1995

Detailed song tracking information for the last 3 weeks for all songs showing increased play this week. Total plays and gain do not include video play. Markets listed in order of population.

Total Plays/Gain

ACE OF BASE 206/4
Beautiful Life (Arista)
Total Stations: 19 Chart Move: 36-37

MARIAH CAREY & BOYZ II MEN 963/284
One Sweet Day (Columbia)
Total Stations: 50 Chart Move: 17-12

EDWYN COLLINS 145/17
A Girl Like You (Bar None/A&M)
Total Stations: 13

DEEP BLUE SOMETHING 411/60
Breakfast At Tiffany's (RainMaker/Interscope)
Total Stations: 24 Chart Move: 31-25

DEL AMITRI 1438/5
Roll To Me (A&M)
Total Stations: 52 Chart Move: 5-5

CELINE DION 167/13
(You Make Me Feel Like) A Natural Woman (Lava/Atlantic)
Total Stations: 14 Chart Move: Debut 40

EVERYTHING BUT THE GIRL 245/127
Missing (Atlantic)
Total Stations: 15 Chart Move: Debut 35

GOO GOO DOLLS 505/45
Name (Metal Blade/Warner Bros.)
Total Stations: 29 Chart Move: 25-21

HOOTIE & THE BLOWFISH 408/65
Time (Atlantic)
Total Stations: 29 Chart Move: 32-26

WHITNEY HOUSTON 927/136
Exhale (Shoop Shoop) (Arista)
Total Stations: 49 Chart Move: 13-13

ELTON JOHN 960/12
Blessed (Rocket/Island)
Total Stations: 48 Chart Move: 11-11

MADONNA 914/135
You'll See (Maverick/Warner Bros.)
Total Stations: 53 Chart Move: 15-14

SARAH MCLACHLAN 380/25
I Will Remember You (Arista)
Total Stations: 27 Chart Move: 30-30

MEAT LOAF 480/8
I'd Lie For You (And That's The Truth) (MCA)
Total Stations: 42 Chart Move: 23-22

NATALIE MERCHANT 1152/42
Carnival (Elektra/EEG)
Total Stations: 51 Chart Move: 9-8

ALANIS MORISSETTE 209/30
Hand In My Pocket (Maverick/Reprise)
Total Stations: 18 Chart Move: 38-36

JOAN OSBORNE 179/36
One Of Us (Blue Gorilla/Mercury)
Total Stations: 14 Chart Move: Debut 38

BONNIE RAITT WITH BRYAN ADAMS 362/60
Rock Steady (Capitol)
Total Stations: 31 Chart Move: 35-31

TLC 347/22
Waterfalls (LaFace/Arista)
Total Stations: 20 Chart Move: 34-33

TOAD THE WET SPROCKET 479/9
Good Intentions (Columbia/Reprise)
Total Stations: 37 Chart Move: 24-23



POWER PLAYLISTS

Table with columns for KROQ (Los Angeles), WKQX (Chicago), and WPLY (Philadelphia). Each station lists top 30 songs with artist names and chart positions.

Table with columns for WDRE (Long Island), WBCN (Boston), and WHYT (Detroit). Each station lists top 30 songs with artist names and chart positions.

Table with columns for KDGE (Dallas), WHFS (Washington, DC), and KITS (San Francisco). Each station lists top 30 songs with artist names and chart positions.

Main chart table with columns: THIS WEEK, LAST WEEK, WKS. ON CHART, TITLE/LABEL/DISTRIBUTING LABEL, ARTIST, TW, LW. Includes top 20 records like 'MY FRIENDS' by Red Hot Chili Peppers.

Records showing an increase in detections over the previous week, regardless of chart movement. A record which has been on the chart for more than 20 weeks will not receive a bullet, even if it registers an increase in detections.

Advertisement for 'Folk Implosion "Natural One"' featuring a collage of faces and text: '7 - 6 Monitor Modern Rock Chart Now Over 1500 Spins! 44 - 35 Billboard Hot 100 Airplay Crossing Now At CHR!'.



COMBINED TOP 40 MONITOR AIRPLAY											AIRPLAY THIS WEEK BY FORMAT											
TW	LW	WKS	TITLE (LABEL)	ARTIST	THIS WEEK			LAST WEEK			MAINSTREAM		RHYTHM		ADULT		MODERN					
					Audience (millions)	Detections No.	Rank	Audience (millions)	Detections No.	Rank	Audience (millions)	Detections No.	Rank	Audience (millions)	Detections No.	Rank	Audience (millions)	Detections No.	Rank			
1	1	13	FANTASY (COLUMBIA)	MARIAH CAREY	66.1403	5683	1	70.0005	6256	1	28.8734	3183	1	30.7154	1713	1	6.5210	741	15	0.0305	6	—
(2)	2	6	ONE SWEET DAY (COLUMBIA)	MARIAH CAREY & BOYZ II MEN	57.0293	4899	4	49.3519	3943	9	22.8817	2487	5	25.2085	1448	3	8.9322	963	11	0.0069	1	—
(3)	7	12	NAME (METAL BLADE/WARNER BROS.)	GOO GOO DOLLS	44.5574	4924	3	44.2649	4927	3	21.5432	2722	3	0.2775	21	—	7.7240	505	21	15.0127	1676	3
4	5	14	RUNAWAY (A&M)	JANET JACKSON	44.4342	5047	2	46.5987	5455	2	23.2926	2857	2	9.5947	970	5	11.5211	1218	7	0.0258	2	—
5	3	22	KISS FROM A ROSE (ZTT/SIRE/WARNER BROS.)	SEAL	43.1441	3967	7	48.2696	4359	6	19.3848	1902	15	4.1804	397	25	19.2187	1615	2	0.3602	53	—
6	4	20	ONLY WANNA BE WITH YOU (ATLANTIC)	HOOTIE & THE BLOWFISH	43.0863	4043	6	47.1495	4487	5	21.8427	2190	11	1.4119	125	—	18.4462	1557	3	1.3855	171	—
7	6	18	AS I LAY ME DOWN (COLUMBIA)	SOPHIE B. HAWKINS	43.0391	4361	5	46.3805	4627	4	21.8431	2502	4	1.3786	118	—	19.6160	1713	1	0.2014	23	—
8	9	16	ROLL TO ME (A&M)	DEL AMITRI	38.1649	3504	11	39.2610	3771	11	18.6462	1814	16	0.1101	17	—	17.4296	1434	5	1.9790	235	—
9	8	17	TIL I HEAR IT FROM YOU (A&M)	GIN BLOSSOMS	38.0648	3873	9	39.6178	4009	8	21.2467	2411	6	0.1511	18	—	14.7316	1115	9	1.9354	329	—
10	10	17	CARNIVAL (ELEKTRA/EEG)	NATALIE MERCHANT	34.1547	3883	8	36.7658	4035	7	17.2653	2276	7	0.1363	17	—	12.5633	1152	8	4.1898	438	—
(11)	14	10	TELL ME (EPIC)	GROOVE THEORY	33.6234	2541	23	31.9893	2436	25	7.4333	1004	33	26.0879	1481	2	0.0953	55	—	0.0069	1	—
12	12	27	RUN-AROUND (A&M)	BLUES TRAVELER	33.4116	3148	17	34.5854	3334	13	13.4998	1579	18	0.0530	8	—	17.6297	1256	6	2.2291	305	—
(13)	16	4	EXHALE (SHOOP SHOOP) (ARISTA)	WHITNEY HOUSTON	32.2125	3270	14	29.2626	2855	17	10.3529	1377	24	13.8807	963	7	7.9585	927	13	0.0204	3	—
14	11	14	BACK FOR GOOD (ARISTA)	TAKE THAT	31.8053	3675	10	34.6466	3901	10	14.5654	2074	14	0.7012	55	—	16.5169	1544	4	0.0218	2	—
(15)	17	4	YOU'LL SEE (MAVERICK/WARNER BROS.)	MADONNA	31.7891	3428	13	29.2897	3103	15	17.0785	2121	13	4.1818	392	26	10.5220	914	14	0.0068	1	—
(16)	18	7	BREAKFAST AT TIFFANY'S (RAINMAKER/INTERSCOPE)	DEEP BLUE SOMETHING	30.6141	3194	16	27.7954	3136	14	18.5625	2222	10	0.0958	10	—	7.9986	411	25	3.9572	551	39
17	13	14	GANGSTA'S PARADISE (MCA SOUNDTRACKS/MCA)	COOLIO FEATURING L.V.	30.5030	2575	22	32.3800	2721	22	15.1678	1611	17	15.3183	963	6	—	—	—	0.0169	1	—
(18)	19	6	DIGGIN' ON YOU (LAFACE/ARISTA)	TLC	30.2442	3240	15	27.2836	2909	16	16.1538	2269	8	14.0209	936	8	0.0526	34	—	0.0169	1	—
19	15	12	HAND IN MY POCKET (MAVERICK/REPRISE)	ALANIS MORISSETTE	27.4385	3480	12	29.9102	3519	12	16.6705	2268	9	0.1552	16	—	3.0701	209	36	7.5427	987	22
20	20	27	DECEMBER (ATLANTIC)	COLLECTIVE SOUL	25.4549	2605	21	26.6683	2763	20	13.2981	1478	22	0.0883	12	—	9.2900	741	17	2.7785	374	—
(21)	31	3	MISSING (ATLANTIC)	EVERYTHING BUT THE GIRL	23.7039	1550	46	17.6659	1114	65	12.6161	954	36	5.7214	321	36	4.9694	245	35	0.3970	30	—
22	21	26	I CAN LOVE YOU LIKE THAT (BLITZZ/ATLANTIC)	ALL-4-ONE	23.3522	2257	26	25.9848	2482	24	8.6484	921	—	3.0305	262	—	11.6733	1074	10	—	—	—
23	23	4	BEAUTIFUL LIFE (ARISTA)	ACE OF BASE	22.6728	2868	19	22.9118	2772	19	14.9215	2156	12	5.3514	490	20	2.3416	206	37	0.0583	16	—
24	22	25	WATERFALLS (LAFACE/ARISTA)	TLC	22.4172	2075	28	23.5944	2300	26	11.9502	1272	25	6.3760	454	—	4.0903	347	33	0.0007	2	—
25	24	11	LUMP (COLUMBIA)	THE PRESIDENTS OF THE UNITED STATES OF AMERICA	20.5161	2623	20	22.9429	2773	18	9.2931	1217	27	0.0722	11	—	0.3555	63	—	10.7953	1332	8
(26)	32	2	ONE OF US (BLUE GORILLA/MERCURY)	JOAN OSBORNE	19.8836	2467	24	17.8327	2212	30	9.0938	979	34	—	—	—	1.9409	179	38	8.8489	1309	10
(27)	26	22	YOU OUGHTA KNOW (MAVERICK/REPRISE)	ALANIS MORISSETTE	19.8153	1944	30	19.3514	2245	28	16.7989	1516	20	0.2371	16	—	0.2079	55	—	2.5714	357	—
28	25	6	BULLET WITH BUTTERFLY WINGS (VIRGIN)	SMASHING PUMPKINS	19.4505	2104	27	19.5591	2133	31	3.5759	231	—	—	—	—	—	—	—	15.8746	1873	2
29	27	3	DREAMING OF YOU (EMI LATIN/EMI)	SELENA	19.0917	1690	40	19.2947	1645	44	10.6591	835	39	8.0367	747	11	0.3887	107	—	0.0072	1	—
30	28	8	MY FRIENDS (WARNER BROS.)	RED HOT CHILI PEPPERS	18.5439	2463	25	19.5388	2516	23	4.9514	570	—	—	—	—	0.0252	3	—	13.5673	1890	1
(31)	35	4	GOOD INTENTIONS (COLUMBIA/REPRISE)	TOAD THE WET SPROCKET	18.3789	2872	18	16.3622	2756	21	8.0967	1504	21	0.0899	14	—	4.7663	479	23	5.4260	875	24
32	29	5	WHO CAN I RUN TO (SO SO DEF/COLUMBIA)	XSCAPE	18.1896	1447	48	18.9854	1314	52	1.8439	416	—	16.3200	1028	4	—	—	—	0.0257	3	—
(33)	40	2	HEY LOVER (DEF JAM/RAL/ISLAND)	L.L. COOL J	17.7575	971	77	15.4164	759	100	1.1439	118	—	16.6136	853	9	—	—	—	—	—	—
(34)	34	27	I'LL BE THERE FOR YOU (ELEKTRA/EEG)	THE REMBRANDTS	17.4308	1555	45	17.0937	1652	41	7.5605	766	—	0.3040	11	—	9.4292	762	16	0.1371	16	—
(35)	<b>NEW</b>		TIME (ATLANTIC)	HOOTIE & THE BLOWFISH	16.5228	1944	29	13.4433	1649	42	10.2994	1414	23	0.0361	7	—	5.2154	408	26	0.9719	115	—
(36)	<b>NEW</b>		SET U FREE (STRICTLY RHYTHM)	PLANET SOUL	16.4483	871	87	13.6261	750	102	3.8187	154	—	12.6296	717	12	—	—	—	—	—	—
(37)	<b>NEW</b>		1979 (VIRGIN)	SMASHING PUMPKINS	15.5459	1280	54	12.6755	952	82	2.7589	142	—	—	—	—	—	—	—	12.7870	1138	13
38	36	2	NATURAL ONE (LONDON/ISLAND)	FOLK IMPLOSION	15.5185	1741	37	16.4172	1648	43	2.9623	240	—	—	—	—	—	—	—	12.5562	1501	6
39	33	21	I COULD FALL IN LOVE (EMI LATIN/EMI)	SELENA	15.4077	1424	49	17.2678	1571	46	4.1646	512	—	4.7446	307	38	6.4985	605	19	—	—	—
40	38	13	COMEDOWN (TRAUMA/INTERSCOPE)	BUSH	14.8775	1187	62	15.8719	1341	50	6.3785	322	—	—	—	—	0.0061	1	—	8.4929	864	25

Records showing an increase in audience over the previous week, regardless of chart movement. Rankings broken down by format (on right side of this page) correspond to 40-position charts printed in this week's Monitor and therefore rankings do not exist for reentrants and records below No. 40. Audience computed by cross-referencing exact times of airplay with Arbitron listener data. © 1995, Billboard/BPI Communications.

**20,000 READERS STRONG**

**CLASSIFIED**

**AIRPLAY Monitor**

# LOOK WHAT'S **NEW**

# AT



# RECORDS

			TELL ME EPIC	GROOVE THEORY	1004	92
			<b>ONE OF US</b> BLUE GORILLA/MERCURY	<b>JOAN OSBORNE</b>	979	808
(33)	37	2		DAVE MATTHEWS BAND	968	1280
			ANTS MARCHING RCA	EVERYTHING BUT THE GIRL	954	664
(34)	<b>NEW ▶</b>			DIANA KING	870	960
35	26	16	MISSING ATLANTIC	BACKSTREET BOYS	858	963
(36)	<b>NEW ▶</b>		SHY GUY WORK	SELENA	835	756
37	36	24	WE'VE GOT IT GOIN' ON JIVE	<b>DEF LEPPARD</b>	764	664
38	35	4	DREAMING OF YOU EMI LATIN/EMI			
(39)	<b>NEW ▶</b>		<b>WHEN LOVE &amp; HATE COLLIDE</b> MERCURY			
(40)	<b>NEW ▶</b>					

## JOAN OSBORNE

### "One Of Us"

**979 Top 40 BDS Spins!**

**Over 9 Million Top 40 Listeners!!**

## DEF LEPPARD

### "When Love And Hate Collide"

**773 Top 40 BDS Spins!**

**Over 3 Million Top 40 Listeners!!**

THIS WEEK	LAST WEEK	WKS. ON CHART	MAINSTREAM		DETECTIONS		
			TITLE/LABEL/DISTRIBUTING LABEL	ARTIST	TW	LW	
			*** No. 1 ***				
1	1	13	FANTASY COLUMBIA	MARIAH CAREY	3183	3492	
			6 weeks at No. 1				
2	2	14	RUNAWAY A&M	JANET JACKSON	2857	3186	
3	4	9	NAME METAL BLADE/WARNER BROS.	GOO GOO DOLLS	2722	2572	
4	3	20	AS I LAY ME DOWN COLUMBIA	SOPHIE B. HAWKINS	2502	2669	
5	15	4	ONE SWEET DAY COLUMBIA	MARIAH CAREY & BOYZ II MEN	2487	1974	
6	6	17	TIL I HEAR IT FROM YOU A&M	GIN BLOSSOMS	2411	2470	
7	7	17	CARNIVAL ELEKTRA/VEEG	NATALIE MERCHANT	2276	2386	
8	14	6	DIGGIN' ON YOU LAFACE/ARISTA	TLC	2269	2042	
9	10	7	HAND IN MY POCKET MAVERICK/REPRISE	ALANIS MORISSETTE	2268	2118	
10	8	16	BREAKFAST AT TIFFANY'S RAINMAKER/INTERSCOPE	DEEP BLUE SOMETHING	2222	2181	
11	5	21	ONLY WANNA BE WITH YOU ATLANTIC	HOOTIE & THE BLOWFISH	2190	2505	
12	12	5	BEAUTIFUL LIFE ARISTA	ACE OF BASE	2156	2096	
13	16	4	YOU'LL SEE MAVERICK/WARNER BROS.	MADONNA	2121	1908	
14	9	18	BACK FOR GOOD ARISTA	TAKE THAT	2074	2176	
15	11	23	KISS FROM A ROSE ZTT/SIRE/WARNER BRDS.	SEAL	1902	2100	
16	13	21	ROLL TO ME A&M	DEL AMITRI	1814	2028	
17	19	11	GANGSTA'S PARADISE MCA SOUNDTRACKS/MCA	COOLIO FEATURING L.V.	1611	1701	
18	18	35	RUN-AROUND A&M	BLUES TRAVELER	1579	1724	
19	21	17	LET ME BE THE ONE EMI	BLESSID UNION OF SOULS	1530	1546	
20	17	17	YOU OUGHTA KNOW MAVERICK/REPRISE	ALANIS MORISSETTE	1516	1782	
			*** AIRPOWER ***				
21	24	8	GOOD INTENTIONS COLUMBIA/REPRISE	TOAD THE WET SPROCKET	1504	1361	
22	20	25	DECEMBER ATLANTIC	COLLECTIVE SOUL	1478	1580	
23	28	4	TIME ATLANTIC	HOOTIE & THE BLOWFISH	1414	1221	
24	32	3	EXHALE (SHOOP SHOOP) ARISTA	WHITNEY HOUSTON	1377	1167	
25	22	24	WATERFALLS LAFACE/ARISTA	TLC	1272	1514	
26	27	8	I'D LIE FOR YOU (AND THAT'S THE TRUTH) MCA	MEAT LOAF	1225	1277	
27	31	5	LUMP COLUMBIA	THE PRESIDENTS OF THE UNITED STATES OF AMERICA	1217	1188	
28	23	19	I WANNA B WITH U CURB EDEL	FUN FACTORY	1192	1414	
29	34	7	SOLITUDE LAVA/ATLANTIC	EDWIN MCCAIN	1081	1052	
30	25	12	DO YOU SLEEP? GEFREN	LISA LOEB & NINE STORIES	1074	1286	
31	29	7	PRETTY GIRL Y&B YUM/550 MUSIC	JON B.	1071	1191	
32	30	6	YOUR LITTLE SECRET ISLAND	MELISSA ETHERIDGE	1052	1171	
33	37	2	TELL ME EPIC	GROOVE THEORY	1004	927	
34	NEW		ONE OF US BLUE GORILLA/MERCURY	JOAN OSBORNE	979	808	
35	26	16	ANTS MARCHING RCA	DAVE MATTHEWS BAND	968	1280	
36	NEW		MISSING ATLANTIC	EVERYTHING BUT THE GIRL	954	664	
37	36	24	SHY GUY WORK	DIANA KING	870	960	
38	35	4	WE'VE GOT IT GOIN' ON JIVE	BACKSTREET BOYS	858	963	
39	NEW		DREAMING OF YOU EMI LATIN/EMI	SELENA	835	756	
40	NEW		WHEN LOVE & HATE COLLIDE MERCURY	DEF LEPPARD	764	664	

THIS WEEK	LAST WEEK	WKS. ON CHART	RHYTHM-CROSSOVER		DETECTIONS		
			TITLE/LABEL/DISTRIBUTING LABEL	ARTIST	TW	LW	
			*** No. 1 ***				
1	1	13	FANTASY COLUMBIA	MARIAH CAREY	1713	1873	
			10 weeks at No. 1				
2	2	14	TELL ME EPIC	GROOVE THEORY	1481	1462	
3	3	7	ONE SWEET DAY COLUMBIA	MARIAH CAREY & BOYZ II MEN	1448	1290	
4	4	11	WHO CAN I RUN TO SD SD DEF/COLUMBIA	XSCAPE	1028	1039	
5	5	14	RUNAWAY A&M	JANET JACKSON	970	1015	
6	6	15	GANGSTA'S PARADISE MCA SOUNDTRACKS/MCA	COOLIO FEATURING L.V.	963	1018	
7	7	5	EXHALE (SHOOP SHOOP) ARISTA	WHITNEY HOUSTON	963	892	
8	8	9	DIGGIN' ON YOU LAFACE/ARISTA	TLC	936	858	
9	13	4	HEY LOVER DEF JAM/RAL/ISLAND	L.L. COOL J	853	696	
10	9	9	ANYTHING MJJ/550 MUSIC	3T	849	788	
11	10	14	DREAMING OF YOU EMI LATIN/EMI	SELENA	747	806	
12	15	8	SET U FREE STRICTLY RHYTHM	PLANET SOUL	717	657	
13	11	8	SEXUAL HEALING S.O.S./ZOO	MAX-A-MILLION	687	720	
14	14	21	PRETTY GIRL Y&B YUM/550 MUSIC	JON B.	676	647	
			*** AIRPOWER ***				
15	18	4	BE MY LOVER RCA	LA BOUCHE	630	584	
			*** AIRPOWER ***				
16	19	6	YOU REMIND ME OF SOMETHING JIVE	R KELLY	601	535	
17	17	7	BEFORE YOU WALK OUT OF MY LIFE ROWDY/ARISTA	MONICA	573	564	
18	16	18	'TIL YOU DO ME RIGHT VIRGIN	AFTER 7	547	615	
19	12	14	BROKENHEARTED ATLANTIC	BRANDY	511	711	
20	25	3	BEAUTIFUL LIFE ARISTA	ACE OF BASE	490	469	
21	22	4	CRUISIN' EMI	D'ANGELO	487	448	
22	20	8	MAGIC CARPET RIDE SMJ E/PROFILE	THE MIGHTY DUB KATS	486	512	
23	27	4	RIDIN' LOW HOLLYWOOD	L.A.D. FEATURING DARVY TRAYLOR	461	425	
24	21	25	BOOMBASTIC VIRGIN	SHAGGY	456	477	
25	24	18	KISS FROM A ROSE ZTT/SIRE/WARNER BROS.	SEAL	397	468	
26	28	4	YOU'LL SEE MAVERICK/WARNER BROS.	MADONNA	392	416	
27	26	5	HOOKED ON YOU ELEKTRA/VEEG	SILK	380	405	
28	23	23	HE'S MINE DUTBURST/RAL/ISLAND	MOKENSTEF	375	467	
29	35	7	AUTOMATIC LOVER (CALL FOR LOVE) ARISTA	REAL MCCOY	370	326	
30	33	8	BOOM BOOM BOOM AUREUS	THE OUTHERE BROTHERS	361	354	
31	32	4	COME WITH ME GASOLINE ALLEY/MCA	SHAI	352	333	
32	36	2	DANGER FADER/MERCURY	BLAHZAY BLAHZAY	348	324	
33	38	2	TOO HOT TDMY BOY	COOLIO	341	325	
34	29	10	A MOVER LA COLITA GROOVE NATION/SCOTTI BRDS	ARTIE THE 1 MAN PARTY	341	387	
35	31	6	EAST SIDE RENDEZVOUS RUTHLESS/RELATIVITY	FROST	336	353	
36	40	3	MISSING ATLANTIC	EVERYTHING BUT THE GIRL	321	302	
37	30	21	YOU ARE NOT ALONE EPIC	MICHAEL JACKSON	316	366	
38	RE-ENTRY		I COULD FALL IN LOVE EMI LATIN/EMI	SELENA	307	299	
39	37	9	AIN'T NUTHIN' BUT SHE A THING LONDON/ISLAND	SALT-N-PEPA	269	301	
40	RE-ENTRY		SENTIMENTAL ARISTA	DEBORAH COX	259	244	

Records showing an increase in detections over the previous week, regardless of chart movement. A record which has been on either chart for more than 20 weeks will not receive a bullet, even if it registers an increase in detections. Airpower awarded to those records which attain 1500 detections (mainstream) or 600 detections (rhythm) for the first time. If two records are tied in number of plays, the record being played on more stations is placed first. Records below the top 20 are removed from the chart after 26 weeks.

# Sometimes I miss you so much

[dedicated to the christ-consciousness]

**P.M. DAWN**

The new single from the album **JESUS WEPT**

ON YOUR DESK NOW  
Written, Arranged and Produced by P.M. Dawn

Bless me cursed with colourful emotions

OVER 35 STATIONS IN THE 1ST WEEK!  
OVER 430 SPINS INCLUDING:

KKFR WZJM WHHH KS104  
Z90 WJMN WJBT KLRZ

**GEE STREET**

Management:  
LIPPMAN  
ENTERTAINMENT

Island Records, A PolyGram Company

Management:  
LIPPMAN  
ENTERTAINMENT