

TOP 40 AIRPLAY Monitor

• We Listen To Radio •

October 13, 1995 \$4.95 Volume 3 • No. 42

TOP 40 HIGHLIGHTS

MAINSTREAM

#1

HOOTIE & THE BLOWFISH
Only Wanna Be With You (ATLANTIC)

★ ★ ★ AIRPOWER ★ ★ ★

DAVE MATTHEWS BAND • *Ants Marching (RCA)*

NEW RELEASES

ACE OF BASE • *It's A Beautiful Life (ARISTA)*
ALL-4-ONE • *I'm Your Man (BLITZZ/ATLANTIC)*
HOOTIE & THE BLOWFISH • *Time (ATLANTIC)*
ELTON JOHN • *Blessed (ROCKET/ISLAND)*
PRETENDERS • *Sense Of Purpose (WARNER BROS.)*
BOB SEGER • *Lock And Load (CAPITOL)*
SELENA • *Dreaming Of You (EMI LATIN/EMI)*

RHYTHM CROSSOVER

#1

MARIAH CAREY
Fantasy (COLUMBIA)

★ ★ ★ AIRPOWER ★ ★ ★

AFTER 7 • *Til You Do Me Right (VIRGIN)*
XSCAPE • *Who Can I Run To (ISO SO DEF/COLUMBIA)*
3T • *Anything (MJJ/550 MUSIC)*

NEW RELEASES

ACE OF BASE • *It's A Beautiful Life (ARISTA)*
ALL-4-ONE • *I'm Your Man (BLITZZ/ATLANTIC)*
QUINCY JONES INTRODUCING TAMIA • *You Put A Move... (QWEST/WARNER BROS.)*
L.V. • *Throw Your Hands Up (TOMMY BOY)*
RAW STYLUS • *Believe In Me (Geffen)*
SELENA • *Dreaming Of You (EMI LATIN/EMI)*

ADULT

#1

SEAL
Kiss From A Rose (ZTT/SIRE/WARNER BROS.)

★ ★ ★ AIRPOWER ★ ★ ★

NO RECORDS QUALIFIED FOR AIRPOWER THIS WEEK

NEW RELEASES

TYLER COLLINS • *Never Alone (Eeyore's Lullaby) (WALT DISNEY)*
SELENA • *Dreaming Of You (EMI LATIN/EMI)*

'Jock-In-The-Box' Coming Soon— PDs Split Over Impact On Format

by Sean Ross with Kevin Carter

Is it live or is it Memorex?

Between the growing versatility of hard-drive automation, the increasing availability of top 40 programming on satellite, and the number of stations still relying on that old standby of board operators running voice tracks, that's a question top 40 listeners have to ask themselves more these days, as more stations find ways to operate without a jock present on all shifts.

Consider some recent developments:

- Top 40 powerhouses, such as WHTZ (Z100) New York and WBBM-FM (B96) Chicago, run jockless several hours a day.
- Boston-based syndicator SuperRadio claims 33 outlets—more than one-tenth of the format nationwide—for its satellite overnight top 40 show, All Nite Cafe, including format powerhouse WKSS Hartford, Conn. Its rival, Fayetteville, Ark.-based Music Channel One, has gone

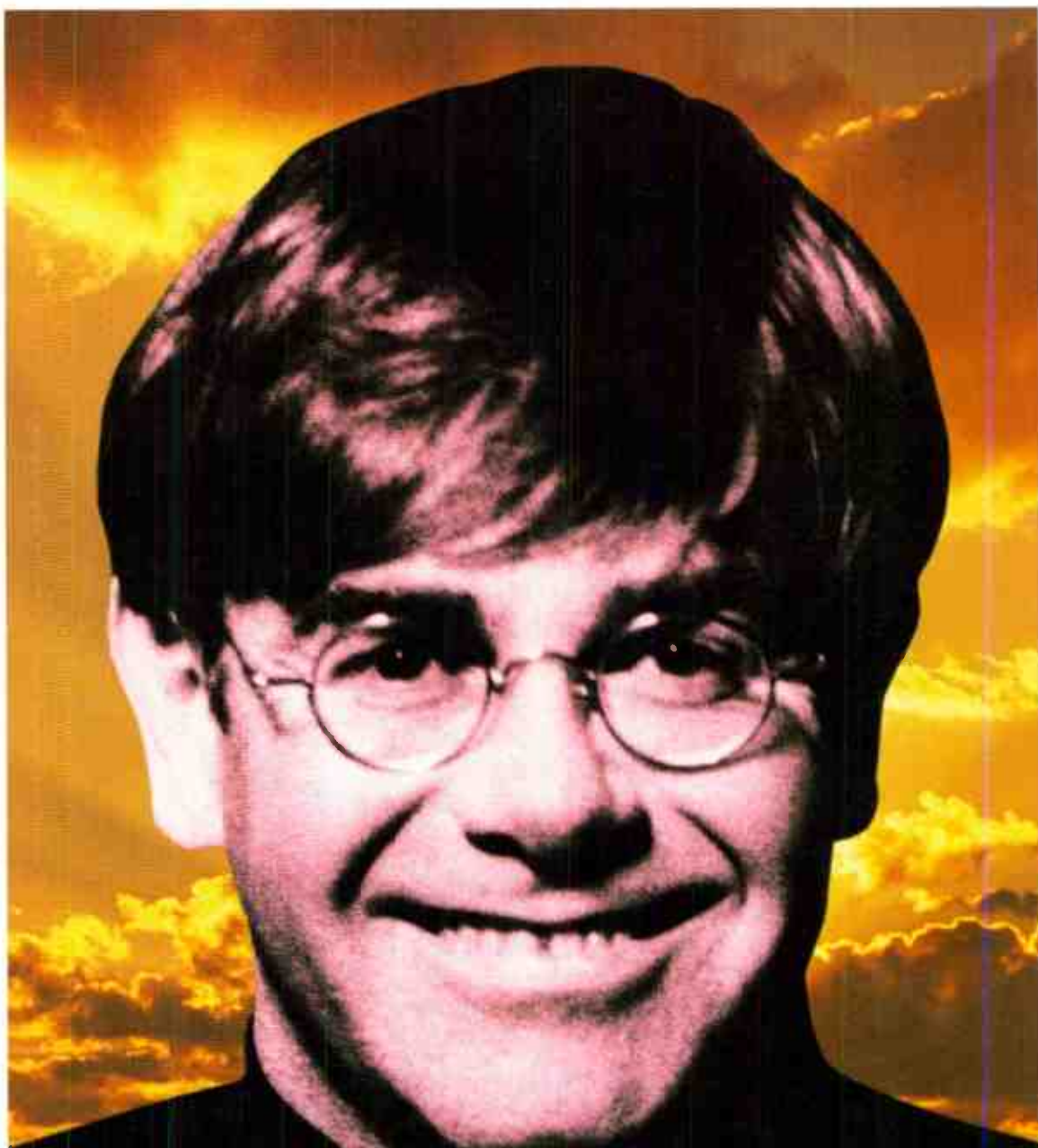
from an overnight-only service to a full-time format. And veteran broadcaster Art Laboe is preparing a 24-hour rhythmic top 40/oldies hybrid via satellite.

- Most important, the FCC issued a ruling Oct. 6 allowing unattended station operation. The commission found that "in many areas of broadcast operation, automation is seen as affording more accurate and controlled operation than that performed by humans."

Add in the number of duopolies where jocks work more than one station simultaneously, technological improvements, and PD complaints about availability of talent, and jockless top 40 could become a lot more common in the near future, despite the concerns of some top 40 PDs.

It's already a reality at KRQQ Tucson, Ariz., where PD Mark Todd is running board-operated voice tracks in overnights. And when owner Prism Radio Partners moves its four Tucson stations into new

Continued on page 6



blessed

THE NEW TRACK FROM THE PLATINUM ALBUM

Made In England

rocket

MANAGEMENT: JOHN REID
© 1995 WILLIAM A. BONG, LTD.



**We use
sophisticated techniques
to measure
the size of the audience
for each style of music.**

**We've determined
that these types of
songs, artists and styles
go together with
your format.**



Silk

“Hooked On You”

Produced by:
SoulShock & Karlin for Soulpower Productions

Management:
Sandy Gallin, Jim Morey and Annice Parker
for Gallin/Morey Associates

Album in stores November 14



Simply Red

“Fairground”

Produced by:
Mick Hucknall and Stewart Levine

Management:
Elliot Rashman and Andy Dodd
for So What Arts Limited
in association with Lisa Barbaris
for So What Media and Management

Album in stores October 24



Exclusive Live Performances!
during the **Billboard/Airplay Monitor Awards Dinner**
(Westside Ballroom in the Marriot Marquis)
Saturday, October 14, 7-10pm

Welcome To New York, Now Go Learn

The staff of Top 40 Airplay Monitor extends a warm welcome to everyone attending the second annual Billboard/Airplay Monitor Radio Seminar and Awards. Following page 20, you'll find a special four-page insert featuring a schedule of events and several articles tied to Airplay Monitor sessions. Here's to a great convention.

In This Issue Of Top 40 Airplay Monitor:

- 4** Programmer Profile: G105/Raleigh & Brian Burns
- R-1** Billboard/Airplay Monitor Convention Schedule
- R-3** Airchecker's Guide To New York Radio



RADIOACTIVE

by Kevin Carter

Z100 Courts Jerky Boys; KHOM To Top 40

WITH **WHTZ** (Z100) New York looking for a nontraditional morning show to replace **John Lander**, VP/programming **Steve Kingston** says that he's talking to Select act/movie stars the **Jerky Boys** about stepping into the Morning Zoo. Kingston says the suggestion came from, of all people, **Mariah Carey**, who heard Z100's "no experience needed" promos. In other Z100 news, new night jock **Cane** will host a retooled "Future Hits" show, which, Kingston says, will get a new sound and possibly a new name by the end of the month. And Kingston's **WILN** Panama City, Fla., had the bad luck of being the one station in that market to have its tower knocked down by Hurricane Opal, although most stations were knocked off the air by the storm at least temporarily.

With **WEZB** (B97) New Orleans having announced a segue to news/talk several months ago, crosstown hot **AC KHOM** (Mix 104) has announced its intention to evolve into mainstream top 40 under PD **Bill Thorman**. **KHOM** is currently jockless outside the drives, but that should change in the next few weeks. Meanwhile, some legendary New Orleans calls resurface in the market, as suburban country outlet **KLEB** becomes oldies **WTIX-FM**, targeted to New Orleans under GM/PD **Michael Costello**, formerly a market fixture at crosstown **WRNO**. Former **WRNO** personality "Hot" **Rod Glenn** is doing middays; former **WCKW** PD **Bobby Reno** will do afternoons.

J.J. Duling, most recently PD of oldies **WOLL** West Palm Beach, Fla., is the new interim PD at top 40 **WDJX** Louisville, Ky., following the departure of longtime PD **Chris Shebel**, who can be reached at 502-636-2355. Duling's top 40 experience includes programming **WGRD** Grand Rapids, Mich., during the '80s.

WGRD PD/MD **Alex Tear** makes the mega-leap to **WHYT** Detroit as MD, replacing **Mark Jackson**. No PD replacement has been named yet, although **WGRD** midday jock **Leeann Curtis** nabs MD stripes.

Jim McGuinn from **KPNT** St. Louis is the new PD of modern **WDRE** Long Island, N.Y., and its **WDRE** Network, replacing **Russ Mottla**. Pollack Media Group is now consulting the station.

Toronto's two top 40/rhythm-crossover outlets end their LMA this week and become two competing stations again, as **CIDC** (Hot 103.5) and **CING** (Energy 108) split. **Liz Janik**, who had been working with both stations, will continue to consult Hot 103.5.

As a result of its pending sale to Commo-seur Broadcasting, **WZOK** Rockford, Ill., is now being consulted by **Bill Richards**.

WGTV Dayton, Ohio, is auditioning **Joe Steele** (ex-**WZNY** Augusta, Ga., and last heard briefly as "Vedder" at **WEDJ** Charlotte) this week for the vacant night gig. Meanwhile, ex-**WGTV** morning talent **Jeff**

Wicker ends up at '70s gold **WYSY** (Y107.9) Chicago, replacing **Dan Walker** in mornings, as **Louis Kaplan** beats the bushes for a replacement.

WWST (Star 93.1) Knoxville MD/overnight man **Tony Castle** is moving to Atlanta this week, as his wife nails down a heavy-duty commercial artist gig. Castle will be pursuing radio in the Olympic city. OM **Jim Richards** ups morning guy **Ron Geronimo** to MD and is looking for an overnigher. With the station's pending sale to Heritage, the short-term lineup has PD **Todd Shannon** jumping on the air for middays, while **Richards** does afternoons.

WABB-FM Mobile, Ala., morning guys **Trey Matthews** and **Chris Smith** exit.

Former **WAYV** Atlantic City, N.J., PD **Mark Hunter** resurfaces across the street as assistant PD/morning man at crosstown **WBSS** (Boss 97), replacing **Dr. Michael Lynn**, now in mornings at **WXTU** (Country 92.5) Philadelphia. . . From the prisoner swap department: **KQID** Alexandria, La., adds **KLRZ** New Orleans p.m. driver **Skid Marx** as APD/morning co-host. Also, **Mark the Shark** from **WBSS** joins for nights. Meanwhile, former **KQID**'ster **Ace Anthony**, now doing mornings at **WZYP** Huntsville, Ala., adds MD duties, replacing **Nikki Nite**.

Top 40/adult **WAEV** (Mix 97.3) Savannah, Ga., midday weasel **Rick Hunter** adds APD stripes, as PM driver **Brad Kelly** is upped to MD. PD **Burke Allen** needs a few good P/Ts.

Raquel Guillory, most recently an account executive at **WPGC-AM** (Flava 1580) Washington, D.C., joins **WERQ** (92Q) Baltimore as morning producer/co-host.

Longtime **WKRQ** (Q102) Cincinnati personality **Janeen Coyle**, most recently with crosstown **WCKY**, is the new morning co-host at crosstown **WGRR** (Oldies 103.5), where she joins another former Q102'er (and her husband) **Chris O'Bryan**. . . **AC WLMX** Chattanooga P/T **Chuck Bryson** goes to middays at top 40 rival **WKXJ**.

KCAQ (Q105) Oxnard, Calif., APD/midday jock **Mandy Thomas** crosses the street for the same shift at **AC KBBY**. Night jock **Kelli McKay** moves to middays; part-timer **Juanita** slides into overnights; and **Tracy Thompson** moves off-air for promotions. PD **Rooster Rhodes** is looking for a night jock.

Here's the lineup for new top 40/adult outlet **KAMZ** (93.1 Kiss) El Paso, Texas: **Mike Martinez** from **KFRQ** McAllen, Texas, MD/mornings; **Roberto Varela** from crosstown **KJLF-TV**, middays; **Courtney Nelson** from sister **KLAQ**, PD/afternoons; **Anthony Michaels** from **KLAQ**, nights.

Jerry Clifton's New World Communications stations are planning their seventh annual "Stop The Violence" day Nov. 22. Over 50 stations were involved in last year's event. For more info, call NWC's **Paige Nienaber** at 612-433-4554.

Mancow Breaks The Ice



WRCX (Rock 103.5) Chicago morning host **Mancow Muller** warmed up for the 1995 Billboard/Airplay Monitor Radio Awards, which he'll host this Saturday evening (14), by encasing himself in a 5,000-pound block of ice to raise \$5,000 for charity. Muller, right, is shown here with somebody who used to work in radio before getting a real job.



TOP 40 TOPICS

by Sean Ross

First With The Hits (By Several Years)

WE THINK OF MODERN rock as the format that breaks the acts today. We think of triple-A radio as the esoteric format playing **Robert Cray** or 20-year-old **Jackson Browne** depth tracks. And since there is no triple-A station in many markets, few of us are likely to be divested of that opinion. But many of the acts that we think of as crossovers from modern are really triple-A acts either by origin or temperament. **Blues Traveler** and the **Dave Matthews Band** are the obvious examples. But **Del Amitri**, the **Rembrandts**, **Seal**, **Lisa Loeb**, **Toad The Wet Sprocket**, and **Natalie Merchant** are as tied to the acoustic singer/songwriter traditions of triple-A as to the guitar crunch of today's modern rock. They are acts for which modern can, at best, share custody with triple-A.

By comparison, there are few acts on the top 40/mainstream chart that fit the definition of a hard-rocking modern act. **Better Than Ezra** is the obvious one. **Alanis Morissette** certainly broke in modern rock, but musically, she's as pure pop as well. **Edwyn Collins**. The **Goo Goo Dolls** qualify, but they're represented with an uncharacteristic record. As for **Hootie & the Blowfish** and **Collective Soul**, they were the last acts embraced by album rock's not-so-distant policy of welcoming only new artists who sounded like classic rockers.

Triple-A gave top 40 acts that played real instruments, wrote identifiable lyrics, and recalled the '70s rock'n'roll that today's adults missed. In doing so, it helped break the grip of country, which was seen by some as the only format with "real music." Best of all, triple-A did all of this quietly, investing time and energy in **Blues Traveler** and **Dave Matthews** at a time when top 40s weren't playing rock at all, much less records that sounded like "Rosalita." And top 40 PDs weren't even aware of it.

But triple-A's status as a breaking ground for top 40 acts is threatened. In recent weeks, triple-A has been hit by a rash of defections: stations flipping either to modern rock or to the "rock alternative" format popularized by **KXPK** Denver—the format that plays the softer half of today's modern rock, along with the '80s gold that no longer fits many modern rock stations. There were already relatively few triple-A stations anyway, at least in proportion to the attention the format got from the labels. Now there are fewer; and many of them will be taking their cues from modern rock, rather than preparing artists to cross to modern and then to album rock or top 40.

In this regard, the radio landscape today looks a lot like it did in 1983-84, when every format wanted to be top 40. Album rock and hot AC almost destroyed themselves in the process; indeed, neither of them really became forces to be reck-

oned with again until the late '80s, when top 40 helped them by also self-destructing. Top 40, hot AC, and album rock already want to be modern rock. Now so does triple-A.

This isn't good news for the next dump of potential crossovers. **Joan Osborne** and **Heather Nova** made it through at triple-A and then modern rock before the door closed; the next such artist may not be as lucky. An aspiring **Blues Traveler** may not get several albums to come up with something as accessible as "Run-around." The next **Dave Matthews** may not get several years to work up a following large enough to cross over with a not-immediately obvious song like "What Would You Say." Triple-A also had a lot to do with keeping "Carnival" alive until most modern and top 40 PDs realized it was a hit. The mechanism that spawned many of today's most mass appeal hit acts may be scrapped before many of us even learn to take advantage of it.

It takes many years for the supply of acts from any given format to stop trickling down to top 40. Album rock tried to mimic top 40 in 1983. It tried to mimic classic rock in 1987. Top 40 PDs didn't notice that there weren't any new rock acts until 1990. R&B radio, meanwhile, reasserted itself by dropping crossover music for new-jack swing in 1987-88. The results were obvious.

It's not the inherent duty of triple-A stations to operate as they have in the past few years—beloved by the whole record industry but known only by a handful of listeners. Some triple-A stations, **WXRT** Chicago and **KBCO** Denver in particular, have realized how important the modern rock image was only after they lost it. So one understands why changes are taking place now.

Triple-A has been, thus far, one of the few formats to do so much for so many and get so little credit for it. Country crossed only a few records to top 40 and got immense free publicity. Triple-A, not modern rock, is currently the second biggest sound cluster at top 40—next, perhaps, to the still surprisingly vital dance/pop category—yet it's done little to publicize itself as the format where the hits happen first, perhaps because taking credit for anybody who has already crossed over is against its own nature. Before triple-A stations rush to become something else, one hopes they'll find another way to enjoy their own success on their own terms, if only so top 40 can enjoy more product down the line.

PSA FILE: **WFHN** (Fun 107) New Bedford, Mass., has been temporarily removed from the top 40/mainstream panel due to a reception problem, bringing that panel to 81 stations. Also, **WPNT** (FM 100) Chicago is added to the top 40/adult panel bringing that format to 57 stations.

PROMOTIONS

by Kevin Carter

True-Life Tales Of O.J., Money, and Meat

Like KHS-FM Los Angeles (Top 40 Airplay Monitor, Sept. 29), KUTQ (Q99) Salt Lake City was one of many stations with O.J. Simpson fever. Listeners submitted predictions including time and date of the verdict. The winners were awarded a trip to Mexico and will be transported 20 miles to the airport by the morning team of Cano and McCormick via a low-speed Bronco chase. Police officers will escort the Bronco, and a police helicopter will shadow overhead. Once at the airport, the winners will be escorted to a police holding room, where they will be served a continental breakfast, complete with o.j.

Then there was WMXQ (Mix 94.5) Birmingham, Ala., where the post-O.J. weekend prize package consisted of black gloves, orange juice, and a garment bag. Winners, instead of making a run for Mexico, made a run for a Mexican restaurant.

On a serious note, WXKS-FM (Kiss 108) Boston news and entertainment reporter Bill Costa, who was filling in for Matt Siegel the day after the Simpson verdict was handed down, decided to bend the format to fit the downcast mood of the community. "With all the controversy and divisiveness stewing in the wake of the Simpson verdict, I just couldn't do a comedy show," said Costa, who instead aired a pledge drive to combat domestic violence. In just four hours, Costa was able to raise more than \$17,000, which was earmarked for the Jane Doe Safety Fund, a local organization designed to break the cycle of domestic violence. "The response was overwhelming, both emotionally and financially," say Costa. The station is the official radio sponsor of the Jane Doe Walk for Women's Safety, scheduled for Oct. 15.

Meanwhile, Kiss 108 is saluting some of the immortals enshrined in the Rock and Roll Hall of Fame in Cleveland: Elvis Presley, Jimi Hendrix, John Lennon, and Dale Dorman. Dale Dorman? It's true. Kiss 108's own loveable, squeezable, 25-year market legend, p.m. driver Dorman has been honored by the Hall of Fame as one of the greatest DJs of all time. KISS recently sponsored a trip to see the hallowed Dorman display, escorted by Dale his own self. Listeners qualified at 7:20 a.m. on Matt Siegel's morning show by listening for the "Uncle Dale Double Play." Winners were flown to Cleveland, where they knelt at the shrine of Dorman and attended a live nightclub performance by A&M recording artist Blues Traveler. As a special

bonus, winners were then flown home to Boston.

WXXI (XL106.7) Orlando, Fla., has tied in with its noisy next-door neighbor, Universal Studios Florida, for the park's annual 12-night Halloween extravaganza, beginning, appropriately enough, Friday the 13th. Night guy Kid Cruz has invited 13 listeners and their guests to kick off the festivities with a seance, where they will be able to talk to some real-life dead celebrities. P.S.: Submersible teen heartthrob Jonathan Brandis from "Seaquest 2032" stopped by the station last week to promote a charity golf tournament. No one was injured.

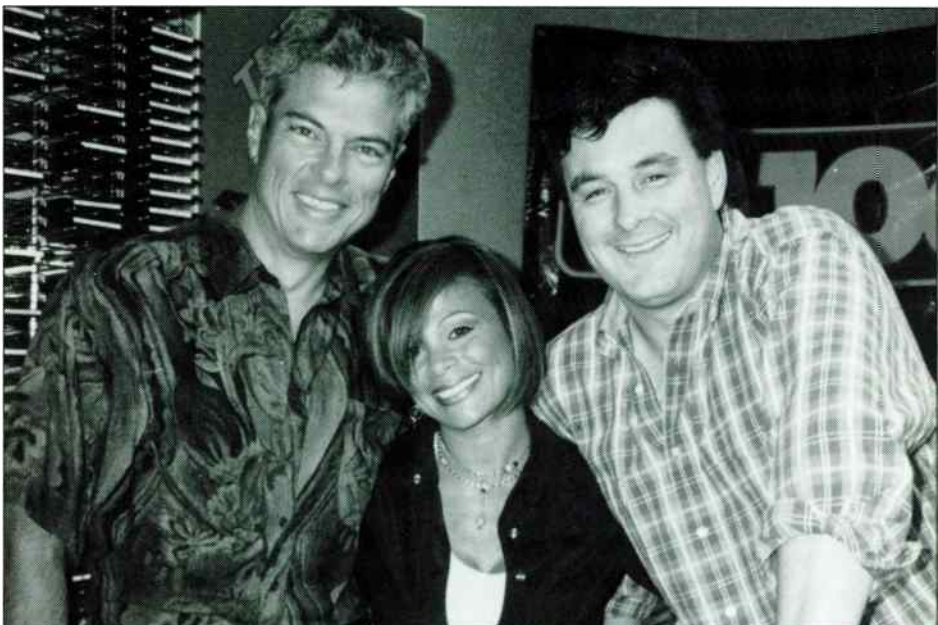
When Pittsburgh Steelers head coach Bill Cowher was fined \$7,500 during a recent Steelers/Vikings game, WBZZ (B94) jocks took to busy intersections to raise the money which Cowher will probably donate to charity.

Adult top 40 WPNT (FM100) Chicago did its part to publicize Chicago's thriving theater scene with a week of ticket giveaways to various local legit theaters, as well as free public performances, theater workshops, and backstage tours of local venues. Gary "Captain Dan" Spinese, whose career began at Chicago's Stepwolf Theater, will co-chair Theater Week with Mayor Richard Daley and his wife.

And in a promotion of equal sensitivity, KDWB Minneapolis is semi-proud to present "The Mile Of Meat." The morning show solicited between 50 and 100 eligible bachelors, who faxed their bios to the station. The guys then lined up along a mile of roadway, each wearing a station T-shirt and holding a large card with a number on it. Female listeners were then invited to treat the road like a giant drive-through window of testosterone, check out the merchandise, and call the station to claim their "meat." The lucky men later met the women at a local nightclub for a free buffet and gratuitous small talk. The promotion managed to back up traffic for more than five miles during the ogling portion, draw over 250 people to the nightclub that evening, and get TV coverage on three local stations and on many NBC affiliates nationally. The station recently completed "Mile Of Meat, Part Deux" and plans another installment for spring of 1996. Vegetarians welcome.

Send your fab promo pix to Kevin Carter, Top 40 Airplay Monitor, 5055 Wilshire Blvd. 7th Floor, Los Angeles, CA 90036. Fax your promo press releases to 213-525-2394.

They're Crazy. She's Cool.



KKLQ (Q106) San Diego morning hosts Jerry St. James, left, and Jeff Elliott flank Captive/Virgin recording artist Paula Abdul on a recent visit.

PROGRAMMER PROFILE

G105 Dominates Research Triangle; Burns Finds Happiness In Med. Mkt.

It's difficult to do these profiles," says WDCG (G105) Raleigh, N.C., PD Brian Burns. "In the final analysis, you can't really capture the essence of a radio station in the limited space allotted."

"It's like the first time you heard about KROQ Los Angeles: You had to actually hear it," adds G105 MD/p.m. driver Steve Douglas. "It's hard to describe G105 on paper, because it doesn't translate . . . you really gotta hear it."

G105 hasn't generated quite as much buzz as KROQ. But it's up there. In the spring Arbitron book and through the first two summer trends, G105 has proved that top 40 is alive and holding a valid license to print money, finishing No. 1 12-plus and 18-34 and No. 2 25-54. It's also shown that a top 40 station can cover the modern rock front and still play the mainstream megahits from All-4-One and TLC. For that reason, Burns and Douglas will try and describe the station anyway.



Brian Burns
Program Director
WDCG (G105) Raleigh, N.C.

"There are more than 100,000 college students here who help set the tone, the attitude, and the mentality of this market. We superserve that segment"

When Burns arrived eight months ago, after a successful two-year stint at WKSE Buffalo, N.Y., G105 was leaning dancy, even though the Research Triangle had no modern rock outlet. This situation existed, Burns says, despite the fact that "the musical tastes are very cut and dried [in Raleigh]. There are more than 100,000 college students living here who help set the tone, the attitude, and the mentality of this market. We decided to superserve that segment of the audience."

Burns compares the current Raleigh situation to the growing pains experienced by Silicon Valley in the '70s and '80s, when the market was flooded with transplanted East Coasters. "This is not your typical Southern town," he says. The Raleigh area is full of transplanted Yanks, who relocated to work for IBM, Glaxo, and dozens of other hi-tech industries. "This is one of the most computer-literate markets in the nation, and there are more Ph.D.s here in the Research Triangle per capita than any city in the country."

As a result, Douglas says, "We stopped playing disposable music from the likes of Paula Abdul and Ace Of Base." Instead, Burns says, "Our station leans heavily into the Alanis Morissette/Melissa Etheridge genre, and we supplement that with core gold artists, like U2, the Cure, New Order, Depeche Mode, and those types of artists that many AC stations can't or won't play. This is the music our 25-34s grew up with during high school and college."

Adds Douglas, "This is the passion music for our target demo . . . it wasn't always readily available on the radio, so it hadn't been overplayed. Most of that music is just as viable or even more viable than a lot of today's music."

Here's a midday hour on G105: Red Hot Chili Peppers, "Under The Bridge"; Blues Traveler, "Run-Around"; Prince, "I Would Die 4 U"; the Dave Matthews Band, "Ants Marching"; the Cure, "Love Song"; Collective Soul,

"December"; Dexy's Midnight Runners, "Come On Eileen"; Stone Temple Pilots, "Interstate Love Song"; Hootie & the Blowfish, "Hold My Hand"; R.E.M., "Strange Currencies"; the Gin Blossoms, "Until I Fall Away"; All-4-One, "I Can Love You Like That"; and the Rembrandts, "This House Is Not A Home."

As for G105's ever-tightening playlist, Burns says, "We don't allow marginal material on the air. I truly believe that has been one of the keys to our success." "We'll step out on stuff like Natalie Merchant and Alanis Morissette," says Douglas, "But it's not very easy to get a record on this station. By now, we know what a G105 record sounds like." "Just because a label promotes it to us, that doesn't necessarily mean it automatically fits our audience," says Burns. "The last time I checked, there were only 10 top 10 hits."

G105's success, and the lack of a full-fledged modern rocker in the Triangle, suggests that the station won't be alone in the modern zone forever. Douglas and Burns have definite opinions about how to handle potential format poachers. "I'd like to take Bill Murray's approach from 'Caddyshack,'" says Douglas. "Take a pen knife and cut the Achilles tendon . . . then he's done. They would have to niche themselves very narrow and very young. We would probably lose some audience initially, but we'd be willing to give some of them up in the short term."

"I don't believe anyone could come in and take us to task. At this point, it would be like knocking the giant off the mountain," says Burns. "Beyond the music, this is a very sound radio station in every facet with a solid foundation. Our morning show, 'Bob & Madison,' is No. 1 in almost every important demo." (Editor's note: Don't even think about it; they're under contract.)

"We also have a deep programming bench," says Douglas, noting that former programmer Kip Taylor has joined G105 for middays. "He serves in so many areas. He backs me up in the music department, works with the jocks, and helps integrate our promotions into the on-air sound to maximize the way they're sold."

Burns and Douglas also credit creative services director Chris Edge with giving G105 a big-market sound. "I know that may sound arrogant, but I would put this station on par with WHTZ (Z100) New York, KHS Los Angeles, or KRBE Houston," says Burns, who notes that he no longer feels the need to be in a large market for its own sake. "Unfortunately, some people still correlate market size with their own personal success. Once you become 40 years old and a father of three, your quality of life becomes more important."

Adds Douglas, who worked with Burns at pioneering "Rock 40" outlet KXXR Kansas City in 1988, "Just because you may be a small-market PD, don't let that affect [your] vision. You have the opportunity to make your station great." And Burns notes that for those who do want to move to the big city, larger markets are far less size-conscious than they were in the not-too-distant past.

Besides lifestyle considerations, Douglas says, he likes working for G105 owner Prism Radio Partners, who are "deeply committed to top 40 radio." (Prism's current stable includes top 40s KKRD Wichita, Kan., and KRQQ Tucson, Ariz.) That company has also been a pioneer in duopoly, and although Burns' job description doesn't officially include classic rock sister station WZZU, he says, "[WZZU PD] Bob Edwards and I always exchange ideas, and we end up contributing to each other's success. If people would not always feel the need to take credit for everything, it's amazing how much more can be accomplished."

KEVIN CARTER

FrOm Z100 to WPLJ.

FrOm  to  .

FrOm 99X to StAr94
to StAr 98.

FrOm LA to ATlaNta.

FrOm KRBE and WNCI,
to Q106 and WZPL.

FrOm SATurDAy NigHt LivE
and WPLY to
DAvid LetteRman

AwEsome calloUt and rEquests too.

FrOm a crEative sParK to
dOuble plAtinUm pluS.

THE DAVE MATTHEWS BAND
maRches oN.

4 fOrmAts and gRowiNg...

★★★★AIRPOWER★★★★

①9 TOp 40/MainStreAm
MoniTor

“Ants Marching”

Dave Matthews Band



'Jock-In-The-Box' Coming Soon— PDs Split Over Impact On Format

Continued from page 1

digital facilities next March, Todd is looking forward to the day when he can "get rid of those five-hour air shifts, downsize to standard four-hour shifts during the day, and then go on the box from 2-5:30 a.m."

NO PIZZA, NO DOGGY DOO

There are other advantages to automation, Todd says. No jocks breaking format and no pizza delivery guys hanging around or after-bar crowds congregating in the studio and getting cigarette burns on the console. Todd remembers a previous station where the overnights brought his dog to work. "You can't imagine the phone calls I used to get when the morning guys would step in the land mines that Fluffy would leave in the hallway."

Todd sees 2 a.m. as a reasonable time to go on the box, as it "would more than likely satisfy the majority of the after-bar crowd, college students, and insomniacs" who look to KRQQ for companionship. "It may seem initially unfair, but overnights... is not a revenue-generating daypart. Even though conventional wisdom says overnights leads into morning drive, if you have a strong morning show, more than likely your audience has already made [its] choice."

B96 PD Todd Cavanah's first jockless experiment was at 3-5 a.m. "I had to cut somewhere, and one way to do it was not to have a \$50,000-a-year AFTRA jock in overnights." Recently, he added a 9-10 a.m. jockless oldies hour, because "instead of somebody saying 'I remember when this song came out,' I wanted the music to be the star." Cavanah adds that while listeners may like the DJs that are there already, "I've never had anybody say they don't like us because we didn't have DJs. I don't think they notice."

NOT ALWAYS ECONOMICS

At several points in top 40's history, programmers have gone jockless for what they saw as aesthetic, not financial, reasons. Automated top 40 was common in the early '70s, as PDs sought to duplicate the "no-hype" style of album radio. There was also a brief period in 1988-89, when stations as prominent as KHS Los Angeles experimented with "jock-free" hours.

Z100 VP/operations Steve Kingston has been running board-op'd between 2-5:30 a.m. since early April. It isn't a financial issue for Z100. Rather, Kingston says, he can't find the type of offbeat show that would be right for a cutting-edge station. And with Z100 looking for a morning show, too, that will take first priority, he says.

WMQT (Q107) Marquette, Mich., PD Jim Koski installed a hard-drive system in April. Now all his overnights and some weekend shifts are on the box. "In a market this size, we sometimes have trouble finding people who are interested in the overnight shift or are reliable," Koski says. Since overcoming the initial difficulties of hard drive, he says, "we may be on the system for a 24-hour stretch over a weekend, and I don't even think about it."

WJMX Florence, S.C., is only on hard drive for two hours a day (2-3 p.m. and 6-7 p.m.), but its duopoly partners are more automated, allowing four stations to run with five full-timers. Similarly, WZST (Star 98) Chattanooga, Tenn., used hard drive until this week to allow its midday jock to also do nights on AC duopoly partner WLMX. Now that shift is live, but the station still runs automated in overnights.

THE EXTENDED SNEAK PREVIEW

WZST signed on as a top 40 early this year but waited until this week to fill out its daytime lineup, and many new top 40s are following its lead. Until the late '80s, it was customary for top 40s to sign on with their jocks in place. Then, it became common to run jockless for a week or two until the staff was

lined up. Now that new top 40s are often the kid sister in a duopoly, or a suburban move-in trying to take advantage of a sudden hole in the market, new stations are jockless for increasingly longer periods.

In New Orleans, for example, both KLZ (Z100) and KHOM (Mix 104) are looking to take advantage of WEZB (B97)'s segue to news/talk. Z100 was, until recently, going automated at 10 p.m., although PD Dan Deaton has extended his live shifts to midnight. He says, "I don't like the way it feels, even in the middle of the night." KHOM PD Bill Thorman, meanwhile, says that without the budget for high-powered talent, he felt he was just as well-off jockless.

Thorman is one of several PDs who sees hard-drive as not just a money-saver, but also a way to create a perfect radio station. "If you're a control freak, the possibilities are scary," says one PD who is contemplating automation. Adds Thorman, "If you could find the kind of person who could entertain and sound natural [on hard drive], then find a staff of writers to come up with bits for him, you could have a phenomenal air staff for \$3,000-\$4,000 a month."

'I WOULDN'T EVEN CONSIDER IT'

Many PDs don't see it that way. They view running jockless as anathema to a foreground format. Several PDs contacted for this article were using hard-drive automation on their duopoly partners in other formats but deliberately not on their top 40 station. And WKDY (Kiss 102) Utica, N.Y., PD Wally McCarthy says, "I wouldn't even consider it. It just doesn't make sense for the format. You can't produce the energy and personality that you know is right."

"Radio is a 24-hour means of entertainment," says KLU' Las Vegas PD Jerry Dean. "A faceless hard drive is shortchanging the listeners. In a small town it might be OK, but in this town everybody is out driving around at 3 a.m."

At KKRD Wichita, Kan., KRQQ's sister station, PD Jack Oliver believes that "the issue of live vs. hard drive is 'training tomorrow's talent.' Everyone complains about the lack of talent out there. My job is to train people to step in whenever I need them. Management thinks it can cut a shift, but if I suddenly have an open shift, who ya gonna call?" Oliver adds, "A soft AC could do it, but top 40 is an active format."

Adds KQHT Grand Forks, N.D., PD Jay Murphy, "Grand Forks is a small but very competitive radio market. Our listeners expect a bare minimum performance level... Our 7 p.m.-midnight jock has been in the business a little over a year, and he sounds like a million bucks, but it was a difficult process. I can't afford not to invest in my people, and I need my overnights to develop talent."

"Some of the jocks who influenced me the most were overnights," says WPLY (Y100) Philadelphia PD Garret Michaels. "These are stations saying, 'Let's find another way not to hire anybody.' When you're talking about top 50 or even top 100 markets, these are pretty big markets to be doing that."

MIXED EMOTIONS

Even some of the PDs who are running jockless have mixed emotions. One PD who now runs board-op'd on weekends fears the day when his GM, who oversees several top 40s, will want to go further:

"It's kind of scary," admits WZST OM/PD Bob Forster, who adds that whether jockless top 40 is good radio "depends a lot on the person producing it, but ours is hitting the post and the whole nine... One day my MD looked at me while we were out doing street hits and asked, 'Are we live now?'" Forster adds, "There are a lot of good people out of work now, and I hate to see that."

Boyz Run Around With Michaels



Dre Force/Rhythm Safari/Priority artists Boyz Of Paradise's recent promotional tour took them to top 40/rhythm-crossover WJJS Roanoke, Va. Shown, from left, are BOP's Eric Cortez; Priority's Andrea Newton; WJJS PD David Lee Michaels; and BOP's Jeff Dela Cruz, Ricky Bascones, and Charlie Hisatake. In front is BOP's Jack Hisatake.

Brickman's Shore Bet



Windham Hill artist Jim Brickman's tour to promote "Angel Eyes" and his new single, "If You Believe," took him to the Jersey shore's AC WOBM-FM Monmouth/Ocean County, N.J. Brickman, right, visits with MD Jeff Rafter.

Send Them All Away, Er, On Their Way



WHTZ (Z100) New York p.m. driver Elvis Duran took 500 contest winners and Mercury's Rusted Root around Manhattan on a 97-foot boat for the Z100 Schmoose Cruise. Duran, left, is shown with Rusted Root's Steve Glabicki.

PUBLISHER: MICHAEL ELLIS
 EDITOR: SEAN ROSS
 MANAGING EDITOR: KEVIN CARTER
 DIRECTOR OF CHARTS: JERRY MCKENNA
 TOP 40/ADULT CHART MANAGER: STEVEN GRAYBOW
 CHART PRODUCTION MANAGER: MICHAEL CUSSON
 ASST. CHART PRODUCTION MANAGER: PAUL PAGE
 EDITORIAL PRODUCTION MANAGER: BARRY BISHIN
 ASSOC. EDITORIAL PRODUCTION MANAGER: MARCIA REPINSKI
 EDITORIAL PRODUCTION: MARC GIAQUINTO, MORRIS KLEGMAN
 COPY EDITOR: CARL ROSEN
 ADVERTISING PRODUCTION MANAGER: LYDIA MIKULKO
 ADVERTISING PRODUCTION ASST.: CINDIE WEISS
 ADVERTISING ART DIRECTOR: RAY CARLSON

NATIONAL ADVERTISING MANAGER: JON GUYNN
 ADVERTISING SALES: ART PHILLIPS, ANDREA THOMPSON
 CLASSIFIED ADVERTISING: LAURA RIVCHUN
 ADVERTISING SERVICES MGR.: MICHELE JACANGELO
 SALES ASSISTANTS: EVELYN ASZODI, ERICA BENGTON,
 JEFF LESTINGI, ALYSE ZIGMAN

EDITORIAL ADVISOR: TIMOTHY WHITE
 PRODUCTION DIRECTOR: MARIE GOMBERT
 DIRECTOR OF MARKETING: ELISSA TOMASETTI
 CIRCULATION MANAGER: JEANNE JAMIN

©1995 BPI Communications, 1515 Broadway, New York, NY 10036
 212-536-5039 For subscriptions call: 800-722-2346

Billboard Music Group
 PRESIDENT: HOWARD LANDER

**ON
AC RADIO
NOW!**

Joshua Kadison Take It On Faith

The first single from the album **Delilah Blue**

ON TOUR

MON 10/9 NEW HAVEN Toad's Place
TUES 10/10 PHILADELPHIA Theater of the Living Arts
THU 10/12 NYC Billboard Monitor Convention
FRI 10/13 NYC Town Hall
SUN 10/15 BOSTON Paradise
MON 10/16 WASHINGTON, DC The Bayou
WED 10/18 CHICAGO Park West
THU 10/19 DETROIT Industry
TUES 10/24 LOS ANGELES House Of Blues

Produced by Joshua Kadison Management Nick Bode Management

**IMPACT DATE:
EXPLODING AT
RADIO NOW!**

CHYNNA PHILLIPS

Naked and Sacred

EMI Records
EMI

PRODUCED BY RICK NOWELS AND BILLY STEINBERG MANAGEMENT C. WINSTON SIMONE

World Radio History

L.A.D.

featuring darvy traylor

ALBUQUERQUE	KKSS	77X	Rank #2
EL PASO	KPRR	57X	Rank #1
SANTA BARBARA	KCAQ	34X	Rank #14
CORPUS CHRISTI	KZFM	21X	Rank #27
SAN ANTONIO	KTFM	16X	Rank #29
LAS VEGAS	KLUC	21X	Rank #34
PROVIDENCE	WWKX	10X	New



Ridin' Low

©1991 Hollywood Records

Hollywood
RECORDS

Available on Hollywood Records
Vinyl, Compact Discs and Cassettes.

AIRPLAY Monitor® GREATEST GAINERS

STRONGEST INCREASE IN AIRPLAY

MAINSTREAM

INCREASE
IN PLAYS

MEAT LOAF • I'd Lie For You (And That's The Truth) (MCA)	+283
WXKB +17, WLXK +16, WNCI +16, WBZZ +15, WPRO +14, WYCR +13, WZYP +12, WSSX +12, WMXQ +12, WFBC +11	
TLC • Diggin' On You (LAFACE/ARISTA)	+264
KHKS +30, KMXV +29, WRVQ +29, WIOQ +21, KHFI +19, KDWB +17, KBFM +14, WWST +12, WPXY +12, WFLY -11	
TOAD THE WET SPROCKET • Good Intentions (COLUMBIA/REPRISE)	+254
WDJX +18, WXIS +17, WLAN +15, WDDJ +14, WFLZ +14, WSNX -12, WIXX +10, WFLY +10, WVSR +9, WGTZ +9	
TOM COCHRANE • I Wish You Well (CAPITOL)	+234
WKSE +20, WYCR +18, WZYP +17, WWCK +17, WXIS +15, WTVR +15, WZPL +13, WZNY +11, WSSX +11, KLRZ +10	
GOO GOO DOLLS • Name (METAL BLADE/WARNER BROS.)	+232
WXS +22, WHTZ +19, WDCG +18, WDJX +16, WFLY +13, WBZZ +13, WTIC +12, KKLQ +10, KDWB -10, WFLZ +8	
JON B. • Pretty Girl (YAB YUM/550 MUSIC)	+210
WNVZ +25, KHTO +16, KKRD +16, WPRO +14, KHFI +14, WSTW -12, KRQQ +12, WYCR +12, KKLQ +12, WFLZ +11	
MELISSA ETHERIDGE • Your Little Secret (ISLAND)	+197
WPST +18, WPLY +17, WZPL +14, WXKS +13, WGTZ +12, WDCG +11, WHTZ +11, WPXY +10, KRBE +9, WEDJ +8	
ALANIS MORISSETTE • Hand In My Pocket (MAVERICK/REPRISE)	+188
KQKQ +14, KJYO +14, WHTZ +13, WHOT +11, WEDJ +10, WXIS +9, WXKB +9, WXXX +8, WKCI +8, WXXL +8	
BLUES TRAVELER • Hook (A&M)	+173
WNOK +19, WSSX +18, WWCK +16, KLRZ +14, KKRD +13, WHTZ +12, WPST +10, WWST +8, WXIS +7, WZNY +7, WXXX +6	
REAL MCCOY • Automatic Lover (ARISTA)	+167
KHTO +22, KDWB +19, WDJX +15, WHHY +13, KKRD +11, WSNX +10, WYCR +9, WFLY +9, KQKQ +7, KBFM +6	

RHYTHM-CROSSOVER

INCREASE
IN PLAYS

MARIAH CAREY & BOYZ II MEN • One Sweet Day (COLUMBIA)	+420
WPGC +41, KBXX +37, KTFM +32, KYLD +29, KKFR +27, WERQ +23, WOJV +23, KBOS +22, KPRR +22, KMEL +21	
R. KELLY • You Remind Me Of Something (JIVE)	+203
WJMH +32, KBXX +31, WPGC +21, KCAQ +18, WERQ +16, WJMN +15, WQHT +14, WWKX +10, KMEL +10, WHHH +8	
XSCAPE • Who Can I Run To (SO SO DEF/COLUMBIA)	+194
XHTZ +37, KTFM +26, KSFM +21, WHHH +20, WJJS +14, KYLD +13, WWKX +9, KDON +8, WQHT -8, KZFM +6	
TLC • Diggin' On You (LAFACE/ARISTA)	+190
KGGI +31, KZFM +30, WHHH +26, WERQ +23, KLUC +20, WOJV +17, KYLD +15, KKFR +15, KBOS +10, WJMH +9	
GROOVE THEORY • Tell Me (EPIC)	+170
XHTZ +26, WWKX +25, KSFM +24, KKSS +15, KZHT +15, KKFR +12, WPGC +11, KXTZ +9, WOJV +8, KMEL +7	
MONICA • Before You Walk Out Of My Life (ROWDY/ARISTA)	+122
WJMH +36, KTFM +27, WERQ +17, XHTZ +11, KCAQ +10, WJJS -8, KPRR +5, WHHH +4, WWKX +4, KMEL +2	
3T • Anything (MJJ/550 MUSIC)	+119
KDON +37, WJMH +19, KPRR +18, KYLD +13, WHHH +12, WOJV +12, KTFM +7, WQHT +6, XHTZ +5, WJMN +5	
L.V. • Gangsta's Paradise (TOMMY BOY)	+109
KMEL +37, KPWR +30, KYLD +27, KZFM +8, KXTZ +5, XHTZ +2	
MAX-A-MILLION • Sexual Healing (S.O.S./ZOO)	+95
XHTZ +27, WOJV +22, KCAQ +20, WJJS +15, KBOS +9, KZHT +8, KYLD +1, KTFM +1, KKFR +1, KQKS +1	
L.A.D. • Ridin' Low (PR/HOLLYWOOD)	+82
WKSS +47, KTFM +16, KZFM +12, KCAQ +9, KPRR +1	

VIDEO PLAYLISTS



		TW	LW		TW	LW
1	Coolio Feat. L.V., Gangsta's Paradise	36	42	41	P.M. Dawn, Downtown Venus	8 9
2	Green Day, Geek Sunk Breath	34	31	42	D'Angelo, Brown Sugar	7 10
3	Foo Fighters, I'll Stick Around	29	27	43	White Zombie, Electric Head Pt. 2	7 8
4	Mariah Carey, Fantasy	24	31	44	Melissa Etheridge, Your Little Secret	7 0
5	Bush, Come Down	23	28	45	Coolio, Fantastic Voyage	6 2
6	Red Hot Chili Peppers, Warped	23	25	46	Naughty By Nature, Feel Me Flow	6 6
7	Salt-N-Pepa, Ain't Nuthin' But A She Thing	21	22	47	Dr. Dre, Keep Their Heads Ringin'	6 7
8	Presidents Of The United State, Lump	21	17	48	Edwin McCain, Solitude	6 6
9	Bon Jovi, Something For The Pain	20	23	49	Deep Blue Something, Breakfast At Tiffan	5 4
10	Goo Goo Dolls, Name	19	21	50	Groove Theory, Tell Me	5 4
11	Silverchair, Tomorrow	18	26			
12	Janet Jackson, Runaway	18	28			
13	Rod Stewart, This	16	20			
14	Rancid, Time Bomb	16	15			
15	Hootie & The Blowfish, Only Wanna Be Wit	16	20			
16	Brandy, Brokenhearted	15	11			
17	Skee-Lo, I Wish	15	16			
18	Lisa Loeb & Nine Stories, Do You Sleep?	15	10			
19	Soul Asylum, Just Like Anyone	15	16			
20	Candlebox, Simple Lessons	14	13			
21	Dave Matthews Band, Ants Marching	13	19			
22	TLC, Waterfalls	13	12			
23	Alanis Morissette, You Oughta Know	13	22			
24	Michael Jackson, You Are Not Alone	12	18			
25	TLC, Diggin' On You	12	0			
26	Blues Traveler, Run Around	11	14			
27	Seal, Kiss From A Rose	10	13			
28	Toadies, Possum Kingdom	10	10			
29	Bone Thugs-N-Harmony, 1st Of Tha Month	10	13			
30	CIV, Can't Wait One Minute More	10	13			
31	Lenny Kravitz, Rock And Roll Is Dead	10	14			
32	David Bowie, The Hearts Filthy Lesson	10	8			
33	Alanis Morissette, Hand In My Pocket	10	0			
34	R.E.M., Tongue	9	8			
35	Boyz II Men, Vibe	9	3			
36	Natalie Merchant, Carnival	9	10			
37	Take That, Back For Good	9	9			
38	Garbage, Queer	8	5			
39	AC/DC, Hard As A Rock	8	9			
40	Heather Nova, Walk This World	8	5			



ADULT

INCREASE
IN PLAYS

ELTON JOHN • Blessed (ROCKET/ISLAND)	+222
WQLH +39, WAEV +22, WKQI +19, KGBY +18, WLHT +17, WEZF -15, KGBX +14, KHMV +11, WGSY +9, WDEF +9	
GIN BLOSSOMS • Til I Hear It From You (A&M)	+137
KDMX +18, KSTP +17, WMYI +17, KYKY +15, WRQX +13, WMC +11, WMXL +10, KHMV +10, WKZL +10, WZPK +9	
DAVE MATTHEWS BAND • Ants Marching (RCA)	+124
WTMX +21, WYYY +11, WMC +11, WZPK +10, WAEV +9, KYSR +9, KFMB +9, WMXV +8, KISN +8, WVAF +7	
LISA LOEB & NINE STORIES • Do You Sleep? (Geffen)	+108
KSTP +23, WVTY +19, WTMX +16, WZPK +15, KDMX +13, KALC +12, KHMV +9, WRQX +4, KFMB +3, WBLI +1	
NATALIE MERCHANT • Carnival (ELEKTRA/EEG)	+107
WKQI +19, KHMV +17, WRQX +17, KVUU +16, WKZL +11, KPLZ +9, KDMX +6, WMTX +6, WAEV +5, WZPK +5	
TAKE THAT • Back For Good (ARISTA)	+101
KYKY +20, WKQI +19, WCSO +16, WRMF +16, WVTY +14, WKZL +12, KTHT +9, WMXL +8, KHMV +8, WRQX +5	
MEAT LOAF • I'd Lie For You (And That's The Truth) (MCA)	+100
WKDD +22, WIVY +16, KYKY +11, WTMX +7, WTFM +7, WMXV +7, KSTZ +7, WMXL +6, WZPK +5, WWSN +4	
JUDE COLE • Believe In You (ISLAND)	+98
WKDD +16, KWMX +15, KPLZ +15, KHMV +13, WMC +13, WBEB +6, WMXV +6, WBLI +6, WMXL -5, WMYI +5	
COLLECTIVE SOUL • December (ATLANTIC)	+91
WVTY -31, WIVY +17, KHMV +12, WKZL +11, WIOG +9, WZPK +7, KSTP +7, KWMX +7, WMXB +6, WKDD +4	
DEEP BLUE SOMETHING • Breakfast At Tiffany's (RAINMAKER/INTERSCOPE)	+87
WTMX +21, KFMB +18, WZPK +15, WPLJ +13, WKTI +9, WYYY +8, KHMV +6, WMXL +1, WJDX +1, KTHT +1	

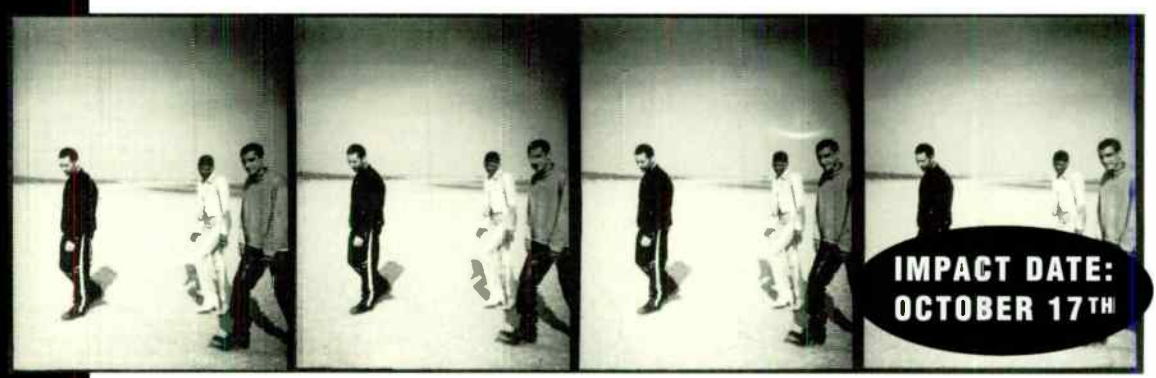
Early Mixshow Play At:
WPGC
PWR106
B96
WPOW
WERQ
Z90
WQVW
WEJM
WILD
WOWI
KCAQ
KMXV
KKSS
WHUR
WUSL
WVEE

the essential groove. raw stylus

"believe in me"
the first single
from the debut album
pushing against the flow
produced by gary katz and raw stylus

management:
groove academy/maurice bernstein
internet: <http://www.geffen.com>
© 1995 geffen records, inc.

BILLBOARD CLUB: 37 - 23



**IMPACT DATE:
OCTOBER 17TH**

MAINSTREAM



POWER PLAYLISTS



For Week Ending October 8, 1995

Playlists supplied by Broadcast Data Systems Radio Track service. Stations selected from panel of leading broadcasters in 125 radio markets, electronically monitored 24 hours a day, 7 days a week. Songs ranked by number of plays in monitored week.

Q104		Q102		G105		THE EDGE		Z100		XL106.7	
WKQB St. Louis	PD: Michael St. John MD: Kenny Knight	WKQR Cincinnati	PD: Jimmy Steal APD/MD: Brian Douglas	WDGG Raleigh	PD: Brian Burns MD: Steve Douglas	WEDJ Charlotte	PD: Brian Bridgman MD: Tom Naylor	KKRZ Portland	PD: Ken Benson APD/MD: Chet Buchanan	WOXL Orlando	PD: Adam Cook MD: Larry D.
TW	LW	TW	LW	TW	LW	TW	LW	TW	LW	TW	LW
1	52	1	52	1	52	1	52	1	52	1	52
2	51	2	51	2	51	2	51	2	51	2	51
3	42	3	42	3	42	3	42	3	42	3	42
4	36	4	36	4	36	4	36	4	36	4	36
5	30	5	30	5	30	5	30	5	30	5	30
6	24	6	24	6	24	6	24	6	24	6	24
7	22	7	22	7	22	7	22	7	22	7	22
8	20	8	20	8	20	8	20	8	20	8	20
9	19	9	19	9	19	9	19	9	19	9	19
10	18	10	18	10	18	10	18	10	18	10	18
11	17	11	17	11	17	11	17	11	17	11	17
12	16	12	16	12	16	12	16	12	16	12	16
13	15	13	15	13	15	13	15	13	15	13	15
14	14	14	14	14	14	14	14	14	14	14	14
15	13	15	13	15	13	15	13	15	13	15	13
16	12	16	12	16	12	16	12	16	12	16	12
17	11	17	11	17	11	17	11	17	11	17	11
18	10	18	10	18	10	18	10	18	10	18	10
19	9	19	9	19	9	19	9	19	9	19	9
20	8	20	8	20	8	20	8	20	8	20	8
21	7	21	7	21	7	21	7	21	7	21	7
22	6	22	6	22	6	22	6	22	6	22	6
23	5	23	5	23	5	23	5	23	5	23	5
24	4	24	4	24	4	24	4	24	4	24	4
25	3	25	3	25	3	25	3	25	3	25	3
26	2	26	2	26	2	26	2	26	2	26	2
27	1	27	1	27	1	27	1	27	1	27	1
28	0	28	0	28	0	28	0	28	0	28	0
29	0	29	0	29	0	29	0	29	0	29	0
30	0	30	0	30	0	30	0	30	0	30	0
31	0	31	0	31	0	31	0	31	0	31	0
32	0	32	0	32	0	32	0	32	0	32	0
33	0	33	0	33	0	33	0	33	0	33	0
34	0	34	0	34	0	34	0	34	0	34	0
35	0	35	0	35	0	35	0	35	0	35	0
36	0	36	0	36	0	36	0	36	0	36	0
37	0	37	0	37	0	37	0	37	0	37	0
38	0	38	0	38	0	38	0	38	0	38	0
39	0	39	0	39	0	39	0	39	0	39	0
40	0	40	0	40	0	40	0	40	0	40	0

UB40

KINGSTON TOWN



the first single and video from **Best of UB40 Volume Two**
produced by UB40

Jeff McClusky

& Associates

Congratulate

All Of The

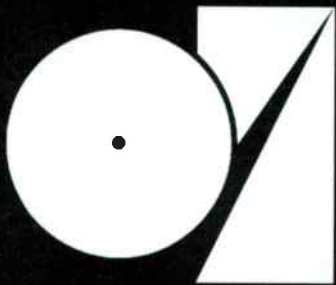
1995

Radio Award

Nominees

And

Winners



JEFF McCLUSKY & ASSOCIATES, INC.
marketing and promotion services

MAINSTREAM

POWER PLAYLISTS™



AIRPLAY
Monitor

For Week Ending
October 8, 1995

Playlists supplied by Broadcast Data Systems' Radio Track service. Stations selected from panel of leading broadcasters in 125 radio markets, electronically monitored 24 hours a day, 7 days a week. Songs ranked by number of plays in monitored week.

WIXX		KHFI		WVKS	
PD: Dan Stone MD: Steve Louizos		PD: John Roberts MD: Fernando Ventura		PD: Mike Wheeler MD: Curt Kruse	
Green Bay		Austin		Toledo	
TW	LW	TW	LW	TW	LW
1	40	1	68	1	68
2	38	2	67	2	64
3	37	3	65	3	62
4	36	4	63	4	60
5	36	5	64	5	58
6	34	6	65	6	56
7	34	7	66	7	54
8	33	8	67	8	52
9	32	9	68	9	50
10	32	10	69	10	48
11	31	11	70	11	46
12	31	12	71	12	44
13	30	13	72	13	42
14	30	14	73	14	40
15	29	15	74	15	38
16	29	16	75	16	36
17	28	17	76	17	34
18	28	18	77	18	32
19	27	19	78	19	30
20	27	20	79	20	28
21	26	21	80	21	26
22	26	22	81	22	24
23	25	23	82	23	22
24	25	24	83	24	20
25	24	25	84	25	18
26	24	26	85	26	16
27	23	27	86	27	14
28	23	28	87	28	12
29	22	29	88	29	10
30	22	30	89	30	8
31	21	31	90	31	6
32	21	32	91	32	4
33	20	33	92	33	2
34	20	34	93	34	1
35	20	35	94	35	1
36	19	36	95	36	1
37	19	37	96	37	1
38	18	38	97	38	1
39	18	39	98	39	1
40	17	40	99	40	1

WDJX		K92		Q99	
Acting PD: J.J. Dulling MD: Jill Meyer		PD/MD: Chris Taylor		PD: Brian deGeus MD: Geronimo	
Louisville		Roanoke		Salt Lake City	
TW	LW	TW	LW	TW	LW
1	53	1	55	1	46
2	52	2	54	2	45
3	52	3	53	3	44
4	49	4	52	4	43
5	48	5	51	5	42
6	48	6	50	6	41
7	46	7	49	7	40
8	45	8	48	8	39
9	45	9	47	9	38
10	44	10	46	10	37
11	44	11	45	11	36
12	43	12	44	12	35
13	43	13	43	13	34
14	42	14	42	14	33
15	42	15	41	15	32
16	41	16	40	16	31
17	41	17	39	17	30
18	40	18	38	18	29
19	40	19	37	19	28
20	39	20	36	20	27
21	39	21	35	21	26
22	38	22	34	22	25
23	38	23	33	23	24
24	37	24	32	24	23
25	37	25	31	25	22
26	36	26	30	26	21
27	36	27	29	27	20
28	35	28	28	28	19
29	35	29	27	29	18
30	34	30	26	30	17
31	34	31	25	31	16
32	33	32	24	32	15
33	33	33	23	33	14
34	32	34	22	34	13
35	32	35	21	35	12
36	31	36	20	36	11
37	31	37	19	37	10
38	30	38	18	38	9
39	30	39	17	39	8
40	29	40	16	40	7

KC101		93Q		B104	
OM: Glenn Beck PD: Steve Wilson MD: Jeff McCartney		PD/MD: Dave Edwards		PD: Billy Santiago MD: Jeff DeWitt	
New Haven		Syracuse		McAllen	
TW	LW	TW	LW	TW	LW
1	43	1	65	1	52
2	43	2	64	2	51
3	42	3	63	3	50
4	41	4	62	4	49
5	41	5	61	5	48
6	40	6	60	6	47
7	39	7	59	7	46
8	39	8	58	8	45
9	38	9	57	9	44
10	38	10	56	10	43
11	37	11	55	11	42
12	37	12	54	12	41
13	36	13	53	13	40
14	36	14	52	14	39
15	35	15	51	15	38
16	35	16	50	16	37
17	34	17	49	17	36
18	34	18	48	18	35
19	33	19	47	19	34
20	33	20	46	20	33
21	32	21	45	21	32
22	32	22	44	22	31
23	31	23	43	23	30
24	31	24	42	24	29
25	30	25	41	25	28
26	30	26	40	26	27
27	29	27	39	27	26
28	29	28	38	28	25
29	28	29	37	29	24
30	28	30	36	30	23
31	27	31	35	31	22
32	27	32	34	32	21
33	26	33	33	33	20
34	26	34	32	34	19
35	25	35	31	35	18
36	25	36	30	36	17
37	24	37	29	37	16
38	24	38	28	38	15
39	23	39	27	39	14
40	23	40	26	40	13

HIS "LIFE IS A HIGHWAY" CARRIED YOU AWAY.
THIS STRETCH OF RAGGED ASS ROAD BRINGS YOU HOME.



"I WISH YOU WELL"
TOM COCHRANE

The first single from RAGGED ASS ROAD

ON OVER 100 STATIONS AFTER 1 WEEK INCLUDING:

WPLJ	WZPL	WKRQ	B94	WKSE
WNCI	WKBQ	KLRZ	WKTJ	B97

Every now and then a road comes along you have to take.

<http://www.tocochrane.com/tc>

Produced by John Webster and Tom Cochrane - Management: Dana Millman/Ron Stone for Gold Mountain

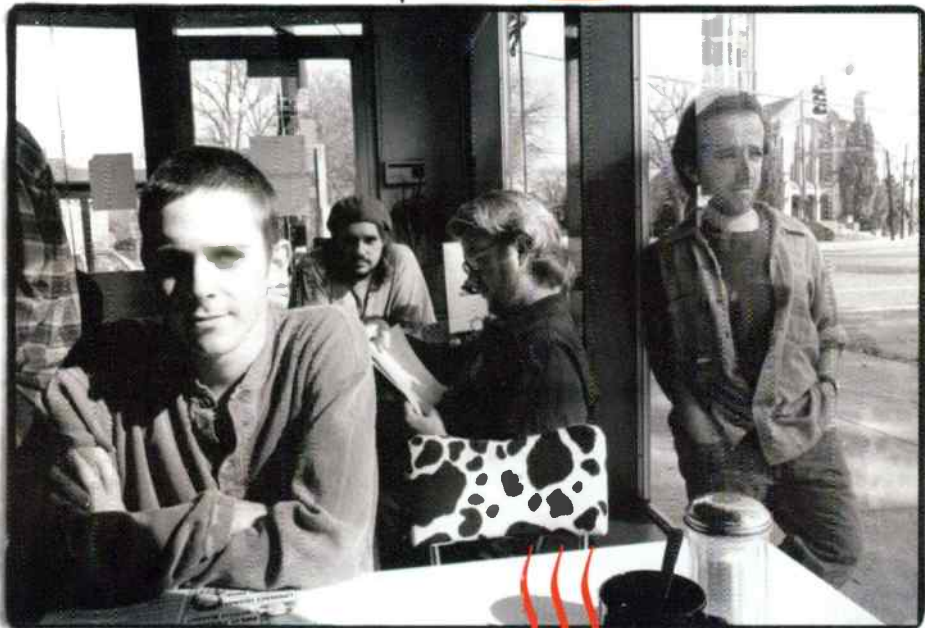
Monitor Conference Attendees: Meet Tom Friday night at the cocktail party!

World Radio History



© 1995 EMI Records Ltd.

That and a dime will get you
a cup of coffee?



"GOOD INTENTIONS"

Toad The Wet Sprocket

previously unreleased

F.R.I.E.N.D.S.

From the soundtrack
to the colossal,
wenu-centered,
ugly naked guy hit series

Management: Blake & Bradford



©1994 Warner Bros. Television ©1995 Reprise Records. Toad The Wet Sprocket appear courtesy of Columbia Records.

A MULTI FORMAT HIT!
**TOP 40 MONITOR/
MAINSTREAM CHART**

36 - 27

**ROCK MONITOR/
MAINSTREAM CHART**

40 - 35

**ROCK MONITOR/
MODERN CHART**

35 - 28

**BILLBOARD HOT ADULT
CONTEMPORARY CHART**

40 - 35

MAINSTREAM

POWER PLAYLISTS



For Week Ending
October 8, 1995

Playlists supplied by Broadcast Data Systems' Radio Track service. Stations selected from panel of leading broadcasters in 125 radio markets, electronically monitored 24 hours a day, 7 days a week. Songs ranked by number of plays in monitored week.

SWEET 98				Q94				WHOT			
KQKQ Omaha		PD: Michael Steele MD: Jimi Jamm		WRVQ Richmond		PD: Lisa McKay MD: Billy Surf		WHOT Youngstown		PD/MD: Tom Pappas	
		TW	LW			TW	LW			TW	LW
1	Monica, Don't Take It Personal	64	53	1	Alanis Morissette, You Oughta Know	59	46	1	Mariah Carey, Fantasy	56	57
2	Hootie & The Blowfish, Only Wanna Be With You	63	63	2	Boyz II Men, Thank You	57	47	2	Michael Jackson, You Are Not Alone	54	55
3	Seal, Kiss From A Rose	60	60	3	Mariah Carey, Fantasy	57	56	3	Hootie & The Blowfish, Only Wanna Be With You	52	50
4	Soul For Real, Every Little Thing I Do	58	59	4	Collective Soul, December	57	51	4	Sophie B. Hawkins, As I Lay Me Down	51	47
5	Sophie B. Hawkins, As I Lay Me Down	57	61	5	TLC, Waterfalls	56	54	5	Seal, Kiss From A Rose	50	51
6	Michael Jackson, You Are Not Alone	44	42	6	Jon B. Feat. Babyface, Someone To Love	53	55	6	Blues Traveler, Run Around	48	53
7	Mariah Carey, Fantasy	41	40	7	Diana King, Shy Guy	52	42	7	Del Amitri, Roll To Me	43	40
8	Collective Soul, December	40	37	8	Del Amitri, Roll To Me	45	24	8	Collective Soul, December	39	41
9	Dave Matthews Band, Ants Marching	38	35	9	Janet Jackson, Runaway	40	43	9	Janet Jackson, Runaway	35	34
10	Janet Jackson, Runaway	36	33	10	Sophie B. Hawkins, As I Lay Me Down	39	30	10	All-4-One, I Can Love You Like That	34	34
11	Fun Factory, I Wanna Be With U	36	39	11	Boyz II Men, Water Runs Dry	38	33	11	Real McCoy, Come And Get Your Love	33	34
12	Live, Lightning Crashes	36	38	12	Janet Jackson, Runaway	37	27	12	Janet Jackson, Runaway	33	32
13	Diana King, Shy Guy	35	37	13	All-4-One, I Can Love You Like That	35	28	13	Live, Lightning Crashes	33	29
14	Blessid Union Of Souls, Let Me Be The On	35	30	14	Natalie Merchant, Carnival	34	23	14	Jon B. Feat. Babyface, Someone To Love	33	34
15	TLC, Digg'n' On You	35	29	15	Michael Jackson, You Are Not Alone	33	36	15	TLC, Waterfalls	31	32
16	TLC, Waterfalls	30	40	16	Yolco Ross, Miss Me	30	11	16	Natalie Merchant, Carnival	31	33
17	Green Day, When I Come Around	29	28	17	TLC, Digg'n' On You	29	17	17	Lisa Loeb & Nine Stories, Do You Sleep?	29	13
18	Del Amitri, Roll To Me	27	24	18	Seal, Kiss From A Rose	28	32	18	Blessid Union Of Souls, Let Me Be The On	28	28
19	The Rembrandts, I'll Be There For You	27	25	19	Crystal Waters, 100% Pure Love	26	16	19	Take That, Back For Good	28	27
20	Coolio Feat. L.V., Gangsta's Paradise	27	31	20	Montell Jordan, This Is How We Do It	22	22	20	Deep Blue Something, Breakfast At Tiffan	26	25
21	Janet Jackson, Runaway	26	29	21	Real McCoy, Another Night	21	19	21	Alanis Morissette, You Oughta Know	25	24
22	Tom Cochrane, I Wish You Well	26	26	22	Alanis Morissette, Hand In My Pocket	20	15	22	Fun Factory, I Wanna Be With U	23	22
23	3T, Anything	25	21	23	Ini Kamoze, Here Comes The Hotstepper	18	13	23	Selena, I Could Fall In Love	23	35
24	Real McCoy, Automatic Lover	24	17	24	Backstreet Boys, We've Got It Gon' On	18	14	24	Meat Loaf, I'd Lie For You	23	25
25	Natalie Merchant, Carnival	22	25	25	Edwyn Collins, A Girl Like You	17	12	25	Boyz II Men, Water Runs Dry	22	14
26	Take That, Back For Good	22	29	26	Hootie & The Blowfish, Only Wanna Be With You	16	42	26	Diana King, Shy Guy	22	25
27	Backstreet Boys, We've Got It Gon' On	22	21	27	Wicki French, Total Eclipse Of The Moon	16	19	27	Nicki French, Total Eclipse Of The Moon	21	21
28	Alanis Morissette, You Oughta Know	22	24	28	2 Unlimited, Get Ready For This	16	16	28	Des'ree, You Gotta Be	20	23
29	All-4-One, I Can Love You Like That	21	24	29	Four Seasons, December 1963	16	10	29	Donna Summer, I Wanna Dance With Somebody	20	22
30	Blues Traveler, Run Around	20	20	30	Des'ree, You Gotta Be	15	9	30	Monica, Don't Take It Personal	19	18
31	Montell Jordan, This Is How We Do It	20	19	31	US3, Cantaloupe	15	9	31	2 Unlimited, Get Ready For This	19	18
32	Toad The Wet Sprocket, Good Intentions	20	18	32	Silverchair, Tomorrow	15	17	32	Green Day, When I Come Around	19	17
33	Lisa Loeb & Nine Stories, Do You Sleep?	19	22	33	Brandy, Baby	14	10	33	Jessica Hetheridge, I'm The Only One	18	15
34	P.M. Dawn, Downtown Venus	18	19	34	Nootie & The Blowfish, Hold My Hand	13	6	34	Hootie & The Blowfish, Let Her Cry	18	23
35	Boyz II Men, Water Runs Dry	17	22	35	Melissa Etheridge, Come To My Window	13	10	35	Sheryl Crow, All I Wanna Do	18	16
36	Real McCoy, Another Night	17	16	36	Coolio Feat. L.V., Gangsta's Paradise	13	8	36	TLC, Digg'n' On You	17	18
37	Alanis Morissette, Hand In My Pocket	17	3	37	Jade, Every Day Of The Week	12	14	37	Sheryl Crow, Can't Cry Anymore	16	10
38	Nicki French, Total Eclipse Of The Moon	16	16	38	The Rembrandts, I'll Be There For You	12	10	38	Corona, The Rhythm Of The Night	16	18
39	4 P.M., Suzyaki	16	19	39	Captain Hollywood Project, More And More	12	9	39	Jamie Walters, Hold On	15	17
40	Donna Summer, I Know	16	14	40	Salt-N-Pepa, Am'N Nuttin' But A She Th	12	10	40	Martin Page, In The House Of Stone And L	15	16

WAPE				WNNK				STAR 93.1			
WAPE Jacksonville		PD: Cat Thomas APD: Tony Mann MD: Damon Cox		WNNK Harrisburg		PD: John O'Dea MD: Scott Shaw		WWST Knoxville		OM: Jim Richards PD: Todd Shannon MD: Tony Castle	
		TW	LW			TW	LW			TW	LW
1	Natalie Merchant, Carnival	56	55	1	Janet Jackson, Runaway	36	37	1	Mariah Carey, Fantasy	57	58
2	Take That, Back For Good	54	51	2	Mariah Carey, Fantasy	34	36	2	TLC, Waterfalls	57	30
3	Del Amitri, Roll To Me	52	45	3	Take That, Back For Good	33	36	3	Seal, Kiss From A Rose	54	56
4	Sophie B. Hawkins, As I Lay Me Down	51	49	4	Del Amitri, Roll To Me	32	36	4	Aaliyah, Back & Forth	54	56
5	Collective Soul, December	51	31	5	Janet Jackson, Runaway	31	29	5	Michael Jackson, You Are Not Alone	44	55
6	TLC, Waterfalls	50	44	6	Blessid Union Of Souls, Let Me Be The On	30	26	6	Del Amitri, Roll To Me	35	28
7	Alanis Morissette, You Oughta Know	46	45	7	Meat Loaf, I'd Lie For You	30	21	7	Paula Abdul, Crazy Cool	34	29
8	Blessid Union Of Souls, Let Me Be The On	37	29	8	The Rembrandts, This House Is Not A Home	29	30	8	Hootie & The Blowfish, I Go Blind	33	23
9	Mariah Carey, Fantasy	35	33	9	Selena, I Could Fall In Love	29	34	9	Janet Jackson, Runaway	33	31
10	Seal, Kiss From A Rose	34	50	10	The Badloes, Fear Of Falling	28	10	10	Monica, Don't Take It Personal	31	31
11	Janet Jackson, Runaway	34	33	11	Natalie Merchant, Carnival	27	22	11	Take That, Back For Good	30	19
12	Fun Factory, I Wanna Be With U	30	27	12	Soul For Real, Every Little Thing I Do	26	26	12	Blessid Union Of Souls, Let Me Be The On	30	19
13	Selena, I Could Fall In Love	26	11	13	Michael Bolton, Can I Touch You There?	25	30	13	Alanis Morissette, You Oughta Know	30	21
14	Hootie & The Blowfish, Only Wanna Be With You	23	48	14	Dave Matthews Band, Ants Marching	22	11	14	Mariah Carey, Open Arms	29	3
15	Goo Goo Dolls, Name	23	18	15	Lisa Loeb & Nine Stories, Do You Sleep?	23	20	15	Mariah Carey, One Sweet Day	23	3
16	Michael Jackson, You Are Not Alone	22	23	16	Toad The Wet Sprocket, Good Intentions	21	21	16	Sophie B. Hawkins, As I Lay Me Down	21	28
17	Toad The Wet Sprocket, Good Intentions	21	18	17	Jon B., Pretty Girl	21	16	17	Edwin McCain, Solitude	20	14
18	Lisa Loeb & Nine Stories, Do You Sleep?	20	20	18	Goo Goo Dolls, Name	21	18	18	Jon B. Feat. Babyface, Someone To Love	19	18
19	Janet Jackson, Runaway	20	35	19	Fun Factory, I Wanna Be With U	20	19	19	Diana King, Shy Guy	19	24
20	Edwin McCain, Solitude	19	14	20	Seal, Kiss From A Rose	20	19	20	Collective Soul, December	18	20
21	P.M. Dawn, Downtown Venus	17	14	21	P.M. Dawn, Downtown Venus	20	13	21	Madonna, Don't Stop	17	48
22	Jon B., Pretty Girl	17	7	22	Vanessa Williams, Colors Of The Wind	19	22	22	Hootie & The Blowfish, Only Wanna Be With You	17	15
23	Presidents Of The United States, Lump	17	12	23	Matthew Sweet, We're The Same	19	15	23	Live, Lightning Crashes	16	10
24	Blues Traveler, Run Around	16	16	24	Deep Blue Something, Breakfast At Tiffan	18	33	24	Janet Jackson, Runaway	15	31
25	Deep Blue Something, Breakfast At Tiffan	15	11	25	Michael Bolton, Can I Touch You There?	18	27	25	P.M. Dawn, Downtown Venus	15	17
26	Corona, The Rhythm Of The Night	15	17	26	Janet Jackson, Runaway	18	25	26	Boyz II Men, Thank You	14	14
27	All-4-One, I Can Love You Like That	15	13	27	Jon B. Feat. Babyface, Someone To Love	17	21	27	Dave Matthews Band, What Would You Say	14	14
28	Tony! Tony! Tane!, If I Had No Loot	14	12	28	Hootie & The Blowfish, Only Wanna Be With You	17	21	28	TLC, Creep	14	14
29	Melissa Etheridge, I'm The Only One	13	9	29	Nicki French, Did You Ever Really Love M	17	12	29	Fun Factory, I Wanna Be With U	14	13
30	Real McCoy, Run Away	13	14	30	Alanis Morissette, You Oughta Know	16	13	30	* - I Hate U	14	14
31	Live, Lightning Crashes	13	15	31	Real McCoy, Run Away	16	12	31	TLC, Digg'n' On You	14	2
32	Heather Nova, Walk This World	13	12	32	Corrs, Runaway	16	17	32	Backstreet Boys, We've Got It Gon' On	14	13
33	Green Day, When I Come Around	12	11	33	Wanderlust, I Walked	16	15	33	Deep Blue Something, Breakfast At Tiffan	14	13
34	Haddaway, What Is Love	12	12	34	Backstreet Boys, We've Got It Gon' On	16	16	34	Jon B., Pretty Girl	14	6
35	Real McCoy, Another Night	11	8	35	Wisa, All Or Nothing	15	14	35	Meat Loaf, I'd Lie For You	13	8
36	Stone Temple Pilots, Interstate Love Song	11	11	36	The Rembrandts, I'll Be There For You	14	11	36	Corrs, Runaway	13	10
37	Ace Of Base, Don't Turn Around	11	11	37	Real McCoy, Another Night	14	14	37	The Rembrandts, I'll Be There For You	13	17
38	John Mellencamp, Wild Night	11	13	38	Diana Ross, Take Me Higher	14	6	38	Dave Matthews Band, Ants Marching	13	14
39	Inner Circle, Sweat	11	12	39	Brandy, Brokenhearted	14	14	39	Toad The Wet Sprocket, Good Intentions	13	9
40	2 Unlimited, Get Ready For This	11	13	40	Bon Jovi, Something For The Pain	14	12	40	Coolio Feat. L.V., Gangsta's Paradise	12	9

WSNX				WZYP				WABB			
WSNX Grand Rapids		PD: Mark McGill MD: Keith Curry		WZYP Huntsville		PD: Ken Wall MD: Ace Anthony		WABB Mobile		PD: Brett Dumler MD: Crash	
		TW	LW			TW	LW			TW	LW
1	Del Amitri, Roll To Me	58	54	1	Mariah Carey, Fantasy	46	35	1	Alanis Morissette, You Oughta Know	51	51
2	Hootie & The Blowfish, Only Wanna Be With You	57	59	2	Collective Soul, December	45	45	2	Collective Soul, December	50	53
3	Blues Traveler, Run Around	56	52	3	Blues Traveler, Run Around	45	43	3	Hootie & The Blowfish, Only Wanna Be With You	47	52
4	Michael Jackson, You Are Not Alone	56	52	4	Janet Jackson, Runaway	44	43	4	Seal, Kiss From A Rose	44	55
5	Mariah Carey, Fantasy	53	46	5	Hootie & The Blowfish, Only Wanna Be With You	44	45	5	Sophie B. Hawkins, As I Lay Me Down	39	41
6	Seal, Kiss From A Rose	53	56	6	Seal, Kiss From A Rose	44	42	6	Natalie Merchant, Carnival	36	37
7	Janet Jackson, Runaway	50	50	7	Sophie B. Hawkins, As I Lay Me Down	42	42	7	Janet Jackson, Runaway	36	38
8	Janet Jackson, Runaway	50	50	8	Lisa Loeb & Nine Stories, Do You Sleep?	42	42	8	Melissa Etheridge, Like The Way I Do	35	27
9	Collective Soul, December	45	44	9	Michael Jackson, You Are Not Alone	38	28	9	Sheryl Crow, Can't Cry Anymore	33	34
10	Diana King, Shy Guy	38	35	10	The Rembrandts, This House Is Not A Home	38	24	10	Deep Blue Something, Breakfast At Tiffan	33	39
11	Sophie B. Hawkins, As I Lay Me Down	36	26	11	Janet Jackson, Runaway	28	29	11	Janet Jackson, Runaway	32	39
12	Alanis Morissette, You Oughta Know	34	26	12	Del Amitri, Roll To Me	28	25	12	The Rembrandts, I'll Be There For You	32	40
13	Alanis Morissette, You Oughta Know	33	30	13	Selena, I Could Fall In Love	28	26	13	TLC, Waterfalls	31	31
14	Collective Soul, December	30	37	14	Blessid Union Of Souls, Let Me Be The On	27	29	14	Del Amitri, Roll To Me	31	40
15	Better Than Ezra, Good	27	27	15	Edwin McCain, Solitude	26	18	15	Boyz II Men, Water Runs Dry	27	29
16	Fun Factory, I Wanna Be With U	26	24	16	Dave Matthews Band, Ants Marching	25	22	16	Mariah Carey, Fantasy	27	38
17	Deep Blue Something, Breakfast At Tiffan	25	28	17	Alanis Morissette, You Oughta Know	25	23	17	Live, Lightning Crashes	22	28
18	Sheryl Crow, Can't Cry Anymore	25	38								

8 million albums later, The Sign leads here:

ACE OF BASE

Beautiful life



“Beautiful Life”
is the first smash
single and video from
their new album
THE BRIDGE,
the follow-up to their
#1 debut album

★ ★ ★ **AIRPOWER** ★ ★ ★

(Minimum 1500 detections for the first time)

Total Plays/Gain

DAVE MATTHEWS BAND 1543/104
Ants Marching (RCA)

Total Stations: 80/Chart Move: 20-19
Heavy (40+ plays): 6 KLRZ, WEDJ, WSSX, WTVR, WWCK, WXIS
Medium (20-39): 32 KHTO, KHLY, KQKQ, KUTQ, WABB, WBHT, WDCG, WDDJ, WDXX, WZBZ, WFCB, WFLY, WFLZ, WHTZ, WIXX, WKCI, WKRZ, WKSE, WLAN, WNNK, WNOK, WPLY, WPST, WSTR, WSTW, WVKK, WXXX, WYCR, WZNY, WZPL, WZYP
Light (Under 20): 42
New Airplay This Week: 1 KKLQ

AIRPOWER BOUND

Total Plays/Gain

GOO GOO DOLLS 1367/232

Name (Metal Blade/Warner Bros.)
Total Stations: 76/Chart Move: 26-20
Heavy (40+ plays): 6 KHLY, WEDJ, WHTZ, WPLY, WPST, WXIS
Medium (20-39): 29 KDWB, KHTO, KJYO, KKRD, KRBE, KRQQ, KUTQ, WAPE, WBHT, WZBZ, WDCG, WDDJ, WEZB, WFCB, WFLZ, WIXX, WKCI, WKRZ, WKSE, WKXJ, WLAN, WMXQ, WNNK, WNOK, WNTQ, WTVR, WWCK, WXLK, WZNY
Light (Under 20): 41
New Airplay This Week: 5 KKLQ, WDXX, WFLY, WKSS, WTIC

FUN FACTORY 1362/5

I Wanna B With U (Curb Edel)
Total Stations: 72/Chart Move: 23-22
Heavy (40+): 9 KKRZ, WFCB, WHYI, WNCI, WNVZ, WPRO, WPXY, WXXX, WZJM
Medium (20-39): 22 KDWB, KHTO, KLRZ, KQKQ, WAPE, WZBZ, WDXX, WFLZ, WHOT, WIOQ, WIXX, WKBQ, WKRZ, WKSE, WKXJ, WLAN, WNNK, WSNX, WXXX, WXLK, WYCR, WZNY
Light (Under 20): 41

COOLIO FEAT. L.V. 1159/32

Gangsta's Paradise (MCA Soundtracks/MCA)
Total Stations: 59/Chart Move: 25-26
Heavy (40+): 7 KHKS, KIIS, KLRZ, KZZU, WFLZ, WKSE, WNVZ
Medium (20-39): 21 KBFM, KDWB, KHFI, KJYO, KKRD, KQKQ, KRQQ, WDJX, WFCB, WFLY, WGTZ, WIOQ, WKBQ, WKRZ, WKSS, WNOK, WPKY, WTVR, WVKK, WZJM, WZPL
Light (Under 20): 31
New Airplay This Week: 2 KHTO, WIXX

TOAD THE WET SPROCKET 1035/254

Good Intentions (Columbia/Reprise)
Total Stations: 69/Chart Move: 36-27
Heavy (40+): 0
Medium (20-39): 27 KHTO, KHLY, KKLQ, KKRD, KQKQ, KRBE, WABB, WAPE, WBHT, WDDJ, WEZB, WFCB, WFLZ, WKBQ, WKCI, WKRZ, WKSE, WKXJ, WNNK, WNOK, WSTR, WVSR, WXIS, WXLK, WYCR, WZNY, WZYP
Light (Under 20): 42
New Airplay This Week: 7 WDJX, WFLY, WHOT, WLAN, WPLY, WSNX, WXXX

MEAT LOAF 944/283

I'd Lie For You (And That's The Truth) (MCA)
Total Stations: 58/Chart Move: 40-29
Heavy (40+): 0
Medium (20-39): 21 KJYO, WFCB, WHOT, WHYI, WKRZ, WKSE, WLAN, WNCI, WNNK, WNOK, WPRO, WSTR, WSTW, WTVR, WVKK, WWCK, WXIS, WXXX, WYCR, WZNY, WZYP
Light (Under 20): 37
New Airplay This Week: 9 WZBZ, WGTZ, WKSS, WMXQ, WSNX, WSSX, WXXX, WXLK, WXXXL

THE REMBRANDTS 869/36

This House Is Not A Home (EastWest/EEG)
Total Stations: 77/Chart Move: 35-31
Heavy (40+): 0

Medium (20-39): 20 KHTO, KLRZ, WBZZ, WDCG, WDDJ, WDJX, WEZB, WFLY, WFMF, WKRQ, WKRZ, WLAN, WNNK, WSTW, WTVR, WWCK, WXIS, WYCR, WZJM, WZYP
Light (Under 20): 57
New Airplay This Week: 1 WZNY

JON B. 815/210

Pretty Girl (Yab Yum/550 Music)
Total Stations: 60/Chart Move: Debut 33
Heavy (40+): 3 KBFM, KHFI, WVKK
Medium (20-39): 18 KHTO, KKRZ, KLRZ, KRQQ, KZZU, WFLZ, WKRQ, WKSS, WMXQ, WNNK, WNVZ, WPRO, WSTR, WTVR, WWCK, WYCR, WZJM, WZPL
Light (Under 20): 39
New Airplay This Week: 6 KHTO, KKLQ, KKRD, WNVZ, WSNX, WSTW

ALANIS MORISSETTE 785/188

Hand In My Pocket (Maverick/Reprise)
Total Stations: 50/Chart Move: Debut 34
Heavy (40+): 6 KRBE, WBHT, WEDJ, WHTZ, WPLY, WPST
Medium (20-39): 10 KHLY, KUTQ, WBZZ, WEZB, WKBQ, WKCI, WRVQ, WXIS, WXXX, WXXXL
Light (Under 20): 34
New Airplay This Week: 7 KJYO, KQKQ, WDDJ, WFLZ, WHOT, WPXY, WVSR

EDWYN COLLINS 763/150

A Girl Like You (Bar None/A&M)
Total Stations: 51/Chart Move: Debut 36
Heavy (40+): 0
Medium (20-39): 18 KDWB, KHLY, KKRD, KRBE, KUTQ, WDDJ, WDJX, WEDJ, WHTZ, WKSS, WPRO, WPST, WTVR, WVSR, WXIS, WXLK, WXXX, WZPL
Light (Under 20): 33
New Airplay This Week: 5 KHHT, WDJX, WKXJ, WNOK, WPLY

EDWIN MCCAIN 733/141

Solitude (Lava/Anti)
Total Stations: 53/Chart Move: Debut 39
Heavy (40+): 2 WFCB, WSSX
Medium (20-39): 15 KHTO, KHLY, WDCG, WDDJ, WEDJ, WEZB, WKRZ, WNOK, WNVZ, WPST, WWCK, WWST, WXIS, WYCR, WZYP
Light (Under 20): 36
New Airplay This Week: 3 KHTO, KHHT, WSTW

CHART BOUND

REAL MCCOY 604/167

Automatic Lover (Arista)
Total Stations: 42
Heavy (40+): 0
Medium (20-39): 16 KBFM, KDWB, KHTO, KKRD, KMXV, KQKQ, WDJX, WFLY, WHHY, WIOQ, WKXJ, WPXY, WVKK, WXLK, WYCR, WZPL
Light (Under 20): 26
New Airplay This Week: 6 KDWB, WGTZ, WNTQ, WSNX, WZNY, WZYP

MOST NEW AIRPLAY THIS WEEK

No. Of Stations

TOM COCHRANE <i>I Wish You Well (Capitol)</i>	17
THE PRESIDENTS OF THE UNITED STATES OF AMERICA <i>Lump (Columbia)</i>	13
BLUES TRAVELER <i>Hook (A&M)</i>	12
MELISSA ETHERIDGE <i>Your Little Secret (Island)</i>	12
BACKSTREET BOYS <i>We've Got It Goin' On (Jive)</i>	10
TLC <i>Diggin' On You (LaFace/Arista)</i>	10

BACKSTREET BOYS 552/157

We've Got It Goin' On (Jive)
Total Stations: 52
Heavy (40+): 0
Medium (20-39): 9 KLRZ, KQKQ, WFLY, WNCI, WNVZ, WPRO, WTVR, WWCK, WZPL
Light (Under 20): 43
New Airplay This Week: 10 KHHT, KKMG, KKRD, WDDJ, WFCB, WGTZ, WKSE, WKSS, WLAN, WSTW

TLC 544/264

Diggin' On You (LaFace/Arista)
Total Stations: 35
Heavy (40+): 0
Medium (20-39): 13 KHFI, KHKS, KKMG, KKRD, KMXV, KQKQ, KZZU, WFLZ, WIOQ, WKRQ, WRVQ, WXXX, WZPL
Light (Under 20): 22
New Airplay This Week: 10 KBFM, KDWB, KKLQ, KMXV, WFLY, WIOQ, WKBQ, WPXY, WRVQ, WWST

THE PRESIDENTS OF THE UNITED STATES OF AMERICA 537/141

Lump (Columbia)
Total Stations: 48
Heavy (40+): 2 KUTQ, WHTZ
Medium (20-39): 3 WDCG, WEDJ, WXIS
Light (Under 20): 43
New Airplay This Week: 13 KHFI, KJYO, KKRD, WGTZ, WKBQ, WKSS, WPRO, WSNX, WWST, WXLK, WXXX, WYCR, WZNY

THE CORRS 501/38

Runaway (143/Lava/Anti)
Total Stations: 34
Heavy (40+): 1 KLRZ
Medium (20-39): 8 WHYI, WKCI, WKRZ, WLAN, WTIC, WWCK, WYCR, WZYP
Light (Under 20): 25
New Airplay This Week: 1 KKRZ

LIVE 434/16

All Over You (Radioactive/MCA)
Total Stations: 18
Heavy (40+): 5 WBHT, WEDJ, WHTZ, WPLY, WPST
Medium (20-39): 5 KHFI, KRBE, WDCG, WKRZ, WXIS
Light (Under 20): 8

BUSH 404/29

Come Down (Trauma/Interscope)
Total Stations: 28
Heavy (40+): 2 KHLY, WHTZ
Medium (20-39): 5 KUTQ, WDCG, WPLY, WPST, WXIS
Light (Under 20): 21
New Airplay This Week: 3 WFLY, WHOT, WWCK

RED HOT CHILI PEPPERS 361/92

My Friends (Warner Bros.)
Total Stations: 37
Heavy (40+): 0
Medium (20-39): 4 KHLY, KRBE, KUTQ, WPST
Light (Under 20): 33
New Airplay This Week: 9 KHHT, KJYO, WABB, WFMF, WKXJ, WWCK, WXIS, WXXX, WZNY

EVERYTHING BUT THE GIRL 347/46

Missing (Atlantic)
Total Stations: 14
Heavy (40+): 4 KBFM, KHFI, KRBE, WXXX
Medium (20-39): 4 KHKS, KIIS, WHYI, WIOQ
Light (Under 20): 6
New Airplay This Week: 2 KHKS, KIIS

BLUES TRAVELER 363/173

Hook (A&M)
Total Stations: 25
Heavy (40+): 0
Medium (20-39): 8 KHTO, WNOK, WPLY, WPST, WTVR, WWCK, WXIS, WXXX
Light (Under 20): 17
New Airplay This Week: 12 KKRD, KLRZ, WABB, WBHT, WGTZ, WHTZ, WKXJ, WNOK, WVSR, WWCK, WWST, WZNY

LOS DEL RIO 324/67

Macarena (Bayside Boys Mix) (RCA)
Total Stations: 34
Heavy (40+): 2 KLRZ, KMXV
Medium (20-39): 7 KDWB, KHFI, KJYO, WFLY, WIOQ, WVSR, WZJM
Light (Under 20): 25

BETTER THAN EZRA 316/37

In The Blood (Elektra/EEG)
Total Stations: 17
Heavy (40+): 2 KRBE, WPLY
Medium (20-39): 6 KHLY, KUTQ, WEDJ, WEZB, WPST, WXIS
Light (Under 20): 9
New Airplay This Week: 1 WBHT

TEARS FOR FEARS 310/19

God's Mistake (Epic)
Total Stations: 23
Heavy (40+): 1 KUTQ
Medium (20-39): 4 KHTO, KLRZ, WSSX, WXIS
Light (Under 20): 18
New Airplay This Week: 2 KHHT, WNCI

SHAGGY 300/12

Boombastic (Virgin)
Total Stations: 24
Heavy (40+): 1 WFLZ
Medium (20-39): 2 KIIS, WZJM
Light (Under 20): 21
New Airplay This Week: 1 KBFM

TOM COCHRANE 288/234

I Wish You Well (Capitol)
Total Stations: 34
Heavy (40+): 0
Medium (20-39): 3 KQKQ, WKRQ, WKSE
Light (Under 20): 31
New Airplay This Week: 17 KKRD, KLRZ, WDDJ, WKBQ, WKSE, WNCI, WNNK, WSSX, WTVR, WVSR, WWCK, WXIS, WXXX, WYCR, WZNY, WZPL, WZYP

JOAN OSBORNE 286/41

One Of Us (Mercury)
Total Stations: 26
Heavy (40+): 0
Medium (20-39): 5 KHLY, KRBE, KUTQ, WPST, WSTR
Light (Under 20): 21
New Airplay This Week: 3 WBHT, WHTZ, WXIS

SALT-N-PEPA 278/57

Ain't Nuthin' But A She Thing (London/Island)
Total Stations: 42
Heavy (40+): 0
Medium (20-39): 2 KZZU, WZPL
Light (Under 20): 40
New Airplay This Week: 4 KHFI, WFMF, WNVZ, WZJM

SELENA 275/60

Dreaming Of You (EMI Latin/EMI)
Total Stations: 8
Heavy (40+): 4 KBFM, KHFI, KHKS, KIIS
Medium (20-39): 0
Light (Under 20): 4
New Airplay This Week: 2 WHYI, WXXX

★ SIMPLY RED 253/106

Fairground (EastWest/EEG)
Total Stations: 31
Heavy (40+): 0
Medium (20-39): 4 KLRZ, WMXQ, WWCK, WXIS
Light (Under 20): 27
New Airplay This Week: 7 KDWB, KJYO, KKRD, KLRZ, WFMF, WMXQ, WNNK

GREEN DAY 221/59

Geek Stink Breath (Reprise)
Total Stations: 24
Heavy (40+): 0
Medium (20-39): 3 KUTQ, WHTZ, WPST
Light (Under 20): 20
New Airplay This Week: 4 KJYO, WBHT, WEDJ, WXLK

★ MELISSA ETHERIDGE 197/197

Your Little Secret (Island)
Total Stations: 43
Heavy (40+): 0
Medium (20-39): 0
Light (Under 20): 43
New Airplay This Week: 12 KRBE, WDCG, WEDJ, WGTZ, WHTZ, WKSS, WPLY, WPST, WPXY, WTVR, WXXX, WZPL

★ GROOVE THEORY 188/63

Tell Me (Epic)
Total Stations: 22
Heavy (40+): 0
Medium (20-39): 4 KZZU, WNVZ, WVSR, WZJM
Light (Under 20): 20
New Airplay This Week: 3 WFLY, WWST, WXIS

★ MARIAH CAREY & BOYZ II MEN 176/158

One Sweet Day (Columbia)
Total Stations: 14
Heavy (40+): 0
Medium (20-39): 5 KKRZ, KZZU, WFLZ, WPXY, WWST
Light (Under 20): 9
New Airplay This Week: 9 KKRZ, KZZU, WFCB, WFLY, WFLZ, WKRZ, WPXY, WWST, WZPL

★ HOOTIE & THE BLOWFISH 157/53

I Go Blind (Atlantic/Reprise)
Total Stations: 13
Heavy (40+): 0
Medium (20-39): 4 KKMG, WEDJ, WKXJ, WWST
Light (Under 20): 9
New Airplay This Week: 2 WABB, WSNX

INTONATION FEAT. JOEE 147/35

Died In Your Arms (TiAmo/Metropolitan)
Total Stations: 6
Heavy (40+): 1 WIOQ
Medium (20-39): 3 KBFM, WFLZ, WPXY
Light (Under 20): 2

WE DIDN'T NEED TO...

We didn't need to spend \$7,000,000 on a video for MTV and VH-1. **We didn't need to** spend over the top with our co-op dollars. **We didn't need to** buy the press off for their four-star raves or to have Joan perform on the likes of Letterman, The Tonight Show, Crossroads and Good Morning America. **We didn't need to** bribe Melissa Etheridge and The H.O.R.D.E. tours to take Joan out with them. We just had to release the album.



JOAN OSBORNE
RELISH

**WHILE IN NEW YORK AT THE MONITOR CONVENTION...
ASK THESE PD'S WHY THEY'RE PLAYING "ONE OF US".**

**STEVE KINGSTON-Z100, NEW YORK
JOHN IVEY-WXKS, BOSTON
DON BENSON-WSTR, ATLANTA**

**GARRETT MICHAELS-Y100, PHILADELPHIA
TOM POLEMAN-KRBE, HOUSTON
PAUL CANNON-WTIC, HARTFORD**

**AND HEAR JOAN OSBORNE
ON Z100-100.3FM.**



©1995 PolyGram Records Inc.

AIR's First Top 40/Adult Competition begins October 26.

"Can't wait! I always thought I could pick the hits...

now we'll find out if I truly can!"

Danny Clayton, PD - WKTI/Milwaukee

"With the format getting due respect, and more impact with the contemporary listeners every day, it's exciting to once again be a part of the AIR Competition."

Steve Davis, PD - WMXB/Richmond

"I'm really excited about the AIR Top 40/Adult Competition. As a former Top 40/Mainstream winner, I can tell you that there is no better way to find out about the best new music... and the grand prize ain't bad either."

Dusty Hayes, PD - KAMX/Austin

"Once again, AIR leads the way in recognizing the power of Top 40/Adult radio stations to develop new artists and hit songs. I can't wait to get involved with AIR in their new competition."

Tracy Johnson, OM - STAR 100.7/San Diego

Grand Prize
Mercedes-Benz C220

**For more information,
call Andy Szulinski at (410)381-6800.**



A C T I V E I N D U S T R Y R E S E A R C H

World Radio History

1 9 9 5

Billboard•Monitor

Radio

seminar & awards

In conjunction with this year's Radio Seminar, Airplay Monitor presents the following special section, previewing some of the topics to be addressed during the Oct. 12-to-14 event in New York.

Schedule Of Events

THURSDAY, OCT. 12

Noon - 4:00PM
REGISTRATION
(7th Floor Foyer)

6:30PM - 9:30PM
OPENING NIGHT COCKTAIL RECEPTION:
Co-sponsored by EMI and MCA with special live performances by Joshua Kadison and Shai
(The Supper Club, 240 W. 47th Street)

FRIDAY, OCT. 13

8:00AM - 4:00PM
REGISTRATION
(7th Floor Foyer)

8:30AM - 10:00AM
BREAKFAST, with special performance by Dre Force/Rhythm Safari/Priority artists Boyz Of Paradise
(The Hard Rock Cafe, 221 W. 57th Street)

10:15AM - 11:30AM
"Group Heads: By Next Year, One of These Men Will Own Your Station."

Hear from radio executives who are aggressively buying stations across the country. What are their strategies? How soon will one of them be your boss?
(Astor Ballroom)

11:45AM - 1:00PM
FOUR SIMULTANEOUS FORMAT SESSIONS

"Modern Rock: Too Good to be True?"
The current industry darling is finally enjoying its well deserved success, but how long can the growth spurt last? Find solutions to the growing pains that are threatening to stunt this format's future.
(Astor Ballroom)

"R&B/Mainstream vs. Top 40/Rhythm-Crossover"
Can these formats co-exist? Is there a way they can benefit from one another?



Joshua Kadison

Simply Red's Mick Hucknall

(Empire Complex)

"Country: The Great Playlist Debate"

The most divisive issues in country right now are playlist size and how quickly to add and drop records. The consultants' rallying cry is "Slow it down," but is this really in the format's long-term best interest?
(Duffy/Columbia)

"AC and Top 40/Adult: The Fall Test That Shook The World"

Is Michael Bolton still a core artist for AC? Is Collective Soul? See the research that's caused a massive change at Top 40/adult radio this fall. Then discuss how the record community can better meet AC's needs.
(Soho Complex)

1:00PM - 2:15PM
LUNCH

2:30PM - 3:45PM
"The Mind Of The Female Listener: Unveiling The Mysteries"

Larry Rosin, president of Edison Media

Research, offers an exclusive presentation illuminating the differences in the way men and women relate to and process music. Why do women burn slower on music than men? Why do they seem to be more attuned to a rhythmic beat and lyrical content? And what can your station do to capitalize on the differences?
(Astor Ballroom)

4:00PM - 5:15PM
TWO SIMULTANEOUS FORMAT SESSIONS

"Female Programmers: What They Know About Your Audience That You Don't"

Most formats target women, but most stations are still programmed by men. What insights do female programmers have that can help you program a better station? Hear female programmers respond to Larry Rosin's presentation.
(Astor Ballroom)

"Video Didn't Kill The Radio Star"

A panel of radio-turned-video programmers discusses the synergy between the two mediums. Do radio and video outlets help or hurt each other? What radio programming techniques are working on the video side? What successful video programming tools could be adapted to radio?
(Empire Complex)

7:00PM - 10:00PM
COCKTAIL PARTY
Sponsored by Atlantic and Virgin Records
(Astor Ballroom)

SATURDAY, OCT. 14

9:00AM - 12:00PM
REGISTRATION
(7th Floor Foyer)

8:30AM - 9:30AM

BREAKFAST sponsored by BDS
(7th Floor Foyer)

9:30AM - 10:45AM
"Broadcast Data Systems: Looking Toward The Future"

Learn what exciting new developments are in store from the industry's leading airplay-monitoring company.
(Duffy/Columbia)

11:00AM - 12:15PM
THREE SIMULTANEOUS SESSIONS

"Album Rock: Two Faces Of A Format"

As the troubled format faces erosion from all sides, including modern rock, Triple-A and a dozen other permutations, some programmers have chosen to stay the course while others have made a left turn onto the alternative road. Where is album-rock headed, and what can it do to weather the current storm of format confusion?
(Duffy/Columbia)

"R&B: The Adult Choice"

The R&B/adult format faces competition not only from its mainstream counterparts, but also from other adult-targeted R&B sub-genres like jazz/AC and R&B oldies. How can the R&B/adult format compete effectively, and what's in the format's future?
(Soho Complex)

"Top 40: Waiting For The Renaissance"

As Top 40 splinters off in every direction—rhythm, modern, mainstream and adult included—its audience shares continue to dwindle. What actionable steps can Top 40 programmers take to regain the

Continued on page R-2

FORMAT DEFINITIONS

By Michael Ellis, Publisher of Airplay Monitor

Classifying music radio stations consistently by formats has been a continual problem for trade magazines. In the June 30 issue of Airplay Monitor, we offered as a basis of discussion possible definitions of the radio-station formats covered in Airplay Monitor. The staff at Billboard and Monitor believes that stations should be classified only by the music they play, because this leads to the most consistent charts. Our proposed definitions met with a mixed response, so we have not yet enforced them. At the Billboard/Airplay Monitor Seminar, we will have one session dedicated to reviewing and discussing our proposals. We have revised the definitions based on some very good suggestions from the industry, and herewith are the new proposed format definitions. As we stated before, we will not enforce these definitions until we have determined that there is an industry consensus in their favor, but we are using them as general guidelines. (The country format is not included because there have been no problems identifying country stations. We have not yet formulated a definition for the Triple A rock format.)

Top 40/Mainstream: a station that plays a wide variety of current music. The most-played record on the station must be played at least 40 times per week. Among the station's 40 most-played records are rock songs and songs from at least one of the following musical genres: R&B (including rap), pop dance, uptempo pop, and pop ballads.

Top 40/Adult: a station that plays a variety of current music acceptable to an adult audience, drawn from the genres above, but excluding rap and hard rock. The most-played current record on the station must be played at least 21 times per week. Among the station's 30 most-played records are songs from at least two of the five musical genres listed in top 40/mainstream.

Rhythm-Crossover: a station that plays a variety of current music but no rock. The most-played record on the station must be played at least 40 times per week. Among the station's 40 most-played records are songs from at least two of the following four musical genres: R&B (including rap and reggae), pop dance, uptempo pop, and pop ballads.

Mainstream Rock (formerly Album Rock): a station that plays a variety of rock music, by traditional or classic-rock artists and by alternative-rock artists.

Modern Rock: a station that plays rock music, but not by traditional or classic-rock artists.

R&B/Mainstream: a station that plays a variety of current R&B music, but no rock music. Among the station's 40 most-played records are songs from three of the following genres: rap, reggae, R&B ballads and R&B uptempo/dance music.

R&B/Adult: a station that plays current R&B music acceptable to an adult audience. Among the station's 30 most-played records are R&B ballads and R&B uptempo music, but no rap or rock music. ■

SCHEDULE OF EVENTS
Continued from page R-1

prosperity the format once enjoyed?
(Astor Ballroom)

12:15PM - 1:15PM
LUNCH

1:30PM - 2:45PM
TWO SIMULTANEOUS SESSIONS

"The Country Clinic"

A rap room focusing on the most pertinent issues and trends facing country radio. You set the agenda.
(Empire Complex)

"Format Definitions: An Impossible Dream?"

Monitor publisher Michael Ellis leads a discussion among radio programmers and record executives concerning the difficulty of classifying radio stations by format. The proposed format guidelines printed recently in Monitor will be a starting point for the debate.
(Soho Complex)

3:00PM - 4:15PM
TWO SIMULTANEOUS SESSIONS

"Artist Wars: Radio's Divisive Issue"

Squabbles among competing stations over issues like artists' visits, endorsements, the right to present concerts and who gets new records first are getting louder and uglier and may even be threatening radio's future. It's an issue that now affects nearly every format. What can programmers from other formats learn from each other about how to solve this issue? A team of record-label promotion veterans moderates the debate.
(Soho Complex)

"Air Personality Supergroup"

Hear from the biggest names in radio what it takes to be a successful radio entertainer today. How does the radio industry's future look from behind the microphone? What tips can you take home from these radio stars that can help your station's personalities?
(Astor Ballroom)

4:30PM - 5:30PM
"Trivia Challenge '95"

Test your knowledge of music trivia and win prizes in this fun and entertaining contest designed by Airplay Monitor's master of music trivia, Sean Ross.
(Astor Ballroom)

7:00PM - 10:00PM
BILLBOARD/AIRPLAY MONITOR RADIO AWARDS DINNER:
 Sponsored by Elektra Entertainment with special live performances by Silk and Simply Red
(Westside Ballroom)

11:00pm - 1:00am
LATE-NIGHT GAMBLING
 Sponsored by Epic/550/Arista
(All information accurate as of press time.)

RADIO AND MUSIC-VIDEO BURY THE HATCHET: *It's An A-V Lovefest*

The Buggles were wrong. In the decade-plus since MTV's launch, both radio and music-video programmers have managed to settle into an interdependent relationship.

BY BRETT ATWOOD

When MTV made the prophetic choice to begin its broadcast life in 1981 with the Buggles' "Video Killed The Radio Star" clip, it caused many in the music industry to worry. As a result of the advent of music video in the '80s, radio stations suddenly found a new form of competition. However, it turns out that the Buggles' bold proclamation of the death of radio was not entirely accurate.

CO-PROMOTED PROGRAMMING

In the decade-plus since MTV's revolutionary launch, both radio and music-video programmers have managed to settle into a somewhat interdependent relationship. Music-video programmers are branching into radio to further expand its potential audience, while some radio stations are linking with national and regional video shows to co-promote their programming.

National music-video programmer The Box is using cross-promotional affiliations with some of the nation's top-rated radio stations to extend its reach into the world of broadcast radio. The music-video network has agreements with 20 local stations to participate in its radio-affiliations program, which began in 1994, and is airing promotional announcements produced by its own creative team specifically to reach each market's radio station.

Stations participating in the one-year program include WQHT (Hot 97) New York, KPWR (Power 106) Los Angeles and KBXX (The Box) Houston.

As part of the program, participating stations get assistance with the coordination of local events and contests.

"We act as an added force to help radio bring a visual element to its promotional events," says Liz Kiley, director of radio affiliations for The Box.

In addition, The Box sometimes helps local radio stations nab big-name talent for their promotions.

For example, The Box helped secure Patra for a mid-June promotion at WUSL (Power 99) Philadelphia. Contest winners had breakfast with the reggae artist in Atlantic City, N.J.

FRANCHISING MTV FEATURES TO RADIO

Not to be outdone, MTV is moving into radio by developing its own audio-only content. In September, MTV formed a radio-network division to further extend its identity to the broadcast world.

The music-video channel is offering programming packages that include specialty programs based on existing MTV franchises, include "House Of Style" and "MTV News."

Some radio stations are developing their own music-video programs, too. WXXL (XL 106.7) Orlando, Fla. produces the video show "XL-

TV" in-house.

"XL-TV" was a relatively easy way for us to expand awareness of the radio station through television," says Dave Demer, promotion director for WXXL and "XL-TV."

"XL-TV" airs Fridays at 11:30 p.m. on a local Orlando broadcast station known as "Rainbow 65." WXXL night personality Kid Cruz hosts the half-hour show, which plays clips for songs that are also airing on the radio station.

Demer says that "XL-TV" has provided an excellent promo-

Drumm. In turn, both media broadcast commercials for each other over-the-air.



WXXL's Dave Demer

VIDEO EXEC'S RADIO ROOTS

The synergy between both media extends to the people behind the programming. Many of the executives in music-video programming have their roots in radio. Some programmers say that the programming strategies can be quite different.

"It's a different media, and there are different criteria," says MuchMusic senior floor producer John Jones, who was previously

MD at CFNY Toronto. "Some will say that television is about the image first, while the audio remains a less significant component. To a great degree, that is true. The visual element is essential in deciding what will get on the air. However, the quality of that image can detract from the substance of the music."

Lee Chesnut, VHI VP of music programming, says that the look of a video can sometimes be

the deciding factor as to whether or not a clip gets airplay.

"In some cases, there may be a song which is right for our audience, but the visual just does not fit," says Chesnut, who was previously PD at WSTR (Star 94) Atlanta.

"If the artist is going after an image that is too young for our target demographic, then we take that into serious consideration."

VISUALS' EXTRA EDGE

Frankie Blue, director of programming at The Box, says that the visual element can make a big difference in determining whether or not a song gets added to its rotation.

"I think the Primus video 'Wynona's Big Brown Beaver' is a perfect example of that," says Blue, who came to the music-video channel from his MD duties at WHTZ New York City. "The clip brought an extra edge to the song. It was so unique and different, which helped it get a quicker response than it might have received without the video."

However, Blue points out that there are more similarities than differences when it comes to programming both media.

"The same priorities exist for both radio and television," says Blue. "The bottom line is putting the best music on the air—regardless of whether or not it is television or radio." ■



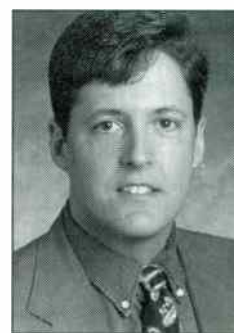
The Box's Liz Kiley



Primus: Visuals make a difference.



Patra: Power breakfast



VH-1's Lee Chesnut

ational opportunity for the top 40 radio station.

"It is totally cost-effective for us," says Demer. "The production company and the television station split the ad revenue, while we use the TV show to further expose our radio station. It's like a free half-hour commercial for WXXL."

SYMBIOSIS IN DENVER

Another radio station successfully venturing into music video is KTCL Denver, which has had a successful partnership with the local UHF music-video show "Music Link" since 1992.

Mike Drumm, president of Music Link Productions, organized a cross-promotional plan to simulcast concert events of name acts on both "Music Link" and KTCL. In the arrangement, both outlets work together to secure and promote the talent for the local-venue events, according to

Listening To New York An Airchecker's Guide To N.Y. FM

BY SEAN ROSS



nobody gives New York radio a lot of respect.

Record people bemoan the fact that there's no dance station, that there's no mainstream R&B competition for WQHT (Hot 97), that there's not a full-fledged alternative outlet. Go to lunch with anybody in the business and after you've looked at the pictures of their kids (or pets), there's that discussion that begins with, "I can't believe this is the No. 1 market in the country and we still don't have..."

Go to lunch with an out-of-town radio person and, eventually, you'll have another conversation: the one that begins with, "I thought this was the No. 1 market in the country. I can't believe the radio sounds like this. I'm only in market No. 37, but our radio sounds better than this."

Sorry, pal. To paraphrase Mayor Giuliani, or David Letterman, our radio can kick your radio's ass.

New York has the station that proved that hip-hop is a viable marketing handle for a radio station, not just the thing that gets played on other R&B stations after 6 p.m. New York has the station that proved the adult-R&B format could attract boxcar numbers. New York has the station that redefined AC for the '90s. New York has the station that proved that pop oldies weren't just for 2-share AMs.

CHANGES GONNA COME

New York has more influential stations than you think. If they weren't always the first into their format, they were the ones whose successes signaled to the rest of the country that it was time to try this at home. And for a market with a reputation for being static, there have been two format changes between mid-July and Labor Day. There'll probably be more by the time you read this.

Here's an airchecker's guide to New York's FM music stations.

WXAX (92.3) - when WNEW-FM went to its new "rock alternative" format, you might have expected the home of Howard Stern to become harder and more male-oriented. Actually, like many of the classic-rock outlets around the country in the post-Arrow era, it remains relatively soft and accessible. That makes sense when you consider how many people Stern draws from outside the format. It also makes sense when you consider the amount of classic rock on this market's AC stations, but more about that momentarily.

WPAT-FM (93.1) - WPAT has been through at least three different permutations of AC since it segued out of easy listening in the early '90s. Right now it's "Today's 93.1," an '80s- and '90s-driven soft AC using the model developed by WMJX Boston several years ago.

WPLJ (95.5) - After KHMJ (Mix 96.5) Houston, this was the station that helped reinvent the hot AC or adult top 40 format—the station that understood that "Turn The Beat Around" and "Don't Do Me Like That" were now AC records, because their fans had grown into the AC demo. After a few years (1991-92) where everybody wondered what Scott Shannon and Tom Cuddy were thinking, WPLJ finally started to gel when everybody realized it had discovered '70s oldies ahead of the curve. Earlier this summer, WPLJ, in hopes of protecting the '70s franchise, had gone all '70s at night. Now it's '70s and '80s, but you'll still get the idea.

WQHT (97.1) - Those conversations about "Why doesn't New York have..." always used to include "Why doesn't New York have a hip-hop station?" The answer turned out to be that nobody had managed to eliminate the market's mainstream R&B outlets.

With WRKS having been bought out and switched to adult R&B, and with WBLS having followed it, Hot 97 now has the financial freedom to take chances like an all-dance-hall reggae weekend or an all-mixer weekend. If you hear it on Friday morning, you'll be able to hear Dr. Dre & Ed Lover, the format's first outrageous morning show. If you hear it on the weekend, you'll hear a stable of rap all-stars.

WSKQ-FM (97.9) - For several years, New York's first Spanish-language FM was essentially a 2-share soft AC station, despite all the conversations about the lack of salsa on the radio. Then its owners dumped soft AC for "banda" in Los Angeles, saw how much money they could make doing something besides Spanish soft AC, and switched WSKQ-FM to a salsa-based "tropical" format as Mega 97.9.

You'll hear an occasional-English language disco record here, in recognition of the Latin dance folks disenfranchised when Hot 97 went hip-hop. You'll also hear more lasers and more energy than any format since Top 40 in the early '80s. (And if you haven't heard the Regional Mexican format that got all that attention in L.A., try WSKQ-FM's newly converted AM outlet, WXLX (620).

WPAK (98.7) - If you want to hear Kiss FM's regular format, make sure you listen during the day on Thursday or Friday. It goes into its Quiet Storm-type program early on weeknights, and its weekends are all-oldies. What you'll hear during the week is mostly '80s- and '70s-based with a sprinkling on either side. Like its duopoly partner Hot 97, you'll also hear a lot from the artists themselves—including Barry White and Isaac Hayes, the voices of the station. Kiss also managed a recent show with Aretha

Continued on page R-4

MONITOR TOP 40 PANELS

TOP 40 MAINSTREAM STATIONS (82)

Albany, NY	WFLY	Mobile, AL	WABB
Atlanta, GA	WSTR	Montgomery, AL	WHHY
Augusta, GA	WZNY	Nashville, TN	WYHY
Austin, TX	KHFI	New Bedford, MA	WFHN
Baton Rouge, LA	WFME	New Haven, CT	WKCI
Birmingham, AL	WMXQ	New Orleans, LA	KLRZ
Boston, MA	WXKS		WEZB
Buffalo, NY	WKSE	New York, NY	WHTZ
Burlington, VT	WXXX	Norfolk, VA	WNVZ
Charleston, SC	WSSX	Oklahoma City, OK	KJYO
Charleston, WV	WVSR	Omaha, NE	KQKQ
Charlotte, NC	WEDJ	Orlando, FL	WXIL
Chattanooga, TN	WKXJ	Paducah, KY	WDDJ
Cincinnati, OH	WKRQ	Philadelphia, PA	WIOQ
Cleveland, OH	WZJM		WPLY
Colorado Springs, CO	KKMG	Pittsburgh, PA	WBZZ
Columbia, SC	WNOK	Portland, OR	KKRZ
Columbus, OH	WNCI	Providence, RI	WPRO
Dallas, TX	KHKS	Raleigh, NC	WDCG
Dayton, OH	WGTV	Richmond, VA	WRVQ
Flint, MI	WWCK	Roanoke, VA	WXLK
Ft. Myers, FL	WXKB	Rochester, NY	WPXY
Grand Rapids, MI	WSNX	St. Louis, MO	WBQB
Green Bay, WI	WIXX	Salt Lake City, UT	KUTQ
Greenville, SC	WFBC	San Diego, CA	KKLQ
Harrisburg, PA	WNNK	Santa Barbara, CA	KHTY
Hartford, CT	WKSS	Spokane, WA	KZZU
	WTIC	Springfield, MO	KHTO
	KRBE	Syracuse, NY	WNTQ
Houston, TX	WZYP	Tampa, FL	WFLZ
Huntsville, AL	WZPL	Toledo, OH	WTWR
Indianapolis, IN	WAPE		WVKS
Jacksonville, FL	WXIS	Trenton, NJ	WPST
Johnson City, TN	KMXV	Tucson, AZ	KRQQ
Kansas City, MO	WWST	Tulsa, OK	KHTT
Knoxville, TN	WLAN	Wichita, KS	KKRD
Lancaster, PA	KIIS	Wilkes-Barre, PA	WBHT
Los Angeles, CA	WDJX		WKRZ
Louisville, KY	KBFM	Wilmington, DE	WSTW
McAllen/Brownsville, TX	WHYI	York, PA	WYCR
Miami, FL	KDWB	Youngstown, OH	WHOT
Minneapolis, MN			

TOP 40/RHYTHM-CROSSOVER STATIONS (32)

Albuquerque, NM	KKSS	Monterey, CA	KDON
Bakersfield, CA	KKXX	New York, NY	WQHT
Baltimore, MD	WERQ	Oxnard, CA	KCAQ
Boston, MA	WJMN	Phoenix, AZ	KKFR
Chicago, IL	WBBM	Providence, RI	WWXX
Corpus Christi, TX	KZFM	Riverside, CA	KGGI
Denver, CO	KQKS	Roanoke, VA	WJIX
El Paso, TX	KPRR	Sacramento, CA	KSFM
Fresno, CA	KBOS	Salt Lake City, UT	KZHT
Greensboro, NC	WJMH	San Antonio, TX	KTFM
Houston, TX	KBXX	San Diego, CA	XHTZ
Indianapolis, IN	WHHH	San Francisco, CA	KMEL
Las Vegas, NV	KLUC		KYLD
	KXTZ	Seattle, WA	KUBE
Los Angeles, CA	KPWR	Washington, DC	WPGC
Miami, FL	WPOW	West Palm Beach, FL	WQVW

TOP 40/ADULT STATIONS (57)

Akron, OH	WKDD	Long Island, NY	WALK
Boston, MA	WBMX		WBLI
Buffalo, NY	WMJQ	Los Angeles, CA	KYSR
Burlington, VT	WEZF	Memphis, TN	WMC
Charleston, WV	WVAF	Milwaukee, WI	WKTI
Charlotte, NC	WBT	Minneapolis, MN	KSTP
Chattanooga, TN	WDEF	New York, NY	WMXV
Chicago, IL	WPNT		WPLJ
	WTMX	Philadelphia, PA	WBEB
	WQAL		WYXR
Cleveland, OH	KVUU	Pittsburgh, PA	WTTY
Colorado Springs, CO	WGSY	Portland, ME	WCSO
Columbus, GA	KDMX		WZPK
Dallas, TX	KALC	Richmond, VA	WMXB
Denver, CO	KWMX	Sacramento, CA	KGBY
	KSTZ	Saginaw, MI	WIOG
Des Moines, IA	WKQI	St. Louis, MO	KYKY
Detroit, MI	KTHT	Salt Lake City, UT	KISN
Fresno, CA	WLHT	San Diego, CA	KFMB-FM
Grand Rapids, MI	WQLH	San Francisco, CA	KIOI
Green Bay, WI	WKZL	San Jose, CA	KEZR
Greensboro, NC	WMIY	Savannah, GA	WAEV
Greenville, SC	KHMX	Seattle, WA	KPLZ
Houston, TX	WAHR	Springfield, MO	KGBX
Huntsville, AL	WJDX	Syracuse, NY	WYYY
Jackson, MS	WIVY	Tampa, FL	WMTX
Jacksonville, FL	WTFM	Washington, DC	WRQX
Johnson City, TN	KMZQ	West Palm Beach, FL	WRMF
Las Vegas, NV	WMLX		
Lexington, KY			

Women In Radio

There may be fewer at the top, but women are an integral part of the business, and the bottom line is "We're all here to do a job."

BY JANINE McADAMS

NEW YORK FM

Continued from page R-3

Franklin, Patti Labelle and the Isley Bros. on the same bill.

WKTZ (100.3) - Writing this several weeks in advance, it's hard to know where Z100 will be musically by the time you read this. After having gone almost all-modern in mid-summer, it regrouped again, adding TLC, Mariah Carey and Janet Jackson, then it backed off most of those records, again. What will most likely be the same by the time you read this is the presentation, which, unlike other Top 40-to-modern converts, has remained resolutely Top 40 because this is, after all, Z100.

WCBS-FM (101.1) - With Harry Harrison, Ron Lundy, Dan Ingram and Cousin Bruce Morrow on the payroll, you'd expect this station to sound a lot like the old WABC, but, having heard airchecks of WCBS-FM from 1972, when those jocks were still gainfully employed on WABC, what WCBS-FM really sounds like now is the old WCBS-FM. It's one of the oldies format's original and most durable outlets. It's also one of the oldies format's broadest formats. Pundits thought that WCBS-FM would stop playing disco or "Every Breath You Take" once WPLJ came along, but it hasn't, although its core years still seem to be the pre-Beatles era.

WCBS (101.9) - If you flew into Newark Airport, you've probably seen at least one great painted billboard for CD101.9. If you've heard the jazz/AC format in other markets, you've probably heard some of its innovations. Like WNUA Chicago, CD101.9 was one of the first jazz/AC outlets to become the jazz, easy-listening and R&B-adult station for its market simultaneously. This explains why you'll hear some liners that sound a lot like a soft AC station. It also explains why you'll hear Boyz II Men's "Water Runs Dry."

WJLV-FM (102.7) - Not everybody in the industry likes it, but WNEW-FM may be the market's most fascinating station at the moment. As the New York counterpart of KXPX Denver, it works the black seam between modern and Triple-A. It plays a lot of the Talking Heads, INXS and Elvis Costello oldies that other modern-rock stations have just ditched. (It also plays a lot of depth tracks by the artists on the border of modern rock, like Tom Petty and Dire Straits.) And it plays more currents (and harder currents) as the weeks go by. So it may be the full-fledged, full-signal modern rocker that New York hasn't yet had.

WYNY (103.5) - This station hasn't gotten a lot of industry respect in eight years either. It's the subject of near-constant format-change rumors now that Evergreen Media has taken over, and you can hear everybody else licking their chops in the background which is too bad, because, after numerous format permutations, WYNY has kind of come up with a sense of what works for country in New York, bal-

ancing between the older listeners who were unaware that there ever was a "young country" movement and the hipper listeners who consider Mary Chapin Carpenter as important, or more important, than Garth and Reba. If you're around on Sunday night, check out Steve Warren's country-oldies show.

WAXQ (104.3) - Q104.3 became a hard-rock station just as hard rock was losing all its non-alternative core artists. The rumors were heavy a few months ago that it would thus become an alternative station. But after WNEW-FM segued from mainstream to modern rock, PD Ron Valeri actually took the station the other way for awhile, adding more gold from Bad Company and other acts that had been turfed from WNEW. Now there seems to be another change, back toward alternative, taking place with acts like the Cranberries and Hootie showing up for the first time.

WJLV (105.1) - First WPLJ came along and introduced disco and classic rock to before. I think that big strides have been made toward equality [between men and women in radio]," says Lisa McKay, PD of Top 40 WRVQ Richmond, Va. "A lot of women in certain positions might have a different view. But at this station, it's not an issue, because our promotion director, our GM and our sales manager are all women. We work well together. For me, it's a completely moot point. At WRVQ, it's like 'The



KPWR's Michelle Mercer



KMTT's Chris Mays

Planet Of The Apes' where the apes have taken over."

EQUAL PAY FOR EQUAL WORK

The new generation of radio women say they have not experienced sexual harassment or gender discrimination to the degree that perhaps their predecessors in the '60s and '70s may have, and that bringing attention to gender differences can in fact be detrimental. There may still be an Old Boys Club in radio, but the doors are opening. If there is one frontier left, it is equal pay for equal work.

"I haven't personally experienced any discrimination, I feel like I've been treated fairly and equally all along," says Chris Mays, PD of KMTT, who has programmed six stations—including rock, oldies, AC and progressive—in her 17-year career. "I think there are probably still circumstances where it happens, but it

depends on the corporate culture of the station, the management style, the strength of the women and the men in their particular situations. It's probably generally true that women have a difficult time matching male salaries."

JOINING THE BOYS CLUB

"To a certain extent, it is a boys' club," admits Terry Avery, VP of adult programming for Radio One of Maryland. "But if you know how to hang with the boys, you can get into the club." Avery adds that, while some men have made patronizing or aggressive comments, coping successfully is a matter of style. "I deal with it. You don't get it every day, but sometimes somebody comes along who wants to strong-arm you."

INNATE PROGRAMMING ADVANTAGE

Recent radio studies have shown that female audiences spend more time listening to a particular station and switch stations less than their male counterparts. A new study executed by Larry Rosin's Edison Media Research has further found that female listeners are more attuned to rhythm and lyric content, and burn slower on favorite records. It could then be posited that female programmers are more sensitive to their audience's needs and could have an innate programming advantage over men that would increase their station's TSL as well as come.

But WRVQ's McKay disputes that premise. "Basically, I try to take all the clutter out, get rid of any reason someone would have to change stations, and put in the best testing-songs we can get our hands on, and hope that's enough," she says, adding that TSL rates for Top 40s can be pretty low. "I work on TSL all the time; in come it's easy to be No. 1. But keeping them there? I have no womanly secrets."

"The bottom line is we're all here to do a job. The one who does it the best wins," says Avery. ■



WQHT's Dr. Dre and Ed Lover

AC. Then WLTW became more eclectic (see below). So what was a station that positioned itself between WPLJ and WLTW to do? For a while, Mix 105 took the term "spectrum AC" very seriously, playing everything from Petty and other WPLJ music on one side to some of WLTW's titles on the other. Under new PD Steve Weed, it seems to be more clearly focused and

more definitively a mainstream AC.

WLTW (106.7) - Several years ago, I heard Lite FM in a taxicab playing "Border Song" by Elton John and, until the back-sell, I wondered who had gone Triple-A in the market. Despite its conservative reputation, Lite has spent much of the past several years looking for unlikely records that might fit from a texture and demographic standpoint. In recent weeks, however, there seems to be a renewed focus on the format's staple artists.

WBLS (107.5) - For the past six months, following the success of WRKS, this station has been back in the R&B-adult vein, billing itself as "the home of classics and future classics." During the week, you'll hear a few more currents than WRKS, and you'll hear them a few more times per week. On Sunday morning, you'll hear the legendary Hal Jackson, whose success with oldies on Sunday made it possible for New York to have two gold-based R&B-adult outlets in the first place. ■

SERVICES

SERVICES

TOP 40 AIRPLAY MONITOR COUNTRY AIRPLAY MONITOR R&B AIRPLAY MONITOR ROCK AIRPLAY MONITOR

RADIO BITS WANTED

VOICEOVERS

MUSIC SOFTWARE

WANTED

Great Radio Bits for NYC and LA.

Atlantic Records' Low Power Radio Department is looking for great 1 - 1 1/2 minute radio bits to use as programming content for our low power signals at NYC tunnels and on Sunset Blvd. in LA. Accepted bits will receive \$50 and you may submit as often as you like

Send tapes to:
Jeff James, Director
of Low Power Radio Ventures,
c/o Atlantic Records
1290 Ave. of the Americas,
27th floor.
New York, NY 10019

If you have any questions, call
Jeff James at (212) 265-4134



FASTEST GROWING VOICE-OVER TALENT IN NORTH AMERICA. FEMALE ROSTER ALSO AVAILABLE. CALL 1-800-843-3933 FOR DEMO.
WELCOME KRIS-HOUSTON, Q102-DALLAS, WGPR-DETROIT

AFFORDABLE Music Software

No Lease Charges

Features & Flexibility PDs want at a price even small markets can afford.

For More Information call:
HALPER & ASSOCIATES
304 Newbury St., #506
Boston, MA 02115
(617) 786-0666

CARTER DAVIS VOICE AND PRODUCTION FOR RADIO AND TV Tel/FAX: (901) 681-0650

HELP WANTED

HE'S LEAVING!

WNCI NOW SEARCHING ... CURRENT SHIFT OR MARKET DOES NOT MATTER ... ONE OF OUR MORNING HOSTS RETURNING HOME ... WE NEED YOU! EVER BEEN TOLD YOU'D BE GREAT IN MORNINGS? WANT TO WORK FOR AMERICAS BEST RADIO COMPANY? CALL DAVE ROBBINS IMMEDIATELY (614) 224-9624. NO T & R'S PLEASE ... CALLS ONLY (WE TALK TO PEOPLE)!

CALL 614- 224-9624!

WNCI/NATIONWIDE COMMUNICATIONS EQUAL OPPORTUNITY EMPLOYER.

When Excellence Matters

Sean Caldwell
PRODUCTIONS
Y100 Young Country
B-98 KISS-FM WLLZ
New Country KISS106
Country CHR Rock Hot AC
voice-over • production effects
(610) 440-5899 FAX 892-7890



THE NEW VOICE FOR THE 21ST CENTURY. ALL FORMATS. FULL PRODUCTION AVAILABLE. CALL FOR A DEMO TODAY!
910-997-7192

AIRCHECKS

URBAN AIR-CHECK VOL 1!
Hear WHTA, WJLB, WPEG, WGCI, and over 5 other stations! Plus hot drops and production!
ONLY \$12.00!
URBAN AIR-CHECK
P.O. BOX 7808 • N. AUGUSTA, SC 29841
FREE DEMO & INFO (706) 481-1821!

REACH OVER 18,000 RESPONSIVE READERS IN THE RADIO INDUSTRY EVERY WEEK
CALL
AIRPLAY MONITOR CLASSIFIED
ASK FOR LAURA RIVCHUN
Phone: 212 536-5058
Fax: 212 536-5055

The only radio publications based exclusively on electronically monitored airplay from Broadcast Data Systems.

- Airplay Charts • Power Playlists • Biggest Gainers
- New Releases • Song Activity Reports • Impact Pages
- Monitored Video Playlists • Plus all the latest radio and music industry news every week.

Call 1-800-722-2346 to subscribe.

Part of the Billboard Music Group.

CLASSIFIED ADVERTISING RATES

HELP WANTED:

1 WEEK \$75.00 per inch
2 WEEKS \$65.00 per inch

POSITION WANTED

AND BULLETIN BOARD:
\$45.00 per inch

BOX NUMBER: Add \$20.00

DEADLINE

(ALL CLASSIFIED):

Each Wednesday 3pm EST,
9 day leadtime.

• Classified ads are non-commissionable •

SERVICES:

1 WEEK \$75.00 per inch
6 WEEKS \$65.00 per inch
13 WEEKS \$60.00 per inch
26 WEEKS \$55.00 per inch
51 WEEKS \$50.00 per inch

SUBMIT ALL AD COPY TO:

Laura Rivchun
Airplay Monitor Classified
1515 Broadway
New York, NY 10036

Phone: 212-536-5058
Fax: 212-536-5055

Name _____
Address _____
City _____ State _____ Zip _____
Company Name _____
Phone _____
PAYMENT MUST ACCOMPANY ORDER
Payment of \$ _____ enclosed for _____ Insertion(s)
Charge to American Express Visa Mastercard
Account Number _____
Expiration Date _____
Signature _____

STATION I.D.

ID Packages CHR & Rhythmic

"They are FAT." -
Jay Stevens P.D. WPGC

"You HAVE to hear these!" -
Mike Tierney P.D. KUBE 93

ReelWorld Productions

Call for demo (206) 713-3044

CALL LAURA RIVCHUN for
Airplay Monitor Classifieds
Ph (212) 536-5058 • Fax (212) 536-5055

UPDATED
FOR THE FALL!

Experience The Power!

Brought to you by Billboard and Monitor, the most comprehensive guide to radio and record promotion -- **THE POWER BOOK - The New Fall Edition!**

JAMPACKED WITH LISTINGS: • Radio Stations -- Country, Rock, R&B, Top 40 • Record Company Promotion Personnel • Radio Syndicators • Top 100 Arbitron Markets
The most important tool for music, radio and promotion executives to use every day!

Order your copy now for just \$75 (plus \$5 shipping and handling, \$12 for international orders).

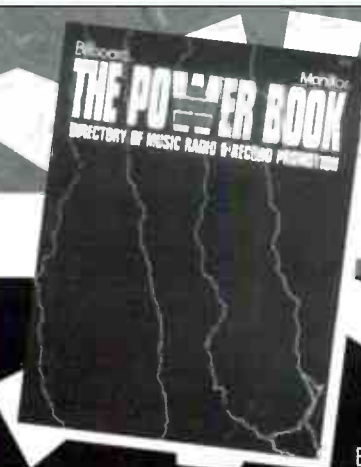
2 DIRECTORY PACKAGE: The Power Book Fall 1995 Edition AND the Power Book Spring 1996 Edition for \$119 -

Order NOW & SAVE more than 40% on the Spring edition! (Spring Directory will automatically mail in March 1996).

Please add appropriate sales tax in NY, NJ, PA, CA, TN, MA, IL & DC. Orders payable in U.S. funds only. All sales are final.

To order, or for more information call (800) 344-7119 or (800) 223-7524. In NY call (212) 536-5174. In NJ call (908) 363-4156.

Or mail this ad with your payment to: Billboard Directories, P.O. Box 2016, Lakewood, NJ 08701.



BDPB3095



SONG ACTIVITY REPORTS



For Week Ending October 8, 1995

Detailed song tracking information for the last 3 weeks for all songs showing increased play this week. Total plays and gain do not include video play. Markets listed in order of population.

JON B. 815/210 Pretty Girl (36 Yum/550 Music) Total Stations: 60 Chart Move: 29-30

BACKSTREET BOYS 552/157 We've Got It Goin' On (Jive) Total Stations: 52

BLESSIE UNION OF SOULS 2020/53 Let Me Be The One (EMI) Total Stations: 77 Chart Move: 14-14

BLUES TRAVELER 363/173 Hook (A&M) Total Stations: 25

BUSH 404/29 Comedown (Trauma/Interscope) Total Stations: 28

MARIAH CAREY 3347/152 Fantasy (Columbia) Total Stations: 76 Chart Move: 3-2

EDWYN COLLINS 763/150 A Girl Like You (Bar None/A&M) Total Stations: 51 Chart Move: Debut 36

COOLIO FEAT. L.V. 1159/32 Gangsta's Paradise (MCA Soundtracks/MCA) Total Stations: 59 Chart Move: 25-26

THE CORRS 501/38 Runaway (143/Lava/Atlantic) Total Stations: 34

DEEP BLUE SOMETHING 1626/138 Breakfast At Tiffany's (RainMaker/Interscope) Total Stations: 77 Chart Move: 19-18

DEL AMITRI 2561/92 Roll To Me (A&M) Total Stations: 80 Chart Move: 10-9

FUN FACTORY 1362/5 I Wanna B With U (Curb-edel) Total Stations: 72 Chart Move: 23-22

GIN BLOSSOMS 2649/71 I'll Hear It From You (A&M) Total Stations: 81 Chart Move: 8-6

GOO GOO DOLLS 1367/232 Name (Metal Blade/Warner Bros.) Total Stations: 76 Chart Move: 26-20

SOPHIE B. HAWKINS 2628/15 As I Lay Me Down (Columbia) Total Stations: 79 Chart Move: 7-7

"TIME"

*The new single from the largest selling debut act
in the history of Atlantic Records.*

HOOTIE & THE BLOWFISH-
who'd you think we were talking about?

CALL 1-900-ATLANTIC FOR A QUICK MUSIC TUNE-UP.
ONLY \$1 PER CALL. UNDER 18 GET PARENT'S PERMISSION. TOUCHTONE PHONE REQUIRED.
ATLANTIC RECORDS, NY, NY (212)399-4433

surf atlantic
<http://www.atlantic-records.com>

THE ATLANTIC GROUP ©1995 ATLANTIC RECORDING CORP.
A TIME WARNER COMPANY

POWER PLAYLISTS



AIRPLAY Monitor

For Week Ending
October 8, 1995

Playlists compiled by Broadcast Data Systems. Radio track service. Stations selected from panel of leading broadcasters in 125 radio markets. Electronically monitored 24 hours a day, 7 days a week. Songs ranked by number of plays in monitored week.

HOT 97			POWER 106			B96		
WOHT New York	PD: Steve Smith APD/MD: Tracy Caherty		KPWR Los Angeles	PD: Michelle Mercer MD: Bruce St. James		WBMM Chicago	PD: Todd Cavanah MD: Erik Bradley	
TW	LW		TW	LW		TW	LW	
1	47	38	1	72	72	1	75	73
2	45	48	2	70	68	2	70	75
3	43	44	3	68	67	3	70	21
4	43	42	4	55	42	4	67	66
5	42	32	5	54	60	5	64	48
6	42	47	6	52	27	6	48	24
7	42	44	7	49	45	7	44	24
8	40	25	8	48	43	8	44	24
9	39	33	9	43	50	9	40	61
10	38	42	10	40	70	10	39	66
11	38	41	11	36	39	11	39	43
12	37	31	12	36	34	12	34	39
13	36	38	13	31	34	13	33	30
14	34	35	14	30	0	14	33	18
15	33	35	15	30	32	15	32	33
16	31	32	16	29	38	16	30	15
17	29	44	17	27	27	17	29	37
18	29	24	18	22	24	18	25	24
19	28	30	19	22	15	19	22	3
20	25	17	20	21	20	20	22	3
21	23	23	21	16	13	21	21	18
22	23	13	22	15	15	22	16	2
23	22	31	23	14	21	23	15	15
24	19	1	24	11	22	24	15	17
25	16	14	25	11	22	25	15	16
26	16	8	26	8	5	26	14	12
27	15	13	27	8	5	27	13	13
28	14	3	28	8	5	28	12	16
29	14	17	29	7	6	29	12	12
30	13	13	30	7	6	30	12	12
31	14	0	31	7	6	31	12	13
32	12	31	32	7	5	32	12	3
33	12	0	33	7	4	33	11	4
34	11	10	34	7	4	34	11	12
35	10	23	35	6	7	35	11	11
36	10	11	36	6	4	36	10	12
37	10	10	37	6	3	37	10	20
38	10	14	38	6	4	38	10	12
39	10	11	39	6	5	39	10	11
40	9	10	40	6	2	40	9	9
KMEL			WPGC			WILD 107		
KMEL San Francisco	PD: Michelle Santosuosso MD: Joey Arbagey		WPGC Washington, DC	PD: Jay Stevens APD: Bob Holmcrans MD: Albie Dee		KYLD San Francisco	OM: Bob Hamilton PD/MD: Michael Martin	
TW	LW		TW	LW		TW	LW	
1	62	55	1	58	60	1	66	54
2	62	62	2	53	55	2	64	65
3	59	58	3	51	42	3	63	69
4	58	49	4	49	44	4	60	66
5	51	58	5	46	58	5	51	58
6	50	62	6	45	29	6	51	38
7	50	31	7	40	43	7	50	48
8	49	53	8	40	39	8	43	0
9	48	33	9	40	43	9	42	40
10	47	36	10	40	28	10	40	5
11	35	36	11	35	30	11	40	38
12	33	18	12	31	33	12	39	28
13	29	28	13	30	19	13	37	8
14	29	27	14	30	28	14	36	40
15	28	30	15	27	38	15	36	21
16	28	30	16	23	29	16	31	5
17	27	17	17	21	0	17	31	5
18	26	24	18	20	32	18	29	32
19	24	24	19	19	10	19	27	25
20	23	30	20	18	20	20	27	0
21	22	19	21	18	24	21	24	33
22	21	0	22	17	0	22	24	18
23	19	25	23	17	26	23	19	0
24	18	21	24	16	6	24	19	62
25	16	23	25	15	15	25	19	2
26	16	10	26	14	14	26	17	23
27	15	8	27	13	15	27	16	20
28	15	12	28	13	17	28	15	36
29	13	0	29	13	19	29	15	19
30	12	11	30	12	16	30	15	17
31	11	0	31	12	11	31	15	1
32	10	1	32	12	17	32	12	38
33	10	1	33	12	15	33	12	16
34	10	0	34	11	0	34	12	13
35	10	17	35	10	15	35	12	10
36	9	8	36	10	13	36	10	19
37	9	8	37	10	19	37	10	16
38	8	21	38	9	9	38	10	17
39	7	20	39	9	9	39	10	12
40	7	3	40	9	11	40	9	9
JAM'N 94.5			THE BOX			POWER 96		
WJMN Boston	PD: Cadillac Jack MD: Cat Collins		KBXX Houston	PD: Rob Scorpio MD: Greg Head		WPOW Miami	PD: Frank Walsh APD: Leo Vela MD: John Rogers	
TW	LW		TW	LW		TW	LW	
1	68	66	1	73	72	1	55	50
2	65	47	2	68	71	2	47	50
3	64	66	3	62	53	3	45	45
4	60	47	4	62	58	4	36	37
5	56	58	5	59	58	5	35	27
6	49	54	6	54	54	6	35	24
7	48	38	7	53	49	7	31	25
8	47	46	8	47	61	8	27	23
9	46	39	9	46	53	9	25	22
10	45	41	10	45	47	10	24	38
11	44	45	11	42	5	11	23	25
12	43	38	12	41	40	12	23	32
13	42	28	13	36	31	13	22	29
14	41	55	14	35	35	14	21	18
15	40	54	15	35	34	15	21	24
16	40	42	16	34	35	16	18	28
17	32	35	17	34	35	17	18	17
18	30	32	18	31	0	18	18	24
19	27	42	19	31	0	19	17	15
20	26	27	20	29	29	20	16	18
21	25	22	21	29	36	21	16	19
22	25	21	22	27	28	22	15	21
23	19	6	23	27	22	23	15	16
24	19	21	24	26	31	24	15	10
25	18	20	25	26	49	25	14	19
26	18	3	26	25	22	26	13	14
27	18	21	27	25	42	27	13	11
28	18	21	28	25	42	28	13	12
29	18	34	29	25	42	29	13	12
30	16	43	30	24	29	30	12	13
31	15	0	31	24	30	31	12	17
32	15	0	32	24	30	32	12	7
33	15	0	33	24	30	33	12	18
34	14	7	34	24	30	34	12	18
35	13	9	35	24	30	35	12	18
36	13	14	36	24	30	36	12	18
37	12	11	37	24	30	37	12	18
38	11	11	38	24	30	38	12	18
39	11	14	39	24	30	39	12	18
40	10	9	40	24	30	40	12	18

THE "FUN" BEGINS AGAIN
OCTOBER 24TH
"TAKE YOUR CHANCE"
FUN FACTORY'S NEWEST
ANOTHER UPTempo, MAKE YA FEEL GOOD HIT
FROM THE GROUP THAT BROUGHT YOU
"I WANNA B WITH U"
THAT'S STILL SELLING 4000 UNITS A WEEK



Slow Pain



Saturday Night Ballin'

RHYTHM-CROSSOVER

POWER PLAYLISTS



AIRPLAY
Monitor

For Week Ending
October 8, 1995

Playlists supplied by Broadcast Data Systems' Radio
Track service. Stations selected from panel of leading
broadcasters in 125 radio markets, electronically
monitored 24 hours a day, 7 days a week. Songs
ranked by number of plays in monitored week.

KUBE		POWER 92		KGGI	
PD: Mike Tierney MD: Shellie Hart		PD: Don Parker MD: Brian Douglas		PD: Carmy Ferreri APD/MD: Sonia Jimenez	
Seattle		Phoenix		Riverside	
TW	LW	TW	LW	TW	LW
1	82	1	63	1	56
2	68	2	62	2	58
3	66	3	57	3	52
4	64	4	56	4	51
5	63	5	51	5	50
6	63	6	47	6	39
7	60	7	44	7	39
8	51	8	42	8	33
9	44	9	40	9	32
10	43	10	38	10	31
11	40	11	38	11	30
12	39	12	33	12	30
13	39	13	31	13	30
14	38	14	34	14	29
15	34	15	36	15	27
16	32	16	35	16	26
17	31	17	34	17	25
18	29	18	33	18	23
19	29	19	30	19	22
20	29	20	29	20	22
21	28	21	28	21	21
22	25	22	28	22	21
23	25	23	27	23	21
24	24	24	26	24	21
25	24	25	25	25	21
26	23	26	26	26	20
27	23	27	22	27	16
28	23	28	22	28	16
29	19	29	20	29	16
30	18	30	20	30	15
31	18	31	20	31	15
32	17	32	18	32	15
33	16	33	18	33	13
34	15	34	17	34	13
35	12	35	17	35	12
36	12	36	17	36	11
37	11	37	17	37	11
38	11	38	16	38	11
39	11	39	15	39	10
40	10	40	15	40	10

FM102		KTFM		92Q	
PD: Rick Thomas MD: Trejo		PD: Cliff Tredway APD/MD: Charles Chavez		PD: Russ Allen MD: Camille Cashwell	
Sacramento		San Antonio		Baltimore	
TW	LW	TW	LW	TW	LW
1	63	1	66	1	52
2	59	2	62	2	50
3	59	3	61	3	49
4	56	4	52	4	45
5	50	5	51	5	46
6	42	6	46	6	45
7	37	7	45	7	43
8	37	8	45	8	43
9	34	9	42	9	41
10	34	10	42	10	40
11	34	11	42	11	39
12	32	12	40	12	33
13	30	13	37	13	32
14	27	14	37	14	30
15	27	15	35	15	30
16	23	16	28	16	28
17	22	17	28	17	28
18	21	18	27	18	26
19	20	19	26	19	24
20	18	20	26	20	24
21	17	21	26	21	23
22	17	22	25	22	22
23	16	23	22	23	22
24	16	24	20	24	22
25	14	25	18	25	21
26	13	26	17	26	20
27	13	27	16	27	20
28	13	28	16	28	18
29	12	29	16	29	18
30	12	30	15	30	17
31	12	31	15	31	17
32	11	32	14	32	16
33	11	33	14	33	16
34	9	34	13	34	15
35	9	35	13	35	15
36	9	36	12	36	15
37	9	37	11	37	15
38	8	38	10	38	14
39	8	39	8	39	14
40	8	40	7	40	13

KS104		Z90		B95	
PD: Mark Feather APD: Michael Hayes MD: John Dickenson		OM: Lisa Vazquez APD: Jeff Nelson		PD: Mark Adams MD: Mikey Freeman	
Denver		San Diego		Fresno	
TW	LW	TW	LW	TW	LW
1	76	1	52	1	65
2	63	2	52	2	58
3	60	3	51	3	60
4	56	4	50	4	57
5	55	5	50	5	52
6	51	6	47	6	51
7	46	7	45	7	50
8	44	8	45	8	49
9	44	9	45	9	48
10	43	10	43	10	46
11	41	11	41	11	43
12	32	12	33	12	43
13	32	13	31	13	40
14	32	14	31	14	40
15	31	15	31	15	39
16	28	16	28	16	39
17	26	17	26	17	30
18	24	18	24	18	29
19	21	19	21	19	28
20	21	20	20	20	28
21	21	21	20	21	25
22	19	22	19	22	25
23	19	23	18	23	24
24	18	24	18	24	24
25	17	25	17	25	23
26	17	26	16	26	23
27	17	27	16	27	21
28	16	28	15	28	20
29	15	29	15	29	20
30	15	30	14	30	19
31	15	31	14	31	18
32	14	32	13	32	18
33	13	33	13	33	17
34	13	34	12	34	17
35	13	35	12	35	16
36	13	36	11	36	16
37	12	37	11	37	16
38	12	38	10	38	15
39	12	39	9	39	15
40	11	40	8	40	14

POWER PLAYLISTS



AIRPLAY #1 Monitor

For Week Ending October 8, 1995

Playlists supplied by Broadcast Data Systems' Radio Track service. Stations selected from panel of leading broadcasters in 125 radio markets, electronically monitored 24 hours a day, 7 days a week. Songs ranked by number of plays in monitored week.

102 JAMZ PD: Brian Douglas MD: Horse Raney. Table with 40 rows of song titles and ratings.

POWER 102 PD: John Candelaria. Table with 40 rows of song titles and ratings.

KIX 106 PD: Joe Dawson MD: Naughty Boy. Table with 40 rows of song titles and ratings.

KLUC PD: Jerry Dean MD: Cat Thomas. Table with 40 rows of song titles and ratings.

STAR 95.5 PD: Neil Sullivan MD: Scott Davidson. Table with 40 rows of song titles and ratings.

KDON PD: Michael Newman MD: Jennifer Wilde. Table with 40 rows of song titles and ratings.

97 KISS PD: Roy Jaynes MD: Jackie James. Table with 40 rows of song titles and ratings.

HOOSIER 96.3 PD: Scott Wheeler MD: Carl Frye. Table with 40 rows of song titles and ratings.

94.1 JAMZ PD: Jay Stone MD: M.C. Scrapy. Table with 40 rows of song titles and ratings.

JUNIOR M.A.F.I.A.



"I Need You Tonight"

EARLY: KYLD WERQ WOCQ KKSS NEW: KFFM KHTN XHTZ KDLE KZHT IN ROTATION: WQHT KPWR KMEL WPGC KGAQ KBXX KZFM KPRR KLUC

PLAYING ON THESE R&BSTATIONS:

WJLB WUSL WOWI WPEG WHTA WXYV WKYS WQUE WQMG WEJM KKDA WCDX



AIRPLAY
Monitor

BDS IMPACT

DETECTIONS



★ ★ ★ AIRPOWER ★ ★ ★

(Minimum 600 detections for the first time)

Total Plays/Gain	Total Plays/Gain	Total Plays/Gain
AFTER 7 651/63 <i>Til You Do Me Right (Virgin)</i> Total Stations: 25/Chart Move: 15-12 Heavy (40+ plays): 8 KBXX, KCAQ, KDON, KKSS, KLUC, KMEL, WERQ, WJMN Medium (20-39): 5 KGGI, KSFM, KXTZ, KZHT, WHHH Light (Under 20): 12 New Airplay This Week: 1 WOVV	XSCAPE 632/194 <i>Who Can I Run To (So So Def/Columbia)</i> Total Stations: 25/Chart Move: 23-13 Heavy (40+): 7 KBXX, KYLD, WERQ, WHHH, WJMH, WPGC, XHTZ Medium (20-39): 6 KMEL, KSFM, KTFM, KZFM, WJJS, WQHT Light (Under 20): 12 New Airplay This Week: 7 KDON, KSFM, KTFM, KXTZ, WJMN, WOVV, WWKX	3T 624/119 <i>Anything (MJJ/550 Music)</i> Total Stations: 23/Chart Move: 20-14 Heavy (40+): 6 KBXX, KPRR, KTFM, KYLD, WJMH, WJMN Medium (20-39): 9 KDON, KKFR, KMEL, KSFM, KUBE, KXTZ, WHHH, WJJS, WWKX Light (Under 20): 8 New Airplay This Week: 3 KDON, WOVV, WQHT

AIRPOWER BOUND

Total Plays/Gain
TLC 484/190 <i>Diggin' On You (LaFace/Arista)</i> Total Stations: 26/Chart Move: 35-21 Heavy (40+ plays): 2 KLUC, KZFM Medium (20-39): 9 KBOS, KGGI, KQKS, KUBE, KYLD, KZHT, WERQ, WHHH, WQHT Light (Under 20): 15 New Airplay This Week: 8 KGGI, KKFR, WERQ, WHHH, WJMH, WOVV, WPGC, WPOW

MARIAH CAREY & BOYZ II MEN 483/420 <i>One Sweet Day (Columbia)</i> Total Stations: 21/Chart Move: Debut 22 Heavy (40+): 2 KBXX, WPGC Medium (20-39): 13 KBOS, KGGI, KKFR, KMEL, KPRR, KQKS, KSFM, KTFM, KUBE, KYLD, WBBM, WERQ, WOVV Light (Under 20): 6 New Airplay This Week: 14 KBOS, KBXX, KKFR, KMEL, KPRR, KSFM, KTFM, WBBM, WJMH, WJMN, WOVV, WPGC, WPOW, WQHT
--

AZ 374/13 <i>Sugar Hill (EMI)</i> Total Stations: 19/Chart Move: 29-28 Heavy (40+): 4 KCAQ, WERQ, WQHT, WWKX Medium (20-39): 4 KBXX, KKSS, KZHT, WHHH Light (Under 20): 11
--

MAX-A-MILLION 358/95 <i>Sexual Healing (S.O.S./Zoo)</i> Total Stations: 17/Chart Move: 38-29 Heavy (40+): 3 KLUC, WWKX, XHTZ Medium (20-39): 6 KCAQ, KXTZ, KZFM, WBBM, WJJS, WOVV Light (Under 20): 8 New Airplay This Week: 1 KZHT
--

PLANET SOUL 340/56 <i>Set U Free (Strictly Rhythm)</i> Total Stations: 19/Chart Move: 37-31 Heavy (40+): 3 KPRR, KTFM, KYLD Medium (20-39): 4 KCAQ, KZFM, WPOW, XHTZ Light (Under 20): 12 New Airplay This Week: 3 KZFM, WBBM, WJJS
--

THE OUTHERE BROTHERS 310/51 <i>Boom Boom Boom (Aureus)</i> Total Stations: 20/Chart Move: 39-32 Heavy (40+): 2 KPRR, KPWR Medium (20-39): 3 KUBE, WWKX, XHTZ Light (Under 20): 15 New Airplay This Week: 3 KBOS, KYLD, KZHT
--

REAL MCCOY 302/56 <i>Automatic Lover (Arista)</i> Total Stations: 18/Chart Move: Debut 34 Heavy (40+): 1 KXXX Medium (20-39): 8 KKFR, KPRR, KQKS, KZHT, WJJS, WOVV, WPOW, WWKX Light (Under 20): 9 New Airplay This Week: 1 KZFM

MONICA 284/122 <i>Before You Walk Out Of My Life (Rowdy/Arista)</i> Total Stations: 14/Chart Move: Debut 37 Heavy (40+): 3 KBXX, WERQ, WJMH Medium (20-39): 2 KTFM, WJMN Light (Under 20): 9 New Airplay This Week: 4 KCAQ, KTFM, WJJS, XHTZ

MIGHTY DUB KATS 281/34 <i>Magic Carpet Ride (Sm:)e/Profile)</i> Total Stations: 15/Chart Move: 40-38 Heavy (40+): 2 KPWR, KYLD
--

Medium (20-39): 5 KBOS, KCAQ, KKFR, KPRR, KZFM Light (Under 20): 8

CHART BOUND

Total Plays/Gain
DEBORAH COX 244/29 <i>Sentimental (Arista)</i> Total Stations: 18 Heavy (40+): 1 KKFR Medium (20-39): 6 KBOS, KZHT, WERQ, WHHH, WJJS, WWKX Light (Under 20): 11 New Airplay This Week: 1 WQHT

L.A.D. 234/82 <i>Ridin' Low (Pr/Hollywood)</i> Total Stations: 7 Heavy (40+): 2 KKSS, KPRR Medium (20-39): 2 KCAQ, KZFM Light (Under 20): 3

SHAI 232/29 <i>Come With Me (Gasoline Alley/MCA)</i> Total Stations: 20 Heavy (40+): 1 WJMH Medium (20-39): 4 KDON, KZHT, WERQ, WWKX Light (Under 20): 15 New Airplay This Week: 1 WJMN
--

DOVE SHACK 224/38 <i>Summertime In The LBC (G Funk/RAL/Island)</i> Total Stations: 8 Heavy (40+): 3 KMEL, KPWR, KYLD Medium (20-39): 2 KCAQ, WJJS Light (Under 20): 3 New Airplay This Week: 1 KYLD
--

TERRY ELLIS 215/35 <i>Where Ever You Are (EastWest/EEG)</i> Total Stations: 19 Heavy (40+): 1 WERQ Medium (20-39): 1 KZFM Light (Under 20): 17 New Airplay This Week: 5 KCAQ, KKSS, KZFM, WJMN, XHTZ

R. KELLY 203/203 <i>You Remind Me Of Something (Jive)</i> Total Stations: 20 Heavy (40+): 0 Medium (20-39): 3 KBXX, WJMH, WPGC Light (Under 20): 17 New Airplay This Week: 10 KBXX, KCAQ, KMEL, WERQ, WHHH, WJMH, WJMN, WPGC, WQHT, WWKX

BLAHZAY BLAHZAY 196/44 <i>Danger (Fader/Mercury)</i> Total Stations: 12 Heavy (40+): 3 WERQ, WPGC, WQHT Medium (20-39): 1 WJMH Light (Under 20): 8
--

FROST 181/67 <i>East Side Rendezvous (Ruthless/Relativity)</i> Total Stations: 15 Heavy (40+): 1 KKSS Medium (20-39): 1 KPWR Light (Under 20): 13 New Airplay This Week: 1 KGGI
--

CHARLES HILL 159/3 <i>Don't Let It End (Riot)</i> Total Stations: 7 Heavy (40+): 0 Medium (20-39): 4 KBOS, KPRR, KTFM, WWKX Light (Under 20): 3 New Airplay This Week: 1 XHTZ
--

SOUL FOR REAL 123/39 <i>If You Want It (Uptown/MCA)</i> Total Stations: 10 Heavy (40+): 1 KDON Medium (20-39): 1 KZHT Light (Under 20): 8

ELAN 115/44 <i>Better Than You (Strictly Rhythm)</i> Total Stations: 12 Heavy (40+): 1 KYLD Medium (20-39): 1 KTFM Light (Under 20): 10

KRS-ONE 113/13 <i>MC's Act Like They Don't Know (Jive)</i> Total Stations: 9 Heavy (40+): 1 WPGC Medium (20-39): 2 WJMH, WQHT Light (Under 20): 6

L.V. 109/109 <i>Gangsta's Paradise (Tommy Boy)</i> Total Stations: 6 Heavy (40+): 0 Medium (20-39): 3 KMEL, KPWR, KYLD Light (Under 20): 3 New Airplay This Week: 4 KMEL, KPWR, KYLD, KZFM

THE PHARCYDE 102/30 <i>Runnin' (Delicious Vinyl/Capitol)</i> Total Stations: 11 Heavy (40+): 0 Medium (20-39): 3 KMEL, KPWR, WJMH Light (Under 20): 8 New Airplay This Week: 1 WJMH
--

CHEF RAEKWON 101/7 <i>Ice Cream (Loud/RCA)</i> Total Stations: 8 Heavy (40+): 1 WQHT Medium (20-39): 1 WERQ Light (Under 20): 6 New Airplay This Week: 1 WWKX
--

FAITH EVANS 98/18 <i>Soon As I Get Home (Bad Boy/Arista)</i> Total Stations: 3 Heavy (40+): 2 WERQ, WPGC Medium (20-39): 0 Light (Under 20): 1
--

CYPRESS HILL 96/27 <i>Throw Your Set In The Air (Ruffhouse/Columbia)</i> Total Stations: 9 Heavy (40+): 0 Medium (20-39): 1 KPWR Light (Under 20): 8 New Airplay This Week: 2 KYLD, WERQ

SILK 95/54 <i>Hooked On You (Elektra/EEG)</i> Total Stations: 11 Heavy (40+): 0 Medium (20-39): 1 WHHH Light (Under 20): 10 New Airplay This Week: 3 KCAQ, KQKS, WWKX
--

DIANA KING 93/59 <i>Love Triangle (Work)</i> Total Stations: 7 Heavy (40+): 0 Medium (20-39): 2 KKFR, KZHT Light (Under 20): 5 New Airplay This Week: 1 XHTZ

SOPHIE B. HAWKINS 92/25 <i>As I Lay Me Down (Columbia)</i> Total Stations: 13 Heavy (40+): 0
--

MOST NEW AIRPLAY THIS WEEK

No. Of Stations

MARIAH CAREY & BOYZ II MEN 14 <i>One Sweet Day (Columbia)</i>
R. KELLY 10 <i>You Remind Me Of Something (Jive)</i>
TLC 8 <i>Diggin' On You (LaFace/Arista)</i>
XSCAPE 7 <i>Who Can I Run To (So So Def/Columbia)</i>
D'ANGELO 5 <i>Cruisin' (EMI)</i>
TERRY ELLIS 5 <i>Where Ever You Are (EastWest/EEG)</i>

Medium (20-39): 1 KXXX Light (Under 20): 12 New Airplay This Week: 1 KXXX

GERALD & EDDIE LEVERT, SR. 88/29 <i>Already Missing You (EastWest/EEG)</i> Total Stations: 8 Heavy (40+): 0 Medium (20-39): 1 WERQ Light (Under 20): 7 New Airplay This Week: 2 WHHH, WJJS

TRIBE 82/26 <i>So In Love (Ti Amo/Metropolitan)</i> Total Stations: 3 Heavy (40+): 1 KTFM Medium (20-39): 1 XHTZ Light (Under 20): 1
--

JAMIROQUAI 78/7 <i>Space Cowboy (Work)</i> Total Stations: 6 Heavy (40+): 0 Medium (20-39): 1 WJJS Light (Under 20): 5 New Airplay This Week: 1 WBBM

BOYZ OF PARADIZE 70/8 <i>The Run Around (Dre Force/Rhythm Safari/Priority)</i> Total Stations: 7 Heavy (40+): 0 Medium (20-39): 0 Light (Under 20): 7

D'ANGELO 70/49 <i>Cruisin' (EMI)</i> Total Stations: 9 Heavy (40+): 0 Medium (20-39): 0 Light (Under 20): 9 New Airplay This Week: 5 KCAQ, KMEL, KYLD, WHHH, XHTZ
--

TAKE THAT 69/4 <i>Back For Good (Arista)</i> Total Stations: 9 Heavy (40+): 0 Medium (20-39): 1 KQKS Light (Under 20): 8
--

MONICA 67/16 <i>Like This And Like That (Rowdy/Arista)</i> Total Stations: 5 Heavy (40+): 0 Medium (20-39): 2 WERQ, WJMH Light (Under 20): 3 New Airplay This Week: 1 WERQ

LA BOUCHE 66/15 <i>Sweet Dreams (RCA)</i> Total Stations: 2 Heavy (40+): 1 WBBM Medium (20-39): 0 Light (Under 20): 1

LA BOUCHE 64/11 <i>Be My Lover (RCA)</i> Total Stations: 5 Heavy (40+): 0 Medium (20-39): 2 WBBM, WPOW Light (Under 20): 3
--

HOOTIE & THE BLOWFISH 64/16 <i>Only Wanna Be With You (Atlantic)</i> Total Stations: 11 Heavy (40+): 0
--

Medium (20-39): 1 KKFR Light (Under 20): 10 New Airplay This Week: 1 WBBM

CLICK 61/36 <i>Hurricane (Sick Wid It/Jive)</i> Total Stations: 4 Heavy (40+): 0 Medium (20-39): 2 KMEL, KYLD Light (Under 20): 2 New Airplay This Week: 1 KYLD
--

LUNIZ 57/2 <i>Playa Hata (Noo Trybe)</i> Total Stations: 6 Heavy (40+): 0 Medium (20-39): 1 KYLD Light (Under 20): 5
--

LL COOL J 57/49 <i>Hey Luva (Def Jam/RAL/Island)</i> Total Stations: 6 Heavy (40+): 0 Medium (20-39): 0 Light (Under 20): 6 New Airplay This Week: 2 KYLD, WPGC
--

NICKI FRENCH 55/22 <i>Did You Ever Really Love Me? (Critique)</i> Total Stations: 4 Heavy (40+): 0 Medium (20-39): 2 WJJS, WOVV Light (Under 20): 2 New Airplay This Week: 1 KZHT
--

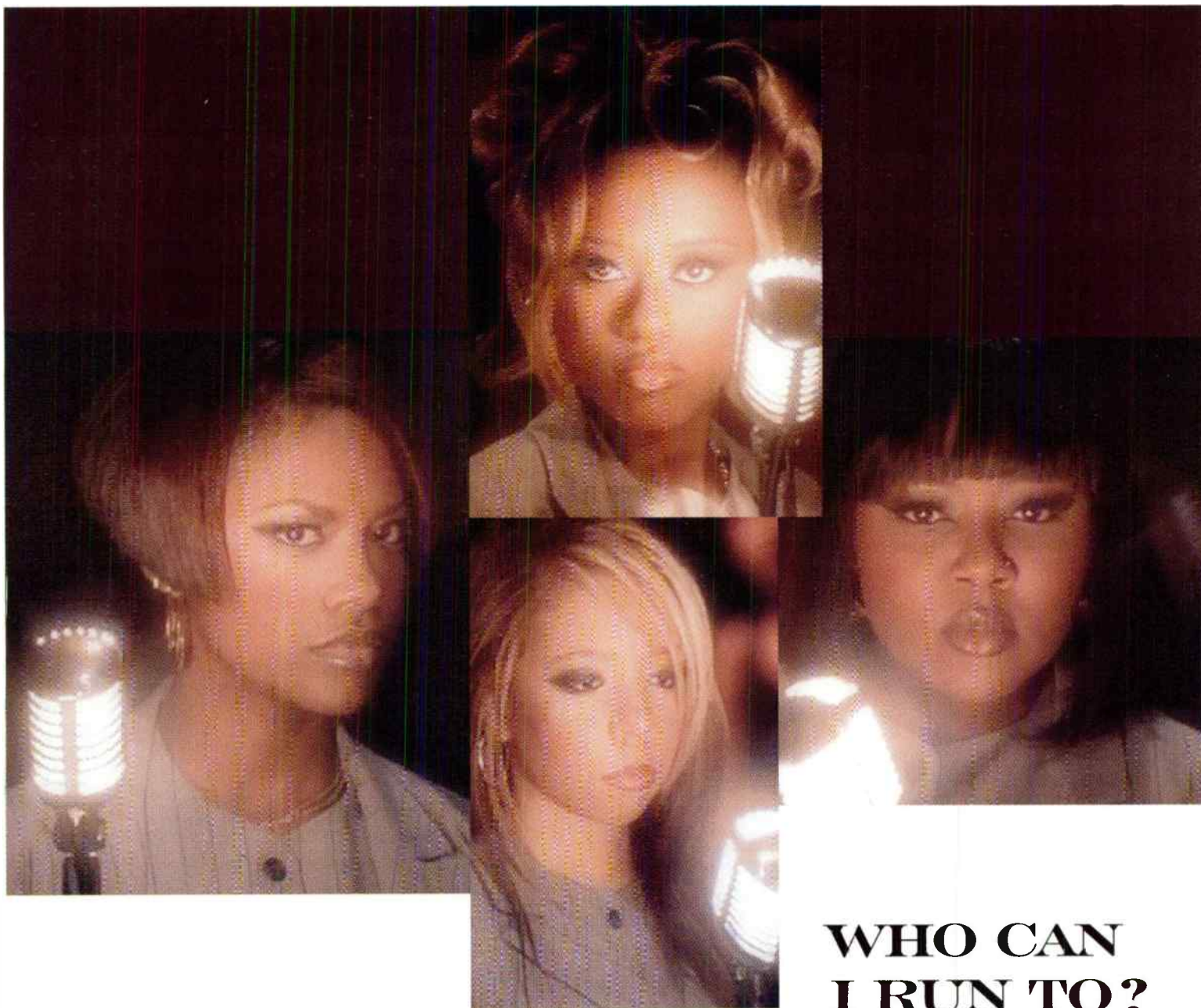
BLESSID UNION OF SOULS 54/9 <i>Let Me Be The One (EMI)</i> Total Stations: 8 Heavy (40+): 0 Medium (20-39): 1 KKFR Light (Under 20): 7
--

2 UNLIMITED 52/12 <i>Here I Go (Radikal/Critique)</i> Total Stations: 3 Heavy (40+): 0 Medium (20-39): 1 KZFM Light (Under 20): 2

WHISTLE 52/52 <i>Chance For Our Love (Select)</i> Total Stations: 3 Heavy (40+): 1 KYLD Medium (20-39): 0 Light (Under 20): 2 New Airplay This Week: 2 KSFM, KYLD
--

MN8 50/4 <i>Happy (Work)</i> Total Stations: 2 Heavy (40+): 0 Medium (20-39): 2 KLUC, XHTZ Light (Under 20): 0
--

KAUSION 50/5 <i>What You Wanna Do? (Lench Mob/Priority)</i> Total Stations: 3 Heavy (40+): 0 Medium (20-39): 1 KPWR Light (Under 20): 2 New Airplay This Week: 1 KYLD
--



SPINS OVER 3000
DEBUT (27) BILLBOARD HOT 100

★★★AIRPOWER★★★
23 - (13) TOP 40/RHYTHM- CROSSOVER MONITOR

SOUNDCAN SINGLE DEBUT (21)
SOUNDCAN SINGLE SOLD OVER 17,000-FIRST WEEK
SOUNDCAN ALBUM SOLD OVER 35,000-THIS WEEK

ALREADY ON:

HOT 97	KMEL	WILD 107
WPGC	KBXX	WJMN
Z90	92Q	KS104
KSFM	WJBT	WWKX
KTFM	WHHH	KZHT
KKBT	WGCI	WJLB

PLUS 85 MORE STATIONS

TOP 5 RESEARCH & REQUEST:

WILD 107	KMEL	KBXX
92Q	WPGC	Z90
WJBT	KKBT	WJMH

VIDEO:

#6 


HEAVY ROTATION!

**WHO CAN
 I RUN TO?**

THE SOULFUL
 SECOND SINGLE FROM
 THEIR FOLLOW-UP LP,
 "OFF THE HOOK."

XSCAPE

PRODUCED BY
 JERMAINE DUPRI
 FOR SO SO DEF
 PRODUCTIONS.
 EXECUTIVE PRODUCERS:
 JERMAINE DUPRI
 AND MICHAEL MAULDIN
 MANAGEMENT: ARTISTIC
 CONTROL MANAGEMENT

"After 2 weeks of airplay, Xscape is a Top 5 Callout and Top 5 Request. This is an absolute smash!"

Michael Martin, PD/MD WILD 107

"This record has been a #1 Callout 3 weeks in a row, 18-34 Female, Black and Hispanic. The audience keeps saying it and we keep playing it."

Rob Scorpio & Greg Head, KBXX

"Top 5 researching record. Sales are phenomenal. This is a hit record."

Russ Allen, 92Q



For Week Ending October 8, 1995

3T Anything (MJJ/550) Total Stations: 23 Chart Move: 20-14

AFTER 7 'Til You Do Me Right (Virgin) Total Stations: 25 Chart Move: 15-12

AZ Sugar Hill (EMI) Total Stations: 19 Chart Move: 29-28

BLAHZAY BLAHZAY Danger (Fader/Mercury) Total Stations: 12 Chart Move: 196/44

BRANDY Brokenhearted (Atlantic) Total Stations: 29 Chart Move: 6-6

MARIAH CAREY Fantasy (Columbia) Total Stations: 32 Chart Move: 1-1

MARIAH CAREY & BOYZ II MEN One Sweet Day (Columbia) Total Stations: 21 Chart Move: Debut 22

DEBORAH COX Sentimental (Arista) Total Stations: 18 Chart Move: 244/29

DOVE SHACK Summertime In The LBC (G Funk/RAL/Island) Total Stations: 8 Chart Move: 224/38

ELAN Better Than You (Strictly Rhythm) Total Stations: 12 Chart Move: 115/44

TERRY ELLIS Where Ever You Are (EastWest/EEG) Total Stations: 19 Chart Move: 215/35

FROST East Side Rendezvous (Ruthless/Relativity) Total Stations: 15 Chart Move: 181/67

GROOVE THEORY Tell Me (Epic) Total Stations: 32 Chart Move: 7-5

CHARLES HILL Don't Let It End (Riot) Total Stations: 7 Chart Move: 159/3

JANET JACKSON Runaway (A&M) Total Stations: 30 Chart Move: 4-3

R. KELLY You Remind Me Of Something (Jive) Total Stations: 20 Chart Move: 203/203

KRS-ONE MC's Act Like They Don't Know (Jive) Total Stations: 9 Chart Move: 113/13

L.A.D. Ridin' Low (Pr/Hollywood) Total Stations: 7 Chart Move: 234/82

L.V. Gangsta's Paradise (Tommy Boy) Total Stations: 6 Chart Move: 109/109

MAX-A-MILLION Sexual Healing (S.O.S./Zoo) Total Stations: 17 Chart Move: 358/95

MIGHTY DUB KATS Magic Carpet Ride (Sm:/e/Profile) Total Stations: 15 Chart Move: 281/34

MONICA Before You Walk Out Of My Life (Rowdy/Arista) Total Stations: 14 Chart Move: Debut 37

THE OUTHERE BROTHERS Boom Boom Boom (Aureus) Total Stations: 20 Chart Move: 310/51

THE PHARCYDE Runnin' (Delicious Vinyl/Capitol) Total Stations: 11 Chart Move: 102/30

PLANET SOUL Set U Free (Strictly Rhythm) Total Stations: 19 Chart Move: 340/56

REAL MCCOY Automatic Lover (Arista) Total Stations: 18 Chart Move: Debut 34

SHAI Come With Me (Gasoline Alley/MCA) Total Stations: 20 Chart Move: 232/29

SOUL FOR REAL If You Want It (Uptown/MCA) Total Stations: 10 Chart Move: 123/39

TLC Diggin' On You (LaFace/Arista) Total Stations: 26 Chart Move: 484/190

XSCAPE Who Can I Run To (So So Def/Columbia) Total Stations: 25 Chart Move: 632/194

QUINCY JONES

"YOU PUT A MOVE ON MY HEART"

Introducing **TAMIA**

THE FIRST SINGLE FROM:  **Q's JOOK JOINT**

PRODUCED BY QUINCY JONES
ARRANGED BY ROD TEMPERTON AND JOHN CLAYTON
MIXED BY BRUCE SWEDIEN



Management: Brenda Richie



©1995 Qwest Records
World Radio History

POWER PLAYLISTS

AIRPLAY Monitor

For Week Ending October 8, 1995

Archie Data Systems

Playlists compiled by Archie Data Systems. Radio track service. Stations selected from panel of leading broadcasters in 125 radio markets electronically monitored 24 hours a day, 7 days a week. Songs ranked by stations on plays in monitored week.

Q104 PD: Mary Ellen Kachinske MD: Steve Curry. Table with 30 rows of song titles, artists, and chart positions.

MIX 102.9 PD: Russ Morley APD/MD: Kim Ashley. Table with 30 rows of song titles, artists, and chart positions.

STAR 101.5 PD: John Dimick. Table with 30 rows of song titles, artists, and chart positions.

KYKY PD: Smokey Rivers MD: Greg Hewitt. Table with 30 rows of song titles, artists, and chart positions.

MIX 96 PD: Mason Dixon MD: Rico Blanco. Table with 30 rows of song titles, artists, and chart positions.

WALK PD: Gene Michaels MD: Charlie Lombardo. Table with 30 rows of song titles, artists, and chart positions.

VARIETY 96 PD: Bruce Gilbert MD: Scott Alexander. Table with 30 rows of song titles, artists, and chart positions.

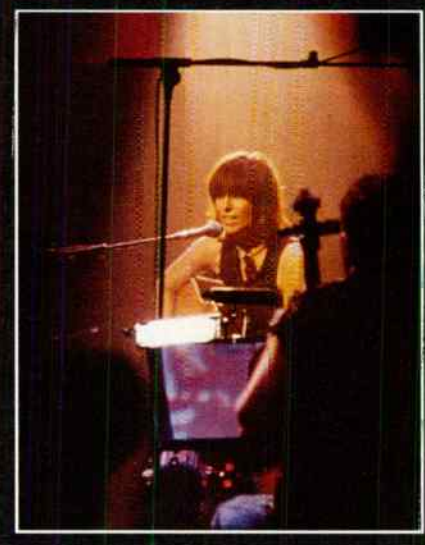
WKTI PD: Danny Clayton MD: Leonard Peace. Table with 30 rows of song titles, artists, and chart positions.

WBLI PD: Stefan Rybak MD: Al Levine. Table with 30 rows of song titles, artists, and chart positions.

ALICE 106 PD: Gregg Cassidy MD: Jim Lawson. Table with 30 rows of song titles, artists, and chart positions.

STAR 100.7 CM: Tracy Johnson. Table with 30 rows of song titles, artists, and chart positions.

SUNNY 107.9 PD: John McFadden MD: Arroe Collins. Table with 30 rows of song titles, artists, and chart positions.



PRETENDERS "SENSE OF PURPOSE"

THE DEBUT SINGLE FROM THE SOON TO BE RELEASED ALBUM THE ISLE OF VIEW

ON YOUR DESK NOW!

k.d. LANG "IF I WERE YOU"

FROM THE ALBUM ALL YOU CAN EAT

PLAYING ON:

- KHMX, WMEW, KRLB, STAR 100, KMAJ, WEZF, WJRZ, KMGQ, WMXS, WQSM, KOSO, WKEE, WMXB, WQMZ, AND MORE



GOO GOO DOLLS "NAME"

FROM A BOY NAMED GOO

26 - 20

TOP 40 MAINSTREAM CHART! AUDIENCE REACH APPROACHING 14 MILLION

SPINNING ON:

- STAR 98.7, 34x, WPLJ, 18X, KALC, 37X, WTMX, 32X, WZPK, 22X, KHMX, 18X, WKTI, 13X, WKDD, 12X, WYYY, 10X, WMTX, ADD!, WBLI, KSTP, AND MORE!

37 TOP 40/ ADULT AIRPLAY CHART! 22 HOT SHOT DEBUT HOT 100 SINGLES



BDS IMPACT

AIRPOWER
(Minimum 600 detections for the first time)

NO RECORDS QUALIFIED FOR AIRPOWER THIS WEEK

AIRPOWER BOUND

Total Plays/Gain

COLLECTIVE SOUL 536/91
December (Atlantic)

Total Stations: 27/Chart Move: 22-21
Heavy (30+ plays): 8 KALC, KHM, KWMX, KYSR, WPNT, WQAL, WVTY, WWSN
Medium (15-29): 9 KFMB, KSTZ, WIVY, WKDD, WKTI, WMXB, WMXV, WPLJ, WZPK
Light (Under 15): 10
New Airplay This Week: 4 KSTP, WIVY, WKZL, WVTY

PETER CETERA & CRYSTAL BERNARD 448/64
Forever Tonight (River North)

Total Stations: 27/Chart Move: 23-23
Heavy (30+): 2 WLHT, WMJQ
Medium (15-29): 16 KGBX, KGBY, KMZQ, WAHR, WALK, WBEB, WCSO, WDEF, WGSY, WJDX, WMC, WMTX, WMXL, WRMF, WYYY, WZPK
Light (Under 15): 13

PRETENDERS 379/16
I'll Stand By You (Sire/Warner Bros.)

Total Stations: 26/Chart Move: 23-24
Heavy (30+): 5 KFMB, KHM, KWMX, KYSR, WTMX
Medium (15-29): 6 KALC, KIOI, KISN, KPLZ, WEZF, WRQX
Light (Under 15): 15
New Airplay This Week: 2 KISN, WVTY

MEAT LOAF 354/100
I'd Lie For You (And That's The Truth) (MCA)

Total Stations: 30/Chart Move: 31-25
Heavy (30+): 1 WEZF
Medium (15-29): 11 KIOI, KPLZ, KYKY, WIVY, WKDD, WKTI, WMXL, WMXV, WPLJ, WWSN, WZPK
Light (Under 15): 18
New Airplay This Week: 7 KSTZ, WBMX, WIVY, WKDD, WMYI, WTFM, WTMX

JIMMY BUFFETT 341/7
Mexico (Margaritaville/MCA)

Total Stations: 28/Chart Move: 25-26
Heavy (30+): 2 WLHT, WRQX
Medium (15-29): 10 KDMX, WAHR, WALK, WDEF, WKDD, WKTI, WMJQ, WMTX, WTFM, WZPK
Light (Under 15): 16

BLESSID UNION OF SOULS 329/15
Let Me Be The One (EMI)

Total Stations: 21/Chart Move: 26-27
Heavy (30+): 2 WKTI, WZPK
Medium (15-29): 10 KDMX, WAHR, WJDX, WKDD, WLHT, WMJQ, WMXL, WMXV, WPLJ, WVTY
Light (Under 15): 9
New Airplay This Week: 1 WALK

ELTON JOHN 327/222
Blessed (Rocket/Island)

Total Stations: 25/Chart Move: Debut 28
Heavy (30+): 2 KGBY, WQLH
Medium (15-29): 8 WAEV, WDEF, WEZF, WJDX, WKQI, WLHT, WMJQ, WTFM
Light (Under 15): 15
New Airplay This Week: 12 KGBX, KHM, WAEV, WBEB, WEZF, WGSY, WKQI, WLHT, WMTX, WMXL, WMYI, WQLH

TLC 317/24
Waterfalls (LaFace/Arista)

Total Stations: 18/Chart Move: 28-29
Heavy (30+): 4 KTHT, WQLH, WYXR, WZPK
Medium (15-29): 3 KALC, WKTI, WMTX
Light (Under 15): 11

CORRS 303/29
Runaway (143/Lava/Atlantic)

Total Stations: 22/Chart Move: 30-30
Heavy (30+): 0
Medium (15-29): 12 KIOI, KISN, KPLZ, KWMX, WBLI, WBMX, WEZF, WKDD, WKQI, WKTI, WPLJ, WWSN
Light (Under 15): 10
New Airplay This Week: 3 KISN, WKDD, WVAF

DAVE MATTHEWS BAND 278/124
Ants Marching (RCA)

Total Stations: 22/Chart Move: 39-31
Heavy (30+): 0
Medium (15-29): 9 KISN, KVVU, KYSR, WKDD, WMC, WPLJ, WTMX, WYYY, WZPK
Light (Under 15): 13
New Airplay This Week: 6 KFMB, WAEV, WCSO, WMXV, WTMX, WVAF

LISA LOEB & NINE STORIES 242/108
Do You Sleep? (Geffen)

Total Stations: 19/Chart Move: Debut 33
Heavy (30+): 1 KYSR
Medium (15-29): 8 KALC, KDMX, KFMB, KHM, KSTP, WTMX, WVTY, WZPK
Light (Under 15): 10
New Airplay This Week: 3 KDMX, KSTP, WVTY

TOAD THE WET SPROCKET 230/79
Good Intentions (Columbia/Reprise)

Total Stations: 17/Chart Move: 40-35
Heavy (30+): 0
Medium (15-29): 10 KALC, KHM, KPLZ, KWMX, KYSR, WBLI, WMBX, WMXL, WVTY, WZPK
Light (Under 15): 7
New Airplay This Week: 3 KPLZ, KYSR, WEZF

JON B. FEAT. BABYFACE 207/14
Someone To Love (Yab Yum/550 Music)

Total Stations: 20/Chart Move: 35-36
Heavy (30+): 3 KIOI, KTHT, WYXR
Medium (15-29): 1 WEZF
Light (Under 15): 16

MOST NEW AIRPLAY THIS WEEK

- ELTON JOHN 12**
Blessed (Rocket/Island)
- MEAT LOAF 7**
I'd Lie For You (And That's The Truth) (MCA)
- JUDE COLE 6**
Believe In You (Island)
- DAVE MATTHEWS BAND 6**
Ants Marching (RCA)
- COLLECTIVE SOUL 4**
December (Atlantic)
- HOOTIE & THE BLOWFISH 4**
Time (Atlantic)

GOO GOO DOLLS 206/49
Name (Metal Blade/Warner Bros.)

Total Stations: 17/Chart Move: 38-37
Heavy (30+): 3 KALC, KYSR, WTMX
Medium (15-29): 3 KHM, WPLJ, WZPK
Light (Under 15): 11
New Airplay This Week: 2 WPLJ, WYYY

DEEP BLUE SOMETHING 189/87
Breakfast At Tiffany's (RainMaker/Interscope)

Total Stations: 13/Chart Move: Debut 38
Heavy (30+): 2 KYSR, WTMX
Medium (15-29): 5 KFMB, KHM, WKTI, WYYY, WZPK
Light (Under 15): 7
New Airplay This Week: 3 KFMB, WPLJ, WZPK

SARAH MCLACHLAN 179/43
I Will Remember You (Arista)

Total Stations: 18/Chart Move: Debut 40
Heavy (30+): 1 KHM
Medium (15-29): 2 KPLZ, KWMX
Light (Under 15): 15
New Airplay This Week: 3 KDMX, WMC, WMXV

CHART BOUND

Total Plays/Gain

JUDE COLE 176/98
Believe In You (Island)

Total Stations: 17
Heavy (30+): 0
Medium (15-29): 5 KHM, KPLZ, KWMX, WKDD, WMXV
Light (Under 15): 12
New Airplay This Week: 6 KPLZ, WBEB, WBLI, WKDD, WMC, WMYI

JON SECADA & SHANICE 138/20
If I Never Knew You (Hollywood)

Total Stations: 13
Heavy (30+): 2 KGBY, KIOI
Medium (15-29): 2 KTHT, WGSY
Light (Under 15): 9
New Airplay This Week: 3 WDEF, WJDX, WMJQ

THIS WEEK	LAST WEEK	WEEKS ON	TITLE/LABEL	ARTIST	TW	LW	DETECTIONS
			*** No. 1 ***				
1	1	17	KISS FROM A ROSE ZTT/SIRE/WARNER BROS.	SEAL	1912	1993	
2	2	22	AS I LAY ME DOWN COLUMBIA	SOPHIE B. HAWKINS	1740	1739	
3	3	14	ONLY WANNA BE WITH YOU ATLANTIC	HOOTIE & THE BLOWFISH	1582	1587	
4	5	20	RUN-AROUND A&M	BLUES TRAVELER	1470	1463	
5	4	20	I CAN LOVE YOU LIKE THAT BLITZZ/ATLANTIC	ALL-4-ONE	1357	1463	
6	6	11	BACK FOR GOOD ARISTA	TAKE THAT	1281	1180	
7	7	11	YOU ARE NOT ALONE EPIC	MICHAEL JACKSON	1152	1150	
8	8	7	FANTASY COLUMBIA	MARIAH CAREY	1096	1036	
9	9	10	ROLL TO ME A&M	DEL AMITRI	1077	1034	
10	13	8	RUNAWAY A&M	JANET JACKSON	1040	976	
11	12	22	I'LL BE THERE FOR YOU EASTWEST/EEG	THE REMBRANDTS	979	1024	
12	10	18	COLORS OF THE WIND HOLLYWOOD	VANESSA WILLIAMS	925	1055	
13	16	10	TIL I HEAR IT FROM YOU A&M	GIN BLOSSOMS	903	766	
14	14	13	I COULD FALL IN LOVE EMI LATIN/EMI	SELENA	880	925	
15	19	7	CARNIVAL ELEKTRA/EEG	NATALIE MERCHANT	829	722	
16	11	9	CAN I TOUCH YOU...THERE? COLUMBIA	MICHAEL BOLTON	768	1018	
17	18	47	IN THE HOUSE OF STONE AND LIGHT MERCURY/MARTIN PAGE		761	759	
18	15	37	I KNOW COLUMBIA	DIONNE FARRIS	734	807	
19	21	27	LET HER CRY ATLANTIC	HOOTIE & THE BLOWFISH	691	722	
20	20	25	WATER RUNS DRY MOTOWN	BOYZ II MEN	611	718	
21	22	10	DECEMBER ATLANTIC	COLLECTIVE SOUL	536	445	
22	17	15	WALK IN THE SUN RCA	BRUCE HORNSBY	517	771	
23	23	8	FOREVER TONIGHT RIVER NORTH PETER CETERA & CRYSTAL BERNARD		448	384	
24	24	31	I'LL STAND BY YOU SIRE/WARNER BROS.	PRETENDERS	379	363	
25	31	2	I'D LIE FOR YOU (AND THAT'S THE TRUTH) MCA	MEAT LOAF	354	254	
26	25	7	MEXICO MARGARITAVILLE/MCA	JIMMY BUFFETT	341	334	
27	26	7	LET ME BE THE ONE EMI	BLESSID UNION OF SOULS	329	314	
28	NEW		BLESSED ROCKET/ISLAND	ELTON JOHN	327	105	
29	28	12	WATERFALLS LAFACE/ARISTA	TLC	317	293	
30	30	3	RUNAWAY 143/LAVA/ATLANTIC	THE CORRS	303	274	
31	39	3	ANTS MARCHING RCA	DAVE MATTHEWS BAND	278	154	
32	27	22	BIG YELLOW TAXI A&M	AMY GRANT	250	306	
33	NEW		DO YOU SLEEP? GEFGEN	LISA LOEB & NINE STORIES	242	134	
34	32	19	SOMEBODY'S CRYING REPRISE	CHRIS ISAAK	232	226	
35	40	2	GOOD INTENTIONS COLUMBIA/REPRISE	TOAD THE WET SPROCKET	230	151	
36	35	15	SOMEONE TO LOVE YAB YUM/550 MUSIC	JON B. FEATURING BABYFACE	207	193	
37	38	2	NAME METAL BLADE/WARNER BROS.	GOO GOO DOLLS	206	157	
38	NEW		BREAKFAST AT TIFFANY'S RAINMAKER/INTERSCOPE	DEEP BLUE SOMETHING	189	102	
39	33	13	CAN'T CRY ANYMORE A&M	SHERYL CROW	187	221	
40	NEW		I WILL REMEMBER YOU ARISTA	SARAH MCLACHLAN	179	136	

Records showing an increase in detections over the previous week, regardless of chart movement. A record which has been on the chart for more than 20 weeks will not receive a bullet, even if it registers an increase in detections. Airpower awarded to those records which attain 600 detections for the first time. If two records are tied in number of plays, the record being played on more stations is placed first. Records below the top 20 are removed from the chart after 26 weeks. © 1995, Billboard/BPI Communications.



jude cole
"believe in you"

stations playing:

- | | | |
|--------|-------|------|
| WMXV | KHM | KDM |
| KPLZ | KWM | KYK |
| KSFI | WBLI | WMXB |
| FM 100 | WMXL | WNSN |
| KISN | WWNK | WLTE |
| KS95 | KQ102 | WMAS |
| WLIF | WBEB | WRVR |



A PolyGram Company



SONG ACTIVITY REPORTS

Broadcast Data Systems
Detailed song tracking information for the last 3 weeks for all songs showing increased play this week. Total plays and gain do not include video play. Markets listed in order of population.

For Week Ending October 8, 1995

Grid of 16 song activity reports for artists including Blessid Union of Souls, Blues Traveler, Jimmy Buffett, Mariah Carey, Peter Dinklage & Crystal Bernard, Collective Soul, The Corrs, Del Amitri, Gin Blossoms, Janet Jackson, Michael Jackson, Elton John, Lisa Loeb & Nine Stories, Dave Matthews Band, Meat Loaf, Natalie Merchant, Pretenders, Take That, and TLC. Each report includes station data, chart movement, and regional performance.

POWER PLAYLISTS™

KROQ

Los Angeles PD: Kevin Weatherly APD: Gene Sandbloom. Chart with 30 entries including Green Day, Presidents Of The United State, Lump, Edwyn Collins, A Girl Like You, Bush, Come Down, Red Hot Chili Peppers, My Friends, Natalie Merchant, Carnival, Folk Implosion, Natural One, Rentals, Friends Of P, Smashing Pumpkins, Bullet With Butterfly, Rancid, Time Bomb, Goo Goo Dolls, Name, Silverchair, Tomorrow, Presidents Of The United State, Kitty, Alanis Morissette, All I Really Want, Foo Fighters, I'll Stick Around, Tripping Daisy, I Got A Girl, Alanis Morissette, Hand In My Pocket, Weezer, Say It Ain't So, Red Hot Chili Peppers, Warped, Toadies, Possum Kingdom, Rancid, Ruby Soho, Garbage, Queer, Joan Osborne, One Of Us, Filter, Hey Man Nice Shot, Green Day, I Ain't So, Seaweed, Start With, Pearl Jam, Breath, Meat Puppets, Scum, Collective Soul, The World I Know, Elastica, Stutter.

WKQX

Chicago PD: Bill Gamble APD/MD: Mary Shuminas. Chart with 30 entries including Green Day, Presidents Of The United State, Lump, Alanis Morissette, Hand In My Pocket, Red Hot Chili Peppers, My Friends, Smashing Pumpkins, Bullet With Butterfly, Live, White, Discussion, Red Hot Chili Peppers, Warped, Bush, Come Down, Folk Implosion, Natural One, Garbage, Queer, Pearl Jam, Inimortality, Rentals, Friends Of P, Natalie Merchant, Carnival, Rancid, Time Bomb, CIV, Can't Wait One Minute More, Dave Matthews Band, Ants Marching, Joan Osborne, One Of Us, Filter, Deep, Blue, Weezer, Say It Ain't So, Edwyn Collins, A Girl Like You, Goo Goo Dolls, Name, Melissa Etheridge, Your Little Secret, Blues Traveler, Hook, The Nixons, Happy Song, Alanis Morissette, All I Really Want, Red Hot Chili Peppers, My Friends, Rusted Root, Send Me On My Way, Collective Soul, The World I Know, Lenny Kravitz, Rock And Roll Is Dead, Morrissey, The Boy Racer, Hootie & The Blowfish, Drowning, Filter, Hey Man Nice Shot.

WDRE

Long Island Interim MD: Jed Morey. Chart with 30 entries including Foo Fighters, I'll Stick Around, Presidents Of The United State, Lump, Garbage, Queer, Green Day, Geek Stink Breath, Alanis Morissette, Hand In My Pocket, Goo Goo Dolls, Name, Bush, Come Down, Rancid, Time Bomb, Red Hot Chili Peppers, My Friends, Candlebox, Simple Lessons, Toad The Wet Sprocket, Good Intentions, David Bowie, The Hearts Filthy Lesson, Lenny Kravitz, Rock And Roll Is Dead, David Byrne, The World I Know, Smashing Pumpkins, Bullet With Butterfly, Urge Overkill, The Break, Red Hot Chili Peppers, Warped, Heather Nova, Walk This World, Red Hot Chili Peppers, My Friends, The Charlatans UK, Just Lookin', Lisa Loeb & Nine Stories, Do You Sleep?, P.M. Dawn, Downtown Venus, Dandelion, Weirid Out, Soul Asylum, Just Like Anyone, Collective Soul, Smashing Young Man, P.M. Dawn, Downtown Venus, Red Hot Chili Peppers, My Friends, Soul Asylum, Just Like Anyone, Natalie Merchant, Wonder, Morrissey, The Boy Racer, Hootie & The Blowfish, In The Blood, Silverchair, Tomorrow.

WBCN

Boston VP/Programming: Qedipus MD: Carter Alan. Chart with 30 entries including Presidents Of The United State, Lump, Green Day, Geek Stink Breath, Bush, Come Down, Red Hot Chili Peppers, My Friends, Alanis Morissette, Hand In My Pocket, Toadies, Possum Kingdom, Silverchair, Tomorrow, Smashing Pumpkins, Bullet With Butterfly, Oasis, Mummy Glory, Urge Overkill, The Break, Rancid, Time Bomb, Meat Puppets, Scum, Garbage, Queer, Candlebox, Simple Lessons, Foo Fighters, I'll Stick Around, CIV, Can't Wait One Minute More, Foo Fighters, This Is A Call, Goo Goo Dolls, Name, Alanis Morissette, All I Really Want, Ruth Ruth, Uninvited, Collective Soul, December, Folk Implosion, Natural One, Natalie Merchant, Carnival, Heather Nova, Walk This World, Seaweed, Start With, -311-, Don't Stay Home, Alice In Chains, Lind, Melissa Etheridge, Your Little Secret, Offspring, Gettin' Out Away, Matthew Sweet, Sick Of Myself.

WHYT

Detroit PD: Rick Gillette. Chart with 30 entries including Goo Goo Dolls, Name, Alanis Morissette, All I Really Want, Red Hot Chili Peppers, My Friends, Presidents Of The United State, Lump, Toadies, Possum Kingdom, Folk Implosion, Natural One, Rat Bat Blue, The Good Life, Bush, Come Down, Edwyn Collins, A Girl Like You, Bjork, It's Oh So Quiet, Green Day, Geek Stink Breath, Garbage, Queer, Dave Matthews Band, Ants Marching, Rancid, Time Bomb, Lisa Loeb & Nine Stories, Do You Sleep?, God Lives Underwater, All Wrong, Ruth Ruth, Uninvited, -311-, Don't Stay Home, Alanis Morissette, Hand In My Pocket, Silverchair, Tomorrow, Sponge, Ramin, Rentals, Friends Of P, Smashing Pumpkins, Bullet With Butterfly, Foo Fighters, I'll Stick Around, P.M. Dawn, Downtown Venus, Meat Puppets, Scum, Seal, Fish Face, A Rose, Gin Blossoms, Till I Hear It From You, Oasis, Live Forever, Natalie Merchant, Carnival.

KDGE

Dallas PD: Joel Folger MD: Jay Michaels. Chart with 30 entries including Toadies, Possum Kingdom, Alanis Morissette, Hand In My Pocket, Pearl Jam, Live Through This, Presidents Of The United State, Lump, Silverchair, Tomorrow, Natalie Merchant, Carnival, Goo Goo Dolls, Name, Bush, Come Down, Dave Matthews Band, Ants Marching, Hootie & The Blowfish, Only Wanna Be With You, Green Day, Geek Stink Breath, Lisa Loeb & Nine Stories, Do You Sleep?, Blues Traveler, Hiak, Live, All Over You, Del Amitri, Roll To Me, Alanis Morissette, You Oughta Know, Collective Soul, December, Smashing Pumpkins, Bullet With Butterfly, Deep Blue Something, Breakfast At Tiffany's, Better Than Ezra, In The Blood, Edwyn Collins, A Girl Like You, Alanis Morissette, All I Really Want, Tripping Daisy, I Got A Girl, Melissa Etheridge, Your Little Secret, Urge Overkill, The Break, Rentals, Friends Of P, Red Hot Chili Peppers, My Friends, Weezer, Say It Ain't So, Elastica, Connection, The Nixons, Happy Song.

WHFS

Washington, DC PD: Robert Benjamin APD: Bob Waugh. Chart with 30 entries including Bush, Come Down, Goo Goo Dolls, Name, Natalie Merchant, Wonder, Foo Fighters, I'll Stick Around, Toad The Wet Sprocket, Good Intentions, Alanis Morissette, Hand In My Pocket, Smashing Pumpkins, Bullet With Butterfly, Green Day, Geek Stink Breath, Ruth Ruth, Uninvited, Red Hot Chili Peppers, My Friends, Toadies, Possum Kingdom, Jewel, With Your Head, Presidents Of The United State, Lump, The Cranberries, Liar, Silverchair, Tomorrow, Better Than Ezra, In The Blood, Live, White, Discussion, Edwyn Collins, A Girl Like You, Heather Nova, Walk This World, Gin Blossoms, Till I Hear It From You, Garbage, Queer, Folk Implosion, Natural One, Rusted Root, Send Me On My Way, Meat Puppets, Scum, Alanis Morissette, All I Really Want, Matthew Sweet, Super Baby, Blues Traveler, Hook, Elastica, Stutter, Foo Fighters, This Is A Call, Live, All Over You.

KITS

San Francisco VP/Prgm: Richard Sands MD: Steve Masters. Chart with 30 entries including Edwyn Collins, A Girl Like You, Foo Fighters, I'll Stick Around, Goo Goo Dolls, Name, Alanis Morissette, Hand In My Pocket, Green Day, Geek Stink Breath, Smashing Pumpkins, Bullet With Butterfly, Red Hot Chili Peppers, My Friends, Presidents Of The United State, Kitty, Natalie Merchant, Carnival, Presidents Of The United State, Lump, Toadies, Possum Kingdom, Garbage, Queer, Rentals, Friends Of P, Folk Implosion, Natural One, Joan Osborne, One Of Us, Elastica, Stutter, Blur, Country House, Collective Soul, The World I Know, Bush, Come Down, Heather Nova, Walk This World, Silverchair, Tomorrow, Better Than Ezra, In The Blood, Foo Fighters, Big Me, Alanis Morissette, You Oughta Know, Elastica, Connection, Bjork, It's Oh So Quiet, Trapping Daisy, Paranza, Jawbreaker, Fillman, The Cure, Just Like Heaven, Alanis Morissette, All I Really Want.

WNNX

Atlanta PD: Brian Philips APD: Leslie Fram. Chart with 30 entries including Foo Fighters, I'll Stick Around, Edwyn Collins, A Girl Like You, Bush, Come Down, Toadies, Possum Kingdom, Goo Goo Dolls, Name, Red Hot Chili Peppers, My Friends, Better Than Ezra, In The Blood, Alanis Morissette, Hand In My Pocket, Seven Mary Three, Cumberbome, -311-, Don't Stay Home, Natalie Merchant, Carnival, Collective Soul, The World I Know, Rusted Root, Send Me On My Way, Garbage, Queer, Heather Nova, Walk This World, Folk Implosion, Natural One, Silverchair, Pure Massacre, Green Day, Geek Stink Breath, Becky Sharp, Beach Beat, Rancid, Time Bomb, R.E.M., Tongue, Silverchair, Molly, Rentals, Friends Of P, Elastica, Connection, Sponge, Flowed, Trapping Daisy, Paranza, Candlebox, Simple Lessons, Live, I Ain't So, Eleven, Why, Natalie Merchant, Wonder.

KEGE

Minneapolis PD: John Lassman MD: Wade Linder. Chart with 30 entries including Presidents Of The United State, Lump, Dandelion, Weirid Out, Natalie Merchant, Carnival, Bush, Come Down, Red Hot Chili Peppers, My Friends, Rancid, Time Bomb, Edwin McCain, Solitude, Folk Implosion, Natural One, Melissa Etheridge, Your Little Secret, Heather Nova, Walk This World, Collective Soul, The World I Know, Green Day, Geek Stink Breath, Red Hot Chili Peppers, Warped, The Cranberries, Liar, Smashing Pumpkins, Bullet With Butterfly, Goo Goo Dolls, Name, Garbage, Queer, Alanis Morissette, All I Really Want, Silverchair, Tomorrow, Foo Fighters, I'll Stick Around, Meat Puppets, Scum, Alanis Morissette, Hand In My Pocket, Brother Cane, And Foggy Shine On, Lisa Loeb & Nine Stories, Do You Sleep?, Toadies, Possum Kingdom, Blivet, Mother, Down, Joan Osborne, One Of Us, Alanis Morissette, You Oughta Know, Toad The Wet Sprocket, Good Intentions, Lenny Kravitz, Rock And Roll Is Dead.

WMMS

Cleveland OM/PD: John Gorman APD/MD: Doug Kubinski. Chart with 30 entries including Presidents Of The United State, Lump, Silverchair, Tomorrow, Edwyn Collins, A Girl Like You, Goo Goo Dolls, Name, Toadies, Possum Kingdom, Rancid, Time Bomb, Bush, Come Down, Red Hot Chili Peppers, My Friends, CIV, Can't Wait One Minute More, Heather Nova, Walk This World, Foo Fighters, I'll Stick Around, Green Day, Geek Stink Breath, Lenny Kravitz, Rock And Roll Is Dead, Candlebox, Simple Lessons, Joan Osborne, One Of Us, Live, White, Discussion, Alanis Morissette, Hand In My Pocket, Smashing Pumpkins, Bullet With Butterfly, God Lives Underwater, No More Love, 1000 Mona Lisa's, You Oughta Know, White Zombie, Electric Head Pt. 2, Chris Isaak, Go Walking Down There, Alice In Chains, Grind, Rentals, Friends Of P, Folk Implosion, Natural One, Lisa Loeb & Nine Stories, Do You Sleep?, Melissa Etheridge, Your Little Secret, Prick, Animal, Public Display Of Infection, Strange Lit.

KOME

San Jose OM: Ron Nenni PD/MD: Jay Taylor. Chart with 30 entries including Green Day, Geek Stink Breath, Bush, Come Down, Edwyn Collins, A Girl Like You, Red Hot Chili Peppers, My Friends, Presidents Of The United State, Lump, Alanis Morissette, All I Really Want, Rentals, Friends Of P, Folk Implosion, Natural One, Presidents Of The United State, Kitty, Toadies, Possum Kingdom, Foo Fighters, I'll Stick Around, Tripping Daisy, I Got A Girl, Natalie Merchant, Carnival, Seaweed, Start With, Alanis Morissette, Hand In My Pocket, Weezer, Say It Ain't So, Red Hot Chili Peppers, Warped, Jawbreaker, Fireman, Goo Goo Dolls, Name, Silverchair, Tomorrow, Collective Soul, The World I Know, Smashing Pumpkins, Bullet With Butterfly, Elastica, Stutter, Silverchair, Pure Massacre, Filter, Hey Man Nice Shot, Meat Puppets, Scum.

Main chart with columns: THIS WEEK, LAST WEEK, WKS. ON CHART, TITLE/LABEL/DISTRIBUTING LABEL, ARTIST, TW, LW, DETECTIONS. Includes top 40 entries with star ratings and airpower indicators.

Records showing an increase in detections over the previous week, regardless of chart movement. A record which has been on the chart for more than 20 weeks will not receive a bullet, even if it registers an increase in detections. Airpower awarded to those records which attain 90 detections for the first time. If two records are tied in number of plays, the record being played on more stations is placed first. ©1995, Billboard/BPI Communications.

First there were credible charts. Now there's incredible news!

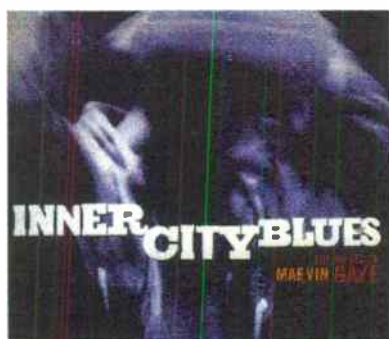
Airplay Monitor—everything you expected and news coverage too!



• Top 40 Airplay Monitor • Country Airplay Monitor • R&B Airplay Monitor • Rock Airplay Monitor. The only radio publications based exclusively on electronically monitored airplay from Broadcast Data Systems. • Airplay Charts • Power Playlists • Biggest Gainers • New Releases • Song Activity Reports • Impact Pages • Monitored Video Playlists • PLUS all the latest radio and music industry news* every week!

CALL 1-800-722-2346 TO SUBSCRIBE! Part of the Billboard Music Group.

Special Offer for Billboard Subscribers. Receive Top 40 Airplay Monitor for the discount rate of \$179/year. Receive any of the other Airplay Monitors (Rock, R&B, Country) for the discount rate of \$149/year. That's a 25% discount off of the regular subscription rates!



3145-30452-2/4



*Motown Congratulates
Billboard on a Successful
Second Annual Conference*

INNER CITY BLUES

THE MUSIC OF
MARVIN GAYE

**FEATURING: BONO, BOYZ II MEN, NENEH CHERRY, DIGABLE PLANETS,
NONA GAYE, MADONNA WITH MASSIVE ATTACK, SOUNDS OF
BLACKNESS, SPEECH, LISA STANSFIELD, STEVIE WONDER
COMING TO YOU IN RECORD STORES OCTOBER 17TH ACCOMPANIED
BY THE 90 MINUTE TV SPECIAL ON  THURSDAY OCTOBER 19TH.**



© 1995 MOTOWN RECORD CO., L.P.

COMBINED TOP 40 MONITOR AIRPLAY									AIRPLAY THIS WEEK BY FORMAT													
TW	LW	WKS	TITLE (LABEL)	ARTIST	THIS WEEK			LAST WEEK			MAINSTREAM		RHYTHM		ADULT		MODERN					
					Audience (millions)	Detections No.	Rank	Audience (millions)	Detections No.	Rank	Audience (millions)	Detections No.	Rank	Audience (millions)	Detections No.	Rank	Audience (millions)	Detections No.	Rank			
1	2	7	FANTASY (COLUMBIA)	MARIAH CAREY	73.4574	6383	1	69.3656	6122	2	28.7440	3347	2	34.1643	1917	1	10.4633	1096	8	0.0858	23	—
2	1	16	KISS FROM A ROSE (ZTT/SIRE/WARNER BROS.)	SEAL	70.7470	6222	2	74.4740	6581	1	34.9682	3320	3	10.8879	865	8	24.0076	1912	1	0.8833	125	—
3	3	14	ONLY WANNA BE WITH YOU (ATLANTIC)	HOOTIE & THE BLOWFISH	53.4532	5393	4	55.8523	5599	3	30.8127	3437	1	0.9947	64	—	19.3776	1582	3	2.2682	310	—
4	4	8	RUNAWAY (A&M)	JANET JACKSON	47.6819	5409	3	50.7652	5315	4	23.4211	3042	4	14.5059	1327	3	9.7549	1040	10	—	—	—
5	5	13	YOU ARE NOT ALONE (EPIC)	MICHAEL JACKSON	43.3334	4894	5	47.8457	5203	5	18.5237	2508	10	13.9534	1233	4	10.8538	1152	7	0.0025	1	—
6	8	12	AS I LAY ME DOWN (COLUMBIA)	SOPHIE B. HAWKINS	42.8349	4469	6	43.6412	4423	6	21.5939	2628	7	0.8147	92	—	20.4146	1740	2	0.0117	9	—
7	7	21	RUN-AROUND (A&M)	BLUES TRAVELER	42.0326	4263	8	44.2112	4346	7	19.7801	2383	11	0.0668	9	—	19.3279	1470	4	2.8578	401	—
8	9	11	CARNIVAL (ELEKTRA/EEG)	NATALIE MERCHANT	41.3022	3952	9	40.6432	3873	9	21.4553	2360	12	0.1076	13	—	10.9521	829	15	8.7872	750	18
9	6	8	GANGSTA'S PARADISE (MCA)	COOLIO FEATURING L.V.	39.6833	2564	20	44.9062	2695	18	13.3870	1159	26	26.2136	1401	2	—	—	—	0.0827	4	—
10	11	11	TIL I HEAR IT FROM YOU (A&M)	GIN BLOSSOMS	39.3850	4314	7	37.8091	4334	8	21.7479	2649	6	0.1388	17	—	12.9786	903	13	4.5197	745	19
11	13	10	ROLL TO ME (A&M)	DEL AMITRI	38.3297	3907	10	35.8735	3776	12	22.5615	2561	9	0.1269	13	—	14.2982	1077	9	1.3431	256	—
12	12	19	WATERFALLS (LAFACE/ARISTA)	TLC	36.7119	3750	11	37.6816	3837	10	23.3855	2699	5	10.7161	725	10	2.6003	317	29	0.0100	9	—
13	10	20	I CAN LOVE YOU LIKE THAT (BLITZZ/ATLANTIC)	ALL-4-ONE	35.5394	3412	13	40.8232	3778	11	15.7672	1629	17	5.1255	426	24	14.6467	1357	5	—	—	—
14	16	6	NAME (METAL BLADE/WARNER BROS.)	GOO GOO DOLLS	31.2078	3532	12	27.6535	3197	14	12.4978	1367	20	0.0625	12	—	3.6297	206	37	15.0178	1947	2
15	18	6	HAND IN MY POCKET (MAVERICK/REPRISE)	ALANIS MORISSETTE	28.3999	2838	18	25.8855	2667	19	10.9590	785	34	0.0158	1	—	2.1856	113	—	15.2395	1939	3
16	14	15	I COULD FALL IN LOVE (EMI LATIN/EMI)	SELENA	28.3955	2853	17	30.3571	3085	16	10.4777	1365	21	8.3167	608	16	9.6011	880	14	—	—	—
17	15	16	YOU OUGHTA KNOW (MAVERICK/REPRISE)	ALANIS MORISSETTE	28.3093	3221	15	29.7164	3205	13	23.3349	2602	8	0.3062	23	—	0.5883	65	—	4.0799	531	37
18	17	21	DECEMBER (ATLANTIC)	COLLECTIVE SOUL	26.7161	3053	16	27.8177	3098	15	14.6730	2053	13	0.1052	13	—	8.1196	536	21	3.8183	451	—
19	19	8	BACK FOR GOOD (ARISTA)	TAKE THAT	26.5597	3284	14	25.3266	3083	17	11.6976	1934	15	0.8525	69	—	14.0096	1281	6	—	—	—
20	20	21	I'LL BE THERE FOR YOU (ELEKTRA/EEG)	THE REMBRANDTS	24.5638	2338	26	25.2209	2439	21	11.8960	1332	23	0.2102	14	—	12.4090	979	11	0.0486	13	—
21	25	4	TELL ME (EPIC)	GROOVE THEORY	22.5838	1343	46	20.3378	1110	67	0.8700	188	—	21.7138	1155	5	—	—	—	—	—	—
22	26	5	LUMP (COLUMBIA)	THE PRESIDENTS OF THE UNITED STATES OF AMERICA	22.4820	2490	21	20.3305	2356	22	6.0365	537	—	—	—	—	—	—	—	16.4455	1953	1
23	21	4	BROKENHEARTED (ATLANTIC)	BRANDY	21.7913	1491	43	22.8395	1534	41	2.8134	420	—	18.7154	1050	6	0.2170	17	—	0.0455	4	—
24	32	4	DO YOU SLEEP? (Geffen)	LISA LOEB & NINE STORIES	21.1347	2762	19	18.3579	2507	20	13.1793	1790	16	0.0939	14	—	3.0810	242	33	4.7805	716	20
25	28	7	COMEDOWN (TRAUMA/INTERSCOPE)	BUSH	20.6270	2117	27	19.3363	2099	28	6.4937	404	—	—	—	—	—	—	—	14.1333	1713	5
26	34	4	ANTS MARCHING (RCA)	DAVE MATTHEWS BAND	19.6921	2372	25	17.7520	2189	25	11.7833	1543	19	0.0645	12	—	3.9159	278	31	3.9284	539	36
27	22	21	DON'T TAKE IT PERSONAL (JUST ONE OF...) (ROWDY/ARISTA)	MONICA	19.6627	1640	37	22.5544	1800	33	8.6491	1016	28	10.9969	618	15	—	—	—	0.0167	6	—
28	33	2	GEEK STINK BREATH (REPRISE)	GREEN DAY	19.3517	1992	29	18.0951	1823	32	3.6713	221	—	—	—	—	—	—	—	15.6804	1771	4
29	24	21	SOMEONE TO LOVE (Y&B YUM/ISSO MUSIC)	JON B. FEATURING BABYFACE	18.3904	1620	38	20.5840	1767	34	8.8269	941	30	7.0661	472	—	2.4974	207	36	—	—	—
30	31	3	A GIRL LIKE YOU (BAR NONE/A&M)	EDWYN COLLINS	18.3322	2381	24	18.4608	2152	26	6.0567	763	36	—	—	—	0.7812	84	—	11.4943	1534	8
31	36	3	LET ME BE THE ONE (EMI)	BLESSID UNION OF SOULS	17.7959	2412	23	16.9505	2328	23	12.9920	2020	14	0.6940	54	—	4.0985	329	27	0.0114	9	—
32	38	2	MY FRIENDS (WARNER BROS.)	RED HOT CHILI PEPPERS	17.6688	1950	30	16.2304	1708	36	3.3716	361	—	—	—	—	—	—	—	14.2972	1589	7
33	27	21	WATER RUNS DRY (MOTOWN)	BOYZ II MEN	17.5398	2004	28	20.0738	2210	24	8.3893	1029	—	4.7034	357	—	4.4378	611	20	0.0093	7	—
34	29	21	EVERY LITTLE THING I DO (UPTOWN/MCA)	SOUL FOR REAL	17.5324	1341	47	19.1185	1457	47	8.6967	759	37	8.8321	579	17	0.0036	3	—	—	—	—
35	30	21	I KNOW (COLUMBIA)	DIONNE FARRIS	17.2205	1659	36	19.3316	1751	35	7.2862	858	—	0.8493	47	—	9.0324	734	18	0.0526	20	—
36	23	13	HE'S MINE (OUTBURST/IRLANDISLAND)	MOKENSTEF	16.4248	1315	48	21.9579	1491	45	4.3064	425	—	12.1184	890	7	—	—	—	—	—	—
37	35	21	LET HER CRY (ATLANTIC)	HOOTIE & THE BLOWFISH	16.0145	1510	41	17.3573	1670	37	6.7438	721	—	0.0806	4	—	8.5026	691	19	0.6875	94	—
38	37	10	TOMORROW (EPIC)	SILVERCHAIR	15.4483	1928	32	16.9866	2037	29	5.4504	585	—	—	—	—	0.0275	5	—	9.9704	1338	9
39	NEW		BREAKFAST AT TIFFANY'S (RAINMAKER/INTERSCOPE)	DEEP BLUE SOMETHING	15.2723	2420	22	11.9660	2131	27	9.0536	1626	18	0.0768	10	—	3.0414	189	38	3.1005	595	34
40	NEW		PRETTY GIRL (Y&B YUM/ISSO MUSIC)	JON B.	14.6402	1707	34	13.1601	1483	46	4.7938	815	33	9.5254	825	9	0.3198	66	—	0.0012	1	—

Records showing an increase in audience over the previous week, regardless of chart movement. Rankings broken down by format (on right side of this page) correspond to 40-position charts printed in this week's Monitor and therefore rankings do not exist for recurrences and records below No. 40. Audience computed by cross-referencing exact times of airplay with Arbitron listener data. © 1995, Billboard/BPI Communications.

LL COOL J "Hey Lover"

Airplay 10/30



A PolyGram Company

SHOOOP, SHOOOP, SHOOOP,

SHOOO BE DOOP

WEDNESDAY

THIS WEEK	LAST WEEK	WKS. ON CHART	MAINSTREAM		DETECTIONS		
			TITLE/LABEL/DISTRIBUTING LABEL	ARTIST	TW	LW	
			*** No. 1 ***				
1	1	15	ONLY WANNA BE WITH YOU ATLANTIC 2 weeks at No. 1	HOOTIE & THE BLOWFISH	3437	3666	
(2)	3	7	FANTASY COLUMBIA	MARIAH CAREY	3347	3195	
3	2	17	KISS FROM A ROSE ZTT/SIRE/WARNER BROS.	SEAL	3320	3581	
(4)	4	8	RUNAWAY A&M	JANET JACKSON	3042	3031	
5	5	18	WATERFALLS LAFACE/ARISTA	TLC	2699	2801	
(6)	8	11	TIL I HEAR IT FROM YOU A&M	GIN BLOSSOMS	2649	2578	
(7)	7	14	AS I LAY ME DOWN COLUMBIA	SOPHIE B. HAWKINS	2628	2613	
(8)	9	11	YOU OUGHTA KNOW MAVERICK/REPRISE	ALANIS MORISSETTE	2602	2533	
(9)	10	15	ROLL TO ME A&M	DEL AMITRI	2561	2465	
10	6	10	YOU ARE NOT ALONE EPIC	MICHAEL JACKSON	2508	2712	
11	11	29	RUN-AROUND A&M	BLUES TRAVELER	2383	2458	
(12)	12	11	CARNIVAL ELEKTRA/EEG	NATALIE MERCHANT	2360	2318	
13	13	19	DECEMBER ATLANTIC	COLLECTIVE SOUL	2053	2172	
(14)	14	11	LET ME BE THE ONE EMI	BLESSID UNION OF SOULS	2020	1967	
(15)	15	12	BACK FOR GOOD ARISTA	TAKE THAT	1934	1838	
(16)	17	6	DO YOU SLEEP? GEFEN	LISA LOEB & NINE STORIES	1790	1654	
17	16	21	I CAN LOVE YOU LIKE THAT BLITZZ/ATLANTIC	ALL-4-ONE	1629	1816	
(18)	19	10	BREAKFAST AT TIFFANY'S RAINMAKER/INTERSCOPE	DEEP BLUE SOMETHING	1626	1488	
			*** AIRPOWER ***				
(19)	20	10	ANTS MARCHING RCA	DAVE MATTHEWS BAND	1543	1439	
(20)	26	3	NAME METAL BLADE/WARNER BROS.	GOO GOO DOLLS	1367	1135	
21	18	12	I COULD FALL IN LOVE EMI LATIN/EMI	SELENA	1365	1526	
(22)	23	13	I WANNA B WITH U CURB EDEL	FUN FACTORY	1362	1357	
23	21	22	I'LL BE THERE FOR YOU EASTWEST/EEG	THE REMBRANDTS	1332	1384	
24	24	18	SHY GUY WORK	DIANA KING	1234	1302	
25	22	6	DOWNTOWN VENUS GEE STREET/ISLAND	P.M. DAWN	1216	1360	
(26)	25	5	GANGSTA'S PARADISE MCA SOUNDTRACKS/MCA	COOLIO FEATURING L.V.	1159	1127	
(27)	36	2	GOOD INTENTIONS COLUMBIA/REPRISE	TOAD THE WET SPROCKET	1035	781	
28	28	14	DON'T TAKE IT PERSONAL (JUST ONE OF DEM DAYS) ROWDY/ARISTA	MONICA	1016	1097	
(29)	40	2	I'D LIE FOR YOU (AND THAT'S THE TRUTH) MCA	MEAT LOAF	944	661	
30	29	20	SOMEONE TO LOVE YAB YUM/550 MUSIC	JON B. FEATURING BABYFACE	941	1065	
(31)	35	3	THIS HOUSE IS NOT A HOME EASTWEST/EEG	THE REMBRANDTS	869	833	
32	30	8	CRAZY COOL CAPTIVE/VIRGIN	PAULA ABDUL	851	1031	
(33)	NEW		PRETTY GIRL YAB YUM/550 MUSIC	JON B.	815	605	
(34)	NEW		HAND IN MY POCKET MAVERICK/REPRISE	ALANIS MORISSETTE	785	597	
35	32	26	TOTAL ECLIPSE OF THE HEART CRITIQUE	NICKI FRENCH	772	842	
(36)	NEW		A GIRL LIKE YOU BAR NONE/A&M	EDWYN COLLINS	763	613	
37	31	13	EVERY LITTLE THING I DO UPTOWN/MCA	SOUL FOR REAL	759	896	
38	34	15	CAN'T CRY ANYMORE A&M	SHERYL CROW	733	847	
(39)	NEW		SOLITUDE LAVA/ATLANTIC	EDWIN MCCAIN	733	592	
40	33	21	GOOD ELEKTRA/EEG	BETTER THAN EZRA	698	859	

THIS WEEK	LAST WEEK	WKS. ON CHART	RHYTHM-CROSSOVER		DETECTIONS		
			TITLE/LABEL/DISTRIBUTING LABEL	ARTIST	TW	LW	
			*** No. 1 ***				
(1)	1	7	FANTASY COLUMBIA 4 weeks at No. 1	MARIAH CAREY	1917	1887	
2	2	9	GANGSTA'S PARADISE MCA SOUNDTRACKS/MCA	COOLIO FEATURING L.V.	1401	1565	
(3)	4	8	RUNAWAY A&M	JANET JACKSON	1327	1307	
4	3	15	YOU ARE NOT ALONE EPIC	MICHAEL JACKSON	1233	1341	
(5)	7	8	TELL ME EPIC	GROOVE THEORY	1155	984	
(6)	6	8	BROKENHEARTED ATLANTIC	BRANDY	1050	1020	
7	5	17	HE'S MINE OUTBURST/RAL/ISLAND	MOKENSTEF	890	1050	
8	8	12	KISS FROM A ROSE ZTT/SIRE/WARNER BROS.	SEAL	865	880	
9	9	15	PRETTY GIRL YAB YUM/550 MUSIC	JON B.	825	835	
10	11	35	WATERFALLS LAFACE/ARISTA	TLC	725	741	
11	10	8	I HATE U NPG/WARNER BROS.		697	809	
			*** AIRPOWER ***				
(12)	15	12	'TIL YOU DO ME RIGHT VIRGIN	AFTER 7	651	588	
			*** AIRPOWER ***				
(13)	23	5	WHO CAN I RUN TO MCA	XSCAPE	632	438	
			*** AIRPOWER ***				
(14)	20	3	ANYTHING MCA		624	505	
15	12	25	DON'T TAKE IT PERSONAL (JUST ONE OF DEM DAYS) ROWDY/ARISTA	MONICA	618	701	
16	13	16	I COULD FALL IN LOVE EMI LATIN/EMI	SELENA	608	634	
17	18	26	EVERY LITTLE THING I DO UPTOWN/MCA	SOUL FOR REAL	579	558	
18	16	14	1ST OF THE MONTH RUTHLESS/RELATIVITY	BONE THUGS-N-HARMONY	567	585	
19	17	19	BOOMBASTIC VIRGIN	SHAGGY	561	569	
20	14	9	MACARENA (BAYSIDE BOYS MIX) RCA	LOS DEL RIO	509	611	
(21)	35	3	DIGGIN' ON YOU LAFACE/ARISTA	TLC	484	294	
(22)	NEW		ONE SWEET DAY COLUMBIA	MARIAH CAREY & BOYZ II MEN	483	63	
23	22	17	I GOT 5 ON IT NOO TRYBE	LUNIZ	453	465	
24	21	21	I CAN LOVE YOU LIKE THAT BLITZZ/ATLANTIC	ALL-4-ONE	426	499	
25	25	8	DREAMING OF YOU EMI LATIN/EMI	SELENA	416	421	
26	24	23	BEST FRIEND ATLANTIC	BRANDY	406	424	
27	26	3	AIN'T NUTHIN' BUT SHE A THING LONDON/ISLAND	SALT-N-PEPA	390	415	
(28)	29	5	SUGAR HILL EMI	AZ	374	361	
(29)	38	2	SEXUAL HEALING S.O.S./ZOO	MAX-A-MILLION	358	262	
30	28	4	A MOVER LA COLITA GROOVE NATION/SCOTTI BROS.	ARTIE THE 1 MAN PARTY	351	368	
(31)	37	2	SET U FREE STRICTLY RHYTHM	PLANET SOUL	340	283	
(32)	39	2	BOOM BOOM BOOM AUREUS	THE OUTHERE BROTHERS	310	259	
33	30	10	BROWN SUGAR EMI	D'ANGELO	309	346	
(34)	NEW		AUTOMATIC LOVER ARISTA	REAL MCCOY	302	245	
35	27	9	FEEL THE FUNK MCA	IMMATURE	299	371	
36	31	18	ONE MORE CHANCE/STAY WITH ME BAD BOY/ARISTA	THE NOTORIOUS B.I.G.	297	345	
(37)	NEW		BEFORE YOU WALK OUT OF MY LIFE ROWDY/ARISTA	MONICA	284	162	
(38)	40	2	MAGIC CARPET RIDE (S.M.) E/PROFILE	THE MIGHTY DUB KATS	281	247	
39	32	11	SOMETHIN' 4 DA HONEYZ PMP/RAL/ISLAND	MONTELL JORDAN	275	343	
40	34	23	I WISH SUNSHINE/SCOTTI BROS.	SKEE-LO	248	310	

Records showing an increase in detections over the previous week, regardless of chart movement. A record which has been on either chart for more than 20 weeks will not receive a bullet, even if it registers an increase in detections. Airpower awarded to those records which attain 1500 detections (mainstream) or 600 detections (rhythm) for the first time. If two records are tied in number of plays, the record being played on more stations is placed first. Records below the top 20 are removed from the chart after 26 weeks.

TOP 40 RHYTHM-CROSSOVER
*****AIRPOWER*****
BREAKING AT

TIL YOU DO ME RIGHT Produced by Babyface

1 THE BOX MUSIC TELEVISION

After

"After 18 weeks of promotion... a call-out research monster and a true hit record"

OVER 600,000 SOLD!!! STARTING TO CROSS-OVER NOW!

©1995 Virgin Records America, Inc.