

ROCK AIRPLAY Monitor

• We Listen To Radio •

June 26, 1998 \$4.95 Volume 5 • No. 26

ROCK HIGHLIGHTS

MAINSTREAM

#1

KENNY WAYNE SHEPHERD BAND

Blue On Black (REVOLUTION/REPRISE)

★ ★ ★ AIRPOWER ★ ★ ★

CANDLEBOX • *It's Alright* (MAVERICK/WARNER BROS.)

JERRY CANTRELL • *My Song* (COLUMBIA)

CREED • *What's This Life For* (WIND-UP)

GOING FOR AIRPLAY

MARC COHN • *Lost In The Canyon* (ATLANTIC)

GOVT MULE • *She Said, She Said* (CAPRICORN/MERCURY)

IRON MAIDEN • *The Angel And The Gambler* (CMC INTERNATIONAL)

DAVE MATTHEWS BAND • *Stay (Wasting Time)* (RCA)

THE MAYFIELD FOUR • *Always* (EPIC)

NINE VOLT • *Stupid* (CRASH/PRIVATE I/MERCURY)

THE RED TELEPHONE • *Pirhana* (WARNER BROS.)

KENNY WAYNE SHEPHERD BAND • *Somehow, Somewhere, Someway* (REVOLUTION/REPRISE)

THE VERVE • *The Rolling People* (VCIHUT/VIRGIN)

MODERN

#1

GOO GOO DOLLS

Iris (WARNER SUNSET/REPRISE)

★ ★ ★ AIRPOWER ★ ★ ★

ATHENAEUM • *What I Didn't Know* (ATLANTIC)

FOO FIGHTERS • *Walking After You* (CAPITOL/ELEKTRA/EEG)

GOING FOR AIRPLAY

DIMITRI FROM PARIS • *Une Very Stylish Fille* (ATLANTIC)

GOD LIVES UNDERWATER • *Rearrange* (1500/A&M)

MASSIVE ATTACK • *Fly Away* (VIRGIN)

DAVE MATTHEWS BAND • *Stay (Wasting Time)* (RCA)

NEWSBOYS • *WooHoo* (VIRGIN)

THE RED TELEPHONE • *Piranha* (WARNER BROS.)

THIRD EYE BLIND • *Jumper* (ELEKTRA/EEG)

TRIPLE-A

#1

NATALIE MERCHANT

Kind & Generous (ELEKTRA/EEG)

★ ★ ★ AIRPOWER ★ ★ ★

NO RECORDS QUALIFIED FOR AIRPOWER THIS WEEK

Exclusive Midyear Recaps Show Debut Acts Riding High

by Marc Schiffman

It's the middle of 1998; do you know where your favorite artists are? With the first six months of our chart year, which began last November, wrapped up, Rock Airplay Monitor offers an early look at "The Best Of 1998... So Far," beginning on page 4.

Across the board, the stats show debut acts making names for themselves at rock radio. Creed and Days Of The New did it with multiple tracks in multiple formats. Meanwhile, Pearl Jam seems to be the multi-format favorite, with tracks covering all three rock flavors—mainstream, active, and heritage—as well as modern rock.

Marcy Playground and matchbox 20 managed to score one entry on each of the rock Monitor's five charts. Marcy Playground also scored the biggest modern rock track of the year, while matchbox 20 capped the triple-A track chart.

Comparing last year's midway re-

cap with this year's shows all formats embracing new acts, with modern and triple-A showing the most diversity.

MY OWN FORMAT

Last year, it was the Wallflowers who were in peak form, scoring the No. 1 tracks at mainstream, modern, and triple-A (there was no active and heritage recap available a year ago). This year, the top mainstream rock track of 1998 to date is by Wind-Up *wunderkind* Creed. The track, "My Own Prison," is one of two songs the band has placed in mainstream's midyear top 20. (See this week's Monitor Profile for the label perspective on the act's success, page 7). Days Of The New also posted two singles in that top 20; Metallica was the only veteran act to do so. In all, seven of the top 20 mainstream tracks (35%) are by debut acts, though that number raises to nine (45%), if you add the solo debuts of Alice In Chains' Jerry Cantrell and

Continued on page 7

THE MAYFIELD FOUR

THE BUZZ IS HUGE!

COULD NOT WAIT:

WLZR WRCX KRXQ
WXTB KAZR KTUX
KRZR KQWB KFRQ
KNJY KRAD KRQC
KQDS KATS

IMPACTING
THIS
WEEK!



ALWAYS

FROM THE DEBUT ALBUM "FALLOUT"

PRODUCED BY JERRY HARRISON

MIXED BY BRENDAN O'BRIEN

MANAGEMENT: ERIC HOPPE FOR ERIC HOPPE MANAGEMENT.

www.themayfieldfour.com • www.epicrecords.com



EPIC™ AND REG. U.S. PAT. & TM. OFF. MARCA REGISTRADA. © 1998 SONY MUSIC ENTERTAINMENT INC.

AIRPLAY
Monitor BEST OF 1998... SO FAR



Going for adds 6/29

Blowing out at Retail!!!

New York #77
Los Angeles #53
San Francisco #45
Seattle #62
San Diego #51 XHRM 19x

MASSIVE ATTACK TEARDROP

**On Tour with
The Verve
this Summer:**

July 28 Des Plains, IL
July 29 Auburn Hills, MI
July 31 Hamilton, ONT
Aug. 1 Montreal, Quebec
Aug. 3 Lowell, MA
Aug. 5 New York, NY
Aug. 7 Atlanta, GA
Aug. 9 Houston, TX
Aug. 11 Morrison, CO
Aug. 14 Anaheim, CA
Aug. 15 San Francisco, CA
Aug. 17 Seattle, WA

the new single from the album **MEZZANINE**

produced by Massive Attack and Neil Davidge

Virgin MELANKOLIC

www.virginrecords.com
AOL Keyword: Virgin Records
© 1998 Circa Records Ltd.

Mancow Moves Across Town To Q101, WRCX Picks Up Bob & Tom

Album WRCX (Rock 103.5) Chicago morning man **Mancow** makes a surprise exit for crosstown modern rock **WKQX** (Q101), where he'll replace **Wendy Snyder** and **Bill Leff**. The Chicago Sun-Times puts Mancow's new three-year deal with the Emmis modern rocker in the neighborhood of \$3 million—making him the highest-paid local radio host in the market. According to a statement from WRCX VP/GM **Mike Fowler**, "We chose not to match an offer made by another company paying him three times his current deal." Mancow is currently on vacation in Alaska and is predicted to be on the air at Q101 by mid-July. Q101 is running music in the morning until its new air talent arrives.

Meanwhile, Rock 103.5 has wasted no time in picking Mancow's replacement. It's the syndicated team of **Bob and Tom**, who recently picked up representation by AMFM Radio Networks, whose parent company, Chancellor, is also the owner of WRCX.

MANAGEMENT: GUTHRIE GROWS

Kim Guthrie, GSM of adult top 40 **KSTP-FM** (KS95) Minneapolis, is now GM at Cox's newly acquired Long Island, N.Y., outlets, album **WBAB/WHFM** and top 40 **WBLL**, replacing **Bill Edwards**, who remains GM of Chancellor's Long Island cluster that WBAB once belonged to.

Saga Communications taps **David Paulus** for its GM vacancy at album **WNOR** Norfolk, Va. Paulus comes from Cumulus' Ann Arbor, Mich., cluster, which includes album **WIQB**.

As tipped here last week, **Gary Krantz** is named VP of programming for AMFM Radio Networks after 18 years at rival syndicator **MJI Broadcasting**, most recently as VP/GM. Chancellor also makes its entry into the billboard business this week, picking up **Martin Media** for \$610 million.

FORMATS: WLUM TO ROCK

Modern **WLUM** Milwaukee flipped to album June 23. PD **Chuck Summers** remains in place. Liners include "Milwaukee's best rock" and "Milwaukee's finest rock." The format launched with **Jimi Hendrix**, "Star-Spangled Banner"; **Rolling Stones**, "It's Only Rock 'N Roll (But I Like It)"; **Nirvana**, "Smells Like Teen Spirit"; and **Melissa Etheridge**, "I'm The Only One."

Album **WXEX** Providence, R.I., returns to the modern fold, dropping the **AC/DC**, **Guns N' Roses**, and **Kenny Wayne Shepherd** titles it had been mixing in. It continues calling itself the X. Jacor's newly acquired modern **KOME** San

Jose, Calif., signed off June 19, to simulcast classic rock **KUFX**. Look for **KUFX**'s programming to eventually move solely to the **KOME** signal. Former owner **CBS** is keeping the **KOME** calls for future use.

Spanish **KBSO** Corpus Christi, Texas, flips to classic rock under PD **Mike Aradillas**, former MD of crosstown album **KNCN**.

The M Street Daily reports that top 40 **KFQX** (Fox 103) Abilene, Texas, is flipping to classic rock as the Bear in the coming month.

WHOB (B106) Nashua, N.H., is transitioning from a modern/top 40 hybrid to an '80s-based pop oldies format with some currents.

PROGRAMMING: SCHMIDT TO WPLA

Modern **WXSX** Tallahassee, Fla., PD **Rick Schmidt** joins modern **WPLA** Jacksonville, Fla., as PD, replacing **J.R. Randall**. Schmidt will continue to play a role at **XSX** in a consultant capacity. **WXSX** morning-team member **Scott Petibone** will be Schmidt's on-site contact, taking on some programming duties.

Modern **KXPK** Denver PD **Gary Schoenwetter** exits. . . Modern adult **WLIR** Long Island, N.Y., PD **Jeff Levine** exits.

Former **KEZK** St. Louis PD **Jeff Cochran** is now OM of Capstar's Richmond, Va., station group, including modern **WBZU**, classic rock **WKLR**, adult top 40 **WMXB**, and country **WKHK**. He'll also oversee programming on **WBZU** for now.

With album **KAZR** Des Moines, Iowa, PD/afternoons **Troy**

Hanson out, promotion director/programming assistant **Sean Elliott** steps up to the plate. As **Elliott** finalizes his lineup, night jock **Ryan Castle** slides into afternoons.

Album **KSQY** Rapid City, S.D., PD/mornings **Kevin Mee** exits, as has middayer **Nikki Lace**. **Corey Ward** returns to radio as **KSQY**'s PD/middayer, with local TV woman **Donna** in mornings.

Album **KMKF** Manhattan, Kan., p.m. driver **Shane Sellers** is upped to PD/mornings. Night jock **John Leach** shifts to 4-10 p.m. and gets MD stripes.

Classic rock **KXDG**/country **KIXQ**/top 40 **KSYN/AC** **KJMK** Joplin, Mo., OM **Spyder** exits. **KXDG** **Chris Hayes** picks up OM stripes at **KXDG** and **KIXQ**.

PEOPLE: FATMAN EXITS WKRL

Modern **WKRL** Syracuse, N.Y., morning man **Fatman** exits.

Album **KLOS** L.A. promotion manager **Jolene Pellant** crosses to modern trimulcast **KLYY** (Y107) as assistant director of marketing and promotion.

Former classic rock **WYBB** Charleston, S.C., PD **T.K. O'Grady** becomes album **WONE**/country **WQMX**/sports **WAKR** Akron, Ohio, as production director. Modern **WWVU** Morgantown, W.Va., production director and album **WDVE** Pittsburgh production assistant **Andrew Kaminitz** joins the trio as production assistant.

Album **WBOP** Harrisonburg, Va., PD/middayer **Robin Kreisberg** exits for the APD spot at album **KICT** Wichita, Kan., where he'll also be voice-tracking overnights.

Noncommercial triple-A **KNBA** Anchorage, Alaska, PD **Kathy Mitchell** returns to crosstown modern **KWHL** for MD/middays duties. **Joe King** had last been in middays, and the MD stripes were being held by **Dan Thomas**. **KNBA**'s acting PD is operations director/MD/production director **Loren Dixon**.

Modern **KHLR** Bryan, Texas, replaces the exited **Mike Fitch** in middays with afternooner **Tracy Rose**. In for afternoons is **Lisa Galvez** from middays at country **KFIN** Jonesboro, Ark.

Jim Herron, last seen programming triple-A **WBOS** Boston, has joined the **Jerry Brenner** Group as president of adult rock.

The Chicago Sun-Times reports that **Mark Zaner**'s "Rock Of The Eighties" is back on classic/talk **WCKG** Chicago from 11 p.m.-2 a.m. weekdays and from 10 p.m.-2 a.m. on Saturdays.

Semisonic, Completely Planet



A day after the Detroit stop on the Semisonic tour, the band showed up on the morning show of modern **WPLT** (the Planet) Detroit. Seen after their on-air encore performance, standing, from left, are Semisonic's **John Munson**, Planet traffic guy **Hadji**, Semisonic's **Dan Wilson**, morning man **Johnny**, and Semisonic's **Jake Slichter**. In front, from left, are morning co-host **Zito** and PD **Garrett Michaels**.



212-536-5361 • sgraybow@airplaymonitor.com

Gersh Gone From Capitol

ON THE MOVE: Billboard Bulletin confirms the departure of Capitol president/CEO **Gary Gersh**. **EMI Records** North America deputy president **Roy Lott** picks up the Capitol president title. . . Universal officially names **Monte Lipman** senior VP. The label ups **Charlie Foster** to VP of promotion/Northeast regional and **David Nathan** to associate national promotion director. . . **Elton John**'s Rocket Records gets **Derek MacKillop** as its new VP/GM, reports Billboard Bulletin. **MacKillop** previously spent four years as John's creative manager. . . **Arista/Austin** senior director of promotion **John Butler** exits. Reach him at 615-269-9951. . . **Push Records** VP of radio promotion **Dave Morrell** exits; **Brad Montague**, who worked with **Morrell**, assumes radio promotion duties but has not yet been named to a new post.

THE NEW BOY: Don't be fooled by **Rod Stewart**'s backward 14-15 move at mainstream rock. "Cigarettes And Alcohol" (Warner Bros.) garners a healthy 3% increase this week, vaulting 3-1 at heritage rock.

Following his recent successes with the re-formed **Styx** (and **Damn Yankees** before that), **Tommy Shaw** charts again as a solo artist this week. Shaw's "Ocean" (CMC International) is the guitarist/songwriter's first solo hit since "No Such Thing" in November 1987. It enters the heritage rock chart at No. 38, with a 78% increase. One year ago, **Styx** peaked at No. 33 on the heritage chart with "On My Way."

A week after charting, **Candlebox**'s "It's Alright" jumps 30-12 at mainstream rock, achieving Airpower status with an 85% gain. At active rock, "Alright" bolts 21-9 with a 64% increase; the track enters the heritage chart with a 154% gain, debuting at No. 17 as an Airpower track.

Two tracks move to recurrent at mainstream this week. **Creed**'s "My Own Prison" drops off after a 44-week run, while **Days Of The New**'s "Shelf In The Room" moves along after 26 weeks.

But What I Really Wanna Know Is, Are You Gonna Play My Song?



The newly installed modern **KITS** (Live 105) San Francisco programming brain trust of **Jay Taylor**, left, and **Ron Nenni**, right, had an audience with **Lenny Kravitz**, during which they got valuable tips on guitars, fashion, and body piercing.

Feeder Your Oed'



Modern **WBCN** Boston PD **Oedipus** took some time for a chat and photo with **Feeder**'s **Grant Nicholas** during a break in the action at the station's **Riverave** concert. Shown, from left, are **Elektra**'s **Greg Dorfman**, **Nicholas**, **Oedipus**, and **Elektra**'s **Jim Cortez** and **Pete Rosenblum**.

United Stations is launching "Conan On The Radio," a daily two-minute feature spotlighting segments from the opening monologue on NBC's nightly "Late Night With Conan O'Brien." The feature debuts Aug. 1.

Former MTV siren **Nina Blackwood** joins **NBG** Radio Network for a weekly three-hour show called "Nina Blackwood's Totally '80s."

Classic rock **KCBS** (Arrow 93) L.A. morning man **Uncle Joe Benson** has picked up hosting duties for **Westwood One**'s "Off The Record."

Columbia House's retail **World Wide Web** site **Total E@** (<http://www.totale.com>) has inked a deal with **SW Networks**, which will provide music news and celebrity audioclips for the **Total E** site.



Creed

Mainstream

Top Mainstream Rock Tracks

- Pos. TITLE—Artist—Imprint/Promotion Label
- 1 MY OWN PRISON—Creed—Wind-Up
 - 2 TOUCH, PEEL AND STAND—Days Of The New—Outpost/Geffen
 - 3 THE UNFORGIVEN II—Metallica—Elektra/EEG
 - 4 GIVEN TO FLY—Pearl Jam—Epic
 - 5 BLUE ON BLACK—Kenny Wayne Shepherd Band—Revolution
 - 6 SEX AND CANDY—Marcy Playground—Capitol
 - 7 SHELF IN THE ROOM—Days Of The New—Outpost/Geffen
 - 8 3 AM—Matchbox 20—Lava/Atlantic
 - 9 BACK ON EARTH—Ozzy Osbourne—Epic
 - 10 TASTE OF INDIA—Aerosmith—Columbia
 - 11 MY HERO—Foo Fighters—Roswell/Capitol
 - 12 THE GIRL I LOVE—Led Zeppelin—Atlantic
 - 13 TIME OF YOUR LIFE (GOOD RIDDANCE)—Green Day—Reprise
 - 14 WITHOUT YOU—Van Halen—Warner Bros.
 - 15 THE MEMORY REMAINS—Metallica—Elektra/EEG
 - 16 CUT YOU IN—Jerry Cantrell—Columbia
 - 17 SUNSHOWER—Chris Cornell—Atlantic
 - 18 WASH IT AWAY—Black Lab—DGC/Geffen
 - 19 TORN—Creed—Wind-up
 - 20 CLUMSY—Our Lady Peace—Columbia



Days Of The New

Top Mainstream Rock Artists

- Pos. ARTIST (No. Of Charted Tracks) Imprint/Promotion Label
- 1 DAYS OF THE NEW (2) Outpost/Geffen
 - 2 METALLICA (3) Elektra/EEG
 - 3 CREED (2) Wind-Up
 - 4 PEARL JAM (3) Epic
 - 5 KENNY WAYNE SHEPHERD BAND (2) Revolution
 - 6 FOO FIGHTERS (2) Roswell/Capitol
 - 1 EMI-Capitol

- 7 MATCHBOX 20 (2) Lava/Atlantic
- 8 MARCY PLAYGROUND (1) Capitol
- 9 MEGADETH (2) Capitol
- 10 VAN HALEN (2) Warner Bros.

Top Mainstream Rock Labels

- Pos. PROMOTION LABEL (No. Of Charted Tracks)
- 1 CAPITOL (8)
 - 2 ATLANTIC (11)
 - 3 GEFEN (7)
 - 4 EPIC (8)
 - 5 ELEKTRA ENTERTAINMENT GROUP (9)
 - 6 COLUMBIA (9)
 - 7 WIND-UP (2)
 - 8 VIRGIN (6)
 - 9 REVOLUTION (3)
 - 10 WARNER BROS. (10)



Active

Top Active Rock Tracks

- Pos. TITLE—Artist—Imprint/Promotion Label
- 1 MY OWN PRISON—Creed—Wind-up
 - 2 TOUCH, PEEL AND STAND—Days Of The New—Outpost/Geffen
 - 3 THE UNFORGIVEN II—Metallica—Elektra/EEG
 - 4 SEX AND CANDY—Marcy Playground—Capitol
 - 5 SHELF IN THE ROOM—Days Of The New—Outpost/Geffen
 - 6 GIVEN TO FLY—Pearl Jam—Epic
 - 7 MY HERO—Foo Fighters—Roswell/Capitol
 - 8 THE MEMORY REMAINS—Metallica—Elektra/EEG
 - 9 TORN—Creed—Wind-up
 - 10 EVERLONG—Foo Fighters—Roswell/Capitol
 - 11 CUT YOU IN—Jerry Cantrell—Columbia
 - 12 BACK ON EARTH—Ozzy Osbourne—Epic
 - 13 CLUMSY—Our Lady Peace—Columbia
 - 14 TIME OF YOUR LIFE (GOOD RIDDANCE)—Green Day—Reprise
 - 15 3 AM—Matchbox 20—Lava/Atlantic
 - 16 BLUE ON BLACK—Kenny Wayne Shepherd Band—Revolution
 - 17 WASH IT AWAY—Black Lab—DGC/Geffen
 - 18 SUNSHOWER—Chris Cornell—Atlantic
 - 19 FUEL—Metallica—Elektra/EEG
 - 20 ALMOST HONEST—Megadeth—Capitol

Top Active Rock Artists

- Pos. ARTIST (No. Of Charted Tracks) Imprint/Promotion Label
- 1 METALLICA (3) Elektra/EEG
 - 2 DAYS OF THE NEW (2) Outpost/Geffen
 - 3 CREED (2) Wind-up

Airplay Monitor Midyear '98 Chart Recap

With summer here and the 1998 chart year now half complete, we thought it would be a good time to take a look at the top performers of the year so far. The following is Airplay Monitor's tally of the top 20 songs, top 10 artists, and top 10 labels so far this year

in five categories: mainstream rock, active rock, heritage rock, modern rock, and triple-A. The period covered is from the Nov. 28, 1997, issue through the May 22 issue.

ANTHONY COLOMBO

- 4 FOO FIGHTERS (2) Roswell/Capitol (1) EMI-Capitol
- 5 PEARL JAM (3) Epic
- 6 MARCY PLAYGROUND (1) Capitol
- 7 MEGADETH (2) Capitol
- 8 GREEN DAY (2) Reprise
- 9 KENNY WAYNE SHEPHERD BAND (2) Revolution
- 10 MATCHBOX 20 (2) Lava/Atlantic

- 15 FLIP THE SWITCH—The Rolling Stones—Virgin
- 16 RAGE—Van Zant—CMC International
- 17 SLOW RIDE—Kenny Wayne Shepherd Band—Revolution
- 18 MOST HIGH—Jimmy Page & Robert Plant—Atlantic
- 19 WITHOUT EXPRESSION—John Mellencamp—Mercury
- 20 THE OAF (MY LUCK IS WASTED)—Big Wreck—Atlantic

Top Heritage Rock Artists

- Pos. ARTIST (No. Of Charted Tracks) Imprint/Promotion Label
- 1 KENNY WAYNE SHEPHERD BAND (2) Revolution
 - 2 THE ROLLING STONES (3) Virgin
 - 3 DAYS OF THE NEW (2) Outpost/Geffen
 - 4 MATCHBOX 20 (2) Lava/Atlantic
 - 5 PEARL JAM (3) Epic



Metallica

Top Active Rock Labels

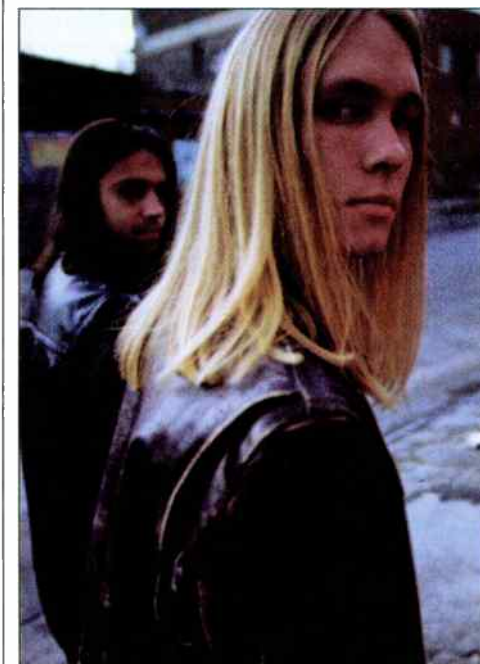
- Pos. PROMOTION LABEL (No. Of Charted Tracks)
- 1 CAPITOL (8)
 - 2 GEFEN (7)
 - 3 ELEKTRA ENTERTAINMENT GROUP (8)
 - 4 ATLANTIC (11)
 - 5 COLUMBIA (9)
 - 6 EPIC (7)
 - 7 WIND-UP (2)
 - 8 WARNER BROS. (9)
 - 9 REPRIS (5)
 - 10 VIRGIN (5)



Heritage

Top Heritage Rock Tracks

- Pos. TITLE—Artist—Imprint/Promotion Label
- 1 BLUE ON BLACK—Kenny Wayne Shepherd Band—Revolution
 - 2 3 AM—Matchbox 20—Lava/Atlantic
 - 3 GIVEN TO FLY—Pearl Jam—Epic
 - 4 TOUCH, PEEL AND STAND—Days Of The New—Outpost/Geffen
 - 5 SAINT OF ME—The Rolling Stones—Virgin
 - 6 MY OWN PRISON—Creed—Wind-up
 - 7 THE GIRL I LOVE—Led Zeppelin—Atlantic
 - 8 TASTE OF INDIA—Aerosmith—Columbia
 - 9 THE UNFORGIVEN II—Metallica—Elektra/EEG
 - 10 WITHOUT YOU—Van Halen—Warner Bros.
 - 11 BACK ON EARTH—Ozzy Osbourne—Epic
 - 12 BOTH SIDES NOW—Sammy Hagar—The Track Factory/MCA
 - 13 SEX AND CANDY—Marcy Playground—Capitol
 - 14 SHELF IN THE ROOM—Days Of The New—Outpost/Geffen



Kenny Wayne Shepherd Band

- 6 METALLICA (3) Elektra/EEG
- 7 CREED (2) Wind-up
- 8 AEROSMITH (3) Columbia
- 9 VAN HALEN (2) Warner Bros.
- 10 LED ZEPPELIN (1) Atlantic

Top Heritage Rock Labels

- Pos. PROMOTION LABEL (No. Of Charted Tracks)
- 1 ATLANTIC (13)
 - 2 EPIC (6)
 - 3 VIRGIN (6)
 - 4 GEFEN (5)
 - 5 REVOLUTION (3)
 - 6 CAPITOL (7)
 - 7 COLUMBIA (11)
 - 8 ELEKTRA ENTERTAINMENT GROUP (8)
 - 9 REPRIS (7)
 - 10 WARNER BROS. (7)





Marcy Playground

Modern

Top Modern Rock Tracks

- Pos. TITLE—Artist—Imprint/Promotion Label
- 1 SEX AND CANDY—Marcy Playground—Capitol
 - 2 TIME OF YOUR LIFE (GOOD RIDDANCE)—Green Day—Reprise
 - 3 BITTER SWEET SYMPHONY—The Verve—VC/Hut/Virgin
 - 4 CLUMSY—Our Lady Peace—Columbia
 - 5 GIVEN TO FLY—Pearl Jam—Epic
 - 6 HOW'S IT GOING TO BE—Third Eye Blind—Elektra/EEG
 - 7 MY OWN PRISON—Creed—Wind-up
 - 8 BRICK—Ben Folds Five—550 Music
 - 9 I WILL BUY YOU A NEW LIFE—Everclear—Capitol
 - 10 THE WAY—Fastball—Hollywood
 - 11 EVERYTHING TO EVERYONE—Everclear—Capitol
 - 12 3 AM—Matchbox 20—Lava/Atlantic
 - 13 TOUCH, PEEL AND STAND—Days Of The New—Outpost/Geffen
 - 14 MY HERO—Foo Fighters—Roswell/Capitol
 - 15 DAMMIT (GROWING UP)—Blink 182—Cargo/MCA
 - 16 CLOSING TIME—Semisonic—MCA
 - 17 MOUTH—Bush—Trauma/Interscope/Hollywood
 - 18 KARMA POLICE—Radiohead—Capitol
 - 19 TUBTHUMPING—Chumbawamba—Republic/Universal
 - 20 TORN—Natalie Imbruglia—RCA



Green Day

Top Modern Rock Artists

- Pos. ARTIST (No. Of Charted Tracks)
- 1 GREEN DAY (3) Reprise
 - 2 MARCY PLAYGROUND (2) Capitol
 - 3 EVERCLEAR (2) Capitol
 - 4 PEARL JAM (2) Epic
 - 5 THIRD EYE BLIND (2) Elektra/EEG
 - 6 FOO FIGHTERS (2) Roswell/Capitol
 - 7 THE VERVE (2) VC/Hut/Virgin
 - 8 OUR LADY PEACE (3) Columbia
 - 9 DAYS OF THE NEW (2) Outpost/Geffen
 - 10 MATCHBOX 20 (2) Lava/Atlantic

Top Modern Rock Labels

- Pos. PROMOTION LABEL (No. Of Charted Tracks)
- 1 CAPITOL (8)
 - 2 EPIC (9)
 - 3 REPRISE (7)
 - 4 ATLANTIC (11)
 - 5 GEFLEN (5)



- 6 COLUMBIA (7)
- 7 MCA (6)
- 8 550 MUSIC (4)
- 9 ELEKTRA ENTERTAINMENT GROUP (4)
- 10 VIRGIN (5)

Triple-A

Top Triple-A Tracks

- Pos. TITLE—Artist—Imprint/Promotion Label
- 1 3 AM—Matchbox 20—Lava/Atlantic
 - 2 BITTER SWEET SYMPHONY—The Verve—VC/Hut/Virgin
 - 3 THE MUMMERS' DANCE—Loreena McKennitt—Quinlan Road/Warner Bros.
 - 4 SWEET SURRENDER—Sarah McLachlan—Arista
 - 5 I DO—Lisa Loeb—Geffen
 - 6 HOW'S IT GOING TO BE—Third Eye Blind—Elektra/EEG
 - 7 SEX AND CANDY—Marcy Playground—Capitol
 - 8 MY FATHER'S EYES—Eric Clapton—Reprise
 - 9 ONE BELIEF AWAY—Bonnie Raitt—Capitol
 - 10 SMILING UP THE FROWN—Agents Of Good Roots—RCA
 - 11 TORN—Natalie Imbruglia—RCA
 - 12 WALKIN' ON THE SUN—Smash Mouth—Interscope
 - 13 32 FLAVORS—Alana Davis—Elektra/EEG
 - 14 THE WAY—Fastball—Hollywood
 - 15 TIME OF YOUR LIFE (GOOD RIDDANCE)—Green Day—Reprise
 - 16 BLUE ON BLACK—Kenny Wayne Shepherd Band—Revolution
 - 17 HAPPY—Sister Hazel—Universal
 - 18 SAINT OF ME—The Rolling Stones—Virgin
 - 19 ALREADY HOME—Marc Cohn—Atlantic
 - 20 I DON'T WANT TO WAIT—Paula Cole—Imago/Warner Bros.



Matchbox 20

Top Triple-A Artists

- Pos. ARTIST (No. Of Charted Tracks) Imprint/Promotion Label
- 1 MATCHBOX 20 (2) Lava/Atlantic
 - 2 SARAH MCLACHLAN (3) Arista
 - 3 THE VERVE (1) VC/Hut/Virgin
 - 4 LOREENA MCKENNITT (1) Quinlan Road/Warner Bros.
 - 5 ERIC CLAPTON (2) Reprise
 - 6 LISA LOEB (1) Geffen
 - 7 THIRD EYE BLIND (1) Elektra/EEG
 - 8 MARCY PLAYGROUND (1) Capitol
 - 9 PAULA COLE (2) Imago/Warner Bros.
 - 10 BONNIE RAITT (1) Capitol

Top Triple-A Labels

- Pos. PROMOTION LABEL (No. Of Charted Tracks)
- 1 ATLANTIC (5)
 - 2 REPRISE (5)
 - 3 RCA (4)
 - 4 WARNER BROS. (4)
 - 5 VIRGIN (3)
 - 6 CAPITOL (3)
 - 7 ELEKTRA ENTERTAINMENT GROUP (5)
 - 8 ARISTA (4)
 - 9 GEFLEN (2)
 - 10 INTERSCOPE (2)



Gov't Mule

the new featured single
She Said, She Said

COULDN'T WAIT:

- WBAB
WDHA
KFMX
WQWK
WWCT
WKGB
WIIL
KFDB
KZLE

From the Capricorn
CD & Cassette "Dose"
314 536 504-2/4



ALSO SPINNING:
WROV
WWWV
WIZN

ON YOUR DESK NOW!!!
GOING FOR ADDS JUNE 29!!!
CHECK OUT THE MULE ON THE H.O.R.D.E. TOUR

RADIO CONCERT MONITOR

DATE	CALL LETTERS	EVENT	SCHEDULED TO APPEAR
June 27	WBAB Long Island, N.Y.	Blues & Brews	Cadillac Moon, Halley DeVestern, Gov't Mule, Li'l Buster & the Soul Brothers, Jimmy Vaughan
June 28	CIMX Detroit	89X Seventh Birthday Bash	Atomic Fireballs, Blink 182, Creeper Lagoon, Ghandarvas, Mustard Plug, Sugar Ray
June 28	WDHA Morristown, N.J.	Rock the Park	Blue Oyster Cult, Gov't Mule, Nine Days
July 3	WJRR Orlando, Fla.	WJRR'S Dependence Day	Addict, Black Crowes, Darling, Honeyrods, Samiam, Semisonic
July 4	KEGL Dallas	First Annual Fourth of July Celebration	Dokken, L.A. Guns, Quiet Riot, Slaughter, Warrant
July 4	WXTB Tampa, Fla.	World's Largest BBQ	Addict, Black Crowes, Candlebox, Semisonic, Seven Mary Three, Swinging Mooks
July 10-12	WXPN Philadelphia	Singer-Songwriter Weekend	Bela Fleck & the Flecktones (July 10); Olu Dara, Huffamoose, Marah, Southern Culture On The Skids, Lucinda Williams (July 11); Mary Arden Collins, Francis Dunnery, Patty Griffin, James McMurtry, Moxy Fruvous (July 12)
July 12	WKRL/WKLL/WKRH Syracuse/Utica, N.Y.	K-Rockathon	Big Wreck, Blink 182, Eve 6, God Lives Underwater, Our Lady Peace, Semisonic, Smash Mouth, Spacehog, Stabbing Westward, Third Eye Blind

To include your station's concert information in Rock Concert Monitor, call Marc Schiffman at 212-536-5065, fax 212-536-5286, or E-mail mschiffman@airplaymonitor.com



CHEET SHEET BY MARK MARONE

212-536-5051 • mmarone@airplaymonitor.com

Guster Defies Convention And Thrives

Guster was formed at Tufts University in 1992 after three new classmates met during freshman orientation. By junior year, the band had released an independent debut called "Parachute" and since then have defied the odds as a rock band with an unconventional approach.

Playing live without an electric guitar, bass, or drum set anywhere in sight, Guster opts for pop songs with acoustic guitars and percussion. Combining melodic songs, strong live performances, and business savvy, this Boston-area trio has cultivated an impressive network of supporters for its harmony-driven, college pop/rock. Before the members graduated in 1995, Guster was a self-reliant working band that spent more time performing than at school.

The band helped cultivate a following by employing a "rep" program in which Guster fans would agree to sell the band's album on consignment in exchange for a free T-shirt and passes to its shows. While this clever distribution system expanded to all corners of the country via college boosters who moved, the band started to play bigger gigs—even selling out the rock club Avalon in Boston as an independent band.

Guitarist/singer Ryan Miller is, however, reluctant to affix the do-it-yourself banner to the band.

Unlike Ani DiFranco or Fugazi, he says, "we were indie rock because we were forced to be. We didn't have the buzz: We weren't grunge, electronica, or this totally hip sound. We weren't in the buzz bins of the world, didn't have a lot of hype. We were just a pop band with sort of unusual instrumentation."

While the band members' folks helped out with the rent, the trio toured tirelessly, developing something not all nationally released debut acts have: the ability to pull off a dynamic live show. For Miller, "it turns out to be the best thing in the world, because we know we have legs to stand on. We're in Boston. I can't tell you how many bands have been signed and dropped in the [life] span of our band. And bands that have lived and died by radio. Not to say that we're



From left: Ryan Miller, Adam Gardner, Brian Rosenworcel

above that, but certainly we're hoping that this slow progression can continue." Having said that, Miller admits that although the band has subsisted on live shows, Guster ultimately needs radio to break it. "We're not like Phish or Dave Matthews; we don't really play our instruments that well. We write pop songs."

Pop songs the band members do write, but Guster's trademark is its peculiar instrumentation. Miller says the approach wasn't by any grand design. "It just started as a goof, I think," recalls Miller about the impetus for him and guitarist/co-lead singer Adam Gardner getting together in a dorm room with a couple of acoustics. "We were just playing guitars, and Brian [Rosenworcel] said, 'I play bongos,' and we said, 'Oh, OK. It sounds pretty stupid, but whatever.' Then it just sort of took off."

Any preconceptions that Guster might be a passive, folksy band usually dissipate once the group begins playing. Octave pedals are employed on the acoustic guitars, and Rosenworcel's percussion setup, which includes bongos, congas, splash cymbals, and a djembe drum, is approached by both player and sound man as a traditional rock drum setup. The percussionist says they "put a mike at the bottom of the djembe drum, which has a big boomy sound, to bring out the lowest frequencies. That thing sounds like a cannon."

For a kid who grew up in Dallas listening to heavy metal, Miller sees no reason why his band can't kick ass the way he saw Kiss do at his first-ever concert when he was in the fifth grade. "We go for the big rock show. Lots of energy and us trying to be the big rock'n'roll band, even though we're beating the crap out of these wussy little instruments."

MONITOR PROFILE

Fischer's Wind-Up Pitches Creed To Record-Breaking Success

The corks were popping at Wind-Up Records last week. The label's debut act, Creed, set a record on Monitor's active rock chart, placing three tracks in the top 20. That's a feat any label would be happy about, but the fact that Wind-Up is an independent working its first act makes it that much more impressive. "People wish to have one of these in their entire career," VP of promotion Shanna Fischer says. And she insists, "We're very serious about what we're doing. This is not just an indie label; this is a small major label."

While she admits she didn't foresee this type of success this fast, Fischer knew Wind-Up was getting more than a brand-new artist. Creed had already garnered airplay in its home state of Florida by the time it signed with the label. "The most important thing was to capitalize on what was already happening," she says. "There was an incredible story in Florida at both rock and modern rock radio. By the time we signed

Hardin's Jacor ties proved helpful, too. "He was sending out copies of this record to Tim Dukes and Rick Jamie and getting everybody excited about the record. That helped bring in those stations a lot earlier than they probably normally would have come," she says.

She also got help from Curtis Johnson, PD of album KRXQ Sacramento, Calif. "There were a couple of cases where it wouldn't test," she says. "Curtis Johnson found a hook that worked, and as soon as we found out that he had [it], we made copies of it and sent it to programmers all over the country. Anybody who told us their research was bad, we sent them Curtis' hook."

Creed's live act is one of its major strengths, and the band members have honed their skills even more over their year of explosive growth. That first August tour intended to introduce Creed to markets outside Florida was set to last six weeks. As it turned out, the band didn't get a break until March. "They certainly never anticipated that they were going to be packing up and spending the next year of their lives constantly on the road," says Fischer.

A galvanizing moment for Fischer was seeing the band play in Miami. Though it was in Creed's home state, the gig was its first in Miami. Fischer had brought Gregg Steele and Duane Doherty, then with album WZTA, to see the show. "Three songs into it, Duane and I looked at each other, and we were both like, 'Wow!'" she says. "The girls were packed up at the front of the stage just reaching out to touch [vocalist] Scott [Stapp], and the guys were moshing in the back. It was the most incredible vibe, and it wasn't even their show... It was one of those moments, and, happily, I get that moment every time I see them."

The band has used its live show in its writing routine. "They use sound checks to write new material," says Fischer, spending "two hours a day working on new material, and they showcase those songs now, live. They play anywhere between three and four new songs a night."

Aside from the live angle, Fischer and Wind-Up are big believers in the World Wide Web. "Our Internet marketing division is probably unusual compared with most labels," says Fischer. "We have five people here, and we're adding more who are devoted to the Internet."

Creednet.com keeps fans abreast of the band's activities, connecting them with one another across the country and with the band itself. "The band has laptops on the road, so they can E-mail and be part of what's going on," Fischer says. "The Internet has been a lot about what we do. We have used it from the very beginning in spreading the word on Creed... I think we're averaging about 80,000 hits a week right now."

As the Creed project has grown, so has Wind-Up, which now has 44 staffers. Hauser and Galbraith, present at the beginning of the project, are now full-time employees. Fischer oversees a regional staff, along with director of rock promotion Joanne Grand and director of modern rock promotion Wendy Naylor.

Fischer says one big difference between her label and the majors is that with Creed and the upcoming albums by Finger Eleven and Stretch Princess, Wind-Up has a 44:3 ratio of employees to acts. That makes for intense focus on each project and great flexibility in executing plans. Fischer reports having marketing meetings and then acting on that meeting's decision in 24 hours.

Looking back on a successful year, Fischer says, "what's important about the success of Creed is that you don't have to be a major label to have a multi-platinum act... After the success of Creed, programmers didn't look at the stack of CDs on their desk in the same way anymore. Active rock, as a format, is willing to deal with records and labels [regardless of size], as long as the music is good. We're going to have even more cases of that." **MARC SCHIFFMAN**



Shanna Fischer
VP of Promotion
Wind-Up Records

'We're serious about what we're doing... This is a small major label'

Creed, [active WXTB Tampa PD] Brad Hardin had already been playing it for well over a month and had it as one of his top-researching and top-requesting records. Rick Schmidt [then] in Tallahassee at [modern] WXSX was experiencing the same thing, as well as [modern] WKRO Daytona Beach."

All this from a self-released album that cost the band \$6,000 to produce and had moved 5,000 pieces before it signed with Wind-Up. "So there were all sorts of signs already that it was a hit, and we just wanted to make sure that we could capitalize on that quickly," Fischer says.

As soon as the deal was done, Wind-Up brought Creed back to the studio to recut "My Own Prison." "At the time we were shipping that to radio for adds, they were still in the studio mixing the rest of the record," Fischer says.

Fischer was at this point one-half of a two-person team—with Drew Hauser—and describes a very organic process of growing Creed, primarily through the programmers having success with the act. Promoter Bill McGathy had played the song for album WLZR Milwaukee PD Keith Hastings, who, along with Hardin and Schmidt, was talking up the band to his peers.

Next up, Fischer projected which markets and stations she thought would embrace the project and started routing a tour through those markets. It was Creed's first tour outside of the Sunshine State, and Fischer hired Alan Galbraith to go to each tour stop two weeks before the band. "Alan's job was to go into these markets and go to the clubs, go to the retail stores, the college radio stations, wherever he could go to spread the word about Creed," says Fischer. "He had a van that was just loaded with singles, posters, and stickers, just so people would know who Creed was when they came into town."

The only problem with that plan was how fast radio picked up on the record. All the markets Fischer projected came in during the first two weeks. The tour plan gave Fischer added fuel. "As radio hit the record, I was immediately able to give them a presents on that show [and] get them involved from the very beginning," she says.

Exclusive Midyear Recap Shows Debut Acts Riding High

Continued from page 1

Soundgarden's Chris Cornell.

In contrast, last year only Metallica and Bush made top 20 double plays, with a notable absence of baby bands. Aside from Metallica, Aerosmith and Van Halen are the only other bands to hit the midyear top 20 at mainstream two years straight.

Speaking of baby bands, this year's top 10 mainstream acts include Days Of The New, Creed, matchbox 20, and Marcy Playground, all of whom got there with their debut releases.

ACTIVE, HERITAGE THINK YOUNG

Creed also topped the tracks chart in its home format of active rock. Like Creed, Days Of The New placed two tracks on that chart, highlighting the parallels between active rock and its mainstream parent. Foo Fighters also placed two tracks, and Metallica nabbed three. With its hat trick, it's no wonder Metallica is 1998's No. 1 active rock artist, so far.

As far as new act penetration, seven active rock tracks (35%) are from debut albums (eight [40%], if you include Cantrell). Artist-wise, the same four baby bands who were in the mainstream top 10 hit the active top 10 artist roundup.

Surprisingly, Days Of The New cracked the heritage chart's top 20 titles with multiple entries. It joins fellow newcomer Kenny Wayne Shepherd, whose "Blue On Black" is the midyear leader at heritage. Other acts with two tracks in the top 20 are the Rolling Stones and Jimmy Page and Robert Plant—if you count the fact that they charted both as Page & Plant and as Led Zeppelin. A respectable six tracks (30%) are from debut albums. Not bad for a heritage chart.

MODERN MARCY'S PLAYGROUND

It's a "Sex And Candy" year so far at modern rock, with Marcy Playground earning the No. 1 track. It's a testament to modern's interest in a wide variety of music that only Everclear man-

aged to place more than one cut on the chart. Half the charted tracks are from major-label debuts.

Last year's top modern tracks also had only one act—Bush—represented twice, but only 25% of that chart was from debut albums.

Like its mainstream and active brethren, modern's top 10 acts include four debut bands—Marcy Playground, matchbox 20, Third Eye Blind, and Days Of The New.

TRIPLE-A MOST DIVERSE

Living up to its promise of diversity, triple-A had 20 acts contributing to its top 20. Of those, eight tracks are from debut acts—including chart-topper matchbox 20—making triple-A the most likely format to embrace new artists, at least gauged by this midyear-recap comparison. Oddly, only three of the top 10 triple-A acts are debut acts, though again, the list is topped by matchbox 20.

Last year, incidentally, triple-A played host to Counting Crows and R.E.M. two times in the top 20, and four top 20 entries were from major-label debuts, indicating some growth in the format's diversity over last year, perhaps a nod to the growing modern adult effect. Whether that means labels offering up more new material to fill the modern adult gap or triple-A programmers stepping out more frequently to fend off the modern adult effect is unclear.

CAPITOL, ATLANTIC TOP LABELS

Looking at the label roundup, it's a Capitol and Atlantic world out there, with the former picking up No. 1 slots at mainstream, active, and modern, each with eight tracks. Atlantic got the No. 1 nod at heritage and triple-A.

All charts are based on the number of spins acquired in the first six months of our 1998 chart cycle. In the case of best artists and best labels, you'll notice a number in parentheses. That represents how many separate singles contributed to the overall spin count for that entry.

One More From The Festival Front



Modern WPLY (Y100) Philadelphia is another one of the stations that threw its hat in the festival ring this season, with the Y100 Festival. Shown at the Festival in the back row, from left, are promotion director Kelly Gross, Columbia's Dave Watson, PD Jim McGuinn, night jock LeeAnn Curtis, Wyclef Jean, overnight jock Monkey-boy, and APD Doug Kubinski. In front, from left, are promotion coordinator Kris Murphy, promotion assistant Casey-Girl, and morning producer Ben Maxwell.

PUBLISHER: JON GUYNN

EDITOR: SEAN ROSS

MANAGING EDITOR: MARC SCHIFFMAN

NATIONAL CHART MANAGER: LINDA SILVER

MAINSTREAM ROCK/TRIPLE A CHART MANAGER: ANTHONY COLOMBO

MODERN ROCK CHART MANAGER: MARK MARONE

ASSOCIATE DIRECTOR OF CHARTS: STEVE GRAYBOW

WRITER/REPORTER: DANA HALL

CHART PRODUCTION MANAGER: MICHAEL CUSSON

ASST. CHART PRODUCTION MANAGER: ALEX VITOULOS

EDITORIAL PRODUCTION MANAGERS: BARRY BISHIN, MARCIA REPINSKI

EDITORIAL PRODUCTION: MADELINE CARROLL, SUSAN CHICOLA,

MARC GIAGUINTO, MARIA MANIPLICI

COPY EDITOR: CARL ROSEN

ADVERTISING PRODUCTION MANAGER: LYDIA MIKULKO

ADVERTISING PRODUCTION COORDINATOR: PAUL PAGE

ART DIRECTOR: RAY CARLSON

ADVERTISING PRODUCTION ARTIST: KAREN PLATT

1515 Broadway, New York, NY 10036 212-764-7300

For subscriptions call: 800-745-8922

Airplay Monitor reporting panels are based solely on a station's musical content.

©1998 BPI Communications Inc. No part of this publication may be reproduced, stored in any retrieval system, or transmitted, in any form or by any means, electronic, mechanical, photocopying, recording, or otherwise, without the prior written permission of the publisher.

NATIONAL ADVERTISING MANAGER: HANK SPANN

ACCOUNT MANAGERS: JEFF SOMERSTEIN, SHARON WHITE

ADVERTISING SERVICES MANAGER: ALYSE ZIGMAN

SALES ASSISTANTS: EVELYN ASZODI,

ERICA BENGISON, CANDACE GIL

EDITORIAL ADVISER: TIMOTHY WHITE

PRODUCTION DIRECTOR: MARIE GOMBERT

CIRCULATION DIRECTOR: JEANNE JAMIN

MARKETING MANAGER: ROB ACCATINO



Billboard Music Group

PRESIDENT: HOWARD LANDER

SENIOR VP/GENERAL COUNSEL: GEORGINA CHALLIS

VICE-PRESIDENTS: IRWIN KORNFELD, KAREN OERTLEY, ADAM WHITE

DIRECTOR OF STRATEGIC DEVELOPMENT: KEN SCHLAGER

BUSINESS MANAGER: JOELLEN SOMMER

MONITOR ROCK PANELS

MAINSTREAM ROCK (109)

Akron, Ohio	WONE	Miami	WZTA
Albany, N.Y.	WPYX	Milwaukee	WLZR
Albuquerque, N.M.	KZRR	Minneapolis	KQRS
Allentown, Pa.	WZZO		KXXR
Atlanta	WKLS		WRGC
Austin, Texas	KLBJ	Monterey, Calif.	KMBY
Bakersfield, Calif.	KRAB	Montgomery, Ala.	WXFX
Baltimore	WIYY	Morristown, N.J.	WDHA
Boston	WAAF	New Haven, Conn.	WPLR
Burlington, Vt.	WIZN	New Orleans	WCKW
Charleston, W.Va.	WKLC	Norfolk, Va.	WNOR
Charlotte, N.C.	WXRC	Oklahoma City	KATT
Chicago	WRCX	Omaha, Neb.	KEZO
Cincinnati	WEBN	Orlando, Fla.	WJRR
Cleveland	WMMS	Pensacola, Fla.	WTXX
	WNCX	Philadelphia	WMMR
Colorado Springs, Colo.	KILO		WYSP
Columbus, Ga.	WVRK	Phoenix	KDKB
Columbus, Ohio	WBZX		KUPD
	WLVQ	Pittsburgh	WDVE
Corpus Christi, Texas	KNCN	Portland, Maine	WBLM
	KRAD	Portland, Ore.	KUFO
	KEGL	Providence, R.I.	WHJY
Dallas, Texas	KTXQ		WXEX
	WTUE	Raleigh, N.C.	WRDU
Dayton, Ohio	KBPI	Richmond, Va.	WRXL
Denver	KAZR	Roanoke, Va.	WROV
Des Moines, Iowa	KGGO	Rochester, N.Y.	WCMF
	WKRK	Sacramento, Calif.	KRXQ
Detroit	WRIF	St. Louis	KSHE
	KLAQ	Salt Lake City	KBER
El Paso, Texas	WRXK	San Antonio, Texas	KISS
Ft. Myers, Fla.	KRZR	San Bernardino, Calif.	KCAL
Fresno, Calif.	WKLQ	San Diego	KIOZ
Grand Rapids, Mich.	WAPL	San Jose, Calif.	KSJO
Green Bay, Wis.	WROQ	Santa Barbara, Calif.	KTYD
Greenville, S.C.	WTPT	Savannah, Ga.	WIXV
	WQXA	Seattle	KISW
Harrisburg, Pa.	WTPA	Shreveport, La.	KTAL
	WCCC		KTUX
Hartford, Conn.	KLOL	Spokane, Wash.	KNJY
Houston	WFBQ	Springfield, Mo.	KXUS
Indianapolis	WSTZ	Syracuse, N.Y.	WAQX
Jackson, Miss.	FYV	Tampa, Fla.	WXTB
Jacksonville, Fla.	KQRC	Toledo, Ohio	WBUZ
Kansas City	WIMZ		WIOT
Knoxville, Tenn.	KOMP	Tucson, Ariz.	KLPX
Las Vegas	WKQQ	Tulsa, Okla.	KMOD
Lexington, Ky.	KMUJ	Washington, D.C.	WWDC
Little Rock, Ark.	WBAB	West Palm Beach, Fla.	WZZR
Long Island, N.Y.	KLOS	Wichita, Kan.	KRZZ
Los Angeles, Calif.	WTFX	Wilkes-Barre, Pa.	WEZZ*
Louisville, Ky.	KFRQ		WZMT
McAllen, Texas	WEGR	Youngstown, Ohio	WNCD
Memphis	WMFS		

MODERN ROCK (80)

Albany, N.Y.	WEQX	Los Angeles	KLYY
	WQBK		KROQ
Albuquerque	KTEG	Memphis	WRXQ
Atlanta	WNNX	Milwaukee	WLUM
Augusta, Ga.	WRXR	Minneapolis	KZMZ
Austin, Texas	KROX	Nashville	WKDF
Birmingham	WRAX	New Bern, N.C.	WXNR
Boston	WBCN	New Orleans	KKND
	WFNX	New York	WXRK
Buffalo, N.Y.	WEDG	Norfolk, Va.	WROX
Burlington, Vt.	WBTZ	Philadelphia	WPLY
Charleston, S.C.	WAVF	Phoenix	KEDJ
Charlotte, N.C.	WEND		KZON
Chicago	WKQX	Pittsburgh	WXDX
Cincinnati	WAQZ	Portland, Ore.	KNRK
Cleveland	WENZ	Portland, Maine	WCYY
Columbia, S.C.	WARQ	Providence, R.I.	WBRU
Columbus, Ohio	WWCD	Richmond, Va.	WBZU
	WZAZ	Riverside, Calif.	KCXX
Dallas	KDGE	Rochester, N.Y.	WNVE
Dayton, Ohio	WXEG	Sacramento, Calif.	KWOD
Daytona Beach	WKRO	St. Louis	KPNT
Denver	KTCL	Salt Lake City	KENZ
Des Moines, Iowa	KKDM		KXKK
Detroit	CIMX	San Diego	XHRM
	WPLT		XTRA
Fresno, Calif.	KFRR	San Francisco	KITS
Ft. Myers, Fla.	WJBX	San Jose, Calif.	KOME
Grand Rapids, Mich.	WGRD	Santa Barbara, Calif.	KHTY
Greensboro, N.C.	WXRA		KJEE
Hartford, Conn.	WMRQ	Seattle	KNDD
Honolulu	KPOI	Spokane, Wash.	KAEP
Houston	KTBS	Springfield, Mo.	KTOZ
Indianapolis	WRZX	Syracuse, N.Y.	WKRL
Jacksonville, Fla.	WPLA	Toronto	CFNY
Kansas City	KCCX	Tucson, Ariz.	KFMA
	KLZR	Tulsa, Okla.	KMYZ
Lafayette, La.	KFTF	Washington, D.C.	WHFS
Las Vegas	KXTE	West Palm Beach, Fla.	WPBZ
Lexington, Ky.	WXZZ	Wichita, Kan.	KICT

TRIPLE-A (21)

Albany, N.Y.	WXLE	Indianapolis	WTTS
Austin, Texas	KGSR	Minneapolis	KTCZ
Boston	WBOS	Monterey, Calif.	KPIG
	WXRV	Nashville	WRLT
Burlington, Vt.	WNCS	Norfolk, Va.	WKOC
Chattanooga, Tenn.	WDOD	Portland, Ore.	KINK
Chicago	WXRT	St. Louis	WVRV
Dallas	KKZN	San Francisco	KFOG
Denver	KBCO	Seattle	KMTT
	KXPK	Tampa, Fla.	WHPT
Detroit	CIDR		

*Added to panel

AIRPLAY
Monitor
GREATEST GAINERS



Strongest Increase In Airplay This Week

MAINSTREAM ROCK

**INCREASE
IN PLAYS**

CANDLEBOX • It's Alright (MAVERICK/WARNER BROS.)	+455
KFRQ +24, WJRR +17, KCAL +17, WCCC +15, KTXQ +15, KTUX +14, KRZR +14, WXRC +14, WTKX +13, KDKB +13	
JIMMY PAGE & ROBERT PLANT • Shining In The Light (ATLANTIC)	+187
WAQX +20, WYSP +17, KTXQ +17, WDVE +15, WBUZ +12, WEGR +12, WSTZ +11, WKRK +10, WMFS +9, KYTD +9	
MONSTER MAGNET • Space Lord (A&M)	+159
KCAL +22, KISS +15, KTUX +14, WTPT +12, KBPI +12, WYSP +10, KRAD +9, KAZR +7, WIYY +7, WMMR +7	
CREED • What's This Life For (WIND-UP)	+148
KFRQ +22, KAZR +10, WMFS +9, KTXQ +9, KRXQ +9, WBUZ +8, WJRR +8, WKRK +7, WTFX +7, WQXA +7	
MEGADETH • A Secret Place (CAPITOL)	+98
WJRR +14, WMFS +13, WTKX +11, KOMP +11, WAPL +8, KZRR +6, KRXQ +6, KNCN +5, WNCN +4, WXTB +4	
DAYS OF THE NEW • The Down Town (OUTPOST/GEFFEN)	+97
KNJY +12, WAQX +12, KOMP +10, KRAB +10, WJRR +9, KISS +9, KUFO +8, KAZR +8, KLBJ +8, WAPL +6	
JERRY CANTRELL • My Song (COLUMBIA)	+77
WYSP +15, WMFS +10, WTFX +10, KOMP +9, WRIF +8, WTPT +6, WIOT +6, WCMF +6, WIYY +6, WZMT +5	
JOURNEY • Remember Me (COLUMBIA)	+77
KTAL +15, WSTZ +14, WIMZ +14, KDKB +13, WEZX +5, WPYX +4, KMJX +3, KSHE +2, WZZO +1, KRZZ +1	
FILTER • One (ELEKTRA/EEG)	+70
WQXA +13, WRQC +12, KAZR +6, WKRK +4, WZMT +4, WSTZ +4, WRCX +4, WKLQ +4, WTPT +3, KOXR +3	
SEVEN MARY THREE • Over Your Shoulder (ATLANTIC)	+70
WXTB +15, WJRR +14, WVRK +8, WKLS +8, WKQQ +6, WTUE +5, WZTA +3, KTUX +3, WZZO +2, KILO +2	

MODERN ROCK

**INCREASE
IN PLAYS**

BARENAKED LADIES • One Week (REPRISE)	+277
WENZ +23, KKDM +21, WZAZ +19, WAVF +18, WHFS +16, KZON +15, WPLA +14, WXDX +13, KFRR +13, WXNR +12	
THE SMASHING PUMPKINS • Perfect (VIRGIN)	+186
WPLY +16, WGRD +16, KWOD +16, XHRM +14, WPLT +13, WXDX +12, KTOZ +12, WHFS +10, KNDD +9, WKQX +9	
DAYS OF THE NEW • The Down Town (OUTPOST/GEFFEN)	+165
KXKR +25, KNDD +15, WENZ +15, KKND +13, WRXQ +13, KTOZ +12, KPNT +12, KFTE +11, KDGE +10, WKQX +10	
NATALIE IMBRUGLIA • Wishing I Was There (RCA)	+160
WXNR +25, KXKR +22, WRAX +16, WHFS +15, WBRU +12, WKDF +12, KROQ +10, KROX +8, WRXR +8, KTCL +8	
GRANT LEE BUFFALO • Truly, Truly (SLASH/WARNER BROS.)	+158
WXRA +26, WZAZ +21, XTRA +18, WXDX +17, WQBK +16, WEND +15, WKDF +12, KPNT +8, WPLY +7, KICT +6	
DAVE MATTHEWS BAND • Stay (Wasting Time) (RCA)	+154
WBRU +25, KTBZ +17, WHFS +17, WNNX +16, KZMZ +14, WEQX +11, WMRQ +10, WBZU +9, WXZZ +8, WPLY +6	
CANDLEBOX • It's Alright (MAVERICK/WARNER BROS.)	+142
KCXX +23, WPLA +15, KNRK +14, WXNR +12, KTOZ +12, WRXQ +11, WRXR +9, WKRL +8, WKQX +8, WARQ +7	
CREED • What's This Life For (WIND-UP)	+135
WKRL +17, WXDX +17, WAVF +13, KCXX +10, WXRK +9, WRXQ +7, KROQ +7, WCYY +6, CFNY +6, KXTE +5	
EVERYTHING • Hooch (BLACKBIRD/SIRE)	+121
WPLT +19, WKRO +17, KNRK +15, WNNX +15, WRXR +13, XHRM +12, WXZZ +11, WAVF +10, KTEG +8, KDGE +8	
GARBAGE • I Think I'm Paranoid (ALMO SOUNDS/INTERSCOPE)	+113
KITS +18, KHLY +15, KJEE +12, KNDD +12, KXKR +12, WENZ +10, KXTE +8, WHFS +7, WRAX +6, KROQ +5	

**VIDEO
PLAYLISTS**

MOST PLAYED ROCK TRACKS



	TW	LW
1 Natalie Imbruglia, Torn	36	36
2 Marcy Playground, Sex And Candy	29	31
3 Goo Goo Dolls, Iris	25	21
4 Natalie Merchant, Kind & Generous	22	20
5 Fastball, The Way	19	20
6 Sarah McLachlan, Adia	19	16
7 Matchbox 20, 3 AM	18	22
8 Rod Stewart, Ooh La La	16	15
9 Vonda Shepard, Searchin' My Soul	14	22
10 Smash Mouth, Walkin' On The Sun	12	15
11 Edwin McCain, I'll Be	12	6
12 Bonnie Raitt, One Belief Away	12	12
13 Matchbox 20, Real World	11	10
14 Semisonic, Closing Time	11	11
15 Fleetwood Mac, Landslide	10	12
16 The Wallflowers, One Headlight	10	10
17 Paula Cole, I Don't Want To Wait	10	10
18 Third Eye Blind, How's It Going To Be	10	8
19 Dave Matthews Band, Don't Drink The Water	10	10
20 Third Eye Blind, Semi-Charmed Life	9	10
21 Sugar Ray, Fly	9	11
22 Matchbox 20, Push	8	8
23 Sister Hazel, All For You	8	10
24 Cherry Poppin' Daddies, Zoot Suit Riot	8	8
25 The Wallflowers, Heroes	8	16
26 The B-52's, Debbie	8	3
27 Queen & David Bowie, Under Pressure	4	3
28 Paul McCartney & Michael Jackson, Say Say Say	4	3
29 Jewel, Who Will Save Your Soul	4	1
30 Billie Myers, Tell Me	4	0



	TW	LW
1 Puff Daddy Feat. Jimmy Page, Come With Me	25	26
2 Matchbox 20, Real World	22	13
3 Goo Goo Dolls, Iris	20	28
4 Eve 6, Inside Out	19	11
5 Aerosmith, I Don't Want To Miss A Thing	19	20
6 Cherry Poppin' Daddies, Zoot Suit Riot	19	16
7 Semisonic, Closing Time	18	14
8 Fastball, The Way	17	21
9 The Smashing Pumpkins, Ava Adore	17	15
10 Metallica, Fuel	13	19
11 Natalie Imbruglia, Torn	13	19
12 The Wallflowers, Heroes	12	22
13 Rammstein, Du Hast	12	0
14 Green Day, Redundant	10	10
15 Lenny Kravitz, If You Can't Say No	9	9
16 Fuel, Shimmer	7	4
17 Sean Lennon, Home	7	7
18 Marcy Playground, Sex And Candy	6	4
19 Green Day, Time Of Your Life (Good Riddance)	5	5
20 Harvey Danger, Flagpole Sitta	5	5
21 Natalie Merchant, Kind & Generous	5	0
22 The Urge, Jump Right In	4	6
23 No Doubt, Just A Girl	3	1
24 No Doubt, Don't Speak	3	0
25 Matchbox 20, 3 AM	3	3
26 Dave Matthews Band, Don't Drink The Water	3	8
27 Garbage, Push It	3	3
28 Bryan Adams, (Everything I Do) I Do It For You	2	0
29 Beastie Boys, Sabotage	2	2
30 Stone Temple Pilots, Interstate Love Song	2	1
31 Jewel, You Were Meant For Me	2	1
32 Fiona Apple, Criminal	2	1
33 Matchbox 20, Push	2	2
34 Sugar Ray, Fly	2	1
35 Sarah McLachlan, Adia	2	3
36 The Verve, Lucky Man	2	5
37 Alanis Morissette, You Oughta Know	2	1
38 Jamiroquai, Virtual Insanity	2	0
39 Red Hot Chili Peppers, Give It Away	2	0
40 Puff Daddy & The Family, It's All About The Benjamins	2	0

TRIPLE-A

**INCREASE
IN PLAYS**

THE BRIAN SETZER ORCHESTRA • Jump Jive An' Wail (INTERSCOPE)	+62
WRLT +11, KMTT +11, WKOC +11, KPIG +10, WXRV +7, WNCS +6, KTCZ +3, KFOG +3, WBOS +2, KGSR +1	
THE SMASHING PUMPKINS • Perfect (VIRGIN)	+38
WBOS +15, KXPK +12, KKZN +6, WNCS +4, WVRV +1, KGSR +1	
DAVE MATTHEWS BAND • Stay (Wasting Time) (RCA)	+37
WKOC +19, WNCS +10, WVRV +6, KXPK +5, KTCZ +5, KMTT +4, WRLT +2, KBCO +1	
BARENAKED LADIES • One Week (REPRISE)	+32
WKOC +13, WDOD +10, WVRV +9, WRLT +3, KXPK +3, CIDR +2, WBOS +2, WXRT +2	
MARC COHN • Lost You In The Canyon (ATLANTIC)	+29
KTCZ +9, KKZN +7, WXRV +6, KBCO +5, WNCS +2, KGSR +2, KXPK +1, WBOS +1	
JOHN FOGERTY • Premonition (REPRISE)	+29
WBOS +9, WDOD +8, WHPT +7, KINK +4, CIDR +4, WRLT +3, KMTT +2, WXRV +2, KFOG +1, WXRT +1	
THE TRAGICALLY HIP • Poets (SIRE)	+27
CIDR +12, WXLE +4, KMTT +4, KKZN +3, WNCS +2, KGSR +2	
AGENTS OF GOOD ROOTS • Smiling Up The Frown (RCA)	+25
KXPK +19, WTTT +3, WRLT +2, KMTT +2, KGSR +2, KFOG +2, WXRT +2, WNCS +1, WXRV +1	
MATCHBOX 20 • Real World (LAVA/ATLANTIC)	+23
WHPT +15, CIDR +7, WBOS +5, WVRV +4, WDOD +1, KMTT +1, WKOC +1, KXPK +1, WXRT +1	
ROBBIE ROBERTSON • In The Blood (CAPITOL)	+23
WRLT +13, KMTT +5, WNCS +4, KGSR +1	
WILLIAM TOPLEY • Wake Up (MERCURY)	+23
KBCO +8, WRLT +7, WNCS +6, WXRV +5, CIDR +1	

**THE 1999
RADIO
POWER BOOK**

from the publishers of



THE 1999 RADIO POWER BOOK IS BEING FINE-TUNED AND ALMOST READY TO HIT THE STREET!

Now is your chance to impact leaders in the radio and record industries by delivering a powerful advertising message in what has become the indispensable companion to Airplay Monitor.

For rates and positioning, call your Airplay Monitor account manager or Alyse Zigman @ 323.525.2308 or e-mail: azigman@airplaymonitor.com



AIRPLAY Monitor

POWER PLAYLISTS

For Week Ending June 21, 1998



Playlists supplied by Broadcast Data Systems' Radio Track service...

KLOS Los Angeles PD: John Duncan MD: Rita Wilde



Table with 2 columns: Song Title, Rank. Top songs include Kenny Wayne Shepherd, Joe Satriani, Big Head Todd & The Monsters.

WYSP Philadelphia OM: Tim Sabean PD: Neal Mirsky



Table with 2 columns: Song Title, Rank. Top songs include Stabbing Westward, Joe Satriani, DLR Band.

WRCC Chicago PM: Dave Richards APD/MD: Jo Robinson



Table with 2 columns: Song Title, Rank. Top songs include Creed, Jerry Cantrell, Joe Satriani.

KQRS Minneapolis PD: Dave Hamilton APD/MD: Reed Endersbe



Table with 2 columns: Song Title, Rank. Top songs include Jimmy Page & Robert Plant, Raddy Guy, Gregg Allman.

WMMR Philadelphia PD: Joe Bonadonna MD: Ken Zipeto



Table with 2 columns: Song Title, Rank. Top songs include Pearl Jam, Aerosmith, Caramel, Lucy.

WWDC Washington, DC VP/Pgm: Dave Brown MD: Buddy Rizer



Table with 2 columns: Song Title, Rank. Top songs include Black Lab, Wash It Away, Goo Goo Dolls.

WFBQ Indianapolis OM: Marty Bender MD: Ace Cosby



Table with 2 columns: Song Title, Rank. Top songs include Aerosmith, Fastball, Rod Stewart.

WRIF Detroit OM: Doug Podell APD: Dave Wellington



Table with 2 columns: Song Title, Rank. Top songs include Aerosmith, Creed, DLR Band.

WAAF Boston PD: Dave Douglas MD: John Osterlind



Table with 2 columns: Song Title, Rank. Top songs include Stabbing Westward, Rage Against The Machine.

WDVE Pittsburgh PD: Garrett Hart MD: Cris Winter



Table with 2 columns: Song Title, Rank. Top songs include Fastball, Rod Stewart, The Wallflowers.

KLOL Houston Dir Of OPS: Michael Hughes APD/MD: Max Dugan



Table with 2 columns: Song Title, Rank. Top songs include Brother Cane, The Wallflowers, Van Halen.

WNXC Cleveland PD: Bill Louis MD: David Jockers



Table with 2 columns: Song Title, Rank. Top songs include Aerosmith, Jimmy Page & Robert Plant.

WKLS Atlanta PD: Pat Ervin MD: Lisa Sturgis



Table with 2 columns: Song Title, Rank. Top songs include Kenny Wayne Shepherd, Collective Soul.

KTXQ Dallas OM: Andy Lockridge MD: Redbeard



Table with 2 columns: Song Title, Rank. Top songs include Metallica, The Smashing Pumpkins.

KEGL Dallas PD: Greg Stevens MD: Cindy Scull



Table with 2 columns: Song Title, Rank. Top songs include Days Of The New, Jimmy Page & Robert Plant.

WMMS Cleveland PD: Bob Neumann APD: 'Spaceman' Scott Hughes



Table with 2 columns: Song Title, Rank. Top songs include Goo Goo Dolls, Semisonic.

WZTA Miami VP/Pgm: Gregg Steele



Table with 2 columns: Song Title, Rank. Top songs include Addict, Stabbing Westward.

KSHE St. Louis PD: Rick Balis MD: Al Hofer



Table with 2 columns: Song Title, Rank. Top songs include Jimmy Page & Robert Plant, John Fogarty.

WEBN Cincinnati OM: Jim Richards MD: Rick Jamie



Table with 2 columns: Song Title, Rank. Top songs include Goo Goo Dolls, Megadeth.

KSJO San Jose PD: Dana Jang MD: Laurie Free



Table with 2 columns: Song Title, Rank. Top songs include U2, Creed, Stabbing Westward.

WIYY Baltimore PD: Rick Strauss APD/MD: Rob Heckman



Table with 2 columns: Song Title, Rank. Top songs include Jerry Cantrell, Stabbing Westward.

WRQC Minneapolis OM: Andy Bloom PD: Lauren MacLeash APD/MD: Jay Philpott



Table with 2 columns: Song Title, Rank. Top songs include DLR Band, Creed, The Smashing Pumpkins.

WKRK Detroit Interim PD: Mark Thompson MD: Erin Carman



Table with 2 columns: Song Title, Rank. Top songs include DLR Band, Marcy Playground.

KOXR Minneapolis PD: Wade Lind APD/MD: Bill Jones



Table with 2 columns: Song Title, Rank. Top songs include Deep Purple, Metallica, DLR Band.

POWER PLAYLISTS

For Week Ending June 21, 1998

Radio Data Systems Broadcast Data Systems logo and text: Playlists supplied by Broadcast Data Systems. Radio Track service. Songs ranked by number of plays in monitored week.



WXTB Tampa PD: Brad Hardin MD: Brian Medin. Table with 30 rows of song titles and airplay counts.

WLZR Milwaukee PD: Keith Hastings MD: Marilyn Mee. Table with 30 rows of song titles and airplay counts.

KISW Seattle SM/PP: Clark Ryan MD: Cathy Faulkner. Table with 30 rows of song titles and airplay counts.

WBAB Long Island VP Pgm: Bob Buchman MD: Eric Wellman. Table with 30 rows of song titles and airplay counts.

WHY Providence PD: Joe Bevilacqua MD: Sharon Schifano. Table with 30 rows of song titles and airplay counts.

WBZX Columbus, OH PD: Hal Fish APD/MD: Ronni Hunter. Table with 30 rows of song titles and airplay counts.

WJRR Orlando PD: Dick Sheetz MD: Pat Lynch. Table with 30 rows of song titles and airplay counts.

KQRC Kansas City PD: Vince Richards MD: Valerie Knight. Table with 30 rows of song titles and airplay counts.

KUPD Phoenix OM: Tim Maranville PD: JJ Jeffries. Table with 30 rows of song titles and airplay counts.

WONE Akron PD: J.D. APD: Tim Daugherty. Table with 30 rows of song titles and airplay counts.

WRDU Raleigh PD: Bob Edwards MD: Mark Arsen. Table with 30 rows of song titles and airplay counts.

KBPI Denver PD: Bob Richards MD: Willie B. Table with 30 rows of song titles and airplay counts.

WIMZ Knoxville PD: Jim Pemberton MD: Bill Kidd. Table with 30 rows of song titles and airplay counts.

KUFO Portland OM: Dave Numme APD: AJ Scott. Table with 30 rows of song titles and airplay counts.

KISS San Antonio OM: Virgil Thompson MD: Kevin Vargas. Table with 30 rows of song titles and airplay counts.

WCCC Hartford PD: Michael Picozzi APD/MD: Mike Karolyi. Table with 30 rows of song titles and airplay counts.

KIOZ San Diego PD: Tim Dukas MD: Sharon Leder. Table with 30 rows of song titles and airplay counts.

WQXA Harrisburg PD: Chris Lloyd MD: Claudine DeLorenzo. Table with 30 rows of song titles and airplay counts.

WROQ Greenville, S.C. PD: Ken Carson APD/MD: K.C. Carson. Table with 30 rows of song titles and airplay counts.

KDKB Phoenix OM: Tim Maranville MD: Tracy Lea. Table with 30 rows of song titles and airplay counts.

WCKW New Orleans GM: Sid Levett. Table with 30 rows of song titles and airplay counts.

KATT Oklahoma City PD: Chris Baker MD: Jake Daniels. Table with 30 rows of song titles and airplay counts.

WLVC Columbus PD: Greg Ausham. Table with 30 rows of song titles and airplay counts.

WDHA Morristown PD: Lenney Barr MD: Terrie Carr. Table with 30 rows of song titles and airplay counts.

POWER PLAYLISTS™

AAA Broadcast Data Systems
 Radio Track™
 Airplay Monitor™

AIRPLAY
Monitor

For Week Ending
 June 21, 1998

Playlists supplied by Broadcast Data Systems' Radio Track™ service. Songs ranked by number of plays in monitored week. Playlists are listed in order of TSA weekly cume, beginning with the highest-cuming station. Cumes are updated twice yearly following the release of the Spring and Fall Arbitron surveys. The number of stations shown each week varies depending upon space.

WGR Memphis
 PD: Drake Hall
 MD: Zeke Logan



	TW	LW
1 Aerosmith, I Don't Want To Miss A Thing	24	7
2 John Fogarty, Premonition	22	9
3 Rod Stewart, Cigarettes And Alcohol	22	7
4 Eric Clapton, She's Gone	21	8
5 The Wallflowers, Heroes	20	8
6 Jimmy Page & Robert Plant, Shining In The	18	6
7 Brother Cane, I Lie In The Bed I Make	12	6
8 Matchbox 20, Real World	7	3
9 Scott Thomas Band, Black Valentine	7	12
10 Fastball, The Way	7	11
11 Soul Asylum, I Will Still Be Laughing	7	9
12 DLR Band, Slam Dunk	7	6
13 Van Halen, Fire In The Hole	6	8
14 Storyville, Born Without You	6	9
15 Steve Miller Band, Fly Like An Eagle	5	2
16 Rush, Midnight	5	3
17 The Beatles, Sgt. Pepper's Lonely Hearts	5	3
18 Steve Miller Band, Jungle Love	5	2
19 Deep Purple, Any Fule Kne That	5	0
20 Big Head Todd & The Monsters, Boom Boom	5	2
21 Goo Goo Dolls, Iris	5	11
22 Big Wreck, The Det	4	0
23 AC/DC, You Shook Me All Night Long	4	0
24 Rolling Stones, Saint Of Me	4	0
25 ZZ Top, La Granga	4	2
26 Pink Floyd, Learning To Fly	4	2
27 Pink Floyd, Time	4	1
28 Billy Squier, Everybody Wants You	4	3
29 Pink Floyd, Another Brick In The Wall	4	1
30 Jonny Lang, Lie To Me	4	0

WIOT Toledo
 OM/PD: Darin Arriens
 APD: Don Davis



	TW	LW
1 Jerry Cantrell, My Song	26	20
2 Aerosmith, I Don't Want To Miss A Thing	21	18
3 Candlebox, It's Alright	21	19
4 Kenny Wayne Shepherd, Blue On Black	20	18
5 Days Of The New, Touch, Peel And Stand	20	15
6 Blue Oyster Cult, Harvest Moon	13	12
7 Van Halen, Fire In The Hole	12	10
8 Jimmy Page & Robert Plant, Shining In The	12	8
9 Creed, What's This Life For	12	6
10 Caroline's Spine, Sullivan	12	9
11 Deep Purple, Any Fule Kne That	11	6
12 Another Society, Little Gypsy	11	8
13 John Fogarty, Premonition	11	6
14 Goo Goo Dolls, Iris	11	11
15 Caroline's Spine, Wallflower	10	6
16 Monster Magnet, Space Lord	9	3
17 Creed, My Own Prison	8	9
18 Kenny Wayne Shepherd, Slow Ride	8	6
19 Ozzy Osbourne, See You On The Other Side	8	4
20 Live, Lightning Crashes	8	4
21 Metallica, Hero Of The Day	7	4
22 Rod Stewart, Cigarettes And Alcohol	7	3
23 Sammy Hagar, Both Sides Now	7	6
24 AC/DC, Back In Black	6	0
25 Tonic, If You Could Only See	6	4
26 Ozzy Osbourne, Back On Earth	6	3
27 Days Of The New, The Down Town	6	6
28 Pink Floyd, Mother	6	5
29 Stone Temple Pilots, Vasoline	6	8
30 Outcry, On & On	6	2

KLAQ El Paso
 PD/MD: "Magic" Mike Ramsey



	TW	LW
1 Goo Goo Dolls, Iris	27	24
2 Kenny Wayne Shepherd, Blue On Black	25	25
3 Foo Fighters, My Hero	24	18
4 Fastball, The Way	24	25
5 Rod Stewart, Cigarettes And Alcohol	22	15
6 Jimmy Page & Robert Plant, Shining In The	17	11
7 Candlebox, It's Alright	17	14
8 Pearl Jam, Wishlist	17	10
9 Semisonic, Closing Time	16	17
10 Days Of The New, The Down Town	16	12
11 Creed, Tom	15	9
12 Dave Matthews Band, Don't Drink The Water	15	16
13 Scott Thomas Band, Black Valentine	15	13
14 Aerosmith, I Don't Want To Miss A Thing	14	14
15 Kenny Wayne Shepherd, Somewhere, Somewhere	13	3
16 Matthew Ryan, Irrelevant	13	10
17 Tonic, If You Could Only See	13	11
18 Days Of The New, Shelf In The Room	12	26
19 Foghat, Bad Bad Lovin'	12	10
20 Matchbox 20, 3 AM	11	8
21 Matchbox 20, Real World	11	14
22 Metallica, Fuel	11	8
23 John Fogarty, Premonition	11	6
24 Creed, My Own Prison	10	10
25 Foo Fighters, Everlong	10	8
26 Marcy Playground, Sex And Candy	10	11
27 The Smashing Pumpkins, Ava Adore	10	12
28 Matthew Ryan, Gully	10	9
29 Aerosmith, Taste Of India	10	10
30 Jerry Cantrell, Cut You In	10	11

WAPL Green Bay
 PD: Randy Hawke



	TW	LW
1 Jerry Cantrell, My Song	24	22
2 Days Of The New, The Down Town	23	17
3 Van Zant, That Was Yesterday	23	23
4 Van Halen, Fire In The Hole	21	18
5 Brother Cane, I Lie In The Bed I Make	21	18
6 John Fogarty, Premonition	20	22
7 Soul Asylum, I Will Still Be Laughing	20	22
8 Pearl Jam, Wishlist	12	10
9 Goo Goo Dolls, Iris	12	10
10 Rod Stewart, Cigarettes And Alcohol	12	13
11 The Wallflowers, Heroes	12	9
12 Our Lady Peace, 4 AM	12	10
13 Jimmy Page & Robert Plant, Shining In The	11	7
14 Kenny Wayne Shepherd, Blue On Black	11	7
15 Stobberbone, Barrel Chested	11	9
16 Big Wreck, That Song	11	12
17 Caroline's Spine, Wallflower	11	12
18 Fuel, Shimmer	11	10
19 Metallica, Fuel	11	10
20 Union, October Morning Wnd	10	11
21 Deep Purple, Any Fule Kne That	10	10
22 Dave Matthews Band, Don't Drink The Water	9	10
23 Aerosmith, I Don't Want To Miss A Thing	9	13
24 Semisonic, Closing Time	9	10
25 DLR Band, Slam Dunk	9	13
26 Scott Thomas Band, Black Valentine	8	10
27 Fastball, The Way	8	10
28 Guster, Airport Song	8	10
29 Storyville, Born Without You	8	5
30 Hair Of The Dog, The Party Ain't Over	8	10

WFVY Jacksonville
 PD: David Moore
 MD: "Woodman"



	TW	LW
1 DLR Band, Slam Dunk	23	21
2 Kenny Wayne Shepherd, Blue On Black	20	18
3 Jimmy Page & Robert Plant, High	20	18
4 Rod Stewart, Cigarettes And Alcohol	18	18
5 Big Head Todd & The Monsters, Boom Boom	17	10
6 The Wallflowers, Heroes	14	11
7 Aerosmith, I Don't Want To Miss A Thing	13	20
8 John Fogarty, Premonition	13	14
9 Jimmy Page & Robert Plant, Shining In The	12	10
10 Brother Cane, I Lie In The Bed I Make	11	20
11 Jackyl, Locked & Loaded	9	7
12 Sammy Hagar, Both Sides Now	9	7
13 Corey Stills, Take It Back	8	8
14 Ozzy Osbourne, Back On Earth	8	11
15 Days Of The New, The Down Town	8	9
16 Scott Thomas Band, Black Valentine	8	9
17 Rolling Stones, Saint Of Me	7	7
18 Led Zepplin, The Girl I Love	7	6
19 AC/DC, For Those About To Rock	7	4
20 Kiss, Jungle	6	8
21 Ozzy Osbourne, Crazy Train	6	7
22 Rush, Tom Sawyer	6	4
23 U2, I Still Haven't Found What I'm	6	4
24 Def Leppard, Rock Of Ages	6	5
25 AC/DC, Dirty Eyes	6	8
26 Metallica, Enter Sandman	5	2
27 Billy Joel, White Wedding	5	4
28 Pink Floyd, Hey You	5	4
29 Scorpions, Still Loving You	5	5
30 Pink Floyd, Comfortably Numb	5	6

KBER Salt Lake City
 OM: Bruce Jones



	TW	LW
1 Foo Fighters, My Hero	26	24
2 Kenny Wayne Shepherd, Blue On Black	25	23
3 Days Of The New, Shelf In The Room	24	25
4 Creed, Tom	23	23
5 Stabbing Westward, Save Yourself	17	10
6 Candlebox, It's Alright	16	13
7 Fuel, Shimmer	15	20
8 Ramstein, Du Hast	15	16
9 Creed, What's This Life For	15	15
10 The Smashing Pumpkins, Ava Adore	12	10
11 Brother Cane, I Lie In The Bed I Make	11	16
12 Pearl Jam, Given To Fly	12	9
13 Jerry Cantrell, Cut You In	11	16
14 The Offspring, Gone Away	11	13
15 The Hanger, Free	11	13
16 Monster Magnet, Space Lord	11	12
17 Days Of The New, The Down Town	10	14
18 Marcy Playground, Sex And Candy	10	12
19 Collective Soul, Listen	10	4
20 Creed, My Own Prison	9	10
21 Seven Mary Three, Cumberstone	9	7
22 Days Of The New, Touch, Peel And Stand	9	11
23 Collective Soul, December	8	7
24 Stone Temple Pilots, Plush	8	8
25 Alice In Chains, Man In The Box	8	8
26 Ozzy Osbourne, Back On Earth	8	7
27 Metallica, The Unforgiven I	8	6
28 Collective Soul, Shine	8	4
29 Soundgarden, Spoonman	8	8
30 The Black Crowes, Hard To Handle	8	4

KLBJ Austin
 OM: Jeff Carrol
 MD: Loris Lowe



	TW	LW
1 Fastball, The Way	31	25
2 Foo Fighters, Baker Street	25	26
3 Pearl Jam, Wishlist	24	25
4 Van Halen, Fire In The Hole	24	26
5 Days Of The New, The Down Town	23	15
6 DLR Band, Slam Dunk	23	15
7 Fuel, Shimmer	21	20
8 Lenny Kravitz, Fly Away	19	19
9 Carole King, Where Were You When I	19	18
10 The Smashing Pumpkins, Ava Adore	18	18
11 Creed, What's This Life For	19	17
12 Big Wreck, That Song	19	20
13 Marcy Playground, Saint Joe On The	18	18
14 Jimmy Page & Robert Plant, Shining In The	10	28
15 The Verve, Lucky Man	10	17
16 Storyville, Born Without You	10	17
17 Our Lady Peace, 4 AM	17	15
18 Monster Magnet, Space Lord	17	16
19 Candlebox, It's Alright	14	2
20 Aerosmith, I Don't Want To Miss A Thing	10	0
21 Jimmie Vaughan, Like A King	18	8
22 Buddy Guy Feat. Jonny Lang, Midnight	10	10
23 Aerosmith, I Don't Want To Miss A Thing	10	10
24 Addict, Monsterade	9	8
25 Oran S.T.M., Crack The Liar's Smile	9	8
26 Athensense, What I Didn't Know	9	8
27 Glorstone, Halfway	9	7
28 Creed, Tom	8	25
29 Metallica, Fuel	8	8
30 The Boors, Break On Through	7	2

WTUE Dayton
 PD: Chris Geisen
 MD: John Beauhieu



	TW	LW
1 Brother Cane, I Lie In The Bed I Make	33	33
2 Days Of The New, Shelf In The Room	32	31
3 Goo Goo Dolls, Iris	32	30
4 Kenny Wayne Shepherd, Blue On Black	30	30
5 The Wallflowers, Heroes	29	33
6 Jimmy Page & Robert Plant, Shining In The	19	18
7 DLR Band, Slam Dunk	18	21
8 Aerosmith, I Don't Want To Miss A Thing	17	20
9 Days Of The New, The Down Town	17	17
10 Rod Stewart, Cigarettes And Alcohol	15	13
11 Creed, Tom	14	17
12 Candlebox, It's Alright	13	1
13 Metallica, Fuel	11	9
14 Monster Magnet, Space Lord	9	6
15 Creed, What's This Life For	9	5
16 The Hanger, Free	8	7
17 Jerry Cantrell, My Song	8	5
18 Everclear, Santa Monica	7	7
19 Collective Soul, Where The River Flows	7	5
20 Jonny Lang, Lie To Me	7	7
21 Tonic, Open Up Your Eyes	7	7
22 Sammy Hagar, Both Sides Now	7	5
23 Babs Frazee, Carolina Blues	7	7
24 Alice In Chains, Over Now	7	7
25 Mighty Joe Young, Live Through This	7	7
26 Rolling Stones, Saint Of Me	7	6
27 Dave Matthews Band, Don't Drink The Water	7	19
28 Matchbox 20, 3 AM	7	7
29 Fastball, The Way	7	7
30 Days Of The New, Touch, Peel And Stand	6	5

WNOR Norfolk
 PD: Harvey Kojan
 APD/MD: Tim Parker



	TW	LW
1 Kenny Wayne Shepherd, Blue On Black	30	28
2 Creed, Tom	29	29
3 Metallica, Fuel	26	27
4 Tool, Aenema	26	26
5 Foo Fighters, My Hero	25	26
6 The Mayfield Four, Big Verb	15	0
7 Stabbing Westward, Save Yourself	15	11
8 Tool, Forty Six & 2	14	10
9 Creed, My Own Prison	13	17
10 Sevendust, Black	13	13
11 Days Of The New, The Down Town	13	14
12 Candlebox, It's Alright	13	24
13 Days Of The New, Touch, Peel And Stand	12	10
14 Monster Magnet, Space Lord	12	15
15 Addict, Monsterade	12	12
16 Creed, What's This Life For	12	13
17 Jerry Cantrell, My Song	11	16
18 Tool, Stinkfist	11	8
19 The Offspring, Gone Away	10	9
20 Jane's Addiction, Been Caught Stealing	10	6
21 Radiohead, Creep	10	7
22 Megadeth, Almost Honest	10	8
23 Aerosmith, Sweet Emotion	10	8
24 Brain S.T.M., Crack The Liar's Smile	10	8
25 Megadeth, Trust	10	9
26 Stone Temple Pilots, Interstate Love Song	9	8
27 Rush, Tom Sawyer	9	7
28 Candlebox, Far Behind	9	5
29 Pearl Jam, Wishlist	9	11
30 Ozzy Osbourne, Bark At The Moon	9	1

KRXQ Sacramento
 SM: Curtiss Johnson
 APD: Pat Martin
 MD: Kylee Brooks



	TW	LW
1 Megadeth, Use The Man	32	30
2 Tool, Forty Six & 2	32	29
3 Stabbing Westward, Save Yourself	31	32
4 Monster Magnet, Space Lord	29	33
5 Creed, Tom	25	29
6 Creed, What's This Life For	24	28
7 Big Wreck, That Song	22	19
8 Bad Religion, Shades Of Truth	22	18
9 The Gandharras, Downbme	21	19
10 Metallica, Fuel	20	18
11 The Mayfield Four, Always	20	18
12 The Smashing Pumpkins, Ava Adore	19	17
13 Rancid, Blood	14	8
14 Faith No More, Ashes To Ashes	18	18
15 Jerry Cantrell, My Song	18	18
16 Days Of The New, The Down Town	17	19
17 Matchbox 20, Real World	17	18
18 Pearl Jam, Wishlist	17	17
19 Stogansrus, At The Water	14	19
20 Megadeth, A Secret Place	13	14
21 Harvey Danger, Flagpole Sitta	13	14
22 Days Of The New, Touch, Peel And Stand	11	8
23 Eiv O, Inside Out	11	1
24 Ramstein, Du Hast	11	10
25 Sevendust, Too Close To Hate	11	9
26 Limp Bizkit, Counterfeit	11	9
27 Salimov, Santaria	10	8
28 Alice In Chains, Man In The Box	10	8
29 Marcy Playground, Sex And Candy	10	8
30 Rage Against The Machine, No Shelter	10	11

WPYX Albany
 PD/MD: John Cooper



	TW	LW
1 Goo Goo Dolls, Iris	23	21
2 Kenny Wayne Shepherd, Blue On Black	22	24
3 Matchbox 20, Real World	21	22
4 Days Of The New, Touch, Peel And Stand	20	22
5 Aerosmith, I Don't Want To Miss A Thing	20	18
6 Fastball, The Way	19	22
7 The Wallflowers, Heroes	12	10
8 Blue Oyster Cult, Harvest Moon	11	12
9 Eric Clapton, She's Gone	10	11
10 John Fogarty, Premonition	10	13
11 Rod Stewart, Cigarettes And Alcohol	10	10
12 Smash Mouth, Walkin' On The Sun	9	7
13 Jimmy Page &		



★ ★ ★ **AIRPOWER** ★ ★ ★

(Minimum 800 detections for the first time)

Total Plays/Gain	Total Plays/Gain	Total Plays/Gain
CANDLEBOX 989/455 <i>It's Alright (Maverick/Warner Bros.)</i> Total Stations: 76/Chart Move: 30-12 Heavy (21+ plays): 14 KAZR, KCAL, KDKB, KFRQ, KILQ, KNJY, KZRR, WAAF, WIOT, WIYY, WRIF, WTKX, WXTB, WZTA Medium (14-20): 20 KBER, KISW, KLAQ, KLBJ, KQRC, KRZR, KTUX, KTXQ, KUFO, WBUZ, WCCC, WEBN, WJRR, WLZR, WMMS, WQXA, WRXC, WTPA, WXRC, WZMT Light (Under 14): 42 New Airplay This Week: 33 KBPI, KFRQ, KISS, KLBJ, KLPX, KMBY, KRZR, KSJO, KTAL, KTUX, KTXQ, KUPD, KXUS, WAPL, WAQX, WBZX, WCCC, WDVE, WHJY, WJRR, WKLQ, WKQQ, WMFS, WMMR, WROV, WTPT, WTUE, WVRK, WXEX, WAFX, WXRC, WZZO, WZZR	JERRY CANTRELL 836/77 <i>My Song (Columbia)</i> Total Stations: 57/Chart Move: 22-18 Heavy (21+): 11 KNJY, KRAD, KTUX, KTXQ, WAPL, WIOT, WMFS, WRIF, WXRC, WXTB, WZTA Medium (14-20): 19 KEGJ, KEZO, KILQ, KISW, KOMP, KQRC, KRXQ, KRZR, KSJO, KUPD, KZRR, WBUZ, WCCC, WEBN, WJRR, WTKX, WTPT, WYSP, WZMT Light (Under 14): 27 New Airplay This Week: 7 KAZR, KXUS, WIYY, WTFX, WTUE, WVRK, WYSP	CREED 807/148 <i>What's This Life For (Wind-up)</i> Total Stations: 64/Chart Move: 27-19 Heavy (21+): 8 KFRQ, KILQ, KRXQ, KTUX, WJRR, WTKX, WXEX, WZTA Medium (14-20): 16 KATT, KBER, KBPI, KLBJ, KNJY, KQRC, KRZR, KTXQ, WBUZ, WIYY, WLZR, WTFX, WTPA, WTPT, WWDC, WXTB Light (Under 14): 40 New Airplay This Week: 12 KAZR, KCAL, KFRQ, WCCC, WKQQ, WKRK, WMFS, WNCD, WQXA, WRIF, WROV, WTUE

AIRPOWER BOUND

Total Plays/Gain

FUEL 770/34
Shimmer (550 Music)
Total Stations: 59/Chart Move: 23-20
Heavy (21+ plays): 13 KILQ, KLBJ, KNCN, KNJY, KRAB, KRAD, KTUX, WAAF, WJRR, WQXA, WTKX, WXRC, WZTA
Medium (14-20): 15 KBER, KEGJ, KISS, KRZR, KSJO, KTXQ, KZRR, WCCC, WEBN, WMMR, WNCD, WTPA, WTPT, WWDC, WZZO
Light (Under 14): 31
New Airplay This Week: 1 KMOD

JOHN FOGERTY 664/-12
Premonition (Reprise)
Total Stations: 49/Chart Move: 25-24
Heavy (21+): 5 KMOD, KSHE, WEGR, WONE, WRDU
Medium (14-20): 16 KGGO, KMJX, KQRS, KRZZ, KTYD, WAPL, WBAB, WBLM, WCKW, WMMS, WPLR, WRXL, WSTZ, WAFX, WZZO, WZZR
Light (Under 14): 28
New Airplay This Week: 3 KEZO, KFRQ, WLVO

ADDICT 519/57
Monsterside (Big Cat/V2)
Total Stations: 45/Chart Move: 32-28
Heavy (21+): 7 KRAD, KTUX, KUPD, WJRR, WLZR, WXTB, WZTA
Medium (14-20): 7 KILQ, KRZR, WCCC, WMFS, WQXA, WTKX, WWDC
Light (Under 14): 31
New Airplay This Week: 1 WXRC

GIRLS AGAINST BOYS 405/26
Park Avenue (DGC/Geffen)
Total Stations: 58/Chart Move: 35-31
Heavy (21+): 1 KNJY
Medium (14-20): 9 KEGJ, KRZR, KTUX, KTXQ, KUPD, WJRR, WKLQ, WMFS, WZMT
Light (Under 14): 48
New Airplay This Week: 2 KFRQ, WEBN

RAMMSTEIN 399/66
Du Hast (Slash/London/Island)
Total Stations: 51/Chart Move: 38-33
Heavy (21+): 1 KNJY
Medium (14-20): 5 KBER, KEGJ, KNCN, KUPD, WAAF
Light (Under 14): 45
New Airplay This Week: 4 KATT, KCAL, KLBJ, WBUZ

RAGE AGAINST THE MACHINE 398/61
No Shelter (Epic)
Total Stations: 36/Chart Move: 37-34
Heavy (21+): 3 KNJY, WAAF, WXEX
Medium (14-20): 5 KRAD, KTUX, WMFS, WTKX, WXRC
Light (Under 14): 28
New Airplay This Week: 6 KRZR, KZRR, WBUZ, WJRR, WSTZ, WTFX

GRAVITY KILLS 362/31
Falling (TVT)
Total Stations: 43/Chart Move: 39-35
Heavy (21+): 2 KNJY, WJRR
Medium (14-20): 5 KRZR, KTXQ, KUPD, WTKX, WXEX
Light (Under 14): 36
New Airplay This Week: 3 KBPI, KXXR, WAFX

MARCY PLAYGROUND 352/32
Saint Joe On The School Bus (Capitol)
Total Stations: 29/Chart Move: 40-36
Heavy (21+): 3 KRAD, KTUX, WTFX
Medium (14-20): 11 KILQ, KISS, KLBJ, KMBY, KRZR, KSJO, KTXQ, WEBN, WJRR, WZMT, WZTA
Light (Under 14): 15
New Airplay This Week: 4 KEZO, KILQ, KQRC, KRAB

OUR LADY PEACE 330/46
4 AM (Columbia)
Total Stations: 37/Chart Move: Debut 38
Heavy (21+): 1 KTUX
Medium (14-20): 9 KLBJ, KRAD, KTXQ, WBUZ, WJRR, WQXA, WXEX, WXRC, WZTA
Light (Under 14): 27
New Airplay This Week: 3 KBPI, WRQC, WTPT

DRAIN S.T.H. 312/43
Crack The Liars Smile (The Enclave/Mercury)
Total Stations: 42
Heavy (21+): 0
Medium (14-20): 4 KNJY, KRZR, WTPT, WZMT
Light (Under 14): 38
New Airplay This Week: 6 KISS, KNCN, WBZX, WKLQ, WMMS, WTKX

THE GANDHARVAS 309/22
Downtime (MCA)
Total Stations: 36
Heavy (21+): 4 KNJY, KRXQ, KRZR, WTKX
Medium (14-20): 5 KDKB, KTUX, WJRR, WKLQ, WZTA
Light (Under 14): 27
New Airplay This Week: 2 WTPT, WXTB

MEGADETH 280/98
A Secret Place (Capitol)
Total Stations: 35
Heavy (21+): 0
Medium (14-20): 6 KNJY, KRXQ, KRZR, WAAF, WJRR, WZMT
Light (Under 14): 29
New Airplay This Week: 9 KNCN, KOMP, KTUX, WAPL, WJRR, WLZR, WMFS, WTKX, WWDC

FEEDER 270/46
High (Echo/Elektra/EEG)
Total Stations: 25
Heavy (21+): 3 KTUX, WAAF, WXRC
Medium (14-20): 3 KRAD, WMMS, WXEX
Light (Under 14): 19
New Airplay This Week: 1 KNJY

THE HUNGER 264/16
Free (Universal)
Total Stations: 28
Heavy (21+): 1 KNCN
Medium (14-20): 6 KRAD, KUPD, WIYY, WJRR, WMFS, WSTZ
Light (Under 14): 21
New Airplay This Week: 2 KDKB, WBZX

STORYVILLE 264/55
Born Without You (Atlantic)
Total Stations: 27
Heavy (21+): 0

Medium (14-20): 7 KATT, KDKB, KEZO, KLBJ, KMOD, KTAL, WSTZ
Light (Under 14): 20
New Airplay This Week: 7 KQRS, WAPL, WBAB, WDHA, WIXV, WZZO, WZZR

DEEP PURPLE 250/-4
Any Fule Kno That (CMC International)
Total Stations: 24
Heavy (21+): 0
Medium (14-20): 6 KMOD, KOMP, KXXR, WKLO, WPLR, WRXL
Light (Under 14): 18

LIMP BIZKIT 225/16
Sour (Flip/Interscope)
Total Stations: 26
Heavy (21+): 0
Medium (14-20): 4 KNJY, WXEX, WXRC, WZMT
Light (Under 14): 22
New Airplay This Week: 3 KAZR, WTFX, WTKX

FILTER 224/70
One (Elektra/EEG)
Total Stations: 37
Heavy (21+): 1 KRAD
Medium (14-20): 3 KNJY, KUPD, WXRC
Light (Under 14): 33
New Airplay This Week: 4 KAZR, WKRK, WRQC, WXTB

LENNY KRAVITZ 215/24
Fly Away (Virgin)
Total Stations: 20
Heavy (21+): 1 WXTB
Medium (14-20): 6 KBPI, KLBJ, KTXQ, WBUZ, WJRR, WTKX
Light (Under 14): 13
New Airplay This Week: 2 KMBY, WZTA

FOO FIGHTERS 193/24
Walking After You (Capitol/Elektra/EEG)
Total Stations: 26
Heavy (21+): 0
Medium (14-20): 4 KRAD, KRZR, KTUX, WZTA
Light (Under 14): 22
New Airplay This Week: 2 KEZO, WAPL

BUDDY GUY FEAT. JONNY LANG 174/8
Midnight Train (Silvertone)
Total Stations: 18
Heavy (21+): 0
Medium (14-20): 4 KMJX, KQRS, WDHA, WPLR
Light (Under 14): 14

GLORITONE 165/41
Halfway (Kneeling Elephant/RCA)
Total Stations: 42
Heavy (21+): 0
Medium (14-20): 3 KNJY, KRAD, WKLQ
Light (Under 14): 39
New Airplay This Week: 1 KTUX

BLUE OYSTER CULT 159/0
Harvest Moon (CMC International)
Total Stations: 19
Heavy (21+): 0
Medium (14-20): 3 KMOD, WDHA, WRXL
Light (Under 14): 16
New Airplay This Week: 1 WLVO

MOST NEW STATIONS

No. Of Stations

CANDLEBOX <i>It's Alright (Maverick/Warner Bros.)</i>	33
CREED <i>What's This Life For (Wind-up)</i>	12
JIMMY PAGE & ROBERT PLANT <i>Shining In The Light (Atlantic)</i>	11
MEGADETH <i>A Secret Place (Capitol)</i>	9
JERRY CANTRELL <i>My Song (Columbia)</i>	7
STORYVILLE <i>Born Without You (Atlantic)</i>	7

VAN ZANT 151/-2
That Was Yesterday (CMC International)
Total Stations: 12
Heavy (21+): 2 WAPL, WRDU
Medium (14-20): 4 KMOD, WNCD, WNCX, WZZR
Light (Under 14): 6

SEVEN MARY THREE 147/70
Over Your Shoulder (Atlantic)
Total Stations: 20
Heavy (21+): 1 WZTA
Medium (14-20): 4 WEBN, WJRR, WKQQ, WXTB
Light (Under 14): 15
New Airplay This Week: 4 WJRR, WKLS, WVRK, WXTB

HARVEY DANGER 144/4
Flagpole Sitta (Slash/London/Island)
Total Stations: 12
Heavy (21+): 2 KRAB, KRAD
Medium (14-20): 1 WJRR
Light (Under 14): 9

TOMMY SHAW 143/62
Ocean (CMC International)
Total Stations: 12
Heavy (21+): 1 WIMZ
Medium (14-20): 4 KMOD, KSHE, KXUS, WNCX
Light (Under 14): 7
New Airplay This Week: 3 WAFX, WZZO, WZZR

THE ROLLING STONES 137/-3
Out Of Control (Virgin)
Total Stations: 17
Heavy (21+): 0
Medium (14-20): 3 KMOD, WROV, WZZR
Light (Under 14): 14
New Airplay This Week: 3 WIXV, WLVO, WONE

GUSTER 120/10
Airport Song (Hybrid/Sire)
Total Stations: 15
Heavy (21+): 0
Medium (14-20): 4 KDKB, KTUX, WDHA, WXEX
Light (Under 14): 11
New Airplay This Week: 1 WCMF

CLUTCH 113/5
The Elephant Riders (Columbia)
Total Stations: 16
Heavy (21+): 1 KNJY
Medium (14-20): 0
Light (Under 14): 15
New Airplay This Week: 1 WZMT

EVE 6 108/54
Inside Out (RCA)
Total Stations: 15
Heavy (21+): 1 KRAB
Medium (14-20): 1 KDKB
Light (Under 14): 13
New Airplay This Week: 5 KRAB, KRAD, KRXQ, WJRR, WSTZ

SNOT 102/-2
The Box (Geffen)
Total Stations: 15
Heavy (21+): 0
Medium (14-20): 2 KNJY, KUPD
Light (Under 14): 13
New Airplay This Week: 2 KAZR, WRXC

COAL CHAMBER 101/9
Sway (The Roof Is On Fire) (Roadrunner)
Total Stations: 21
Heavy (21+): 0
Medium (14-20): 1 KNJY
Light (Under 14): 20

UNWRITTEN LAW 89/-3
California Sky (Interscope)
Total Stations: 17
Heavy (21+): 0
Medium (14-20): 1 KNJY
Light (Under 14): 16

JIMMIE'S CHICKEN SHACK 84/44
Blood (Rocket/Island)
Total Stations: 13
Heavy (21+): 0
Medium (14-20): 1 KNJY
Light (Under 14): 12
New Airplay This Week: 3 KTUX, WROV, WTPT

SLOBBERBONE 83/6
Barrel Chested (Doolittle)
Total Stations: 6
Heavy (21+): 1 WSTZ
Medium (14-20): 2 KTUX, KTXQ
Light (Under 14): 3

OUTCRY 82/-2
On & On (Eureka)
Total Stations: 13
Heavy (21+): 0
Medium (14-20): 1 WZZO
Light (Under 14): 12
New Airplay This Week: 3 KTUX, WIOT, WROQ

KENNY WAYNE SHEPHERD BAND 81/47
Somehow, Somehow, Someway (Revolution/Reprise)
Total Stations: 14
Heavy (21+): 0
Medium (14-20): 1 WNCX
Light (Under 14): 13
New Airplay This Week: 3 KLAQ, WRDU, WRIF

COLD 80/7
Go Away (Flip/A&M)
Total Stations: 16
Heavy (21+): 0
Medium (14-20): 1 KNJY
Light (Under 14): 15

BEASTIE BOYS 79/2
Intergalactic (Grand Royal/Capitol)
Total Stations: 11
Heavy (21+): 1 WAAF
Medium (14-20): 2 WQXA, WXEX
Light (Under 14): 8
New Airplay This Week: 1 KBPI

JOURNEY 77/77
Remember Me (Columbia)
Total Stations: 15
Heavy (21+): 0
Medium (14-20): 3 KTAL, WIMZ, WSTZ
Light (Under 14): 12
New Airplay This Week: 4 KDKB, KTAL, WIMZ, WSTZ

THANK YOU RADIO!



Congratulates

**The Beastie Boys, Everclear,
Foo Fighters, Marcy Playground,
Megadeth, Radiohead and their
management on the success of
the first half of 1998**

#1 Modern Label

#1 Active Label

#1 Mainstream Label

SONG ACTIVITY REPORTS

For Week Ending June 21, 1998



Detailed song tracking information for the last 3 weeks for all songs showing increased play this week. Total plays and gain do not include video play. Markets listed in order of population.

Grid of song activity reports for ADDICT, AEROSMITH, CANDLEBOX, JERRY CANTRELL, and CREED. Each entry includes station call letters, song title, and performance metrics.

Grid of song activity reports for DAYS OF THE NEW, DRAIN S.T.H., FUEL, GIRLS AGAINST BOYS, and GRAVITY KILLS. Each entry includes station call letters, song title, and performance metrics.



SONG ACTIVITY REPORTS

For Week Ending June 21, 1998

AMM Broadcast Data Systems... Detailed song tracking information for the last 3 weeks for all songs showing increased play this week.

Table with 8 columns: Artist, Title, Total Plays/Gain, Chart Move, and station codes (TW, LW, ZW, IP). Rows include MARCY PLAYGROUND, MONSTER MAGNET, OUR LADY PEACE, JIMMY PAGE & ROBERT PLANT, and RAGE AGAINST THE MACHINE.

Table with 8 columns: Artist, Title, Total Plays/Gain, Chart Move, and station codes (TW, LW, ZW, IP). Rows include RAMMSTEIN, KENNY WAYNE SHEPHERD BAND, THE SMASHING PUMPKINS, STABBING WESTWARD, and ROD STEWART.



THIS WEEK	LAST WEEK	WKS. ON CHART	HERITAGE ROCK		DETECTIONS	
			TITLE/IMPRINT/PROMOTION LABEL	ARTIST	TW	LW
★ ★ ★ No. 1 ★ ★ ★						
1	3	7	CIGARETTES AND ALCOHOL WARNER BROS. 1 week at No. 1	ROD STEWART	901	882
2	1	6	I DON'T WANT TO MISS A THING COLUMBIA	AEROSMITH	899	897
3	2	24	BLUE ON BLACK REVOLUTION/REPRISE	KENNY WAYNE SHEPHERD BAND	890	883
4	4	10	HEROES EPIC	THE WALLFLOWERS	764	806
5	7	10	SHINING IN THE LIGHT ATLANTIC	JIMMY PAGE & ROBERT PLANT	708	592
6	5	15	I LIE IN THE BED I MAKE VIRGIN	BROTHER CANE	658	710
7	6	5	PREMONITION REPRISE	JOHN FOGERTY	628	635
8	9	12	WISHLIST EPIC	PEARL JAM	570	576
9	8	11	FIRE IN THE HOLE WARNER BROS.	VAN HALEN	454	585
10	12	11	IRIS WARNER SUNSET/REPRISE	GOO GOO DOLLS	454	497
11	11	13	SLAM DUNK WAWAZAT!!	DLR BAND	434	509
12	10	15	SHE'S GONE REPRISE	ERIC CLAPTON	413	519
13	15	4	THE DOWN TOWN OUTPOST/GEFFEN	DAYS OF THE NEW	411	384
14	14	13	REAL WORLD LAVA/ATLANTIC	MATCHBOX 20	378	417
15	13	12	MOST HIGH ATLANTIC	JIMMY PAGE & ROBERT PLANT	344	472
16	16	16	CLOSING TIME MCA	SEMISONIC	330	369
★ ★ ★ AIRPOWER ★ ★ ★						
17	NEW		IT'S ALRIGHT MAVERICK/WARNER BROS.	CANDLEBOX	320	126
18	18	9	THE WAY HOLLYWOOD	FASTBALL	284	303
19	17	26	SEX AND CANDY CAPITOL	MARCY PLAYGROUND	263	341
20	22	12	FUEL ELEKTRA/EEG	METALLICA	257	253
21	24	4	SPACE LORD A&M	MONSTER MAGNET	252	216
22	20	12	DON'T DRINK THE WATER RCA	DAVE MATTHEWS BAND	240	288
23	21	16	TORN WIND-UP	CREED	240	257
24	19	25	SHELF IN THE ROOM OUTPOST/GEFFEN	DAYS OF THE NEW	232	297
25	27	2	BORN WITHOUT YOU ATLANTIC	STORYVILLE	228	182
26	28	9	SHIMMER 550 MUSIC	FUEL	204	180
27	25	4	ANY FULE KNO THAT CMC INTERNATIONAL	DEEP PURPLE	204	211
28	23	6	BLACK VALENTINE ELEKTRA/EEG	SCOTT THOMAS BAND	198	235
29	32	5	MY SONG COLUMBIA	JERRY CANTRELL	189	160
30	39	2	WHAT'S THIS LIFE FOR WIND-UP	CREED	186	142
31	26	20	MY HERO ROSWELL/CAPITOL	FOO FIGHTERS	172	204
32	30	6	AVA ADORE VIRGIN	THE SMASHING PUMPKINS	166	170
33	34	2	MIDNIGHT TRAIN SILVERTONE	BUDDY GUY FEATURING JONNY LANG	164	156
34	29	8	THAT SONG ATLANTIC	BIG WRECK	154	174
35	35	3	THAT WAS YESTERDAY CMC INTERNATIONAL	VAN ZANT	149	152
36	36	7	HARVEST MOON CMC INTERNATIONAL	BLUE OYSTER CULT	146	147
37	31	16	BOOM BOOM REVOLUTION	BIG HEAD TODD & THE MONSTERS WITH JOHN LEE HOOKER	143	169
38	NEW		OCEAN CMC INTERNATIONAL	TOMMY SHAW	143	80
39	40	2	OUT OF CONTROL VIRGIN	THE ROLLING STONES	137	140
40	37	18	CUT YOU IN COLUMBIA	JERRY CANTRELL	128	145

Records showing an increase in detections over the previous week, regardless of chart movement. A record which has been on the chart for more than 20 weeks will not receive a bullet, even if it registers an increase in detections. Airpower awarded to those records which attain 300 detections for the first time. If two records are tied in number of plays, the record being played on more stations is placed first. Records below the top 20 are removed from the chart after 26 weeks.

GREATEST GAINERS

INCREASE IN PLAYS

CANDLEBOX • It's Alright (MAVERICK/WARNER BROS.)	+194
KFRQ +24, KCAL +17, KDKB +13, WROV +12, KMBY +10, WMMR +10, WZZO +9, WAQX +9, KLPX +9, WDVE +9	
JIMMY PAGE & ROBERT PLANT • Shining In The Light (ATLANTIC)	+116
WAQX +20, WDVE +15, WEGR +12, WSTZ +11, KTYD +9, WCKW +8, KCAL +8, KQRS +8, WNCD +7, WROV +7	
JOURNEY • Remember Me (COLUMBIA)	+76
KTAL +15, WSTZ +14, WIMZ +14, KDKB +13, WEZX +5, WPYX +4, KMJX +3, KSHE +2, WZZO +1, KRZZ +1	
TOMMY SHAW • Ocean (CMC INTERNATIONAL)	+63
WZZO +10, KXUS +10, WIMZ +9, KMOD +9, KEZO +7, WZZR +7, KRZZ +5, WAFX +3, KMJX +2, WDHA +1	
THE TRAGICALLY HIP • Poets (SIRE)	+53
WIZN +39, KLPX +12, KLAQ +1, WFYV +1	

THIS WEEK	LAST WEEK	WKS. ON CHART	ACTIVE ROCK		DETECTIONS	
			TITLE/IMPRINT/PROMOTION LABEL	ARTIST	TW	LW
★ ★ ★ No. 1 ★ ★ ★						
1	2	16	SAVE YOURSELF COLUMBIA 1 week at No. 1	STABBING WESTWARD	1176	1125
2	1	21	TORN WIND-UP	CREED	1080	1136
3	3	7	AVA ADORE VIRGIN	THE SMASHING PUMPKINS	968	960
4	6	7	SPACE LORD A&M	MONSTER MAGNET	930	807
5	4	27	FUEL ELEKTRA/EEG	METALLICA	913	948
6	7	5	THE DOWN TOWN OUTPOST/GEFFEN	DAYS OF THE NEW	866	796
7	5	15	I LIE IN THE BED I MAKE VIRGIN	BROTHER CANE	830	916
8	8	23	BLUE ON BLACK REVOLUTION/REPRISE	KENNY WAYNE SHEPHERD BAND	684	659
9	21	2	IT'S ALRIGHT MAVERICK/WARNER BROS.	CANDLEBOX	669	408
10	11	7	MY SONG COLUMBIA	JERRY CANTRELL	647	599
11	16	4	WHAT'S THIS LIFE FOR WIND-UP	CREED	621	517
12	10	11	WISHLIST EPIC	PEARL JAM	586	648
13	13	15	SHIMMER 550 MUSIC	FUEL	566	556
14	9	24	MY HERO ROSWELL/CAPITOL	FOO FIGHTERS	564	648
15	12	19	CUT YOU IN COLUMBIA	JERRY CANTRELL	543	584
16	14	10	SLAM DUNK WAWAZAT!!	DLR BAND	533	544
17	22	9	MONSTERSIDE BIG CAT/V2	ADDICT	466	408
18	18	46	MY OWN PRISON WIND-UP	CREED	464	478
19	15	28	SHELF IN THE ROOM OUTPOST/GEFFEN	DAYS OF THE NEW	453	529
20	23	8	IRIS WARNER SUNSET/REPRISE	GOO GOO DOLLS	409	405
21	17	10	FIRE IN THE HOLE WARNER BROS.	VAN HALEN	396	494
22	20	16	CLOSING TIME MCA	SEMISONIC	374	410
23	28	3	NO SHELTER EPIC	RAGE AGAINST THE MACHINE	370	325
24	19	9	HEROES EPIC	THE WALLFLOWERS	366	420
25	29	5	DU HAST SLASH/LONDON/ISLAND	RAMMSTEIN	357	311
26	27	6	PARK AVENUE DGC/GEFFEN	GIRLS AGAINST BOYS	336	329
27	30	4	FALLING TVT	GRAVITY KILLS	330	305
28	25	11	DON'T DRINK THE WATER RCA	DAVE MATTHEWS BAND	324	377
29	24	20	USE THE MAN CAPITOL	MEGADETH	320	399
30	31	4	I DON'T WANT TO MISS A THING COLUMBIA	AEROSMITH	320	291
31	NEW		SHINING IN THE LIGHT ATLANTIC	JIMMY PAGE & ROBERT PLANT	280	209
32	36	2	CRACK THE LIARS SMILE THE ENCLAVE/MERCURY	DRAIN S.T.H.	275	237
33	26	12	MOST HIGH ATLANTIC	JIMMY PAGE & ROBERT PLANT	274	360
34	38	3	SAINT JOE ON THE SCHOOL BUS CAPITOL	MARCY PLAYGROUND	267	232
35	37	3	DOWNTIME MCA	THE GANDHARVAS	253	234
36	RE-ENTRY		4 AM COLUMBIA	OUR LADY PEACE	249	217
37	33	8	THE WAY HOLLYWOOD	FASTBALL	248	271
38	34	8	THAT SONG ATLANTIC	BIG WRECK	246	254
39	NEW		HIGH ECHO/ELEKTRA/EEG	FEEDER	238	199
40	32	10	BE QUIET AND DRIVE (FAR AWAY) MAVERICK/WARNER BROS.	DEFTONES	230	287

Records showing an increase in detections over the previous week, regardless of chart movement. A record which has been on the chart for more than 20 weeks will not receive a bullet, even if it registers an increase in detections. Airpower awarded to those records which attain 400 detections for the first time. If two records are tied in number of plays, the record being played on more stations is placed first. Records below the top 20 are removed from the chart after 26 weeks.

GREATEST GAINERS

INCREASE IN PLAYS

CANDLEBOX • It's Alright (MAVERICK/WARNER BROS.)	+261
WJRR +17, WCCC +15, KTXQ +15, KTUX +14, KRZR +14, WXRC +14, WTKX +13, KLBK +12, WTUE +12, WTPT +11	
MONSTER MAGNET • Space Lord (A&M)	+123
KISS +15, KTUX +14, WTPT +12, KBPI +12, WYSP +10, KRAD +9, KAZR +7, WIYY +7, WMFS +6, WIOT +6	
CREED • What's This Life For (WIND-UP)	+104
KAZR +10, WMFS +9, KTUX +9, KRXQ +9, WBUZ +8, WJRR +8, WKRK +7, WQXA +7, WRIF +7, KNJY +6	
JIMMY PAGE & ROBERT PLANT • Shining In The Light (ATLANTIC)	+71
WYSP +17, KTXQ +17, WBUZ +12, WKRK +10, WMFS +9, KILO +5, WIOT +4, KTUX +4, WKLQ +4, WRCX +2	
DAYS OF THE NEW • The Down Town (OUTPOST/GEFFEN)	+70
KNJY +12, KRAB +10, WJRR +9, KISS +9, KUFO +8, KAZR +8, KLBK +8, WIYY +6, KUPD +5, WRCX +4	

POWER PLAYLISTS

For Week Ending June 21, 1998



Playlists supplied by Broadcast Data Systems' Radio Track service. Songs ranked by number of plays in monitored week. Playlists are listed in order of TSS weekly cumes, beginning with the highest-cuming station. Cumes are updated twice yearly following the release of the Spring and Fall Arbitron surveys. The number of stations shown each week varies depending upon space.



WXRK New York PD: Steve Kingston MD: Mike Peer Music Coor: Booker



KROQ Los Angeles VP/Pgm: Kevin Weatherly APD: Gene Sandbloom MD: Lisa Worden



WKQX Chicago PD: Alex Luke MD: Mary Sturminas



WBGN Boston VP/Pgm: Oedipus MD: Steve Strick AMD: Mike Green



KLY Los Angeles VP/Pgm: Steve Blatter MD: Mike Savage



WPLY Philadelphia PD: Jim McGuinn APD: Doug Kubinski MD: Preston Elliot



Table with 2 columns: Rank and Song/Artist. Songs include 'The Smashing Pumpkins, Ava Adore', 'Semisonic, Closing Time', 'Foo Fighters, My Hero', etc.

Table with 2 columns: Rank and Song/Artist. Songs include 'Beastie Boys, Intergalactic', 'Harvey Danger, Flagpole Sitta', 'Semisonic, Closing Time', etc.

Table with 2 columns: Rank and Song/Artist. Songs include 'Semisonic, Closing Time', 'Eve 6, Inside Out', 'Fuel, Shimmer', etc.

Table with 2 columns: Rank and Song/Artist. Songs include 'Garbage, Push It', 'Everclear, I Will Buy You A New Life', 'Beastie Boys, Intergalactic', etc.

Table with 2 columns: Rank and Song/Artist. Songs include 'The Smashing Pumpkins, Perfect', 'Everclear, I Will Buy You A New Life', 'Fuel, Shimmer', etc.

Table with 2 columns: Rank and Song/Artist. Songs include 'Semisonic, Closing Time', 'Everclear, I Will Buy You A New Life', 'Pearl Jam, Wishlist', etc.

WHFS Washington, DC PD: Robert Benjamin APD: Bob Waugh MD: Pat Ferrise



WPLT Detroit PD: Garrett Michaels MD: Ann Delisi



KDGE Dallas PD: Duane Doherty APD/MD: Alan E. Smith



WNXX Atlanta OM: Brian Philips PD: Leslie Fram MD: Sean Dery



KITS San Francisco OM: Ron Nenni PD: Jay Taylor MD: Aaron Axelson



KNDL Seattle PD: Phil Manning MD: Kim Monroe



Table with 2 columns: Rank and Song/Artist. Songs include 'Third Eye Blind, Jumper', 'Barenaked Ladies, One Week', 'Goo Goo Dolls, Iris', etc.

Table with 2 columns: Rank and Song/Artist. Songs include 'Goo Goo Dolls, Iris', 'Green Day, Time Of Your Life', 'Natalie Merchant, Kind & Generous', etc.

Table with 2 columns: Rank and Song/Artist. Songs include 'Semisonic, Closing Time', 'Fuel, Shimmer', 'Pearl Jam, Wishlist', etc.

Table with 2 columns: Rank and Song/Artist. Songs include 'Eve 6, Inside Out', 'The Wallflowers, Heros', 'Tori Amos, Spark', etc.

Table with 2 columns: Rank and Song/Artist. Songs include 'Harvey Danger, Flagpole Sitta', 'Beastie Boys, Intergalactic', 'Creed, My Own Prison', etc.

Table with 2 columns: Rank and Song/Artist. Songs include 'The Smashing Pumpkins, Ava Adore', 'Stabbing Westward, Save Yourself', 'Marcy Playground, Saint Joe On The', etc.

KTBS Houston PD: Jim Trapp APD: Steve Robison MD: David Sadoff



KOME San Jose APD: Don West AMD: Jeanette Grgurevic



WXDX Pittsburgh PD: John Moschitta MD: Lenny Diana



KPNT St. Louis OM: Allan Fee APD: Marty Link MD: Traci Wilde



CIMX Detroit PD: Murray Brookshaw APD/MD: Vince Cannova



KEDJ Phoenix PD: Shellie Hart APD/MD: Chris Patyk



Table with 2 columns: Rank and Song/Artist. Songs include 'Natalie Imbruglia, Torn', 'Semisonic, Closing Time', 'Fastball, The Way', etc.

Table with 2 columns: Rank and Song/Artist. Songs include 'Beastie Boys, Intergalactic', 'Harvey Danger, Flagpole Sitta', 'Semisonic, Closing Time', etc.

Table with 2 columns: Rank and Song/Artist. Songs include 'Fastball, The Way', 'The Smashing Pumpkins, Ava Adore', 'Fuel, Shimmer', etc.

Table with 2 columns: Rank and Song/Artist. Songs include 'Everclear, I Will Buy You A New Life', 'Goo Goo Dolls, Iris', 'Dave Navarro, I Wanna Be', etc.

Table with 2 columns: Rank and Song/Artist. Songs include 'Goo Goo Dolls, Iris', 'Harvey Danger, Flagpole Sitta', 'The Smashing Pumpkins, Ava Adore', etc.

Table with 2 columns: Rank and Song/Artist. Songs include 'The Smashing Pumpkins, Ava Adore', 'Beastie Boys, Intergalactic', 'Sublime, Carers Me Down', etc.

WMRQ Hartford PD: Jay Beau Jones MD: Dave Hill



KWOD Sacramento PD: Ron Burce MD: Carla "Raz" Raswyck



WENZ Cleveland PD: Dan Binder APD: Ric Bennett MD: No. 1 Son



WKDF Nashville PD: Kidd Redd MD: Sheri Sexton



WRZX Indianapolis PD: Scott Jameson MD: Michael Young



KZON Phoenix PD: Paul Peterson APD: Laura Smith MD: Kevin Mannion



Table with 2 columns: Rank and Song/Artist. Songs include 'Fuel, Shimmer', 'Goo Goo Dolls, Iris', 'Creed, My Own Prison', etc.

Table with 2 columns: Rank and Song/Artist. Songs include 'Eve 6, Inside Out', 'Goo Goo Dolls, Iris', 'Blink 182, Dammit', etc.

Table with 2 columns: Rank and Song/Artist. Songs include 'Harvey Danger, Flagpole Sitta', 'Goo Goo Dolls, Iris', 'Semisonic, Closing Time', etc.

Table with 2 columns: Rank and Song/Artist. Songs include 'Fastball, The Way', 'Matchbox 20, Real World', 'Goo Goo Dolls, Iris', etc.

Table with 2 columns: Rank and Song/Artist. Songs include 'Goo Goo Dolls, Iris', 'Fuel, Shimmer', 'Creed, My Own Prison', etc.

Table with 2 columns: Rank and Song/Artist. Songs include 'Athenaeum, What I Didn't Know', 'Everclear, I Will Buy You A New Life', 'Goo Goo Dolls, Iris', etc.

RMMSTEIN



DU + FIRST

ACTIVE 29 - 25

MAINSTREAM ROCK 38 - 33

NOW SOUNDSCANNING
OVER 8500/WEEK!!!

TRANSWORLD SALES UP 38%
MUSICLAND SALES UP 27%
BLOCKBUSTER SALES UP 40%
WHEREHOUSE SALES UP 31%
CAMELOT SALES UP 27%
CIRCUIT CITY SALES UP 17%

HUGE CALLOUT RESEARCH IN
CHICAGO, PHOENIX AND MORE!
MASSIVE PHONES EVERYWHERE!

"Lifting all daypart restrictions, going to 3 spins a day."
-Kevin Vargas/KISS San Antonio

© 1998 Siskin Records

MODERN ROCK

POWER PLAYLISTS™



AIRPLAY
Monitor

For Week Ending
June 21, 1998

Playlists supplied by Broadcast Data Systems' Radio Track service. Songs ranked by number of plays in monitored week. Playlists are listed in order of TSA weekly curve, beginning with the highest-cumulating station. Cumulative are updated twice yearly following the release of the Spring and Fall Arbitron surveys. The number of stations shown each week varies depending upon space.

XTRA San Diego
PD: Bryan Schock
MD: Chris Muckley



	TW	LW
1	Foo Fighters, Walking After You	42 31
2	Everclear, I Will Buy You A New Life	42 38
3	Sublime, Badfish	41 38
4	The Smashing Pumpkins, Ava Adore	40 31
5	Semisonic, Closing Time	41 39
6	Sprung Monkey, Get 'Em Outta Here	41 38
7	Fastball, The Way	39 42
8	Harvey Danger, Flagpole Sitta	25 29
9	Green Day, Redundant	24 25
10	Marcy Playground, Saint Joe On The	23 25
11	Big Bad Voodoo Daddy, You And Me And The	22 22
12	Garbage, Push It	22 22
13	Smash Mouth, Can't Get Enough Of You	21 27
14	God Lives Underwater, From Your Mouth	20 19
15	Grant Lee Buffalo, Truly, Truly	19 1
16	Jane's Addiction, Jane Says	18 13
17	Beastie Boys, Intergalactic	17 14
18	Marcy Playground, Sex And Candy	17 14
19	Fountains Of Wayne, Sink To The Bottom	16 14
20	Third Eye Blind, Losing A Whole Year	16 13
21	Cake, The Distance	16 16
22	The Smashing Pumpkins, Perfect	14 20
23	The Verve, Sonnet	14 20
24	Blur, Song 2	15 24
25	Back, The New Pollution	15 24
26	Blink 182, Dammit	14 19
27	Foo Fighters, Everlong	12 13
28	Stone Temple Pilots, Tumble In The Rough	12 11
29	Back-O-Nine, My Town	12 10
30	Natalie Imbruglia, Torn	11 13

WGRD Grand Rapids
PD/MD: Margot Smith
AMD: Tim Bronson



	TW	LW
1	Harvey Danger, Flagpole Sitta	37 30
2	Fuel, Shimmer	34 36
3	Goo Goo Dolls, Iris	34 34
4	Eve 6, Inside Out	33 36
5	Semisonic, Closing Time	32 29
6	Fastball, The Way	31 31
7	Alanis Morissette, Uninvited	31 28
8	Garbage, Push It	31 30
9	Dave Matthews Band, Don't Drink The Water	28 34
10	Baronak Ladies, One Week	25 25
11	Grant Lee Buffalo, Truly, Truly	25 15
12	The Urge, Jump Right In	20 23
13	The Wallflowers, Heroes	20 24
14	Feeder, High	20 16
15	Foo Fighters, My Hero	19 3
16	Marcy Playground, Saint Joe On The	19 21
17	Pearl Jam, Wishlist	19 21
18	The Verve, Lucky Man	19 22
19	Athenaeum, What I Didn't Know	18 15
20	Matchbox 20, Real World	18 24
21	Ben Folds Five, Song For The Dumped	18 25
22	Creed, My Own Prison	18 21
23	Jerry Cantrell, My Song	17 15
24	Green Day, Redundant	16 24
25	The Smashing Pumpkins, Perfect	16 0
26	Foo Fighters, Walking After You	14 14
27	Our Lady Peace, 4 AM	14 13
28	Cowboy Junkies, Miles From Our Home	13 13
29	Natalie Merchant, Kind & Generous	12 10
30	Bernard Berter, Stay	12 6

KZMZ Minneapolis/St. Paul
PD: John Lassman
APD: Marc Allen



	TW	LW
1	Natalie Merchant, Kind & Generous	34 32
2	The Wallflowers, Heroes	33 18
3	Semisonic, Closing Time	33 33
4	Goo Goo Dolls, Iris	32 34
5	Soul Asylum, I Will Still Be Laughing	31 25
6	Brian Setzer Orchestra, Jump Live An'	25 12
7	Baronak Ladies, One Week	25 25
8	Smash Mouth, Can't Get Enough Of You	25 22
9	The Smashing Pumpkins, Perfect	24 21
10	Foo Fighters, Walking After You	24 22
11	Everything, Everything	23 13
12	Dave Matthews Band, Stay	23 9
13	Eve 6, Inside Out	22 25
14	Natalie Imbruglia, Wishing I Was There	21 24
15	Fastball, The Way	21 26
16	Fuel, Shimmer	20 29
17	The Smashing Pumpkins, Ava Adore	20 20
18	Green Day, Time Of Your Life	19 19
19	Matchbox 20, Real World	19 19
20	Patty Griffin, One Big Love	19 19
21	The Verve, Lucky Man	19 25
22	Garbage, Push It	17 9
23	Grant Lee Buffalo, Truly, Truly	16 24
24	Pearl Jam, Wishlist	16 18
25	Cowboy Junkies, Miles From Our Home	16 0
26	Tonic, If You Could Only See	11 9
27	Harvey Danger, Flagpole Sitta	11 7
28	Pearl Jam, In Hiding	11 2
29	Marcy Playground, Sex And Candy	10 11
30	The Honeydogs, Rumor Has It	10 9

WQBK Albany
PD/MD: Kelli McNamara
AMD: Jeff Callan



	TW	LW
1	Goo Goo Dolls, Iris	32 38
2	Fuel, Shimmer	32 39
3	Semisonic, Closing Time	30 39
4	Pearl Jam, Wishlist	29 39
5	Harvey Danger, Flagpole Sitta	27 27
6	Ben Folds Five, Song For The Dumped	27 23
7	The Smashing Pumpkins, Ava Adore	26 42
8	The Urge, Jump Right In	24 19
9	Athenaeum, What I Didn't Know	18 22
10	The Verve, Lucky Man	17 18
11	Garbage, Push It	17 24
12	Tori Amos, Spark	17 23
13	Grant Lee Buffalo, Truly, Truly	16 15
14	Green Day, Redundant	16 19
15	God Lives Underwater, From Your Mouth	15 20
16	Creed, What's This Life For	14 14
17	Baronak Ladies, One Week	14 16
18	Monster Magnet, Space Lord	13 15
19	Our Lady Peace, 4 AM	13 16
20	Foo Fighters, My Hero	13 11
21	The Wallflowers, Heroes	13 39
22	Feeder, High	13 15
23	Foo Fighters, Everlong	12 14
24	The Verve, Bitter Sweet Symphony	12 17
25	Green Day, Time Of Your Life	12 11
26	Third Eye Blind, Semi-Charmed Life	11 11
27	Our Lady Peace, Superman's Dead	11 11
28	Everclear, Everything To Everyone	10 16
29	Beastie Boys, Intergalactic	10 11
30	Soundgarden, Black Hole Sun	9 3

WLUM Milwaukee
PD: Chuck Summers



	TW	LW
1	Eve 6, Inside Out	28 28
2	The Wallflowers, Heroes	28 29
3	Alanis Morissette, Uninvited	28 27
4	Tori Amos, Spark	28 28
5	Fastball, The Way	27 30
6	Fuel, Shimmer	27 23
7	Baronak Ladies, One Week	26 24
8	Goo Goo Dolls, Iris	25 29
9	Semisonic, Closing Time	24 25
10	Dave Matthews Band, Don't Drink The Water	24 28
11	Pearl Jam, Wishlist	23 25
12	Matchbox 20, Real World	21 22
13	Harvey Danger, Flagpole Sitta	21 25
14	Athenaeum, What I Didn't Know	21 9
15	Green Day, Redundant	20 21
16	Big Bad Voodoo Daddy, You And Me And The	19 18
17	Cherry Poppin' Daddies, Zoot Suit Riot	19 20
18	Lenny Kravitz, If You Can't Say No	18 19
19	Garbage, Push It	17 16
20	The Urge, Jump Right In	17 11
21	Natalie Merchant, Kind & Generous	16 16
22	Sprung Monkey, Get 'Em Outta Here	15 12
23	Soul Asylum, I Will Still Be Laughing	15 22
24	Natalie Imbruglia, Wishing I Was There	14 13
25	The Smashing Pumpkins, Ava Adore	13 11
26	The Getaway People, She Gave Me Love	13 12
27	Everclear, I Will Buy You A New Life	13 22
28	The B-52's, Debbie	13 16
29	Beastie Boys, Intergalactic	13 14
30	Propellerheads, History Repeating	12 11

WBRU Providence
PD: Tim Schiavelli



	TW	LW
1	Goo Goo Dolls, Iris	37 33
2	Fastball, The Way	34 37
3	The Smashing Pumpkins, Ava Adore	34 38
4	Semisonic, Closing Time	34 34
5	Fuel, Shimmer	33 35
6	Harvey Danger, Flagpole Sitta	32 32
7	Beastie Boys, Intergalactic	33 32
8	Baronak Ladies, One Week	30 31
9	Dave Matthews Band, Stay	25 0
10	Gustar, Airport Song	22 18
11	Tori Amos, Spark	21 21
12	Marcy Playground, Saint Joe On The	20 15
13	Matchbox 20, Real World	19 17
14	The Wallflowers, Heroes	19 23
15	Eve 6, Inside Out	19 22
16	Creed, What's This Life For	18 17
17	The Verve, Lucky Man	18 17
18	Days Of The New, The Down Town	17 13
19	Big Bad Voodoo Daddy, You And Me And The	16 15
20	Creed, My Own Prison	16 17
21	Third Eye Blind, How's It Going To Be	16 12
22	Marcy Playground, Sex And Candy	16 14
23	Athenaeum, What I Didn't Know	16 11
24	The Urge, Jump Right In	16 22
25	Save Farris, The World Is New	15 18
26	Foo Fighters, Everlong	14 13
27	Dave Matthews Band, Don't Drink The Water	14 14
28	Big Wrack, That Song	14 8
29	Everclear, Everything To Everyone	14 13
30	Natalie Imbruglia, Torn	13 12

WNVE Rochester
PD/MD: Erick Anderson



	TW	LW
1	Semisonic, Closing Time	37 36
2	Marcy Playground, Sex And Candy	33 32
3	Goo Goo Dolls, Iris	33 37
4	Dave Matthews Band, Don't Drink The Water	29 21
5	Fastball, The Way	29 39
6	Pearl Jam, Wishlist	29 29
7	Foo Fighters, My Hero	28 21
8	Fuel, Shimmer	28 24
9	Everclear, I Will Buy You A New Life	28 30
10	The Urge, Jump Right In	27 29
11	The Smashing Pumpkins, Ava Adore	24 21
12	Third Eye Blind, How's It Going To Be	24 11
13	Tonic, Open Up Your Eyes	24 27
14	Cherry Poppin' Daddies, Zoot Suit Riot	24 21
15	Bush, Mouth	23 21
16	Creed, My Own Prison	23 30
17	Sneaker Pimps, 6 Underground	23 32
18	Everclear, Everything To Everyone	23 26
19	Harvey Danger, Flagpole Sitta	22 37
20	Our Lady Peace, Superman's Dead	21 21
21	Third Eye Blind, Graduate	20 21
22	Blur, Song 2	20 27
23	Days Of The New, Touch, Peel And Stand	20 21
24	Alanis Morissette, Uninvited	19 12
25	Green Day, Brain Stew	19 15
26	Metallica, The Unforgiven II	19 20
27	Sublime, Santitas	18 17
28	Stabbing Westward, Save Yourself	18 17
29	Foo Fighters, Everlong	15 30
30	Chris Cornell, Sunshower	14 11

KNRK Portland, OR
PD/MD: Mark Hamilton



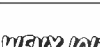
	TW	LW
1	Harvey Danger, Flagpole Sitta	44 41
2	Garbage, Push It	42 38
3	Goo Goo Dolls, Iris	41 34
4	Semisonic, Closing Time	41 41
5	Cherry Poppin' Daddies, Zoot Suit Riot	41 36
6	The Smashing Pumpkins, Ava Adore	37 40
7	Fuel, Shimmer	35 26
8	Eve 6, Inside Out	28 41
9	Marcy Playground, Sex And Candy	27 20
10	Everclear, Everything To Everyone	27 22
11	Creed, My Own Prison	25 16
12	Blur, Song 2	25 23
13	Big Bad Voodoo Daddy, You And Me And The	24 23
14	Stabbing Westward, Save Yourself	24 27
15	Beastie Boys, Intergalactic	24 23
16	Sneaker Pimps, 6 Underground	23 15
17	Green Day, Time Of Your Life	23 21
18	Foo Fighters, Everlong	22 21
19	Baronak Ladies, One Week	22 14
20	Jane's Addiction, Jane Says	21 21
21	Fastball, The Way	21 23
22	Green Day, Redundant	21 16
23	Feeder, High	21 19
24	Everclear, I Will Buy You A New Life	20 16
25	Dave Matthews Band, Crash Into Me	20 17
26	Marcy Playground, Saint Joe On The	20 20
27	The Verve, Lucky Man	19 17
28	Everclear, Father Of Mine	19 19
29	Third Eye Blind, How's It Going To Be	18 0
30	Sublime, Sarteria	17 8

WEND Charlotte
PD: Jack Daniel
MD: Rick Brewer



	TW	LW
1	Dave Matthews Band, Don't Drink The Water	46 46
2	Goo Goo Dolls, Iris	46 47
3	Semisonic, Closing Time	46 46
4	Pearl Jam, Wishlist	46 41
5	Green Day, Time Of Your Life	45 43
6	Foo Fighters, My Hero	44 43
7	311, Beautiful Disaster	43 20
8	Fuel, Shimmer	42 20
9	The Smashing Pumpkins, Ava Adore	26 15
10	Garbage, Push It	23 19
11	Feeder, High	19 26
12	Lenny Kravitz, If You Can't Say No	19 15
13	The Urge, Jump Right In	19 18
14	Solea, Pennsylvania	18 15
15	The Verve, Lucky Man	18 17
16	Creed, What's This Life For	17 13
17	Eve 6, Inside Out	17 14
18	Baronak Ladies, One Week	16 18
19	Cherry Poppin' Daddies, Zoot Suit Riot	15 15
20	Tori Amos, Spark	15 15
21	Grant Lee Buffalo, Truly, Truly	15 0
22	Glortone, Halfway	15 11
23	Athenaeum, What I Didn't Know	14 17
24	Marcy Playground, Saint Joe On The	14 13
25	Harvey Danger, Flagpole Sitta	14 19
26	Gravity Kills, Falling	14 10
27	Beastie Boys, Intergalactic	13 13
28	Our Lady Peace, 4 AM	13 13
29	Ben Folds Five, Song For The Dumped	13 12
30	Heather Nova, London Rain	12 13

WFMX Boston
PD: Cruze
MD: Laurie Gail



	TW	LW
1	Beastie Boys, Intergalactic	36 37
2	Harvey Danger, Flagpole Sitta	32 28
3	Eve 6, Inside Out	28 29
4	Big Bad Voodoo Daddy, You And Me And The	26 11
5	Stabbing Westward, Save Yourself	26 16
6	Feeder, High	25 13
7	Dolorean, Silence	23 24
8	Blink 182, Dammit	20 16
9	Rancid, Bloodlet	20 15
10	Semisonic, Closing Time	19 15
11	Garbage, Push It	19 20
12	The Smashing Pumpkins, Ava Adore	18 20
13	The Smashing Pumpkins, Daphne Descends	17 14
14	Garbage, I Think I'm Paranoid	16 14
15	The Urge, Jump Right In	16 26
16	Fuel, Shimmer	20 9
17	Radiohead, Karma Police	15 15
18	Marcy Playground, Saint Joe On The	15 11
19		

POWER PLAYLISTS

Broadcast Data Systems
AIRPLAY
Monitor
For Week Ending
June 21, 1998

Playlists supplied by Broadcast Data Systems' Radio Track service. Songs ranked by number of plays in monitored week. Playlists are listed in order of TSA weekly cumes, beginning with the highest-cuming station. Cumes are updated twice weekly following the release of the Spring and Fall Arbitron surveys. The number of stations shown each week varies depending upon space.

KENZ Salt Lake City
PD: Bruce Jones
MD: Dom Casual
107.5 the end

	TW	LW
1	Goo Goo Dolls, Iris	33 35
2	Alana Davis, Crazy	32 28
3	The Wallflowers, Heroes	32 35
4	Barenaked Ladies, One Week	32 38
5	Everything, Hooch	30 31
6	Lenny Kravitz, Fly Away	30 30
7	Monie Love, Life In Mono	29 27
8	Sarah McLachlan, Adia	23 19
9	The Smashing Pumpkins, Perfect	16 17
10	Natalie Imbruglia, Torn	15 15
11	The Verve, Lucky Man	13 13
12	Athenaeum, What I Didn't Know	15 10
13	Green Day, Time Of Your Life	14 15
14	Fastball, The Way	14 18
15	Semisonic, Closing Time	14 17
16	Grant Lee Buffalo, Truly, Truly	14 20
17	The Verve, Bitter Sweet Symphony	14 15
18	The Mighty Mighty Bosstones, The Impression	13 13
19	Tori Amos, Spark	13 15
20	Everclear, Everything To Everyone	13 13
21	The Connells, Crown	13 17
22	Matchbox 20, Real World	12 17
23	Dave Matthews Band, Crash Into Me	12 11
24	Marcy Playground, Saint Joe On The	12 17
25	Alanis Morissette, Uninvited	11 9
26	Sublime, What I Got	11 11
27	Dave Matthews Band, Stay	11 9
28	Natalie Imbruglia, Wishing I Was There	11 8
29	Eve 6, Inside Out	11 12
30	Matchbox 20, 3 AM	10 12

KKND New Orleans
OM: Dave Stewart
APD/MD: Rod Ryan
106.7

	TW	LW
1	Marcy Playground, Saint Joe On The	38 36
2	God Lives Underwater, From Your Mouth	38 35
3	Garbage, Push It	32 35
4	The Smashing Pumpkins, Ava Adore	37 39
5	Harvey Danger, Flagpole Sitta	37 39
6	Days Of The New, The Down Town	36 23
7	Semisonic, Closing Time	36 38
8	Ben Folds Five, Song For The Dumped	27 37
9	Fuel, Shimmer	26 26
10	Goo Goo Dolls, Iris	25 25
11	Lenny Kravitz, Fly Away	25 27
12	Eve 6, Inside Out	25 25
13	Creed, What's This Life For	25 23
14	Our Lady Peace, 4 AM	24 26
15	Green Day, Redundant	24 25
16	Dave Matthews Band, Don't Drink The Water	24 24
17	The Urge, Jump Right In	24 23
18	Foo Fighters, Walking After You	23 18
19	Days Of The New, Touch, Peel And Stand	20 18
20	Monster Magnet, Space Lord	20 15
21	Scott Weiland, Opposite Octave Reaction	17 17
22	Jerry Cantrell, My Song	17 17
23	Feeder, High	16 11
24	Santana, She Found You	16 17
25	The Verve, Lucky Man	16 16
26	Glorious, Halfway	16 12
27	Barenaked Ladies, One Week	16 16
28	Sprung Monkey, Get 'Em Outta Here	16 17
29	Stabbing Westward, Save Yourself	16 13
30	Beastie Boys, Intergalactic	16 14

XHRM San Diego
PD: Mike Halloran
MD: Chaz Kelly
92.5

	TW	LW
1	Barenaked Ladies, One Week	40 42
2	The Verve, Lucky Man	34 38
3	Beastie Boys, Intergalactic	32 28
4	Sprung Monkey, Get 'Em Outta Here	28 28
5	Harvey Danger, Flagpole Sitta	28 28
6	Dave Matthews Band, Don't Drink The Water	27 44
7	Fuel, Shimmer	27 24
8	Green Day, Redundant	27 23
9	Foo Fighters, Walking After You	24 23
10	Garbage, Push It	24 27
11	MP3, You're OK	24 22
12	The Smashing Pumpkins, Perfect	24 10
13	Silence None The Richer, Kiss Me	22 13
14	Rocket From The Crypt, Break It Up	22 25
15	The Smashing Pumpkins, Ava Adore	21 23
16	Reverend Horton Heat, Baby I'm Drunk	21 28
17	Pearl Jam, In HIDing	22 0
18	Bad Religion, Shades Of Truth	22 28
19	Fatboy Slim, The Rockafeller Skank	21 17
20	Home Grown, Surfer Girl	20 17
21	Lenny Kravitz, If You Can't Say No	19 25
22	Eagle Eye Cherry, Save Tonight	19 0
23	Dragstore, El Presidente	17 14
24	Billy Bragg & Wilco, California Stars	18 1
25	Gracie Abrams, Truly, Truly	16 12
26	Goo Goo Dolls, Iris	16 11
27	Blink 182, Josie	16 16
28	Ben Harper, Mama's Trippin'	15 12
29	Eve 6, Inside Out	15 13
30	Rancid, Bloodclot	15 14

WEDG Buffalo
PD: John Hager
MD: Rich Wall
103.3 EDGE

	TW	LW
1	Goo Goo Dolls, Iris	40 39
2	Third Eye Blind, How's It Going To Be	32 32
3	Fuel, Shimmer	31 39
4	Semisonic, Closing Time	30 38
5	The Tragically Hip, Poets	29 0
6	Foo Fighters, My Hero	28 38
7	The Smashing Pumpkins, Ava Adore	28 29
8	Fastball, The Way	20 38
9	Green Day, Redundant	20 20
10	Everclear, I Will Buy You A New Life	19 35
11	Our Lady Peace, 4 AM	16 20
12	Barenaked Ladies, One Week	16 21
13	Pearl Jam, Wishlist	16 20
14	Matchbox 20, Real World	16 20
15	311, Beautiful Disaster	15 19
16	The Urge, Jump Right In	15 19
17	Grant Lee Buffalo, Truly, Truly	15 19
18	The Verve, Lucky Man	15 19
19	Eve 6, Inside Out	15 20
20	Athenaeum, What I Didn't Know	14 17
21	Ani DiFranco, As Is	14 20
22	Harvey Danger, Flagpole Sitta	13 20
23	God Lives Underwater, From Your Mouth	13 18
24	Ben Folds Five, Song For The Dumped	13 22
25	Foo Fighters, Everlong	12 14
26	Days Of The New, Touch, Peel And Stand	12 15
27	Our Lady Peace, Clumsy	12 13
28	Blair, Song 2	12 15
29	Monster Magnet, Space Lord	11 14
30	Swirl, Hey Now Now	11 17

WZAZ Columbus
PD: Greg Aulshus
MD: Mark Pennington
103.3

	TW	LW
1	Natalie Imbruglia, Torn	51 51
2	Fastball, The Way	50 50
3	The Wallflowers, Heroes	50 51
4	DeLerium, Silence	50 48
5	Matchbox 20, Real World	48 50
6	Natalie Imbruglia, Kind & Generous	48 28
7	Goo Goo Dolls, Iris	48 28
8	Alanis Morissette, Uninvited	28 28
9	Pearl Jam, Wishlist	28 27
10	Cherry Poppin' Daddies, Zoot Suit Riot	28 29
11	Eve 6, Inside Out	28 27
12	The Verve, Lucky Man	28 26
13	Foo Fighters, Walking After You	28 24
14	Tori Amos, Spark	28 26
15	Third Eye Blind, Losing A Whole Year	28 25
16	Barenaked Ladies, One Week	22 3
17	Lorona McKennitt, The Mummers' Dance	22 21
18	Grant Lee Buffalo, Truly, Truly	22 0
19	Marcy Playground, Saint Joe On The	20 9
20	Fiona Apple, Criminal	20 19
21	Paula Cole, I Don't Want To Wait	18 20
22	Semisonic, Closing Time	18 46
23	Tonic, If You Could Only See	18 21
24	Luscious Jackson, Naked Eye	17 21
25	Live, Turn My Head	17 21
26	Sublime, What I Got	17 19
27	Sugar Ray, Fly	17 7
28	The Mighty Mighty Bosstones, The Impression	17 22
29	Open Up Your Eyes	17 10
30	Sublime, Santitas	16 21

WPBZ West Palm Beach
PD: John O'Connell
MD: Dan O'Brien
BUZZ 103.1

	TW	LW
1	God Lives Underwater, From Your Mouth	37 35
2	Goo Goo Dolls, Iris	36 36
3	The Urge, Jump Right In	36 35
4	Creed, My Own Prison	35 36
5	Fuel, Shimmer	35 37
6	Fastball, The Way	34 36
7	The Smashing Pumpkins, Ava Adore	29 28
8	11, Beautiful Disaster	33 34
9	Pearl Jam, Wishlist	32 35
10	The Verve, Lucky Man	30 30
11	Marcy Playground, Saint Joe On The	30 27
12	Harvey Danger, Flagpole Sitta	29 30
13	Athenaeum, What I Didn't Know	29 25
14	Garbage, Push It	28 28
15	Ben Folds Five, Song For The Dumped	28 30
16	Green Day, Redundant	27 30
17	Stabbing Westward, Save Yourself	26 8
18	Litany, By Myself	24 24
19	Beastie Boys, Intergalactic	21 12
20	The Wallflowers, Heroes	18 20
21	Semisonic, Closing Time	18 21
22	Sprung Monkey, Get 'Em Outta Here	17 18
23	Foo Fighters, Walking After You	17 17
24	Our Lady Peace, 4 AM	17 15
25	The B-52's, Debbie	16 14
26	Monster Magnet, Space Lord	16 6
27	The Gandhivas, Downtime	16 13
28	Grant Lee Buffalo, Truly, Truly	15 14
29	Everclear, Everything To Everyone	15 19
30	Jerry Cantrell, Cut You In	14 16

WAQZ Cincinnati
PD/MD: Matt Harris
APD: Sterling Schiessler
The New Music Revolution 107.3

	TW	LW
1	Edwin McCain, I'll Be	59 56
2	Matchbox 20, Real World	59 45
3	Alanis Morissette, Uninvited	57 56
4	Natalie Imbruglia, Torn	57 55
5	Goo Goo Dolls, Iris	56 58
6	Semisonic, Closing Time	53 61
7	Alana Davis, Crazy	42 33
8	Dave Matthews Band, Stay	41 41
9	Rebekah, Sin So Well	40 37
10	Sarah McLachlan, I Will Remember You	39 44
11	Green Day, Redundant	38 43
12	Everclear, I Will Buy You A New Life	38 42
13	Sarah McLachlan, Adia	37 30
14	Seven Mary Three, Lucky	34 27
15	Billie Myers, Tell Me	33 9
16	Barenaked Ladies, One Week	32 29
17	Heather Nova, London Rain	32 23
18	Sprung Monkey, Get 'Em Outta Here	32 37
19	Harvey Danger, Flagpole Sitta	31 22
20	Barenaked Ladies, Brian Wilson	29 23
21	Soel Asylum, I Will Still Be Laughing	28 27
22	Natalie Imbruglia, Wishing I Was There	27 20
23	Fastball, The Way	19 35
24	Chantal Kreviazuk, Surrounded	16 17
25	Lorona McKennitt, The Mummers' Dance	16 20
26	Tonic, Open Up Your Eyes	16 15
27	Sugar Ray, Fly	16 15
28	Marcy Playground, Sex And Candy	15 19
29	The Verve, Bitter Sweet Symphony	15 18
30	Vonda Shepard, Searchin' My Soul	15 17

KNRZ Kansas City
APD: Dave Horn
MD: Jason Justice
107.3

	TW	LW
1	Stabbing Westward, Save Yourself	38 40
2	The Smashing Pumpkins, Ava Adore	37 40
3	Fuel, Shimmer	37 39
4	Harvey Danger, Flagpole Sitta	37 39
5	Semisonic, Closing Time	37 39
6	Pearl Jam, Wishlist	36 36
7	Creed, Torn	35 34
8	Beastie Boys, Intergalactic	31 26
9	Marcy Playground, Saint Joe On The	21 20
10	Green Day, Redundant	20 16
11	The Urge, Jump Right In	21 23
12	Goo Goo Dolls, Iris	38 42
13	Ben Folds Five, Song For The Dumped	19 19
14	Eve 6, Inside Out	18 22
15	Feeder, High	17 21
16	Days Of The New, The Down Town	17 16
17	Foo Fighters, Walking After You	17 20
18	Sprung Monkey, Get 'Em Outta Here	14 14
19	Fastball, The Way	18 18
20	The Verve, Lucky Man	13 12
21	Metallica, The Unforgiven II	13 9
22	Glorious, Halfway	14 15
23	Blink 182, Josie	13 15
24	Everclear, I Will Buy You A New Life	13 10
25	Lenny Kravitz, Fly Away	12 17
26	Blair, Song 2	16 15
27	Monster Magnet, Space Lord	12 10
28	Jerry Cantrell, Cut You In	11 10
29	Big Wreck, The Out	11 9
30	Cherry Poppin' Daddies, Zoot Suit Riot	12 13

KMYZ Tulsa
PD: Lynn Barstow
MD: Ray Dog
EDGE 107.5

	TW	LW
1	Stabbing Westward, Save Yourself	36 28
2	Garbage, Push It	35 34
3	Pearl Jam, Wishlist	35 34
4	Goo Goo Dolls, Iris	34 34
5	Everclear, I Will Buy You A New Life	34 33
6	Fuel, Shimmer	34 32
7	Semisonic, Closing Time	33 34
8	The Smashing Pumpkins, Ava Adore	33 32
9	Harvey Danger, Flagpole Sitta	33 34
10	Eve 6, Inside Out	19 17
11	The Urge, Jump Right In	19 19
12	Green Day, Redundant	18 18
13	Ben Folds Five, Song For The Dumped	17 18
14	Creed, What's This Life For	17 12
15	Matchbox 20, Real World	16 13
16	Marcy Playground, Saint Joe On The	16 15
17	Jerry Cantrell, My Song	15 15
18	Grant Lee Buffalo, Truly, Truly	14 17
19	Athenaeum, What I Didn't Know	14 11
20	Big Wreck, That Song	14 14
21	Beastie Boys, Intergalactic	14 12
22	Rancid, Bloodclot	13 11
23	Girls Against Boys, Park Avenue	13 11
24	The Wallflowers, Heroes	13 8
25	Rage Against The Machine, No Shelter	13 8
26	The Smashing Pumpkins, Perfect	12 12
27	Gravity Kills, Falling	12 12
28	Foo Fighters, Walking After You	12 16
29	Screaming Trees, Nearly Lost You	10 8
30	Barenaked Ladies, One Week	10 0

KROX Austin
PD: Sara Trexler
APD/MD: Lloyd "LA" Hocutt
101X

	TW	LW
1	Harvey Danger, Flagpole Sitta	40 40
2	Semisonic, Closing Time	40 39
3	Goo Goo Dolls, Iris	40 36
4	Garbage, Push It	37 35
5	Fuel, Shimmer	36 39
6	Eve 6, Inside Out	36 40
7	Everything, Hooch	29 31
8	Our Lady Peace, 4 AM	28 28
9	David Garza, Discoball World	28 23
10	Barenaked Ladies, One Week	28 16
11	Everclear, I Will Buy You A New Life	27 20
12	Athenaeum, What I Didn't Know	27 26
13	Matchbox 20, 3 AM	26 17
14	Black Lab, Time Ago	24 20
15	The Urge, Jump Right In	22 28
16	The Verve, Lucky Man	22 14
17	Natalie Imbruglia, Wishing I Was There	22 14
18	Dave Matthews Band, Don't Drink The Water	21 15
19	Cherry Poppin' Daddies, Zoot Suit Riot	21 20
20	Grant Lee Buffalo, Truly, Truly	21 23
21	Marcy Playground, Sex And Candy	21 18
22	Foo Fighters, Walking After You	21 24
23	The Verve, Lucky Man	21 19
24	The Smashing Pumpkins, Ava Adore	20 23
25	Creed, What's This Life For	20 22
26	The Gandhivas, Downtime	20 13
27	Marcy Playground, Saint Joe On The	20 21
28	Gastor, Airport Song	20 12
29	Green Day, Time Of Your Life	19 15
30	Far Too Jones, As Good As You	18 0

KTCL Denver
PD: Mike O'Connor
93.3

	TW	LW
1	Big Bad Voodoo Daddy, You And Me And The	45 43
2	Goo Goo Dolls, Iris	44 39
3	Tori Amos, Spark	44 46
4	Garbage, Push It	42 43
5	The Verve, Lucky Man	41 44
6	Eve 6, Inside Out	38 32
7	Harvey Danger, Flagpole Sitta	35 31
8	God Lives Underwater, From Your Mouth	34 31
9	Sprung Monkey, Get 'Em Outta Here	28 28
10	Natalie Imbruglia, Wishing I Was There	28 20
11	Grant Lee Buffalo, Truly, Truly	28 31
12	The Urge, Jump Right In	27 24
13	Barenaked Ladies, One Week	27 27
14	The Crystal Method, Busy Child	26 45
15	Dave Matthews Band, Stay	26 27
16	Athenaeum, What I Didn't Know	26 18
17	Madonna, Ray Of Light	26 25
18	Feeder, High	26 8
19	Beastie Boys, Intergalactic	25 25
20	Semisonic, Closing Time	22 24
21	Sublime, Badfish	21 19
22	Tonic, If You Could Only See	19 20
23	Cherry Poppin' Daddies, Zoot Suit Riot	21 19
24		

Monitor AIRPLAY

POWER PLAYLISTS

For Week Ending June 21, 1998

Playlists supplied by Broadcast Data Systems' Radio Track service. Songs ranked by number of plays in monitored week.

WXRA Greensboro PD: Tim Satterfield APD: Marcia Gan 94.5 the rock alternative.

WROX Norfolk PD/MD: Al Mitchell 90X MODERN ROCK

WRAX Birmingham PD: Dave Rossi APD: Hurricane Shane MD: Suzy Boe 101.5

WXEK Dayton PD: Jeff Stevens MD: Alan Rantz 106.5 BUZZ

WBZU Richmond OM: Jeff Cochran MD: Jay Smack 106.5 BUZZ

WPLA Jacksonville PD: Rick Schmidt 93.3

KFRR Fresno PD: Bruce Wayne New Book 104 THIS IS NOT FOR YOU!

KLZR Kansas City PD: Roger The Dodger AMD: Bob Osborn MD: Jeff Petterson LAZER

WCYU Portland, ME PD: Herb Ivy MD: Brian James 106.5

KTEG Albuquerque PD: Skip Isley THE edge 107.9

WWCD Columbus PD/MD: Andy Davis 101.5

KPOI Honolulu PD: Brock Whaley MD: Nikki Basque 106.5 BUZZ

WRQ Memphis PD: Tony Williams MD: John Michael 96X

KAEP Spokane OM: Ray Edwards PD: Haley Jones MD: Larry Pearson 96X

WKRO Orlando OM: Taft Moore MD: Rosie Acevedo 93.1

KICT Wichita PD: Ron Eric Taylor T95

KFMA Tuscon PD/MD: Chuck Roast 92.1 KFMA

WAVF Charleston, SC PD: Rob Cressman MD: Janda Baldwin 96WAVE

WXNR Greenville, NC PD: B.K. Kirkland MD: Ali Taylor new rock 99X

KKDM Des Moines OM: Lee Konfrst MD: Sophia John 107.5

WEQX Albany PD: Ian Harrison MD: Stephen Bottomley 102.7 EQX

WBTV Burlington PD: Stephanie Hindley MD: Steve Picard 106.5 BUZZ

WJWB Fort Myers PD: Stephanie Bradford AMD/MD: Lee Daniels 99X

WKRL Syracuse PD/MD: Mimi Griswold Modern Rock 100.9 K-ROCK



*** **AIRPOWER** ***
(Minimum 1,100 detections for the first time)

	Total Plays/Gain	Total Plays/Gain
ATHENAEUM 1158/72 <i>What I Didn't Know (Atlantic)</i> Total Stations: 63/Chart Move: 21-18 Heavy (30+ plays): 5 KTbz, KWOD, KZON, WARQ, WXRA Medium (15-29): 36 KCXX, KDGE, KENZ, KFMA, KFRR, KFTE, KICT, KKDM, KKND, KLYY, KLZR, KOME, KPNT, KROX, KTCL, KXKR, WAVF, WBRU, WCY, WENZ, WEQX, WGRD, WJbX, WKRL, WKRO, WLUM, WMRQ, WNNX, WPBZ, WPLA, WPLT, WQbK, WRXQ, WRXR, WXNR, WXZZ Light (Under 15): 22 New Airplay This Week: 2 KOME, KTEG		FOO FIGHTERS 1114/67 <i>Walking After You (Capitol/Elektra/EEG)</i> Total Stations: 70/Chart Move: 22-20 Heavy (30+): 5 KJEE, WBTZ, WRAX, WXNR, XTRA Medium (15-29): 34 CFNY, CIMX, KFMA, KFTE, KKDM, KKND, KLZR, KNRX, KOME, KROX, KTbz, KTCL, KTEG, KTOZ, KZbZ, KZON, WBZU, WCY, WEQX, WJbX, WKQX, WKRL, WKRO, WNNX, WPBZ, WPLT, WPLY, WROX, WRXQ, WRXR, WXEG, WXZZ, WZAZ, XHRM Light (Under 15): 31 New Airplay This Week: 7 KFRR, KPOI, KTCL, KWOD, WAVF, WBCN, WPLY

AIRPOWER BOUND

	Total Plays/Gain
GRANT LEE BUFFALO 1009/158 <i>Truly, Truly (Slash/Warner Bros.)</i> Total Stations: 64/Chart Move: 27-23 Heavy (30+ plays): 1 KXPK Medium (15-29): 38 CFNY, KFMA, KFTE, KHTY, KICT, KJEE, KLZR, KROX, KTCL, KTEG, KTOZ, KZbZ, WAVF, WBTZ, WBZU, WCY, WEDG, WEND, WENZ, WEQX, WGRD, WKDF, WNNX, WPBZ, WPLT, WPLY, WQbK, WRAX, WRXQ, WRXR, WWCD, WXDX, WXEG, WXRA, WXZZ, WZAZ, XHRM, XTRA Light (Under 15): 25 New Airplay This Week: 7 KPNT, WEND, WQbK, WXDX, WXRA, WZAZ, XTRA	
SPRUNG MONKEY 990/69 <i>Get 'Em Outta Here (Surfdog/Hollywood)</i> Total Stations: 65/Chart Move: 26-24 Heavy (30+): 7 KITS, KJEE, KOME, KROQ, WAQZ, WHFS, XTRA Medium (15-29): 22 CFNY, KDGE, KFMA, KFTE, KHTY, KKND, KLZR, KPNT, KTCL, KTEG, KTOZ, KWOD, KXTE, WARQ, WCY, WLUM, WPBZ, WROX, WRXQ, WWCD, WXRA, XHRM Light (Under 15): 36 New Airplay This Week: 2 KFRR, WENZ	
STABBING WESTWARD 962/34 <i>Save Yourself (Columbia)</i> Total Stations: 56/Chart Move: 24-25 Heavy (30+): 6 KMYZ, KNDD, KNRX, KPOI, WKRL, WXRA Medium (15-29): 22 KDGE, KEDJ, KFTE, KHTY, KICT, KKND, KLZR, KNRX, KTEG, KTOZ, KXTE, WBTZ, WCY, WFNX, WNYE, WPBZ, WPLA, WRXQ, WRXZ, WWCD, WXDX, WRXK Light (Under 15): 28 New Airplay This Week: 1 XHRM	
THE SMASHING PUMPKINS 789/186 <i>Perfect (Virgin)</i> Total Stations: 46/Chart Move: 32-28 Heavy (30+): 6 KITS, KLYY, KOME, KROQ, WNNX, WRAX Medium (15-29): 21 CIMX, KEDJ, KENZ, KHTY, KICT, KJEE, KKDM, KLZR, KNDD, KPNT, KWOD, KZbZ, WBCN, WGRD, WHFS, WKQX, WKRO, WPLT, WPLY, WXRK, XHRM Light (Under 15): 19 New Airplay This Week: 4 KTOZ, KXKR, WGRD, WXDX	
BIG BAD VOODOO DADDY 650/98 <i>You Are My Life And The Bottle Makes Three Tonight (Baby) (Columbia/Elektra/Capitol)</i> Total Stations: 37/Chart Move: 34-32 Heavy (30+): 3 KHTY, KROQ, KTCL Medium (15-29): 20 CIMX, KFRR, KITS, KJEE, KNDD, KNRX, KOME, KTOZ, KXKR, WBRU, WBTZ, WEQX, WFNX, WHFS, WLUM, WROX, WWCD, WXZZ, WZAZ, XTRA Light (Under 15): 14 New Airplay This Week: 6 KFMA, WBCN, WMRQ, WPLY, WROX, WXEG	
OUR LADY PEACE 645/34 <i>4 AM (Columbia)</i> Total Stations: 43/Chart Move: 31-33 Heavy (30+): 2 CIMX, KCXX Medium (15-29): 21 KFMA, KFTE, KKND, KLZR, KROX, KTEG, KTOZ, WAVF, WBTZ, WCY, WEDG, WENZ, WEQX, WKRL, WPBZ, WRAX, WRXR, WRXZ, WXDX, WXRA, WXZZ Light (Under 15): 20 New Airplay This Week: 1 KZbZ	
FEEDER 639/105 <i>High (Echo/Elektra/EEG)</i> Total Stations: 45/Chart Move: 36-34 Heavy (30+): 1 KNDD	

	Total Plays/Gain
CREED 632/135 <i>What's This Life For (Wind-up)</i> Total Stations: 42/Chart Move: 39-35 Heavy (30+): 0 Medium (15-29): 26 KCXX, KFTE, KKND, KLZR, KMYZ, KPNT, KROX, KTEG, KTOZ, KWOD, WARQ, WAVF, WBCN, WBRU, WBZU, WCY, WEND, WJbX, WKQX, WKRL, WPLA, WRXQ, WRXR, WXDX, WXRA, WXZZ Light (Under 15): 16 New Airplay This Week: 6 CFNY, KROQ, WAVF, WKRL, WXDX, WRXK	
RAGE AGAINST THE MACHINE 574/99 <i>No Shelter (Epic)</i> Total Stations: 52/Chart Move: 40-36 Heavy (30+): 2 KEDJ, KXTE Medium (15-29): 10 CIMX, KDGE, KITS, KLZR, KNDD, KROQ, WBCN, WBTZ, WCY, WXRA Light (Under 15): 40 New Airplay This Week: 7 CFNY, KKND, KWOD, WAVF, WEND, WENZ, WXDX	
GUSTER 569/32 <i>Airport Song (Hybrid/Sire)</i> Total Stations: 43/Chart Move: 35-37 Heavy (30+): 0 Medium (15-29): 19 KCXX, KFTE, KKDM, KROX, WARQ, WAVF, WBCN, WBRU, WBTZ, WBZU, WCY, WEQX, WNNX, WPLA, WRAX, WRXQ, WRXR, WWCD, WXRA Light (Under 15): 24 New Airplay This Week: 5 KHTY, WEND, WKRL, WKRO, WZAZ	
NATALIE IMBRUGLIA 510/160 <i>Wishing I Was There (RCA)</i> Total Stations: 30/Chart Move: Debut 39 Heavy (30+): 2 KXKR, WNNX Medium (15-29): 15 KHTY, KROQ, KROX, KTCL, KTEG, KWOD, KZbZ, WAQZ, WARQ, WHFS, WRAX, WRXR, WXEG, WXNR, WXZZ Light (Under 15): 13 New Airplay This Week: 5 WBRU, WHFS, WKDF, WMRQ, WXNR	
EVERYTHING 473/121 <i>Hooch (Blackbird/Sire)</i> Total Stations: 38/Chart Move: Debut 40 Heavy (30+): 2 KENZ, KZON Medium (15-29): 15 KAEP, KNRX, KROX, KTCL, KZbZ, WARQ, WCY, WEQX, WJbX, WKRO, WNNX, WPLT, WRAX, WROX, WXRA Light (Under 15): 21 New Airplay This Week: 14 KDGE, KFTE, KNRX, KTEG, WAQZ, WAVF, WEND, WKRO, WNNX, WPLT, WRXR, WXEG, WXZZ, XHRM	

CHART BOUND

	Total Plays/Gain
GRAVITY KILLS 423/52 <i>Falling (TVT)</i> Total Stations: 56 Heavy (30+): 0 Medium (15-29): 5 KCXX, KPNT, KXTE, WCY, WKRO Light (Under 15): 51 New Airplay This Week: 1 WPBZ	
RANCID 394/53 <i>Bloodclot (Epitaph)</i> Total Stations: 46 Heavy (30+): 0 Medium (15-29): 9 KEDJ, KLZR, KOME, KOME, KXTE, WBTZ, WFNX, WXDX, XHRM Light (Under 15): 37 New Airplay This Week: 6 KFTE, KOME, KPNT, KROX, WBRU, WCY	

MOST NEW STATIONS

	No. Of Stations
EVERYTHING 14 <i>Hooch (Blackbird/Sire)</i>	14
CANDLEBOX 12 <i>It's Alright (Maverick/Warner Bros.)</i>	12
DAYS OF THE NEW 9 <i>The Down Town (Outpost/Geffen)</i>	9
GRANT LEE BUFFALO 7 <i>Truly, Truly (Slash/Warner Bros.)</i>	7
FOO FIGHTERS 7 <i>Walking After You (Capitol/Elektra/EEG)</i>	7
RAGE AGAINST THE MACHINE 7 <i>No Shelter (Epic)</i>	7

K'S CHOICE 392/46
Everything For Free (550 Music)

Total Stations: 34 Heavy (30+): 0 Medium (15-29): 12 KFMA, KKND, WARQ, WENZ, WKDF, WNNX, WPLA, WRAX, WRXQ, WRXR, WXDX, WXZZ Light (Under 15): 22 New Airplay This Week: 3 KHTY, WAVF, WCY

GIRLS AGAINST BOYS 390/-5
Park Avenue (DGC/Geffen)

Total Stations: 48 Heavy (30+): 0 Medium (15-29): 5 KICT, KLZR, KXKR, WCY, WWCD Light (Under 15): 43 New Airplay This Week: 2 KROX, WJbX
--

THE GANDHARVAS 373/24
Downtime (MCA)

Total Stations: 38 Heavy (30+): 0 Medium (15-29): 12 CIMX, KEDJ, KFTE, KROX, WCY, WEQX, WJbX, WPBZ, WRXQ, WWCD, WXRA, WXZZ Light (Under 15): 26 New Airplay This Week: 1 WRAX

DAYS OF THE NEW 361/165
The Down Town (Outpost/Geffen)

Total Stations: 25 Heavy (30+): 2 KKND, WRXQ Medium (15-29): 9 KICT, KNDD, KNRX, KXKR, WBRU, WENZ, WKRO, WRXR, WXZZ Light (Under 15): 14 New Airplay This Week: 9 KDGE, KFTE, KNDD, KPNT, KTOZ, KXKR, WARQ, WENZ, WKQX
--

DAVE MATTHEWS BAND 345/154
Stay (Wasting Time) (RCA)

Total Stations: 26 Heavy (30+): 2 WAQZ, WPLY Medium (15-29): 9 KTbz, KTCL, KZbZ, WBRU, WBZU, WEQX, WHFS, WMRQ, WNNX Light (Under 15): 15 New Airplay This Week: 5 KXKR, WGRD, WHFS, WNNX, WXZZ
--

BLINK 182 327/11
Josie (Cargo/MCA)

Total Stations: 35 Heavy (30+): 1 KXTE Medium (15-29): 6 KEDJ, KLZR, KNDD, KNRX, WBZU, XHRM Light (Under 15): 28 New Airplay This Week: 3 KPNT, KWOD, XTRA
--

SMASH MOUTH 280/15
Can't Get Enough Of You Baby (Elektra/EEG)

Total Stations: 19 Heavy (30+): 0 Medium (15-29): 9 KHTY, KJEE, KROQ, KTEG, KWOD, KZbZ, WKQX, WPLY, XTRA Light (Under 15): 10 New Airplay This Week: 2 WENZ, WPLT

JERRY CANTRELL 272/43
My Song (Columbia)

Total Stations: 22 Heavy (30+): 0

Medium (15-29): 9 KCXX, KKND, KMYZ, WBCN, WGRD, WRXQ, WRXZ, WXRA, WRXK Light (Under 15): 13 New Airplay This Week: 3 KCXX, KFTE, WPBZ

CANDLEBOX 260/142
It's Alright (Maverick/Warner Bros.)

Total Stations: 34 Heavy (30+): 0 Medium (15-29): 6 KCXX, KFTE, KICT, KNRX, WPLA, WXRA Light (Under 15): 28 New Airplay This Week: 12 KCXX, KNRX, KNRX, KTOZ, WARQ, WJbX, WKQX, WKRL, WPLA, WRXQ, WRXR, WXNR
--

GARBAGE 237/113
I Think I'm Paranoid (Atmo Sounds/Interscope)

Total Stations: 23 Heavy (30+): 1 KROQ Medium (15-29): 7 KEDJ, KHTY, KITS, KNDD, KXTE, WFNX, WHFS Light (Under 15): 15 New Airplay This Week: 5 KHTY, KJEE, KXKR, WENZ, WRAX
--

THIRD EYE BLIND 218/39
Juniper (Elektra/EEG)

Total Stations: 26 Heavy (30+): 1 WHFS Medium (15-29): 5 KITS, KOME, KROQ, KWOD, WXEG Light (Under 15): 20 New Airplay This Week: 4 KFTE, KNDD, KTEG, WMRQ
--

GLORITONE 207/26
Halfway (Kneeling Elephant/RCA)

Total Stations: 30 Heavy (30+): 0 Medium (15-29): 6 KCXX, KEDJ, KFTE, KKND, KNDD, WEND Light (Under 15): 24 New Airplay This Week: 1 WRXQ

SWIRL 195/89
Hey Now Now (Mercury)

Total Stations: 34 Heavy (30+): 0 Medium (15-29): 4 KFTE, KROX, KWOD, WAVF Light (Under 15): 30 New Airplay This Week: 6 KENZ, KLZR, KROX, WKRL, WXDX, WXEG

FAR TOO JONES 172/65
As Good As You (Mammoth)

Total Stations: 21 Heavy (30+): 0 Medium (15-29): 3 KROX, WXRA, WXZZ Light (Under 15): 18 New Airplay This Week: 5 KROX, WENZ, WGRD, WKRL, WRAX

LIMP BIZKIT 163/32
Sour (Flip/Interscope)

Total Stations: 21 Heavy (30+): 0 Medium (15-29): 1 KJEE Light (Under 15): 20 New Airplay This Week: 3 KJEE, KPNT, WXDX

BIG WRECK 160/5
That Song (Atlantic)

Total Stations: 14 Heavy (30+): 1 WARQ Medium (15-29): 3 KFTE, WCY, WRXZ Light (Under 15): 10
--

LENNY KRAVITZ 155/5
Fly Away (Virgin)

Total Stations: 11 Heavy (30+): 1 KENZ Medium (15-29): 5 KEDJ, KFMA, KKND, KXTE, WBCN Light (Under 15): 5 New Airplay This Week: 1 KFMA

HOME GROWN 143/23
Surfer Girl (Outpost/Geffen)

Total Stations: 14 Heavy (30+): 1 KPOI Medium (15-29): 3 KHTY, KOME, XHRM Light (Under 15): 10

THE BRIAN SETZER ORCHESTRA 136/44
Jump Jive An' Wall (Interscope)

Total Stations: 37 Heavy (30+): 1 KHTY Medium (15-29): 1 KZbZ Light (Under 15): 35 New Airplay This Week: 4 KFTE, KPNT, KTCL, WXDX
--

MXPX 123/17
I'm OK, You're OK (A&M)

Total Stations: 16 Heavy (30+): 0 Medium (15-29): 3 KNDD, WBTZ, XHRM Light (Under 15): 13 New Airplay This Week: 1 KROQ

FATBOY SLIM 122/54
The Rockafeller Skank (Astralwerks)

Total Stations: 43 Heavy (30+): 0 Medium (15-29): 1 XHRM Light (Under 15): 42 New Airplay This Week: 3 KROQ, WBCN, WEQX

EDWIN MCCAIN 120/-6
I'll Be (Lava/Atlantic)

Total Stations: 8 Heavy (30+): 1 WAQZ Medium (15-29): 2 KZON, WPLT Light (Under 15): 5 New Airplay This Week: 1 WRAX
--

COWBOY JUNKIES 120/20
Miles From Our Home (Geffen)

Total Stations: 11 Heavy (30+): 0 Medium (15-29): 4 CIMX, WARQ, WEQX, WXZZ Light (Under 15): 7

ESTHERO 117/33
Heaven Sent (WORK)

Total Stations: 12 Heavy (30+): 1 CIMX Medium (15-29): 1 CFNY Light (Under 15): 10 New Airplay This Week: 5 CFNY, KWOD, WEQX, WMRQ, XHRM
--

THE CRYSTAL METHOD 104/44
Comin' Back (Outpost/Geffen)

Total Stations: 25 Heavy (30+): 0 Medium (15-29): 1 KJEE Light (Under 15): 24 New Airplay This Week: 5 KDGE, KHTY, KWOD, WEQX, WJbX

THE TRAGICALLY HIP 99/95
Poets (Sire)

Total Stations: 9 Heavy (30+): 1 CFNY Medium (15-29): 2 CIMX, WEDG Light (Under 15): 6 New Airplay This Week: 4 CFNY, CIMX, WARQ, WEDG
--

EAGLE EYE CHERRY 94/75
Save Tonight (WORK)

Total Stations: 18 Heavy (30+): 0 Medium (15-29): 3 KHTY, KROQ, XHRM Light (Under 15): 15 New Airplay This Week: 3 KHTY, KLYY, XHRM

MONEY MARK 89/21
Hand In Your Head (Mo Wax/frr/London)

Total Stations: 13 Heavy (30+): 0 Medium (15-29): 2 KJEE, WBTZ Light (Under 15): 11 New Airplay This Week: 2 KJEE, KOME

POSSUM DIXON 86/14
Holding (Interscope)

Total Stations: 31 Heavy (30+): 0 Medium (15-29): 2 KNDD, KXKR Light (Under 15): 29
--

Airpower awarded to those records which attain 1,100 detections for the first time. New airplay lists those stations registering six or more detections per week on a record for the first time. ★ Initial impact: records appearing on this page for the first time.



SONG ACTIVITY REPORTS

For Week Ending June 21, 1998

MM Broadcast Data Systems logo and detailed song tracking information for the last 3 weeks.

ATHENAUM 1158/72 What I Didn't Know (Atlantic) Total Stations: 63 Chart Move: 21-18

BARENAKED LADIES 1570/277 One Week (Reprise) Total Stations: 69 Chart Move: 15-9

BEASTIE BOYS 1365/108 Intergalactic (Grand Royal/Capitol) Total Stations: 71 Chart Move: 17-14

BIG BAD VODOO DADDY 650/98 You And Me And The Bottle Makes Three Tonight (Baby) (Columbia/EMI-Capitol) Total Stations: 37 Chart Move: 34-32

JERRY CANTRELL 272/43 My Song (Columbia) Total Stations: 22 Chart Move: 22-18

CREED 632/135 What's This Life For (Wind-up) Total Stations: 42 Chart Move: 39-35

DAYS OF THE NEW 361/165 The Down Town (Outpost/Geffen) Total Stations: 25 Chart Move: 25-21

EVE 6 1789/70 Inside Out (RCA) Total Stations: 75 Chart Move: 8-8

EVERYTHING 473/121 Hooch (Blackbird/Sire) Total Stations: 38 Chart Move: Debut 40

FEEDER 639/105 High (Echo/Elektra/EEG) Total Stations: 45 Chart Move: 36-34

FOO FIGHTERS 1114/67 Walking After You (Capitol/Elektra/EEG) Total Stations: 70 Chart Move: 22-20

FUEL 2245/36 Shimmer (550 Music) Total Stations: 78 Chart Move: 4-3

THE GANDHARVAS 373/24 Downtime (MCA) Total Stations: 38 Chart Move: 2-1

GOO GOO DOLLS 2637/29 Irs (Warner Sunset/Reprise) Total Stations: 78 Chart Move: 2-1

GRANT LEE BUFFALO 1009/158 Truly, Truly (Slash/Warner Bros.) Total Stations: 64 Chart Move: 27-23

Monitor AIRPLAY SONG ACTIVITY REPORTS

For Week Ending June 21, 1998

GRAVITY KILLS 423/52, GUSTER 569/32, HARVEY DANGER 2212/58, NATALIE IMBRUGLIA 510/160, K'S CHOICE 392/46. Includes station lists and chart moves for each act.

MARCY PLAYGROUND 1349/84, DAVE MATTHEWS BAND 345/154, MONSTER MAGNET 313/104, OUR LADY PEACE 645/34, RAGE AGAINST THE MACHINE 574/99. Includes station lists and chart moves for each act.

RANCID 394/53, SMASH MOUTH 280/15, THE SMASHING PUMPKINS 789/186, SPRUNG MONKEY 990/69, STABBING WESTWARD 962/34. Includes station lists and chart moves for each act.

POWER PLAYLISTS™

KFOG San Francisco
PD: Paul Marszalek
APD/MD: Bill Evans



	TW	LW
1 The Wallflowers, Heroes	21	17
2 Marc Cohn, Already Home	20	20
3 Bonnie Raitt, Spit Of Love	19	8
4 Eric Clapton, She's Gone	18	14
5 Bonnie Raitt, One Belief Away	17	16
6 Dave Matthews Band, Stay	17	17
7 Agents Of Good Roots, Smiling Up The	17	15
8 Natalie Merchant, Kind & Generous	16	18
9 Buddy Guy Feat. Jonny Lang, Midnight	14	15
10 Jimmy Page & Robert Plant, Shining In The	11	8
11 Kenny Wayne Shepherd, Blue On Black	9	10
12 Grant Lee Buffalo, Truly, Truly	9	6
13 Matchbox 20, 3 AM	9	7
14 Cowboy Junkies, Miles From Our Home	8	10
15 Pearl Jam, Wishlist	8	3
16 Jimmy Page & Robert Plant, Most High	8	10
17 Pete Dinklage, Spaggy And Shakun	8	10
18 Sister Hazel, All For You	7	8
19 Sheryl Crow, A Change Would Do You Good	7	5
20 Rolling Stones, Anybody Seen My Baby	7	7
21 The B-52's, Debbie	7	5
22 Scott Thomas Band, Black Valentine	7	8
23 Soul Asylum, I Will Still Be Laughing	6	10
24 Foo Fighters, Walking After You	6	10
25 Neil Finn, She Will Have Her Way	6	1
26 Abra Moore, Four Leaf Clover	5	7
27 Brian Setzer Orchestra, Jump Jive An'	5	2
28 Sarah McLachlan, Building A Mystery	5	4
29 Lenny Kravitz, Live	5	10
30 Heather Nova, London Rain	5	7

WBOS Boston
PD: George Taylor Morris
MD: Cliff Nash



	TW	LW
1 The Verve, Lucky Man	26	23
2 Natalie Merchant, Kind & Generous	26	25
3 Dave Matthews Band, Stay	25	25
4 Vonda Shepard, Searchin' My Soul	24	30
5 Goo Goo Dolls, Iris	24	26
6 Eric Clapton, She's Gone	24	13
7 Matchbox 20, Real World	23	18
8 Pearl Jam, Wishlist	23	18
9 Natalie Imbruglia, Torn	22	26
10 Patty Griffin, One Big Love	22	18
11 Kenny Wayne Shepherd, Blue On Black	21	27
12 Semisonic, Closing Time	20	22
13 Athenaeum, What I Didn't Know	20	13
14 Matthew Ryan, The Dead Girl	19	16
15 Bonnie Raitt, Spit Of Love	19	13
16 Everclear, I Will Buy You A New Life	18	15
17 Natalie Imbruglia, Wishing I Was There	18	12
18 The Smashing Pumpkins, Perfect	17	2
19 Alanis Morissette, Uninvited	16	5
20 Fastball, The Way	14	12
21 Sarah McLachlan, Adia	14	18
22 Marcy Playground, Sex & Candy	13	14
23 Third Eye Blind, How's It Going To Be	13	12
24 Green Day, Time Of Your Life	13	12
25 Eric Clapton, Pilgrim	13	7
26 John Fogerty, Premonition	12	3
27 Cowboy Junkies, Miles From Our Home	12	5
28 Heather Nova, London Rain	12	2
29 Bonnie Raitt, One Belief Away	11	22
30 Paula Cole, Me	11	4

WXRT Chicago
VP/Pgmng: Norm Winer
MD: Patty Martin



	TW	LW
1 Dave Matthews Band, Don't Drink The Water	16	17
2 Jimmy Page & Robert Plant, Most High	16	14
3 The Wallflowers, Heroes	16	15
4 Fastball, The Way	14	14
5 The B-52's, Debbie	14	17
6 Natalie Merchant, Kind & Generous	13	13
7 Bonnie Raitt, One Belief Away	13	14
8 The Smashing Pumpkins, Ava Adore	13	12
9 Buddy Guy Feat. Jonny Lang, Midnight	12	12
10 Pearl Jam, Wishlist	11	10
11 Jimmy Page & Robert Plant, Shining In The	10	10
12 Goo Goo Dolls, Iris	10	10
13 Poi Dog Pondering, That's The Way Love	10	9
14 John Fogerty, Premonition	10	9
15 Dave Matthews Band, Crush	10	8
16 Everclear, I Will Buy You A New Life	10	8
17 Dave Matthews Band, Stay	9	9
18 Pearl Jam, In Hiding	9	11
19 Semisonic, Closing Time	9	6
20 Kenny Wayne Shepherd, Blue On Black	8	5
21 Pearl Jam, No Way	8	3
22 Ani DiFranco, As Is	8	10
23 Agents Of Good Roots, Smiling Up The	8	10
24 Tori Amos, Spark	8	8
25 Barenaked Ladies, One Week	8	6
26 Foo Fighters, Walking After You	8	6
27 Jeff Buckley, Everybody Here Wants You	8	3
28 The Sundays, Summertime	7	4
29 Steve Poltz, Silver Lining	7	5
30 Bonnie Raitt, Spit Of Love	7	8

KTCZ Minneapolis
PD: Lauren MacLeash
MD: Mike Wolf



	TW	LW
1 Dave Matthews Band, Stay	21	16
2 Natalie Merchant, Kind & Generous	20	19
3 Natalie Imbruglia, Torn	20	20
4 Fastball, The Way	19	18
5 Everything, Hocho	18	17
6 Edwyn McCain, I'll Be	18	19
7 Eric Clapton, She's Gone	18	12
8 The Verve, Lucky Man	16	10
9 John Fogerty, Premonition	11	11
10 Foo Fighters, Walking After You	10	12
11 Sister 7, Know What You Mean	10	9
12 Matchbox 20, Real World	10	10
13 The Connells, Crown	10	11
14 Goo Goo Dolls, Iris	9	11
15 Scott Thomas Band, Black Valentine	9	10
16 Sister Hazel, Concede	9	10
17 Storyville, Born Without You	9	10
18 Marc Cohn, Lost You In The Canyon	9	10
19 Patty Griffin, One Big Love	9	10
20 Buddy Guy Feat. Jonny Lang, Midnight	9	9
21 Marcy Playground, Sex & Candy	8	10
22 The Wallflowers, Heroes	8	11
23 Heather Nova, London Rain	7	7
24 Robert Plant, 29 Palms	6	3
25 Die Starks, Solitaires Of Swing	6	4
26 Rod Stewart, Ooh La La	6	3
27 Grant Lee Buffalo, Truly, Truly	6	5
28 From Good Homes, Kick It On	6	5
29 Barenaked Ladies, One Week	6	6
30 Cowboy Junkies, Miles From Our Home	6	8

KBCO Denver
PD: Dave Benson
MD: Scott Arbough



	TW	LW
1 Pearl Jam, Wishlist	27	28
2 Natalie Merchant, Kind & Generous	26	28
3 Dave Matthews Band, Stay	26	25
4 Rod Stewart, Ooh La La	25	18
5 Bonnie Raitt, One Belief Away	24	27
6 Natalie Imbruglia, Torn	23	22
7 Edwyn McCain, I'll Be	18	22
8 Foo Fighters, Walking After You	17	17
9 Eagle Eye Cherry, Save Tonight	17	21
10 Goo Goo Dolls, Iris	15	17
11 Sister 7, Know What You Mean	15	18
12 Everything, Hocho	15	16
13 Kenny Wayne Shepherd, Blue On Black	14	15
14 Fastball, The Way	14	12
15 The Verve, Lucky Man	14	14
16 Jimmy Page & Robert Plant, Shining In The	14	14
17 Cherry Poppin' Daddies, Zoot Suit Riot	14	2
18 Scott Thomas Band, Black Valentine	14	17
19 Barenaked Ladies, One Week	14	15
20 Ziggy Marley & The Melody Makers, People	13	13
21 Abra Moore, Four Leaf Clover	13	11
22 Brad, The Day Brings	12	10
23 William Topley, The Ring	12	12
24 The Verve, Bitter Sweet Symphony	12	11
25 Marc Cohn, Already Home	11	11
26 Agents Of Good Roots, Smiling Up The	11	13
27 Sarah McLachlan, Adia	10	13
28 William Topley, Wake Up	9	1
29 Freddy Jones Band, Wonder	9	5
30 Big Head Todd & The Monsters, Broken	6	4

WHPT Tampa
PD: Chuck Beck
MD: Kurt Schreiner



	TW	LW
1 Goo Goo Dolls, Iris	32	32
2 Edwyn McCain, I'll Be	29	13
3 Natalie Merchant, Kind & Generous	28	12
4 Matchbox 20, Real World	28	13
5 Fastball, The Way	27	10
6 Kenny Wayne Shepherd, Blue On Black	13	32
7 Eric Clapton, She's Gone	12	14
8 Sister Hazel, Happy	11	31
9 Sarah McLachlan, Adia	11	32
10 Ugly Americans, The Wrong Orcaction	11	7
11 The Wallflowers, Heroes	9	11
12 Steve Poltz, Silver Lining	12	16
13 Dave Matthews Band, Don't Drink The Water	8	7
14 Natalie Imbruglia, Torn	7	33
15 Sheryl Crow, Home	7	4
16 Grant Lee Buffalo, Truly, Truly	7	0
17 Joan Osborne, One Of Us	7	3
18 John Fogerty, Premonition	7	17
19 Duncan Sheik, Barely Breathing	7	8
20 Asia, Only Time Will Tell	7	6
21 R.E.M., Losing My Religion	7	7
22 Paula Cole, I Don't Want To Wait	7	5
23 Marc Cohn, Walking In Memphis	7	8
24 Blues Traveler, Run Around	7	6
25 Alana Davis, Crazy	11	1
26 Bonnie Raitt, One Belief Away	11	13
27 Red Hot Chili Peppers, Under The Bridge	6	6
28 Sister Hazel, All For You	6	4
29 Bonnie Raitt, Love Sneakin' Up On You	6	4
30 Robert Palmer, Addicted To Love	6	3

KMTT Seattle
SM: Chris Mays
APD: Jason Parker
MD: Dean Carlson



	TW	LW
1 Brian Setzer Orchestra, Jump Jive An'	22	11
2 The Wallflowers, Heroes	19	22
3 Dave Matthews Band, Stay	19	15
4 Natalie Merchant, Kind & Generous	19	19
5 Eric Clapton, She's Gone	18	18
6 Sarah McLachlan, Black & White	18	9
7 Train, Meet Virginia	18	7
8 Cowboy Junkies, Miles From Our Home	11	11
9 Bonnie Raitt, The Fundamental Things	10	5
10 Bonnie Raitt, One Belief Away	10	17
11 Semisonic, Closing Time	10	10
12 Rod Stewart, Ooh La La	10	9
13 Morphine, The Cure For Pain	10	7
14 Tori Amos, Spark	9	7
15 Lenny Kravitz, If You Can't Say No	9	15
16 Everything, Hocho	9	9
17 Jimmy Page & Robert Plant, Shining In The	9	8
18 Widespread Panic, Pickin' Up The Pieces	9	11
19 Pearl Jam, Wishlist	8	18
20 Natalie Merchant, Break Your Heart	8	18
21 John Fogerty, Premonition	8	6
22 Agents Of Good Roots, Upspin	8	6
23 Buddy Guy Feat. Jonny Lang, Midnight	8	9
24 Five Easy Pieces, Lovers	7	5
25 Jeff Buckley, Everybody Here Wants You	7	5
26 Scott Thomas Band, Black Valentine	7	5
27 Kenny Wayne Shepherd, Blue On Black	6	5
28 Sheryl Crow, A Change Would Do You Good	6	5
29 Paula Cole, Where Have All The Cowboys	5	4
30 Marc Cohn, Already Home	5	4

WVRV St. Louis
PD: Mike Richter
APD: Chuck Jeffries



	TW	LW
1 Fastball, The Way	39	36
2 Goo Goo Dolls, Iris	38	37
3 Natalie Imbruglia, Torn	38	35
4 Green Day, Time Of Your Life	36	33
5 Alanis Morissette, Uninvited	35	27
6 Edwyn McCain, I'll Be	34	33
7 Dave Matthews Band, Stay	34	33
8 Matchbox 20, Real World	27	23
9 Patty Griffin, One Big Love	27	25
10 Barenaked Ladies, One Week	27	18
11 Vonda Shepard, Searchin' My Soul	27	26
12 Semisonic, Closing Time	25	23
13 Eric Clapton, She's Gone	24	26
14 Sister 7, Know What You Mean	24	22
15 Natalie Merchant, Kind & Generous	24	24
16 Sister Hazel, All For You	22	12
17 Bonnie Raitt, One Belief Away	21	23
18 The Wallflowers, Heroes	21	25
19 The Sundays, Summertime	12	9
20 Sarah McLachlan, Adia	11	9
21 Tonic, If You Could Only See	11	8
22 Lisa Loeb, I Do	10	9
23 Smash Mouth, Walkin' On The Sun	10	9
24 The Wallflowers, One Headlight	10	24
25 Third Eye Blind, How's It Going To Be	10	24
26 Better Than Ezra, Desperately Waiting	9	9
27 Ebbas Forsberg, Lost Count	9	9
28 Matchbox 20, 3 AM	9	8
29 Sarah McLachlan, Sweet Surrender	9	8
30 Billie Myers, Kiss The Rain	9	10

KXPK Denver
PD: Gary Schoenwetter
APD/MD: Eric Schmidt



	TW	LW
1 Kenny Wayne Shepherd, Blue On Black	31	30
2 The Wallflowers, Heroes	30	33
3 Goo Goo Dolls, Iris	30	30
4 Natalie Merchant, Kind & Generous	29	31
5 Barenaked Ladies, One Week	24	21
6 Agents Of Good Roots, Smiling Up The	24	23
7 Alana Davis, Crazy	23	12
8 Dave Matthews Band, Stay	19	14
9 Grant Lee Buffalo, Truly, Truly	18	21
10 Smash Mouth, Can't Get Enough Of You	16	5
11 Athenaeum, What I Didn't Know	15	12
12 The Verve, Lucky Man	14	13
13 Cherry Poppin' Daddies, Zoot Suit Riot	14	11
14 Fastball, The Way	14	12
15 Tori Amos, Spark	13	11
16 Agents Of Good Roots, Upspin	13	0
17 The Smashing Pumpkins, Perfect	12	0
18 Bonnie Raitt, One Belief Away	12	11
19 Everclear, I Will Buy You A New Life	12	5
20 Semisonic, Closing Time & Generous	11	8
21 Tonic, If You Could Only See	11	8
22 Third Eye Blind, How's It Going To Be	11	9
23 Eric Johnson, S.R.V.	10	4
24 Ziggy Marley & The Melody Makers, People	10	7
25 Everclear, Everything To Everyone	10	12
26 Marcy Playground, Sex & Candy	10	9
27 Matchbox 20, Real World	10	9
28 Brad, The Day Brings	10	8
29 The Verve, Bitter Sweet Symphony	9	4
30 Sarah McLachlan, Adia	9	5

CIDR Detroit
PD: Wendy Duff



	TW	LW
1 Goo Goo Dolls, Iris	37	35
2 The Wallflowers, Heroes	36	28
3 Matchbox 20, Real World	35	36
4 Natalie Merchant, Kind & Generous	35	33
5 Dave Matthews Band, Stay	34	34
6 Semisonic, Closing Time	33	34
7 Bonnie Raitt, One Belief Away	33	33
8 Cowboy Junkies, Miles From Our Home	32	28
9 Tori Amos, Spark	26	8
10 Agents Of Good Roots, Upspin	23	16
11 Everything, Hocho	17	9
12 Billy Mann, Beat Myself Up	17	13
13 Barenaked Ladies, One Week	17	15
14 Grant Lee Buffalo, Truly, Truly	17	12
15 Patty Griffin, One Big Love	16	16
16 Edwyn McCain, I'll Be	16	22
17 Fastball, The Way	16	16
18 Alana Davis, Crazy	15	15
19 Natalie Imbruglia, Wishing I Was There	15	9
20 Sarah McLachlan, Adia	15	15
21 Steve Poltz, Silver Lining	15	16
22 John Fogerty, Premonition	15	11
23 The Tragically Hip, Poets	12	0
24 Paula Cole, Me	11	7
25 Lisa Loeb, I Do	11	9
26 Brian Setzer Orchestra, Jump Jive An'	11	11
27 Sister Hazel, All For You	10	6
28 Third Eye Blind, Semi-Charmed Life	10	6
29 Fiona Apple, Cinnamon	10	8
30 Fleetwood Mac, Silver Springs	10	10

KKZN Dallas
PD: Joel Folger
Interim MD: Abbey Goldstein



	TW	LW
1 Matchbox 20, Real World	31	31
2 Eric Clapton, She's Gone	29	28
3 Natalie Imbruglia, Torn	28	24
4 Fastball, The Way	28	25
5 Natalie Merchant, Kind & Generous	28	30
6 The Wallflowers, Heroes	28	27
7 Goo Goo Dolls, Iris	24	12
8 Bonnie Raitt, One Belief Away	16	28
9 Semisonic, Closing Time	15	19
10 Heather Nova, London Rain	13	7
11 Storyville, Born Without You	15	11
12 Edwyn McCain, I'll Be	14	14
13 Dave Matthews Band, Stay	14	13

For Week Ending June 21, 1998

COMBINED ROCK AUDIENCE										AIRPLAY BY FORMAT									
TW	LW	WKS	TITLE (IMPRINT/PROMOTION LABEL)	ARTIST	THIS WEEK			LAST WEEK			MAINSTREAM			MODERN			TRIPLE-A		
					Audience (millions)	Detections No.	Rank	Audience (millions)	Detections No.	Rank	Audience (millions)	Detections No.	Rank	Audience (millions)	Detections No.	Rank	Audience (millions)	Detections No.	Rank
1	1	13	IRIS (WARNER SUNSET/REPRISE)	GOO GOO DOLLS	24.8446	3898	1	25.3891	3910	1	5.1754	861	16	17.3770	2637	1	2.2922	400	2
2	2	17	CLOSING TIME (MCA)	SEMISONIC	22.6351	3480	2	23.5452	3700	2	4.1081	704	22	17.1005	2509	2	1.4265	267	8
3	3	7	AVA ADORE (VIRGIN)	THE SMASHING PUMPKINS	20.5071	3317	3	21.6542	3420	3	6.4562	1134	10	13.6463	2105	5	0.4046	78	—
4	6	18	WISHLIST (EPIC)	PEARL JAM	18.0558	2793	6	18.5482	2952	5	6.3954	1156	9	10.3694	1457	11	1.2909	180	19
5	7	16	SHIMMER (550 MUSIC)	FUEL	17.3338	3021	4	15.9617	2945	6	3.7243	770	20	13.5952	2245	3	0.0143	6	—
6	5	19	THE WAY (HOLLYWOOD)	FASTBALL	17.3056	2651	7	19.0646	2881	7	3.5204	532	27	11.6905	1795	7	2.0947	324	5
7	4	10	HEROES (EPIC)	THE WALLFLOWERS	16.8983	2890	5	19.5555	3249	4	6.5080	1130	11	8.3494	1431	13	2.0409	329	4
8	8	13	FLAGPOLE SITTA (SLASH/LONDON/ISLAND)	HARVEY DANGER	14.1367	2356	8	13.4640	2294	9	0.5874	144	—	13.5493	2212	4	—	—	—
9	14	12	SAVE YOURSELF (COLUMBIA)	STABBING WESTWARD	12.7271	2244	9	11.9680	2170	10	7.9748	1282	4	4.7523	962	25	—	—	—
10	10	22	I WILL BUY YOU A NEW LIFE (CAPITOL)	EVERCLEAR	11.9492	1676	18	12.6765	1814	14	0.8035	135	—	10.7934	1445	12	0.3523	96	—
11	16	21	BLUE ON BLACK (REVOLUTION/REPRISE)	KENNY WAYNE SHEPHERD BAND	11.7342	1762	15	11.5592	1733	17	10.3577	1574	1	0.0177	18	—	1.3588	170	20
12	17	13	PUSH IT (ALMO SOUNDS/INTERSCOPE)	GARBAGE	11.6173	2039	10	11.3429	2108	11	0.5433	141	—	11.0069	1877	6	0.0671	21	—
13	15	40	MY OWN PRISON (WIND-UP)	CREED	11.5201	1584	21	11.9129	1714	18	4.7460	727	—	6.7568	851	—	0.0173	6	—
14	9	35	SEX AND CANDY (CAPITOL)	MARCY PLAYGROUND	11.4616	1704	16	12.7047	1903	13	3.9043	620	—	6.8415	957	—	0.7158	127	—
15	13	24	MY HERO (ROSWELL/CAPITOL)	FOO FIGHTERS	11.3402	1446	27	12.0364	1559	22	5.4983	736	21	5.8419	710	29	—	—	—
16	18	32	TIME OF YOUR LIFE (GOOD RIDDANCE) (REPRISE)	GREEN DAY	11.0414	1453	26	11.2774	1439	26	2.2196	316	40	8.2854	1032	—	0.5364	105	—
17	12	13	REAL WORLD (LAVA/ATLANTIC)	MATCHBOX 20	10.9311	1838	13	12.1167	1961	12	2.5397	473	29	6.8254	1075	22	1.5660	290	7
18	19	6	INSIDE OUT (RCA)	EVE 6	10.9200	1916	12	9.8949	1790	15	0.5796	108	—	10.2866	1789	8	0.0538	19	—
19	23	2	ONE WEEK (REPRISE)	BARENAKED LADIES	10.7888	1837	14	8.7440	1515	24	0.3025	61	—	9.4029	1570	9	1.0834	206	12
20	25	3	THE DOWN TOWN (OUTPOST/GEFFEN)	DAYS OF THE NEW	10.0499	1638	19	8.1897	1376	27	7.8891	1277	5	2.1608	361	—	—	—	—
21	20	12	TORN (WIND-UP)	CREED	9.7680	1515	22	9.8486	1576	20	9.1081	1320	3	0.6599	195	—	—	—	—
22	21	3	INTERGALACTIC (GRAND ROYAL/CAPITOL)	BEASTIE BOYS	9.7328	1444	28	9.0905	1334	28	0.4068	79	—	9.3260	1365	14	—	—	—
23	22	11	SPARK (ATLANTIC)	TORI AMOS	9.0547	1459	25	8.9611	1503	25	0.0033	2	—	8.2511	1255	17	0.8003	202	13
24	11	13	DON'T DRINK THE WATER (RCA)	DAVE MATTHEWS BAND	8.9080	1959	11	12.1654	2460	8	2.3827	564	26	5.9395	1307	16	0.5858	88	—
25	39	2	PERFECT (VIRGIN)	THE SMASHING PUMPKINS	8.5595	869	57	6.2101	634	78	0.0389	11	—	8.0907	789	28	0.4299	69	—
26	27	5	SAINT JOE ON THE SCHOOL BUS (CAPITOL)	MARCY PLAYGROUND	8.4350	1701	17	8.1038	1586	19	1.5107	352	36	6.9243	1349	15	—	—	—
27	24	14	I LIE IN THE BED I MAKE (VIRGIN)	BROTHER CANE	8.3581	1593	20	8.7387	1734	16	3.0051	1488	2	0.3530	105	—	—	—	—
28	28	9	FUEL (ELEKTRA/EEG)	METALLICA	7.9898	1278	32	8.0018	1303	31	7.3529	1170	8	0.6369	108	—	—	—	—
29	NEW		WHAT'S THIS LIFE FOR (WIND-UP)	CREED	7.7133	1439	29	6.0562	1156	36	4.1780	807	19	3.5353	632	35	—	—	—
30	NEW		SPACE LORD (A&M)	MONSTER MAGNET	7.6798	1495	24	5.6158	1232	34	6.1380	1182	7	1.5418	313	—	—	—	—
31	33	2	WALKING AFTER YOU (CAPITOL/ELEKTRA/EEG)	FOO FIGHTERS	7.4476	1408	31	7.2378	1311	30	0.9024	193	—	5.8686	1114	20	0.6766	101	—
32	30	50	EVERLONG (ROSWELL/CAPITOL)	FOO FIGHTERS	7.3902	1025	41	7.4771	1079	39	2.6548	407	—	4.7315	617	—	0.0039	1	—
33	26	46	TOUCH, PEEL AND STAND (OUTPOST/GEFFEN)	DAYS OF THE NEW	7.3562	1257	34	8.1671	1292	32	3.8000	654	—	3.5562	603	—	—	—	—
34	NEW		SHINING IN THE LIGHT (ATLANTIC)	JIMMY PAGE & ROBERT PLANT	6.8343	1061	40	5.0931	872	57	6.1876	988	13	0.0080	2	—	0.6387	71	—
35	29	20	TORN (RCA)	NATALIE IMBRUGLIA	6.7453	933	51	7.6600	1045	44	0.3366	31	—	4.9077	675	30	1.5010	227	10
36	RE-ENTRY		WHAT I DIDN'T KNOW (ATLANTIC)	ATHENAEUM	6.7236	1274	33	5.9145	1250	33	0.3605	64	—	6.0924	1158	18	0.2707	52	—
37	NEW		IT'S ALRIGHT (MAVERICK/WARNER BROS.)	CANDLEBOX	6.7233	1249	35	4.4675	652	74	5.7018	989	12	1.0215	260	—	—	—	—
38	NEW		MY SONG (COLUMBIA)	JERRY CANTRELL	6.7225	1108	39	5.8342	988	48	4.7252	836	18	1.9973	272	—	—	—	—
39	35	2	I DON'T WANT TO MISS A THING (COLUMBIA)	AEROSMITH	6.5634	1236	38	6.5129	1207	35	6.5106	1219	6	—	—	—	0.0528	17	—
40	34	10	JUMP RIGHT IN (IMMORTAL/EPIC)	THE URGE	6.5307	1505	23	7.1772	1573	21	0.1121	25	—	6.4021	1471	10	0.0165	9	—

Records showing an increase in audience over the previous week, regardless of chart movement. Rankings broken down by mainstream, modern and triple-A formats (on right side of this page) correspond to charts printed in this week's Monitor and therefore rankings do not exist for recurrenents and records below No. 40 (No. 20 for triple-A). Audience computed by cross-referencing exact times of airplay with Arbitron listener data. ©1998, Billboard/BPI Communications.

GRAVITY KILLS

**Over 200,000
Units Shipped**

**Debut (107)
Billboard 200**

Now Spinning
in 16 of the
Top 20 Markets

MGT: GLORIA BUTLER

"FALLING"

FROM THE NEW ALBUM ** PERVERSION **

Active Rock 30 - (27)

Mainstream Rock (39) - (35)

Modern WYAK WKOH WBCN 12x KQGE 14x KPNT 21x WKRO 16x And More!	New On CFNY WEDG WBZU WRRU WZMT WRAT WGBF KZZK	Rock WRCH WYSP 10x KTHQ 14x KEGL WRIF And More!
--	---	--

ON TOUR NOW! • WWW.TVTRCORDS.COM

Compiled from a national sample of airplay supplied by Broadcast Data Systems. Radio tracks supplied by Rock Airplay Monitor. All measurements such as #1 week and #1 rock stations are electronically monitored 24 hours a day, 7 days a week. Songs are ranked by number of stations. © 1998, BDU/Broadcast Data Systems

THIS WEEK	LAST WEEK	WKS. ON CHART	MAINSTREAM		DETECTIONS			
			TITLE/IMPRINT/PROMOTION LABEL	ARTIST	TW	LW		
			★★★ No. 1 ★★★					
1	2	24	BLUE ON BLACK	REVOLUTION/REPRISE	6 weeks at No. 1	KENNY WAYNE SHEPHERD BAND	1574	1542
2	1	15	I LIE IN THE BED I MAKE	VIRGIN		BROTHER CANE	1488	1626
3	3	20	TORN	WIND-UP		CREED	1320	1393
4	4	16	SAVE YOURSELF	COLUMBIA		STABBING WESTWARD	1282	1242
5	9	5	THE DOWN TOWN	OUTPOST/GEFFEN		DAYS OF THE NEW	1277	1180
6	8	6	I DON'T WANT TO MISS A THING	COLUMBIA		AEROSMITH	1219	1188
7	13	6	SPACE LORD	A&M		MONSTER MAGNET	1182	1023
8	7	20	FUEL	ELEKTRA/VEEG		METALLICA	1170	1201
9	6	11	WISHLIST	EPIC		PEARL JAM	1156	1224
10	10	7	AVA ADORE	VIRGIN		THE SMASHING PUMPKINS	1134	1130
11	5	9	HEROES	EPIC		THE WALLFLOWERS	1130	1226
			★★★ AIRPOWER ★★★					
12	30	2	IT'S ALRIGHT	WARNER BROS.		CANDLEBOX	989	534
13	19	6	SHINING IN THE LIGHT	ATLANTIC		JIMMY PAGE & ROBERT PLANT	988	801
14	12	11	SLAM DUNK	WAWAZAT!!		DLR BAND	970	1053
15	14	7	CIGARETTES AND ALCOHOL	WARNER BROS.		ROD STEWART	964	937
16	15	10	IRIS	WARNER SUNSET/REPRISE		GOO GOO DOLLS	861	902
17	11	10	FIRE IN THE HOLE	WARNER BROS.		VAN HALEN	850	1079
			★★★ AIRPOWER ★★★					
18	22	6	MY SONG	COLUMBIA		JERRY CANTRELL	836	759
			★★★ AIRPOWER ★★★					
19	27	3	WHAT'S THIS LIFE FOR	WIND-UP		CREED	807	659
20	23	13	SHIMMER	550 MUSIC		FUEL	770	736
21	16	23	MY HERO	ROSWELL/CAPITOL		FOO FIGHTERS	736	852
22	21	16	CLOSING TIME	MCA		SEMISONIC	704	779
23	24	19	CUT YOU IN	COLUMBIA		JERRY CANTRELL	671	729
24	25	5	PREMONITION	REPRISE		JOHN FOGERTY	664	676
25	17	12	MOST HIGH	ATLANTIC		JIMMY PAGE & ROBERT PLANT	618	832
26	26	12	DON'T DRINK THE WATER	RCA		DAVE MATTHEWS BAND	564	665
27	28	9	THE WAY	HOLLYWOOD		FASTBALL	532	574
28	32	7	MONSTERSIDE	BIG CATV2		ADDICT	519	462
29	29	13	REAL WORLD	LAVA/ATLANTIC		MATCHBOX 20	473	548
30	31	14	SHE'S GONE	REPRISE		ERIC CLAPTON	417	531
31	35	3	PARK AVENUE	DGC/GEFFEN		GIRLS AGAINST BOYS	405	379
32	34	7	THAT SONG	ATLANTIC		BIG WRECK	400	428
33	38	2	DU HAST	SLASH/LONDON/ISLAND		RAMMSTEIN	399	333
34	37	2	NO SHELTER	EPIC		RAGE AGAINST THE MACHINE	398	337
35	39	2	FALLING	TVT		GRAVITY KILLS	362	331
36	40	2	SAINT JOE ON THE SCHOOL BUS	CAPITOL		MARCY PLAYGROUND	352	320
37	33	20	USE THE MAN	CAPITOL		MEGADETH	347	441
38	NEW		4 AM	COLUMBIA		OUR LADY PEACE	330	284
39	36	7	LUCY	41/GEFFEN		CARAMEL	325	360
40	RE-ENTRY		TIME OF YOUR LIFE (GOOD RIDDANCE)	REPRISE		GREEN DAY	316	315

THIS WEEK	LAST WEEK	WKS. ON CHART	MODERN		DETECTIONS			
			TITLE/IMPRINT/PROMOTION LABEL	ARTIST	TW	LW		
			★★★ No. 1 ★★★					
1	2	13	IRIS	WARNER SUNSET/REPRISE	1 week at No. 1	GOO GOO DOLLS	2637	2608
2	1	17	CLOSING TIME	MCA		SEMISONIC	2509	2636
3	4	17	SHIMMER	550 MUSIC		FUEL	2245	2209
4	5	13	FLAGPOLE SITTA	SLASH/LONDON/ISLAND		HARVEY DANGER	2212	2154
5	3	7	AVA ADORE	VIRGIN		THE SMASHING PUMPKINS	2105	2215
6	7	13	PUSH IT	ALMO SOUNDS/INTERSCOPE		GARBAGE	1877	1926
7	6	20	THE WAY	HOLLYWOOD		FASTBALL	1795	1975
8	8	10	INSIDE OUT	RCA		EVE 6	1789	1719
9	15	3	ONE WEEK	REPRISE		BARENAKED LADIES	1570	1293
10	12	13	JUMP RIGHT IN	IMMORTAL/EPIC		THE URGE	1471	1542
11	13	19	WISHLIST	EPIC		PEARL JAM	1457	1532
12	11	22	I WILL BUY YOU A NEW LIFE	CAPITOL		EVERCLEAR	1445	1554
13	10	9	HEROES	EPIC		THE WALLFLOWERS	1431	1665
14	17	4	INTERGALACTIC	GRAND ROYAL/CAPITOL		BEASTIE BOYS	1365	1257
15	16	9	SAINT JOE ON THE SCHOOL BUS	CAPITOL		MARCY PLAYGROUND	1349	1265
16	9	13	DON'T DRINK THE WATER	RCA		DAVE MATTHEWS BAND	1307	1667
17	14	11	SPARK	ATLANTIC		TORI AMOS	1255	1313
			★★★ AIRPOWER ★★★					
18	21	11	WHAT I DIDN'T KNOW	ATLANTIC		ATHENAEUM	1158	1086
19	18	10	LUCKY MAN	VC/HUT/VIRGIN		THE VERVE	1151	1238
			★★★ AIRPOWER ★★★					
20	22	5	WALKING AFTER YOU	CAPITOL/REPRISE		FOO FIGHTERS	1114	1047
21	19	11	REDUNDANT	REPRISE		GREEN DAY	1114	1182
22	20	14	REAL WORLD	LAVA/ATLANTIC		MATCHBOX 20	1075	1146
23	27	4	TRULY, TRULY	SLASH/WARNER BROS.		GRANT LEE BUFFALO	1009	851
24	26	6	GET 'EM OUTTA HERE	SURFDOG/HOLLYWOOD		SPRUNG MONKEY	990	921
25	24	15	SAVE YOURSELF	COLUMBIA		STABBING WESTWARD	962	928
26	25	18	ZOOT SUIT RIOT	MOJO/UNIVERSAL		CHERRY POPPIN' DADDIES	798	926
27	23	9	SONG FOR THE DUMPED	550 MUSIC		BEN FOLDS FIVE	798	937
28	32	2	PERFECT	VIRGIN		THE SMASHING PUMPKINS	789	603
29	29	25	MY HERO	ROSWELL/CAPITOL		FOO FIGHTERS	710	706
30	28	21	TORN	RCA		NATALIE IMBRUGLIA	675	729
31	30	14	UNINVITED	WARNER SUNSET/REPRISE		ALANIS MORISSETTE	669	623
32	34	2	YOU AND ME AND THE BOTTLE MAKES THREE TONIGHT (BABY)	COOLVILLE/EMI-CAPITOL		BIG BAD WOODOO DADDY	650	552
33	31	7	4 AM	COLUMBIA		OUR LADY PEACE	645	611
34	36	2	HIGH	ECHO/ELEKTRA/VEEG		FEEDER	639	534
35	39	2	WHAT'S THIS LIFE FOR	WIND-UP		CREED	632	497
36	40	2	NO SHELTER	EPIC		RAGE AGAINST THE MACHINE	574	475
37	35	3	AIRPORT SONG	HYBRID/SIRE		GUSTER	569	537
38	33	8	KIND & GENEROUS	ELEKTRA/VEEG		NATALIE MERCHANT	560	567
39	NEW		WISHING I WAS THERE	RCA		NATALIE IMBRUGLIA	510	350
40	NEW		HOOCH	BLACKBIRD/SIRE		EVERYTHING	473	352

Records showing an increase in detections over the previous week, regardless of chart movement. A record which has been on either chart for more than 20 weeks will not receive a bullet, even if it registers an increase in detections. Airpower awarded to those records which attain 800 detections (mainstream) or 1,100 (modern) for the first time. If two records are tied in number of plays, the record being played on more stations is placed first. Records below the top 20 are removed from the chart after 26 weeks.

Over 12 million DMB albums sold worldwide
Before These Crowded Streets: Already **DOUBLE PLATINUM**
• The Biggest Concert Tour of the Year:
So far this summer, over 342,000 of your listeners flocked to a DMB show
(and that's only the first half of the tour)

DAVE MATTHEWS BAND

multi-format impact date:
6.29.98

(but nobody could wait)

Already over 1800
multi-format spins on 'Stay'

STAY

(W A S T I N G T I M E)

The **New Single** From The Multi-Platinum Album *Before These Crowded Streets* • Produced by Steve Lillywhite • Mixed by Steve Lillywhite & Steve Harris • Management: Red Light • www.dmband.com



THE RCA label is a trademark of RCA Records, a division of Sony Music Entertainment Inc. © 1998 RCA Records, a division of Sony Music Entertainment Inc. All rights reserved. RCA and Stay are trademarks of RCA Records, a division of Sony Music Entertainment Inc.

PHUNK JUNKEEZ

“HAZEE”

Now Playing at:

KEDJ	KTCL	WQXA
XHRM	XTRA	WWDC
KMYZ	KHTY	WXEX
WPLY	KFMA	WIOT
WXDX	WEQX	KWOD
KTOZ	WBCN	WKRL
WRZX	WFNX	KFMA
KFTE	WCYY	WRRV
WARQ	KTEG	WJSE
WROX	WHTG	WTGZ
WBZU	KZYR	WIXO

Top 5 Phones @ KEDJ

On Tour This Summer with Clutch

From the new **PHUNK JUNKEEZ** album
Fear Of A Wack Planet (78864-74001-2/4)



Produced by Lee Popa
and Phunk Junkeez
Mixed by Paul Palmer
and Lee Popa

Trauma
RECORDS

©1998 Trauma Records. All rights reserved.

World Radio History

Managed by Willobee Carlan for Stone Age Management:stoneage@juno.com

www.phunkjunkeez.com