

# ROCK AIRPLAY Monitor

• We Listen To Radio •

June 5, 1998

\$4.95

Volume 5 • No. 23

## ROCK HIGHLIGHTS

### MAINSTREAM

#1

#### BROTHER CANE

*I Lie In The Bed I Make (VIRGIN)*

★ ★ AIRPOWER ★ ★ ★

NO RECORDS QUALIFIED FOR AIRPOWER THIS WEEK

#### GOING FOR AIRPLAY

(HED) P.E. • *Serpent Boy (JIVE)*  
 JIMMIE'S CHICKEN SHACK • *Blood (ROCKET/ISLAND)*  
 MEGADETH • *A Secret Place (CAPITOL)*  
 JIMMY PAGE & ROBERT PLANT • *Shining In The Light (ATLANTIC)*  
 RAGE AGAINST THE MACHINE • *No Shelter (EPIC)*  
 TOMMY SHAW • *Ocean (CMC INTERNATIONAL)*  
 SPACEHOG • *Carry On (HIFI/SIRE/WARNER BROS.)*  
 JIMMIE VAUGHAN • *Like A King (EPIC)*

### MODERN

#1

#### SEMISONIC

*Closing Time (MCA)*

★ ★ ★ AIRPOWER ★ ★ ★

MARCY PLAYGROUND • *Saint Joe On The School Bus (CAPITOL)*

#### GOING FOR AIRPLAY

CHUMBAWAMBA • *Drip, Drip, Drip (REPUBLIC/UNIVERSAL)*  
 THE CRYSTAL METHOD • *Comin' Back (OUTPOST/GEFFEN)*  
 EMM GRYNER • *Summerlong (MERCURY)*  
 MONSTER MAGNET • *Space Lord (A&M)*  
 RAGE AGAINST THE MACHINE • *No Shelter (EPIC)*  
 SISTER HAZEL • *Concede (UNIVERSAL)*  
 SPACEHOG • *Carry On (HIFI/SIRE/WARNER BROS.)*  
 CHRIS STILLIS • *Last Stop (ATLANTIC)*

### TRIPLE A

#1

#### NATALIE MERCHANT

*Kind & Generous (ELEKTRA/EEG)*

★ ★ ★ AIRPOWER ★ ★ ★

EDWIN MCCAIN • *I'll Be (LAVA/ATLANTIC)*

## Lessons Rock Labels Can Learn From Country's Artist Relationships

by Marc Schiffman

In country radio, observers say, the station visit is the foundation upon which country labels build their bands' success stories. It's absolutely mandatory that a full-scale radio tour to 150-200 reporting stations across the country take place before the first single is serviced. Artists cross paths in station lobbies as one goes in to play just as another comes out.

Certainly rock radio is no stranger to the artist visit, as countless benefit CDs will attest, each with its own unplugged versions of today's hits as recorded in a station's studios. But there is a difference. Consultant Tom Barnes pointed it out in a recent article (Rock Airplay Monitor, April 17) when he said that rock labels should follow the example of country labels' maintaining a strong connection between the artist and their fans... and radio, for that matter. And most programmers who have worked both rock and country can attest that the level of artist accessibility is greater. But not everybody we asked is sure the one-on-one approach would translate if stacks of Marshall amps are involved.

Rock radio veteran John Sebastian is PD of country KZLA Los Angeles. He says, "From day one, I was blown

away at the line of not only baby acts but well-known acts that came through the station."

He says that while in country, artists are so open that they seem like cousins. "Virtually they are unavailable in the rock realm... I don't know what happened that country all of a sudden figured out that this would be a real boon to their artists' careers."

"Country artists are easier to get to," adds Doug Hamand, OM of rock WKQQ Lexington, Ky., and its country sister, WBUL-FM. "They're more approachable than on the pop side, where... once they get a record on the radio, here comes the ego. You can't touch him, you can't speak to him, you have to stand in a line backstage and not say anything, not move." In contrast, "backstage at a country show, these guys are coming up to you and putting their arm around you, taking pictures with you.

#### REBA'S HERE TO SEE YOU

Sebastian tells of frequent visits and E-mails from Reba McEntire and even mentions that he and Garth Brooks are "talking about having dinner sometime. That would be like having dinner with Mick Jagger, Elton John, or Billy Joel." When it is

*Continued on page 5*

MONITOR ACTIVE ROCK: DEBUT (35)  
 R&B ACTIVE ROCK: DEBUT 48  
 WRCX WRF WXTB KISS  
 WDC WLZR KTXQ KUPD  
 WHEX WNOR KEGL KRKQ  
 WYSP WMFS

MONITOR MODERN ROCK: CHARTBOUND  
 WHRK KPNT KJGG  
 Q-101 WLUM KWOD  
 WBCN (13X) WEND (13X) KRTE  
 WENZ (14X) KEQJ KMYZ

NEW THIS WEEK:  
 WJAR, WTPT, KFMW AND MORE!

TOP PHONES ALREADY:  
 KPNT, KNB, KTEG AND MORE!

# "FALLING"

# GRAVITY KILLS

FROM THE NEW ALBUM  
 \*\*PERVERSION\*\*

ALBUM  
 STREET  
 DATE  
 6.9.98

Go to [WWW.TVTRECORDS.COM](http://WWW.TVTRECORDS.COM)  
 and be the first to download the new single.

ON TOUR NOW!  
 © 1998 T.V.T. RECORDS 23 E. 4TH ST. NEW YORK NY 10003  
 TEL. 212.979.6410 FAX. 212.979.6489

World Radio History

IMPACTING  
MODERN ROCK NOW!

# NATALIE IMBRUGLIA

## WISHING I WAS THERE

The new single from the debut PLATINUM plus album "Left Of The Middle"

Over 20 Stations in First Week!

Including:

99X	WLIR	KHTY	WARQ	WOSC
KZNZ	KPOI	WEQX	KQRX	WRXR
KWOD	KTEG	WXZZ	WRRV	WJSE
WLUM				



### THE NATALIE STORY:

Dec. '97: Radio asks: Natalie who?

Jan. '98: MTV adds TORN videoc to Buzz Clips

Feb. '98: TORN is played nationally on Modern

Rock radio

March '98: Natalie is "live from New York" on Saturday

Night Live...a week before album street date

Album ships GOLD+ • Album debuts TOP 10

April '98: Album goes PLATINUM in just under 5 weeks

Natalie performs on: Late Night with David Letterman

• Rosie O'Donnell • Modern Rock Live

May '98: WISHING I WAS THERE ships to Modern

Rock Radio

May 12th: SPIN MAGAZINE cover hits newsstands

June 1998: Upcoming performances on: MTV Movie

Awards 6/4 • The Tonight Show 6/5 • Hard Rock Live-VH1

...AND THE STORY CONTINUES!

Produced by Phil Thornalley • Mixed by Nigel Godrich • Worldwide Management Anne Barrett • www.bmg-backstage.co.uk/natalie • The RCA Records Label is a unit of BMG Entertainment. Tmk(s) ® Registered • Marca(s) Registrada(s) © General Electric Co. USA • BMG logo is a trademark of BMG Music • © 1998 BMG Entertainment International UK and Ireland Ltd.

KEDJ-Phoenix-20 Spins+Top 10 Phones  
KDKB-Phoenix-16 Spins+Phones Starting  
219 Sold+Ranked#15!



And on 20 More Modern Rock Stations Including:

KNDD	KCXX	KWOD
WXZZ	WMRQ	KNRX

Also on 20 Mainstream Rock Stations Including:

WLZR	WKLQ	WCCC
KIBZ	KNJY	KRAD

# GLORITONE

HALFWAY CUP RUNNETH OVER

THE RCA RECORDS LABEL IS A UNIT OF BMG ENTERTAINMENT • Tmk(s) ® REGISTERED MARCA(S) REGISTRADA(S) © GENERAL ELECTRIC CO., USA • BMG LOGO IS A TRADEMARK OF BMG MUSIC • © 1998 BMG ENTERTAINMENT

PROF. LEED, CAPTURED AND ILLUMINATED BY **BRADLEY COOK**

MANAGEMENT: **CHARLES LEVY**

www.kneelingelephant.com

## CBS, Jacor Swap Highlights Deal Trend

**T**he last week brought an avalanche of station trading news. CBS and Jacor swapped stations in several markets, including San Jose, Calif., where Jacor picked up modern KOME and classic rock KUFX. Jacor was already slated to pick up album KSJO from ARS in the market. In St. Louis, classic rock KSD is put in the Jacor portfolio, and classic hits WOCT Baltimore is added to the Jacor lineup. CBS enters Columbus, Ohio, through the deal, via the pickup of album stations WLWQ and WAZU. In total, Jacor picks up six CBS stations and CBS get five Jacor properties.

The swap satisfies the divestiture requirements that the Justice Department and the FCC established for CBS' pending purchase of American Radio Systems' stations in Baltimore, St. Louis, and San Jose; the FCC approved that deal May 27. Once the ARS deal is closed, CBS will have 165 stations in 33 markets. Jacor will have 204 stations in 55 markets when its pending deals close, including the buy of Nationwide Communications.

In a separate deal, Jacor spins modern WZAZ Columbus to Blue Chip. And the Baltimore Business Journal reports that Jacor is negotiating with Hearst Corp. to add album WIYY and N/T sister WBAL.

Capstar Broadcasting Corp. has completed its \$2.2 billion acquisition of SFX Broadcasting. That closing spurred the resolution of several other deals. Hefitel has closed on SFX's modern adult outlet KKP (the Planet) Houston and flipped it to regional Mexican. The remainder of the SFX Houston stations (including KODA and classic rock KKRW) were picked up by Chancellor. So are SFX outlets in Pittsburgh (including modern album WDVE, modern WDX, and modern adult WDRV), San Diego (classic rock KPLN and soft AC KYXY), and Dallas (album KTXQ and AC KBFB). And Cox has closed on its purchase of four Long Island, N.Y., stations, including top 40 WBLI and album WBAB/WHFM.

With Chancellor picking up album WWDC-FM (DC101) Washington, D.C., GM Goff Lebar exits, as expected. Sister talk WWRC/AC WGAY GM Rick Mack is interim GM at WWDC.

EXCL and ARS close on their station swap, giving ARS two Portland, Ore., signals, including triple-A KINK, and divesting it of a pair of Sacramento stations.

### MANAGEMENT: HEY, PORTER

Jacor Salt Lake City VP/GM Rick Porter moves to Dayton as VP/market manager, which includes oversight of modern WXEG and album WTUE.

Don Oylear, GSM of country KUPL Portland is the new VP/GM at CBS' classic rock WZPT, country WDSY (Y108), and top 40 WBZZ (B94) Pittsburgh.

Central Star Madison, Wis., station manager Jeffrey Tyler is now GM of the company's five properties there, including album WIBA and modern WMAD. In other station news, WMAD overnigher Hambone takes nights, replacing the recently exited Robin Ellis, and WIBA P/T Jonathan Slayther moves to WMAD for overnights.

Barbara Allen exits as GM of AC/country/album rock combo WMYI/WSSL/WROQ, Greenville, S.C. Southern Star regional VP Bill McMartin is acting GM.

The Research Group executive VP Roxann Miller joins Cox Radio Inc. as VP of research, based in Portland, Ore.

### PROGRAMMING: KOME ON OVER

In San Jose, with Jacor taking over

KOME, many KOME staffers remain in the CBS family, transplanted to KITS (Live 105). In are OM Ron Nenni and PD Jay Taylor; gone are VP Richard Sands, PD Roland West, and others. Howard Stern is now in mornings at Live 105.

Triple-A WBOS Boston has its new PD, as George Taylor Morris signs on. Morris was most recently across the street at classic rock WZLX, where he was APD.

Top 40-turned-N/T outlet KDRE Little Rock, Ark., becomes triple-A/modern hybrid Lick 101. GM Neal Ardman is programming the station. Cory Deitz and Jay Hamilton remain in mornings. The station is holding open auditions for its other positions.

Mike Topoll from the H&D Broadcast Group becomes GM of album WZNW Decatur, Ill. In a separate move, MD/afternoons Brian Rickman is named PD, as Chris Anderson exits. Rickman is looking for a replacement to cover Anderson's duties as local host of the station's Bob and Tom morning broadcasts.

Modern KHLR Bryan, Texas, APD/MD/morning man Mark McKenzie becomes PD, as PD/middayer Mike Fitch exchanges the title for production director. Morning co-host Don Kelley adds APD stripes.

Modern WBZU Richmond, Va., PD J.J. Quest exits.

Classic rock KZFX Omaha, Neb., OM Mike Steele resigns.

After a brief experiment with current product, KSD St. Louis returns to classic rock.

Oldies KFMT Omaha, Neb., flips to classic hits under new PD/morning man Chris Walz. Karla James is out.

The M Street Journal reports that digital programming supplier CD Radio has announced its programming lineup. It includes two classic rock formats, two modern rock formats, five oldies channels, "soft rock," "love songs," four jazz channels, R&B, dance, two Christian formats, and at least nine Spanish-language channels.

The Los Angeles Times reports that L.A. radio veteran Jim "the Poorman" Trenton (ex-KACD, KPWR, KROQ) is leasing afternoons on suburban KPLS-AM beginning June 8 for a new show focusing only on unsigned and indie-label acts. Poorman's "Anti-Radio" will exclude anything that's been played at commercial radio. KPLS is a former children's radio outlet that's being sold to a religious programmer, so expect the anti-radio experiment to be short-lived.

### PEOPLE: DELISI DELIVERED TO WPLT

Triple-A CIDR (the River) Detroit MD Ann Delisi crosses to modern WPLT (the Planet) as MD, replacing the recently exited Alex Tear.

Modern KNRK Portland promotion director Patty Pastor expands her duties to include sister classic rock KGON under the new title marketing director. KGON promotion director Garry Greth is now in Seattle doing promotion at classic rock KZOK, where he is reunited with KZOK PD Carey Curelop. The two last worked together at KLOS L.A.

With album KICT Wichita, Kan., MD Sherry McKinnon out, middayer R.J. Davis picks up MD duties. The overnight shift that McKinnon had been voice-tracking will be folded into a promotion director post that's up for grabs.

Triple-A WZEW Mobile, Ala., picks up Uncle Tim Hallmark as promotion director from crosstown adult R&B WDLT.

Modern WXRA Greensboro, N.C., weekend air personality Monica Cline adds

## Guster Blows In To 99X



Hybrid Recordings brought Guster to modern WNNX (99X) Atlanta for the taping of "Live X." Shown in front, from left, are 99X's MD Sean Demery and Chris Williams and Guster's Ryan Miller. In the back row, from left, are Demery's wife, Jennifer; Guster's Brian Rosenworcel and Adam Gardner; Hybrid's Jesse Barnett; and Sire's William Marion.



**The SPIN** BY STEVE GRAYBOW

212-536-5361 • sgraybow@airplaymonitor.com

## 'Touch, Peel And Stand' Sets Record

**A**FTER 46 WEEKS at mainstream rock and 47 weeks at active rock, Days Of The New's "Touch, Peel And Stand" (Outpost/Geffen) goes to recurrent. "Touch" sets a mainstream rock record for having the longest chart run since the recurrent rule was put into effect in June 1992. The only two songs that have had an equal or longer stay on the chart are Van Halen's "Top Of The World" and "Right Now," which spent 51 and 46 weeks on the mainstream rock chart, respectively. Days Of The New's newest, "The Down Town," moves 40-26 at mainstream rock with a 90% increase and 35-22 at modern rock with a 96% gain. And another long-running title, Creed's "My Own Prison" (Wind-Up), goes to recurrent after 28 weeks on the modern rock chart.

CMC International has three acts charting simultaneously at heritage rock for the first time in the label's history. Deep Purple's "Any Fule Kno That" debuts at No. 38, joining Blue Oyster Cult's "Harvest Moon" (39-32) and Van Zant's "Rage" (23-31).

Although the Beastie Boys show up regularly in the gold lists of many modern rock stations, they have only charted three times since the debut of the modern rock chart in 1988. "Intergalactic" (Grand Royal/Capitol), the Boys' fourth modern rock title to chart, debuts at No. 34 with 57 stations. To top their previous chart numbers, "Intergalactic" will have to go higher than No. 18, the peak position of both "Hey Ladies" (1989) and "Sabotage" (1994).

INDUSTRY MOVES: ZTT inks a four-year distribution deal with Universal; the label was distributed by Warner Bros. until last year. The first album to benefit from this agreement will likely be an Art Of Noise release due late this year.

Mercury senior director of modern rock promotion Michael Idlis has resigned. He looks to make an announcement shortly on his next move. After June 19, he can be reached at 212-245-6292. . . MCA ups Southeast regional Jeff Davis to national director of East Coast promotion. Davis will head all rock and alternative promotion efforts. . . Nettwerk national director of promotion Marc Alghini heads to Astralwerks for the same post. . . Geffen's Northwest regional promotion slot has been phased out; you can reach Carolyn Padgham at 206-723-2405. Padgham's duties have been absorbed by San Francisco local Scott Perlewitz.

V2 adds former Revolution local Randy Smith for Southwest duties. Look for V2 to hire several regionals and one national in the coming months.

Joe DeMeo, formerly with Delicious Vinyl, joins Trauma as VP of sales and field marketing. . . Sony Music Distribution L.A. marketing manager Gary Kelly is upped to New York/Washington, D.C., marketing manager for Epic.

ARTIST DEVELOPMENTS: Billboard Bulletin reports that Stone Temple Pilots singer Scott Weiland, on tour for his solo project, was arrested on charges of drug possession June 1 in New York. . . As the Black Crowes near the completion of their fifth album, their first for Columbia, the band will spend a six-week stretch playing clubs starting June 19 in New Haven, Conn. Look for the album in September. . . Republic Records has signed Rob Van Winkle, who is in the studio working on his label debut, "Hard To Swallow," with producer Ross Robinson (Korn, Limp Bizkit). You might recall Van Winkle by his old performance name, Vanilla Ice.


morning news duties.

After a tornado touched down in upstate New York, album WPYX Albany morning man Bob Wolf vowed during his shift June 1 to stay on the air until the station collected \$20,000 in donations for victims of the previous night's rough weather. When 10 a.m.

came and he'd reached his goal, he decided to make it a marathon shift, staying on the air until 2 p.m., raising a total of \$52,000. The impromptu fund-raiser emptied the station's prize closet. The station is asking record labels to help it restock its promotional arsenal.

## M Street Format Monitor

### Classic Only Rock Gainer In May Format Tally

RANK		The M Street  <b>FORMAT MONITOR</b>	STATION COUNT		
THIS MONTH	LAST MONTH		MAY '98	APRIL '98	NET GAIN OR LOSS
1	1	Country	2,429	2,432	-3
2	2	News/Talk	1,116	1,121	-5
3	3	Adult Contemporary	870	873	-3
4	4	Oldies	775	776	-1
5	5	Religion (Music)	718	716	2
6	6	Adult Standards	560	559	1
7	7	Spanish	483	482	1
8	8	Classic Rock/Hits	446	444	2
9	9	Soft AC/Easy Listening	400	401	-1
10	10	Top-40/Mainstream/Rhythm	373	368	5
11	11	Religion (Talk)	358	356	2
12	12	Top-40/Adult	265	264	1
13	13	Mainstream Rock	258	258	0
14	14	Sports	242	240	2
15	15	R&B Adult/Oldies	178	178	0
16	16	R&B	167	167	0
17	17	Miscellaneous	155	148	7
18	18	Modern Rock	143	145	-2
19	19	Triple-A	93	94	-1
20	20	Jazz	87	88	-1
21	21	Modern AC	75	76	-1
22	22	Classical	42	43	-1
<b>Total commercial operating stations</b>			<b>10,233</b>	<b>10,229</b>	
<b>Stations off the air</b>			<b>109</b>	<b>105</b>	

M Street Corp. is a Nashville-based provider of radio station information to the radio and music industries. Call 615-251-1525 for more information.

## And The Cradle Will K-Rock



Album WKRK (K-Rock) Detroit and local retailer Harmony House held a private party for Van Halen and 60 station listeners. Shown during the festivities, from left, are Eddie Van Halen, programming assistant Matt Surrena, VH's Michael Anthony, marketing director Jim Marchyshyn, MD Erin Carman, Alex Van Halen, PD John Gorman, Gary Cherone, K-Rock jock Millen, and Detroit Lion Juan Roque.

## RADIO CONCERT MONITOR

DATE	CALL LETTERS	EVENT	SCHEDULED TO APPEAR
June 13	KRXQ Sacramento, Calif.	Second 98 Rock Real Rock Jambo-Freakin'-Ree	Creed, Gandharvas, Megadeth, Monster Magnet, Oleander, Rise Guys Band, Sevendust, Soak, Stabbing Westward, Stegosaurus
June 21	KUFO Portland, Ore.	RockFest '98	Brother Cane, Creed, Deftones, Jimmie's Chicken Shack
June 21	WAAF Boston	WAAF BFD	Black Crowes, Feeder, Fuel, Corey Glover, Hum
June 27	WBAB Long Island, N.Y.	Blues & Brews	Cadillac Moon, Halley DeVestern, Gov't Mule, Li'l Buster & the Soul Brothers, Jimmy Vaughan
June 28	WDHA Morristown, N.J.	Rock the Park	Blue Oyster Cult, Gov't Mule, Nine Days
Sept. 11	KUPD Phoenix	U-Fest	Jerry Cantrell, Days Of The New, Metallica

To include your station's concert information in Rock Concert Monitor, call Marc Schiffman at 212-536-5065, fax 212-536-5286, or E-mail [mschiffman@airplaymonitor.com](mailto:mschiffman@airplaymonitor.com)



## CHEET SHEET BY MARK MARONE

212-536-5051 • [mmarone@airplaymonitor.com](mailto:mmarone@airplaymonitor.com)

### Sprung Monkey's Brotherhood of Jams

If there's one consistent thread within the music of San Diego's Sprung Monkey, it's eclecticism. First, the the group's members hail from ethnic backgrounds that are more varied than most—a mix of Hawaiian, Mexican, African-American, and Japanese. Second, they have a penchant for juggling everything from funk-inflected metal and hip-hop to jazz and punk in an eclectic mix like that made by Faith No More.

But as singer Steve Summers says about Sprung Monkey's major-label debut, "Mr. Funny Face," diversity works in different ways. "We do so many different styles of music, so we know that some of the songs we do are never going to see the radio. We also feel that some of the things are right in the mix," says the half-Hawaiian singer about the prospect of getting airplay. "Then you come to realize that there's this wheel of big business behind the whole music industry, and if you're lucky enough, you can catch a break and bypass all of that."

After eight years together and two independent albums ("Swirl" on SurfDog Records was produced by '70s luminary Roy Thomas Baker), Sprung Monkey appears ready to be hoisted from perennial local favorite to national competitor with "Get 'Em Outta Here." While the album's amalgamation of aggressive rap/metal/funk is bound to make further inroads with the band's already established skate crowd, the single's breezy, feel-good vibe has broader pop potential. Summers says there's a specific inspiration for each song. "I always go into it with an idea in mind. Whether I can pull it off or not, it always comes out different." For instance, the single's call-and-response chorus, he says, was influenced by hip-hop act the Pharcyde.



From left, Tony Delocht, William Riley, Ernie Longoria, Mike Summers, Steve Summers

Sprung Monkey started out in typical fashion "as kids drinking in the garage" using the moniker Love Slug. "We kept the same theme, I guess, for better or worse," says Summers, confirming the anatomical nature of the band's current name. "But now it seems like at times [the name] can come back to haunt you, so we tell people it's like 'being crazy.'"

Less typical, however, has been the relationship between the singer and his brother, guitarist Mike Summers, who formed the band. Usually the mention of siblings together brings about an assumed cynicism that the partnership is imminently doomed, but not here. "I can't remember ever fighting with him once in my whole life," says Steve. "I think our parents have just been like two angels, so we've always had that to look at and the love they have for each other and the way they've treated us. I've never even heard them fight." Their father was a former sax player who played in big bands and who, Summers notes, "was in the military when he went over and got himself a little Hawaiian bride." Sprung Monkey even pays homage to the Summerses' Hawaiian roots in a tribute to a recently deceased cousin of the Summerses' in a song called "He Aloha Melee."

A winner in the San Diego Music Awards for three years running beginning in 1994, Sprung Monkey has built its reputation on a strong affiliation with the skate crowd. Additionally, it's appeared in a handful of skate-lifestyle videos. "Kids are attaching themselves to our band through these Fox motocross videos without even knowing anything about us," Steve Summers says.

Summers adds the band members skate a bit themselves, but you won't see them out on the courses trying to traverse the vertical jumps. "I got one in the trunk in case I ever run out of gas," offers the singer, adding that he'd prefer to leave the daredevil antics to the pros. "We enjoy the energy of the whole scene. Those are the people who are really going for it in that realm, and we like to think we're the same way musically."

They'll be feeding off that energy again this summer when they head out on the road with Unwritten Law in June, followed by dates on the East Coast leg of the Warped tour. And certain things will not have changed since Sprung Monkey began in the garage of the Summers' home. "We have yet to get a white guy in the band. So we just hire them as our road crew and make the white man work for us," Summers says, laughing.

PUBLISHER: JON GUINN  
 EDITOR: SEAN ROSS  
 MANAGING EDITOR: MARC SCHIFFMAN  
 NATIONAL CHART MANAGER: LINDA SILVER  
 MAINSTREAM ROCK/TRIPLE A CHART MANAGER: ANTHONY COLOMBO  
 MODERN ROCK CHART MANAGER: MARK MARONE  
 ASSOCIATE DIRECTOR OF CHARTS: STEVE GRAYBOW  
 WRITER/REPORTER: DANA HALL  
 CHART PRODUCTION MANAGER: MICHAEL CUSSON  
 ASST. CHART PRODUCTION MANAGER: ALEX VITOULIS  
 EDITORIAL PRODUCTION MANAGERS: BARRY BISHIN, MARCIA REPINSKI  
 EDITORIAL PRODUCTION: MADELINE CARROLL, SUSAN CHICOLA,  
 MARC GIAQUINTO, MARIA MANLICIC  
 COPY EDITOR: CARL ROSEN  
 ADVERTISING PRODUCTION MANAGER: LYDIA MIKULKO  
 ADVERTISING PRODUCTION COORDINATOR: PAUL PAGE  
 ART DIRECTOR: RAY CARLSON  
 ADVERTISING PRODUCTION ARTIST: KAREN PLATT  
 1515 Broadway, New York, NY 10036 212-764-7300  
 For subscriptions call: 800-745-8922

NATIONAL ADVERTISING MANAGER: HANK SPANN  
 ACCOUNT MANAGERS: JEFF SOMERSTEIN, SHARON WHITE  
 ADVERTISING SERVICES MANAGER: ALYSE ZIGMAN  
 SALES ASSISTANTS: EVELYN ASZODI,  
 ERICA BENGTON, CANDACE GIL  
 EDITORIAL ADVISER: TIMOTHY WHITE  
 PRODUCTION DIRECTOR: MARIE GOMBERT  
 CIRCULATION DIRECTOR: JEANNE JAMIN  
 MARKETING MANAGER: ROB ACCATINO



PRESIDENT: HOWARD LANDER  
 SENIOR VP/GENERAL COUNSEL: GEORGINA CHALLIS  
 VICE PRESIDENTS: IRWIN KORNFELD, KAREN OERTLEY, ADAM WHITE  
 DIRECTOR OF STRATEGIC DEVELOPMENT: KEN SCHLAGER  
 BUSINESS MANAGER: JOELLEN SOMMER

Airplay Monitor reporting panels are based solely on a station's musical content.

©1998 BPI Communications Inc. No part of this publication may be reproduced, stored in any retrieval system, or transmitted, in any form or by any means, electronic, mechanical, photocopying, recording, or otherwise, without the prior written permission of the publisher.

## Lessons Rock Labels Can Learn From Country's Artist Relationships

Continued from page 1

pointed out that he is, after all, in L.A., Sebastian replies, "I hear the same story wherever I go, Lubbock, Phoenix, Cleveland."

Sebastian also notes "a sincerity to their approach to meeting you that bowls me over, where sometime you got the feeling with other formats, even in those rare circumstances where a band does come by, [that] they were going through the motions and supposed to do this. With country artists, it's like, 'I really appreciate any opportunity I can to meet you and play my music.'"

Clear Channel Orlando, Fla., OM Chris Kampmeier, whose duties now include oversight of modern adult WSHE, programmed country at WYNY New York. He says, "One of the things that differentiates country artists compared to rockers when they're making the rounds is that the country performers know that if they play it right, it is a lifetime career." But, he says, rock musicians know their life expectancy is a bit more tenuous, so they don't put as much effort into it as he saw in his country days, and it's evident in "their attitudes and their relationships and the extent to which they reach out to their fans."

Yet Kampmeier does see a similarity between country artists and today's modern adult acts. "They're very down to earth, very easy-going, very happy to meet anybody they could, comfortable playing in the conference room. It could be that the music has more of an acoustic foundation, but it seems to be a hungry attitude."

### ROCK NOT ALL THAT BAD

Not all rock heavyweights are that aloof. Hamand says that when Aerosmith was in the area, WKQQ got to broadcast live from the venue and was joined on the air by all the band members. "For Aerosmith to do what they did for us was phenomenal. They had a lot of fun with us, took a lot of calls," says Hamand.

As Susquehanna's director of programming in Atlanta and Dallas, Brian Philips works with country KPLX Dallas and modern WNNX Atlanta. Country artists, he says, "are very good at staying in touch and having a personal touch," although Philips thinks the industry could be "a lot more inventive with how we use the artist's time" than plunking them down in a conference room. He cites the work he's done at 99X, where the artists are involved with charity events, bringing them closer to their audience, to the benefit of both parties.

And Philips compares the tireless outreach of country artists, regardless of market size, to baby acts at the modern format. "In Atlanta, we've gotten really used to seeing a lot of artists. Almost every day there's somebody stopping in."

V2 VP of promotion Matt Pollack thinks rock has had more than its fair share of artist visits. "As a label, you have to be real cognizant that this is not a new concept," he says. "But it's so overdone, [that] unless the artist is so exceptional, it's diluted. . . . I only do it with the artists that lend themselves to that environment. Some artists have the kind of voice where the room is so quiet you can hear a pin drop." But, Pollack recalls, "it's backfired in a couple of instances. . . . An artist may have a terrific voice and you bring them into a room and it fails—it's embarrassing."

Pollack cites Alanis Morissette as one example of an artist helped by a station tour. "I remember Alanis Morissette going to every station she could. That's what won them."

"Everybody's come in and done these things and people never forget that Alanis Morissette played in our conference room," Philips adds.

### CONFERENCE ROOM AS STUDIO

But not every rock act will come across in a conference room. Pollack says that hard rock acts in particular just don't sound the same unplugged. "A country artist I can see doing very well, because a lot of the music sonically comes in that mold," he says. "What works so well is [that country] songs lend themselves to intimate settings."

TVT Records national director of alternative radio promotion John Perrone agrees that

when it comes to some rock acts, sitting down with an acoustic guitar in a crowded conference room may not be the way to go. Citing both Gravity Kills and Sevendust, Perrone says that if he encountered a programmer who wasn't playing his bands, he'd "bring them to the venue to see them playing live and then maybe introduce them to the band. Especially on Sevendust, since they're such a powerful live band, we sold a bunch of people on what they can do live."

The same thing goes for Gravity Kills, whose "stage presence is amazing," says Perrone. And that's something you're not going to see in a conference room. "You want to show what they can do live," Perrone says. "We did a lot of radio festivals on the first record for Gravity Kills. Those kids flipped out when they played their single," and that sells a programmer, too.

### GRAVITY SIGNS

Perrone says Gravity Kills has embraced the country philosophy of getting out there and meeting with the fans. "Every band should do it," he says. "There shouldn't even be a question." For the first Gravity Kills album, Perrone says, "they played every one of the radio festivals, and they have those autograph booths. Each band only gets a half-hour to meet their fans. Last time around, in Dallas at the Edgefest and in Houston at Buzzfest, they had their time, and then they were leaving but still had a line of fans. They sat there for an hour and a half to two hours meeting their fans, signing autographs and getting their picture taken with the fans. These kids remember this. This is the way they keep in touch with their fans."

Perrone adds, "We didn't have to school this band. They want a career, [and] they know that this is good for their career. They are completely and utterly ready to do what they have to do for their career. Meeting the kids and meeting the programmers and remembering the names of programmers they've met. People remember when this band came through, and they remember names and are good with that. They keep up with their Web site and answer every possible question that they can."

### WHERE ARE THE LESSONS?

To Kampmeier, this is not necessarily so much an issue for labels as for management. "For any young person attempting to build a career, making as many friends as you can both among listeners and business people is going to help your career growth. And stations are certainly willing to devote a lot more energy to developing a new artist when the artist makes themselves available."

Philips says, "It's a fundamental business truth that if you meet someone face to face and especially if you get some follow-up, it's great. It's essential to getting to the next level." When an artist makes that personal connection, "it helps in this era of too many records, too many artists, and too many signings."

From the record side, Pollack would like nothing more than an artist who is as much a promotion animal as he is. "There's no bigger magic than when the artist is their own self-promoting machine. Some of the most successful acts are those that understand what promotion does," he says. "I've seen artists basically get themselves played on the radio. They went in there and worked the hallways, everyone from the receptionist to the GM. So by the time they opened their mouth to sing the song, they had the station in their hands."

While some country A&R folk will go so far as putting station-visit abilities on their checklist when signing talent, Pollack doesn't see doing that any time soon. "It's not a prerequisite at all in the A&R or promotion," he says. "It's just an added advantage. In marketing meetings, I always want to know, 'How are they on one-on-ones? Are they comfortable in an acoustic situation? How are they in interviews?' If they're not good at that, we move on. It's amazing that the country format really uses that as a base for signing artists. For us, it's an added advantage."

**'SPACE LORD'  
IS BIGGER THAN  
THIS TIP SHEET!**

**ALREADY A MONSTER  
AT ACTIVE AND MAINSTREAM ROCK!**

**MONITOR/ACTIVE ROCK (14) - (10)  
MONITOR/MAINSTREAM ROCK (27) - (20)**

**NOW SMASHING THROUGH AT ALTERNATIVE:  
KPNT, WEDG, KKND, WXRA, WHTG, KICT,  
WNVE, WKRL, WRRV, WKLL, CFNY...SO FAR**

**"Hot phones!!!!...But seriously, this will reaffirm  
your faith in rock."  
-Rich Wall, WEDG**

**"Monster Magnet is the 'Space Lord' of my dreams.  
We are going to conquer galaxies together."  
-Mimi Griswold, WKRL**

**"We're early 'cause we believe this record will be  
huge...and we want to save the format."  
-Alan Fee, KPNT**

**"Wake up you alternative geeks and play a great  
rock record!"  
-Rod Ryan, KKND**

**I THINK I NEED A  
BIGGER  
BOOM BOX**



**POWERTRIP  
MONSTER  
MAGNET  
THIS SUMMER'S OTHER MONSTER.**



**ENTER THE VORTEX**

**www.amrecords.com \* 1-800-556-7625 code 0704**

Produced by Dave Wyndorf & Matt Hyde • Engineered by Matt Hyde • Mixed by Randy Staub except "Baby Götterdämmerung" and "Your Lies Become You" mixed by Matt Hyde and "See You In Hell" and "Goliath And The Vampires" mixed by John Travis  
Management: Andy Gould and Jodie Wilson for AGM ©1998 A&M Records, Inc., a PolyGram Company. All rights reserved.

**AIRPLAY**  
**Monitor**  
**Broadcast Data Systems**  
**GREATEST GAINERS**

**Strongest Increase In Airplay This Week**

**MAINSTREAM ROCK**

**INCREASE  
IN PLAYS**

<b>DAYS OF THE NEW • The Down Town (OUTPOST/GEFFEN)</b>	<b>+300</b>
KZRR +21, KRZR +16, WCCC +16, WAAF +16, WMFS +14, WJRR +14, WKLO +14, WTPT +12, KTUX +12, WQXA +11	
<b>AEROSMITH • I Don't Want To Miss A Thing (COLUMBIA)</b>	<b>+179</b>
WTUE +15, WZMT +14, WROV +13, WVRK +10, WAPL +10, WIXV +9, WLTV +9, WFBQ +9, KTUX +7, KLAQ +6	
<b>JOHN FOGERTY • Premonition (REPRISE)</b>	<b>+140</b>
WRXL +15, WAPL +13, KSHE +11, WCKW +8, WBAB +8, WZZO +7, WIXV +7, KGGG +7, WIOT +6, KMJX +6	
<b>MONSTER MAGNET • Space Lord (A&amp;M)</b>	<b>+132</b>
WKRR +12, KNUJ +11, KOMP +11, KNCN +9, WAAF +9, WVRK +7, KXUS +6, WXTB +6, WHJY +6, WTPT +5	
<b>DLR BAND • Slam Dunk (WAWAZAT!!)</b>	<b>+123</b>
WQXA +13, WTFX +11, WBZX +10, WDHA +8, WAQX +8, WAPL +8, KAZR +8, WRIF +8, WZMT +7, WCCC +7	
<b>THE SMASHING PUMPKINS • Ava Adore (VIRGIN)</b>	<b>+111</b>
KNUJ +15, WTKX +14, WMFS +12, WQXA +12, WCCC +12, WZMT +10, WMMR +10, KEGL +8, KRAD +7, WTPA +6	
<b>CREED • What's This Life For (WIND-UP)</b>	<b>+105</b>
WJRR +13, WTPT +11, KILO +9, KATT +9, WLZR +9, KSJO +8, KUFO +7, WXRC +7, WXTB +6, KMBY +5	
<b>JIMMY PAGE &amp; ROBERT PLANT • Shining In The Light (ATLANTIC)</b>	<b>+96</b>
WDHA +14, WRXL +14, WNCX +12, KMOD +12, WKQQ +9, KTAL +7, KCAL +7, WWDC +6, KLBK +5, KATT +5	
<b>METALLICA • Fuel (ELEKTRA/EEG)</b>	<b>+91</b>
WCCC +13, WTPA +10, KTXQ +9, KUFO +8, KAZR +8, WXRC +7, WBUZ +6, WZMT +6, KILO +4, WXTB +4	
<b>ROD STEWART • Cigarettes And Alcohol (WARNER BROS.)</b>	<b>+91</b>
WIMZ +19, KMOD +13, WRDU +10, WONE +8, WDVE +8, KTAL +6, WPLR +6, KGGG +5, WTPA +5, WKQQ +4	

**MODERN ROCK**

**INCREASE  
IN PLAYS**

<b>BEASTIE BOYS • Intergalactic (GRAND ROYAL/CAPITOL)</b>	<b>+597</b>
KFMA +29, KXTE +27, CIMX +25, KEDJ +24, XHRM +24, KITS +24, KNDD +23, WBCN +23, WFNX +22, WKQX +21	
<b>BARENAKED LADIES • One Week (REPRISE)</b>	<b>+370</b>
WARQ +25, CIMX +23, WEND +21, KTEG +21, CFNY +21, KTCL +21, WENZ +20, XHRM +19, WAQZ +18, KWOD +18	
<b>EVE 6 • Inside Out (RCA)</b>	<b>+243</b>
WFNX +14, KWOD +12, KJEE +11, WXEG +11, WRZX +11, KNRK +10, KLZR +10, WROX +9, KPNT +9, KMYZ +9	
<b>FOO FIGHTERS • Walking After You (ROSWELL/CAPITOL)</b>	<b>+214</b>
CIMX +22, WZAZ +14, WCYY +14, WXRK +12, KROX +11, WXEG +11, KKDM +11, WRAX +10, KJEE +10, XHRM +9	
<b>GRANT LEE BUFFALO • Truly, Truly (SLASH/WARNER BROS.)</b>	<b>+155</b>
KTCL +13, KENZ +11, WRAX +10, KLZR +10, WEDG +10, WFNX +10, KFTE +9, KPOI +8, WXEG +8, WAVF +8	
<b>THE SMASHING PUMPKINS • Perfect (VIRGIN)</b>	<b>+131</b>
CIMX +15, WPLY +14, WKQX +14, WHFS +11, WBRU +8, CFNY +6, KEDJ +6, KMYZ +5, KNDD +4, WEDG +4	
<b>MARCY PLAYGROUND • Saint Joe On The School Bus (CAPITOL)</b>	<b>+123</b>
KNND +14, KNDD +13, KDGE +11, WCYY +9, WXEG +8, WZZX +6, WRXR +6, WGRD +6, WFNX +6, WBTZ +5	
<b>FUEL • Shimmer (550 MUSIC)</b>	<b>+113</b>
WXRA +14, WPLT +14, KNRX +12, KITS +12, KOME +11, WRZX +9, KZON +9, KLYY +8, KMYZ +8, KFRR +7	
<b>THE URGE • Jump Right In (IMMORTAL/EPIC)</b>	<b>+113</b>
WMRQ +14, WPLT +11, WKRO +10, KNND +9, KROX +9, WQBK +9, WNVE +9, KTEG +9, KITS +9, WBTZ +8	
<b>FEEDER • High (ECHO/ELEKTRA/EEG)</b>	<b>+106</b>
WARQ +15, WNNX +12, WRZX +11, KFTE +10, KTOZ +10, KCXX +9, WCYY +7, KNRX +7, WFNX +6, WNVE +5	

**VIDEO  
PLAYLISTS**  
**MOST PLAYED ROCK TRACKS**



**TW LW**



	<b>TW</b>	<b>LW</b>		<b>TW</b>	<b>LW</b>
1	29	32	1	25	17
2	22	26	2	25	22
3	19	23	3	24	23
4	17	20	4	21	16
5	17	1	5	20	21
6	14	14	6	19	16
7	10	2	7	19	0
8	9	10	8	18	20
9	9	15	9	15	12
10	9	11	10	13	12
11	9	19	11	11	15
12	8	6	12	11	9
13	8	16	13	10	12
14	7	10	14	9	12
15	6	14	15	8	0
16	6	8	16	7	7
17	6	6	17	7	4
18	5	0	18	7	2
19	5	11	19	6	10
20	5	12	20	5	2
21	4	11	21	5	4
22	4	9	22	5	4
23	4	10	23	5	4
24	4	0	24	5	1
25	4	3	25	5	2
26	4	9	26	4	2
27	3	0	27	4	2
28	3	0	28	4	1
29	3	0	29	4	4
30	3	0	30	4	2
			31	4	2
			32	3	0
			33	3	1
			34	3	0
			35	3	0
			36	3	1
			37	3	1
			38	3	3
			39	3	1
			40	3	3

**TRIPLE-A**

**INCREASE  
IN PLAYS**

<b>NATALIE MERCHANT • Kind &amp; Generous (ELEKTRA/EEG)</b>	<b>+55</b>
KINK +19, KKZN +11, WRLT +5, WXRV +5, WDOO +4, WNCS +4, WHPT +3, KGSR +3, WTTT +2, WKOC +2	
<b>GRANT LEE BUFFALO • Truly, Truly (SLASH/WARNER BROS.)</b>	<b>+53</b>
KKZN +9, WXLE +8, WTTT +8, KTCZ +7, KGSR +5, WDOO +4, WXRV +4, KBCC +4, KMTT +2, KXPK +2	
<b>COWBOY JUNKIES • Miles From Our Home (Geffen)</b>	<b>+43</b>
WKOC +12, CIDR +6, KTCZ +4, WXRT +4, KKZN +3, KMTT +3, WNCS +3, WXRV +3, KGSR +3, KPIG +2	
<b>BARENAKED LADIES • One Week (REPRISE)</b>	<b>+42</b>
KBCC +14, CIDR +8, KXPK +7, WXRV +7, WTTT +3, WXLE +2, KMTT +2	
<b>MATCHBOX 20 • Real World (LAVA/ATLANTIC)</b>	<b>+28</b>
WHPT +19, WKOC +6, WDOO +2, CIDR +2, WXRV +2, WXLE +1, WBOS +1, WXRT +1	
<b>THE WALLFLOWERS • Heroes (EPIC)</b>	<b>+28</b>
KXPK +15, KKZN +10, WKOC +7, KGSR +3, WXLE +1, KMTT +1, WTTT +1, WHPT +1, KBCC +1	
<b>GOO GOO DOLLS • Iris (WARNER SUNSET/REPRISE)</b>	<b>+22</b>
CIDR +13, WTTT +8, KGSR +7, KXPK +6, WXLE +3, KTCZ +2, WXRT +2, WBOS +1	
<b>CHERRY POPPIN' DADDIES • Zoot Suit Riot (MOJO/UNIVERSAL)</b>	<b>+21</b>
WDOO +13, KXPK +6, WXLE +3, KGSR +3, WKOC +2, KMTT +1	
<b>EVERYTHING • Hooch (BLACKBIRD/SIRE)</b>	<b>+20</b>
WDOO +9, WXLE +5, KMTT +5, WHPT +5, KGSR +4, KKZN +3, KTCZ +3, WTTT +1, WVRV +1, WNCS +1	
<b>THE VERVE • Lucky Man (VC/HUT/VIRGIN)</b>	<b>+20</b>
WKOC +13, WRLT +4, WXLE +2, WNCS +2, WDOO +1, WBOS +1, KGSR +1, KBCC +1	

**Billboard & Monitor**

# RADIO

seminar & awards

September 17-19, 1998

The Pointe Hilton Resort at Tapatio Cliffs, Phoenix, Arizona

Join radio's key players  
for a bounty of industry  
panels, artist showcases,  
keynoters and all  
the networking you  
can muster!

For information call:  
Michele Quigley 212-536-5088

For Week Ending May 31, 1998



Playlists supplied by Broadcast Data Systems' Radio Track service. Songs ranked by number of plays in monitored week. Playlists are listed in order of TSA weekly count, beginning with the highest-counting station. Counts are updated twice yearly following the release of the Spring and Fall Arbitron surveys. The number of stations shown each week varies (depending upon sales).

KLOS Los Angeles PD: John Duncan MD: Rita Wilde KLOS 95.5. Playlist table with 30 items including Eric Clapton, Pearl Jam, and The Wallflowers.

WYSP Philadelphia OM: Tim Sabean PD: Neal Mirsky WYSP 94.7. Playlist table with 30 items including Jimmy Page & Robert Plant, Creed, and The Wallflowers.

WRCC Chicago SM: Dave Richards APC/MD: Jo Robinson ROCK 103.5. Playlist table with 30 items including Jerry Cantrell, Joe Satriani, and Megadeth.

KQRS Minneapolis PD: Dave Hamilton APD/MD: Reed Endersbe 92 KQRS. Playlist table with 30 items including Jimmy Page & Robert Plant, Semisonic, and The Wallflowers.

WMMR Philadelphia PD: Joe Bonadonna MD: Ken Zipeto WMMR 93.7. Playlist table with 30 items including Pearl Jam, The Wallflowers, and Joe Satriani.

WWDC Washington, DC VP/Pgm: Dave Brown MD: Buddy Rizer DC 101. Playlist table with 30 items including Stabbing Westward, Goo Goo Dolls, and The Wallflowers.

WFBQ Indianapolis OM: Marty Bender MD: Ace Cosby WFBQ 107.7. Playlist table with 30 items including Aerosmith, The Wallflowers, and John Mellencamp.

WRIF Detroit OM: Doug Pudell APD: Dave Wellington 101 WRIF. Playlist table with 30 items including Aerosmith, Jerry Cantrell, and DLR Band.

WAAF Boston PD: Dave Douglas MD: John Osterliad WAAF 103.3 FM. Playlist table with 30 items including Stabbing Westward, Sevendust, and The Wallflowers.

WDVE Pittsburgh PD: Garrett Hart MD: Cris Winter WDVE 93.7. Playlist table with 30 items including Eric Clapton, The Wallflowers, and Soul Asylum.

KLOL Houston Dir Of OPS: Michael Hughes APD/MD: Max Dugan KLOL 101.1. Playlist table with 30 items including Brother Cane, Van Halen, and The Wallflowers.

WNXC Cleveland PD: Bill Louis MD: David Jockers 98.5 WNXC. Playlist table with 30 items including Aerosmith, Jimmy Page & Robert Plant, and DLR Band.

WKLS Atlanta PD: Pat Ervin MD: Lisa Sturges 96.7. Playlist table with 30 items including Kenny Wayne Shepherd, Collective Soul, and Goo Goo Dolls.

KTXQ Dallas OM: Andy Lockridge MD: Redbard 102.3. Playlist table with 30 items including Fastball, The Smashing Pumpkins, and Megadeth.

KEGL Dallas PD: Greg Stevens MD: Cindy Scull 97.1 THE EAGLE ROCKS. Playlist table with 30 items including Stabbing Westward, Days Of The New, and The Smashing Pumpkins.

WMMS Cleveland PD: Bob Neumann APD: "Spaceman" Scott Hughes WMMS 100.5 FM. Playlist table with 30 items including Foo Fighters, Kenny Wayne Shepherd, and Marcy Playground.

WZTA Miami VP/Pgm: Gregg Steele WZTA 93.7. Playlist table with 30 items including Stabbing Westward, Semisonic, and The Smashing Pumpkins.

KSHE St. Louis PD: Rick Ballis MD: Al Hofer 93.7 KSHE 93.7. Playlist table with 30 items including Rod Stewart, Walter Trout, and Joe Satriani.

WEBN Cincinnati OM: Jim Richards MD: Rick Jamie WEBN 93.7. Playlist table with 30 items including Foo Fighters, Megadeth, and Creed.

KSJO San Jose PD: Dana Sang MD: Laurie Free KSJO 92.5. Playlist table with 30 items including Joe Satriani, Creed, and UFO.

WIYY Baltimore PD: Rick Strauss APD/MD: Rob Heckman 96.7. Playlist table with 30 items including Jerry Cantrell, Creed, and Days Of The New.

WRQC Minneapolis OM: Andy Bloom PD: Lauren MacLeash APD/MD: Jay Philpott ROCK 100.3. Playlist table with 30 items including Metallica, Jimmy Page & Robert Plant, and Van Halen.

WKRR Detroit PD: John Gorman MD: Erin Carmen WKRR 93.7. Playlist table with 30 items including DLR Band, Foo Fighters, and Days Of The New.

KOXR Minneapolis PD: Wade Linde APD/MD: Bill Jones 93.7 KOXR. Playlist table with 30 items including Metallica, DLR Band, and The Unforgiven II.

POWER PLAYLISTS

For Week Ending May 31, 1998



Playlists supplied by Broadcast Data Systems. Radio Track service. Songs ranked by number of plays in monitored week. Playlists are listed in order of TSB weekly average, beginning with the highest-scoring station. Counts are updated twice weekly following the release of the Spring and Fall Arbitron surveys. The number of stations shown each week varies depending upon space.

WXTB Tampa PD: Brad Hardin MD: Brian Medlin 98.9 ROCK 100.1 FM

WLZR Milwaukee PD: Keith Hastings MD: Marilyn Mee PURE ROCK 102.3 FM

KISW Seattle SM/PD: Clark Ryan MD: Cathy Faulkner 99.9 FM

WBAB Long Island OM: Eric Wellman 102.3 FM

WHJY Providence PD: Joe Bevilacqua MD: Sharon Schifino 94.1 FM

KSD St Louis PD: Steve Brill MD: Smasher 93.7 KSD

WBXZ Columbus, OH PD: Hal Fish APD/MD: Ronni Hunter 98.1 FM

WJRR Orlando PD: Dick Sheetz MD: Pat Lynch 106.1 FM

KQRC Kansas City PD: Vince Richards MD: Valorie Knight The Rock! 98.1 FM

KUPD Phoenix OM: Tim Maranville PD: JJ Jeffries 98.1 FM

WONE Akron PD: J.D. APD: Tim Daugherty 106.1 FM

WRDU Raleigh PD: Bob Edwards MD: Mark Arsen 106.1 FM

KBPI Denver PD: Bob Richards MD: Willie B. 98.1 FM

WIMZ Knoxville PD: Jim Pemberton MD: Bill Kidd Classic Rock 105.3 FM

KUFO Portland OM: Dave Numme APD: Al Scott 101.1 FM

KISS San Antonio PD: Kevin Vargas MD: C.J. Cruz 99.5 KISS

WCCC Hartford PD: Michael Picozzi APD/MD: Mike Karolyi Today's Best Rock! 106.7 WCCC

KIQZ San Diego PD: Tim Dukes MD: Shannon Leder ROCK 105.3 FM

WQXA Harrisburg PD: Chris Lloyd MD: Claudine DeLorenzo 98.1 FM

WROQ Greenville, S.C. PD: Ken Carson APD/MD: K.C. Carson 106.1 FM

KDKB Phoenix OM: Tim Maranville MD: Tracy Lea 93.3 KDKB

WCKW New Orleans GM: Sid Levett Louisiana's ROCK 92.3

KATT Oklahoma City PD: Chris Baker MD: Jake Daniels 98.1 FM

WLWQ Columbus PD: Greg Ausham 98.1 FM



# MAINSTREAM ROCK

## POWER PLAYLISTS

**AIRPLAY Monitor** For Week Ending \*\*Date\*\*, 1998

**WDHA Morrristown**  
PD: Lenny Bloch  
MD: Terrie Carr

**105.5**  
Jersey's Rock Radio

	TW	LW
1	Brother Cane, I Lie In The Bed I Make	20
2	Pearl Jam, Wishlist	28
3	OLR Band, Slam Dunk	25
4	The Wallflowers, Heroes	24
5	Matchbox 20, Real World	22
6	Dave Matthews Band, Don't Drink The Water	22
7	Jimmy Page & Robert Plant, Shining In The	21
8	Eric Clapton, She's Gone	17
9	Fastball, The Way	16
10	Soul Asylum, I Will Still Be Laughing	15
11	Aerosmith, I Don't Want To Miss A Thing	15
12	Blue Oyster Cult, Harvest Moon	15
13	Semisonic, Closing Time	14
14	Gov't Mule, Blind Man In The Dark	14
15	Van Halen, Fire In The Hole	13
16	Days Of The New, Shelf In The Room	13
17	Jimmy Page & Robert Plant, Most High	11
18	Green Day, Time Of Your Life	11
19	Creed, My Own Prison	11
20	Deep Purple, Any Fule Km That	10
21	Kenny Wayne Shepherd, Blue On Black	9
22	Marcy Playground, Sex And Candy	9
23	Chris Cornell, Sunshine	8
24	Black Lab, Wash It Away	8
25	Aerosmith, Pink	7
26	Jonny Lang, Lie To Me	7
27	Guster, Airport Song	7
28	Monster Magnet, Space Lord	7
29	Days Of The New, Touch, Peel And Stand	6
30	AC/DC, You Shook Me All Night Long	6

**WEGR Memphis**  
PD: Drake Hall  
MD: Zeke Logan

**103**

	TW	LW
1	Aerosmith, I Don't Want To Miss A Thing	17
2	John Fogerty, Premonition	16
3	Eric Clapton, She's Gone	16
4	Rod Stewart, Cigarettes And Alcohol	15
5	Jimmy Page & Robert Plant, Shining In The	14
6	The Wallflowers, Heroes	12
7	Brother Cane, I Lie In The Bed I Make	10
8	Billy Squier, Everybody Wants You	7
9	Dave Matthews Band, Don't Drink The Water	7
10	Scott Thomas Band, Black Valentine	7
11	U2, I Still Haven't Found What I'm	6
12	Lee Zeppelin, Ramble On	5
13	The Doors, Light My Fire	5
14	Steve Miller Band, The Joker	5
15	AC/DC, You Shook Me All Night Long	5
16	ZZ Top, Tush	5
17	The Beatles, Come Together	5
18	David Bowie, Space Oddity	5
19	Tom Petty & The Heartbreakers, Breakdown	5
20	The Beatles, Sgt. Pepper's Lonely Hearts	5
21	Stevie Ray Vaughan & Double, Couldn't	5
22	Allman Brothers Band, Whipping Post	5
23	Cream, White Rabbit	4
24	ZZ Top, Jesus Just Left Chicago	4
25	ZZ Top, Warlin' For The Bus	4
26	U2, Pride	4
27	Led Zeppelin, Stairway To Heaven	4
28	Rolling Stones, Saint Of Me	4
29	Go Go Dolls, Ins	5
30	Soul Asylum, I Will Still Be Laughing	6

**WIOT Toledo**  
DM/PD: Darrin Arriens  
APD: Don Davis

**104.7**

	TW	LW
1	Kenny Wayne Shepherd, Blue On Black	24
2	Aerosmith, I Don't Want To Miss A Thing	23
3	Creed, My Own Prison	23
4	Days Of The New, Touch, Peel And Stand	22
5	Metallica, Unholy Sleeps	16
6	Jerry Cantrell, My Song	14
7	UFO, Venus	14
8	Semisonic, Closing Time	13
9	Jimmy Page & Robert Plant, Most High	12
10	Go Go Dolls, Ins	11
11	Blue Oyster Cult, Harvest Moon	11
12	Eric Clapton, She's Gone	10
13	George Thorogood & The Destroyers, The Usual	9
14	Deep Purple, Any Fule Km That	9
15	Tonic, If You Could Only See	8
16	Matchbox 20, Push	8
17	Kenny Wayne Shepherd, Slow Ride	8
18	Caroline's Spine, Wallflower	8
19	Brother Cane, I Lie In The Bed I Make	8
20	Van Halen, Fire In The Hole	8
21	John Fogerty, Premonition	7
22	Spacehog, In The Meantime	7
23	Metallica, Hero Of The Day	7
24	Go Go Dolls, Ins	7
25	Days Of The New, The Down Town	7
26	Dave Matthews Band, Don't Drink The Water	7
27	James Gang, Funk #49	6
28	Candlebox, You	6
29	Marcy Playground, Sex And Candy	6
30	Metallica, Enter Sandman	6

**KLAQ El Paso**  
PD/MD: "Magic" Mike Ramsey

**105.5**  
55.5 FM

	TW	LW
1	Go Go Dolls, Ins	27
2	Days Of The New, Shelf In The Room	26
3	Matchbox 20, Real World	25
4	Kenny Wayne Shepherd, Blue On Black	25
5	Semisonic, Closing Time	24
6	Dave Matthews Band, Don't Drink The Water	23
7	Fastball, The Way	23
8	Brother Cane, I Lie In The Bed I Make	22
9	Rod Stewart, Cigarettes And Alcohol	22
10	The Wallflowers, Heroes	21
11	Pearl Jam, Wishlist	14
12	Aerosmith, I Don't Want To Miss A Thing	14
13	Jimmy Page & Robert Plant, Most High	13
14	Athenaeum, What I Didn't Know	13
15	Foo Fighters, My Hero	13
16	Fuel, Shimmer	12
17	Stegosaurus, At The Water	12
18	Creed, Torn	11
19	Black Lab, Time Ago	11
20	The Smashing Pumpkins, Ava Adore	11
21	Soul Asylum, I Will Still Be Laughing	11
22	Jerry Cantrell, Cut You In	11
23	Scott Thomas Band, Black Valentine	10
24	Rolling Stones, Saint Of Me	10
25	Green Day, Time Of Your Life	10
26	Creed, My Own Prison	10
27	DLR Band, Slam Dunk	10
28	Joe Satriani, Ceremony	10
29	Matchbox 20, 3 AM	9
30	Matthew Ryan, Guilty	9

**WAPL Green Bay**  
PD: Randy Hawke

**105.7**  
WAPL

	TW	LW
1	John Fogerty, Premonition	23
2	Van Zant, That Was Yesterday	23
3	DLR Band, Slam Dunk	23
4	Brother Cane, I Lie In The Bed I Make	23
5	Jerry Cantrell, My Song	22
6	Rod Stewart, Cigarettes And Alcohol	22
7	Aerosmith, I Don't Want To Miss A Thing	20
8	Kenny Wayne Shepherd, Blue On Black	17
9	Go Go Dolls, Ins	15
10	Matchbox 20, Real World	14
11	The Wallflowers, Heroes	14
12	Eric Clapton, She's Gone	14
13	Pearl Jam, Wishlist	14
14	Semisonic, Closing Time	14
15	Jimmy Page & Robert Plant, Most High	12
16	Everclear, I Will Buy You A New Life	12
17	Union, October Morning Wind	12
18	Our Lady Peace, 4 AM	12
19	The Beatles, Crown	11
20	Big Wreck, That Song	11
21	Stabbing Westward, Save Yourself	11
22	Dave Matthews Band, Don't Drink The Water	10
23	Caroline's Spine, Wallflower	10
24	Fuel, Shimmer	9
25	Black Lab, Time Ago	9
26	Rod Stewart, Cigarettes And Alcohol	9
27	Stevie Nicks, Love On Ice	9
28	Hair Of The Dog, The Party Ain't Over	8
29	Athenaeum, What I Didn't Know	8
30	UFO, Venus	8

**WFYV Jacksonville**  
PD: David Moore  
MD: "Woodman"

**105**  
Rock 105

	TW	LW
1	Jimmy Page & Robert Plant, Most High	14
2	Aerosmith, I Don't Want To Miss A Thing	14
3	Big Head Todd & The Monsters, Boom Boom	14
4	DLR Band, Slam Dunk	12
5	Kenny Wayne Shepherd, Blue On Black	12
6	Rod Stewart, Cigarettes And Alcohol	12
7	Van Halen, Fire In The Hole	10
8	Sammy Hagar, Both Sides Now	9
9	Brother Cane, I Lie In The Bed I Make	8
10	Ozzy Osbourne, Flynn High Again	7
11	Eagles, Hotel California	7
12	Def Leppard, Too Late For Love	6
13	AC/DC, T.N.T.	6
14	Lynyrd Skynyrd, Sweet Home Alabama	6
15	Lynyrd Skynyrd, Free Bird	6
16	Lynyrd Skynyrd, Don't Ask Me No Question	6
17	Aerosmith, Dream On	6
18	Ozzy Osbourne, Crazy Train	6
19	Rush, Tom Sawyer	6
20	Matchbox 20, 3 AM	6
21	Rolling Stones, It's Only Rock 'n Roll	6
22	The Wallflowers, Heroes	6
23	Jerry Cantrell, My Song	6
24	Athenaeum, What I Didn't Know	6
25	Big Wreck, That Song	6
26	Lynyrd Skynyrd, Call Me The Breeze	5
27	ZZ Top, Tush	5
28	Boston, Peace Of Mind	5
29	Guns N' Roses, Knockin' On Heaven's Door	5
30	AC/DC, Back In Black	5

**KBKR Salt Lake City**  
OM: Bruce Jones

**101**  
Main's Rock Radio

	TW	LW
1	Creed, Torn	25
2	Days Of The New, Shelf In The Room	24
3	Foo Fighters, My Hero	22
4	Kenny Wayne Shepherd, Blue On Black	20
5	Marcy Playground, Sex And Candy	20
6	Brother Cane, I Lie In The Bed I Make	20
7	Stabbing Westward, Save Yourself	20
8	The Smashing Pumpkins, Ava Adore	19
9	Jerry Cantrell, Cut You In	19
10	Fuel, Shimmer	17
11	Pearl Jam, Given To Fly	17
12	Creed, My Own Prison	16
13	Days Of The New, Touch, Peel And Stand	15
14	Rammstein, Du Hast	15
15	Van Halen, Fire In The Hole	14
16	Monster Magnet, Space Lord	14
17	The Offspring, Gone Away	13
18	Soul Asylum, I Will Still Be Laughing	13
19	Matchbox 20, Long Day	13
20	Metallica, Fuel	12
21	Ozzy Osbourne, Back On Earth	12
22	Metallica, The Memory Remains	11
23	Oeffenes, Be Quiet And Drive	11
24	Semisonic, Closing Time	10
25	Meat Puppets, Backwater	10
26	Lenny Kravitz, Are You Gonna Go My Way	10
27	Collective Soul, December	10
28	Bush, Come Down	10
29	Foo Fighters, Everlong	9
30	Guns N' Roses, Sweet Child O Mine	9

**KLBJ Austin**  
OM: Jeff Carrol  
MD: Lonis Love

**101**  
Main's Rock Radio

	TW	LW
1	The Wallflowers, Heroes	27
2	Brother Cane, I Lie In The Bed I Make	26
3	Van Halen, Fire In The Hole	26
4	Pearl Jam, Wishlist	26
5	Foo Fighters, Baker Street	21
6	Soul Asylum, I Will Still Be Laughing	20
7	Creed, Torn	20
8	Fuel, Shimmer	19
9	Marcy Playground, Saint Joe On The	19
10	Fastball, The Way	18
11	Big Wreck, That Song	18
12	The Smashing Pumpkins, Ava Adore	18
13	Lanny Kravitz, Fly Away	18
14	Hum, Green To Me	17
15	Caramel, Lucy	17
16	Jimmy Page & Robert Plant, Shining In The	16
17	Dave Matthews Band, Don't Drink The Water	16
18	Storyville, Born Without You	16
19	DLR Band, Slam Dunk	16
20	Semisonic, Closing Time	12
21	Days Of The New, The Down Town	11
22	Matchbox 20, Real World	9
23	Ugly Americans, Boom Boom Baby	9
24	Athenaeum, What I Didn't Know	9
25	Metallica, Fuel	8
26	Addict, Monsterside	8
27	Monster Magnet, Space Lord	8
28	Bush, Come Down	7
29	Matchbox 20, 3 AM	7
30	Everclear, I Will Buy You A New Life	7

**WTUE Dayton**  
PD: Chris Geisen  
MD: John Beaulieu

**101**  
Dayton's Best Rock

	TW	LW
1	Days Of The New, Shelf In The Room	30
2	Kenny Wayne Shepherd, Blue On Black	29
3	Brother Cane, I Lie In The Bed I Make	28
4	Go Go Dolls, Ins	27
5	Marcy Playground, Sex And Candy	26
6	Jerry Cantrell, Cut You In	19
7	The Wallflowers, Heroes	17
8	Creed, Torn	16
9	DLR Band, Slam Dunk	15
10	Jimmy Page & Robert Plant, Most High	15
11	Aerosmith, I Don't Want To Miss A Thing	15
12	Dave Matthews Band, Don't Drink The Water	14
13	Rod Stewart, Cigarettes And Alcohol	10
14	Eric Clapton, She's Gone	10
15	Matchbox 20, Real World	8
16	Soul Asylum, I Will Still Be Laughing	8
17	Van Halen, Fire In The Hole	8
18	Blues Traveler, Caroline's Blues	7
19	Monster Magnet, Space Lord	7
20	Fastball, The Way	7
21	Metallica, Fuel	7
22	The Offspring, Gone Away	6
23	Matchbox 20, 3 AM	6
24	Lynyrd Skynyrd, Sweet Home Alabama	6
25	Joe Walsh, Rocky Mountain Way	6
26	Mighty Joe Plum, Live Through This	6
27	Collective Soul, Where This River Flows	6
28	Steppenwolf, Born To Be Wild	6
29	Tonic, Open Up Your Eyes	6
30	Aerosmith, Pink	6

**WNOR Norfolk**  
PD: Harvey Kojan  
APD/MD: Tim Parker

**99**  
WNOR

	TW	LW
1	Creed, Torn	31
2	Foo Fighters, My Hero	29
3	Megadeth, Use The Man	27
4	Tool, Aenema	26
5	Jerry Cantrell, My Song	20
6	Monster Magnet, Space Lord	18
7	Addict, Monsterside	15
8	Sevendust, Black	16
9	Metallica, Fuel	15
10	Kenny Wayne Shepherd, Blue On Black	15
11	Brother Cane, I Lie In The Bed I Make	15
12	Metallica, The Unforgiven II	15
13	The Smashing Pumpkins, Ava Adore	14
14	Jimmy Page & Robert Plant, Most High	13
15	Days Of The New, The Down Town	13
16	Stabbing Westward, Save Yourself	13
17	Tool, Forty Sex & 2	13
18	Pearl Jam, Wishlist	13
19	Creed, What's This Life For	13
20	Jimmie's Chicken Shack, High	12
21	The Cult, She Sells Sanctuary	12
22	Tool, Smbkfst	12
23	Marcy Playground, Sex And Candy	10
24	Big Wreck, The Oaf	10
25	Green Day, Brain Stew	10
26	Megadeth, Trust	9
27	Toadies, Possum Kingdom	9
28	Foo Fighters, Baker Street	9
29	Days Of The New, Touch, Peel And Stand	9
30	Soundgarden, Fell On Black Days	9

**KRXQ Sacramento**  
SM: Curtiss Johnson  
APD: Pat Martin  
MD: Kylee Brooks

**98**  
Rock 98

	TW	LW
1	Faith No More, Ashes To Ashes	31
2	Stabbing Westward, Save Yourself	30
3	Creed, Torn	30
4	Tool, Forty Sex & 2	30
5	Megadeth, Use The Man	28
6	Metallica, Fuel	20
7	Foo Fighters, My Hero	20
8	Joe Satriani, Ceremony	20
9	Monster Magnet, Space Lord	20
10	Pearl Jam, Wishlist	19
11	The Smashing Pumpkins, Ava Adore	19
12	The Gandharvas, Downtime	19
13	Jerry Cantrell, My Song	19
14	Brother Cane, I Lie In The Bed I Make	18
15	Jimmy Page & Robert Plant, Most High	17
16	Megadeth, Almost Honest	17
17	Creed, What's This Life For	17
18	Stegosaurus, At The Water	17
19	Van Halen, Fire In The Hole	17
20	Days Of The New, The Down Town	17
21	Fuel, Shimmer	16
22	Caramel, Lucy	16
23	Econoline Crush, Home	16
24	Soak, Shutter Gut	10
25	Sublime, Santena	10
26	Harvey Danger, Flaggpole Sitba	10
27	Limp Bizkit, Cowardfart	10
28	Sublime, Wrong Way	9
29	Stabbing Westward, What Do I Have To Do?	9
30	The Offspring, Gone Away	9

**WPYX Albany**  
PD/MD: John Cooper

**106**  
Rock 106

	TW	LW
1	Days Of The New, Touch, Peel And Stand	23
2	Go Go Dolls, Ins	21
3	Big Head Todd & The Monsters, Boom Boom	21
4	Kenny Wayne Shepherd, Blue On Black	18
5	Eric Clapton, My Father's Eyes	15
6	Matchbox 20, Real World	14
7	Fastball, The Way	13
8	John Fogerty, Premonition	13
9	Jimmy Page & Robert Plant, Shining In The	12
10	Eric Clapton, She's Gone	12
11	Rod Stewart, Cigarettes And Alcohol	11
12	The Wallflowers, Heroes	11
13	DLR Band, Slam Dunk	8
14	Smash Mouth, Walkin' On The Sun	7
15	Aerosmith, I Don't Want To Miss A Thing	7
16	Sammy Hagar, Both Sides Now	6
17	Tonic, If You Could Only See	6
18	Marcy Playground, Sex And Candy	6
19	Brother Cane, I Lie In The Bed I Make	6
20	Third Eye Blind, Semi-Charmed Life	6
21	Green Day, Time Of Your Life	



★ ★ ★ **AIRPOWER** ★ ★ ★  
(Minimum 800 detections for the first time)

NO RECORDS QUALIFIED FOR AIRPOWER THIS WEEK

**AIRPOWER BOUND**

Total Plays/Gain

**MONSTER MAGNET 762/132**  
*Space Lord (A&M)*

Total Stations: 69/Chart Move: 27-20  
Heavy (21+ plays): 7 KILO, KNCN, KNJY, KUPD, WMFS, WTKX, WXTB  
Medium (14-20): 14 KAZR, KBER, KEGL, KRAD, KRXQ, KRZR, WAAF, WCCC, WJRR, WKLQ, WLZR, WNOR, WQXA, WTPT  
Light (Under 14): 48  
New Airplay This Week: 10 KISS, KMBY, KOMP, KKUS, WBZX, WDHA, WHJY, WKRK, WVRK, WXRC

**ROD STEWART 761/91**  
*Cigarettes And Alcohol (Warner Bros.)*

Total Stations: 57/Chart Move: 24-21  
Heavy (21+): 6 KCAL, KMOD, KSHE, WLVQ, WPLR, WZZO  
Medium (14-20): 19 KDKB, KGGO, KLAQ, KLOS, KLPX, KMBY, KMJX, KRZZ, KTAL, WBAB, WOVE, WEGR, WIMZ, WIXV, WONE, WRXL, WSTZ, WTPA, WZZR  
Light (Under 14): 32  
New Airplay This Week: 3 WIMZ, WKQQ, WRDU

**GOO GOO DOLLS 738/27**  
*Iris (Warner Sunset/Reprise)*

Total Stations: 55/Chart Move: 22-22  
Heavy (21+): 11 KDKB, KLAQ, KRAB, KRAD, KTUX, WJRR, WKLS, WPYX, WTUE, WWDC, WZTA  
Medium (14-20): 12 KEZO, KLPX, KNCN, KTAL, WAPL, WBAB, WEBN, WQXA, WSTZ, WTPA, WTPT, WZZO  
Light (Under 14): 32  
New Airplay This Week: 3 KLLO, WHJY, WIYY

**FUEL 683/41**  
*Shimmer (550 Music)*

Total Stations: 51/Chart Move: 26-23  
Heavy (21+): 7 KILO, KNJY, KRAD, KTUX, KTXQ, WAAF, WQXA  
Medium (14-20): 16 KBER, KBPI, KEZO, KISS, KLBJ, KNCN, KRXQ, KRZR, KZRR, WCCC, WJRR, WTFX, WTKX, WTPT, WZTA, WZZO  
Light (Under 14): 28  
New Airplay This Week: 1 WHJY

**ERIC CLAPTON 664/15**  
*She's Gone (Reprise)*

Total Stations: 48/Chart Move: 25-24  
Heavy (21+): 7 KMOD, WBAB, WLVQ, WONE, WPLR, WZZO, WZZR  
Medium (14-20): 19 KDKB, KGGO, KLPX, KMBY, KMJX, KRZZ, KTAL, KTYD, KZRR, WAPL, WBLM, WCMF, WDHA, WOVE, WEGR, WIXV, WIZN, WKLC, WKLS  
Light (Under 14): 22

**DAYS OF THE NEW 633/300**  
*The Down Town (Outpost/Geffen)*

Total Stations: 54/Chart Move: 40-26  
Heavy (21+): 6 KILO, KZRR, WAAF, WTFX, WXTB, WYSP  
Medium (14-20): 14 KCAL, KEZO, KRXQ, KRZR, KUFO, WCCC, WEBN, WJRR, WKLQ, WLZR, WMFS, WRCX, WTKX, WTPT  
Light (Under 14): 34  
New Airplay This Week: 21 KATT, KEGL, KIOZ, KLBJ, KRAD, KRZR, KTUX, KZRR, WAPL, WCCC, WJRR, WKLO, WMFS, WMMR, WQXA, WRIF, WTPA, WTPT, WXRC, WZMT, WZTA

**JERRY CANTRELL 611/55**  
*My Song (Columbia)*

Total Stations: 50/Chart Move: 29-27  
Heavy (21+): 9 KEGL, KNJY, KRAD, KRZR, KTUX, KTXQ, WAAF, WAPL, WZTA

Medium (14-20): 13 KILO, KRXQ, KUPD, KZRR, WBUZ, WEBN, WIOT, WJRR, WMFS, WNOR, WTKX, WXRC, WXTB  
Light (Under 14): 28  
New Airplay This Week: 2 WCMF, WFYV

**FASTBALL 499/37**  
*The Way (Hollywood)*

Total Stations: 39/Chart Move: 30-30  
Heavy (21+): 6 KRAB, KRAD, KTXQ, WQXA, WTKX, WZTA  
Medium (14-20): 11 KISS, KLAQ, KLBJ, KMBY, WBAB, WDHA, WOVE, WEBN, WFBO, WMMS, WWDC  
Light (Under 14): 22  
New Airplay This Week: 2 WBZX, WKLS

**JOHN FOGERTY 497/140**  
*Premonition (Reprise)*

Total Stations: 44/Chart Move: 36-31  
Heavy (21+): 3 WAPL, WONE, WRDU  
Medium (14-20): 10 KMJX, KMOD, KTAL, WEGR, WKLC, WMMS, WRXL, WSTZ, WZZO, WZZR  
Light (Under 14): 31  
New Airplay This Week: 9 KGGO, KSHE, WBAB, WCKW, WFBO, WIOT, WIXV, WNOC, WRXL

**JIMMY PAGE & ROBERT PLANT 475/96**  
*Shining In The Light (Atlantic)*

Total Stations: 46/Chart Move: 34-32  
Heavy (21+): 4 KMOD, WDHA, WIYY, WMMS  
Medium (14-20): 13 KDKB, KEZO, KLBJ, KZRR, WEGR, WIZN, WKLC, WKQQ, WMMR, WNCX, WONE, WRXL, WZZR  
Light (Under 14): 29  
New Airplay This Week: 3 KCAL, KGGO, WWDC

**BIG WRECK 440/24**  
*That Song (Atlantic)*

Total Stations: 40/Chart Move: 32-33  
Heavy (21+): 5 KATT, WAAF, WCMF, WTKX, WXRC  
Medium (14-20): 8 KLBJ, KQRC, KTUX, WCCC, WJRR, WKLQ, WMFS, WQXA  
Light (Under 14): 27  
New Airplay This Week: 2 WFYV, WKQQ

**ADDICT 390/13**  
*Monsterside (Big Cat/V2)*

Total Stations: 36/Chart Move: 35-34  
Heavy (21+): 4 KTUX, WTKX, WXTB, WZTA  
Medium (14-20): 7 KAZR, KILO, KRZR, KUPD, WCCC, WLZR, WNOR  
Light (Under 14): 25  
New Airplay This Week: 2 KDKB, KSJO

**CARAMEL 367/30**  
*Lucy (41/Geffen)*

Total Stations: 43/Chart Move: 38-36  
Heavy (21+): 3 KQRC, KTUX, WCCC  
Medium (14-20): 6 KLBJ, KRXQ, KUPD, WOVE, WXRC, WZMT  
Light (Under 14): 34  
New Airplay This Week: 2 KRZR, WKQQ

**CHART BOUND**

Total Plays/Gain

**GIRLS AGAINST BOYS 279/24**  
*Park Avenue (DGC/Geffen)*

Total Stations: 38  
Heavy (21+): 1 KNJY  
Medium (14-20): 4 KEGL, WKLQ, WMFS, WQXA  
Light (Under 14): 33  
New Airplay This Week: 4 WBZX, WNOR, WRCX, WSTZ

**MOST NEW STATIONS**

No. Of Stations

**DAYS OF THE NEW 21**  
*The Down Town (Outpost/Geffen)*

**MONSTER MAGNET 10**  
*Space Lord (A&M)*

**JOHN FOGERTY 9**  
*Premonition (Reprise)*

**GRAVITY KILLS 9**  
*Falling (TVT)*

**AEROSMITH 8**  
*I Don't Want To Miss A Thing (Columbia)*

**RAMMSTEIN 276/8**  
*Du Hast (Slash/London/Island)*

Total Stations: 44  
Heavy (21+): 1 KNJY  
Medium (14-20): 2 KBER, KUPD  
Light (Under 14): 41  
New Airplay This Week: 4 KFRQ, WBZX, WJRR, WYSP

**CREED 255/105**  
*What's This Life For (Wind-up)*

Total Stations: 28  
Heavy (21+): 1 WIYY  
Medium (14-20): 9 KDKB, KEGL, KILO, KRXQ, WJRR, WLZR, WTKX, WTPT, WXEX  
Light (Under 14): 18  
New Airplay This Week: 7 KATT, KSJO, KUFO, WJRR, WLZR, WXRC, WXTB

**GRAVITY KILLS 245/89**  
*Falling (TVT)*

Total Stations: 39  
Heavy (21+): 0  
Medium (14-20): 4 KNJY, WJRR, WTKX, WXEX  
Light (Under 14): 35  
New Airplay This Week: 9 KEGL, KFRQ, KISS, KRAD, WBUZ, WCCC, WMFS, WXTB, WYSP

**THE GANDHARVAS 244/38**  
*Downtime (MCA)*

Total Stations: 32  
Heavy (21+): 0  
Medium (14-20): 7 KDKB, KNJY, KRAD, KRXQ, KRZR, KTUX, WTKX  
Light (Under 14): 25  
New Airplay This Week: 1 KMBY

**OUR LADY PEACE 222/35**  
*4 AM (Columbia)*

Total Stations: 28  
Heavy (21+): 0  
Medium (14-20): 6 KRAD, WJRR, WQXA, WTKX, WXEX, WXRC  
Light (Under 14): 22  
New Airplay This Week: 1 KFRQ

**MARCY PLAYGROUND 214/18**  
*Saint Joe On The School Bus (Capitol)*

Total Stations: 27  
Heavy (21+): 0  
Medium (14-20): 6 KLBJ, KMBY, KRAD, KRZR, WJRR, WZMT  
Light (Under 14): 21

**SCOTT THOMAS BAND 207/32**  
*Black Valentine (Elektra/EEG)*

Total Stations: 28  
Heavy (21+): 0  
Medium (14-20): 3 KDKB, KLPX, KTUX  
Light (Under 14): 25  
New Airplay This Week: 3 WAPL, WEGR, WONE

**GREEN DAY 182/24**  
*Redundant (Reprise)*

Total Stations: 22  
Heavy (21+): 0  
Medium (14-20): 5 KRAD, KRZR, WEBN, WTPA, WXEX  
Light (Under 14): 17  
New Airplay This Week: 2 WJRR, WVRK

**FEEDER 176/51**  
*High (Echo/Elektra/EEG)*

Total Stations: 20  
Heavy (21+): 3 KTUX, WAAF, WXEX

Medium (14-20): 2 KEGL, WWDC  
Light (Under 14): 15  
New Airplay This Week: 3 KLBJ, KQRC, WXRC

**RAGE AGAINST THE MACHINE 173/45**  
*No Shelter (Epic)*

Total Stations: 24  
Heavy (21+): 4 KNJY, WAAF, WMFS, WXEX  
Medium (14-20): 0  
Light (Under 14): 20

**FILTER 164/45**  
*One (Elektra/EEG)*

Total Stations: 28  
Heavy (21+): 0  
Medium (14-20): 2 KNJY, KRAD  
Light (Under 14): 26  
New Airplay This Week: 6 KEGL, KRXQ, KTUX, WTPT, WXRC, WZMT

**DEEP PURPLE 163/55**  
*Any Fule Kno That (CMC International)*

Total Stations: 25  
Heavy (21+): 0  
Medium (14-20): 3 WKLQ, WRXL, WZZR  
Light (Under 14): 22  
New Airplay This Week: 5 KFRQ, KSHE, KXXR, WKLQ, WRXL

**LIMP BIZKIT 160/44**  
*Sour (Flip/Interscope)*

Total Stations: 23  
Heavy (21+): 0  
Medium (14-20): 3 KNJY, KRAD, WXEX  
Light (Under 14): 20  
New Airplay This Week: 5 WQXA, WTPT, WXRC, WZMT, WZTA

**THE HUNGER 158/57**  
*Free (Universal)*

Total Stations: 23  
Heavy (21+): 0  
Medium (14-20): 2 KUPD, WMFS  
Light (Under 14): 21  
New Airplay This Week: 6 KFRQ, WIYY, WLZR, WMFS, WRIF, WSTZ

**BLUE OYSTER CULT 154/37**  
*Harvest Moon (CMC International)*

Total Stations: 15  
Heavy (21+): 0  
Medium (14-20): 4 KMOD, WDHA, WIZN, WRXL  
Light (Under 14): 11  
New Airplay This Week: 3 WCMF, WFBO, WRDU

**COREY GLOVER 153/-5**  
*Do You First, Then Do Myself (LaFace/Arista)*

Total Stations: 17  
Heavy (21+): 1 WAAF  
Medium (14-20): 2 KNJY, WQXA  
Light (Under 14): 14  
New Airplay This Week: 1 WZMT

**FOO FIGHTERS 134/46**  
*Walking After You (Roswell/Capitol)*

Total Stations: 23  
Heavy (21+): 0  
Medium (14-20): 1 KTUX  
Light (Under 14): 22  
New Airplay This Week: 4 KEGL, WAQX, WBAB, WZTA

**HARVEY DANGER 121/13**  
*Flagpole Sitta (Slash/London/Island)*

Total Stations: 12  
Heavy (21+): 0  
Medium (14-20): 3 KEGL, KRAD, WJRR  
Light (Under 14): 9  
New Airplay This Week: 1 KRAB

**THE VERVE 116/11**  
*Lucky Man (VC/Hut/Virgin)*

Total Stations: 12  
Heavy (21+): 0  
Medium (14-20): 2 WTKX, WXRC  
Light (Under 14): 10  
New Airplay This Week: 1 WZZO

**★ LENNY KRAVITZ 114/44**  
*Fly Away (Virgin)*

Total Stations: 16  
Heavy (21+): 0  
Medium (14-20): 3 KLBJ, KTXQ, WJRR  
Light (Under 14): 13  
New Airplay This Week: 4 KILO, KTXQ, WIZN, WXTB

**CAROLINE'S SPINE 111/19**  
*Wallflower (Hollywood)*

Total Stations: 16  
Heavy (21+): 1 KTUX  
Medium (14-20): 0  
Light (Under 14): 15  
New Airplay This Week: 1 WSTZ

**BAD RELIGION 101/-3**  
*Shades Of Truth (Atlantic)*

Total Stations: 21  
Heavy (21+): 1 KRZR  
Medium (14-20): 0  
Light (Under 14): 20

**★ DRAIN S.T.H. 93/62**  
*Crack The Liars Smile (The Enclave/Mercury)*

Total Stations: 18  
Heavy (21+): 0  
Medium (14-20): 1 KNJY  
Light (Under 14): 17  
New Airplay This Week: 7 KAZR, KNJY, KRAD, KSJO, WNOR, WRIF, WTPT

**UNWRITTEN LAW 90/9**  
*California Sky (Interscope)*

Total Stations: 21  
Heavy (21+): 0  
Medium (14-20): 1 KNJY  
Light (Under 14): 20

**CLUTCH 89/8**  
*The Elephant Riders (Columbia)*

Total Stations: 21  
Heavy (21+): 1 KNJY  
Medium (14-20): 0  
Light (Under 14): 20  
New Airplay This Week: 1 KRAD

**GUSTER 89/10**  
*Airport Song (Hybrid/Sire)*

Total Stations: 13  
Heavy (21+): 0  
Medium (14-20): 2 KTUX, WXEX  
Light (Under 14): 11  
New Airplay This Week: 1 WIZN

**★ VAN ZANT 89/31**  
*That Was Yesterday (CMC International)*

Total Stations: 6  
Heavy (21+): 2 WAPL, WRDU  
Medium (14-20): 2 WNCX, WROQ  
Light (Under 14): 2

**COAL CHAMBER 81/2**  
*Sway (The Roof Is On Fire) (Roadrunner)*

Total Stations: 16  
Heavy (21+): 0  
Medium (14-20): 1 KNJY  
Light (Under 14): 15  
New Airplay This Week: 1 KTUX

**★ SNOT 76/19**  
*The Box (Geffen)*

Total Stations: 18  
Heavy (21+): 0  
Medium (14-20): 1 KNJY  
Light (Under 14): 17  
New Airplay This Week: 2 KRXQ, WAAF



SONG ACTIVITY REPORTS



For Week Ending May 31, 1998

Updated song tracking information for the last 3 weeks for all songs showing increased play this week. Total plays and gain do not include video play. Markets listed in order of population.

Table with 12 columns: Artist, Song, Total Plays/Gain, Chart Move, and station codes. Includes entries for Aerosmith, Brother Kane, Jerry Cantrell, Eric Clapton, and Creed.

Table with 12 columns: Artist, Song, Total Plays/Gain, Chart Move, and station codes. Includes entries for Creed, Days of the New, Fuel, Go Go Dolls, and Dave Matthews Band.



SONG ACTIVITY REPORTS



For Week Ending May 31, 1998

Detailed song tracking information for the last 3 weeks for all songs showing increased play this week. Total plays and gain do not include video play. Markets listed in order of population.

Table with 12 columns: Artist, Song, Total Stations, Chart Move, and 12 regional markets (L.A., Chicago, Detroit, Dallas, Wash., DC, Houston, Boston, Miami, Atlanta, Seattle, Long Isl., San Diego, Minn., St. Louis, Balt., Pitts., Phoenix, Tampa, Cleveland, Denver, Port., OR, Cincinnati, Kan. City, Kansas, Sacramento, San Jose, Provid., Columbus, OH, Norfolk, San Antonio, Salt Lake, Indian., Chart., NC, New Or., Orlando, Hartford, Memphis, Rochester, W.P. Beach, Las Vegas, Louisville, Ral./Dur.).

Table with 12 columns: Artist, Song, Total Stations, Chart Move, and 12 regional markets (L.A., Chicago, Detroit, Dallas, Wash., DC, Houston, Boston, Miami, Atlanta, Seattle, Long Isl., San Diego, Minn., St. Louis, Balt., Pitts., Phoenix, Tampa, Cleveland, Denver, Port., OR, Cincinnati, Kan. City, Kansas, Sacramento, San Jose, Provid., Columbus, OH, Norfolk, San Antonio, Salt Lake, Indian., Chart., NC, New Or., Orlando, Hartford, Memphis, Rochester, W.P. Beach, Las Vegas, Louisville, Ral./Dur.).



THIS WEEK	LAST WEEK	WKS. ON CHART	HERITAGE ROCK		DETECTIONS	
			TITLE/IMPRINT/PROMOTION LABEL	ARTIST	TW	LW
<b>★★★ No. 1 ★★★</b>						
1	1	71	BLUE ON BLACK <small>REVOLUTION</small> 15 weeks at No. 1	KENNY WAYNE SHEPHERD BAND	898	883
2	3	7	HEROES <small>EPIC</small>	THE WALLFLOWERS	799	769
3	2	9	MOST HIGH <small>ATLANTIC</small>	JIMMY PAGE & ROBERT PLANT	732	808
4	7	3	I DON'T WANT TO MISS A THING <small>COLUMBIA</small>	AEROSMITH	731	605
5	5	4	CIGARETTES AND ALCOHOL <small>WARNER BROS.</small>	ROD STEWART	727	641
6	4	12	I LIE IN THE BED I MAKE <small>VIRGIN</small>	BROTHER CANE	725	704
7	6	12	SHE'S GONE <small>REPRISE</small>	ERIC CLAPTON	644	630
8	8	8	FIRE IN THE HOLE <small>WARNER BROS.</small>	VAN HALEN	583	568
9	9	10	SLAM DUNK <small>WAWAZAT!!</small>	DLR BAND	560	506
10	10	9	WISHLIST <small>EPIC</small>	PEARL JAM	496	477
11	16	2	PREMONITION <small>REPRISE</small>	JOHN FOGERTY	465	334
12	11	10	REAL WORLD <small>LAVA/ATLANTIC</small>	MATCHBOX 20	443	460
13	13	8	IRIS <small>WARNER SUNSET/REPRISE</small>	GOO GOO DOLLS	413	407
14	14	13	CLOSING TIME <small>MCA</small>	SEMISONIC	410	377
15	12	9	DON'T DRINK THE WATER <small>RCA</small>	DAVE MATTHEWS BAND	405	417
16	15	23	SEX AND CANDY <small>CAPITOL</small>	MARCY PLAYGROUND	374	372
<b>★★★ AIRPOWER ★★★</b>						
17	20	7	SHINING IN THE LIGHT <small>ATLANTIC</small>	JIMMY PAGE & ROBERT PLANT	369	284
18	18	13	TORN <small>WIND-UP</small>	CREED	354	326
19	19	22	SHELF IN THE ROOM <small>OUTPOST/GEFFEN</small>	DAYS OF THE NEW	327	314
20	17	8	I WILL STILL BE LAUGHING <small>COLUMBIA</small>	SOUL ASYLUM	317	333
21	22	9	FUEL <small>ELEKTRA/VEEG</small>	METALLICA	242	230
22	21	13	BOOM BOOM <small>REVOLUTION</small> BIG HEAD TODD & THE MONSTERS WITH JOHN LEE HOOKER		236	274
23	24	6	THE WAY <small>HOLLYWOOD</small>	FASTBALL	205	189
24	26	15	CUT YOU IN <small>COLUMBIA</small>	JERRY CANTRELL	191	185
25	27	17	MY HERO <small>ROSWELL/CAPITOL</small>	FOO FIGHTERS	180	177
26	30	3	BLACK VALENTINE <small>ELEKTRA/VEEG</small>	SCOTT THOMAS BAND	174	149
27	29	6	SHIMMER <small>550 MUSIC</small>	FUEL	171	153
28	<b>NEW</b>		THE DOWN TOWN <small>OUTPOST/GEFFEN</small>	DAYS OF THE NEW	166	95
29	28	6	WHAT I DIDN'T KNOW <small>ATLANTIC</small>	ATHENAEUM	163	153
30	31	5	THAT SONG <small>ATLANTIC</small>	BIG WRECK	154	133
31	23	17	RAGE <small>CMC INTERNATIONAL</small>	VAN ZANT	149	192
32	39	4	HARVEST MOON <small>CMC INTERNATIONAL</small>	BLUE OYSTER CULT	143	108
33	25	9	TIME AGO <small>DGC/GEFFEN</small>	BLACK LAB	134	187
34	38	5	AT THE WATER <small>REPRISE</small>	STEGOSAURUS	132	113
35	33	3	AVA ADORE <small>VIRGIN</small>	THE SMASHING PUMPKINS	132	133
36	32	20	SUNSHOWER <small>ATLANTIC</small>	CHRIS CORNELL	131	133
37	35	6	SAVE YOURSELF <small>COLUMBIA</small>	STABBING WESTWARD	127	123
38	<b>NEW</b>		ANY FULE KNO THAT <small>CMC INTERNATIONAL</small>	DEEP PURPLE	124	86
39	34	24	GIVEN TO FLY <small>EPIC</small>	PEARL JAM	123	124
40	<b>NEW</b>		SPACE LORD <small>A&amp;M</small>	MONSTER MAGNET	122	82

Records showing an increase in detections over the previous week, regardless of chart movement. A record which has been on the chart for more than 20 weeks will not receive a bullet, even if it registers an increase in detections. Airpower awarded to those records which attain 300 detections for the first time. If two records are tied in number of plays, the record being played on more stations is placed first. Records below the top 20 are removed from the chart after 26 weeks.

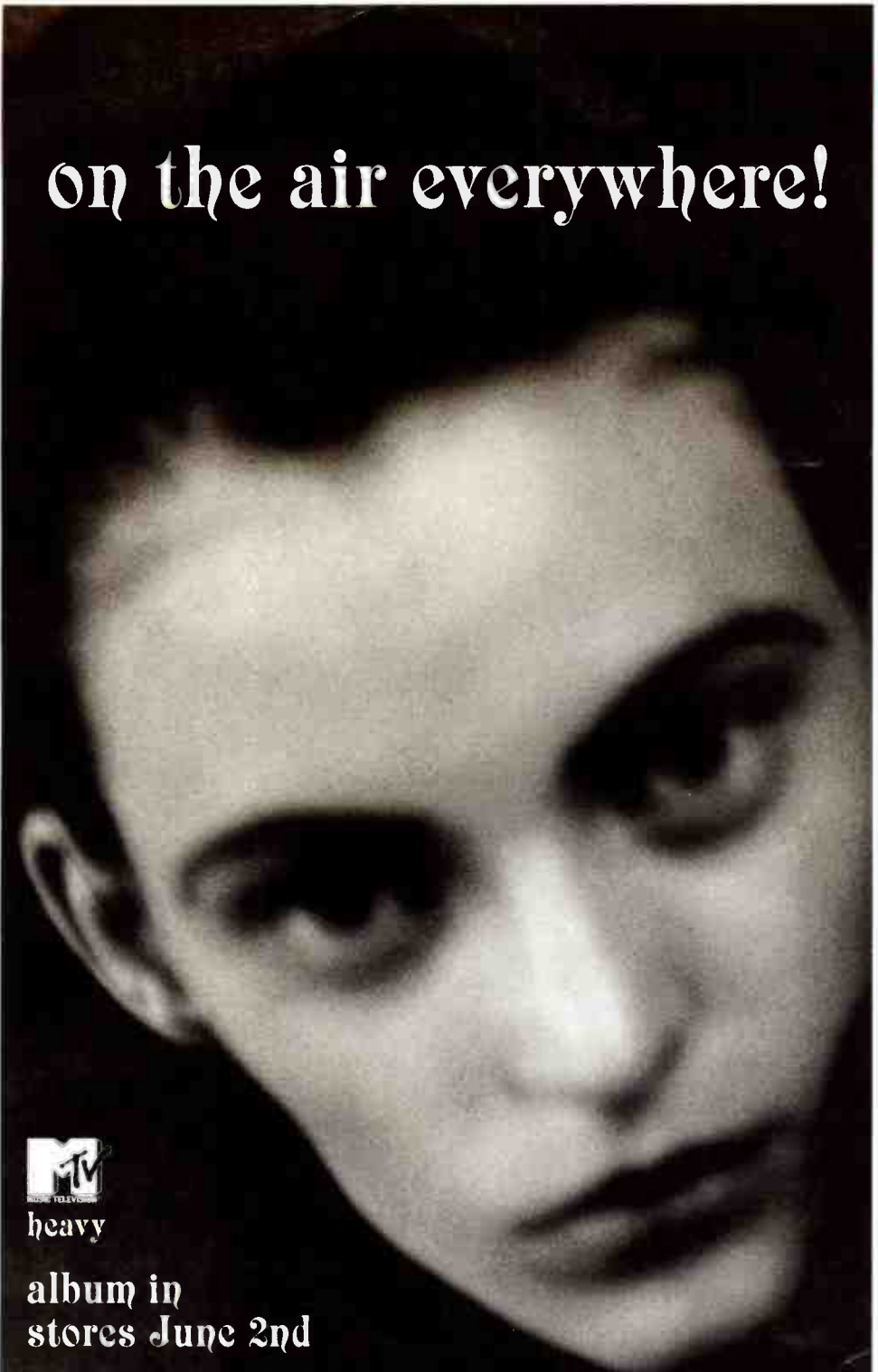
THIS WEEK	LAST WEEK	WKS. ON CHART	ACTIVE ROCK		DETECTIONS	
			TITLE/IMPRINT/PROMOTION LABEL	ARTIST	TW	LW
<b>★★★ No. 1 ★★★</b>						
1	1	18	TORN <small>WIND-UP</small> 6 weeks at No. 1	CREED	1144	1166
2	2	13	SAVE YOURSELF <small>COLUMBIA</small>	STABBING WESTWARD	1060	993
3	3	12	I LIE IN THE BED I MAKE <small>VIRGIN</small>	BROTHER CANE	1033	992
4	4	24	FUEL <small>ELEKTRA/VEEG</small>	METALLICA	990	911
5	5	4	AVA ADORE <small>VIRGIN</small>	THE SMASHING PUMPKINS	986	874
6	6	16	CUT YOU IN <small>COLUMBIA</small>	JERRY CANTRELL	820	799
7	7	20	BLUE ON BLACK <small>REVOLUTION</small>	KENNY WAYNE SHEPHERD BAND	753	771
8	10	8	WISHLIST <small>EPIC</small>	PEARL JAM	697	690
9	9	21	MY HERO <small>ROSWELL/CAPITOL</small>	FOO FIGHTERS	692	716
10	14	4	SPACE LORD <small>A&amp;M</small>	MONSTER MAGNET	640	548
11	11	7	FIRE IN THE HOLE <small>WARNER BROS.</small>	VAN HALEN	633	645
12	8	25	SHELF IN THE ROOM <small>OUTPOST/GEFFEN</small>	DAYS OF THE NEW	618	716
13	12	9	MOST HIGH <small>ATLANTIC</small>	JIMMY PAGE & ROBERT PLANT	600	641
14	13	17	USE THE MAN <small>CAPITOL</small>	MEGADETH	576	559
15	16	43	MY OWN PRISON <small>WIND-UP</small>	CREED	540	525
16	21	7	SLAM DUNK <small>WAWAZAT!!</small>	DLR BAND	534	465
17	17	6	HEROES <small>EPIC</small>	THE WALLFLOWERS	519	495
18	15	13	CLOSING TIME <small>MCA</small>	SEMISONIC	513	540
19	19	12	SHIMMER <small>550 MUSIC</small>	FUEL	512	489
20	22	4	MY SONG <small>COLUMBIA</small>	JERRY CANTRELL	490	433
21	18	26	SEX AND CANDY <small>CAPITOL</small>	MARCY PLAYGROUND	486	492
<b>★★★ AIRPOWER ★★★</b>						
22	35	2	THE DOWN TOWN <small>OUTPOST/GEFFEN</small>	DAYS OF THE NEW	467	238
<b>★★★ AIRPOWER ★★★</b>						
23	24	8	DON'T DRINK THE WATER <small>RCA</small>	DAVE MATTHEWS BAND	400	372
24	26	6	MONSTERSIDE <small>BIG CAT/V2</small>	ADDICT	358	345
25	23	7	BE QUIET AND DRIVE (FAR AWAY) <small>MAVERICK/WARNER BROS.</small>	DEFTONES	349	372
26	27	5	IRIS <small>WARNER SUNSET/REPRISE</small>	GOO GOO DOLLS	325	304
27	30	5	THE WAY <small>HOLLYWOOD</small>	FASTBALL	294	273
28	29	5	THAT SONG <small>ATLANTIC</small>	BIG WRECK	286	283
29	25	7	I WILL STILL BE LAUGHING <small>COLUMBIA</small>	SOUL ASYLUM	263	371
30	32	2	DU HAST <small>SLASH/LONDON/ISLAND</small>	RAMMSTEIN	261	253
31	28	10	HOME <small>RESTLESS</small>	ECONOLINE CRUSH	258	292
32	<b>NEW</b>		I DON'T WANT TO MISS A THING <small>COLUMBIA</small>	AEROSMITH	257	204
33	36	3	PARK AVENUE <small>DGC/GEFFEN</small>	GIRLS AGAINST BOYS	254	235
34	34	5	LUCY <small>41/GEFFEN</small>	CARAMEL	251	241
35	<b>NEW</b>		FALLING <small>TVT</small>	GRAVITY KILLS	229	149
36	37	5	SHE FOUND YOU <small>IGNITION</small>	SAMIAM	229	235
37	<b>NEW</b>		WHAT'S THIS LIFE FOR <small>WIND-UP</small>	CREED	228	137
38	40	13	BAKER STREET <small>EMI-CAPITOL</small>	FOO FIGHTERS	200	211
39	31	9	REAL WORLD <small>LAVA/ATLANTIC</small>	MATCHBOX 20	196	259
40	<b>RE-ENTRY</b>		TIME OF YOUR LIFE (GOOD RIDDANCE) <small>REPRISE</small>	GREEN DAY	195	198

Records showing an increase in detections over the previous week, regardless of chart movement. A record which has been on the chart for more than 20 weeks will not receive a bullet, even if it registers an increase in detections. Airpower awarded to those records which attain 400 detections for the first time. If two records are tied in number of plays, the record being played on more stations is placed first. Records below the top 20 are removed from the chart after 26 weeks.

GREATEST GAINERS		INCREASE IN PLAYS
JOHN FOGERTY • <i>Premonition</i> (REPRISE)		+131
WRXL +15, WAPL +13, KSHE +11, WCKW +9, WBAB +8, WZZO +7, WIXV +7, KGGO +7, KMJX +6, WEGR +6		
AEROSMITH • <i>I Don't Want To Miss A Thing</i> (COLUMBIA)		+126
WROV +13, WVRK +10, WAPL +10, WIXV +9, WLQV +9, WFBQ +9, KLAQ +6, WIZN +5, WAQX +5, WPLR +5		
ROD STEWART • <i>Cigarettes And Alcohol</i> (WARNER BROS.)		+86
WIMZ +19, KMOD +13, WRDU +10, WONE +8, WDVE +8, KTAL +6, WPLR +6, KGGO +5, WKQQ +4, WRXL +4		
JIMMY PAGE & ROBERT PLANT • <i>Shining In The Light</i> (ATLANTIC)		+85
WDHA +14, WRXL +14, WNCX +12, KMOD +12, WKQQ +9, KTAL +7, KCAL +7, WMMR +5, WONE +4, KGGO +3		
DAYS OF THE NEW • <i>The Down Town</i> (OUTPOST/GEFFEN)		+71
KZRR +21, KCAL +9, WMMR +9, KEZO +7, WTFX +6, KMBY +5, KRZZ +5, WDHA +4, WAPL +4, WEBN +2		

GREATEST GAINERS		INCREASE IN PLAYS
DAYS OF THE NEW • <i>The Down Town</i> (OUTPOST/GEFFEN)		+229
KRZR +16, WCCC +16, WAAF +16, WMFS +14, WJRR +14, WKLQ +14, WTPT +12, KTUX +12, WQXA +11, KLBK +11		
THE SMASHING PUMPKINS • <i>Ava Adore</i> (VIRGIN)		+112
KNJY +15, WTKX +14, WMFS +12, WQXA +12, WCCC +12, WZMT +10, KEGL +8, KRAD +7, WTPA +6, KBER +6		
MONSTER MAGNET • <i>Space Lord</i> (A&M)		+92
WKRK +12, KNJY +11, KNKN +9, WAAF +9, WXTB +6, WTPT +5, WJRR +5, WZTA +5, WXRC +5, KUPD +4		
CREED • <i>What's This Life For</i> (WIND-UP)		+91
WJRR +13, WTPT +11, KILO +9, KATT +9, WLZR +9, KSJO +8, KUFO +7, WXRC +7, WXTB +6, WXEX +5		
GRAVITY KILLS • <i>Falling</i> (TVT)		+80
WCCC +12, KNJY +10, KRAD +9, WBUZ +8, WYSP +7, WXTB +7, KISS +6, KILO +5, WJRR +5, WWDC +5		

# on the air everywhere!



album in stores June 2nd

U.S. dates in July

**4** modern rock monitor  
**10** mainstream rock monitor

The Smashing Pumpkins  
Ava Adore

the first song from the new album Adore

Produced by Billy Corgan and Brad Wood

Mixed by Flood and Billy Corgan Management: Q Prime, Inc.

www.virginrecords.com AOL Keyword: Virgin Records © 1998 Virgin Records America, Inc. and The Smashing Pumpkins

## MODERN ROCK

# POWER PLAYLISTS

AIRPLAY  
**Monitor**

For Week Ending  
May 31, 1998

Powerplay is a weekly chart of the top 100 songs on modern rock radio. It is based on the number of spins of each song on the radio. The chart is compiled by Nielsen Broadcast Data Systems. For more information, please call 1-800-343-7000.

**WXRK New York**  
PD: Steve Kingston  
MD: Mike Peer  
Music Coord: Booker



	TW	LW
1 Radiohead, Karma Police	34	26
2 Green Day, Time Of Your Life	32	20
3 The Smashing Pumpkins, Ava Adore	32	26
4 Pearl Jam, Wishlist	32	20
5 Foo Fighters, My Hero	31	25
6 Tool, Forty Six & 2	30	21
7 Alice In Chains, Down In A Hole	30	17
8 Goo Goo Dolls, Ins	29	21
9 Harvey Danger, Flagpole Sitta	29	17
10 Deftones, Be Quiet And Drive	23	17
11 Days Of The New, Shelf In The Room	23	15
12 Everclear, I Will Buy You A New Life	23	20
13 Creed, My Own Prison	23	18
14 Blink 182, Dammit	22	11
15 Metallica, The Unforgiven II	21	15
16 Black Lab, Time Ago	20	17
17 The Wallflowers, Heroes	18	18
18 The Gandharvas, Downtime	18	17
19 Semisonic, Closing Time	18	13
20 Beastie Boys, Intergalactic	17	0
21 Foo Fighters, Walking After You	15	3
22 Jane's Addiction, Jane Says	15	13
23 Dave Matthews Band, Don't Drink The Water	15	19
24 Rage Against The Machine, No Shelter	13	17
25 Marcy Playground, Sex And Candy	13	10
26 Everclear, Everything To Everyone	13	10
27 Fuel, Shimmer	13	18
28 Tool, Sober	12	8
29 Pearl Jam, Given To Fly	12	9
30 Days Of The New, Touch, Peel And Stand	12	14

**KROQ Los Angeles**  
VP/Pgm: Kevin Weatherly  
APD: Gene Sandbloom  
MD: Lisa Worden



	TW	LW
1 Sublime, Badfish	15	21
2 Garbage, Push It	15	23
3 Goo Goo Dolls, Ins	14	22
4 Tori Amos, Spark	14	19
5 Harvey Danger, Flagpole Sitta	13	21
6 Fastball, The Way	13	17
7 Semisonic, Closing Time	12	19
8 Green Day, Time Of Your Life	11	16
9 The Verve, Bitter Sweet Symphony	11	13
10 Sprung Monkey, Get 'Em Outta Here	11	15
11 Eve 6, Inside Out	11	15
12 Creed, My Own Prison	11	9
13 Blink 182, Dammit	11	13
14 Save Ferris, Goodbye	10	10
15 Big Bad Voodoo Daddy, You And Me And The	10	11
16 The Smashing Pumpkins, Ava Adore	10	12
17 Marcy Playground, Sex And Candy	10	8
18 Sublime, Wrong Way	8	5
19 Foo Fighters, Everlong	8	14
20 Beck, Where It's At	8	6
21 311, Beautiful Disaster	8	10
22 The Crystal Method, Busy Child	7	7
23 311, Down	7	7
24 The Verve, Bitter Sweet Symphony	7	6
25 Beastie Boys, Intergalactic	7	3
26 Blur, Song 2	7	8
27 The Wallflowers, Heroes	7	11
28 Headrillaz, Get Yourself Organized	6	5
29 The Smashing Pumpkins, 1979	6	5
30 311, All Mixed Up	6	5

**WKQX Chicago**  
PD: Alex Luke  
MD: Mary Shuminas



	TW	LW
1 The Smashing Pumpkins, Ava Adore	50	39
2 Eve 6, Inside Out	44	39
3 Fuel, Shimmer	41	40
4 Semisonic, Closing Time	40	38
5 Natalie Imbruglia, Torn	35	33
6 Pearl Jam, Wishlist	34	38
7 The Verve, Lucky Man	26	23
8 Foo Fighters, Everlong	25	21
9 Tori Amos, Spark	23	23
10 Foo Fighters, Walking After You	23	21
11 Goo Goo Dolls, Ins	23	20
12 Marcy Playground, Saint Joe On The	22	25
13 Beastie Boys, Intergalactic	21	0
14 The Wallflowers, Heroes	19	22
15 Dave Matthews Band, Don't Drink The Water	18	12
16 Dave Matthews Band, Ants Marching	18	12
17 Fastball, The Way	17	19
18 Green Day, Time Of Your Life	17	14
19 Harvey Danger, Flagpole Sitta	17	18
20 Matchbox 20, Real World	16	21
21 Ben Folds Five, Song For The Dumped	15	16
22 Creed, What's This Life For	15	12
23 Garbage, Push It	15	19
24 The Smashing Pumpkins, Perfect	14	23
25 Everclear, I Will Buy You A New Life	14	17
26 Beck, Jack-Ass	14	13
27 The Urge, Jump Right In	14	14
28 Dave Matthews Band, Crash Into Me	14	11
29 Everclear, Everything To Everyone	13	12
30 The Verve, Bitter Sweet Symphony	13	12

**WBCN Boston**  
VP/Pgm: Dedipus  
MD: Steve Strick  
AMD: Mike Green



	TW	LW
1 Harvey Danger, Flagpole Sitta	41	36
2 Blink 182, Dammit	38	39
3 Semisonic, Closing Time	37	37
4 Pearl Jam, Wishlist	37	35
5 Radiohead, Karma Police	36	37
6 Dave Matthews Band, Don't Drink The Water	29	28
7 Garbage, Push It	29	28
8 Lenny Kravitz, Fly Away	27	28
9 Stabbing Westward, Save Yourself	27	26
10 The Smashing Pumpkins, Ava Adore	26	27
11 Creed, What's This Life For	25	19
12 Beastie Boys, Intergalactic	23	0
13 Rage Against The Machine, No Shelter	23	17
14 God Lives Underwater, From Your Mouth	18	18
15 Black Lab, Time Ago	17	13
16 The Verve, Lucky Man	16	19
17 Cornershop, Sleep On The Left Side	16	14
18 Our Lady Peace, 4 AM	16	18
19 Pure, Chocolate Bar	16	15
20 The Wallflowers, Heroes	15	19
21 Big Wreck, That Shook Me Out	15	17
22 Everclear, I Will Buy You A New Life	15	13
23 Eve 6, Inside Out	15	13
24 Green Day, Redundant	14	18
25 Marcy Playground, Sex And Candy	14	16
26 Litany, By Myself	14	14
27 Soul Asylum, I Will Still Be Laughing	13	18
28 Tori Amos, Spark	13	17
29 Gravity Kills, Falling	13	9
30 Creed, My Own Prison	12	11

**KLYY Los Angeles**  
VP/Pgm: Steve Blatter  
MD: Mike Savage



	TW	LW
1 Fastball, The Way	33	25
2 Semisonic, Closing Time	33	23
3 Everclear, I Will Buy You A New Life	31	24
4 Goo Goo Dolls, Ins	31	23
5 The Specials, It's You	23	12
6 Fuel, Shimmer	18	10
7 The Wallflowers, Heroes	17	11
8 Marcy Playground, Sex And Candy	17	12
9 Harvey Danger, Flagpole Sitta	17	11
10 Eve 6, Inside Out	16	11
11 Marcy Playground, Saint Joe On The	15	11
12 Beck, Deadweight	15	10
13 Sublime, Wrong Way	15	12
14 The Verve, Bitter Sweet Symphony	15	11
15 Natalie Imbruglia, Torn	14	7
16 Garbage, Push It	14	12
17 The Smashing Pumpkins, Ava Adore	13	14
18 Foo Fighters, Everlong	12	10
19 Tears For Fears, Change	11	9
20 Dramarama, Anything, Anything	11	11
21 Echo & The Bunnymen, Lips Like Sugar	11	10
22 INXS, Need You Tonight	11	8
23 Gingo Boingo, Stay	11	6
24 Foo Fighters, Walking After You	11	5
25 The Church, Under The Milky Way	10	6
26 INXS, Don't Change	10	5
27 R.E.M., It's The End Of The World As	10	8
28 Sneaker Pimps, 6 Underground	10	8
29 The B-52's, Debbie	10	4
30 The Urge, Jump Right In	10	8

**WPLY Philadelphia**  
PD: Jim McGuinn  
APD: Doug Kubinski  
MD: Preston Elliot



	TW	LW
1 Pearl Jam, Wishlist	45	46
2 Fastball, The Way	44	42
3 Natalie Imbruglia, Torn	44	44
4 Goo Goo Dolls, Ins	44	45
5 Semisonic, Closing Time	42	44
6 Everclear, I Will Buy You A New Life	42	42
7 Matchbox 20, Real World	41	38
8 Black Lab, Time Ago	36	31
9 The Wallflowers, Heroes	35	36
10 Fuel, Shimmer	33	32
11 The Mighty Mighty Bosstones, Wrong Thing	32	24
12 The Smashing Pumpkins, Ava Adore	31	31
13 Green Day, Redundant	23	27
14 Tori Amos, Spark	31	38
15 Natalie Merchant, Kind & Generous	28	20
16 Alanis Morissette, Uninvited	28	23
17 Cherry Poppin' Daddies, Zoot Suit Riot	26	33
18 Dave Matthews Band, Stay	25	22
19 Garbage, Push It	25	25
20 Marcy Playground, Sex And Candy	23	28
21 The B-52's, Debbie	23	22
22 Third Eye Blind, Losing A Whole Year	23	29
23 Third Eye Blind, Semi-Charmed Life	21	19
24 Athenaeum, What I Didn't Know	21	21
25 Barenaked Ladies, One Week	21	23
26 Kula Shaker, Hush	19	17
27 Harvey Danger, Flagpole Sitta	18	14
28 Matchbox 20, 3 AM	18	18
29 Smash Mouth, Walkin' On The Sun	17	22
30 Green Day, Time Of Your Life	16	20

**WHFS Washington, DC**  
PD: Robert Benjamin  
APD: Bob Waugh  
MD: Pat Ferrise



	TW	LW
1 Semisonic, Closing Time	41	36
2 Garbage, Push It	37	36
3 Fastball, The Way	36	32
4 Harvey Danger, Flagpole Sitta	36	32
5 Sublime, Caress Me Down	35	24
6 Dave Matthews Band, Don't Drink The Water	35	34
7 The Smashing Pumpkins, Ava Adore	31	34
8 Goo Goo Dolls, Ins	27	25
9 Tori Amos, Spark	24	21
10 Third Eye Blind, Jumper	24	23
11 The Wallflowers, Heroes	24	24
12 Big Bad Voodoo Daddy, You And Me And The	24	13
13 The Urge, Jump Right In	23	25
14 Sprung Monkey, Get 'Em Outta Here	22	19
15 Everclear, Father Of Mine	21	2
16 Green Day, Time Of Your Life	21	19
17 Fuel, Shimmer	19	16
18 Eve 6, Inside Out	19	18
19 The Verve, Bitter Sweet Symphony	17	17
20 Marcy Playground, Sex And Candy	17	16
21 Beastie Boys, Intergalactic	17	5
22 Marcy Playground, Saint Joe On The	16	19
23 Cherry Poppin' Daddies, Zoot Suit Riot	16	16
24 Everclear, I Will Buy You A New Life	15	24
25 Blur, Song 2	15	12
26 Everclear, Everything To Everyone	15	14
27 Pearl Jam, In Hiding	15	14
28 Foo Fighters, Everlong	14	20
29 The Smashing Pumpkins, Perfect	14	3
30 Creed, My Own Prison	14	17

**WPLT Detroit**  
PD: Garrett Michaels  
MD: Ann DeLisi



	TW	LW
1 Matchbox 20, Real World	47	32
2 Alanis Morissette, Uninvited	47	32
3 Natalie Imbruglia, Torn	47	31
4 Goo Goo Dolls, Ins	47	34
5 Semisonic, Closing Time	46	35
6 Green Day, Time Of Your Life	45	32
7 Natalie Merchant, Kind & Generous	35	18
8 Marcy Playground, Sex And Candy	33	33
9 Edwin McCain, I'll Be	27	18
10 Everclear, I Will Buy You A New Life	27	18
11 Paula Cole, We	25	19
12 The Specials, It's You	25	14
13 Fastball, The Way	25	17
14 Third Eye Blind, How's It Going To Be	24	16
15 Tonic, Open Up Your Eyes	24	16
16 Everclear, Everything To Everyone	24	16
17 Sarah McLachlan, Adia	24	17
18 Barenaked Ladies, Brian Wilson	24	17
19 Dave Matthews Band, Don't Drink The Water	24	14
20 The Wallflowers, Heroes	23	18
21 Agents Of Good Roots, Smiling Up The	23	16
22 Pearl Jam, Wishlist	23	16
23 Smash Mouth, Walkin' On The Sun	23	18
24 Matchbox 20, 3 AM	22	16
25 Tori Amos, Spark	22	13
26 Soul Asylum, I Will Still Be Laughing	21	12
27 Cherry Poppin' Daddies, Zoot Suit Riot	21	12
28 Barenaked Ladies, One Week	19	3
29 Sister Hazel, All For You	19	13
30 Athenaeum, What I Didn't Know	19	12

**KDGE Dallas**  
PD: Duane Doherty  
APD/MD: Alan E. Smith



	TW	LW
1 Goo Goo Dolls, Ins	44	44
2 Fuel, Shimmer	43	43
3 Natalie Imbruglia, Torn	43	43
4 Fastball, The Way	43	43
5 Semisonic, Closing Time	42	17
6 Pearl Jam, Wishlist	41	18
7 Matchbox 20, Real World	32	15
8 The Smashing Pumpkins, Ava Adore	29	36
9 Athenaeum, What I Didn't Know	22	14
10 The Urge, Jump Right In	22	14
11 Garbage, Push It	20	18
12 Our Lady Peace, Superman's Dead	19	16
13 The Crystal Method, Keep Hope Alive	19	18
14 Stabbing Westward, Save Yourself	18	13
15 Ben Folds Five, Song For The Dumped	18	19
16 Rage Against The Machine, No Shelter	18	4
17 The Verve, Lucky Man	17	17
18 The Wallflowers, Heroes	17	17
19 Lenny Kravitz, If You Can't Say No	17	15
20 Everclear, Everything To Everyone	17	13
21 Sprung Monkey, Get 'Em Outta Here	17	9
22 Our Lady Peace, Clumsy	16	13
23 Marcy Playground, Sex And Candy	16	13
24 Our Lady Peace, 4 AM	16	17
25 Creed, My Own Prison	16	17
26 Dave Matthews Band, Don't Drink The Water	16	20
27 Third Eye Blind, Graduate	15	13
28 Third Eye Blind, How's It Going To Be	15	14
29 Foo Fighters, Everlong	15	10
30 Foo Fighters, My Hero	15	40

**WNNX Atlanta**  
DM: Brian Philips  
PD: Leslie Fram  
MD: Sean Demery



	TW	LW
1 Goo Goo Dolls, Ins	26	30
2 Eve 6, Inside Out	26	36
3 Alanis Morissette, Uninvited	26	28
4 Fastball, The Way	25	32
5 Semisonic, Closing Time	25	33
6 Garbage, Push It	24	33
7 The Smashing Pumpkins, Ava Adore	24	33
8 Harvey Danger, Flagpole Sitta	22	31
9 Grant Lee Buffalo, Truly, Truly	22	30
10 Fuel, Shimmer	22	26
11 Dave Matthews Band, Don't Drink The Water	20	22
12 The Wallflowers, Heroes	19	31
13 The Verve, Lucky Man	19	21
14 Addict, Monstrosity	19	17
15 Everclear, I Will Buy You A New Life	17	22
16 Tori Amos, Spark	17	20
17 The Urge, Jump Right In	17	22
18 Lenny Kravitz, If You Can't Say No	17	21
19 Widespread Panic, Travelin' Light	16	23
20 Guster, Airport Song	16	25
21 Matchbox 20, Long Day	15	17
22 Pearl Jam, Wishlist	15	22
23 Cherry Poppin' Daddies, Zoot Suit Riot	15	23
24 Ben Folds Five, Song For The Dumped	15	19
25 Creed, My Own Prison	14	21
26 Athenaeum, What I Didn't Know	14	

POWER PLAYLISTS

Broadcast Data Systems  
Radio Track  
Apple, PlayStation, Gateway

AIRPLAY  
**Monitor**

For Week Ending  
May 31, 1998

Playlists supplied by Broadcast Data Systems' Radio Track service. Songs ranked by number of plays in monitored week. Playlists are listed in order of TSA weekly charts, beginning with the highest-charting station. Charts are updated twice weekly following the release of the Spring and Fall Arbitron surveys. The number of stations shown each week varies depending upon space.

**KTBZ Houston**  
PD: Jim Trapp  
APD: Steve Robison  
MD: David Sadoff



TW LW

- 1 Fastball, The Way 45 41
- 2 Dave Matthews Band, Don't Drink The Water 40 42
- 3 Goo Goo Dolls, Iris 39 34
- 4 Garbage, Push It 38 41
- 5 The Wallflowers, Heroes 38 41
- 6 Semisonic, Closing Time 37 38
- 7 Harvey Danger, Flagpole Sitta 34 35
- 8 Brother Cane, I Lie In The Bed I Make 33 30
- 9 The Smashing Pumpkins, Ava Adore 33 33
- 10 Fuel, Shimmer 33 27
- 11 Athensoun, What I Didn't Know 23 25
- 12 Creed, Torn 23 25
- 13 Tori Amos, Spark 23 20
- 14 Marcy Playground, Saint Joe On The 22 20
- 15 God Lives Underwater, From Your Mouth 22 21
- 16 Pearl Jam, Wishlist 21 21
- 17 The Verve, Lucky Man 20 18
- 18 Soul Asylum, I Will Buy You A New Life 20 18
- 19 Creed, My Own Prison 19 17
- 20 Our Lady Peace, 4 AM 18 14
- 21 Death In Vegas, Diet 17 14
- 22 Days Of The New, Touch, Peel And Stand 17 14
- 23 The Urge, Jump Right In 16 13
- 24 Eve 6, Inside Out 15 14
- 25 Everclear, I Will Buy You A New Life 15 10
- 26 Foo Fighters, Baker Street 15 8
- 27 Everclear, Everything To Everyone 15 8
- 28 Stabbing Westward, Save Yourself 14 20
- 29 Green Day, Redundant 12 16
- 30 Foo Fighters, Everlong 12 7

**KOME San Jose**  
APD: Don West  
AMD: Jeanette Grgurevic



TW LW

- 1 The Smashing Pumpkins, Ava Adore 36 32
- 2 Sublime, Badfish 34 26
- 3 Everclear, I Will Buy You A New Life 33 18
- 4 Harvey Danger, Flagpole Sitta 33 28
- 5 Creed, My Own Prison 32 23
- 6 Fastball, The Way 31 23
- 7 Garbage, Push It 31 27
- 8 Semisonic, Closing Time 30 18
- 9 Marcy Playground, Saint Joe On The 29 25
- 10 Eve 6, Inside Out 28 19
- 11 Green Day, Time Of Your Life 28 20
- 12 Badfish, Karma Sitta 27 20
- 13 Sprung Monkey, Get 'Em Outta Here 26 17
- 14 Pearl Jam, Wishlist 25 19
- 15 311, Beautiful Disaster 25 21
- 16 Baff Punk, Da Funk 25 19
- 17 The Urge, Jump Right In 24 19
- 18 Jewel's Addiction, Jane Says 24 19
- 19 Fuel, Shimmer 22 11
- 20 Third Eye Blind, Jumper 21 15
- 21 Everclear, Father Of Mine 21 19
- 22 Marcy Playground, Sex And Candy 21 22
- 23 Goo Goo Dolls, Iris 20 18
- 24 Blink 182, Dammit 20 16
- 25 Cherry Poppin' Daddies, Zoot Suit Riot 20 14
- 26 Green Day, Redundant 19 15
- 27 Save Ferris, Goodbye 19 20
- 28 Beastie Boys, Intergalactic 19 0
- 29 The Verve, Bitter Sweet Symphony 18 16
- 30 Foo Fighters, My Hero 18 22

**WXDX Pittsburgh**  
PD: John Moschitta  
MD: Lenny Diana



TW LW

- 1 Jerry Cantrell, Cut You In 36 38
- 2 Foo Fighters, My Hero 36 35
- 3 Fastball, The Way 36 36
- 4 Fuel, Shimmer 35 36
- 5 Semisonic, Closing Time 34 40
- 6 Days Of The New, Shell In The Room 33 30
- 7 Goo Goo Dolls, Iris 33 38
- 8 Dave Matthews Band, Don't Drink The Water 31 35
- 9 The Smashing Pumpkins, Ava Adore 24 23
- 10 Creed, My Own Prison 23 23
- 11 Green Day, Redundant 21 23
- 12 The Urge, Jump Right In 21 22
- 13 Garbage, Push It 20 25
- 14 Pearl Jam, Wishlist 20 23
- 15 The Wallflowers, Heroes 20 24
- 16 Black Lab, Time Ago 20 24
- 17 Everclear, Everything To Everyone 17 18
- 18 Third Eye Blind, Losing A Whole Year 17 18
- 19 Sublime, What I Got 16 11
- 20 God Lives Underwater, From Your Mouth 16 18
- 21 Days Of The New, Touch, Peel And Stand 16 13
- 22 The Verve, Lucky Man 16 20
- 23 Our Lady Peace, Clumsy 15 15
- 24 Scott Weiland, Opposite Octave Reaction 15 4
- 25 Harvey Danger, Flagpole Sitta 14 15
- 26 The Mighty Mighty Bosstones, The Impression 13 15
- 27 Marcy Playground, Sex And Candy 13 12
- 28 Blur, Song 2 13 14
- 29 Third Eye Blind, How's It Going To Be 13 12
- 30 Our Lady Peace, 4 AM 13 2

**KPNT St. Louis**  
OM: Allan Fee  
APD: Marty Linck  
MD: Traci Wilde



TW LW

- 1 The Urge, Jump Right In 38 36
- 2 Everclear, I Will Buy You A New Life 37 34
- 3 Creed, My Own Prison 37 37
- 4 Semisonic, Closing Time 34 39
- 5 Fastball, The Way 33 32
- 6 The Smashing Pumpkins, Ava Adore 32 31
- 7 Pearl Jam, Wishlist 30 29
- 8 Goo Goo Dolls, Iris 29 18
- 9 Eve 6, Inside Out 28 17
- 10 Matchbox 20, Real World 26 24
- 11 Harvey Danger, Flagpole Sitta 26 23
- 12 Fuel, Shimmer 23 21
- 13 Marcy Playground, Sex And Candy 23 24
- 14 The Wallflowers, Heroes 23 21
- 15 Foo Fighters, Baker Street 22 25
- 16 Athensoun, What I Didn't Know 22 22
- 17 Days Of The New, Shell In The Room 22 28
- 18 Ben Folds Five, Song For The Dumped 22 19
- 19 Green Day, Redundant 21 21
- 20 Jerry Cantrell, Cut You In 21 22
- 21 Gravy Kills, Falling 21 14
- 22 Dave Matthews Band, Don't Drink The Water 19 18
- 23 Garbage, Push It 18 19
- 24 311, Beautiful Disaster 16 16
- 25 Our Lady Peace, Clumsy 16 15
- 26 The Verve, Bitter Sweet Symphony 16 18
- 27 Green Day, Time Of Your Life 15 19
- 28 Days Of The New, Touch, Peel And Stand 14 14
- 29 Beastie Boys, Intergalactic 14 0
- 30 Deftones, Be Quiet And Drive 14 14

**CIMX Detroit**  
PD: Murray Brookshaw  
APD/MD: Vince Cannova



TW LW

- 1 Fuel, Shimmer 46 50
- 2 Harvey Danger, Flagpole Sitta 45 50
- 3 Goo Goo Dolls, Iris 44 37
- 4 Everclear, I Will Buy You A New Life 44 50
- 5 Garbage, Push It 43 44
- 6 The Verve, Lucky Man 38 35
- 7 The Smashing Pumpkins, Ava Adore 38 35
- 8 Our Lady Peace, 4 AM 38 18
- 9 Pura, Swinger 36 31
- 10 Semisonic, Closing Time 34 32
- 11 Foo Fighters, Walking After You 31 33
- 12 Blink 182, Dammit 30 29
- 13 Matchbox 20, 3 AM 30 29
- 14 Barwood Ladies, One Week 30 7
- 15 Deftones, Be Quiet And Drive 29 28
- 16 The Verve, Bitter Sweet Symphony 27 23
- 17 Fastball, The Way 27 31
- 18 Marcy Playground, Sex And Candy 26 32
- 19 Beastie Boys, Intergalactic 25 0
- 20 Pearl Jam, Given To Fly 25 19
- 21 Girls Against Boys, Park Avenue 24 47
- 22 Cowboy Jubilee, Miles From Our Home 24 22
- 23 Foo Fighters, Everlong 23 31
- 24 The Urge, Jump Right In 23 22
- 25 The Wallflowers, Heroes 22 22
- 26 Esthero, Country Livin' 22 27
- 27 Alanis Morissette, Uninvited 22 24
- 28 Third Eye Blind, How's It Going To Be 22 30
- 29 Tori Amos, Spark 21 11
- 30 Dave Matthews Band, Don't Drink The Water 20 20

**KEDJ Phoenix**  
PD: Shellie Hart  
APD/MD: Chris Patyk



TW LW

- 1 Everclear, Everything To Everyone 39 14
- 2 Stabbing Westward, Save Yourselves 37 34
- 3 Sublime, Carass Me Yours 34 34
- 4 Tool, Forty Six & 2 29 25
- 5 The Smashing Pumpkins, Ava Adore 27 28
- 6 Creed, My Own Prison 27 26
- 7 Beastie Boys, Intergalactic 24 0
- 8 Puff Daddy, Come With Me 24 29
- 9 Rage Against The Machine, The Ghost Of 24 22
- 10 Brother Cane, I Lie In The Bed I Make 22 11
- 11 Garbage, I Think I'm Paranoid 22 16
- 12 Harvey Danger, Flagpole Sitta 21 20
- 13 Rage Against The Machine, No Shelter 21 22
- 14 The Wallflowers, Heroes 21 23
- 15 Girls Against Boys, Park Avenue 20 23
- 16 Fuzz Bubble, Out There 19 20
- 17 Glorstone, Halfway 19 15
- 18 Foo Fighters, My Hero 19 17
- 19 Foo Fighters, Everlong 18 17
- 20 The Urge, Jump Right In 18 12
- 21 Green Day, Brain Snow 18 12
- 22 Eve 6, Inside Out 16 11
- 23 Pearl Jam, Wishlist 16 19
- 24 Pearl Jam, Given To Fly 16 19
- 25 Semisonic, Closing Time 16 14
- 26 Deftones, Be Quiet And Drive 14 14
- 27 Silverchik, Untold 13 20
- 28 Blink 182, Dammit 12 19
- 29 The Goochurras, Downtown 11 7
- 30 Phunk Junkiez, Hazze 11 7

**WMRQ Hartford**  
PD: Jay Beau Jones  
MD: Dave Hill



TW LW

- 1 Fuel, Shimmer 44 44
- 2 Goo Goo Dolls, Iris 44 46
- 3 Third Eye Blind, How's It Going To Be 43 40
- 4 Everclear, I Will Buy You A New Life 40 41
- 5 Semisonic, Closing Time 35 25
- 6 Creed, My Own Prison 35 25
- 7 Foo Fighters, Baker Street 31 28
- 8 The Smashing Pumpkins, Ava Adore 31 24
- 9 Dave Matthews Band, Don't Drink The Water 30 29
- 10 Garbage, Push It 29 25
- 11 Harvey Danger, Flagpole Sitta 29 27
- 12 Cherry Poppin' Daddies, Zoot Suit Riot 28 25
- 13 The Urge, Jump Right In 28 14
- 14 Pearl Jam, Wishlist 24 27
- 15 Our Lady Peace, Clumsy 23 43
- 16 Scott Weiland, Opposite Octave Reaction 22 18
- 17 The Wallflowers, Heroes 21 22
- 18 Fastball, The Way 21 28
- 19 Third Eye Blind, Losing A Whole Year 19 19
- 20 Green Day, Redundant 18 17
- 21 Eve 6, Inside Out 17 12
- 22 Sprung Monkey, Get 'Em Outta Here 16 15
- 23 Our Lady Peace, 4 AM 15 0
- 24 Jimmie's Chicken Shack, Dropping Anchor 15 12
- 25 Athensoun, What I Didn't Know 14 10
- 26 Tori Amos, Spark 14 16
- 27 God Lives Underwater, From Your Mouth 14 16
- 28 21st Century J's, Riot Herd 14 12
- 29 Natalie Merchant, Kind & Generous 13 14

**KWOD Sacramento**  
PD: Ron Buncie  
MD: Carla "Raz" Raswyck



TW LW

- 1 Everclear, I Will Buy You A New Life 52 51
- 2 Goo Goo Dolls, Iris 50 51
- 3 Creed, My Own Prison 49 50
- 4 Natalie Imbruglia, Torn 47 52
- 5 The Smashing Pumpkins, Ava Adore 47 49
- 6 Eve 6, Inside Out 45 33
- 7 Blink 182, Dammit 39 51
- 8 Black Lab, Time Ago 30 30
- 9 The Wallflowers, Heroes 29 32
- 10 Semisonic, Closing Time 28 31
- 11 Foo Fighters, My Hero 27 45
- 12 Marcy Playground, Saint Joe On The 27 28
- 13 Pearl Jam, Wishlist 27 10
- 14 Harvey Danger, Flagpole Sitta 26 28
- 15 Sprung Monkey, Get 'Em Outta Here 25 21
- 16 Green Day, Redundant 24 25
- 17 Green Day, Time Of Your Life 24 22
- 18 Sublime, Badfish 24 23
- 19 Sublime, Carass Me Down 19 17
- 20 Dave Matthews Band, Crash Into Me 23 22
- 21 Matchbox 20, Real World 23 23
- 22 Foo Fighters, Everlong 23 24
- 23 Third Eye Blind, How's It Going To Be 23 22
- 24 Marcy Playground, Sex And Candy 23 24
- 25 Third Eye Blind, Losing A Whole Year 23 23
- 26 Days Of The New, Touch, Peel And Stand 23 23
- 27 Natalie Merchant, Kind & Generous 23 22
- 28 Everclear, Everything To Everyone 22 20
- 29 Matchbox 20, 3 AM 22 18
- 30 Save Ferris, The World Is New 21 23

**WENZ Cleveland**  
PD: Dan Binder  
APD: Ric Bennett  
MD: No. 1 Son



TW LW

- 1 Goo Goo Dolls, Iris 45 42
- 2 The Smashing Pumpkins, Ava Adore 41 43
- 3 Semisonic, Closing Time 41 35
- 4 The Wallflowers, Heroes 40 38
- 5 Fastball, The Way 39 35
- 6 Pearl Jam, Wishlist 37 36
- 7 Alanis Morissette, Uninvited 34 34
- 8 Haronaked Ladies, One Week 29 9
- 9 Our Lady Peace, Clumsy 23 20
- 10 Marcy Playground, Sex And Candy 23 23
- 11 Sublime, What I Got 21 45
- 12 The Verve, Lucky Man 20 17
- 13 Sneaker Pimps, 6 Underground 20 13
- 14 The B-52's, Debbie 19 17
- 15 Garbage, Push It 18 17
- 16 Soul Asylum, I Will Still Be Laughing 18 15
- 17 Dave Matthews Band, Don't Drink The Water 18 19
- 18 Our Lady Peace, 4 AM 18 20
- 19 Tori Amos, Spark 17 18
- 20 Green Day, Time Of Your Life 17 22
- 21 Everclear, Everything To Everyone 17 20
- 22 Everclear, I Will Buy You A New Life 17 16
- 23 Fuel, Shimmer 17 12
- 24 Foo Fighters, My Hero 16 19
- 25 Harvey Danger, Flagpole Sitta 16 17
- 26 Ben Folds Five, Song For The Dumped 17 18
- 27 Foo Fighters, Everlong 15 43
- 28 Gravy Kills, Falling 14 14
- 29 Athensoun, What I Didn't Know 14 11
- 30 Marcy Playground, Saint Joe On The 14 16

**WKDF Nashville**  
PD: Kidd Redd  
MD: Sheri Sexton



TW LW

- 1 Goo Goo Dolls, Iris 34 35
- 2 Semisonic, Closing Time 34 38
- 3 Fastball, The Way 33 35
- 4 Fuel, Shimmer 33 32
- 5 Pearl Jam, Given To Fly 32 26
- 6 Dave Matthews Band, Don't Drink The Water 30 33
- 7 Huffamoose, Wait 30 31
- 8 The Wallflowers, Heroes 25 25
- 9 Ben Folds Five, Song For The Dumped 25 25
- 10 Agents Of Good Deeds, Straining Up The 23 21
- 11 Athensoun, What I Didn't Know 23 22
- 12 Everclear, I Will Buy You A New Life 21 18
- 13 Matchbox 20, Real World 21 26
- 14 Lenny Kravitz, If You Can't Say No 18 25
- 15 Third Eye Blind, Losing A Whole Year 18 15
- 16 The B-52's, Debbie 18 15
- 17 Green Day, Time Of Your Life 17 15
- 18 Sarah McLachlan, Sweet Surrender 17 14
- 19 Natalie Merchant, Kind & Generous 17 17
- 20 Ben Folds Five, Brick 17 12
- 21 Sarah McLachlan, Building A Mystery 15 12
- 22 Marcy Playground, Sex And Candy 15 10
- 23 Sister Hazel, All For You 15 13
- 24 Soul Asylum, I Will Still Be Laughing 14 17
- 25 Matchbox 20, Push 14 13
- 26 Third Eye Blind, How's It Going To Be 13 17
- 27 The Verve, Lucky Man 13 9
- 28 Chris Cornell, Sunshower 13 17
- 29 The Urge, Jump Right In 13 15
- 30 Sheryl Crow, If It Makes You Happy 11 8

**WRXZ Indianapolis**  
PD: Scott Jameson  
MD: Michael Young



TW LW

- 1 Goo Goo Dolls, Iris 38 38
- 2 Garbage, Push It 38 37
- 3 Black Lab, Time Ago 36 37
- 4 Semisonic, Closing Time 35 37
- 5 Third Eye Blind, Losing A Whole Year 34 33
- 6 Fuel, Shimmer 33 19
- 7 Jerry Cantrell, Cut You In 27 34
- 8 The Smashing Pumpkins, Ava Adore 27 34
- 9 Fastball, The Way 24 34
- 10 Pearl Jam, Given To Fly 24 23
- 11 Harvey Danger, Flagpole Sitta 24 19
- 12 Creed, My Own Prison 22 28
- 13 The Verve, Lucky Man 22 18
- 14 Dave Matthews Band, Don't Drink The Water 21 19
- 15 Marcy Playground, Saint Joe On The 21 19
- 16 Eve 6, Inside Out 20 9
- 17 Sprung Monkey, Get 'Em Outta Here 20 20
- 18 Our Lady Peace, 4 AM 20 19
- 19 Big Wreck, That Song 18 20
- 20 Smash Mouth, Walkin' On The Sun 18 17
- 21 Green Day, Redundant 18 19
- 22 The Wallflowers, Heroes 17 34
- 23 Days Of The New, Touch, Peel And Stand 17 13
- 24 Natalie Merchant, Kind & Generous 17 11
- 25 Reverend Horton Heat, Lie Detector 16 9
- 26 Days Of The New, Shell In The Room 15 18
- 27 The Verve, Lucky Man 14 17
- 28 Green Day, Hitchin' A Ride 14 10
- 29 Blur, Song 2 13 14
- 30 Everclear, I Will Buy You A New Life 13 14

**KZON Phoenix**  
PD: Paul Peterson  
APD: Laura Smith  
MD: Kevin Mannion



TW LW

- 1 Everclear, I Will Buy You A New Life 33 31
- 2 Fuel, Shimmer 32 33
- 3 Matchbox 20, Real World 32 30
- 4 Semisonic, Closing Time 32 33
- 5 Pearl Jam, Wishlist 31 29
- 6 Edwin McCain, I'll Be 30 29
- 7 Goo Goo Dolls, Iris 28 24
- 8 Garbage, Push It 27 16
- 9 Everything, Hooch 20 17
- 10 Athensoun, What I Didn't Know 20 19
- 11 The Wallflowers, Heroes 19 30
- 12 Natalie Imbruglia, Torn 18 19
- 13 Foo Fighters, Everlong 18 18
- 14 Days Of The New, Touch, Peel And Stand 17 18
- 15 Black Lab, Time Ago 18 9
- 16 Fastball, The Way 17 19
- 17 Green Day, Time Of Your Life 17 13
- 18 Natalie Merchant, Kind & Generous 17 15
- 19 Matchbox 20, 3 AM 16 14
- 20 Yonda Shepard, Seachin' My Soul 16 16
- 21 Third Eye Blind, Semi-Charmed Life 15 14
- 22 Marcy Playground, Sex And Candy 15 13
- 23 The Verve, Lucky Man 15 13
- 24 Ebbz Forsberg, Last Coast 14 16
- 25 Sarah McLachlan, Building A Mystery 13 12
- 26 Tonic, If You Could Only See 12 16
- 27 Third Eye Blind, How's It Going To Be 12 15
- 28 Harvey Danger, Flagpole Sitta 12 8
- 29 The Refreshments, Banditos 11 8



# FEEDER HIGH

THE FIRST SINGLE FROM THE SOUNDTRACK FOR THE COLUMBIA PICTURES MOTION PICTURE

*Can't Hardly Wait*

R&R 46-43\*  
#2 MOST ADDED AGAIN  
NEW THIS WEEK: KTBZ (HOUSTON), KPNT (ST. LOUIS)!  
ON OVER 60 STATIONS INCLUDING:

- |      |      |      |      |
|------|------|------|------|
| WXRK | WQBK | KWOD | WFNX |
| KNDD | WRZX | WGRD | KNRX |
| WBCN | WLUM | WEND | WEQX |
| KOME | WNVE | WRAX | KNRK |

TOP 10 CALLOUT AT KNDD!  
&  
ON OVER 40 ROCK STATIONS INCLUDING:  
WMMS WXTB WLZR  
KEEL WAAF DC101  
WXRC WRCX KQRC

ON TOUR W/STABBING WESTWARD STARTING JUNE 20th!

starring Ethan Embry, Charlie Korsmo, Lauren Ambrose,  
Peter Facinelli, Seth Green and Jennifer Love Hewitt

## FILM OPENS JUNE 12

Also available on Feeder's debut album **POLYTHENE**

"HIGH" PRODUCED BY CHRIS SHELDON & FEEDER REMIXED BY BRIAN SPERBER  
EXECUTIVE PRODUCER: RALPH SALL U.S. REPRESENTATION: AAM

On Elektra compact discs and cassette www.elektra.com  
© 1998 Elektra Entertainment Group, A Division of Warner Communications Inc. A Time Warner Company.





Playlists supplied by Broadcast Data Systems' Radio Track service. Songs ranked by number of plays in monitored week.

XTRA San Diego PD: Bryan Schock MD: Chris Muckley



Table with 2 columns: Song Title, TW LW. Top songs include Semisonic, Closing Time and The Smashing Pumpkins, Ava Adore.

WGRD Grand Rapids PD/MD: Margot Smith AMD: Tim Bronson



Table with 2 columns: Song Title, TW LW. Top songs include Goo Goo Dolls, Iris and Everclear, I Will Buy You A New Life.

KZMZ Minneapolis/St. Paul PD: John Lassman APD: Mike Hanson



Table with 2 columns: Song Title, TW LW. Top songs include Semisonic, Closing Time and Fastball, The Way.

WQBK Albany PD/MD: Kelli McNamara



Table with 2 columns: Song Title, TW LW. Top songs include The Wallflowers, Heroes and Semisonic, Closing Time.

WLUM Milwaukee PD: Chuck Summers



Table with 2 columns: Song Title, TW LW. Top songs include Dave Matthews Band, Don't Drink The Water and Semisonic, Closing Time.

WBRU Providence PD: Tim Schiavelli



Table with 2 columns: Song Title, TW LW. Top songs include Fuel, Shimmer and Fastball, The Way.

WNVE Rochester PD/MD: Erick Anderson



Table with 2 columns: Song Title, TW LW. Top songs include Everclear, I Will Buy You A New Life and Marcy Playground, Sex And Candy.

KNRK Portland, OR PD/MD: Mark Hamilton



Table with 2 columns: Song Title, TW LW. Top songs include Harvey Danger, Flagpole Sitta and The Smashing Pumpkins, Ava Adore.

WEND Charlotte PD: Jack Daniel MD: Rick Brewer



Table with 2 columns: Song Title, TW LW. Top songs include Creed, My Own Prison and 311, Beautiful Disaster.

WFNX Boston PD: Cruze MD: Laurie Gail



Table with 2 columns: Song Title, TW LW. Top songs include The Smashing Pumpkins, Ava Adore and Garbage, Push It.

KXKR Salt Lake City PD: Mike Summers MD: Sean Ziebarth



Table with 2 columns: Song Title, TW LW. Top songs include The Wallflowers, Heroes and Grant Lee Buffalo, Truly, Truly.

KCXX Riverside/San Bernardino PD: Dwight Arnold MD: Bruce Pulley



Table with 2 columns: Song Title, TW LW. Top songs include The Urge, Jump Right In and Fuel, Shimmer.

KENZ Salt Lake City PD: Bruce Jones MD: Don Casual



Table with 2 columns: Song Title, TW LW. Top songs include Goo Goo Dolls, Iris and Everything, Hooch.

KKND New Orleans PD: Dave Stewart APD/MD: Rod Ryan



Table with 2 columns: Song Title, TW LW. Top songs include Fastball, The Way and Garbage, Push It.

XHRM San Diego PD: Mike Halloran MD: Chaz Kelly



Table with 2 columns: Song Title, TW LW. Top songs include Dave Matthews Band, Don't Drink The Water and Rocket From The Crypt, Break It Up.

WEDG Buffalo PD: John Hager MD: Rich Wall



Table with 2 columns: Song Title, TW LW. Top songs include Goo Goo Dolls, Iris and 311, Beautiful Disaster.

WZAZ Columbus PD: Greg Ausham MD: Mark Pennington



Table with 2 columns: Song Title, TW LW. Top songs include Marcy Playground, Sex And Candy and Fastball, The Way.

WPBZ West Palm Beach PD: John O'Connell MD: Dan O'Brien



Table with 2 columns: Song Title, TW LW. Top songs include The Wallflowers, Heroes and Goo Goo Dolls, Iris.

WAQZ Cincinnati PD/MD: Matt Harris APD: Sterling Schiessler



Table with 2 columns: Song Title, TW LW. Top songs include Fastball, The Way and Edwin McCain, I'll Be.

KNRX Kansas City PD: John Lenac APD: Dave Horn MD: Jason Justice



Table with 2 columns: Song Title, TW LW. Top songs include The Smashing Pumpkins, Ava Adore and Jerry Cantrell, Cut You In.

KMYZ Tulsa PD: Lynn Barstow MD: Ray Dog



Table with 2 columns: Song Title, TW LW. Top songs include The Smashing Pumpkins, Ava Adore and Days Of The New, Shelf In The Room.

KROX Austin PD: Sara Trester APD/MD: Lloyd "LA" Houtt



Table with 2 columns: Song Title, TW LW. Top songs include Goo Goo Dolls, Iris and Fastball, The Way.

KTCL Denver PD: Mike O'Connor



Table with 2 columns: Song Title, TW LW. Top songs include Fastball, The Way and Mulu, Pussycat.

KTVE Las Vegas PD: Mike Stern MD: Chris Ripley



Table with 2 columns: Song Title, TW LW. Top songs include Creed, Torn and Blink 182, Josie.





★ ★ ★ **AIRPOWER** ★ ★ ★  
(Minimum 1,100 detections for the first time)

**MARCY PLAYGROUND 1112/123**  
*Saint Joe On The School Bus (Capitol)*  
Total Stations: 70/Chart Move: 22-19  
Heavy (30+ plays): 3 KKND, KNDD, KTEG  
Medium (15-29): 35 CIMX, KCXX, KEDG, KFMA, KFTE, KHTY, KITS, KJEE, KLYY, KLZR, KMYZ, KNRK, KNRX, KOME, KROX, KTBZ, KTOZ, KWOD, KXRK, WARQ, WBTZ, WBZU, WCYY, WGRD, WHFS, WKQX, WKRO, WPBZ, WPLA, WROX, WRXQ, WRXR, WRZX, WXRA, WXZZ  
Light (Under 15): 32  
New Airplay This Week: 2 KDGE, WXEG

**AIRPOWER BOUND**

**ATHENAEUM 1082/82**  
*What I Didn't Know (Atlantic)*  
Total Stations: 68/Chart Move: 21-20  
Heavy (30+ plays): 2 KXRK, WXRA  
Medium (15-29): 39 CIMX, KDGE, KEDG, KENZ, KFRR, KFTE, KICT, KKDM, KKND, KLZR, KMYZ, KNRK, KNRX, KPNT, KROX, KTBZ, KTCL, KTOZ, KWOD, KZON, WARQ, WCYY, WEDG, WEQX, WGRD, WJXB, WKDF, WLUM, WPBZ, WPLT, WPLY, WQBK, WRAX, WROX, WRXQ, WRXR, WXEG, WXNR, WXZZ  
Light (Under 15): 27  
New Airplay This Week: 3 CIMX, KCXX, WAQZ

**STABBING WESTWARD 945/30**  
*Save Yourself (Columbia)*  
Total Stations: 56/Chart Move: 25-22  
Heavy (30+): 7 KEDJ, KNDD, KNRK, KNRX, KXTE, WRXQ, WXRA  
Medium (15-29): 22 KDGE, KFTE, KHTY, KICT, KLZR, KMYZ, KPOI, KROX, KTOZ, WBCN, WBTZ, WBZU, WCYY, WJXB, WKRL, WKRO, WNVE, WPBZ, WPLA, WROX, WWCD, WXZZ, XHRM  
Light (Under 15): 27  
New Airplay This Week: 1 KITS

**BEN FOLDS FIVE 920/20**  
*Song For The Dumped (550 Music)*  
Total Stations: 57/Chart Move: 27-23  
Heavy (30+): 2 KKND, WQBK  
Medium (15-29): 29 KDGE, KFTE, KHTY, KJEE, KLZR, KMYZ, KNRX, KPNT, KTOZ, WBZU, WCYY, WEDG, WENZ, WEQX, WGRD, WJXB, WKDF, WKQX, WKRL, WKRO, WNNX, WPBZ, WPLA, WRAX, WROX, WRXQ, WWCD, WXZZ, XHRM  
Light (Under 15): 26  
New Airplay This Week: 2 WRXZ, WXNR

**BLACK LAB 758/-18**  
*Time Ago (DGC/Geffen)*  
Total Stations: 58/Chart Move: 30-28  
Heavy (30+): 3 KWOD, WPLY, WRXZ  
Medium (15-29): 23 KAEP, KFMA, KFTE, KHTY, KICT, KKND, KLZR, KROX, KTOZ, KZON, WARQ, WBCN, WCYY, WEQX, WKRO, WPBZ, WQBK, WRXQ, WDXD, WXNR, WRXR, WXZZ, WZAZ  
Light (Under 15): 32  
New Airplay This Week: 1 KHTY

**FOO FIGHTERS 720/214**  
*Walking After You (Roswell/Capitol)*  
Total Stations: 59/Chart Move: 37-30  
Heavy (30+): 1 CIMX  
Medium (15-29): 23 CFNY, KFTE, KJEE, KKDM, KKND, KLZR, KNRX, KTOZ, KXPK, KZNZ, WBTZ, WEQX, WGRD, WKQX, WKRO, WPBZ, WRAX, WROX, WRXR, WXZZ, XHRM, XTRA  
Light (Under 15): 35  
New Airplay This Week: 8 KLYY, KMYZ, KROX, WCYY, WQBK, WXEG, WRXR, WZAZ

**SPRUNG MONKEY 671/94**  
*Get 'Em Outta Here (Surfdog/Hollywood)*  
Total Stations: 50/Chart Move: 34-32  
Heavy (30+): 4 KJEE, KTCL, WAQZ, XTRA  
Medium (15-29): 12 KDGE, KEDG, KFMA, KHTY, KITS, KOME, KWOD, WHFS, WMRQ, WROX, WRXZ, WWCD  
Light (Under 15): 34  
New Airplay This Week: 2 KFTE, KROX

**NATALIE MERCHANT 645/18**  
*Kind & Generous (Elektra/EEG)*  
Total Stations: 45/Chart Move: 32-33  
Heavy (30+): 3 WAQZ, WPLT, WXEG  
Medium (15-29): 14 KAEP, KENZ, KFMA, KKDM, KNRK, KZNZ, KZON, WCYY, WEQX, WKDF, WLUM, WPLY, WRAX, WZAZ  
Light (Under 15): 28

★ **BEASTIE BOYS 609/597**  
*Intergalactic (Grand Royal/Capitol)*

Total Stations: 57/Chart Move: Debut 34  
Heavy (30+): 0  
Medium (15-29): 19 CIMX, KDGE, KEDJ, KFMA, KFRR, KITS, KJEE, KLZR, KNDD, KOME, KXRK, KXTE, WBCN, WBTZ, WFNX, WHFS, WKQX, WXRK, XHRM  
Light (Under 15): 38  
New Airplay This Week: 37 CFNY, CIMX, KDGE, KEDG, KEDJ, KFMA, KFRR, KFTE, KITS, KJEE, KLZR, KNDD, KNRK, KNRX, KOME, KPNT, KROQ, KTEG, KXRK, KXTE, WBCN, WBRU, WBTZ, WFNX, WHFS, WKQX, WKRO, WMRQ, WNNX, WPBZ, WPLA, WPLY, WWCD, WDXD, WXRK, XHRM, XTRA

★ **THE B-52'S 608/39**  
*Debbie (Reprise)*

Total Stations: 50/Chart Move: 35-35  
Heavy (30+): 0  
Medium (15-29): 15 KHTY, KITS, KJEE, KNRK, KTCL, KWOD, WENZ, WKDF, WPLA, WPLY, WRAX, WRXR, WWCD, WXNR, WXZZ  
Light (Under 15): 35  
New Airplay This Week: 6 KAEP, KROX, KZON, WAQZ, WBTZ, WLUM

★ **OUR LADY PEACE 586/56**  
*4 AM (Columbia)*

Total Stations: 42/Chart Move: 36-36  
Heavy (30+): 1 CIMX  
Medium (15-29): 20 KCXX, KDGE, KFTE, KKND, KLZR, KROX, KTBZ, WAVF, WBCN, WBTZ, WEDG, WENZ, WEQX, WGRD, WKRL, WMRQ, WRAX, WRXR, WRXZ, WXZZ  
Light (Under 15): 21  
New Airplay This Week: 3 KICT, WMRQ, WDXD

★ **GRANT LEE BUFFALO 503/155**  
*Truly, Truly (Slash/Warner Bros.)*

Total Stations: 47/Chart Move: Debut 37  
Heavy (30+): 1 KXRK  
Medium (15-29): 14 KFMA, KLZR, KMYZ, KROX, KTCL, WEDG, WNNX, WPLT, WRAX, WRXQ, WRXR, WWCD, WXZZ, XHRM  
Light (Under 15): 32  
New Airplay This Week: 9 CFNY, KEDJ, KENZ, KFTE, KPOI, KWOD, WAVF, WEQX, WXEG

**CHART BOUND**

**BARENAKED LADIES 437/370**  
*One Week (Reprise)*

Total Stations: 38  
Heavy (30+): 1 CIMX  
Medium (15-29): 16 CFNY, KTCL, KTEG, KWOD, KXRK, KZNZ, WAQZ, WARQ, WBRU, WCYY, WEDG, WENZ, WPLT, WPLY, XHRM  
Light (Under 15): 21  
New Airplay This Week: 18 CFNY, KENZ, KTCL, KTEG, KWOD, KXRK, KZNZ, WAQZ, WARQ, WBRU, WCYY, WEND, WGRD, WMRQ, WNNX, WPLT, WXEG, XHRM

★ **GUSTER 432/51**  
*Airport Song (Hybrid/Sire)*

Total Stations: 39  
Heavy (30+): 0  
Medium (15-29): 13 KFTE, KKND, WARQ, WBRU, WBTZ, WBZU, WCYY, WEQX, WNNX, WRAX, WRXQ, WRXR, WXRA  
Light (Under 15): 26  
New Airplay This Week: 4 KEDG, WLUM, WWCD, WXZZ

★ **FEEDER 403/106**  
*High (Echo/Elektra/EEG)*

Total Stations: 38  
Heavy (30+): 0  
Medium (15-29): 9 KCXX, KFTE, KNDD, WARQ, WEND, WFNX, WGRD, WQBK, WXZZ

**MOST NEW STATIONS**

Station	No. Of Stations
<b>BEASTIE BOYS</b> <i>Intergalactic (Grand Royal/Capitol)</i>	<b>37</b>
<b>BARENAKED LADIES</b> <i>One Week (Reprise)</i>	<b>18</b>
<b>GRANT LEE BUFFALO</b> <i>Truly, Truly (Slash/Warner Bros.)</i>	<b>9</b>
<b>FOO FIGHTERS</b> <i>Walking After You (Roswell/Capitol)</i>	<b>8</b>
<b>FEEDER</b> <i>High (Echo/Elektra/EEG)</i>	<b>7</b>
<b>GRAVITY KILLS</b> <i>Falling (TVT)</i>	<b>7</b>
<b>RAGE AGAINST THE MACHINE</b> <i>No Shelter (Epic)</i>	<b>7</b>

Light (Under 15): 29  
New Airplay This Week: 7 KNRX, KTOZ, WARQ, WCYY, WNNX, WNVE, WRXZ

★ **DEFTONES 400/2**  
*Be Quiet And Drive (Far Away) (Maverick/Warner Bros.)*

Total Stations: 37  
Heavy (30+): 0  
Medium (15-29): 6 CIMX, KNDD, KXTE, WPLA, WROX, WXRK  
Light (Under 15): 31

★ **BIG BAD VOODOO DADDY 395/51**  
*You And Me And The Bottle Makes Three Tonight (Baby) (Columbia/Epic)*

Total Stations: 32  
Heavy (30+): 0  
Medium (15-29): 11 CIMX, KHTY, KJEE, KNDD, KNRK, KTCL, KTOZ, WHFS, WWCD, WZAZ, XTRA  
Light (Under 15): 21  
New Airplay This Week: 2 WJXB, WZAZ

★ **GIRLS AGAINST BOYS 388/37**  
*Park Avenue (DGC/Geffen)*

Total Stations: 44  
Heavy (30+): 0  
Medium (15-29): 7 CIMX, KEDJ, KICT, KLZR, KXRK, WBZU, WRXQ  
Light (Under 15): 37  
New Airplay This Week: 4 WBRU, WCYY, WRAX, WWCD

★ **BLINK 182 321/37**  
*Josie (Cargo/MCA)*

Total Stations: 31  
Heavy (30+): 1 KXTE  
Medium (15-29): 4 KHTY, KLZR, WBTZ, WBZU  
Light (Under 15): 26  
New Airplay This Week: 1 KITS

★ **RAGE AGAINST THE MACHINE 314/56**  
*No Shelter (Epic)*

Total Stations: 44  
Heavy (30+): 1 KXTE  
Medium (15-29): 6 CIMX, KDGE, KEDJ, KNDD, WBCN, WBTZ  
Light (Under 15): 37  
New Airplay This Week: 7 KDGE, KFMA, KNRX, WMRQ, WQBK, WROX, WXRA

★ **SAVE FERRIS 298/33**  
*The World Is New (Starpool/Epic)*

Total Stations: 46  
Heavy (30+): 0  
Medium (15-29): 5 KFRR, KHTY, KJEE, KWOD, WRAX  
Light (Under 15): 41  
New Airplay This Week: 2 KMYZ, WEQX

★ **GRAVITY KILLS 287/57**  
*Falling (TVT)*

Total Stations: 36  
Heavy (30+): 0  
Medium (15-29): 4 KPNT, KTOZ, KXTE, WRXQ  
Light (Under 15): 32  
New Airplay This Week: 7 KDGE, KICT, KKDM, KPOI, WKQX, WRAX, WDXD

★ **THE GANDHARVAS 267/38**  
*Downtime (MCA)*

Total Stations: 33  
Heavy (30+): 0  
Medium (15-29): 7 CIMX, KFTE, KROX, WJXB, WXRA, WXRK, WXZZ  
Light (Under 15): 26  
New Airplay This Week: 4 KCXX, KTOZ, WNVE, WRXR

★ **EDWIN MCCAIN 122/9**  
*I'll Be (Lava/Atlantic)*

Total Stations: 5  
Heavy (30+): 2 KZON, WAQZ  
Medium (15-29): 1 WPLT  
Light (Under 15): 2

★ **LENNY KRAVITZ 121/25**  
*Fly Away (Virgin)*

Total Stations: 17  
Heavy (30+): 0  
Medium (15-29): 3 KENZ, KKND, WBCN  
Light (Under 15): 14  
New Airplay This Week: 2 KEDJ, KENZ

★ **SCOTT WEILAND 120/35**  
*Opposite Octave Reaction (Atlantic)*

Total Stations: 15  
Heavy (30+): 0  
Medium (15-29): 5 KKND, WBTZ, WMRQ, WDXD, XHRM  
Light (Under 15): 10  
New Airplay This Week: 2 WGRD, WDXD

★ **LITANY 116/7**  
*By Myself (Time Bomb)*

Total Stations: 18  
Heavy (30+): 0  
Medium (15-29): 0  
Light (Under 15): 18

★ **METALLICA 115/-8**  
*Fuel (Elektra/EEG)*

Total Stations: 13  
Heavy (30+): 1 WRXQ  
Medium (15-29): 2 KICT, KXTE  
Light (Under 15): 10

★ **LIMP BIZKIT 113/23**  
*Sour (Filip/Interscope)*

Total Stations: 20  
Heavy (30+): 0  
Medium (15-29): 1 KXTE  
Light (Under 15): 19  
New Airplay This Week: 3 KMYZ, WKRL, WMRQ

★ **FILTER 111/16**  
*One (Elektra/EEG)*

Total Stations: 27  
Heavy (30+): 0  
Medium (15-29): 2 KXTE, WKRO  
Light (Under 15): 25  
New Airplay This Week: 1 WJXB

★ **HEATHER NOVA 106/9**  
*London Rain (Nothing Heals Me Like You Do) (Big Cat/WORX)*

Total Stations: 18  
Heavy (30+): 0  
Medium (15-29): 3 WKRO, WRAX, WXZZ  
Light (Under 15): 15  
New Airplay This Week: 2 KXRK, WEQX

★ **ANI DIFRANCO 102/16**  
*As Is (Righteous Babe)*

Total Stations: 10  
Heavy (30+): 1 WRAX  
Medium (15-29): 1 WEDG  
Light (Under 15): 8  
New Airplay This Week: 3 KWOD, KXRK, WEQX

★ **MONSTER MAGNET 91/24**  
*Space Lord (A&M)*

Total Stations: 15  
Heavy (30+): 0  
Medium (15-29): 1 WEDG  
Light (Under 15): 14  
New Airplay This Week: 2 WKRL, WXRA

★ **DAYS OF THE NEW 86/5**  
*The Down Town (Outpost/Geffen)*

Total Stations: 7  
Heavy (30+): 0  
Medium (15-29): 4 KICT, KXTE, WKRO, WXZZ  
Light (Under 15): 3  
New Airplay This Week: 1 WRXR

★ **GLORITONE 86/43**  
*Halfway (Kneeling Elephant/RCA)*

Total Stations: 20  
Heavy (30+): 0  
Medium (15-29): 1 KEDJ  
Light (Under 15): 19  
New Airplay This Week: 4 KTOZ, WEQX, WKRL, WXZZ

★ **HOME GROWN 83/23**  
*Surfer Girl (Outpost/Geffen)*

Total Stations: 17  
Heavy (30+): 0  
Medium (15-29): 1 KHTY  
Light (Under 15): 16  
New Airplay This Week: 5 KJEE, KOME, KPOI, KTOZ, KWOD

Airpower awarded to those records which attract 1,100 detections for the first time. New airplay lists those stations registering six or more detections per week on a record for the first time. ★ Initial impact: records appearing on this page for the first time.

SONG ACTIVITY REPORTS

For Week Ending May 31, 1998



Detailed song tracking information for the last 3 weeks for all songs showing increased play this week. Total plays and gain do not include video play. Markets listed in order of population.

ATHENAUM 1082/82

What I Didn't Know (Atlantic) Total Stations: 68 Chart Move: 21-20

Table with columns for station, song, and play count for Athenaum.

THE B-52'S 608/39

Debbie (Reprise) Total Stations: 50 Chart Move: 35-35

Table with columns for station, song, and play count for The B-52's.

BARENAKED LADIES 437/370

One Week (Reprise) Total Stations: 38

Table with columns for station, song, and play count for Barenaked Ladies.

BEASTIE BOYS 609/597

Intergalactic (Grand Royal/Capitol) Total Stations: 57 Chart Move: Debut 34

Table with columns for station, song, and play count for Beastie Boys.

BEN FOLDS FIVE 920/20

Song For The Dumped (550 Music) Total Stations: 57 Chart Move: 27-23

Table with columns for station, song, and play count for Ben Folds Five.

BIG BAD VOODOO DADDY 395/51

You And Me And The Bottle Makes Three Tonight (Baby) (Columbia/EML/Capitol) Total Stations: 32

Table with columns for station, song, and play count for Big Bad Voodoo Daddy.

BLINK 182 321/37

Josie (Cargo/MCA) Total Stations: 31

Table with columns for station, song, and play count for Blink 182.

DEFTONES 400/2

Be Quiet And Drive (Far Away) (Maverick/Warner Bros.) Total Stations: 37

Table with columns for station, song, and play count for Deftones.

EVE 6 1463/243

Inside Out (RCA) Total Stations: 74 Chart Move: 15-13

Table with columns for station, song, and play count for Eve 6.

FEEDER 403/106

High (Echo/Elektra/EEG) Total Stations: 38

Table with columns for station, song, and play count for Feeder.

FOO FIGHTERS 720/214

Walking After You (Roswell/Capitol) Total Stations: 59 Chart Move: 37-30

Table with columns for station, song, and play count for Foo Fighters.

FUEL 2122/113

Shimmer (550 Music) Total Stations: 80 Chart Move: 7-5

Table with columns for station, song, and play count for Fuel.

GIRLS AGAINST BOYS 388/37

Park Avenue (DGC/Geffen) Total Stations: 44

Table with columns for station, song, and play count for Girls Against Boys.

GOO GOO DOLLS 2437/61

Iris (Warner Sunset/Reprise) Total Stations: 79 Chart Move: 2-2

Table with columns for station, song, and play count for Goo Goo Dolls.

GRANT LEE BUFFALO 503/155

Truly, Truly (Slash/Warner Bros.) Total Stations: 47 Chart Move: Debut 37

Table with columns for station, song, and play count for Grant Lee Buffalo.



SONG ACTIVITY REPORTS



For Week Ending May 31, 1998

Total Plays/Gain

GRAVITY KILLS 287/57 Falling (TVT) Total Stations: 36

GUSTER 432/51 Airport Song (Hybrid/Sire) Total Stations: 39

HARVEY DANGER 1894/41 Flagpole Sitta (Slash/London/Island) Total Stations: 77

MARCY PLAYGROUND 1112/123 Saint Joe On The School Bus (Capitol) Total Stations: 70

MATCHBOX 20 1320/21 Real World (Lava/Atlantic) Total Stations: 64

NATALIE MERCHANT 645/18 Kind & Generous (Elektra/EGG) Total Stations: 45

OUR LADY PEACE 586/56 4 AM (Columbia) Total Stations: 42

RAGE AGAINST THE MACHINE 314/56 No Shelter (Epic) Total Stations: 44

SAVE FERIE'S 298/33 The World Is New (Starpool/Epic) Total Stations: 46

SEMISONIC 2622/81 Closing Time (MCA) Total Stations: 80

THE SMASHING PUMPKINS 2250/44 Ava Adore (Virgin) Total Stations: 80

SPRUNG MONKEY 671/94 Get 'Em Outta Here (Surfdog/Hollywood) Total Stations: 50

STABBING WESTWARD 945/30 Save Yourself (Columbia) Total Stations: 56

THE URGE 1506/113 Jump Right In (Immortal/Epic) Total Stations: 80

THE URGE 1146/28 Lucky Man (VC/Hut/Virgin) Total Stations: 72

## POWER PLAYLISTS™

**KFOG San Francisco**  
PD: Paul Marszalek  
APD/MD: Bill Evans

	TW	LW
1 Natalie Merchant, Kind & Generous	21	19
2 Pete Dinklage, Spacy And Shakin'	22	22
3 The Wallflowers, Heroes	19	18
4 Bonnie Raitt, One Belief Away	18	18
5 Marc Cohn, Already Home	15	18
6 Buddy Guy Feat. Jonny Lang, Midnight	15	9
7 Pearl Jam, Wishlist	14	19
8 Eric Clapton, My Father's Eyes	14	18
9 Jimmy Page & Robert Plant, Shining In The	11	12
10 Scott Thomas Band, Black Valentine	11	11
11 Foo Fighters, Walking After You	10	10
12 Dave Matthews Band, Stay	10	13
13 Sheryl Crow, A Change Would Do You Good	10	8
14 Dave Matthews Band, Don't Drink The Water	10	8
15 The B-52's, Debbie	10	7
16 Jimmy Page & Robert Plant, Most High	10	12
17 Matchbox 20, 3 AM	9	8
18 Kenny Wayne Shepherd, Blue On Black	9	9
19 The Verve, Bitter Sweet Symphony	9	9
20 Cowboy Junkies, Miles From Our Home	8	10
21 Lenny Kravitz, Live	8	7
22 Agents Of Good Roots, Smiling Up The	8	7
23 Blues Traveler, Most Precarious	7	7
24 Eric Clapton, She's Gone	7	1
25 Abra Moynihan, Walking After You	7	1
26 Sister Hazel, All For You	6	2
27 The Verve Pipe, The Freshmen	6	5
28 B.B. King With Rolling Stones, Paying	6	8
29 Rolling Stones, Saint Of Me	5	8
30 Jonny Lang, Lie To Me	5	8

**WBOS Boston**  
Interim PD: Don Kelley  
MD: Cliff Nash

	TW	LW
1 Goo Goo Dolls, Ins	33	32
2 Edwin McCain, I'll Be	33	31
3 Vonda Shepard, Searchin' My Soul	33	30
4 Bonnie Raitt, One Belief Away	33	30
5 Natalie Imbruglia, Torn	32	33
6 Natalie Merchant, Kind & Generous	25	23
7 The Verve, Lucky Man	24	23
8 Matchbox 20, Real World	24	23
9 Dave Matthews Band, Stay	23	23
10 Semisonic, Closing Time	22	21
11 Marcy Playground, Sex & Candy	20	17
12 The Verve, Bitter Sweet Symphony	19	17
13 Pearl Jam, Wishlist	19	17
14 Green Day, Time Of Your Life	18	17
15 The Verve Pipe, The Freshmen	18	20
16 Third Eye Blind, How's It Going To Be	18	20
17 Matchbox 20, 3 AM	17	15
18 The Smashing Pumpkins, Crashing Into Me	17	15
19 Meredith Brooks, Stop	17	11
20 Eric Clapton, My Father's Eyes	16	15
21 Fastball, The Way	15	20
22 Tracy Chapman, Give Me One Reason	14	12
23 Eric Clapton, She's Gone	14	24
24 Smash Mouth, Walkin' On The Sun	13	13
25 Counting Crows, A Long December	13	13
26 Sister Hazel, All For You	12	12
27 Jewel, You Were Meant For Me	11	9
28 Ben Folds Five, Brick	11	14
29 Barenaked Ladies, The Old Apartment	11	11
30 Matchbox 20, Push	11	10

**WXRT Chicago**  
VP/Pgm: Norm Winer  
MD: Patty Martin

	TW	LW
1 Fastball, The Way	19	19
2 The B-52's, Debbie	18	17
3 The Wallflowers, Heroes	17	18
4 Dave Matthews Band, Don't Drink The Water	15	14
5 Natalie Merchant, Kind & Generous	14	17
6 Tori Amos, Spark	14	13
7 The Smashing Pumpkins, Ava Adore	13	12
8 Bonnie Raitt, One Belief Away	13	12
9 Pearl Jam, Wishlist	12	13
10 Jimmy Page & Robert Plant, Most High	12	14
11 John Fogerty, Premonition	12	10
12 Marcy Playground, Sex And Candy	11	6
13 Ani DiFranco, As Is	11	8
14 Goo Goo Dolls, Ins	11	9
15 Garbage, Push It	10	6
16 Pearl Jam, In Hiding	9	10
17 Jimmy Page & Robert Plant, Shining In The	9	8
18 Dave Matthews Band, Black Valentine	17	10
19 Cowboy Junkies, Miles From Our Home	9	5
20 Bonnie Raitt, Spit Of Love	8	10
21 Train, Meet Virginia	8	10
22 Radiohead, Karma Police	8	7
23 Natalie Merchant, Break Your Heart	7	8
24 Matchbox 20, Real World	7	6
25 Grant Lee Buffalo, Truly, Truly	7	6
26 Lou Reed, Wicous	7	5
27 The Verve, Lucky Man	7	8
28 Steve Poltz, Silver Lining	7	8
29 Whiskeytown, 16 Days	7	4
30 World Party, Call Me Up	7	6

**KTCZ Minneapolis**  
PD: Lauren MacLeash  
MD: Mike Wolf

	TW	LW
1 Natalie Merchant, Kind & Generous	26	27
2 The Wallflowers, Heroes	24	29
3 Eric Clapton, She's Gone	22	25
4 Bonnie Raitt, One Belief Away	22	24
5 Marcy Playground, Sex And Candy	22	23
6 Fastball, The Way	19	28
7 Goo Goo Dolls, Ins	14	12
8 Sister 7, Know What You Mean	14	11
9 Edwin McCain, I'll Be	14	11
10 Dave Matthews Band, Stay	12	8
11 Patty Griffin, One Big Love	12	6
12 Marc Cohn, Already Home	12	16
13 Alana Davis, Crazy	12	11
14 Sarah McLachlan, Adia	12	11
15 Natalie Imbruglia, Torn	11	0
16 Everything, Hooch	11	0
17 Matchbox 20, Real World	11	11
18 The Connells, Crown	11	11
19 The Verve, Lucky Man	10	10
20 John Fogerty, Premonition	9	10
21 Dave Matthews Band, Don't Drink The Water	9	7
22 Buddy Guy Feat. Jonny Lang, Midnight	8	6
23 Ugly Americans, The Wrong Direction	8	7
24 Grant Lee Buffalo, Truly, Truly	8	6
25 Scott Thomas Band, Black Valentine	8	6
26 Tori Amos, Spark	8	6
27 Rod Stewart, Cigarettes And Alcohol	7	6
28 Rod Stewart, Ooh La La	7	3
29 Gerald Collier, Fearless	7	5
30 Robbie Robertson, Unbound	7	6

**KBCO Denver**  
PD: Dave Benson  
MD: Scott Arbrough

	TW	LW
1 Natalie Imbruglia, Torn	26	26
2 Edwin McCain, I'll Be	26	19
3 Kenny Wayne Shepherd, Blue On Black	24	29
4 Fastball, The Way	24	27
5 Bonnie Raitt, One Belief Away	24	28
6 Dave Matthews Band, Stay	23	29
7 Foo Fighters, Walking After You	17	12
8 Barenaked Ladies, One Week	15	14
9 The Verve, Lucky Man	15	14
10 Eric Clapton, She's Gone	15	16
11 Goo Goo Dolls, Ins	15	16
12 Natalie Merchant, Kind & Generous	15	15
13 Pearl Jam, Wishlist	15	16
14 Rod Stewart, Ooh La La	14	16
15 Sister 7, Know What You Mean	14	16
16 Everything, Hooch	14	16
17 Jimmy Page & Robert Plant, Shining In The	13	14
18 Semisonic, Closing Time	12	13
19 Sarah McLachlan, Adia	11	15
20 Bonnie Raitt, Spit Of Love	11	8
21 Scott Thomas Band, Black Valentine	11	2
22 William Topley, Slabrock Woman	10	12
23 Ziggy Marley & The Melody Makers, People	7	10
24 Freddy Jones Band, Wonder	10	13
25 Brad, The Day Brings	10	13
26 Blues Traveler, Most Precarious	10	3
27 Rod Stewart, Cigarettes And Alcohol	10	9
28 Marcy Playground, Sex And Candy	10	13
29 The Verve, Bitter Sweet Symphony	9	4
30 Matchbox 20, 3 AM	9	13

**WHPT Tampa**  
PD: Chuck Beck  
MD: Kurt Schreiner

	TW	LW
1 The Wallflowers, Heroes	34	33
2 Natalie Imbruglia, Torn	33	33
3 Matchbox 20, 3 AM	32	33
4 Matchbox 20, Real World	26	7
5 Sarah McLachlan, Adia	25	3
6 Eric Clapton, She's Gone	16	30
7 Goo Goo Dolls, Ins	15	16
8 Sister Hazel, All For You	14	7
9 Kenny Wayne Shepherd, Blue On Black	14	30
10 Natalie Merchant, Kind & Generous	12	9
11 Edda Forsberg, Lost Count	12	15
12 Dave Matthews Band, Don't Drink The Water	10	5
13 Marc Cohn, Walking In Memphis	10	12
14 Blues Traveler, Run Around	10	6
15 Dishwalla, Counting Blue Cars	10	10
16 Yes, Owner Of A Lonely Heart	10	13
17 The Fixx, One Thing Leads To Another	9	16
18 J. Geils Band, Centerfold	8	11
19 Babys, Back On My Feet Again	8	10
20 Pretenders, Back On The Chain Gang	8	9
21 Tracy Chapman, Give Me One Reason	8	10
22 The Romantics, Talking In Your Sleep	8	5
23 Tom Cochrane, Life Is A Highway	7	10
24 Yes, Owner Of A Lonely Heart	7	10
25 Robert Palmer, Bad Case Of Loving You	7	10
26 Peter Frampton, Show Me The Way	7	11
27 Spin Doctors, Little Miss Can't Be Wrong	7	6
28 Steve Winwood, Don't You Know What The	7	9
29 Bob Marley & The Wailers, One Love/People	7	9
30 John Caffery & The Beaver, On The	7	10

**KMTT Seattle**  
SM: Chris Mays  
APD: Jason Parker  
MD: Dean Carlson

	TW	LW
1 Bonnie Raitt, One Belief Away	23	18
2 Dave Matthews Band, Stay	22	18
3 The Wallflowers, Heroes	21	20
4 Eric Clapton, She's Gone	20	22
5 Natalie Merchant, Kind & Generous	20	20
6 Pearl Jam, Wishlist	19	15
7 Lenny Kravitz, If You Can't Say No	17	15
8 John Fogerty, Premonition	16	6
9 Big Head Todd & The Monsters, Boom Boom	8	7
10 Agents Of Good Roots, Smiling Up The	8	8
11 Sarah McLachlan, Black & White	8	8
12 Everything, Hooch	8	3
13 Cherry Poppin' Daddies, Zoot Suit Riot	7	3
14 Jimmy Page & Robert Plant, Shining In The	7	3
15 Widespread Panic, Pickin' Up The Pieces	7	2
16 Train, Meet Virginia	7	6
17 The Specialists, It's You	7	6
18 Marc Cohn, Already Home	6	6
19 Semisonic, Closing Time	6	9
20 Pete Dinklage, Spacy And Shakin'	6	8
21 Tori Amos, Spark	6	8
22 The Verve, Lucky Man	6	6
23 Cowboy Junkies, Miles From Our Home	6	3
24 Bob Dylan, Cold Irons Bound	6	3
25 Scott Thomas Band, Black Valentine	5	3
26 Pete Belasco, All I Want	5	5
27 Fastball, The Way	5	3
28 Gerald Collier, Fearless	5	3
29 Hub, Evil Twin	4	3
30 Jonny Lang, Lie To Me	4	1

**WVRV St. Louis**  
PD: Mike Richter  
APD: Chuck Jeffries

	TW	LW
1 Natalie Imbruglia, Torn	40	37
2 Fastball, The Way	38	34
3 Edwin McCain, I'll Be	38	38
4 Third Eye Blind, How's It Going To Be	37	35
5 Bonnie Raitt, One Belief Away	37	40
6 Pearl Jam, Wishlist	37	37
7 Goo Goo Dolls, Ins	34	41
8 Vonda Shepard, Searchin' My Soul	27	25
9 Eric Clapton, She's Gone	25	17
10 Matchbox 20, Real World	25	25
11 Semisonic, Closing Time	25	24
12 Patty Griffin, One Big Love	24	16
13 Alanis Morissette, Uninvited	24	16
14 Natalie Merchant, Kind & Generous	24	24
15 The Wallflowers, Heroes	23	23
16 Sister 7, Know What You Mean	22	24
17 Dave Matthews Band, Don't Drink The Water	21	17
18 Edda Forsberg, Lost Count	16	15
19 Imani Coppola, Legend Of A Cowgirl	12	8
20 Smash Mouth, Walkin' On The Sun	11	8
21 The Smashing Pumpkins, The Impression	11	8
22 Collective Soul, December	11	9
23 John Mellencamp, Just Another Day	11	10
24 The Sundays, Summertime	11	8
25 Matchbox 20, Push	10	7
26 Tonic, If You Could Only See	10	10
27 Naked, Raining On The Sky	10	10
28 The Smashing Pumpkins, 1979	9	8
29 Billie Myers, The Rain	9	5
30 Counting Crows, A Long December	9	8

**KXKP Denver**  
PD: Gary Schoenwetter  
APD/MD: Eric Schmidt

	TW	LW
1 Kenny Wayne Shepherd, Blue On Black	31	31
2 Natalie Merchant, Kind & Generous	28	28
3 Goo Goo Dolls, Ins	28	22
4 Fastball, The Way	27	30
5 The Wallflowers, Heroes	25	10
6 The Verve, Lucky Man	23	26
7 Alana Davis, Crazy	20	14
8 Semisonic, Closing Time	18	28
9 Dave Matthews Band, Stay	17	15
10 Everything, Hooch	17	30
11 Cherry Poppin' Daddies, Zoot Suit Riot	15	9
12 Natalie Imbruglia, Torn	14	16
13 Alana Davis, Crazy	14	16
14 Pearl Jam, Wishlist	14	13
15 Bonnie Raitt, One Belief Away	14	13
16 William Topley, The Ring	12	12
17 Everclear, Everything To Everyone	11	7
18 Tori Amos, Spark	11	6
19 Matchbox 20, Real World	11	11
20 The B-52's, Debbie	11	8
21 Paula Cole, Me	11	10
22 Steve Poltz, Silver Lining	10	6
23 Sister Hazel, Happy	10	7
24 Freddy Jones Band, Wonder	9	7
25 Ziggy Marley & The Melody Makers, People	9	5
26 Marcy Playground, Sex And Candy	9	5
27 Tonic, If You Could Only See	9	8
28 The Smashing Pumpkins, Ava Adore	9	8
29 Eric Johnson, S.R.	8	6
30 Agents Of Good Roots, Smiling Up The	8	8

**CIDR Detroit**  
PD: Wendy Duff

	TW	LW
1 Bonnie Raitt, One Belief Away	35	25
2 Edwin McCain, I'll Be	35	35
3 Marc Cohn, Already Home	35	32
4 Eric Clapton, She's Gone	34	34
5 Natalie Merchant, Kind & Generous	31	34
6 Semisonic, Closing Time	31	29
7 Goo Goo Dolls, Ins	30	17
8 Barenaked Ladies, One Week	19	11
9 Dave Matthews Band, Stay	18	18
10 Dave Matthews Band, Don't Drink The Water	18	17
11 Alana Davis, Crazy	18	16
12 Tori Amos, Spark	18	17
13 Steve Poltz, Silver Lining	17	18
14 Lenny Kravitz, If You Can't Say No	17	18
15 Ani DiFranco, Little Plastic Castle	17	16
16 John Fogerty, Premonition	17	7
17 Robbie Robertson, Unbound	16	15
18 Agents Of Good Roots, Smiling Up The	16	17
19 Matchbox 20, Real World	16	14
20 Agents Of Good Roots, Upspin	16	13
21 Patty Griffin, One Big Love	16	13
22 Billy Mann, Beat Myself Up	15	16
23 Sarah McLachlan, Adia	15	16
24 Edda Forsberg, Lost Count	15	15
25 The Verve, Lucky Man	15	15
26 Jeb Loy Nichols, Sugar Creek	14	10
27 Fastball, The Way	13	18
28 The Verve, Bitter Sweet Symphony	10	11
29 The Sundays, Summertime	10	11
30 Sarah McLachlan, Sweet Surrender	10	5

**KKZN Dallas**  
PD: Joel Folger  
Interim MD: Abbey Goldstein

	TW	LW
1 Fastball, The Way	31	27
2 Bonnie Raitt, One Belief Away	30	24
3 Semisonic, Closing Time	28	29
4 Matchbox 20, Real World	28	33
5 Eric Clapton, She's Gone	28	18
6 Natalie Merchant, Kind & Generous	24	13
7 The Wallflowers, Heroes	22	12
8 Marc Cohn, Already Home	16	11
9 Rod Stewart, Ooh La La	16	14
10 The Specialists, It's You	14	12
11 Everything, Hooch	14	11
12 Natalie Imbruglia, Torn	13	31
13 Kenny Wayne Shepherd, Blue On Black	13	28
14 Mayfield, Reach Out	13	14
15 Edwin McCain, I'll Be	13	12
16 John Fogerty, Premonition	13	12
17 Sister 7, Know What You Mean	13	12
18 The B-52's, Debbie	12	8
19 Smash Mouth, Can't Get Enough Of You	12	10
20 Alanis Morissette, Uninvited	12	12
21 Cowboy Junkies, Miles From Our Home	12	9
22 Dishwalla, Counting Blue Cars	10	6
23 Dave Matthews Band, Stay	9	0
24 Marcy Playground, Sex And Candy	9	0
25 Grant Lee Buffalo, Truly, Truly	9	0
26 Goo Goo Dolls, Ins	9	14
27 Natalie Imbruglia, Torn	8	6
28 Delbert McClinton, Somebody To Love You	8	8
29 Patty Griffin, One Big Love	8	0
30 Heather Nova, London Rain	8	0

**WXRW Boston**  
PD: Joanne Doody  
MD: Mike Mullaney

COMBINED ROCK AUDIENCE										AIRPLAY BY FORMAT									
TW	LW	WKS	TITLE (IMPRINT/PROMOTION LABEL)	ARTIST	THIS WEEK			LAST WEEK			MAINSTREAM			MODERN			TRIPLE-A		
					Audience (millions)	Detections No.	Rank	Audience (millions)	Detections No.	Rank	Audience (millions)	Detections No.	Rank	Audience (millions)	Detections No.	Rank	Audience (millions)	Detections No.	Rank
1	1	14	CLOSING TIME (MCA)	SEMISONIC	23.1178	3844	1	22.5556	3786	1	5.2334	923	15	16.3550	2622	1	1.5294	299	8
2	4	10	IRIS (WARNER SUNSET/REPRISE)	GOO GOO DOLLS	21.6159	3522	2	20.4014	3412	3	4.4171	738	22	15.2827	2437	2	1.9161	347	5
3	3	4	AVA ADORE (VIRGIN)	THE SMASHING PUMPKINS	21.0966	3416	4	20.7332	3272	5	6.6607	1118	10	14.1281	2250	4	0.3078	48	—
4	2	7	HEROES (EPIC)	THE WALLFLOWERS	20.6143	3462	3	20.8601	3428	2	8.0415	1318	5	10.3557	1783	10	2.2171	361	3
5	5	15	WISHLIST (EPIC)	PEARL JAM	19.9905	3260	5	19.7120	3288	4	6.8658	1193	8	11.6442	1842	9	1.4805	225	11
6	6	16	THE WAY (HOLLYWOOD)	FASTBALL	19.2375	3121	6	19.3950	3178	6	3.2281	499	30	13.6177	2258	3	2.3917	364	2
7	7	10	DON'T DRINK THE WATER (RCA)	DAVE MATTHEWS BAND	15.6431	2989	7	17.1132	3095	7	4.0993	805	19	10.3546	1961	7	1.1892	223	12
8	8	13	SHIMMER (550 MUSIC)	FUEL	14.9374	2805	8	14.8063	2654	8	3.0655	683	23	11.8719	2122	5	—	—	—
9	9	32	SEX AND CANDY (CAPITOL)	MARCY PLAYGROUND	13.7707	2179	11	14.1827	2211	10	5.4724	860	17	7.1892	1161	17	1.1091	158	19
10	11	21	MY HERO (ROSWELL/CAPITOL)	FOO FIGHTERS	12.5464	1716	18	12.8250	1861	17	6.7659	872	16	5.7805	844	26	—	—	—
11	10	19	I WILL BUY YOU A NEW LIFE (CAPITOL)	EVERCLEAR	12.3586	2005	14	12.9731	2060	12	1.1258	192	—	10.9003	1689	11	0.3325	124	—
12	15	37	MY OWN PRISON (WIND-UP)	CREED	12.1774	1899	16	11.5581	1890	15	5.3967	842	18	6.8250	1039	—	0.0457	18	—
13	12	10	PUSH IT (ALMO SOUNDS/INTERSCOPE)	GARBAGE	11.9974	2229	10	12.6146	2208	11	0.7626	169	—	11.1301	2035	6	0.1047	25	—
14	16	10	REAL WORLD (LAVA/ATLANTIC)	MATCHBOX 20	11.8819	2240	9	11.5377	2271	9	3.5870	639	25	6.7962	1320	14	1.4987	281	9
15	14	18	BLUE ON BLACK (REVOLUTION)	KENNY WAYNE SHEPHERD BAND	11.7836	1813	17	11.8419	1866	16	10.6835	1651	2	0.0205	19	—	1.0796	143	—
16	13	10	FLAGPOLE SITTA (SLASH/LONDON/ISLAND)	HARVEY DANGER	11.6403	2015	13	11.9869	1961	14	0.5426	121	—	11.0977	1894	8	—	—	—
17	17	9	SAVE YOURSELF (COLUMBIA)	STABBING WESTWARD	11.6382	2132	12	10.8431	2031	13	7.3850	1187	9	4.2522	945	22	—	—	—
18	18	11	I LIE IN THE BED I MAKE (VIRGIN)	BROTHER CANE	11.0651	1944	15	10.2981	1860	18	9.7628	1758	1	1.3023	186	—	—	—	—
19	19	29	TIME OF YOUR LIFE (GOOD RIDDANCE) (REPRISE)	GREEN DAY	10.4302	1422	27	10.2116	1402	26	1.9979	304	—	7.7920	991	—	0.6403	127	—
20	20	9	TORN (WIND-UP)	CREED	10.1740	1701	19	9.8053	1704	19	9.2422	1498	3	0.9318	203	—	—	—	—
21	28	3	INSIDE OUT (RCA)	EVE 6	9.0948	1520	21	7.8854	1263	32	0.4325	53	—	8.6562	1463	13	0.0061	4	—
22	23	16	CUT YOU IN (COLUMBIA)	JERRY CANTRELL	8.9755	1485	23	8.9695	1479	24	6.6859	1011	12	2.2896	474	40	—	—	—
23	27	17	TORN (RCA)	NATALIE IMBRUGLIA	8.8717	1211	35	8.3931	1232	34	0.6389	41	—	6.3728	858	24	1.8600	312	7
24	21	9	MOST HIGH (ATLANTIC)	JIMMY PAGE & ROBERT PLANT	8.8351	1412	28	9.2341	1554	22	8.2031	1332	4	0.2130	10	—	0.4190	70	—
25	22	19	SHELF IN THE ROOM (OUTPOST/GEFFEN)	DAYS OF THE NEW	8.4488	1440	26	9.0586	1640	21	5.3659	945	14	3.0829	495	38	—	—	—
26	24	47	EVERLONG (ROSWELL/CAPITOL)	FOO FIGHTERS	8.3744	1120	37	8.8544	1120	38	2.9334	400	—	5.4313	716	—	0.0097	4	—
27	26	43	TOUCH, PEEL AND STAND (OUTPOST/GEFFEN)	DAYS OF THE NEW	8.3598	1325	33	8.5839	1381	28	4.6442	700	—	3.7156	625	—	—	—	—
28	25	8	SPARK (ATLANTIC)	TORI AMOS	8.3248	1505	22	8.6100	1504	23	0.0105	5	—	7.5012	1301	15	0.8131	199	13
29	29	6	FUEL (ELEKTRA/EEG)	METALLICA	8.0941	1347	31	7.7371	1264	31	7.4182	1232	6	0.6759	115	—	—	—	—
30	30	5	LUCKY MAN (VC/HUT/VIRGIN)	THE VERVE	7.9863	1441	25	7.6285	1382	27	0.5533	116	—	6.2780	1146	18	1.1450	179	15
31	32	7	JUMP RIGHT IN (IMMORTAL/EPIC)	THE URGE	7.2145	1538	20	6.8830	1429	25	0.0446	25	—	7.1553	1506	12	0.0146	7	—
32	35	2	SAINT JOE ON THE SCHOOL BUS (CAPITOL)	MARCY PLAYGROUND	7.1248	1326	32	6.5423	1186	37	0.7962	214	—	6.3286	1112	19	—	—	—
33	38	5	REDUNDANT (REPRISE)	GREEN DAY	6.7164	1355	30	6.4123	1333	30	0.8606	182	—	5.8558	1173	16	—	—	—
34	34	34	3 AM (LAVA/ATLANTIC)	MATCHBOX 20	6.5843	1051	41	6.6020	999	42	2.1275	346	—	3.4558	555	—	1.0010	150	—
35	40	2	WHAT I DIDN'T KNOW (ATLANTIC)	ATHENAEUM	6.5257	1402	29	6.0973	1335	29	0.9161	275	—	5.4394	1082	20	0.1702	45	—
36	31	7	I WILL STILL BE LAUGHING (COLUMBIA)	SOUL ASYLUM	6.5075	1478	24	7.3999	1682	20	2.6599	580	29	3.6949	852	25	0.1527	46	—
37	33	4	FIRE IN THE HOLE (WARNER BROS.)	VAN HALEN	6.4323	1216	34	6.6234	1214	36	6.4323	1216	7	—	—	—	—	—	—
38	36	35	BITTER SWEET SYMPHONY (VC/HUT/VIRGIN)	THE VERVE	6.3769	1032	42	6.4970	1024	41	0.7140	139	—	4.8267	769	—	0.8362	124	—
39	NEW		KIND & GENEROUS (ELEKTRA/EEG)	NATALIE MERCHANT	6.3322	1115	38	5.9958	1044	40	0.0573	6	—	3.3546	645	33	2.9203	464	1
40	39	40	EVERYTHING TO EVERYONE (CAPITOL)	EVERCLEAR	6.3058	984	45	6.1924	925	46	0.5229	105	—	5.6243	840	—	0.1586	39	—

Records showing an increase in audience over the previous week, regardless of chart movement. Rankings broken down by mainstream, modern and triple-A formats (on right side of this page) correspond to charts printed in this week's Monitor and therefore rankings do not exist for reissues and records below No. 40 (No. 29 for triple-A). Audience computed by cross-referencing exact times of airplay with Arbitron listener data. ©1998, Billboard/BPI Communications.



## What's This Life For

The new single from their soon-to-be **MULTIPLATINUM** debut

"My staff and listeners LOVE Creed. What has surprised me most is the longevity of their songs. Research just gets stronger and stronger...One of the biggest records of the year!"  
-Dave Rossi/WRAX

"Creed is hands-down *the* breakout rock band of the year, and I believe this song has the potential to be the biggest one yet."  
-Rick Strauss/WIYY

"This album is entrenched in the Tulsa Soundscan Top 40. This is the second single I'll be dealing with and possibly one of the most successful albums I've ever seen. It's a no-brainer."  
-Lynn Barstow/KMYZ



212.251.9665



www.creednet.com

THIS WEEK	LAST WEEK	WKS. ON CHART	MAINSTREAM		DETECTIONS		
			TITLE/IMPRINT/PROMOTION LABEL	ARTIST	TW	LW	
			<b>★★★ No. 1 ★★★</b>				
(1)	1	12	I LIE IN THE BED I MAKE VIRGIN	BROTHER CANE	1758	1696	
	2	21	BLUE ON BLACK REVOLUTION	KENNY WAYNE SHEPHERD BAND	1651	1654	
(3)	3	17	TORN WIND-UP	CREED	1498	1492	
	4	9	MOST HIGH ATLANTIC	JIMMY PAGE & ROBERT PLANT	1332	1449	
(5)	5	6	HEROES EPIC	THE WALLFLOWERS	1318	1264	
(6)	8	17	FUEL ELEKTRA/EEG	METALLICA	1232	1141	
(7)	6	7	FIRE IN THE HOLE WARNER BROS.	VAN HALEN	1216	1213	
(8)	7	8	WISHLIST EPIC	PEARL JAM	1193	1167	
(9)	9	13	SAVE YOURSELF COLUMBIA	STABBING WESTWARD	1187	1116	
(10)	11	4	AVA ADORE VIRGIN	THE SMASHING PUMPKINS	1118	1007	
(11)	13	8	SLAM DUNK WAWAZAT!	DLR BAND	1094	971	
(12)	12	16	CUT YOU IN COLUMBIA	JERRY CANTRELL	1011	984	
(13)	17	3	I DON'T WANT TO MISS A THING COLUMBIA	AEROSMITH	988	809	
	14	24	SHELF IN THE ROOM OUTPOST/GEFFEN	DAYS OF THE NEW	945	1030	
(15)	14	13	CLOSING TIME MCA	SEMISONIC	923	917	
	16	20	MY HERO ROSWELL/CAPITOL	FOO FIGHTERS	872	893	
	17	26	SEX AND CANDY CAPITOL	MARCY PLAYGROUND	860	864	
	18	42	MY OWN PRISON WIND-UP	CREED	842	796	
(19)	19	9	DON'T DRINK THE WATER RCA	DAVE MATTHEWS BAND	805	789	
(20)	27	3	SPACE LORD A&M	MONSTER MAGNET	762	630	
(21)	24	4	CIGARETTES AND ALCOHOL WARNER BROS.	ROD STEWART	761	670	
(22)	22	7	IRIS WARNER SUNSET/REPRISE	GOO GOO DOLLS	738	711	
(23)	26	10	SHIMMER 550 MUSIC	FUEL	683	642	
(24)	25	11	SHE'S GONE REPRISE	ERIC CLAPTON	664	649	
	25	10	REAL WORLD LAVA/ATLANTIC	MATCHBOX 20	639	719	
(26)	40	2	THE DOWN TOWN OUTPOST/GEFFEN	DAYS OF THE NEW	633	333	
(27)	29	3	MY SONG COLUMBIA	JERRY CANTRELL	611	556	
	28	17	USE THE MAN CAPITOL	MEGADETH	606	619	
	29	7	I WILL STILL BE LAUGHING COLUMBIA	SOUL ASYLUM	580	704	
(30)	30	6	THE WAY HOLLYWOOD	FASTBALL	499	462	
(31)	36	2	PREMONITION REPRISE	JOHN FOGERTY	497	357	
(32)	34	3	SHINING IN THE LIGHT ATLANTIC	JIMMY PAGE & ROBERT PLANT	475	379	
(33)	32	4	THAT SONG ATLANTIC	BIG WRECK	440	416	
(34)	35	4	MONSTERSIDE BIG CAT/V2	ADDICT	390	377	
	35	6	BE QUIET AND DRIVE (FAR AWAY) MAVERICK/WARNER BROS.	DEFTONES	369	406	
(36)	38	4	LUCY 41/GEFFEN	CARAMEL	367	337	
	37	5	AT THE WATER REPRISE	STEGOSAURUS	321	347	
	38	RE-ENTRY	THE MEMORY REMAINS ELEKTRA/EEG	METALLICA	320	293	
	39	31	TIME AGO DGC/GEFFEN	BLACK LAB	310	436	
	40	39	HOME RESTLESS	ECONOLINE CRUSH	305	334	

THIS WEEK	LAST WEEK	WKS. ON CHART	MODERN		DETECTIONS		
			TITLE/IMPRINT/PROMOTION LABEL	ARTIST	TW	LW	
			<b>★★★ No. 1 ★★★</b>				
(1)	1	14	CLOSING TIME MCA	SEMISONIC	2622	2541	
(2)	2	10	IRIS WARNER SUNSET/REPRISE	GOO GOO DOLLS	2437	2376	
	3	17	THE WAY HOLLYWOOD	FASTBALL	2258	2309	
(4)	4	4	AVA ADORE VIRGIN	THE SMASHING PUMPKINS	2250	2206	
(5)	7	14	SHIMMER 550 MUSIC	FUEL	2122	2009	
	6	10	PUSH IT ALMO SOUNOS/INTERSCOPE	GARBAGE	2035	2061	
	7	10	DON'T DRINK THE WATER RCA	DAVE MATTHEWS BAND	1961	2062	
(8)	9	10	FLAGPOLE SITTA SLASH/LONDON/ISLAND	HARVEY DANGER	1894	1853	
	9	16	WISHLIST EPIC	PEARL JAM	1842	1893	
	10	6	HEROES EPIC	THE WALLFLOWERS	1783	1831	
	11	19	I WILL BUY YOU A NEW LIFE CAPITOL	EVERCLEAR	1689	1746	
(12)	12	10	JUMP RIGHT IN IMMORTAL/EPIC	THE URGE	1506	1393	
(13)	15	7	INSIDE OUT RCA	EVE 6	1463	1220	
(14)	14	11	REAL WORLD LAVA/ATLANTIC	MATCHBOX 20	1320	1299	
	15	8	SPARK ATLANTIC	TORI AMOS	1301	1305	
	16	8	REDUNDANT REPRISE	GREEN DAY	1173	1175	
	17	33	SEX AND CANDY CAPITOL	MARCY PLAYGROUND	1161	1195	
(18)	18	7	LUCKY MAN V2/HUT/VIRGIN	THE VERVE	1146	1118	
			<b>★★★ AIRPOWER ★★★</b>				
(19)	22	6	SAINT JOE ON THE SCHOOL BUS CAPITOL	MARCY PLAYGROUND	1112	988	
(20)	21	8	WHAT I DIDN'T KNOW ATLANTIC	ATHENAEUM	1082	1000	
	21	15	ZOOT SUIT RIOT MOJO/UNIVERSAL	CHERRY POPPIN' DADDIES	988	1115	
(22)	25	12	SAVE YOURSELF COLUMBIA	STABBING WESTWARD	945	915	
(23)	27	6	SONG FOR THE DUMPED 550 MUSIC	BEN FOLDS FIVE	920	900	
	24	18	TORN RCA	NATALIE IMBRUGLIA	858	870	
	25	7	I WILL STILL BE LAUGHING COLUMBIA	SOUL ASYLUM	852	933	
	26	22	MY HERO ROSWELL/CAPITOL	FOO FIGHTERS	844	968	
	27	13	LOSING A WHOLE YEAR ELEKTRA/EEG	THIRD EYE BLIND	761	901	
	28	8	TIME AGO DGC/GEFFEN	BLACK LAB	758	776	
	29	14	FROM YOUR MOUTH 1500/A&M	GOD LIVES UNDERWATER	732	850	
(30)	37	2	WALKING AFTER YOU ROSWELL/CAPITOL	FOO FIGHTERS	720	506	
(31)	31	11	UNINVITED WARNER SUNSET/REPRISE	ALANIS MORISSETTE	678	670	
(32)	34	3	GET 'EM OUTTA HERE SURFDG/HOLLYWOOD	SPRUNG MONKEY	671	577	
(33)	32	5	KIND & GENEROUS ELEKTRA/EEG	NATALIE MERCHANT	645	627	
(34)	NEW ▶		INTERGALACTIC GRAND ROYAL/CAPITOL	BEASTIE BOYS	609	12	
(35)	35	3	DEBBIE REPRISE	THE B-52'S	608	569	
(36)	36	4	4 AM COLUMBIA	OUR LADY PEACE	586	530	
(37)	NEW ▶		TRULY, TRULY SLASH/WARNER BROS.	GRANT LEE BUFFALO	503	348	
	38	16	SHELF IN THE ROOM OUTPOST/GEFFEN	DAYS OF THE NEW	495	610	
	39	24	GIVEN TO FLY EPIC	PEARL JAM	487	500	
	40	15	CUT YOU IN COLUMBIA	JERRY CANTRELL	474	495	

Records showing an increase in detections over the previous week, regardless of chart movement. A record which has been on either chart for more than 20 weeks will not receive a bullet, even if it registers an increase in detections. Airpower awarded to those records which attain 800 detections (mainstream) or 1,100 (modern) for the first time. If two records are tied in number of plays, the record being played on more stations is placed first. Records below the top 20 are removed from the chart after 26 weeks.

# RAGE AGAINST THE MACHINE

## "NO SHELTER"

**IMPACTING 6/8!**  
the new single from

### GODZILLA

the album

**Couldn't Wait:**

KXTE 35x	WAAF 31x
WBCN 21x	WXEX 36x
89X 21x	DC101 10x
KDGE 20x	KRXQ 10x
KEDJ 21x	WMFS 19x
KKND 19x	KNJY 25x

WYSP Add    WRCX Add  
 WLZR Add    KBPI Add  
 WIYY Add    WNOR Add

**And Many More!**

The

# Conclave

Learning  
Conference

1998

Now What?!

## Agenda Highlights

Tentative  
More TBA

Keynote Speaker #1  
**Dan Mason**  
President  
CBS Radio

**The Internet**  
Friend or foe  
With ABC Radio's  
Gina Smith

Keynote Speaker #2  
**Tom Welch**  
AUTHOR OF "WORK HAPPY  
LIVE HEALTHY"

**Virtual Radio**  
Actual Reality?  
with  
Larry Campbell/Research  
Group & Edie Hillard/BPI

Friday's  
Special Musical Guest  
**Smashing  
Pumpkins!**

## Top Consultants Host Conclave College

The 23rd Annual Conclave begins at 1pm on Thursday, July 16th with Conclave College, an afternoon of intense one hour sessions designed to build skills in today's competitive programming environments.

**Zapoleon Media Strategies**  
60 Minutes To Better TSL

**Don Anthony of Talentmasters**  
Ten Steps To Building A Bigger Than Life  
Morning Show

**Jacobs Media**  
What You Need To Know About Sales  
To Become A Successful Programmer

**Dr. Roger Wimmer  
& Matt Hudson**  
of Wimmer/Hudson Research  
Radio Research... The Fun Crash Course!

**Mike McVay of McVay Media**  
Cluster Programming with Synergy

The 1998 Conclave Learning Conference is back at the...

**Minneapolis Marriott  
City Center**

JULY 16-19, 1998

## The Nation's Most Unique Interactive Format Symposia

<b>Country</b> Friday AM	<b>Alternative</b> Friday PM
<b>Modern AC</b> Friday AM	<b>Adult Contemporary</b> Friday PM
<b>Triple A</b> Saturday PM	<b>Top 40</b> Saturday AM
<b>News/Talk</b> Saturday AM	<b>Oldies</b> Saturday PM
	<b>NAC/Smooth Jazz</b> Saturday AM
	<b>Rock</b> Friday AM

## Conclave Travel

**Advent Travel** 1-800-426-8585  
(up to 10% off lowest applicable fare)

**Premiere Limo** 1-800-899-RIDE

**Conclave Office** 1-612-927-4487

Visit The Conclave on the Web at  
[www.theconclave.com](http://www.theconclave.com)

### 1998 CONCLAVE REGISTRATION FORM

\*As your badge will read

\*Name \_\_\_\_\_

\*Company \_\_\_\_\_

Address \_\_\_\_\_

\*City \_\_\_\_\_ State \_\_\_\_\_ ZIP \_\_\_\_\_

Phone \_\_\_\_\_ FAX \_\_\_\_\_

E-Mail \_\_\_\_\_ Format \_\_\_\_\_

Payment by:  CHECK  VISA  MASTERCARD  DISCOVER  
for credit cards, please complete section below

Account Number \_\_\_\_\_ Expiration Date \_\_\_\_\_

Cardholder \_\_\_\_\_ Authorized Signature \_\_\_\_\_

Mall/FAX/E-mail to: The Conclave, 4517 Minnetonka Blvd., Suite 104, Minneapolis, MN 55416  
(FAX: 612-927-6427 email: conclave @ bitstream.net) Refunds will be issued after the Conclave, less a \$75 administrative fee.

The **Conclave**

The 23rd Conclave, July 16-19, 1998

\$239 TUITION FEE UNTIL JULY 1, 1998!

\$99 STUDENT/EDUCATOR/FREE AGENT/  
CONCLAVE FACULTY

Amount Enclosed \$ \_\_\_\_\_

**Marriott City Center SOLD OUT!**  
The nearby Crowne Plaza (612)338-  
2288 has a limited number of special  
"Clave" Rooms for only \$79.00 per  
night. Hurry before they're gone!

# THESE PROGRAMMERS CAN'T HIDE THEIR MONSTER SIDE



BRAD HARDIN • WXTB



GREGG STEELE • WZTA



HARVEY KOJAN • WNOR



J.J. JEFFRIES • KUPD



KEITH HASTINGS • WLZR



RICH HAWK • KILO

Active  
Rock Monitor  
26 - (24)

Mainstream  
Rock Monitor  
35 - (34)

# addict

ON AT:

WXTB 25X	WZTA 24X
KUPD 18X	WLZR 18X
WNOR 17X	WJRR 15X
WYSP 12X	WWDC 13X
KTXQ 12X	KILO 20X
KRZR 20X	WTKX 20X
WCC 18X	KTUX 28X

AND MANY MORE!



MANAGEMENT: LIQUID MANAGEMENT LTD, SANDFORD HOUSE, 10 MAYNARD CLOSE,  
LONDON SW6 20B TEL: 0171 736 9755/FAX: 0171 731 7266

PRODUCED BY DAVID BIANCO AND ADDICT

World Radio History