

ROCK ■ AIRPLAY Monitor

• We Listen To Radio •

November 28, 1997 \$4.95 Volume 4 • No. 48

ROCK HIGHLIGHTS

MAINSTREAM

#1

DAYS OF THE NEW

Touch, Peel And Stand (OUTPOST/GEFFEN)

★★★ AIRPOWER ★★★

BLACK LAB • Wash It Away (DGC/GEFFEN)

GOING FOR AIRPLAY

AEROSMITH • Taste Of India (COLUMBIA)

HUFFAMOOSE • Wait (INTERSCOPE)

EDDIE MONEY & RONNIE SPECTOR • Everybody Loves Christmas (CMC INTERNATIONAL)

TRANS-SIBERIAN ORCHESTRA • Christmas Eve - Sarajevo 12/24 (LAVA/ATLANTIC)

SCOTT WEILAND • Lady, Your Roof Brings Me Down (ATLANTIC)

MODERN

#1

CHUMBAWAMBA

Tubthumping (REPUBLIC/UNIVERSAL)

★★★ AIRPOWER ★★★

GREEN DAY • Time Of Your Life (Good Riddance) (REPRISE)

GOING FOR AIRPLAY

FOUNTAINS OF WAYNE • I Want An Alien For Christmas (SCRATCHIE/TAG/ATLANTIC)

HUFFAMOOSE • Wait (INTERSCOPE)

JANE'S ADDICTION • Jane Says - Live (WARNER BROS.)

LOREENA MCKENNITT • The Mummers' Dance (DNA Remix) (WARNER BROS.)

SCOTT WEILAND • Lady, Your Roof Brings Me Down (ATLANTIC)

THE WILSONS • I Hate Your Face (MERCURY)

TRIPLE-A

#1

MATCHBOX 20

3 AM (LAVA/ATLANTIC)

★★★ AIRPOWER ★★★

NO RECORDS QUALIFIED FOR AIRPOWER THIS WEEK

Industry Mourns Heston Hosten, Airplay Monitor Editor In Chief

Heston Hosten, editor in chief of Billboard's four Airplay Monitor publications, died Nov. 19 in New York after an extended battle with colon cancer. He was 29 years old.

Hosten, who joined Airplay Monitor in April, was a five-year veteran of the Airplay Monitor-affiliated Broadcast Data Systems (BDS), where he first began to cement his extensive relationships with record- and broadcast-industry members. At BDS, Hosten worked his way up from administrative assistant to BDS' R&B administrator, becoming director of radio and charts in 1995. He was also the author of Airplay Monitor's BDS-themed column, "Watching the Detections."

Before joining BDS, Hosten majored in public administration at John Jay College of Criminology and business administration at LaGuardia College.



Hosten

Despite Hosten's ongoing battle with cancer, his tenure at Airplay Monitor was marked by the development of numerous charts and features, some of which will continue to debut in these publications in the months to come.

Co-workers and industry executives alike praised Hosten's natural affability, positivity, and dedication.

"All of us here are deeply saddened by the loss of our colleague and

friend," says Howard Lander, president/publisher of Billboard and president of the Billboard Music Group. "When I brought Heston over from BDS to be editor in chief of Airplay Monitor, it was evident immediately that his energy, enthusiasm, and knowledge of the industry would lead our radio publications to greater heights. The additional benefit was that we gained a warm-hearted individual with a terrific sense of humor. He will be greatly missed."

"Clearly, everyone at BDS is going to miss Heston desperately," says BDS GM Joe Wallace. "We're going to miss his drive, his intensity, and his sense of humor. Heston was our greatest hit... I thought he was a terrific guy, and we just miss him terribly."

Former Airplay Monitor publisher Michael Ellis, now VP of A&R for Crave Records, recalls Hosten as "just a really positive, can-do kind of person." When Hosten was at BDS, "he used to pull off miracles... and he always had positive solutions to problems," Ellis adds.

"All of us who knew Heston were affected by his loving, caring, and unique personality. We have a difficult time understanding why such a young, wonderful person has passed on," says Jonas Cash, CEO of Active Industry Research. "We will remember him for the rest of our lives and are grateful to the Almighty for sharing him with us. I suppose he nussed him as much as we will and wanted him home."

Continued on page 5

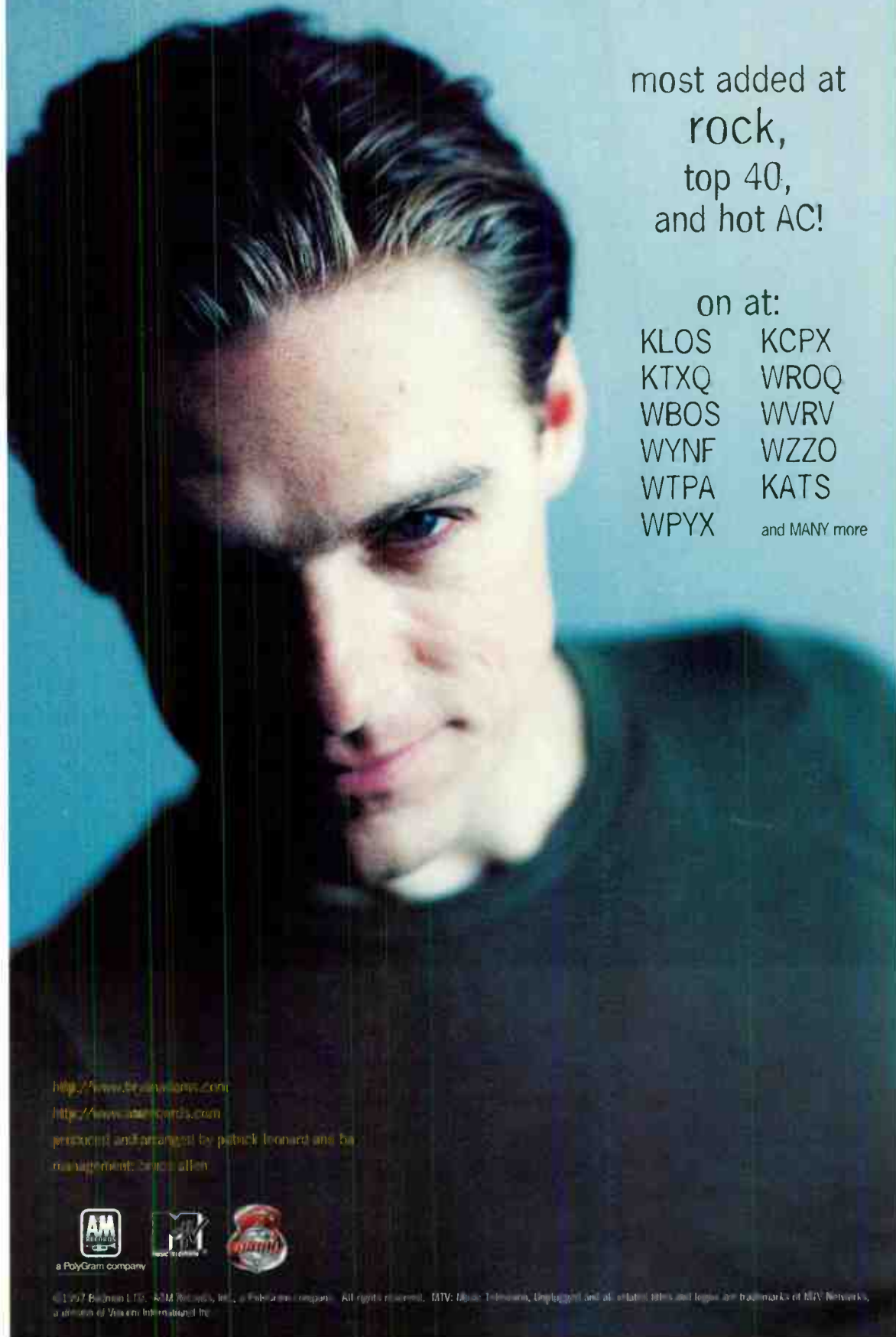
bryan adams back to you

the single from the new album
bryan adams mtv unplugged™

most added at
rock,
top 40,
and hot AC!

on at:

KLOS	KCPX
KTXQ	WROQ
WBOS	WVRV
WYNF	WZZO
WTPA	KATS
WPYX	and MANY more



<http://www.bryanadams.com>

<http://www.cater.com>

produced and arranged by Patrick Leonard and by management: Bruce Allen



a PolyGram company



made in china



© 1997 BMG Music Inc. All rights reserved. MTV, Music Television, Unplugged and all related titles and logos are trademarks of MTV Networks, a division of Viacom International Inc.

**radio found her #1 hit
"four leaf clover."
NOW, they've
discovered
the follow-up.**

MOST ADDED 3 WEEKS STRAIGHT!!!

99X	WXRT	WBOS
KAEP	101X	KTCZ
KLLC	KBBT	KZON
KXPK	KGSR	KWOD
WPLL	WMTX	KZNZ
KKZN	WJBX	WTTS

WRRX	WRLT	WDOD	KTHX
KXST	KAMX	WXLE	WMVY
WRNX	WIQB	KRSH	KFXD
WJSE	WEBX	KFLX	KBAC

AND 30 MORE!

"Don't Feel Like Cryin" sounds awesome on the air! There's a ton of female generic 'sound-alikes right now, and ABRA isn't anywhere near that new brat pack!"

- Lisa Adams, KBBT

"She's gonna win a Grammy someday!"

- Lin Brehmer, WXRT

"Abra Moore played our Planet Pumpkin Party, and was a huge hit! Our audience loves Abra!"

- Rob Roberts, WPLL

"Abra's latest track packs a lot of Fender guitar, sparking a resurgence on both (charts)!"

- The Zimmermen/GAVIN

"Record To Watch" 11/21/97

abra moore don't feel like cryin'
from her arista austin album *strangest places*

ARISTA
austin

© 1997 Arista Records, Inc., a unit of BMG Entertainment Management: Tim Neece Produced by Mitch Watkins Mixed by Jack Joseph Puig www.abramoore.com

World Radio History

Madame Butterfly Meets NIN In 'QRS Flip

Greater Media has flipped its Detroit classical station **WQRS** to modern under market manager **Tom Bender**. Jacobs Media is consulting the new Edge, and former Jacobs PD **Amy Doyle** returns to the fold as PD, from the same post at triple-A **KKZN** Dallas. The station made the transition from "Madame Butterfly" to **Nine Inch Nails'** "Closer." No word on how many coronaries were reported at local hospitals. **WQRS** is currently jockless and in the midst of playing "the best alternative rock songs of all time" for 10 days, by which time a full air staff should be in place. New calls will be applied for.

PROGRAMMING

Album **WEBN** Cincinnati APD/middayer **Michael "Dolphin" Walter** is now PD. In other Cincinnati news, new classic hits outlet **WMMA**, which we reported on several weeks ago, is now calling itself **Alex@97.3**.

Robbin Dell crosses to Alex as GM from an AE slot at AC rival **WVMX**. Sister oldies **WGRR** OM **Chuck Finney** adds the same duties over **WMMA**.

Album rock **WRXR** Augusta, Ga., OM/afternoon host **Jeff Sanders** becomes OM at modern **WXNR** and album rock **WSFL** Greenville, N.C.

Don O'Neal exits the PD chair at modern **KFRR** (New Rock 104), classic rock **KJFX** (the Fox), and sports **KYNO** Fresno, Calif. **KFRR** midday personality **Andy Winford** is interim PD for that station, while Fox APD/p.m. driver **Angie Good** is named interim PD there.

Modern **WOXY** Cincinnati PD **Dave Tellmann** exits the station and the industry.

Country **KYKS** Lufkin, Texas, MD/afternoon jock **Steve Ricks** moves to sister classic rock station **KTBO** as PD.

With **Chris "RJ" Fleming** having ended his brief tenure as PD of modern **WGRD** Grand Rapids, Mich., last week, APD/MD **Margot Smith** is handed interim PD responsibilities.

Modern **AC WLNK** (the Link) Charlotte, N.C., PD **Stacy Cantrell** exits to finish her Ph.D. and embark on a teaching career.

MediaAmerica enters the rock daily prep service fray with **FAX OFF!**, which promises

daily delivery of music, movie, Internet, TV, and other news and a biweekly artist interview CD.

PEOPLE

Modern **KLYY** (Y107) Los Angeles APD **Sandy Horowitz** exits the station.

Album **KILO** Colorado Springs, Colo., promotion director/p.m. driver **Don Jantzen** is upped to APD/MD.

Album **WRDU** Raleigh, N.C., P/T **Mark Arsen** moves to MD/evenings. **WRDU**/oldies **WTRG** promotion director **Pam Dzuiba** now covers that role at sister top 40/modern hybrid **WDCG** (G105) and **AC WRSN** as well.

Michele Clark Promotion national noncommercial promotion director **Dan Reed** joins noncommercial triple-A **WFPK** Louisville, Ky., as MD/morning man.

Shortly after her departure from nights at **WMMR** Philadelphia, **Elise Brown** surfaces across the street at modern **WPLY** for P/T.

KBBT (the Beat) Portland, Ore., morning team **Brian Shook** and **Brian Suits** have exited the modern adult outlet. P.m. driver **Troy Daniels** will cover for now. Packages to PD **Michael Newman** or consultant **Randy Lane**.

Julio leaves modern **WLUM** Milwaukee for P/T at album **WRXC** Chicago.

WQIK Jacksonville, Fla., production director **Dave Savage** reportedly transfers to classic rock **WOFX** Cincinnati.

At classic hits **WFWI** (the Fort) Fort Wayne, Ind., P/T **Chris Conner** advances to production director/afternoons. **Dave Collins** joins as morning producer/early middays from MD/afternoons at crosstown country **WBUT**.

Helen Jordan leaves top 40 **WZYP** Huntsville, Ala., for the long-vacant promotion director slot at album **KURR** (Rock 99)/top 40 **KZHT** Salt Lake City.

Modern **XHRM** (the Flash) San Diego picks up **Kevin Carter** as host of its Friday-night techno specialty show and swing work.

The industry mourns the passing of legendary radio personality, **Mike Herrington**, 57. He started in top 40 as **Captain Mikey** and eventually programmed **KMET** Los Angeles. His tenure there was the basis of the film "FM." Donations can be sent in his name to the Leukemia Society.

COURT CLUTCHES CARGILL?

According to The Hollywood Reporter, Cargill Communications is facing a lawsuit brought against it from its days as owner of modern **KREV** (Rev 105) Minneapolis. According to the Supreme Court, former promotion director **Annie Miners** can sue the station for firing her after her refusal of treatment for alcoholism. According to Miners, she is not an alcoholic.

VIDEO CHANNELS MULTIPLY

MTV Networks and the Box have both unveiled new services for 1998.

Billboard Bulletin reports that the Box has announced the **Box Set**, which consists of four new digital, all-music channels: **Pulse**, with a top 40/modern adult mix; **Classic**, with mid-'70s to '90s classic videos; **Urban**, with contemporary R&B, hip-hop, and reggae; and **Edge**, featuring modern rock videos.

Next July, MTV Networks will bow the **Suite From MTV** and **VH1**, which will include the freeform **M2**; **MTV Ritmo**, targeted to a Latino audience; **MTV Indie**, with rap, techno, and college releases from independent labels; **MTV Rocks**, featuring hard rock and heavy metal; **VH1 Soul**, featuring R&B artists; **VH1 Country**; and **VH1 Smooth**, featuring jazz, new age, and AC music.

White Named Monitor Account Manager

Sharon White is named account manager for Top 40 and Rock Airplay Monitor for the Western U.S. She will work out of Monitor's Los Angeles office, starting Dec. 9. White, is a record-industry veteran and

comes to the company after serving as a regional promotion manager for RCA, Geffen, and EMI. She also worked on the Album Network's Yellow Pages of Rock directory.



PERSONNEL FILE

BY STEVE GRAYBOW

212-536-5361 • sgraybow@billboard.com

Several Out In Freeworld Restructure

Due to a restructuring, Freeworld national director of rock promotion **David Ross** is available; reach him at 201-226-6853. Also out are locals **Christopher Allen** (Los Angeles), **Heather Luke** (San Francisco), **Bob Salerno** (Chicago), **Kathy Long** (Washington, D.C.), and **Todd Heft** (Boston) and **Amy Basler** (artist development), **Evangeline Yacuk** (promotion coordinator), **David Maricich** (A&R), and **Matt Marshall** (A&R). In a separate move, VP of promotion **Doug Ingold** also exits.

Columbia ups Cleveland local **Dave Watson** to national director of alternative promotion . . . Sire adds former Island local **Paddy Rascone** for New York duties, as well as **Sophon Greene** in Denver, **Chris Payne** in Texas, **Andre Morris** in Cleveland, and **Mike Monahan** in Atlanta. Look for **Sheri Trahan** to join the label in January as VP of alternative promotion.

DreamWorks hires **Kay McCarthy** for Southeast promotion . . . Detroit local **Kevin Kay** segues from Island to V2 . . . Los Angeles local **Sue Waters** moves to PGD's marketing department.

Sire Records Group has entered into an agreement with Sub Pop Records to market and distribute certain Sub Pop releases. The first titles worked jointly will be new releases by **Sunny Day Real Estate** and **Sebadoh**, both expected in the second half of 1998.

Grant Lee Buffalo moves from Reprise to Warner Bros. and is currently in the studio . . . Singer/songwriter **Peter Himmelman** inks a deal with Island-distributed imprint **Six Deegs**; look for a new album early next year.



Hitchin' With Stern



During a New York blitz, hurricane **Green Day** visited modern **WXRK** (K-Rock) for a photo op with morning man **Howard Stern**. Shown, from left, are Reprise artist relations rep **Helena Coram**, **Green Day's Mike Dirnt**, **Stern**, **Green Day's Billie Joe Armstrong** and **Tre Cool**, and Reprise New York field promo rep **Anne Marie Foley**.

Warm Musical Nourishment



For its fifth straight year, triple-A **KFOG** San Francisco has released a compilation CD as a fund-raiser for Bay Area charities. "Live From The Archives 4" has live performances donated by **Big Head Todd & the Monsters**, **Blues Traveler**, **the Boneshakers**, **Tommy Castro**, **Bruce Cockburn**, **Melissa Etheridge**, **Indigo Girls**, **INXS**, **Nil Lara**, **Tom Petty**, **Bonnie Raitt**, **Toad The Wet Sprocket**, **the Toytes**, **Suzanne Vega**, **Joe Louis Walker**, and **Wilco**. This year's cover was selected from 250 entries. The CD sold out its 20,000-unit stock in a record three days. Last year's 18,000-copy run took eight days to be depleted.

EDITOR IN CHIEF: HESTON HOSTEN
 EDITOR: SEAN ROSS
 MANAGING EDITOR: MARC SCHIFFMAN
 MAINSTREAM ROCK/TRIPLE A CHART MANAGER: ANTHONY COLOMBO
 MODERN ROCK CHART MANAGER: MARK MARONE
 MODERN ADULT CHART MANAGER: STEVE GRAYBOW
 WRITER/REPORTER: DANA HALL
 CHART PRODUCTION MANAGER: MICHAEL CUSSON
 ASST. CHART PRODUCTION MANAGER: ALEX VITOUKIS
 EDITORIAL PRODUCTION MANAGERS: BARRY BISHIN, MARCIA REPINSKI
 EDITORIAL PRODUCTION: MADELINE CARROLL, SUSAN CHICOLA,
 MARC GIAQUINTO, SARAH JOHNSON, MARIA MANUCLIC
 COPY EDITOR: CARL ROSEN
 ADVERTISING PRODUCTION MANAGER: LYDIA MIKULKO
 ASSOC. ADVERTISING PRODUCTION MANAGER: CINDEE WEISS
 ART DIRECTOR: RAY CARLSON
 ADVERTISING PRODUCTION ARTIST: SHIRA HALFON

©1997 BPI Communications
 1515 Broadway, New York, NY 10036 212-764-7300
 For subscriptions call: 800-722-2346

Airplay Monitor reporting panels are based solely on a station's musical content.

GENERAL MANAGER: JON GUYNN
 ACCOUNT MANAGER: JEFF SOMERSTEIN
 ADVERTISING SERVICES MANAGER: ALYSE ZIGMAN
 SALES ASSISTANTS: EVELYN ASZODI, ERICA BENGTON
 EDITORIAL ADVISER: TIMOTHY WHITE
 PRODUCTION DIRECTOR: MARIE GOMBERT
 DIRECTOR OF MARKETING: ELISSA TOMASETTI
 CIRCULATION DIRECTOR: JEANNE JAMIN



PRESIDENT: HOWARD LANDER
 SENIOR VP/GENERAL COUNSEL: GEORGINA CHALLIS
 VICE PRESIDENTS: KAREN OERTLEY, ADAM WHITE
 DIRECTOR OF STRATEGIC DEVELOPMENT: KEN SCHLAGER
 BUSINESS MANAGER: JOELLEN SOMMER

Kansas Takes Classic Rock's No. 1 Spot

Kansas posts just one track on the chart but "Cary On Wayward Son" nails down the No. 1 position in the November edition of Broadcast Data Systems' classic rock custom chart. The 1977 hit is tied in detections with Aerosmith's "Sweet Emotion" but is given the nod via a tiebreaker. Aerosmith and the Steve Miller Band claim three chart tracks apiece; Boston, Eagles, Heart, Lynyrd Skynyrd, Pink Floyd, Steppenwolf, Yes, and ZZ Top have two hits apiece. WTAK Huntsville, Ala., is new to the panel this

month, making the number of reporters 21. They are WZGC Atlanta; WZLX Boston; WCKG and WXCD Chicago; WOFX Cincinnati; WNCX Cleveland; WCSX Detroit; KKRW Houston; WTAK Huntsville; KCFX Kansas City; KCBS Los Angeles; WBGW Miami; WAXQ and WNEW New York; KSLX Phoenix; KGON Portland, Ore.; KSEG Sacramento, Calif.; KSAN San Francisco; KZOK Seattle; KSD St. Louis; and WARW Washington, D.C.

ANTHONY COLOMBO

CLASSIC ROCK CHART

TW	LW	SONG-ARTIST	STATIONS	PLAYS	
				TW	LW
1	6	Carry On Wayward Son-Kansas	21	101	89
2	3	Sweet Emotion-Aerosmith	21	101	96
3	2	After Midnight-Eric Clapton	21	99	97
4	1	Dream On-Aerosmith	21	96	104
5	5	La Grange-ZZ Top	20	94	89
6	14	All Right Now-Free	20	90	80
7	21	Magic Carpet Ride-Steppenwolf	21	86	78
8	7	Long Time-Boston	20	86	88
9	8	Tush-ZZ Top	20	85	86
10	10	Sweet Home Alabama-Lynyrd Skynyrd	21	84	85
11	13	Don't Fear The Reaper-Blue Oyster Cult	20	84	81
12	20	The Joker-Steve Miller Band	21	79	79
13	15	Layla-Derek & the Dominos	21	79	80
14	12	Sultans Of Swing-Dire Straits	21	79	82
15	11	More Than A Feeling-Boston	19	79	84
16	33	Barracuda-Heart	19	76	71
17	16	Ramblin Man-Allman Brothers Band	21	75	80
18	36	White Room-Cream	20	75	69
19	32	Walk This Way-Aerosmith	20	75	71
20	25	Magic Man-Heart	20	74	75
21	18	Hotel California-Eagles	20	74	80
22	17	All Along The Watchtower-Jimi Hendrix	20	74	80
23	24	China Grove-Doobie Brothers	20	73	76
24	22	Feel Like Makin' Love-Bad Company	20	71	77
25	34	Rock'n Me-Steve Miller Band	19	71	71
26	35	Reelin' In The Years-Steely Dan	17	71	70
27	—	Just What I Needed-Cars	20	70	60
28	—	Born To Be Wild-Steppenwolf	20	70	67
29	38	Money-Pink Floyd	20	70	68
30	26	Another Brick In The Wall (Part II)-Pink Floyd	20	70	75
31	—	Owner Of A Lonely Heart-Yes	19	70	62
32	31	I've Seen All Good People-Yes	18	70	71
33	—	Rocky Mountain Way-Joe Walsh	20	69	66
34	—	Night Moves-Bob Seger & the Silver Bullet Band	19	69	55
35	—	Two Tickets To Paradise-Eddie Money	21	68	60
36	—	Take It Easy-Eagles	19	68	60
37	37	Take The Money And Run-Steve Miller Band	18	68	69
38	—	Free Bird-Lynyrd Skynyrd	20	67	67
39	—	Evil Ways-Santana	19	67	67
40	39	Lucky Man-Emerson, Lake & Palmer	18	67	68

RADIO CONCERT MONITOR

DATE	CALL LETTERS	EVENT	SCHEDULED TO APPEAR
Dec. 1	WMRQ Hartford, Conn.	Jingle Bell Jam	Everclear, K's Choice, Longpigs, Veruca Salt
Dec. 2	WBCN Boston	X-Mas Rave	Amazing Royal Crown, Blink 182, Boy Wonder, Catherine Wheel, Crystal Method, Cure, Dandy Warhols, Days Of The New, Tanya Donnelly, Everclear, Ben Folds Five, G. Love & Special Sauce, Goldfinger, Ben Harper, Letters To Cleo, Longpigs, Love Spit Love, Tara MacLean, Mistle Thrush, Ric Ocasek, Skavoozie & the Epitones, Smash mouth, Space Monkeys, Specials, Spiritualized, Stereophonics, Tonic, Jen Trynin, Veruca Salt (across 11 venues)
Dec. 4	KOME San Jose, Calif.	Almost Acoustic Christmas	Everclear, Green Day, Mighty Mighty Bosstones, Our Lady Peace, Sneaker Pimps
Dec. 5	KGDE Omaha, Neb.	Snowball '97	Bloodhound Gang, Blue Moon Ghetto, Buck-O-Nine, Creed, Reel Big Fish
Dec. 5	KMYZ Tulsa, Okla.	Not Necessarily Acoustic Christmas	Jars Of Clay, Plumb, Seven Mary Three
Dec. 5	KROQ Los Angeles	Eighth Annual Almost Acoustic Christmas	Fiona Apple, Chumbawamba, Jamiroquai, Jane's Addiction, Matchbox 20, Sarah McLachlan, Smash mouth, Sneaker Pimps, Verve
Dec. 6	KBBT Portland, Ore.	Second Acoustic Christmas Show	Devlins, dog's eye view, Sarah McLachlan, Abra Moore
Dec. 6	KITS San Francisco	Electronica Hanukkah	Crystal Method, DJ Shadow, Keoki, Meat Beat Manifesto, Sneaker Pimps, Josh Wink
Dec. 6	KROQ	Eighth Annual Almost Acoustic Christmas	Aquabats, David Bowie, Everclear, Green Day, Live, Portishead, Save Ferris, Sugar Ray, 311, Third Eye Blind

To include your station's concert information in Rock Concert Monitor, call Marc Schiffman at 212-536-5065, fax 212-536-5286, or E-mail mschiffman@billboard.com



CHEET SHEET BY MARK MARONE

212-536-5051 • mmarone@billboard.com

The (More Than) Bearable Fusion Of Behan

Songwriters **Monica Behan** and **Deron Johnson** met six years ago in Los Angeles under the auspices of a music publishing friend. Their association spawned a romantic relationship and, three years later, a group bearing their surnames. In both cases, Behan Johnson's principals must have felt the adage "opposites attract" was true with respect to their disparate musical backgrounds and upbringings.

L.A. native Johnson is a multi-instrumentalist who played with jazz luminaries ranging from **Stanley Clarke** and **David Sanborn** to **Miles Davis**. Behan comes from a more folk and classic rock background and doesn't play an instrument but possesses a sweet **Rickie Lee Jones**-type voice. The result was a rock/folk adult alternative sound guided by subtle hip-hop rhythms, jazz overtures, and funk grooves—a convergence of their individual tastes.

Behan was brought up among nine children in Watertown, N.Y., near the Canadian border. Family jam sessions were a part of life, and the sounds of piano, guitar, mandolin, and hand drums in the living room brought about a passion for music that would only be surpassed by an early love of verse. "I would always psychoanalyze lyrics. I wanted to know what the songs were about. My oldest brother got me into that by sitting me down in fourth grade and having me listen to a song by **Neil Young** and then asking me what it was about,"



Deron Johnson and Monica Behan

says Behan, who also developed an affinity for **Carole King**, **Bob Dylan**, and **Steely Dan**. "And of course, he'd allow me to have a couple of puffs of his cigarette while I was in there so I could think I was doing something cool."

As prodigious a musician as Johnson became—he plays piano, keyboards, guitars, bass, and drums and sings background on the band's self-titled debut, he dreamed as a kid of running gracefully down a football field and making acrobatic catches like his idol, **Lynn Swann**. It seemed an attainable goal after he watched his older brother become a college star and ultimately wind up playing

professionally in the CFL for several years and even for one year with the San Diego Chargers. Johnson's aspirations were ended by a tackle during his sophomore year of high school. The ankle injury sidelined him for good, leaving Johnson with a slight limp to this day.

Resigned to his sedentary state, Johnson began playing more on the house piano. He had already had some musical experience, having been thrust upon a bass at the age of 7 by his drumming older brother, who needed a rhythm partner to play **James Brown** grooves. His injury at 16 paved the way for him to become an accomplished player; so much so that in an L.A. jazz club some 10 years later he was approached by Davis' nephew about playing with the legendary trumpet player. Johnson recalls vividly his first trip to Davis' house in Malibu, Calif. "I think the darkness of his skin combined with his sunglasses—and this was at night—he just looked like this abyss. Like this being that was there but not there," he says. Johnson toured Europe with Davis in 1991 and played on some of the tracks on his "Doo-Bop" album the following year.

While the band's live show invokes the improvisational spirit of jazz, its songs rely on the songwriting relationship of Behan and Johnson that came from sharing a piano bench for many hours. Just as inevitable was the sprouting of a romantic situation after three months of work in such circumstances. "When you spend that much time together, I guess it is inevitable," concedes Johnson. "After six years, we have this connection now that when we play piano and vocal songs, we really know each other. We can make the impact that much more strong."

Harping On Roland



Virgin guitarist singer/songwriter Ben Harper, left, was passing through San Francisco but couldn't leave town without a photo summit with modern KITS (Live 105) San Francisco APD Roland West, right.

Industry Mourns Heston Hosten, Airplay Monitor Editor In Chief

Continued from page 1

"Heston's work ethic and approach to his job was exemplary," says Alan Smith, COO of A.I.R. "What set him apart, I think, was that he felt it was his duty to get it right, whatever it was. He made people feel like their problem was his problem, and that attitude gained him a lot of respect in a very short time. This is a very sad time for us."

"We had a great relationship, he was the best, and he always looked out [for your interests]," says Lionel Ridenour, VP of R&B music at Arista Records. "You do business with a lot of people, and some of them you don't really like, but it's like, whatever it takes to get the job done. But I genuinely, really liked Heston—he was a great guy. My Monday was not complete without talking to him. I'd be driving in the car after I got my BDS numbers, and my next phone call was to Heston. We'd laugh and joke about stuff. I consider myself to be an intense person about business, but he'd be right there with me, pound for pound. He was so knowledgeable—I told him they should have changed it to HDS."

"I got to know him on a daily basis through dealing with him at BDS, and a relationship that developed that was far more than business," says Arista VP of promotion Jim Elliott. "What I admired and respected about him was his work ethic, his fairness, and his incredible positive attitude. Even when he was extremely ill, he didn't bring you down when you visited him; he was still very positive up 'til the end. Most of all, we can all take a page from the way he looked at the world. He did not see color. In an industry that does segregate things in terms of music appeal and in many other ways, Heston did not. Heston saw people for just being people. He heard music for just being good music. And if we could all be more like that, this

world would be a helluva better place to live."

"I've lost a good friend, and the industry has lost an inspiring and valuable voice," says Virgin/Noo Trybe VP of promotion Dwight Bibbs. "He showed us how much one can accomplish as a young African-American man. He was a trailblazer and an innovator. I admired him greatly and will truly miss him."

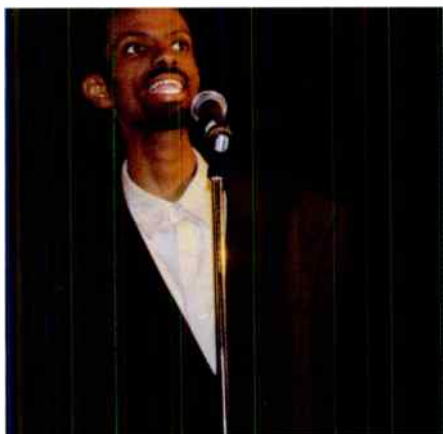
"In the couple of years that I worked with Heston, I came to consider him a real friend," says Elaine Locatelli, VP of AC promotion for Columbia Records. "He had a real good feeling for people, he respected people, and everybody who knew him genuinely liked him."

Says Helen Little, OM at WUSL Philadelphia, "He will be missed, but his presence will always be with us. If I had to find something positive in all of this, it would have to be that although he is no longer in one place, in one body, he is now among all of us, in each of us. We'll miss his smile and his laughter, but his brilliance, his heart, his commitment, and all that he stood for, will continue to live on through all who knew him; we will carry with us, all the things he believed so strongly in. It's tragic to see someone so young suffer, but we have to believe that there is a reason and a message for all of us to learn from this and more importantly from Heston and the life he lived."

Funeral services were held Nov. 25, at St. Charles Borromeo Catholic Church in Harlem, N.Y. Billboard and Airplay Monitor plan to establish a fund in his honor, more details of which will be forthcoming.

Hosten is survived by his mother, Greta; his aunt, Barbara Perrotte; and three cousins, Carol, George, and Sadina Perrotte.

The family has asked that in lieu of flowers, donations should be made in Hosten's name to cancer-related charities.



While in New Orleans this August for the National Black Programmers Coalition meet, Heston Hosten addressed participants at R&B Monitor's Reader Appreciation Party.



Hosten represents Country Airplay Monitor at June's Monitor anniversary celebration in Nashville.



Hosten is surrounded by some of his staffers at the Reader Appreciation Party in New Orleans. Pictured, from left, are reporter Dana Hall, R&B chart manager Datu Faison, Top 40 chart manager Theda Sandiford-Waller, editor Sean Ross, account executive Hank Spann, Hosten, and R&B Monitor managing editor Janine Coveney.

MONITOR PROFILE

Rock Vet Hughes Gets Houston To Admit It Likes In-Your-Face KLOL

On his 15th anniversary in radio, Michael Hughes celebrated the milestone like any other radio professional: He changed jobs. In April, after spending most of the '90s at the helm of album WKLS (96 Rock) Atlanta, he joined heritage Houston rocker KLOL as PD. The station had gone from active rock to a more adult-targeted format, with legendary morning men Stevens and Pruett as the highly controversial elder statesmen. Six months later, the summer Arbitron survey showed the station at its highest level in more than a year, up 3.2-3.9 12-plus.

Hughes had been through an active-to-heritage transition before. "WKLS had been rather active and young-focused, and they had some updated goals. That was our charge, and we turned it into a reality." Before his arrival, KLOL had gone almost entirely classic rock. The station is now 80%-85% classic, with the remainder current/



'Yes, we are KLOL. We are a brand unique to ourselves'

Michael Hughes
Program Director
KLOL Houston

recurrent material. That said, Hughes notes that KLOL's most-played title last week was Mighty Joe Plum's "Live Through This." "I'm a big proponent of Tom Barnes' theory of programming to the demo and not the format." (Consultant Barnes worked with Hughes on WKLS and does so again at KLOL.)

"We're not quick to jump on the latest and the greatest," Hughes says. "We'll satisfy the curiosity factor with the new songs from the heritage artists, but because it is the new Stones doesn't necessarily make it a two-month automatic and current. It has to earn its keep just like Mighty Joe Plum earned its introduction."

"It's not the role of KLOL in 1997 to be first with new music. That is not a priority that we hang our hat on, nor do we try to live up to it. We're a music- and personality-based rock station for Houston. If some call it classic rock, I'm OK with that. If some call it mainstream, I'm OK with that. What I'm concerned about is the ratings and the revenue on a quarterly basis."

Here's a sample hour on KLOL: Aerosmith, "Sweet Emotion"; Stevie Ray Vaughan, "Pride & Joy"; Boston, "Rock & Roll Band"; Matchbox 20, "Push"; Eagles, "Hotel California"; Rush, "Tom Sawyer"; Wallflowers, "One Headlight"; Van Halen, "Right Now"; Pink Floyd, "Another Brick In The Wall"; The Cars, "Good Times Roll"; and Rolling Stones, "Anybody Seen My Baby."

"We're talking about a fairly finite music base," Hughes admits. That's merely impetus to hone "every other element on the radio station, with the perspective of keeping that music sounding fresh. It's the law of surprise and repetition: Keep telling them the same thing in new and different ways."

One way is the station's recently adopted secondary positioner, "Texas rock and

blues." Hughes sees it as a way to tap into a powerful musical genre in the market as well as "providing an on-ramp toward the adult audience." Now, along with playing such Texas treasures as ZZ Top and Stevie Ray Vaughan, KLOL has a "Bluesman Of The Week" feature, for which a different artist visits the morning show each week.

Hughes also worked to make KLOL fun to listen to, even outside the morning show. "For a long time, it has been Stevens and Pruett and the music in other dayparts. Now I'm a big proponent of personality radio. When it's done well, it provides that additional magnet that's really required in today's competitive framework of a market."

So the station that first gave its audience "outlaw radio" has courted that attitudinal image again, with things like their Marv Albert weekend, "where we played two songs from a guy band and one song from a girl band," says Hughes, who attributes the style to his Atlanta days. "That kind of attitude-driven stuff had become part of our modus operandi at [WKLS owner] Jacor. It was fun to introduce that element, but it's a challenge to continue it."

"We need to create as many additional magnets as we can," Hughes continues. "More and more, unless you are uniquely niched with your music, you have to rely on those other elements. And when you have a brand as powerful as these call letters in this marketplace doing what they've done for 27 years, [you have to ask,] What huge starting blocks? You're halfway down the racetrack."

Using the Marv Albert weekend as an example, Hughes stresses that his station's strength is in making "the one-off mini-promotions huge." Even with something as simple as the Sing Like Stevie contest, for front row Fleetwood Mac tickets, "We had all these people all week on the morning show call in," Hughes says, "and it turns out everybody's listening for it . . . And we recognize those opportunities and just drive them and keep that general attitude alive. Promotions are a vehicle, and oftentimes we don't utilize them that way. We don't maximize them. I venture to say [that at] most radio stations, once a promotion is over, there's rarely any post-promotion."

Along with the station's heritage comes the reputation of Stevens and Pruett as the bad boys of Houston radio. They've had their run-ins with the FCC. They are the classic upstart morning show. And they were in some way the impetus for KLOL's Admit It marketing campaign, which was put together by former GM Kathy Stinehour, GM Brian Purdy, consultant Guy Zapoleon, and Chancellor programming mind Greg Solk.

"Everybody knows the stigma associated with a classified 'blue' morning show," Hughes says. "And we all read the horror stories of phantom come. And what we've done is to make it OK. 'Go ahead and admit it.' And with the likes of every celebrity on earth saying 'I admit it. I listen to Stevens and Pruett' to Joe down in Galveston, I think that's really helped perpetuate our image. Yes, we are KLOL. We are a brand unique to ourselves. And the ratings indicate that it's popular in this marketplace. Admit it! And attempting, obviously, to manipulate the psyche of a diary keeper."

The campaign started heavy on TV and has graduated to billboards. "We anticipate it being a part of this radio station for a long time," says Hughes.

MARC SCHIFFMAN

GREATEST GAINERS

Strongest Increase In Airplay This Week

MAINSTREAM ROCK

INCREASE
IN PLAYS

METALLICA • The Unforgiven II (ELEKTRA/EEG)	+443
WLZR +34, WEBN +26, KAZR +21, KIOZ +18, WNOR +18, KQRC +16, KUFO +16, KCAL +15, KXXR +14, WIYY +12	
METALLICA • Fuel (ELEKTRA/EEG)	+275
KQRC +23, WTFX +20, WLZR +20, WNOR +15, WIYY +13, KSJO +12, KCAL +11, WRCX +10, KIOZ +10, WYSP +9	
THE ROLLING STONES • Flip The Switch (VIRGIN)	+250
WRXL +17, WHJY +16, WJRR +14, WCKW +14, WZAT +12, WIOT +11, KZRR +11, WDHA +10, WIZN +10, WTPA +10	
OUR LADY PEACE • Clumsy (COLUMBIA)	+209
WZAT +22, KTUX +19, WXRA +18, WJRR +17, WCCC +16, WZTA +15, KRZR +11, WXRC +9, KEGL +9, KRAD +8	
METALLICA • Devil's Dance (ELEKTRA/EEG)	+168
WLZR +20, KQRC +16, KCAL +12, KAZR +11, WAAF +10, KSJO +9, KRAB +7, KBER +7, KATT +7, KRXQ +7	
MATCHBOX 20 • 3 AM (LAVA/ATLANTIC)	+123
WJRR +16, WXRA +15, WTPT +12, WPYX +10, KATT +10, WIYY +10, KISS +9, WIOT +7, KLOS +7, WDHA +6	
METALLICA • Bad Seed (ELEKTRA/EEG)	+92
KAZR +11, KIOZ +6, KATT +6, WBAB +6, KRXQ +5, KRZR +4, WXRC +4, WBZX +3, KBER +3, WHJY +3	
SAMMY HAGAR • Both Sides Now (THE TRACK FACTORY/MCA)	+91
WMMS +15, WCMF +10, WDHA +9, WTPA +9, KRAB +9, KSJO +8, KISS +8, KISW +8, WAFX +6, KMOD +5	
METALLICA • Attitude (ELEKTRA/EEG)	+88
WLZR +18, KAZR +10, KBPI +7, WXTB +5, KRZR +4, KSJO +4, WEBN +3, WMFS +2, WDHA +2, KILO +2	
METALLICA • Better Than You (ELEKTRA/EEG)	+85
KAZR +11, WNOR +11, WAAF +10, KSJO +8, KRAB +6, WZTA +3, KRZR +3, WTFX +2, WROV +2, KIOZ +2	

MODERN ROCK

INCREASE
IN PLAYS

GREEN DAY • Time Of Your Life (Good Riddance) (REPRISE)	+470
KPOI +25, KEDJ +21, KLZR +21, WKQX +21, WCYW +20, KNRK +17, KICT +17, KNDD +16, KWOD +15, WPBZ +14	
OUR LADY PEACE • Clumsy (COLUMBIA)	+402
KROQ +23, KZLN +21, KLZR +18, WEND +17, KTBZ +16, WKRL +15, KDGE +15, WENZ +15, KITS +15, WBZU +14	
BEN FOLDS FIVE • Brick (550 MUSIC)	+304
KZLN +23, WBZU +20, KOME +20, KROQ +20, WLUM +16, KENZ +15, KITS +14, KKND +13, KNDD +13, WHFS +13	
THE MIGHTY MIGHTY BOSSTONES • Royal Oil (BIG RIG/MERCURY)	+223
WBTZ +22, KLZR +16, WEQX +15, WEDG +14, KPNT +13, WXEG +12, WENZ +12, KFTE +11, KHXY +11, KNDD +10	
THIRD EYE BLIND • How's It Going To Be (ELEKTRA/EEG)	+200
KHXY +24, WKQX +21, WAQZ +20, KFRR +18, KEDJ +13, CFNY +10, KENZ +9, WCYW +9, XTRA +9, WDXD +8	
BUSH • Mouth (TRAUMA/INTERSCOPE/HOLLYWOOD)	+127
KPOI +18, WEND +17, WKDF +16, WEQX +13, KEDG +11, WPLA +10, KJEE +9, WRXQ +7, KTCL +7, WRZX +6	
RAGE AGAINST THE MACHINE • The Ghost Of Tom Joad (EPIC)	+107
WCYW +10, WQXA +10, KJEE +8, KROX +8, WQBK +7, WPLA +7, CIMX +6, KFTE +5, KKND +5, WXZZ +5	
MARCY PLAYGROUND • Sex & Candy (MAMMOTH/CAPITOL)	+103
KCCX +17, WFNX +12, WBCN +12, KFTE +9, WBTZ +9, KXRK +9, KMYZ +8, KPOI +7, KNRK +7, KFRR +7	
DAVID BOWIE • I'm Afraid Of Americans (VIRGIN)	+101
WQBK +17, WDXD +15, KEDG +15, KNRK +13, KKND +8, KXRK +8, WENZ +8, WPBZ +6, WXZZ +5, KEDJ +5	
JANE'S ADDICTION • Jane Says - Live (WARNER BROS.)	+93
CIMX +26, KNDD +16, KDGE +15, KZLN +11, KFMA +9, KOME +9, XHRM +7, WWCD +5, WNNX +5, WXRK +4	
SUGAR RAY • RPM (LAVA/ATLANTIC)	+93
WBTZ +13, WCYW +12, KFTE +9, KJEE +9, WDGE +9, WNNX +7, WFNX +7, KTOZ +6, KOME +5, KPOI +4	

VIDEO PLAYLISTS

MOST PLAYED ROCK TRACKS



	TW	LW
1 Fiona Apple, Criminal	36	21
2 Paula Cole, I Don't Want To Wait	36	37
3 Sugar Ray, Fly	33	37
4 Smash Mouth, Walkin' On The Sun	31	18
5 Chumbawamba, Tubthumping	29	21
6 Matchbox 20, Push	24	27
7 Jewel, Foolish Games	23	19
8 Sarah McLachlan, Building A Mystery	23	35
9 Fleetwood Mac, Silver Springs	18	15
10 Elton John, Something About The Way You Look Tonight	17	18
11 The Rolling Stones, Anybody Seen My Baby?	16	21
12 U2, Please	15	15
13 The Wallflowers, One Headlight	13	11
14 The Wallflowers, Three Marlenas	13	8
15 Meredith Brooks, What Would Happen	11	12
16 The Verve Pipe, The Freshmen	10	8
17 Third Eye Blind, Semi-Charmed Life	10	25
18 Jamiroquai, Alright	9	15
19 Sarah McLachlan, Sweet Surrender	9	0
20 Duran Duran, Electric Barbarella	9	9
21 Sheryl Crow, Tomorrow Never Dies	9	0
22 Jewel, You Were Meant For Me	8	8
23 No Doubt, Don't Speak	8	8
24 Savage Garden, I Want You	8	9
25 Sheryl Crow, Home	7	16
26 Sister Hazel, All For You	7	9
27 Duncan Sheik, Barely Breathing	6	9
28 Shawn Colvin, Sunny Came Home	6	9
29 The Cardigans, Lovefool	6	5
30 Third Eye Blind, How's It Going To Be	6	1

1 Chumbawamba, Tubthumping	21	18
2 Days Of The New, Touch, Peel And Stand	20	16
3 Metallica, The Memory Remains	20	0
4 David Bowie, I'm Afraid Of Americans	19	15
5 Aerosmith, Pink	19	17
6 The Verve, Bitter Sweet Symphony	18	17
7 Radiohead, Karma Police	16	17
8 Cornershop, Brimful Of Asha	16	13
9 Beck, Deadweight	16	12
10 Bush, Mouth	13	9
11 The Wallflowers, Three Marlenas	11	12
12 Edwyn Collins, The Magic Piper	11	1
13 Everclear, Everything To Everyone	11	7
14 Matchbox 20, 3 AM	9	5
15 Ben Folds Five, Brick	9	1
16 Marilyn Manson & Sucker Pimps, Long Hard Road Out Of Hell	9	7
17 Green Day, Hitchin' A Ride	9	9
18 Death In Vegas, Dirt	8	8
19 Blink 182, Dammit (Growing Up)	7	4
20 Oasis, Don't Go Away	7	8
21 Sheryl Crow, Tomorrow Never Dies	7	0
22 U2, Please	6	5
23 Sarah McLachlan, Sweet Surrender	6	0
24 Robert Bradley, Once Upon A Time	5	1
25 Third Eye Blind, How's It Going To Be	5	3
26 Metallica, One	5	0
27 Metallica, Wherever I May Roam	4	1
28 Metallica, King Nothing	4	1
29 Fiona Apple, Criminal	4	2
30 Sublime, Doin' Time	4	4
31 Matchbox 20, Push	4	2
32 Puff Daddy & The Family, It's All About The Benjamins	4	1
33 Jimmie's Chicken Shack, High	4	4
34 Billie Myers, Kiss The Rain	4	3
35 Lisa Loeb, I Do	4	0
36 Beastie Boys, Sabotage	4	0
37 Rancid, The Harder They Come	4	0
39 Red Hot Chili Peppers, Under The Bridge	3	2
40 Soundgarden, Black Hole Sun	3	0

TRIPLE-A

INCREASE
IN PLAYS

MATCHBOX 20 • 3 AM (LAVA/ATLANTIC)	+45
WDOD +12, KTCZ +12, WXLE +11, KBCO +8, KMTT +6, WXRV +4, WXRT +4, WHPT +3, WTTS +2, WNCS +2	
JOHN MELLENCAMP • Without Expression (MERCURY)	+42
WVRV +15, KKZN +8, WKOC +7, KXPT +5, KINK +2, CIDR +2, KPIG +2, WTTS +2, WBOS +2, KGSR +2	
B.B. KING WITH TRACY CHAPMAN • The Thrill Is Gone (MCA)	+39
KKZN +14, KBCO +12, KXPT +6, WRLT +5, KMTT +5, WKOC +3, KTCZ +3, WOOD +1, KINK +1, CIDR +1	
LISA LOEB • I Do (Geffen)	+38
WDOD +8, KMTT +6, WKOC +6, WXRV +5, KKZN +3, WJBX +3, KXPT +3, WBOS +3, WXRT +3, WRLT +2	
GREGG ALLMAN • Whippin' Post (550 MUSIC)	+35
KFOG +11, WTTS +10, KXPT +5, KGSR +5, KMTT +2, KTCZ +2, WXRT +1	
THE VERVE • Bitter Sweet Symphony (VIRGIN)	+32
WKOC +8, WDOD +6, WBOS +6, CIDR +5, KGSR +5, WXLE +3, WRLT +2, WXRV +1, WXRT +1	
SARAH MCLACHLAN • Sweet Surrender (ARISTA)	+26
KTCZ +10, WBOS +7, WXLE +6, WDOD +4, WKOC +3, KBCO +3, WJBX +1, KMTT +1, WTTS +1, KGSR +1	
ALANA DAVIS • 32 Flavors (ELEKTRA/EEG)	+24
WHPT +6, WXLE +5, KMTT +4, KINK +3, KGSR +3, WRLT +2, WBOS +2, CIDR +1	
DUNCAN SHEIK • Wishful Thinking (ATLANTIC)	+24
WNCS +9, WXLE +8, WBOS +7, KINK +1	
SISTER HAZEL • Happy (UNIVERSAL)	+23
KTCZ +8, WNCS +5, WJBX +4, WBOS +3, KKZN +2, WVRV +1, WHPT +1	

AIRPLAY
Monitor ANNOUNCES
BEST OF '97
OUR SPECIAL 4-in-1 COMBINED
Year-End Issue

THIS MEGA-MONITOR WILL INCLUDE:

- The top songs & artists of 1997
- Top 100 hits for each major format
- Year-end power playlists showing total detections for each station
- Interviews with the year's top artist & labels
- Chart managers' analysis of the year in radio
- Label of the year
- Plus much more!

AD CLOSE: DECEMBER 3

Distributed the week of December 15 to every subscriber of Country, Top 40, R&B and Rock Airplay Monitor
Los Angeles: 213-525-2308 New York: 212-536-5272 • Nashville: 615-321-4294



MAINSTREAM ROCK

POWER PLAYLISTS

For Week Ending November 23, 1997



Playlists supplied by Broadcast Data Systems' Radio Track service. Songs ranked by number of plays in monitored week. Playlists are ranked in order of their weekly count, beginning with the top-ranking station. Cumulative airplay is shown weekly following the release of the Spring and Fall Arbitron surveys. The number of stations shown each week varies depending upon spots.

Grid of 48 radio station playlists including KLOS, WYSP, WRCX, WMMR, KQRS, WWDC, WRIF, WFBQ, WAAF, KEGL, WKLS, KXXX, KTXQ, WMMS, WRQC, KSHE, WZTA, KSJO, WIYY, WEBN, KISW, WHJY, WXTB, and WONE. Each station entry includes a list of songs and their corresponding radio track counts.



SONG ACTIVITY REPORTS

For Week Ending November 23, 1997



Detailed song tracking information for the last 3 weeks for all songs showing increased play this week. Total plays and gain do not include video play. Markets listed in order of population.

Grid of 16 song activity report sections for artists: AC/DC, BIG WRECK, BLACK LAB, BUSH, CREED, FAITH NO MORE, SAMMY HAGAR, KULA SHAKER, LED ZEPPELIN, LIFE OF AGONY. Each section includes station data, chart movement, and regional performance metrics.

SONG ACTIVITY REPORTS

For Week Ending November 23, 1997



Grid of song activity reports for Matchbox 20, Megadeth, John Mellencamp, Metallica, and Ozzy Osbourne. Columns include station, song title, and chart position.

Grid of song activity reports for The Rolling Stones, Smash Mouth, Soundgarden, Tool, and Yes. Columns include station, song title, and chart position.

POWER PLAYLISTS



For Week Ending November 23, 1997

Playlists supplied by Broadcast Data Systems' Radio Track service. Songs ranked by number of plays in monitored week. Playlists are listed in order of TSA weekly curve, beginning with the highest-cumulating station. Cumulative are updated twice yearly following the release of the Spring and Fall Arbitron surveys. The number of stations shown each week varies depending upon space.

KOME San Jose PD: Jay Taylor

Table with 3 columns: Rank, Song Title, TW LW. Top songs include Marcy Playground, Sex & Candy; Chumbawamba, Tubthumping; Everclear, Everything To Everyone.

KTBB Houston PD: Jim Trapp MD: David Sadoff

Table with 3 columns: Rank, Song Title, TW LW. Top songs include Smash Mouth, Walkin' On The Sun; Seven Mary Three, Lucky; Green Day, Hitchin' A Ride.

CIMX Detroit PD: Murray Brookshaw APD/MD: Vince Cannova

Table with 3 columns: Rank, Song Title, TW LW. Top songs include Marcy Playground, Sex & Candy; Everclear, Everything To Everyone; Chumbawamba, Tubthumping.

KPNT St. Louis PD: Allan Fee MD: Adam Potts

Table with 3 columns: Rank, Song Title, TW LW. Top songs include Fiona Apple, Criminal; Everclear, Everything To Everyone; Chumbawamba, Tubthumping.

WXDX Pittsburgh PD: John Moschitta MD: Lenny Diana

Table with 3 columns: Rank, Song Title, TW LW. Top songs include Chumbawamba, Tubthumping; Days Of The New, Touch, Peel And Stand; Foo Fighters, Everlong.

KEDJ Phoenix PD: Shellee Hart APD/MD: Chris Patyk

Table with 3 columns: Rank, Song Title, TW LW. Top songs include Green Day, Time Of Your Life; Smash Mouth, Walkin' On The Sun; Third Eye Blind, How's It Going To Be.

WLIR Long Island PD: Jeff Levine Mus. Coord.: Lynda Lopez

Table with 3 columns: Rank, Song Title, TW LW. Top songs include Chumbawamba, Tubthumping; Smash Mouth, Walkin' On The Sun; Sugar Ray, Fly.

XTRA San Diego PD: Bryar Schock MD: Chris Muckley

Table with 3 columns: Rank, Song Title, TW LW. Top songs include B'lar, Song 2; Beck, Jack-Ass; Less Than Jake, Doperman.

WMRQ Hartford PD: Jay Beau Jones MD: Dave Hill

Table with 3 columns: Rank, Song Title, TW LW. Top songs include Chumbawamba, Tubthumping; Smash Mouth, Walkin' On The Sun; Everclear, Everything To Everyone.

WENZ Cleveland PD/MD: Sean Robertson

Table with 3 columns: Rank, Song Title, TW LW. Top songs include Chumbawamba, Tubthumping; Days Of The New, Touch, Peel And Stand; Bush, Mouth.

WKDF Nashville PD: Kidd Redd MD: Sheri Sexton

Table with 3 columns: Rank, Song Title, TW LW. Top songs include Green Day, Time Of Your Life; Ben Folds Five, Brick; Everclear, Everything To Everyone.

KXPK Denver PD: Gary Schwenwetter APD/MD: Eric Schmidt

Table with 3 columns: Rank, Song Title, TW LW. Top songs include Oasis, Don't Go Away; Matchbox 20, 3 AM; Sarah McLachlan, Sweet Surrender.

Large vertical advertisement for Soundgarden. Features the text 'SOUNDGARDEN' in large letters, 'THE NEW SINGLE' on the right, and 'ALL THE HITS - FROM A BAND WHO NEVER CARED IF THEY HAD ONE' at the bottom. Includes a photo of the band and production credits.

POWER PLAYLISTS

For Week Ending November 23, 1997



Playlists supplied by Broadcast Data Systems' Radio Track service. Songs ranked by number of plays in monitored week. Playlists are listed in order of TSM weekly count, beginning with the highest-counting station. Counts are updated twice yearly following the release of the Spring and Fall Arbitron surveys. The number of stations shown each week varies depending upon space.

Grid of 48 radio station playlists (WRZZ, KWOD, KZON, XHRM, WQBK, WEND, WQXA, WLUM, WNVE, WFNX, KZNZ, WBRU, WEDG, KCCX, WGRD, KNRK, KENZ, KXRK, WPBZ, WAQZ, WROX, KTCL, KXTE, WDGE) with columns for station name, PD, MD, and song/album/track with play counts.

POWER PLAYLISTS

For Week Ending November 23, 1997



Playlists supplied by Broadcast Data Systems' Radio Track service. Songs ranked by number of plays in monitored week. Playlists are listed in order of their weekly count, beginning with the highest-counting station. Counts are updated twice weekly following the release of the Spring and Fall Arbitron surveys. The number of stations shown each week varies depending upon space.



KMYZ Tulsa PD: Lynn Barstow MD: Greg Kocsack. Playlist table with columns for song title, artist, and rank.

KKND New Orleans OM: Dave Stewart MD: Rod Ryan. Playlist table with columns for song title, artist, and rank.

KCXX Riverside/San Bernardino OM/PD: Dwight Arnold MD: Bruce Pulley. Playlist table with columns for song title, artist, and rank.

KROX Austin PD: Sara Trexler APD/MD: Lloyd "LA" Hoccutt. Playlist table with columns for song title, artist, and rank.

KEDG Las Vegas PD: John Griffin MD: Freddy Snakeskin. Playlist table with columns for song title, artist, and rank.

WXEG Dayton PD: Jeff Stevens MD: Alan Rance. Playlist table with columns for song title, artist, and rank.

WPLA Jacksonville PD: Jim Randall MD: Greg Brady. Playlist table with columns for song title, artist, and rank.

WCYY Portland, ME PD: Herb Ivy MD: Brian James. Playlist table with columns for song title, artist, and rank.

KFRR Fresno PD: Don O'Neal AMD: Andy Winford. Playlist table with columns for song title, artist, and rank.

WWCD Columbus PD: Jane Purcell MD: Andy Davis. Playlist table with columns for song title, artist, and rank.

WBZU Richmond PD: JJ Quest. Playlist table with columns for song title, artist, and rank.

KLZR Kansas City PD: Roger The Dodger MD: Bob Osborn. Playlist table with columns for song title, artist, and rank.

KAEP Spokane PD: Scott Souhrada MD: Haley Jones. Playlist table with columns for song title, artist, and rank.

KPOI Honolulu PD: Brock Whaley MD: Nikki Basque. Playlist table with columns for song title, artist, and rank.

KTEG Albuquerque PD: Skip Isley MD: Julie Hoyt. Playlist table with columns for song title, artist, and rank.

KKDM Des Moines OM: Lee Konfrst MD: Sophia John. Playlist table with columns for song title, artist, and rank.

KFMA Tuscon PD/MD: Suzie Dunn. Playlist table with columns for song title, artist, and rank.

KICT Wichita PD: Ron Eric Taylor MD: Sherry McKinnon. Playlist table with columns for song title, artist, and rank.

WRXQ Memphis PD: Tony Williams MD: Dianna Gee. Playlist table with columns for song title, artist, and rank.

WKRL Syracuse PD/MD: Mimi Griswold. Playlist table with columns for song title, artist, and rank.

WXZZ Lexington PD: Dennis Dillon APD: Steve Isert. Playlist table with columns for song title, artist, and rank.

WEQX Albany PD: Ian Harrison. Playlist table with columns for song title, artist, and rank.

WXNR Greenville, NC PD: B.K. Kirkland MD: Ali Taylor. Playlist table with columns for song title, artist, and rank.

WBTZ Burlington PD: Stephanie Hindley MD: Steve Picard. Playlist table with columns for song title, artist, and rank.



AIRPOWER

(Minimum 1,100 detections for the first time)

Total Plays/Gain

GREEN DAY 1253/470
Time Of Your Life (Good Riddance) (Reprise)
 Total Stations: 71/Chart Move: 28-15
 Heavy (30+ plays): 10 KEDJ, KITS, KJEE, KLZR, KOME, WCYW, WHFS, WKDF, WLUM, WNNX
 Medium (15-29): 31 CFNY, KCCX, KCHZ, KDGE, KICT, KKDM, KKND, KLYY, KNDD, KNRK, KPOI, KROQ, KTCL, KWOD, KZNX, KZON, WAQZ, WBCN, WBTZ, WDGE, WENZ, WFNX, WGRD, WKQX, WLJR, WPBZ, WPLY, WXDZ, WXEG, WXRK, XHRM
 Light (Under 15): 30
 New Airplay This Week: 19 CFNY, KAEP, KENZ, KFMA, KFTE, KICT, KNRK, KPOI, KTEG, KTOZ, KXKR, WBZU, WEDG, WKQX, WNVF, WPBZ, WPLA, WROX, WRXQ

AIRPOWER BOUND

- Total Plays/Gain**
- BEN FOLDS FIVE 1099/304**
Brick (550 Music)
 Total Stations: 59/Chart Move: 27-17
 Heavy (30+ plays): 6 KLZR, KROQ, KWOD, KXKR, WBZU, WKDF
 Medium (15-29): 33 KCCX, KDGE, KENZ, KFMA, KFTE, KHTY, KJEE, KNDD, KNRK, KOME, KROX, KTOZ, KZNX, KZON, WAVF, WBCN, WBRU, WCYW, WEND, WENZ, WEQX, WGRD, WKQX, WKRL, WLUM, WNNX, WPBZ, WPLA, WPLY, WQBK, WRXQ, WWCD, WXEG
 Light (Under 15): 20
 New Airplay This Week: 11 CFNY, CIMX, KFRR, KITS, KKND, KOME, KZNX, WHFS, WNVF, WRZX, XHRM
- BLINK 182 980/73**
Dammit (Growing Up) (Cargo/MCA)
 Total Stations: 62/Chart Move: 24-23
 Heavy (30+): 3 KEDG, WBZU, WROX
 Medium (15-29): 33 CIMX, KCCX, KDGE, KEDJ, KFMA, KFTE, KHTY, KITS, KJEE, KKND, KLZR, KPNT, KPOI, KTCL, KTOZ, WBCN, WBRU, WBTZ, WCYW, WEDG, WEND, WENZ, WFNX, WHFS, WKQX, WKRL, WPBZ, WPLA, WQBK, WRZX, WXRK, XHRM, XTRA
 Light (Under 15): 26
 New Airplay This Week: 2 KICT, KTEG
- BECK 972/29**
Deadweight (London/Island)
 Total Stations: 64/Chart Move: 22-24
 Heavy (30+): 5 CIMX, KEDJ, WCYW, WFNX, WHFS
 Medium (15-29): 30 CFNY, KCCX, KDGE, KFMA, KFTE, KITS, KJEE, KNDD, KLZR, KNDD, KNRK, KOME, KROX, KTCL, KTEG, KXKR, KZON, WBTZ, WENZ, WKQX, WKRL, WNNX, WPLY, WROX, WWCD, WXEG, WXRK, XHRM, XTRA
 Light (Under 15): 29
 New Airplay This Week: 2 KPNT, WBCN
- SARAH MCLACHLAN 965/43**
Sweet Surrender (Arista)
 Total Stations: 65/Chart Move: 23-25
 Heavy (30+): 4 KWOD, KXKR, KZON, WWCD
 Medium (15-29): 32 CFNY, CIMX, KAEP, KDGE, KENZ, KFMA, KFRR, KFTE, KHTY, KNDD, KNRK, KROX, KTCL, KTEG, KTOZ, KXPK, KZNX, WAQZ, WBRU, WBTZ, WCYW, WENZ, WEQX, WKDF, WLUM, WNNX, WPLT, WPLY, WQBK, WXDZ, WXEG, XHRM
 Light (Under 15): 29
 New Airplay This Week: 1 WFNX
- SPACE MONKEYS 947/83**
Sugar Cane (Factory/Chingon/Interscope)
 Total Stations: 71/Chart Move: 26-26
 Heavy (30+): 3 KWOD, WEQX, WROX
 Medium (15-29): 29 KCHZ, KDGE, KEDG, KFMA, KFTE, KHTY, KICT, KJEE, KLZR, KMYZ, KNDD, KNRK, KPNT, KROX, KTCL, KXKR, KZON, WBTZ, WCYW, WEND, WENZ, WKDF, WKQX, WLJR, WLUM, WMRQ, WPBZ, WXEG, XHRM
 Light (Under 15): 39
 New Airplay This Week: 4 KFRR, WPLY, WRXQ, WXRK
- RADIOHEAD 755/16**
Karma Police (Capitol)
 Total Stations: 52/Chart Move: 30-30
 Heavy (30+): 2 WNVF, XHRM
 Medium (15-29): 23 CFNY, CIMX, KCCX, KFMA, KFTE, KHTY, KJEE, KNRK, KWOD, KXKR, WBRU, WBTZ, WCYW, WEND, WENZ, WFNX, WKRL, WPBZ, WQBK, WRZX, WWCD, WXRK, XTRA

MOST NEW STATIONS

	No. Of Stations
OUR LADY PEACE <i>Clumsy (Columbia)</i>	25
GREEN DAY <i>Time Of Your Life (Good Riddance) (Reprise)</i>	19
THE MIGHTY MIGHTY BOSSTONES <i>Royal Oil (Big Rig/Mercury)</i>	17
BEN FOLDS FIVE <i>Brick (550 Music)</i>	11
RAGE AGAINST THE MACHINE <i>The Ghost Of Tom Joad (Epic)</i>	11

- DAVID BOWIE 441/101**
I'm Afraid Of Americans (Virgin)
 Total Stations: 41
 Heavy (30+): 2 KEDG, KXKR
 Medium (15-29): 12 KFMA, KITS, KNDD, KNRK, KROQ, WBCN, WENZ, WHFS, WNNX, WQBK, WXDZ, XTRA
 Light (Under 15): 27
 New Airplay This Week: 3 KKND, WQBK, WXDZ
- REEL BIG FISH 291/34**
She Has A Girlfriend Now (Mojo/Universal)
 Total Stations: 25
 Heavy (30+): 0
 Medium (15-29): 8 KCXX, KEDJ, KFTE, KLZR, KPNT, KTOZ, WKRL, XHRM
 Light (Under 15): 17
 New Airplay This Week: 2 KHTY, KKDM
- TOOL 278/36**
Forty Six & 2 (Fearworld)
 Total Stations: 26
 Heavy (30+): 1 KXTE
 Medium (15-29): 5 KFTE, KMYZ, WBZU, WDGE, WENZ
 Light (Under 15): 20
 New Airplay This Week: 2 WQBK, WXRK
- OLIVE 277/15**
You're Not Alone (RCA)
 Total Stations: 24
 Heavy (30+): 1 WFNX
 Medium (15-29): 10 KCHZ, KEDJ, KJEE, KROX, KTCL, KWOD, WBTZ, WLUM, WNNX, WPLT
 Light (Under 15): 13
 New Airplay This Week: 1 WXEG
- BARENAKED LADIES 274/-5**
Brian Wilson (Reprise)
 Total Stations: 20
 Heavy (30+): 1 WPLT
 Medium (15-29): 8 KAEP, KCHZ, KENZ, WAVF, WDGE, WEQX, WNNX, WRXQ
 Light (Under 15): 11
 New Airplay This Week: 1 WEQX
- LISA LOEB 270/59**
I Do (Geffen)
 Total Stations: 14
 Heavy (30+): 4 KAEP, KCHZ, KENZ, WAQZ
 Medium (15-29): 5 KXPK, KZNX, KZON, WKDF, WLR
 Light (Under 15): 5
 New Airplay This Week: 1 WKDF
- PRODIGY 265/36**
Smack My Bitch Up (XL Mute/Maverick/Warner Bros.)
 Total Stations: 37
 Heavy (30+): 0
 Medium (15-29): 3 KEDG, KNDD, WBCN
 Light (Under 15): 34
 New Airplay This Week: 3 KDGE, KFTE, WPLA
- DEATH IN VEGAS 241/14**
Dirt (Time Bomb)
 Total Stations: 38
 Heavy (30+): 0
 Medium (15-29): 4 KEDG, KEDJ, KITS, KROQ
 Light (Under 15): 34
 New Airplay This Week: 1 WENZ
- STEREOPHONICS 240/17**
Traffic (V2)
 Total Stations: 24
 Heavy (30+): 1 WLUM
 Medium (15-29): 4 KCXX, KFTE, WEQX, WKDF
 Light (Under 15): 19
 New Airplay This Week: 2 KCCX, KPNT
- A3 214/32**
Ain't Goin' To Goa (Elemental/Geffen)
 Total Stations: 21
 Heavy (30+): 0
 Medium (15-29): 5 KROX, KTCL, KZNX, WBZU, WENZ
 Light (Under 15): 16
 New Airplay This Week: 3 WBRU, WKRL, WXZZ

- DEFTONES 199/20**
My Own Summer (Shove It) (Maverick/Warner Bros.)
 Total Stations: 35
 Heavy (30+): 0
 Medium (15-29): 2 KEDJ, WQXA
 Light (Under 15): 33
 New Airplay This Week: 4 KFMA, KHTY, KJEE, WPBZ
- DEPECHE MODE 195/20**
Home (Mute/Reprise)
 Total Stations: 16
 Heavy (30+): 0
 Medium (15-29): 5 KLYY, KWOD, WLUM, WPLT, XHRM
 Light (Under 15): 11
 New Airplay This Week: 2 KDGE, KEDG
- AQUABATS 193/-1**
Super Rad (Goldenvoice/Time Bomb)
 Total Stations: 24
 Heavy (30+): 0
 Medium (15-29): 5 KEDJ, KITS, KJEE, KXKR, XHRM
 Light (Under 15): 19
 New Airplay This Week: 2 KFRR, KPOI
- PORTISHEAD 192/10**
All Mine (Go! Beat/London/Island)
 Total Stations: 24
 Heavy (30+): 0
 Medium (15-29): 6 KITS, KJEE, KNDD, KTCL, WFNX, XHRM
 Light (Under 15): 18
 New Airplay This Week: 1 KEDJ
- SISTER HAZEL 183/52**
Happy (Universal)
 Total Stations: 19
 Heavy (30+): 1 KZNX
 Medium (15-29): 5 KAEP, KCHZ, KKDM, WRXQ, WXRK
 Light (Under 15): 13
 New Airplay This Week: 4 WGRD, WRXQ, WXEG, WXRK
- FOO FIGHTERS 176/-6**
My Hero (Roswell/Capitol)
 Total Stations: 17
 Heavy (30+): 0
 Medium (15-29): 8 KEDJ, KKND, KNDD, KOME, KTE, WBTZ, WNNX, WXRK
 Light (Under 15): 9
 New Airplay This Week: 1 KJEE
- ALANA DAVIS 156/49**
32 Flavours (Elektra/EEG)
 Total Stations: 11
 Heavy (30+): 1 KCHZ
 Medium (15-29): 5 KDGE, KKDM, WAQZ, WLUM, WPLT
 Light (Under 15): 5
 New Airplay This Week: 2 WAQZ, WNNX
- TOAD THE WET SPROCKET 109/15**
Crazy Life (Columbia)
 Total Stations: 5
 Heavy (30+): 1 WPLT
 Medium (15-29): 2 KZNX, WLUM
 Light (Under 15): 2
- ★ **BLACK LAB 106/27**
Wash It Away (DGC/Geffen)
 Total Stations: 12
 Heavy (30+): 0
 Medium (15-29): 2 WBRU, WENZ, WQXA
 Light (Under 15): 9
 New Airplay This Week: 3 CFNY, KZON, WEQX
- ★ **BLUR 95/45**
Beetlebum (Virgin)
 Total Stations: 19
 Heavy (30+): 0
 Medium (15-29): 2 KITS, WBTZ
 Light (Under 15): 17
 New Airplay This Week: 3 KCHZ, WEQX, WNNX
- ★ **LIMP BIZKIT 88/23**
Counterfeit (Interscope)
 Total Stations: 12
 Heavy (30+): 0
 Medium (15-29): 1 KXTE
 Light (Under 15): 11
 New Airplay This Week: 1 WENZ
- ★ **CHRIS CORNELL 88/13**
Sunshower (Atlantic)
 Total Stations: 9
 Heavy (30+): 0
 Medium (15-29): 2 KNDD, WXRK
 Light (Under 15): 7
 New Airplay This Week: 2 WENZ, WPLY

CHART BOUND

- Total Plays/Gain**
- LOVE SPIT LOVE 487/39**
Fall On Tears (Maverick/Warner Bros.)
 Total Stations: 46
 Heavy (30+): 1 WMRQ
 Medium (15-29): 13 KENZ, KFTE, KJEE, KZON, WBRU, WENZ, WHFS, WKRL, WNNX, WPBZ, WPLA, WWCD, XHRM
 Light (Under 15): 32
 New Airplay This Week: 1 WROX
- JANE'S ADDICTION 291/93**
Jane Says - Live (Warner Bros.)
 Total Stations: 34
 Heavy (30+): 1 CIMX
 Medium (15-29): 6 KDGE, KNDD, KZNX, WHFS, WWCD, XHRM
 Light (Under 15): 27
 New Airplay This Week: 7 CIMX, KDGE, KFMA, KNDD, KOME, WMRQ, WNNX

Airpower awarded to those records which attain 1,100 detections for the first time. New airplay lists those stations registering six or more detections per week on a record for the first time. ★ Initial impact: records appearing on this page for the first time.



SONG ACTIVITY REPORTS



For Week Ending November 23, 1997

Detailed song tracking information for the last 3 weeks for all songs showing increased play this week. Total plays and gain do not include "idea play." Markets listed in order of population.

Table for 311 Beautiful Disaster (Capricorn/Mercury). Total Stations: 36. Chart Move: 425/35. Includes columns for station, week, and play count.

Table for BECK Deadweight (London/Island). Total Stations: 64. Chart Move: 972/29. Includes columns for station, week, and play count.

Table for BEN FOLDS FIVE Brick (550 Music). Total Stations: 59. Chart Move: 1099/304. Includes columns for station, week, and play count.

Table for BLINK 182 Dammr (Growing Up) (Cargo/MCA). Total Stations: 62. Chart Move: 980/73. Includes columns for station, week, and play count.

Table for DAVID BOWIE I'm Afraid Of Americans (Virgin). Total Stations: 41. Chart Move: 441/101. Includes columns for station, week, and play count.

Table for BUSH Mouth (Trauma/Interscope/Hollywood). Total Stations: 76. Chart Move: 1986/127. Includes columns for station, week, and play count.

Table for CORNERSHOP Brimful Of Asha (Luaka Bop/Warner Bros.). Total Stations: 59. Chart Move: 752/53. Includes columns for station, week, and play count.

Table for CREED My Own Prison (Wind-Up). Total Stations: 34. Chart Move: 596/50. Includes columns for station, week, and play count.

Table for DAYS OF THE NEW Touch, Peel And Stand (Outpost/Geffen). Total Stations: 66. Chart Move: 1811/79. Includes columns for station, week, and play count.

Table for EVERCLEAR Everything To Everyone (Capitol). Total Stations: 78. Chart Move: 2473/41. Includes columns for station, week, and play count.

Table for GREEN DAY Time Of Your Life (Good Riddance) (Reprise). Total Stations: 71. Chart Move: 1253/470. Includes columns for station, week, and play count.

Table for JANE'S ADDICTION Jane Says - Live (Warner Bros.). Total Stations: 34. Chart Move: 291/93. Includes columns for station, week, and play count.

Table for LISA LOEB I Do (Geffen). Total Stations: 14. Chart Move: 270/59. Includes columns for station, week, and play count.

Table for LOVE SPIT LOVE Fall On Tears (Maverick/Warner Bros.). Total Stations: 46. Chart Move: 487/39. Includes columns for station, week, and play count.

Table for MARCY PLAYGROUND Sex & Candy (Mammoth/Capitol). Total Stations: 72. Chart Move: 1814/103. Includes columns for station, week, and play count.



SONG ACTIVITY REPORTS



For Week Ending November 23, 1997

Obtained song tracking information for the last 3 weeks for all songs showing increased play this week. Total plays and gain do not include video play. Markets listed in order of population.

MATCHBOX 20 1903/45

Table with columns for station, song, and play count for Matchbox 20's '3 AM (Lava/Atlantic)'. Total Stations: 75, Chart Move: 7-6.

SARAH MCLACHLAN 965/43

Table with columns for station, song, and play count for Sarah McLachlan's 'Sweet Surrender (Arista)'. Total Stations: 65, Chart Move: 23-25.

METALLICA 301/73

Table with columns for station, song, and play count for Metallica's 'The Memory Remains (Elektra/EEG)'. Total Stations: 25.

THE MIGHTY MIGHTY BOSSTONES 389/223

Table with columns for station, song, and play count for The Mighty Mighty Bosstones' 'Royal Oil (Big Rig/Mercury)'. Total Stations: 44.

OLIVE 277/15

Table with columns for station, song, and play count for Olive's 'You're Not Alone (RCA)'. Total Stations: 24.

OUR LADY PEACE 648/402

Table with columns for station, song, and play count for Our Lady Peace's 'Clumsy (Columbia)'. Total Stations: 51, Chart Move: Debut 33.

PRODIGY 265/36

Table with columns for station, song, and play count for Prodigy's 'Smack My Bitch Up (XL Mute/Maverick/Warner Bros.)'. Total Stations: 37.

RADIOHEAD 755/16

Table with columns for station, song, and play count for Radiohead's 'Karma Police (Capitol)'. Total Stations: 52, Chart Move: 30-30.

RAGE AGAINST THE MACHINE 434/107

Table with columns for station, song, and play count for Rage Against the Machine's 'The Ghost Of Tom Joad (Epic)'. Total Stations: 45.

REEL BIG FISH 291/34

Table with columns for station, song, and play count for Reel Big Fish's 'She Has A Girlfriend Now (Mojo/Universal)'. Total Stations: 25.

SPACE MONKEYS 947/83

Table with columns for station, song, and play count for Space Monkeys' 'Sugar Cane (Factory/Chingon/Interscope)'. Total Stations: 71, Chart Move: 26-26.

SUGAR RAY 406/93

Table with columns for station, song, and play count for Sugar Ray's 'RPM (Lava/Atlantic)'. Total Stations: 48.

THIRD EYE BLIND 1508/200

Table with columns for station, song, and play count for Third Eye Blind's 'How's It Going To Be (Elektra/EEG)'. Total Stations: 72, Chart Move: 15-12.

TOOL 278/36

Table with columns for station, song, and play count for Tool's 'Forty Six & 2 (Freeworld)'. Total Stations: 26.

THE VERVE 1899/72

Table with columns for station, song, and play count for The Verve's 'Bitter Sweet Symphony (VC/Hut/Virgin)'. Total Stations: 75, Chart Move: 8-7.

POWER PLAYLISTS

WXRT Chicago VP/Programming: Norm Winer MD: Patty Martin

KFOG San Francisco PD: Paul Marszalek APD/MD: Bill Evans

WBOS Boston PD: Jim Herron MD: Cliff Nash

KTCZ Minneapolis PD: Lauren MacLeash MD: Jane Fredericksen

WHPT Tampa PD: Chuck Beck

WVRV St. Louis MD: Mike Richter

KBCO Denver PD: Dave Benson MD: Scott Arbough

KMTT Seattle SM: Chris Mays MD: Dean Carlson

CIDR Detroit PD: Wendy Duff MD: Ann Delisi

KKZN Dallas APD: Spike

KINK Portland OR PD: Dennis Constantine APD: Anita Garlock

WXRV Boston PD: Joanne Duddy MD: Mike Mullaney

Main chart table with columns: THIS WEEK, LAST WEEK, WKS. ON CHART, TITLE/IMPRINT/PROMOTION LABEL, ARTIST, TW, LW. Includes No. 1 record: 3 AM LAVA/ATLANTIC.

MODERN ADULT chart table with columns: THIS WEEK, LAST WEEK, WKS. ON CHART, TITLE/IMPRINT/PROMOTION LABEL, ARTIST, TW, LW. Includes No. 1 record: TUBTHUMPING REPUBLIC/UNIVERSAL.

Records showing an increase in detections over the previous week, regardless of chart movement. A record which has been on the chart for more than 20 weeks will not receive a bullet, even if it registers an increase in detections.

For Week Ending November 23, 1997

COMBINED ROCK AUDIENCE									AIRPLAY BY FORMAT										
TW	LW	WKS	TITLE (IMPRINT/PROMOTION LABEL)	ARTIST	THIS WEEK			LAST WEEK			MAINSTREAM			MODERN			TRIPLE-A		
					Audience (millions)	Detections No.	Rank	Audience (millions)	Detections No.	Rank	Audience (millions)	Detections No.	Rank	Audience (millions)	Detections No.	Rank	Audience (millions)	Detections No.	Rank
1		16	TOUCH, PEEL AND STAND (OUTPOST/GEFFEN)	DAYS OF THE NEW	27.9089	4005	1	27.7622	3947	1	15.3892	2194	1	12.5197	1811	9			
2		20	EVERLONG (ROSWELL/CAPITOL)	FOO FIGHTERS	26.3645	3449	2	26.7954	3502	2	9.9395	1295	7	16.4164	2147	3	0.0086	7	
3		20	WALKIN' ON THE SUN (INTERSCOPE)	SMASH MOUTH	23.2618	3278	4	23.7681	3353	3	5.5894	877	14	16.3560	2136	4	1.3164	265	6
4		7	3 AM (LAVA/ATLANTIC)	MATCHBOX 20	22.2388	3404	3	21.1877	3191	5	6.4307	1064	10	13.0097	1903	6	2.7984	437	1
5		13	EVERYTHING TO EVERYONE (CAPITOL)	EVERCLEAR	20.6283	3148	5	21.3936	3209	4	4.0572	624	22	16.4551	2473	2	0.1160	51	
6		12	TUBTHUMPING (REPUBLIC/UNIVERSAL)	CHUMBAWAMBA	19.3815	2913	6	20.6254	2958	6	0.7922	159		17.6897	2556	1	0.8996	198	13
7		10	MY OWN PRISON (WIND-UP)	CREED	15.2664	2257	8	14.7548	2198	10	11.9326	1661	2	3.3338	596	35			
8		8	BITTER SWEET SYMPHONY (VCI/HUT/VIRGIN)	THE VERVE	15.2301	2237	9	15.3410	2123	11	0.6108	142		13.6278	1899	7	0.9915	196	14
9		5	SEX & CANDY (MAMMOTH/CAPITOL)	MARCY PLAYGROUND	15.0078	2013	12	14.0011	1823	16	0.8918	174		14.0659	1814	8	0.0501	25	
10		7	MOUTH (TRAUMA/INTERSCOPE/HOLLYWOOD)	BUSH	14.0485	2380	7	13.9133	2230	9	1.8767	392	35	12.1690	1986	5	0.0028	2	
11		13	HITCHIN' A RIDE (REPRISE)	GREEN DAY	13.0104	2235	10	15.5173	2667	7	3.8814	725	17	9.0497	1474	13	0.0793	36	
12		8	WRONG NUMBER (FICTION/ELEKTRA/EEG)	THE CURE	12.7335	1832	15	12.6675	1879	14	0.0655	29		12.2587	1720	11	0.4093	83	
13		11	DON'T GO AWAY (EPIC)	OASIS	11.9605	2215	11	13.4091	2426	8	1.8759	314	38	9.5002	1732	10	0.5844	169	19
14		35	IF YOU COULD ONLY SEE (POLYDORA/A&M)	TONIC	11.7479	1629	21	12.0894	1777	18	5.2922	702	18	5.5092	762		0.9465	165	
15		24	FLY (LAVA/ATLANTIC)	SUGAR RAY	11.7263	1649	19	12.0730	1785	17	1.7434	266		8.9697	1222	16	1.0132	161	
16		4	HOW'S IT GOING TO BE (ELEKTRA/EEG)	THIRD EYE BLIND	11.5549	1635	20	10.4492	1425	26	0.3815	47		10.8008	1508	12	0.3726	80	
17		3	THE MEMORY REMAINS (ELEKTRA/EEG)	METALLICA	11.3206	1721	16	13.4745	1851	15	9.1718	1420	5	2.1488	301				
18		2	TIME OF YOUR LIFE (GOOD RIDDANCE) (REPRISE)	GREEN DAY	10.8993	1369	26	7.4714	844	51	0.5196	113		10.3696	1253	15	0.0101	3	
19		6	BACK ON EARTH (EPIC)	OZZY OSBOURNE	10.7234	1669	17	10.2725	1582	21	10.0499	1633	3	0.6735	36				
20		9	THREE MARLENAS (INTERSCOPE)	THE WALLFLOWERS	10.4460	1979	13	11.2524	2050	12	3.0255	622	23	5.4751	1006	21	1.9454	351	2
21		35	PUSH (LAVA/ATLANTIC)	MATCHBOX 20	10.1162	1460	24	10.1193	1573	22	3.2847	535		5.9124	799		0.9191	126	
22		19	CRIMINAL (CLEAN SLATE/WORK)	FIONA APPLE	9.7638	1588	22	11.1149	1744	19	0.5944	112		8.0090	1284	14	1.1604	192	16
23		7	RATTLESNAKE (RADIOACTIVE/MCA)	LIVE	9.1290	1872	14	10.7721	1947	13	4.0106	847	15	5.0851	1013	20	0.0333	12	
24		3	THE GIRL I LOVE (ATLANTIC)	LED ZEPPELIN	9.0310	1479	23	9.1835	1468	25	8.9915	1467	4	0.0345	11		0.0050	1	
25		26	WRONG WAY (GASOLINE ALLEY/MCA)	SUBLIME	8.9619	1055	39	9.8689	1173	34	1.1064	112		7.8532	940	27	0.0023	3	
26		5	BLEED TOGETHER (A&M)	SOUNDGARDEN	8.5888	1652	18	9.1780	1643	20	5.4109	954	13	3.1779	698	32			
27	NEW		BRICK (550 MUSIC)	BEN FOLDS FIVE	8.3870	1152	33	5.4825	848	50	0.0981	26		8.1701	1099	17	0.1188	27	
28		36	SEMI-CHARMED LIFE (ELEKTRA/EEG)	THIRD EYE BLIND	8.3817	1198	32	8.7065	1251	32	1.5201	253		5.8098	805		1.0518	140	
29		7	SLOW RIDE (REVOLUTION)	KENNY WAYNE SHEPHERD BAND	8.3479	1433	25	9.0865	1508	23	8.2847	1410	6				0.0632	23	
30		36	THE IMPRESSION THAT I GET (BIG RIG/MERCURY)	THE MIGHTY MIGHTY BOSSSTONES	8.2097	1042	41	8.6851	1097	37	0.7476	143		7.1017	831		0.3604	68	
31		4	SWEET SURRENDER (ARISTA)	SARAH MCLACHLAN	8.0177	1344	27	8.5531	1266	30	0.1083	36		6.0235	965	25	1.8859	343	3
32		5	DIRTY EYES (EASTWEST/EEG)	AC/DC	7.7392	1300	28	7.3108	1266	29	7.2155	1264	8	0.5237	36				
33		13	SUMMERTIME (DGC/GEFFEN)	THE SUNDAYS	7.6343	1298	29	8.5826	1478	24	0.1192	38		5.8948	999	22	1.6203	261	7
34		32	SONG 2 (FOOD/PARLOPHONE/VIRGIN)	BLUR	7.2229	912	47	7.3028	901	48	1.4788	191		5.7127	707		0.0314	14	
35		7	LUCKY (MAMMOTH/ATLANTIC)	SEVEN MARY THREE	6.9376	1206	31	6.7880	1262	31	1.0963	155		5.7860	1027	19	0.0553	24	
36		23	BUILDING A MYSTERY (ARISTA)	SARAH MCLACHLAN	6.9289	1003	43	6.7659	1065	38	0.4509	69		5.4121	769	29	1.0659	165	20
37		3	DEADWEIGHT (LONDON/ISLAND)	BECK	6.9140	1007	42	6.8565	974	43	0.0113	11		6.8582	972	24	0.0445	24	
38	NEW		DAMMIT (GROWING UP) (CARGO/MCA)	BLINK 182	6.7444	1116	36	5.3856	988	40	0.7165	135		6.0253	980	23	0.0026	1	
39		51	ONE HEADLIGHT (INTERSCOPE)	THE WALLFLOWERS	6.7394	877	50	6.7355	929	46	2.6377	350		3.1607	405		0.9410	122	
40		3	ALMOST HONEST (CAPITOL)	MEGADETH	6.6809	1120	35	6.9322	1103	36	6.6093	1090	9	0.0716	30				

Records showing an increase in audience over the previous week, regardless of chart movement. Rankings broken down by mainstream, modern and triple-A formats (on right side of this page) correspond to charts printed in this week's Monitor and therefore rankings do not exist for re-releases and records below No. 40 (No. 20 for triple-A). Audience computed by cross-referencing exact times of airplay with Arbitron listener data. ©1997, Billboard/BPI Communications.



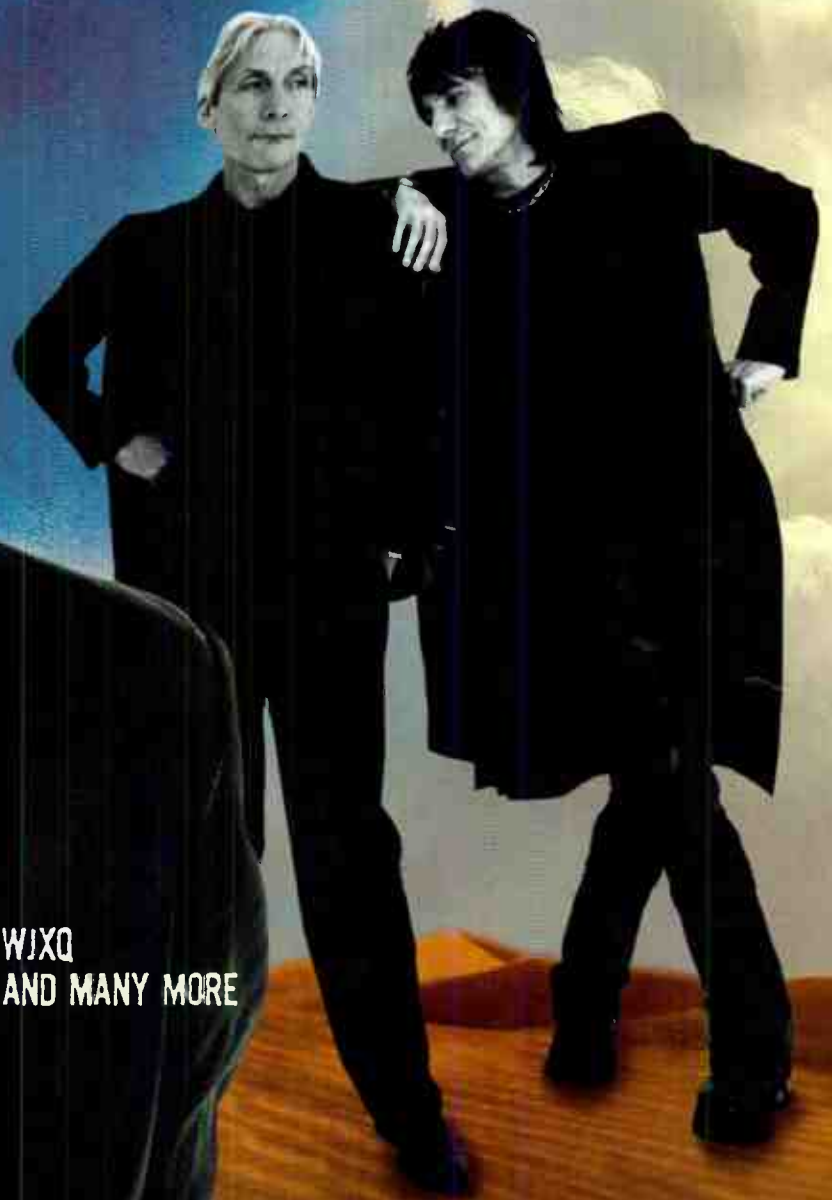
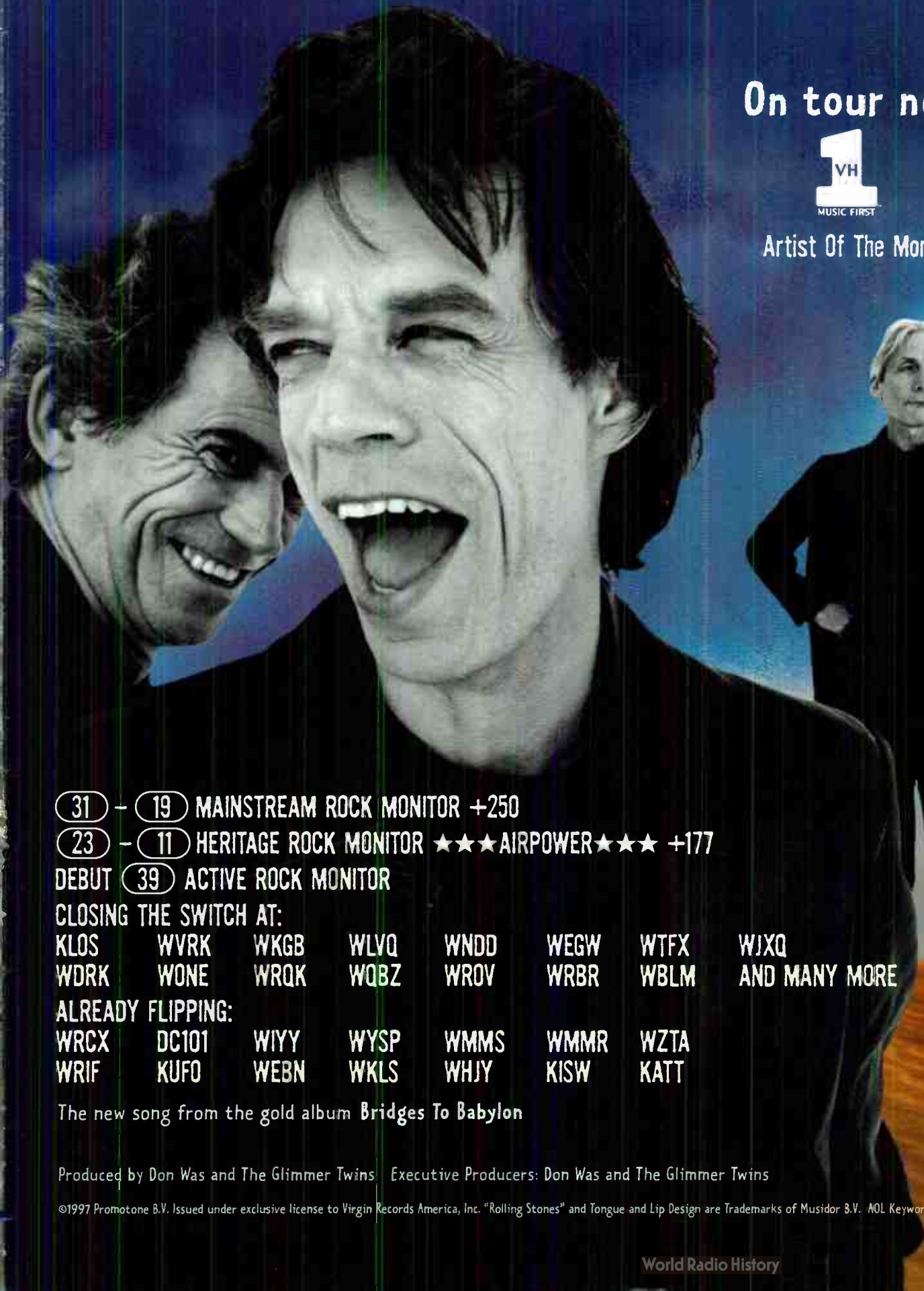
— THE — ROLLING STONES

“FLIP THE SWITCH”

On tour now.



Artist Of The Month



31 - 19 MAINSTREAM ROCK MONITOR +250
23 - 11 HERITAGE ROCK MONITOR ★★★AIRPOWER★★★ +177
DEBUT 39 ACTIVE ROCK MONITOR

CLOSING THE SWITCH AT:

KLOS WVRK WKGB WLVQ WNDD WEGW WTFX WJXQ
WDRK WONE WRQK WQBZ WROV WRBR WBLM AND MANY MORE

ALREADY FLIPPING:

WRCX DC101 WIYY WYSP WMMS WMMR WZTA
WRIF KUFO WEBN WKLS WHJY KISW KATT

The new song from the gold album *Bridges To Babylon*

Produced by Don Was and The Glimmer Twins Executive Producers: Don Was and The Glimmer Twins

©1997 Promotone B.V. Issued under exclusive license to Virgin Records America, Inc. "Rolling Stones" and Tongue and Lip Design are Trademarks of Musidor B.V. AOL Keyword: Stones www.the-rolling-stones.com



Copyrighted from a database service of airplay supported by Broadcast Data Systems. All Rights Reserved. All other trademarks and service marks are the property of their respective owners. © 1997 Broadcast Data Systems.

			MAINSTREAM		DETECTIONS	
THIS WEEK	LAST WEEK	WKS. ON CHART	TITLE/IMPRINT/PROMOTION LABEL	ARTIST	TW	LW
★ ★ ★ No. 1 ★ ★ ★						
1	1	20	TOUCH, PEEL AND STAND OUTPOST/GEFFEN 10 weeks at No. 1	DAYS OF THE NEW	2194	2215
(2)	2	15	MY OWN PRISON WIND-UP	CREED	1661	1652
(3)	4	6	BACK ON EARTH EPIC	OZZY OSBOURNE	1633	1558
(4)	6	4	THE GIRL I LOVE ATLANTIC	LED ZEPPELIN	1467	1447
5	3	3	THE MEMORY REMAINS ELEKTRA/EEG	METALLICA	1420	1623
6	5	11	SLOW RIDE REVOLUTION	KENNY WAYNE SHEPHERD BAND	1410	1494
7	7	16	EVERLONG ROSWELL/CAPITOL	FOO FIGHTERS	1295	1341
(8)	8	6	DIRTY EYES EASTWEST/EEG	AC/DC	1264	1236
(9)	10	9	ALMOST HONEST CAPITOL	MEGADETH	1090	1073
(10)	12	6	3 AM LAVA/ATLANTIC	MATCHBOX 20	1064	941
(11)	11	7	BOTH SIDES NOW THE TRACK FACTORY/MCA	SAMMY HAGAR	1040	949
12	9	8	JUNGLE MERCURY	KISS	1022	1103
(13)	13	5	BLEED TOGETHER A&M	SOUNDGARDEN	954	940
(14)	15	13	WALKIN' ON THE SUN INTERSCOPE	SMASH MOUTH	877	863
15	16	7	RATTLESNAKE RADIOACTIVE/MCA	LIVE	847	862
★ ★ ★ AIRPOWER ★ ★ ★						
(16)	20	6	WASH IT AWAY DGC/GEFFEN	BLACK LAB	807	743
17	14	12	HITCHIN' A RIDE REPRISE	GREEN DAY	725	867
18	17	35	IF YOU COULD ONLY SEE POLYDOR/A&M	TONIC	702	820
(19)	31	3	FLIP THE SWITCH VIRGIN	THE ROLLING STONES	664	414
20	18	20	LIVE THROUGH THIS (FIFTEEN STORIES) ATLANTIC	MIGHTY JOE PLUM	664	777
(21)	25	8	HUSH COLUMBIA	KULA SHAKER	633	596
22	22	11	EVERYTHING TO EVERYONE CAPITOL	EVERCLEAR	624	724
23	24	9	THREE MARLENAS INTERSCOPE	THE WALLFLOWERS	622	657
24	21	19	I CHOOSE COLUMBIA	THE OFFSPRING	619	737
25	23	12	ANYBODY SEEN MY BABY? VIRGIN	THE ROLLING STONES	586	716
(26)	26	4	FORTY SIX & 2 FREEWORLD	TOOL	545	533
(27)	30	4	ASHES TO ASHES SLASH/REPRISE	FAITH NO MORE	499	451
(28)	29	5	WEEDS ROADRUNNER	LIFE OF AGONY	495	463
(29)	32	2	WITHOUT EXPRESSION MERCURY	JOHN MELLENCAMP	492	413
(30)	NEW ▶		THE UNFORGIVEN II ELEKTRA/EEG	METALLICA	471	28
(31)	34	2	THE OAF (MY LUCK IS WASTED) ATLANTIC	BIG WRECK	422	389
32	27	11	BLAME ATLANTIC	COLLECTIVE SOUL	416	529
(33)	39	3	OPEN YOUR EYES BEYOND MUSIC	YES	411	343
34	28	9	GRADUATE ELEKTRA/EEG	THIRD EYE BLIND	400	527
(35)	37	2	MOUTH TRAUMA/INTERSCOPE/HOLLYWOOD	BUSH	392	370
36	33	5	DROWN IN ME M/JWORK	THE JASON BONHAM BAND	367	409
(37)	NEW ▶		SO WHAT! WARNER BROS.	JANE'S ADDICTION	315	305
38	38	4	DON'T GO AWAY EPIC	OASIS	314	365
39	35	6	BURNING MY SOUL EASTWEST/EEG	DREAM THEATER	305	379
40	RE-ENTRY		AENEMA FREEWORLD	TOOL	302	310

			MODERN		DETECTIONS	
THIS WEEK	LAST WEEK	WKS. ON CHART	TITLE/IMPRINT/PROMOTION LABEL	ARTIST	TW	LW
★ ★ ★ No. 1 ★ ★ ★						
1	1	12	TUBTHUMPING REPUBLIC/UNIVERSAL 6 weeks at No. 1	CHUMBAWAMBA	2556	2598
(2)	2	13	EVERYTHING TO EVERYONE CAPITOL	EVERCLEAR	2473	2432
3	4	19	EVERLONG ROSWELL/CAPITOL	FOO FIGHTERS	2147	2156
4	3	21	WALKIN' ON THE SUN INTERSCOPE	SMASH MOUTH	2136	2240
(5)	6	7	MOUTH TRAUMA/INTERSCOPE/HOLLYWOOD	BUSH	1986	1859
(6)	7	8	3 AM LAVA/ATLANTIC	MATCHBOX 20	1903	1858
(7)	8	9	BITTER SWEET SYMPHONY VCHUT/VIRGIN	THE VERVE	1899	1827
(8)	12	6	SEX & CANDY MAMMOTH/CAPITOL	MARCY PLAYGROUND	1814	1711
(9)	11	11	TOUCH, PEEL AND STAND OUTPOST/GEFFEN	DAYS OF THE NEW	1811	1732
10	5	11	DON'T GO AWAY EPIC	OASIS	1732	1867
11	10	8	WRONG NUMBER FICTION/ELEKTRA/EEG	THE CURE	1720	1763
(12)	15	5	HOW'S IT GOING TO BE ELEKTRA/EEG	THIRD EYE BLIND	1508	1308
13	9	13	HITCHIN' A RIDE REPRISE	GREEN DAY	1474	1770
14	13	20	CRIMINAL CLEAN SLATE/WORK	FIONA APPLE	1284	1405
★ ★ ★ AIRPOWER ★ ★ ★						
(15)	28	2	TIME OF YOUR LIFE (GOOD RIDDANCE) REPRISE	GREEN DAY	1253	783
16	14	24	FLY LAVA/ATLANTIC	SUGAR RAY	1222	1320
(17)	27	3	BRICK 550 MUSIC	BEN FOLDS FIVE	1099	795
18	17	9	ON AND ON MOTHER/ISLAND	LONGPIGS	1078	1137
19	21	11	LUCKY MAMMOTH/ATLANTIC	SEVEN MARY THREE	1027	1041
20	18	7	RATTLESNAKE RADIOACTIVE/MCA	LIVE	1013	1071
21	19	9	THREE MARLENAS INTERSCOPE	THE WALLFLOWERS	1006	1064
22	16	14	SUMMERTIME DGC/GEFFEN	THE SUNDAYS	999	1162
(23)	24	9	DAMMIT (GROWING UP) CARGO/MCA	BLINK 182	980	907
(24)	22	5	DEADWEIGHT LONDON/ISLAND	BECK	972	943
(25)	23	5	SWEET SURRENDER ARISTA	SARAH MCLACHLAN	965	922
(26)	26	5	SUGAR CANE FACTORY/CHINGON/INTERSCOPE	SPACE MONKEYS	947	864
27	20	26	WRONG WAY GASOLINE ALLEY/MCA	SUBLIME	940	1042
28	25	5	SO WHAT! WARNER BROS.	JANE'S ADDICTION	781	900
29	29	23	BUILDING A MYSTERY ARISTA	SARAH MCLACHLAN	769	776
(30)	30	4	KARMA POLICE CAPITOL	RADIOHEAD	755	739
(31)	33	4	BRIMFUL OF ASHA LUAKA BOP/WARNER BROS.	CORNERSHOP	752	699
32	32	4	BLEED TOGETHER A&M	SOUNDGARDEN	698	703
(33)	NEW ▶		CLUMSY COLUMBIA	OUR LADY PEACE	648	246
34	31	18	THE RASCAL KING BIG RIG/MERCURY	THE MIGHTY MIGHTY BOSSTONES	636	710
(35)	39	2	MY OWN PRISON WIND-UP	CREED	596	546
36	35	19	SUPERMAN'S DEAD COLUMBIA	OUR LADY PEACE	582	679
37	37	10	DOIN' TIME GASOLINE ALLEY/MCA	SUBLIME	547	636
38	38	3	STEPPING STONES OKEH/EPIC	G. LOVE & SPECIAL SAUCE	526	546
39	36	10	I CHOOSE COLUMBIA	THE OFFSPRING	519	663
40	40	22	BREATHE XL MUTE/MAVERICK/WARNER BROS.	PRODIGY	517	485

Records showing an increase in detections over the previous week, regardless of chart movement. A record which has been on either chart for more than 20 weeks will not receive a bullet, even if it registers an increase in detections. Airpower awarded to those records which attain 800 detections (mainstream) or 1,100 (modern) for the first time. If two records are tied in number of plays, the record being played on more stations is placed first. Records below the top 20 are removed from the chart after 26 weeks.

SEVENDUST

"For Active Rockers, it's great for the core audience and it's something you can turn up real loud! It's working great for us on the air and on the phones!" -John Osterlind, WAAF

"The song brought an instant phone reaction! The band played here in Waterloo on a Monday night and brought in over 300 people! On a Monday! In Waterloo!" -Jave Patterson, KFMW

MONITOR ACTIVE ROCK (38) - (36)

NEW ADDS INCLUDE:
WYSP KIOZ KBER

#1 PHONES:
KUPD
KILO

TOP 5 PHONES:
WAAF WRAT
WWGZ WJJO

ALREADY IN THE "BLACK":

WXRK
WRIF
WXTB
KUPD (21x)
WLZR
WMFS(21x)

WRCX
WKLS
KISS
KRXQ
WAZU
KFMW(23x)

WAAF(16x)
93X
KBPI
WJRR
WKLO
KILO

OVER 60 STATIONS SPINNING

SCANNING 2500 UNITS A WEEK

OVER 600 UNITS SCANNED IN BOSTON IN LAST 4 WEEKS

Produced by Mark Melancon and Jay Rodriguez for Rebellion Music

TVT Records 23 E. 4th St. New York, NY 10003
Tel: 212 998 6100 Fax: 212 978 6409 www.tvtrecords.com
© 1997 TVT Records