

# ROCK AIRPLAY Monitor

• We Listen To Radio •

February 16, 1996 \$ 4.95 Volume 3 • No. 8

## ROCK HIGHLIGHTS

### MAINSTREAM ROCK

#1

#### COLLECTIVE SOUL

*The World I Know* (ATLANTIC)

★★★ AIRPOWER ★★★

ZZ TOP • *She's Just Killing Me* (EPIC SOUNDTRAX/EPIC)

### NEW RELEASES

THE BEATLES • *Real Love* (APPLE/CAPITOL)

INTO ANOTHER • *T.A.I.L.* (HOLLYWOOD)

ODDS • *Truth Untold* (ELEKTRA/EEG)

JOAN OSBORNE • *Right Hand Man* (BLUE GORILLA/MERCURY)

SEVEN MARY THREE • *Water's Edge* (MAMMOTH/ATLANTIC)

SOUTHERN CULTURE ON THE SKIDS • *Camel Walk* (DGC/GEFFEN)

### MODERN ROCK

#1

#### OASIS

*Wonderwall* (EPIC)

★★★ AIRPOWER ★★★

NO RECORDS QUALIFIED FOR AIRPOWER THIS WEEK

### NEW RELEASES

BANDIT QUEEN • *Give It To The Dog* (MAMMOTH)

THE INBREDS • *Amelia Earhart* (TAG)

LUSH • *Lady Killers* (REPRISE)

ODDS • *Truth Untold* (ELEKTRA/EEG)

JOAN OSBORNE • *Right Hand Man* (BLUE GORILLA/MERCURY)

SAVOY • *Velvet* (WARNER BROS.)

THRONEBERRY • *On The Stroke Flume* (ALIAS)

THE WRENS • *Rest Your Head* (GRASS)

## Fall Arbs: What Happened To Mainstream Rock's Comeback?

by John Loscalzo

To many mainstream rockers who hoped that their format was making a serious comeback and that modern rock was leveling off, the fall Arbitron were a body blow. Torch-bearer WRCX (Rock 103.5) Chicago was off 3.8-3.3 12-plus, KLOS Los Angeles dipped 2.9-2.4, and KBPI Denver slid 4.7-3.2. So why the down books? Some blame Arbitron. Some attribute it to acts of God. Few are worried about the available music, but many mainstream rock PDs are still grappling with what mainstream rock really is in 1996.

Robin Lee, PD of WZZO Allentown, Pa. (10.3-10.1), says, "I think we're like a lot of the [album rockers across] the country, because we didn't know what direction to take. Were you going to go modern? Were you going to go heavy? I think we actually have gotten closer to where we're supposed to be. We're doing auditorium tests this month to fine tune and learn the things that we should be playing that we're currently not, like Iron Maiden."

"We're the only station [on which] you can hear the Beatles and Pearl

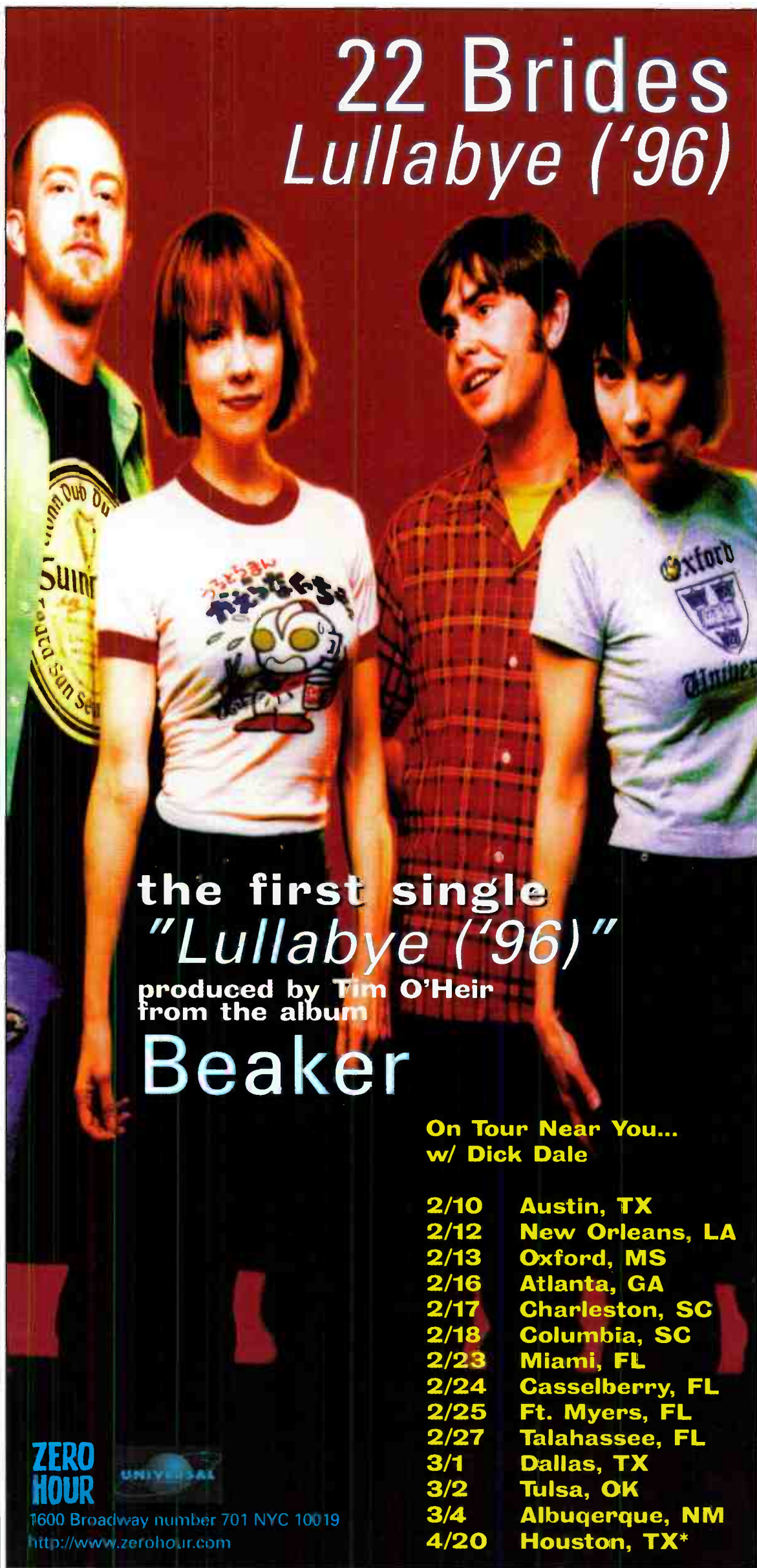
Jam. And right now, that's a big difference," says WBAB Long Island, N.Y., PD Jeff Levine. Despite his station's down book (3.4-2.6), the PD is bullish on mainstream. "I think it's tougher to get the mix right than it ever was, but if you get it right it still works."

Levine is looking forward to the dividend he expects from WXRK (K-Rock) New York's flip from classic to modern. "Two of our mainstream competitors have been weeded out with K-Rock going modern and [triple-A] WNEW bouncing back and forth. We've been hearing from listeners who are thrilled that we're the only ones left. The other competitors left in mainstream are below a 2 share and are financially not doing what they're expected to be doing. The mainstream battle for us is one of perseverance. We're in it for the long haul, so we're very excited for the next year."

What does Levine think of the current modern wave? "Modern rock is rock. It's rock that got away from the older artists and more conservative styles. When you have Smashing Pumpkins on [New York's adult top 40] WPLJ, there's no definitions. It's all

*Continued on page 5*

# 22 Brides Lullabye ('96)



the first single  
"Lullabye ('96)"

produced by Tim O'Heir  
from the album

# Beaker

On Tour Near You...  
w/ Dick Dale

2/10	Austin, TX
2/12	New Orleans, LA
2/13	Oxford, MS
2/16	Atlanta, GA
2/17	Charleston, SC
2/18	Columbia, SC
2/23	Miami, FL
2/24	Casselberry, FL
2/25	Ft. Myers, FL
2/27	Tallahassee, FL
3/1	Dallas, TX
3/2	Tulsa, OK
3/4	Albuquerque, NM
4/20	Houston, TX*

ZERO  
HOUR

UNIVERSAL

1600 Broadway number 701 NYC 10019

<http://www.zerohour.com>

# LOVE AND ROCKETS SWEET AND ROCK LOVE AND

Love And Rockets "Sweet Lover Hangover" The new single. The best hangover you've ever had.

Co-Produced by Sylvia Massey and Love And Rockets. From the distinctively pleasing new album: Sweet FA.

For the latest info about Love And Rockets and all other American Recordings artists, contact American Recordings on the Internet at <http://american.recordings.com> or e-mail us at [american@american.recordings.com](mailto:american@american.recordings.com) or on America Online - Keyword: Warner

**99X/Atlanta #1 PHONES!**

**Early Hangovers:**

**91X/San Diego**

**LIVE 105/San Francisco**

**KXRK/Salt Lake City**

**KWOD/Sacramento**

**KENZ/Salt Lake City**

**XHRM/San Diego**

**KTCL/Denver**

**WROX/Norfolk**

**WXRT/Chicago**





## WHATEVER BY LOSCALZO

### Y100 Takes A KNAPP; Hey Kemosabe In Atlanta

**W**MRQ HARTFORD, CONN., PD **John Knapp** is on his way to the plum gig at WPLY (Y100) Philadelphia. Knapp's promotion savvy and modern background make him the perfect choice for the job. Not to mention the fact that he actually got good numbers in the insurance capital. Who had him in the office pool? Wish I did, Knapp was a 15-to-1 shot. Hmmm. Who'll land in Hartford? Place your bets. Call for odds.

It seemed like every weasel, penguin, and tipster in the industry converged on Atlanta last week for the Gavin Seminar. And it felt like all of them were there to see **WQBK** (the Edge) Albany, N.Y., PD **Dan Binder**. Binder, by the way, was the only PD I saw at **Pierre Bouvard's** Arbitron Bootcamp on Saturday morning.

Bouvard and Arbitron sales rep and Radio Software Team leader **Bob Michaels** played their roles of the Ernie and Bert of research perfectly, sans rubber ducky. It went quite well with the "let's cover the most basic issues possible" vibe of the meeting. Explaining TSL, cume, and AQH to a roomful of radio geeks seemed pretty elementary to me. Where were the heated debates about the allegedly outdated diary method? At the end of the session, one tyro PD did ask about the idea of using E-mail in lieu of diaries as a way to increase young response rates. I was impressed by Bouvard's restraint. He should've just belted out, "Silly PD, the Internet is the CB radio of the '90s!" Instead, he responded by saying that the company is in a watch-and-wait mode regarding the Net.

Although the meeting was more **Carlton Sheetz's** infomercial than a crash course in science, Bouvard left me with a warm, fuzzy feeling, a tingling only enhanced by the really cool pens that were handed out, which double as a yellow highlighter. Arbitron likes me! It really likes me!

The consultants panel on Friday featured **Fred Jacobs, Don Kelly, Bill Richards, Rusty Walker,** and radio legend **Paul Drew**. While I found the free coffee in the back to be the most helpful element of the panel, I discovered that to become a legend, I need to come up with a gimmick like Drew's trademark hat. Maybe I could wear a fez or something. Yeah, that would get people talking. Better yet, maybe I should wear suspenders all the time. Or maybe I'll begin to refer to myself in the third person.

Über-broadcaster **Rupert Murdoch** and Atlantic chairman **Ahmet Ertegun** were keynotes at the confab. Murdoch spoke to PBS chat boy **Charlie Rose** about many things, but mostly Murdoch's world-domination jones. Rupie said he's working on an all-news channel to go head-to-head with megabubba **Ted Turner's** CNN, as well as ABC, CBS, and NBC. He added that his channel wouldn't be biased like ABC, whose

**Peter Jennings** commented after the 1994 Republican congressional wins that "the American people had a temper tantrum tonight." No way will of Rupe's net be opinionated. Hey, isn't this the guy who brought us *The New York Post*? "A Current Affair"? **Gordon Elliot**?

The first person I saw Saturday morning was Universal's **Steve Leeds**. I should've turned around and gone home, but before I could bolt, I spotted former **WABC** New York superjock (sing the jingle) **Dan Ingram** standing next to us. I wanted to yell out, "Hey, Kemosabe!" or some other hep line. I didn't. I was afraid **Scott Shannon** would take a swing at this baby DJ in an effort to protect the legend Mr. Ingram.

The legends of radio panel was fascinating. **The Bottle Rockets** opened for the jocks. What a concept—rock'n'roll at 11 a.m. I checked out their set the night before, and they rocked. I knew they must be really hip because **Mark Marone** showed up.

Back to the panel. Legend **Dr. Don Rose**, when asked if he missed being on the air, replied that he didn't because he's got a family and a life outside of radio. What? There's more to life than radio? I've got to look into that.

I got a little misty when Ingram told the story about the final time he said "WABC New York" the day the station flipped from top 40 to talk more than 10 years ago. Of course, he was upset, but not that upset, because he'd just signed a huge no-cut contract to be part of the ill-fated Super Radio. He got to stay home for two years and collect a lot of money. Now that's legendary.

Here's a question: Where were all the legends of ROCK radio? Who wouldn't want to hear **Scott Muni** dish about the old days? Or **Jim Ladd** discussing the virtues of FM radio (no static at all)?

One ad for the virtues of FM radio was host station **WNNX** (99X) Atlanta's action-packed Chinese New Year show at the Fox Theater featuring **the Toadies, BoDeans,** and **Collective Soul**. People who unsuccessfully tried to avoid me at the show included **FMQB's Mike Parrish, Binder** (again), **WQXA** (the Edge) Harrisburg, Pa., PD **John "Mookie, Don't Call Me Mookie" Moschitta,** United Stations' **Andy Denmark,** and **TAG's Gary Spivak**.

During **Collective Soul's** last song (a cover of **the Gap Band's** "You Dropped A Bomb On Me"), lead singer **Ed Rowland** said, "Anyone who grew up in Atlanta dreams of being on-stage at the Fox Theater." At that point, he invited all the members of the audience on-stage with him. Being a New Yorker, I was sure that a riot would be next on the menu. But this is the South, friends. The "kids" (all 300 of them) were orderly as they sang, slammed, moshed, and cleared off the stage in a reasonable amount of time after the band was done.

### Triple A Chart Debuts

Effective with this week's issue, Rock Airplay Monitor is pleased to announce the addition of a triple-A chart—the first chart specifically developed for Airplay Monitor that has, until now, relied exclusively on charts developed for Billboard. The 20-position tracks chart is on page 21. The chart information is compiled by Broadcast Data Systems' Radio Track service, which monitors stations 24 hours a day, seven days a week.

Among the 22 stations currently reporting to the chart panel are **WNEW** New York, **WXRT** Chicago, **KFOG** San Francisco, and **KSCA** Los Angeles. BDS hopes to continue adding triple-A stations in the coming weeks.

The addition of the chart recognizes triple-A's integral role in developing the careers of many of today's most popular artists, including **Hootie & the Blowfish, Joan Osborne, Gin Blossoms, the Dave Matthews Band,** and **Natalie Merchant**, as well as the continued strength of such artists as **Bonnie Raitt, Jackson Browne, John Hiatt,** and **Tom Petty**, who have been core artists since the infancy of the format.

Although this week's chart is the first published, BDS has been running test charts for six weeks, and the new chart will contain complete information for previous weeks.

ANTHONY COLOMBO

## RADIOACTIVE

### Buying Bonanza: Jacor Eats Citicasters

**I**t's Jacor-mania again this week, as the company announced that it will purchase Cincinnati-based **Citicasters** for \$29 a share plus approximately one-fifth of a warrant per fully diluted Citicasters share. Jacor will allow Citicasters shareholders to purchase Jacor stock at \$28 per share. The move raises Jacor's total number of radio stations to 54. Citicasters properties include album **WKLS** Atlanta, **WLWQ** Columbus, Ohio, **KYYS** Kansas City, and **WXTB** Tampa, Fla. In other news from the feeding frenzy, **SFX** Broadcasting picks up **WROQ** Greenville, S.C., **WZRZ/WSTZ** Jackson, Miss., and the entire Prism Radio Partners chain. **EZ** Communications picks up Infinity's country **KYCW** Seattle to pair with country/classic rock combo **KMPS/KZOK**.

**WMRQ** (Radio 104) Hartford, Conn., PD **John Knapp** is named PD at **WPLY** (Y100) Philadelphia, replacing **Garett Michaels**, who is now PD at **WHYT** Detroit.

**WARQ** Columbia, S.C., PD **Dave Stewart** will replace **Bill Pugh** as PD at **WSHE** Miami. Stewart will assume Pugh's afternoon airshift. At press time, an interim PD for **WARQ** had not been announced.

Modern **WLUM** Milwaukee PD **Ron Bunce** resigned Feb. 9 and will stay with the station as "interim production director," a position he held when the station was top 40. Staffer **Tommy Wilde** has been named interim PD.

Modern **WXRK** (K-Rock) New York began running promos this week asking DJ wannabes to send their audition tapes to **Howard Stern**. The station has been running jockless since changing format in early January. No word yet on a new PD, although rumors about **WHTZ** OM/PD **Steve Kingston** joining the station refuse to die.

In other K-Rock news, **Dier** announced that his movie deal with Paramount is official. It will be a biopic of his book "Private Parts" adapted by **Len Blum**. Former "Hill Street Blues" star **Betty Thomas** will direct, with **Ivan Reitman** producing. The pair were guests on the *Stern* show Tuesday (13). Filming will take place in New York starting in May.

Modern **WAVF** Charleston, S.C., will not

be naming a new PD to replace **Dave Rossi** in the near future, according to owner/GM **Woody Bartlett**. Staffers **Rob Crusman, Storm Zebel,** and **Holly Anderson** will handle those duties indefinitely.

**WGRD** Grand Rapids, Mich., GM **Phil Catlett** adds Midwest regional manager stripes for owner **Patterson Broadcasting**.

Chicago's **Rebel Radio**, currently heard overnights on ethnic/variety outlets **WVXV** and **WKTA-AM**, has begun broadcasting a 24-hour version of its hard rock mix on the World Wide Web (<http://www.rebelradio.com>).

Classic rock **KCBQ-FM** San Diego flips to an adult rock format under the name **Sets FM**. The new format, which precedes **KCBQ's** move from 105.3 to 102.1 and its frequency swap with **KIOZ** (Rock 102.1), will feature various adult rock artists in two- to four-song sets.

Album **KRNA** Iowa City, Iowa, names morning show co-host **Joe Nugent** PD. He replaces **Bill Summers**, now with the American Heart Assn.

**KTOZ** (Channel Z) Springfield, Mo., names market vet **Kirt Edwards** sales manager, replacing **Corey Pinney**, now at **KDEB-TV**.

Album **WJXQ** (Q106) Lansing, Mich., overnights **Mike Childs** is named PD of modern **WWDX**. He replaces **Sandy Horowitz**, now at **KTEG** (the Edge) Albuquerque, N.M. And speaking of **KTEG**, that station's **Kit Missile** joins **WEDG** Buffalo, N.Y., for middays, as **MD Rich Wall** comes off the air.

Look for former **WRXK** (96 K-Rock) Fort Myers, Fla., PD **Austin Keyes** to join ABC's forthcoming **Deep Cuts** triple-A network as APD. Also, look for '70s gold **WJUK** Charleston, S.C., to head in a more classic hits direction following its acquisition by crosstown **WSSX**.

**WZZQ** Terre Haute, Ind., names **WKHY** Lafayette, Ind., p.m. driver/production director **Jim Stone** PD, replacing the ephemeral **Troy Hanson**. No replacement for **Stone** had been named at press time.

**Kevin Stapleford's** **KDK** Media is looking for talent. Rush T&Rs to him and maybe you can be on one of his client stations. The address is 3790 Via de la Valle #204, Del Mar, Calif. 92014.

### Kenny Is My Shepard



**Kenny Wayne Shepard**, left, paid a visit to **KIOZ** (Rock 102.1) San Diego jock **Todd Kelly**, center, to spin tunes from Shepard's "Ledbetter Heights" long-player. Also pictured is band vocalist **Cory Sterling**.

## ROCK MONITOR EXCLUSIVE

### Mancow Vents Spleen At Stern And Orders Mickey Mantle's Liver On NYC Field Trip

**W**hat drives WRCX (Rock 103.5) Chicago morning man Eric "Mancow" Muller? "Hunger," he says. "I'm afraid of becoming old and poor."

Gee, Muller didn't *sound* afraid on the air last week, when he spent Monday morning being simulcast on WYNY New York as part of that station's format change. Muller's on-air aggression, including multiple attacks on Howard Stern and a few on everybody else in town, made him the industry's most talked-about air talent and got him the kind of publicity—not all of it positive—that other morning shows take years to achieve.

"I have no fear, and the reason is simple. Early in my career, I got stuck reading liner cards, and there's just no way to do it right. I [did] great interviews with Arnold Schwarzenegger or Bruce Willis, and the PD would spend a half-hour critiquing the way I said the call letters. I tried to please all these PDs, and I got fired anyway... I decided, I'm gonna do it my way, and if I get fired, at least I can live with myself." The bottom line, says Muller, is "I fear nothing. I'm a single guy. I have no kids. What do I have to lose?"

Muller's pre-radio career includes pitstops as a



**Mancow Muller**  
Air Personality  
WRCX Chicago

*"I'm gonna do it my way, and if I get fired, at least I can live with myself"*

projectionist for a drive-in theater, satellite-dish installer, fast-food geek, and a beekeeper. "I had 100 beehives at one time," he says, semi-proudly. "I bottled honey myself. I sold it through some specialty shops and also sold it door-to-door."

How does one tastefully segue from beekeeper to zookeeper? Muller, who has degrees in theater and public relations, was washing dishes at the Golden Corral in Warrensburg, Mo., when he heard that local station KOKO was looking for a guy to run "The Larry King Show," which, he says, "a chimp could do." Once there, Muller began the fine tradition of getting yelled at. "I'd pot up the mike during the breaks and belch or something," he recalls. "Someone would hear it at 2:30 a.m. and complain, and management would threaten to automate the overnight show."

In one early run-in, Muller recalls, "I managed to get Pee-wee Herman on the phone the day after he was busted, for his first and only interview. Excerpts were later used on CNN, and all my GM could say was, 'Too much talk... you shoulda said the calls more, and you didn't fit in your eight songs an hour.'" Then there was the year Muller couldn't attend Don Anthony's "Morning Show Boot Camp," so he ordered tapes of the sessions. On one tape, he heard his GM telling a roomful of people he was having a problem with his morning guy and would probably fire him by year's end. When Muller confronted him, the GM denied it. Muller was fired on New Year's Day.

After doing mornings at KIDON Salinas, Calif., Muller gained industry-wide notoriety at KYLD (Wild 107) San Francisco with the infamous Bay Bridge haircut stunt, a parody of President Clinton's Air Force 1 haircut that tied up air traffic in Los Angeles. Muller was subsequently convicted

of being a public nuisance, "which seems perfect for me," he says. "I spent 100 hours wearing an orange monkey suit, picking up trash along the freeways. I've paid for my art." (Not completely, though. He's headed back to San Francisco this weekend for further litigation. "I'm thinking about doing call-ins from court," he says.)

Muller credits Evergreen honcho Jim de Castro for giving him his big break in Chicago two years ago. It was there that Muller's feud with Stern started. Muller gets a bit prickly when his approach to morning radio is compared with Stern's, something done by several callers last week. "That just irritates me. If the guy deserved credit, I'd give him credit. A lot of guys inspired me... Jeff and Jer, Kidd Kraddick in Dallas, and Rusty Humphries at TM Century. Also, Skid Roadie was a cool rock jock when I was growing up in Kansas City, to name a few.

"I talk about sex, politics, everything. The one thing I don't do is slam people's religion. My dad was dying of cancer last year, and every day Stern was praying to Jesus for my father's death. I have yet to find anyone who can show me the humor in that. John DeBella's wife laid in the ground, and I don't find anything cute about it," he says. Muller cites Stern's new book, which he hasn't read. "He apparently admitted that he has... psychological problems. He obviously was not a happy child, and now, everybody has to pay."

Which brings us to his New York assault Feb 5. How did Muller prep for a New York crowd without ignoring his Chicago base? "I think they forgave me for a day," he says. "I think people in Chicago see me as a brave warrior going into a savage land." Muller wasn't in New York, but Evergreen's staffers hit the Big Apple streets, hard. "They took Chicago and New York pizza out to the streets and had a homeless taste test," he says. "Then they went into Mickey Mantle's restaurant and ordered liver. There was a lot more going on than just Stern-bashing." Of course, "Hard Copy" and CNN were there to cover it.

There continues to be a buzz regarding a possible Muller syndication deal. Muller predicts syndication to both coasts by year's end. "There's nothing wrong with being No. 1 in my target in Chicago," he says. "I think it would take a couple of years, but I could be No. 1 in New York, without question. That's not just ego talking... It's all about water-cooler talk. Love me or hate me, everybody in New York talked about Mancow yesterday."

As for the fact that not all the talk was positive, he says, "PDs and industry people... don't get me, but real people do, and that's what matters. I don't do my show for the [trades] or PDs."

He means that. There are no aircheck sessions with WRCX PD Dave Richards, whom he affectionately refers to as "Sgt. Dickhead." "I refuse to aircheck," he says. "Listen to my show. Don't roll tape and listen to it in the afternoon, out of context. The vibe is completely different."

Advice for future Mancows? "Don't take a job for money, and don't get caught up in market size; that'll all come. The important thing is go where you can have freedom. It's never been about money or fame for me; it's having a creative outlet.

"This is the greatest business in the world, but so many people get caught up in research and become tied to their laptops. The Internet has also managed to separate us from other people, so there's less and less personal communication. There's nothing instantaneous about TV, and people just read certain chunks out of newspapers, but with radio you actually become somebody's friend. It's the most human art form.

"If a loser like Mancow can get on the radio, you can, too. My show is inclusive, not exclusive. It's designed for everybody, but mostly for men who like talking about pussy." **KEVIN CARTER**



## CHEET SHEET BY MARK MARONE

### 3 lb. Thrill Changes Its Identity With 'Diana'

Under the federal witness-protection program, government informers are instructed to assume new lifestyles, along with changing their names and addresses. No, the former members of Uncle Green haven't been collectively subpoenaed or involved in underworld dealings, but they have changed their band name and moved out of their Monkees-style, shared house. Uncle Green, who have opted for a new identity as 3 lb. Thrill, began when a group of friends decided to leave native New Jersey for Atlanta when visiting band member Matt Brown's sister there in 1984 and formed a band that put out four independent releases (three on DB Records) and one album on Atlantic in 1992.

Producer Brendan O'Brien—who has done albums by Pearl Jam, Stone Temple Pilots, Neil Young, and Black Crowes, among others—has been working with the band since 1989, when he produced two of their indie records, and it was this bond that led to 3 lb. Thrill being the

first release on O'Brien's fledgling label, 57 Records.

On "Diana," the first single from the album "Vulture," the midtempo, feel-good pop/rock sound belies the song's subject matter. The story is based on tales of sexual abuse from friends of songwriter Matt Brown that surfaced over the course of several conversations. "Diana" is sung in the first person and describes how a man manipulates a child. 3 lb. Thrill—whose name refers to the weight of the human brain—is on tour with Ben Folds Five, following its tour with Matthew Sweet.

### Never Play 'Skydiver' Without Your Schtum

"Schtum's music's all about rhythm," says lyricist/vocalist/guitarist Christian McNeill. "The four of us gel together, that's our strength." Characterized by swirling guitars, hip-hop-influenced rhythms, and McNeill's David Byrne/Johnny Lydon/Matt Johnson vocal hybrid, the Derry, Ireland, quartet has been honing its craft since it was formed from the remnants of various local bands in 1992. By that time, McNeill and guitarist Ivan Birthistle had already developed a unique counter-guitar interplay over the course of a seven-year relationship.



The band met former Undertones drummer Bill Doherty, who recorded and eventually began managing the band. Following a debut EP on its own label Big River Records and press accolades from various Irish music magazines, the band was signed by Columbia to a developmental deal. With three EPs under its belt, the band has a release on the Work Group, titled "Grow," that is its first major-label outing and features the lead single "Skydiver."

"I was sitting in my flat on a sunny day in the springtime, and as a complete opposite to the way I was feeling, I wrote 'Skydiver,'" McNeill

says of that song's suicide lyric. "Because we're going down the road where the planet explodes" is one of its lyrics, while the song's catch phrase—"And I have to have some hope or I'll jump right off the face of it"—refers to skydiving in reverse; wanting to, in the depths of depression, jump off the face of the planet. McNeill says he isn't bothered that the song's point of view is often missed, saying, "I would never expect people to take a song about suicide to heart."

McNeill's first brush with creative inspiration was not with music, but with reading and writing poems as a child. Crediting his father, who was a rock/soul singer, with being a musical guide, McNeill says his dad recognized his keen interest in music early on and would offer him records to listen to. He soon became a "Beatles fanatic," but it was the noisy experimentation of Lou Reed's "Transformer" and the Stooges' "Fun House" that put him on a path to playing music. Most influential to McNeill's moody, brooding style has been the music of Tom Waits, along with Reed and Iggy. Having been to America very briefly for a couple of shows, Schtum is gearing up for its first major tour of the U.S. with labelmates Ruby. The tour begins with a five-city promotional jaunt starting in New York Feb. 22 followed by a six week national tour beginning March 16 in Austin, TX.

## ON THE AIR

NEW STATIONS AND OTHER REPORTER CHANGES FROM BDS & AIRPLAY MONITOR

### K-Rock Joins Panel; Airpower Increased

Effective with this week's issue, WXRK New York (PD Andre Gardner, 212-750-0550) has been added to Airplay Monitor's modern rock panel. Also, KEDG Las Vegas has been reactivated.

Added to Airplay Monitor's triple-A panel is CIDR Detroit (PD Murray Brookshaw, MD Ann Delisi, 519-258-8888); readded to Airplay Monitor's mainstream rock panel is KOMP Las Vegas. There are now 72 modern rock reporters, 22 triple-A reporters, and 100 mainstream rock reporters.

Also effective this week, the criteria for Airpower status on the modern rock chart will be 1,000 detections.

In addition, the stations used in this week's Power Playlist section have been adjusted to reflect the fall '95 Arbitron ratings. Inclusion and ranking on the Power Playlist pages are determined by a station's total survey area 12-plus cume. **ANTHONY COLOMBO**

## Fall Arbs: What Happened To Mainstream Rock's Comeback?

Continued from page 1

just rock'n'roll. The stations that can mix it together the best for their demo will be the stations that succeed. It's [all about] the proper balance of currents and gold, if you lean too far either way, you mess it up."

Levine also cites better music as a reason to be excited about mainstream's future. "There's been a lot of good stuff that hasn't been alternative. The Ozzy [Osbourne] and AC/DC albums had good tracks on them. Bob Seger and Don Henley, although they haven't sold a lot, have certainly been good adult mainstream albums [for us], and the Bradlees are an example of a good new mainstream-sounding band."

KQRC Kansas City PD Doug Sorenson notes that there's more to come. "1996 is going to be a terrific year. We're going to get new records from Stone Temple Pilots, Soundgarden, and Metallica, not to mention the fact that Soundgarden and Metallica are touring together in Lollapalooza. It'll re-ignite interest in rock."

### ARBITRON-BASHING ALERT!

KQRC was one of the lucky ones ratings-wise, flat at 5.2 12-plus and No. 1 in the 18-34 demo. But beauty is in the eye of the sample reader. Arbitron's weighting of diaries in high-density Hispanic areas (HDHA) and high-density black areas (HDBA) remains a sore point for rock stations in urban areas. And it was the fall Los Angeles book with its sharp drops for both KLOS and modern KROQ that led several GMs to stage their much publicized protest over what they feel is an over-representation of Hispanic listeners.

WZTA Miami PD Gregg Steele, who was relatively flat (3.3-3.2) this fall, also believes there was oversampling of Hispanics. "It appeared that the Hispanic weighting was about 7% greater than the rise in the Hispanic population. Surprising, but not too surprising given the way it's gone with other heavily weighted Hispanic markets."

While whining about Arbitron's methodology is getting to "the dog ate my homework" level, Levine says, "When 20-year-old kids barely have to write anything out because they're working on computers all day, the diary becomes less and less practical. I don't know if Arbitron has a solution to solving this problem."

At WFBQ Indianapolis (the market's No. 1 station) PD Marty Bender doesn't blame Arbitron. "I think the Spanish resurgence is reality," he says. "I don't think it's Arbitron making a mistake." Instead, he blames Santa Claus, noting that the fall book is one where people's lives are "disrupted" by the holidays. "People's day-to-day lifestyle gets thrown off, and research becomes difficult or inaccurate, as the holidays are becoming a major detour in our normal lifestyle. I'm beginning to see more distinctive wobbles during that time."

WZZO's Lee mentions winter weather as a factor in the down book, pointing out that news station WAEB-AM had "the best book they've ever had." Noting that the worst of the weather dividend is yet to come, she says, "We're gonna take a big hit in the winter book!"

### RAH RAH ROB YOUR CORE

What happens when you're in a medium-market college town and the football team becomes unbeatable? Ask WLWQ Columbus, Ohio, PD Greg Ausham (7.0-5.4). "In this town, the [Ohio State] Buckeyes are the team. On Saturdays during football season, you can shoot cannons down

the street and not hit anything. People are either at the game or at home watching it. You never can gauge what kind of an impact a rush to the national title or a team that is undefeated in college football can do to you in a market this size.

"In the second phase of this book, our sharing with WBNS-AM, a sports station, went from 4% to 25% among 25-34 men. We took a major hit, and the net result is that we lost a great deal of audience to a nonformat competitor. That was the only big surprise of the book. In the third phase of the book, we looked fantastic. Ironically, that was after Ohio State lost to Michigan. It was uncanny to see the number bounce back the week after the loss."

But college football is only one day a week. How can it do so much damage? Ausham says it was a seven-day-a-week affair fueled by "the mania created by the Buckeyes winning. It was kind of funny that WBNS-AM has no night-time signal, and our morning drive numbers were untouched, and 7 p.m.-midnight had great numbers as well. But during the daytime we got hit."

### CHANGE THE FREQUENCY, KENNETH

Sometimes, you just have to change frequency to get the desired results. Greg Stevens, PD of KIOZ (Rock 102) San Diego, says, "The fall book was a perfect example of the signal problem we've had all along. Luckily, within a few more months, we'll switch to a full signal [with recently acquired KCBQ], and maybe we'll get a fair shake. It's an example of how the station can bounce between a 4 share in a good book and a 2 share in a low book, during which time it makes no programming changes at all. If you looked at those numbers at face value, you'd think the station was constantly gaining and losing massive amounts of audience, which is not the case. Accuratings shows the station holding steady with no major fluctuations. When I isolate the ZIP codes in the north part of the county, where we don't have a signal problem, the station remains dominant."

### I (STILL) LOVE ROCK AND ROLL

WZTA's Steele manages to come away from the fall sampling with a positive spin. "I'm excited about the returns for 18-24 males," he says. "The PD thinks that if returns of 25-34 male diaries can increase in the same way in the coming year, it would help mainstream stations. Looking at how strong most rock stations are [among 25-34 males], they'll be able to outdistance their modern rock competitors, who are primarily 18-24. Rock isn't probably worth the slide it took in the fall. If there's improvement in the area of HDHA weighting as well, I think you'll see rock come back this year."

Bender also sees that mainstream light at the end of the tunnel. "The mainstream [rockers] that toughed it out, while other formats diluted it, will have pretty good years. This is still a mainstream country. If you're in a market where two or three stations are battling it out for the alternative position and you hung in there as a mainstream, things are going to look pretty good for you. Only so many stations can play alternative."

Pointing out the current round of format musical chairs in the No. 1 market, WFBQ's Bender says, "I'd want to be a heritage rock station in New York right now. When Pink Floyd comes out with an album, who's going to play it there?"

# ROCK GODZ

## PD Balis Remains 'True To Rock' In Third Stint At Album KSHE

Last November, Rick Balis began his third tour of duty as PD of heritage album rocker KSHE St. Louis. That's where he began his career in commercial radio in 1976. It's also the station at which he has spent 15 of the last 20 years, save for detours at hometown WLUP Chicago and classic rock KSD St. Louis, as well as a stint in the voice-over business in 1983. But with more rock competition and a surprising morning-show choice, Balis says, this time around is already different.

"I'm looking at this whole thing through different eyes than before," Balis says. "I have more energy and enthusiasm about my work than I can recall. From a personal vantage point, that's what the third round represents. It also is a tenure as PD in the most competitive time for the St. Louis rock



**Rick Balis**  
Program Director  
KSHE St. Louis

*'We're consistent in many ways, and that's important. It's simple, but it's key.'*

arena. In a general way, it represents a continuing evolution of a heritage giant. Bringing the past with us, but not living there.

"We're pretty much into a new era for the radio station," he adds.

Balis returns to KSHE after programming rival KSD. That station, which was AC during KSHE's 12-share heyday in the '80s, has fragmented St. Louis' rock scene, along with modern KPNT (the Point) and triple-A WVRV (the River).

Against that backdrop, one of Balis' first acts was to add WFBQ Indianapolis' syndicated "Bob & Tom" show. Asked why he chose that show in a Howard Stern-less market, Balis cites the duo's Midwestern appeal. "They've been successful in a market that in many ways is very similar to St. Louis. We've been familiar with them throughout the years, and they've been very successful. They've got a 45 share among men [in the 18-34 demo] in their market. There's obviously no denying that they're very talented."

"We continue to localize very much, and we felt it important to keep John Ulett, who's been a part of the morning show for a long time and who continues to do morning news and then middays. Some people in the market are scratching their heads—and we knew they would—about adding a show that is from outside the market [and] a show that plays very little rock, especially on a station that continues to be known as 'Real rock radio.' [But I hope] the entertainment value will make this all worthwhile."

Balis says that a vocal minority were upset by the change, but so far, positive responses have been generated by promotions, and the buzz on request lines is upbeat.

Musically, Balis says KSHE has opened up, but in a way consistent with the station's

heritage. "We're not as conservative with current music as the station has been in the last couple of years," he says. "We will look first at Tom Petty, Clapton, and the Stones, [then for those newer] acts we feel comfortable in calling mainstream. Frankly, we would leave what [we consider] alternative to the Point. We're not trying to cover so much ground . . . that we'd be serving no one to their satisfaction."

As for his and other mainstream rockers' reaction to modern rock's growth, Balis says, "We all know what is happening. Many have begun talking about what is going on in the world of the alternative format, really getting to the point of asking now if it is truly a format. Does it have much shelf life? It would appear that the lion's share of listening to alternative stations is becoming more and more core, which is driving these stations very current and very hard. Because of the fact that we're much more interested in a 25-plus audience, we can't afford to do that."

A recent afternoon monitor of the station went as follows: Thin Lizzy, "Jailbreak"; Smitherens, "A Girl Like You"; Van Halen, "Seventh Seal"; Cream, "Crossroads"; Gin Blossoms, "Follow You Down"; U2, "New Year's Day"; and Rainbow, "Since You've Been Gone."

One reason KSHE hasn't had to jump on the modern bandwagon is because its heritage has been an asset, not a liability. "I think it's primarily because the station never went into a holding pattern one way or another. It was always looking to grow at times [and to] evolve and be aware of trends. It's something we're very proud of—that the station has been around for this long. We have listeners who started with us in the '60s and the '70s, but we've never rested on that. We always look to keep those listeners as happy as we could and keep them around as long as we could while trying to find new listeners."

"Over the 28 years the station has been around, it's remained true to rock. So when Prince and Michael Jackson were infiltrating a lot of rock playlists, they didn't manage to infiltrate KSHE. I think a lot of the stuff we do is common sense. We're consistent in many ways, and that's important. It's simple, but it's key."

In the fall Arbitrons, KSHE was up slightly, 6.3-6.4 12-plus. KSD, which just added currents to its classic mix, was up 2.9-3.4, but Balis doesn't think the growth across the street is music-driven. "It's pretty safe to say that growth at KSD has come from football. If you take a look at the ratings, the growth truly came on Sundays, although KSHE continues to lead that station on Sunday. The jury is out on what type of growth they're going to be able to sustain."

"I would describe KSD as 'KSHE Light,'" Balis says. "I just think that, in a way, they are trying to become us." Balis calls KSD and the River "two radio stations that have, throughout the course of the year, changed several times. What KSD is doing right now is their fifth sound in a year and their eighth sound in two years. I know that because I was a part of that. They're looking for their niche. The River has been trying to do the same thing; check them out from one month to the next and you shouldn't be surprised to find something different."

**JOHN LOSCALZO**

PUBLISHER: MICHAEL ELLIS  
EDITOR: SEAN ROSS  
MANAGING EDITOR: JOHN LOSCALZO  
DIRECTOR OF CHARTS: JERRY MCKENNA  
MAINSTREAM ROCK CHART MANAGER: ANTHONY COLOMBO  
MODERN ROCK CHART MANAGER: MARK MARONE  
CHART PRODUCTION MANAGER: MICHAEL CUSSON  
ASST. CHART PRODUCTION MANAGER: PAUL PAGE  
EDITORIAL PRODUCTION MANAGER: BARRY BISHIN  
ASSOC. EDITORIAL PRODUCTION MANAGER: MARCIA REPINSKI  
EDITORIAL PRODUCTION: MARC GIAQUINTO, MORRIS KUEGMAN  
COPY EDITOR: CARL ROSEN  
ADVERTISING PRODUCTION MANAGER: LYDIA MIKULKO  
ADVERTISING PRODUCTION ASST.: CINDIE WEISS  
ADVERTISING ART DIRECTOR: RAY CARLSON  
©1996 BPI Communications, 1515 Broadway, New York, NY 10036  
212-536-5039 For subscriptions call: 800-722-2346

NATIONAL ADVERTISING MANAGER: JON GUYN  
ADVERTISING SALES: ART PHILLIPS  
CLASSIFIED ADVERTISING: LAURA RIVCHUN  
ADVERTISING SERVICES MGR.: MICHELE JACANGELO  
SALES ASSISTANTS: EVELYN ASZODI, ERICA BENGITSON,  
ALEX VITOULOS, ALYSE ZIGMAN  
EDITORIAL ADVISER: TIMOTHY WHITE  
PRODUCTION DIRECTOR: MARIE GOMBERT  
DIRECTOR OF MARKETING: ELISSA TOMASETTI  
CIRCULATION MANAGER: JEANNE JAMIN



PRESIDENT: HOWARD LANDER

## SERVICES

### VOICEOVERS



FASTEST GROWING VOICE-OVER TALENT IN NORTH AMERICA. FEMALE ROSTER ALSO AVAILABLE. CALL 1-800-843-3933 FOR DEMO. WELCOME KRIS-HOUSTON, Q102-DALLAS, WGPR-DETROIT

CHOOSE THE VOICE FOR TODAY AND TOMORROW CHOOSE  
**JJ McKay PRODUCTIONS, INC.**  
(214) 539-2620  
COUNTRY-KEYE, KRAK  
CHR WMTX, WSTW  
NEWSTALK-KSDO, WFBC

**CARTER DAVIS**  
VOICE AND  
PRODUCTION  
FOR RADIO AND TV  
Tel/FAX:  
(901) 681-0650

THE **REVOLUTION**  
THE VOICE SOLUTION  
HEAR IT NOW! 800-762-2397

**THE LINER RANCH**  
LOOKING FOR A NEW STATION VOICE?  
BIG MARKET VOICE  
FOR SMALL MARKET DOLLARS  
**STEPHAN KAUFMAN**  
509-292-8609  
WELCOME KOLO-TV, RENO  
KXO-AM/FM, EL CENTRO

**DANNY JENSEN**  
The Man, The Pipes!  
**ABSOLUTE "IMAGE VOICE"**  
SWEEPERS/ID'S (208) 384-9278  
AC, COUNTRY, CHR, ROCK, NEWS/TALK

**Uniquely Human Liners**  
MORE THAN WORDS &  
**MTW** Promos  
PRODUCTIONS  
414-652-4707

### SHOW PREP

SINCE 1988  
**BRAD MESSER'S**  
**PREP**  
Radio's Favorite Daily  
*Show Prep Sheet*  
CALL NOW • 24-hours  
Sample 1 800 788-PREP

## HELP WANTED

### DIRECTOR OF PROMOTION

KS95-FM a Twin Cities Adult Contemporary Station is looking for a Promotions/Marketing person. Ability to deal with the public; 4 years previous major market experience in promotion and marketing; knowledge of FCC rules and regulations as they pertain to contests; familiarity with programming concepts; applicant must be highly organized and able to prioritize own work; an understanding of television buying would be helpful. Please call Bob Davis at 612-642-4141 and submit resumes to:

**AMY J. STEDMAN**  
KSTP-FM  
Job #192-95  
3415 UNIVERSITY AVE.  
ST. PAUL, MN 55114

AN EQUAL OPPORTUNITY EMPLOYER

### PROGRAM DIRECTOR

Columbus, Georgia's country giant, KIX 106 is looking for an on-air program director. Minimum 3 years country experience required. Tape, resume and cover letter to:  
**BERNIE BARKER, GENERAL MANAGER**  
WSTH  
1236 BROADWAY, COLUMBUS, GA 31901

### Q95.5 Seeks A Marketing/Promotions Manager

Candidates must be highly motivated, possess the ability to visualize then execute exciting promotions for an adult, female audience, generate business for our advertisers, and build brand awareness of the Motor City's HOT AC radio station.

Send resume and examples of your work to:

**Tom O'Brien, WKQI**  
15401 W. Ten Mile Road  
Oak Park, Michigan 48237

AN EVERGREEN MEDIA CORPORATION  
STATION, WKQI IS AN EQUAL  
OPPORTUNITY EMPLOYER.

## HELP WANTED



TOP RATED CHR LOOKING FOR MORNING SHOW HOST ... CREATIVE TEAM PLAYER WITH A SENSE OF HUMOR. SLACKERS NEED NOT APPLY. SEND T&R TO:  
**MICHAEL NEWMAN, PD**  
55 PLAZA CIRCLE  
SALINAS, CA 93901  
NO CALLS PLEASE

### N.C. FM seeks Radio Supreme

Being for:  
Operations, On Air (Mornings),  
Production. Digilink experience a must.  
Send T/R:  
GM • Box 910  
Roanoke Rapids, NC 27870

### DATABASE COORDINATOR/DIRECTORIES NASHVILLE, TN.

Part time person to coordinate the inputting of data for Billboard Directories. Work in Billboard's Nashville office. Knowledge of music industry & computers necessary. Detailed phone work & followup. No calls please.

Resume to: Box RW-1  
Billboard • 1515 Broadway  
New York, NY 10036  
EOE

## POSITION WANTED

25 year vet, last 10 ... KPLM, earlier Los Angeles, Boston, San Diego, needs Palm Springs gig today!

**Ford Michaels:**  
(619) 329-6982

Currently employed top 10 alt. guy seeking top 30 alt. gig. I am the scene. Affordable. Mobile. Undercover.

**BG (817) 545-3018**

**Scott Brunner, KKRD**  
Wichita mornings/digital production/WZOU Boston. 15-year total exp. Accept all calls;

**(316) 684-2207**

## POSITION WANTED

15-year pro. Great pipes. Good attitude. Versatile. Seeks on-air gig in Sacramento area.

**JOHN: (916) 488-1347**

Ferocious female rocker seeks Southern AOR. Currently playing tunes my parents probably made out to.

**JOANIE: (904) 278-0972**

Rockin' female AT available now. APD/MD/promotions experience, public appearance pro! Prefer West.

**C.J.: (520) 323-8495**

23 year's experience GM, SM, PD, on-air, PBP, sales; all formats.

Seeking N. West U.S.  
**John: (907) 747-8248**

Family man needs FT on-air/production. Five years' exp. CHR/AC/Urban. Illinois/Missouri preferred.

**Michael: (314) 423-4396**

Currently employed 20-year vet seeks PD/OM position. Format implementation, promotion, production. Mid-West/East.

Call: **JOHN (314) 365-2478**

## BULLETIN BOARD

A.Z. in L.A. - Are you stryintosay? You are the butta beasts.

**GERRI, TONI, & DAWN** - How'd you like my song and dance routine? Move over Elton John. Wait til you see what I've got for an encore ...

**HI ROSE** - Good things happen to those who wait. Keep thinking good thoughts ...

**HEY JOE** - Thanks for the info! See you on 2/24. Don't forget the papers. From B.C.

**HEY S.B.** - Thanks for the special treatment! You really know how to treat a girl. Thanks again!!! TB

## CLASSIFIED ADVERTISING RATES

### HELP WANTED:

1 WEEK \$75.00 per inch  
2 WEEKS \$65.00 per inch

**POSITION WANTED AND BULLETIN BOARD:**  
\$45.00 per inch

**BOX NUMBER:** Add \$20.00

### SERVICES:

1 WEEK \$75.00 per inch  
6 WEEKS \$65.00 per inch  
13 WEEKS \$60.00 per inch  
26 WEEKS \$55.00 per inch  
51 WEEKS \$50.00 per inch

### DEADLINE (ALL CLASSIFIED):

Each Wednesday 3pm EST, 9 day leadtime.

• Classified ads are non-commissionable •

### SUBMIT ALL AD COPY TO:

**Laura Rivchun**  
Airplay Monitor Classified  
1515 Broadway  
New York, NY 10036

Phone: 212-536-5058  
Fax: 212-536-5055

**AIRPLAY**  
**Monitor**  
**GREATEST GAINERS**



**Strongest Increase In Airplay This Week**

**MAINSTREAM ROCK**

**INCREASE  
IN PLAYS**

- ZZ TOP • She's Just Killing Me (EPIC SOUNDTRAX/EPIC)** +285  
 KHOP +24, WXTB +18, KFRQ +17, KLOL +15, WEGR +14, WFBQ +14, WKLS +12, WRXL +11, WLWQ +11, WTFX +10
- SPACEHOG • In The Meantime (HIFI/SIRE/EEG)** +152  
 WTUE +17, WNCD +15, WRCX +15, WNOR -12, WVRK +9, KEGL +9, WXRA +8, WKLC +8, KDKB +8, WRIF +8
- DON HENLEY • You Don't Know Me At All (Geffen)** +146  
 KFRQ +20, KGGG +12, KLAQ +12, KMJX +10, WRDU +10, WKLS +9, WRXR +8, WPLR +8, WAFX +7, WAPL +7
- GIN BLOSSOMS • Follow You Down (A&M)** +145  
 KDKB +20, KRZZ +11, WNCD +11, KZRR +10, WLWQ +9, WSTZ +8, WRXK +8, KXUS +7, WRXR +7, WKLC +7
- BUSH • Machinehead (TRAUMA/INTERSCOPE)** +133  
 WXTB +24, WJST +16, WIYY +15, KIOZ +13, KSJO +11, WRIF +10, WAXQ +9, WKLQ +8, KBPI +8, KJPD +7
- EVERCLEAR • Santa Monica (Watch The World Die) (TIM KERR/CAPITOL)** +133  
 WNOR +12, KFRQ +11, KRZR +11, WRDU +11, KEZO +10, WTPA +10, WXTB +8, WKLQ +8, WDVN +8, KDKB +8
- GOO GOO DOLLS • Naked (METAL BLADE/WARNER BROS.)** +116  
 WJST +20, WXTB +14, KFRQ +12, WZZR +11, WIYY +11, WKQQ +10, KMJX +10, KSHE +9, WTFX +8, WPLR +8
- SILVERCHAIR • Israel's Son (EPIC)** +115  
 WAAF +15, KEGL +13, WQFM +9, KBPI +9, KQRC +8, KTXQ +8, KILO +7, KLBJ +7, KICT +6, KRZR +6
- THE PRESIDENTS OF THE UNITED STATES OF AMERICA • Peaches (COLUMBIA)** +115  
 KTUX +17, WXRA +16, KIOZ +13, WJST +12, KEZO +11, WVRK +10, KHOP +9, KRXQ +7, WZAT +6, WWDC +6
- DOG'S EYE VIEW • Everything Falls Apart (COLUMBIA)** +112  
 WJST +18, WPLR +14, WRXK +11, KTXQ +11, KCAL +9, WARQ +7, WKQQ +7, WIYY -7, KLOS +7, KLAQ +6

**MODERN ROCK**

**INCREASE  
IN PLAYS**

- BUSH • Machinehead (TRAUMA/INTERSCOPE)** +143  
 WWWW +19, WYGO +18, WXNU +17, WXDX +12, WBCN +11, XTRA +10, WCYY +9, KGDE +9, KEGE +9, WKQX +9
- RUBY • Tiny Meat (CREATION/WORK)** +141  
 WXNU +16, WROX +14, WFNX +13, KDGE +11, WQXA +11, KTOZ +9, WCYY +7, WKOC +6, KNRK -6, WJRR +6
- PEARL JAM • Leaving Here (EPIC)** +126  
 WEDG +12, KNNC +12, XTRA +11, WKQX +10, KITS +10, WPBZ +9, WENZ +9, WRXQ +7, WPLY +7, WMMS +7
- OASIS • Champagne Supernova (EPIC)** +117  
 KPNT +17, KFRR +16, KDGE +13, WKQX +12, XTRA +10, KEGE +9, WBRU +9, KNRK +6, CIMX +6, WHYT +6
- THE PRESIDENTS OF THE UNITED STATES OF AMERICA • Peaches (COLUMBIA)** +106  
 KEDG +14, WCYY +12, WBRU +12, WFNX -11, WXDX +9, WMMS +9, KRRK +8, WLUM +8, WHFS +8, WMRQ +7
- BAD RELIGION • A Walk (ATLANTIC)** +104  
 WKQX +15, KTBZ +12, WNNX +12, KXRX +9, KNNC +9, WOXY +6, KEGE +6, KLZR +5, KNDD +5, KWOD +3
- FOO FIGHTERS • Big Me (ROSWELL/CAPITOL)** +104  
 KNRK +13, KOME +13, KISF +12, KTCL +12, KAEP +11, KNND +9, KEGE +9, WHYT +9, WNVE -7, KXRX +6
- GIN BLOSSOMS • Follow You Down (A&M)** +88  
 WXNU +14, WZRH +14, KISF +14, WAQZ +12, WMMS +12, KTEG +11, WEQX +11, KNRK +10, WROX +10, WBCN +9
- ALICE IN CHAINS • Heaven Beside You (COLUMBIA)** +88  
 WNNX +22, WEQX +16, KOME +12, KISF +11, KRRK +10, KEGE +10, WCHZ +8, KNRK +7, WEND +7, KMYZ +7
- TORI AMOS • Caught A Lite Sneeze (ATLANTIC)** +84  
 KTOZ +15, WPBZ +12, KNRK +12, WXNU +12, WDRE +12, WCHZ +10, WXRK +8, KWOD +8, KOME +6, KFRR +5

**VIDEO  
PLAYLISTS**

**MOST PLAYED ROCK TRACKS**



	TW	LW
1 Joan Osborne, One Of Us	36	36
2 Melissa Etheridge, I Want To Come Over	33	21
3 Hootie & The Blowfish, Time	33	33
4 Natalie Merchant, Wonder	25	18
5 Seal, Don't Cry	23	20
6 Natalie Merchant, Carnival	22	22
7 Blues Traveler, Hook	21	18
8 Deep Blue Something, Breakfast At Tiffany's	19	19
9 Collective Soul, The World I Know	16	12
10 Oasis, Wonderwall	11	10
11 Son Volt, Drown	10	7
12 Soul Asylum, Promises Broken	10	8
13 Gin Blossoms, Follow You Down	9	7
14 Blues Traveler, Run Around	8	9
15 Alanis Morissette, Hand In My Pocket	8	17
16 Seal, Kiss From A Rose	7	7
17 Collective Soul, December	6	7
18 Goo Goo Dolls, Name	6	5
19 J. Geils Band, Centerfold	6	2
20 John Mellencamp, Wild Night	5	4



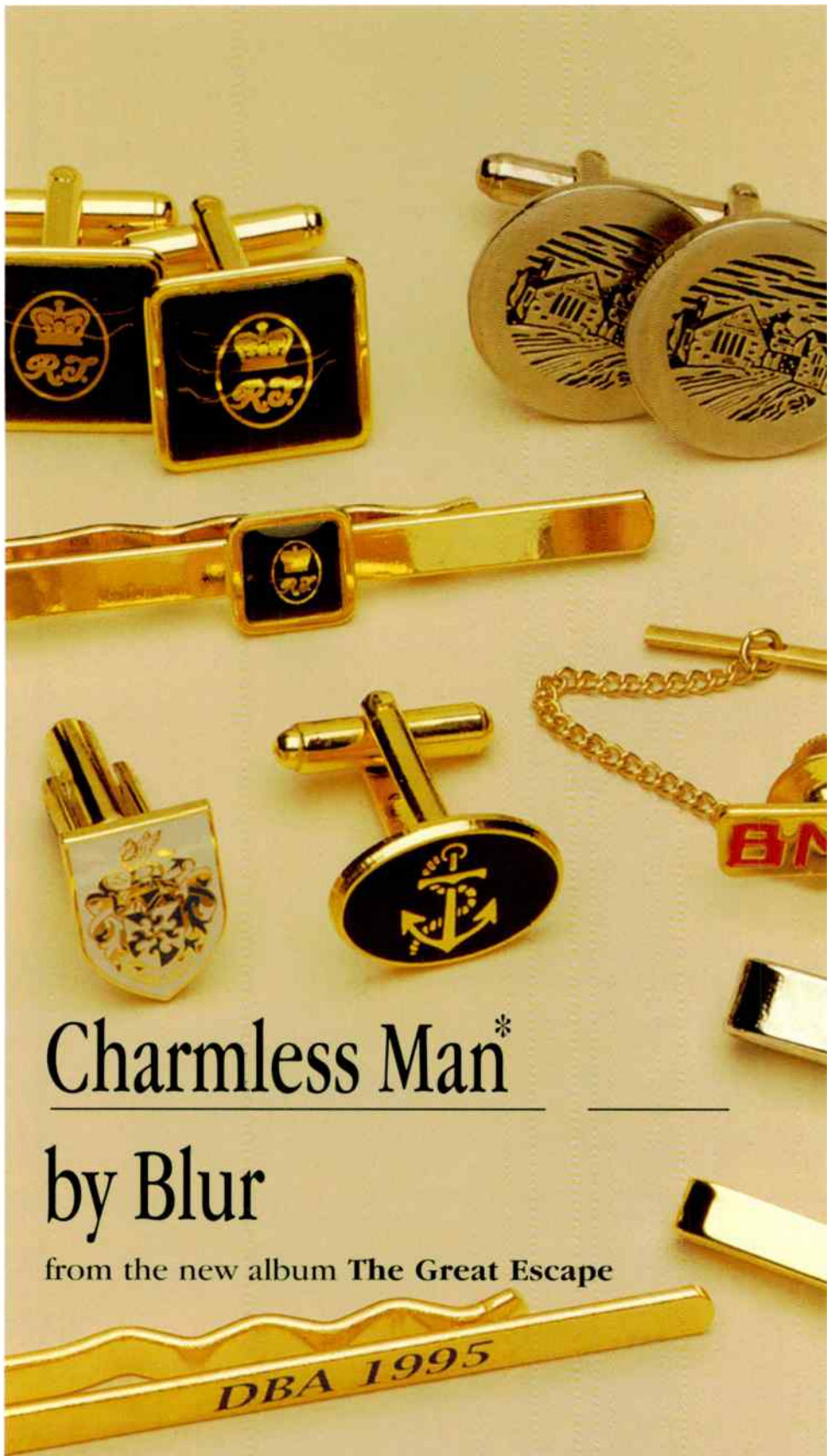
	TW	LW
1 Oasis, Wonderwall	31	33
2 Bush, Glycerine	30	35
3 Smashing Pumpkins, 1979	30	21
4 Green Day, Brain Stew	29	30
5 Presidents Of The United States, Peaches	27	27
6 Alanis Morissette, Ironic	23	16
7 Collective Soul, The World I Know	21	24
8 Goo Goo Dolls, Naked	20	18
9 Seven Mary Three, Cumbersome	20	22
10 Foo Fighters, Big Me	20	6
11 Blues Traveler, Hook	19	21
12 Everclear, Santa Monica	16	15
13 No Doubt, Just A Girl	15	15
14 Alice In Chains, Heaven Beside You	13	9
15 Dave Matthews Band, Satellite	12	13
16 Seal, Don't Cry	11	14
17 Joan Osborne, One Of Us	11	11
18 Pete Drogé, Beautiful Girl	11	0
19 Spacehog, In The Meantime	10	11
20 Smashing Pumpkins, Bullet With Butterfly	10	9
21 Radiohead, High And Dry	10	10
22 Dog's Eye View, Everything Falls Apart	10	0
23 White Zombie, Super-Charger Heaven	9	11
24 For Squirrels, Mighty K.C.	9	7
25 Melissa Etheridge, I Want To Come Over	9	9
26 Gin Blossoms, Follow You Down	9	11
27 Rancid, Ruby Soho	7	22
28 Folk Implosion, Natural One	6	9
29 Live, Lightning Crashes	6	2
30 Red Hot Chili Peppers, Aeroplane	6	0
31 Red Hot Chili Peppers, Give It Away	5	1
32 Korn, Shoots And Ladders	5	5
33 Salt, Bluster	5	2
34 Red Hot Chili Peppers, Under The Bridge	4	2
35 Stone Temple Pilots, Interstate Love Song	4	2
36 Soul Asylum, Promises Broken	4	6
37 Red Hot Chili Peppers, My Friends	4	2
38 Tori Amos, Caught A Lite Sneeze	4	2
39 Nirvana, Come As You Are	3	1
40 Pearl Jam, Even Flow	3	2

**TRIPLE A**

**INCREASE  
IN PLAYS**

- STING • Let Your Soul Be Your Pilot (A&M)** +109  
 KMTT +15, KSCA +15, WHPT +14, KTMN +10, WNEW +10, WRLT +6, WTTS +6, WVRV +6, WXRT +6, CIDR +5
- COWBOY JUNKIES • A Common Disaster (Geffen)** +73  
 CIDR +21, WXLE +13, KTMN +12, WTTS +9, KTCZ +6, KBCO +5, WRLT +3, WNCS +3, WXRC +2, WXRT +2
- JOAN OSBORNE • Ladder (BLUE GORILLA/MERCURY)** +51  
 KBCO +18, WVRV +12, WNEW +10, KFVG +8, WXRT +6, KFOG +5, KTMN +3, WRLT +3, WXLE +2, KMTT +2
- NATALIE MERCHANT • Jealousy (ELEKTRA/EEG)** +51  
 KBCO +15, KTCZ +11, WXRT +10, WHPT +7, KFVG +6, KZON +3, KTMN +1, WXLE +1
- THE SUBDUDES • All The Time In The World (HIGH STREET)** +47  
 WNCS +10, KTMN +7, WRLT +7, KSCA +6, WXRT +6, WTTS +5, KMTT +3, KFVG +2, WNEW +2, WHPT +1
- PETE DROGE • Beautiful Girl (ELEKTRA/EEG)** +38  
 WNEW +12, KXPT +11, WNCS +9, KTMN +5, KSCA +1
- SOUL ASYLUM • Promises Broken (COLUMBIA)** +35  
 KSCA +16, KXPT +13, KFOG +3, WXRC +2, KTMN +1, WNEW +1
- MICHAEL MCDERMOTT • Summer Days (EMI)** +33  
 WXRC +11, WXLE +7, WXRT +5, KSCA +4, CIDR +3, KFOG +2, WTTS +1, WRNR +1, WNEW +1
- JOAN ARMATRADING • Everyday Boy (RCA)** +23  
 WXLE +19, WXRT +2, KMTT +1, WRNR +1
- BLUES TRAVELER • The Mountains Win Again (A&M)** +21  
 KTCZ +12, WTTS +10, WXRT +6, KFVG +5, WVRV +1

**SAVE THESE DATES** **BILLBOARD AIRPLAY MONITOR** **RADIO SEMINAR & AWARDS** **SEPTEMBER 5-7 1996** **NYC SHERATON** **STAY TUNED FOR DETAILS**



# Charmless Man\*

by Blur

from the new album *The Great Escape*

Produced by Stephen Street  
CMO Management (International) Ltd., London

## U.S. TOUR SOLD OUT!

- |                 |               |                  |
|-----------------|---------------|------------------|
| <b>LIVE 105</b> | <b>91X</b>    | <b>KLZR</b>      |
| <b>WBCN</b>     | <b>KBBT</b>   | <b>WOXY</b>      |
| <b>WENZ</b>     | <b>REV105</b> | <b>WZRH</b>      |
| <b>KPNT</b>     | <b>WUNX</b>   | <b>WBER</b>      |
| <b>WWBX</b>     | <b>KKNB</b>   | <b>CFNY</b>      |
| <b>KQXR</b>     | <b>KROX</b>   | <b>AND MORE!</b> |

(Yes, it really really really could happen...)

©1996 Food Limited, a division of EMI Records Ltd.



# MAINSTREAM ROCK

## POWER PLAYLISTS™

For Week Ending February 11, 1996

Station	PD	MD	Track	Time
<b>KLOS</b> Los Angeles	Carey Curelop	Rita Wilde	1 Green Day, Brain Stew	33:29
<b>WAXQ</b> New York	Ron Valeri	Vinny Marino	1 Green Day, Brain Stew	36:37
<b>WRCX</b> Chicago	Dave Richards	Jo Robinson	1 Seven Mary Three, Cumbersome	38:35
<b>WMMR</b> Philadelphia	Joe Bonadonna	Riki Hofberg	1 Collective Soul, The World I Know	18:16
<b>KQRS</b> Minneapolis	Dave Hamilton	Reed Collins	1 Don Henley, You Don't Know Me At All	16:14
<b>WWDC</b> Washington, DC	Dave Brown	Buddy Rizer	1 For Squirrels, Mighty K.C.	23:21
<b>WFBQ</b> Indianapolis	Marty Bender	Ace Cosby	1 Bob Seger, Lock And Load	20:17
<b>WRIF</b> Detroit	Doug Podell	Dave Wellington	1 Ozzy Osbourne, See You On The Other Side	32:29
<b>WAAF</b> Boston	Dave Douglas	John Osterlind	1 Green Day, Brain Stew	42:40
<b>WDVE</b> Pittsburgh	Gene Romano		1 Seven Mary Three, Cumbersome	24:23
<b>WKLS</b> Atlanta	Michael Hughes	Beth Kepple	1 Collective Soul, The World I Know	31:29
<b>KEGL</b> Dallas	Duane Doherty	Cindy Scull	1 Oasis, Wonderwall	33:34





POWER PLAYLISTS

For Week Ending February 11, 1996



Playlists supplied by Broadcast Data Systems Radio-Track service...

KISW Seattle PD: Steve Young MD: Cathy Faulkner. Top 30 playlist including White Zombie, Silverchair, Collective Soul, Alice In Chains, Green Day, Pearl Jam, Everclear, Ozzy Osbourne, Presidents Of The United States, Supertramp, God Lives Underwater, The Bottle Rockets, Ruth Ruth, Victor, Toadies, The Nixons, Kenny Wayne Shepherd, Smashing Pumpkins, Ministry, Pearl Jam, Therapy?, Rust, Green, Son Volt, ZZ Top, Fitter, Dose, Into Another, The Afghan Whigs, Goo Goo Dolls.

WKDF Nashville PD: Kidd Redd MD: Shelli Sexton. Top 30 playlist including Seven Mary Three, Green Day, Smashing Pumpkins, Alice In Chains, Stabbing Westward, God Lives Underwater, Everclear, Pearl Jam, Green Day, Foo Fighters, The Nixons, Oasis, Tom Petty, Spacohog, Red Hot Chili Peppers, Goo Goo Dolls, Toadies, Weezer, Pearl Jam, Self, Cannon, Red Hot Chili Peppers, Joan Osborne, Presidents Of The United States, Collective Soul, Bush, Silverchair, Bob Seger, Alice In Chains.

WDIZ Orlando Acting PD/MD: Pat Lynch. Top 30 playlist including Smashing Pumpkins, Collective Soul, Oasis, Bush, Pearl Jam, Toadies, Possum Kingdom, Bush, Everclear, The Nixons, Alice In Chains, Red Hot Chili Peppers, AC/DC, Balabaner, Pearl Jam, All Over You, Ozzy Osbourne, Joan Osborne, Goo Goo Dolls, Stone Temple Pilots, Stabbing Westward, Green Day, Silverchair, Smashing Pumpkins.

KBPI Denver PD: Bob Richards. Top 30 playlist including Seven Mary Three, Bush, Smashing Pumpkins, Green Day, Everclear, Red Hot Chili Peppers, Bush, Salt, Smashing Pumpkins, Presidents Of The United States, Veruca Salt, Toadies, Stabbing Westward, Oasis, Alice In Chains, Fig Dish, Spacohog, White Zombie, Goo Goo Dolls, The Nixons, Ozzy Osbourne, Goo Goo Dolls, Tom Petty, Silverchair, The Stone Roses, Alice In Chains, Joan Osborne, Bad Religion, Rancid, Senses, Live, Pearl Jam, Jimi Hendrix.

KATT Oklahoma City PD: Chris Baker MD: Kelley Davis. Top 30 playlist including Collective Soul, Bush, Pearl Jam, Seven Mary Three, Everclear, Red Hot Chili Peppers, Goo Goo Dolls, Ozzy Osbourne, Alice In Chains, The Nixons, Green Day, Smashing Pumpkins, The Black Crowes, Stone Temple Pilots, Folk Implosion, Ian Moore, Everclear, Red Hot Chili Peppers, Toadies, Possum Kingdom, Silverchair, Presidents Of The United States, Brother Cane, U2, Better Than Ezra, Seven Mary Three, U2, Red Hot Chili Peppers, Pearl Jam, R.E.M., Smashing Pumpkins.

KQRC Kansas City PD: Doug Sorenson MD: Valorie Knight. Top 30 playlist including AC/DC, Collective Soul, Pearl Jam, Alice In Chains, Smashing Pumpkins, Ozzy Osbourne, Spacohog, Everclear, Green Day, Red Hot Chili Peppers, The Nixons, Oasis, Blues Traveler, The Nixons, Goo Goo Dolls, Bush, Rust, Self, Victor, Silverchair, Smashing Pumpkins, Toadies, Everclear, Bush, Ozzy Osbourne, Red Hot Chili Peppers, U2, Hold Me, Kiss, Seven Mary Three, U2, Hold Me, Kiss, Red Hot Chili Peppers, U2, Hold Me, Kiss, Weezer, Smashing Pumpkins.

KUPD Phoenix OM: Tim Maranville APD/MD: J.J. Jeffries. Top 30 playlist including The Nixons, Spacohog, Seven Mary Three, Live, Goo Goo Dolls, Obvious, Kicking Harold, God Lives Underwater, Toadies, Stabbing Westward, Victor, Alice In Chains, 3 Lb. Thrill, Ozzy Osbourne, Green Day, Smashing Pumpkins, Smashing Pumpkins, Foo Fighters, Candlebox, AC/DC, Fig Dish, Gwen Mars, Bush, Red Hot Chili Peppers, Toadies, AC/DC, Ozzy Osbourne, Presidents Of The United States, White Zombie.

KDKB Phoenix OM: Tim Maranville MD: Paul Peterson. Top 30 playlist including ZZ Top, Ozzy Osbourne, Spacohog, Everclear, Gin Blossoms, The Refreshments, Son Volt, Jackson Browne, Seven Mary Three, Bodians, Natalie Merchant, The Nixons, Joan Osborne, Toad The Wet Sprocket, Melissa Etheridge, Bob Seger, Lenny Kravitz, Natalie Merchant, Alice In Chains, Joan Osborne, Toad The Wet Sprocket, Melissa Etheridge, Bob Seger, Bush, Melissa Etheridge, Silverchair, Pearl Jam, Alanis Morissette, Hootie & The Blowfish, Collective Soul, Hootie & The Blowfish.

KISS San Antonio PD: Virgil Thompson MD: Debbie Alcocer. Top 30 playlist including Ozzy Osbourne, Pearl Jam, Collective Soul, Green Day, Seven Mary Three, Smashing Pumpkins, Spacohog, Jackson Browne, Oasis, Red Hot Chili Peppers, Everclear, Alice In Chains, The Nixons, Red Hot Chili Peppers, AC/DC, Balabaner, Pearl Jam, All Over You, Ozzy Osbourne, Joan Osborne, Goo Goo Dolls, Rancid, White Zombie, Silverchair, Green Day, Foo Fighters, Alanis Morissette, ZZ Top, Limp Bizkit, Brother Cane.

WLVQ Columbus PD: Greg Ausham MD: Joe Pasternak. Top 30 playlist including Collective Soul, Don Henley, Ozzy Osbourne, Tom Petty, Goo Goo Dolls, AC/DC, Red Hot Chili Peppers, Seven Mary Three, ZZ Top, AC/DC, Red Hot Chili Peppers, Better Than Ezra, Alice In Chains, The Nixons, Stone Temple Pilots, AC/DC, Red Hot Chili Peppers, Brother Cane, Rolling Stones, The Bottle Rockets, Brother Cane, Stone Temple Pilots, Tom Petty, Van Halen, The Dwellers, White Zombie, Red Hot Chili Peppers, Hootie & The Blowfish, Pearl Jam, Brother Cane, Ozzy Osbourne, Van Halen, Pearl Jam, Jimi Hendrix.

WRDU Raleigh PD: Tom Guild. Top 30 playlist including Bush, Collective Soul, Smashing Pumpkins, Pearl Jam, Spacohog, Bodians, Gin Blossoms, Seven Mary Three, Natalie Merchant, Dog's Eye View, Everclear, Bob Seger, Brother Cane, Meat Puppets, Blues Traveler, Joe Satriani, Stone Temple Pilots, Seven Mary Three, Everclear, Aliman Brothers, Soundgarden, Kenny Wayne Shepherd, Goo Goo Dolls, Son Volt, Don Henley, Green Day, Seven Mary Three, Everclear, One Of One, Tom Petty, Edwin McCain, Live, Joe Satriani, R.E.M., Bang And Blame.

WIMZ Knoxville PD: Jim Pemberton MD: Bill Kidd. Top 30 playlist including Brother Cane, Bob Seger, ZZ Top, Don Henley, Kenny Wayne Shepherd, Collective Soul, Ozzy Osbourne, Rolling Stones, Neil Young, Eric Clapton, Don Henley, Brother Cane, Tom Petty, R.E.M., Seven Mary Three, Collective Soul, December, Bob Seger, Aliman Brothers, Dave Matthews, Counting Crows, Edgar Winter Group, J. Geils Band, Rick Derringer, Genesis, Eagles, Queen, The Black Crowes, John Cougar Mellencamp, The Black Crowes, 38 Special.

KYYS Kansas City PD: John Duncan MD: Debbie Mitchell. Top 30 playlist including Joe Satriani, Joan Osborne, Don Henley, Hootie & The Blowfish, Tom Petty, Jackson Browne, The Badloes, Melissa Etheridge, Freddy James, ZZ Top, The Bottle Rockets, Collective Soul, Bob Seger, Gin Blossoms, Follow You Down, Toad The Wet Sprocket, Pearl Jam, Goo Goo Dolls, Ozzy Osbourne, The Nixons, Bush, Aliman Brothers, Hootie & The Blowfish, Peter Gabriel, Blues Traveler, Son Volt, Collective Soul, Robert Plant.

WHCN Hartford PD: Bryan Krysz. Top 30 playlist including Collective Soul, Pearl Jam, Bush, Seven Mary Three, Tom Petty, Smashing Pumpkins, Kenny Wayne Shepherd, Ozzy Osbourne, Alice In Chains, Bob Seger, Melissa Etheridge, Red Hot Chili Peppers, Gin Blossoms, Follow You Down, Toad The Wet Sprocket, Soul Asylum, Joan Osborne, The Dwellers, Melissa Etheridge, Green Day, Brother Cane, Blues Traveler, Peter Gabriel, Pink Floyd, AC/DC, Spacohog, Joan Osborne.

WPYX Albany PD: Fred Horton MD: John Cooper. Top 30 playlist including Seven Mary Three, Red Hot Chili Peppers, Collective Soul, Green Day, Hootie & The Blowfish, Tom Petty, Smashing Pumpkins, Bush, Gin Blossoms, Melissa Etheridge, Joan Osborne, Ozzy Osbourne, Alice In Chains, Jackson Browne, Oasis, Wanda, Pearl Jam, Alanis Morissette, Rolling Stones, Stone Temple Pilots, Spacohog, Hootie & The Blowfish, Live, Lightening Crashes, Hootie & The Blowfish, Bush, Alanis Morissette, Collective Soul, Hootie & The Blowfish.

WNOR Norfolk PD: Harvey Kojan APD/MD: Tim Parker. Top 30 playlist including Seven Mary Three, Toadies, Possum Kingdom, Hootie & The Blowfish, Bush, Collective Soul, Green Day, Pearl Jam, Smashing Pumpkins, Bob Seger, Ozzy Osbourne, AC/DC, Brother Cane, Brother Cane, Bush, Collective Soul, Live, Selling The Drama, Dave Matthews, Red Hot Chili Peppers, Pearl Jam, Better Man, Jimmy Page & Robert Plant, Live, All Over You, Everclear, Hootie & The Blowfish, Pearl Jam, Van Halen.

WCMF Rochester PD: Stan Main MD: Dave Kane. Top 30 playlist including Collective Soul, Don Henley, Kenny Wayne Shepherd, Son Volt, Tom Petty, Blues Traveler, Freddy James, The Badloes, Peter Gabriel, Van Halen, Rolling Stones, Pearl Jam, Corduroy, Ozzy Osbourne, Eric Clapton, Sammy Hagar, Eric Clapton, U2, Pink Floyd, Victor, Steve Ray Vaughan, Greg Allman, Spacohog, Doc Brothers, Eric Clapton, Pink Floyd, Bad Company, Steve Ray Vaughan, Rick Derringer, The Black Crowes, The Black Crowes, The Black Crowes, The Black Crowes, The Black Crowes.

WEGR Memphis PD: Drake Hall MD: Zeke Logan. Top 30 playlist including Melissa Etheridge, Ozzy Osbourne, Collective Soul, Tom Petty, Bob Seger, ZZ Top, Victor, Billy Squier, Gin Blossoms, Dave Matthews, Pink Floyd, Jimi Hendrix, Alanis Morissette, Steve Ray Vaughan, Steve Ray Vaughan, Steve Ray Vaughan, Steve Ray Vaughan, Steve Ray Vaughan, Steve Ray Vaughan, Steve Ray Vaughan, Steve Ray Vaughan, Steve Ray Vaughan, Steve Ray Vaughan.

WXRA Greensboro PD: Randy Scovill MD: Marcia Gan. Top 30 playlist including Bush, Smashing Pumpkins, Collective Soul, Green Day, Pearl Jam, Everclear, Seven Mary Three, Oasis, Red Hot Chili Peppers, For Squirrels, Joan Osborne, Spacohog, Alice In Chains, Dave Matthews, Alanis Morissette, Silverchair, Ruth Ruth, Gin Blossoms, Goo Goo Dolls, Load, Blues Traveler, Self, Melissa Etheridge, Alanis Morissette, Presidents Of The United States, Foo Fighters, Toadies, Candlebox, Stabbing Westward, The Nixons.

WFYV Jacksonville PD: Lex Staley APD/MD: Charlie Waters. Top 30 playlist including Alice In Chains, Bush, Pearl Jam, Collective Soul, Kenny Wayne Shepherd, Everclear, Green Day, Red Hot Chili Peppers, Goo Goo Dolls, AC/DC, Smashing Pumpkins, Oasis, Wanda, Tom Petty, Weezer, Pearl Jam, Green Day, Toad The Wet Sprocket, AC/DC, Tom Petty & The Heartbreakers, The Black Crowes, Live.

WTUE Dayton PD: Tom Carroll MD: John Beaulieu. Top 30 playlist including Bush, Smashing Pumpkins, Alice In Chains, Pearl Jam, Collective Soul, The Nixons, Green Day, Red Hot Chili Peppers, Goo Goo Dolls, AC/DC, Balabaner, Pearl Jam, All Over You, Ozzy Osbourne, Joan Osborne, Goo Goo Dolls, Rancid, White Zombie, Silverchair, Green Day, Foo Fighters, Alanis Morissette, ZZ Top, Limp Bizkit, Brother Cane.

WAPL Green Bay OM: Carret: Hart MD: Bob Baron. Top 30 playlist including Alanis Morissette, Bob Seger, Collective Soul, Melissa Etheridge, ZZ Top, Everclear, Red Hot Chili Peppers, Pearl Jam, Better Man, Jimmy Page & Robert Plant, Live, All Over You, Everclear, Hootie & The Blowfish, Pearl Jam, Van Halen.

WPLR New Haven PD: John Griffin MD: Pam Landry. Top 30 playlist including ZZ Top, Collective Soul, Don Henley, Victor, Melissa Etheridge, Gin Blossoms, Follow You Down, Bush, Ozzy Osbourne, Red Hot Chili Peppers, Dan Baird, Tom Petty, Kenny Wayne Shepherd, Hootie & The Blowfish, Time, Pearl Jam, Don Henley, Bodians, Van Halen, Bonnie Raitt, Tom Petty, Everclear, John Hiatt, Kenny Wayne Shepherd, Foo Fighters, Brother Cane, Freddy James, The Bottle Rockets, Son Volt, Jackson Browne.

WTFX Louisville PD: Michael Lee. Top 30 playlist including ZZ Top, Smashing Pumpkins, Alanis Morissette, Seven Mary Three, Bush, Green Day, Red Hot Chili Peppers, The Nixons, Oasis, Blues Traveler, Peter Gabriel, Pink Floyd, AC/DC, Spacohog, Joan Osborne, Toad The Wet Sprocket, AC/DC, Tom Petty & The Heartbreakers, The Black Crowes, Live.



For Week Ending February 11, 1996

Detailed song tracking information for the last 3 weeks for all songs showing increased play this week. Total plays and gain do not include video plays. Markets listed in order of population.

Table with 10 columns: Artist, Song, Total Plays/Gain, and 12 market columns (e.g., New York, L.A., Chicago, etc.). Rows include Alice In Chains, Brother Cane, Dog's Eye View, Melissa Etheridge, Everclear, Gin Blossoms, Go Go Dolls, Green Day, Don Henley, and The Nixons.

For Week Ending February 11, 1996

Detailed song tracking information for the last 3 weeks for all songs showing increased play this week. Total plays and gain do not include video play. Markets listed in order of population.

Grid of song activity reports for OASIS, OZZY OSBOURNE, RED HOT CHILI PEPPERS, BOB SEGER & THE SILVER BULLET BAND, and SMASHING PUMPKINS. Each section includes station data, chart moves, and play counts across various markets.

Grid of song activity reports for SON VOLT, SPACEHOG, STABBING WESTWARD, TOADIES, and ZZ TOP. Each section includes station data, chart moves, and play counts across various markets.





# GRAVITY KILLS

## GRAVITY KILLS "GUILTY"

JUST CONVICTED: **ALREADY SERVING TIME:**

**WEND 91X KTBZ KBBT WXNU**  
**WMAD WRXQ KJEE WGRD WEQX**  
**KMYZ 17x KNNC 38x WIBF 23x KGDE 32x**  
**KDGE 15x WPLA 25x WRIC 15x KRRX 29x**  
**Q101 29x WFNX 12x LIVE 105 13x WZRH 8x**

**KDGE KKOM KNNC WIBF KXRX WPLA WRIC WEDJ**

THE SINGLE DEBUT FROM GRAVITY KILLS "GUILTY" OVER 450 BDS SPINS! #1 MOST ADDED DEBUT 49 AT R&R

ARE YOU GUILTY TOO?  
 SEE GRAVITY KILLS  
 ON TOUR NOW WITH SISTER MACHINE GUN

CONTACT JOHN PERRONE OR GARY JAY AT TVT 212.979.6410  
 TVT RECORDS, 23 EAST 4TH STREET, NEW YORK NY 10003  
 TEL 212.979.6410 FAX 212.979.6489 HTTP://WWW.TVTRECORDS.COM  
 MANAGEMENT: GLORIA BUTLER MANAGEMENT



# MODERN ROCK

## POWER PLAYLISTS

**AIRPLAY Monitor** For Week Ending February 11, 1996

Station	PD/MD	Artist	Rank	Change																		
<b>KWOD</b> Sacramento	PD/MD: Alex Cosper	1	Spacehog, In The Meantime	40 39																		
		2	Oasis, Wonderwall	39 36																		
		3	Red Hot Chili Peppers, Aeroplane	36 28																		
		<b>WRZX</b> Indianapolis	PD: Scott Jameson MD: Michael Young	1	Alanis Morissette, Ironic	36 34																
				2	Goo Goo Dolls, Naked	35 36																
				3	Smashing Pumpkins, 1979	35 33																
				<b>WFNX</b> Boston	PD: Troy Smith MD: Laurie Gail	1	Salt, Bluster	34 32														
						2	Schium, Slydver	32 30														
						3	Dubstar, Stars	32 32														
						<b>XHRM</b> San Diego	OM: Bryan Jones PD: Kelli Cluque	1	Collective Soul, The World I Know	25 29												
								2	Red Hot Chili Peppers, Aeroplane	25 31												
								3	Jewel, You Were Meant For Me	25 30												
								<b>WLUM</b> Milwaukee	Acting PD: Tommy Wild MD: Zerrin Bulut	1	Alanis Morissette, Ironic	38 35										
										2	Everclear, Santa Monica	38 36										
										3	Dave Matthews Band, Satellite	38 36										
										<b>WXDX</b> Pittsburgh	PD: Cris Winter MD: Steve Frankenberg	1	Oasis, Wonderwall	29 23								
												2	Smashing Pumpkins, 1979	26 25								
												3	Green Day, Brain Stew	26 23								
												<b>KNRK</b> Portland, OR	PD: Mark Hamilton MD: Matt Souther	1	Alanis Morissette, Ironic	40 28						
														2	Green Day, Brain Stew	40 38						
														3	Alice In Chains, Heaven Beside You	39 32						
														<b>KISF</b> Kansas City	PD: Jon Anthony MD: Jason Justice	1	Pearl Jam, I Got It	44 42				
																2	Gin Blossoms, Follow You Down	44 30				
																3	Smashing Pumpkins, 1979	43 43				
																<b>WEDG</b> Buffalo	PD: Vince Richards MD: Rich Wall	1	Smashing Pumpkins, 1979	38 34		
																		2	Green Day, Brain Stew	37 29		
																		3	Oasis, Wonderwall	37 38		
																		<b>KEDJ</b> Phoenix	PD: John Clay MD: Christopher "The Minister"	1	Alanis Morissette, Ironic	48 47
																				2	Green Day, Brain Stew	47 50
																				3	Smashing Pumpkins, 1979	47 48
<b>WNVE</b> Rochester	PD/MD: Erick Anderson																			1	Collective Soul, The World I Know	29 21
																				2	Alanis Morissette, Ironic	28 27
																				3	Joan Osborne, One Of Us	28 27
		<b>WGRD</b> Grand Rapids	PD: Allan Fee MD: Leann Curtis																	1	Seven Mary Three, Cumbersome	35 36
																				2	Bush, Glycerine	34 32
																				3	Green Day, Brain Stew	32 30



POWER PLAYLISTS



For Week Ending February 11, 1996

Playlists compiled by Broadcast Data Systems' Radio Track service. Stations selected from panel of leading broadcasters in 125 radio markets. Electronically monitored 24 hours a day, 7 days a week. Songs ranked by number of plays in monitored week.

WROX Norfolk PD: Perry Stone MD: Al Mitchell. Playlist table with 30 items including Smashing Pumpkins, Alice In Chains, Red Hot Chili Peppers.

WBRU Providence PD: Alexa Tobin MD: Stephanie Hindley. Playlist table with 30 items including Bash, Glycerine, Presidents Of The United States, Peaches.

WEND Charlotte PD: Jack Daniel MD: Kim Monroe. Playlist table with 30 items including Everclear, Santa Monica, Bash, Glycerine.

WKOC Norfolk PD: Mark Bradley MD: Dal Hunter. Playlist table with 30 items including Alanis Morissette, Everclear, Santa Monica.

KMYZ Tulsa PD: Paul Kreigler MD: Greg Kocsack. Playlist table with 30 items including Folk Implosion, Natural One, Alice In Chains.

KXKR Salt Lake City PD: Mike Summers MD: Sean Ziebart. Playlist table with 30 items including Ruby, Tiny Meat, Everclear, Santa Monica.

KEDG Las Vegas PD: John Griffin MD: Freddy Snakeskin. Playlist table with 30 items including Seven Mary Three, Smashing Pumpkins.

WAQZ Cincinnati PD/MD: Matt Harris APD: Sterling Schiessler. Playlist table with 30 items including Chris Isaak, Folk Implosion, Natural One.

KCXX Riverside/SanBernardino PD: Chuck Summers MD: Dwight Arnold. Playlist table with 30 items including Folk Implosion, Natural One, Presidents Of The United States.

WWCD Columbus PD: Jane Purcell MD: Andy Davis. Playlist table with 30 items including Alanis Morissette, Bash, Glycerine.

WQXA Harrisburg PD: John Moschitta MD: Scott McFadden. Playlist table with 30 items including Everclear, Santa Monica, Spacohog.

KGDE Omaha PD: Lynn Barstow. Playlist table with 30 items including Alice In Chains, Green Day, Brain Stew.

Josh Clayton-Felt Window. The first track from the A&M debut album inarticulate nature boy. ON TOUR NOW. Produced by Josh Clayton-Felt. Co-Produced by Tony Phillips. Executive Producer: Matt Wallace. Management: Tommy Manzi. (formerly of School Of Fish). © 1996 A&M Records, Inc. All rights reserved.





SONG ACTIVITY REPORTS



For Week Ending February 11, 1996

Detailed song tracking information for the last 3 weeks for all songs showing increased play this week. Total plays and gain do not include video plays. Markets listed in order of population.

Grid of song activity reports for artists: 311 All Mixed Up (Capricorn), 3 LB. THRILL Diana (57/550 Music), ALICE IN CHAINS Heaven Beside You (Columbia), TORI AMOS Caught A Lite Sneeze (Atlantic), BUSH Machinehead (Trauma/Interscope). Each entry includes station codes, play counts, and chart positions.

Grid of song activity reports for artists: DEL AMITRI Tell Her This (A&M), DOG'S EYE VIEW Everything Falls Apart (Columbia), EVERCLEAR Santa Monica (Watch The World Die) (Tim Kerr/Capitol), FOO FIGHTERS Big Me (Roswell/Capitol), GARBAGE Only Happy When It Rains (AlmoSounds/Geffen).

Grid of song activity reports for artists: GIN BLOSSOMS Follow You Down (A&M), GOO GOO DOLLS Naked (Metal Blade/Warner Bros.), GRAVITY KILLS Guilty (TVT), GREEN DAY Brain Stew/Jaded (Reprise), JARS OF CLAY Flood (Essential/Silvertone).

Detailed song tracking information for the last 3 weeks for all songs showing increased play this week. Total plays and gain do not include video plays. Markets listed in order of population.

ALANIS MORISSETTE 1859/23 Ironic (Maverick/Reprise) Total Stations: 70 Chart Move: 3-3

THE NIXONS 321/21 Sister (MCA) Total Stations: 26 Chart Move: Debut 37

OASIS 524/117 Champagne Supernova (Epic) Total Stations: 42 Chart Move: Debut 37

THE PRESIDENTS OF THE UNITED STATES 1469/106 Peaches (Columbia) Total Stations: 68 Chart Move: 16-12

RED HOT CHILI PEPPERS 1560/57 Aeroplane (Warner Bros.) Total Stations: 71 Chart Move: 10-8

RUBY 766/141 Tiny Meat (Creation/Work) Total Stations: 58 Chart Move: 33-27

RUST 273/78 Not Today (Atlantic) Total Stations: 30 Chart Move: 22-22

SALT 958/28 Bluster (Island) Total Stations: 57 Chart Move: 24-22

SCHTUM 290/19 Skydiver (Work) Total Stations: 27 Chart Move: 26-23

SILVERCHAIR 302/72 Israel's Son (Epic) Total Stations: 34 Chart Move: 28-25

SMASHING PUMPKINS 587/61 Zero (Virgin) Total Stations: 37 Chart Move: 36-33

SON VOLT 744/80 Drown (Warner Bros.) Total Stations: 42 Chart Move: 29-28

SPACEHOOG 1645/3 In The Meantime (HiFi/Sire/EEG) Total Stations: 71 Chart Move: 7-7

STABBING WESTWARD 941/83 What Do I Have To Do? (Columbia) Total Stations: 58 Chart Move: 26-23

TOADIES 714/12 Away (Interscope) Total Stations: 49 Chart Move: 28-29

POWER PLAYLISTS

WNEW New York PD: Ted Edwards MD: Amy Winslow TW LW
1 Dave Matthews Band, Satellite 21 19
2 Oasis, Wonderwall 21 21
3 Smashing Pumpkins, Tonight, Tonight 21 19

WXRT Chicago VP Programming: Norm Winer MD: Patty Martin TW LW
1 Cowboy Junkies, A Common Disaster 15 13
2 Tori Amos, Caught A Lite Sneeze 13 11
3 Sting, Let Your Soul Be Your Pilot 12 6

KFOG San Francisco PD: Paul Marszalek MD: Bill Evans TW LW
1 Don Henley, The Garden Of Allah 17 12
2 Chris Isaak, Go Walking Down There 17 19
3 Sting, Let Your Soul Be Your Pilot 17 6

KSCA Los Angeles PD: Mike Morrison MD: Merilee Kelly TW LW
1 Gin Blossoms, Follow You Down 25 22
2 Collective Soul, The World I Know 22 22
3 Sting, Let Your Soul Be Your Pilot 22 7

WHPT Tampa PD: Chuck Beck APD/MD: Chris Taylor TW LW
1 Collective Soul, The World I Know 30 30
2 Hootie & The Blowfish, Time 29 31
3 Melissa Etheridge, I Want To Come Over 29 32

KBCO Denver PD: Mike O'Connor MD: Scott Arbough TW LW
1 Gin Blossoms, Follow You Down 31 22
2 Tracy Chapman, Give Me One Reason 29 31
3 Smashing Pumpkins, 1979 29 26

KTCZ Minneapolis PD: Lauren MacLeash MD: Jane Fredricksen TW LW
1 Joan Osborne, One Of Us 21 19
2 Tom Petty, Waiting For Tonight 21 18
3 The Badlees, Fear Of Falling 20 23

CIDR Detroit PD: Murray Brookshaw MD: Ann Delisi TW LW
1 Collective Soul, The World I Know 38 37
2 Gin Blossoms, Follow You Down 37 38
3 Jewel, You Were Meant For Me 29 23

KMTT Seattle PD: Chris Mays MD: Dean Carlson TW LW
1 Smashing Pumpkins, 1979 18 14
2 Natalie Merchant, Jealousy 16 16
3 Alanis Morissette, Ironic 16 16

Main chart table with columns: THIS WEEK, LAST WEEK, WKS ON CHART, TITLE/LABEL/DISTRIBUTING LABEL, ARTIST, TW, LW. Includes 'FOLLOW YOU DOWN' as No. 1.

Advertisement for 'Tell Her This' by Del Amitri. Includes station logos (WNEW, WRRT, KSCA, etc.), a quote from Billboard, and chart info (36 - 28 BDS TRIPLE A CHART).

For Week Ending February 11, 1996

COMBINED ROCK MONITOR AIRPLAY										AIRPLAY THIS WEEK BY FORMAT									
TW	LW	WKS	TITLE (LABEL)	ARTIST	THIS WEEK			LAST WEEK			MAINSTREAM			MODERN			TRIPLE A		
					Audience (millions)	Detections No.	Rank	Audience (millions)	Detections No.	Rank	Audience (millions)	Detections No.	Rank	Audience (millions)	Detections No.	Rank	Audience (millions)	Detections No.	Rank
1	1	16	1979 (VIRGIN)	SMASHING PUMPKINS	35.1427	4054	1	35.1060	4091	1	15.3322	1837	2	17.9768	1963	2	1.8337	254	3
2	2	16	THE WORLD I KNOW (ATLANTIC)	COLLECTIVE SOUL	29.5045	3634	2	30.4856	3827	2	15.0723	1905	1	12.5625	1400	14	1.8697	324	2
3	4	14	WONDERWALL (EPIC)	OASIS	28.1815	3522	3	29.3203	3641	3	8.7667	1271	10	17.4779	2051	1	1.9369	200	9
4	7	13	SANTA MONICA (WATCH THE WORLD DIE) (TIM KERR/CAPITOL)	EVERCLEAR	27.4927	3299	4	24.9593	3118	7	12.5429	1535	6	14.8742	1750	5	0.0756	14	—
5	3	12	I GOT ID (EPIC)	PEARL JAM	27.3401	3041	8	29.3874	3274	6	14.7019	1735	4	12.4617	1278	18	0.1765	23	—
6	8	10	BRAIN STEW/JADED (REPRISE)	GREEN DAY	27.0229	2992	10	24.8975	2905	9	10.9300	1158	11	16.0887	1828	4	0.0042	6	—
7	5	20	CUMBERSOME (MAMMOTH/ATLANTIC)	SEVEN MARY THREE	26.9763	3133	6	27.6443	3323	5	15.1118	1766	3	11.4106	1284	17	0.4539	83	—
8	9	10	HEAVEN BESIDE YOU (COLUMBIA)	ALICE IN CHAINS	25.3698	3169	5	23.3734	2988	8	12.5270	1499	8	12.8140	1663	6	0.0288	7	—
9	6	16	GLYCERINE (TRAUMA/INTERSCOPE)	BUSH	24.1284	3081	7	26.7550	3433	4	10.7498	1511	7	13.0349	1524	10	0.3437	46	—
10	10	11	IN THE MEANTIME (HIFI/SIRE/EEG)	SPACEHOG	22.8756	3008	9	21.8865	2842	10	10.6543	1288	9	11.8320	1645	7	0.3893	75	—
11	11	4	FOLLOW YOU DOWN (A&M)	GIN BLOSSOMS	20.2459	2974	11	20.2265	2726	11	7.8954	1133	12	9.4229	1512	11	2.9276	329	1
12	12	8	NAKED (METAL BLADE/WARNER BROS.)	GOO GOO DOLLS	18.5536	2628	12	18.2192	2497	12	8.1528	1050	13	10.2339	1537	9	0.1669	41	—
13	13	5	AEROPLANE (WARNER BROS.)	RED HOT CHILI PEPPERS	17.4754	2400	13	16.6028	2253	14	6.4865	783	18	10.4902	1560	8	0.4987	57	—
14	14	18	NATURAL ONE (LONDON/ISLAND)	FOLK IMPLOSION	16.8214	2102	15	17.6260	2201	15	5.3027	694	22	11.1375	1345	16	0.3812	63	—
15	16	6	IRONIC (MAVERICK/REPRISE)	ALANIS MORISSETTE	16.5082	2392	14	15.6383	2271	13	1.4897	332	—	13.4103	1859	3	1.6082	201	8
16	15	27	POSSUM KINGDOM (INTERSCOPE)	TOADIES	15.6444	1604	19	16.5030	1715	17	7.2058	725	—	8.4374	876	25	0.0012	3	—
17	23	4	BIG ME (ROSWELL/CAPITOL)	FOO FIGHTERS	14.6523	1820	17	12.2466	1634	19	3.1232	396	—	11.0810	1365	15	0.4481	59	—
18	20	3	PEACHES (COLUMBIA)	THE PRESIDENTS OF THE UNITED STATES OF AMERICA	14.0958	1894	16	13.1851	1669	18	3.4322	417	36	10.6587	1469	12	0.0049	8	—
19	18	27	NAME (METAL BLADE/WARNER BROS.)	GOO GOO DOLLS	13.3651	1543	21	14.1220	1726	16	6.3726	757	19	5.8880	635	—	1.1045	151	18
20	19	12	JUST A GIRL (TRAUMA/INTERSCOPE)	NO DOUBT	13.1606	1527	22	13.3098	1582	21	0.5444	98	—	12.5159	1408	13	0.1003	21	—
21	21	7	SEE YOU ON THE OTHER SIDE (EPIC)	OZZY OSBOURNE	12.9666	1557	20	12.1243	1491	22	12.9634	1555	5	0.0032	2	—	—	—	—
22	26	4	WHAT DO I HAVE TO DO? (COLUMBIA)	STABBING WESTWARD	12.3987	1610	18	11.1435	1445	23	5.0738	665	23	7.3236	941	23	0.0013	4	—
23	17	22	MY FRIENDS (WARNER BROS.)	RED HOT CHILI PEPPERS	12.3928	1407	25	14.3648	1617	20	6.2685	716	20	5.2459	585	34	0.8784	106	—
24	32	2	MACHINEHEAD (TRAUMA/INTERSCOPE)	BUSH	12.3799	1012	40	9.5650	736	60	6.2183	455	34	6.1616	557	35	—	—	—
25	24	19	BULLET WITH BUTTERFLY WINGS (VIRGIN)	SMASHING PUMPKINS	11.7978	1246	29	11.9023	1399	25	5.6603	587	29	6.1311	651	30	0.0064	8	—
26	22	27	COMEDOWN (TRAUMA/INTERSCOPE)	BUSH	11.1480	1143	35	12.2062	1201	37	5.5536	595	—	5.5914	547	—	0.0030	1	—
27	28	2	CAUGHT A LITE SNEEZE (ATLANTIC)	TORI AMOS	11.1001	1488	23	9.8856	1381	27	0.3871	45	—	8.3896	1210	19	2.3234	233	6
28	25	27	TOMORROW (EPIC)	SILVERCHAIR	10.7571	1170	33	11.5401	1251	35	5.5393	605	—	5.2175	564	—	0.0003	1	—
29	29	3	ZERO (VIRGIN)	SMASHING PUMPKINS	10.2173	814	51	10.2218	740	59	3.1764	227	—	7.0409	587	33	—	—	—
30	30	27	ALL OVER YOU (RADIOACTIVE/MCA)	LIVE	9.4093	950	43	10.0515	1039	41	4.1704	457	—	5.0718	479	—	0.1671	14	—
31	35	3	AWAY (INTERSCOPE)	TOADIES	9.3622	1330	28	8.8277	1310	31	4.6257	616	26	4.7365	714	29	—	—	—
32	33	5	HIGH AND DRY (CAPITOL)	RADIOHEAD	9.2384	1206	31	8.9231	1289	32	0.9546	105	—	7.2669	983	21	1.0169	118	—
33	NEW		EVERYTHING FALLS APART (COLUMBIA)	DOG'S EYE VIEW	8.9926	1330	27	7.7424	1157	38	4.4724	663	24	3.0291	499	39	1.4911	168	14
34	NEW		DROWN (WARNER BROS.)	SON VOLT	8.5327	1486	24	7.6576	1337	29	3.7041	591	28	3.3469	744	28	1.4817	151	19
35	NEW		BLUSTER (ISLAND)	SALT	8.4857	1092	38	7.7734	1030	42	0.9856	129	—	7.4975	958	22	0.0026	5	—
36	NEW		SISTER (MCA)	THE NIXONS	8.3437	1342	26	7.4864	1227	36	6.9285	1018	14	1.4140	321	—	0.0012	3	—
37	34	17	WONDER (ELEKTRA/EEG)	NATALIE MERCHANT	8.1026	975	42	8.8172	985	44	1.6054	250	—	5.6883	627	32	0.8089	98	—
38	39	2	ONLY HAPPY WHEN IT RAINS (ALMO SOUNDS/GEFFEN)	GARBAGE	8.0638	1216	30	8.5921	1146	39	0.6336	89	—	7.4103	1116	20	0.0199	11	—
39	RE-ENTRY		LUMP (COLUMBIA)	THE PRESIDENTS OF THE UNITED STATES OF AMERICA	8.0521	921	46	8.1487	974	45	2.8817	339	—	5.1643	579	—	0.0061	3	—
40	RE-ENTRY		LIGHTNING CRASHES (RADIOACTIVE/MCA)	LIVE	8.0268	940	44	8.0056	932	47	3.5499	481	—	4.2991	426	—	0.1778	33	—

Placements showing an increase in audience over the previous week, regardless of chart movement. Rankings broken down by mainstream and modern formats (on right side of this page) correspond to charts printed in this week's Monitor and therefore rankings do not exist for recurrences and records below No. 40 (No. 20 for Triple A). Audience computed by cross-referencing exact times of airplay with Arbitron listener data. © 1996, Billboard/BPI Communications.

# 4 audiences for the price of one

For the cost of one insertion, your ad appears in four different publications:  
Rock Monitor, R&B Monitor, Top 40 Monitor and Country Monitor.

**FOUR FOR ONE ... GOOD DEAL**

**CONTACT: LAURA RIVCHUN 212-536-5058**

into another



# T.A.I.L.

from the album *Seemless* **add date 2/20**



produced and mixed by rick parasher

©1996 hollywood records

<http://www.hollywoodrec.com/intoanother>


COULDN'T WAIT  
TO "MUTATE"  
TO "T.A.I.L."

OVER 25 STATIONS PLAYING IT INCLUDING:  
92X, WVRK, WCCC, WHMH, KISW, WJSE, WTFX

THIS WEEK	LAST WEEK	WKS. ON CHART	MAINSTREAM		DETECTIONS		
			TITLE/LABEL/DISTRIBUTING LABEL	ARTIST	TW	LW	
			★★★★ NO. 1 ★★★★★				
1	1	16	THE WORLD I KNOW ATLANTIC 4 weeks at No. 1	COLLECTIVE SOUL	1905	1986	
(2)	3	12	1979 VIRGIN	SMASHING PUMPKINS	1837	1812	
3	2	24	CUMBERSOME MAMMOTH/ATLANTIC	SEVEN MARY THREE	1766	1843	
4	4	12	I GOT ID EPIC	PEARL JAM	1735	1784	
(5)	6	10	SEE YOU ON THE OTHER SIDE EPIC	OZZY OSBOURNE	1555	1489	
(6)	7	10	SANTA MONICA (WATCH THE WORLD DIE) TIM KERR/CAPITOL	EVERCLEAR	1535	1402	
7	5	14	GLYCERINE TRAUMA/INTERSCOPE	BUSH	1511	1709	
(8)	8	10	HEAVEN BESIDE YOU COLUMBIA	ALICE IN CHAINS	1499	1405	
(9)	10	11	IN THE MEANTIME HIFI/SIRE/EEG	SPACEHOG	1288	1136	
(10)	9	8	WONDERWALL EPIC	OASIS	1271	1252	
(11)	12	9	BRAIN STEW/JADED REPRISE	GREEN DAY	1158	1093	
(12)	14	3	FOLLOW YOU DOWN A&M	GIN BLOSSOMS	1133	988	
(13)	15	5	NAKED METAL BLADE/WARNER BROS.	GOO GOO DOLLS	1050	934	
(14)	16	6	SISTER MCA	THE NIXONS	1018	926	
			★★★★ AIRPOWER ★★★★★				
(15)	24	2	SHE'S JUST KILLING ME EPIC SOUNDTRACK/EPIC	ZZ TOP	909	624	
16	11	12	WAITING FOR TONIGHT MCA	TOM PETTY & THE HEARTBREAKERS	857	1083	
17	13	13	COVER YOU IN OIL EASTWEST/EEG	AC/DC	790	996	
(18)	23	4	AEROPLANE WARNER BROS.	RED HOT CHILI PEPPERS	783	681	
19	18	25	NAME METAL BLADE/WARNER BROS.	GOO GOO DOLLS	757	849	
20	17	21	MY FRIENDS WARNER BROS.	RED HOT CHILI PEPPERS	716	901	
21	19	18	DEJA VOODOO GIANT	KENNY WAYNE SHEPHERD	700	798	
22	21	5	NATURAL ONE LONDON/ISLAND	FOLK IMPLOSION	694	710	
(23)	26	3	WHAT DO I HAVE TO DO? COLUMBIA	STABBING WESTWARD	665	582	
(24)	27	3	EVERYTHING FALLS APART COLUMBIA	DOG'S EYE VIEW	663	551	
25	20	9	PROMISE ATLANTIC	VICTOR	618	770	
(26)	25	4	AWAY INTERSCOPE	TOADIES	616	608	
(27)	28	4	I WANT TO COME OVER ISLAND	MELISSA ETHERIDGE	611	553	
(28)	29	3	DROWN WARNER BROS.	SON VOLT	591	521	
29	22	19	BULLET WITH BUTTERFLY WINGS VIRGIN	SMASHING PUMPKINS	587	694	
(30)	31	2	HANDS IN THE AIR CAPITOL	BOB SEGER & THE SILVER BULLET BAND	554	490	
(31) NEW▶			YOU DON'T KNOW ME AT ALL GEFLEN	DON HENLEY	521	375	
(32)	36	2	VOICE OF EUJENA VIRGIN	BROTHER CANE	520	442	
33	32	6	PROMISES BROKEN COLUMBIA	SOUL ASYLUM	468	489	
(34) NEW▶			MACHINEHEAD TRAUMA/INTERSCOPE	BUSH	455	322	
35	30	7	TIME ATLANTIC	HOOTIE & THE BLOWFISH	447	497	
(36) NEW▶			PEACHES COLUMBIA	THE PRESIDENTS OF THE UNITED STATES OF AMERICA	417	302	
37	33	10	ONE OF US BLUE GORILLA/MERCURY	JOAN OSBORNE	410	485	
38	34	22	HOOK A&M	BLUES TRAVELER	409	470	
39	37	23	HARD AS A ROCK EASTWEST/EEG	AC/DC	408	442	
40	39	20	PERRY MASON EPIC	OZZY OSBOURNE	406	422	

THIS WEEK	LAST WEEK	WKS. ON CHART	MODERN		DETECTIONS		
			TITLE/LABEL/DISTRIBUTING LABEL	ARTIST	TW	LW	
			★★★★ NO. 1 ★★★★★				
1	1	14	WONDERWALL EPIC 9 weeks at No. 1	OASIS	2051	2186	
2	2	14	1979 VIRGIN	SMASHING PUMPKINS	1963	2041	
(3)	3	8	IRONIC MAVERICK/REPRISE	ALANIS MORISSETTE	1859	1836	
(4)	4	10	BRAIN STEW/JADED REPRISE	GREEN DAY	1828	1802	
(5)	5	16	SANTA MONICA (WATCH THE WORLD DIE) TIM KERR/CAPITOL	EVERCLEAR	1750	1698	
(6)	8	7	HEAVEN BESIDE YOU COLUMBIA	ALICE IN CHAINS	1663	1575	
(7)	7	12	IN THE MEANTIME HIFI/SIRE/EEG	SPACEHOG	1645	1642	
(8)	10	5	AEROPLANE WARNER BROS.	RED HOT CHILI PEPPERS	1560	1503	
(9)	9	9	NAKED METAL BLADE/WARNER BROS.	GOO GOO DOLLS	1537	1518	
10	6	16	GLYCERINE TRAUMA/INTERSCOPE	BUSH	1524	1575	
(11)	14	3	FOLLOW YOU DOWN A&M	GIN BLOSSOMS	1512	1423	
(12)	16	4	PEACHES COLUMBIA	THE PRESIDENTS OF THE UNITED STATES OF AMERICA	1469	1463	
13	13	15	JUST A GIRL TRAUMA/INTERSCOPE	NO DOUBT	1408	1450	
14	11	15	THE WORLD I KNOW ATLANTIC	COLLECTIVE SOUL	1400	1475	
(15)	18	5	BIG ME ROSWELL/CAPITOL	FOO FIGHTERS	1365	1261	
16	15	19	NATURAL ONE LONDON/ISLAND	FOLK IMPLOSION	1345	1429	
17	17	18	CUMBERSOME MAMMOTH/ATLANTIC	SEVEN MARY THREE	1284	1382	
18	12	12	I GOT ID EPIC	PEARL JAM	1278	1471	
(19)	19	6	CAUGHT A LITE SNEEZE ATLANTIC	TORI AMOS	1210	1126	
(20)	22	5	ONLY HAPPY WHEN IT RAINS ALMO SOUNDS/GEFFEN	GARBAGE	1116	1059	
21	20	10	HIGH AND DRY CAPITOL	RADIOHEAD	983	1080	
(22)	24	4	BLUSTER ISLAND	SALT	358	930	
(23)	26	4	WHAT DO I HAVE TO DO? COLUMBIA	STABBING WESTWARD	941	838	
24	21	11	RUBY SOHO EPITAPH	RANCID	902	1051	
25	25	26	POSSUM KINGDOM INTERSCOPE	TOADIES	876	912	
26	23	12	MIGHTY K.C. 550 MUSIC	FOR SQUIRRELS	824	1007	
(27)	33	3	TINY MEAT CREATION/WORK	RUBY	766	625	
(28)	29	5	DROWN WARNER BROS.	SON VOLT	744	664	
(29)	28	4	AWAY INTERSCOPE	TOADIES	714	702	
30	30	19	BULLET WITH BUTTERFLY WINGS VIRGIN	SMASHING PUMPKINS	651	695	
31	27	22	ONE OF US BLUE GORILLA/MERCURY	JOAN OSBORNE	641	746	
(32)	32	19	WONDER ELEKTRA/EEG	NATALIE MERCHANT	627	623	
(33)	36	2	ZERO VIRGIN	SMASHING PUMPKINS	587	526	
34	34	22	MY FRIENDS WARNER BROS.	RED HOT CHILI PEPPERS	585	591	
(35) NEW▶			MACHINEHEAD TRAUMA/INTERSCOPE	BUSH	557	414	
36	31	11	SATELLITE RCA	DAVE MATTHEWS BAND	549	639	
(37) NEW▶			CHAMPAGNE SUPERNOVA EPIC	OASIS	524	407	
(38)	38	2	DIANA 57/550 MUSIC	3 LB. THRILL	499	471	
(39)	40	2	EVERYTHING FALLS APART COLUMBIA	DOG'S EYE VIEW	499	454	
(40) NEW▶			ALL MIXED UP CAPRICORN		311	440	

Records showing an increase in detections over the previous week, regardless of chart movement. A record which has been on either chart for more than 20 weeks will not receive a bullet, even if it registers an increase in detections. Airpower awarded to those records which attain 800 detections (mainstream) or 1000 (modern) for the first time. If two records are tied in number of plays, the record being played on more stations is placed first. Records below the top 20 are removed from the chart after 26 weeks.



**MODERN ROCK ON OVER 50 STATIONS OUT OF THE BOX!!!**

**MAINSTREAM ROCK ALREADY ON: WEBN KISW KBER KUPD WGRX AND MANY MORE!!!**

# The afghan whigs

*honky's ladder*

*The premiere single and video from the forthcoming new album Black Love.*

*Album in stores March 2nd*

*Available on cassette*