

AIRPLAY Monitor

THIS WEEK IN MONITOR:

Is Jammin' Oldies Making
A Comeback? p. 19

Battling With Bad
Customer Service p. 47

GROOVE993

JULY 4, 2003

• We Listen To Radio •

VOLUME 11 • NO. 27 \$6.95

From 'Planet Rock' To 'Cameltoe' Candid Talk From Tommy Boy's Founder

■ by Sean Ross

You would expect candor from the head of a record label whose current hit is about women who show too much. And Tommy Boy founder Tom Silverman doesn't disappoint. More than one year after its reorganization, Tommy Boy has two records in play now with the fast-reacting "Cameltoe" by Fannypack, as well as the Roc Project Featuring Tina Arena's "Never (Past Tense)," which has been simmering for more than six months since being championed by WPYM (Party 93.1) Miami. In this Q&A, Silverman and head of radio promotion Hazel Zoleta share some provocative thoughts about whether life has really improved for independent labels, the indie promoter shakeout, and the state of hip-hop—a genre the label helped grow, then moved away from.



SILVERMAN

Monitor: So how did the new Tommy Boy crystalize?

Silverman: In March 2002, Warner Music Group bought the 50% of Tommy Boy Music that I didn't own and took over the old catalog and publishing. We moved forward the following Monday and started Tommy Boy Entertainment—we kept the phone number, domain name and everything else the same, but with a significantly smaller staff that was lean and mean for the new music business. In-

Continued on page 3

Already Making A Mark As WSM-FM's New PD

■ by Phyllis Stark

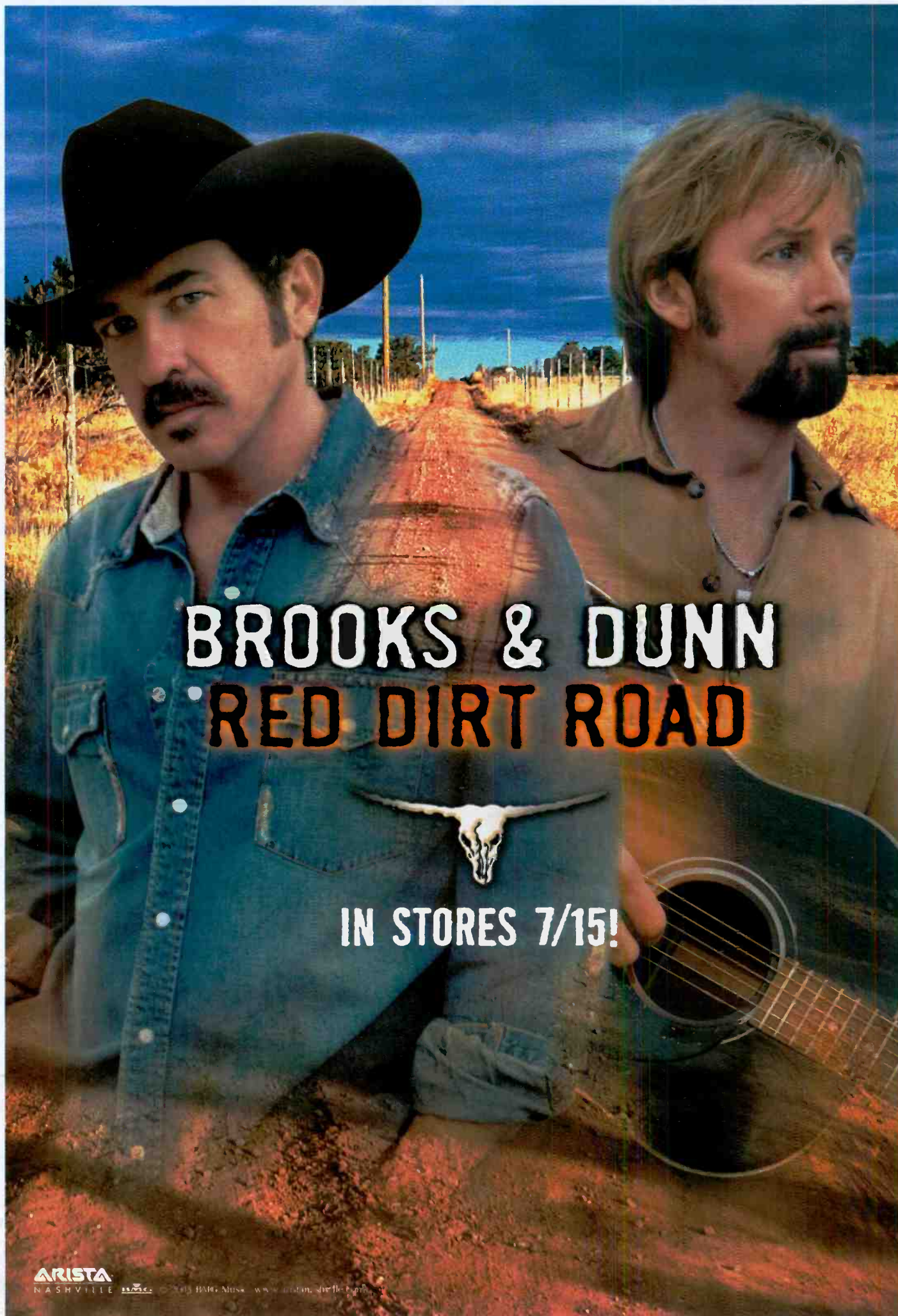
Lee Logan wasn't even in the building yet at WSM-FM Nashville when he served notice to the market that he was playing to win.

On June 9, residents and workers of several Nashville neighborhoods, including Music Row, woke up to find more than 3,000 WSM signs blanketing the sides of busy roads. Employees of rival stations WSIX and WKDF were greeted with an eight-foot-long mural of the new WSM logo painted in their stations' driveways, alongside posted signs that read "Going out of business" (*Airplay Monitor*, June 13).

Logan, WSM's new PD, says the campaign was designed to dispel the "format change rumors and innuendos floating around the market. Once and for all, especially for the internal group of people, we had to put all that nonsense to bed. We are, and will be, a country station."

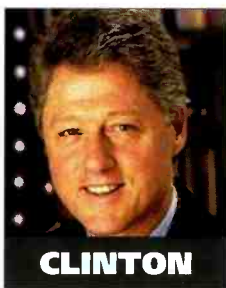
The stunt generated plenty of local media attention, including a front-page story in the daily newspaper in which the station's signs were

Continued on page 27



Bubba Fought The Jukebox

The debate over radio ownership picks up a new voice this week, as **Bill Clinton** weighs in with an op-ed piece in New York's Daily News. The former president warns that the FCC's June 2 rules changes will give "big media firms the chance to gobble up many more local TV stations" and "reduce the diversity of information, opinion and entertainment people get . . . Whatever your political philosophy, if you favor competition and diversity in the media, you should call, write or e-mail your senators and representatives."



LEGISLATING PLAYLIST DIVERSITY

While some broadcast industry observers might wish that Congress would legislate playlist diversity, it's closer to reality in the U.K. *Airplay Monitor's* sister publication Music & Media reports that sections of the recent UK Communications Bill are expected to be amended, around the time you read this, to address a music industry lobbying campaign to promote diversity.

M&M reports that "the format definitions of 'localness' for radio stations will now include an explicit requirement that local stations must play music that reflects the tastes of their local populations. This could, for example, make it politically difficult for major radio groups to roll out standardized playlists across their local stations."

MANAGEMENT

AC **CHQM-FM** Vancouver PD **Neil Gallagher** is named VP/GM for **CHUM/Vancouver**.

GSM **Barbara Haynes** is upped to GM at **Citel/Providence, R.I.**, replacing **Andrea Scott**.

PROGRAMMING

Former Clear Channel senior VP of programming/veteran AC programmer/station owner **Jack Taddeo** joins **Vallie/Richards Consulting**.

Adult R&B **WBHK** (98.7 Kiss) Birmingham, Ala., PD **Jay Dixon** is named OM for **Cox/Birmingham**, overseeing R&B **WBHJ**, gospel **WAGG** and Spanish **WRJS**.

Former adult R&B **WMXD** (Mix 92.3) Detroit PD **Janet G** joins R&B **WFOX** (97.1 Jamz) Atlanta for similar duties.

Former adult top 40 **WMWX** (Mix 95.7) Philadelphia PD **Chris Ebbott** joins **Bob**



Lawrence's Pinnacle Media Worldwide as senior research associate.

WAQZ (New Rock 97.3) Cincinnati APD/MD **Jeff "Shaggy" Nagel** becomes PD, replacing **John Michael**, now at **KROQ** Los Angeles.

Top 40 **KQKQ** Omaha, Neb., PD **Tommy Austin** exits. Sister **KCTY** (the City) PD **Brian Burns** is upped to OM and will oversee **KQKQ** along with R&B **KBLR** (Hot 107.7).

Former **WNOE** New Orleans PD **Les Acree** joins country **KRMD** Shreveport, La., July 1 as brand manager/PD. He replaces **Bob Shannon**.

Alan Sledge signs on for two more years as **Clear Channel/Phoenix's** director of programming operations and regional VP of programming. He is also country brand manager for **CC**.

RADIO: THE SITCOM

"Seinfeld" cast member **John "J. Peterman" O'Hurley** and **Perri "Roz" Gilpin** from "Frazier" are among the imaging voices as top 40 **CKNG** Edmonton, Alberta, segues to adult top 40 and reimages as "the best of the '80s, '90s and now." Meanwhile, former "Coach" cast member **Pam Stone** joins adult top 40 **WLNK** (the Link) Charlotte, N.C., for 10 a.m.-noon. APD/middayer **Chris Allen** will continue to do the rest of mid-days. And with the station's afternoon team **Matt & Ramona** starting syndication on July 21, **WLNK** PD **Neal Sharpe** is named PD for **Jefferson-Pilot Radio Syndication**.

FORMATS: KNOXVILLE DE-BONED

Journal Broadcast Group switches its classic rock **WBON** Knoxville, Tenn., to "today's hip-hop and R&B" as "Hot 104.5" under consultant **Mark St. John** of **Zapoleon Media Strategies**. **WBON** PD **Bruce Patrick** moves to oldies **WMYU**.

At press time, ABC's supersoft AC **KMEQ** (Memories 96.7) Dallas was playing young-leaning country as "the Twister." The station has announced a commercial-free summer. Also, according to market observers, all-'80s **WRQQ** Nashville had segued to adult top 40.

Smooth jazz **WZMR** Albany, N.Y., adds R&B oldies to its mix and relaunches as "104.9 Love FM—today's smooth jazz and classic soul."

PEOPLE: SEARCHING FOR STERN

Lycos has released a list of Web users' popular national radio personalities, based on searches on its Web site. **Howard Stern** is tops for the third straight year, while **Tom Joyner** jumps from No. 5 to No. 2. Last year's No. 2, **Opie & Anthony**, remain No. 9, despite being off the air for a year.

Infamous New York publicist **Lizzie Grubman** is now contributing entertainment reports to **WNEW** (Blink 102.7) New York.

R&B **WQUE** (Q93) New Orleans news director **Monica Pierre** becomes an adjunct professor of journalism at that city's **Dillard University**.

R&B **WPEG** (Power 98) Charlotte, N.C., names programming assistant **Deon Cole** MD. **WPEG** late-nighter **Eddie Owens** shifts to afternoons as late nights are filled by **Danny Diaz** from R&B **WJWZ** (97.9 Jamz) Montgomery, Ala.

Top 40 **WKFS** Cincinnati ups promotion coordinator **Brad Teaney** to promotions director.

After announcing plans to join **WSM-FM** Nashville, **Bill "Dex" Poindexter** has decided to stay at **WUSY** Chattanooga, Tenn. **David Hughes**,



BY ANTHONY COLOMBO, WADE JESSEN, PATRICK MCGOWAN & MINAL PATEL

Neo-Garage Scores A No. 1

For the past 18 months, modern rock stations have cautiously embraced the neo-garage movement, lest, they said, it follow electronica as the "next big thing" that never materialized. But this week, the **White Stripes' "Seven Nation Army"** (V2) gives the genre its first No. 1 record. It's also a personal best for the group (which peaked at No. 12 with "Fall in Love With a Girl" in May 2002) and for V2, which got to No. 3 with **Moby's "South Side"** in March 2001. Electronica, meanwhile, has never yielded a No. 1 song.



WHITE STRIPES

Alan Jackson & Jimmy Buffett's "It's 5 O'Clock Somewhere" (Arista Nashville) climbs 14-7 in its fourth chart week, the second song this year to ascend into the top 10 in less than one month. **Daryl Worley's "Have You Forgotten?"** took only three weeks to reach the top 10 in March. This is Jackson's fifth song to reach the top 10 within four weeks.

Since 1990, only **Garth Brooks** (with eight) and **George Strait** (six) have done that more often. Of the 31 prior songs that reached the top 10 in four or less weeks since 1990, 26 of them (84%) have gone on to reach No. 1.

Heather Headley's "I Wish I Wasn't" (RCA/RMG) posts the most spins in a single week at adult R&B with 1,170, surpassing the 1,137 spin record set by **Floetry's "Say Yes"** three weeks ago.

Chevelle tops the mainstream rock chart with "Send the Pain Below" (Epic), replacing "Like a Stone" by labelmate **Audioslave** after 12 weeks. It's the second time this year a label has had consecutive No. 1 tracks at mainstream rock, following **UMRG act 3 Doors Down's "When I'm Gone"** and **Godsmack's "Straight out of Line."** The last time we saw this twice in one year was 1996, when Atlantic did it both times.

Chicago Idol



Chicago-area residents sent in demos by the boxload for their chance to have a song produced and written by R. Kelly in conjunction with **WGCI Chicago**. Pictured, from left, are **WVAZ/WGCI PD Elroy Smith**, **WGCI APD/MD Tiffany Green**, and **WVAZ APD/MD Armando Rivera**.

who had originally been tapped as **Poindexter's** afternoon partner, may still join the station.

Former country **WGKX** Memphis morning hosts **Andy** and **Debbie Montgomery** have joined similarly formatted **WKSF** Asheville, N.C., for mornings as **Drew & Debbie**. **WKSF** OM **Jeff Davis** is also seeking an APD/midday host.

Former AC **WLIT** Chicago morning co-host **Bill Leff** joins '80s rival **WNND** for mornings, replacing **Tom Hanson**.

R&B **KWID** (Wild 102) Las Vegas adds R&B **KMEL** San Francisco talent **Jay Boogie** for nights.

Cox's adult top 40 **KRAV** Tulsa, Okla., taps **Nina Valente** from sister **KJSR** as morning co-host, joining **Chris Kellogg**.

Top 40 **WKSS** (Kiss 95.7) Hartford, Conn., morning veteran **Ross Brittain** exits.

R&B **WPHI** (103.9 the Beat) Philadelphia national sales manager **E. Steven Collins** adds a Sunday-morning talk show. He was the longtime public affairs host at adult R&B rival **WDAS**.

Modern **KCXX** (X103.9) Riverside, Calif., teams **Michael Bower** and **Ginny Harman** for the "Brand X Morning Show," replacing **Todd Kelly**.

R&B/hip-hop **WGBT** (the Beat) Greensboro, N.C., finalizes its lineup with **Prettyboy A.D.** from **KVGS** (V108) Las Vegas in nights and p.m. driver **Jay Rio** from **KBLZ** Tyler, Texas . . . R&B **WEUP** Huntsville, Ala., afternoon talent **Delyte** exits.

At modern **KEDJ** (the Edge) Phoenix **Whip & Vince** are off mornings. **Vince** may stay on in

another capacity . . . Modern **WXEG** (the X) Dayton, Ohio, MD **Boomer** moves from afternoons to mornings, replacing **Scott Mallory**.

WQHT (Hot 97) New York adds a production director position. PD **Tracy Cloherty** is accepting production demos and résumés.

THE MOVE

BDS Monitors MusicChoice, Sirius

Nielsen Broadcast Data Systems will begin monitoring 10 channels from cable music provider **MusicChoice** and eight from **Sirius Satellite Radio**. Those national music services join the previously announced **XM Satellite Radio** and **Jones Radio Networks**.

Dorsey Fuller, formerly APD at R&B **KKBT** (the Beat) Los Angeles, lands at **DreamWorks Records** as West Coast regional.

Former **ArtistDirect** senior director of modern promotion **Brian Corona** joins **Atlantic** for triple-A. He may be reached at 818-238-6838.

Elektra VP of modern rock **Pete Rosenblum** exits. He may be reached at 917-733-6772. Replacing him is **Vagrant's Bill Carroll**.

George Picks Chicks



WMZQ Washington, D.C., listeners had to find "George W. Bush" around town to win front-row tickets to the sold-out **Dixie Chicks** show at the **MCI Center**. Here's "George" contemplating buying a **Chicks** T-shirt.



Candid Talk From Tommy Boy's Founder

Continued from page 1

tially, our focus was dance and compilations because of the lower cost of entry and risk/reward ratio, then we started developing new projects. So co-producer Matt Goias got rid of the DJ concept and went out to find different girls. We auditioned girls, but they came in with their moms and had big résumés and all wanted to be like an artist that already existed.

[Hip-hop veteran] Prince Paul came to me with the idea of three girls who would be DJs. It was going to be more dance-oriented, but the three girl DJs I met didn't have the right star quality. So co-producer Matt Goias got rid of the DJ concept and went out to find different girls. We auditioned girls, but they came in with their moms and had big résumés and all wanted to be like an artist that already existed.

He was in the Fulton Mall in Brooklyn [N.Y.] and heard some girls talking and he said, "That's it." He asked one girl if she wanted to be in a group, and she says, "Whatever." He brings her in, and she's fantastic. That's Jezebel; at the time, she was 17 years old and just starting senior year in high school. [Once the group was assembled], he asked what was going on in their high school and

what words they used and what they called boys, and he would build songs out of the language they gave him, so it would be relevant to kids in high school today.

They did a six-song demo, and everyone who heard "Cameltoe" went crazy. I didn't necessarily think "Cameltoe" was the best single—just the one they reacted to the most. I also liked it because it didn't sound like anything that's out there now. Their album comes out July 8 here and in

Europe in September. We're also working with Disco-D, a 22-year-old from Detroit who plays hip-hop but at 150 bpm—[that's] what's called "ghetto tech" in Detroit.

Monitor: Tommy Boy came to prominence in the early '80s with a landmark hip-hop record in "Planet Rock" and contributed numerous others over the years. Why were you willing to walk away from hip-hop and start over with dance?

Silverman: Musically, I felt it was stagnating. When I started in hip-hop in 1980-'81, it really stood for something. Hip-hop was a totally alternative kind of music. All throughout the '80s and early '90s, it was a badge that pinned you as a different kind of person. Now it's no different than Whitney Houston or Mariah Carey, and the cost of breaking it is [the cost of breaking both a pop and R&B project together]. And your return on investment, after the top three or four records out there, has gone way down. You see all these albums where they spent \$2 million in marketing to sell 500,000 units or less, which means that at \$5-\$6 a unit, they lose \$1-\$2 for every record they sell. There are exceptions, like Lil' Jon, but I didn't want to build our business around an anomaly.

Hip-hop is no longer a cutting-edge format... And dealing with a hip-hop artist takes a lot of work: They're not self-contained. There's a lot of babysitting involved, and they expect the keys to the Bentley as soon as you sign the deal. Now, when you listen to what they're talking about, it's all about Cristal and gang banging. That was really cool when N.W.A did it, but I've been hearing it for more than 10 years. I'm looking for people who want to do hip-hop, but a new kind of hip-hop.

[WQHT] Hot 97 [New York, where former morning host Star was spiking "Cameltoe" at the outset] won't play Fannypack because it doesn't fit in with the other records they're playing, and that's the same story I got when I tried to work Afrika Bambaataa's "Jazzy Sensation" to R&B

radio in 1981-'82. But when they did play it, it took off. Every kid who listened to Hot 97 was loving that record and singing it on the street corner, but they wouldn't consider it because it didn't sound like their station. So the only records they consider are the ones that sound like what they're already playing.

There used to be ways to get in [with a record]—now it's just about who can spend the most money... When I got "Jazzy Sensation" played on Mr. Magic's show on WHBI [now WCAA], which was only on for an hour on Thursday nights, I sold 5,000 12-inches in one week off of one spin, then went on to sell 20,000 more in one week off of one DJ playing it on one station. Now there's an enormous amount of hip-hop available, and the demand is diminishing.

Monitor: There's a perception that it's getting better for indie labels in recent years. What's it like being out there as an indie now?

Zoleta: It's about finding one believer in a chain or breaking it regionally and spreading it from there. Tom got it started with Star & Buc [Wild], then I got [crosstown] WKTU's Vic Latino a copy and he hit it, then the [WHTZ] Z100 morning show started hitting it and it was all over New York. Roc Project's "Never" started off at WPYM, then went to [top 40 rival WHYI] Y100, then [sister] WLDI West Palm Beach [Fla.] started to feel it, and now it's spreading throughout Clear Channel. But it's not like 1995, when there weren't any chains. There are fewer people to champion a record than there used to be.

Silverman: Fannypack is a record that only took three spins to break, but otherwise it's hard for anything new to get a real test... There used to be three records like "Whoomp! (There It Is)" a year that came off little indie labels and sold a half-million or a million copies that might not even break nationally.

Monitor: Is the move by some groups away from indie promotion good or bad for independent labels?

Silverman: I'm not sure how it's going to work in the long run. The cost of breaking a pop record is going to be less than a third of what it was three or four years ago. On the R&B side, it's just as much if not more... As an independent label, Hazel is a one-person show and depends on her relationships with the true independents that actually work records and go to radio stations. She's one person. She can't talk to everybody. Indie promoters are important to small labels, if they're true indies. If the "toll-takers" go away, that's fine.

Zoleta: They don't help us anyway. But there are a lot of people that really do work for us, and we need them for our survival. We don't want them banned at radio. Otherwise, we're going to get killed against people who have staffs. It's very key that certain indies stay in the game.

Silverman: If "Cameltoe" had never gotten played by Star & Buc Wild and Vic Latino, you wouldn't be calling me right now. There may be 50 other "Cameltoes" that are dormant because their labels don't have the relationships that we do, so they can't get their record played [the] one time it would take to react.

Ninety-five percent of the records on radio, unfortunately, aren't real records. They're not records that would break organically; they're breaking because there's a giant spending force behind them. It would be good for everybody, including radio, if there was a way that cream could rise to the top again.

'95% of the records on radio aren't records that would break organically; they're breaking because there's a giant spending force behind them'

—Tom Silverman

RADIO CONCERT MONITOR

DATE	STATION	EVENT	PROMOTIONS DIRECTOR
July 4	WMC-FM Memphis	Star Spangled Celebration	Cindy DeBardelaben
		APPEARING: Sixpence None the Richer	
July 5	WHTZ New York	Jenkinsons Live	Paul Miraldi
		APPEARING: Justin Guarini	
July 6	Capital FM London	Party in the Park	Sheena Mason
		APPEARING: Beyoncé, David Gray, Daniel Bedingfield, Craig David, Meat Loaf, Simply Red, Liberty X, Atomic Kitten, Melanie C, Big Brovaz, Mis-Teeq, Blue, Blazin' Squad, Dannii Minogue, Gareth Gates, Sugababes, Kym Marsh, Girls Aloud	
July 9	KMXV Kansas City	Red, White & Boom 8	Chad Mantoath
		APPEARING: Goo Goo Dolls, Kelly Clarkson, Hootie & the Blowfish, Lisa Marie Presley, Ginuwine, Blu Cantrell, Frankie J, Jennifer Love Hewitt, M.C. Hammer, Stacie Orrico, Jessica Simpson, Nick Lachey, Lillix	
July 11	WSTR Atlanta	On the Bricks Series	J.R. Ammons
		APPEARING: Better Than Ezra, Lifehouse	
July 14	WPLJ New York	Family Fun Night	Theresa Angela
		APPEARING: Jeffrey Gaines, Gregory Raposo	
July 17	KDWB Minneapolis	Star Party	Chris Cegla
		APPEARING: 50 Cent, Snoop Dogg, Busta Rhymes, Fabolous, Sean Paul	
July 21	KUBE Seattle	Summer Jam Day Fest	Mike Schubert
		APPEARING: 50 Cent, Ludacris, Fabolous, Ginuwine, Tyrese	
July 25	WSTR Atlanta	On the Bricks Series	J.R. Ammons
		APPEARING: Everclear, Maroon 5	
July 26	WBBM Chicago	Summer Jam	Michael Biemolt
		APPEARING: Lil' Kim, Da Brat, Ginuwine, Sarai, Smiley & Southstar, Mya, Frankie J, Nick Cannon, Fabolous	
July 28	WAKS Cleveland	Kissmas in July	Jeff Zukauckas
		APPEARING: Nelly	
July 28-29	CKKS Vancouver	Jack Concerts in the Park	May Lam
		APPEARING: Blue Rodeo	
July 31	WTMX Chicago	After Five Live	Debbie Wagner-Fors
		APPEARING: Dave Gahan	
Aug. 1	WSTR Atlanta	On the Bricks Series	J.R. Ammons
		APPEARING: Nickel Creek, Franky Perez	

Let us monitor your event! Call Sean Ross at 646-654-4617 or e-mail sross@airplaymonitor.com

Star and Vic and [Z100 morning man] Elvis Duran and [MD Paul] Cubby [Bryant] are heroes on this record. And [WPYM PD] Phil Michaels is a hero with Roc Project. There are too few [PDs like] Phil Michaels. He sends you records that he's excited about. How many radio guys do that? I wish there was 50 guys like Phil in every genre.

Monitor: And perhaps 50 dance stations as well. How useful are the handful of dance/pop stations, and why aren't there more of them?

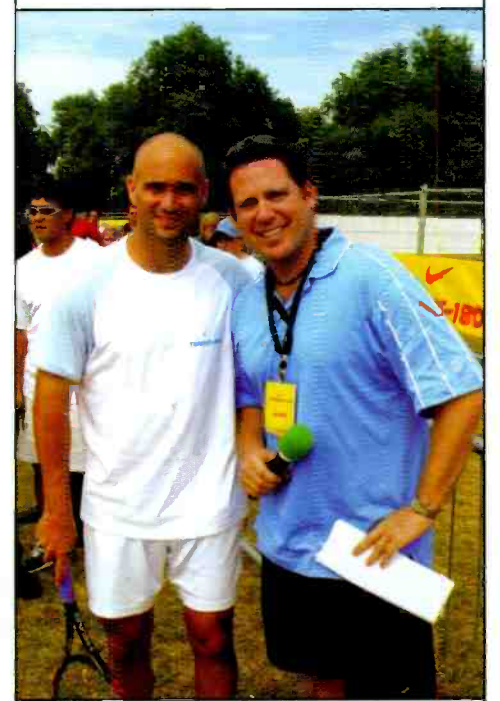
Zoleta: A record can go one of two ways. You might have a record that just stays with the core stations—WKTU New York, WPYM, WPYO Orlando [Fla.], and KCJZ San Antonio—and it will never grow beyond that. But when we picked up Roc Project, I had a gut feeling I could cross it to Y100, and that was the goal.

Sometimes mainstream America isn't going to accept some of the imports that dance radio plays—they play stuff that a KIIS [Los Angeles] audience isn't going to get.

Silverman: And in this country, there's not the media support; there's a bigger club culture and dance press in Europe. Here, it's very segmented: the techno kids, the trance kids, the freestyle kids, but there's still a lot of cream that comes out of there.

I'm hoping that dance music on radio survives this bit of a drought that we're in right now. We need more music to cross out of that genre. If we can get a Roc Project over in a big way like DJ Sammy and you know you can get three or four of those a year, it helps substantiate the genre in the same way that hip-hop is supported by its proliferation in the mainstream.

D.C. Calling



Adult top 40 WWZZ (Mo e Music 104) Washington, D.C., morning host Brett Haber, right, makes friends with Andre Agassi at Nike Tennis 180 in London, a charity benefit for underprivileged youth.

HUGE SPINS AT:
 WBBM 89x
 WJMN 91x
 KUBE 70x
 KLUC 55x
 WBTS 75x
 KQKS 50x
 WHZT 99x
 WNVZ 60x

MONITOR RHYTHMIC TOP 40:
 4 - 3 +214

HOT 100 AUDIENCE OVER 50 MILLION

ALREADY PLAYING AT THESE TOP 40 STATIONS:

WIHT 25x	WXSS 18x
KHTS 29x	WKSE 25x
KDWB 18x	WKSS 18x
WKST 25x	WEZB 18x
WBZZ 23x	WHKF 46x
KCHZ 26x	

VIDEO PREMIERING 4TH OF JULY ON BET

ALSO APPEARING THIS WEEK AT THE MTV BEACH HOUSE

ON ALL OF THE ROCK THE MIC TOUR DATES WITH 50 CENT & JAY-Z

IMPACTING TOP 40 NOW

**JUST ADDED @
 WKSC WKQI
 WIHT KDWB
 KSLZ WAKS
 WKFS
 + MANY MORE!!!!**

THE SUMMER SMASH THAT'S ALREADY IN DEMAND!

FABOLOUS INTO YOU

FEATURING TAMIA

THE HOT NEW SINGLE AND VIDEO FROM THE PLATINUM ALBUM STREET DREAMS

SEE FAB ON THE ROCK THE MIC TOUR STARTING JUNE 25!

TRACK PRODUCED BY CLUE AND DURO FOR NO QUESTION ENTERTAINMENT
 EXECUTIVE PRODUCERS: DJ CLUE, DURO & SKANE
 MANAGEMENT: WEB & CHEO FOR STAR POWER MANAGEMENT

WWW.FABOLOUS.NET



AIRPLAY MONITOR

FOR WEEK ENDING JUNE 29, 2003

Songs posting gains in detections or with a percentage loss in detections equal to or better than the monitored down time percentage in the format. Songs listed in order of detections.

TOP 10 BOUND

FRANKIE J 4490/96
Don't Wanna Try (Columbia)
Total Stations: 122 Chart Move: 11-11
H (18), M (76), L (28)
Airplay Adds: 0

MTV	VH1	KISS	K102	WABC	WFLX	WISN	WISN	WISN	WISN
29	53	49	42	40	38	36	34	32	30
25	29	28	27	26	25	24	23	22	21
19	18	17	16	15	14	13	12	11	10
9	8	7	6	5	4	3	2	1	

MICHELLE BRANCH 4385/474
Are You Happy Now? (Maverick/Warner Bros.)
Total Stations: 123 Chart Move: 15-12
H (6), M (96), L (21)
Airplay Adds: 4

MTV	VH1	KISS	K102	WABC	WFLX	WISN	WISN	WISN	WISN
38	17	29	82	10	43	31	203	171	162
20	26	14	26	14	12	11	10	9	8
17	16	15	14	13	12	11	10	9	8
7	6	5	4	3	2	1			

UNCLE KRACKER FEAT. DOBIE GRAY 4284/303
Drift Away (Lava)
Total Stations: 116 Chart Move: 14-13
H (34), M (38), L (44)
Airplay Adds: 7

MTV	VH1	KISS	K102	WABC	WFLX	WISN	WISN	WISN	WISN
17	14	13	12	11	10	9	8	7	6
5	4	3	2	1					

JEWEL 3941/314
Intuition (Atlantic)
Total Stations: 122 Chart Move: 18-14
H (14), M (70), L (38)
Airplay Adds: 0

MTV	VH1	KISS	K102	WABC	WFLX	WISN	WISN	WISN	WISN
5	21	26	181	2	12	11	10	9	8
1	1	1	1	1	1	1	1	1	1

PINK FEATURING WILLIAM ORBIT 3939/139
Feel Good Time (Columbia)
Total Stations: 123 Chart Move: 16-15
H (2), M (93), L (28)
Airplay Adds: 1

MTV	VH1	KISS	K102	WABC	WFLX	WISN	WISN	WISN	WISN
36	19	24	142	1	11	10	9	8	7
1	1	1	1	1	1	1	1	1	1

SIMPLE PLAN 3853/328
Addicted (Lava)
Total Stations: 117 Chart Move: 19-16
H (17), M (57), L (43)
Airplay Adds: 3

MTV	VH1	KISS	K102	WABC	WFLX	WISN	WISN	WISN	WISN
35	55	68	568	2	12	11	10	9	8
1	1	1	1	1	1	1	1	1	1

WUKE 363/30
Rock On (Atlantic)
Total Stations: 122 Chart Move: 18-14
H (14), M (70), L (38)
Airplay Adds: 0

MTV	VH1	KISS	K102	WABC	WFLX	WISN	WISN	WISN	WISN
65	63	60	339	4	13	12	11	10	9
1	1	1	1	1	1	1	1	1	1

LIL' KIM FEAT. 50 CENT 3757/719
Magic Stick (Queen Bee/Antic)
Total Stations: 120 Chart Move: 22-21
H (7), M (62), L (51)
Airplay Adds: 0

MTV	VH1	KISS	K102	WABC	WFLX	WISN	WISN	WISN	WISN
53	47	48	350	3	12	11	10	9	8
1	1	1	1	1	1	1	1	1	1

ASHANTI 3609/294
Rock Wit U (Awww Baby) (Murder Inc./Def Jam/IDJMG)
Total Stations: 122 Chart Move: 21-20
H (6), M (64), L (52)
Airplay Adds: 3

MTV	VH1	KISS	K102	WABC	WFLX	WISN	WISN	WISN	WISN
53	47	48	350	3	12	11	10	9	8
1	1	1	1	1	1	1	1	1	1

THE ALL-AMERICAN REJECTS 3408/152
Swing, Swing (Doghouse/DreamWorks)
Total Stations: 120 Chart Move: 22-21
H (7), M (62), L (51)
Airplay Adds: 0

MTV	VH1	KISS	K102	WABC	WFLX	WISN	WISN	WISN	WISN
96	83	47	476	13	8	14	61	11	8
1	1	1	1	1	1	1	1	1	1

THALIA FEATURING FAT JOE 2840/366
I Want You (EMI Latin/Virgin)
Total Stations: 122 Chart Move: 26-23
H (2), M (49), L (71)
Airplay Adds: 4

MTV	VH1	KISS	K102	WABC	WFLX	WISN	WISN	WISN	WISN
23	23	22	22	22	22	22	22	22	22
1	1	1	1	1	1	1	1	1	1

JASON MRAZ 2481/165
The Remedy (I Won't Worry) (Elektra/EEG)
Total Stations: 116 Chart Move: 28-25
H (1), M (48), L (67)
Airplay Adds: 8

MTV	VH1	KISS	K102	WABC	WFLX	WISN	WISN	WISN	WISN
14	2	2	2	2	2	2	2	2	2
1	1	1	1	1	1	1	1	1	1

TRAIN 1795/89
Calling All Angels (Columbia)
Total Stations: 104 Chart Move: 33-30
H (2), M (30), L (72)
Airplay Adds: 1

MTV	VH1	KISS	K102	WABC	WFLX	WISN	WISN	WISN	WISN
22	24	21	176	1	1	1	1	1	1
1	1	1	1	1	1	1	1	1	1

NELLY, P. DIDDY & MURPHY LEE 1713/514
Shake Ya Tailfeater (Bad Boy/UMRG)
Total Stations: 89 Chart Move: 40-31
H (0), M (26), L (63)
Airplay Adds: 19

MTV	VH1	KISS	K102	WABC	WFLX	WISN	WISN	WISN	WISN
45	36	31	81	1	1	1	1	1	1
1	1	1	1	1	1	1	1	1	1

GOOD CHARLOTTE 1611/727
Girls And Boys (Daylight/Epic)
Total Stations: 96 Chart Move: Debut 32
H (0), M (17), L (79)
Airplay Adds: 26

MTV	VH1	KISS	K102	WABC	WFLX	WISN	WISN	WISN	WISN
12	5	9	49	1	1	1	1	1	1
1	1	1	1	1	1	1	1	1	1

H=Heavy (55+ Detections), M=Medium (25-54), L=Light (Under 25). Airpower awarded to songs appearing in the top 20 on both the Airplay and Audience charts for the first time with increases in both detections and audience. ★ Initial Impact: Songs appearing on this page for the first time in summary form. Airplay Adds are songs with 6 or more detections at new stations this week. The Airplay Leaderboard ranks taste-maker stations that have been the most successful in identifying future hit songs as measured by the amount of AIRPOWER titles for which they were Airplay Leaders. Refer to each former's Power Playlists page to see this week's Airplay Leaders.

MAINSTREAM TOP 40

FOR WEEK ENDING JUNE 29, 2003



Nielsen Broadcast Data Systems

Songs posting gains in detections or with a percentage loss in detections equal to or better than the monitored downtime percentage in the format. Songs listed in order of detections. *Indicates station experienced between 24 and 56 hours of monitored downtime during the chart week.

MAINSTREAM TOP 40

Table with columns: City, Station, Rank, Title, Artist, and other chart data. Includes entries like 'I Can Only Imagine' by MercyMe and 'You Are My Number One' by Smash Mouth.

MERCYME 1230/116

I Can Only Imagine (INO/Curb) Total Stations: 39 Chart Move: Debut 37 H (8), M (12), L (19) Airplay Adds: 3

Table showing station detections for 'I Can Only Imagine' across various markets like New York, Chicago, and Detroit.

CHART BOUND

Total Detections/Gain

CHINGY 989/260

Right Thurr (Disturbing Tha Peace/Priority/Capitol) Total Stations: 74 Heavy (4) KCHZ, KHTT, KTFM, WHKF Medium (5), Light (65) Airplay Adds: 14 KHFI, KJYO, KLZR, KQKQ, KSMB, KQSR, WBHT, WCIL, WFHN, WFLY, WKSC, WKSE, WXPY, WSSX

SANTANA FEAT. ALEX BAND OR CHAD KROEGER 980/371

Why Don't You & I (Arista) Total Stations: 53 Heavy (2) KRUF, WIXX Medium (12), Light (39) Airplay Adds: 17 KHKS, KKRZ, KLAL, KSMB, KZHT, WABB, WAEV, WCIL, WFMF, WKRZ, WLDI, WLKT, WNCI, WRHT, WXXS, WXLK, WXXX

R. KELLY FEATURING BIG TIGER 884/5

Snake (Jive) Total Stations: 65 Heavy (1) WKGS Medium (15), Light (49) Airplay Adds: 3 KHTT, WCIL, WJBQ

STAGG LEE 787/103

Roll With Me (We Be Like) The La La Song (M.V.P./ARTISTdirect) Total Stations: 70 Heavy (1) WWHT Medium (10), Light (59) Airplay Adds: 3 KDWB, KKBM, KQKQ

DA BRAT FEATURING CHERISH 1491/228

In Love Wit Chu (So So Def/Arista) Total Stations: 92 Chart Move: 37-34 H (4), M (17), L (71) Airplay Adds: 7

Table showing station detections for 'In Love Wit Chu' across various markets.

DREAM FEATURING LOON 1014/184

Crazy (Bad Boy/UMRG) Total Stations: 94 Chart Move: Debut 39 H (0), M (9), L (85) Airplay Adds: 6

Table showing station detections for 'Crazy' across various markets.

SARAI 1437/305

Ladies (Sweat/Epic) Total Stations: 86 Chart Move: Debut 35 H (0), M (19), L (67) Airplay Adds: 9

Table showing station detections for 'Ladies' across various markets.

DREAM FEATURING LOON 1014/184

Crazy (Bad Boy/UMRG) Total Stations: 94 Chart Move: Debut 39 H (0), M (9), L (85) Airplay Adds: 6

Table showing station detections for 'Crazy' across various markets.

LUMIDEE 1004/243

Never Leave You - Uh Ooh, Uh Oooh! (Universal/UMRG) Total Stations: 75 Chart Move: Debut 40 H (2), M (16), L (57) Airplay Adds: 6

Table showing station detections for 'Never Leave You' across various markets.

TRAPT 488/116

Headstrong (Warner Bros.) Total Stations: 34 Heavy (0) Medium (3), Light (31) Airplay Adds: 3 WAVY, WNCI, WZEE

SMASH MOUTH 437/258

You Are My Number One (Interscope) Total Stations: 47 Heavy (0) Medium (3), Light (44) Airplay Adds: 20 KLAL, KRQO, KZZU, WABE, WAEV, WBAM, WBBO, WDCG, WFBC, WIXX, WKRZ, WLN, WNCI, WNKX, WPST, WRHT, WSSX, WXXS, WXLK, WZNY

SKYE SWEETNAM 329/8

Billy S (Capitol) Total Stations: 32 Heavy (0) Medium (1), Light (31) Airplay Adds: 2 WCIL, WERO

FABOLOUS FEATURING TAMIA OR ASHANTI 324/90

Into You (Desert Storm/Elektra/EEG) Total Stations: 22 Heavy (0) Medium (5), Light (17) Airplay Adds: 4 KDWB, KZZU, WKSS, WMEG

BROOKS BUFORD 323/55

Trailer Fabulous (So So Def/Arista) Total Stations: 30 Heavy (0) Medium (3), Light (27) Airplay Adds: 5 WBAM, WCGQ, WFLY, WIXX, WXLK

50 CENT 323/110

P.I.M.P. (Shady/Aftermath/Interscope) Total Stations: 29 Heavy (3) WEZB, WKGS, WXSS Medium (1), Light (25) Airplay Adds: 6 KCHZ, KHTT, WHKF, WIOQ, WKSE, WKST

JOE BUDDEN 285/33

Pump It Up (Def Jam/IDJMG) Total Stations: 38 Heavy (1) WHKF Medium (3), Light (34) Airplay Adds: 3 KHTS, WIHT, WSNX

MYA 285/77

My Love Is Like... Wo (A&M/Interscope) Total Stations: 20 Heavy (0) Medium (4), Light (16) Airplay Adds: 5 KHTS, KLAL, WBBO, WXPX, XHTO

JUSTIN TIMBERLAKE 278/194

Senorita (Jive) Total Stations: 40 Heavy (0) Medium (2), Light (38) Airplay Adds: 7 KCHZ, KXXM, WABE, WIHT, WIOQ, WKSC, WKSS

LEANN RIMES 272/135

We Can (Reprise/Curb) Total Stations: 29 Heavy (0) Medium (1), Light (28) Airplay Adds: 12 KHTT, KJYO, KRUF, KSMB, KZHT, WAVY, WCGQ, WJBQ, WKSS, WNTQ, WXXX, WZNY

BRIAN MCKNIGHT FEATURING NELLY 272/-1

All Night Long (Motown/UMRG) Total Stations: 22 Heavy (0) Medium (4), Light (18) Airplay Adds: 4 KRQO, WHYI, WQZQ, WSNX

SUGAR RAY 270/153

Is She Really Going Out With Him (Atlantic) Total Stations: 29 Heavy (0) Medium (4), Light (25) Airplay Adds: 10 KHTT, KLZR, KXXM, WAEV, WBBO, WHYI, WHTO, WPRO, WXXX, WZYP

NICK LACHEY 256/215

Shut Up (Universal/UMRG) Total Stations: 40 Heavy (0) Medium (0), Light (40) Airplay Adds: 18 KHTS, KHTT, KKRZ, KLAL, KMXV, KRQO, KZZU, WDJX, WFBC, WFHN, WNTQ, WPRO, WPST, WXPY, WRHT, WRVQ, WSSX, WSTW

JASON NEVINS PRESENTS HOLLY JAMES 219/92

I'm In Heaven (Ultra) Total Stations: 38 Heavy (0) Medium (4), Light (34) Airplay Adds: 3 WCIL, WIOQ, WMEG

SALIVA 202/60

Rest In Pieces (Island/IDJMG) Total Stations: 17 Heavy (0) Medium (0), Light (17) Airplay Adds: 4 KDND, WHYI, WVRW, WXXX

MARY J. BLIGE FEAT. METHOD MAN 191/63

Love At 1st Sight (Geffen) Total Stations: 25 Heavy (0) Medium (4), Light (21) Airplay Adds: 1 WAKS

BABY BASH FEATURING FRANKIE J 153/55

Suga Suga (Universal/UMRG) Total Stations: 6 Heavy (1) KTFM Medium (1), Light (4)

JUSTIN GUARINI 151/69

Sorry (RCA/RMG) Total Stations: 26 Heavy (0) Medium (0), Light (26) Airplay Adds: 4 KZHT, WAEV, WFKS, WHYI

JOSH KELLEY 151/40

Amazing (Hollywood) Total Stations: 11 Heavy (0) Medium (5), Light (6) Airplay Adds: 1 WJBQ

SEAN PAUL 146/64

Like Glue (VP/Atlantic) Total Stations: 28 Heavy (0) Medium (1), Light (27) Airplay Adds: 4 KIIS, WHKF, WHTZ, WKSS

CHRISTINA AGUILERA 106/81

Can't Hold Us Down (RCA/RMG) Total Stations: 26 Heavy (0) Medium (1), Light (25) Airplay Adds: 2 KZZU, WIHT

LIZ PHAIR 99/22

Why Can't I (Capitol) Total Stations: 10 Heavy (0) Medium (2), Light (8)

DMX 99/2

X Gon' Give It To Ya (Bloodline/Def Jam/IDJMG) Total Stations: 7 Heavy (0) Medium (1), Light (6)

NELLY 96/11

Pimp Juice (Fo' Reel/Universal/UMRG) Total Stations: 7 Heavy (1) WEZB Medium (0), Light (6)

BROOKE 81/46

Coming Home (Connoisseur/Artemis) Total Stations: 5 Heavy (0) Medium (1), Light (4) Airplay Adds: 2 WBAM, WXXX

LIL JON & THE EAST SIDE BOYZ 77/17

Get Low (BME/TVT) Total Stations: 15 Heavy (0) Medium (1), Light (14) Airplay Adds: 1 KHKS

IIO 73/2

At The End (Ministry Of Sound/Made) Total Stations: 15 Heavy (0) Medium (1), Light (14)

JESSICA SIMPSON 70/48

Sweetest Sin (Columbia) Total Stations: 37 Heavy (0) Medium (0), Light (37) Airplay Adds: 2 KHKS, KZHT

RICKY MARTIN 62/4

Jaleo (Sony Discos) Total Stations: 2 Heavy (0) Medium (2), Light (0)

BONE CRUSHER FEAT. KILLER MIKE & T.I. 54/13

Never Scared (Break 'Em Off/So So Def/Arista) Total Stations: 11 Heavy (0) Medium (0), Light (11)

50 CENT FEAT. THE NOTORIOUS B.I.G. 54/3

Niggas (G-Unit) Total Stations: 1 Heavy (0) Medium (1), Light (0)

FABOLOUS FEAT. P. DIDDY & JAGGED EDGE 52/5

Trade It All (Epic) Total Stations: 11 Heavy (0) Medium (0), Light (11)

SMILEZ & SOUTHSTAR 51/6

Now That You're Gone (ARTISTdirect) Total Stations: 11 Heavy (0) Medium (1), Light (10)

H=Heavy (55+ Detections), M=Medium (25-54), L=Light (Under 25). Airpower awarded to songs appearing in the top 20 on both the Airplay and Audience charts for the first time with increases in both detections and audience. * Initial impact: songs appearing on this page for the first time in summary form. Airplay Adds are songs with 6 or more detections at new stations this week. The Airplay LeaderBoard ranks taste-maker stations that have been the most successful in identifying future hit songs as measured by the amount of AIRPOWER titles for which they were Airplay Leaders. Refer to each format's Power Playlists page to see this week's Airplay Leaders.

Airplay Adds (AA) denotes songs with 6 or more detections at station for first time this week.

POWER LAYERS

Monitor AIRPLAY Nielsen Broadcast Data Systems

Compiled from a national sample of data supplied by Broadcast Data Systems... FOR WEEK ENDING JUNE 29, 2003

WMWX Philadelphia PD: Gerry DeFrancesco... List of top 30 songs including Daniel Bedingfield, Justin Timberlake, Kelly Clarkson.

WDVD Detroit* PD: Greg Ausham... List of top 30 songs including matchbox twenty, 3 Doors Down, Evanescence.

WQAL Cleveland PD: Allan Fee... List of top 30 songs including Uncle Kracker, Evanescence, Jason Mraz.

KPLZ Seattle OM: Rob Dunlop... List of top 30 songs including Uncle Kracker, Evanescence, Jason Mraz.

WMVX Cleveland PD: Dave Popovich... List of top 30 songs including Train Calling All Angels, Evanescence.

KMXP Phoenix PD: Ron Price... List of top 30 songs including Evanescence, Jason Mraz, Uncle Kracker.

WMMX Baltimore OM: Bill Pasha... List of top 30 songs including Jason Mraz, matchbox twenty, Counting Crows.

WOMX Orlando PD: Jeff Cushman... List of top 30 songs including Counting Crows, Norah Jones, Uncle Kracker.

KYKY St. Louis VP/Pgm: Smokey Rivers... List of top 30 songs including Uncle Kracker, matchbox twenty, Kelly Clarkson.

KALC Denver* PD: BJ Harris... List of top 30 songs including Evanescence, Jason Mraz, matchbox twenty.

WVRV St. Louis* PD: Marty Linck... List of top 30 songs including Train Calling All Angels, Evanescence.

WTIC Hartford* OM: Steve Saihani... List of top 30 songs including Kelly Clarkson, Uncle Kracker, matchbox twenty.

Main chart table with columns: THIS WEEK, LAST WEEK, WKS. ON CHART, TITLE/IMPRINT/PROMOTION LABEL, ARTIST, DETECTIONS (TW, LW), AUDIENCE (MILLIONS, RANK). Includes top songs like 'UNWELL ATLANTIC' and 'BRING ME TO LIFE'.

Songs ranked by number of detections... Songs showing an increase in detections over the previous week...

GREATEST GAINERS MODERN AC

Table listing Greatest Gainers with columns: Song Title, Artist, and Increase in Detections. Includes 'SANTANA FEAT. ALEX BAND OR CHAD KROEGER' (+125).

IMPACT! AIRPLAY Monitor Nielsen Broadcast Data Systems

Songs posting gains in detections or with a percentage loss in detections equal to or better than the monitored downtime percentage in the format. Songs listed in order of detections. *Indicates station experienced between 24 and 56 hours of monitored downtime during the chart week.

TOP 10 BOUND

JOSH KELLEY 1382/135 Amazing (Hollywood) Total Stations: 71 Chart Move: 16-15 H (9), M (42), L (20) Airplay Adds: 2

Table with columns: Station, LW, WZ, ZN, ID, and song details for Josh Kelley's 'Amazing'.

LIVE 1236/148 Heaven (Radioactive/MCA) Total Stations: 66 Chart Move: 19-18 H (12), M (30), L (24) Airplay Adds: 4

Table with columns: Station, LW, WZ, ZN, ID, and song details for Live's 'Heaven'.

LIZ PHAIR 1149/88 Why Can't I (Capitol) Total Stations: 65 Chart Move: 20-19 H (3), M (39), L (23) Airplay Adds: 5

Table with columns: Station, LW, WZ, ZN, ID, and song details for Liz Phair's 'Why Can't I'.

THIRD EYE BLIND 1139/19 Blinded (When I See You) (Elektra/EEG) Total Stations: 65 Chart Move: 17-20 H (6), M (32), L (27) Airplay Adds: 3

Table with columns: Station, LW, WZ, ZN, ID, and song details for Third Eye Blind's 'Blinded'.

Table with columns: Station, LW, WZ, ZN, ID, and song details for Pete Yorn's 'Crystal Village'.

AIRPOWER

SANTANA FEAT. ALEX BAND OR CHAD KROEGER 1270/329 Why Don't You & I (Arista) Total Stations: 67 Chart Move: 21-16 H (7), M (36), L (24) Airplay Adds: 17

AIRPLAY LEADER

KRSK • Portland, OR PD: Dan Persigehl MD: Cheryl Stuart Date: 01/12/03

Table with columns: Station, LW, WZ, ZN, ID, and song details for KRSK's 'Why Don't You & I'.

AIRPOWER BOUND

KELLY CLARKSON 1078/201 Miss Independent (RCA/RMG) Total Stations: 38 Chart Move: 22-21 Heavy (19) KBBY, KFMB, KHMV, KHTO, KIMN, KIZS, KSII, KYKY, WBMX, WJLK, WKDD, WKRR, WMC, WMMX, WPLJ, WQAL, WTIC, WWMX, WZPL Airplay Adds: 3 KHMV, KMXB, KVUU

NORAH JONES 817/75 Come Away With Me (Blue Note/Virgin) Total Stations: 49 Chart Move: 25-23 Heavy (11) KALZ, KEZR, KLLC, KPLZ, WBMX, WBNS, WJLK, WKZN, WLNK, WMC, WOMX Medium (11), Light (27) Airplay Adds: 1 WBSN

AUDIOSLAVE 803/-3 Like A Stone (Interscope/Epic) Total Stations: 48 Chart Move: 23-24 Heavy (8) KALC, KALZ, KIZS, KMXB, KZPT, WCDA, WVVZ, WZPL Medium (18), Light (22) Airplay Adds: 1 WBSN

CHRISTINA AGUILERA 409/44 Fighter (RCA/RMG) Total Stations: 19 Chart Move: 29-28 Heavy (6) KHTO, KIZS, WBMX, WENS, WKRR, WMMX Medium (5), Light (8) Airplay Adds: 2 KSTZ, WQAL

PLUMB 375/31 Real (Curb) Total Stations: 26 Chart Move: 31-30 Heavy (1) KVUU Medium (11), Light (14) Airplay Adds: 1 WDMA

PETE YORN 368/62 Crystal Village (Columbia) Total Stations: 27 Chart Move: 33-31 Heavy (0) Medium (14), Light (13) Airplay Adds: 3 KURB, WBNS, WSSR

FLEETWOOD MAC 334/176 Say You Will (Reprise) Total Stations: 27 Chart Move: Debut 32 Heavy (1) KSTZ Medium (12), Light (14) Airplay Adds: 11 KHTO, KIMN, KQIS, KVUU, WBMX, WCDA, WJLK, WRVE, WTSS, WVOR, WXMA

PINK FEATURING WILLIAM ORBIT 316/46 Feel Good Time (Columbia) Total Stations: 27 Chart Move: 35-33 Heavy (2) KFMB, KMXB Medium (8), Light (17) Airplay Adds: 4 KMPX, KYKY, WMMX, WZPL

THE ATARIS 307/73 The Boys Of Summer (Columbia) Total Stations: 15 Chart Move: 39-34 Heavy (4) KALC, KMXB, KRSK, WSSR Medium (5), Light (6) Airplay Adds: 2 KHTO, WMBZ

SUGAR RAY 263/85 Is She Really Going Out With Him (Atlantic) Total Stations: 32 Chart Move: Debut 36 Heavy (0) Medium (6), Light (26) Airplay Adds: 8 KHTO, KVUU, WJLK, WMMX, WMMV, WRFY, WSNE, WVOR

SMASH MOUTH 259/163 You Are My Number One (Interscope) Total Stations: 26 Chart Move: Debut 38 Heavy (0) Medium (7), Light (19) Airplay Adds: 15 KFME, KHTO, KIZS, KQIS, KTOZ, KURB, KVUU, KYIS, WCDA, WINK, WPLJ, WRFY, WTSS, WVOR, WVRV

COLDPLAY 221/68 The Scientist (Capitol) Total Stations: 20 Chart Move: Debut 40 Heavy (1) WSSR Medium (6), Light (13) Airplay Adds: 3 KAMX, KVUU, WTMX

SHANIA TWAIN 99/14 Forever And For Always (Mercury/IDJMG) Total Stations: 7 Heavy (1) WTSS Medium (2), Light (4) Airplay Adds: 1 KURB

SIMPLE PLAN 92/6 Addicted (Lava) Total Stations: 4 Heavy (2) KHTO, KIZS Medium (0), Light (2)

BROOKE 89/29 Coming Home (Connoisseur/Artemis) Total Stations: 9 Heavy (0) Medium (3), Light (6) Airplay Adds: 1 KSII

FOO FIGHTERS 78/13 Times Like These (Roswell/RCA/RMG) Total Stations: 5 Heavy (1) KFMB Medium (2), Light (2)

GUSTER 74/3 Amsterdam (Gonna Write You A Letter) (Palm/Reprise) Total Stations: 11 Heavy (0) Medium (3), Light (8)

O.A.R. 74/50 Hey Girl (Everfine/Lava) Total Stations: 8 Heavy (0) Medium (3), Light (5) Airplay Adds: 4 KALZ, KPEK, KQMB, WSSR

DAVE GAHAN 67/1 Dirty Sticky Floors (Mute/Reprise) Total Stations: 5 Heavy (0) Medium (3), Light (2)

MATT NATHANSON 57/3 Laid (Republic/Universal/UMRG) Total Stations: 4 Heavy (0) Medium (3), Light (1)

PALOOZA 167/1 Breathe In (American/IDJMG) Total Stations: 15 Heavy (1) WSSR Medium (3), Light (11) Airplay Adds: 1 KFBZ

ALICE PEACOCK 161/0 Bliss (Columbia) Total Stations: 11 Heavy (2) KMXB, WTMX Medium (2), Light (7)

MERCYME 151/17 I Can Only Imagine (INO/Curb) Total Stations: 10 Heavy (2) WKZN, WOMX Medium (1), Light (7) Airplay Adds: 1 WLNK

SALIVA 147/26 Rest In Pieces (Island/IDJMG) Total Stations: 8 Heavy (0) Medium (7), Light (1) Airplay Adds: 1 WVVZ

ANNIE LENNOX 144/5 Pavement Cracks (JRMGM) Total Stations: 16 Heavy (0) Medium (3), Light (13) Airplay Adds: 2 KKPN, WMC

MACY GRAY 128/20 She Ain't Right For You (Epic) Total Stations: 11 Heavy (0) Medium (4), Light (7) Airplay Adds: 1 KSII

FOUNTAINS OF WAYNE 120/39 Stacy's Mom (S-Curve/Virgin) Total Stations: 11 Heavy (2) KRSK, WPTA Medium (1), Light (8) Airplay Adds: 1 KALC

CLAY AIKEN 107/5 This Is The Night (RCA/RMG) Total Stations: 16 Heavy (0) Medium (3), Light (13) Airplay Adds: 1 WPLJ

SHANIA TWAIN 99/14 Forever And For Always (Mercury/IDJMG) Total Stations: 7 Heavy (1) WTSS Medium (2), Light (4) Airplay Adds: 1 KURB

SIMPLE PLAN 92/6 Addicted (Lava) Total Stations: 4 Heavy (2) KHTO, KIZS Medium (0), Light (2)

BROOKE 89/29 Coming Home (Connoisseur/Artemis) Total Stations: 9 Heavy (0) Medium (3), Light (6) Airplay Adds: 1 KSII

FOO FIGHTERS 78/13 Times Like These (Roswell/RCA/RMG) Total Stations: 5 Heavy (1) KFMB Medium (2), Light (2)

GUSTER 74/3 Amsterdam (Gonna Write You A Letter) (Palm/Reprise) Total Stations: 11 Heavy (0) Medium (3), Light (8)

O.A.R. 74/50 Hey Girl (Everfine/Lava) Total Stations: 8 Heavy (0) Medium (3), Light (5) Airplay Adds: 4 KALZ, KPEK, KQMB, WSSR

DAVE GAHAN 67/1 Dirty Sticky Floors (Mute/Reprise) Total Stations: 5 Heavy (0) Medium (3), Light (2)

MATT NATHANSON 57/3 Laid (Republic/Universal/UMRG) Total Stations: 4 Heavy (0) Medium (3), Light (1)

PALOOZA 167/1 Breathe In (American/IDJMG) Total Stations: 15 Heavy (1) WSSR Medium (3), Light (11) Airplay Adds: 1 KFBZ

LUTHER VANDROSS 53/14 Dance With My Father (JRMGM) Total Stations: 6 Heavy (0) Medium (2), Light (4)

JULY FOR KINGS 50/9 Normal Life (MCA) Total Stations: 2 Heavy (1) KMXB Medium (0), Light (1)

R. KELLY 45/19 Ignition (Jive) Total Stations: 3 Heavy (1) WMMX Medium (0), Light (2)

ASHANTI 45/6 Rock Wit U (Awww Baby) (Murder Inc./Def Jam/IDJMG) Total Stations: 2 Heavy (1) KSII Medium (0), Light (1)

CLAY AIKEN 42/9 Bridge Over Troubled Water (RCA/RMG) Total Stations: 4 Heavy (0) Medium (2), Light (2)

MARIAH CAREY 39/15 Bringin' On The Heartbreak (MonarC/Island/IDJMG) Total Stations: 6 Heavy (0) Medium (0), Light (6) Airplay Adds: 1 WWWW

DAKONA 37/17 Good (I've Got A Lot To Learn) (Maverick/Reprise) Total Stations: 9 Heavy (0) Medium (1), Light (8)

LINKIN PARK 37/3 Somewhere I Belong (Warner Bros.) Total Stations: 3 Heavy (0) Medium (1), Light (2)

THE BEU SISTERS 33/25 I Was Only (Seventeen) (S-Curve/Virgin) Total Stations: 5 Heavy (0) Medium (0), Light (5) Airplay Adds: 3 KQIS, KURB, WSNE

SIMPLY RED 33/10 Sunrise (simplyred.com) Total Stations: 4 Heavy (0) Medium (1), Light (3) Airplay Adds: 1 KIMN

WAYNE WONDER 33/3 No Letting Go (VP/Atlantic) Total Stations: 3 Heavy (0) Medium (1), Light (2)

GOOD CHARLOTTE 31/26 Girls And Boys (Daylight/Epic) Total Stations: 3 Heavy (0) Medium (1), Light (2) Airplay Adds: 2 KALZ, KIZS

JUSTIN GUARINI 29/19 Sorry (RCA/RMG) Total Stations: 1 Heavy (0) Medium (1), Light (0)

BLACK EYED PEAS 28/26 Where Is The Love? (A&M/Interscope) Total Stations: 2 Heavy (0) Medium (1), Light (1) Airplay Adds: 1 WQAL

MATCHBOX TWENTY 26/0 Bright Lights (Atlantic) Total Stations: 1 Heavy (0) Medium (1), Light (0)

H=Heavy (30+ Detections), M=Medium (15-29), L=Light (Under 15). Airpower awarded to songs appearing in the top 20 on both the Airplay and Audience charts for the first time with increases in both detections and audience. * Initial impact: songs appearing on this page for the first time in summary form. Airplay Adds are songs with 6 or more detections at new stations this week. The Airplay Leaderboard ranks taste-maker stations that have been the most successful in identifying future hit songs as measured by the amount of AIRPOWER titles for which they were Airplay Leaders. Refer to each format's Power Playlists page to see this week's Airplay Leaders.

THIS WEEK	LAST WEEK	WKS. ON CHART	TITLE/IMPRINT/PROMOTION LABEL	ARTIST	DETECTIONS		AUDIENCE	
					TW	LW	MILLIONS	RANK
			★ ★ ★ No. 1 ★ ★ ★					
1	1	17	DRIFT AWAY LAVA 6 weeks at No. 1	UNCLE KRACKER FEATURING DOBIE GRAY	1928	1999	20.319	1
2	2	11	HAVE YOU EVER BEEN IN LOVE EPIC	CELINE DION	1816	1891	16.810	2
(3)	3	13	IF YOU'RE NOT THE ONE ISLAND/IDJMG	DANIEL BEDINGFIELD	1739	1707	15.081	3
4	4	40	THE GAME OF LOVE ARISTA	SANTANA FEATURING MICHELLE BRANCH	1442	1553	14.393	4
5	6	41	CAN'T STOP LOVING YOU ATLANTIC	PHIL COLLINS	1371	1345	12.148	7
6	5	29	BEAUTIFUL RCA/RMG	CHRISTINA AGUILERA	1323	1444	11.330	9
7	7	12	ONE WARNER BROS.	FAITH HILL	1240	1322	11.341	8
8	8	46	DON'T KNOW WHY BLUE NOTE/VIRGIN	NORAH JONES	1203	1268	10.326	10
(9)	10	10	FOREVER AND FOR ALWAYS MERCURY/IDJMG	SHANIA TWAIN	1148	1027	8.506	11
(10)	12	6	HOLE IN THE WORLD ERC	EAGLES	1080	1015	8.455	12
11	9	63	A THOUSAND MILES A&M/INTERSCOPE	VANESSA CARLTON	962	1049	8.300	13
12	11	44	CRY WARNER BROS.	FAITH HILL	952	1022	8.116	15
(13)	13	9	BIG YELLOW TAXI GEFEN/INTERSCOPE	COUNTING CROWS FEATURING VANESSA CARLTON	915	894	12.517	5
14	15	86	SUPERMAN (IT'S NOT EASY) AWARE/COLUMBIA	FIVE FOR FIGHTING	860	727	8.032	16
(15)	16	8	UNWELL ATLANTIC	MATCHBOX TWENTY	799	717	12.331	6
(16)	17	7	MAN ON A MISSION U-WATCH	DARYL HALL JOHN OATES	706	697	3.696	21
(17)	18	4	DANCE WITH MY FATHER J/RMG	LUTHER VANDROSS	666	565	8.234	14
(18)	21	8	I CAN ONLY IMAGINE INO/CURB	MERCYME	507	447	2.333	25
19	20	21	PICTURE LAVA/ATLANTIC	KID ROCK FEATURING SHERYL CROW	419	452	6.209	17
			★ ★ AIRPOWER ★ ★					
(20)	27	2	THIS IS THE NIGHT RCA/RMG	CLAY AIKEN	414	269	5.101	18
(21)	23	4	I HEARD IT THROUGH THE GRAPEVINE MOTOWN/UMRG	MICHAEL MCDONALD	409	376	2.181	28
22	22	20	TRY IT ON MY OWN ARISTA	WHITNEY HOUSTON	357	413	3.102	23
23	19	16	PEACEKEEPER REPRISE	FLEETWOOD MAC	328	512	1.951	-
(24)	26	5	DON'T WANNA TRY COLUMBIA	FRANKIE J	314	295	2.612	24
25	24	24	I DROVE ALL NIGHT EPIC	CELINE DION	309	364	3.438	22
26	25	23	I'M WITH YOU ARISTA	AVRIL LAVIGNE	298	319	2.219	27
(27)	NEW		WE CAN REPRISE/CURB	LEANN RIMES	293	174	1.345	-
			★ GREATEST GAINER®/MOST AIRPLAY ADDS ★					
(28)	NEW		SAY YOU WILL REPRISE	FLEETWOOD MAC	285	86	3.987	20
(29)	30	4	FLYING WITHOUT WINGS J/RMG	RUBEN STUDDARD	281	233	4.318	19
30	28	19	DON'T DREAM IT'S OVER SQUINT-CURB/REPRISE	SIXPENCE NONE THE RICHER	252	266	2.290	26

Songs ranked by number of detections. () Songs showing an increase in detections over the previous week, regardless of chart movement. A song will also receive a bullet if its percentage loss in detections does not exceed the percentage of monitored station downtime for the format. A song that has been on the chart for more than 20 weeks will generally not receive a bullet, even if it registers an increase in detections. Airpower awarded to songs appearing in the top 20 on both the Airplay and Audience charts for the first time with increases in both detections and audience. Greatest Gainer awarded to the song with the largest increase in detections. Most Airplay Adds awarded to the song registering six or more detections at the most stations for the first time this week. A song with a gain in detections over the previous week is placed first if tied with a song with a decline over the same period. When tied songs are each gaining detections or each losing detections, the song being played on more stations is placed first. Songs below the top 15 become recurrents and are removed from the chart after 26 weeks.

most airplay adds

ADULT CONTEMPORARY

NEW STATIONS

FLEETWOOD MAC *Say You Will (Reprise)* **20**
KESZ, KGBY, KKCW, KOSI, KRBB, KSRC, KVL, WDOK, WHUD, WLTJ, WMGN, WMGS, WMXC, WNIC, WOOD, WRVR, WSUY, WTFM, WTPI, WTVR
Total Stations With Six Or More Detections: 25
TOTAL DETECTIONS BY DAYPART: 6-10 **8%**, 10-3 **20%**, 3-7 **17%**, 7-12 **10%**, 12-6A **46%**

LEANN RIMES *We Can (Reprise/Curb)* **13**
KESZ, KISC, KOSI, KSRC, KTDY, WALK, WDEF, WDOK, WLTE, WLTJ, WMXC, WRVR, WSHH
Total Stations With Six Or More Detections: 24
TOTAL DETECTIONS BY DAYPART: 6-10 **4%**, 10-3 **13%**, 3-7 **13%**, 7-12 **9%**, 12-6A **61%**

CLAY AIKEN *This Is The Night (RCA/RMG)* **12**
CIDR, KLSY, KMZQ, KSFI, KYMX, WBEB, WHUD, WJXB, WLHT, WLTE, WLTW, WOBB
Total Stations With Six Or More Detections: 30
TOTAL DETECTIONS BY DAYPART: 6-10 **15%**, 10-3 **23%**, 3-7 **19%**, 7-12 **13%**, 12-6A **30%**

LUTHER VANDROSS *Dance With My Father (J/RMG)* **8**
CIDR, WARM, WDOK, WLHT, WLMG, WMGC, WMGS, WVAF
Total Stations With Six Or More Detections: 44
TOTAL DETECTIONS BY DAYPART: 6-10 **13%**, 10-3 **18%**, 3-7 **15%**, 7-12 **18%**, 12-6A **37%**

MATCHBOX TWENTY *Unwell (Atlantic)* **6**
KEZK, KRBB, KSSK, KWAV, WBEB, WOBB
Total Stations With Six Or More Detections: 42
TOTAL DETECTIONS BY DAYPART: 6-10 **17%**, 10-3 **21%**, 3-7 **20%**, 7-12 **11%**, 12-6A **31%**

GREATEST GAINERS ADULT CONTEMPORARY

INCREASE IN DETECTIONS

FLEETWOOD MAC • *Say You Will (Reprise)* **+199**
KOSI +19, WRVR +15, WHUD +12, KVL +10, WTPI +9, KKCW +9, KSRC +9, WMGN +9, WNIC +9, WOOD +9

CLAY AIKEN • *This Is The Night (RCA/RMG)* **+145**
WBEB +15, WRSN +13, WHUD +12, KMZQ +10, WJXB +10, WDOK +8, WLTW +8, KLSY +8, KSFI +8, WRAL +7

SHANIA TWAIN • *Forever And For Always (Mercury/IDJMG)* **+121**
WLDE +10, WOBB +8, WTVR +7, WSUQ -6, WBBQ +6, WEAT +6, KESZ +5, KVL +5, WTFM +5

LEANN RIMES • *We Can (Reprise/Curb)* **+119**
WRVR +13, KBEE +10, KOSI +8, WLTJ +7, WALK +5, WASH +5, WOBB +5, KVL +4, WDEF +4, KTDY +4

LUTHER VANDROSS • *Dance With My Father (J/RMG)* **+101**
WMGC +16, WMGS +15, WOBB +11, WARM +11, CIDR +10, WBBQ +8, WLHT +8, WHUD +7, KOSI +7, WDOK +7

Monitor. RECURRENTS ADULT CONTEMPORARY

RANK	TITLE ARTIST (IMPRINT/PROMOTION LABEL)	DETECTIONS	
		TW	LW
1	HERO ENRIQUE IGLESIAS (INTERSCOPE)	868	807
2	SOAK UP THE SUN SHERYL CROW (A&M/INTERSCOPE)	796	825
3	I HOPE YOU DANCE LEE ANN WOMACK (MCA NASHVILLE/UNIVERSAL/UMRG)	718	742
4	IF YOU'RE GONE MATCHBOX TWENTY (LAVA/ATLANTIC)	714	800
5	THANK YOU DIDO (ARISTA)	704	700
6	DROPS OF JUPITER (TELL ME) TRAIN (COLUMBIA)	699	705
7	I'M ALREADY THERE LONESTAR (BNA)	638	653
8	A NEW DAY HAS COME CELINE DION (EPIC)	634	499
9	SOMETHING TO TALK ABOUT BONNIE RAITT (CAPITOL)	602	516

RANK	TITLE ARTIST (IMPRINT/PROMOTION LABEL)	DETECTIONS	
		TW	LW
10	WHEREVER YOU WILL GO THE CALLING (RCA/RMG)	570	595
11	YOUR BODY IS A WONDERLAND JOHN MAYER (AWARE/COLUMBIA)	552	581
12	I NEED YOU LEANN RIMES (SPARROW/CAPITOL/CURB)	547	560
13	TRULY MADLY DEEPLY SAVAGE GARDEN (COLUMBIA)	539	577
14	ONLY TIME ENYA (REPRISE)	533	581
15	COMPLICATED AVRIL LAVIGNE (ARISTA)	520	568
16	A MOMENT LIKE THIS KELLY CLARKSON (RCA/RMG)	519	560
17	EVERY BREATH YOU TAKE THE POLICE (A&M/INTERSCOPE)	514	483
18	FOREVER FOR YOU DARYL HALL JOHN OATES (U-WATCH)	506	531
19	YOU'RE STILL THE ONE SHANIA TWAIN (MERCURY/IDJMG)	505	398
20	(I'VE HAD) THE TIME OF MY LIFE BILL MEDLEY & JENNIFER WARNES (RCA/RMG)	505	432

Recurrents are titles that have appeared on the Adult Contemporary Airplay chart for 26 weeks and have dropped below the top 15.

MERCYME

"I CAN ONLY IMAGINE"

A MAINSTREAM A/C SMASH...
MONITOR AC (21) - (18) OVER 500 SPINS
R&R A/C CHART... 19*-16*... OVER 735 SPINS

NEW THIS WEEK @: KOST/LOS ANGELES!!!!
WHBC/CANTON & WMAG/GREENSBORO
MAJOR FEATURE ON MERCY ME IN LA TIMES LAST WEEK

HOT A/C ACTION... NEW THIS WEEK @: K101/SF... WMYX/MILWAUKEE... WKRC/CINCINNATI

MAJOR ACTION AT: WOZN 38x, WOMX 37x, WKZN 33x, WMMX 14x, WLNK 10x

www.mercyme.org
CURB RECORDS curb.com



LEANN RIMES

ANOTHER LEANN HIT FOR A/C RADIO... MOST ADDED 3 WEEKS IN A ROW
MONITOR AC DEBUT (27)
R&R A/C... DEBUT @ 23*... OVER 400 SPINS
HOT A/C ACTION AT: WTSS 26x, KIMN 21x, WMC 21x, KFMB 12x, KSZR 12x, KHMV 11x
MAJOR SPINS AT: KVL, KBEE, WTPI, WRVR, KOSI, WLTJ, KXLY & MORE

FEATURED TRACK IN THE MOVIE LEGALLY BLONDE 2: RED WHITE & BLONDE

MASSIVE 4TH OF JULY WEEKEND EXPOSURE.....

ADULT CONTEMPORARY AIRPLAY Monitor Nielsen Broadcast Data Systems

Songs posting gains in detections or with a percentage loss in detections equal to or better than the monitored downtime percentage in the format. Songs listed in order of detections. *Indicates station experienced between 24 and 56 hours of monitored downtime during the chart week.

TOP 10 BOUND

Total Detections/Gain COUNTING CROWS FEAT. VANESSA CARLTON 915/21 Big Yellow Taxi (Geffen/Interscope)

Table with columns: Station, LW, 2W, 3W, ID, Mon/Oceania, WOBM, LW, 2W, 3W, ID. Lists stations and their performance for 'Big Yellow Taxi'.

AIRPOWER CLAY AIKEN 414/145 This Is The Night (RCA/ARMG)

Total Detections/Gain NO AIRPLAY LEADER

Table with columns: Station, LW, 2W, 3W, ID, Mon/Oceania, WOBM, LW, 2W, 3W, ID. Lists stations and their performance for 'This Is The Night'.

MATCHBOX TWENTY 799/82 Unwell (Atlantic)

Total Stations: 64 Chart Move: 16-15 H (17), M (10), L (37) Airplay Adds: 6

Table with columns: Station, LW, 2W, 3W, ID, Mon/Oceania, WOBM, LW, 2W, 3W, ID. Lists stations and their performance for 'Unwell'.

AIRPOWER BOUND DARYL HALL JOHN OATES 706/9 Man On A Mission (U-Watch)

Total Stations: 83 Chart Move: 17-16 H (4), M (13), L (66) Airplay Adds: 2

Table with columns: Station, LW, 2W, 3W, ID, Mon/Oceania, WOBM, LW, 2W, 3W, ID. Lists stations and their performance for 'Man On A Mission'.

LUTHER VANDROSS 666/101 Dance With My Father (JRMG)

Total Stations: 79 Chart Move: 18-17 H (5), M (19), L (55) Airplay Adds: 8

Table with columns: Station, LW, 2W, 3W, ID, Mon/Oceania, WOBM, LW, 2W, 3W, ID. Lists stations and their performance for 'Dance With My Father'.

MICHAEL MCDONALD 409/33 I Heard It Through The Grapevine (Motown/UMRG)

Total Stations: 51 Chart Move: 23-21 H (1), M (7), L (43) Airplay Adds: 5

Table with columns: Station, LW, 2W, 3W, ID, Mon/Oceania, WOBM, LW, 2W, 3W, ID. Lists stations and their performance for 'I Heard It Through The Grapevine'.

FRANKIE J 314/19 Don't Wanna Try (Columbia)

Total Stations: 41 Chart Move: 26-24 H (2), M (3), L (36) Airplay Adds: 3

Table with columns: Station, LW, 2W, 3W, ID, Mon/Oceania, WOBM, LW, 2W, 3W, ID. Lists stations and their performance for 'Don't Wanna Try'.

LEANN RIMES 293/119 We Can (Reprise/Curb)

Total Stations: 45 Chart Move: Debut 27 H (0), M (4), L (41) Airplay Adds: 13

Table with columns: Station, LW, 2W, 3W, ID, Mon/Oceania, WOBM, LW, 2W, 3W, ID. Lists stations and their performance for 'We Can'.

FLEETWOOD MAC 285/199 Say You Will (Reprise)

Total Stations: 39 Chart Move: Debut 28 H (0), M (4), L (35) Airplay Adds: 20

Table with columns: Station, LW, 2W, 3W, ID, Mon/Oceania, WOBM, LW, 2W, 3W, ID. Lists stations and their performance for 'Say You Will'.

RUBEN STUDDARD 281/48 Flying Without Wings (JRMG)

Total Stations: 55 Chart Move: 30-29 H (1), M (1), L (53) Airplay Adds: 3

Table with columns: Station, LW, 2W, 3W, ID, Mon/Oceania, WOBM, LW, 2W, 3W, ID. Lists stations and their performance for 'Flying Without Wings'.

CHART BOUND

Total Detections/Gain

Table with columns: Station, LW, 2W, 3W, ID, Mon/Oceania, WOBM, LW, 2W, 3W, ID. Lists stations and their performance for chart-bound songs.

SIMPLY RED 110/35 Sunrise (simplyred.com)

Total Stations: 20 Heavy (0) Medium (1), Light (19) Airplay Adds: 5 KKLt, KTSM, WBEB, WLIF, WTCB

ANNIE LENNOX 100/15 Pavement Cracks (JRMG)

Total Stations: 19 Heavy (0) Medium (0), Light (19) Airplay Adds: 1 KKMJ

JOHN MAYER 100/3 Why Georgia (Aware/Columbia)

Total Stations: 8 Heavy (0) Medium (5), Light (3) Airplay Adds: 1 KVLV

DAN GARDNER 82/1 More Than Life (DGP)

Total Stations: 15 Heavy (0) Medium (0), Light (15) Airplay Adds: 1 KISC

NORAH JONES 78/19 Come Away With Me (Blue Note/Virgin)

Total Stations: 8 Heavy (2) KLSY, WRAL Medium (0), Light (6)

STEVEN CURTIS CHAPMAN 70/10 How Do I Love Her (Sparrow)

Total Stations: 14 Heavy (0) Medium (0), Light (14) Airplay Adds: 2 KISC, WLTE

KELLY CLARKSON 61/17 Miss Independent (RCA/ARMG)

Total Stations: 6 Heavy (1) KBIG Medium (0), Light (5) Airplay Adds: 1 WRAL

DAVID COREY 35/1 Now That I Love You (Legend)

Total Stations: 5 Heavy (0) Medium (0), Light (5)

JEWEL 32/4 Intuition (Atlantic)

Total Stations: 6 Heavy (0) Medium (1), Light (5) Airplay Adds: 1 WMJX

CHANTAL KREVIAZUK 32/1 In This Life (Columbia)

Total Stations: 3 Heavy (0) Medium (1), Light (2)

JASON MRAZ 32/0 The Remedy (I Won't Worry) (Elektra/EEG)

Total Stations: 5 Heavy (1) WRAL Medium (0), Light (4)

JOAN ARMSTRADING 26/5 Lover's Speak (Denon)

Total Stations: 6 Heavy (0) Medium (0), Light (6)

H=Heavy (21+ Detections), M=Medium (14-20), L=Light (Under 14). Airpower awarded to songs appearing in the top 20 on both the Airplay and Audience charts for the first time with increases in both detections and audience. * Initial impact: songs appearing on this page for the first time in summary form. Airplay Adds are songs with 6 or more detections at new stations this week. The Airplay Leaderboard ranks take-maker stations that have been the most successful in identifying future hit songs as measured by the amount of AIRPOWER titles for which they were Airplay Leaders. Refer to each format's Power Playlists page to see this week's Airplay Leaders.



Bakersfield Is Grooving Once Again To Jammin' Oldies

In the late '90s, almost every market had a station dedicated to R&B oldies from some sort, including Bakersfield, Calif. But the mania over Jammin' Oldies came and went, with most stations either evolving into adult R&B or switching altogether, including Bakersfield's KCOO. But now, R&B oldies are back in Bakersfield and bigger than ever.

Buckley Broadcasting's KKBB (Groove 93.3) has gone 2.7-7.1 12-plus since switching from classic rock in early February—good for third place overall. It has also had a noticeable impact on rhythmic top 40 powerhouse KISV (Hot 94.1), the former KCOO's sister station, which was off 10.0-7.3 during the same period.

KKBB PD Tommy Del Rio, a San Jose, Calif., native, also programs rhythmic top 40 KSEQ Fresno, Calif., and classic rock KIOO Visalia, Calif. He began working with KKBB when Buckley purchased the station late last year.

When Del Rio suggested Jammin' Oldies as an option, he says, "boy, was I putting myself out there. The format had been unsuccessful in most markets, including this one. But as an outsider looking in, I could tell those stations were unfocused and not superserving the right audience. We needed something that would cost almost nothing to run and that would sell easily on the local level.

"This is an easy format to sell locally," he adds, "and we've already seen a large increase in revenue over the past few months." While Del Rio allows that "the staying power of this station is a tough call, KKBB could last five to 10 years or longer. In the meantime, we're enjoying the success and the increase in revenue."

THE SECOND TIME AROUND

Working in Fresno as well as Bakersfield, Del Rio has the advantage of being across the street from one of the few enduring stations from Jammin' Oldies' first wave, KMGV. He feels the format ultimately disappointed in most markets because of a "cookie cutter" approach. "Every situation is different, and I did see mistakes made by stations that switched to Jammin' Oldies. How can you start up a station by modeling it after someone's success in another market? If you're going to do this or any other format, you've got to do it right with the right people.

"The first Jammin' Oldies was unfocused: The music was all over the place, the jocks were voice-tracked and had no passion in between the records, and their image did not reflect the market. Groove is the complete opposite, and judging from the feedback, research and ratings, the audience seems to vibe with its music more than the first experience they [had]."

The timing may be better as well. "We are in a time of consolidation in just about every industry," Del Rio says. "Jobs are cut, people are mad. The best thing for me to do as a PD is be an outlet for good times."

Musically, KKBB shares a lot of its key titles with the various "low rider" and "old school" shows heard in Los Angeles over the years, with core acts that include not only Al Green, Marvin Gaye and the Gap Band but also War, Zapp & Roger, and Brenton Wood.

One reason for the L.A. influence is because the market didn't have any R&B or rhythmic radio of its own until the late '80s. "Bakersfield never really had many heritage stations due to numerous format changes the market has encountered over the last few decades. I've done my own research from various sources."

LET ME SEE YOU GO BACK/ LET ME SEE YOU GO FORTH

KSEQ is licensed to KIOO's home market of Visalia but competes in Fresno, which puts Del Rio in the unique position of programming three stations for three different markets. "I'm based out of Visalia, with Fresno 40 minutes north of me and Bakersfield 70 miles south of me. I actually hear all three radio stations from my home and office. Fresno is tough. I'm battling a heritage top 40 [KBOS] and we go at it every day. My competitor could suck and still win because of their top-of-mind recognition, so we have to work extra hard to win there. I have APDs for each station, and boy, do they help. I'm basically the coach that picks the right players that will follow our game plan to win."

Promotionally, KKBB's TV campaign is in the works, "and we already have a strong street presence," Del Rio says. "We just wrapped up

our party cruise to Ensenada, Mexico, and we've already had three concerts. We always reflect the lifestyle of our audience."

While any hot station initially transcends its target demos, Del Rio doesn't expect that situation to last forever. "Bakersfield's Old School" is what we are. The station targets adults 25-54 and we superserve 35-44. As an oldies format, I don't expect to keep the high 12-plus share. The younger [listeners] will filter back to top 40 with limited listening, but it's the upper demos that will continue to tune in. If I keep a good balance of cume and TSL, we'll be fine in the demos I need to reach."

KKBB's airstaff consists of local and regional veterans who are familiar with the music and lifestyle, including afternoon talent Joe Brown, a Bakersfield native with 20 years in radio at various area stations. Del Rio is currently accepting tapes and résumés for a morning show.



DEL RIO

GROOVE 93.3 2 P.M.

Marvin Gaye, "Let's Get It On"
War, "The Cisco Kid"
Connie, "Funky Little Beat"
The Gap Band, "You Dropped a Bomb on Me"
Brenton Wood, "Me and You"
A Taste of Honey, "Boogie Oogie Oogie"
Santana, "Oye Como Va"
Earth, Wind & Fire, "Reasons" (live)
Prince, "When Doves Cry"
Deniece Williams, "Silly"
Stevie Wonder, "Superstition"
El Chicano, "Tell Her She's Lovely"
Mary Jane Girls, "All Night Long"

Q: What's in your CD player?

Sugar Bear, PD, WAJZ Albany, N.Y.: "R. Kelly's 'Chocolate Factory.' I've been playing the hell out of that CD for so long."

Tony Gray, president, Gray Communications: "50 Cent and David Banner at the moment."

Terri Avery, PD, WPEG/WBAV Charlotte, N.C.: "R. Kelly's 'Chocolate Factory.' The whole CD is tight!"

D.C., PD, WQQK Nashville: "Aretha Franklin's 'Amazing Grace: The Complete Recordings.' I found this double-CD set on a trip to New York recently, and it's outstanding. A must-have."

Derrick Brown, PD, WHQT (Hot 105) Miami: "Johnny Guitar Watson's 'Ain't That a Bitch' and 'A Real Mcther for Ya.'"



D.C.

Ladies Only



J Records artist Tyrese, left, appeared at an exclusive ladies-only meet-and-greet with R&B WBOT (Hot 97.7) Boston. He's pictured with midday personality Rocsi.

RADIO CONCERT MONITOR

DATE	STATION	EVENT	PROMOTIONS DIRECTOR
July 4	KKDA Dallas APPEARING: Monica	Trinity Fest	Liz Laos
July 19	WDKX Rochester, N.Y. APPEARING: Floetry, BL Cantrell, Musiq, Erykah Badu	Rochester Music Fest	Virginia Relyea
July 19	WHRK Memphis APPEARING: Avant, B.G., Bubba Sparxxx, Tela, Big Gipp, David Banner, Chingy, Yo Gotti	K97 Summer Jam	Frank Gilbert
July 19	WWHV Norfolk, Va. APPEARING: Ludacris, Field Mob, Wayne Wonder, Lil' Mo, Bow Wow, Joe Budden	Hot Summer Fest	Aaron Graves
July 20	WDKX Rochester, N.Y. APPEARING: Third Word, Dru Hill, the Whispers, Frankie Beverly & Maze	Rochester Music Fest	Virginia Relyea
July 24	KBMB Sacramento, Calif. APPEARING: TBA	Doug Banks Jam Session	Tessica Island
July 24	WQHT New York APPEARING: Ashanti	Hot Summer Night	Kevin Cox
July 26	KMEL San Francisco APPEARING: Jay-Z, 50 Cent, Sean Paul, Busta Rhymes, Blackalicious	Rock the Mic	Stacy Cunningham
Aug. 2	KHHT Los Angeles APPEARING: Cameo, M.C. Hammer, Con Funk Shun, Naughty by Nature, Frankie J, Wayne Wonder, Seduction, Stevie B.	Funktastic Bombastic	Freddie Mino
Aug. 2	XHRM San Diego APPEARING: Dazz Bard, Mary Jane Girls, the Midnighters, A Taste of Honey, Evelyn "Champagne" King, Midnight Star, Zapp	Old-School Summer Jam 3	Sergio Hernandez

Let us monitor your event! Call Skip Dillard at 646-654-4688 or e-mail sdillard@airplaymonitor.com



Songs ranked by number of detections. Playlists are listed in order of TSA weekly cume, beginning with the highest-cuming station. Cumes are updated twice yearly following the release of the spring and fall Arbitron surveys. The number of stations shown each week varies depending upon space.

Airplay Adds (AA) denotes songs with 6 or more detections at station for first time this week.

AIRPLAY LEADERBOARD

THE STATIONS THAT BREAK THE HITS



WZMX Hartford, CT (MD: DJ Buck)

Airplay Leader Designations: 12

- #1 WQHT, New York, NY (PD/MD: Cloherty/E-Bro) 8
#2 WJNH, Baton Rouge, LA (PD: Randy Chase) 7
#4 WBHH, Norfolk, VA (PD: Heart Attack) 6
#5 KKDA, Dallas, TX (PD: Skip Cheatham) 5

Refer to Impact! page for this week's Airplay Leaders and Airplay Leaderboard rules.

WGCI Chicago OM: Eloy R.C. Smith APD/MD: Tiffany Green Clear Channel 312-540-2000

Table with 2 columns: Rank and Song/Artist. Top songs include Monica So Gone, Aaliyah Come Over, Dru Hill I Love You, Ginuwine in Those Jeans, Lil' Kim Featuring Twista Thug Liv, etc.

WPWX Chicago PD/MD: Jay Alan APD: Tracie Reynolds AMD: Barbara McDowell Crawford 773-734-4455

Table with 2 columns: Rank and Song/Artist. Top songs include Eminem, 50 Cent & Busta Rhym Hail Mary, Monica So Gone, Ginuwine in Those Jeans, Lil' Kim Featuring 50 Cent Magic Stick, etc.

WQHT New York VP/Pgm: Tracy Cloherty MD: E-Bro Emmis 212-229-9797

Table with 2 columns: Rank and Song/Artist. Top songs include Lumidee Never Leave You - Uh Ooh, Uh Oh, Sean Paul Get Busy, Monica So Gone, Lil' Kim Featuring 50 Cent Magic Stick, etc.

WJMN Boston PD: Jack McCartney APD: Dennis O'Heron MD: Chris Tyler Clear Channel 781-663-2500

Table with 2 columns: Rank and Song/Artist. Top songs include Ashanti Rock Wit U (Awww Baby), Beyonce Featuring Jay-Z Crazy In Love, Fabulous Featuring Tamia Or Into You, etc.

KMEL San Francisco OM: Michael Martin APD/MD: "Jazzy" Jim Archer Clear Channel 415-538-1061

Table with 2 columns: Rank and Song/Artist. Top songs include Monica So Gone, Floetry Say Yes, Lil' Kim & The East Side Boyz Get Low, etc.

KPWR Los Angeles Dir/Pgm: Damien Young APD/MD: E-man Emmis 818-953-4200

Table with 2 columns: Rank and Song/Artist. Top songs include Lil' Kim Featuring 50 Cent Magic Stick, 2Pac Featuring Trick Daddy Still Ballin, Chingy Right Thurr, etc.

WPGC Washington, DC VP/Pgm: Jay Stevens OM: Reggie Rouse MD: Sarah O'Connor Infinity 301-918-0955

Table with 2 columns: Rank and Song/Artist. Top songs include Beyonce Featuring Jay-Z Crazy In Love, Monica So Gone, Lil' Kim Featuring 50 Cent Magic Stick, etc.

KBXX Houston PD: Tom Calococco MD: Carmen Contreras Radio One 713-623-2108

Table with 2 columns: Rank and Song/Artist. Top songs include Lil' Kim & The East Side Boyz Get Low, David Banner Featuring Lil' Like A Pim, Bone Crusher Featuring Killa Never Scar, etc.

WWPR New York PD: Michael Saunders MD: Mara Melendez Clear Channel 212-704-1051

Table with 2 columns: Rank and Song/Artist. Top songs include Monica So Gone, Ginuwine in Those Jeans, Lil' Kim Featuring 50 Cent Magic Stick, etc.

WUSL Philadelphia Dir/Pgm: Thea Mitchem PD: Glenn Cooper MD: Coca-Lani Clear Channel 215-483-8900

Table with 2 columns: Rank and Song/Artist. Top songs include Dru Hill I Love You, Monica So Gone, Lumidee Never Leave You - Uh Ooh, Uh Oh, etc.

KKDA Dallas PD: Skip Cheatham Service 972-263-9911

Table with 2 columns: Rank and Song/Artist. Top songs include Lil' Kim & The East Side Boyz Get Low, Monica So Gone, H.A.W.K. Featuring Big T You Already Kn, etc.

WBLS New York PD: Vinny Brown MD: Deneen Womack Inner City 212-447-1000

Table with 2 columns: Rank and Song/Artist. Top songs include Beyonce Featuring Jay-Z Crazy In Love, Ginuwine in Those Jeans, Ashanti Rock Wit U (Awww Baby), etc.

WVEE Atlanta PD: Tony Brown APD/MD: Tasha Love Infinity 404-898-8900

Table with 2 columns: Rank and Song/Artist. Top songs include Ginuwine in Those Jeans, Beyonce Featuring Jay-Z Crazy In Love, Monica So Gone, etc.

WEDR Miami PD/MD: Cedric Hollywood AMD: Shelby Rushin Cox 305-623-7711

Table with 2 columns: Rank and Song/Artist. Top songs include 50 Cent P.I.M.P., Lil' Kim Featuring 50 Cent Magic Stick, Monica So Gone, etc.

KKBT Los Angeles PD: Robert Scorpio Radio One 323-634-1800

Table with 2 columns: Rank and Song/Artist. Top songs include Ashanti Rock Wit U (Awww Baby), Chingy Right Thurr, Monica So Gone, etc.

WKYS Washington, DC PD: Darryl Huckaby MD: DJ Iran Radio One 301-306-1111

Table with 2 columns: Rank and Song/Artist. Top songs include Beyonce Featuring Jay-Z Crazy In Love, Bone Crusher Featuring Killa Never Scar, Monica So Gone, etc.

WJLB Detroit PD: K.J. Holiday APD/MD: Kris Kelly Clear Channel 313-965-2000

Table with 2 columns: Rank and Song/Artist. Top songs include Monica So Gone, Lil' Kim & The East Side Boyz Get Low, Ginuwine in Those Jeans, etc.

R&B/HIP-HOP

R&B/HIP-HOP

Airplay Adds (AA) denotes songs with 6 or more detections at station for first time this week.



POWER PLAYISTS

KBFB Dallas PD: John Candelaria MD: Big Bink Radio One 972-331-5400

WDTJ Detroit PD: Charles "Spudd" Spence Radio One 313-259-2000

WPHI Philadelphia PD: Colby Cobb APD/MD: Raphael George Radio One 215-884-9400

Table with 4 columns: Rank, Title, Artist, and Station. Lists top 40 songs for KBFB Dallas.

Table with 4 columns: Rank, Title, Artist, and Station. Lists top 40 songs for WDTJ Detroit.

Table with 4 columns: Rank, Title, Artist, and Station. Lists top 40 songs for WPHI Philadelphia.

WHTA Atlanta PD: Jerry Smokin' B APD: Dimitrios Stevens MD: Ramona DeBreaux Radio One 404-765-9750

KPTY Houston PD/MD: Marco Anas Hispanic 713-407-1415

WJHM Orlando PD: Stevie DeMann APD: Keith Memoly MD: Jay Love Infinity 407-919-1000

Table with 4 columns: Rank, Title, Artist, and Station. Lists top 40 songs for WHTA Atlanta.

Table with 4 columns: Rank, Title, Artist, and Station. Lists top 40 songs for KPTY Houston.

Table with 4 columns: Rank, Title, Artist, and Station. Lists top 40 songs for WJHM Orlando.

WZMX Hartford APD/MD: DJ Buck Infinity 860-677-6700

KKFR Phoenix PD: Bruce St. James MD: Joey Boy MD: J. Philia Emmis 602-274-6200

WPEG Charlotte MD: Terry Avery Infinity 704-333-0131

Table with 4 columns: Rank, Title, Artist, and Station. Lists top 40 songs for WZMX Hartford.

Table with 4 columns: Rank, Title, Artist, and Station. Lists top 40 songs for KKFR Phoenix.

Table with 4 columns: Rank, Title, Artist, and Station. Lists top 40 songs for WPEG Charlotte.

AIRPLAY Monitor RAP

Compiled from a national sample of data supplied by Broadcast Data Systems to Airplay Monitor, 99 R&B/Hip-Hop and 53 Rhythmic Top 40 stations are electronically monitored 24 hours a day, 7 days a week. © 2003 VNU Business Media, Inc. All rights reserved.

FOR WEEK ENDING JUNE 29, 2003

Main chart table with columns: THIS WEEK, LAST WEEK, WKS. ON CHART, TITLE/IMPRINT/PROMOTION LABEL, ARTIST, DETECTIONS (TW, LW), AUDIENCE (MILLIONS, RANK). Includes 'No. 1' and 'Greatest Gainer' callouts.

Songs ranked by number of detections. Songs showing an increase in detections over the previous week, regardless of chart movement. A song will also receive a bullet if its percentage loss in detections does not exceed the percentage of monitored station downtime for the format.

GREATEST GAINERS RAP section with callouts for CHINGY, 50 CENT, FABOLOUS, BOW WOW, and NELLY, P. DIDDY & MURPHY LEE.

TOP 10 BOUND

50 CENT 2844/475 P.I.M.P. (Shady/Aftermath/Interscope)

Table with columns: Station, ID, LW, WZ, ID, and data for 50 CENT's P.I.M.P.

AIRPOWER

Total Detections/Gain Chart Move: 17-11 H (20), M (32), L (45) Airplay Adds: 12

LUDACRIS 2937/134 Act A Fool (Disturbing The Peace/Def Jam South/DJMG)

AIRPLAY LEADER (FIRST STATION TO 150 PLAYS) PD: Parrish Brown Date: 05/11/03

Total Stations: 96 Chart Move: 12-10 H (18), M (40), L (38) Airplay Adds: 1

Table with columns: Station, ID, LW, WZ, ID, and data for LUDACRIS's Act A Fool.

DAVID BANNER FEAT. LIL' FLIP 2841/2 Like A Pimp (SRC/Universal/UMRG)

Total Stations: 95 Chart Move: 11-12 H (18), M (36), L (41) Airplay Adds: 0

Table with columns: Station, ID, LW, WZ, ID, and data for DAVID BANNER's Like A Pimp.

LUMIDEE 2473/312 Never Leave You - Uh Ooh, Uh Oooh! (Universal/UMRG)

AIRPLAY LEADER (FIRST STATION TO 150 PLAYS) WQHT • New York, NY PD: Tracy Cloherty MD: E-Bro Date: 05/18/03

Total Stations: 94 Chart Move: 21-14 H (15), M (36), L (43) Airplay Adds: 5

Table with columns: Station, ID, LW, WZ, ID, and data for LUMIDEE's Never Leave You.

AALIYAH 2366/204 Come Over (Blackground/Universal/UMRG)

Total Stations: 83 Chart Move: 20-15 H (14), M (30), L (39) Airplay Adds: 0

Table with columns: Station, ID, LW, WZ, ID, and data for AALIYAH's Come Over.

AIRPOWER BOUND

Total Detections/Gain Chart Move: 22-21 H (11), M (24), L (61) Airplay Adds: 2

SEAN PAUL 2128/181 Like Glue (VP/Atlantic)

Total Stations: 96 Chart Move: 22-21 H (11), M (24), L (61) Airplay Adds: 2

Table with columns: Station, ID, LW, WZ, ID, and data for SEAN PAUL's Like Glue.

MARY J. BLIGE FEAT. METHOD MAN 2161/724 Love At 1st Sight (Geffen)

NO AIRPLAY LEADER

Total Stations: 94 Chart Move: 29-18 H (2), M (38), L (54) Airplay Adds: 18

Table with columns: Station, ID, LW, WZ, ID, and data for MARY J. BLIGE's Love At 1st Sight.

AIRPLAY Monitor

Total Stations: 97 Chart Move: 17-11 H (20), M (32), L (45) Airplay Adds: 12

Table with columns: Station, ID, LW, WZ, ID, and data for AIRPLAY Monitor.

FABOLOUS FEAT. TAMIA OR ASHANTI 2141/348 Into You (Desert Storm/Elektra/EEG)

AIRPLAY LEADER (FIRST STATION TO 150 PLAYS) KQKS • Denver, CO PD: Cat Collins MD: John E. Kage Date: 04/06/03

Total Stations: 90 Chart Move: 24-20 H (9), M (22), L (59) Airplay Adds: 8

Table with columns: Station, ID, LW, WZ, ID, and data for FABOLOUS's Into You.

MYA 1791/189 My Love Is Like... Wo (A&M/Interscope)

Total Stations: 83 Chart Move: 26-26 H (2), M (37), L (44) Airplay Adds: 4

Table with columns: Station, ID, LW, WZ, ID, and data for MYA's My Love Is Like... Wo.

AIRPOWER BOUND

Total Detections/Gain Chart Move: 22-21 H (11), M (24), L (61) Airplay Adds: 2

SEAN PAUL 2128/181 Like Glue (VP/Atlantic)

Total Stations: 96 Chart Move: 22-21 H (11), M (24), L (61) Airplay Adds: 2

Table with columns: Station, ID, LW, WZ, ID, and data for SEAN PAUL's Like Glue.

MARY J. BLIGE FEAT. METHOD MAN 2161/724 Love At 1st Sight (Geffen)

NO AIRPLAY LEADER

Total Stations: 94 Chart Move: 29-18 H (2), M (38), L (54) Airplay Adds: 18

Table with columns: Station, ID, LW, WZ, ID, and data for MARY J. BLIGE's Love At 1st Sight.

AIRPLAY Monitor

Total Stations: 84 Chart Move: 38-31 H (2), M (13), L (69) Airplay Adds: 10

Table with columns: Station, ID, LW, WZ, ID, and data for AIRPLAY Monitor.

BOW WOW FEATURING BABY 1294/335 Let's Get Down (Columbia)

Total Stations: 84 Chart Move: 38-31 H (2), M (13), L (69) Airplay Adds: 10

Table with columns: Station, ID, LW, WZ, ID, and data for BOW WOW's Let's Get Down.

YOUNG GUNZ 1133/137 Can't Stop, Won't Stop (Roc-A-Fella/Def Jam/DJMG)

Total Stations: 78 Chart Move: 37-35 H (6), M (9), L (63) Airplay Adds: 9

Table with columns: Station, ID, LW, WZ, ID, and data for YOUNG GUNZ's Can't Stop, Won't Stop.

NELLY, P. DIDDY & MURPHY LEE 1747/300 Shake Ya Tailfeather (Bad Boy/UMRG)

Total Stations: 90 Chart Move: 27-27 H (3), M (22), L (65) Airplay Adds: 12

Table with columns: Station, ID, LW, WZ, ID, and data for NELLY's Shake Ya Tailfeather.

JAY-Z 1120-2 La-La-La (Excuse Me Again) (Bad Boy/UMRG)

Total Stations: 88 Chart Move: 35-36 H (0), M (13), L (75) Airplay Adds: 5

Table with columns: Station, ID, LW, WZ, ID, and data for JAY-Z's La-La-La.

TYRESE 1591/254 Signs Of Love Makin' (J/RMG)

Total Stations: 87 Chart Move: 31-29 H (5), M (19), L (63) Airplay Adds: 0

Table with columns: Station, ID, LW, WZ, ID, and data for TYRESE's Signs Of Love Makin'.

AIRPLAY Monitor

Total Stations: 84 Chart Move: 38-31 H (2), M (13), L (69) Airplay Adds: 10

Table with columns: Station, ID, LW, WZ, ID, and data for AIRPLAY Monitor.

BOW WOW FEATURING BABY 1294/335 Let's Get Down (Columbia)

Total Stations: 84 Chart Move: 38-31 H (2), M (13), L (69) Airplay Adds: 10

Table with columns: Station, ID, LW, WZ, ID, and data for BOW WOW's Let's Get Down.

YOUNG GUNZ 1133/137 Can't Stop, Won't Stop (Roc-A-Fella/Def Jam/DJMG)

Total Stations: 78 Chart Move: 37-35 H (6), M (9), L (63) Airplay Adds: 9

Table with columns: Station, ID, LW, WZ, ID, and data for YOUNG GUNZ's Can't Stop, Won't Stop.

NELLY, P. DIDDY & MURPHY LEE 1747/300 Shake Ya Tailfeather (Bad Boy/UMRG)

Total Stations: 90 Chart Move: 27-27 H (3), M (22), L (65) Airplay Adds: 12

Table with columns: Station, ID, LW, WZ, ID, and data for NELLY's Shake Ya Tailfeather.

JAY-Z 1120-2 La-La-La (Excuse Me Again) (Bad Boy/UMRG)

Total Stations: 88 Chart Move: 35-36 H (0), M (13), L (75) Airplay Adds: 5

Table with columns: Station, ID, LW, WZ, ID, and data for JAY-Z's La-La-La.

TYRESE 1591/254 Signs Of Love Makin' (J/RMG)

Total Stations: 87 Chart Move: 31-29 H (5), M (19), L (63) Airplay Adds: 0

Table with columns: Station, ID, LW, WZ, ID, and data for TYRESE's Signs Of Love Makin'.

H-Heavy (45+ Detections), M-Medium (25-44), L-Light (Under 25). Airpower awarded to songs appearing in the top 20 on both the Airplay and Audience charts for the first time with increases in both detections and audience. ★ Initial impact: songs appearing on this page for the first time in summary form. Airplay Adds are songs with 6 or more detections at top stations this week. The Airplay Leaderboard ranks taste-maker stations that have been the most successful in identifying future hit songs as measured by the amount of AIRPOWER titles for which they were Airplay Leaders. Refer to each format's Power Playlists page to see this week's Airplay Leaders.

Table with columns for station and song/detection counts. Includes stations like WKOU, WJIM, WYLL, WYZZ, WYZZ-FM, WKYC, WKYC-FM, WYZZ-FM 2, WKYC-FM 3, WKYC-FM 4, WKYC-FM 5.

T.I. 998/51. 24's (Grand Hustle/Atlantic). Total Stations: 64. Chart Move: 39-38. H (3), M (10), L (51).

Chart details for T.I. listing stations and detection counts. Columns include city, station call letters, and detection counts.

THREE 6 MAFIA FEAT. LIL' FLIP 938/33. Ridin' Spinners (Hypnotize Minds/Loud/Columbia). Total Stations: 68. Chart Move: 40-40.

Chart details for THREE 6 MAFIA listing stations and detection counts.

CHART BOUND

JS 852/142. Ice Cream (DreamWorks). Total Stations: 60. Heavy (9), Medium (0), Light (51).

TAMIA 778/75. Officially Missing You (Elektra/EEG). Total Stations: 72. Heavy (0), Medium (6), Light (66).

YOUNGBLOODZ FEATURING LIL JON 729/185. Damn! (Arista). Total Stations: 66. Heavy (2), KBFB, WHTA.

LOON FEATURING KELIS 723/19. How You Want That (Bad Boy/UMRG). Total Stations: 83. Heavy (1), KUJU.

R. KELLY 714/102. I'll Never Leave (Jive). Total Stations: 34. Heavy (6), KATZ, WHRK, WJLB, WPWX, WQUE.

NIVEA 651/12. 25 Reasons (Jive). Total Stations: 40. Heavy (2), WEUP, WIFZ.

RUBEN STUDDARD 574/29. Superstar (J/RMG). Total Stations: 51. Heavy (1), WHRK.

JAVIER 523/35. Crazy (Capitol). Total Stations: 49. Heavy (0), Medium (3), Light (46).

KEITH MURRAY 516/114. Candi Bar (Def Jam/IDJMG). Total Stations: 63. Heavy (0), Medium (2), Light (61).

THALIA FEATURING FAT JOE 496/15. I Want You (EMI Latin/Virgin). Total Stations: 39. Heavy (1), KKFR.

50 CENT 410/42. If I Can't (Shady/Aftermath/Interscope). Total Stations: 48. Heavy (3), KUJU.

BUSTA RHYMES 372/54. Light Your Ass On Fire (Star Trak/Arista). Total Stations: 67. Heavy (1), WBHH.

BLACK EYED PEAS 370/11. Where Is The Love? (A&M/Interscope). Total Stations: 34. Heavy (2), KUJU.

R. KELLY 360/360. Thoina Thoina (Jive). Total Stations: 38. Heavy (0), Medium (4), Light (34).

TIMBALAND & MAGOO 340/65. Cop That Sh#! (Blackground/Universal/UMRG). Total Stations: 68. Heavy (0), Medium (3), Light (65).

NICK CANNON FEATURING B2K 333/59. Feelin' Freaky (Nick/Jive). Total Stations: 46. Heavy (0), Medium (2), Light (44).

YING YANG TWINS 331/89. Naggin (ColliPark/TVT). Total Stations: 39. Heavy (0), Medium (4), Light (35).

LUTHER VANDROSS 323/40. Dance With My Father (J/RMG). Total Stations: 26. Heavy (0), Medium (5), Light (21).

50 CENT FEAT. THE NOTORIOUS B.I.G. 317/10. Niggas (G-Unit). Total Stations: 48. Heavy (3), KKBT, KPWR.

ELEPHANT MAN 273/45. Pon De River, Pon De Bank (VP). Total Stations: 29. Heavy (1), WZMX.

ROSCOE 265/49. Smooth Sailin' (Priority/Capitol). Total Stations: 17. Heavy (1), KVEG.

JOE BUDDEN FEAT. BUSTA RHYMES 264/52. Fire (Yes, Yes Y'all) (Def Jam/IDJMG). Total Stations: 53. Heavy (1), WQHT.

B.G. 252/3. Keep It Gangsta (Choppa City/In The Paint/Koch). Total Stations: 34. Heavy (0), Medium (0), Light (34).

CHERISH FEATURING DA BRAT 246/112. Miss P. (Reprise/Warner Bros.). Total Stations: 40. Heavy (0), Medium (1), Light (39).

BRIAN MCKNIGHT FEATURING NELLY 232/42. All Night Long (Motown/UMRG). Total Stations: 32. Heavy (0), Medium (0), Light (32).

DA BRAT 222/170. Boom (So So Def/Arista). Total Stations: 33. Heavy (0), Medium (1), Light (32).

H.A.W.K. FEATURING BIG T 214/1. You Already Know (Ghetto Dreams/Game Face). Total Stations: 9. Heavy (2), KBFB, KKDA.

BOO & GOTTI FEAT. LIL WAYNE 207/23. Ain't It Man (Cash Money/Universal/UMRG). Total Stations: 36. Heavy (0), Medium (1), Light (35).

ZANE FEATURING TANK 195/79. Tonight, I'm Yours (Forster Bros./Priority/Capitol). Total Stations: 39. Heavy (0), Medium (0), Light (39).

LIL' KIM FEATURING TWISTA 192/46. Thug Luv (Queen Bee/Atlantic). Total Stations: 10. Heavy (2), WGCI, WJLB.

DWELE 187/93. Find A Way (Virgin). Total Stations: 29. Heavy (0), Medium (0), Light (29).

LATIF 183/6. I Don't Wanna Hurt You (Motown/UMRG). Total Stations: 20. Heavy (0), Medium (2), Light (18).

112 FEATURING SUPERCAT 153/76. Na, Na, Na (Def Soul/IDJMG). Total Stations: 43. Heavy (0), Medium (0), Light (43).

HI-C FEATURING DJ QUIK 141/18. Let Me Know (Hi-Life). Total Stations: 18. Heavy (1), KKFR.

SOULJA SLIM 140/2. I'll Pay For It (Cut Throat Committy). Total Stations: 6. Heavy (1), WQUE.

AVANT 139/43. Read Your Mind (MCA). Total Stations: 18. Heavy (0), Medium (0), Light (18).

BULL DOG 127/33. We Thuggin' (Iconz/In The Paint/Koch). Total Stations: 22. Heavy (0), Medium (0), Light (22).

RED CAFE 126/0. May I (Arista). Total Stations: 33. Heavy (1), WBHH.

NAS FEATURING PHARRELL 119/73. Nas' Angels... The Flyest (Columbia). Total Stations: 25. Heavy (0), Medium (1), Light (24).

SCARFACE 119/9. Recognize (J Prince/Rap-A-Lot). Total Stations: 17. Heavy (0), Medium (1), Light (16).

MARK RONSON FEAT. GHOSTFACE KILLAH & NATE DOGG 115/38. Oohwee (Elektra/EEG). Total Stations: 43. Heavy (0), Medium (0), Light (43).

JACKI-O 114/50. Pussy (Poe Boy). Total Stations: 26. Heavy (0), Medium (1), Light (25).

BEYONCE FEATURING SEAN PAUL 109/30. Baby Boy (Music World/Columbia). Total Stations: 20. Heavy (0), Medium (1), Light (19).

ATL 105/13. Calling All Girls (Noontime/Epic). Total Stations: 13. Heavy (0), Medium (0), Light (13).

BIG GIPP 103/57. Steppin' Out (In The Paint/Koch). Total Stations: 21. Heavy (0), Medium (1), Light (20).

BONE CRUSHER 100/38. Grippin' Tha Grain (Break 'Em Off/So So Def/Arista). Total Stations: 23. Heavy (0), Medium (0), Light (23).

KANE & ABEL 99/48. Toot It Up (Most Wanted Empire). Total Stations: 12. Heavy (0), Medium (1), Light (11).

ANTHONY HAMILTON 96/30. Comin' From Where I'm From (So So Def/Arista). Total Stations: 14. Heavy (0), Medium (1), Light (13).

XZIBIT FEAT. EMINEM & NATE DOGG 95/21. My Name (Loud/Columbia). Total Stations: 2. Heavy (1), KUJU.

PRETTY TONY 81/16. Down In The Dirty (J/RMG). Total Stations: 12. Heavy (0), Medium (1), Light (11).

TECH N9NE 79/10. Imma Tell (Strange/MSC). Total Stations: 19. Heavy (0), Medium (0), Light (19).

TREE AKA LIL HOLLYWOOD 74/33. Hot Sh*T (Bungalo). Total Stations: 9. Heavy (0), Medium (0), Light (9).

NAPPY ROOTS 72/43. Roun The Globe (Atlantic). Total Stations: 19. Heavy (0), Medium (0), Light (19).

LUTHER VANDROSS DUET WITH BEYONCE KNOWLES 68/40. The Closer I Get To You (J/RMG/Columbia). Total Stations: 9. Heavy (0), Medium (0), Light (9).

THE ISLEY BROTHERS FEAT. RONALD ISLEY 66/9. Busted (DreamWorks). Total Stations: 13. Heavy (0), Medium (0), Light (13).

GOAPELE 66/5. Closer (Skyblaze/ABB). Total Stations: 3. Heavy (0), Medium (2), Light (1).

FRANKIE J 62/4. Don't Wanna Try (Columbia). Total Stations: 10. Heavy (0), Medium (1), Light (9).

ADDITUDE 62/0. Tell Me Ya Wit It (RPM). Total Stations: 34. Heavy (0), Medium (0), Light (34).

JUELZ SANTANA 61/13. Santana's Town (Roc-A-Fella/IDJMG). Total Stations: 13. Heavy (0), Medium (1), Light (12).

R. KELLY 56/16. Heart Of A Woman (Jive). Total Stations: 6. Heavy (0), Medium (1), Light (5).

R. KELLY 55/4. Forever (Jive). Total Stations: 4. Heavy (0), Medium (1), Light (3).

DIRT MCGIRT FEAT. NICOLE WRAY 55/0. Welcome Home (Roc-A-Fella/Def Jam/IDJMG). Total Stations: 34. Heavy (0), Medium (0), Light (34).

E-40 FEATURING CLIPSE 53/8. Quarterbackin' (Sick Wid' It/Jive). Total Stations: 16. Heavy (0), Medium (0), Light (16).

DIRTY SOUTH FEAT. DAVID BANNER 51/17. There They Go (Hard 2 Hit). Total Stations: 17. Heavy (0), Medium (0), Light (17).

T.O.K. 51/4. She's Hot (VP). Total Stations: 7. Heavy (1), WZMX.

H=Heavy (45+ Detections), M=Medium (25-44), L=Light (Under 25). Airpower awarded to songs appearing in the top 20 on both the Airplay and Audience charts for the first time with increases in both detections and audience. Initial impact: songs appearing on this page for the first time in summary form. Airplay Adds are songs with 6 or more detections at new stations this week. The Airplay Leaderboard ranks taste-maker stations that have been the most successful in identifying future hit songs as measured by the amount of AIRPOWER titles for which they were Airplay Leaders. Refer to each format's Power Playlists page to see this week's Airplay Leaders.



POWER PLAYS



AIRPLAY LEADERBOARD

Table with columns for station, song, and chart position. Includes WRKS New York and KHHT Los Angeles.

Table with columns for station, song, and chart position. Includes WHUR Washington, DC and WHUR 96.3.

TOP 10 BOUND

JEFFREY OSBORNE

Table with columns for station, song, and chart position. Includes JAVIER Crazy (Capitol) and WHQT Miami, FL.

CHART BOUND

SYLEENA JOHNSON

Table with columns for station, song, and chart position. Includes SMOKE NORFOL I Need You Now (EMI Gospel) and TYRESE Signs Of Love Makin' (J/RMG).

WVAZ Chicago

Table with columns for station, song, and chart position. Includes WHQT Miami, FL and WHUR Washington, DC.

WDAS Philadelphia

Table with columns for station, song, and chart position. Includes WHUR Washington, DC and WHUR 96.3.

WHUR Washington, DC

Table with columns for station, song, and chart position. Includes WHUR Washington, DC and WHUR 96.3.

AIRPOWER

Table with columns for station, song, and chart position. Includes JAVIER Crazy (Capitol) and WHQT Miami, FL.

BLU CANTRELL

Table with columns for station, song, and chart position. Includes WHUR Washington, DC and WHUR 96.3.

KMJQ Houston

Table with columns for station, song, and chart position. Includes WHQT Miami, FL and WHUR Washington, DC.

WMMJ Washington, DC

Table with columns for station, song, and chart position. Includes WHUR Washington, DC and WHUR 96.3.

KJLH Los Angeles

Table with columns for station, song, and chart position. Includes WHUR Washington, DC and WHUR 96.3.

JAVIER Crazy (Capitol)

Table with columns for station, song, and chart position. Includes WHUR Washington, DC and WHUR 96.3.

ASHANTI Rock Wit U (Awww Baby)

Table with columns for station, song, and chart position. Includes WHUR Washington, DC and WHUR 96.3.

WMXD Detroit

Table with columns for station, song, and chart position. Includes WHUR Washington, DC and WHUR 96.3.

WHQT Miami

Table with columns for station, song, and chart position. Includes WHUR Washington, DC and WHUR 96.3.

KBLX San Francisco

Table with columns for station, song, and chart position. Includes WHUR Washington, DC and WHUR 96.3.

VIVIAN GREEN Fanatic (Columbia)

Table with columns for station, song, and chart position. Includes WHUR Washington, DC and WHUR 96.3.

DETRICK HADDON Sinner's Prayer (Verity/Jive)

Table with columns for station, song, and chart position. Includes WHUR Washington, DC and WHUR 96.3.

WZAK Cleveland

Table with columns for station, song, and chart position. Includes WHUR Washington, DC and WHUR 96.3.

KRWP Houston

Table with columns for station, song, and chart position. Includes WHUR Washington, DC and WHUR 96.3.

WFRC Raleigh

Table with columns for station, song, and chart position. Includes WHUR Washington, DC and WHUR 96.3.

WHUR Washington, DC

Table with columns for station, song, and chart position. Includes WHUR Washington, DC and WHUR 96.3.

JOHN STODDART Angel (Reprise/Warner Bros.)

Table with columns for station, song, and chart position. Includes WHUR Washington, DC and WHUR 96.3.

WWIN Baltimore

Table with columns for station, song, and chart position. Includes WHUR Washington, DC and WHUR 96.3.

WYLD New Orleans

Table with columns for station, song, and chart position. Includes WHUR Washington, DC and WHUR 96.3.

KSOC Dallas

Table with columns for station, song, and chart position. Includes WHUR Washington, DC and WHUR 96.3.

AIRPOWER BOUND

Table with columns for station, song, and chart position. Includes WHUR Washington, DC and WHUR 96.3.

GOAPEL Closer (Skyblaze/ABB)

Table with columns for station, song, and chart position. Includes WHUR Washington, DC and WHUR 96.3.



Already Making A Mark As WSM-FM's New PD

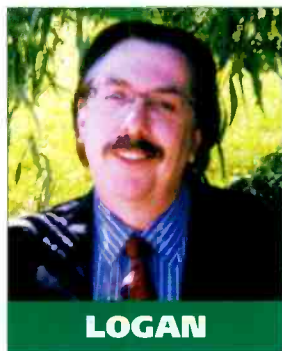
Continued from page 1

prominently featured. It also quoted a spokesperson for the Tennessee Dept. of Transportation, who called the signs illegal.

But, Logan says, "there was no negative fallout for the station at all. In reality, we didn't do anything malicious. The signs came up out of the ground. The paint was water-soluble.

"You've got to get people's attention," he adds. "We still exist in what is really a political atmosphere. What we do is try to be memorable, so that someone can vote for us when they have to sit down and fill out their diaries. The best way to do that is to go out and make a positive, fun impression."

Logan, who officially started his new job June 23, spent the previous three weeks splitting his time between WSM and his prior job as OM for Saga's Clarksville, Tenn., cluster. He has also been busy working on a master's degree in psychological counseling and therapy at the Nashville campus of Atlanta-based Argosy University. At some point in his career, Logan hopes to become a licensed "life coach," which he describes as being like a "professional mentor."



LOGAN

days there is way too much 'safe' radio, so major accolades [to him] for stepping out and trying something new." But he also says that research on "Live 95" found neither negatives nor positives. "There was nothing. But we did find that the call letters had tremendous value, so it made sense to revitalize that."

Although WSM shares those call letters with Gaylord Entertainment's heritage AM, Logan is not concerned about diary confusion. "We may have lost one diary in the last book [to AM/FM] confusion," he says. "Sometimes we sell the listeners a little short. When they listen to the FM, they know they're listening to the FM."

On the music front, Logan has already made some changes, including the addition of an '80s gold category, but he says the music is still a work in progress and will be for a few more months. In terms of currents, however, he expects the station to stay roughly where it is now, at 27 or 28. The '80s gold, he says, is "material that tests well and belongs on the station." Most of it is from the late '80s.

Logan describes the new WSM-FM as "a contemporary country station. We have a nice, healthy balance of currents and former currents. But the radio station is fairly balanced and broad-based. I liken it to the great [country] radio stations of the early '90s that had a nice balance in their music. You'll hear something from the late '70s and something that's brand-new."

The oldest gold in the library dates back to about 1978. "Whoever determined that 10 years is the oldies cutoff point is beyond me," he says, referring to a common country radio practice.

The '80s music, Logan says, "gives the radio station a point of difference. We couldn't be the most outrageous current station because that position was already taken [by WSIX], and we couldn't be the legends station because that position was already taken [by WKDF]."

"The Cumulus philosophy, as I understand it as a newbie, is that instead of having a company policy, they really are market-adaptive," he continues. "They've spent a great deal of time researching and understanding the marketplace to make sure what we do is appropriate for the listeners of Middle Tennessee."

THIRD FROM THE TOP, FOR NOW

Logan knows he and the WSM staff have a big challenge ahead as the lowest-rated of Nashville's three country FMs. "There's no doubt about the fact that if you look at the three country competitors, our image is the least solid in the listener's mind, so that gives us our first point to work on," he says. "The station with the strongest image in town right now is the station that's winning. As we fix that, we become a more viable competitor."

"Our goal is to really build this radio station as a group of people with a lot of vision and goals who are trying to overcome a lot of animosity in the form of a very competitive marketplace," Logan says. "If there's any secret sauce to our success, that will be it."

LIVE NO LONGER

Among Logan's first decisions at WSM was to drop the "Live 95" position implemented by his predecessor, Kevin O'Neal. The experimental format had initially featured live versions of hit songs whenever possible. Logan—working closely with the Cumulus Media programming team that included executive VP of programming John Dickey and national country PD Bob Raleigh—replaced "Live 95" with the slogan "Nashville's best country" and emphasized the call letters.

Logan says of the "Live 95" experiment: "I give Kevin credit for trying something. These



WSM-FM: LIFE AFTER LIVE

Fun In The Sun



WKDF Nashville's country beach party and celebrity golf classic raised \$250,000 for the Cystic Fibrosis Foundation. Tammy Cochran co-hosted the beach party with Tennessee Titan Joe Nedney. Pictured, from left, are CFF ambassador John Roland Burch, Nedney, Cochran, and WKDF OM Dave Kelly.

CRB Honors Reba McEntire

In his first public appearance since sustaining a life-threatening head injury April 11, Universal South Records senior partner Tony Brown presented Reba McEntire with the Country Radio Broadcasters (CRB) Career Achievement Award June 26 in Nashville.

Brown, who has produced McEntire and formerly was president of her label, MCA Nashville, remarked that McEntire has "not only inspired [other] artists, but executives too."

The award was given at the CRB's Country Music DJ Hall of Fame dinner, where country radio personalities Bob Cole, Duke Hamilton, W. Steven Martin and the late Dick Haynes were inducted (*Airplay Monitor*, Feb. 21). Former station owner and one-time Country Music Assn. president Dan McKinnon was inducted into the Country Radio Hall of Fame, reserved for broadcasters who were not air personalities. Frank Mull, the CRB's first executive director, received the group's President's Award.

McEntire called Brown "a walking miracle" and said of his injury, "I thought we had lost him. I'm so proud of everyone who prayed and convinced God to let us keep him longer."

Accepting her award, McEntire said, "Country radio has been so very good to me. You've entertained me and played my music, but you've also drawn out of me [in interviews] stories about my raising and shared them with the world. I think we always made a good team, and I'm proud of that."

Sara Evans and Trisha Yearwood paid tribute to McEntire by singing some of her hit songs, and both took the opportunity to do vocal impressions of her.

Yearwood confessed to being nervous about "singing Reba McEntire's biggest hits in front of Reba McEntire" and talked about how supportive McEntire has always been to other female country artists.

McEntire, meanwhile, said she was to begin work on her new album June 30. "It's from my heart," she said of the project. "Every song I chose touched me, and I hope it touches you."

In his acceptance speech, longtime KNIX Phoenix personality Martin said the highlights of his career have always been the ones involving "talking to listeners and meeting people at events who need local heroes. Broadcasting brought me closer, nearer and in an area of love with the people who listen to my station. Country radio has made a difference in my

life and in my community." McKinnon, the former owner of KSON San Diego, talked about how country music has grown "to have an impact throughout all entertainment," something he said he never envisioned when he started out in radio in the '60s. He challenged those still actively involved in the country music industry, telling them they have "an opportunity and responsibility to carry the torch of country music into the future, because I think there's still an opportunity for growth in America's music."



MCENTIRE

ON THE ROW

Guest Artists Share Paisley's 'Mud'

Brad Paisley's new Arista Nashville album, "Mud on the Tires," includes a slew of guest artists. Contributors include Alison Krauss, Vince Gill, Dan Tyminski and Jerry Douglas; Paisley also has a vocal collaboration with actors Jim Belushi and Dan Aykroyd on the song "That's Love." The disc, due July 22, includes the hidden track "Kung Pao."

In other collaboration news, "Nashville Star"

winner Buddy Jewell's debut album for Columbia Records features two of his fellow contestants. The CD, which streeted July 1, includes a duet with Miranda Lambert on the Merle Haggard standard "Today I Started Loving You Again." And Jamey Garner, another of the show's finalists, plays harmonica on one track. Album producer Clint Black wrote the song "I Can't Get By" for the set.

"We envision ourselves as the little engine that could. We realize we're third of three in a row, and we have a long way to go," Logan adds. "We hope to quickly bring ourselves up to parity and, after that, it's every man for themselves, and may the best station win."

"As long as we keep it as a friendly, fun battle, we all get better. There have been shares for country in Nashville that have just vaporized." Increasing those shares, he says, "can have a positive influence on our whole industry."

NEW CULTURE, NEW STUDIOS

In addition to facing the challenges any new PD would face, Logan has the added hurdle of helping instill a new corporate culture at WSM, which was recently sold by longtime parent company Gaylord Entertainment to Cumulus.

"I've always believed that great radio stations stand on four pegs of service," Logan says. "They have to serve their shareholders, listeners, clients and you also have to serve your

employees, because they are the people who do the work and have the passion for the product. The management inside Cumulus has great empathy for all of that. As a management group, it's up to us to make sure people accept and embrace the culture and, once that takes place, see the strategic vision in their mind the same way we do, to take it to the streets and get it done."

"It's not going to be easy. The Gaylord culture is firmly entrenched in the people and in the building."

The station is still physically located on Gaylord property, with studios in the Opryland Hotel. In December, all of the Cumulus/Nashville stations will be moving together into a new facility.

Meanwhile, Logan says, "we have to be good citizens and rely on things like Gaylord's telephone and IT department. The challenge is to establish the new culture while at the same time embracing some existing policies and procedures."



**AND THE
CROWD
GOES
WILD...**

JULY 28TH

Mercury
A UNIVERSAL MUSIC COMPANY

TOP 10 BOUND

GEORGE STRAIT 3458/22 Tell Me Something Bad About Tulsa (MCA Nashville) Total Stations: 148 Chart Move: 13-12 H (5), M (47), L (96) Airplay Adds: 0

Table with columns: Station, ID, LW, ZW, ID, and song/artist information for George Strait's 'Tell Me Something Bad About Tulsa'.

BRIAN MCCOMAS 3120/165 99.9% Sure (I've Never Been Here Before) (Lyric Street) Total Stations: 148 Chart Move: 17-14 H (3), M (47), L (98) Airplay Adds: 1

Table with columns: Station, ID, LW, ZW, ID, and song/artist information for Brian McComas's '99.9% Sure'.

TRACY BYRD 3068/2 The Truth About Men (RCA) Total Stations: 148 Chart Move: 16-15 H (4), M (41), L (103) Airplay Adds: 0

Table with columns: Station, ID, LW, ZW, ID, and song/artist information for Tracy Byrd's 'The Truth About Men'.

WYNONNA 2983/115 What The World Needs (Asylum-Curb) Total Stations: 148 Chart Move: 18-17 H (2), M (42), L (104) Airplay Adds: 0

Table with columns: Station, ID, LW, ZW, ID, and song/artist information for Wynonna's 'What The World Needs'.

TIM MCGRAW 2824/154 Real Good Man (Curb) Total Stations: 145 Chart Move: 20-19 H (1), M (33), L (111) Airplay Adds: 6

Table with columns: Station, ID, LW, ZW, ID, and song/artist information for Tim McGraw's 'Real Good Man'.

TIM MCGRAW 2824/154 Real Good Man (Curb) Total Stations: 145 Chart Move: 20-19 H (1), M (33), L (111) Airplay Adds: 6

Table with columns: Station, ID, LW, ZW, ID, and song/artist information for Tim McGraw's 'Real Good Man'.

TRACY BYRD 3068/2 The Truth About Men (RCA) Total Stations: 148 Chart Move: 16-15 H (4), M (41), L (103) Airplay Adds: 0

Table with columns: Station, ID, LW, ZW, ID, and song/artist information for Tracy Byrd's 'The Truth About Men'.

TRACY BYRD 3068/2 The Truth About Men (RCA) Total Stations: 148 Chart Move: 16-15 H (4), M (41), L (103) Airplay Adds: 0

Table with columns: Station, ID, LW, ZW, ID, and song/artist information for Tracy Byrd's 'The Truth About Men'.

TRACY BYRD 3068/2 The Truth About Men (RCA) Total Stations: 148 Chart Move: 16-15 H (4), M (41), L (103) Airplay Adds: 0

Table with columns: Station, ID, LW, ZW, ID, and song/artist information for Tracy Byrd's 'The Truth About Men'.

SARA EVANS 2461/74 Backseat Of A Greyhound Bus (RCA) Total Stations: 145 Chart Move: 22-22 H (0), M (26), L (119) Airplay Adds: 0

Table with columns: Station, ID, LW, ZW, ID, and song/artist information for Sara Evans's 'Backseat Of A Greyhound Bus'.

CLAY WALKER 2291/143 A Few Questions (RCA) Total Stations: 146 Chart Move: 24-24 H (1), M (20), L (125) Airplay Adds: 1

Table with columns: Station, ID, LW, ZW, ID, and song/artist information for Clay Walker's 'A Few Questions'.

BUDDY JEWELL 2156/267 Help Pour Out The Rain (Lacey's Song) (Columbia) Total Stations: 146 Chart Move: 25-25 H (1), M (21), L (124) Airplay Adds: 10

Table with columns: Station, ID, LW, ZW, ID, and song/artist information for Buddy Jewell's 'Help Pour Out The Rain'.

JOE NICHOLS 1813/97 She Only Smokes When She Drinks (Universal South) Total Stations: 146 Chart Move: 26-26 H (0), M (8), L (138) Airplay Adds: 6

Table with columns: Station, ID, LW, ZW, ID, and song/artist information for Joe Nichols's 'She Only Smokes When She Drinks'.

MARTINA MCBRIDE 1734/632 This One's For The Girls (RCA) Total Stations: 135 Chart Move: 29-27 H (2), M (5), L (128) Airplay Adds: 35

Table with columns: Station, ID, LW, ZW, ID, and song/artist information for Martina McBride's 'This One's For The Girls'.

MARTINA MCBRIDE 1734/632 This One's For The Girls (RCA) Total Stations: 135 Chart Move: 29-27 H (2), M (5), L (128) Airplay Adds: 35

Table with columns: Station, ID, LW, ZW, ID, and song/artist information for Martina McBride's 'This One's For The Girls'.

AIRPOWER NO RECORDS QUALIFIED FOR AIRPOWER THIS WEEK

AIRPOWER BOUND Total Detections/Gain TRACE ADKINS 2903/126 Then They Do (Capitol) Total Stations: 148 Chart Move: 19-18 H (0), M (40), L (108) Airplay Adds: 0

DIERKS BENTLEY 2684/311 What Was I Thinkin' (Capitol) Total Stations: 147 Chart Move: 23-21 H (4), M (31), L (112) Airplay Adds: 9

BUDDY JEWELL 2156/267 Help Pour Out The Rain (Lacey's Song) (Columbia) Total Stations: 146 Chart Move: 25-25 H (1), M (21), L (124) Airplay Adds: 10

BUDDY JEWELL 2156/267 Help Pour Out The Rain (Lacey's Song) (Columbia) Total Stations: 146 Chart Move: 25-25 H (1), M (21), L (124) Airplay Adds: 10

Songs posting gains in detections or with a percentage loss in detections equal to or better than the monitored downtime percentage in the format. Songs listed in order of detections.

IMPACT!



Nielsen Broadcast Data Systems

Songs posting gains in detections or with a percentage loss in detections equal to or better than the monitored downtime percentage in the format. Songs listed in order of detections. *Indicates station experienced between 24 and 56 hours of monitored downtime during the chart week.

Table with columns for station, song, and detections. Includes Memphis, Raleigh, Jacksonville, etc.

FAITH HILL 948/170 You're Still Here (Warner Bros./WRN) Total Stations: 134 Chart Move: 36-32 Heavy (0)

DARRYL WORLEY 209/137 Tennessee River Run (DreamWorks) Total Stations: 35 Chart Move: Debut 57 Heavy (0)

REBECCA LYNN HOWARD 35/29 What A Shame (MCA Nashville) Total Stations: 25 Heavy (0) Medium (0), Light (25)

KEITH URBAN 1388/412 Who Wouldn't Wanna Be Me (Capitol) Total Stations: 125 Chart Move: 30-28 H (0), M (5), L (120) Airplay Adds: 22

BILLY CURRINGTON 884/73 Walk A Little Straighter (Mercury) Total Stations: 120 Chart Move: 34-33 Heavy (1) KMLE Medium (1), Light (118) Airplay Adds: 5 WMUS, WOKQ, WQDR, WRNS, WYGY

MCHAYES 512/74 It Doesn't Mean I Don't Love You (Universal South) Total Stations: 96 Chart Move: 45-42 Heavy (0) Medium (0), Light (96) Airplay Adds: 3 KHKI, WKIS, WRBT

MARTY STUART 191/100 If There Ain't There Oughta Be (Columbia) Total Stations: 40 Chart Move: Debut 58 Heavy (0) Medium (0), Light (40) Airplay Adds: 8 KTOM, KUBL, WFLS, WGNE, WIRK, WIVK, WSSL, WSTH

DEAN MILLER 33/5 The Gun Ain't Loaded (Universal South) Total Stations: 9 Heavy (0) Medium (0), Light (9)

Main chart table with columns for station, song, and detections. Includes LA, Chicago, Dallas, Detroit, etc.

RUSHLOW 874/69 I Can't Be Your Friend (Lyric Street) Total Stations: 111 Chart Move: 35-34 Heavy (1) WYPY Medium (4), Light (106) Airplay Adds: 3 KBQI, KILT, WKCN

JAMIE O'NEAL 463/53 Every Little Thing (Mercury) Total Stations: 73 Chart Move: 46-44 Heavy (0) Medium (2), Light (71) Airplay Adds: 4 KFTX, KTOM, WHOK, WWKA

DERIC RUTTAN 189/54 When You Come Around (Lyric Street) Total Stations: 33 Chart Move: 57-59 Heavy (0) Medium (0), Light (33) Airplay Adds: 8 KKAT, KZLA, WCTO, WGH, WGIX, WIVK, WKCCQ, WNCY

DARRYL WORLEY 33/4 I Need A Breather (DreamWorks) Total Stations: 5 Heavy (0) Medium (0), Light (5)

DEANA CARTER 784/11 I'm Just A Girl (Arista Nashville) Total Stations: 118 Chart Move: 37-35 Heavy (0) Medium (2), Light (116) Airplay Adds: 2 KFTX, WCTO

RODNEY ATKINS 434/122 Honesty (Write Me A List) (Curb) Total Stations: 57 Chart Move: 50-46 Heavy (0) Medium (0), Light (57) Airplay Adds: 13 KUBL, KZSN, WCAT, WCTK, WCTO, WGNE, WIVK, WNCY, WPCV, WWGR, WXBW, WYWK, WYUW

RICK TREVINO 157/63 In My Dreams (Warner Bros./WRN) Total Stations: 46 Chart Move: Re-Entry 60 Heavy (0) Medium (1), Light (45) Airplay Adds: 5 KPLX, KSOP, KUBL, WEZL, WQMX

PAT GREEN 33/1 A Guy Like Me (Republic/Universal South) Total Stations: 2 Heavy (0) Medium (1), Light (1)

GARY ALLAN 780/226 Tough Little Boys (MCA Nashville) Total Stations: 76 Chart Move: 42-36 Heavy (1) KKCS Medium (3), Light (72) Airplay Adds: 18 KBQI, KILT, KRTY, KSON, WCAT, WCTK, WCTO, WFMS, WKDF, WOKO, WPCV, WPOR, WSIX, WSOC, WUSY, WWGR, WXBW, WYUW

CHRIS CAGLE 354/183 Chicks Dig It (Capitol) Total Stations: 44 Chart Move: 55-48 Heavy (0) Medium (1), Light (43) Airplay Adds: 18 KBQI, KFTX, KKCS, KUBL, KYGO, WCAT, WCTK, WGGY, WGNE, WNCY, WNKI, WOGK, WQBE, WQMX, WQYK, WXBQ, WYRK, WYUW

CHART BOUND

Total Detections/Gain

ALISON KRAUSS + UNION STATION 119/26 The Lucky One (Rounder) Total Stations: 11 Heavy (0) Medium (1), Light (10)

GEORGE STRAIT 31/28 Heaven's Missing An Angel (MCA Nashville) Total Stations: 31 Heavy (0) Medium (0), Light (31)

MARK WILLS 1230/3 When You Think Of Me (Mercury) Total Stations: 133 Chart Move: 28-30 H (1), M (8), L (124) Airplay Adds: 0

PAT GREEN 750/115 Wave On Wave (Republic/Universal South) Total Stations: 64 Chart Move: 41-37 Heavy (3) KASE, KILT, KPLX Medium (4), Light (57) Airplay Adds: 6 KMDL, KWJJ, KXKT, WIRK, WOKQ, WYGY

JOSH TURNER 334/48 Long Black Train (MCA Nashville) Total Stations: 53 Chart Move: 52-50 Heavy (0) Medium (0), Light (53) Airplay Adds: 5 KBQI, KMDL, KSOP, WBEE, WKCCQ

THE WARREN BROTHERS 110/89 Break The Record (BNA) Total Stations: 17 Heavy (0) Medium (0), Light (17) Airplay Adds: 8 KFKF, WKCCQ, WMZQ, WQBE, WQYK, WRNS, WXBQ, WYUW

JACK INGRAM 31/5 A Little Bit (Lucky Dog) Total Stations: 7 Heavy (0) Medium (0), Light (7)

Main chart table with columns for station, song, and detections. Includes LA, Chicago, Dallas, Detroit, etc.

RACHEL PROCTOR 729/74 Days Like This (BNA) Total Stations: 95 Chart Move: 40-38 Heavy (0) Medium (2), Light (93) Airplay Adds: 6 KFDI, KHKI, WCTK, WTQR, WUSY, WWQM

BLAKE SHELTON 269/189 Playboys Of The Southwestern World (Warner Bros./WRN) Total Stations: 48 Chart Move: Debut 52 Heavy (0) Medium (0), Light (48) Airplay Adds: 19 KBQI, KBQI, KFKF, KRST, KRTY, KSOP, KTOM, KUZZ, WBCT, WBUL, WCAT, WFRE, WGNE, WOKQ, WQMX, WUSY, WWKA, WXBW, WYWK

4 RUNNER 92/42 Getaway Car (Fresh) Total Stations: 49 Heavy (0) Medium (0), Light (49)

DWIGHT YOAKAM 30/26 The Late Great Golden State (Audiom) Total Stations: 29 Heavy (0) Medium (0), Light (29)

AARON LINES 619/92 Love Changes Everything (RCA) Total Stations: 105 Chart Move: 43-39 Heavy (0) Medium (1), Light (104) Airplay Adds: 2 KXKT, WYYD

RASCAL FLATTS 243/166 I Meit (Lyric Street) Total Stations: 70 Chart Move: Debut 54 Heavy (0) Medium (1), Light (69) Airplay Adds: 6 KFTX, WCOL, WGH, WGNE, WUSN, WYYD

STEVE WARINER 43/19 I'm Your Man (Selectone) Total Stations: 12 Heavy (0) Medium (0), Light (12)

DARYLE SINGLETARY 29/1 Kay (Audiom) Total Stations: 2 Heavy (0) Medium (1), Light (1)

PATTY LOVELESS 600/236 Lovin' All Night (Epic/EMN) Total Stations: 105 Chart Move: 47-40 Heavy (0) Medium (0), Light (105) Airplay Adds: 16 KDRK, KEEY, KKAT, KUBL, WCTK, WCTO, WDAF, WGKX, WKDF, WKXC, WNCY, WRNS, WSOX, WTQR, WWGR, WQWM

DWIGHT YOAKAM 218/2 The Back Of Your Hand (Audiom) Total Stations: 56 Chart Move: 53-55 Heavy (0) Medium (0), Light (56) Airplay Adds: 2 WCAT, WPCV

SHANIA TWAIN 41/7 She's Not Just A Pretty Face (Mercury) Total Stations: 9 Heavy (0) Medium (1), Light (8)

CROSS CANADIAN RAGWEED 27/25 Anywhere But Here (Universal South) Total Stations: 24 Heavy (0) Medium (0), Light (24)

TOP 30 BOUND

Total Detections/Gain

EMERSON DRIVE 1040/98 Only God (Could Stop Me Loving You) (DreamWorks) Total Stations: 132 Chart Move: 32-31 Heavy (0) Medium (2), Light (130) Airplay Adds: 7 KIIM, KYGO, WCOS, WHOK, WOGI, WUBE, WYYZ

SHERRIE AUSTIN 529/77 Streets Of Heaven (Broken Bow) Total Stations: 67 Chart Move: 44-41 Heavy (0)

JEFF CARSON 217/45 I Can Only Imagine (Asylum-Curb) Total Stations: 34 Chart Move: 54-56 Heavy (0) Medium (2), Light (32) Airplay Adds: 2 KIIM, WDAF

SCOTTY EMERICK 36/32 I Can't Take You Anywhere (DreamWorks) Total Stations: 14 Heavy (0) Medium (0), Light (14) Airplay Adds: 2 KCCY, KNKI

TRAVIS TRITT 25/24 Lonesome, On'ry And Mean (RCA) Total Stations: 20 Heavy (0) Medium (0), Light (20)

H=Heavy (45+ Detections), M=Medium (25-44), L=Light (Under 25). Airpower awarded to songs appearing in the top 20 on both the Airplay and Audience charts for the first time with increases in both detections and audience. Initial impact: songs appearing on this page for the first time in summary form. Airplay Adds are songs with 6 or more detections at new stations this week. The Airplay Leaderboard ranks taste-maker stations that have been the most successful in identifying future hit songs as measured by the amount of AIRPOWER titles for which they were Airplay Leaders. Refer to each format's Power Playlists page to see this week's Airplay Leaders.



Bringing The Commercial World To An 'Eclectic' Showplace

While triple-A KCRW Los Angeles MD/"Morning Becomes Eclectic" host Nic Harcourt has been at the high-profile noncommercial station for the past five years, he brought nearly a decade of commercial experience with him from triple-A WDST Poughkeepsie, N.Y. "When I first started working at WDST, it wasn't that dissimilar to KCRW in that it was pretty much a free-form station," he says. "Over the years, we developed a promotion and marketing angle, and I brought a little bit of that commercial world with me. A lot of people talk about how we've grown KCRW, and I think that my experience doing that kind of stuff [at WDST] has served me well. KCRW was a very successful station before, but I think we've taken it to another level."

Harcourt inherited "Morning Becomes Eclectic" upon arriving at the station, becoming the fourth host in its almost 20-year history. He maintains that there have been few changes made to the show since taking over the reins. "I didn't come with any sort of agenda, but you start to do things in the way you think would be beneficial," he says. "If I were to say one thing, I think the show is more inclusive and eclectic than it was before. We're embracing a more diverse range of musical styles."

There's also a two-hour weekly syndicated version of the show called "Sounds Eclectic" that is distributed by Public Radio International. "A big part of what we do on the show is have live performances three or four days a week," Harcourt says. "So the last hour of the program is live performances from the preceding week. The rest of the program is recorded separately, and it's all new music. The morning show can throw in a Beatles, Sinatra or Peggy Lee track, but 'Sounds Eclectic' focuses totally on new releases."

The show has also spawned a nationally distributed CD series taken from the live performances, which is now on its seventh volume. "I've done three of them so far," Harcourt says. "The first four were called 'Rare On Air.' When I got there, we changed the name to 'Morning Becomes Eclectic,' and then just 'Becomes Eclectic,' to reflect the national show."

KCRW PRESENTS . . . IN NYC, TOO

One area in which KCRW has grown since Harcourt's arrival is presenting concerts. "One of the things I discovered when I first got to L.A. was that there was very little brand recognition of KCRW outside of its immediate listenership," Harcourt says. "I felt that it was really important for us to be visible outside of the station, so I went to [KCRW GM Ruth Seymour] about six months after I got here, and we started presenting shows. In many cases, we're the only radio station in town supporting these artists, or if we're not the only one, we're usually the first.

"Over the last four years, we've built the KCRW Presents program into a part-time job for someone, and last year we presented 250 shows—everything from jazz and hip-hop to singer/songwriters," Harcourt adds. "I think a big part of the reason the station has grown in listenership and subscribers is through our concert promotion."

KCRW recently garnered attention by expanding its concert series to New York, via KCRW.com (Radioactive, Airplay Monitor, June 20). "Last fall, during [college music convention] CMJ, I was asked to put together a show that we could brand as a KCRW Presents, and we did Sigur Rós at the Beacon Theater. It made me realize that we had to be more active in the New York market, because we have a significant Web audience. KCRW.com has just grown and grown over the last five years, to the point that whenever I go to New York, people will tell me how they listen to the station online every day. It seemed like another opportunity to brand the station as an innovative place on the Web as well as the radio dial to hear new and independent music."

So far, the shows that KCRW.com presents will be at small venues and relegated to New York. "We'll start slowly, and ideally, do one show per week. I think that's reasonable," Harcourt says. "Our biggest online listenership is actually the Bay Area, but we're going to take it as it comes in New York. If it's successful, and it's something we feel we have the opportunity to do in another city where we have a significant online audience and subscribers, then maybe we can do it in other cities. But we've got very limited resources, and it's as simple as that. We're not a company that can open an office in New York or San Francisco. We're an organization that's very grassroots."

"I'm not doing this to step on anyone's toes," Harcourt continues. "I'm doing this because there's a need for it. There are artists that we play that don't get airplay in New York, and there's an audience that listens to us online that will support those artists. I'm not going to try to present artists who are getting significant airplay on other radio stations, because they don't need our help. We're talking about artists that we know nobody else is playing or artists that we know that we're on way before everyone else. I don't want to get into any sort of competitive situation with anyone else. It's basically about taking our niche and trying to build something in a very significant market."

MORE DEF THAN MOST TRIPLE-AS

While KCRW may be filling a hole left by Los Angeles' short-lived triple-As KSCA and KACD, Harcourt hesitates to call it a triple-A radio station. "You could say that we're representative of some of the music that gets played on triple-A

MONITOR PROFILE



NIC HARCOURT

MD/"Morning Becomes Eclectic" host
KCRW Los Angeles

'We're [presenting shows by] artists that we know nobody else is playing'



9 A.M.

Cinematic Orchestra, "Evolution"
Groove Armada, "Remember"
M. Ward, "Vincent O'Brien"
Erlend Oye, "Sheltered Life"
Cornershop, "Wogs Will Walk"
Erik Truffaz, "Turiddu"
Lou Reed, "Rock 'N' Roll"
Pernice Brothers, "The Weakest Shade of Blue"
Turin Brakes, "Self Help"
The Postal Service, "Suddenly Everything Has Changed"
Christopher O'Riley, "Knives Out"
Death in Vegas, "Hands Around My Throat"
Starlight Mints, "Brass Digger"
Andrew Bird, "Weather Systems"

Blue And Yellow Weenies



Modern KROQ Los Angeles staffers catch up with Used singer Bert McCracken at their Weenie Roast. Pictured, from left, are KROQ's Stryker and Bean, McCracken, and the station's Kevin.

RADIO CONCERT MONITOR

DATE	STATION	EVENT	PROMOTIONS DIRECTOR
July 4	WMRQ Hartford, Conn.	WMRQ-fest 2003	Greg Bartosiewicz
		APPEARING: Authority Zero, Auto Pilot Off, Diffuser, Evanescence, Eve 6, the Exies, Fear Nuttin' Band, Fiction Plane, Gob, Hoobastank, Hot Hot Heat, Lo Pro, Revis, Smile Empty Soul, Third Eye Blind, Throne, Trapt, 2 Skinnee J's, Zug Island	
July 4	WXRT Chicago	Free Fourth of July Concert	Tom Lisack
		APPEARING: Guster, Shemekia Copeland, the Wallflowers, Pete Yorn	
July 5	WHRL Albany, N.Y.	Big Day Out III	Jeremy Hogeboom
		APPEARING: Evanescence, Eve 6, Lo Pro, Staind, Static-X	
July 6	WDTW Detroit	First Birthday Bash	Amy Spencer
		APPEARING: David Lee Roth	
July 7-13	CJAY Calgary, Alberta	Calgary Stampede	Ryan Dryden
		APPEARING: Cheap Trick, Eve 6, Foreigner Featuring Lou Gramm, Gob, Matthew Good, Sam Roberts, Theory of a Deadman, Treble Charger	
July 8	WXRK New York	Dysfunctional Family Picnic 7-Tarium	Marie Rodrigues
		APPEARING: Deftones, Limp Bizkit, Linkin Park, Metallica, Mudvayne	
July 11	KUFO Portland, Ore.	RockFest 8.0	Susan Reynolds
		APPEARING: Chevelle, Disturbed, Korn, Trapt	
July 11	WNNX Atlanta	99X the Big Rock	Kitsy Rose
		APPEARING: TBA	
July 18	WNNX Atlanta	99X the Big Rock	Kitsy Rose
		APPEARING: Die Trying, Hoobastank, Black Eyed Peas	

Let us monitor your event! Call Bram Teitelman at 646-654-4727 or e-mail bteitelman@airplaymonitor.com

radio, but we play a lot of music that they won't. They won't play Blackalicious or DJ Shadow or Mos Def. And even though they play a lot of singer/songwriters, they tend not to be early on some of the core acts. We've been playing Damien Rice for a year, and it's just starting to catch on everywhere else. I would guess that most of KSCA listeners are listening to [adult top 40 KSYR] Star, since they're playing a lot of the triple-A artists. Also, we're not a 24-hour music station. "Morning Becomes Eclectic" is the only music on the station during the day."

Harcourt calls triple-A an unquantifiable format. "Everybody does it differently," he says, "but it is the only format right now that's breaking bands. There are programmers at noncomm and triple-A stations as well that are among the more adventurous programmers out there in radio. So even though it's done differently from market to market, that's a good thing. Noncomms in particular is where a lot of these things are starting."

Many of Los Angeles' music and entertainment industryites listen to the show. As a result, "a lot of what gets played on KCRW ends up in

movies, on television programs and in commercials," Harcourt says. "And artists have gotten signed through our exposure. Sigur Rós and Damien Rice are good examples of records that were not available in the States that we sparked A&R feeding frenzies for by playing on KCRW."

The crossover success of artists like Norah Jones and Jack Johnson has benefited KCRW's listenership as well. "A lot of people who listen to our station tell their friends about us," Harcourt says. "They'll say stuff like 'You're loving Norah Jones, and you're listening to it on such and such station, but if you had been listening to the station I listen to, you would've heard it a year ago.' I think people discover us through word-of-mouth."

While Harcourt sees himself at KCRW for some time, he has also done some work outside of radio. "I do some work in the movie world," he says. "I music-supervised the movie 'Igby Goes Down' last year, and I've consulted on a couple of films, and that's interesting to me. Television is also interesting. I'm trying to develop something in that world as well."

THIS WEEK	LAST WEEK	WKS. ON CHART	TITLE/IMPRINT/PROMOTION LABEL	ARTIST	DETECTIONS		AUDIENCE		
					TW	LW	MILLIONS	RANK	
			★★★ NO. 1 ★★★						
1	3	19	SEVEN NATION ARMY THIRD MAN V2 1 week at No. 1	THE WHITE STRIPES	3081	2962	18.370	1	
2	1	22	SEND THE PAIN BELOW EPIC	CHEVELLE	2876	3086	14.326	5	
3	2	30	HEADSTRONG WARNER BROS.	TRAPT	2857	3017	16.678	2	
4	4	5	JUST BECAUSE CAPITOL	JANE'S ADDICTION	2778	2667	15.987	3	
5	5	24	LIKE A STONE INTERSCOPE/EPIC	AUDIOSLAVE	2458	2528	14.789	4	
6	7	9	FAINT WARNER BROS.	LINKIN PARK	2343	2158	13.551	7	
7	6	16	STUPID GIRL FLIP/GEFFEN/INTERSCOPE	COLD	2326	2347	9.628	12	
8	10	14	GO WITH THE FLOW INTERSCOPE	QUEENS OF THE STONE AGE	2187	2081	12.293	9	
9	12	5	THE BOYS OF SUMMER COLUMBIA	THE ATARIS	2154	1924	12.724	8	
10	8	25	TIMES LIKE THESE ROSWELL/RCA/RMG	FOO FIGHTERS	2010	2140	14.080	6	
11	11	11	MINERVA MAVERICK/REPRISE	DEFTONES	1947	2038	8.287	16	
12	9	18	SOMEWHERE I BELONG WARNER BROS.	LINKIN PARK	1919	2091	10.006	10	
13	14	7	DOSED WARNER BROS.	RED HOT CHILI PEPPERS	1679	1651	8.815	15	
14	16	10	THERE THERE CAPITOL	RADIOHEAD	1666	1641	9.649	11	
15	13	25	BRING ME TO LIFE WIND-UP	EVANESCENCE FEATURING PAUL MCCOY	1664	1858	9.130	14	
16	15	10	BOTTOM OF A BOTTLE LAVA	SMILE EMPTY SOUL	1629	1643	6.658	18	
17	21	3	SHOW ME HOW TO LIVE INTERSCOPE/EPIC	AUDIOSLAVE	1462	1334	6.514	19	
18	19	5	THINK TWICE RCA/RMG	EVE 6	1458	1383	5.459	24	
			★★ AIRPOWER ★★						
19	23	3	SO FAR AWAY FLIP/ELEKTRA/EEG	STAIN D	1457	1091	9.271	13	
20	20	8	SHATTERDAY EPIC	VENDETTA RED	1416	1343	5.287	25	
21	17	17	DRIVEN UNDER WIND-UP	SEETHER	1408	1559	5.799	21	
22	26	3	GOING UNDER WIND-UP	EVANESCENCE	1182	960	5.115	27	
23	22	5	ST. ANGER ELEKTRA/EEG	METALLICA	1129	1192	6.025	20	
24	25	10	BANDAGES SUB POP/SIRE/REPRISE	HOT HOT HEAT	1101	1011	6.870	17	
25	24	5	BLUE AND YELLOW REPRISE	THE USED	1062	1014	5.138	26	
26	18	13	PRICE TO PLAY FLIP/ELEKTRA/EEG	STAIN D	955	1397	3.853	30	
27	29	6	EVERYONE ELEKTRA/EEG	SOCIALBURN	776	772	2.616	37	
28	33	2	THE LEAVING SONG PT. II NITRO/DREAMWORKS	AFI	769	700	4.472	29	
29	32	4	OXYGEN'S GONE ISLAND/IDJMG	DIE TRYING	719	734	2.016	-	
30	NEW		LIBERATE REPRISE	DISTURBED	681	487	2.636	36	
			★ GREATEST GAINER ★						
31	NEW		DID MY TIME IMMORTAL/EPIC	KORN	666	28	4.964	28	
32	NEW		SET ME FREE DECCA	VELVET REVOLVER	658	447	5.583	22	
33	31	10	THE HORIZON HAS BEEN DEFEATED JACK JOHNSON/UNIVERSAL/UMRG	JACK JOHNSON	658	748	2.698	35	
34	34	4	FLY FROM THE INSIDE ATLANTIC	SHINEDOWN	649	697	1.653	-	
35	28	6	THE YOUNG AND THE HOPELESS DAYLIGHT/EPIC	GOOD CHARLOTTE	646	778	2.564	39	
36	36	22	STRAIGHT OUT OF LINE REPUBLIC/UNIVERSAL/UMRG	GODSMACK	632	651	3.814	31	
37	27	12	THE SCIENTIST CAPITOL	COLDPLAY	602	826	3.237	33	
			★ MOST AIRPLAY ADDS ★						
38	NEW		CREATURES (FOR A WHILE) VOLCANO/JIVE		311	590	13	5.485	23
39	30	8	THE LAST SONG DOGHOUSE/DREAMWORKS	THE ALL-AMERICAN REJECTS	589	768	1.868	-	
40	37	22	GIRL'S NOT GREY NITRO/DREAMWORKS	AFI	566	621	3.034	34	

Songs ranked by number of detections. Songs showing an increase in detections over the previous week, regardless of chart movement. A song will also receive a bullet if its percentage loss in detections does not exceed the percentage of monitored station downtime for the format. A song that has been on the chart for more than 20 weeks will generally not receive a bullet, even if it registers an increase in detections. Airpower awarded to songs appearing in the top 20 on both the Airplay and Audience charts for the first time with increases in both detections and audience. Greatest Gainer awarded to the song with the largest increase in detections. Most Airplay Adds awarded to the song registering six or more detections at the most stations for the first time this week. A song with a gain in detections over the previous week is placed first if tied with a song with a decline over the same period. When tied songs are each gaining detections or each losing detections, the song being played on more stations is placed first. Songs below the top 20 become recurrents and are removed from the chart after 26 weeks.

most airplay adds MODERN ROCK

NEW STATIONS

- 311** *Creatures (For A While) (Volcano/Jive)* **34**
 CIMX, KCNL, KCPX, KCXX, KFMA, KFRR, KMYZ, KPNT, KRBZ, KTCL, KTZO, KUCC, KWOD, KXRK, KXTE, WAQZ, WAVF, WBCN, WBRU, WBYL, WEDG, WFNX, WHFS, WKQX, WNNX, WOCL, WOXY, WPLY, WRXL, WSUN, WWDC, WXRK, WXTM, WZZN
 Total Stations With Six Or More Detections: 35
 TOTAL DETECTIONS BY DAYPART: 6-10 7%, 10-3 23%, 3-7 21%, 7-12 28%, 12-6A 22%
- KORN** *Did My Time (Immortal/Epic)* **34**
 CIMX, KCPX, KCXX, KFMA, KLEC, KMYZ, KNDD, KNRK, KPNT, KORA, KROQ, KROX, KTEG, KTZO, KWOD, KXTE, WAQZ, WBCN, WBRU, WBSX, WBTZ, WEDG, WHFS, WHRL, WJBX, WJRR, WKQX, WMRO, WNNX, WOCL, WPBZ, WPLY, WXRK, WZZN
 Total Stations With Six Or More Detections: 37
 TOTAL DETECTIONS BY DAYPART: 6-10 5%, 10-3 17%, 3-7 24%, 7-12 32%, 12-6A 22%
- STAIN D** *So Far Away (Flip/Elektra/EEG)* **16**
 KHRO, KKND, KPNT, KXRK, WEDG, WGRD, WKRL, WLIR, WNFZ, WNNX, WPBZ, WRAX, WROX, WRWK, WRXL, WZNE
 Total Stations With Six Or More Detections: 66
 TOTAL DETECTIONS BY DAYPART: 6-10 9%, 10-3 21%, 3-7 18%, 7-12 21%, 12-6A 31%
- VELVET REVOLVER** *Set Me Free (Decca)* **15**
 KFRR, KKND, KMYZ, KSYR, KTZB, KWOD, WBSX, WDYL, WEDG, WEND, WKQX, WOCL, WOXY, WXTM, XTRA
 Total Stations With Six Or More Detections: 31
 TOTAL DETECTIONS BY DAYPART: 6-10 7%, 10-3 20%, 3-7 19%, 7-12 25%, 12-6A 29%
- GODSMACK** *Serenity (Republic/Universal/UMRG)* **13**
 KFTE, WARQ, WBSX, WBTZ, WHFS, WHRL, WKQX, WKRL, WLRS, WNFZ, WROX, WRZX, WZNE
 Total Stations With Six Or More Detections: 33
 TOTAL DETECTIONS BY DAYPART: 6-10 6%, 10-3 20%, 3-7 13%, 7-12 27%, 12-6A 35%

GREATEST GAINERS MODERN ROCK

INCREASE IN DETECTIONS

- KORN** • *Did My Time (Immortal/Epic)* **+638**
 KNRK +35, KXTE +34, KCPX +33, WKQX +33, KNDD +31, WBSX +30, KPNT +29, WAQZ +23, WJRR +23, KCXX +21
- 311** • *Creatures (For A While) (Volcano/Jive)* **+577**
 KXTE +26, WOCL +25, CIMX +24, WAQZ +24, WKQX +22, KROQ +22, KXRK +21, WNNX +21, WPLY +21, WHFS +20
- STAIN D** • *So Far Away (Flip/Elektra/EEG)* **+366**
 WARQ +24, WGRD +24, KJEE +21, WRWK +20, WBUZ +18, WRXL +17, WEDG +16, WROX +16, KHRO +15, WPBZ +15
- THE ATARIS** • *The Boys Of Summer (Columbia)* **+230**
 KTCL +20, WARQ +18, KKND +16, KFTE +15, WRXL +13, WDXD +12, WRWK +12, WHFS +11, WKQX +11, WJBX +11
- EVANESCENCE** • *Going Under (Wind-up)* **+222**
 KTCL +19, KSYR +18, KFRR +18, WOCL +16, WCYY +13, WNFZ +12, KROX +12, KRBZ +11, WWDC +10, KLEC +9

Monitor RECURRENTS MODERN ROCK

RANK	TITLE	ARTIST (IMPRINT/PROMOTION LABEL)	DETECTIONS	
			TW	LW
1	CAN'T STOP	RED HOT CHILI PEPPERS (WARNER BROS.)	1255	1255
2	NO ONE KNOWS	QUEENS OF THE STONE AGE (INTERSCOPE)	1004	1038
3	ALL MY LIFE	FOO FIGHTERS (ROSWELL/RCA/RMG)	983	1012
4	FINE AGAIN	SEETHER (WIND-UP)	857	863
5	WHEN I'M GONE	3 DOORS DOWN (REPUBLIC/UNIVERSAL/UMRG)	824	840
6	THE RED	CHEVELLE (EPIC)	813	797
7	ALWAYS	SALIVA (ISLAND/IDJMG)	719	739
8	AERIALS	SYSTEM OF A DOWN (AMERICAN/COLUMBIA)	686	676
9	CLOCKS	COLDPLAY (CAPITOL)	651	660

Recurrents are titles that have appeared on the Modern Rock Airplay chart for 26 weeks and have dropped below the top 20.

RANK	TITLE	ARTIST (IMPRINT/PROMOTION LABEL)	DETECTIONS	
			TW	LW
10	STILL WAITING	SUM 41 (ISLAND/IDJMG)	614	687
11	POEM	TAPROOT (VELVET HAMMER/ATLANTIC)	601	590
12	REMEMBER	DISTURBED (REPRISE)	591	591
13	CRAWLING IN THE DARK	HOOBASTANK (ISLAND/IDJMG)	525	476
14	YOU KNOW YOU'RE RIGHT	NIRVANA (DGC/GEFFEN/INTERSCOPE)	498	553
15	PRAYER	DISTURBED (REPRISE)	479	507
16	WISH YOU WERE HERE	INCUBUS (IMMORTAL/EPIC)	478	479
17	BY THE WAY	RED HOT CHILI PEPPERS (WARNER BROS.)	458	476
18	CHOP SUEY	SYSTEM OF A DOWN (AMERICAN/COLUMBIA)	454	449
19	SHE HATES ME	PUDDLE OF MUDD (FLAWLESS/GEFFEN/INTERSCOPE)	445	440
20	LAST RESORT	PAPA ROACH (DREAMWORKS)	423	428

the White Stripes
Seven Nation Army
 From the new album *Elephant*

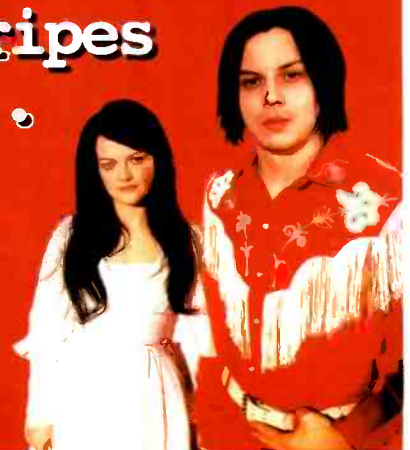
The White Stripes
 & V2 Thank You...

For Our #1 Record...

That Was Over 5 Months In
 The Making!



www.v2music.com
 www.whitestripes.com





Songs ranked by number of detections. Playlists are listed in order of TSA weekly cume, beginning with the highest-cuming station. Cumes are updated twice yearly following the release of the spring and fall Arbitron surveys. The number of stations shown each week varies depending upon space. Airplay Adds (AA) denotes songs with 6 or more detections at station for first time this week.

AIRPLAY LEADERBOARD

THE STATIONS THAT BREAK THE HITS

#1 WFMS, Memphis, TN (PD/MD: Cressman/Killbrew) 4

#2 WMFS, Memphis, TN (PD/MD: Cressman/Killbrew) 4

#3 KNDD, Seattle, WA (PD: Phil Manning) 4

#4 KITS, San Francisco, CA (PD/MD: Demery/Axelsen) 4

#5 KROQ, Los Angeles, CA (PD/MD: Weatherly/Worden) 4

Refer to Impact! page for this week's Airplay Leaders and Airplay Leaderboard rules.

WXRK New York OM: Robert Cross MD: Mike Peer Infinity 212-314-9230

Table with 2 columns: Rank, Song/Artist. Top songs include Linkin Park Faint, Foo Fighters Times Like These, The White Stripes Seven Nation Army.

KROQ Los Angeles Sr. VP/Pgm: Kevin Weatherly APD: Gene Sandbloom MD: Lisa Worden Infinity 323-930-1067

Table with 2 columns: Rank, Song/Artist. Top songs include Jane's Addiction Just Because, Hot Hot Heat Bandages, Staind Price To Pay.

WKQX Chicago PD: Tim Richards APD/MD: Mary Shuminas Emmis 312-527-8348

Table with 2 columns: Rank, Song/Artist. Top songs include The White Stripes Seven Nation Army, Foo Fighters Times Like These, Staind Price To Pay.

WBCN Boston VP/Pgm: Oedipus APD/MD: Steven Strick AMD: Josh Aarons Infinity 617-266-1111

Table with 2 columns: Rank, Song/Artist. Top songs include Jane's Addiction Just Because, Dropkick Murphys Walk Away, Audioslave Show Me How To Live.

WWDC Washington, DC PD: Buddy Rizer Clear Channel 301-587-7100 DC's Rock Station

Table with 2 columns: Rank, Song/Artist. Top songs include Trapt Headstrong, Audioslave Like A Stone, The White Stripes Seven Nation Army.

WZZN Chicago PD: Bill Gamble APD: Steve Levy MD: James VanOssdol ABC 312-984-9923

Table with 2 columns: Rank, Song/Artist. Top songs include Trapt Headstrong, Foo Fighters Times Like These, Powerman 5000 Just Because.

WHFS Washington, DC PD: Robert Benjamin APD: Bob Waugh MD: Pat Ferrise Infinity 301-306-0991

Table with 2 columns: Rank, Song/Artist. Top songs include The Ataris The Boys Of Summer, Hot Hot Heat Bandages, Trapt Headstrong.

KDGE Dallas PD: Duane Doherty APD/MD: Alan Ayo Clear Channel 972-770-7777

Table with 2 columns: Rank, Song/Artist. Top songs include Jane's Addiction Just Because, The White Stripes Seven Nation Army, Staind So Far Away.

KTBB Houston PD: Vince Richards APD: Eric Schmidt Clear Channel 713-968-1067

Table with 2 columns: Rank, Song/Artist. Top songs include Chevelle Send The Pain Below, Saliva Rest In Pieces, Seether Driven Under.

WPLY Philadelphia PD: Jim McGuinn MD: Dan Fein Radio One 610-276-1100

Table with 2 columns: Rank, Song/Artist. Top songs include The White Stripes Seven Nation Army, Trapt Headstrong, The Ataris The Boys Of Summer.

KITS San Francisco PD: Sean Demery MD: Aaron Axelsen Infinity 415-402-6700

Table with 2 columns: Rank, Song/Artist. Top songs include Junior Senior Move Your Feet, Queens Of The Stone Age Go With The Flo, Hot Hot Heat Bandages.

WNNX Atlanta Dir/Pgm: Leslie Fram PD: Chris Williams MD: Jay Harren Susquehanna 404-266-0997

Table with 2 columns: Rank, Song/Artist. Top songs include Audioslave Like A Stone, Chevelle Send The Pain Below, Evanceescence Featuring Paul M Bring Me T.

CIMX Detroit PD: Murray Brookshaw APD: Vince Cannova MD: "Phat" Matt Franklin CHUM Group 519-258-8888

Table with 2 columns: Rank, Song/Artist. Top songs include Audioslave Show Me How To Live, Three Days Grace (I Hate) Everything Ab, Finch What It Is To Burn.

KNDD Seattle PD: Phil Manning APD: Jim Keller Entercom 206-622-3251

Table with 2 columns: Rank, Song/Artist. Top songs include The White Stripes Seven Nation Army, Linkin Park Faint, Queens Of The Stone Age Go With The Flo.

KZON Phoenix PD: Tim Maranville APD/MD: Kevin Mannion Infinity 602-258-8181

Table with 2 columns: Rank, Song/Artist. Top songs include Chevelle Send The Pain Below, Foo Fighters Times Like These, The Ataris The Boys Of Summer.

WZTA Miami OM: Rob Roberts Dir/Rock Pgm: Troy Hanson APD/MD: Ryan Castle Clear Channel 954-862-2000

Table with 2 columns: Rank, Song/Artist. Top songs include Trapt Headstrong, Evanceescence Featuring Paul M Bring Me T, Linkin Park Faint.

XTRA San Diego PD: Bryan Schock MD: "Smiling Marty" Whitney Clear Channel 858-292-2000

Table with 2 columns: Rank, Song/Artist. Top songs include Audioslave Like A Stone, Jimmy Eat World A Praise Chorus, The White Stripes Seven Nation Army.

WXDX Pittsburgh OM: John Moschitta MD: Vinnie Ferguson Clear Channel 412-937-1441

Table with 2 columns: Rank, Song/Artist. Top songs include Trapt Headstrong, Foo Fighters Times Like These, The White Stripes Seven Nation Army.

KTCL Denver Dir/Pgm: Mike O'Connor Intern MD: Hill Jordan Clear Channel 303-713-8000

Table with 2 columns: Rank, Song/Artist. Top songs include Chevelle Send The Pain Below, Foo Fighters Times Like These, Audioslave Like A Stone.

WLIR Long Island Co-PD: Andre Ferro Co-PD: Jon Daniels Jarad 516-222-1103

Table with 2 columns: Rank, Song/Artist. Top songs include Daniel Bedingfield If You're Not The One, Coldplay Clocks, Evanceescence Featuring Paul M Bring Me T.

WJRR Orlando Co-PD: Pat Lynch MD: Brian Dickerman Clear Channel 407-916-7790

Table with 2 columns: Rank, Song/Artist. Top songs include Cold Stupid Girl, Mudvayne Not Falling, The White Stripes Seven Nation Army.

KPNT St. Louis PD: Tommy Matterson APD: Woody Fife MD: Frizz Emmis 314-231-1057

Table with 2 columns: Rank, Song/Artist. Top songs include The Ataris The Boys Of Summer, The Roots Featuring Cody Che The Seed (C), Linkin Park Faint.

WOCL Orlando PD: Alan Smith APD/MD: Bobby Smith Infinity 407-919-1000

Table with 2 columns: Rank, Song/Artist. Top songs include Audioslave Like A Stone, Trapt Headstrong, Foo Fighters Times Like These.

IMPACT!

AIRPLAY Monitor

Nielsen Broadcast Data Systems

Songs posting gains in detections or with a percentage loss in detections equal to or better than the monitored downtime percentage in the format. Songs listed in order of detections. *Indicates station experienced between 24 and 56 hours of monitored downtime during the chart week.

TRAPT <i>Still Frame (Warner Bros.)</i> Total Stations: 42 Heavy (0) Medium (5), Light (37) Airplay Adds: 13 CIMX, KFMA, KHRO, KJEE, KNDD, KQRA, KROX, WARQ, WKQX, WKRL, WMRQ, WPBZ, WSUN	351/149	BLUE OCTOBER <i>Calling You (Brando/Universal/UMRG)</i> Total Stations: 15 Heavy (1), KDGE Medium (3), Light (11) Airplay Adds: 4 KFSD, KLEC, KSYR, KUCD	142/72	PALOALTO <i>Breathe In (American/IDJMG)</i> Total Stations: 6 Heavy (1), KFSD Medium (1), Light (4)	81/6	PILLAR <i>Fireproof (Flicker/MCA)</i> Total Stations: 16 Heavy (0) Medium (0), Light (16) Airplay Adds: 1 WBUZ	57/5	COWBOY MOUTH <i>Better (33rd Street)</i> Total Stations: 3 Heavy (0) Medium (1), Light (2) Airplay Adds: 1 KNND	37/5
AUTHORITY ZERO <i>Over Seasons (Lava)</i> Total Stations: 27 Heavy (1), KFSD Medium (9), Light (17) Airplay Adds: 1 KHBZ	341/4	GOOD CHARLOTTE <i>Girls And Boys (Daylight/Epic)</i> Total Stations: 7 Heavy (1), KUUCD Medium (3), Light (3) Airplay Adds: 2 KNRK, WEDG	132/74	PETE YORN <i>Crystal Village (Columbia)</i> Total Stations: 7 Heavy (0) Medium (1), Light (6) Airplay Adds: 3 WHTG, WLIR, WWCD	71/45	RELIENT K <i>Chapstick, Chapped Lips & Things Like Chemistry (Gotee)</i> Total Stations: 10 Heavy (1), KFSD Medium (0), Light (9)	56/18	THE REVOLUTION SMILE <i>Bonethrower (Flawless/Geffen/Interscope)</i> Total Stations: 8 Heavy (0) Medium (1), Light (7)	35/8
MUDVAYNE <i>World So Cold (Epic)</i> Total Stations: 33 Heavy (2), KHRO, WXTM Medium (6), Light (25) Airplay Adds: 4 KLEC, KTEG, WJRR, WPBZ	330/17	YEAH YEAH YEAHS <i>Date With The Night (Interscope)</i> Total Stations: 19 Heavy (0) Medium (3), Light (16) Airplay Adds: 2 WROX, WWCD	129/56	O.A.R. <i>Hey Girl! (Everfine/Lava)</i> Total Stations: 5 Heavy (0) Medium (3), Light (2)	71/14	MEST FEAT. BENJI MADDEN <i>Jaded (These Years) (Maverick/Reprise)</i> Total Stations: 13 Heavy (0) Medium (1), Light (12)	53/25	FANZINE <i>Head In The Sky (Emanon)</i> Total Stations: 2 Heavy (0) Medium (1), Light (1)	35/3
SWITCHFOOT <i>Meant To Live (Red Ink/Columbia)</i> Total Stations: 30 Heavy (4), CIMX, KEDJ, KFSD, WHRL Medium (2), Light (24) Airplay Adds: 2 KUUCD, WFXH	309/49	(HED)PLANET EARTH <i>Other Side (Volcano/Jive)</i> Total Stations: 20 Heavy (0) Medium (3), Light (17) Airplay Adds: 4 KTEG, WROX, WZNE, WZZN	127/43	PEPPER <i>Give It Up (Volcom)</i> Total Stations: 1 Heavy (1), KUUCD Medium (0), Light (0)	69/43	ME FIRST AND THE GIMME GIMMES <i>I Believe I Can Fly (Fat Wreck Chords)</i> Total Stations: 26 Heavy (0) Medium (1), Light (25) Airplay Adds: 1 WEDG	52/22	★ SLOTH <i>Someday (Hollywood)</i> Total Stations: 9 Heavy (0) Medium (0), Light (9) Airplay Adds: 1 KPNT	31/14
ROONEY <i>Blue Side (Geffen/Interscope)</i> Total Stations: 32 Heavy (1), KFSD Medium (4), Light (27) Airplay Adds: 3 KROQ, KXRK, WWCD	296/52	YEAR OF THE RABBIT <i>Rabbit Hole (Elektra/EEG)</i> Total Stations: 21 Heavy (0) Medium (0), Light (21) Airplay Adds: 3 KCPX, KUUCD, WWCD	112/43	SAM ROBERTS <i>Brother Down (Universal/UMRG)</i> Total Stations: 4 Heavy (0) Medium (3), Light (1)	68/5	BILLY TALENT <i>Try Honesty (Atlantic)</i> Total Stations: 20 Heavy (0) Medium (1), Light (19)	51/1	★ BRAND NEW <i>The Quiet Things That No One Ever Knows (Triple Crown/Razor & Tie)</i> Total Stations: 15 Heavy (0) Medium (1), Light (14)	30/10
ADEMA <i>Unstable (Arista)</i> Total Stations: 32 Heavy (0) Medium (6), Light (26) Airplay Adds: 5 KLEC, KMBY, KMYZ, KSYR, WARQ	264/57	ALIEN ANT FARM <i>These Days (El Tonal/DreamWorks)</i> Total Stations: 33 Heavy (0) Medium (0), Light (33) Airplay Adds: 5 KCXX, KEDJ, KJEE, WEDG, WZZN	98/57	SENSEFIELD <i>I Refuse (Nettwerk)</i> Total Stations: 11 Heavy (1), KFSD Medium (0), Light (10) Airplay Adds: 2 WAVF, WDYL	67/38	THE STREETS <i>Don't Mug Yourself (Vice/Atlantic)</i> Total Stations: 7 Heavy (0) Medium (1), Light (6)	51/3	★ THE SOUNDS <i>Seven Days A Week (New Line)</i> Total Stations: 7 Heavy (0) Medium (1), Light (6) Airplay Adds: 1 WHTG	30/20
★ DASHBOARD CONFESSIONAL <i>Hands Down (Vagrant)</i> Total Stations: 42 Heavy (0) Medium (3), Light (39) Airplay Adds: 12 KEDJ, KHBZ, WBCN, WBRU, WDYL, WEDG, WFNX, WKQX, WPLY, WRWK, WXRK, WZNE	218/217	JUNIOR SENIOR <i>Move Your Feet (Crunchy Frog/Atlantic)</i> Total Stations: 10 Heavy (2), KITS, WLIR Medium (1), Light (7)	96/13	EELS <i>Saturday Morning (DreamWorks)</i> Total Stations: 16 Heavy (0) Medium (1), Light (15) Airplay Adds: 2 WFNX, WKRL	65/28	LINKIN PARK <i>From The Inside (Warner Bros.)</i> Total Stations: 4 Heavy (0) Medium (1), Light (3) Airplay Adds: 1 KFMA	49/14	★ COLDPLAY <i>Moses (Capitol)</i> Total Stations: 2 Heavy (0) Medium (1), Light (1) Airplay Adds: 1 XTRA	29/13
FOO FIGHTERS <i>Low (Roswell/RCA/RMG)</i> Total Stations: 31 Heavy (0) Medium (6), Light (25) Airplay Adds: 4 KFSD, WRWK, WRZX, WZZN	197/79	BOYSETSFIRE <i>Last Year's Nest (Wind-up)</i> Total Stations: 9 Heavy (0) Medium (2), Light (7)	96/9	MAROON 5 <i>This Love (Octone/JRMG)</i> Total Stations: 4 Heavy (0) Medium (2), Light (2)	65/4	★ SALIVA <i>Raise Up (Island/IDJMG)</i> Total Stations: 19 Heavy (0) Medium (0), Light (19) Airplay Adds: 2 KNRK, KROX	46/26	FATBOY SLIM <i>Give The Po' Man A Break (Skint/Astralwerks)</i> Total Stations: 2 Heavy (0) Medium (1), Light (1)	29/8
GUSTER <i>Amsterdam (Gonna Write You A Letter) (Palm/Reprise)</i> Total Stations: 17 Heavy (1), WCYY Medium (5), Light (11) Airplay Adds: 1 WFNX	194/42	DROPKICK MURPHYS <i>Walk Away (Hellcat/Epitaph)</i> Total Stations: 10 Heavy (1), WBCN Medium (1), Light (8)	87/13	BROOKS BUFORD <i>Trailer Fabulous (So So Def/Arista)</i> Total Stations: 9 Heavy (0) Medium (0), Light (9)	63/7	SPYMOB <i>It Gets Me Going (Star Trak/Arista)</i> Total Stations: 4 Heavy (1), KFSD Medium (0), Light (3)	44/1	★ BLEU <i>Get Up (Aware/Columbia)</i> Total Stations: 5 Heavy (0) Medium (0), Light (5) Airplay Adds: 1 WFNX	26/11
LESS THAN JAKE <i>The Science Of Selling Yourself Short (Sire/Warner Bros.)</i> Total Stations: 19 Heavy (0) Medium (7), Light (12) Airplay Adds: 4 KFMA, KMBY, KRBZ, KUUCD	176/55	JACK JOHNSON <i>Wasting Time (Jack Johnson/Universal/UMRG)</i> Total Stations: 5 Heavy (1), KUUCD Medium (2), Light (2)	85/16	GOB <i>Oh! Ellin (Arista)</i> Total Stations: 12 Heavy (0) Medium (1), Light (11) Airplay Adds: 3 WBUZ, WCYY, WWCD	61/30	★ BLACK EYED PEAS <i>Anxiety (A&M/Interscope)</i> Total Stations: 13 Heavy (0) Medium (1), Light (12) Airplay Adds: 1 KWOD	39/18	★ THE HISS <i>Riverbed (Loog/Polydor Import)</i> Total Stations: 7 Heavy (0) Medium (1), Light (6)	25/5
OVERSEER <i>Horndog (Columbia)</i> Total Stations: 45 Heavy (0) Medium (5), Light (40) Airplay Adds: 2 KFSD, KPNT	160/61	METALLICA <i>Frantic (Elektra/EEG)</i> Total Stations: 11 Heavy (1), KCPX Medium (1), Light (9) Airplay Adds: 1 WDXD	81/17	KINGS OF LEON <i>Molly's Chambers (RCA/RMG)</i> Total Stations: 10 Heavy (0) Medium (1), Light (9) Airplay Adds: 2 KFSD, WOXY	59/28	★ COLDPLAY <i>Daylight (Capitol)</i> Total Stations: 3 Heavy (0) Medium (1), Light (2)	38/14	★ SEETHER <i>Gasoline (Wind-up)</i> Total Stations: 2 Heavy (0) Medium (1), Light (1)	25/3
RAGE AGAINST THE MACHINE <i>Calm Like A Bomb (Epic)</i> Total Stations: 3 Heavy (0) Medium (3), Light (0)	59/9								

H=Heavy (30+ Detections), M=Medium (15-29), L=Light (Under 15). Airpower awarded to songs appearing in the top 20 on both the Airplay and Audience charts for the first time with increases in both detections and audience. ★ Initial impact: songs appearing on this page for the first time in summary form. Airplay Adds are songs with 6 or more detections at new stations this week. The Airplay Leaderboard ranks taste-maker stations that have been the most successful in identifying future hit songs as measured by the amount of AIRPOWER titles for which they were Airplay Leaders. Refer to each format's Power Playlists page to see this week's Airplay Leaders.

THIS WEEK	LAST WEEK	WKS. ON CHART	TITLE/IMPRINT/PROMOTION LABEL	ARTIST	DETECTIONS		AUDIENCE	
					TW	LW	MILLIONS	RANK
			★ ★ ★ No. 1 ★ ★ ★					
1	1	23	SEND THE PAIN BELOW EPIC 3 weeks at No. 1	CHEVELLE	1847	1745	8.162	1
2	5	18	STUPID GIRL FLIP/GEFFEN/INTERSCOPE	COLD	1572	1461	5.921	5
3	2	39	HEADSTRONG WARNER BROS.	TRAPT	1478	1522	6.490	2
4	4	5	ST. ANGER ELEKTRA/EEG	METALLICA	1436	1492	6.382	3
5	3	24	LIKE A STONE INTERSCOPE/EPIC	AUDIOSLAVE	1418	1501	6.057	4
6	6	18	SOMEWHERE I BELONG WARNER BROS.	LINKIN PARK	1400	1448	5.912	6
7	8	19	CAUGHT IN THE RAIN EPIC	REVIS	1149	1100	3.535	11
8	10	5	JUST BECAUSE CAPITOL	JANE'S ADDICTION	1119	1024	4.038	8
9	7	22	STRAIGHT OUT OF LINE REPUBLIC/UNIVERSAL/UMRG	GODSMACK	1104	1287	5.179	7
10	9	15	FREE DREAMWORKS	POWERMEN 5000	1066	1069	3.405	13
11	12	17	DRIVEN UNDER WIND-UP	SEETHER	947	1004	3.481	12
12	16	5	SHOW ME HOW TO LIVE INTERSCOPE/EPIC	AUDIOSLAVE	924	843	3.882	9
13	15	4	FAINT WARNER BROS.	LINKIN PARK	899	852	3.209	14
14	14	30	REMEMBER REPRISE	DISTURBED	864	877	3.703	10
15	13	10	MINERVA MAVERICK/REPRISE	DEFTONES	855	941	2.576	19
16	11	13	PRICE TO PLAY FLIP/ELEKTRA/EEG	STAINED	811	1012	3.065	15
17	21	4	LIBERATE REPRISE	DISTURBED	796	725	2.516	22
18	19	13	FLY FROM THE INSIDE ATLANTIC	SHINEDOWN	768	765	2.567	20
			★ ★ AIRPOWER ★ ★					
19	28	3	SO FAR AWAY FLIP/ELEKTRA/EEG	STAINED	747	436	3.003	16
20	17	12	MOBSCENE NOTHING/INTERSCOPE	MARILYN MANSON	727	793	2.433	23
21	20	19	BRING ME TO LIFE WIND-UP EVANESCENCE FEATURING PAUL MCCOY		666	749	2.556	21
22	22	14	STILLBORN SPITFIRE	BLACK LABEL SOCIETY	647	679	2.677	18
23	24	7	WORLD SO COLD EPIC	MUDVAYNE	610	568	1.504	28
			★ GREATEST GAINER®/MOST AIRPLAY ADDS ★					
24	NEW		DID MY TIME IMMORTAL/EPIC	KORN	605	0	2.733	17
25	23	15	IMPRINT ROADRUNNER/DJMG	DOUBLEDRIE	565	584	1.198	31
26	26	8	EVERYONE ELEKTRA/EEG	SOCIALBURN	546	555	0.994	32
27	25	12	BOTTOM OF A BOTTLE LAVA	SMILE EMPTY SOUL	535	568	1.202	30
28	32	2	SERENITY REPUBLIC/UNIVERSAL/UMRG	GODSMACK	528	346	1.509	27
29	18	15	THE ROAD I'M ON REPUBLIC/UNIVERSAL/UMRG	3 DOORS DOWN	512	774	1.390	29
30	31	2	SET ME FREE DECCA	VELVET REVOLVER	482	354	1.928	24
31	27	24	TIMES LIKE THESE ROSWELL/RCA/RMG	FOO FIGHTERS	452	463	1.762	25
32	29	9	NOTHING SACRED COLUMBIA	MEMENTO	385	430	0.898	33
33	34	7	OXYGEN'S GONE ISLAND/DJMG	DIE TRYING	297	285	0.483	-
34	NEW		STILL FRAME WARNER BROS.	TRAPT	294	167	0.780	35
35	30	11	GO WITH THE FLOW INTERSCOPE	QUEENS OF THE STONE AGE	278	428	0.826	34
36	35	4	SAFE PASSAGE AMERICAN/DJMG	MANMADE GOD	275	252	0.560	39
37	39	2	RAISE UP ISLAND/DJMG	SALIVA	273	196	0.536	40
38	36	4	SEVEN NATION ARMY THIRD MAN/V2	THE WHITE STRIPES	273	229	1.574	26
39	NEW		UNSTABLE ARISTA	ADEMA	259	156	0.679	37
40	38	5	FIREPROOF FLICKER/MCA	PILLAR	246	224	0.485	-

Songs ranked by number of detections. ○ Songs showing an increase in detections over the previous week, regardless of chart movement. A song will also receive a bullet if its percentage loss in detections does not exceed the percentage of monitored station downtime for the format. A song that has been on the chart for more than 20 weeks will generally not receive a bullet, even if it registers an increase in detections. Airpower awarded to songs appearing in the top 20 on both the Airplay and Audience charts for the first time with increases in both detections and audience. Greatest Gainer awarded to the song with the largest increase in detections. Most Airplay Adds awarded to the song registering six or more detections at the most stations for the first time this week. A song with a gain in detections over the previous week is placed first if tied with a song with a decline over the same period. When tied songs are each gaining detections or each losing detections, the song being played on more stations is placed first. Songs below the top 20 become recurrents and are removed from the chart after 26 weeks.

most airplay adds

ACTIVE ROCK

NEW STATIONS

- KORN** *Did My Time (Immortal/EPIC)* **34**
KATT, KCAL, KDJE, KEGL, KFNN, KHTQ, KILO, KISS, KQRC, KRAB, KRFR, KRQC, KRXQ, KRZR, KUFO, KUPD, KXXR, KZRO, WAAF, WBZX, WGIR, WIYY, WJJO, WLZR, WNOR, WNVE, WQXA, WTFX, WTKX, WXQR, WXTB, WXWX, WYSP, WZOR
Total Stations With Six Or More Detections: 34
TOTAL DETECTIONS BY DAYPART: 6-10 **6%**, 10-3 **18%**, 3-7 **23%**, 7-12 **31%**, 12-6A **22%**
- STAINED** *So Far Away (Flip/Elektra/EEG)* **19**
KAZR, KBER, KBPI, KHTQ, KICT, KQHC, KRAB, KRXQ, KSJO, KZRO, WJJO, WMMS, WNVE, WQXA, WRXW, WXQR, WXWX, WXZZ, WYSP
Total Stations With Six Or More Detections: 42
TOTAL DETECTIONS BY DAYPART: 6-10 **7%**, 10-3 **18%**, 3-7 **17%**, 7-12 **23%**, 12-6A **35%**
- GODSMACK** *Serenity (Republic/Universal/UMRG)* **14**
KBER, KBPI, KEGL, KHTQ, KICT, KNKN, KXXR, WBZX, WJJO, WLZR, WQBK, WRTT, WXQR, WXZZ
Total Stations With Six Or More Detections: 34
TOTAL DETECTIONS BY DAYPART: 6-10 **6%**, 10-3 **15%**, 3-7 **12%**, 7-12 **28%**, 12-6A **40%**
- ADEMA** *Unstable (Arista)* **11**
KAZR, KBPI, KRQC, KXXR, KZRO, WGIR, WIIL, WJJO, WQBK, WRQC, WTPT
Total Stations With Six Or More Detections: 20
TOTAL DETECTIONS BY DAYPART: 6-10 **5%**, 10-3 **7%**, 3-7 **9%**, 7-12 **33%**, 12-6A **46%**
- VELVET REVOLVER** *Set Me Free (Decca)* **10**
KBER, KHTQ, KRTQ, KUPD, WBZX, WGIR, WJJO, WKLO, WNVE, WTPT
Total Stations With Six Or More Detections: 27
TOTAL DETECTIONS BY DAYPART: 6-10 **5%**, 10-3 **19%**, 3-7 **15%**, 7-12 **22%**, 12-6A **38%**

GREATEST GAINERS® ACTIVE ROCK

- KORN** • *Did My Time (Immortal/EPIC)* **+605**
KFNN +42, KRAB +37, KRFR +32, WXQR +28, WJJO +27, WBZX +25, KUFO +24, KRQC +22, WAAF +21, WNOR +21
- STAINED** • *So Far Away (Flip/Elektra/EEG)* **+311**
KBER +27, KRAB +20, KZRO +19, WYSP +18, KSJO +15, WRXW +15, WNVE +14, WXWX +14, WXQR +14, WCCC +13
- GODSMACK** • *Serenity (Republic/Universal/UMRG)* **+182**
KXXR +16, KNKN +15, KBER +13, WRTT +12, WJJO +12, KBPI +10, WRQC +9, KZRO +8, KHTQ +8, WXQR +7
- VELVET REVOLVER** • *Set Me Free (Decca)* **+128**
KBER +15, KUPD +15, WJJO +12, WRTT +11, WKLO +11, WAAF +9, KOMP +9, WTPT +8, WRAT +6, KRZR +6
- TRAPT** • *Still Frame (Warner Bros.)* **+127**
KQRC +18, KDJE +15, KILO +13, KRFR +12, WRQC +11, KSJO +8, WJJO +8, WZOR +5, KOMP +5, KAZR +5

Monitor. RECURRENTS ACTIVE ROCK

RANK	TITLE	ARTIST (IMPRINT/PROMOTION LABEL)	DETECTIONS	
			TW	LW
1	NOT FALLING	MUDVAYNE (EPIC)	627	641
2	FINE AGAIN	SEETHER (WIND-UP)	591	610
3	THE RED	CHEVELLE (EPIC)	567	538
4	ALWAYS	SALIVA (ISLAND/DJMG)	553	579
5	PRAYER	DISTURBED (REPRISE)	545	626
6	ALL MY LIFE	FOO FIGHTERS (ROSWELL/RCA/RMG)	526	533
7	WHEN I'M GONE	3 DOORS DOWN (REPUBLIC/UNIVERSAL/UMRG)	516	644
8	AERIALS	SYSTEM OF A DOWN (AMERICAN/COLUMBIA)	487	500
9	POEM	TAPROOT (VELVET HAMMER/ATLANTIC)	378	398

RANK	TITLE	ARTIST (IMPRINT/PROMOTION LABEL)	DETECTIONS	
			TW	LW
10	SHE HATES ME	PUDDLE OF MUDD (FLAWLESS/GEFFEN/INTERSCOPE)	352	357
11	I STAND ALONE	GODSMACK (REPUBLIC/UNIVERSAL/UMRG)	346	360
12	MAN IN THE BOX	ALICE IN CHAINS (COLUMBIA)	345	356
13	NO ONE KNOWS	QUEENS OF THE STONE AGE (INTERSCOPE)	344	374
14	BOTHER	STONE SOUR (ROADRUNNER/DJMG)	316	349
15	CONTROL	PUDDLE OF MUDD (FLAWLESS/GEFFEN/INTERSCOPE)	312	311
16	BLURRY	PUDDLE OF MUDD (FLAWLESS/GEFFEN/INTERSCOPE)	311	311
17	DOWN WITH THE SICKNESS	DISTURBED (GIANT/REPRISE)	309	301
18	SMELLS LIKE TEEN SPIRIT!	NIRVANA (DGC/INTERSCOPE)	298	305
19	CANT STOP	RED HOT CHILI PEPPERS (WARNER BROS.)	296	290
20	PLUSH	STONE TEMPLE PILOTS (ATLANTIC)	294	303

Recurrents are titles that have appeared on the Active Rock Airplay chart for 26 weeks and have dropped below the top 20.

THE MOST ACCURATE SIGN OF A FUTURE HIT

AIRPLAY adds

AIRPLAY
Monitor



Songs ranked by number of detections. Playlists are listed in order of TSA weekly cume, beginning with the highest-cuming station. Cumes are updated twice yearly following the release of the spring and fall Arbitron surveys. The number of stations shown each week varies depending upon space. Airplay Adds (AA) denotes songs with 6 or more detections at station for first time this week.

Nielsen Broadcast Data Systems

AIRPLAY LEADERBOARD

THE STATIONS THAT BREAK THE HITS

#1 WAAF Boston, MA (PD/MD: Hastings/Carrie) Airplay Leader Designations: 5

#2 WZOR Green Bay, WI (PD: Roxanne Steele) 5

#3 KRAB, Bakersfield, CA (PD: Danny Spanks) 4

#4 KXXR, Minneapolis, MN (PD/MD: Linder/Pablo) 4

#5 WTKX, Pensacola, FL (PD/MD: Sampson/Dyba) 3

Refer to Impact page for this week's Airplay Leaders and Airplay Leaderboard rules.

WAAF Boston PD: Keith Hastings MD: Mistress Carne Entercom 617-779-5800

Table with 2 columns: Rank and Song/Station. Top songs include Staind So Far Away, Audioslave Show Me How To Live, Metallica St. Anger, etc.

WYSP Philadelphia OM: Tim Sabean APD: Gil Edwards Interim MD: Rich DeSisto Infinity 215-625-9460

Table with 2 columns: Rank and Song/Station. Top songs include Staind Price To Pay, Disturbed Remember, Trap! Headstrong, etc.

KSJO San Francisco OM: Gary Schoenwetter MD: Zack Tyler Clear Channel 408-453-5400

Table with 2 columns: Rank and Song/Station. Top songs include Staind So Far Away, Audioslave Like A Stone, Trap! Headstrong, etc.

WRIF Detroit OM: Doug Podell APD/MD: Mark Pennington Greater Media 248-547-0101

Table with 2 columns: Rank and Song/Station. Top songs include Audioslave Show Me How To Live, Linkin Park Somewhere I Belong, Trap! Headstrong, etc.

KQRC Kansas City PD: Bob Edwards APD: Don Jantzen Entercom 913-677-8998

Table with 2 columns: Rank and Song/Station. Top songs include Chevelle Send The Pain Below, Audioslave Like A Stone, Cold Spud Girl, etc.

KEGL Dallas PD: Max Dugan APD: Chris Ryan MD: Cindy Scull Clear Channel 972-869-9700

Table with 2 columns: Rank and Song/Station. Top songs include Chevelle Send The Pain Below, Staind Price To Pay, Trap! Headstrong, etc.

WXTB Tampa Dir/FM Pgm: Brad Hardin PD: Rick Schmidt APD: Carl Harris Clear Channel 813-832-1000

Table with 2 columns: Rank and Song/Station. Top songs include Audioslave Like A Stone, Metallica St. Anger, Audioslave Like A Stone, etc.

KXXR Minneapolis PD: Wade Linder APD/MD: Pablo ABC/Disney 612-617-4000

Table with 2 columns: Rank and Song/Station. Top songs include The White Stripes Seven Nation Army, Linkin Park Somewhere I Belong, Staind So Far Away, etc.

WIYY Baltimore PD: Dave Hill APD/MD: Rob Heckman Hearst 410-889-0098

Table with 2 columns: Rank and Song/Station. Top songs include Evanesence Featuring Paul M Bring Me T, Chevelle Send The Pain Below, Audioslave Like A Stone, etc.

WMMS Cleveland PD: Jim Trapp MD: Slats Clear Channel 216-520-2600

Table with 2 columns: Rank and Song/Station. Top songs include Chevelle Send The Pain Below, Metallica St. Anger, Trap! Headstrong, etc.

KUPD Phoenix PD: J.J. Jeffries MD: Larry McFeele Sandusky 480-838-0400

Table with 2 columns: Rank and Song/Station. Top songs include Chevelle Send The Pain Below, Metallica St. Anger, Linkin Park Somewhere I Belong, etc.

KBPI Denver Dir/Pgm: Mike O'Connor PD: Bob Richards APD/MD: Willie B. Clear Channel 303-713-8000

Table with 2 columns: Rank and Song/Station. Top songs include Audioslave Like A Stone, Godsmack Straight Out Of Line, Disturbed Remember, etc.

KISS San Antonio OM: Virgil Thompson PD: Kevin Vargas APD/MD: Willie B. Cox 210-646-0105

Table with 2 columns: Rank and Song/Station. Top songs include Linkin Park Somewhere I Belong, Trap! Headstrong, Godsmack Straight Out Of Line, etc.

KIOZ San Diego Dir. FM Pgm: Jim Richards PD/MD: Shauna Moran Clear Channel 858-292-2000

Table with 2 columns: Rank and Song/Station. Top songs include System Of A Down Aerials, Metallica St. Anger, Godsmack Straight Out Of Line, etc.

WLZR Milwaukee PD: Mike Stern MD: Marilyn Wee Saga 414-978-9000

Table with 2 columns: Rank and Song/Station. Top songs include Linkin Park Somewhere I Belong, Trap! Headstrong, Chevelle Send The Pain Below, etc.

WBZC Columbus PD: Hal Fish APD/MD: Ronni Hunter North America 614-481-7800

Table with 2 columns: Rank and Song/Station. Top songs include Chevelle Send The Pain Below, Metallica St. Anger, Godsmack Straight Out Of Line, etc.

KUFO Portland OM: Dave Numme APD: Al Scott Infinity 503-222-1011

Table with 2 columns: Rank and Song/Station. Top songs include Trap! Headstrong, Powerman 5000 Free, Metallica St. Anger, etc.

WCCB Hartford OM/MD: Michael Picozzi APD/MD: Mike Karolyi Marlin 860-525-1069

Table with 2 columns: Rank and Song/Station. Top songs include Chevelle Send The Pain Below, Metallica St. Anger, Jane's Addiction Just Because, etc.

WBBB Raleigh PD: Jay Nachts MD: Curtis 919-876-3831

Table with 2 columns: Rank and Song/Station. Top songs include Trap! Headstrong, Linkin Park Somewhere I Belong, Audioslave Like A Stone, etc.

KCAL San Bernardino PD: Steve Hoffman MD: MJ Matthews Anaheim 909-793-3554

Table with 2 columns: Rank and Song/Station. Top songs include Mudvayne Not Falling, Godsmack Straight Out Of Line, Metallica St. Anger, etc.

WQXA Harrisburg PD: Claudine DeLorenzo MD: Nixon Citadel 717-367-7700

Table with 2 columns: Rank and Song/Station. Top songs include Cold Spud Girl, Chevelle Send The Pain Below, Seether Driven Under, etc.

KRXQ Sacramento SM: Curtiss Johnson PD: Pat Martin MD: Paul Marshall Entercom 916-334-7777

Table with 2 columns: Rank and Song/Station. Top songs include Chevelle Send The Pain Below, Linkin Park Somewhere I Belong, Shinedown Fly From The Inside, etc.

WNOR Norfolk PD: Harvey Kojan APD/MD: Tim Parker SAGA 757-366-9900

Table with 2 columns: Rank and Song/Station. Top songs include Chevelle Send The Pain Below, Linkin Park Somewhere I Belong, Shinedown Fly From The Inside, etc.



Songs posting gains in detections or with a percentage loss in detections equal to or better than the monitored downtime percentage in the format. Songs listed in order of detections. *Indicates station experienced between 24 and 56 hours of monitored downtime during the chart week.

TOP 10 BOUND

AUDIOSLAVE 924/81 Show Me How To Live (Interscope/Epic) Total Stations: 52 Chart Move: 16-12 H (21), M (9), L (22) Airplay Adds: 3

Table with columns: Station, LW, ZW, ID, and song details for various markets.

LINKIN PARK 899/47 Faint (Warner Bros.) Total Stations: 51 Chart Move: 15-13 H (14), M (22), L (15) Airplay Adds: 4

Table with columns: Station, LW, ZW, ID, and song details for various markets.

SHINEDOWN 768/3 Fly From The Inside (Atlantic) Total Stations: 52 Chart Move: 19-18 H (14), M (13), L (25) Airplay Adds: 0

Table with columns: Station, LW, ZW, ID, and song details for various markets.

AIRPOWER Total Detections/Gain

STAIN'D 747/311 So Far Away (Flip/Elektra/EEG) AIRPLAY LEADER (FIRST STATION TO 100 PLAYS) WAAF - Boston, MA PD: Keith Hastings MD: Mistress Carrie Date: 06/22/03

Table with columns: Station, LW, ZW, ID, and song details for various markets.

AIRPOWER BOUND

DISTURBED 796/71 Liberate (Reprise) Total Stations: 52 Chart Move: 21-17 H (14), M (13), L (25) Airplay Adds: 4

Table with columns: Station, LW, ZW, ID, and song details for various markets.

MUDVAYNE 610/42 World So Cold (Epic) Total Stations: 43 Chart Move: 24-23 H (9), M (13), L (21) Airplay Adds: 2

Table with columns: Station, LW, ZW, ID, and song details for various markets.

KORN 605/605 Did My Time (Immortal/Epic) Total Stations: 45 Chart Move: Debut 24 H (11), M (10), L (24) Airplay Adds: 35

Table with columns: Station, LW, ZW, ID, and song details for various markets.

GODSMACK 528/182 Serenity (Republic/Universal/UMRG) Total Stations: 50 Chart Move: 32-28 H (7), M (9), L (34) Airplay Adds: 14

Table with columns: Station, LW, ZW, ID, and song details for various markets.

VELVET REVOLVER 482/128 Set Me Free (Decca) Total Stations: 34 Chart Move: 31-30 H (9), M (8), L (17) Airplay Adds: 10

Table with columns: Station, LW, ZW, ID, and song details for various markets.

DIE TRYING 297/12 Oxygen's Gone (Island/IDJMG) Total Stations: 32 Chart Move: 34-33 H (11), M (9), L (22) Airplay Adds: 0

Table with columns: Station, LW, ZW, ID, and song details for various markets.

TRAPT 294/127 Still Frame (Warner Bros.) Total Stations: 37 Chart Move: Debut 34 H (3), M (4), L (30) Airplay Adds: 9

Table with columns: Station, LW, ZW, ID, and song details for various markets.

MANMADE GOD 275/23 Safe Passage (American/IDJMG) Total Stations: 37 Chart Move: 35-36 H (1), M (3), L (33) Airplay Adds: 2

Table with columns: Station, LW, ZW, ID, and song details for various markets.

SALIVA 273/77 Raise Up (Island/IDJMG) Total Stations: 34 Chart Move: 39-37 H (0), M (4), L (30) Airplay Adds: 7

Table with columns: Station, LW, ZW, ID, and song details for various markets.

THE WHITE STRIPES 273/44 Seven Nation Army (Third Man/V2) Total Stations: 21 Chart Move: 36-38 H (6), M (1), L (14) Airplay Adds: 1

Table with columns: Station, LW, ZW, ID, and song details for various markets.

ADEMA 259/103 Unstable (Arista) Total Stations: 34 Chart Move: Debut 39 H (2), M (4), L (28) Airplay Adds: 11

Table with columns: Station, LW, ZW, ID, and song details for various markets.

PILLAR 246/22 Fireproof (Flicker/MCA) Total Stations: 28 Chart Move: 38-40 H (2), M (3), L (23) Airplay Adds: 1

Table with columns: Station, LW, ZW, ID, and song details for various markets.

MANMADE GOD 275/23 Safe Passage (American/IDJMG) Total Stations: 37 Chart Move: 35-36 H (1), M (3), L (33) Airplay Adds: 2

Table with columns: Station, LW, ZW, ID, and song details for various markets.

SALIVA 273/77 Raise Up (Island/IDJMG) Total Stations: 34 Chart Move: 39-37 H (0), M (4), L (30) Airplay Adds: 7

Table with columns: Station, LW, ZW, ID, and song details for various markets.

THE WHITE STRIPES 273/44 Seven Nation Army (Third Man/V2) Total Stations: 21 Chart Move: 36-38 H (6), M (1), L (14) Airplay Adds: 1

Table with columns: Station, LW, ZW, ID, and song details for various markets.

ECHO 7 95/6 One Step Away (In De Goot) Total Stations: 15 Heavy (0) Medium (0), Light (15)

Table with columns: Station, LW, ZW, ID, and song details for various markets.

METALLICA 89/14 Frantic (Elektra/EEG) Total Stations: 26 Heavy (0) Medium (2), Light (24)

Table with columns: Station, LW, ZW, ID, and song details for various markets.

NICKELBACK FEAT. KID ROCK 88/63 Saturday Night's Alright (For Fighting) (Columbia) Total Stations: 15 Heavy (1) KRTO Medium (2), Light (12) Airplay Adds: 3 KRTQ, WAAF, WRIF

Table with columns: Station, LW, ZW, ID, and song details for various markets.

THRIVE 88/31 All That's Left (Island/IDJMG) Total Stations: 15 Heavy (0) Medium (0), Light (15) Airplay Adds: 4 KAZR, WJJO, WTKX, WTPM

Table with columns: Station, LW, ZW, ID, and song details for various markets.

PEPPER 55/55 Give It Up (Volcom) Total Stations: 1 Heavy (1) KPOI Medium (0), Light (0) Airplay Adds: 1 KPOI

Table with columns: Station, LW, ZW, ID, and song details for various markets.

ELEMENT H 53/2 Honesty (No Label) Total Stations: 12 Heavy (1) WTFX Medium (0), Light (11)

Table with columns: Station, LW, ZW, ID, and song details for various markets.

MOTOGRATER 48/41 Down (Elektra/EEG) Total Stations: 12 Heavy (0) Medium (1), Light (11) Airplay Adds: 3 KQRC, KRZR, WAAF

Table with columns: Station, LW, ZW, ID, and song details for various markets.

FOO FIGHTERS 41/26 Low (Roswell/RCA/RMG) Total Stations: 9 Heavy (0) Medium (1), Light (8) Airplay Adds: 3 KOMP, WXXW, WXZZ

Table with columns: Station, LW, ZW, ID, and song details for various markets.

H=Heavy (21+ Detections), M=Medium (14-20), L=Light (1-13). Airpower awarded to songs appearing in the top 20 on both the Airplay and Audience charts for the first time with increases in both detections and audience. * Initial impact: songs appearing on this page for the first time in summary form. Airplay Adds are songs with 6 or more detections at new stations this week. The Under Leaderboard ranks taste-maker stations that have been the most successful in identifying future hit songs as measured by the amount of AIRPOWER titles for which they were Airplay Leaders. Refer to each format's Power Playlists page to see this week's Airplay Leaders.

Table listing radio stations and their top songs, including KZFM Corpus Christi, KBBT San Antonio, KPRT El Paso, Texas, and others.

Table listing radio stations and their top songs, including KBBT San Antonio, KPRT El Paso, Texas, and others.

Table listing radio stations and their top songs, including WGCI Chicago, WRJH Jackson, Miss., KWSP Oklahoma City, and others.

Table listing radio stations and their top songs, including WRJH Jackson, Miss., KWSP Oklahoma City, and others.

Table listing radio stations and their top songs, including WRJH Jackson, Miss., KWSP Oklahoma City, and others.

Table listing radio stations and their top songs, including WRJH Jackson, Miss., KWSP Oklahoma City, and others.

Table listing radio stations and their top songs, including WRJH Jackson, Miss., KWSP Oklahoma City, and others.

Table listing radio stations and their top songs, including WRJH Jackson, Miss., KWSP Oklahoma City, and others.

The music industry's most important R&B•Hip-Hop event of the year

HIGHLIGHTS

- ▶ **NEW ARTIST SHOWCASES** performances by:
BLACK JUICE, Big Picture Entertainment
CALIBE, The Royalty Network
M1, THA LYRICAL MISTRESS, Newsmakers Prod.
QUE & MALAIKA, Ernie Green Entertainment
- ▶ **AURN SALUTE TO THE FINALIST RECEPTION**
- ▶ **UP CLOSE N' PERSONAL SUPERSTAR INTERVIEW**
- ▶ **BMI URBAN AWARDS SHOW** (invitation only)
Tribute to Isaac Hayes, plus performances by
Floetry, Bilal, Anthony Hamilton and more!
- ▶ **LIVING LEGENDS DINNER**
An unprecedented event honoring:
CHARLES WARFIELD, ICBC Broadcasting Holdings
TERRI AVERY, WPEG/WBAV/WGIV
VERNON SLAUGHTER, The Artist Factory
ROBERT JOHNSON, Delicious Records
TERRI ROSSI



BLACK JUICE



CALIBE



M1

AURN LIVE BROADCAST

Over 25 million listeners will hear on-site artist interviews, daily event recaps, the Awards Show and more on AURN's entertainment shows, including:

USA MUSIC MAGAZINE
SUPERJAM
WBLS, NEW YORK
KMJQ, HOUSTON
WEDR, MIAMI
WAMO, PITTSBURGH

WKBW, WEST PALM BEACH
AURN WORLD NEWS, KIM LAMPKINS
KKDA-DALLAS
RUSS PARR & THE MORNING CREW
TANYA HART, HOLLYWOOD LIVE
AND MANY MANY MORE!

**REGISTER
BY JULY 11
SAVE \$100
PRE REGISTRATION
DEADLINE**

Billboard



AMERICAN URBAN
RADIO NETWORKS

R&B hip hop

conference
awards

**august 6-8
miami beach**

CONTACTS

REGISTRATION & GROUP DISCOUNTS
Kelly Peppers 646.654.4643, kpeppers@billboard.com

AWARDS SHOW & PERFORMANCES
Michele Jacangelo 646.654.4660, bbevents@billboard.com

SPONSORSHIPS
Cebele Marquez 646.654.4648, cmarquez@billboard.com
Johnna Johnson 646.654.4707, jjohnson@billboard.com

AMERICAN URBAN RADIO NETWORKS
Andy Anderson 212.883.2117, aanderson@aurn.com

HOTEL
The Roney Palace 305.604.1000
Make your reservations before 7/15
to receive discounted room rate of \$159!

PANELS

Provocative sessions covering the industry's current trends, issue and challenges.

THIS YEAR'S PANELISTS INCLUDE:

Chris Atlas, Cornerstone Promotion
Randy Chin, VP Records
Will Griffin, Simmons Lathan Media Group
Haqq Islam, GreeneStreet Records
James Leach, SESAC
Michelle Lin, VP Records
Ted Lucas, Slip-N-Slide Records
Bernie Resnick, Bernard M. Resnick, Esq., P.C.
Anasa Troutman, Groovement, Inc.
Damon Williams, Music Choice
MORE TO BE ANNOUNCED!

GRAND FINALE

BILLBOARD R&B•HIP-HOP AWARDS

HONORING THE TOP URBAN ARTISTS OF THE YEAR

To see this year's finalists visit
WWW.BILLBOARDEVENTS.COM

STAY TUNED FOR THIS YEAR'S LINEUP!



for more info & to register: www.billboardevents.com or call 646.654.4660