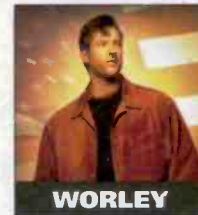


# AIRPLAY ■ Monitor®

THIS WEEK IN MONITOR:

Reggae Act Tops R&B Chart  
For The First Time p. 3

Examining Country's  
Patriotic Roots p. 38



APRIL 25, 2003

• We Listen To Radio •

VOLUME 11 • NO. 17 \$6.95

## Local Show Beats Syndicated Rivals

■ by Dana Hall

WWWZ (Z93) Charleston, S.C., has the No. 1 morning show in the market, Da Breakfuss Club With Tessa & Baby J. Considering the station is also No. 1 12-plus, you might expect that. But it's remarkable because Charleston is also a market where all four syndicated morning shows targeting an African-American audience are airing. And Da Breakfuss Club wins over them all. It even beats Howard Stern.



SPENCER, BYRD, BABY J

Da Breakfuss Club is Tessa Spencer, Baby J, and producer Evans "Byrdman" Byrd. At the helm (but not on-air) is Citadel/Charleston OM Terry Base. Airplay Monitor spoke with Base and his morning team on the show's climb to success, the keys to battling syndicated radio, and whether the team's success will prompt it to enter syndication as well.

Continued on page 24

## Where's Active Rock In NY, L.A., Chicago?

■ by Bram Teitelman

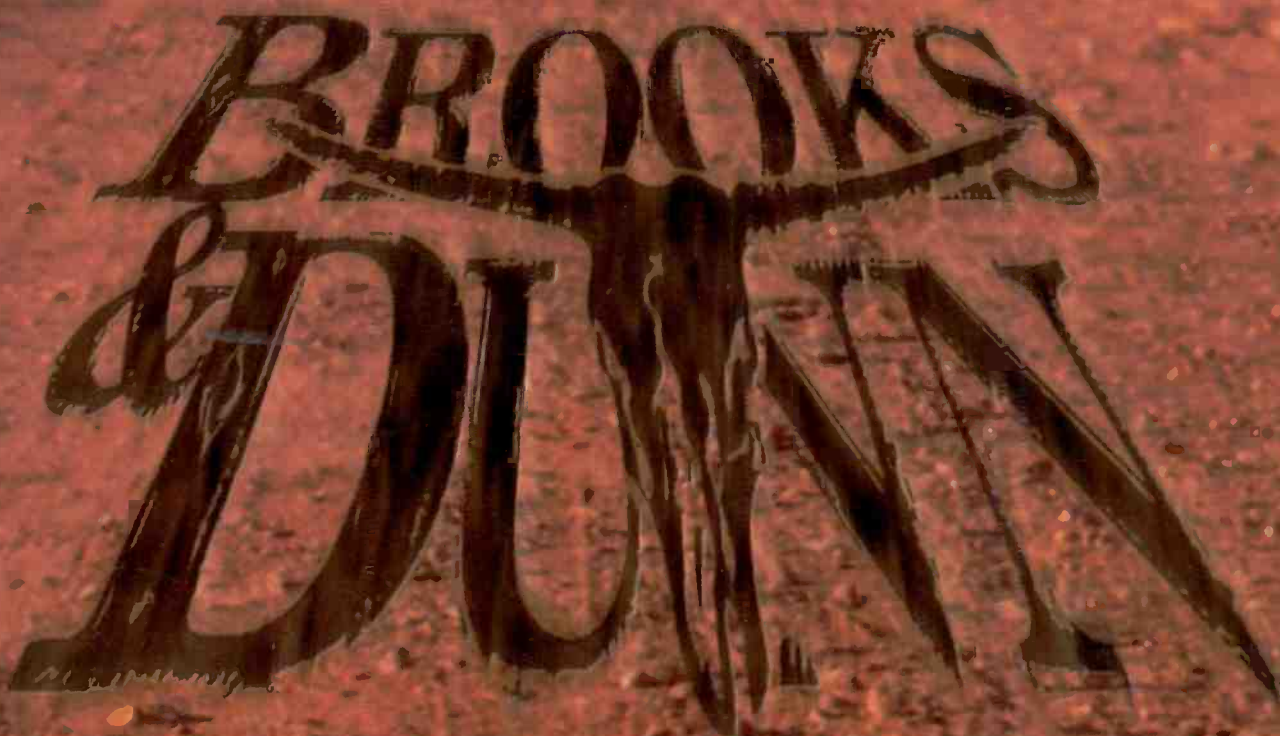
For rock label executives, it has been a sore spot for years: The top three markets (and five of the top 10) don't have an active rock station, usually because the modern station is rocking so hard that there's no room for one. But even now, with modern starting to differentiate itself from active, format observers still believe that ethnic composition and the cost of entry will keep active rock out of New York, Chicago, and Los Angeles.

"New York and Los Angeles are such incredibly expensive markets," TMT senior director of national rock promotion Joanne Grand says. "New York doesn't have a pure jazz station or a country station either."

"Is there revenue to support active rock in those markets?" Virgin VP of rock formats Steve Leeds asks. "One would think [so] on the surface, but active rock isn't normally the easiest sell, and when you're competing against an established heritage modern rock station, it's going to be difficult. Infinity and Clear Channel had the opportunity in New York to put active rock stations on in the past year. Both of those companies are run by intelligent, bright radio executives. Had there

Continued on page 44

## "RED DIRT ROAD"



The first single from their upcoming album  
In stores this summer!

37 BB/MONITOR #33 RR

OVER 90 FIRST WEEK STATIONS!

Catch Brooks & Dunn on tour  
this summer in a city near you!

ARISTA  
NASHVILLE  
BMG  
© 2003 BMG Music  
www.aristanashville.com



**SOUNDCAN DEBUT #18  
54,000 SOLD FIRST WEEK!**

**OVER 2500  
BDS SPINS TO DATE!**

# RIGHTEOUSLY

...THE INCREDIBLY SEXY, STAND-OUT SINGLE  
FROM THE INCREDIBLY SEXY, STAND-OUT ARTIST

## Lucinda Williams

FROM THE NEW ALBUM  
*World Without Tears*



**IMPACTING HOT/MOD AC 5-5**

**"Lucinda Williams has made  
the record of a lifetime...  
a profoundly chilling,  
heartbreaking,  
important record."**

**- Vanity Fair**

*Produced by Mark Howard & Lucinda Williams  
Executive Producer: Gary Briggs*

LOST HIGHWAY

[www.lucindawilliams.com](http://www.lucindawilliams.com) • [www.losthighwayrecords.com](http://www.losthighwayrecords.com)

© 2003 UMG Recordings, Inc.

## Toronto Radio Copes With SARS

As Toronto deals with the outbreak of severe acute respiratory syndrome (SARS), some of the city's programmers are doing their best to maintain business as usual in their hallways and on the air, despite a health scare that has the potential to keep both employees and listeners at home. While **Rob Farina**, PD of adult top 40 CHUM-FM says, "Things are very bleak business wise up here. The SARS scare has [had] a big impact in advertisers moving their business off the air," other PDs say the media has blown the outbreak out of proportion.

At R&B CFXJ (Flow 93.5), PD **Kevin Fox** says the scare hasn't stopped listeners from living their normal lives, including hanging out at the clubs. Despite the media coverage, Fox says, SARS is "really only a concern in the medical fields and hospitals. We had a scare, when one of our employees was contacted by the Ministry of Health because she had been in an infected hospital. She was quarantined for a couple of days... and we had a meeting with the staff just to stress that she and everyone else in-house would be fine. The only major change we've made in policy is that we've discontinued our weekend music meetings with local artists until this SARS scare is over. That way we control who is coming in and out of our offices."

At modern CFNY, PD **Dave Farough** also believes that "the media in the U.S. and Canada are blowing things out of proportion." Farough has heard through the grapevine that some bands and some hockey players have been nervous about coming to the Toronto area. CFNY was actually planning to call its recent all-request weekend the Super All-Request Special, those plans were scrapped when more serious information about the disease came out. "We want to have fun, but we never want to be considered tasteless," Farough says. "But once it starts to die down a little bit and people start to get a sense of humor about it, then we'll probably do something with it."

At classic rock sister CILQ (Q107), PD **Jeff Woods** says, "Our fear is that if we spend too much



**WOODS**

time instilling fear, people aren't going to support the sponsors. We're talking about it in terms of updates and closings and have basically taken a public-service angle on it so far." None of the station's promotions have been canceled, and everyone has shown up for work as normal.

Woods says, "We have one advertiser, the Mandarin Restaurant, telling the audience what they've done from a cautionary standpoint and stating that anyone [who works there and] has traveled to Singapore or any other countries involved isn't allowed to come to work."

### BUSINESS: A FREUND OF THE BEAT

R&B KKBT (the Beat) Los Angeles ups **GSM Sue Freund** to GM, replacing longtime GM **Nancy Leichter**, who exits for personal reasons.

**Infinity/Orlando, Fla., GM Robin Smith** exits to follow her husband out of the market.

**Clear Channel and AFTRA** have reached an agreement and have averted a planned strike by on-air personalities in New York. Details on the agreement were not released, but the new contract covers **AC WLTW (Lite FM)**, rhythmic top 40 **WKTU**, R&B **WWPR (Power 105.1)**, and classic rock **WAXQ**. Jocks had voted to authorize a strike in response to Clear Channel's proposed use of voice-tracking in the market.

**Ben Buckland** is promoted from GSM to GM at country oldies **KKNG Oklahoma City**, assuming duties previously handled by owner **Tony Tyler**.

**John Broomfield's Rainbow Radio** sells its Columbia, S.C., cluster to competitor **Inner City Broadcasting** for \$11.1 million. Inner City—which owns R&B **WVDM**, modern rock **WARQ**, classic rock **WMFX**, and all-sports **WOIC**—picks up R&B **WHXT** and R&B oldies **WZMJ**. Inner City also taps **Steve Patterson** as cluster GM from the crosstown Clear Channel stations.

**Jones Radio Networks (JRN) VP/COO Edie Hilliard** will exit May 16. She has been with JRN and predecessor Broadcast Programming since 1987. Meanwhile, two of JRN's syndicated formats are now being monitored by Nielsen BDS; their data have not yet been added to *Airplay Monitor* or its charts.

Clear Channel promotes senior VP of marketing and corporate communications **Lisa Dollinger** to VP of worldwide communications.

### FREE WATER FOR THE 13TH CALLER

Maybe Americans have reached a point where radio is just another appliance. But the *Chicago Tribune* reports that the 40 soldiers in the Army's Psychological Operations Unit are "walking the streets of Baghdad, sidestepping unexploded grenades and other litter of war to deliver what they consider their primary weapon: a \$2.99 AM/FM radio." The free radios are to promote three AM stations with information on food, drinking water, medical care, and the post-Saddam Hussein government. The unit's captain, **Curt Barker**, has already distributed 800 radios, with thousands more to come. He says, "It worked in Bosnia and Kosovo, and it can work here, too." The *Tribune* reports that one of the first recipients of the radios "grasped it with a look of



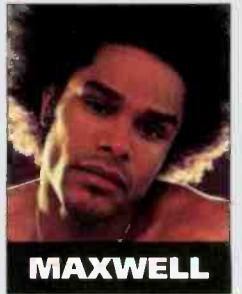
BY ANTHONY COLOMBO, WADE JESSEN, PATRICK MCGOWAN & MINAL PATEL

## Playing The (Really) Slow Jams

Two weeks ago, **Maxwell** ended a record-breaking 91-week run on the adult R&B chart with "Lifetime." Debuting July 28, 2001, that song went on to spend 15 weeks at No. 1, then hung in within the chart's top 20 well after the 26-week limit at which a song is moved to the recurrent chart if it falls below that number.

"Lifetime" is only one of five No. 1 hits in the past year to pass the 52-week benchmark set in 1998 by **Kenny Lattimore's "For You."** **Luther Vandross' "Take You Out"** did it exactly one year ago. Vandross has since been joined by **Maxwell, "Anything"** by **Jaheim, "Someone to Love You"** by **Ruff Endz**, and his own "I'd Rather"—the latter two are still on the chart at 17 and 18, respectively. And with 20 charted titles in all, Vandross holds the record for the most total weeks spent on the chart with 510.

With songs becoming more entrenched at the top, the time it takes to get there is also increasing. **Jaheim's "Fabulous"** now holds the record for the longest trip to No. 1 with 30 weeks, beating out "Tears" by the **Isley Brothers**, which took 29 weeks to get to No. 1 in 1997. Of the seven titles to reach No. 1 so far this year, only two took less than 4 1/2 months: **Musiq's "dontchange"** (15 weeks) and **Whitney Houston's "One of Those Days"** (13).



**MAXWELL**

### MATCHBOX TWENTY CAPS ARISTA STREAK AT 39 WEEKS

Arista's record streak of 39 weeks at No. 1 on adult top 40 is ended by the act that was most likely to reach the top of that chart, **Matchbox Twenty**. "Unwell" (Atlantic) is the band's fourth No. 1 on adult top 40; no other act has more than two. Arista's streak was bookended by **Avril Lavigne's "Complicated"** (16 weeks, beginning July 26, 2002) and "I'm With You" (10 weeks). In between was **Santana Featuring Michelle Branch's "The Game of Love"** (13 weeks).

"When I'm Gone" (Republic/Universal/UMRG) by **3 Doors Down** becomes the first top 10 modern rock hit to top the mainstream top 40 chart since **Linkin Park's "In the End"**

did so in March/April 2002. And with "Bring Me to Life" by **Evanescence** at No. 8, there are now two modern top 10s in the mainstream top 10 for the first time since last August ("Hero" by **Chad Kroeger Featuring Josey Scott** and "The Middle" by **Jimmy Eat World**). "When I'm Gone" is **3 Doors Down's** second No. 1 at mainstream following "Kryptonite" in September 2000.



**MATCHBOX TWENTY**

### REGGAE ACT SCORES FIRST R&B NO. 1

**Sean Paul** earns his first No. 1 on the R&B/hip-hop chart with "Get Busy" (VP/Atlantic). With the exception of **Bounty Killer's** month-long stay at No. 1 as a featured artist on the **Fugees' "Killing Me Softly,"** he is the first reggae artist to top that chart.

**R. Kelly's "Ignition"** (Jive) moves to No. 1 at rhythmic top 40. It is his first No. 1 on that chart since "Bump N' Grind" in April 1994. Although the title's detection total declines by 49 spins, "Ignition" earns a bullet, per *Airplay Monitor* policy to highlight a track in its first week at No. 1.

As **Darryl Worley** tops the country airplay chart for a fifth week, his "Have You Forgotten?" (DreamWorks) caps a top 10 that has no new titles for the second straight week. In fact, no new titles crack the top 20 or the top 30 this issue. The logjam on this chart is also magnified by an unusually high number of titles that increase in detections but decrease in rank. Seven titles between No. 19 and No. 36 are awarded backward bullets.

Four spins separate the top three songs at triple-A, as **Jason Mraz's "The Remedy (I Won't Worry)"** (Elektra/EEG) (334 detections) edges **Fleetwood Mac's "Peacekeeper"** (Reprise) (392) and **John Mayer's "Why Georgia"** (Aware/Columbia) (390). That's the closest gap among the top three since the Dec. 14, 2001, issue when one detection separated the top three. That week Mayer was No. 3 with "No Such Thing" while **Ryan Adams' "New York, New York"** took the top spot on a tiebreaker over **Dave Matthews Band's "Everyday."**

### PANEL CHANGES

**WESZ** Green Bay, Wis., is removed from mainstream top 40 due to a format change. Returning to panels this week are **KBQI** Albuquerque, N.M. (country) and **WFLM** Fort Pierce, Fla. (adult R&B).

## THE MOVE

### Apple To Unveil Digital Music Service

*Billboard Bulletin* reports that Apple is expected to unveil an à la carte digital music service that will feature content from the five major labels and will allow for the transport of tracks to its iPod digital music player. There is also speculation the company may introduce new iPod devices.

**Nina Rossman** joins Nashville-based Dreamcatcher Records as promotion director. She most recently was publisher of industry newsletter *Conference Call*.

**Cleveland International Records** VP of rock promotion **Marty Mooney** died of heart failure April 16 in a Cleveland hospital, following a lengthy illness, according to *Billboard Bulletin*. He was 60. Mooney did two stints with the label and also worked for Columbia and as an independent promoter in Nashville.

In 2004, the Grammy Awards will move from their usual late-February date to Feb. 8 and will return to Los Angeles next year. In addition, the American Music Awards move from their normal January slot to Nov. 16.

After suffering a stroke April 16, singer **Luther Vandross** is in stable condition in a New York hospital. He turned 52 April 20.

Jazz/R&B legend **Nina Simone** died April 21 at 70, following a long illness. Her career began in the late 1950s and was often associated with the civil-rights movement, particularly through her signature tune "To Be Young, Gifted, and Black."

confusion on his face. Under Hussein, he said, radios often were not available in stores, and most of his neighbors do not own one."

### PROGRAMMING: SETH, I HEAR YOU CALLING

Modern WBRU Providence, R.I., PD **Tim Schiavelli** will exit in June. Former modern KNDD (the End) Seattle MD **Seth Resler** will be the new PD.

Triple-A WXRV (the River) Boston PD/p.m. driver **Joanne Doody** exits. Northeast director of programming **Nicole Sandler** assumes her duties.

Former classic rock WDTW (the Drive) Detroit PD **Jay Nachlis** is named PD at active WBBB (96 Rock) Raleigh, N.C. . . . R&B WWBZ Charleston, S.C., PD **Gentleman George** exits.

Modern WNFX (Extreme Radio) Knoxville, Tenn., PD **Dan Bozyk** exits. He may be reached at 865-216-1668 or bozyk@comcast.net. **Trixie** moves from nights to afternoons, replacing Bozyk, while P/T **Opie** takes nights.

R&B WHBX Tallahassee, Fla., MD/p.m. driver

**Ed the World Famous** is named PD/afternoon host on new R&B/hip-hop sister **WWLD (Blazin' 102.3)**, while WHBX night guy **J. Blaze** segues to APD/MD/night host. At WHBX, P/T and long-time Columbia Records rep **Joe Bullard** takes on afternoons. (He was also the longtime PD of crosstown WANM when it was the market's R&B powerhouse.) Former R&B oldies **WALR (Kiss 104.1)** Atlanta night jock **Jeffrey Charles** will voice-track WHBX's slow-jam show. Former Blazin' 102.3 PD **B. Paiz** returns to MD/night duties at **WMNX (Coast 97.3)** Wilmington, N.C.

**Randy "Mudflap" Wilcox** joins country **WEGX (Eagle 92.9)** Florence, S.C., as PD. He was MD of **WNKT (Cat Country)/AC WSUY** Charleston, S.C. **Eric Chaney** returns to Citadel/Charleston as APD/MD of **WNKT** and **WSUY**.

Rhythmic top 40 **KBOM** Santa Fe, N.M., PD **Rob Royale** exits. Rhythmic top 40 sister **KYLZ (Wild 106)** Albuquerque, N.M., PD **Mr. Clean** absorbs those duties.

Continued on page 4



# THE #1 ALBUM IN AMERICA!

THE MOST ANTICIPATED ALBUM OF THE YEAR  
IS NOW THE BIGGEST ALBUM IN THE U.S!

"This is a win beneath her wings! Clarkson glides through octaves with the masterful control of someone who's been doing this for decades. And her range is awesome: in a dozen tracks, she owns Pop, R&B, Country and Gospel."

Entertainment Weekly 4/25/2003

"At last! Kelly Clarkson's album Thankful does just what it needs to do, riding the melodic edge between her diva range and songs hip enough to appeal to youth. She tackles every genre of music with plenty to thrill."

Billboard 4/26/2003



Featuring the massive hit "Miss Independent"  
and the #1 smash "A Moment Like This."

## "KELLY CLARKSON'S DEBUT ALBUM PROVES AMERICA WAS RIGHT TO IDOL-IZE HER!"

Entertainment Weekly 4/25/2003



Executive Producer: Clive Davis / A&R: Steve Ferrera / Additional A&R: Keith Naftaly / Management: Simon Fuller; 19 Management / A 19 Entertainment Production

WWW.KELLYCLARKSONWEB.COM WWW.AMERICANIDOLMUSIC.COM WWW.RCARECORDS.COM

The RCA Records Label is a Unit of BMG Tmk(s) © Registered • Marca(s) Registrada(s) © Trademark Management S.A. BMG logo is a trademark of BMG Music © 2003 BMG





## Quiet Storm Shows: Not Just For R&B Anymore

Historically, many rhythmic top 40 stations have left the late-night love songs/dedication show to their R&B rivals, countering the Quiet Storm with a "Thunderstorm" mix or similar programming. But some stations *are* having success by chilling out at night. And in one recent, attention-getting move, even mainstream top 40 WFLZ Tampa, Fla., added a Quiet Storm.

In most cases, PDs say, the impetus to break format is most obvious in a market where there isn't any R&B competition. Rhythmic top 40 XHTZ (Jammin' Z90) San Diego PD Diana Laird says, "I think everything in radio is a market-by-market decision. Our *Between the Sheets* show is pretty basic with requests and dedications, and although we're a rhythmic, energetic station, we promote the show as it is, very sexy and mellow."

WFLZ's show goes back 10 years as a Sunday-night program to a time before rhythmic rival WLLD's arrival, when WFLZ still leaned rhythmic itself. Hosted by WBTT Fort Myers, Fla., PD Ron Sheppard (aka Jomamma Johnson), the program is now heard 11 p.m.-2 a.m. nightly.

WFLZ PD Jeff Kapugi says, "It's really a market-by-market decision. The ability of our direct competitor to draw from the market coalition allows them to be perceived as the default R&B station in the market. We needed something at night that would draw some of that audience to us, given the lack of a dominant R&B station here. But if the market demos weren't set up like they are, I wouldn't be doing it."

WFLZ's Quiet Storm can have such unlikely (for a mainstream top 40) titles as "Before I Let You Go" by BLACKstreet, "Take You Out" by Luther Vandross, or "Feelin' on Your Booty" by R. Kelly. The week-night version skews younger than the Sunday-night show. "I let Ron call the shots on the music, and we sit down and discuss," Kapugi says. "We'll throw in a Christina Aguilera or 'N Sync ballad on the weeknights due to a younger audience tuning in, while Sunday nights remain more R&B-based due to older audiences."

### EVEN ADULT TOP 40s ARE INVITED TO A QUIET STORM

WFLZ's Quiet Storm actually recalls a period before Toronto got its own R&B outlet, CFXJ (the Flow), when adult top 40 CHUM-FM had its own R&B-flavored show, *Lights Out*. That show went through transitions and disappeared after CFXJ signed on, but it's back under current PD Rob Farina.

"The show went through many transitions. At one time it was even new age during a time [when] AC stations were obligated [by Canadian content laws] to play some instrumentals," Farina says.

"Then we moved [to] adult R&B but, although [it was] phenomenal, our music department just were not specialists in R&B music."

"While traveling I got influenced overseas with the global music scene, which made me want to try a mellow type of show again," Farina continues. "So after a countdown show that didn't perform as well as we had hoped, *Lights Out* is back. Today it leans pretty broad with music from artists from Jill Scott to Etta James to Groove Armada to Telepopmusik. It's overall very mellow, with the attitude that we're taking listeners on a journey each night. Our host Maie Pauts adds quite a bit of personality and is really good at conveying information to listeners and even discussing a variety of topics."

### HOW OLD CAN YOU GO?

While WFLZ keeps it more contemporary during the week, KKFR (Power 92) Phoenix PD Bruce St. James is still willing to dig in the crates,

even on a station that powers "In Da Club" up to 95 times per week. *Lights Out Phoenix* goes back as far as Marvin Gaye and Smokey Robinson.

St. James says, "Certain records are timeless. I believe that some titles just don't sound dated. A rock song from the '70s sounds very different from a rock song today. A hip-hop song from the '80s sounds very different from a hip-hop song today. But for some reason Marvin Gaye can play along with R. Kelly and Tyrese in the show. It's about lyrics, feeling, and maybe a simple track. In some markets, especially those with [a] high Latino concentration, these oldies are very acceptable. We get heavy requests on oldies from Marvin to Tierra's 'Together' and Malo's 'Suavecito.' Teens request and dedicate them. There's not so much of a gender gap when it comes to this type of music."

Rhythmic top 40 KDGS (Power 93.9) Wichita, Kan., PD Greg Williams, who brought the Quiet Storm with him when he joined the station in 2000, says, "Some of our oldies go back to the '60s. Although we're a current station, the show works. We recently did a perceptual [study], and 83% of our audience identified the feature. On the flip side, we also have a vehicle for breaking new cuts. I've found a few records and artists that have been big for us, including Jaheim, who started on the show."

"I think these programs can work if they're done correctly with your audience in mind," Williams adds. "For instance, our Quiet Storm is seasonal: it comes off the air between Memorial Day and Labor Day. [In the summer] people are just more active, kids are out of school, there's more going on. And we actually air our show

## THE BRINGBACK FILE

### RECORDS THAT WORK BUT AREN'T BEING WORKED

#### ● Vi3, "Eyes Closed So Tight"

Even at the height of their popularity, teen acts were a touchy subject for most top 40 PDs. So the first challenge that Vi3's "Eyes Closed So Tight" faced was getting on the air, even with a HitPredictor score that suggested it would come back top 10 in callout. Now, several weeks after the song peaked nationally, some stations are starting to see results that recall the mother/daughter coalitions of old. And some saw them right away.

At WDJX Louisville, Ky., "Eyes Closed So Tight" came back in its first callout at No. 5 overall. Last week, it went from 37 spins to 79, bringing it to a total of about 250.

"Vi3 is really kicking in here," KHTS (106.9 K-Hits) Tulsa, Okla., OM Tod Tucker says. "We do Web-based research, and 'Eyes Closed So Tight' has high potential scores in both 18-34 and teen females."

"Vi3 is doing well on both the low and upper end. It really kicked in about three weeks deep," WKQI (Channel 95.5) Detroit PD Dom Theodore says. "It's nice to see that pop music can still test in this era."

At sister WSNX Grand Rapids, Mich., new PD Eric O'Brien says the song has "connected with women at our station of all ages. It just goes to prove that no matter what the flavor of the month is, it's hard to stop the power of a great song."

SEAN ROSS



**93.3 WFLZ**  
**'QUIET STORM'**

Avant, "Makin' Good Love"  
R. Kelly, "Ignition"  
Jagged Edge, "Promise"  
Aaliyah, "Miss You"  
Frankie J, "Don't Wanna Try"  
BLACKstreet, "Deep"  
Adina Howard, "T-Shirt & Panties"  
Jaheim, "Fabulous"  
Destiny's Child, "Brown Eyes"

**Z90**  
**'BETWEEN THE SHEETS'**

Dru Hill, "I Love You"  
Zapp, "Computer Love"  
Busta Rhymes & Mariah Carey, "I Know What You Want"  
Keith Sweat & Jaci McGhee, "Make It Last Forever"  
Case, "Missing You"  
LL Cool J, "Hey Lover"  
Frankie J, "Don't Wanna Try"  
Tony! Toni! Toné!, "(Lay Your Head on My) Pillow"

**POWER 92.3**  
**'LIGHTS OUT PHOENIX'**

Anquette, "I Will Always Be There for You"  
Tank, "Maybe I Deserve"  
K-Ci & JoJo, "This Very Moment"  
Tyrese, "Sweet Lady"  
Jagged Edge, "Promise"  
Total, "Kissin' You"  
GQ, "I Do Love You"

**POWER**  
**'QUIET STORM'**

The Isley Brothers, "What Would You Do?"  
Hi-Five, "Never Should've Let You Go"  
The Deele, "Two Occasions"  
Smokey Robinson, "Being With You"  
Jaheim, "Put That Woman First"  
Jodeci, "Freek'n You"  
Al Green, "Let's Stay Together"  
Jon B, "Pretty Girl"  
Brian McKnight, "Shoulda, Woulda, Coulda"  
Al B. Sure!, "Nite and Day"

## RADIO CONCERT MONITOR

DATE	STATION	EVENT	PROMOTIONS DIRECTOR
May 9	WWKX Providence, R.I.	Hot Night 10	Joey Foxx
APPEARING: 50 Cent, Busta Rhymes, Fabolous, Lil' Kim, Lil' Mo, Kevin Little, Lyric			
May 15	KYLD San Francisco	Bomb 2003	Ray Wong
APPEARING: 50 Cent, Fabolous, Frankie J, Da Brat, Smilez & Southstar, Blu Cantrell			
May 17	KIIS Los Angeles	Wango Tango	Alfredo Ferero
APPEARING: Nelly, Christina Aguilera, Santana, Sting, Tyrese, Kiss, Michelle Branch, Craig David, Musiq, Amanda Perez, Bowling for Soup, O-Town, Lasgo, JC Chasez, Lisa Marie Presley, Sugar Ray, Daniel Bedingfield, Jennifer Love Hewitt			

Let us monitor your event! Call Skip Dillard at 646-654-4688 or e-mail sdillard@airplaymonitor.com

from midnight to 2 a.m. weeknights to keep it from compromising the primary programming on the station."

### MUSIC IS THE STAR, BUT THE ONLY STAR?

While music is clearly the star of Quiet Storm-type programs, especially those that radically break format with the rest of a station, those programs have also been launching pads for well-known personalities, most notably the late WHUR Washington, D.C., host Melvin Lindsey.

Williams' show doesn't have a host, and it utilizes custom jingles and liners, while St. James has a high-profile host, Melissa the Midnight Mamacita.

"She actually has a degree in psychology and uses [her] talents on the air nightly," St. James says. "Daily features range from 'sex and relationship day' to 'girls' night,' where she brings ladies into the studio to discuss relationship issues.

"She sticks pretty much with dedications in terms of music, she interacts extensively with listeners, and she's No. 1 18-34, beating the hell out of [syndicated love-song show] *Delilah* crosstown," St. James continues. "I think you can't just throw on some slow songs on these types of radio stations and expect the show to win. You need a host

who will embrace the show, throw their arms around it, and make it work. The problem with really making these shows big is that the best hosts for them may not be the best people at everything else in radio. Your average love-song host won't be your next hot morning or afternoon show. These shows are about a vibe, feeling, and patience."

St. James adds that *Lights Out Phoenix* also provides a relief valve for the station. "It's nice having a vehicle you can promote that acts as a clearinghouse for all those requests and dedications [that are] impossible to get to in other dayparts."

**BLAZIN'  
UP THE CHARTS  
AND TAKING  
THE COUNTRY  
BY STORM**

**#4 TOP 40  
IN CALLOUT  
AMERICA!  
APRIL 16, 2003**

**KTFM 82x  
KCHZ 74x  
WKST 60x  
KHTS 58x  
WDRQ 50x  
KZZU 50x  
WKSE 45x  
B94 44x  
KBKS 43x  
WKSS 40x**

**Z100 25x  
KIIS 25x  
KDND 28x  
WRVQ 29x  
WAKS 37x  
KHTT 36x  
KZHT 38x  
WKFS 37x  
WWHT 35x  
WSNX 36x**

**how you** **HIS RED HOT NEW HIT**  
**gonna act like that**

**TYRESE**

**THE FIRST SINGLE FROM  
HIS CHART TOPPING ALBUM  
"I WANNA GO THERE"  
ON J RECORDS**

**MONITOR  
MAINSTREAM TOP 40:  
32 - 29 (+254)**

**R&R/TOP 40:  
31\*-26\* (+290)**

[WWW.JRECORDS.COM](http://WWW.JRECORDS.COM) [WWW.TYRESE.COM](http://WWW.TYRESE.COM)

©2002 J Records, LLC











Nielsen Broadcast Data Systems

Songs ranked by number of detections. Playlists are listed in order of TSA weekly count, beginning with the highest-counting station. Games are updated twice weekly following the release of the spring and fall Arbitron surveys. The number of stations shown each week varies depending upon space.

Airplay Adds (AA) denotes songs with 6 or more detections at station for first time this week.

WMEG San Juan PD: Raymond Torres MD: Edwin Santiago SBS 787-622-9700



WAKS Cleveland PD: Dan Mason APD/MD: Kasper Clear Channel 216-520-2600



KSLZ St. Louis OM: Mike Wheeler PD: Boomer MD: Taylor J. Clear Channel 314-692-5108



WNKS Charlotte PD: John Reynolds MD: Keli Reynolds Infinity 704-331-9510



WPST Trenton Sr. VP/Pgm: Michelle Stevens PD: Dave McKay APD/MD: Chris Puorro Nassau 609-419-0300



KHTS San Diego Dir./FM Pgm: Jim Richards PD: Diana Laird APD/MD: Hitman Haze Clear Channel 619-291-9191



Table with 2 columns: Rank and Song Title. Includes songs like 'Evanescence Featuring Paul M Bring Me T', 'Sean Paul Get Busy', 'Eminem Sing For The Moment'.

Table with 2 columns: Rank and Song Title. Includes songs like '50 Cent In Da Club', 'Eminem Sing For The Moment', 'Justin Timberlake Rock Your Body'.

Table with 2 columns: Rank and Song Title. Includes songs like 'Ginuwine Featuring Baby Hell Yeah', 'Eminem Sing For The Moment', '50 Cent In Da Club'.

Table with 2 columns: Rank and Song Title. Includes songs like '3 Doors Down When I'm Gone', 'matchbox twenty Unwell', 'Amanda Perez Angel'.

Table with 2 columns: Rank and Song Title. Includes songs like 'Kid Rock Featuring Sheryl Cr Picture', '50 Cent In Da Club', 'R. Kelly Ignition'.

Table with 2 columns: Rank and Song Title. Includes songs like 'R. Kelly Ignition', '50 Cent In Da Club', 'Ginuwine Featuring Baby Hell Yeah'.

WKSS Hartford PD: Rick Vaughn MD: Jolo Brooks Clear Channel 860-723-6160



WBZZ Pittsburgh VP/Pgm: Keith Clark APD/MD: Ryan Mill AMD: Adam Hapeman Infinity 412-920-9400



WNCI Columbus RVP/PD: Jimmy Steele APD/MD: Joe Kelly Clear Channel 614-430-9624



WKST Pittsburgh PD: Jason Kidd MD: Dino Robitaille Clear Channel 412-937-1441



WXFL Orlando OM/PD: Adam Cook APD/MD: Pete deGraaf Clear Channel 407-916-7800



WNOU Indianapolis PD: David Edgar MD: Doc Miller Emmis 317-236-9300



Table with 2 columns: Rank and Song Title. Includes songs like 'Eminem Sing For The Moment', '50 Cent In Da Club', 'Justin Timberlake Rock Your Body'.

Table with 2 columns: Rank and Song Title. Includes songs like 'R. Kelly Ignition', '50 Cent In Da Club', 'Smilez & Southstar Tell Me (What's Goin)'.

Table with 2 columns: Rank and Song Title. Includes songs like '3 Doors Down When I'm Gone', 'Jennifer Lopez Featuring LL All I Have', 'Eminem Lose Yourself'.

Table with 2 columns: Rank and Song Title. Includes songs like 'Eminem Sing For The Moment', 'R. Kelly Ignition', '50 Cent In Da Club'.

Table with 2 columns: Rank and Song Title. Includes songs like 'Justin Timberlake Rock Your Body', '50 Cent In Da Club', 'R. Kelly Ignition'.

Table with 2 columns: Rank and Song Title. Includes songs like '50 Cent In Da Club', '3 Doors Down When I'm Gone', 'Amanda Perez Angel'.

WKFS Cincinnati OM: Steve Bender Interim PD: Donna DeCoster Clear Channel 513-763-5477



KMXV Kansas City OM: Jon Zellner APD: Ponch MD: Jana Sutter Infinity 816-756-5698



WDGQ Raleigh PD: Chris Edge APD: Keith Scott Clear Channel 919-871-1051



WRVW Nashville PD/MD: Rich Davis Clear Channel 615-664-2400



KKRZ Portland PD: Michael Hayes Clear Channel 503-226-0100



WXSS Milwaukee OM: Brian Kelly MD: Jolo Martinez Entercom 414-529-1250



Table with 2 columns: Rank and Song Title. Includes songs like 'Justin Timberlake Rock Your Body', 'Eminem Sing For The Moment', 'R. Kelly Ignition'.

Table with 2 columns: Rank and Song Title. Includes songs like '50 Cent In Da Club', 'Justin Timberlake Rock Your Body', '3 Doors Down When I'm Gone'.

Table with 2 columns: Rank and Song Title. Includes songs like '3 Doors Down When I'm Gone', 'matchbox twenty Unwell', 'Jennifer Lopez Featuring LL All I Have'.

Table with 2 columns: Rank and Song Title. Includes songs like '3 Doors Down When I'm Gone', 'Kid Rock Featuring Sheryl Cr Picture', 'matchbox twenty Disease'.

Table with 2 columns: Rank and Song Title. Includes songs like 'R. Kelly Ignition', '50 Cent In Da Club', 'Simple Plan I'd Do Anything'.

Table with 2 columns: Rank and Song Title. Includes songs like '50 Cent In Da Club', 'Justin Timberlake Rock Your Body', 'Christina Aguilera Fighter'.

AIRPLAY MONITOR Nielsen Broadcast Data Systems logo and introductory text.

TOP 10 BOUND

GOOD CHARLOTTE 3612/230 The Anthem (Daylight/Epic)

Table of station data for Good Charlotte, including station names, call letters, and audience share percentages.

AIRPLAY LEADER (FIRST STATION TO 150 PLAYS)

WKHF • Harrisburg, PA PD: Jason Barsky Date: 03/30/03

Table of station data for WKHF, including station names, call letters, and audience share percentages.

WEEK 22-11

Chart Move: 22-11

Table of station data for Week 22-11, including station names, call letters, and audience share percentages.

MADONNA 2064/23

American Life (Maverick/Warner Bros.)

Table of station data for Madonna, including station names, call letters, and audience share percentages.

JENNIFER LOPEZ 1979/875

I'm Glad (Epic)

Table of station data for Jennifer Lopez, including station names, call letters, and audience share percentages.

GINUIWE FEATURING BABY 3194/310

Hell Yeah (Epic)

Table of station data for Ginuiwe, including station names, call letters, and audience share percentages.

AIRPOWER BOUND

STACIE ORRICO 3174/128

Table of station data for Stacie Orrico, including station names, call letters, and audience share percentages.

AVRIL LAVIGNE 2777/306

Losing Grip (Arista)

Table of station data for Avril Lavigne, including station names, call letters, and audience share percentages.

COLDPLAY 2060/167

Clocks (Capitol)

Table of station data for Coldplay, including station names, call letters, and audience share percentages.

WAYNE WONDER 1919/391

No Letting Go (VP/Atlantic)

Table of station data for Wayne Wonder, including station names, call letters, and audience share percentages.

AIRPOWER

SEAN PAUL 3869/1115 Get Busy (VP/Atlantic)

Table of station data for Sean Paul, including station names, call letters, and audience share percentages.

MATCHBOX TWENTY 3084/171

Unwell (Atlantic)

Table of station data for Matchbox Twenty, including station names, call letters, and audience share percentages.

SICK OF BEING LOOSE (MCA)

Total Stations: 114

Table of station data for Sick of Being Loose, including station names, call letters, and audience share percentages.

TYRESE 2023/254

How You Gonna Act Like That (JRMG)

Table of station data for Tyrese, including station names, call letters, and audience share percentages.

COUNTING CROWS FEAT. VANESSA CARLTON 1902/161

Big Yellow Taxi (Geffen/Interscope)

Table of station data for Counting Crows, including station names, call letters, and audience share percentages.

AIRPLAY MONITOR Nielsen Broadcast Data Systems

Songs posting gains in detections or with a percentage loss in detections equal to or better than the monitored downtime percentage in the format. Songs listed in order of detections.

Table listing songs and stations for the week ending April 20, 2003. Includes columns for station, song title, and artist.

Table listing songs and stations for the week ending April 20, 2003. Includes columns for station, song title, and artist.

KELLY CLARKSON 1238/851 Miss Independent (RCA/RMG) Total Stations: 87 Heavy (0) Medium (18), Light (69)

LISA MARIE PRESLEY 1435/114 Lights Out (Capitol) Total Stations: 80 Chart Move: 39-38 H (1), M (17), L (62)

THE ALL-AMERICAN REJECTS 1186/221 Swing, Swing (Doghouse/DreamWorks) Total Stations: 73 Heavy (0) Medium (14), Light (59)

BUSTA RHYMES & MARIAH CAREY 1129/174 I Know What You Want (J/Monarc/RMG/IDJMG) Total Stations: 75 Heavy (3) KTFM, WLKZ, WQZZ

JASON MRAZ 1047/274 The Remedy (I Won't Worry) (Elektra/EEG) Total Stations: 61 Heavy (0) Medium (18), Light (43)

AUDIOSLAVE 993/182 Like A Stone (Interscope/Epic) Total Stations: 88 Heavy (0) Medium (4), Light (84)

FRANKIE J 1414/249 Don't Wanna Try (Columbia) Total Stations: 72 Chart Move: Debut 39 H (3), M (21), L (48)

LINKIN PARK 858/95 Somewhere I Belong (Warner Bros.) Total Stations: 62 Heavy (1) WMEG Medium (14), Light (47)

B2K 954/23 Girlfriend (T.U.G./Epic) Total Stations: 91 Heavy (0) Medium (9), Light (82)

LILLIX 796/200 It's About Time (Maverick/Reprise) Total Stations: 67 Heavy (0) Medium (3), Light (64)

JAY-Z 753/84 Excuse Me Miss (Roc-A-Fella/Def Jam/IDJMG) Total Stations: 54 Heavy (0) Medium (12), Light (42)

JOHN MAYER 714/74 Why Georgla (Aware/Columbia) Total Stations: 38 Heavy (0) Medium (11), Light (27)

50 CENT FEATURING NATE DOGG 660/189 21 Questions (Shady/Aftermath/Interscope) Total Stations: 52 Heavy (0) Medium (9), Light (43)

SNOOP DOGG 1276/171 Beautiful (Doggystyle/Priority/Capitol) Total Stations: 77 Heavy (2) KTFM, WQZZ Medium (16), Light (59)

Medium (2), Light (51) Airplay Adds: 28 KKMGM, KLAL, KSMB, KZZU, WABB, WAEZ, WBAM, WBBO, WDRO, WIOG, WJBO, WKCI, WKST, WLAN, WNKS, WNOU, WNTQ, WPRO, WPST, WRHT, WSTW, WWSR, WWST, WXXB, WXXX, WYOY, WZEE, WZNY

FABOLOUS FEAT. MIKE SHOREY & LIL' MO 537/126 Can't Let You Go (Desert Storm/Elektra/EEG) Total Stations: 44 Heavy (1) KTFM Medium (3), Light (40)

LIL' KIM FEATURING MR. CHEEKS 509/129 The Jump Off (Queen Bee/Atlantic) Total Stations: 48 Heavy (1) WKGS Medium (6), Light (41)

UNCLE KRACKER FEAT. DOBIE GRAY 367/83 Drift Away (Lava) Total Stations: 17 Heavy (3) KTFM, WLKZ, WXXS Medium (1), Light (13)

STAGGA LEE 354/48 Roll Wit M.V.P. (M.V.P./ARTISTdirect) Total Stations: 36 Heavy (0) Medium (4), Light (32)

RACHEL FARRIS 346/29 I'm Not The Girl (Big3) Total Stations: 42 Heavy (0) Medium (3), Light (39)

DMX 301/48 X Gon' Give It To Ya (Bloodline/Def Jam/IDJMG) Total Stations: 15 Heavy (2) WKST, WXXX Medium (4), Light (9)

FOO FIGHTERS 282/103 Times Like These (Roswell/RCA/RMG) Total Stations: 38 Heavy (0) Medium (1), Light (37)

MERCYME 225/72 I Can Only Imagine (INO/Curb) Total Stations: 16 Heavy (0) Medium (5), Light (11)

T.A.T.U. 213/122 Not Gonna Get Us (Interscope) Total Stations: 59 Heavy (0) Medium (2), Light (57)

THE TROYS 206/44 What Do You Do (Elektra/EEG) Total Stations: 16 Heavy (0) Medium (2), Light (14)

SUM 41 184/83 The Hell Song (Island/IDJMG) Total Stations: 28 Heavy (0) Medium (0), Light (28)

WHITNEY HOUSTON 174/103 Try It On My Own (Arista) Total Stations: 22 Heavy (0) Medium (0), Light (22)

PLAY 159/75 I Must Not Chase The Boys (Columbia) Total Stations: 18 Heavy (0) Medium (0), Light (18)

LA BOUCHE 156/6 In Your Life (Logic) Total Stations: 42 Heavy (0)

Medium (1), Light (41) Airplay Adds: 2 WFLY, WKST

★ BECKY BAELING 141/112 Getaway (Universal/UMRG) Total Stations: 20 Heavy (0) Medium (3), Light (17)

KREO' 137/1 Burn For You (Robbins) Total Stations: 17 Heavy (0) Medium (2), Light (15)

EVE 134/8 Satisfaction (Ruff Ryders/Interscope) Total Stations: 13 Heavy (1) WXXX Medium (1), Light (11)

IIO 133/2 At The End (Ministry Of Sound/Made) Total Stations: 11 Heavy (1) WLDI Medium (2), Light (8)

THE ROC PROJECT FEAT. TINA ARENA 110/56 Never (Past Tense) (Tommy Boy Silver Label/Tommy Boy) Total Stations: 18 Heavy (0) Medium (1), Light (17)

JA RULE 97/8 Reign (Murder Inc./Def Jam/IDJMG) Total Stations: 11 Heavy (1) WQZZ Medium (0), Light (10)

★ PANJABI MC FEATURING JAY-Z 90/63 Beware Of The Boys (Mundian To Bach Ke) (Sequence) Total Stations: 22 Heavy (0) Medium (0), Light (22)

SISTER HAZEL 86/7 Your Mistake (Sixthman) Total Stations: 7 Heavy (0) Medium (1), Light (6)

LL COOL J FEATURING AMERIE 82/19 Paradise (Def Jam/IDJMG) Total Stations: 8 Heavy (0) Medium (1), Light (7)

CHOPPA FEATURING MASTER P 69/15 Choppa Style (Take Fo'/New No Limit/UMRG) Total Stations: 7 Heavy (1) WEZB Medium (0), Light (6)

HOOTIE & THE BLOWFISH 67/8 Innocence (Atlantic) Total Stations: 5 Heavy (0) Medium (1), Light (4)

★ RACHEL LOY 64/54 The Same Man (For Matthew) (Epic) Total Stations: 18 Heavy (0) Medium (1), Light (17)

★ JENNIFER LOVE HEWITT 61/34 Can I Go Now (Jive) Total Stations: 6 Heavy (0) Medium (0), Light (6)

★ LIAM LYNCH 55/26 United States Of Whatever (S-Curve) Total Stations: 18 Heavy (0) Medium (0), Light (18)

TIM DELUXE 52/1 It Just Won't Do (Groovilicious/Strictly Rhythmic) Total Stations: 1 Heavy (0) Medium (1), Light (0)

JEWEL 1650/570 Intuition (Atlantic)

Table listing songs and stations for the week ending April 20, 2003. Includes columns for station, song title, and artist.

NAS 1547/279 I Can (Ill Will/Columbia)

Table listing songs and stations for the week ending April 20, 2003. Includes columns for station, song title, and artist.

CHART BOUND Total Detections/Gain

Table listing songs and stations for the week ending April 20, 2003. Includes columns for station, song title, and artist.

H=Heavy (55+ Detections), M=Medium (25-54), L=Light (Under 25). Airpower awarded to songs appearing in the top 20 on both the Airplay and Audience charts for the first time with increases in both detections and audience.





Songs ranked by number of detections. Playlists are listed in order of TSA weekly cume, beginning with the highest-cuming station. Cumes are updated twice weekly following the release of the spring and fall Arbitron surveys. The number of stations shown each week varies depending upon space. \*Indicates station reports to both Adult Top 40 and Modern AC. Airplay Adds (AA) denotes songs with 6 or more detections at station for first time this week.

AIRPLAY LEADERBOARD

THE STATIONS THAT BREAK THE HITS



KYSR Los Angeles

(PD/MD: Ivey/Patyk) Airplay Leader Designations: 6

Table with 3 columns: Rank, Station, and Score. #2 KAMX, Austin, TX; #3 WTMX, Chicago, IL; #4 WZPL, Indianapolis, IN; #5 WMBZ, Memphis, TN.

Refer to Impact page for this week's Airplay Leaders and Airplay Leaderboard rules.

WPLJ New York\* logo and station info.

Table with 3 columns: Rank, Song, and Score. 1 Coldplay Clocks; 2 Counting Crows Feat. Van Big Yellow; 3 Uncle Kracker Feat. Sheryl Cr Picture; 4 matchbox twenty Unwell; 5 John Mayer Your Body Is A Wonderland.

KYSR Los Angeles\* logo and station info.

Table with 3 columns: Rank, Song, and Score. 1 matchbox twenty Unwell; 2 John Mayer Why Georgia; 3 Counting Crows Feat. Van Big Yellow; 4 Uncle Kracker Feat. Sheryl Cr Picture; 5 3 Doors Down When I'm Gone.

WTMX Chicago\* logo and station info.

Table with 3 columns: Rank, Song, and Score. 1 Maroon 5 Harder To Breathe; 2 matchbox twenty Unwell; 3 John Mayer Why Georgia; 4 Coldplay Clocks; 5 Uncle Kracker Feat. Sheryl Cr Picture.

WBMX Boston\* logo and station info.

Table with 3 columns: Rank, Song, and Score. 1 3 Doors Down When I'm Gone; 2 Avril Lavigne I'm With You; 3 Norah Jones Don't Know Why; 4 Uncle Kracker Feat. Sheryl Cr Picture; 5 Norah Jones Come Away With Me.

WRQX Washington, DC logo and station info.

Table with 3 columns: Rank, Song, and Score. 1 Uncle Kracker Feat. Sheryl Cr Picture; 2 Santana Feat. Michelle B The Game O; 3 Norah Jones Don't Know Why; 4 John Mayer Your Body Is A Wonderland; 5 Uncle Kracker In A Little While.

KIOI San Francisco logo and station info.

Table with 3 columns: Rank, Song, and Score. 1 Avril Lavigne I'm With You; 2 Kid Rock Feat. Sheryl Cr Picture; 3 Uncle Kracker Feat. Sheryl Cr Picture; 4 No Doubt Feat. Lady Saw Underneath; 5 Christina Aguilera Beautiful.

WWZZ Washington, DC\* logo and station info.

Table with 3 columns: Rank, Song, and Score. 1 Evanesence Feat. Paul M Bring Me T; 2 matchbox twenty Unwell; 3 Coldplay Clocks; 4 Jack Johnson Flake; 5 John Mayer Why Georgia.

KDMX Dallas\* logo and station info.

Table with 3 columns: Rank, Song, and Score. 1 Santana Feat. Michelle B The Game O; 2 3 Doors Down When I'm Gone; 3 Uncle Kracker Feat. Sheryl Cr Picture; 4 Norah Jones Don't Know Why; 5 matchbox twenty Unwell.

KLLC San Francisco\* logo and station info.

Table with 3 columns: Rank, Song, and Score. 1 Coldplay Clocks; 2 Kid Rock Feat. Sheryl Cr Picture; 3 Norah Jones Don't Know Why; 4 Santana Feat. Michelle B The Game O; 5 Norah Jones Come Away With Me.

KSTP Minneapolis logo and station info.

Table with 3 columns: Rank, Song, and Score. 1 Goo Goo Dolls Sympathy; 2 Uncle Kracker Feat. Sheryl Cr Picture; 3 matchbox twenty Unwell; 4 Counting Crows Feat. Van Big Yellow; 5 3 Doors Down When I'm Gone.

KHMX Houston logo and station info.

Table with 3 columns: Rank, Song, and Score. 1 Christina Aguilera Beautiful; 2 Avril Lavigne I'm With You; 3 Kid Rock Feat. Sheryl Cr Picture; 4 John Mayer Your Body Is A Wonderland; 5 Uncle Kracker Feat. Sheryl Cr Picture.

WMWX Philadelphia logo and station info.

Table with 3 columns: Rank, Song, and Score. 1 Kid Rock Feat. Sheryl Cr Picture; 2 Avril Lavigne I'm With You; 3 John Mayer Your Body Is A Wonderland; 4 Counting Crows Feat. Van Big Yellow; 5 Santana Feat. Michelle B The Game O.

WDVD Detroit\* logo and station info.

Table with 3 columns: Rank, Song, and Score. 1 Coldplay Clocks; 2 3 Doors Down When I'm Gone; 3 Kid Rock Feat. Sheryl Cr Picture; 4 Dave Matthews Band Where Are You Going; 5 Norah Jones Don't Know Why.

WQAL Cleveland logo and station info.

Table with 3 columns: Rank, Song, and Score. 1 No Doubt Feat. Lady Saw Underneath; 2 Nickelback How You Remind Me; 3 Avril Lavigne I'm With You; 4 Norah Jones Don't Know Why; 5 Uncle Kracker Feat. Sheryl Cr Picture.

KPLZ Seattle logo and station info.

Table with 3 columns: Rank, Song, and Score. 1 3 Doors Down When I'm Gone; 2 matchbox twenty Unwell; 3 Coldplay Clocks; 4 Avril Lavigne I'm With You; 5 Norah Jones Don't Know Why.

WMVX Cleveland logo and station info.

Table with 3 columns: Rank, Song, and Score. 1 matchbox twenty Unwell; 2 Uncle Kracker Feat. Sheryl Cr Picture; 3 John Rzeznik I'm Still Here (Jim's Them); 4 Norah Jones Don't Know Why; 5 Fleetwood Mac Peacekeeper.

KMXP Phoenix logo and station info.

Table with 3 columns: Rank, Song, and Score. 1 matchbox twenty Unwell; 2 3 Doors Down When I'm Gone; 3 Jimmy Eat World The Middle; 4 Nickelback How You Remind Me; 5 Pink Just Like A Pill.

WMWX Baltimore logo and station info.

Table with 3 columns: Rank, Song, and Score. 1 Avril Lavigne I'm With You; 2 John Mayer Your Body Is A Wonderland; 3 Uncle Kracker Feat. Sheryl Cr Picture; 4 Counting Crows Feat. Van Big Yellow; 5 Kid Rock Feat. Sheryl Cr Picture.

WOMX Orlando logo and station info.

Table with 3 columns: Rank, Song, and Score. 1 Avril Lavigne I'm With You; 2 John Mayer Your Body Is A Wonderland; 3 Uncle Kracker Feat. Sheryl Cr Picture; 4 matchbox twenty Unwell; 5 Kid Rock Feat. Sheryl Cr Picture.

KYKY St. Louis logo and station info.

Table with 3 columns: Rank, Song, and Score. 1 3 Doors Down When I'm Gone; 2 John Mayer Your Body Is A Wonderland; 3 Counting Crows Feat. Van Big Yellow; 4 matchbox twenty Unwell; 5 Avril Lavigne I'm With You.

KALC Denver\* logo and station info.

Table with 3 columns: Rank, Song, and Score. 1 Evanesence Feat. Paul M Bring Me T; 2 Avril Lavigne I'm With You; 3 3 Doors Down When I'm Gone; 4 Uncle Kracker Feat. Sheryl Cr Picture; 5 John Mayer Why Georgia.

WVRV St. Louis\* logo and station info.

Table with 3 columns: Rank, Song, and Score. 1 John Mayer Why Georgia; 2 Dave Matthews Band Grey Street; 3 Train Calling All Angels; 4 matchbox twenty Unwell; 5 Coldplay Clocks.

WTIC Hartford\* logo and station info.

Table with 3 columns: Rank, Song, and Score. 1 Counting Crows Feat. Van Big Yellow; 2 Uncle Kracker Feat. Sheryl Cr Picture; 3 Santana Feat. Michelle B The Game O; 4 John Mayer Your Body Is A Wonderland; 5 Kid Rock Feat. Sheryl Cr Picture.

ADULT TOP 40

Airplay Adds (AA) denotes songs with 6 or more detections at station for first time this week.



Nielsen Broadcast Data Systems

LOWER LAYERS

WLNK Charlotte\* PD: Neal Sharpe APD: Chris Allen MD: Derek James Jefferson Pilot 704-374-3500

KFMB San Diego\* GM: Tracy Johnson APD/MD: Jen Sewell Midwest TV 858-292-7600

WKRC Cincinnati PD: Tommy Frank APD: Grover Collins MD: Brian Douglas Infinity 513-699-5102

WBNS Columbus, OH\* PD: Jeff Ballentine MD: Robin Cole Radio Ohio 614-460-3850

KMYI San Diego PD: Duncan Payton MD: Mel McKay Clear Channel 858-522-5781

WKTI Milwaukee OM: Rick Belcher PD/MD: Bob Walker Journal 414-967-5339

WSSR Tampa\* OM: Jeff Kapugi PD: Rick Schmidt APD: Kurt Schreiner Clear Channel 813-839-9393

KRSK Portland\* PD: Dan Persigehl APD: Lisa Adams MD: Sheryl Stewart Entercom 503-223-1441

KIMM Denver PD: Ron Harrell APD/MD: Michael Gifford Infinity 303-832-5665

WSNE Providence PD: Bill Hess MD: Gary Trust Clear Channel 401-438-9300

WMYX Milwaukee OM: Brian Kelly PD: Tom Gjerdrum APD: Mark Richards Entercom 414-529-1250

WTSS Buffalo OM/MD: Sue O'Neil MD: Rob Lucas STAR 102.5 rock's best variety

AIRPLAY Monitor MODERN AC

Compiled from a national sample of data supplied by Broadcast Data Systems to The 40 Airplay Monitor. 45 modern AC stations are electronically monitored 24 hours a day, 7 days a week. © 2003 VNU Business Media, Inc. All rights reserved.

Nielsen Broadcast Data Systems

Main chart table with columns: THIS WEEK, LAST WEEK, WKS. ON CHART, TITLE/IMPRINT/PROMOTION LABEL, ARTIST, TW, LW, MILLIONS, RANK. Includes tracks 1-40 and various annotations like 'NO. 1', 'GREATEST GAINER', 'AIRPOWER'.

Songs ranked by number of detections. Songs showing an increase in detections over the previous week, regardless of chart movement. A song will also receive a bullet if its percentage loss in detections does not exceed the percentage of monitored station downtime for the format.

GREATEST GAINERS MODERN AC

Table listing Greatest Gainers with columns: Song Title, Station, Increase in Detections. Includes Train, Jewel, Evanescence, Maroon 5, Third Eye Blind.

IMPACT!



Nielsen Broadcast Data Systems

Songs posting gains in detections or with a percentage loss in detections equal to or better than the monitored downtime percentage in the format. Songs listed in order of detections. \*Indicates station experienced between 24 and 56 hours of monitored downtime during the chart week.

TOP 10 BOUND

GOO GOO DOLLS 1804/129
Sympathy (Warner Bros.)
Total Stations: 76 Chart Move: 12-12
H (26), M (33), L (17)
Airplay Adds: 1

Table with columns for station, week 1, week 2, week 3, week 4, week 5, week 6, week 7, week 8, week 9, week 10, week 11, week 12, week 13, week 14, week 15, week 16, week 17, week 18, week 19, week 20, week 21, week 22, week 23, week 24, week 25, week 26, week 27, week 28, week 29, week 30, week 31, week 32, week 33, week 34, week 35, week 36, week 37, week 38, week 39, week 40, week 41, week 42.

TRAIN 1600/377
Calling All Angels (Columbia)
Total Stations: 73 Chart Move: 18-13
H (16), M (42), L (15)
Airplay Adds: 11

Table with columns for station, week 1, week 2, week 3, week 4, week 5, week 6, week 7, week 8, week 9, week 10, week 11, week 12, week 13, week 14, week 15, week 16, week 17, week 18, week 19, week 20, week 21, week 22, week 23, week 24, week 25, week 26, week 27, week 28, week 29, week 30, week 31, week 32, week 33, week 34, week 35, week 36, week 37, week 38, week 39, week 40, week 41, week 42.

EVANESCENCE FEAT. PAUL MCCOY 1497/254
Bring Me To Life (Wind-up)
Total Stations: 63 Chart Move: 17-15
H (22), M (20), L (21)
Airplay Adds: 4

Table with columns for station, week 1, week 2, week 3, week 4, week 5, week 6, week 7, week 8, week 9, week 10, week 11, week 12, week 13, week 14, week 15, week 16, week 17, week 18, week 19, week 20, week 21, week 22, week 23, week 24, week 25, week 26, week 27, week 28, week 29, week 30, week 31, week 32, week 33, week 34, week 35, week 36, week 37, week 38, week 39, week 40, week 41, week 42.

FLEETWOOD MAC 1223/101
Peacekeeper (Reprise)
Total Stations: 71 Chart Move: 19-17
H (6), M (39), L (26)
Airplay Adds: 7

Table with columns for station, week 1, week 2, week 3, week 4, week 5, week 6, week 7, week 8, week 9, week 10, week 11, week 12, week 13, week 14, week 15, week 16, week 17, week 18, week 19, week 20, week 21, week 22, week 23, week 24, week 25, week 26, week 27, week 28, week 29, week 30, week 31, week 32, week 33, week 34, week 35, week 36, week 37, week 38, week 39, week 40, week 41, week 42.

Table with columns for station, week 1, week 2, week 3, week 4, week 5, week 6, week 7, week 8, week 9, week 10, week 11, week 12, week 13, week 14, week 15, week 16, week 17, week 18, week 19, week 20, week 21, week 22, week 23, week 24, week 25, week 26, week 27, week 28, week 29, week 30, week 31, week 32, week 33, week 34, week 35, week 36, week 37, week 38, week 39, week 40, week 41, week 42.

AIRPOWER

Total Detections/Gain

JEWEL 1032/330
Intuition (Atlantic)
Total Stations: 56 Chart Move: 25-18
H (6), M (31), L (19)
Airplay Adds: 13

NO AIRPLAY LEADER

Total Stations: 56 Chart Move: 25-18
H (6), M (31), L (19)
Airplay Adds: 13

Table with columns for station, week 1, week 2, week 3, week 4, week 5, week 6, week 7, week 8, week 9, week 10, week 11, week 12, week 13, week 14, week 15, week 16, week 17, week 18, week 19, week 20, week 21, week 22, week 23, week 24, week 25, week 26, week 27, week 28, week 29, week 30, week 31, week 32, week 33, week 34, week 35, week 36, week 37, week 38, week 39, week 40, week 41, week 42.

AIRPOWER BOUND

Total Detections/Gain

LISA MARIE PRESLEY 876/30
Lights Out (Capitol)
Total Stations: 50 Chart Move: 21-20
Heavy (6) KAMX, WCDA, WKZN, WMBZ, WMC, WTSS
Medium (24), Light (20)
Airplay Adds: 1 KIMN

Table with columns for station, week 1, week 2, week 3, week 4, week 5, week 6, week 7, week 8, week 9, week 10, week 11, week 12, week 13, week 14, week 15, week 16, week 17, week 18, week 19, week 20, week 21, week 22, week 23, week 24, week 25, week 26, week 27, week 28, week 29, week 30, week 31, week 32, week 33, week 34, week 35, week 36, week 37, week 38, week 39, week 40, week 41, week 42.

CHANTAL KREVIK 779/40
In This Life (Columbia)
Total Stations: 49 Chart Move: 23-22
Heavy (6) KAMX, KLLC, KMXB, KVVU, KZPT, WMBZ
Medium (19), Light (24)
Airplay Adds: 4 KHM, WPLJ, WRFY, WSNE

Total Stations: 49 Chart Move: 23-22
Heavy (6) KAMX, KLLC, KMXB, KVVU, KZPT, WMBZ
Medium (19), Light (24)
Airplay Adds: 4 KHM, WPLJ, WRFY, WSNE

NORAH JONES 686/53
Come Away With Me (Blue Note/Virgin)
Total Stations: 40 Chart Move: 26-23
Heavy (8) KALZ, KAMX, KEZR, KFMB, KLLC, KVVU, WBMX, WOMX
Medium (10), Light (22)
Airplay Adds: 1 WMC

Table with columns for station, week 1, week 2, week 3, week 4, week 5, week 6, week 7, week 8, week 9, week 10, week 11, week 12, week 13, week 14, week 15, week 16, week 17, week 18, week 19, week 20, week 21, week 22, week 23, week 24, week 25, week 26, week 27, week 28, week 29, week 30, week 31, week 32, week 33, week 34, week 35, week 36, week 37, week 38, week 39, week 40, week 41, week 42.

LIFEHOUSE 541/84
Take Me Away (DreamWorks)
Total Stations: 37 Chart Move: 30-27
Heavy (1) KAMX
Medium (18), Light (18)
Airplay Adds: 3 WMC, WWWW, WZPL

ROBBIE WILLIAMS 448/14
Feel (Virgin)
Total Stations: 35 Chart Move: 31-28
Heavy (1) KFMB
Medium (13), Light (21)

FRANKY PEREZ 408/91
Something Crazy (Lava)
Total Stations: 31 Chart Move: 36-30
Heavy (3) KAMX, KRSK, WSSR
Medium (4), Light (24)
Airplay Adds: 4 KHTO, KLTV, WOMX, WSNE

FEEL 386/2
Got Your Name On It (Curb)
Total Stations: 32 Chart Move: 33-32
Heavy (1) KFMB
Medium (10), Light (21)

JOSH KELLEY 385/65
Amazing (Hollywood)
Total Stations: 33 Chart Move: 35-33
Heavy (0)
Medium (13), Light (20)
Airplay Adds: 3 KEZR, KPEK, WVRV

DANIEL BEDINGFIELD 366/122
If You're Not The One (Island/IDJMG)
Total Stations: 22 Chart Move: Debut 34
Heavy (4) KEZR, KIZS, KSIJ, WWWW
Medium (8), Light (10)
Airplay Adds: 3 KIOI, WQAL, WTSS

TORI AMOS 320/45
Taxi Ride (Epic)
Total Stations: 20 Chart Move: 39-35
Heavy (0)
Medium (10), Light (10)
Airplay Adds: 1 KDMX

THIRD EYE BLIND 282/106
Blinded (When I See You) (Elektra/EEG)
Total Stations: 26 Chart Move: Debut 38
Heavy (0)
Medium (9), Light (17)
Airplay Adds: 7 KBBY, KFBZ, KHTO, KZZO, WKRQ, WMBZ, WRFY

MAROON 5 827/105
Harder To Breathe (Octone/JRMG)
Total Stations: 41 Chart Move: 24-21
Heavy (9) KALC, KAMX, KMXB, KSTZ, KVVU, WMBZ, WTMX, WVRV, WZPL
Medium (18), Light (14)
Airplay Adds: 2 KHM, KLTV

DANA GLOVER 279/22
Rain (DreamWorks)
Total Stations: 27 Chart Move: 40-39
Heavy (1) WTSS
Medium (6), Light (20)
Airplay Adds: 1 KLTV

AUDIOSLAVE 209/93
Like A Stone (Interscope/Epic)
Total Stations: 20 Chart Move: 17-17
Heavy (0)
Medium (4), Light (16)
Airplay Adds: 7 KQIS, KVVU, KZPT, KZZO, WCDA, WKRQ, WSSR

DAVE MATTHEWS BAND 205/28
Grey Street (RCA/RMG)
Total Stations: 18 Chart Move: 13-13
Heavy (3) KSTZ, WVRV, WWWW
Medium (2), Light (13)

HOOTIE & THE BLOWFISH 601/40
Innocence (Atlantic)
Total Stations: 41 Chart Move: 27-25
Heavy (1) KSTP
Medium (16), Light (24)
Airplay Adds: 2 KZPT, WNNK

AVRIL LAVIGNE 196/94
Losing Grip (Arista)
Total Stations: 19 Chart Move: 19
Heavy (0)
Medium (6), Light (13)
Airplay Adds: 5 KSTP, KZPT, WBNS, WMC, WVOR

JACK JOHNSON 164/87
The Horizon Has Been Defeated (Moonshine Conspiracy/Universal/UMRG)
Total Stations: 17 Chart Move: 17
Heavy (0)
Medium (2), Light (15)
Airplay Adds: 10 KAMX, KEZR, KFBZ, KFMB, KTOZ, WBMX, WMC, WRMF, WSSR, WVVZ

THE ALL-AMERICAN REJECTS 156/9
Swing, Swing (Doghouse/DreamWorks)
Total Stations: 12 Chart Move: 12
Heavy (0)
Medium (6), Light (6)

RACHEL FARRIS 155/42
I'm Not The Girl (Big3)
Total Stations: 16 Chart Move: 16
Heavy (0)
Medium (3), Light (13)
Airplay Adds: 2 KQIS, WPTF

FAITH HILL 147/64
One (Warner Bros.)
Total Stations: 16 Chart Move: 16
Heavy (0)
Medium (3), Light (13)
Airplay Adds: 4 KFMB, KSTZ, WRMF, WWWW

THE WALLFLOWERS 141/12
How Good Can It Get (Interscope)
Total Stations: 17 Chart Move: 17
Heavy (0)
Medium (2), Light (15)
Airplay Adds: 1 KFME

JUSTIN TIMBERLAKE 139/53
Rock Your Body (Jive)
Total Stations: 7 Chart Move: 7
Heavy (1) KSIJ
Medium (4), Light (2)
Airplay Adds: 1 KBBY

PLUMB 125/63
Real (Curb)
Total Stations: 17 Chart Move: 17
Heavy (0)
Medium (1), Light (16)
Airplay Adds: 5 KAMX, KFBZ, KQIS, KRSK, WSNE

LINKIN PARK 94/38
Somewhere I Belong (Warner Bros.)
Total Stations: 6 Chart Move: 6
Heavy (0)
Medium (3), Light (3)

CHRISTINA AGUILERA 76/31
Fighter (RCA/RMG)
Total Stations: 4 Chart Move: 4
Heavy (1) KIZS
Medium (1), Light (2)

LIVE 68/19
Heaven (Radioactive/MCA)
Total Stations: 8 Chart Move: 8
Heavy (1) WSSR
Medium (0), Light (7)
Airplay Adds: 1 WRFY

UNWRITTEN LAW 30/2
Rest Of My Life (Lava)
Total Stations: 1 Chart Move: 1
Heavy (1) KZPT
Medium (0), Light (0)

★ BLUE MAN GROUP FEAT. DAVE MATTHEWS 67/55
Sing Along (Blue Man Group/Lava)
Total Stations: 6 Chart Move: 6
Heavy (0)
Medium (2), Light (4)
Airplay Adds: 3 KALC, KVVU, WCDA

★ RACHEL LOY 63/40
The Same Man (For Matthew) (Epic)
Total Stations: 12 Chart Move: 12
Heavy (0)
Medium (2), Light (10)
Airplay Adds: 3 KALC, KIMN, KSIJ

EVERCLEAR 58/4
Volvo Driving Soccer Mom (Capitol)
Total Stations: 3 Chart Move: 3
Heavy (1) KMXB
Medium (1), Light (1)

STACIE ORRICO 51/4
Stuck (Forefront/Virgin)
Total Stations: 3 Chart Move: 3
Heavy (0)
Medium (2), Light (1)

SOUTHF M 50/12
Dear Claudia (Brando/MCA)
Total Stations: 7 Chart Move: 7
Heavy (1) WSSR
Medium (0), Light (6)
Airplay Adds: 1 KALZ

JUSTIN TIMBERLAKE 49/29
Cry Me A River (Jive)
Total Stations: 3 Chart Move: 3
Heavy (1) KIZS
Medium (0), Light (2)

★ KELLY CLARKSON 45/21
Miss Independent (RCA/RMG)
Total Stations: 13 Chart Move: 13
Heavy (0)
Medium (1), Light (12)

CRAIG DAVID 45/2
Hidden Agenda (Wildstar/Atlantic)
Total Stations: 1 Chart Move: 1
Heavy (1) KSIJ
Medium (0), Light (0)

ALICE PEACOCK 43/4
Bliss (Columbia)
Total Stations: 1 Chart Move: 1
Heavy (1) WTMX
Medium (0), Light (0)

SIMPLE PLAN 38/8
Addicted (Lava)
Total Stations: 3 Chart Move: 3
Heavy (0)
Medium (1), Light (2)

BROOKE 35/2
Coming Home (Connoisseur/Artemis)
Total Stations: 8 Chart Move: 8
Heavy (0)
Medium (1), Light (7)

★ PALOALTO 31/22
Breathe In (American/IDJMG)
Total Stations: 1 Chart Move: 1
Heavy (1) WSSR
Medium (0), Light (0)

H=Heavy (30+ Detections), M=Medium (15-29), L=Light (Under 15). Airpower awarded to songs appearing in the top 20 on both the Airplay and Audience charts for the first time with increases in both detections and audience. \*Initial impact: songs appearing on this page for the first time in summary form. Airplay Adds are songs with 6 or more detections at new stations this week. The Airplay Leaderboard ranks taste-maker stations that have been the most successful in identifying future hit songs as measured by the amount of AIRPOWER titles for which they were Airplay Leaders. Refer to each format's Power Playlists page to see this week's Airplay Leaders.



THIS WEEK	LAST WEEK	WKS. ON CHART	TITLE/IMPRINT/PROMOTION LABEL	ARTIST	DETECTIONS		AUDIENCE	
					TW	LW	MILLIONS	RANK
			★★★★ No. 1 ★★★★★					
1	1	19	BEAUTIFUL RCA/RMG 3 weeks at No. 1	CHRISTINA AGUILERA	1784	1844	17.048	2
2	2	30	THE GAME OF LOVE ARISTA	SANTANA FEATURING MICHELLE BRANCH	1731	1791	20.181	1
3	3	31	CAN'T STOP LOVING YOU ATLANTIC	PHIL COLLINS	1524	1587	15.563	4
4	4	36	DON'T KNOW WHY BLUE NOTE/VIRGIN	NORAH JONES	1492	1444	15.789	3
5	5	34	CRY WARNER BROS.	FAITH HILL	1398	1347	12.591	6
6	6	53	A THOUSAND MILES A&M/INTERSCOPE	VANESSA CARLTON	1356	1302	12.887	5
7	8	51	SOAK UP THE SUN A&M/INTERSCOPE	SHERYL CROW	1111	1119	11.381	8
8	9	26	FOREVER FOR YOU U-WATCH	DARYL HALL JOHN OATES	1110	1092	6.758	15
9	7	14	I DROVE ALL NIGHT EPIC	CELINE DION	1050	1167	8.488	10
10	12	10	TRY IT ON MY OWN ARISTA	WHITNEY HOUSTON	873	855	7.077	14
11	11	82	HERO INTERSCOPE	ENRIQUE IGLESIAS	871	878	9.129	9
12	13	9	DON'T DREAM IT'S OVER SQUINT-CURB/REPRISE	SIXPENCE NONE THE RICHER	841	822	5.676	18
13	15	6	PEACEKEEPER REPRISE	FLEETWOOD MAC	840	810	6.030	17
14	10	76	SUPERMAN (IT'S NOT EASY) AWARE/COLUMBIA	FIVE FOR FIGHTING	796	925	8.136	11
15	18	7	DRIFT AWAY LAVA	UNCLE KRACKER FEATURING DOBIE GRAY	753	590	12.257	7
16	14	13	YOU'RE STILL YOU 143/REPRISE	JOSH GROBAN	733	816	4.296	23
17	17	20	YOUR BODY IS A WONDERLAND AWARE/COLUMBIA	JOHN MAYER	629	616	7.715	12
18	16	8	COME WITH ME (LULLABY) ATLANTIC	PHIL COLLINS	606	640	5.479	20
19	25	3	IF YOU'RE NOT THE ONE ISLAND/IDJMG	DANIEL BEDINGFIELD	566	380	5.429	21
			★★ AIRPOWER ★★					
20	23	2	ONE WARNER BROS.	FAITH HILL	521	398	5.643	19
21	19	13	I'M WITH YOU ARISTA	AVRIL LAVIGNE	486	495	5.370	22
22	20	13	THINKING OVER DREAMWORKS	DANA GLOVER	479	492	2.331	30
23	21	11	PICTURE LAVA/ATLANTIC	KID ROCK FEATURING SHERYL CROW	468	456	7.372	13
			★ GREATEST GAINER®/MOST AIRPLAY ADDS ★					
24	NEW		HAVE YOU EVER BEEN IN LOVE EPIC	CELINE DION	463	82	6.406	16
25	22	16	BABIES REFUGEE/UNIVERSAL SOUTH	REGIE HAMM	437	409	1.788	-
26	26	8	SEPTEMBER GRASS COLUMBIA	JAMES TAYLOR	355	357	2.860	27
27	24	25	I'M GONNA GETCHA GOOD! MERCURY/IDJMG	SHANIA TWAIN	290	382	1.855	-
28	30	7	NO SIGN OF IT CURB	NATALIE GRANT	288	260	0.691	-
29	27	9	INNOCENCE ATLANTIC	HOOTIE & THE BLOWFISH	283	310	1.080	-
30	28	26	LANDSLIDE MONUMENT/COLUMBIA	DIXIE CHICKS	244	282	3.321	24

Songs ranked by number of detections. (○) Songs showing an increase in detections over the previous week, regardless of chart movement. A song will also receive a bullet if its percentage loss in detections does not exceed the percentage of monitored station downtime for the format. A song that has been on the chart for more than 20 weeks will generally not receive a bullet, even if it registers an increase in detections. Airpower awarded to songs appearing in the top 20 on both the Airplay and Audience charts for the first time with increases in both detections and audience. Greatest Gainer awarded to the song with the largest increase in detections. Most Airplay Adds awarded to the song registering six or more detections at the most stations for the first time this week. A song with a gain in detections over the previous week is placed first; if tied with a song with a decline over the same period. When tied songs are each gaining detections or each losing detections, the song being played on more stations is placed first. Songs below the top 15 become recurrents and are removed from the chart after 26 weeks.

## most airplay adds ADULT CONTEMPORARY

**NEW STATIONS**

**CELINE DION** *Have You Ever Been In Love (Epic)* 28  
 KEFM, KESZ, KKLT, KKMJ, KLSY, KMXZ, KOST, KRWM, KSFI, KVL, KXLY, WASH, WDEF, WHUD, WJBR, WJXB, WLHT, WLMG, WMGS, WNIC, WOOD, WRRM, WRVF, WSHH, WTFM, WTP, WWLI, WYSF  
**Total Stations With Six Or More Detections: 33**  
**TOTAL DETECTIONS BY DAYPART: 6-10 10%, 10-3 16%, 3-7 15%, 7-12 27%, 12-6A 32%**

**DANIEL BEDINGFIELD** *If You're Not The One (Island/IDJMG)* 11  
 KTDY, KXLY, WASH, WDOK, WJBR, WLTE, WLTJ, WMGC, WMYI, WOOD, WTP  
**Total Stations With Six Or More Detections: 42**  
**TOTAL DETECTIONS BY DAYPART: 6-10 7%, 10-3 10%, 3-7 12%, 7-12 33%, 12-6A 38%**

**UNCLE KRACKER FEATURING DOBIE GRAY** *Drift Away (Lava)* 10  
 KBIG, KSFI, KTDY, WDOK, WHOM, WLTM, WMGS, WRAL, WRSN, WWLI  
**Total Stations With Six Or More Detections: 44**  
**TOTAL DETECTIONS BY DAYPART: 6-10 17%, 10-3 22%, 3-7 17%, 7-12 13%, 12-6A 31%**

**FAITH HILL** *One (Warner Bros.)* 9  
 KMXZ, KTDY, WDOK, WHOM, WLHT, WMGC, WMGS, WRAL, WTVR  
**Total Stations With Six Or More Detections: 37**  
**TOTAL DETECTIONS BY DAYPART: 6-10 9%, 10-3 20%, 3-7 14%, 7-12 13%, 12-6A 44%**

**SUZY K** *Teaching (Vellum)* 5  
 KKMJ, WDOK, WEAT, WSPA, WSUY  
**Total Stations With Six Or More Detections: 7**  
**TOTAL DETECTIONS BY DAYPART: 6-10 0%, 10-3 6%, 3-7 2%, 7-12 5%, 12-6A 88%**

## GREATEST GAINERS ADULT CONTEMPORARY

**INCREASE IN DETECTIONS**

**CELINE DION** • *Have You Ever Been In Love (Epic)* +381  
 WDEF +18, KLSY +17, WLMG +13, WRVF +14, WNIC +13, WMGS +12, WTP +11, KOST +11, KRWM +11, WLHT +11

**DANIEL BEDINGFIELD** • *If You're Not The One (Island/IDJMG)* +186  
 KTDY +10, WALK +9, WASH +8, WMTX +7, WHUD +7, WTCB +7, KXLY +7, WTP +7, WAHR +6, WMGC +6

**UNCLE KRACKER FEATURING DOBIE GRAY** • *Drift Away (Lava)* +163  
 WRAL +21, KBIG +16, WMGS +13, WRSN +11, KSFI +10, WHOM +9, KTDY +8, WMTX +6, WBEA +6, WLTJ +6

**FAITH HILL** • *One (Warner Bros.)* +123  
 WLHT +11, KMXZ +10, WHOM +8, WRVF +7, WLMG +7, WASH +7, WRAL +7, WTCB +6, WYJB +6, WMGS +6

**SHANIA TWAIN** • *Forever And For Always (Mercury/IDJMG)* +53  
 KKCW +13, WSNY +11, WDEF +7, KESZ +6, KKLT +5, WTCB +5, WRCH +2, WWDE +2, KWAV +1, WLTQ +1

### Monitor RECURRENTS ADULT CONTEMPORARY

RANK	TITLE	ARTIST	IMPRINT/PROMOTION LABEL	DETECTIONS TW	LW
1	IF YOU'RE GONE	MATCHBOX TWENTY	LAVA/ATLANTIC	879	810
2	I HOPE YOU DANCE	LEE ANN WOMACK	MCA NASHVILLE/UNIVERSAL/UMRG	841	795
3	I'M ALREADY THERE	LONESTAR	(BNA)	769	758
4	DROPS OF JUPITER (TELL ME)	TRAIN	COLUMBIA	743	718
5	THANK YOU	DIDO	(ARISTA)	727	724
6	A NEW DAY HAS COME	CELINE DION	(EPIC)	663	659
7	A MOMENT LIKE THIS	KELLY CLARKSON	(RCA/RMG)	624	838
8	TRULY MADLY DEEPLY	SAVAGE GARDEN	(COLUMBIA)	617	579
9	FOLLOW ME	UNCLE KRACKER	(TOP DOG/LAVA/ATLANTIC)	606	579

RANK	TITLE	ARTIST	IMPRINT/PROMOTION LABEL	DETECTIONS TW	LW
10	BREATHE	FAITH HILL	(WARNER BROS.)	605	630
11	COMPLICATED	AVRIL LAVIGNE	(ARISTA)	601	645
12	WHEREVER YOU WILL GO	THE CALLING	(RCA/RMG)	596	577
13	ONLY TIME	ENYA	(REPRISE)	596	673
14	CRUISIN'	HUEY LEWIS & GWYNETH PALTROW	(HOLLYWOOD)	580	555
15	I KNEW I LOVED YOU	SAVAGE GARDEN	(COLUMBIA)	556	536
16	HOW DO I LIVE	LEANN RIMES	(CURB)	537	456
17	SOMETHING TO TALK ABOUT	BONNIE RAITT	(CAPITOL)	534	459
18	OPEN ARMS	JOURNEY	(COLUMBIA)	510	419
19	AMAZED	LONESTAR	(BNA)	509	473
20	SMOOTH	SANTANA FEAT. ROB THOMAS	(ARISTA)	499	480

Recurrents are titles that have appeared on the Adult Contemporary Airplay chart for 26 weeks and have dropped below the top 15.

# WE'VE MADE **AIRPLAY Monitor** EASIER TO GET!

**FOR YOUR SUBSCRIPTION NEEDS, CALL:**  
**JAMIE DeFOUR (646) 654-5863**  
 Email: [jdefour@vnubuspubs.com](mailto:jdefour@vnubuspubs.com) Fax: (646) 654-5518







Songs posting gains in detections of with a percentage loss in detections equal to or better than the monitored downtime percentage in the format. Songs listed in order of detections. \*Indicates station experienced between 24 and 56 hours of monitored downtime during the chart week.

TOP 10 BOUND

WHITNEY HOUSTON 873/15 Try It On My Own (Arista) Total Stations: 84 Chart Move: 12-10 H (7), M (16), L (61)

Table with columns: Station, W, L, G, M, L, D, W, L, G, M, L, D. Lists stations and their performance for Whitney Houston's song.

SIXPENCE NONE THE RICHER 841/19 Don't Dream It's Over (Squint-Curb/Reprise) Total Stations: 76 Chart Move: 13-12 H (9), M (16), L (51)

Table with columns: Station, W, L, G, M, L, D, W, L, G, M, L, D. Lists stations and their performance for Sixpence None the Richer's song.

FLEETWOOD MAC 840/30 Peacekeeper (Reprise) Total Stations: 79 Chart Move: 15-13 H (6), M (19), L (54)

Table with columns: Station, W, L, G, M, L, D, W, L, G, M, L, D. Lists stations and their performance for Fleetwood Mac's song.

UNCLE KRACKER FEAT. DOBIE GRAY 753/163 Drift Away (Lava) Total Stations: 63 Chart Move: 18-15 H (12), M (15), L (36)

Table with columns: Station, W, L, G, M, L, D, W, L, G, M, L, D. Lists stations and their performance for Uncle Kracker's song.

JOHN MAYER 629/13 Your Body Is A Wonderland (A&M/Columbia) Total Stations: 59 Chart Move: 17-17 H (8), M (20), L (31)

Table with columns: Station, W, L, G, M, L, D, W, L, G, M, L, D. Lists stations and their performance for John Mayer's song.

AIRPOWER

FAITH HILL 521/123 One (Warner Bros.) Total Stations: 60 Chart Move: 23-20 H (3), M (7), L (50)

AIRPLAY LEADER (FIRST STATION TO 100 PLAYS) WLTV • New York, NY PD: Jim Ryan Date: 04/13/03

CELINE DION 463/381 Have You Ever Been In Love (Epic) Total Stations: 71 Chart Move: Debut 24 H (0), M (11), L (60)

Table with columns: Station, W, L, G, M, L, D, W, L, G, M, L, D. Lists stations and their performance for Celine Dion's song.

DANIEL BEDINGFIELD 566/186 If You're Not The One (Island/IDJMG) Total Stations: 78 Chart Move: 25-19 H (3), M (8), L (67)

Table with columns: Station, W, L, G, M, L, D, W, L, G, M, L, D. Lists stations and their performance for Daniel Bedingfield's song.

REGIE HAMM 437/28 Babies (Refugee/Universal South) Total Stations: 64 Chart Move: 22-25 H (0), M (5), L (59)

Table with columns: Station, W, L, G, M, L, D, W, L, G, M, L, D. Lists stations and their performance for Reggie Hamm's song.

KID ROCK FEAT. SHERYL CROW 468/12 Picture (Lava/Antaltil) Total Stations: 39 Chart Move: 21-23 H (9), M (10), L (20)

Table with columns: Station, W, L, G, M, L, D, W, L, G, M, L, D. Lists stations and their performance for Kid Rock's song.

NATALIE GRANT 288/28 No Sign Of It (Curb) Total Stations: 35 Chart Move: 30-28 H (0), M (3), L (35)

Table with columns: Station, W, L, G, M, L, D, W, L, G, M, L, D. Lists stations and their performance for Natalie Grant's song.

ROD STEWART 190/52 They Can't Take That Away From Me (JRMG) Total Stations: 27 Heavy (1) KOSI Medium (2), Light (24) Airplay Adds: 4 KKCW, KKMJ, WMGS, WRRM

Table with columns: Station, W, L, G, M, L, D, W, L, G, M, L, D. Lists stations and their performance for Rod Stewart's song.

ROD STEWART 190/52 They Can't Take That Away From Me (JRMG) Total Stations: 27 Heavy (1) KOSI Medium (2), Light (24) Airplay Adds: 4 KKCW, KKMJ, WMGS, WRRM

Table with columns: Station, W, L, G, M, L, D, W, L, G, M, L, D. Lists stations and their performance for Rod Stewart's song.

ROD STEWART 190/52 They Can't Take That Away From Me (JRMG) Total Stations: 27 Heavy (1) KOSI Medium (2), Light (24) Airplay Adds: 4 KKCW, KKMJ, WMGS, WRRM

Table with columns: Station, W, L, G, M, L, D, W, L, G, M, L, D. Lists stations and their performance for Rod Stewart's song.

ROD STEWART 190/52 They Can't Take That Away From Me (JRMG) Total Stations: 27 Heavy (1) KOSI Medium (2), Light (24) Airplay Adds: 4 KKCW, KKMJ, WMGS, WRRM

Table with columns: Station, W, L, G, M, L, D, W, L, G, M, L, D. Lists stations and their performance for Rod Stewart's song.

COUNTING CROWS FEAT. VANESSA CARLTON 162/2 Big Yellow Taxi (Geffen/Interscope) Total Stations: 11 Heavy (3) KBIG, KKLT, WRAL Medium (3), Light (5)

Table with columns: Station, W, L, G, M, L, D, W, L, G, M, L, D. Lists stations and their performance for Counting Crows' song.

NO DOUBT FEAT. LADY SAW 122/7 Underneath It All (Interscope) Total Stations: 9 Heavy (3) KKLT, KSSK, WMGS Medium (1), Light (5) Airplay Adds: 1 WLEV

MERCYME 86/17 I Can Only Imagine (INO/Curb) Total Stations: 12 Heavy (1) WY5F Medium (0), Light (11) Airplay Adds: 1 KMG

AMERICAN IDOL FINALISTS 70/27 God Bless The U.S.A. (RCA/RMG) Total Stations: 10 Heavy (1) WBEB Medium (1), Light (8) Airplay Adds: 2 KBVL, WLTV

SUZY K 66/19 Teaching (Vellum) Total Stations: 13 Heavy (0) Medium (0), Light (13) Airplay Adds: 5 KKMJ, WOOK, WEAT, WSPA, WSUY

Laura Pausini 55/1 If That's Love (Atlantic) Total Stations: 11 Heavy (0) Medium (0), Light (11) Airplay Adds: 1 WTVR

SHANIA TWAIN 54/53 Forever And For Always (Mercury/IDJMG) Total Stations: 10 Heavy (0) Medium (0), Light (10) Airplay Adds: 4 KESZ, KKCW, WDEF, WSNY

VANESSA CARLTON 44/5 Pretty Baby (A&M/Interscope) Total Stations: 2 Heavy (1) KVLY Medium (0), Light (1)

JUSTIN TIMBERLAKE 40/1 Cry Me A River (Jive) Total Stations: 13 Heavy (0) Medium (0), Light (13)

STYX 33/9 Yes I Can (Sanctuary) Total Stations: 8 Heavy (0) Medium (0), Light (8) Airplay Adds: 1 WSUY

OJAILAH 31/5 I'm Free (Charlotte's Web) Total Stations: 13 Heavy (0) Medium (0), Light (13)

NORAH JONES 30/0 Come Away With Me (Blue Note/Virgin) Total Stations: 11 Heavy (0) Medium (0), Light (11)

ROD STEWART 190/52 They Can't Take That Away From Me (JRMG) Total Stations: 27 Heavy (1) KOSI Medium (2), Light (24) Airplay Adds: 4 KKCW, KKMJ, WMGS, WRRM

ROD STEWART 190/52 They Can't Take That Away From Me (JRMG) Total Stations: 27 Heavy (1) KOSI Medium (2), Light (24) Airplay Adds: 4 KKCW, KKMJ, WMGS, WRRM

ROD STEWART 190/52 They Can't Take That Away From Me (JRMG) Total Stations: 27 Heavy (1) KOSI Medium (2), Light (24) Airplay Adds: 4 KKCW, KKMJ, WMGS, WRRM

ROD STEWART 190/52 They Can't Take That Away From Me (JRMG) Total Stations: 27 Heavy (1) KOSI Medium (2), Light (24) Airplay Adds: 4 KKCW, KKMJ, WMGS, WRRM

ROD STEWART 190/52 They Can't Take That Away From Me (JRMG) Total Stations: 27 Heavy (1) KOSI Medium (2), Light (24) Airplay Adds: 4 KKCW, KKMJ, WMGS, WRRM

ROD STEWART 190/52 They Can't Take That Away From Me (JRMG) Total Stations: 27 Heavy (1) KOSI Medium (2), Light (24) Airplay Adds: 4 KKCW, KKMJ, WMGS, WRRM

ROD STEWART 190/52 They Can't Take That Away From Me (JRMG) Total Stations: 27 Heavy (1) KOSI Medium (2), Light (24) Airplay Adds: 4 KKCW, KKMJ, WMGS, WRRM

ROD STEWART 190/52 They Can't Take That Away From Me (JRMG) Total Stations: 27 Heavy (1) KOSI Medium (2), Light (24) Airplay Adds: 4 KKCW, KKMJ, WMGS, WRRM



# DAVID BANNER

## "LIKE A PIMP"

FEATURING LIL' FLIP

ON OVER  
100  
STATIONS!

MONITOR RAP (25)

MONITOR  
R&B/HIP-HOP (27)

DEBUT #39\* +194x  
MEDIABASE RHYTHM

#28\* +155x  
MEDIABASE URBAN

AUDIENCE  
13 MILLION!

TOP 5 PHONES:  
WHHH KXHT  
WBHJ KBFB  
WWBZ WCHH  
KKDA KIPR  
WRJH WJMI

ADDED AT JAMZ & J2

ADDED AT 3ET - MEDIUM ROTATION!

VIDEO PREMIERE ON BET "106<sup>TH</sup> AND PARK"!

NEW THIS WEEK AT:

KBXX-HOUSTON WRVZ-CHARLESTON KSKY-SANTA ROSA WLYD-GREEN BAY WPHR-SYRACUSE

BLOWING UP HUGE AT:

WHHH	60x	KBFB	50x	WHTA	47x	KKDA	30x	KIPR	38x
KXHT	57x	WWBZ	50x	WPWX	30x	WEUP	50x	KATZ	30x
WBHJ	53x	WCHH	40x	WHXT	30x	WRJH	57x	WJUC	45x

FROM THE UPCOMING ALBUM

# MISSISSIPPI

## THE ALBUM

IN STORES MAY 20, 2003

DAVID BANNER  
"LIKE A PIMP" FEAT. LIL' FLIP



PARENTAL  
ADVISORY  
EXPLICIT CONTENT

EDITED  
VERSION ALSO  
AVAILABLE.

www.parentalguide.org

h.i.g. face

© 2003 Universal Records, a Division of UMG Recordings, Inc.

SRC STREET RECORDS CORPORATION

UNIVERSAL RECORDS

RHYTHMIC TOP 40

POWER PLAYLISTS



Songs ranked by number of detections. Playlists are listed in order of TSA weekly cume, beginning with the highest-cuming station. Cumes are updated twice yearly following the release of the spring and fall Arbitron surveys. The number of stations shown each week varies depending upon space.

Airplay Adds (AA) denotes songs with 6 or more detections at station for first time this week.

AIRPLAY LEADERBOARD

THE STATIONS THAT BREAK THE HITS



WPOW Miami, FL (PD/MD: Curry/Mix) Airplay Leader Designations: 5

Table with 5 rows showing station rankings for WPOW Miami, FL. Includes station name, PD/MD, and Airplay Leader Designations.

Refer to Impact! page for this week's Airplay Leaders and Airplay Leaderboard rules.

WKTU New York PD: Frankie Blue APD/MD: Jeff Z MC: Sky Walker Clear Channel 201-420-3700

Table with 40 rows showing song rankings for WKTU New York. Includes song title, artist, and chart position.

WBBM Chicago PD: Todd Cavanah MD: Erik Bradley Infinity 312-944-6000

Table with 40 rows showing song rankings for WBBM Chicago. Includes song title, artist, and chart position.

KYLD San Francisco OM: Michael Martin MD: "Jazzy" Jim Archer Clear Channel 415-356-0949

Table with 40 rows showing song rankings for KYLD San Francisco. Includes song title, artist, and chart position.

WPOW Miami PD: Kid Curry APD: Tony The Tiger MD: Eddie Mix Beasley 305-653-6796

Table with 40 rows showing song rankings for WPOW Miami. Includes song title, artist, and chart position.

WBTS Atlanta PD: Sean Phillips APD/MD: Maverick Cox 404-897-7500

Table with 40 rows showing song rankings for WBTS Atlanta. Includes song title, artist, and chart position.

KGGI Riverside PD: Jesse Duran MD: Robert "O.D.M." Gutierrez Clear Channel 909-684-1991

Table with 40 rows showing song rankings for KGGI Riverside. Includes song title, artist, and chart position.

KUBE Seattle OM: Shellee Hart PD: Eric Powers MD: Karen Wild Clear Channel 206-285-2295

Table with 40 rows showing song rankings for KUBE Seattle. Includes song title, artist, and chart position.

WPYM Miami PD/MD: Phil Michaels Cox 305-444-4404

Table with 40 rows showing song rankings for WPYM Miami. Includes song title, artist, and chart position.

KSFM Sacramento PD: Byron Kennedy MD: Tony Tcate Infinity 916-920-1025

Table with 40 rows showing song rankings for KSFM Sacramento. Includes song title, artist, and chart position.

WQX Boston PD: Jerry McKenna MD: Rob Tyler Entercom 617-779-5300

Table with 40 rows showing song rankings for WQX Boston. Includes song title, artist, and chart position.

KZZP Phoenix PD: Mark Medina APD/MD: Corina MD: Chino Clear Channel 602-279-5577

Table with 40 rows showing song rankings for KZZP Phoenix. Includes song title, artist, and chart position.

XHTZ San Diego PD: Diana Laird APD: Sonny Loco MD: Pablo Sato Clear Channel 619-575-9090

Table with 40 rows showing song rankings for XHTZ San Diego. Includes song title, artist, and chart position.

WLLD Tampa PD: Orlando APD: Scantman MD: Beata Infinity 727-568-9870

Table with 40 rows showing song rankings for WLLD Tampa. Includes song title, artist, and chart position.

KTTB Minneapolis PD: Dusty Hayes APD/MD: Zennie K Radio One 952-842-7200

Table with 40 rows showing song rankings for KTTB Minneapolis. Includes song title, artist, and chart position.

KBBT San Antonio PD: JD Gonzalez MD: Romeo Hispanic 210-829-1075

Table with 40 rows showing song rankings for KBBT San Antonio. Includes song title, artist, and chart position.

KXJM Portland, OR VP/Pgm: Mark Adams APD: Mario Devoe MD: Alexa Rose City 503-243-7595

Table with 40 rows showing song rankings for KXJM Portland, OR. Includes song title, artist, and chart position.

WNVZ Norfolk PD: Don London APD/MD: Jay West Entercom 757-497-2000

Table with 40 rows showing song rankings for WNVZ Norfolk. Includes song title, artist, and chart position.



Songs posting gains in detections or with a percentage loss in detections equal to or better than the monitored downtime percentage in the format. Songs listed in order of detections. \*Indicates station experienced between 24 and 56 hours of monitored downtime during the chart week.

TOP 10 BOUND

Table with columns: Rank, Station, Song, Artist, Detections, Gain/Loss. Includes entries for Eminem, Jennifer Lopez, Talib Kweli, etc.

Table with columns: Rank, Station, Song, Artist, Detections, Gain/Loss. Includes entries for Joe Budden, Jennifer Lopez, etc.

Table with columns: Rank, Station, Song, Artist, Detections, Gain/Loss. Includes entries for Jennifer Lopez, Talib Kweli, etc.

Table with columns: Rank, Station, Song, Artist, Detections, Gain/Loss. Includes entries for Talib Kweli, Lil' Mo, etc.

Table with columns: Rank, Station, Song, Artist, Detections, Gain/Loss. Includes entries for Lil' Mo, Monica, etc.

Table with columns: Rank, Station, Song, Artist, Detections, Gain/Loss. Includes entries for Monica, Lil' Kim, etc.

Table with columns: Rank, Station, Song, Artist, Detections, Gain/Loss. Includes entries for Lil' Kim, R. Kelly, etc.

Table with columns: Rank, Station, Song, Artist, Detections, Gain/Loss. Includes entries for R. Kelly, Wayne Wonder, etc.

Table with columns: Rank, Station, Song, Artist, Detections, Gain/Loss. Includes entries for Wayne Wonder, etc.

Table with columns: Rank, Station, Song, Artist, Detections, Gain/Loss. Includes entries for Joe Budden, etc.

Table with columns: Rank, Station, Song, Artist, Detections, Gain/Loss. Includes entries for Joe Budden, etc.

Table with columns: Rank, Station, Song, Artist, Detections, Gain/Loss. Includes entries for Joe Budden, etc.

Table with columns: Rank, Station, Song, Artist, Detections, Gain/Loss. Includes entries for Joe Budden, etc.

Table with columns: Rank, Station, Song, Artist, Detections, Gain/Loss. Includes entries for Joe Budden, etc.

Table with columns: Rank, Station, Song, Artist, Detections, Gain/Loss. Includes entries for Joe Budden, etc.

Table with columns: Rank, Station, Song, Artist, Detections, Gain/Loss. Includes entries for Joe Budden, etc.

Table with columns: Rank, Station, Song, Artist, Detections, Gain/Loss. Includes entries for Joe Budden, etc.

Table with columns: Rank, Station, Song, Artist, Detections, Gain/Loss. Includes entries for Kylie Dean, etc.

Table with columns: Rank, Station, Song, Artist, Detections, Gain/Loss. Includes entries for Kylie Dean, etc.

Table with columns: Rank, Station, Song, Artist, Detections, Gain/Loss. Includes entries for Kylie Dean, etc.

Table with columns: Rank, Station, Song, Artist, Detections, Gain/Loss. Includes entries for Kylie Dean, etc.

Table with columns: Rank, Station, Song, Artist, Detections, Gain/Loss. Includes entries for Kylie Dean, etc.

Table with columns: Rank, Station, Song, Artist, Detections, Gain/Loss. Includes entries for Kylie Dean, etc.

Table with columns: Rank, Station, Song, Artist, Detections, Gain/Loss. Includes entries for Kylie Dean, etc.

Table with columns: Rank, Station, Song, Artist, Detections, Gain/Loss. Includes entries for Kylie Dean, etc.

Table with columns: Rank, Station, Song, Artist, Detections, Gain/Loss. Includes entries for Floetry, etc.

Table with columns: Rank, Station, Song, Artist, Detections, Gain/Loss. Includes entries for Floetry, etc.

Table with columns: Rank, Station, Song, Artist, Detections, Gain/Loss. Includes entries for Floetry, etc.

Table with columns: Rank, Station, Song, Artist, Detections, Gain/Loss. Includes entries for Floetry, etc.

Table with columns: Rank, Station, Song, Artist, Detections, Gain/Loss. Includes entries for Floetry, etc.

Table with columns: Rank, Station, Song, Artist, Detections, Gain/Loss. Includes entries for Floetry, etc.

Table with columns: Rank, Station, Song, Artist, Detections, Gain/Loss. Includes entries for Floetry, etc.

Table with columns: Rank, Station, Song, Artist, Detections, Gain/Loss. Includes entries for Floetry, etc.

AIRPOWER

Table with columns: Rank, Station, Song, Artist, Detections, Gain/Loss. Includes entries for Stagg Lee, etc.

Table with columns: Rank, Station, Song, Artist, Detections, Gain/Loss. Includes entries for Stagg Lee, etc.

Table with columns: Rank, Station, Song, Artist, Detections, Gain/Loss. Includes entries for Stagg Lee, etc.

Table with columns: Rank, Station, Song, Artist, Detections, Gain/Loss. Includes entries for Stagg Lee, etc.

Table with columns: Rank, Station, Song, Artist, Detections, Gain/Loss. Includes entries for Stagg Lee, etc.

CHART BOUND

Table with columns: Rank, Station, Song, Artist, Detections, Gain/Loss. Includes entries for DJ Kayslay, etc.

Table with columns: Rank, Station, Song, Artist, Detections, Gain/Loss. Includes entries for DJ Kayslay, etc.

Table with columns: Rank, Station, Song, Artist, Detections, Gain/Loss. Includes entries for DJ Kayslay, etc.

Table with columns: Rank, Station, Song, Artist, Detections, Gain/Loss. Includes entries for DJ Kayslay, etc.

Table with columns: Rank, Station, Song, Artist, Detections, Gain/Loss. Includes entries for DJ Kayslay, etc.

Table with columns: Rank, Station, Song, Artist, Detections, Gain/Loss. Includes entries for DJ Kayslay, etc.

KYLIE DEAN

Table with columns: Rank, Station, Song, Artist, Detections, Gain/Loss. Includes entries for Kylie Dean, etc.

BECKY BAEING

Table with columns: Rank, Station, Song, Artist, Detections, Gain/Loss. Includes entries for Becky Baeing, etc.

R. KELLY

Table with columns: Rank, Station, Song, Artist, Detections, Gain/Loss. Includes entries for R. Kelly, etc.

CHRISTINA AGUILERA

Table with columns: Rank, Station, Song, Artist, Detections, Gain/Loss. Includes entries for Christina Aguilera, etc.

DRU HILL

Table with columns: Rank, Station, Song, Artist, Detections, Gain/Loss. Includes entries for Dru Hill, etc.

50 CENT

Table with columns: Rank, Station, Song, Artist, Detections, Gain/Loss. Includes entries for 50 Cent, etc.

SMILEZ & SOUTHSTAR

Table with columns: Rank, Station, Song, Artist, Detections, Gain/Loss. Includes entries for Smilez & Southstar, etc.

HITMAN SAMMY SAM

Table with columns: Rank, Station, Song, Artist, Detections, Gain/Loss. Includes entries for Hitman Sammy Sam, etc.

THE ROC PROJECT FEAT. TINA ARENA

Table with columns: Rank, Station, Song, Artist, Detections, Gain/Loss. Includes entries for The Roc Project, etc.

FLOETRY

Table with columns: Rank, Station, Song, Artist, Detections, Gain/Loss. Includes entries for Floetry, etc.

COLDPLAY

Table with columns: Rank, Station, Song, Artist, Detections, Gain/Loss. Includes entries for Coldplay, etc.

ROCKELL

Table with columns: Rank, Station, Song, Artist, Detections, Gain/Loss. Includes entries for Rockell, etc.

LIL JON & THE EAST SIDE BOYZ

Table with columns: Rank, Station, Song, Artist, Detections, Gain/Loss. Includes entries for Lil Jon & The East Side Boyz, etc.

LATIF

Table with columns: Rank, Station, Song, Artist, Detections, Gain/Loss. Includes entries for Latif, etc.

DA ENTOUAGE

Table with columns: Rank, Station, Song, Artist, Detections, Gain/Loss. Includes entries for Da Entouage, etc.

FOGGY

Table with columns: Rank, Station, Song, Artist, Detections, Gain/Loss. Includes entries for Foggy, etc.

BABY BEESH FEATURING FRANKIE J

Table with columns: Rank, Station, Song, Artist, Detections, Gain/Loss. Includes entries for Baby Beesh, etc.

MISSY "MISDEMEANOR" ELLIOTT

Table with columns: Rank, Station, Song, Artist, Detections, Gain/Loss. Includes entries for Missy "Misdemeanor" Elliott, etc.



## Local Show Beats Syndicated Rivals

Continued from page 1

What's the recent history of Charleston's morning-show battles?

Base: Well, our show as it is now started in '99, and all of the challengers have come on since then except Tom Joyner, [who] has been on our adult R&B sister WMGL since the mid-'90s. Frank Ski came on WPAL-FM within the last year, Banks has been on WWBZ almost three years, and Parr debuted when WSSP came on a year ago. The market is saturated with these shows because we've seen so many new direct competitors launch in the past four years. But if you look at the ratings, none of those have made any significant headway in morning share.

Where do you lead in the ratings?

Baby J: Name your demo.

Spencer: There was one book where we were No. 1 in 13 out of 19 demos.

Base: Our goal is to dominate 18-34, but we also work on 18-49, and even 25-54. . . . We give Joyner about one book per year in his demo. We even top Howard Stern, although he occasionally wins in his demo. For the most part, we dominate those three demos, and we're No. 1 12-plus.

What's the history of Da Breakfuss Club?

Base: The station has had a morning show with that name for about 10-12 years. When I returned to Charleston as PD in '99, we decided to move the morning man then over to WMGL. I brought in Tessa, who had worked with me in mornings in the past and who was from Charleston originally. Baby J came from Greenville, N.C., and I had a vision they would be a good team.

Spencer: It didn't take us long to jell. It was an immediate chemistry on-air and off. With morning shows, that's either [the case] at the beginning or it's not. There's not much you can do to try and create chemistry.

Base: You can tell when a morning team doesn't really like each other on-air. They can be combative, but it comes across as negative. Whereas these guys, even when they disagree, come right back with that chemistry in the next sentence.

Once the syndicated shows were in the market, did they have anything that your morning show didn't? How did the team address those challenges?

Baby J: They definitely have more access to national celebrities, and we had to learn how to combat that. We got ourselves together in terms of our interviewing skills, and then we went after the same star power.

Base: We've really worked our relationships with the labels and even management. One of the things we try to do is to always have an artist who is in town come by our studios first, since we are the only local show [that] can do an interview. We also have good relationships with ABC and Westwood One to do live phone interviews.

We also consider ourselves on the same level as the syndicated shows in terms of being able to handle interviews with major stars. A lot of talent in medium or smaller markets might not be able to handle that kind of interview. We don't look at ourselves as the small morning show at all.

Spencer: It also helps that we have a two-hour radio countdown that we produce for Citadel's R&B stations in Little Rock, Ark., and Baton Rouge and Lafayette, La., as well as Z93.

Base: In fact, we're in the initial stages of looking at syndicating the morning show, at least on a small- to medium-market level. As a chain, there could be a need for that in the future.

Considering you feel you're at an advantage over the syndicated shows by being local in Charleston, would it concern you to then

### Charleston, S.C. Morning Ratings

Fall 2002, 12-plus

Da Breakfuss Club (WWWZ)	10.3
Howard Stern (WYBB)	6.2
Tom Joyner (WMGL)	5.7
Russ Parr (WSSP)	2.3
Doug Banks (WWBZ)	1.4
Frank Ski (WPAL-FM)	0.6

syndicate yourself to other markets?

Spencer: Actually, no. We're behind the idea, because we know we have something that other shows, local or syndicated, are missing. But, if it were to happen, we would take a more hands-on approach in the other markets. If you have only two to three stations you're working with, it's a great deal easier to make market visits on a regular basis.

Base: With a controlled number of stations, it's possible to be available for the big station events, as well as the live remote at the car dealership or store opening. We would look at the grassroots approach to spreading the show, one market at a time, rather than how the big syndicated shows have done it. Why not integrate the markets as you go along, rather than get everyone on board and then try to work in market visits?

Describe the personality of Da Breakfuss Club and its benchmarks.

Spencer: We do skits, characters, as well as have open conversations about issues or things in the news. We have Da Breakfuss Club Reality TV on the radio, a segment called

Da Badge, where we discuss real stupid crime stories from real life.

What are some of the recurring characters?

Baby J: Little Herbert, an 8-year-old who gives the horoscopes. Evans, our producer, has a couple of characters, including a Johnny Carson-like psychic. . . . and we also have Doctor Pho, who is a gitchy version of Dr. Phil.

Base: "Gitchy" is the Charleston version of "Gulla." Don't forget about Bootany Lee and his Asian wife Ramona.

Spencer: We leave no race out! The show doesn't have a particular color—we touch on and appeal to everybody.

Does each partner have a specific role on the show?

Base: There is definitely some role-playing amongst the team. But usually they're just bringing their own life experiences and relating that to their audience. Listeners identify with that. It could be about family, friends, or even relationships with the opposite sex.

At the same time, we're very proud of the amount of community issues we discuss. I would say we have something on about the community every morning. It might be talking with listeners or having someone on as a guest to talk about a project. We've backed down on the music just a bit to allow for this. I wouldn't say we are a music-intensive morning show, although we play just as much if not a little more than any of the syndicated shows.

Spencer: We also have Talk Tuesday, where just about every 20 minutes we begin a new topic of discussion. We get the ideas for topics from the newspaper, television, or more often from shop talk—you know, when you're at the beauty shop or barbershop. That's where the most interesting topics come from.

Baby J: [A recent topic concerned] a question I heard at the shop. . . . A guest asked, "What is

## Yeah Yeah You Know Them



Keith Murray helps deliver his new single, "Yeah Yeah U Know It," to WEDR (99 Jamz) Miami. He's flanked by Def Jam regional Luis Duran, left, and PD Cedric Hollywood.

## RADIO CONCERT MONITOR

DATE	STATION	EVENT	PROMOTIONS DIRECTOR
April 25-26	WJLB Detroit	Hip-Hop Summit and Charity Dinner	Dodie Johnson
	APPEARING: Russell Simmons, more		
April 26	WPRW Augusta, Ga.	PowerFest	Cher Best
	APPEARING: Floetry, 'Nam Brigade, Lil' Mo, Marcus Houston, Bone Crusher, Haze, Novell, T.I., Owee, David Banner		
May 2	WZMX Hartford, Conn.	Birthday Bash	Jason Ricketts
	APPEARING: 50 Cent, Lil' Kim, Cam'ron & the Diplomats, Nivea, Fabolous, Freeway, Lil' Mo		
May 14	WJKS Wilmington, Del.	Kiss Spring Jam	Tony Q
	APPEARING: Lil' Mo, MC Lyte, Killer Mike, Ms. Jade, Payback		
May 16	WHXT Columbia, S.C.	Doug Banks Jam Session	Tessica Island
	APPEARING: TBA		
May 23	WBTJ Richmond, Va.	Doug Banks Jam Session	Tessica Island
	APPEARING: TBA		
May 24	WQQK Nashville	Come Together Day	Jasmine Sanders
	APPEARING: TBA		
May 26	KMEZ New Orleans	Summer Old-School Concert Series Kickoff	LeBron Joseph
	APPEARING: TBA		
June 6	WKKV Milwaukee	Doug Banks Jam Session	Tessica Island
	APPEARING: TBA		
June 7-8	WHUR Washington, D.C.	Capitol Jazz Fest	Marty Martin
	APPEARING: Mike Philips, Will Downing, George Duke, Roy Ayers, Ray Charles, and more		
June 18	WBLS New York	Doug Banks Fifth Anniversary	Tina Nachman
	APPEARING: TBA		
June 21	WDTJ Detroit	Summer Jamz 2003	Vicki Preston
	APPEARING: TBA		
June 28	WUSL Philadelphia	Sistahs Expo	Marie Tolson
	APPEARING: TBA		
July 24	KBMB Sacramento, Calif.	Doug Banks Jam Session	Tessica Island
	APPEARING: TBA		

Let us monitor your event! Call Dana Hall at 646-654-4711 or e-mail dhall@airplaymonitor.com

the cut-off age for a man you would allow your 17-year-old daughter to date?" He said 21, and the whole shop erupted.

Base: But there is definitely balance when it comes to the political or serious issues. Sometimes with the syndicated show, they can get caught up in one particular issue, almost to a point of overkill, and the listeners feel like all they want is just to get back to the music or something a little lighter. With us, we can quickly respond to that, being local. Knowing when to back down is so important.

How often does the team meet? Do you all

plan out each day's show in advance?

Baby J: We usually try it out on each other beforehand or run ideas in our meetings. Tessa is our barometer. If Evans and I try a new character or skit and she doesn't laugh, we kill it.

Base: We try to meet three times a week, but I have enough confidence in them that we could do it just once a week. We're communicating on a daily basis anyway. I don't feel it's necessary to go over every break hour by hour anymore. If I have to tell them what to do or how to be funny, then I should be looking for another morning team.



# SEAN PAUL

**"Get Busy"**

The follow up to the smash  
dancehall reggae hit

*"Gimme The Light"!*

**In Stores Now**



Produced by Steven "Lenky" Marsden  
for 40/40 Productions

**Atlantic Records  
would like to thank Urban Radio  
for making Sean Paul #1!**

**67 Million in audience  
Over 5000 detections**

**Check out Sean Paul  
on tour with 50 Cent this summer!**



[www.atlantic-records.com](http://www.atlantic-records.com)

© 2003 Atlantic Recording Corporation for the United States and VEA International Inc.  
for the world outside the United States.



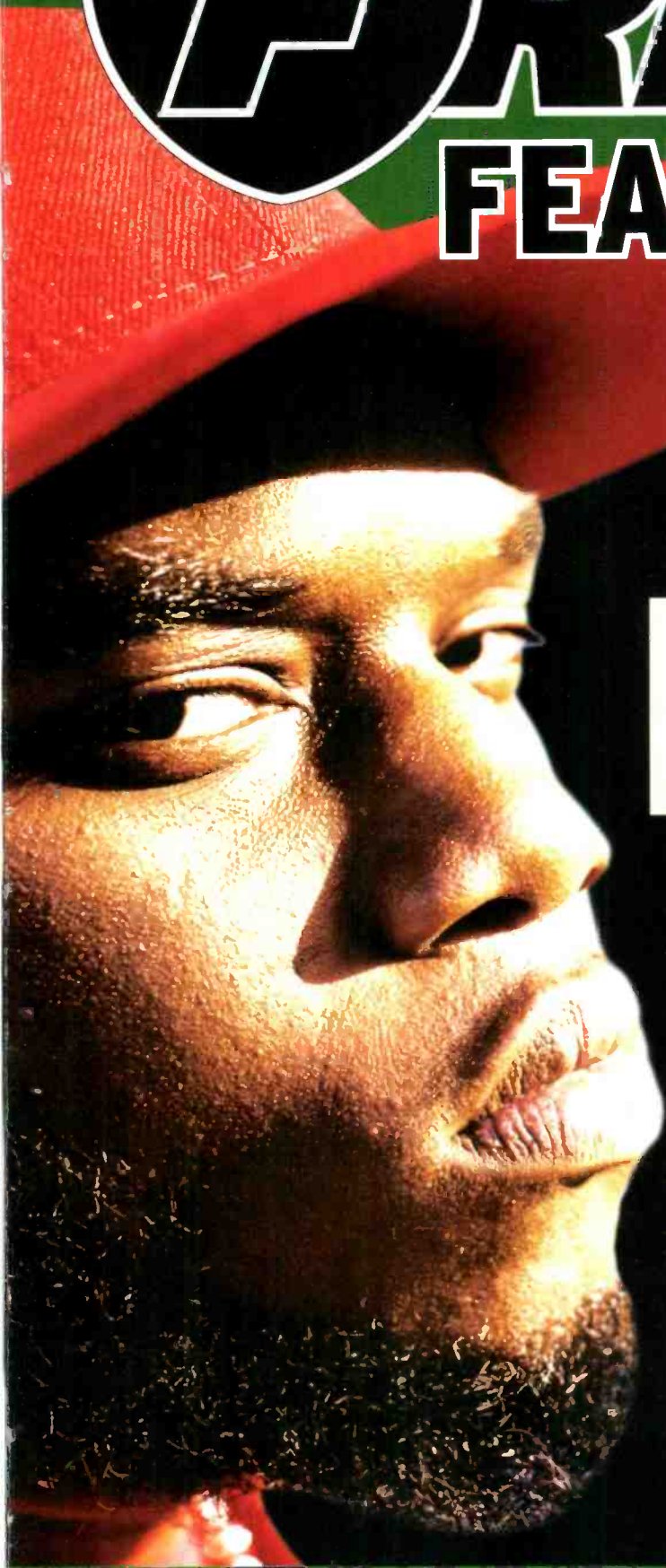




THE ROC PRESENTS...

# FREEWAY

FEAT. PEEDI CRAKK



PUTTING THE HOOD  
ON SMASH WITH

# FLIPSIDE

IMPACTING 4/28

WPHI	30x	WUSL	25x
WJHM	15x	WZMX	14x
WBHH	14x	WQHT	10x
WPHR	10x	WHTA	10x
WCHH	9x	WMBX	8x
WBOT	5x	WJMN	5x
WDTJ	5x	WPWX	5x

"The hottest record on the streets!!!"

-Colby Colb/PD/WPHI

"The Summer Banger!"

-Gold/PD/WUSL

THE NEW ALBUM

# PHILADELPHIA FREEWAY

IN STORES NOW



LOOK OUT FOR THE ROC ARMY TOUR  
COMING TO A CITY NEAR YOU!



ROC-A-FELLA  
RECORDS

POWER PLAYERS



Songs ranked by number of detections. Playlists are listed in order of TSA weekly... Nielsen Broadcast Data Systems

AIRPLAY LEADERBOARD

THE STATIONS THAT BREAK THE HITS



WZMX Hartford, CT (PD: Victor Starr) Airplay Leader Designations: 12

Table with 2 columns: Rank and Station Name. #2 WQHT, New York, NY; #3 KKDA, Dallas, TX; #4 WBHH, Norfolk, VA; #5 WJNH, Baton Rouge, LA

Refer to Impact! page for this week's Airplay Leaders and Airplay Leaderboard rules.

WGCI Chicago OM: Elroy R.C. Smith APD/MD: Tiffany Green Clear Channel 312-540-2000

Table with 2 columns: Rank and Song/Artist. 1 50 Cent Featuring Nate Dogg 21 Question; 2 Aaliyah Miss You; 3 Sean Paul Get Busy

WPWX Chicago APD/MD: Jay Alan PD: Tracie Reynolds AMD: Barbara McDowell Crawford 773-734-4455

Table with 2 columns: Rank and Song/Artist. 1 Sean Paul Get Busy; 2 Wayne Wonder No Letting Go; 3 Snoop Dogg Featuring Pharrell Beautiful

WQHT New York VP/Pgm: Tracy Cloherty MD: E-Bro Emmis 212-229-9797

Table with 2 columns: Rank and Song/Artist. 1 Fabolous Featuring Mike Shor Can't Let; 2 50 Cent Featuring Nate Dogg 21 Question; 3 Busta Rhymes & Mariah Carey I Know Who

WJMN Boston PD: Jack McCartney APD: Dennis O'Heron MD: Chris Tyler Clear Channel 781-663-2500

Table with 2 columns: Rank and Song/Artist. 1 50 Cent Featuring Nate Dogg 21 Question; 2 Sean Paul Get Busy; 3 Fabolous Featuring Mike Shor Can't Let

KMEL San Francisco OM: Michael Martin APD/MD: "Jazzy" Jim Archer Clear Channel 415-538-1061

Table with 2 columns: Rank and Song/Artist. 1 50 Cent Featuring Nate Dogg 21 Question; 2 Busta Rhymes & Mariah Carey I Know Who; 3 Sean Paul Get Busy

KPWR Los Angeles VP/Pgm: Jimmy Steal APD: Damon Young MD: E-man Emmis 818-953-4200

Table with 2 columns: Rank and Song/Artist. 1 Nas I Can; 2 50 Cent In Da Club; 3 Fabolous Featuring Mike Shor Can't Let

WPGC Washington, DC VP/Pgm: Jay Stevens APD: Reggie Rouse MD: Sarah O'Connor Infinity 301-918-0955

Table with 2 columns: Rank and Song/Artist. 1 Snoop Dogg Featuring Pharrell Beautiful; 2 Busta Rhymes & Mariah Carey I Know Who; 3 The Roots Featuring Musiq Break You Off

KBXX Houston PD: Tom Calococi MD: Carmen Contreras Radio One 713-623-2108

Table with 2 columns: Rank and Song/Artist. 1 H.A.W.K. You Already Know; 2 50 Cent Featuring Nate Dogg 21 Question; 3 Busta Rhymes & Mariah Carey I Know Who

WWPR New York PD: Michael Saunders MD: Mara Melendez Clear Channel 212-704-1051

Table with 2 columns: Rank and Song/Artist. 1 Fabolous Featuring Mike Shor Can't Let; 2 50 Cent Featuring Nate Dogg 21 Question; 3 Busta Rhymes & Mariah Carey I Know Who

WUSL Philadelphia PD: Glenn Cooper MD: Coka-Lani AMD: Cosmic Key Clear Channel 215-483-8900

Table with 2 columns: Rank and Song/Artist. 1 50 Cent Featuring Nate Dogg 21 Question; 2 Sean Paul Get Busy; 3 Lil' Kim Featuring 50 Cent Magic Slick

KKDA Dallas PD: Skip Cheatham Service 972-263-9911

Table with 2 columns: Rank and Song/Artist. 1 Missy "Misdemeanor" Elliott P\*\*\*ycat; 2 Fabolous Featuring Mike Shor Can't Let; 3 Tyrese How You Gonna Act Like That

WBLS New York PD: Vinny Brown MD: Deneen Womack Inner City 212-447-1000

Table with 2 columns: Rank and Song/Artist. 1 Tyrese How You Gonna Act Like That; 2 50 Cent In Da Club; 3 Jahiem Put That Woman First

WVEE Atlanta PD: Tony Brown APD/MD: Tosha Love Infinity 404-898-8900

Table with 2 columns: Rank and Song/Artist. 1 R. Kelly Ignition; 2 50 Cent Featuring Nate Dogg 21 Question; 3 Snoop Dogg Featuring Pharrell Beautiful

WEDR Miami PD/MD: Cedric Rushwood AMD: Shelby Rushton Cox 305-623-7711

Table with 2 columns: Rank and Song/Artist. 1 Snoop Dogg Featuring Pharrell Beautiful; 2 R. Kelly Ignition; 3 Tyrese How You Gonna Act Like That

KKBT Los Angeles PD: Robert Scorpio APD/MD: Dorsey Fuller Radio One 323-634-1800

Table with 2 columns: Rank and Song/Artist. 1 50 Cent Featuring Nate Dogg 21 Question; 2 Snoop Dogg Featuring Pharrell Beautiful; 3 Fabolous Featuring Mike Shor Can't Let

WKYS Washington, DC PD: Daryl Huckaby MD: Iliran Radio One 301-306-1111

Table with 2 columns: Rank and Song/Artist. 1 Busta Rhymes & Mariah Carey I Know Who; 2 Sean Paul Get Busy; 3 Snoop Dogg Featuring Pharrell Beautiful

WJLB Detroit PD: K.J. Holiday APD/MD: Kris Kelly Clear Channel 313-965-2000

Table with 2 columns: Rank and Song/Artist. 1 Busta Rhymes & Mariah Carey I Know Who; 2 Floetry Say Yes; 3 Sean Paul Get Busy

R&B/HIP-HOP

# Aaliyah

Brings You

"Come Over"



The Follow-Up to the #1 Single  
"I MISS YOU"

Going for Airplay Now!

**OVER 1.5  
MILLION  
SOLD**

Aaliyah  blackground records  UNIVERSAL RECORDS

[WWW.AALIYAHICARE4U.COM](http://WWW.AALIYAHICARE4U.COM) | [WWW.BLACKGROUND.COM](http://WWW.BLACKGROUND.COM) | [WWW.UNIVERSALRECORDS.COM](http://WWW.UNIVERSALRECORDS.COM)

Airplay Adds (AA) denotes songs with 6 or more detections at station for first time this week.



Nielsen Broadcast Data Systems

POWER PLAYLISTS

KBFB Dallas PD: John Candelaria MD: Big Bink Radio One 972-331-5400

WDTJ Detroit PD: Charles "Spudd" Spence Radio One 313-259-2000

WPHI Philadelphia PD: Colby Cobb APD/MD: Raphael George Radio One 215-884-9400

Table with columns: Rank, Title, Artist, Station, Detections, Audience. Includes songs like '50 Cent In Da Club', 'Snoop Dogg Featuring Pharrell Beautiful', etc.

Table with columns: Rank, Title, Artist, Station, Detections, Audience. Includes songs like 'Busta Rhymes & Mariah Carey I Know Who', 'Snoop Dogg Featuring Pharrell Beautiful', etc.

Table with columns: Rank, Title, Artist, Station, Detections, Audience. Includes songs like 'Joe Budden Pump It Up', 'Aaliyah Miss You', '50 Cent Featuring Nate Dogg 21 Question', etc.

WHTA Atlanta PD: Jerry Smokin' B APD: Dimitrios Stevens MD: Ramona DeBreaux Radio One 404-765-9750

KPTY Houston PD/MD: Marco Arias Hispanic 713-407-1415

WJHM Orlando PD: Stevie DeMann APD: Keith Memoly MD: Jay Love Infinity 407-919-1000

Table with columns: Rank, Title, Artist, Station, Detections, Audience. Includes songs like 'Snoop Dogg Featuring Pharrell Beautiful', 'Bone Crusher Featuring Killer Mike & T.I.', etc.

Table with columns: Rank, Title, Artist, Station, Detections, Audience. Includes songs like 'Snoop Dogg Featuring Pharrell Beautiful', 'Bone Crusher Featuring Killer Mike & T.I.', etc.

Table with columns: Rank, Title, Artist, Station, Detections, Audience. Includes songs like 'Sean Paul Get Busy', 'Tyrese How You Gonna Act Like That', 'Fabulous Featuring Mike Shore Can't Let', etc.

WZMX Hartford PD: Victor Starr APD: David Simpson Infinity 860-677-6700

KKFR Phoenix PD: Bruce St. James MD: Joey Phila MD: J Phillia Emmis 602-274-6200

WPEG Charlotte OM: Terry Avey APD/MD: Nate Quick Infinity 704-333-0131

Table with columns: Rank, Title, Artist, Station, Detections, Audience. Includes songs like 'Sean Paul Get Busy', '50 Cent Many Men (Wish Death)', 'Panjabi MC Featuring Jay-Z Beware Of Th', etc.

Table with columns: Rank, Title, Artist, Station, Detections, Audience. Includes songs like '50 Cent In Da Club', 'Snoop Dogg Featuring Nate Dogg 21 Question', 'Nas I Can', etc.

Table with columns: Rank, Title, Artist, Station, Detections, Audience. Includes songs like 'Lil' Kim Featuring 50 Cent Magic Stick', 'Sean Paul Get Busy', 'Fabulous Featuring Mike Shore Can't Let', etc.

AIRPLAY Monitor RAP

Compiled from a national sample of data supplied by Broadcast Data Systems to Airplay Monitor, 99 R&B/Hip-Hop and 49 Rhythmic Top 40 stations are electronically monitored 24 hours a day, 7 days a week. © 2003 VNU Business-Media, Inc. All rights reserved.

Nielsen Broadcast Data Systems

FOR WEEK ENDING APRIL 20, 2003

Main table with columns: This Week, Last Week, Wks. On Chart, Title/Imprint/Promotion Label, Artist, TW, LW, Millions, Rank. Includes songs like 'GET BUSY', '21 QUESTIONS', 'CANT LET YOU GO', etc.

Songs ranked by number of detections. (C) Songs showing an increase in detections over the previous week, regardless of chart movement. A song will also receive a bullet if its percentage loss in detections does not exceed the percentage of monitored station downtime for the format.

GREATEST GAINERS RAP section with large text and details on songs like '50 CENT FEATURING NATE DOGG', 'FABOLOUS FEAT. MIKE SHOREY & LIL' MO', etc.

BLACKGROUND PRESENTS

# PLAYA

## “NEVER TOO LATE”

FIRST IT WAS...SAME OLE G, SO ANXIOUS (*GINUWINE*), LUV 2 LUV YA (*TIMBALAND & MAGOO*), TRY AGAIN, ROCK THE BOAT, MORE THAN A WOMAN, ARE U THAT SOMEBODY, WE NEED A RESOLUTION (*AALIYAH*), AND ADDICTIVE (*TRUTH HURTS*)

AND NOW HIT SONGWRITER “STATIC” DOES IT AGAIN WITH “NEVER TOO LATE” THE FIRST SINGLE FROM PLAYA’S SELF-TITLED ALBUM IN STORES THIS SUMMER

MOST ADDED  
41 STARTING **PLAYAS** OUT THE BOX!!!



BLACK



STATIC



SMOKEY

# IMPACTING NOW

**EXECUTIVE PRODUCERS:**

Stephen “Static” Garrett and Benjamin “Black” Bush  
Barry Hankerson and Jomo Hankerson



[www.blackground.com](http://www.blackground.com)



SOUTHERNAIRE  
ENTERTAINMENT

UNIVERSAL  
RECORDS

[www.universalrecords.com](http://www.universalrecords.com)



TOP 10 BOUND

JAHEIM 2417/65 Put That Woman First (Divine Mill/Warner Bros.)

Table with columns: City, Station, Airplay, and song details for JAHEIM's 'Put That Woman First'.

TOP 10 BOUND

NELLY 1730/117 Pimp Juice (Fo' Reel/Universal/UMRG)

Table with columns: City, Station, Airplay, and song details for NELLY's 'Pimp Juice'.

TOP 10 BOUND

MISSY 'MISDEMEANOR' ELLIOTT 1447/131 P\*tycat (The Gold Mind/Elektra/EEG)

Table with columns: City, Station, Airplay, and song details for MISSY's 'P\*tycat'.

TOP 10 BOUND

THE ISLEY BROTHERS FEAT. RONALD ISLEY 1690/53 What Would You Do? (DreamWorks)

Table with columns: City, Station, Airplay, and song details for THE ISLEY BROTHERS' 'What Would You Do?'.

TOP 10 BOUND

PANJABI MC FEATURING JAY-Z 1216/288 Beware Of The Boys (Mundian To Bach Ke) (Sequence)

Table with columns: City, Station, Airplay, and song details for PANJABI MC's 'Beware Of The Boys'.

B2K 2409/8 Girlfriend (T.U.G./Epic)

Table with columns: City, Station, Airplay, and song details for B2K's 'Girlfriend'.

MONICA 2094/508 So Gone (JRMG)

Table with columns: City, Station, Airplay, and song details for MONICA's 'So Gone'.

TALIB KWELI 1370/40 Get By (Rawkus/MCA)

Table with columns: City, Station, Airplay, and song details for TALIB KWELI's 'Get By'.

FLOETRY 2309/64 Say Yes (Soljaz/DreamWorks)

Table with columns: City, Station, Airplay, and song details for FLOETRY's 'Say Yes'.

LIL' KIM FEATURING 50 CENT 1172/313 Magic Stick (Queen Bee/Atlantic)

Table with columns: City, Station, Airplay, and song details for LIL' KIM's 'Magic Stick'.

BONE CRUSHER FEAT. KILLER MIKE & TI 1774/134 Never Scared (Break 'Em Off/So So Def/Arista)

Table with columns: City, Station, Airplay, and song details for BONE CRUSHER's 'Never Scared'.

HITMAN SAMMY SAM 1511/233 Step Daddy (ColliPark/Universal/UMRG)

Table with columns: City, Station, Airplay, and song details for HITMAN SAMMY SAM's 'Step Daddy'.

DAVID BANNER FEAT. LIL' FLIP 1303/152 Like A Pimp (SRC/Universal/UMRG)

Table with columns: City, Station, Airplay, and song details for DAVID BANNER's 'Like A Pimp'.

LIL' MO FEATURING FABOLOUS 1920/182 4 Ever (The Gold Mind/Elektra/EEG)

Table with columns: City, Station, Airplay, and song details for LIL' MO's '4 Ever'.

DAVID BANNER FEAT. LIL' FLIP 1303/152 Like A Pimp (SRC/Universal/UMRG)

Table with columns: City, Station, Airplay, and song details for DAVID BANNER's 'Like A Pimp'.

Summary text for the top 10 songs, including chart movements and detection counts.

Summary text for the top 10 songs, including chart movements and detection counts.

Summary text for the top 10 songs, including chart movements and detection counts.



IMPACT!



Nielsen Broadcast Data Systems

Songs posting gains in detections or with a percentage loss in detections equal to or better than the monitored downtime percentage in the format. Songs listed in order of detections. \*Indicates station experienced between 24 and 58 hours of monitored downtime during the chart week.

DA BRAT FEATURING CHERISH 1110/251 In Love Wit Chu (So So Def/Arista) Total Stations: 72 Chart Move: 40-34 H (2), M (10), L (60) Airplay Adds: 13

Table with columns: City, Station, and numerical data for DA BRAT FEATURING CHERISH.

FIELD MOB FEAT. CEE-LO & JAZZE PHA 381/106 All I Know (MCA) Total Stations: 50 Heavy (0) Medium (1), Light (49) Airplay Adds: 8 KMJJ, WAMO, WBHJ, WBLX, WBTF, WCKX, WEAS, WEUP

Table with columns: City, Station, and numerical data for FIELD MOB FEAT. CEE-LO & JAZZE PHA.

D'MELLO FEATURING MOBB DEEP 170/12 Best Love Story (Warner Bros.) Total Stations: 22 Heavy (0) Medium (0), Light (22) Airplay Adds: 1 WJUC

Table with columns: City, Station, and numerical data for D'MELLO FEATURING MOBB DEEP.

AX 169/28 Dream Eyes (Lil Van) Total Stations: 14 Heavy (0) Medium (1), Light (13) Airplay Adds: 1 WJUC

Table with columns: City, Station, and numerical data for AX.

JA RULE 98/98 Loose Change (Murder Inc./Def Jam/IDJMG) Total Stations: 29 Heavy (0) Medium (0), Light (29) Airplay Adds: 4 WBHH, WEDR, WJMH, WOWI

Table with columns: City, Station, and numerical data for JA RULE.

DRU HILL 1102/112 I Love You (Def Soul/IDJMG) Total Stations: 72 Chart Move: 36-35 H (2), M (8), L (62) Airplay Adds: 3

Table with columns: City, Station, and numerical data for DRU HILL.

CHART BOUND Total Detections/Gain

STAGG LEE 858/36 Roll Wit M.V.P. (M.V.P./ARTISTdirect) Total Stations: 64 Heavy (1) WJNH Medium (8), Light (55) Airplay Adds: 2 WBHJ, WPHR

Table with columns: City, Station, and numerical data for STAGG LEE.

AMANDA PEREZ 364/24 Angel (Powerhouse/Virgin) Total Stations: 27 Heavy (1) WEUP Medium (3), Light (23) Airplay Adds: 2 KPRS, WFXE

Table with columns: City, Station, and numerical data for AMANDA PEREZ.

GINUWINE 165/120 In Those Jeans (Epic) Total Stations: 30 Heavy (0) Medium (2), Light (28) Airplay Adds: 5 KMJJ, WFXE, WGZB, WHRK, WPMX

Table with columns: City, Station, and numerical data for GINUWINE.

DEBORAH COX 95/2 Play Your Part (JRMG) Total Stations: 14 Heavy (0) Medium (0), Light (14) Airplay Adds: 1 WWWZ

Table with columns: City, Station, and numerical data for DEBORAH COX.

702 780/75 I Still Love You (Motown/UMRG) Total Stations: 51 Heavy (0) Medium (14), Light (37) Airplay Adds: 2 WKYS, WWHV

Table with columns: City, Station, and numerical data for 702.

EMINEM 341/6 Sing For The Moment (Web/Aftermath/Interscope) Total Stations: 20 Heavy (3) KKFR, KQKS, KVEG Medium (3), Light (14) Airplay Adds: 1 KPWR

Table with columns: City, Station, and numerical data for EMINEM.

LOON FEATURING KELIS 162/50 How You Want That (Bad Boy/Universal/UMRG) Total Stations: 37 Heavy (0) Medium (2), Light (35) Airplay Adds: 2 KPWR, WUSL

Table with columns: City, Station, and numerical data for LOON FEATURING KELIS.

CROOKED I 89/46 Still Tha Row (Death Row/Koch) Total Stations: 16 Heavy (0) Medium (0), Light (16) Airplay Adds: 2 KJMM, WWBZ

Table with columns: City, Station, and numerical data for CROOKED I.

LIL JON & THE EAST SIDE BOYZ 970/146 Get Low (BME/TVT) Total Stations: 47 Chart Move: Debut 37 H (5), M (13), L (29) Airplay Adds: 4

Table with columns: City, Station, and numerical data for LIL JON & THE EAST SIDE BOYZ.

LSG FEATURING LOON 321/76 Just Friends (Elektra/EEG) Total Stations: 28 Heavy (0) Medium (1), Light (27) Airplay Adds: 3 KIPR, WGZB, WWDM

Table with columns: City, Station, and numerical data for LSG FEATURING LOON.

LYRIC 275/153 Hot & Tippy (JRMG) Total Stations: 32 Heavy (0) Medium (2), Light (30)

Table with columns: City, Station, and numerical data for LYRIC.

THREE 6 MAFIA 161/32 Riddin' Spinners (Hypnotize Minds/Loud/Columbia) Total Stations: 21 Heavy (1) KXHT Medium (1), Light (19) Airplay Adds: 2 KKDA, WFXE

Table with columns: City, Station, and numerical data for THREE 6 MAFIA.

WESTSIDE CONNECTION 88/25 Lights Out (Bungalo) Total Stations: 3 Heavy (0) Medium (3), Light (0)

Table with columns: City, Station, and numerical data for WESTSIDE CONNECTION.

702 780/75 I Still Love You (Motown/UMRG) Total Stations: 51 Heavy (0) Medium (14), Light (37) Airplay Adds: 2 WKYS, WWHV

Table with columns: City, Station, and numerical data for 702.

EMINEM 341/6 Sing For The Moment (Web/Aftermath/Interscope) Total Stations: 20 Heavy (3) KKFR, KQKS, KVEG Medium (3), Light (14) Airplay Adds: 1 KPWR

Table with columns: City, Station, and numerical data for EMINEM.

LOON FEATURING KELIS 162/50 How You Want That (Bad Boy/Universal/UMRG) Total Stations: 37 Heavy (0) Medium (2), Light (35) Airplay Adds: 2 KPWR, WUSL

Table with columns: City, Station, and numerical data for LOON FEATURING KELIS.

CROOKED I 89/46 Still Tha Row (Death Row/Koch) Total Stations: 16 Heavy (0) Medium (0), Light (16) Airplay Adds: 2 KJMM, WWBZ

Table with columns: City, Station, and numerical data for CROOKED I.

HEATHER HEADLEY 943/40 I Wish I Wasn't (RCA/RMG) Total Stations: 60 Chart Move: 39-38 H (0), M (14), L (46) Airplay Adds: 1

Table with columns: City, Station, and numerical data for HEATHER HEADLEY.

CHINGY 658/169 Right Thurr (Disturbing Tha Peace/Priority/Capitol) Total Stations: 63 Heavy (1) KQKS Medium (5), Light (57) Airplay Adds: 12 KBXX, KKBT, KMEL, KMJJ, KRRQ, WBHH, WBHJ, WHTA, WJNH, WPRW, WQBT, WWBZ

Table with columns: City, Station, and numerical data for CHINGY.

R. KELLY 265/38 I'll Never Leave (Jive) Total Stations: 20 Heavy (2) WGCI, WHRK Medium (2), Light (16) Airplay Adds: 2 KATZ, WBLX

Table with columns: City, Station, and numerical data for R. KELLY.

YOUNG GUNZ 151/9 Can't Stop, Won't Stop (Roc-A-Fella/Def Jam/IDJMG) Total Stations: 17 Heavy (1) WBHH Medium (0), Light (16) Airplay Adds: 1 KRRQ

Table with columns: City, Station, and numerical data for YOUNG GUNZ.

PAPA REU FEAT. LIL' FLIP, LIL KEKE & HAWK 82/7 Represent (Reu Musik) Total Stations: 10 Heavy (0) Medium (1), Light (9)

Table with columns: City, Station, and numerical data for PAPA REU FEAT. LIL' FLIP, LIL KEKE & HAWK.

JUSTIN TIMBERLAKE 648/202 Rock Your Body (Jive) Total Stations: 58 Heavy (0) Medium (6), Light (52) Airplay Adds: 13 KIPR, KKDA, KMEL, WBLX, WDHT, WDTJ, WEAS, WHXT, WJBT, WJHM, WPHR, WQUE, WUSL

Table with columns: City, Station, and numerical data for JUSTIN TIMBERLAKE.

MC LYTE 197/18 Ride Wit Me (iMusic/ARTISTdirect) Total Stations: 21 Heavy (0) Medium (1), Light (20) Airplay Adds: 2 WJTT, WQUE

Table with columns: City, Station, and numerical data for MC LYTE.

R. KELLY 144/33 Heart Of A Woman (Jive) Total Stations: 8 Heavy (1) KXHT Medium (1), Light (6)

Table with columns: City, Station, and numerical data for R. KELLY.

SMILEZ & SOUTHSTAR 80/29 Now That You're Gone (ARTISTdirect) Total Stations: 16 Heavy (0) Medium (0), Light (16) Airplay Adds: 2 WFXA, WJMH

Table with columns: City, Station, and numerical data for SMILEZ & SOUTHSTAR.

DA BRAT FEATURING CHERISH 1110/251 In Love Wit Chu (So So Def/Arista) Total Stations: 72 Chart Move: 40-34 H (2), M (10), L (60) Airplay Adds: 13

STAGG LEE 858/36 Roll Wit M.V.P. (M.V.P./ARTISTdirect) Total Stations: 64 Heavy (1) WJNH Medium (8), Light (55) Airplay Adds: 2 WBHJ, WPHR

LYRIC 275/153 Hot & Tippy (JRMG) Total Stations: 32 Heavy (0) Medium (2), Light (30)

YOUNG GUNZ 151/9 Can't Stop, Won't Stop (Roc-A-Fella/Def Jam/IDJMG) Total Stations: 17 Heavy (1) WBHH Medium (0), Light (16) Airplay Adds: 1 KRRQ

SMILEZ & SOUTHSTAR 80/29 Now That You're Gone (ARTISTdirect) Total Stations: 16 Heavy (0) Medium (0), Light (16) Airplay Adds: 2 WFXA, WJMH

R&B/HIP-HOP



She's back!

In Just  
3 WEEKS...

17

R&B/Hip Hop

monica

*so gone*

"The hottest record on the radio right now...period!  
It's on fu...fire!" - PD Ronn Scott WKKV/V100 Milwaukee

★ #1 Greatest Gainer ★ Over 25 million in audience and growing

*so gone* 3:

WPWX 30x  
WPHR 41x  
WKKV 37x

WOWI 47x  
WHRK 46x  
WIZF 36x

WAMO 32x  
WPHI 43x  
WCHH 40x

WWPR 30x  
WWWZ 45x  
WJUC 39x

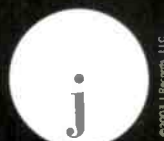
WPEG 44x  
WVEE 32x  
KIPR 42x  
and more...

Produced by Missy Elliott

from her forthcoming NEW album dropping this Spring  
Y'all ain't ready for this!



Added in  
medium rotation



©2003 J Records, LLC

www.monica.com www.jrecords.com records

POWER PLAYISTS

ADULT R&B AIRPLAY LEADERBOARD

Table with columns for station, song, and airplay leader designations. Includes stations like WHQT Miami, FL and WHUR Washington, DC.

Table for WRKS New York with columns for song, station, and airplay leader designations. Includes songs like Vivian Green Emotional Rollercoaster.

Table for KHHT Los Angeles with columns for song, station, and airplay leader designations. Includes songs like Aaliyah Miss You.

Table for WVAZ Chicago with columns for song, station, and airplay leader designations. Includes songs like Gerald Levert Funny.

Table for WDAS Philadelphia with columns for song, station, and airplay leader designations. Includes songs like Brian McKnight Shoulda, Woulda, Coulda.

Table for WHUR Washington, DC with columns for song, station, and airplay leader designations. Includes songs like Kim Love Calls.

Table for KMJQ Houston with columns for song, station, and airplay leader designations. Includes songs like Syleena Johnson Guess What.

Table for WMMJ Washington, DC with columns for song, station, and airplay leader designations. Includes songs like Tyrese How You Gonna Act Like That.

Table for KJLH Los Angeles with columns for song, station, and airplay leader designations. Includes songs like Donnie Cloud 9.

Table for WMXD Detroit with columns for song, station, and airplay leader designations. Includes songs like Syleena Johnson Guess What.

Table for WHQT Miami with columns for song, station, and airplay leader designations. Includes songs like Tyrese How You Gonna Act Like That.

Table for KBLX San Francisco with columns for song, station, and airplay leader designations. Includes songs like Kindred The Family Soul Far Away.

Table for WZAK Cleveland with columns for song, station, and airplay leader designations. Includes songs like Vivian Green Emotional Rollercoaster.

Table for KRWP Houston with columns for song, station, and airplay leader designations. Includes songs like Tyrese How You Gonna Act Like That.

Table for WFXC Raleigh with columns for song, station, and airplay leader designations. Includes songs like Gerald Levert Closure.

Table for WWIN Baltimore with columns for song, station, and airplay leader designations. Includes songs like Gerald Levert Closure.

Table for WYLD New Orleans with columns for song, station, and airplay leader designations. Includes songs like Tyrese How You Gonna Act Like That.

Table for KSOC Dallas with columns for song, station, and airplay leader designations. Includes songs like Tyrese How You Gonna Act Like That.

IMPACT! AIRPLAY Monitor

TOP 10 BOUND

JAHEIM That Girl (Motown/UMRG)

Table for JAHEIM with columns for station, song, and airplay leader designations. Includes stations like BET, NY, and WYLD.

KEM Love Calls (Kemistry/Motown/UMRG)

Table for KEM with columns for station, song, and airplay leader designations. Includes stations like BET, NY, and WYLD.

KINDRED THE FAMILY SOUL Far Away (Hissen Beach/Epic)

Table for KINDRED THE FAMILY SOUL with columns for station, song, and airplay leader designations. Includes stations like BET, NY, and WYLD.

WZAK Cleveland Tell Me Why (Motown/UMRG)

Table for WZAK with columns for station, song, and airplay leader designations. Includes stations like BET, NY, and WYLD.

WYLD New Orleans No Letting Go (VP/Atlantic)

Table for WYLD with columns for station, song, and airplay leader designations. Includes stations like BET, NY, and WYLD.

WYLD New Orleans No Letting Go (VP/Atlantic)

Table for WYLD with columns for station, song, and airplay leader designations. Includes stations like BET, NY, and WYLD.

WYLD New Orleans No Letting Go (VP/Atlantic)

Table for WYLD with columns for station, song, and airplay leader designations. Includes stations like BET, NY, and WYLD.

Summary text for the IMPACT! chart, including station abbreviations and chart movement information.

JOE FEATURING MR. CHEEKS That Girl (Motown/UMRG)

Table for JOE FEATURING MR. CHEEKS with columns for station, song, and airplay leader designations.

INDIA.ARIE The Truth (Motown/UMRG)

Table for INDIA.ARIE with columns for station, song, and airplay leader designations.

LSG FEATURING LOON Just Friends (Elektra/EEG)

Table for LSG FEATURING LOON with columns for station, song, and airplay leader designations.

WHITNEY HOUSTON Try It On My Own (Arista)

Table for WHITNEY HOUSTON with columns for station, song, and airplay leader designations.

EARTH, WIND & FIRE All In The Way (Kalimba)

Table for EARTH, WIND & FIRE with columns for station, song, and airplay leader designations.

R. KELLY Step In The Name Of Love (Jive)

Table for R. KELLY with columns for station, song, and airplay leader designations.

SMOKIE NORFUL I Need You Now (EMI Gospel)

Table for SMOKIE NORFUL with columns for station, song, and airplay leader designations.

DAVE HOLLISTER Tell Me Why (Motown/UMRG)

Table for DAVE HOLLISTER with columns for station, song, and airplay leader designations.

DONNIE Cloud 9 (Giant Step/Motown/UMRG)

Table for DONNIE with columns for station, song, and airplay leader designations.

TOM SCOTT FEAT. ANN NESBY You Are My Everything (Higher Octave Jazz/Higher Octave)

Table for TOM SCOTT FEAT. ANN NESBY with columns for station, song, and airplay leader designations.

JEFFREY OSBORNE Rest Of Our Lives (Jay Oz/Koch)

Table for JEFFREY OSBORNE with columns for station, song, and airplay leader designations.

DEBORAH COX Play Your Part (J/RMG)

Table for DEBORAH COX with columns for station, song, and airplay leader designations.

WAYNE WONDER No Letting Go (VP/Atlantic)

Table for WAYNE WONDER with columns for station, song, and airplay leader designations.

SANTANA FEATURING MUSIQ Nothing At All (Arista)

Table for SANTANA FEATURING MUSIQ with columns for station, song, and airplay leader designations.

ROME Do It (J/TJ/Bayside)

Table for ROME with columns for station, song, and airplay leader designations.

DRU HILL I Love You (Def Soul/IDJMG)

Table for DRU HILL with columns for station, song, and airplay leader designations.

GEORGE DUKE Guess You're Not The One (BPM)

Table for GEORGE DUKE with columns for station, song, and airplay leader designations.

A Man of Many Hats...

# GEORGE DUKE

Producer

Music Director

Songwriter

Musician

Performing Artist

Composer

Grammy Award Winner



BPM Announces...

His New CD Release

## FACE THE MUSIC

Featuring the single #1 most added at Urban A.C. radio format

# "Guess You're Not The One"



**24** Monitor Adult R&B

**#23** Debut On R & R

STATIONS THAT "ARE THE ONE":

WHUR	WCFB	WDZZ	KNEK	KVGS
WDAS	WBAV	KQXL	WLOV	KJLH
WHQT	WLXC	WDLT	WSQK	KMOJ
WMGL	WVBE	WKXI	KMJM	WFLM
WSOL	WIMX	KOKY	KMJK	WWIN

The Touch Format

**MANAGEMENT:** Consolidated Productions 321/935-4444

**BOOKING:** Associated Booking Company 212/874-2400

**PUBLIC RELATIONS:** The Brookes Company 353/913-7000

**BPM RECORDS:** 714/778-3864



## Why Patriotic Songs Find A Home On Country Radio

In times of national strife, patriotic songs often top the country charts, and—as evidenced by the strong reaction to the Dixie Chicks' Natalie Maines' recent comment about the president—many country fans have little tolerance for behavior they deem unpatriotic. But why are these such hot-button issues for country listeners? Are there any unique benefits that patriotism offers the format? And with an inevitable flood of patriotic songs during each time of national challenge, how do PDs sort the sincere from the exploitative?

WUSN (US99) Chicago PD Justin Case says the format typically draws an audience whose value system can be summed up as "God, family, country." He adds, "It is the way they were raised. The themes of country music connect with these individuals. Most fans have a strong sense of community and family. Terrorism threatens their belief system, and they are prone to rally to protect their family and way of life."

"Country music fans seem to possess an unusually high degree of patriotism because it just happens to parallel their lifestyles," KZLA Los Angeles APD/MID Tonya Campos says. "[They] have a value system that includes love of family, country, and morals/ethics."

Consultant Larry Daniels says, "This format has always had a patriotic leaning. One song I remember hearing as a child was Ernest Tubb's 'Soldier's Last Letter.' It came out in 1944, but I was a mere toddler when I heard it several years later after World War II had ended."

DreamWorks artist Darryl Worley has been a beneficiary of country fans' patriotism with a five-week stay at No. 1 for "Have You Forgotten?" "These people that listen to country music are country people—hard-working, working-class American people, and they typically lean in that [patriotic] direction. The country listeners tend to back us guys when we put out something pro-America [or] pro-military," Worley says, citing Toby Keith's "Courtesy of the Red, White and Blue (The Angry American)."

But L.J. Smith, regional VP of programming for Clear Channel's Oklahoma/Arkansas region, thinks patriotism is not unique to country fans. "While looking over the programming of about

40 radio stations in all formats, I am no longer convinced that country listeners have a lock on the whole patriotism corner," he says. "News/talk listeners are by far the most vocal, and even the rock audience has surprised me with their intolerance of anything less than 100% American patriotism. If there is any gap in the amount of American pride with country listeners than with other formats, the line has, at least, been blurred during this time of war."

### PATRIOTISM PAYS OFF

Regardless of whether the sentiment is unique to country, it's unlikely that programmers in any other format are shipped as many patriotic songs, and most country stations play up patriotism in their on-air production elements. But how, exactly, does all this patriotic spirit benefit the format?

RCA Label Group executive YP Butch Waugh says it's not just country's music that draws listeners at times like this. "I have a lot of friends that program pop radio stations, and they tell me they want to be an alternative to the war where people can go to escape the news. But I'm not sure Americans want to escape the war. I think they want to know more about it. As long as our troops are in foreign territory and their lives are in jeopardy, I think the American people want to know everything they can about that. Country radio is addressing that. Some of the other formats are not."

"Country listeners have always been loyal, and during a time of enhanced patriotism they become much more expressive," Case says. "This can only help the format, because our music is extremely relevant during times of war and challenging economic times."

"This patriotism does have unique benefits for the country format in that it is a perfect match... to that lifestyle [and] strong value system," Campos says. "A lot of those songs speak directly about love of family, country, and morals/ethics."

"There's no question patriotism is a benefit for the country format," Daniels says. "Many of the country stars who have recorded patriotic songs are believable. Their songs and styles are heartfelt. In fact, many of these songs are so emotionally strong that they have become standards for other formats as well. 'God Bless the USA' by Lee Greenwood has been a great example. 'Have You Forgotten?' and Alan Jackson's 'Where Were You (When the World Stopped Turning)' are huge hits that have spread to enormous popularity because of their incredibly engaging lyrics."

### SEPARATING CREDIBLE FROM CRASS

Programmers were flooded with flag-wavers after Sept. 11, 2001, again on the first anniversary of that day, and yet again since the start of the war in Iraq. But what percentage of these singles strike them as a sincere expression of the artist's patriotism? What percentage are a crass attempt to sell records or get publicity? And, perhaps more important, how can they tell the difference? For most, it's a matter of gut instinct.

WUBE Cincinnati OM Tim Closson puts the credible vs. crass figure at 50/50 and says of the difference, "You can feel it when you listen."

"I'm sure most are sincere, but most are also a little over the top," KWEN Tulsa, Okla., PD/Cox country format coordinator Gerry McCracken says. "I don't try to judge motives of people I don't know." But he also has a unique criterium for choosing the good ones. "If it makes my 34-year-old [female] assistant cry, it's a keeper."

"They all are sincere expressions of the artist's patriotism," Campos says. "However, the percent-



WORLEY

## Time To Put Chicks Bashing To Rest

Leave it to the nicest guy in the business to be the one to finally speak up and call for an end to the Dixie Chicks bashing that has dominated the format since lead singer Natalie Maines expressed her now infamous anti-war opinions. Vince Gill called for an end to the Chicks bashing backstage at the April 7 CMT Flameworthy 2003 Video Music Awards, and his comments couldn't have come at a better time.

By the time Gill made his statement at the awards show, pretty much everyone who has an opinion on Maines' comments has expressed it. And now is the time for the attacks on Maines and her group to stop so that whatever healing will inevitably occur can begin.

Although most country stations did an admirable job of responding to listener concerns on both sides of Maines' comments, I was extremely disappointed by how some stations blatantly exploited the controversy as a promotional opportunity. Regardless of where you stand on the war in Iraq and your individual assessment of how George W. Bush handled the diplomatic efforts that led to combat, there is little good that can come from drawing out and elongating the war of words that Maines started with her onstage rant. Although emotions are still running high when it comes to the war, knowing that even the most vehement war pro-

testers largely remain supportive of the men and women on the front lines, there is no admirable goal to be served by country radio being the catalyst for further division on the issue.

In the days and months ahead, there is a greater cause for good that country radio can create by providing a sounding board for listeners who remain deeply troubled and divided over the issue of war. Much of that good work is already being done, both on and off the air, but country

radio can magnify its influence with the audience in a far more admirable and productive way by trading the mudslinging directed at Maines and her group for a more positive, uplifting approach, even if that's just a matter of invoking your mom's "If

you can't say something nice..." rule.

Some local audiences will undoubtedly insist on continuing the fight over who's to bless and who's to blame on the issue, but the time has come for programmers to consider limiting those discussions to studio telephone lines and recorded listener comment lines. Otherwise, we run the risk of being further stereotyped as the format that claims to be an all-inclusive "family" of artists and fans, so long as none of the family members step out of line.

Gill is right. It's time for everyone to get over it and move on.



BY WADE JESSEN

615-321-4291 • wjessen@airplaymonitor.com

## Letter: It's Research, Not A Boycott

I wanted to comment on the Dixie Chicks and some of country radio's "boycotting" of their music. Since KCYY (Y100) is one of those stations, I felt I needed to let you know our reasons.

My first thoughts when Natalie [Maines'] comment came out were "She has a right to express her feelings," and I didn't think much of it. I personally didn't agree with her but was not going to make any quick musical decision on someone's comments. The following morning, [Y100 morning hosts] Winston & Alyce called me to let me know [about] the dozens of calls they were getting against us playing the Dixie Chicks music and said they weren't going to play the Chicks that morning because of the calls. I subsequently pulled all Chicks music for that day and asked the jocks to keep tabs on how the phones were going. Sure enough, every shift that day was running 20 to 1 against any Chicks music on KCYY.

I pulled the Chicks music for the following weekend and spoke with other Cox country PDs to get their read on the situation. All of them were getting the same reaction. By the following Monday, I had a Web poll and, by that week's end, a phone survey to a database of thousands of country core listeners here in San Antonio. Three weeks later, it's still more than

60% against playing the Chicks on KCYY.

So, the Chicks weren't pulled at KCYY because of opposing political views or a few phone calls but because of solid research and listening to KCYY's audience. What really disappoints me is everyone outside and some inside radio saying we are "boycotting" the Dixie Chicks. This is not a boycott but a realistic "bend over and take the temperature of our audience" to find out what they want to hear and don't want to hear. Would anyone play a song or, in this case, a group that has [a] 60% negative [reaction]? Here in San Antonio we have three Air [Force] bases and two Army bases. These people took [Maines'] comments very seriously, and KCYY listened.

Will we play the Chicks again? Absolutely. When? That's another question. I have no problem with freedom of speech, but I have a duty to my audience's "freedom of reaction."

I just feel radio is being wrongly accused of being behind this Chicks boycott scandal. The truth is it is just as big a pain for me as it is for the labels. Banning one of our top acts is not good for this format.

George King  
PD  
KCYY/KKYX San Antonio

## No Need To 'Feed Jake'



New Capitol artist Dierks Bentley couldn't bear to part with his beloved pet Jake when he embarked on his radio tour, so the Capitol staff made him a life-size stand-up of the dog to take with him on the road. WWGR Fort Myers, Fla., PD Mark Phillips, right, is pictured here getting acquainted with Bentley and "Jake."

age we feel are ready for airplay are low. That is not because these people are not passionate about what they are feeling, but [it is] more a reflection on talent or the basic sonic quality of the material they send.

"There will always be a small percentage of material sent in that is an attempt to get publicity," Campos adds, "and we basically use our gut feelings to seek those out."

"It's obvious when they're sincere, and it's also obvious when some are just taking advantage of

the moment," says Daniels, who also relies on "gut instinct" to tell the difference.

Case thinks "most artists write and sing from the heart. They feel something inside and put it on paper or to music. Like any personal expression, some sentiments score a direct hit with the consumer." As for picking the good from the bad, he says that "most songs that try to take advantage of a situation sound that way. PDs must choose the most relevant songs for their audience. You can't play them all, so find the standouts."

# HOT CONCERT! HOT NEW VENUE!



Join in the fun and the fight against cystic fibrosis!



Ninth Annual  
**Sizzlin' Country**  
Honoring  
**Henry Juskiewicz**  
Chairman and CEO

Gibson Guitar Corp. and Baldwin Pianos

**TUESDAY, MAY 20, 2003**

**THE HOUSE OF BLUES, LAS VEGAS, NEVADA**  
(Located in the Mandalay Bay Resort and Casino)

Benefiting the  
**CYSTIC FIBROSIS FOUNDATION**



**SARA EVANS, HOST**  
**DEANA CARTER**  
**DIAMOND RIO**  
**DARRYL WORLEY**

And Featuring  
**THE DOO-WAH RIDERS**  
And More To Be Announced!

**CORPORATE PARTNERS:**

**ACADEMY OF COUNTRY MUSIC**  
**ACADEMY OF COUNTRY MUSIC**  
**PROGRAM, STEVE TOLIN,**  
**PUBLISHER**  
**AMERICAN AIRLINES**  
**ANDERSON MERCHANDISERS**  
**ARISTOMEDIA**  
**AUREOLE LAS VEGAS**  
**BMI**  
**B|3**  
**BALDWIN PIANOS**  
**BJS RESTAURANT & BREWERY**

**BLEU BLANC ROUGE**  
**CHINA GRILL**  
**3950**  
**CMT**  
**CMT.COM**  
**THE GARY GROUP**  
**GIBSON GUITARS**  
**HOUSE OF BLUES**  
**IVY HILL CORPORATION**  
**95.5 KWNR**  
**THE MANDALAY BAY**

**RESORT AND CASINO**  
**RED SQUARE**  
**RUM JUNGLE**  
**SHANGHAI LILLY**  
**TRAVIS TELEVISION**  
**WARNER MEDIA SERVICES**  
**WARNER STRATEGIC**  
**MARKETING**  
**WEA INC.**

For Tickets and Information, please call (714) 938-1393 or visit [www.sizzlincountry.com](http://www.sizzlincountry.com)



Main chart table with columns: THIS WEEK, LAST WEEK, WKS. ON CHART, TITLE/IMPRINT/PROMOTION LABEL, ARTIST, TW, LW, MILLIONS, RANK. Includes entries for No. 1, Greatest Gainer, and Most Airplay Adds.

most airplay adds NEW STATIONS section featuring Brooks & Dunn, Shania Twain, Tracy Byrd, Toby Keith, and Brad Paisley with station lists and detection percentages.

GREATEST GAINERS COUNTRY section listing songs like 'Beer For My Horses' and 'Forever And For Always' with their increase in detections.

Monitor RECURRENTS COUNTRY section listing songs that have been on the chart for 20 weeks and have dropped below the top 20.

Recurrents chart table with columns: THIS WEEK, LAST WEEK, WKS. ON CHART, TITLE/IMPRINT/PROMOTION LABEL, ARTIST, TW, LW, MILLIONS, RANK. Includes 'Hot Shot Debut' entry.

Songs ranked by number of detections. Songs showing an increase in detections over the previous week, regardless of chart movement. A song will also receive a bullet if its percentage loss in detections does not exceed the percentage of monitored station downtime for the format.

Subscription advertisement for Airplay Monitor Country Hotline magazine, offering a special introductory rate of \$99 for one year.





Songs posting gains in detections or with a percentage loss in detections equal to or better than the monitored downtime percentage in the format. Songs listed in order of detections. \*Indicates station experienced between 24 and 56 hours of monitored downtime during the chart week.

TOP 10 BOUND

RASCAL FLATTS 3607/175 Love You Out Loud (Lyric Street)

Total Stations: 146 Chart Move: 11-11 H (5), M (64), L (77) Airplay Adds: 0

Table with columns: Station, ID, LW, WZ, ID, and song details for Rascal Flatts.

TOBY KEITH DUET WITH WILLIE NELSON 2662/528 Beer For My Horses (DreamWorks)

Total Stations: 145 Chart Move: 20-17 H (3), M (37), L (105) Airplay Adds: 20

Table with columns: Station, ID, LW, WZ, ID, and song details for Toby Keith.

JEFF BATES 2838/102 The Love Song (RCA)

Total Stations: 143 Chart Move: 15-15 H (1), M (36), L (106) Airplay Adds: 1

Table with columns: Station, ID, LW, WZ, ID, and song details for Jeff Bates.

JESSICA ANDREWS 2470/124 There's More To Me Than You (DreamWorks)

Total Stations: 143 Chart Move: 17-19 H (1), M (30), L (112) Airplay Adds: 3

Table with columns: Station, ID, LW, WZ, ID, and song details for Jessica Andrews.

MONTGOMERY GENTRY 2699/361 Speed (Columbia)

Total Stations: 144 Chart Move: 18-16 H (0), M (37), L (107) Airplay Adds: 4

Table with columns: Station, ID, LW, WZ, ID, and song details for Montgomery Gentry.

AIRPLAY LEADER (FIRST STATION TO 150 PLAYS)

KNIX • Phoenix, AZ PD: Shaun Holly MD: Gwen Foster Date: 12/01/02

Total Stations: 143 Chart Move: 19-20 H (2), M (31), L (110) Airplay Adds: 5

Table with columns: Station, ID, LW, WZ, ID, and song details for KNIX.

KID ROCK FEAT. SHERYL CROW OR ALLISON MOOPER 2134/82 Picture (Lava/Atlantic/Universal South/WRN)

Total Stations: 137 Chart Move: 21-23 H (4), M (29), L (104) Airplay Adds: 2

Table with columns: Station, ID, LW, WZ, ID, and song details for Kid Rock.

TRACY BYRD 2230/342 The Truth About Me (RCA)

Total Stations: 144 Chart Move: 24-21 H (1), M (18), L (125) Airplay Adds: 25

Table with columns: Station, ID, LW, WZ, ID, and song details for Tracy Byrd.

LONESTAR 3239/403 My Front Porch Looking In (BNA)

Total Stations: 144 Chart Move: 14-12 H (1), M (56), L (87) Airplay Adds: 2

Table with columns: Station, ID, LW, WZ, ID, and song details for Lonestar.

JESSICA ANDREWS 2470/124 There's More To Me Than You (DreamWorks)

Total Stations: 143 Chart Move: 17-19 H (1), M (30), L (112) Airplay Adds: 3

Table with columns: Station, ID, LW, WZ, ID, and song details for Jessica Andrews.

JOE DEE MESSINA 2174/161 Was That My Life (Curb)

Total Stations: 144 Chart Move: 23-22 H (0), M (17), L (127) Airplay Adds: 2

Table with columns: Station, ID, LW, WZ, ID, and song details for Joe Dee Messina.

AIRPOWER BOUND

TRACY BYRD 2230/342 The Truth About Me (RCA)

Total Stations: 144 Chart Move: 24-21 H (1), M (18), L (125) Airplay Adds: 25

Table with columns: Station, ID, LW, WZ, ID, and song details for Tracy Byrd.

GARTH BROOKS 1662/44 Why Ain't I Running (Capitol)

Total Stations: 140 Chart Move: 25-24 H (0), M (3), L (137) Airplay Adds: 0

Table with columns: Station, ID, LW, WZ, ID, and song details for Garth Brooks.

JIMMY WYBE 2919/270 Stay Gone (DreamWorks)

Total Stations: 145 Chart Move: 16-14 H (3), M (37), L (105) Airplay Adds: 3

Table with columns: Station, ID, LW, WZ, ID, and song details for Jimmy Wybe.

CRAIG MORGAN 2468/183 Almost Home (Broken Bow)

Total Stations: 144 Chart Move: 23-22 H (0), M (17), L (127) Airplay Adds: 2

Table with columns: Station, ID, LW, WZ, ID, and song details for Craig Morgan.

AIRPOWER

CRAIG MORGAN 2468/183 Almost Home (Broken Bow)

Table with columns: Station, ID, LW, WZ, ID, and song details for Craig Morgan.

JOE DEE MESSINA 2174/161 Was That My Life (Curb)

Total Stations: 144 Chart Move: 23-22 H (0), M (17), L (127) Airplay Adds: 2

Table with columns: Station, ID, LW, WZ, ID, and song details for Joe Dee Messina.

GARTH BROOKS 1662/44 Why Ain't I Running (Capitol)

Total Stations: 140 Chart Move: 25-24 H (0), M (3), L (137) Airplay Adds: 0

Table with columns: Station, ID, LW, WZ, ID, and song details for Garth Brooks.

ARPOWER

Total Detections/Gain. Table with columns: Station, ID, LW, WZ, ID, and song details for Arpower.

Table with columns: Station, ID, LW, WZ, ID, and song details for Arpower.

H=Heavy (45+ Detections), M=Medium (25-44), L=Light (Under 25). Arpower awarded to songs appearing in the top 20 on both the Airplay and Audience charts for the first time with increases in both detections and audience. \*Initial impact: songs appearing on this page for the first time in summary form. Airplay Adds are songs with 6 or more detections at new stations this week. The Arpower Leaderboard ranks taste-maker stations that have been the most successful in identifying future hit songs as measured by the amount of ARPOWER titles for which they were Airplay Leaders. Refer to each format's Power Playlists page to see this week's Airplay Leaders.



Songs posing gains in detections or with a percentage loss in detections equal to or better than the monitored downtime percentage in the format. Songs listed in order of detections.

Table with columns for city, station, and song rank. Includes entries for Las Vegas, New Orleans, Nashville, etc.

Table with columns for city, station, and song rank. Includes entries for Houston, Atlanta, Miami, etc.

Table with columns for city, station, and song rank. Includes entries for Las Vegas, New Orleans, Nashville, etc.

Table with columns for city, station, and song rank. Includes entries for Las Vegas, New Orleans, Nashville, etc.

JOE NICHOLS 129/102
She Only Smokes When She Drinks (Universal South)
Total Stations: 38 Chart Move: Debut 58
Heavy (0)
Medium (1), Light (37)
Airplay Adds: 3 KEY, KTTS, WBCT

GEORGE STRAIT 1614/288
Tell Me Something Bad About Tulsa (MCA Nashville)
Total Stations: 131 Chart Move: 27-25
H (3), M (9), L (119) Airplay Adds: 17

Large table listing stations and their respective song ranks for George Strait's 'Tell Me Something Bad About Tulsa'.

BRAD PAISLEY 1484/416
Celebrity (Arista Nashville)
Total Stations: 139 Chart Move: 30-28
H (0), M (8), L (131) Airplay Adds: 17

Large table listing stations and their respective song ranks for Brad Paisley's 'Celebrity'.

SARA EVANS 1275/205
Backseat Of A Greyhound Bus (RCA)
Total Stations: 137 Chart Move: 31-31
Heavy (0)
Medium (5), Light (132)
Airplay Adds: 8 KHAY, KPLX, KRTY, WKCO, WQDR, WRNS, WROO, WTQR

Table listing stations and their respective song ranks for Sara Evans' 'Backseat Of A Greyhound Bus'.

SHANIA TWAIN 1242/498
Forever And For Always (Mercury)
Total Stations: 93 Chart Move: 37-32
Heavy (1) WYPY
Medium (7), Light (85)
Airplay Adds: 29 KASE, KDRK, KFKF, KHKI, KIIM, KMDL, KNIX, KSKS, KKKT, WCTK, WEZL, WFSM, WGAR, WKCO, WKXC, WMIL, WNCY, WOGL, WPCV, WPOR, WQBE, WQDR, WSIX, WSLC, WSM, WSOC, WVVY, WXBO, WYGY

Table listing stations and their respective song ranks for Shania Twain's 'Forever And For Always'.

EMERSON DRIVE 404/34
Only God (Could Stop Me Loving You) (DreamWorks)
Total Stations: 58 Chart Move: 46-42
Heavy (0)
Medium (1), Light (57)
Airplay Adds: 5 KHKI, KKKT, WKCN, WKDF, WNCY

Table listing stations and their respective song ranks for Emerson Drive's 'Only God (Could Stop Me Loving You)'.

LEANN RIMES 402/59
Suddenly (Asylum-Curb)
Total Stations: 69 Chart Move: 47-43
Heavy (0)
Medium (3), Light (66)
Airplay Adds: 2 KWJJ, WVVY

Table listing stations and their respective song ranks for Leann Rimes' 'Suddenly'.

RUSHLOW 105/48
I Can't Be Your Friend (Lyric Street)
Total Stations: 20
Heavy (0)
Medium (0), Light (20)
Airplay Adds: 3 WCTO, WGNW, WKCO

Table listing stations and their respective song ranks for Rushlow's 'I Can't Be Your Friend'.

CHAD BROCK 88/49
It's A Woman Thing (Broken Bow)
Total Stations: 33
Heavy (0)
Medium (0), Light (33)
Airplay Adds: 3 WDAF, WFRE, WGNW

Table listing stations and their respective song ranks for Chad Brock's 'It's A Woman Thing'.

TRAVIS TRITT 1571/38
Country Ain't Country (Columbia)
Total Stations: 143 Chart Move: 26-26
H (0), M (12), L (131) Airplay Adds: 5

Large table listing stations and their respective song ranks for Travis Tritt's 'Country Ain't Country'.

THE WARREN BROTHERS 1356/51
Hey Mr. President (BNA)
Total Stations: 139 Chart Move: 28-29
H (1), M (8), L (130) Airplay Adds: 6

Large table listing stations and their respective song ranks for The Warren Brothers' 'Hey Mr. President'.

TRACE ADKINS 1171/133
Then They Do (Capitol)
Total Stations: 124 Chart Move: 32-33
Heavy (0)
Medium (3), Light (121)
Airplay Adds: 10 KBQI, KFDI, KNIX, KRST, WGNW, WKIS, WUSN, WYUU, WZZK

Table listing stations and their respective song ranks for Trace Adkins' 'Then They Do'.

AMY DALLEY 1014/178
Love's Got An Attitude (It Is What It Is) (Curb)
Total Stations: 130 Chart Move: 35-36
Heavy (0)
Medium (4), Light (126)
Airplay Adds: 7 KHKI, KKXK, WGAR, WUSY, WOKO, WPOR, WYGY

Table listing stations and their respective song ranks for Amy Dalley's 'Love's Got An Attitude'.

DIERKS BENTLEY 323/136
What Was I Thinkin' (Capitol)
Total Stations: 47 Chart Move: 56-47
Heavy (0)
Medium (0), Light (47)
Airplay Adds: 11 KEY, KTTS, KUZZ, KXKT, KYGO, WCTO, WKXC, WQBE, WWQM, WXBO, WZZK

Table listing stations and their respective song ranks for Dierks Bentley's 'What Was I Thinkin''.

TRICK PONY 289/44
A Boy Like You (Warner Bros./WRN)
Total Stations: 42 Chart Move: 51-50
Heavy (0)
Medium (0), Light (42)
Airplay Adds: 6 WCAT, WGNW, WUBE, WUSY, WYRK, WYUU

Table listing stations and their respective song ranks for Trick Pony's 'A Boy Like You'.

★ RACHEL PROCTOR 75/53
Days Like This (BNA)
Total Stations: 17
Heavy (0)
Medium (0), Light (17)
Airplay Adds: 5 KSPD, WGH, WGNW, WPOC, WQBE

Table listing stations and their respective song ranks for Rachel Proctor's 'Days Like This'.

★ FAITH HILL 64/64
You're Still Here (Warner Bros./WRN)
Total Stations: 28
Heavy (0)
Medium (0), Light (28)
Airplay Adds: 2 KZLA, WSOC

Table listing stations and their respective song ranks for Faith Hill's 'You're Still Here'.

★ TAMMY COCHRAN 58/40
What Kind Of Woman Would I Be (Epic/EMN)
Total Stations: 39
Heavy (0)
Medium (0), Light (39)
Airplay Adds: 1 WFRE

Table listing stations and their respective song ranks for Tammy Cochran's 'What Kind Of Woman Would I Be'.

CLAY WALKER 278/116
A Few Questions (RCA)
Total Stations: 76 Chart Move: 58-52
Heavy (0)
Medium (0), Light (76)
Airplay Adds: 5 KBEO, KIIM, KSCS, KWNW, WIRK

Table listing stations and their respective song ranks for Clay Walker's 'A Few Questions'.

AARON LINES 267/75
Love Changes Everything (RCA)
Total Stations: 46 Chart Move: 54-53
Heavy (0)
Medium (0), Light (46)
Airplay Adds: 4 WBBS, WGNW, WKLB, WNCY

Table listing stations and their respective song ranks for Aaron Lines' 'Love Changes Everything'.

★ CHARLIE ROBISON 46/38
Walter (Lucky Dog)
Total Stations: 18
Heavy (0)
Medium (0), Light (18)
Airplay Adds: 3 KDRK, KTOM, WSOC

Table listing stations and their respective song ranks for Charlie Robison's 'Walter'.

MCHAYES 252/61
It Doesn't Mean I Don't Love You (Universal South)
Total Stations: 41 Chart Move: 55-54
Heavy (0)
Medium (0), Light (41)
Airplay Adds: 6 KBQI, KZLA, WCAT, WKXC, WSIX, WXBW

Table listing stations and their respective song ranks for Mchayes' 'It Doesn't Mean I Don't Love You'.

BRIAN MCCOMAS 1547/375
99.9% Sure (I've Never Been Here Before) (Lyric Street)
Total Stations: 141 Chart Move: 29-27
H (1), M (6), L (134) Airplay Adds: 16

Table listing stations and their respective song ranks for Brian Comas' '99.9% Sure'.

MARK WILLIS 717/85
When You Think Of Me (Mercury)
Total Stations: 78 Chart Move: 40-38
Heavy (0)
Medium (2), Light (76)
Airplay Adds: 6 KASE, KFRG, WIVK, WKCO, WXBW, WZZK

Table listing stations and their respective song ranks for Mark Willis' 'When You Think Of Me'.

TERRI CLARK 597/114
Three Mississippi (Mercury)
Total Stations: 92 Chart Move: 44-39
Heavy (0)
Medium (1), Light (91)
Airplay Adds: 9 KIIM, KNKI, KRTY, KXXY, KZSN, WHOK, WKCO, WUSY, WYNNK

Table listing stations and their respective song ranks for Terri Clark's 'Three Mississippi'.

VINCE GILL 594/177
Someday (MCA Nashville)
Total Stations: 73 Chart Move: 45-40
Heavy (0)

Table listing stations and their respective song ranks for Vince Gill's 'Someday'.

BILLY CURRINGTON 165/112
Walk A Little Straighter (Mercury)
Total Stations: 58 Chart Move: Debut 56
Heavy (0)
Medium (0), Light (58)
Airplay Adds: 3 KATM, KEY, KTOM

Table listing stations and their respective song ranks for Billy Currington's 'Walk A Little Straighter'.

MONTGOMERY GENTRY 25/9
Break My Heart Again (Columbia)
Total Stations: 2
Heavy (0)
Medium (0), Light (2)

Table listing stations and their respective song ranks for Montgomery Gentry's 'Break My Heart Again'.

H=Heavy (45+ Detections), M=Medium (25-44), L=Light (Under 25). Airpower awarded to songs appearing in the top 20 on both the Airplay and Audience charts for the first time with increases in both detections and audience. ★ Initial impact: songs appearing on this page for the first time in summary form. Airplay Adds are songs with 6 or more detections on new stations this week. The Airplay Leaderboard ranks taste-maker stations that have been the most successful in identifying future hit songs as measured by the amount of AIRPOWER titles for which they were Airplay Leaders. Refer to each format's Power Playlists page to see this week's Airplay Leaders.



## Where's Active Rock In NY, L.A., Chicago?

Continued from page 1

really been a niche, they would have identified it and gone for it."

For a while, there were rumors that Clear Channel would take one of its L.A. properties to active rock. But that station never materialized. As CC/San Diego director of FM programming Jim Richards notes, "There's so much money to be made in those markets that every major operator is satisfied to pleased with the amount of money that they're making on their current properties that they don't want to take a chance."

### WHERE ARE THE ROCKERS?

There are also demographic issues. Markets that support an active and a modern rock station usually have low ethnic compositions. Milwaukee is only 18% black and Hispanic. Boston and Seattle only around 11%. Philadelphia is 23%. By comparison, New York is 34.8% black and Hispanic, and Los Angeles is 45%. But there are tantalizing exceptions: Norfolk, Va., has an active and modern despite its 32% ethnic composition. So does San Diego, with 29%.



RICHARDS

"It's really about ethnicity in the major markets and the diary return relative to ethnicity," Mediathink consultant Tom Barnes says. "The ethnic composition of the U.S. has changed, and active rock is really music for white guys. But while white guys are liking other forms of music like rap, people of other ethnic backgrounds really don't adopt rock the way Caucasians have adopted rhythmic music."

"In Los Angeles, New York, and Chicago, a single station playing the harder stuff as well as the poppier modern rock stuff supercedes everyone else in those markets because of the ethnic makeup," RCA VP of rock music/A&R Bill Burrs says. "If [owners] can fulfill the needs of the rock listener with one signal, then they will. Active has been tried in the top three before, and it doesn't seem to work. I think that the melting pot of the population plays into it."

In addition, Barnes says, "file sharing has greatly increased the capacity for listeners to adopt music, and radio has not caught up. If you're between 18 [and] 34 and middle class, you have access to every song that you know about online. So you take [the ethnicity and active's tight musical boundaries into account], and they create a bad environment for active rock in big markets that have significant ethnic compositions."

### K-ROCKS ROCK ENOUGH

Then there's Infinity's pair of "K-Rock" stations: KROQ Los Angeles and WXRK New York. The former is one of the stations responsible for making modern rock harder in the mid-'90s, while the latter was regarded by some industryites as an active rock station until relatively recently.

Leeds says both stations are still covering any active rock hole. "If you go through the charts, there's about six songs in the top 40 at modern that aren't shared with active... Both stations seem to be doing extremely well, [they] super-serve their audience and constituencies, and no one seems to be complaining. Also, there are secondary outlets in both markets that one could argue provide for the fringes of the active rock community, be it Internet radio in Los Angeles with knac.com or in New York with [noncommercial] WSOU. And [active] WRAT [Monmouth, N.J.] is an extremely well-programmed, very focused active rock station that sells records."

Grand says WXRK PD Steve Kingston "has very

successfully programmed K-Rock enough to keep interested parties out. He has really parlayed the station to enough different facets of P1 listeners that he has kept active rock out."

"In New York, I don't think there's a hole for active," Richards says. But even in L.A., where, he says, KROQ isn't as crunchy as it was a year-and-a-half ago, "they're obviously satisfying that niche. I can only speculate that all of the radio owners haven't seen a hole that they feel is big enough that's worth owning."

Arista senior national director of rock and modern promotion Dave Lombardi does see a possible opening, even in New York. "The modern format

has started to take ownership of some records that they hadn't previously," he says. "WXRK went a long time without playing Coldplay because they were texturally a harder station. Now they're playing it, and it sounds awesome on the air and will probably make the station amenable to similar records in the future, which might leave the extreme stuff out in the cold. If there's enough of that music not getting played that's succeeding at those stations that do play it, that does create a hole."

### NOT FILLING (THE DEMAND)?

Besides, Lombardi says, covering the harder product isn't really the same as fostering it. "There is a bunch of rock music that could possibly succeed" with more exposure. WXRK "swings pretty hard on the active side, and they take a fair amount of those bigger records. But is Mudvayne really a band that could excite a radio listener in New York? I think so. Godsmack is another band that hasn't been as immediately embraced by modern as it would be at an active rock station. Those are big bands."

Grand recalls her days at Wind-up when she was trying to get Creed's first record played. "Initially, neither K-Rock would play them, and it was obvious in [Nielsen] SoundScan that those markets weren't being exposed to them because they didn't have a fan base via touring," she says. "But touring definitely helped establish them."

Burrs leaves it to street teams, but he says that bands' underground followings help spread the word. "In New York and Los Angeles, there is enough of a community that's down with the metal bands and harder-edged stuff. Without the regular sources of information, such as radio, there's a subculture in itself in those major markets that helps perpetuate band sales. A lot of these bands that are real have been touring forever, and they come through the markets a lot. We'll also have street teams do what they do in New York and Los Angeles to really help put these artists on the map."

### AGENCIES THINKING YOUNG?

While ethnic composition may work against active rock, there is some good age-related news. "The 18-44 and 18-49 demographics really seem to be moving the needle with national buyers for the major markets, whereas before it was always a 25-54 game," Barnes says. "So active, which was always seen as a younger format, has become a format for an older audience. It has also got a longer time horizon on it than classic rock or classic hits. What distinguishes modern and active is that the active has an older, more blue-collar male, and the modern has a younger, more white-collar male. With that, you've got more of a gold-driven base with active, which may be friendlier to an Arbitron methodology."

Burrs says, "I think there's a hole for active anywhere. They could put an active on in New York City with the expectations being realistic, but doing

## Chevelle Cruise To Philly



In Philadelphia for the Music As a Weapon tour, Chevelle stops by active WYSP. Pictured, from left, are Chevelle's Joe Loeffler, WYSP's Spike and Tanya, the band's Pete Loeffler, interim MD Rich DeSisto, APD Gil Edwards, the station's Donielle Flynn, and Chevelle's Sam Loeffler.

## RADIO CONCERT MONITOR

DATE	STATION	EVENT	PROMOTIONS DIRECTOR
April 25	KMTT Seattle	Spring Concert	Jennifer Orr
APPEARING: Carbon Leaf, Greg Giraldo, Ziggy Marley, Jason Mraz			
April 25	WZTA Miami	Zeta Salute the Troops USO Show	Steve Brancik
APPEARING: American Hi-Fi, Godsmack, Oleander, Outspoken, Pacifier, Powerman 5000, Ra, Shinedown, Skindred, Slaves on Dope, Socialburn, Stone Sour, Theory of a Deadman, 3 Doors Down, Trapt			
April 26	WBOS Boston	Earthfest	Adam Klein
APPEARING: Alice Peacock, Big Head Todd & the Monsters, Sheryl Crow, Nickel Creek, Sister Hazel, Peter Wolf, Dan Zanes			
April 26-27	WXTB Tampa, Fla.	Livestock 13	Mike Oliviero
APPEARING: Battery, Born Into Kaos, Diary of a Madman, Def Leppard, Godsmack, Hells Belles, Oleander, Outspoken, Powerman 5000, Presence, Ra, Seether, Shinedown, Socialburn, Stone Sour, 10 Second Trip, Theory of a Deadman, 3 Doors Down, Trapt			
April 27	WJRR Orlando, Fla.	Earthday Birthday X	Josh Egolf/Crissy Matrick
APPEARING: American Hi-Fi, doubleDrive, Godsmack, Oleander, Outspoken, Pacifier, Powerman 5000, Ra, Saliva, Seether, Sevendust, Shinedown, Socialburn, Stone Sour, Theory of a Deadman, 3 Doors Down, Trapt			
May 17	KDGE Dallas	Edgefest 12	Sam Grafford
APPEARING: All-American Rejects, Evanescence, the Fags, Good Charlotte, Maroon 5, MXPX, New Found Glory, Riddlin' Kids, Seether, Socialburn			
May 17	KXTE Las Vegas	Our Big Concert 6	Mary Helen Ciaravino
APPEARING: Blindside, Deftones, Mudvayne, S.T.U.N., Social Distortion, Taking Back Sunday, Taproot, Trapt, the Used			
May 24	WRZX Indianapolis	May Day 2003	Helen Zimmerman
APPEARING: Evanescence, Everclear, Revis, Saliva, Staind			
May 26	WAQX Syracuse, N.Y.	Fifth Annual X-Fest	Janice Cole
APPEARING: doubleDrive, Outspoken, Powerman 5000, Ra, Slur, Stone Sour			
May 26	WXDX Pittsburgh	X-Fest	Nicole Shackelford
APPEARING: Cold, the Donnas, Evanescence, Godsmack, Juliana Theory, Punchline, Staind, the Used			
May 27	WHFS Washington, D.C.	HFS-Tival	Valorie Wunder
APPEARING: TBA			

Let us monitor your event! Call Bram Teitelman at 646-654-4727 or e-mail bteitelman@airplaymonitor.com

what we do, expectations are never realistic. If they had a radio station playing the hardest-rocking stuff and would be comfortable having a 2 share, that would be great. But we know how radio works, and no one would be happy with that."

"There's a niche for any format in any market if it can, on the balance sheet before it's ever launched, demonstrate that it can make a lot of money," Richards says. "I'd love to see active rock stations in the top three markets, but no radio operator is going to roll the dice on \$20 million

in cash flow that they're making out of their worst-performing radio station for the potential to do better than that." Only "if it can demonstrate that it will make more cash flow than what's currently on any given stick, then it will be talked about" by any major group.

"If the audience demands it, someone will build it," Leeds says. "Emmis, Clear Channel, Infinity, and ABC must know more than us record guys, because if there was a need for that format, one of them would be rolling that format."





Songs ranked by number of detections. Playlists are listed in order of TSA weekly cume, beginning with the highest-cuming station. Cumes are updated twice yearly following the release of the spring and fall Arbitron surveys. The number of stations shown each week varies depending upon space.

AIRPLAY LEADERBOARD

THE STATIONS THAT BREAK THE HITS

#1 KFSB San Diego, CA (PD: Jeremy Pritchard) Airplay Leader Designations: 5

#2 KITS, San Francisco, CA (PD/MD: Demery/Axelsen) 4

#3 KROQ, Los Angeles, CA (PD/MD: Weatherly/Worden) 4

#4 KNDD, Seattle, WA (PD: Phil Manning) 3

#5 WMRQ, Hartford, CT (PD/MD: Thomas/Kelly) 3

Refer to Impact! page for this week's Airplay Leaders and Airplay Leaderboards.

WXRK New York PD: Steve Kingston MD: Mike Pear Infinity 212-314-9230

Table with 2 columns: Rank and Song/Artist. Top songs include Evancevance Featuring Paul M Bring Me T, Coldplay Clocks, The White Stripes Seven Nation Army.

KROQ Los Angeles Sr. VP/Pgm: Kevin Weatherly APD: Gene Sandbloom MD: Lisa Worden Infinity 323-930-1067

Table with 2 columns: Rank and Song/Artist. Top songs include The White Stripes Seven Nation Army, Evancevance Featuring Paul M Bring Me T, Audioslave Like A Stone.

WKQX Chicago PD: Tim Richards APD/MD: Mary Shuminas Emmis 312-527-8348

Table with 2 columns: Rank and Song/Artist. Top songs include The White Stripes Seven Nation Army, Linkin Park Somewhere I Belong, Evancevance Featuring Paul M Bring Me T.

WBCN Boston VP/Pgm: Oedipus APD/MD: Steven Strick AMO: Josh Aarons Infinity 617-266-1111

Table with 2 columns: Rank and Song/Artist. Top songs include The White Stripes Seven Nation Army, Linkin Park Somewhere I Belong, Evancevance Featuring Paul M Bring Me T.

WWDC Washington, DC PD: Buddy Rizer MD: Leeann Curtis Clear Channel 301-587-7100

Table with 2 columns: Rank and Song/Artist. Top songs include Evancevance Featuring Paul M Bring Me T, Linkin Park Somewhere I Belong, Jimmy Eat World A Prase Chorus.

WZZN Chicago PD: Bill Gamble APD: Steve Levy MD: James VanOsdol ABC 312-984-9923

Table with 2 columns: Rank and Song/Artist. Top songs include AFi Girl's Not Grey, Sum 41 The Hell Song, The Ataris In This Diary.

WHFS Washington, DC PD: Robert Benjamin APD: Bob Waugh MD: Pat Ferrise Infinity 301-306-0991

Table with 2 columns: Rank and Song/Artist. Top songs include Evancevance Featuring Paul M Bring Me T, Audioslave Like A Stone, The White Stripes Seven Nation Army.

KDGE Dallas PD: Duane Doherty Clear Channel 972-770-7777

Table with 2 columns: Rank and Song/Artist. Top songs include Seether Fine Again, SocialBurn Down, Linkin Park Somewhere I Belong.

KTBU Houston PD: Vince Richards APD: Eric Schmidt Clear Channel 713-968-1067

Table with 2 columns: Rank and Song/Artist. Top songs include Linkin Park Somewhere I Belong, Maroon 5 Harder To Breathe, Evancevance Featuring Paul M Bring Me T.

WPLY Philadelphia PD: Jim McGuinn MD: Dan Fein Radio One 610-276-1100

Table with 2 columns: Rank and Song/Artist. Top songs include The White Stripes Seven Nation Army, Red Hot Chili Peppers Can't Stop, Evancevance Featuring Paul M Bring Me T.

KITS San Francisco PD: Sean Demery MD: Aaron Axelsen Infinity 415-402-6700

Table with 2 columns: Rank and Song/Artist. Top songs include The White Stripes Seven Nation Army, Transplants Live In Oakland, Linkin Park Somewhere I Belong.

WNNX Atlanta Dir/Pgm: Leslie Fram PD: Chris Williams MD: Jay Harren Susquehanna 404-266-0997

Table with 2 columns: Rank and Song/Artist. Top songs include Evancevance Featuring Paul M Bring Me T, Trapt Headstrong, Stained Price To Play.

CMX Detroit PD: Murray Brookshaw APD: Vince Cannova MD: "Phat" Matt Franklin CHUM Group 519-258-8888

Table with 2 columns: Rank and Song/Artist. Top songs include Evancevance Featuring Paul M Bring Me T, Trapt Headstrong, Stained Price To Play.

KNDD Seattle PD: Phil Manning APD: Jim Keller Entercom 206-622-3251

Table with 2 columns: Rank and Song/Artist. Top songs include The White Stripes Seven Nation Army, Trapt Headstrong, Audioslave Like A Stone.

KZON Phoenix PD: Tim Maranville APD/MD: Kevin Mannion Infinity 602-258-8181

Table with 2 columns: Rank and Song/Artist. Top songs include Linkin Park Somewhere I Belong, Counting Crows Featuring Van Big Yellow, Trapt Headstrong.

WZTA Miami APD/MD: Ryan Castle Clear Channel 954-862-2000

Table with 2 columns: Rank and Song/Artist. Top songs include Linkin Park Somewhere I Belong, Red Hot Chili Peppers Can't Stop, Stained Price To Play.

XTRA San Diego PD: Bryan Schock MD: Chris Muckley Clear Channel 858-292-2000

Table with 2 columns: Rank and Song/Artist. Top songs include Foo Fighters Times Like These, Red Hot Chili Peppers Can't Stop, The White Stripes Seven Nation Army.

WXDX Pittsburgh OM: John Moschitta MD: Vinnie Ferguson Clear Channel 412-937-1441

Table with 2 columns: Rank and Song/Artist. Top songs include Red Hot Chili Peppers Can't Stop, Evancevance Featuring Paul M Bring Me T, Linkin Park Somewhere I Belong.

KTCL Denver Dir/Pgm: Mike O'Connor Interim MD: Hill Jordan Clear Channel 303-713-8000

Table with 2 columns: Rank and Song/Artist. Top songs include Queens Of The Stone Age No One Knows, Trapt Headstrong, Red Hot Chili Peppers Can't Stop.

WLIR Long Island PD/MD: Gary Cee Jarad 516-222-1103

Table with 2 columns: Rank and Song/Artist. Top songs include Coldplay Clocks, Evancevance Featuring Paul M Bring Me T, Audioslave Like A Stone.

WJRR Orlando PD: Pat Lynch MD: Brian Dickerman Clear Channel 407-916-7790

Table with 2 columns: Rank and Song/Artist. Top songs include Trapt Headstrong, Midvayne Not Falling, Audioslave Like A Stone.

KPNT St. Louis PD: Tommy Mattern APD: Woody Fife MD: Frizz Emmis 314-231-1057

Table with 2 columns: Rank and Song/Artist. Top songs include Trapt Headstrong, Linkin Park Somewhere I Belong, Linkin Park Somewhere I Belong.

WOCL Orlando PD: Alan Smith APD/MD: Bobby Smith Infinity 407-919-1000

Table with 2 columns: Rank and Song/Artist. Top songs include The White Stripes Seven Nation Army, Linkin Park Somewhere I Belong, Linkin Park Somewhere I Belong.

Songs posting gains in detections or with a percentage loss in the monitored equal to or better than the monitored downtime percentage in the format. Songs listed in order of detections.

TOP 10 BOUND

THE ATARIS In This Diary (Columbia)

Total Stations: 81 Chart Move: 13-12 H (15), M (36), L (30)

Table with columns: City, Station, ID, and signal strength for The Ataris.

SUM 41 The Hell Song (Island/IDJMG)

Total Stations: 76 Chart Move: 17-14 H (13), M (37), L (26)

Table with columns: City, Station, ID, and signal strength for Sum 41.

SEETHER Driven Under (Wind-up)

Total Stations: 70 Chart Move: 26-21 H (12), M (32), L (26)

Table with columns: City, Station, ID, and signal strength for Seether.

SALIVA Rest In Pieces (Island/IDJMG)

Total Stations: 59 Chart Move: 23-22 H (11), M (33), L (15)

Table with columns: City, Station, ID, and signal strength for Saliva.

REVIS Caught In The Rain (Epic)

Total Stations: 61 Chart Move: 28-25 H (7), M (26), L (28)

Table with columns: City, Station, ID, and signal strength for Revis.

QUEENS OF THE STONE AGE Go With The Flow (Interscope)

Total Stations: 73 Chart Move: 24-18 H (6), M (40), L (27)

Table with columns: City, Station, ID, and signal strength for Queens of the Stone Age.

3 DOORS DOWN The Road I'm On (Republic/Universal/UMRG)

Total Stations: 54 Chart Move: 31-29 H (5), M (28), L (21)

Table with columns: City, Station, ID, and signal strength for 3 Doors Down.

TAPROOT Mine (Velvet Hammer/Atlantic)

Total Stations: 58 Chart Move: 32-30 H (2), M (21), L (35)

Table with columns: City, Station, ID, and signal strength for Taproot.

COLDPLAY The Scientist (Capitol)

Total Stations: 59 Chart Move: 37-32 H (6), M (13), L (40)

Table with columns: City, Station, ID, and signal strength for Coldplay.

P.O.D. Sleeping Awake (Maverick/Reprise)

Total Stations: 74 Chart Move: Debut 24 H (2), M (31), L (41)

Table with columns: City, Station, ID, and signal strength for P.O.D.

R.O.D. 1032/797

Total Stations: 74 Chart Move: Debut 24 H (2), M (31), L (41)

Table with columns: City, Station, ID, and signal strength for R.O.D.

THIRD EYE BLIND Blinded (When I See You) (Elektra/EEG)

Total Stations: 38 Chart Move: 40-35 H (3), M (17), L (18)

Table with columns: City, Station, ID, and signal strength for Third Eye Blind.

DEFTONES Minerva (Maverick/Reprise)

Total Stations: 61 Chart Move: Debut 37 H (1), M (14), L (46)

Table with columns: City, Station, ID, and signal strength for Deftones.

MARILYN MANSON Mobsence (Nothing/Interscope)

Total Stations: 58 Chart Move: Debut 38 H (2), M (11), L (45)

Table with columns: City, Station, ID, and signal strength for Marilyn Manson.

DEFONES 600/591

Total Stations: 61 Chart Move: Debut 37 H (1), M (14), L (46)

Table with columns: City, Station, ID, and signal strength for Deftones.

MARILYN MANSON Mobsence (Nothing/Interscope)

Total Stations: 58 Chart Move: Debut 38 H (2), M (11), L (45)

Table with columns: City, Station, ID, and signal strength for Marilyn Manson.

DEFONES 600/591

Total Stations: 61 Chart Move: Debut 37 H (1), M (14), L (46)

Table with columns: City, Station, ID, and signal strength for Deftones.

LIVE Heaven (Radioactive/MCA)

Total Stations: 36 Chart Move: Debut 39 H (4), M (16), L (16)

Table with columns: City, Station, ID, and signal strength for Live.

PETE YORN Come Back Home (Columbia)

Total Stations: 54 Chart Move: Debut 37 H (1), M (14), L (46)

Table with columns: City, Station, ID, and signal strength for Pete Yorn.

SMILE EMPTY SOUL Bottom Of A Bottle (Lava)

Total Stations: 48 Chart Move: Debut 38 H (2), M (11), L (45)

Table with columns: City, Station, ID, and signal strength for Smile Empty Soul.

LINKIN PARK Faint (Warner Bros.)

Total Stations: 30 Chart Move: Debut 38 H (2), M (11), L (45)

Table with columns: City, Station, ID, and signal strength for Linkin Park.

H=Heavy (30+ Detections), M=Medium (15-29), L=Light (Under 15). AIRPOWER awarded to songs appearing in the top 20 on both the Airplay and Audience charts for the first time with increases in both detections and audience.

# IMPACT!

AIRPLAY Monitor

Nielsen Broadcast Data Systems

Songs posting gains in detections or with a percentage loss in detections equal to or better than the monitored downtime percentage in the format. Songs listed in order of detections.

\*Indicates station experienced between 24 and 50 hours of monitored downtime during the chart week.

<p><b>RADIOHEAD</b> 416/396 <i>There There (Capitol)</i> Total Stations: 54 Heavy (0) Medium (13), Light (41) Airplay Adds: 17 CIMX, KCNL, KFSD, KJEE, KRBZ, KTBZ, WBCN, WBTZ, WCYY, WJBX, WKQX, WNNX, WOCL, WPLY, WWCD, WXRK, XTRA</p>	<p><b>SYSTEM OF A DOWN</b> 162/26 <i>Innervision (American/Columbia)</i> Total Stations: 25 Heavy (1) KTEG Medium (1), Light (23)</p>	<p><b>THE USED</b> 81/22 <i>Blue And Yellow (Reprise)</i> Total Stations: 5 Heavy (0) Medium (4), Light (1)</p>	<p>★ <b>SAM ROBERTS</b> 41/34 <i>Brother Down (Universal/UMRG)</i> Total Stations: 7 Heavy (0) Medium (1), Light (6) Airplay Adds: 3 CIMX, KRBZ, WWCD</p>	<p>★ <b>PRESENCE</b> 30/6 <i>Tonz Of Fun (Curb)</i> Total Stations: 4 Heavy (0) Medium (0), Light (4)</p>
<p><b>TAKING BACK SUNDAY</b> 263/22 <i>Cute Without The "E" (Victory)</i> Total Stations: 26 Heavy (1) KRBZ Medium (6), Light (19) Airplay Adds: 2 KHRO, KTEG</p>	<p><b>SWITCHFOOT</b> 162/27 <i>Meant To Live (Red Ink/Columbia)</i> Total Stations: 14 Heavy (1) KFSD Medium (4), Light (9)</p>	<p><b>EVANESCENCE</b> 79/1 <i>Going Under (Wind-up)</i> Total Stations: 11 Heavy (0) Medium (1), Light (10) Airplay Adds: 1 KSYR</p>	<p><b>SKINDRED</b> 40/1 <i>Set It Off (Bieler Bros./MCA)</i> Total Stations: 5 Heavy (0) Medium (0), Light (5)</p>	<p>★ <b>JUNIOR SENIOR</b> 30/8 <i>Move Your Feet (Crunchy Frog)</i> Total Stations: 3 Heavy (0) Medium (1), Light (2)</p>
<p><b>SHINE DOWN</b> 256/49 <i>Fly From The Inside (Atlantic)</i> Total Stations: 26 Heavy (1) WMFS Medium (7), Light (18) Airplay Adds: 4 KHRO, WDYL, WKRL, WROX</p>	<p><b>VENDETTA RED</b> 161/61 <i>Shatterday (Epic)</i> Total Stations: 32 Heavy (0) Medium (4), Light (28) Airplay Adds: 4 KHRO, KNXX, KWOD, WDYL</p>	<p><b>3 DOORS DOWN</b> 77/25 <i>Here Without You (Republic/Universal/UMRG)</i> Total Stations: 2 Heavy (1) KUCC Medium (0), Light (1)</p>	<p><b>SNEAKER PIMPS</b> 39/6 <i>Loretta Young Silks (V2)</i> Total Stations: 8 Heavy (1) KFSD Medium (0), Light (7)</p>	<p>★ <b>BLUE OCTOBER</b> 29/6 <i>Calling You (Brando)</i> Total Stations: 2 Heavy (0) Medium (1), Light (1)</p>
<p><b>THE ROOTS FEATURING CODY CHESNUTT</b> 244/44 <i>The Seed (2.0) (MCA)</i> Total Stations: 18 Heavy (1) KRBZ Medium (6), Light (11) Airplay Adds: 2 WEQX, WNNX</p>	<p><b>TRAIN</b> 145/86 <i>Calling All Angels (Columbia)</i> Total Stations: 10 Heavy (1) WLUM Medium (4), Light (5) Airplay Adds: 4 KDGE, WLUM, WRAX, WRWK</p>	<p><b>ELECTRIC SIX</b> 71/0 <i>Danger! High Voltage (XL/Beggars Group)</i> Total Stations: 10 Heavy (1) WFNX Medium (1), Light (8)</p>	<p><b>MADONNA</b> 37/2 <i>American Life (Maverick/Warner Bros.)</i> Total Stations: 8 Heavy (1) WLIR Medium (0), Light (7)</p>	<p><b>CHANTAL KREVIASZUK</b> 29/7 <i>In This Life (Columbia)</i> Total Stations: 1 Heavy (0) Medium (1), Light (0)</p>
<p><b>BEN HARPER</b> 243/15 <i>With My Own Two Hands (Virgin)</i> Total Stations: 19 Heavy (1) KFSD Medium (8), Light (10)</p>	<p><b>12 STONES</b> 117/29 <i>Crash (Wind-up)</i> Total Stations: 13 Heavy (0) Medium (2), Light (11) Airplay Adds: 2 KUCC, WLUM</p>	<p><b>FROM ZERO</b> 67/12 <i>Sorry (Arista)</i> Total Stations: 13 Heavy (0) Medium (1), Light (12) Airplay Adds: 1 WBUZ</p>	<p>★ <b>FINGER ELEVEN</b> 36/17 <i>Good Times (Wind-up)</i> Total Stations: 12 Heavy (0) Medium (0), Light (12)</p>	<p>★ <b>THE EXIES</b> 27/11 <i>Kickout (Immortal/Virgin)</i> Total Stations: 11 Heavy (0) Medium (0), Light (11) Airplay Adds: 1 WHTG</p>
<p><b>SOUTHFM</b> 229/19 <i>Dear Claudia (Brando/MCA)</i> Total Stations: 15 Heavy (0) Medium (9), Light (6) Airplay Adds: 3 KROX, KTBZ, WZNE</p>	<p>★ <b>THE ALL-AMERICAN REJECTS</b> 116/92 <i>The Last Song (Doghouse/DreamWorks)</i> Total Stations: 30 Heavy (1) KFSD Medium (1), Light (28) Airplay Adds: 5 KFSD, KNXX, KRBZ, KROX, WSUN</p>	<p><b>JOHN MAYER</b> 60/15 <i>Why Georgia (Aware/Columbia)</i> Total Stations: 3 Heavy (0) Medium (2), Light (1)</p>	<p><b>WILL HOGE</b> 35/0 <i>Be The One (Atlantic)</i> Total Stations: 4 Heavy (1) KFSD Medium (0), Light (3)</p>	<p><b>TORI AMOS</b> 27/3 <i>Taxi Ride (Epic)</i> Total Stations: 3 Heavy (0) Medium (1), Light (2)</p>
<p><b>EMINEM</b> 226/16 <i>Sing For The Moment (Web/Aftermath/Interscope)</i> Total Stations: 15 Heavy (2) WNNX, WXRK Medium (5), Light (8) Airplay Adds: 1 WXTM</p>	<p><b>COUNTING CROWS</b> 110/48 <i>Big Yellow Taxi (Geffen/Interscope)</i> Total Stations: 4 Heavy (1) KZON Medium (2), Light (1)</p>	<p><b>AVRIL LAVIGNE</b> 57/11 <i>Losing Grip (Arista)</i> Total Stations: 4 Heavy (1) KZON Medium (0), Light (3)</p>	<p><b>THE UNSTABLE</b> 33/4 <i>Retch (Powerhouse)</i> Total Stations: 2 Heavy (0) Medium (1), Light (1) Airplay Adds: 1 WGRD</p>	<p>★ <b>CHEVELLE</b> 26/26 <i>Comfortable Liar (Epic)</i> Total Stations: 26 Heavy (0) Medium (0), Light (26)</p>
<p><b>LESS THAN JAKE</b> 194/127 <i>She's Gonna Break Soon (Sire/Warner Bros.)</i> Total Stations: 30 Heavy (0) Medium (1), Light (29) Airplay Adds: 15 KEDJ, KMBY, KRBZ, KWOD, WAQZ, WARQ, WBCN, WKQX, WKRL, WLUM, WOCL, WRAX, WROX, WWCD, WZNE</p>	<p><b>CKY</b> 94/38 <i>Attached At The Hip (Island/IDJMG)</i> Total Stations: 14 Heavy (0) Medium (1), Light (13) Airplay Adds: 5 CIMX, KSYR, KWOD, WDYL, WEDG</p>	<p><b>ZUG ISLAND</b> 51/18 <i>Cry (Psychopathic)</i> Total Stations: 8 Heavy (0) Medium (1), Light (7) Airplay Adds: 2 WARQ, WRAX</p>	<p><b>OUR LADY PEACE</b> 33/5 <i>Sell My Soul (Columbia)</i> Total Stations: 1 Heavy (1) CIMX Medium (0), Light (0)</p>	<p>★ <b>THE FAGS</b> 26/5 <i>Truly, Truly (Idol)</i> Total Stations: 1 Heavy (0) Medium (1), Light (0)</p>
<p><b>GOB</b> 193/34 <i>Give Up The Grudge (Arista)</i> Total Stations: 23 Heavy (0) Medium (4), Light (19) Airplay Adds: 4 KUCC, WGRD, WHTG, WWCD</p>	<p><b>ACROMA</b> 87/11 <i>Sun Rises Down (Republic/Universal/UMRG)</i> Total Stations: 17 Heavy (0) Medium (2), Light (15) Airplay Adds: 2 KLEC, WPBZ</p>	<p>★ <b>CAESARS</b> 50/33 <i>Jerk It Out (Astralwerks)</i> Total Stations: 20 Heavy (0) Medium (1), Light (19) Airplay Adds: 2 KFSD, WOXY</p>	<p><b>JIMMY EAT WORLD</b> 32/2 <i>If You Don't, Don't (DreamWorks)</i> Total Stations: 1 Heavy (1) WHTG Medium (0), Light (0)</p>	<p><b>TRANSPLANTS</b> 26/1 <i>Down In Oakland (Hellcat/Epitaph)</i> Total Stations: 1 Heavy (0) Medium (1), Light (0)</p>
<p><b>JASON MRAZ</b> 183/21 <i>The Remedy (I Won't Worry) (Elektra/EEG)</i> Total Stations: 14 Heavy (3) KENZ, KZON, WEQX Medium (2), Light (9) Airplay Adds: 1 WHTG</p>	<p><b>ALKALINE TRIO</b> 83/31 <i>We've Had Enough (Vagrant)</i> Total Stations: 21 Heavy (0) Medium (2), Light (19) Airplay Adds: 3 WPLY, WROX, WZZN</p>	<p><b>THE WHITE STRIPES</b> 45/15 <i>The Hardest Button To Button (Third Man/V2)</i> Total Stations: 6 Heavy (0) Medium (1), Light (5)</p>	<p>★ <b>GOOD CHARLOTTE</b> 31/27 <i>The Young And The Hopeless (Daylight/Epic)</i> Total Stations: 15 Heavy (0) Medium (0), Light (15)</p>	<p>★ <b>JEWEL</b> 25/3 <i>Intuition (Atlantic)</i> Total Stations: 1 Heavy (0) Medium (1), Light (0)</p>



Compiled from a national sample of data supplied by Nielsen Broadcast Data Systems to Airplay Monitor. 58 active rock stations are electronically monitored 24 hours a day, 7 days a week. © 2003 VNU Business Media, Inc. All rights reserved.

Main chart table with columns: THIS WEEK, LAST WEEK, WKS ON CHART, TITLE/IMPRINT/PROMOTION LABEL, ARTIST, DETECTIONS TW, LW, AUDIENCE MILLIONS, RANK. Includes star ratings and No. 1 designation for 'HEADSTRONG'.

most airplay adds ACTIVE ROCK

NEW STATIONS section listing songs like 'Sleeping Awake' by P.O.D., 'Mobscene' by Marilyn Manson, and 'Minerva' by Deftones with station counts and daypart percentages.

GREATEST GAINERS ACTIVE ROCK

GAINERS section listing songs like 'Sleeping Awake' by P.O.D., 'Mobscene' by Marilyn Manson, and 'Minerva' by Deftones with increase in detections.

AIRPLAY Monitor RECURRENENTS ACTIVE ROCK

RECURRENENTS table listing songs like 'All My Life' by Foo Fighters and 'No One Knows' by Queens of the Stone Age.

Table with columns: RANK, TITLE, ARTIST (IMPRINT/PROMOTION LABEL), DETECTIONS TW, LW. Lists songs like 'Control' by Puddle of Mudd and 'Man in the Box' by Alice in Chains.

Songs ranked by number of detections. Songs showing an increase in detections over the previous week, regardless of chart movement, receive a star. A song that has been on the chart for more than 20 weeks will generally not receive a star, even if it registers an increase in detections.

Recurrenents are titles that have appeared on the Active Rock Airplay chart for 26 weeks and have dropped below the top 20.

IDENTIFYING THE REAL HITS.



LOW PLAYLISTS



Songs ranked by number of detections. Playlists are listed in order of TSA weekly cumes, beginning with the highest-cuming station. Cumes are updated twice yearly following the release of the spring and fall Arbitron surveys. The number of stations shown each week varies depending upon space.

AIRPLAY LEADERBOARD

Table with 5 rows and 4 columns showing station names, PDs, and Airplay Leader Designations. Includes logos for WZOR Green Bay, WI and WRAT Monmouth/Ocean, NJ.

WYSP Philadelphia PD: Jim Sabean. Table with 30 rows of song titles and station numbers.

WRIF Detroit PD: Doug Podell. Table with 30 rows of song titles and station numbers.

KEGL Dallas PD: Max Dugan. Table with 30 rows of song titles and station numbers.

KXXR Minneapolis PD: Wade Linder. Table with 30 rows of song titles and station numbers.

WMMS Cleveland PD: Jim Trapp. Table with 30 rows of song titles and station numbers.

WAAF Boston PD: Keith Hastings. Table with 30 rows of song titles and station numbers.

KSJO San Francisco PD: Gary Schoenwetter. Table with 30 rows of song titles and station numbers.

KQRC Kansas City PD: Bob Edwards. Table with 30 rows of song titles and station numbers.

WXTB Tampa PD: Rick Schmidt. Table with 30 rows of song titles and station numbers.

WIYY Baltimore PD: Dave Hill. Table with 30 rows of song titles and station numbers.

KUPD Phoenix PD: JJ Jeffries. Table with 30 rows of song titles and station numbers.

KBPI Denver PD: Mike O'Connor. Table with 30 rows of song titles and station numbers.

KISS San Antonio PD: Virgil Thompson. Table with 30 rows of song titles and station numbers.

KIOZ San Diego PD: Jim Richards. Table with 30 rows of song titles and station numbers.

WLZR Milwaukee PD: Mike Stern. Table with 30 rows of song titles and station numbers.

WBZX Columbus PD: Hal Fish. Table with 30 rows of song titles and station numbers.

KUFO Portland PD: Dave Numme. Table with 30 rows of song titles and station numbers.

WCCC Hartford PD: Michael Piccozzi. Table with 30 rows of song titles and station numbers.

WBBB Raleigh PD: Andy Meyer. Table with 30 rows of song titles and station numbers.

KCAL San Bernardino PD: Steve Hoffman. Table with 30 rows of song titles and station numbers.

WQXA Harrisburg PD: Claudine DeLorenzo. Table with 30 rows of song titles and station numbers.

KRXQ Sacramento PD: Curtis Johnson. Table with 30 rows of song titles and station numbers.

WNOR Norfolk PD: Harvey Kojan. Table with 30 rows of song titles and station numbers.

Airplay Adds (AA) denotes songs with 6 or more detections at station for first time this week.



Nielsen Broadcast Data Systems

POWERPLAYISTS

WGIR Manchester PD: Valorie Knight MD: Jason Russell Clear Channel 603-625-6915

KATT Oklahoma City PD: Chris Baker MD: Jake Daniels Citadel 405-848-0100

WTPT Greenville, SC PD/MD: Mark Hendrix Barnstable 864-467-9330

WKLQ Grand Rapids OM: Tony Gates PD: Hunter Scott Bloomington 616-774-8461

WTFX Louisville OM: Michael Lee MD: Frank Webb Clear Channel 502-479-2222

WILL Kenosha, WI OM/PD: John Perry MD: Joanie Meyers NextMedia 262-694-7800

KFNK Seattle OM: Josh Dallyn Ackerley 253-671-0195

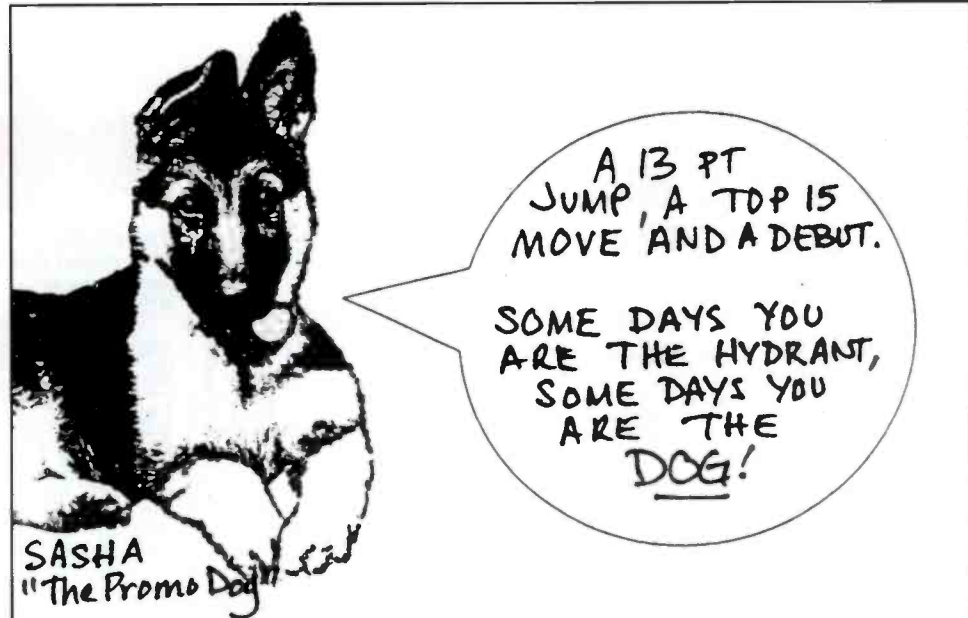
KOMP Las Vegas PD: John Griffen MD: Big Marty Lotus 702-876-1460

KBER Salt Lake City OM: Bruce Jones PD: Kelly Hammer MD: Helen Powers Citadel 801-485-6700

KAZR Des Moines PD: Sean Elliott MD: Jo Michaels Saga 515-280-1350

WJJO Madison, Wis. PD: Randy Hawke APD/MD: Blake Patton Midwest Family Broadcasting 608-273-1000

WNVE Rochester PD: Erick Anderson MD: Dan Vincent Clear Channel 716-246-0440



MARILYN MANSON

"MOBSCENE" ACTIVE ROCK D 39-26\* +355 MODERN ROCK DEBUT 38\* 592x +366 #2 GREATEST GAINER! REQUESTING @ KXXR#1 KBPI WZOR KILO#1 WBSX WXQR WYSP WGIR KFMX 110 TOTAL ACTIVE/MODERN/ROCK STATIONS REVOLVER COVER, FEATURES IN SPIN, BLENDER, ROLLING STONE + DETAILS -THE GOLDEN AGE OF THE GROTESQUE- IN STORES MAY 13TH \*OZZFEST\*

COLD "Stupid Girl" ACTIVE ROCK 19-14\* 855x +67 MODERN ROCK 21-17\* 1421x +115 -YEAR OF THE SPIDER- IN STORES MAY 13TH ON TOUR W/ GODSMACK, STAIN'D, LOLLAPALOOZA THIS SUMMER!

QOTSA "Go With The Flow" ACTIVE ROCK DEBUT 40\* 245x +90 MODERN ROCK 24-18\* 1367x +159 #5 GREATEST GAINER THIS WEEK! -SONGS FOR THE DEAF- SCANNED 665K+ LOLLAPALOOZA THIS SUMMER!

ACTIVE ROCK AIRPLAY Monitor Nielsen Broadcast Data Systems

Songs posting gains in detections or with a percentage loss in detections equal to or better than the monitored downline percentage in the format. Songs listed in order of detections. \*Indicates station experienced between 24 and 56 hours of monitored downtime during the chart week.

TOP 10 BOUND

EVANESCENCE FEAT. PAUL MCCOY 953/86 Bring Me To Life (Wind-up)

Table with columns: Station, ID, LW, ZW, ID, and data for various stations like Chicago, San Francisco, Dallas, etc.

SALIVA 881/29 Rest In Pieces (Island/IDJMG)

Table with columns: Station, ID, LW, ZW, ID, and data for various stations like Chicago, San Francisco, Dallas, etc.

COLD 855/67 Stupid Girl (Flip/Geffen/Interscope)

Table with columns: Station, ID, LW, ZW, ID, and data for various stations like Chicago, San Francisco, Dallas, etc.

3 DOORS DOWN 852/7 The Road I'm On (Republic/Universal/UMRG)

Table with columns: Station, ID, LW, ZW, ID, and data for various stations like Chicago, San Francisco, Dallas, etc.

REVIS 846/32 Caught In The Rain (Epic)

Table with columns: Station, ID, LW, ZW, ID, and data for various stations like Chicago, San Francisco, Dallas, etc.

AIRPOWER

NO RECORDS QUALIFIED FOR AIRPOWER THIS WEEK

AIRPOWER BOUND

(HED) PLANET EARTH 765/29 Blackout (Volcano/Jive)

Table with columns: Station, ID, LW, ZW, ID, and data for various stations like Chicago, San Francisco, Dallas, etc.

POWERMAN 5000 745/74 Free (DreamWorks)

Table with columns: Station, ID, LW, ZW, ID, and data for various stations like Chicago, San Francisco, Dallas, etc.

SEETHER 701/43 Driven Under (Wind-up)

Table with columns: Station, ID, LW, ZW, ID, and data for various stations like Chicago, San Francisco, Dallas, etc.

BREAKING BENJAMIN 567/27 Skin (Hollywood)

Table with columns: Station, ID, LW, ZW, ID, and data for various stations like Chicago, San Francisco, Dallas, etc.

TAPROOT 561/66 Mine (Velvet Hammer/Aatlantic)

Table with columns: Station, ID, LW, ZW, ID, and data for various stations like Chicago, San Francisco, Dallas, etc.

MARILYN MANSON 548/355 Mobscene (Nothing/Interscope)

Table with columns: Station, ID, LW, ZW, ID, and data for various stations like Chicago, San Francisco, Dallas, etc.

ZAKK WYLDE'S BLACK LABEL SOCIETY 518/54 Stillborn (Spitfire)

Table with columns: Station, ID, LW, ZW, ID, and data for various stations like Chicago, San Francisco, Dallas, etc.

P.O.D. 500/385 Sleeping Awake (Maverick/Reprise)

Table with columns: Station, ID, LW, ZW, ID, and data for various stations like Chicago, San Francisco, Dallas, etc.

UNLOCO 405/7 Failure (Maverick/Reprise)

Table with columns: Station, ID, LW, ZW, ID, and data for various stations like Chicago, San Francisco, Dallas, etc.

SHINE DOWN 404/86 Fly From The Inside (Atlantic)

Table with columns: Station, ID, LW, ZW, ID, and data for various stations like Chicago, San Francisco, Dallas, etc.

DOUBLEDRIVE 398/30 Imprint (Roadrunner/IDJMG)

Table with columns: Station, ID, LW, ZW, ID, and data for various stations like Chicago, San Francisco, Dallas, etc.

PRESENCE 278/19 Tonz Of Fun (Curb)

Table with columns: Station, ID, LW, ZW, ID, and data for various stations like Chicago, San Francisco, Dallas, etc.

SMILE EMPTY SOUL 250/46 Bottom Of A Bottle (Lava)

Table with columns: Station, ID, LW, ZW, ID, and data for various stations like Chicago, San Francisco, Dallas, etc.

QUEENS OF THE STONE AGE 245/90 Go With The Flow (Interscope)

Table with columns: Station, ID, LW, ZW, ID, and data for various stations like Chicago, San Francisco, Dallas, etc.

CHART BOUND

FROM ZERO 205/11 Sorry (Arista)

Table with columns: Station, ID, LW, ZW, ID, and data for various stations like Chicago, San Francisco, Dallas, etc.

★ DEFTONES 195/194 Minerva (Maverick/Reprise)

Table with columns: Station, ID, LW, ZW, ID, and data for various stations like Chicago, San Francisco, Dallas, etc.

LIVE 170/32 Heaven (Radioactive/MCA)

Table with columns: Station, ID, LW, ZW, ID, and data for various stations like Chicago, San Francisco, Dallas, etc.

CAVE IN 143/19 Anchor (RCA/RMG)

Table with columns: Station, ID, LW, ZW, ID, and data for various stations like Chicago, San Francisco, Dallas, etc.

12 STONES 123/14 Crash (Wind-up)

Table with columns: Station, ID, LW, ZW, ID, and data for various stations like Chicago, San Francisco, Dallas, etc.

MEMENTO 114/65 Nothing Sacred (Columbia)

CLOSURE 111/7 Look Out Below (TVT)

ACROMA 101/19 Sun Rises Down (Republic/Universal/UMRG)

LINKIN PARK 98/5 Faint (Warner Bros.)

FORTY FOOT ECHO 93/15 Save Me (Hollywood)

★ DEPSWA 55/20 This Time (Geffen/Interscope)

★ KEVIN MARTIN 55/14 If We Could (Tympanic)

★ VERBENA 50/38 Way Out West (Capitol)

★ SLAVES ON DOPE 47/28 Go (Bieler Bros./MCA)

★ PACIFIER 36/18 Comfort Me (HiFi/Arista)



HERITAGE ROCK

FOR WEEK ENDING APRIL 20, 2003



Airplay Adds (AA) denotes songs with 6 or more detections at station for first time this week.

POWERPLAYISTS

AIRPLAY LEADERBOARD

Table with 5 rows and 2 columns: Rank, Station/Artist. #1 WEBN Cincinnati, OH (PD/MD: Reinhart/Vaske) Airplay Leader Designations: 5. #2 KLAQ, El Paso, TX (PD: Mike Ramsey) 2. #3 WZZO, Allentown, PA (PD/MD: Lee/Moyer) 2. #4 WDMA, Morristown, NJ (PD: Terrie Carr) 2. #5 WKKB, New Bedford, MA (PD/MD: Rock/Brangiforte) 1.

WAXJ New York PD: Bob Buchmann APD/MD: Eric Wellman Clear Channel 212-575-1043. List of 20 songs with TW and LW columns.

KLOS Los Angeles PD: Rita Wilde ABC/Disney 310-840-4800 95.5 KLOS. List of 20 songs with TW and LW columns.

WLUP Chicago VP/Pgmng & Ops: Greg Solk Pgm Mgr: Bill Klapproth Bonnieville 312-440-5270. List of 20 songs with TW and LW columns.

WMMR Philadelphia PD: Sam Mikham APD/MD: Ken Zipeto Greater Media 610-771-0933. List of 20 songs with TW and LW columns.

WDVE Pittsburgh OM: John Moschitta MD: Val Porter Clear Channel 412-937-1441. List of 20 songs with TW and LW columns.

WFBQ Indianapolis OM: Marty Bender PD: Mike Thomas MD: Ace Cosby Clear Channel 317-257-7565. List of 20 songs with TW and LW columns.

WKLS Atlanta Reg VP/Pgmng: Tim Dukes APD/MD: Jimmy Tidwell Clear Channel 404-325-0960. List of 20 songs with TW and LW columns.

KLOL Houston OM: Vince Richards Clear Channel 713-830-8000. List of 20 songs with TW and LW columns.

KISW Seattle PD: Dave Richards APD: Kyelee Brooks Entercom 206-285-7625. List of 20 songs with TW and LW columns.

WEBN Cincinnati OM/MD: Scott Reinhart MD: Rick "The Dude" Vaske Clear Channel 513-621-9326. List of 20 songs with TW and LW columns.

KSHE St. Louis PD: Rick Balis Emmis 314-621-0095. List of 20 songs with TW and LW columns.

KDKB Phoenix PD: Joe Bonadonna MD: Dock Ellis Sandusky 480-897-9300. List of 20 songs with TW and LW columns.

WBAB Long Island PD: John Olsen APD/MD: John Parise Cox 631-587-1023. List of 20 songs with TW and LW columns.

WHY Providence PD: Joe Bevilacqua APD: Doug Palmieri MD: John Laurenti Clear Channel 401-438-6110. List of 20 songs with TW and LW columns.

HERITAGE ROCK

FOR WEEK ENDING APRIL 20, 2003



Songs gaining 6 or more detections or with a percentage loss in detections equal to or better than the monitored downtime percentage in the format. Songs listed in order of detections. \*Indicates station experienced between 24 and 56 hours of monitored downtime during the chart week.

IMPACT!

TOP 10 BOUND

STAIN Price To Play (Flip/Elektra/EEG) Total Stations: 24 Chart Move: 15-11 Airplay Adds: 5. Table with 10 columns: Station, TW, LW, ZN, ID, Detections/Gain.

LINKIN PARK Somewhere I Belong (Warner Bros.) Total Stations: 16 Chart Move: 11-12 Airplay Adds: 0

Table with 10 columns: Station, TW, LW, ZN, ID, Detections/Gain.

TRAPT Headstrong (Warner Bros.) Total Stations: 15 Chart Move: 13-13 Airplay Adds: 0

Table with 10 columns: Station, TW, LW, ZN, ID, Detections/Gain.

SALIVA Rest In Pieces (Island/IDJMG) Total Stations: 18 Chart Move: 19-17 Airplay Adds: 0

Table with 10 columns: Station, TW, LW, ZN, ID, Detections/Gain.

DISTURBED Remember (Reprise) Total Stations: 19 Chart Move: 25-21

DOUBLEDRIE Imprint (Roadrunner/IDJMG) Total Stations: 17 Chart Move: 27-23

POWERMEN 5000 Free (DreamWorks) Total Stations: 14 Chart Move: 29-26

LIVE Heaven (Radioactive/MCA) Total Stations: 14 Chart Move: 31-28

SEETHER Driven Under (Wind-up) Total Stations: 13 Chart Move: 30-29

FORTY FOOT ECHO Save Me (Hollywood) Total Stations: 15 Chart Move: 32-30

COLD Stupid Girl (Flip/Geffen/Interscope) Total Stations: 12 Chart Move: 36-31

EVANESCENCE FEATURING PAUL MCCOY Bring Me To Life (Wind-up) Total Stations: 8 Chart Move: 40-36

QUEENS OF THE STONE AGE Go With The Flow (Interscope) Total Stations: 8 Chart Move: Debut 37

ERIC CLAPTON Higher Ground (Motown/UMRG) Total Stations: 10 Chart Move: Debut 38

TAPROOT Mine (Velvet Hammer/American) Total Stations: 9 Chart Move: 38-39

TRAIN Calling All Angels (Columbia) Total Stations: 11 Chart Move: 45-45

SHINE DOWN Fly From The Inside (Atlantic) Total Stations: 14 Chart Move: 14-14

12 STONES Crash (Wind-up) Total Stations: 6 Chart Move: 10-10

SYSTEMATIC Leaving Only Scars (TMC/Elektra/EEG) Total Stations: 6 Chart Move: 10-10

MUDVAYNE Not Falling (Epic) Total Stations: 7 Chart Move: 10-10

P.O.D. Sleeping Awake (Maverick/Reprise) Total Stations: 8 Chart Move: 10-10

REVIS Caught In The Rain (Epic) Total Stations: 18 Chart Move: 23-20

AIRPOWER Bound NO RECORDS QUALIFIED FOR AIRPOWER THIS WEEK

AIRPOWER BOUND

REVIS Caught In The Rain (Epic) Total Stations: 18 Chart Move: 23-20

REVIS Caught In The Rain (Epic) Total Stations: 18 Chart Move: 23-20

REVIS Caught In The Rain (Epic) Total Stations: 18 Chart Move: 23-20

REVIS Caught In The Rain (Epic) Total Stations: 18 Chart Move: 23-20

REVIS Caught In The Rain (Epic) Total Stations: 18 Chart Move: 23-20

REVIS Caught In The Rain (Epic) Total Stations: 18 Chart Move: 23-20

REVIS Caught In The Rain (Epic) Total Stations: 18 Chart Move: 23-20

REVIS Caught In The Rain (Epic) Total Stations: 18 Chart Move: 23-20

H=Heavy (24+ Detections), M=Medium (12-23), L=Light (Under 12). Airpower awarded to songs appearing in the top 20 on both the Airplay and Audience charts for the first time with increases in both detections and audience. \*Initial impact: songs appearing on this page for the first time in summary form. Airplay Adds are songs with 6 or more detections at new stations this week.

MAINSTREAM TOP 40

Detections

Table listing radio stations and their top 40 detections, including WFLY Albany, N.Y., WAEB Allentown, Pa., WSTR Atlanta, etc.

Table listing radio stations and their top 40 detections, including WKDM Des Moines, Iowa, WDRQ Detroit, WKQI Detroit, etc.

Table listing radio stations and their top 40 detections, including KJIS Los Angeles, WDJX Louisville, Ky., WZEE Madison, Wis., etc.

Table listing radio stations and their top 40 detections, including WPRO Providence, R.I., WDCG Raleigh, N.C., WRVQ Richmond, Va., etc.

Table listing radio stations and their top 40 detections, including WLDI West Palm Beach, WCRZ Wilkes-Barre, Pa., WSTW Wilmington, Del., etc.

Table listing radio stations and their top 40 detections, including KFME Kansas City, KQIS Lafayette, La., WMAJ Madison, Wis., etc.

Table listing radio stations and their top 40 detections, including WMBZ Memphis, WMC Memphis, WYCR York, Pa., etc.

Table listing radio stations and their top 40 detections, including WDEF Chattanooga, WMMX Youngstown, WYWH Youngstown, etc.

Table listing radio stations and their top 40 detections, including KRCW Portland, Ore., WHUD Poughkeepsie, N.Y., WWLI Providence, R.I., etc.

ADULT TOP 40

Detections

Table listing radio stations and their top 40 adult detections, including KPEK Albuquerque, KAMX Austin, Texas, KLLY Bakersfield, Calif., etc.

RHYTHMIC TOP 40

Detections

Table listing radio stations and their top 40 rhythmic detections, including KYZL Albuquerque, WBSY Atlanta, WQBT Austin, Texas, etc.











# R. Kelly / Ignition-Remix

#1  
Callout America!

#2 Most Requested  
Single in America!

#2 Hot 100 Audience!  
Over 125 Million!

#1 Rhythmic Top 40 Record  
In The Country!

Top 5 Mediabase  
National Callout - All Demos!

LP *Chocolate Factory* Double Platinum!

Monitor Mainstream Top 40: **3** +527

R&R Pop: 3\* +682

"GREAT PHONES every week! Just moved it up to POWER! We think R. Kelly is the BIGGEST RECORD OF THE SPRING!"

- Nancy Gambino, LJ & Jeremy Rice, WBLI/Nassau

"#1 Requests since the day we put it on the air. R. Kelly's 'Ignition-Remix' is a SMASH!" - Marcus D/MD, KBKS/Seattle

"If 'Ignition-Remix' is not STUCK in POWER on your station, then push, pull or drag your radio station to the closest used car lot and see what you can get for it!"

- Jeff Kapugi & Toby Knapp, WFLZ/Tampa



www.r-kelly.com  
www.jiverecords.com