

# Radio & Records

THE INDUSTRY'S NEWSPAPER

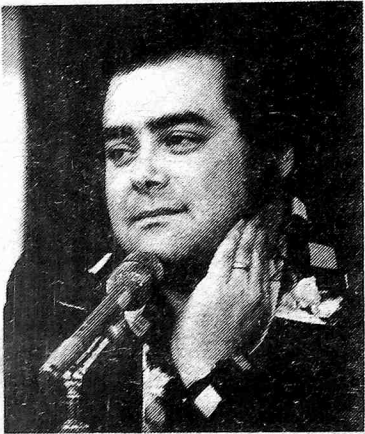
VOLUME 2, NUMBER 47

FRIDAY, NOVEMBER 29, 1974

**PAT O'DAY  
RESIGNS  
WATSON OUT  
AT K-100**

## Epic's Alexenburg Promoted To VP & GM

Eleven years ago he started as a local promotion man, nine years ago he joined Columbia. Today Ron Alexenburg has been promoted to Vice President and



General Manager of Epic Records and all the Columbia Custom Labels. Ron will now be in control of all merchandising, promotion, sales and A&R departments.

### PAT O'DAY RESIGNS KJR-SEATTLE

What came as a shock to the industry last Friday, has apparently been in the planning stage for months. Pat O'Day told R&R he has left KJR to form a



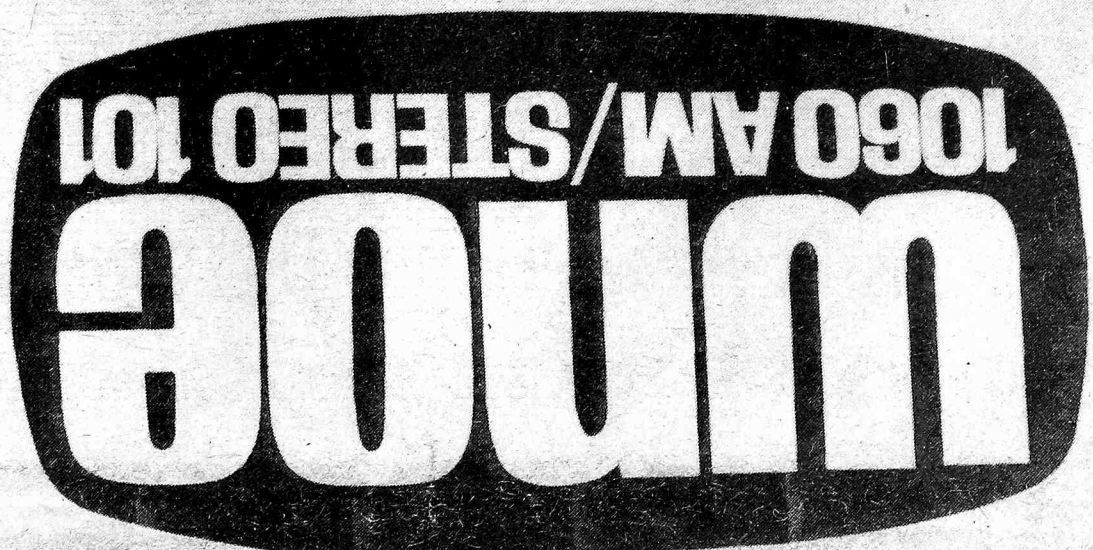
new company for Kaye-Smith, which owns KJR. The new operations will be oriented to concert and film production. The new GM at KJR is Shannon Sweatte. New PD is Steve West, from KJRB. O'Day said "It's something I've been thinking about for quite some time, I just decided to actually set a date. It's time to step aside at KJR and make way for some new people. I've been with them for 15 years and I need some new challenges." Pat noted that he still loved broadcasting, but was looking forward to the new company.

### BILL WATSON OUT AT K100

Bill Watson, with The Drake

Continued on page 22

LAMAR DEAN



### WNOE IS TURNING NEW ORLEANS UPSIDE DOWN

We may never know if WNOE-New Orleans really planned their outdoor advertising campaign this way, or if it was a mistake. Pictured is the station sales staff trying to figure out how to explain it to clients, who are also trying to figure it out.



**(Cont. from last week)**

# **The Great Elektra/Asylum Singles Release.**

Last week we told you about the greatest release of single records in our history. So extensive, we said, that it would take two pages in the same issue, and an additional page in the following week's issue.

Here it is. Part two of the The Great Elektra/Asylum Singles Release.

**Joni Mitchell "Big Yellow Taxi"** E 45221

**Harry Chapin "Cat's In The Cradle"** E 45203

**Eagles "Best Of My Love"** E 45218

**Souther, Hillman, Furay Band  
"Safe At Home"** E 45217

**Dick Feller "Cry For Lori"** E 45220

**The Hagers "Cherry Pie"** E 45219

**Queen "Killer Queen"** E 45226

**Jo Jo Gunne "Where Is The Show?"** E 45225

**Gene Clark "Life's Greatest Fool"** E45222

**A Foot In Coldwater  
"(Make Me Do) Anything You Want"** E45224





# RADIO

## KCBQ Tower Hit By QFO?

One of KCBQ-San Diego's towers tumbled over just two days before the ARB was over. The station is now at reduced power, from 50KW to 5KW. No foul play, just corroded old guidelines. The incident happened about 3am, after which the engineer on duty spent about 20 minutes trying to figure out from the meters what was wrong. Finally he went out to the field and saw the downed tower. **Buzz Bennett** was in town at the R&R offices when the story came in. His comment: "Sure am glad I wasn't in San Diego this time."

### BUTTS BUTTED OUT

Morning personality **Michael Butts** is no longer at KIMN-Denver. According to Butts, he was accused of looking for another job. He says he wasn't ... but he is now. Contact him at (303) 751-4955.

### HOOPER INTO MUSIC RESEARCH

**Bob Kniffin**, new general manager of C.E. Hooper, sent us a copy of his new music research survey. They make 2200 calls into a specified market and get demographic breakdowns on the hits. Contact Hooper for more details.

### CASH CALL PROBLEMS

KSTP-Minneapolis has incurred an apparent liability for forfeiture in the amount of \$2,000, for willful or repeated violation of FCC section 73.1206; failure to give notice to a party called by the station of the station's intention to broadcast the

conversation before it was broadcast. In other words ... be careful how you run 'Cash Call.'

### WJBQ'S 'LAST RECORD'

WJBQ-Portland running the "Last Record" contest, where they call out and ask if person can name the last record played on air. Prize is \$1000 to each winner.

### RKO'S COURSE ON RADIO SELLING WELL

RKO's Breakthrough Course on Radio is a revolutionary idea, actually training someone on how to get into radio. We talked with **Art Mandelbaum** at RKO about the concept and how the course is doing. According to Art, sales are already close to a thousand units, with several schools including it in their communications departments. He also disclosed that 30 percent of the orders for the course have come from stations in markets under 100,000 population.

The course consists of cassettes (recorded by **Charlie Van Dyke**) with the text & illustration to read along. It covers everything from a History of Radio to Programming (with a section by **Paul Drew**) to sales and engineering.

Until now, most people broke into radio as a jock, then worked up to management. Training was by doing. The course offers an easy way to understand all the complicated structures in radio. **Mandelbaum** feels that many jocks and program directors would better understand the structure of the entire station, not only as it deals with their area of programming, but how sales and programming can go hand in hand. It also offers the salesman the best way to assimilate the information he needs to better understand the programming side, and their problems.

The concept of the course belongs to **Bruce Johnson**, president of RKO, who developed it because of the need to train people getting into radio. The course cuts the training time down, and uses experts to explain it all.

### THE LAST WORD

KFRC-FM-San Francisco running "The Last Word" contest. They place calls (from post cards mailed in) to listeners asking them for the last word in the trivia sentence. Ex: In the song "Teen Angel," the story centers around a 16 year old girl

who lost her life trying to retrieve a \_\_\_\_\_.

### THANKSGIVING MARATHON

KDZA-Pueblo is running their annual Thanksgiving Marathon where **Randy Jay** and **Rip Van Winkel** go on the air for the holiday weekend, and station donates a turkey an hour to the Salvation Army.

### PHONE-Y BROADCAST

WKBW-Buffalo jock **Hank Nevins** got snowed in and couldn't make it to the station for his show, so he did it from his house via phone line. City was hit with 5 feet of snow.

### PULSE RESULTS

Charlotte-Sept-Oct 6am-12mid total shares

Station	Men	Women	Teens	Total
WAYS R	20	17	58	24
WBT M	11	13	2	11
WAME C	9	16	8	12
WGIV R	8	9	10	9
WROQ P	11	6	12	9

Baltimore (July-Sept)

	M	W	Teens	Total
WBAL M	20	14	2	15
WCAO R	8	12	21	12
WWIN B	8	7	17	9
WSID B	5	8	15	8
WLPL R	3	2	11	4
WITH-FM R	1	1	6	2
WISZ C	3	3	2	3
WBMD C	1	1	-	1
WPOC-FM C	1	2	-	1
WEBB B	3	2	2	2
WFBR R	5	6	3	5
WKTK P	8	3	5	5

### WORJ QUAD-CASTS

WORJ-Orlando presented a first for Central Florida, an "Evening With Heartsfield" (simulcast in SQ Matriz Quad). They tied in with a local TV station for the picture. Response was so great they have now planned a series of Quad-casts, according to **PD Lee Arnold**.

# THE FCC

(So You Can Understand It)

## BY JASON SHRINSKY

LAW OFFICES OF STAMBLER & SHRINSKY

### REPORT ON RECENT (OCTOBER) FCC DEVELOPMENTS

—Continued from last week—

C. Station WQXX (McAllen, Tx.) was fined \$2,000 for failure to notify FCC of its intention to conduct equipment tests and commencing program tests without FCC authority.

D. The FCC fined Station WCCO (Minneapolis) \$1,000 for failure to properly identify a program sponsor. The statement "This is Jack Douglas speaking from the Minnesota School Board Association" was held to be inadequate as not indicating that the Association sponsored or paid for it.

E. FCC unusually reduced a \$1,000 fine on KLAS-TV (Las Vegas) to \$500 because although it failed to provide equal time, it has previously requested complainant to purchase time well in advance of the election so as to avoid scheduling problems.

F. The FCC reaffirmed an \$800 fine against Station WKSJ (Deadwood, S.D.) for its failure to operate with its authorized power during pre- sunrise hours, even though it was entitled to the higher power but didn't apply for it (which it argued was due to his lack of knowledge.)

### ACTION OF NOVEMBER 13

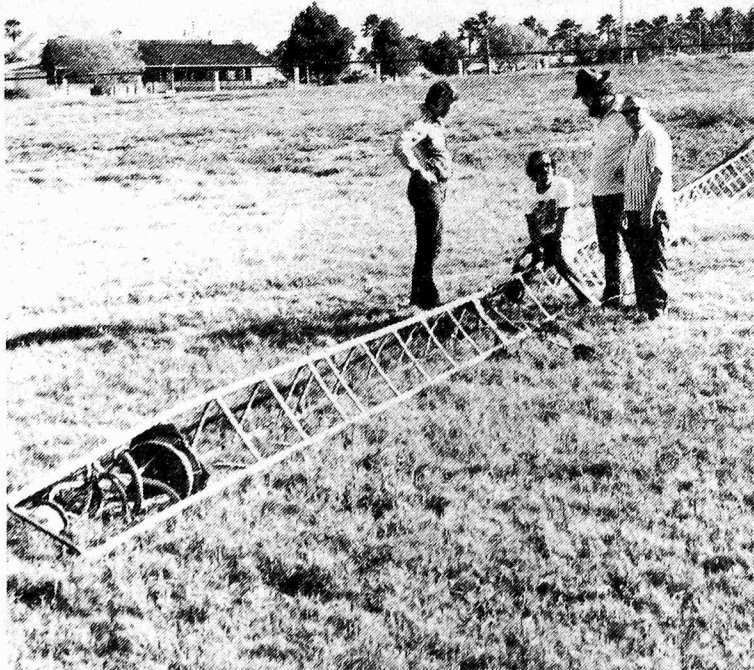
WSJS, WINSTON-SALEM, N.C., TRIANGLE BROADCASTING CORPORATION. As the result of an inspection by a member of the Norfolk office of the Field Operations Bureau, notified the licensee that it has incurred an apparent liability for forfeiture in the amount of \$1,000 for willful or repeated violation of Section 73.52(a) or 73.111 of the Commission's rules by operating with an antenna input power in excess of that authorized or by making incorrect entries in the log.

### ACTIONS OF NOVEMBER 14

KDON, SALINAS, CALIF., FORREST CAL-CENTRAL CORPORATION. As the result of an inspection by a member of the San Francisco, California office of the Field Operations Bureau, notified the licensee that it has incurred an apparent liability for forfeiture in the amount of \$1,000 for willful or repeated violation of Sections 73.52(a) and 73.111(a) of the Commission's Rules by failing to operate with authorized power and by failing to have an operator signed on duty in the operating logs.

WNEW-FM, NEW YORK, N.Y., METROMEDIA, INC. As the result of an inspection by a member of the New York office of the Field Operations Bureau, notified the licensee that it has incurred an apparent liability for forfeiture in the amount of \$500 for willful or repeated violation of Sections 73.265(a) and (c) of the Commission's Rules by permitting an operator not holding the proper form of license to be in charge of the transmitter.

WIFM and WIFM-FM, ELKIN, N.C., TRI-COUNTY BROADCASTING, INC. As the result of an inspection by a member of the Norfolk office of the Commission's Field Operations Bureau, notified the licensee that it has incurred an apparent liability for forfeiture in the amount of \$750 for willful or repeated violation of Sections 73.267(b)(1) and 73.52(a) of the Commission's Rules by operating the stations with power in excess of that authorized.



Bill Moffit, Jimi Fox, Shotgun Tom, and engineer George Dimel check out the felled "Q" tower. See story above.



PURPLE TO THE PEOPLE: Deep Purple's Jon Lord (left) and Glenn Hughes (right) are shown during an interview for the NBC Radio Network's Super Rock Show with Don Imus. Lord and Hughes spoke about their just released Warner Bros. album "Stormbringer."

## Radio & Records

BOB WILSON  
PUBLISHER

MARK SHIPPER  
EDITOR

DICK KRIZMAN  
AD DIRECTOR

CANDY TUSKEN  
ASSOCIATE EDITOR

LINDA GOETTSCHE  
ASSOCIATE EDITOR

JIM DUNCAN  
COUNTRY EDITOR

MARJIE ARNOLD  
SUBSCRIPTIONS

MIKE KASABO  
POP/MOR EDITOR

MIKE HARRISON  
FM ROCK

JASON SHRINSKY  
FCC ADVISOR

BIFF COLLIE  
NASHVILLE EDITOR

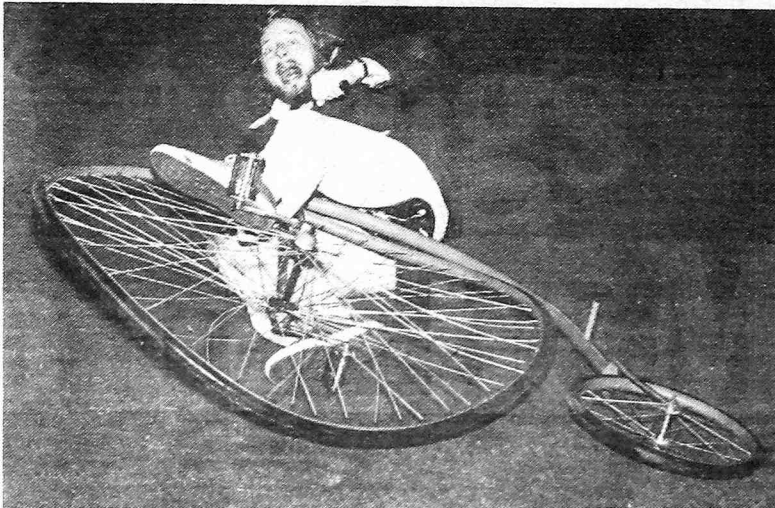
GRAPHICS:  
Sun Flair

San Fernando, Calif

RADIO & RECORDS is published every Friday by Radio & Records, Inc. 6430 Sunset Blvd., Suite 1221, Hollywood, CA 90028, 213-466-1605. Subscriptions \$130 per year or \$35 per quarter. No portion of this publication may be reprinted without the written permission of the publisher. Copyright © 1974, RADIO & RECORDS, INC.



# RADIO



In the August 2 issue of R&R, we showed you Ralph Cole of KLIV, who broke both arms riding the 7-Up "Boogie Bike." Above is Bobby Rich of KFMB-San Diego, who did not suffer serious injuries when he took his spill. (He did, however, suffer third degree humiliation, as it happened on the 40-yard line of San Diego Stadium before a crowd of 30,000!).

**LETTERS:**

## "When You Got Nuthin To Say . . . Shaddup!"

Dear R&R

I read two articles in the most recent issue of RADIO & RECORDS and for the first time in my life I felt moved to reply ... here goes.

"Fallacy of Misplaced Concreteness" by Mr. Pittman was glaring with dubious comparisons. There are at least six different ways to interpret "concreteness," though his was the hardest. However, when used in conjunction with "empiricism" the meaning is narrowed. In the abstract of existence, concreteness has no relation to empiricism. Mr. Pittman's article did follow the doctrine philosophy of empiricism, utter generalities.

The article begins with reference to a "...record that was out a few years ago..." and then "Let It Ride" by B.T.O. is used as a comparison factor. This record isn't even a year old, which narrows its categories.

As tempo goes Mr. Pittman makes fleeting reference to psychographics and demographics. I have yet to find a situation in research where the former could be applied without the latter.

After reading the article once, I was so confused I read it again, then a third time, then a fourth time. I was trying to figure out who this article was meant for. Could it be for people like Bill Drake, or Paul Drew, or Bob Wilson, or Bryan McIntyre? Naa, couldn't be them, guys like them have they're shit so together it's scary. How about FM Programmers? Nope, they're super together, too.

I'm afraid the article was meant for dummies like me who'll take the time to read and re-read, trying to learn a little. Damned little is what I learned.

I was reminded of an old rule Bill Drake told a lot of us who used to work for him. It concerns communication, Mr. Pittman, and I'll paraphrase it for you, "...when you got nuthin' to say ... shaddap!!!!

The only point to the article I could find was ... keep an open mind. For this I thank you, and I'll thank you to say it in one-third the space and time ... next time.

The other article that griped me was by Steve Casey, "Music

Research - Variations on a Theme." This article was by declaration pointed at "neophyte music directors."

The only place I've seen the 6 percent quoted, related to request tabulations, was in your article, Mr. Casey. I'd like to know where you got that bit of info. I'm sure Mr. Wilson would print much needed information like that.

Single sales tabulations are as valid as you make them. When you find discrepancies, ask questions and find out why. Here's a tip for you new music directors ... if you print a weekly survey that is sent to the local stores, watch for it to be read back to you.

I've got a flash for you, Mr. Casey ... very damn few stations use computers to do their logs. A lot of us involved in Marketing and Psychological Research use an old gimmick called "elbow grease" and "midnight oil" to get the work done.

To you new music directors, it doesn't matter what your competitive situation is; work hard and do all the research that is possible, even though you may work for a well known program director or consultant. RESEARCH does not mean that you are going to find a new format or rotation and get rich and famous. If your research only makes you feel more positive about what you are doing, then you've accomplished one hell of a lot.

I've worked for Bill Drake and Paul Drew, and if you think they got where they are by not listening or working hard, you're nuts. When you have valid information and tested research procedures, tell your P.D. or consultant. Don't expect them to fall to the ground in total amazement and declare you the next genius; chances are they are aware of what you are saying and doing.

But, they will also be aware that you aren't sitting on your ass letting them do it all. They'll respect you for your effort and in time, if what you are doing is valid, you'll find yourself gaining more control over your competitive situation.

Sincerely,  
Stew Robb  
Program Director  
WVOV-Huntsville

.. Concerts may never be the same again, once Direct Video Corporation gets into the act. The company has developed a new closed-circuit system especially for rock concerts which, in addition to a distortion-free, concert quality sound system and high fidelity picture quality, has features that the company hopes will finally bridge the reality gap between live and recorded performance.

DVC's system gives each ticket holder a front row seat. They use a 75 ft. screen, specially adapted TV cameras with three times the fidelity of normal TV and sound which is encoded to avoid distortion before being transmitted over AT&T lines.

One of the most interesting features is what DVC calls its "Live Connection" system, which sets up video monitors for the performers so that they can see the audience reaction in each of the cities the closed circuit concert is broadcast, and in turn react to it, thereby enhancing the performer-audience relationship.

Perhaps the strongest selling point for DVC is that smaller cities-which rarely get to see superstars live-will now be able to. Plus acts that don't like to tour will no longer have to. They can perform in one concert hall and be seen nationally.



WCAO-Baltimore is running a hot air balloon promotion. The captain is going under the name of Professor Lighthouse. Shown with the Professor is PD Ron Riley.



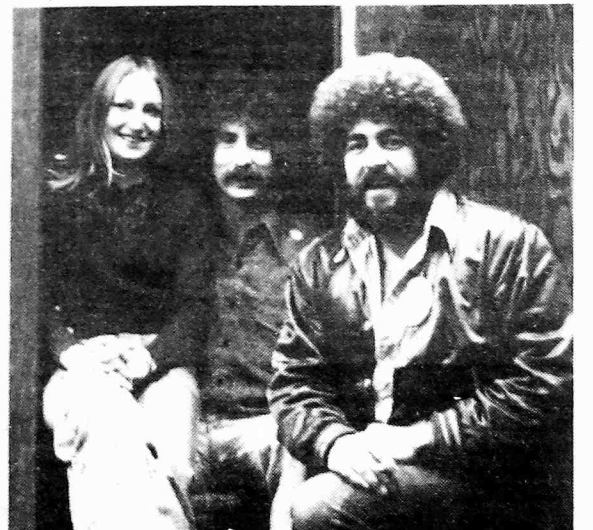
Ringo Starr stopped by KHJ-Los Angeles last week to be a guest jock on the Billy Pearl show. Pictured left to right are Billy Pearl 6-10pm, Ringo, Gerry Peterson, KHJ PD.



Above is the KDES-Palm Springs staff at their 18th birthday celebration which took place at a local park and included a live broadcast, bands, and free food for all who stopped by.



Michael St. John of WERC-Birmingham is coaching a "75 lb. Football Team" Michael calls it "sork of a Jock in the Community" bit. The team has so far posted a 7-2 mark. That's St. John (standing) in back of the kids.



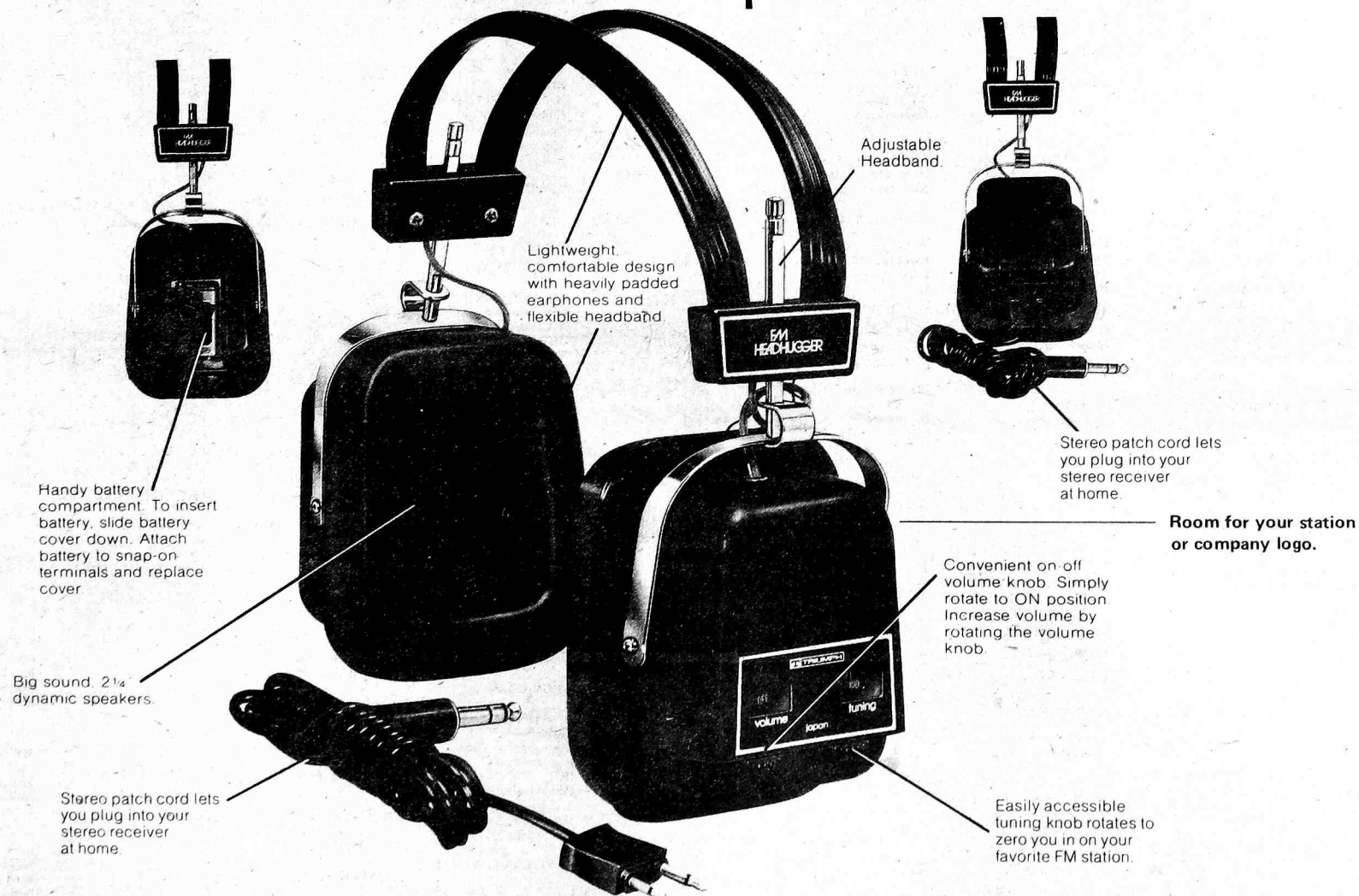
KKXL-Grand Forks put their jocks in a coffin for a Halloween promotion. Listeners were to guess which jock was currently in the coffin at the time of the call. Atlantic Records joined in by giving away copies of J. Geils "Nightmares" LP. Above (from left): Contest winner, on knee of PD Mark Renier, and Atlantic promotion rep Sam Plcido.



# THE R&R BUYERS SERVICE IS HERE!

**YOU CAN'T BEAT OUR PRICE  
on Fantastic Christmas Gift  
Items for Clients or Audience Giveaways**

## FM Headhugger Combo... Private Headset Radio & Stereo Headphones



**WHETHER YOU BUY 6 OR 96, PRICE ALWAYS STAYS SUPER LOW**

**RETAIL: \$40.00 WHOLESALE: \$27.00**

**R&R: \$17.00** Minimum Order: 6

**AVAILABLE WITH AM ONLY: \$13.50**

**INCLUDES PRE-PAID DELIVERY**

**ORDER SHIPPED WITHIN 72 HOURS OF RECEIPT**

**CALL R&R --(213) 466-1605 FOR ORDERING DETAILS**

**OFFER OPEN TO ALL R&R SUBSCRIBERS**



THE HOTTEST:

HELEN REDDY
PAUL MCCARTNEY
BARRY WHITE
ELTON JOHN
JETHRO TULL

added this week...

Most added
BARRY MANILOW
GLORIA GAYNOR
CARPENTERS
ELTON JOHN
NEIL SEDAKA
STEVIE WONDER

PARALLEL 1

13Q/PITTSBURGH
Doobie Bros
Paul McCartney
Barry White
Neil Sedaka
Eagles
HOT
Helen Reddy 19-7
Elton John 23-10
Barry Manilow 31-20
KSTP/ST. PAUL
Neil Sedaka
Elvis Presley
J. Geils
Stevie Wonder
Doobie Bros.
Reunion (readd)
Elton John
George Harrison
Gloria Gaynor
HOT
Harry Chapin 5-2
Ringo Starr debut 13
Alba 23-15
WPGC/WASHINGTON D.C.
Stevie Wonder
Barry Manilow
J. Geils
Ringo Starr
Elton John
HOT
Paul McCartney 11-5
Love Untold. 20-13
Barry White debut 15
Rolling Stones 22-17
WPIX/NEW YORK
Billy Joel
Stevie Wonder
Barry Manilow
Rufus
Gloria Gaynor
HOT
Barry White 8-1
The Joneses 14-10
Billy Swan 20-12
Paul McCartney debut 14
Disco-Tex debut 19
KQV/PITTSBURGH
Skyliners
Styx
Carpenters
HOT
Kiki Dee 16-7
B.T. Express 15-8
Helen Reddy 23-9
Barry White 22-15
KDWB/MINNEAPOLIS
Helen Reddy
Paul McCartney
Neil Sedaka
HOT
Elton John 28-3
Doobie Bros. 18-8
Three Degrees 27-10
Jethro Tull 21-12
WLS/CHICAGO
Al Green
Styx (nite)
HOT
Harry Chapin 7-2
Helen Reddy 11-7
Paul McCartney 14-10
Z93/ATLANTA
Stevie Wonder
Splinter
Gloria Gaynor
Barry Manilow
Donny & Marie Osmond
HOT
Harry Chapin 19-6
Elvis Presley 20-7
Shirley Brown 18-14
WDRQ/DETROIT
Helen Reddy
Paul McCartney
Neil Sedaka
HOT
Stevie Wonder 17-11
Elton John 25-14
Jethro Tull 23-18
KKDJ/LOS ANGELES
Jethro Tull
Paul Davis
HOT
Helen Reddy 17-8
Harry Chapin 19-10
Disco-Tex 14-11
Elton John debut 14
KLIF/DALLAS
None
HOT
Three Degrees 6-1
Helen Reddy 20-10

PARALLEL 2

WFOV/PHILADELPHIA
Neil Sedaka
Grand Funk
Rufus
Disco-Tex
HOT
Carl Carlton 19-13
Kiki Dee 24-18
Carpenters 26-19
WRC/WASHINGTON D.C.
Guess Who
Barry Manilow
Neil Sedaka
Pointer Sisters
Linda Ronstadt
Righteous Bros.
Gladys Knight & Pips
Lynyrd Skynyrd (nite)
HOT
Carl Douglas 12-4
Paul McCartney 11-6
Helen Reddy 18-12
Neil Sedaka debut 15
K100/LOS ANGELES
Mac Davis
Eric Clapton
J. Geils
Gladys Knight & Pips
HOT
Ringo Starr 23-12
Neil Sedaka 25-13
Carpenters 26-18
WQXI/ATLANTA
Stevie Wonder
Barry Manilow
Ohio Players
David Bowie
HOT
Rufus 10-7
Sunny Johns 14-10
KSLQ/ST. LOUIS
HOT
Stevie Wonder 23-7
Barry White 20-10
Elton John 24-18
WABC/NEW YORK
None
HOT
HOT
Carl Douglas 12-4
Harry Chapin 21-13
KFRC/SAN FRANCISCO
Rufus
Barry Manilow
HOT
Helen Reddy 16-10
Harry Chapin 22-15
Jethro Tull 24-16
Paul McCartney 27-19
KHJ/LOS ANGELES
Rufus
Neil Sedaka
HOT
Ringo Starr 26-18
Elton John 27-20
Stevie Wonder 29-21
CKLW/DETROIT
Billy Preston
Neil Sedaka
A Foot in Cold Water
HOT
Harry Chapin 12-9
Kiki Dee debut 16
Anka/Coates 23-17
Elton John debut 18
99X/NEW YORK
Paul McCartney
Helen Reddy
Disco-Tex
Chicago
HOT
McCartney add 17
Stevie Wonder 20-11
Kiki Dee 16-12
WRKO/BOSTON
Ringo Starr
Barry Manilow
HOT
Gloria Gaynor 17-11
Barry White 25-19
Carol Douglas 30-20
WIFE/INDIANAPOLIS
Barry White
Elton John
Stylists
Mike Allen
Eric Clapton
HOT
HOT
Carl Douglas 16-9
Aerosmith 20-11
B.T. Express 22-14

PARALLEL 2

WKBW/BUFFALO
Kiki Dee
Neil Sedaka
Rufus
HOT
Hudson Bros 15-6
Barry White 23-10
Michael Holm 28-17
Elton John 30-20
WVOV/HUNTSVILLE
Carl Douglas
Carpenters
Carl Graves
Neil Sedaka
Gary Bonner
Kathy Dalton
George Harrison
Ringo Starr
HOT
Barry White 12-4
Paul McCartney 17-11
WGRQ/BUFFALO
Carol Douglas
Carpenters
Cher
HOT
Paul McCartney 16-11
Helen Reddy 23-15
Elton John debut 20
WDXR/PADUCAH
Gloria Gaynor
Carpenters
Neil Sedaka
HOT
Pointer Sisters 13-6
Al Green 14-8
George Harrison 23-14
Elton John 29-19
Y100/MIAMI
Ringo Starr
Gloria Gaynor
HOT
Paul McCartney 11-7
Elton John 20-12
Ringo Starr add 20
WGRD/GRAND RAPIDS
Rolling Stones
Elton John
Paul McCartney
HOT
HOT
Carl Douglas 5-1
Harry Chapin 16-7
Paul McCartney 22-15
Elton John add 16
Jethro Tull 29-18
WYRE/ANNAPOLIS
Righteous Bros
Guess Who
Brownsville Station
Elton John
Carpenters
HOT
Paul McCartney 16-10
Barry White 21-17
Rolling Stones 25-19
Barry Manilow 30-22
WYND/SARASOTA
Jethro Tull
Carpenters
HOT
Three Degrees 9-2
Carl Carlton 17-11
Paul McCartney 21-13
Paul Davis 20-14
Kiki Dee 24-15
KTKT/TUCSON
Barry Manilow
J. Geils
Doobie Bros
HOT
Three Degrees 11-4
Jethro Tull 16-10
Barry White 22-15
WSGA/SAVANNAH
Paul McCartney "Sally G"
Rufus
Elvis Presley
Lynyrd Skynyrd
Gloria Gaynor
Barry Manilow
Roy Rogers
HOT
HOT
Elton John 27-9
Bobby Vinton 14-10
WNOV/NORFOLK
J. Geils
Stevie Wonder
Carpenters
Heywoods
HOT
HOT
Helen Reddy 9-5
Carl Douglas 18-8
Bobby Vinton 22-11

PARALLEL 2

WCAO/BALTIMORE
Elvis Presley
Gloria Gaynor
Cat Stevens
Eagles
HOT
Barry White 14-9
Rolling Stones 21-16
Neil Sedaka 24-17
Stevie Wonder 27-20
WRIE/ERIE
Jethro Tull
Carl Graves
Michael Holm
Linda Ronstadt
HOT
John Denver 16-6
Carl Douglas 15-8
Maureen McGovern 37-9
Prelude 20-13
Hudson Bros 23-18
KEZY/ANAHEIM
Stevie Wonder
Disco-Tex
Barry White
HOT
Carl Douglas 15-7
Harry Chapin 16-9
Kiki Dee 18-10
XROK/EL PASO
Rufus
Carl Douglas
Harry Chapin
HOT
Shirley Brown 12-7
Paul McCartney 13-11
Neil Diamond 17-13
KIOA/DES MOINES
Doobie Bros
Neil Sedaka
Carpenters
Donny & Marie Osmond
HOT
Carl Douglas 7-1
Chicago 13-6
Ringo Starr 19-10
Paul Davis 21-15
KRSP/SALT LAKE CITY
Elvis Presley
B.T. Express
Gloria Gaynor
HOT
Prelude 11-7
Heywoods 14-8
Barry Manilow 24-16
Ringo Starr 23-18
KBEO/KANSAS CITY
Barry White
Anka/Coates
HOT
Helen Reddy 12-5
Rufus 20-13
Hues Corp 24-17
Elton John 28-18
George Harrison 29-19
KLEO/WICHITA
Ringo Starr
Rufus
Jethro Tull
HOT
Helen Reddy 19-10
Paul McCartney 16-11
B.T. Express 24-14
Chicago 26-19
Carpenters 30-21
KSEA/SAN DIEGO
Stevie Wonder
Carpenters
HOT
HOT
Helen Reddy 13-8
Paul McCartney 18-13
Neil Sedaka 20-14
KYNO/FRESNO
Mac Davis
Gladys Knight & Pips
J. Geils
Stevie Wonder
HOT
HOT
Barry White 14-5
Jethro Tull 15-9
Paul McCartney 16-10
WLAC/NASHVILLE
Shirley Brown
Neil Sedaka
Gloria Gaynor
HOT
HOT
Barry White 11-6
Jethro Tull debut 15
WHBQ/MEMPHIS
Staple Singers
Ringo Starr

PARALLEL 3

WVAV/NEW HAVEN
Not Available
HOT
Barry White 17-8
Jethro Tull 18-12
Harry Chapin 23-14
America 22-16
KAKC/TULSA
Paul Davis
Gloria Gaynor
Rufus
HOT
Carl Douglas 9-1
Helen Reddy 12-6
Paul McCartney 14-8
John Denver 17-11
WSAI/CINCINNATI
Elton John
Joe Cocker
Eagles
Jethro Tull
HOT
Neil Diamond 14-6
Hudson Bros 20-15
Neil Sedaka 28-18
WQNG/PROVIDENCE
Rufus
Stevie Wonder
Anka/Coates
HOT
Harry Chapin 14-7
Barry White 17-11
B.T. Express 24-16
Jethro Tull 23-18
KTLK/DENVER
Righteous Bros
Linda Ronstadt
Elton John
"One Day at a Time"
Grand Funk
HOT
Sugarloaf 16-9
Jethro Tull 23-16
Elton John
(both sides) 37-20
KFMG/DES MOINES
Paul Davis
Barry White
Barry Manilow
ELO
Doobie Bros
HOT
Jethro Tull 22-12
Righteous Bros 30-13
Ringo Starr 27-16
Elton John (both sides)
WVRO/ROANOKE
Carol Douglas
David Bowie
Average White Band
Brownsville Station
HOT
HOT
Carl Douglas 20-5
Stevie Wonder 21-9
WKLO/LOUISVILLE
Hagers
Average White Band
Brownsville Station
HOT
HOT
Carl Douglas 20-5
Stevie Wonder 21-9
WVRO/ROANOKE
Carol Douglas
David Bowie
Average White Band
Brownsville Station
HOT
HOT
Carl Douglas 20-5
Stevie Wonder 21-9
KKXL/GRAND FORKS
Billy Joel
David Bowie
David Essex
Carl Graves
Lynyrd Skynyrd
Deep Purple
Gloria Gaynor
Heywoods
Barry Manilow
HOT
Guess Who 26-9
Eric Clapton 22-10
Kiki Dee 24-12
Rufus 27-15
CHUM/TORONTO
Stevie Wonder
Helen Reddy
Donny & Marie Osmond
Ringo Starr
Carpenters
Wednesday
Charity Brown
HOT
HOT
Carl Douglas 22-9
Kiki Dee 15-10
Anka/Coates 26-18
KQWB/FARGO
Heywoods
Elton John
Mac Davis
Donny & Marie Osmonds
Cat Stevens
HOT
HOT
Neil Sedaka 20-14
Barry White 35-26
Barry Manilow 39-28
WGH/NORFOLK
J. Geils
Jethro Tull
Elton John
Carpenters
Lynyrd Skynyrd
Heywoods
Ide & Tina Turner
J. Geils
HOT
HOT
Carl Douglas 10-3
Anka/Coates 13-7
Rufus 20-13
Paul McCartney 23-15
Barry White 27-16
Neil Sedaka 29-19
WCOL/COLUMBUS
Billy Joel
Cat Stevens
ELO
Peter Shelley
HOT
Anka/Coates 17-9
Stevie Wonder 18-10
Barry White 27-13
J. Geils 24-16
WQNZ/NATCHEZ
Carpenters
Rolling Stones
Elton John
Gloria Gaynor
HOT
Helen Reddy 18-13
Harry Chapin 23-17
WAKY/LOUISVILLE
Elton John
Neil Sedaka
Carpenters
HOT
HOT
Helen Reddy 22-10
Ringo Starr 23-13
George Harrison 30-23
KAFY/BAKERSFIELD
Jethro Tull
Heywoods
Gloria Gaynor
J. Geils
HOT
HOT
B.T. Express 15-8
Rolling Stones 23-16
Pointer Sisters 24-17
WMAK/NASHVILLE
Barry Manilow
Linda Ronstadt
Carpenters
Gladys Knight & Pips
Elton John
HOT
HOT
Paul Davis 13-6
Elvis Presley 16-11
Neil Sedaka 20-16
KING/SEATTLE
Barry White
Mac Davis
HOT
HOT
Helen Reddy 14-7
Neil Sedaka 17-11
WIBG/PHILADELPHIA
Stevie Wonder
Eagles
Carol Douglas
HOT
HOT
Barry White 18-10
Carpenters 23-13
Jethro Tull 26-19
WCFL/CHICAGO
Neil Sedaka
HOT
HOT
Billy Swan 17-10
B.T. Express 20-14
KKAM/PUEBLO
Elvis Presley
HOT
HOT
Sugarloaf 22-17
Barry Manilow 25-19
WMC FM/MEMPHIS
Gladys Knight & Pips
Ringo Starr
George Harrison
Billy Joel
Little Feat
HOT
HOT
Paul McCartney 14-8
Barry Vinton 15-9
Barry Manilow 18-10

PARALLEL 3

WVLY/LEXINGTON
Carpenters
Donny & Marie Osmond
Al Green
Stevie Wonder
HOT
Shirley Brown 5-1
Latimore 20-13
Neil Sedaka 28-17
WERC/BIRMINGHAM
Barry Manilow
Guess Who
Gloria Gaynor
HOT
HOT
Paul McCartney "Sally G" 20-8
Jethro Tull 22-16
Anka & David Williams 28-20
WBGW/BOWLING GREEN
Fallenrock
Elvis Presley
Stevie Wonder
Tony Orlando & Dawn
Gloria Gaynor
Shirley Brown
J. Geils
HOT
HOT
Barry White 18-10
Love Untld. 21-14
Helen Reddy 27-19
KIMN/DENVER
David Bowie
Mac Davis
Rolling Stones
HOT
Barry Manilow 20-7
Sugarloaf 13-8
Helen Reddy 21-15
Stevie Wonder 25-16
WRFC/ATHENS
James & Bobby Purify
J. Geils
Linda Ronstadt
HOT
HOT
Harry Chapin 12-7
Helen Reddy 17-8
Rolling Stones 24-17
WEEQ/WAYNESBORO
Cat Stevens
Barry Manilow
Carol Douglas
Eagles
Gloria Gaynor
J. Geils
HOT
HOT
Al Green 15-9
Paul McCartney 17-10
B.T. Express 23-14
Neil Sedaka 22-15
Ringo Starr 28-16
WISM/MADISON
Rufus
Neil Sedaka
Gloria Gaynor
J. Geils
HOT
HOT
Helen Reddy 12-8
Barry White 20-13
Paul McCartney 21-14
Stevie Wonder 24-19
KREM/SPOKANE
Jethro Tull
Linda Ronstadt
Tim Moore
Eagles
Elton John
HOT
HOT
B.T. Express debut 16
Barry Manilow debut 19
WVLY/LEXINGTON
Carpenters
Donny & Marie Osmond
Al Green
Stevie Wonder
HOT
Shirley Brown 5-1
Latimore 20-13
Neil Sedaka 28-17
WERC/BIRMINGHAM
Barry Manilow
Guess Who
Gloria Gaynor
HOT
HOT
Paul McCartney "Sally G" 20-8
Jethro Tull 22-16
Anka & David Williams 28-20
WBGW/BOWLING GREEN
Fallenrock
Elvis Presley
Stevie Wonder
Tony Orlando & Dawn
Gloria Gaynor
Shirley Brown
J. Geils
HOT
HOT
Barry White 18-10
Love Untld. 21-14
Helen Reddy 27-19
KIMN/DENVER
David Bowie
Mac Davis
Rolling Stones
HOT
Barry Manilow 20-7
Sugarloaf 13-8
Helen Reddy 21-15
Stevie Wonder 25-16
WRFC/ATHENS
James & Bobby Purify
J. Geils
Linda Ronstadt
HOT
HOT
Harry Chapin 12-7
Helen Reddy 17-8
Rolling Stones 24-17
WEEQ/WAYNESBORO
Cat Stevens
Barry Manilow
Carol Douglas
Eagles
Gloria Gaynor
J. Geils
HOT
HOT
Al Green 15-9
Paul McCartney 17-10
B.T. Express 23-14
Neil Sedaka 22-15
Ringo Starr 28-16
WISM/MADISON
Rufus
Neil Sedaka
Gloria Gaynor
J. Geils
HOT
HOT
Helen Reddy 12-8
Barry White 20-13
Paul McCartney 21-14
Stevie Wonder 24-19
KREM/SPOKANE
Jethro Tull
Linda Ronstadt
Tim Moore
Eagles
Elton John
HOT
HOT
B.T. Express debut 16
Barry Manilow debut 19
Z96/GRAND RAPIDS
Barry White
David Bowie
B.T. Express
HOT
HOT
Helen Reddy 13-8
Paul Davis 21-16
Neil Sedaka 30-24



**WE ARE THE ONLY RECORD LABEL  
WHO CAN AFFORD TO SAY THIS.**

U. K. RECORDS INC.  
SUITE 311  
315 WEST 57TH STREET  
NEW YORK, N. Y. 10019  
(212) 581-7577

Now

Dear P.D / M.D

Please Listen to all  
versions of "Rock & Roll -  
I gave you the best years of  
my life" before deciding which  
one to programme

Best wishes

U. K. Records

**The original version by Kevin Johnson has been covered by two major  
artistes. We believe it's a personal song best and most sincerely ex-  
pressed by the writer himself. Please make your own choice, but if  
you can, listen to all 3 records first.**

**\*P.S. Thanks for "Beach Baby" and thanks for your fast growing support for  
"Dreams are Ten a Penny."**





# ALBUMS

Mike Harrison/Editor

## Radio & Records November 29, 1974

## FM ROCK RADIO

BY MIKE HARRISON

A song reaches its peak when it is familiar enough for the listener to excitedly anticipate its hook and substance without reaching the point of boredom or irritation. Sort of like returning to a good restaurant, vacation place or seeing a friend.

The relationship between a tune and the public can be looked at as classic romanticism. There is the courting period, a period of anticipation. There is perhaps a degree of infatuation. Then there is the familiar, a time of comfort. Finally fickle disinterest, annoyance and separation. Or a long lasting meaningful relationship.

To go further using this as an analogy, you can really find some startling parallels when it comes to oldies programming. For example, why do some records make it back to the charts years after they've had their first run? Why are some totally forgotten? Why are some mainstays of the back-up library that you hear often on just about every station for years and years?

Taking all these questions and factors in hand and picking up on last week's discussion, the skilled broadcaster can draw the most from the listener's emotional response to music for skilled use of the music sweep (set.) The proper placing of musical elements based upon who will respond and how, can be compared to the way food is laid out on a plate, the order in which the courses come and the manner in which the waiter (DJ) serves it.

A fine restaurant and a greasy spoon can share the same kitchen but no one has to know. People pay for the psychological difference. After all in the end it's all a bunch of shit -- so give 'em a good time.

### LETTERS:

### No Diary Credit For Less Than Five Minutes

Dear Mike: I found your comments on Bob Paiva's fine article on radio contests quite provocative in that they offered an alternative viewpoint.

However, there is one fact that your readers should be aware of. ARB does not credit a diary entry for a listening period of less than five minutes. Consequently, your readers should be aware that it is not more effective (as you suggested) to get a person to listen for two minutes in three different time periods, than for five minutes in one time period. That five minutes within any quarter hour wins the station the entire quarter hour. Two minutes listening in any quarter hour gets the station zero points.

Sincerely,  
Don Hofmann  
Program Director  
KVI-Seattle

The Radio & Records  
24 Hour Classified  
Hotline:  
(213) 466-2248

The R & R Album Chart is based on a combination of play, requests, & retail sales.

LW:	Rank	Artist	Album	Label	Notes
	1	1	ROLLING STONES	It's Only Rock 'N Roll (Rolling Stones)	"Beg," "If You Can't," "Sister" all strong.
	2	2	JETHRO TULL	Warchild (Chrysalis)	"Hurrah" leads pack, "Jungle" huge.
	9	3	NEIL DIAMOND	Serenade (Columbia)	Single is hot.
	3	4	JOHN LENNON	Walls & Bridges (Apple)	Take your pick.
	4	5	JIM CROCE	Greatest Hits (ABC)	His greatest hits.
	10	6	DAVID BOWIE	Live (RCA)	Old "Changes" out as single. Album strong.
	7	7	LOU REED	Sally Can't Dance (RCA)	Title track.
	6	8	CHEECH & CHONG	Wedding Album (Ode)	"Black Lassie".
	5	9	AMERICA	Holiday (WB)	"Lonely People" next biggie.
	11	10	ROD STEWART	Smiler (Mercury)	Everything strong. "Farewell."
	8	11	TRAFFIC	When The Eagle Flies (Asylum/Island)	"Something New."
	12	12	THE WHO	Odds & Sods (MCA)	"Photograph" single.
	20	13	JACKSON FIVE	Dancing Machine (Motown)	Single very hot, getting progressive play.
	21	14	JACKSON BROWNE	Late For The Sky (Asylum)	"The Road and The Sky".
	19	15	NEKTAR	Remember The Future (Sire)	Single is excellent.
	16	16	ELO	Eldorado (UA)	"Head" getting strong requests.
	14	17	CAROLE KING	Wrap Around Joy (Ode)	Waiting for new single.
	15	18	BACHMAN-TURNER	Not Fragile (Mercury)	Still a strong album.
	25	19	HARRY CHAPIN	Verities & Balderdadh (Elektra)	"Cat's In The Cradle."
	18	20	PAUL ANKA	Anka (UA)	"One Woman Man" is the single.
	17	21	CSNY	So Far (Atlantic)	Their greatest hits.
	22	22	BARRY WHITE	Can't Get Enough (20th Century)	"My Everything."
	13	23	ALICE COOPER	Greatest Hits (WB)	Their greatest hits.
	24	24	DAVE MASON	Dave Mason (Columbia)	"Watchtower" and "Bring It On Home To Me."
	-	25	JEFFERSON STARSHIP	Dragonfly (Grunt)	"Ride The Tiger."
	23	26	ANDY KIM	Andy Kim (Capitol)	Single is hot.
	28	27	FRANK ZAPPA	Live (Discreet)	Zappa freaks love it.
	30	28	LOGGINS & MESSINA	Mother Lode (Columbia)	"Growin'" leads the pack.
	29	29	PHOEBE SNOW	Phoebe Snow (Shelter)	"Let The Good Times Roll."
	-	30	SANTANA	Borboletta (Columbia)	Everything excellent.

## Suggested New Product:

### MURRAY



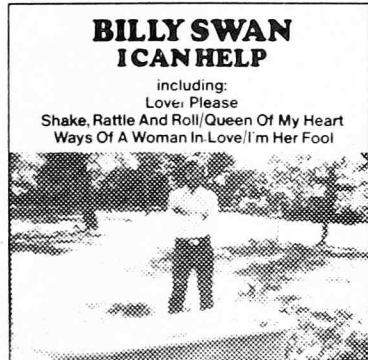
HIGHLY PRIZED POSSESSION (CAPITOL)  
Her best. Single is "Day Tripper," other cuts excellent.

### BODINE



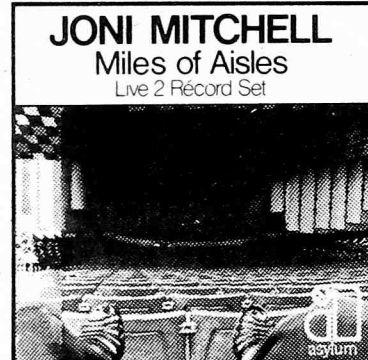
BODINE, RITA JEAN (20TH)  
Great deal of enthusiasm about this LP—a "Must-Listen."

### SWAN



BILLY SWAN I CAN HELP (MONUMENT)  
Single is number one. A very commercial album.

### MITCHELL



JONI MITCHELL MILES OF AISLES (ELEK-ASY.)  
Couple of new cuts on this live LP. "Taxi" is the single.

## COMING THROUGH:

### KOTTKE



DREAMS & ALL THAT STUFF (CAPITOL)  
He's finally made it to the major leagues. Deserves your attention.

### OHIO PLAYERS



FIRE (MERCURY)  
Doing extremely well.

### LOGGINS



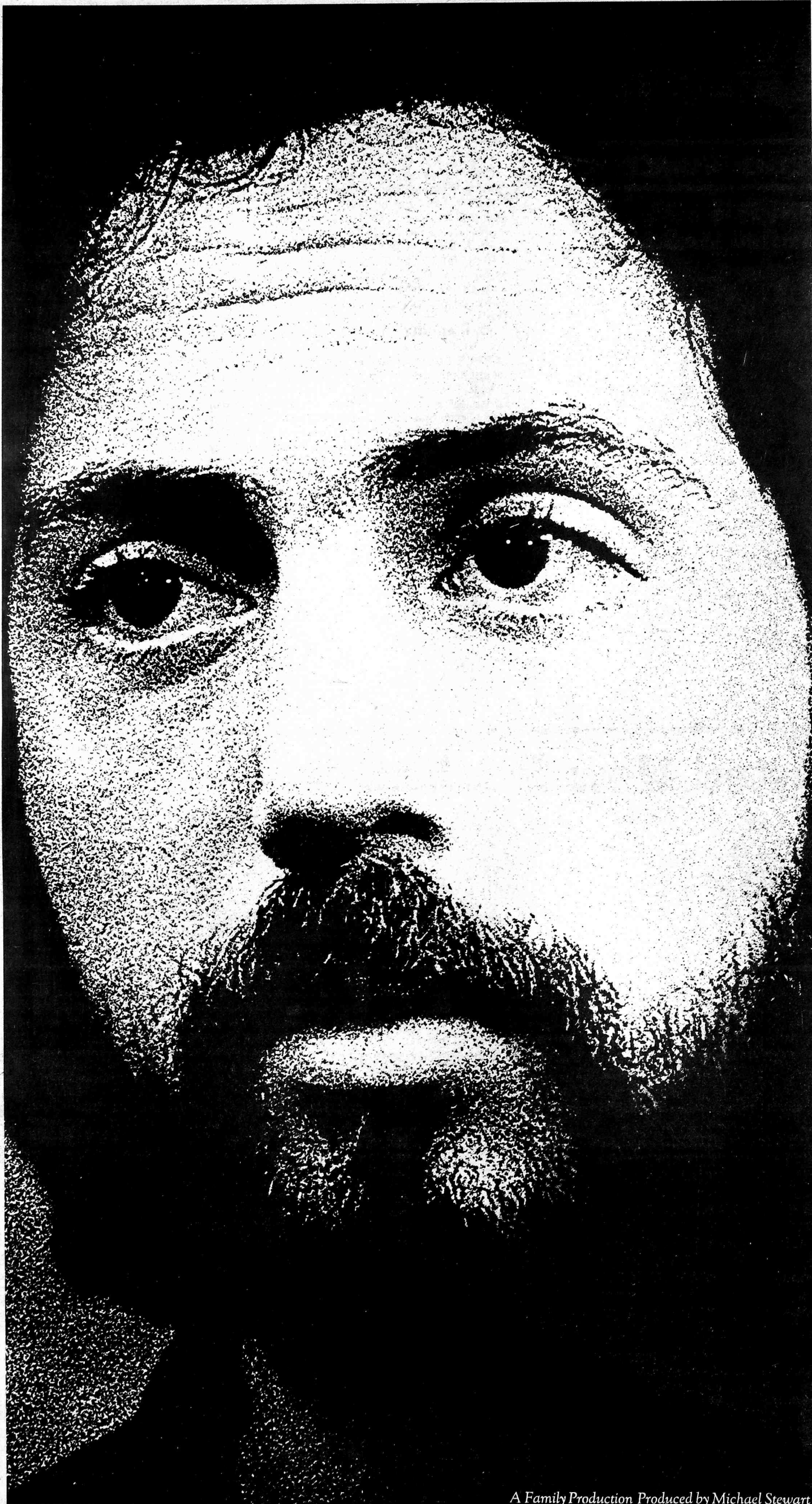
APPRENTICE (EPIC)  
Single hot.

### RINGO



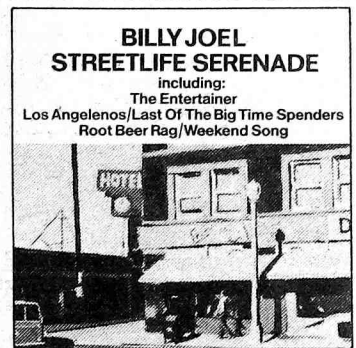
GOODNIGHT VIENNA (APPLE)  
"Snookeroo" & single getting most play so far.





Billy Joel  
is currently entertaining  
the listeners of  
WHBQ Memphis,  
KCPX Salt Lake City,  
KXOL Fort Worth,  
WMPS Memphis,  
WGRQ Buffalo,  
WIFE Indianapolis,  
KRSP Salt Lake City,  
K-IOI San Francisco,  
KLIV San Jose,  
KTAC Tacoma,  
KAAV Little Rock,  
KEEL Shreveport,  
KRLY Houston,  
WKY Oklahoma City,  
KOMA Oklahoma City,  
KJOY Stockton,  
WLCY Tampa,  
WQRK Norfolk and  
WNCI Columbus.

**Billy Joel:**  
"The Entertainer."<sup>3-10064</sup>  
The amazing smash  
single from his  
brilliant new album,  
"Streetlife Serenade."  
On Columbia Records



A Family Production Produced by Michael Stewart



© 1974 CBS Inc.

® "COLUMBIA" MARCAS REG. PRINTED IN U.S.A.



# CLASSIFIED



LONELY?--Marjie Arnold (above) gives great phone 24 hours a day on the R&R Classified Hotline. Call (213) 466-2248 anytime

## OPENINGS

**KYSN-Colorado Springs** needs first ticket Top 40 jock -- call Gregor Vaule, (303) 634-1511 (11-19)

**WDAT-Daytona Beach** needs pro jock with quality production. Send resume and tape to Dick Lange, WDAT, Box 5038, Daytona Beach, Fla. 32020. (11-21)

**WFIR-Roanoke** needs a bright young communicator to handle adult contemporary evening air shift. Good production a must. Tapes and resumes to WFIR, P.O. Box 150, Roanoke, Va. 24002. (11-18).

**KZFM-Corpus Christi** is looking for an all night lunatic -- madmen only need apply. Send tapes and resumes to Jim Allen, KZFM, 600 Bldg., Corpus Christi, Tex. 78401, or call (512) 883-3516 (11-20)

**WIVY-Jacksonville** looking for production man who will also do weekend swing shift. Should have Top 40 experience, good voice and be creative. \$200-week to start. Tape and resume to Lee Fowler, WIVY, Gulf Life Center, Jacksonville, Fla. 32207 (11-21)

**KIKX-Tucson** needs one jock, one production man, and one newsman. Contact KIKX, 4601 No. Swan Rd., Tucson, Az. 85703, or call (602) 299-9711. (11-21)

**WPEZ-Pittsburgh** needs jock, possibility of Jock, PD position. Contact Dick Booth. (11-20)

**WAXY-Ft. Lauderdale** needs one production man. Tape and resume to John Gambling, 419 S. Andrews Ave., Ft. Lauderdale, Fla. 33312 (11-18)

**KKXL-Grand Forks** looking for night time rocker. Tapes and resumes to Mark Renier, KKXL, Box 997, Grand Forks, N.D. 58201 (11-19)

**WGOW-Chattanooga** seeks strong personality jock. No "Time & Temps" need apply. No calls, tapes and resumes to Tex Meyer, WGOW, P.O. Box 4704, Chattanooga, Tenn. 37405. EOE (11-18)

**WJDX-Jackson** needs several jocks. Contact Bill Crews, WJDX, P.O. Box 2171, Jackson, Miss. 39205. (601) 982-1062 (11-19)

Secondary market PD for Top 40 station. Tapes and resumes to SRO Brd. c-o Bo Donovan, P.O. Box 1723, Bellevue, Wash. 98009. (206) 455-8124 (11-13)

Major Market jock opening. Contact SRO Broadcasting, c-o Bo Donovan, P.O. Box 1723, Bellevue, Wash. 98009 (206) 455-8124. (11-13)

**WLRS-Nashville** needs jocks immediately. Tapes and Resumes to WLRS, David St. John, 800 S. 4th St., Suite 908, Louisville, Ky. 40203. (502) 585-5178 (11-13)

**WSHE-Ft. Lauderdale** needs jocks immediately. Tapes and resumes to WSHE, Gary Granger, 3000 W. 60th Ft. Lauderdale, Fla. 33314. (305) 581-1580 (11-13)

**KSSS-Colorado Springs** needs traffic person; writing skills and production helpful Tapes and resumes to Mike Maloney, KSSS, Colorado Springs. 80901 (11-13) EOE

**KATZ-St. Louis** needs night jock, high energy, good balls, good production. Tapes and resumes only to Keith Adams, KATZ, 812 Olive, St. Louis, Mo. 61301. NO CALLS PLEASE. (11-13)

**WAXY-Ft. Lauderdale** looking for heavy production people and news people. Tapes and resumes to John Gambling, WAXY, 419 S. Andrews, Ft. Lauderdale, Fla. (11-13)

**KENO-Las Vegas** needs first class weekend and first class ticketed jocks full time and news personnel. Contact Doug Corey, KENO, P.O. Box 5367, Las Vegas, Nev. 89102. (702) 876-1460 (11-13)

## NEWSMEN & WOMEN

**WHBQ-Memphis** -- opening for a young energetic all-night news person. Contact News Director Sid Leak, WHBQ, 485 S. Highland, Memphis, Tenn. (901) 323-7661 EOE (11-18)

**WAXY-Ft. Lauderdale** needs newsmen. Tapes and resumes to John Gambling, 419 S. Andrews Ave., Ft. Lauderdale, Fla. 33313. (11-18)

**KDZA-Pueblo** needs newsperson. Tapes & resumes to Jack Carter, Box 93, Pueblo, Colo. 81002. (10-23)

**KIKX-Tucson** looking for a morning newsperson, with a strong voice and good delivery. Tapes & resumes to Chuck Dunaway, Box 5566, Tucson, Az. 85703. (10-23)

## MISCELLANEOUS

Top Quality 3M-177, 1 Mil Tape, in white boxes, on 7 inch reels. Only used once by major national syndicator. Value is \$3.75 a box, will sell for 75¢ a reel, complete with box. Call R&R, ask for Dave Nelson (213) 466-1605.

## POSITIONS SOUGHT

**DAVID BRYAN**, MD of KSSS-Colo. Springs looking in and around Kansas City, Mo., metro area. Tapes and resumes available. (303) 596-5000 (11-18)

**No. 1 Rated Personality MD** of Southern Top 30 market seeks to return home to Midwest as PD of "Q" format or contemporary MOR -- Nine years in Top 50 markets, also assistant PD experience. Contact John, (312) 664-6389. (11-19)

**RICH BRYAN**, KIKX-Tucson looking. (602) 325-4673 (11-19)

**ROBERT STEELE**, PD at WYFE-Rockford looking for move to major market as talent or PD. (815) 226-9667 (11-19)

**GREG ALLEN** of Longview, Washington available for MOR or Top 40 position as air talent. Also does production, has MD experience, etc. Call (206) 423-2159. (11-19)

**JOHN ARNOLD**, of WCHB-Detroit and WERD-Jacksonville as PD looking for job. (313) 383-6236. (11-19)

**STEVE ELLIOTT** looking for production and/or copy opening in major or upper-medium market only; currently at WIVY-Jacksonville. Call (904) 731-3096. (11-19)

Major market morning drive news communicator formerly with King Broadcasting looking for major market news gig or medium market PD position. Call person-to-person, Chris, (219) 838-7034. (11-20)

**KIM ROBERT SCOVILL** formerly a WBBY Superjock needs super job immediately. Five years experience, top quality work air and production. Tape and resume available. 4270 Golden Gate Square West, Apt. B, Columbus, Ohio 43224 or call (614) 475-4470 after 6 EST. (11-20)

Major market news and sports communicator looking to relocate. Would like major market gig or medium market news directorship. Actuality crazy -- currently employed. Call person-to-person for JOHN after 1 p.m. (414) 634-5775. (11-21)

**ALTEN BREWSTER** has third phone, looking for first break. Good production and also news. Will relocate. (213) 295-9612. (11-21)

**DENNIS ELLIOT** from WLAV looking for medium-major marketing gig or small market PD. (616) 455-0888 or (616) 456-5461. (11-21)

**JIM BARKER** former MD at KCBQ looking for PD or MD of Jock position in Medium to major market. (714) 449-6937. (11-22)

Former PD at WERD and No. 1 DJ for WCHB-Detroit. Need a gig ASAP! Call (313) 383-6236 (11-22)

**RON OLNEY**, ten years experience afternoon drive formerly with KATY-San Luis Obispo. Looking for medium to major market. (805) 992-6440. (11-22)

**BILL MONOHAN MD** at KRLD-EI Paso looking to move up to larger market and new challenges. (915) 544-8864 (11-22)

Newsman from WLEE-Richmond, **AMOS B. MOSES**, mad cooking maniac available for decent price, formerly with WDJQ-Baltimore, WHYN-Springfield, WGNG, etc. Contact (914) 337-8331, or Mike Cavanaugh, WLEE, (804) 288-2835 (11-13)

**JIM FAIRCHILD** looking for gig, news or jock. (314) 724-8838 (11-14)

**STEPHAN KAUFMAN** formerly of WHJ-Cleveland and KLAK-Denver looking for well established news operation in large or medium market. Call (303) 795-2557 or write 4421 S. Lowell Blvd., Denver, Colo. 80236 (11-12)

**MARK DENVER** from WAXY-Miami and WIBG-Philadelphia looking for medium to major market gig. Please call (305) 665-2452 (11-12)

**TERRY STEVENS** former PD with WIXY looking for PD or jock position. Call (216) 289-0218 (11-14)

**JACK ARMSTRONG** former PD WFEC and WAMS with 12 years experience wants PD, MD, Prod. Dir., or jock gig. Please phone (717) 667-2251. (11-11)

**MIKE CRAWFORD** looking for major market jock or medium market PD gig. Has worked in New Haven, Fresno, Bakersfield, and Denver. Please call (805) 832-3788 (11-11)

HELP! **JIM DINAWAY**, presently at WDAT-Daytona looking for personality morning gig or programming ASAP. Please contact at 1619 Espanola, No. 107, Holly Hill, Fla. 32017, or call (904) 677-4122. (11-11)

**CHUCK ZIMMERMAN** looking for medium or major market jock position. First phone, formerly with KAAY and KTKT. (602) 884-9687 (11-15)

**DOUG METZ** looking for sports, news, or music opportunity. First phone and play-by-play experience. Prefer small to medium California market. Call (415) 474-1154 (11-14)

**BOB KITZMILLER** currently PD at WRMA-Montgomery, looking for sportcaster spot in major market. Second only to Howard Cosell. Call (205) 264-6449. (11-12)

# CHANGES

**BWANA JOHNNY** from KJR to KXOL-Ft. Worth as PD.

**NEIL BLAZE** back to KKDJ.

**ART WALLACE** from WLOB to KIMN.

**STEVE BRODY** from WAVZ to WLOB to do middays.

**DAVE WHITE** from WKLO to News Director at WKEE-Huntington.

**CHUCK DIAMOND** from WKLO to KATZ-St. Louis.

**BOB BISON** and **BILL FLYNN** leaving WJBQ. **DINO DEL GALLO** from WPGC

doing nights at WJBQ. **ROCCO** from 99X to WJBQ.

**DAVID PERKINS** from WQNZ-Natchez to WJDX-Jackson as air talent.

**CARL DAVIS** to 15Q to do weekends.

**KSLY-Spokane** new lineup:

"The Lyon's Den" with Joe Lyons 5-10 a.m.

Old Gold with Bob Summers 10-3 p.m.

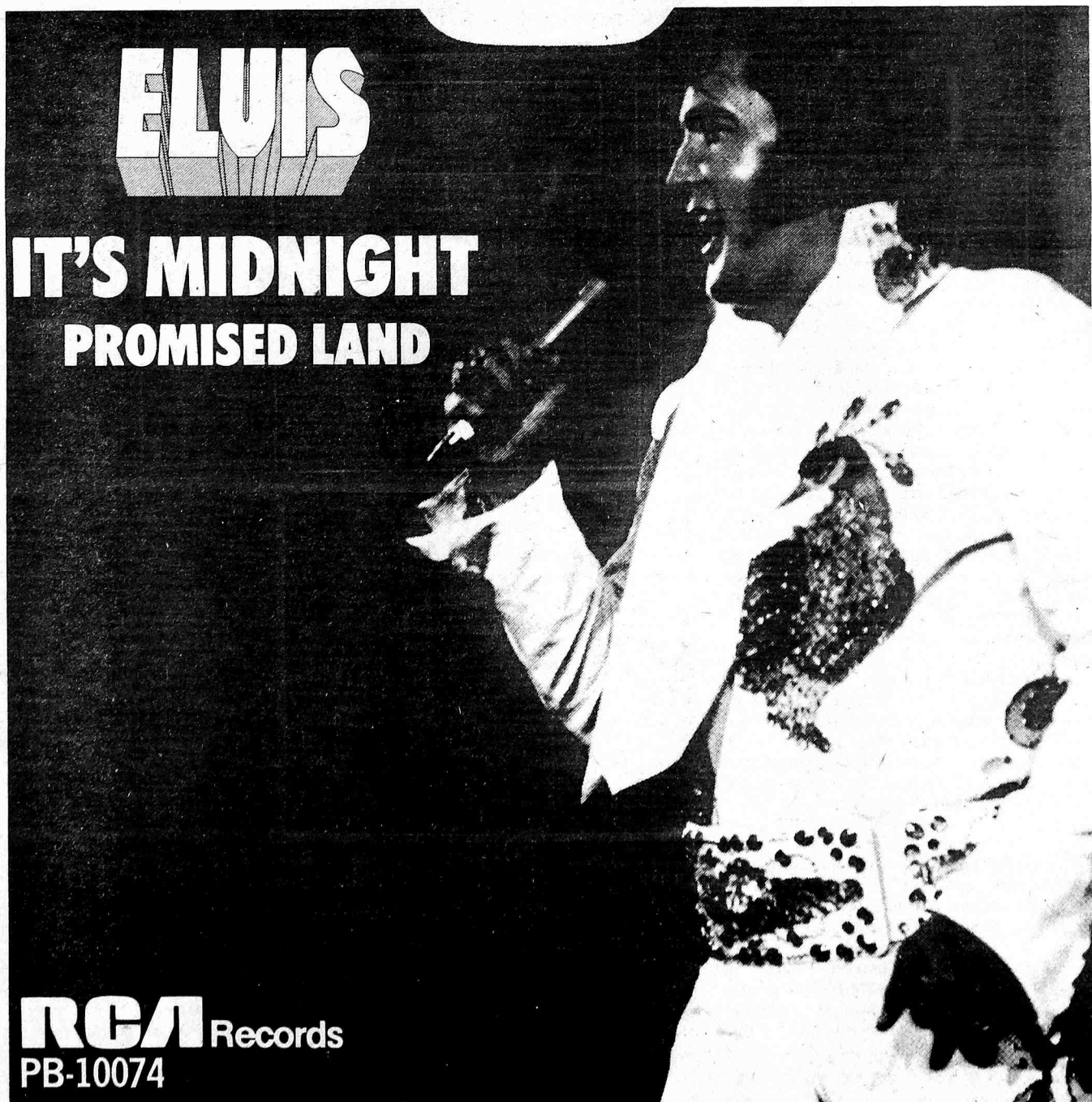
Chuck Harmon 3-7 p.m.

Steve Sibulsky 7-1 a.m.



# ELVIS

## THE NEW SINGLE





# RECORDS

## RECORD INDUSTRY NOTES



by Candy Tusken

Motown's number two man, Berle Adams handed in his resignation to boss Berry Gordy last Friday (11-22). Adams was head of **Motown Industries** and was directly above E. Abner. No reason for the departure was given and no replacement has been named as yet... A Southern-based record company President may be going to jail to serve a four month term to commence just before Christmas. The "infraction" concerned shipping books of questionable content across state lines six and a half years ago. The law, although antiquated, evidently still has enough punch to put the violator behind bars. He has been fighting the "issue" itself all the way to the Supreme Court, but at this point it looks like it's to no avail as the incarceration is set for December second as decreed by a Florida Court...

### TRICKS OF THE TRADE

PD Gerry Peterson of KHJ was looking for a ride last Friday to the Mac Davis-Anne Murray concert down in Anaheim, California. Columbia Promotion Executive Terry Powell, who was also attending the show, graciously offered to chauffeur. As soon as the two were on the road, Terry deftly switched on this tape machine and played the entire Columbia release for the month (which he had personally programmed for the event.) Said Terry: "There wasn't too much Gerry could do as we were traveling at 70 miles an hour and I had all the doors locked!"... Capitol's heavyweight, Al Coury (fondly known as "Crusher") still has that old promotion blood in him. Al couldn't resist attending Linda Ronstadt's opening at the Troubadour last week wearing his specially made T-shirt that reads "Linda Ronstadt Found Asylum On Capitol Records." Linda has a new single and album out on Capitol (which she owed them from her previous contract), however, she had signed with Asylum Records last year!

### WHY RIGHTEOUS PEOPLE SHOULD SHAVE

KIIS Radio had been holding an open house all last week from five to eight in the evenings to celebrate the opening of their new offices in Los Angeles. Last Wednesday night the KIIS bouncer was clearing out the die-hards at 8:45 when in walked an unshaven man asking for MD Mike Kasabo. The bouncer said "who are you; Kasabo has left and the party's over." A hassle ensued as the young man insisted that he had an appointment. Luckily jock Dave Diamond spotted the bewhiskered man and told the bouncer he knew him and to lay off. The bouncer then recognized the well known singer and apologized explaining the two day growth prevented identification. But, easy going Bill Medley laughed it off and spent the evening with Dave as guest jock for the station...

### MY LITTLE CHICKADEE

Columbia Records threw a nostalgica party for W.C. Fields last week at The Speakeasy Discoteque in Los Angeles to celebrate the release of three new albums by the master. The party invitation was a straw hat and white gloves which were worn to gain entrance into the party. W.C. was there himself complete with red nose and walking stick (you may remember him on TV as W.C. Fritos and is an identical twin to the famous comic.) A banquet of food, liquor and games were provided to the guests who ate and drank until past one in the morning. The last person I saw upon leaving was KMPC's "twinkle toes" Sonny Melendrez still watusing up a storm after having beat everyone at the electronic game of "Pong." The new Grand Funk single is the old R&B hit, "Some Kind Of Wonderful," now shipping...

### MUSIC TO LISTEN TO EARTHQUAKES BY

From those of you who like something a little different in home entertainment and like to shake up your friends, MCA has just released an album called "Music From The Original Motion Picture Soundtrack 'Earthquake'." When the record is played to near full volume the listener will actually experience and feel tremors similar to those experienced in an earthquake. The frequency of the sound effects is comparable to the Sylmar earthquake in California which registered 6.4 on the Richter scale. A better title for the LP might be "Shake, Rattle & Roll!"... Speaking of "Good Vibrations" Earth News reports that San Francisco nightclub The Orphanage has just installed "sonic stimulation" rooms. It's a new music system that is essentially tactile communication that allows persons to physically feel music rather than hear it. You get all wired up with a "probe" that expels air causing vibration wherever the probe is affixed. The probe can be attached to any sensitive part of the body, including internal organs. The young inventor, Wachspress, plans a multitrack system explaining 'we'll be able to have one guy playing for the elbow, one for the crotch and one for the face!'

### ELO TO REALLY MOVE THEIR TAIL FOR YOU

If you happen to be traveling on Air-Canada (which flies all over the world) you might plug in your headphones and hear Jeff Lynne doing an introduction on a specially programmed tape of Electric Light Orchestra. United Artists prepared the tape and presented it to the airline, who snapped it up. It may be the first group to be promoted to listeners high in the sky (at least they have a captive audience!) The tape is around an hour long with Jeff doing a discourse in the beginning

Continued on page 14



Motown Records held a marketing and creative services meeting for all Motown Regional promotion and regional sales managers last week. The promotion and sales managers were brought to town for the two day session to discuss the November release and show off their great looking personalized Company sweatshirts.



The Bistro (one of Los Angeles' private clubs) was the scene for a party hosted by Mike Stewart of United Artists and Wes Farrell of Chelsea in honor of recording artist, Lulu. She had just completed recording the soundtrack for the new James Bond movie "The Man With The Golden Gun." the rather unusual deal includes the soundtrack album to be released on U.A. with the single of the same title being offered on Chelsea. (L to r) Mike Stewart, Chairman of the Board of United Artists, Bill Drake of K100, Chris Christ, promotion executive for U.A., Lulu and Wes Farrell, President of Chelsea Records



A&M artist Billy Preston locks arms with George Harrison during the latter's recent Forum performance.





Eagles new single is  
"The Best of My Love." E45218

More of the best.





# RECORDS

## RECORD INDUSTRY NOTES



*Continued from page 12*

and finishing up the tape after "the concert" with some more ELO rap.. Another multi-coverage battle is shaping up between London, Bell and Columbia Records. The name of the song is "Rock 'N Roll I Gave You The Best Years Of My Life" which was written and produced by Kevin Johnson. Johnson had the single released by Mainstream several years ago and it enjoyed some regional successes. Jonathan King just recently bought it and London has released the original version by Kevin only to have Terry Jacks and Mac Davis both release it as well...

### LEON WOWS HARRISON CROWD

George Harrison was finishing up his concert in Tulsa, Oklahoma last Thursday night (11-21) when he was joined by Leon Russell who performed on the encore of "My Sweet Lord." The audience went crazy and demanded the two continue on. The song ended up lasting 15 minutes to a standing and screaming crowd... Former KMET jock, Richard Kimball, who has been working at Manticore Records for the past four months is out as West Coast Representative for that label... Mo Ostin and Joe Smith of Warner Bros. have announced the promotion of Bob Regehr from head of Artist Relations to Vice-President of Artist Development for the company... Vince Faraci has been upped to National Pop Promotion Director for Atlantic Records with Margo Knesz named as his assistant for secondaries... Whatever happened to department: Julius Larosa is alive and well in New York and just completed his first concert appearance at the Big Apple's Carnegie Hall. Julius has been with station WNEW -New York and Sid Bernstein of the station presented the singer to a jampacked audience of friends and relatives. He mentioned during the show that his favorite song was "I Won't Last A Day Without You."



Larson E. Whipsnade (better known as W.C. Fields) was up visiting R&R grabbing both our paper and Marjie Arnold to keep him company. W.C. was promoting his new 3 record set on Columbia which contains some great one liners for jocks such as: "She's all dressed up like a well-kept grave," or "I drink medicinally only... when I feel ill, so to speak."



This was the scene at Elton John's presentation of gold records to CKLW and WJLB for their help in making "Bennie And The Jets" the smash that it was. From left: Rosalie Tromblie, CKLW; Donnie Simpson, WJLB; Claude Young, WJLB; Kiki Dee; and Elton.



That's Dan Fogelberg, (3rd from left) one of Epic's newest acquisitions, shown after a recent engagement at Denver's Ebbets Field nightclub. Also shown are (from left): Bud O'Shea, regional Epic promo; Lee Trippett, product manager; Epic; Fogelberg; Randy Brown, Branch Manager, CBS Denver; Ruth Pelton-Robey, Denver Post columnist; Chuck Morris, owner, Ebbets Field; Greg Rogers, Epic Local Manager; Ron Thompson, KERE; and Don Zucker, GM, KFML.



Backstage at New York's Felt Forum after Barry White's sold-out show are (from left): Frankie Crocker, PD WBLB; Mrs. Glodean White of Love Unlimited; White; Diane Taylor of Love Unlimited; George Greif, White's manager; and Linda James of Love Unlimited.



# **ROCK 'N ROLL**

**[I GAVE YOU THE BEST YEARS OF MY LIFE]**

**MAC DAVIS**



**THE SENSATIONAL SINGLE  
THAT'S ALREADY ON:**

**KHJ, KILT, WAKY, WKLO, K100, KJR,  
KQWB, KJRB, KYNO, KIMN, KING**

**...AND MANY MORE**

**THANK YOU RADIO FOR BELIEVING IN MAC**  
THE COLUMBIA PROMOTION STAFF

**MAC DAVIS IS COMING BACK TO  
PRIME TIME NBC-TV DECEMBER 19!**



**On Columbia Records**



# THE PARALLELS:

PARALLELS are simply designations to make station comparisons easier.

**P1:** Top 15 markets with playlist size of 30. Power record rotation of 7-10 records.

**P2:** All other markets outside of top 15 with 30 record playlist size, 7-10 power record rotation

**P3:** All markets with excess of 35 records being played. Power record rotation varies.

## A

### AMERICA—3:25

*Tin Man (WB)*

LP: Holiday

P1	P2	P3
KHJ 6-12 KKDJ 12-17 K100 8-9 KFRC 14-21 WABC 7-10 99X 14-15 WFL 14-16 KDWB 5-5 KSTP 6-9 13Q 12-14 CKLW 7-4 WDRQ 4-4 KLIF 8-12 WRKO 21-28 WLS 5-4 WPGC 16-21	WSAI 12-16 WOKY 14-19 WYRE 13-14 WAVZ 22-16 WGNG 6-10 WYND 11-12 KAKC 8-5 KTKT 14-17 KEZY 4-11 WGRD 9-10 KCBQ 4-4 Y100 16-18 WIFE 9-16 WRIE 10-19 WOW 6-12 WHBQ 6-16 WMP5 5-11 WBBF 2-5 WGRQ 11-18 WKBW 7-14 KTLK 9-11	WCFL 2-2 KAFY 12-21 KEEL 4-18 WPOP 3-6 WERC 19-21 CHUM 11-17 WROK 17-18 KIMN 6-11

### PAUL ANKA—2:58

*One Man Woman/  
One Woman Man (UA)*

LP: Anka

P1	P2	P3
CKLW 23-17 WRC a	WCAO d 21 WOKY 15-7 WGNG a KBEQ a 30 WRIE 27-25 WVOV d 12 WMP5 on KRSP 27-23 WGRQ 19-16 KFMG 25-25	KILT 40-31 WCFL 25-21 WCOL 17-9 KQWB 33-31 KJRB 32-26 WISM 27-23 WGH 39-35 WKLO 25-22 KEEL 26-22 WPOP 30-26 WIXY 13-7 WFOM 30-21 WBBQ 29-28 CHUM 26-18 WROK 25-22 KIMN 29-20 WBGW 29-25 WROV on WVWK 21-16 WRFC 26-23 WEEQ d 38 KKXL 29-20 WORD a

Showing steady growth.

## B

### BACHMAN-TURNER—3:29

*Ain't Seen Nothing Yet  
(Mercury)*

LP: Not Fragile

P1	P2	P3
KHJ 2-5 KKDJ 3-4 K100 5-5 KFRC 6-7 WABC 2-7 99X 8-16 WFL 4-11 KSTP 14-7 13Q 10-17 CKLW 13-15 WDRQ 9-9 KLIF 1-2 WQXI 7-11 Z93 5-11 WLS 4-9 KSLQ 4-8 WPGC 21-27	WSAI 6-9 WOKY 4-6 WYRE 3-7 WAVZ 14-19 WGNG 8-12 XROK 5-10 WYND 4-10 KAKC 18-29 KTKT 12-20 KEZY 8-15 WGRD 18-23 KIOA 5-4 KLEO 5-5 KCBQ 3-3 Y100 15-17 WIFE 6-12 WRIE 18-15 WVOV 7-15 WOW 12-5 WHBQ 3-6 WMP5 1-3 WWSA 5-11 WGOW 16-23 WBBF 5-8 KRSP 6-12 WGRQ 5-9 KFMG 4-6 WKBW 4-7 KTLK 14-17 WLAC 6-10 WNOR 2-2 WDXR 5-13	KILT 3-5 WCFL 5-11 WMAK 8-12 KQWB 4-7 KJR 9-11 KJRB 11-12 KING 3-5 KAFY 11-12 WISM 9-16 WGH 9-15 WAKY 27-27 WKLO 12-14 WPOP 11-11 WLPL 2-6 WFOM 5-3 WERC 21-29 CHUM 1-4 WROK 9-14 KIMN 14-28 WBGW 10-13 KDON 5-9 WQNZ 6-5 WIBG 3-5 WEEQ 11-21 KKXL 3-3 WORD 7-17

### SHIRLEY BROWN—3:54

*Woman To Woman (Truth)*

P1	P2	P3
99X 7-7 Z93 18-14	WAYS 10-8 WGNG d 27 XROK 12-7 WHBQ 28-23 WMP5 on WGRQ 8-6 WGOW 2-3 WLAC a	WMAK 25-19 WCOL 19-19 WBBQ a WBGW a KDON d 25 KJOY 10-9 WIBG 28-26 WVWK 5-1 WRFC 10-10 WORD 3-3

Crossover pattern is slow.

### B.T. EXPRESS—3:09

*Do It (Scepter)*

LP: Do It

P1	P2	P3
KHJ 9-8 K100 10-8 KFRC 8-5 WABC 4-6 99X 3-4 WFL 11-7 KDWB 30-27 13Q 26-22 KQV 15-8 CKLW 2-3 WDRQ 2-6 WRKO 16-15 WQXI 8-9 WLS 24-18 WRC 3-5 KSLQ 3-4 WPGC 3-3	WAYS 6-4 WCAO 4-2 WOKY 29-26 WYRE 10-5 WAVZ 11-7 WGNG 24-16 KBEQ 7-7 XROK 9-9 WYND 10-9 KAKC 7-4 KEZY 13-12 KIOA 20-20 KLEO 24-14 KCBQ a 25 Y100 4-6 WIFE 22-14 WHBQ 16-3 WMP5 14-6 WGOW 8-11 WBBF a 24 KRSP a WGRQ 7-8 KYNO 23-21 WKBW 11-5 WNOR 7-9 WDXR 12-24	KILT 18-15 WCFL 20-14 WMAK 21-18 WCOL 15-15 KJR 29-27 KJRB 26-16 KAFY 15-8 WISM 10-6 WGH 5-4 WAKY 15-18 WPOP 21-15 WIXY 11-9 WLPL 22-15 WFOM 10-7 WERC 12-11 WROK 24-17 KDON 8-3 KJOY 23-14 WQNZ 11-8 WIBG 14-9 WROV 20-16 WVWK 3-2 WRFC 11-11 WEEQ 23-14 WORD 13-7 Z96 a 30

## C

### CARL CARLTON—2:20

*Everlasting Love (Back Beat)*

LP: Everlasting Love

P1	P2	P3
K100 16-20 KFRC 13-14 WABC 8-5 99X 5-6 WFL 19-13 KDWB 10-14 KSTP 4-4 KLIF 13-13 WRKO 10-10 WLS 10-8 WRC 7-9 KSLQ 14-16 WPGC 12-20	WOKY 9-9 WYRE 6-12 WAVZ 5-11 WGNG 9-8 KBEQ 5-8 WYND 17-11 KAKC 11-20 KTKT 10-12 KEZY 12-17 KIOA 10-13 KLEO 14-17 KCBQ 20-18 Y100 5-10 WIFE 2-7 WRIE 5-12 WOW 5-6 WMP5 6-12 WBRF 11-10 KYNO 5-12 KFMG 11-14 WKBW 3-4 WNOR 6-7 WDXR 10-17	KILT 27-38 WCFL 10-13 WMAK 7-10 KQWB 19-15 KJR 14-8 KING 13-13 KAFY 7-11 WISM 5-9 WGH 3-9 WAKY 12-16 WKLO 9-13 KEEL 8-9 WPOP 17-17 WIXY 4-10 WFOM 6-4 CHUM 7-7 WROK 10-6 KIMN 5-18 KYSN 15-14 KDON 4-12 WQNZ 12-16 WIBG 13-12 WVWK 7-6 WEEQ 6-13 KKXL 13-24

### ERIC CLAPTON—3:10

*Willie and Hand Jive (RSO)*

LP: 461 Ocean Blvd.

P1	P2	P3
K100 a WRC 20-17 WPGC d 25	WYRE 28-27 WGNG 21-20 WIFE a WRIE 35-24 WVOV 13-7 KYNO 28-26 WNOR 28-21	WCOL 9-7 WISM on WGH 30-27 WLPL 14-20 WFOM 18-16 WBBQ 14-12 KYSN 19-18 WBGW 19-16 KDON 22-20 WEEQ 40-34 KKXL 22-10 WRFC 23-19

### CARPENTERS—2:48

*Please Mr. Postman (A&M)*

P1	P2	P3
KHJ 24-19 K100 26-18 KFRC 28-24 WFL 26-19 KQV a 24 WDRQ 26-23 WRKO 26-25 WQXI 23-22 Z93 d 20 WRC d 23 WPGC d 33	WAYS 25-21 WCAO 30-22 WOKY 30-27 WYRE a 30 WAVZ 27-20 WGNG d 26 KBEQ 30-21 XROK on WYND a 20 KAKC 30-27 KTKT 27-22 KEZY d 19 KIOA a 29 KLEO 30-21 KCBQ a 24 Y100 26-21 WIFE d 28 WRIE on WVOV a 18 WHBQ 27-25 WMP5 d 16 WWSA 29-25 WGOW d 16 KRSP a 27 WGRQ a KYNO 30-27 KFMG 31-28 KTLK 31-21 WLAC 12-12 WNOR a WDXR a	KILT 32-26 WMAK a WCOL d 29 KQWB 38-34 KJR 27-22 KJRB 37-28 KING on KAFY d 29 WGH a 40 WAKY a 30 WKLO 29-28 KEEL a 30 WPOP a 27 WIXY 31-20 WLPL on WFOM 38-33 WBBQ 27-26 WERC d 26 CHUM a KIMN 38-31 KYSN 35-28 WBGW on KDON 32-26 KJOY d 27 WQNZ a WIBG 23-13 WROV on WVWK a WRFC on WEEQ 34-23 KKXL on WORD on

### HARRY CHAPIN—3:44

*Cat's In The Cradle (Elektra)*

LP: Verities & Balderdash

P1	P2	P3
KHJ 13-10 KKDJ 19-10 K100 12-11 KFRC 22-15 WABC 21-13 99X 13-10 WFL 12-10 KDWB 2-2 KSTP 5-2 13Q 4-4 KQV 2-3 CKLW 12-9 WDRQ 11-7 KLIF 21-18 WRKO 4-3 WQXI 19-19 Z93 19-6 WLS 7-2 WRC 9-3 KSLQ 17-14 WPGC 5-2	WSAI 1-1 WAYS 8-6 WCAO 13-10 WOKY 3-4 WYRE 12-9 WAVZ 23-14 WGNG 14-7 KBEQ 3-3 XROK a WYND 2-1 KAKC 29-25 KTKT 17-13 KEZY 16-9 WGRD 16-7 KIOA 2-3 KLEO 2-2 KCBQ 9-5 Y100 9-5 WIFE 13-18 WRIE 9-5 WVOV 3-10 WOW 4-3 WHBQ 21-10 WMP5 15-9 WWSA 4-3 WGOW 12-18 WBBF 8-6 KRSP 3-2 WGRQ 12-10 KYNO 24-20 KFMG 3-5 WKBW 26-25 KTLK 3-6 WLAC 10-11 WNOR 4-3 WDXR 7-5	KILT 5-3 WCFL 8-3 WMAK 1-2 WCOL 5-11 KQWB 3-3 KJR 3-3 KJRB 7-7 KING 4-3 KAFY 2-7 WISM 7-4 WGH 17-8 WAKY 6-4 WKLO 3-3 KEEL 4-14 WPOP 22-18 WIXY 6-4 WLPL 16-12 WFOM 17-23 WERC 3-3 CHUM d 29 WROK 7-4 KJOY 6-5 KIMN 2-2 KYSN 2-3 WBGW 7-9 KDON 4-4 WQNZ 23-17 WIBG 5-4 WROV 9-5 WVWK 18-19 WRFC 12-7 WEEQ 9-6

### CHICAGO—2:54

*Wishing You Were Here (Col)*

LP: Chicago VII

P1	P2	P3
KFRC d 25 WABC 19-18 99X a 22 WFL 9-9 KDWB 7-7 KSTP 8-6 13Q 17-24 KQV 9-12 WDRQ 12-15 KLIF 5-6 WLS 12-11 WRC 2-7 KSLQ 16-17 WPGC 6-8	WSAI 23-17 WAYS 19-17 WCAO 7-7 WYRE 2-6 WAVZ 13-13 KBEQ 9-12 XROK 3-6 WYND 5-5 WGRD 6-8 KIOA 13-6 KLEO 26-19 KCBQ a 23 WIFE 17-24 WRIE 6-11 WOW 20-18 WHBQ 5-7 WMP5 9-8 WWSA 12-16 WBBF 13-11 KRSP 5-10 WGRQ 6-5 KYNO 9-4 KFMG 10-7 KTLK 7-10 WNOR 17-15 WDXR 4-11	KILT 20-20 WCFL 16-15 WMAK 22-26 WCOL 4-4 KQWB 12-9 KJR 4-9 KJRB 5-5 KING 8-9 KAFY 13-14 WISM 13-10 WGH 11-7 WAKY 4-5 WKLO 4-4 KEEL 5-5 WPOP 14-16 WIXY 17-22 WFOM 13-12 WBBQ 11-10 WERC 17-30 CHUM 29-22 WROK 15-12 KIMN 9-14 KYSN 16-12 WBGW 17-18 KDON 12-11 KJOY 18-25 WQNZ 24-21 WIBG 12-11 WROV 10-9 WVWK 15-12 WEEQ 10-19 WORD on

### PAUL DAVIS—3:52

*Ride 'Em Cowboy (Bang)*

LP: Ride 'Em Cowboy

P1	P2	P3
KKDJ a K100 on KDWB 11-11	WYRE d 24 KBEQ 11-10 WYND 20-14	KILT 15-12 WMAK 13-6 KQWB 5-5

### Davis continued.....

KSTP 12-14 13Q 2-3 KQV 7-10 WQXI 9-8 Z93 d 18 KSLQ 25-20	KAKC a KTCT 3-3 KIOA 21-15 KLEO d 29 Y100 25-22 WIFE d 29 WRIE on WVOV 4-9 WSGA 17-14 WGOW 6-5 WBBF 10-15 KRSP 4-4 KYNO d 29 KFMG a 29 KTLK 8-4 WLAC 8-8 WDXR d 26	KJR 20-17 KJRB 3-6 WISM 29-24 KEEL 3-4 WIXY 34-31 WFOM 7-5 WERC 9-24 WROK 33-30 KIMN 12-5 KYSN 21-16 WBGW 8-12 KJOY 3-7 WROV 6-11 WRFC 4-3 WEEQ 27-18 KKXL 7-19
---	--	--

### KIKI DEE BAND—3:40

*Got The Music In Me (Rocket)*

LP: I've Got The Music In Me

P1	P2	P3
KHJ 12-11 K100 11-14 KFRC 10-11 99X 16-12 WPIX on WFL 24-18 KDWB 29-23 KSTP 11-11 13Q 28-21 KQV 16-7 CKLW d 16 WRKO 18-23 WQXI 24-24 Z93 d 17 WRC 14-14 KSLQ 15-11 WPGC 14-18	WAYS 18-18 WCAO 11-11 WYRE 18-13 WAVZ 9-9 WGNG 15-13 KBEQ 10-14 WYND 24-15 KAKC 6-12 KEZY 18-10 WGRD 17-21 KLEO 17-16 Y100 17-14 WIFE 10-6 WVOV 8-5 WOW 9-13 WSGA 28-19 WGOW 18-22 WGRQ d 24 KYNO 9-11 WKBW a 23 KTLK 10-15 WNOR 19-20 WDXR 20-20	KILT 28-32 WCFL 13-18 KQWB 13-13 KJRB d 32 KING 16-19 KAFY 14-9 WGH 6-13 WPOP 12-12 WIXY 8-8 WLPL 8-11 WERC 23-19 CHUM 15-10 KIMN 37-32 KYSN 28-25 WQNZ 28-27 WIBG 10-6 WROV 17-15 WVWK 16-14 WEEQ 19-33 KKXL 24-12 WORD on

### JOHN DENVER—4:42

*Back Home Again (RCA)*

LP: Back Home Again

P1	P2	P3
WPIX on WFL 13-15 KSTP 24-17 KQV 18-13 CKLW 18-19 KLIF 7-11 WRKO 20-17 WQXI 3-6 Z93 6-12 KSLQ 19-19	WSAI 8-14 WAYS 4-12 WGNG 10-14 KAKC 17-11 KEZY 6-3 WGRD 7-11 KCBQ 10-13 Y100 21-24 WRIE 16-6 WOW 8-10 WMP5 13-18 WGOW 5-6 WGRQ 17-14 KYNO 10-13 WKBW 6-11 KTLK 40-39 WNOR 14-14 WDXR 18-25	KILT 23-36 WCFL 23-30 KJR 15-15 KJRB 15-21 KING 10-12 WGH 12-20 WAKY 17-20 WKLO 11-12 WLPL 9-7 WBBQ 8-8 WROK 12-15 WBGW 5-6 WQNZ 7-7 WRFC 7-13 WEEQ 13-25

### NEIL DIAMOND—3:22

*Longfellow Serenade (Col)*

LP: Serenade

P1	P2	P3
KHJ 10-13 K100 9-16 KFRC 9-8 WABC 10-9 WFL 17-17 KDWB 4-4 KSTP 16-12 13Q 16-15 KQV 8-11 CKLW 21-27 KLIF 11-9 WRKO 11-13 WQXI 13-16 WLS 6-5 WRC 13-11 KSLQ 8-15 WPGC 10-9	WSAI 14-6 WCAO 3-4 WOKY 20-20 WYRE 20-16 WAVZ 6-4 WGNG 7-5 XROK 17-13 WYND 7-7 KAKC 10-16 KTCT 6-6 KEZY 3-8 WGRD 3-2 KLEO 8-8 KCBQ 25-22 Y100 13-13 WIFE 5-1 WRIE 4-4 WOW 10-8 WHBQ 10-5 WMP5 4-10 WSGA 13-12 WGOW 17-17 WBBF 24-20 KRSP 12-11 WGRQ 10-7 KYNO 3-2 KFMG 15-15 WKBW 10-13 KTLK 4-5 WNOR 12-12 WDXR 6-16	KILT 30-29 WCFL 6-5 WMAK 10-7 WCOL 7-6 KQWB 14-17 KJR 11-13 KJRB 6-9 KING 6-6 KAFY 8-13 WISM 6-5 WGH 8-6 WKLO 10-25 WPOP 9-7 WLPL 5-5 WFOM 12-6 WBBQ 6-6 WERC 16-22 CHUM 19-12 WROK 16-16 KIMN 3-3 KYSN 8-5 WBGW 12-15 KDON 6-6 WQNZ 19-19 WIBG 8-8 WROV 14-15 WVWK 10-11 WEEQ 7-7 KKXL 6-8



"From  
His Woman  
To You"  
BDA 441

by  
Barbara  
Mason

Over 500,000  
in just  
three weeks!!

**BILLBOARD:** ★ 85

ON BUDDAH RECORDS  
FROM THE BUDDAH GROUP

© 1974 Buddah Records Inc. A Subsidiary of Veeva Inc.





# PARALLELS

a= Add  
d= Debut n= Nite

★ DENOTES FIRST WEEK IN PARALLELS

## D

### CARL DOUGLAS—3:18 *Kung Fu Fighting (20th)*

LP: Kung Fu Fighting & Other Great Love Songs

P1	P2	P3
KHJ 4-3 KKDJ 9-3 K100 4-2 KFRC 1-1 WABC 12-4 99X 4-2 WFIL 7-4 KDWB 1-1 KSTP 1-1 13Q 2-2 KQV 1-1 CKLW 4-2 WDRQ 6-2 KLIF 18-17 WRKO 1-1 WQXI 4-2 Z93 3-4 WLS 3-1 WRC 12-4 KSLQ 2-2 WPGC 4-4	WSAI 11-3 WCAO 10-8 WOKY 1-3 WYRE 1-1 WAVZ 2-2 WGNG 1-2 KBEQ 6-1 XROK 1-1 WYND 1-3 KAKC 9-1 KTKT 1-1 KEZY 15-7 WGRD 5-1 KIOA 7-1 KLEO 1-1 KCBQ 2-1 Y100 1-1 WIFE 16-9 WRIE 15-8 WVOV a 13 WOW 3-4 WHBQ 1-1 WMP5 7-4 WSGA 1-5 WGOW 1-1 WBBF 1-1 KRSP 1-1 WGRQ 1-2 KYNO 7-3 KFMG 2-1 WKBW 1-1 KTLK 6-3 WLAC 2-1 WNOR 18-8 WDXR 1-1	KILT 2-1 WCFL 9-4 WMAK 3-1 WCOL 1-2 KQWB 1-2 KJR 5-6 KJRB 2-2 KAFY 5-1 WISM 3-2 WGH 19-2 WAKY 25-25 KEEL 1-1 WPOP 5-2 WIXY 10-3 WLPL 6-4 WFOM 20-15 WBBQ 4-1 WERC 5-6 CHUM 22-9 WROK 1-1 KJOY 1-1 KIMN 4-4 KYSN 1-1 WBGD 2-1 KDON 1-1 WQNZ 1-1 WIBG 6-3 WROV 14-2 WVWK d 27 WRFC 1-1 WEE0 1-2 KKXL 1-1 WORD 1-1

Still super strong.

## F

### FANCY—2:45 *Touch Me (Big Tree)*

LP: Wild Thing

P1	P2	P3
WPGC 25-28	WNOR d 27	KQWB 15-12 WGH 29-29 WAKY 14-17 WKLO 22-20 WBBQ 20-15 WROK 32-28 KYSN 9-13 WROV 27-27 WEE0 29-27

## G

### GLORIA GAYNOR—2:55 *Never Can Say Goodbye (MGM)*

★

P1	P2	P3
KHJ 28-25 K100 d 25 WPIX a KSTP a WRKO 17-11 WQXI d 30 Z93 a WRC a	WSAI 29-23 WCAO a 30 WAVZ 26-25 WGNG d 29 KAKC a KIOA 29-26 Y100 a 25 WSGA a 28 KRSP a WGRQ 27-23 KYNO d 30 KTLK d 40 WLAC a WDXR a	KILT a WCFL d 19 WCOL d 37 KAFY a WISM a WPOP a 28 WIXY 39-30 WLPL on WFOM a 38 WBBQ on WERC a WBGD a KJOY d 29 WQNZ a WIBG on WROV d 26 WRFC on KSJO a WEE0 a KKXL a

### J. GEILS BAND—2:53 *Must Of Got Lost (Atlantic)*

LP: Nightmares...

P1	P2	P3
K100 a KSTP a 22 WRKO 13-9 WPGC a	WCAO 28-24 WOKY 17-15 WYRE d 28 WAVZ 24-22 WGNG 16-15 KAKC 26-24 KTKT a 23 WVOV d 17 WSGA 23-21 WGRQ 29-28 KYNO a KTLK 33-29 WNOR a 29	KILT 36-33 WCFL 22-20 WCOL 24-16 KQWB 37-36 KJR on KJRB 27-24 KING on KAFY a WISM a WGH a 37 WKLO 31-29 WIXY a WLPL 30-27 WFOM 29-25 WBBQ 16-16 WBGD a KDON 26-24 KJOY 29-13 WROV 25-25 WRFC a WEE0 a KKXL 19-11 WORD a

### CARL GRAVES—3:15 *Baby, Hang Up The Phone (A&M)*

★

P1	P2	P3
CKLW 27-25	WRIE a	WCFL 32-26 WBBQ on KYSN on WBGD 25-20 KDON d 30 KJOY 30-26 KKXL a WORD on

### AL GREEN—2:56 *Sha-La-La (Hi)*

LP: Explores Your Mind

P1	P2	P3
KHJ 5-4 K100 3-6 KFRC 4-4 WFIL 16-14 KSTP a 30 CKLW 6-6 WDRQ 8-10 WRKO 24-24 WQXI 5-5 Z93 12-10 WLS a 21 WRC 9-13 WPGC 15-11	WCAO 18-14 WYRE 29-23 KBEQ 16-16 XROK d 20 KTKT 24-19 KEZY 7-5 WGRD 8-13 KLEO 25-23 WIFE 24-27 WOW a 17 WHBQ 9-12 WMP5 8-7 WGOW 15-15 KYNO d 27 WNOR 13-16 WDXR 14-8	KILT 19-17 WCFL 21-19 WMAK 28-25 WCOL 10-22 KJR 12-10 KJRB 25-31 KING 19-16 KAFY 1-4 WISM 17-12 WGH 7-5 WAKY 16-22 WKLO 17-19 WPOP a 29 WIXY 3-5 WLPL 17-17 WFOM 11-10 WBBQ 5-3 WERC 11-10 WROK 19-13 KYSN 39-33 WBGD d 26 KDON 11-8 KJOY 26-22 WFRC 15-12 WIBG 17-15 WRFC 5-5 WVWK a WEE0 15-9 KKXL 30-22 WORD 15-13

### GUESS WHO—3:15 *Dancin' Fool (RCA)*

LP: Flavours

P1	P2	P3
WRC a	WCAO on WOKY 27-25 WYRE a KEZY on KRSP d 30 KTLK d 31	WCFL 39-36 KQWB 25-24 KJR d 26 KJRB on KING on KAFY 28-24 WISM a WGH on n WKLO 37-36 WIXY 37-32 WLPL d 28 WFOM 40-34 WBBQ on WERC a WROK d 35 KIMN 33-33 KYSN 27-23 KJOY on WIBG d 30 WROV 28-23 WRFC on KKXL 26-9

## H

### GEORGE HARRISON—3:52 *Dark Horse (Apple)*

P1	P2	P3
KSTP a WQXI 26-26	WCAO a 28 WOKY 26-16 WYRE 24-21 WGNG 29-28 KBEQ 29-19 XROK on KTKT 29-25 WVOV a WSGA 24-22 KRSP 18-17 WGRQ d 29 KYNO 25-23 KFMG 29-24 KTLK 39-33 WLAC on WDXR 23-14	KILT 29-27 WCOL d 28 KJR on n KJRB 35-30 KING on KAFY 30-30 WISM 38-27 WGH on n WAKY 30-23 WKLO 24-24 WPOP 27-25 WLPL 27-22 WFOM 39-31 WERC d 28 WROK on KIMN 26-21 KYSN 34-30 KDON d 32 KJOY 15-10 WIBG d 29 WROV d 28 WMC FM a WRFC 30 WEE0 38-30 KKXL d 26 WORD on

### BO DONALDSON & THE HEYWOODS—2:58 *The Heartbreak Kid (ABC)*

P1	P2	P3
	KTKT 25-24 KRSP 14-8 WNOR a	KQWB a KJRB 31-25 KAFY a KEEL 22-20 WIXY a WLPL a WBBQ on KYSN on WBGD on KKXL a

### HUDSON BROTHERS—3:45 *So You Are A Star (Casablanca)*

LP: Hollywood Situation

P1	P2	P3
WPGC 24-22	WSAI 20-15 WYRE 7-11 KBEQ 25-23 KLEO 22-27 WRIE 23-18 WHBQ 23-19 WBBF 23-27 KYNO 11-14 KFMG 14-27 WKBW 15-6 WDXR 19-26	WCFL 19-16 KJR 17-24 KJRB 4-3 KAFY 21-19 WISM 23-21 WAKY 11-12 WKLO 14-15 WROK 28-21 WBGD d 27 WVWK 25-25

WKBW reports super sales and requests.

### HUES CORPORATION—3:06 *Rockin' Soul (RCA)*

LP: Rockin' Soul

P1	P2	P3
WABC a 15 Z93 on WPGC 23-30	WCAO 17-19 KBEQ 24-17 WGRD 26-29	KING on KAFY 20-20 WISM on WGH 14-21 WLPL 19-19 WFOM 19-17 WBBQ 23-21 KIMN 19-19 WQNZ 26-28 WRFC 15-15 WEE0 18-17 KKXL 8-5

## J

### JETHRO TULL—3:20 *Bungle In Jungle (Chrysalis)*

LP: War Child

P1	P2	P3
KHJ 17-15 KKDJ a K100 19-15 KFRC 24-16 WFIL 23-22 KDWB 21-12 KSTP d 10 13Q 8-5 KQV 5-5 WDRQ 23-18 WRKO 3-5 WQXI 30-29 WRC d 26 WPGC 35-31	WSAI a 30 WAYS 24-24 WCAO a 29 KBEQ 18-11 XROK 19-16 WYND a 19 KAKC 21-18 KTKT 16-10 WYRE d 25 WAVZ 18-12 WGNG 23-18 WGRD 29-18 KIOA 23-17 KLEO a WRIE a 28 WHBQ 13-9 WMP5 on WSGA 25-18 WGOW 21-21 WBBF 18-12 KRSP 21-20 WGRQ 26-25 KYNO 15-9 KFMG 22-12 KTLK 23-16 WLAC d 15 WNOR d 25 WDXR 27-22	KILT d 27 WMAK d 27 WCOL 16-12 KQWB 32-27 KJR d 28 KJRB 20-17 KAFY a WISM d 29 WGH a 38 WKLO 19-18 WPOP 26-23 WLPL d 24 WFOM 34-28 WBBQ 18-13 WERC 22-16 WROK 23-19 KJOY 5-3 KIMN 32-30 KDON 18-17 WIBG 26-19 WROV d 30 WRFC d 28 WEE0 41-31 KKXL 33-17 KREM a

## K

### ANDY KIM—3:25 *Fire, Baby On Fire (Capitol)*

LP: Andy Kim

P1	P2	P3
WPIX on	WCAO 25-23 WYRE 27-26 WMP5 on	WCFL 18-17 WCOL 20-18 KAFY d 27 WISM 30-28 WGH 33-33 KEEL 16-16 WIXY 24-23 WLPL 29-26 WFOM 24-20 CHUM 23-20 KIMN 24-24 KYSN 12-11 WVWK d 30 WEE0 25-20 KKXL 25-23

### GLADYS KNIGHT & PIPS—2:48 *I Feel A Song (Buddah)*

LP: I Feel A Song

P1	P2	P3
K100 a KFRC 23-17 CKLW 1-1 WDRQ 5-5 WRKO 30-30 WQXI 28-21 WRC a	WAVZ 29-26 KAKC 23-19 WHBQ 19-17 WMP5 19-15 WGRQ 20-17 KYNO a WKBW 20-16	WCFL 31-27 WMAK a KAFY d 28 WISM d 30 WGH 35-31 WKLO 26-30 KEEL 18-13 WIXY 9-14 WLPL a WFOM 35-29 WBBQ 21-19 WERC 30-23 KYSN 6-4 WBGD 24-21 KDON 15-10 WRFC 22-20 WMS FM a WEE0 12-8 KSJO a

## L

### LATIMORE—3:20 *Straighten It Out (Glades)*

LP: More More More Latimore

P1	P2	P3
CKLW 20-23	WAYS 7-5 WSGA 26-24	KILT 6-6 WAKY 8-11 WKLO 15-11 WBBQ d 30 WBGD 4-5 WQNZ 3-4 WVWK 20-13 KJOY 4-4 WORD 11-12

P1	P2	P3



# Nigel Olsson

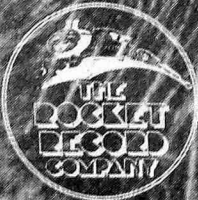


From Nigel and Rocket Records  
A New Single

## "Only One Woman"

(MCA-40337)

Nigel Olsson is currently on tour with The Elton John Band



MCA RECORDS



# PARALLELS

a= Add  
d= Debut n= Nite

★ DENOTES FIRST WEEK IN PARALLELS

**JOHN LENNON—3:24**  
*Whatever Gets You Thru Night (Apple)*  
LP: Walls and Bridges

P1	P2	P3
KHJ 23-30	WSAI 5-10	KILT 11-13
KKDJ 5-12	WCAO 8-15	WCFL 7-6
K100 14-17	WAVZ 15-18	WMAK 12-13
KFRC 12-18	WNGN 4-9	KJR 13-16
WABC 3-8	KBEQ 15-26	KJRB 30-37
CKLW 5-12	KYNO 4-8	KING 9-8
WRKO 22-19	WYND 12-28	WISM 8-11
WLS 9-14	KAKC 4-3	WING 10-17
WRC 4-8	KTCT 4-5	WPOP 7-10
WPGC 8-12	WGRD 13-9	WIXY 14-17
	KCBQ 12-14	WFOV 1-1
	Y100 12-15	WERC 6-9
	WIFE 18-23	CHUM 5-6
	WRIE 22-21	KIMN 10-10
	WVOV 9-14	KYSN 4-9
	WOW 7-14	KDON 9-5
	WHBQ 4-4	WRFC 6-12
	WMP5 10-17	WROV 2-12
	WBBF 27-28	WVLC 4-9
	KRSP 9-13	WEEQ 4-5
	KTLK 5-8	KKXL 5-28
	WNOR 3-6	

**MCCARTNEY & WINGS—3:03**  
*Junior's Farm (Apple)*

P1	P2	P3
KHJ 11-9	WSAI 15-13	KILT 16-14
K100 13-10	WCAO 23-19	WCFL 14-9
KFRC 27-19	WCAO 15-12	WMAK 19-15
WABC 24-21	WOKY 12-8	WCOL 8-5
99X a 17	WYRE 16-10	KJRB 18-14
WPIX d 14	WAVZ 25-24	KJR 16-14
WFIL 25-21	WNGN 19-17	KJRB 18-14
KDWB a 30	WDXR 9-7	KING 18-15
KSTP d 24	KBEQ 13-9	WISM 21-14
13Q a 27	XROK 13-11	WGH 26-18
KQV 17-17	WYND 21-13	WAKY 10-6
WDRQ a 20	KAKC 14-8	WKLO 8-16
WRKO 8-8	KTCT 8-8	KEEL 19-19
WQXI 15-14	KEZY d 16	WPOP 18-13
Z93 16-16	WGRD 22-15	KIMN 18-13
WLS 14-10	KLEO 16-11	KYSN 10-6
WRC 11-6	Y100 11-7	WBGN 28-24
KSLQ 12-6	WIFE 28-21	KDON 19-15
WPGC 11-5	WVOV 17-11	WRFC 21-18
	WOW d 15	WIBG 19-17
	WHBQ 20-15	KJOY 16-12
	WMP5 d 13	WROV 13-10
	WGA 8-6	WEEQ 17-10
	KRSP 17-15	KKXL 10-4
	WGRQ 16-11	WORD d 25
	KYNO 16-10	
	KFMG 21-19	
	WKBW 17-15	
	KTLK 15-13	
	WVLC 29-21	
	WNOR 27-19	

"Sally G" is doing well where played.

**LYNYRD SKYNYRD—4:41**  
*Free Bird (MCA)*

LP: Pron. Leh-nerd Skin-nerd

P1	P2	P3
KDWB 13-9	WAYS 22-22	KILT a 2-4
WQXI 22-20	WCAO on	WMAK 2-4
Z93 d 19	WOKY a 28	WCOL 38-35
WRC a n	WGA a 27	KJR d 30
	WGOW 22-19	KJRB a
	WBBF 16-14	WISM on
	KRSP on	WGH on
	WGRQ 2-1	WAKY 21-15
	WKBW 13-8	WKLO 26-21
	WLAC 5-5	WIXY a
		WFOV a 39
		WERC 8-13
		WROK a
		WBGN 9-7
		WRFC on
		KJOY d 30
		WROV 26-20
		WEEQ 31-22
		KKXL a
		WORD 23-14

## M

**BARRY MANILOW—3:15**  
*Mandy (Bell)*

LP: Barry Manilow II

P1	P2	P3
KFRC a 30	WAYS a	KILT d 34
WPIX a	WCAO 29-25	WMAK a
KSTP a 27	WOKY a 29	WCOL d 34
13Q 31-20	WYRE 30-22	KQWB 39-28
WRKO a	WNGN d 30	KJR d 25
WQXI a	KTCT a 28	KJRB 23-15
Z93 a	WRIE on	KING on
WRC a	WHBQ 30-21	WGH 31-30
WPGC a	WMP5 a	WAKY on
	WGA a 29	KEEL 20-15
	WBBF a	WPOP a 30
	KRSP 24-16	WIXY 35-29
	KFMG a 31	WLPL 24-13
	KTLK 36-25	WFOV a 35
		WBBQ a
		WERC a
		WROK a
		KIMN 20-7
		KYSN d 40
		WBGN d 28
		WRFC on
		WQNZ 28-24
		WIBG d 28
		KJOY d 28
		WROV on
		WVLC on
		WEEQ a 36
		KKXL a
		WORD on

So far strong in females.

**PRELUDE—2:04**  
*After The Goldrush (Island)*

LP: After The Goldrush

P1	P2	P3
KHJ 15-14	WSAI 16-21	KILT 7-9
KFRC 26-20	WOKY 7-10	WCFL 11-23
KDWB 24-25	KAKC d 26	WMAK 4-8
13Q 9-12	WGRD 27-28	KQWB 8-10
KQV 13-19	KLEO 21-28	WISM 15-15
CKLW 19-21	WIFE 14-20	WGH 27-23
WQXI 25-25	WRIE 20-13	WBBQ 10-7
WRC 16-18	KRSP 11-7	WROK 8-11
	KYNO 26-24	KIMN 8-9
	KTLK 11-7	KYSN 37-37
		KDON 25-19
		WIBG 16-16
		KJOY 7-11
		WVLC 17-15
		WORD 22-19

Quick peaks.

**ELVIS PRESLEY—2:50**  
*Promised Land (RCA)*

P1	P2	P3
KSTP a 20	WAYS 17-10	KILT d 39
WQXI 27-23	WCAO a 27	WMAK 16-11
Z93 20-7	WDXR d 23	WCOL 3-8
WRC 27-21	KBEQ 23-28	KQWB 26-20
WPGC 30-24	WRIE 19-26	KJR 25-23
	WHBQ d 28	KJRB a
	WGA a 26	WGH 24-19
	KRSP a	WAKY 2-2
	WGRQ d 30	WKEO 5-6
	WLAC 7-7	KEEL 30-27
	WNOR 25-22	WIXY 28-21
		WLPL on
		WFOV 14-9
		WBBQ 12-11
		WERC 27-25
		KIMN 16-25
		WBGN a
		WRFC 18-14
		WQNZ 25-20
		KKAM a
		WROV 4-13
		WVLC 6-4

## R

**HELEN REDDY—3:29**  
*Angie Baby (Capitol)*

LP: Free And Easy

P1	P2	P3
KHJ 7-6	WSAI 7-5	KILT 10-8
KKDJ 17-8	WAYS 16-14	WCFL 15-12
K100 7-4	WCAO 9-6	WMAK 9-5
KFRC 16-10	WOKY 6-5	WCOL 2-1
WABC 13-11	WYRE 9-8	KQWB 11-8
99X a 18	WAVZ 7-5	KJR 8-4
WFIL 8-6	WNGN 12-6	KJRB 9-8
KDWB a 29	WDXR 8-4	KING 14-7
13Q 19-7	KBEQ 12-5	KAFY 9-5
KQV 23-9	XROK 10-5	WISM 12-8
CKLW d 30	WYND 8-8	WGH 4-3
WDRQ a 19	KAKC 12-6	WAKY 22-10
KLIF 20-10	KTCT 8-14	WKLO 7-7
WRKO 9-7	KEZY 14-13	KEEL 13-10
WQXI 6-4	WGRD 14-14	WPOP 16-21
Z93 4-3	KIOA 3-5	WIXY 21-18
WLS 11-7	KLEO 19-10	WLPL 1-8
WRC 18-12	KCBQ 24-20	WFOV 17-11
KSLQ 7-5	Y100 8-4	WBBQ 19-17
WPGC 13-10	WIFE 12-8	WERC 2-1
	WRIE 8-10	CHUM a
	WVOV 5-3	WROK 11-9
	WOW 14-9	KIMN 21-15
	WHBQ 12-11	KYSN 13-8
	WMP5 16-5	WBGN 27-19
	WGA 6-4	KDON 23-16
	WGOW 11-10	WRFC 17-8
	WBBF a 25	WQNZ 18-13
	KRSP 15-14	WIBG 9-7
	WGRQ 23-15	KJOY 19-15
	KYNO 20-19	WROV 11-8
	KFMG 6-3	WVLC 22-22
	WKBW 22-18	WEEQ 8-4
	KTLK 13-12	KKXL 9-6
	WLAC 9-9	WORD 12-8
	WNOR 9-5	

**ROLLING STONES—3:29**  
*Ain't Too Proud To Beg (RS)*

LP: It's Only Rock 'N Roll

P1	P2	P3
KHJ 18-16	WAYS 20-20	KILT 35-30
K100 17-23	WCAO 21-16	WCFL 33-29
KFRC 29-26	WOKY 23-22	WCOL 25-21
WABC on	WYRE 25-19	KQWB 31-30
WPIX on	WNGN 26-24	KJR 23-20
WFIL 22-20	WDXR 16-15	KJRB 34-27
KQV n	KBEQ 22-22	KING on
WRC 25-19	XROK 16-15	KAFY 23-16
WPGC 22-17	WYND 22-22	WISM 26-25
	KTCT 19-21	WGH 37-32
	WGRD 30-22	WAKY on
	KIOA 22-19	WKLO 23-23
	KLEO 23-22	WPOP 20-19
	WIFE 8-5	WIXY 32-26
	WVOV 10-6	WLPL 28-23
	WGA 11-8	WFOV 33-27
	WGOW 25-24	WBBQ 28-27
	KRSP 28-25	WROK 29-24
	WGRQ 24-21	KIMN a
	KYNO 17-15	KYSN 31-27
	KFMG 20-20	WBGN on
	KTLK 21-19	KDON 28-22
	WNOR 26-26	WRFC 24-17
		WQNZ a
		WIBG 22-21
		WROV 21-19
		WEEQ 30-24
		KKXL 34-21
		WORD on

Album is selling well.

**RUFUS—2:54**  
*You Got The Love (ABC)*

LP: Rags To Rufus

P1	P2	P3
KHJ a 28	WAYS 13-7	KILT 31-23
KFRC a 29	WCAO 16-13	WCOL 28-23
WABC 18-23	WYRE 19-15	KJR on
99X 9-8	WAVZ 30-23	KJRB d 36
WPIX a	WNGN a	KAFY 29-25
WFIL a	KBEQ 20-13	WISM a
KSTP 27-25	XROK a	WGH 18-14
CKLW 9-12	KAKC a	WAKY 24-21
WDRQ 10-13	KTCT 9-9	WIXY 20-13
WRKO 29-27	KLEO a	WLPL 4-3
WQXI 10-7	WHBQ 17-14	WFOV 16-14
WRC 15-16	WMP5 on	WBBQ 17-14
KSLQ 5-12	WGA a 30	WERC 29-24
WPGC 18-19	WKBW a 25	WROK a
	WNOR 20-17	KYSN 33-26
		KDON d 33
		WRFC 20-16
		WIBG 20-18
		KJOY a
		WROV 22-22
		WEEQ 16-12
		KKXL 27-15
		WORD 19-18

## S

**NEIL SEDAKA—2:50**  
*Laughter In The Rain (Rocket)*

LP: Sedaka's Back

P1	P2	P3
KHJ a 29	WSAI 28-18	KILT 12-10
K100 25-13	WAYS a 25	WCFL a 33
KFRC 7-6	WCAO 24-17	WMAK 20-16
WABC on	WOKY 19-17	WCOL 6-3
WFIL a 26	WAVZ 28-21	KQWB 20-14
KDWB a 31	WNGN d 23	KJR 7-5
KSTP a 18	WDXR a	KJRB 10-10
13Q a 29	KBEQ 26-25	KING 17-11
KQV 24-23	WYND 3-4	KAFY 25-23
CKLW a	KAKC 19-15	WISM a
WDRQ a 22	KTCT 28-23	WGH 36-34
WRKO 15-14	KEZY on	WAKY a 29
WQXI 29-27	WGRD 11-4	WKLO 32-31
Z93 on	KIOA a 28	KEEL 10-6
WRC d 15	KLEO 27-24	WPOP 28-14
WPGC 19-14	WIFE 30-22	WIXY 29-19
	WRIE 25-16	WLPL 12-9
	WVOV a 20	WFOV 26-22
	WOW 9-11	WBBQ 26-23
	WGA 22-17	WERC 4-2
	WGOW 14-9	KIMN 30-29
	KRSP 7-3	KIMN 15-12
	WGRQ 15-13	KYSN 30-24
	KYNO 27-22	KDON 14-13
	KFMG 28-23	WRFC 30-26
	WKBW a 28	WQNZ d 29
	KTLK d 24	WIBG 27-22
	WLAC a	KJOY 9-8
	WJBQ a	WROV 24-18
	WNOR 30-28	WVLC 28-17
		WEEQ 22-15
		KKXL 32-18
		WORD 16-11



# **WHAT IS THE NUMBER 1<sup>\*</sup> YEAR-END PROGRAM?**

## **ALL NUMBER 1 SONGS!**

"A Chronology of American Music"—a week-by-week account of the Nation's Number 1 Songs from July, 1955 with Bill Haley's "Rock Around the Clock" moving chronologically to the end of 1974.

Total time for this 19½-year sweep is about 24 hours. "Chronology" is presented in approximately 8-minute sets, leaving 12 commercial minutes per hour. Unlike other specials, "Chronology" uses minimum dialogue to achieve the maximum impact of swift motion through time. "Chronology" is in its fourth successful year.

**Contact Mike Razz or Tom Cox  
in New York at (212) 421-2949**

**A More Music Enterprise Production  
Syndicated By Cox/Razz Productions**

\*Source: Billboard Magazine



# PARALLELS

a= Add  
d= Debut n= Nite

★ DENOTES FIRST WEEK IN PARALLELS

## RINGO STARR—3:16 *Only You (Apple)*

LP: Goodnight Vienna

P1	P2	P3
KHJ 26-18 K100 23-12 WABC 37-24 WFIL d 24 KSTP d 13 WRKO a 29 WQXI 18-17 Z93 14-13 WRC d 24 WPGC a	WSAI 17-12 WAYS a23 WCAO 23-18 WOKY a 21 WYRE 23-20 WNGN 27-21 WDXR 17-10 KBEQ 27-27 XROK d 17 WYND 27-25 KAKC 27-21 KTKT 23-18 KEZY on KIOA 19-10 KLEO a Y100 a 20 WIFE d 30 WRIE 29-29 WVOV a WHBQ a WMPG on WSGA 18-15 WGOW 24-20 KRSP 23-18 WGRQ d 27 KYNO 22-17 KFMG 27-16 KTLK 30-18 WLAC on WNOR 29-23	KILT 26-18 WMAK 27-23 WCOL 33-24 KQWB 27-21 KJR 22-18 KJRB d 33 KING d 20 KAFY 26-22 WISM 25-22 WGH 32-26 WAKY 23-13 WKLO 36-35 KEEL 28-25 WPOP 25-20 WIXY 33-27 WLPL 25-21 WFOM 31-24 WBBQ 24-18 WERC 18-12 CHUM a WROK d 32 KIMN 30-27 KYSN 26-21 WBGD 26-22 KDON 29-28 WRFC 25-22 WIBG 25-23 WROV 23-17 WMC FM a WVWK d 29 WEEQ 28-16 KKXL on WORD on

## BILLY SWAN—2:57 *I Can Help (Monument)*

LP: I Can Help

P1	P2	P3
KHJ 3-2 KKDJ 2-2 K100 2-3 KFRC 2-2 WABC 14-12 99X 12-9 WPIX 20-12 WFIL 5-3 KDWB 3-6 KSTP 2-3 13Q 15-9 KQV 6-6 CKLW 3-5 WDRQ 1-1 KLIF 10-5 WRKO 6-6 WQXI 1-1 Z93 1-1	WSAI 2-4 WAYS 2-2 WCAO 1-1 WOKY 2-1 WYRE 8-2 WAVZ 10-10 WNGN 3-1 WDXR 2-2 KBEQ 2-6 XROK 2-4 WYND 6-6 KAKC 1-2 KTKT 2-2 KEZY 1-4 WGRD 2-5 KIOA 1-2 KLEO 4-7 KCBQ 13-11	KILT 4-7 WCFL 17-10 WMAK 6-9 KQWB 2-1 KJR 1-1 KJRB 1-1 KING 1-1 KAFY 6-2 WISM 1-1 WGH 1-1 WAKY 3-3 WKLO 2-2 KEEL 2-2 WPOP 10-8 WIXY 2-1 WLPL 3-1 WFOM 2-2 WBBQ 2-5

### PARALLEL 1

KHJ LOS ANGELES  
\*KKDJ LOS ANGELES  
K100 LOS ANGELES  
KFRC SAN FRANCISCO  
WABC NEW YORK  
99X NEW YORK  
WPIX NEW YORK  
WFIL PHILADELPHIA  
KDWB ST PAUL MINN  
KSTP MINNEAPOLIS  
130 PITTSBURGH  
WPEZ PITTSBURGH  
KQV PITTSBURGH  
CKLW DETROIT WINDSOR  
WDRQ DETROIT  
KLIF DALLAS  
WRKO BOSTON  
WQXI ATLANTA  
Z93 ATLANTA  
WLS CHICAGO  
WRC WASHINGTON D C  
KSLQ ST LOUIS  
WPGC WASHINGTON D C

### PARALLEL 2

WSAI CINCINNATI  
WAYS CHARLOTTE  
WOKY MILWAUKEE  
WYRE ANNAPOLIS  
WAVZ NEW HAVEN  
WNGN PROVIDENCE  
KBEQ KANSAS CITY  
XROK SACRAMENTO  
KROY SACRAMENTO  
KLIV SAN JOSE  
WYND SARASOTA  
KAKC TULSA  
KTKT TUCSON  
KEZY ANAHEIM  
WGRD GRAND RAPIDS  
KLEO DES MOINES  
KIOA WICHITA  
KUPD PHOENIX  
KRIZ PHOENIX  
KCBO SAN DIEGO  
Y100 MIAMI  
WMYO MIAMI  
WIFE INDIANAPOLIS

## THREE DOG NIGHT—3:32 *Play Something Sweet (ABC/Dunhill)*

LP: Hard Labor

P1	P2	P3
KHJ 22-22	XROK 4-8 KAKC 25-23 WHBQ 14-13	WCFL 29-24 WMAK 30-29 WBBQ 30-22 KYSN 7-10



## BOBBY VINTON—3:08 *Melody Of Love (ABC)*

LP: Melodies Of Love

P1	P2	P3
KHJ 8-7 KKDJ 10-5 K100 6-7 KFRC 15-12 WABC 1-1 99X 6-5 WFIL 1-1 KDWB 8-17 KSTP 7-8 13Q 18-19 KQV 14-20 CKLW 5-8 WDRQ 3-3 WRKO 7-4 WLS 2-3 WRC 8-10 KSLQ 9-9 WPGC 9-16	WSAI 4-8 WCAO 2-5 WOKY 10-11 WYRE 4-4 WAVZ 1-1 WNGN 5-4 WDXR 25-30 KBEQ 14-15 XROK 7-12 WYND 25-24 KAKC 15-14 KEZY 2-1 WGRD 1-6 KIOA 12-9 KCBQ 11-10 Y100 6-8 WIFE 19-13 WRIE 2-1 WOW 1-2 WHBQ 11-18 WMPG 2-2 WSGA 14-10 WBBF 6-7 KRSP 10-9 WGRQ 9-12 KYNO 6-4 KFMG 12-10 WKBW 5-9 WNOR 22-11	WCFL 1-1 WCOL 14-20 KQWB 21-19 KJR 6-7 KJRB 19-18 KING 5-4 KAFY 10-6 WISM 2-7 WGH 13-10 WPOP 1-1 WIXY 1-2 WLPL 15-10 WFOM 15-13 CHUM 3-1 WROK 3-5 KIMN 11-6 WIBG 1-2 KJOY 12-17 WVWK 24-23 WEEQ 5-11 KKXL 31-27



## JIM WEATHERLY—3:53 *The Need To Be (Buddah)*

LP: Songs of

P1	P2	P3
K100 18-26	WSAI 18-24 KAKC 22-17 KTKT 5-11 KIOA 14-12 WIFE 21-15 WRIE 7-7 WHBQ 8-22 KRSP 8-6 KYNO 19-16 WNOR 10-10	WAKY 7-9 WKLO 16-26 WIXY 5-11

### PARALLEL 3

WRC ERIE  
WNOV HUNTSVILLE  
WOW OMAHA  
WHBQ MEMPHIS  
WMPG MEMPHIS  
WNGN NEW ORLEANS  
WSGA SAVANNAH  
WGOV CHATTANOOGA  
WBBF ROCHESTER  
KCPX SALT LAKE CITY  
KRSP SALT LAKE CITY  
WROD BUFFALO  
KYNO FRESNO  
KFMG DES MOINES  
WKBW BUFFALO  
WLOB PORTLAND  
KTLK DENVER  
WLAC NASHVILLE  
WJBO PORTLAND  
WNOR NORFOLK  
KSEA SAN DIEGO

WCFL CHICAGO  
WMAK NASHVILLE  
WCOL COLUMBUS  
WNCI COLUMBUS  
KQWB FARGO  
KJR SEATTLE  
KJRB SPOKANE  
WCAO BALTIMORE  
KING SEATTLE  
KAFY BAKERSFIELD  
WISM MADISON  
WGH NEWPORT NEWS  
WAKY LOUISVILLE  
WKLO LOUISVILLE  
KEEL SHREVEPORT  
WPOP HARTFORD  
WIXY CLEVELAND  
WJDX JACKSON  
WLPL BALTIMORE  
WFOM MARIETTA  
WBBQ AUGUSTA  
WERC BIRMINGHAM  
CHUM TORONTO  
WAMS WILMINGTON  
WROK ROCKFORD

KIMN DENVER  
KYSN COLORADO SPRINGS  
WBGD BOWLING GREEN  
KDON SALINAS  
KKLS RAPID CITY  
WONZ NATCHEZ  
KKAM PUEBLO  
WHY MONTGOMERY  
KJOY STOCKTON  
WROV ROANOKE  
WMC FM MEMPHIS  
WKGX KNOXVILLE  
WVWK LEXINGTON  
WRMA MONTGOMERY  
KFXM SAN BERNARDINO  
WEEQ WYNEBORO  
KQZ PUEBLO  
KKXL GRAND FORKS  
WKSJ JAMESTOWN  
WORD SPARTANBURG  
KJSO SAN JOSE  
KREM SPOKANE  
Z96 GRAND RAPIDS  
WLEE RICHMOND  
KSLY SAN LUIS OBISPO

## BARRY WHITE—3:25 *You're The First, Last (20th)*

LP: Can't Get Enough

P1	P2	P3
KHJ 20-17 K100 22-19 KFRC 25-22 WABC 6-3 99X 2-3 WPIX 8-1 WFIL 10-8 KSTP 19-19 13Q a 28 KQV 22-15 CKLW 8-7 WDRQ 16-12 WRKO 25-19 WQXI 16-12 Z93 9-9 WRC 20-20 KSLQ 20-10 WPGC d 15	WSAI 10-7 WAYS 21-15 WCAO 14-9 WOKY 24-18 WYRE 21-17 WAVZ 17-8 WNGN 17-11 WDXR 22-12 KBEQ a 29 XROK d 3 KAKC d 28 KTKT 22-15 KEZY a WGRD 28-27 KIOA 27-22 KLEO d 30 Y100 10-9 WIFE a WRIE 30-30 WVOV 12-4 WOW a 19 WHBQ d 29 WMPG on WSGA 15-13 WGOW 9-8 KRSP 26-22 WGRQ 25-22 KYNO 14-5 KFMG a 30 WKBW 23-10 KTLK 26-23 WLAC 11-6 WJBO a WNOR 21-18	KILT 21-16 WCFL 30-28 WMAK 26-24 WCOL 27-13 KQWB 35-26 KJR on KJRB 24-20 KING a KAFY 22-18 WISM 20-13 WGH 20-16 WAKY 9-8 WKLO 13-8 KEEL 9-8 WPOP 23-5 KLEO d 30 WLPL 23-18 WFOM 32-26 WBBQ 25-20 WERC 10-7 CHUM d 27 WROK d 31 KIMN 31-23 KYSN d 38 WBGD 18-10 WRC on WQNB d 30 WQNB 18-10 KJOY 21-18 WROV 30-24 WVWK 14-10 WEEQ 33-26 KKXL 12-7 WORD 20-22 Z96 a 28

## STEVIE WONDER—4:05 *Reggae Woman (Tamla)*

LP: Fulfillingness' First Finale

P1	P2	P3
KHJ 29-21 K100 27-22 99X 20-11 WPIX a KSTP a 23 13Q 29-23 KQV 21-16 CKLW 11-11 WDRQ 17-11 WQXI a 28 Z93 a 15 WRC d 25 KSLQ 23-7 WPGC a 23	WAYS 12-9 WCAO 27-20 WNGN a WDXR d 18 KBEQ d 20 KEZY a WSGA 30-20 WGOW a WGRQ 22-19 KYNO a KTLK d 22 WLAC on WNOR a 30	KILT 9-4 WCOL 18-10 KJR 24-21 KJRB d 34 KING on WISM 24-19 WGH 28-22 WAKY 29-26 WKLO 21-9 KEEL 15-12 WIXY a WLPL 21-16 WFOM 37-32 WBBQ on CHUM a WROK on KIMN 25-16 KYNO 23-19 WBGD a KDON 33-29 WRFC 28-21 WIBG a KJOY 20-16 WROV d 29 WVWK a WEEQ 32-29 KKXL on WORD 14-10

### LATE NEWS

CONTINUED FROM Pg 1

Chenault organization nine years, is no longer PD at K100. Les Garland from KYNO-Fresno is the new PD. Mike Novack has been named PD at KYNO. Watson was not available for comment.

### GARY ALLYNOT AT WMYQ

Gary resigned as PD last Friday after the appointment of Jerry Clifton to head of programming for the Bartell chain.

### BIFF COLLIE LEAVES CAPITOL

Biff Collie, one of the best known names in Country music, will leave Capitol Records Nashville producer staff to become an independant producer. He will continue to produce Stoney Edwards and Charlie Walker for Capitol. Biff can be reached at 615-331-2296.

### JOHNNY BOND SENTENCED

Johnny Bond was found guilty on charges of fraud regarding the Roberto Clemente charity

album. Bond was sentenced to a year and a day at Allenwood Federal prison, which now houses the famous Watergate convicts.

### FOOTBALL POOL DELAYED

The Thanksgiving weekend Football Pool game result sheet will appear in the December 13th issue of R&R.

### CURTOM TO WB

Warner Brothers Records has entered into a long term distribution agreement with Chicago based Curtom Records. As of January 1, 1975 the bunny will manufacture and distribute all Curtom product. Curtom has been with Buddah.

### SUBSCRIBE TO R&R

Name \_\_\_\_\_  
Company/Station \_\_\_\_\_  
Address \_\_\_\_\_  
City \_\_\_\_\_ State \_\_\_\_\_ Zip \_\_\_\_\_

SEND TO: Radio & Records, 6430 Sunset, Suite 1221, Hollywood, Calif.

ONE YEAR—\$130

ONE QUARTER—\$35

SPECIAL DISC JOCKEY & SMALL MKT STATION RATES UPON REQUEST



# COUNTRY

R&R COUNTRY HOTLINE:  
(714) 582-7004

JIM DUNCAN/Editor

## Radio & Records

**TREND:** November 29, 1974

11/8	11/15	11/22		
3	1	2	1	BILLY SWAN/I Can Help (Monument)
9	3	3	2	CHARLIE RICH/She Called Me Baby (RCA)
7	2	1	3	JOHN DENVER/Back Home Again (RCA)
11	5	4	4	LA COSTA/Get On My Love Train (Capitol)
16	11	8	5	JOHNNY RODRIGUEZ/We're Over (Mercury)
17	10	7	6	MEL TILLIS/Memory Maker (MGM)
14	12	9	7	JOE STAMPLEY/Take Me Home to Somewhere (Dot)
4	6	5	8	TOM T. HALL/Country Is (Mercury)
-	24	15	9	LYNN ANDERSON/What A Man, My Man Is (Columbia)
1	4	6	10	LORRETTA LYNN/Trouble In Paradise (MAC)
-	20	13	11	BILL ANDERSON/Every Time I Turn the Radio On (MCA)
-	27	23	12	GARY STEWART/Out Of Hand (RCA)
-	25	14	13	ELVIS PRESLEY/It's Midnight (RCA)
19	16	12	14	DAVID HOUSTON/Can't You Feel It (Epic)
-	26	24	15	JERRY LEE LEWIS/He Can't Fill My Shoes (Mercury)
-	21	18	16	DONNA FARGO/U.S. of A. (Dot)
-	-	19	17	ANNE MURRAY/Son of a Rotten Gambler (Capitol)
-	-	28	18	MERLE HAGGARD/Kentucky Gambler (Capitol)
-	-	29	19	RAY PRICE/Like Old Times Again (Myrrh)
-	-	30	20	BILLY "CRASH" CRADDOCK/Ruby Baby (ABC)
15	14	11	21	DON GIBSON/Bring Back Your Love (Hickory)
-	-	-	22	GEORGE JONES/The Door (Epic)
5	8	10	23	DOLLY PARTON/Love is Like a Butterfly (RCA)
20	19	16	24	DICK FELLER/Credit Card Song (UA)
-	-	-	25	BOBBY BARE & FAMILY/Singing in the Kitchen (RCA)
2	7	17	26	CONWAY TWITTY/I See the Want To (MCA)
-	-	-	27	FREDDIE HART/My Woman's Man (Capitol)
6	9	20	28	CHARLIE PRIDE/Mississippi Cotton Pickin' Town (RCA)
-	-	-	29	JEANNE SEELEY/He Can Be Mine (MCA)
-	-	-	30	MEL STREET/Forbidden Angel (GRT)

## added

Asterisk (\*) denotes records Most Added this week.

<b>KENR/HOUSTON</b> Jerry Reed* Don Williams* Tommy Overstreet* David Wills Ferlin Husky Johnny Cash*	<b>KBUL/WICHITA</b> Del Reeves Cal Smith Bud Logan Dickey Lee Tommy Overstreet* Don Williams*	<b>WWHY/HUNTINGTON</b> Mickey Gilley Bobby G. Rice Paul Davis Glen Campbell T.G. Sheppard Roy Clark Dottie West Porter Wagoner Roger Miller Rex Allen, Jr. Durwood Haddock
<b>WSLR/AKRON</b> Don Williams* Jerry Reed* Jim Ed Brown Marilyn Sellars*	<b>WHO/DES MOINES</b> Johnny Cash* Jim Ed Brown Bud Logan Don Williams* Jerry Reed* Tommy Overstreet* Ferlin Husky Pick-Cal Smith	<b>WMNI/COLUMBUS</b> Mickey Gilley Johnny Cash* Charlie Pride
<b>WBAP/FT. WORTH</b> Don Williams* Marilyn Sellars* Tommy Overstreet* Clay Hart Bud Logan Dan Wasson George Morgan Jerry Reed* Charlie Pride Les Cunningham	<b>KFOX/LONG BEACH</b> T.G. Sheppard Asleep at the Wheel Mickey Gilley Don Williams* Cal Smith Marilyn Sellars*	<b>KIKK/HOUSTON</b> Johnny Cash* Jerry Reed* Johnny Williams Crystal Gayle O.B. McClinton
<b>WPLO/ATLANTA</b> Cal Smith-Pick Jerry Reed* Jim Ed Brown Linda Ronstadt Jim Mundy Jennifer O'Brien Chip Taylor Marilyn Sellars*	<b>WUBE/CINCINNATI</b> T.G. Sheppard Gary Stewart Jim Glaser Porter Wagoner Ringo Starr Tommy Overstreet* Rex Allen, Jr. Johnny Cash*	<b>WCMS/NORFOLK</b> O.B. McClinton Chip Taylor Marilyn Sellars* Connie Van Dyke Don Williams* Tommy Overstreet* Pick-Johnny Cash*
<b>WEET/RICHMOND</b> Tenn. Ernie Ford O.B. McClinton	<b>KZON/SANTA MARIA</b> Vicky Bird Ray Stevens Johnny Cash*	<b>WINN/LOUISVILLE</b> Jerry Reed* Glen Campbell Jim Glaser Harry Chapin Eagles Asleep at the Wheel Chip Taylor Country Cavaliers
<b>WDEE/DETROIT</b> Asleep at the Wheel Don Williams* Tommy Overstreet* Porter Wagoner Marilyn Sellars* Dottie West Johnny Cash* Ronnie Milsap Rex Allen, Jr. Rusty Draper	<b>KNUZ/HOUSTON</b> Jerry Reed* Tommy Overstreet* Jim Ed Brown Jerry Naylor Judy Lynn Rita Coolidge	<b>KNEW/OAKLAND</b> Don Williams* Cal Smith Mickey Gilley
<b>KTUF/PHOENIX</b> Jerry Reed* Charlie Pride Jim Ed Brown Linda Hargrove	<b>WIRE/INDIANAPOLIS</b> Charlie Pride Marilyn Sellars* Jerry Wallace Dottie West Don Williams* Porter Wagoner T.G. Sheppard Jerris Ross Jody Miller Asleep at the Wheel Kris Kristofferson & Rita Coolidge Pick-Glen Campbell	<b>WAME/CHARLOTTE</b> No adds this week.
<b>KSON/SAN DIEGO</b> Mickey Gilley Paul McCartney Johnny Cash*	<b>KAYO/SEATTLE</b> Jerry Reed* Charlie Pride-Pick Johnny Cash* Moe Bandy Jacky Ward Douglas Bros.	<b>KCEY/MODESTO</b> Jerry Wallace T.G. Sheppard Roger Miller Ray Stevens Cal Smith David Wills
<b>KUZZ/BAKERSFIELD</b> Mickey Gilley Tommy Overstreet* Jerry Wallace Don Williams* Marilyn Sellars* Jerry Jaye	<b>KERE/DENVER</b> Larry Trider Johnny Cash*	<b>WEPP/PITTSBURGH</b> Freddie Hart Brian Shaw T.G. Sheppard Lou Christie
<b>KRAK/SACRAMENTO</b> George Jones Moe Bandy Ronnie Milsap Del Reeves Buck Owens	<b>WMC/MEMPHIS</b> Sammy Johns Jerry Reed* Billy Larkin Susan Hudson Tommy Overstreet*	<b>KBFW/BILLINGHAM</b> Kris Kristofferson & Rita Coolidge Johnny Cash* Roger Miller
<b>WJJD/CHICAGO</b> Pick-Marilyn Sellars* Bobby G. Rice Red Stegall Linda Ronstadt Patsy Sledge Roger Miller Rex Allen, Jr.	<b>KLAC/LOS ANGELES</b> Bobby G. Rice Don Williams* Johnny Cash* Hank Snow	<b>WIL/ST. LOUIS</b> Mickey Gilley Doyle Holly Don Williams* Asleep at the Wheel Roger Miller Pick-Charlie Pride
<b>KLAK/DENVER</b> Connie Van Dyke Ferlin Husky Willie Nelson Rebecca Lynn Mack White Mickey Gilley Jerris Ross	<b>KCKC/SAN BERNARDINO</b> Jerry Reed* Johnny Cash*	<b>KCKN/KANSAS CITY</b> Linda Ronstadt Tony Booth Charlie Pride Jim Ed Brown Jerry Reed* C.W. McCall David Wilkins Bud Logan Melody Allen David Frizzell Judy Lynn Eddie Arnold
<b>WONE/DAYTON</b> Johnny Cash* Roy Clark Charlie Pride Tommy Overstreet* Don Williams* O.B. McLinton	<b>WHN/NEW YORK</b> Dottie West Faron Young Doyle Holly Jerry Reed* Don Williams* Durwood Haddock Roy Rogers	<b>WUNI/MOBILE</b> Charlie Pride Red Stegall Frank Myers Paul McCartney Kris Kristofferson & Rita Coolidge Durwood Haddock
<b>WISZ/BALTIMORE</b> T.G. Sheppard Bobby Lewis	<b>KBOX/DALLAS</b> Pick-Charlie Pride	

### Most added

- DON WILLIAMS  
*Ties That Bind (ABC/Dot)*
- JOHNNY CASH  
*Came From Baltimore (Columbia)*
- JERRY REED  
*Let's Sing Our Song (RCA)*
- TOMMY OVERSTREET  
*I'm A Believer (ABC/Dot)*
- MARILYN SELLARS  
*He's Everywhere (Mega)*

### DIRECT FROM DUNCAN...



The NEW Country Music Capital of the World: HOLLYWOOD??...Well, not yet, but we're trying. Right now we're getting settled into our new offices. As last weeks R & R editorial mentioned, the reason I'm here is to make the R & R COUNTRY section the BEST source of information anywhere!! I hope you enjoy the new changes we have made and be looking for more very soon...Our address for any publicity photos or news will now be: Attention: Jim Duncan, Radio & Records Country,

Continued on page 24

### NEW & ACTIVE

MARILYN SELLARS (Mega)--"He's Everywhere"--One of the top added records-some crossover MOR play--adds WSLR, WBAP, WPLO, WDEE, KFOX, KUZZ, WCMS, Pick-WJJD.

REX ALLEN, JR. (Warner)--"Never Coming Back Again"--More strong adds this week: WDEE, WJJD, WUBE, WWHY.

JERRY REED (RCA)--"Let's Sing Our Song"--Off to a good start-added KENR, WSLR, WBAP, WPLO, KTUF, WHO, WMC, KCKC, KSO, KIKK, WINN, KCKN.

DOTTIE WEST (RCA)--"Lay Back Lover"--From her last L.P.--More adds: WWHY, WHN, WIRE, WDEE.

DON WILLIAMS (ABC-Dot)--"Ties That Bind"--WIL, WIRE, KFOX, WHO, WONE, WBAP, KENR, KLAC, WHN, WCMS, KNEW, and more.

JOHNNY CASH (Columbia)--"Lady Came From Baltimore"--Added KAYO, WUBE, WHN, WONE, KSON, WDEE, KENR, KIKK, KLAC, Pick-WCMS.

ASLEEP AT THE WHEEL (Epic)--"Choo Choo Ch Boogie"--Requests KTUF, More Adds: KFOX, WIRE, WDEE, WINN.

JIM ED BROWN (RCA)--"Don, Jr."--Picked up on WPLO, KTUF, WHO, KNUZ, KCKN.

TOMMY OVERSTREET (ABC-Dot)--"I'm A Believer"--A most added record--KSO, WMC, KENR, WBAP, WDEE, WONE, WHO, KFOX, WUBE, KNUZ, WCMS.

CHARLIE PRIDE (RCA)--"Then Who Am I"--Pick KAYO, Adds: WBAP, KTUF, KCKN, Pick-KBOX, WMNI.

T.G. SHEPPARD (Melodyland)--"Devil In The Bottle"--More ads-WISZ, KFOX, WIRE, WEPP, KCEY, WWHY.

Continued on page 24



# COUNTRY

R&R COUNTRY HOTLINE:  
(714) 582-7004

JIM DUNCAN/Editor

## DIRECT FROM DUNCAN...



Continued from page 23

6430 Sunset Blvd., Suite 1221, Hollywood, 90028. Until we get a new Country Hotline, call me Monday-Friday: (213) 466-1605....

Hope you had a super Thanksgiving. I asked my new boss if we're going to get some free bonus turkeys this year. All he did was give "The Bird" and told me to "stuff it!".....Couple of L.P. cuts we've been getting good reaction: "Shake, Rattle and Roll" from the BILLY SWAN "I Can Help" album on MONUMENT. ED CHANDLER of KSON, San Diego reports requests for the CHARLIE RICH version of "Tragedy" on his RCA album. Also, I just had the pleasure of tracking the new EPIC L.P. by CHARLIE RICH: "The Silver Fox" and all I can say is: "What a Gas!!!" If you get a chance to program side one as a special...do it!....

(By the way, for you trivia-buffs: THE FLEETWOODS had the original hit of "Tragedy.").....The 1974 BILLBOARD Country D.J. of the year, GARY SEMRO, quit his afternoon-drive gig on WEPP in Pittsburgh. ED SALAMON, Program Director, reports he quit on-the-air and without notice. SEMRO said he wanted more money and could not get it from the company. ("Ma, he's singing my song.")

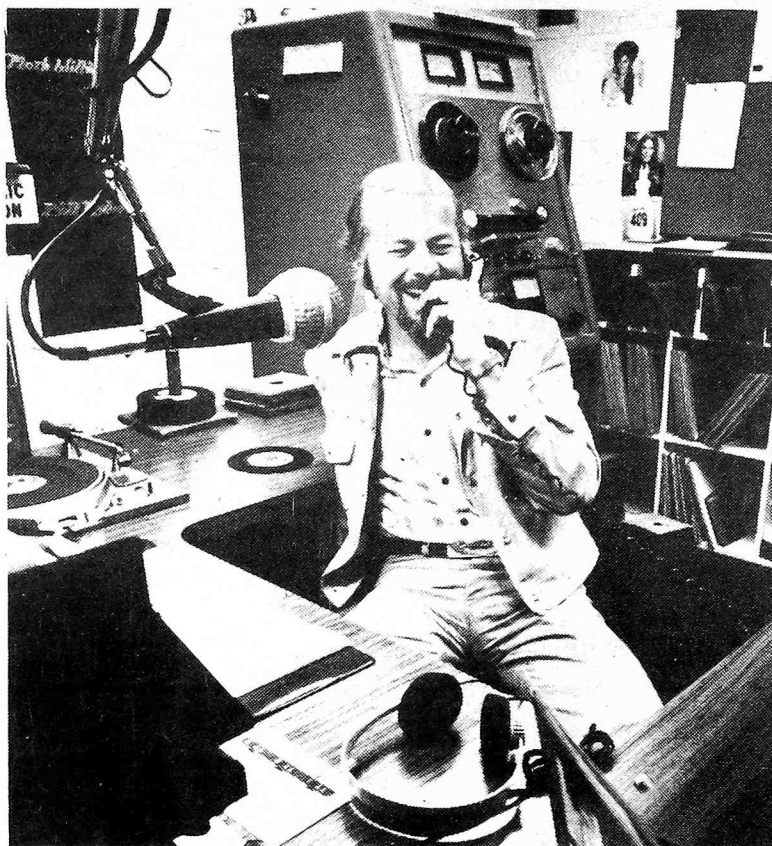
...The welcome mat is out for DALE HANSEN of KBFW in Billingsham, Washington. Dale is our latest addition to the R&R reporters.... T.G. SHEPPARD called me from Nashville, to see how his current single was doing. Of course, you know by now, his "Devil in the Bottle" on MELODYLAND is one of the hottest records out. For your information: T.G. SHEPPARD is really Nashville independent promotion man, BILL BROWDER in disguise. Bill (or is it T.G.) told me: the record was cut as a joke. Now he's going to laugh all the way to the bank. (Well, as they always say: "Disguise the limit!?!?!")....

BILL HART, Music director of WSLR is looking for a position as an air-talent, music director and/or program director. Bill has been with WSLR 4 years and is ready to move on. You can reach him daily at WSLR, (216) 535-6165 or at home (216) 633-8134....MIKE MILLARD resigned last week as P.D. of KERE, Denver. He's also looking. Call (303) 534-5373 or (303) 320-0760. DOUG DILLON of WWOK in Miami will be his replacement....and...GARY MILLER of WWHY, Huntington, West Virginia is resigning as jock and music director. He's ready to go, call (304) 429-4901. (Sounds like JOHNATHAN FRICKE and I have started a new national pastime.)...The new music director of WEET in Richmond, Virginia is PAT HENRY, replacing JIM CASH...The new TOM T. HALL single will be: "I Care" and "Sneaky Snakes" from his forthcoming MERCURY album: "Songs of Fox Hollow"....

BILLY COLE of WHO, Des Moines would like to invite artist to get in on the stations Country-Call In program. The show is featured every Thursday evening 10:15 to 12 midnight. The station will set up a conference line to let listeners talk with artist who call in. You can get more details from Billy by calling

## CORRESPONDENTS' CORNER

BOB MITCHELL  
KCKC/SAN BERNARDINO



"Too often, I believe, the human beast accentuates the negative. I want KCKC to be a source or place people can turn to and find happiness, friendship, and companionship. Some of my happiest moments have been on the air. I've had people call me to ask if I'm always happy. I try to be. I'm not looking at life through rose-colored glasses, but if there is some way I can contribute a little happiness to someone's life, I'll do it...and I'm that way off mike, too."

"We do not talk down to our audience. I picture myself as the average listener and I give our listeners the same kind of programming I would want to listen to..."

## NEW & ACTIVE

Continued from page 23

### RECORDS TO WATCH

CLAY HART (Ranwood)--"Travelin' Minstrel Man"--Adds KCKN, KLAC, WBAP, KSO, WWOK, KWJJ, WCMS.  
GLEN CAMPBELL (Columbia)--"It's A Sin"--Add KSO, WINN, WWHY, Pick-WIRE.  
BOBBY G. RICE (grt)--"Make It Feel Like Love"--Added WJJD, KLAC, WWHY.  
O.B. McCLINTON (Enterprise)--"Yours & Mine"--Added WEET, KIKK, WONE, WCMS, Debut-46 KERE.  
ROY CLARK (ABC-Dot)--"Dear God."--Adds WWHY, WONE.  
BUD LOGAN (Shannon)--"Fine Me A Bluebird"--On WBAP, KBUL, WHO, KCKN  
LINDA RONSTADT (Capitol)--"I Can't Help It"--Added to WPLO, WJJD, KCKN  
FERLIN HUSKY (ABC)--"Champagne Lady"--This week-KENR, WHO.  
JIM GLASER (MGM)--"Forgettin' About You"--Add WUBE, WINN.

(515) 288-6511 during the weekdays. ..Our sympathy to LEE ARNOLD of WHN in New York. His mother passed away last week....KBOX in Dallas raised \$6000. for the family of a Dallas policeman. They had a donkey basketball game for the benefit. (I guess that's one way to make an "ass" of yourself.).... from OAKLAND, KNEW's music

director STEVE LEADER told us the reason there are NO STREAKERS IN ITALY: because there is an "Organ" grinder on every corner!...(Boo!!)...well, we've got to get ORGANIZED here in our new offices. Until next week, same time and same page...enjoy those turkey sandwiches!!...Bye ya' all....

## Biff Collie INSIDE NASHVILLE



The Metropolitan Opera of New York may come to Nashville to record some performances for cable television in the Grand Ole "Opera" House, according to an Opera Association director. The opera is reportedly hampered by financial difficulties (that's news?) and considers paid cable TV as a way of easing their problems....

Music City news today has to do with church music. The Baptist humnal, which sells between eight and eleven million copies each time it changes, is set for a new release March 10, 1975. As a way of introducing it, the Southern Baptist Convention, or perhaps the Baptist Sunday School Board, based here, will hold a six-day "Prai-Sing" March 10-15, during which time the new hymnal will be sung....all the way through! Accompaniment will include everything from Nashville's Symphony Orchestra, George Beverly Shea, Robert Hale and Dean Wilder to Cecil Effinger's new choral work, gospe, country, with stars from both fields, the premier of the new book, with men's groups from ten states and a one hundred piece men's choir. A Texas group has already booked all the tourist space on three 727 jets to come here for this special week's "PraisING."

By The Way: Opry manager Hal Durham presented the CMA board a \$25,000 check for a special anti-piracy fund....Mac Davis' "I Believe In Music" has been recorded over 50 times....Who wins in the Bill Walker-Donna Fargo court suit for \$500,000 is still anybody's guess. Walker contends that he in fact produced Donna's multi-million seller "Happiest Girl In The Whole USA" and should be paid producer's royalties. Stan Silver, Donna's husband and manager says no. David Pack, Walker's lawyer, was a candidate for Governor this year in Tennessee...Walker was musical director on the "Johnny Cash Ridin' The Rails-The Great American Train Story," seen last Friday night on ABC-TV....Columbia Records and Charlie Rich's lawyers sued

Tommy Hill's Gusto Records for his current package of old Rich masters which Tommy calls "Charlie Rich, The Silver Fox." The suit asked that Gusto be forced to take it off the market. U.S. District Judge L. Clure Morton said "There is a likelihood the public will be misled and confused as to its true contents." Hill, as a gesture of good faith, and without admission of any liability, offered to affix a clarifying decal to each of its power pak album "Charlie Rich...The Silver Fox" saying "Early monaural recordings of Charlie Rich, adapted for stereo"....

The members of "ACE" (The Association of Country Entertainers) are not mad at Olivia Newton-John. They just don't think she should win any more country awards. They don't think she wants to win country awards. Tammy Wynette, on Teddy Bart's WSM-TV's "Noon Show," said she and Olivia are friends, and that Olivia just doesn't want to be involved in country.

What They Are Doing: Porter's fishin' at Center Hill Lake....Carl Smith is working his quarterhorses before leaving for a pair of weekend gigs...Frank Jones is waiting for his office furniture for his new Nashville Capitol office....Doodle Owens is unrecognized in a sharp business suit and salt & pepper goatee on Music Row...T. Tommy Cutrer and Vicky are gone cajun country hunting this weekend....Opryland Records is huddling with producer Jimmy Bowen re: schedule on that historic "Opening Night" at the new Opry House last spring....Connie Van Dyke did a switch; she came to Nashville to make it as a country singer and ended up moving to Hollywood to be a Hollywood actress. She's a hit already, and hasn't had a movie released; won't till spring....Columbia's ready with their new 24 track recorders. Johnny Cash was the first to use them, last week....Where was Jimmy Dickens born? "So far back in the country we had to order our haircuts from Sears & Roebuck!"

## MOST REQUESTED:

C.W. McCALL  
Wolf Creek Pass (MGM)

BILLY SWAN  
I Can Help (Monument)

BILLY "CRASH" CRADDOCK  
Ruby Baby (ABC)



# SHELTER COUNTRY

**LONG DISTANCE KISSES**  
(Larry Hosford)



**SR 40312**  
His & Hers-  
Lameduck  
(BMI)

**LARRY HOSFORD**

Producer: Dino Airali  
Syn-Star Prod.

Playing On Over  
150 Top Country  
Stations Nationwide

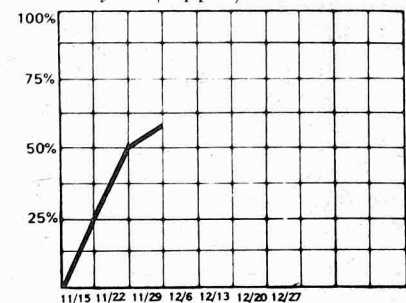


Graphs reflect audience response computed by a combination of sales, airplay and requests. The lower the graph position the less airplay, sales and requests being reported. The higher the position, the more active the record. We feel that a visual aid explains the whole picture better than assigning arbitrary numbers in a longer list.

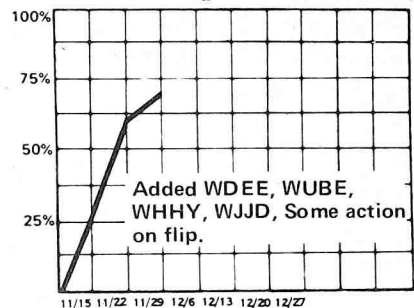
# COUNTRY SINGLES

new entries

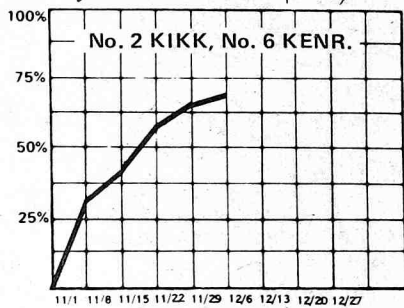
PAUL McCARTNEY  
*Sally G. (Apple)*



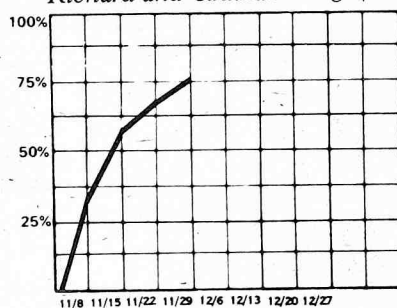
REX ALLEN, JR.  
*Never Coming Back (W. Bros.)*



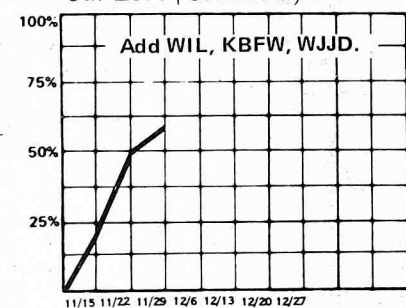
BRIAN COLLINS  
*Way Love Should Be (Dot)*



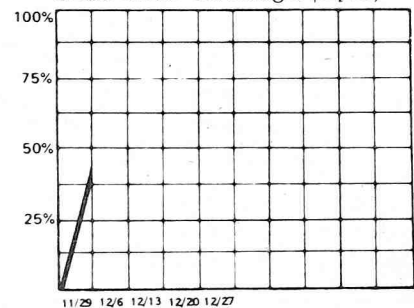
DOYLE HOLLY  
*Richard and Cadillac Kings (Barnaby)*



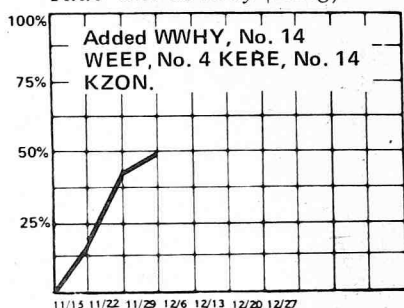
ROGER MILLER  
*Our Love (Columbia)*



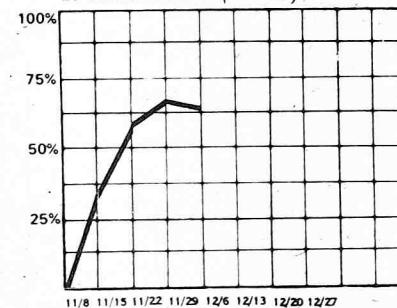
ASLEEP AT THE WHEEL  
*Choo Choo Ch'Boogie (Epic)*



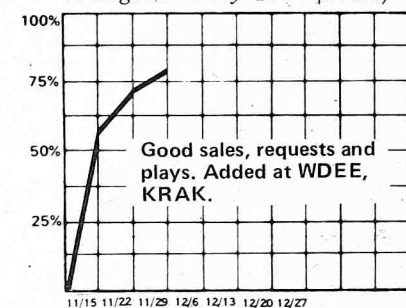
PAUL DAVIS  
*Ride 'Em Cowboy (Bang)*



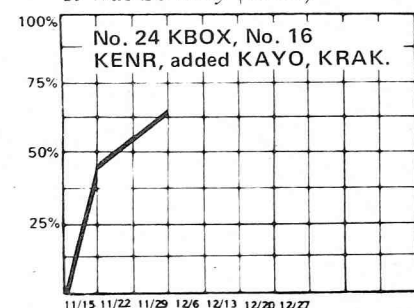
MARY KAY JAMES  
*It Amazes Me (Avco)*



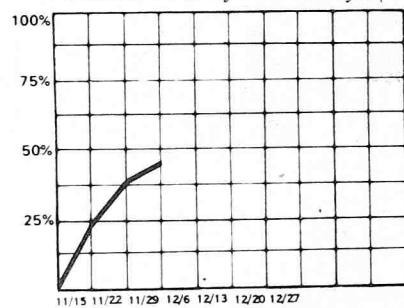
RONNIE MILSAP  
*A Legend In My Time (RCA)*



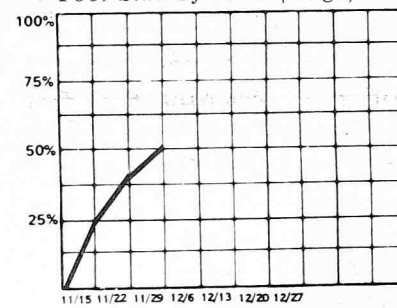
MOE BANDY  
*It Was So Easy (GRC)*



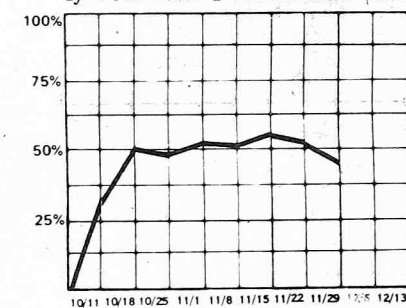
MUNDO EARWOOD  
*Another One Of Those Days (GRT)*



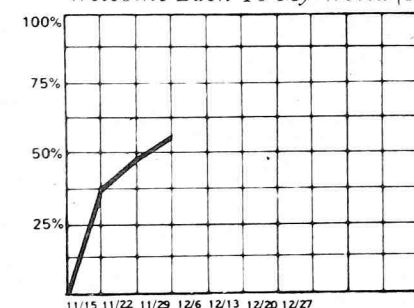
JERRY JAYE  
*Poor Side Of Town (Mega)*



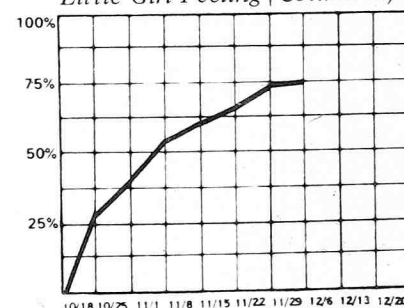
MELBA MONTGOMERY  
*If You Want The Rainbow (Elektra)*



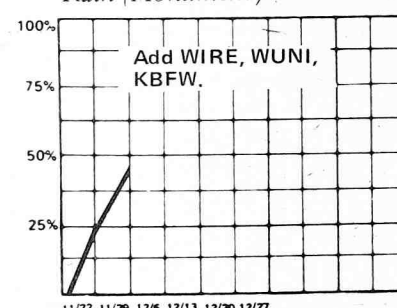
CARL BELEW  
*Welcome Back To My World (MCA)*



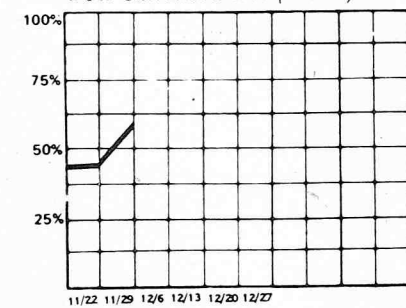
BARBARA FAIRCHILD  
*Little Girl Feeling (Columbia)*



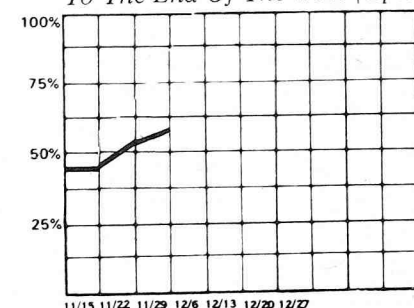
KRISTOFFERSON & COOLIDGE  
*Rain (Monument)*



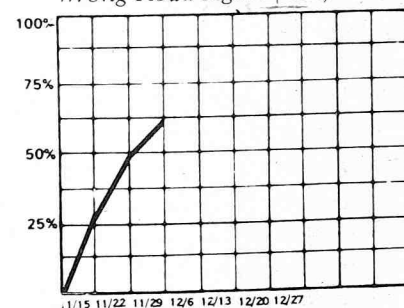
SAM NEELEY  
*You Can Have Her (A&M)*



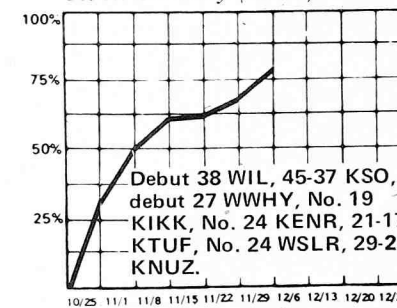
BLANCHARD & MORGAN  
*To The End Of The Wine (Epic)*



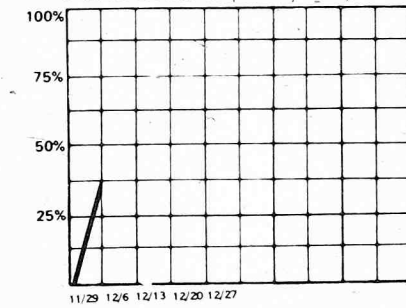
CRYSTAL GALE  
*Wrong Road Again (UA)*



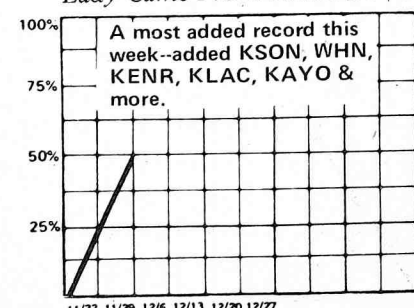
BRENDA LEE  
*Rock On Baby (MCA)*



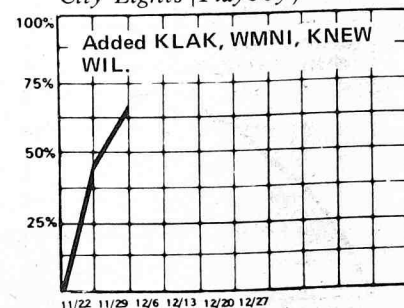
TOMMY OVERSTREET  
*I'm A Believer (ABC/Dot)*



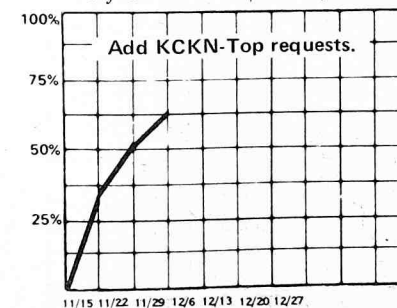
JOHNNY CASH  
*Lady Came From Baltimore (Col)*



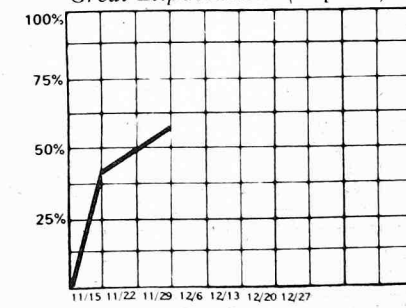
MICKY GILLEY  
*City Lights (Playboy)*



C.W. McCALL  
*Wolf Creek Pass (MGM)*



BUCK OWENS  
*Great Expectations (Capitol)*



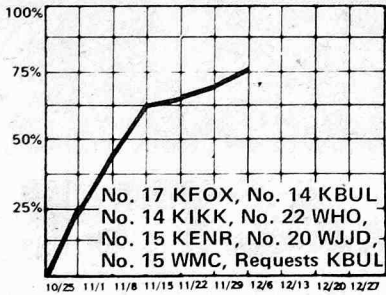


# COUNTRY SINGLES

new entries

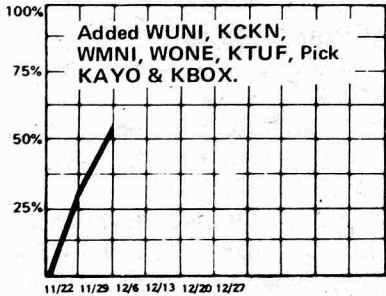
### JOHNNY PAYCHECK

*For A Minute There (Epic)*



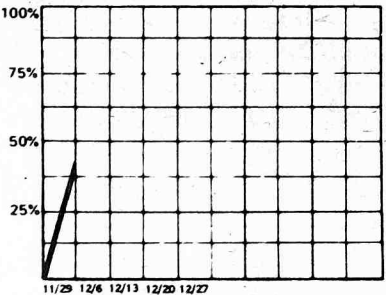
### CHARLIE PRIDE

*Then Who Am I (RCA)*



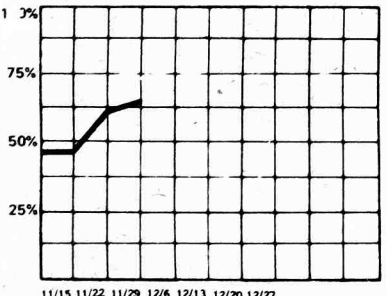
### JERRY REED

*Let's Sing Our Song (RCA)*



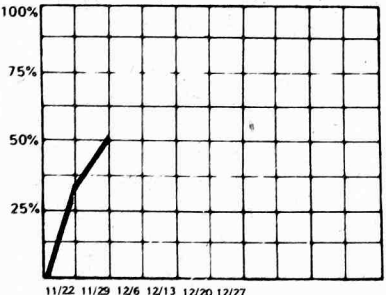
### MARTY ROBBINS

*Two Gun Daddy (MCA)*



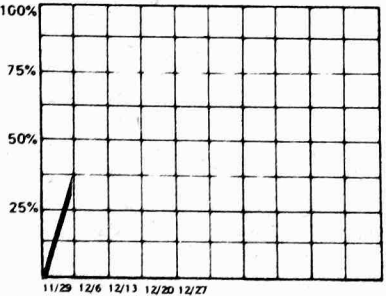
### BETTY JEAN ROBINSON

*On The Way Home (MCA)*



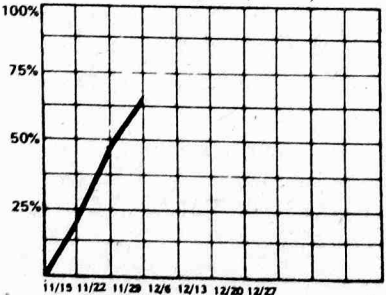
### MARILYN SELLARS

*He's Everywhere (Mega)*



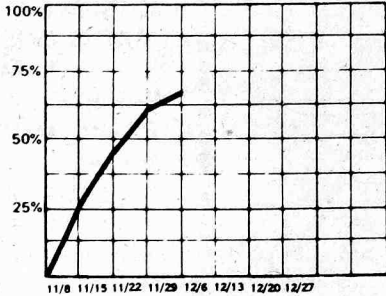
### BRIAN SHAW

*Here We Go Again (RCA)*



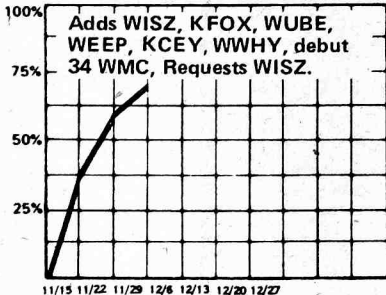
### JEAN SHEPARD

*Poor Sweet Baby (UA)*



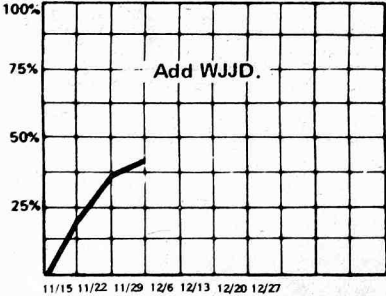
### T.G. SHEPPARD

*Devil In The Bottle (Melodyland)*



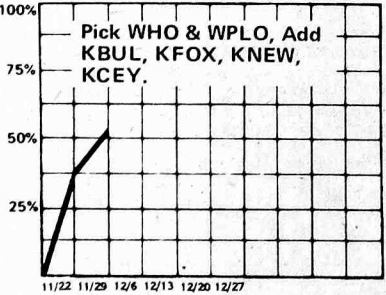
### PATSY SLEDD

*See Saw (ABC)*



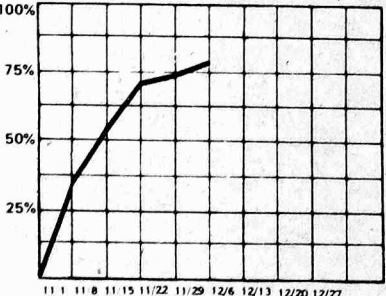
### CAL SMITH

*Time To Pay Fiddler (MCA)*



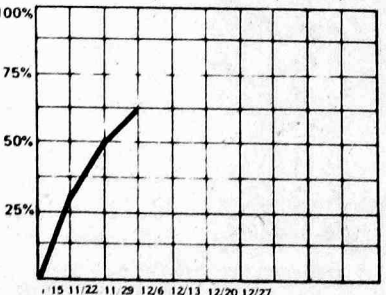
### CONNIE SMITH

*I've Got Baby on My Mind (Columbia)*



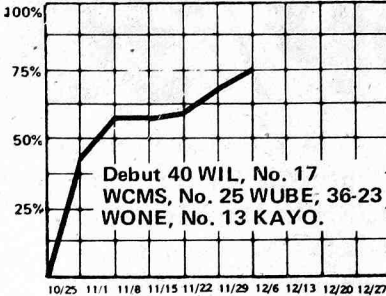
### HANK SNOW

*You're Easy To Love (RCA)*



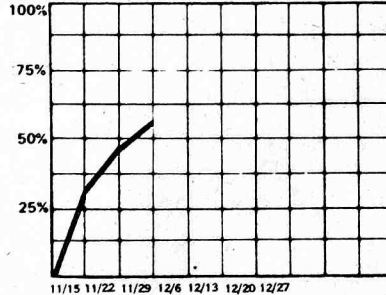
### STATLER BROS.

*Susan When She Tried (Mercury)*



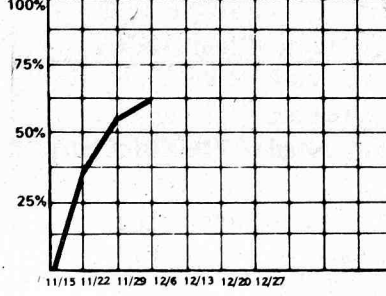
### RED STEGALL

*Someone Cares For You (Capitol)*



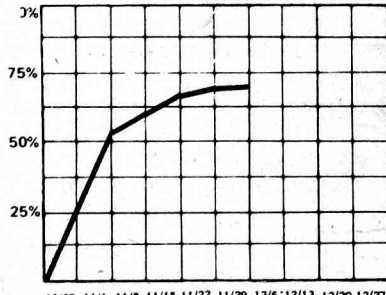
### RAY STEVENS

*Everybody Needs Rainbow (Barnaby)*



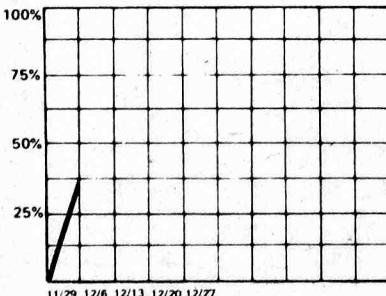
### NAT STUCKEY

*You Don't Have To Go Home (RCA)*



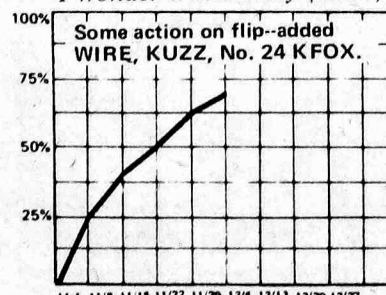
### PORTER WAGONER

*Carolina Moonshiner (RCA)*



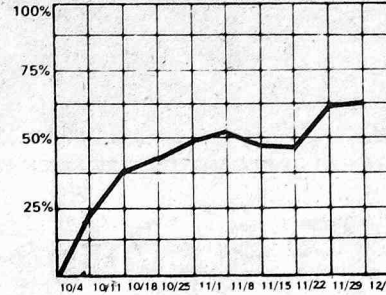
### JERRY WALLACE

*I Wonder Whose Baby (MCA)*



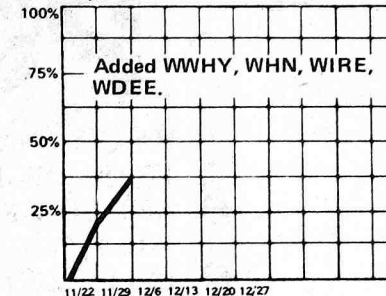
### NANCY WAYNE

*Gone (20th Century)*



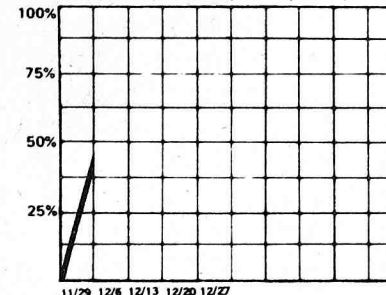
### DOTTIE WEST

*Lay Back Lover (RCA)*



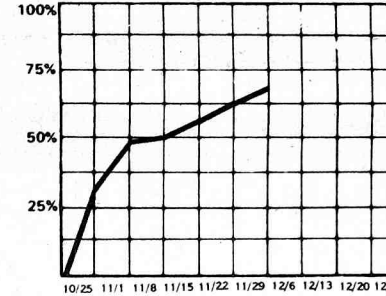
### DON WILLIAMS

*Ties That Bind (ABC/Dot)*



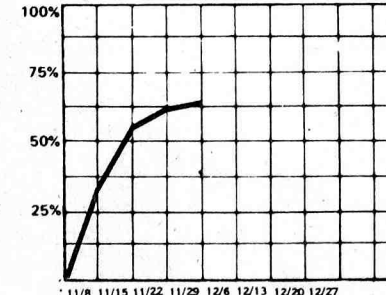
### HANK WILLIAMS, JR.

*Angels are Hard to Find (MGM)*



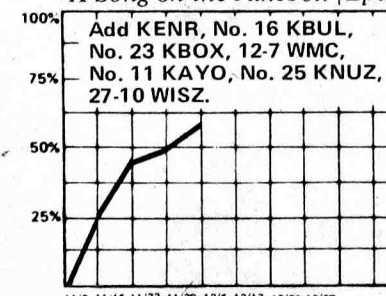
### TEX WILLIAMS

*Bum Bum Bum (Granite)*



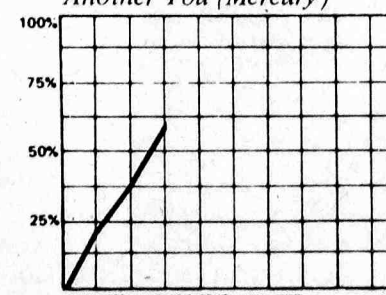
### DAVID WILLS

*A Song on the Jukebox (Epic)*



### FARON YOUNG

*Another You (Mercury)*





# POP

## Radio & Records POP/30

11/15 11/22

2	2	1	HARRY CHAPIN/Cat's In The Cradle (Elektra)
4	3	2	THREE DEGREES/When Will I See You Again (Phy/Int)
7	6	3	NEIL SEDAKA/Laughter In The Rain (Rocket)
1	1	4	BILLY SWAN/I Can Help (Monument)
12	8	5	HELEN REDDY/Angie Baby (Capitol)
8	7	6	NEIL DIAMOND/Longfellow Serenade (Columbia)
5	5	7	TELLY SAVALAS/If (MCA)
21	14	8	FRANKIE VALLI/My Eyes Adored You (Private Stock)
3	4	9	BOBBY VINTON/My Melody Of Love (ABC)
18	12	10	ELVIS PRESLEY/Promised Land & It's Midnight (RCA)
29	18	11	BARRY MANILOW/Mandy (Arista)
17	13	12	CHICAGO/Wishing You Were Here (Columbia)
23	19	13	GLORIA GAYNOR/Never Can Say Goodbye (MGM)
19	16	14	BARRY WHITE/You're The First (20th)
16	15	15	PAUL DAVIS/Ride 'Em Cowboy (Bang)
10	10	16	CARL CARLTON/Everlasting Love (ABC)
-	23	17	RINGO STARR/Only You (Apple)
6	9	18	PRELUDE/After The Goldrush (Island)
-	24	19	PAUL ANKA & ODIA COATES/One Man Woman (UA)
9	11	20	JOHN DENVER/Back Home Again (RCA)
28	22	21	POINTER SISTERS/Fairytale (Blue Thumb)
-	25	22	RIGHTEOUS BROS/Dream On (Haven)
11	17	23	JIM WEATHERLY/The Need To Be (Buddah)
26	26	24	PETER DEAN/Four Or Five Times (Buddah)
-	27	25	STARK & MCBRIEN/Isn't It Lonely Together (RCA)
-	30	26	DON POTTER/Just Leave Me Alone (Columbia)
-	-	27	DONNY & MARIE OSMOND/Morning Side of the Mountain (MGM)
-	-	28	CARL GRAVES/Baby, Hang Up The Phone (A&M)
-	-	29	CARPENTERS/Please Mr. Postman (A&M)
-	-	30	PAUL MCCARTNEY/Sally G (Apple)

## NEW & ACTIVE

**MICHAEL HOLM** "When A Child Is Born" (Mercury) First week out and plenty of talk about this. Plus good initial play at KULF, KNBR, WSB, KIIS, WBAL.

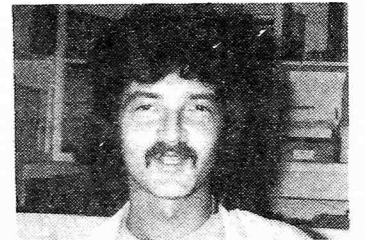
**MAC DAVIS** "Rock 'N Roll (I Gave You The Best Years Of My Life)" (Columbia) Went right on WGN, KIIS, KGIL, KNBR, KHOW.

**PAUL MCCARTNEY** "Sally G" (Apple) Still getting loads of new play. KEX, KWAV, KMEN, KVI, WXYZ, WHAS, WEEI-FM, WSM.

Other Radio Activity: **RAY STEVENS** "Everybody Needs A Rainbow," **ELTON JOHN** "Lucy In The Sky With Diamonds," **TOMITA** "Arabesque," **RITA COOLIDGE** "Love Has No Pride," **LOU RAWLS** "Now You're Coming Back Michelle," **JOE COCKER** "You Are So Beautiful," **PERRY COMO** "Christmas Dream," **SPLINTER** "Costafine Town," **BRENDA SMITH** "There Is A Place," **RONNIE MILSAP** "I'd Be A Legend In My Time," **JAN DAVIS** "Hot Sauce," **DON MCLEAN** "La La I Love You."

## POP NOTES

BY MIKE KASABO



Dave Klahr all excited about some recent visitors at WEEI-FM. He says station's guest roster reads like a radio who's who. The occasion was an exhibition of the station's new program computer which Dave feels is the best and most advanced in the nation. Some of those dropping by included **Rick Sklar**, **Paul Drew**, and **Allan Shaw**.

News from Sacramento ... **Johnny Hyde** is out as Program Director of KCRA. **Dave Darin** is the interim PD, and will also handle the music.

Hot and getting hotter ... the **Gloria Gaynor** "Never Can Say Goodbye." Airplay is now very solid. Stations reporting good activity.

Don Smith WSM reports "Sally G" **Paul McCartney** is already getting Top 5 requests. Similar at many other stations also.

A great big start for "When A Child Is Born" **Michael Holm**. It's been a long time since Mercury has had a record take off with so much impact. It's early, but indication is positive especially in view of the holiday ahead.

**Pet Clark's** "Lovin' Arms" produced by **Phil Gernhard** and **Tony Scotti** is picking up steam in the East.

A few stations report editing the **Elton John** down to around the three minute mark. However, most are playing the full version. By the way, my stop watch indicates "Lucy" runs 5:36 and not the printed 5:58 on the label.

A quick look at the hot stack: "Gee Baby" **Peter Shelley** now getting good exposure across the country... **Don Potter** "Just Leave Me Alone" good blues tune being picked up rapidly... **Sweet Sensations** "Sad Sweet Dreamer," **April Stevens** "Won't You Marry Me Again" starting to show signs.

**Tom Booth** WSJS Winston-Salem passes along that **Bobby Vinton** did a phone rap on his show just prior to his sell-out performance at the Latin Casino in Cherry Hill, New Jersey.

Enjoy your weekend.



Kris Kristofferson and Rita Coolidge with their lead guitarist-turned-recording artist Billy Swan, whose "I Can Help" album has just been released on Monument.



# José sings "Chico and The Man" and the whole country's listening.

"Chico and The Man" is the top rated TV show in the country and José wrote and sings the title song, on his new album "And The Feeling's Good."

It also contains his latest single, "Golden Lady." (PB-10094)



CPL1/CPS1/CPK1-0407

**RCA** Records and Tapes

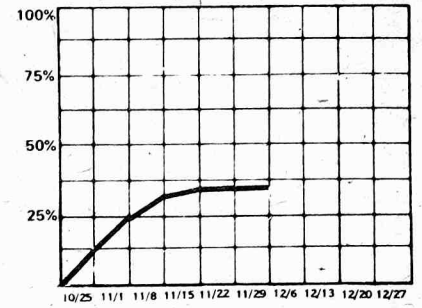


Graphs reflect audience response computed by a combination of sales, airplay and requests. The lower the graph position the less airplay, sales and requests being reported. The higher the position, the more active the record. We feel that a visual aid explains the whole picture better than assigning arbitrary numbers in a longer list.

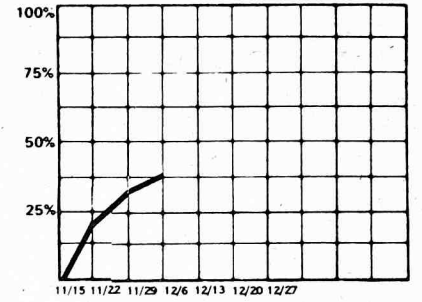
# POP SINGLES

new entries

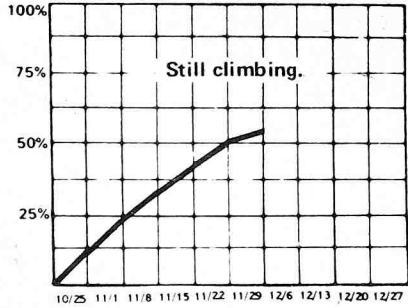
**ALBERT HAMMOND**  
*Names, Tags Etc. (MUMS)*



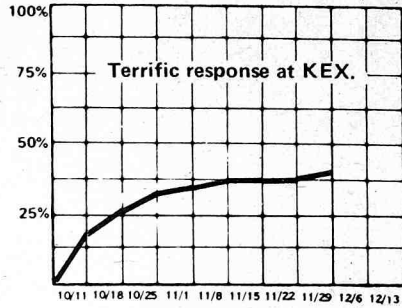
**GEORGE HARRISON**  
*Dark Horse (Apple)*



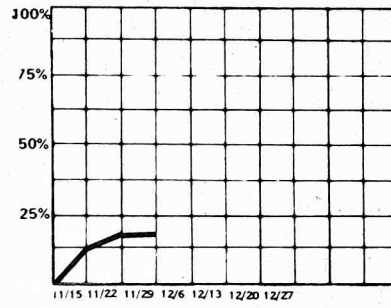
**BEE GEES**  
*Charade (Atco)*



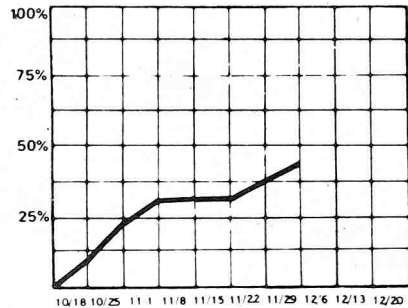
**CAPTAIN & TENNILLE**  
*Way I Want To Touch You (A&M)*



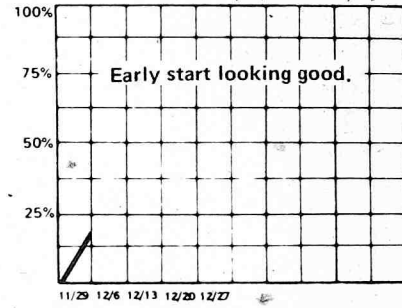
**KATHY DALTON**  
*Justine (DisCreet)*



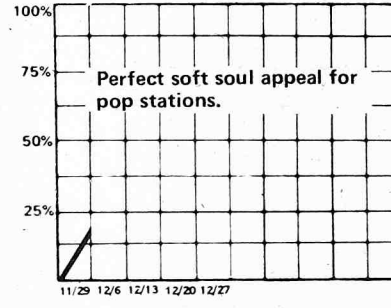
**BLUE MAGIC**  
*Three Ring Circus (Atco)*



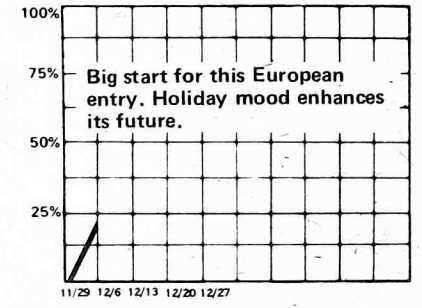
**CHER**  
*A Woman's Story (Warner/Spector)*



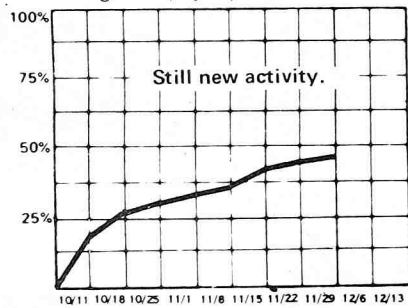
**CAROL DOUGLAS**  
*Doctor's Orders (Midland)*



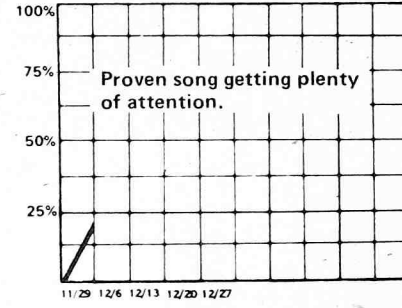
**MICHAEL HOLM**  
*When A Child Is Born (Mercury)*



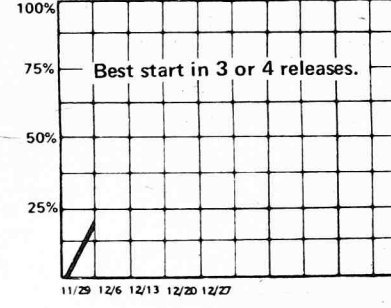
**BOOKER T.**  
*Evergreen (Epic)*



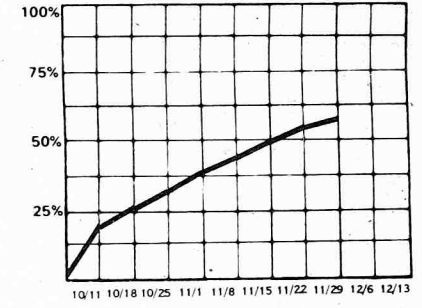
**PET CLARK**  
*Lovin' Arms (ABC)*



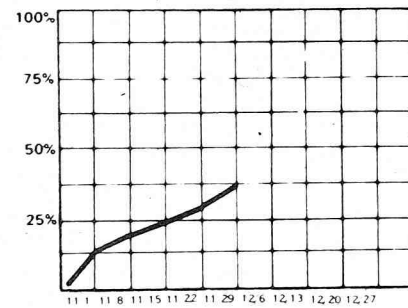
**EAGLES**  
*Best Of My Love (Asylum)*



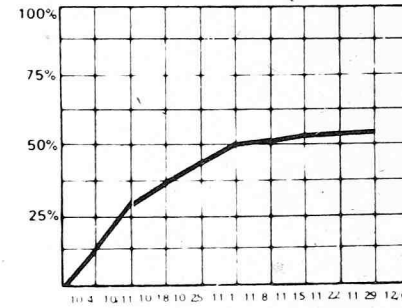
**HUES CORPORATION**  
*Rockin' Soul (RCA)*



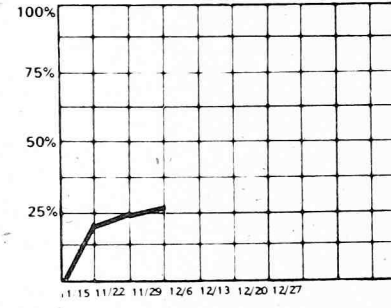
**JOHNNY BRISTOL**  
*You & I (MGM)*



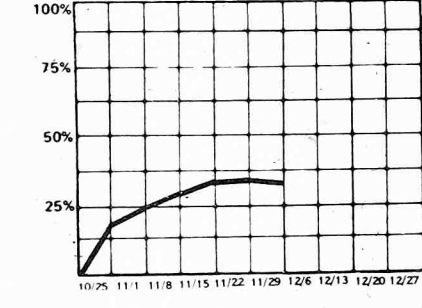
**GENE COTTON**  
*Sunshine Roses (Myrrh)*



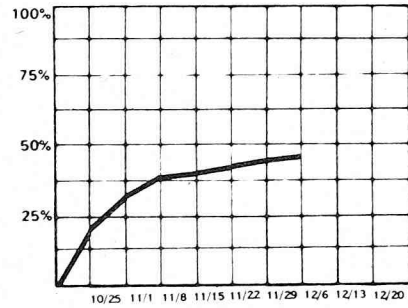
**FIRST CLASS**  
*Dreams Are Ten A Penny (UK)*



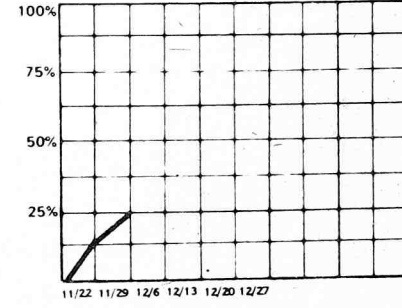
**BOB JAMES**  
*Feel Like Makin' Love (CTI)*



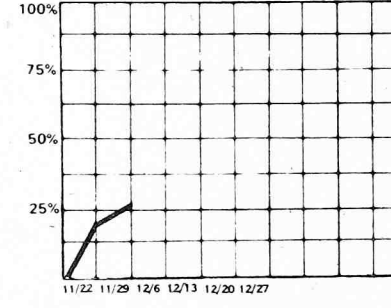
**ALLEN BURTON**  
*Phone Call From Allison (ABC)*



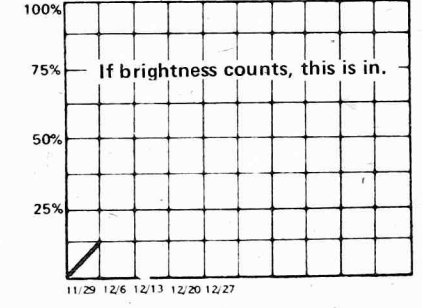
**COTTONWOOD SOUTH**  
*New York City Hello (Columbia)*



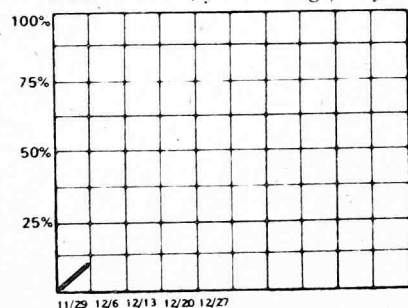
**GEORGE FISCHOFF**  
*That Great Old Song (Lisa)*



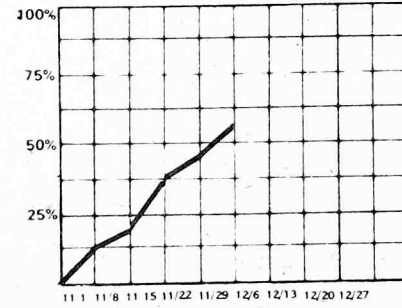
**BILLY JOEL**  
*The Entertainer (Columbia)*



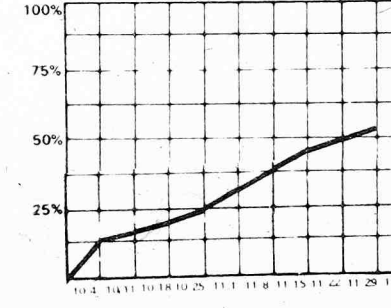
**LANA CANTRELL**  
*Like A Sunday Morning (Polydor)*



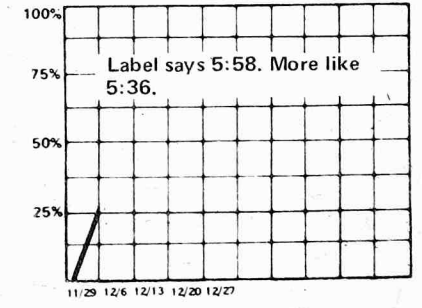
**CUNNINGHAM**  
*Norma Jean A Movie Star (Haven)*



**AL GREEN**  
*Sha-La-La (Hi)*

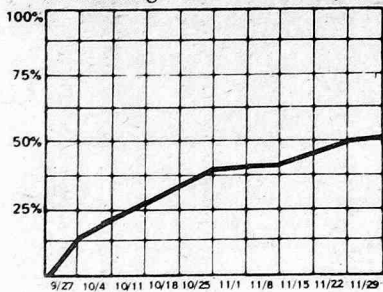


**ELTON JOHN**  
*Lucy In The Sky (MCA)*

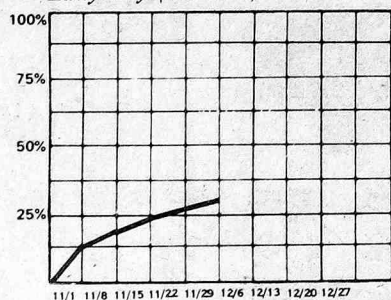




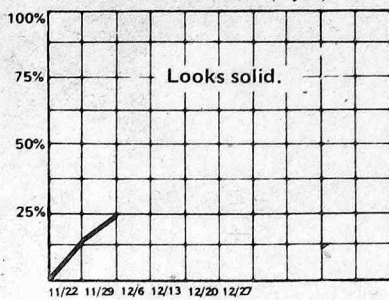
**TOM JONES**  
*Something About You Baby (Parlo)*



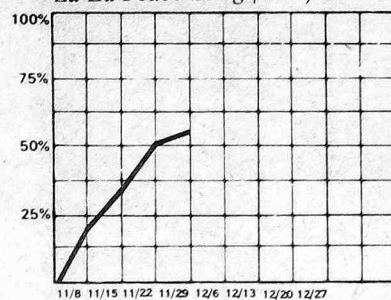
**WAYNE NEWTON**  
*Lady Lay (Chelsea)*



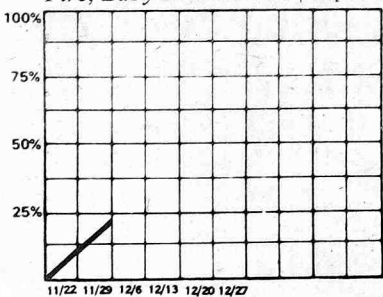
**SWEET SENSATIONS**  
*Sad Sweet Dreamer (Pye)*



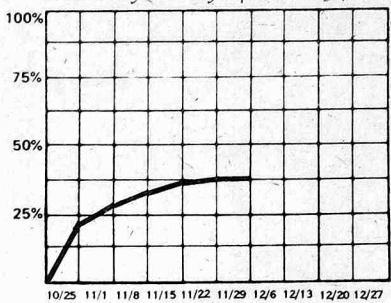
**AL WILSON**  
*La La Peace Song (Bell)*



**ANDY KIM**  
*Fire, Baby I'm On Fire (Capitol)*

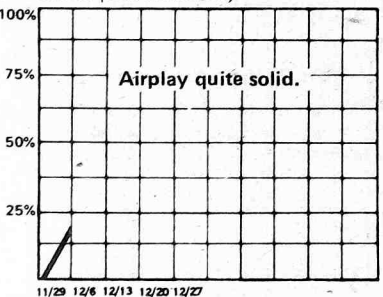


**PAPER LACE**  
*Black-Eyed Boys (Mercury)*

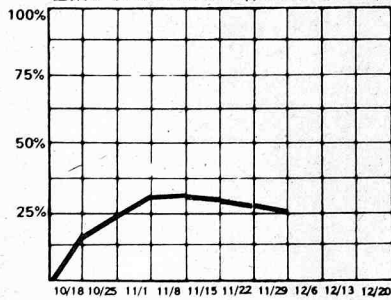


# added

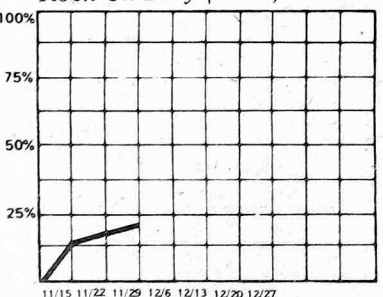
**KRIS & RITA**  
*Rain (Monument)*



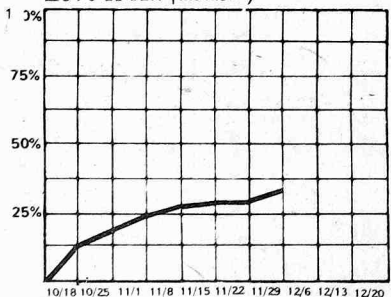
**RAY PRICE**  
*Like Old Times Again (Myrrh)*



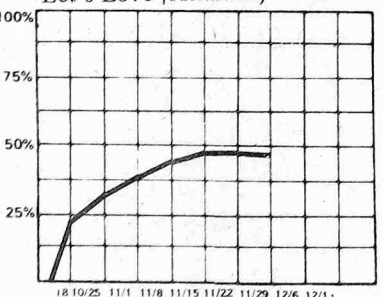
**BRENDA LEE**  
*Rock On Baby (MCA)*



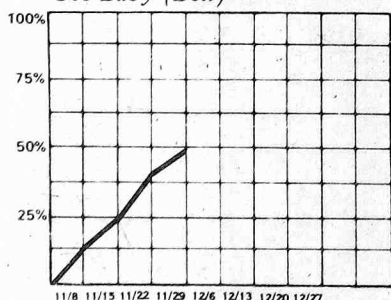
**MALCOLM ROBERTS**  
*Love Is All (BASF)*



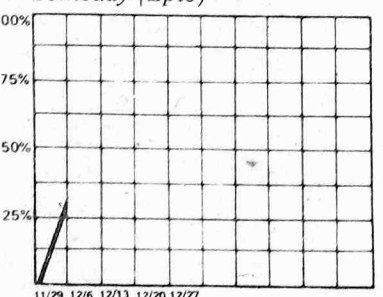
**PEGGY LEE**  
*Let's Love (Atlantic)*



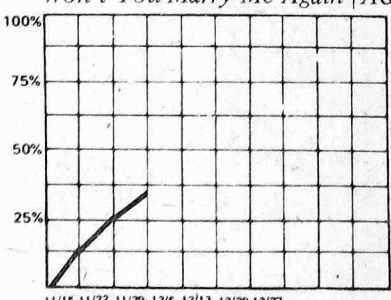
**PETER SHELLEY**  
*Gee Baby (Bell)*



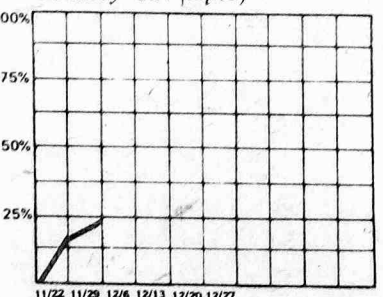
**DAVE LOGGINS**  
*Someday (Epic)*



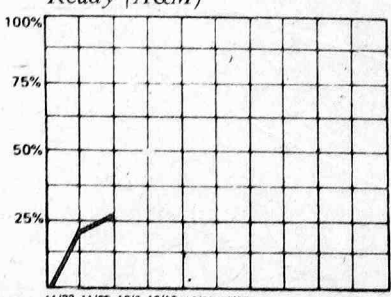
**APRIL STEVENS**  
*Won't You Marry Me Again (A&M)*



**JODY MILLER**  
*Country Girl (Epic)*



**CAT STEVENS**  
*Ready (A&M)*



**WVDC—WASHINGTON**

Barry Manilow  
Booker T.  
Ringo Starr  
Righteous Bros.  
Carpenters

**WSJS—WINSTON/SALEM**

Kris & Rita  
Peter Shelley  
Lani Hall  
Tomita

**KIIS—LOS ANGELES**

Mac Davis  
Michael Holm  
Elton John  
Eagles  
Don Potter  
Cat Stevens  
Lp: "I've Been" N. Diamond  
Lp: "Emotion" H. Reddy  
Lp: "Occapella" R. Starr  
HOT  
Frankie Valli  
Chicago  
Stark & McBrien

**WXYZ—DETROIT**

Paul McCartney  
Kiki Dee

**WPTS—PITTSBURGH/SCRANTON**

Carpenters  
Al Martino  
Nigel Olsson  
Don Potter  
Elton John  
Ringo Starr  
Sweet Sensations  
Ray Stevens  
Kris & Rita  
Eagles  
Tom Jans  
Peter Shelly  
Lana Cantrell  
HOT  
Al Martino

**KGIL—SAN FERNANDO**

Nancy Wilson  
Ray Anthony  
Ventures  
Mac Davis

**WHAS—LOUISVILLE**

Carpenters  
Paul McCartney

**WNEU—WHEELING**

Dave Loggins  
Paul Anka  
Barry Manilow

**KNBR—SAN FRANCISCO**

Billy Joel  
Merle Kilgore  
Don McLean  
Rita Coolidge  
Michael Holm  
Lenny Welch  
Mac Davis

**WMAL—WASHINGTON**

Carpenters  
Johnny Cash  
Tymes

**WREC—MEMPHIS**

Pet Clark  
Don McLean  
Carol Douglas  
Don Potter  
Kris & Rita  
Glen Campbell

**WINZ—MIAMI**

Ringo Starr  
Peter Dean  
Gloria Gaynor  
Carpenters

**WBAL—BALTIMORE**

Michael Holm  
Glen Campbell  
Cat Stevens  
Ringo Starr  
Telly Savalas  
Billy Craddock  
Carol Douglas  
Lana Cantrell  
Vikki Carr  
Carpenters  
Righteous Bros.

**WIP—PHILADELPHIA**

Andy Kim  
Elton John  
Cunningham  
Kathy Dalton  
Asleep At Wheel  
Lp: "Dick & Jane"  
B. Vinton

**KWAV—MONTEREY**

Carpenters  
Paul McCartney  
Eagles  
Splinter  
Pet Clark  
Lani Hall

**KULF—HOUSTON**

Don Potter  
Ray Stevens  
Michael Holm

**WGR—BUFFALO**

Barry White  
Lp: "Most Beautiful Girl"  
B. Vinton

**KMEN—SAN BERNARDINO**

Frankie Valli  
1st Class  
Paul McCartney  
Carpenters  
Roy Rogers

**WMVI—WAILUKU, MAUI**

Stylistics  
Paul McCartney  
Guess Who

**KVI—SEATTLE**

George Fischhoff  
Paul McCartney  
Carpenters  
Frankie Valli  
HOT  
Booker T.  
Barry Manilow

**WSB—ATLANTA**

Lana Cantrell  
Stark & McBrien  
Ringo Starr  
Michael Holm  
Mike Post  
Frankie Valli

**WEEL FM—BOSTON**

Paul McCartney  
Rita Coolidge  
Ringo Starr  
HOT  
Barry Manilow

**KMBZ—KANSAS CITY**

Carpenters  
Gene Cotton  
Johnny Cash  
Tymes

**KAKE—WICHITA**

Ringo Starr  
Carpenters  
Al Green

**KCRA—SACRAMENTO**

HOT  
Neil Sedaka  
Chicago

**KMPK—LOS ANGELES**

La Costa  
Barry Manilow  
Gloria Gaynor  
Lp: "Salvation Stomp"  
Donovan

**WTRX—FLINT**

Ringo Starr  
Kris & Rita  
Carpenters  
George McCrae  
Johnny Bristol  
Donny & Marie Osmond  
Randy Edelman

**WTAE—PITTSBURGH**

Gloria Gaynor  
Cher  
Barry Manilow  
Elvis (Promised)

**CALLS**

Peter Dean  
Al Wilson (Lp Medley)

**WLW—CINCINNATI**

Johnny Bristol  
Lana Cantrell  
Eagles  
Carl Graves  
Carpenters  
Elton John  
Johnny Cash  
Splinter  
Stark & McBrien  
Lani Hall  
Brenda Smith

**WGN—CHICAGO**

Mac Davis

**KEX—PORTLAND**

Paul McCartney  
Lou Rawls  
Ray Stevens  
Lana Cantrell  
Rita Coolidge  
Sweet Sensations  
HOT  
Captain & Tennille

**WCBM—BALTIMORE**

Carpenters  
Righteous Bros.  
HOT  
Three Degrees  
Billy Swan

**WSM—NASHVILLE**

Paul McCartney  
Carpenters  
Donny & Marie Osmond  
Gloria Gaynor  
John Denver  
Don McLean  
HOT  
Barry Manilow  
Carol Douglas

**KHOW—DENVER**

Mac Davis  
HOT  
Stark & McBrien  
Gloria Gaynor  
Peter Dean  
Barry Manilow

**WJW—CLEVELAND**

Lani Hall  
Pet Clark  
Merle Kilgore  
Michael Holm  
Roger Miller  
Clint Holmes

**WEMP—MILWAUKEE**

Perry Como  
Paul McCartney  
Billy Joel  
Merle Kilgore  
Vikki Carr



# Radio & Records

THE INDUSTRY'S NEWSPAPER

**TREND: November 29, 1974**

11/8 11/15 11/22

9	3	1	①	CARL DOUGLAS/Kung Fu Fighting (20th)
3	1	2	②	BILLY SWAN/I Can Help (Monument)
5	4	3	③	THREE DEGREES/When Will I See You Again (Phy/Int)
15	11	5	④	HARRY CHAPIN/Cat's In The Cradle (Elektra)
22	12	7	⑤	HELEN REDDY/Angie Baby (Capitol)
14	6	6	6	NEIL DIAMOND/Longfellow Serenade (Columbia)
1	2	4	7	BACHMAN-TURNER/You Ain't Seen Nothin' Yet (Mercury)
10	5	8	8	BOBBY VINTON/My Melody Of Love (ABC)
19	13	9	9	B.T. EXPRESS/Do It (Scepter)
-	23	13	⑩	PAUL MCCARTNEY & WINGS/Junior's Farm (Apple)
-	30	17	⑪	BARRY WHITE/You're The First, Last (20th)
16	15	12	12	CHICAGO/Wishing You Were Here (Columbia)
-	-	31	⑬	ELTON JOHN/Lucy In The Sky With Diamonds (MCA)
2	7	10	14	AMERICA/Tin Man (WB)
11	8	11	15	CARL CARLTON/Everlasting Love (Back Beat)
-	-	26	⑯	NEIL SEDAKA/Laughter In The Rain (Rocket)
21	19	18	17	AL GREEN/Sha-La-La (Makes Me Happy)(Hi)
6	10	16	18	JOHN LENNON/Whatever Gets You Through The Night (Apple)
24	21	20	19	KIKI DEE BAND/I've Got The Music In Me (Rocket)
-	-	24	20	JETHRO TULL/Bungle in The Jungle (Chrysalis)
4	9	15	21	CAROLE KING/Jazzman (Ode)
12	14	14	22	JOHN DENVER/Back Home Again (RCA)
7	17	19	23	REUNION/Life Is A Rock (RCA)
-	-	38	⑳	RINGO STARR/Only You (Apple)
-	26	25	25	RUFUS/You Got the Love (ABC)
-	-	33	㉔	STEVIE WONDER/Boogie On Reggae Woman (Tamla)
26	25	22	27	PRELUDE/After the Goldrush (Island)
-	-	28	28	ROLLING STONES/Ain't Too Proud To Beg (RS)
-	-	-	⑳	CARPENTERS/Please Mr. Postman (A&M)
28	24	23	30	PAUL DAVIS/Ride 'Em Cowboy (Bang)
13	18	21	31	OLIVIA NEWTON-JOHN/I Honestly Love You (MCA)
-	-	35	32	GLADYS KNIGHT & PIPS/I Feel a Song (Buddah)
-	-	30	33	POINTER SISTERS/Fairytale (Blue Thumb)
-	-	-	34	LYNYRD SKYNYRD/Free Bird (MCA)
-	-	-	35	ELVIS PRESLEY/Promised Land (RCA)
-	-	-	36	GLORIA GAYNOR/Never Can Say Goodbye (MGM)
-	-	40	37	HUDSON BROS/So You Are a Star (Casablanca)
-	-	-	38	J. GEILS BAND/Must of Got Lost (Atlantic)
18	29	29	39	OSMONDS/Love Me For a Reason (MGM/Kolob)
-	-	-	40	ANKA/COATES/One Man Woman, One Woman Man (UA)

## National Request Tabulation

- CARL DOUGLAS
- THREE DEGREES
- HARRY CHAPIN
- HELEN REDDY
- ELTON JOHN
- BILLY SWAN
- B.T.
- JETHRO TULL
- PAUL DAVIS
- CARPENTERS

### OTHERS GETTING SIGNIFICANT REQUEST ACTION

- B.T. EXPRESS  
PAUL MCCARTNEY  
BARRY MANILOW  
NEIL SEDAKA  
HUDSON BROTHERS  
PAPER LACE (CHICAGO)

## NEW & ACTIVE

The following records are listed in order by their activity

### CAROL DOUGLAS

#### Doctor's Orders (Midland)

Picked up very strong action this week. Add WGRQ, WIBG, XROK, WROV, WFOM, 24-21 WDRQ, 29-25 WRFC, debut 20 WPIX, debut 30 WBG, 37-31 WCOL, add WEEQ, on KEZY.

### DONNY & MARIE OSMOND "Morning Side..." (MGM)

Add Z93, WFOM, WGOW, WVLK, KQWB, CHUM, WOKY, on WBBQ, 27-24 WRFC, debut 30 KIOA, 34-27 WRIE, on WMPS, debut 39 WCOL, 25-24 KEEL, debut 29 KRSP.

### EAGLES

#### Best Of My Love (Asylum)

Add WCAO, KJR, WIBG, WAKY, WEEQ, 13Q, on WBBQ, WMPS, WISM, 8-6 WROV, debut 40 KIMN, add WLPL, add KREM.

### MAC DAVIS

#### Rock & Roll... (Columbia)

30-27 KHJ, add KILT, KJR, KQWB, KYNO, K100, KING, KIMN, KJRB, debut 39 WKLO, on WAKY.

### DAVID BOWIE "Changes" (RCA)

Debut 19 KKD, add KIMN, 1-1 at 13Q, 3-2 KQV, 23-19 KDWB, add WROV, on WEEQ, add Z96, 4-4 WBBF, add WQXI, 39-38 WKLO, add KKXL.

DOOBIES "Blackwater" (WB) add 26 KSTP, add 25 at 13Q, add 30 KTKT, 18-8 KDWB, on WGH nites, add KFMG, 26-22 WBBF, on WERC, on WBG.

BILLY JOEL "Entertainer" (Columbia) doing super, 24-20 WHBQ, debut 34 KIMN, add WPIX, 28-25 KQWB, add KKXL, 35-29 KEEL, on WIBG, add WORD, add WCOL, on WGH, 22-21 KRSP.

GENE COTTON "Sunshine Roses" (Myrrh) grows bigger each week, add WERC, WORD, on WBBQ, 24-23 KQWB, on WRFC, 27-23 KEEL, on KKXL, on WVOV, 28-22 KIMN.

LINDA RONSTADT "You're No Good" (Capitol) on WERC FM, KING, KIMN, add WMAK, add WRFC, on WAKY, add WRIE, KTLK, KREM.

CAT STEVENS "Ready" (A&M) add KEEL, WCOL, KQWB, WEEQ, WCAO, WMPS, 40-35 KYSN, debut 38 KTLK.

DISCOTEX "Get Dancin'" (Chelsea) record continues to grow steadily. 14-11 KKD, add WFIL, add 99X, debut 19-WPIX, on WVOV, add KEZY, 34-33 WKLO, debut 39 WCOL.

SUGARLOAF "Don't Call Us" (Claridge) showed well this week. 13-8 KIMN, 29-26 KRSP, 16-9 KTLK, 22-18 KCPX, on WSAI, 22-17 KKAM.

STYX "Lady" Wooden Nickel" 21-16 at 13Q, debut 16 KKXL, add KEEL nites, debut 40 WCOL, 26-24 KIOA, on WROK add WLS nites.

PERCY SLEDGE "I'll Be Your Everything" (Capricorn) 15-11 WBG, on WERC, 8-6 WRFC, debut 24 WORD, 31-30 WCOL, read WBBQ.

SPLINTER "Costafine Town" (Dark Horse) on WERC FM, KSJO, add Z93.

FRANKIE VALLI "My Eyes Adored You" (Private Stock) add WLPL, on WPIX with requests, add WIXY, 35-27 WCOL, add WMPS.

ELO "Can't Get It Out of My Head" (UA) did the tee shirts do this much good already? debut 39 WEEQ, 40-29 KQWB, debut 30 KKXL, add WCOL, add KFMG.

PETER SHELLEY "Gee Baby" (Bell) add WGOW, on WAKY, add WCOL, 27-26 WRKO.

STYLISTICS "Heavy Fallin Out" (Avco) 28-26 WGRQ, add WIFE, 30-25 WIXY, 10-10 CKLW

STAPPENWOLF "Get Into The Wind" (MUMS) on WERC FM, debut 29 WDXR, on KKXL, on WORD.

ROD STEWART "Mine For Me" (Mercury) on WEEQ, KYSN, WORD, WBBQ.

BROWNSVILLE STATION "Mama Don't Allow..." (Big Tree) add WYRE, WKLO, 25-21 WBBF, add WJBQ.

IKE & TINA "Sexy Ida" (UA) 22-18 WYRE, 7-7 WPGC, add WIXY, on WIBG

Others getting significant action this week:

NEWBEATS, AWB, JACKSON 5, MICHAEL HOLM, and the new GRAND FUNK went right on WFIL.