

Radio-TV EXPERIMENTER

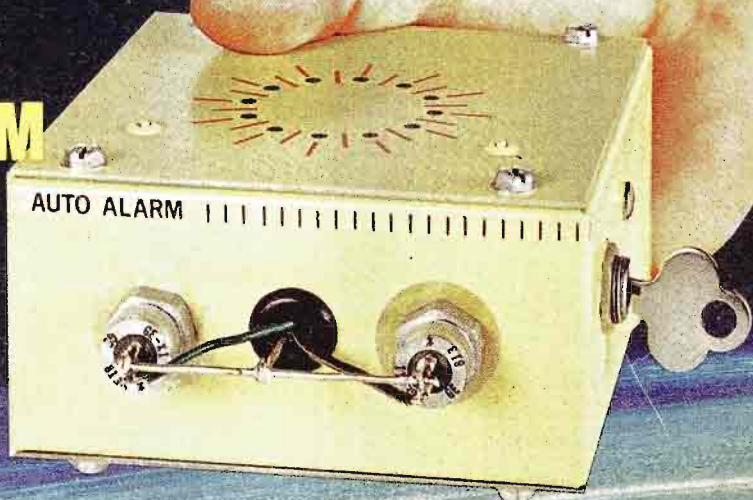
WHITE'S
RADIO LOG

- U.S. AM STATIONS
- WORLDWIDE SW
- POLICE/EMERGENCY

FEBRUARY-MARCH 75c

Build our Sound-off, Short-out **BURGLAR ALARM**

Bong goes the gong,
dead goes the engine,
away goes the thief!



Foil thieves not one, but two ways—see page 33

**21
SECOND
TV
CURE-ALL**

- BUILD NO-TICKET HAM RADIO RIG
- SELF-CALIBRATING CB MOD CHECKER
- 10-BUCK BOOSTER FOR REAL BCB DX

**THE AMAZING
POOLROOM
IN THE
SKY**

EICO Makes It Possible

Uncompromising engineering — for value does it!
You save up to 50% with Eico Kits and Wired Equipment.



Cortina Stereo

THE VERDICT IS IN. High fidelity authorities agree:

Cortina's engineering excellence, 100% capability, and compact dramatic esthetics all add up to Total Stereo Performance at lowest cost.

A Silicon Solid-State 70-Watt Stereo Amplifier for \$99.95 kit, \$139.95 wired, including cabinet. Cortina 3070

A Solid-State FM Stereo Tuner for \$99.95 kit, \$139.95 wired, including cabinet. Cortina 3200.

A 70-Watt Solid-State FM Stereo Receiver for \$169.95 kit, \$259.95 wired, including cabinet. Cortina 3570.

NEW Silicon Solid State 150-Watt Stereo Amplifier designed for audio perfectionists. Less than 0.1% harmonic distortion, 1M distortion. Less than 0.6% at full output. Controls and inputs for every music source. \$149.95 kit, \$225.00 wired including cabinet. Cortina 3150.

NEW 70-Watt Solid State AM/FM Stereo Receiver for \$189.95 kit, \$279.95 wired including cabinet. Cortina 3770.

NEW

NEW

Eicocraft

The newest excitement in kits.

100% solid-state and professional.

Fun to build and use. Expandable, interconnectable. Great as "jiffy" projects and as introductions to electronics. No technical experience needed. Finest parts, pre-drilled etched printed circuit boards, step-by-step instructions.

EC-100 Electronic Siren \$4.95, EC-101 Electronic Burglar Alarm \$6.95, EC-102 Electronic Fire Alarm \$6.95, EC-200 Electronic Intercom \$5.95, EC-300 Audio Power Amplifier \$5.95, EC-400 Electronic Metronome \$3.95, EC-500 Tremolo \$9.95, EC-600 Electronic Light Flasher \$3.95, EC-700 Electronic "Mystifier" \$4.95, EC-800 Photo Cell Nite Lite \$4.95, EC-900 Power Supply \$8.95, EC-1000 Code Oscillator \$2.50, EC-1100 FM Wireless Mike \$9.95, EC-1200 AM Wireless Mike \$9.95, EC-1300 Electronic VOX \$8.95, EC-1400 Solid State FM Radio \$9.95, EC-1500 Solid State AM Radio \$8.95, EC-1600 Electronic Bongos \$7.95



6 EXCITING NEW PROJECTS

EC-1700 Ham/CB Vox \$8.95,
EC-1800 Electronic "TOX" \$8.95,
EC-1900 "Treasure Finder" \$9.95,
EC-2000 Electronic Organ \$9.95,
EC-2100 Electronic "Eye" \$9.95,
EC-2200 Electronic "Magic" Switch \$9.95



Color n' Sound



Add a new dimension to your music system. Introducing the first inexpensive solid-state electronic system which provides true synchronization of color with sound. Watch the music you love spring to life as a vibrant, ever shifting interplay of colors.

Simply connect to speaker leads of your Hi-Fi system (or radio). Kit can be assembled in several hours — no technical knowledge or experience necessary. Kit \$49.95, Wired \$79.95.

Automotive

EICO 888—Car/Boat Engine Analyzer.
For all 6V, 12V systems; 4, 6, 8 cyl. engines.



Now you can keep your car or boat engine in tip-top shape with this solid-state, portable, self-powered universal engine analyzer. Completely tests your total ignition/electrical system.

Complete with a Tune-up & Trouble-shooting Manual. Model 888; \$49.95 kit, \$69.95 wired.



Test Equipment EICO®

100 best buys to choose from.

"The Professionals"
—laboratory precision at lowest cost.
Model 460 Wideband Direct-Coupled 5" Oscilloscope. DC-4.5mc for color and B&W TV service and lab use. Push-pull DC vertical amp., bal. or unbal. input. Automatic sync limiter and amp. \$99.95 kit, \$149.95 wired.

Model 232 Peak-to-Peak VTVM. A must for color or B&W TV and industrial use. 7 non-skip ranges on all 4 functions. With exclusive Uni-Probe.® \$34.95 kit, \$49.95 wired.

FREE 1969 CATALOG

RTVE-2

EICO Electronic Instrument Co., Inc.
263 Malta Street, Brooklyn, N.Y. 11207

Send me FREE catalog describing the full EICO line of 200 best buys, and name of nearest dealer.

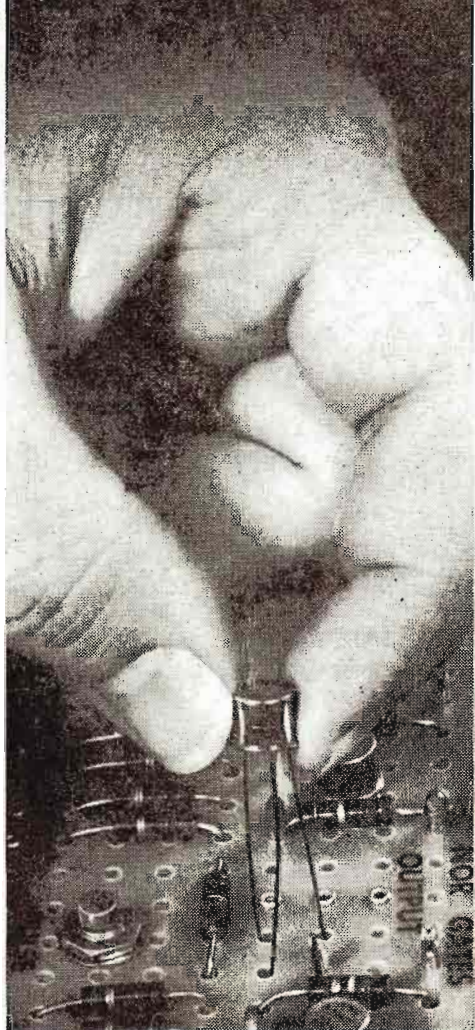
Name _____

Address _____

City _____

State _____ Zip _____

Without NTS training you've only scratched the surface in electronics...



NTS digs deep into electronics. Proof? Look at the close-up at the left. It's the first transistorized digital computer-trainer ever offered by a home study school.

Fascinating to assemble, the NTS Compu-Trainer® introduces you to the exciting world of computer electronics. Its design includes advanced solid-state NOR circuitry, flip-flops, astable multivibrators and reset circuits. Plus two zener and transistorized voltage-regulated power supplies. The NTS Compu-Trainer can perform 50,000 operations per second, and is only one of many ultra-advanced kits we offer to give you incomparable, in-depth career training.

NTS... THE FIRST HOME STUDY SCHOOL TO OFFER LIVE EXPERIMENTS WITH INTEGRATED CIRCUIT KITS

With NTS Project-Method Home Training, you build a computer sub-system using the new, revolutionary integrated circuits. Each one, smaller than a dime, contains the equivalent of 15 resistors and 27 transistors.

With Project-Method, kits are carefully integrated with lesson material. All our kits are real equipment—not school-designed versions for training only. Project-Method was developed in our giant resident school... and proven effective for thousands of men like yourself. It's the practical-experience approach to learning. Gets you going in a hurry!



■ COMMUNICATIONS

This Transceiver is included in Communications courses. It's yours to build... to easily prepare for F.C.C. License exam... To become a fully-trained man in communications.

■ 25" COLOR TV

Included in Color TV servicing courses. Building this advanced receiver gets you deep into color circuitry—advances you into this profitable field of servicing—the easy way. Color is the future of television, and your future, too!

■ INDUSTRIAL & COMPUTER ELECTRONICS

New ideas, new inventions, are opening whole new fields of opportunity. Electronic control systems, computers, are being applied to great numbers of manufacturing processes every day. We train you for this new field, fast! With advanced control systems devices, a new 5" oscilloscope, and the NTS Compu-Trainer. Modern, quick and easy training prepares you to enter this brand-new world like a pro.



GET THE FACTS! SEE ALL NEW KITS AND COURSES OFFERED IN THE NEW NTS COLOR CATALOG. SEND THE CARD TODAY! No obligation. No salesman will call.

Classroom Training At Los Angeles. You can take classroom training at Los Angeles. NTS occupies a city block with over a million dollars in facilities devoted exclusively to technical training. Check box on coupon.

NATIONAL TECHNICAL SCHOOLS

WORLD-WIDE TRAINING SINCE 1905
4000 So. Figueroa Street Los Angeles, Calif. 90037

APPROVED FOR VETERANS



Accredited member:
National Home Study Council
National Association of
Trade and Technical Schools.





Radio-TV EXPERIMENTER

February/March 1969

77	● CABLE TV'S PICTURE IS CLEAR The CATV Caper— <i>ghost, you die!</i>
33	● SPECIAL CONSTRUCTION PROJECT Autoguard— <i>car burglar alarm with protection plus</i>
37	● SCIENCE SPECIALS 21-Second TV Cure-All
44	Electromagnetic Pulse Pickup— <i>2 to 100,000 rpm!</i>
51	The Amazing Poolroom in the Sky— <i>proton pool pays off</i>
	● CONSTRUCTION PROJECTS FOR HOME AND SHACK
45	Mini-Mod— <i>every CBer needs one</i>
49	No-Ticket Rig— <i>great starter station</i>
57	BCB Booster
67	Rapid-Pulse Calibrator— <i>for real scope power</i>
83	Autodim— <i>like front-row center at the theater</i>
	● ELECTRONICS FEATURES
36	It's Sex that Makes Them Different— <i>cartoon page</i>
48	Radio, Grandpappy Style
66	Need Service Info? Try Microfilm!
71	Reel Gone Fishing— <i>no strings attached!</i>
74	The Temptress, the Towers, and the Gold
86	Two-Band Tuner in a One-Band Case
	● LAB CHECKS
43	Allied 1150 Portable Cassette Recorder
64	Dynaco PAT-4 Stereo Preamp and 120 Power Amplifier
76	Injectorall 500 Printed Circuit Kit
	● COMMUNICATIONS: CB / HAM / SWL
18	CB Rigs & Rigmarole— <i>what's new</i>
87	Propagation Forecast
88	Ham Traffic— <i>what price ham radio?</i>
	● NEW THIS ISSUE
14	Stamp Shack— <i>for those stuck on stickums</i>
109	Emergency Radio Services— <i>Chicago area</i>
	● REGULAR DEPARTMENTS
8	Positive Feedback— <i>editorial chit-chat</i>
20	Bookmark— <i>by Bookworm</i>
23	New Products— <i>goodies and gadgets</i>
25	Ask Me Another
30	Literature Library

White's Radio Log, Vol. 51, Part 1—page 90

Cover
drawing
by Joe Rak



been created by the ARRL. To receive it, a ham must have confirmation of at least 100 countries on each of five separate bands. Some of the hard workers probably have the QSL cards stashed away right now to get this award, but there's a hooker: all contacts must have been made after January 1, 1969!

That'll separate the men from the boys for quite a while, and breathe some new life into what had become a "so what?" type of award. With the current sunspot cycle starting downhill and a slice of 40-Meter DX frequencies now taken away from all but the Extra and Advanced Class operators, this award is going to be the object of some feverish activity.

High-Priced Hamming. "Never mind the bruises—collect, collect, and make a speech now and then about restraint and holding the line."

That's Ernie Welling, VE2YU, complaining, and he has plenty to complain about. Ernie is editor of *electron* (a Canadian electronics magazine), and he writes a regular column in the magazine dealing with ham radio.

Lately he's been taking editorial pot shots at the high taxes, duties, and fees which Canadian hams must pay, and he appears to have a sharp aim. When you consider what our neighbors north of the border must pay for licenses and taxes on their equipment, it's remarkable there is any ham radio in Canada at all.

The latest oppressive indignity to be dumped on the VE/VO hams is a fantastic increase in license fees: from \$2.50 to \$10.00! That's a 400% increase, and they have to pay it every year! Amendments to an existing license now cost \$6.00!

Ernie's reaction to this dumbfounding development is concise and to the point:

"The increase in the amateur license fee is an outrage. It has been forced on the licensees without consultation; it is visited upon

Omnigraph, patented in 1904, once struck terror into the hearts of would-be hams. Held by Forest Arden, W7IJP, spring-driven instrument furnished code for tests in license exams.

a group who are not using radio for profit or reward; it penalizes a large number of non-wage earners; it will seriously affect the growth of the hobby among the young, where the country needs it most; and it does not correspond to any increase in services by the Department of Transport. We will obviously have to stop thinking of this as a license fee because what we now have on our hands is a tax—a contribution levied for support of the government."

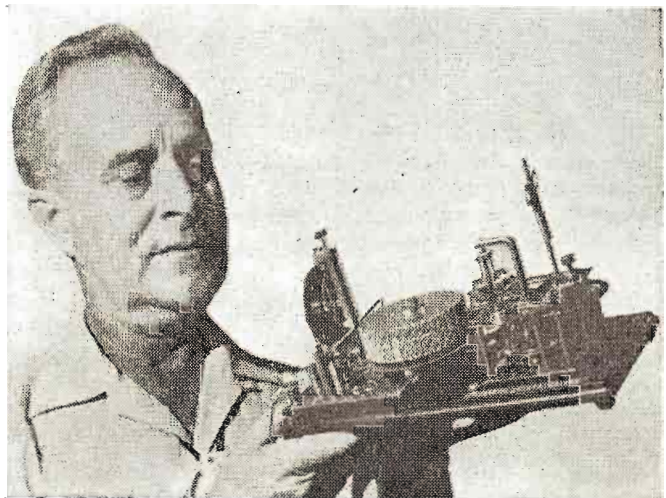
Those words could well be taken to heart by U.S. hams, who have rather blithely accepted our license "fees" without questioning where the money really goes or what it's spent for. (For the record, license fees which U.S. hams pay do *not* go into the FCC budget, and they are *not* proportional to the amount of service which hams receive from the FCC.) I've insisted since the beginning that these are not fees we pay—they are taxes in the true sense of the word. What's more, they are unfair, discriminatory, and illegally-levied taxes at that.

Our Canadian comrades have the same problem, save that they must cough up more than we do. We could be next in this mad mania of modern governments to tax everything in sight and then keep raising the price.

Ernie reports there has been quite a ruckus raised over the license-fee increase, with several petitions filed opposing it.

But the license tax isn't the only price of being a ham in Canada. For all store-bought equipment, there's also the not-so-little matter of the 15% Federal excise tax. Then there's the 11% Federal sales tax. In some cases, there's a provincial sales tax. And if

(Continued on page 114)



WHITE'S RADIO LOG

An up-to-date Directory of North American AM, FM, and TV Stations, including special sections on World-Wide Shortwave Stations and Emergency Stations for Selected Areas

□ *White's Radio Log* was founded in Providence, R. I. by Charles De Witt White as an extension of his earlier publishing activities. Interestingly enough, these, in turn, were a continuation of the business established by his father: the publication of city directories, street guides, and municipal tax guides.

In the early days of broadcasting, compiling a list of operating stations and their frequencies was no simple task. Reason was that prior to the Dill-White Radio Act of 1927, any feed merchant, auto dealer, barber, or undertaker who wanted to advertise his wares or services had only to select a frequency and go on the air. A great many experimenters and businessmen did just that.

Nevertheless, Mr. White's directory publishing experience had convinced him that he could successfully assemble a radio log. In 1924 he justified this conviction with *The Rhode Island Radio Call Book*, following this shortly after with *White's Triple List of Radio Broadcasting Stations*.

In 1927 the two publications were merged and nation-wide distribution established. In ensuing years related publications, such as *Sponsored Radio Programs*, *Radio Announcer's Guide*, *Short-Wave Schedule Guide*, and a special Canadian edition of the *Log* (which had had its title shortened to the one it bears today), were also issued.

The *Log* itself eventually reached a combined circulation of well over a million copies. It also came up with some rather

unusual bedfellows. In 1929-31 it was distributed as the *Enna Jettick Radio Log* (to promote the sale of shoes); in 1938-9 as the *General Electric Radio Log* to promote General Electric's "sensational 1939 receivers with pushbutton tuning."

The Fall-Winter number of the 1927 *Log* listed 701 U.S. stations. Most powerful were WEAJ (now WRCA), New York, with 50,000 watts; KDKA, Pittsburgh; WGY, Schenectady; and WJZ (now WABC), New York, each with 30,000 watts; WGN-WLIB, Chicago, with 15,000 watts; and Boston's WBZ, also with 15,000. Five stations listed (one a Junior High School in Norfolk, Va.) operated on a mighty 5 watts; more than 100 stations had outputs of less than 100 watts.

The current *Log* cross-indexes over 4244 U.S. standard-broadcast (AM) stations, over 2247 U.S. frequency-modulation (FM) and over 810 television stations, has a complete compilation of Canadian broadcasters, and, in addition, has a comprehensive world-wide roster of shortwave stations.

With the success of his *Log*, Charles De Witt White (a direct descendant of Peregrine White, the first child born on the *Mayflower's* historic crossing and bearer of the name of another illustrious ancestor, De Witt Clinton) disposed of his city directory and street guide interests. In time, he transferred his editorial operations to Bronxville, N. Y., a suburb of New York City, where he could remain in close touch with the

broadcasting industry. On April 6, 1957, having only recently completed revising and updating material for the 34th consecutive year of his *Log*, Mr. White died in his sleep. He was 76 years old.

Charles De Witt White's daughter and heir, Mrs. W. R. Washburn, sold all rights in and to the *Log* to Science & Mechanics Publishing Co., and entrusted us with continuing her father's work. This we were proud to do back in 1958 in the fifth issue of RADIO-TV EXPERIMENTER—then an annual publication.

Beginning with our first bimonthly issue in 1964, *White's Radio Log* was divided into three parts (it had grown to 60 pages in size and was much too large to incorporate in any one issue). From 1964 until the present, we published the *Log* in three parts, updating each part right up to press time.

Now, in 1969, the size of the *Log* again necessitates a change. Therefore, *White's Radio Log* will be published in six parts during 1969. In each issue we will include a major listing for either AM Broadcasting

Stations, FM Broadcasting Stations or Television Stations; plus the expanded World-Wide Shortwave Section (brand new for each issue); plus the all-new Emergency Radio Listing for major U.S. cities (a different major city will appear in every issue).

In this issue of RADIO-TV EXPERIMENTER, *White's Radio Log* contains *U.S. AM Stations by Frequency*, *World-Wide Shortwave Stations*, and *Emergency Radio Listings for Chicago, Ill. and Surrounding Communities*.

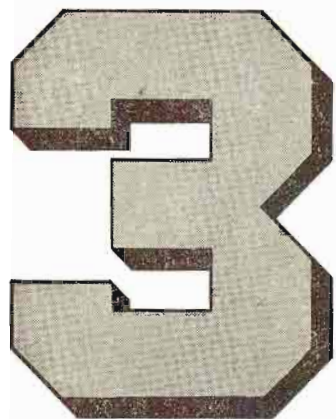
As always, as we go to press on each issue of *White's Radio Log*, station additions, changes, and deletions are made by the U.S. and Canadian governments. The same holds true for the world-wide shortwave broadcasters. Therefore, the Editor cordially invites all readers to inform him of any changes that must be made to keep the *Log* up to date. (In some instances our readers discover and notify us of changes *before* the FCC or DOT officially inform us.) Keep your cards and letters coming—they are most sincerely appreciated, and it's the one way you can help us make a better *Log*.

WHITE'S RADIO LOG CONTENTS FOR 1969

RTVE Issue	Listing	Page
Feb./March	U.S. AM Stations by Frequency	92
	World-Wide Shortwave Stations	107
	Emergency Radio Services—Chicago Area	109
April/May	U.S. TV Stations by States	
	Canadian TV Stations by Cities	
	Canadian AM Stations by Frequency	
	World-Wide Shortwave Stations	
	Emergency Radio Services—New York City Area	
June/July	U.S. AM Stations by Location	
	World-Wide Shortwave Stations	
	Emergency Radio Services—San Francisco Area	
Aug./Sept.	U.S. FM Stations by States	
	Canadian AM Stations by Location	
	Canadian FM Stations by Location	
	World-Wide Shortwave Stations	
	Emergency Radio Services—Boston Area	
Oct./Nov.	U.S. AM Stations by Call Letters	
	World-Wide Shortwave Stations	
	Emergency Radio Services—Philadelphia Area	
Dec./Jan.	U.S. FM Stations by Call Letters	
	Canadian AM Stations by Call Letters	
	Canadian FM Stations by Call Letters	
	World-Wide Shortwave Stations	
	Emergency Radio Services—Washington-Baltimore Area	

kHz	Wave Length	W.P.	kHz	Wave Length	W.P.	kHz	Wave Length	W.P.	kHz	Wave Length	W.P.
WGSM	Huntington, N.Y.	5000d	WEAB	Greer, S.C.	250d	WWL	New Orleans, La.	5000d	WRNL	Richmond, Va.	5000
WMBL	Morehead City, N.C.	1000d	WDEH	Sweetwater, Tenn.	1000d	WKAR	Flansburg, Mich.	1000d	WFJ	Roanoke, Va.	1000d
WPAQ	Mount Airy, N.C.	1000d	KDDP	Dumas, Tex.	250d	WJH	Ithaca, N.Y.	500d	KOR	Portland, Wash.	1000d
KRMG	Tulsa, Okla.	5000d	WJCK	Brigham City, Utah	250d	WGTL	Kannapolis, N.C.	1000d	KIXI	Seattle, Wash.	1000
WCH	Chester, Pa.	1000d	WVSV	Sun Juan, Va.	5000d	WHA	San Juan, P.R.	5000	KISN	Vancouver, Wash.	5000
WIAC	San Juan, P.R.	1000d	WKEE	Huntington, W.Va.	5000d	KJFM	Ft. Worth, Tex.	250d	WISM	Hayward, Wis.	5000d
WBAW	Barnwell, S.C.	1000d	WDUX	Waupaca, Wis.	5000d	WFLO	Farmville, Va.	1000d	WDR	Sturgeon Bay, Wis.	1000d
WIRJ	Humboldt, Tenn.	250d	810-370.2			880-340.7			920-325.9		
WJIG	Tullahoma, Tenn.	250d	KGO	San Francisco, Calif.	5000d	KRVN	Lexington, Neb.	5000d	WCTA	Andalusia, Ala.	5000
KTRH	Houston, Tex.	5000d	KWSR	Rifle, Colo.	1000d	WCBS	New York, N.Y.	5000d	WWWR	Russellville, Ala.	1000d
KCMC	Texarkana, Tex.	1000	WATT	Indianapolis, Ind.	250d	WRBZ	Clinton, N.C.	1000d	KSRM	Soldotna, Alaska	5000
WBCI	Williamsburg, Va.	500d	WEKJ	Jackson, Ky.	500d	WRFD	Worthington, Ohio	5000d	KARK	Little Rock, Ark.	5000
WBOO	Baraboo, Wis.	5000d	WYRE	Annapolis, Md.	250d	890-336.9			KLOC	Ceres, Calif.	500d
750-399.8			WJWP	Rockford, Mich.	500d	WLS	Chicago, Ill.	5000d	KDES	Palm Springs, Cal.	5000
KFQD	Anchorage, Alaska	1000d	WSIC	Magee, Miss.	5000d	WHNC	Henderson, N.C.	1000d	KVCE	San Luis Obispo, Cal.	1000d
WSB	Atlanta, Ga.	5000d	KCMO	Kansas City, Mo.	5000d	KBYE	Okla. City, Okla.	1000d	KLMR	Lamar, Colo.	5000
WBMD	Baltimore, Md.	1000d	KAFA	Santa Fe, N.M.	5000d	WMEG	Eau Gallie, Fla.	1000d	WGST	Atlanta, Ga.	5000
KMMJ	Grand Island, Neb.	1000d	WGY	Schenectady, N.Y.	5000d	WGST	Atlanta, Ga.	5000	WVOH	Hazelhurst, Ga.	500d
WHEB	Portsmouth, N.H.	1000d	WKBC	N.Wilkesboro, N.C.	1000d	WGNU	Granite City, Ill.	500d	WMOK	Metropolis, Ill.	1000d
KSEC	Durant, Okla.	250d	WCCE	Rocky Mount, N.C.	1000d	WBAA	W. Lafayette, Ind.	5000	WBAA	W. Lafayette, Ind.	5000
KXL	Portland, Oreg.	5000d	WCKP	Rockyport, Pa.	1000d	KRFN	Shenandoah, Ia.	1000	KRFN	Shenandoah, Ia.	1000
WPDX	Clarksburg, W.Va.	1000d	WKVM	San Juan, P.R.	2500d	WTWC	Wm. Westburg, Ky.	5000d	WTWC	Wm. Westburg, Ky.	5000d
760-394.5			WQJZ	St. George, S.C.	5000d	WBXX	Bogalusa, La.	1000d	WBXX	Bogalusa, La.	1000d
KFMB	San Diego, Cal.	5000	KBHB	Sturgis, S.D.	5000d	KTCO	Jonesboro, La.	1000d	KTCO	Jonesboro, La.	1000d
KGU	Honolulu, Hawaii	1000d	WMTS	Murfreesboro, Tenn.	5000d	WPTX	Lexington Park, Md.	5000	WPTX	Lexington Park, Md.	5000
WJR	Detroit, Mich.	5000d	KWDR	Del Rio, Tex.	5000d	WMLP	Hancock, Mich.	1000d	WMLP	Hancock, Mich.	1000d
WCPJ	Tarboro, N.C.	1000d	WDMP	Dodgeville, Wis.	5000d	KDHL	Fairbault, Minn.	5000	KDHL	Fairbault, Minn.	5000
WORA	Mayaguez, P.R.	5000	WELF	Tomahawk, Wis.	500d	KWAD	Wadena, Minn.	1000	KWAD	Wadena, Minn.	1000
770-389.4			820-365.6			KWYS	W. Yellowstone, Mont.	1000	KWYS	W. Yellowstone, Mont.	1000
KUOM	Minneapolis, Minn.	5000d	WAIT	Chicago, Ill.	5000d	RAM	Las Vegas, Nev.	1000	RAM	Las Vegas, Nev.	1000
WCAL	Northfield, Minn.	5000d	WIKY	Evansville, Ind.	250d	KOLO	Reno, Nev.	1000	KOLO	Reno, Nev.	1000
WEW	St. Louis, Mo.	1000d	WOSU	Columbus, Ohio	5000d	KQED	Albuquerque, N.Mex.	1000	KQED	Albuquerque, N.Mex.	1000
KOB	Albuquerque, N.Mex.	5000d	WFAA	Dallas, Tex.	5000d	WTM	Trenton, N.J.	1000	WTM	Trenton, N.J.	1000
WABC	New York, N.Y.	5000d	WBAP	Ft. Worth, Tex.	5000d	WKRT	Cortland, N.Y.	1000	WKRT	Cortland, N.Y.	1000
KXA	Seattle, Wash.	1000d	830-361.2			WGHC	Kingston, N.Y.	5000d	WGHC	Kingston, N.Y.	5000d
780-384.4			KIKI	Honolulu, Hawaii	1000d	WRD	Lake Placid, N.Y.	1000	WRD	Lake Placid, N.Y.	1000
WBMM	Chicago, Ill.	5000d	WCCO	Minneapolis-St. Paul, Minn.	5000d	WBEB	Burlington, N.C.	5000d	WBEB	Burlington, N.C.	5000d
WJAG	Norfolk, Neb.	1000d	KBOA	Kennett, Mo.	1000d	KAL	Columbus, Ohio	1000	KAL	Columbus, Ohio	1000
WCKB	Dunn, N.C.	1000d	WNYC	New York, N.Y.	1000d	KGAL	Lebanon, Oreg.	1000	KGAL	Lebanon, Oreg.	1000
WBBO	Forest City, N.C.	1000d	840-356.9			KWA	Lewistown, Pa.	1000	KWA	Lewistown, Pa.	1000
KSPI	Stillwater, Okla.	250d	WTUF	Mobile, Ala.	1000d	KFAL	Fulton, Mo.	1000d	KFAL	Fulton, Mo.	1000d
WAVA	Arlington, Va.	1000d	WRYM	New Britain, Conn.	1000d	KJKS	Columbus, Nebr.	1000d	KJKS	Columbus, Nebr.	1000d
790-379.5			WHAS	Louisville, Ky.	5000d	WOTW	Nashua, N.H.	1000d	WOTW	Nashua, N.H.	1000d
WTUG	Tuscaloosa, Ala.	1000d	WVPO	Stroudsburg, Pa.	250d	WBRV	Boonville, N.Y.	1000d	WBRV	Boonville, N.Y.	1000d
KCAM	Glennallen, Alaska	1000	850-352.7			WKAJ	Saratoga Springs, N.Y.	250d	WKAJ	Saratoga Springs, N.Y.	250d
KCEE	Tucson, Ariz.	5000	WYDE	Birmingham, Ala.	1000d	WKJK	Granite Falls, N.C.	500d	WKJK	Granite Falls, N.C.	500d
KOSY	Texarkana, Ark.	5000	KGYI	Nome, Alaska	1000d	WAYN	Rockingham, N.C.	1000d	WAYN	Rockingham, N.C.	1000d
KABC	Los Angeles, Calif.	5000	KGKO	Ark.	1000d	WIAM	Williamston, N.C.	1000d	WIAM	Williamston, N.C.	1000d
WLBE	Leesburg, Fla.	5000	KQA	Denver, Colo.	5000d	KFNW	Fargo, N.Dak.	1000d	KFNW	Fargo, N.Dak.	1000d
WFUN	Miami, Fla.	5000	WRUF	Gainesville, Fla.	5000	WNYN	Canton, O.	5000d	WNYN	Canton, O.	5000d
WPFA	Pensacola, Fla.	1000d	WEAT	W. Palm Beach, Fla.	1000	WFRO	Fremont, Ohio	500d	WFRO	Fremont, Ohio	500d
WQXI	Atlanta, Ga.	5000	KIMO	Hilo, Hawaii	1000	WCPA	Clearfield, Pa.	1000d	WCPA	Clearfield, Pa.	1000d
WYNR	Brunswick, Ga.	500d	WCLR	Crystal Lake, Ill.	500d	WFLA	Flt. Phd., Fla.	1000d	WFLA	Flt. Phd., Fla.	1000d
WGRA	Cairo, Ga.	1000d	WHDH	Boston, Mass.	5000d	WKXV	Knoxville, Tenn.	1000d	WKXV	Knoxville, Tenn.	1000d
KONA	Kaunakakai, Hawaii	1000d	WKXZ	Muskogean, Mich.	5000d	KALT	Atlanta, Tex.	5000d	KALT	Atlanta, Tex.	5000d
KEST	Boston, Idaho	1000d	WKIX	Raleigh, N.C.	1000d	KMCO	Conroe, Tex.	500d	KMCO	Conroe, Tex.	500d
KBRV	Soda Springs, Ida.	5000d	WJW	Cleveland, Ohio	1000d	KFLD	Floydada, Tex.	250d	KFLD	Floydada, Tex.	250d
WRMS	Beardstown, Ill.	5000d	WJAC	Johnstown, Pa.	1000d	KCLW	Hamilton, Tex.	250d	KCLW	Hamilton, Tex.	250d
KXXX	Colby, Kans.	5000d	WEEU	Roadway, Pa.	1000	WOFY	Bassett, Va.	500d	WOFY	Bassett, Va.	500d
WAKY	Louisville, Ky.	5000d	WABA	Aquadilla, P.R.	500	WAFS	Staunton, Va.	1000d	WAFS	Staunton, Va.	1000d
WRUM	Rumford, Me.	1000d	WVIX	Knoxville, Tenn.	5000d	KUEH	Wanatchee, Wash.	500d	KUEH	Wanatchee, Wash.	500d
WSGW	Saginaw, Mich.	5000	WRAP	Norfolk, Va.	5000d	WATK	Antigo, Wis.	250d	WATK	Antigo, Wis.	250d
KGHL	Billings, Mont.	5000	KTAC	Tacoma, Wash.	1000d	910-329.5			930-322.4		
WNNY	Watertown, N.Y.	1000d	860-348.6			WDVC	Dadeville, Ala.	500d	WETO	Gadsden, Ala.	1000d
WLSV	Wellsville, N.Y.	1000d	WHRT	Hartselle, Ala.	250d	KPHO	Phoenix, Ariz.	5000	KTKN	Ketchikan, Alaska	5000
WTNC	Thomasville, N.C.	1000d	WAMI	Opp, Ala.	1000d	KLCN	Blytheville, Ark.	5000d	KAPR	Douglas, Ariz.	1000d
KFGO	Fargo, N.D.	5000	KIFN	Phoenix, Ariz.	1000d	KAMD	Camden, Ark.	5000	KAFF	Flagstaff, Ariz.	5000d
KWIL	Albany, Oreg.	1000	KOSE	Oseola, Ark.	1000d	KDEO	Ei Cajon, Calif.	1000d	KHJ	Los Angeles, Calif.	5000d
WAEB	Allentown, Pa.	1000	KWRP	Warren, Ark.	250d	KNEW	Oakland, Calif.	5000	KEWO	Paradise, Cal.	5000d
WPIC	Sharon, Pa.	5000	KTRB	Modesto, Calif.	1000d	KXFR	Oxnard, Cal.	5000	KIUP	Durango, Colo.	5000
WEAN	Proving, R.I.	5000	WAZE	Clearwater, Fla.	500d	WRCH	New Britain, Conn.	5000	WTHD	Midford, Del.	1000d
WBDP	Bamberg-Denmark, S.C.	1000d	WKCO	Cocoa, Fla.	1000d	WPLA	Plant City, Fla.	1000d	WHAN	Haines City, Fla.	1000d
WETB	Johnson City, Tenn.	1000d	WERD	Atlanta, Ga.	1000d	WGAF	Valdosta, Ga.	5000	WJAX	Jacksonville, Fla.	5000
WMC	Memphis, Tenn.	5000	WDMG	Douglas, Ga.	5000d	WKBN	Caldwell, Ida.	1000d	WKXY	Sarasota, Fla.	1000
KTHT	Houston, Tex.	5000	WRII	Marion, Ind.	250d	WAKO	Lawrenceville, Ill.	500d	WGR	Bainbridge, Ga.	5000
KFYD	Lubbock, Tex.	5000	KWPC	Muscataine, Iowa	250d	WSUT	Iowa City, Iowa	5000	KSEI	Pocatello, Idaho	5000
KUTA	Blanding, Utah	1000d	KWAM	Pittsburg, Kan.	1000d	KISI	Salina, Kan.	5000	WON	Wentzville, Ind.	5000
WSIG	Mount Jackson, Va.	1000d	WSON	Henderson, Ky.	5000d	WABI	Bangor, Maine	5000	WKCT	Bowling Green, Ky.	1000
WTAR	Norfolk, Va.	5000	WAYE	Baltimore, Md.	1000d	WFDF	Flint, Mich.	5000	WFMD	Frederick, Md.	5000
KGMI	Bellingham, Wash.	5000	WSBS	Gt. Barrington, Mass.	250d	WCOC	Meridian, Miss.	5000	WRB	Holyoke, Mass.	5000
KJRB	Spokane, Wash.	5000	KNUJ	New Ulm, Minn.	1000d	KOYN	Billings, Mont.	1000d	WBCK	Battle Creek, Mich.	5000
WEAQ	Eau Claire, Wis.	5000	WMAG	Forest, Miss.	5000	KBIM	Roswell, N.M.	5000	KIN	Altam, Minn.	1000d
800-374.8			KARS	Belen, N.Mex.	250d	WRKL	New City, N.Y.	1000d	WSLI	Jackson, Miss.	5000
WHOS	Decatur, Ala.	1000d	WFMO	Fairmont, N.C.	250d	WLSG	Saton Rouge, La.	1000	WKC	Ponchar Bluff, Mo.	5000
WNGY	Montgomery, Ala.	1000d	WSTH	Taylorville, N.C.	250d	WABJ	Bangor, Maine	5000	KVSS	Missoula, Mont.	5000d
KINY	Juncos, Alaska	5000	KSHA	Medford, Oreg.	5000d	WFDF	Flint, Mich.	5000	KOGA	Gallatin, Nebr.	500d
KAGH	Crosssett, Ark.	250d	WAMO	Pittsburgh, Pa.	1000d	WOC	Meridian, Miss.	5000	KCCC	Carlsbad, N.M.	5000
KVOM	Merrilton, Ark.	250d	WTEL	Philadelphia, Pa.	1000d	KOYN	Billings, Mont.	1000d	WSOC	Charlotte, N.C.	5000
KBZZ	Bakersfield, Calif.	250d	WLBG	Levens, S.C.	1000d	KBIM	Roswell, N.M.	5000	WITN	Washington, N.C.	5000
KURR	Brighton, Colo.	500d	KFST	Ft. Stockton, Tex.	250d	WRKL	New City, N.Y.	1000d	WNNH	Rochester, N.H.	5000
WLAD	Danbury, Conn.	1000d	KPAN	Hereford, Tex.	5000	WABJ	Bangor, Maine	5000	WPAT	Paterson, N.J.	5000
KRVK	Rockville, Conn.	1000d	KONO	San Antonio, Tex.	5000	WDFD	Flint, Mich.	5000	WZLZ	Johnstown, N.Y.	1000d
WSUZ	Palatka, Fla.	1000d	KWHO	Salt Lake City, Utah	1000d	WOC	Meridian, Miss.	5000	WEQ	Elyria, Ohio	1000
WJAT	Swinburn, Ga.	1000d	WEVA	Emporia, Va.	1000d	WRKL	New City, N.Y.	1000d	WYOL	Oklahoma City, Okla.	5000
WKZI	Casey, Ill.	250d	WDAV	Waynesville, N.C.	1000d	WABJ	Bangor, Maine	5000	KAGI	Grants Pass, Oreg.	5000
KXIC	Iowa City, Iowa	1000d	WNOV	Millwaukee, Wis.	250d	WDFD	Flint, Mich.	5000	KSWB	Seaside, Ore.	1000
WCOM	Lawrence, Mass.	1000d	870-344.6			WOC	Meridian, Miss.	5000	KCNB	Bloomberg, Pa.	1000d
WVAL	Sauk Rapids, Minn.	250d	KIEV	Glendale, Calif.	5000d	WOC	Meridian, Miss.	5000	KSDN	Aberdeen, S.D.	1000
KREI	Farmington, Mo.	1000d	KAIM	Honolulu, Hawaii	5000d	WOC	Meridian, Miss.	5000	SEV	Sevierville, Tenn.	5000
WTMR	Camden, N.J.	500									

Discover the ease and excitement of NRI's



DIMENSIONAL METHOD

of Electronics, Communications, TV-Radio Training

12 HOME STUDY PLANS TO CHOOSE FROM

Practically all vocational and engineering schools require students to conduct carefully planned laboratory demonstrations to prove theory presented in textbooks. So does NRI. Why? Because the only way to really learn at home . . . to recognize and understand circuits . . . is to get your hands on actual equipment, including transistors, printed circuits and today's other solid-state devices. NRI's unique, 3-Dimensional training method puts theory you learn into actual practice. You learn with your hands as well as your head. You learn by unique "discovery" methods the WHY of Electronics, Communications, TV-Radio . . . WHY circuits do the things they do. NRI training starts with carefully, condensed "bite-size," interesting books programmed with ab-

sorbing, revealing experiments using the finest parts money can buy. You get the kind of technical training that gives you experience equal to many, many months of performance on the job.

Whatever your interest, whatever your education, the NRI 3-Dimensional training method can fill your needs. Learning becomes as close to being *fun* as any school can make it. Tens of thousands of men have learned the NRI way. Pick the field of your choice and mail the postage-free card today for your FREE NRI Color Catalog. NATIONAL RADIO INSTITUTE, Electronics Division, Washington, D.C. 20016.

**BEGIN NOW AN ABSORBING
ADVENTURE—LEARN ELECTRONICS
THE NRI WAY—MAIL CARD TODAY**

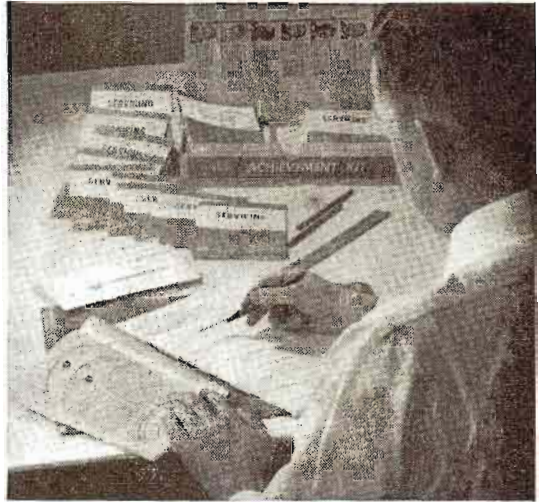
OVER 50 YEARS OF LEADERSHIP



IN ELECTRONICS TRAINING

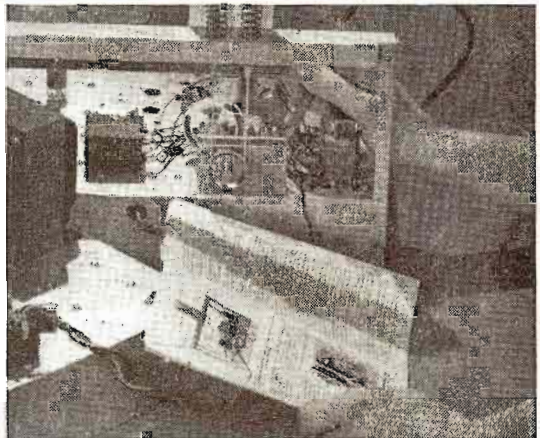
1 Start Fast with NRI's Educator-Acclaimed Achievement Kit

The day you enroll with NRI this remarkable starter kit is on its way to you—regardless of the course you choose. It is specifically designed for you and your training objective. It has one purpose—to get you started quickly and easily. It is an outstanding way of introducing you to NRI training methods . . . an unparalleled "first dimension" that opens the way to new discoveries, new knowledge, new opportunities. The Achievement Kit is worth many times the small payment required to start your training. Find out more about it. Mail the postage-free card now.



2 NRI "Bite-Size" Lesson Texts Program Your Training

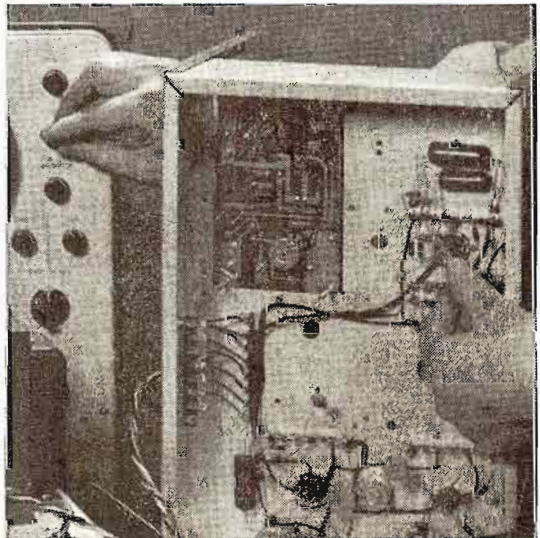
Reading is a necessary part of any training program, but it takes a great deal of stamina to wade through a 300-page technical textbook. Every NRI course is condensed into "bite-size" texts that are simple, direct, well-illustrated, averaging an easily-digested 40 pages. These are "programmed" with NRI training equipment you build, experiments you perform, to bring to life the fundamental laws of electronics, the theory, the training of your choice. You are always kept well supplied with these books, NRI does not require you to "pay as you go."



3 You Get Practical Experience With Actual Electronic Equipment

NRI does not leave the practical side of Electronics to your imagination. Electronics becomes a clear, understandable force under your control as you build, experiment, explore, discover. NRI pioneered the concept of home-lab training equipment to give you 3-Dimensional knowledge and experience. Every kit is designed by NRI to demonstrate principles you must know and understand. Kits contain the most modern parts, including solid state devices. NRI invites comparison with equipment offered by any other school, at any price. Prove to yourself what nearly a million NRI students could tell you . . . that you get more for your money from NRI. Mail postage-free card for your NRI Color Catalog. No obligation. No salesman will call.

APPROVED UNDER GI BILL If you served since January 31, 1955, or are in service, check GI line in postage-free card.



WHITE'S RADIO LOG

kHz Wave Length W.P.

WINZ Miami, Fla. 50000
WMAZ Macon, Ga. 30000
KAMP Waipahu, Hawaii 10000
WMIX Mt. Vernon, Ill. 50000
KIDA Des Moines, Iowa 10000
WCND Shelbyville, Ky. 2500
WYLD New Orleans, La. 10000
WIDG St. Ignace, Mich. 50000
WYWR South Haven, Mich. 10000
WCPC Houston, Miss. 50000
KSWM Aurora, Mo. 5000
KVSH Valentine, Nebr. 5000
WFNC Fayetteville, N.C. 50000
WCIT Lima, Ohio 2500
WNAL Nelsonville, O. 10000
KGRB Bend, Ore. 10000
KWRC Woodry, Ore. 10000
WESA Charleroi, Pa. 2500
WGRP Greenville, Pa. 10000
WIPR San Juan, P.R. 10000
KIXZ Amarillo, Tex. 5000
KTON Belton, Tex. 10000
KATQ Texarkana, Tex. 10000
WNRG Grundy, Va. 50000
WFAW Ft. Atkinson, Wis. 5000
WCSW Shell Lake, Wis.

950—315.6

WRMA Montgomery, Ala. 10000
KIBH Seward, Alaska 1000
KXJK Forrest City, Ark. 50000
KFSA Ft. Smith, Ark. 1000
KAHI Auburn, Calif. 50000
KIMN Denver, Colo. 5000
WLOF Orlando, Fla. 5000
WGTA Summerville, Ga. 50000
WGDV Valdosta, Ga. 5000
KATN Boise, Ida. 50000
KLER Orofino, Idaho 10000
WGRT Chicago, Ill. 10000
KXWL Indianapolis, Ind. 50000
KOEL Delwin, Ia. 5000
KJRC Newton, Kans. 5000
WYWY Barboursville, Ky. 5000
WAGM Presque Isle, Maine 5000
WXLN Potomac-Cabin John, Md. 10000
WRYT Boston, Mass. 50000
WVJ Detroit, Mich. 5000
KWSJ St. Louis Park, Minn. 10000
WBKH Hatfieldburg, Miss. 50000
KLIK Jefferson City, Mo. 50000
KNFT Bayard, N. M. 5000
WHWV Hyde Park, N.Y. 5000
WBFB Rochester, N.Y. 1000
WBIT Utica, N.Y. 5000
WPET Greensboro, N.C. 50000
KYES Roseburg, Ore. 10000
WNCC Barnesboro, Pa. 5000
WFEN Philadelphia, Pa. 5000
WBER Moncks Corner, S. C. 5000
WSPA Spartanburg, S.C. 5000
KWAT Watertown, S. Dak. 10000
WAGG Franklin, Tenn. 10000
KOSX Denison-Sherman, Tex. 5000
KPRC Houston, Tex. 5000
KSLB Lubbock, Tex. 5000
XGFI Richmond, Va. 50000
KJR Seattle, Wash. 5000
WERL Eagle River, Wis. 10000
WKAZ Charleston, W. Va. 50000
WKTS Sheboygan, Wis. 5000
KMER Kemmerer, Wyo. 50000

960—312.3

WBRC Birmingham, Ala. 5000
WMOZ Mobile, Ala. 10000
KOOO Phoenix, Ariz. 5000
KAVR Apple Valley, Calif. 5000
KNEZ Longmead, Calif. 5000
KABL Oakland, Calif. 5000
WELL New Haven, Conn. 5000
WJCO Lake City, Fla. 5000
WJCM Sebring, Fla. 10000
WJAZ Albany, Ga. 50000
WRFCA Athens, Ga. 5000
KSRB Salisbury, Idaho 1000
WDLM E. Moline, Ill. 10000
WSBT South Bend, Ind. 5000
KMA Shenandoah, Iowa 5000
WPRP Prestonsburg, Ky. 50000
WROF Abbeville, La. 10000
KBFC Salisbury, Md. 5000
WFLG Ft. Hagerburg, Mass. 1000
WHAK Rogers City, Mich. 50000
KLTFF Little Falls, Minn. 5000
WABG Greenwood, Miss. 1000
KFVS Cape Girardeau, Mo. 5000
KFLN Baker, Mont. 50000
KNEB Scottsbluff, Nebr. 1000

kHz Wave Length W.P.
KWYK Farmington, N. Mex. 10000
KRIK Roswell, N. Mex. 10000
WEAV Plattsburg, N.Y. 5000
WAAK Dallas, N.C. 10000
WFTC Kinston, N.C. 5000
WWST Wooster, Ohio 10000
KGWA Enid, Okla. 1000
KFLP Yamah Falls, Ore. 5000
WHYL Carlisle, Pa. 50000
WKZA Kane, Pa. 10000
WATS Sayre, Pa. 10000
WBEU Beaufort, S.C. 10000
WBMC McMinnville, Tenn. 5000
KIMP Mt. Pleasant, Tex. 10000
KGKL San Angelo, Tex. 5000
KQVO Provo, Utah 5000
WBBJ Roanoke, Va. 5000
KALE Richland, Wash. 1000
WTCH Shawano, Wis. 1000

970—309.1

WERH Hamilton, Ala. 50000
WTFB Troy, Ala. 5000
KVVM Show Low, Ariz. 50000
KNEA Jonesboro, Ark. 10000
KBIS Bakersfield, Calif. 5000
KCHV Coahella, Calif. 10000
KBEE Modesto, Calif. 1000
KFEL Pueblo, Colo. 10000
WBOM Jacksonville, Fla. 5000
WFLA Tampa, Fla. 5000
WIIN Atlanta, Ga. 50000
WVOP Vidalia, Ga. 50000
KPUI Hilo, Hawaii 5000
KAYT Rupert, Idaho 10000
WMAV Springfield, Ill. 1000
WAVE Evansville, Ky. 5000
KSYL Alexandria, La. 1000
WCSH Portland, Maine 5000
WAMD Aberdeen, Md. 500
WESO Southbridge, Mass. 10000
WCKD Ishpeming, Mich. 50000
WCKM Jackson, Mich. 1000
KQAG Austin, Minn. 5000
WRKB Brandon, Miss. 5000
KOKK Billings, Mont. 5000
KJLT No. Platte, Nebr. 50000
KVEG Las Vegas, Nev. 5000
WJRT Hackensack, N. J. 5000
KDCE Espanola, N. M. 10000
WEBR Buffalo, N.Y. 5000
WCHN Norwich, N.Y. 5000
WVGS Ashokite, N.C. 10000
WVDT Canton, N.C. 5000
WDAY Fargo, N. Dak. 5000
WREO Ashtabula, Ohio 5000
WATH Athens, Ohio 10000
KAKC Tulsa, Okla. 1000
KOIN Portland, Oreg. 5000
WWSW Pittsburgh, Pa. 5000
WJFX Florence, S.C. 5000
HFT Austin, Tex. 10000
KBSN Crane, Tex. 10000
KNOK Ft. Worth, Tex. 10000
WIVI Christiansted, V. I. 5000
WYPR Danville, Va. 10000
WANV Waynesboro, Va. 5000
KREW Spokane, Wash. 5000
WVYD Pineville, W. Va. 5000
WHA Madison, Wis. 50000

980—305.9

WKLF Clinton, Ala. 10000
WXXB Big Delta, Alaska 10000
KCAE Bardonia, Ark. 10000
KINS Eureka, Calif. 5000
KEAP Fresno, Calif. 5000
KFWB Los Angeles, Calif. 5000
KCTY Salinas, Calif. 10000
KGLN Glenwood Springs, Colo. 10000
WSUB Groton, Conn. 10000
WRC Washington, D.C. 5000
WDVH Gainesville, Fla. 50000
WTOT Marianna, Fla. 10000
WBOP Pensacola, Fla. 10000
WLDD Pompano Beach, Fla. 10000
WKLY Hartwell, Ga. 10000
WPGF Farry, Ga. 10000
KUPI Idaho Falls, Idaho 10000
KSGM Chester, Ill. 1000
WITY Danville, Ill. 10000
KCIJ Shreveport, La. 2500
WCAP Lowell, Mass. 10000
WADP Otsego, Mich. 10000
WPBC Richfield, Minn. 5000
WAPF McComb, Miss. 50000
WKOR Starkville, Miss. 5000
KMRZ Kansas City, Mo. 5000
KMYZ Hamilton, Mont. 10000
KCLV Fallon, Nev. 50000
KICVA Clovis, N. Mex. 10000
KMIN Grants, N. Mex. 10000
WTRY Troy, N.Y. 10000
WVCLM Wilmington, N.C. 50000
WAAA Win.-Salem, N.C. 10000
WONE Dayton, Ohio 5000
WILK Wilkes-Barre, Pa. 5000
WAZS Summerville, S.C. 10000
WYCL York, S. C. 10000
KDSJ Deadwood, S. Dak. 1000

kHz Wave Length W.P.
WSIX Nashville, Tenn. 5000
KFRD Rosenberg-Richmond, Tex. 10000
KSVC Richfield, Utah 50000
WFHG Bristol, Va. 5000
WMEK Chase City, Va. 5000
KUTZ Yakima, Wash. 5000
WHAW Weston, W. Va. 10000
WCUB Manitowoc, Wis. 10000
WNBI Park Falls, Wis. 10000
WPRE Prairie du Chien, Wis. 1000

990—302.8

WEIS Center, Ala. 2500
WVWF Fayette, Ala. 10000
WTGB Flomaton, Ala. 5000
KTKT Tucson, Ariz. 10000
KTKS Pittsburg, Calif. 5000
KGUD Santa Barbara, Calif. 10000
KLIR Denver, Colo. 10000
WFCS Southington, Conn. 5000
WFAB Miami, Fla. 5000
WHOD Orlando, Fla. 50000
WDWD Dawson, Ga. 10000
WGML Hinesville, Ga. 2500
KTRG Honolulu, Hawaii 5000
KCAZ Garhage, Ill. 10000
WVJasper, Ind. 10000
WERK Muncie, Ind. 2500
KAYL Storm Lake, Iowa 2500
KRSI Russell, Kans. 2500
WNNR New Orleans, La. 2500
KRIB Rayville, La. 2500
WCRM Clare, Mich. 2500
WABO Waynesboro, Miss. 2500
WMonet, Mo. 2500
KSPV Artesia, N. Mex. 1000
WEEB Southern Pines, N.C. 50000
WJEH Gallipolis, Ohio 10000
WTIG Massillon, Ohio 2500
KRKT Albany, Oreg. 2500
WIBG Philadelphia, Pa. 50000
WVSC Somerset, Pa. 50000
KPRA Mayaguez, P. R. 10000
WLKW Providence, R.I. 500000
WAIKN Aiken, S.C. 10000
WNOX Knoxville, Tenn. 10000
KWAM Memphis, Tenn. 100000
KTRM Beaumont, Tex. 1000
KAML Kennedy-Karnes City, Tex. 2500
KNIN Wichita Falls, Tex. 10000
KDYL Tooele, Utah 10000
WNRV Narrows-Pearisburg, Va. 50000
WANT Richmond, Va. 10000

1000—299.8

WVOV Huntsville, Ala. 50000
WFMI Montgomery, Ala. 50000
KMLO Vista, Cal. 10000
WKMK Blountstown, Fla. 10000
WJTS Jupiter, Fla. 50000
WFL Chicago, Ill. 50000
WLMS Loominster, Mass. 50000
WXTN Lexington, Miss. 50000
WIQT Horseheads, N.Y. 5000
WKBO Garner, N.C. 5000
WSPF Hickory, N.C. 5000
KTKO Okla. City, Okla. 5000
WIDO Carlisle, Pa. 1000
WKYB Hamingsway, S.C. 10000
WGGG Wahalla, S. C. 10000
KXRB Sioux Falls, S.D. 5000
KSTA Coleman, Tex. 2500
KGRJ Henderson, Tex. 2500
WKDE Altavista, Va. 10000
WHWB Rutland, Vt. 10000
WBNB Charlotte Amalie, Virgin Islands 1000
KOMO Seattle, Wash. 50000

1010—296.9

KCAC Phoenix, Ariz. 5000
KVCN Winslow, Ariz. 1000
KLRA Little Rock, Ark. 10000
KCHJ Delano, Calif. 50000
KCMJ Palm Spgs., Calif. 1000
KSAV San Fran., Calif. 10000
WCNU Crestview, Fla. 10000
WBIX Jacksonville Beach, Fla. 100000
WINQ Tampa, Fla. 500000
WGUN Atlanta-Deatur, Ga. 500000
WCSI Columbus, Ind. 5000
KSMN Mason City, Iowa 10000
KIND Independence, Kans. 2500
KDLA DeRidder, La. 10000
WSDI Baltimore, Md. 10000
WITL Lansing, Mich. 50000
WJSW Maplewood, Minn. 2500
WMOX Meridian, Miss. 10000
KCHI Chillicothe, Mo. 2500
KXEN Festus-St. Louis, Mo. 500000
WCNL Newport, N.H. 2500
WINS New York, N.Y. 50000
WABZ Albermarle, N.C. 10000
WFGW Black Mountain, N.C. 500000

kHz Wave Length W.P.
WELS Kinston, N.C. 10000
WIOI New Boston, Ohio 10000
WUDD Lewisburg, Pa. 2500
WHIN Gallatin, Tenn. 10000
WDRM Savannah, Tenn. 2500
KDJW Amarillo, Tex. 5000
KODA Houston, Tex. 50000
KAWA Woodport, Tex. 10000
WELK Charlottesville, Va. 10000
WMEV Marion, Va. 10000
WPMH Portsmouth, Va. 50000
WCST Berkeley Spgs., W. Va. 2500
WSPST Stevens Pt., Wis. 10000

1020—293.9

KGBS Los Angeles, Calif. 500000
WCLL Carbondale, Ill. 10000
WPEO Peoria, Ill. 10000
KSWL Roswell, N. M. 50000
KDKA Pittsburgh, Pa. 50000

1030—291.1

WBZ Boston, Mass. 50000
KCTA Corpus Christi, Tex. 500000
KTWO Casper, Wyo. 10000

1040—288.3

KHVV Honolulu, Hawaii 5000
WHD Des Moines, Iowa 5000
KIXL Dallas, Tex. 10000

1050—285.5

WRFs Alexander City, Ala. 10000
WCRJ Scottsboro, Ala. 2500
KVLCL Little Rock, Ark. 10000
KTOT Big Bear Lake, Cal. 2500
KOFY San Mateo, Calif. 10000
KWSO Wasco, Calif. 10000
WVSB Crestview, Fla. 10000
WJBY Jacksonville, Fla. 10000
WHDG Tampa, Fla. 2500
WRNR Titusville, Fla. 5000
WAUG Augusta, Ga. 50000
WMNZ Montezuma, Ga. 2500
WDD Deatur, Ill. 10000
WTPCA Plymouth, Ind. 2500
KUPK Garden City, Kan. 50000
WNES Central City, Ky. 5000
KPLP Lake Providence, La. 2500
KREB Shreveport, La. 2500
KVPJ Villa Platte, La. 2500
WMSG Oakland, Md. 5000
WQMR Silver Sprg., Md. 10000
WPAG Ann Arbor, Mich. 50000
KLDH Pipestone, Minn. 10000
WACR Columbus, Miss. 10000
KMIS Portageville, Mo. 10000
KJSS Sedalia, Mo. 10000
WBNC Conway, N. H. 10000
WCVB Peterborough, N.H. 5000
WSEN Baldwinville, N.Y. 2500
WYBG Massena, N.Y. 10000
WHN New York, N.Y. 50000
WFSC Franklin, N.C. 10000
WLDN Lincolnton, N.C. 10000
WGPJ Sanford, N.C. 10000
WZIP Cincinnati, Ohio 10000
KCCO Lawton, Okla. 2500
KFMJ Tulsa, Okla. 10000
KURE Eugene, Ore. 10000
WBUT Butler, Pa. 10000
WSKE Everett, Pa. 2500
WLYC Williamsport, Pa. 10000
WCGB Pastilio, P. R. 10000
WSMT Sparta, Tenn. 10000
KLEM Kilton, Tex. 2500
KPKC Liberty, Tex. 5000
KCAS Slaton, Tex. 2500
WGAT Gate City, Va. 10000
WBRG Lynchburg, Va. 10000
WCMS Norfolk, Va. 50000
KBLE Seattle, Wash. 50000
WCEF Parkersburg, W. Va. 50000
WECL Eau Claire, Wis. 10000
WKAU Kaukaun, Wis. 10000
WVLP Kenosha, Wis. 2500
KWIV Douglas, Wyo. 2500

1060—282.8

KUPD Tempe, Ariz. 500
KPAY Chico, Calif. 10000
KLMO Longmont, Colo. 100000
WMLC McLeansboro, Ill. 2500
WRHL Rochelle, Ill. 2500
WKY Jamestown, Ky. 1000
WUDE New Orleans, La. 50000
WGRJ Natick, Mass. 10000
WHFB Benton Harbor, S. Joseph, Mich. 50000
KFIL Preston, Miss. 10000
KNLY Ord, Neb. 10000
WMAP Monroe, N.C. 10000
WBYB St. Pauls, N.C. 2500
WCOK Sparta, N.C. 2500
WIOI Canton, O. 50000
KYW Philadelphia, Pa. 50000
WRIS San German, P. R. 2500
WALD Walterboro, S. C. 10000
KGFY Pierre, S. D. 100000
WPHC Waverly, Tenn. 10000

kHz	Wave Length	W.P.	kHz	Wave Length	W.P.	kHz	Wave Length	W.P.	kHz	Wave Length	W.P.
WCIR	Beckley, W. Va.	10000d	WVJP	Caguas, P.R.	250	1160-258.5			KASY	Auburn, Wash.	250d
KHRB	Lockhart, Tex.		WHIM	Providence, R.I.	1000d	WJJD	Chicago, Ill.	50000d	KOZI	Chelan, Wash.	1000d
KRSP	Salt Lake City, Utah	10000d	KDRY	Alamo Heights, Tex.	1000d	KSL	Salt Lake City, Utah	50000	1230-243.8		
1070-280.2			1120-267.7			1170-256.3			WAUD	Auburn, Ala.	1000
WAPI	Birmingham, Ala.	5000	WUST	Washington, D.C.	1000d	WCOV	Montgomery, Ala.	10000	WJBB	Haleyville, Ala.	1000
KNX	Los Angeles, Calif.	5000	KMOX	St. Louis, Mo.	5000	KJNP	North Pole, Alaska		WBHP	Huntsville, Ala.	1000
WIBC	Indianapolis, Ind.	5000	WWOL	Ruffalo, N.Y.	1000d	KQBG	San Diego, Calif.	5000	WNUZ	Tuladega, Ala.	1000
KILR	Estherville, Iowa	250d	KNPW	Eugene, Ore.	5000	KLOK	San Jose, Calif.	10000	WJBC	Talcahuano, Chile	1000
KFDI	Wichita, Kans.	1000	KCNW	Springfield, Ore.	5000	KOHO	Honolulu, Hawaii	5000	KIFW	Sitka, Alaska	250
KHMO	Hannibal, Mo.	5000	KCLE	Cleburne, Tex.	250d	WLBH	Mattoon, Ill.	250d	KSTN	Bismarck, N.D.	250
WKDR	Plattsburgh, N.Y.	1000	1130-265.3			KSTT	Davenport, Iowa	1000	KAAA	Kingman, Ariz.	250
WNGT	Greenville, N.C.	1000d	KRDJ	Dinuba, Calif.	1000	WLEL	Cornwall, N.Y.	5000	KRIZ	Phoenix, Ariz.	250
WHPE	High Point, N.C.	1000d	KSDO	San Diego, Calif.	5000	KWOO	Tulsa, Okla.	5000	KATO	Safford, Ariz.	250
WKOK	Sunbury, Penn.	1000	WMGA	Moultrie, Ga.	1000	WLEO	Ponce, P.R.	250	KINO	Winslow, Ariz.	1000
WMIA	Arecibo, P.R.	5000	KLEI	Kailua, Hawaii	1000	KPUG	Bellingham, Wash.	5000	KCON	Conway, Ark.	1000
WHYZ	Greenville, S.C.	5000d	KLEY	Wellington, Kan.	250d	WWVA	Wheeling, W.Va.	5000	KFPW	Ft. Smith, Ark.	1000
WFLI	Lookout Mtn., Tenn.	5000	KWKH	Shreveport, La.	5000	WLKE	Waupun, Wis.	1000d	KCTM	Johnsboro, Ark.	1000
WDLA	Memphis, Tenn.	5000	WCDR	Detroit, Mich.	5000	1180-254.1			KGEE	Bakersfield, Calif.	1000
KOPY	Aliee, Tex.	1000	WGAR	Minneapolis, Minn.	5000	WLDJ	Jacksonville, Ill.	1000d	KWTC	Barstow, Calif.	1000
KNNN	Friedman, Tex.	1000	KBLV	Bolivar, Mo.	250d	KOFI	Kalispell, Mont.	5000	KIBS	Bishop, Calif.	1000
KENR	Houston, Tex.	5000d	WNEW	New York, N.Y.	5000	WHAM	Rochester, N.Y.	5000	KVOC	Cathedral City, Calif.	1000
WINA	Charlottesville, Va.	5000	WPYB	Benson, N.C.	1000d	1190-252.0			KXO	El Centro, Calif.	250
WKOW	Madison, Wis.	1000	WASP	Brownsville, Pa.	1000d	KRDS	Tolleson, Ariz.	250	KDAC	Ft. Bragg, Calif.	250
1080-277.6			KBGH	Memphis, Tenn.	1000d	KMCW	Augusta, Ark.	250d	KGFI	Los Angeles, Calif.	1000
WKAC	Athens, Ala.	1000d	WDTM	Selmer, Tenn.	250d	KEZY	Anaheim, Calif.	5000	KPRL	Paso Robles, Calif.	1000
KSCO	Santa Cruz, Calif.	1000	WISN	Milwaukee, Wis.	5000	KNBA	Vallejo, Calif.	250d	KRDD	Redding, Calif.	250
WTIC	Hartford, Conn.	5000	1140-263.0			WGKA	Atlanta, Ga.	1000	KWG	Stockton, Calif.	1000
WVCG	Coral Gables, Fla.	1000	KRAK	Sacramento, Calif.	5000	WRBP	Rossville, Ga.	250d	KEXO	Grand Junction, Colo.	1000
WFIV	Kissimmee, Fla.	5000	KNAB	Burlington, Colo.	5000	WOWO	Ft. Wayne, Ind.	5000	KBRR	Louisville, Colo.	250
WJDE	Port St. Joe, Fla.	1000	WQBA	Miami, Fla.	1000	WANN	Annapolis, Md.	1000d	KDBA	Pueblo, Colo.	1000d
WBDE	Marietta, Ga.	1000d	KGEM	Boise, Idaho	1000	WKOX	Framingham, Mass.	1000	KGEC	Sterling, Colo.	1000d
WPOK	Pontiac, Ill.	1000d	WSIV	Pekin, Ill.	5000	KHAD	De Soto, Mo.	1000	WINF	Manchester, Conn.	1000
WNWI	Valparaiso, Ind.	5000d	WAWK	Kendallville, Ind.	250d	KPAR	Albuquerque, N.M.	1000d	WGGG	Georgetown, Fla.	1000
KOAK	Red Oak, Ia.	1000	KNEI	Waukon, Iowa	250d	WLIB	New York, N.Y.	1000d	WONN	Lakeland, Fla.	1000
WKLO	Louisville, Ky.	1000	KWPK	Piedmont, Mo.	1000	WSML	Graham, N.C.	250d	WMAF	Madison, Fla.	1000
WOAP	Owosso, Mich.	1000	KLUC	Las Vegas, Nev.	1000d	WEXE	Elmore, N.C.	5000	WSSB	New Smyrna Bch., Fla.	1000
KYMN	Northfield, Minn.	1000d	KLPR	Oklahoma City, Okla.	1000d	KEX	Portland, Oreg.	5000	WNVY	Pensacola, Fla.	1000
KGLC	East Moline, Mo.	1000	WBYZ	New Castle, Pa.	1000	WRAI	Rio Piedras, P.R.	1000	WCNH	Quincy, Fla.	1000d
WUD	Amherst, N.Y.	1000	WITA	San Juan, P.R.	1000	WBMJ	San Juan, P.R.	1000	WJNO	W. Palm Beach, Fla.	250
WEWO	Laurinburg, N.C.	5000d	KSOO	Sioux Falls, S.Dak.	1000	KLIF	Dallas, Tex.	5000	WJLA	Augusta, Ga.	1000
WDRR	Murfreesboro, N.C.	1000d	KORC	Mineral Wells, Tex.	250d	1200-249.9			WJLJ	Oakton, Ga.	1000
KNDK	Langdon, N.D.	1000d	WRVA	Richmond, Va.	5000	WDAI	San Antonio, Tex.	5000	WXLJ	Dublin, Ga.	1000
WMMR	Sidney, O.	250d	1150-260.7			1210-247.8			WFOM	Marietta, Ga.	1000
KWJJ	Portland, Oreg.	5000	WBCA	Bay Minette, Ala.	1000d	KZOO	Honolulu, Hawaii	1000	WSOK	Savannah, Ga.	1000
WEPP	Pittsburgh, Pa.	5000d	WGEA	Geneva, Ala.	1000d	WILY	Centennial, Ill.	1000	WAYX	Waycross, Ga.	1000
WLEY	Cavey, P.R.	250	WJRD	Tuscaloosa, Ala.	5000	WKNX	Saginaw, Mich.	1000d	KBAR	Burley, Idaho	1000
KRLD	Dallas, Tex.	5000	KCKY	Coolidge, Ariz.	1000	WADE	Wadesboro, N.C.	1000	KORT	Grangeville, Ida.	1000
WKBY	Chatham, Va.	1000d	KCLR	N. Little Rock, Ark.	5000	WAVI	Dayton, Ohio	250d	KRXK	Rexburg, Idaho	1000
1090-275.1			KRBD	Los Angeles, Calif.	5000	KGYN	Guyton, Okla.	1000	WJBC	Bloomington, Ill.	1000
KAAY	Little Rock, Ark.	5000	KPLS	Santa Rosa, Calif.	5000	WCAU	Philadelphia, Pa.	5000	WHCO	Sparta, Ill.	250
WQIK	Jacksonville, Fla.	5000d	KGMC	Englewood, Colo.	1000d	WHOU	Salinas, P.R.	1000	WJOB	Hammond, Ind.	1000
WWSO	Monticello, Fla.	1000d	WCN	Middletown, Conn.	1000d	WJNO	W. Palm Beach, Fla.	250	WSAL	Lansport, Ind.	1000
WBAF	Barnesville, Ga.	1000	WDEL	Wilmington, Del.	5000	WTCJ	Tell City, Ind.	1000	WBOW	Terre Haute, Ind.	1000d
WCRA	Effingham, Ill.	5000	WNDB	Daytona Bch., Fla.	1000	WBOW	Terre Haute, Ind.	1000d	KFJB	Marshfield, Iowa	1000
WGLC	Mendota, Ill.	1000d	WTMP	Tampa, Fla.	5000	WHIR	Danville, Ky.	1000d	WHOP	Hopkinsville, Ky.	1000
KHAI	Honolulu, Hawaii	5000	WFPM	Fort Valley, Ga.	1000	WHOP	Hopkinsville, Ky.	1000	WANO	Pineville, Ky.	1000
WFWR	Ft. Wayne, Ind.	1000	WFEM	Valdosta, Ga.	1000d	KLIC	Monroe, La.	1000d	KBOK	New Orleans, La.	1000
KNWS	Waterloo, Iowa	1000d	WGHM	Warren, Mich.	1000	KSLD	Opelousas, La.	1000	WBME	Belfast, Me.	250
WDBL	Donalsonville, La.	5000	WGHM	Warren, Mich.	1000	WQDY	Quincy, Maine	1000d	WQDY	Quincy, Maine	1000d
WBAL	Baltimore, Md.	5000	WGHM	Warren, Mich.	1000	WJSR	Madawaska, Me.	1000	WJTB	Wilmington, N.C.	1000
WILD	Boston, Mass.	1000d	WYFE	Rockford, Ill.	5000	WJTB	Wilmington, N.C.	1000	WJTB	Wilmington, N.C.	1000
WMUS	Muskegon, Mich.	1000d	KYND	Burlington, Ia.	5000	WJTB	Wilmington, N.C.	1000	WJTB	Wilmington, N.C.	1000
WTAK	Garden City, Mich.	250d	KWKY	Des Moines, Iowa	1000	WJTB	Wilmington, N.C.	1000	WJTB	Wilmington, N.C.	1000
KEXS	Excelsior Springs, Mo.	1000	KSAL	Salina, Kans.	5000	WJTB	Wilmington, N.C.	1000	WJTB	Wilmington, N.C.	1000
WKTG	King, N.C.	1000d	WMST	Min. Sterling, Ky.	5000	WJTB	Wilmington, N.C.	1000	WJTB	Wilmington, N.C.	1000
KTGO	Tigra, N.D.	1000	WLOC	Munfordville, Ky.	1000d	WJTB	Wilmington, N.C.	1000	WJTB	Wilmington, N.C.	1000
WMWM	Wilkesboro, O.	1000	WJBO	Baton Rouge, La.	5000	WJTB	Wilmington, N.C.	1000	WJTB	Wilmington, N.C.	1000
WKSP	Kingstree, S.C.	1000	WGHM	Warren, Mich.	1000	WJTB	Wilmington, N.C.	1000	WJTB	Wilmington, N.C.	1000
WBZB	Selma, N.C.	1000d	WHMC	Gaithersburg, Md.	1000	WJTB	Wilmington, N.C.	1000	WJTB	Wilmington, N.C.	1000
WENR	Hartwood, Tenn.	1000	WCOP	Boston, Mass.	5000	WJTB	Wilmington, N.C.	1000	WJTB	Wilmington, N.C.	1000
WJMK	Hartsville, Tenn.	250d	WCEN	Mt. Pleasant, Mich.	1000	WJTB	Wilmington, N.C.	1000	WJTB	Wilmington, N.C.	1000
WGOC	Kingsport, Tenn.	1000	KASM	Albany, Minn.	1000d	WJTB	Wilmington, N.C.	1000	WJTB	Wilmington, N.C.	1000
KANN	Ogden, Utah	1000	KRMS	Osage Beach, Mo.	1000d	WJTB	Wilmington, N.C.	1000	WJTB	Wilmington, N.C.	1000
KING	Seattle, Wash.	5000	KSEN	Shelby, Mont.	5000	WJTB	Wilmington, N.C.	1000	WJTB	Wilmington, N.C.	1000
WISS	Berlin, Wis.	1000d	KDEF	Albuquerque, N.M.	5000	WJTB	Wilmington, N.C.	1000	WJTB	Wilmington, N.C.	1000
1100-272.6			WRUN	Utica, N.Y.	5000	WJTB	Wilmington, N.C.	1000	WJTB	Wilmington, N.C.	1000
KFAX	San Francisco, Calif.	5000d	WBAG	Burlington, N.C.	1000d	WJTB	Wilmington, N.C.	1000	WJTB	Wilmington, N.C.	1000
KREX	Grand Junction, Colo.	1000	WGBR	Goldsboro, N.C.	5000	WJTB	Wilmington, N.C.	1000	WJTB	Wilmington, N.C.	1000
WLBB	Carrollton, Ga.	250	WCUE	Cuyahoga Falls, Ohio	1000d	WJTB	Wilmington, N.C.	1000	WJTB	Wilmington, N.C.	1000
WHLI	Hempstead, N.Y.	5000d	WIMA	Lima, Ohio	1000	WJTB	Wilmington, N.C.	1000	WJTB	Wilmington, N.C.	1000
WKYC	Cleveland, O.	5000	KNEB	McAlester, Okla.	1000	WJTB	Wilmington, N.C.	1000	WJTB	Wilmington, N.C.	1000
WGPA	Bethlehem, Pa.	250d	KAGO	Klamath Falls, Oreg.	5000	WJTB	Wilmington, N.C.	1000	WJTB	Wilmington, N.C.	1000
1110-270.1			WHIM	Huntington, Pa.	5000	WJTB	Wilmington, N.C.	1000	WJTB	Wilmington, N.C.	1000
WBIB	Centerville, Ala.	1000d	WYNS	Leighton, Pa.	1000d	WJTB	Wilmington, N.C.	1000	WJTB	Wilmington, N.C.	1000
KRLA	Pasadena, Cal.	5000	WKPA	New Kensington, Pa.	1000d	WJTB	Wilmington, N.C.	1000	WJTB	Wilmington, N.C.	1000
KPOP	Roseville, Cal.	1000	WDIX	Orangeburg, S.C.	5000	WJTB	Wilmington, N.C.	1000	WJTB	Wilmington, N.C.	1000
WALT	Tampa, Fla.	5000d	WTRC	Rock Hill, S.C.	1000d	WJTB	Wilmington, N.C.	1000	WJTB	Wilmington, N.C.	1000
WEBS	Calhoun, Ga.	250d	WSNW	Seneca, S.C.	1000d	WJTB	Wilmington, N.C.	1000	WJTB	Wilmington, N.C.	1000
KIPA	Hilo, Hawaii	1000	KIMM	Rapid City, S.Dak.	5000d	WJTB	Wilmington, N.C.	1000	WJTB	Wilmington, N.C.	1000
WMBI	Chicago, Ill.	5000d	WAPD	Chattanooga, Tenn.	5000	WJTB	Wilmington, N.C.	1000	WJTB	Wilmington, N.C.	1000
WKDZ	Cadiz, Ky.	1000d	WCRK	Clarkston, Tenn.	1000	WJTB	Wilmington, N.C.	1000	WJTB	Wilmington, N.C.	1000
WFCG	Franklin, La.	1000	WTAW	Bryan, Tex.	1000d	WJTB	Wilmington, N.C.	1000	WJTB	Wilmington, N.C.	1000
WUNN	Mason, Mich.	1000	KCTT	Corpus Christi, Tex.	1000d	WJTB	Wilmington, N.C.	1000	WJTB	Wilmington, N.C.	1000
WJML	Potoskey, Mich.	1000	KIZZ	El Paso, Tex.	1000d	WJTB	Wilmington, N.C.	1000	WJTB	Wilmington, N.C.	1000
WKRA	Holly Springs, Miss.	1000d	KVIL	Highland Park, Tex.	1000d	WJTB	Wilmington, N.C.	1000	WJTB	Wilmington, N.C.	1000
KFAB	Omaha, Neb.	5000	KJBC	Midland, Tex.	1000d	WJTB	Wilmington, N.C.	1000	WJTB	Wilmington, N.C.	1000
WSEW	Seneca Falls, N.Y.	5000	KPNG	Port Neches, Tex.	5000	WJTB	Wilmington, N.C.	1000	WJTB	Wilmington, N.C.	1000
WBT	Charlottesville, N.C.	5000	KBER	San Antonio, Tex.	1000d	WJTB	Wilmington, N.C.	1000	WJTB	Wilmington, N.C.	1000
WELX	Kenia, O.	1000	KFUL	Pullman, Wash.	1000d	WJTB	Wilmington, N.C.	1000	WJTB	Wilmington, N.C.	1000
KEOR	Atoka, Okla.	1000	KAYO								

WHITE'S RADIO LOG

kHz	Wave Length	W.P.
WHUC	Hudson, N. Y.	1000
WLFH	Little Falls, N. Y.	1000
WFAS	White Plains, N. Y.	1000
WSKY	Asheville, N.C.	1000
WFAI	Fayetteville, N.C.	1000
WMFR	High Point, N.C.	1000
WISP	Kinston, N.C.	1000
WNNC	Newton, N.C.	1000
WCBT	Roanoke Rap., N. C.	1000
KDIX	Dickinson, N.Dak.	250
WUBE	Cincinnati, O.	1000
WCOL	Columbus, Ohio	1000
WRO	Iron River, Tenn.	1000
WCW	Toledo, O.	1000
KADA	N. of Ada, Okla.	250
WBBZ	Ponca City, Okla.	250
KVAS	Astoria, Ore.	1000
KRNS	Burns, Ore.	1000
KODS	Coos Bay, Ore.	1000
KRDR	Gresham, Ore.	1000
WKIC	Medford, Ore.	1000
KQIK	Lakeview, Ore.	1000
KTDU	Toledo, Ore.	1000
WBVP	Beaver Falls, Pa.	1000
WEXX	Easton, Pa.	1000
WKBO	Harrisburg, Pa.	1000
WCRO	Johnstown, Pa.	1000
WBZP	Lock Haven, Pa.	1000
WTVI	Titusville, Pa.	1000
WNIK	Arcadio, P.R.	1000
WERI	Westerly, R.I.	1000
WAIM	Anderson, S.C.	1000
WNOK	Columbia, S.C.	1000
WOLS	Florence, S.C.	1000
KISD	Sioux Falls, S. Dak.	1000
WAKI	McMinnville, Tenn.	1000
KSIX	Corpus Christi, Tex.	1000
KDLK	Del Rio, Tex.	250
KNUZ	Houston, Tex.	1000
KERV	Kerrville, Tex.	1000
KLVT	Levelland, Tex.	1000
KEEE	Nacogdoches, Tex.	1000
KOZA	Odessa, Tex.	1000
KGRD	Pampa, Tex.	250
KSEY	Seymour, Tex.	1000
KBST	Sulphur Sprgs., Tex.	1000
KWTX	Waco, Tex.	1000
KMOR	Murray, Utah	1000
KOAL	Price, Utah	1000
WJOY	Burlington, Vt.	1000
WCVR	Randolph, Vt.	1000
WBBI	Abingon, Va.	1000
WODI	Brookneal, Va.	1000
WCFV	Clifton Forge, Va.	1000
WFVA	Fredericksburg, Va.	1000
WNOR	Norfolk, Va.	1000
KWYZ	Everett, Wash.	1000
KSPD	Spokane, Wash.	1000
KREW	Sunnyside, Wash.	1000
WLOG	Logan, W. Va.	1000
WTAP	Parkersburg, W. Va.	1000
WHBY	Aupleton, Wis.	1000
WCBO	Janesville, Wis.	1000
KXCO	Wausau, Wis.	1000
WVCO	Casper, Wyo.	1000

1240—241.8

WEBJ	Brewton, Ala.	250
WPRN	Butler, Ala.	1000
WFLA	Eufaula, Ala.	1000
WOWL	Florence, Ala.	1000
WARF	Jasper, Ala.	1000
KVRD	Cottonwood, Ariz.	250
KZOW	So. of Globe, Ariz.	1000
KCYN	Williams, Ariz.	1000
KVRC	Arkadelphia, Ark.	250
KTLD	Mountain Home, Ark.	1000
KWAK	Stuttgart, Ark.	250
KPLY	Crescent City, Calif.	250
KOAD	Lemoore, Cal.	250
KMBY	Monterey, Calif.	1000
KPPC	Pasadena, Calif.	100
KIDCA	Ridgecrest, Calif.	250
KROY	Sacramento, Calif.	1000
KRNO	San Bernardino, Calif.	1000
KSDN	San Diego, Calif.	250
KSMA	Santa Maria, Calif.	250
KSUE	Susanville, Calif.	1000
KRDO	Colo. Springs, Colo.	1000
KDGO	Durango, Colo.	1000
KSLY	Monte Vista, Colo.	1000
KCRT	Trinidad, Colo.	250
WCCO	Waterbury, Conn.	1000
WBGC	Chapley, Fla.	1000
WLCO	Eustis, Fla.	1000
WINK	Ft. Myers, Fla.	1000
WNMB	Melbourne, Fla.	1000
WFOY	St. Augustine, Fla.	1000
WBHB	Fitzgerald, Ga.	1000
WDUN	Gainesville, Ga.	1000
WLAG	LaGrange, Ga.	1000

kHz	Wave Length	W.P.
WBML	Macon, Ga.	1000
WBNS	State, Ga.	1000
WPAX	Thomasville, Ga.	1000
WTWA	Thomas, Ga.	250
KVNI	Coeur d'Alene, Idaho	1000
KFLI	Mountain Home, Idaho	250
KMCL	McCall, Ida.	1000
KWIK	Pocatello, Ida.	1000
WCRW	Chicago, Ill.	1000
WDFC	Decatur, Ill.	1000
WBCB	Chicago, Ill.	1000
WEBQ	Harrisburg, Ill.	1000
WTAX	Springfield, Ill.	1000
WSDR	Sterling, Ill.	500
WHBU	Anderson, Ind.	1000
KDEE	Decorah, Iowa	1000
KWLC	Decorah, Iowa	1000
KBFC	Utumwa, Iowa	1000
KICD	Spencer, Iowa	1000
KIUL	Gardon City, Kans.	1000
KAKE	Wichita, Kans.	250
WINN	Louisville, Ky.	1000
WFTM	Maysville, Ky.	1000
WPKF	Pikeville, Ky.	1000
WSDC	Warrensburg, Ky.	1000
KASO	Minden, La.	1000
KANE	New Iberia, La.	1000
WCOU	Lewiston, Maine	1000
WKIR	Millinocket, Me.	1000
WCEM	Cambridge, Md.	1000
WJEJ	Hagerstown, Md.	1000
WHAJ	Greenfield, Mass.	250
WCCB	W. Yarmouth, Mass.	1000
WATT	Cadillac, Mich.	1000
WCBY	Cheboygan, Mich.	1000
WBPV	Ishpeming, Mich.	1000
WJIM	Lansing, Mich.	1000
WIFG	Hibbing, Minn.	1000
KPRM	Park Rapids, Minn.	1000
WJON	St. Cloud, Minn.	1000
WHPA	Abbeville, Miss.	1000
WGRN	Greenwood, Miss.	250
WGMG	Gulfport, Miss.	1000
WMIS	Natchez, Miss.	1000
WNAT	Natchez, Miss.	1000
KFMO	Ft. River, Mo.	1000
KWOS	Jefferson City, Mo.	1000
KNEM	Nevada, Mo.	250
WSPJ	Gilliland, Mont.	1000
KLTZ	Glazgow, Mont.	1000
KBLH	Helena, Mont.	1000
KFOR	Lincoln, Nebr.	1000
KODY	North Platte, Nebr.	1000
KELK	Elko, Nev.	1000
WFTN	Franklin, N.H.	250
WSNJ	Bridgeton, N. J.	1000
KAVE	Carlsbad, N.Mex.	1000
KCLV	Clovis, N.Mex.	1000
WGBB	Freepport, N.Y.	1000
WGVA	Geneva, N.Y.	1000
WJTN	Jamestown, N.Y.	500
WVOS	Liberty, N.Y.	1000
WNBZ	Saranac Lake, N.Y.	1000
WSNY	Schenectady, N.Y.	1000
WATN	Watertown, N. Y.	1000
WPNF	Brovard, N.C.	1000
WIST	Charlotte, N.C.	1000
WCNC	Elizabeth City, N.C.	1000
WJNC	Jacksonville, N.C.	1000
WRNC	Raleigh, N.C.	1000
KDLR	Devils Lake, N.Dak.	250
WNBZ	Youngstown, Ohio	1000
HZAN	Zanesville, Ohio	1000
KVSO	Ardmore, Okla.	250
KBSO	Eik City, Okla.	250
KBEL	Idabel, Okla.	250
KOKL	Okmulgee, Okla.	1000
KFLY	Corvallis, Ore.	1000
KTXI	Pendleton, Ore.	1000
KPRB	Redmond, Ore.	250
KQEN	Roseburg, Ore.	1000
WRTA	Altoona, Pa.	1000
WHUM	Reading, Pa.	1000
WSEW	Selinsgrove, Pa.	1000
WBAO	Wilkes-Barre, Pa.	1000
WALO	Humacao, P.R.	1000
WDXN	Woonsocket, R.I.	1000
WKDR	Wrentham, S. C.	1000
WDXY	Sumter, S. C.	1000
KCCR	Pierre, S. D.	1000
WBEJ	Elizabethton, Tenn.	1000
WEKR	Fayetteville, Tenn.	1000
WBIR	Knoxville, Tenn.	1000
WKDA	Nashville, Tenn.	1000
WFEI	Ham. City, Tenn.	1000
KVLE	Alpine, Tex.	1000
KEAN	Brownwood, Tex.	1000
KORA	Bryan, Tex.	1000
KOCA	Kilgore, Tex.	1000
KSOX	Raymondville, Tex.	250
KXOX	Sweetwater, Tex.	1000
WSKT	Winterspeter, Vt.	1000
WSPV	Petersburg, Va.	1000
WROV	Roanoke, Va.	1000
WTON	Staunton, Va.	1000
KXLE	Ellensburg, Wash.	1000
KGYE	Olympia, Wash.	1000
WKOY	Bluefield, W. Va.	1000
WTIP	Charleston, W. Va.	1000
WELK	Elkins, W. Va.	1000
WOMT	Manitowoc, Wis.	1000
WIBU	Poyntette, Wis.	1000
WOBT	Rhineland, Wis.	1000

kHz	Wave Length	W.P.
WJMC	Rice Lake, Wis.	1000
KFBC	Cheyanne, Wyo.	1000
KEVA	Evanston, Wyo.	1000
KASL	Newcastle, Wyo.	250
KRAL	Rawlins, Wyo.	1000
KTHE	Thermopolis, Wyo.	1000

1250—239.9

WZOB	Ft. Payne, Ala.	1000
WETU	Wetumpka, Ala.	5000
KSWW	Wickenburg, Ariz.	5000
KHIL	Willcox, Ariz.	5000
KFAY	Fayetteville, Ark.	1000
KALO	Little Rock, Ark.	1000
KHOT	Madera, Calif.	5000
KTSS	Santa Barbara, Calif.	1000
KDHI	Twenty-Nine Palms, California	1000
KICM	Golden, Colo.	1000
WNER	Live Oak, Fla.	1000
WDAE	Tampa, Fla.	1000
WLYB	Albany, Ga.	1000
WYTH	Hudson, Ga.	1000
WJZZ	Stratton, Ill.	5000
WGLF	Ft. Wayne, Ind.	1000
WRAY	Princeton, Ind.	1000
KCFI	Cedar Falls, Iowa	5000
KFKU	Lawrence, Kans.	5000
WREN	Topeka, Kans.	5000
WNVL	Nicholasville, Ky.	1000
WLCB	Scottsville, Ky.	5000
WVBY	Bangor, Maine	5000
WARE	Ware, Mass.	1000
WXOX	Bay City, Mich.	1000
KBRF	Fergus Falls, Minn.	1000
KCUE	Red Wing, Minn.	1000
WHNY	McComb, Miss.	5000
KBTC	Houston, Mo.	1000
WKBR	Manchester, N.H.	5000
WPTV	Morrisown, N.J.	1000
WIPS	Ticonderoga, N.Y.	1000
WFGA	Farmville, N.C.	5000
WBRX	Hamlet, N. C.	1000
WJDM	Marion, N.C.	1000
WCHO	Washington Court House, Ohio	5000
WLEM	Emporium, Pa.	1000
WPEA	Pittsburgh, Pa.	1000
WTAE	Pittsburgh, Pa.	5000
WNOW	York, Pa.	5000
WTMA	Charleston, S.C.	5000
WCKM	Winnboro, S.C.	5000
WKBL	Covington, Tenn.	1000
WKYV	Madisonville, Tenn.	1000
WNZZ	Tazewell, Tenn.	5000
KFTV	Ft. Valley, Tex.	5000
KPAC	Port Arthur, Tex.	5000
KUKA	San Antonio, Tex.	5000
KIKZ	Seminole, Tex.	1000
KVEL	Vernal, Utah	5000
WDVA	Danville, Va.	1000
WYSR	Franklin, Va.	1000
WEER	Warrenton, Va.	1000
WCSG	Pullman, Wash.	5000
KTW	Seattle, Wash.	5000
WEMP	Milwaukee, Wis.	5000

1260—238.0

KPIN	Casa Grande, Ariz.	1000
KCCB	Corring, Ark.	1000
KNSH	Nashville, Ark.	1000
KGIL	San Fernando, Calif.	5000
KYA	San Francisco, Calif.	5000
KSNO	Aspen, Colo.	5000
WCRT	Birmingham, Ala.	5000
WMMM	Westport, Conn.	1000
WNRK	Newark, Del.	1000
WFTC	Washington, D.C.	5000
WFTW	Fort Walton Beach, Florida	1000
WAME	Miami, Fla.	5000
WVPF	Palatka, Fla.	1000
WHAB	Baxley, Ga.	5000
WBBK	Blakely, Ga.	1000
WTFH	East Point, Ga.	5000
WIDF	Idaho Falls, Ida.	5000
KWEI	Weiser, Ida.	1000
WIBV	Belleville, Ill.	5000
WFBM	Indianapolis, Ind.	5000
KFGQ	Boone, Iowa	1000
KWHK	Hutchinson, Kans.	1000
WAIL	Baton Rouge, La.	1000
WELK	Ham. City, Tenn.	1000
WALM	Albion, Mich.	1000
WJBL	Holland, Mich.	5000
KROX	Crookston, Minn.	1000
KDUZ	Hutchinson, Minn.	1000
WGYM	Greenville, Miss.	5000
WNSL	Laurel, Miss.	5000
WCSA	Ripley, Miss.	5000
WKXJ	Springfield, Mo.	5000
KIMB	Kimball, Nebr.	1000
WBUD	Trenton, N.J.	5000
KVSF	Santa Fe, N.Mex.	1000
WBNR	Beacon, N.Y.	1000
WNDR	Syracuse, N.Y.	5000
WGWR	Asheboro, N.C.	5000
WCDJ	Edenton, N.C.	1000
WIXY	Cleveland, O.	5000
WNXT	Portsmouth, Ohio	5000

kHz	Wave Length	W.P.
KWSH	Wewoka-Seminole, Okla.	1000
KMCM	McMinnville, Oreg.	1000
WYMN	Erie, Pa.	5000
WPHB	Philipsburg, Pa.	5000
WISO	Ponce, P.R.	1000
WMOU	Greenville, S.C.	5000
WJOT	Lake City, S.C.	1000
KWYR	Winder, S. Dak.	5000
WNOO	Chattanooga, Tenn.	1000
WMCH	Church Hill, Tenn.	1000
WDKN	Dickson, Tenn.	1000
WCLC	Jamestown, Tenn.	1000
KPSL	Diboll, Tex.	1000
KPSO	Fairfuries, Tex.	500
KWFR	San Angelo, Tex.	1000
KTUE	Tulia, Tex.	1000
WCHV	Charlottesville, Va.	5000
WJWJ	Christiansburg, Va.	1000
KWJQ	Moses Lake, Wash.	1000
WVVW	Grafton, W. Va.	500
WVWS	Black River Falls, Wis.	1000
WEKZ	Monroe, Wis.	1000
WCOO	Oconto, Wis.	1000
KPOW	Powell, Wyo.	5000

1270—236.1

WGSV	Guntersville, Ala.	1000
WZAM	Prichard, Ala.	1000
KBYR	Anchorage, Alaska	5000
KDJI	Holbrook, Ariz.	5000
KADL	Pine Bluff, Ark.	5000
KBLC	Lakeport, Calif.	1000
KCOL	Palm Desert, Cal.	500
KGOK	Tulare, Calif.	5000
WYOG	Naples, Fla.	5000
WHYF	Orlando, Fla.	5000
WTNT	Tallahassee, Fla.	5000
WKRW	Cartersville, Ga.	500
WHYD	Columbus, Ga.	5000
WJJC	Commerce, Ga.	1000
KNDI	Honolulu, Hawaii	5000
KTFI	Twin Falls, Idaho	5000
WEIG	Charleston, Ill.	1000
WHBF	Rock Island, Ill.	5000
WCMR	Elkhart, Ind.	5000
WGA	Carlyle, Ind.	1000
WORX	Madison, Ind.	1000
KSCB	Liberal, Kans.	1000
WAIN	Columbia, Ky.	1000
WFUL	Fulton, Ky.	1000
KVCL	Winnfield, La.	1000
WUOK	Cumberland, Md.	5000
WSPR	Springfield, Mass.	5000
WXYZ	Stark, Mich.	5000
KWEB	Rochester, Minn.	5000
WLOM	Iuka, Miss.	1000
WVSM	Louisville, Miss.	5000
KUSN	St. Joseph, Mo.	1000
KFBD	Waynesville, Mo.	1000
KDVB	Sparks, Nev.	5000
WTSN	Dover, N.H.	5000
WVLS	Viand, N.J.	500
KINN	Alamogordo, N.M.	1000
WHLN	Niagara Falls, N.Y.	5000
WDLA	Walton, N.Y.	1000
WCGC	Belmont, N. C.	1000
WMPM	Smithfield, N.C.	5000
KBOM	Mandan, N.Dak.	1000
WIFL	Cincinnati, Ohio	5000
KWJR	Claremore, Okla.	5000
KAPJ	Grants Pass, Oreg.	5000

WHITES RADIO LOG

kHz Wave Length W.P.

KCAP	Helena, Mont.	1000
KPRK	Livingston, Mont.	1000
KATL	Miles City, Mont.	1000
KYLT	Missoula, Mont.	1000
KHUB	Fremont, Nebr.	500
KGFV	Kearney, Nebr.	500
KSID	Sidney, Nebr.	1000
KORK	Las Vegas, Nev.	1000
KBET	Reno, Nev.	1000
WDOR	Hanover, N.H.	1000
WUJL	Atlantic City, N.J.	1000
KHAP	Aztec, N.M.	1000
KRRR	Ruidoso, N. Mex.	1000
KKIT	Taos, N. Mex.	250
KSLV	Silver City, N. Mex.	1000
WMBO	Auburn, N.Y.	1000
WENT	Gloversville, N.Y.	1000
WKSJ	Jamestown, N.Y.	250
WUSJ	Lockport, N.Y.	1000
WMSA	Massena, N.Y.	1000
WALL	Middletown, N.Y.	1000
WIRY	Plattsburgh, N.Y.	1000
WJRI	Lenoir, N.C.	1000
WTSB	Lumberton, N.C.	1000
WOXF	Oxford, N.C.	1000
WOOV	Greenville, N.C.	1000
WGOI	Wilmington, N.C.	1000
WAIB	Winston-Salem, N.C.	250
KGPC	Grafton, N. Dak.	1000
WNCO	Ashland, O.	1000
WOUB	Athens, Ohio	250
WIZE	Springfield, Ohio	1000
WSTV	Steubenville, Ohio	1000
KIHN	Hugo, Okla.	250
KOCY	Oklahoma City, Okla.	1000
KTOW	Sand Springs, Okla.	1000
KLOO	Corvallis, Ore.	1000
KWVR	Enterprise, Oreg.	250
KIHR	Hood River, Ore.	1000
KBRR	N. Bend, Ore.	1000
WCVI	Connellsville, Pa.	1000
WSAJ	Grove City, Pa.	1000
WKRZ	Oil City, Pa.	1000
WHAT	Philadelphia, Pa.	1000
WRAW	Reading, Pa.	1000
WTRN	Tyrene, Pa.	1000
WBRE	Wilkes-Barre, Pa.	1000
WWPA	Williamsport, Pa.	1000
WUNA	Aquadilla, P.R.	250
WOKC	Charleston, S.C.	1000
WRHI	Rock Hill, S.C.	1000
WSSC	Sumter, S.C.	1000
KIUV	Huron, S.D.	1000
KRSD	Rapid City, S. Dak.	1000
WBAC	Cleveland, Tenn.	1000
WRCM	Columbia, Tenn.	1000
WGRV	Greenville, Tenn.	1000
WGNK	Knoxville, Tenn.	1000
WLOK	Memphis, Tenn.	1000
WCDT	Windsor, Tenn.	1000
KWKC	Abilene, Tex.	1000
KTSL	Burnett, Tex.	250
KAND	Corpus, Tex.	1000
KSET	El Paso, Tex.	250
KLBK	Lubbock, Tex.	1000
KRBA	Lufkin, Tex.	1000
KPDM	Pampa, Tex.	250
KOLE	Port Arthur, Tex.	1000
KTEO	San Angelo, Tex.	250
KVIC	Victoria, Tex.	250
WTWN	St. Johnsburg, Vt.	1000
WSTA	Charlotte Amalie, V.I.	250
WHEP	Covington, Va.	1000
WHAP	Hopewell, Va.	1000
WJMA	Orange, Va.	1000
KAGT	Anacostia, Wash.	250
KSMK	Kennewick, Wash.	1000
KAPA	Raymond, Wash.	1000
KMEL	Wenatchee, Wash.	250
WHAR	Clarksburg, W. Va.	1000
WEPM	Martinsburg, W. Va.	1000
WMOB	Montgomery, W. Va.	1000
WOWE	Wells, W. Va.	1000
WLDY	Ladysmith, Wis.	1000
WRIT	Mitwaukee, Wis.	1000
KSGT	Jackson, Wyo.	250
KYCN	Wheatland, Wyo.	250
KWOR	Worland, Wyo.	1000

1350—222.1

WELB	Elba, Ala.	1000d
WAD	Gadsden, Ala.	5000d
KLYD	Bakersfield, Calif.	1000d
KCKC	San Bernardino, Cal.	1000d
KSRO	Santa Rosa, Calif.	5000
KKAM	Pueblo, Colo.	5000
WNLK	Norwalk, Conn.	1000
WINY	Putnam, Conn.	1000d
WEZY	Cocoa, Fla.	1000d
WZDZ	Dade City, Fla.	1000d
WCAI	Ft. Myers, Fla.	1000d

WBSS	Blackshear, Ga.	500d
WRWH	Cleveland, Ga.	1000d
WAVG	Warner Robins, Ga.	500d
KTOH	Lihou, Hawaii	3000
KRLC	Lewistown, Ind.	5000d
WXCL	Peoria, Ill.	1000
WJBD	Salem, Ill.	1000d
WIOU	Kokomo, Ind.	5000
KRNT	Des Moines, Iowa	5000
KMAN	Manhattan, Kans.	500d
WLOU	Louisville, Ky.	5000d
WSHB	New Orleans, La.	5000d
WHMI	Howell, Mich.	500
KDIO	Ortonville, Minn.	1000d
WCMP	Pine City, Minn.	1000d
WKCU	Corinth, Miss.	1000
WKOZ	Kosciusko, Miss.	5000d
KCHR	Charleston, Mo.	1000d
KBRX	O'Neill, Nebr.	1000d
WLNH	Lacrosse, N.H.	5000d
WHWH	Princeton, N.J.	5000
KABQ	Albuquerque, N.M.	5000
WBCA	Corning, N.Y.	1000d
WRNY	Rome, N.Y.	5000d
WBMS	Black Mountain, N.C.	5000d
WHIP	Mooresville, N.C.	1000d
WLLY	Wilson, N.C.	5000
KBMR	Bismarck, N. D.	5000
WLSR	Akron, O.	5000
WCSM	Galena, Ohio	5000
WCHI	Cnillice, Ohio	1000d
KRHD	Duncan, Okla.	250
KTQL	Tahlequah, Okla.	1000d
KRYC	Ashland, Oreg.	1000d
WORX	York, Pa.	5000
WWRB	Windsor, Pa.	1000d
WDAR	Darlington, S.C.	1000d
WGSW	Greenwood, S.C.	1000d
WRKM	Cartage, Tenn.	1000d
KCAR	Clarksville, Tex.	5000d
KXJ	Jasper, Tex.	1000d
KCOR	San Antonio, Tex.	5000
WBLT	Bedford, Va.	1000d
WFLE	Fredericksburg, Va.	1000d
WNVA	Norton, Va.	5000d
WCVU	Portsmouth, Va.	5000d
WPDR	Portage, Wis.	5000d

1360—220.4

WWVB	Jasper, Ala.	1000d
WLIQ	Mobile, Ala.	3000d
WMFC	Monroeville, Ala.	1000d
WELB	Roanoke, Ala.	1000d
KRUX	Glendale, Ark.	5000
KLYR	Clarksville, Ariz.	5000
KFFA	Helena, Ark.	1000
KFIV	Modesto, Cal.	5000
KRCX	Redcrest, Calif.	1000d
KGSA	San Diego, Calif.	5000
WDRG	Hartford, Conn.	5000
WOBBS	Jacksonville, Fla.	5000d
WKAT	Miami Beach, Fla.	5000
WINT	Winter Haven, Fla.	1000d
WAZA	Bainbridge, Ga.	1000d
WLAW	Lawrenceville, Ga.	1000d
WNAK	Metter, Ga.	5000
WYNR	Rome, Ga.	5000
WLMC	DeKalb, Ill.	1000d
WBLM	St. Carmel, Ill.	5000
WGFA	Watska, Ill.	1000d
KHAK	Cedar Rapids, Iowa	1000d
KXGI	Ft. Madison, Iowa	1000d
KSCJ	Sioux City, Iowa	5000
KETO	El Dorado, Kans.	5000
WFLW	Monticello, Ky.	1000d
KDXI	Manfield, La.	1000d
KNIR	New Iberia, La.	1000d
KTLD	Tallulah, La.	5000
WBEW	Baltimore, Md.	5000d
WLYN	Lynn, Mass.	1000d
WKYO	Caro, Mich.	5000
WKMI	Kalamazoo, Mich.	5000
KLRS	Mountain Grove, Mo.	1000d
KIXC	McCook, Nebr.	1000d
WNXJ	Newtown, N.J.	1000d
WVBZ	Vineland, N.J.	1000
WKOP	Binghamton, N.Y.	5000
WONS	Dean, N.Y.	1000d
WCNL	Chapel Hill, N.C.	1000d
KEYZ	Wilinston, N.C.	5000
WMOB	Cincinnati, Ohio	5000
WVOW	Conneaut, Ohio	5000
KUIK	Hillsboro, Oreg.	1000d
WMCK	McKeesport, Pa.	5000
WPPA	Pottsville, Pa.	5000
WELP	Enslay, S.C.	1000d
WLCM	Lancaster, S.C.	1000d
WBLC	Lenoir City, Tenn.	1000d
WNAH	Nashville, Tenn.	1000d
KRAY	Amarillo, Tex.	5000
KACT	Andrews, Tex.	1000d
KWSA	Baytown, Tex.	1000
KBYS	Corpus Christi, Tex.	1000
KXDL	Ft. Worth, Tex.	5000
WBOB	Galax, Va.	1000d
WRBG	Harrisonburg, Va.	5000d
KFOB	Grand Coulee, Wash.	1000d
KMO	Tacoma, Wash.	5000
WHJC	Natawan, W. Va.	1000d

WMOV	Ravenswood, W. Va.	1000d
WBAV	Green Bay, Wis.	5000
WISV	Viroqua, Wis.	1000
WMNE	Menomonia, Wis.	1000d
KVRS	Rock Springs, Wyo.	1000

1370—218.8

WBYE	Calera, Ala.	1000d
KAWW	Heber Springs, Ark.	5000
KIPA	Prescott, Ark.	5000
KHEL	Carona, Cal.	5000
KPCO	Quincy, Cal.	5000
KEEN	San Jose, Calif.	5000
KGTN	Tulare, Calif.	1000d
WKMK	Blountstown, Fla.	5000
WKEE	Deala, Fla.	5000d
WGF	Fenscoola, Fla.	5000
WAXE	Vero Beach, Fla.	1000d
WLOP	Jesup, Ga.	5000
WFRD	Manchester, Ga.	1000d
WLOV	Washington, Ga.	1000d
WPRC	Lincoln, Ill.	1000d
WTIS	Bloomington, Ind.	3000
WLTH	Gary, Ind.	1000d
KDUB	Dubuque, Iowa	5000
KGNU	Dodge City, Kans.	5000
KALN	Iola, Kans.	5000
WABU	Ft. Campbell, Ky.	5000
WGHG	Grayson, Ky.	5000d
WTKY	Tompkinsville, Ky.	1000d
KAPB	Marksville, La.	1000d
WDEA	Elsworth, Me.	5000
WMTI	Bradocks Hts., Md.	5000
WKIK	Leonardtown, Md.	1000d
WAMM	Cadillac, Mich.	1000d
WGHN	Grand Haven, Mich.	5000
KSUM	Fairmont, Minn.	1000
WIKT	St. Paul, Minn.	5000
WIGO	Canton, Miss.	1000d
KWRT	Boonville, Mo.	1000d
KCRV	Caruthersville, Mo.	1000d
KLFL	Butte, Mont.	5000
KAWL	York, Nebr.	5000
WFEA	Manchester, N.H.	5000
WELV	Ellenville, N.Y.	5000
WALK	Patchogue, N.Y.	5000
WSAY	Rochester, N.Y.	5000
WLTC	Gastonia, N.C.	5000d
WTAB	Tabor City, N.C.	5000d
KFJM	Grand Forks, N.D.	1000d
WSPD	Toledo, Ohio	1000d
KVYL	Holdenville, Okla.	5000
KAST	Astoria, Oreg.	1000
KFIR	Sweet Home, Ore.	1000
WOTR	Corry, Pa.	1000
WPAZ	Pottstown, Pa.	1000d
WKMO	Roaring Spgs., Pa.	1000d
WLVV	Venues, P.R.	5000
WKFD	Wickford, R.I.	5000
WDEF	Chattanooga, Tenn.	5000
WDXE	Lawrenceburg, Tenn.	1000d
WRGS	Rogersville, Tenn.	1000d
KOKE	Austin, Tex.	1000
KFRD	Longview, Tex.	1000
KPOS	Post, Tex.	1000d
KSPD	Salt Lake City, Utah	1000d
WBTN	Bentonville, Va.	1000d
WHEE	Martinsville, Va.	5000
WJWS	South Hill, Va.	5000
KPOR	Quincy, Wash.	1000d
WEIF	Moundsville, W. Va.	1000d
WCCN	Neillsville, Wis.	5000d
KVVO	Cheyenne, Wyo.	1000

1390—215.7

WHMA	Anniston, Ala.	5000
KDQN	DeQueen, Ark.	5000
KAMO	Rogers, Ark.	1000d
KGER	Long Beach, Calif.	5000
KCEY	Turlock, Calif.	5000
KFML	Denver, Colo.	5000d
WUWU	Gainsville, Fla.	5000d
WISK	Americus, Ga.	5000d
WNUS	Chicago, Ill.	5000
WFIW	Fairfield, Ill.	1000
WJCO	Seymour, Ind.	1000d
KCLN	Clinton, Iowa	1000d
KCBC	Des Moines, Iowa	1000
KNCX	Concordia, Kans.	5000
WANY	Albany, Ky.	5000
WKIC	Hazard, Ky.	5000d
KFRA	Franklin, La.	5000
WEGP	Presque Isle, Me.	5000d
KJPV	Waynesville, Mo.	1000d
WCAT	Orange, Mass.	1000d
WPLM	Plymouth, Mass.	5000
WGER	Charlotte, Mich.	5000d
KAOH	Duluth, Minn.	500
KRFB	Ontonagon, Minn.	500
WROA	Gulfport, Miss.	1000d
WQIC	Meridian, Miss.	5000d
KJPV	Waynesville, Mo.	1000d
KENN	Farmington, N. Mex.	5000
KHOB	Hobbs, N. Mex.	5000d
WEOK	Poughkeepsie, N.Y.	5000
WHIV	Riverhead, N.Y.	1000d
WFBL	Syracuse, N.Y.	5000
WFLB	Rocky Mount, N.C.	5000
WADA	Shelby, N.C.	5000
WJRM	Troy, N.C.	5000
KLPM	Minot, N. Dak.	5000
WTOO	Bellefontaine, O.	5000
WMPD	Middleport, O.	5000d
WFMJ	Youngstown, Ohio	5000
KCRC	Enid, Okla.	1000
KSLM	Salem, Oreg.	5000
WLAN	Lancaster, Pa.	5000
WRSO	State College, Pa.	1000d
WISA	Isabella, P.R.	1000
WHPB	Bethel, S.C.	1000d
WOSC	Charleston, S.C.	5000
KJAM	Madison, S.D.	5000d
WYXI	Athens, Tenn.	5000
WJTS	Jackson, Tenn.	5000
WMCT	Mountain City, Tenn.	5000
KULP	El Campo, Tex.	5000
KBEC	Waxahachie, Tex.	5000
KBEL	Logan, Utah	1000
WEAM	Arlington, Va.	5000
WQOD	Bryantwood, Va.	5000
WKLP	Keyser, W. Va.	1000d
KBBO	Yakima, Wash.	1000

1380—217.3

WRAB	Arab, Ala.	1000d
WGYV	Greenville, Ala.	1000d
WVSA	Vernon, Ala.	1000
KOKE	N. Little Rock, Ark.	1000
WVMS	Lancaster, Calif.	1000d
KGMS	Sacramento, Calif.	1000d
KTDM	Salinas, Cal.	5000
KFLJ	Walsenburg, Colo.	1000d
WOWW	Naugatuck, Conn.	5000
WAMS	Wilmington, Del.	5000
WLIJ	Lake Worth, Fla.	1000d
WQXO	Orlando, Fla.	1000d
WLCY	St. Petersburg, Fla.	5000
WAOK	Atlanta, Ga.	5000
WSIZ	Ocala, Fla.	5000d
KPOI	Honolulu, Hawaii	5000
WCMC	Brazil, Ind.	5000
WKJG	Ft. Wayne, Ind.	5000
CIM	Variol, Iowa	5000
KCIJ	Washington, Iowa	5000
KUDL	Fairway, Kan.	5000
WMTA	Central City, Ky.	5000
WVKY	Winchester, Ky.	1000d
WYNK	Baton Rouge, La.	5000
WKJT	Farmington, Me.	1000d
WPHM	Port Huron, Mich.	1000
WPLB	Greenville, Mich.	1000
KLIZ	Brainerd, Minn.	5000
KAGE	Wipona, Minn.	1000
WDLT	Indianola, Miss.	5000
KWK	St. Louis, Mo.	5000
KUVR	Holdrege, Nebr.	5000
WBBX	Partsmouth, N.H.	1000d
WABZ	Concord, N.J.	5000
WSR	East N.Y.	5000
WBNX	New York, N.Y.	5000

WLOS	Asheville, N.C.	5000
WTOB	Winston-Salem, N.C.	5000
WPKO	Waverly, Ohio	1000d
KSSWO	Lawton, Okla.	1000
KMUS	Muskogee, Okla.	1000
KBCH	Ocean Lab, Oreg.	1000d

WHITE'S RADIO LOG

kHz Wave Length W.P.

WGPC Albany, Ga.	1000
WBHF Cartersville, Ga.	1000
WC0N Cornelia, Ga.	250
WKUO Griffin, Ga.	1000
WMMG Milledgeville, Ga.	1000
WBYG Savannah, Ga.	1000
WVLD Valdosta, Ga.	1000
KVSI Montpelier, Ida.	1000
KEEP Twin Falls, Idaho	1000
WVON Ciego, Ill.	1000
WKEI Kewanee, Ill.	500
WCVS Springfield, Ill.	1000
WLVY Ft. Wayne, Ind.	1000
WXVW Jeffersonville, Ind.	1000
WASK Lafayette, Ind.	1000
WAUV Vincennes, Ind.	1000
KLWV Cedar Rapids, Ia.	250
KYET Payette, Ida.	250
KWBW Hutchinson, Kans.	1000
WTCO Campbellsville, Ky.	1000
WXXL Manchester, Ky.	1000
WPAD Paducah, Ky.	1000
WLKS W. Liberty, Ky.	1000
KSIG Crowley, La.	1000
KNOC Natchitoches, La.	1000
WNPS New Orleans, La.	250
WLKN Lincoln, Me.	1000
WRKD Rockland, Maine	1000
WTKQ South Paris, Maine	1000
WTBO Cumberland, Md.	1000
WTHU Thurmont, Md.	100
WMAS Springfield, Mass.	1000
WATZ Alpha Township, Michigan	1000
WHTC Holland, Mich.	1000
WMIQ Iron Min., Mich.	250
WBMJ Jackson, Mich.	1000
WKL A Ludington, Mich.	1000
WNBY Newberry, Mich.	1000
WHLS Port Huron, Mich.	1000
KATE Albert Lea, Minn.	250
KBUN Bemidji, Minn.	1000
KBMW Wahpeton, N.D.	1000
Breckinridge, Minn.	1000
WELY Ely, Minn.	1000
KFAM St. Cloud, Minn.	1000
WROX Clarksdale, Miss.	1000
KJUD Columbia, Miss.	250
WJXN Jackson, Miss.	1000
WOKK Meridian, Miss.	1000
WROB West Point, Miss.	1000
KFTW Fredericktown, Mo.	1000
WMBH Joplin, Mo.	1000
KIRX Kirksville, Mo.	1000
KOKO Warrensburg, Mo.	1000
KWPM West Plains, Mo.	1000
KXXL Bozeman, Mont.	1000
KUDI Great Falls, Mont.	1000
KGMY Missoula, Mont.	250
KRBN Red Lodge, Mont.	1000
KVCK Wolf Point, Mont.	1000
KWBE Bozeman, Nebr.	250
KONE Reno, N.H.	1000
WKXL Concord, N.H.	1000
WFPG Atlantic City, N.J.	1000
WCTC New Brunswick, N. J.	1000
KRZY Albuquerque, N.M.	250
KLMX Clayton, N.Mex.	1000
KOBE Las Cruces, N.Mex.	250
KENN Portales, N.Mex.	1000
WCLI Corning, N.Y.	1000
WWSC Glen Falls, N.Y.	1000
WHDL Olean, N.Y.	1000
WKIP Poughkeepsie, N. Y.	1000
WKAL Rome, N.Y.	1000
WATA Boone, N.C.	1000
WGNC Gastonia, N.C.	1000
WZS Henderson, N.C.	1000
WHKP Hendersonville, N.C.	1000
WHIT New Bern, N.C.	1000
WFBS Spring Lake, N.C.	1000
KCCA Rugby, N. D.	1000
WJER Dover, Ohio	1000
WMDH Hamilton, Ohio	1000
WLEC Sandusky, Ohio	1000
KWHW Athens, Okla.	1000
KGFF Shawnee, Okla.	1000
KSIW Woodward, Okla.	1000
KEED Eugene, Ore.	1000
KFLW Klamath Falls, Dre.	1000
KLBM La Grande, Oreg.	1000
WGOG Erie, Pa.	1000
KBPS Portland, Ore.	250
WFR A Franklin, Pa.	1000
WDAO Indiana, Pa.	1000
WPAM Pottsville, Pa.	1000
WMPT S. Williamsport, Pa.	1000
WMAJ State College, Pa.	1000
WJPA Washington, Pa.	250
WCCR Coamo, P.R.	1000
WWR1 W. Warwick, R.I.	1000

kHz Wave Length W.P.	kHz Wave Length W.P.
WQSN Charleston, S.C.	1000
WCRS Greenwood, S.C.	1000
WMYB Myrtle Beach, S.C.	1000
WHSC Hartsville, S.C.	1000
KBFS Belle Fourche, S. Dak.	1000
KYNT Yankton, S. D.	1000
WLAR Athens, Tenn.	1000
WMOO Chattanooga, Tenn.	1000
WDSG Dyersburg, Tenn.	1000
WSMG Greeneville, Tenn.	250
WLAF LaFollette, Tenn.	1000
WGN S Murfreesboro, Tenn.	1000
KAYC Beaumont, Tex.	1000
KBEN Carrizo Sprgs., Tex.	250
KCTI Gonzales, Tex.	250
KMBL Junction, Tex.	1000
KCVL Lammasas, Tex.	1000
KMHT Marshall, Tex.	1000
KMFL Galera, Tex.	1000
KMST Palestine, Tex.	1000
KSNY Snyder, Tex.	1000
KURA Moab, Utah	1000
KEYE Provo, Utah	250
KDKU St. George, Utah	1000
WSNO Blanding, Vt.	1000
WTS A Brattleboro, Vt.	1000
WFR Front Royal, Va.	1000
WENZ Highland Springs, Va.	1000
WREL Lexington, Va.	1000
WMVA Martinsville, Va.	1000
WLFM Suffolk, Va.	1000
KBCW Abertson, Wash.	1000
KCLX Colfax, Wash.	1000
KONP Port Angeles, Wash.	250
KAYE Puyallup, Wash.	1000
WPAP Parkersburg, W. Va.	1000
KFIZ Fond du Lac, Wis.	1000
WDLB Marshfield, Wis.	1000
WRCO Richland Center, Wis.	1000
KBSB Buffalo, Wyo.	250
KVOW Riverton, Wyo.	1000

1460-2054

WFMH Cullman, Ala.	5000d
WPNX Phenix City, Ala.	5000
KZOT Marianna, Ark.	500
KCLL Paris, Ark.	500d
KTYM Ingleswood, Calif.	1000
KDDN Salinas, Calif.	5000
KVRE Santa Rosa, Calif.	1000d
KVSN Colo. Sprgs., Colo.	1000
WBAR Barstow, Fla.	1000d
WZEP DeFuniak Springs, Florida	1000d
WMBR Jacksonville, Fla.	5000
WDYZ Buford, Ga.	5000d
WPXN Columbus, Ga.	1000
WROY Carmi, Ill.	1000d
WIXN Dixon, Ill.	1000d
WRTL Easton, Ill.	250d
WKAM Goshert, Ind.	1000
WCOH North Vernon, Ind.	1000d
KSO Des Moines, Iowa	5000
KCRB Chanute, Kans.	1000d
WRVK Mt. Vernon, Ky.	500d
WXOK Baton Rouge, La.	5000
KBSF Springhill, La.	1000d
WEDD Easton, Mass.	1000
WBET Brockton, Mass.	5000
WBRN Big Rapids, Mich.	1000d
WPON Pontiac, Mich.	1000
KDWA Hastings, Minn.	1000d
KDMA Montevideo, Minn.	1000
WELZ Belzoni, Miss.	1000d
WCIS Moss Point, Miss.	1000d
KIRL St. Charles, Mo.	5000d
KRNY Kearney, Nebr.	5000d
KENO Las Vegas, Nev.	5000
WJIZ Mt. Holly, N.J.	5000
WKO Albany, N.Y.	5000
WVOX New Rochelle, N.Y.	500d
WHCC Rochester, N.Y.	5000
WAKS Fugay Springs, N. C.	1000d
WRKB Kannapolis, N.C.	5000d
WMMH Marshall, N.C.	500d
WBNS Columbus, Ohio	5000
WPVL Painesville, O.	1000d
KROW Dallas, Oreg.	5000d
KELR El Reno, Okla.	500
WMB A Ambridge, Pa.	500d
WACO Harrisburg, Pa.	5000
WFB A San Sebastian, P.R.	500
WBCU Union, S.C.	1000
WJAK Jackson, Tenn.	5000d
WEEN Layayette, Tenn.	1000d
KBRZ Freeport, Tex.	500d
KRME Hondo, Tex.	500d
KLLL Lubbock, Tex.	1000d
WACO Waco, Tex.	1000
WPRW Manassas, Va.	5000
WRAD Radford, Va.	5000
KYAC Kirkland, Wash.	5000d
KIMA Yakima, Wash.	5000
WBCU Buckhannon, W.Va.	5000d
WRAC Racine, Wis.	500d
WTMB Wisconsin Rapids, Wis.	1000d

1470-2040

WBLO Evergreen, Ala.	1000d
----------------------	-------

kHz Wave Length W.P.	kHz Wave Length W.P.
KDEW DeWitt, Ark.	500d
KOLI Coalinga, Calif.	500d
KUTY Palmdale, Cal.	5000d
KXOA Sacramento, Calif.	5000
KKEP Estes Park, Colo.	500d
WMMW Meriden, Conn.	1000d
WRBD Pompano Beach, Fla.	5000
KCWR Tarpon Springs, Fla.	5000d
WDOL Athens, Ga.	1000d
WCLA Claxton, Ga.	1000
WRGA Rome, Ga.	5000
WMPP Chicago Heights, Ill.	1000d
WMBD Peoria, Ill.	5000
WHUT Anderson, Ind.	1000d
KTRI St. Louis City, Iowa	5000
KWV Waverly, Iowa	1000d
KARE Atchison, Kans.	1000
KLIB Liberal, Kans.	1000d
WSAC Fort Knox, Ky.	1000d
KTDL Farmersville, La.	1000d
KPLC Lake Charles, La.	5000
WLAM Lewiston, Maine	5000
WJY Salisbury, Md.	5000d
WTRB Westminster, Md.	1000d
WSDR Marlborough, Mass.	1000d
WNBP Newburyport, Mass.	5000
WKMF Flint, Mich.	5000
WKLZ Kalamazoo, Mich.	5000
KAND Anoka, Minn.	1000d
WCHJ Brookhaven, Miss.	1000d
WNAU New Albany, Miss.	5000
KGHM Brookfield, Mo.	5000
KTCB Malden, Mo.	1000d
KTKO Ithaca, N.Y.	1000
WPD M Potsdam, N.Y.	1000d
WBG Greensboro, N.C.	5000
WPNC Plymouth, N.C.	1000d
WTOE Spruce Pine, N.C.	1000d
WOHO Toledo, Ohio	1000
KVLH Pauls Valley, Okla.	250d
KVIN Vinita, Okla.	500d
KRAF Redwood, Oreg.	5000d
WSAN Allentown, Pa.	5000
WFAH Farrell, Pa.	1000d
WMLL Portage, Pa.	500d
WQXL Columbia, S.C.	5000d
WINH Georgetown, S.C.	1000d
WEAG Alcoa, Tenn.	1000d
WVLD Berry Hill, Tenn.	5000
KRBC Abilene, Tex.	5000
WHMN Batt. Tex.	500d
KWRD Henderson, Tex.	500d
KCNY San Marcos, Tex.	250d
WTZE Tazewell, Va.	1000d
KELA Centralia-Chehalis, Wash.	5000d
KSEM Moses Lake, Wash.	5000
KAPS Mount Vernon, Wash.	5000
WVNY Huntington, W.Va.	5000
WBZE Wheeling, W.Va.	500d
WBKV West Bend, Wis.	1000d

1480-202.6

WARI Abbeville, Ala.	1000d
WLPH Ironton, Ala.	1000d
WBTS Bridgeport, Ala.	1000d
WAB Mobile, Ala.	5000
KHAT Phoenix, Ariz.	5000
KGLU Safford, Ariz.	1000
KTHS Berryville, Ark.	1000
KWUN Concord, Calif.	5000
KRED Eureka, Cal.	1000
KYOS Merced, Calif.	5000
KWIZ Santa Ana, Calif.	5000
KSEE Santa Maria, Calif.	1000
KCMS Manitou Springs, Colo.	500
WEHW Windsor, Conn.	500d
WAFG Arcadia, Fla.	1000d
WONE Panama City Beach, Fla.	5000
WVCF Wintermere, Fla.	1000d
WYZE Atlanta, Ga.	5000d
WRDW Augusta, Ga.	5000
KOFB St. Maries, Ida.	1000
WGBE Geneva, Ill.	1000
WJBM Jerseyville, Ill.	500d
KTRB Terre Haute, Ind.	5000
WRWS Warsaw, Ind.	1000
KLEE Ottumwa, Iowa	5000
KBEA Mission, Kan.	1000
KLEO Wichita, Kans.	5000
WKOA Hopkinsville, Ky.	1000d
WNKY Neon, Ky.	1000d
WTL Somers, Ky.	1000d
KCKW Jena, La.	500d
KANV Jonesville, La.	500d
KJOE Shreveport, La.	1000d
WSAR Fall River, Mass.	5000
WAFI Grand Rapids, Mich.	5000d
WIOS Tawas City-E. Tawas, Mich.	1000d
WYSI Ypsilanti, Mich.	5000
KAUS Austin, Minn.	1000
KEHG Fosston, Minn.	5000d
WECF Carthage, Miss.	500d
KCCX Sidney, Mont.	5000
KLMS Lincoln, Nebr.	1000
KWEW Hobbs, N. Mex.	5000
WLEA Hornell, N.Y.	1000d
WHOM New York, N.Y.	5000

kHz Wave Length W.P.	kHz Wave Length W.P.
WADR Remsen, N.Y.	5000d
WWKQ Fair Bluff, N. C.	1000d
WVOK Charlotte, N.C.	5000
WYRN Louisburg, N.C.	500d
WMSJ Sylva, N.C.	5000d
WYDK Yadkinville, N.C.	1000d
WHBC Canton, Ohio	5000
WCIN Cincinnati, Ohio	5000
WDEL G. Latrot, Pa.	1000d
WOAS Philadelphia, Pa.	5000
WISL Shamokin, Pa.	1000
WSHP Shippensburg, Pa.	500d
W added Fajardo, P.R.	5000
KSOR Watertown, S.D.	1000d
WJFC Jefferson City, Tenn.	5000
WGMG Memphis, Tenn.	5000
WJLE Smithville, Tenn.	1000d
KBOX Oadessa, Tex.	5000
KLVX Pasadena, Tex.	1000
KAPE San Antonio, Tex.	500d
KONI Spanish Fork, Utah	1000d
WCFR Springfield, Vt.	1000d
WBBL Richmond, Va.	5000
WLEE Richmond, Va.	5000
WJLU Salem, Va.	5000d
KOOD Lakewood Center, Wash.	1000d
KVAN Vancouver, Wash.	1000d
WISM Madison, Wis.	5000
KRAE Cheyenne, Wyo.	1000d

1490-201.2

WANA Anniston, Ala.	250
WAJF Decatur, Ala.	1000
WRLD Lanett, Ala.	1000
WHBB Selma, Ala.	1000
KYCG Prescott, Ariz.	1000
KAIR Tucson, Ariz.	250
KXAR Hope, Ark.	1000
KDRS Paragould, Ark.	1000
KOTN Pino Bluff, Ark.	1000
KXRR Russellville, Ark.	1000
KWAC Bakersfield, Calif.	1000
KWAS Arcadia, Calif.	250
KICO Calexico, Calif.	1000
KRKC King City, Calif.	1000
KTOB Petaluma, Calif.	1000
KBLF Red Bluff, Calif.	1000
KDB Santa Barbara, Calif.	1000
KOWL So. Lake Tahoe, Cal.	250
KSYC Yreka, Calif.	1000
KOON Boulder, Colo.	500d
KGUC Gunnison, Colo.	250
KCMS Manitou Springs, Colo.	500
KOLR Sterling, Colo.	250
WGCH Greenwich, Conn.	250
WTRL Bradenton, Fla.	250
WJBS De Land, Fla.	1000
WCOF Immokalee, Fla.	250
WFBM Miami Beach, Fla.	5000
WSRA Milton, Fla.	1000
WPXE Starke, Fla.	1000
WTTB Vero Beach, Fla.	1000
WSIR Winter Haven, Fla.	500
WMOG Brunswick, Ga.	1000
WJMJ Cordele, Ga.	1000
WRFE Monroe, Ga.	1000
WSPG Tallahassee, Ga.	250
WSNT Sandersville, Ga.	500
WSYL Sylva, Ga.	250
KCID Caldwell, Idaho	1000
WKRO Cairo, Ill.	250
WDAN Danville, Ill.	1000
WAMV East St. Louis, Ill.	1000
WOPA Oak Park, Ill.	1000
WZOE Princeton, Ill.	1000
WKBV Richmond, Ind.	1000
WNOU South Bend, Ind.	1000
KBUR Burlington, Iowa	1000
WOBQ Dubuque, Iowa	1000
KBAB Indianola, Ia.	500
KRIE Mason City, Ia.	1000
WLAN Phillipsburg, Kans.	250
KTOP Topeka, Kan.	1000
WFKY Frankfort, Ky.	1000
WKAY Glasgow, Ky.	1000
WOMI Owensboro, Ky.	1000
WSIP Paintsville, Ky.	1000
WTKC Bogalusa, La.	1000
KEUN Union, La.	1000
KJIN Houma, La.	1000
KRUS Ruston, La.	1000
WPRD Portland, Maine	1000
WTVL Waterville, Maine	1000
WARK Hagerstown, Md.	1000
WHAV Haverhill, Mass.	1000
WVMA Milford, Mass.	1000
WTXL W. Springfield, Mass.	1000
WABJ Adrian, Mich.	1000
WMDN Midland, Mich.	1000
WLRC Whitehall, Mich.	1000
KXRA Alexandria, Minn.	250
KOZY Grand Rapids, Minn.	1000
KLGR Redwood Falls, Minn.	1000
WLOX Biola, Miss.	1000
WCLD Cleveland, Miss.	1000
WHOC Philadelphia, Miss.	1000
WTUP Tupelo, Miss.	1000
WVIM Vicksburg, Miss.	250
KDMO Carthage, Mo.	250
KTRD Rolla, Mo.	1000
KRDD Setaita, Mo.	1000

kHz	Wave Length	W.P.	kHz	Wave Length	W.P.	kHz	Wave Length	W.P.	kHz	Wave Length	W.P.
KDBM	Dillon, Mont.	1000	WKBX	Winston-Salem, N.C.	1000d	KDSN	Denison, Iowa	500d	WYNA	Raleigh, N.C.	1000d
KBON	Omaha, Nebr.	1000	WGIC	Xenia, O.	1000d	KYMN	Northfield, Minn.	1000d	WFTN	Tryon, N.C.	1000d
WEMJ	Laconia, N.H.	1000	KOSG	Pawhuska, Okla.	500d	KNBI	Norton, Kan.	1000d	WFCM	Winston-Salem, N.C.	1000d
WLDB	Atlantic City, N. J.	1000	WMNT	Manass, P.R.	500d	KWLA	Many, La.	1000d	KQWB	Fargo, N.D.	1000d
KRSN	Los Alamos, N.Mex.	1000	WFAF	Gaffney, S. C.	250d	WFNO	Auburn, Me.	500d	WDLR	Delaware, Ohio	500d
KRTN	Raton, N.Mex.	1000	WDBE	Jamestown, Tenn.	1000d	WCFR	Cherterton, Md.	250d	WMD	Middlet, Ohio	250d
WCSS	Astoria, N.Y.	1000	WTNE	Trenton, Tenn.	250d	WRFM	Poplarville, Miss.	1000d	KREK	Summit, Okla.	500d
WBTA	Batavia, N.Y.	250	KWFA	Merkle, Tex.	250d	WTHM	Lapeer, Mich.	500d	WLOA	Bradock, Pa.	1000d
WKNY	Kingston, N.Y.	1000	KTXO	Sherman, Tex.	1000d	WERM	Wyoming, Mich.	500d	WTTA	Wounded, Pa.	500d
WICY	Malone, N.Y.	1000	KANI	Wharton, Tex.	500	KSMW	Shakopee, Minn.	500d	WKFE	Yauco, P.R.	250
WDLC	Port Jervis, N. Y.	1000	1510—199.1			KPCR	Bowling Green, Mo.	250d	WYBC	Bennetsville, S.C.	1000d
WOLF	Syracuse, N. Y.	1000	KALF	Mesa, Ariz.	1000d	KMAM	Butler, Mo.	500d	KCAN	Canyon, Tex.	1000d
WSSB	Durham, N. C.	1000	KSON	Ontario, Cal.	1000d	KLOL	Lincoln, Neb.	500d	KWBC	Navasota, Tex.	250d
WFLE	Fayetteville, N.C.	1000	KIRV	Fresno, Cal.	500d	WELA	Elizabeth, N.J.	5000d	WBYE	Bristol, Tenn.	1000d
WLDE	Lakeview, N.C.	1000	KTIM	San Rafael, Calif.	1000d	KWLG	Wagoner, Okla.	1000d	WFTN	Cookville, Tenn.	250d
WRNB	New Bern, N.C.	1000	KDIO	Littleton, Colo.	1000	WHYP	North East, Pa.	1000d	WKPT	Cookeville, Tenn.	250d
WRMT	Rocky Mount, N. C.	1000	WNLC	New London, Conn.	1000d	WMBT	Shenandoah, Pa.	250d	WKPT	Kingsport, Tenn.	1000d
WSTP	Salisbury, N. C.	1000	WWBC	Cocoa, Fla.	250d	WUPR	Utah, P.R.	1000d	KCGM	Comanche, Tex.	250d
WSVM	Valdese, N.C.	1000	WINU	Highland, Ill.	250d	WASC	Spartanburg, S.C.	250d	KRGO	Salt Lake City, Utah	1000d
WHSL	Wilmington, N. C.	1000	WJRC	Joliet, Ill.	500d	KGTN	Georgetown, Tex.	1000d	WKBA	Vinton, Va.	1000d
KNDC	Hettinger, N.D.	1000	WKAI	Macomb, Ill.	1000d	KGBT	Hartlingen, Tex.	5000d	WVAR	Virginia Bch., Va.	5000d
KOVC	Valley City, N. Dak.	1000	KIFG	Iowa Falls, Iowa	1000d	KCLR	Rolls, Tex.	5000d	WVA	Virginia Beach, Va.	5000d
WBEX	Chillicothe, Ohio	1000	WLAN	Larned, Kan.	1000d	KWVA	Wagoner, Okla.	250d	KQOT	Bellingham, Wash.	1000d
WJMO	Cleveland Hghts., O.	1000	KPCB	Port Sulphur, La.	1000d	KCHY	Cheyenne, Wyo.	1000d	KGAR	Vancouver, Wash.	1000d
WOHI	E. Liverpool, Ohio	250	WMEX	Boston, Mass.	5000d	1540—195.0		WMIR	Lake Geneva, Wis.	1000d	
WMOA	Marietta, Ohio	1000	WJCD	Jackson, Mich.	5000d	WANL	Lineville, Ala.	5000d	WMAD	Madison, Wis.	5000d
WWRN	Marion, Ohio	1000	WLKM	Three Rivers, Mich.	500	WAYD	Ozark, Ala.	5000d	1560—192.3		
KRWV	Guthrie, Okla.	1000	WKPO	Prentiss, Miss.	1000d	KASA	Phoenix, Ariz.	1000d	WAGC	Centre, Ala.	1000d
KXIX	Muskogee, Okla.	1000	KCCV	Independence, Mo.	1000d	KMPG	Hollister, Cal.	1000d	KDDA	Dumas, Ark.	1000d
KBKR	Baker, Oreg.	1000	KTTT	Columbus, Nebr.	500d	KPOL	Los Angeles, Calif.	5000d	KBIB	Monette, Ark.	250d
KRNR	Roseburg, Oreg.	1000	WRAP	Dover, N.J.	1000d	WBSR	Pensacola, Fla.	1000	KPMC	Bakersfield, Calif.	1000d
KBZY	Salem, Oreg.	1000	WJCS	Sum, N.J.	250d	WJGA	Jackson, Ga.	1000d	KYGE	Willows, Calif.	250d
WESB	Bradford, Pa.	1000	WPUT	Brewster, N. Y.	1000d	WOGA	Sylvestor, Ga.	1000d	WTA	Eau Gallie, Fla.	250d
WAZL	Hazleton, Pa.	1000	WEAL	Greensboro, N.C.	1000d	WSMI	Litchfield, Ill.	1000d	WYK	York, Pa.	1000d
WARD	Johnstown, Pa.	1000	WBZB	Seima, N. C.	500d	WMSI	Greenville, Ind.	250d	WCKK	Chickasha, Okla.	1000d
WGAL	Lancaster, Pa.	1000	WLOG	Logan, O.	1000d	WADM	Deatur, Ind.	250d	WCIK	Gordon, Ga.	5000d
WBCB	Levittown, Pa.	1000	WLKR	Norwalk, O.	1000d	WLOI	LaPorte, Ind.	250d	WYCS	Canton, Ill.	250d
WNRW	Lewiston, Pa.	1000	WAHT	Anville-Cleona, Pa.	5000d	WCBK	Martinsville, Ind.	250d	WYAK	Paoli, Ind.	250d
WGWG	Medville, Pa.	1000	WPSL	Monroeville, Penn.	250d	KXEL	Waterloo, Iowa	5000d	WRIN	Rensselaer, Ind.	1000d
WNBW	Wellsville, Pa.	1000	WVAD	Barnettown, S.C.	250d	KNEX	McPherson, Kans.	250d	KRCB	Council Bluffs, Iowa	1000d
WSIB	Beaufort, S.C.	500	WSLW	Woodruff, S.C.	250d	KLKC	Parsons, Kans.	250d	KABI	Abitene, Kan.	250d
WCCD	Chester, S.C.	1000	KCTX	Childress, Tex.	250d	KCTO	Columbia, La.	1000d	WBGD	Ludely, Ky.	250d
WWRB	Greenville, S.C.	1000	KABH	Midland, Tex.	250d	KCLA	Gretna, La.	1000d	WDXR	Raduok, Ky.	1000d
KORN	Mitchell, S.Dak.	1000	KMOO	Minneota, Tex.	250d	WDON	Wheaton, Md.	1000d	WBCS	Sidell, La.	1000d
WOPF	Bristol, Tenn.	1000	KROB	Robstown, Tex.	500d	WLEF	Greenwood, Miss.	1000d	WSMO	La Plata, Md.	1000d
WDXB	Chattanooga, Tenn.	1000	KSTV	Stoughton, Tex.	250d	KBXM	Kennett, Mo.	250d	WPTS	Portage, Mich.	1000d
WROL	Fountain City, Tenn.	1000	KURB	Mouthlake Terrace, Wash.	5000d	WKKR	Exeter, N.H.	1000d	WMIC	Sandusky, Mich.	1000d
WJLM	Lewisburg, Tenn.	1000	KGA	Spokane, Wash.	5000d	WPRB	Abert, N.Y.	5000d	KBEW	Blue Earth, Minn.	1000d
WDXX	Lexington, Tenn.	1000	WAUK	Waukesha, Wis.	1000d	WPAA	E. Syracuse, N.Y.	1000d	KQYX	Joplin, Mo.	250d
KNOW	Austin, Tex.	250	1520—197.4			WKYK	Burnsville, N.C.	1000d	KLTI	Macon, Mo.	250d
KIBL	Beeville, Tex.	250	WAOA	Opelika, Ala.	5000d	WFLC	Charlotte, N.C.	1000d	KTUI	Sullivan, Mo.	1000d
KBST	Big Spring, Tex.	1000	KMPG	Hollister, Cal.	500	WIFM	Elkin, N.C.	1000d	WQXR	New York, N.Y.	5000d
KHJZ	Borger, Tex.	250	KMFB	Mendocino, Cal.	1000d	WBCO	Bucyrus, Ohio	500d	WBKC	Chardon, O.	1000d
KNEI	Brady, Tex.	1000	KACY	Port Huemeo, Calif.	1000d	WABQ	Cleveland, Ohio	1000d	WNSW	Coschocton, Ohio	1000d
KWMC	Del Rio, Tex.	1000	WTLN	Apopka, Fla.	1000d	WNIO	Niles, Ohio	500d	WTCS	Fairfield, O.	5000d
KSAM	Del Rio, Tex.	250	WGNP	Indian Rocks Beach, Fla.	1000d	WBTC	Uhrichsville, O.	250d	KWCO	Toledo, Ohio	5000d
KVOZ	Laredo, Tex.	250	WIXX	Oakland Park, Fla.	1000d	KZEL	Eugene, Ore.	1000d	WRCP	Philadelphia, Pa.	5000d
KZZN	Littlefield, Tex.	1000	WNPT	Eatonton, Ga.	1000d	WPTS	Pittston, Pa.	1000d	WRPS	Pittston, Pa.	1000d
KPLT	Paris, Tex.	1000	WXPQ	Easton, Ga.	1000d	WPMF	Punxsutawney, Pa.	1000d	WADK	Newport, R.I.	1000d
KDOK	Tyler, Tex.	1000	WHOW	Clinton, Ill.	5000d	WKKR	Pickens, S.C.	1000d	WBOL	Pulaver, Tenn.	250d
KVVC	Verdon, Tex.	250	WLUV	Loves Park, Ill.	500d	WBFJ	Woodbury, Tenn.	500d	KCAD	Abitene, Tex.	500d
KVOG	Ogden, Utah	1000	WWSL	Shelbyville, Ind.	1000d	KBUY	Ft. Worth, Tex.	5000d	KEGG	Daingerfield, Tex.	1000d
WKVT	Battleboro, Vt.	1000	KSTB	Creston, Iowa	1000d	KGBC	Galveston, Tex.	1000	KHBR	Hillsboro, Tex.	250d
WFAD	Middlebury, Vt.	1000	WHTC	Hardinburg, Ky.	250d	KEDA	San Antonio, Tex.	1000d	KGUL	Port Lavaca, Tex.	500d
WIKE	Newport, Vt.	1000	WRSI	Lafayette, Ky.	250d	WRGM	Richmond, Va.	1000d	KGHO	Hoguin, Wash.	1000d
WCVA	Culpeper, Va.	1000	WKXW	Lafayette, La.	1000d	WKFJ	Bellevue, Wash.	500d	KGD	Summer, Wash.	250d
WVEC	Hampton, Va.	1000	WYOB	Bel Air, Md.	250d	WTKM	Hartford, Wis.	500d	WFSP	Spring, W. Va.	1000d
WAYB	Waynesboro, Va.	1000	WTRI	Brownswick, Md.	500d	1550—193.5		WGLB	Port Washington, Wis.	250d	
KBRO	Bremerton, Wash.	1000	WKJR	Muskogee Hts., Mich.	1000d	WAAY	Huntsville, Ala.	5000d	1570—191.1		
KVAC	Forks, Wash.	500	WYNZ	Ypsilanti, Mich.	250d	WAOO	Mobile, Ala.	5000d	WCRL	Oneonta, Ala.	1000d
KLOG	Kelso, Wash.	1000	KOLM	Rochester, Minn.	1000d	KUAT	Tucson, Ariz.	5000d	WKQX	Salma, Ala.	5000d
KENE	Toppenish, Wash.	1000	KPL	Sikeston, Mo.	3000	KXEX	Fresno, Calif.	500d	KBRI	Brinkley, Ark.	250d
KTEL	Walla Walla, Wash.	1000	WSLT	Ocean City-Somers Pt., N. J.	1000d	KKHI	San Fran., Calif.	1000d	KBIT	Fordyce, Ark.	250d
WGKV	Charleston, W. Va.	1000	WBKW	Buffalo, N.Y.	5000d	KQXI	Arvada, Colo.	1000d	KRSA	Aisal, Calif.	250d
WTCS	Fairmont, W. Va.	1000	WTHE	Mineola, N.Y.	1000d	WEXT	W. Hartford, Conn.	1000d	KCVR	Lodi, Cal.	5000d
WLOH	Princeton, W. Va.	1000	WDSL	Mckeesville, N.C.	5000	WRIZ	Coral Gables, Fla.	1000d	KACE	Riverside, Cal.	5000d
WGCJ	Sutton, W. Va.	1000	KMAV	Mayville, N. D.	250d	WOGO	New Smyrna Beach, Fla.	250	KLOV	Liveland, Colo.	250d
WGEZ	Bohlot, Wis.	1000	KMBY	Bryan, Ohio	500d	WYOU	Tampa, Fla.	1000d	WTWB	Auburndale, Fla.	5000d
WLXC	LaCrossa, Wis.	1000	WINW	Winton, O.	1000d	WYNY	Smyrna, Ga.	1000d	WFB	Fernandina Beh., Fla.	1000d
WIGM	Medford, Wis.	1000	WKNT	Kent, O.	1000d	WJIL	Jacksonville, Ill.	1000d	WOKC	Okeechobee, Fla.	1000d
WOSH	Oshkosh, Wis.	1000	WTTD	Toledo, D.	1000	WGSJ	Morris, Ill.	250d	WJDE	Ward Ridge, Fla.	250
KLME	Laramie, Wyo.	500	KOMA	Oma, Okla. City, Okla.	5000d	WPDF	Corydon, Ind.	250d	WMS	Ashburn, Ga.	1000d
KRTR	Thermopolis, Wyo.	250	KYXI	Oregon City, Ore.	1000d	WCTW	New Castle, Ind.	250	WMCB	Clayton, Ga.	1000d
KGOS	Torrington, Wyo.	1000	WRAI	San Juan, P.R.	1000d	WKQV	Sullivan, Ind.	250d	WBDL	College Park, Ga.	1000d
1500—199.9			WTRG	Nyrtle Beach, S.C.	250d	KIWA	Sheldon, Iowa	500d	WGSR	Willen, Ga.	250d
WVSM	Rainsville, Ala.	1000d	WBSL	St. Louis, Mo.	1000d	KEDD	Dodge City, Kans.	1000d	WELL	Freeport, Ill.	5000d
KGBR	Jacksonville, Ark.	1000d	WBLT	Brownsville, Tenn.	250d	KNIC	Winfield, Kan.	250d	WBEH	Harvey, Ill.	5000d
KBRX	Burbank, Cal.	1000d	WCSV	Crossville, Tenn.	1000d	WIRV	Irvine, Ky.	1000d	WTAY	Robinson, Ill.	250d
KXRX	San Jose, Cal.	1000d	WIDD	Elizabethton, Tenn.	1000d	WMSK	Madisonville, Ky.	250d	WIFF	Auburn, Ind.	250d
WTFP	Milford, Conn.	5000d	1530—196.1			WLUX	Baton Rouge, La.	5000d	WHEL	Frankfort, Ind.	250d
WFOT	Washington, D.C.	5000d	WAAO	Andalusia, Ala.	1000d	KOKA	Shreveport, La.	1000d	WHEL	New Albany, Ind.	1000d
WKIZ	Key West, Fla.	250	WLCB	Moulton, Ala.	1000d	WSEB	Elkton, Md.	1000d	KMCD	Fairfield, Iowa	250d
WGUL	New Port Richey, Fla.	250d	WCTR	Chesterstown, Mo.	1530	WNTN	Newton, Mass.	1000d	KIFJ	Webster City, Iowa	250d
WSEM	Donaldsonville, Ga.	1000d	KAT	Pine Bluff, Ark.	250d	WSHN	Fremont, Mich.	1000d	KNDY	Narysville, Kans.	250d
WEN	Mesa, Ky.	1000d	KTMN	Trumann, Ark.	250d	WOKJ	Jackson, Miss.	5000d	WKKS	Vanceburg, Ky.	500d
WTHN	Thomas, Ga.	1000d	KFBK	Sacramento, Calif.	5000d	WSAO	Senatobia, Miss.	5000d	WABL	Amite, La.	500d
KUMU	Honolulu, Hawaii	1000d	KRYT	Colorado Springs, Colo.	1000d	KGMG	Cape Girardeau, Mo.	500d	KLLA	Leesville, La.	1000d
WGEN	Geneo, Ill.	500d	WDIZ	Bridgewater, Conn.	1000d	KKJO	St. Joseph, Mo.	500d	KMAR	Winnsboro, La.	1000d
WPMB	Vandalia, Ill.	250	WENG	Englewood, Fla.	1000d	KICS	Hastings, Neb.	500d	WPEP	Taunton, Mass.	1000d
WZBN	Zion, Ill.	2									

WHITE'S RADIO LOG

kHz	Wave Length	W.P.	kHz	Wave Length	W.P.	kHz	Wave Length	W.P.
WJVA	South Bend, Ind.	1000d	WTGA	Thomaston, Ga.	500d	KGST	Fresno, Cal.	5000d
WAMW	Washington, Ind.	250d	WNMP	Evanston, Ill.	1000d	KGWOW	Pemona, Cal.	5000
KCHA	Charles City, Iowa	500d	WAIK	Galesburg, Ill.	5000d	KZON	Santa Maria, Cal.	5000
KWNT	Davenport, Iowa	500d	WGEE	Indianapolis, Ind.	5000d	KUBA	Yuba City, Calif.	5000
KDSN	Denison, Iowa	500d	WCOB	Mt. Vernon, Ind.	500d	KLAK	Lakewood, Colo.	5000
WABU	Georgetown, Ky.	1000d	KWGG	Boone, Iowa	1000	WKEN	Dowd, Iowa	1000
WMTL	Leitchfield, Ky.	250d	KVGB	Great Bend, Kans.	5000	WKTZ	Atlantic Beach, Fla.	1000d
WPKY	Princeton, Ky.	250d	WLBK	Lebanon, Ky.	1000d	WKWF	Key West, Fla.	500
KLUV	Haynesville, La.	250d	KEVL	White Castle, La.	1000d	WHEW	Riviera Beach, Fla.	1000
KLOU	Lake Charles, La.	1000	WISZ	Glen Burnie, Md.	500	WPRV	Wauchula, Fla.	500d
WPCF	Gradbury Hts., Md.	1000d	WETT	Ocean City, Md.	1000	WOKB	Winter Garden, Fla.	5000d
WTDW	Towson, Md.	5000d	WTVB	Coldwater, Mich.	5000	WAUX	Austell, Ga.	1000d
WRBJ	St. Johns, Mich.	1000d	WSMA	Marine City, Mich.	1000d	WNGA	Nashville, Ga.	1000d
KDGM	Windom, Minn.	250d	WSMN	Nashua, N.H.	5000	WSTL	Emmence, Ky.	5000
WABY	Amory, Miss.	5000d	WATC	St. Helen, Mich.	500d	WBNB	Warner Robins, Ga.	1000d
WBSB	Centerville, Miss.	250d	KRAD	E. Grand Forks, Minn.	1000d	WBCO	Chicago Hgts., Ill.	1000d
WESY	Leland, Miss.	1000d	WUUN	Jackson, Miss.	5000	WMTV	Linton, Ind.	500d
WPMP	Pascagoula-Moss Point, Mississippi	1000d	KDEX	Dexter, Mo.	1000d	WARU	Peru, Ind.	1000d
KTRG	Columbia, Mo.	250d	KPBS	Kansas City, Mo.	1000d	KLGA	Algona, Iowa	5000d
KESM	El Dorado Springs, Mo.	500d	KCLU	Rolla, Mo.	1000d	KCRG	Cedar Rapids, Iowa	5000
KNIM	Maryville, Mo.	500d	KTCB	Wayne, Neb.	5000	KNDU	Ft. Scott, Kans.	500d
KAMI	Coad, Neb.	1000d	WERA	Plainfield, N.J.	5000	KFNV	Ferriday, Ky.	1000d
WNHJ	Hammond, N.J.	250d	WAUB	Auburn, N.Y.	500d	KLB	Golden Meadow, La.	1000d
WCRV	Washington, N.J.	1000d	WEHH	Elmira Heights-Horseheads, N.Y.	500d	KNCB	Vivian, La.	5000d
KZIA	Albanyque, N.Y.	1000d	WGGG	Salamanca, N.Y.	5000d	WINX	Rockville, Md.	1000
WPAC	Patchogue, N.Y.	1000d	WBHN	Bryson City, N.C.	5000d	WBOS	Brookline, Mass.	5000
WZKY	Albemarle, N.C.	250d	WCSL	Cherryville, N.C.	500d	WTYM	East Longmeadow, Mass.	5000d
WPYB	Benson, N.C.	500d	WCBG	Chattanooga, N.C.	1000d	WAAM	Ann Arbor, Mich.	5000
WVLD	Columbus, Ohio	1000d	WQOS	High Point, N.C.	1000d	WTRU	Muskegon, Mich.	5000
KLTR	Blackwell, Okla.	1000d	WAKR	Akron, Ohio	5000	WKDL	Clarksdale, Miss.	1000d
WCOY	Columbia, Pa.	500d	WSRW	Hillsboro, Ohio	500d	WFFF	Columbia, Miss.	500d
WEND	Ebensburg, Pa.	1000d	KHEN	Henryetta, Okla.	500d	KATZ	St. Louis, Mo.	5000
WANB	Waynesburg, Pa.	250d	KZYX	Weatherford, Okla.	1000	KTTN	Trenton, Mo.	500d
WORG	Orangeburg, S.C.	1000d	KTIL	Tillamook, Ore.	5000	KNCY	Nebraska City, Nebr.	500d
WBRR	Travelers Rest, S.C.	1000d	WZUM	Garnegie, Pa.	1000d	KRFS	Superior, Nebr.	500d
WSKT	Colonial Village, Tenn.	250d	WCBG	Chambersburg, Pa.	5000	WWRB	New York, N.Y.	5000
WHHL	Henderson, Tenn.	250d	WEEZ	Chester, Pa.	1000	WMCR	Oneida, N.Y.	1000d
WLIJ	Shelbyville, Tenn.	1000d	WXRF	Guayama, P.R.	1000	WNLG	Sag Harbor, N.Y.	500
WSKT	Knoxville, Tenn.	5000d	WARV	Warwick-E. Greenwich, R.I.	1000d	WXKW	Troy, N.Y.	500d
KKAL	Denver City, Tex.	250d	WABV	Abbeville, S.C.	1000d	WGIV	Charlotte, N.C.	1000
KGAF	Gainesville, Tex.	250d	WACA	Camden, S.C.	1000d	WIDU	Fayetteville, N.C.	1000d
KIRT	Mission, Tex.	1000d	WJES	Johnston, S.C.	5000	WHVL	Hendersonville, N.C.	1000d
KTLU	Rusk, Tex.	500d	WPIP	Colterville, Tenn.	500d	WFRG	Reidsville, N.C.	1000
KWED	Seguin, Tex.	1000d	WJEO	Jonesboro, Tenn.	5000	WKSK	W. Jefferson, N.C.	1000d
KBYP	Sbamrock, Tex.	250d	WDBL	Springfield, Tenn.	1000d	KDKK	Carrington, N.Dak.	500d
KRCO	Waco, Tex.	1000	WGOE	Richmond, Va.	5000d	WABQ	Ashtabula, Ohio	1000d
WILA	Danville, Va.	1000d	KSND	Seattle, Wash.	5000d	WBLV	Springfield, Ohio	1000d
WPUV	Pulaski, Va.	5000d	WIXK	New Richmond, Wis.	5000d	WTFE	Tiffin, Ohio	500d
WTTN	Watertown, Wis.	1000d	WSWV	Platteville, Wis.	5000	KUSH	Cushing, Okla.	1000d
			WQTC	Two Rivers, Wis.	1000d	KASH	Eugene, Ore.	5000
			WAWA	West Allis, Wis.	1000d	KOH	St. Helens, Ore.	1000d
			KCGO	Cheyenne, Wyo.	5000d	WHOL	Allentown, Pa.	500d
						WHRY	Elizabethtown, Pa.	500d
						WFIS	Fortaint Inn, S.C.	1000d
						WFNL	No. Augusta, S.C.	500d
						WHBT	Harrison, Tenn.	5000d
						WKBJ	Milan, Tenn.	1000d
						KBBB	Borger, Tex.	5000d
						KBOR	Brownsville, Tex.	1000
						KWEL	Midland, Tex.	1000d
						KCFH	Cruer, Tex.	500d
						KYAL	McKinney, Tex.	5000d
						KOGT	Orange, Tex.	1000
						KBBC	Centerville, Utah	1000d
						WCCK	Chesapeake, Va.	1000d
						WHLL	Wheeling, W.Va.	5000d
						WCWC	Ripon, Wis.	5000

A THANK YOU NOTE FROM THE EDITORS

Thank you! The Editors of RADIO-TV EXPERIMENTER would like to thank all readers who offered information on station changes, additions and deletions during the past few months. Though many of the letters overlapped, each aided us considerably in making the task of keeping White's Radio Log as current as possible at press time. If we left your name out, please forgive us!

Frank E. Aden, Boise, Idaho
 Michael Ames, Cortland, N.Y.
 Jean Pierre Bedard, Charlesbourg, Quebec
 William Boerner, Massillon, Ohio
 David L. Buda, Fort Walton Beach, Florida

David Butler, Lombard, Ill.
 James E. Carter III, Augusta, Georgia
 Ralph Chapman, Buffalo, N.Y.
 Tom Czaja, Milwaukee, Wis.
 Brian Egan, No Address
 Gary Emenitove, Council Bluffs, Iowa
 Clayton Farrell, Southeast Asia
 Lucien Filiault, Istep, N.Y.
 Willis Geo. Frahn, Boise, Idaho
 Arthur Frederick, New Kensington, Pa.
 John Garofano, Framingham, Mass.
 Walter M. Gilday, Brockton, Mass.
 W. Granderath, Albany, N.Y.
 Glenn Greenowold, Davis, Calif.
 William F. Hanson, Aurora, Colo.
 Peter Keller, Hillsboro, Ore.
 Ken Knecht, Oneonta, N.Y.
 Robert Locke, Winnipeg, Manitoba
 Grant MacDonal, Irlington, Ontario
 Michael E. Martin, Cincinnati, Ohio
 Dan McQuade, Omaha, Nebr.
 J. B. Martin, Chicago, Ill.

John M. Meier, Woodward, Iowa
 O. E. Millett, Toronto, Ontario
 Thomas Mount, Red Bank, N.J.
 Marke Paize, North Surrey, B.C., Canada
 Johnny Parks, Portland, Ore.
 Peter Pelland, Chicopee, Mass.
 Jim Petersen, Yorktown Heights, N.Y.
 Robert F. Post, Upland, Calif.
 Richard Powers, Fredericton, N.B., Canada
 John N. Ramsey, West Hartford, Conn.
 Bob Raymond, Bradford, Mass.
 Richard Ringenback, Fair Lawn, N.J.
 John Robertson, Port Huron, Mich.
 Carl Rosell, Kearny, N.J.
 Peter Salant, Park Ridge, N.J.
 George Schwenk, San Pedro, Calif.
 Sheldon Swartz, Sharon, Mass.
 Jimmie Thinnes, Nampa, Idaho
 Robert White, Chanhassen, Minn.
 C. M. Wilkinson, Riverdale, Ill.
 John Vanderplough, Bloomington, Ind.

World-Wide Shortwave Stations

□ This time our big contest (the one with-out prizes or awards, that is) is going to be a bit different. It seems, from the mail we receive, that too few monitors know some of the basic rules of the road for DX'ing. That gave us the idea to ask you some questions on the hobby itself along with our usual demands for you to listen for off-beat DX stations. Scoring info at the end of the quiz.

1. What basic information bits should be sent to stations when you are submitting a reception report with the hopes of getting a QSL card in return?

2. When, after as many as three tries on your part, a station refuses to acknowledge your signal reports with a QSL card, you should: A—Notify all radio clubs that this station is a non-QSL'er and should be black-listed; B—Send them a carbon copy of your original report every two months until they come through with a QSL card; C—Forget them and give up; D—Give them a few more chances before giving up, possibly with a more detailed or different approach to the report you send; E—Write to the station and let them know that they are being "unfair" to the DX'ing hobby.

3. *True or False:* The longer the wire for the receiving antenna, the better the chances you will have for pulling in those far away stations.

4. *True or False:* 26 or 27 mHz is about the upper limit of the radio spectrum insofar as the DX hobbyist is concerned.

5. Here's a rare one out in the Pacific; it's the station of the Fiji Broadcasting Commission on 6005 kHz, heard around 0300 GMT. They are hard to hear in the Eastern half of the States and Canada but will QSL promptly. The address is Box 334, Suva, Fiji Islands.

6. A clandestine (secret location) station calling itself "Radio Free Russia" is now being heard on 6368 and 6376 kHz around 1900 GMT. Can you hear this one?

7. Anybody for Nepal? Don't all scramble at once to hear Radio Nepal on 4795 kHz now that their new higher powered rig is installed. Loom for them on from 1320 to 1620 GMT. Also heard testing on 9590 kHz.

8. Yeah man, here's a chance to hear Yemen, that little kingdom in the middle east which has been in the news during the past few years. A station calling itself

"Yemeni Royalist Radio," and thought to really be in Yemen, is being heard at 1640 GMT on a frequency somewhere between 9972 and 9985 kHz.

9. New Korean station is the "Voice of Hope," operated from Seoul by the S. Korean Army. Look for it on 6170 kHz at 1200 and 0815 GMT.

10. Guess what? That old pirate Radio Libertad is back (according to many reporters) and guess where they are; you betcha—right on 6000 kHz, the frequency formerly used by Radio Americas from Swan Island. This was predicted some time ago — that when Radio Swan/Americas closed down its functions would be taken over by Radio Libertad. Check the channel in the evenings.

Scoring. Take 10 points per question or DX challenge, with 1 point deducted for each thing you forgot to include in your answers to question 1.

Here are the answers to the questions:

1. Send them a *detailed report* listing all *announcements* and *musical selections* monitored during a period of not less than *15 minutes* duration, information on their signals (*fading, strength, interference, modulation quality*), the *time* you heard them (in GMT), the *date*, the *details* of your receiving equipment, and an *International Reply Coupon* to pay the return postage for your QSL.

2. The answer is *D*. Never try to black-list a station or send them a nasty letter. QSL cards are a courtesy to the hobby and not a necessary part of the station's obligation to

This Issue's Shortwave Contributors

Dale G. Wilson, Jr., McHenry, Ill., Harvey Eckhaus, Milwaukee, Wisc., Mel Baird, Lewiston, Fla., Richard McInnes, Vancouver, B.C., Hal Farnsworth, Chicago, Ill., William R. Arnold, Lancaster, Pa., Sp/3 Grover Thompson, APO San Francisco, Calif., Dick Barest, S. Miami, Fla., Helen Parker, New York, N.Y., Irving Blockman, Nashville, Tenn., Jack Lipman, New York, N.Y., Sid Sontag, Denver, Colo., George Sax, Santa Ana, Calif., Tom Kneitel, New York, N.Y., Terry Miner, Dallas, Texas, Joe Vasquez, San Juan, P.R., Gladys Sienkiewicz, Brooklyn, N.Y., Enrique Delon, Paris, France, Michael Schmol, Dover, Del., G. W. Moody II, Dillon, S.C., Rick Slattery, Key West, Fla., Gerald Belmont, Kansas City, Kans., Howard Reglander, Covington, Ky., Morty Golden, Montreal, Que., and Richard Flanagan, Union City, N.J. ■

WHITE'S RADIO LOG

the world public. Your reception report has only minimal value from a technical standpoint and if the station never received it, they

would really be just as happy. Maybe your report got lost in the mail, or maybe the station personnel are busy, maybe they are slow answerers, or maybe your report was inadequate. Don't lose patience, just send them a more detailed report—possibly in their own language.

3. *False!* The most efficient antenna is a directional one which is cut for the specific

band you are monitoring. A long, long, long, zig-zagging random length wire may actually be very poor for hearing certain frequencies or in certain directions.

4. *False!* It may be the upper frequency limits of International Broadcasting, but it is the bottom edge of a whole new world of so-called "utilities" DX which consists several ham bands, police, fire, business, and emergency communications. With an inexpensive VHF receiver and a small antenna you can receive more thrills and excitement than you ever dreamed possible. See our new listing following the World-Wide Short-wave section.

kHz	Call	Identification	Location	GMT
3985	HCERS	Escuelas R. Populares	Riobamba, Ecuador	2345
4765	—	R-TV Congolaise	Brazzaville, Congo	0430
4795	HIAS	S. Dominro R.	Santo Domingo, D.R.	0400
4820	HRVC	HRVC	Tequigalpa, Honduras	0315
—	—	Emis. Oficial	Luanda, Angola	0500
4880	—	R. Yaracuy	Yaracuy, Venezuela	0300
4890	—	R. Dakar II	Dakar, Senegal	0630
4950	YVKB	R. Venezuela	Caracas, Venez.	0245
4990	—	R. RSA	Johannesburg, S. Afr.	0510
4900	YVNK	R. Juventud	Barquisimeto, Venez.	0045
4920	VLM4	A.B.C.	Brisbane, Australia	0910
4940	—	R. Mil	Santo Domingo, D.R.	0430
4953	HRRZ	R. Jutigaipa	Tequigalpa, Honduras	1045
4955	HJCO	R. Nacional	Bogota, Colombia	0010
4965	HJAF	R. Santa Fe	Bogota, Colombia	0515
4990	YMQO	R. Barquisimeto	Barquisimeto, Venez.	0115
5005	OAX2S	V. de Frontera	Lima, Peru	0340
5010	OAX8V	R. Eco	Iquitos, Peru	0430
6025	—	Southern Cross R.	La Paz, Bolivia	0130
5048	—	R. Togo	Lome, Togo	0545
5875	HRN	V. de Honduras	Tequigalpa, Honduras	0135

60-Meter Band—5950-6200 kHz

5960	HRRH	V. de Occidente	Santa Rosa, Honduras	1210
5970	HJVN	HJVN	Bogota, Colombia	0315
5975	ZYT44	R. Globo	Florianapolis, Braz.	0925
5985	LRS2	R. Splendid	Buenos Aires, Argentina	1010
5990	—	RAI	Rome, Italy	0415
—	—	8BC	London, England	0345
6000	—	R. Inconfidencia	Belo Horizonte, Braz.	0945
6005	CFCX	CF Radio	Montreal, Que.	1900
6010	CJCX	CJCX	Sydney, N.S.	0950
6025	HCJB	V. de los Andes	Quito, Ecuador	0715
6030	—	R. Baghdad	Baghdad, Iraq	0250
6035	TIFC	Faro del Caribe	San Jose, C.R.	0320
6045	—	RR1	Jakarta, Indonesia	1215
—	—	R. Santa Rosa	Lima, Peru	0150
6070	CFRX	CFRX	Toronto, Ont.	1000
6075	—	R. RSA	Johannesburg, S. Afr.	2345
6110	—	BBC	London, England	0315
6120	4VEH	V. Evangelique	Cap Haitien, Haiti	1015
6130	—	R. Nacional	Madrid, Spain	0315
—	—	CHNX	Halifax, N.S.	0400
6135	—	R. Habana	Havana, Cuba	0300
6137	—	R-TV Francaise	Papeete, Tahiti	0510
6140	—	R. El Sol	Calli, Colombia	1020
6155	—	Far East Net	Tokyo, Japan	1000
—	—	ZAA	Tirana, Albania	0150
6160	HJKJ	E. Nueva Granada	Bogota, Colombia	0300
6165	XEWW	XEWW	Mexico City, Mex.	0110

kHz	Call	Identification	Location	GMT
6185	ZYR77	R. Bandeirantes	Bandeirantes, Brazil	1000

41-Meter Band—7100-7300 kHz

7110	—	BBC	London, England	0250
7115	—	R. Peking	Peking, China	0245
7125	ETLF	R. V. Gospel	Addis Ababa, Ethiopia	0330
7155	—	R. Peking	Peking, China	1140
7165	—	V. America	Okinawa	1100
7295	ZAA	R. Tirana	Tirana, Albania	2330
7345	—	R. Prague	Prague, Czech.	2215
9490	ZAA	R. Tirana	Tirana, Albania	0140

31-Meter Band—9500-9775 kHz

9505	HISD	HISD	Santo Domingo, D.R.	0315
—	—	R. Japan	Tokyo, Japan	1130
9510	—	BBC	London, England	0610
—	—	OAX4V	Lima, Peru	0730
9520	ZL18	R. New Zealand	Wellington, N.Z.	0700
—	—	OAX4J	Lima, Peru	0310
—	—	Danish BC	Copenhagen, Denmark	0150
9525	—	R. Warsaw	Warsaw, Poland	0745
—	—	R. Habana	Havana, Cuba	0745
9530	—	NHK	Tokyo, Japan	0945
—	—	R. Moscow	Moscow, USSR	0700
9540	ZL2	R. New Zealand	Wellington, N.Z.	0545
9545	DMQ9	Deutsche Welle	Cologne, W. Germany	0240
9560	—	NHK	Tokyo, Japan	1915
—	—	R. Australia	Melbourne, Australia	0730
9580	—	R. Portales	Santiago, Chile	0530
9590	PCJ	R. Nederland	Hilversum, Neth.	0145
9595	JOZ3	Japan BC	Tokyo, Japan	0945
9600	—	BBC	London, England	0745
9605	—	R. Prague	Prague, Czech.	2245
9610	—	A.B.C.	Perth, Australia	1045
9615	ORU	Belgian Radio	Brussels, Belg.	2230
9620	—	R. Belgrade	Belgrade, Yugo.	2210
9625	—	R. Canada	Montreal, Que.	0630
9630	—	R. Prague	Prague, Czech.	0115
9635	—	R. Prague	Prague, Czech.	2315
—	—	ZYR83	Rio de Janeiro, Brazil	0930
9640	HLK5	V. Free Korea	Seoul, Korea	0815
9660	VLP9	R. Australia	Melbourne, Australia	0910
9665	—	R. Malaysia	Kuala Lumpur, Malaysia	1230
9675	—	NHK	Tokyo, Japan	1100
9685	BED73	V. Free China	Taiwan, Repub. China	0945
—	—	R-TV Algerienne	Algiers, Algeria	0950
9710	—	Trans World R.	Bonaire, Neth. Ant.	0300
9725	—	BBC—Far East	Tebrau, Malaysia	1030
9730	—	R. Berlin Int'l.	Berlin, E. Germany	0200
9740	—	R. Moscow	Moscow, USSR	0940
9750	—	R. Soc. Nacional	Santiago, Chile	0100
9770	—	R. Austria	Vienna, Austria	0400

<i>kHz</i>	<i>Call</i>	<i>Identification</i>	<i>Location</i>	<i>GMT</i>
9860	—	R. Peking	Peking, China	1030
11290	—	R. Peking	Peking, China	1100
25-Meter Band—11750-11975 kHz				
11710	—	R. Australia	Melbourne, Australia	0715
11715	—	Swiss BC	Berne, Switzerland	2315
—	—	V. America	Manila, Philippines	0940
11750	—	BBC	Malaysia	1245
—	—	Far East Net.	Tokyo, Japan	0930
11760	—	R. Habana	Havana, Cuba	1350
—	—	HVJ	Vatican City	0100
11795	DMQ11	Deutsche Welle	Cologne, W. Germany	1920
11805	—	R. Globo	Rio de Janeiro, Brazil	0915
11825	—	R-TV Francaise	Papeete, Tahiti	0745
11835	—	R-TV Algerienne	Algiers, Algeria	2230
11850	—	R. Ghana	Accra, Ghana	2000
11860	—	R. Norway	Oslo, Norway	0315
11875	—	R. Japan	Tokyo, Japan	0945
—	—	R. Bucharest	Bucharest, Rumania	0145
—	—	VUD	Delhi, India	1130
11890	—	Far East BC	Manila, Philippines	0930
11900	—	R. RSA	Johannesburg, S. Afr.	2030
11905	DMQ11	Deutsche Welle	Cologne, W. Germany	0530
11920	—	Far East BC	Manila, Philippines	1145
11930	—	R. Habana	Havana, Cuba	0730
11975	—	R. Brazzaville	Brazzaville, Congo	0530
12000	—	R. Kiev	Kiev, USSR	0045
12095	—	BBC	London, England	2200
15030	—	R. Peking	Peking, China	1230
15044	—	R. Hanoi	Hanoi, N. Vietnam	1400
15060	—	R. Peking	Peking, China	0030
15075	—	R. Euzkadi	(clandestine)	2145

19-Meter Band—15100-15450 kHz

15105	—	BBC Relay	Ascension Island	1445
—	—	R. Japan	Tokyo, Japan	1600
15110	XERR	XERR	Mexico City, Mex.	0300
15115	—	R. de Senegal	Dakar, Senegal	2300

<i>kHz</i>	<i>Call</i>	<i>Identification</i>	<i>Location</i>	<i>GMT</i>
15120	HVJ	R. Vatican	Vatican City	1430
15125	—	V. West	Lisbon, Portugal	1545
15140	—	BBC	London, England	0605
15155	ELWA	R. Village	Monrovia, Liberia	1700
15160	—	R. Ankara	Ankara, Turkey	2200
15170	—	R. Norway	Oslo, Norway	1530
15180	—	R. Australia	Melbourne, Australia	0230
15190	—	R. Brazzaville	Brazzaville, Congo	0545
15210	—	R. Berlin Int'l.	Berlin, E. Germany	0245
15220	—	R. Nederland	Bonaire, Neth. Ant.	2130
15230	—	Ceylon BC	Colombo, Ceylon	0130
15235	VUD	All India R.	Delhi, India	2300
15240	—	R. Australia	Melbourne, Australia	0600
15250	DMQ15	Deutsche Welle	Cologne, W. Germany	0615
15260	ETLF	R. V. Gospel	Addis Ababa, Ethiopia	1315
15265	—	R. Kabul	Kabul, Afghanistan	1800
—	—	VUD	Delhi, India	0030
15270	—	R. Habana	Havana, Cuba	0445
15275	—	R. Sweden	Stockholm, Sweden	0430
15285	HVJ	R. Vatican	Vatican City	2245
15300	—	BBC	London, England	0415
—	—	NHK	Tokyo, Japan	1330
15310	—	V. de Revolucion	Conakry, Guinea	1445
—	—	RAI	Rome, Italy	0230
15325	HCJB	V. Andes	Quito, Ecuador	1915
15345	—	R. Athens	Athens, Greece	2200
—	—	R. Norway	Oslo, Norway	0100
15350	—	R. Nederland	Bonaire, Neth. Ant.	0115
17715	—	Viennese R.	Vienna, Austria	0430
17720	BED39	V. Free China	Taiwan, Rep. China	0230
17790	DMQ17	Deutsche Welle	Cologne, W. Germany	1900
17825	—	R. Norway	Oslo, Norway	1500

13-Meter Band—21450-21750 kHz

21465	—	R. Berlin Int'l.	Berlin, E. Germany	0630
21495	CSA67	V. West	Lisbon, Portugal	1845
21550	—	BBC	London, England	1600
21555	—	BBC	London, England	1700
21570	PCJ	R. Nederland	Hilversum, Neth.	1900
21610	—	BBC	London, England	1500

Emergency Radio Station Listings for Chicago and Surrounding Areas

Including all of Cook, DuPage, and Lake Counties in Illinois and northern Lake County, Indiana

□ RADIO-TV EXPERIMENTER furnishes this exclusive listing of emergency radio stations as an aid to our many readers now engaged in the fascinating and rapidly growing hobby of monitoring emergency radio communications. We will be publishing similar lists devoted to different metropolitan areas in forthcoming issues of RADIO-TV EXPERIMENTER so in the months ahead you'll be able to accumulate a sizable array of this difficult-to-obtain data.

All frequencies shown are in MHz unless otherwise noted. Communities not shown in our listing are serviced by an adjoining community, or by county or state agencies. Check county and state listings in this section for this data. When the word "mobiles" is used instead of a callsign, it is because the agency either has no base station and its mobiles use the base station of another agency, or the frequency shown is used for

mobile-to-mobile communication only. When the frequency 155.37 is shown along with another one for a police station, the other frequency is usually the main dispatching channel for patrol cars.

Section 605 of the Communications Act of 1934 provides severe penalties for unauthorized divulging or making use of information obtained by monitoring non-broadcast communications. All readers are hereby cautioned that the data contained herein is to be used solely for hobby listening, private, non-commercial, and/or other purposes which are not in violation of federal, state, county, or local laws. Publisher assumes no further responsibility.

Our listings were compiled and condensed from the well-known series of *Emergency Radio Service Monitoring Bulletins*, by special arrangement with their publisher, Communications Research Bureau, Box 56,

WHITE'S RADIO LOG

Commack, N. Y. 11725. Their series of directories includes police, fire, and other emergency radio station listings for all

large cities, many counties, and all states. A complete catalog of these directories is avail-

able by sending your name and address and a 6¢ stamp directly to the Communications Research Bureau (*not* to RADIO-TV EXPERIMENTER). No portion of this bulletin may be reproduced in any manner whatsoever without the express written permission from the Editor. Coded listings have been included to check copyright violations.

CHICAGO POLICE DEPT.

KAZ299	453.80	KSC765	155.37
KAZ996	453.60		453.10
KAZ997	453.30	KSF382	158.85
KAZ998	453.35		159.15
KBA200	453.40	KSJ745	453.25
KBA201	453.90	453.45	"City Wide 2"
KBA636	453.20	453.50	"City Wide 1"
		453.75	

CHICAGO FIRE DEPT.

KSC711	153.77,	154.13,	154.22
--------	---------	---------	--------

ILLINOIS MUNICIPAL POLICE & FIRE DEPTS.

City	Police		Fire	
	Call	Freq.	Call	Freq.
Addison	KSF311	155.01 155.37	KDT230 KJS849	154.31 155.31
Alsip	KFG448	155.19 155.37		
Arlington Hts.	KSA861	155.13 155.37		
Barrington Hills	KSH426	155.37 155.43		
Bartlett	KFZ748	155.37 155.43		
Bedford Park	KSB268	155.37 155.43	KSF481 KSG325	154.43 154.43
Bellwood	KSA423	155.37 155.49	KDU506 KDU507	154.37 154.37
Bensenville	KSA282	155.01 155.36	KD5610	154.31
Berkeley	KGJ757	155.37 155.49	KDU535	154.37
Berwyn	KSA972	155.31	KDS613	154.19
Bloomington	KDG325	155.37 155.43	KBG635	154.31
Blue Island	KBS579	155.19 155.37		
Bolingbrook	KJK731	155.37 155.43		
Bridgeview	KAY733	155.37 155.43	KAY846	154.43
Broadview	KSE464	155.37 155.49	KAR459 KA5618	154.37 154.37
Brookfield	KSA870	155.07	KBJ644	154.25
Burbank Manor			KSD732	154.43
Butterfield			KSG300	154.31
Calumet City			KEL353	153.89
				154.34
Calumet Park	KBG803	155.19 155.37	KDN561	154.07
Carol Stream	KJV235	155.37 158.79		
Carpentersville	KSF256	155.37 155.43	KAR790	154.43
Cary	KSD554	159.21	KS1321	154.25
Central Stickney			KBZ280	154.43
Chicago (U. Ill.)	KSJ236	155.37 155.43		
Chicago Heights	KSB381	155.19 155.37	KBS471	154.37
Chicago Ridge	KIZ346 KSD572	155.19 155.19 155.37	KAU713	154.37
Cicero	KSA425	155.31 155.37	KCT636	154.19
Clarendon Hills	KSG480	155.01 155.37	KDY296 KSG432	154.25 154.25
Cloverdale			KDZ463	154.31
Country Club Hills	KBG527	155.37		

City	Police		Fire	
	Call	Freq.	Call	Freq.
Countryside	KBQ800	155.07 155.37	KAR790	154.43
Crest Hill	KCO308	155.37 155.73		
Crestwood	KSG280	155.19	mobiles	154.07
Des Plaines	KSA962	155.13 155.37	KBU640	154.34
Dixmoor				
Dolton	KS1824	155.19 155.37	KBS977 FGS433	154.07 153.89
Downers Grove	KSA850	155.01 155.37	KFS985 KFS986 KSC985 KDJ551	154.25 154.25 154.25 154.25
Downers Grove Estates				
East Chicago Hts.	KJW463	155.19 155.37		
East Hazel Crest			mobiles	153.89
Elk Grove	KAY240	155.37 155.55	KAZ658	154.34
Elmhurst	KSA551	155.01 155.37	KAV709 KJL667	155.31 154.31
Elmwood Park	KS8251	155.37 155.49	KDN933	154.37
Evanston	KSA580	155.25 155.37	KSC732 KSC733 KSC734 KSC735 KSD841	154.19 154.19 154.19 154.19 154.19
Evergreen Park	KS8943	155.19 155.37	KS4936	154.43
Flossmoor	KSE513	155.37 155.67	KSG585	153.89
Forest Park	KSA785	155.37 155.49	KBJ207	154.19
Forest View	KSD382	155.07 155.37	KDL861	154.25
Fox Lake	KSG715	155.37	KSD805	154.37
Fox River Grove	KSD532	159.21	KS1514	154.25
Franklin Park	KS8241	155.37 155.49	KSJ636	154.37
Glencoe	KSA439	155.25 155.37		
Glendale Heights	KEP641	154.89 155.01 155.37		
Glen Ellyn	KSA904	155.01 155.37	KCX395	154.31
Glenview	KSA860	155.25 155.37	KSD486	154.43
Glenwood		mobiles		154.68
Grayslake			KDN443	153.89
Hanover Park	KSJ432	155.37 155.43	KSJ472	154.31
Harvey	KSA963	155.37 155.67	KSE454	153.89 154.28
Harwood Hts.	KAV740	155.37 155.49		
Hazel Crest	KJA930	155.19	KCJ414	153.89
Hickory Hills	KSD738	155.19 155.37 155.43 155.72	KSG484	154.43
Highland Park	KSA418	155.37 155.73	KSE745	154.43
Highwood	KJE944	155.37 155.73		
Hillside	KSF856	155.37 155.49	KDQ239	154.37
Hinsdale	KSA668	155.01 155.37	KCI528	154.25
Hoffman Estates	KSJ646	155.37 155.43	KSD739 KAP370	154.25 154.43

City	Police		Fire		City	Police		Fire	
	Call	Freq.	Call	Freq.		Call	Freq.	Call	Freq.
Hometown	KSD695	155.19 155.37	KBN821	154.28 154.43	Orland Park	KBW805	155.19 155.37	KSG346	154.07
Homewood	KSF242	155.37 155.67	KSG487	153.89	Palatine	KJB252	155.13 155.37	KCJ687	154.34
Itasca	KSG745	155.01 155.37	KDP367	154.31		KSE657	155.13 155.37		
Justice	KBR236	155.37 155.43	KCN973	154.43	Palos Heights	KDD995	155.19 155.37	KSE230	154.07
Kenilworth	KSA757	155.25 155.37			Palos Hills	KBB995	155.19 155.37		
La Grange	KSA871	155.07 155.37	KBJ232	154.25	Palos Park	KSE748	155.19 155.37	KSE516	154.07
La Grange Park	KSB391	155.07 155.37	KBW798	154.25	Park Forest	KSB646	155.19 155.37	KSE768	154.43
Lake Bluff	KSI245	155.73	KSE581	154.43	Park Ridge	KSB359	155.13 155.37	KDN584	154.37
Lake Forest	K5C344	155.37 155.73	KSE500	154.43	Phoenix	KUA748	155.37 155.67	KBW819	154.34
Lake Villa			KSH764	154.37			mobiles	153.89	
Lansing	KSC258	155.37 155.61	KDK798	153.89	Posen		mobiles	154.07	
Lemont	KCL516	155.37 155.43	KSG477	154.25	Prospect Heights		KSD839	154.43	
Libertyville			KCS574	153.89	Richton Park		KBR657	154.43	
Lincolnwood	KSA859	155.25 155.37	KCS575	153.89	Riverdale	KSB409	155.19 155.37	KSG991	153.89
Lisle	KFB927	155.01 155.37	KSD937	154.31	River Forest	KSA942	155.37 155.49	KSI510	154.19
Lockport	KSI517	155.37 155.43	KSD442	154.40	River Grove	KSB413	155.37 155.49	KDT324	154.37
	mobiles	42.50 42.66	KSI290	154.40	Riverside	KSB281	155.07 155.37	KCI712	154.25
Lombard	KSA308	155.01 155.37	KDJ477	154.31	Robbins	KSD852	155.19 155.37		
			KSE489	154.31	Rolling Meadows	KSF461	155.13 155.37	KBZ953	154.34
			KSF818	154.31	Romeoville	KBB997	155.37 155.43	KFG465	154.25
			KSH361	154.31	Roselle	KAY934	155.37 155.43	KSI294	154.31
Lyons	KBZ309	155.07	KDA740	154.25	Rosemont	KBV796	155.13 155.37	KCU287	154.37
	KSC331	155.07 155.37	KSI248	154.25	Round Lake	KSJ460	155.37 155.37	KDN450	153.89
McCook	KSB614	155.07 155.37	KQA221	154.25	Sauk Village		KBK405	154.37	
McHenry			KSI513	154.25	Schaumburg		KGU981	154.37	
Markham	KSD913	155.19 155.37	KSG898	153.89	Schiller Park	KSE707	155.37 155.49	KJP463	154.265
Matteson	KDY400	155.19	KSG591	154.37	Skokie	KSA886	155.37 155.565	KCV419	154.37
Maywood	KSB411	155.49	KCR943	154.37	South Chicago Hts.	KBY373	155.19	KBX615	154.37
Melrose Park	KSA458	155.37 155.49	KBF838	154.37	South Holland	KSI631	155.37 155.67	KCW691	153.89
Merrionette Park	KFG449	155.19 155.37	KCU393	154.07	Steger	KSA544	155.19	KFN459	154.37
Midlothian	KSB414	155.13 155.19	KCX434	154.07 154.28	Stickney	KSE480	155.37	KBV780	154.25
Morton Grove	KSD621	155.37 155.13	KDC325	154.265 154.34	Stone Park	KSD754	155.37 155.49	KSD732	154.43
Mount Prospect	KSD985	155.13 155.37	KBU290	154.34	Streamwood	KSG774	155.37 155.43	KBT206	154.37
Mundelein			KSB339	154.43	Summit		155.19	KDJ597	154.25
Naperville	KSA759	155.01 155.37	KCI635	154.25	Thornton	KSA544	155.19	mobiles	153.89
New Lenox	KEM608	155.67	KDN532	154.40	Tintey Park	KSI906	155.19 155.37	KCJ526	153.89
Niles	KSB603	155.37	KCJ688	154.34	Villa Park	KSA382	155.01	KJR326	154.31
Norridge	KEX221	155.37 155.49	KSG348	154.37	Warrenville	KSA383	155.37	KSI633	154.31
Northbrook	KSF474	155.25 155.37	KSC805	154.43	Westchester	KSA508	155.37	KSG300	154.31
North Chicago			KCR319	153.89	West Chicago	KSD461	155.37 155.49	KBK845	154.31
Northfield	KSD361	155.25 155.37	KBW433	154.19	Western Springs	KSA944	155.07 155.37	KDC335	154.37
Northlake	KSC966	155.37 155.49	KSH539	154.37	Westhaven	KJR337	155.19 155.37	KBN831	154.07
North Riverside	KSB681	155.07 155.31	KCI529	154.25	Westmont	KSH531	155.01 155.37		
	KSH586	155.07			Wheaton	KSA921	155.01 155.37	KSH468	154.25
Norwood Park			KSG348	154.37	Wheeling	KSF200	155.13 155.37	KDC256	154.31
Nottingham Park			KBE344	154.43	Willowdale	KSI668	155.01	KBG289	154.43
Oak Brook	KCL501	155.01 155.37	KSI395	154.31	Willow Springs	KJL628	155.37 155.43	KAS303	154.43
Oak Brook Terr.	KAY228	155.01 155.37			Wilmette	KSB218	155.25	KBP403	154.19
Oak Forest	KBY354	155.19 155.37	KSJ505	153.89	Winfield	mobiles	158.79	KSI433	154.31
Oaklawn	KJ1386	155.19 155.37	KBE824	154.28 154.43					
	KSA462	155.37	KJ1387	154.38					
	KSB541	155.19 155.37		154.43					
Oak Park	KSA462	155.37	KBW971	154.19					
Olympia Fields	KFG447	155.19 155.37							

WHITE'S RADIO LOG

Winnetka	KSA591	155.25	KBQ217	154.19
		155.37	mobiles	154.265
Wood Dale	KS1668	155.01	KBH777	154.31
		155.37		
Woodridge	KAZ417	155.01	KGW780	154.31
		155.37		
Worth	KSD226	155.19	KCZ472	154.28
		155.37		

INDIANA MUNICIPAL POLICE & FIRE DEPTS.

City	Police		Fire	
	Call	Freq.	Call	Freq.
East Chicago	KSA499	155.37	KSC252	154.31
		155.73		
East Gary	KSD539	155.13	KJJ456	154.28
		155.37	KSD468	154.31
				154.43
Gary	KSA441	155.01	K5B939	154.19
		155.37	KFZ781	154.31
Griffith	KS1570	155.37		
Hammond	KSA455	155.37	KAZ894	154.34
		155.61		
Highland	KSE473	155.37		
Hobart	KSC288	155.13	KSC286	154.28
		155.37		154.37
Munster	KSE425	155.13	KSC758	153.89
		155.37		
Ogden Dunes	KSE514	155.13	KSH760	154.31
		155.37		
Portage	KS1420	155.13	KGW668	154.31
		155.37		
Schererville	KSG984	155.37		
	KSA547	155.13	KGL509	154.31
Valparaiso		155.37		
Whiting	KSA784	155.13	KFG523	154.34
		155.37		

COUNTY AGENCIES

Cook Co. Sheriff: 154.68 155.37 155.535 155.595 159.09
 Note—Mobile units of municipal police departments can operate on 154.68 in order to contact Cook Co. Sheriff or Ill. State Police. Main Cook Co. channel is 159.09.
 DuPage Co. Sheriff: 155.37 158.79
 Lake Co. (Ill.) Sheriff: 156.21 158.97
 Note—158.97 is main channel.
 Lake Co. (Ill.) Fire Dept.: 153.89 154.40
 Note—153.89 is main channel.
 Lake Co. (Ind.) Sheriff: 155.37

STATE POLICE

Illinois: 39.46 42.50 42.52 42.56 42.60 154.68 154.92 155.37
 Narcotics Control Div. (mobiles) 39.06 154.71
 Public Welfare PD (mobiles) 155.43
 Indiana: 42.42 155.37
 Ind. Toll Road Comm. 154.755 155.415 156.03

FORESTRY

City of Chicago: 159.45 DuPage Co. 31.86

PUBLIC UTILITIES

Chicago Dept. Water & Sewers 158.25
 Commonwealth Edison Co. 153.59
 153.71
 158.13
 Peoples Gas Lt. & Coke Co. 153.41
 153.47
 N. Indiana Public Service 37.78
 158.16
 451.10

HOSPITALS & MEDICAL

Chicago—Amer. Red Cross KSH537 47.42
 Chicago—Mercy Hospital KJD851 47.62

Chicago—Michael Reese	KBK820	47.46
Chicago—State Hosp.	KDP359	155.34
Elmhurst—DuPage Co.	KDJ465	155.28
Harvey—Amer. Red Cross	KI2501	47.42
Evergreen Pk.—L. C. Mary	KCP524	155.28
Lake County Home	KCW438	155.28
Libertyville—Cordell Hosp.	KCN222	155.28
Park Ridge—Am. Red Cross	KBG640	47.42
Waukegan—Lake Co. Gen.	KCW657	155.28
Waukegan—Lake Co. TB	KCW661	155.28
Waukegan—St. Therese	KCW658	155.28
Waukegan—Victory Mem.	KCW660	155.28
Zion—Benton Hosp.	KCW659	155.28

MARINE EMERGENCY COMMUNICATIONS, CHICAGO AREA

Calling and emergency: 2182 kHz 156.80
 U.S. Coast Guard: 2003 2182 2662 2670 2678 2686 2694 2702
 3241 3253 3402.5 4403 5320 6230 kHz 41.22
 Continuous Weather Forecasts: KWO39 162.55

CHICAGO AREA AERO EMERGENCY COMMUNICATIONS

Emergency channel: 121.5
 Air search & rescue: 121.6 (soon changing to 123.1)
 Civil Air Patrol: 4468 4508 4603 4630 kHz 26.62 143.9 148.15

LAND TRANSPORTATION

Chicago Transit Auth.	KSA977	44.54	
Chicago Motor Club	KSA756	37.50	
	KSE512	452.55	457.55

CIVIL DEFENSE NETWORKS

Ill. State	45.44	Lake Co. Ill.	155.28
------------	-------	---------------	--------

Everybody's a Salesman



"This one has the tape deck, 4-track tape and stereo but not the leather carrying case and deluxe mike of this model which has the stainless trim, spare reels and phono jack like this model except that it's fully transistorized, two inches wider and two pounds lighter with extra optional . . ."



Better than
9 out of 10
CIE men win
their "ticket"
the very first
time they try

NATIONAL AVERAGE
IS ONLY 1 OUT OF 9!

Cleveland Institute of Electronics

WARRANTY

of success in obtaining a
Government FCC License

The Cleveland Institute of Electronics hereby warrants that upon completion of the Electronics Technology, Broadcast Engineering, or First-Class FCC License course, you will be able to pass the FCC examination for a First Class Commercial Radio Telephone License (with Radar Endorsement);

OR upon completion of the Electronic Communications course you will be able to pass the FCC examination for a Second Class Commercial Radio Telephone License;

AND in the event that you are unable to pass the FCC test for the course you select, on the very first try, you will receive a FULL REFUND of all tuition payments.

This warranty is valid for the entire period of the completion time allowed for the course selected.

G. O. Allen
Dr. G. O. Allen
President

BUILD YOUR OWN RADIO

Reg. U. S. Pat. Off.

CIRCUITS AT HOME
with the New Improved
PROGRESSIVE RADIO "EDU-KIT"®

only
\$26.95



Training Electronics Technicians Since 1946

A Practical Home Radio Course

Now Includes

- ★ 12 RECEIVERS
- ★ 3 TRANSMITTERS
- ★ SQ. WAVE GENERATOR
- ★ SIGNAL TRACER
- ★ AMPLIFIER
- ★ SIGNAL INJECTOR
- ★ CODE OSCILLATOR

- ★ No Knowledge of Radio Necessary
- ★ No Additional Parts or Tools Needed
- ★ EXCELLENT BACKGROUND FOR TV
- ★ SCHOOL INQUIRIES INVITED
- ★ Sold In 79 Countries

**YOU DON'T HAVE TO SPEND
HUNDREDS OF DOLLARS FOR A RADIO COURSE**

The "Edu-Kit" offers you an outstanding PRACTICAL HOME RADIO COURSE at a rock-bottom price. Our Kit is designed to train Radio & Electronics Technicians, making use of the most modern methods of home training. You will learn radio theory, construction practice and servicing. THIS IS A COMPLETE RADIO COURSE IN EVERY DETAIL.

You will learn how to build radios, using regular schematics; how to wire and solder in a professional manner; how to service radios. You will work with the standard type of punched metal chassis as well as the latest development of Printed Circuit chassis.

You will learn the basic principles of radio. You will construct, study and work with RF and AF amplifiers and oscillators, detectors, rectifiers, test equipment. You will learn and practice code, using the Progressive Code Oscillator. You will learn and practice trouble-shooting, using the Progressive Signal Tracer, Progressive Signal Injector, Progressive Dynamic Radio & Electronics Tester, Square Wave Generator and the accompanying instructional material.

You will receive training for the Novice, Technician and General Classes of F. C. C. Radio Amateur Licenses. You will build Receiver, Transmitter, Square Wave Generator, Code Oscillator, Signal Tracer and Signal Injector, and learn how to operate them. You will receive an excellent background for television, Hi-Fi and Electronics.

Absolutely no previous knowledge of radio or science is required. The "Edu-Kit" is the product of years of teaching and learning. The "Edu-Kit" will provide you with a basic education in Electronics and Radio, worth many times the low price you pay. The Signal Tracer alone is worth more than the price of the kit.

THE KIT FOR EVERYONE

You do not need the slightest background in radio or science. Whether you are interested in Radio & Electronics because you want an interesting hobby, a well paying business or a job with a future, you will find the "Edu-Kit" a worth-while investment. Many thousands of individuals of all

ages and backgrounds have successfully used the "Edu-Kit" in more than 79 countries of the world. The "Edu-Kit" has been carefully designed, step by step, so that you cannot make a mistake. The "Edu-Kit" allows you to teach yourself at your own rate. No instructor is necessary.

PROGRESSIVE TEACHING METHOD

The Progressive Radio "Edu-Kit" is the foremost educational radio kit in the world, and is universally accepted as the standard in the field of electronics training. The "Edu-Kit" uses the modern educational principle of "Learn by Doing." Therefore you construct, learn schematics, study theory, practice trouble shooting—all in a closely integrated program designed to provide an easily-learned, thorough and interesting background in radio.

You begin by examining the various radio parts of the "Edu-Kit." You then learn the function, theory and wiring of these parts. Then you build a simple radio. With this first set you will enjoy listening to regular broadcast stations, learn theory, practice testing and trouble-shooting. Then you build a more advanced radio, learn more advanced theory and techniques. Gradually, in a progressive manner, and at your own rate, you will find yourself constructing more advanced multi-tube radio circuits, and doing work like a professional Radio Technician.

Included in the "Edu-Kit" course are Receiver, Transmitter, Code Oscillator, Signal Tracer, Square Wave Generator and Signal Injector Circuits. These are not unprofessional "breadboard" experiments, but genuine radio circuits, constructed by means of professional wiring and soldering on metal chassis, plus the new method of radio construction known as "Printed Circuitry." These circuits operate on your regular AC or DC house current.

THE "EDU-KIT" IS COMPLETE

You will receive all parts and instructions necessary to build twenty different radio and electronics circuits, each guaranteed to operate. Our Kits contain tubes, tube sockets, variable, electrolytic, mica, ceramic and paper dielectric condensers, resistors, tie strips, hardware, tubing, punched metal chassis, Instruction Manuals, hook-up wire, solder, selenium rectifiers, coils, volume controls and switches, etc.

In addition, you receive Printed Circuit materials, including Printed Circuit chassis, special tube sockets, hardware and instructions. You also receive a useful set of tools, a professional electric soldering iron, and a self-powered Dynamic Radio and Electronics Tester. The "Edu-Kit" also includes Code Instructions and the Progressive Code Oscillator, in addition to F. C. C. Radio Amateur License training. You will also receive lessons for servicing with the Progressive Signal Tracer and the Progressive Signal Injector, a High Fidelity Guide and a Quiz Book. You receive Membership in Radio-TV Club, Free Consultation Service, Certificate of Merit and Discount Privileges. You receive all parts, tools, instructions, etc. Everything is yours to keep.

Progressive "Edu-Kit" Inc., 1186 Broadway, Dept. 552NN, Hewlett, N. Y. 11557

UNCONDITIONAL MONEY-BACK GUARANTEE

Please rush my Progressive Radio "Edu-Kit" to me, as indicated below:

Check one box to indicate choice of model

- Regular model \$26.95.
- Deluxe model \$31.95 (same as regular model except with superior parts and tools plus valuable Radio & TV Tube Checker).

Check one box to indicate manner of payment

- I enclose full payment. Ship "Edu-Kit" post paid.
- Ship "Edu-Kit" C.O.D. I will pay postage.
- Send me FREE additional information describing "Edu-Kit."

Name

Address

City & State

PROGRESSIVE "EDU-KITS" INC.

1186 Broadway, Dept. 552NN, Hewlett, N. Y. 11557

FREE EXTRAS

• SET OF TOOLS

- SOLDERING IRON
- ELECTRONICS TESTER
- PLIERS-CUTTERS
- VALUABLE DISCOUNT CARD
- CERTIFICATE OF MERIT
- TESTER INSTRUCTION MANUAL
- HIGH FIDELITY GUIDE & QUIZZES
- TELEVISION BOOK & RADIO TROUBLE SHOOTING BOOK
- MEMBERSHIP IN RADIO-TV CLUB: CONSULTATION SERVICE & FCC AMATEUR LICENSE TRAINING
- PRINTED CIRCUITRY

SERVICING LESSONS

You will learn trouble-shooting and servicing in a progressive manner. You will practice repairs on the sets that you construct. You will learn symptoms and causes of trouble in home, portable and car radios. You will learn how to use the professional Signal Tracer, the unique Signal Injector and the dynamic Radio & Electronics Tester. While you are learning in this practical way, you will be able to do many a repair job for your friends and neighbors, and charge fees which will far exceed the price of the "Edu-Kit." Our Consultation Service will help you with any technical problems you may have.

FROM OUR MAIL BAG

J. Stataitis, of 25 Poplar Pl., Waterbury, Conn., writes: "I have repaired several sets for my friends, and made money. The "Edu-Kit" paid for itself. I was ready to spend \$240 for a Course, but I found your ad and sent for your Kit."

Ben Valerio, P. D. Box 21, Magna, Utah: "The Edu-Kits are wonderful! Here I am sending you the questions and also the answers for them. I have been in Radio for the last seven years, but like to work with Radio Kits, and like to build Radio Testing Equipment. I enjoyed every minute I worked with the different kits; the Signal Tracer works fine. Also like to let you know that I feel proud of becoming a member of your Radio-TV Club."

Robert L. Shuff, 1534 Monroe Ave., Huntington, W. Va.: "Thought I would drop you a few lines to say that I received my Edu-Kit, and was really amazed that such a bargain can be had at such a low price. I have already started repairing radios and phonographs. My friends were really surprised to see me get into the swing of it so quickly. The Trouble-shooting Tester that comes with the Kit is really swell, and finds the trouble, it there is any to be found."

PRINTED CIRCUITRY

At no increase in price, the "Edu-Kit" now includes Printed Circuitry. You build a Printed Circuit Signal Injector, a unique servicing instrument that can detect many Radio and TV troubles. This revolutionary new technique of radio construction is now becoming popular in commercial radio and TV sets.

A Printed Circuit is a special insulated chassis on which has been deposited a conducting material which takes the place of wiring. The various parts are merely plugged in and soldered to terminals.

Printed Circuitry is the basis of modern Automation Electronics. A knowledge of this subject is a necessity today for anyone interested in Electronics.