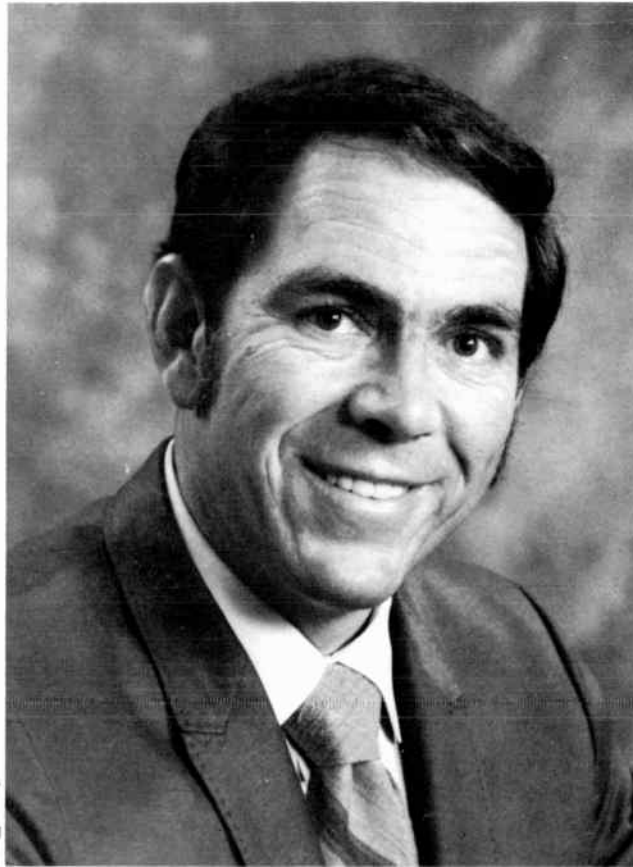


*Through
The Years With*

KEFBI

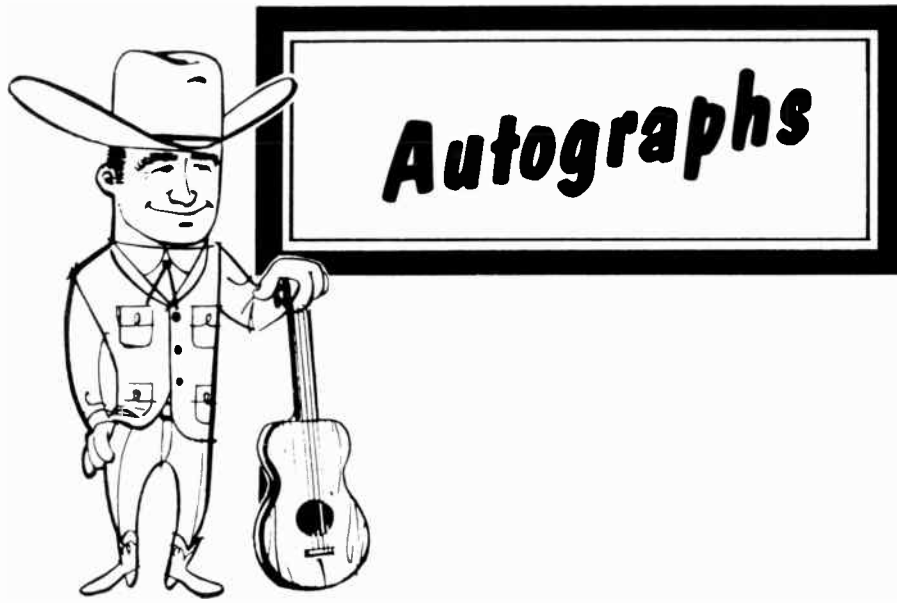
100th Anniversary Souvenir Photo Album

\$1.00



Meet our foreman, Mike Lynch. Through the past 10 years, Mike's presence, talent, and support have been intricately woven into the day to day workings and accomplishments of KFDI. While his personality isn't heard on the air each day, it is felt in our listener functions . . . advertiser functions, in what we say and do on the air and off the air . . . our dedication to country music is an extension of Mike's way of life. You might say he's a boss who is also a friend. We prefer to call him a friend who is also a boss. It is to his influence, principles and goals that these pictorial memories are dedicated.

THE RANCH HANDS —



Meet the Ranch Hands from **KFDI** — AM — 1070



KFDI RANCH HAND

Mike Oatman

PREVIOUS EXPERIENCE

Worked for seven years for 10,000 watt, full time country music station KHEY, El Paso, Texas, working up to the position of Program Director . . . started there after three years at Texas Western College where he majored in radio, television, and speech. While in El Paso, he formed a seven piece western band and appeared weekly on television. He also writes songs, two of which have been recorded by Frankie Laine. Mike came to KFDI in 1964 as program director and set up our current format at that time.

KFDI ASSIGNMENT

His day starts out early as he handles the early morning shift from 6 a.m. to 8:30 a.m. Being the Station Manager, he is involved in the promotion of the station both locally and nationally and handles all grocery merchandising personally. A tough assignment, but our #1 Ranch Hand handles it all!

COMMENTS

Mike, or "OI' Mike" as our audience knows him, has occupied the morning drive shift consecutively longer than any other Wichita radio personality and is well respected in the community for his knowledge of the radio business.

KFDI RANCH HAND

Don Walton

PREVIOUS EXPERIENCE

Don studied journalism on scholarship at a Kansas Junior College. His background includes a variety of occupations from truck driving to department store manager. Somewhere along the way he picked up a love of country music and made a record in Nashville, Tennessee . . . It was this record, and an attempt to have it played on the air, that brought him to KFDI. The station needed a salesman and Don was offered the job.

KFDI ASSIGNMENT

Don is on the air daily from 8:30 A.M. til 12 Noon . . . his chores around the ranch house include the selection of all our music. On the air, he's affectionately known as "Lil' Donnie Do-Dad"!

COMMENTS

Don's personality is definitely country in keeping with our format. He has a young approach and fresh ideas on the air that have attracted him a large personal following. He is particularly popular with the housewife, as evidenced by the latest Pulse and ARB!





KFDI RANCH HAND

Gary Hightower

PREVIOUS EXPERIENCE

Gary worked for several small stations in Southwest Missouri before going to the Springfield Market. In Springfield he worked for stations KGBX, KWTO -FM, where he was program director and he then joined the staff of KFDI's sister station KTTS in 1970. In November of 1973, Gary left KTTS to head up the Programming Department here at the Radio Ranch.

KFDI ASSIGNMENT

Gary takes to the air noon til 3:00 p.m. . . . you'll know him by his Cajun yell! He's KFDI's Program Director, handles the on-air promotions and contests, and you'll also find him in the Production Department when he's off the air.

COMMENTS

Gary had already proved his qualifications as program director when he worked at our sister station, KTTS in Springfield, so when the position became available at KFDI, we knew Gary was our man . . . he's young, talented, and energetic and always willing to go that extra step.

KFDI RANCH HAND

Terry Burford

PREVIOUS EXPERIENCE

Terry's first job was at KBSF radio in Springhill, Louisiana, where he began as a janitor. He worked his way up to a regular air shift there. Being a "natural" country singer, Terry soon became a regular on the Shreveport Country Music Show, "The Louisiana Hayride" . . . from there he went to radio station KOSY in Texarkana, Arkansas, where he stayed for seven years, prior to coming to KFDI.

KFDI ASSIGNMENT

Terry is on the air Monday through Saturday, in our important afternoon drive time. He is also an account executive maintaining a large list of local advertisers. He handles some of our important program features such as "Swap Shop" and "Quips and Quotations."

COMMENTS

Terry's particular brand of country humor and warm personality have made him a fixture in our afternoon drive time. He can ad lib as well as read commercials in an equally convincing manner. It is this same friendliness that has gained him much consideration in selling local accounts.





KFDI RANCH HAND

Jay Shankle

PREVIOUS EXPERIENCE

Jay graduated from Elkins Radio School in Dallas, May of 1963 and started radio at KDSX in Denison-Sherman, Texas, in June of '63. From there he went to KNIC in Wichita Falls, Texas, KTOK in Oklahoma City, and then to KWBB in 1973. He then journeyed to KD JW in Amarillo, Texas, and then in October of 1973, Jay joined the Ranch Hands here at KFDI.

KFDI ASSIGNMENT

Jay handles the 6-12 midnight shift Monday thru Friday and 12 noon to 6 p.m. on Sundays.

COMMENTS

If you've listened to Jay's show, you know he's the brightest thing that's happened here at the Ranch in a long time. The "Weirdo on the Wadio" knows where it's at!

KFDI RANCH HAND

Buddy Nichols

PREVIOUS EXPERIENCE

Started in Wichita radio at KANS on the all night shift. He went from there to KWBB, in Wichita, on the same shift and then to KBYE in Oklahoma City . . . He then moved to KOME in Tulsa, as salesman and disc jockey, and as a farm reporter . . . then at KOOO, Omaha, Nebraska, he was program director, disc jockey, and farm reporter . . . he then was with KSIR radio, Wichita, as farm director and when KSIR sold he came to KFDI.

KFDI ASSIGNMENT

Buddy holds down the all-night show, Monday-Friday, and the 10-2 P.M. shot on Saturday. He also is in demand at all our remote broadcasts.

COMMENTS

Buddy speaks with authority as assistant farm director, as he and his family of five boys live on an eighty-acre farm in Mulvane, Kansas . . . Buddy's humor and lively way with a country song make him Wichita's most listened to "all-night" man, especially among the 3rd shift aircraft plant people. In 1967, he was voted Wichita's most popular disc jockey and his show is continually the number one rated all-night program by both major rating services.





KFDI RANCH HAND

"Willie Wheelchair"

PREVIOUS EXPERIENCE

None: Willie came to us fresh from a sheriff's dispatch microphone . . . injured in a tragic car accident in 1959 which robbed him of the use of his legs, Willie's determination to become a radio Ranch Hand was the substitute for the "experience" we usually require.

KFDI ASSIGNMENT

You can hear Willie on the 6:00 p.m. to Midnight air shift on Sundays.

COMMENTS

Willie's personality has become an integral part of our "Sound that Sells" here at KFDI and he has indeed become a strong and important KFDI personality.

KFDI RANCH HAND

Jerry Adams

PREVIOUS EXPERIENCE

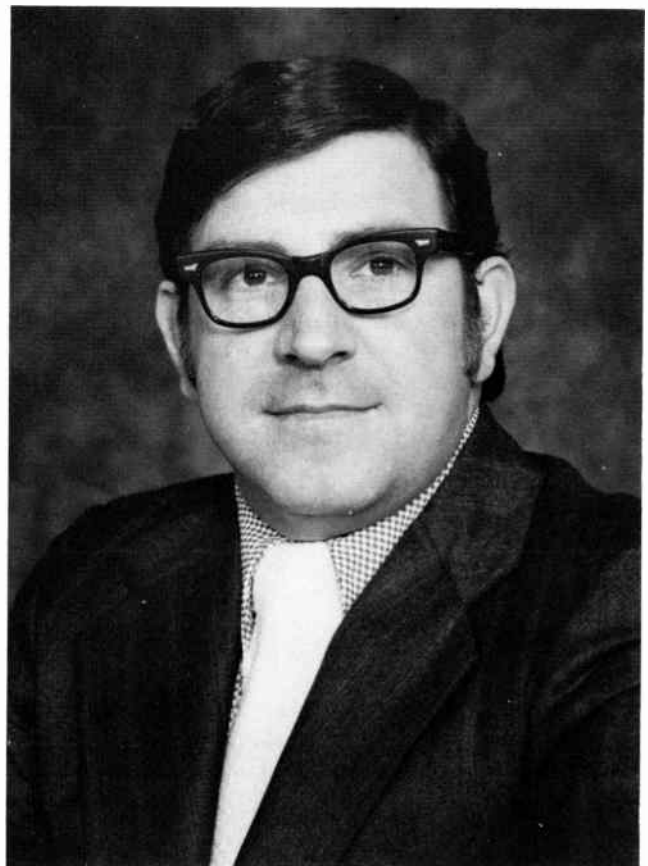
Known as the "Johnny Appleseed of country music for upstate New York", Jerry has had the program directorship and production directorship of WSEN in Syracuse, WNYR in Rochester and WWOL in Buffalo. Other assignments found Jerry in Cedar Rapids, Iowa, Anchorage, Alaska, as well as his native Windsor, Ontario, Canada . . . came to KFDI January, 1973.

KFDI ASSIGNMENT

He heads up the KFDI Production Department as the Production Manager, for KFDI AM and KFDI FM. Jerry works with the Sales Department coordinating special promotions and advertising concepts.

COMMENTS

If it has anything to do with advertising, you'll find that Jerry Adams is ready, willing and able to "get it on"!



KFDI Pony Express News



KFDI RANCH HAND

Joe Montgomery

PREVIOUS EXPERIENCE

A native of Wichita, Joe has worked all but a brief period at radio stations throughout Kansas including KVOE in Emporia, KJCK in Junction City and KMAN in Manhattan during college days, and two years covering the State Capitol at WREN in Topeka. Joe moved to the news director slot at KCSB in Liberal and then to KLEO here in Wichita, until joining the Pony Express news team in 1970.

KFDI ASSIGNMENT

As News Manager, Joe heads up the News Department relying on his 24 plus years of radio experience. Joe mans the news room mornings and reports the news at noon to all of Kansas and Northern Oklahoma. Always in contact with the news room through his mobile unit, Joe guides and directs the total Pony Express News team 24 hours a day.

COMMENTS

Joe is a dedicated, interested, professional electronic journalist. His long experience in broadcasting adds to the depth of the news coverage at KFDI.

KFDI RANCH HAND

Jim Setters

PREVIOUS EXPERIENCE

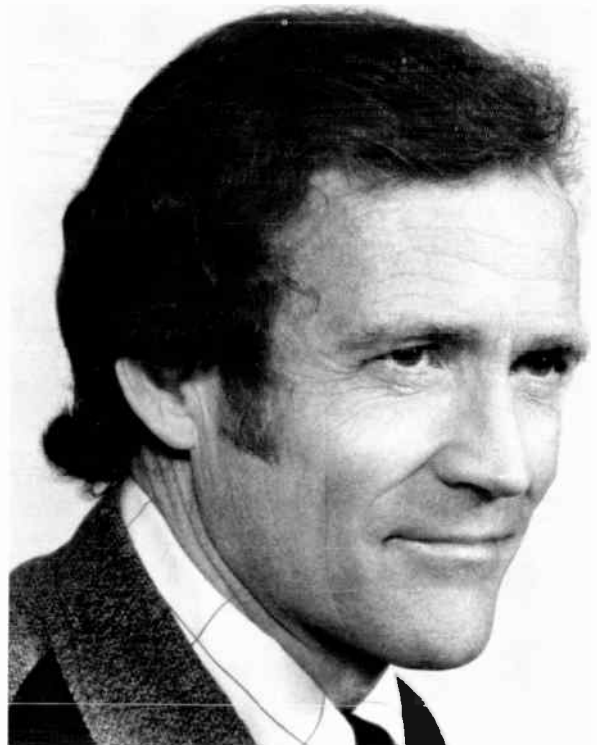
Claiming Wichita as home since the late 1940's, following service in the Marine Corps, Jim now is combining his many years of news experience with a highly successful career in KFDI sales. His first radio experience was in Guyman, Oklahoma, followed by KAKE, and KWBB in Wichita. Jim was News Director at KWBB for ten years and came to KFDI in 1967.

KFDI ASSIGNMENT

Covers the morning news from 5:00 a.m. to 7:30 a.m. . . . has a mobile radio in his car, and is on call 24 hours a day to report any and all happenings. Jim is also Sales Manager for KFDI.

COMMENTS

Jim was the news voice of Wichita for 15 years at KWBB. His exciting commentary style is well known to every Wichita citizen. Jim's dedication to news has earned him probably more respect and attention than is paid to any other Wichita radio journalist. He is a devoted family man and a health enthusiast, spending many of his off hours working out at the YMCA.





KFDI RANCH HAND

Nelson Schock

PREVIOUS EXPERIENCE

Nelson joined the Pony Express news team in early 1972, assigned as mobile reporter. With his background in government, and law enforcement, Nelson has the needed "second question" reporting so important in broadcast journalism. A resident of Wichita since high school, Nelson has spent many years in investigation and undercover work for local law enforcement agencies and in the private sector. These abilities assure KFDI listeners of all the facts, whatever the story.

KFDI ASSIGNMENT

Nelson's primary assignment is mobile coverage of Wichita and Sedgwick County. Additionally, Nelson handles special assignments, and a weekend news room shift.

COMMENTS

Nelson's experience is varied and extensive. With his personal contacts and commitment to radio news, it's easy to see how Nelson gets the story and usually first.

KFDI RANCH HAND

Chuck Hogan

PREVIOUS EXPERIENCE

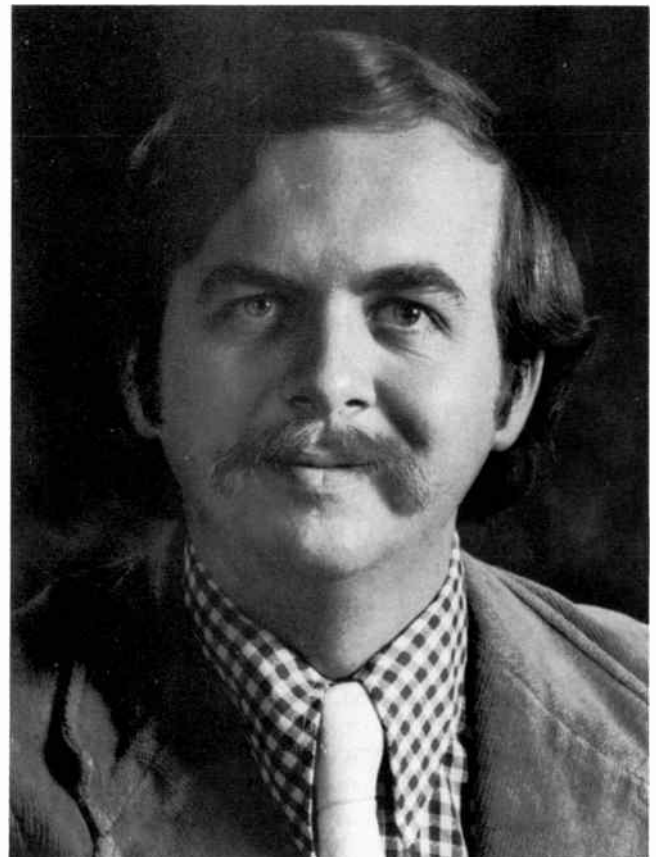
Chuck started at KWBB in 1967, with a short time-out for Army service and from 1970-1973 was News Director at KWBB. A native of Chicago, Chuck completed high school in Dallas and has worked at Garden City and in Wichita, and came to KFDI in June of 1973.

KFDI ASSIGNMENT

Chuck covers the Wichita Board of Education and both state and county courts. Additionally he holds down a regular news room shift broadcasting news to all the Radio Ranch country.

COMMENTS

Chuck's long experience in the Wichita area in news, along with his broad acceptance by not only news sources, but other media, makes him a highly valuable member of the KFDI-Pony Express News Department.





KFDI RANCH HAND

Jim Banzer

PREVIOUS EXPERIENCE

A native of Wichita, Jim got his first taste of radio news at KMUW at Wichita State University. Jim has also worked at KARD - TV, KAKE radio, and KWBB here in Wichita. But Jim's experience in broadcast journalism is not limited to Wichita. Other highlights of his background include the Cleveland, Ohio area, Richmond, Virginia and Washington D.C. While covering the national capital, Jim covered the first national peace moratorium. When in early 1972 an opening was found at KFDI, Jim came home to Kansas and Wichita to join the Pony Express News.

KFDI ASSIGNMENT

Jim provides KFDI listeners with total coverage of Wichita's City Commission meetings, and other city hall news events and insight into the Sedgwick County Commission at their regular meetings. Jim also produces "Talk Back" heard Monday through Friday, and "Encompass" broadcast Sundays on KFDI-FM.

COMMENTS

Even though Jim was gone from Wichita for several years, his ties to the city are strong . . . add this to his talents in broadcasting and journalism, and this all adds up to another top man on the Pony Express News team.

KFDI RANCH HAND

Barry Elvin

PREVIOUS EXPERIENCE

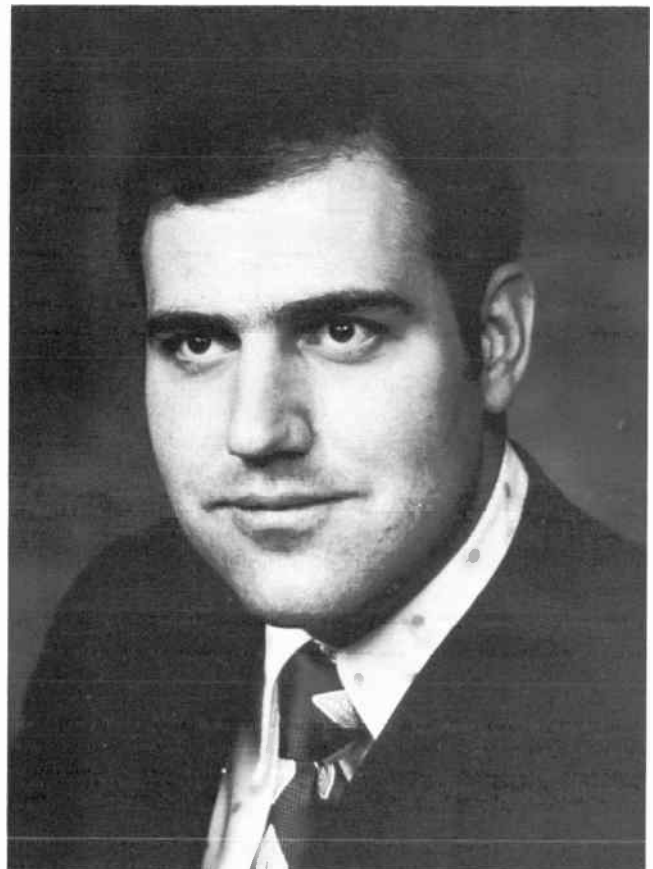
A native of the Wichita area, Barry's long-time interest in history, politics, and current events, eventually led to a political science major at Wichita State University. Realizing the need for rapid understanding by the public moved him into broadcast journalism, and the chief announcers job at KMUW-FM, at Wichita State University. Barry joined the Pony Express News team in January, 1972.

KFDI ASSIGNMENT

Barry's assignments are varied and include both mobile and news room shifts. He also handles special assignments on an individual basis, and writes and produces the "Positive World" heard four times each Sunday morning.

COMMENTS

Barry's background and experience, coupled with his dedication to broadcast news brings to KFDI listeners an unprecedented and understanding of all news assignments.





KFDI RANCH HAND

Jackie Edwards

PREVIOUS EXPERIENCE

Jackie's experience in broadcast news has been short-term, but she's not short in dedication and desire. A Journalism student at Wichita State University, Jackie joined the Pony Express News team in February of 1974, as the very first recipient of the Pony Express News internship. The intern position was created to provide Journalism students with actual on-job training and experience in the "real" world of broadcast news. Jackie immediately won the respect of her co-workers with her efforts and skill. After completing the semester internship, Jackie accepted the full time position that was offered to her.

KFDI ASSIGNMENT

Jackie handles many mobile and special assignment projects in the Pony Express News Department and her skills also allow her to hold down a regular news room shift.

COMMENTS

Jackie's background, as the child of a career Air Force father, has taken her to many parts of the world. Her dedication to do the job, whatever it may be, coupled with her ability to learn, promise her a bright future in the Pony Express News Department.



Our Sports Editor. . .

KFDI RANCH HAND

Ernie Tousley

PREVIOUS EXPERIENCE

Ernie began his radio career with KNCO in Garden City, Kansas, in 1961, moving to KGYN, Guyman, Oklahoma, three years later as sports director and disc jockey. He came to Wichita to work for Jim Setters, then KWBB News Director in 1965. Ernie spent six years as Territory Manager for Burroughs Corporation in Wichita before joining the KFDI sales team in June of 1972.

KFDI ASSIGNMENT

Ernie is a full time salesman for KFDI and also handles the "sports" at the radio ranch.

COMMENTS

Ernie's interest in all sports and experience as play-by-play announcer for Garden City Junior College, and later at Panhandle A & M in Oklahoma, has given him background for handling KFDI's sports reporting with authority.

Ernie's previous experience in sales has really helped him to break into the radio selling business. He's a young man with a lot on the go. Another one of the reasons that makes KFDI #1.



Our Weatherman . . .

Dale Noah

PREVIOUS EXPERIENCE

Dale's interest in the weather and what makes it happen goes back to his childhood, and eventually brought him to the job of radio weatherman for KFDI. A member of the American Meteorological Society for many years, Dale has taught Meteorology and Climatology at the junior and senior high level, and in college. A native of Texas, Dale holds his masters degree from North Texas State at Denton, Texas. In addition to broadcasting the weather on KFDI, Dale is noon hour, and weekend weatherman for channel 12.

KFDI ASSIGNMENT

Dale gathers and analyzes weather information for his broadcasts each day, Monday thru Saturday in the 7:00 a.m., noon, and 5:00 p.m. newscasts, and on the news at 7:30 a.m. and the weathervane at 8:15 a.m. Dale is also on stand-by alert should severe weather threaten the KFDI listening area.

COMMENTS

The addition of Dale Noah to the weather reporting team of KFDI in 1973 has provided a continuation of the top-notch weather information under severe and normal conditions. His knowledge of the weather and ability to explain it provides KFDI listeners with all the weather information so important to Kansas and Oklahoma residents.



Our Outdoor Editor . . .

Ralph Cramm, Jr.

PREVIOUS EXPERIENCE

Ralph started his career at the Wichita Beacon in 1947, as an advertising space salesman. For two and one-half years he published, edited, and distributed "Round-Town Magazine" . . . spent a short time in TV at the UHF Station, KEDD. In 1961, Ralph entered radio sales at KLEO in Wichita . . . In September, 1964, he joined the staff here at KFDI as an account executive and Outdoors Editor.

KFDI ASSIGNMENT

Ralph is one of our leading account executives and his daily 5:30 p.m., "The Wonderful World of Hunting and Fishing" has gained popularity over the years. He also edits and delivers a weekend hunting and fishing report, "Rod and Reel Roundup," which is aired March 15 through December each year on weekends. Ralph is frequently called upon to speak at various functions such as: The Izaak Walton League, Southern Kansas Brittany Club, Ark Valley Bird Dog Club, and many other groups.

COMMENTS

Ralph's zeal for hunting and fishing is equaled only by his zeal for telling the KFDI story to local advertisers. His friendly smile and expert knowledge of fishing and hunting are well appreciated in Wichita and surrounding areas.



Our C.C.A. Director . . .



KFDI RANCH HAND

Glendene O'Neal

PREVIOUS EXPERIENCE

Glendene is a native of Wichita and attended Wichita State University with a major in music. During her family's residence in New Orleans and in New Jersey she was active in many service organizations. Upon her return to Wichita she rejoined the legal secretarial field until joining the staff of KFDI in August, 1972.

KFDI ASSIGNMENT

Glendene is our Community Service Director, and is the director of our Community Club Awards Campaign which directly involves over 10,000 club members in the Wichita and surrounding area. This campaign is run annually from January through March on KFDI AM and FM. Glendene is called upon to speak at club meetings, meet with advertisers, and manage the entire CCA Campaign, as well as handling the merchandising aspects too.

COMMENTS

Glendene's hobbies include gardening, music and broadcasting . . . she blends perfectly with the warmth and friendliness projected by KFDI in all of her dealings with Wichita's community service clubs.



Our Agri-Service Director . . .

KFDI RANCH HAND

Rex Childs

PREVIOUS EXPERIENCE

Rex attended Wichita State University and spent many years in the retail grocery business, along with two years in U.S. Army serving in Korea. As Rex's family is in the farm implement business, he has varied experience in the area of agriculture. Rex joined the KFDI Ranch Hands in the early part of 1973.

KFDI ASSIGNMENT

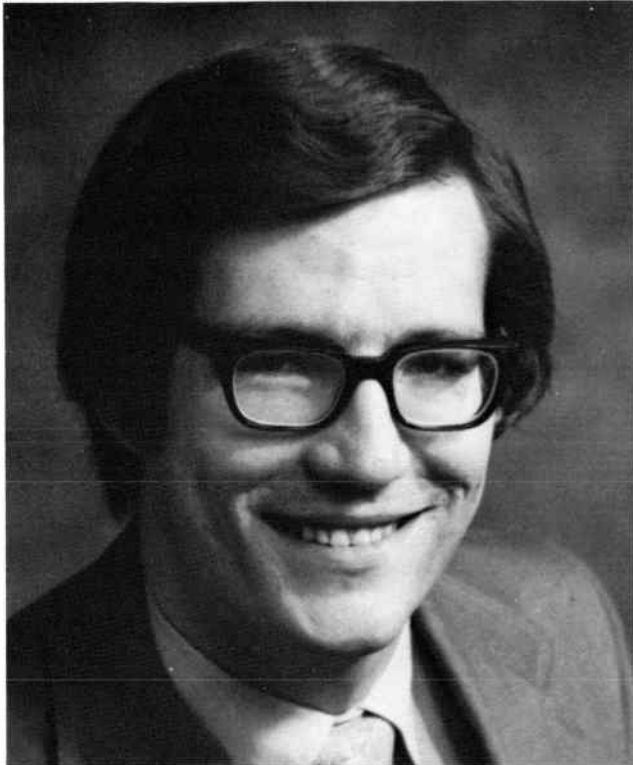
Rex serves as our Agri-Service Director and supervises and directs all KFDI Agri-Service and farm broadcasts. He travels the KFDI coverage area extensively, collecting information, interviewing and attending agri-orientated functions, and speaking to farm meetings and groups.

COMMENTS

Rex is a big part of what makes KFDI the #1 station in Agri-Service. He is well known in the community for his work as an auctioneer and he also raises running quarter horses in Mulvane, Kansas.



Now meet the 101-FM Ranch Hands



KFDI RANCH HAND

John Jolly

PREVIOUS EXPERIENCE

A graduate of the University of Tulsa, John began his broadcasting experience at the University station, KWGS . . . and worked as an announcer for several Tulsa stations while in school, including KOME, KRAV, and Irving Productions, an audio production studio. Before joining KFDI in January 1972, John pulled a two-year hitch with Uncle Sam as a Public Information Officer.

KFDI ASSIGNMENT

John is the Top Hand at the 101 Ranch, KFDI-FM. Besides his programming and announcing duties, he also acts as station photographer and engineer.

COMMENTS

Keeping the 101 Ranch perking with modern country music is a sizeable task . . . and one for which John is well qualified. You might see him when the "Country Caravan" goes traveling, pursuing his favorite avocation . . . magic! John has been an active magician for over 12 years and befuddles 'em, young or old!

KFDI RANCH HAND

John Meyer

PREVIOUS EXPERIENCE

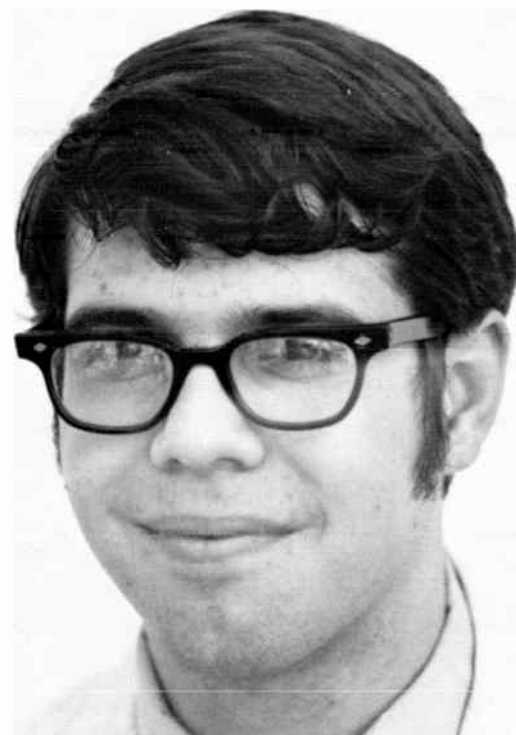
The Radio Ranch provided John with his early broadcast experience in the form of a Radio Explorer Post. After two years in the program, he became an announcer/engineer for KICT and in July of 1973 returned to the Radio Ranch.

KFDI ASSIGNMENT

John is the new voice you're hearing on our FM station, 101.3, and he also handles part of the FM Engineering. In addition to these duties, you can hear John on our AM, 1070 from 12 A.M. to 6 A.M. Saturday Morning and 7 P.M. Saturday Night til 1 A.M. Sunday Morning.

COMMENTS

John Meyer is a good example of what dedication to an idea in your youth can lead to . . . starting out as an Explorer Scout learning about radio, and now an important asset in our FM operation. In addition to his work at KFDI, John is a student at W.S.U., majoring in Electrical Engineering.



The Ranch Hands

The Ranch Hands hold many events a year at Joyland Park. It's kinda' like a second home as these shots collected from the past 10 years will indicate.



Not even the Wichita Linemen, Ol' Mike, Terry and Jim can silence Buddy Nichols.



Balloon Breaking Contest at Joyland, taken about 1966. Ranch Hand Jim Setters (with microphone), Ralph Myers, former AGRI/Service Director (in hat) and Fifo the Clown.



Left to Right: Steve Clark, Lil' Donnie Do-Dad, Mike Lynch, Terry Burford, Stan Nelson (Joyland Park) Faron Young, Ol' Mike and Don Powell.



The Ranch Hands prepare for the 8th Annual Anniversary Celebration, minutes before the gates open.



Jim Setters and all the eager participants at the beginning of our pie eating contest at KFDI's Anniversary Party at Joyland.



John Jolly performing magic tricks at Joyland Party.

at Joyland Park . . .



Jerry Adams, KFDI's Sunday Surprise!



Betty Harmon's the beauty, which leaves Terry Burford.



Terry Burford and Ol' Mike interview the Volkswagen man at the end of another long Anniversary Day.



Left to Right: Steve Clark, unknown band member, Lil' Donnie Do-Dad, Ol' Mike, Don Powell, and Terry Burford.



Ranch Hand Creeta Bressler, Executive Assistant to Mike Lynch, passes out programs at KFDI's Annual Anniversary Party.



Little Donnie Do-Dad, Jim Setters, and Terry Burford, congratulate another anniversary winner.



Ol' Mike and Do-Dad at our Fiddler's Contest. Picture believed to be one of the earliest of our Anniversary in existence.

Interviews...

The Ranch Hands are well acquainted with most of the country stars and in 10 years we've had lots of occasions to air their thoughts via KFDI!



"Crab Grass" flanked by the best in Bluegrass . . . MCA star Sonny Osbourne, former Ranch Hand Don Powell and World's Champion Fiddler, Byron Berline.



Sonny James and Ol' Mike together backstage at Century II.



Jerry "Attaboy" Adams and Terry Burford interview Dolly Parton . . . eat your heart out Ol' Mike.



Terry Burford and Ol' Mike interview Susan Raye at KFDI's first annual "Appreciation Show."



Jerry Adams poses with RCA recording star Jim Ed Brown.



Ol' Mike interviews Carl Smith at a 1965 Mr. T's remote broadcast.



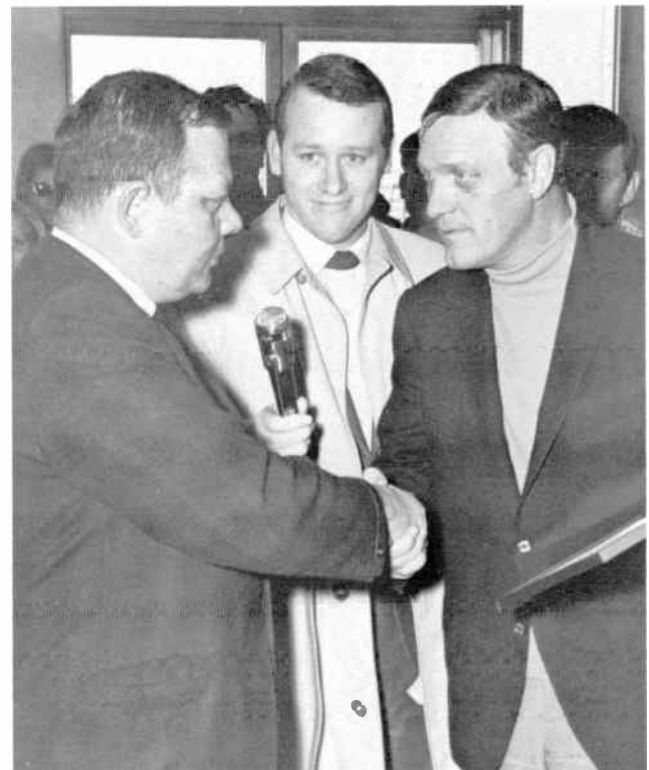
Ol' Mike and Johnny Paycheck "backstage" at the Cotillion just prior to Johnny's first appearance in Wichita.



Former Ranch Hand Don Powell interviews Kenny Starr, popular MCA recording artist. An alumni of the KFDI talent contest.



Buddy Nichols and Lil' Donnie Do-Dad get their funny-bones tickled by MGM recording star Mel Tillis.



Former Wichita mayor Bill Anderson and Ol' Mike officially welcome Eddy Arnold to Wichita on the occasion of his first appearance here in Wichita.



Shoji Tubuchi fiddles up a storm for delighted fair goers, backed by the original Wichita Linemen. Left to right, the late Dana Lovelady, Donnie Do-Dad, Robin Harris and Don Powell.



"The Killer" Jerry Lee Lewis tells all to Ol' Mike backstage at Century II.



Ol' Mike gets the low down on Hank Williams, Jr. backstage at Century II.

Joe Montgomery gets his news straight from the Senator's mouth.

KFDI Country



Hey, Loretta! . . . Happy Birthday from KFDI.



"Happiest Girl in the Whole USA" Donna Fargo and Buddy Nichols backstage at Century II. Who's interviewing who?



Ol' Mike on stage with Buck Owens at Century II.

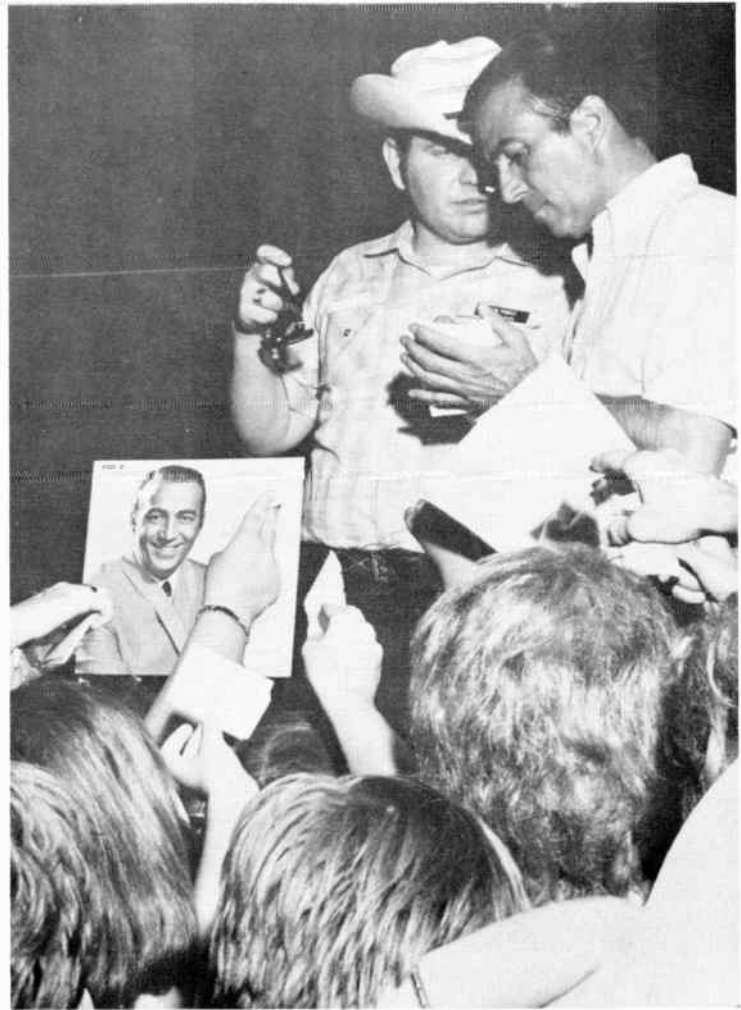


Backstage at KFDI's Christmas Fair. Left to right: George McCormick (formerly with Porter Wagoner), Mike Oatman, Jane Oatman and Grandpa Jones.

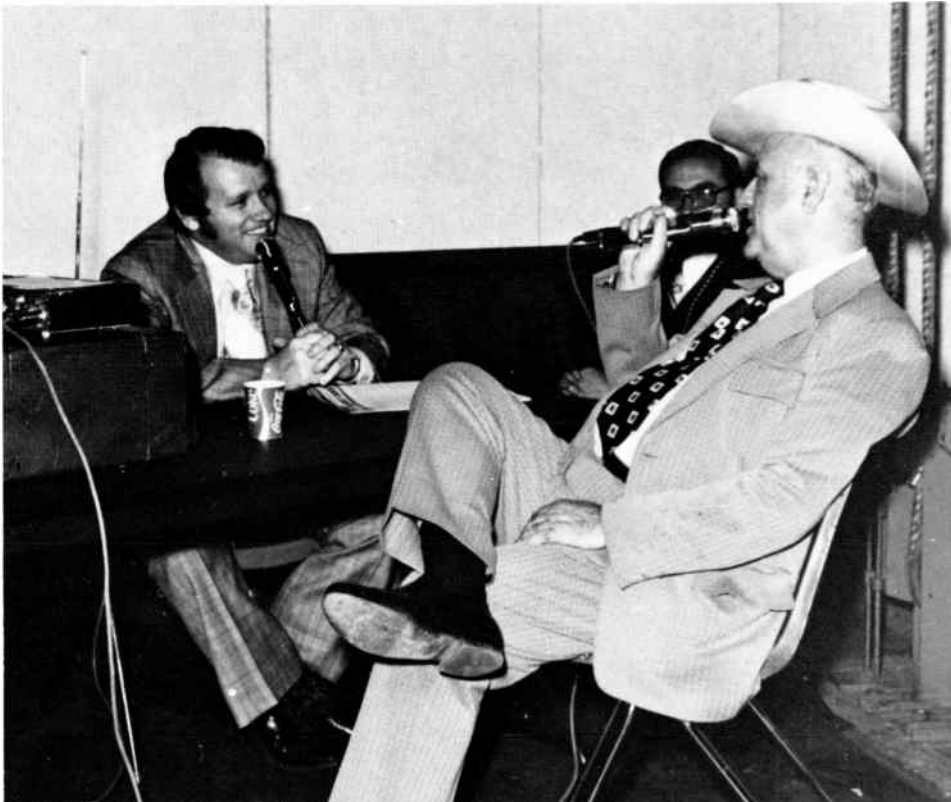
History...



Jerry Adams on stage with Dottie West on the occasion of Ernest Tubb's birthday. KFDI listeners surprised him with a birthday cake.



Don Powell and Faron Young signing autographs at the end of another successful Anniversary Party about 1968.



Mike Oatman and Shelly Davis with Hap Peebles backstage at Century II in about 1971.



Ranch Hand Gary Hightower with Playboy's December 1973 Playmate of the Month, Christine Maddox.



KFDI's favorite sign painter Bill Boggs and former "Ranch Hand Cowboy Bob Roberts" paint up the "Big Box". Remember that contest?



Mike Lynch, Jim Setters, and Mike Oatman at KFDI's ground breaking ceremony for new building.



Dick Schmidt as KFDI News Director.



Ralph Cramm, Ad-Executives Wally Balzerick, Mary Cramm (in background) and former KFDI Bookkeeper Carolyn Latta.



Former KFDI Ranch Hand Jim Bowlin now at KCKN in Kansas City.



Mike Lynch, Jim Setters and Ol' Mike and several guests on the occasion of the ground breaking for the new ranch house.



Little Donnie Do-Dad and former News Director Ken Rucker assist Governor Robert Docking in proclaiming October official Country Music Month.



The Mulvane Mouth and The Texican from the Mexican Border at the 3rd Annual KFDI celebration.



Do I know "Sally was a Good Old Girl"? heh, heh, heh!



Now where the heck are those other guys?!



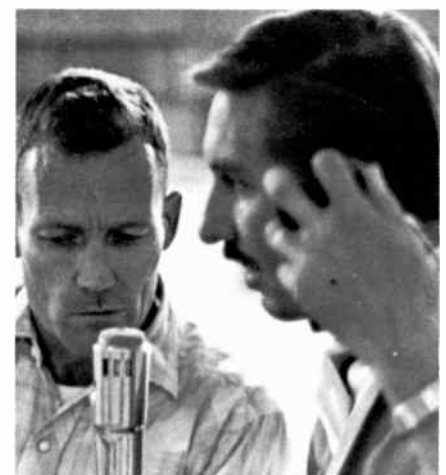
HAPPY DAY!!
Buddy Nichols is passed to the 7th grade.



Creta Bressler at KFDI's annual barbecue at Cowtown.



The "Mulvane Mouth" gives a KFDI HOWDY to one of his many fans.



Dunno . . . it sure LOOKS like a microphone!



Buck Owens attempting to steal Ol' Mike's secretary Betty Harmon backstage at the Christmas Fair. PS. He didn't get her.



A dog's best friend is Ralph Cramm, at the great Vickers, KFDI- KLEO gas war.

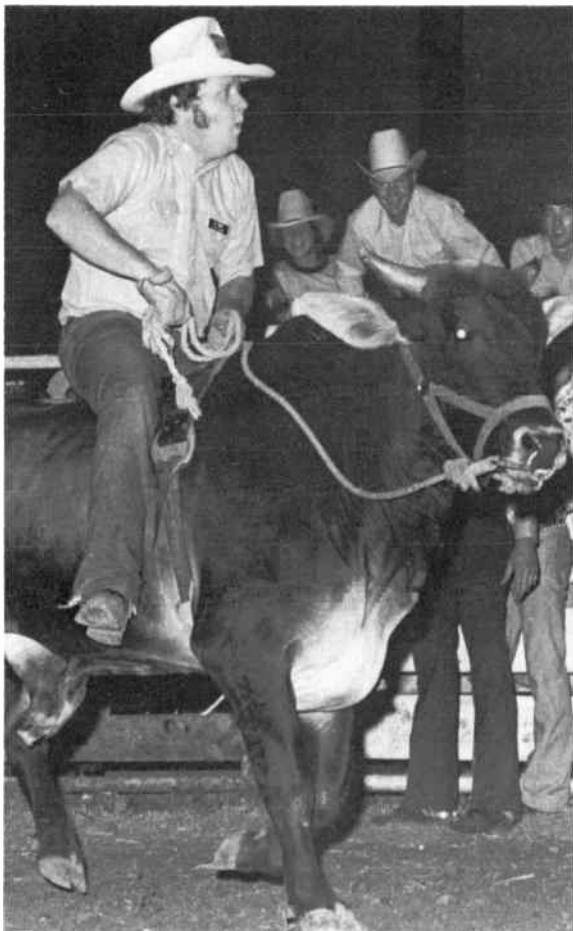


KFDI Ranch Hands at KFDI's Second Annual Ranch Hands Rodeo.



"Now that's "Classic"

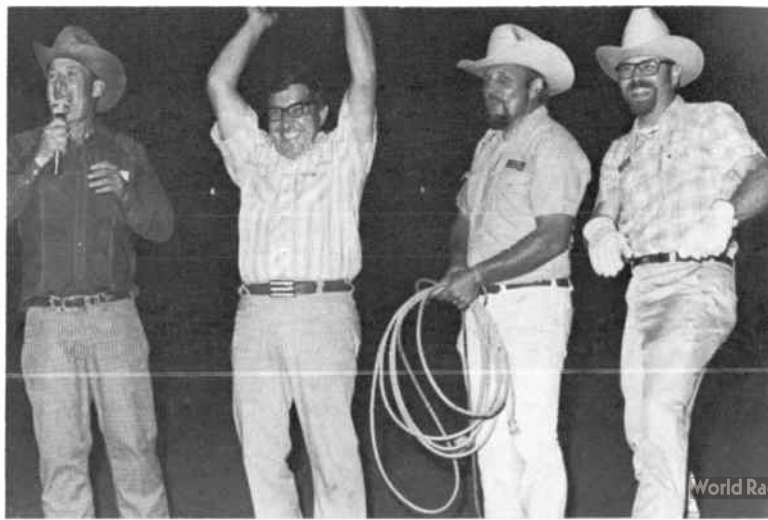
Meanwhile Back At The Ranch" album cover. From left to right front: Little Donnie Do-Dad, Willie Wheelchair, Don Powell and Ol' Mike. Back, left to right: Steve Clark, Terry Burford and Buddy Nichols.



I'll humor Ol' Mike for a little while.



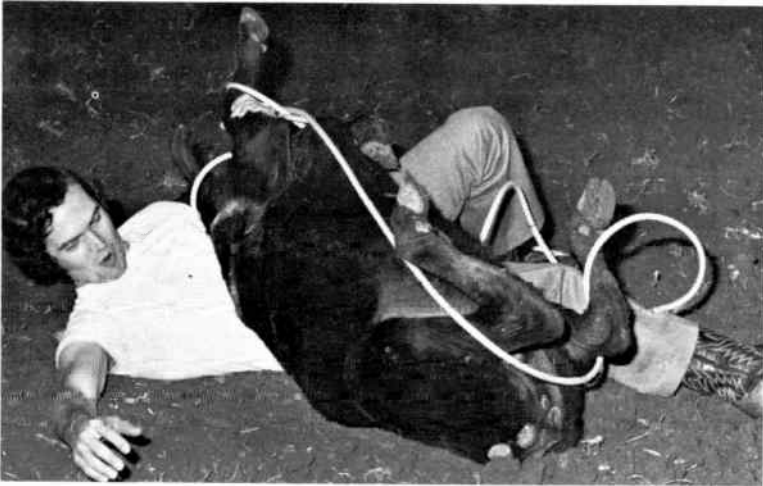
Willie pump'n gas at Vickers Gas Pump Contest (We Won!)



Jerry Adams, Nelson Shock and Joe Montgomery must've won!



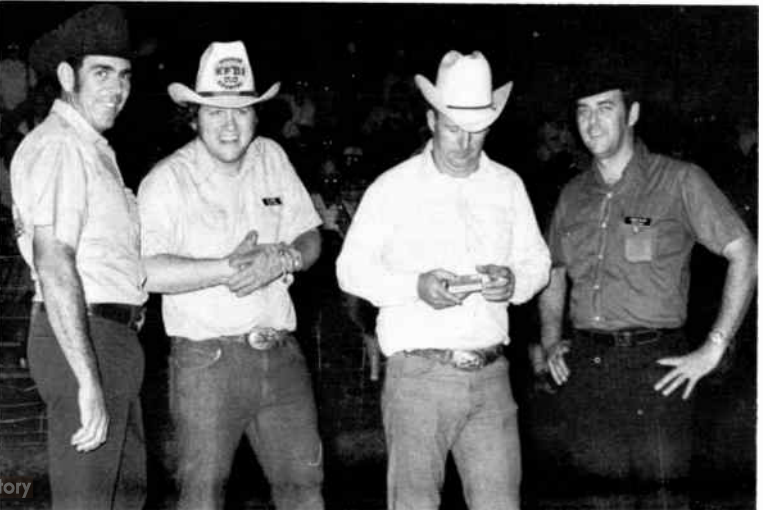
Anticipation . . . determination . . . and an illegally crooked line.



Ranch Hand Jim Davis isn't sure who's ropin' who.



"PEANUT BUTTER SUNDAY" SEVERAL YEARS AGO
Standing with KFDI's FIFTH ANNUAL THE CLOWN is J. Setters, T. Burford, D. Schmidt and S. Clark of KFDI and an unidentified Derby Jaycee.



From left to right: Mike Lynch, Ol' Mike, and a Ranch Hands Rodeo Buckle winner flanked by Little Donnie Do-Dad.



Ol' Mike interviews KLEO morning D.J., Mike Miller —



. . . and sometimes Ralph finds it's cooler to sit on the roof.



Ol' Mike's Secretary, Betty Harmon (l.) and receptionist Cindy Lynch display anniversary poster.



Ralph Cramm interviews an interested KFDI listener during a 1967 Country Caravan at Devoe Mobile Homes.



Mike Lynch presents the "Key To KFDI Country" to Eddy Arnold at 1969 KFDI concert. To Mike's left is former Ranch Hand Moon Mullins, unidentified band member and Ol' Mike.



Mike Lynch at a surprise birthday party at the ranch.



Close up of Terry Burford in action.



Ol' Mike and Terry Burford at a 1966 "Country Caravan" at Kandy's Drive-In.



Ol' Mike and his band "K-HEY Riders" way back when in El Paso. Note: The skinny steel man to the left.



Lil' Donnie Do-Dad and Don Powell "Eat Up the Profits" at Kenny's Market. One of our first sponsors and favorite folks Bud and Ardis Howland.



Terry Burford and Ol' Mike "cleared" the room again.



Jim Setters in the news room.



Ol' Mike explains the inner-workings of his bass Kazoo to Dot record star Roy Clark and an amused Terry Burford.



Lil' Donnie Do-Dad strikes a "Beefcake Pose" while belting it out with the Wichita Linemen.



Willie Wheelchair and Jay Shankle add 2 new Country Club Members to our roster at a recent Home Show.



Terry Burford singing Rambling Rose at a Leon McAuliffe dance.



Rearin' to rope those calves are left to right: Ol' Mike, Chuck Hogan, Nelson Schock, John Jolly, Mike Lynch and Clown!



Ralph's wife NEVER lets him bring eggs home from the market.



Mike Lynch and Don Walton with Governor Docking signing the proclamation for Country Music Month.



KFDI Bookkeeper, Marlys Robbins and Jim Setters checking figures.



The late Dusty Herring, his wife Nita, Foreman Mike Lynch and one of our sponsors at First Annual Advertisers Bar-B-Que.



O! Mike checks in from the KFDI-KLEO Cow Milking Contest.



All smiles are from left to right, Sales Secretaries, Chris Spreier and Linda Van Buren and Receptionist Joyce Taylor.



Jim Setters and Dick Schmidt in Sweetbriar about 1968.



Several Ranch Hands and their families at a station weiner roast at Joyland several years back. Can you believe it's grown since then.



Ralph Cramm's wife Mary, at KFDI 4th of July Picnic.



The late Dusty Herring and foreman Mike Lynch in one of KFDI's favorite projects, The International Junior Livestock Show, about 1967.



Don Walton shows off his daughter to Tommy Overstreet.



Terry Burford (with back turned) with Ken Rucker and wife Patsy at an early family Ranch Hand Weiner Roast.



Steve Clark and Don Powell . . . No one showed up at this one, so they interviewed each other.



Former Ranch Hand Ray Levato in the news room. Ray is now in Syracuse, New York.



Joe Montgomery in November of 1970, filing a report from downtown Wichita.



Left to right: Traffic Manager Joy Poovey and Grace Snell, checking our avails.



Ray Price entertains KFDI Country Club members in 1969 Country Club Dance at the Cotillion.



Go on . . . You're not really a Playboy photographer . . . are you? asked Playboy Bunny June Cochran of Jerry "Attaboy" Adams.



This is a picture of Mike Lynch right after he was elected Foreman of the Radio Ranch.



Terry Burford and Shelly Davis present a comemorative plaque to Hank Thompson on the occasion of his 25 years in show business.



First lady of the Radio Ranch, Dorothy Lynch.



Left to right are Jack Austin, Engineer, John Meyer, FM and Jan Sundquist, Engineer in front of our FM equipment.



Former Ranch Hand Tom Bolinger and Ol' Mike with a 1967 Tele-Booka-Looka winner.



Left to right: Jerry Adams, Jay Shankle, Willie Wheelchair, Gary Hightower, Tele-Booka-Looka winner, Ol' Mike and Lil' Donnie Do-Dad.



Ralph Cramm and former Ranch Hands, Jim Burke and Dick Schmidt, along with Mary Cramm at an early KFDI barbecue.



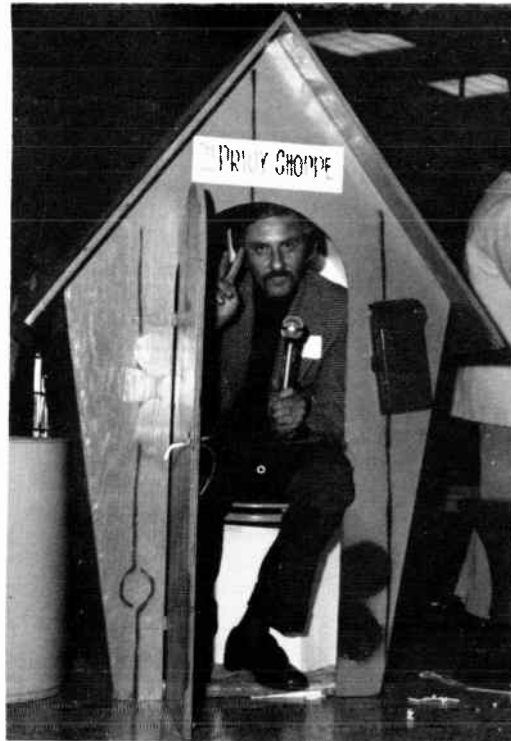
Jim Setters does the Tennessee Shuffle to Ol' Mike's banjo at a recent C.C.A. Pay-Off Party.



Don Powell at the Ranch.
(taken about 1965)



Here's Ol' Richard . . . contemplating his next Cudahy commercial.



Glendene O'Neal, KFDI's CCA Director, at our recent C.C.A. Pay-Off Party.

. . . and remember, tell 'em Terry Burford sent you by!



Buddy, Ol' Mike and Jim Bourke, at a KLEO vs KFDI Cowmilking Contest, in 1967 — (KFDI Won!)



Jim Banzer and Jackle Edwards In news room at KFDI.



Mike Lynch at C.C.A. Pay-Off Party.



Ranch Hand Jay Shankle and wife Sharon at Home Show.



Our "home" for 10 years.



**The new ranchhouse . . .
our "home" for years to come.**

KFTD

WICHITA, KANSAS
1070 AM 101 FM