



Indiana Historical Radio Society
PRESERVATION FOR POSTERITY

Vol. 26

Fall 1997

No.3

Slagle Radio Company Fort Wayne, Indiana



1925 Slagle IV



OFFICERS

Alex R. Whitaker, President
426 Whiteland Road, Apartment A
Whiteland, Indiana 46184
(317)-535-4174

Scott Beard, Vice President
2600 Garfield, Avenue
Terre Haute, Indiana 47804
(317)-535-4174

Louis Moses, Secretary
12575 Brompton Road
Carmel, Indiana 46033
(317)-571-9664

Dr. Michael A Clark, Treasurer
6484 East 350, North
Franklin, Indiana 46201-3360
(317)-738-4649

Michael Feldt, Co-Editor
12035 Somerset Way East
Carmel, Indiana 46033
(317)-844-0635
feldtm@iquest.net

Robert O'Friel, Co-Editor
7635 Cape Cod Circle
Indianapolis, Indiana 46250-1844
(317)-849-4028
bobof@iquest.net

Dr. Ed Taylor, Historian
245 North Oakland Avenue
Indianapolis, Indiana 46201-3360
(317)-638-1641

Fred M. Schultz
1246 Lincolnway South
Ligonier, Indiana 46767
(219)-894-3092

RESPONSIBILITIES

Activities
Business
Publicity

Sites and Dates
of Meetings

Applications and
Correspondence

Dues, Financial &
Address Changes

News, Articals &
Radio Ads

Donations & Scrapbook
Material

Museum Curator

Bulletin Deadlines, News, Articles & RadioAds — 2/15, 5/15, 8/15, 11/15

The INDIANA HISTORICAL RADIO SOCIETY is a non-profit organization founded in 1971. Annual membership dues are \$10.00, which includes the quarterly IHRS BULLETIN. RadioAds are free to all members. Please include a S.A.S.E. when requesting information.

COMING EVENTS

IHRS Winter Meet, Saturday, February 14, 1998, 7:30 AM till ??? Holiday Inn Southeast, 5120 Victory Lane, (I-465 at Emerson Road, Exit 52). We will have lunch at a nearby restaurant (Your choice of menu and costs etc.). Details, next "Bulletin". Contact: Dr. Michael Clark, (317) 738-4649 or Alex Whitaker, (317) 535-4174.

IHRS/AWA 27th Regional Annual Spring Meet
Indianapolis, Signature Inn, I-465 and East Washington Street.
Thursday, April 30, 1998, (set up day for early arrivals).
Friday, May 1st and Saturday, May 2nd, 1998. Details to be announced.

IHRS Special Summer Swap/Contest. Saturday, June 13th, 1998 7:00AM to 3:00PM. Actual 1920s battery radio performance contest. Details forthcoming. Location: Forest Park, northwest corner of Noblesville, Indiana. Contact: Michael Feldt (317) 844-0635 in eve.

IHRS Annual Northern Indiana Summer Meet
High Drive Pavilion, East Beardsly Avenue, Elkhart, Indiana.
Saturday, August 22, 1998, Registration, 8:30AM, \$5.00/member/
family. Swap/Sell Meet in east paved lot. More details to be
announced. Call co-chairman Doug McIntosh 219-264-4658 or
Terry Garl, 219-679-4280 for more information or for a map.

Message From The President

I would like to start my first message to the membership of the IHRS by thanking all of you for giving me the opportunity to serve as president. I have many plans for the club in the coming months. One thing that I feel is a pressing issue is getting more members involved in our business meetings. If we don't have participation from more members, then who will be our officers in the future? To help get more members involved. I would like to make our meetings more clear and concise, and less drawn out. I would like to have discussion by members on club issues to be more structured and organized. This would help keep a meeting from getting bogged down on one issue, as we have seen our business meetings do in the past. People are more likely to stay to hear club business if it is presented in a timely and concise manner. If you have ideas about our club business meetings, or other IHRS business, feel free to contact me at home. Your feedback is important.

Our October meeting was held, as usual, at Riley Park in Greenfield on Saturday, October 12. Attendance was down slightly this year, with 57 registrants. Registration at last year's meet was 63. Once again, we were blessed with good weather, which resulted in a good turnout in the flea market. Mike Clark, our treasurer, said that we signed up to 6 new members as well that day.

The annual election of officers was held at the business meeting that afternoon. Your 1997-1998 IHRS officers are: president - Alex Whitaker; vice president - Scott Beard; treasurer - Mike Clark; secretary - Louis (Lou) Moses. The new officers took office immediately. Also, former president Bob O'Friel has now assumed the position of co-editor for the "Bulletin". He shares that position with Mike Feldt, the organizer of our Noblesville meeting.

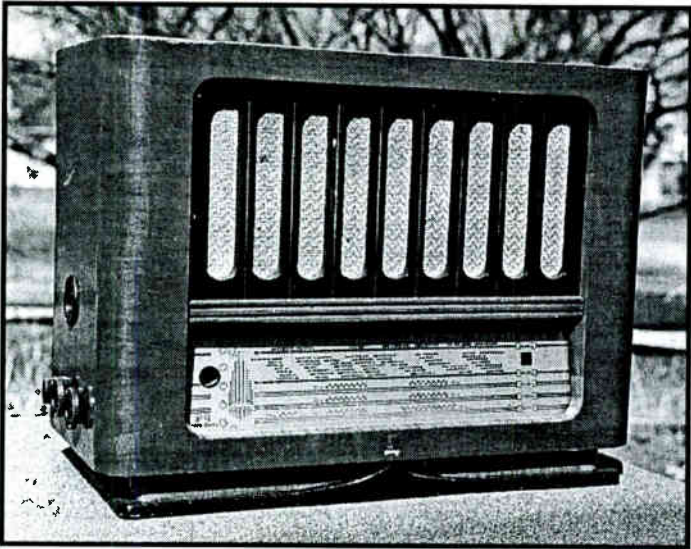
Speaking of meetings, Mike Clark confirmed that our meeting room has been reserved at the Holiday Inn Southeast in Beech Grove. The Winter Meet is set for Saturday, February 14, 1998. One change is that we will be holding our luncheon and business meeting at the nearby Ponderosa, instead of at the Holiday Inn's restaurant. This was done to keep meal costs down and give members more

of a choice of entrees.

IHRS/AWA spring meet organizer Bob O’Friel has advised that most of the details of setting up that meeting are completed. The meet will once again be held at the Signature Inn in Indianapolis. We can hope for better weather this year!

Finally, I would like to personally thank outgoing president Bob O’Friel for his outstanding service to the IHRS. He has also been an invaluable source of information to me as new president. Also, many thanks to treasurer Mike Clark for his assistance with many aspects of club business. See you all February 14th.

Alex R. Whitaker



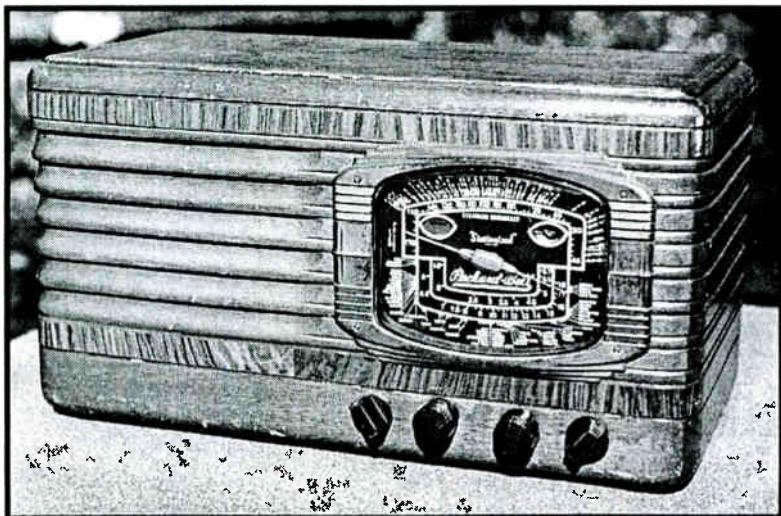
This postwar European multiband receiver is a N.S.F. “Aristona” model H236X made in the Netherlands. The glass dial, which is back lit, is of translucent blue and orange with a silver background. The tuning range is 1950m to 21m which is divided in to five ranges and the tube arrangement is as follows: ECH21 (det./osc.), ECH21 (IF/ det./AVC), EBL21 (output), EBL21 (output), AZ1 (rect.), and EM4 (tuning indicator). This receiver was acquired in 1995 at the IHRS Spring swap meet at Kokomo, Indiana.

Message From The (Past) President, Bob O'Friel

I'll open with a "Bad News/Good News" report. Chris O'Dell advised that he had changed jobs and the new responsibilities were so time intensive that he will not be able to handle the duties as Editor of "The Bulletin". That's the bad news. The good news is that Mike Feldt and yours truly will be co-editors. Accordingly.....any ads, news releases and/or articles should be mailed to one of the two addresses shown on page 2 of this "Bulletin". Since my term as president expired in October, I believe that I'll be able to continue providing service to the IHRS as co-editor. Accordingly, I have purchased a computer capable of supporting the production of said "Bulletin" and that, along with the computer setup publication. Mike is very "computer wise" while I am still going through "Basic Training" so, this edition is coming out later than had been planned. The "August" Bulletin was produced on Mike's computer which yielded very high quality photos and printing. This quality was attenuated somewhat due to the fact that we still had to rely on the standard photocopy process. Those that attended the October/Greenfield meet had the opportunity to compare the original master copy with the reproduction version and those quality differences were very noticeable. With the new computer systems, we will have the ability to download to a "Zip Drive" disc which can then be transported to a high quality typeset and printer house. There, they need only to "read" the disc into their printer unit which will then be able to print/publish the "Bulletin" directly and, at this point, a higher quality paper can be used. Since Mike and I do the production work, our costs at the publishing end are reduced.

I wish to express my gratitude for having been allowed to serve the post of President for the last two years and also thank those who were of such a great help to me including Mike Clark, who helped guide me down the path, Walt and Glenna Sanders who were always there when help was needed at any of

our meets. In addition, Ross Smith, Clo and Doug McIntosh, and Terry Garl along with Glenn Fitch, Mike Clark and his mother, and Alex Whitaker have all given yeoman service in setting up our meets. Mr. and Mrs. Lou Moses and Scott Beard were also there to help. Of course, I cannot overlook the mainstays who have been there for many years such as Fred and Marcella Schultz, Dr. Ed Taylor, (who was ever present when I had questions about club details such as history, precedents and other matters), and the regulars such as Paul and Marilyn Gregg, Pete and Edna Yanczer, Bob and Inez Schuck and Herman and Shirley Gross. I hope that any who I may have missed will forgive me for an unintentional oversight. I need to again emphasize that this is your club and club paper so we look forward to receiving your articles. I was pleased to receive the article from Ed Dupart who submitted his entry on a floppy disc. This makes it much easier to monitor and edit. By the way, this particular issue may have to go the route of the older photocopy process due to time constraints. I want to wish you all of you a very Merry Christmas. In the meantime, I'll see you where ever Radio Lives.



This is a 1937 Packard-Bell model 48BP. The edge lit dial, with it's California station call letters, is white and green.

IS THERE A RADIO DISPLAY IN YOUR FUTURE?

I bet some collectors are like me who have an extensive radio collection and no one really gets to see it. My collection is buried in the attic and those that know me really know what I mean. Sometimes it's like Christmas time when I go up in the attic when I discover a radio I had forgotten I had. So, I decided to get the dust off some of those radios and let more people see what radios were like decades ago. I asked the local library a few years ago about setting up a display and they were very enthusiastic.

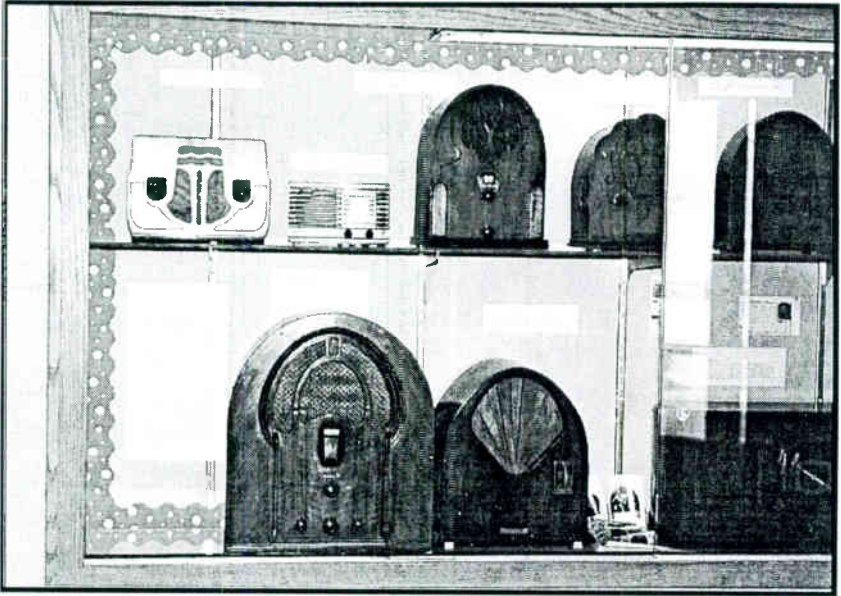
My first display ran for one month, the first two weeks were radios of the 1920's and the second two weeks were radios of the 1930's. The 1920's display consisted of the typical pre 1925 Crosleys and Radiolas and some early AC table radios. The 1930's display had several cathedrals from the very small to the very large types, plus tombstone and small table types. The librarians placed appropriate books and book covers with the display to encourage reading.

Overall, the public really enjoyed the display. Older radio men like the 1920's display with one gentleman writing a letter telling of some his experiences with early radio. The librarians and the public really liked the cathedrals with the librarians drawing straws to see which librarian would get which cathedral. I told them, sorry, they are not for sale! The small cathedrals were the most popular.

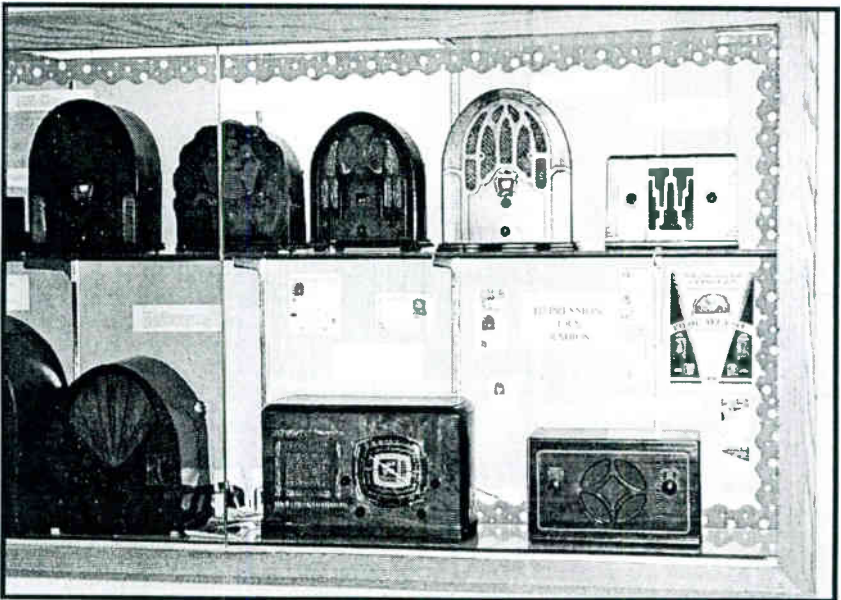
I'm a teacher and one of my responsibilities is the display case with the bulletin board. Teachers who read this will understand this responsibility very well, but I enjoy doing it, especially when I can stuff the case with radios! My first display was the history of radio starting with a slide type crystal set of about 1919 with various radios of each decade ending with a Walkman. Included with this display were various vacuum tubes, transistors and integrated circuits from over the decades so people could see the change in active devices over the years.

My second display at the school consisted entirely of cathedral radios which has been the most popular display so far. Again, I had very small cathedrals to the very large Philco 16. The comments

Pictures of the second display at the local library



Left side of display.



Right side of display.

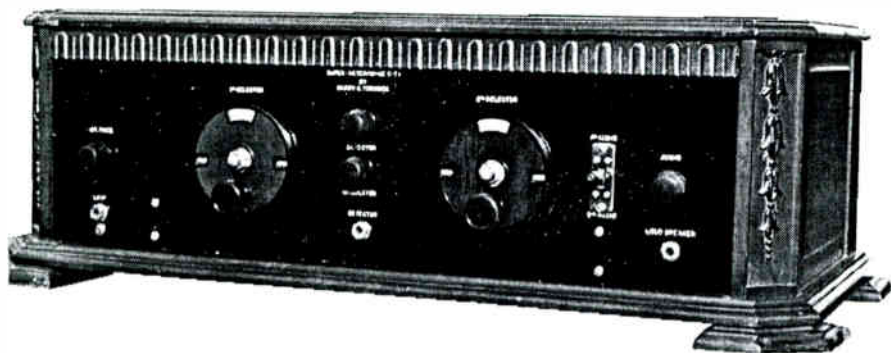
and lookers were many, which confirms what I have known for 40 years, cathedrals are popular with the public.

The last display at the school was titled: Depression Era Radios, and consisted of radios from a 1930 Powell cathedral from Los Angeles to a 1939 Philco Bakelite TH-4, which is very small, with many radios in between. The Powell and the Philco TH-4 Bakelite showed the radical development within a ten year period from large components to very small components. I also had some advertising literature to go with this display. The history and civics teachers and myself planned together on the timing, so the display would coincide with their units on the depression. I am duplicating this display at the library in Sturgis, Michigan for the month of October, 1997.

Things to consider when setting up a display is the space and security. I found that I can get about twelve radios in a 3.5 foot by 7.5 foot display case with two shelves and using the bottom of the case. See the accompanying photos. It will take careful planning to get some of the larger radios in the case and I always put the large heavy ones on the very bottom and not on glass shelves. I want the display to be in full view of the librarians and locked at all times, for obvious reasons. So far I have not had any problems.

The response I have received from people has been overwhelmingly positive. Hopefully this may give some of you ideas for your radios.

Edward Dupart



This home brew superheterodyne receiver dates from about 1926. The interesting aspect about this set is that the builder engraved his name on the front panel "SUPER-HETERODYNE C-T1 BY HARRY C. TURNOCK".

1930s Tube Caddie

Here's a radio curiosity rarely seen. It's a tube caddie used to safely transport up to eight radio tubes from a family's radio to a local business where they could be tested at no charge. These caddies were given out for free, by local businesses, as a friendly service and as a means of advertising Ken-Rad brand radio tubes. If the business was lucky it might sell one or two tubes after testing what tubes the customer brought in. This tube caddie was from the Onsgard & Montague, "Wisconsin Store at the Bridge" of Stoughton, Wisconsin. Stoughton is located just south of Madison, Wisconsin.



Top and front view



Rear and bottom view

Elkhart Meet

By Ross Smith

The IHRS Summer meet in Elkhart was a good one. Everyone in attendance enjoyed a friendly, low key family meet at the High Dive Park Pavilion on Saturday, August 23rd. We had beautiful weather, a good swap meet, an interesting 5 class old equipment contest, a silent auction, and a delicious carry-in dinner. Our IHRS Ladies are the best cooks in Indiana! Registration totaled 109 with members from all parts of Indiana and surrounding states, including Wisconsin. A big THANK YOU to co-chairman Terry Garl and Doug McIntosh, to Ty Gregory for his good work in the lot and for conducting the silent auction, to Marcella Schultz for the popular vote contest, to Clo McIntosh, Mary Miller and their helpers for a good job in the kitchen. OUR CONTEST ATTRACTED TOP QUALITY EXHIBITS again this year with the following winners by the popular votes.

CLASS ONE: TUBE SETS

First Place.....Tom Williams, 32 volt Delco Radio
Second Place.....Tom Williams, Red Mystery Radio

CLASS TWO: TRANSISTOR SETS

First Place.....Mike Clark, Coke Machine Radio
Second Place.....Mike Clark, Toshiba Computer Radio

CLASS THREE: FAVORITE RADIO

First Place.....Fred Prohl, 1925 King Cole Radio
Second Place.....Jeff Beyer, Four Star Violin Radio

CLASS FOUR: GROUP DISPLAYS

First Place.....Ross Smith, Radio Tube Carrousel
Second Place.....Doug McIntosh, Crosley Color Radios

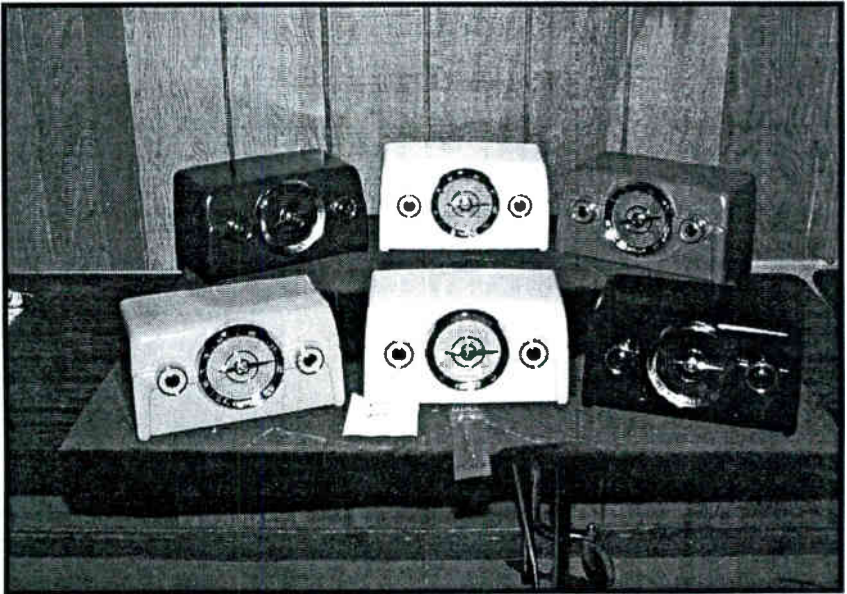
CLASS FIVE: ADVERTISING

First Place.....George Clemens, Radio Buttons
Second Place.....Harvey Bellsey, Radio Literature

Pictures from the Elkhart Meet



Class One: Transistor Sets



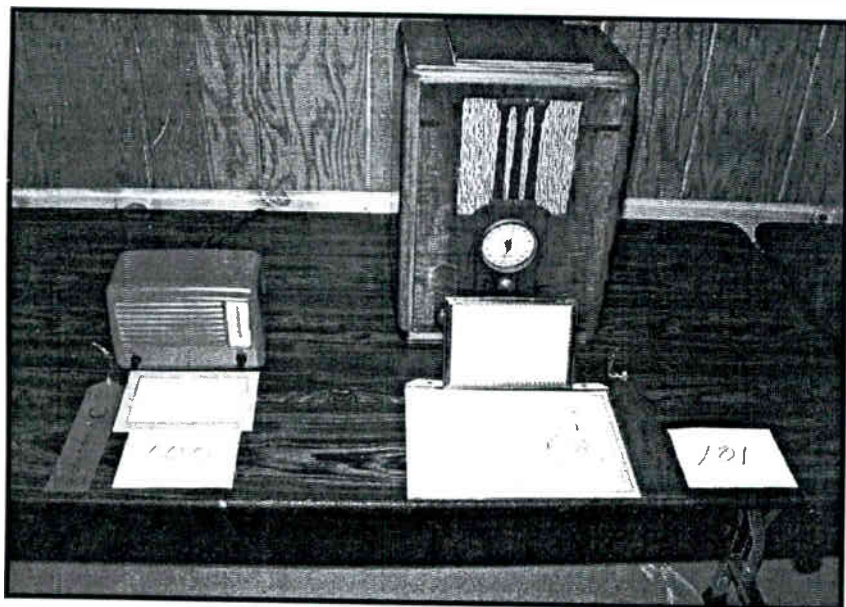
**Class Two: Group Displays
Crosley Color Radios**

Pictures from the Elkhart Meet



Class Three: Favorite Radio
Four Star Violin radio

King Cole radio



Class Three: Tube Sets
Red Mystery radio

32 volt Delco radio

Pictures from the Elkhart Meet



**Class Four: Group Displays
Radio Tube Carousel**



Eating and socializing at the carry-in dinner

RADIOADS

These ads are free to IHRS members. Please limit them to 50 words or less.

FOR SALE ADS

Rebuilt Twist-Loc capacitors. \$14.00 for the first section plus \$1.00 each for additional sections. Add \$3.00 shipping per order.

Frontier Capacitor, Box 218, Lehr, ND 58460
Ph. (701)378/2341

RASCO Radio Parts Catalog

An outstanding 144 page reprint from 1928. Over 500 pictures and illustrations, including descriptive text and prices on each item. There are also numerous schematics for the home brewer. This is an ideal reference book to help you identify many of the parts that were used in early radios. The special price for IHRS members is \$10.00 postage paid.

Peter Yanczer, 835 Bricken Place, St. Louis, MO, 83122

Ph. (314) 822-1748

Try one...you'll really like it.

For Sale: Early Grundig Console. Tube type, not stereo. Phono under lid, grille pulls down for Record storage. 29" wide X 32½" H X 15 ½" D. s/n 061451094. Paid \$20.00 at Garage Sale, Yours for same. Jim Baier, 5122 N Leavitt St., Chicago, IL 60625. Ph. (773)728-6260

NEW QUALITY CAPACITORS

630 VOLT, AXIAL LEADS

Part #	Value (Uf)	*Price/25	Each
.001-630AL	.001	\$ 6.00	.24
.0047-630AL	.0047	\$ 6.25	.25
.01-630AL	.01	\$ 6.50	.26
.022-630AL	.022	\$ 7.00	.28
.033-630AL	.033	\$ 7.25	.29
.047-630AL	.047	\$ 7.50	.30

.1-630AL	.1	\$ 8.00	.32
.22-630AL	.22	\$15.00	.60
	630 Volt, Radial Lead		
.1/630RL	.1	\$ 7.00	.28
	ELECTROLYTICS		
	160 Volts, Axial Leads		
22-160AL	22	\$16.00	.64
33-160AL	33	\$21.00	.84
47-160AL	47	\$24.00	.96
	450 Volts, Axial Leads		
10-450AL	10	\$18.75	.75
22-450AL	22	\$28.00	\$1.12
47-450AL	47	\$45.00	\$1.80
47-450AL10	47	\$20.00/10	\$2.00

*=sold in 25 piece lots except 47-450AL10 Wholesale only. No minimum order

To order, Send Check or Money Order to:

Bob's Antique Radios

111 East 29th Street, La Grange, IL 60526

Ph. (708) 352-0648/FAX(708) 352-0647

Shipping & handling included in price. Ask about Super bulk rates. Sorry, no credit cards or COD's

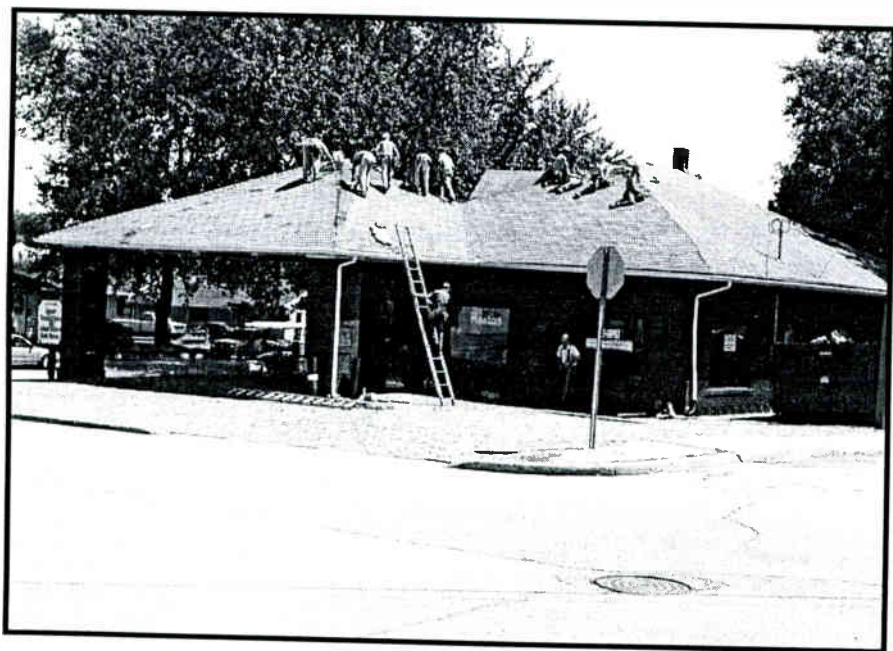
For Sale: Rockola model 1434 "Super Rocket" jukebox configured for 78's. Needs a complete restoration. Realistic offers. Large late 1960's Coke machine—works. \$200.00. Two manual reed organ with bench, plays. \$125.00. All items pick up only.

May be seen by appointment. Mike Clark, 6484 East 350 North, Franklin, IN, 46131, (317) 738-4649 (Eves. 6 to 10PM), FAX (317) 278-0221.

Report of SPARK meet at Dayton Ohio by Dr. Mike Clark
The club held their "Rain or Shine Swap Meet" on Saturday, November 8, 1997 at the Huber Heights Jaycees Hall in Huber Heights, Ohio. Your IHRS President, Alex Whitaker and your Treasurer, Old Doc Clark traveled to this event which was 116

Miles from Franklin, IN. We arrived at 8:30AM and our Tables, which we had reserved by E. Mail in August, were waiting for us. A number of IHRS members were already set up when we arrived. There were about 20 vendors and many buyers in attendance. The facility was very nice and trading was finished by 11:00 AM when everyone had packed up and headed home. I recently received a card thanking me for attending the meeting: I certainly intend to attend in 1998 and would recommend that you participate as well. The 1998 date is November 7 at the same location.

Report From the Museum



These highly skilled Amish carpenters are working on the museum's roof with the speed and efficiency that they are well known for.



PRESERVATION FOR POSTERITY

IHRS Museum Update

The new roof has been installed on the museum. A job that would have normally taken several days was completed in less than 1½ days by local Amish carpenters.

We have had good attendance again this summer and have almost filled our U.S. map of visitors home states. I have just received next weeks scheduled tours which includes 25 senior citizens from Bristol, Indiana, 100 school kids from Elkhart, Indiana and 46 senior citizens by motor coach from Manitowoc, Wisconsin. This is in addition to walk in visitors and last minute tours.

New additions to the museum include a unique tiered vacuum tube display by Ross Smith. Starting with 01 and continuing through 99, the display won best of show at the IHRS fall meet held in Elkhart. Other new items include a Stewart Warner drum speaker with dancing nymphs on the front, a nice Philco 90, a Majestic model 996 deco console, Kennedy VI, an unusual early Beacon microphone on a floor stand, a Western Electric microphone, a Dewald tombstone, an early Zenith console, a Zenith model L cathedral and an unusual salesmans sample of a three wire radio antenna complete in a carrying case.

We are in the process of setting up a display that will allow museum visitors to try and match the radio slogan to the radio manufacturer, "the quality goes in before the name goes on" used by Zenith in the 1920's and Majestics "mighty monarch of the air" are two examples of what we are looking for. Anyone with further information on slogans that were used please send it to: Indiana Historic Radio Museum, 800 Lincolnway S., Ligonier, Indiana 46767. Remember our winter hours are Saturdays from 10-2pm.

The IHRS Museum has again been asked to provide a radio display at the National Automotive and Truck Museum of the United States located in Auburn, Indiana. NATMUS would like to display radios with their chosen automotive theme for the year. 1998 will feature autos from 1948. We will place a few radios from that era in the museum. This summers NATMUS display of radios and pamphlets from the IHRS Museum was very positively received.

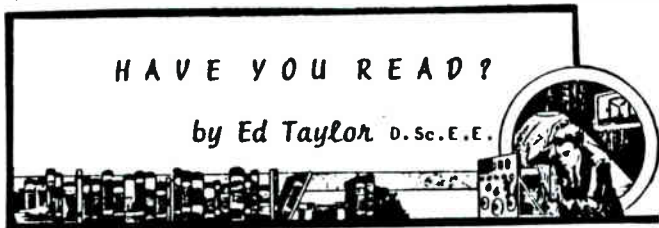
Remember this winter when there is nothing to do to, stop in and see the museum.

One Topic that was brought up at the Elkhart meet related to finding what the IHRS Museum needed in the way of funding or any other area. Fred and Marcella responded that the only need that they presently face is finding more of the outside light reflectors. These are known as "RLM" domes and are green on the outside surface and white underneath so as to reflect the light. Marcella advises that the open end diameter is 14 inches and looks like the drawing below. If you can identify a source, let Alex Whitaker or Fred or Marcella Schultz know. The Museum could probably use 14 or 15 of them.



HAVE YOU READ?

by Ed Taylor D.Sc.E.E.



TOY CRYSTAL RADIOS

by Eric Wrobbel 1997

This little 24 page volume is a picture book, in full color, of about 74 toy crystal radios which were on the market from 1929 - 1966. These are the cute and interesting novelty radios which were appealing to boys.

The cases of these pocket radios were covered with litho paper or made of wood, metal, and colorful plastic. Some were made to resemble space ships or satellites. (How many of us at one time or another owned a rocket radio?) The tiny radio might look like a watch or a fountain pen. Many resembled miniature versions of table radios of the period.

The earliest of these sets used a crystal and cats-whisker while later models employed fixed detectors and finally germanium diodes.

Advertising for these radios ballyhooed: TUBELESS, BATTERYLESS, WIRELESS, NO TRANSISTORS, NOTHING TO WEAR OUT, LASTS A LIFETIME. How could any boy resist such temptation? The little sets could faintly receive a local station or two (sometimes together) with a wire clipped to the bedsprings or water pipe.

The author has spent a considerable amount of time on the photos and text so if you are into collecting these novelties, the booklet price of \$19.95 P.P. may not seem excessive. The color photographs are first rate. Included is a "buyer-beware" price guide.

Available from: Eric Wrobbel, Dept. I
20802 Exhibit Court
Woodland Hills, CA 91367





Lavern S. Slagle
1899-1974

The Slagle Radio Company

By Michael Feldt

The state of Indiana was never as big in the manufacturing of radio sets as were its neighbors, Ohio, Illinois, and Michigan, during the 1920s. Most of Indiana's manufacturers, (less than forty are known to exist), were small and lasted for only two or three years before they quietly disappeared. Only a few manufacturers ever lasted long enough to actually prosper and one of these manufacturers was the Slagle Radio

Company. It was founded by Lavern Slagle, an assistant teller for the First National Bank

of Fort Wayne, a ham operator with the call letters of (9ME), and for a while in 1922, was the cities "ARRL Manager". During 1924 he began to manufacture radio sets, presumably in the basement of his home, at 530 West Masterson. The radio, designated as the "Slagle" model IV, was a standard three dial, 5 tube, TRF design which used higher quality components than what was normally found in most of the brand sets of the day.

In 1925 the IV was still being offered but a variety of new designs were introduced, all of which were 5 tube circuits. The V was a spruced up version of the IV with the three dials offset to the left and the filament controls, along with a panel meter, offset to the right side of the panel. The panel, itself, was either bakelite or metal with gold etchings. A smaller model, the VII, was a three dialer with a gold etched metal panel and featured a cabinet of solid wood with rounded edges. A third model, the 5, had only two dials but sold for a little more than the V. Other models, which were based on either the V, 5, or VII, were the 10, 4, 9, Console 4, Console 5, X, and XII.

In 1926 the Slagle Radio Company had a new business address, 127-129 West Wallace Streets and introduced a radically new style of radio. Instead of a variety of circuits and styles, the whole line was based on a single design. The foundation set was the model XX which featured two windowed, enclosed, illuminated, tuning dials, a

single volume control and a sectioned, aluminum cast chassis with a top and bottom cover for total shielding. It was a five tube, TRF, design with an improved output section that was designed to handle a 71A power output tube. All of the other upper models were based on this design.

1927 saw another change in the company's address, this time on 4419 Indiana Avenue. At about this time, RCA began to license its patents which required a guarantee of \$100,000 in fees paid each year from any company that was granted the license. The Slagle Radio Company wanted to acquire this license but wasn't large enough to meet this requirement so it partnered up with four other radio manufacturers to form the United States Electric Corporation. This enabled the partnership to acquire the much coveted license but only briefly because one of the companies soon went into bankruptcy and the partnership fell apart. Later the Slagle Radio Company was able to acquire a Technidyne license and it incorporated that circuit into some of its upper models. The 1927 model line again featured an enclosed aluminum chassis but only had a single, glass enclosed, illuminated, dial. The model designation was given to the style of the cabinet, not to the circuit that was inside. The model A was equipped with a 6 tube TRF circuit only, the model B could be fitted with either a battery operated, 6 tube TRF circuit or a 9 tube, battery operated, or a 10 tube AC operated, technidyne circuit. The model C was equipped with a 10 tube, AC operated, technidyne circuit only.

Slagle, again, changed its business address to 1232 Maumee Avenue in 1928 and put out a new model line which was fitted with a 9 or 10 tube, AC powered, technidyne receiver consisting of a separate cast aluminum enclosed, 8 tube, tuner chassis and a separate amplifier chassis. The amplifier could be either a three tube unit consisting of a pair of 71As and an 80 or a four tube unit consisting of a pair of 250s and a pair of 281s. Because such a large circuit was offered, no table model sets were offered. Later on the Slagle Radio Company raised additional capital and renamed itself the Continental Radio Corporation, moving its operations to 3700 East Pontiac which was next door to the Capehart Corporation. There in 1929 the Continental Radio Corporation put out a new line called the "Sky Raider" later changing its name to the "Star Raider". These were

large, heavy, and lavishly styled receivers using exotic woods and veneers from all around the world. The huge sets all incorporated a 9 tube, technidyne circuit consisting of a 7 tube, cast aluminum enclosed tuner using Cardon 484 tubes and an amplifier that was fitted with a pair of 250 output tubes and a pair of 281 rectifier tubes. Five models were offered ranging in price from \$435.00 to \$1600.00. Shortly after the Star Raider line went on the market, the Stock Market crashed, causing a severe sales slump on of the lavish and highly priced radios. In early 1930 the company went into receivership and the assets along with all of the unsold radios were liquidated. Even an RCA license, which by this time Continental possessed, was sold to an interest group led by Carl Boyd, formally of Apex, and John Betty of the Sentinel Radio Corporation.

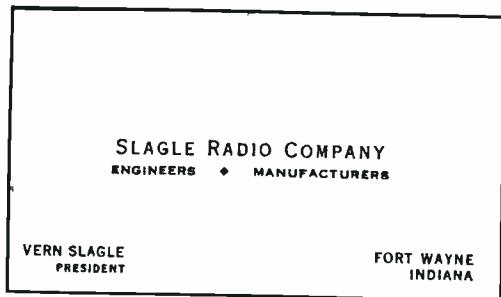


CARL D. BOYD

JOHN T. BEATTY

PAUL K. ROMEY

They formed the Continental Radio and Television Corporation in Chicago in 1934 and produced a line of radios called the Admiral. In 1942 the company changed it's name to the Admiral Corporation and produced a wide range of radios, television sets, and appliances. As for Lavern Slagle, after the collapse of his company in 1930, he tried to re-enter into the radio business in 1935 and again in 1946 without success.



Lavern Slagle's business card.

Guarantee

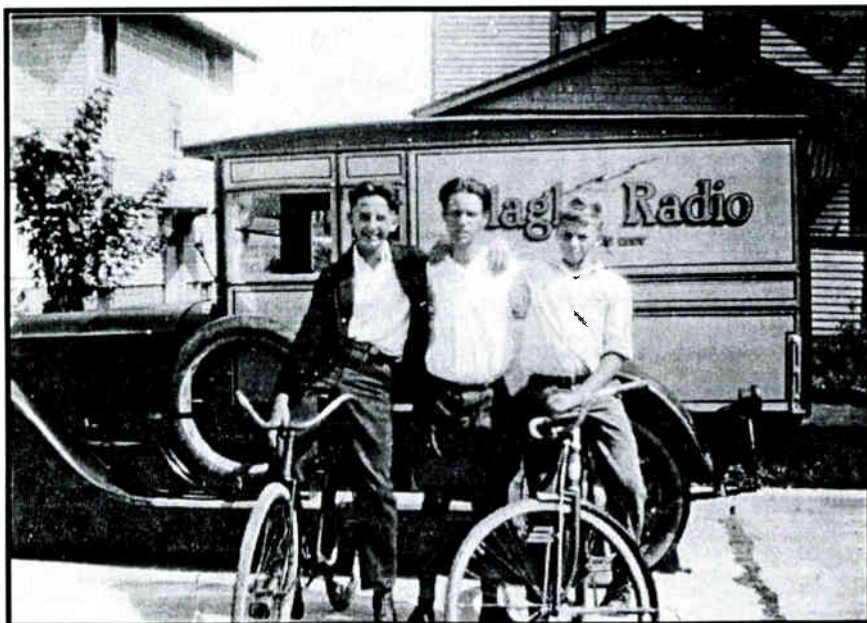
We guarantee every Slagle Radio to be satisfactory in every detail and to reach you in perfect condition -- that it will give you the service you have a right to expect -- that it represents full value for the price you pay.

Every buyer of a Slagle Radio is entitled to 30 days free trial. If at the end of this period you are not absolutely satisfied with your Slagle Radio, return it to us on or before the 30th day and your money will be refunded in full, less transportation charges.

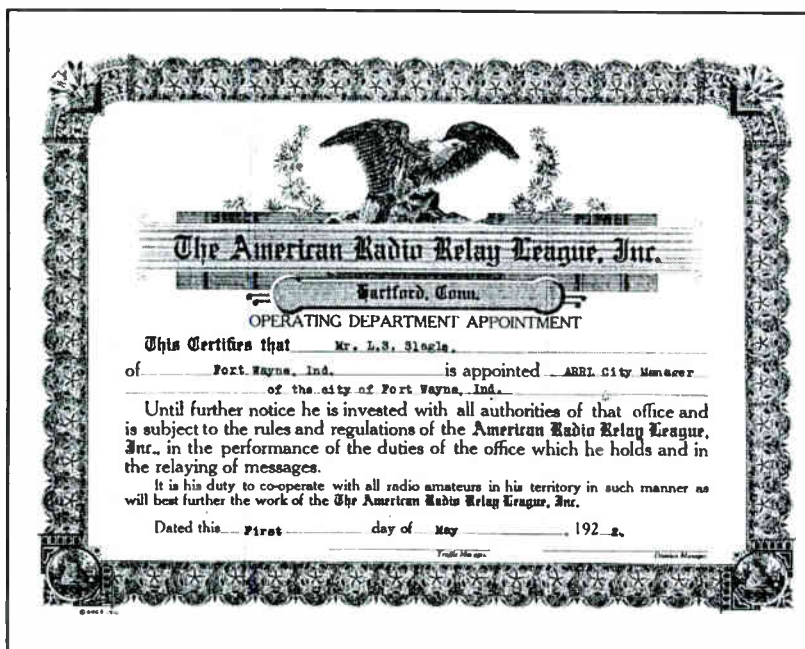
All parts are guaranteed for one year, should any prove defective within this time we will repair or furnish a new part at no cost, providing the defective part is returned to us transportation prepaid.

SLAGLE RADIO COMPANY

This 30 day Slagle guarantee accompanied each set that Slagle sold.

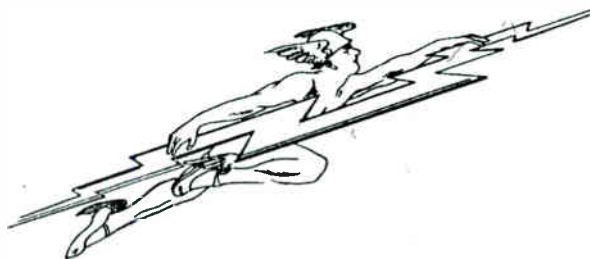


This photograph, taken in a back alley during the mid 1920s, shows a Slagle delivery van with the driver posing in front with two acquaintances. It was found by Bob Shuck at a farmers flea market in Strawtown, Indiana.



Lavern Slagle's "ARRL City Manager" certificate.

Ser. No. 217,967. (CLASS 21. ELECTRICAL APPARATUS, MACHINES, AND SUPPLIES.) LAVERN S. SLAGLE, doing business as Slagle Radio Company, Fort Wayne, Ind. Filed July 27, 1925.



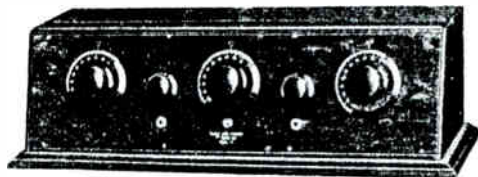
The subject of the illustration is fanciful.

Particular description of goods.—Radio Receiving Sets Assembled, Tubes, Loud Speakers, Batteries, and Battery Eliminators.

Claims use since Apr. 25, 1925.

The Slagle Radio Company's registered trade mark.

Wait--'till You've Heard the Slagle!



Is There A Best Radio Receiver?

Only deliberate comparison of various receivers can determine. The ideal receiver is a musical instrument—that's a Slagle! Its vast reserve of power is operated by one simple control. Go to a Slagle dealer and ask for a demonstration. It will mark the end of your quest for the best in radio achievement.

SLAGLE RADIO COMPANY

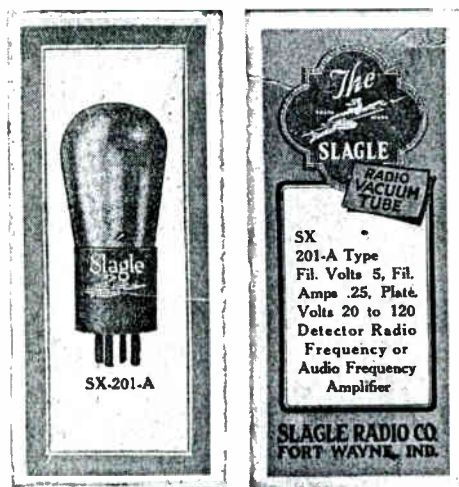
Fort Wayne

Indiana

61

SAY YOU SAW IT IN QST—IT IDENTIFIES YOU AND HELPS QST

Slagle advertisement of the model IV for QST, September 1925
From the collection of Paul Gregg.



This Slagle SX-201-A tube carton in the colors of black, blue, orange and off white. The Slagle SX-112 tube carton is in black, red, purple, and off white. It is not yet known what colors are on the Slagle SX-171 tube carton.

SLAGLE

Radio Company

530 Masterson Ave.

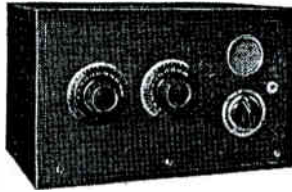
Fort Wayne, Ind.

PRICE LIST

FEBRUARY, 1924

TO PROMISE A ONE DAY
SERVICE IS ONE THING—
TO LIVE UP TO THAT
PROMISE MEANS EXTRA
HOURS, EXTRA WORK,
EXTRA EXPENSE

BUT THE COMMENTS OF
OUR CUSTOMERS HAVE
SHOWN US THAT IT'S
WORTH ALL THE EFFORTS
THAT WE MAKE



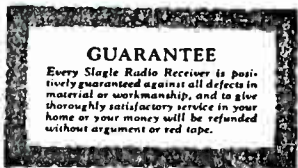
One Day Service

This is possibly Lavern Slagle's first catalog. It lists radio tubes, batteries, loudspeakers, dials and other components. The only brand radio it mentions is a Grebe CR-12 which is illustrated on the back cover with a notice to write to the company for literature on other receiving sets. It's not sure what the origin is of the one tube receiver featured on the front cover but it could have been one of earliest sets that Slagle made.

This "Hook-Up" Makes Money For You

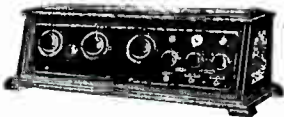


Model VII. This compact little 5-tube set is the wonder of all who see it and hear it. Simple, plain cabinet, that looks well anywhere. Full 5-tube reception that brings the programs in, as well or better than many higher priced sets. Here's a quality set at the lowest price you can expect. Use it for a leader. You'll not be disappointed. List \$70 without accessories.



GUARANTEE

Every Slagle Radio Receiver is positively guaranteed against all defects in material or workmanship, and to give thoroughly satisfactory service in your home or your money will be refunded without argument or red tape.



Model V. Free of noises for which sets are often responsible. Low battery consumption, extreme sensitivity to signals, sharp, clean tuning, plenty of volume, simple and complete control, full, rich tone values, and beautiful appearance are some of the points that make this set sell. It's real value. List \$150 without accessories.

There is real money in a radio store or department when properly conducted. This is the story of a "hook-up" that gives you real material to work—a common sense plan that gets results and is easy to follow.

A COMPLETE line of radio sets; designed right, built right, priced right and supported by a clean cut guarantee that means just what it says. . . . That's the beginning.

We support our trade with a powerful, hard-selling advertising campaign. It's aimed at your prospects. Through leading farm journals and newspapers it is working up business for you all the time. That's not all.

Our dealers get an attractive assortment of window streamers and easel cards for window and counter. That's not all, either.

We help you go after your prospects by mail with letters and interesting literature. We help you make sales, and we keep in touch with owners afterwards, boosting your game all the time.

The Slagle line is sold through recognized channels of distribution with liberal margins of profit. Let us tell you more of this "hook-up", what it will do for you and where you can connect with it.

SLAGLE RADIO COMPANY
Fort Wayne, Indiana

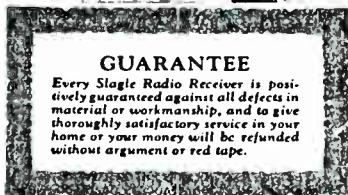
A set is no better than its accessories—*Sell good ones*

Slagle Radio

Slagle Advertisement for Radio Retailing, July 1926.

Get This Color Chart of Slagle Models

*A complete line of quality sets . . .
correct price range . . . strong sales
plan . . . with plenty of help for you*



THE full line of Slagle models is shown in our 4-color chart just off the press. Full descriptions of the sets are given together with an outline of our complete plan for helping you sell. Here is a well-balanced line of high quality sets selling from \$70 to \$350; backed by a solid, conservative company in the business 15 years; sold by a carefully organized system of cooperation that gives real results. Send for the beautiful color chart today.

SLAGLE RADIO COMPANY
Fort Wayne, Indiana

Slagle Radio

Slagle Advertisement for Radio Retailing, August 1926.

1926 Catalog

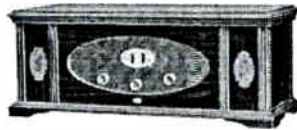


Quality



MODEL XII

This compact high quality five tube set will appeal immediately to those who wish to get just-class performance with a limited outlay. The plain mahogany cabinet looks exceptionally well and yet allows us to get our real value into the actual radio equipment. The construction, workmanship and material used in this set is the very best and in comparative tests the Model XII excels everything in its price class. Price \$79.00 with battery cable but without accessories.



MODEL XX

Five tube radio frequency set by latest and finest achievement of Slagle engineers, embodying complete shielding and most construction, giving desired sensitivity with perfect tone quality. The cabinet is genuine walnut with matched burr oak-veneer top and side panels. The extreme panel is also matched burr walnut. Extreme simplicity of control features this model. Systems are selected by turning knobs at the right and left sides of control panel. Band readings appear through the window in the panel. Volume is controlled by adjusting the cover knob. Model XX is equipped for the use of a power amplifier tube in the last audio stage if desired. Price \$150.00, without accessories.

Performance

Slagle Radi



MODEL XX CONSOLE
(Closed)

This beautiful walnut Lane de embodies the same we design and construct in the Model XX Cabinet. The rich dark-tone finish and the attractive design harmonizes with the most perfectly appointed home. The speaker unit and stand amplifying equipment with which this model is equipped have been designed especially to meet the requirements of the set.



MODEL XX CONSOLE
(Open)

Quality in a radio console, above everything else and in prominence, this model is an offering a set that excels in workmanship and performance. This five tube audio frequency set is completely shielded with perfect air quality. Your investment in a Model XX Console will bring the greatest possible return in satisfactory performance and beauty. Price \$185.00 without accessories.

Fort Wayn

o Company



MODEL XXV CONSOLE
(Closed)

In presenting the Model XXV Console, we have endeavored to combine the finest art work with exceptional radio performance. Hand-crafted oak gives this Period model a richness that is found only in the finest turn of the



MODEL XXV CONSOLE
(Open)

Not only have Slagle designers built in the Model XXV, a Console of rare beauty but they have incorporated a radio frequency set that is selective and efficient. This model is regularly equipped to operate from the light socket without employing batteries so regular but may be supplied for battery operation. Price with bench and socket power but without tubes \$425.00.

e, Indiana

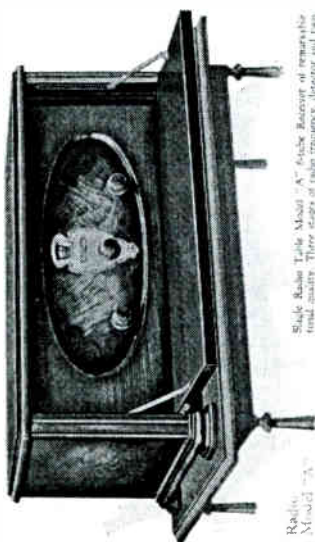
1927 Catalog

Slagle

Radio



SLAGLE DIVISION
8107 WAYNE INDIANA



Slagle Radio
Table Model "A"

Slagle Radio Table Model "A" Radio Receiver of remarkable quality. Features 5 vacuum tubes, including detector and transformer of audio. Power to be used by standard Edison or Edison-Ferranti audio transformers. Single dial control. A "perfect" hi priced set. Without accessories, price \$150.00.

Slagle Quality Insures Exceptional Performance

Long before the public dreamed of radio as a means of entertainment, the makers of today's Slagle Receivers were building radio equipment. The Slagle policy has always been highly selective only the finest materials and craftsmanship are used.

Slagle engineers are never handicapped by the possibility of certain operations or materials costing too much. Slagle Radio, from designing room to testing table, is a quality product in every detail in engineering, material, assembly, cabinet work and performance.

In addition to the many improvements worked out by Slagle experts, the Slagle line enjoys complete license coverage under the patents of the Radio Corporation of America, the Westinghouse Company, the General Electric Company (Super heterodyne excepted), the Lator Corporation, the Hazeltine Corporation and the Technolyne Corporation.



Single Radio
Console Model "B"

This model is available equipped with either the Single 6-tube circuit as described on preceding page or with the now famous 9-tube Technylone circuit equipped with built-in Newcomb-Hawley speaker.

The Single 6-tube All-Electric Receiver operates on outside antenna and uses dry socket power throughout. Without tubes or antenna equipment, but otherwise complete, the price is \$309.00.

The same model equipped with 9-tube Technylone circuit, with built-in-loop, battery operated, is priced at \$360.00, without tubes or batteries.

Single Receivers Provide Enjoyment of Radio

The ideal Radio Receiver is capable of bringing in local quality—will absolutely separate the various stations to cut through local broadcasting and reach out for

The ideal Radio Receiver operates without howls or of unending entertainment. All Single Radio Receivers conform to this ideal.



Model "C"
Table

Provide The Utmost In Radio Entertainment

Local and distant stations with equal clarity and perfect volume lengths to a fraction of a meter, making it possible to listen to desirable programs wherever they may be.

These receivers are specially designed and built to measure up to the highest standard.



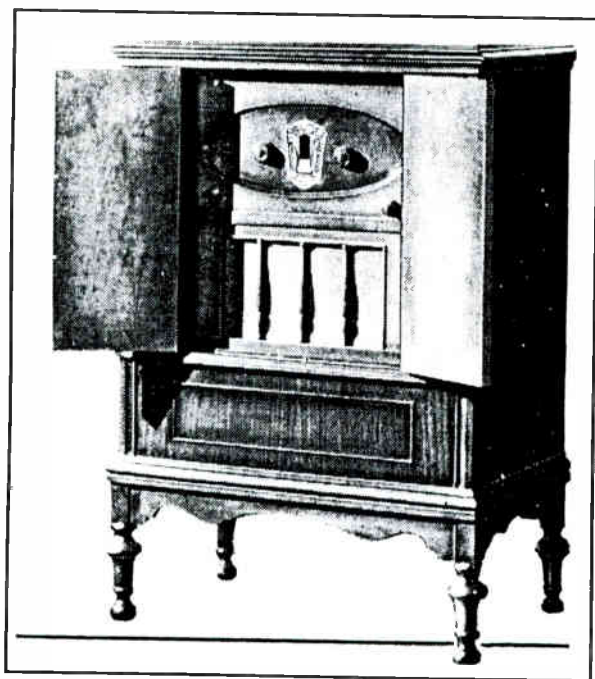
Single Radio
Console Model "D"

The fruit of many years of research and development is represented in this master piece of radio engineering. The Single 10-tube Technylone has no superior in any single quality demanded of a radio receiver. Its combined qualities make it the outstanding set in the radio world. Operates on dry socket power, without aerial or ground. Employs push-pull amplification. Unsurpassed in total quality, sensitivity, selectivity, clarity and volume. Equipped with built-in-loop and Newcomb-Hawley speaker. Cabinet of beautiful burl-walnut, hand-dressed, highlighted and dune-bly made. Price complete (except tubes), \$560.00.

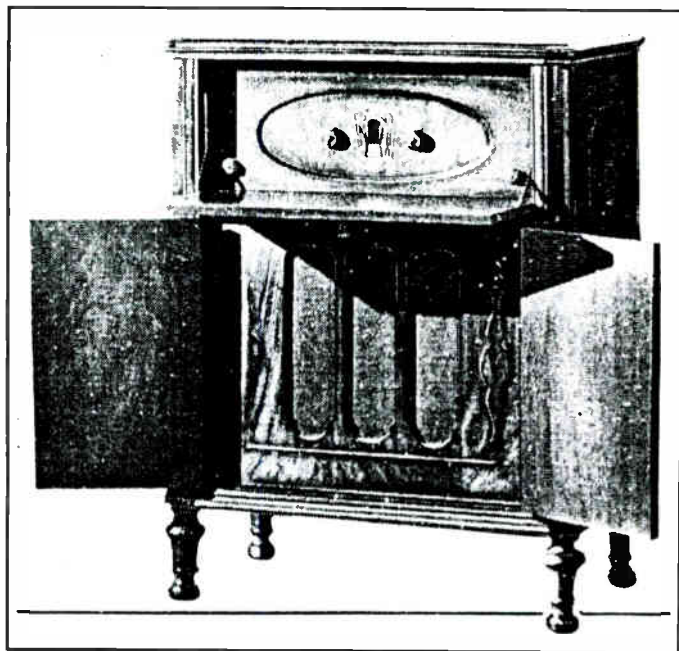


Model "E"
Table

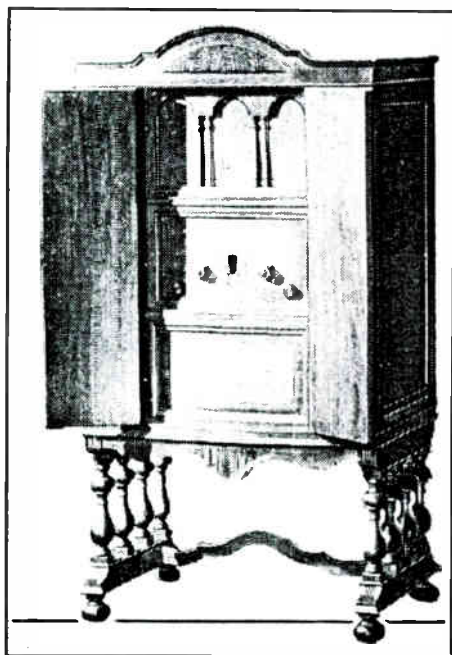
1928 Catalog



Model Ten-29A

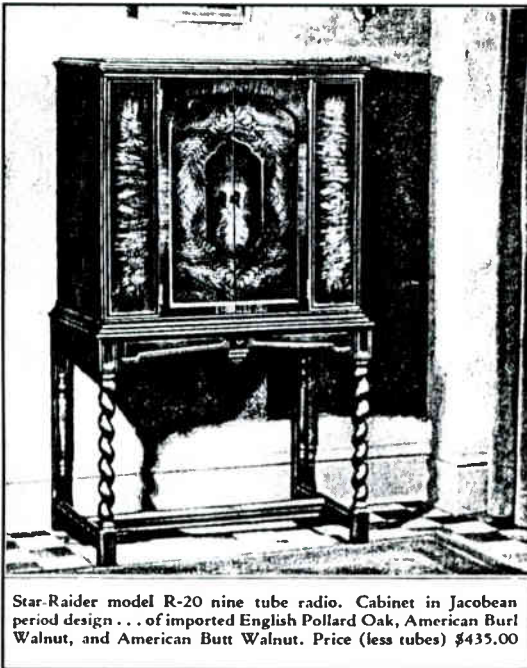


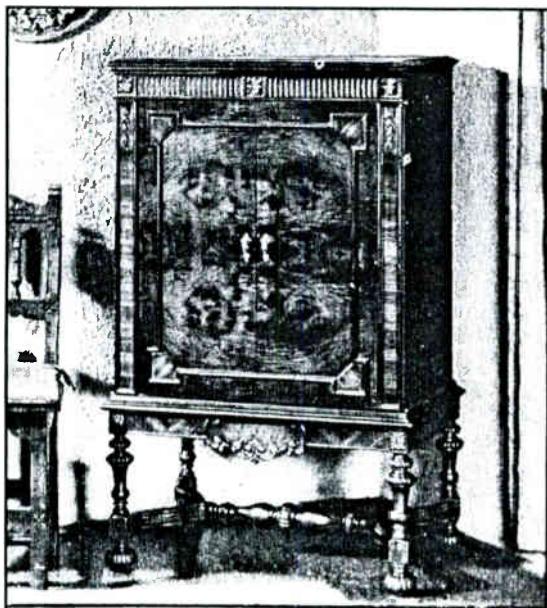
Model Ten-29B



Model Ten-29C

Continental Radio Corporation “Star-Raider” 1929 Catalogue

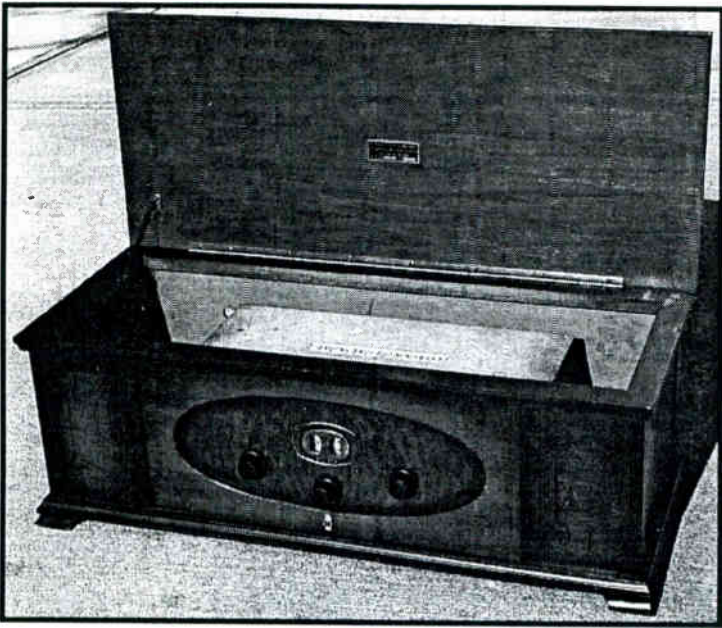




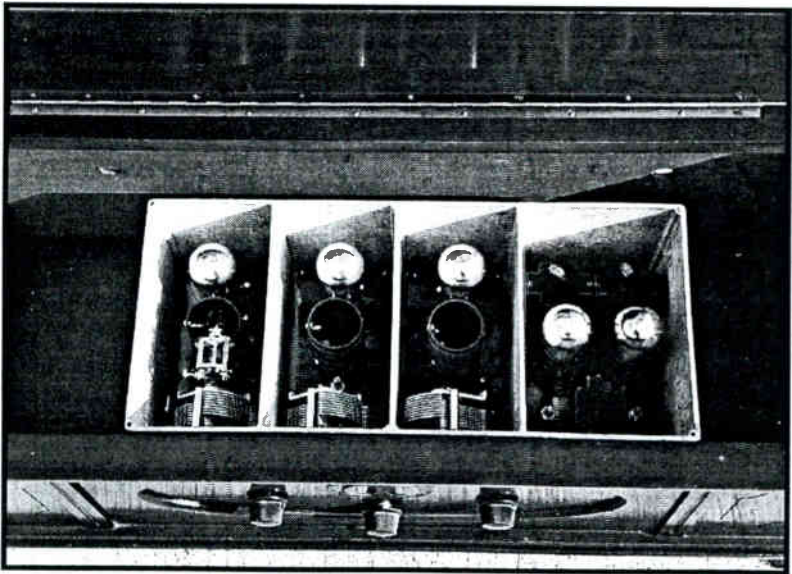
Star-Raider model R-30 nine tube radio. Cabinet in Elizabethan period design . . . of genuine Australian Walnut, Acacia, and Rare Zebrawood. Price (less tubes) \$525.00



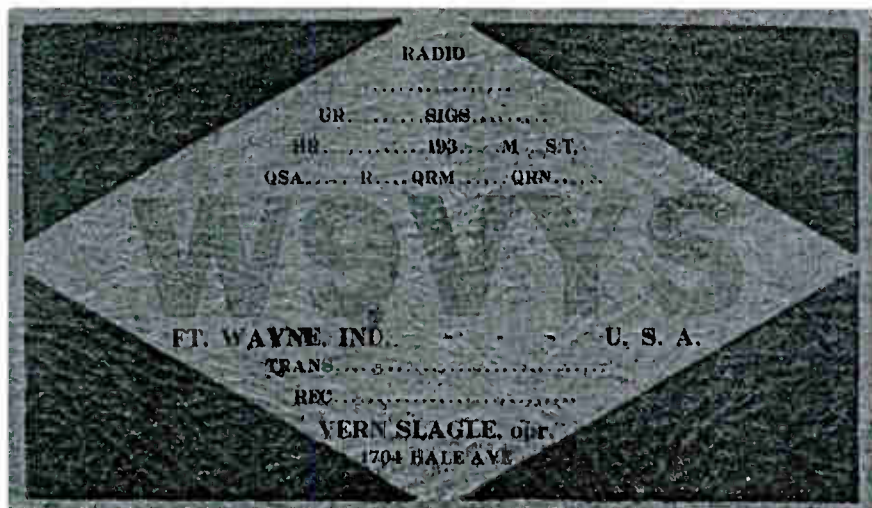
Star-Raider model RP-40 nine tube Radio-Phonograph combination. Cabinet of English Renaissance period of imported English Pollard Oak, Burl Walnut, and matched American Butt Walnut. Price (less tubes) \$725.00



Front view of 1926 Sagle XX.



Top view of Sagle XX with the top cover of the chassies removed.



Vern Slagle's QSL card, in the colors of red, green and gold, proclaim his call letters as "W9VYS" in bold print. The card shows his address as 1701 Hale Avenue and dates from the mid 1930s.

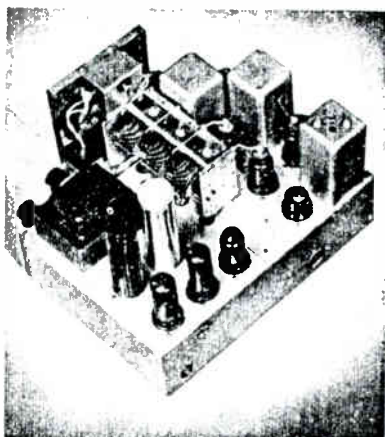


Lavern Slagle's former residence at 530 East Masterson Avenue where the Slagle Radio Company began. This photograph was taken by former IHRS member Del Barrett.

"RADIOS OF TOMORROW"

By

SLAGLE RADIO COMPANY FORT WAYNE, INDIANA



Model 735

The Model 735 is one of the finest radios ever to leave the Slagle Laboratories. It is built on a heavy steel base, cadmium plated, and floating on rubber. All coils are oversize and wound on Bakelite forms, instead of the usual paper, to eliminate possibility of characteristics changing with atmospheric conditions. Each coil is individually shielded in a heavy non-magnetic Enaydo metal can. The power transformer has an unusually big iron core as a safety factor in taking care of changes in line voltage. The dial drive, while simple, is fool-proof and unusually smooth. Each part in the Model 735 is the finest obtainable.

Seven of the very latest metal or octal base glass tubes.
Complete SHORT-WAVE and BROADCAST coverage — from 510 kilocycles straight through to 18,000 kilocycles.

Gets everything out the air. Foreign Reception is absolutely assured.

Extreme sensitivity and selectivity.

The finest tone that it is possible to obtain through a heavy electro-dynamic speaker.

More volume than you will ever require.

Uses a special superheterodyne circuit with automatic volume control.

Full tone control.

Beautiful illuminated airplane dial.

And many other features which place the Slagle Custom-Built Radios far ahead of other sets now on the market.

The coil assembly is the best which can be built, it is even used on our Special Custom-Built Model 35-19.

Chassis dimensions: 3 1/2 x 7 1/2 x 11 inches. Shipping weight 39 lbs.

Chassis, tubes and 8 in Electro-Dynamic Speaker.....\$94.50

Chassis, tubes and 10 inch Electro-Dynamic Speaker..... 97.50

Model 735 Chassis in Beautiful V-Matched Walnut Cabinet, complete with tubes and 8 inch dynamic speaker..... 99.50

Model 935 Chassis — A magnificent receiver (similar to Model 735) with everything; latest circuit; 9 metal or octal base glass tubes, covers broadcast and all short-wave bands; of plane dial with bands individually illuminated; Shadow tuning; band spreading; push-pull output, variable High Fidelity. 12-inch electro-dynamic matched speaker and all other features of the Model 735.

Chassis, tubes and 12 in. Electro Dynamic Speaker 144.50

Model 935 Chassis in Beautiful Walnut Console Cabinet

Complete 174.00

This catalog is from Lavern Slagle's attempt to get back into the radio business in 1935. All of these radios were produced by other manufacturers and relabeled as Slagles. It's doubtful if any of these "Slagle" radios were ever sold.

4 Tube AC - DC

Short Wave and Standard Broadcast 2 Bands - 75 to 550 Meters

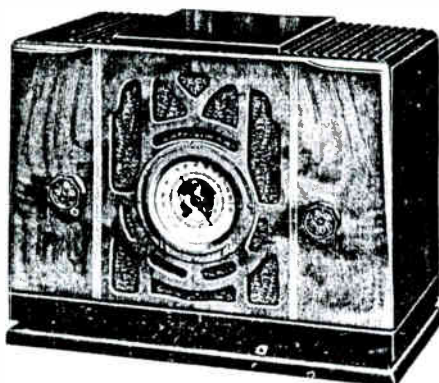
Unquestionably one of the finest 4 tube AC-DC Radios ever produced. It has everything--advanced circuit design giving maximum efficiency on both short wave and standard broadcast--glorious tone--volume to spare.

Dual Wave, 75 to 550 Meters

Receives Amateurs, Airplanes, Police Calls and Standard Broadcast.

The cabinet is faced with beautiful butterfly walnut with two vertical strips of inlaid marquetry on each side of the speaker grill. Illuminated Airplane dial. Electro Dynamic Speaker. Uses 1-6C6, 1-6D6, 1-43 and 1-25Z5 new type tubes. Built-in antenna.

For 110 Volt AC or DC operation. Width 10 inches. Height 8 3/4 inches. Depth 5 3/4 inches. Shipping Weight9 pounds

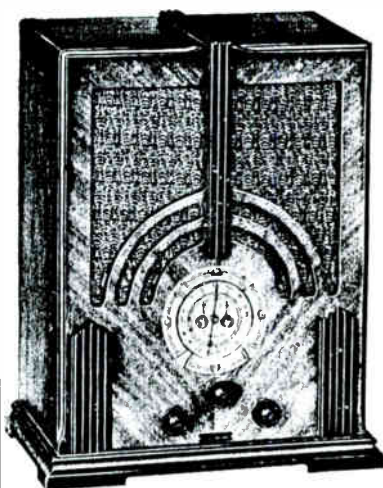


Model A-354

Price	\$27.50
Chassis with tubes and speaker only	
Price	25.50

For the Best in Radio Look to Slogle

Model B-354



4 Tube AC Dual Wave Short Wave and Standard Broadcast 2 Bands - 75 to 550 Meters

This modern 4 tube TRF incorporates latest features of design and construction. Performance is excellent and will equal many 5 tube receivers. Exceptional tonal fidelity with full 6 1/2 inch electro dynamic speaker. Cabinet of V butt walnut is artistically designed and highly polished. Dual Wave--75 to 550 Meters. Receives Amateurs, Airplanes, Police Calls and Standard Broadcast. Uses 1-6C6, 1-6D6, 1-42 and 1-80 new type tubes. Has illuminated Airplane Dial. For 110 Volt AC 60 Cycle Operation. Width 10 1/2 inches. Height 13 3/4 inches. Depth 6 1/2 inches. Shipping Weight 12 pounds.

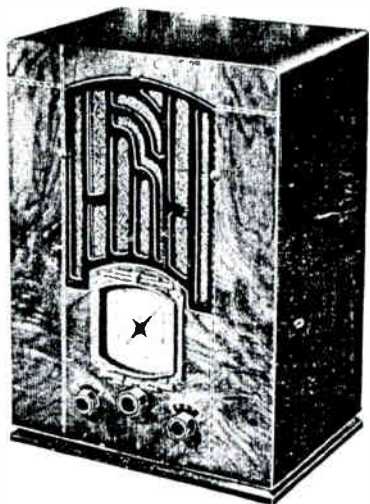
Price	30.00
-------	-------

Chassis, tubes and 6 1-2 inch Electro Dynamic Speaker, only	28.00
---	-------

5 Tube AC Superhetrodyne
All Wave - 3 Full Bands
18 to 555 Meters

Foreign and American Reception

Gets world wide reception Europe-South America-the Orient-as well as U. S. from Coast to Coast, Amateurs, Police Calls, Ships at Sea, Airplanes and Standard Broadcast. 3 Full Bands, 18 to 55, 55 to 175 and 175 to 550 Meters. Latest dual purpose tubes and advanced circuit design give 8 tube efficiency with 5 tube economy. Separate coils for each wave band. The matched 6 1/2 inch electro-dynamic speaker reproduces faithfully with full glorious tones at full volume. Full Automatic Volume Control. The cabinet is handsomely designed with butterfly walnut and inlaid marquetry strips, polished to a brilliant finish. Beautiful rectangular illuminated Airplane Dial. Uses 1-6A7, 1-6D6, 1-75, 1-42 and 1-80 tube. Height-14 3/4 inches, Width-10 3/4 inches, Depth-7 3/4 inches. Shipping Weight 18 pounds. 110 Volts AC 60 Cycle.



Price

47.50

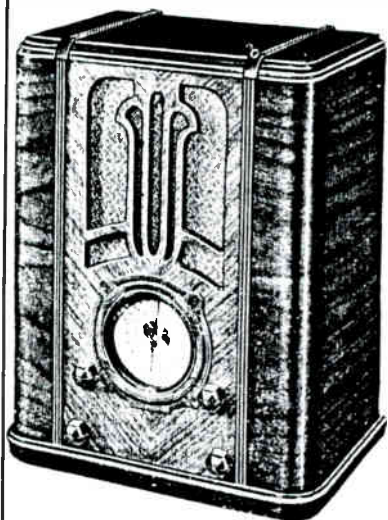
Model 355

Chassis with tubes and 6 1/2 inch electro dynamic speaker

45.00

With 8 inch electro dynamic speaker

47.50



Model 356

6 Tube AC Superhetrodyne
All Wave - 3 Full Bands
18 to 555 -Meters

A triumph in brilliant radio engineering and cabinet craftsmanship. Gets world-wide reception- Europe -South America -the Orient-as well as U. S. from Coast to Coast. Amateurs, Police Calls, Airplanes, and all Standard Broadcast. Latest manual tone control, automatic volume control and supersensitive reception. Beauty of tone and far reaching power are capably handled by the full 6 1/2" matched Electro-dynamic speaker. 3 Full Bands - 18 to 55, 55 to 175 and 175 to 555 Meters. Uses New Octal Base Glass Tubes or Metal Tubes - 6A8, 6K7, 6H6, 6F5, 6F6 and 5Y3. Illuminated 5 inch Airplane Dial. Separate Coils for each band. The cabinet is breath-taking in it's beauty, with V-matched walnut center and horizontally grained walnut that extend in a graceful curve from the front to the back. Width 13 inches, Height 16 1/2 inches, Depth 8 1/2 inches. Shipping Weight 20 pounds. 110 Volts AC 60 Cycle.

Price

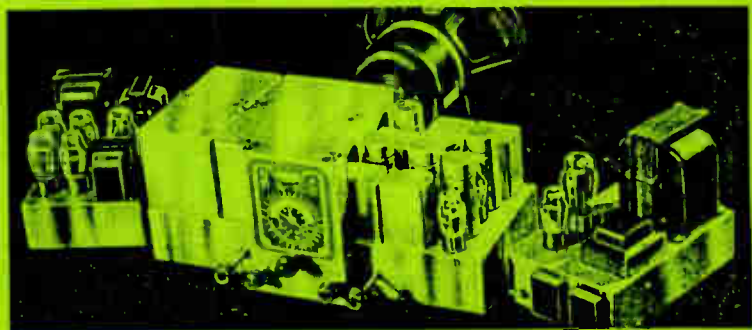
67.50

Chassis with tubes and 6 1/2 Electro Dynamic Speaker

63.50

With 8 inch Electro Dynamic Speaker

65.00



TUBE EQUIPMENT

Tuner: 6-78, 3-76, 1-85, 1-6C5, 1-80.

Amplifier: 5-42.

Power Pack: 1-5Z3, 1-84.

DIMENSIONS

Tuner: 20½ in. Long, 11 in. Wide, 9 in. High.

Amplifier: 12 in. Long, 7 in. Wide, 9 in. High.

Power Pack: 12 in. Long, 7 in. Wide, 9 in. High.

The magnificent performance of this set has thrilled hundred who have heard it and when a set can do this, it must have "Everything." Its Hundred Pound tuner, power, amplifier and Giant Jensen Speaker gives an all inspiring "Cathedral Tone." Its high fidelity and bass tone control give a range of tone never before achieved in radio reproduction. Single dial Band Spread, the complete elimination of background noise. **FOUR (4) BAND RECEPTION**—18-5.5 Megacycles. Foreign and local broadcast in addition to Airplane and Amateur Bands. 5.5-1.6 Megacycles—Amateur, All Police Calls and Airplane Bands. 1600-540 kilocycles Standard Broadcast Band and new high fidelity bands. 390-150 kilocycles European Long Wave Broadcasts and American Aircraft, Beacon signals and Weather Reports. All available through simple switch turn-over.

2 STAGE PRE-AMPLIFIER—Insures tremendous sensitivity for foreign reception tuning increases image, making actual sensitivity so great that the most laboratory instrument cannot measure it.

2 STAGES IF SYSTEM—Amplifies high "Q" coils and air tuned condenser. 6 tuned circuits in IF—2 tuned circuits in rf insures the utmost in good selectivity.

20 WATT OUTPUT—Enough power to fill auditorium, sufficient output to be heard Tremendous Distance, thus insuring ordinary reception of the finest type and the utmost purity of tone.

AUTOMATIC VOLUME CONTROL—A special design, extremely smooth in operation and unusually effective especially on short wave reception.

TONE CONTROL—World Premier Construction which, when it increases the bass, does not eliminate the high notes which with its high fidelity switch gives an actual audio range that is simply tremendous in its beauty and purity.

GIANT JENSEN SPEAKER—The same type as is used in theaters. This, plus the separate audio amplifier fully powered by 7 tubes for tone alone, as many as are used in an average radio altogether, gives a depth and range that will prove a real thrill, even to the accomplished musician.

BEAT OSCILLATOR—A switch at back of tuner brings it into the circuit when desired for sharp tuning. It is absolutely essential for proper reception of foreign stations as is indicated by its use on all CW radio telegraph.

CHASSIS—Its appearance in perfect keeping with the superb technical specifications. A 12 tube tuner, 5 tube amplifier and 2 tube power pack made of 16 gauge steel is indubitably cadmium plated and silver lacquered. Rigid, Strong and Beautiful. Also features a single unit RF coil system, air tuned IF assemblies, 4 gang low loss and low minimum tuning condenser, the entire tuning unit floated on five rubber, metal covered for core plate protection. Head phones and phonographs included as well as 3-way antenna connection for the new Double Doublet and shielded installation.

Shipping weight, 112 lbs., Console, 160 lbs.

Model 3519 Tuner, Amplifier, Power Pack Speaker and Nineteen Tubes,	\$350.00
Model 3519 Console, complete	\$125.00

Bruce Kelley 1914-1997



Kelley, Bruce L. (W2ICE)

BLOOMFIELD: Bruce Kelley, 82, of Main Street died November 6 at his home. A Kodak retiree, Mr. Kelley was a co-founder of the Antique Wireless Association and a member of the Rochester Amateur Radio Association.

He is survived by his wife, Helen of Bloomfield, a daughter, Karon Johnson of Colorado; 2 sons, Mark Kelley of Oregon and Keith "Tim" Kelley of California; a stepson, Andrew Hall of North Chili; a stepdaughter, Charlotte, Morgan of Tennessee and several grandchildren. He is also survived by his brother and sister-in-law, Neil & Olga Kelley of New Hampshire.

Friends may call at the Kennedy & Son Funeral Home, 2 South Ave. Bloomfield, Wednesday from 3-5 & 7-9 p.m. A service celebrating Bruce's life will be held at St. Peter's Episcopal Church, Thursday afternoon at 2. Those who wish may contribute to the Ontario Yates Hospice, 756 Pre-emption Rd., Geneva, NY 14456 or to the Museum Fund of the AWA, c/o Dexter Deeley, 8 Briar Circle, Rochester, NY 14618.