

Radio Guide

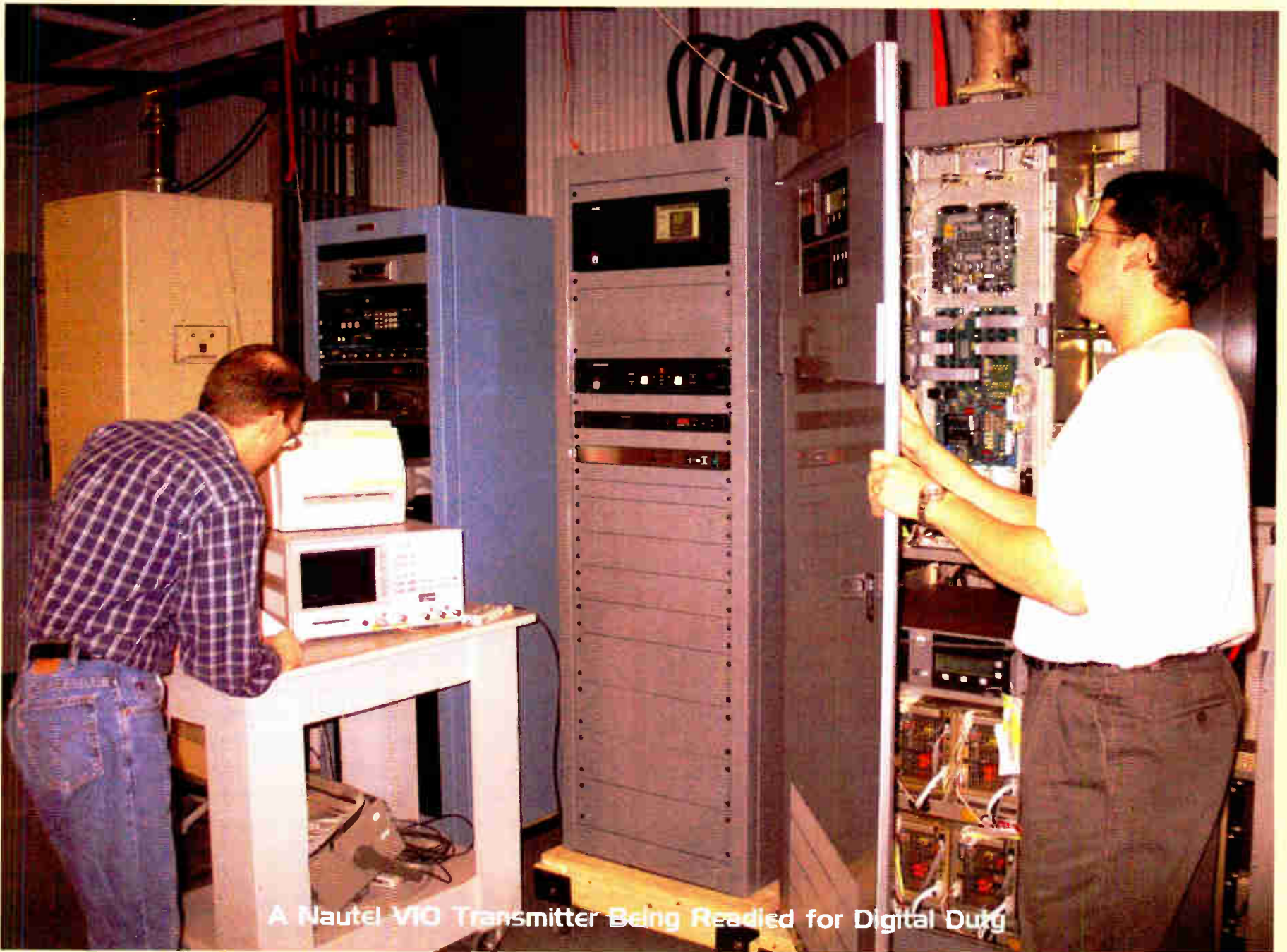
Radio Technology for Engineers and Managers

www.radio-guide.com – www.radio-classifieds.com – www.olderadio.com

December 2004

Volume 12 Issue 12

Planning the Digital Conversion



A Nautel V10 Transmitter Being Readied for Digital Duty

Six Ways to Tomorrow

Page 4 – Consider this chilling scenario: You – an FM station's chief engineer or engineering contractor – are called into a management meeting. You are informed and queried, "We have decided to implement HD Radio. How much will it cost and when can we be on the air?"

Yikes! Where to start! Well, as it turns out, you need to start at the end – the transmission plant. Proper analysis of your existing transmission configuration will determine the nature of your HD Radio upgrade

Do Fence Me In

Page 8 – Proper, secure fencing and entry points are a necessary part of your overall site security management. Perhaps that is not how you might feel while fumbling with a lock and key on a cold, rainy night, but better that than the aftereffects of vandalism, right?



**\$10,000 featured processors
for a fraction of the price.**

www.stolen-audio-processors.com
where processors are a steal

ONE product, TWO solutions!

It's **AUTOSWITCH**, an automatic audio switcher!

AutoSwitch eliminates that annoying "digital echo" in DJ headphones by switching the headphones from Air to Local audio when the mic is on.

It's also an automatic silence sensor, and can switch your audio to a backup source if the main source fails.

Now in stock!

NEW!



**Broadcasters
General Store**

Call BGS for great deals on Henry products! www.bgs.cc

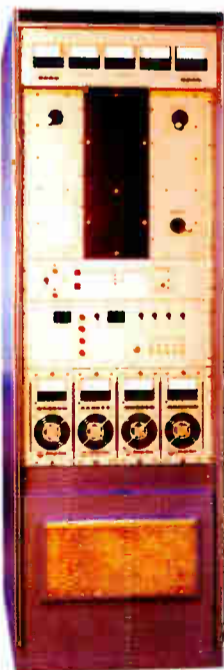
352.622.7700

We Sell At Least One ECO FM Transmitter Per Day!!

ENERGY-ONIX ECO Transmitters are the most popular FM Transmitters ever built. There are at least 1000 of these transmitters operating world wide.

They utilize one zero bias triode operating in a grounded grid mode and incorporate a solid state driver and frequency agile exciter. Their reliability is unprecedented and their prices are realistic.

Do you want to know more details? Contact our office or your neighbor — he must have an ECO transmitter. Or, better yet — visit our modern 35,000 sq. ft. factory in beautiful "Upstate" New York and "Kick the Tires."



HERE ARE SOME OF THE REASONS

- ◆ Honest Prices
- ◆ Understandable Control System
- ◆ Single, Long Life, Triode in Grounded Grid Configuration
- ◆ No Neutralization Required
- ◆ Minimum Plate Voltage (7500 Volts for 25KW Output)
- ◆ Solid State IPA with Loads of Reserve
- ◆ Automatic Power Output Control
- ◆ VSWR Foldback and Trip Control
- ◆ Extremely Long Tube Life
- ◆ Personalized Technical Support from Competent Engineers who Designed These Transmitters
- ◆ Models Available at 4, 6, 8, 10, 15, 22, 25, 30, 40 & 50KW
- ◆ Manufactured in our U.S.A. Factory



ENERGY-ONIX
BROADCAST EQUIPMENT CO., INC.

"The Transmitter People"

P.O. Box 801, 1306 River St., Valatie, NY 12184
VOICE: 518-758-1690/888-324-6649 FAX: 518-758-1476
E-MAIL: energy-onix@energy-onix.com
WEB PAGE: www.energy-onix.com

– Contents –

Six Ways to Tomorrow 4
Six solutions for FM HD Radio implementation.

Survival Guide 7
How not to get eaten alive in Radio's food chain.

Security Guide 8
Do Fence Me In

Audio Processing From the Ground Up ... 12
Part 18 – Getting the Right Sound

Tower Topics 14
Part 3 – Towers Meet Mathematics

FCC Focus 16
Keeping the Antenna System Legal

The Worst I've Ever Seen 19
Curious Solutions to Technical Problems

Broadcaster's Desktop Reference 19
Back issues of Radio Guide available on CD.

Radio.edu 22
Remote Broadcasting on Campus – A Primer

Things You Need to Know 24
Dealing With the Flu Season

Practical Engineering 26
High Voltage is Not Your Friend

Tips From the Field 28
Generator Maintenance: Replacing the Starter

EAS Q&A 30
Answers to Your EAS Questions

Tech Tips 31
Keeping Stuff Out of Your Transmitters

Gear Guide 32
Automation – Digital Audio – Studio Control

Consultant Guide 35
Radio Consulting Engineers

Service Guide 36 & 37
Products and Services for Radio

Final Stage 38
Date Book - Advertiser List - Industry Updates

Radio Guide

PO Box 20975, Sedona, AZ 86341
 Phone: 928-284-3700 Fax: 866-728-5764

Ray Topp (Publisher)
 Email: radio@broadcast.net

Barry Mishkind (Editor)
 Email: editor@radio-guide.com

Radio Guide, ISSN 1061-7027, is published monthly, 12 times a year, by Media Magazines Inc., PO Box 20975, Sedona, AZ 86341. Radio Guide is copyright 2004, Media Magazines Inc., and may not be copied, reproduced, or stored in any format, without the written permission of the publisher.

Radio Guide

Volume 12 Issue 12
 December 2004

Controlling What We Can

When I was young, we had horses. One lovely morning, my dad and I headed home after a "break fast ride," a lovely morning meal out on the trail. The horse, however, wanted to go her own way. No matter how I adjusted the reins, the horse just kept pulling, trying to move in a different direction.

Eventually, I noticed the horse was moving down the trail very nearly sideways; to my horror, her rump was swinging around toward the "front." Only a few moments later, that rump met a cholla cactus. In a flash, the horse took off ... and I was left lying awkwardly in the dust!

Could this be a metaphor for what is happening with digital radio?

As we prepare to enter the new year, things are "happening." In 2004 the spigots opened, and some real money began flowing into the infrastructure of radio stations – much of it to buy and install digital gear.

You may be a "true believer," unsure, or a cynic about the quality of analog to digital (and back) conversions, transmission or audience acceptance. Nevertheless, a transition is going on in radio. Some prefer to debate and criticize the actions and motives of others with assumptions, even nastiness. We may even see an effort to tie up digital radio in court hassles.

Meanwhile, more than a few have become adopters of the technology.

Sure, many still have reservations about the technology, predicting a "wave of interference" from IBOC sidebands. Others question the economics of buying "an expensive receiver to listen to ten spots in a row "in digital clarity."

But the bottom line is that we must learn as much about digital radio as possible, so we can discuss it from an informed viewpoint, not an emotional one.

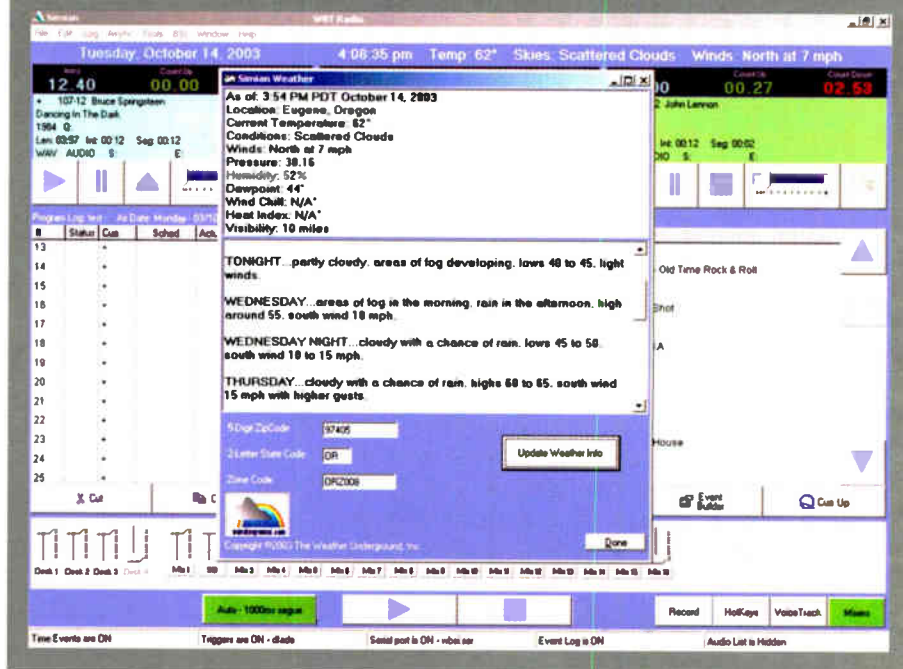
This is much better than letting your horse's rump get hit by a cholla bush!

Simian 1.6 is the result of input from numerous BSI users. Thanks to their input, Simian now includes an on-screen weather display that updates from the internet.

The new Simian also includes sophisticated new Voice-Tracking functionality allowing Voice-Tracking days in advance, even from remote studios, and an improved ability to verify logs before air play.

Simian is still the most feature-rich automation system in the industry and provides powerful, reliable broadcast automation for stations in the US and around the world.

New Simian 1.6



Simian broadcast automation

Just \$1499 including technical support and updates for 1 year

Thousands of users have discovered how easy and versatile BSI Simian really is.

Test and try before you buy.



Broadcast Software International
 1925 Bailey Hill Road, Suite A
 Eugene, OR 97405
 www.bsiusa.com
 888-BSI-USA1 (888-274-8721)
 info@bsiusa.com

Six Ways to Tomorrow

Six Solutions for FM HD Radio Implementation

by Jeff Johnson

[CINCINNATI, Ohio - December 2004] Consider this chilling scenario: You – an FM station's chief engineer or engineering contractor – are called into a management meeting. You are informed and queried, "We have decided to implement HD Radio. How much will it cost and when can we be on the air?"

Yikes! Where to start! Well, as it turns out, you need to start at the end – the transmission plant. Proper analysis of your existing transmission configuration will determine the nature of your HD Radio upgrade.

Here are six possible solutions, one of which will be best for a particular situation. (Until recently, five methods of implementing FM HD Radio had been available; an additional method has now proven highly beneficial for some stations.) When one is chosen, bidding and "roll out" can proceed.

SPACE COMBINING

The first two upgrade paths utilize "space combining" – that is, combining in the RF field after the analog and digital signals have been radiated by separate antennas or by interleaved arrays (Either way, the digital signal is radiated *separately* from the analog signal).

Although now approved by the FCC, space combining has its drawbacks. First – the added wind, weight, and possible ice loading from the additional elements. Second – tower space constraints may limit or preclude additional hardware. Third – radiation patterns must match or the ratio of analog to digital signal strength may deviate beyond acceptable limits at certain locations.

An interleaved array of identical elements can be seen to be optimum, however use of a differing auxiliary antenna for the digital signal is unlikely to produce an identical pattern. Consider the instance of a multi-bay main analog antenna paired with a single bay auxiliary antenna for digital. Close-in, lobe nulls of the analog antenna may result in locations where the digital signal is stronger than the analog causing interference.

According to engineers at Harris, space combining "cannot guarantee the correct Analog / HD Radio signal ratios and duplicate coverage - tracking - even with interleaved antennas due to the opposite polarization rotation sense of the interleaved elements."

THE DUAL INPUT ANTENNA SYSTEM

A third method is via a dual-input antenna or system. With this method, all elements radiate both the digital and analog signals, but with an opposite circular polarization sense. The vagaries of space combining are reduced since the patterns are equal, but the signal ratio in the far field is still subject to variations due to the unequal addition of multipath components from the two different polarizations for the analog and HD Radio signals.

Perhaps the dual input method outlined by Bob Surette of Shively at recent NAB engineering sessions – that of "backfeeding" a master antenna combiner with the digital signal – is the simplest. This is available only to a station on a master antenna system, however.

ERI has introduced a dual-input side mount antenna wherein all elements are energized with both analog and digital signals. This antenna also mini-

mizes, but does not eliminate, space-combining problems and requires no additional vertical tower space. However it doubles the number of bays and, being half wave spaced, presents a different radiation elevation pattern.

These first three methods avoid significant efficiency loss, requiring only a small digital transmitter, however, they come at the expense of greater tower loading and/or the uncertainties of space combining.

LOW LEVEL

The fourth and fifth methods are the well-known low-level and high-level RF combining. With these methods, assuming a suitably broadband existing antenna, no changes are required on the tower. However, significant inefficiencies are encountered generating or combining the RF power.

Low-level combining takes place before the final RF amplification. Since the combined signal has amplitude components introduced by the digital portion of the signal, a linear final amplifier is required. Linear amplification is inherently less efficient.

Separate Amplification	Enter TPO (Watt) here 19,000	Split-Level Combining
COUPLER		
-10	Coupling Factor (dB)	-4.77
Z12HD	ZHD TRANSMITTER	Z16HD
8,250	P _{sat} (W)	11,000
1,900	HD Power (W)	570
NA	FM Power (W)	4,319
NA	HD/FM Ratio, dB	-8.8
NA	Total RF Power (W)	4,889
5,166	Dissipation (W)	8,065
7,066	AC Power Consumption (W)	12,953
26.9	Overall Efficiency (%)	37.7
MAIN FM TRANSMITTER		
111.1%	FM Power (% of TPO)	78.8%
21,111	FM Power (W)	14,970
14,074	Dissipation (W)	9,980
35,185	AC Power Consumption (W)	24,950
60	Overall Efficiency (%)	60
REJECT LOAD		
3,821	Rejected Power (W)	659
SYSTEM PERFORMANCE		
23,061	Total Dissipation (W)	18,713
42,251	Total AC Power Consumption (W)	37,903
83.4%	Combining Efficiency (%)	96.6%
45.4%	Overall Efficiency (%)	50.6%
Split-Level Calculator Rev D	Reduction in dissipation	4,348
	Watts	
	In percentage	-18.9%

As pointed out by Geoff Mendenhall at Harris, linearization may be accomplished in part by pre-distortion of the input signal exactly complementary to the non-linearity of the amplifier. Thus the amplifier may be biased closer to Class C, the most efficient. Nevertheless, low-level combining encounters amplifier inefficiency, and is generally unsuitable for Transmitter Power Output (TPO) levels beyond about seven kW.

HIGH LEVEL

High-level combining encounters technical problems in the combining process. The question was asked, "Why not combine in the same way used for a common antenna?" Harris engineers explained the closeness of the frequencies involved exceed the ability of combining technology to isolate the signals within practical filtering constraints and acceptable group delay.

Up until now, it is usual for a combiner with a coupling factor of 10% to be used. This combiner rejects 10% of the analog signal and 90% of the digital signal; the analog transmitter must produce 10% more TPO, while 90% of the expensively produced digital RF is wasted.

This wastefulness results in a need for increased electrical service, increased cooling capacity, and greater floor space.

Other complications in using the High Level combining method include the potential where the analog transmitter already may be at its maximum TPO and – unable to deliver the additional required power – must be modified or replaced. Aside from the equipment cost, floor space may not be available at any cost. Furthermore, upgrading utility power and air conditioning at the site may be difficult or impossible and will be expensive.

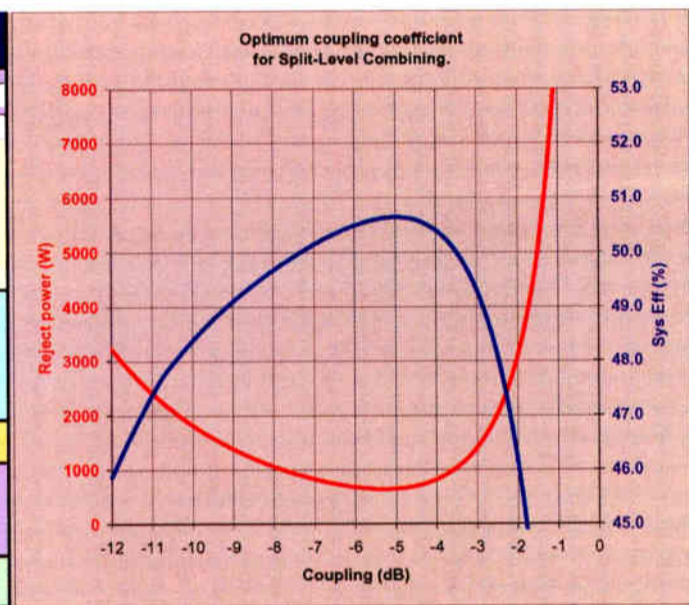
SPLIT-LEVEL COMBINING

In his article in the October, 2004 issue of *Radio Guide*, Dave Agnew, FM Applications Engineer at Harris Corporation, introduced a concept known as "Split-Level Combining," a sixth method.

The new Split-Level Combining technique entails finding an efficiency "sweet spot" by setting the combining ratio (coupling factor in dB) to -3.01dB, -4.77dB, or -6.02dB and optimizing the transmitter power levels to achieve a maximum efficiency at the required TPO.

(A software tool developed by George Cabrera of Harris is available on the Harris web site at: <http://www.broadcast.harris.com/extremedigital/hdradcalc.asp> allows fine-tuning of these values until the optimum combination is found.)

With this method, the new digital transmitter supplies not only the required digital signal, but also a portion of the analog signal. To provide a working example, please note the figures below, in this chart generated by the Harris software.



This study is based on a station requiring 19 kW TPO (a range where Split-Level combining is most effective) in order to reach the authorized ERP.

At this TPO (19.0 kW), a sweet spot of maximum over-all efficiency (blue line) and minimum reject power (red line) occurs near the -4.77 dB coupling factor. The reject load expels 669 watts as opposed to 3,821 watts with conventional high-level combining.

However, the use of a linearized HD transmitter for a portion of the analog power results in less overall analog amplification efficiency. In other words, the digital transmitter generates some of the heat otherwise rejected by the dummy load.

BETTER EFFICIENCY

It is important to note in our example that overall efficiency is improved by 5.2% and wattage dissipation is reduced 18.9%. Other examples achieve similar efficiencies at a lower TPO.

Agnew notes, "While the dissipation and efficiency improvements begin to move closer to 10 dB combining at the 37 kW to 45 kW range, using Split-Level Combining can allow you to use a single cabinet digital transmitter versus a much higher priced dual cabinet transmitter."

(Continued on Page 6)

Bigger, Bolder, Brighter!

**THIRD-GENERATION "DAVID" PROCESSING...
SMOOTH AND EXCEPTIONALLY COMPETITIVE!**



Improved AGC, 3-band Spectral Loading processing, and our proprietary PIPP limiter... new features we've merged with the 'elegant simplicity' that characterizes the "DAVID" FM-airchain legacy. The result is performance that rivals processing systems costing several times the DAVID-III's modest price. Your listeners will hear music with dynamics and 'punch,' and live-announce that's natural and non-abrasive.

The DAVID-III is easy to set up and easy to use. It employs quasi-digital PWM processing circuitry, digital synthesis of the FM baseband signal, and it never requires routine calibration. Component parts are common and available worldwide.

*Ask your preferred distributor for a demonstration
of the DAVID-III at your station.*

Inovonics
1305 Fair Ave. • Santa Cruz, CA 95060
TEL: (831) 458-0552 • FAX: (831) 458-0554
www.inovon.com • e-mail: info@inovon.com

DAVID-III - \$2200
Visit www.inovon.com
for full technical details

FM Broadcasters' First Choice

SHPX ROTOTILLER® FM Antenna

HD Radio Ready™

- Rugged brass construction
- Stainless steel brackets
- Reliable series fed elements
- Welded internally pressurized feed connection
- Multiplexed versions available

"HD Radio" is a trademark of iBiquity Digital Corporation

ERI® ELECTRONICS RESEARCH, INC.
(812) 925-6000 | www.eriinc.com

Commander G3

Modular Stereo POTS • ISDN • GSM Codec

Introducing the all new Commander G3

At Tieline, we've taken a fresh approach to audio codec design. Now you can customize your audio codec to suit your exact needs for remote broadcasts and STLs. You only pay for what you need and we're the first to be compatible with most major POTS and ISDN codecs in your rack.

Think of the new Commander G3 as a codec foundation with two expansion slots which accept your choice of POTS, ISDN and GSM modules. You simply buy what you need.

The range of modules together with the Commander G3 can deliver your choice of 15kHz mono over POTS, 15kHz Dual mono and 15kHz Stereo over POTS, Mono/Stereo over ISDN and between 7.5kHz and 15kHz over GSM wireless networks depending on your service provider.

The new Tieline Commander G3 is simply the world's most powerful, flexible and customizable codec. It's even compatible with your Comrex® Vector, Matrix, Blue and Musicam Liberty POTS codecs.

For the complete list of features and specifications of the new Tieline Commander G3 please visit www.tieline.com/rg

Hurry, free demonstration Commander G3's are limited. Call your favorite broadcast dealer or call us at 800-780-4750 to book your free demo.



Tieline
TECHNOLOGY

* Comrex and Musicam are registered trademarks of each respective corporation

Call: 800-780-4750
www.tieline.com/rg

Six Ways to Tomorrow

Six Solutions for FM HD Radio Implementation

Continued From Page 4

As an example, at 37 kW TPO, Split-Level Combining at -6.02 dB is less efficient, however only a single Z161HD digital transmitter is required.

With split-level combining, as with high and low-level combining, changes on the tower are unnecessary and no space-combining issues are encountered. Distinct advantages realized by the Split-Level technique:

1) No modification or replacement of the existing analog transmitter is necessary. Actually, the current analog FM transmitter's power is reduced, resulting in longer tube life.

2) The digital transmitter may serve as a partial-power backup for the analog transmitter. If a facility presently has no backup transmitter or cannot physically accommodate a third transmitter, the Split-Level combining technique solves these problems.

3) Up to an 85% reduction in reject-load wattage.

4) Up to a 7% improvement in overall efficiency over conventional high-level combining.

In such higher-powered station situations, Split-Level combining appears to show some impressive advantages. However, it is important to check out all the variables discussed; as we have seen, weighing the different factors can lead to a different transmitting solutions.

Jeff Johnson is Network Engineer for Xavier University's X-Star Radio Network. Contact him at: Jeff.Johnson@xstarnet.com

Digital Transmission Choices Summarized

METHOD 1: Separate Antenna Space Combining

If you own your tower and there is space available, you can rent additional space at reasonable cost, or you presently have a suitable auxiliary antenna within 70-100% of AGL and coordinates within three seconds of your main antenna, transmitting the digital signal with the separate antenna approach may be optimal.

There will be no combining loss, and you will need only a digital exciter and low power transmitter. Additional electrical power costs for transmitting and cooling will be low.

METHOD 2: Interleaved Antenna Space Combining

Inconsistent digital to analog power ratios will be lessened, and less tower real estate will be consumed. However, wind and weight loading will increase. Transmitter considerations will be the same as with the separate antenna approach.

METHOD 3: Dual Input Antenna or Master Antenna Combining

An existing or modified dual input master antenna or master antenna combiner is required. Alternately a new side mount dual input antenna may be installed at

significant cost and increased wind and weight loading. Additional electrical power costs will remain low.

METHOD 4: Low-Level Combining

For TPOs of less than approximately seven kW, this is commonly an economical solution. A new transmitter will be required with lower efficiency than an analog-only transmitter.

METHOD 5: High-Level Combining

This is has been, until recently, the simplest method to implement for TPOs above seven kW or so. However the analog transmitter will have to produce 10% more power, the inherently less efficient digital transmitter will have to have ten times the power actually broadcast.

All of the power lost in the combiner is rejected as very expensive heat; cooling loads will be higher. Adequate utility power and square footage may not be available.

METHOD 6: Split-Level Combining

This most sophisticated, new method has been recently introduced. If antenna additions or modifications are ruled out, split-level may be the best way to proceed.

Sports Broadcasts



Interface Solutions



Communications

Live interviews or remotes?

You've got to check out our new ComPack - Universal Telecom Interface and RemoteMix Sport, our most popular broadcast mixer. Both ComPack and RemoteMix Sport interface to PBX systems, cell phones, and analog lines for true flexibility. We also offer a full line of passive interface tools like the Daptor Two - Wireless Phone Audio Interface.

Data sheets, specs, prices all at www.jkaudio.com

JK Audio

800-552-8346 815-786-2929 fax - 815-786-8502 info@jkaudio.com

New Broadcast equipment at exceptional prices.

Quality pre-owned equipment.

Customized automation systems.

Complete turnkey installation

Console pre-wiring packages.

Broadcast equipment repair.

Complete engineering services.

Studio design and project management.

Lightner Electronics Inc.
Your Ultimate Solution.

Toll Free: 866-239-3888

Fax: 814-239-8402

www.LightnerElectronics.com



Survival Guide

How Not to Get Eaten Alive in Radio's Food Chain

By Rich Wood

[SPRINGFIELD, Massachusetts - December 2004] Ever since Samoff dissed Armstrong there has been an uneasy balance of terror between broadcast disciplines.

IN THE BEGINNING

In the earliest days, Engineers roamed the earth with impunity. It literally took dozens of them to keep the equipment running. We had no choice.

Without warning, Raptors appeared in the form of General Managers, Program Directors and, worst of all, Personalities. Engineers found themselves nipped at the heels from every direction. It gets worse every year as more equipment takes care of itself and folks get downsized or puppetized by Headquarters.

In such an environment, "turf" becomes more important than ever. Merely justifying one's existence in 21st Century Broadcasting can become a full-time job.

WHICH DEPARTMENT IS MORE IMPORTANT?

Personally, I have this quaint belief that every department in a radio station is critical to its success. The question "Can't we all just get along?" becomes more critical as Wall Street (greed) replaces Broadway (entertainment) as our reason for being.

Sadly, some of the most serious conflicts are between Engineers and Program Directors. Neither can do their jobs without the other. Yet an uneasy, often-broken truce exists from day to day.

Picking on Program Directors as major engineering irritants is probably unfair. There are so many contributors in other departments that we need several articles (or a book) to cover all the possibilities. In the olden days,

Program Directors actually made decisions, so we will tackle them first.

UNDERSTANDING THE CULTURES

As a long-time programmer with a lot of computer and engineering "geek" in me, I understand both perspectives. No department can honestly argue that entertainment is not our Prime Directive. Without compelling programming there is no reason for any of us to exist.

That compelling programming brings with it huge egos which must be buffered by the Program Director. No Engineer wants to be faced with angry talent on loan from any Higher Power. Neither Personality nor Engineer is known for U.N.-style diplomacy.

Yet, the Engineer sees the PD as a badly dressed creature with hair (or intentional lack of it) configured to match the programming. I remember when we changed the format at XTRA to New Wave. Overnight the programming staff changed from recognizable humans to the undead with spiked hair. It was trendy. Still is.

The PD sees the Engineer as someone dressed in something flannel, and with jeans that were torn at work rather than at the factory. He has an overloaded pocket protector and enough white medical tape to repair a lifetime of glasses. (Those who have attended a Hamfest know exactly what I am describing.)

After consulting a friend steeped in the ways of contemporary fashion, I have been assured the "Geek look" is even trendier than spiked hair, so Engineers win this one. However, never wear white tape after 6 PM - have a pair of evening glasses with black electrical tape handy.

FAILURE TO COMMUNICATE

Another culture war escalates when the Program Director, under orders from the Sales Manager, sets up a remote (that is *really* remote) for early that same afternoon. Although Telco says "two weeks for an ISDN install," the advertiser's check has already been cashed and he is expecting his "KIA Karnage" extravaganza to go off without a hitch.

Something got lost along the way. The Engineer told the Program Director about the lead-time, and the PD passed it

along to the Sales Manager who forgot to tell the Account Executive. The General Manager now gets into the act and wants to know who screwed it up.

It must have been the Engineer! Engineers are known to work miracles, so one was expected. (Free advice: go easy with miracles or you will end up always being expected to pull off miracles, including the loaves and fishes thing, because you are so handy.)

CONTRASTING COMMUNICATION STYLES

This is a communications industry. That is probably why we rarely communicate well. There is nothing more frustrating for someone who deals in things ephemeral - like formats or a "personality" making \$285 million needing a ride to work - than to be confronted by an Engineer supported by the laws of physics. There is just no wriggle room.

Engineers have to use that awesome power for good (preferably their own good). Engineers with great people skills usually have fewer problems. Nearly every other department requires people skills in one way or another - they need cooperation. It may seem like they are snookering each other, though it is really the social lubricant that makes a complex system work.

The most well-liked and effective Engineers I have worked with have been willing to take the time to carefully explain the process. "Why does it take two weeks?" "Because Telco says it does." "Why can't I wrap the needles around the meter pins?" "Because we are digital and everything goes sour when you hit the digital brick wall."

Even the best employees will need help when analog goes digital and most of the staff has been downsized. Most people understand simple explanations, especially when backed up by detailed memos/directions and training. The PD who gets the blame when the local Ranchero station beats you - in a market where no one knows what that is - needs someone on whom to lay it off.

You do have time for all that - right?

Rich Wood has programmed stations and networks for over four decades, and now operates Rich Wood Multimedia, a programming/production consulting company in Western MA. Contact Rich at: richwood@pobox.com

FlipJack FJ-500

NEW!



CELL PHONE INTERFACE MIXER

The FlipJack is the latest addition to the Conex line of cell phone interface products. The FlipJack is designed to interface most hand held phones that have a 2.5 mm hands-free adapter jack.

FOR MORE INFORMATION

1-800-645-1061

www.conex-electro.com

FEATURES:

- Two headphone jacks ... each with it's own volume control.
- Two Mic inputs and a seperate Line Input
- Connection To A Standard Telephone Line.
- Separate headphone cue switch for more flexibility
- Operates on "AA" batteries (Included) or external power (Optional)
- Balanced Line Level Output
- Slots for shoulder straps.
- All IC's socketed for easy maintenance
- Tuner input for off-air monitoring
- LED level indicator

CONEX ELECTRO SYSTEMS

1602 Carolina St. PO Box 1342 Bellingham WA 98227
phone: 360.734.4323 fax: 360.676.4822

UNLEASH THE POWER OF BEXT

"A Bext transmitter has been our main stay since August 29th, 1988" (WJZN FM)

Transmitters from 10W to 35kW
Digital / Analog STLs, Translators
Antennas, Filters & Combiners

1 888 239 8462
www.bext.com

Security Guide

Do Fence Me In

by William Bordeaux

Transmitter site security is an ongoing concern, made more important in recent times by various incidents of vandalism, and worries about terrorist activities. In this article, Bill Bordeaux helps illuminate some of the good and not so good implementations of a station's first line of defense – the fences and gates.

[SAN LUIS OBISPO, California - December 2004]

Proper, secure fencing and entry points are a necessary part of your overall site security management. Perhaps that is not how you might feel while fumbling with a lock and key on a cold, rainy night, but better than the aftereffects of vandalism, right?

True, fencing does not generate revenue, it does not attract new listeners, and it cannot even be called "sexy." Furthermore, good fences and a good locking arrangement do not come cheap. Nevertheless, done right – and with a little maintenance along the way – it will save time and money and protect the station's bottom line.

WHY A FENCE?

Clearly the mandate from the Feds is all about safety. Is the fence high enough and is it strong enough to do the job of keeping people safe? These questions should be answered when planning a fence and assessing the condition of fencing around a site. No doctorate needed here.

Beyond safety, each site should be evaluated for other protection afforded by fencing. This includes:

- Limiting vandalism
- Protecting equipment and structures from damage by animals or vehicles.

Most sites are susceptible to vandals and most will experience some form of vandalism at one time or another. This can range from graffiti to break-ins with the theft of valuable equipment. Unattended sites, particularly in urban areas need to be hardened with tall fences, bright lights, security systems and razor wire where applicable. Some sites can get away with a six or ten foot chain-link fence and never suffer harm.

Either way, do not be surprised when a visit to a site finds that you have had a visitor or two crawl under or over a fence. If someone wants to get into a site bad enough, it is likely they will succeed.

SMALL "LOSS," HUGE EXPENSE

Recently, a site had unwanted visitors that liberated all of the copper ground bus bars that could be reached from the outside of buildings. It seems that the thieves went through a lot of trouble for little payback. The copper was worth a few hundred dollars at most. The major expense for the affected site users was the labor to reinstall the ground bus bars and reattach the ground cables.

Another reason to keep fences in good repair is to protect the site from inadvertent damage. Kids love to take four-wheel vehicles on tower sites, as there is a lot of room to "spin around."

However, in addition to the potential damage to the ground system (just think of what happens when a truck tire sinks down!), the trucks can also clip a guy wire, and then you will have a major problem.

Among the various dangers to the guy wires and anchors are landscaping companies mowing the field. And broadcast lore is filled with stories of landscapers who decided the quickest way to "clear the field" was to scrape it – leaving behind a set of chopped spaghetti formerly known as a ground system.

Sites that allow grazing animals or farming operations nearby also need to be concerned about accidental damage from animals or farm implements. Especially the guy wire anchors and coax exits (and paths) should be carefully protected by fencing.

Years of rubbing from itchy cows will eventually take its toll on guy wires or other structures. I recall one site where an itchy cow scratched his itch using the piping off of a propane tank that fed the station's emergency generator. Eventually the fitting on the pipe broke off and the cow went dashing for cover as 450 gallons of propane fuel steamed off into the atmosphere. Needless to say a small fence around the propane tank would have paid for the cost of the tank repair and refill.



These guys and the anchor are protected from accidental damage.

CONTROLLING ACCESS

The easiest – and at the same time most difficult – way to control access to a site is a locked gate. Easiest, because a locked gate should keep out casual visitors. These are the folks the FCC especially wants you to keep away from excessive RF radiation.

Hardest, because a lot of engineers seem to hate to get out of the truck, especially in inclement weather. True, a lot of emergencies occur during storms, and finding the right lock on a "chain o' locks" to get the gate open can leave someone fairly well drenched.

Leaving the gate open is not a particularly good solution. In addition to unwanted visitors, the FCC might come calling, and question whether the public could receive excessive RF. Since each tenant on a site can be cited by the FCC, it pays to have good local cooperation, and make sure the gates are closed, especially if you have two-way or cell neighbors, who might be quite lax about closing and locking up while on site.

Some sites have found a common combination lock works well. Other times, some entities (often a local utility) might fight the use of a common lock, preferring to use their own specially keyed locks. A way to keep some order and make things function under this arrangement are special gate mechanisms that will open when any one lock is removed. A minor installation expense when shared, but such a mechanism can save a lot of hassle in an emergency.



The "Chain O' Locks"
One misplaced lock can prevent access in an emergency.

NATURAL FENCES

There are many ways to keep fencing costs in line. One clever approach I have seen is to use natural features of the landscape to enclose the property.

For example, at one site, located on a desolate patch of Pacific Coast mountain ridge, it was determined (and rightly so) that the thorny scrub brush encircling the property and steep terrain would effectively keep all but

the most determined trespasser safely away from the equipment within.

A ten-foot high fence rimmed with barbwire was constructed in areas where the brush was thin or nonexistent. A gate with multiple locks insured only authorized vehicles had access to the property. And so it was that the site was secured from vandals as well as the curious public.

Then, one dry, hot August morning, the sky turned a hazy brown as a wild fire crept along a distant ridge. As the sun came up and with it a strong breeze, the fire exploded across the mountaintops and incinerated everything in its path. Luckily, the equipment shelters on the peak were spared, but not so the brush "fence line." Suddenly the site was accessible to anyone who happened by.

It had been almost a hundred years since a fire had gone over that particular mountaintop. Yet, sometimes even the best-laid plans go afoul for reasons that are unimaginable. Naturally, the fence contractor had to be called out to install more fencing, whether the CAPEX was ready or not.

WHY IT IS IMPORTANT

Of course, the users of the site all managed to pony up for the necessary improvements, and the site was secured. On the other hand, imagine if an FCC inspector happened by about that time to be sure that we were complying with ANSI regulations regarding RF exposure and public access. I suppose that there was a good excuse, but the explanation to the FCC would have been an interesting one.

The FCC only gives general guidelines regarding fencing requirements at AM sites:

Section 73.49 – AM transmission system fencing requirements. Antenna towers having radio frequency potential at the base (series fed, folded unipole, and insulated base antennas) must be enclosed within effective locked fences or other enclosures. Ready access must be provided to each antenna tower base for meter reading and maintenance purposes at all times. However, individual tower fences need not be installed if the towers are contained within a protective property.

For FM and TV, there are no such rules but rather the FCC uses the ANSI/IEEE RF exposure guidelines to require fencing to limit access to high RF energy areas. In both the AM and FM/TV cases, the bottom line is this: Install fencing that will prevent the public from entering the area and harming themselves. By fencing and locking access, only trained, informed workers will have access into the area. It is really that simple.



A nice and properly fenced site.

WHEN "LOCKED" DOES NOT MEAN "LOCKED"

A check through the files of the FCC seems to show there is some confusion as to the interpretation of what constitutes an "effective locked fence" as the following shows:

"On December 28, 1999, the Enforcement Bureau's Seattle Office received a complaint from the owner of the property where KOBB(AM)'s antenna is located, that the fencing at the base of KOBB's antenna tower was in disrepair and falling down. The complainant expressed extreme concern because of the addition of a children's daycare facility on the property at this location."

After contacting the owner of KOBB(AM), explaining the Rule (73.49) and faxing him a copy of the same, the FCC was told the fence now met the requirements of the Rule. Of course, the FCC Field Office thought it prudent to see the fence first hand. After a visit, it wrote the following:

"On January 22, 2000, two Seattle agents conducted an inspection of the KOBB(AM) antenna site in Bozeman, Montana. The agents found that the fencing was old wooden fencing, most of which was rotten and fallen over on the ground, leaving the antenna accessible to the public. There did not appear to be a locked gate associated with the wooden fencing. There was some temporary

(Continued on Page 10)



ECONCO

Rebuilt Power Tubes



Approximately
One Half the Cost of New
3,000 Hour Unconditional Guarantee
Call for Your Quotation

ECONCO 1318 Commerce Ave., Woodland, CA 95776
Phone: 530-662-7553 Fax: 530-666-7760
Toll Free: 800-532-6626 Website: www.econco.com

Logitek Brings Flexibility to Fast-Paced Operation



The Ramora-4 is a tiny but powerful workhorse for production, news and backup operation.

As your needs change, Logitek can change with you.

Our Numix and Remora consoles are flexible enough to handle the pace of your facility, whether it's in a major market or a small town. On-air and production rooms, news and edit suites can all share sources from our versatile router, the Logitek Audio Engine. It's networkable to accommodate as many sources as you need to share. For your next rebuild or update, Logitek is the logical choice.

Logitek

Console Router Systems

© 2004 Logitek Electronic Systems, Inc.

Logitek Electronic Systems, Inc.
5622 Edgemoor • Houston, TX 77081 USA
713.664.4470 800.231.5870
www.logitekaudio.com

Congratulations!!

To our **FM Broadcast Friends** who have been successful in the recent "Auction 37." **Energy-Onix** can supply all your FM transmitter, STL and RPU requirements.

We have requested that **Broadcast Connection**, with their three offices, assist you. You will be very pleased with their personal, competent support.

Best of Luck !!

Bernard Wise

Bernard Wise, President
Energy-Onix Broadcast Equipment Co., Inc.

Broadcast Connection Offices

John Shideler
6301 Jackpine Dr.
Bellvue, CO 80512
Tel: (970) 482-9254 Fax: (970) 482-6123
john@broadcastconnection.com

Steve Ellison
2164 New Garden Rd, Williamsburg, IN 47393
Tel: (765) 847-2143 Fax: (208) 439-1895
steve@broadcastconnection.com

Dan Roberts
921 Meadowbrook Rd, Elwood, IL 60421
Tel: (815) 423-7122 Fax: (815) 361-0683
dan@broadcastconnection.com



1306 River Street, Valatie, NY 12184
Voice: 518-758-1690 / 888-324-6649
Fax 518-758-1476
Email: energy-onix@energy-onix.com
Website: www.energy-onix.com

TRANSCOM CORP.

Serving the Broadcast Industry Since 1978

Visit Our Website – www.fmamtv.com

New Digital and Analog TV Transmitters
Send your e-mail requests to: transcom@fmamtv.com

Fine Used AM & FM Transmitters & New Equipment

AM Trans	1 kW	1998	Continental 314D Solid State
	1 kW	1986	Harris SX1A Solid state
	1 kW	1983	Harris MW1A Solid State
	10 kW	1986	Harris MW10B
	50 kW	1985	Continental 317C2
	50 kW	1986	Nautel AMPFET 50 Solid State
FM Transmitters	1 kW	1998	Harris Quest Solid State
	1.5 kW	1987	BE FM1.5A
	3.5 kW	1986	Harris FM 3.5K
	3.5 kW	1992	Harris HT3.5
	5 kW	1982	Harris FM 5K
	20 kW	1978	Collins 831G2
	25 kW	1980	CSI T-25-FA (amplifier only)
	25 kW	1982	Harris FM25K
	30 kW	1986	BE FM-30A
50 kW	1982	Harris Combiner (w/auto exciter-transmitter switcher)	

Used Misc. Equipment

USED EXCITERS:
• Harris Digit 2002 Exciter
• Continental 802B Exciter
• New - 20 watt Synthesized

USED MISC. EQUIPMENT:
Audiometrics Stereo Distribution Amp
BGW 85 Audio Amplifier

Crown D-75 Audio Amplifier
NEW - Denon 720R Cassette Player
Moseley Remote Controls
Potomac AM19 Phase Monitor, w/sampler
Potomac 1901 Digital Phase Monitor, 2-tower
Sola Voltage Regulator, 60 Hz 1 KVA s-phase
And much more ...
Retuning and testing available – call for quote!

PO Box 26744, Elkins Park, PA 19027
800-441-8454 215-938-7304 Fax: 215-938-7361

Security Guide

Do Fence Me In

Continued From Page 8

orange plastic net fencing, which was also partially falling over. A subsequent telephone call from the property owner revealed that he had installed the plastic netting to offer some temporary protection.”

Based on the inspection visit by the Field Office and the subsequent response from the licensee, the Commission itself responded as might be expected, assessing a \$7,000 fine on the station:

“The Commission assesses monetary forfeitures pursuant to Section 503(b) of the Act and Section 1.80(a) of the Commission’s Rules, which both state that any person who willfully or repeatedly fails to comply with the provisions of the Communications Act or the Commission’s Rules shall be liable for a forfeiture penalty. For purposes of Section 503(b), the term “willful” means that the violator knew the requirement of the Commission’s Rule, but did not take corrective action to comply with the rule.”

Clearly, replacing and maintaining the fence would have saved everyone lots of time and money. In this case the licensee got to pay for the fence twice.

IS IT A FENCE OR IS IT NOT A FENCE?

This example is not to say that there are not instances where the function of the fence might be debatable. For example:

“On March 8, 2002, an agent from the Philadelphia Office inspected the three-tower array of WOYK(AM) in York, Pennsylvania. The agent observed that the middle tower (antenna structure registration number 1029250) was not enclosed within an effective locked fence. The agent determined that the middle tower could be accessed through an opening in the fence created when a portion of the fence fell off a warped fence post.”

The FCC issued a Notice of Apparent Violation (NAL) and suggested a fine of \$7,000 be in order for this violation. The licensee responded:

“WOYK states that the fence was repaired less than 24 hours after it was notified that the fence needed repair. Further, WOYK contends that because the Philadelphia Office did not send it a Notice of Violation regarding this matter, it never had an opportunity, pursuant to Section 503(b)(2)(D) of the Communications Act of 1934 as amended (“Act”), to speak to the nature, circumstances, extent or gravity of the violation.

“WOYK also contends that although the base forfeiture amount for a violation of AM tower fencing is \$7,000, this is not a situation in which the licensee had no fence or a partial fence. WOYK argues that in this case, the violation was minor in that there was a slight gap in the fence which was almost immediately repaired and posed no danger to the public or the environment.

“The licensee also claims that during the inspection, the agent only mentioned the fence “in passing” and never inquired again about the fence or returned to the station to reinspect the fence. For these reasons, the licensee contends that the forfeiture should be rescinded or reduced.”

The bickering about who said what and when is best left to the lawyers, but for me the heart of the matter is did the “gap” in the fence really pose a health and safety issue? Clearly the previous site located near a daycare facility should raise some eyebrows, but if what WOYK says is true then should they still have the book thrown at them? The FCC considers the matter and agrees with WOYK and rescinds the fine.

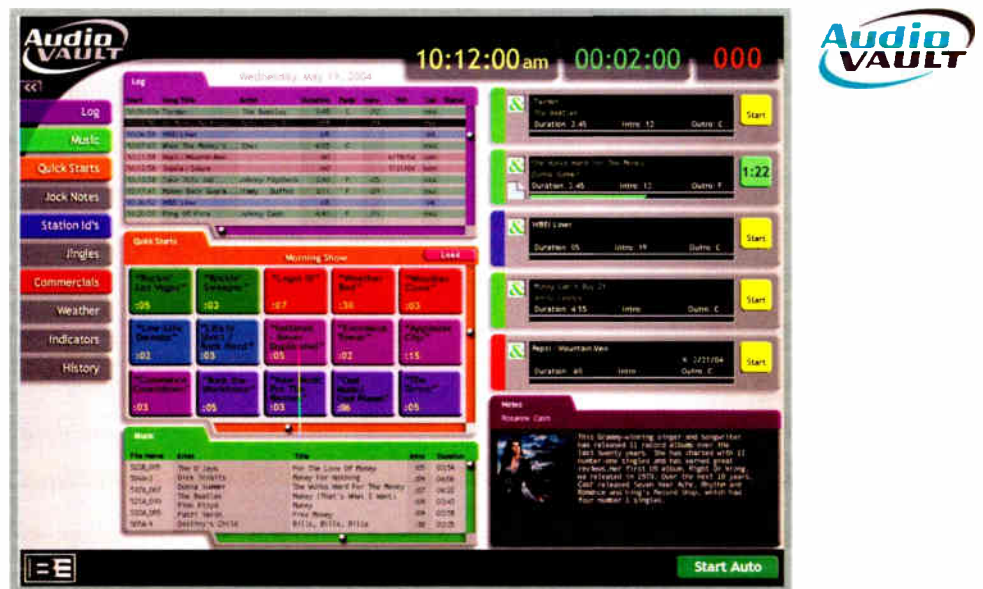
“Section 73.49 of the Rules states that antenna towers having radio frequency potential at the base “must be enclosed within effective locked fences or other enclosures.” WOYK submitted a signed declaration from its president, who repaired the fence, stating that the fence section at issue is generally secured to the fence post at the top, middle, and bottom, and that the fence section referred to in the NAL only fell away from the top, creating a six to twelve inch gap, but that the fence section remained secured to the fence post at the middle and bottom.

“WOYK admits that the fence may have been in some minor disrepair but argues that it would have been virtually impossible to access the tower without climbing over the fence or breaking it down. After reviewing the record before us, we conclude that there is not enough evidence to support a finding that WOYK failed to maintain an effective locked fence in violation of Section 73.49. Consequently, we cancel the NAL.”

As we have seen, attention to the fences and access to your site is important. Just because “only the engineer goes out there – and not very often” is not a reason to allow the fences to deteriorate and create problems ranging from fines to insurance liabilities.

When done right, and properly maintained, your fences will serve you well for many years without requiring extensive costs in either time or materials.

Bill Bordeaux is a contract engineer based in San Luis Obispo, CA. You can reach him via email at: bill@stationengineer.com



AudioVAULT Big Bang for Small Bucks.

No, we didn't change our price list. AudioVAULT has always been an economical, modular software solution for small and medium-sized stations requiring the front end to the full programming, operational and production functions. It's a complete solution for the radio station. The AudioVAULT software is designed to be flexible and adaptable to the needs of the radio station. It's a complete solution for the radio station. It's a complete solution for the radio station.



Broadcast Electronics, Inc. • 4100 North 24th Street, P.O. Box 3606, Quincy, Illinois 62305-3606 U.S.A.
Telephone: (217) 224-9600 • Fax: (217) 224-9607 • E-Mail: bdcast@bdcast.com

Product and company names are trademarks of their respective owners. © 2004 Broadcast Electronics, Inc.



RF Specialties® Group

"I didn't know you guys sold that!"

We hear that a lot. There's more to the name RF Specialties than meets the eye. **We are not a run-of-the-mill "Box House."** We offer many small items you use everyday in the operation of your station, including microphones, headphones, monitor speakers, tower lights, copper strap, audio cable, CD players, and hard drive systems. **Select from over 300 product lines.**

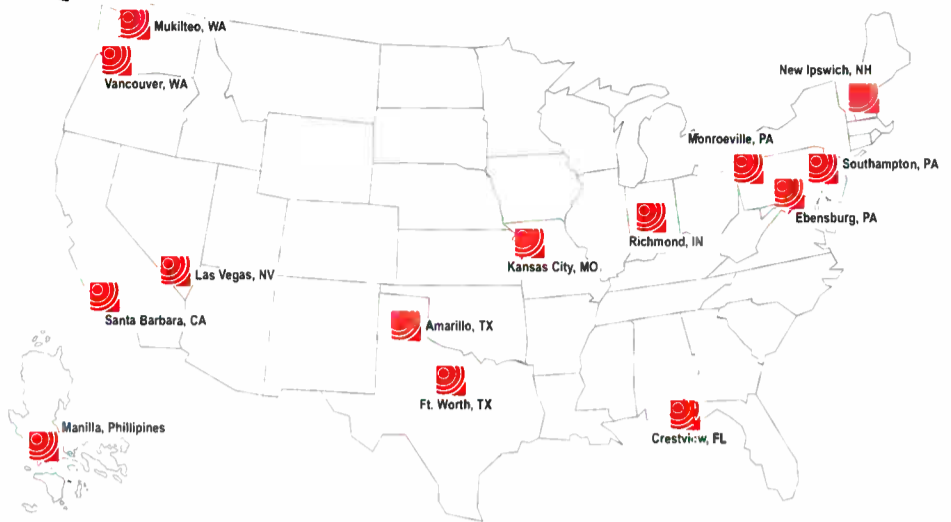
Call the nearest office for more information on even the smallest items you might need. For your added convenience, check out the full line of products and detailed information on each manufacturer by going to **RF Specialties.com**.

We Continue to Grow for Sound Reasons!

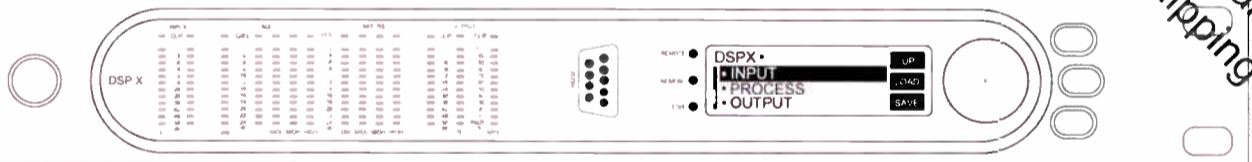
RF is Good for You! And the Rest of the World!

Visa and Mastercard are welcome.
Offices Independently Owned and Operated.

www.rfspec.com



Sam Lane	Santa Barbara, CA	1-800-346-6434
Bill Newbrough	Las Vegas, NV	1-888-737-7321
Bob Trimble	Vancouver, WA	1-800-735-7051
Walt Lowery	Mukilteo, WA	1-425-210-9196
Don Jones	Amarillo, TX	1-800-537-1801
Wray Reed	Ft. Worth, TX	1-888-839-7373
Chris Kreger & John Sims	Kansas City, MO	1-800-467-7373
Rick Funk	Richmond, IN	1-888-966-1990
Ed Young	Monroeville, PA	1-866-412-7373
Dave Edmiston	Ebensburg, PA	1-866-736-3736
Harry Larkin	Southampton, PA	1-888-260-9298
Sam Matthews	New Ipswich, NH	1-800-485-8684
Bill Hoisington	Crestview, FL	1-800-476-8943
Ed Edmiston	RF Specialties of Asia (Manila, Philippines)	+63-2-412-4327



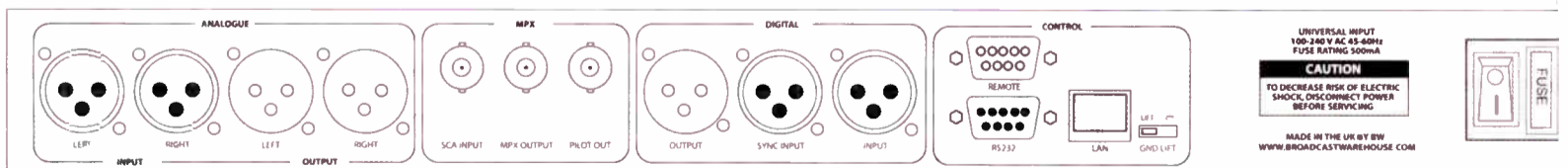
V2 Software
Now Shipping

Just because its **compact** doesn't mean it has less **impact**. You're reading this aren't you!?

DSPX, the 1RU sized **FM-IBOC-HD-NET processor** from **BW**. Small box, small price, **BIG** sound.

Now available from broadcasters general store.

For more info or to arrange a demo contact BGS on 352-622-7700



DSPX DIGITAL AUDIO BROADCAST PROCESSOR

4 band rms agc - 4 band dynamic limiters - dual use outputs - lookahead limiting - distortion controlled clipping - composite processing - bass enhancement - rs232 and IP control - real time clock for scheduling - remote trigger port - factory and user presets - dual screens - digital and analog IO - flash upgradable - much much much more.

www.dsp-x.com

BW, 15 YORK RD, WIMBLEDON, SW19 8TP, UK P +44 20 85409992 F +44 20 85409994

Audio Processing From the Ground Up

Part 18: Getting the Right Sound

by Cornelius Gould

When we last heard from Corny, he was telling us to take our time as we adjust processing, not to rush it. Well, he took his own advice, and has been "lost" in his lab for the past several months, as he developed some new tweaks and tips to share with us.

[CLEVELAND, Ohio - July 2004] I hope the past few months allowed you to use some of the knowledge that you have gained during the series to spruce up your station's audio. If you recall, our goal is to help achieve the sound you want – a "signature" for your station – rather than just sounding like everyone else.

At this juncture, it is appropriate that we discuss audio processing for the newer radio mediums – and what is a hotter topic in radio right now than "HD Radio?" Digital processing does not necessarily mean digital audio.

It might help to go back and "refresh" yourself on all the articles you have read so far, as this one ties into most of them. If you are a new subscriber, you can find my previous articles at <http://techcentral.cgould.com>. They are also on the Broadcaster's Desktop Reference (BDR) mentioned elsewhere in this magazine, or at www.olderadio.com/bdr.htm

SQUEEZING AUDIO

Processing for HD Radio has a lot in common with many of the new digital broadcast services available to listening audiences right now. These include Satellite radio and Internet radio audio.

None of these services would be possible without the technique of "bit-rate-reduced digital audio" CODECS. The term "CODEC" is an acronym for "enCOder – DECoder." I covered the basic idea behind coded audio in "The Rock and The Pin" article in the September 2003 issue of *Radio Guide*. [Available on the BDR, CD-ROM, see page 19] Now we come to the point where we start to use the basic information in that article and tie it in with audio processing.

To briefly re-cap my "The Rock and the Pin" article, the idea behind coded audio is to attempt to remove certain aural elements of a digital audio signal that we would not normally notice, but are present in the captured audio stream. Doing so dramatically reduces the amount of bandwidth needed to transmit digital audio.

This is very important for digital radio broadcasters as there is insufficient bandwidth available within our assigned channels to transmit normal (linear) digital audio.

To accomplish this digital bandwidth reduction, the coding equipment (software) takes advantage of the quirks of human hearing with regards to frequency, time, and loudness masking to remove elements we would not instinctively notice, either because of time and frequency proximity, or loudness masking (or all of them at the same time). Again, please refer to my Rock and Pin articles for a little better picture of the basics of what is happening in these coding systems.

Basic processing concepts remain true regardless of the digital broadcasting standard used. However, because of CODEC's and a number of other factors, we all have to re-think the way we handle audio processing.

CLIPPING IS BAAAAAD

The biggest change comes in the form of the venerable old loudness clipper. It is gone in this digital arena – typically replaced by a device called a "look ahead limiter."

This change is necessary for two reasons. The first is the reality of having a finite bandwidth. Even if we were able to broadcast linear digital audio, clipping will still present a problem as it takes a really high sample rate to accurately recreate a square wave. This is because the "sharp corners" of the square wave consists of audio harmonics that extend well beyond the range of human hearing.

Since digital audio typically is concentrated within the 20 - 20,000 Hertz range of normal human hearing, it is almost impossible to reproduce such a form within normal digital audio sample rates – with the one exception of the clipping of lower frequency elements such as "bass." (See my May 2003 article in *Radio Guide* for more information on this effect).

The second change comes from the fact that there is no pre-emphasis curve to deal with (or compensate for) in the digital broadcast domain. Since most engineers have most likely heard most of us processing geeks mention this point more than once, I will stop here, and explain what we mean. This is also something programming people need to be aware of as well for reasons that will make sense soon!

PRE-EMPHASIS

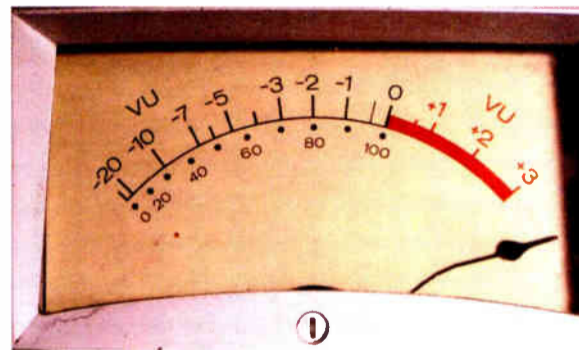
If you remember from my previous articles, pre-emphasis is used in analog broadcasting to compensate for noise normally picked up by radio receivers under typical reception conditions.

The way it works is basically like this: at the transmitter end of things, we broadcasters boost the "high end" (treble) by a pre-determined amount, defined in the US as a maximum of 75 μ S. The listeners' radios are designed to do the opposite, bringing the frequency response back to normal. While this sounds sort of nebulous, it can be described fairly simply.

(For the examples given below, imagine a typical VU meter as a reference.) The audio frequencies from deep bass to about 2 kHz are flat (all at 0 dB on the VU meter – the division point between the red and black areas on the meter)

The treble boost used for pre-emphasis starts at about 2 kHz (roughly the frequency area where "the chalk on the blackboard scratching noise" is most prominent) with a 2 dB boost (+2 dB on the VU meter). As you go higher in frequency, the boost continues rapidly higher and higher until you reach 15 kHz – the upper limit that most people can hear. (For those, like me, who can easily hear that high, 15 kHz is about the frequency of the high pitch tone or whistle your TV set makes while it is on.)

At 15 kHz the boost is around +17 dB. On a typical VU meter, this would be waaaaaay off scale!



The radio receivers out there tuned into broadcast signals apply an opposite response curve to the audio to bring the final frequency response back to normal. Now, let us return to what this means to the audio processor, and why it is so different in the digital domain.

WHAT IS 100%?

The typical FM station is limited to a maximum of 100% modulation. On a VU meter, 100% modulation typically is defined as that boundary between the red and black areas. Already, you might see that we have a little problem here.

The only way to fit everything in without going well into the red is to turn down the level until the 15 kHz audio components do not exceed 0 VU. This will place

the bass energy at about -17 dB (barely registering on the VU meter). This is the game the audio processor has to do when we require them to be used for our loudness wars, only the audio processing has to react to this change rapidly to keep program audio disturbances to a minimum.

Those who remember the sound of processing during the classic era of radio using wideband solutions may recall how stations became really quiet during cymbal crashes, and sharp "Ess'es." Another anomaly commonly heard back in the good 'ol days of processing was when you had a song where the drummer is tapping away on the cymbals while the singer holds a note.

Every cymbal tap would rapidly modulate the singer's voice downward. After the cymbal tap, the voice level would jump back to normal levels till the next "tap" of the cymbal. The overall effect was sort of like the singer was pounding on their chest at a rate matching the cymbal crashes. I call this effect "high frequency pumping."

HIGH FREQUENCY LIMITING

Processors in the late 70's got around this problem by splitting the pre-emphasis band where the boosted frequencies basically went to their own limiter, leaving unboosted frequencies alone. This solves the problem of high frequency pumping.

This change allowed for greater loudness gains. Managing the pre-emphasized audio with processing causes a profound change in the "balance" of the audio texture. This is especially true when maximum loudness is needed. It causes the high frequencies to become "smeared, or smashed."

The split-band technique (which lives on today in one form or another) causes the high frequency texture to become extremely "thick" under heavy processing needed for loudness. This is most easily heard when punching back and forth between the "program" and "air" on the studio audio monitor.

High frequency management these days is performed primarily by the audio clippers, which are used to "chop off" any audio peaks that exceed 100% modulation. The louder you need your station to be, the more you drive the clipping level, which also increases distortion on the audio. We discussed this effect in April last year.

Since we are boosting the high frequencies much more than the lower frequencies, the treble area of the audio sees much more clipping than the low frequency material. This becomes most noticeable when listening to snare drums.

When punching the studio monitor between "program" and "air," you will notice that in "program," the snare drum sounds clear, and in the forefront. In "air," the snare drum all but disappears. (By the way, the louder your station is on the radio dial, the more you will notice the disappearing snare drums.)

With these two points in mind, the biggest thing you will notice when jumping into the digital space is the complete disappearance of the above two observations.

CLEANER PROCESSING

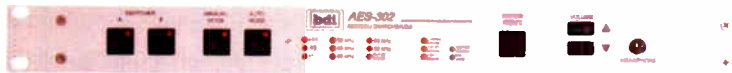
Since pre-emphasis is not needed in any digital audio broadcast medium, increasing loudness does not mean an increase in the above odd anomalies with which we have become familiar in analog broadcasting.

This is a big plus in one way, although it could be a negative for radio operators who have defined their programming around this sound. It is possible to recreate this effect to a degree, and as we wrap up this part of the series, you will hopefully have the knowledge needed to do that without disrupting the quality of the digital signal too much. More on what I mean by that later on!

The digital audio broadcasting world has introduced most of us to a new tool for "modulation" control. Since we cannot use audio clipping, we have to look to something called a look-ahead limiter. How does it work? Why have we not been using it for processing before now? That will be our next topic.

Cornelius Gould's mission is to rid the world of bad sounding audio. Meanwhile he moonlights as Senior Staff Engineer for Infinity Broadcasting in Cleveland, Ohio. Corny can be contacted at: cg@radiocleveland.com

Digital and Analog Transmitter Audio Switching Solutions, Analog to IBOC!



The AES-302 Digital Audio Switcher/DA/D to A Converter



The CDS-300 Composite Audio Switcher/DA



The CDS-302 Automatic Composite Audio Switcher/DA

Introducing the next generation **transmitter audio switchers** from BDI. Now you can have complete confidence in your signal path with this series of switcher/DA systems. We have **composite** and **digital** solutions for your routing and distribution requirements. If your system is all digital, choose the AES-302 to automatically switch, distribute and monitor your transmitter audio feeds. Still running an analog STL or stereo generator? Use either the CDS-300 or 302 to switch and distribute your baseband audio signals. Select one of the optional modules for the CDS series and convert your analog signal path into an AES digital output suitable for digital exciters and IBOC implementations. Visit our web site and download complete information about these problem solver products.

Broadcast Devices, Inc.

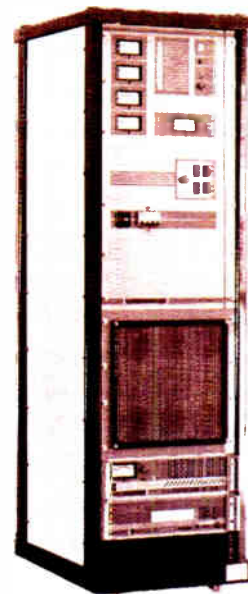
Tel. (914) 737-5032 Fax. (914) 736-6916

Website: www.Broadcast-Devices.com

bdi

Superior Broadcast Products

TV-FM-AM Transmitters & Antennas

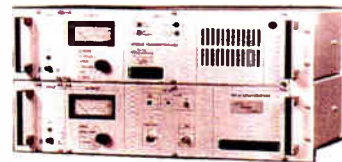


FM Transmitters
High Performance Solid State
Exciter and 500 watt Driver
Power Levels to 30,000 watts

Grounded Grid Models Feature

- Ease of Installation
- Fast Delivery
- Motor Driven Tuning
- Complete Front Panel Metering
- Low Pass Filter
- Soft Start Up
- Cost Effective Pricing
- Financing Available
- LED Read out on front panel shows operating parameters

Frequency Agile FM STL Transmitter and Receiver



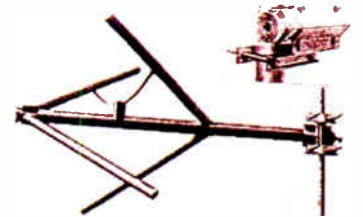
Both Transmitter and Receiver

\$3,500.00

Contact **Benny Springer 800/695-7919** or **Jimmie Joynt 800/279-3326**

194 Preston Rd. Suite 120-297 Dallas, TX 75248

Broadband FM Antennas



Circular polarization - DC grounded for lightning protection - mounts directly to tower leg - Power input 4,000 watts per bay

PHASETEK INC.

Quality

PHASETEK'S manufacturing facility and components expertise are available to design and fabricate any type of inductor or special RF component.

Our engineering and production staff's years of experience and commitment to quality are available to fill any special requirements.

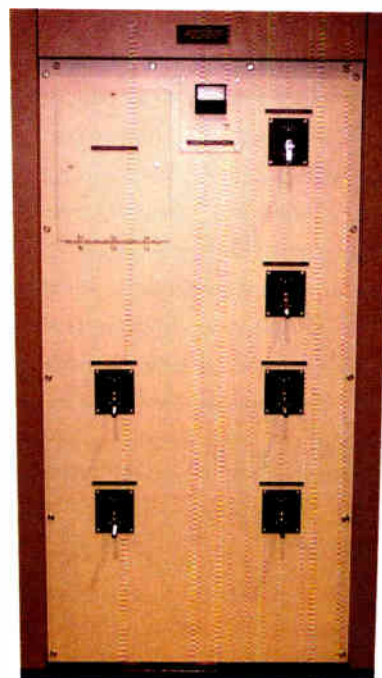
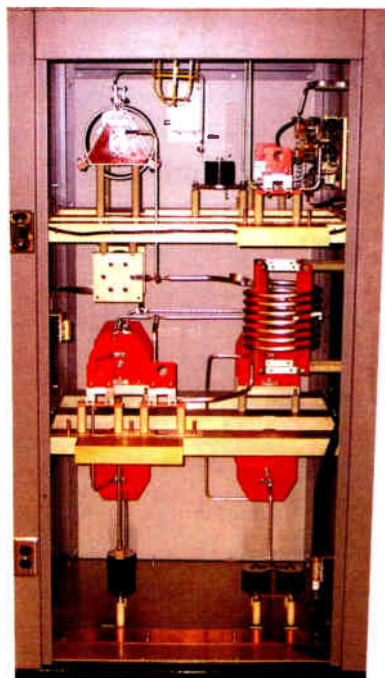
Dependable

RELIABLE & DEPENDABLE RF COMPONENTS & PARTS

Variable & Fixed Inductors
Variable & Fixed Vacuum Capacitors
Fixed Mica Capacitors
RF Contactors
Vacuum RF Contactors
Test Jacks and Accessories
Static Drain and Lighting Chokes
Isolation Inductors
Sampling Loops
Dial Counters and Couplers
Transmission Line Terminations
Ribbon Clips and Tubing Clamps
Horn Gaps
Toroidal Current Transformers
And More!

550 California Road, Unit 11
Quakertown, PA 18951

Phone: 800-742-7383 215-536-6648
Fax: 215-536-7180 Email: kgpti@epix.net
Website: www.phasetekinc.com



Custom Phasing Systems

Custom Manufactured

Antenna Phasing Systems
Control Systems
AM/MF Antenna Tuning Units
Diplexers (NDA/DA and expanded band)
Triplexers
Transmitter Combiners
Dummy Loads (with matching networks)
Tower Detuning Units/Skirts
Broadband Matching Networks
Tunable Skirt Assemblies (TSA's)
Isolation Transformers

Experience

Phasetek's experienced staff of engineers and production personnel are dedicated to provide the broadcast industry the highest quality, custom designed phasing equipment.

Value

OTHER SERVICES AVAILABLE:

Phasing System Design
Engineering & Technical Field Support
AM & FM Installations.

Tower Topics

We Deal in Steel – The Truth About Towers

Part 3 – Towers Meet Mathematics

by Leonard Weenou, P.E.

[SEDONA, Arizona - December 2004] In this series, we have been discussing the selection and design concepts of towers in general, and using the information to start planning a “fantasy” tower. Last time we considered the principle specifications and loads, and identified the limitations of our location for our theoretical project.

Although we promised last time to start pinning down some specific details, on reflection I think in our discussion today we should make sure we define and understand some of the important terms.

WHAT IS THE TOWER'S PURPOSE?

Among the most important things we need to answer: exactly what does this fantasy tower – or your real tower – really have to do for us?

At the most basic level, we can reduce the criteria to these areas:

1. Hold up the station antennas.
(or be the antenna if it is for an AM station)
2. Hold itself up.
3. Survive duress.

Now there are tower ‘builders’ who are the people who put up structures by rote to accomplish these goals, and they just replicate what others have done in non-critical applications. There are tower designers who just use tables and basic GEP (Good Engineering Practice) to tailor installations.

Then there are the engineers who know the physics and mathematics of what they are dictating to be erected, and can speak with authority about the structure. These latter talents are especially needed in purpose-built, near one-of-a-kind or highly customized structures. So how do they do this?

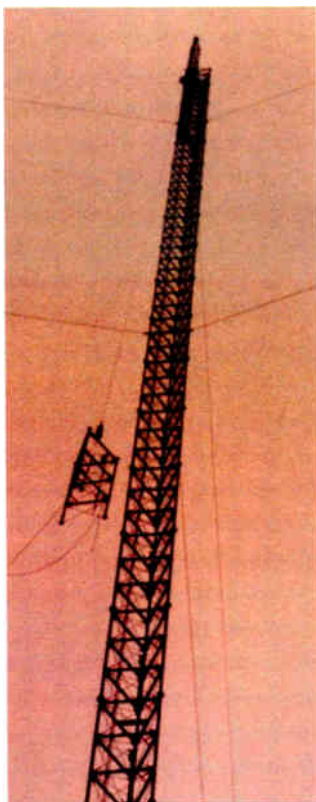
ENGINEERS LOVE TRIG!

The fruits of trigonometry* are all over and around us and most of the world we know. Trig helps define and evaluate many of the forces that we encounter. Trig is so ubiquitous, it has become part of our lexicon.

1. Hollywood writers refer to the story “arc.”
2. We all know people who are “off on a tangent.”
3. And all through the sixties, everyone wanted to know “hey baby, what’s your sine?”

Seriously though, for design and evaluation purposes towers, in the main, can be divided into a large series of triangles, and trig is for triangles.

Why this love affair with triangles? Because the triangle is the strongest form in nature. Even without physics training, a study of nature, even human nature would show you this. For example, when challenged, most people move into a triangular support stance – legs out, forming a triangle with the ground and leaning forward, creating another vector triangle with the ground.



A tower is a mass of triangles.

A study of a well-designed tower through field glasses or a spotting scope will reveal that it is a mass of triangles. Even four legged self-supporting towers achieve rigidity and strength through using face diagonals and gussets or wedges in the corners making triangles.



A closer look at a “mass of triangles.” Recently assembled seven foot face, by twenty foot high, triangular sections await stacking.”

THE TRIANGLE AND THE GUY WIRE

In a guyed tower, a most important diagonal (or hypotenuse) of that triangle is quite often a guy line.

It is worth noting that a guy line has no strength in compression and so contributes its supporting capability only when in tension. Even so, only when in extreme tension does the line take on the characteristic of a straight element. For the most part, the guy line geometry is a catenary – an arc. By the way, trig works for arcs as well because what is an arc for evaluation purposes but a long series of very tiny triangles?

The purest catenaries are unilateral with even elevation high points at the ends and the maximum sag in the middle such as you see on power lines in southern New Jersey, the flattest land space on earth. The even elevation of the end points and the uniform weight of the wire create this symmetry.

Since the guy line connections on our guyed tower are uneven in elevation (low earth point at ground level

at the anchor and a higher connection point at some elevation on the tower), the arc is uneven with the maximum deflection (sort of a sag) not normally at the midpoint of length.



Guy wires have no strength in compression – only in tension.

Now I mention this catenary circumstance for three reasons:

- One, the use of straight-line calculations for stress analysis is a fiction. However it is a fiction close enough to be accurate.
- Two, because of the catenary, cable length, the varying tension, etc. the phenomena of line resonance and period harmonics becomes of interest and possibly some concern. We will get back to this – I promise.
- Three, deflection (the differential value of sag from a theoretical straight line between the two connection points) and period of oscillation can be used then as secondary indicators of cable tension and guy tension balance.

Next time we will delve further into tower fabrication and define some more terms we have or will encounter, so we are all on the same page so to speak. Please bring your calculator.

* To be precise, trigonometry is only that portion of mathematics that deals with the special properties of a right triangle. However we will include here much of geometry and some other small sections of helpful related math elements and throw them into what most of us think of as “trig.”

A legendary consulting engineer, Leonard Weenou has overseen many tower projects. So far as we can tell, all have stayed erect! Contact him at editor@radioguide.com

ENGINEERS AND TOWER ERECTORS (RIGGERS)

[SEDONA, Arizona - December 2004] In a gross simplification, the difference between engineers and riggers is that the former have a strong knowledge of concepts and a workable knowledge of materials. Conversely and complimentary, riggers have a workable knowledge of concepts and a strong knowledge of materials.

If these two groups work together and harmoniously, your tower has the greatest chance of being as close to perfect as possible. Even on the simplest of projects, riggers should never be allowed to do their work without ready access to the design engineer.

In the case of a new tower, the execution of its construction is normally straightforward, and unless erection limitations are noted on the drawings, the riggers can normally just follow good construction practice and mandatory regulations to safely and expeditiously proceed to conclusion.

Retrofits, especially in the current tower sharing enthusiasm, represent the greatest danger to the rigging crew with the real possibility of exceeding the design limits of the structure. The static loads of the final installation may be well within capability, but the dynamic forces during the retrofit may exceed safe limits unless precautions are taken.

In the above circumstance, the engineer should dictate a detailed CPM (critical path method) schedule of exactly how the work should proceed (sequence, manner, means, limitations, hazards, etc.).

On the other hand, riggers should neither feel free to vary from this CPM nor should they feel that they could not

question the plan. We are all human (with those feet of clay) and we do make mistakes. Good riggers understand that when your life is on the line, you have the right to ask questions to ensure if what is written is really what is needed to be done.



Rigging work is tough and demanding even on the ground. Two pros manhandle a tall tower anchor fanner plate adapter into place to be “pinned.”

Clarity is everything in these instances and a good dialog and exchange of concerns between the different disciplines does nothing but lead to a safe, zero-defect project. – Radio Guide –

A Rectifier To Fit Your Transmitter



HVCA
872B

No matter what transmitter you own, we can provide quality rectifiers from stock. We have a reliable, cost-effective solution to meet the requirements of most AM and FM transmitters built since the 1950s at prices better than the manufacturers'.

We Have CCA Rectifiers

- Rectifier Upgrades Available
- Same Day Shipments



www.rectifiers.com ■ 800-649-6370



Model RFC-1/B Remote Facilities Controller

- control transmitter from any telephone
- 8-64 channels of telemetry and control
- programmable control by date and time
- optional printer and modem adapters
- programmable telemetry alarms
- integrated rack panel



Model RAK-1 Intelligent Rack Adapter

- parallel printer interface
- internal modem for data transfer
- front panel status indicators
- battery backed power supply
- rack mountable chassis
- accessory package for RFC-1/B

Model DAI-2 Dialup Audio Interface

- perform unattended remote broadcasts
- fully programmable output on any key press
- momentary and/or maintained relay outputs
- four logic inputs with programmable output
- balanced audio input and output with ALC
- seven DPDT relays and one 4PDT relay



Model AFS-3 Audio Failsafe

- contact closure or status voltage on alarm
- adjustable delay period from 30 sec to 5 min
- positive delay adjustment via rotary switch
- internal audible alert--continuous or pulsing
- front panel status indicators and bypass
- dual, balanced audio inputs



 Sine Systems, Inc.

615.228.3500
www.sinesystems.com

Announcing

VoxPro PC

Version 3.3

One Hot Editor

- Adjusts gain after recording in single or both tracks.
- Compatible with virtually all sound cards.
- Imports-exports all popular formats including MP3.
- Fully re-sizable screen from minimal to full screen.
- Networks on NT, Novell or peer-to-peer networks.
- Remotely starts record, play, and stop from your console.
- Copies or moves multiple files from folder-to-folder, user to user or room-to-room.
- Records host in one channel, caller in another and plays back in stereo or mono.
- Lists file titles and sorts by name, length and modified time.
- Scrubs audio using jog wheel or buttons.
- Unlimited undo's and redo's for life of file.
- Opto-Iso tally in record mode for on-air lights.
- One button Insert Record automatically sandwiches new audio into existing recordings.



"Never has one piece of equipment made such a difference in the air staff's ability to build great phoners, fast! And they learned it in minutes without having to spend much time training on it."

No Other Editor

Bob Case, VP Programming,
Clear Channel - Seattle.

No other digital audio editor in the world has the ability to copy and move *multiple* files from user to user or room to room; create files and instantaneously share them with other selected workstations; or provide access to on-air files from another studio when you're off the air using existing NT, Novell or peer to peer networks.

System Requirements: Pentium 3 or higher, Windows 2K, XP Pro, 128 MB RAM, CD-ROM, 20GB hard drive, serial or USB port for control panel, USB or parallel port for software key



Available at all broadcast distributors. Check out VoxPro PC 3.3 at:
www.audionlabs.com or call us for more information: 206 842 5202 x 204

Keeping the Antenna System Legal

by Alan Alsobrook

As promised in September's issue, Alan returns to his discussion of some key areas targeted in inspections by the FCC and the Alternate Inspection Program.

[ST. AUGUSTINE, Florida - December 2004] When inspecting a station's plant, it is impossible for anyone to think of every place to look, even with an FCC Self-Inspection Checklist in hand. More importantly, there are many things that – while not illegal – can degrade operations unless they are caught by regular maintenance.

As with our previous discussion of technical operations, the goal of this article is to help you find the right places to check *before* the inspector arrives.

GROUND SYSTEM INSPECTION TOOL

Another fairly recent addition to the AM checklist concerns a visual check of your ground system. What an inspector will be looking for on a visit is that all of your radials appear to be intact, and that they are properly buried as per your station license. (If your license specifies a buried ground system, you should not have any radial wires showing above ground.)

How can you tell if your ground system is in good shape? After a visual check for exposed sections, you can locate your buried radials quite easily with a FIM (field intensity meter) that has an external antenna jack and a sniffer probe.

You can make a sniffer probe easily in your shop. What you will need to make a sniffer loop is about eight feet of shielded coax (RG-58), and a pole on which to mount it. To make things easier for me, I ended up using a broken golf club, which works out very nicely.

To make the sniffer, wind five or so turns about three inches in diameter and tie the center conductor and shield of the end of the loop back to the shield at the start of the loop. I used a G3 capacitor as a form.



Marking the center of the loop.



Cutting the shield at the center of the loop.

When you get the coax shield cleaned at the mid-point, this will give you a small-shielded loop antenna. Then just use electrical tape to hold it all together and dress it for use.



Wrapping the loop with electrical tape.

On the end of the cable you will need a BNC connector; in use, this will connect to the external input of the FIM.

SNIFFING AROUND THE GROUND SYSTEM

Now you can sweep your newly made loop along the ground in line with the radial, and you should see a large upward deflection on the FIM as you cross a radial. (The "Log" mode setting on the FIM works best for this application.)

By the way, I trust when you go to look at your ground system you had to unlock a gate to get to the base of any energized AM tower. The fencing requirements in the FCC Rules are that an "effective" locked fence be protecting the base of every AM tower. Effective is defined for this purpose, as it would keep small children away from the tower.

This leaves quite a bit of latitude for inspector interpretation. From what I have gathered from different inspectors over the years, the fence should be at least four feet high – although many prefer six feet – and of such construction that small children cannot get over, under, or through it.

DIRECTIONAL ARRAYS

At this point, we ought to consider some aspects related to directional arrays. To make sure an array is legal you need to (1) regularly check the monitor points, (2) make sure they are in tolerance, and (3) log the readings. Additionally, when you go to check your monitor points you should be able to get to them following the *exact directions on your license*. Licensees should make certain each point can be located based solely on the description provided in the station's license or a copy of the letter sent to the FCC to correct the license.



The Ground Loop Sniffer ready for use.

Sometimes cities will change things (road alignments, names, numbers, etc.), especially if a new subdivision is built around your monitor point. If you cannot get to the monitor point following the existing "official" directions, you will need to make a correction. To do this, the station must file a letter with the Media Bureau, Audio Division, FCC, Washington, D.C. 20554, containing a corrected description.

You will find a corrected license authorization will not be issued solely for this change, so a copy of the letter must be maintained with the station's files. I would also make sure to place a copy of this correction letter with all posted copies of the station license so that any inspector would be sure to find it during an inspection.

How often you visit your monitor points is up to the individual station. Under the old Rules it was monthly for most stations; under the new Rules it is "as often as necessary." At an absolute minimum I would recommend at least quarterly measurements. (If you do not have an approved sampling system, as stated on your license, you are still required to take measurements at a time interval not to exceed 120 days.)

Meanwhile, back at the transmitter building, do you have adequate metering to make sure the array is operating as required? By this, we mean an antenna monitor system, preferably using an approved sampling system. Normally the allowable tolerance for the current ratio is 5%, and 3% for the phase angle of each radiator, unless otherwise stated on your license.

DOCUMENTATION

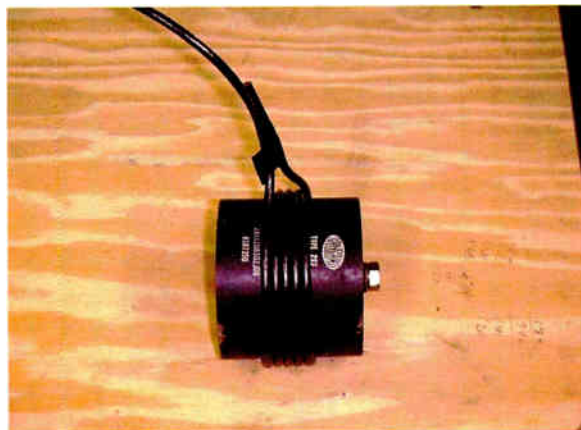
Back to something we keep saying is very important: the paper work. When the array was initially installed a full Proof was required. Can you locate it? Not only is this invaluable information, should there be a problem with the array over the years, but all stations are required to have the original Proof along with the most recent Partial Proof on file for inspection.

Again – and I cannot repeat this enough – never throw away any Proof information on a directional array. While some of it may no longer be required to be kept on file, the information in it could save many thousands of dollars when trouble shows up and adjustment is necessary.

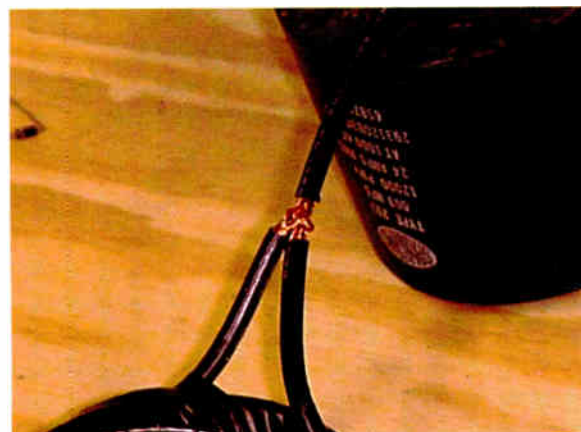
Directional arrays can be very difficult to maintain if some part of it deteriorates, and recreating the data of the original Proof prior to working on the problem could be quite expensive. But that is for another discussion; in this one we are basically interested in covering the legal requirements for the array.

If you read this and discover that your array is out of tolerance, for your own financial well being – please – under any circumstances – *do not* run over to the phasor and start cranking knobs unless you really know what you are doing. A few cranks of the wrong knob on the phasor could easily cost you over \$10,000 in consultant fees to get it back in shape.

(Continued on Page 18)



Forming the loop.



Tying the ends of the loop together.

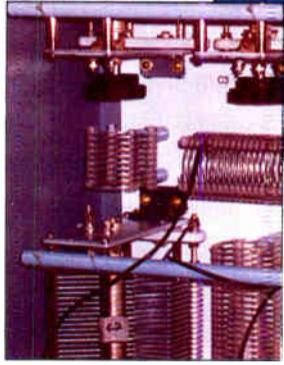
Right in the middle of the loop – in this example where we used five turns, it will be the top of the third turn – open the shield. The easiest way I have found is to use some white-out to mark the spot, and then remove the capacitor and cut down to the inner insulator.



nott ltd

3801/4001 La Plata Hwy
Farmington, NM 87401

Manufacturers
of the
Gila-Stat
Lightning
Prevention
System



Design and Manufacture of
Folded Unipole Antennas
Structure Detuning Systems

Design and Manufacture of
Lightning Prevention Systems
ROHN Towers & Accessories

Phone: **505-327-5646**

Fax: **505-325-1142**

Website: www.nottltd.com

Email: judyn@nottltd.com

**Over 40 Years
Broadcasting
Experience**



75412 Highway 25 • Covington, LA 70435 - U.S.A.

800-624-7626 • 985-893-1243

Fax: 985-892-7323 • www.freeland-inc.com

Email: freeland-inc.com@freeland-inc.com

LOOKING TO CUT YOUR BUDGET?

**LET US HELP REDUCE YOUR
ENGINEERING COSTS WITH REBUILT TUBES.**

**WE OFFER A GREAT WARRANTY, QUICK
SERVICE, AND A MONEY SAVING PRICE!**

We also buy used tubes.

Recycle those unwanted duds for \$\$\$ CASH \$\$\$



We are a third generation,
American owned and operated company,
rebuilding quality tubes since 1940.

Freeland Products, Inc.

75412 Highway 25 • Covington, LA 70435

1-800-624-7626 • 985-893-1243 • freeland-inc.com@freeland-inc.com

**Take
10% Off**

**— THE COST OF YOUR NEXT
REBUILT TRANSMITTER TUBE.**



This original coupon must accompany
the used tube when sending it in
for rebuilding, for discount to apply.

This coupon is only valid for one rebuilt tube.
COUPON COPIES ARE NOT VALID



www.ramsyscom.com

FAVORITES / BOOKMARK

FCC Focus

Keeping the Antenna System Legal

Continued From Page 16

TRANSMITTER CONTROL

Another area where inspections often uncover problems is transmitter control. Station operating personnel must have the ability to turn off the transmitter within three minutes, should an out-of-tolerance condition occur. Thus, it is important to make sure that you have a reliable method of turning off the transmitter at all times.

For those stations that have different powers and modes of operation, you must change modes within three minutes of the time stated on your license. I have received some questions about the three-minute time tolerance for switching modes, which is stated in Section 73.1350(d)(2).

For those stations using automated control systems, they should be capable of determining an out-of-tolerance condition and either correcting the condition or terminating operation if necessary for improper mode, excessive power, or excessive modulation.

Manually controlled stations must have a person who can monitor the operation of the station, on duty at a fixed location at all times the station is in operation. After the FCC changed the Rules on controlling of stations they placed the burden of proof back on the station.

The rules also allow unattended operation where there is "Highly Stable" equipment that you can just walk away from as long as you meet all requirements of Part 11 (EAS). Again, if the FCC comes in and finds the station operating illegally, then obviously the equipment was not stable enough to be left unattended.

MAINTAIN CONTROL

If you read the Rules, you can get many different ideas from them. For some issues, it appears you may have up to three hours to make corrections to an out of tolerance operation. On the other hand, some AM transmission problems require correction within three *minutes*, or the station must be shut down.

The bottom line remains that you need to know what your station is doing and be able to control it promptly. Additional information from the FCC on remote control operations is available at <http://www.fcc.gov/mb/audio/bickel/noonehome.html>.

Obviously, with these requirements you need to have some way of determining that you are in compliance with both modulation and power output rules. This would indicate you need some metering devices such as modulation monitor, base current meter(s), output power meters, or some other valid method of determining your correct output power.

Several years ago the Rules were relaxed as to exactly what you need to make sure you are in compliance. Of course some stations decided that that means you do not have to have anything.

This is obviously not the case since you are required to be able to determine your compliance with these items at all times. So not only do you need to have them but, also, they must be calibrated and you should keep a record of that calibration.

Please note that according to the Self-Inspection Checklist, you are required to log all meter calibrations per Section 73.1820(a)(2)(iii). But when you read that section you will see that it only applies to AM directional stations without an approved antenna monitor. If you should get dinged for this you might be able to make the argument that the Rules do not require the logging of calibrations. Of course the first choice would be to avoid any hassles all together and log the calibration.

HOW LOUD IS TOO LOUD?

Finally – if you are feeling brave, let us take a quick look at your modulation monitor. For AM stations the Rules state, "In no case shall the amplitude modulation of the carrier wave exceed 100% on negative peaks of frequent recurrence, or 125% on positive peaks at any time." I am not sure exactly how you can exceed 100% negative modulation, so the best bet is to not to even hit 100% negative modulation. With the current processor technology there is no reason this should be a problem.

For FM stations the Rules allow you to run 100% as referenced to 75 kHz deviation. You may add up to 10% more modulation at a rate of 0.5% for each 1% injection of an SCA signal up to a maximum of 82.5 kHz deviation. While out inspecting, I have walked in on stations that were modulating as high as 115% – without any subcarriers. Had I been the FCC, I would have whipped out my NOV pad.

In a future article, I plan to go into depth on how to determine your station's modulation. While it seems simple enough, according to those Rules cited above, it can get quite involved. Hopefully, I will have a chance to take a close look at some of the newer modulation monitors to see how well they work, and pass on some information to you.

Alan Alsobrook is a contract engineer based St. Augustine, FL, when he is not out inspecting stations for the Florida Association of Broadcasters AIP. You can contact Alan at aalso@bellsouth.net

Remote Broadcast Solutions



Amplified Mic/Line to Telephone Interface

- Outputs & Inputs for telephone handset, cellular phone or balanced line level at up to +10dBm.
- Operates up to 36+ hours on two 9V alkaline batteries.
- High quality, user-switchable, internal limiter prevents clipping.
- External power input with silent, auto-switching battery backup.
- Individual gain controls for send, receive and headphones levels.



Unattended Dial-Up Broadcasts with the DR-10

- The DR-10 is a Dial-Up remote control with balanced, telephone audio input & output that can control many automation systems or your audio console for unattended remote broadcasts.
- Our Silencer™ option removes control tones from the audio path.
- Use the DPDT relays to insert the phone audio directly into the program path when necessary, especially for emergencies.



TelTap Pocket-Sized Manual Telephone Coupler

- Can be used as a phone tap or a passive manual telephone coupler.
- Send or receive telephone audio.
- Compact size & low cost makes the TelTap a great addition to your remote kit for main or backup capabilities.

Discover more online at
www.circuitwerkes.com



CircuitWerkes, Inc. - 2805 NW 6th Street, Gainesville, Florida 32609, USA. 352-335-6555

The Worst I've Ever Seen

A periodic display of curious solutions for technical problems.

[December 2004] Sometimes we need to attenuate a signal in order to properly handle it.

Most know that each connector carries with it a small insertion loss. Of course, at times it might be easy to let this concept get away from us ...



Do you have a picture demonstrating genius in engineering, or something that wouldn't win the "consolation prize?" Send it on to us, so we can share the good, and the not-so-good! Email your worst to: radio@broadcast.net

Missing Your Radio Guide? Get Them All on the BDR

Version 2.0 of the Broadcaster's Desktop Reference now includes every issue of Radio Guide since January 2003 to the present. Plus, there is an index for the PDFs, for easier location of older articles.

The BDR (Broadcaster's Desktop Reference) is an ongoing effort to provide useful tools, information, and history of interest to broadcasters.

The CD includes several sets of Radio Utilities, an AM and FM/TV database viewer (including DA patterns), as well as EAS printer paper sources, project schematics, historical data and pictures – even some interesting Top Ten lists.

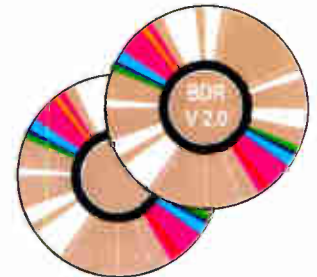
Recent additions include updated FCC and EAS checklists, and some equipment manuals. Having this out at the transmitter site can save you lots of time and effort.

A Table of Contents for the BDR can be found at: www.olderadio.com/bdr.htm

The proceeds from this CD fund both future improvements of the BDR, as well as helping the efforts of olderadio.com to document the industry's history.

There is no set price for the BDR. Many find \$15-\$20 appropriate to cover the costs of materials and shipping, plus a little extra for funding the improvements. If you pay more, it will be put to good use.

If you have wideband Internet, we can now make arrangements for you to get the BDR quicker, via download.



Credit Card Payments Accepted at:

www.radio-guide.com/products.html

Or send your check or money order to:

Barry Mishkind, 2033 S. Augusta Place, Tucson, Arizona 85710
Please include your snailmail and email addresses.

Wizard 4 Windows
now brings
Multi Station
Monitoring
to your desktop
with true multitasking

www.belar.com 610-687-5550
Email sales@belar.com

See our interactive demo
at www.belar.com

FMMA-1 TOTAL Bar Graph
PEAK 107.4%
AVE 94.2%
MIN 51.0%

FMMA-1 TOTAL Bar Graph
PEAK 107.4%
AVE 94.2%
MIN 51.0%

FMMA-1 TOTAL Bar Graph
PEAK 107.4%
AVE 94.2%
MIN 51.0%

RFA-4
RF LEVEL

FMMA-1
PEAK MOD
PPM
GENERAL

FMSA-1
TOTAL 306%
LEFT CHANNEL
RIGHT CHANNEL

RDS-1
RDS INT 4.3%

FMMA-1 TOTAL vs Time
PEAK: 63.9% AVE: 48.1% MIN: 33.1%

Percent vs Seconds
3/24/2004 4:56:56 PM

Leading POTS Codecs Compared.

	Comrex Matrix	Tieline Commander	Zephyr Xport
Audio Bandwidth @ 24 kbps @ 19 kbps	14 kHz 11.2 kHz	15 kHz 9 kHz	15 kHz 15 kHz
<u>Direct</u> Internet Software Updates	No	No	Yes, via Ethernet port
Digital PC Audio Input	No	No	Yes, via Ethernet port and supplied driver
Audio Metering (XMIT/RCV)	Transmit only	One-at-a-time	Simultaneous
Audio Processing	None	Simple AGC	Digital multi-band AGC with look-ahead limiter by Omnia
Remote Control	No	RS-232 and dedicated computer	Ethernet via Web browser
Auto Dial Storage	19 Numbers	50 Numbers	100 Numbers
Frequently-Used Settings Storage	none	none	30
Standards-based POTS Codec	No - Proprietary	No - Proprietary	Yes - aacPlus (MPEG HEAAC)
Transmit-Receive Quality Display	No	Yes	Yes
Contact Closures	2	2	3
Display Resolution	120x32 LCD	120x32 LCD	128x64 LCD
Analog Cell Phone Interface	Optional	Standard	Standard
Mixer Inputs	1 mic, 1 mic / line	2 mic / line	1 mic, 1 line
Phantom Power	No	No	Yes - 12 volt
Automatic Voice-Grade Backup	No	No	Yes
Power Supply	External	External	Internal auto-switching
Local Mix Audio Outputs Headphone Line Level	Yes Yes	Yes No	Yes Yes
Direct Receive Audio Output	No	Yes	Yes
Uses ISDN at the Studio Side for More Reliable Connections	No	No	Yes - your Zephyr Xstream becomes universal POTS and ISDN codec.
Available ISDN Option	\$850.00 (adds MPEG I.3 & G.722)	\$850.00 (adds G.722)	\$495.00 (adds G.722 & state-of- the-art AAC-LD for high fidelity and low delay)
List Price:*	\$3,700.00	\$3,650.00	\$2,495.00



The world's most advanced POTS codec
is also the world's lowest priced POTS codec.

Telos
AUDIO | NETWORKS

* Refers to base MSRP without ISDN option as of 5/1/04. The Telos logo, Zephyr, Zephyr Xstream, Zephyr Xport are all registered trademarks of TLS Corporation, © 2004. aacPlus (TM) Coding Technologies. Comrex, Tieline and associated trademarks are property of their respective owners. Product specifications quoted from manufacturer's most current published documentation at time of printing.

The routing switcher gets a new twist.

(About five twists per inch, actually.)

Everybody needs to share audio. Sometimes just a few signals — sometimes a few hundred. Across the hall, between floors, now and then across campus. Routing switchers are a convenient way to manage and share your audio, but will your GM really let you buy a router that costs more than his dream car? Unlikely.

If you need a routing switcher but aren't made of money, consider Axia, the Ethernet-based audio network. Yes, Ethernet. Axia is a *true network*. Place our audio adapter nodes next to your sources and destinations, then connect using standard Ethernet switches and Cat-6. Imagine the simplicity and power of Ethernet connecting any studio device to any other, any room to any other, any building to any other... you get the idea.



Routers are OK... but a network is so much more modern. With Axia, your ins and outs are next to the audio, where they belong. No frame, no cabs, no sweat.

Scalable, flexible, reliable... pick any three.

An expensive proprietary router isn't practical for smaller facilities. In fact, it doesn't scale all that well for larger ones. Here's where an expandable network really shines. Connect eight Axia 8x8 Audio Nodes using Cat-6 cable and an Ethernet switch, and you've got a 64x64 routing switcher. And you can easily add more I/O whenever and wherever you need it. Build a 128x128 system... or 1024x1024... use a Gigabit fiber backbone and the sky's the limit.



Are you still using PC sound cards?

Even the best sound cards are compromised by PC noise, inconvenient output connectors, poor headroom, and other gremlins. Instead, load the Axia IP-Audio Driver for Windows® on your workstations and connect directly to the Axia audio network using their Ethernet ports. Not only will your PC productions sound fantastic, you'll eliminate sound cards and the hardware they usually feed (like router or console input modules). Just think of all the cash you'll save.



There's a better way to get audio out of your PC. No more consumer-grade 1/8" connectors — with Axia your digital audio stays clean and pristine.



Put an Axia Microphone Node next to your mics and send preamplified audio anywhere you need it, over Ethernet — with no line loss or signal degradation.

Put your preamps where your mics are.

Most mainframe routers have no mic inputs, so you need to buy preamps. With Axia you get ultra-low-noise preamps with Phantom power. Put a node in each studio, right next to the mics, to keep mic cables nice and tight, then send multiple mic channels to the network on a single Cat-6 cable. And did we mention that each Mic Node has eight stereo line outputs for headphones? Nice bonus.



Put your snake on a diet.

Nobody loves cable snakes. Besides soldering a jillion connectors, just try finding the pair you want when there's a change to make. Axia Audio Nodes come in AES/EBU and balanced stereo analog flavors. Put a batch of Nodes on each end of a Cat-6 run, and BAM! a bi-directional multi-channel snake. Use media converters and a fiber link for extra-long runs between studios — or between buildings.



An Axia digital audio snake can carry hundreds of channels of digital audio on one skinny CAT-6 cable. We know you're not going to miss soldering all that multi-pair...



Scott Studios



BALSYS

Axia is already working with some great companies. Like Enco Systems, Scott Studios, Radio Systems, Balsys Technology Group, and of course Telos and Omnia. Check AxiaAudio.com/partners/ to find out who's next.

With a little help from our friends.

A networked audio system doesn't just replace a traditional router — it *improves* upon it. Already, companies in our industry are realizing the advantages of tightly integrated systems, and are making new products that reap those benefits. Working with our partners, Axia Audio is bringing new thinking and ideas to audio distribution, machine control, Program Associated Data (PAD), and even wiring convenience.



Would you like some control with that?

There are plenty of ways to control your Axia network. For instance, you'll find built-in webservers on all Axia equipment for easy configuration via browser. PathfinderPC® software for Windows gives you central control of every audio path in your plant. Router Selector nodes allow quick local source selection, and intelligent studio control surfaces let talent easily access and mix any source in your networked facility.



Control freaks of the world, rejoice: intelligent Axia mixing surfaces give talent complete control of their working environment. Reconfigure studios instantly and assign often-used sources just when they're most useful.



"This sounds expensive." Just the opposite, really. Axia saves money by eliminating distribution amps, line selectors, sound cards, patch bays, multi-pair cables, and tons of discrete wiring — not to mention the installation and maintenance time you'll recover. And those are just side benefits: our hardware is about half the cost of those big mainframe routers. That's right... *half*. Once you experience the benefits of networked audio, you will never want to go back. AxiaAudio.com for details.



Remote Broadcasting on Campus – A Primer

by John Devecka

[BALTIMORE, Maryland - December 2004] While having a well-designed and staffed studio helps provide a truly professional image for any campus station, it is when the station “goes out to the listeners” that it really becomes an integral part of campus life.

For example, sports events seem a natural for remote broadcasting, although some of the rights may have been sold to local commercial broadcasters, and may present some difficulties. However, sports events can also be the hardest events to do right. What about the other myriad of events that are going on – right there on campus – that you can promote, highlight, participate in, and broadcast?

YOUR EVENT IS THERE, BUT YOUR STUDIO IS HERE

Of course, once you have decided to spice up your broadcasts with some sports and maybe some campus events programming, how do you do it? You could lug a recording system out there – and bring back the material for editing and later playback – or you could find a way to remotely feed your main studios with the programming.

Remote broadcasting presents some common issues, and there are a wide variety of solutions for these problems. Like anything in broadcasting, when someone asks: “how do I do it?” the first reply is always, “how much ya got?” So, as we look at the various options and explore a bit, perhaps some of these suggestions will fit your situation, or remind you of the people you need to call.

What follows is ranked (very roughly) by typical cost from the cheapest to the ones for which you go for a grant. Nevertheless, as we move along we will try to avoid an overly detailed discussion about exact costs, since some of these items can be had for a wide variety of prices.



The cheapest way to send audio from a remote site.

As an example of your options, allow me to mention two reasonable resources for used broadcast gear: www.radio-classifieds.com and www.ebay.com. There is one caveat though: you should also be friends with someone who knows which end of the soldering iron burns, just in case your used gear looks like Jake and Elwood's car at the end of the Blues Brothers.

FIRST THINGS FIRST

There are a few basic things you should do, before you even begin to embark on a remote broadcasting quest. One is to make friends with the people who handle telecommunications on your campus. And I mean, go and meet them, buy them a coffee, ask them questions about their jobs, about how phone infrastructure is done on campus – anything and everything you can do to make sure that they *like* you, so when you ask for a favor, it just might happen.

If you do not know how to make friends like this on your campus, *learn now!* This is how many special “things” happen on campus, things which might not ever

find their way into the records. Make friends with the IT people the same way.

You get a zillion spare CDs for promotions, right? Do you know what kind of music the IT guys like? Or the guy that will come fix your broken door or get you the magic key for a storage closet? *Learn!* You will be amazed how much better things can go on a campus when the behind-the-scenes people like you and know that you respect them.

SIMPLE AND QUICK

Here is where those friends in telecom come into play: The easiest solution is to have direct audio connections from key campus sites, like the sports centers or the Mall, to the studio. This is usually done using a “dry pair” line from the location to the studio.

(A “dry pair” is a line running from one point to the other without passing through any transformer or patch locations. In other words, it is like running a phone line all across campus, except you do not have to deal with “ring voltage.”)

Usually, you can get a campus phone technician to provide this kind of line for you. If so, it makes it much easier to walk over to the event location, connect up your audio and go right on-the-air. On the studio end, you simply connect the line like any other input on the console and run it.

It is possible the phone techs on your campus will do this at no cost to you. While nothing is ever truly free, it is possible. Assuming you are able to accomplish this, your basic portable mixing board can be connected (line out) to the line back to the studio and away you go. You also may require amplifiers or equalizers to do this, but they are relatively cheap. See – your newfound friends have already paid off!

OTHER CONNECTION OPTIONS

The second easiest solution is a direct audio connection using coaxial, fiber optic, ethernet or another point-to-point cable from the remote site to the studio. With these options, you will need some kind of analog-to-digital converter to make the audio enter and a digital-to-analog converter to exit the cable, but that is usually not too expensive.

A heavily wired campus may have some or all of these options already in place. And, your friends (remember them?) in telecom or IT may very well have some of the gear you need sitting on a shelf.

In our case, everything audio on campus is “home run” to a central phone room, and everything video to a cable TV room. Chances are that your main sports areas will already be wired in some manner for audio and video. If not, there are wireless options, and we will get to them; for now, please be patient and let me finish this one first.

If you have a cable TV system running on campus, you can probably use sub-band, or “T” channels to insert programming that can run all over the system but not be seen (or heard) by the standard cable connection. This means that you can insert audio at the sports location on channel T-9 (for example) using a cable TV modulator, and extract it anywhere in the system using a T-9 receiver.

By the way, do not be surprised if your campus cable guys have a couple of these units just lying around. At the very least they can probably point you to cheap sources for these. As a bonus, if you need it, you can also send video this way, opening up all sorts of possibilities ranging from letting the studio engineer see what is going on at the remote to aiding staff in troubleshooting various problems that might come up. (“Use the second jack on the left side. No, the *other left side!*”)

USING THE TELEPHONE SYSTEM

The on-campus telephone system will usually offer you a variety of options, especially if there is a campus phone line near the event location. The most common approach would be to directly connect an open telephone line to the studio – similar to using a “dry pair,” but likely to have more “noise.” To do this though, you need to strip out the “ring voltage” that exists on standard lines using inexpensive phone taps. Warning: forget to do this and you may fry gear at both ends!

Another way to get audio to the studio would be to use the campus phone system as a dialup connection to the studio phones. The main disadvantage is that this requires the purchase of equipment to connect and dial. The advantage would be that you would be able to use the dialup equipment for away games as well.

Sometimes, you can get these systems connected with analog lines in your studio (or other places) – again by asking your campus telecom friends. They often need to put in analog connections for fax machines, so you can just tell them you need a fax line in your studio (but I would suggest you make sure it is analog anyway). At our campus, we have determined the campus PBX system easily can drop analog lines in most places that we need them with only a couple of days' notice

DIGITAL PBX FUN

However, there can be some real issues with campus telephone systems. Generally, these are digital PBX systems (meaning Private Branch eXchange) that are centrally connected on campus before they go out to the “real world.” Digital systems have special methods for carrying the signals around campus and use special handsets. They are virtually all proprietary and unique; all too often your gear is not going to be directly compatible.

For that reason, you need to make sure anything you use to connect is able to deal with the digital signal. The easy solution – as usual – involves money: JK Audio [www.jkaudio.com] introduced a PBX hybrid at the last NAB show and it offers the simplest solution. They claim this unit is compatible with all digital PBX systems, barring handset-wiring issues.

Once you have hooked up this gear, you can call in from anywhere on a regular handset to make announcements. If you desire to make mixes, look at other products from JK like the ComPack. It connects into a PBX from the other side of campus and lets you do your remotes quickly.

If you cannot get analog lines, do not have access to equipment which can protect you from ring voltage or digital signals and you just *have* to make a wired system work, there is one more option. Transformers can be used to knock out voltage at both ends of the line; a quick and dirty example is using a transformer to connect your speakerphone to the console. I can direct you to a very nice site where Rane has offered a lot of information: <http://www.rane.com/note150.html>



“Can you hear me now?”

Perhaps more flexible in many ways – but more expensive – are wireless links. We will pick up with that topic next time.

John Devecka is the Operations Manager for WL0Y at Loyola College in Maryland. He has friends in IT and Telecom, and is currently trying to get them to do their own radio shows. For more advice on butt-kissing around campus, email John at: wloy@loyola.edu

PROGRAM DELIVERY COSTING TOO MUCH?

NEED TO DISTRIBUTE YOUR PROGRAMMING BEYOND STL?

Space Time from \$695 per Month
Reaching All 48 States with Your Network Programming

Complete Uplink Facilities for \$19,995

Receive Sites for \$2,500

Leasing Available

24 Hour Emergency Backup Services Including ISDN

Satellite Lynx™

"Connect with the Lynx"

888-SAT-LYNX
7 2 8 - 5 9 6 9

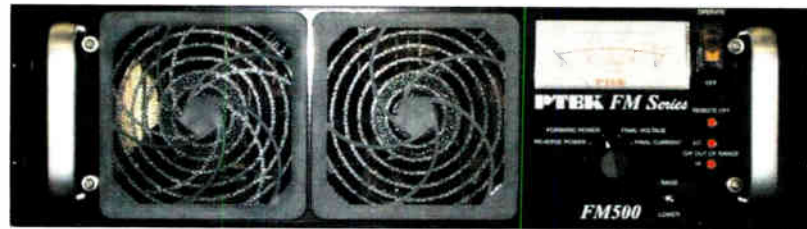
sales@satellitelynx.com

Satellite Lynx, LLC • 205 River Road • Walden, NY 12586

PTTEK

FM Power Amplifiers

San Jose CA



FM150\$2,145
FM150\$2,500
FM300\$3,295
FM500\$3,575

New model FM1000: 5.25" high, 65lbs \$4,900

FM Exciters

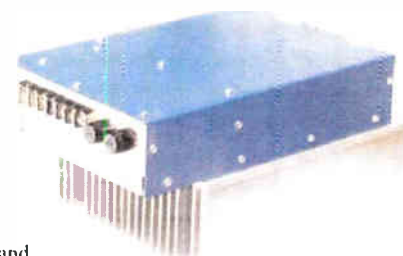
700W Modules

Repair \$950 Flat fee, any fault, 90 day Warranty



Exchange \$1450; New \$1950

2 year Warranty (Gain and phase matched to Blue or Gold Modules)



FM25E\$1,167
FM50E\$1,975
FM150E\$2,684
FM250E\$2,925

All products designed and
built in USA

For full details see our web site www.ptekpower.com or Call
408-448-3342 Fax 408-549-9991 email pteksales@ptekpower.com

GR

GORMAN-REDLICH

257 W. Union Street, Athens, OH 45701
Phone: 740-593-3150 – Fax: 740-592-3898

30 Years Experience with
Alerting Equipment



Model CRW-S Weather Receiver

Model CRW-S Weather Receiver

For receiving alerts from the
National Weather Service (NWS).
Redesign of our Model CRW now
with the "SAME" decoder feature.

Easy to Use and Reliable EAS Equipment*

- Pre-programmed for your location.
- Program interrupt relays built in.
- Six audio inputs.
- 2 minutes stored audio.
- All operations via keypad.



EAS1 Encoder-Decoder

EAS1 Encoder-Decoder

EAS1 Decoder

EAS1-CG Encoder Decoder with built-in character generator.

*Optional DTMF interface available.



Model CMR Digital Antenna Monitor

**Model CMR Digital
Antenna Monitor**

- Remote Controllable
- True ratio readings.
- Phase sign automatic, no extra operation.

Contact Jim Gorman at: 740-593-3150
jimg@gorman-redlich.com – www.gorman-redlich.com

**WHY NOT SWITCH TO MCI?
COMPLETE FM/TV PRODUCT LINE**



• ANTENNAS

• SPLITTERS

• NOTCH FILTERS

• HARMONIC FILTERS

• POWER COMBINERS

• CHANNEL COMBINERS

• N +1 SWITCHING MATRIX

Coax switches from
7/8" through 6-1/8"
Control panels available.

Free UPS Ground shipping within the continental USA
and Canada - SWITCHES ONLY

Micro Communications, Inc.



Toll Free: 800-545-0608
www.mcibroadcast.com



Things You Need to Know

Dealing With Flu Season

Reports coming in from all over the place indicate that this year's flu season has started. Due to the way the news reports have sensationalized the reduced supply of flu shots, many people have become much more worried than usual about becoming infected.

GERM CENTRAL

Since flu is very contagious – passed on by air and skin contact – a radio studio could be among the more difficult places to work without endangering one's health. While health professionals advise staying out of places where people are coughing, sneezing or showing flu-like symptoms, the Control Room is hard to avoid. Just one sick announcer could take out the whole staff in a matter of days.

Fortunately, it does not take too much effort to provide a measure of protection for your staff, and with a little cooperation, it is indeed possible to get through the flu season without losing all your live announcers. Furthermore, some of these suggestions are worth implementing all year long. It will promote a healthier environment and staff, with fewer lost workdays.

BASIC STUDIO HYGIENE

Many people immediately focus on the microphone, as that is a place where many announcers hold their lips millimeters from the metal or windscreen. As they speak, they naturally transfer saliva – or worse. Even in good times,

However, the first line of defense should start before anyone even gets close to a microphone. While it might raise the overhead for a few days, an alert GM or PD will help the entire staff to see the need to stay home when sick. In fact, being overly cautious would not be wrong.

The second line of defense is basic personal hygiene. Each staff member owes it to his or her workmates to give close attention to the work area. Washing hands (the station could well provide anti-bacterial soaps and hand wipes) before touching the door, the console, the microphone, the telephone, etc, are all important. But what of the person before you?

Many stations have a can of some anti-bacterial agent in the Control Room. Sadly, the container is often empty. Not only should there be proper cleaning products available, the staff should have training to actually use them. The agent can be as little as a 10% solution of Clorox and water, or something much stronger. Cleaning wipes and paper towels should be readily available.

Remember that flu germs, like many others often are transmitted when someone touches a place where the germs have been deposited, and eventually touches the face, eyes, etc. The key then, is to clean the air and places where people are likely to touch.

CLEANLINESS IS NEXT TO HEALTHINESS

Some of you may remember the days when each announcer was told to clean the heads and pressure rollers

during his/her shift. Today's training is not so very different: at each shift change, the Control Room should be disinfected. By cleaning all common surfaces, we go a long way to preventing germs from being transferred.

One warning: be careful about spraying liquids on surfaces. Liquid solutions can get into and destroy many things from key contacts to monitor screens. Whatever is used should be tested, and best carefully applied with swabs, paper towels, etc.

After surfaces are cared for, it is important to give attention to the air and ... yes ... that aural scoop that is the focal point of the room – the microphone. You probably do not need a CSI team to know there are billions and billions of germs hiding right there in the pop filter or windscreen.

The best way to handle this is to give each announcer their own windscreen, and make them responsible for regularly cleaning it. If that is not possible, clean and rotate several common windscreens.

Just as with the various surfaces, chose the method of cleaning carefully. Hot water and a mild cleanser may well

provide longer life for the pop filter/windscreen. Check with the manufacturer if you want to use something stronger.

That leaves the air in the studio. While the obviously best approach is to have good air movement, so the air is constantly replaced with fresh air, this can be difficult in weather extremes, or in studios designed merely for quiet air flow.

Some advocate the use of electronic devices that use ozone or other methods to cleanse the air. A few products advertise their "disinfectant action" to the air passing through.

SELF PRESERVATION

Staying healthy can be a challenge. Drinking fluids, taking proper doses of vitamin C, zinc, echinacea, etc, will go a long way to keeping your body's natural defenses strong. Bring your own pens to work. And remember: Mr. Monk is not the only person who wipes his hands right after shaking hands with someone.

The goal is to stay healthy and avoid the flu. We wish you good health! – Radio Guide –



GET IN ON THE ACTION... ON OR OFF THE FIELD.

Matrix Portable:

Delivering the sound of the coin toss to listeners around the world is as simple as pressing a button. Only the advanced Comrex Matrix POTS codec delivers the highest quality audio and superior connection reliability over both standard wired and GSM wireless phone connections. Our road-proven design and construction, plus ease of operation and real-world features, make Matrix your best choice for all your POTS and ISDN remotes. The results? Your listeners hear the collision, the grunting, the exhale... and the sound of victory.



Matrix Rack:

Sure all the action is in the field, but a great remote needs a great home base. And there's nothing better than the Matrix Rack. It's compatible via POTS and ISDN with ALL Comrex codecs as well as those from nearly everyone else. Perfect for receiving those calls from the field. Make the Matrix Rack the center of communications for ALL your remotes.

Grab your audience by the ears and give them the full experience—not just a story.

Doing a remote? Put Comrex on the line.

COMREX

Toll Free: 800-237-1776 • www.comrex.com • e-mail: info@comrex.com
19 Pine Road, Devens, MA 01434 USA • Tel: 978-784-1776 • Fax: 978-784-1717

BROADCAST *tools*, INC.

tiny **TOOLS**TM
POWERED BY BROADCAST*tools*[®]



The WRC-4 Web Based Remote Control

tiny TOOLS, tiny PRICE!

The tiny TOOLS line of products offers exceptional functionality at an affordable price.

Tiny TOOL products are manufactured with the same quality and innovation as all our Broadcast Tools® products. All amplified products are powered by a surge protected internal bi-polar 15vdc power supply, affording superior HEADROOM! and high definition audio. Each tiny TOOL is a compact one-quarter-rack space unit, allowing the mounting of up to four units on the optional RA-1 rack shelf. Most products are furnished with plug-in euroblock connectors.

The WRC-4 is a fresh approach to site monitoring and control, or providing an inexpensive solution to Internet enabling your present remote control system.

VAD-2 – Voice/Pager Alarm Auto Dialer with integrated stereo silence sensor.

TT-1 – Telco Tool.
Telephone line powered Hybrid/TAP.

MT-1 – Match Tool.
Bi-directional Stereo level Interface

TMT-2 – Twin Match Tool.
Twin Unidirectional Stereo level Interface

DTE-16 – DTMF Tone Encoder with program mixer. Encodes all 16 DTMF tones or macros with control via contact closures and/or RS-232 serial strings.

DTD-4 – DTMF Tone Decoder.
Decodes all 16 DTMF tones or multiple groups with four relays, 12 open collectors and/or RS-232 serial strings.

SUM-4 – Stereo Utility Mixer.
Four Channel Stereo Mixer

2x6 DA – DA Tool.
2x3 or 1x6 Distribution Amplifier

More products added monthly. Be sure to check our web site frequently.



RDDA 4x4

The Broadcast Tools RDDA 4x4 is a routable four input, sixteen-output digital audio distribution unit capable of distributing the same format AES and/or Word Clock around your facility. Each input may be configured to feed any one or all of the four groups of outputs. Each group consists of four transformer-balanced outputs. Inputs, outputs and status are supplied on removable Euro block connectors. Input signal presence is monitored and displayed on four front panel led's with remote control status provided on the rear panel. The RDDA 4x4 is powered by a surge protected internal power supply. The half rack profile, allows the unit to be set on a desktop, mounted on a wall or as part of the new RA-1, "Rack-Able" mounting shelf.

Additional features:

- Four transformer balanced loop-thru inputs with selectable termination
- Sixteen transformer balanced outputs with selectable termination
- Accepts sample rates from 8 to 96 kHz
- I/O selection via DIP switches
- Power and Status indicators
- Open Collector Status outputs



HPA-4

The Broadcast Tools HPA-4 with cue powers up to four sets of headphones. Each output is supplied with a hefty stereo amplifier and may be configured to accept cue audio on the left headphone with a simple contact closure to ground. Front and rear panel T/R/S jacks are provided with each output, along with a front panel level control. The stereo balanced input is adjustable with the front panel master level control. The balanced cue input is equipped with a rear panel trimmer. The HPA-4 is powered by a surge protected internal bi-polar 15vdc power supply affording superior headroom and high definition audio. The half rack profile, allows the unit to be set on a desktop, mounted on a wall or as part of the new RA-1, "Rack-Able" mounting shelf.

BROADCAST
t o o l s

Ph. 360.854.9559 • Fax: 360.854.947
support@broadcasttools.com
www.broadcasttools.com



High Voltage is Not Your Friend

by Dave Dunsmoor

[MINOT. North Dakota - December 2004] When working with equipment utilizing high voltage, it is a given that we stay clear of energized elements. But what constitutes "high" voltage? And how far away is safe? How can we determine both what is safe for us and safe for our equipment?

Forty volts seems to be the threshold that activates the "HV" annunciator on many DVMS today. I never used to consider this seemingly low voltage to be a problem. However, manufacturers (or their attorneys) presumably have done the research indicating anything over 40 V is potentially hazardous.

Current is the dependent variable here; its value is the result of the applied voltage and skin resistance. Very low currents – way less than 1/10 of an Ampere – can bring severe pain, loss of breathing and/or muscular control, and even heart fibrillation. As little as 50 mA can be fatal. This is why the "One Hand in the Pocket" Rule is a good one – it has saved me at least once.

Since I personally prefer to avoid such empirical research into the subject, I will use 40 V as the point where I do not poke about with my bare hands.

Now that I have defined 40 V as "high voltage," just how do we go about safely troubleshooting equipment that generally has far more potential in it than this? After all, it seems like many feel it is just "common knowledge" that you have to do some "fingerpoken" to get the job done.

KNOW THE CIRCUIT

Probing equipment with a voltmeter can usually be done safely if you are very careful to keep in mind where your hands are and where the energized parts are located. This rule works well until you get distracted, or are tired – situations that can easily occur during a callout to make repairs.

Older audio boards, new audio boards' power supplies, older transmitters, newer transmitters, receivers, and computers all have high enough voltages in them to be truly hazardous. If you treat them all with the required care and respect you will reap the benefits of (1) keeping your life and good health, (2) keeping your repair time to a minimum, by not having to run out for more repair parts or test equipment, and (3) keeping your self respect and professional status with your clients intact.

Few things will make you seem to be the dull-witted, nerdy stereotypical engineer quicker than a "snap!, flash!, and a puff of smoke." Someone will always notice the event.

DANGER COMES QUICKLY

Consider this: the override of your nervous system when you contact a high voltage source is instantaneous. You have no control over the muscles involved. Just like the FM capture effect, the strongest signal prevails. Your fist will clench, your arm will jerk, chest muscles contract, and your heart may stop.

Even if you do not receive a severe enough shock to do permanent damage, you may suffer substantial cuts as a result of this involuntary reaction. Worse, while your hand is busy impaling itself onto some hardware, that open wound now provides an even better electrical path, and the damage could become even more life threatening. This is an immediate effect – you simply cannot pull your hand out before the electricity has done its work.

I have managed to arrive at the ripe old age of 53 relatively unhurt, partially by luck in my earlier years and mostly by being careful in the later years. Troubleshooting or adjusting transmitters often requires the determination of high voltage levels and comparing these values to either published specifications, or to theoretical or logical values. The only safe way to do this is to power the equipment down, carefully connect your test equipment, then power everything back up and interpret the metering indications.

Truthfully, I (almost) always do this for anything over 24 volts. And I when I say power down, I mean for you to give it time to discharge completely. Use the shorting stick – after all, it is there to protect you.

TAKE YOUR TIME

Sure, I have poked around in live service panels checking for an open fuse, as I am sure all of you have. I just no longer think it is worth the time saved. First, it is just too easy to contact live parts, and secondly, the test leads and probes can fail to provide the insulation protection as designed. You do not need any information so immediately as to chance being hurt or killed while doing your work.

I was nearly knocked off the chair at the bench some years ago by "only" 500 volts in a two-way radio. I felt it clear into my chest even though I did have one hand in my pocket.



Many DVMS now indicate 40V as "High Voltage."

Mentally reviewing the event later on, I guessed that the shock I received was similar to the charging of a capacitor – me being one plate, the carpeted floor the insulator and the concrete being the other plate. I do not know for certain what the actual dynamics are. But it was intense, and I do not ever want to experience that again.

An acquaintance of mine was troubleshooting a 2 kV power supply problem some years ago by probing it "hot" with a voltmeter. He was nearly killed, and suffered some severe burns across his chest. Possibly the probes were dirty, cracked, or maybe his hand slipped. No matter, if he had powered down, connected the meter, then powered up when he was outside of the equipment, he would have not have spent time in the ER and ICU.

True, 2 kV does not seem like much when compared to the 10 kV or more usually associated with FM transmitters, but it is a dangerous and potentially lethal voltage. I will submit to you that contact with the 5-10 kV B+ inside tube transmitters will likely kill you before you even hit the floor.

KEEPING THE EQUIPMENT SAFE

Earlier, I mentioned "safe for the equipment." This refers to how you dress your test leads outside the cabinet before you power it back up. I usually bypass interlocks with their built-in mechanical override, then continue. However, if the door or access point you have open does not want to stay open, please be sure to block it open.

Although a set of test leads may fit under the door without being completely pinched off, they can still arc through – or worse, be cut by the door's edge. Then you have at least one more problem to solve before you get back to troubleshooting. And the evidence of you having been there is left forever.

Next, consider test equipment placement. Just because your meter has a plastic or rubber case is no guarantee it will not flash over when you do re-apply the power. Whether it is sitting on the chassis or on the concrete, relying on the case to provide sufficient insulation can be risky.

Insulating matting (or electrical switchboard matting) is cheap enough, and available from many suppliers. It is sold in various lengths and thicknesses, and rated from 20 to 50 kV, with suggested working voltages from 3.5 kV up to 17 kV.

Check your favorite parts and equipment supplier, and if they do not carry it, there is always the Internet. I did a Google search and found several. For the extra \$100 or so, I think this is good protection for you and your test equipment. It is also more comfortable than walking or kneeling on concrete.

PROBLEMS FROM LOOSE CONNECTIONS

Another aspect of working with electrical equipment is the open or loose neutral. This most commonly is exhibited by either dimmed or overly bright building lighting. What happens is this: the neutral connection from the utility power transformer becomes loose, which in turn causes the 240 VAC to the building to lose its center tap neutral reference.

The phase-to-phase voltage still reads 240, but measuring from the breakers to the panel neutral will show anything from very low to very high. I have had voltages from 65 to 185 volts at the 120-volt connection. The equipment on the low leg will run poorly or not at all, on the high leg will probably run OK (for a while) but its power supply will be over-stressed and will probably fail early. A third problem associated with this is the offending connection will run hot, and could even start a fire.

This applies to all connections from the utility power to the last bullet in your FM antenna, or the connector to your AM tower. If it is not tight, it is taking power from its intended purpose and generating heat instead. It is a good idea to go through your entire plant annually and check and retighten as necessary all connections, not just the high current/high voltage ones.

A new method to check connections is the non-contact, Infrared (IR) thermometers that are generally available for under \$100 (Another Franklin well spent!). They make quick checks easy to do, but I still like doing an occasional physical "back off and re-tighten" as connectors not drawing much current will not heat up much, and thus will not show up on the IR thermometer.

RF VOLTAGE

The last item I want to discuss is an issue for many who maintain transmitter sites, and that is the RF voltages on the AM towers, on the output connectors of the transmitter, or the exposed portions of the ATU components. There is a real problem of RF burns.

I have had RF burns at power levels as low as five watts. So how much worse will 5,000 watts feel? Lots. As I said: I was more lucky than smart in my earlier years.

Five kilowatts into 79 ohms results in about 680 V RMS at the feedpoint – and with full modulation, it rises to over twice that (if you are running your processing hard). RF voltages will be even higher in the ATU, as the impedances are greater at some points in the tuned circuits.

Contact with exposed parts burns – and it burns deep. Quite often RF burns take a long time to heal as it seems like the wound goes clear to the bone, and heals from the outside in.


My "Elmer" once showed me "the wooden pencil drawing an arc from the tower trick," warning me: "Dave, don't ever do this!" Understanding the physics, I will not do that. Yet, some years later I started pulling the metering panel off an ATU while the tower was hot.

The metering cable was about a quarter-wavelength long back to the transmitter building. After the last panel screw was removed, what do you suppose I had in my hand? Yes, a very expensive, very RF hot meter panel. I must have gotten a half dozen good RF burns before I got it put back into place.

TAKE IT SLOW AND EASY

The lesson is clear: think about what you are going to do and how you are going to go about it. Take your time. Thinking a problem through and developing a careful course of action will likely lead you more quickly to an answer – and may also keep you alive.

Dave Dunsmoor prefers not being part of high voltage circuits. His email address is: mr.fixit@min.mideco.net



OMB
MT-MR Platinum STL System

Why the MT-MR Platinum?

- For its **excellent quality-price** value.
- For its **adjustable transmission power** output from 0 to 20W for any selected operational frequency.
- For its **double conversion receiver** that makes it opt for **digital codification** (Up to 4 audio channels).
- For being **digitally synthesized** in 20 MHz operational band for frequencies from 150 MHz to 960 MHz.
- For the fact that **both the transmitter and receiver can measure the modulation percentage and pilot signal level** (19 KHz stereo without disconnecting the audio from the transmitter).
- For its **remote control**.
- For its **analog telemetry**.
- For being made for **mono or stereo (MPX) signal**.
- For its **capability to work with AC power voltage from 90 to 250 V, 50/60 Hz**, and also with external battery if needed.

OMB, the **F**uture of **C**ommunication

OMB

OMB AMERICA
phone. (305) 477-0973
(305) 477-0974
fax. (305) 477-0611

3100 NW 72nd. Ave. Unit 112
MIAMI, Florida 33122 USA
<http://www.omb.com>
usa@omb.com

Cam-D™ (Compatible AM-Digital)

The new Hybrid Digital solution for modernizing AM Radio.

Lets you enjoy full fidelity 15 kHz AM Stereo.

... plus

The latest version of POWER-side™ extends your coverage.

... plus

Provides Digital Data Flow as fast as you can read it.

All within your legal bandwidth with no increased interference, even to your first adjacent channel neighbors.

And, your station sounds better – even with existing radios.

Of course, like all KCI products
Cam-D™ "is not afraid of the dark."

KAHN COMMUNICATIONS, INC.

338 Westbury Avenue
Carle Place, New York 11514

New York City Office
212-983-6765

NOW IN PRODUCTION 815D5 S/S FM TRANSMITTER

Features Include

- Ease of Maintenance
- Simple Troubleshooting
- Proven Components
- Streamlined RF Path
- Rollout PA/Combiners
- Hot Swap Modules
- 24.5" User Rack Space
- Reliable Analog PS
- Simple Control System
- Auto Power Control
- Soft-Start™
- Socketed Components
- Redundant PA Amplifiers
- Precision 250 Meters



Continental Electronics

BROADCAST TRANSMITTERS

www.contelec.com 800.733.5011



Tips From the Field

Generator Maintenance: Replacing the Starter

by Warren Shulz

According to Warren Shulz, the generator starter is among the most important parts in a radio station. That is because "if that starter motor does not do its job in a power outage, nothing else will matter." Is your generator's starter on your maintenance check-list?

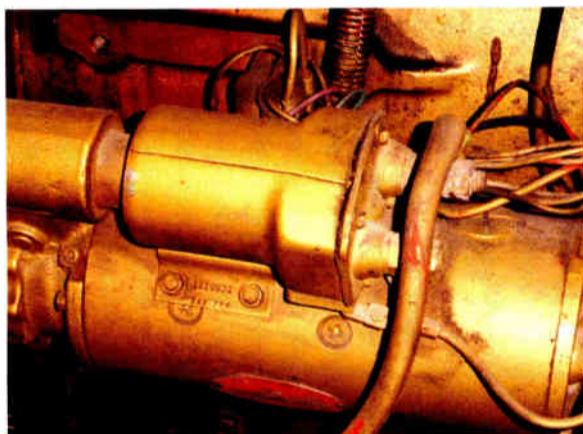
[CHICAGO, Illinois - December 2004] A recent project here at WLS was to replace the 28-year-old starter motor and battery cables on the diesel generator set at the transmitter. This course of action was recommended by the diesel maintenance technician during his last maintenance visit.

However, by doing the work in-house we were able to get the job done for under \$600, saving approximately \$450 in contract labor cost. If you are considering doing this yourself, you will likely find the major costs will be \$450 for a starter and \$108 for battery cables.

MAKING IMPROVEMENTS (AND LEARNING) AS WE GO

As with many projects, additional problems will often "appear" as you go, and can be corrected by inspecting the entire system. Often the failure can even be traced to something quite unexpected – or at least a different part of the assembly.

Carefully noting the make and model of the part being replaced will ensure getting the right replacement. It is also worthwhile to note the size of the part, since over the years it is not uncommon for a replacement part to have anything from a different mounting bracket to being a whole lot larger or smaller.



A reference close-up of the old starter.

In our case, the Cummins part number cross-referenced to a Cummins remanufactured 24-volt starter, with eleven teeth and a clockwise rotation.

While removing the old starter we noted a concealed brad ground strap had never been connected to the engine block. This was corrected. Additionally, there were a total of twelve positive and negative wires involved in the assembly. Oddly, they were not color-coded. So, we carefully marked each wire "+" or "-" with appropriate tags.

A MINOR HURDLE OR TWO

As we put the rebuilt unit on the generator, we did have a couple of small difficulties to overcome. For example, the attachment bracket (between starter motor and mounting surface) needed to be rotated in order to get the starter to mate properly.

This required a Torx bit set to accomplish; the good news was that we had just purchased a set for the tool box.

Prior to inserting the starter into the housing, it is important to inspect the flywheel teeth to make sure the teeth are in good condition for correct mesh so the starter can operate smoothly. If the flywheel teeth are shot, you are facing a big expense.



It is important to make sure the flywheel (shown inside the starter ring) is in good condition for a proper mesh with the starter gear.



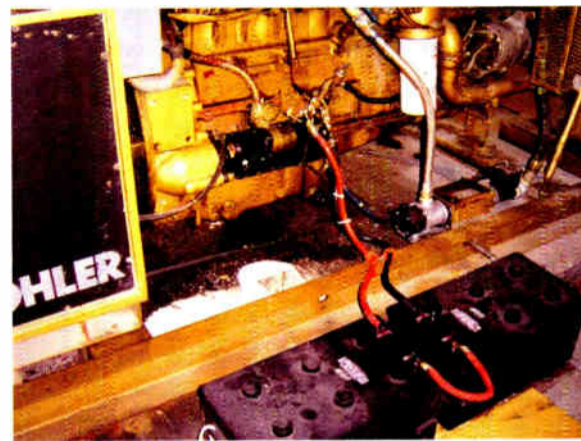
New starter being set in place with "car ramp" to hold it while mounting.

On the other hand, the auxiliary solenoid mounted without a problem, as did the new battery cables. We made up new 30-inch cables for both the positive and the negative connections. To make the best possible connection, we used solder-style lugs with factory installed battery end jumpers; the terminals were coated at the battery side.

As we put the whole package back together, we connected it to the "golf cart" style sealed batteries. We verified open circuit battery voltage and verified the battery charger was supplying rated charge current.

TESTING IT OUT

Once everything was in its place, we got ready and pushed the button for a "live test." As a reward for our careful maintenance and repairs, the generator roared to life without hesitation.



The new starter with new battery cables.

We tested the start-up procedure three times, using spaced intervals. Happily, the new starter plus the new battery leads really "kicks" the motor now. The start-up time is much faster than with old unit; the motor really gets going a lot faster than before. This should result in a faster re-start from a ComEd outage.

Overall, we were pleased that no additional major problems were noted, and I believe the unit is better than I found it. We stored the old starter in our storage area supply cabinet, along with the used block heater, the used day tank pump, and the used day tank sensor switch. Each of these "old" parts was removed before they failed so they become "used spares."

While many of you have generator shops to care for your power backup, sometimes it is helpful to be able to save a little cash by doing some of the work in-house. Additionally, by getting to know the generator better, you will be more confident of its operation should it be needed.

Warren Shulz is the Chief Engineer at WLS in Chicago, IL. Over the years, Warren has picked up a lot of experience in keeping old gear working, and is happy to share. His email address is: Warren.G.Shulz@abc.com

WANTED

\$50.00 Reward
for Bona Fide Tech-Tips



Have you solved a technical problem?

Have you saved money by finding a cost-effective solution?

Have you discovered a new application for an old tool or test procedure?

Email them to us: editor@radio-guide.com
Each tech-tip published receives \$50.00

"Share the Knowledge"

COOL-AMP Conducto-Lube COMPANY

Cool-Amp Silver Plating Powder

- Maintain your RF frequency.
- Increase conductivity.
- Minimize power loss from oxidation.
- Applied ON-THE-JOB.
- Cost-effective pure silver coating for copper, brass, or bronze.

Conducto-Lube

Increases conductivity for switches
Prevents hot spots.

Highly conductive, contains pure silver.
Prevents galling that will freeze hinge joints.

Order Direct

Phone 503-624-6426 Fax: 503-624-6436
sales@cool-amp.com www.cool-amp.com

Digital Ready. Value Conscious.

1kW AM Broadcast Transmitter



Nautel Jazz J1000



Save Money

A value priced, high quality transmitter with traditional Nautel reliability.

High operating efficiency reduces power bills.

Compact design reduces shipping costs.

Save Time

Next business day shipment from factory.

6 preset RF power levels can be programmed to automatically meet your power allocations throughout the day, 12 months of the year.

Critical parameters can be conveniently set and queried using the graphic user interface.

Diagnostic flow diagram simplifies troubleshooting and maintenance.

Save Space

Both the power section and the controller mount in a standard 19" rack and only 13U (22.75 inches) total height.

Sound Great

Switch mode power supplies adjusts operating voltage to optimize performance at any power level.

Synthesized exciter using advanced DDS technology.

Feed an external GPS reference clock signal to the J1000 controller for synchronous operation.

Place your order for next business day shipment by calling Cheryl toll-free now.

You can even pay for your new J1000 with your Visa card.

1.877.662.8835



Nautel Maine Inc. 201 Target Industrial Circle
Bangor ME, USA 04401

The Jazz 1000 is proudly crafted in the state
of Maine, United States of America.

Phone: +1.207.947.8200 | Fax: +1.207.947.3693

www.nautel.com | info@nautel.com



Jazz is a registered trademark of Nautel Limited. All rights reserved. HD Radio is a trademark of iBiquity Digital Corp.

World Radio History



Answers to Your EAS Questions

EAS Q&A

by Clay Freinwald with Barry Mishkind

[SEATTLE, Washington - December 2004] As 2004 ends, the FCC's NPRM is on the minds of many in the broadcast and emergency management communities. While all the reply comments and the FCC's decisions are sorted out, those working with the system have questions about current operations. Clay actually has some answers.

HOW ARE WE SUPPOSED TO ...

Barry - Since there is nothing so constant in broadcasting as change, we get a lot of questions from folks who are new to a particular facility, and now have the responsibility to manage the EAS operations. Among the first questions these folks have is "where can we get help on understanding how our unit operates?"

Clay - While it may seem rather obvious, the very best place to start is with the manufacturer. If their manual does not answer your questions, contact them directly with your questions. Most will be pleased to assist you in ensuring their product is working properly.

Barry - Suppose the manual is missing?

Clay - Some manufacturers have their manuals on-line for downloading, usually in the "support" section of their websites. Another solution is checking with your neighboring stations. Chances are good you will find someone with a manual: a few minutes at the copier and you will have your own manual.

Barry - That works for turning and testing the system, but how about checking the programming of the unit to make sure it is up-to-date and correct? Will the manufacturer help with that?

Clay - Yes and no. Manufacturers can help you understand what the unit is set to do, and even direct you to information on re-programming if that is necessary. However, they have no way of knowing, for example, what

signals you can receive from LP stations. Furthermore, policies relating to which alerts to receive and/or forward are something for local management and the LECC (Local Emergency Coordinating Committee) to determine.

In Washington, we have developed some standardized programming to help stations deal with the myriad of options offered by some of the manufacturers. Check with your LECC and/or SECC (State Emergency Coordinating Committee) to see if they have customized recommendations for setting up equipment in your area/region.

WHAT DID THEY SAY???

Barry - Readers often complain about getting EAS messages via a government two-way radio channel. One problem is when the audio has a really annoying hum on it. What can be done?

Clay - Many two-way radio systems operate with what is called CTCSS or Continuous Tone Codes Squele System. They transmit a continuous low frequency tone to permit selective opening of the squelch on specific receivers. In land mobile type equipment this tone is filtered out in the receivers.

Unfortunately most of the receivers that Broadcasters purchase to receive EAS messages via these channels is not designed to filter this out. But there are some fairly easy solutions.

1. Get a receiver designed for two-way radio applications. It likely has a built-in filter.
2. Contact a local two-way radio shop; they may have a filter that will work, perhaps from an old radio.
3. Contact your local Amateur Radio Club. Ask to talk to someone that is involved in their "repeater" activities. They may well be able to offer assistance.

Barry - There are also common complaints about distorted audio, low level audio, even "missing" audio. Often, PDs want to stop relaying anything from those bureaucrats who have no concern for how stations sound.

Clay - Oh No - that way, everyone loses. In many areas it has taken several meetings with local emergency officials to help them realize the disruptive effect they can cause on local radio if they fail to prepare carefully before activating EAS. Often the LECC and SECC can be helpful in making the case for more care on their part.

Another, pro-active approach, is to offer help with their audio and EAS systems. They may not have a clue how to set levels, or even how they sound, unless you provide them an "air check." Quite a few local agencies have changed the way they train their personnel once they could hear the "final product" for themselves.

USING THE NWS

Barry - The National Weather Service (NWS) recently got approval to install equipment that will enable it to handle EAS messages. How is this going to work?

Clay - Unfortunately NWS did not want to simply adopt the system we are using here in Seattle (called the "Seattle Experiment") whereby NWR relays EAS messages much like an LP Station. They currently prefer a method where text messages are sent to them over the Internet via FTP (File Transfer Protocol). The messages then are passed along to be read by their text readers.

There may well be a place for this technology, however it may be a hard sell at your local emergency management office to get them to FTP a document to NWS - especially when it is a whole lot easier to encode their public warning message using EAS equipment.

Overall, the NWS has shown a willingness to work with the EAS community, so we can expect systems to get easier for everyone as these (and other) different approaches are tested and evaluated.

Clay Freinwald, Senior Facilities Engineer for Entercom in Seattle, is Chairman of the SBE's EAS Committee as well as chair of the Washington State SECC. He welcomes your questions about EAS at k7er@wolfenet.com



Innovating since 1971

New HD solutions in...

- Transmitters
- Digital TI STLs
- Microwave STLs
- Monitors

Custom designed and manufactured by

QEI Corporation
Where Radio Frequency Works

24/7 Service:
856-728-2020

Contact Sales at:
800-334-9154 or
qeisales@qei-rf.com

Patents pending

AM Ground Systems Co.

**Ground System Construction,
Evaluation & Repair**

1-877-766-2999

www.amgroundsystems.com

- ◆ Has your station lost coverage over time?
- ◆ Is your AM ground system over 30 years old?
- ◆ Do you have a new CP or are moving transmitter sites?
- ◆ Has your ground system been damaged or vandalized?
- ◆ Is your base impedance or directional pattern unstable?
- ◆ Just wondering if you are getting all of the range your station is capable of?

If the answer to any of these questions is YES
Call today for a free construction, repair or evaluation quote.

Reliable On-time Installation

Quality Workmanship

Tower Tune-up

**Free Budgetary Estimates &
Quotes**

Tech Tips

Keeping Stuff Out of Your Transmitters

By Gary Peterson

[RAPID CITY, South Dakota - December 2004] I hate cleaning transmitters. There are so many other things I can do with time otherwise spent removing dust and critters from the transmitter cabinets. So, you can understand that I am always on the lookout for tricks to keep stuff out of the transmitters in the first place.

If you dislike spending your maintenance time cleaning dirt and dead bugs out of transmitters, the following tips may help make your life more pleasurable.

HELPING THE FILTERS FILTER

Your first line of defense should always be properly sealing the doors and other openings in the transmitter building. (Although most transmitters have some sort of air filtering, there is no law that says you cannot do as much as possible to trap dust and dirt before they reach the transmitter.)

Of course, the more stuff that your air filters catch, the less you will have to deal with inside the transmitter cabinet. I use disposable fiberglass filters and change them frequently. It is possible to greatly increase the efficiency of your air filters. The trick is to use a good filter spray.

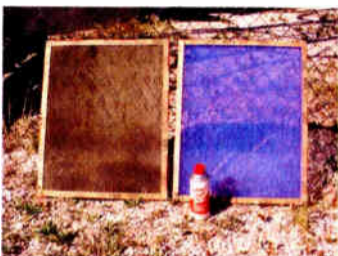
For several years, we have been using RP brand "Filter Coat." It comes in two forms. One is an oily liquid in a plastic spray bottle. After experimentation, we find that we prefer the oily material in the aerosol spray can.

The Filter Coat is available at some hardware stores, and heating/ventilating and air conditioning shops may carry it. I would suggest you avoid the kind that smells like wintergreen. While it will make your transmitter shack smell like Life Savers, I have found that it does not catch dirt very well.



Application is easy: take the new air filter outside and lean it up against the perimeter fence. Shake the can well and apply a light coat to both sides of the filter before installing. You will be amazed at how quickly the filter gets dirty. When I began doing this, I tried spraying the filter on only one of the two transmitters at our site. Within a few weeks the difference was obvious.

The filter on the left is shown after three weeks in typical dry, dusty "Plains" service. It is compared with a new filter.



You will have to change filters more often. But as you can see from the picture, that dirt does not end up inside the unit, where it adheres to all manner of irregular surfaces and, therefore, is much more difficult to remove. If you try a filter spray, the next time you open up the equipment for maintenance, you will notice the difference.

INSECT BARRIER

Of course, use of a good insecticide around the walls and openings will go a long way to reducing the number of critters in the building. I also like to use naphthalene mothballs to discourage both little and some not so little "tenants" from taking up residence.

For whatever reason, certain years and/or seasons seem to result in huge infestations of various insect species. In a bad year up here in South Dakota, "miller" moths can quickly clog a transmitter air filter. They even seem to be able to easily get into what is, for all practical purposes, a tight building.

A FLYING CRITTER TRAP

When the millers get real bad, I leave a pan of water on the floor with a bit of liquid dishwashing detergent added. (Most soapy materials should work.) The only other thing needed is a trouble lamp to clamp to the pan.

Later on, when the transmitter room is dark, the moths will be attracted to and circle the light attached to the pan. Eventually each of the critters will hit the water and the detergent will wet their wings.

On my next trip, all I have to do is dump the water-detergent mix, with all the drowned moths, and refill it with a fresh mixture. None of those critters made it to clog the air filter on the transmitter. Just make sure that you use enough mixture to last until your next visit.

These are a couple of easily implemented ideas. Perhaps you have some other tricks that have worked at your site. If so, please let us know. After all, a clean transmitter is a happy transmitter!

Gary Peterson is the Corporate Engineering Manager for Triad Broadcasting Company in South Dakota. He can be contacted at kzerocx@rapidcity.net



Reduce Your Work Load Save Time and Money With SCMS!

- ❖ 28 Years of Personal Service
- ❖ Extensive Rental Fleet
- ❖ Experienced Technical Staff
- ❖ Rep for 600+ Companies
- ❖ New & Rebuilt Audio & RF
- ❖ Trade-ins Welcomed

Mid-South Sales:
Bob Mayben
Voice: 877-391-2650

Central Sales:
Bernie O'Brien
Cell: 731-695-1714

West Coast Sales:
Doug Tharp
Sales: 866-673-9267

Mid-West Sales:
Mary Schnelle
Sales: 866-850-7790

South-Atlantic Sales:
Art White
Sales: 770-632-1295

North-East Sales:
Jim Peck
Sales: 315-623-7655

South-West Sales:
Tyler Callis
Sales: 409-899-3324

CORPORATE SALES OFFICE Pineville, N.C.

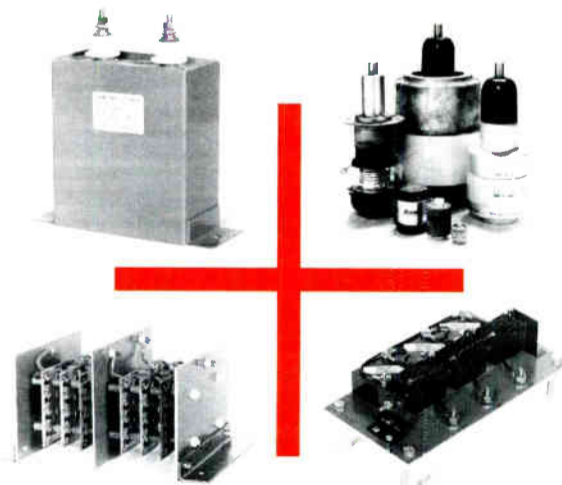
Call: **BOB, MIKE, ERNIE or MATT**

Toll FREE 1-800-438-6040
1-704-889-4508
Fax 1-704-889-4540

e-mail sales@scmsinc.com
www.scmsinc.com



the PETER DAHL CO. for custom transformers



DC filter capacitors • variable capacitors
custom rectifier assemblies • transient suppressors
and then some...

Peter Dahl Co.

write or fax for an extensive catalog

915 751-2300 • fax: 915 751-0768 • 5869 Waycross • El Paso, TX 79924
www.pwdahl.com • pwdco@pwdahl.com

Audion Labs

Audion Laboratories develops award-winning VoxPro™ audio recording/editing products, known for their speed, reliability and ease-of-use.

The company sells: Professional studio and control room products such as the VoxPro PC (software) - \$999, and the VoxPro PC Network (software) included with VoxPro PC software, and the VoxPro PC Control Panel (hardware) - \$999.



Select features include one-button record, edit, insert/record on two tracks, import-export of single or multiple files using popular file formats including MP3, unlimited undo/redo, file sort. Ten gigs = 15 hours of stereo files. Access www.audionlabs.com for complete product and reseller information demos, free 30-day downloads.

Audion Labs

Phone: 206-842-5202
Website: www.audionlabs.com

Broadcast Electronics

The BE AudioVAULT has always been an economical, modular automation and content management solution for small- and mid-sized stations requiring the right balance to meet programming, operational and budget requirements. Support of multiple studios and stations, as well as true IP networking, are only some of the reasons AudioVAULT is also the first choice for major markets.



The latest version of reliable, flexible AudioVAULT provides a second-generation CD ripper, true IP networking and individualized user interfaces. AudioVAULT provides advanced integration with RDS and HD Radio data, including secondary audio services, such as Tomorrow Radio.

Broadcast Electronics

Phone: 217-224-9600
Website: www.bdcast.com

BSI

Simian from Broadcast Software International is powerful and reliable digital audio automation software, as well as being very affordable. Simian leverages the power of the Windows environment to give you many of the advanced features of the "super expensive" systems. They even provide some features that they don't, such as a multi-lingual interface and the ability to run other programs, generate dynamic web pages with play list info and remote error notification and control via standard email.



They've worked hard to make Simian a powerful, yet easy-to-use, automation system, with a touchscreen compatible, intuitive interface. You can also download the real software (not just a demo) right from their website.

Broadcast Software International

Phone: 888-274-8721
Website: www.bsiusa.com

Broadcast Tools

The Console Controller IIA provides the solution for interfacing non-broadcast consoles and digital workstations to the broadcast studio. The CC-IIA is equipped with three channels of insert switching. These three channels allow the ON/OFF control of each monaural microphone channel when connected to the console's insert points or between a source's output and a device's input.



The CC-IIA also provides front panel switching for internal (the console) and external (air signal) monitor inputs. Monitor muting and a front panel monitor level control add to the many capabilities of the CC-IIA. Multiple CC-IIA's may be cascaded to increase the number of inputs desired.

Broadcast Tools

Phone: 360-854-9559
Website: www.broadcasttools.com

CircuitWerkes

The pREX, is an incredibly powerful tool for managing and multiplying contact closures in any facility. You can use the pREX to manage your cue system and telephone hybrids, operate on-air lights from multiple inputs, start and stop skimmers, route audio around your studios, convert or multiply momentary satellite closures and more.



Individually programmable relays let you configure the pREX in almost any way imaginable, including momentary, latching, interlocked, pulse stretching up to 45 hours, leading or trailing edge triggered & more.

Free software interface lets you easily program or manage the pREX from any PC equipped with a serial port. Outputs appear on a telco RJ-21 for easy connectivity to a standard telco punch block.

CircuitWerkes

Phone: 352-335-6555
Website: www.circuitwerkes.com

Henry Engineering

Henry Engineering's Superelay is a control interface product that's essential when building or upgrading a broadcast studio. Superelay controls the On The Air warning lights, and provides utility switching for the studio.

Superelay is normally interfaced to a broadcast console's Mic Tally logic, e.g., a contact closure or DC voltage that indicates when the Control Room mic is on. Superelay controls 115VAC On The Air warning lights with a synchronous solid-state relay for noise-free operation without pops, clicks, or arcing.



Superelay's six SPDT relay contacts can be used to switch the various equipment functions that need to be controlled when the Control Room mic is 'live': telephone mute, intercom mute, skimmer start, speaker mute, etc.

Henry Engineering

Phone: 352-622-7700
Website: www.henryeng.com

Prophet Systems

You can afford a feature-rich radio automation system from a company you trust. NexGen101 is a new line-up of products based on the proven Prophet technology. With NexGen101 you get the best of both worlds: software designed specifically to run a single radio station, yet based on the ultra-reliable NexGen software.



You buy only what you need, and add on features as your station grows or your budget allows. Start with the core software, which includes the ability to process a log, letting you run your station with \$495 worth of software. Don't sacrifice reliability and ease of use by purchasing unknown, unproven and unreliable automation software.

Prophet Systems

Phone: 877-774-1010
Website: www.prophetsys.com

RDL – Radio Design Labs

The RU-AEC1 is the ideal choice in installations requiring high quality analog audio from an AES/EBU digital audio source. The RU-AEC1 input XLR is 110 Ohms terminated. Audio outputs are available both on XLR connectors and on the full-size barrier block. In the absence of a valid audio input, the output is muted. The RU-AEC1 features operation up to 24 bits, 96 kHz as well as automatic sample rate detection. The RU-AEC1 also features a digital signal error indicator.



Sure-Lok auto-recovery circuitry unique to the RU-AEC1 monitors the most frequent causes of latch-up and re-initiates digital signal lock, bringing a new higher level of stability to digital audio signal conversion under the variety of conditions.

RDL – Radio Design Labs

Phone: 800-281-2683
Website: www.rdlnet.com

Sine Systems

The MBC-1 is designed to replace all the various strobe lights and colored beacons that are a part of most every broadcast studio. It has 15 inputs for relay contact closures or logic level sources and a single serial output that connects to an electronic message display – typically an inexpensive "Beta-Brite" by AMS. Each input can trigger a unique display on the message board and multiple message boards can be connected to a single MBC-1.



The messages are saved in the display so the same input signal can trigger different messages on different displays. A factory setup feature programs the display with a list of starter messages. The display is fully programmable by the user.

Sine Systems

Phone: 615-228-3500
Website: www.sinesystems.com

The Broadcast Industry's **FIRST** 6-channel UNcompressed Digital STL



MODEL 466 DIGITAL STL TRANSMITTER



MODEL 467 DIGITAL STL RECEIVER

Advanced Technology, Only From TFT

- 6 UNcompressed Program Channels, maximum
- PC Configurable from Front Panel for Frequency, I/O, Alarms, LCD
- Supports 48, 44.1, as well as 32 ks/s Sample Rates
- 256 QAM, 64 QAM, 16 QAM Modulation
- AES/EBU or Analog I/O - Built-In Sample Rate Converters
- Major/Minor Alarms on both Transmitter and Receiver
- 3.125 kHz Step Size



Phone: (+1)408-943-9323
FAX: (+1)408-432-9218

www.TFTInc.com e-mail: info@tftinc.com
1953 Concourse Drive, San Jose, CA 95131

BALSYS

Studio Installation Studio Furniture RF Installation



A unique combination of technical design and installation services with custom furniture design & fabrication, provides full service capabilities that assure new construction efficiency and quality as well as expansion of existing facilities at affordable cost.

Balsys provides any combination of turnkey, project oversight and coordination, or individualized services on a nationwide basis.



- Workflow & Systems Analysis
- Equipment Recommendations
- Furniture Design & Fabrication
- Wiring Design
- Prewiring & Test
- On-Site Installation & Test
- Training

Balsys Technology Group, Inc.
Balsys Wood Arts, Inc.

930 Carter Road #228 - 232
Winter Garden, FL 34787

Tel: 407-656-3719
Fax: 407-656-5474

sales@balsys.com
www.balsys.com

References Provided Upon Request - Balsys is Fully Insured

- Studio Facilities
- Technical Operation Centers
- AM & FM Transmission Sites
 - Prefab Buildings
 - Towers & Antennas

**"Value Is The Realization Of A Job Accomplished Professionally,
On Schedule, And Within Budget"**



* Gibraltar IV Series * Standard AZ-EL
* Horizon to Horizon * Heavy Duty Polar

ANTENNAS ANTENNAS ANTENNAS ANTENNAS ANTENNAS

COMMERCIAL QUALITY
(6m, 9m, 11m, 12m, 15m, 18m, 24m, 27m, 30m, 33m, 37m, 39m, 42m, 45m, 50m)

Call For Info

800-627-9443 608-326-8406

www.dhsatellite.com

Offering:

- * Feed Horns
- * LNB's
- * Multi-Cable
- * Receivers
- * Controllers
- * Antenna Covers
- * Custom Fabrications

OVER 600,000 Manufactured

- * High Efficiency
- * Custom Fabrications
- * Fast Direct Delivery
- * 5 Year Warranty

Fax: 608-326-4233
Email: dhsat@mhtc.net

Buy Factory Direct & Save!

Experience Exceptional Quality, Reliability and Service! Experience Armstrong Transmitter!



Our single tube FM transmitters offer you exceptional quality and affordable prices.

Built for the "real world" environment these RF workhorses offer long term reliability and features not found in any other single tube transmitter available.

Like Fiber Optic PA arc detection, PA thermostatic protection Roll Out Power Supply, and Key Component temperature sensors

Armstrong Transmitter brings you the best RF products, the best around the clock support and the best prices
....because you deserve nothing less!



ARMSTRONG
TRANSMITTER CORPORATION

web: www.armstrongtx.com ph: 315-673-1269
email: sales@armstrongtx.com fx: 315-673-9972

Coverage,
Reliability
and
Experience

When Millcreek Broadcasting
set out to build a master panel antenna
and combiner facility
to accomodate multiple stations,
they chose

Shively Labs

... again!

1-888-SHIVELY
www.shively.com

photo by Kevin Terry

LARCAN
We hear you. Loud and clear.

LOOK TO LARCAN FOR TRULY MADE TO MEASURE FM SOLUTIONS

Designed with a difference to ensure the highest quality audio performance - LARCAN offers a superior range of solid-state FM solutions from 25w to 5kW. Customer driven and purpose designed for optimum performance - we bring you the ultimate in FM broadcast technology from 'start to service'.

We hear you. Loud and clear.



25w FM Translator
FMT-25

Custom Fit Features:

- Superior Audio Performance
- Modular Design
- Wideband Operation
- Automatic Tuning (front-end)
- High Selectivity
- Fully Synthesized (Tx and Rx)
- Internal FCC Code Key Module
- Compact 1RU Design

U.S. Tel: 1-303-665-8000 • Fax: 1-303-673-9900 Canada Tel: 1-905-564-9222 • Fax: 1-905-564-9244

www.larcancan.com

Email: sales@larcancan.com

Radio Guide Tech Initiative

As announced at the NAB 2004 Radio Show, **Radio Guide** magazine has embarked on a **Tech Initiative** to encourage the sharing of technical knowledge and experience among the engineering community.

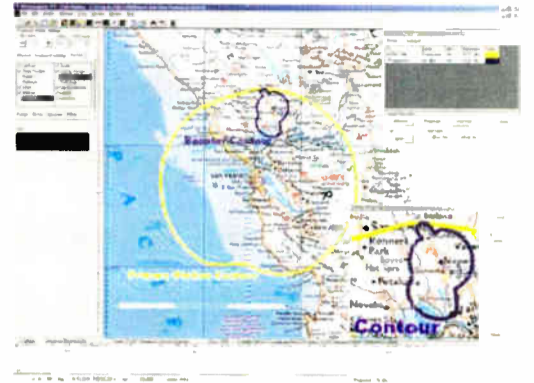
As part of this outreach to encourage information sharing, a number of manufacturers have already contributed over \$15,000 of gear, to be awarded to the best submissions. Some of the items include:



- Broadcast Warehouse DSP-X Digital Processor
- Comrex DH-20 Digital Phone Hybrid
- Audion Labs Voxpro Digital Audio Editor
- Henry Engineering Studio Drive Mixer
- Orban Optimod 1100 Processor Card
- rfSoftware rInvestigator (full package).

What we are asking is for you to share your Tech Tips, User Reports and War Stories as well as longer articles on topics that interest you, from studio construction or renovation, to transmitter site maintenance. Please address any questions or submissions to: Editor@radio-guide.com

rfSoftware, the industry leader in innovative engineering tools has just released **rInvestigator-FM v2.5**. This program is designed for engineers by engineers. We are so confident that our new release of **rInvestigator 2.5** is the premier product of its type; we are willing to provide a **NO RISK 60-DAY GUARANTEE!** If you are not completely satisfied, we will refund your money. How can you beat that? **rfSoftware** is dedicated to customer satisfaction.



Some Super *new* features include:

- One set of TOPO! Maps is included – 1ST two layers preloaded
- Display Audemat-Aztec Navigator 100 & Navigator 007 field surveys
- A much-improved automatic “DA Design Tool” Including user Antenna design limits and user selectable free space limits
- An automatic “DA Design Tool” for boosters
- Ability to export propagation jobs for display in other mapping programs such as Map Info and Maptitude
- Make user defined contours
- Create your own map labels
- Display M3 Ground Conductivity Data
- Set the line weights for your monitor and printer
- New resolution for Path Loss Files (6 & 9 sec.)
- Display ESRI Shape Files on the Job Map

Call 352-336-7223 or visit www.rfsoftware.com for information.

Consultant Guide: Radio Consulting Engineers

Consulting Communications Engineers EMC Test Lab

- FCC Applications
- Frequency Searches and Coordination
- AM-FM-CATV-ITFS-LPTV
- EMC Test Lab - FCC and European (IEC)

OWL ENGINEERING, INC.

Email: info@owleng.com **651-784-7445** Fax: 651-784-7541
5844 Hamline Ave. N., Shoreview, MN 55126 Member AFCCE



Consulting Communications Engineers

FCC Applications • Design • Field Engineering • Tower Detuning
Upgrade & Relocation Studies • AM Directional Array Tuning & Proof

EXPERTS IN:

FM • Directional Antennas • RF Exposure • TV • DTV Transition

210 S. Main St, Theinsville, WI 53092 • 262-242-6000 • Fax: 262-242-6045
www.evansassoc.com Member AFCCE



457 West Middle Rd
Lykens, PA 17048
(717) 365-4081
9717) 365-4083 (fax)



Market Analysis Engineering Software Ethnic/Demographic Data Custom Full-Color Mapping Sales Marketing Packages

Dataworld® is America's unequalled provider of data services, specialized maps, and broadcasting-related technical reports and services.

Phone: 800-368-5754 info@dataworld.com
Fax: 301-656-5341 www.dataworld.com

MULLANEY ENGINEERING INC. Consulting Engineers

- Design and Optimization of AM Directional Arrays
- Field Work
- Analysis for New Allocation
- Site Relocation and Upgrades AM-FM, TV LPTV
- Wireless Cable (MDS/MMDS/ITFS/OFS)
- Environmental Radiation Analysis

301-921-0115 • Fax: 301-590-9757
Email: mullengr@aol.com

Your Ad Here Only \$50.00

Reach 11,000 Readers
Every Month

Reach those who will
specify your services.

Email: radio@broadcast.net
or call: 928-284-3700

Graham Brock Inc.

Broadcast Technical Consultants

Full Service From Allocation to Operation
AM - FM - TV - AUX Services
Field Work - Antenna and Facilities Design

Over 35 years engineering
and consulting experience.

912-638-8028
202-393-5133

www.grahambrock.com



ERI Structural Analysis



Electronics Research, Inc.
812.925.6000 www.ERInc.com

BROADCAST WORKS

Applications and Upgrades
New Construction
Emergency Field Service
Preventive Maintenance

Broadcast Works builds and maintains broadcast facilities all over the country. We work in markets of every size.

903-509-2470 Fax: 903-509-0880
Email: hello@broadcastworks.com
Web: www.broadcastworks.com

Communications Technologies Inc.

Radio Frequency/Broadcast
Engineering Consultants

AM • FM • TV • LPTV
Cellular/PCS Site Analysis

P.O. Box 1130, Marlton NJ 08053
Phone: 856-985-0077
Fax: 856-985-8124
web: www.commtelchrf.com

Clarence M. Beverage
Laura M. Mizrahi



New tubes are now manufactured by Econco in expanded facilities in Woodland, California.

NEW ECONCO NEW

Tel: 800-532-6626 Web: www.econco.com
Intl: +1-530-662-7553 Fax: +1-530-666-7760



TRANSMITTING CAPACITORS
MICA-VACUUM-CERAMIC



SURCOM ASSOCIATES, INC.
(760) 438-4420
LINK@SURCOM.COM

RJB Broadcast Corp.

Transmit-Satellite-Web-Convergence

Call Us Today **800-870-9233**

RIZ transmitters (AM,FM,SW)
New QuickSpot (portable VSAT uplink)
Digital One- web products
Register on our website for free report "Information Suppliers Don't Want You to Have"

Your Econco New Tube Source	Sale Prices
	4CX3500A \$1750. 4CX7500A \$2295.

On the web at www.rjbbroadcast.com

RF PARTS COMPANY
From Milliwatts to Kilowatts™

Eimac • Amperex • Svetlana • M/A-Com
Motorola • Toshiba • Philips • Mitsubishi

Se Habla Español • We Export

800-737-2787

760-744-0700 Email: rpf@rfparts.com
www.rfparts.com

AM Ground Systems Co.

Ground System Construction,
Evaluation & Repair

1-877-766-2999

www.amgroundsystems.com

BAUER TRANSMITTERS, INC.
www.bauertx.com

BAUER - ELCOM BAUER - SPARTA - CETEC


Re-Manufactured
Bauer Transmitters Available

AM/FM – 2.5 kW to 25 kW
www.bauertx.com paul@bauertx.com
915-595-1048 Fax: 915-595-1840

Now Available! New Sections!

The updated 2004 version of Eimac's *Care & Feeding of Power Grid Tubes Handbook* is now available.

Contact Richardson Electronics today for your **FREE** copy.



Richardson Electronics
Engineered Solutions

Toll Free: 800-882-3872
630-208-2200
Internet: broadcast.rell.com
E-mail: broadcast@rell.com

<p>DA HOOK</p> <p>Safety Grounding Hook</p> <p>Solic Brass Hook & Hardware Fiberglass Rod Handle #10 Copper Cable & Alligator Clip</p>	<p>DA GAP</p> <p>Lightning Dissipation Gap</p> <p>Available with Horn or Ball Gaps Patented (#5,661,262) Hot Adjust Mechanism</p>
---	--

To purchase, or for more technical data, telephone, write, or email home page.

Wilk Science and Technology Inc.
1112 North Grove Avenue, Oak Park, Illinois 60302
Telephone & Fax: (708) 524-8588
<http://members.tripod.com/w70mum/edwilk.htm>

D&C Electronics Co.

- New Tubes -

We have the alternatives for all your needs, at the lowest prices, direct from our stock!

EIMAC, SVETLANA, PRO-TEK®, EEV, and many others.

352-688-2374 or 800-881-2374

VISA VISA & MASTERCARD Accepted

Chris Scott & Associates

Visit our website www.scott-inc.com

Ph: (270)781-5301
Fax: (270)781-1232
Bowling Green, Kentucky

NRSC Loop Antenna

AM-FM Notch Filters



CCA PARTS & SERVICE
V&J Electronics

Can supply all parts, schematics, and manuals for CCA, CSI, Sintronic, and Visual transmitters. Field service and complete rebuild transmitters available.

Call Van or Jerry Meier: 770-907-2694
Fax: 770-907-2694 – 24/7 Service
COD, Visa, Master, Discover, NET-15/30
www.ccaelectronics.net

Board Traces for Attenuators
Bal to UnBal
UnBal to Bal
Bal to Bal

1500 V.D.C. Pri - Sec Isolation

Quality PREM Transformers

1/8" Mounting Holes

Industrial Glass Epoxy Board (2"x2.3")
Plated thru Holes

Response 30 - 30 K (Increasing above 30 K)

Audio Lightning Isolator (& Hum ISO)

Hertel Engineering & Newman Kees Measurements
8611 Slate Rd
Evansville, IN 47720
812-963-3294
nhkang@insightbb.com

\$24.95 ea.
Free Shipping w/ an Order of 4 or more

SPACEWISE®
Home of the "BUDGET CRUNCHERS"™

EXPRESS STUDIO™ GREAT QUALITY! GREAT PRICES!

1 1/2" PLYWOOD LAMINATED TOPS!
DUAL SIDED FINISHED BASES!
SOLID WOOD BULLNOSE AND TRIM!
WOOD KICKS! EUROPEAN DOORS!

CALL US AT... 800-775-3660
SEE US AT... SPACEWISE.COM

6 RACK 2 PC STUDIO SYSTEM \$3995!

WE HAVE 25 YEARS OF BROADCAST ENGINEERING EXPERIENCE.
Several affordably customizable studio systems to choose from!
Large sturdy pre-built base modules for easy and fast assembly!
Plus... economically and safely delivered crate d to you!

Think Only the Big Guys Can Look Sharp?



Think again!

Mike flags like these cost \$150 for four.

www.mikeflags.com



OWN A LPAM STATION! LICENSE FREE!

- 1-2 Miles Range Possible
- FCC Part 15 Type Accepted
- Best sound in the business!

Tel 919-362-9393 Fax 919-367-0607 Visa/M/C
<http://www.am1000RANGEMASTER.com>
sales@am1000RANGEMASTER.com

**D
C
S** DIVERSIFIED COMMUNICATIONS SYSTEMS

9139 Route 18
Cranesville, PA 16410
814-756-3053

"SERVING BROADCASTERS SINCE 1981"

BROADCAST EQUIPMENT REPAIR
Audio/RF Equipment - AM/FM Transmitters
Free Consultation/Loaners Available

BROADCAST SERVICES
AM/FM Antenna System Testing & Repair
NRSC Measurements
Turnkey AM/FM/LPFM Transmitter and Studio Installations
Compliance/Facility Inspections

www.divcomm.biz
Email: rpogson@aol.com

Maximize your FM Station
Use the Software that works as hard as you do!

rflInvestigator-FM v2.5
The Industry Leader in Innovative Engineering Tools

Make Your Work Easier and Faster

- Display and Printing Improvements
- *Set Colors and Line Weights
- *Invert Colors easily
- *Display ESRI Shape Files

Completely redesigned "DA Design Tool"

- *Set your own Antenna Design Limits
- *New Booster Designer

rfSoftware, Inc.
innovative engineering tools
Visit www.rfsoftware.com Today
Call 352-336-7223


MOORETRONIX
BROADCAST & INDUSTRIAL ELECTRONICS

Our 3rd Year

Our client list continues to grow. Thank you for your confidence and equipment purchases.

We Re-Condition
Pacific Recorders BMX I-II-III, AMX, ABX and RMX, Stereo-Mixer and Mixer News-Mixer products.

Solve Your System Wiring Problems Fast!



With **STEREOTRACER**
See our Web News-Update page, for details.

Tel: 800-300-0733 Fax: 231-924-7812
WWW.MOORETRONIX.COM

rfEngineers, Inc.

Coverage modeling
RF exposure limit reports
STL & microwave path analysis
Collocation and interference studies
Expert witness testimony by P.E.s

For information call: 352-367-1725 or
Visit www.rfengineers.com today!

DANGER

NO ENTRY FOR ANY PURPOSE
RF TRAINED PERSONNEL ONLY
DO NOT TOUCH TOWER
HIGH RF VOLTAGES




YOUR ASR NUMBER HERE

FCC Tower signs - AM and FM towers
Guy wire protectors - Antenna Tags
Antenna ID Products call 610-458-8418

BESCO World Leader in AM-FM Transmitters
INTERNACIONAL
"Now in Our 34th Year"

AM & FM Pre-Owned Units in Stock
All Powers and Manufacturers
Instruction Books - Spares - Complete

Visit our Website: www.besco-int.com
Or Call Rob Malany at: 321-960-4001

 **Broadcast Engineering Books**

Purchase Online!

New and Used Broadcast Radio books. AM, FM, Cable, Web-casting, Antenna theory and design, Digital, Networking, Amateur Radio and more! Study for your SBE Certification. Knowledge is power! www.BroadcastingBooks.com

Bay Country Broadcast Equipment
Your #1 Source for Quality Used Broadcast Equipment

Call us for our latest list of quality, in stock radio broadcast equipment, or view it at our website:

Bay Country Broadcast Equipment
<http://www.baycountry.com>
(Website Updated Daily)
E-mail: info@baycountry.com
877-722-1031 (Toll Free) 786-513-0812 (Fax)

Professional Equipment Repair

- ▶ Consoles at Lightner Electronics, Inc.
- ▶ Exciters
- ▶ STLS
- ▶ Automation Systems
- ▶ Audio Processors
- ▶ Transmitters
- ▶ Remote Equipment



Toll Free: 866-239-3888
www.LightnerElectronics.com

McPherson Radio
Specializing in pre-owned QEI transmitter products.

QEI – 6 Month Warranty – QEI

All equipment tuned and tested on your frequency. MRC has a repair facility to meet your broadcast needs, for repair of QEI exciters and low power transmitters. Other broadcast manufacturer products are welcomed too.

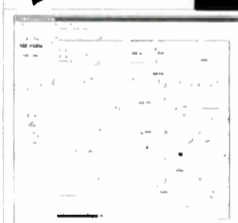
Bob Brown at 856-232-1625 Fax: 856-232-2075
Email: mcphersonradio@comcast.net

VSoft COMMUNICATIONS
R.F. Communications Software and Engineering Consulting

FM Prospector: For Professional FM Frequency Searches

FM Prospector is the ideal low-cost frequency search program.

- FREE FM Database downloads
- Find new channels
- Upgrade stations
- Create area-to-locate maps
- LPFM & full service spacings
- Find translator channels



The "Leader" in broadcast engineering software 800 743-3684
www.v-soft.com

We Buy & Sell Used Transmitters & Antennas
USA and International – Contact us for a quote.

NOW SAVE \$\$\$ ON USED TEST EQUIPMENT!
HP & Tektronix Scopes, Spectrum Analyzers & Signal Generators – Call for fantastic prices!

We also offer REPAIR SERVICE at reasonable rates for all brands of test equipment & TELFAX remote units.

A/Q America
Phone: 515-432-5780 Fax: 801-761-2511
Email: cjp2020@hotmail.com

Zonum Industries
Quality Rebuilt Tubes
4,000 Hour Guarantee

- Se Habla Español -

Phone: 530-476-2400 Fax: 530-476-3210
zonumindustries@yahoo.com
www.zonumindustries.com

 **Earn Your Degree at Home!**
Cleveland Institute of Electronics

www.cie-wc.edu
Visit our Web Site for detailed course descriptions, tuition prices or for a FREE Course Catalog.



CIE offers a variety of comprehensive yet affordable independent study training programs in electronics and computer technology!

Partial list of programs offered:
• A.A.S. in Electronic Engineering
• Electronics Communications
Call (800) 243-6446 for details.

Visit www.ciebookstore.com
• 19 Self-Study Lessons
• Instructor Support
• Certificate upon completion
• Graded Exams

FCC COURSE on CD - \$49.95

FINAL STAGE



Send your information for publication to: radio@broadcast.net

Radio Guide Ads: December-2004

Advertiser - Page	Website
AM Ground Systems - 30	www.amgroundsystems.com
Armstrong Transmitters - 33	www.armstrongtx.com
Audion - 15	www.audionlabs.com
Balsys - 33	www.balsys.com
Belar - 19	www.belar.com
BEXT - 7	www.bext.com
Broadcast Devices - 13	www.broadcast-devices.com
Broadcast Electronics - 10	www.bdcast.com
Broadcast Software Intl. - 3	www.bsiusa.com
Broadcast Tools - 25	www.broadcasttools.com
Broadcast Warehouse - 1, 11	www.broadcastwarehouse.com
CircuitWerkes - 18	www.circuitwerkes.com
CKE - 15	www.rectifiers.com
Conex Electro Systems - 7	www.conex-electro.com
Comrex - 24	www.comrex.com
D&H Antennas - 33	www.dhsatellite.com
DRS Technologies - 27	www.contelec.com
Econco Tubes - 9	www.econco.com
Energy Onix - 2, 9	www.energy-onix.com
ERI - 5	www.eriinc.com
Freeland Products - 17	www.freeland-inc.com
Gorman Redlich - 23	www.gorman-redlich.com
Harris - 40	www.broadcast.harris.com
Henry Engineering - 2	www.henryeng.com
Inovonics - 5	www.inovon.com
JK Audio - 6	www.jkaudio.com
Kahn Communications - 27	none
Larcan - 34	www.larcan.com
Lightner Electronics - 6	www.lightnerelectronics.com
Logitek - 9	www.logitekaudio.com
Micro Communications - 23	www.mcibroadcast.com
NAB - 39	www.nab.org
Nautel - 29	www.nautel.com
Nott Ltd. - 17	www.nottltd.com
OMB America - 27	www.omb.com
Orban - 40	www.orban.com
Peter Dahl - 31	www.pwdahl.com
PTEK - 23	www.ptekpower.com
Phasetek - 13	www.phasetekinc.com
QEI Corporation - 30	www.qei-broadcast.com
RAM Broadcast Sys. - 17	www.ramsys.com
RF Specialties - 11	www.rfspec.com
Satellite Lynx - 23	www.satellitelynx.com
SCMS Inc. - 31	www.scmsinc.com
Shivley Labs - 34	www.shivley.com
Sine Systems - 15	www.sinesystems.com
Superior - 13	www.superiorbroadcast.com
Telos/Axia - 20, 21	www.telos-systems.com
TFT - 33	www.tftinc.com
Tieline - 5	www.tieline.com
Transcom - 9	www.fmamtv.com

Radio Guide Calendar

List your Convention, Event or Gathering Here
Email information to: radio@broadcast.net

SBE Certification Exam

Feb. 4-14 – Local Chapters – Dec. 27 App Deadline

National Religious Broadcasters Convention

February 11-16 – Anaheim – www.nrb.org

National Assn. of Tower Erectors (NATE) 2005

February 14-17 – Dallas – www.natehome.com

Great Lakes Broadcasting Expo

March 7-8 – Lansing, MI – www.michmab.com

IBS International College Radio Conference

March 11-13 – New York – www.collegeradio.tv

SBE Certification Exam

April 19 – Las Vegas – March 1 App Deadline

NAB 2005 Spring Convention

April 16-21 – Las Vegas – www.nab.org

SBE Certification Exam

Jun. 3-13 – Local Chapters – Apr. 22 App Deadline

NAB 2005 Fall Radio Show

September 21-23 – Philadelphia – www.nab.org

Letters from our Readers

Dear Radio Guide:

I just read George Nicholas' excellent article on *Customer Service in the Radio Station* in the October issue of *Radio Guide* magazine. Mr. Nicholas makes some excellent points; ones that we would all be better served to take to heart.

Most of us have heard the old saying: "The customer is always right." I would respectfully suggest that, in the radio or any other business, there are times when the customer is very much wrong. This includes when:

* The customer asks you to do something unethical. Example: If you are a contract engineer servicing several competing stations and the management of one station asks you to disclose upgrade, remote or other technical information of one of their competitors.

* The customer asks you to steal. Example: If you are ordering equipment and/or shop supplies and the Sales Manager asks you to order two pairs of high-end monitors; one pair for the station and one pair for his new apartment.

* The customer asks you to do something that is unsafe. Example: The GM asks you to travel to the transmitter site in obviously unsafe weather conditions. You're asked to climb the tower or STL when you do not have the proper safety gear. You are asked to overlook (or not given the budget to deal with) wiring situations that pose a shock hazard.

The last example is probably the most important, given the trend of station consolidation, staff reductions and budget constraints. When the customer, whether in-house or outside, asks you to put your life in danger, they are wrong – dead wrong.

Keep up the great work,

Charlie Farr
Virginia Beach, VA.

CAT5/5E Cable Tester

RF Industries has released the RFA-4218-20, cable tester for Cat5/5E cable assemblies. This light and compact tester, with two RJ-45 inputs, is used to test straight and crossover RJ-45 UTP, STP, EIA/10Base-T, 100Base-T, EIA/TIA 568A/568B, FDDI, ATM, TP-PMD and Token Ring cables.

The LED display is powered by a 9v battery and clearly indicates shorts, open wires, reversed pairs, crossed pairs and mis-wires. Automatically identifying the cable type it is connected to, the unit verifies all the connections in the cable.

RF Industries

800-233-1728 – www.rfindustries.com



Order Cable by the Foot On-Line

By customer request, **SystemsStore** is now offering the full line of Gepco cable products for direct ordering on-line, BY-THE-FOOT.

No more need to order those 1000' reels and boxes that sit around half empty when the project is done. Now you can order exactly what you need from SystemsStore, with the convenience of being able to order on-line. Your order will be cut to your required lengths, and shipped to you directly from factory stock.

Per-foot ordering includes the new CT504HD "Tactical" Heavy Duty Cat5-E cable. This new cable works like a data cable, but acts like a mic cable. Great for remotes and other applications where you need a data connection that will hold up to repeated use.

Also available by-the-foot at SystemsStore is the popular Gepco 61801EZ single pair analog audio cable (ref 9451). This 22 gauge cable is available in Black, Brown, Red, Orange, Yellow, Green, Blue, Violet, Grey, and White. It is also available in the popular dual pair "zip" configuration, widely used for left-right stereo equipment connections. The zip version has a blue jacket with a red stripe on one pair.

See the entire line of Gepco audio and video cable products on SystemsStore.com.

SystemsStore.com

Phone: 636-230-0046

www.systemsstore.com

Dielectric Introduces HD Plus™ Digital FM Antenna

Dielectric Communications has announced the introduction of the HD Plus™ FM antenna, which achieves a level of analog and digital signal isolation necessary for in-band on-channel (IBOC) broadcasts without the isolator required by the majority of separate antenna systems recently approved by the FCC for high definition radio operation.

The HD Plus antenna can easily be integrated alongside existing analog FM antennas, allowing the station the ability to continue its analog broadcast while also adding a digital broadcast of the same signal at the same frequency. IBOC broadcasts are transparent to radio audiences using analog receivers, while those with digital receivers benefit from improved audio quality.

With the HD Plus, special design considerations between the analog and digital antenna bays provide for isolation that exceeds 40 dB, over 10% more than the 36 dB required by the FCC. With such excellent isolation from the antenna, the need for a supplemental isolator in the system is effectively removed. This not only lowers the initial equipment expenditure, but removes a component which has until now proven to be a reliability concern.

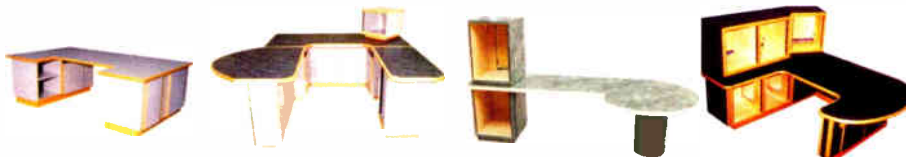
Dielectric Communications

Phone: 207-655-8152

www.dielectric.com

"DESIGNED TO FIT" IN YOUR STUDIO & YOUR BUDGET!

**"EXPRESS
STUDIO'S"**
NOW
FROM \$1995!



TOP QUALITY WELL BUILT SYSTEMS EASILY CUSTOMIZED, SHIPPED AND ASSEMBLED!

SPACEWISE®

HOME of the DELUXE & RADIAL STUDIO SYSTEMS!
"WE'RE BROADCAST EXPERIENCED"

800-775-3660
spacewise.com



NAB 2005

THE WORLD'S LARGEST ELECTRONIC MEDIA SHOW

YOUR FUTURE STARTS HERE



The future of electronic media takes shape at the NAB show. Join thousands of future-focused professionals from more than 130 countries around the world as they gather to discover cutting-edge tools, discuss new ideas, and sharpen their competitive edge. NAB2005 will showcase the latest innovations from every facet of television, radio, film, video, audio and multimedia technology in an event unlike any other. If you work in the world of electronic media — Your future starts here.

NAB2005 • Conferences: April 16-21 • Exhibits: April 18-21
Las Vegas Convention Center
Las Vegas, Nevada USA

www.nabshow.com

Are you ready for a breakout performance?

The notion of "perfect sound" is always going to be fodder for debate among radio pros far and wide. But regardless of what you hear as "perfect" most PD's and engineers agree that major market radio sound demands consistent loudness, punch, and clarity. In fact, more than ever, it demands the Orban Optimod-FM 8400. With five times the raw processing power of its predecessor, the Orban Optimod-FM 8400 delivers a consistently louder signal with lower distortion than any other product on the market, analog or digital...and at lower cost. The "look ahead" intelligent design means you'll pump out polished, balanced sound regardless of the input – be it speech or music – and you have the flexibility of customizing that sound with over 20 expertly designed preset audio textures. The Orban Optimod-FM 8400 also features three levels of password-protected access control and full TCP/IP network and PC dial-up remote control. What a package. But then...you wanted perfect, didn't you?

For more information on the Orban Optimod-FM 8400 call us today at 1-800-622-0022.

www.broadcast.harris.com



HARRIS

PRSR STD
U.S. POSTAGE
PAID
PERMIT NO. 410
BEAVER DAM WI

– Radio Guide Websites –

Radio Guide: www.radio-guide.com

Used Gear: www.radio-classifieds.com

Radio History: www.olderadio.com

Radio Web Links: www.radiolinks.net