

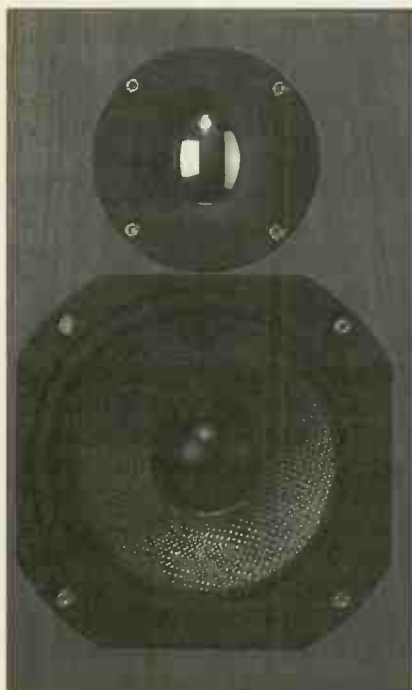
Hi-Fi
W O R L D

Hi-Fi

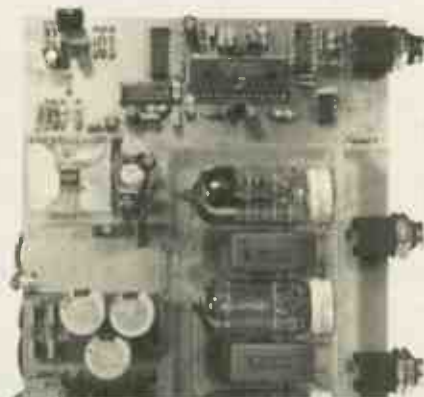
W O R L D

NO.37 JUNE 1998

SUPPLEMENT

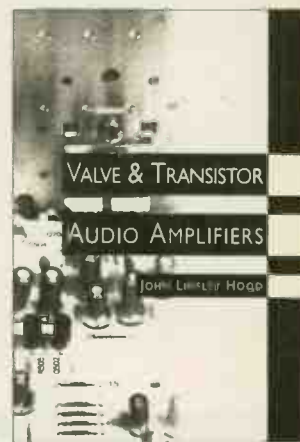


KLS10 HIGH-TECH MINI MONITOR WITH GOLD DOME



24-BIT DAC WITH VALVE OUTPUT STAGE, PART 2

DIY BOOK REVIEWS



FREE D.I.Y. SUPPLEMENT No.37

World Radio History

PRICE VALIDITY TO END MAY 1998 - ASK ABOUT ANY TYPES NOT ON THIS LIST



CHELMER VALVE COMPANY

for High Quality Audio Tubes

Everybody in the tube business knows that the justly famous Brand names of yesteryear like BRIMAR, GEC, MULLARD, RCA & TELEFUNKEN Etc. Etc. are scarce and often very expensive.

Although we supply all major brands when available (and have many in stock) our policy is to offer a range of tubes, mostly of current manufacture, the best we can find from factories around the world, which we process specially to suit audio applications. The result - CVC PREMIUM BRAND.

Our special processing includes selection for LOW NOISE, HUM & MICROPHONY and controlled BURN-IN on all power tubes to improve STABILITY and select out tubes with weaknesses Etc.

A selection of CVC PREMIUM Audio Tubes

PRE-AMP TUBES	POWER TUBES	POWER TUBES	SOCKETS ETC.
ECC81 5.00	EL34G 7.50	(continued)	B9A (Chassis or PCB) 1.60
ECC82 5.00	EL34 (TESLA) 8.00	6336A 46.00	B9A (Ch or PCB) G/Plated 3.00
ECC83 5.00	EL34 (Large Dia.) 8.50	6550A 11.00	Octal (Ch. or PCB) 1.80
ECC85 6.00	EL84/6BQ5 4.70	6550WA or WB 13.50	Octal (Ch. or PCB) G/Plated 4.20
ECC88 5.00	EL509/519 13.00	7581A 11.00	4 Pin (For 2A3, 300B etc.) 3.30
ECF82 5.00	E84L/7189A 6.50	807 9.00	4 Pin (For 2A3, 300B etc) G/Plated 5.00
ECL82 5.00	KT66 9.50	811A 11.00	4 Pin Jumbo (For 211 etc.) 11.00
ECL86 5.00	KT77 12.00	812A 34.00	4 Pin Jumbo (For 211 etc.) Gold Plated 15.00
EF86 5.50	KT88 (Standard) 12.50	845 30.00	5 Pin (For 807) 3.00
E80F Gold Pin 10.00	KT88 (Gold Special) 21.00	RECTIFIER TUBES	7 Pin (For 6C33C-B) 4.50
E81CC Gold Pin 6.80	KT88 (Gold Lion Pair) 60.00	EZ80 4.00	9 Pin (For EL, PL509, Ch. or PCB) 5.00
E82CC Gold Pin 8.00	PL509/519 9.00	EZ81 4.50	Screening Can (For ECC83 etc.) 2.00
E83CC Gold Pin 7.50	2A3 (4 or 8 Pin) 14.50	GZ32 11.00	Anode Connector (For 807 etc.) 1.50
E88CC Gold Pin 8.00	211 22.00	GZ33 9.50	Anode Connector (For EL509 etc.) 1.70
6EU7 6.00	300B 50.00	GZ34 6.50	Retainer (For 6L6WGC etc.) 2.00
6SL7GT 4.50	6C33C-B 27.00	GZ37 7.50	
5SN7GT 4.50	6L6GC 6.50	5U4G 5.00	
6922 5.20	6L6WGC/5881 8.00	5V4GT 4.50	
7025 6.50	6V6GT 5.00	5Y3GT 4.00	
	6080 11.50	5Z4GT 4.50	
	6146B 10.50		

and a few "Other Brands" (inc. Scarce types).

5AR4/GZ34 MULLARD 20.00	6B4G RAYTHEON 27.00	6SN7GT BRIMAR 5.50	13E1 STC 110.00
5R4GY RCA, STC 7.00	6BW6 BRIMAR 5.00	12AT7WA MULLARD 5.00	805 CETRON 50.00
5R4WGY CHATHAM USA 10.00	6BX7 GT SYLVANIA 8.50	12AY7 GE-SYLVANIA 7.75	5842A GEC 15.00
5U4GB RCA or GE 12.00	6CG7/6FQ7 SYLVANIA 7.50	12AZ7 GE 7.50	6080W TUNGSTOL 12.50
5Y3WGT SYLVANIA 5.00	6CL6 RCA or GE 5.00	12BH7A GE or RCA 13.00	6550A GE 22.00
6AS7G RCA or SEIMENS 12.00	6CW4 RCA 11.00	12BY7A GE 9.00	6146B GE 17.00
6AU6WC SYLVANIA 3.50	6SL7GT STC 5.50	12E1 STC 12.50	

ALL PRICES IN U.K. POUNDS £

Please note carriage charge extra + VAT (EEC Only) - When ordering state if matching required (add £1.00 per tube).

Payment by CREDIT CARD (ACCESS, VISA, MASTERCARD) or BANKERS DRAFT, TRANSFER or CHEQUE (UK ONLY).

FAX or POST your ORDER - We shall send PROFORMA INVOICE if necessary.

Valve Amplifiers sound better still fitted with CVC PREMIUM Valves!

Chelmer Valve Company, 130 New London Road,
Chelmsford, Essex CM2 0RG. England.

☎ 44 (0)1245 355296 Fax: 44 (0)1245 490064

Supplement Contents

All rights to the designs are reserved by World Audio Design Ltd. They are published for single use by private individuals. They are not to be used for commercial gain without prior permission from World Audio Design Ltd.
Audio Publishing Ltd and World Audio Design Ltd accept no responsibility for accident or injury arising from the construction or use of any of the designs published. All of the projects in this supplement have gone through rigorous listening and test procedures. The performance and specification of these projects can only be guaranteed on kits bought directly from World Audio Design Ltd.

KIT NEWS

Budding DIY constructors turn to this page first for the latest audiophile components.

5

KLS10 GOLD DOME

Noel Keywood guides you through the construction of KLS10, a two-way kit that marries a carbon-fibre mid/bass to Audax's Piezo-electric Gold Dome tweeter.

7

24-BIT DAC WITH VALVE OUTPUT, PART 2

Chris Found takes the wraps off the final PCB layouts and build sequence for our 24-bit DAC.

15

BOOK REVIEWS: VALVE AND TRANSISTOR AUDIO AMPLIFIERS

John Linsley Hood opens up his considerable thermionic and solid-state design knowledge to DIY fans in his new book.

21

DIGITAL AUDIO SIGNAL PROCESSING

Udo Zolzer takes an in-depth mathematical look at modern digital signal processing.

23

DIY Q&A

Seek and ye shall find the answers to your DIY queries here.

25

AUDIO LINKS

1998

SPECIALIST COMPONENTS CATALOGUE

£2.00 PER COPY

7 Fairmont Crescent, Scunthorpe
North Lincolnshire DN16 1EL

TEL/FAX (+44) 01724 - 870432

Watford Valves

3 Ryall Close
Bricket Wood,
St Albans
Herts AL2 3TS
Phone: 01923 893270
Fax: 01923 679207

7 DAYS A WEEK 9AM - 9 PM The Audiophiles Choice

SOVTEK 300B

Improved control and transparency
For sheer musical enjoyment the new 300B has
no equal, available at £59 each this month only

FREE DELIVERY on all valves to anywhere in UK
until 30 April '98

Rare Original Valves

Siemens 6922 Gold pin - superb quality £15.00
Phillips E188cc Gold pin - special quality £15.00
Telefunken ECC82 - diamond mark £25.00

PRE-AMP VALVES			OUTPUT VALVES		
		£			£
ECC81	Brimar	4.50	EL34	Svetla	8.50
ECC82	Philips	4.50	E34L	Tesla	8.50
ECC83	Philips	6.00	EL84M	Sovtek	5.00
ECL86	Tungstrm.	4.00	EL84	Tesla	6.00
EF86	R.F.T.	8.00	KT61	GEC	22.50
5687WB	Philips	5.00	KT66	GEC	60.00
5842WA	Raytheon	8.00	KT66/7581A	USA	20.00
6922	Philips	6.00	300B	Sovtek	59.00
6SL7WGT	Philips	8.00	6L6/5881	Sovtek	5.00
6SN7WGT	Philips	8.00	6V6GT	Philips	10.00
GZ32	RTC	10.00	6550A	GE	25.00
GZ34	Harma	6.00	6550C	Svetla	16.00

Free matching, full specialist testing, no quibble guarantee
Open 7 days a week 9am - 9pm Professional advice



Fast & Efficient mail order service. All valves are new, boxed and guaranteed. Numerous more valves stocked. Prices exclude VAT and carriage.



LANGREX SUPPLIES LTD

DISTRIBUTORS OF ELECTRONIC VALVES, TUBES AND SEMI-CONDUCTORS AND I.C.S.

1 MAYO ROAD • CROYDON • SURREY CR0 2QP

24 HOURS EXPRESS MAIL ORDER SERVICE ON STOCK ITEMS

PHONE
0181 684 1166

FAX
0181 684 3056

A selection of our stocks of New Original Valves / Tubes.
Many other brands available.

STANDARD TYPES			SPECIAL QUALITY TYPES			AMERICAN TYPES			OTHER TYPES		
ECC88	BRIMAR	4.50	A2900/CV6091	GEC	17.50	5R4GY	RCA	7.50	ECC81	RFT	3.00
ECC88	MULLARD	6.00	E88CC/CV2492	BRIMAR	4.50	5U4GB	SYLVANIA	10.00	ECC82	RFT	3.50
ECH81	MULLARD	3.00	E88CC/CV2492	MULLARD	8.50	5Y3 WGT	SYLVANIA	3.50	ECC83	RFT	5.00
ECL82	MULLARD	5.00	E88CC	SIEMENS	7.50	6BQ5	RCA	5.00	EF86	USSR	5.00
ECL86	SIEMENS	5.00	ECC81/CV4024	MULLARD	6.00	6B4G	SYLVANIA	22.00	EL84	USSR	2.25
EL36	MULLARD	5.00	ECC81/M8162	MULLARD	7.50	6FQ7	SYLVANIA	7.50	EL34G	SOVTEK	6.00
EL84	PHILIPS	6.00	ECC81/6201	MULLARD	8.50				E34L	TESLA	8.00
EZ80	MULLARD	3.50	ECC82/CV4003	MULLARD	6.00				6SL7GT	USA	5.00
GZ33/37	MULLARD	6.00	ECC82/M8136	MULLARD	7.50				6SN7GT	USA	5.00
5Z4G	BRIMAR	5.00	ECC83/CV4004	BRIMAR	6.50						
6V6GT	BRIMAR	4.25	ECC83/M8137	MULLARD	15.00						
12E1	STC	10.00									
13E1	STC	85.00									
807	HYTRON	7.50									
811A	RCA	25.00									
6080	MULLARD	10.00									

THESE ARE A SELECTION FROM OUR STOCK OF OVER 6000 TYPES. PLEASE CALL OR FAX FOR AN IMMEDIATE QUOTATION ON ANY TYPES NOT LISTED. WE ARE ONE OF THE LARGEST DISTRIBUTORS OF VALVES IN THE UK.

SAME DAY DESPATCH VISA/ACCESS ACCEPTABLE. OBSOLETE TYPES A SPECIALITY.

CREDIT CARD MIN ORDER £10.00.

OPEN TO CALLERS MON.-FRI. 9AM - 4PM. CLOSED SATURDAY

U.K. P&P 1-3 VALVES £2.00, 4-6 VALVES £3.00 ADD 17.5% VAT TO TOTAL INC P+P. O'SEAS P & P PLEASE ENQUIRE



KIT NEWS

CROSSING OVER

In addition to the Two-Way Electronic Crossover (Maplin part number DR66W, designed for in-car use but suitable for home hi-fi) mentioned in some of our previous Supplements, Maplin stock more complex active crossovers.

If a three-way 'speaker is your idea of transducer heaven, then a three-channel crossover is called for. GK10L offers 12dB/octave roll-offs, each crossover point switchable from a choice of four different settings. Price is £46.99.

Another option is DR67X which is a five-way unit. This has more flexibility for adjusting crossover points, the ranges including 40Hz to 90Hz, 90Hz to 1kHz and 1kHz to 8kHz. Priced at £64.99, this crossover has a claimed 0.01% distortion and a signal-to-noise ratio of 100dB.

Maplin
PO Box 777
Rayleigh,
Essex
SS6 8LU
Tel: 01702 554002

BOXING CLEVER

South Coast Speakers are offering a design service for budding loudspeaker builders. They can help with cabinet design by calculating the ideal enclosure volume, port size and length on reflex designs for your chosen drivers. The service costs £25 + VAT.

Also offered is crossover design, where given drive units can be matched to a suitable crossover, again for £25 +VAT. If the chosen driver does not have a spec sheet, or if a finished loudspeaker needs to be assessed with a measured performance, this can also be undertaken, with phase, impedance and Thiele/Small parameters calculated for £5-£10 + VAT.

Speaking of drivers, SCS are going to be selling a new line-up of mid/bass units and woofers from Canadian company Loudspeaker Research and Development.

These eight new arrivals with their polymica cones all boast high power handling thanks to Kapton voice-coil formers and five vents behind the cone, which gives them their Max Pentivent name. Prices vary from £22 for the 4in. to £85 for the 250watt 12in.

South Coast Speakers
326 Portswood Road,
Southampton,
Hampshire
SO17 2DT
Tel: 01703 559312

WOUND UP

IT Electronics of Germany make a range of high-grade inductors wound with 99.99% High Conductivity Oxygen-Free Copper wire. Available exclusively from AudioCom, the air-core range are made in values from 0.10mH to 6.8mH, priced between £1.77 and £12.39 depending on value.

These air-cored coils are claimed to outperform both ferrite and regular air-cores due to their low-resistance, high-purity copper.

Another option for enhanced performance is the Corobar range, which uses an iron-dust core to maximise inductance with fewer turns, thus allowing for further reduced resistance. The Corobar come in values from 0.10mH to 12.0mH, priced between £7.24 and £19.84. For close tolerance applications or where unconventional values are required, specific inductances can be created in-house by winding down from the next highest value.

AudioCom are also stocking an upgrade kit for use on most CD players - the Superclock module. This smart little device enhances the player's in-built crystal-oscillator clock with precision high-grade components, all neatly encapsulated within a black box. Relatively simple to fit, the basic kit costs £145, or there's a deluxe version with



pure silver hook-up wire at £155. For the soldering iron-shy, the deluxe can be fitted for £185 inclusive.

We hope to be testing both Superclock and HC-OFC inductors in forthcoming supplements.

AudioCom
Unit 6,
Tindle Enterprise Centre,
Warren Street,
Tenby,
Pembrokeshire
SA70 7JY
Tel: 01834 842803



TECHNICAL & GENERAL

SOME NECESSITIES - FROM THE ORIGINAL CLASSIC TURNTABLE SPECIALISTS

CONNOISSEUR

		£10.55	£1.85
BD1/2 Drive Belt		£13.95	£2.45
BD1/2 Motor Suspension kit		£16.75	£2.55
SAU.2 Headshell		£15.95	£3.55
SAU.2 Connecting Lead			

GARRARD Standard Models

Wired arm tubes	from	£12.75	£2.50
Cartridge carriers (sliders)		£10.55	£1.85
Idler wheels		£9.85	£2.25

301/401 Transcription models

Original Thrust pad assembly		£10.85	£2.25
Original Idler tension spring		£2.95	£1.85
Original Brake pad		£2.20	£1.85
Xeroxcopy Owners Manual 301 incl. full size mounting template		£8.85	£1.85
		£6.70	
Replacement 301 control knobs On-Off/Speed select	pair	£20.25	£2.55
Replacement 301 suppressor unit		£5.65	£2.25
Replacement 301 motor pulley (-2%), (-1%), (Std), (+1%)	each	£15.65	£2.25
Replacement 301 Chrome plated mounting bolts	set	£6.60	£2.25
Recommended Lubrication set - early 301 or 301/401	(specify)	£5.60	£1.85

GOLDRING/LENCO

Idler wheel (lock-nut or clip fixing)		£19.95	£2.85
Arm pivot bearings with instructions		£8.55	£1.85
Spindle/Main bearing assembly complete		£24.85	£3.85
Headshells	from	£21.95	£2.55
Instruction books	from	£4.20	£1.85

THORENS

TD.124 series			
Idler wheel original		£27.50	£2.85
Idler wheel our redesigned replacement		£15.35	£2.55
Drive belt		£15.25	£1.85
Chassis spring suspension (replaces 'mushrooms')		£15.85	£2.55
TD.150/160			
Drive Belt		£10.55	£1.85
Suspension springs (-1%), (Std), (+1%)	set	£12.85	£2.55
Suspension bushes	(set of 3)	£12.50	£2.55
Armboards for most models	from	£16.90	£2.55

CECIL WATTS

Dustbugs/Parastats/Spares - incl. Preener wicks

Cartridges and styli for 78s and Mono LPs in addition to current Stereo LPs

TECHNICAL & GENERAL
PO BOX 53, CROWBOROUGH, EAST SUSSEX, TN6 2BY
TELEPHONE: (01892) 654 534



SERVICE FOR ENTHUSIASTS

High quality Push-Pull or single ended Output, Mains, Chokes, Interstage, Input and Cartridge Transformers



Choose from our catalogue or specify a custom design at no extra charge. Range of package options: full or half shrouded or open frame. Encapsulation, as illustrated for our popular size "P+" for output or mains. All transformers built to order by our craftsmen. Usually 6-8 weeks delivery. Free technical support for all our products (Phone, Fax or internet). Free catalogue. Competitive prices.

E A Sowter Ltd
PO Box 36 IPSWICH
IP1 2EI England
Tel: (+44) (0) 1473 252794
Fax: (+44) (0) 1473 236188

E-Mail: sales@sowter.co.uk
techsupport@sowter.co.uk
Catalogue and overseas agents on our Website:
http://www.sowter.co.uk

Falcon Acoustics Ltd

Incorporating: Falcon Electronics, Basically Sound

New:- Tapped Inductors.

0-10mH in 1mH steps & 0-1mH in 0.1mH steps

DRIVE UNITS: by FOCAL and Seas, and a pick of the best from other manufacturers.

100 + CROSSOVER NETWORKS: - Active & Passive, Components, Accessories, COMPONENTS

SOLENE Polypropylene capacitors. 0.1mFd. to 100mfd.

Polyester and Polycarbonate Film capacitors. 0.1mFd. to 10mFd.

ALCAP Reversible Electrolytic Capacitors (Non-Polar); 50v, 100v & Low Loss, 2mfd. to 600mFd.

FALCON custom-wound Inductors

FERRITE:- Standard, High Power, Super Power, Super Super Power + AIRCORED 0.56-1.25mm wire

AUDIO AMATEUR PUBLICATIONS

NEW - Valves for Audio Frequency Amplifiers from Phillips Technical Library plus lots in P/L.

Back year sets of Speaker Builder, Audio Amateur & Glass Audio, plus the Audio Anthology Set.

Altogether 50+ books and 50+ Audio Amateur's magazine year sets. 1997 sets available.

COMPUTER PROGRAMS

Large selection of Programs available from the very comprehensive Liberty AudioSuite test program via AIRR, LoudSpeaker Ver.6, BassBox 5.1, to the basic Bullock/White Boxresponse.

Also the IMP FFT Test Kit, the Mitey Mic Kit and Mic/Preamp kit for Audiosuite or AIRR



'State of the Art' Kit Designs

B300 8.5litre 2 way Compact,	88.5 dB/watt system; -3dB. point of 60Hz.
B400 18litre 2 way Compact,	90.5 dB/watt system; -3dB. point of 55Hz.
C500 30litre 2 way Column,	89.5 dB/watt system; -3dB. point of 45Hz.
C600 52litre 2 way Column,	91.0 dB/watt system; -3dB. point of 42Hz.
C700 53litre 3 way Column,	89.5 dB/watt system; -3dB. point of 38Hz.
C800 83litre 3 way column,	90.2 dB/watt system; -3dB. point of 35Hz.

A comprehensive range of Focal kits from an even wider range of High-Tech Loudspeaker units

SUPPLIERS TO THE TRADE SINCE 1972

Send for our FREE price list PL26: Just send a large S.A.E. (38p stamp) or US\$2 bill overseas, Europe US\$1 bill or 3 International Reply Coupons (IRC) to: (Dept HFW) Tabor House, Norwich Road, MULBARTON, Norwich, Norfolk. NR14 8JT Tel. (01508) 578272

Arcadia Valve Amplifiers



New Line Level Pre-Amplifiers

Two Models Available.

6 line inputs, 10dB of gain, zero feedback finest quality components, musical results

Model 1 £995, Model 2 £1195

"There's none of the wispy airiness and soft, slow bass that one associates with the breed - just consistently fine tone, edge-of-your-seat dynamics and effortlessness."

Jason Kennedy on the Model 1 in Hi-Fi Choice Sept '97

OEM, TRADE AND RETAIL ENQUIRIES WELCOME

P.O. Box 21, Bramhall, Cheshire SK7 2FF

Tel/Fax: +44 (0)1761 439077

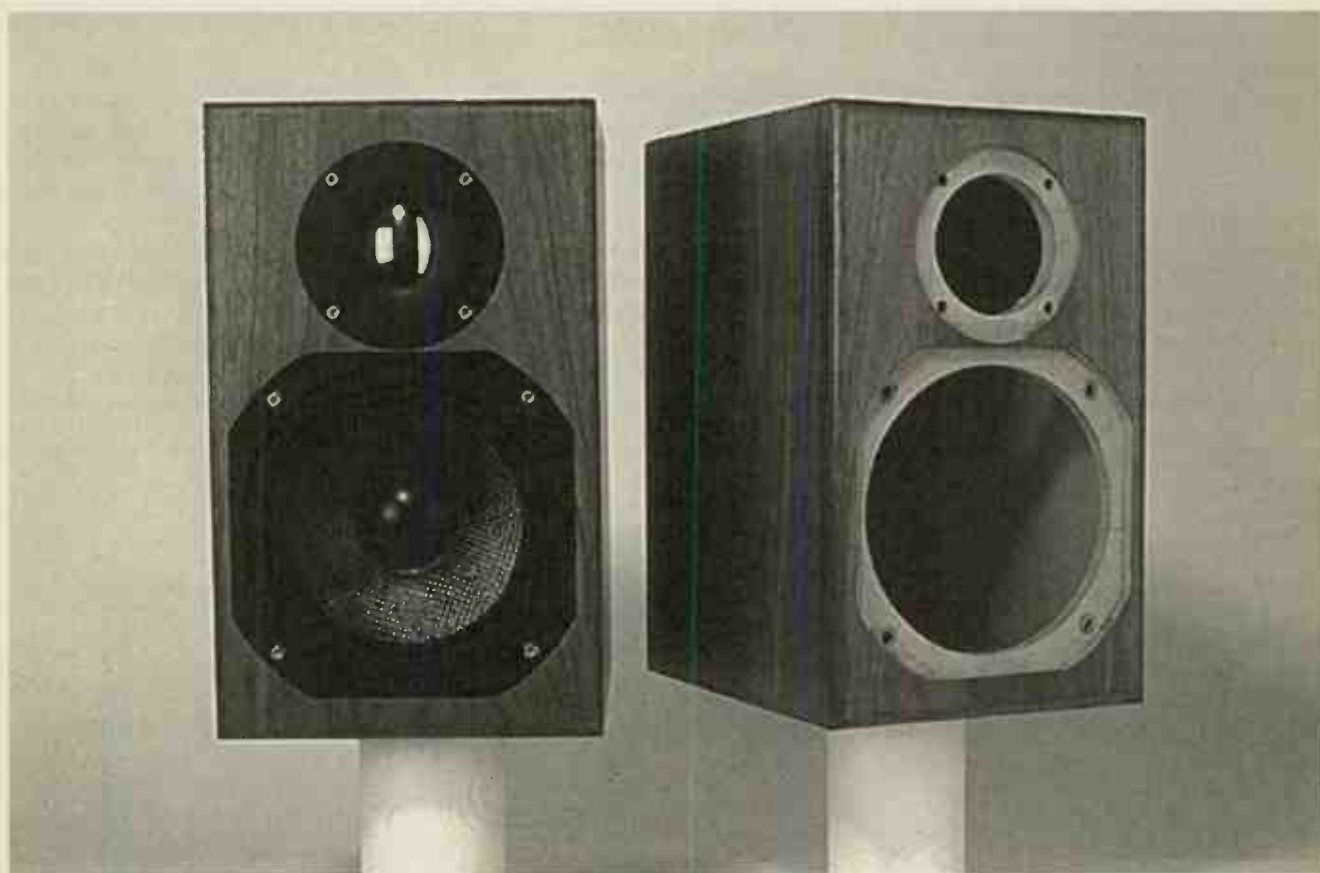
EMAIL: SJS@AUDIOPHILE.COM
HTTP://WWW.NETFORWARD.COM/AUDIOPHILE/SJS

SJS Electroacoustics
HAND WOUND INTERSTAGE. OUTPUT AND MAINS TRANSFORMERS FOR VALVE AMPS



KLS10 GOLD

A high-performance mini-monitor based on our popular KLS3 Gold MkII floorstander. It uses the unique Audax piezo-electric gold dome tweeter. Noel Keywood on the FFT, assisted by designer Gary Holland.



Our KLS3 Gold MkII kit loudspeaker has been popular - people like the idea behind it. But not everyone can accommodate a big floor stander in their home. "What we want", many readers have said, "is a mini version". So here it is: KLS10.

KLS3 was originally conceived to give the classic advantages of a three-way, brought up to date with modern, high-technology drivers. I placed emphasis on midrange clarity and projection because there's no doubt that a loudspeaker able to project clean, cohesive and strongly embodied images of singers and instruments into the room, a few feet in front of the loudspeaker, is captivating to

listen to. The superb carbon-fibre-cone Audax HMI30CO midrange unit achieves this with some ease, sounding smooth and free from raggedness. That's because the small, light, stiff cone reaches up high before its response starts to roll off, covering the human vocal range using a well-controlled area of cone behaviour.

Small cabinet dimensions in themselves make for good imaging, so even before considering engineering details, I expected KLS10 to be good in this area. Just bear in mind though that counterbalancing this is the fact that compact monitors are space savers designed for use close to a rear wall, or perhaps on a shelf. Both positions degrade imaging a little so there is an

inevitable compromise here.

To retain the sense of relaxed clarity the carbon-fibre cones of KLS3 provide, I chose to use Audax's carbon-fibre HMI70CO. This is a 170mm (6.5in.) unit with enough cone area to generate good bass without excessive cone excursion and distortion. Otherwise it is similar to KLS3's smaller midrange driver, displaying the same excellent midrange clarity. There is, too, an absence of hardness or coarseness that comes from paper cones, or the slightly bland and occasionally quacky sound that arises if a better-damped plastic cone is used. Carbon fibre exhibits the strengths of both without falling prey to the weaknesses of either. So

the HMI70CO is used as a mid/bass drive unit in KLS10 in order to provide similar properties to the dedicated midrange driver of KLS3.

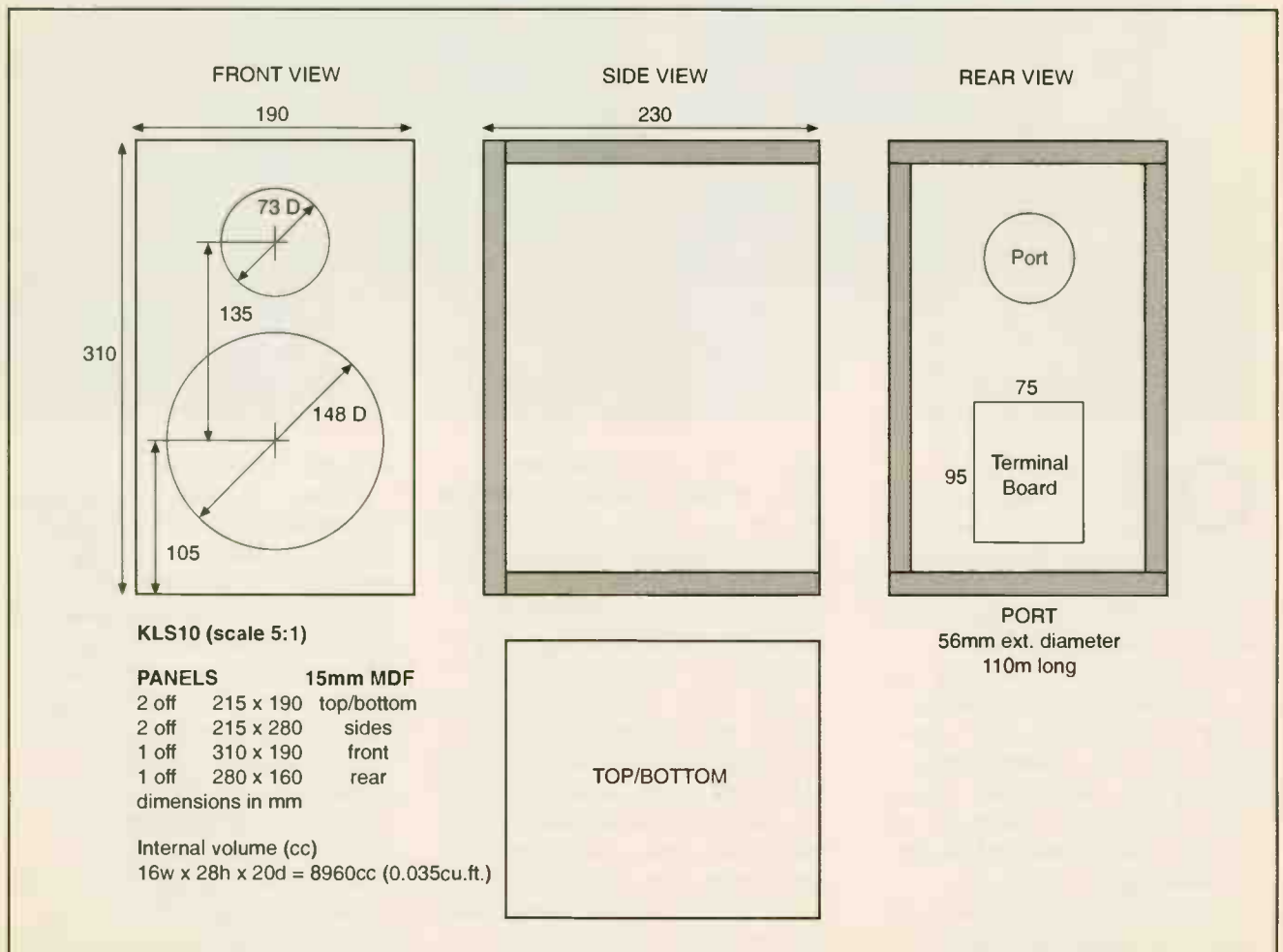
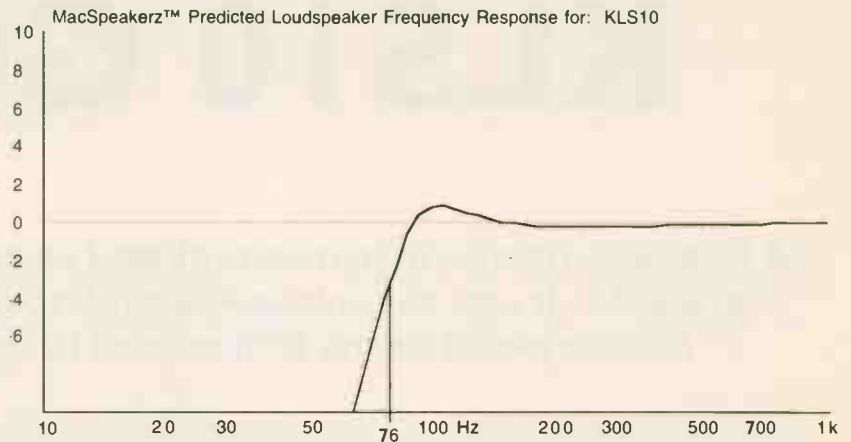
A loudspeaker as compact as KLS10 cannot go as low in its bass reproduction as KLS3, but by using a 'speaker like this close to a wall (1ft or so away) it provides fast, punchy bass. A generation of Linn Kan owners got hooked on speedy bass, which you get by eliminating low bass whilst boosting the 'punch' region from 60Hz-100Hz. That's what KLS10 offers. It turned out to be a speed king, much as expected, by our choice of a slightly under-damped Chebychev alignment for its bass loading. This imparts a good sense of bass enthusiasm, or willingness to play a tune, without one-noting. As it's a reflex, constructors can tune port length to suit their room and their own tastes, or even put wool/foam in the ports to damp the bass down by moving toward infinite-baffle operation.

All the same, some prefer seismic bass and for this minis are best paired with a subwoofer, since it can be made

reasonably compact. We're only at the head-scratching stage with this one, but it would likely comprise a single, large twin-coil bass driver in a reflex cabinet. Because the Audax carbon-fibre range use 8Ω voice coils it could run in parallel with KLS10s without becoming an excessive load for an amplifier.

To retain the essence of KLS3 Gold MkII we had to retain the unique Audax HD3P piezo-electric tweeter in KLS10.

It's so expensive few manufacturers can afford to use it, but this tweeter is arguably the best in the world today. Apart from being technically impressive in all areas, it has the rare but invaluable property of sweetness. I have yet to meet anyone who didn't like it and loudspeaker engineers in particular - a hard group to please - all praise the HD3P. Its appeal seems to be universal, about the strongest endorsement you can get for

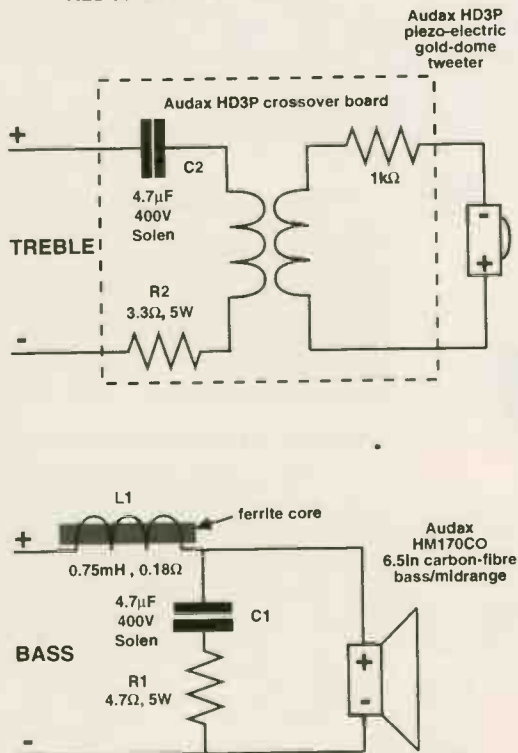


any hi-fi product.

Take it for granted that the HD3P produces great treble: clear, highly detailed, incisive in a pleasant way - not cutting. Even the great Tonigen ribbon tweeter (no longer available) has to bow to the HD3P, since the latter is sweeter and has better dispersion. It reaches down further too, working from 4.5kHz up to 20kHz. The Tonigen worked from 6kHz up to 20kHz so it had to be used with a high-performance midrange unit in a three-way arrangement - few and far between these days for reasons of cost (a cheap three-way is not worth having - see my column this month).

Here again you can see how trade-offs and price (ie performance) enter the scheme of things. With cheap mid/basses you can opt for a well-damped synthetic cone that should be rolled off by the crossover at around 3kHz to avoid quack from break-up modes. Try and integrate this with the HD3P and you will get a midrange dip that will introduce softness to the sound and loss of detail. It's not a bad solution, but not ideal. A lightweight paper cone will go higher but they can get really nasty at high-ish volume levels. Both types of driver are relatively inexpensive and low-tech nowadays.

KLS 10 CROSSOVER



For a few dollars more you can get a good, modern synthetic cone which exhibits greater consistency and better damping. Manufacturers are slowly moving to Audax's High Definition Aerogel (HDA), used in our KLS9 for example. Others are now turning to carbon fibre. So a loudspeaker like KLS10 gets you into the high-performance picture easily and at little cost.

CABINET

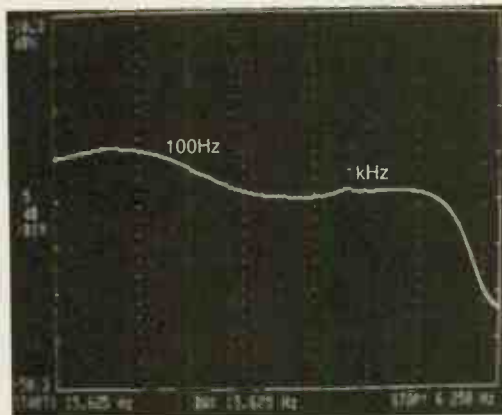
From the above you can see how I chose drive units for KLS10. This process is crucial, because you can't hope to produce a high-quality loudspeaker by using cheap drivers. No amount of sophisticated engineering can compensate and I have to say that this penny-pinching approach hampers a lot of commercial loudspeakers, which use drivers costing just a few pounds.

We do not stray away from Audax's best for our kits and this has served us well by giving constructors a pleasant surprise for their efforts. But of course you can mess things up by putting

good drivers into a poorly-engineered system. This is where experience comes in, plus our superb Fast Fourier Transform analyser, which can measure all aspects of loudspeaker behaviour in real-time - a killer development tool.

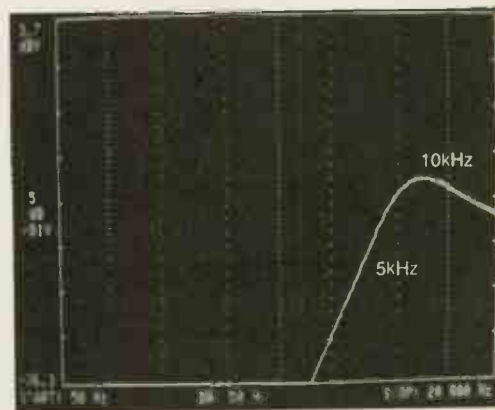
Sorting out box volume is, these days, just a matter of plugging Thiele-Small parameters into a computer programme. That's what I did for the HM170CO, built the box and found it didn't measure as predicted. Rats.

Box optimisation is time consuming and also where experience is needed to avoid insidious problems. Smelling a



Filter response of the low pass section feeding the bass/midrange unit, showing gentle low frequency lift response shaping.

hidden problem I contacted freelance designer Gary Holland. I'm not especially keen on using outside 'experts', because too often they are far from that, but having measured some of Gary's designs and heard praise for his abilities I asked him to sort this problem, because my time



Filter response of the high pass section feeding the tweeter, showing very rapid attenuation below 5kHz.

allocation had run out. He has done an excellent job.

It turned out Audax had changed the HM170CO's properties. Gary re-measured the Thiele-Small parameters, plugged them into the computer and - bingo! - we had a box volume of 8 litres. I decided to increase this to 9 litres on the grounds that you can easily reduce volume by putting anything from a block of wood, wooden cabinet braces or even a brick inside. but you cannot increase volume. Since a 9-litre cabinet is not unduly large the increase carries no penalty.

A 9-litre cabinet peaks up around 90Hz by 2dB or so and this is a bit much. You will get plenty of bass but it is likely to be

HART

The Home of *Hi-Finesse.*

Hart Audio Kits and factory assembled units use the unique combination of circuit designs by the renowned John Linsley Hood, the very best audiophile components, and our own engineering expertise, to give you unbeatable performance and unbelievable value for money.

We have always led the field for easy home construction to professional standards, even in the sixties we were using easily assembled printed circuits when Heathkit in America were still using tagboards! Many years of experience and innovation, going back to the early Dinsdale and Bailey classics gives us incomparable design background in the needs of the home constructor. This simply means that building a Hart kit is a real pleasure, resulting in a piece of equipment that not only saves you money but you will be proud to own.

Why not buy the reprints and construction manual for the kit you are interested in to see how easy it is to build your own equipment the HART way. The FULL cost can be credited against your subsequent kit purchase.

'AUDIO DESIGN' 80 WATT POWER AMPLIFIER.



Our John Linsley Hood designed 80 watt Power Amplifier continues to amaze all who listen to it, and it is now finding new friends among speaker manufacturers who use it to show their own products to their best advantage. Its flawless performance is a result of the combination of inspired circuit design and the very best components, specified by the designer. Such innovations as the six rail fully stabilised power supply make great contributions to the overall reproduction quality yet are not found on even the most expensive run-of-the-mill designs in the High St shop window.

We have long known that the delicacy and transparency of sound from this amplifier placed it in the world class and side-by-side comparisons with amplifiers costing five times as much still show small performance advantages, which suggests that even the most expensive amplifiers will only equal rather than exceed, its sound quality. All amplifiers in the range have the same basic quality and the decision about whether to use a preamplifier is governed by the facilities you need. The STANDARD amplifier has switching for up to three inputs, if you need more than this then a preamplifier feeding a SLAVE power amplifier will give you up to seven inputs.

If you would like to hear this incredible amplifier in action then arrange a visit to Wilmsham Audio's new premises at Broughton Astley, near Leicester. Their phone number is 01455 286603, speak to Shaun or Terry.

All amplifiers are available in kit or factory assembled form.

K1100 Complete STANDARD Amplifier Kit	£415.21
A1100 Factory Assembled version	£515.21
K1100S Complete stereo SLAVE Kit	£353.62
A1100S Factory Assembled	£522.22
K1100M MONOBLOC Amplifier Kit	£271.20
A1100M Factory Assembled	£351.20

Super Audiophile (SA) Versions of all the above come with selected audiophile components at an extra cost of only £39.30 per channel. All HART kits are designed for easy home construction to the very highest standards, and can be built by anyone of average manual ability. If you are still not convinced how easy it is to build it yourself with a HART kit you can order the Instruction Manual to read for yourself and we will refund the cost when you buy your kit!

JOHN LINSLEY HOOD 15W SINGLE ENDED CLASS 'A' POWER AMPLIFIER

A design for the experimenter who wants to try and re-create the warmth and purity of sound given by valve amplifiers from the vintage years, without the problems of cost, deterioration and danger associated with trying to use valves today.

It employs the newly re-discovered single-ended circuit configuration to give total freedom from crossover artifacts and to give a sound that is indistinguishable from the famous 'Williamson' design, the undisputed leader of the field, with its triode connected KT66s and all-triodes driver. See our list for full details.

Reprint of Article	£2.50
CM4000 Construction Manual	£5.00

MAINS LEADS & POWER DISTRIBUTION.

All our kits use standard IEC mains leads and these are available for a range of countries. We also stock distribution boxes with IEC sockets to minimise the space needed for power leads. See our lists for details.

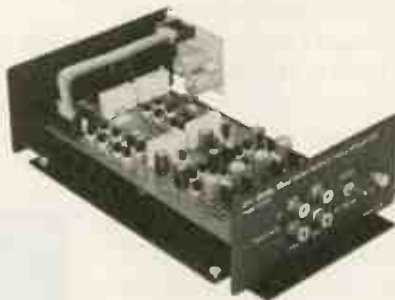
"CHIARA" HEADPHONE AMPLIFIER.



Highest quality, purpose designed, 'single ended' class 'A' headphone amplifier for 'stand alone' use or to supplement those many power amplifiers that do not have a headphone facility. Easy installation with special signal link-through feature, the unit uses our 'Andante' Ultra High Quality power supply.

Housed in the neat, black finished, Hart minibox it features the wide frequency response, low-distortion and 'musicality' that one associates with designs from the renowned John Linsley Hood. Volume and balance controls are Alps "Blue Velvet" components. Very easy to build, or available factory assembled, the kit has very detailed instructions, and comes with Hart audiograde silver solder. A valuable personal listening option and an attractive and harmonious addition to any hi-fi system.	
K2100 Complete Standard Kit	£112.50
K2100SA 'Series Audiophile' Kit with selected audiophile components	£115.46
A2100SA 'Series Audiophile', Factory Assembled	£115.46
CM2100 Construction Manual	£2.50

SHUNT FEEDBACK PICKUP PREAMPLIFIER



If you want the very best sound out of vinyl discs then you need our high quality preamplifier with Shunt Feedback equalisation. The K1450 also has an advanced front end, specially optimised for low impedance moving coil cartridges as well as moving magnet types. Selected discrete components are used throughout for ultimate sound quality. The combination of John Linsley Hood design, high quality components and an advanced double sided printed circuit board layout make this a product at the leading edge of technology that you will be proud to own. A recent review in "Gramophone" magazine endorsing this view. Bought in kit form our step by step instructions it is very easy and satisfying to assemble, or you can buy a factory assembled version if you wish.

This magnificent kit, comes complete with all parts ready to assemble inside the fully finished 228 x 134 x 63mm case. Comes with full, easy to follow, instructions as well as the Hart Guide to PCB Construction, we even throw in enough Hart Audiograde Silver Solder to construct your kit!	
K1450 Complete Kit	£116.58
K1450SA Audiophile Kit	£138.94
A1450SA Factory assembled Audiophile unit	£188.94

"Andante" Linear Technology AUDIOPHILE POWER SUPPLIES



The HART "Andante" series power supplies are specially designed for exacting audio use requiring absolute minimum noise, low hum field and total freedom from mechanical noise.

Utilising linear technology throughout for smoothness and musicality makes it the perfect partner for the above units, or any equipment requiring fully stabilised $\pm 15v$ supplies.

There are two versions, K3550 has 2 $\pm 15v$ supplies and a single 15v for relays etc. K3565 is identical in appearance and has one $\pm 15v$. Both are in cases to match our 'Chiara' Headphone Amplifier and our K1450 'Shunt Feedback' Pickup preamp.	
K3550 Full Supply with all outputs	£94.75
K3565 Power Supply for K1450 or K2100	£84.42
A3550 Factory Assembled Full Supply	£147.25

ALPS "Blue Velvet" PRECISION AUDIO CONTROLS



Now you can throw out those noisy ill-matched carbon pots and replace with the famous Hart exclusive ALPS 'Blue Velvet' range components only used selectively in the very top flight of World class amplifiers. The improvement in track accuracy and matching really is incredible giving better tonal balance between channels and rock solid image stability. Motorised versions have 5v DC motor.

MANUAL POTENTIOMETERS	
2-Gang 100K Lin	£15.67
2-Gang 10K, 50K or 100K Log	£16.40
2-Gang 10K Special Balance, zero crosstalk & zero centre loss	£17.48
MOTORISED POTENTIOMETERS	
2-Gang 20K Log Volume Control	£26.20
2-Gang 10K RD Special Balance, zero crosstalk and less than 10% loss in centre position	£26.98

ALPS PRECISION SWITCHES.

At long last, switches to match the quality of our Alps pots. These switches not only solve the quality gap but also have features facilitating their use in real audio applications. The "Flex" version having a panel mounting control coupled to a rear mountable switch unit by a 190mm Flex Link. Also available is a motor driven option which, like the pots, can also be operated with its control knob.

HC5520. 4P 4W. Manual Control	£16.73
HC519. 4P 6W Manual	£17.95
HC5545. 8P 5W Flex Switch	£21.60
HC5560. 4P 6W Motorised	£29.80

SOLDERING

The size of modern components makes the right soldering equipment essential for good results. Everything we offer we actually use in our own workshops. See our Lists for the full range. 845-820 XS240 ANTEX 240v 25w Soldering Iron. This is the ideal Multi-purpose iron as the bit is designed to totally surround the element giving the best heat transfer. This excellent design also means that although it is small and handy enough for modern components its heating capacity is better than larger irons of conventional construction. Excellent Value. £12.43

HART SUPER AUDIOGRADE SILVER SOLDER.

Hart Super Audiograde Silver Solder has been specially formulated for the serious audiophile. Not only does it give beautiful easy-to-make joints but it is designed to melt at normal soldering temperatures avoiding the possibility of thermal damage to components or the need for special high temperature irons. A very low residue flux makes perfect joints easy but eliminates the need for board cleaning after assembly.

845-007 3mtrs 22SWG in Hart Mini Tube	£3.90
845-008 100g. Reel Special Valve Grade, 20swg	£12.90
845-009 100g. Precision PCB Grade, 22swg	£14.75
845-110 100g Reel Superline 24swg for ultra precise control and easy working	£21.45

PRINTED CIRCUIT BOARD SOLDERING PRACTICE KIT.

Unsure whether you can construct a HART kit?, this is your chance to try! Your HART Printed Circuit Board Soldering Practice Kit comes with a range of modern components, a typical Hart quality PCB, a roll of the correct grade of solder and full instructions. It enables the enthusiast who is uncertain of his, or indeed her, ability to put together and solder a printed circuit to try their hand at minimum cost. The instructions explain the right technique and guide even an absolute beginner through the seemingly daunting, but in fact very simple, art of making a good soldered joint. Excellent value for money at only £4.99

LINSLEY-HOOD 400 SERIES SUPER HIGH QUALITY FM TUNER.

This ultra high quality analogue tuner system is the ideal companion to the 80W Audio Design Amplifier in any ultimate hi fi setup, with case size, front plate layout and even control pitches unified for stacking. Like the 80W Audio Design Amplifier this is your route to ultimate performance at incredibly modest cost! Novel circuit features include ready built pre-aligned front end, phase locked loop demodulator with a response down to DC and advanced sample and hold stereo decoder together making a tuner which sounds better than the best of the high-priced exotica but, thanks to HART engineering, remains very easy to build and set up. Since all components are selected by the designer to give the very best sound this tuner is not cheap, but in terms of its sheer sound quality it is incredible value for money.

K400 Complete Kit	£256.82
RLH8 Reprints of 3 articles covering the FM tuner.	£3.70
CM400 Construction Manual	£4.95

Send for Your **FREE** copy of our **LISTS**

All Prices include **UK/EC VAT.**

Its not what you do, its HOW you do it that counts!.

ASM100 ACTIVE SUBWOOFER MODULE



This attractive module consists of a low pass filter and power amplifier ready for you to mount in a suitable sub-woofer cabinet. The combined unit can then be combined with any new or existing hi fi or home cinema speaker system to add in the real bass punch missing from most setups.

The ASM 100 module comes as a ready-to-mount unit on a solid diecast aluminium frame/heatsink. Input signal can be at line or speaker level for easy system integration. There are three separate stereo inputs at line level and the unit will use any signal presented or mix all inputs to add bass to any signal. The speaker level inputs are used by simply wiring the unit in parallel with the existing speakers to provide them with strong bass support. Crossover frequency can be selected to 50, 100 or 200Hz and the bass level can be adjusted by a front panel control. The 'Green' power supply switches the unit to standby if no signal is present. Drawings are included free for the compact 418 x 380 x 303mm cabinet.

With its powerful 125 watt output and versatile filtering the ASM 100 is the ideal universal active driver module for all subwoofer requirements.

ASM 100 Module, complete with IEC mains lead, instructions and ASM - W20 cabinet drawings. Pt. No. V7000 £185.29
W 200 S 20cm Long Throw Drive unit for use in ASM - W20 cabinet £36.68

VISATON HI TOWER SPEAKER KIT

A speaker kit from the VISATON range that really fits the modern idiom, giving a full uncoloured, and highly defined, sound stage combined with unobtrusive elegance that does not look out of place, even in a smaller room. A frequency response from 38-20,000Hz and a power rating of 100W make it easy to drive. The novel arrangement of five high/mid tweeters, angled at 45 degrees, creates a really dynamic sound stage with sharply defined sound staging. With its compact 200mm square section it can also be used as ultra high quality main speakers for home cinema applications. The kit includes all drive units, crossovers, terminal blocks and damping materials for you to make a stereo pair of speakers.



EXPERIENCE V20

A real heavyweight performer with a total of no less than five drive units in each cabinet. Together these produce a satisfyingly smooth and wide frequency response. The single tweeter is a special 25mm high-end unit with a double coated fabric dome and ferrofluid for cooling and damping. There are two 13cm mid-range speakers and two 20cm long throw woofers for extended bass.

Nominal Power Rating 180W
Max. Music Power 300W
Impedance 4Ω
Freq. Response 29 - 30,000Hz.
Crossover Frequency 450Hz, 3KHz
Mean Sound Pressure 88dB
Box Volume 100Ltr. & 7Ltr.
Size, Height 1,300mm
Width 300mm
Depth 360mm

LK5965 Per Pair £538.70

ASM - T20 SUBWOOFER

An easy to build, but very effective, bass reflex cabinet design using the ASM 100 Active Sub-woofer Module and the W200S, high compliance, 8" driver, with its 20mm maximum cone displacement. Easy to incorporate into a modern living environment the size of the cabinet has been kept as small as possible at 418 mm high, 303 mm wide, and 380 mm long. To aid its ease of positioning in the room both the drive unit and the vent are situated on the front of the cabinet. Despite these compact dimensions, and with a volume of only 31Ltrs, the ASM T20 gives up to 106dB with an acoustical cut-off frequency of 25 Hz!.. The cabinet is made from 19mm MDF, and needs about 8 sq.ft.

W200S 20cm. Long Throw Drive unit.
Part No. 9030 £36.68



COUPLED CAVITY SUBWOOFER.
An alternative design by David Purton, from his little "Coupled Cavity Handbook", using the same drive unit but requiring a bit more woodworking skill as the speaker is set on a baffle in the middle of the box. The total box size is even smaller than the ASM T20 at only 418 mm high, 303 mm wide, and 344 mm long.
Construction Drawing. £1.50

SPEAKER DESIGN SOFTWARE

All programs are for IBM or compatible computers.

VISATON SPEAKER PRO 6. Software (PC) for cabinet and crossover design and calculation with full extendable data bank of drive unit parameters with performance curves acquired in tests in VISATON's own anechoic chamber. This is the essential tool that turns you into a speaker designer. £45.51
Full Version (3")

BASSBOX 5.0 for WINDOWS.

Harris Technologies.
This program aids the design of bass enclosures by allowing you to model how a speaker will sound in a variety of boxes and then modelling the maximum loudness of the speaker/box combination. It then helps to calculate the dimensions of the box and port, if vented. Needs Windows 3.1+, DOS 5.0+, 386 or better, 4MB RAM and 44MB hard disk space. With easy-to-use printed manual. Shipping Wt. 450g
SOF-BAS £87.50

BASS HORN DESIGN.

A.L.Senson.
This program, patterned after Brian Smith's tractrix horn design program, calculates dimensions for a catenoid, exponential or hyperbolic bass horn and prints out in less than a minute. Provides mouth and throat areas, back chamber volume, and dimensions to design your enclosure.
SOF-HOR £17.95

X*OVER 2.0 for WINDOWS.

Harris Technologies.
This package helps in the design of two and three way passive dividing networks as well as load compensating circuits and calculates values for first, second, third and fourth order networks. Same computer requirements as above but only needs 1.5MB disk space.
SOF-XOV £27.90

"QUICK & EASY TRANSMISSION LINE LOUDSPEAKER DESIGN"

Larry D.Sharp.
Explanatory booklet plus computer disk that requires Lotus 123, or equivalent spreadsheet software on your machine. 1993. 22pp. 215 x 280. Spiralbound.
SOF-QET £8.95

REPLACEMENT CASSETTE HEADS.



The excellent performance of modern cassette recorders depends totally on the quality of the R/P head. Even the slightest amount of wear can impair the frequency response and distortion levels. Our HC80 is a top quality head from one of the foremost manufacturers in Japan.

It is easily fitted to most standard stereo recorders (except Sony) and will transform the performance over a worn head. The fact that we buy these in vast quantities enables us to offer them at the amazing price.

HC80 R/P Head, Std Mtg £11.70
Special Offer. 2 for £17.60

HRP373 Downstream monitor combi head. £29.50
SPECIAL OFFER HALF PRICE £14.60
HQ551A 4-Track R/P £14.60
HQ551S Sony Mount 4-Tr. R/P £14.90

REEL TO REEL HEAD 999R 2/4 R/P 110mmH £16.84

PRECISION DIGITAL Triple Purpose TEST CASSETTE TC1D.
Are you sure your tape recorder is set up to give its best? Our latest triple purpose test cassette checks tape speed, head azimuth and VU level without test equipment. Ideal for machine testing or when fitting new heads. A professional quality, digitally mastered test tape at a price anyone can afford.

TC1D Test Cassette. Our price only. £9.99.

CD3 "Stereophile" TEST CD. 27 Tracks for testing loudspeakers and rooms.
CDSTPH3 £8.75

PROFESSIONAL PHONO AUDIO LEADS



Super High Quality stereo phono to phono audio lead featuring gold plated screened phono plugs with split outer contact shell ensuring positive connection to phono sockets. Plugs have red and black polarity bands. Sky blue multistrand oxygen free copper cables with independent braided screens give minimum signal loss and crosstalk with maximum musicality at a sensible price. Directional arrows indicate preferred signal direction.

An excellent high quality lead ideal for interconnection between professional audio equipment or for use in high end domestic hi-fi systems.
4ft long £14.98

MAKE YOUR OWN AUDIO INTERCONNECTS.

Using our High Quality Audiophile Grade double screened signal cable. Linear crystal oxygen free copper with outside diameter to match our T711G Teflon insulated plugs.
780-911 Audiophile Signal Cable. Per metre £3.98
T711G Plugs, Red or Black ring £3.25
T711G 10 or more, mixed OK £2.75

780-803 Speaker Cable. 322 x 0.1 OFC. Mtr. £5.42
780-804 Speaker Cable. 511 x 0.1 OFC. Mtr. £8.90

TECHNICAL BOOKSHELF

Bigger Range of Books. Better Prices. No "28 Day" Wait!

New Titles.

"A BEGINNER'S GUIDE TO TUBE AUDIO DESIGN" Bruce Rozenblit. A practical book that does exactly what its title says and takes a modern look at valve amplifier construction. 132pp. ISBN 1-88280-13-3. £18.20
"HIGH PERFORMANCE LOUDSPEAKERS" Edn.5. Martin Colloms. Latest edition, just out. A really in-depth coverage of the whole World of speakers and high quality sound reproduction, but entirely readable in style. Just reviewed in "HiFi World". 478pp. ISBN 0-4719-7089-1 £24.95*

NORMAL STOCK RANGE

"AUDIO ELECTRONICS" John Linsley Hood. £19.95*
"THE ART OF LINEAR ELECTRONICS." John Linsley Hood £19.95*
"THE ART OF ELECTRONICS" Horowitz & Hill £35.00*
"DIGITAL AUDIO AND COMPACT DISC TECHNOLOGY" 3rd.Edn. 0-240 51397 5 £19.95*
"INTRODUCING DIGITAL AUDIO CD, DAT AND SAMPLING" ISBN 1870775 22 8 £7.95
"ACTIVE FILTER COOKBOOK" Don Lancaster £19.95
"THE ART OF SOLDERING" 0-85935-324-3. 0 £3.95
"HOW TO USE OSCILLOSCOPES & OTHER TEST EQUIPMENT" R.A.Pentold. BP267 £3.50
"LOUDSPEAKERS; THE WHY AND HOW OF GOOD REPRODUCTION". G.Briggs. 1949. £8.95
"THE LS. DESIGN COOKBOOK" Vance Dickason. (5th Edn. £22.95
"ELECTROSTATIC LOUDSPEAKER DESIGN AND CONSTRUCTION" Ronald Wagner BKT6 £15.95
"THE ELECTROSTATIC LS. DESIGN COOKBOOK" R. P.Sanders £24.95*
"BULLOCK ON BOXES" Bullock & White. £8.99
"AN INTRODUCTION TO LOUDSPEAKERS & ENCLOSURE DESIGN" V. Capel. BP256 £3.95
"LOUDSPEAKERS FOR MUSICIANS" BP297 £3.95
"THEORY & DESIGN OF LS. ENCLOSURES" J.E.Banson. £21.95
"THE COUPLED CAVITY HANDBOOK" David Purton. £4.90
"VISATON. HOME HI FI CATALOGUE." Specifications and Thiele Small Data on all Drive Units £4.50
"VISATON. CAR HI FI CATALOGUE." In car guide £3.50
"VISATON. CABINET PROPOSALS" Book 1. In GERMAN £6.50
"VISATON. CABINET PROPOSALS" Book 2. In GERMAN £6.50
"VALVE AMPLIFIERS" Morgan Jones. 1995/6 £24.50
"THE VTL BOOK" David Manley 1994. BKVT1. £17.95
"MULLARD TUBE CIRCUITS FOR AUDIO AMPLIFIERS" BKAA27. £11.95
"THE WILLIAMSON AMPLIFIER" 0-9624-1918-4 £6.95
"AN APPROACH TO AUDIO FREQUENCY AMPLIFIER DESIGN" GEC 1957. £13.95
"AUDIO ANTHOLOGIES", articles from Audio Engineering. Six volumes covering the days when audio was young and valves were king! BKAA3/1 to 6. Price Each All £12.95
"THE RADIOTRON DESIGNERS HANDBOOK" (CD) £49.00
"PRINCIPLES OF ELECTRON TUBES" H.D.Reich PH.D £25.95
"POWER AMP PROJECTS" Anthology. 1970-1989 £15.50
"WORLD TUBE DIRECTORY" 1996-7 Sourcebook £5.95

REEL TO REEL HEAD 999R 2/4 R/P 110mmH

"VISATON. HOME HI FI CATALOGUE."

Specifications and Thiele Small Data on all Drive Units £4.50

"VISATON. CAR HI FI CATALOGUE." In car guide £3.50

"VISATON. CABINET PROPOSALS" Book 1. In GERMAN £6.50

"VISATON. CABINET PROPOSALS" Book 2. In GERMAN £6.50

"VALVE AMPLIFIERS" Morgan Jones. 1995/6 £24.50

"THE VTL BOOK" David Manley 1994. BKVT1. £17.95

"MULLARD TUBE CIRCUITS FOR AUDIO AMPLIFIERS" BKAA27. £11.95

"THE WILLIAMSON AMPLIFIER" 0-9624-1918-4 £6.95

"AN APPROACH TO AUDIO FREQUENCY AMPLIFIER DESIGN" GEC 1957. £13.95

"AUDIO ANTHOLOGIES", articles from Audio Engineering. Six volumes covering the days when audio was young and valves were king!

BKAA3/1 to 6. Price Each All £12.95

"THE RADIOTRON DESIGNERS HANDBOOK" (CD) £49.00

"PRINCIPLES OF ELECTRON TUBES" H.D.Reich PH.D £25.95

"POWER AMP PROJECTS" Anthology. 1970-1989 £15.50

"WORLD TUBE DIRECTORY" 1996-7 Sourcebook £5.95

Don't forget, No waiting at HART! All listed books are normally in stock! Postage, unless starred, only £2 per book, maximum £4.50 for any number, any size! Starred items are heavy books costing £3.50 to send.



At WILMSLOW AUDIO
50 Main St., Broughton Astley
Leicester LE9 6RD

WILMSLOW AUDIO TEL. 01455 286603 Fax 01455 286605

a bit one-note. All the same, there's nowt like taste; some might prefer it like this. With the box as dimensioned you at least get this option, and I know from readers' letters that most like to have the opportunity to experiment. I would suggest a block of wood, up to 1000 cubic centimetres in volume, glued inside onto the cabinet's base, will reduce bass output and improve bass damping to the right level. Bear in mind that the HMI70CO and the crossover intrude into the basic box volume, so a little less than 1000cc will be best.

Readers often ask if they can re-proportion our cabinets to suit their own requirements. The answer is yes, within certain limitations. The length/depth/height dimensions must not only all be different, they must also not be multiples or sub-multiples of each other. Get this wrong and standing waves will produce box honk.

Furthermore, the box should be kept deep so that energy reflected off the rear wall is attenuated by distance. Otherwise this energy will disturb frequency response and also be heard as a coloration, since reflected sound from the rear wall passes out through the cone.

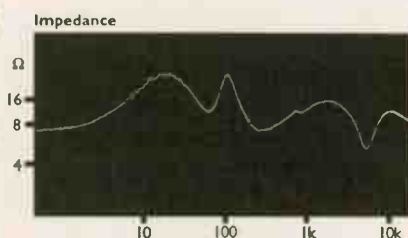
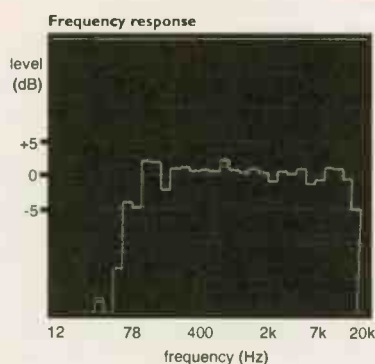
We still use MDF for our boxes, and 15mm MDF (or thereabouts) is thick enough. Because there is concern about the dust being carcinogenic, and the glue exuding formaldehyde fumes, some constructors prefer block board or solid hardwood these days. I opt to use a face mask when cutting MDF.

Use Evode Resin W glue to hold the panels together. DIY shops are often able to cut panels, leaving you to glue them together and do the finishing work. Look for a cabinet maker to do all this if you want top-quality veneering. Routed-in hardwood edges are a nice touch, especially if they have a radius on them. Radiusing the edges also improves stereo imaging. The drive units can be inset into the front panel too, which also improves imaging. Again a router is handy. The idea is to avoid sharp edges and discontinuities, which improves high frequency dispersion, providing more assured images.

The way the panels fit together is not critical. We arrange it to a common pattern where panel seams are only visible on the sides. You can glue in the back panel, or screw it in against battens.

MEASURED PERFORMANCE

The art of a good loudspeaker is to balance all parameters and make sure that they all reach a high standard. It's easy to get flat frequency response, for example, if you ignore a loudspeaker's impedance characteristics, since filters can lift or attenuate response anywhere needed, by drawing more or less energy from a constant voltage source (conventional solid-state amplifier). But then the amplifier has to deal with a difficult load. We aim to avoid this sort of thing.



KLS10 has the sort of flat frequency response we like to achieve, one which is generally accepted as popular. It has a little lift at low frequencies to ensure good body and warmth to the sound. The tweeter is set flat with the crossover as shown. Its

level can be adjusted though, by resistor R2.

An important feature of KLS10 is its lack of a dip in the crossover region. This ensures it will deliver good amounts of detail. Because the HD3P does not reach down as far as conventional tweeters this is a potential problem with any application and, doubtless, another reason the HD3P is not in common commercial usage. Partnering it with a high-performance carbon-fibre driver is the key to success here.

Bass output reaches down to 80Hz, the port suppressing forward output below this frequency. It is tuned, here, to 60Hz, meaning rear port output is at 60Hz, effectively extending frequency response downward to 50Hz or so. The loudspeaker is designed to be used close to a rear wall, toed-in to face listeners. Positioning will affect both the amplitude and phase of port energy reflected from a rear wall and should be optimised by experiment. Room conditions are so varied it is impossible to say precisely what will work best, but a foot or two in front of a wall usually offers a good compromise between imaging and bass boost.

The loudspeaker is extremely sensitive for a miniature, producing 89dB SPL from a nominal watt of input (2.84V). Having a high overall impedance of 10ohms, KLS10 draws little current from an amplifier and is a light load. The volume control will need to be kept down a bit.

This is the basic target performance of KLS10. As I mentioned earlier constructors expect to tune to taste, so I am going to cover this topic, which requires some space, next month in a concluding feature. NK

The HMI70CO cut-out is big enough to allow front access if the rear is glued.

Reflex loudspeakers must not be over-filled with wool, since this influences port behaviour. It is best to line the cabinet walls with thick natural carpet felt or Deflex panels and leave it at that.

CROSSOVER

The crossover is relatively simple, because the HD3P tweeter comes with its own high-pass crossover network attached to a small circuit board. The basic tweeter unit behaves like a capacitor, because signal is applied to front and rear gold conducting layers,

which are plated onto a piezo electric film which forms the dome. It takes this form under pressure from a gas chamber behind it. There is no voice coil or magnet. As a result the diaphragm is twenty times lighter than the dome of a conventional tweeter, giving it the ability to accelerate rapidly and so reproduce high-frequency signals faithfully.

It flexes under piezo-electric forces generated by the applied voltage from a small step-up transformer that is supplied with the tweeter on the circuit board.

Note that the phase of this assembly is reversed in KLS10. You can connect the positive input wire to the negative side of

the board, or alternatively just reverse-connect the tweeter unit, since it is electrically symmetrical.

The HMI70CO mid/bass is fed from a simple second-order, low-pass filter. Having good sensitivity, KLS10 does not need a lot of power, so a ferrite-cored inductor is used to keep DCR low at just 0.18Ω, to improve electrical damping. The capacitor is a high-quality audio-grade Solen polypropylene type.

The crossover can be built on a tag board or a piece of hardboard. Because signal currents are high it is not a good idea to use a printed circuit board with thin tracks. Commercial loudspeakers use them only for speed and ease of assembly. Components should be glued down and connected together with copper wire.

The crossover can be screwed or glued anywhere inside the cabinet, the base board being most convenient. It is better practice to mount the crossover externally to lessen vibration on the components. It can be housed in a plastic case and screwed onto the rear panel, or even kept separate. If you want to go the whole hog, the crossover can be positioned close to the amplifier and the bass and treble cables run independently. It is usual, when doing this, to use silver-plated single-strand for the tweeter and heavier multi-strand for the bass, but of course you are free to experiment.

POWER HANDLING

The power handling of a loudspeaker is not a measure of how loud it will go. It is solely the maximum power it will take

KLS10 Gold PARTS LIST (per loudspeaker)

Drivers	
Bass/midrange	Audax HMI70CO 170mm carbon fibre cone/cast chassis
Treble	Audax HD-3P piezo-electric gold dome tweeter
Crossover	
L1	0.75mH, 0.18Ω, ferrite cored, 1mm wire
C1	4.7μF, Solen (400V)
C2	4.7μF, Solen (400V)
R1	4.7Ω resistor, 5W
R2	3.3Ω resistor, 5W
Hardware	
Input	bi-wire input terminal panel
Damping	a little long haired wool (0.5 lb)
Port	55mm diameter, 110mm long
Wire	PTFE silver plated copper

before suffering damage, thermal from the voice coil overheating or mechanical from the cone hitting its end stops hard. I mention this because many believe power rating is all-important; it is not. Sensitivity must be taken into account as well.

The maximum power KLS10 can handle is the rated power of the HMI70CO, which Audax quote as 60watts. Since it has a Kapton voice-coil former I imagine this is fairly conservative, but all the same it is best to be safe. You can use a more powerful amplifier: how much power goes into the loudspeaker depends solely upon how loud you go. Because KLS10 is sensitive and high in impedance it does not draw much current and, therefore, power. Nor does it need much. It produces a loud 89dB SPL from

1 watt, so will produce 108dB SPL at one metre from 60watts, which is pretty loud.

TUNING

KLS10 can be tuned in a variety of ways. Tweeter level can be varied by adjusting R2 to give a bright or soft sound. As set the 'speaker measures flat and is technically correct.

However, those with hearing loss may well prefer a brighter sound (lower value of R2), whilst others with better hearing and a small, lightly-furnished room may prefer less treble energy (increase the value of R2).

The port can be tuned for frequency by adjusting its length. It is currently set at 60Hz. Increasing length will lower this. When port frequency exactly coincides with the bass unit's resonance, maximum acoustic and electrical damping on the cone will be applied, something I will discuss next month.

If you make a 9-litre 'oversized' cabinet, decreasing volume to 8 litres by putting wood inside will progressively lessen bass output and increase bass damping.

Finally, various absorbents can be used to line and fill the cabinet. We will discuss these tuning techniques next month

AUGUST ISSUE

We will conclude this feature in the August issue DIY Supplement with details of port tuning, tweeter level adjustment, internal damping and related sound quality.

KLS10 GOLD IS AVAILABLE AS A KIT FROM HI-FI WORLD.

	U.K. (inc. VAT & P&P)	Overseas (exc. VAT & P&P)
Drive units, crossover components, input dish, wool, etc (no wood)	£394.00	£343.00
Drive units only	£358.00	£311.00

Call Nick Lucas on 0171-221-0691 (9am - 5pm, Monday-Friday)

Fax

0171-289-5620 (overseas +44 171)

e-mail

wad@hi-fiworld.co.uk

For overseas freight charges, please call, fax or e-mail.



MANTRA AUDIO

CARTRIDGE SELECTION	STYLUS	REPLACEMENT STYLUS
Audio Technica		ADC XLM Mk III £13.50
AT 95 E £21 £13		Akal AN 5, AN 60 £9
AT 110 E £25 £13		AN2, AN 70 £11
AT OC 9 £280 £210 EX		Dual DN 145 E, DN 165 E £13.50
Denon		Goldring G800 Super E £13.50
DL 110 £70 £55 EX		JVC DT 55, DT 60 £9
DL 304 £190 £160 EX		National EPS 24 CS, P 30 D, P 33 D £9
Goldring		Ortofon FF 15 E II, VMS 20 E II, DM 20 510 £13.50
1012 GX £74 £48		Pioneer PN 210, PN 220, PN 240 £9
1022 GX £90 £60		Shure N 75 C, SC 35 C, £9
1042 £110 £74		N 75 ED T2, N 75 EJ T2 £11
Eroica (LX or H) £102 £78 EX		N 95 ED, N 95 EJ, N 75 3 (78) £13.50
Elite £200 £153 EX		VN 35 E £16.50
Excel VX £446 £342 EX		N 95 HE, N 97 HE, VN 35 HE £22
Grado		Sony ND 142 G, ND 150 G, ND 155 G £9
Prestige Black £44 £24		CN234 £11
Prestige Gold £134 £74		*** OVER 500 STYLUS TYPES STOCKED ***
Ortofon		All Swiss quality diamond stylus except * originals
510 £32 £22		ORTOFON DJ PACKS (CARTRIDGE + 2 STYLUS)
MC 15 Super II £120 £102 EX		Concorde Pro SSS Pack £67 Stylus £15
MC 25 FL £210 £178 EX		Concorde Nightclub SSS Pack £106 Stylus £27
MC 10 Supreme £263 £224 EX		Concorde Nightclub EEE Pack £82 Stylus £33
MC 20 Supreme £330 £280 EX		Concorde DJ SSS Pack £82 Stylus £21
MC 30 Supreme £392 £333 EX		SWITCHING & CONTROL UNITS
Rohmann £725 £645 EX		QED MA17 2 Way Speaker Switch (Series) £23.00
Shure		MA18 2 Way Speaker Switch (Parallel) £28.00
V 15 V XMR £265 £178		MA33 3 Way Speaker Switch £36.00
SC 35 X £29 £20		MB42 4 Way Speaker Switch £43.00
		MA18 Headphone Volume Control £36.00
		LOUDSPEAKER CABLE & INTERCONNECTS
		QED QM/10 Qudos/Micro 10m £15.00
		QS/100 Qudos Original 10m £25.00
		Milly CC127 Gold Banana Plugs 4mm 4 No £6.00
		RECORD/DISC CLEANER KIT REFILL
		Milly Permactan Record Cleaner £12.00 £8.00
		Permastat Anti-static Spray £12.00 £8.00
		Discwasher CD Cleaner £14.00 £5.50

MAIL ORDER (1-10 DAYS) PRICES (INC P&P) ARE BEST WE CAN OFFER THROUGH COMPETITIVE SOURCING UK & MAINLAND EUROPE - ALL ITEMS CARRY FULL MANUFACTURERS GUARANTEE - PLEASE NOTE WE DO NOT ACCEPT CREDIT CARDS - OVERSEAS CUSTOMERS PLEASE ADD £5.00 TO ORDERS OVER £50 IN VALUE TO COVER INSURANCE

Tel/Fax (01757) 288652 e-mail: enquiry@mantra-audio.co.uk

MANTRA AUDIO (HFV), 22 GARTH AVENUE, NORTH DUFFIELD, SELBY, NORTH YORKS YO8 7RP

LOUDSPEAKER and ROOM MEASUREMENT PACKAGES

LIBERTY AUDIOSUITE v 3 visit <http://www.libinst.com>

Loudspeaker (and Electronic) Measurement System with

- HIGHEST CAPABILITY**
Now with Multitone distortion measurements (IMD) using up to 4 simultaneous test stimulus frequencies, plus many new added functions
- STRAIGHTFORWARD OPERATION**
With built-in, expanded, EASY SCRIPTS
- DOWN TO EARTH PRICE** **£696.00 plus VAT**
Plus £15 next day delivery

ETF4 (WINDOWS95/NT) visit <http://www.etfacoustic.com>

Room Measurement and Analysis System

- ROOM ACOUSTIC MEASUREMENTS**
presented in simple graphical form, easy to understand
- DESIGN ROUTINES for HELMHOLTZ RESONATORS and QRD DIFFUSERS** for you to correct room acoustic problems
- uses your existing soundcard, and an omni mic **\$195.95 plus VAT**

LspCADv3 visit <http://hem1.passagen.se/ljdata>

Combined Room / Loudspeaker Box / Crossover program

- imports data from LAUD, LEAP and MLLSA **£68.00 plus VAT**

Tony Seaford at MARTON MUSIC
Phone 01282-773198 or Fax 01282-776413
e-mail 106505.251@compuserve.com



Vacuum Tubes for Audio Are Back!

Glass Audio brings together yesterday's tube with today's improved components, voltage control, and the exciting new Soviet tubes, to make smooth sound in your livingroom possible again!

YES!

Please send my first issue of *Glass Audio*. I'll pay just \$45.00 for six issues (1 year); \$80.00 for 12 issues (2 years) of the best information on tubes to be found anywhere. I understand that my satisfaction is guaranteed!

Name _____

Street & Number _____

City _____ Postal Code _____

Country _____

REMIT IN US \$ DRAWN ON A US BANK ONLY. PRICE GOOD THROUGH DECEMBER 31, 1995.

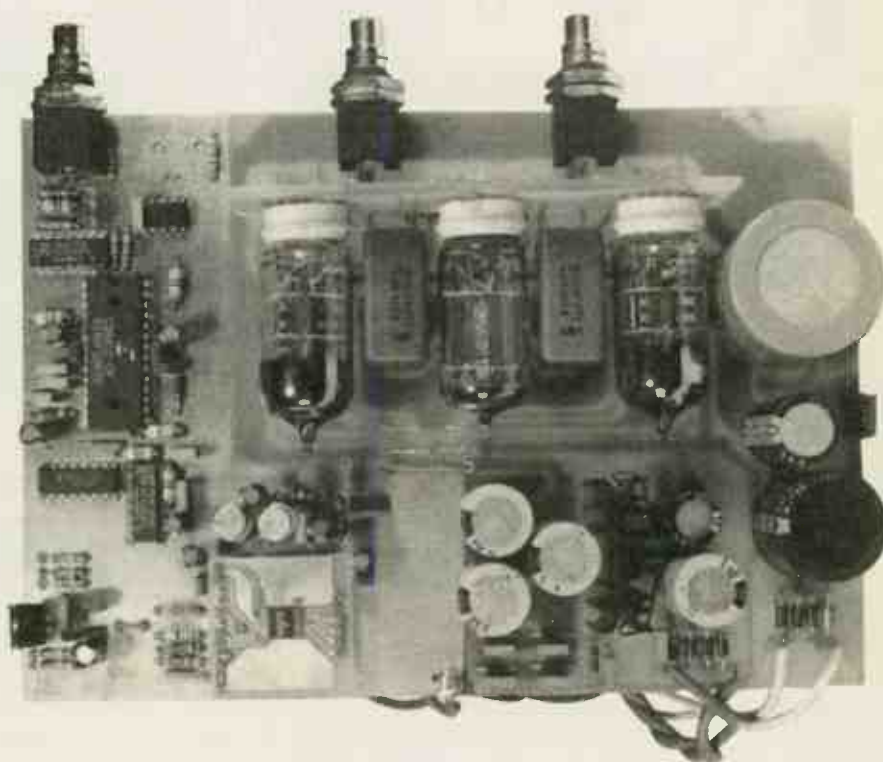
We Accept MC/VISA.

Glass Audio

PO Box 176, Dept. HFWS, Peterborough, NH 03458-0176 USA
Phone: (603) 924-9464 or FAX 24 hours a day (603) 924-9467

CRYSTAL CLEAR II

In April's DIY Supplement, Chris Found detailed the design of a 24-bit 44.1kHz DAC with a valve output stage. This month he explains how you can actually build the convertor.



The whole main unit is built on three printed circuit boards - the mother board, the valve output stage and the DAC module. Silk screening with component numbers is a good idea as any mistakes in component placement can be easily seen.

Everything except the mains transformers, power switch, IEC mains socket and input selection switch is placed on the motherboard. The digital inputs and audio outputs are PCB-mounted, as is the input selector switch. This allows for easy voltage testing outside of the case, if necessary, and providing that care is taken not to touch the high-voltage stages, there should be no real problems.

There's a specific sequence for building the main board which ensures that small components can be held properly in their position while soldering and reduces the number of cosmetic touch-ups that might be necessary later.

First to go on the board are the resistors, starting with the small 1/6watters in the digital section before moving on to the large resistor in the power supply. Next come the rectifier diodes in the PSU, whose correct orientation is vital - make sure you check this carefully.

All of these components except the large resistor have a 10mm pitch, so they can be folded in one go. When

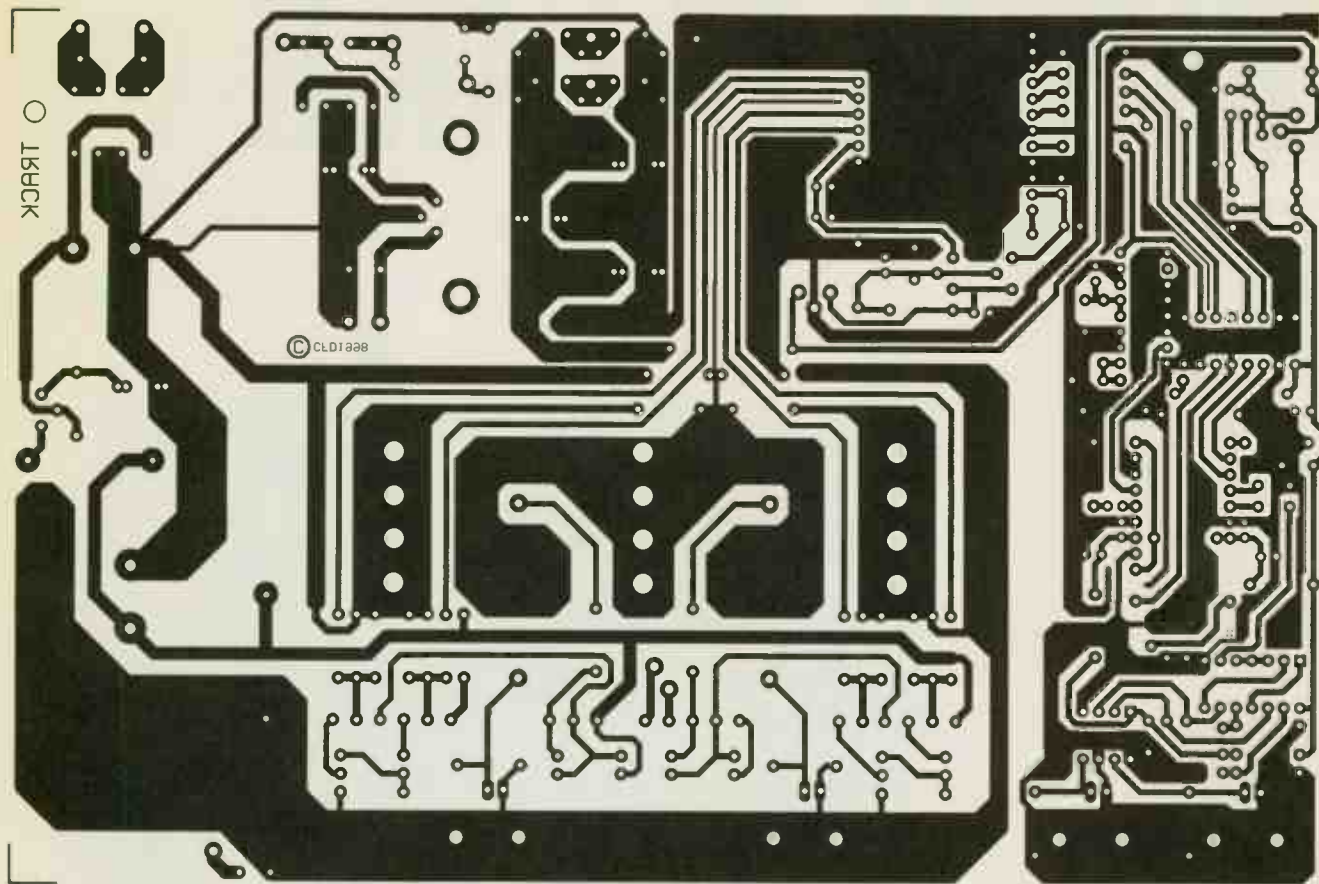
you mount these parts, bend the leads that protrude on the lower track side of the board slightly to hold the component in position while it is being soldered and so avoid burnt fingers. This technique allows more than one component to be soldered at a time and greatly reduces build time. Just double-check each component's location as you put it onto the board.

Once the resistors have been soldered in place, the integrated circuits can be mounted. Again, diligent checking is a must here - make sure the orientation of each device is correct and confirm that all of the pins have gone through the board before soldering each IC individually. You will find that the ICs' legs are pushed out at a slight angle; these can be easily straightened with care.

Then it's the turn of the rest of the small components - polyester capacitors, T05 and the tiny ZTX transistors. Try not to push the transistors down too far, otherwise the legs could bend apart further than intended.

Once that's finished, fit the larger components, observing the polarity of electrolytic capacitors where necessary. Finally, solder the valve bases onto their PCB before mounting it on the motherboard and connecting the wires for the heater supplies.

Once the boards are connected together and the



The underside of the main PCB is reproduced here at 75% of full size. It can be blown up to 100% on a photocopier.

transformers wired up, you can now run a series of basic tests on the PCBs. However, DO NOT fit the DAC module yet.

The initial testing of the DAC is done after one last check that all the components are in the right places. This is very important as a mistake could damage some

of the parts and cost a substantial amount of money to put right. To test the unit you will need either an analogue or digital voltmeter.

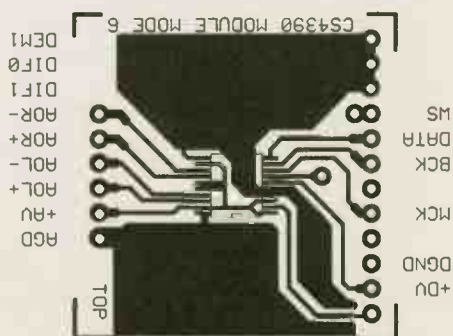
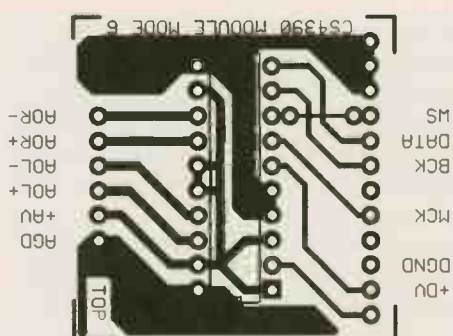
When you are satisfied that the boards are correct, apply power to the unit. Give it some time to warm up while you look and smell for any strange happenings. After a few minutes you can begin taking measurements to confirm you have built the DAC correctly.

Start by setting the voltmeter to a range of 20VDC to 30V DC and testing the digital power supply and its regulation. There should be 5VDC +/- 0.3V on the left side of L1. For a ground point use one of the digital input sockets' outer rings. Simply clip a ground wire terminated with a crocodile clip onto this.

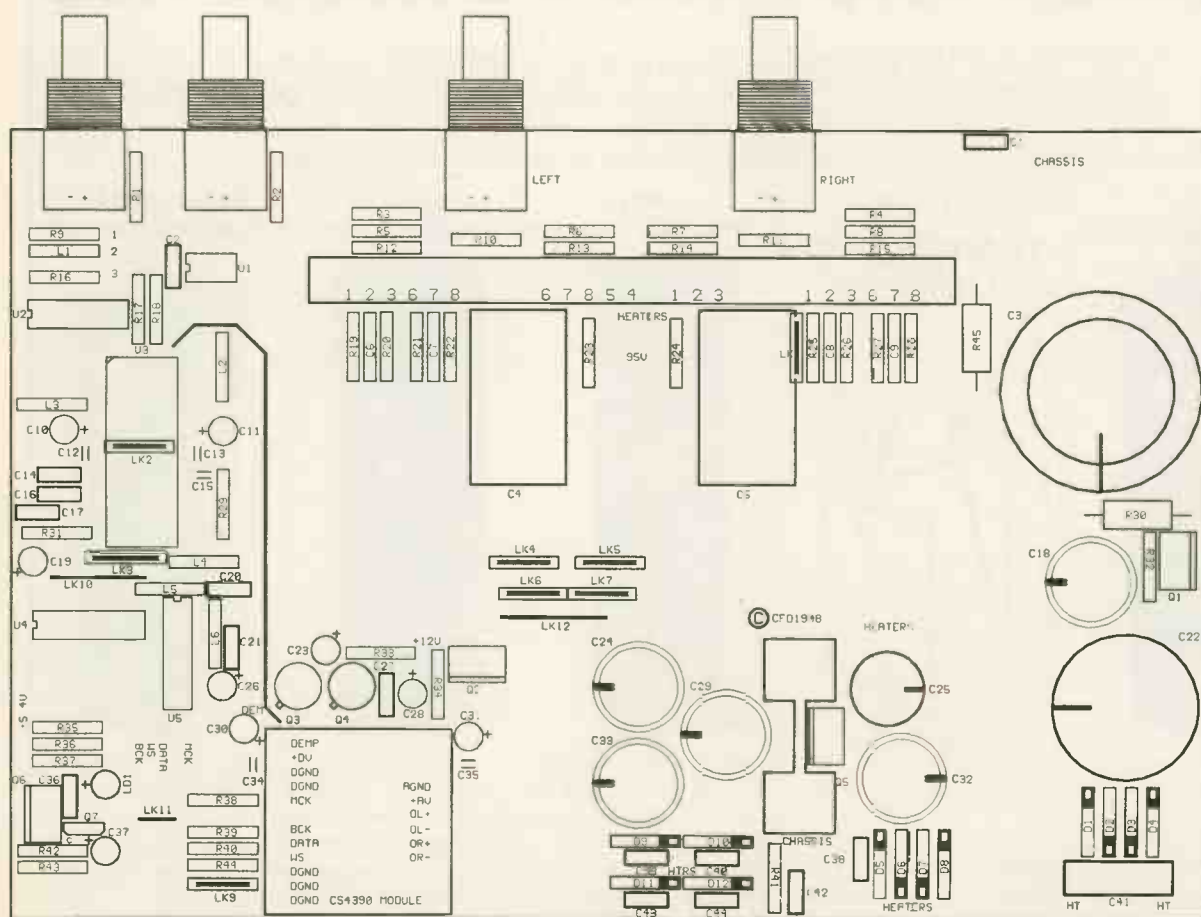
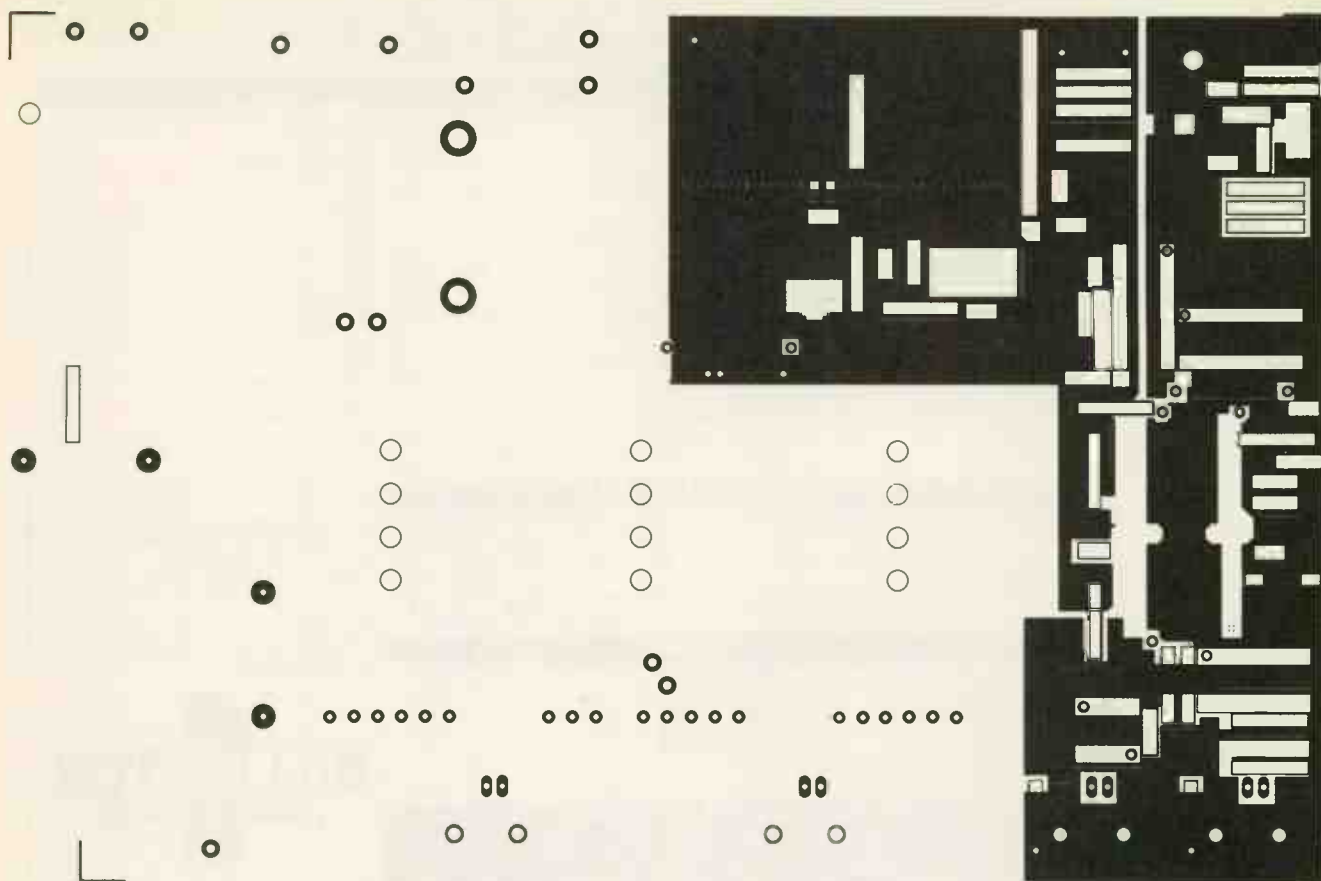
If these voltages are correct, test the supply rail to the DAC module on one of the cans of the 2N2219 transistors, where there should be 12VDC. On the top of R34 there should be 5.6VDC +/- 0.3V.

The following step are the valves' heaters. As these heaters are floating until all three valves are placed in their holders, you need to check at the heater pins near C25 and the large heatsink at the front of the motherboard. Place the black probe on the pin soldered to the same track as C25's negative terminal and the red probe on the other pin, which should give you a 12VDC reading.

Now you have checked the main supply voltages and nothing has blown up, you can safely assume that the board is built correctly. All that's left to do after the unit has fully cooled down is mount the DAC module and the valves and begin listening to all your favourite CDs through your new convertor.



The two PCBs to the right include one (top) for the non-surface-mount version of the DAC chip and one (bottom) for the smaller SM type. These are printed here at full size.



Above is the layout for the upper side of the main PCB. Below is the component positioning diagram which can be silk-screened onto the PCB to aid construction. Both are at 75% of full size.

α

Billington

Gold

Ω

Long known as specialists in rare tube brands, Billington Export provides a line of premium-grade valves to fill the increasing demand for hard-to-find tubes! BILLINGTON GOLD features specially tested valves selected for long life, low microphony and low noise. Versions with gold plated pins are available. BILLINGTON GOLD brand comes from a variety of countries around the world. We have carefully chosen the best manufacturer for each type, with an emphasis on the highest audio quality and product reliability. We stock one million valves including: BRIMAR, GE USA, GEC UK, MAZDA, MULLARD, RCA, RUSSIAN/SOVTEK/SVETLANA, SYLVANIA, TESLA, THERMIONIC, TUNGSRAM and other rare brands, as well as sockets and CRTs.

BILLINGTON GOLD

2A3	17.25
6L6GC	9.50
6L6GT	6.45
6SL7GT	4.50
12AX7	5.55
50CA10	22.50
274B	12.00
300B/VA300B	126.00
New improved version	63.00
807	9.95
811A	9.00
813	24.00
845	33.00
4300B	66.00
5881	8.00
6550B/B3	12.00
E81CC	5.70
E81CC-01	9.50
E82CC	5.70
E82CC-01	8.50
E83CC-01	8.50
E88CC	8.00
ECC81	5.70
ECC82	5.70
ECC83	5.55
ECC88	5.25
EF86	9.90
EL34	7.50
EL84	3.60
GZ34	8.40
KT66	9.50
KT88 Special	
GEC replica	22.50
KT88	18.50
TT21 Chinese	27.00

For orders over £600.00 please deduct 33%.

RARE BRANDS

3C24EEV	27.00	85A2 Mullard	4.50	ECC86 Mullard	5.93
4250A/QB35750 Philips	72.00	350B Chines	14.25	ECF80/6BL8	0.75
5Y3GT	3.90	807 USA	6.75	ECL82 Tungstram	3.30
6AH4GT USA	7.50	1625 USA	3.95	ECL85/805	1.49
6AS7G Russian	2.93	6587WB Philips	5.93	ECL86	2.85
6AU5GT GE USA	3.75	5751GE	6.00	EF39/CV1053	1.65
6AU8A USA	0.75	5814AECG/Philips	2.70	EF95/CV4010 Mullard	1.95
6BE6/5915 ECG Philips	0.90	6028	0.99	EF184 RFT	0.99
6BH6 RCA	2.48	6463 GE USA	2.40	EL38	13.32
6C33CB Russian	19.50	A2293/CV4079	4.43	EL86 Russian	1.49
6J4/CV5311	1.80	C3m Siemens	15.30	EL90 Brimar	2.70
6Q7G/CV587	3.60	CV4062/E2134	5.25	F2A Siemens	POA
6SQ7	3.00	DA42 GEC	28.50	F2A11 Siemens	POA
6U8A RCA	1.43	DG7-32 Mullard	21.00	PCL82 Tungstram	2.15
6V6 RCA Black Metal	15.00	E80CC Mullard	45.00	PCL86 (ECL86) Russian	0.53
6V6GT MWT	6.00	E80F Philips	18.00	QQV03/20A GEC	5.25
12E1 STC TTT UK	16.50	E80L Philips	31.50	S11E12/CV4060	43.50
12SG7	1.65	E88CC Tesla Gold Pin	8.85	Z2b	27.00
13E1 STC UK	120.00	ECC81/CV4024 Mullard UK	7.50		

WHOLESALE SECTION

6AL5/EB91 Mullard, government box	100 pieces @ £ 75.00 [£0.75 each]*
9002 RCA USA audio triode	100 pieces @ £ 60.00 [£0.60 each]*
E180CC/7062 Mullard UK box anode GVT	100 pieces @ £280.00 [£2.80 each]*
EF37A Mullard UK Grey	50 pieces @ £125.00 [£2.50 each]*
EF86 Russian, Identical to Svetlana EF86 but no logo	50 pieces @ £210.00 [£4.20 each]*
EL34 Chinese tested - guaranteed	50 pieces @ £175.00 [£3.50 each]*

RARE SOCKETS

47E [for 4212E]	ORDER CODE 47E	37.50
4B4/B5B [for PX4]	ORDER CODE 4B4/5BB	3.98
45DA [for DA100]	ORDER CODE 45DA	15.00
B5 [for ML4]	ORDER CODE 4B4/B5A	3.98
PO5 [for Aa, Ba]	ORDER CODE 5PO	11.70
Octal and B9A sockets IN STOCK...POA		
Side contact for AZI [473]	ORDER CODE 8P/8SC	10.43

All items in stock at the time of going to press. Prices in GB Pounds. Please ask for our free 50 page catalogue of valves. AMERICAN EXPRESS, MASTER-CARD, VISA, accepted. MINIMUM ORDER: UK £50 + VAT & Carriage. Export £100.00 [US \$150.00] + Carriage. 3,000 OTHER TYPES OF VALVES IN STOCK! PLEASE INQUIRE FOR ANY TYPE NOT LISTED.

BILLINGTON

EXPORT LIMITED



BILLINGTON EXPORT LTD IE GILLMANS TRADING ESTATE
BILLINGSHURST WEST SUSSEX RH14 9EZ UK

TEL: (0)1403 784961 FAX: (0)1403 783519 email: billingtonexportltd@btinternet.com

VISITORS BY APPOINTMENT PLEASE

SPEAKER KITS FROM IPL ACOUSTICS

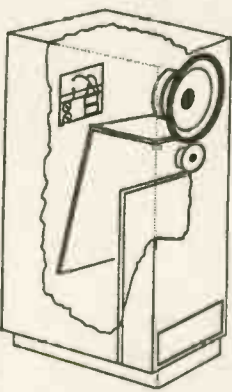
Over a 9 year period I.P.L. ACOUSTICS have developed a range of high quality speaker kits, using the best units from SEAS, MOREL, AUDAX, and I.P.L. and have produced a comprehensive range of speakers which will compete with the most expensive of commercial designs. All speakers have biwired crossover kits containing high quality components and terminals.

S5TL TRANSMISSION LINE



PLUS KIT£383.00
TOTAL KIT£506.00

FIVE TRANSMISSION LINE KITS



TRANSMISSION LINE
PLUS KITS £172.00 -
.....£383.00

M3TL TRANSMISSION LINE



PLUS KITS£172.00
TOTAL KIT£236.00

A2 H.D.A. AEROGEL KIT



PLUS KIT£187.50
TOTAL KIT£259.00

S3TLM METAL TRANSMISSION LINE



PLUS KIT£224.00
TOTAL KIT£302.50

PRE-VENEERED CABINET KITS NOW AVAILABLE. Carriage charge extra on all kits.

If you would like further details please send large SAE with 36p stamp for PAGE SPEAKER BUILDING CATALOGUE, comprising VALUABLE ADVICE on DESIGNING, BUILDING, and TESTING speakers and full technical specifications including response curves of eight kits, drive units, and details of SPECIALIST CABLES and ACCESSORIES. KITS FOR A.V. USE NOW AVAILABLE.

I.P.L. Acoustics, 2 Laverton Road, Westbury, Wiltshire, BA13 3RS. Tel: 01373 823333

COMPONENTS LIST

Resistors

(all 1/6W, metal film unless otherwise specified)

R38	22R	1off
R39	33R	1off
R40,R44	47R	2off
R1,R2	75R	2off
R37	220R	1off
R23,R24	820R	2off
R29	1k	1off
R34	2k	1off
R13, R14, R3, R4	2k2	2off
R12, R15, R5, R8, R33	2k4	5off
R16, R17, R18, R35, R42, R43, R9, R36,R19,R22,R25,R28	3k3	12off
R6,R7	10k	2off
R30	15k (1W Metal Oxide)	1off
R20,R21,R26,R27	22k	4off
R31	39k	1off
R32	56k	1off
R10, R11	100k	2off
R45	100k (1W Metal Oxide)	1off

Capacitors

C6, C7, C8, C94	Axial Polystyrene 470pF 160V	4off
C12,C13	2.5mm 22nF Polyester 63V WIMA	2off
C14,C16,C17,C2,C20,C21,C27,C36,C1,C38,C39,C40 C42,C43,C44	5mm 22nF Polyester 63V	15off
C15,C34,C35	2.5mm 47nF Polyester 63V WIMA	3off
C41	10mm 0.1uF Polyester 400V	1off

C4,C5	2.2uF Polypropylene 400V	2off
C10,C11,C19,C26,C30,C31	10uF Low ESR Electrolytic 50V	6off
C18	33uF Electrolytic 350V	1off
C23,C28,C37	47uF Electrolytic 25V	3off
C22	100uF Electrolytic 400V	1off
C3	220uF Electrolytic 400V	1off
C25	1000uF Electrolytic 35V	1off
C24,C29,C32,C33	3300uF Electrolytic 25V	4off

INDUCTORS

L1,L2,L3,L4,L5,L6 Axial 470uH

SEMICONDUCTORS

D10,D11,D12,D5,D6,D7,D8,D9	1N4002	8off
D1,D2,D3,D4	1N4007	4off
U1	DIL 8 UA9637A	1off
U2	DIL 14 74HC00	1off
U5	DIL 16 74HC153	1off
U4	DIL 16 74HC173	1off
U3	DIL 28 CS8412G	1off
U6	CS4390 DAC Module	1off
Q1	TO220 TIP50	1off
Q2	TO220 7812 1Amp	1off
Q3,Q4	TO5 2N2219	2off
Q5	TO220 78S12	1off
Q6	TO220 TIP29	1off
Q7	Zetec ZTX653	1off
LD1	5mm Green Led	1off

VALVES

V1,V3	B9A 6922	2off
V2	B9A ECC82	1off

MISCELLANEOUS

LK1,LK2,LK3,LK4,LK5,LK6,LK7,LK8,LK9	10mm links	9off
CN1,CN2,CN3	Black PCB-mount RCA sockets	3off
CN4	Red PCB-mount RCA socket	1off
HS1	25mm Heatsink	1off

CRICKLEWOOD ELECTRONICS

ANSAR SUPERSOUND
Audio Polypropylene 400VDC±5%

The secret's in the metallised film!



Manufactured specifically for high end audio, these polypropylene capacitors offer exceptional value for money as they use a specially imported high purity metallised polypropylene film, ensuring smooth, detailed and transparent sound quality and extremely low distortion, whether they are placed directly in the signal path such as in crossovers or for decoupling etc. (also for replacing old, stale and lumpy capacitors).

Part No	Value	Price
CW100N	CAP PROPYL 100nF	£1.25
CW150N	CAP PROPYL 150nF	£1.25
CW220N	CAP PROPYL 220nF	£1.25
CW330N	CAP PROPYL 330nF	£1.25
CW470N	CAP PROPYL 470nF	£1.25
CW680N	CAP PROPYL 680nF	£1.25
CW1100N	CAP PROPYL 1µF	£1.25
CW1105N	CAP PROPYL 1.5µF	£1.50
CW202N	CAP PROPYL 2.2µF	£1.50
CW303N	CAP PROPYL 3.3µF	£1.85
CW404N	CAP PROPYL 4.7µF	£2.00
CW606N	CAP PROPYL 6.8µF	£2.50
CW1010N	CAP PROPYL 10µF	£3.50
CW1515N	CAP PROPYL 15µF	£4.50
CW2220	CAP PROPYL 22µF	£6.50
CW5050	CAP PROPYL 50µF	£9.95
CW10000	CAP PROPYL 100µF	£20.00

Low value capacitors are extensively used in amps & preamps (especially in tone control, bass & treble etc). By changing to polypropylene you can enjoy an enhanced lighter, brighter sound especially in the treble and mid bass range, and a transparent lower bass improvement. Close tolerance & high stability ensure that both channels can be very closely matched.

Part No	Value	Voltage	Price
CP947P	CAP PROPYL 47pF	250V	£0.35
CP1100P	CAP PROPYL 100pF	250V	£0.35
CP1150P	CAP PROPYL 150pF	250V	£0.35
CP220P	CAP PROPYL 220pF	250V	£0.35
CP330P	CAP PROPYL 330pF	250V	£0.35
CP470P	CAP PROPYL 470pF	250V	£0.35

Part No	Specification	Price
P15	150µH 0.15Ω 8x19mm	£2.00
P22	220µH 0.15Ω 48x19mm	£2.50
P33	330µH 0.20Ω 8x19mm	£3.00
P47	470µH 0.25Ω 50x19mm	£3.50
P68	680µH 0.35Ω 59x19mm	£4.50
P100	1.0mH 0.40Ω 59x19mm	£5.50
P150	1.5mH 0.50Ω 70x30mm	£6.50
P220	2.2mH 0.60Ω 70x30mm	£8.00
P330	3.3mH 0.75Ω 70x30	£10.00

Low Impedance High Temperature (105°C) Radial Electrolytics ± 5%

Superior electrolytics at affordable prices. The low impedance end resistance maximises signal purity whilst the superior temperature characteristics allow the capacitor to remain very stable under the most varying conditions.

Part No	Value	Voltage	Price
1H50	LO 2 HI TEMP 1µF	50V	£0.25
2U2H50	LO 2 HI TEMP 2.2µF	50V	£0.25
4U7H63	LO 2 HI TEMP 4.7µF	63V	£0.25
10H63	LO 2 HI TEMP 10µF	63V	£0.25
22H63	LO 2 HI TEMP 22µF	63V	£0.30
47H63	LO 2 HI TEMP 47µF	63V	£0.35
100H63	LO 2 HI TEMP 100µF	63V	£0.50
220H50	LO 2 HI TEMP 220µF	50V	£0.75
470H63	LO 2 HI TEMP 470µF	63V	£1.25
1000H35	LO 2 HI TEMP 1000µF	35V	£1.50
2200H50	LO 2 HI TEMP 2200µF	50V	£2.25
4700H25	LO 2 HI TEMP 4700µF	25V	£2.50

Trobo Solder Lug Reservoir Capacitor 10,000µF 80V

Choosing the right electrolytic for power supply use is very important in keeping down hum whilst allowing maximum current flow for good transient & bass response. Elna capacitors are respected the World over for their exceptional audio attributes.

Part No	µF/Voltage	Price
10000CB0	CAL ELNA 10000µF/80V	£11.00

Monacor Air Cored Inductors.



A range of professional air cored inductors for 8Ω or 4Ω crossovers/filters for use up to 300W. 1.2mm enamelled copper wire wound on air spaced plastic bobbins.

Monacor Ferrite Inductors



A range of professional high efficiency ferrite core inductors with very low ohmic losses for 8Ω or 4Ω crossovers or filters for use up to 400W. 1.4mm enamelled copper wire (1.3mm on F1000) wound on plastic bobbin.

Part No	Specification	Price
F220	2.2mH 0.15Ω 400W	£6.50
F330	3.3mH 0.20Ω 330W	£9.50
F470	4.7mH 0.25Ω 140W	£11.00
F680	6.8mH 0.35Ω 120W	£12.00
F1000	10mH 0.45Ω 100W	£13.50

High Quality Valves

Part No	Description	Price
6550C	OUTPUT VALVE	£26.00
6L6GT	OUTPUT VALVE	£4.50
6SN7GT	OUTPUT VALVE	£4.50
6V6GT	OUTPUT VALVE	£3.95
ECC81	TRIDGE	£4.50
ECC82	TRIDGE	£4.50
ECC83	TRIDGE	£4.50
EF86	LOW NOISE PENTODE	£9.90
EL34	OUTPUT VALVE	£8.50
EL84	OUTPUT VALVE	£3.50
GZ34	RECTIFIER	£6.50
KT88	OUTPUT VALVE	£20.00

Valve Holders - High quality valve bases. Chassis mounting with screw fittings.

Part No	Description	Price
B9AC	B9A VALVE HOLDER CERAMIC	£1.50
CC	SCREENING CAN	£2.25
OCTC	OCTAL VALVE HOLDER CERAMIC	£2.00
OCTP	OCTAL VALVE HOLDER PHENOL	£1.50

Fully Gold Plated Phono (RCA) Plugs with spring coil cable grip.



Part No	Description	Price
PPG5A2	PAIR GOLD PLUGS for up to 5mm CABLE	£1.50 pair
PPG8A2	PAIR GOLD PLUGS for up to 8mm CABLE	£1.50 pair

Very High Quality Phono (RCA) Plugs



Very high quality satin grey metal with heavy gold plated connections. Top collet cable grip & PTFE insulators. Very low noise.

Part No	Description	Price
PPG6H2	GOLD PTFE PLUGS for up to 6mm CABLE	£3.50 pair
PPG8H2	GOLD PTFE PLUGS for up to 8mm CABLE	£3.50 pair

Extra High Quality Gold Plated Phono Oxygen Free (RCA) Leads (pairs)



Available in 2 colours & 3 lengths. Highly flexible

oxygen free cable with extra moulded-in control / grounding wire.

Part No	Length/Colour	Price
LP11QV	0.8 Metres/Green	£5.50
LLP1QV	0.8 Metres/Violet	£5.50
LP2QV	1.5 Metres/Green	£6.50
LP2QV	1.5 Metres/Violet	£6.50
LP5QV	5 Metres/Green	£11.00
LP5QV	5 Metres/Violet	£11.00

Bass Reflex Tuning Ports



A range of adjustable plastic ports for use in various sizes of loudspeaker cabinets. d= diameter L=adjustable length (mm)

Part No	Dimensions	Price
R35	d=35L=110-210	£2.50
R50	d=50L=150-280	£3.00
R70	d=70L=128-245	£3.50
R100	d=100L=160-122	£5.50
R85	d=85 angled 45° for narrow cabinets L=210-310	£6.50

Super Monacor Loudspeaker cabinet design book with many interesting new designs £6.00 (no VAT) + £1.00 P&P

High Quality Components at the right price. Please add £2.00 carriage + VAT to all orders. Credit Card phone orders accepted.

Cricklewood Electronics Ltd, 40 & 42 Cricklewood Broadway, London NW2 3ET. Tel: 0181 452 0161 Fax: 0181 208 1441

WIRE & INSULATION

introduce **DESKADEL** Products

731/733 Ormskirk Road • Pemberton
Wigan • Lancashire • England • WN5 8AT
Tel: 01942 224040 Fax: 01942 887171

The DESKADEL range of HI-Fi interconnect, speaker cables, hook-up wires and tone arm wires are precision manufactured featuring PURE SILVER conductors insulated with PTFE in a variety of designs to suit all applications. Using only the finest materials and the latest manufacturing techniques we aim to provide a selection of quality products for superb natural sound reproduction on a scale previously unheard.

INTERNATIONAL TRADE ENQUIRIES WELCOME
World Radio History

DISTRIBUTORS:

ARBELOS
Tel/Fax: 41-613616466

ANALOGUE AUDIO PRODUCTS
Tel/Fax: 31-30-6044342

DESKADEL INT BVBA
Tel: 32-3-8892231
Fax: 32-3-8609181

VALVE AND TRANSISTOR AMPLIFIERS

By John Linsley Hood

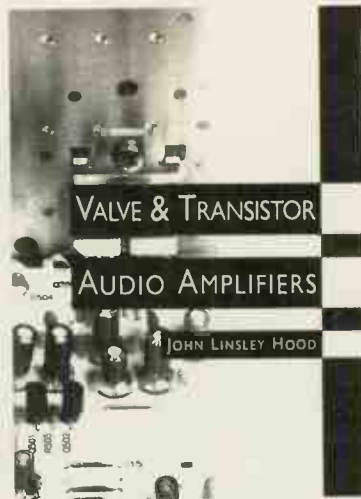
Reviewed by Noel Keywood.

Unlike many books I review, which are idiosyncratic in structure, *Valve And Transistor Audio Amplifiers* keeps to its aims in covering a lot of territory evenly, albeit with some unconvincing fly swatting when the author leaves his chosen subject to flail around at imaginary foes, especially the hi-fi press and other designers.

Valves (tubes) are a mysterious area to most solid-state engineers who weren't around in the valve's heyday. John Linsley Hood however was there: he tells us in a footnote that he had, "the great privilege of acquaintanceship with Mr Radford", and was "invited to his home in the early 1970s... as a consultant". Valve amps were moving toward apparent extinction in the late 1960s and a consultant at that time would have been very much aware of the debates around new fangled transistors, which possessed their own set of unique problems. It is this vantage point that gives the book the benefit of experience, and the credibility that comes from it. John Linsley Hood methodically and comprehensively works through the basic theory of operation of valve stages, identifying their particular difficulties and the solutions used to overcome them.

Chapter 6, entitled 'Valve-Operated Audio Power Amplifiers', concludes the valve section by looking at the workings of a wide range of commercial designs, including old faves like the Williamson, Quad and McIntosh, plus a few lines on Leak's successful and venerated TL12.

Maintaining an historical outlook helps lend this book a clear structure. Hood moves from valve amplifiers onto solid-state devices, including FETs, and then to early transistor amplifiers and their problems. This alone gives makes the book unique, and there are plenty of references to *Wireless World* articles of the time which discuss such problems in detail. The



book concludes with chapters on 'Contemporary Power Amplifier Designs' and 'Power Supplies'.

In keeping with the usual approach of starting at the beginning, I ought to mention that the first two chapters cover active then passive components, with some interesting insights into capacitor construction and various effects that might explain their impact on sound quality. Which brings me to the many opinions expressed.

I valued the engineering information presented in this book but not Hood's opinions. If opinion is to be taken seriously then other views need to be gathered and presented, putting the case for and against different approaches. Hood's own views are shallow rhetoric from a distant place. Other designers, Martin Colloms, the dreaded hi-fi press and various other ogres on the author's personal landscape all figure, with no counterbalancing arguments. Because Hood has not, as a consultant, worked at length inside the industry or the press, unlike Stan Curtis or Andy Grove for example, both of whom design and write, he's not especially well informed about those he swipes at - including "hi-fi publishers" like myself! Having heard it all before I tend to ignore this sort of thing, but it is at times misleading, as well as a lost opportunity to offer a broader view on various circuit techniques.

The topic of feedback is a good enough illustration. Working designers like Rob Watts (DPA) and Andy Grove (Quad/Leak/Wharfedale) keep a fairly open mind on the subject. The notion of producing an amplifier good enough not to need feedback is challenging to modern-day designers, leading to interesting techniques being aired by Douglas Self, and working products from Onkyo (Japan) and now Mission. None of this current interest and activity makes it into *Valve And Transistor Audio Amplifiers*. Instead, I see one particular MOSFET circuit used to suggest that low levels of feedback make things worse not better, based on distortion as a sole criterion, plus the view that lots of feedback is a good thing.

Hood tells us that "an amplifier block employing negative feedback, where this is applied correctly in a properly-designed system, will be substantially superior to that of a system without NFB. The fact that claims are sometimes made that the performance of an amplifier without negative feedback is superior to that of one using this technique seems to be due principally to the lack of design skills of those in respect of whose designs this claim is made".

This is a trite and unfortunate conclusion. If feedback is applied to improve performance then, ipso facto, performance without feedback must be unsatisfactory. So are we designing basically unsatisfactory amplifiers? Why not try and design an amplifier that is good enough not to need feedback? It is an interesting idea that could do with a more balanced airing than Hood is prepared to offer, which is a pity.

All the same, Hood has a lifetime's practical experience and an enduring interest. Both contribute to making this an interesting and potentially valuable book for any designer interested in the thinking behind a wide variety of circuit arrangements●

**Valve And Transistor
Audio Amplifiers**
£19.99

ISBN 0-7606-3356-5

**Customer Services Dept.,
Heinemann Publishers
Oxford,
PO Box 382,
Oxford OX2 8RU
Tel: 01865 314301
Fax: 01865 314029**

DIGITAL AUDIO SIGNAL PROCESSING

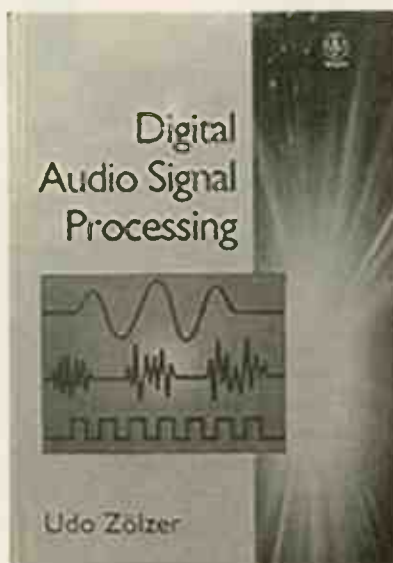
By Udo Zolzer

Reviewed by R. Casadei.

Digital signal processing is definitely here to stay whether you like it or not. As an audio designer I have gradually been accepting this fact and have since been burning the midnight oil trying to understand the concepts and make them work for hi-fi reproduction. Having been through several dozen books on the topic, ranging from those by Babani to John Watkinson's, *Digital Audio Signal Processing (DASP)* by Udo Zolzer is the latest addition to my reading list and it is probably one of the most technical reads I have yet to come across.

If you, as a hobbyist, bought this book after reading the back cover, you'd be excused for thinking it might be fairly technical but would still help you to understand most of the subjects mentioned herein. On reading the Preface things are already getting rather serious, however. It begins by stating that *Digital Audio Signal Processing* provides the basis of an advanced course in DASP for research students and professional audio engineers alike (ie the real ones!) So if you can actually understand the topics described in the contents page, then you are likely to be a technically well-informed individual. Unfortunately, when you turn over to the book's main sections, you'll be left in no doubt that you'll have to be either a die-hard research student of Udo Zolzer or Udo Zolzer himself to take in any of it! This book is H-e-a-v-y! If it were a car then it would handle like an eighteen-wheeler doing a three-point-turn on Kilburn High Street with no power steering, if you know what I mean.

Digital Audio Signal Processing is divided into two main parts. The first four chapters present the basis for hardware DASP, beginning with a brief description of studio technology, digital transmission



systems, storage media and audio components at home (but not as we know them, Jim!) Some good information is provided here on the different sampling rates used in the various types of storage media and broadcast systems, together with specifications for CD, R-DAT, DCC and DAB, leaving them all open for us mortals to pick holes in. (But who would argue about the pros and cons on DPSK modulation technique in DAB, eh?)

Then what you get is FFTs (Fast Fourier Transforms) and more FFTs, so much so that you are beginning to create your own versions for the meaning of the acronym "FFT"! Finally the book comes back to earth on digital amplifier concepts, with a clear and concise description via a few easily comprehensible diagrams and some plain English.

The following chapter concerns itself with Quantisation, Dither, Noise Shaping and Numerical Representation (Fixed Point and Floating Point). This section, like most of this book, is filled with hard-core mathematical formulae and frankly it's not for the faint-hearted. Yes, they are all real and they are the

theory behind the world of DASP, but I do think they are far too theoretical for most people and there are lesser books around that can offer simpler ways to explain them.

Analogue-to-Digital and Digital-to-Analogue conversion are the main topics covered in Chapter Three. Most of us interested in the topic would find half of each section to be informative on A/D and D/A conversion. That would be the right place to stop as well, unless you want to become either a researcher or totally confused; you have been warned!

From Chapter Four onwards you are on your own. Here you'll discover the dense mathematics and formulae for DASP techniques, digital filtering and digital equalisation, room simulation, dynamic range control, sample rate conversion and data compression. It is here that you can start calling yourself a Doctor or Professor, if you understand all this, and no one would ever argue with you. You would probably qualify for a seat in the Audio Engineering Society too, but then you probably wouldn't believe different interconnects or 'speaker cables can sound different and BluTack will remain just a good way to ruin your bedroom wallpaper.

Digital Audio Signal Processing is full of solid facts and theories that explain and prove how all the electronics should work, but not how good it will sound. As an audio enthusiast with electronics ability, I would recommend a lighter read for the hobbyist. For the die-hard, no-holds-barred audio researcher, then this book is the one to go for. But after digesting its contents, do try swapping your interconnects for better ones and get your 'speakers off the bookshelf and put them on some decent stands (and don't forget to the BluTack!)

Digital Audio Signal Processing £45.00

ISBN0-471-97226-6

John Wiley & Sons
Baffins Lane,
Chichester,
West Sussex
PO19 1UD
Tel: 01243 779777

Audio Note Kit Amplifiers -

Power-Amp Kit

The Audio Note Kit One *(illustrated)*

Based around the justly famous 300B directly heated triode, we see this kit as the introduction to real Audio Amplification, as it covers all the important aspects of design necessary, Single Ended, No-Feedback, Class A, Directly Heated Triode, to become a member of this exclusive club of amplifiers.

Kit One has one 300B per channel running at 420 volts with 75mA current giving 8-9 watts of the cleanest power you will ever hear, the input stage consists of a 6SN7GT with a 5687 double triode driver stage running in SRPP. The power supply is capacitor-choke-capacitor configuration with a 5U4G HT rectifier, the 300B's have a DC filament supply for hum-free operation whilst the other valves are AC heated. Component quality is similar to our Level 2 finished products, **Audio Note** paper in oil signal capacitors, Beyschlag 1 watt 1% metal film resistors, good quality electrolytics (*sorry NO Black Gates!*) and a simple, attractive stereo chassis in black paintwork. We have several component and cosmetic upgrades available for **Kit One**, please ask for details.



The Kit One has recently been awarded the title "The Greatest Audio Bargain of the Twentieth Century" by Dick Oisher (ex-Stereophile) in a review on the Internet - this is just one of many rave reviews, copies of which we can supply on request.

Price: £799 incl. VAT, which includes ALL parts & valves (yes, also the 2 x 300B's needed) but not postage/packing which to UK customers is £12.

KIT ONE ORDER CODE: AN-KIT-001

Audio Note is happy to provide a wide range of complete kits, output and mains transformers, chokes, paper in oil, aluminium, tin, copper or silver foil signal capacitors, Black Gate, Cerafine or standard electrolytic capacitors, tantalum, carbon and metal film resistors, silver wires, interstage and driver transformers, switches, balance controls, potentiometers, attenuators, chassis's and fittings for the quality oriented DIY'er, whether you are a beginner or hardened experimenter, male or female, we have the best (and not always most expensive) ports for most projects.

Audio Note Loudspeaker Drivers & Kits

We shall be offering the speaker drivers that we use in our own loudspeakers for general sale from now on. You can buy the drivers individually or together with matched and tested cross-overs, cabinet drawings and reflex ports.

Audio Note Circuits, Valvedata & Basic Technical Information

If you would like some suggestions which to base a future project around, then we shall be happy to provide you with a circuit pack containing good circuits like ONGAKU, KEGON/KASSAI, NEIRO, GAKU-ON plus several other power amplifier circuits and the M7Tube & M10 pre-amplifiers, which are the best sounding pre-amplifier circuits we have come across.

Audio Note Quality Output Transformers

We are in the process of building up four separate ranges of **Audio Note** output transformers, in order to offer the best possible outputs at different pricepoints, they will fall into four categories.

Economy range Selected to ensure quality audio in a price efficient package.

Mid-price range Top quality with specially selected components.

High Quality range Double C-core outputs for single-ended circuits exclusively.

Super High Quality range All-silver wired outputs of the best possible quality.

Audio Note offer a design, prototyping and production service, where we can supply for almost any requirement. Please telephone for details.

Audio Note Mains Transformers

Available for most popular designs. We shall continue to expand the range as opportunities become available.

The Audio Note Kit Two

Kit Two features a single 6550 tetrode running in Single-Ended mode, yielding some 12 watts of pure Class A. This kit has a valve rectified HT for the output stage, stereo chassis, and 6SN7GT input and 12AX7/ECC83 SRPP driver stage, componentry and chassis as Kit One.

Kit Two costs £599 incl. VAT, includes valves, but not postage/packing.

KIT TWO ORDER CODE: AN-KIT-002

The Audio Note Kit Three

Kit Three features 2 x 300B's per channel running in single-ended parallel yielding 16/17 watts in pure Class A. This kit is on two mono chassis with valve rectified HT supplies, no signal feedback, it uses a 6SN7GT double triode as input valve and a pair of 5687 double triodes running in SRPP as drivers. The **Kit Three** is essentially a mono version of the **Kit One** with double the power, the same component choices and on two chassis' instead of one.

The Kit Three costs £1,550 incl. VAT but excluding delivery.

KIT THREE ORDER CODE: AN-KIT-003

The Audio Note Kit Four

The **Kit Four** is really our introduction to valve amplifier kit building, the circuit and power supply being mounted on a single printed circuit board. The high-quality push-pull output and mains transformers are all mounted in a small aluminium chassis covering everything so nobody will be able to see that you have succumbed to the lure of the valve amplifier which is sweeping the world. The circuit consists of two 6V6GT tetrodes running in Push-Pull class A, yielding about 10 watts, driven by a 6SN7GT and a 12AX7/ECC83 input stage. Easy to build, even for the beginner. Visually **Kit Four** matches the **Audio Note** Pre-amplifier shown here but with a single chrome-plated volume control. As with all **Audio Note** kits everything (except solder) is included.

The Kit Four costs: £299 incl. VAT but not delivery.

KIT FOUR ORDER CODE: AN-KIT-004

Audio Note Driver, Interstage & Pre-Amplifier Output Transformers

Here is a product group that you do not see advertised every day! As usual we start small with the intention to grow quickly.

Audio Note Paper In Oil Signal Capacitors

These handmade signal capacitors are sonically superior to any of the plastic or other paper types we have come across. If you have never experienced the difference that a really good paper/oil capacitor can make in a valve amplifier, then you really should try.

Audio Note Paper In Oil Tin Foil Signal Capacitors

The tin foil is better than alu-foil for most applications, we recommend you try them!

Audio Note Paper In Oil Copper & Silver Foil Signal Capacitors

These copperfoil paper signal capacitors are considerably better than both the standard offerings and the tin foils. To start with there will be a few values / voltages of each available and we shall expand as fast as we can to cover all the popular values.

Audio Note Acid & Chloride Free Silver Solder

The best solder available, used in all our amplifiers from OT0 to the mighty GAKU-ON.

Audio Note Cables & Wires

Audio Note manufacture a range of high quality copper and silver coax, speaker and wiring cables, which, depending on the overall price of the project, will do justice to any hifi system, regardless of price. Please call for prices and details.

Audio Note High Quality Stepped Attenuators & Switches

These handmade attenuators and switches are manufactured by a friend of Mr Kondo of **Audio Note**. They are the best you can buy.

Audio Note High Quality Valve Bases

All of our valve bases are of the highest possible quality materials. Ceramic, Teflon and gold and silver plated. If you want the best look no further - they are the ultimate!

Audio Note Resistors

Audio Note endeavour to stock the entire E12 range of all the different makes of resistor, since most are used in our products stock is generally available within four weeks.

BEYSCHLAG - HOLCO - SHINKOH Tantalum Film Resistors

AUDIO NOTE 1/2 Watt Tantalum Resistors

AUDIO NOTE 1 Watt Tantalum Resistors

AUDIO NOTE 2 Watt 1% Tantalum Resistors

AUDIO NOTE Precision Carbon Film Resistors

ALLEN BRADLEY 1 Watt 5% Carbon Film Resistors

Components & Valves

Pre-Amp Kit

The Audio Note Pre-Amplifier Kit (illustrated)

A complete kit loosely based on the Audio Note M7Tube pre-amplifier circuit is now available. The moving-magnet compatible phono stage consists of a cascode input, with passive RIAA equalisation and anode-follower output using the 12AX7/ECC83. Line buffer/amplification for the four line inputs consists of an ECC82 configured in parallel anode-follower mode. For the power supply a valve rectifier and choke-input filtering are employed. All circuitry is housed in a non-magnetic aluminium chassis giving the very best sound quality.

Both phono and line stages are built on 'track-less' pcbs allowing easy construction but with the sonic benefits of hard-wiring.

The standard-quality version of the pre-amp kit includes Roederstein polyester film capacitors, Beyschlag 1 watt 1% metal film resistors, Noble open-frame style potentiometers and all pcbs, valves, wire etc. Various component upgrades are available, details upon request.

Cost of The Pre-Amplifier Kit is: **£349**
Incl. VAT but not delivery.



Audio Note Black Gate Electron Transfer, High Performance, Graphite Foil Capacitors

Audio Note is currently the sole source in Europe that holds any significant range of values in stock, we use literally 1000's in production, as we were the first company to realise the tremendous benefits that Black Gate capacitors offer, and we are to date the only high-end audio company in the world to incorporate Black Gate capacitors consistently in our finished products.

There are very few audio parts that promise a guaranteed improvement when replacing practically any other part, but this is what the BLACK GATE capacitors actually do. Exchanging any electrolytic capacitor anywhere in the circuit of an amplifier or in the crossover of a speaker will greatly improve sound quality. We are working on some guidelines as to where, how and which types of Black Gates to use in different circuits, the first such technical guideline is available now and is called "Improving your CD-Player" and can be obtained by sending a stamped addressed envelope to us requesting this leaflet. All AUDIO NOTE Level 2 Signature products use Black Gate Electron Transfer in critical signal / power supply junctions.

Audio Note Cerafine Powdered Ceramic Electrolytic Capacitors

We have at long last secured a reliable source for these fine power supply filter capacitors, a must in any single-ended project. The Cerafines really cover many of the Black Gates values and where the prices for the BG's are prohibitive the Cerafine is a fine sounding alternative. We have increased the range of Cerafines we stock quite recently, and strongly recommend all the Cerafines as a far superior replacement or substitute for ordinary electrolytics, and at the prices offered that should be within most budgets. All power supply Cerafines are supplied with a capacitor clamp and are upright mounting.

Audio Note Potentiometers

The best available from a sound quality / price viewpoint, made by Noble in Japan, utilising high quality conductive plastic film. However a better alternative is the KO-ON volume controls which are used in pre-amplifiers like the M7 Tube, M7Line, and in a mono version on the input in the NEIRO, KASSAI, KEGON and GAKU-ON, these are very good sounding pots by any standard.

Audio Note also carry large quantities of STANDARD TYPE SWITCHES, STANDARD ELECTROLYTIC CAPACITORS (good quality industrial types), RCA, BNC, BANANA, PLUGS, RCA SOCKETS, SPEAKER & GROUND TERMINALS & LOUDSPEAKER SPADES.

Audio Note Moving Coil, CD Line & Input Matching Transformers

Audio Note now offer moving coil, CD and Input matching transformers for general sale. Common to all of these small signal transformers is that they come in a mumetal screening can with a threaded spindle with a nut for mounting.

Valves

The Audio Note AV300BSL (illustrated)

Audio Note is proud and happy to announce a joint venture with Mr Alesa Vaic of AVT in the Czech Republic, under the agreement reached Alesa Vaic's company will be making a range of directly heated triodes for small signal, driver and output stages exclusively for Audio Note. This will with time allow us to explore hitherto uncharted territory in the field of Single-Ended Audio Amplifier design, by putting us in a position to design and manufacture triodes specifically for a given purpose, something which has not been within our reach in the past, where we have always had to settle for the best amplifying devices available, but which good as many of them are, were generally made for other purposes.

Currently, we have a super linear version of the 300B available, dubbed The Audio Note AV300B SL it is available in limited numbered samples at US \$250 each either single, or in matched pairs. We will follow this fairly quickly by a new, more powerful, power triode, the Audio Note AV32B SL with 65 watt dissipation for about 18 watt class A in single-ended configuration for an expected price of US \$300 each. The Audio Note AV52B SL with an 85 watt dissipation for 28 watts of class A operation will be available in early 1998. This will be quickly followed by the most powerful and linear power triode available - the Audio Note AV62B SL with 120 watt dissipation for about 40 watt class A in single-ended configuration at an expected price of US \$500 each, it will help advance the case for SE operation despite the deplorable inefficiency of most modern loudspeakers!



Audio Note Selected Audio Valves

Our valves are selected from the best available sources and are tested to the same stringent standards that we apply in the production of our own amplifiers. They fall into two categories, standard production items and rare, mostly NOS (New Old Stock) valves which are no longer in production. We have compiled a special list of the NOS items, which is available against a stamped self addressed envelope. If you live outside the UK, send US \$2. You should be aware that the valves on this list are NOT cheap, but we have stock of original GE, RCA and United Electronics 211, both standard versions and reinforced anode type for the US airforce, 845 Westinghouse, VT25/10/10Y, VT62/801A, WE300B, STC4300A, Mullard GZ34/CV1377, Tungsol 5U4G (best sounding 5U4G we have ever heard!), Chatham 5R4WGY and many others.

Audio Note Recommended Magazines Full list available on request

Listener - Review based music & hi-fi magazine that contains some of the best considered & well written articles in print. A very good read £4 per copy

The Audio Adventure - Well produced publication, a good alternative to the established magazines. Not afraid to be controversial. £4 per copy.

Sound Practices - Our best seller. A must for all DIY projects. Contributors include Audio Note, Herb Reichert and Diego Nardi. £5 per copy.

Vacuum Tube Valley - Specialising in anything to do with audio valves. A wealth of information on specific valves and their applications. £8.50 per copy.

Positive Feedback - Including zany, controversial articles from a wide range of contributors including our own Peter Qvortrup. £7 per copy.

FOUNDING SPONSOR

masterprize

Call for more information. Ask for a full components catalogue or see our web page.



Audio Note

Music's Finest Conductor

Audio Note (UK) Ltd, Unit C, Peacock Industrial Estate
Lyon Close, 125-127 Davigdor Road, Hove, East Sussex BN3 1SG

Tel: +44 (0)1273 220511 Fax: +44 (0)1273 731498

Web: www.audionote.co.uk

DIY Letters



STAYING REGULAR

I use a number of QED 'Black Box' components - a Digit DAC, Vector pre-amp, Discsaver phono stage, etc. I find that all of them sound better when powered by QED's external Positron rather than the basic wall-plug type of supply.

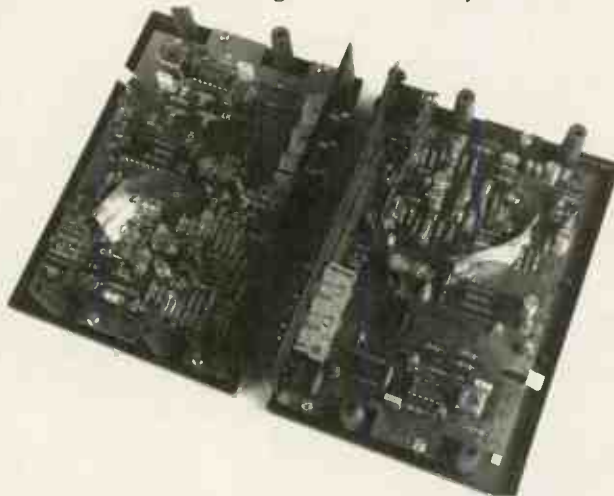
My problem is that I have only one Positron, which QED have now discontinued. The input socket appears to be a standard 12V type, such as would be seen on a portable TV. My question is, do you, or any of your readers, know of a (preferably cost-effective) battery or mains 12V power supply which I could use instead? I remember once reading in Hi-Fi World that some people use a battery supply for the Digit, so I would be grateful for any advice or hints.
James Taylor
London.

You can choose either battery or mains supplies - both are easy to build with off-the-shelf bits and pieces and will give very good results. None of the components you list consume a great deal of current, which simplifies matters.

'Old reliable' in the regulator world is the LM317T variable-voltage positive reg. All you'll need to make a fully-fledged PSU for each of your various QEDs is one variable and one fixed resistor, a couple of capacitors (preferably

Sanyo Os-Cons from, say, Audio-Links, tel: 01724 870432), said LM317T and some lead/acid batteries. The circuit is therefore extremely quick and simple to construct according to the diagram shown. Here, R1 can be adjusted to give an accurate 12volts (it should initially be set for approximately 240ohms).

The LM317T requires an input at least 2volts higher than the output



With a proper PSU, QED's Digit DAC can sound surprisingly good.

in order to work properly. So, by connecting three 6volt lead/acid rechargeable batteries together in series, you have a suitable 18volt supply. Paralleling up an additional three 6volt batteries alongside the originals will double the PSU's overall current capacity - paralleling two 4Ah (Amphour) batteries gives you 8Ah to draw on.

Series connection does the same for voltage.

Maplin (tel: 01702 554000) sell appropriate lead/acids (XG70M, 6V 4Ah, £12.99) and chargers (GU08J, £29.99). I've been using a set to power my DPA 50S pre-amp with fine results.

These parts might not look amazingly cost-effective at first glance, but bear in mind the charger will individually charge as many batteries as you have and the lead/acids should be good for a minimum of 500 recharges. You can either run all your QEDs off one PSU (although the batteries won't last too long like this unless you parallel up two or three sets) or make separate PSUs for each component.

If that's still too much expense to contemplate, perhaps a mains supply would be the answer. The cheapest battery option adds up to £13x3 plus £30, which is

£69. Maplin have a 225VA toroidal transformer with 12volt secondaries at £25. A relatively chunky unit like this has superior regulation (ie, a more stable AC output voltage) than smaller alternatives and sounds better. You could follow this with four £1.10 11DQ06 Schottky rectifiers from Audio-Links and three or four 25volt 2200uF Elna RSH reservoir caps paralleled up to

KIT & COMPONENT SUPPLIERS

LOUDSPEAKER KIT SUPPLIERS

**Wilmislow Audio, 50 Main Street,
Broughton Astley, Leicester LE9 6RO
Tel: (01455) 286603
Fax: (01455) 286605**

UK distributors of Drive Units from ATC, COLES, DYNAUDIO, KEF, MOREL, PEERLESS, RCL, SEAS, SCANSPEAK AND VOLT. Comprehensive range of high quality crossover components, acoustic damping products, connectors and veneers. Over 20 different D.I.Y. loudspeaker kits on demonstration, including ATC S0 & 100.

Audio Note (UK Ltd)

**Unit C, Peacock Ind. Est.
125-127 Davigdor Road
Hove, East Sussex BN13 1SG
Tel: 01273 220511
Fax: 01273 731298**

Suppliers of a large amount of components for the Audiophile Kit builder. Valve amplification data and vintage circuits also available. See the double page spread in the back section of the main issue for extra & more detailed information.

Avondale Audio,

**The Hollius, Avondale Road
Chesterfield S40 4TF
Tel: 01246 200096
Fax: 01246 207240**

Audio Engineers; upgrades, Improvements & servicing to both static and moving parts of the hi-fi chain. (amps as well as turntables). Also bespoke range of own equipment and an extensive range of parts & components available.

European Precision Mouldings Ltd

**Highwyh, Sawbridgeworth,
Herts, CM21 0JS
Tel: 01279 600428
Fax: 01279 723846**

Manufacturers of the Red Scorpion range of loudspeaker terminals and binding posts.

Falcon DIY Speakers

**Falcon Acoustics Ltd., Tabor House,
Norwich Road, Mulbarton,
Norfolk NR14 8JT.
Tel: 01508 578272**

UK distributors of FOCAL drive units, Kits, In Car and JMLab speaker systems plus SOLEN (SCR - Chateauroux) poly-propylene capacitors and the largest audio inductor manufacturer in the UK. Stocking Audio Amateur Publications and Computer software. Comprehensive range of D.I.Y Speaker kits, Parts, Accessories and Books. Please send large SAE (36p) for free price list. "Everything but the wood"

IPL Acoustics, 2 Laverton Road,

**Westbury, Wiltshire BA13 3RS.
Tel: 0373 823333**

IPL supply a range of eight speaker kits using drive units from SEAS, Morel, Audax, Visaton etc. including four transmission lines to suit all room sizes. We also supply a full range of drive units, capacitors, and cabinet accessories as well as silver plated P.T.F.E. insulated cables.

South Coast Speakers Ltd

**326 Portwood Road,
Southampton, Hampshire.
Tel: 01703 559312**

UK suppliers for High-Quality Driver Units from: SEAS VOLT VISION SCAN-SPEAK also MOREL RCL & many more. Accessories/Components all of the Highest Quality inc. ProAudio MKT Capacitors, Inductors wound to order for any valves. Many DIY Kits along with demonstration in our comfortable listening area. Custom design services & friendly advice!

VALVE AND OUTPUT TRANSFORMER SUPPLIERS

**Wilson Valves, 28 Banks Avenue,
Golcar, Huddersfield,
West Yorks HD7 4LZ.
Tel: 01484 654650
Fax: 01484 655699**

E-mail: wilsonvalves@surfink.co.uk

We stock over 2,500 different types of valves, N.O.S. and New. Please send a S.A.E. for full list. No charge for matching. Most major credit cards accepted.

Billington Export Ltd.

**IE Gillmans Trading Estate,
Billingshurst,
West Sussex RH14 9EZ
Tel: 01403 784961
Fax: 01403 783519**

Billington Export Ltd. holds large stocks of audio valves including many obsolete brands such as Mullard, GEC, Brimar etc. as well as Sovtek. Thermionic Gold Brand and the recently introduced Billington Gold range. Also Cathode Ray Tubes (eg. used in Marantz tuner 10B). 50 page catalogue available, tel or fax for a quotation. Minimum order £50.00 UK, £100 export

**Langrex Supplies Ltd
1 Mayo Road, Croydon,
Surrey CR0 2QP**

**Tel: 0181 684 1166
Fax: 0181 684 3056**

One of the largest distributors of electronic valves, tubes and semi-conductors in the UK by original UK and USA manufacturers. Obsolete types are a speciality. Telephone or fax for an immediate quotation.

Watford Valves

**3 Ryall Close, Bricket Wood,
St. Albans, Herts AL2 3TS
Tel: 01923 893270
Fax: 01923 679207**

Specialist in new old stock and current production valves. Sole UK distributor of the Harma Diamond range selected for their superior performance. Huge range held, stockists of Mullard, GE, Phillips, National, Brimar, Sylvania, Telefunken, RCA, MOV and many more. All valves are new boxed and guaranteed. For free price list and specialist advice call or fax Derek Rocco, Watford Valves.

PM Components

**Springhead Enterprise Park,
Springhead Road, Gravesend,
Kent DA11 3HD
Tel: 0474 560521**

P.M. Components Ltd are the specialist component company for High End Audio enthusiasts. We have a design and manufacturing base for audio valves and associated products and have a capability to produce custom tubes for major manufacturers. Our 70 page catalogue is available at £2.50 including U.K. postage. P.M. Components are major stockists for Golden Dragon, Mullard, GEC and Teonex valves and have a vast archive of vintage tubes gathered from every manufacturer in the world.

Chelmer Valve Company

**130 New London Road,
Chelmsford, Essex CM2 0RG.**

Tel: 01245 265865 Fax: 01245 490064.
Supplier of premium range of audio valves, other valves and components also available. (Please see our main advertisement in this supplement).

Woodside Sound Engineering,

**Arfryn, Llanboidy, Whitland. SA34 0EY
Tel: 01994 448271 Fax: 01994 448665**

E-Mail: woodside@arfryn.demon.co.uk
As well as producing transformers for our own products, we can now offer an expanding range of audio transformers for new ventures and Renovations. We can wind transformers for most RADFORD amplifiers to original specification. Contact us with your requirements or a list of standard items is available on request.

CLASSIC TURNTABLES

**Technical & General
P.O. Box 53, Crowborough,
East Sussex TN6 2BY.
Tel: 01892 65 45 34.**

The original specialist source of spares, replacements and expertise for the classic turntables. Years of actual experience and comprehensive range of parts (originals and re-manufactures), manuals, ancillaries. No dubious 'improvements' - no harmful 'modifications'. Our specialities: Connoisseur; Garrard; Goldring; Lenco; S.M.E.; Thorens; Watts; Ortofon; Shure; Cartridges and styli for 78s, Mono LPs, Stereo LPs.

COMPONENT SUPPLIERS

Audio-Links

**7 Fairmont Crescent, Scunthorpe,
North Lincolnshire DN16 1EL
Tel/Fax: 01724 870432**

Large range of specialist electronic components and accessories for solid state and valve enthusiasts. Mail order and a friendly service. Monday to Saturday, 10am - 7pm. Catalogue - £2.00

AudioCom (UK),

**Unit 6, Tindle Enterprise Centre
Warren Street, Tenby
Pembrokeshire, SA70 7JY
Tel: 01834 842803
Fax: 01834 842804**

E-Mail: audiocom@connect-wales.co.uk
AudioCom are suppliers of Premium Grade components, including: ALPS, BHC, AEROVOX, Burr Brown, Caddock, Danish Audio Connect, DNM Design, T-Network & Slit Foil electrolytics, Elna, Elma, I.T. Electronics Air Core and Corobar 99.99%OFC Inductors, Linear Technology, MIT Multicaps, Nichicon, MUSE premium grade electrolytics, 99.99% Pure Silver Wire, Sanyo OS-CON, Sfernice, Suflex, Vishay... plus many more products at very competitive prices. Our 1998 Audiophile Parts Catalogue available on request.

I.T. Electronics (Germany)

**AudioCom (UK),
Unit 6, Tindle Enterprise Centre
Warren Street, Tenby
Pembrokeshire, SA70 7JY
Tel: 01834 842803
Fax: 01834 842804**

E-Mail: audiocom@connect-wales.co.uk
I.T. Electronics are manufacturers of audiograde components and accessories. Product range includes polypropylene capacitors, high power resistors, air core, RCA split-pin lockable phono's, interconnects, drive units, over 40 loudspeaker kits. A selection of components are now held in stock, and available by mail order from AudioCom (see our ad for brochure). Alternatively send for I.T. Electronics 245 page handbook, priced £2.50. (German language only)

Hart Electronic Kits Ltd

**Penylan Mill, Oswestry,
Shropshire SY10 9AF
24 Hr sales/enquiries Tel: 01691 652894**

A range of Audiophile kits for 80 watt Power Amplifiers, Tuners, Pre-Amps and Moving Coil/Moving Magnet RIAA Pickup Preamps. All kits are fully engineered, with our thirty years design experience, for easy constructions from circuits by John Lindsey Hood, the most respected designer in the field. Send for lists.

AP Electronics

**20 Derwent Centre, Clarke Street,
Derby, DE1 2BUT**

Check out the AP ELECTRONICS catalogue. It's free with every order of over £40.00 or can be purchased for a £4.95 cheque payable to 'AUDIOKITS'. Over 80 pages include pre and power amplifier kits, high grade audiophile resistors, capacitors and semiconductors, audio and mains cables, gold and rhodium plated connectors and COMPONENT NOTES on using high grade parts. A quarterly newsletter 'AP PERFORMANCE AUDIO' has been recently launched and your first issue is free.

Cambridge Scientific Supplies

**12 Willow Walk,
Cambridge CB1 1LA.
Tel: 01223 811 716
Fax: 01223 501 833**

Specialist wire products for the knowledgeable audiophile including: Silver wire (>99.99% purity, stress free) unique quadruple PTFE insulated Silver wire, Silver loaded solder, PTFE sleeving and Nylon braid sleeving, premium Gold plated connectors and plugs. Custom assembly available. Call Peter Bullock for a catalogue and application note.

**Russ Andrews Accessories Ltd
Edge Bank House, Skelsmergh,**

Kendal, Cumbria, LA8 9AS

**Tel: 01539 823247
Fax: 01539 823317**

Orderline: 0800 373467 (UK)

World leading supplier of the highest quality premium grade components. Loudspeaker Upgrade Handbook available. Sole UK distributor of Kimber Kable. NEW Audio Lifestyle Brochure available containing new ranges of accessories.

To receive your copy just mail, phone or fax the address above.

V.R.R.

**30 Melbourne Avenue,
Worthing, BN12 4RT.
Tel: 01903 501158**

Vintage Radio Restoration

Bespoke output transformers for most valves, push-pull and single ended. Components and circuits provided to construct high quality valve amplifiers. Mains transformers "C" core ideal for pre-amps. Call for spec.

Kopperae

**PO Box 6884, Dundee, DD5 1YB
Tel: 07970 n 654356**

Email: wkopp@taynet.co.uk

Kopperae supply sheet copper for anti-radio frequency interference use. Build chip, transformer and DAC shields, clad casings, or even construct new chassis and get the significant benefits that RF shielding brings. We'll cut to any size and supply any quantity, including mass production requirements. Best prices. We also supply the highly effective and unique CD ROOF: an anti-RF, anti-vibration slab for the TOP of your CD player. Available in various kit formats from only £19.95. Contact us now for a free brochure

RESTORATION

Audio Laboratories (Leeds)

**3, Kildare Terrace, Whitehall Road,
Leeds, LS12 1DB
Tel: 0113 244 0378**

Have your pet hi-fi project professionally done. With over 20 years experience in factory-grade kitbuilds and overhauls, to both valve and solidstate equipment, our good reputation stems from meticulous engineering coupled with superb measurement facilities.

VINTAGE DIY

**Loricraft Audio
4 Big Lane, Goose Green,
Lambourn, Berks RG16 7SQ.
Tel: 01488 72267**

Specialist restoration of 301's and 401's using genuine spares and re-manufactured parts to original pristine standards in our newly built workshops designed primarily for these purposes.

Classique Sounds

**Classique House
61 Aylestone Drive
Aylestone, Leicester, LE2 8QE
Tel/Fax: 0116 2835821**

Mobile: 0802 213740

Suppliers of quality vintage/valve hifi equipment including Leak, Quad, Radford, Rogers, Lowther, Tannoy, Garrard, Thorens etc. Rebuild service available with 12 months guarantee. Also suppliers of heavy plinths for Garrard 301/401/124, from £175.00. As well as power supplies. Repairs to Quad Electrostatic ESL75 Treble/Base panels. EHT units and dust covers also available. Translucent 99.99% pure silver interconnect cable. Terminated from £59.99 .5m. Guaranteed better than existing cable, regardless of price. Quality modern Hifi also available. Wanted all your vintage hifi equipment

WELDING

**N.Clark Welding & Fabrications
14 Redhills Road
Easton Industrial Estate
Southwoodham Ferrers
Essex CM3 5UP
Tel: 01245 323336**

Precision welding and sheet metal work TIG/MIG welding, CNE Punch and Press Milling and Turning Fine Limit and General Engineering Prototype work and batch work undertaken.

give 8800uF total. This lot should produce about 18volts of fairly smooth DC to feed to the same LM317T reg. JM

STRIKING GOLD(RING)

I was interested in the query from Paul Fitzgerald in the April Supplement concerning modifying the Goldring-Lenco GL75. The hole for the tone-arm is, in fact, significantly larger than the diameter of the arm pillar and is an exact fit for a Decca London uni-pivot arm. Not only that, but the hole is within a whisker of the prescribed distance for that arm from the platter centre, so alignment is no problem. The Decca arm has no lifting device but the excellent built-in lift on the turntable works a treat, providing some tape is attached to the arm and/or the lift to prevent the arm from sliding sideways during lowering.

I have dispensed with the turntable mounting springs and bolted the top plate to a solid plinth constructed à la Bastin of layers of thick ply. The whole affair rests on Goldring Perfect-Sound spikes and damper discs. Whilst lacking the assurance of my 401/SME IV combination, the turntable delivers a secure sound using a variety of cartridges and forms the basis of a trouble-free second system.

P. Pascoe
Liverpool.

MORE GOLD(RING)

Much like Paul Fitzgerald of Birmingham, I too am a recent convert to the delights of a mint GL75 (cost £30) and a GL78 (cost £15), the slightly more up-market

version of the former. Also like Mr Fitzgerald, I found that one of the turntables had suffered a lifetime of not having all the transportation screws released - no wonder some people claim these lovely bits of engineering suffer rumble.

I bought mine for playing a growing 78rpm record collection but found, with a few minor modifications and a reasonably decent cartridge, it would give my PT TOO (with RB300 arm and Elys cartridge) a run for its money. Indeed, having transferred the modifications to the GL78, and having acquired and used a stylus balance, test record and protractor to set up an Ortofon OM40 cartridge, I'd say in some respects, the GL leaves the PT in a trail of dust! For one thing, its motor rotation is more stable - I checked with a GL proprietary strobe disc. (By the way, I bought the OM40 because its stylus is easily swapped for one to play the 78s.)

Modifications? In fact, these are more 'tweaks' than modifications. For one, my entire hi-fi set up benefits from a purified and regulated power supply, courtesy of a 'late' Radar Electronics hi-fi grade filter and "virtual batteries", plus a hefty ex-Telecom purifier which sits in the power line closest to the wall socket.

I have also mounted the beast on an isolated platform. The GL78 sits on a marble slab which is supported by Sorbothane sandwiched between three Michell cones and its underside.

The next trick is more Sorbothane (I love the stuff! I use it to great effect in other parts of the hi-fi system, too). The underside of the cast metal platter has a covering, which helps eliminate its bell-like ring. There is more Sorbothane on the

top of the head shell, some underneath it, and a couple of tiny bits of it stuck to each side of the cartridge.

But what about that awful arm? This too seems to benefit from a strip of Sorbothane curled around the length of it. Also, forget the counterbalance - get a nice, heavy brass one made in its place. Then,

use a stylus balance to get close to the stylus pressure weight but don't assume that is spot-on - it may need a bit of fine adjustment to ensure the stylus tracks properly once the bias weights are set. To find this out you will need a test record, such as that from The Cartridge Man. I have found my GL78 with Ortofon OM40 passed the most exacting bias test-track with flying colours (which is more than can be said of the PT TOO/RB300/Elys) once I slightly increased the pressure on the stylus.

Having done all that and used a blob of good ol' BlueTak to secure the record to the spindle (it's cheaper than a turntable clamp), play the black stuff. . . And be amazed!

CDs? Pah! PT TOO? To be honest, there are still records I may prefer to play on the PT TOO - for example, Mary Black's voice is softer and less nasal than it sounds on the GL78. But on the other hand, the midrange tonal quality and transients are better defined on the GL - cymbals zing, ting and tong rather than simply tash, while violins sound like they are made of different woods. But then, with two different cartridges, the comparison is hardly fair.

My only gripe is that I cannot get the GL78 auto-return mechanism to work properly (if at all.) Now, if anyone can tell me what's wrong with it. . .

Graham Nelson
GiroGANelson@compuserve.com

CROSSING OVER

Being an avid reader of your magazine for the last 12 months or so, I decided to upgrade my 20-year-old Wharfedale Glendale XP2 'speakers. I replaced the crossover components, terminals and internal wiring with modern equivalents and a large improvement was the result. Having read the DIY Supplements I became interested in making my own.

So I purchased The Loudspeaker Cookbook and Bullock On Boxes and bought a 'scope, an AF signal generator, frequency counter and soon a suitable multimeter. I duly digested the contents of both books. My question relates to the designing of the crossover. Following the procedures in both books is no problem, but the authors seem to make the assumption that the crossover is already designed and finished. I refer particularly to: "taking into account the series resistances" when calculating Rg, the source resistance. After reading and re-



Carry on classic - Goldring's GL75 is an excellent second-hand buy.

reading the texts my only conclusion is that initially a 'basic' crossover is used, then the enclosure volume found and then the testing and re-testing begins. Am I correct in this assumption of, as Dickason puts it, "the art of 'speaker design" or am I still missing something?

I've also tried to 'reverse engineer' your KLS9s from the crossover point of view but without a great deal of success, so any help would be gratefully appreciated.

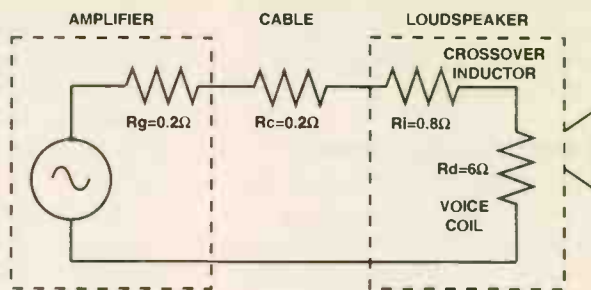
Also is there any advice you can give regarding the pros and cons of software for analysis of 'speakers, ie L.E.A.P, Liberty, etc, other than your recent articles in the Supplements? My maths ability starts to get ragged about the level of Laplace, Fourier and Partial Differentiation.

Michael Abbott
mabbott@compuserve.com

You are not alone in being confused

variables like this subside virtually into insignificance relative to other matters - especially 'driver acoustic centre' or ZDP - once you get stuck in.

- 1) Sort out your basic concept - what drivers you want to use to achieve what end.
- 2) In a two-way, obtain the Thiele-Small parameters of the bass/midrange drive unit, plug them into a loudspeaker design programme like L.E.A.P. and find the ideal box volume for the response you hope to achieve.
- 3) Validate this information by building a quick prototype box and then measuring the frequency

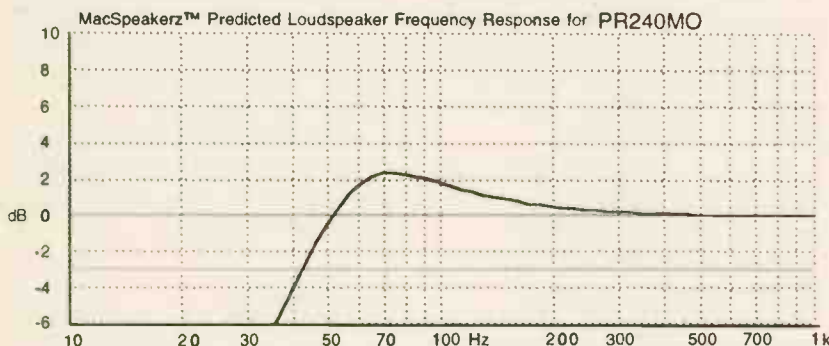


The equivalent circuit diagram for an amp, cables and 'speaker.

article in the Supplement this month.

You can, if you wish, add a source resistance of 1ohm or so to simulate the DCR of the low-pass crossover inductor. This will make the electrical damping more like that in real life, but it has no great effect. Loudspeakers are damped acoustically and magnetically, as well as electrically. Fiddling around with minutiae at this stage is pointless. And if you use a port, its acoustic damping effects will swamp Rg. Yet in spite of all the theoretical flim-flam around ports there's little agreement on their optimum dimensioning or frequency of tune. It's all a matter of perspectives.

4) Having matched bass/mid to box you must now match in the treble unit - and this really means design the crossover network (I assume your bass/midrange unit in its box measure well). It is usual to roll off the high frequency output of a midrange driver where it starts to get ragged (the break-up region), so that this raggedness and associated problems like coarseness and coloration are not audibly intrusive. I find 99% of bass/midrange units are rolled off at 3kHz. My advice is

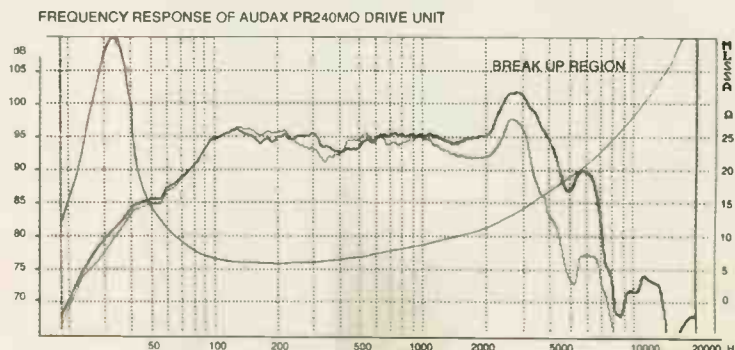


As instep 3), you need to measure your mid/bass in the enclosure to determine their combined bass response.

by the crossover. I'm told the first person to write a comprehensible book on crossover design is likely to make a fortune. I've even given it some thought, having done a few in my time, but I just do not know how you explain such a subject in any easy manner. Also, I should point out that most practising loudspeaker designers admit to using theory to start a design, to get into the right ball park as it were, then experiment thereafter - and that includes me.

Here's my own entirely conventional and relatively simple approach to loudspeaker design, echoed by many others in the business. You might be surprised that matters such as Rg (amplifier source resistance) don't figure. You will realise why small external

response of the bass/midrange driver in it. At this point you need no crossover. You are determining the bass performance, which really means the behaviour of the box acting as a high-pass filter. See the theoretical response of an HM170CO on p8 of my KLS10



All mid/bass drivers become rough in their responses as frequency rises.

to start off with a second-order Butterworth or Linkwitz-Riley; both are popular. You must use measurement to decide whether you have a smooth roll down or not. 5) Now try and match the treble unit to the bass unit. This is where the fun starts. Your bass/midrange response could look pretty smart and you could be thinking "this is a doddle". Start praying. If you are lucky, using a second or third-order high-pass filter to drive the tweeter may give a net flat response and good phase matching, with a reasonably even impedance curve. But there's a 90% chance it won't because of all the variables involved. This is why, in the end, you must experiment. Also, it can be faster than ploughing through theory that only gives a partial result. But of course you must use calculation and then validate your results with measurement. Loudspeakers are too complex to be designed on an ad hoc basis. NK

KITTED OUT

Having become sick to death of the endless search for something approaching 'jouissance' from 'hi-fi' amps in the sub-£1000 bracket I am now researching the DIY option. The most adequate musical reproduction I have enjoyed to date was via a Gamma Acoustics Rhythm, utilising 211 triodes. Is there an integrated kit based around these valves or alternative valves with a similarly neutral sound (preferably at least 17 wpc SE and real bass) well under £1000? Alternatively would I be best off starting from scratch and, if so, what design source literature could you recommend?

I am also interested in your 'speakers. Would the three-way design be suitable for this sort of power and do you supply ready-cut cabinet board or must this be purchased and cut separately? I am very much a beginner (with more than adequate carpentry skills) who is fortunate enough to have some electronically-gifted friends.

Tim
tim.hicks3@virgin.net

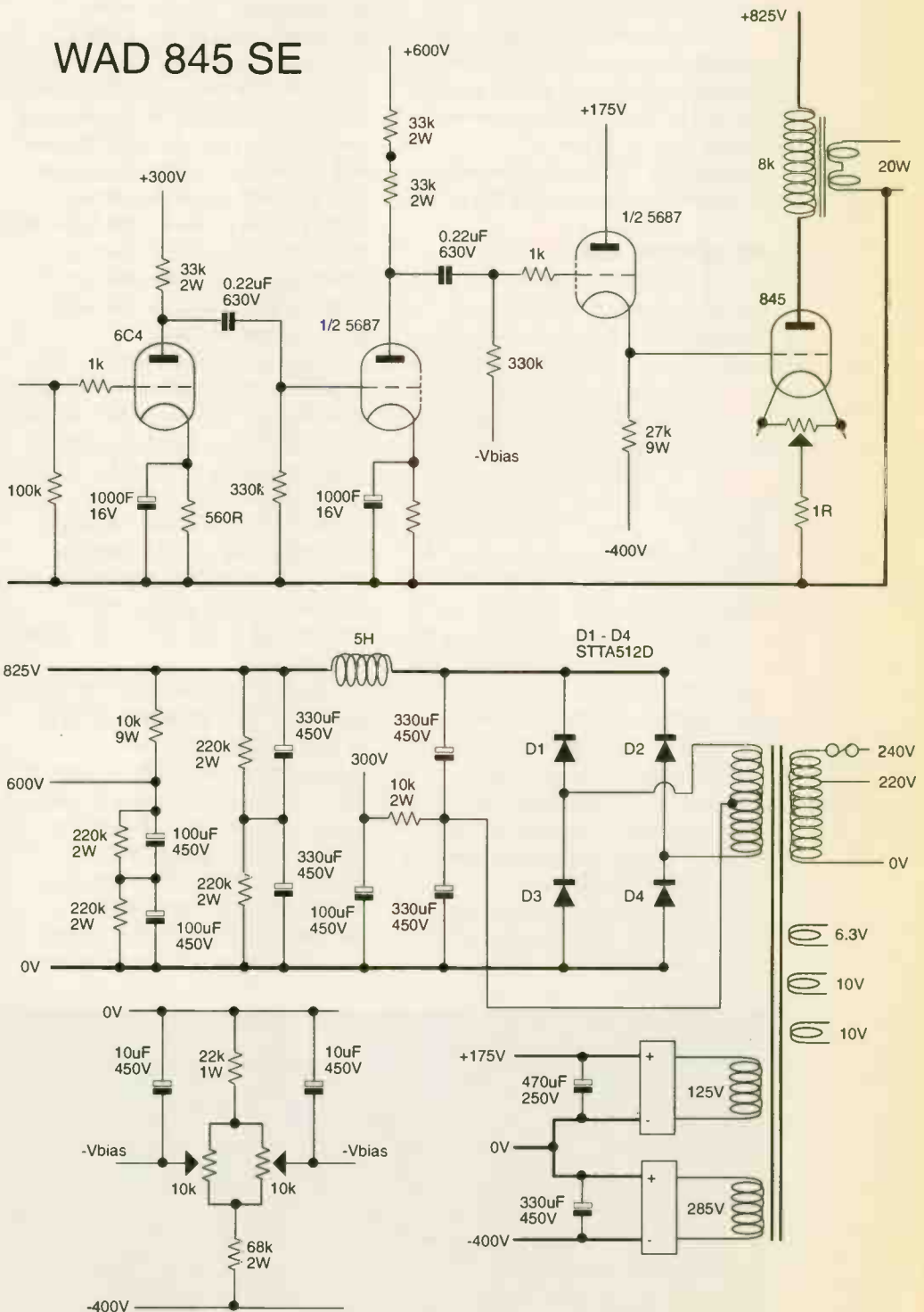
Sorry to disappoint you, but 211 amplifiers are not so easy to build. We considered using the big brother of the 211, the 845, which has a graphite anode capable of 100W

dissipation, in a single-ended amplifier. Here is an early circuit for you to peruse. Because of the low conversion efficiency of a single-ended design this amplifier would deliver around 30watts - but look at the HT. voltages! The output valve needs a stunning 825V. At these levels you have to start to consider arcing and tracking along insulators, breakdown in the mains transformer due to surge voltages and, most horrifying of all, primary-

to-secondary breakdown across the output transformer. This would do interesting things to your loudspeakers - and the cat would definitely leave home.

We've built an amplifier with 211s and transmitter rectifier valves in the power supply delivering a 1200V HT line for one customer, but decided this was not suitable for DIYers or those without experience. We used a transformer sub-contractor who specialised in EHT

The 845 is a superb valve, but in single-ended mode it runs off a huge 825V HT.



transformers for power transmission. They were confident about safety, but knew nothing about audio. Andy Grove had to give them precise instructions for the complex sectionalising needed for an audio output transformer. This shows you how peculiarly difficult and dangerous such amplifiers are, even if they do sound wonderful when designed and built properly. But there are few people in the world with the necessary knowledge and skills, including your friends I suspect.

Stick to something simple and live a little longer. Our kit valve amplifiers offer great sound quality and can be tuned up even further if you so wish with special components. All our loudspeakers are suitable for valve amplifiers. NK

MOTORING ON

I've just had a similar experience to the one which spurred Nigel Purdy into building what sounds like a top-quality home-made turntable - that is, getting one's jaw bruised from it hitting the floor when enquiring about the cost of hi-fi. I will try to explain as briefly as I can.

I recently bought Goldie's Saturnzreturn and only having the bog standard LP12 couldn't play it (the four records are 45s). I popped to my local hi-fi shop and they advised me that either a Lingo or the little push-on spindle device would solve my problem. On hearing the price of a new Lingo I plumped for faffing about with the spindle for the time being.

Talking to an electronic engineer at work who has the same problem, we decided we could probably muster enough control theory and practical know-how to lash a PSU together but realised we didn't know enough about the LP12 to get us started.

Do you have any outlines for the specifications for the motor in an LP12? What are the pitfalls to be avoided in

designing a motor PSU for a record deck? Have you ever covered building a motor PSU in the kit Supplement and, if not, do you intend to? Any advice would be greatly appreciated.

Nick Weston
WESTON_NICK/GB@renishaw.co.uk

It's not just Goldie fans who need 45rpm these days; there are many new vinyl releases which favour the 7in. single speed. Recent examples we've come across include Roni Size & Reprazents' Newforms on quadruple 12in. 45 and Primal Scream's Vanishing Point on double 12in. 45s. The motor pulley adaptor will do the trick but if, like me, you prefer not to have to fiddle this on and off during a listening session, then a quartz oscillator power supply is the answer. This is because the motor's speed is frequency dependent. To spin the platter at 45rpm requires a higher frequency than the mains' 50Hz.

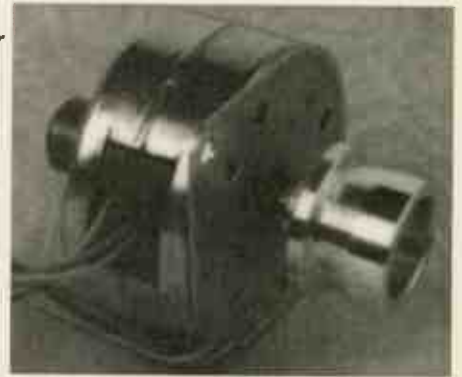
The Airpax motor fitted to the LP12 is a synchronous 24-pole affair specified for 110V operation on two separate phases, and is designed to work optimally with 50Hz (in most applications a lower voltage, typically 80V, is used to reduce vibration. Any lower brings the motor closer to silent operation, but the lower torque gives trouble overcoming the inertia of the platter on start-up).

To electronically shift to 45rpm requires 67.5Hz ac power. This is not easily done without regenerating a signal from scratch. The traditional technique is to use a quartz-crystal signal generator which pulses precisely at MegaHertz frequencies, step this down with frequency divider networks to 50Hz or 67.5Hz and low-pass filter this square wave to

a clean sinusoidal waveform. This can then be phase shifted 90° with a capacitor, with alternate motor coils connected via the red and blue motor lead-out wires. Grey wires can be commoned for motor earth.

Building such a dual-frequency supply requires no small amount of expertise in solid-state electronics; a short-cut to building this kind of project from first principles would be to rebuild an existing single-frequency unit for solely 45rpm use - the Linn Valhalla board may be a useful starting point as they can be acquired second-hand for less than £50, but do beware of the high voltages present on the board. We don't know of anyone who has tried this yet, but it may be possible to substitute a different crystal, or to recalculate and modifying the frequency-divider circuitry. Either way you'll need to adjust the value of the phase shift capacitor at the output stage to give a true 90° shift at the higher operating frequency.

Once a supply is running, pay attention to the suppression of RF noise, a by-product of very high frequency oscillators. You could start by investigating copper shielding on the quartz crystals, or using ferrite-ring RF suppressors around connecting cables and the power supply mains lead. AH



Airpax's ubiquitous 24-pole AC synchronous motor.

Supplement Advertiser's Index

Audio Links	4	Falcon	6	Marton Music	14
Audio Note	23	Glass Audio	14	PM Components	BC
Audio Note	24	Hart Kits	10	SJS	6
Audiocom	IBC	Hart Kits	10	Sowter	6
Billington Valves	18	IPL Acousics	18	T&G	6
Chelmer Valves	IFC	Langrex	4	Watford Valves	4
Cricklewood Electronics	20	Mantra Audio	14	Wire & Insulation	20

DANISH AUDIO CONNECT

Made in Denmark



CTI Audio Attenuator / Volume Control

Improve the sound quality of your amplifiers by changing to the CTI volume control.

CTI offers you a more effortless sound, more details, better dynamics, lower distortion and improved bandwidth. CTI has the ability to “disappear” and not influence the enjoyment of the music. The tracking between stereo channels and the attenuation is within the range of professional equipment. Besides, CTI is very compact for easy build-in.

How do we obtain this?

- 24 step precision switch.
- All contacts and conductors are gold plated.
- Use of low noise, non inductive, non-magnetic SMD resistors.
- Five times shorter signal path than conventional designs.

Key CTI specifications

Bandwidth: 50 MHz
Attenuation accuracy:
 $\pm 0.05\text{dB}$
Tracking between channels:
 $\pm 0.05\text{dB}$
THD: $<0.0001\%$
Dimensions:
32mm diameter, 45mm length

CTI versions

Standard impedances:
10, 20, 50, 100
and 250 kOhm
Available with:

- 1 wafer (single ended mono)
- 2 wafers (single ended stereo or balanced mono)
- 4 wafers (balanced stereo)

Danish Audio Connect (Thailand) Ltd., Rm. 1501/3 Ban Chang Glas Haus Bldg., 1 Sukhumvit Road Soi 25, Bangkok 10110, Thailand, Tel.: (+66 2) 260 6072, Fax: (+66 2) 260 6071, E-mail: vifadact@loxinfo.co.th

UK distributor: AudioCom (UK), Unit 6 Tindle Enterprise Centre, Warren Street, Tenby, Pembrokeshire SA70 7JY
Tel.: (+44) (01834) 842803, Fax: (+44) (01834) 842804, E-mail: AudioCom@connect-wales.co.uk

PM Components Ltd

SALE SALE SALE

VALVE SECONDS

These valves have been tested and are electrically to the same standard as Golden Dragon premium quality valves. However, during testing some discolouration of the glass envelope has occurred which means we cannot offer them as first quality.

The following are available until stocks are sold (few of each only, matched pairs available (subject to stock):

**300B, KT90LX, EL156LX, KT66, 4.300B, KT90, 4.300B LX, 2A3, KT88,
300B Super, KT88M, EL34**

Valve seconds for sale at 40 % discount off normal retail.

All guaranteed NEW, and unused.

Guaranteed for six months

Selectron House, Springhead Enterprise Park, Gravesend, Kent. England. DA11 8HD

FAX: 01474 333762 TEL: 01474 560521