

Bulk Rate
U.S. POSTAGE
PAID
Permit #12
Ontario, CA

THE WAVE'S MUSIC NOTES

"The WAVE's MusicNotes", offers insight into the people behind the music heard on The WAVE.

As the eighties saw technology produce synthesizers that could reproduce instrumentsounds with more accuracy, the nineties have seen a trend in contemporary jazz to un-synth



Jeff Lorber

and return to the warmth of real instruments. On **Jeff Lorber's** new album "West Side Stories" you will hear plenty of real instruments, but also some retro electronic gear like the Hammond B3 organ and the Wurlitzer electric piano which he feels have more history and emotional resonance than current synthesizers.

The song "Faces Of The Heart" on **Dave Koz's** "Lucky Man" CD is not only the theme to the ABC soap, "General Hospital," it is also helping to grant wishes to seriously and terminally ill children. All proceeds from the sale of the song go directly to The Starlight



Kenny G

Foundation. The organization, founded by actress Emma Samms 12 years ago, has been granting wishes and providing hospitals around the globe with activity centers to

keep those children with serious illness entertained during their stay.

Some WAVE listeners were brought back-stage to meet **Kenny G** before his show at Anaheim Pond last October. The listeners were given copies of his new holiday CD "Miracles" for Kenny to autograph, which turned out to be a surprise to Kenny, who had not yet seen the finished product. We do our best to bring you WAVE music first.

Slated for release in the early months of 1995 are new albums from WAVE Artists: **Enya, Pat Metheny Group and Tom Scott.**

THE FOLLOWING VENUES OFTEN FEATURE WAVE ARTISTS:

THE GREATER LOS ANGELES AREA:

- BAKED POTATO,**
3738 Cahuenga Blvd., North Hollywood, (818) 980-1615
- BAKED POTATO,**
26 E. Colorado Blvd., Pasadena, (818) 564-1122
- CLUB BRASSERIE/Bel Age Hotel,**
1020 N. San Vicente Blvd., West Hollywood, (310) 854-1111
- LE CAFE,**
14633 Ventura Blvd., Sherman Oaks, (818) 986-2662
- LA VE LEE,**
12514 Ventura Blvd., Studio City, (818) 980-8158
- THE STRAND,**
1700 Pacific Coast Highway, Redondo Beach, (310) 316-1700
- HOUSE OF BLUES,**
8430 Sunset Blvd., Los Angeles, (213) 650-0247
- JAZZ BAKERY,**
3233 Helms Ave., Culver City, (310) 271-9039
- THE ROXBURY,**
8225 Sunset Blvd., Los Angeles, (213) 656-1750
- THE TROUBADOUR,**
9081 Santa Monica Blvd., West Hollywood, (310) 276-6168
- THE PALACE,**
1735 N. Vine Street, North Hollywood, (213) 467-4571
- BISCOTTI & BOOKS,**
38 E. Holly Street, Pasadena, (818) 793-6496
- LUNARIA,**
10351 Santa Monica Blvd., Los Angeles, (310) 282-8870
- MUSEUM CAFE,**
17 N. Delacey, Pasadena, (818) 795-2491
- HIGHER GROUNDS,**
90 N. Los Robles, Pasadena, (818) 683-9909
- JAX,**
339 N. Brand Blvd., Glendale, (818) 500-1604
- LUNAPARK,**
665 N. Robertson Blvd., West Hollywood, (310) 652-0611
- PAPA GARO'S,**
1810 S. Catalina Blvd., Redondo Beach, (310) 540-7272
- ST. MARK'S,**
23 Windward Ave., Venice, (310) 452-2222
- COFFEE JUNCTION,**
19221 Ventura Blvd., Tarzana, (818) 342-3405
- ORANGE COUNTY:**
- RANDELL'S,**
3 Hutton Centre Dr., Santa Ana, (714) 556-7700
- STUDIO CAFE,**
300 Pacific Coast Highway, Huntington Beach, (714) 536-8775
- STUDIO CAFE,**
100 Main Street, Balboa, (714) 675-7760
- COACH HOUSE,**
33157 Camino Capistrano, San Juan Capistrano, (714) 496-8927
- GALAXY CONCERT THEATRE,**
3503 S. Harbor Blvd., Santa Ana, (714) 957-0600
- STEAMERS CAFE,**
138 W. Commonwealth, Fullerton, (714) 871-8800
- VENTURA COUNTY:**
- VENTURA THEATRE,**
26 S. Chestnut St., Ventura (TX) (805) 648-1888, (HOTLINE) (805) 648-1936

TICKETMASTER:
(213) 480-3232, (714) 740-2000, (805) 583-8700, (619) 278-TIXS

Wine Tasting
Holiday Wine Sale
Value priced Art Benefit

The Los Angeles Artcore Center
DADA
(Downtown Arts Development Association)
Invite you to share in this Special Holiday Happening

SUNDAY, DECEMBER 11, 1994
2:00PM TO 6:00PM
AT THE SAN ANTONIO WINERY
737 LAMAR STREET • LOS ANGELES

Tickets \$15.00 - for more information call
LA ART CORE: (213) 617-3274 or DADA: (213) 625-3232

UP & COMER EVERETTE HARP

BY BRENDA LOWRY

Everette Harp has always been driven by a passion for his music. With his new album "Common Ground," and his added responsibilities as producer, he is the one doing the driving.



Harp steps into the role of producer for eleven of the thirteen scintillating tracks on "Common Ground," his second album on Blue Note, that showcases Harp's musical diversity and talents.

"I discussed producing my second album with George Duke (the executive producer for "Common Ground" and the producer for Harp's self-titled 1992 debut), but I found that thinking about producing and actually doing it are definitely two different things," said Harp. "Being someone who's never completely satisfied with my work, it wasn't easy making the final call on my own performances but at the end of the day, I'd have to say that I'm very proud of the album. I accomplished my main goal, which was to do a range of different music styles and yet maintain a certain continuity throughout the record."

"Common Ground" is an album chock full of driving beats and innovative diversity, from the funky, uptempo "Strut" featuring star percussionist Sheila E. to the smoky, "late

night" feel of "Love You to the Letter." Harp covers all musical bases — including soulful ballads like "Jeri's Song" and the poignant "Coming Home," which was written by the late Craig Smith, a friend and colleague who passed away from AIDS four years ago and to whom the track is dedicated.

The months of writing and doing extensive pre-production work before hitting the studios to lay down the final tracks for "Common Ground" are evident. The album permeates a certain heart and soul and Harp approaches each song as though it's his last — it's that intense.

"I'd say that I put everything ... into my playing," said Harp. The man honestly loves music, and anyone who hears his newest album is sure to concur.

Harp's deep love for his music and his deep knowledge of quality sound has left him with a steadily evolving musical style that any jazz or blues music listener would love.

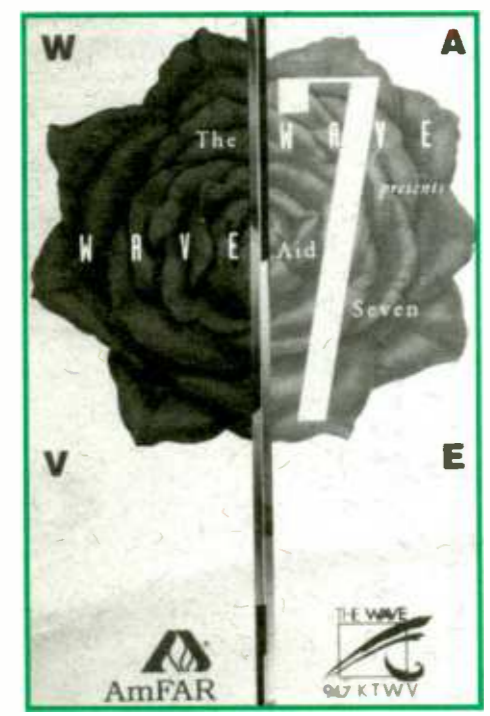
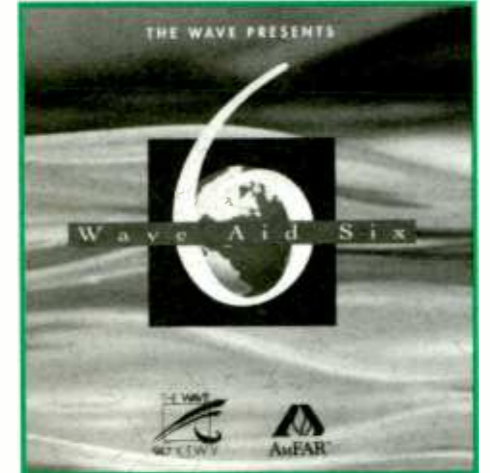
"The key for me on this album was diversity and balance, and I'd like to think we achieved that," said Harp. The genial Mr. Harp need have no worry; "Common Ground" provides a fine display for his soulful virtuosity, musical power and engaging artistry.

OUR HOLIDAY GIFT TO YOU...

*Continuous, commercial-free WAVE Music...
30 hours, starting at 6:00PM, Christmas Eve
sponsored by Tower Records*

*24 hours, starting at 6:00PM, New Year's Eve
sponsored by Champagne Neuve Clicquot*

**HAPPY HOLIDAYS, FROM ALL OF US AT
94.7 THE WAVE**



INSIDE THIS ISSUE:
The WAVE Holiday Music Lists
Concert and Event Listings
Artist Spotlights:
David Benoit & Everette Harp
Club Guide

THE WAVE 94.7 KTWW

THE WAVE MUSIC LETTER

VOL. 7, NO. 12-1 DECEMBER/JANUARY 1995

THE WAVE CHARITIES

As 1994 draws to a close, it's only natural to reflect on accomplishments made over the past year. At The WAVE, our goal each year is to provide you with WAVE Music that provides an accompaniment to all your activities, whether at work, in your car, or at home (remember, WAVE Music is back in the morning with Paul Crosswhite!). We hope that we've been your favorite radio dial source for entertainment...if we are, then we've accomplished one of our major goals.

Over the past two years, we've also raised in excess of \$500,000 for AIDS Project Los Angeles, via our "March Against AIDS" Radiothon.

This year, we encourage you to consider the seven "WAVE AID" samplers when filling out your holiday gift list. All seven contain timeless WAVE Music classics, including tracks donated by Kenny G, David Benoit, Basia, Pat Metheny, Enya, Peter White, Ottmar Liebert, Dave Koz, Sting, Sade, Kenny Loggins and many, many more. WAVE AID CD's and cassettes are available at your local music retailer.

In 1995, The WAVE will continue its commitment to helping Southern Californians in need. In the Spring, we'll unveil a brand new WAVE Music sampler, again with all proceeds going to charity. We'll continue our commitments to the American Foundation for AIDS Research, via our WAVE AID cassette and CD samplers.

In 1994, we raised funds for "Re-Style L.A." This organization was started as a direct result of the devastating 1992 riots. Some of the best and brightest arts students from riot-torn areas are awarded scholarships so they can continue their education. In all of these efforts, you are the key. Won't you join The WAVE Charities in our commitment to making life better in 1995? *Thanks for listening.*

THE WAVE MUSIC LIST

Here's an alphabetical listing of some of the newest music played on -

94.7 KTWV THE WAVE

ARTIST	TITLE	LABEL
ACOUSTIC ALCHEMY <i>British guitar duo never lets the dust settle on their sound</i>	Against The Grain	GRP
AVENUE BLUE FEATURING JEFF GOLUB <i>nearby touring guitar work with shades of blue and a lot of soul</i>	Avenue Blue	Bluemoon
BASIA <i>first release in four years from one of The WAVE's most popular vocalists</i>	The Sweetest Illusion	Epic
ANITA BAKER <i>seven-time Grammy winner with a three-octave voice</i>	Rhythm Of Love	Elektra
DAVID BENOIT <i>David was after a sixties-James Bond-sort-of-vibe on this release</i>	Shaken Not Stirred	GRP
BENOIT/FREEMAN <i>Rippingtons guitarist Russ Freeman collaborates with pianist David Benoit</i>	The Benoit/Freeman Project	GRP
RICK BRAUN <i>flugelhorn and muted trumpet weaving unbelievable melodies</i>	Night Walk	Bluemoon
NORMAN BROWN <i>sophomore effort from guitarist well on his way to greatness</i>	After the Storm	MoJazz
JONATHAN BUTLER <i>South African guitarist is back from a four year hiatus</i>	Head To Head	Mercury
CRAIG CHAQUICO <i>former Jefferson Starship guitarist is proving to be a very unique instrumental artist</i>	Acoustic Planet	Higher Octave
RICHARD ELLIOT <i>simply one of the best saxophone players around</i>	After Dark	Blue Note
TOMMY EMMANUEL <i>debut U.S. release from this Australian guitarist already a favorite on The WAVE</i>	The Journey	Epic
EVERYTHING BUT THE GIRL <i>finely crafted lyrics from the British duo of Ben Watt & Tracy Thorn</i>	Amplified Heart	Atlantic
EVERETTE HARP <i>smooth and sexy</i>	Common Ground	Blue Note
WARREN HILL <i>saxophonist recorded his album in Nashville, a place he now calls home</i>	Truth	RCA
HIROSHIMA <i>east meets west with this Japan influenced contemporary jazz album</i>	L.A.	Warner Bros.
BONEY JAMES <i>album number two for one of contemporary jazz's brightest saxophone stars</i>	Backbone	Warner Bros.
EARL KLUGH <i>few things are warmer than Earl's nylon string guitar</i>	Move	Warner Bros.
JEFF LORBER <i>keyboardist has been integral to the careers of many musicians including Kenny G</i>	West Side Stories	Verve
NAJEE <i>Najee shares another collection of memorable melodies</i>	Share My World	EMI
ART PORTER <i>saxophonist from Little Rock Arkansas with a smooth soulful sound</i>	Undercover	Verve Forecast
RIPPINGTONS <i>Russ Freeman's band delivers another chart topper</i>	Sahara	GRP
JOE SAMPLE <i>a groove reminiscent of his days with the Crusaders</i>	Did You Feel That?	Warner Bros.
SPECIAL EFX <i>album displays more of a street sound from this premier contemporary jazz duo</i>	Catwalk	JVC
PETER WHITE <i>Peter reflects on the music that has inspired him along the way</i>	Reflections	Sin-Drome

WAVE ARTIST PROFILE DAVID BENOIT

BY BRENDA LOWRY

Although keyboardist-composer **David Benoit** has put out both "Letter to Evan" — a tribute to the late great jazz pianist Bill Evans — and "The Benoit-Freeman Project," a reunion with guitarist Russ Freeman of the Rippingtons, in just the last couple of years, he is by no means slowing down.

Benoit has just finished up his ninth album for GRP, "Shaken Not Stirred" (as in the way James Bond enjoyed his martinis). A nostalgic set of music, recalling some of Benoit's childhood memories from the early '60s, the album sums up a lot of the musical strains that have made him one of the most cutting edge contemporary jazz artists of the day.

His workspace is a studio he built last summer while creating music for the television series "Sirens". "Sarah's Theme", a smoky jazz tune closing the new album, was originally written for that show. The show was canceled, but the studio remained and Benoit settled in to create his new project on his own turf. Working in the comfort zone of his own studio gave Benoit a certain sense of freedom that enabled him to experiment and try something different with his music.

"After making so many records, I thought I should come out with something different that would reflect my personality," said Benoit. "This album has a more emotional feel." "Shaken Not Stirred" is definitely more introspective and brooding than his previous endeavors.

"Shaken Not Stirred" is so multidimensional that the creations of Benoit — his style and wild artistic expression — are bound to touch those in his path. The funk-driven track "I Went To Bat For You", with its roll-

ing, boogie-like piano chord peppers the intensity of such smooth, melodic numbers like "Wailea." Wailea's signature feature is the actual human vocal pads which gracefully underscore Benoit's grand piano parts.

Partly because of the wistful backwards-glancing nature of this album and partly because of his current interest in music that could qualify under the "unplugged" umbrella, Benoit's new album leans towards non-electronic textures. "On my other records, you hear a lot more guitar...and synthesizers," said Benoit. "There's not much of that on this record. There is a little bit of synth, but hardly any electric guitar. I think I'm going back to acoustic instruments."

To continually grow, Benoit enlists the help of other musicians to add a different flavor to the overall feel of the new music. On the new album, Benoit benefits from the addition of David Pack on "Any Other Time." Not only has this helped diversify and expand his sound, it has given Benoit a new perspective on what his music really is.

Like Benoit, the new album can't really be placed into any neat category. "I hate categories," said Benoit. "I think the audience should take away from the music what they want. As long as they get a good feeling off of it, then that's all that matters."

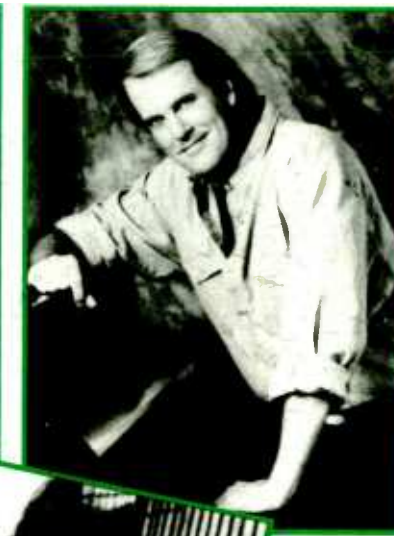
With "Shaken Not Stirred" running at high speed, Benoit is already planning the next leg of his seemingly never-ending projects. He's playing The Strand on Dec. 16 and he is currently working on a score for a Clint Eastwood film. And if the past is any hint of the future, Benoit will certainly deliver the unexpected. Many sleepless nights in his studio undoubtedly await him. But it's all worth it. The audience, and Benoit, demands the dedication.



UPCOMING EVENTS

We have listed some of the great events happening in the Southland. Stay tuned to 94.7-KTWV The WAVE for updates and more details on how you can win tickets.

Pictured top to bottom, John Tesh, Boney James & Norman Brown.



JOHN TESH
Coach House 12/3

EVERYTHING BUT THE GIRL
Coach House 12/6

SEAL
Wiltern Theatre 12/7 & 12/8

MICHAEL MCDONALD
House of Blues 12/9

NORMAN BROWN & BONEY JAMES
The Strand 12/9
Galaxy Concert Theatre 12/23

STRUNZ & FARAH
Galaxy Concert Theatre 12/10
Ventura Theatre 12/16

RICHARD ELLIOT
Coach House 12/15

DAVID BENOIT
The Strand 12/16

ANITA BAKER
Universal Amphitheatre 12/27 & 12/28 & 12/30

PAT METHENY
Universal Amphitheatre 2/18

Here is a list of some of this holiday season's new arrivals as well as some gems from Christmas' past. Enjoy the best of Holiday WAVE Music throughout the month of December on 94.7 The WAVE.

RICK BRAUN	Christmas Present	Mesa
LARRY CARLTON	Christmas At My House	MCA
NATALIE COLE	Holly & Ivy	Elektra
KENNY G	Miracles	Arista
OTTMAR LIEBERT	Poets + Angels	Higher Octave
MANNHEIM STEAMROLLER	A Fresh Aire Christmas	American Gramophone
MANNHEIM STEAMROLLER	Christmas	American Gramophone
JOHN TESH	A Family Christmas	GTS
JOHN TESH	A Romantic Christmas	GTS
VARIOUS ARTISTS	A Very Special Christmas, Volumes I & II	A&M
VARIOUS ARTISTS	A GRP Christmas Collection, Volumes I,II & III	GRP
VARIOUS ARTISTS	The Christmas Collection, Volumes I & II	Narada
VARIOUS ARTISTS	A Winter Solstice, Volumes I,II,III & IV	Windham Hill

94.7 The WAVE
welcomes
ANITA BAKER
at the
Universal Amphitheatre
Dec. 28th

For more information
Call 1-800-520-WAVE
or for ticket information
Call Ticket Master at
(213) 480-3232

KTWV-FM LOS ANGELES

Chris Claus
Vice President/General Manager

Tim Pohlman
General Sales Manager

Christine Brodie
Program Director

Dick Warshaw
National Sales Manager

Bob Ferro
Local Sales Manager

Debbie Vandermeulen
Director of Marketing/Promotion

Ralph Stewart
Assistant Program Director/
Music Director

Michael Sheehy
Production Director

Chris Buehl
Promotion Coordinator

ON THE AIR

PAUL CROSSWHITE

TALAYA

DON BURNS

CATHI PARRISH

AMY HIATT

Mornings

Mid-Days

Afternoons

Evenings

Late Night

THE WEEKEND STAFF:

Mark Abel, Keith Allen, Steve Clark, Joseph Dean, Nicole Devereux, Nancy Wilson, Wally Wingert and Jamie Worlds



SPECIAL PROGRAMMING:

"Nite Trax"

Every night starting at 8:00 p.m.

"The Saturday Night CD"

Saturday at 11:00 p.m.

"The Listening Room"
- New Music Review

Sunday at 8:00 p.m.

"The WAVE's World Music Hour"

Sunday at 9:00 p.m.

"Musical Starstreams"

Sunday at midnight

THE WAVE MUSICLETTER

Wildhirt/Fowlkes Graphics
Graphics/Typesetting

Daval Communications
Printing/Mailing

"The WAVE MusicLetter" is published bi-monthly by 94.7, KTWV, The WAVE. Subscriptions are free and can be obtained by sending your name, address, and daytime and nighttime phone numbers to "The WAVE MusicLetter", P.O. Box 4310, Los Angeles, CA 90078.

All letters and materials sent to "The WAVE MusicLetter" become the property of The WAVE and cannot be returned. "The WAVE MusicLetter" is copyright 1994 by KTWV. All rights reserved.

THE WAVELINES:

The WAVELINES are your direct connection to information about music The WAVE plays. Give us a call anytime, 24 hours a day...

(800) 520-WAVE

The Wave

Fax: (213) 469-0279

Entertainment Line: (213) 484-WAVE

Business Office: (213) 466-WAVE

Music Source: (800) 50-MUSIC

EMAIL correspondence via the INTERNET: wave@ktwv.group.wec.com

KTWV is an Equal Opportunity Employer

