

The

# KMA GUIDE



April, 1955

APRIL 1, 1955

Pretty lassies, baby chicks, and April. They all go together to make Easter as we know it here in the Middlewest.

And just about the time you get your April issue it will be time to pause and ponder the true meaning of Easter.

Christian people the world over recognize Easter as the greatest day in our world's history. For it was on this day that Our Lord, after dying for every man's salvation, threw off his shackles and bonds and joined his Father who is in Heaven.

Right now and thru Easter, everyone should take some time from regular, routine duties to renew the knowledge of the crucifixion and resurrection of Our Lord. If you do, we are certain you'll live the rest of the year with a stronger, more meaningful outlook on life.

In the cover photo are Betty and Lyn Soflin, KMA's popular sister singing team, along with a batch of fresh, new baby chicks. Betty and Lyn can be heard every day between 5 and 6 a.m. on Town and Country Hour; at 6:20 on Monday, Wednesday and Fridays as the Berry Maids; and on Hiland Tater Quiz at 11:30 five days each week.

The KMA Guide is published the first of each month by the Tom Thumb Publishing Co., 205 North Elm St., Shenandoah, Iowa. Owen Saddler, editorial chairman; F. S. (Toke) Nelson, editor; Doris Murphy, feature editor, Carol Lewis, copy editor. Subscription price \$1 per year (12 issues) in the United States, foreign countries, \$1.50 per year. Allow two week's notice for changes of address and be sure to send old as well as new address.

## NEW LISTING OF A's GAMES IN OUR LOG

You'll be able to follow the A's baseball broadcasts right thru the exciting year on KMA. Our traffic manager, Miss Evalyn Saner, is listing the entire months schedule on the program log now, see page 14.



Confessed bank robber Eugene Buff (center) is handcuffed and put in patrol car, shortly after his capture on Friday, March 11, by Sheriff Rex Crouse (left) of Winterset, and highway patrolmen. KMA figured very dramatically in the story of the bank robbery, and gave listeners a flash-by-flash report, from the time the commercial Savings Bank at Afton, Iowa was robbed until Buff was captured seven hours later, just over the Missouri border, south of Mount Ayr, Iowa. (another photo and story on page four).

# Voices of our Kansas City Athletics



Larry Ray



Merle Harmon

## KMA WILL HAVE BASEBALL EXCURSION FOR A's GAME WITH INDIANS MAY 29

Here is the news that we are sure you baseball fans have been waiting to hear. Radio station KMA will sponsor a big fun-filled Baseball Excursion to Kansas City on Sunday, May 29. And our Athletics will be meeting the American League Champions the Cleveland Indians, so it should really be a whale of a ball game.

A special Burlington, air-conditioned train will leave Shenandoah at 8:30 a.m. on Sunday, May 29. It arrives at Hamburg, Iowa at 9:20; and arrives at Langdon at 9:40. The train pulls into Kansas City at 12:30, and you'll be taken by special bus to the ball park, arriving there by 1:00, with an hour to "rubberneck" before the big game between the A's and the Cleveland Indians starts.

Following the game, we'll all be taken by bus to the Continental Hotel for a big, informal dinner party. No need to "dress

up" for this dinner, because it's strictly a "come as you are" affair. In addition to having a delicious meal, we'll also get to hear some of the famous A's personalities. Parke Carroll, business manager of the A's says he will line up some excellent entertainment, despite the fact that the A's have to catch an early train to play an afternoon doubleheader in Detroit on Monday.

We plan to have the train leave Kansas City by 7 p.m. and will pull into Langdon at 9:36, get to Hamburg at 10:10; and will be back to Shenandoah at 11 p.m.

It promises to be a real swell get together. The seats at the ball park will be very choice ones, and you'll be among some really fine sporting fans. Why don't you get up a father-son party in your community, nad write us for a whole block of tickets. . . don't forget the gals, either.

(Continued on Page 4)

# NIELSON INTERVIEWS BANK EMPLOYEES



Here's KMA's program director Warren Nielson, johnny-on-the-spot to get interviews with the personnel at the Commercial State Savings bank at Afton, shortly after the bank was robbed of \$25,000. Bank employees (rear, left to right) are Mrs. Doris McGrath, Mrs. Dorothy Brosnahan, and Mrs. Violet Means. Talking to Warren is R. M. Crandall, who had a shotgun as close to his nose as the KMA mike is in this picture.

□ □ □ □ □ □

□ □ □ □ □ □

At 3 p.m. on Friday, March 11, a lone bandit entered Commercial Savings Bank in Afton, Iowa. He pushed a sawed-off shotgun under the nose of Cashier R. M. Crandall and told him, "this is a holdup." The bandit pushed Crandall and the three women employees into the vault, and left with a gunny sack full of money, \$25,000 plus worth of it.

KMA got first hand word of the event minutes later, when Warren Nielson talked with Crandall by telephone. Crandall and the women employees gave KMA a very complete description.

From there on in KMA started calling news sources, sheriffs, sent up the company airplane. . . and kept listeners dramatically in touch with all operations. . . and kept repeating the description to listeners.

In at least one instance, that might have helped to save violence, perhaps lives.

The bandit headed south, stopped at a farm house south of Mount Ayr, Iowa, and entered a house. The housewife grabbed a four-year old son and fled out the front door. . . and notified authorities. Minutes

before she had heard the news bulletin and description broadcast on KMA.

Just seven hours after the bandit left the bank, he was captured, when more than 200 lawmen formed a posse to scour the rugged hills southeast of Mount Ayr.

And two days later Eugene Buff, 33, was back in prison, this time for life. It was learned that Buff had been released from Nebraska prison after 11 years on Thursday morning, just 35 hours before he committed the Afton bank robbery.

There was no violence or tragedy, the money was returned, and KMA was proud to have been able to serve the public and Iowa and Missouri's wonderful, efficient, and brave law enforcement personnel.

(Continued from Page 3)

The cost for the entire excursion is \$14.00 for adults, and \$10.00 for children under 12 years of age.

We have not announced this tour on the air yet, and do not plan to do so until April 5. We have only 500 accommodations and we thought our Guide subscribers should get first chance at it.



# A CHAT WITH EDWARD MAY

You have often heard the saying "In Spring a young man's fancy turns to love." I think perhaps it should be, "In Spring one's fancy turns to the outdoors and the anticipation of seeing Mother Nature bring forth her handiwork." This can be said in many different ways. I personally like the way Whittier said it when he wrote this poem:

Give fools their gold and knaves their power,  
Let fortunes bubbles rise and fall:  
Who sows a field or trains a flower,  
Or plants a tree is more than all.

Thus with the cold of the winter behind us we are making preparations for our outdoor work. An example can be seen in the picture below which was taken one afternoon when my Mother stopped at the store to check some of the new varieties of roses that have been introduced. She is extremely fond of flowers and undoubtedly has one of the most beautiful yards to be seen in this part of the country. Her flowers are a profusion of bloom from early spring until late fall.

Eleanor and I eventually hope to have a yard comparable to Mother's, but that takes time. Our house is a new one and has been landscaped only two years so it will take time for our trees and shrubs to grow to the size and height where they will give us maximum shade and beauty.

At our house we have given considerable thought to our planting needs for this spring and I think we have them about complete. We have begonias started in the house and will set them on the north side of the garage after all danger of frost is past. We plant all colors including red, copper, yellow, pink, orange and white.

In back of the house, around our screened-in porch, we intend to plant annual flowers, mainly petunias, marigolds and snapdragons with a border of alyssum. Along the back fence we have plans for climbing roses and we also have given serious thought in regard to planting Floribunda roses in front of the house between the driveway and the sidewalk. In addition, we want to plant some chrysanthemums in order to give us the added color in the fall. Last but not least, we have a planter box by the front door in which we set geraniums, coleus and vinca.

Eventually we hope to have something blooming throughout the entire growing season and are rapidly approaching that point. For early spring we have tulips, hyacinths, daffodils and crocus together with a show of color from a Magnolia, Red Bud and Flowering Crab. In addition, we have Hybrid Tea Roses, Floribunda Roses, Azaleas, Iris, Peonies and Lilies.

Perhaps I should tell you about the desires of Annette and Karen to plant flowers around the playhouse in the backyard. Karen wants about every kind of flower that grows. Little Eddie isn't big enough yet to become interested in flowers but before the summer is over he will probably be either crawling around or walking and picking a few flowers.

Personally I think there is no greater pleasure than being outside and working with the soil. It has been aptly put in the following words:

"The kiss of the sun for  
pardon.  
The song of the birds  
for mirth.  
I am closer to God's  
heart in the garden  
Than anywhere else  
on earth."

*Edward May*



Ed shows his mother new rose variety he plans to plant.

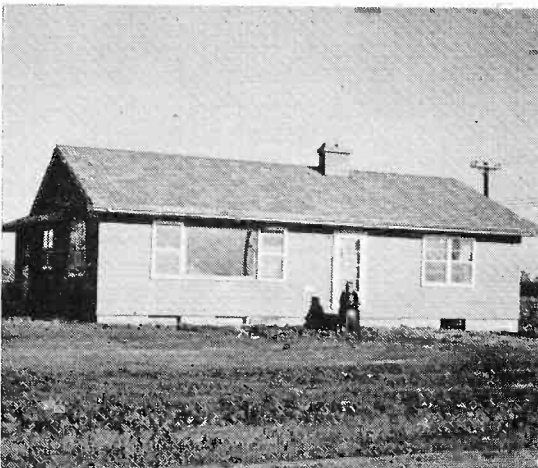
## Frank Comments

By FRANK FIELD

Yes, the last thirty days has seen quite a change in the outward appearance of our new house and even more on the inside.

This picture was taken about 4:00 on March 16, exactly four weeks later than the picture in the March Guide. At this time last month we thought surely the house would be completed by March 15, so that we could move in and be all straightened up by the first of April. Again the weatherman had other ideas. The weather turned bad the day after I took the picture last month and we didn't get a thing done for about ten days. But for the past week or ten days things have really been hopping. The city came up last week and re-graded the street in front of the house lowering the grade line about 18 inches. Most of the dirt they took out of the street was spread out around the house as you can see by comparing this month's picture with last month's. By the first of April the concrete curb and gutter will be in and the street covered with crushed rock. That means about 10 or 12 inches more dirt will have to be taken off the parking and that will be just about enough to finish the grading around the house. Naturally I can't sow May Park lawn grass until the final grading is completed, that will be about the first of April the way it looks now.

The cement floor is in place in the basement and the gas furnace is in and hooked up and pouring out enough heat to properly dry out the plaster and a little later on the painting. It looks now as if the painters will put the final coat on the walls next Monday, that will be March 21.



Here's what the Frank Field house looked like at 4 p.m. on March 16. That's Jennie out front.

If you would be interested in Jennie's color scheme, I think I can give you a pretty good idea of what the rooms will look like. The southwest bedroom will be two shades of light blue. The southeast bedroom will be two shades of sandal wood, which is about the color of cocoa with quite a little milk in it. The living room will be a beautiful soft green, except for the south wall which will be covered with plastic tile, bamboo finish. The kitchen floor will be vinyl tile in two shades of grey. The walls will be light blue plastic tile up four feet and then painted a darker blue up to the ceiling. With a very light blue for the ceiling. The counter tops will be a bright red linen finish formica and the cabinets are all natural finish birch wood. The bathroom floor will be covered with vinyl tile in a pattern of white mottled with black and black mottled with white. The walls up four feet high will be covered with vinyl tile in mottled rose pink pattern trimmed in black. Above that the walls will be porcelain blue with a lighter blue ceiling.

That oblong spot of white on the side of the house between the door and the window is our mail chute and big enough for newspapers and magazines. Just lift the trap door and slide them through and they land on the floor in the living room right beside the door. By this time next month we should have the sidewalks in also. One walk will be from the front door straight out to the street. Another walk will stay four feet out from the house and go from the front door around north and then east to the garage door. This four foot space will be plenty wide enough to plant evergreens. And I intend to put Japanese yews on the north end of the house and Junipers along the front of the house. Most people make the mistake of putting the walks so close to the house that there is no room for any planting. There should always be at least four feet of space.

I won't bother now to tell you about the rest of the landscape planting except to say that there will be a big rose bed in the northwest corner of the yard. And there will be two hybrid elms in the front yard, one on each side of the house to sort of frame it as the trees get older and larger. There will also be three pin oaks on the south lot line. One southeast of the house, one south and one southwest of the house, to give us shade from early morning to late afternoon. Maybe next month the picture will show quite a bit of the landscape planting. Yes it looks now as if we will actually be moved in by the time you are reading this the first few days in April. We certainly hope so.

*Frank Field*

*The KMA Guide*

# Grass Root Notes

By  
**MERRILL LANGFITT**  
KMA Farm Service Director

The month of March was really a busy one in the KMA Farm Department. First it was helping with preparations for the Cornbelt Livestock Feeders Association, with their first annual convention and then we pitched in and helped a sponsor set up and carry through the first annual convention of the National Nitrogen Solution Dealers Association. In our picture you see Walter Colvin, Midwest Sales Manager for the Nitrogen Division of Allied Chemical and Dye Corporation, and myself beaming over the convention program, a convention which was carried through very successfully. Omaha is becoming quite a convention city. Both of the above mentioned meetings were held in the city, which now is the worlds largest cattle market. Shenandoah is happy to have Omaha as a next door neighbor and KMA enjoys the recognition as the leading farm radio station in this big farming country. We are of course happy for the opportunities to help these large agricultural organizations with all of their activities and delighted that they think of us when they want assistance of one kind or another.

Building a better agricultural community is important. Saving lives in our farming country is important too. In fact saving lives on the farm is so important that I want to devote the remainder of my column to that subject.

Each year we kill hundreds of people in farm accidents. I'm particularly concerned about the little fellows that are run over by tractors, trucks and cars on the farm. These little toddlers can so easily dart under a machine and be run over. They need to be closely watched at all times around the barn yard. They should not be taken on the tractor or other machines as a passenger. The tractor has one seat and that is for the operator. There is no safe place on the tractor for a passenger. When you give your little fellow a ride you are endangering his life. Every year dozens of them fall under a tractor or implement wheel and lose their lives. You wouldn't



**Merrill (right) talks over national solution convention program with Walt Colvin of Allied Chemical Co.**

purposely endanger your child's life would you? Of course not, but many of you, without thinking, do place your children in great jeopardy. Cover those stock tanks. Each year many little children drown in open watering tanks. Keep the children away from dangerous animals. Above all, see that your children are closely supervised as they play around the farm. The farm is a wonderful place for children, but it can be a dangerous place too.

Let's all be safely conscious as the 1955 work season begins. Think before you act, use the safety devices built for your machines as if they were a dangerous weapon. Don't you be a farm accident head line in 1955.

*Merrill Langfitt*

## **BIBLE TRUTH STARTS 16th YEAR ON KMA**

The month of April marks the close of 15 years of broadcasting for the Bible Truth Program, one of the most listened-to radio programs on Midwest radio on Sundays.

We had a nice letter from Mrs. Ruth Lippincott, wife of radio pastor Edgar Lippincott recently, and Ruth said, "we certainly look forward to starting our 16th year." She also sent along the current issue of their wonderful little paper, "Good Tidings."

Bible Truth program is broadcast at 9:15 every Sunday over KMA, direct from the home of Edgar and Ruth Lippincott in Stanberry, Missouri. If you aren't now a listener, put this program on your list of "Sunday radio musts."



# On the KMA PARTY LINE

By **DORIS MURPHY**

Speaking of cooperation! FLORENCE FALK'S car radio has certainly been behaving in a tactful way. Something has gone wrong with it, and the FALK'S can't get any radio stations on it. . .except ONE KMA! That's what I call loyalty. Knowing FLORENCE is on KMA at 10,30 every morning, it just can't let her down. . .so it keeps right on bringing in KMA, even if it hasn't the strength to pull in any other station.

Spring is blossoming forth in the farm service department of KMA, with both MERRILL LANGFITT and JACK GOWING developing building plans. If MERRILL'S plans work out, the LANGFITT'S will be building a new ranch type home in the May-Rankin addition in Shenandoah this spring, and JACK will move the middle of April to the family farm home, 3 miles north of town. JACK and his wife have been busy remodeling the place, plastering, building cupboards, tearing out a partition, painting and papering. It will be a busy summer for the boys, but an enjoyable one getting their families located in new homes.

BETTY and LYN SOFLIN like dogs but their love waned considerably one muddy spring day recently, when a big, old hound dog got carried away with his friendliness,

and jumped in their car uninvited. The girls had just pulled up in front of a downtown store, when they heard a funny noise outside the car. Turning her head BETTY found herself staring right into the face of a big dog looking in the window. Hoping to shoo him away, she opened the car door. With a big leap, the dog with his mud covered feet and wet, muddy fur, jumped right into the car. Before the girls could coax him out, he had left muddy footprints all over the back seat. Of all the cars on the street, the girls wondered WHY he had to pick on THEM!

Fluffy baby chicks and spring are synonymous. . .and everyone gets a big kick out of seeing chirping baby chicks right out of the shells. When the promotion department brought a box of these little fellows to the studio for a picture with the Berry Maids, BETTY and LYN, MERL DOUGLAS got his picture taken unexpectedly just as he was in the throes of trying to help catch them. Here you see DOUG sneaking up on them with his coat trying to gather the chicks under.

Traveling 1,600 miles. . .making three churches, one school, and one radio appearance all in one weekend, was accomplished by the DIXIE FOUR QUARTET of KMA, when they made a trip to Flint, Michigan recently. Their personal appearances March 5 and 6 were under the sponsorship of the Flint Gospel Singing Association and their gospel music was heard by 2,000 people in the two-day period. The DIXIE FOUR are getting around these days, presenting concerts in Iowa, Nebraska and Missouri. Watch for them when they come to YOUR territory. Gradually the members of the quartet have succeeded in finding housing, and so far three of the families have come to make their home in Shenandoah. TOM MITCHELL, wife and 13 month old daughter Stephanie Ann of St. Louis are living in an apartment on Sycamore street. NORMAN WOOD and his wife and two children Norman Lee 8 and Cathy Susan 5 from Troy, Missouri, are located in a duplex on South Center St. MELVIN REED'S wife and 15 year old son Douglas have arrived from Indianapolis and the family is living in an apartment at 402½ West St. JOE THOMAS'S family is still in Indianapolis but will join him as soon as



"Mother" Merl Douglas gathers up his brood of peeping, baby chicks.



school is out. The only bachelor in the quartet. . . pianist WAYNE GRIFFIN makes his home at the hotel. If their music sounds happier these days, it's because their families have arrived and the boys are again eating their wives delicious home cooking.

Announcer MERL DOUGLAS really hit a "detour" while singing "Detour" on the air recently and practically ended singing "up-side-down." All. . .because entertainer LYN SOFLIN wanted to help him, by scotch taping to-gether his old sheet music that had torn into. MERL got along fine singing the verse, but when he came to the chorus, you can imagine his surprise to see the music was scotch taped together up-side-down. That required quick thinking to know what to do on the spur of the moment. Leaning over as far as he could one way. . .then the other MERL swung his guitar back and forth and kept right on singing and playing, reading the music the best he could from a 50 degree angle. LYN'S face was red from embarrassment at her mistake. . .and MERL'S face was red from singing while practically standing on his head!

At last her dream is coming true! Ruth, wife of announcer MERL DOUGLAS has wanted to open her own Beauty Parlor for several years, but never could quite get things worked out. NOW. . .plans are completed and in early April she will be ready to operate a shop at the corner of Walnut and Fifth avenue in Shenandoah. The DOUGLAS family is moving into the location and Ruth will convert part of the home into a Beauty Parlor. She has been an operator for five years and it will be a real thrill to have her own shop.

KMA's evening a n n o u n c e r MIKE HEUER received publicity in the Billboard recently. All because of his originality, the

article stated that "whenever MIKE HEUER thinks his record show is getting dull, he reads the lyrics of any rhythm and blues number over an instrumental version of Melody of Love. MIKE says this stunt is particularly effective with "Shtiggy Boom!" Listen to MIKE'S "Club 960" at 7:30 in the evenings, and you'll have a big laugh at this unusual stunt.

Twelve minutes after Florence Falk, "The Farmer's Wife" had gone on the air with her "Sunday on the Farm" program February 27, a call came from the Nursing Home in Farragut, saying her husband's mother, Mrs. Carrie Falk had taken a turn for the worse. Ill with pneumonia, she had suddenly gone into a coma. The engineer on duty heard Byron say "We'll come as soon as Florence is off the air", so they immediately got ready with records to take over the show. Florence quickly told the listeners she had to leave. . .signed off. . . and grabbed her coat. They rushed to Farragut, only to arrive a few minutes after she had passed away. Mrs. Falk, age 82, suffered her first stroke 27 years ago, and had been a wheel patient for the past 10 years. All thru her long illness, she was cheerful, and a wonderful example to everyone who suffers an affliction. On the Sunday following her funeral the alter vases at St. John's Lutheran church in Essex were filled with flowers in her memory. .at the same time a rose in a vase announced the arrival of her great grand-daughter Marlene Jean, born to Mr. and Mrs. Marlen Holmes.

What else could get a girl on top of a chair as fast as a tiny mouse? And to complicate things even more. . .CAROL LEWIS, Copy Editor of the KMA Guide had just gotten on the chair when a long distance call came through. But she wouldn't think of getting down off the chair, with the little mouse still in the office. No indeed. . . . that would be too dangerous! She wiggled her knees until the chair moved over far enough for her to reach the phone. About that time Editor TOKE NELSON grabbed his camera, and there you are! A few minutes later, the advertising department, who just happened to have some HIDE on hand, appeared with this reliable mouse killer and before long the little mouse's career was ended. CAROL'S life was saved!



Funny way to answer a phone? Copy editor Carol Lewis was "chaired" by a mouse when long distance call came.

# On the KMA PARTY LINE

By **DORIS MURPHY**

Speaking of cooperation! FLORENCE FALK'S car radio has certainly been behaving in a tactful way. Something has gone wrong with it, and the FALK'S can't get any radio stations on it. . . except ONE KMA! That's what I call loyalty. Knowing FLORENCE is on KMA at 10,30 every morning, it just can't let her down. . . so it keeps right on bringing in KMA, even if it hasn't the strength to pull in any other station.

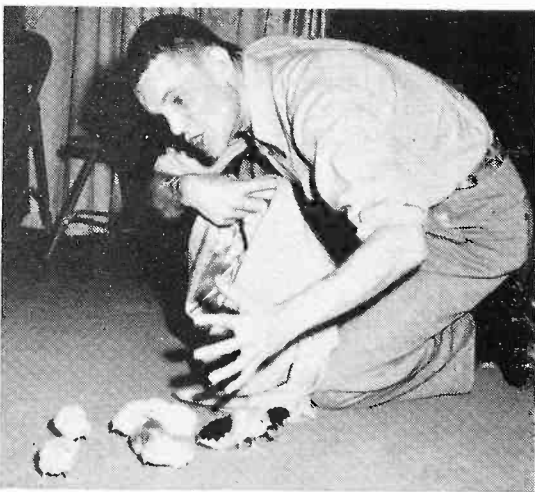
Spring is blossoming forth in the farm service department of KMA, with both MERRILL LANGFITT and JACK GOWING developing building plans. If MERRILL'S plans work out, the LANGFITT'S will be building a new ranch type home in the May-Rankin addition in Shenandoah this spring, and JACK will move the middle of April to the family farm home, 3 miles north of town. JACK and his wife have been busy remodeling the place, plastering, building cupboards, tearing out a partition, painting and papering. It will be a busy summer for the boys, but an enjoyable one getting their families located in new homes.

BETTY and LYN SOFLIN like dogs but their love waned considerably one muddy spring day recently, when a big, old hound dog got carried away with his friendliness,

and jumped in their car uninvited. The girls had just pulled up in front of a downtown store, when they heard a funny noise outside the car. Turning her head BETTY found herself staring right into the face of a big dog looking in the window. Hoping to shoo him away, she opened the car door. With a big leap, the dog with his mud covered feet and wet, muddy fur, jumped right into the car. Before the girls could coax him out, he had left muddy footprints all over the back seat. Of all the cars on the street, the girls wondered WHY he had to pick on THEM!

Fluffy baby chicks and spring are synonymous. . . and everyone gets a big kick out of seeing chirping baby chicks right out of the shells. When the promotion department brought a box of these little fellows to the studio for a picture with the Berry Maids, BETTY and LYN, MERL DOUGLAS got his picture taken unexpectedly just as he was in the throes of trying to help catch them. Here you see DOUG sneaking up on them with his coat trying to gather the chicks under.

Traveling 1,600 miles. . . making three churches, one school, and one radio appearance all in one weekend, was accomplished by the DIXIE FOUR QUARTET of KMA, when they made a trip to Flint, Michigan recently. Their personal appearances March 5 and 6 were under the sponsorship of the Flint Gospel Singing Association and their gospel music was heard by 2,000 people in the two-day period. The DIXIE FOUR are getting around these days, presenting concerts in Iowa, Nebraska and Missouri. Watch for them when they come to YOUR territory. Gradually the members of the quartet have succeeded in finding housing, and so far three of the families have come to make their home in Shenandoah. TOM MITCHELL, wife and 13 month old daughter Stephanie Ann of St. Louis are living in an apartment on Sycamore street. NORMAN WOOD and his wife and two children Norman Lee 8 and Cathy Susan 5 from Troy, Missouri, are located in a duplex on South Center St. MELVIN REED'S wife and 15 year old son Douglas have arrived from Indianapolis and the family is living in an apartment at 402½ West St. JOE THOMAS'S family is still in Indianapolis but will join him as soon as



"Mother" Meri Douglas gathers up his brood of peeping, baby chicks.

school is out. The only bachelor in the quartet. . . pianist WAYNE GRIFFIN makes his home at the hotel. If their music sounds happier these days, it's because their families have arrived and the boys are again eating their wives delicious home cooking.

Announcer MERL DOUGLAS really hit a "detour" while singing "Detour" on the air recently and practically ended singing "up-side-down." All . . . because entertainer LYN SOFLIN wanted to help him, by scotch taping together his old sheet music that had torn into. MERL got along fine singing the verse, but when he came to the chorus, you can imagine his surprise to see the music was scotch taped together up-side-down. That required quick thinking to know what to do on the spur of the moment. Leaning over as far as he could one way. . . then the other MERL swung his guitar back and forth and kept right on singing and playing, reading the music the best he could from a 50 degree angle. LYN'S face was red from embarrassment at her mistake. . . and MERL'S face was red from singing while practically standing on his head!

At last her dream is coming true! Ruth, wife of announcer MERL DOUGLAS has wanted to open her own Beauty Parlor for several years, but never could quite get things worked out. NOW. . . plans are completed and in early April she will be ready to operate a shop at the corner of Walnut and Fifth avenue in Shenandoah. The DOUGLAS family is moving into the location and Ruth will convert part of the home into a Beauty Parlor. She has been an operator for five years and it will be a real thrill to have her own shop.

KMA's evening announcer MIKE HEUER received publicity in the Billboard recently. All because of his originality, the

article stated that "whenever MIKE HEUER thinks his record show is getting dull, he reads the lyrics of any rhythm and blues number over an instrumental version of Melody of Love. MIKE says this stunt is particularly effective with "Shtiggy Boom!" Listen to MIKE'S "Club 960" at 7:30 in the evenings, and you'll have a big laugh at this unusual stunt.

Twelve minutes after Florence Falk, "The Farmer's Wife" had gone on the air with her "Sunday on the Farm" program February 27, a call came from the Nursing Home in Farragut, saying her husband's mother, Mrs. Carrie Falk had taken a turn for the worse. Ill with pneumonia, she had suddenly gone into a coma. The engineer on duty heard Byron say "We'll come as soon as Florence is off the air", so they immediately got ready with records to take over the show. Florence quickly told the listeners she had to leave. . . signed off. . . and grabbed her coat. They rushed to Farragut, only to arrive a few minutes after she had passed away. Mrs. Falk, age 82, suffered her first stroke 27 years ago, and had been a wheel patient for the past 10 years. All thru her long illness, she was cheerful, and a wonderful example to everyone who suffers an affliction. On the Sunday following her funeral the alter vases at St. John's Lutheran church in Essex were filled with flowers in her memory. . . at the same time a rose in a vase announced the arrival of her great grand-daughter Marlene Jean, born to Mr. and Mrs. Marlen Holmes.

What else could get a girl on top of a chair as fast as a tiny mouse? And to complicate things even more. . . CAROL LEWIS, Copy Editor of the KMA Guide had just gotten on the chair when a long distance call came through. But she wouldn't think of getting down off the chair, with the little mouse still in the office. No indeed. . . that would be too dangerous! She wiggled her knees until the chair moved over far enough for her to reach the phone. About that time Editor TOKE NELSON grabbed his camera, and there you are! A few minutes later, the advertising department, who just happened to have some HIDE on hand, appeared with this reliable mouse killer and before long the little mouse's career was ended. CAROL'S life was saved!



Funny way to answer a phone? Copy editor Carol Lewis was "chaired" by a mouse when long distance call came.

# A LETTER FROM BERNICE CURRIER

Dear Friends,

Thanks for your many, many letters this last month and every month. Now I'm writing to each and every one of you and am even going to answer some of the questions you have asked. First, one of the new listeners wanted to know about my family. My four children are scattered all over. Helen lives in Houston, Texas and has four of the sweetest children you ever saw. Three boys and a girl. The girl is the oldest though, so she bosses them around quite a bit. Little Alan is the youngest. He was only 2 when I visited them last summer. He never wants to go to bed so he just doesn't. Helen said she was worn out trying to cope with it, and now he could stay up until he dropped off to sleep in his chair or sitting on the floor! That's a far cry from the way she did with her first baby. Merrill (Red) and his family live in Cairo, Illinois. He is manager of the radio station there, also an elder in the Presbyterian church, and one of the City Commissioners. They have two girls, 11 and 5 years. He and his wife, Janet, both have red hair but the girls' neither one have. Karen is a honey blond and Lynn Rae is darker. Margaret lives in New York, N. Y. She is married, has no children and is a dreamer and writer. Ed and his family live in Elmhurst, Illinois. He is a chemical engineer with the Argonne Laboratories. They have two girls' Carol Ann and Joyce Elaine, Carol is 2 and Joyce is 5 months.

That's my family and I am very proud of them. My sister, Elizabeth and brother-in-law, Lee Craig, live in Billings, Montana. They were here at Christmas time and many of you heard them on my program. They went south from here and haven't been able to get back to Billings yet. I know they are going to write and say that

never again will they come back to the midwest in the wintertime. But it was so good having them here. They were at Las Vegas when this last atomic blast was fired. But they didn't seem to be very excited about it. Said it was just a terrifically bright glare.

Spring is in the air, the sun has warmth, the birds are beginning to talk about where they will build their nests, and the grass is very decidedly turning green under the snow and ice.

I should have had my apple tree sprayed with the dormant spray before now, but have been so busy I couldn't take time to find someone to do it. OH WELL! ! It's SPRING and I love it.

And let's not forget that "A Smile costs nothing but creates much. It happens in a flash and the memory sometimes lasts forever. It cannot be bought, begged, borrowed or stolen—but it is something that is no earthly good to anyone until it is given away. So, if in your hurry and rush, you meet someone who is too weary to give you a smile, leave one of yours. For no one needs a smile quite so much as he who has none to give."

These are two of my grand-children and of course grandmothers are supposed to be a little "touched" where these youngsters are concerned. Johnny and David Armstrong are 10 and 7 years old. They live in Houston, Texas where they are out of doors practically the year 'round, so are brown as Indians most of the time. They swim a great deal and Johnny is quite a champion. Aren't they handsome? And smart? Thanks, I knew you would agree with me.

Be with me every morning Monday though Saturday at 9:00 o'clock and until then. . . Bless your hearts. . . Goodbye.

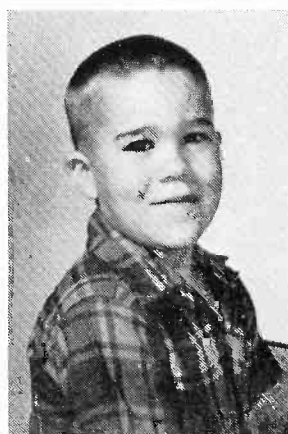
*Bernice*



John Armstrong  
10 on October 1, 1955



Bernice Currier, 1955  
27 Years in Radio



David George Armstrong  
7 on May 20, 1955



## Homemaker's Guide

### "THE FARMER'S WIFE"

By FLORENCE FALK

*Greetings from the Farm Kitchen!!!*  
**LUNCHEON FRUIT PLATE  
WITH NOODLES**

- 4 large tart apples
- $\frac{3}{4}$  c. seedless raisins
- 1 c. water
- $\frac{1}{4}$  c. brown sugar
- $1\frac{3}{4}$  c. boiling water
- $\frac{1}{4}$  c. brown sugar
- 2 T. flour
- $\frac{1}{4}$  t. nutmeg
- $\frac{1}{4}$  t. salt
- 1 T. butter
- 1 T. vinegar
- 4 to 5 oz. Gooch's noodles

Pare, core and quarter the apples. Steam with the raisins in first brown sugar until tender. Remove apples to hot serving plate and keep warm. Add the boiling water. Mix the other brown sugar with the flour, nutmeg and salt. Add gradually to the raisin mixture. Cook, stirring constantly, until it is thick and smooth. Add the butter to the sauce and remove from the fire. Add vinegar. Cook the bread, Gooch's noodles in boiling salted water 7 to 10 minutes. Drain. Remove to the hot platter, cover with apples and pour the hot raisin sauce over all. Serves 6.

**MINT-MERINGUE PEACHES AS  
GARNISH FOR LAMB**

Color and flavor are two qualities which go into good garnishes. Mint-meringue peaches have both. Here's how! Beat two egg whites until they are stiff. Add a half cup of mint jelly and continue beating until it's well mixed. Place a large spoonful of mint meringue in each of eight or 10 peach halves. Put the peaches in the oven or under the broiler just long enough for the meringue to become slightly browned. Serve these edible, attractive garnishes with hot lamb or your meat favorite.

Crispness for cottage cheese. For a texture change, mix crumbled broiled bacon over the cottage cheese you use in a vegetable or fruit salad.

**CARROT SPICE CAKE**

- $1\frac{1}{2}$  c. finely grated carrots
- $1\frac{1}{2}$  c. sugar
- $1\frac{1}{2}$  c. water
- 1 c. seeded raisins
- $\frac{1}{2}$  c. butter or margarine
- 1 t. cinnamon

- 1 t. cloves
- 1 t. nutmeg
- 2 c. all-purpose flour (Gooch's)
- 2 t. baking soda
- $\frac{1}{4}$  t. salt
- $\frac{1}{2}$  c. chopped nuts

Place carrots, sugar, water, raisins, butter and spices in a sauce pan. Bring to boiling point and cook slowly for 5 minutes. Place pan over ice cubes to cool mixture quickly. Sift flour, soda, and salt together. Add to first mixture with nuts and mix quickly and thoroughly. Place in a well greased and floured 9 inch ring mold. Bake in a moderate oven, 375° for 50 minutes. Ice with a fluffy boiled icing or butter cream icing.

**DIFFERENT FRIED APPLES**

- 3 large tart cooking apples
- $\frac{3}{4}$  c. brown sugar
- 2 t. cinnamon
- $\frac{1}{2}$  t. salt
- 6 T. butter

Wash and core apples without peeling, cut into  $\frac{1}{2}$  inch slices. Combine brown sugar, cinnamon, and salt in small bowl. Melt butter over low heat in large heavy frying pan. Place apple slices in pan, sprinkle each slice with 1 t. cinnamon sugar mixture. Fry apple slices, a few at a time, over low heat about 5 minutes. Turn sprinkle with another teaspoon sugar-cinnamon mixture. Fry until apples are tender and almost transparent. Keep warm and serve with sour cream if desired.

**BOSTON BROWN BREAD**

- $\frac{2}{3}$  c. graham flour (Gooch's)
- $\frac{2}{3}$  c. rye flour (Gooch's)
- $\frac{2}{3}$  c. cornmeal (Gooch's)
- $\frac{1}{2}$  t. soda
- $\frac{1}{2}$  t. baking powder
- $\frac{2}{3}$  t. salt
- $1\frac{1}{2}$  T. shortening
- $\frac{1}{2}$  c. molasses
- 2 c. sour milk
- $\frac{1}{2}$  c. raisins
- $\frac{1}{2}$  c. chopped dates

Sift and re-measure graham flour, rye flour and cornmeal. Mix with baking powder, soda and salt. Melt shortening and blend with molasses and sour milk. Stir briskly into flour mixture. Add raisins and dates. Pour into round molds or cans. Cover tightly. Steam 2 hours or if a drier texture is desired remove from steam kettle and bake in 350° oven for 10 to 15 minutes. If for dessert serve with a good rich hard sauce.





## HOMEMAKER'S VISIT

By **BERNICE CURRIER**

### FABULOUS FLUFFY FLOATING ISLAND MERINGUES

- 1 egg white
- dash salt
- 2 T. sugar
- 2 c. milk

Beat egg white with salt till frothy. Add sugar gradually beating until very stiff. Heat milk to simmering in skillet. Drop meringue in by Tbs. Cook slowly, do not let boil, uncovered, till firm (about 5 minutes). Lift from milk with slotted spoon (save milk for custard). Drain on paper towel and chill.

### CUSTARD

- 2 eggs and 1 egg yolk
- $\frac{1}{4}$  c. sugar
- dash salt
- 2 c. milk (from meringues plus extra)
- 1 t. vanilla

Beat eggs slightly, add sugar and salt. Stir in milk. Cook in double boiler stirring constantly till mixture coats spoon. Add vanilla. Pour into dessert dishes and chill. To serve, top each with a meringue and sprinkle with nutmeg or top with preserves or jelly. Makes 4 servings.

### JELLY ROLL

#### WITH ALMOND FROSTING

- One 3 oz. package cream cheese
- 1 T. milk
- $2\frac{1}{2}$  c. sifted powder sugar
- $\frac{1}{2}$  t. almond extract
- 1 jelly roll cake
- Strawberry preserves
- Toasted slivered almonds
- Whole strawberries

Blend cheese and milk, add sugar and extract and blend till smooth. Bake jelly roll cake spread with preserves, roll up and spread with your frosting mixture. Sprinkle with Almonds, garnish with strawberries.

### PRUNE NUT COFFEE CAKE

- A—2 packages dry yeast
- $\frac{1}{2}$  c. warm water
- B— $\frac{1}{2}$  c. milk scalded
- $\frac{1}{2}$  c. sugar
- $\frac{1}{2}$  t. salt
- $\frac{1}{2}$  c. shortening
- $4\frac{1}{2}$  to 5 c. sifted flour

- 2 eggs slightly beaten
- 1 recipe Prune-Nut Filling
- 1 recipe Lemon Icing

Combine A. Combine B and cool to luke-warm then beat in 2 c. flour. Add the eggs and mix well, then stir in A. Add remaining flour to make soft dough. Knead on floured board till smooth and satiny. Place in greased bowl, brush lightly with grease, cover, let rise in warm (85 degrees) place, till double. Punch down with fist, cover, let rise again 45 minutes. Put out on board and divide into 2 balls. Let rest, covered 10 minutes. Keep warm and out of drafts. Roll out 1 of the balls to 8 by 14 inches. Place on greased cooky sheet and spread with Prune-Nut Filling just down the center. On each side cut 4 gashes at equal intervals toward the center making them  $2\frac{1}{2}$  inches long. Crisscross the strips from each side, tucking in the end of last one. Cover, let rise to double. Bake about 30 minutes at  $360^{\circ}$ . Remove to rack to cool. Frost with Lemon Icing. Use remaining ball of dough for dinner rolls.

### PRUNE NUT FILLING

Combine 1 c. chopped prunes,  $\frac{1}{2}$  c. finely chopped apples,  $\frac{1}{8}$  c. chopped walnuts,  $\frac{1}{4}$  c. sugar and 1 T. lemon juice.

### LEMON ICING

Mix  $\frac{1}{2}$  c. powder sugar and 1 T. lemon juice and 1 T. soft butter till of spreading consistency.

### SPANISH EGGS

- A—One 6 oz. package noodles
- B— $\frac{1}{2}$  c. chopped onion
- $\frac{1}{2}$  c. chopped green pepper
- 3 T. fat
- C—1 No. 2 can tomatoes
- D— $\frac{1}{4}$  pound grated cheese
- E— $\frac{1}{4}$  c. butter
- F— $\frac{1}{4}$  c. flour
- $\frac{1}{2}$  t. salt
- 6 hard boiled eggs.

Cook A in boiling salted water until tender, drain. Cook B till tender. Add C and simmer 10 minutes. Add D. Melt E and blend in F. Combine this with tomato mixture. Cook and stir till thick. Place half of A in casserole. Slice 3 eggs over it, top with half of tomato mixture, repeat layers, covering egg slices with tomato mixture. Bake in  $350^{\circ}$  oven 25 minutes. Makes 6 to 8 servings.



★

LETTER FROM....

*Melvin Redd*

The Bass Voice of  
THE DIXIE FOUR

★

This is somewhat of a new experience for me but I'll try to throw a few words together to better acquaint you with the quartet and our work.

As for myself I was one of eight children born to Mr. and Mrs. W. F. Redd in Green, a little town away down in South Carolina. My father being a musician and teacher, I inherited a talent and love for music, as did my brothers and sisters who were all musicians, either vocal or instrumental.

In my early teens I became interested in the guitar which was among the first instruments I studied. My first musical experience was in the popular field, having played in a mandolin orchestra about four years.

About 1937, due to the influence of a very dear friend of mine, my interest turned to Gospel music. I began singing in our church choir and for a few years I devoted my time to choir and chorus work. But gradually I became interested in quartet work.

Early in 1943 I went to Florida to work in a shipyard. During the three years I worked there, I didn't have much time for singing. However, I joined a quartet which had been organized in the shipyard and we sang at conventions and did some concerts when time would permit. And when the defense work began slowing down we had more time for singing. Our travels took us over the northwest section of Florida and into South Georgia and Alabama.

By this time I had made up my mind that the quartet business was for me and decided to make it my profession. At the close of World War II my job, like many other defense jobs, was terminated. I then went to Chattanooga, Tennessee, to



Here's a recent picture of Melvin, his wife Edith, and son Douglas, 15.

work for the Stamps Baxter Music and Printing Co. I sang with the office quartet there about three months.

My professional career was launched in the fall of 1946 when I joined a Stamps Baxter Quartet in Jackson, Miss. Since then I have worked with several different groups. I have been with "The Dixie Four" since May, 1953, and I can truthfully say it has been a wonderful association.

We of "The Dixie Four" feel we are very fortunate to be with Radio KMA. It's management and personnel are tops. We think it's one of the best stations in the country. We have found the people in Iowa and surrounding states to be very friendly.

They have given us a warm welcome wherever we have been.

Above is a picture of my family. My wife, Edith, is a native of North Carolina. Her home is in the western part of the state near Ashville. Douglas is our only child. He is fifteen years old and is in his second year in high school. Doug is a great baseball enthusiast. He was chosen for the all star team in his league two seasons ago. It looks like I'm running out of space so I'll close with this message to the readers of the Guide. You have become acquainted with us, now let us become acquainted with you by making a personal appearance in your community.

*Melvin Redd*

**DAILY DAYTIME PROGRAMS**

**MONDAY THROUGH FRIDAY**

5:00 a.m.—Town & Country Hour  
 6:00 a.m.—News & Weather  
 6:10 a.m.—Practical Land Use (Tu. & Th.)  
 6:15 a.m.—Merl Douglas  
 6:30 a.m.—Merrill Langfitt  
 7:00 a.m.—Dean Naven, News  
 7:15 a.m.—Markets  
 7:35 a.m.—Betty & Lyn  
 7:45 a.m.—Morning Headlines  
 8:00 a.m.—Breakfast Club  
 9:00 a.m.—Bernice Currier  
 9:25 a.m.—Whispering Streets  
 9:45 a.m.—When A Girl Marries  
 10:00 a.m.—Kitchen Club  
 10:15 a.m.—Betty & Lyn  
 10:30 a.m.—Florence Falk  
 10:55 a.m.—**Betty Crocker (M.W.F.)**  
 11:00 a.m.—Back To The Bible  
 11:30 a.m.—Hiland Tater Quiz  
 11:45 a.m.—Morning Markets  
 12:00 noon—Dean Naven, News  
 12:15 p.m.—Edward May  
 12:30 p.m.—Jack Gowing  
 12:45 p.m.—Markets  
 1:00 p.m.—Dick Mills' or Baseball Show  
 3:30 p.m.—Dick Mills' Show  
 4:00 p.m.—News  
 4:05 p.m.—Bill Stern  
 5:45 p.m.—Farm Bulletin Board  
 6:00 p.m.—Dixie Four  
 6:20 p.m.—Let's Go Visiting (T.T.)  
 6:30 p.m.—Ralph Childs, News  
 6:45 p.m.—Edw. May, Mkts & Weather

**MONDAY NIGHT**

7:06 p.m.—Lone Ranger  
 7:25 p.m.—Les Griffith  
 7:30 p.m.—Voice of Firestone  
 8:00 p.m.—Club 960  
 9:30 p.m.—Tarkio College Story  
 9:45 p.m.—Join The Navy  
 10:00 p.m.—Ralph Childs, News  
 10:15 p.m.—Martin Block  
 11:00 p.m.—News  
 11:05 p.m.—Music In The Night  
 11:30 p.m.—Back To The Bible

**TUESDAY NIGHT**

7:00 p.m.—Saga  
 7:25 p.m.—Les Griffith  
 7:30 p.m.—Club 960  
 10:00 p.m.—Ralph Childs, News  
 10:15 p.m.—Martin Block  
 10:30 p.m.—Sports Scoreboard  
 10:45 p.m.—Gloria Parker  
 11:00 p.m.—News  
 11:05 p.m.—Music In The Night  
 11:30 p.m.—Back To The Bible

**WEDNESDAY NIGHT**

7:00 p.m.—Lone Ranger  
 7:25 p.m.—Les Griffith  
 7:30 p.m.—Club 960  
 10:00 p.m.—Ralph Childs, News  
 10:15 p.m.—Martin Block  
 11:00 p.m.—News  
 11:05 p.m.—Music In The Night  
 11:30 p.m.—Back To The Bible

**THURSDAY NIGHT**

7:00 p.m.—Saga  
 7:30 p.m.—Les Griffith  
 7:30 p.m.—Club 960  
 10:00 p.m.—Ralph Childs, News  
 10:15 p.m.—Martin Block  
 11:00 p.m.—News  
 11:05 p.m.—Music In The Night  
 11:30 p.m.—Back To The Bible

**FRIDAY NIGHT**

7:00 p.m.—Lone Ranger  
 7:25 p.m.—Les Griffith  
 7:30 p.m.—Club 960  
 10:00 p.m.—Ralph Childs, News  
 10:15 p.m.—Martin Block  
 10:30 p.m.—Sports Scoreboard  
 10:45 p.m.—Gloria Parker  
 11:00 p.m.—News  
 11:05 p.m.—Music In The Night  
 11:30 p.m.—Back To The Bible

**SATURDAY PROGRAMS**

5:00 a.m.—Town & Country Hour  
 6:00 a.m.—News & Weather  
 6:15 a.m.—Merl Douglas

6:30 a.m.—Merrill Langfitt  
 7:00 a.m.—Dean Naven, News  
 7:15 a.m.—Frank Field  
 7:30 a.m.—This Week In Sports  
 7:45 a.m.—Morning Headlines  
 8:00 a.m.—Saturday Shopper  
 9:00 a.m.—Bernice Currier  
 9:30 a.m.—Space Patrol  
 10:00 a.m.—Talk of The Town  
 10:30 a.m.—Florence Falk  
 11:00 a.m.—Back To The Bible  
 11:30 a.m.—To Be Announced  
 11:45 a.m.—Practical Land Use  
 12:00 noon—Ralph Childs, News  
 12:15 p.m.—Edward May  
 12:30 p.m.—Jack Gowing  
 1:00 p.m.—Metro, Opera 4/2 & 9  
 4:00 p.m.—Dick Mills' Show  
 5:45 p.m.—Bob Edge  
 6:00 p.m.—At Ease  
 6:15 p.m.—Dixie Four  
 6:30 p.m.—News  
 6:45 p.m.—Serenade In Blue  
 7:00 p.m.—Dancing Party or Baseball Game  
 10:00 p.m.—Ralph Childs, News  
 10:15 p.m.—Hotel Statler Band  
 10:30 p.m.—Proudly We Hail  
 11:00 p.m.—News  
 11:05 p.m.—Music In The Night  
 11:55 p.m.—News

**SUNDAY PROGRAMS**

6:30 a.m.—Musical Clock  
 7:00 a.m.—News and Weather  
 7:15 a.m.—Dixie Four  
 7:30 a.m.—Musical Clock  
 8:00 a.m.—Radio Bible Class  
 8:30 a.m.—Your Worship Hour  
 9:00 a.m.—Sunday School Lesson  
 9:15 a.m.—Bible Truth  
 9:30 a.m.—Wings Of Healing  
 10:00 a.m.—Sunday Worship  
 10:15 a.m.—Wes Haines' Sun. Album  
 12:00 noon—News  
 12:15 p.m.—Platter Party  
 12:55 p.m.—Baseball Game  
 3:30 p.m.—Platter Party  
 5:00 p.m.—Mon. Morn. Headlines  
 5:15 p.m.—Paul Harvey  
 5:30 p.m.—World Church  
 6:00 p.m.—Light & Life Hour

6:30 p.m.—Valentino  
 7:00 p.m.—Revival Hour  
 8:00 p.m.—Walter Winchell  
 8:15 p.m.—Quincy Howe  
 8:30 p.m.—Greatest Story Told  
 9:00 p.m.—Paul Harvey  
 9:15 p.m.—Elmer Davis  
 9:30 p.m.—Hour of Decision  
 10:00 p.m.—News  
 10:15 p.m.—Guest Star  
 10:30 p.m.—Revival Time  
 11:00 p.m.—News  
 11:05 p.m.—Music In The Night  
 11:55 p.m.—News

**APRIL 1955**

**KANSAS CITY BASEBALL SCHEDULE**  
 2—Jacksonville 7:00  
 3—Savannah 12:55  
 4—Columbia 12:55  
 5—Winston Salem 12:55  
 6—Fayetteville 1:25  
 7—Norfolk 12:55  
 8—Richmond 12:55  
 9—Phillies 7:00  
 10—Phillies 12:55

**REGULAR SEASON OPENS**

12—Detroit 1:55  
 13—Detroit 1:55  
 14—Chicago 1:25  
 16—Detroit 12:55  
 17—Detroit 12:55  
 18—Cleveland 7:55  
 19—Cleveland 7:55  
 22—Chicago 7:55  
 23—Chicago 1:55  
 24—Chicago 1:55  
 26—Boston 7:55  
 27—Boston 7:55  
 28—New York 7:55  
 29—New York 7:55

Listings Correct at Time of Publication.

However, all Programs Are Subject to Change.

# KMA's Family Album



## HIGH SCHOOL STARS ON "TALK OF TOWN"

The actors and producers of the Shenandoah High "Varieties" were interviewed on "Talk of the Town" popular audience show emceed by Warren Nielson. The show is heard at 10 a.m. every Saturday, originating from Simpson's Cafe in downtown Shenandoah. Visitors are welcome, and free coffee is served. Try to attend it when in Shenandoah.

## LANGFITT TALKS TO NATIONAL CONVENTION

Merrill Langfitt, KMA's aggressive farm service director, spent a busy month in March. He is shown here addressing the National Nitrogen Solution dealers convention in Omaha, flanked by Casper Peter (left) of Phillips Petroleum; and Lawrence A. Long, editor of Croplife magazine.



## LIFE WITH THE DOUGLAS FAMILY

Because we hadn't shown you any pictures of the two children that are the apple of Ruth and Merl Douglas' eye, we thought a new photo was in order. Little one is Valerie Jo, and next to her is Sharon Lynn.



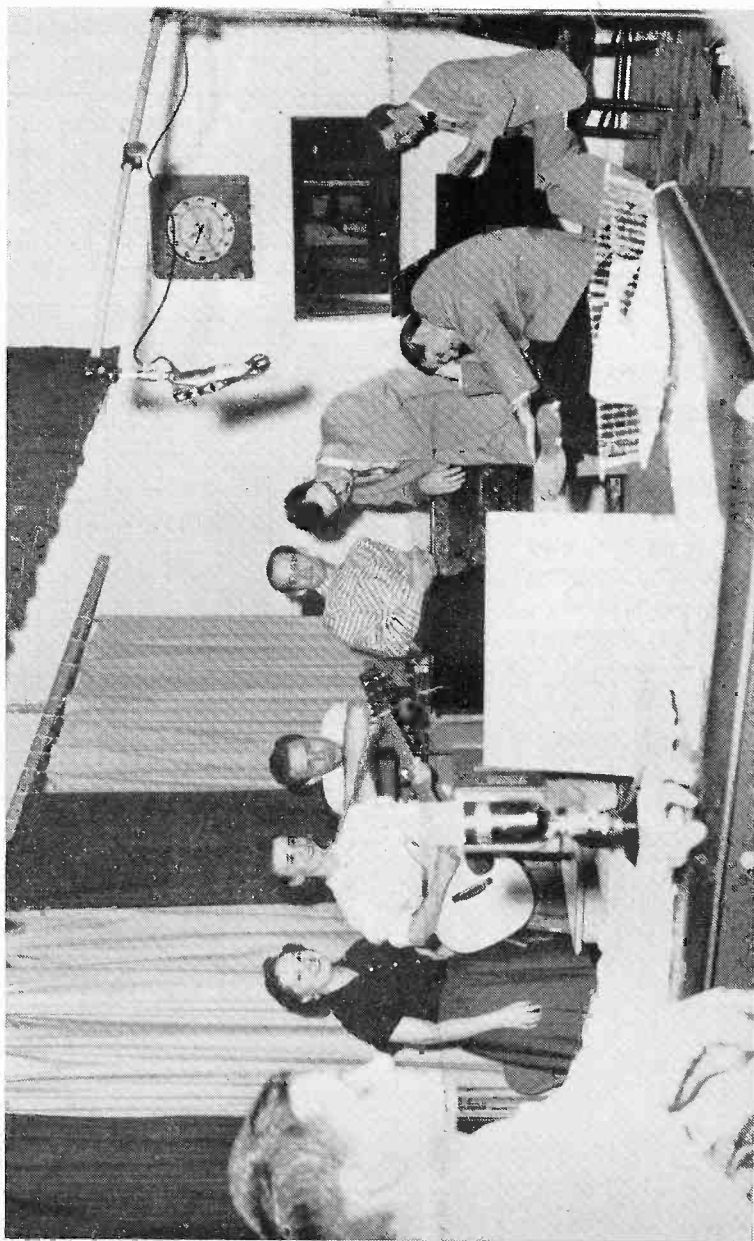
**Return Postage Guaranteed  
POSTMASTER.** If address-see has moved and forwarding order is on file, send form 3547, postage for which is guaranteed. If undelivered for any other reason, return to sender.

**Tom Thumb Publishing Co.  
Shenandoah, Iowa**

MISS LOIS ADELUNG  
108 EAST GRANT  
SHENANDOAH IOWA

**Bulk Rate  
U. S. Postage  
- PAID -  
Permit No. 1  
Shenandoah, Ia.**

# It's Town and Country Time On KMA



Five o'clock in the morning comes mighty early. . . but you'll be greeted by some real entertainment, country style, if you tune your radio to KMA every morning at that time. Betty and Lyn and the famed Dixie Four, along with pianist Wayne Griffin, and Emcee Merl Douglas spice up the day for early risers. (Ed. Note: Photographer must confess, he wasn't up that early, either. This picture was taken at 10 til 11, as the tell-tale clock in photo reveals).