

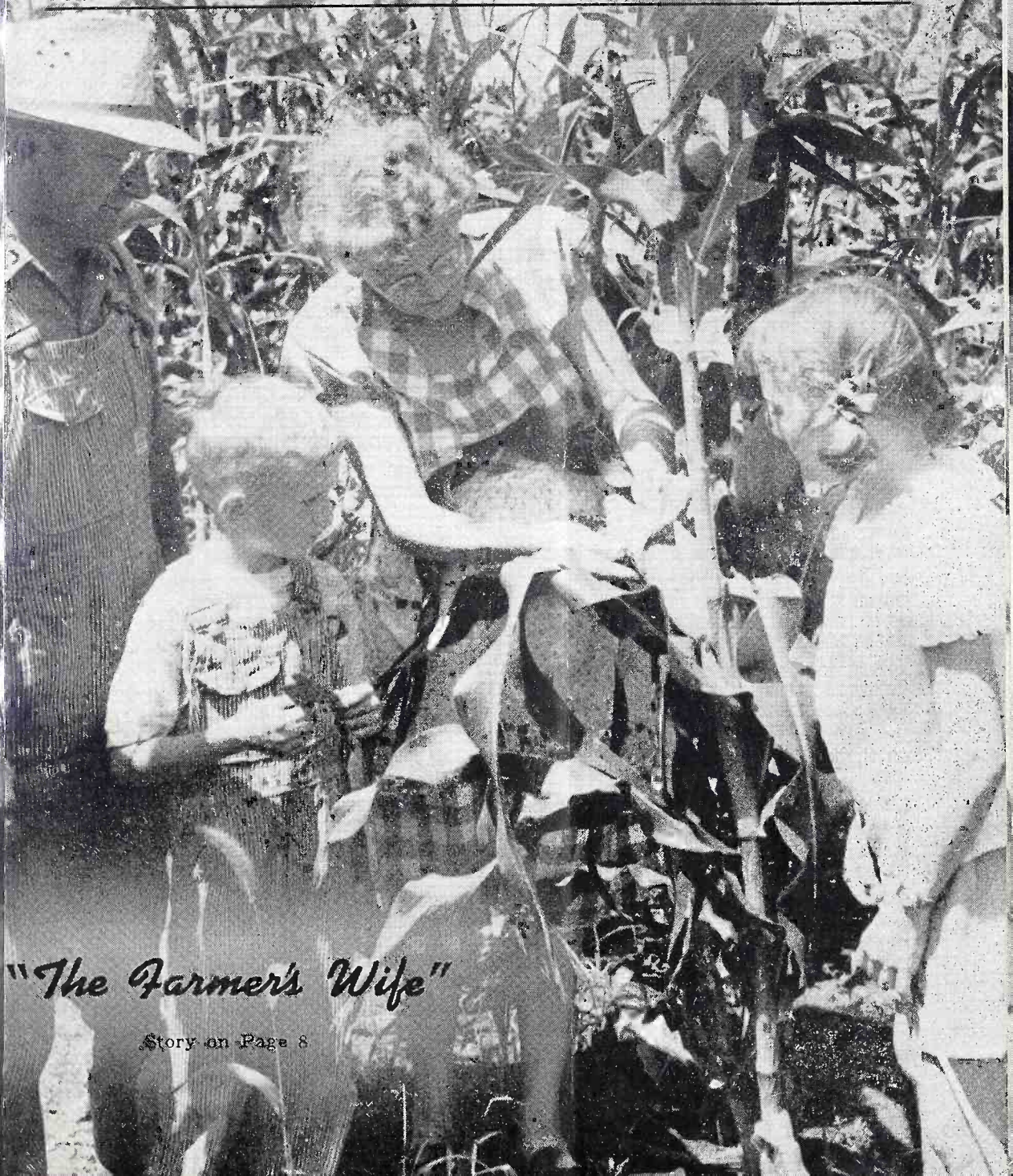
The

KMA GUIDE

Vol. 9

SEPTEMBER, 1952

No. 9



"The Farmer's Wife"

Story on Page 8



The KMA Guide

Vol. 9

No. 9

SEPTEMBER, 1952

The KMA Guide is published the first of each month by the Tom Thumb Publishing Co., 205 North Elm St., Shenandoah, Iowa. Owen Saddler, editorial Chairman; Harold B. Arkoff, editor; Doris Murphy, feature editor. Subscription price \$1 per year (12 issues) in the United States; foreign countries, \$1.50 per year. Allow two weeks' notice for changes of address and be sure to send old as well as new address.

Omaha, Nebraska . . . I am renewing my subscription to the GUIDE for another year. I only missed the first two issues. I have all the rest in a file. It seems like a long time to wait . . . an entire month for a new copy.

Mrs. Margaret Whitesides
3925 "K" Street

* * * * *

Plymouth, Nebraska . . . You will find my renewal to THE KMA GUIDE enclosed. When the mailman delivers this magazine I always stop my work and look through it, and in the evening when my work is completed for the day, I read it from cover to cover and enjoy everything in it.

Mrs. Herman Kisling

* * * * *

Maurice, Iowa . . . Enclosed please find 10¢ in coin for "The KMA GUIDE Cook Book". I have been a subscriber to the GUIDE since it began its publication in 1944, and have enjoyed every issue.

Mrs. Dick Lammers

(For complete information on obtaining the current cook book published by the KMA GUIDE, see page 16 of this issue.)

* * * * *

Des Moines, Iowa . . . My year's renewal subscription to THE KMA GUIDE is enclosed. My family and I would like to see a picture of Florence Falk and her family in the September issue. I enjoy her program, "The Farmer's Wife" very much.

Mrs. Clarence Swanson

(The KMA GUIDE photographer visited Florence's home this month and took the informal pictures you see of the family on pages 8 and 9. Also there is an interesting article about her and her family on those pages.)

* * * * *

Bentonville, Arkansas . . . Enclosed is a dollar for the KMA GUIDE. We enjoy it so much now that we're so far away from you.

Miss Velma Miers

* * * * *

Beaver Crossing, Nebraska . . . All my family enjoy reading the KMA GUIDE. We feel like we know almost all the folks who are pictured. I am nearly 85 years old and this magazine is my favorite.

Mrs. Anna LeZotte

New Betty & Lyn Show On KMA at 12:30 Daily

The ringing of the dinner bell at 12:30 every noon hour on KMA will introduce the new "Dinner Belles" show featuring KMA's popular singing sister team, Betty & Lyn, with an assist from Herman Housh and his fiddle.

Betty and Lyn team up on the same kind of novelty duet numbers that have made them so many fans and listeners on their 7:30 morning show.

The "Dinner Belles" first show was September 1 and it will continue to be heard every day, Monday through Saturday, at 12:30.

INEZ KEETON, KMA GUIDE STAFF MEMBER, ENGAGED TO WESTBORO, MO. MAN

The engagement of Inez Keeton, KMA promotion department secretary and an associate editor of the KMA GUIDE, to John Dennis Johnston of Westboro, Mo., was recently announced by Miss Keeton's parents, Mr. and Mrs. Charles Keeton of Shenandoah.

A January wedding is planned, after which the couple will live on a farm near Westboro.

"Stump Us" To Return To KMA September 29

"Stump Us", the long-time KMA favorite stump-the-musician program, will return to KMA September 29. The program, which gives valuable prizes to housewives who submit the names of tunes the "Stump Us" Gang can't play, will be heard daily, Monday through Friday, from 11:35 to 11:55 am.

KMA production manager Warren Nielson will be master of ceremonies for the show which will be sponsored by the Manchester Biscuit Company.

A Chat With Edward May



Mrs. Earl May, Warren Nielson (center), KMA production manager, and Edward with the cake honoring KMA's 27th birthday.

August was an eventful month for those of us at KMA. On the 12th, KMA had its 27th birthday and we celebrated that occasion in connection with Flower Arrangement Day. My mother was on hand to help blow out the candles on the huge birthday cake. (See photo above).

We had more than 1200 garden club members and other flower lovers in attendance and I believe everyone thoroughly enjoyed the day. Many of you have been listening to KMA since its first broadcast and we are very proud to know we have so many faithful friends and listeners in the area.

Also, on September 1 we put into use our new transmitter. It is a 5,000 watt RCA transmitter of the latest design and should enable KMA to bring you even better broadcasting service. Our old transmitter had been in use for nearly 17 years and has given more than 120,000 hours of faithful service.

Installed at a cost of nearly \$40,000, the addition of this new equipment reaffirms our belief in the continued importance of radio as the most important medium of information and entertainment in America today.

During the past few weeks many have written asking if we are planning a tour similar to the one we took last year to Mexico and the previous year to Alaska. We are working on a conducted tour and it looks as if plans will materialize for a KMA trip to the southlands and probably a cruise in the Caribbean sometime during the coldest part of the winter.

As soon as our plans are definite we will inform you as to the date of departure and return and also the many points of interest

which will be included on the journey.

I don't know where the summer went but it certainly passed in a hurry. For the most part it was very favorable and here around Shenandoah we had plenty of moisture for the months of June, July and August.

Rainfall during July was slightly below normal but August more than made up for it, so for the three months just ended we had slightly more than an inch and a half of rainfall above normal.

The long range forecast for September calls for temperatures to be slightly above normal and rainfall slightly below normal. If this government forecast turns out to be correct, September should be a delightful month and help materially to mature our bumper corn crop.

I hope you and your family had a very pleasant summer, we have at our house. Both Annette and Karen had the measles but outside of this we were treated exceptionally well. Now it's school time again. Annette's school started September 2 and she is in the second grade this year. Karen still has one more year before she starts to school.

I want to invite you to come to Shenandoah anytime during the next few weeks and see the many flowers that are in bloom. The asters, dahlias and chrysanthemums put on quite a show in the fall and stay with us until frost.

We all hate to see the time arrive when we no longer have flowers, but then we commence looking forward to the first flowers in the spring . . . tulips, hyacinths, daffodils and the other early blooms.

Merrill Langfitt on ABC Network Farm Program

An interview by KMA's Farm Service Director Merrill Langfitt with Colorado's Governor Dan Thornton was broadcast coast-to-coast on the American Broadcasting Company Radio Network September 6. It was part of "The American Farmer" program.

Langfitt's interview with Thornton was made on Thornton's ranch in Colorado and related the story of the modern ranches in that state.

"Greatest Story Ever Told" Returns Sept. 21

"The Greatest Story Ever Told", often called the most honored program in radio, will return to KMA via the ABC Radio Network after a summer absence on Sunday, September 21, from 4:30 to 5 pm.

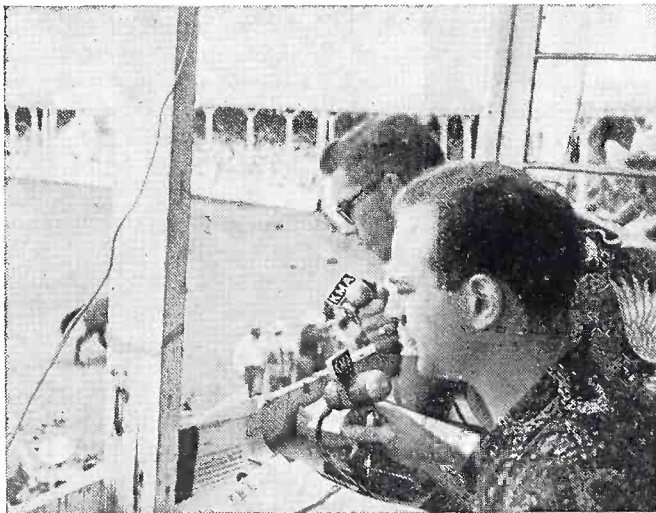
The award-winning series, renowned for its presentation of dramatized Biblical stories with artistry and dignity, is in its sixth consecutive year.

The Goodyear Tire and Rubber Company, which has sponsored the program since its inception in January of 1947, again will sponsor it as a public service program

The opening story will be "Do Ye Even So To Them", a moving and inspiring drama based on a teaching from the Sermon on the Mount as chronicled in the Seventh Chapter of the Gospel according to St. Matthew. It will be the first of eight Biblical dramatizations based on the Sermon on the Mount.



PEGGY TAYLOR - NEW "BREAKFAST CLUB" VOCALIST: Here's the latest picture of Peggy Taylor, young California-born singer, who has been chosen to sing on Don McNeill's "Breakfast Club" (8 am daily on KMA-ABC). Twenty-three year old Peggy has been active in Chicago radio and television circles for the past two years. She replaces the former "Breakfast Club" vocalist Patsy Lee, who left the program last spring to be married. Peggy first sang on the "Breakfast Club" during the week of May 26, while Don McNeill was trying out several vocalists for the job. More than 150 female vocalists from coast-to-coast had auditioned for the role.



KMA BROADCASTS FROM SIDNEY, IOWA RODEO

For the second year, KMA presented daily exclusive broadcasts from the Iowa Championship Rodeo at Sidney, Iowa, August 19-23. This year the play-by-play reports were given by Paul Pippert with other KMA staff members giving the color.

In the picture at left are Paul Pippert (background) and Bill Hare broadcasting from the KMA booth, which was located right over the shoots.

BETTY CROCKER TO HAVE THREE 5-MINUTE SHOWS DAILY OVER KMA

"Time for Betty Crocker", featuring that famous authority on food, made its bow over KMA and the ABC radio network on September 1, presenting three five-minute programs daily, Monday through Friday.

The three programs will each serve a different purpose for the housewife. They are subtitled as follows:

11:30 to 11:35 am: "Planning and Management", which will offer helpful suggestions on organizing menus for family or party.

1:30 to 1:35 pm: "Betty Crocker Shows You How", with Betty Crocker explaining in detail how to prepare famous recipes.

3:25 to 3:30 pm: "Variety", presenting the kitchen expert's advice on food for the family, party suggestions and efficient operation of the kitchen.

The programs are all presented by General Mills, Inc.

"JACK BERCH" SHOW ON AT NEW TIME SEPT. 22

KMA-ABC's smiling ambassador of song, Jack Berch and the "Jack Berch Show" moves to a new time period effective Monday, September 22. On this date Berch will be heard at 11:10 am over KMA and continue thereafter each Monday through Friday at this time.

Also featured on the program, which is sponsored by the Prudential Insurance Company of America, are Eddie Dunn, announcer-straight man, and the Charles Mag-nante trio.

NOTE FROM McNEILL

While vacationing in August at his summer home northwest of Chicago, Don McNeill, "Breakfast Club" toastmaster (KMA, daily at 8 am), wrote that he was building a flower box for his wife, Kay.

"It's a double-decker," said Don. "I'll plant pansies above and Kay says she will plant bachelor buttons below. Guess she figures the buttons will hold up my pansies."

FRIDAY FIGHTS RETURN

The Friday night boxing bouts on Gillette's "Cavalcade of Sports" returned to the air over KMA September 5 and will continue throughout the year bringing top boxing bouts from all over the country to KMA listeners each Friday night at 9.

September, 1952

Forecasts for the Month

BIRTHDAYS:

Sept. 13—Mike Koelker, son of Tony Koelker assistant station manager.

Sept. 14—Mrs. Earl E. May.

Sept. 23—Mildred Jennings, wife of Roland Jennings, engineer.

Sept. 27—Betty Lund, wife of Ralph Lund, engineer.

Sept. 29—Susan Childs, daughter of Ralph Childs, newseditor.

Oct. 3—Eleanor Jean May, wife of Edward May, president of the May Broadcasting Co. and the May Seed Co.

ANNIVERSARIES:

Sept. 5—Muriel and Newseditor Ralph Childs.

Oct. 1—Pat and Tony Koelker, assistant station manager.



CAL TINNEY, THE OKLAHOMA HUMORIST — Here's Cal Tinney, the Oklahoma humorist who stars on his own KMA-ABC show at 3 pm every afternoon. Typical of Tinney's wit is the time he was called upon to comment on the dry weather in the south. "Well", Tinney quipped, "We're running about five hundred cattle right now and if it doesn't rain pretty soon I can sell 'em as dried beef."



On the KMA PARTY LINE

With **DORIS MURPHY**

A leaky valve . . . a gasoline lantern . . . an explosion! The accident occurred at a sand pit, where KMA Engineer HAL HORAK of Wahoo, Nebr., and kid brother, Donald, age 15, were fishing. HAL had just stopped fishing and was putting out the lantern, when it exploded, throwing gasoline on the back of his thumb and part of his hand. In the excitement, HAL quickly put his hand between his trouser legs to extinguish the flame. When he removed his hand, he discovered the burned skin had stuck to the Marine Corp. dungarees he was wearing, and the skin was pulled off. So far, doctors have been unable to determine whether or not it will be necessary to graft skin on the hand. Quick action on the part of Donald, probably saved the car from going up in flames. When burning gasoline flew into the car

trunk, Donald beat it out before it had time to spread. Even though it has been a little difficult working controls with a bandaged hand, HAL has been able to continue with his work. He will leave Sept. 21st for Omaha where he will join the staff at KMTV. And to think . . . after all that grief . . . he didn't even catch a fish!

It was during our recent "Flower Arrangement Day" festivities at KMA last month. FRANK FIELD (in photo below) was introduced to the crowd right after all the KMA homemakers were introduced. FRANK, who often gives recipes on some of his morning shows, asked the 800 assembled women, "who here has ever used a recipe that I gave on the air?" Nearly half the crowd held up their hands. "That's what I told you, DORIS," said FRANK, looking at where I was standing behind the curtain, "Who said I'm not a homemaker!"

I'm wondering if you early listeners enjoyed as good a laugh as Engineer WALT ELY at 5 a.m. the morning of Aug. 22, when he found the record he put on to open up the day's broadcasting, was an old one dated Feb. 22. And all the information the announcer gave was WRONG! Here is how it happened. WALT, upon finding the control booth was not functioning, decided he would go ahead and put the station on, play a record or two and get things going. Quickly he grabbed up a record labeled "Star Spangled Banner" and "Opening" and put it on the air. You can imagine his amazement when he heard the announcer say: "It is 5:30



"Homemaker" Frank Field shows a new flower variety to the recent "Flower Arrangement Day" crowd.

a.m. . . . Febr. 22nd . . . 33 degrees in Shenandoah . . . and the weather forecast is for cold and windy". About that time I expect you listeners thought we had lost our mind here at KMA. We hadn't! It was just a mistake. Hope you enjoyed a good laugh with us.

Announcer **BILL HARE** wasn't content to kill the flies flying low in the studio! He got on a chair to kill those up high. And the inevitable happened. The chair slipped and down went **BILL** to the floor, bruising himself and skinning his shin. What's more . . . he missed the fly!

Most women have a hard time resisting buying a new dress, but it was cowgirl outfits that entertainer **BETTY SOFLIN** found hard to resist while vacationing at Estes Park. She didn't weaken and buy a complete new outfit, but she did buy beautiful new chocolate colored cowboy hats and red leather boots for herself and her sister **LYN**, whom you hear on the "Double Daters" at 7:30 each weekday morning. They are striking, when worn with their green skirts and blouses. **BETTY'S** vacation was saddened the first day when she received word of the critical illness of her grandmother, Mrs. William Metzger in Oxford, Nebr. Her death occurred a few days after **BETTY'S** return from Colorado. A brother, nephew and niece accompanied her on vacation.

It is 150 miles home for two KMA entertainers, **EZRA HAWKINS** and accordionist **PAT STARR**. And both make the trip every weekend, **EZRA** driving to Topeka, Kans., and **PAT** to Kansas City. Since the distance is the same, the boys try to out-do each other . . . seeing who can make the trip the quickest. **PAT** won easily the weekend that **EZRA** ran into so much trouble. He drove thru a blinding rain, hail, and to top it all off, quite a long distance on a freshly oiled road that delayed the trip and caused him to work a week to get the oil cleaned off his car.



Left to Right: Mrs. James Barnitz, Beverly, Barbara, and Doris Murphy.

Even in the face of all that trouble . . . **EZRA** still continues to make his weekly trips to Topeka.

Going home to Elkhart, Ind., for a visit this summer, meant more to entertainer **COY MARTIN** than ever before, because his younger brother, Ronnie had just returned home from two years service with the army in Germany. It had been four years since the brothers had seen each other, so they had plenty to talk about. And Ronnie had never seen his new nephew **MIKE**, son of **MR. & MRS. COY MARTIN**. The **MARTINS** also visited at Kalamazoo, Mich. on their vacation.

After hearing about the tea at my home honoring my niece, Mrs. James Barnitz and twin daughters Beverly and Barbara of Baltimore, Md., many of you wrote wanting to see their picture. So here it is! Compare it with the one in the Sept. 1950, **KMA GUIDE**. The girls have certainly grown, haven't they? Beverly is on the left, by her mother, and I am on the right, next to Barbara. They were delighted at the idea of having their picture taken. Betty and family visited her parents, Mr. and Mrs. Paul Ambler several weeks. Jim, who is with the Martin Aircraft Co. joined them later. The twins were wearing blue pinafores with white organdy ruffles and bright red trim. They will be 3 in October.

“The Farmer’s Wife” Iowa Farm is Background For New KMA Program

Meet the “Farmer’s Wife” and her family!

In order to introduce KMA GUIDE readers to Mrs. Byron (Florence) Falk, her husband and children, the KMA GUIDE this month visits the Falk farm, two miles east of Essex in Southwest Iowa.



Florence Falk

Florence is now heard every afternoon at 3:30 on KMA with a brand new homemaker’s show the “Farmer’s Wife”, featuring, homemaking tips, recipes and information from a farm wife’s point of view. When the direct broadcasting line to her home is completed in the very near future, it is believed that this will be the first time in midwest radio that a regular homemaker broadcast will originate from a farm home

The Falks live on a typical Iowa farm, an 80 acre farm about a mile on dirt from the black top that extends east of Essex. Up the road another mile or so is another 160 acres that the Falks also farm, and used to live on — that is, before the tornado of 1949.

There used to be 13 buildings on the 160 acre place, including two houses. The tornado came up out of the southeast about 6:15 pm on June 1, 1949 and the Falks took off in their car towards town just ahead of the whirling wind. When they returned to their farm there was nothing left standing except the big red barn that you can see in

Like a lot of farmwives, Mrs. Falk takes her turn running the tractor. Here she is with her children and Mr. Falk.



the background in one of the pictures on the opposite page.

That wasn't the first time the Falks had received a setback from Old Mother Nature. Seven years earlier, on July 15, 1942, a fire swept the farm and destroyed everything except the house and garage.

But the Falks don't spend too much time thinking about the past. A near bumper crop is now maturing in the fields and the whole family is kept busy from sunrise to sunset.

Byron does all the farm work by himself, with occasional help from Florence taking a turn on the tractor or helping with the chores. In addition to her regular farm work, Florence now has her daily KMA broadcast to work into the routine of things. She was driving the nine miles or so into Shenandoah each day to air her program but the direct line to the farm home was scheduled to be completed early in September, so Florence will be able to broadcast direct from the farm.

The children, Karen and Bruce, have started back to school again. Blonde-haired Karen is a member of the Pierce Pinettes 4-H group and belongs to Troop 1 of the Girl Scouts in Essex. Her hobby is collecting story book dolls of which she now has 18.

Like most boys his age, Bruce is interested in collecting knick-knacks, including cowboy offers that he hears on the radio. He's also proud of his collection of 30 to 40 plastic charms that he's saved out of cracker jack boxes.

Ex-school teacher Florence, still spends as much time as she can with community activities and teaches the intermediate Sunday school class each week. Her old hobby of collecting recipes, cook books and helpful household hints gives her a wonderful working "library" for her radio programs. Personally, she prefers Swedish dishes and likes to help with neighborhood smorgasbords.



Here is the Falk family out in the pasture with 28 year old "Topsy", whose ancestors have been in the Falk family for 93 years. The barn on the hillside in the background is the only building to survive the tornado that wiped out 13 other structures on the Falk farm, including two houses, in 1949.



Bruce and Karen play with some new-born kittens in a barn on the Falk farm. The current population of cats and kittens on the farm is only eight, a new low.

Frank Comments

By FRANK FIELD

Reading from left to right, you will see George, Me and Danny. It is a little hard to distinguish George, a parakeet, but he is sitting on top of that T stick which I am holding in my hand. This is Danny's first experience with a bird so tame that he will hop up on your finger when you hold it in front of him and he doesn't know quite what to make of it.

George's colors don't show up at all in a black and white picture, but he is really quite a brilliant bird. The color scheme is a combination of dark blue, light blue and gray. His face is practically white with the cutest cobalt blue side-burns and his vest is a delicate light blue.

He has the run of the house, as we leave his cage door open all the time. He uses the cage principally for eating and sleeping purposes and during the day he spends most of his time perched on top of the drape in the living room, but he will sit for hours on the back of the davenport watching and listening to television programs. He doesn't care so much for plays, but seems to thoroughly enjoy a good musical program, particularly orchestras with stringed instruments.

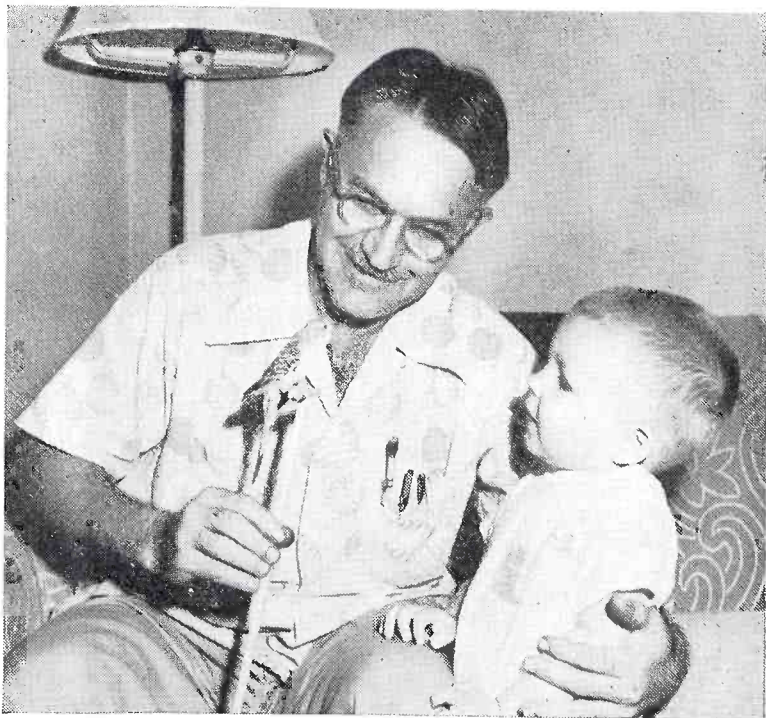
One evening last week Jennie and I were out in the kitchen hulling a bushel and a half of Fordhook lima beans. George was flitting around through the house, first in one room and then another waiting impatiently for us to come in and turn on the television set. When we finally did get through and went into the living room, George was nowhere to be found. We searched that place from top to bottom, end to end and side to side, but no George. We searched about a half an hour the following morning before I came down to the radio station, without any luck, but about 9:00 A.M. Jennie called and said she had located him in a back hallway, in a dark corner

where he had apparently spent the night. That was the night it went down to 52° and George was plenty chilly.

No, George has not learned to talk yet, although we have had him nearly a month. He does plenty of chattering, but so far, we haven't been able to understand a word he says. I suppose he gets pretty provoked at us sometimes for not being able to understand him.

The place big Johnnie bought in Hamburg is one of those beautiful, big, old places. The house sits on the south one of two lots and the north lot is practically all lawn. Of course, that left no room whatsoever for a vegetable garden, so Johnnie rented two different pieces of ground this year. The closest one being at least 6 or 8 blocks from the house.

Imagine how scandalized the neighbors were this week to see a tractor pull in on the north side of Johnnie's house and plow under the north half of the lawn. Johnnie figures it won't take a bit longer to run over that ground with a wheel hoe between vegetable rows than it does to go over it every week with the lawn mower just keeping the grass down. In other words, his garden spot next year is going to be right beside the house.





HOMEMAKER'S GUIDE

Homemaker Visit

By **BERNICE CURRIER**

One day's menu that includes the eight nutritional groups.

BREAKFAST

Bananas with light cream

Fried mush with sausages Crisp rolls
Coffee Milk for children

LUNCH

Orange and grapefruit salad and honey
cream dressing

Rye Bread

Milk or cocoa Brownies

DINNER

Hawaiian Cauliflower and
Patties cheese sauce

Enriched bread

Tomato and French
cucumber salad dressing

Molasses coconut steamed pudding

Hard sauce

Tea or coffee Milk for children

HONEY CREAM DRESSING

1 three oz. package cream cheese

1/2 teaspoon salt

1 tablespoon honey

1 teaspoon grated orange rind

Paprika

Pinch cayenne pepper

1/4 cup orange juice

1 tablespoon lemon juice

Soften cheese, add remaining ingredients in order given, blending well after each. Stir until smooth.

* * * * *

HAWAIIAN PATTIES

6 slices pineapple

2 cups sweet potatoes cooked and mashed

3 cups ground cooked ham

1/2 teaspoon dry mustard

1/3 cup thick white sauce

2 teaspoons grated onion

6 slices bacon

Arrange pineapple in greased shallow baking pan. Shape sweet potatoes into patties the size of pineapple slices. Combine ham, mustard, white sauce and onion and shape into same size patties. On each slice pineapple put a potato patty, then a ham patty. Wrap a strip of bacon around each and fasten with toothpick. Bake in moderate oven (375°) about 30 min. or until browned.

MOLASSES COCONUT STEAMED PUDDING

A—2 1/4 cups sifted flour

1/2 teaspoon salt

1 teaspoon baking soda

B—1/3 cup shortening

1/2 cup sugar

C—3 well beaten eggs

D—3/4 cup milk

E—3/4 cup mild dark molasses

3/4 cup moist coconut

Sift A, cream B, add C and beat well. Add A and D alternately. Add E. Pour into well greased and sugared 1 quart mold. Cover tight, steam 1 1/2 hours. Remove from steamer and let stand 10 minutes before unmolding pudding. Serve with hard sauce.

* * * * *

SPANISH OMELET

6 eggs

1/2 teaspoon salt

Few grains pepper

4 tablespoons milk

3 tablespoons butter

Beat eggs till fluffy, add seasonings and milk. Heat butter in heavy skillet or omelet pan only until moderately hot. Pour in eggs, cook over low heat, lifting mixture very gently with spatula if cooking in skillet, and tip skillet so uncooked mixture runs under. Do not cut through mixture. When bottom is browned and mixture is firm, fold in half and serve at once with Creole Sauce, made as follows: Heat 3 tablespoons fat in heavy skillet, add 1/2 cup finely cut green pepper, 1/2 cup finely chopped onion, and 1 clove finely chopped garlic if liked. Simmer about 5 min. Then add 1 No. 2 1/2 can tomatoes, 1 teaspoon chilli powder, 1 teaspoon sugar, 1 small bay leaf, 1/8 teaspoon ground cloves, 1 teaspoon salt, 1/4 teaspoon pepper. Continue cooking about 50 min. very slowly.

* * * * *

GRAPE JAM (No Crystals)

1 rounding cup grapes

1 cup sugar

Stir together till juice starts to rise. Then put over heat and when it comes to a boil, let boil 20 minutes. Remove from stove and strain through cheese cloth. Pour into sterilized jars and seal.



The Farmer's Wife

By FLORENCE FALK

HAM LOAF

- 1 1/2 pounds ground ham (smoked)
- 1 1/2 pounds lean pork or veal, ground
- 1 cup cracker crumbs
- 1 cup thin cream
- 2 eggs

Combine above ingredients. Shape into loaf. Top with syrup and bake in oven 250° 2 or 2 1/2 hours.

Syrup:

- 1 cup brown sugar
- 1/2 cup water
- 1 teaspoon mustard

Bring to boil and pour over Ham Loaf.

* * * * *

BAKED LIMA BEANS

Soak 2 cups dry Lima beans. Parboil in water with 1/2 teaspoon dry mustard and 1/2 teaspoon soda. Be sure to have large pan as this will foam badly. When cooked, drain beans and blanch in cold water. Drain again. Place in casserole 8 inches round and cover with the following mixture:

- 3/4 cup sour cream
- 1/4 cup catsup
- 1/2 teaspoon dry mustard
- 1/2 teaspoon salt
- 1/2 cup brown sugar
- 1 teaspoon onion salt

Bake two hours in slow oven. Fine to serve with above ham loaf as they both take slow oven.

* * * * *

CHICKEN CASSEROLE

- 2 cups cooked diced chicken (save broth)
- 1 1/2 cups cooked macaroni
- 1 cup potato chips

Make a white sauce of the following ingredients:

- 3 tablespoons butter
- 3 tablespoons flour
- 3 oz. cream cheese (foil wrapped type)
- 1 small pimento chopped
- 1 teaspoon salt
- 1 cup chicken broth
- 1 cup milk

Melt butter and blend in the flour and cream cheese. Add liquids, milk and broth. Heat to boiling and cook 3 minutes. Add chicken and macaroni. Put in a greased baking dish. Crumble the potato chips over the top and bake the casserole in 350° oven 30 minutes.

TWO-LAYER SALAD

- 1 package lemon gelatin
- 1 3/4 cups hot water
- 2 bananas sliced
- 8 marshmallows, cut
- 1 small can drained pineapple

Mix gelatin with water, add marshmallows and pineapple. When it begins to congeal slice the bananas on top. (Or if you prefer mix them in the gelatin mixture).

Dressing:

- Juice from pineapple and water added to make 1 cup
- 1 cup
- 1/2 cup sugar
- 2 tablespoons flour
- 1 egg
- 2 tablespoons butter

Cook the dressing until it coats the spoon and thickens, stirring constantly. When cool fold in 1 cup whipped cream. Pour over set gelatin mixture making certain all bananas are covered to prevent them from darkening. Grate cheese over the top.

* * * * *

APPLE CRISP

- 4 cups apples, peeled and sliced
- 1/2 cup water

Put the above ingredients in a buttered casserole or baking dish approximately 8 inches square or the oblong dish 6" x 8" or a deep pie pan. Mix the following ingredients as for pie crust.

- 3/4 cup brown sugar
- 3/4 cup white sugar
- 1 cup flour

5 tablespoons butter or margarine

Pat this mixture over the apples but do not stir. This mixture forms the crust and the apples the filling. Bake 350° 45 min. or until the apples are done. Serve warm with ice cream, whipped cream or top milk.

Listen to

Florence Falk

"THE FARMER'S WIFE"

every afternoon on KMA
at 3:30 pm

Broadcasting direct from
the Farm!

Grass Root Notes

By **MERRILL LANGFITT**
KMA Farm Service Director

Many of you have heard me speak on the air about the new Midwest Livestock Feeder's Association that recently held its first general meeting in the KMA Auditorium.

I believe that the huge crowd of cattle feeders that attended and the great interest that they have shown in the organization is testimony to the success the group will have.

The purpose of the association is to organize cattle feeders of Western Iowa, Northwestern Missouri, Southeastern Nebraska and Northeastern Kansas in order that they may be informed at all times of true market values, better feeding and management methods and strive generally to uphold the best interests of cattle feeders.

Among the feelings expressed by cattle feeders at the meeting was that cattle should be transported from the producing areas to the public markets, with such transportation costs to be born by the producers.

The feeders present at the meeting were asked about their feeding plans for the year. They indicated that they will, if present intentions are carried out, feed 16,322 cattle during the season, or an aver-

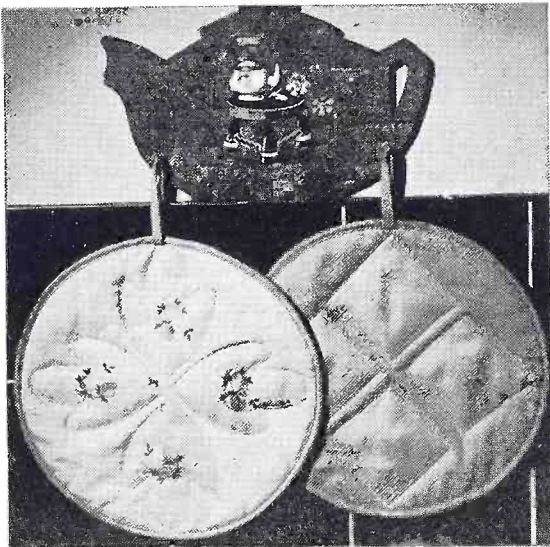


New Midwest Cattle Feeder's Association officers are, left to right: Wayne Anderzohn, Shenandoah, treasurer; Ken Fulk, Clarinda, Iowa, secretary; O. C. Schwackhammer, Tarkio, Missouri, president; Warren Gregory, Tabor, Iowa, vice president and Merrill Langfitt, KMA, publicity director.

age of 23 head per person. They will pay an average price for all cattle of \$26.93 per hundred, ranging from calves to heavy yearlings and two-year-olds.

The newly elected officers of the group are shown in the photo above.

Already a large number of cattle feeders have paid their \$5 dues to join the new organization. Many more will join in the next few months as the various county associations are organized. You can get more information by writing to either the secretary, Ken Fulk of Clarinda, Iowa, or to me at KMA.



PATTERN FOR THE MONTH— Jiffy Potholders

The makings of colorful and inexpensive potholders are in your scrap bag. Pick out some plain cotton pieces and a bit of printed chintz, convert them into fancy appliqued and quilted potholders. Every homemaker needs these handy kitchen aids.

If you're planning to make some new crocheted articles for gifts send a self-addressed, stamped envelope to THE KMA GUIDE, Shenandoah, Iowa. Ask for Leaflet No. E-1938. You will receive this pattern free of charge.

The KMA GUIDE presents a new pattern each month on these pages as a service to our readers. Readers are also invited to write in for patterns that have appeared in recent issues of this magazine.

KMA DAILY PROGRAMS FOR SEPTEMBER, 1952

960 ON YOUR DIAL — 5000 WATTS — ABC

DAILY DAYTIME PROGRAMS

MONDAY THROUGH FRIDAY

5:00 a.m.—Hillbilly Jamboree
 6:00 a.m.—News & Weather, Pippert
 6:15 a.m.—Bob Stotts
 6:30 a.m.—Merrill Langfitt
 7:00 a.m.—Paul Pippert, News
 7:15 a.m.—Frank Field
 7:30 a.m.—The Double Daters
 7:45 a.m.—Morning Headlines—Pippert
 9:00 a.m.—Bernice Currier
 9:25 a.m.—Whispering Streets
 9:45 a.m.—News

10:00 a.m.

EDITH HANSEN'S

"Kitchen Club"
 Broadcasting Direct
 To KMA Listeners



10:30 a.m.—Break The Bank
 11:00 a.m.—Jack Berch
 11:15 a.m.—Melody Club
 11:30 a.m.—Betty Crocker
 11:35 a.m.—Standby For Music
 11:55 a.m.—Get It From Gooch
 12:00 p.m.—News
 12:15 p.m.—Edward May
 12:30 p.m.—Half Past Nooners
 12:45 p.m.—Market Reports, Childs
 1:00 p.m.—Polka Time
 1:15 p.m.—Adella Shoemaker
 1:30 p.m.—Betty Crocker
 1:35 p.m.—Nishna Valley Neighbors
 1:45 p.m.—Bob Stotts
 2:00 p.m.—The Midwesterners
 2:30 p.m.—Tennessee Ernie
 3:00 p.m.—Cal Tinney
 3:25 p.m.—Betty Crocker
 3:30 p.m.—Florence Falk
 4:00 p.m.—Merl Douglas Show
 4:30 p.m.—P. Pippert, News
 4:45 p.m.—Mickey Cottley

5:00 p.m.

"BAR NOTHIN RANCH"

With Ezra Hawkins
 and the
 Bar Nothin Gang!



5:30 p.m.—Fun Factory
 5:55 p.m.—Frankie Frisch
 6:00 p.m.—Sports Parade—Douglas

6:15 p.m.—Peggy Lee (M.W.F.)
 6:20 p.m.—Let's Go Visiting (T.Th.)
 6:30 p.m.—Ralph Childs, News
 6:45 p.m.—Edw. May, Mkts. & Weather

MONDAY NIGHT

7:00 p.m.—Lone Ranger
 7:30 p.m.—Your Land And Mine
 7:45 p.m.—Outdoor Mid-America
 8:00 p.m.—Paul Whiteman's Teen Club
 9:00 p.m.—Chicago Signature
 9:30 p.m.—Jimmy Dorsey
 9:45 p.m.—Elmer Davis
 10:00 p.m.—Ralph Childs, News
 10:15 p.m.—Sports Report
 10:30 p.m.—Edwin C. Hill
 10:35 p.m.—Time For Defense
 11:00 p.m.—Newstime — Bank
 11:15 p.m.—Music In The Night

TUESDAY NIGHT

7:00 p.m.—Silver Eagle
 7:30 p.m.—Escape With Me
 8:00 p.m.—Am. Town Meeting
 8:45 p.m.—Talk On Books
 9:00 p.m.—City of Times Square
 9:30 p.m.—Guest Star
 9:45 p.m.—Elmer Davis
 10:00 p.m.—Ralph Childs, News
 10:15 p.m.—Sports Report
 10:30 p.m.—Edwin C. Hill
 10:35 p.m.—Showtime Review
 11:00 p.m.—Newstime — Bank
 11:15 p.m.—Music In The Night

WEDNESDAY NIGHT

7:00 p.m.—Lone Ranger
 7:30 p.m.—Valentino
 8:00 p.m.—Mr. President
 8:30 p.m.—Crossfire
 9:00 p.m.—Movietown Theatre
 9:30 p.m.—Heres To Vets
 9:45 p.m.—Elmer Davis
 10:00 p.m.—Ralph Childs, News
 10:15 p.m.—Sports Report
 10:35 p.m.—Edwin C. Hill
 11:00 p.m.—Newstime — Bank
 11:15 p.m.—Music In The Night

THURSDAY NIGHT

7:00 p.m.—Silver Eagle
 7:30 p.m.—Defense Attorney
 8:00 p.m.—Amateur Hour
 8:45 p.m.—I Covered The Story
 9:00 p.m.—Mr. Broadway
 9:30 p.m.—Serenade In Blue
 9:45 p.m.—Elmer Davis
 10:00 p.m.—Ralph Childs, News
 10:15 p.m.—Sports Report
 10:30 p.m.—Edwin C. Hill
 10:35 p.m.—Skitch Henderson
 11:00 p.m.—Newstime — Bank
 11:15 p.m.—Music In The Night

FRIDAY NIGHT

7:00 p.m.—Lone Ranger
 7:30 p.m.—This Is Your FBI
 8:00 p.m.—Newstand Theatre
 8:30 p.m.—Summer Cruise
 9:00 p.m.—The Top Guy
 9:30 p.m.—Heartstrings
 9:45 p.m.—Elmer Davis
 10:00 p.m.—Ralph Childs, News
 10:15 p.m.—Sports Report
 10:30 p.m.—Edwin C. Hill
 11:00 p.m.—Newstime — Bank
 11:15 p.m.—Music In The Night

SATURDAY PROGRAMS

5:00 a.m.—Hillbilly Jamboree
 6:00 a.m.—News & Weather—Childs
 6:15 a.m.—Bob Stotts
 6:30 a.m.—Merrill Langfitt
 7:00 a.m.—Ralph Childs, News
 7:15 a.m.—Frank Field
 7:30 a.m.—Double Daters
 7:45 a.m.—Morning Headlines—Childs
 8:00 a.m.—Saturday Shopper

9:00 a.m.

BERNICE CURRIER'S

"Homemaker's Visit"
 Every day at 9 a.m.
 Monday thru Sat.



9:30 a.m.—Space Patrol
 10:00 a.m.—Book Parade
 10:15 a.m.—Forest Stories
 10:30 a.m.—Pvt. Eddie Fisher
 11:00 a.m.—101 Ranch Boys
 11:30 a.m.—Am. Farmer
 12:00 noon—Ralph Childs, News
 12:15 p.m.—Edward May
 12:30 p.m.—Half Past Nooners
 12:45 p.m.—This Week On The Farm
 1:00 p.m.—Polka Time
 1:15 p.m.—Guest Star
 1:30 p.m.—Nishna Valley Neighbors
 1:45 p.m.—Bob Stotts
 2:00 p.m.—The Midwesterners
 2:30 p.m.—Front and Center
 3:00 p.m.—Hank Thompson
 3:15 p.m.—Voice of America
 3:30 p.m.—Florence Falk
 4:00 p.m.—Merl Douglas Show
 4:30 p.m.—Ralph Childs, News
 4:45 p.m.—Mickey Cottey
 5:00 p.m.—Bar Nothing Ranch
 5:30 p.m.—Junior Junction
 6:00 p.m.—Sports Parade—Douglas
 6:15 p.m.—Una Mae Carlisle

6:30 p.m.—Ralph Childs, News
 6:45 p.m.—Dinner Music
 7:00 p.m.—Dancing Party
 9:00 p.m.—Sat. At The Shamrock
 9:30 p.m.—Dinner at The Green Room
 10:00 p.m.—Merl Douglas, News
 10:15 p.m.—The Playboys
 10:30 p.m.—Jazz Club
 11:00 p.m.—Newstime — Douglas
 11:15 p.m.—Music In The Night

SUNDAY PROGRAMS

7:00 a.m.—News
 7:15 a.m.—Morning Song
 7:30 p.m.—Worship Service
 8:00 a.m.—Rev. Gene Phillips
 8:30 a.m.—Your Worship Hour
 9:00 a.m.—Sunday School Lesson
 9:15 a.m.—Bible Truth
 9:30 a.m.—Lutheran Gospel Hour
 10:00 a.m.—News —
 10:15 a.m.—Sunday Hymns
 10:30 a.m.—Milton Cross Opera Album
 11:00 a.m.—Songs by Fisher
 11:30 a.m.—Piano Playhouse
 12:00 noon—News
 12:15 p.m.—Guest Star
 12:30 p.m.—Frank Devol Presents
 1:00 p.m.—Fine Arts Quartet
 1:30 p.m.—Back To The Bible
 2:00 p.m.—Newstime
 2:15 p.m.—Highways To Safety
 2:30 p.m.—Hour Of Decision
 3:00 p.m.—Revival Hour
 4:00 p.m.—Heartstrings
 4:30 p.m.—Greatest Story St. 9/21

5:00 p.m.

DREW PEARSON

One of America's
 Most Distinguished
 Commentators!



5:15 p.m.—Monday Morning Headlines
 5:30 p.m.—Time Capsule
 6:00 p.m.—Musical Hall
 7:00 p.m.—Marching Along Together
 7:30 p.m.—Sophisticated Rhythm
 8:00 p.m.—Walter Winchell
 8:15 p.m.—Melody Highway
 8:45 p.m.—As Others See Us
 9:00 p.m.—Let's Be Healthy
 9:15 p.m.—Gloria Parker
 9:30 p.m.—Bill Tusher
 9:45 p.m.—Bob Edge
 10:00 p.m.—News
 10:15 p.m.—Thoughts In Passing
 10:30 p.m.—This Week Around The
 World
 11:00 p.m.—Newstime
 11:15 p.m.—Music In The Night

Listings Correct at Time of Publication
 However, all Programs Are Subject to Change

Return postage guaranteed.

POSTMASTER. If addressee has moved and forwarding order is on file, send form 3547, postage for which is guaranteed. If undelivered for any other reason, return to sender.

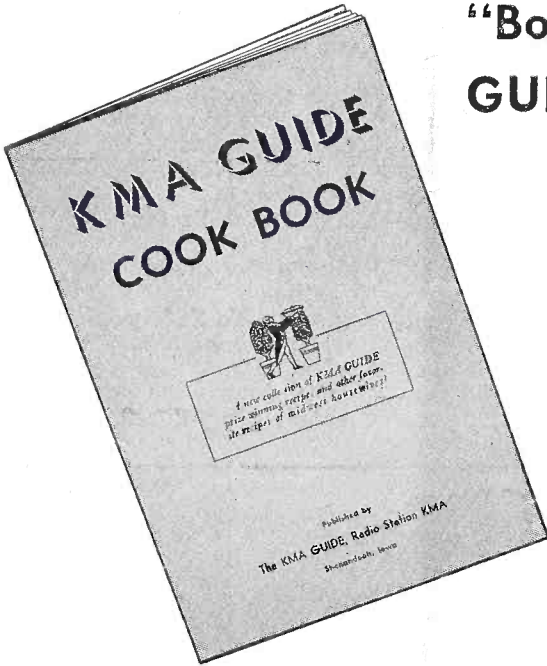
Tom Thumb Publishing Co.
Shenandoah, Iowa

MISS LOIS ADELUNG
108 EAST GRANT
SHENANDOAH IOWA

Sec. 34.66
P. L. & R.
U. S. Postage
Paid
Permit No. 1
Shenandoah, Ia.

Write Today For Your Copy of the KMA GUIDE Cook Book

“Bonus” Cook Book For GUIDE Subscribers Only!



In just the short time that the new KMA GUIDE COOK BOOK has been off the press, it has proven to be extremely popular with KMA GUIDE readers everywhere. Already several thousand KMA GUIDE subscribers have sent for their copy. Here is how you can get yours.

This new cook book, which contains contest-winning recipes as well as other home-style favorites of midwest housewives, is for KMA GUIDE subscribers ONLY! They may have their copy by sending only 10¢, to cover the cost of postage and handling, to THE KMA GUIDE, Shenandoah, Iowa. You may wish to renew your present subscription at the same time. If so, just send \$1 for a full, one-year renewal from the expiration date of your present subscription.

This is the most complete and interesting cook book KMA has ever published. There are recipes for everything from English Toffee, Molded Shrimp Salad, Barbecued Chicken and Peach Twirls, to Popovers, Cinnamon Puffs, Pioneer Corn Bread and Southern Apple Dumplings. Each recipe lists the name and address of the housewife who submitted it.

Be sure and send for your copy of the KMA GUIDE COOK BOOK—today!

Mail The Coupon Below—
Or, Send a Separate
Letter — TODAY!

KMA GUIDE
Shenandoah, Iowa
Dear Sir:

I am a KMA GUIDE Subscriber. Please send me the KMA GUIDE Cook Book. I enclose 10¢ for postage and handling.

Check here if
you enclose \$1 for
a one-year renewal.

Name _____

Address _____
