

# SPEEDY

## Inside...

Up Front.....	2
..... Tom Kephart	
Spotlights.....	3
..... David Sharp	
DX Montage.....	4
..... David Sharp	
Station Skeds.....	8
..... Ralph Bowden	
N. America/Caribbean.....	11
..... Tom Sable	
Europe.....	14
..... Daniel Sampson	
Africa.....	19
..... Al Quaglieri	
ANARCON Photo Gallery.....	24
Asia/Oceania.....	28
..... Bob Thunberg	
Hawaii Report.....	33
..... Richard E. Wood, Ph.D.	
Japan Report.....	34
..... Ralph Famularo	
QSL Report.....	35
..... Ray Forsgren	
Utility Scene.....	40
..... Jeff Knapp	
ANARCON Report, pt. 2.....	46
Contributors List.....	47
..... John Trautschold	

### Cover Art:

..... Peggy Thompson

**October  
1986**

Volume 16, Number 10

48 pages

ISSN 0882-8091

## ANARCON '86

Photo Gallery.....page 24  
Problems for VOA's proposed  
Sri Lanka relay.....in "DX Montage"  
BBC Monitoring Service Info  
returns to "Station Skeds"  
Radio "Voice of the Gospel" In  
Ethiopia profiled.....in "Africa"  
Richard Wood's "Hawaii Report"  
debuts.....on page 33  
Radio Botswana is verifying!  
.....see "QSL Report "

and... Jeff Knapp is back!

So as the frost begins to hit the pumpkins, dust off the radio and start listening, with this magazine in one hand and your favorite fall beverage in the other....



**The DX Radio Magazine for Active SWLs**

# Up Front

Tom Kephart  
1510-E Portabella Trail  
Mt. Pleasant, MI 48858-4035

**SEPTEMBER ISSUE** was mailed on 9 September 1986.

I recently received a few letters from members who state that if I can't mail their magazines so that it always arrives by the 7th, perhaps the club should find a new publisher. All I can do is remind these members that SPEEDX is a volunteer organization! I spend between 8-12 hours per week on SPEEDX, time I used to spend DXing. Publishing the magazine is a high priority to me, but occasionally due to work or family situations, I fall behind by a few days. The past four months, I also edited "Utility Scene", which I enjoyed, but it took some extra time, particularly last month.

My job situation is settling down a little, and we currently appear to be staying in Mount Pleasant. I plan on mailing this issue by the 4th of October, and will continue to do my best to get SPEEDX in the mail to you by the 5th each month. 'Nuff said.

**MAILING LABELS** Membership credits and status have been deleted from the labels. Although Membership Chairman John Trautschold and I have been cross-referencing our lists every six months, only a few months have to go by before many labels are inaccurate.

John will continue to keep records, of course, but the information will no longer appear on your mailing label. Watch David Sharp's "Spotlights" column for new Full Members, and if you have any questions about your current membership status, please write to John Trautschold, 354 North Winston Drive, Palatine, IL 60067-4132.

**MISSING COLUMNS** As of the 23rd, I've not received Carl Huffaker's "Latin America" or Woody Seymour's

"Program Panorama" column. Carl's column probably got lost in the Mexican mail, something we'd been concerned about, but so far hadn't had to deal with. I don't know where Woody's column is.

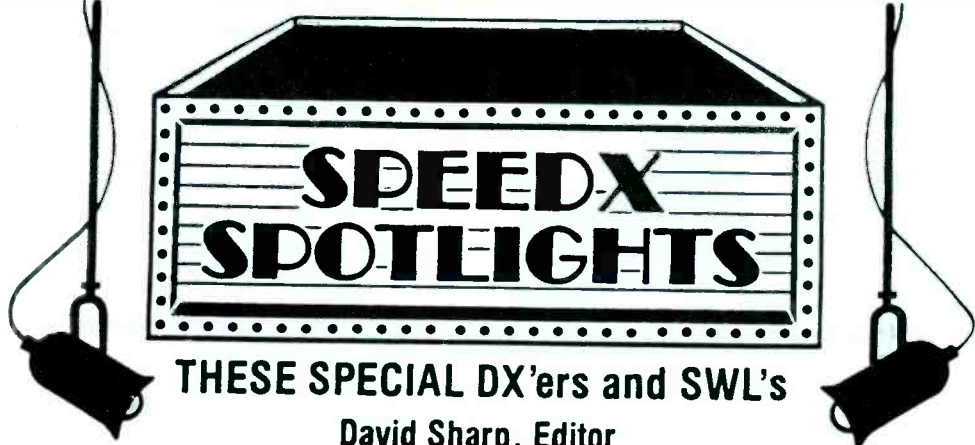
**OTHER MAG NEWS** In this issue, you'll find the debut of Richard Wood's "Hawaii Report" column. With the apparently improving reception from Africa and Asia/Oceania (see those columns!), Managing Editor Rick Drollinger and I hope that Richard's column, along with Ralph Famularo's "Japan Report", will tip European and North American SPEEDXers to changes in those areas, and possibly to stations which may be audible later in the DX season. Your comments, as always, are welcome on both columns.

**"MAYAK"** In the "Americas" column in the September SWL, ASWLC member Wayne Thompson of Florida has been monitoring the "Mayak Relay" from Cuba, which has been operating on 4765 KHz for some time now. During one four-hour listening period, Wayne heard "at least three different identifications. These are Radiostantsiya Atlantika, Radiostantsiya Rodina, and a Radio Moscow ID. Rodina means 'homeland', by the way. [Are the] 'radiostantsiyas' true stations [or] programs originating at the Moscow studios? From what I have been able to figure out, this station (when it first came on the air) relayed just the 1st and 2nd programs (which includes "Mayak"), but later on switched to the 5th program (which includes the 1st and 2nd programs)."

I, too, have heard most of the Soviet programs on this relay, and am currently hearing Mayak, Atlantika, Rodina, and a Radio Moscow service. I believe these are all Moscow-originated programs, but I could be wrong. This relay has also been noted recently on 4770 instead of 4765, and operates 24 hours. If anyone has a definite schedule or other information on this relay station, send it along to Caribbean Editor Tom Sable!

CUN NOVEMBER!

Tom



**THESE SPECIAL DX'ers and SWL's**  
**David Sharp, Editor**

Welcome again to Spotlights. Our congratulations to 3 new FMers.....

CHRIS MERCHANT....NH                      FRANK MEZEK....CO                      GEOFFREY SHANKLIN,MA

Thanks to each of you for your interest in SPEEDX. As our way of thanking you for your input, headquarters will be sending a Full Membership Certificate (suitable for framing) for display in your shack. Remember, you'll need to maintain at least ten membership credits per year to retain Full Membership. Once again, congrats, gents.

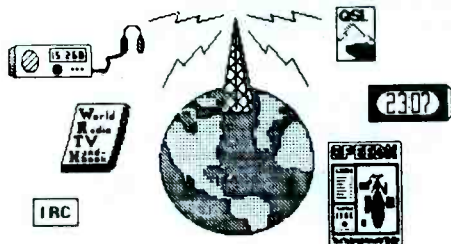
\*\*\*\*\*

This month we welcome twenty-seven new and rejoining members to SPEEDX..

James Pogue Memphis, TN	Dan Ortega Buena Park, CA	Dale Vanderpoel Ft. Lauderdale, FL
Tom McKeough Edmonton, ALBERTA CANADA	Garie Halstead St. Albans, WV (Drake R-4B)	Keith Kwiecien Las Vegas, NV (ICOM IC R71A)
Jeanne Ferrell Park Ridge, NJ	Douglas Willets Tampa, FL	David Norcross Bakersfield, CA
James Randall McNeill Pine Level, AL (Realistic DX 400)	Howard Kemp Laconia, NH (ICOM IC R71A)	William Via Baltimore, MD (FRG 8800)
Pierre Ducos Paris, FRANCE	Traver Smith San Jose, CA	Phillip Abbinante Oak Park, IL
Walley Francis Syracuse, NY (ICF 2010)	Joel Prout Brookfield, WI (R-2000)	James Hutchinson Clayton, NY (ICF 2002)
Orin Kanzigg Pensacola, FL	Arthur Getzel Flushing, NY	John Bryant Stillwater, OK
Claude Noneman East Lansing, MI	M. Cooper Atlanta, GA	Tony Kobylski Baltimore, MD
T. Krecic Arcadia, CA	Gerald Cook Portage, IN (NRD 525)	Richard Gilmore Framingham, MA

\*\*\*\*\*

Some new names, and some old friends...all are welcome to SPEEDX. Each of you should have gotten a New Member Packet, and if you have any questions about your club, just ask. That's why we're here! My editing duties continue on the next page with DX Montage, so keep reading.....



# DX Montage

The Feature Pages of SPEEDX

000

David Sharp

3024 Gates Drive, Apt. 358  
Tampa, FL 33613

SPOOK MONTH (OCTOBER), 1986

Hello one and all; whether you're a hobgoblin, ghost, demon, or common household DXer....welcome to DXM. I've just added a new receiver to my shack, a Hammarlund HQ-180. I had the radio three days, and it worked great. Unfortunately, the thing is now in the shop. It seems one of the IF circuits went out, but I should have the radio back in a day or two. I'll also be adding an R4B to my shack in a month or two, and it'll be neat to see what it digs out of the QRM. I'm pleased to report that the response to our popularity poll has been excellent. Like I mentioned last month, I had to go to press early because of my move....there were five or six entries to the poll which could not be tabulated. To those people, my apologies once again, and y'all can expect a little something in the mail. I've rambled on way too much, so away we go with this month's column.....

\*\*\*\*\*

Notice to DXM Readers: Those of you, who've been with SPEEDX for awhile, know that several years ago, members were encouraged to write original material for the old Tips 'n' Topics column. TNT has been an integral part of this column for several months, but it has been quite some time since original material has appeared in our mag. Therefore, I urge you to take pen in hand and write about aspects of SW that interest you. Any length is okay, I'll edit down if necessary. I know there are some "closet editors" in our membership, and I want you to "strut your stuff." Of course, I'm not planning any drastic changes in the column, and the newspaper and magazine articles you've been sending are still very welcome. I just thought it'd be nice to give members the opportunity to have a voice in the column. After all, we are "The Feature Pages of SPEEDX." Thanks for your support, SPEEDXers! ds.

DXM Station Profile: Radio Beijing English Service: The EE language service of Radio Beijing is one of the most important branches of China's overseas radio service. Its first broadcast, on September 11, 1947, was transmitted from a mountain cave in north China. It was then called "New China's Broadcasting Station, North Shanxi."

The English language service daily transmits 17 hours of programs around the world. It also beams a medium-wave English service to Beijing itself. The Capital Service began in 1984 and now broadcasts for 5 hours a day. The programs are relayed in Shanghai and Guangzhou.

The English service provides news and commentaries on domestic and international affairs, and often produces special programs for festivals, holidays and other noteworthy occasions. Cultural programming introduces noted figures in the arts. Music lovers can hear both traditional & modern Chinese music, along with foreign music from time to time.

Letters from all around the world pour into the English Department daily. They often include reception reports, comments on programs and suggestions. All questions are answered either on air or by mail. The English Department also sends out QSL cards and small souvenirs. Broadcast skeds are available by writing to: English Department, Radio Beijing, Beijing, China. (From a Radio Beijing press release. Contributed by our excellent Station Skeds editor, Ralph Bowden-CA. ds.)

Member Ralf F. Munster-CA passes word that Mr. Munro Vorster is the new frequency manager for Radio RSA. For subsequent freq changes, see Africa column.



Blimp Gets Stuck On Radio Tower: A Seattle man hired to fly a hot-air blimp to promote a local radio station escaped injury when the blimp got stuck 360 feet up on the radio station's transmission tower, authorities said.

Errol Van Eton was piloting the red-and-white blimp when its nose became entangled in guy wires anchoring the antenna of sister radio stations KCIS and KCMS (in Seattle, WA) shortly before 4 p.m., said Pamela Bailey, communications supervisor for the King County police. Eton was suspended in his gondola for more than two hours before firefighters and a rescue team were able to climb the tower, secure him with ropes and a lifeline and lower him. (From the Oregonian, Hand-delivered by David Klopfenstein upon his arrival at Tampa Int'l Airport. ds.) Also from David Klop.....Canada Post, which is more innovative than most of the world's postal administrations, has just issued a stamp, the image of which was entirely generated by computer. The 34-cent stamp marks the 50th anniversary of the founding of the CBC.

Radio began with Guglielmo Marconi's tower on Signal Hill, at St. John's, Newfoundland, and it is appropriate that the 1st computer-generated stamp to be issued in Canada should commemorate the CBC. (Also from the Oregonian newspaper. Yes gang, Dave K. is having a BLAST in the Florida sun. ds.)

Radio 101 in Zagreb Rocks to Beat of its Own Drummer: Hey comrades, this is Omladinski Radio, 101 on the dial, coming your way. We're a party, not Party, station bringing you 15 hours, 17 hours on weekends, of music, commentary, chat, and all the news not fit to print. And sarcasm, plenty of sarcasm. Making waves on the airwaves. We're No. 1 in Zagreb.

The wall stickers at the station-- "Disco is Dead," "Rock and Roll Forever"--are those of your everyday, run-of-the-mill pop radio station. But what goes on within the walls makes Radio 101 quite unusual, and very popular. "Omladinski" means "youth," and Radio 101 is the voice of Yugoslavia's young, or at least those in Zagreb, the country's second-largest city. It is a voice that is speaking freely. Although it was founded two years ago by the official student-youth organization, Radio 101 says it is one of only 2 stations in Yugoslavia that don't belong to the state broadcasting union, run by the Communist Party.

Unconventional is in at Radio 101. The news is laced with irony and satire. The discussions and call-in shows tackle personal and social problems head-on. Party officials listening in can hear their names linked to unpopular policies. Nearly all the music comes from Capitalist record labels. This fresh style isn't cramped by the station's narrow quarters. It operates in a set of rooms, formerly a storage attic, located above the student restaurant at the university. The ceilings are so low the tops of the door frames are lined with padding to soften the head knocking. It all adds to the off-beat, student-commune type atmosphere that is reflected in the programming. Talk shows sometimes feature university professors and others known for positions counter to the official party line.

The station tries to cater their listeners, and at last report, there were a lot of them. It has been estimated they have a listenership of over 600,000 people. (From Bob Moser-IL and the Wall Street Journal. Looks like you won't hear Radio 101 programming on Radio Yugoslavia. But then again, when was the last time you heard RY, anyway? Seriously.....reception of RY has been nonexistent at my shack! ds.)

Ten-Tec to Market New Receiver: At a time when Japanese products are skyrocketing in price because of the yen-dollar yo-yo, the first U.S. made general coverage SW communications receiver in years is about to hit the market. The new Ten-Tec RX325 receiver, manufactured in southeast Tennessee, should be in production by the time you read this. An undated letter received August 27 and signed by Joe Redwine, Ten-Tec's communication sales manager, stated that "production of the RX325 is scheduled for early August." Suggested list price, \$549. The spec sheet indicates the RX325 is to compete with the FRG-8800 and R-2000. Ten-Tec has long been respected by radio amateurs for its quality SW transceivers and accessories. (Submitted to DXM by Don Brewer (W5VJQ)-AR. ds.)

Peggy Thompson, of beautiful La Crescenta, CA, forwards us a copy of the Free Radio Listeners Club, "Update." The June issue has 15 pages of tips & info on just about every Euro-pirate currently in operation. A must for any DXer needing to keep abreast of European "Free Radio." I could not find subscription info in the mag, but more info can be obtained by writing to FRLC at: P.O. Box 99, Northampton, ENGLAND. Let 'em know SPEEDX sent you. ds.

**\*\*HEY DAVE, PASS ME SOME OF THAT SUNTAN OIL.....\*\***

Regional Politics Cause Static for VOA Relay: Construction in Sri Lanka of a new VOA transmitter has been delayed because of the government of Sri Lanka wants to change the site although ground has already been broken for the project. U.S. officials have expressed confidence that the station, designed to beam SW programs to India, the USSR, East Africa and China, will be completed at the new site. But according to other sources, the 100 million dollar project is in trouble, mainly because of regional political considerations.

One source, a confident of Sri Lankan President Junius R. Jayewardene, said, "I doubt the station will ever be built." India, 20 miles from this island nation, strongly opposes the station, contending that it might be used as a covert listening post in South Asia. For the last two years the Indian government has sought to mediate differences between the government of Sri Lanka and Tamil separatist guerrilla groups, and Indian diplomats in Colombo said they have discussed the VOA project with Sri Lankan leaders.

The Sri Lankan government announced in late August that the site for the radio station will be changed from Chilaw, about 40 miles north of Colombo, to Puttalam, 50 miles farther north, because about 200 squatters living on the Chilaw land would have to be relocated. But the squatters, mostly fishermen and their families, have been living on the 1,000 acre site since negotiations began on the project five years ago. The alternative site, at Puttalam, was rejected earlier because of a teak forest project in that area. Nonetheless, U.S. officials said they have been assured by the Sri Lankan government that the agreement on the new site will be honored.

U.S. and Sri Lankan officials agree that the new site will delay the project by as much as two years. When the station finally does come on-air,

Relay Broadcasts via Canada Starting on October 1st,  
to Improve Reception Conditions in North America

Radio Japan plans to lease the transmission facilities of Radio Canada International in Sackville, New Brunswick, Canada in order to relay its broadcasts to North America. The contract with RCI is expected to be signed by the end of August or early September, and the 250kW transmissions, which will be for one hour for both the English and the Japanese programs, are scheduled to start on October 1st this year.

At present, Radio Japan broadcasts to Europe, the Middle East and Africa are relayed via Gabon in West Africa. As remarkable improvement has been achieved by the Gabon relay, the planned relay via Canada is expected to improve reception conditions in North America, including New York, Washington, and other big cities on the East Coast of the United States.

Universal Shortwave Radio,

In Reynoldsburg, OH is compiling their next edition of "DX'ers Directory." Ordering information for the book can be found in the July DXM but to be included in the next "DX'ers Directory," all you need to do is send your name, address, phone number (optional), listening inter-

ests, and any shortwave clubs to which you belong (presumably SPEE DX, plus any others). Your listing is absolutely free and there is no obligation to buy the directory, but it's a great way to get to know DX'ers in your area! For more info on the directory or to send in your entry, write to Universal Shortwave Radio, 1280 Aida Dr., Reynoldsburg, OH 43068. (Via Steve Balt-IL. ds.)

From Beautiful New England Writes Steve George, who inquires about the RFO outlet in St. Pierre et Miquelon on listed 1375 kHz. If anyone reading DXM has heard the station, Steve would like to hear from you. Drop him a line at: 23 Dana Street, Amherst, MA 01002. Your assistance will be welcome.

Antenna Ordinance Stalled (Dunedin, FL): City commissioners issued differing signals on a proposed ordinance that would regulate satellite dish, as well as other antennas. Commission questions about the regulation of ham radio antennas, a grandfathering clause and a proposed 15-foot height limitation prompted them to table the proposal.

As presented, the ordinance would regulate satellite dish, television & radio antennas, by zoning district, according to their location, size, and placement within setbacks and on rooftops. General requirements would include compliance with applicable electrical and building codes. City attorney John Hubbard said the FCC made it clear in a February 1986 ruling that cities could not regulate satellite dish antennas and exclude others without risking court action. (From Jack Heaton-FL and the Clearwater Sun newspaper. Although a local issue in the Tampa area, I thought this would be of interest to members. Unfortunately, it seems many towns across the country are trying to restrict the erection and use of various outdoor antennas... It'll be interesting to see if their efforts succeed...ds.)

# dx montage's **CONTEST PAGE**

More On Our All-Band DX Contest: Membership response over the past couple of weeks has been fantastic, and I've gotten a lot of input as to how it should be conducted. A few minor details still need to be worked out, but I believe something can be scheduled for a few weeks in late December. Stay tuned to Montage and the Contest Page for further details!

Pin the Tail On Ye Ed: I've got a toughie for you this month, gang. I want to know the year in which ZOE in Tristan da Cunha signed on the air? Since it may take awhile to dig up the answer, I'll make the deadline for this competition is November 12th. All correct entries received by that time will be eligible for a random drawing; lucky winner to get pamphlet of their choice (excluding SRGU) from hqs. Be sure and indicate your choice on your entry!

Geography Quiz: Our country profile for last month was Thailand. Winner of the SPEEDX "stick-on" logos is Don Weber-OH. Now, our October country profile; winner to get some air force stickers from this country. Location: Europe. Ethnic Groups: Finnish, Swedish, Lapps, European immigrants. Population: 8,330,573 Religion: Lutheran and Protestant. Geographic Neighbors: Norway and Finland. Area: 173,665 sq. mi, slightly larger than CA. Languages: Nordic languages. Topography: Mountains along the NW; flat, rolling terrain in the central and southern areas, which includes several large lakes. Radios in use: 3,327,000. TV Sets in use: 3,236,037. History: Independence from rule by Danish kings (dating from 1397) was secured by Gustavus I in a revolt, 1521-23; he built up the government and military and established the Lutheran Church. In the 17th century this country was a major European power, gaining most of the Baltic seacoast. The Napoleonic wars helped this country to annex Norway. This country remained neutral in both World Wars. Per capita GNP is among the highest in the world.

Language ID: Okay contest aficionados....no correct answers to our September contest, so we'll extend it one more month. Our mystery language is Eastern European, and our three words are: cot, ascensor, inginer. Identify our language and receive a SPEEDX bumper sticker.

Foreign Competition: This contest is only open to those members residing outside the U.S.A. and Canada...get those entries in by November 12th. Our question is: Which religious organization had its programs broadcast via Radio Andorra on shortwave? Correctly identify the organization and win a Guide to Soviet Radio. Good luck.

When entering one of our contests, please remember to clearly write or type your name and address on entry itself. Believe-you-me, I get enough paper here at press time, without having to worry about a ton of envelopes. That means they are usually the first thing to go into my circular file (garbage can). I hope you understand and your cooperation will be appreciated. Just one more reminder, and that is comments and ideas on new contests are always welcome...so let's hear from you!

\*\*\*\*\*

That almost completes another DX Montage. But, as you know, I've been picking on David Klopfenstein, who, at press time, is spending his vacation with me here in FL. Anyway, in the interest of fair journalism, here is his rebuttal to my comments elsewhere in the column: "It's amazing isn't it? Paper boys will travel 2,000 miles to deliver an Oregonian. The Florida sun is great, the beach is sandy and the bay is wet. As a matter of fact, the humidity contains moisture, which your last bottle of white-out could have used. Sorry...sun tan lotion is about as available in Oregon as Tristan QSL's....Oops! You gotta be careful with a man who has everything. How 'bout some well-used rain gear? Get your own oil. Let's get this off to Tom so we can get back to our (my) vacation....."

Okay, at least you can't say I don't give both sides of an issue.....hi! Until Turkey Month (November), here's all the best and 73's from the "two Dave's"..... *David Sharp and David Klopfenstein*

# Station Skeds

DEGREES OF AZIMUTH

TIMES (UTC)

EDITOR:

FREQUENCIES

LANGUAGES

Ralph S. Bowden  
1255 Amethyst Street  
Space 30

RELAY SITES

TARGET AREAS

Mentone, CA 92359

POWER (kW)

ANGOLA: R. NACIONAL DE ANGOLA, LUANDA,  
LATEST INFORMATION:

			LG
0500-1900	7245, 9660,		
	7215, 11965	PT/VN	
1900-0500	3375, 3355,		
	4820	PT/VN	

REGIONAL STATIONS, PT/VN LANGUAGES:

(FM=EMISSORA REGIONAL)

0500-2400	7160	ER do	Husabo
0500-2400	5060	ER do	Husabo
0500-2400	4820	ER do	Huila
0500-2400	4985	ER do	Bie
0600-1100	5192	ER do	Moxico
1300-1400	5192	ER do	Moxico
0600-1400	5015	ER do	Macanedes
0600-1400	4895	ER do	Kuando-Kabango
1700-2400	4895	ER do	Kuando-Kabango
0600-2200	4970	ER do	Cabinda
1800-2300	4885	ER do	Zaire
0600-1400	4885	ER do	Zaire
0600-2400	4850	ER do	Uige
0600-2400	7260	ER do	Luada-Sul
0530-2400	6150	ER do	Benguela
0530-2400	5040	ER do	Benguela
0530-1400	7170	ER do	Benguela

(INDIRECT, RNA, G. VanHorn, FL.)

ANGOLA: THE VOICE OF RESISTANCE OF THE  
BLACK COCKEREL, UNITA STATION, OR A VOZ  
DE RESISTENCIA DO GALO NEGRO, TRANSMITTER  
LOCATED AT JAMBA, ANGOLA (CLANDESTINE):

			LG
0700-0900	9450, 5850	PT, Um, Kw	
1300-1400	9450, 5850	PT, Um, Kw	
1400-1500	5850	PT, Um, Kw	
1700-1900	7315, 4935	PT, Um, Kw	
1630-1840	4975	PT, VN	
0330-0530	4975	PT, VN	

LANGUAGES: Um=Umbundo. Kw=Kwanyama.  
(COMPLETE: BBC, MS, WBI, July 25, 1986.)

CANADA: CANADIAN BROADCASTING CORPORATION,  
CBC STATIONS, MOSTLY 24 HOURS DAILY, HEARD  
IN ENGLISH LANGUAGE USUALLY:

CALL SIGNS

SW	MW	FREQ	WATTS (power)
CXCN	CBC	6160	300

Studios, St. John's Newfoundland  
CKZU CBU 6160 400 DA  
Studios, Vancouver, British Columbia  
(DIRECT, RCI-CBC, Montreal, 7-28-86.)

CANADA: CANADIAN BROADCASTING CORPORATION,  
OR SOCIETE RADIO-CANADA, MONTREAL, CBC  
NORTHERN QUEBEC SERVICE:

			LG
0658-0109	9625	EG, FR, Cree,	
		Inuktitut, Indian	
0658-0900	6065	EG, FR, Cree	
		Inuktitut, Indian	
0900-1830	11720	EG, FR, Cree,	
		Inuktitut, Indian	
1830-0109	6195	EG, FR, Cree,	
		Inuktitut, Indian	

(DIRECT, RCI-CBC, Montreal, 7-28-86.)

BURMA: BURMA BROADCASTING SERVICE,  
RANGOON, G.E. 96.10E/16.52N., VARIABLE  
PROGRAMS:

			LG
0030-0200	7185	BR	
0200-0230	7185	EG	
0330-0700	9730	BR	
0700-0730	9730	EG	
0930-1430	5985	BR	
1430-1600	5985	EG	
1030-1445	4725	VN *	

\* Nationalities programs on freq. 4725  
alternate Arakan, Chin, Kachin, Kayah,  
Mon, Pwo Karen, Sgaw Karen, Shan and  
Burmese languages.

(1986 WRTH: Above reprinted with the  
permission from publishers of World Radio  
TV Handbook, (C) 1986 Billboard A.G.)

FRANCE: R. FRANCE INTERNATIONALE, PARIS,  
S-86, VARIABLE SCHEDULE, INCLUDING "PARIS  
CALLING AFRICA" PROGRAMS:

			LG	TAR	PCM
0700-1700	21620		FR	IndOc	
0800-1500	17850		"	"	
0800-1600	11845, 11700		"	Naf	
0800-1700	15315		"	"	
0800-1900	15300		"	"	
1030-1230	11690		"	Nam	
1030-1700	15365		"	"	
1245-1600	17720		"	"	
1600-1700	11800, 11705	EG	Naf	PCAF	
1600-1700	17620, 17795	"	IndOc	"	
1600-1700	6175	"	Eur	"	
1600-1700	9860	"	ME	"	
2300-0000	5950, 9800	SP	Nam		
0030-0130	5950, 9800	:	"		

PCAF=PARIS CALLING AFRICA program.  
(DIRECT, RFI, EXTRACTS.) R/ Hesch, NY.

OCTOBER, 1986: Mail D-86 shortwave schedules now to STATION SKEDS Editor. /Ralph



GERMANY (FEDERAL REPUBLIC): R, DEUTSCHE WELLE, KOLN, ENGLISH LANGUAGE BROADCASTS, ALL ZONES:

			TAR.
0900-0950	11945, 15160, 15165, 15205, 15320, 17780, 17800, 21560, 21680		Asia
1000-1030	7225, 9735, 11765, 15185		C&EAF
1130-1200	15410, 17765, 17800, 21600		WAF
1500-1550	7225, 9735, 15135, 17825		C&EAF
1610-1650	6170, 7200, 9685, 17825		Asia
1800-1825	7285, 9700, 11785		Af
2100-2150	6185, 7130, 9650, 9765		Asia
0100-0150	6040, 6085, 6145, 9545, 9565, 11785		NAm
0200-0250	5995, 6035, 7285, 9850, 9690, 11945		Asia
0300-0350	6010, 9545, 9565, 9640		NAm
0500-0550	5960, 6120, 6130, 9700		NAm

(DIRECT, RW, PARTIAL.  
C. Weyrich, MD.)

IRAQ: R, BAGHDAD, LATEST INFORMATION, INTERNATIONAL SERVICE:

		LG	TAR.
2000-2200	15120	EG	Eur
0000-0200	11750	"	SAm

(INDIRECT, RB, PARTIAL. C. Weiss, OH.)

ITALY: RAI, OR RADIOTELEVISIONE ITALIANA, ROME, S-86 SCHEDULE:

		LG	TAR.
1450-1700	15310	IT	NAm
1935-1955	9710, 7230, 7275	EG	U.K.
2025-2045	11800, 9575, 7235	"	Near E.
2200-2225	11800, 9710, 5990	"	Japan
2230-0100	9575, 6010	IT	NAm
2230-0100	11905, 9780	"	SAm
2230-0100	9710	"	CAm
0100-0120	9710	SP	"
0100-0120	9575, 6010	EG	NAm
0100-0120	11905, 9700	SP	SAm
0120-0135	11905, 9780	PT	"
0120-0135	9575, 6010	FR	NAm
0120-0135	9710	PT	CAm
0140-0305	9710	IT	"
0140-0305	9575	"	NAm
0140-0305	11805, 9780, 6010	"	SAm
0305-0325	9575	SP	NAm
0305-0325	11905, 9780, 6010	"	SAm
0305-0325	9710	"	CAm
0350-0410	15330, 11905, 9710	EG	FE

(DIRECT, RAI, ROME, EXTRACTS.)

OCTOBER, 1986: BBC, WRTM and CCN have granted permission to use schedules./rsb

JAPAN: R, JAPAN (NHK), TOKYO, S-86 BROADCASTS BEAMED TO NORTH AMERICA:

		REGIONAL SERVICE:	LG
0900-1000	5990, 9505, 9525		NP
1000-1030	5990, 9505, 9525		PT
1030-1100	5990, 9505, 9535		SP
0130-0200	15195, 15420, 17825		JP
0200-0300	15195, 15420, 17825		EG
0300-0330	15195, 15420, 17825		SP
0400-0500	9505		EG

GENERAL SERVICE:

1200-1400	5990	JP
1400-1430	5990	EG
1500-1600	5990	"
1600-1700	5990	JP
1700-1730	5990	EG
1800-1830	9505	JP
1900-1930	9505	EG
2000-2030	9505	JP
0400-0500	9675	"
0500-0600	9675	EG
0600-0700	9675	JP
0700-0800	9675	EG
0800-0830	9675	JP
1030-1130	6120	JP/EG
1130-1230	6120	JP/EG

(DIRECT, RJ-NHK, DIRECT, ALSO J. SANDERSON, AZ. FREQ. 6120 BROADCASTS VIA SACKVILLE, CANADA, 1030-1130 UTC from 10-1-86; 1130-1230 UTC after 10-26-86. ONE-HALF HOUR JAPANESE, ONE HALF-HOUR ENGLISH LANGUAGE.)

PHILIPPINES: FAR EAST BROADCASTING CO., METRO-MANILA, S-86 SHORTWAVE SCHEDULE:

		LG	AZ
0830-1100	6030	EG/TG	320
0830-1000	11850	EG/HK	150
0830-1000	15350	EG/HK	240
0900-1200	9645	CH	330
1000-1100	11850	AY/ST	330
1000-1100	15350	"	240
1100-1200	11850	HM/LO	200
1100-1200	9670	VT	280
1100-1200	6030	TG	330
1100-1400	15350	BR/VT	293
1200-1300	11850	KM	200
1200-1430	11850	EG	200
1200-1330	11860	JV/IN	200
1200-1330	11840	"	30
1300-1400	9670	VI/VN	280
1400-1430	15350	BR	280
1400-1500	6140	CN	330
1400-1600	9510	EG	280
1400-1930	6120	RS	330
1600-1700	11780	TG	10
2130-2300	6030	TG	320
2200-2400	9665, 6145	CH	330
2230-2330	9690, 9710	IN	200
2230-2300	9675	LG	280
2300-2330	6145	AY	330
2300-2400	9675	HK/KM	280
2300-0200	15445	EG	280
2300-0000	11865	EG, Wa	280
2330-0100	15410	BR/KY	293
0400-0600	11850, 15350	EG	240
0500-0900	11795	CH	330

(DIRECT, FEBC, Manila, COMPLETE.)

PHILIPPINES: R. VERITAS ASIA, CATHOLIC,  
NON-GOVERNMENTAL BROADCASTER, QUEZON  
CITY, S-86 PROGRAMS BEAMED TO ASIA:

1030-1125	11770, 9605	LG CH
1130-1200	9695	Karen
1130-1155	15105, 9605	IN
1200-1225	9560	JP
1200-1225	15105, 9695	VT
1230-1255	11830, 9550	KR
1300-1330	15215, 9700	CH
1300-1330	9595	BR
1330-1355	9595	Kachin
1330-1400	15215, 9700	TL
1400-1425	15215, 9700, 9595	TM
1430-1455	15215, 9595	VT
1430-1500	9700	SN
1500-1530	9540	EG
1530-1600	9540	EN
2200-2225	9740, 9585	KR
2230-2325	11715, 9740	CH
2300-2330	15280	CH
2330-2355	11725	IN
2330-2355	15280, 9740	VT
0000-0030	11730	SN
0000-0025	15275	JP
0030-0055	15275	EN
0030-0100	15155, 11730	TM
0100-0125	15275, 15195	BR
0130-0200	15175, 15255	TL
0200-0230	15155	EG
0230-0300	15380, 15195	VT

(COMPLETE: BBC, MS, WBI, 8-8-86.)

POLAND: R. POLONIA (FOREIGN SERVICE),  
WARSAW, ENGLISH LANGUAGE BROADCASTS,  
LATEST INFORMATION:

0530-0700	9675, 7270, 6135	TAR. Eur
1230-1700	15120, 11840, 9625	Af
1630-1700	11840, 9675, 7125	"
1400-1430	7285, 6095	Eur
1600-1630	9540, 6135	"
1730-1800	9540, 6135	"
1830-1855	11840, 9535, 7135	Af
1830-1855	7285, 6135, 5995	Eur
2000-2030	9675, 9525, 7145	Af
2030-2055	7285, 6095	Eur
2230-2300	7270, 7125, 6135	"
0200-0255	15120, 11815, 9535, 7270, 7145, 6125, 6095	NAm

(DIRECT, RPP, PARTIAL. D. Sampson, WI.  
J. Sanderson, AZ. J. Somers, CA.)

SRI LANKA: SRI LANKA BROADCASTING CORP.,  
COLOMBO, ENGLISH LANGUAGE BROADCASTS,  
CURRENT SCHEDULE:

1230-1600	6075, 9720, 15425	TAR. Asia
0030-0430	6005, 9720, 15425	"
1030-1130	11835, 15120, 17850	Austr

(INDIRECT, SLBC, EXTRACTS.)

SWEDEN: R. SWEDEN INTERNATIONAL,  
STOCKHOLM, S-86 BROADCASTS BEAMED TO  
NORTH AMERICA:

1400-1430	15345	LG EG	AZ 305
	11785	"	320
1500-1530	15345	FR	305
1600-1630	11785	SW	305
2300-2330	11705	EG	290
	9695	"	290
2330-0000	9695	SW	290
0200-0230	9695	"	320

(DIRECT, RSI, PARTIAL.)

U.S.A.: KNLS, THE NEW LIFE STATION,  
ANCHOR POINT, ALASKA, S-86 SCHEDULE:

1630-2200	7355	AZ 000	LG EG/RS	TAR. Eur
2230-0000	11885	285	CH	China
0000-0230	11750	315	RS	USSR
0230-0400	11900	220	EG	Asia PC *
0230-0400	11905	270	"	Asia PC **
0400-0530	9670	270	"	Asia PC
0730-0900	9620	285	CH	China

\* 9-7-86 through 9-28-86. \*\* 9-29-86  
through 11-2-86. (DIRECT, KNLS.)

U.S.A.: WYFR, FAMILY RADIO, OAKLAND, CA.,  
TRANSMITTER AT OCHEECHOBEE, FL., ENGLISH  
AND SPANISH LANGUAGES, S-86:

1200-1300	9680	LG EG	TAR. NAm
1302-1502	15055	"	"
1300-1600	9680, 11830	"	"
1300-1502	11550	"	India
1600-2000	11830, 11875, 11915	"	NAm
1600-1700	15440, 15566, 17845, 21525, 21615	"	Eur/Af
1900-2000	21615, 15566	"	"
2000-2300	21525, 17845	"	"
2000-2300	15365, 11875	"	NAm
2300-0000	6300, 9465, 9930	"	China
0600-0800	6065	"	NAm
0600-0800	7400, 7155, 9852.5, 9680	"	Eur/Af
1100-1200	11725, 9605	SP	CAM
1200-1400	11725, 15230	"	"

(DIRECT, WYFR, INCOMPLETE.)

U.S.S.R.: RADIO STATION PEACE AND  
PROGRESS, MOSCOW, LATEST INFORMATION:

0000-0030	9695, 9655	LG CR	TAR. Haiti
0000-0030	11850, 9880, 9785, 7440	SP	CAM
0100-0130	9795, 9675, 9550, 9490,	PT	SAM
0130-0200	12040, 12020, 11920, 11900, 11860, 9820, 9795, 9675, 7225, 7200	SP	SAM
0200-0230	9895, 9655	CR	Haiti

(INCOMPLETE: BBC, MS, WBI, 6-2-86.  
Also, S. George, MA.)

OCTOBER, 1986: BBC, WRTH and CCM granted permission to extract material. /Ralph

# NORTH AMERICA/CARIBBEAN



Thomas Sable  
University of Scranton  
Scranton, PA 18510

DEADLINE: 12th

Chile is coming in very strong on 15145 as I type this. Maybe the sunspot cycle is looking up. Well, I'm back to school, so not as much time for dx or antenna raising...but soon...some more wire in the air. And now with the mists and mellow fruitfulness of fall in the air- to the loggings: language is English unless noted otherwise.

## ALASKA KNLS

11850 0930 Country mx, Daily Devotion (444 8/19 Sheedy CA)  
11860 0800 Big Band mx, Sound Words pgm (454 8/21 Uetake JA)  
11930 1030 American Mx Spotlight (242 Wright MB)  
11965 1855 Heartbeat, Herald of Truth (444 8/22 Sheedy CA)

## ANTIGUA Deutsche Welle relay\*\*British Broadcasting Corp. relay

6085 0445 DW Sports nx, mostly tennis (444 8/27/271 Lord CA)  
6120 0525 DW Microphone on Europe, Germany Today (444 8/23 Brown IL)  
6155 0402 BBC OK postal worker runs amok (333 8/20 Brown IL)  
6175 0411 BBC Queen mother's heart test (444 8/15 Brown IL) Church service (444 8/10 Dillon MD) World nx (323 8/27 Lord CA)(555 8/13 Hesch PA) H.G. Wells (444 8/12 McCants AL)+1  
9510 0433 BBC Classical Mx Review (444 8/27 Brown IL)  
9590 0155 BBC Cameroun deaths (544 8/27 Walley CA)  
9640 0331 DW Doll Museum in Hamburg (444 8/27 LoTurco NY) Press Review (344 8/13 LoTurco NY) Listeners' Letters (555 8/16 Brown IL) Berlin Wall, Science magazine (444 8/12 Neff OH)  
9735 0914 DW Gorbachov offers to extend test ban (555 8/19 Brown IL)  
15210 2100 DW IS and ID (444 8/12 Miller PA)

## CANADA R. Canada International\*\*Northern Quebec Service\*\*BBC relay\*\*DW relay

5960 0315 RCI Calgary Olympics (555 8/26 Brown IL)  
6005 2040 CFCX Dodgers vs. Expos (333 8/25 Balt IL)(8/14 Miller PA)  
6070 0505 CFRX Sports (433 8/21 Brown IL) Business report (433 8/12 Bishop NY)+1  
6120 0000 BBC Radio Newsreel (433 8/25 Dillon MD) Quiz (555 8/18 Levison PA) Mx fests in Britain (444 8/12 Hesch PA)  
6140 0515 RCI Canadian Open (544 8/12 Brown IL)  
6160 1033 CKZN Sri Lankan boat people (322 8/12 Bishop NY) Strike (333 Krist VA)  
6175 2302 BBC Nature Notebook, Farm Report (333 8/21 Neff)  
9510 1310 BBC 24 Hours (544 8/21 Brown IL)  
9535 0125 RCI Canadian movies (444 8/3 Brown IL)  
9590 2232 BBC Econ. nx (444 8/15 Brown IL)  
9625 0153 NOS Reagan and workers' rights (544 9/1 Brown IL)  
9650 1158 RCI Spectrum: immigration (555 8/19 Brown IL)  
9755 0000 RCI SWL Digest;Canada Rocks; Spotlight on Science (444 8/17 Dillon MD)Canadian history (444 8/11 Miller CA) As It Happens (544 8/29 Brown IL)  
11775 1646 BBC Saturday Cricket (544 9/6 Brown IL)  
11945 2056 RCI Listeners' Corner (544 9/7 Brown IL)(444 8/10 Neff OH) FF Bilingual educ. (433 8/11 Pike NM) Canada Rocks (444 8/23 Krist VA) Niobium jewelry (444 8/9 Neff OH)  
11960 1345 RCI Mounties start union (433 8/24 Walley CA) Boat people (8/12 Miller PA)  
15325 2110 RCI National Party in S. Africa (444 8/11 Hesch PA)

CUBA R.Habana\*\*R. Rebelde relay\*\*R.Moscow World Service relay

5025 1146 SS R. Rebelde Angola report, Noticias nacional (333 8/16 Dillon MD)  
5970 0355 Creole RHC YL talks (322 8/31 Westenhaver QU)  
6090 0400 RHC Nx (8/15 Miller PA)  
6140 0200 RHC Nuke ban, Angola (444 8/12 Miller CA) Chilean judge (544 8/15 Brown IL)  
9580 1205 RMWS Nuke ban, Africa, RR contest (333 8/14 Miller CA)  
9600 0441 RMWS Mailbag: Dating and drinking (444 8/10 Brown IL)  
9730 0346 RHC Cuban mx //9470 [probably a spur, Bill] (233 8/31 Westenhaver QU) (333 8/23 Dillon MD)  
9740 0100 RHC U.S. army capt. defects to Cuba (433 8/17 Dillon MD) Non-aligned summit in Zimbabwe (555 9/3 Brown IL) Sports (344 8/29 LoTurco NY) Cuba's first test tube baby (333 8/11 Neff OH) On the scene report from S.Africa (444 9/12 Sable PA)  
9770 2300 SS RHC Mx (323 8/13 Balt IL)(8/14 Hawk VA)  
11760 2258 SS RHC Cuban mx (555 8/13 Hesch PA)  
11840 1811 RMWS Israel's oppression of Arabs (444 8/13 Miller CA)  
11930 1950 RHC Mex. pres to meet Reagan (444 8/11 Pike NM)

HAITI 4VEH

4930 1115 FF YL, EZL mx (333 8/16 Dillon MD)

MONTSERAT DW relay

9565 0131 Interview (444 9/3 Brown IL) GG/SS nx (444 8/22 Miller CA) Vienna meet on Chernobyl (333 8/23 Krist VA)  
11865 0048 SS Frequencies (444 8/28 Goodman IA)

NETHERLANDS ANTILLES Radio Nederland\*\*TransWorld Radio

6020 1022 RN Happy Station (544 8/10 Brown IL)  
6165 0529 RN Chilean court convicts military (555 8/13 Brown IL) (8/25 Thompson CA) Dutch nx (545 8/27 Lord CA) Newsline (545 8/19 Wright MB)  
9535 0430 TWR Caribbean Night Call (555 8/25 Balt IL) (444 8/10 Brewer AR)+2  
9590 0302 RN Letters (544 8/16 Brown IL) Media Network: rxrs (433 8/28 Brown IL)  
9630 0746 RN Egypt-Israel meet (433 8/29 Brown IL)+2  
9650 1029 RN Sudan airliner downed (444 8/19 Brown IL)  
9715 0551 RN Happy Station (533 8/11 Brown IL)  
9895 0237 RN News:Botha will not give in (433 8/14 Brewer AR)  
11715 0012 SS RN "Radio Enlace": satellite TV in France (433 8/9 Westenhaver QU)  
11815 1334 TWR Cocaine in Santo Domingo (433 9/6 Brown IL) Billy Graham (444 8/24 McCants AL) Unshackled, Our Daily Bread (444 8/9 Neff OH)  
15355 0002 PP TWR Inspirational talk (444 8/24 Dillon MD)  
17605 1833 RN Bomb in Iran (333 8/19 Brown IL)(353 8/18 Stransky NY)  
21685 1912 RN Happy Station with birthday wishes for Rick Drollinger [congrats! TFS] //17605 (242 Westenhaver QU)

PIRATES\*\*a/k/a watts on cable

7440 0443 Canadian Club R. Strange sound effects (222 8/30 Shanklin MA)  
7490 0145 R. Mauser Worldwide Rock, IDs (353 Jones TX)

UNITED STATE OF AMERICA The Voice of America\*\*The Voice of Free China (via WYFR)\*\*Armed Forces Radio and Television Service\*\*Radio Marti\*\*

5985 0300 VOFC Orchid Island (433 8/25 Neff OH) A Piece of Asia (555 9/5 Watson FL) Band Concert (544 8/27 Lord CA)  
5995 0432 VOA Sports (444 8/25 Brown IL) Making of a Nation (444 8/14 Hawk VA)+1  
6020 0431 PP VOA IS and ID (433 8/13 Brown IL)  
6030 0355 AFRTS Marine P.O.W. training (333 8/12 Neff OH)+2  
6035 0339 VOA Daybreak Africa, sports (333 8/26 LoTurco NY)  
6065 0755 WYFR Mx, ID, and freqs (433 8/13 Neff OH)  
6185 0350 WRNO Call-in Rock Show (555 8/26 LoTurco NY) World of Radio with GH (444 8/23 Krist VA) +3  
7355 0330 WHRI Radio Earth: This is the Caribbean; Universal ad (444 8/26 Brown IL) EGE ad



U.S.A (cont.)

(444 8/21 Neff OH) Curacao nx (8/15 Miller PA)  
---- 0215 WRNQ Saints vs. Patriots preseason (544 8/16 Brown IL)  
7400 0526 WHRI Christian mx, religious prg [probably 7075 is a spur, Ron] (444 8/29 Trotto FL)  
9455 0255 VOA Worldwide SW Spectrum //5995 (344 8/13 LoTurco NY)  
9530 0702 VOA Bishop Tutu in China (555 8/11 Brown IL)  
---- 1025 AFRTS NPR (333 8/19 Brown IL)  
9535 0354 WYFR Preaching (8/14 Miller PA)  
9565 0730 AA VOA Nx (444 8/22 Trotto FL)  
9570 1245 SS RM Nx, Cuban mx (555 8/12 Fraser MA)  
9575 0431 VOA Benefits of exercise (433 8/10 Brown IL)+2  
9615 0901 SS KGEI Currency prices (555 8/18 Brown IL)  
9650 0115 VOA Report to the Americas (555 8/15 Balt IL)  
9670 0450 VOA Saturday Morning, Golf (555 8/15 Brown IL)+1  
9705 0445 SS WYFR religious prgm with lugubrious mx (444 8/23 Munster GA)  
9770 2157 WHRI Christian mx, ID (433 8/20 Bishop NY)  
9852.5 2330 WRNO World of Radio(444 8/30 Soomre MA)  
11580 0344 VOA Willis Connover and jazz //11680,9455 (8/13 Miller PA)  
11715 0338 RR KGEI religious talk (555 8/31 Sheedy CA)  
11735 1750 KCBI World of Radio #347, Singing Postman (333 8/10 Neff OH) Today in Dallas  
(455 8/11 McCants AL)+2  
11770 0006 WHRI EZL Xtn mx (322 8/9 Westenhaver QU)+1  
11790 0210 AFRTS Nx: Tractor drive across WI (555 8/16 Brown IL)  
11805 1635 AFRTS AP nx (433 9/6 Brown IL)  
11830 1330 WYFR Family Bible (444 8/12 McCants AL) Unshackled (545 8/26 Pike NM)  
---- 2350 SS V. of O.A.S. 2 OM and nx (333 8/14 Balt IL)  
11860 0030 VOA Berlin Wall anniv. (444 8/11 Neff OH)  
11875 0100 WYFR mx, Insight (444 8/26 McCants AL)  
15105 1820 WHRI Life in the Spirit (343 8/12 Miller CA)  
15145 0124 SS WINB Religious px (242 8/22 Krist VA)+1  
15160 0001 SS V. of the O.A.S. ID, songs (333 8/9 Westenhaver QU)  
15205 0130 SS VOA Chilean violence, Guyana sugar (555 8/18 Wright MB)  
15330 2306 AFRTS Shuttle to be rebuilt (555 8/18 Miller CA)  
15345 1220 AFRTS Drugs, fear of flying (545 8/23 Miller CA)  
15410 1643 VOA Drought in South (555 8/29 Brown IL)  
15440 2100 VOFC People at Work, ROC Today (544 8/22 Brown IL)  
17765 0035 AFRTS Mets vs. Dodgers (252 8/19 Krist VA)

KVOH is supposed to have started testing around mid to late August on 17775 from 1700 to 2200 UTC. I have not heard them yet at this QTH nor were there any loggings of the site sent in yet, so last month's quick contest is still in effect. The first logging of KVOH from the California site that I receive earns a set of three Steamtown postcards.

Larry Miller passes on the information that Jeff White has been contracted by R. Clarin to produce programs for the international service on 11700. A new directional antenna pointed towards N. America is currently under construction. The international service is scheduled for 2200-0100 UTC. There will be one hour of English programming, but the exact time has not been determined.

For those of you with tube equipment, a handy source of information is *The Hollow State Newsletter*. Tropical band dxers find that some of the older tube equipment is less noisy. The summer issue features an article on Hammariund gear by SPEEDX's own Al Quaglieri. The newsletter also offers a wealth of information on where to obtain replacement parts. For a year's subscription send \$4 to P.O. Box 1226, New York, N.Y. 10159. Say you saw it here.

For all of you returning to knob-twirling after the summer hiatus please remember that all Central America, clandestine, and South American loggings go to Carl Huffaker, editor of the next column. See his column masthead for the Mexico address. All North American, Caribbean, and North American pirate loggings go to me at the Scranton address on the masthead. Please send your loggings to me by the twelfth of the month and by the fifth of the month to our Central Distribution Editor, Peggy Thompson, whose California address is listed on the back cover. Goodbye for now from Steamtown, U.S.A. 73 es gd dx

Bye for  
now,  
T.F.S.

**EUROPE**

Daniel Sampson  
Route #1, Box 36  
Black River Falls, WI 54615-9714



Deadline: 12th  
Times/Dates: UTC  
Frequencies: KHz

Destination: \_\_\_\_\_

Seat Window Center Aisle  
Flight 000

Row 000

BOARDING PASS

**EUROPE**

Now that we're in October it won't be long before the ghouls & goblins will be knocking at the door. Remember to stock up on candy, you don't want a trick played on you that may interfere with your DXing now that we're into the DXing season!

ALBANIA Radio Tirana

7090 0523 RT Serbocroat; OM w/ tlk, ID, NA, 0527\* (343 8/13 Trotto-FL)  
7120 0247 RT EE; ID, YL, political tlk w/ Asian sounding filler mx, the ARO calling CQ in the background was more interesting (333 8/25 Phillips) 0140 drug problems in Western nations (444 8/22 Krist-VA)(Brown-IL)  
7121.6 0320 RT SS; revolutionary mx, stirring contry by 2 OMs, ID @ 0335, CW QRM, back on 7120 8/20 (fr 8/19 Sheedy-CA)  
7300 0330 RT EE; YL w/ nx, tlk on economics of metal processing (8/15 Miller-PA)  
9480 2210 RT EE; ID, "Nx about Albania," Albanian economy (434 8/15 Balt-IL)  
2250 RT Swedish; tlk by YL, symphony mx, ID @ 2257 (333 8/25 Rocker-MS)  
9500 0630 RT EE; OM w/ ID, wld nx, "Nx About Albania," Socialists propaganda (444 7/27 Havrilko-U.K.)

AUSTRIA Radio Austria International

6155 0643 RAI EE; OM w/ tlk of Open Air military museum, // 6000 (444 7/27 Havrilko-U.K.)  
9585 0629 RAI EE; IDs in GG/EE/FF/II/SS, "Report from Austria (422 8/17 Orr-FL)  
9670 1500 RAI EE; to South Asia, "Austria Calling," // 12015 (422 8/24 Shreedhar/  
9770 0146 RAI EE; "Report from Austria," tlk about some summer mx, sked /India) (433 8/21 Bishop-NY) 0130 Austrian speed limits (333 8/23 Dillon-MD)  
15415 1259 RAI EE; "Rpt from Austria," nf sked (444 8/20 Brown-IL)  
1259 RAI GG; IS, ID, nx (343 8/16 Uetake-Japan)

BELGIUM Belgische Radio en Televisie

9830 0037 BRT EE; discussion on pay rates in EEC, intvw w/ musician, spts, 0125\* (333 8/3 Shaffer-PA) 0045 "Radio World" (433 8/14 Thunberg-PA)(Krist-VA)  
9925 0055 BRT EE; tlk about Belgium-based int'l airline, mx by Billy Joel, // 9830 (333 8/16 Balt-IL) 0030 unemployment benefits (343 8/7 Goodman)  
15515 0800 BRT EE; "Brussels Calling," QRM Moscow (433 8/20 Shreedhar-India)  
15590 1339 BRT EE; "P.O. Box 26," songs, "Belgium Thru the Ages" (444 8/27 KristVA)

BULGARIA Radio Sofia

6070 0312 RS EE; anti-nuke tlk, "Lifestyle" w/ comment on social & other items on TV pgm (433 8/13 Neff-OH)  
7115 0015 R. Moscow relay EE; "Outlook," rpts on works of city councils & factory modernization (555 8/13 Fraser-MA) 0115 Moscow Mailbag (444 9/1 Soomre)  
0343 RS EE; OM/YL w/ tlk on Bulgarian related nx items, tlk on Bulgarian Communist Party (242 8/31 Abbinante-IL)(444 9/4 Phillips-PA)(Brown-IL)  
2048 RS EE; ID, "Spectrum" on TV in Bulgaria, IS (333 8/24 Dillon-MD)  
9700 2035 RS EE; tlk about developments in metallurgy in Bulgaria, preparation for bid for 1992 Winter Olympics (333 8/29 Shanklin-MA)(Hunt-NC)(Fraser)  
11720 2301 RS EE; wld nx, usual remarks against the U.S. (8/4 Levison-PA)  
15140 0645 RS EE; ID, DX pgm by OM/YL (252 8/16 Trotto-FL)  
15330 2200 RS EE; Bulgarian folk mx, "History Time" (544 8/15 Balt-IL)  
2324 RS EE; "Midweek Mailbag," mx, 2330\* (554 7/31 Kaessinger-F.R.G.)(Neff)

CZECHOSLOVAKIA Radio Prague

5930 \*0100 RP EE; nx, "Sunday Magazine" on cheesemaking (333 8/11 Wakefield-IA)  
0213 RP SS; ID by OM @ 0213, musical interlude, TC (333 8/30 Abbinante-IL)  
0300 RP EE; nx, contry on U.S.-Soviet tlks, S. Africa (444 8/12 Wright-ME)

CZECHOSLOVAKIA continued

7345 0112 RP EE; wld nx, comments on Reagan security & peace in the Pacific (8/8 Levison-PA)

0300 RP EE; IS, nx, rpt by Arbatov in Moscow on U.S.-Soviet arms talks & general relations (555 8/28 Coleman-MA) 0333 spts (444 8/18 Brown-IL)

15205 \*1530 RP EE; ID as Afro-Asian svce, nx, co-channel VOA, splash de Africa #1 on 15200 (222 8/29 Westenhaver-QU)

17705 1430 RP EE; IS, ID, nx by YL, QRM BBC (232 8/6 Goodman-IA)

FINLAND Radio Finland

11715 2100 RF EE; to Australia, Finnish nx, wx, rpt on Nordic foreign ministers' meeting (333 8/17 Dillon-MD)

15240 0830 RF EE; nx, intvw, to Australasia (544 8/25 Shreedhar-India)

15265 0842 RF EE; "Nordic Weekend Magazine, 0855\* (555 8/2 Kaessinger-F.R.G.)

15400 1200 RF EE; nx, interest rate reduction, action against S. Africa (354 8/16 Wright-MB) 1304 customs watch for radioactive imports (333 8/11 BrownIL)

FRANCE Radio France International

7280 0531 RFI FF; nx of Hungarian Grand Prix & 25th Anniversary of the Berlin Wall, REE co-channel (434 8/11 Westenhaver-QU)

9805 \*1000 RFI FF; ID by YL, nx headlines (252 8/23 Welch-MA)

11995 0422 RFI EE; nx, S. African violence, "Review of French Press," spts, Grand Prix racing (343 8/10 Brown-IL)

15190 1400 RFI FF; nx, variety pgm, pops, tlk, comedy (333 8/18 Sato-Japan)

15195 1058 RFI FF; OM w/ tlk, under VOA (131 7/26 Havrilko-U.K.)

17620 1600 RFI EE; nx, spts, listener's pgm (454 9/7 Pogue-TN)

17850 1455 RFI FF; accordian mx to 1500, ID, nx by OM (333 8/19 Rocker-MS)

GERMAN DEMOCRATIC REPUBLIC Radio Berlin International

6080 \*0115 RBI EE; nx, comtry on Summer jobs for college students, spts rpt (422 8/19 Krist-VA)

6125 0200 RBI EE; a bazaar whose proceeds go to the fight in Nicaragua, remembering journalists who were murdered (422 8/30 Phillips-PA)(Westenhaver-PQ)

0228 RBI SS; chime IS, mx, ID by OM, QRM VOA 6130 (533 8/20 Orr-FL)

2200 RBI EE; tlk of department stores & supermarkets (545 8/23 Robinson-TN)

9560 0226 RBI EE; DX pgm, discussion of SW antennas (322 8/12 Loturco-NY)

15240 0545 RBI EE; to S.E. Asia, // 11960nf (444 8/21 Shreedhar-India)

17705 1118 RBI EE; nx, DX pgm (253 8/11 Uetake-Japan)

1820 RBI SS; nx, El Salvador, Nicaragua & Cuba (333 8/18 Stransky-NY)

GERMAN FEDERAL REPUBLIC Deutsche Welle

5960 0502 DW EE; nx, German car imports increase, "Press Review" on increasing terrorist attacks, "Germany Today" (333 8/16 Brown-IL)

6190 0538 Sender Freies Berlin GG; EE/GG pop mx, OM DJ, 0559 time pips into nxcast (232 8/18 Orr-FL)

7145 0144 DW GG; German band mx (oompah-type) w/YL, ARO QRM (433 8/9 Westenhaver)

7155 0200 R. Liberty RR; YL w/ nx, ID @ 0207, comtry (343 8/25 Rocker-MS)

9765 2115 DW EE; mx, ID, tlk about possible U.S.-Soviet summit (434 8/15 Balt-IL)

15105 0023 DW SS; musical selections, Tosca, Pucchini (8/25 Levison-PA)

1345 DW GG; 1445 ID, rel pgm (tlk, mx & bells of church), 1457\* (333 8/16 Sato-Japan)

15185 1110 DW JJ; Letterbox pgm (343 8/17 Uetake-Japan)

15245 1106 DW GG; OM w/ tlk, ment Switzerland, Cairo (555 7/26 Havrilko-U.K.)

GREAT BRITAIN British Broadcasting Corporation

5975 0000 BBC EE; wld nx, "Nx about Britain," "Radio Nxreel" (444 8/18 Dillon-MD)

0703 BBC EE; nx, Peru gov't attacks drug airplane strips (544 8/10 Brown-IL)

6050 0425 BBC EE; end of "Nxdesk," "Country Style," co-channel HCJB (333 8/8 Westenhaver-QU)

0605 BBC EE; nx, correspondence reports (433 8/21 Rocker-MS)

6150 0332 BBC EE; nx, Egyptian gov't to put fundamentalists on trial, "Network Africa," ID (333 9/1 Brown-IL)

7220 0430 V. of America relay Albanian; ID, nx, comtry (544 8/20 Orr-FL)

7260 0344 BBC RR; "Govorit London" by YL, nxcast, ARO QRM (533 8/20 Orr-FL)

7275 0522 R. Canada Int'l relay EE; nx, baseball scores, wx, stock report, ID @ 0530, into FF, QRM RAI IS (222 8/14 Trotto-FL)

7320 0515 BBC AA; ID, Arabic mx, tlk by OM/YL (444 8/7 Trotto-FL)

7325 0014 BBC EE; Reagan's urinary tract (545 8/10 Wakefield-IA)

0159 BBC EE; wld nx, USSR announces extention of moratorium on nuclear testing (444 8/19 Brewer-AR)

GREAT BRITAIN continued

9410 0158 BBC EE; bells, ID, wld nx, press review, "Network UK" (343 8/23 Dillon)  
 2210 BBC EE; Garrison Keillor reads "Lake Wobegon Days" (454 8/10 Fraser-MA)  
 2225 "Letter from N. Ireland," // 9915 & 15070 (433 8/15 Balt-IL)  
 9915 2330 BBC EE; pgm on H. G. Welles & his writings (454 8/12 Fraser-MA)  
 11760 2005 V. of America relay EE; wld nx by CM hrd intermittently under very strong jamming (211 8/10 Westenhaver-QU)  
 11935 \*1445 R. Canada Int'l relay EE; ID, YL w/nx, rpt on Canada's Grain Harvest, 1459\* (333 8/27 Krist-VA)  
 15070 0613 BBC EE; YL w/nx of Chinese version of Live Aid, OM w/tlk of 1600 African students in China (343 7/26 Havrilko-U.K.)  
 1950 BBC EE; British nx, "Week in Review" (433 8/15 Brown-IL) (C/12 MillerPA)  
 15180 1446 BBC AA; AA inst mx, ID @ 1447, into serious-sounding tlk (343 8/13 Rocker-MS)  
 1652 BBC AA; AA mx, OM vocals, anmts, 1659 "Huna London" ID, into 1700 nx (344 9/2 Orr-FL)

GREECE Voice of Greece

7430 0102 VOG Greek; nx, Greek mx w/ YL DJ, ID @ 0113 "Edo Athina," ute QRM (433 8/24 Dillon-MD) 0142 mx, Greek nx (333 9/2 Brown-IL)  
 0227 VOG Greek; Greek folk tunes, ID @ 0245, tlk (333 8/29 Abbinante-IL)  
 0344 VOG EE; nx, // 9420 (8/15 Miller-PA)  
 9395 \*2335 VOG EE; "This is Athens-the VOG" by OM, nx (353 8/12 Krist-VA)  
 9420 0128 VOG EE/GG; YL sings in Greek, nx, Pakistan hijacking, contry on Turkey, ID @ 0140 (434 9/6 Watson-FL) 0133 nx by YL (444 9/8 Bradley-MA)(Dillon)  
 9425 \*2000 VOG Greek; s/on anmts by OM, nx (353 9/3 Welch-MA)  
 9700 2045 V. of America relay EE; Gerry Mulligan playing jazz, under Sofia (232 8/11 Fraser-MA)  
 9935 1645 Thessaloniki Greek; Greek pop mx, 1700 OM tlk (nx?) (222 8/16 Sato-Jap.)  
 11595 1512 VOG Greek; Greek mx, 1615 dramatic readings, semi-class mx pgm @ 1630, sounds like relay of 1st pgm Home Svce (444 9/2 Quaglieri-NY)  
 11645 1541 VOG EE; OM w/ nx of EEC, Reagan & PLO, ID @ 1548, anmt in lang, 1550\* (141 9/5 Sampson-WI)  
 2335 VOG EE; ID, nx (353 8/19 Krist-VA)  
 12105 1403 VOG Greek; nx, ID, Greek pop mx, 1442 nx in AA, 1451\* (333 8/16 Sato-/Japan)  
 2339 VOG SS; folk mx, tlk, ID, YL w/ freqs (353 8/16 Orr-FL)

Thessaloniki (R. S. Makedonias-djs) is on new 11595 @ 0500 (Bob Padula-Australia/RA JJ DX Time via SWL Digest 8/24)

HUNGARY Radio Budapest

6025 0114 RB EE; nx, contry (333 8/14 Hawk-VA) 0100 contry on US-USSR Cancer research cooperation (433 8/27 Krist-VA)  
 9520 0300 RB EE; IS, ID, tlk, BBC QRM on 9515, nx, contry (422 8/15 Miller-CA)  
 9835 0948 RB EE; spts, OM ancr, 1000\* (252 8/23 Welch-MA)  
 2025 RB EE; Hungary's interest in the EEC, Hung. R&R mx (343 8/29 Shanklin)  
 11910 1140 RB II; OM "Buon Giorno..." ID, freqs, nx (333 8/27 Quaglieri-NY)  
 12000 0203 RB EE; nx, Hungarian economic issues discussed (343 8/15 Sampson-WI)

ICELAND

Iceland State Broadcasting Svce is on new 9985 USB ex-9675 1900-1940, @ 1305 9640 or 11855 are no longer heard (Ernie Behr-ON via SWL Digest 8/24)

IRELAND Radio Dublin International

6910 0020 RDI EE; rock mx, wx report @ 0100 (322 8/19 Thunburg-PA) 0100 American rock & pop hit tunes, OM w/ID (433 8/18 Hunt-NC) 0638 British & US pop mx, ad for carwash, no ID hrd (151 8/17 Orr-FL)

ITALY Radiotelevisione Italiana

7275 \*0535 RAI RR; IS, ID by YL, nx, QRM RCI (222 8/14 Trotto-FL)  
 9575 0102 RAI EE; ID, freqs, nx, Italy & Great Britain agree to liberalize markets (333 9/3 Brown-IL)  
 11800 2201 RAI EE; bird IS, ID, nx, Gov't sends condolences to families of the victims of terrorists attack (222 9/7 Brown-IL)  
 17780 1657 RAI II; bid IS, OM ID, nx (343 9/2 Quaglieri-NY)

LUXEMBOURG Radio Luxembourg

6090 2300 RL EE; nx, wx rpt, rock mx (433 8/19 Hunt-NC) 2350 songs, nx, wx (433 8/20 Krist-VA)  
 15350 2118 RL EE; hard rock mx (8/12 Miller-PA)



MALTA Radio Mediterranean  
6110 2040 RM EE; OM w/ "Hour with Peter" gospel pgm (555 8/9 Havrilko-U.K.)  
9545 \*0155 Deutsche Welle relay GG; ID, nx of Germany (444 8/11 Hesch-PA)

NETHERLANDS Radio Nederland  
6020 0228 RN EE; ID, freqs, TPs, nx, "Nxline," "SW Feedback" (543 9/7 Bradley-MA)  
1123 RN EE; "Media Network," 1125\* (434 8/28 Loturco-NY)  
9895 2102 RN EE; "Happy Station," hvy electronic QRM (422 9/7 Brown-IL)  
11740 2030 RN EE; nx, rpts on Social Security (544 8/15 Balt-IL)  
13770 1502 RN EE; "Media Network" visits the PIRATO consumer electronics show in Amsterdam (343 8/28 Westenhaver-QU)  
15560 \*1430 RN EE; nx, "Newsline" (252 8/23 Welch-MA) 1430 "Happy Station" (333 8/17 Sato-Japan)

NORWAY Radio Norway International  
9605 2210 RNI EE; nx, rpt on NATO exercises, Norway's radio system (433 9/7 Brown)  
9610 0125 RNI EE; test w/ new 500 kilowatt transmitter, // 11840 & 15345 (544 8/27 Hunt-NC)  
9650 0358 RNI Norw.; ID in EE/Norw., tlk (434 8/16 Pike-NM)  
11865 0614 RNI EE/Norw.; just IS & EE/Norw. IDs over & over to 0620\* (fr 8/28 Sheedy-CA)  
15305 1957 RNI EE; IS, ID, // 11865 (8/12 Miller-PA)  
15310 2020 RNI EE; nx, ID @ 2026 in EE/Norw. (433 8/26 Pike-NM)(Fraser-MA)(Hunt-NC)  
15315 1600 RNI EE; Europe & Nordic nx, pop hits (544 8/24 Shreedhar-India)(Bishop)

POLAND Radio Polonia  
7125 2230 RP EE; tlk on East/West relations (433 8/28 Hunt-NC)  
7270 0557 RP Esperanto; OM w/tlk then ID & IS @ 0559, off @ 0600, back on @ 0603 in FF (333 8/13 Trotto-FL)  
9525 \*2000 RP EE; s/on anmts, nx by OM (232 8/11 Welch-MA)  
9675 2024 RP EE; Panorama pgm, overmodulated audio (544 7/25 Havrilko-U.K.)  
11840 1214 RP Polish; tlk by OM, 1218 "Tu Polskie Radio Warszawa" ID & series of short items read by YL (343 8/7 Westenhaver-QU)

PORTUGAL Radio Portugal  
9565 0328 RP EE; tlk about Portuguese mx, guitar mx (534 8/25 Miller-CA)  
9680 0040 RP EE; nx, ID, sked, mailbag show, co-channel QRM WYFR (434 8/12 Rocker)  
9715 0300 RP EE; NA, ID, nx, Portugal imports 80% of everything (322 8/26 Brown)  
15250 1657 RP FF; IS, ID in FF, OM w/tlk (544 8/8 Havrilko-U.K.)  
15285 1750 RP PP; pop mx, ID by YL @ 1758, sked, off 1800 (444 8/23 Dillon-MD)  
17725 1403 R. Liberty RR; nx, ID "Govorit R. Svoboda" (242 8/13 Rocker-MS)

ROMANIA Radio Bucharest  
5990 2334 RE Romanian; mostly local mx, some tlking (8/12 Levison-PA)  
6155 \*0400 RE EE; IS, ID, freq, nx by YL (333 8/27 Trotto-FL)  
9690 2100 RE EE; pgm of WWII, class mx, European & S. American svce (444 8/23 Robinson-TN) \*1930 nx by YL (434 8/17 Trotto-FL)(Brown-IL)(Havrilko-UK)  
11809.5 0348 RE SS; Listeners Club promo, // 11940 9510 9350 (fr 8/8 Sheedy-CA)  
11940 1945 RE EE; "Youth Club," tlk about training pgms in industry (433 8/25 Shanklin-MA)

SPAIN Radio Exterior de Espana  
6055 0005 REE EE; nx, Gov't testing of A-bombs (433 8/21 Bishop-NY)(Phillips-PA)  
7280 0532 REE SS; jingle ID, tlk de OM under co-channel RFI (311 8/11 Westenhaver)  
9360 0157 REE SS; IS, SS svce, ID, freqs, sked (343 8/24 Brewer-AR)(Balt-IL)  
9620 2201 REE EE; wld nx, "Musical Spotlite" (322 8/20 Thunberg-PA)  
9630 0000 REE EE; nx, pgm on Spanish poet commemorating 60th Anniv. of death (8/20 Wright-MB) 0100 press review (554 9/7 Bradley-MA)(Neff-OH)  
17845 1425 REE SS; tlk by OM, ID, pop mx (354 8/13 Rocker-MS)

SWEDEN Radio Sweden International  
9695 2310 RSI EE; "Sweden Calling DXers," tlk of Japan's J. F. Satellite just launched (555 8/19 Hunt-NC) 2300 "Sunday from Stockholm (444 8/17 Wright-MB) \*2300 (343 8/19 Welch-MA) 2300 (433 8/19 Krist-VA)  
15240 1845 RSI EE; "Sweden Calling DXers" (333 9/2 Quaglieri-NY)  
15345 1409 RSI EE; homosexual issues & gay pride in Sweden (444 8/8 Neff-OH)

SWITZERLAND Swiss Radio International  
6135 0202 SRI EE; nx, interviews, QRM RHC & VOA (323 8/11 Vercellino-IL) 0359 II/EE; Alpine mx, "Dateline Tuesday" (433 8/12 Brown-IL) (Miller-CA)

SWITZERLAND continued

6190 2130 SRI EE; to Europe, wld nx, "Sunday Supplement" (333 8/24 Dillon-MD)  
 9535 1651 SRI GG; stock market rpt, currency exchange, into EE, YL gave time as  
 1900 hrs Middle European Summer Time @ 1700 (222 8/28 Shanklin-MA)  
 9590 2100 SRI EE; "Dateline" w/ rpt from film festival (433 8/15 Balt-IL)  
 9725 0400 SRI EE; ID, time, freqs, nx (322 8/16 Brown-IL) 0500 FF (434 8/18 Orr-FL)  
 9755 0400 SRI EE; nx, Swiss Aid in Nicaragua, Red Cross in Africa (454 8/1 Wright)  
 9885 0220 SRI EE; spts-a three-wheeler in bicycle race (444 8/20 Goodman-IA)  
 11755 1019 SRI EE; rpt on comedy film festival (353 8/21 Krist-VA)(Brown-IL)  
 12035 0312 Red Cross B/Cing Svce EE; to N & CAM, intvws w/ 2 YLs representing the  
 American Red Cross, QRM Moscow on 12030 (211 9/2 Collins-OR)  
 15430 0656 SRI EE; "Swiss SW Merry-Go-Round," Swiss mx, into II (252 8/16 Trotto-FL)  
 17570 1530 SRI EE; nx by YL, "Dateline," Star Wars comments (343 8/11 Vercellino-IL)

U.S.S.R. (European) Radio Moscow

5920 0214 RM EE; tlk on Soviet nuclear test ban proposal (141 9/5 Sampson-WI)  
 0445 RM Tula ERSFSR (RDI) EE; pop mx, to N. Africa (343 9/6 Thunberg-PA)  
 7165 0100 R. Rodina RR; nx of Gorbachev, tones before ID "Radiostaniya Rodina"  
 (444 8/24 Robinson-TN)  
 0228 R. Kiev EE; sked to Nam, // 7175 7205 11790 & 11875 ancd (343 8/25  
 Rocker-MS)  
 7175 0201 R. Kiev EE; nx, "Facts Testify," "Ukraine Today" (555 8/21 Krist-VA)  
 7185 0151 RM Lvov Ukraine (RDI) EE; Russian folk mx (322 9/3 Brown-IL)  
 7195 0608 RM EE; wld nx, "Nx & Views" (343 8/11 Westenhaver-QU)  
 7230 0325 RM SS; ID, svce to "America Latina" (233 8/13 Loturco-NY)  
 9470 1940 RM Ulyanovsk ERSFSR (RDI) EE; tlk of utilities & costs of food which  
 hasn't changed for over 40 years, // 7330 7370 & 9775 (544 7/25/  
 9640 2230 R. Rodina RR; ID, nx, contry, OM w/modern RR songs /Havrilkko-U.K.)  
 (544 8/10 Fraser-MA)  
 2330 R. Kiev EE; nx, DX Pgm, about Ham Radio (555 8/10 Fraser-MA)  
 9655 1542 RM EE; pgm about Genetic Engineering (434 8/18 Emerson-OR)  
 9720 0125 RM Vinnitsa Ukraine (RDI) EE; "Moscow Mailbag w/ congratulations to  
 SPEEDXers Rob Harrington & Joyce Harrington on their marriage (433 8/7/  
 9765 0250 RM Lvov Ukraine (RDI) EE; DX nx, // 9600 (344 8/12 Loturco/Goodman-IA)  
 9795 0031 RM PP; Brazilian svce, tlk about Soviet Gov't leaders visiting  
 Chernobyl (343 8/8 Westenhaver-QU)  
 11850 0800 RM EE; "Midnight in Moscow," chimes, nx, // 11950 (243 8/9 Rocker-MS)  
 11860 2010 RM Lvov Ukraine (Orbita) EE; "Nx & Views" (444 8/10 Westenhaver-QU)  
 11890 0400 RM Lvov Ukraine (RDI) FF; IS, TP, ID, nx (343 8/11 Rocker-MS)  
 13665 1311 RM Simferopol Ukraine (UHN) EE; contry on nuclear testing, economic  
 trends, "Folkbox" (242 9/11 Sampson-WI)  
 2000 RM EE; ID, wld nx, RTTY QRM (444 8/20 Rocker-MS)  
 13680 1416 RM Kalinin ERSFSR (Orbita) EE; "Soviet Way of Life" on conserving  
 water, // 13615 (243 8/28 Westenhaver-QU)  
 13755 1900 R. Rodina RR; mx, comments by OM/YL (8/10 Levison-PA)  
 15175 \*1200 R. Atlantika RR; "Govorit Moskva" & TC for 1600, ID "Govorit R. St.  
 Atlantika," reading from Pravda (444 8/4 Westenhaver-QU)  
 15490 2050 RM EE; African svce, tlk on why there's no unemployment in the USSR  
 (333 8/10 Westenhaver-QU)

VATICAN CITY STATE Vatican Radio

6150 0330 VR IS (211 9/5 Brown-IL)  
 9605 0045 VR EE; goings on in Rome, ID, wld nx, 0100\* (323 8/12 Pike-NM)(Krist-VA)  
 9615 \*0000 VR SS; "El Papa y el Mundo" (433 8/11 Wakefield-IA)  
 9645 2000 VR EE; "The Church Today," rpt on euthanasia, 2010\* (444 8/15 Balt-IL)  
 17730 0625 VR EE; // 15190, ID @ 0630, tlk of Holy Ghost congregation (343 7/26  
 Havrilkko-U.K.)  
 17870 1357 VR SS; chimes, ID "La Voz de R. Vaticana," tlk (242 8/13 Rocker-MS)

YUGOSLAVIA Radio Yugoslavia

6100 1920 RY EE; YL w/ID, sked, soft spoken YL, // 7240 (332 7/25 Havrilkko-U.K.)

CLANDESTINE Radio Free Afghanistan via Radio Liberty

9555 \*0200 RFA Dari; TP, ID sounding like "Inja Radia Afghanistan Azeri," prayer,  
 anmts, nx de 2 OMs, site either Gloria Portugal or Holzkirchen FRG  
 (433 8/29 Westenhaver-QU) RDI lists site as Gloria-djs

UNIDENTIFIED

11595 1325 mx w/ vocals (Greek?), mx & lang sounds like Greek (222 8/13 Levison-PA  
 V. of Greece has been heard here @ 1512 & Thessaloniki @ 0500, see  
 Greece in this column-djs *Danu*

# Africa

Al Quaglieri • P.O. Box 888 • Albany, NY 12201-0888

All times and dates UTC: Frequencies in Khz: \*0000 = s/on, 0000\* = s/off.

Submission Deadline is the 12th.

Wow! If I had any more info to squeeze into this month's column, I'd reduce the type size and make you all use a magnifying glass! An explanation of the new marks in the left-hand column follows these great loggings:

LOGGINGS FOR OCTOBER, 1986

## ANGOLA

- 3578.3 0400 R. Nacional: PP; nx headlines, ID "transmite RNac. de Angola", march, patriotic mx, into pgm EZL mx w/laid-back anc. 343(9-2 ed.)
  - 3598.6 0634 R. Nacional: PP; same xmtr as above...last hrd here on 9-3, gone since. They either fixed it or broke it, or condx lost. -ed.
  - 4952.6 0450 ER da Huila(t): PP; ry of RN pgm: discussion, IS @0500, ID/nx to 0502, then local dj program. Bad audio hum. 222(9-9 ed.)
  - 4969.8 0507 ER de Cabinda: PP; ry of Luanda nx/cnty to 0521, then split from net w/lcl ID, messages, lcl mx to f/out @0532. 222/211(9-2 ed.)
  - 5059.8 0505 ER do Huambo: PP; M nx to fanfare @0512, then lcl/US soul mx; ID @0530 "...por Em. Regional do Huambo..", TC, lost to noise by 0600. fair(8-25
  - 5061.8 0537 ER do Huambo(t): PP; hilife mx, traces PP M tlk. 141(8-30 ed.) [Sheedy-CA]
  - 6151.7 0544 ER de Benguela: PP; W tlk ment Luanda, ID @0558-clr ment Benguela, no IS, W nx hdlns to lcl mx @0602. Severe QRN. 211(8-30 ed.)
  - 7160.6 0611 ER do Huambo: PP; lcl vcl mx, M brief TC, more mx. Deep fades. 242(8-30 ed.)
- [Also noted around 9-1 @0500-0615v were vy weak hets, sometimes w/mx, on 4882.5 and 7192.8, which may possibly be ER do Zaire and ER do Lobito, respectively. -ed.]

## ASCENSION ISLAND

- 7160 0500 BBC Relay: EE; Nx, Afr Nx, Network Africa. 333(8-26 Sharpe-CA). 444(8-25 Brown-IL)
- 9515 2000 BBC Relay: EE; nx, 24 Hours, international rpts. 454(8-14 Balt-IL)
- 15260 1710 BBC Relay: EE; Sports, Letter from Wales, piano roll mx. 453 (8-13 Miller-
- 17785 1430 BBC Relay: EE; M anc. w/cricket coverage, Saturday Special. 343(8-23 [CA] Havrilko-UK)

## BENIN

- 4870 2114 LV de la Revolution: FF; M ID, children perform lcl mx; IS @2118, then M w/tlk, ment Cotonou. 343(8-22 Havrilko-UK). @0550 mx, ID, into M tlk; very low modulation. 343(8-28 Rocker-MS)

## BOTSWANA

- 3356 0435 R. Botswana: Sets/EE; EE promo for 20 Yrs of Independence; Dolly Parton mx foll by lcl mx & M in Setswana. Best on LSB. 433(8-25 Shaffer-PA)
- 4820 0349 R. Botswana: Sets/EE; "Old McDonald" IS [barnyard noises-ed.] to choral NA, bilingual ID/sked. QRM HRVC. 322(9-11 Thunberg-PA). Freq in clr after HRVC off 0458\*. 333(8-19 Trotto-FL). 444(Van Horn-FL). 434(Balt-IL). 423(Rocker-MS). 433(Sharpe-CA). 343(Havrilko-UK). 333(Westenhaver-IN). 332(Welch-MA).

## BURKINA-FASO

- 4815 0545 RTV Burkina: FF; M talk o/mx, FF pops, @0600 M "Radiodifusion Television Burkina", into nx. 333(8-25 Berri-CA)

BURUNDI

3300 0413 LV de la Revolution: Kirundi?; M tlk, drums, cmty on Tanzania, more drums, M ID ment Bujumbura, foll by nx in another language? Over/under TGNC. 322/311(8-29 ed.)

CAMEROON

4795 0533 R. Douala: EE/FF; EE nx de Yaounde w/R. Cameroon ID @0537, hilife mx and into FF @0547. 232(8-19 Westenhaver-IN). 332(8-25 George-NC). @1948 in FF. 443(8-20 Havrilko-UK)

4850 0530 R. Cameroon: EE; ID, strange IS, nx; bad UTE QRM. 322(8-25 Balt-IL). 343(8-25 George-NC)

- 5010 0425 R. Garoua: EE/FF; bilingual ID/freqs, NA, into FF pgm @0430. 444(8-24 Balt-IL). 323(8-12 VanHorn-FL). 343(8-14 George-NC)

CANARY ISLANDS

- 15365 \*2147 R. Exterior de Espana Relay: SS; REE IS to 2200, nx. (Do you know how monotonous that IS can be after 15 minutes?). 333(8-24 Balt-IL). [I'll bet you get up at sunrise to watch TV test-patterns too. -ed.] @2200 opening ID "Radio Nacional de Espana en las Islas Canarias, transmitiendo para America desde Santa Cruz de Tenerife." vy gd(8-22 Sheedy-CA)

CENTRAL AFRICAN REPUBLIC

5034.4 \*0427 R. Centrafrique: FF; piano chord IS, NA ID, nx, stn anmts, lcl mx. 343(8-31 VanHorn-FL). 242(8-29 ed.) @2301\*. 353(8-20 D'Angelo-PA)

CHAD

- 4920 \*0500 RN Tchadienne: FF; IS to 0500 NA, choral anthem, M w/anmts, into Afropops w/M dj. 454(8-25 George-MA). 442(8-18 Orr-FL). wiping out R. Quito @ \*0500. 444(9-2 Huffaker-MX). @2303\* s/off anmts, NA; s/off time listed as 2200\* on Saturday..is this new s/off time? 353(8-9 D'Angelo-PA). [It was that night.-ed.]

DJIBOUTI (JIBOUTI? TCHABOUTI?...djust djoking, Glenn. -ed.)

4780 0307 R. Djibouti: Somali; Qur'an to 0311, then tlk by M. I can remember this stn being a really rare catch a few years ago. 333(8-26 George-NC). [It still is for those without the patience/equipment/luck to dig under the racket from WGY912, the Federal Emergency Management Agy's CW stn that usually dominates this freq in NA. -ed.]

EGYPT

- 9455 0443 R. Cairo: AA; M tlk/mx mix to 0448, then ID by W. 444(8-14 Trotto-FL)
- 9475 0210 R. Cairo: EE; The Holy Qur'an and Its Meaning In Modern Life, then TS @ 0215 foll by nx. 353(9-6 Welch-MA). 343(8-17 Wright-MB). 333(8-20 Brown-IL). muddly modulation, hvy QRN. 311(8-14 Brewer-AR). @2000 in AA w/nx, pgm on Islam, literary analysis. 343(8-17 Dillon-MD)
- 9805 \*2115 R. Cairo: EE; nx headlines, mx Press Rpt. 243(8-2 Kaessinger-FRG). @2138 nx, ID, songs, Reception Reports, tlk on jamming. 333(8-27 Krist-VA)
- 9900 0151 R. Cairo: AA; M tlk to 0158, march, @ 0200 chimes, W ID, nx fanfare, nx. 333(9-11 Westenhaver-QUE)
- 12050 2318 R. Cairo: AA; song by Farid al-Atrash, W dj, chimes @2330, ID, "Al-Anba" (nx). 433(8-17 Dillon-MD). @1520 in AA. 232(8-31 Abbinante-IL). @1900 in AA. 545(8-23 Robinson-TN)
- 15210 1845 R. Cairo: Hausa?; nx fanfare, M anmt, nx. 322(9-4 Westenhaver-QUE). @1400 in AA w/ID, bells, W nx, dramatic tlk from M/W. fr(8-21 Shimada-JPN)
- 17745 1340 R. Cairo: AA; VO the Arabs pgm w/Qur'an, w tlk, vcl mx. 253(8-13 Rocker-MS)

EQUATORIAL GUINEA

9553 2157 R. Nacional: ??; rushed home from work, tuned in & caught tail end of NA. 222(8-1 D'Angelo-PA). ["Yes, Officer, I know I was speeding, but there's this National Anthem I just gotta hear....." ed.]

ETHIOPIA

7110 0337 VO Revolutionary Ethiopia: Amh; M nx to 0339, then lcl flute mx, M introduces pgm Ethiopian mx. QRM bubble jammer, Sofia 7115. 211(8-28 ed.)

GABON

- 4830 0500 Africa #1: FF; W ID/freq, into Afro pop mx. 433(8-14 Miller-CA). @2113 w/usual mx pgms. 433(8-22 Bishop-NY)
- 7135 0415 R. France Int'l. Relay: EE; freqs, nx, rpt on Cameroon disaster. 454(8-25)
- 9570 0458 R. Japan Relay: JJ/EE; IS, IDs in JJ/EE, blown away by VOA @0500|Balt-IL) [9565, I presume.-ed.]. 333(8-10 Brown-IL).



GABON (cont.)

- 9645 2300 R. Japan Relay: EE; Cameroon rpt, Asia Now: kid books, ME relationships. 433(8-28 Hunt-NC). 343(8-9 Neff-OH). 444(8-26 Krist-VA)
- 11940 0626 Africa #1: FF; ad Jeune Afrique magazine, into M nx. 242(8-11 W'haver-QUE)
- 15200 1511 Africa #1: FF; Afro pop mx, W dj. 334(8-15 Sampson-WI). 444(8-17 Westenhaver-IN). vy gd(8-16 Sheedy-CA). sudden off @1658\* 444(8-9 Neff-OH).
- 15475 1856 Africa #1: FF/EE; FF nx to 1900, then W w/1 min of EE nx, EE ID, back to usual mx pgms; also noted SS ID @1916. 444(9-10 ed.). 433(8-14 Winarz-QUE). s/off @2100\* 444(8-22 Brown-IL)
- 21700 1500 R. Japan Relay: EE; nx, cmt. Severe fading. 322(8-19 Shreedhar-INDIA)  
[From Andy Sennitt/RNMN, via Bill Westenhaver, comes news that Swiss Radio Int'l has registered 9625kHz via Moyabi for 2200-0111 b/c to SA in various langs.]

GHANA

- 3240.1 0603 GBC(t): EE/vern; M nx & sports to 0614, drums, then into vern lang; f/out by 0621. Believe 'twas replacd 2 nites later by next freq..343(9-1 ed.)
- 3350 0553 GBC: EE/vern; M vern to 0159 drums, then "This is the Ghana B/Cing Corp, the time is 6 o'clock.", home nx EE. 343(9-3 ed.)
- 3366 2248 GBC: EE; M African nx, soccer scores, ID, vern mx. 211(8-31 Shanklin-MA). 433(8-20 Havrilko-IK). @0600 W ID as "GBC-2, the Commercial Sce. of R. Ghana." 343(8-18 Trotto-FL). 344(8-28 Rocker-MS)
- 4915 0608 GBC: EE; W w/nx, football scores, lottery #s, into vern @0615. 333(8-24 Winarz-QUE). 434(8-31 VanHorn-FL). 444(8-26 Brown-IL). 222(Sharpe-CA). 322(8-22 Bishop-NY). 433(8-25 Westenhaver-QUE)
- [From SCDX: Steve Gustaffson-IN, hears GBC on 7295 @0545-0600]

GUINEA

- 4900 2250 RDif Nationale: FF; hilife mx to 2300 ID, hilife/pops to s/off w/ID & NA @0001\*. 252(8-30 D'Angelo-PA). @0657 in FF. 252(9-2 ed.)

IVORY COAST

- 6015 0657 R.Cote-d'Ivoire:FF; "L'Emission Catholique" rel pgm to 0700 M ID. nx. 343(8-17 Orr-FL). KO'd by VOA @0715. 343(8-30 George-MA)
- 9620 2210 R. Cote-d'Ivoire(t): Indig mx to 2214, W poss ID, tlk, pop mx, ment Abidjan @2230, hrd "R. France Int'l" few times too...perhaps this is a relay? F/out by 2250. 222(9-1 Atkins-WA).[Prob. Abidjan...'tho now on 9670, they were prob visiting hr for old times' sake. -ed.]
- 9670 1907 R. Cote-d'Ivoire: FF; hilife mx, sports, poem, tlk abt lcl hospital. 333(8-24 Dillon-MD), blocked by VOA @ 2258. 434(8-16 Orr-FL). [I've hrd a Qur'an pgm in AA? on Thur @2130 this freq de Abidjan. -ed.]

KENYA

- 4915.2 0318 VO Kenya(t): Swah?; Afr drums & chanting, quick f/out; hvy QRM de Brasil on 4915. 222(8-28 ed.)

LESOTHO

- 4800.1 0435 R. Lesotho: EE; M w/nx abt Bush visit to ME. 322(8-4 Shaeffer-PA). 333(8-25 Westenhaver-QUE). 322(8-21 Rocker-MS). 343(8-25 George-NC). 433(8-25 Balt-IL). @\*0300 QRM Ecuador 4800.6. 322(8-28 ed.). @1502!! fair but losing to dawn noise [I remember her...ed.](8-20 Sheedy-CA)

LIBERIA

- 3255 2346 ELBC: EE; W w/echo:"This is ELBC from Monrovia, Liberia.", jazz mx. 322(8-29 Shanklin-MA). 433(8-22 Bishop-NY). @0002\*. 252(8-20 D'Angelo-PA).
- 3990 0420 VOA Relay: EE; VOA Friday Morning: Palestine press. 333(8-22 W'haver-QUE)
- 4760 2157 ELWA: EE; lcl instr mx to 2200 ID, VOA nx. 252 QRN(8-21 D'Angelo-PA)
- 15315 1930 VOA Relay: FF; M ID, into world nx. 444(8-17 Orr-FL)
- 15600 1559 VOA Relay: EE; IS, s/on Afr Sce: nx. 343(9-6 Brown-IL)
- 17870 1721 VOA Relay: EE; Afr Panorama: Tutu visits China. 142(8-15 Sampson-WI). 242(8-10 W'haver-QUE).(8-14 Winarz-QUE). 434(8-14 Balt-IL)
- [Peter Dillon-MD also reported VOA Relay on unlisted 15235 kHz @1700 in Swahili. This is indeed Monrovia, and has sked 0730-0800, 1100-1600, 1630-1730, and 1800-2300.-ed.]

LIBYA

- 7245 0230 VO the Greater Arab Homeland: AA; anti-Jewish drama, ID @0241 "Sawt ul-watan il-'Arabi il-Kabir.", world nx @0300, Qur'an, off0315\*. 433(8-17)
- 15235 2155 R. Jamahiriyyah: AA; AA mx, dramatized phonecall, chanting, TP |Dillon-MD) @2200, ID "Saut-al-watan" & nx. 343(9-1 Westenhaver-QUE)

LIBYA (cont.)

- 15415 1555 R. Jamahiriyah: AA; large group M singing continuously (wonder if they had oxygen tanks?). 333(8-31 Abbinante-IL)
- 17895 2150 R. Jamahiriyah: AA; mx, TC @2200, M tlc, thought I hrd "Jamahiriyah". 343 (8-24 Balt-IL)

[Oops...I goofed last month...as Glenn Hauser correctly points out, my log of 13650 was indeed Iraq, not Libya. Should've never trusted my pathetic Arabic language skills.-ed.]

MADAGASCAR

- 7285 \*2300 R. Nederland Relay: Indo; IS, full ID, M w/world nx. 333(8-17 Trotto-FL)
- 9505 \*1330 RN Relay: Dutch; s/on anmts & chat, nx. 2 xmtrs on freq. 343(8-18 W'haver-
- 9715 2050 RN Relay: EE; Newslite: cancer after Chernobyl. 433(8-29 Brown-IL). [QUE] @2120 in EE w/Happy Station. 455(8-24 Balt-IL)
- 17575 0900 RN Relay: EE; Portraits of the Past: 1966. 544(8-25 Shreedhar-INDIA)
- 21485 1027 RN Relay: Dutch; IS, DI, nx, interview. 454(8-7 Uetake-JPN)

MALAWI

- 5995 0358 MBC: Chichewa/EE; lcl mx (in VOA break), M ad Chichewa, jingle, ID by M/W @0400, then M lcl/regional nx to 0409; EE ID & ad. Mixing w/VOA, best hrd in LSB under optimum African condx. 311(8-28 ed.)

MALI

- 4783 0625 RN du Mali: FF; 2 M tlc; mix of FF, soul, Afro mx; FF ID @0701. 333(8-25 Thompson-CA). 434(8-18 Trotto-FL). [//4834 also noted 9-3..ed.]
- 7285 0703 RN du Mali: FF; march mx by Malian Army Band; TC, ID in full @0716, gave sked for Band performances. 433(8-17 Orr-FL)

[Gabriel Ivan Barrera-ITALY recently received this full sked with his QSL: 0600-0800 and 1800-0000 on 4783, 4835, 5995; 0800-1000 and 1200-1800 on 7285, 9635, 11960.--via SCDX]

MAURITANIA

- 4845 2116 RTV Mauritanie: AA; M tlc, AA chants & mx. 444(8-20 Havrilko-UK). 333 (8-10 Hawk-VA)

MAURITIUS

- 9710 0440 MBC(t): FF; M/W anmts, poss ID (thought I hrd "...television Maurice."), FF vcls & nx @0500. 433(8-11 VanHorn-FL)

MOROCCO

- 5950 2123 Medi Un(t): AA; ancrs chit-chat, nx promos, soft pop/C&W mx. 444(8-31 Van
- 9795 0630 R. Monte Carlo Relay: AA; mx pgm with W dj. 433(8-30 McNeill-AL) [Horn-FL)
- 11920 2340 RTV Marocaine: AA; chants, tlc, ID @2350, long tlc o/mx. 343(8-15 Jones-TX). 343(8-17 Wright-MB). 243(8-16 Orr-FL)
- 13695 1422 RMC Relay: AA; weird disco remix of "Stairway to Heaven", M dj/mx, then ID/nx @1500. 233(8-28 Westenhaver-QUE). @0754. 353(8-11 Orr-FL)
- 15195 \*1530 VOA Relay: Turk; IS, EE ID, M w/nx in Turkish. 242(8-22 Trotto-FL)
- 15335 0007 RTV Marocaine: AA; W w/nx to 0010, then cmty, interview. 333(8-13 Rocker-MS)
- 17595 1629 RTV Marocaine: AA; lcl mx w/M ancr, f/out by 1645. 242(8-22 Dillon-MD)

MOZAMBIQUE

- 3338.4 0420 Emis. Interprovincial de Maputo e Gaza: PP; canned promos, live M dj w/ local pops; faded badly by 0445. QRM de RTTY(USB)/data Burst(LSB). 333 (9-9 ed.)
- 4866.6 0414 UNID: PP; W calisthenics to 0416, then kiddie mx to 0425, instr mx, M poss ID, canned promo, drum mx, fade. Deep fades, possibly Quelimane? 242 (8-28 ed.)
- 11818 1100 R. Mocambique(t): PP; IS, ID/sked by M, mnf IDs, tlc abt U.S. TV. 343(8-12 Soomre-MA)

NIGER

- 5020 0558 RTV Niger: FF; drum mx, TP, one flute IS & ID, nx w/drums between items. Better than usual sigs from here lately. 353(8-25 Rocker-MS). 333(8-20 Roo-FL)

NIGERIA

- 4770 0534 R. Nigeria-Kaduna: EE; tlc abt women's role in Nigerian politics, TC. 222 (8-13 Shanklin-MA). 343(8-25 W'haver-QUE). 344(8-25 Balt-IL). 434(8-21 Miller-PA). 444(8-28 Rocker-MS)
- 4990 2225 R. Nigeria-Lagos: EE/Vern; Muslim rel pgms, pgm previews, TC, ID, nx@2300, foll by pledge & NA, 2307\*. 353(8-22 D'Angelo-PA). @0507..322(8-27George |-NC)

NIGERIA (cont.)

6025 0537 R. Nigeria-Enugu: EE; heavily-accented M introduces lcl mx, talks about performer, foll by lively Waf rhythms. 322(9-1 ed.)

RWANDA

7225 0350 Deutsche Welle Relay: Swahili; Saf mx w M dj, @0400 M w/nx. 333(8-30 W'hav.  
 9640 2358 DW Relay: GG; IS, IDs, ID as Kigali ry, s/on & nx. 344(8-21 Rocker-MS) [-QUE]  
 11705 2310 DW Relay: GG; Wirtschaftspanorama (Economics Report). 342 (444 next dy)(8-21 Munster-GA)  
 11730 0000 DW Relay: GG; ID, M nx, disc abt work in Nicaragua. 433(8-12 Pike-NM)  
 21560 0900 DW Relay: EE; to Australia, irreg //11945(544) and 15160(444). 544(8-24 Shreedhar-INDIA)

SEYCHELLES

9590 1600 FEBA: EE; nx after religious pgm. 544(8-25 Shreedhar-INDIA)  
 11755 \*0400 FEBA: AA; IS, rel pgm, "huna Feebah" @0415, more canned rel 'til closing theme @0430, IS & off. fair(8-16 Sheedy-CA). 252(8-12 Rocker-MS). 344(8-17 Orr-FL)  
 11865 1150 FEBA: Hindi; Bible study, SAsian vcl mx, address for letters, off @1220\* w/IS. good(8-23 Shimada-JPN)

SIERRA LEONE

5979.9 2207 SLBC: EE; M nx, W ID, drums, indig mx, into vern tlk, another EE ID @2229, then EZL mx. 221/2(9-4 ed.)

SOUTH AFRICA

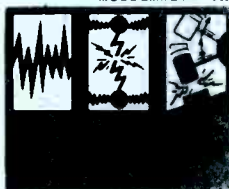
[NOTE: For the sake of clarity, only loggings from currently active freqs appear.-ed.]  
 3215 0407 R. Oranje: Afk/EE; M dj, some EE, mostly Afk, light pops/country, TCs & IDs. 332(8-4 Shaffer-PA). 343(9-1 Huffaker-MX)  
 3230 0308 R. RSA: EE; end nx, ID, tlk abt Zimbabwe sanctions. 343(9-10 ed.). 443(8-19 Havrilko-UK). 243(8-25 Balt-IL)  
 3927.4 0433 Capital Radio, Transkei: EE; pop mx, slick M dj, mni ads/IDs. Ham QRM, hi QRN lvls. 222(9-10 ed.)  
 4810 2120 R. RSA: EE; M w/nx abt sanctions, feature pgm abt SAA (Saf Airlines), s/off w/IS @2156\*. 222(8-29 Shanklin-MA). 252(8-21 D'Angelo-PA)  
 4880 0410 R. 5: EE; ment "R. 5 in the 60mb" and freq 41mb. fr(9-6 Sheedy-CA)  
 4945 \*1455 R. RSA: Lozi; IS, EE ID, fanfare, TPs, ID, onto Lozi. weak/clear(8-21 Sheedy  
 6065 2356 R. RSA: SS; IS, EE ID, NA, SS nx. 434(8-10 VanHorn-FL) [-CA]  
 7270 2130 R. RSA: EE; W nx of Afr Nat'l Congress. 444(8-22 Robinson-TN)  
 9615 0213 R. RSA: EE; Economic Review. 444(8-9 Wright-MB). Clobbered by DW. 333(9-1 Brown-IL)  
 11775 2120 R. RSA: EE; answering letter from listeners. 333(8-23 Hunt-NC)  
 21590 1055 R. RSA: EE; IS, ID, nx, interview pgm. 353(8-12 Uetake-JPN)

Just to clear the air, here's how the recent Internal Sce shakeup has left things:

3215	0400-2008	RADIO ORANJE
3230	0300-0426	R. RSA (EE)
	1658-1756	R. RSA (Chichewa)
	1858-1956	R. RSA (PP)
3250	NO LONGER IN USE	
3320	0400-0555	SABC (Afk)
	1535-1930	SABC (Afk)
	1930-0400	R. ORION
3955	0400-0615	SABC (Afk)
	1515-1930	SABC (Afk)
	1930-0400	R. ORION
4810	1958-2056	R. RSA (FF)
	2058-2156	R. RSA (EE)
4835	NO LONGER IN USE	
4880	0400-0520	RADIO 5
4945	1458-1958	R. RSA (Lozi)
6005	0555-1535	SABC (Afk)
6105	0540-1545	R. ORANJE
7170	0520-1550	RADIO 5
7285	0615-1515	SABC (Afk)

If you're feeling incredibly lucky, or just like chasing windmills, try the mediumwave channel of 727 kHz. Sked:

1258-1556	EE
1758-1858	FF
1858-1958	PP
1958-2058	FF
2058-???	EE



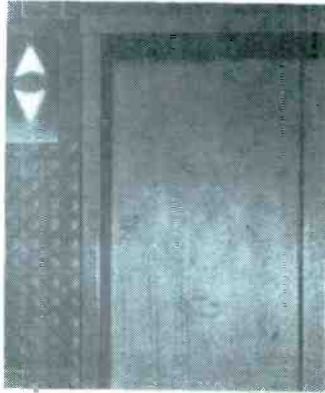
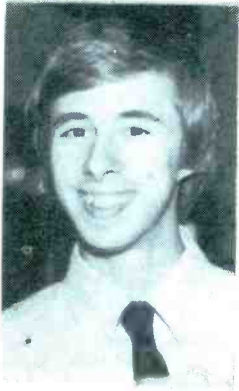
**SPEEDX**

INFO DIRECT FROM MEYERTON.

Forgot a good one in the loggings dept.:

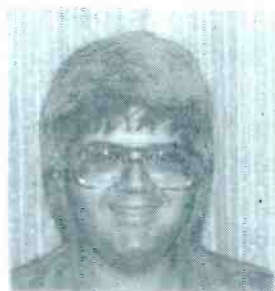
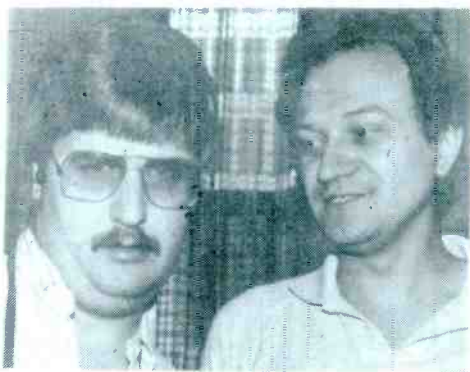
6105 0616 R. Oranje: Afk; usual Afk dj show, ads in EE/Afk, horn & ID @0630, into apparent nx. poor(9-4 Sheedy-CA)

"Africa" continues on page 26...



**ANARCON — 86**  
**JULY / JUILLET 18-20, 1986**





# Photo Gallery

Photos by Al Quaglieri  
Photo Identifications are on page 46



and wherefore of new national monicker. Seems Burkina means something like fine, noble, and upstanding, and Faso means republic. Thus, name like RT du Burkina still makes sense without the Faso.....My apologies to all members subjected to my 35mm camera at ANARCON..at least now you're all nationally-known faces after this issue!...Here are a pair of features I wish I had more room for; one is first in a series, the other a one-shot.

## HEAR AFRICA

Every month I hear from 2 or 3 people who want more info on how to catch all this neat African DX. This series will hopefully answer these questions en masse, and cover all aspects of this challenging side of SWling.

Let's first deal with the equipment you'll need. Contrary to what many of you seem to believe, you can hear most countries in Africa on standard SWL equipment, even portables! You'll need a set that can tune 3200-3400kHz and 4700-5100kHz (the Tropical Bands), with a fair amount of sensitivity, good image rejection, and as much selectivity as you can reasonably afford. Larry Magne's receiver reviews, on RCI and in the past few WRTH's, are excellent guideposts, and his book, "Receiver Specification Guide" (details in SPEEDX 6/86, p.6) is worthwhile also. Also recommended for the DX-oriented is Rainer Lichte's "Radio Receiver--Chance or Choice" from Gilfer.

You'd be surprised if you ever took time to check most Africa logs with each issue's Contributor's List and saw what equipment was used in each case..most stns have been hrd with straightforward stuff like FRGs, R600s, R1000s, etc. The "trick", if one exists, is knowing when and where to listen. I'll fill you in on this in coming months, but for now why not try this: throughout this month's column, you'll see this • before a number of frequencies/times...this indicates what I consider to be your best shot at logging that particular country; I'll bet if you make a little "want list" up from these dot recommendations, you'll add one or more new countries to your logs by next month. Good luck!



## RADIO VOICE OF THE GOSPEL

If you discovered shortwave radio within the past ten years, you'll probably be surprised to learn that Ethiopia used to be a pretty easy catch, as opposed to the DX challenge it has since become!

Station ETLF--The Radio Voice of the Gospel, beamed multi-language programs in almost all directions, throughout the day, using then-state-of-the-art 100kw xmtrs and a reversible/sleuable curtain array. This, briefly, is the story behind RVOG.

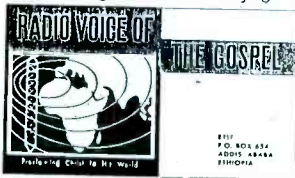
As an attempt to bring modern technology to its ministry, the Lutheran World Federation decided, in 1958, to build its own station in Africa. The organization chose Ethiopia as its site, due to favorable geographical position, and that country's Christian traditions, culture, and lack of a colonial past. Then-Emperor Haile Selassie encouraged the LWF, granting 3 years of duty-free import of technical and building material; he believed a major international b/c'er would project a progressive image of Ethiopia as a country at the vanguard of the "new" Africa.

The station, consisting of modern studios, offices, and residences at Addis Ababa, and xmtr site at Gedja, began regular b/c's on 2/26/63, after several months of tests using a 1 kw xmtr. Callsign ETLF was chosen for ET (Ethiopia prefix) and LF= Lutheran Federation. The powerful xmtrs covered all of Africa and Arabia with excellent signals, and reached China and India with usable signals. Programming consisted of b/c's in French, English, Amharic (all from Ethiopian studios), plus 14 other languages in programs recorded at LWF's local church production studios in 16 African and Asian nations. This diversity made RVOG unique in the history of religious b/c'ers, in that it was designed to be an instrument for local churches to speak to their countrymen. A 30/70 formula was used: 30% religious programs, 70% educational, cultural, & news pgms. RVOG was fiercely proud of its accurate, unbiased news operation, something of a rarity even in present-day Africa. As political upheavals shook the country in the 70's, this insistence on factual newscasting proved to be a major thorn in the side of a forming revolutionary govt.

Years of increasing tension and pressure from Ethiopia's new socialist regime came to a head, and ETLF's b/c's came to a halt on March 12, 1977, when government troops decided to nationalize the stn. Ethiopian citizens at RVOG were allowed to remain, but all other personnel were asked to leave the country with only their personal belongings.

Today's Voice of Revolutionary Ethiopia still uses RVOG's facilities, which have deteriorated to the point that VORE is now rare DX!

Many thanks to Pastor Gene Thieman, Fern Hagedorn, and Manfred Lundgren of Lutheran World Ministries for their input. Mr. Lundgren's book, "Proclaiming Christ to His World", is a complete and fascinating account of RVOG, and I'll provide more info on request. Thanks also to SPEEDXers Richard D'Angelo and Donald Weber for their assistance!



RVOG QSL CARD



**Bob Thunberg**  
**409 Burt Street**  
**DuBois, PA 15801**

**DEADLINE: 12th**  
**Dates/Times: UTC**  
**Frequencies: KHz**

Is there no justice? Last month A/O was allotted six pages, but because of the late arrival of Peggy's CDE logs, I only had enough material to fill four. Now this month everything has arrived on time providing me with seven pages of loggings and I am allotted only five! But as the saying goes, "When the going gets tough...." Please excuse the abbreviated listings and don't forget to check out the info in the Oceania section on the new Pacific island now broadcasting on Shortwave.

<u>BURMA</u>		<u>Burma Broadcast Service</u>	
4725t	1229	BBS: Unid lang: YL tlk, native mx; Ute QRM (222 8/10 Atkins-WA)	
<u>CHINA (PEOPLE'S REPUBLIC)</u>		<u>R. Beijing</u>	
5770	1140	V. of the Straight (FFS-2): CC: YL tlk; ID @ 1145 (433 8/8 Rocker-MS)	
8260	1438	V. of Kampuchea: VV: PRC relay of OM tlk. mx (353 8/5 Donegan-CA)	
9535	1200	RB: EE: nx, "China Anthology", "Listener's Letterbox" (333 8/17 Alexander-NJ) press review (545 8/23 Robinson-TN) (353 Sampson-WI)	
9550	1352	RB: EE: ID, sked, IS & 1356* (444 8/19 Berrin-CA)	
9570	1605	RB: EE: nx, cmt, CC mx to SE Asia (434 8/14 Miller-CA)	
9700	0845	RB: EE: nx of S.Africa, mx pgm (242 8/13 Trotto-FL)	
9730	1230	RB: EE: CC mx, tlk on birdsounds; BBC QRM (544 8/24 Miller-CA)kins-WA)	
*11330p	0710	Cent. People's Bcast Stn-l: CC: play w/sound effects; //11290(121 At-	
11500	1900	RB: EE: tlk on Tutu's visit, "China Scrapbook" (443 8/12 Kaessinger-FG)	
11515	1000	RB: JJ: CC lang course (454 8/20 Uetake-JP)	
11640	1500	RB: TAMIL: nx, tlk on Chinese culture (544 8/20 Shreedhar-India)	
11650	1210	RB: EE: nx, Letterbox (353 8/24 Krist-VA) "in the Third World" pgm (344 8/20 Westenhaver-QUE) (444 Brown-IL) (Rocker-MS)	
11755	0835	RB: EE: wld nx, cmt, CC mx (454 8/18 Uetake-JP)	
15120	0015	RB: SS: pgm of CC vcl mx (8/19 Levison-PA)	
15280	0447	RB: EE: ID, vcl mx; polar flutter (343 8/8 Rocker-MS)	
15330	*1400	RB: CHAOZHOU(?): "East is Red" IS; tlk in tonal Asian lang; buried under AFRTS: lang per WRTH (211 8/6 Westenhaver-QUE)	
15445	2302	RB: SS: nxcst; //15180 (353 8/16 Orr-FL) "Minorias Nacionales de China" pgm (343 8/11 Westenhaver-QUE) (Levison-PA)	
	0050	EE: "Listener's Letterbox" (433 8/10 Zirkelbach-CA)	
<u>CYPRUS</u>		<u>British Bcast Corp Relay</u>	
9590	0202	BBC: EE: US & USSR working on spy swap (343 9/3 Brown-IL) "Network UK" (343 8/23 Emerson-OR)	
	9740	BBC: EE: nx of World Chess Championship (545 8/24 Miller-CA)	
<u>INDIA</u>		<u>All India Radio</u>	
11620	*1845	AIR Aligarh: EE: lyrical compositions in Urdu lang; cmt on Soviet withdrawal from Afghan. (333 8/1 Kaessinger-FRG)	
15320	1000	AIR Aligarh: EE: nx, cmt, mx (343 8/11 Uetake-JP)	
<u>INDONESIA</u>		<u>Radio Republik Indonesia</u>	
4931.6	1421	RR1 Surakarta: IN: ID by YL; tlk abt babies & food; instl & pop vcl mx (322 8/23 Sharpe-CA)	
<u>IRAN</u>		<u>V. of the Islamic Rep. of Iran</u>	
9022	1930	VOIRI: EE: Qur'an recitation, nx; QRN (242 8/1 Kaessinger-FRG)	
	0235	FARSI: nx, ID, Qur'an (453 8/20 Orr-FL)	
15084	1620	VOIRI: FARSI: tlk, ID @ 1630, nx read by OM; break in signal @ 1640 (453 8/16 Sharpe-CA)	
	0130	SS: sked, ID, local mx (343 8/15 Rocker-MS) beamed to C & Sam..ed.	



IRAQ

R. Baghdad      Sawt ul Jamaheer

9635 0153 SuJ: AA: disc. of Islam, ID @ 0157 & nx @ 0200 (433 8/17 Dillon-MD)  
 9665 0351 SuJ: AA: AA vcl mx, ID @ 0400 into nx; //9635 (344 8/20 Orr-FL)  
 11705p 1804 SuJ: AA: 2 OM's w/nx, flute mx; //11770 (434 8/17 Orr-FL)  
 11750 0030 RB: EE: mx, YL tlk (323 8/12 Pike-NM) ID & 0155\* (443 Goodman-IA)  
 13650 1945 SuJ: AA: ME mx, cmty, ID @ 1955; //weaker 13700 (444 8/20 Rocker-MS)  
 13700 2308 SuJ: AA: wld nx, ID @ 2310, mx (353 8/16 Orr-FL)  
 15120 \*2100 RB: EE: AA vcl mx, nx of Iraqi raids (444 8/17 Robinson-TN)  
 1805 FF: YL w/nx, ID @ 1810 into mx & more tlk (343 8/28 Trotto-FL)  
 17705 2025 RB: AA: AA vcl mx, chimes @ 2100, nx (353 9/7 Welch-MA) 2145 f/out

ISRAEL

Kol Israel

5885 0114 KI: EE: tlk on "Jews for Justice" organization (454 8/23 Krist-VA)  
 7410 2300 KI: EE: "Calling All Listeners", "DX Corner" (444 8/31 Soomre-MA)  
 0004 EE: tlk on Moscow/Israeli relations (433 8/20 Bishop-NY)  
 0120 EE: "Upward & Onward" pgm (343 8/31 Abbinante-IL) ver-QUE)  
 9008 0252 KI: RR: nx, ID; 2 diff. types of jamming; off nom. 9009 (333 Westenha-  
 9384 0300 Reshet Bet: HH: after anmts, always opens w/relg svc; @ 0311 continues  
 w/exercises incl mx; then ads, nx briefs, pop mx etc; jammed after  
 0400; nom. 9385 & //7465, 13745 (353 8/19 Munster-GA) (Trotto-FL)  
 9435 \*0000 KI: EE: "Song and Singer" mx pgm; 0026\* (444 8/13 Krist-VA) (Pike-NM)  
 2325 EE: pop mx, sked & EE s/off (444 8/6 Brewer-AR) (Robinson-TN)  
 0400 EE: nx of diamond robbery in Tel Aviv (333 8/2 Walley-CA) (Brown-IL)  
 1950 FF: YL & OM ancrs; 1950\* (454 9/3 Welch-MA)  
 0345 SS: ID, YL tlk, poss. nx; into EE @ 0400 (333 8/13 Loturco-NY)  
 9858 \*0000 KI: EE: "This is Israel" pgm, nx (433 8/27 Krist-VA)  
 11585p 1935 Reshet Bet: HH: pop & ballad mx (444 8/13 Shaffer-PA) QUE)  
 12080 2135 KI: EE: nx on emigration of Soviet Jews; "Israel Mosaic"(444 Winiarz-  
 13725 2130 KI: EE: nx, "Spotlight" on people in the nx (353 8/16 Trotto-FL)

JAPAN

Nihon SW Bcast      Far East Network      R. Japan

6055p 0801 NSB: JJ: pop mx, ads, presumed nx @ 0805 (243 8/20 Orr-FL)  
 6155 0834 FEN: EE: pop mx, ads, UPI nx @ 0900 (343 8/20 Orr-FL)  
 9595 0630 NSB: JJ: nx, "R. Tanpa" ID (151 8/17 Orr-FL)  
 9675 2012 RJ: JJ: mx, YL tlk incl ment of "Tokyo" (433 8/15 Miller-CA)  
 1530 HINDI: nx & mx (333 8/24 Shreedhar-India)  
 9695 1402 RJ: EE: Pres. Aquino visits Indonesia; hrd //s 9675, 7140, 5990 (444  
 8/24 Walley-CA) nx summary (122 8/28 Berri-CA)  
 9735 0540 RJ: EE: Listener's letters; ko'ed by DW @ 0555 (433 8/25 Berri-CA)  
 11705 0450 RJ: EE: Asian nx to 0458 sked (0400-0500) & 0500\* (gd 8/25 Sheedy-CA)  
 11750 0750 FEN: EE: wx, PSAs, FEN jingles; oldies pgm incl Venture's mx; ID as  
 "11.75 Tokyo, serving American forces thruout Pacific"(vy gd Sheedy-CA)  
 11815 1500 RJ: EE: nx; imaginary tour to yr 1999 in Japan (444 8/16 Emerson-OR)  
 11955 0707 RJ: EE: nx, ID, "Tokyo Pop-In" (252 8/16 Trotto-FL)  
 15195 \*0200 RJ: EE: wld & lcl nx, "Japan Scene", etc to 0300\* (555 8/4 Neuverth-CO)  
 tlk on start of radio in Japan (322 8/23 Hunt-NC) nx of Japan/Soviet  
 summit (455 9/6 Watson-FL) (444 8/24 Zirkelbach-CA) (Bishop-NY)  
 15235 0750 RJ: EE: instl mx, wld nx beamed to EU/AF (253 8/9 Rocker-MS)  
 15260 0455 FEN: EE: pop mx, ads, ID @ 0459; wk & fading (142 8/8 Rocker-MS)  
 15420 0204 RJ: EE: wld nx, ID (151 8/18 Orr-FL) (322 8/25 Miller-CA)  
 17810 0530 RJ: EE: symphony mx; folk story abt hunter's dream of the mourning  
 mate of bird he killed; // 9735, 15235 (433 8/13 Zirkelbach-CA)

[Preliminary reports suggest that R. Canada Intl may be relaying pgms of R. Japan via its Sackville xmtr as early as Oct 86, possibly in the 1200-1300 time slot. Maybe RJ will finally be hrd on a consistent basis in ECNA. Remember that reports of this proposed relay go to Tom Sable, NOT to me...ed.]

KOREA (PEOPLE'S DEM. REP.)      Korean Central Bcast Stn      R.Pyongyang

2300t 1020 KCBS Hyesan: KK: martial mx w/male & female choirs (212 8/10 Atkins-WA)  
 3320p 1310 RP: KK: nx w/ment of Chun Doo Hwan; tape of speech, usual martial  
 mx (343 8/21 Sharpe-CA)  
 4770p \*1402 Pyongyang: KK: "spy" stn w/IS, anthem & YL reading # groups; occ. mx  
 bridges; // 5870 (gd 8/16 Sheedy-CA) prob. should be classed as Ute...ed.  
 6540 0929 RP: JJ: Korean mx pgm (454 8/16 Uetake-JP)  
 9345 1305 RP: EE: negative cmty abt S. Korea (353 9/3 Donegan-CA) QUE)  
 9977 1113 RP: EE: nx, semi-class mx; flutter made hard copy (232 8/20 Westenhaver-  
 11681.4t 1506 KCBS Pyongyang: KK: nx to 1509; YL w/poss ID, orch mx (232 9/2 Quagli-  
 eri-NY)  
 13650 0600 RP: EE: sked, msg from "Great Leader" (dull) (444 8/23 Zirkelbach-CA)

13750nf 0620 RP: FF: ID "Ici Pyongyang" (222 8/10 Atkins-WA)  
0735 EE: end of low key non-political pgm; //15340 (fr 8/15 Sheedy-CA)  
15180 0633 RP: EE: political tlk, KK choral mx (131 8/10 Atkins-WA)

KOREA (REPUBLIC OF) R. Korea  
9750 1400 RK: EE: nx of MIGs delivered to N.Korea from USSR (343 8/6 Sampson-WI)  
15395 \*0600 RK: EE: wld & lcl nx read by Peter Gordon, mx, "Seoul Calling", etc.  
0700\* (444 8/7 Neuverth-CO) bad het on freq (322 8/10 Atkins-WA)  
15575 0002 RK: EE: "NX CMTY"; item on summer resorts (232 8/17 Krist-VA) "Top  
Songs of Korea" (333 8/24 Zirkelbach-CA) "Sports Roundup" (444 8/19  
Emerson-OR) (Levison-PA) (Bishop-NY) (Donegan-CA)

KUWAIT R. Kuwait  
9840 1914 RK: AA: drama pgm, ID @ 1920, AA mx (343 8/17 Dillon-MD)  
15505 1627 RK: AA: AA mx, ID, Call to Prayer & relg tlk (232 8/18 Sharpe-CA)(242  
8/23 Dillon-MD) (454 8/23 Welch-MA) (333 9/1 Abbinante-IL)

LEBANON Radio Voice of Lebanon  
6549v 2320 RVOL: AA: AA mx w/OM ancr; starting to fade @ 2327 (151 8/16 Orr-FL)

MALAYSIA (EASTERN) Radio Malaysia  
4970 1450 RM Kota Kinabalu: MALAY: nx from Kuala Lumpur, YL w/nx cmtly, magazine  
pgm w/occ. instl pop mx bridges (222 8/25 Sharpe-CA)

MALAYSIA (PENINSULAR)  
4845 1330 RM: TAMIL: spts nx, film mx (444 8/19 Shreedhar-India)  
5965 1330 RM Kuala Lumpur: MALAY: Qur'an, OM tlk w/ment of Muslim countries;  
AA vcl mx; // 9665 (fair 8/22 Shimada-JP)  
1510 MALAY: phone calls from listeners, pop mx, ID & nx by YL Hasnah Ab-  
dullah (243 Sharpe-CA)  
6025 1530 RM: CC: ID & nx by OM, pop mx; closing prayer & NA (333 8/21 Sharpe-CA)

OMAN British Bcast Corp Relay  
15235 0409 BBC: AA: tlk w/ment of Arab countries; YL w/intvw & AA mx (242 8/11  
Westenhaver-QUE)

PAKISTAN R. Pakistan  
17660 1602 RP: EE: latest nx on Pan Am airliner hijacking in progress at Karachi  
airport. The siege came to a tragic end 1½ hrs later; deep fades but  
in the clear (242 9/5 Thunberg-PA)

PHILIPPINES R. Veritas Asia V. of America Far East Bcast Co  
9540 1508 RVA: EE: tlk by Fely Montecillo; QRM de WYFR (333 8/14 Miller-CA)  
11965 1451 VOA: CC: tkl abt Angola, ID, EE anmt & 1459\* (343 9/2 Quaglieri-NY)  
15255 0200 RVA: EE: "Listener's Intl" DX pgm, wld nx; 0225\* (fr 8/23 Shimada-JP)  
15325 0755 VOA: RR: cmtly on Nicaragua, ID; //weaker 17865 (355 8/9 Rocker-MS)  
15350 0433 FEBC: EE: nx, lite mx; QRM de "DA" jammer on 15355 (232 Rocker-MS)  
15425 1330 VOA: EE: "Studio #1" pgm (222 9/7 Brown-IL)  
15430 2330 FEBC: EE: TP's, Asian & wld nx; "Pacific Sunrise"; "Good Morning Mani-  
la" @ 2400 (good 8/21 Shimada-JP)

SINGAPORE British Bcast Corp Singapore Bcast Corp  
3915 1214 BBC: EE/CC: OM tlk, mx; Big Ben @ 1215 (343 8/10 Atkins-WA)  
5010 1410 SBC: EE: pop mx, TC (232 8/28 Berri-CA) nx, //5052, 11940-this freq  
not listed on 11940 s/off, 1st time 5010 hrd in one or two yrs (fair  
8/21 Sheedy-CA)

SRI LANKA Sri Lanka Bcast Corp  
7190 1600 SLBC: HINDI: nx; prop. fading (no DW from Sri Lanka so far) (322 8/18  
Shreedhar-India)  
11800 1532 SLBC: HINDI: film mx, long tlk by OM, ID @ 1600 (222 8/25 Sharpe-CA)

SYRIA R. Damascus  
7355 1856 RD: GG: ID, ME mx, nx @ 1900 into FF lang bcast (353 9/2 Quaglieri-NY)  
7455 2133 RD: AA: AA vcl mx, ID; // 9950 (533 8/16 Orr-FL)  
9950 2245 RD: AA: tlk, AA mx; into PP to SAM @ 2330 (252 8/28 Donegan-CA)  
12085 \*2005 RD: EE: nx, Press Review, "Welcome to Syria", AA mx, 2102\* (543 8/2  
Kaessinger-FRG) (433 8/16 Bishop-NY) tlk on Syrian architecture (222  
8/29 Atkins-WA) (444 8/19 Hunt-NC) (233 8/10 Westenhaver-QUE)  
15020 1433 RD: AA: vcl mx, ID @ 1435 (454 8/27 Orr-FL)

TAIWAN

V. of Asia V. of Free China  
 5980p 1445\* VOA: CC: vy good CC pop mx (252 9/1 Donegan-CA)  
 7130 1201 VOFC: CC: caught end of ROC NA, OM anmt, CC mx & YL tlk; beamed to Japan/Korea (232 8/18 Westenhaver-IN) India)  
 11550 1530 WYFR via VOFC: EE: relg tlk; //15050 till 1500 (454 8/21 Shreedhar-11745 0301 VOFC: EE: NA, nx (211 9/3 Brown-IL)

TURKEY

V. of Turkey  
 7215 0031 VOT: TURKISH: mournful mx, ID @ 0045; CW QRM (433 8/24 Dillon-MD)  
 9560 \*2200 VOT: EE: nx, Review of Foreign Press, Letterbox (454 8/27 Krist-VA) (8/21 Coleman-MA) (8/15 Brown-IL)  
 0303 EE: tlks on tourism, Turk. vcl mx (433 8/18 Neff-OH) (Miller-CA)  
 9615 0303 VOT: TURKISH: nx, ID @ 0307; beamed to Asia (343 8/8 Westenhaver-QU)  
 15220 1915 VOT: TURKISH: vcl mx; slight het (8/19 Levison-PA)

USSR (ASIAN)

R. Moscow  
 4485 0817 Petrovavlovsk-Kamchatskiy: RR: tlk, lt piano mx; "Mayak" ID @ 0822; //4765 (343 8/20 Orr-FL) MA)  
 4740a \*0127 R. Afghanistan: PUSHTO?: IS, NA, tlk & subcont. mx (222 8/30 George-7335 1530 Khabarovsk: RR: RR pop & folk mx (444 8/21 Sharpe-CA)  
 9530 0607 Novosibirsk(tent): RR: nx w/correspondents; Moscow time & ID; YL w/ "govorit Magadan" @ 0636, class mx (422 8/18 Sharpe-CA)  
 9610 1611 R. Stantsiya Atlantika: RR: pop vcls, IS, TC, Mayak ID (333 Sharpe-CA)  
 9895 1149 RM: JJ: tlk translated into RR, RR mx; Hochirawa Moscow" ID, sked & 1159\* (343 8/20 Westenhaver-IN) site poss. Petro/Kam...ed.  
 11880 1900 R. Afghanistan: EE: ID, sked, nx of Afghan., pop mx, letters read (343 8/1 Hesch-NY) (242 8/18 Thunberg-PA)  
 11990 0455 Komsomol'sk: RR: Mayak pgm of instl mx, IS, TP @ 0500, ID & nx; // 11845 via Kazan (354 8/12 Rocker-MS)  
 12025 1505 Novosibirsk?: URDU: ID & wld nx, RR pop mx, closing anmts & 1531\*; URSC lists Urdu on 12020 @ 1500 from Novosibirsk (453 8/17 Sharpe-CA)  
 12030 0610 RM: EE: tlk on US/Soviet relations; site poss Petro/Kam (232 Berri-CA)  
 12070 0410 Khabarovsk: RR: tlk, ID, RR pop mx (233 8/11 Rocker-MS) IN)  
 13775 0225 RM: CC: instl mx, ID "Mosuko gangbo dientai" (343 8/17 Westenhaver-)

UNITED ARAB EMIRATES

R. Dubai  
 15320 1600 RD: EE: "Telstar" theme, Mailbag, tlk on camel racing (545 8/16 Robinson-TN) Mailbag incl letter from Betsy Robinson! //17775, 17830 (344 8/31 Westenhaver-QUE) nx, wx-106°! (433 8/29 Brown-IL)  
 15435 1704 RD: AA: wld nx, ID @ 1706 (544 9/2 Orr-FL)  
 17775 1345 RD: EE: tlk on life of Mohammed, ID into AA @ 1354 (353 8/13 Rocker-MS)  
 17865 1032 RD: EE: nx, Mailbag; QRM de VOA \*1057 (222 8/2 Kaessinger-FRG)  
 1605 EE: "The Holy Prophet", instl mx (333 8/6 Vercellino-IL)  
 1445 AA: ME mx, OM tlk (333 8/6 Goodman-IA) AA & Western mx (Abbinante-IL)  
 17890 0338 RD: EE: nx, Mailbag pgm (252 8/17 Wright-MB)

VIETNAM

V. of Vietnam  
 10040p 1229 VQV: VV: Asian flute mx w/YL ancr; 1243\* (222 8/31 Abbinante-IL)

YEMEN (PEOPLE'S DEM. REP.) Dem. Yemen Bcast Service

7190 0301 DYBS: AA: vcl anthem, ID by OM, Qur'an, slow AA mx w/YL ancr, nx at 0330 (322 8/25 Evans-TN) (433 Orr-FL) (211 McNeil-AL)(Thunberg-PA)

CLANDESTINE

V. of Tamil Eelam: EE: tlk on Gorbachev's peace plan; hrd irregularly (544 8/25 Shreedhar-India)

A number of Indian DXers have reported a "black clandestine" V. of Tamil Eelam, no doubt operated by the Sri Lankan govt, as the xmsns are not jammed. This stn was hrd on 9700 kHz @ 0430-0530 & 1330-1430. Also reported on 9705, 9675, 9560. [SCDX]

/OCEANIA/AUSTRALIA

R. Australia  
 5995 \*1100 RA: EE: nx, spts, stock market report (444 8/27 Krist-VA) tlk on aboriginal langs (Walley-CA) (Wright-MB) (Westenhaver-IN)  
 6080 0808 RA: EE: PNG Svc of EE pop mx (343 8/20 Orr-FL)  
 6150 1144 VLR6 Lyndhurst: EE: pop mx, ABC nx @ 1200 (252 8/22 D'Angelo-PA)  
 7120 1149 RA: CC: tlk w/ment of Singapore; CC/EE ID, lt mx (343 Westenhaver-IN)  
 7205 1305 RA: EE: wld nx (222 8/21 Brown-IL) @1600 EE: //6035 (Shreedhar-India)

9580 \*0800 R. Australia: EE: IS, s/on anmts into wld nx (555 8/14 Brewer-AR)  
 "Country Wide" (Hunt-NC) tlk on Aborigines struggle (Neff-OH) (Good-  
 man-IA) (Wright-MB) (Krist-VA) (Winiarz-QUE) (IN)  
 9610 1153 VLW9 Perth: EE: anmt for lcl rodeo, TP, nx @ 1200 (343 Westenhaver-  
 9655 0720 RA: EE: "Window on Australia" pgm, mx (444 8/13 Trotto-FL)  
 9710 \*0858 RA: EE: wld nx, "Soundabout" (444 8/13 Trotto-FL)(Miller-CA)(Brown-IL)  
 9760 \*0756 RA: EE: s/on w/sked, nx; strong het (222 8/8 Kerrigan-IL)  
 11910 0403 RA: EE: nx, "International Report" (232 8/6 Westenhaver-QU)(Rocker-MS)  
 11945 0328 RA: EE: pop mx, spts; //15160, 15320, 17795 (151 8/15 Sampson-WI) TP  
 @ 0400 into nx; freq not listed in WRTH (344 8/11 Rocker-MS) (Orr-FL)  
 15160 0634 RA: EE: tlk on disease prevention (333 8/8 Kerrigan-IL)(Westenhaver)  
 15320 2230 RA: EE: lt opera mx (433 8/11 Pike-NM) "Innovation" (322 Krist-VA)  
 0156 EE: wld & lcl nx (233 8/23 Shanklin-MA)  
 0240 FF: "English by Radio" pgm (433 8/10 Orr-FL)  
 0405 EE: nx of Israel & Cameroon restoring relations (554 8/27 Walley-CA)  
 15395 0200 RA: EE: nx, TC, "Intl Report" (333 8/22 Krist-VA) (434 Walley-CA)  
 15425 0530 VLW15 Perth: EE: nx of hijacked chickens; "Sing & Play" kids pgm (433  
 8/25 Zirkelbach-CA) @ 0130 (333 8/19 Hunt-NC)  
 17795 0130 RA: EE: lcl nx & spts; "Aboriginal Australia Today" (333 8/17 Winiarz-  
 QU) (Shanklin-MA) (Dillon-MD)(Levison-PA)(Krist-VA)(Hunt-NC)

COOK ISLANDS

R. Cook Islands

11760p 0500 RCI: MAORI/EE: Ann Murray song, OM ancr; TC @ 0502, EE s/off @ 0502  
 (232 8/25 Thompson-CA) EZL & island mx, tlk in Maori & EE; QRN (322  
 8/26 Zirkelbach-CA) pop & island mx hrd past 0522 (434 Miller-CA)  
 11761 0510 RCI: EE: ID, lcl TC then tlks in Maori/EE, US pop mx; best ever hrd-  
 while on DXpedition (444 8/10 Atkins-WA)

GUAM

Trans World Radio

11735 0750 KTWR: EE: hymns & prayers, ID; "Uncle Charlie" & "Children's Bible  
 Hour" pgms (444 8/16 Zirkelbach-CA)  
 0853 KTWR: EE: relg pgm, ID into CC(?) lang @ 0900 (253 9/7 Pogue-TN)  
 "Thru the Bible"; sked, ID, IS & 0853\* (vy gd 8/15 Sheedy-CA)

MARIANA ISLANDS

15190 0600 KYOI: JJ/EE: rock mx, IDs (433 8/10 Zirkelbach-CA) (222 Atkins-WA)

NEW ZEALAND

R. New Zealand

9620 1024 RNZ: EE: tlk on relations w/US & Austl' (242 8/19 Krist-VA) mx from  
 jazz quartet (353 8/27 Quaglieri-NY)  
 0500 EE: religious pgm (222 8/3 Hawk-VA)  
 11780 0417 RNZ: EE: Aussie/NZ football; instl mx @ 0435 (423 9/6 Watson-FL) "Mx  
 for Pleasure"; nx in EE/Maori @ 0500 (343 8/19 Westenhaver-IN) nx,  
 wx, oldies mx (454 8/15 Sampson-WI) (353 8/12 Rocker-MS)  
 0600 EE: "Spts Headlines", nx @ 0614 (433 8/25 Zirkelbach-CA) pop mx. Wel-  
 lington Report, mx (243 8/30 McNeil-AL) WA  
 15160 0040 RNZ: EE: "sheepish" intvw abt lamb exports to Japan (333 8/26 Atkins-

PAPUA NEW GUINEA

WA)

3360 0750 R. Milne Bay: PD/EE: Melanesian mx; EE ID & TC @ 0800, nx (322 Atkins-  
 3385t 0833 R. East New Britain: PD: mx, long YL tlk (322 8/10 Atkins-WA)  
 4890 1015 NBC Port Moresby: EE: folk tale (322 8/15 Krist-VA) mix of calypso,  
 pop & EZL mx; ID (333 8/27 Zirkelbach-CA) (333 8/17 Westenhaver-IN)

SOLOMON ISLANDS

Solomon Islands Bcast Corp

9545 0510 SIBC: EE: ads, mx requests (333 8/19 Zirkelbach-CA) lcl nx, TC & ID  
 // 5020 (232 8/10 Atkins-WA)

>>>>TONGA<<<<

According to a report on MEDIA NETWORK, the Pacific Island of  
 Tonga is now on SW! UNESCO has helped Tonga set up a SW feeder (SSB plus carrier)  
 to link the capital Nuku'alofa to the northern island of Vava'u, where it will feed a  
 low power FM xmtr. This feeder is only 200 watts and the primary freq is 5030 kHz,  
 with a secondary freq of 6012 (don't confuse w/AFAN-McMurdo Bay Antarctica). Sked is  
 1800-1000 GMT. Thanks to Bill Westenhaver-QUE for this good news. At only 200 watts,  
 it won't be easy, but WCNA listeners should have a shot during good prop. conditions.  
 Brian Clark-MZ reported on R. Australia's TALKBACK that a DXer in Adelaide, S. Aus-  
 tralia did hear Tonga on 5030 on 20 Aug until 1000\*.

VANUATU

R. Vanuatu

7260 0803 RV: VERN/EE: nx by OM, EE nx by YL, ID @ 0821 (242 8/22 Trotto-FL)  
 //3945 tent. @ 0625 w/YL tlk, drums @ 0630, pop mx, ID? @ 0730 (Forsman-CA)

Sorry, no room for Society Islands this month. Tnx to all & Happy Halloween! 73s,

*Bda*



Richard E. Wood, Ph.D.  
P.O. Box 5074  
Hilo, HI 96720

"Solar-powered DXing from the Big Island"

# Hawaii Report

E komo mai! (Welcome) to my first monthly column devoted to SWBC, and to a lesser extent MW, DX from the east side of the Big Island of Hawaii, from my home from which I have excellent views of the blue Pacific, on one side, and of the eruptions of Kilauea Volcano, currently shooting up 800 ft. orange lava gushers through Pu'u 'O'o Vent.

To introduce myself, I am Richard E. Wood, Ph.D., a full member of SPEEDX, a continuously active SWBC and MW DXer for 31 years.

Born in Dundee, Scotland, I began DXing in Newcastle upon Tyne, England, in 1957. I am now a U.S. citizen and businessman; a former professor of European languages and linguistics. I have lived and DXed in many countries including Germany, Curaçao and most recently Saudi Arabia, but now enjoy my listening post 15 miles southeast of Hilo, the island capital. My DX is truly solar; I use a passive solar tracker of 4 solar panels mounted on a frame which rotates, following the sun, on my roof; feeding six 12VDC batteries.

My receivers are a Trio (Kenwood) R-1000 and a Drake SPR-4; an ICOM R-71A is currently out of commission but I hope it will be in use in 1987. Speaking of 1987, the continuation of this column, and its possible growth to two pages, depend on your reaction to SPEEDX HQ. So please write.

For antennas I use five Beverage wave antennas arranged in a fan-like array in all major directions, averaging 1500 ft. each in length. These are of course directional on MW and on the lowest SW bands. Two of them can be phased against each other using a Connolly phasing unit (I generally use the North American and Buenos Aires, Argentina beams). For higher SWBC bands, an AN-1 active antenna (stepped down to match my 12VDC house current) is also used, where the Beverages are too long.

Some points about DX in Hawaii:

1. MW stations from all continents including Africa and Europe are regular.
2. The antipodean effect produces powerful signals from Southern Africa, 12,000 miles away, including Namibia-747 kHz, a regular MW catch. The antipode of most of Hawaii lies in Botswana. This is the only spot from which I have observed a pronounced antipodean effect.
3. European reception is, all in all, better than in California.
4. High-frequency bands are open late at night, more than in the mainland U.S. 19, 16 and even 13 m. are still open past local midnight.
5. Being close to the equator, seasonal variation is not as great as at higher latitudes. But Brazil, Argentina, Australia, Namibia, Indonesia, etc., dominate MW in summer. North Asia, Europe, the northern U.S., Canada, Alaska, etc., in winter.
6. Twilight is short, the difference between daylight and darkness is extreme. MW reception around local noon is confined to Hawaii; the lower SWBC bands are more or less dead during the midday hours. High-latitude low-frequency DX propagation is not noted here.
7. On MW, I am shielded by high, volcanic mountains from Honolulu stations. Space permits only a very few recent loggings:

## AUSTRALIA

1287 1555 2TM Tanworth, N.S.W.: EE: time check, John Lennon (Good 9/7)  
1296 1555 4BK Brisbane, Qld.: EE: ID "At 1296, 4BK", US oldies (Good 9/15)

## CLANDESTINE (CHINA)

15110 0415 V. of Kampuchean People: KH: talk on ASEAN; // 17680 (Good 9/8)

## INDONESIA

1287 1559 RRI Palembang: IN: "Indonesia" IS, ID, nx (Good 9/12)

## NORTHERN MARIANA IS.

15305 0115 KFBS Saipan: Telugu: Christian talks, ID (Good 9/8); // 17745

## NORWAY

15305 1655 RNI: NN/EE: ID, IS, into NN nx; // 15230 (Good 9/8)

## PHILIPPINES

11850 0600 FEBC: EE: s/off, ann'ced only "19 & 25 m.b.'s" (Good 9/13)

# 日本レポート

## Japan Report

Ralph Famularo  
Koike Bunka 1F  
Shido Azasuenaga 95  
Amagasaki-shi 661  
JAPAN

日本SPEEDXの会員の皆様へ

ヘッドクォーターからのお知らせをお届けします。最近、日本からの情報提供が、少なくなりました。もし投稿量が増えず、この状態が続くようでしたら、Japanレポートは、今後継続できなくなりますとの事でした。

That's just a note announcing my potential swan song unless contributions to the column increase. Other happenings : As noted in the August SPEEDXGRAM, the French government cancelled an agreement to relay R. Beijing via French Guiana. I think it's fair to assume that China reciprocated. That would explain the sudden absence of RFI's morning (local time) broadcast to South Asia.

Although too old for the loggings, there was an excellent gray-line reception morning in early August which yielded catches from the likes of R. Chimu, PNG (2376) and RRI Pontianak, Indonesia (3447). Hopefully a good sign for the Fall/Winter DX season.

August's report of R. Free Afghanistan on 15685 is more likely the Voice of Unity. In any case it's certainly an anti-Soviet/pro-resistance transmission.

Via Koji Yamada comes more info about R. Japan's Sackville relay; scheduled times for the broadcast are Oct.1 - Oct.25, 1030-1100 UTC in JJ and 1100-1130 UTC in EE. From Oct.26, 1130-1200 in EE and 1200-1230 in JJ. The frequency should be 6120 khz with 250kw expected power. Also, in a Denpa Times article forwarded by Mr. Yamada is mention of the possible revision of a Japanese broadcasting law which would enable foreign broadcasters to utilize NHK's equipment. ( a prelude to NHK relaying other broadcasters?)

Finally, I recently purchased a Sony ICF-6800A and am quite content. Most impressive is the sound quality (even the R.Cairo YL is almost understandable-Hi).

### B R A Z I L

6180 0904 R.Nacional da Amazonia: PP ads.TC, LAM mx, ID; audible until CBS Taiwan \*0930. My 1st domestic LAM logged here in Japan. (fair, 8/24)

### C L A N D E S T I N E

5108 1235 VOBurmese People: after months of checking finally fr-gd reception thru UTE QRM w/choral songs, local mx and strident YL tlk (8/28)  
6325t 1238 VOKhmer: Khmer mx, YL at 1300-too weak for details. (poor, 9/11)  
15110 0430 VODemocratic Kampuchea: Nice slo-tempo mx, Cambodian OM-YL tlks, ID, 0457\* (fair, 8/16)

### F I N L A N D

15245 0850 R.Finland: EE tlk & taped interviews, ID/IS into lang to Australia/New Zealand, I believe (poor, 8/30)

### I R A N

5960 1508 VOIRI: Farsi w/martial & dramatic classical mx, excited OM speech, ID mixing with bubble-jammer (fair, 8/27)

### V A N U A T U

7260 0837 R.Vanuatu: EE gospel tunes, OM Bislama/FF tlk, IDs, EE TC seems too strong for listed 2kw (fair-good, 8/24) RMF

# QSL REPORT

EDITOR:

DEADLINE: 12th

RAY FORSGREN  
RT. #4, BOX 213  
CHIPPEWA FALLS, WI.  
54729

Big news in the world of QSL'ing: Radio Botswana is once again being verified!!!! Details below in the Africa section. Also, the Honduran HRR1 is answering reportes. Personally this was a bad month for me-not one QSL! Oh well- these things do happen...

## AFRICA

BOTSWANA R. Botswana: 3356, 4820 f/d Cattle cd. in 140 ds. V/S Ted Makgekgenene- Chief En. (George-NC with help from Gerry Dexter). 4820 f/d Mochudi cd. in 33 ds. for an irc. (Havrilko-UK)...welcome!...7255 f/d pfc in 67 ds. for a taped rpt. & ms. V/S T.R. Dithabi. This via the Botswanan embassy. (Wilkins-CO)...Good to see this one verifying again. As mentioned in Al Quaglieri's column last month, the C.E. has said that he will verify reports- this mentioned over the Media Network pgm. PLEASE, send return postage and make sure that your rpt. is complete and courteous- no telling what made them quit before so we want to 'keep them on our side'. The QTH for the embassy, if you want to go that route, is: Ms. T.R. Dithabi @ Botswana Embassy  
4301 Connecticut Avenue NW  
Washington DC, 20011

Thanks to Bill Thim for this address. When sending to this address, make sure that you send a TAPE report- a good quality recording, along with a pfc & return postage. Again, lats keep them on our side...rjf.

BURKINA FASO R. Nationale: 4815 p/d form ltr. w/ sked. in 39 ds. for a FF rpt. & an irc. (Pimblett-AB).

CAMEROON R. Bafoussam: 4000 f/d cd. w/ ltr. in 88 ds. for a FF rpt. & 2 ircs. V/S Messi Boniface, Chef. (Orr-FL).

KENYA VoK: 6132 f/d aerogramme in 139 ds. for 2 ircs. V/S E.K. Tiampat. (Pimblett-AB).

MADAGASCAR R. Nederland Relay: 9540 f/d cd. in 22 ds. for ms. (George-MA). same in 33 ds. (Wakefield-IA).

MALI RDTV Malienne: 4783 f/d cd. in 29 ds. for a FF rpt. & 2 ircs. (Leite-MA). same in 35 ds. for a FF rpt. & \$l. (Coday-CA). in 41 ds. for a FF rpt. & 2 ircs. (Pimblett-AB).

MOROCCO R. Monte Carlo: 15465 n/d ltr. in 23 ds. for a FF rpt. V/S P. Casalta. (George-MA). R. Mediteranee Int.: 9577 n/d ltr. w/ sked & sticker in 58 ds. for a FF rpt. & an irc. (Orr-FL).

NIGER ORTN: 5020 p/d cd. w/ f/d handwritten ltr. in 36 ds. after f-up for a FF rpt. & ms. V/S Yacouba Alwali. (Wilkins-CO).

SOUTH AFRICA Radio RSA: 6010 f/d cd. in 44 ds. (McCants-AL). 9615 f/d cd. in 13 ds. (Wakefield-IA). SABC: 3215 f/d cd. in 20 ds. for an irc. (Van Horn-FL)...Gayle forwards the following QTH that should speed up return time: SABC, P.O. Box 563, Orange Free State, Bloemfontein 9300 ...f/d cd. w/ sticker & sked. in 32 ds. V/S Colin Miller. (Constantinides-RSA).

SWAZILAND Radio SR: 4980 f/d Wrrrior cd. in 5 yrs!!!! V/S Bill Cookson (Huffaker-MX)...never give up!...

/TANZANIA/ R. Tanzania: 9685 p/d Map cd. in 64 ds. for 2 ircs. (Wilkins-CO)

ASIA

/CHINA/ R. Beijing: 6015 f/d Dancer cd. in 4 wks. (Bowden-CA). 9535 f/d Dolls cd. in 4 wks. (Bowden-CA). 9550 f/d Art cd. in 30 ds. (Bowden-CA). 9730 f/d cd. in 30 ds. (Bowden-CA). 9860 f/d Horses cd. in 5 wks. for a SS rpt. (Bowden-CA). CPBS-2: 8007 f/d CC ltr. in 34 ds. for an EE rpt. & \$1. (Orr-FL).

/CYPRUS/ BBC Relay: 15445 n/d cd. in ?? ds. (Brown-IL).

/INDONESIA/ RRI Ujung Pandang: 4719, 4753 f/d RRI cd. in 33 ds. for an INDO rpt. & ms. V/S A. Nyongki BA- Kepala. (Kusalik-AB)...congrats on finally nailing this one down! rjf...RRI Jayapura: 9612 p/d personal ltr. in 32 ds. after f-up for an INDO rpt. & 2 ircs. V/S Harry Liborang. (Orr-FL).

/IRAN/ VoIRI: 9022 f/d War cd. w/ goodies in 213 ds. for 3 ircs. (Westenhaver-QU).

/JAPAN/ R. Japan: 9645 2 f/d Lion cds. in 11 ds. (Levison-PA). f/d cd. in 27 ds. (Leite-MA). 15195 p/d cd. in 23 ds. (Wright-MB).

/LEBANON/ King of Hope: 6280 f/d Village cd. in 76 ds. via CA. QTH for ms. (Orr-FL)...nice one!

/MALAYSIA/ RTM SibU: 5005 f/d cd. in 21 ds. for \$1. (Coday-CA).

/PHILIPPINES/ FEBC: 6140 f/d Sunset cd. in 37 ds. after f-up for \$1. V/S Mrs. Anita Sundersingh. (Coday-CA).

/SOUTH KOREA/ R. Korea: 15575 f/d Choi Soon Ho cd. in 65 ds. (Bishop-NY).

/SYRIA/ R. Damascus: 9670 n/d cd. w/ goodies in 120 ds. registered mail (Weber-OH).

/TURKEY/ VoT: 7215 f/d Topkapi cd. w/ goodies in 51 ds. (Levison-PA). 9560 f/d Kekoua Antalya cd. in 43 ds. (Brown-IL). f/d cd. w/ goodies in 59 ds. (Wakefield-IA).

/UNITED ARAB EMIRATES/ R. Dubai: 15320 f/d Map cd. w/ pennant in 30 ds. V/S Kay Fenner. (Coday-CA).

EUROPE

/AUSTRIA/ RAI: 9755 f/d Styrian cd. in 44 ds. (Westenhaver-QU). 9770 f/d Salzburg cd. in 41 ds. (Brown-IL). f/d Tyrol cd. in 46 ds. (Bishop-NY). f/d Gail cd. in 50 ds. (Bowden-CA). f/d cd. in 56 ds. (Wakefield-IA). f/d Klagenfurt cd. w/ sticker in 59 ds. (Westenhaver-QU).

/BELGIUM/ BRT: 9830, 15590 f/d Art cd. in 53 ds. (Westenhaver-QU). 9830 f/d form ltr. w/ pennant in 35 ds. (Coday-CA). f/d Park cd. in 37 ds. (PA-Levison). 15515 f/d paintings cd. w/ sked. in 40 ds. (Shreedhar-INDIA). 15590 f/d cd. in 59 ds. (Levison-PA).

/CZECHOSLOVAKIA/ R. Prague: 5930 f/d Beskydy cd. in 30 ds. (Bowden-CA). f/d Costumes cd. in 6 wks. (Bowden-CA). 7345 f/d Vyakov cd. in 5 wks. (Bowden-CA). 11990 f/d cd. in 3 wks. (Bowden-CA). f/d 50 yrs. cd. in 37 ds. (Levison-PA). 13715 f/d Architecture cd. in 30 ds. (Bowden-CA). f/d Tank cd. in 5 wks. (Bowden-CA).



GERMAN DEMOCRATIC REP./ RBI: 9560 f/d Vacation cd. in 53 ds. w/ goodies (Brown-IL). 9620 f/d Antenna cd. in 23 ds. (Westenhaver-QU). 9730 f/d Stralsund cd. in 50 ds. (Wakefield-IA). f/d Leipzig cd. in 61 ds. (Westenhaver-QU). 9560, 9620 f/d Dresden cd. w/ goodies in 30 ds. (Kusalik-AB).

GERMAN FEDERAL REP./ Sudwestfunk: 7265 p/d Globe cd. in 72 ds. for a taped rpt. & an irc. V/S Dr. Krank. (Wilkins-CO),

HUNGARY/ R. Budapest: 12000 f/d Logo cd. w/ goodies in 27 ds. (Coday-CA).

NETHERLANDS/ R. Nederland: 6020 f/d cd. in 16 ds. for an irc. (Havrliko-UK). 9895 f/d cd. in 27 ds. (Brown-IL). 11740 f/d Flevo cd. in 26 ds. (Wakefield-IA).

POLAND/ R. Polonia: 7145 f/d Crakow cd. in 6 mo. (Bowden-CA). 7270 f/d Poznan cd. in 6 mo. (Bowden-CA). f/d Wroclaw cd. in 6 mo. (Bowden-CA).

ROMANIA/ R. Bucharest: 5990 p/d University cd. w/ goodies in 98 ds. (Wright-MB).

SPAIN/ REE: 6055 f/d Navarra cd. in 59 ds. (Bishop-NY). 9630 f/d cd. in 30 ds. (Bowden-CA). f/d Olite cd. in 42 ds. (McCants-AL). 9650 f/d cd. in 45 ds. for a SS rpt. (Bowden-CA).

SWITZERLAND/ SRI: 6135 f/d Scenes cd. in 45 ds. (Bowden-CA). 9725, 9885 n/d cd. in 30 ds. (Kusalik-AB). 9725 n/d cd. in 30 ds. for an irc. (Wakefield-IA). ICRC: 9885 f/d Logo cd. w/ sticker in 30 ds. for ms. (George-MA). 6135 f/d cd. w/ goodies in 27 ds. (Westenhaver-QU)...for 2 ircs.

VATICAN CITY/ R. Vatican: 9605 f/d Pope cd. in 40 ds. for a SS rpt. (Bowden-CA). 9615 f/d Thank You cd. in 50 ds. for a SS rpt. (Bowden-CA). 11910 f/d 25th Ann. cd. in 5 wks. for a SS rpt. (Bowden-CA). 15120 f/d Radio cd. in 6 wks. for a SS rpt. (Bowden-CA). f/d Pope's cd. in 119 ds. (brown-IL). 15405 f/d cd. in 25 ds. (Bowden-CA).

WEST BERLIN/ RIAS Berlin: 6000 f/d cd. in 59 ds. for 2 ircs. (Constantides-RSA)...Nice one!!

#### U.S.S.R.

Radio Kiev: 9685 f/d cd. in ?? ds. (Brown-IL).

Radio Moscow: 9600, 9720 f/d cd. in 5 wks. (Bowden-CA). 9590 via Khabarovsk; 9765 via Lvov; 9795 via Komsomolsk on Amur; 9800 via Kazan; 11730, 12050, 15265 via Chita; 11850 via Ryazan; 13680, 15210 via Moscow; 15225 via Vinnitsa; 15330 via Kursk; 15510 via Frunze; 15520 via Khar'kov; 17555 via Tula; 17625 via Armavir f/d cds. in 42 ds. (Soomre-MA). 7315 via Irkutsk; 7320 via Starobelsk; 9765 via Leningrad; 11705 via Serpukhov f/d cds. in 46 ds. (Pimblett-AB). 9580 via Blagoveshchensk; 12050 via Khabarovsk; 13665 via Petropavlosk-Kamchatsky; 17860 via Chita; 17880 via Irkutsk f/d cd. in 36 ds. (Wilkins-CO). 7115 via Kiev; 7180 via Simferopol; 7290 via Moscow; 7335 via Serpukhov; 9610, 9765 via Lvov; 9720 via Vinnitsa; 9865 via Yerevan f/d cds. in 71 ds. (Welch-MA). Radio Tashkent: 11785, 15460 f/d cds. in 50 & 90 ds. (Weber-OH). Radio Vilnius: 9665, 9685 f/d cds. & ltr. in 93 ds. (Westenhaver-QU).

#### NORTH AMERICA

CANADA/ CBCNQS: 9625 n/d Eskimo cd. w/ goodies in 28 ds. (Coday-CA). RCI: 6140 goodies but no QSL in 23 ds. for an irc which was returned...one has to be on the mailing list to get their QSL cds.; these are do-it-yourself cds; they send you a blank cd., you fill it in and send it back to the station to be verified...rjf... (Havrliko-UK).

COSTA RICA/ R. Lira Int. (AWR): 15460 f/d AWR cd. & ltr. in 24 ds. V/S David L. Gregory. (Huffaker-MX).

DOMINICAN REPUBLIC/ R. Clarin: 11700 p/d Map/Logo cd. in 27 ds. for a SS rpt. & \$1. (Coday-CA)...nice one Richard!!

HONDURAS/ Sani Radio, HRRI: 4755 p/d ltr. from US QTH, which said rpt. would be forwarded to station for QSL. V/S Roy Williams. (Welch-MA). f/d personal ltr. in 30 ds. V/S Edward A. Pfister. (Huffaker-MX). p/d ltr. in 32 ds. for \$1. (George-NC)...There are many address'at present for this station; best bet is...Apartado 113, La Ceiba, Atlantida, Honduras. For the complete story on this station, check out Carl Huffakers' LA column from last month...HRVC: 4820 p/d Map cd. w/ ltr. & pennant in 21 ds. for an irc. V/S Miss Reina Figueroa. (Havrilko-UK),

NETHERLANDS ANTILLES/ R. Nederland: 17605 f/d Map cd. in 18 ds. (Levison-PA).

NICARAGUA/ La Voz de Nicaragua: 6015 p/d form ltr. w/ goodies in 57 ds. for a SS rpt. (Wakefield-IA).

UNITED STATES/ AFRTS: 15430 f/d Seal cd. in 29 ds. for an irc, which was returned. (Havrilko-UK). R. Earth: 7400 f/d Harbor cd. w/ info. in 209 ds. for ms. (Coday-CA). same in 214 ds. for ms. V/S Jeff White. (MA-Soomre). R. Marti: 9525 f/d Bust cd. in 25 ds. for a SS rpt. & ms. (George-MA). KCBI: f/d cd. in 40 ds. for ms...11735, (Pogue-TN). WHRI: 7400 f/d Globe cd. in 45 ds. for ms. V/S Loren Holycross. (Pogue-TN). WJNB: 15185 f/d cd. in 64 ds. for ms. (Pogue-TN). 15400 f/d cd. in 22 ds. for ms. (Wakefield-IA). WYFR: 11830 f/d cd. in 38 ds. (McCants-AL).

#### OCEANIA

AUSTRALIA/ R. Australia: 9580 f/d Farm cd. in 30 ds. (Wright-MB). 11945 f/d Boats cd. in 20 ds. (Huffaker-MX). 17795 f/d cd. w/ rpt. forms in 19 ds. (Levison-PA). VL8A: 2310 n/d form ltr. in 38 ds. for 2 ircs. V/S R.S. Gulson. (Pimblett-AB). VL8K: 2485 f/d form ltr. in 45 ds. for an irc. V/S R.H. O'Sullivan. (Pimblett-AB). VLR6: 6150 f/d form ltr. in 23 ds. V/S Mavis Gerditz. (Coday-CA). VLN9: 9610 f/d Map cd. in 38 ds. (Zirkelbach-CA). VLQ9: 9660 f/d Symphony cd. in 12. ds. (Coday-CA).

COOK ISLANDS/ RCI: 11760 f/d Conch Blower cd. in 29 ds. for an irc. (Orr-FL). same in 30 ds. for \$1. V/S Nooroa E. Tangaroa. (Kusalik-AB).

MARIANAS ISLANDS/ KFBS: 9635 f/d Logo cd. in 13 ds. for ms. V/S Roy J.B. Alvarez. (Wilkins-CO), 11790 f/d Palm Trees cd. in 37 ds. for a RR/EE rpt. & ms. V/S Joseph Sam. (George-MA). 15220 f/d cd. in 17 ds. for ms & an INDO rpt. V/S Mrs. Rose Bower. (Orr-FL).

NEW CALEDONIA/ RFO: 7170 n/d cd. in 8 mo. for a FF rpt. & 2 ircs. (FL-Orr).

NEW ZEALAND/ 11780 f/d Rugby cd. w/ goodies in 29 ds. (Wright-MB). 15150 f/d cd. w/ goodies in 21 ds. for 4 ircs. V/S Rudi Hill. (Chickerell-WV).

PAPUA NEW GUINEA/ R. Western Highlands: 3375 p/d personal ltr. in 111 ds. V/S Edward Kenas. (Pimblett-AB). NBC: 4890 f/d Map cd. w/ ltr. & sked. in 41 ds. for 3 ircs. V/S Pomsie Pomat. (Evans-TN).

SOLOMON ISLANDS/ SIBC: 9545 f/d Seal cd. in 30 ds. for \$1. (Kusalik-AB). f/d Logo cd. in 35 ds. for 2 ircs. (Zirkelbach-CA).

#### SOUTH AMERICA

BOLIVIA/ R. Santa Cruz: 6135 f/d Palm Tree cd. w/ ltr. & pennant in 36 ds. after f-up for a SS rpt. & \$1. V/S Alvarado Puente, Dir. (Wilkins-CO)...very nice! Best bet for sending rp to Bolivia is to send \$\$, as the inflation rate there makes sending ms more or less outdated- by the time your rpt gets there, the stamps aren't worth too much!! rjf



**UTILITY SCENE**

0-30 MHZ SSB • RTTY • AM • CW • FAX

**Jeff Knapp**  
 5465 Kirby Rd. Apt. 20  
 Cincinnati, Ohio 45223, USA

**deadline:**  
 12th of the month

Well, things finally settled down to the point that I could take up the reins, so here we are together again! Before I go further I want you all to stand up and applaud Tom Kephart. I think Tom did a really fine job filling in, and I really appreciate his efforts (as well as your patience).

Since this is a kind of re-start for me, I felt it might be helpful to review some of the finer points of contributing. I know I harp on the topic a lot but it is important; especially in the coming months as DXing gets more plentiful and my spare time is shortened due to job-related studies. By the way, the new job is going great as Data Processing Manager for the Schoenling Brewing Company. We make Little Kings Cream Ale and Diamond Wine Coolers, and a few beer products. Just this week I fulfilled the first project assigned to me; we ordered an IBM minicomputer and customized software in order to integrate and automate the functions done manually and on a half-dozen PCs. But I digress.

Use the contribution form; don't scrawl your logs on paper towels and such. By the way, don't scrawl either- if I can't make sense your log gets tossed. I realize English isn't natural for some of our foreign contributors, but there is no excuse for poor penmanship from Americans or from our overseas friends. Cut the form into strips where indicated. Be sure to write your name and state or country on each strip. Be as complete as possible. I won't have as much time as in the past to research the missing calligns et cetera. My page allocation has been cut, so be selective; send logs that are DX and/or unusual or interesting. For instance if you live in Miami, don't send Miami-based-USCG comms. If you would like an answer to a question, send an SASE along; otherwise your answer will appear if and when there is space.

Enough for now. Suffice it to say my time will be short and loggings will be up; your logs will have a better chance of making it if you help me out a little. On with the show...

**\*\*\* NORTH AMERICA \*\*\***

CNTRY	FREQ	M	TIME	CALL	CITY	IDENT	TRAFFIC	CONTRB
BER	16947.6	C	1847	VRT	HAMILTON	MARCO	GSX M56	SS -NY
CAN	2398.0	U	0303	VFR	RESOLUTE BAY	CCG	WKG VCS 942	DR -MA
CAN	3290.0	C	0739	CKN	VANCOUVER	CANMIL	NAWS DE CKN	RWK-WA
CAN	4235.0	C	0752	VAI 2	VANCOUVER	CCG	CQ MARKER	RWK-WA
CAN	6431.0	C	0445	CFH	HALIFAX	CANMIL	V MARKER	BJ -TX
CAN	6493.0	C	0425	VAI	VANCOUVER	CCG	GSX M56	SS -NY
CAN	6745.0	U	0637	CHR	TRENTON	CANMIL	WX	PK -IL
CAN	8978.5	U	1506	VFG	GANDER	AERO	WKG AIR INDIA 101	LM5-NY
CAN	11265.0	U	0324	CHR	TRENTON	CANMIL	R/C WITH PRIZER 10	LR -MS
CAN	12876.0	C	2245	VAI	VANCOUVER	CCG	CQ MARKER	POC-NH
CAN	13270.0	U	1850	VFG	GANDER	AERO	AED WX	RT -FL
MEX	4285.0	C	0203	XFU	VERACRUZ	MARCO	CQ MARKER	RSR-ON
MEX	8567.0	C	0125	XFM	MANZANILLO	MARCO	V MARKER	EZ -ME
MEX	12829.5	C	2230	XFM	MANZANILLO	MARCO	CQ MARKER	PAC-UK
MEX	12830.0	C	0128	XFM	MANZANILLO	MARCO	V MARKER	RWK-WA
USA	2182.0	U	0152	NMF 49	PORTLAND	USCG	WKG CUTTER THUNDER BAY	ES -MA
USA	2670.0	U	0302	NMF 2	BOSTON	USCG	WKG GYPSUM COUNTESS	ES -MA
USA	2670.0	U	0104	NMN 37	PORTSMOUTH	USCG	WX	BD -CT



USA	2670.0	U	0105	NMN	37	PORTSMOUTH	USCG	WX		KH -MA
USA	4125.0	U	2325	KXS	319	GREENVILLE	MARCO	WKG	THE JIM BAKER	NAP-AL
USA	4125.0	U	1247	KUB	269	PULASKI	MARCO	WKG	THE DAN C	NAP-AL
USA	4125.0	U	1249	KGW		GALLIANO	MARCO	TFC		NAP-AL
USA	4143.6	U	2210	WEC		ROGERS CITY	MARCO	NTM		NAP-AL
USA	4370.0	U	0153	WLC		NEW ORLEANS	USCG	WKG	USCGC CHEROKEE	KH -MA
USA	4428.7	U	0046	NMG		WASHINGTON	DOS	ORA	MARKER	BD -CT
USA	6974.8	C	0240	KKN	50	NORFOLK	NAVRAD	WX		LS -CA
USA	8099.0	C	0010	NAM		NORFOLK	NAVRAD	WX		POC-NH
USA	8099.0	C	2020	NAM		NORFOLK	NAVRAD	WX		SS -NY
USA	8291.1	U	1225	NWV		PASCAGOULA	MARCO	WKG	KUY	NAP-AL
USA	8291.1	U	1510	WQX	722	HOUMA	MARCO	WKG	AMERICAN EXPRESS	NAP-AL
USA	8291.1	U	1313	KJA	476	ARANSAS PASS	MARCO	WKG	LITTLE LISA	NAP-AL
USA	8294.2	U	1429	WPK		BRUNSWICK	MARCO	CLG	H3ZD	NAP-AL
USA	8294.2	U	1230	WHD		MIAMI	MARCO	WKG	THE MAYA	NAP-AL
USA	8294.2	U	1430	WRF		ELIZABETH	MARCO	WKG	THE SAN PEDRO	NAP-AL
USA	8665.0	C	0617	KLC		GALVESTON	MARCO	CG	MARKER	RWK-WA
USA	8666.0	C	0230	KLC		GALVESTON	MARCO	TFC	LIST	SS -NY
USA	8706.5	C	0150	WLO		MOBILE	MARCO	DE	MARKER	LS -CA
USA	8790.0	U	2310	WLO		MOBILE	MARCO	WX		NAP-AL
USA	12432.3	U	1423	WAI		PORT EVERGLADE	MARCO	WKG	NOCB	NAP-AL
USA	12435.4	U	1640	KVR	499	SAN PEDRO	MARCO	WKG	ALTIVAR CARRIER	JEB-CA
USA	13103.9	C	2200	KMI		DIXON	MARCO	TFC	LIST	SS -NY
USA	13270.0	U	1843	WYJ	70	NEW YORK	AERO	AERO	WX	RT -FL
USA	14390.0	U	1830	WYJ		ANDREWS	USAF	CLG	AGG FOR PHONE PATCH	RT -FL
USA	16330.0	C	1333	KKN	50	WASHINGTON	DOS	ORA	MARKER	RR -MS
USA	16587.1	U	1647	KHT		CEDAR RAPIDS	MARCO	WKG	KHLQ	EZ -ME
USA	17239.2	U	2330	KMI		DIXON	MARCO	TFC	IN EE	RSR-ON

\*\*\* CENTRAL AMERICA \*\*\*

CNTRY	FREQ	M	TIME	CALL	CITY	IDENT	TRAFFIC	CONTRB
PANA	6423.0	C	0603	HPP	PANAMAINTELMA	MARCO	CG MARKER	DB -AR
PANA	8590.0	C	0225	HPP	PANAMAINTELMA	MARCO	CG MARKER	RWK-WA

\*\*\* CARIBBEAN \*\*\*

CNTRY	FREQ	M	TIME	CALL	CITY	IDENT	TRAFFIC	CONTRB
CUBA	8700.0	C	0237	CLA	HAVANA	MARCO	CG MARKER	RWK-WA
JAM	8465.0	C	2139	6YJ	WINGSTON	MARCO	CG MARKER	PAC-UK
MART	4095.0	C	0746	FUF	FT DE FRANCE	NAVRAD	V MARKER	RWK-WA
MART	8478.0	C	0612	FUF	FT DE FRANCE	NAVRAD	V MARKER	DB -AR
MART	22390.0	C	2315	FUF	FT DE FRANCE	NAVRAD	V MARKER	RSR-ON
VIRG	4403.9	U	0600	WAH	ST. THOMAS	MARCO	TFC LIST	KH -MA

\*\*\* SOUTH AMERICA \*\*\*

CNTRY	FREQ	M	TIME	CALL	CITY	IDENT	TRAFFIC	CONTRB
ARGN	8457.0	C	0050	LSA 4	BOCA	MARCO	NEWS IN SS	SS -NY
ARGN	8645.0	C	0232	LPD 33	GEN. PACHECO	MARCO	V MARKER	RWK-WA
ARGN	12990.0	C	0135	LPD 88	GEN. PACHECO	MARCO	V MARKER	RWK-WA
BRZL	8460.0	C	0420	PPJ	JUNCAO	MARCO	OSX MSG	SS -NY
BRZL	22420.0	C	2055	PPR	RIO DE JANEIRO	MARCO	TFC LIST	GS -MA
CHIL	12745.0	C	1540	CBV	VALPARAISO	MARCO	CG MARKER	EZ -ME
COLD	4277.1	C	0200	HKB	BARRANQUILLA	MARCO	V MARKER	RSR-ON
COLD	17003.8	C	0030	HKB	BARRANQUILLA	MARCO	CG MARKER	RJC-MA
ECUA	3810.0	A	0544	HD 210A	GUYAQUIL	SFTS	TIME SIGS	RR -MS

\*\*\* EUROPE \*\*\*

CNTRY	FREQ	M	TIME	CALL	CITY	IDENT	TRAFFIC	CONTRB
CYPR	4910.0	C	0225	KWS 78	NICOSIA	EMBASY	DE MARKER	RSR-ON
DEN	1813.0	U	2005	DXB	BLAVAND	MARCO	ALL SHIPS CALL	PAC-UK
ENG	10000.0	C	2319	MSF	LONDON	SFTS	TIME SIGS	POC-NH
FIN	12690.0	C	0435	OFJ	HELSINKI	MARCO	OSX MARKER	RWK-WA
FRAN	4232.0	C	0045	HWN	PARIS	NAVRAD	V MARKER	RJC-MA
FRAN	6990.0	C	0510	FDY	ORLEANS	FAF	V MARKER	RR -MS
FRAN	10562.2	C	1945	FTK 56A	PARIS	AFP	NEWS	EZ -ME
FRG	8483.5	C	0130	DAN	NORDDEICH	MARCO	CG MARKER	SS -NY
FRG	8675.0	C	0533	DAF	NORDDEICH	MARCO	V MARKER	RWK-WA
FRG	12745.0	C	0450	DAM	NORDDEICH	MARCO	V MARKER	RWK-WA
GDR	4525.0	C	0120	Y3S	NAUEN	SFTS	TIME SIGS	RSR-ON
GIBR	8625.2	C	2022	GYU	GIBRALTAR	NAVRAD	DE MARKER	EZ -ME
GREE	8681.0	C	0250	SVI	ATHENS	MARCO	DE MARKER	SS -NY
HOLL	8693.0	C	0617	PJC	WILLEMSTAD	MARCO	CG MARKER	DB -AR
ITLY	17083.9	C	2024	IQX	TRIESTE	MARCO	V MARKER	RSR-ON
ITLY	17105.0	C	2021	IRM	ROME	CIRM	V MARKER	RSR-ON
MALT	8441.4	C	0856	9HD	VALETTA	MARCO	V MARKER	PAC-UK
MONA	8728.2	U	1500	3AC	MONACO	MARCO	ALL SHIPS CALL	PAC-UK
POL	8557.1	C	0200	SPE 41	SZCZECHEIN	MARCO	TFC LIST	GS -MA
POL	13616.0	C	2224	SON 261	WARSAW	PAP	TFC	RDS-NJ
SPAN	8618.0	C	0207	EDJ 4	ARANJUEZ	MARCO	OSX MSG	SS -NY
SWED	8498.0	C	0135	SAG 4	GOETEBORG	MARCO	CG MARKER	SS -NY
SWIS	4259.0	C	0510	HEB	BERNE	MARCO	CG MARKER	SS -NY
SWIS	13034.0	C	2007	HEB	BERNE	MARCO	CG MARKER	EZ -ME
USSR	8440.6	C	0430	UAT	MOSCOW	MARCO	OSX MSG	SS -NY

USSR	12690.0	C	1155	UJY	KALININGRAD	MARCO	CQ	MARKER	GH -WV
USSR	12794.0	C	0852	RIT	MOSCOW	NAVRAD	CQ	MARKER	PAC-UK
USSR	12797.0	C	0036	UDK 2	MURMANSK	MARCO	WKG	UJLR	GH -WV
USSR	12798.0	C	0453	UDK 2	MURMANSK	MARCO	DE	MARKER	RWK-WA
YUGO	8700.0	C	0330	YUR	RIJEKA	MARCO	V	MARKER	BJ -TX

\*\*\* AFRICA/MIDDLE EAST \*\*\*

CNTRY	FREQ	M	TIME	CALL	CITY	IDENT	TRAFFIC	CONTRB	
ALGE	12662.0	C	1550	7TA 8	ALGIERS	MARCO	CQ	MARKER	EZ -ME
ANGO	13023.0	C	1515	D3E 62	LUANDA	MARCO	CQ	MARKER	EZ -ME
CAPE	8467.4	C	1941	D4A	SAD VICENTE	MARCO	CQ	MARKER	PAC-UK
DJIB	8992.0	C	0203	FUV	DJIBOUTI	NAVRAD	V	MARKER	RSR-ON
DJIB	12728.0	C	0914	JZA	DJIBOUTI	MARCO	CQ	MARKER	PAC-UK
EGPT	8472.0	C	2010	SUP	PORT SAID	MARCO			PAC-UK
ISRL	4237.0	C	0050	4X0	HAIFA	MARCO	TFC		RJC-MA
ISRL	8437.3	C	0415	4XZ	HAIFA	NAVRAD	V	MARKER	SS -NY
LIBE	4886.0	C	0219	KKN 44	MONROVIA	EMBASY	DE	MARKER	RWK-ON
LYBA	8450.0	C	0852	SAB	BENGHAZI	MARCO	CQ	MARKER	PAC-UK
LYBA	8515.0	C	0906	SAT	TRIPOLI	MARCO	CQ	MARKER	PAC-UK
MROC	8686.0	C	2002	CNP	CASABLANCA	MARCO	CQ	MARKER	PAC-UK
NIGR	16861.0	C	1345	50W	LAGOS	MARCO	CQ	MARKER	PAC-UK
SENE	6384.5	C	2043	6VA	DAKAR	MARCO	CQ	MARKER	PAC-UK

\*\*\* ASIA/FAR EAST \*\*\*

CNTRY	FREQ	M	TIME	CALL	CITY	IDENT	TRAFFIC	CONTRB	
JPAN	8570.0	C	0553	JNA	TKYO	EMBASY	CQ	MARKER	RWK-WA
JPAN	8658.0	C	0620	JCT	CHOSI	MARCO	CQ	MARKER	RWK-WA
JPAN	12210.0	C	0447	KWL 90	TKYO	EMBASY	QRA	MARKER	RR -MS
JPAN	12658.0	C	0538	JNA	TKYO	MARCO	CQ	MARKER	RR -MS
JPAN	12675.0	C	0724	JOU	NAGASAKI	MARCO	CQ	MARKER	RWK-WA
JPAN	12880.0	C	0131	JCU	CHOSI	MARCO	CQ	MARKER	RWK-WA
JPAN	12948.0	C	1732	JJF	TKYO	NAVRAC	CP	DE JJF FB3	PAC-UK
JPAN	13055.0	C	0508	JDC	CHOSI	MARCO	CQ	MARKER	RWK-WA
JPAN	13055.0	C	0709	JDC	CHOSI	MARCO	CQ	MARKER	RWK-WA
JPAN	16998.5	C	0730	JDC	CHOSI	MARCO	CQ	MARKER	RR -MS
JPAN	17043.2	C	0732	JCU	CHOSI	MARCO	CQ	MARKER	RR -MS
PHIL	8640.4	C	2043	D7J	BULACAN	MARCO	CQ	MARKER	PAC-UK
SING	12659.4	R	1655	9V6 37	SINGAPORE	MARCO	V	MARKER	JEB-CA
SING	12659.5	C	1545	9V6 37	SINGAPORE	MARCO	V	MARKER	PAT-CA

\*\*\* PACIFIC \*\*\*

CNTRY	FREQ	M	TIME	CALL	CITY	IDENT	TRAFFIC	CONTRB	
AUST	6430.0	C	0828	VIX	CANBERRA	MARCO	V	MARKER	RWK-WA
AUST	6465.0	C	0832	VIS 3	SYDNEY	MARCO	V	MARKER	RWK-WA
AUST	8597.0	C	2034	VIP 03	PERTH	MARCO	V	MARKER	EZ -ME
AUST	12910.0	C	0702	VHP 2	CANBERRA	MARCO	V	MARKER	RWK-WA
AUST	12950.0	C	0707	VIS	SYDNEY	MARCO	V	MARKER	RWK-WA
AUST	16918.0	C	0052	VIX 6	CANBERRA	NAVRAD	V	MARKER	RR -MS
FFPD	6460.0	C	0830	FUM	PAPEETE	NAVRAD	V	MARKER	RWK-WA
FFPD	12665.0	C	0719	FUM	PAPEETE	NAVRAD	V	MARKER	RWK-WA
FFPD	17380.0	C	0057	FUM	PAPEETE	NAVRAD	V	MARKER	RR -MS
HI	2670.0	U	0551	NMD	HONOLULU	USCG	WX		KH -MA
HI	8828.0	C	0400	KUJ 70	HONOLULU		VOLMET	WX	GS -MA
NCAL	8655.0	C	0852	FVM	NOUMEA	NAVRAD	V	MARKER	RWK-WA
NCAL	8700.0	C	0537	FJP 8	NOUMEA	MARCO	CQ	MARKER	RWK-WA
NCAL	12710.0	C	0441	FJP 2	NOUMEA	MARCO	CQ	MARKER	RWK-WA
NZEL	8504.0	C	0444	ZLB 4	AWARUA	MARCO	QSK	MSG	RWK-WA
NZEL	8600.0	C	0848	ZLO	WAIROURU	NAVRAD	DE	MARKER	SS -NY

\*\*\* RTTY \*\*\*

FREQ	TIME	BD-SHIFT	CALL	CITY	IDENT	CNTY	TRAFFIC	CONTRB
4268.6	1917	100R	SAG 23	GOTEBORG	MARCO	SWED	WX	EZ -ME
4271.0	0150	100-850R	CFH	HALIFAX	CANNIL	CAN	WX	KR -FL
4352.0	0033	FEC	WLO	MOBILE	MARCO	USA	WX	KR -FL
4487.0	0422	ARG	TNL	BRAZZAVILLE	ASECNA	CONG	TFC	JK -FG
5160.0	0226	ARG	CLN 21	HAVANA	PTT	CUBA	TO MIAMI	JK -FG
5240.1	0018	50-V-R	40C 2	BELGRADE	TANJUG	YUGO	NEWS IN EE	GS -MA
5740.3	0215	80-850N	HZN	JEDDAH	METEO	SAUD	WX	GS -MA
7658.0	0015	50-425R	YZD	BELGRADE	TANJUG	YUGO	RRS	RR -MS
8707.0	0006	FEC	WLO	HOBILE	MARCO	USA	WX	KR -FL
8712.5	0048	FEC	WCC	CHATAM	MARCO	USA	TFC LIST	KR -FL
10536.0	2144	100-850R	CFH	HALIFAX	CANNIL	CAN	WX	KR -FL
11063.0	1640		LZU 2	SOFIA	METEO	BUL	WX	EZ -ME
11570.0	1402	75-933N	NBA	SALBOA	NAVRAD	PANA	RRS	RDS-NJ
12175.0	0445	50-425N	HMF 42	MURMANSK	MARCO	USSR	GRAMS	RR -MS
12797.0	2235	50-170N	UDK 2	GALVESTON	MARCO	USA	WX	RMA-IA
13095.0	1915	FEC	KLC	HANGA ROA	AERO	EAST	DE MARKER	KR -FL
13200.0	1500	50-425N	CAI7E	ANGA ROTIRI	RAF	CYPR	FOXES/RRS	RMA-IA
13569.0	2245	40-485R	MKD	MIAMI	METEO	USA	WX	RDS-NJ
13624.0	1408	75-879N	WBR 70	HAVANA	PL	CUBA	RY TO NY	RDS-NJ
14640.0	1346	50-421R	CLN 447	RIO DE JANIE	NAVRAD	BRZL	RRS	RDS-NJ
14760.7	1725	100R	PWZ					EZ -ME

14810.0	2242		GXD	LONDON	BA	ENG	FOXES	RMA-IA
14901.0	1947		CLN 451	BAUTA	TASS	CUBA	NEWS	POC-NH
14901.0	1407	50-430N	CLN 452	HAVANA	FL	CUBA	EE NEWS	RDS-NJ
16137.0	1325	50-447R	CML 47	HAVANA	FTT	CUBA	RY5	RDS-NJ
16348.0	1914		CLN 530	HAVANA	FL	CUBA	NX	POC-NH
16412.0	0040	50-425R	BAK 66		XINHUA	PRC	NEWS IN 5S	RR -MS
20472.5	1937	75-850R	CXR	MONTEVIDEO	NAVRAO	URGY	FOXES	RR -MS

\*\*\* SHIPS \*\*\*

FREQ	M	TIME	CALL	NAME	TRAFFIC	CONTRB
2182.0	U	0101		MARY HICKEM	WKG SIDNEY CG	BD -CT
4081.0	U	0015	WTEW	R/W NOAA WHITING	WKG NMN	EZ -ME
4090.9	U	0239	3FH 2	AMERIKANIS	WKG WOO	POC-NH
4097.1	U	0403	HO 6496	GARGOYLE EXPRESS	WKG WDM	POC-NH
4112.6	U	0410	LNVP	SONG OF NORWAY	WKG WOM	DL -MA
4131.2	U	0358	D5WM	MARCUS TRIDENT	WKG MIAMI	AL -MA
5320.0	U	0231	NAEP	USCGC MANITOU	WKG FT. PIERCE	AL -MA
5320.0	R	0230	NLVA	USCGC POINT BARNES	WKG NMN	AL -MA
6200.0	U	0123		USCGC SENECA	WKG NMD	AL -MA
6200.0	R	1113	NAOD	USCGC JARVIS	WKG WRI	DL -MA
6218.6	U	1522	WB7 97	MARYANN	WKG WHD 576	EZ -ME
6221.6	U	2025	WVUF	R/V ALBATROSS II	WKG KVH	SS -NY
6509.5	U	1820	WTEW	NOAA WHITING	WKG WDM	EZ -ME
8198.1	U	1940	LKQH	S/S SKYWARD	WKG WOO	EZ -ME
8216.0	U	1912	GBTT	QUEEN ELIZABETH II	WKG PORTSMOUTH	POC-NH
8251.5	U	0215	WTER	RESEARCHER	WKG WOM	POC-NH
8269.4	U	0239	ELRM 9	TROPICALE	CLG KXS 311	NAP-AL
8291.1	U	1259		THE PUERTO RICO	WKG DENMARK	RMA-IA
8345.0	R	0045	ONLA	LEON PIERRE	WKG SVS 4	AL -MA
8349.0	R	2339	J4K0	ANANGEL VICTORY	WKG SVS 4	AL -MA
8349.0	R	2333	J4YI	M/V GHIKAS	WKG WLD	AL -MA
8351.0	R	0138	LENA	M/S SONG OF NORWAY	WKG UFN	AL -MA
8351.5	R	0018	ULBJ	TK P. ALESKSHV	WKG J3N	AL -MA
8353.3	R	0043	UIVT	BREST GRIGORIJ POLUYANOV	WKG WCC	AL -MA
8354.0	R	0038	ELPH	S/S FAIRWIND	WKG WCC	AL -MA
8354.0	R	0032	PCSD	M/V ANTILLA BAY	WKG GKQ 4	AL -MA
8357.0	R	0056	GBQE	M/V FORT EDMONTON	CLG EDZ 6	RM -IL
8372.5	C	2109	EFNA	CASTILLO DE LA MOTA	SERBO-CROAT MSG	RM -IL
8381.0	C	2223	YTON	KRANJEVIK	ETA MSG	RM -IL
8383.0	C	1453	4X10	ZIM MIAMI	ETA MSG	RM -IL
8387.0	U	0220	NXSF	AN FU JIANG	WKG USNS MOHAWK	POC-NH
8718.0	U	1856	WTEZ	R/V FERREL NOAA	WKG NMN	EZ -ME
12330.0	U	2125	VRLP	TAI FUNG	WKG GKT 51	POC-NH
12342.4	U	2222	NRFJ	USCGC NORTHWIND	WKG PORTSMOUTH	POC-NH
12351.0	U	1822	WCHF	SEALAND CONSUMER	CLG WOM	POC-NH
12429.2	U	1332	KLJH	SEALAND VENTURE	WKG WRF	DL -MA
12429.2	U	1346	KOHC	TROPIC SUN	WKG KVX773	DL -MA
12432.0	U	1456		EDMONTON	WKG ONTEL	AHF-NM
12495.0	R	0115	GBKE		WKG KPH	JEB-CA
12499.0	R	0100	3FXV 2	M/V FLENSBURG	RFC	JEB-CA
12501.5	R	0110	WRFJ	S/T OVERSEAS HARRIETTE	WKG KPH IN ARQ	AL -MA
12503.0	R	0020	ULZH	TKH KAP VAVILOV	WKG UNM2	AL -MA
12503.5	R	2320	GBOD	M/V FORT COULONGE	WKG WLD	JEB-CA
12504.0	R	1945	DHTP	MAERSK BRAVO	WKG LYNGBY MARCO	GS -MA
12505.5	R	2225	DYBF	LAURA MAERSK	WKG GKP 5	AL -MA
12519.0	R	0121	ELEY 9	M/V GOLDEN FLEECE	WKG GKQ 5	AL -MA
12521.5	R	2322	UNWZ	BATM ALEKSANDOR TYURIN	WKG ODESSA	RMA-IA
12522.0	R	2220	UTWH	TH ADLER	WKG ODESSA	RMA-IA
12522.5	R	2323	LYFH	BATM MARSHAL KRYLOV	WKG ODESSA MARCO	GS -MA
12524.5	R	2129	UURS	UKRAINIA	WKG ODESSA	RMA-IA
12524.5	R	2145	UYES	TH BEREZNIKI	CLG ODESSA	GS -MA
12525.5	R	2310	URSV	TKH NOVOLOVOVSK	CLG NMN	JEB-CA
12546.5	C	1834	ATVD	VISHVA PANKAJ	WKG WCC	RM -IL
12547.0	C	1506	VRCV	PORT QUEBEC	CLG DAN	RM -IL
12559.0	C	1438	9VEK	NORDWELLE	MSG IN GREEK	RM -IL
12575.5	C	1721	5RNE	THIOS COSTAS	MSGS	RM -IL
12587.5	C	1636	3EPR	HAOU EL HAMBRA	MSGS	RM -IL
12588.0	C	1411		MOUNTAIN AZALEA	WKG KHT	EZ -ME
16587.0	U	1553		S/S EXXON LEXINGTON	WKG KHT	EZ -ME
16587.0	U	1508	WGDB	S/S EXXON PRINCE	CLG CUL 22	RM -IL
16749.0	C	1558	CSNC	F/V S. GONCALINHO		

\*\*\* AERO \*\*\*

FREQ	M	TIME	CALL	TRAFFIC	CONTRB
5532.0	U	2303	SPRINGBOK 247	WKG LONDON	DL -MA
6577.0	U	2328	AEROMEXICO 450	CLG NY	KR -FL
6577.0	U	2330	AIR CANADA 964	WKG NY	KR -FL
6649.0	U	0450	LUFTHANSA 512	WKG LIMA	DL -MA
6693.0	U	1526	CANMIL 8021	WKG ST. JOHNS	EZ -ME
8825.0	U	2356	AIR FRANCE 236	WKG SANTA MARIA AERO	KR -FL
8843.0	U	0233	SINGAPORE 02	WKG SAN FRAN	EZ -ME
8879.0	U	1908	AEROFLOT 347	WKG GANDER	EZ -ME
8879.0	U	2237	AEROFLOT 357	WKG GANDER	BD -CT
8879.0	U	1830	AIR FRANCE 1305	WKG NEW YORK	EZ -ME
8879.0	U	1905	KLM 643	WKG SHANWICK	EZ -ME
8903.0	U	2307	MOZAMBIQUE 634	WKG KINSHASA	BD -CT
8921.0	U	1828	EASTERN 800	WKG BERMUDA	EZ -ME

8921.0	U	0335	EASTERN 928	WKG BERMUDA	NAP-AL
8921.0	U	2345	SPEEDBIRD 52	WKG LONDON	BD -CT
8992.5	U	1901	LL 32	WKG MACDILL	EZ -ME
8993.0	U	1922	NAVY LF 165	WKG ALBROOK	SS -NY
11180.0	U	0337	AIR FORCE TWO	WKG ANDREWS	POC-NH
11182.0	U	1916	SENTRY 50	WKG SCOTT	POC-NH
13305.8	U	1709	IBERIA 951	WKG NY	BD -CT
15015.0	U	1800	MAC 00447	WKG ALBROOK	BD -CT
15036.0	U	0121	SAM 972	WKG ANDREWS	RR -MS

\*\*\* TACTICAL \*\*\*

FREQ	M	TIME	CALL	TRAFFIC	CONTRB
4143.6	U	2131	BRAVO QUATRO	WKG CHARLIE 6 BRAVO	NAP-AL
4742.0	U	0220	ARCHITECT	AERO CONDITIONS	KH -MA
6762.0	U	0728	STEAMCAR	TRYING CONTACT TANGO 43	PK -IL
7430.0	L	0518	FOXTROT 4	WKG ALBROOK	SS -NY
7739.0	L	0518	FOX 4	WKG ALBROOK	SS -NY
8944.0	U	1700	FIRESIDE 3	WKG AIRCRAFT DUST 71	SS -NY
8993.0	U	0950	AGAR 24	WKG CAPE RADIO	SS -NY
9023.0	U	0217	NEON LAMP	WKG VOCALIZE	SS -NY
11118.0	U	1442	HEADRESS	CLG TOP BONE	DL -MA
11182.0	U	1923	MUSIC 42	CLG MAINSAIL	POC-NH
11214.0	U	1635	DRAGNET WHISKEY	WKG DRAGNET JULIET	SS -NY
11233.1	U	1817	BRAVE LION 5561	CARGO LIST TO TRENTON	BD -CT
11243.0	U	1520	MOUTH 51	CLG SKYTRD	DL -MA
11440.0	U	1555	KING 63	P/P TO HOMESTEAD	SS -NY
11440.0	U	1935	TEAL 22	WKG MIAMI MONITOR	SS -NY
12189.0	U	1310	XRAY 1 GOLF	WKG YANKEE 8 DELTA	RR -MS
13181.0	U	1350	MIKE 4 DELTA	TFC	POC-NH
14686.0	U	1459	SUNDANCE 875	RADIO CHECK	BD -CT
15031.0	U	1738	ASCOT 5972	POSSIBLE ROUTING CHANGE	BD -CT
17975.0	U	1410	CASEFLOW	CODED SAC MSG	RR -MS
20885.4	L	1830	FOX 4	INFO ON FAO COURSE	BD -CT

\*\*\* NUMBERS \*\*\*

DATE	STRT-STOP	FREQ	M	LL/GG	TRAFFIC	CONTRB
08/09/86	0400-0445	8802.0	A	SS/YL	'677' COUNT, 4D	AHP-NM
08/12/86	0320-0335	11171.0	C	/	5D MACHINE SENT	RR -MS
08/13/86	1305-1306	12004.0	C	/	5D	RR -MS
08/15/86	2011-0815	11530.0	A	SS/YL	4D IN PROGRESS	PAT-CA
08/17/86	1400-1410	14430.0	C	/	5D	RMA-IA
08/18/86	0103-----	5253.0	A	SS/YL	5D	RT -FL
08/18/86	0540-----	4837.0	A	SS/YL	5D	RT -FL
08/20/86	2003-2015	13775.0	U	GG/YL	5D 'OSCAR TANGO' & FLUTE	RR -MS
08/21/86	0304-----	9387.0	A	SS/YL	5D	RFM-GA
08/22/86	0110-0130	8418.0	A	SS/YL	4D	RR -MS
08/25/86	0708-0715	3780.0	A	SS/YL	5D IN HAM BAND	RR -MS
08/26/86	0111-0150	6963.0	A	EE/YL	3/2 IN PROGRESS	RR -MS
08/26/86	2312-2317	9324.9	U	GG/YL	5D	KR -FL
08/31/86	0917-----	6225.0	A	SS/YL	5D	LMS-NY
09/01/86	0204-0208	4670.0	A	SS/YL	10-COUNT/'280' RPTD	LMS-NY
09/05/86	0224-----	5810.0	A	SS/YL	4D IN PROGRESS	LMS-NY
09/07/86	1932-1949	10135.0	A	GG/YL	3/2 GROUPS	PAT-CA
						BD -CT

\*\*\* BEACONS \*\*\*

FREQ	M	TIME	CALL	TYPE	TRAFFIC	CONTRB
10285.0	C	0155	V	SLHFB	IDENTICAL TO K & U	RR -MS
15705.0	C	0138	U	SLHFB		RR -MS

\*\*\* VLF/LF/MH \*\*\*

CNTRY	FREQ	M	TIME	CALL	CITY	IDENT	TRAFFIC	CONTRB
CAN	292.0	C	0157	TO	PT DES MONTS	NDB	ID	POC-NH
CAN	341.0	C	0330	YU	KAPUSKASING	NDB	ID	POC-NH
CAN	438.0	C	0339	CFH	HALIFAX	NDB	ID	POC-NH
JAM	360.0	C	0356	KIN	KINGSTON	CANMIL	V MARKER	POC-NH
USA	278.0	C	0338	RST	BELFAST	NDB	ID	POC-NH
USA	340.0	C	0322	BOG	WOODBRIDGE	NDB	ID	POC-NH
USA	436.0	C	0256	WCC	CHATHAM	MARCO	TFC LIST	POC-NH
USA	482.0	C	0325	WSC	TUCKERTON	MARCO	TFC LIST	POC-NH

\*\*\* QSLs \*\*\*

CNTRY	CALL	DES/ID	NAME/LOCATION	QSL/ POSTAGE/ #DAYS	FREQ	CONTRB
			BRAZILIAN AF 2464	PFC MS 42D	8993.0	POC-NH
	3FIP 2	SS	MARTIN AIR BP	PFC 21RC 22D	11345.0	POC-NH
	CG 2133		GALILEO	PFC 1MS 28D	8216.7	EZ -ME
	HPEN	SS	USCG HU-25A	PFC MS 7D	5696.0	POC-NH
	KING 29		BRITANIS	PFC 1MS 36D	8226.0	EZ -ME
	MAC 60134			PFC MS 21D	11182.0	POC-NH
				PFC 1MS 12D	11182.0	EZ -ME




NYKN	USS	YORKTOWN	PFC 1MS 54D	3199.0	EZ	-ME
SGGN		BOGABILLA	CARD/PHOTO	500.0	HH	-MD
TELL 16		USAF F16	PFC MS 13D	11182.0	POC	-NH
XD 02			PFC MS 69D	11182.0	POC	-NH
CHIL	CCS	NAVRAD	SANTIAGO	11526.4	EZ	-ME
COST	TIM	MARCO	LIMON	17149.0	EZ	-ME
FRAN	FFT 62	MARCO	ST. LYS	13097.5	EZ	-ME
JPAN	JJY	SFTS	TOKYO	15000.0	SG	-MA
MONA	3AC	MARCO	MONACO	8728.2	PAC	-UK
PORT	CUA 69	CPRM	LISBON	11526.4	EZ	-ME
PRC	BPM	SFTS	XI AN	10000.0	SG	-MA
			LETTER 21RC 54D			
			CARD 21RC 26D			
			PFC 11RC 58D			
			CARD MS 23D			
			PFC 11RC 9D			
			CARD 21RC 51D			
			CARD 31RC 119D			

\*\*\* CONTRIBUTORS \*\*\*

NAME	RECEIVER	# LOGS
ALEXANDER, RODNEY	RMA-IA	9
BERRI, JASON E.	JEB-CA	7
BREWER, DON	DB -AR	3
COLEMAN, R.J.	RJC-CA	3
CONWAY, PETER A.	PAC-UK	17
DOYLE, BOB	BD -CT	14
GEORGE, S.	SG -MA	2
HALSTEAD, GARY	GH -WV	2
HILL, KEN	XH -MA	5
HOLBROOK, HANK	HH -MD	1
JONES, BRIAN	RJ -TX	1
KERRIGAN, PATRICK	PK -IL	1
KLINGENFUSS, JOERG	JK -FG	29
KNIGHT, ROBERT W.	RWK-WA	9
LEHMAN, DIANN	DL -MA	17
LEWKOWICZ, ABE	AL -MA	11
MARGOLIS, ROBERT	RM -IL	1
MUNSTER, RALF	RFM-GA	7
O'CONNOR, PATRICK	POC-NH	33
PERDUE, NEAL	NAP-AL	15
PIKE, ARTHUR H.	AHP-NM	2
ROBERTS, KEN	KR -FL	10
ROCKER, RAYMOND	RR -MS	24
ROSS, ROBERT S.	RSR-ON	10
SCHMAUTZ, SCOTT	SS -NY	25
SHANKLIN, GEOFF	GS -MA	7
SOOMRE, ED	ES -MA	2
STEIN, RICKY	RDS-NJ	7
STRANSKY, LARRY	LMS-NY	4
SZALONY, LEONARD	LS -CA	2
THOMPSON, PEGGY	PAT-CA	5
TROTTO, RON	RT -FL	5
ZIEGLER, ED	EZ -ME	34
	R 2000	
	DX 302/ICF 2001	
	DX 302	
	R 4B/2C /DX 400	
	ICF 6800W	
	R 2000	
	FT 757GX	
	FR 101S/TS 430S	
	R 2000	
	FRG 7000/7700	
	TS 930S	
	FRG 7	
	UNIDEN CR 2021	
	R 2000	

That's all for now. Unfortunately, right after I said I'd take the column again and Tom sent me your logs, my computer went down with memory problems that took a few days to solve.

I hope to see some great logs next month. Grab a cup of cocoa (or a bottle of Little Kings) and settle down in front of the radio.....

73's and best DX (good to be back) - 

**BBC**

*Monitoring Service*

World Broadcasting Information

Published weekly by the **BBC Monitoring Service**, the WBI gives up to date news on developments in world broadcasting, including:

- Details of programme and frequency schedules
- Broadcasting behaviour and technical developments
- Activities of clandestine and unofficial broadcasters

For more information, please write to:

Subscriptions Office, BBC Monitoring Service, Caversham Park, Reading RG4 8TZ, Berkshire, England.

# ANARCON '86 REPORT, Part Two by Tom Kephart and Woody Seymour

This year's convention in Montréal was Woody's fifth and my second. As we mentioned last month, it seems like the focus of the convention has moved away from the clubs and toward the broadcasters. While increased support and participation by the people who put out the signals is welcome, it was somewhat dismaying to see so few ANARC Member Clubs represented with table displays. The Canadian clubs were there in force, including the **Ontario DX Association**, the **Canadian International DX Club**, and **Le Club Ondes Courtes du Québec**. That last group had its display right next to the SPEEDX table on Friday, and as you might guess, this club does its business *en français*! Combined with the fact that the convention was in Montréal, it assured a pretty fair number of French-speaking DXers holding an informal club meeting right next to us! I took a few years of French in high school and college, but am somewhat ashamed to admit that it is so bad that I could only converse with these fine folks if they talked to me like a child, very slowly and distinctly. Fortunately, they almost all spoke English quite well, but it didn't help my inferiority complex any, hi!

Among the American clubs, SPEEDX was pretty much the star of the show. The **Worldwide TV-FM DX Association**, the **Association of DX Reporters**, and the **Michigan Association of Radio Enthusiasts** all had displays or material on hand, but only MARE's table was regularly manned. SPEEDX had a table with all of our publications displayed, and in addition to doing over \$200 worth of sales, the table provided a gathering point for SPEEDX members.

Two special guests were in attendance at ANARCON '86. **Jens Frost**, Editor-in-Chief of the **World Radio TV Handbook**, was in Montréal from WRTH headquarters in Denmark, and **Arthur Cushen**, Secretary-General of the South

Pacific Association of Radio Clubs (SPARC), who has made Invercargill, New Zealand, a fairly familiar DX location, especially among mediumwave DXers. Mr. Cushen was the banquet speaker, and he and his wife **Relda** provided an insight into the world of DXing "down under".

The annual ANARC achievement awards were given out at the banquet. The North American DXer award went to **Gerry Dexter**, who among other things, is editor of the "Listening Post" column in *Popular Communications*. Specialty Band DXer of the Year was **Bruce Elving**, author of the FM ATLAS and editor of "FCC News" in the WTFDA bulletin. International awards went to **Jens Frost** as Shortwave International DXer, and **Glenn Hauser** as International Broadcaster of the Year. In addition, special ANARC Executive Council awards for special service to the hobby went to **Robert Horvitz** (for his work on ANARC's "Woodpecker Project" and working to get changes made in the Electronic Communications Privacy Act), and **Terry Colgan**, for his four years as Executive Secretary of ANARC.

If you missed this year's convention, next year's is being sponsored by ODXA and will be held in Mississauga, Ontario, just outside of Toronto. More details shortly after the first of the year!

Finally, a special "thanks" and "good show" to **Ian McFarland** and the entire Radio Canada International staff, who did so much to make ANARCON '86 run smoothly. See you in Mississauga!

## Photo Identifications

(a) SPEEDXers unless otherwise noted)

### Page 24

**Top (1-r):** Joe LoTurco, Radio Netherlands' Jonathan Marks, Bill Westenhever. **Center (1-r):** Chris Merchant, the infamous turbo elevator, Peter Card. **Bottom (1-r):** Frank Mezak, Rich D'Angelo, Bruce Johnston.

### Page 25

**Top (1-r):** Geoff Shanklin, Tom Kephart and John Trautschold. **Center (1-r):** Arthur and Relda Cushen, Ray Forsgren. **Bottom (1-r):** Don Hosmer, Radio Discovery's Jeff White.

# CONTRIBUTORS LIST

OCTOBER 1986

EDITED BY: JOHN TRAUTSCHOLD & THE ALTAIR 8800 COMPUTER  
354 N. WINSTON DRIVE, PALATINE, IL 60067 U.S.A.

TOTAL CONTRIBUTORS: 103

3	ABBINANTE, PHIL	IL IC-R71A	1	MUZYKA, WILLIAM	NY RF4900
1	ALEXANDER, HARRY	NJ NRDS525	2	McCANTS, DONALD	AL RF2200
2	ATKINS, GUY	WA IC-R70	2	McENTEE, ROBERT	TX R1000
5	BALT, STEVE	IL R2000	1	McNEILL, RANDY	AL
1	BARRY, JOE	CA	6	NEFF, GEORGE	OH ICF4800
2	BERRI, JASON	CA RF2900	3	NEUVERTH, MICHAEL	CO DX400
7	BISHOP, FORREST	NY RF4800	5	ORR, TONY	FL R600
2	BOWDEN, RALPH	CA FRG7700	1	PHILLIPS, LOUIS	PA DX400
2	BRADLEY, HERBERT	MA DX302	7	PIKE, ARTHUR	NM ICF6800W
8	BREWER, DON	AR R1000	1	PIMBLETT, NIGEL	AB
7	BROWN, EDWARD	IL RF2200	3	POGUE, JIM	TN R2000
1	CAMPBELL, BILL	CT NRDS515	2	QUAGLIERI, AL	NY EC958/3
1	CATEY, ROBERT	IL	4	ROBINSON, BETSY	TN FRG7700
1	CEREGHIN, JOHN	MD DX400	3	ROCKER, RAYMOND	MS FT7576X
1	CHICKERELL, LARRY	WV DX400	2	ROMANIN, GIORGIO	IT FRG7700M
2	CODAY, RICHARD	CA FRG7700	1	SABLE, THOMAS	PA TS430S
5	COLEMAN, ROBERT	MA FRG7	5	SAMPSON, DANIEL	WI R1000
1	COLLINS, JAN	OR	1	SAMS, MITCH	KS
1	CONSTANINIDES, COSTA	SA NRDS515	1	SANDERSON, JACK	AZ R1000
4	D'ANGELO, RICHARD	PA NC190	1	SATO, JUNICHI	JP NRDS525
1	DICKERMAN, WILLIAM	PA DX400	1	SCHLOSSMAN, MARC	CA FRG7
5	DILLON, PETER	MD ZENITH T	4	SHAFFER, LAWRENCE	PA ICF2010
1	DONEGAN, PAUL	CA ICF2010	5	SHANKLIN, GEOFF	MA IC-R70
4	EMERSON, TERRY	OR RF3100	3	SHARPE, BRYAN	CA DX302
2	EVANS, JAMES	TN R2000	6	SHEEDY, DAN	CA IC-R70
1	FAMULARO, RALPH	JP RF-B30	2	SHIMADA, SENSHU	JP FRG7700
1	FLYNN, BILL	CA R7A	1	SHOCKLEY, MIKE	OK
3	FRASER, BOB	MA CR2021	4	SHREEDHAR, R.	II YB700
3	GEORGE, NELSON	NC IC-R71A	1	SOMERS, JACK	CA TS430S
5	GEORGE, STEVEN	MA IC-R71A	7	SOOMRE, ED	MA R2000
4	GOODMAN, JOEL	IA R390	3	STRANSKY, LARRY	NY R2000
6	HAVRILKO, VINCENT	NY CR2021	4	THOMPSON, PEGGY	CA FRG7
4	HAWK, MICHAEL	VA ICF6800W	1	THUNBERG, BOB	PA R1000
4	HESCH, RUTH	NY R1000	9	TROTTO, RON	FL CR2021
1	HILL, KENNETH	MA DX1000	4	UETAKE, ATSUO	FL NRDS515
2	HUFFAKER, CARL	MX HOMEBREW	5	VAN HORN, GAYLE	FL RF3100
4	HUNT, BILLY	NC NRDS515	5	VERCELLINO, JOHN	IL GRUNDIG
4	JONES, BRIAN	TX IC-R70	3	WAKEFIELD, PAUL	IA DX160
4	KAESSINGER, ROBERT	FG R2000	5	WALLEY, STEVEN	CA ICF2010
4	KERRIGAN, PATRICK	IL R1000	3	WATSON, MARSHALL	FL ICF2010
6	KRIST, KRAIG	VA FRG7700	1	WEBER, DON	OH R2000
1	KUSALIK, EDWARD	AB FRG7000	1	WEISS, CHARLES	OH RF-B600
1	LEHMAN, DIANN	MA R2000	4	WELCH, FRANK	MA ICF6800W
1	LEITE, STEPHEN	MA	6	WESTENHAVER, WILLIAM	PQ ICF6500W
5	LEVISON, HAROLD	PA IC-R70	1	WEYRICH, CARROLL	MD RF4900
2	LORD, EARLE	CA IC-R71A	1	WILKINS, JOHN	CO R1000
5	LOTURCO, JOE	NY ICF2010	1	WINIARZ, MICHAEL	PQ RF2600
1	MERCHANT, CHRIS	NH TS430S	6	WRIGHT, PHILIP	MB DX400
2	MEZEK, FRANK	CO IC-R71A	1	YAJKO, ROBERT	PA
2	MILLER, LARRY	PA ICF2010	1	ZILMER, ROBERT	NM R1000
4	MILLER, WILLIAM	CA DX400	1	ZIRKELBACH, BOB	CA R1000
8	MUNSTER, RALF	GA R7/DR7			

THE FOLLOWING COLUMNS DIRECT CONTRIBUTIONS WERE NOT RECEIVED IN TIME:

NA# / UTILITIES / DX MONTAGE

THE FOLLOWING COLUMNS ARE INCLUDED FROM LAST MONTHS BULLETIN:

NA# / AFRICA

# SPEEDY

The DX Radio Magazine for Active SWLs

## BOARD OF DIRECTORS

Jack Sanderson (President) Tom Kephart (Vice-President)  
Peggy Thompson Rick Drollingger David Sharp

PUBLISHER \_\_\_\_\_ Tom Kephart  
MANAGING EDITOR \_\_\_\_\_ Rick Drollingger  
BUSINESS MANAGER \_\_\_\_\_ Jack Sanderson  
MEMBERSHIP CHAIRMAN \_\_\_\_\_ John Trautschold  
PROJECTS COORDINATOR \_\_\_\_\_ Craig Krist  
AWARDS CHAIRMAN \_\_\_\_\_ Jack Jones  
PUBLICITY CHAIRMAN \_\_\_\_\_ David Sharp  
SPEEDYGRAM EDITOR/PUBLISHER \_\_\_\_\_ Bruce Macgibbon  
CENTRAL DISTRIBUTION EDITOR \_\_\_\_\_ Peggy Thompson  
CDE ADDRESS: 2706 Alabama Street, La Crescenta, CA 91214-2925

## SPEEDY Subscription Rates

FIRST CLASS MAIL to the United States \_\_\_\_\_ \$ 18.00  
AIRMAIL to Canada and Mexico \_\_\_\_\_ \$ 18.00  
AIRMAIL to Central America and the Caribbean \_\_\_\_\_ \$ 24.00  
AIRMAIL to Europe and South America \_\_\_\_\_ \$ 26.00  
AIRMAIL to Africa, Asia, Oceania and the USSR \_\_\_\_\_ \$ 31.00  
SURFACE MAIL outside of North America \_\_\_\_\_ \$ 18.00  
SAMPLE COPY to North America \_\_\_\_\_ \$ 1.50  
SAMPLE COPY outside of North America — 6 IRCs or \$ 2.00

ALL SUBSCRIPTION PAYMENTS must be payable to **SPEEDY** in:

United States funds only  
PLEASE SEND ALL SUBSCRIPTIONS, RENEWALS, and ADDRESS  
CHANGES to the Business Manager at the Tucson address at  
right. Allow 4 to 6 weeks for address changes to take effect.

# SPEEDY

7736 East Hampton Street  
Tucson, Arizona 85715-4212



EXPIRES STAF  
AL QUAGLIERI  
P.O. BOX 888  
ALBANY, NY 12201-0888

FIRST CLASS MAIL  
UNITED STATES POSTAGE  
**PAID**  
Mt. Pleasant, MI 48856  
Permit Number 50

# FIRST-CLASS MAIL