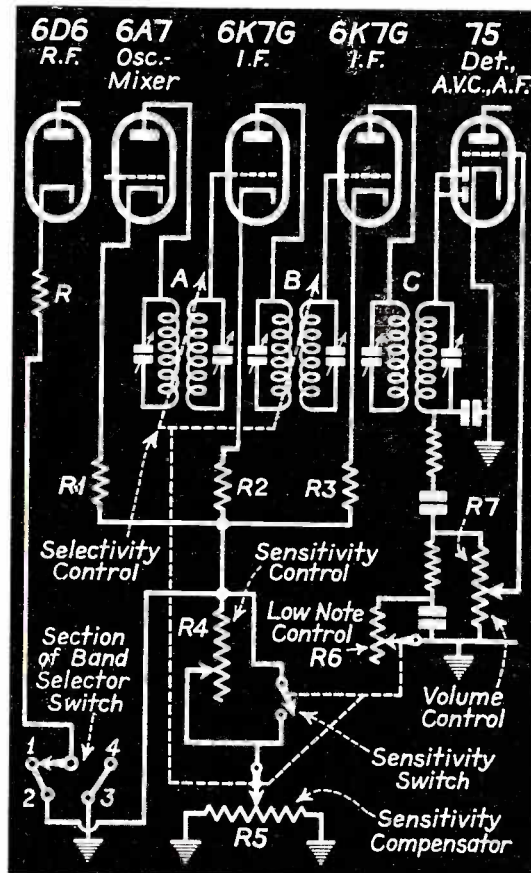


SERVICE



A MONTHLY DIGEST OF RADIO AND ALLIED MAINTENANCE



PER COPY
25 CENTS

Selectivity—High-Fidelity Control Circuit

(See Page 550)

DECEMBER
1935

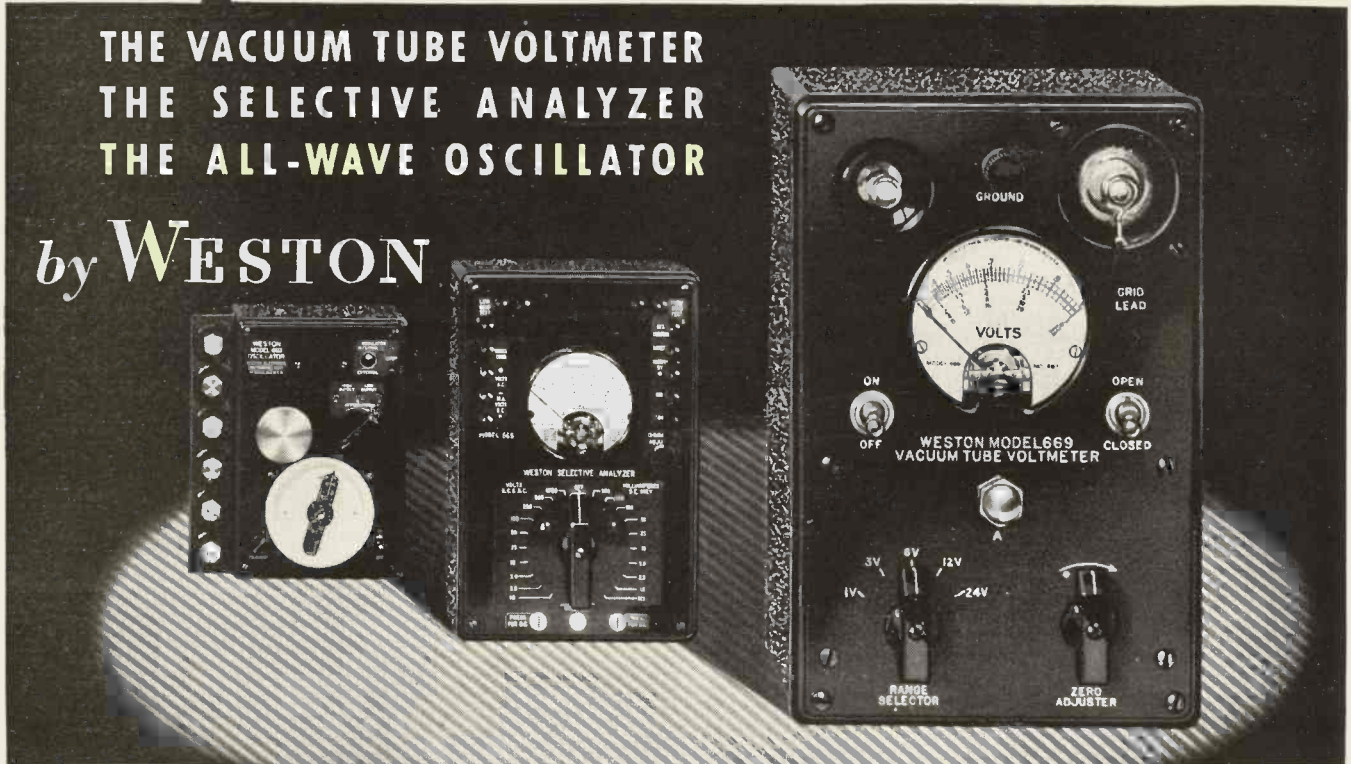
INSTRUMENTS THAT

MARK

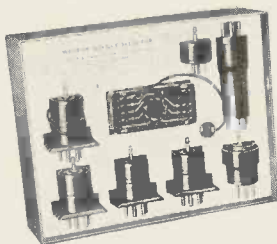
the dependable shop!

THE VACUUM TUBE VOLTMETER
THE SELECTIVE ANALYZER
THE ALL-WAVE OSCILLATOR

by **WESTON**



THE WESTON
SOCKET SELECTOR SET
MODEL 666 TYPE 1B



Bring your analyzer out of the obsolete class with the inexpensive WESTON Socket Selector Set. Fits all Analyzers. Ask for full details.

Nothing can surpass this group of servicing instruments . . . from a standpoint of *efficient* servicing, or profitable servicing.

The Weston Selective Analyzer is a life-time instrument . . . ready for any and all receivers. It measures in fundamentals . . . current, voltage, resistance and output . . . fully protecting this analyzer against early obsolescence.

The All-Wave Oscillator is triple shielded and built with the same care as a laboratory instrument. It will do a precision aligning job on

all modern radio receivers.

The Vacuum Tube Voltmeter, used with the Oscillator, will measure gain per stage . . . r.f. amplitude in oscillator circuit of superheterodynes . . . check the pre-selector or i-f. stages in superheterodynes . . . check the impedance of chokes, condensers, etc., and other voltage measurements.

The coupon will bring you full data on these and all other Weston instruments for radio servicing . . . Weston Electrical Instrument Corporation, 604 Frelinghuysen Avenue, Newark, New Jersey.

WESTON

Radio Instruments

WESTON ELECTRICAL INSTRUMENT CORPORATION
604 Frelinghuysen Avenue, Newark, N. J.

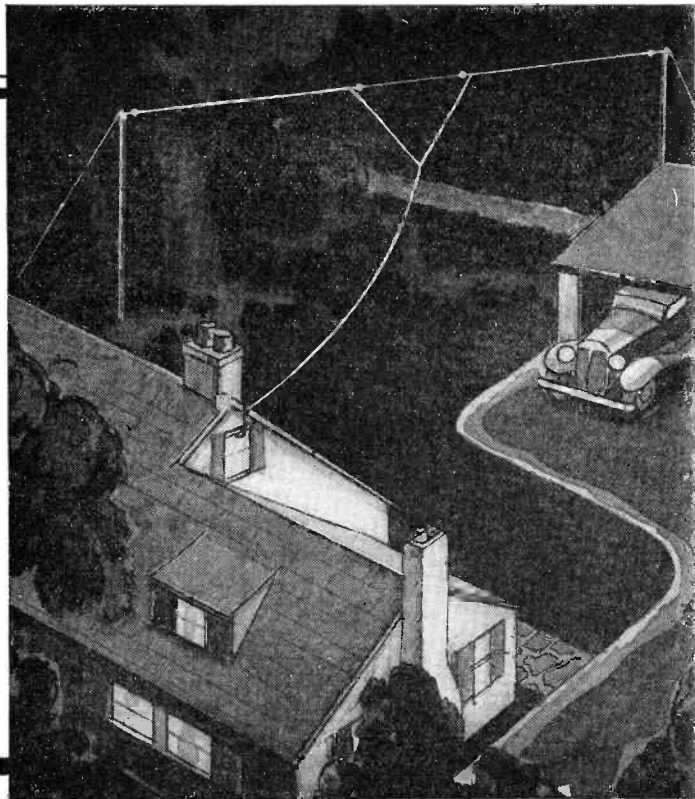
Send bulletin on Weston Radio Instruments.

Name

Address

City and State

G-E
"V-DOUBLET"
ANTENNA SYSTEM
PULLS IN DOLLARS
FOR SERVICE MEN



Every community offers good money-making opportunities for the enterprising service man to sell and install short-wave antenna systems.

If you are a service man working for a radio retailer, recommend the installation of a G-E "V-Doublet" antenna system with every radio you install. If you are in business for yourself, sell a G-E "V-Doublet" antenna system to all owners of short-wave receivers now using inadequate aerial systems.

All-wave antenna sales and installations not only bring in extra income for service men but also provide them with a means of making new contacts for other types of radio and electrical service work. You'll find this rich market waiting right at your door.

G-E "V-DOUBLET" ANTENNA PICKS UP ALL SHORT-WAVE SIGNALS—It provides uniformly good reception in the entire short-wave spectrum. In the "V-Doublet" the high impedance point is extended out to such a high frequency that efficient pick-up is obtained over all the short-wave bands. The signal is transferred to the receiver

with a negligible loss. The result is a doublet of uniform sensitivity over the entire range of short-wave frequencies.

FREES RECEPTION OF MAN-MADE STATIC—Signals intercepted are fed to the receiver through a balanced, twisted-pair, lead-in line. The lead-in line functions only to transfer signals from the "V-Doublet" to the receiver and rejects man-made static "picked up" by the ordinary type of antenna lead-in line.

EXCELLENT ANTENNA FOR STANDARD BROADCAST RECEPTION—There is no sacrifice of performance in standard broadcast bands in order to obtain good short-wave reception. This antenna is a "V-Doublet" below 55 meters and a conventional T-type broadcast antenna above 55 meters. The change-over from one type to another is automatic.

FACTORY ASSEMBLED READY FOR INSTALLATION—The "V-Doublet" antenna system, consisting of the doublet wires, glass strain insulators and transmission line, is assembled at the factory. The antenna is shipped complete in kit form . . . all ready for immediate installation.

See your G-E Radio Distributor for additional information or write to Section R-7812, Appliance and Merchandise Department, General Electric Company, Bridgeport, Connecticut.

GENERAL  **ELECTRIC**

The Original Metal-tube Radio

APPLIANCE AND MERCHANDISE DEPT., GENERAL ELECTRIC CO., BRIDGEPORT, CONN.

SERVICE

A Monthly Digest of Radio and Allied Maintenance
Reg. U. S. Patent Office. Member, Audit Bureau of Circulations

Vol. 4, No. 12
DECEMBER, 1935

EDITOR
M. L. Muhleman

ASSOCIATE EDITOR
Ray D. Rettenmeyer

EDITORIAL CONTENTS

FEATURES

- Hints on Eliminating Traffic Signal Interference
By J. R. Steen..... 566
- Profits in Old Set Conversion With Modern Methods, Part III
By Tobe Deutschmann..... 545
- Selectivity—High-Fidelity Control Circuit... 550
- Service Annual Index..... 556-557-558

ANTENNA

- All-Metal Tubes..... 542

AUTO RADIO

- Motorola Models 100, 110..... 560

CIRCUITS

- AVC Circuit for Kadette 53, 553..... 558
- Emerson Model 36..... 555
- Filter Circuits for Eliminating Traffic Signal Interference..... 566
- General Electric A-70, A-75..... 549
- Motorola Models 100, 110..... 560
- Selectivity—High-Fidelity Control Circuit
Front Cover
- Sensitivity Switch for Silverstone 1905, 1915, 1955, 1965..... 558
- Stewart-Warner R-134..... 551
- Wells-Gardner Series 7GM..... 553

GENERAL DATA

- Adding AVC to Kadette Models 53 and 553... 558
- Adding Sensitivity Switch to Silvertone 1905, 1915, 1955, 1965..... 558
- Eliminating Traffic Signal Interference..... 566
- Emerson Model 36..... 555
- General Electric A-70, A-75..... 548
- Motorola—Intermittent Ignition Interference in Cars of All-Steel Body Construction... 555
- Selectivity—High-Fidelity Control Circuit... 550
- Silvertone Models 1923, 1933, 1983, 1993... 554
- Stewart-Warner R-134..... 550
- Wells-Gardner Series 7GM..... 552

HIGHLIGHTS..... 568-570

MANUFACTURERS..... 572-574

ON THE JOB

- Hints on Eliminating Traffic Signal Interference
By J. R. Steen..... 566
- Receiver Case Histories..... 552-564

BRYAN S. DAVIS
President

JAS. A. WALKER
Secretary

New York Telephone: Plaza 3-0483

Chicago Office—608 S. Dearborn St.—C. O. Stimpson, Mgr.
Telephone: Wabash 1903
Cleveland Office—10515 Wilbur Ave.—J. C. Munn, Mgr.
Telephone: Republic 0905-J

Published Monthly by the

Bryan Davis Publishing Co., Inc.
19 East 47th Street
New York City

SANFORD R. COWAN
Advertising Manager
PAUL S. WEIL
Eastern Advertising
Manager
A. B. CARLSEN
Circulation Manager

St. Louis Office—505 Star Bldg.—F. J. Wright, Mgr.
Wellington, New Zealand—Tearo Book Depot.
Melbourne, Australia—McGill's Agency.

Entered as second-class matter June 14, 1932, at the Post Office at New York, N. Y., under the Act of March 3, 1879. Subscription price \$2.00 per year in the United States of America; 25 cents per copy. \$3.00 per year in Canada and foreign countries; 35 cents per copy.



"YOUR NEW BOOK HAS PUT MONEY IN MY POCKET"

Servicemen write us that Sylvania's new volume of Service Hints can't be beat. Send for your free copy today.

● Sylvania's new book Service Hints contains practical servicing tips that have been gathered from successful servicemen all over the country.

You get the benefit of their years of experience when you tackle tough problems. It gives you the easiest solution to everyday problems. These and hundreds of other up-to-the-minute service tips are contained in Sylvania's new book Service Hints. Send for this valuable book today, and put yourself in line for more and better service jobs with bigger profits.

Get the inside dope on receiver troubles. Iron out your problems. Right now . . . fill out this coupon and send it to the Hygrade Sylvania Corporation. The New Volume of Service Hints will be sent you within a few days.

FREE!

SEND FOR YOUR COPY TODAY! . . .

SYLVANIA

Registered U. S. Pat. Off.

THE SET-TESTED RADIO TUBE

Makers of Sylvania Tubes and Hygrade Lamps

Factories: Emporium, Pa., Salem, Mass., St. Mary's, Pa.

Copyright 1935 Hygrade Sylvania Corp.

HYGRADE SYLVANIA CORPORATION S-12
Emporium, Pa.

Please send me free, without obligation, Volume 2 of Sylvania's "Service Hints."

Experimenter Amateur Call
Serviceman Employed by dealer
Independent

Member Service Organization
NAME
ADDRESS
CITY STATE
NAME OF JOBBER
ADDRESS

THE ANTENNA . . .

ALL-METAL TUBES

THE ALL-METAL TUBE has come into its own. From now on these little "iron bottles" are going to play an important part in the shaping of the entire radio industry.

No doubt some of the first-production metal tubes were not what they should have been, but it is a tribute to the tube-design engineer that the deficiencies of the metal tube have been eliminated. The metal tube of today is a practical device, and when we say practical, we mean that it is altogether suitable for use by the public.

It has been said that the metal tube was designed with no consideration given to its mechanical properties. This may or may not be so, but the fact remains that the metal tube of today is quite a different device than the metal tube first introduced in April of this year.

For one thing, leakage at the points where the Ferrico eyelets pass through the header, has been eliminated by brazing each eyelet. A small ring of copper is dropped over the sleeve of each eyelet and the header passed through a furnace with a temperature high enough to fuse the copper around each eyelet.

The elements and supporting members of a metal tube are much closer to the base or header than they are in the glass tube. Moreover, the glass beads through which the leads are passed, are only a fraction of an inch above the surface of the header. In the first production tubes, trouble was experienced due to vapor from the flashed getter condensing on the glass beads and lower mica spacer. This condensed vapor produced numerous leakage paths across the surface of the glass beads and also across the surface of the mica spacer. Though a metal shield was, and still is, used in each tube to prevent the vapor from reaching these insulation points, it still manages to collect in the lower parts of the tube where the getter is flashed.

The above problem has been solved by spraying both the glass beads and the mica spacer in each tube with a liquid ceramic. When this liquid dries, it forms a pebbly surface which, if magnified, would appear like a series of mountain ranges with deep valleys. The result is that any vapor that may condense on the beads or mica spacer, can condense only on the "mountain peaks." Since the peaks are separated by comparatively deep depressions, the condensed vapor cannot form a continuous conductive path.

Grid losses have also been greatly reduced. A new molded material is now being used to insulate the grid cap from the shell of the tube. The insulation now presented to weak signal voltages may be said to be as good as the insulation presented by glass.

These are but a few of the improvements that have been made in metal tubes. The ones we have dealt with will serve to indicate that the tube engineer has been right on his toes from the very start. It is surprising indeed that he has been able to whip the problems in such short order. It speaks well for the future to say the least.

The Service Man may continue to run into "bad actors" among metal tubes, but he can rest in the assurance that the new "iron bottles" will be good troopers.

SPRUCING UP

THE FIRST THING you know it will be 1936. If you're like the average mortal, you'll probably make a bunch of New Year's resolutions, some of which you'll keep, but most of which you'll forget the morning after.

But, you might think about sprucing up your test equipment whether or not you are addicted to resolutions. When we say "sprucing up," we mean getting the equipment in shape for the servicing of the 1935-1936 sets, which, in turn, means getting more accuracy into analyzers, capacity and resistance bridges, test oscillators, etc.

For, what you will need this coming year will be accuracy, and plenty of it—accuracy particularly in conjunction with the all-wave signal generator.

And it is necessary that such accuracy as the various devices may have be maintained. Every instrument should be checked and calibrated periodically. The average Service Man can do this in his shop without much difficulty.

You can't hope to do good work if the equipment you use is inaccurate.

• • •

CHECK-UP

WE HAVE RUN into all sorts of definitions of the radio Service Man, some of which have been good and some pretty poor. But, no matter how good any such definition may be, we doubt if it can help the business of servicing.

On the other hand, it might be very valuable if the Service Man knew just what sort of a fellow he is—in the aggregate, so to speak. If he knew just what his attributes and his shortcomings were, he might be able to get along better in the field.

Look at it this way: The average man follows his inclinations; the factual man may turn out to be a butcher or a doctor, depending upon which way the wind blows for him; the sensitive fellow may become a poet or an artist; while the fellow who is born curious, may turn out to be a physicist or, the Lord forbid, a Peeping Tom.

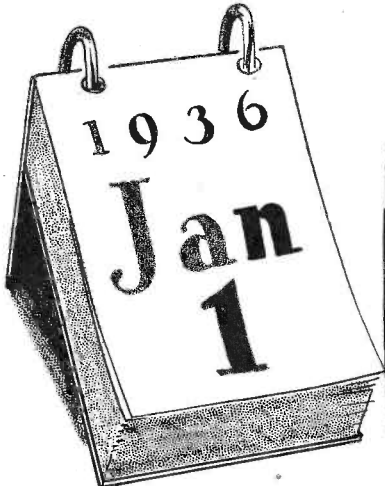
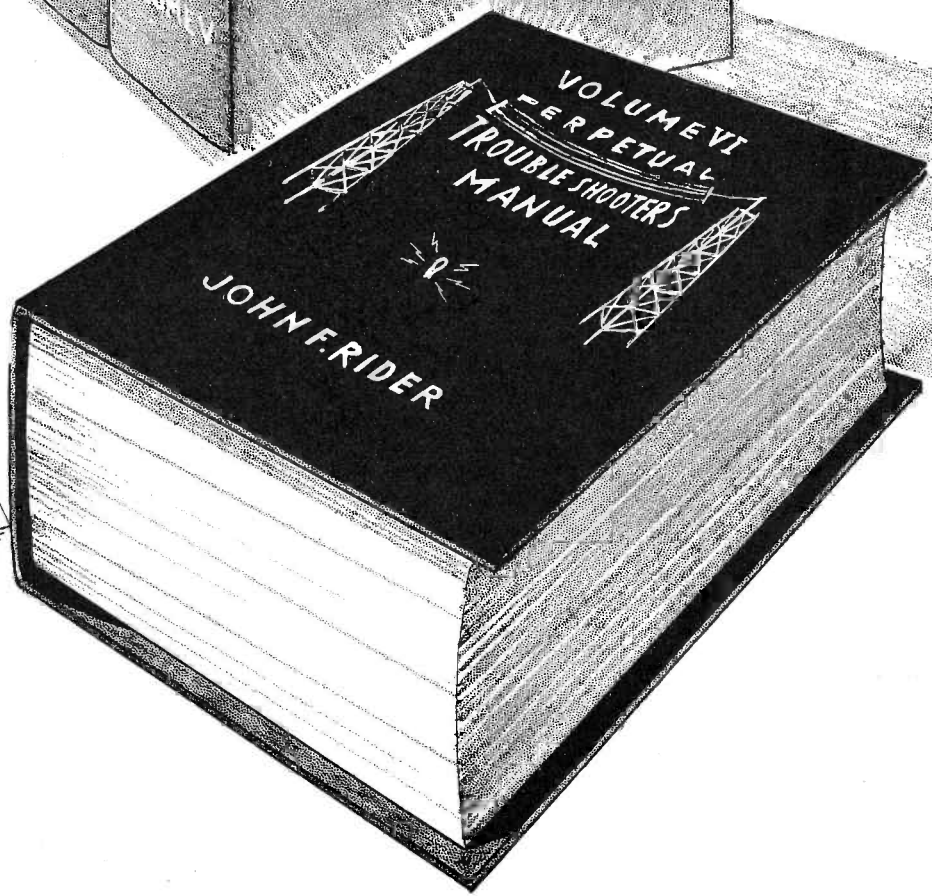
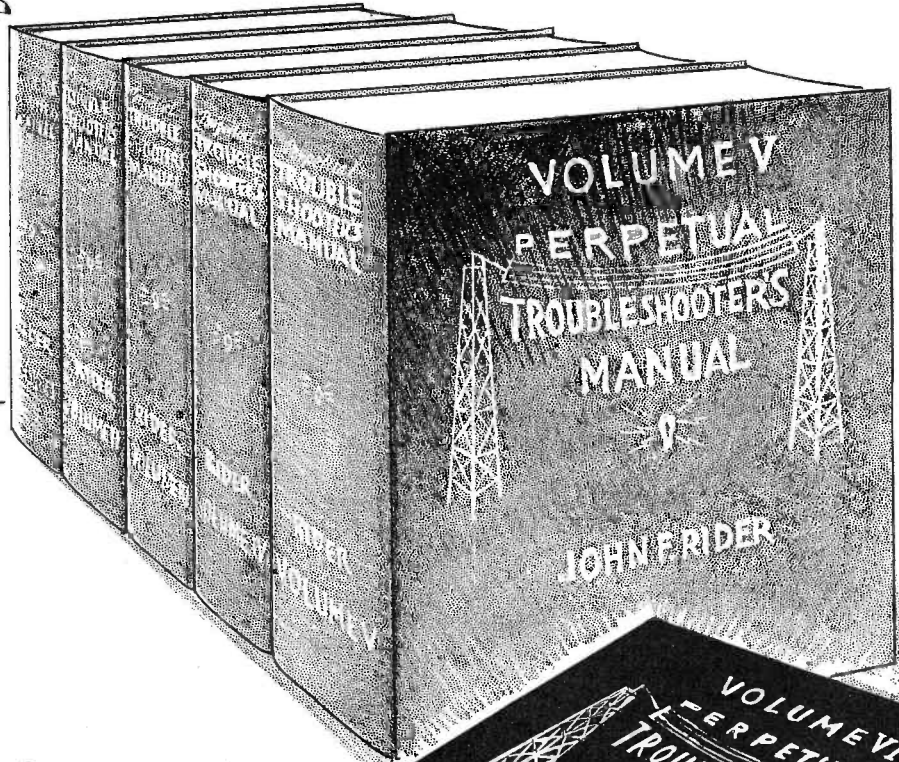
Maybe you fellows are all different, but we have a hunch that most of you have a great deal in common in so far as personal characteristics are concerned—else you wouldn't be Service Men.

Are you a Service Man because you have a thirst for knowledge? Or because you are imaginative, and radio happened to grip that imagination? Or because as a child you took clocks apart to see what made them go? Or why?

We'd like to know, and if you fellows will give us the low-down, we should be able to work up a very interesting "composite" individual typical of the average Service Man.

Come on—let's see what you're made of!

Resolved

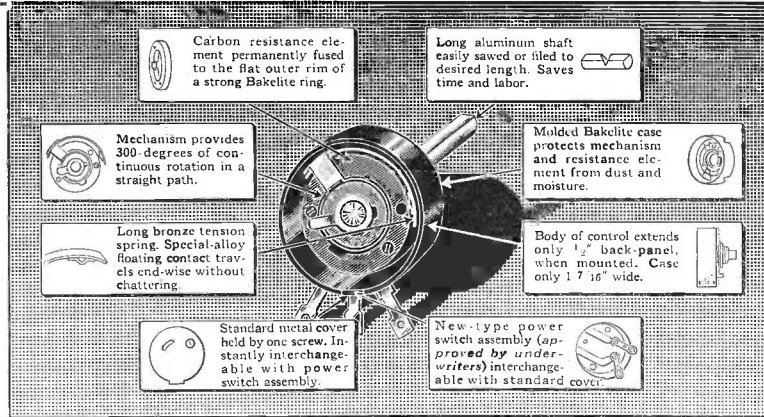


ELECTRAD

RESISTOR SPECIALISTS IN RADIO AND ELECTRICAL INDUSTRY SINCE 1923

New ELECTRAD CARBON VOLUME CONTROL

Exclusively
**METAL,
BAKELITE
and
CARBON
Construction**



Mechanically
**SMOOTH
and
STRONG**

Electrically
**QUIET
and
EFFICIENT**

SMOOTH · · QUIET · · LONG-LIVED

The DIRECT-CONTACT, CARBON VOLUME CONTROL With ONLY ONE MOVING UNIT

SIMPLICITY is the keynote of Electrad design—simplicity which performs efficiently without waste motions.

Direct floating contact on the carbon resistance element, with only one moving unit in the entire assembly, mean freedom from mechanical complications—no gadgets to go wrong. They also mean longer life, *more positive and finer variation of current regulation.*

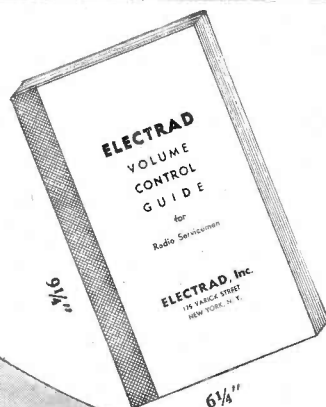
With nothing but established electrical materials—Metal, Bakelite and Carbon—in its construction, the Electrad Volume Control is immune to changes in resistance value or variation in resistance curves caused by temperature, water, salt air or humidity.

The resistance element is *permanently fused* at high temperature (not merely dipped or painted) to the flat outer rim of a warp-and-wobble-proof Bakelite ring. The special-alloy floating contact is self-cleaning—polishes the carbon to icy smoothness—keeps it clear of dust. No skipping, leaping or stuttering to make noise. Electrad individually tests each volume control for noise before it leaves the factory.

Study the additional features in the above illustration and you will understand why Electrad *unqualifiedly guarantees trouble-free performance.*

Install the Electrad Carbon Volume Control in your next service job.

**Write For This
FREE New
VOLUME
CONTROL
GUIDE**



100 pages, listing in alphabetical order all receiver models for which Electrad standard or special replacement controls are made. Gives names of receiver manufacturers, model numbers, resistance values and list prices.

Mailed FREE if you send us the flap (showing specification and resistance) from any new-type Electrad Carbon Volume Control carton, together with your business letterhead or card. Address Dept. S-12.

175 Varick St., New York, N.Y.
ELECTRAD
INC.

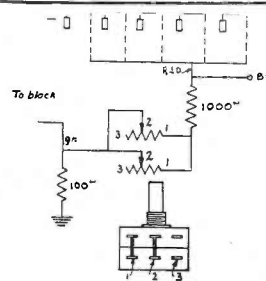


Diagram shows one of many special applications described in the **ELECTRAD VOLUME CONTROL GUIDE.** (See free offer on this page.)

Special Application of Electrad Control No. 200-T to the A.C. DAYTON NAVIGATOR RECEIVER

Due to the large power dissipation required of a control used in the circuit shown, volume controls in this position have been generally unsatisfactory.

Electrad, by using a tandem unit, has doubled the power rating of the control, thus assuring long life and excellent performance. The connections for this unit are shown in the accompanying diagram.

RESISTOR SPECIALISTS

Featuring:

**QUIET CARBON VOLUME
CONTROLS
VITREOUS RESISTORS
TRUVOLT RESISTORS
POWER RHEOSTATS**

Write Dept. S-12 for 1936 Catalog

SERVICE

A Monthly Digest of Radio and Allied Maintenance

FOR DECEMBER, 1935

PROFITS IN OLD SET CONVERSION WITH MODERN METHODS

By TOBE DEUTSCHMANN*

In this, the final article, Mr. Deutschmann describes two more practical conversions—the General Motors 120 highboy and the Victor RE-32—as made by an aggressive Service Man; and shows how best to capitalize the possibilities of this work through solicitation, advertising and display.

THE old story about the world beating a track to the shop of a man in the middle of the woods just because he made a better mouse-trap is a pretty tale—but that's about all. Certainly it has little significance in these competitive days, where the quality of one's product is only one factor in its sale, and is no factor at all unless potential customers can be made acquainted with it. Today, the genius with his A-number-one mouse-trap would starve to death in his sylvan shop, while somebody else with an inferior product, but an attractive window display on a busy corner, would prosper.

SERVICE A PRODUCT

In a sense, radio service is a product—a commodity. It should of course be a quality product. But a complete set of Rider's manuals, adequate knowledge, intelligence and adeptness with the analyzer and oscilloscope—all this will not, in itself, build up a successful service business. Like any other endeavor, if it is to survive, and then some, every reasonable and ethical advantage should be taken of advertising and publicity.

The modernization end of servicing has unique possibilities from the advertising angle—points that may be readily emphasized and which have selling power with millions of set owners—every set owner who is using a receiver purchased prior to the all-wave auto-

matic-volume-control days. There are more than five millions of them, and few Service Men, who have been in business over a year, who cannot point to a dozen or more such instances on his own customer list.

MAIN SELLING POINTS

It should be borne in mind that modernization is to be recommended only

RADIO MODERNIZATION I

Enjoy static-free programs
—listen to police calls all
over the country, select any
station you want between
13 and 550 meters, soothe
your ears and nerves with
fadeless programs.

In other words, enjoy modern reception on your present receiver at one third the cost of a new set. We guarantee work for one year. Estimate and demonstration cheerfully given—without obligation!

THE RADIO SHOP
111 Main Street - Phone M399

Fig. 1. An inexpensive ad that has proved its effectiveness in selling modernization jobs.

when the sale of a new set which would give results comparable to those of an efficient modernization job and from which new set sale the Service Man would profit, is out of the question. The amount of profit should also receive consideration. If the Service Man has the agency for the receiver sold, his profit will be adequate to justify the recommendation of a new set rather than modernization. However, when he has to split profits with a dealer, as is often the case, modernization will usually ring up more on the cash register, and should be prescribed regardless of how much money the client is willing to spend. The Service Man can do this in all fairness to his customer, for by choosing the proper chassis as the basis of modernization, any desired performance can be obtained at a lower cost. (It is of course always assumed that the client is satisfied with his original cabinet and that it is adequate for the contemplated modernization job.)

Regardless of the classification into which the prospect falls—old customer, new contact, etc.—or the type of advertising—direct, by mail, display, etc.—the following sales points should always be emphasized:

SALES POINTS

1.—Protection of the original investment. The majority of out-moded receivers were purchased during a time when the average cost of a set was well over \$100. Such receivers have practically no turn-in value, and in purchasing a new receiver, the owner is practically throwing away his old. As a matter of fact, many radio listeners have been deterred from buying new sets by the thought of how much they paid for their present equipment and how little they

*President, Tobe Deutschmann Corp.

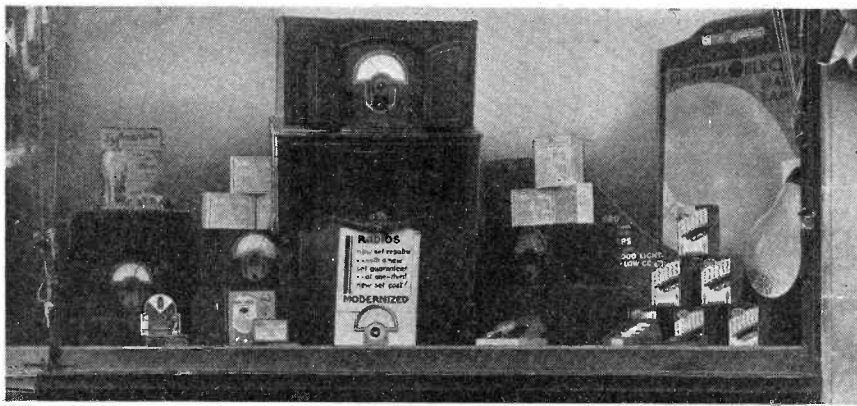


Fig. 2. An attractive window display will be most effective in making the passerby modernization conscious.

can get for it. Such persons are most favorably inclined toward modernization.

2.—Many of the old receivers are housed in luxuriously beautiful cabinets, often custom built to conform with a certain scheme of interior decoration. Occasionally there is a sentimental attachment for the old set, which, as far as the owner is concerned, is represented pretty much by its externals. The entire works could be ripped out, but if the cabinet remains it is still his original set from an emotional point of view. This process (modernization) is a sort of radio face-lifting.

3.—Economy in first cost and in operation. If you select a reliable chassis as the basis of modernization, you can assure your customer of superior results at a lower cost than a new set. This is particularly true if you select a chassis which requires the Service Man to do at least a part of the construction work. Such chassis are necessarily less expensive, and the Service Man himself pockets a good bit of the

assembling costs. Old receivers are notoriously inefficient from an electrical point of view, and consume considerable electricity. It is not uncommon for such receivers to consume 200 or more watts, whereas a modern chassis, such as the Browning-35, consumes less than 70 watts.

4.—Results: Primarily this is what

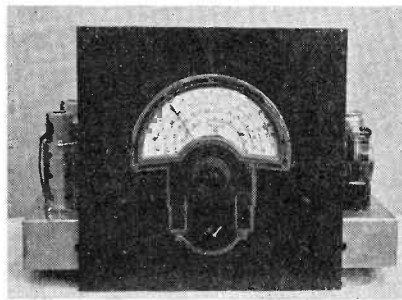


Fig. 4. The chassis and new panel ready for mounting in the General Motors cabinet.

the prospective customer is most interested in, or he would not be considering a new receiver or modernization of the old. The fascination and entertainment of short-wave foreign reception should be stressed, as well as the novelty of police and aircraft reception. Improved selectivity and sensitivity that will reach out and pull in distant stations on the conventional broadcast band—stations that can really be enjoyed, thanks to automatic volume control—are additional features to be mentioned. These advantages are best brought out in a demonstration.

5.—The reliability of a modern receiver should not be neglected as a sales point. The fool-proof character of such sets is a guarantee against costly service calls. This point can be stressed to particular advantage if the potential customer is a regular client and you have a record of repeated service calls with which to emphasize the argument.

THE BEST BET

The sales possibility of the highest potentiality is always a customer who

has called you in on a service job. His set is not working, and, momentarily at least, he is dissatisfied with it. Under such auspicious circumstances, a modernization sale is a relatively simple matter.

It is a good idea to remove the ailing receiver to the shop leaving a modernized receiver with the customer. This is always an excellent procedure at any time. It is a courtesy the customer always appreciates, and in this instance may serve a double purpose. As the customer is not being deprived of his radio entertainment, there need be no hurry in repairing the faulty set. Call him up in a day or so, and suggest modernization rather than repair, explaining that his old receiver can be made to perform exactly as the one he is now temporarily using, and with a concomitant improvement in appearance. Explain to him that you will make him an allowance on the parts removed from the old receiver.

Full advantage should be taken of this trade-in psychology. In the first place, the customer will not expect much. If the parts removed were of any real value, you wouldn't be taking them out. (It should be obvious that this is a different proposition than a trade-in allowance on the *whole* set against a new one. The customer will usually consider himself well treated if you allow him ten dollars for most of the chassis, whereas, he would be dissatisfied with a twenty-dollar allowance on the whole set.) Always offer the client a trade-in value of more than the parts are really worth to you, and tack the difference on to the bill for modernization. In other words, if you estimate you can do a modernization job for \$50.00, the net cost to the customer should be \$50.00 less a five-dollar allowance for the old parts, or a net price of \$45.00. However, it is better psychology to estimate

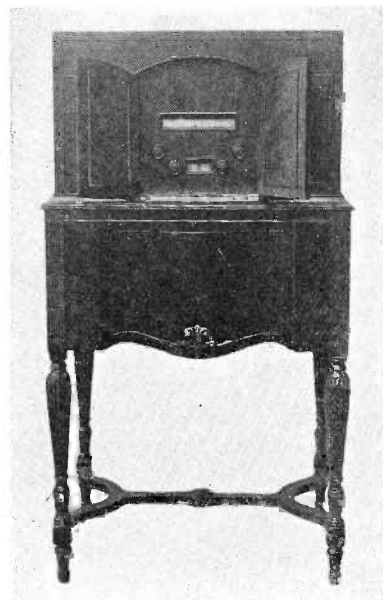


Fig. 3. The General Motors 120 highboy before rejuvenation.

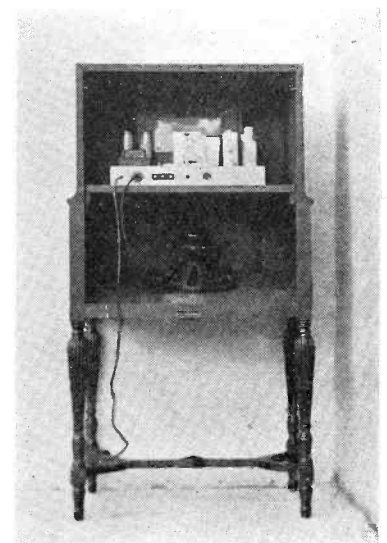


Fig. 5. Rear view of the completed job. The original speaker was retained.

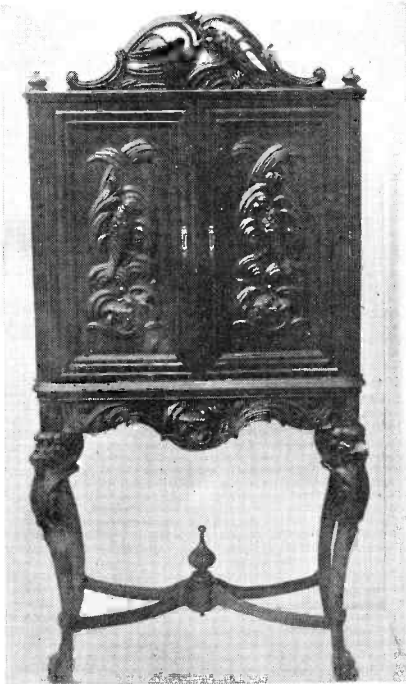


Fig. 6. The Victor cabinet alone represents a considerable investment which is protected by modernization.

the bill at \$55.00 and offer him a ten-dollar allowance—the net cost still being \$45.00, and your profit, obviously, is not affected. The psychology works as follows: The customer figures (more or less subconsciously) that he is getting quite an expensive job—in other words a quality proposition—which he can afford, nevertheless, because of the liberal allowance on the scavenged parts.

The next best bets are your regular customers—who, at the moment, are not in need of your repair services. From your records, which every Service Man should studiously keep, you can immediately ascertain the vintages of their present receivers. You have already established contacts with them, and, if you have done your work well and charged them reasonably, they will be favorably inclined toward your advice regarding the rejuvenation of their old sets. They should be circularized, preferably with personal letters, outlining the advantages of modernization as indicated a few paragraphs back. Do not malign or otherwise run down their old receivers. Rather the correct psychological approach is to praise the present equipment, indicating that it is a shame that so excellent a set should not be brought up to date.

POTENTIAL CUSTOMERS

Anyone who has an antiquated receiver is, of course, a potential customer for modernization. By conducting a radio census of your neighborhood, you can usually scare up a score or more such radio homes. Such a census con-

sists of a house-to-house canvass, which is a simple and not unpleasant task. As you have nothing to sell, no doors will be slammed in your face. The Service Man merely explains that a radio census is being conducted, and that all he wishes to know is the make and model of the receiver. This information will almost invariably be forthcoming when the person answering the door can give it. In many instances the Service Man will be invited in to ascertain the facts for himself. If the party contacted cannot supply the desired information, and indicates no willingness to obtain it or permit the Service Man to inspect the set, he or she can usually tell you the make of the receiver, approximate number of tubes and the year in which it was purchased—which is, in most cases, enough for the expert.

A list of potential customers can also be compiled by advertising a prize contest for the oldest radio in the neighborhood—offering as a prize a complete modernization job. Such a contest wings several birds with one stone. It advertises the Service Man, it advertises modernization and it contacts the Service Man with the most logical prospects for such work.

A more conventional advertisement, such as that in Fig. 1, is also effective. This ad has been attractively set up from standard type fonts, and your local newspaper can duplicate it. It has been designed for three-inch one column space.

A window display is always effective, and will draw well if the Service Man

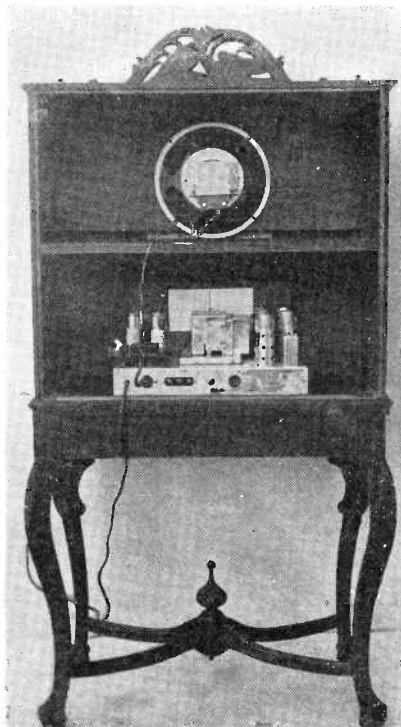


Fig. 7. Behind the scenes. The Victor RE-32 brought up to date.

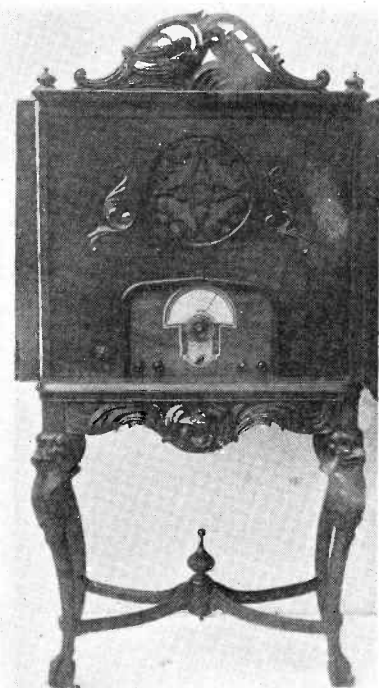


Fig. 8. Front view of the modernized Victor. The small panel is new, the larger one being retained from the original set.

is located on a busy street and has the space available. Such a display—which has resulted in considerable business for a Massachusetts Service Man—is shown in Fig. 2. The receiver in the window will be recognized as a General Motors highboy—which, incidentally, brings us down to the brass tacks of receiver modernization, and it's as good a receiver as any to start with.

MODERNIZING THE G.M. 120

This receiver is a popular—and expensive—example of a once-upon-a-time good set sadly in need of modernization. The original receiver is shown in Fig. 3—which may be contrasted with the modernized version displayed in Fig. 2.

The mechanics of modernization have been adequately covered in the preceding articles, so we shall confine ourselves to points special with this set. The chassis and speaker were first removed, followed with the chassis shelf which is fastened with four wood screws to cleats on the side. This shelf has a large opening in it which was partially closed with strips to accommodate a Browning-35 chassis. The original panel was removed—it is held by wood screws—and a new panel cut and drilled for vertical control mounting as described in the previous articles.

Fig. 4 shows the chassis and new panel ready for mounting in the cabinet, while Fig. 5 is the rear view of the finished job. The original speaker was

(Continued on page 550)

General Data . . .

General Electric A-70, A-75

Models A-70 and A-75 employ seven metal tubes in a superheterodyne circuit, giving the excellent selectivity and sensitivity inherent in this type circuit. Separate groups of coils are used for each frequency band. Ample undistorted output is obtained through diode detection and two audio amplifier stages.

The signal from the antenna is applied to the control grid of the 6K7 r-f amplifier tube through the antenna coil, the secondary of which is tuned to the incoming signal by the rear section of the main tuning condenser. The secondary of the coil for the band next lower in frequency to the one in use is short-circuited by the band switch to prevent absorption of energy at its resonant frequency which falls in the next higher band.

The amplified radio-frequency signal is impressed on the control grid of the 6A8 converter and oscillator tube through the r-f coil, the secondary of which is tuned to the signal frequency by the center section of the main tuning condenser. In the 6A8 tube the incoming signal is combined with the local oscillator signal which is 465 kc higher in frequency. The local signal is generated by the oscillator elements of this tube and the proper frequency difference is maintained throughout the tuning range by the front section of the main tuning condenser in conjunction

with the oscillator coil and padding capacitors. The oscillator section of the main tuning condenser, although of the same capacity as the other two sections, is larger physically to permit wider spacing of the plates, thereby reducing the possibility of microphonic feedback howl.

The combination of the signal frequency with the local oscillator frequency in the converter tube produces the intermediate frequency of 465 kilocycles. This particular intermediate frequency is chosen to reduce image response and improve short-wave performance. The intermediate-frequency amplifier consists of a 6K7 tube and two transformers, each with two tuned circuits.

The output of the i-f amplifier is applied to the 6H6 diode rectifier, which is a combined detector and automatic volume control tube. The direct-current component of the rectified signal produces a voltage drop across R-12. This voltage drop provides automatic bias for the r-f and i-f amplifier and converter tubes and so gives automatic volume control action. Full automatic bias voltage is applied to the r-f amplifier tube, while half this voltage, from the midtap of R-12, is applied to the converter tube and i-f amplifier, which handle a somewhat larger signal voltage than the r-f amplifier.

The manual volume control selects the

amount of audio signal applied through coupling capacitor C-36 to the grid of the 6C5 audio amplifier tube, and this regulates the output of the receiver. The output of the 6C5 tube is resistance coupled to the grid of the 6F6 power amplifier pentode. The plate circuit of the 6F6 is suitably matched to the loudspeaker by means of a step-down output transformer.

The tone control circuit consists of a .03-mfd capacitor connected in series with a continuously variable 0-100,000-ohm resistance across the primary of the output transformer. When it is desired to reduce the high-frequency output of the receiver, resistance is cut out of the circuit by operating the tone control knob.

Plate and grid voltages for all tubes are supplied by the power-supply system employing a 5Z4 full-wave rectifier tube which, together with a suitable network of resistors and capacitors, supplies the required voltages and filtering action.

ALIGNMENT PROCEDURE

The receiver should first be allowed to run for fifteen minutes in order to reach its approximate normal operating temperature. Before making any adjustments, it is wise to determine the correctness of the existing alignment. This may be done by supplying a signal at the alignment frequency from the test oscillator to the receiver and inserting a "Tuning Wand" into the coil involved.

In order to align these receivers properly, it is necessary to have available the following test equipment:

1. A modulated test oscillator with frequencies available of 465, 580, 1740, 6,000 and 18,000 kc.
2. An output indicator, such as a high resistance a-c voltmeter with a maximum scale reading of 3 to 5 volts, or a neon lamp output indicator.
3. An alignment tool consisting of an insulating shaft with a small screw-driver blade.
4. A tuning wand.

The location of all trimmer capacitors, as well as socket voltages to chassis, is shown to Fig. 2.

I-F ALIGNMENT

Set the frequency band switch of the receiver to Band "B," short-circuit the antenna and ground terminals and tune the receiver at some point above 1500 kc so that no signal is heard. Set the volume control at its maximum position and ground the chassis.

The i-f amplifier is tuned to 465 kc; set the test oscillator dial at this frequency. Connect the test oscillator output between the converter tube (6A8) control grid and chassis. Connect the output meter across the cone coil of the speaker and adjust the test oscillator

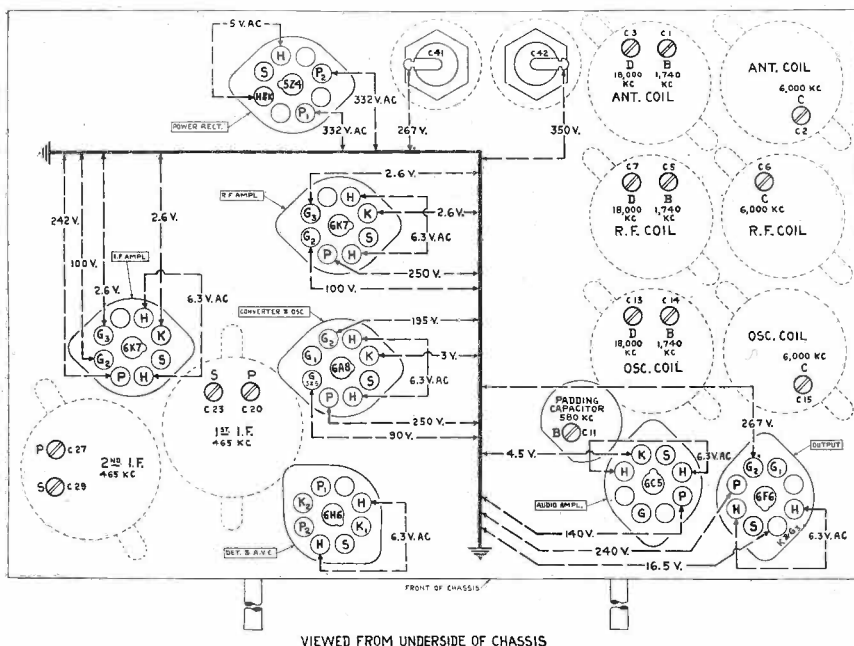


Fig. 2. Chassis layout giving tube voltages and locations of trimmers.

GENERAL DATA—continued

output control so that, with the receiver volume control at maximum, a small deflection is observed in the output meter. During both i-f and r-f alignment, the test oscillator signal should be maintained at the lowest level that will give a good readable output indication.

Adjust the secondary trimmer of the second i-f transformer until a maximum output reading is obtained. Maintain a small deflection on the output meter throughout alignment by adjusting the test oscillator output. Next, adjust the primary trimmer of the second i-f transformer for maximum output. Continue this procedure, adjusting the secondary trimmer of the first i-f transformer and lastly the primary trimmer of the first i-f transformer. After completing this procedure, repeat it a second time for final alignment. The i-f alignment will then be complete.

R-F ALIGNMENT

Band "B" requires four trimmer adjustments, while Band "C" and Band "D" each require three adjustments. Care should be taken to adjust only the trimmers of the band under test. Check the position of the dial pointer. Make

sure the antenna and ground terminals of the receiver are not short-circuited and connect to them the output from the test oscillator, preferably using a dummy antenna of 250 mmfd in series with 200 ohms between the test oscillator and receiver antenna terminal. Connect the output indicator across the speaker cone coil.

BAND "B"—540-1740 KC

Set the frequency band switch to the position where the dial indicates the above range. Tune the test oscillator to 1740 kc and set the dial pointer on the receiver to this frequency. Adjust the Band "B" oscillator trimmer for maximum output, keeping the receiver volume control at its extreme clockwise position and adjusting the test oscillator output to maintain a small reading on the output indicator. When optimum adjustment on the Band "B" oscillator trimmer is obtained, adjust the Band "B" r-f and antenna trimmers for maximum output.

Now tune the test oscillator to 580 kc and set the receiver to that frequency. Slowly rocking the tuning condenser back and forth through the signal, adjust the 580-kc padding capacitor for maxi-

mum output. When this has been done, return to 1740 kc on the receiver and test oscillator and recheck the alignment for maximum output. Band "B" should now be in alignment.

BAND "C"—1.75-6.0 MC

Set the band switch to the position where the dial indicates the above range. Tune the test oscillator to 6000 kc and set the dial pointer on the receiver to this frequency. Adjust the Band "C" oscillator trimmer for maximum output, using the first peak obtained when increasing the capacitance from minimum to maximum.

Check for the image signal which should be received at about 5070 kc on the receiver dial. It should be necessary to increase input to the receiver from the test oscillator for this check. Retune the receiver to the correct scale reading (6000 kc) and reduce the test oscillator output to its previous value. Then adjust the Band "C" r-f and antenna trimmers for maximum output.

BAND "D"—6.0-19.5 MC

Set the band switch to the position where the dial indicates the above range. Tune the test oscillator to 18,000 kc and

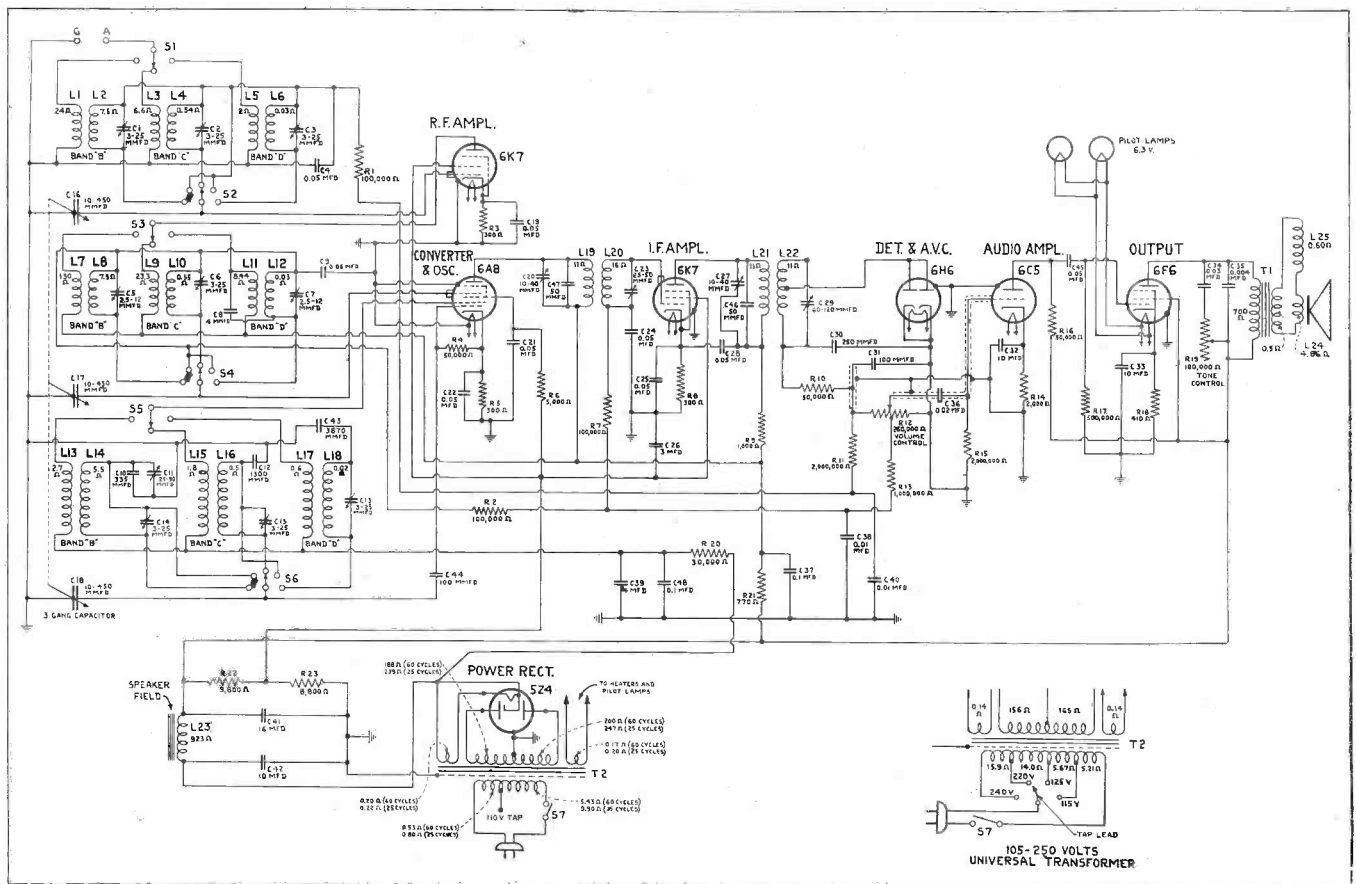


Fig. 1. Circuit used in G.E. Models A-70 and A-75.

set the dial pointer on the receiver to this frequency. Adjust the Band "D" oscillator trimmer for maximum output, using the first peak obtained when increasing the capacitance from minimum to maximum.

Check for the image signal which should be received at about 17,070 on the receiver dial. It may be necessary to increase input to the receiver from the test oscillator for this check. Retune the receiver to the correct scale reading (18,000 kc) and reduce the test oscillator output to its previous value.

Reduce the capacitance of the r-f trimmer to a minimum. While slowly rocking the tuning condenser through the 18,000-kc point, increase the Band "D" r-f trimmer capacitance until a maximum response point is obtained. The Band "D" antenna trimmer should next be peaked. It is not necessary to rock the tuning condenser while making this last adjustment.

Stewart-Warner Model R-134

This receiver is a six-tube, two-band superheterodyne. It covers the broadcast band from 540 kc to 1750 kc and the short-wave band from 2200 kc to 7000 kc. Each one of the bands may be aligned without affecting the other.

ALIGNMENT

During alignment the volume control should be set at maximum. Trimmer locations are shown in the sketch on the opposite page, and the order of their adjustment is given below:

- (1). First i-f (at 456 kc.)
- (2). Second i-f (at 456 kc.)
- (3). Repeat Nos. 1 and 2 if considerable trimmer adjustment was required.
- (4). Calibrate the broadcast band by adjusting trimmer No. 3 at 1400 kc, the signal being applied to the antenna input through a 400-ohm carbon resistor.
- (5). Align with trimmers Nos. 4 and 5.
- (6). Using a 600-kc signal, adjust oscillator padding trimmer No. 6 to maximum output *while rocking the condenser gang*.
- (7). Recheck trimmers Nos. 4 and 5 at 1400 kc.
- (8). Calibrate the short-wave band by setting the dial indicator to 6 megacycles, feeding a 6-megacycle signal to the antenna input through 400 ohms and adjusting trimmer No. 7 for maximum response *at the lesser of the two possible capacity settings* at which resonance may be obtained.
- (9). Align with trimmers Nos. 8 and 9.

SELECTIVITY — HIGH - FIDELITY CONTROL CIRCUIT

(See Front Cover)

THE circuit conditions required for the reception of distant stations are entirely different from the conditions necessary for high-fidelity reception. In the first instance, high gain and selectivity are required; in the second instance selectivity must be reduced in order that the bandwidth of the receiver may be sufficient to pass the complete band of audio frequencies transmitted. At the same time it is preferable that the r-f gain of the receiver be reduced for high-fidelity reception so that there is no chance of interstation interference due to the overlapping of sidebands.

Such an arrangement is used in the new Silvertone Models 1918 and 1968. It is, in a sense, a selectivity—high-fidelity control circuit which assures correct operating conditions.

Referring to the circuit on the front cover, it will be seen that the conditions for high-fidelity reception are met by providing variable coupling in the i-f transformers A and B. When the coupling between the primary and secondary windings is tight, selectivity is decreased and the bandwidth consequently increased. When the coupling is loose, the selectivity is increased for dx reception.

Now note that the r-f, mixer and i-f tubes are initially biased by the voltage drop in resistors R, R-1, R-2 and R-3. However, the gain of these four tubes, when the band-selector switch is in the broadcast or medium short-wave position, is set by the Sensitivity Control R-4 and the Sensitivity Compensator R-5 which are common to all four cathode circuits. (As an incidental to the discussion at hand, it might be pointed out that when the band-selector switch is at positions 3 and 4, corresponding to the two shortest short-wave bands, the cathode of the r-f tube is connected directly to ground, in which case the added r-f gain required on these short-wave bands is obtained by releasing the r-f tube from the high bias produced by the sensitivity controls and leaving it only with its initial bias, produced by resistor R.)

Before going further, it should be pointed out that the Sensitivity Control R-4 is not manually operated from the front of the receiver panel, but is located at the rear of the chassis where it may be adjusted for a degree of sensitivity best suited to local noise conditions, etc. Once set, it is left alone.

On the other hand, the Selectivity

Control is on the front panel, and it will be seen from the diagram that this control is mechanically coupled to the Sensitivity Switch, the Sensitivity Compensator R-5 and to the Low Note Control R-6, in such a manner that when selectivity is decreased for high-fidelity reception, the sensitivity control R-4 is effective (by the automatic opening of the Sensitivity Switch) but the process of sensitivity control is taken over by the Sensitivity Compensator R-5.

Now, the arm of R-5 moves with a movement of the Selectivity Control, with the result that the correct amount of sensitivity is provided for any given position of the Selectivity Control—that is to say, a movement of the Selectivity Control automatically changes the bias on the r-f, mixer and i-f tubes.

The Low Note Control is also coupled to the Sensitivity Switch in a manner such that when the knob is turned to the right, the Sensitivity Switch is automatically opened. In this, the high-fidelity position, the bass reproduction can be controlled.

When the Selectivity Control is set for maximum selectivity (loose coupling of the i-f transformers) the Low Note Control closes the Sensitivity Switch and the bias supplied to the tubes is equal to the drop across the individual bias resistors and a portion of the Sensitivity Compensator R-5. The bias is therefore less and the sensitivity greater.

SET CONVERSION

(Continued from page 547)

retained. As the speaker plug in the original G.M. 120 fits the Browning socket, it was only necessary to disconnect the center tap of the speaker field in the speaker cable.

THE VICTOR RE-32

This receiver presents an excellent example of the expensive, if ornate, cabinet—as the reader may judge for himself by inspecting Fig. 6. No difficulties of any order were encountered in effecting this modernization. The standard horizontal control panel layout was employed. The speaker was defective, so a Wright-DeCoster was substituted in conjunction with the Browning-35 chassis. Fig. 7 is a rear view of the modernized version, while Fig. 8 shows the front with the doors open and the new panel installed—a perfect combination of antique beauty and modern performance!

Wells-Gardner Series 7GM

This is a 7-tube, 3-band receiver covering a frequency range from 535 to 18,300 kc in the following steps: 535 to 1730 kc; 1715 to 5800 kc; 5750 to 18,300 kc. The power consumption is 68 watts and the power output is 3 watts undistorted. The selectivity is given as 28 kc broad at 1,000 times signal.

THE CIRCUIT

Referring to Fig. 1, T-1 and T-2 are the antenna and interstage r-f transformer assemblies and T-5 is the oscillator coil assembly. The standard wave and 1st and 2nd short-wave coils in each assembly are indicated by the letters B, C and D respectively.

The band switch completes connections to the coils in use. It also short circuits the r-f transformer secondary and oscillator coil of lower frequency not in use.

The antenna transformer with tuned secondary feeds into a type 6K7 r-f tube. The output of this tube is fed through the interstage r-f transformer with tuned secondary into another 6K7 tube which functions as the first detector or mixer.

A separate type 76 tube is employed in the oscillator circuit. Referring to the oscillator assembly T-5, B, C, and D refer to the standard wave, 1st short-wave and 2nd short-wave oscillator coils respectively. The oscillating circuit is always resonant at 456 kc above the frequency to which the r-f amplifier is tuned.

The oscillator potential is fed into the cathode circuit of the 6K7 first detector tube. This results in the intermediate or beat frequency of 456 kc being present in the plate circuit of the tube.

One stage of i-f is employed, using a 6K7 tube. The primaries and secondaries of the first and second i-f transformers are tuned by small trimmer condensers.

SELECTIVITY CONTROL

Referring to the first i-f transformer

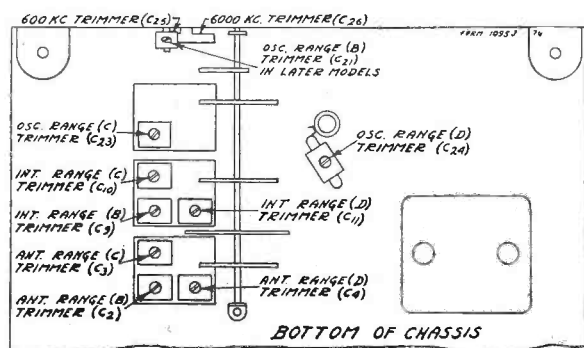
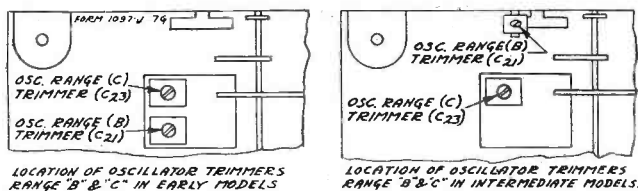


Fig. 3. Two sketches, showing location of trimmers in early and intermediate models.



T-3, it will be noted that there is a coupling winding below the primary. Refer also to the bypass arrangement in the pentode plate circuit of the 6B7 tube.

When the selectivity control is in the sharp position, the coupling winding is open circuited and the loose coupling which exists between the primary and the secondary of this transformer results in high selectivity. High audio frequencies are bypassed to ground through condenser C-35.

When the selectivity control is in the broad position, the coupling winding which is wound under the primary is connected in series with the secondary. This provides overcoupling which results in a greatly widened resonance curve. Passage of a wide range of audio frequencies is thus obtained.

In order to allow passage of the higher audio frequencies in the broad position, the capacity of the bypass condenser to ground is greatly reduced (C-35 and the capacity of shield E in series).

DUAL VOLUME CONTROL

A dual manual volume control is employed. In one section the audio voltage applied to the first audio section of the 6B7 tube is varied (R-2). The purpose of the latter section is to reduce the sensitivity of the receiver at low volume settings in order to cut down noise pick-up between stations. The variable section R-2 is shorted out through contact No. 4 of the interstage section of the band selector when in the 2nd short-wave position.

A type 6B7 duo-diode pentode tube functions as the second detector and a one stage audio amplifier. The two

diode plates are connected together. The avc voltage is applied through isolating resistors to the control-grid circuits of the r-f and i-f tubes. The audio voltage developed across volume-control resistor R-10 is applied through the movable arm to the control grid of the 6B7 tube. Resistance coupling is used between the first audio stage and the output stage which employs a type 6F6 output pentode tube. A type 80 full-wave rectifier is used in the power unit.

ALIGNMENT AND CALIBRATION

A signal generator that will provide an accurately calibrated signal at 456, 1730, 1500, 600, 5800, 5000, 18,300, 15,000 and 6000 kc and an output indicating meter are required. It will be practically impossible to align the receiver if unsatisfactory apparatus is used. If a station is tuned in with the selectivity control in the broad position and this control is then turned to the sharp position, the station may disappear. This is not an indication that the receiver is out of alignment.

Use a non-metallic screwdriver for the adjustments. The complete procedure is as follows:

I-F ADJUSTMENT

Set the signal generator for a signal of 456 kc.

Connect the output of the signal generator through a .1-mfd condenser to the grid of the 1st detector.

Connect the ground lead of the receiver to the ground post of the signal generator.

Turn the band selector to the Range B position.

Turn the selectivity switch to the sharp position and keep it in this position for all adjustments.

Turn the volume control to the maximum position.

Attenuate the signal from the signal generator to prevent the levelling-off action of the avc.

Then adjust the four i-f trimmers until maximum output is obtained. The adjusting screws for these condensers are reached from the top of the chassis.

(Continued on page 554)

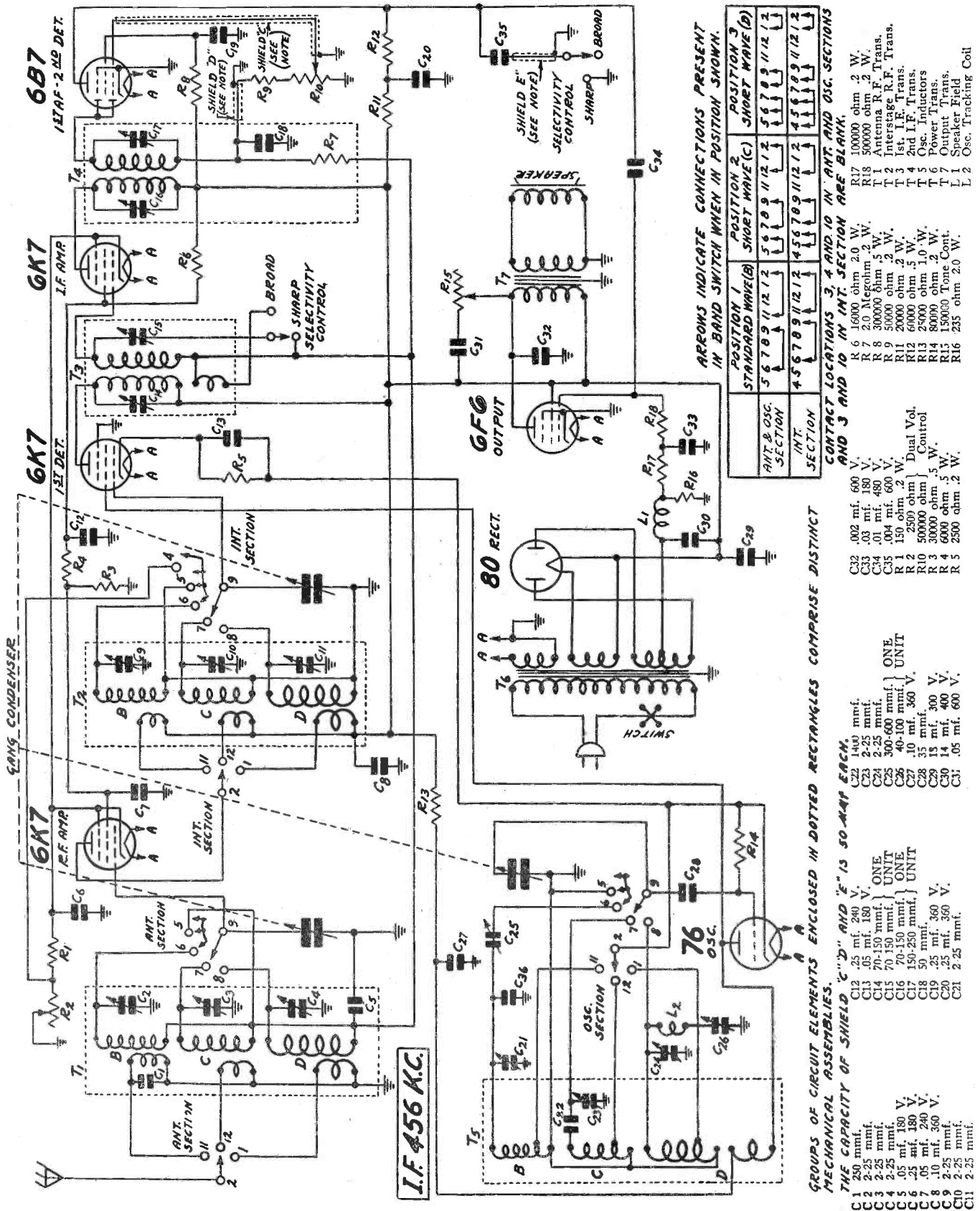


Fig. 1. Complete circuit diagram of the Wells-Gardner Series 7GM chassis. It should be noted that groups of circuit elements enclosed in dotted rectangles comprise distinct mechanical assemblies. A separate sketch is included showing connections of the band selector switch. Voltages are not included in the above diagram. They will be found in the table of Fig. 4.

GENERAL DATA—continued

RANGE B ALIGNMENT

1730-kc Adjustment

Set the signal generator for 1730 kc. Turn the rotor of the tuning condenser to the full open position.

Keep the band selector in the standard wave position.

Connect the antenna lead of the receiver through a 200-mmfd condenser to the output of the signal generator.

For this and all subsequent adjustments keep the volume control at the maximum position and attenuate the signal from the signal generator to prevent AVC action.

Adjust the oscillator Range B trimmer (C-21) until maximum output is obtained. The location of this trimmer is shown in Figs. 2 and 3.

1500-kc Adjustment

Set the signal generator for 1500 kc.

Turn the rotor of the tuning condenser carefully until maximum output is obtained.

There is a lever arm in front of the large gear on the tuning condenser shaft by means of which the position of the station pointer may be adjusted. Set the station pointer at the 1500 kc mark on the dial scale by adjusting this lever arm.

Adjust the interstage Range B trimmer (C-9) and antenna Range B trimmer (C-2) to maximum.

600-kc Adjustment

Set the signal generator for 600 kc.

Turn the tuning condenser rotor until maximum output is obtained.

Turn the rotor slowly back and forth at the same time adjusting the 600 kc trimmer until the peak of greatest intensity is obtained. See Fig. 2 for location of this trimmer.

RANGE C ALIGNMENT

5800-kc Adjustment

Set the signal generator for 5800 kc. Connect the antenna lead of the receiver through a 400-ohm resistor to the output of the signal generator.

Turn the rotor of the tuning condenser to the full open position.

Turn the band selector to the Range C position.

Adjust the oscillator Range C trimmer (C-23) until maximum output is obtained. See Figs. 2 and 3 for location of this trimmer.

5000-kc Adjustment

Set the signal generator for 5000 kc. Turn the rotor of the tuning condenser carefully until maximum output is obtained. Then adjust the interstage Range C trimmer (C-10) and antenna Range C trimmer (C-3) to maximum.

Do not change the setting of the oscillator Range C trimmer.

RANGE D ALIGNMENT

18,300-kc Adjustment

Set the signal for 18,300 kc. Keep the antenna lead of the receiver connected through the 400-ohm resistor to the output of the signal generator. Turn the rotor of the tuning condenser to the full open position. Turn the band selector switch to the Range D position.

Then adjust the oscillator Range D trimmer (C-24) until maximum output is obtained. See Fig. 2 for location of this trimmer.

15,000-kc Adjustment

Set the signal generator for 15,000 kc and turn the rotor of the tuning condenser carefully until maximum output is obtained.

Then adjust the interstage Range D

trimmer (C-11) and antenna Range D trimmer (C-4) to maximum.

When adjusting the interstage Range D trimmer, it will be necessary at the same time to turn the tuning condenser rotor slowly back and forth until the peak of greatest intensity is obtained.

Then go back and repeat the procedure as given for the 18,300 kc adjustment. If it is found necessary to make any appreciable change in the setting of the oscillator Range D trimmer, the 15,000-kc adjustment must be repeated.

Do not make any further change in the setting of the oscillator Range D trimmer.

6000-kc Adjustment

Set the signal generator for 6000 kc and turn the tuning condenser rotor until maximum output is obtained. Then turn the rotor slowly back and forth at the same time adjusting the 6000-kc trimmer until the peak of greatest intensity is obtained. See Fig. 2 for location of this trimmer.

VOLTAGES

The voltages at sockets are given in the table of Fig. 4. All necessary data is included in the table.

Silvertone Models 1923, 1933, 1983, 1993

Pilot Light Switch: Occasionally, the pilot light switch bracket must be bent to make the pilot light switch work when the volume control knob is pushed down.

Wave Switch Knob: A very few sets may have gone into the field with the flat of the wave switch shaft improperly positioned, so that the lettering on the Wave Switch knob faces down instead of up. If one of these sets should be encountered, the easiest remedy is to file a new flat in the shaft.

Condenser-Drive Gears: Occasionally a set is found in which the condenser-drive gears do not mesh properly. To correct this, proceed as follows:

Remove the dial pointers, the station selector dial, and the metal pointer-drive gear. Then adjust the lower bracket, that mounts the small condenser-drive gear, by slightly loosening its two mounting screws and shifting the bracket until proper meshing of the gears is secured. Then re-assemble the dial and pointers. Correct dial calibration can be secured either by tuning in a station of known frequency and setting the pointer to that frequency, or by fully meshing the condenser plates and putting the dial pointer horizontal.

VOLTAGES AT SOCKETS						
Line Voltage, 115 - Volume Control at Maximum Antenna Shorted to Ground						
Type of Tube	Function	Heater or Filament	Plate to Ground	Screen to Ground	Cathode to Ground	Plate M. A.
6K7 (6D6)	R. F.	6.1	230	95	3.0	6.4
6K7 (6D6)	1st Det.	6.1	230	100	9.0	3.2
76	Osc.	6.1	100			5.2
6K7 (6D6)	I. F.	6.1	230	120	3.0	9.
6B7	2nd Det.	6.1	55 ⁽¹⁾	40		2.3
6F6 (42)	Power	6.1	215	230	17 ⁽²⁾	30.0
80	Rectifier	4.7				34. per plate

(1) As read with 500,000 ohm meter
(2) As read across R16

Fig. 4. Here is the complete table of voltage readings for the Wells-Gardner Series 7GM. These voltages apply to either the metal or metal-glass tubes.

GENERAL DATA—continued

Emerson Model 36

The Model 36 uses Chassis Model B5. The circuit is shown on this page.

There are two waveband positions, as follows: Broadcast Band, 540 to 1530 kc; Short-Wave Band, 1500 to 3200 kc.

TRAP CIRCUIT

Referring to the accompanying diagram, it will be seen that the antenna circuit includes a trap which resonates at 456 kc, the same as the intermediate frequency. This prevents signals from code stations at or near the intermediate frequency from riding through to the i-f amplifier where they would be amplified the same as any other signal.

The antenna circuit is both inductively and capacitively coupled to the secondary windings of the input transformers. The capacity coupling is obtained by using single-turn open-ended coils in close proximity to the secondary windings.

BAND SWITCHING

Switching from the broadcast to the short-wave band is accomplished by placing coils in the detector and oscillator circuits in parallel with each other. When two coils are paralleled, the inductance of the combination is decreased and consequently higher frequencies may be reached.

The output of the first detector is fed to the i-f tube through a double-

tuned i-f transformer. A second i-f transformer of the same type couples the 6D6 i-f tube to the type 76 second detector tube. This latter tube functions as a power detector and has high bias. The detector is resistance coupled to a type 42 power pentode which in turn feeds a dynamic speaker the field coil of which is used as the filter choke in the power supply.

Bias for the first detector tube is supplied by the drop across the 300-ohm and 4500-ohm resistors in series with the cathode and ground. The bias on the i-f tube is variable, and is supplied by the drop across the 150-ohm (initial bias) portion of the 5000-ohm potentiometer, plus the amount of additional potentiometer resistance in circuit between the initial bias unit and the movable arm (ground). The voltage drop across this potentiometer is substantially increased by bleeding current through it from the high-voltage source.

Thus, the control of the bias on the i-f tube, plus the shunting action in the antenna circuit which is connected to ground through the potentiometer arm, controls the volume of the receiver.

Voltage readings are given in the diagram. These should be taken with the volume control turned on full and with the antenna wire grounded to the chassis. The readings are based on a line voltage of 117.

Motorola—Intermittent Ignition Interference in Cars of All-Steel Body Construction

Interference of this type may evidence itself in the later model cars when accelerating or decelerating the engine.

If the interference feeder of the Magic Eliminode is connected at a point where an appreciable amount of this interference is flowing, as well as the normal interference from the spark plugs, it will of course be balanced out in regular balancing procedure of the Magic Eliminode.

If, however, this is not the case, the balancer of the Magic Eliminode will not eliminate it.

To avoid the necessity of having to cast about for the proper pickup point for the interference feeder, a Motorola Dome Lite Filter can be connected in series with the *Distributor Breaker Point Wire*.

Mount the filter on the distributor.

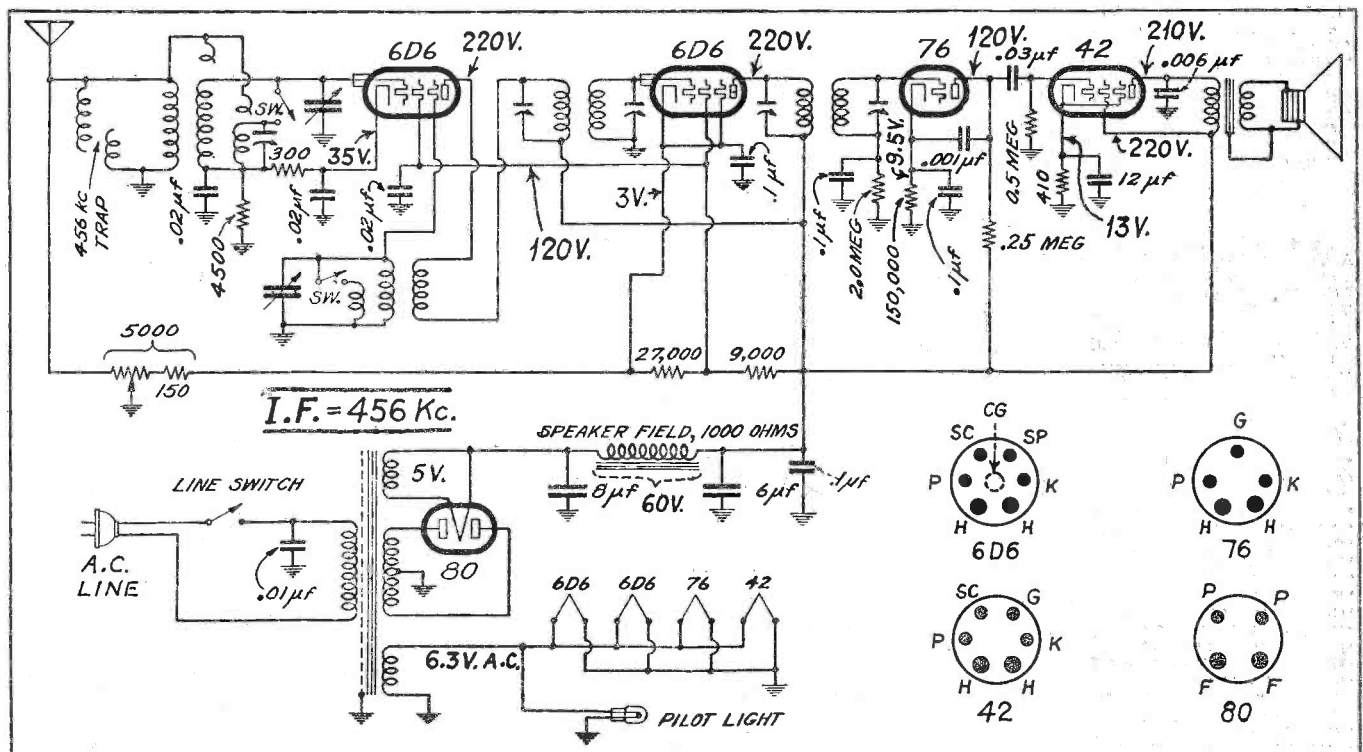
Secure a good ground to the distributor base.

Connect the "Bat" side of the filter toward the distributor.

Connect the "Load" side of the filter toward the ignition coil.

Caution—Keep the connection between the filter and distributor as short as possible.

Practically every case of intermittent interference of this type may be eliminated by this method.



Diagram, with voltage and parts values, of Emerson Model 36.

SERVICE ANNUAL INDEX

January, 1935 — December, 1935

An asterisk preceding a listing indicates that a circuit accompanies the text.

		Issue	Page			Issue	Page			Issue	Page
AERIALS											
All-Wave											
New All-Wave Noise-Reducing Antenna System	Sept.	379									
Noise-Suppression Antennas	Apr.	161									
Noise-Suppression Antennas	June	247									
Wave Propagation and Receiving Antennas	Mar.	112									
Auto-Radio											
Auto-Radio's New Day	Feb.	68									
Hudson-RCA Victor Model H-6	Nov.	506									
Installing Motorola GM Model Sets on Roof Aerial	Oct.	454									
More Auto-Radio Facts	May	208									
Motorola—Excessive Antenna Capacity	Sept.	394									
Sidewalk Antenna	Aug.	349									
AUTO RADIO											
Aerials											
<i>(See Aerials, Auto Radio)</i>											
General											
Auto-Radio Switches	Nov.	514									
Code Reception with Sparton 333	Apr.	171									
Installing Motorola 75 and 57.. Model 100 Motorola	Sept.	394									
Wells-Gardner S-732 Series 66Z Auto Radios	Nov.	518									
	Sept.	398									
Noise Suppression											
Installations in Old Cars	Nov.	514									
Locating Motorola Interference Feeder	Oct.	454									
Motorola Magic Eliminode Notes Reversing Eliminode Connection in GM 79 and 110	Oct.	452									
The Motorola Magic Eliminode	Nov.	514									
Tire Static	Apr.	171									
	Sept.	394									
Receivers											
*Atwater Kent Model 776	Oct.	460									
*Colonial Model 182	Jan.	20									
*De Wald Model 605	May	210									
*Emerson Model 5A	June	255									
*Fada Model 166 Motoset	May	210									
*Firestone-Stewart-Warner R-1332	Aug.	346									
*Hudson-RCA Victor Model H-6	Nov.	506									
*Motorola Models 100, 110	Dec.	560									
*Philco Model 11	Mar.	124									
*Philco Model 805	June	256									
*RCA Victor Model M-101	May	212									
*Stewart-Warner Model R-131 Chassis	July	304									
*Wells-Gardner Series 6S	Aug.	354									
*Wells-Gardner Series 6S	Nov.	510									
Vibrators											
Auto-Radio Vibrators	Oct.	458									
A Versatile Tester for Vibrators	July	310									
Motorola Auto Vibrator	July	308									
RCA M-34 Auto Vibrator	July	310									
Vibrators—Theory and Practice, Part I	July	302									
Vibrators—Theory and Practice, Part II	Aug.	335									
Vibrators—Theory and Practice, Part III	Sept.	393									
AVC											
*Atwater Kent Model 649	Sept.	386									
*Audio-Frequency AVC	Apr.	163									
*"Audio-Frequency AVC"	June	250									
*Automatic Initial Bias Circuit	Oct.	439									
*Colonial Model 182	Jan.	20									
*Crosley Chassis 5C2	Apr.	168									
*De Wald Model 605	May	210									
*Emerson Model 5A	June	255									
*Fada Model 160	Oct.	446									
*Grunow 11A Chassis	Mar.	118									
*Howard Model D All-Wave	Jan.	18									
*Howard "Grand" Receiver	Apr.	164									
*Hudson-RCA Victor Model H-6	Nov.	506									
*Improved 6B7 Circuit	May	206									
*Kadette "Jewel" Model 40	Jan.	17									
*New Bias System	Aug.	336									
RCA Victor Models 60-66	May	216									
*RCA Victor Model M-101	May	212									
*Retroactive AVC Circuit	Mar.	111									
*Stromberg-Carlson No. 70 Series Unstable AVC	June	251									
	Oct.	462									
EDITORIALS											
(Antenna)											
All-Metal Tubes	Dec.	542									
"Automatic"—Case Histories	July	288									
Auto Radio	May	200									
Manufacturer and Service Man	Aug.	332									
New Business	Oct.	434									
Public Address—Case Histories	June	244									
Receiver Case Histories	April	156									
Replacement Parts	Sept.	376									
The All-Wave Customer	Mar.	104									
Time Element	Feb.	52									
Watch Your Drift—Out of the Doldrums — Apartment-House Aerials—Amateur Interference	Nov.	490									
1935	Jan.	6									
FEATURES											
A Beam Velocity Microphone	Feb.	76									
By A. Barbieri											
An Efficient Accounting System for the Radio Service Man	Sept.	400									
By Ben. B. Dibrell	April	163									
Audio-Frequency AVC	June	250									
"Audio-Frequency AVC"	Oct.	439									
Automatic Initial Bias Circuit	June	250									
Auto Radio's New Day	Feb.	68									
By Arthur H. Lynch											
A Versatile Tester for Vibrators	Oct.	456									
By A. R. Moseley	Jan.	11									
Beat-Oscillator Circuit	July	299									
Capacity Measurement	July	299									
By R. M. Fiske											
Cathode-Ray Oscilloscope Testing of RCA Victor Model C 15-3	Nov.	496									
Class AB Amplifier Design	June	257									
By Maurice Apstein	Sept.	380									
Crystal-Oscillator Circuit	Nov.	495									
Crystal-Oscillator Test Circuit	Aug.	337									
G. E. Models A-63 and A-65 Metal-Tube Receivers	Dec.	566									
Hints on Eliminating Traffic Signal Interference	Jan.	11									
By J. R. Steen											
Increasing B Battery Service	Nov.	504									
By L. S. Fox	Sept.	388									
Intermediate-Frequency Peaks for 1936 Receivers	May	208									
Metal Tubes in a P-A Amplifier	July	293									
By I. A. Mitchell	Sept.	379									
More Auto-Radio Facts	Aug.	336									
By Arthur H. Lynch											
New "ABC" Circuit	July	293									
New All-Wave Noise-Reducing Antenna System	Sept.	379									
By T. Lundahl	Aug.	336									
New Bias System	April	161									
Noise-Suppression Antennas	June	247									
By William F. Osler											
Noise-Suppression Antennas	June	247									
By William F. Osler											
Profits in Old Set Conversion with Modern Methods, Part I	Oct.	437									
By Tobe Deutschmann											
Profits in Old Set Conversion with Modern Methods, Part II	Nov.	493									
By Tobe Deutschmann											
Profits in Old Set Conversion with Modern Methods, Part III	Dec.	545									
By Tobe Deutschmann											
Profits for the Service Man in Portable Sound Systems	May	215									
By Hubert L. Short											
Public Address for 1935—What Does It Offer?	Feb.	72									
By P. S. Gates											
"Public Address" from the Radio Receiver	July	306									
By E. M. Prentke	June	250									
Quick-Heater Circuit	Oct.	440									
RCA Victor Model C 15-3 Metal-Tube Receiver	Feb.	66									
RCA Victor Phonograph Oscillator	July	293									
RCA 6E5	May	206									
Reflexed 6B7 Circuit	Mar.	111									
Retroactive AVC Circuit	Jan.	12									
Review of Set Testers	Feb.	58									
Review of Set Testers	Dec.	550									
Selectivity—High-Fidelity Control Circuit	Mar.	109									
Service Applications of the RCA Cathode-Ray Oscillograph	April	159									
Standardized Alignment Methods	Sept.	381									
By V. E. Jenkins	Jan.	9									
Testers for the 8-Pin Tubes	Jan.	9									
By Floyd Fausett	July	291									
The All-Star Junior											
The Metal Tubes											
The Motorola Magic Eliminode	April	171									
By E. H. Wavering											
The Service Man—Business Man	Feb.	55									
By P. R. Kendall											
The Service Man and Group Hearing Aids	Mar.	126									
By Paul A. Bottorff											
The Service Men's Side of High Fidelity	Jan.	24									
By I. A. Mitchell											
The Servicing Profession	July	300									
By M. K. Barber											
Vacuum-Tube Voltmeter Applications	May	203									
By Kendall Clough											
Vibrators—Theory and Practice, Part I	July	302									
By Allen S. Nace											
Vibrators—Theory and Practice, Part II	Aug.	335									
By Allen S. Nace											
Vibrators—Theory and Practice, Part III	Sept.	393									
By Allen S. Nace											
Wave Propagation and Receiving Antennas	Mar.	112									
By William F. Osler											
FRONT COVER CIRCUITS											
Crosley Model 1014 ("Centurion") Retroactive AVC Circuit	Mar.	111									
New Bias System	Aug.	336									
New Hazeltine "ABC" Circuit	July	293									
Philco Models 810PA and 810PB Crystal-Oscillator Circuit	Sept.	380									
RCA Automatic Residual Bias Circuit	Oct.	439									
RCA Crystal-Oscillator Test Circuit	Nov.	495									
RCA Victor Model ACR-136 Beat-Oscillator Circuit	Jan.	11									
RCA Victor Model RK-24 Phonograph Oscillator	Feb.	66									
RCA Victor Model M-109 Audio-Frequency AVC	April	163									
Reflexed 6B7 Circuit	May	206									
Selectivity—High-Fidelity Control Circuit	Dec.	550									
Wurlitzer Model 453 Quick-Heater Circuit	June	250									
I-F PEAK TABLES											
Arvin I-F Peaks	Jan.	17									
Atwater-Kent I-F Peaks	Nov.	504									
Bosch I-F Peaks	Nov.	504									
Colonial I-F Peaks	Jan.	18									
De Wald I-F Peak Table	July	297									
Fada I-F Peaks	Nov.	504									
General-Electric I-F Peaks	July	306									
General-Electric I-F Peaks	Nov.	504									
Grunow I-F Peak Table	Nov.	504									
International I-F Peaks	Aug.	352									
Philco I-F Peak Table	Aug.	354									
RCA Victor I-F Peaks	Jan.	17									
RCA Victor I-F Peak Table	June	259									
RCA Victor I-F Peak Table	Nov.	504									
Silvertone I-F Peaks	Nov.	504									
Sparton I-F Peak Table	Nov.	504									
Sparton Models and I-F Peaks	Sept.	398									
Stewart-Warner I-F Peaks	July	298									
Stewart-Warner I-F Peak Table	Nov.	504									
Stromberg-Carlson I-F Peaks	July	306									
Stromberg-Carlson I-F Peaks	Nov.	504									
Wells-Gardner I-F Peaks	Nov.	504									
Wells-Gardner Peaks	Oct.	462									
Zenith I-F Peaks	Oct.	462									
ON THE JOB											
*A-C Operated Volt-Ohmmeter Adapter—7-Prong Plug to Octal Tube Socket	Aug.	349									
An Efficient Accounting System for the Radio Service Man	Nov.	516									
*A Versatile Tester for Vibrators	Sept.	400									
Brace Grip	Oct.	456									
*Capacity Measurement	Jan.	23									
Electrolytic Condenser Ratings	July	299									
Emergency Footing Cleats	Jan.	18									
Filing Technical Data	Jan.	18									
Help Yourself to a Condenser Tester	Mar.	132									
Tester	Feb.	80									
Hints on Eliminating Traffic Signal Interference	Dec.	566									
Improving "Drummy" Sets	June	262									
*Improving Quality in Midgets	Nov.	516									
Making Service Data Handy	Jan.	22									
One-Man Ladder Raiser	Feb.	80									
Oscillation and Electrolytics	Jan.	18									
Oscillation Puzzle	June	262									
Pentode Hot Grids	Jan.	18									
Portable Tube Tester	Sept.	402									
Regeneration in Analyzer Cables	June	262									
	Nov.	516									

ANNUAL INDEX—continued

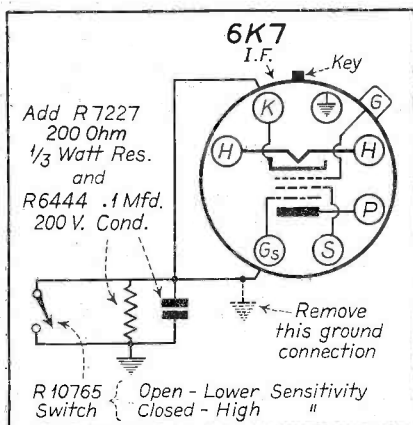
	Issue	Page		Issue	Page		Issue	Page
*Remote Speakers	Oct.	458	Grunow 660, 662, 650	Oct.	460	Sparton Models with Aeroplane Dial	Mar.	114
Removing Wire Kinks	Mar.	132	Grunow 670 or 6D Chassis	July	308	Sparton—Slipping of Planetary Drive	Apr.	167
Servicing Records	Nov.	516	Grunow 750 to 7B Chassis	July	262	Sparton 26	Sept.	398
Sidewalk Antenna	Aug.	349	Improving "Drummy" Sets	June	514	Sparton Model 36	Mar.	128
Speaker Phasing	Sept.	402	Installations in Old Cars	Nov.	132	Sparton Models 61 and 62	Apr.	167
Suggested Standards of Measurement for Service Work	Aug.	349	International Kadette	Mar.	306	Sparton Models 65 and 66	Mar.	128
*Switching Unit	Apr.	172	International Models 105 & 1050	July	460	Sparton Models 65 and 66	May	207
The Servicing Profession	July	300	Kadette ES-19, ES-20	Oct.	460	Sparton Models 67, 68, 691	Mar.	128
T-R-F Cigar-Box Sets	Sept.	386	Karadio	Oct.	460	Sparton Model 333	Mar.	122
PUBLIC ADDRESS			Kolster Model 6K	Mar.	132	Sparton Model 333 Auto Radio	Apr.	171
Amplifiers			Kolster K-60, K-62, K-100	Oct.	460	Sparton 930-931 Models	Oct.	462
*Class AB Amplifier Design	June	257	Kolster K-130, 132	Oct.	460	Sparton 931	July	310
*Metal Tubes in a P-A Amplifier	Sept.	388	Kolster K-111, K-132	Sept.	396	Sparton 931	Nov.	520
*Profits for the Service Man in Portable Sound Systems	May	215	Lyric A-65	Dec.	562	Speaker Phasing	Sept.	402
*Public Address for 1935	Feb.	72	Lyric SA-120 Chassis	Oct.	460	Stewart-Warner Speaker Adjustments	July	298
*Public Address from the Radio Receiver	July	306	Majestic 15	Nov.	518	Stewart-Warner 102-A	Dec.	564
*The Service Man's Side of High Fidelity	Jan.	24	Majestic 20	Jan.	23	Stewart-Warner Series 108	Sept.	398
General			Majestic 66 Auto Radio	July	308	Stewart-Warner R-138	Nov.	520
*RCA Victor Model PG-62D1 Portable Public-Address System	April	174	Majestic 70	Aug.	352	Stromberg-Carlson No. 58	Aug.	349
*The Service Man and Group Hearing Aids	Mar.	126	Majestic 70-B	Dec.	562	Stromberg-Carlson No. 82	Sept.	398
Microphones			Majestic 90 Series	July	308	Stromberg-Carlson 82	Dec.	564
A Beam Velocity Microphone	Feb.	76	Majestic 92	Aug.	352	Stromberg-Carlson 642 and 846 Noise	Aug.	354
Phonograph Data			Majestic 130-A	Nov.	518	"Sun-Glow" Melody Chest	Nov.	520
*RCA Victor Phonograph Oscillator	Feb.	66	Majestic 130-A	Dec.	562	TCA Clarion 260	Dec.	564
Speakers			Majestic 300	Sept.	398	Tire Static	Sept.	394
*Remote Speakers	Oct.	458	Majestic 400	Aug.	352	T-R-F Cigar-Box Sets	Sept.	386
RECEIVER CASE HISTORIES			Majestic 800 Chassis	Aug.	354	Unstable AVC	Oct.	462
A-C, D-C Midgits	Dec.	562	Montgomery Ward 40, 40A, 62-11, 62-14	Sept.	398	U. S. Apex 12, 120 (Chassis 1200)	Sept.	398
Atwater Kent "L" Chassis	Dec.	562	Montgomery Ward 62-103, 62-105	Aug.	354	U. S. Radio 9A	Dec.	564
Atwater Kent 37, 38, 40, 42, 44	July	308	Motorola Junction Box	Dec.	562	U. S. Radio & Television Radiotrope 27	Sept.	398
Atwater Kent 40	Aug.	352	Motorola Receivers	Dec.	562	U. S. Radio & Television 28, 28A, 29	Dec.	564
Atwater Kent 84	Aug.	352	Motorola Super 6 Auto Radio	Aug.	354	Wells-Gardner 5E and 9B	Dec.	564
Atwater Kent 165	Aug.	352	Motorola 75 and 57—Installing	Sept.	394	Wells-Gardner 40, 40A	Sept.	398
Atwater Kent 310, 510	July	308	Motorola Model 100	Jan.	18	Wells-Gardner 65	Dec.	564
Atwater Kent 345	July	308	Motorola Model 100	Dec.	562	Wells-Gardner S-732 Series 06Z Auto Radios	Sept.	398
Atwater Kent 424	Aug.	352	Oscillation and Electrolytics	Nov.	518	Westinghouse 12	Nov.	520
Atwater Kent 708, 711	Oct.	460	Oscillation Puzzle	June	262	Zenith MH	Oct.	462
Auto-Radio Switches	Nov.	514	Ozarka 93 and 94 AVC	Aug.	354	Zenith 705, 706, 707, 711, 712, 750	Nov.	520
Auto-Radio Vibrators	Oct.	458	Pentode Hot Grids	Sept.	402	Zenith 770 B, 775 B, 776 B	Nov.	520
Balkeitt 41A	Sept.	396	Philco V-C Noises	Jan.	22	RECEIVERS		
Belmont 41, 42A	Sept.	396	Philco Models—Moisture	Jan.	23	Auto		
Belmont 420	Oct.	460	Philco Shadow-Tuning Unit	Oct.	462	<i>(See Auto Radio)</i>		
Bosch 350	Sept.	396	Philco Series 5	Feb.	80	Broadcast, A-C		
Bosch 402	July	308	Philco Model 16 (Code 125-6-7)	Aug.	354	*International Model 90	July	296
Brunswick 15	July	308	Philco Model 16 (Code 126 & 7)	May	207	Broadcast, Battery		
Cadillac Master 1935	Dec.	562	Philco Models 18-60-66-89-118-144-200-201	Mar.	111	*International Model 90	July	296
Clarion 90, 94, 95, 160	June	262	Philco 20	Dec.	564	Broadcast, Universal		
Colonial—			Philco Model 29	Mar.	118	*Crosley Chassis 5 C 2	Apr.	168
Repairing Wave Switches	Mar.	118	Philco Model 32	Mar.	111	*Kadette "Jewel" Model 40	Jan.	17
Colonial—Shorts in Late Models	Feb.	63	Philco 32	Aug.	354	*RCA Victor 220-Volt A-C, D-C	Mar.	122
Colonial 36, 36-P, 114	Sept.	396	Philco Model 34	Mar.	120	Dual—and All-Wave		
Colonial 136	Sept.	396	Philco Model 38 (Code 123)	Mar.	128	*All-Star Junior	Jan.	9
Colonial 250, 300	Nov.	518	Philco 38-B	Oct.	462	*Atwater Kent Model 275	Jan.	15
Colonial Model 654 Volume	May	207	Philco 45	Sept.	310	*Atwater Kent Model 649	Sept.	386
Colonial Model 657 Pilot-Light Circuit	Feb.	66	Philco 45	July	294	*Browning-35	Oct.	438
Columbia C-100-A	Sept.	396	Philco 49	July	294	Emerson Model 36	Dec.	555
Crosley 54	Sept.	396	Philco 54	Sept.	398	*Fada Model 160	Oct.	446
Crosley 124	May	216	Philco 54-C Howl	Mar.	132	*General Electric A-53	Sept.	387
Crosley 124J	Nov.	498	Philco 54 and 57	Aug.	354	*G. E. Models A-63 and A-65	Aug.	332
Crosley 130	Aug.	352	Philco Model 57-C Wax	July	310	*General Electric A-70, A-75	Dec.	548
Crosley 137	Oct.	460	Philco 65	Sept.	398	*Grunow 6G Chassis	Nov.	499
Crosley 146	Aug.	352	Philco 66	Oct.	462	*Grunow 11-A Chassis	Mar.	118
Crosley Models 170, 171	Aug.	352	Philco 80	Oct.	462	*Howard Model D	Jan.	18
Edison-Bell No. 35	Dec.	562	Philco 89	July	297	*Howard "Grand" Receiver	Apr.	164
Emerson L-AC-5	Feb.	80	Philco 90; Grebe SK4	Dec.	564	*International Models 105 and 1050	Aug.	341
Emerson V4, LA, 415, 416	Oct.	460	Philco Model 111, 111-A	June	222	*Philco Model 97	Aug.	343
Eveready 50	Sept.	396	Philco 112 Cracking	Jan.	26	*Philco Model 610	May	294
Fada KW Chassis 48, 49	Sept.	396	Philco 144	July	294	*RCA Victor Model C 15-3	Oct.	440
Fada 10, 11, 30, 31	May	206	Philco Models 201 & 509	Mar.	120	RCA Victor Model C 15-3	Nov.	496
Fada Models 25 and 25Z	May	206	Philco 800	Nov.	518	*Remler Model 42	Jan.	16
Fada Models 150T, 150C	Sept.	386	Pilot 31-81 Rainbow Super	Oct.	462	*Silvertone Models 1904, 1904A, 1906, 1914, 1954, 1964	Oct.	444
Fading Tip	July	310	Pilot 55 or 43	July	310	*Silvertone Models 1922A, 1932A, 1982A, 1992A	Nov.	500
Federal Orthosonic Types E and F	Aug.	352	Radiola R-4	Oct.	462	Silvertone Models 1923, 1933, 1983, 1993	Dec.	554
Ford Receivers	Oct.	460	Radiola Superette, R-7, R-8, R-9, R-10	July	310	*Sparton Model 57	Feb.	64
Freed NR 65-78-79	Dec.	562	Radiola R-11 RAE 26	Jan.	23	*Sparton Model 594	Aug.	343
Freed-Eisemann NR-80, NR-85	Sept.	396	Radiola 80 Series	Feb.	80	*Sparton Model 655	Apr.	170
G. E. Little General	Sept.	396	RCA Models Using "ARB"	Nov.	502	*Stewart-Warner R-126 Chassis	Mar.	115
General Electric A-53 (Metal)	Sept.	396	RCA Victor Combinations	Aug.	354	*Stewart-Warner R-130 Chassis	Oct.	442
General Electric A-65 (Metal)	Sept.	396	RCA M-34 Auto Vibrator	July	310	*Stewart-Warner R-134	Dec.	550
General Electric B-40 Auto Vibrator	Aug.	352	RCA Victor R-32	Feb.	80	*Stewart-Warner R-136 Chassis	Sept.	384
G. E. H-31; Radiola 80	Dec.	562	RCA R-35, R-39, RE-57	Nov.	518	*Stromberg-Carlson No. 58	Aug.	340
General Electric K-51	July	308	RCA R-37, R-38	July	310	*Stromberg-Carlson Nos. 62 and 63	Sept.	382
General Electric M-81, M-86	July	308	RCA R-37-P, R-38-P	Nov.	518	*Stromberg-Carlson No. 70 Series	June	251
Grebe M 3-4	July	308	RCA 38-P	July	310	*Wells-Gardner No. 5D Series	Aug.	339
Grunow Chassis 5B	July	308	RCA 50, 55; G. E. H-32	Nov.	518	*Wells-Gardner Series 7GM	Dec.	552
Grunow Chassis 7A, 8A, 9A	July	308	RCA Models 60-66 Volume Control Action	May	216	*Wurlitzer Model 454	May	207
Grunow Chassis 7B, 11A	Oct.	460	RCA Victor 100	Jan.	22			
Grunow 650, 660, 670, 750, 1151	July	308	RCA Victor 118 and 211	Aug.	354			
			Silver-Marshall Model "Q"	Dec.	564			
			Silver Model R	Jan.	22			
			Silvertone All-Wave (83 Rectifier)	Nov.	518			
			Silvertone General Notes	Nov.	520			
			Silvertone 36, 37, 41 and 1172	July	310			
			Silvertone 550, Sentinel 550	Mar.	132			
			Silvertone 1732	July	310			
			Silvertone 1904, 1906, 1914, 1954, 1964	Nov.	502			
			Silvertone 1905, 1915, 1955, 1965	Nov.	518			
			Silvertone 1918, 1968	Nov.	518			
			Silvertone Models 1925, 1935, 1985, 1995	Dec.	564			
			Sparton Alignment Instructions	July	298			
			Sparton Models Using 485's	Dec.	564			

ANNUAL INDEX—continued

	Issue	Page		Issue	Page		Issue	Page
Phonograph Data			*A Versatile Tester for Vibrators	Oct.	456	Standardized Alignment Methods	April	159
Howard "Grand" Receiver.....	Apr.	164	*Lafayette Universal Bridge....	Jan.	12	Vacuum-Tube Voltmeter Applications	May	205
*RCA Victor Phonograph Oscillator	Feb.	66	*Service Applications of the RCA Cathode-Ray Oscillograph....	Mar.	109			
*Stewart-Warner R-126 Chassis.	Mar.	115	*Switching Unit	Apr.	172			
*Stromberg-Carlson No. 70 Series	June	251	*Vacuum-Tube Voltmeter Applications	May	203			
32-Volt			Ohmmeters			TUBES		
*International Model 90.....	July	296	*A-C Operated Volt-Ohmmeter..	Aug.	249	Operation		
SERVICE-MAN'S NOTEBOOK			Oscillators			Audio-Frequency AVC	Apr.	163
Vacuum Tubes and Their Applications, Part I.....	Jan.	21	*Crystal-Oscillator Test Circuit .	Nov.	495	"Audio-Frequency AVC"	June	250
Vacuum Tubes and Their Applications, Part II.....	Feb.	78	*RCA Victor TMV-128-A Frequency Modulator	Apr.	169	Automatic Initial Bias Circuit..	Oct.	439
Vacuum Tubes and Their Applications, Part III.....	Mar.	130	Set Testers			Beat-Oscillator Circuit	Jan.	11
Vacuum Tubes and Their Applications, Part IV.....	May	218	*Dayrad Series 52	Jan.	12	Class AB Amplifier Design.....	June	257
Vacuum Tubes and Their Applications, Part V.....	June	260	*Hickok Model SG-4800.....	Feb.	58	Crystal-Oscillator Circuit	Sept.	380
Vacuum Tubes and Their Applications, Part VI.....	July	301	*Radio City Model 404.....	Jan.	13	Crystal-Oscillator Test Circuit..	Nov.	495
Vacuum Tubes and Their Applications, Part VII.....	Aug.	350	*Supreme Model 333-D.....	Feb.	59	Metal Tubes in a P-A Amplifier.	Sept.	388
SPEAKERS			*Testers for the 8-Pin Tubes....	Sept.	381	New "ABC" Circuit	July	293
Colonial Field-Coil Values.....	Jan.	18	*Weston Model 665	Feb.	63	New Bias System	Aug.	336
Public Address for 1935.....	Feb.	72	*Weston Model 698	Jan.	14	Pentode Hot Grids	Sept.	402
*RCA Victor 118 and 211.....	Aug.	345	Tube Testers			Profits for the Service Man in Portable Sound Systems	May	215
*Remote Speakers	Oct.	458	Portable Tube Tester	June	256	"Public Address" from the Radio Receiver	July	306
Speaker Phasing	Sept.	402	TESTING METHODS			Quick-Heater Circuit	June	250
The Service Man and Group Hearing Aids	Mar.	126	Calculations			RCA Victor Phonograph Oscillator	Feb.	66
The Service Man's Side of High Fidelity	Jan.	24	Capacity Measurement	July	299	Reflexed 6B7 Circuit	May	206
TESTING EQUIPMENT			Electrolytic Condenser Ratings..	Jan.	18	Vacuum Tubes and Their Applications, Part I.....	Jan.	21
Capacity Meters			Suggested Standards of Measurement for Service Work.....	Aug.	349	Vacuum Tubes and Their Applications, Part II.....	Feb.	78
*Capacity Measurement	July	299	Vacuum Tubes and Their Applications, Part VII.....	Aug.	350	Vacuum Tubes and Their Applications, Part III.....	Mar.	130
Condenser Tester	Feb.	80	Cathode Ray			Vacuum Tubes and Their Applications, Part IV.....	May	218
General			Cathode-Ray Oscilloscope Testing of RCA Victor C 15-3.....	Nov.	496	Vacuum Tubes and Their Applications, Part V.....	June	260
Adapter—7-Prong Plug to Octal Tube Socket	Nov.	516	Service Applications of the RCA Cathode-Ray Oscillograph.....	Mar.	109	Vacuum Tubes and Their Applications, Part VI.....	July	301
			General			Vacuum Tubes and Their Applications, Part VII.....	Aug.	350
			Crystal-Oscillator Test Circuit..	Nov.	495	Vacuum-Tube Voltmeter Applications	May	203
			Noise-Suppression Antennas	June	247	Vibrators—Theory and Practice.	Sept.	393
						Types (Characteristics)		
						National Union Type 6E6	Mar.	114
						Raytheon 6Q7 Duo-Diode Triode.	Nov.	502
						RCA 6E5	July	293
						The Metal Tubes	July	291

Adding Sensitivity Switch to Silvertone Models 1905, 1915, 1955 and 1965

In locations that are electrically noisy, it may be desirable to reduce the sensitivity of the receiver to prevent between-station noise as the receiver is tuned from station to station. This can be done by disconnecting the present direct connection of the 6K7 cathode to ground and inserting a 200-ohm, 1/3-watt resistor between the 6K7 cathode and ground, as shown in the accompanying diagram. An 0.1-mfd, 200-volt condenser should be connected di-



Method of adding sensitivity switch to Silvertone receivers listed above.

rectly across the 200-ohm resistor. A single pole single throw switch, connected from the 6K7 cathode to ground, will then act as a sensitivity control. When the switch is open, the sensitivity will be lowered.

If a separate sensitivity switch is undesirable, the present on-off switch can be replaced with a combination on-off and sensitivity switch (R-10756). Rotating this switch part way to the right, turns the receiver on. When the switch knob is turned all the way to the right, the sensitivity control switch incorporated in it is closed and maximum sensitivity is had.

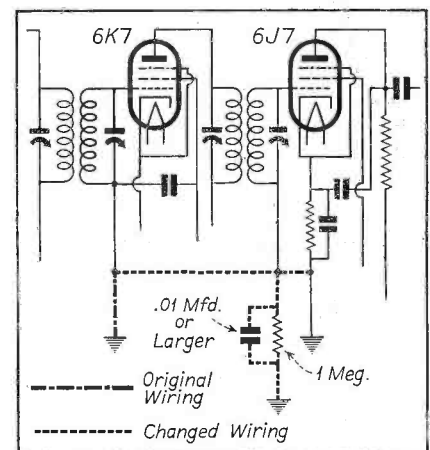
Adding AVC to Kadette Models 53 and 553

The Kadette (International Radio Corp.) Models 53 and 553 using the 6J7 second detector tube do not incorporate automatic volume control. When operated in the vicinity of powerful broadcast stations a tendency toward overloading may be found on strong signals. It is evidenced by blocking out of the signal as the volume control is advanced. This condition may be corrected easily by making the simple change illustrated in the accompanying diagram.

Originally the grid returns of the 6K7 and 6J7 tubes go direct to ground. These should be removed from ground, tied together and returned to ground through a one-megohm resistor shunted by a condenser of 0.01 mfd or larger capacity.

PRECAUTION

In making this change, be sure the cathode of the 6J7 tube is connected as shown and not left connected to the low end of the second i-f transformer grid winding.



Method of adding automatic volume control to Kadette Models 53 and 553 to prevent overloading on strong signals.

Look for this trade mark. It is your guarantee of Quality—always!



HAVE YOU

QUALIFIED YOURSELF AS A MODERNIZATION ENGINEER, Mr. SERVICEMAN?

ANOTHER TOBE WINNER!

When in need of condensers you look for quality . . . which means that TOBE is a name that at once comes to mind. But TOBE gives servicemen an ADDED measure of value . . . FREE Add-a-Unit cabinets which may be locked together horizontally or vertically to make a complete file for condensers or other small parts. If you've already bought one or more kits—better check your stock now; it may be running low. If you haven't bought a kit—start building NOW.

FREE!
ADD-A-UNIT CABINETS



Above—Kit No. 1

Right—Kit No. 2

Kit No. 1—Tubular Surgeproof and Openproof Oil Processed Condensers.

Amt.	Cap. MFD	D. C. Volts Working	Type	Price List	Total
3	.001	600	M-1	@ .18	.54
2	.002	600	M-2	@ .18	.36
3	.005	600	M-5	@ .18	.54
5	.01	600	M-10	@ .18	.90
5	.02	600	M-20	@ .20	1.00
5	.05	400	M-50	@ .22	1.10
5	.10	400	410-T	@ .25	1.25
3	.25	400	425-T	@ .25	1.05
3	.50	400	450-T	@ .50	1.50

Total List Price \$8.24
Less Servicemen's Discount of 40% 3.30

Net \$4.94
Plus fair cost of one TOBE Add-a-Unit Cabinet 2.00

TOTAL VALUE \$6.94

Servicemen's Net Cost of Condensers with FREE Cabinet. (TOBE Condenser Kit No. 1) only **\$4.94**

Kit No. 2—Dry Electrolytic Condensers. Popular Sizes.

Amt.	Cap. MFD	Peak Volts D. C.	Type	List Price	Total
2	8	500	618	1.05	2.10
5	8	500	518	.95	4.75
2	4	500	514	.75	1.50

Total List Price \$8.35
Less Servicemen's discount of 40% 3.34

Net \$5.01
Plus fair cost of one TOBE Add-a-Unit Cabinet 2.00

TOTAL VALUE \$7.01

Servicemen's Net Cost of Condensers with FREE Cabinet. (TOBE Condenser Kit No. 2) only **\$5.01**

EVERY day customers are walking in to their neighborhood Radio Servicemen and asking "Are you a modernization Engineer? Can you tell me how I may modernize my model Blank Radio and how much it will cost?"

Perhaps *you* have had this same experience. The question is: Are you qualified to tell customers how to convert their present sets into modern, up to date all-wave receivers? Can you take advantage of the profitable opportunity which every such call means to you?

There's no reason why you cannot get into this lucrative branch of selling just as have more than 1,000 other radio servicemen. *The business* is there waiting . . . all you have to do is to know how to get it. That is easy, for a little book by Zeh Bouck, famous consulting engineer, tells how any serviceman can modernize obsolete receivers which are near and dear to the heart of their owners. This book gives concrete examples, complete with photos and diagrams—a primer on modernization.

You can get this book, by sending the coupon below, together with a complete merchandising plan, display card, advertising mats, stickers, 2 ft. scale . . . all that is needed to get you started at once.

Modernizing obsolete receivers is Big Business—Profitable Business, as many Servicemen have found out. Here at the factory we maintain a staff of engineers to aid you in solving individual problems or to give competent advice on receivers not covered in the book.

Get all the facts today. Cash in on the need for a competent modernization service which is being sought by scores of prospects in your own locality.

TOBE DEUTSCHMANN CORP.
Canton Dept. S-125 Massachusetts

TOBE DEUTSCHMANN CORP.
Canton, Massachusetts — Dept. S-125

I enclose 25c for Zeh Bouck's Book and Free Sales Promotion Kit.

I enclose \$..... for Condenser Kit No..... together with Free Add-a-Unit Cabinet.

Name

Address

City State

**Demanded by those
who insist on the best**

MALLORY

**DRY ELECTROLYTIC CAPACITORS
FOR RADIO AND INDUSTRIAL FIELDS**



MALLORY vision
discovered them
MALLORY genius
designed them
MALLORY ingenuity
produced them

Manufactured under
U. S. Patents 1710073,
1714191 et al.

Used by
exacting
customers
everywhere

MALLORY experience
refined them
MALLORY quality
identifies them
MALLORY integrity
guarantees them

P. R. MALLORY & CO., Inc., INDIANAPOLIS, INDIANA
Cable Address — Pelmallo

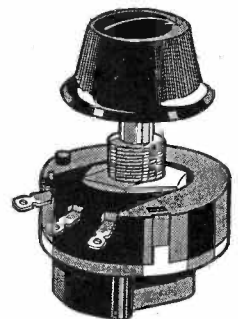


*- it's a Landslide
for* **CENTRALAB**

Every serviceman from coast to coast knows Centralab . . . everybody's his friend and the worst thing his enemies can say is that he's a mighty smooth article.

Yes . . . he's smooth all right . . . and it's that famous non-rubbing contact that makes him "that way."

. . . a tip from campaign headquarters: a mere handful will service practically any set ever made . . . "better than ever before."



Every Radio Service Man
should be a member of the
Institute of Radio Service Men

Centralab

MILWAUKEE, WIS.

**RADIOHMS SUPPRESSORS
FIXED RESISTORS**

RECEIVER CASE HISTORIES

A-C, D-C Midgets

Overloading, low volume, distortion: Frequently detector plate resistor is too high in value, begins to burn out, or opens completely. Replace with a 250,000-ohm $\frac{1}{2}$ -watt resistor. Most of cheaper midgets can be improved as far as volume handling capacity is concerned by substituting a 0.25-meg resistor for the 0.5- to 3-meg unit.

Allan Epstein.

Atwater-Kent "L" Chassis

Oscillation; set dead: Dirty rotors are fairly common due to low tension on rotor springs. Clean, increase tension and apply a little mineral oil. Lack of voltage on detector or first audio tube is usually due to burned-out filter resistors and not to shorted condensers or even plate resistors or input transformers burning out.

F. C. Wolven.

Cadillac Master 1935

Shorted resistor: If large 2,000-ohm resistor under sub-panel is found to be burned, check last i-f coil. Although not shown on wiring diagram, this unit has a third winding, one end of which goes to ground while the other is floating. This coil is interwoven with the primary, and often shorts it.

Remove coil from set. Cut ground lead of shorted winding on bobbin of assembly, leaving primary clear of ground. Replace coil and resistor. Slightly stagger last i-f to compensate for removal of third coil.

A. H. Schoss.

Edison-Bell No. 35

The power transformer in this set is rather frail and may cause trouble. In making replacement, use unit with electrostatic shield if possible, otherwise a severe hum will be heard on every carrier. Conversely, if this trouble is noticed in one of these sets, a broken lead to shield may be cause. If it is necessary to use a replacement without such a shield, connect two 0.25-mfd, 600-volt condensers in series across the a-c input and ground their common connection to chassis.

F. C. Wolven.

Freed NR 65-78-79

Intermittent fading: Look for corroded connection under rubber insulation on end of 1-watt, 500-ohm fixed bias resistor which is in series with the

volume control. The value varies from 500 ohms to 25,000 ohms. *Note: Resistance test on cold chassis may check OK.*

Al. Beers.

G.E. H-31; Radiola 80

Crackling: Symptoms of metal filings in tuning condenser. Probing disclosed just that but source of particles was a mystery. Finally traced to heavy gilt trimming on wallpaper which was dusted periodically thereby loosening the gilt which proved a good conductor.

F. C. Wolven.

Lyric A-65

Resistors: Have had a good deal of trouble with 15,000 (2-watt, standard code) and 10,000 (1-watt, solid blue) ohm resistors forming the voltage divider for the screen circuit. They usually drop to 5,000 ohms or less and burn up. These sets occasionally operate over only part of the dial due to failure of oscillator to function. Drop the value of the cathode resistor to half.

F. C. Wolven.

Majestic 70

Dial cables: For the benefit of those who have not yet tried it, the only good way to replace Majestic 70 dial cables is to disconnect the gang condenser electrically and mechanically from the chassis and lift out the whole assembly. This can be done by swinging the tuner endwise in cabinet and does not necessitate removal of chassis. Wind the rear drum first and finish on the front one.

F. C. Wolven.

Majestic 130-A

Short circuit: Often blows 0.3-mfd plate bypass across either i-f or r-f plate circuit. Check with 0-500 ohmmeter for quick location of defect. Plate circuit with least resistance to ground is the offender. These condensers have two white wires connected to one side and with the other side connected to the common ground to can. Symptoms are: Very low plate and screen voltages with overheating and peeling of enamel on black 4875-ohm wire-wound resistor. Set may not work except with volume control in center position or may play very faintly.

F. C. Wolven.

Motorola Junction Box

Antenna Junction Box: We wish to again impress upon all Service and Installation Men the great importance of securing a perfect ground connection on the antenna junction box.

Practically every case of interference difficulty that has come to our attention has been remedied by better grounding at this point.

Clean the paint from the metal before mounting the junction box.

Mount it to the inside of the cowl *not* to the instrument panel.

When installing the GM models with under-car aerial, attach the grounding lug of the lead-in under one of the bolts that join the front fender to the splash apron of the car.

A good ground at this point is as important as when using the junction box.

Again we repeat . . . *This is the most important part of the entire installation.*

Galvin Manufacturing Corporation.

Motorola Receivers

Elimination of Ignition Interference When Using Running Board Aerial on Ford V-8: Due to the extremely high level of interference from the running board of the Ford V-8, the following method of installation may prove advantageous:

Mount the aerial, preferably under the left running board. Ground the shielded antenna lead to the frame of the car at a point opposite the front edge of the running board aerial. Extend the aerial lead and shield it with a piece of $\frac{3}{8}$ -inch shielded loom. Ground this loom again at a point opposite the rear support of the running board aerial. Connect the aerial lead to the aerial near its rear edge. Connect the interference feeder to the throttle rod about 2 inches from the point where it passes through the bulkhead. If the aerial is under the right running board, ground the exhaust manifold and muffler to the car frame.

Motorola Model 100

Installation in Ford V-8: When mounting the Model 100 in the motor compartment of the V-8 Ford, be sure to mount it at least 5 inches above the rear spark plug of the left motor block.

If it is mounted too close to spark plugs, interference difficulties may occur.

**ARCTURUS
"CORONET"
the Perfected
METAL TUBE**

**The Metal Tube that
the Industry hoped for...
IS HERE!**

UTILIZING all the advantages of manufacturing technique developed in the past 28 years, Arcturus has perfected and improved "the greatest advance in radio tube design in 28 years." The radio industry, aware of the inherent weaknesses of metal tubes, had looked forward to an improvement by 1936.

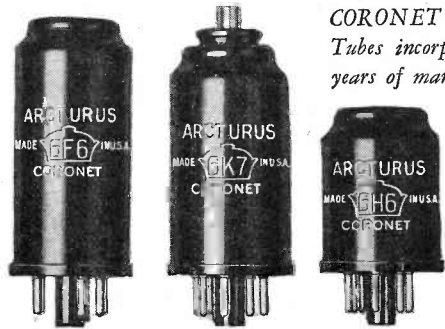
Now, a full business year ahead of the industry, Arcturus introduces the

CORONET Metal Tube—the perfected development of the metal tube. CORONET Metal Tubes at once advance the metal tube development from an experimental stage to a dependable design using all the tried and proved advantages of the vacuum tube art. Get the details of this remarkable new improvement today.

Arcturus Radio Tube Company,
Newark, New Jersey.

**SALIENT FEATURES OF ARCTURUS
CORONET METAL TUBES ARE:**

1. Lower capacities than either other metal or glass tubes.
2. More dependable vacuum than the original metal tube.
3. Less prone to gas than the original metal tube.
4. Lower operating temperatures permit closer arrangement of chassis components.
5. Eliminate possibility of dead shorts to ground.
6. Diameter identical to other metal tubes.
7. Height $\frac{1}{2}$ inch greater, facilitating insertion and removal.
8. Rugged structure; better appearance; longer life.
9. Quiet operation, as it has no metallic sleighbells.
10. Self shielding.



CORONET Metal Tubes incorporate 28 years of manufacturing technique.

ARCTURUS RADIO TUBES

—a Factory rebuild on
WESTON Model 682



\$9.50

COMPLETE

Bring your Model
682 right up to
the minute....

- 1 Equipped for the new metal tubes.
- 2 With improved high resistance Neon short check.
- 3 Completely re-inspected.

—price complete \$9.50 f.o.b. Newark, N.J. Rebuild service also available on other WESTON Tubecheckers . . . Repair Service Dept., Weston Electrical Instrument Corp., 604 Frelinghuysen Avenue, Newark, N.J.

WESTON
Radio Instruments

*New Year Resolution
I've learned my
lesson! I'm not taking
any more chances
or wasting my time
with inferior parts.
When it comes to re-
sistors the Ohmite
Catalog is my bible.
Bill Fixit*

Send for
Catalog 14
FREE

OHMITE
MANUFACTURING COMPANY
4827 Flournoy Street - - Chicago, Ill.

Philco 20

Oscillation: A drop of mineral oil on the wiping contacts and bearings of the variable condenser is quick and easy cure in many cases. When everything is OK and set still oscillates, try a larger mica condenser in the detector plate circuit. These sets seem to be hard on input transformers. Resistance-capacity coupling into the primary is advisable.

F. C. Wolven.

Philco 90; Grebe SK4

Distortion on low volume: If set is located near powerful station it is necessary to turn volume control down a great deal. This causes bias on tubes (24s) to reach a point where they act as detectors and cut off. This causes considerable distortion on low volume. To remedy, change the 24s to 35s or use a double control—a bias control and an antenna shunt. The Philco 90 has this double control. All that is necessary in this case is to short to ground the tap on the voltage divider next to the grounded one, *not* the tap connected to c.t. of the high voltage. Shorting this tap to ground reduces the bias voltage and thereby uses the antenna control chiefly to reduce the volume. *Note: Latter procedure is only possible on the Philco 90 using two 45s.*

Allan Epstein.

Silver-Marshall Model "Q"

Motorboating, only on resonance on strong stations: The avc plate resistor was low. Replacement helped but did not cure complaint. Replacement of the plate bypass across this resistor finished the job. The leakage in this condenser was about 30 megohms.

F. C. Wolven.

Silvertone Models 1925, 1935 1985, 1995

Tube selection: Because of the low voltage at which these models are operated, more than usual care must be used in selecting 6A7 and 75 tubes that will operate properly on the short-wave band. This will be particularly true for installations where the line voltage is lower than average. Tubes which do not operate properly in these models may be entirely satisfactory for use in other sets operating at a higher voltage.

Sparton Models Using 485's

Low volume: If voltages are normal in models using six or seven 485 tubes,

examine all 5-prong sockets for defective contacts.

E. M. Prentke.

Sparton 930-931

Intermittent reception, cutting off: Rotor section of tuning condensers become loose causing them to rock slightly. Because of space between rotors and rotor shaft corrosion causes the rotors to lose ground, introducing up to 10 ohms resistance between the rotors and shaft. This ruins the resonant circuit. Usually touching condensers is enough to show up the condition. To remedy solder a piece of dial cable from one stator to another and ground with pig-tail to rotor shaft. The best place to solder this wire is on end of stator where all plates are joined together.

Allan Epstein.

Stewart-Warner 102-A

Resistors forming voltage divider for screen voltage do not stand up well as evidenced by excessive screen voltage or total lack of it. Coupling condenser to grid of 47 is 400 volts; becomes leaky, should be 600 volts. Severe intermittent hum was traced to grid circuit of 47. Even slight jar would bring set back to normal. Finally found short to chassis on the low end of the 47 grid resistor which is connected to decoupling resistor on mounting board spaced very close to chassis.

F. C. Wolven.

Stromberg-Carlson 82

Audio-frequency howl on strong carrier: This is due to vibration of oscillator coil assembly. Remove shield and place several tight-fitting soft-rubber washers or disks inside the coil form.

E. M. Prentke.

TCA Clarion 260

Voltage dividers: Trouble with defective voltage dividers, typical indications being high screen voltages, lack of screen voltages, etc. These units may be intermittent.

F. C. Wolven.

U. S. Radio 9A

Oscillation, motorboating: Often caused by open 7100-ohm section in voltage divider which causes all voltages to rise abnormally. (This, of course, applies only to one-speaker jobs.) If oscil-

lation persists, check condenser across output of filter. If condenser is still good, add 0.5-mfd, 600-volt unit across screen or cathode circuit to ground on i-f stage. Motorboating may accompany open voltage dividers but is more often due to loss of capacity in filter condensers.

F. C. Wolven.

U. S. Radio & Television 28, 28A, 29

Whistle: Check 0.04-mfd first audio bypass condenser for drop in value (sometimes drops to 0.007 mfd). Replacements should be made with 0.05-mfd unit.

Al. Beers.

Wells-Gardner 5E and 9B

Change in bias of sets using type 19 tube: Considerable variation has been encountered in the type 19 output tubes as used in the above mentioned receivers. In some of the sets using these tubes, poor tone quality is encountered when operated at 6 volts bias as specified in the receiver instructions. For this reason the bias on this tube has been changed to 4½ volts. All of them will function satisfactorily at that value. With regard to the receivers in the field the change is made as follows:

Series 5E: Connect the white battery lead with the "C-6" marker to the 4½-volt tap on the "C" battery. (If separate 22½-volt and 4½-volt batteries are used for the "C" connections, connect this lead to the 4½-volt tap on the 22½-volt battery.)

Series 9B and 9BM: Connect the white battery lead with the "C-6" marker to the 4½-volt tap on the "C" battery. This lead and the green and yellow lead with the 4½-volt marker will then be connected to the 4½-volt tap on the battery.

Wells-Gardner 65

Intermittent audio howl: Replace double audio electrolytic condenser (this is a 12-12 mfd unit). When replacing this unit it is necessary to remove chassis from case (but not speaker). Cut both red leads short and use them for the replacement unit.

A. H. Schoss.

Wells-Gardner 65

Low volume: Check coupling condensers in series with volume control.

A. H. Schoss.

RAYTHEON

TRADE-MARK

PARADE of All-Metal Radio Tubes



- 6A8**—Oscillator-Detector
- 6K7**—Detector Amplifier
- 6Q7**—Diode Triode Amplifier
Detector
- 6L7**—Pentagrid Mixer Amplifier
- 6J7**—Pentode Amplifier Detector
- 6F5**—Triode Amplifier

- 6C5**—Oscillator Amplifier
- OZ4**—Full-Wave Gas-filled Rectifier
(exclusively Raytheon)



- 6H6**—Detector (Diode)

- 6F6**—Power Amplifier
- 25A6**—Power Amplifier
- 25Z6**—Rectifier
- 5Z4**—Full-Wave Rectifier
- 6X5**—Full-Wave Rectifier
(Auto Sets)



HEADQUARTERS FOR TUBE INFORMATION Raytheon Production Corporation

30 East 42nd Street, New York, N. Y.
55 Chapel Street, Newton, Massachusetts
445 Lake Shore Drive, Chicago, Illinois
555 Howard Street, San Francisco, Calif.

HELP FOR SERVICEMEN WHO WANT TO GET INTO PUBLIC ADDRESS

Perhaps you are one of those radio servicemen who have been standing by helplessly while others have cashed in to the extent of \$25 per day and more on public address. If so, here is YOUR opportunity to get into this lucrative yet little exploited field.

- Many radio servicemen have stayed out of this field deliberately because they felt that they lacked sufficient technical knowledge—the ability to accurately recommend proper equipment for each particular requirement.
- No longer need any radio serviceman hesitate to get into public address, for Lafayette engineers—known the world over for their pioneering and their accomplishments in the sound field—are prepared to bring to your business a consulting service that immediately qualifies you to get into public address.
- Whatever your problem may be—bring it to us. Let our experts give you sound, authoritative advice on the proper equipment and its method of installation. There is no charge for this service. It's yours for the asking.
- NOW is the time to prepare for next summer, with its conventions, fairs, fraternal, social and athletic events. Lay your plans now by consulting in person with Lafayette engineers, at any of our 5 salesrooms, or by using the coupon below. Make 1936 a Profit Year with Public Address.
- In the meantime get a copy of our latest catalog No. 59 in which the world's largest selection of P.A. equipment is listed—amplifiers, tuners, power supply units, transformers, trumpets, phono-pick ups, microphones—in fact everything you may need at lowest **WHOLE-SALE** prices.

Lafayette P.A. Equipment is exclusively sold inter-nationally by Wholesale Radio Service Company, Inc.

WHOLESALE RADIO SERVICE CO., INC.
100 Sixth Ave., Dept. S-125,
New York, N. Y.

- Send me Catalog 59 listing P.A. equipment.
- I have a P.A. Problem. See attached letter.

Name

Address

State

City

WHOLESALE RADIO SERVICE CO.
NEW YORK, N.Y.
100 SIXTH AVE.

CHICAGO, ILL.
901 W. JACKSON BLVD.

ATLANTA, GA.
430 W. PEACHTREE ST. N.W.

BRONX, N.Y.
542 E. FORDHAM RD.

NEWARK, N.J.
219 CENTRAL AVE.

ON THE JOB . . .

HINTS ON ELIMINATING TRAFFIC SIGNAL INTERFERENCE

BY J. R. STEEN
(Radio Service Engineer)

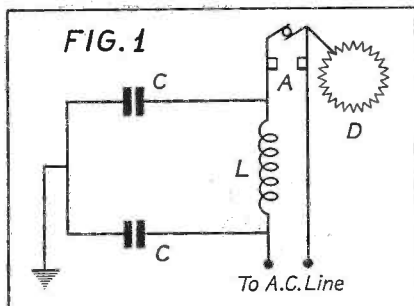
RADIO interference from traffic signals is a common cause of disturbance on both home and automobile radio receivers. Generally, however, nothing is done about it largely because people who are bothered with this type of interference either do not know where it comes from, or, if they do, they assume that it cannot be eliminated. Even Service Men have hesitated to approach the problem for lack of a definite plan for going after this business.

PROFITABLE FIELD

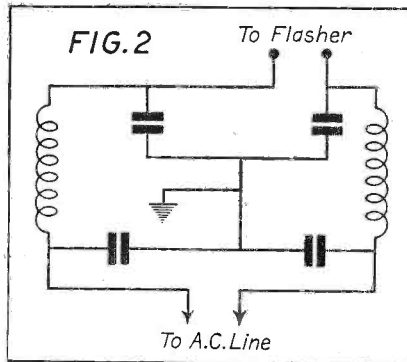
On the other hand, my own personal experience as a Service Man has convinced me that there is a profitable field here for the fellows who will go after it. Just as they did in my town, many city officials will be glad to cooperate if you go to the trouble of explaining the matter carefully and even demonstrating how much radio interference an innocent-looking traffic light can actually cause. With the number of lights now used in the average town or city, I hardly have to point out what a juicy slice of business can be had if you obtain the job of eliminating interference from them. Certainly it is a field well worth the time and effort required to win it.

LOGGING COMPLAINTS

Complaints regarding traffic light interference should be made to the local police commissioner, public works commissioner, city electrician or contractor—whichever is in charge according to your local set-up. This information can



Circuit of traffic signal contactor with filter installed.



This type of filter circuit should be used for the more obstinate cases.

easily be obtained at city headquarters.

The yellow caution light or blinker (flasher) is usually the worst offender. This is good for the Service Man, for such lights are generally installed at minor traffic intersections in residential districts where many radio receivers are in use. The red and green lights operating at regular 10- or 30-second intervals do not often cause really serious interference.

INTERFERENCE ELIMINATION

Fig. 1 shows one type of contactor. "D" is a saw-toothed disc operated by a small motor. "A" represents the contacts in series with the flasher lights. Choke L consists of approximately a ½-pound roll of No. 18 bell wire (up to a 5 amp circuit), wound on a core of about 1½-inch diameter. Condensers "C" are from 1 to 1.5 mfd, 220 volt a-c ratings.

More obstinate cases of traffic light interference will require the filter shown in Fig. 2. If interference still persists after using such a filter, add circuit of Fig. 3. The combination of either circuits 1-3 or 2-3 will eliminate radio noises from this source in just about every case. The values of condensers and chokes in Figs. 2 and 3 are the same as those for Fig. 1.

As is well known, much of this interference elimination work is experimental up to a certain point. It means working by the method of "cut and try." However, if the Service Man

has the filter parts shown in each of the three diagrams he will be well equipped to go out and show real results.

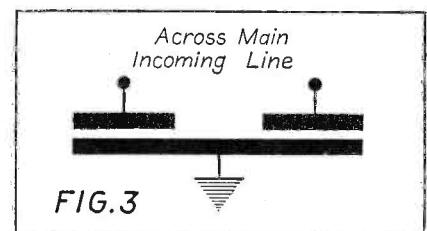
HOW MUCH FILTER?

In my own work along these lines, I have dispensed with the "cut and try" method in favor of the Sprague Interference Analyzer. This is the last word in noise elimination work—one as valuable in ordinary home interference jobs as it is when approaching traffic-light problems. Simply by cutting this Analyzer into the circuit and then applying various filter banks by turning the dial you are enabled to find in short order the exact filter combination to produce best results. After working "cut and try" for several years with many loose filter units, I find that the Sprague Interference Analyzer reduces my working time on a job by more than half.

INSTALLING FILTER

After the correct filter combination has been determined these units can be installed directly in the signal box if there is room, or in a metal container fastened outside of the box. The traffic-light maintenance crew will often dig up a container and attach it to the signal box for you. Westinghouse makes a good weather-proof marine box which is ideal for the purpose.

A car radio, close to the control box, is a great help while working on the job, or have a helper stand near a window of an adjacent house so he can



This arrangement should be added to that of Fig. 2, if interference still persists.

signal to you while he is listening to the radio. By listening to the radio you can tell at once when you have hit upon the proper filter combination to eliminate the interference.

BROAD FIELD

This sort of work represents a broad field warranting real consideration from every Service Man who is looking for ways and means of expanding his business along practical, profitable lines—and it is one which will become increasingly important as more auto radios are used and as short-wave reception becomes even more popular with the consequent necessity for still more sensitive home receivers.

Dependable



Suited to
SERVICE MEN'S NEEDS

**HIGHEST
QUALITY
SOUND
ENGINEERING**

**Ken-Rad
Radio Tubes**

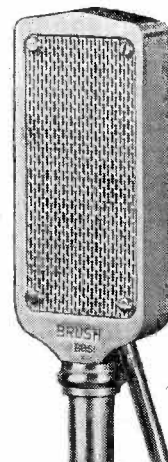
Glass or
Metal
Radio Tubes

THE KEN-RAD CORPORATION, Inc., OWENSBORO, KY
Division of The Ken-Rad Tube and Lamp Corporation
Also Manufacturers of Ken-Rad Incandescent Electric Lamps

For Your Next "P.A." Job this New *Sound Cell* Microphone

The Brush B2S microphone is an ideal pickup for "PA," dance band, and sound car work. It is a quality instrument — now available at a remarkably low price.

only
\$45⁰⁰
List



Brush B2S
Microphone

Leads are taken directly to a "high gain" amplifier. No input transformer is required. Response is not affected by wind or severe changes in atmospheric conditions. No distortion from close speaking. Weight only 3 ozs. Height 4 1/4 inches.

Use a B2S mike on your next "PA" job. Typical sound cell construction—insures satisfactory operation. Fully guaranteed. More details, circuit diagrams, etc., available on request. Write for copies today!

The **BRUSH** DEVELOPMENT COMPANY
PIEZO ELECTRIC CLEVELAND, O.
1882 E. 40th St.
MICROPHONES • MIKE STANDS • TWEETERS • HEAD PHONES • LOUD SPEAKERS

This is the Portable P. A. SYSTEM

that is making
money



*No. 60 Operadio

for RADIO MEN

This Portable Public Address System incorporates the same high quality reproduction as in a permanent installation, and yet is flexible in its uses and foolproof in operation. Low in price, with a nice profit margin, you will find a large market for this unit.

*If you are already stocking this model, you will be interested to know that by using our Model 70 Power Booster you can approximately triple the power of No. 60.

HIGHLIGHTS

Incorporates a very powerful Class "A" Amplifier having 12 watts power output, a heavy duty 10" Electrodynamic Speaker, a high grade two-button Carbon Hand Type Microphone, an ingeniously designed Control Box and the necessary connection cords for the speaker and microphone. Comes mounted in a single leatherette covered carrying case.

OPERADIO

MANUFACTURING COMPANY

ST. CHARLES, ILLINOIS

Export Division—347 Madison Ave., New York, N. Y.

Curtis
Electrolytic
CONDENSERS

"STANDARD"

6 volt to 550 volt

"BLUE RIBBON"

630 volt

In any style, size or capacity.

For Radio Filter, Audio By-pass, Transmitting and Motor Starting.

Every Condenser guaranteed to
give Satisfaction.



Patent
No. 1950352

● CURTIS CONDENSER CORPORATION ●

3088 WEST 106TH ST. CLEVELAND, OHIO

HIGHLIGHTS . . .

RIDER'S VOLUME VI

There has been—until the advent of Rider's Perpetual Trouble Shooter's Manual, Volume VI—exactly 18.25 inches of diagrams and what have you to Mr. Rider's bookshelf. The sum total width occupied by the Rider Manuals is now 21.5 inches . . . almost two feet, and God knows how many thousand pages.

Volume VI of the perpetual series is identical to the others in dimensions, cover, manner of presentation, etc., but unlike the others, it actually has more data per average page than previous Rider Manuals. There are 100 more "strip-in" pages in the new manual, and each "strip-in" page represents an average of four pages of manufacturer's data. There are altogether 275 "strip-in" pages in Volume VI, which represents alone about 1,000 pages of actual data.

Over 115 manufacturers are represented in Volume VI. There are 1,240 pages of circuits and information, which includes 15 double-spread pages. The new metal-tube jobs are in abundance; as a matter of fact, the Manual is right up-to-the-minute, and includes practically everything released up to as late a date as November 19th.

Volume VI not only includes practically all the new receiver circuits and servicing data, but also quite a group of old, hard-to-obtain diagrams which have not, to our knowledge, ever been published before.

Volume VI will be of particular value to the Service Man since it contains so much new and valuable data on metal-tube receivers. This data is an education in itself.

Accompanying each copy of Volume VI is an 80-page Index which covers the complete group of Rider Manuals. The Index is a great help in quickly locating a desired circuit hidden somewhere in a stack of pages which, if placed end to end, would reach, we should say, to Mars.

MAKING A LIVING IN RADIO

It has been somewhat of a mystery to this reviewer as to why Zeh Bouck, a man whose unique talents are more often directed toward the criticism of the broadcasting set-up than toward the more technical and commercial phases of the art, should have written a book relative to the job of making a living in radio. Why should he have put himself to the back-breaking task of pounding out the equivalent of 220 printed pages of material on this subject when he could have easily pocketed more fluff by confining his activities to words of sheer brilliance which bring high rates.

There is only one answer as we see it—Bouck is vitally concerned over the fellow who is either just starting out in the field of radio, or the fellow who is desirous of forging ahead; he wants to see them get at least an even break.

And, because we believe Bouck wrote "Making a Living in Radio" for the express purpose of clarifying a subject which has too often been distorted, we also believe that every word in the book is sincere.

Bouck never dresses facts in petticoats. If a man is a louse, Bouck won't call him a hummingbird, any more than he will tell you that your chances in a given phase of

radio are excellent if the facts show that such is not the case.

And that's where you get a break—for, if you want the real low-down, you can get it straight from "Making a Living in Radio." If you want to be soft-soaped, okay—there are plenty of people who will apply the old fat—but, if you want to know your chances in any branch of radio, from servicing to engineering and from brass pounding to writing radio drama, written by a man who knows the field from A to Z, then run along and buy yourself a copy of Bouck's opus. It costs \$2.00; it's worth the price of a university extension course, if you're that sort of a fellow. And you are, if you want to stick to radio for the rest of your living days.

MILLER DISPLAY STAND

Dramatizing the theme, "Eliminates Noise," a convenient display stand for the Miller line filter is offered to dealers by the J. W. Miller Company, Los Angeles.

Effective use of orange, black and white on a small card produces a display that



has sufficient attention—getting value for use in the front window and is convenient enough for an inside counter or table. The stand measures only 10½ inches wide by 11½ inches high.

The copy on the card reads "Eliminates Noise! Miller Line Filter. Just plug it in." The illustration shows a listener driven to distraction by power-line noises, and another listener thoroughly enjoying a program.

AEROVOX CONDENSER AND RESISTOR CATALOG

A larger and still more varied line of condensers and resistors is featured in the 1936 Aerovox Catalog, just off the press. Several pages have been added over previous editions, particularly to accommodate the rapidly growing assortment of exact duplicate replacement condensers for servicing standard radio sets, to feature wire-wound vitreous-enamel Pyrohm Jr. and Slideohm resistors, and to introduce a superlative carbon resistor. In the strict sense, this is a new catalog, replete with added items and many revisions, so as to bring the entire line of electrolytic, paper, mica and other condensers, as well as several types of resistors, up to the anticipated 1936 standards and requirements. A copy may be had from local jobber or direct from Aerovox Corporation, 70 Washington St., Brooklyn, N. Y.

PHILADELPHIA RADIO SERVICEMEN'S ASSOCIATION

At the recent Radio and Electric Show held in Philadelphia, P.R.S.M.A. drew thousands of spectators to their two elaborate booths by inserting a fifty-line advertisement in the largest local newspaper. The heading of the ad stated "SEE SOUND."

The booths were set up as a complete, modern workshop, equipped with newest test instruments and a complicated radio chassis under test. To this receiver was attached an oscillograph, which was demonstrated to put the story across that "a pair of pliers and a screw-priver were not sufficient equipment to repair a modern receiver satisfactorily."

Another oscillograph was connected to a microphone and amplifier. The spectators were invited to speak into the mike and SEE their voices. The crowds drawn to the booths by this stunt remained long enough to be highly impressed by the excellent service set-up and demonstration. During the show, about 80,000 pamphlets were distributed by P.R.S.M.A., which contained the name, address, and phone number of each member, listed both alphabetically and sectionally.

In November P.R.S.M.A. issued Volume 1, Number 1 of "THE PRSMA NEWS," their new monthly publication devoted to better radio repairs and improved reception. Every radio dealer and Service Man in the Philadelphia area received a copy. Many letters of congratulation have been received complimenting P.R.S.M.A. upon the excellent presentation and interesting material contained in the NEWS.

In December the following newly elected officers were installed: Mr. E. Ohldack, Pres.; Mr. E. M. Ward, Vice-Pres.; Mr. J. Bishop, Treas.; Mr. H. R. DeLong, Sec. To the Advisory Board were elected Mr. R. Thorn, Mr. J. H. Jackson, Mr. R. Mauger.

At this meeting, the speakers of the evening were Mr. H. R. Shaw and Mr. M. A. Feldstein of the General Electric Company, who gave technical lectures on new circuits and visual alignment.

PAUL G. FREED,
Chairman, Publicity Committee,
5053 Baltimore Ave., Phila., Pa.

G-E RADIO TO CONDUCT NATION-WIDE SERIES OF SERVICE MEETINGS

Concluding its current series of service meetings for radio Service Men and dealers' salesmen, G-E Radio, General Electric's Merchandise Department, Bridgeport, Conn., will conduct meetings in 100 cities over the country from November 12 to December 15. Supervision will be in charge of G-E Radio field engineers.

The meetings will be open to anyone with a technical training who is interested in the fast-moving developments in radio engineering, design and application. Attendance of more than 7,500 is expected.

Subjects will embrace clinical discussions of power amplifiers and technical data pertaining to the circuit design and operation of the G-E Deluxe Model All-Metal Tube Receiver, which incorporates General Electric's latest developments for long- and short-wave radio reception.



WIN a CASH PRIZE

Design an Amplifier using
CONTINENTAL Carbon, Inc.,
Resistors and Condensers

\$25.00, 1st prize; \$10.00, 2d prize;
10 consolation prizes of \$2.50 each

1. Secure an entry blank and rules of the contest from your distributor or directly from CONTINENTAL Carbon, Inc. A post-card will bring you full information and the latest CONTINENTAL Technical Bulletins.
2. You have only to submit an ink diagram and list of parts as described in the rules of the contest. If you build the amplifier, submit a photograph of it.
3. All entries must be postmarked not later than February 28, 1936.
4. Use any parts, but all resistors and condensers must be standard CCI products.



13912 Lorain Ave., Cleveland, Ohio Toronto, Ontario

UTAH

VIBRATORS



Tear out this ad and pin to your letter-head for FREE copy of the NEW UTAH General Catalog of vitalized radio parts

UTAH RADIO PRODUCTS CO.,
Orleans St., Chicago

WRIGHT-DECOSTER Port-A-Case



Model 890

This handsome ruggedly constructed carrying case complete with a Model 790—10" D. C. Speaker—

for Only \$14.40 List

or make it an A. C. Speaker by using a Model 470 field supply, at the low additional list price of **\$4.70**

There is plenty of extra room in the Port-A-Case for the field supply and a small amplifier besides.

Write for catalog giving full description and showing our astonishing prices for the Port-A-Case Complete with the different 12" Speakers.

*Remember the quality
always remains the same*

Buy through the Wright-DeCoster distributors. You will find them always anxious to cooperate.

WRIGHT-DECOSTER, Inc. 2253 University Ave.
ST. PAUL, MINN.

PROBLEM

To find a reliable source for all your radio supplies which will bring you the highest grade of merchandise at the lowest prices—a vast selection to fill every Radio Service need—and a speed and accuracy in shipment that cannot be excelled.

APPLY —



ALLIED's 1936 Catalog—the leading Radio Supply Guide. A real index to radio progress—brimming over with fine standard merchandise lines at lowest prices—sparkling with new test equipment developments, new P.A. systems, new metal tube radios—rich with fine selections of tools and thousands of high grade parts—everything to save you money and help you succeed.

RESULTS :

Save time—save money—get any part, any brand any time you want it—at the lowest prices—and enjoy ALLIED's speedy, helpful personal service, besides. Keep an ALLIED Catalog by your side—it pays!



ALLIED RADIO

833 W. Jackson Blvd.
Chicago, Ill. Dept. N.

Send me your FREE 1936 Catalog—the most complete Radio Supply Guide ever published.

Name

Address

City State.....

FREE

HIGHLIGHTS—continued

STORE DEMONSTRATION OF ALL-WAVE SETS

How to demonstrate one or more all-wave sets successfully in the store itself, regardless of surrounding electrical equipment and usual background noises, is explicitly told in an illustrated bulletin just issued by Technical Appliance Corp., 17 East 16th St., New York. Copies are available on request.

The Taco all-wave store demonstration system is based on the well-known all-wave noiseless antenna, which swings its aerial proper high above the inductive-interference zone and conveys the powerful, clean-cut signals over a non-pickup transmission line, down to the remote radio set. Thus maximum signal-to-noise ratio is obtained, which makes it possible to operate any set at full sensitivity and volume with minimum background noise. By means of a multiple position double-pole switch, signals may be delivered to a plurality of radio sets on the floor, for quick comparison of their respective operating characteristics. Two methods are suggested: one, a fully noise-proofed system up to the set itself, calling for a set coupler for each set; the other, a noise-proofed system with exception of leads from single set coupler at switch, to the set itself, where lowest-priced installation is sought and noise conditions are not severe. Standard Taco antenna system components are used, plus any standard multiple position double-pole switch.

FERRANTI BULLETINS

Ferranti Electric, Inc., 130 West 42 Street, New York City, have recently released two interesting bulletins. One bulletin covers the New Ferranti electrostatic voltmeters for a-c and d-c measurements; while the other one deals with a clip-on ammeter, a split-core current transformer, the primary of which is formed by the conductor whose current is to be measured, the secondary being connected to a milliammeter.

NEW SOLAR CONDENSER CATALOG

A new type of condenser catalog has been issued for the benefit of the radio Service Man by Solar Manufacturing Corporation, 599 Broadway, New York City, who make fixed capacitors of all types. This new catalog, known as No. 7-S, lists wet, dry, paper, mica and trimmer condensers in a clearly defined manner so that "he who runs can read." A special feature of the catalog is a large tabulation of exact replacement dry electrolytics with an illustration of each one so the Service Man can be certain he is ordering the correct type.

The catalog carries a complete listing of the new ultra compact Solar "little giant" dries, which have caused quite a sensation in the trade because they almost literally "fit anywhere." "Elim-O-Stats," the new Solar radio noise suppressors, designed to eliminate man-made static in connection with modern receivers and electrical appliances, are also listed. Established radio Service Men as well as interested amateurs can obtain copies of this catalog by addressing the manufacturer.

OXFORD-TARTAK COMBINE

Of interest to Radio Jobbers, Dealers and Service Men is the announcement of the formation of the Oxford-Tartak Radio Corporation at 350 West Huron Street, Chicago, Illinois, to merge the business, equipment and assets of the Oxford Radio Corporation and the Tartak Manufacturing Company, both of Chicago.

Increased space is being taken at the above address and production facilities are being increased to take care of the growing demand for the new Oxford Hi-Fidelity line of Speakers and to give better service to customers.

Featured among the items of the new line will be Oxford Chromavox Speakers, Dynatest Universal Speaker Testing Devices, and a most complete line of replacement Speakers for Radio and Sound Amplifying equipment. The line is said to be

exceptionally complete and to offer advantages both from a technical and a merchandising standpoint. Jobbers are now being appointed for many new territories.

Paul H. Tartak is President and General Manager of the combined organization.

LAUNCH BIG METAL TUBE ADVERTISING CAMPAIGN

A giant advertising and promotional campaign designed to further educate the public on the advantages of metal tubes has been launched by the RCA Radio Tube division with the cooperation of 48 of the leading radio set manufacturers who are using metal tubes in their new radio models.

Large newspaper space, ranging from full pages to 1000-line advertisements in over 100 newspapers in the principal cities; special metal tube newspaper sections with cooperative advertising, publicity stories and photographs; special window and store displays, and radio broadcasting are among the media being used in the campaign.

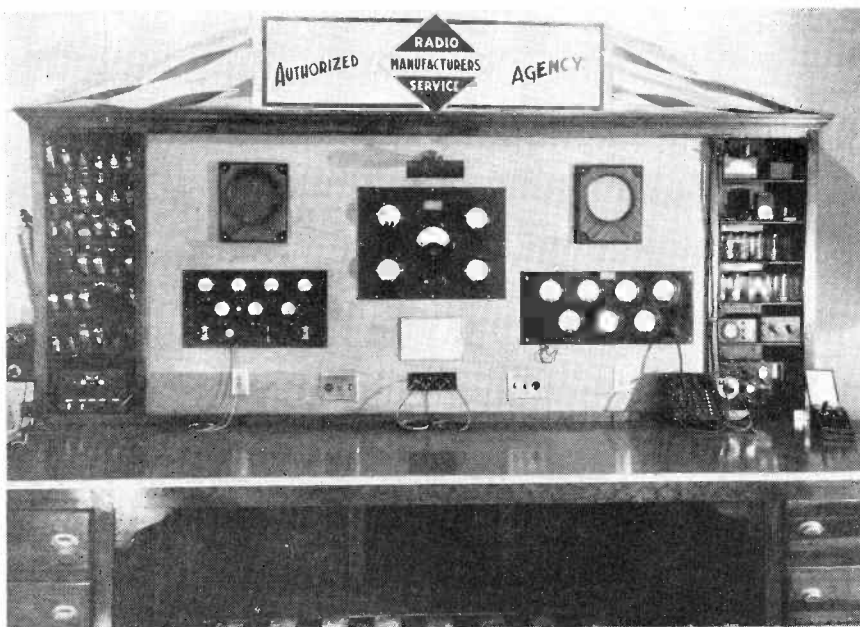
The first full-page advertisement has already begun to appear and is to be followed by similar ads. Blazened with a headline reading "48 RADIO MANUFACTURERS NOW USE METAL TUBES", the first ad lists these prominent set makers in alphabetical order at the top of the page to point out that the Radio Industry has enthusiastically adopted metal tubes by an overwhelming majority. "Metal tubes", the ad continues in a sub-head, "are the Sign of an Up-to-date Radio", "Be Modern—Get a Radio Set with Metal Tubes!" The copy then goes on to name the milestones in radio progress, up to the advent of metal tubes, which are hailed as the greatest tube advance in 28 years. The illustrations consist of a number of metal tubes and a cut-away drawing of a metal tube showing its special features. Enclosed in a box is the following pungent paragraph.

"This is the age of steel and electricity. Metal tubes, designed by the famed General Electric laboratories, and made by RCA and other tube makers licensed under RCA patents, are manufactured with a precision that is possible only in steel. Precision is the cause and measure of radio efficiency. Metal tubes give you more efficient reception. They are quieter, more stable, more enjoyable and especially superior in all-wave sets. Let any radio dealer prove this to you".

Reprints of this ad in large quantities are being widely circulated by all of the 48 manufacturers. In addition, special kits made up of window streamers, stamps, set signs and other material are being sent out to all dealers. Each of the manufacturers has notified his dealers and distributors to tie in locally with the appearance of these big metal tube ads and to arrange for metal tube radio sections.

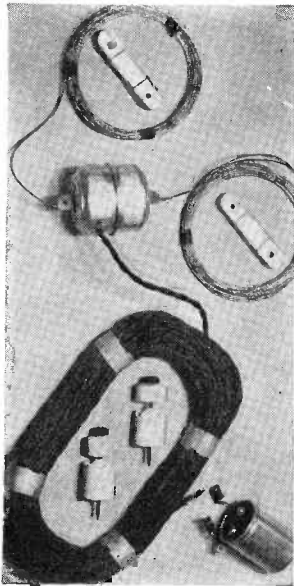
NEW BRUNO CATALOG

A new catalog has been issued by Bruno Laboratories, 22 West 22d St., New York City, illustrating their line of velocity microphones for amateur, experimental, public-address and broadcasting uses. Methods used to attain improved tone quality and sensitivity are described. The entire line of microphones represents a complete redesign by the engineers of Bruno Laboratories.



The attractive (and very efficient) test bench used by Shannon Radio Service, Mount Vernon, N. Y.

Thousands of All-Wave Antennae
Were Boiled Down to Produce This



TACO Noiseless ANTENNA

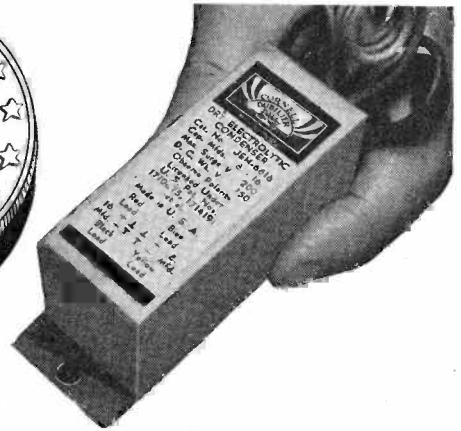
- Designed by same engineers responsible for transoceanic communications antennae.
- This No. 20 Kit the result of thousands of combinations and tests.
- Startling results in broadcast, amateur and short-wave bands.
- Sells on demonstration . . . in home or store . . . and stays sold. A safe money-back-if-not-satisfied item. \$6.75 list, less discounts.
- Positively out-performs any all-wave antenna on market. Test it for yourself . . . or insist on our evidence.

DATA Send for technical and merchandising facts. Meanwhile, order a kit from local jobber. And don't lose any more time getting behind this money-making item.

TITANCO

TECHNICAL APPLIANCE CORPORATION

17 East 16th Street :: :: New York City



SERVICEMEN ACCLAIM THE NEW TYPE J-EH and here's why—

• **COMPACT—CONVENIENT**
Encased in handy flanged cardboard containers, approximately 3" long by 1 1/4" square. Separate leads coded for polarity and capacity. Ideal for tough AC-DC midget assignments.

• **DEPENDABLE**
Type J-EH "stays put"—no kicks or return calls to make good. You build your "rep"—and add "steady" customers by using Type J-EH, because they stand up!

When you buy C-D you get more for your money. Get the full dope from your local C-D jobber. Catalog 128 on a complete condenser line available free for the asking.

• **INEXPENSIVE**
By buying from the world's largest manufacturer of condensers you enjoy quantity prices due to volume production, on quality condensers. Type J-EH is a real money saver!

Type	Cap.	List Price
J-EH-6404	4-4	\$.85
J-EH-6408	4-8	.95
J-EH-6803	8-8	1.20
J-EH-6416	4-16	1.25
J-EH-6816	8-16	1.35

CORNELL-DUBILIER

C O R P O R A T I O N

4375 BRONX BOULEVARD
NEW YORK



ONE OUT OF FOUR SERVICEMEN FAIL!

According to conservative estimates, one out of four servicemen fail or go out of business EVERY YEAR!

Will you be among them? Will you be one of the even larger group making only a bare living from the work. . . . Or, will you join the select, ambitious few who, in every town and city, grasp existing opportunities and build an outstanding success?

Sprayberry Training is specifically designed for men who aim to be in the latter group. Through it, I want to help you forge ahead as I have already helped hundreds of others. I want to help you do all types of radio work easier and quicker—help you build a REAL future. And, as proof of what I might do for you, I can point to a record of success that is second to none.

Let Me Help You Build A REAL Future!

Mine is not a "course" for beginners. It is **ADVANCED SERVICE AND BUSINESS TRAINING** for men who believe in looking ahead. No "fluff," fancy bindings or useless theory. From beginning to end, you get sound, **PRACTICAL HELP**—at a fraction of the cost you might expect to pay. Investigate!



F. L. Sprayberry 2548 University Place, N. W.
Washington, D. C.

Without obligation, please send your free booklet "PUTTING PROFITS & EFFICIENCY INTO SERVICING."

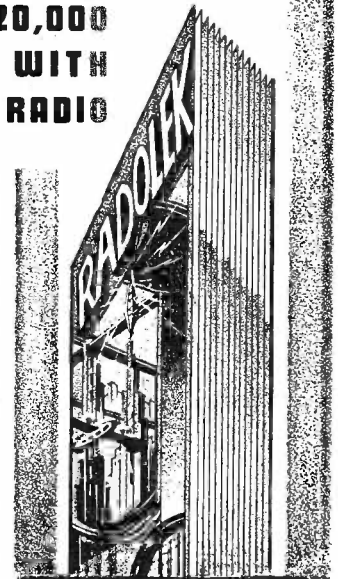
Name

Address S-12-35

Radio Parts Specialists

... SUPPLYING 20,000
SERVICE MEN WITH
EVERYTHING IN RADIO

• The New Radolek 1936 Profit Guide is NEW! BIGGER! BETTER! The most complete Radio Parts Catalog ever published—it's colossal—gigantic—it's the "top"! Never has there been a Radio Parts Catalog comparable to this superb book. Every page brings you extra profits. Completely revised—right up to the minute, bringing you everything in radio—at the right prices. Over 160 pages of valuable, money-saving "radio-buying" information. Over 10,000 separate Repair Parts—hundreds of new items—a complete, new selection of Radio Receivers and Amplifiers. Contains the most complete, exact duplicate, replacement parts listings of volume controls, condensers, transformers, vibrators ever compiled. This is your book—it's FREE. Send for IT!



THE
RADOLEK
COMPANY

567 W. Randolph St., Chicago

Name

Address

City

SERVICE MAN DEALER

Send Coupon →

THE MANUFACTURERS . . .

MILLER IRON-CORE I-F'S

Designed to have twice the selectivity and gain of an air-core type, a new iron-core intermediate-frequency transformer, with duo-lateral wound coils, has been developed by the J. W. Miller Company, Los Angeles, for distribution through regular trade channels.

The rustless and corrosionless core of uniform quality is known as "Crolite," a finely divided magnesium alloy imbedded in a ceramic body. The mica compression type tuning condensers assembled on a special ceramic base are adjustable from the top of the shield.

Aluminum, rather than the less expensive zinc alloy, is used for the shield, which measures only $1\frac{1}{2}$ x $1\frac{1}{2}$ x $3\frac{1}{2}$ inches overall.

Miller engineers point out that a single-stage intermediate amplifier using Miller iron-core transformers can be designed to have the selectivity and gain of a two-stage air-core type with approximately half the inherent noise level, resulting in a better signal-to-noise ratio.

ARCTURUS INTRODUCES METAL TUBE LINE

The Arcturus Radio Tube Company, Newark, N. J., announces its "Coronet" Metal Tube line, utilizing a new and exclusive principle in receiving tube structure. It is claimed that the "Coronet" seal in these tubes enables the application of the manufacturing technique perfected by the industry over the past 28 years.

By using the tried and proved advantages of the vacuum tube art in the manufacture of "Coronet" metal tubes, the inherent weaknesses of the original metal tube are overcome. This special construction also results in a material reduction of the input and output capacities and makes possible uniformity in inter-element capacities. A special process has been developed to permit proper bombardment of the inner elements to the temperature necessary to disperse with residual gas troubles. The "Coronet" seal also precludes the possibility of shorts between wires and ground.

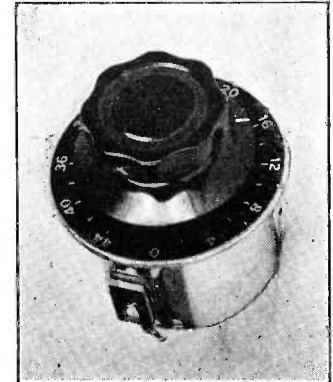
In addition to the foregoing advantages of Arcturus "Coronet" metal tubes, the manufacturer claims that they have more dependable vacuum than the original metal tube; lower operating temperatures permitting closer arrangement of chassis components; rugged structure eliminating metallic sleighbells and resulting in quiet operation.



The types already in production are 5Z4, 6A8, 6C5, 6F5, 6F6, 6H6, 6J7, 6K7 and 6L7.

MULTIPLE-SECTION MIDGET ELECTROLYTICS

Extreme compactness and utility are combined in double- and triple-section midget electrolytic condensers recently made available by Aerovox Corporation, Brooklyn, N. Y. Such units provide entirely separate and distinct sections in a single cardboard container, with individual positive and negative flexible leads for each section. The double-section units are available in 250 and 525 volt peak ratings, in combinations of 4-4 to 8-16 mfd. A single 8-8-8 mfd, triple-section unit is offered. Heavy cardboard cases, thorough impregnation, positive sealing and handy mounting flanges characterize these units.



construction. It has been possible to construct an attenuator of remarkably small dimensions (2 1-8 inch diam. by 1 13-16 inch depth) having 22 steps of attenuation covering a range of 50 decibels.

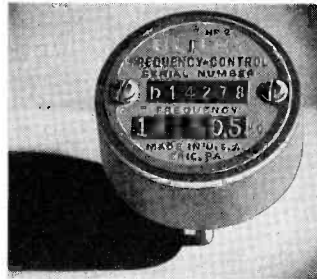
Besides sound recording, public-address and broadcasting applications this attenuator is also ideal for use in the laboratory in all types of experiments requiring low d-c or a-c voltages. Particularly in chemical, physical and medical research many uses for this instrument are apparent. By, for instance, connecting two of these attenuators in series and connecting a 1.5 volt battery to the input leads the output will give voltages from 0.000047 volt.

A bulletin describing the new attenuator and some of its many uses is now available for distribution.

NEW BLILEY 20-METER CRYSTAL

The Bliley Electric Company announces a new type mounted quartz frequency control unit for the 20-meter amateur band covering ranges from 14,000 kc to 14,400 kc.

Over a year has been spent on research and testing this crystal before placing it on



the market. Several new features are incorporated into the design. The crystal itself is thicker than an X-cut would be for this band, which gives it greater power handling ability and makes it less sensitive to mechanical shock. Likewise the temperature coefficient of the new 20-meter unit is considerably less than that of an X-cut, assuring greater frequency stability.

Known as the type HF-2 Unit, the Bliley 20-meter crystal delivers excellent power, will not jump from one frequency to another. The crystal is mounted in a circular holder of Victron G, a special material having extremely low radio-frequency losses. The holder plugs into any five-prong tube socket. Standard conventional crystal circuits are employed when using the Bliley HF-2 Unit.

NEW P-A ATTENUATOR

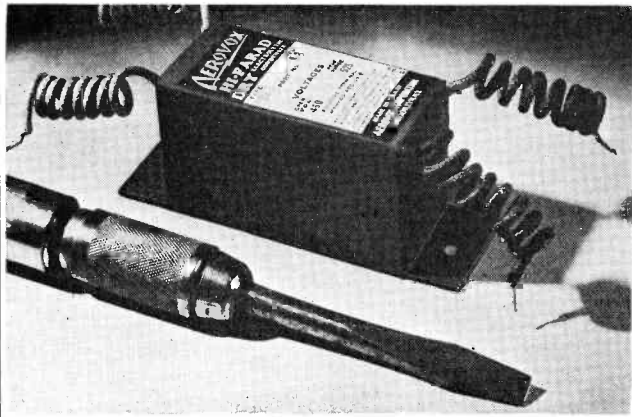
The Tech Laboratories of 703 Newark Avenue, Jersey City, N. J., announce a new improved attenuator specially designed for p-a and portable equipment. This attenuator meets the demand for a low priced compact unit of wide range and high quality

CLAROSTAT VOLUME CONTROL REPLACEMENT KIT

Volume control replacements for the bulk of the more popular radio sets are met by a handy and inexpensive kit now made available to Service Men by the Clarostat Mfg. Co., Inc., 285 N. 6 St., Brooklyn, N. Y. The kit is offered in two types: one, made up of composition volume controls; the other, comprising wire-wound volume controls. Each kit has five volume controls, three power switches that snap on to any Clarostat volume control, and five $\frac{1}{2}$ -watt flexible resistors used as external biasing resistance. The volume controls are of assorted resistance carefully chosen to serve the greatest variety of popular sets. Buying these kits, the Service Man gets the full benefit of big-lot prices, and, in addition, receives the five flexible resistors free of charge.

HYGRADE SYLVANIA ANNOUNCES TYPE 6E5

Hygrade Sylvania Corporation announces production of Type 6E5 intended primarily for use as a visible tuning indicator of the electron-ray type. Structurally, the tube consists of two parts—a triode which functions as a d-c amplifier, and the electron ray device. The latter unit has a round conical plate or "target" visible through the top of the bulb, which fluoresces during operation, showing a shaded or unlighted section when the receiver is not directly in tune. The triode section of the tube is of the conventional indirectly heated construction.



Dual Midget ELECTROLYTICS



Aerovox PBS midgets in 250 and 525 v. peak ratings.

Wide range of combinations for every need.

Heavy cardboard cases. Thoroughly impregnated. Fully sealed.

With flanges for ready mounting. Break off if not needed.

Colored pigtails.

Most capacity for least cost. Least bulk for greatest service.

Two entirely separate sections in one handy unit. Four leads—two positive, two negative. Most compact yet consistent with safety and long life. Unit shown is 8-8 mfd. 525 v. peak. Compare it with screwdriver alongside! Ideal for AC-DC midget set repairs. Or for crowded assemblies. Also triple 8 units, slightly larger. Send for new 1936 catalog covering complete condenser and resistor line.



CORPORATION

80 Washington St., Brooklyn, N. Y.

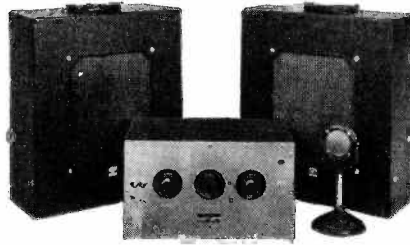
P.A. Systems



GET YOUR SHARE!

... of profit on P.A. Sales and Rentals

The market exists. It's just a matter of having the right equipment and then suggesting its use. And alert service men throughout the country are making "important dough" with Bell P.A. Systems . . . they're so efficient, flexible, and economical. You, too, can start cashing in. Write now and get details of Bell's full line. Then you'll be ready to start.



Model P.A. 3-C

A popular P.A. System, remarkably low priced. Powerful enough for the majority of needs and built for layman operation. 15 watt output, twin heavy-duty speakers, high fidelity crystal microphone.

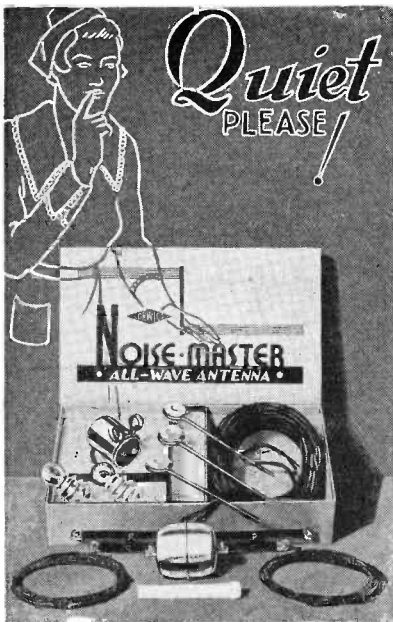
With two separately controlled input channels, recordings and voice can be run simultaneously. Two compact, light Keratol covered carrying cases. Total weight, 74 lbs.

And for you, Mr. Jobber!

We have a real proposition in a few select open territories. With the increasing demand for P.A. systems, plus our efficient equipment and promotional help, we can show you the way to substantial profits. Let's discuss it.



BELL SOUND SYSTEMS Inc.
61-62 East Goodale St.
COLUMBUS, OHIO



Quiet PLEASE!

"NOISE-MASTER"

Makes every receiving set a BETTER set

Electrically AUTOMATIC in operation

LIST PRICE \$6.75

Also available with special transformers for European broadcast bands . . . list \$7.00

Eliminates static on both broadcast and shortwave bands.



QUIET is what the set-owner craves, and here's the way to give 'em what they want. This A.A.K. licensed product, designed and engineered with typical CORWICO thoroughness, needs no manual operation after a qualified service-man has adjusted it. It eliminates noise and improves reception EVERYWHERE. Use it on your next installation!

Write for descriptive literature on this and other CORWICO units.

Cornish Wire Co., Inc.

30 Church Street

New York City

DESIGNED FOR

Speedy and Efficient

SERVICE WORK



Point-to-Point Tester Model 720-A. Dealer Net Price . . . \$15.00

With this Point-to-Point Tester defects can be localized without removing chassis from cabinet. Speeds up radio service repair work, measures resistance. Capacity and continuity, checks voltages of tube circuit.

Model 730-A Point-to-Point Tester same as Model 720-A except has Triplett Model 223 D.C. Voltmeter. Dealer Net Price . . . \$18.60

See them at your Jobbers. Write for Complete details.

Readrite manufactures all types of testers used for servicing Radio Sets, including Set Testers, Tube Testers, Resistance, Continuity and Capacity Testers, Point-to-Point Testers and inexpensive Indicating Meters.

MAIL THIS COUPON

READRITE METER WORKS
12-17 College Drive, Bluffton, Ohio

Please rush details on Model 720-A

730-A Send Catalogue

Name

Address

City State

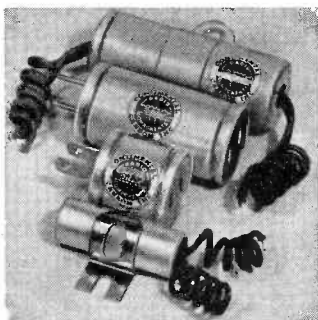


MANUFACTURERS—continued

CONTINENTAL "FILTERCANS"

Man-made static reduction is the object of seven new types of supply line filter devices developed by Continental Carbon, Inc., 13900 Lorain Ave., Cleveland, Ohio.

Filters designated for use with small motors, heater pads, vibrators and neon



transformers are of the type which prevents radiation of high-frequency impulses on the supply lines. Two designs are specifically for use between a radio receiver and a power line and are of the convenient plug-in type which can be quickly connected and demonstrated. For oil-burner motors and noise-producing devices with grounded frames, two filters are provided with mounting straps to be attached directly to the apparatus. Five of the seven filters employ combination network of inductances and condensers. The filters are rated to carry 5 amperes, a-c or d-c.

The principle of the filters is to prevent radiation of interference by capacity or capacity and inductance and to block line noise from entering a receiver by diverting extraneous signals to ground or shunting the r-f component to the grounded side of the line.

The word "filter" and the first three letters of the firm name have been combined into the word "Fitercon," as the general designation for the new noise-reduction devices.

SOLAR "LITTLE GIANTS" ADD DUAL TYPE TO POPULAR LINE

The service trade is now familiar with the virtues of "little giants", the ultra-compact midjet dry electrolytics introduced by Solar Mfg. Corp., 599 Broadway, New York City, some months ago. Reduced to a startlingly small size, so that for equal capacity and voltage ratings, they need only about half the space required by other so-called "midjets." "little giants" have earned a high rating with the servicing fraternity.

Solar, accordingly, and in answer to a definite demand, now announces "little giants" of the dual type. This series affords the same space-saving economy, and offers lower cost than buying two singles, with increased convenience through flange mounting. They are made with separate sections and with leads from each section, so connections may be arranged to fit any circuit layout. Four new types are available. Capacities of 4+4 mfd, 250 volts surge peak; 8+8 mfd, 250 volts surge

peak; 4+4 mfd, 525 volts surge peak, and 8+8 mfd, 525 volts surge peak.

Service organizations are invited to write to Solar at the above address for complete information and samples.

AMPLIVOX AURITON

A simple, practical device for diverting signals from the loudspeaker to earphones has been designed by the Amplivox Labs., 227 Fulton St., New York.

It is called the Auriton. Its outstanding features are first, that it automatically silences the speaker when the phones are plugged into the circuit; second, that incorporated in the device is a circuit for using the full amplification of the receiver for listening. This permits using the device to operate a speaker on the porch, in bedrooms, etc.

The circuit is not unbalanced in any way; nor is any damage possible to the receiver.

The practical advantages are that it permits the listener to hear programs at all times without interfering with other members of the family, in complete "privacy". Auriton is especially helpful to the hard-of-hearing.

A 5-foot cable permits placing the device at the fingertips of the user, yet is not in the way. The Auriton avoids the



necessity of rewiring the receiver for an earphone jack.

Available in several models so that it can be used with either single audio power tube or with audio power tubes in push-pull.

Complete information available in new Bulletin O.

"PRECISION" ELECTRONOMETER TUBE ANALYZER

The Precision Apparatus Corporation introduces the Series 500 Electronometer, said to embody many advanced circuit features to fill the need of tube analyzing in an extremely accurate, complete and speedy manner.

The following is a condensed list of the outstanding features employed:

1. Tests over 300 tube types including all types of glass, metal, metal glass and glass octal base tube series.
2. Hot cathode leakage test.
3. Hot neon inter-electrode short test between any elements.
4. Tubes tested under properly rated loads so that damage to the tube will not occur by drawing excessive emission from the filament.
5. Sufficient current is delivered by the power tubes to show up poor cathode structure under heavy load conditions.
6. Complete free point tube analysis provides for extreme flexibility for future

tube releases without the necessity of rewiring.

7. Gives individual tests for each section of

- (a) full-wave rectifier tubes
- (b) double-triode tubes
- (c) triode-diode tubes
- (d) pentode-diode tubes
- (e) duo-diode tubes
- (f) pentode-triode tubes
- (g) frequency-converter tubes.

8. Line voltage checked directly on the meter.

9. Center tapped filament tubes 6Z5, 12A5 and 12Z5 can be checked for shorts.

10. Large 4-inch square meter with a three colored English reading scale plate.

11. Neon condenser leakage test.

12. Easy to operate.

The No. 500 Electronometer can be obtained in three types: portable, counter and panel type.

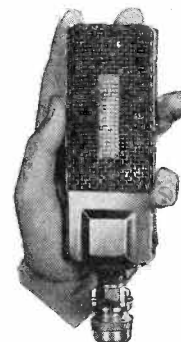
Circular matter giving complete information may be obtained by writing to Precision Apparatus Corporation, 821 E. New York Ave., Brooklyn, N. Y.

BRUNO VELOCITY MIKES

Two types of velocity microphones for direct connections to the grids of vacuum tubes are announced by William Bruno, President of Bruno Laboratories, 22 West 22nd St., New York City. One of the types has an output impedance of 100,000 ohms, suitable for connection to a vacuum tube as used in the customary pre-amplifier, and the other has an output impedance of 5000 ohms, for circuits using special tubes with relatively low input impedance, or conventional tubes with special grid loading.

There are two models for each type. One model is flat to one decibel from 50 cycles to 12,000 cycles, and the other to two decibels from 60 cycles to 10,000 cycles. An engineering circular is obtainable from the manufacturer.

The high impedance velocity microphones dispense with the need of a coupling transformer, since usually such microphones would have impedances of 200 or



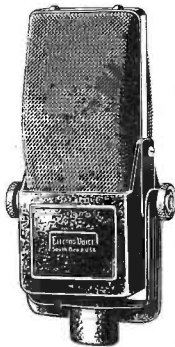
500 ohms, impractical for direct connection to a tube grid circuit because of the loss suffered through mismatch.

"The new high impedance type velocity microphones," said Mr. Bruno, "increases the gain and also reduces the hum."

A complete list of various constructions and designs are available by writing Bruno Laboratories.

ELECTRO-VOICE

HUM-FREE VELOCITY MICROPHONES



Among the many exclusive features that are found in this new Velocity microphone series, elimination of hum pick-up is an important one. The intelligent application of basic engineering principles does the job with extraordinary efficiency. The High Impedance type, for example, can be operated within eighteen inches of the power transformer and the 200 ohm type, even closer. This has never before been possible with any other Velocity microphone in the medium price class and is just another reason that your ELECTRO-VOICE will be a joy to own and use.

Stocked by reputable jobbers.

Electro-Voice Mfg. Company, Inc.
332 E. Colfax Ave. South Bend, Ind., U. S. A.

SERVICE? If you service, we can supply you with 'most anything in radio, from our large stock.

SUPREME INSTRUMENTS ON TIME PAYMENTS. This high grade line available from stock.

SUPREME 310 FOUNDATION METER KIT

The new, specially designed Supreme 5 inch meter is fan shape and incorporates 26% longer scales and larger figures. Combined with the parts kit, it provides 2 D.C. current ranges (0/5/125 mils.), 4 A.C. voltage ranges (0/5/125/500/1250 volts), 4 D.C. voltage ranges (0/5/125/500/1250 volts), 4 output voltage ranges (0/5/125/500/1250 volts), and 3 ohmmeter ranges (0/2,000/20,000/2,000,000 ohms). A complete circuit diagram is also included.

Complete 310 Meter Rectifier and Resistor Kit
Dealers' net price \$12.74

RCA OSCILLOGRAPHS and OSCILLATORS
WEBBER · TRIPLETT · BURTON · RADIO CITY

GROSS RADIO, INC.

51 VESEY STREET NEW YORK, N. Y.

THE TOOLS THAT MAKE THE HARDEST JOB Easier

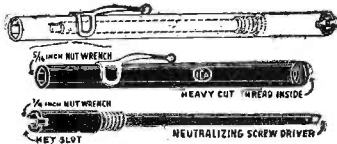
ICA COLORED NEUTRALIZING TOOL SET complete with screw driver. Supplied with vest pocket clip and composed of two socket wrenches telescoping into each other with screw driver attachment.

No. 1027 List \$6.00
Complete line of wrenches—test tools—leads and equipment that every serviceman needs. . . .

See your local ICA jobber and let him show you a real serviceman's outfit. Inexpensive—of high standards, the ICA tools will fit your requirements to a "T." Send for complete literature.

INSULINE CORP. OF AMERICA

25 PARK PLACE, NEW YORK, N. Y.



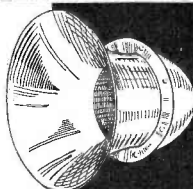
THE new ALL-ALUMINUM PARABOLIC DEFLECTOR BAFFLE with Weather-proof Speaker Housing

HOPE PARABOLIC BAFFLES assure a more effective sound distribution and minimize feed-back difficulties. Constructed of heavy gauge spun aluminum, reinforced, and beautifully finished with a special aluminum lacquer. Any cone speaker can be easily mounted in the housing, making the assembly ready for immediate operation.

MODEL 100 (Illustrated)—Depth of housing, 10"; Speaker opening, 10" diameter; Length of horn, 10"; Bell opening, 17" diameter; Overall outside dimensions, 17" x 20". This model is suitable for all 10, 11, and 12" cone speakers.

Write Dept. RS. for illustrated literature on HOPE Horns and Trumpets. A complete line at attractively low prices.

HOPE MANUFACTURING COMPANY
401 Broadway New York, N. Y.



\$6.95 NET

Insist on this Trade Mark

Radiart

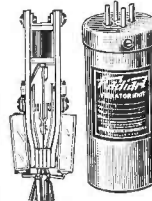
Exact Duplicate Replacement VIBRATORS FOR AUTO RADIOS

Every electric auto radio in use means a vibrator replacement eventually. Only with Radiart can you cash in on this market completely. Only Radiart makes a COMPLETE EXACT DUPLICATE line. Only Radiart has the experience of furnishing initial equipment to more than 70% of the auto set manufacturers. Look for the orange and black label on the box and on the vibrator, if it isn't there it isn't a genuine Radiart vibrator. In making replacements choose the vibrator the set manufacturers themselves prefer—you will be sure of a satisfied customer. Available at all good jobbers. Write for catalog sheet.

THE RADIART CORP.

13229 Shaw Ave.

Cleveland, O.



New! POSITIVE-AND-SMOOTH-ACTION MIKE STANDS

Featuring positive, NON-SLIDING, ball-bearing clutch. Will never wear out . . . never require adjustment. WILL NOT "CREEP." Tightens with only 1/8 turn of clutch. Mike can be ROTATED WITHOUT LOOSENING CLUTCH. Smooth, PNEUMATIC-LIKE ACTION up and down. A model for every purpose.

WRITE FOR ILLUSTRATED BULLETIN S.

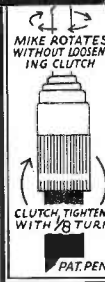
NEW! HIGH LEVEL VELOCITY MIKE

(High impedance—2000 ohms) Eliminates (1) separate pre-amp. (2) input transformer and its losses, (3) hum trouble and feedback.

WRITE FOR BULLETIN H.

AMPERITE Company 561 BROADWAY NEW YORK

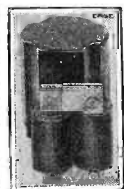
AMPERITE 1-POINT Velocity MICROPHONE



COLUMBIA 18 WATTS Class "A" High Fidelity Amplifier System

With two-channel SPECIAL OFFER With two-channel mixer for Ribbon &/or Crystal Microphones, Phono-Pickup, etc., complete with 6 tubes, \$40. Ribbon or Crystal Mike, 12" Dynamic Speaker (provision for additional speakers optional), neat and sturdy portable case, cables, etc., ready to operate. Described in February, 1936 issue of Radio Craft.

Columbia Sound Co., Inc.
135 R Liberty St., New York City



30-13000 Cycles ± 1 db Multiple Coil

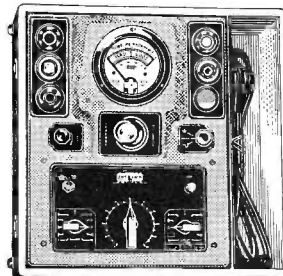
Balanced, symmetrical, hum-free construction. Audio-Line-Mike etc. Transformers in Alloy Hum-proof castings, each net \$3.75

Hum Proof Alloy Castings

No. 1—2 1/2 x 2 1/2 x 2 3/4 \$0.75
No. 2—3 1/8 x 3 3/8 x 3 3/4 \$0.75
No. 3—4 1/8 x 4 1/2 x 5 1/8 \$1.50

Shielded Filter Chokes, Power Transformers, etc.

Alloy Transformer Co., Inc.
135 V Liberty St., New York City



The Finest TUBE TESTER money can buy

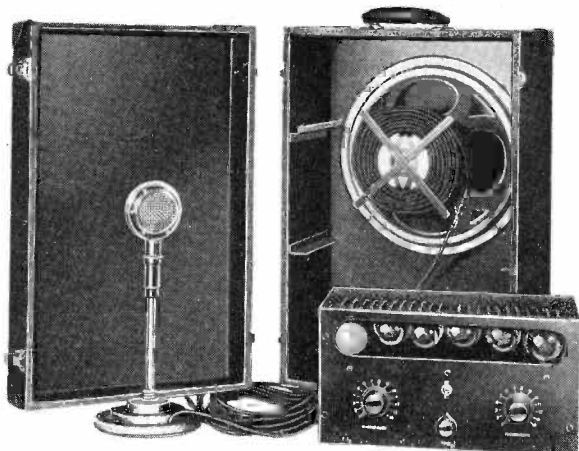
Yet costs only \$39.50

MAKES A BETTER TEST ON EVERY TUBE

Send for Literature

JACKSON ELECTRICAL INSTRUMENT CO., Dayton, Ohio

JACKSON



NEW! PORTABLE Public Address System

HERE is a new Portable Public Address System, with extreme range and power—a recent Webster-Chicago development. Suitable for group performances and similar installations. High-gain 4-stage amplifier. Crystal microphone. Musical background mixer. Full portability. Single or dual speakers.

SOUND EQUIPMENT OF ADVANCED DESIGN

Webster-Chicago engineers are continually bringing out sound units of advanced design. Two other recent ones include a Class A 15-Watt Amplifier with 4-Position Electronic Mixer and a High-Gain 17-Watt Amplifier.

Ask for Catalog

THE WEBSTER COMPANY

3829 WEST LAKE STREET

CHICAGO, ILL.



Elim-O-Stat RADIO

NOISE SUPPRESSORS

COMPACT AND INEXPENSIVE! EFFECTIVE! Reliable products of an established organization. Built to meet the wide demand for really-efficient, low-priced noise-eliminators. Easy to apply; cost nothing to operate.

There is a dependable Elim-O-Stat available for every "man-made" noise-problem encountered in standard broadcast and short-wave reception. Try Elim-O-Stats! Your satisfaction is unconditionally guaranteed!

Please write for new Elim-O-Stat and Fixed Condenser Catalog No. 7-S

SOLAR MANUFACTURING CORP.

599-601 Broadway, New York City

Manufacturing Affiliates in London, Paris, Berlin, Milan

STENTORIAN

15 Watt Amplifier Nucleus

REMEMBER!—Build your Sound Amplifiers the STENTORIAN way—for powerful clear volume, finest quality, lowest cost!

For convention halls, night clubs, factory call systems, sound trucks, stadiums, etc.

STENTORIAN NUCLEUS includes genuine "Pull-Push" moisture-proofed transformer, chokes, audios, outputs, and beautiful chassis with lettered terminal strips, marked tube sockets. 6-10-15-30 watt Amplifiers. A and AB power. 2.5 and 6.3 volt tubes. Nuclei for crystal or condenser mike Pre-Amplifiers; and for small Class B battery Amplifier.

Send Now For Full Details!



Free for the Asking!

Send for Free Illustrated Bulletin on Stentorian Sound Amplifier Nuclei and name of our nearest distributor.

General Transformer Corp.
502 South Throop Street, Chicago
Manufacturers of Replacement Units

MUTER
Carbons
**ARMOURD
WIREWOUND
RESISTORS**

OVER TWELVE
MILLION IN USE
WRITE TODAY FOR
COMPLETE CATALOG

THE MUTER COMPANY
1955 SO. MICHIGAN AVENUE, CHICAGO

INDEX TO ADVERTISERS

Aerovox Corp.	573	General Electric Co.	539	Radio & Technical Pub. Co.	577
Allied Radio Corp.	569	General Transformer Corp.	576	Radiart Corp., The.	575
Alloy Transformer Co.	575	Gross Radio, Inc.	575	Readrite Meter Works.	573
Amperite Company	575	Hope Mfg. Co.	575	Radio Products Co., The. Third Cover	
Arcturus Radio Tube Co.	563	Hygrade Sylvania Corp.	541	Radolek Co., The.	571
B		I		Raytheon Production Corp.	565
Bell Sound Systems, Inc.	573	Insuline Corp.	575	Rider, John F.	543
Brush Development Co., The.	567	Jackson Elec. Inst. Co.	575	Rivard Mfg. Co.	577
Burstein-Applebee Co.	577	J		S	
Burton-Rogers Co.	577	Jackson Elec. Inst. Co.	575	Solar Mfg. Corp.	576
C		K		Sprayberry, F. L.	571
Centralabs	561	Ken-Rad Corp., The.	567	T	
Continental Carbon, Inc.	569	M		Technical Appliance Corp.	571
Cornell-Dubilier Corp.	571	Mallory & Co., Inc., P. R.	561	Tobe Deutschmann Corp.	559
Cornish Wire Co., Inc.	573	Muter Co., The.	576	Trimm Radio Mfg. Co.	577
Curtis Condenser Corp.	567	O		U	
E		Ohmite Mfg. Co.	563	Utah Radio Products Co.	569
Electrad, Inc.	544	Operadio Mfg. Co.	567	W	
Electro-Voice Mfg. Co., Inc.	575	P		Webster Co., The.	576
F		Precision Apparatus Corp.	577	Weston Elec. Inst. Corp. 2nd Cover	563
Federated Purchaser	578	R		Wholesale Radio Service Co., Inc.	565
		RCA Mfg. Co., Inc.	Fourth Cover	Wright-DeCoster, Inc.	569



**NEW!
MODERN!**
SQUARE METER
WITH UNUSUALLY
LONG SCALE
BY **HOYT**
Reasonably Priced!

Have this beautiful instrument on YOUR test panel.
For prices and full information write

BURTON-ROGERS CO., 755 BOYLSTON STREET, BOSTON, MASS.
Sales Division of HOYT ELECTRICAL INSTRUMENT WORKS

MANY SERVICEMEN

are finding Profit in
Trimm group hearing
aid equipment, are you?

Designed for highest quality performance and simplicity of installation.

Write to Dept. S for full information.

TRIMM RADIO MANUFACTURING CO.
1770 W. Berneau Ave. - Chicago

BIG 1936 WHOLESALE CATALOG FREE



164 pages—Radio, Electrical and Refrigeration Equipment at lowest net prices. A catalog of great value to every dealer, service man and amateur. Complete sets, parts, amateur and commercial apparatus. Write today.

BURSTEIN-APPLEBEE CO.
1012-14 McGEE ST. KANSAS CITY, MO.

DID YOU GET YOURS?

Handy, new 25-ft. sample spool, 50c.
Phosphor Bronze Dial Cable

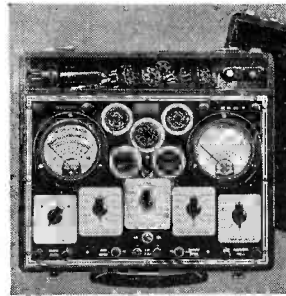


One to a service man. Place other orders with jobbers.

JOBBERS

Write for catalog and sample.

RIVARD MFG. CO.
Toledo, Ohio



YOUR OBSOLETE ANALYZER MODERNIZED

INTO A TWO METER MASTER
ROTARY SELECTIVE SYSTEM

WRITE FOR OUR PLAN MENTION MODEL NUMBER
OF YOUR OLD ANALYZER

Modernization Division — Dept. S

PRECISION APPARATUS CORP.
821 EAST NEW YORK AVENUE - BROOKLYN, NEW YORK

"K.H."

in *Electronics* says about

MODERN RADIO SERVICING

by ALFRED A. GHIRARDI

"THERE WAS A TIME when practically anyone could service a radio receiver. If it didn't 'play' you whacked the detector tube and if a bong came out of the loud speaker you felt sure the audio amplifier was not in trouble. Then you took the antenna wire and put it successively on the grid of the detector, the first and second r-f tubes until you had found which was the dead stage.

This was before Trube, Ballantine, Wheeler, Jarvis, Travis et al., including those at Camden got busy with perfectly good radios and put a.v.c., inter-carrier noise suppression, diode detection, variable-mu tubes and other tricks into everybody's set. Furthermore they were unsatisfied with a straightforward (from the standpoint of service) t.r.f. job and made nearly everyone own a much more complicated superhet. Then someone got the all-wave idea, and now they are to have wide-band receivers.

The result is that practically no one can service a radio nowadays without expensive tools, vast patience and intuition, and a rather complete knowledge of these more modern receivers.

Mr. Ghirardi, whose 'Radio Physics Course' is well known, has assembled a tremendous book of dope for servicemen. In its 1300 pages he has described servicing equipment, told how to make much of it, what makes

radio wheels go round and what makes them stop and how to start them running again. It is up to the minute with a chapter on high-fidelity receivers (anticipating the day when such will be a bit more plentiful than now), much material on cathode ray tubes, 100 pages in a chapter on aligning superheterodynes, data on testing and repairing components, how to diagnose and remedy troubles in automobile sets.

This reviewer spent the better part of a day looking over this book. He now understands why servicemen often feel like darning a chief engineer to try to service one of his own creations. And while this reviewer does not offer to take on practically anybody's radio which has something wrong with it, he does feel that within the pages of this huge book there is all that a service man needs to know to tackle the worst of today's receivers.

As a companion to the text there is a smaller volume by the same author with the aid of B. M. Freed. It is called 'Radio Field Service Data' and it gives the i.f.'s of 2700 models of receivers, grid bias resistor chart, wiring diagrams of automobile ignition systems, trouble symptoms and remedies of over 750 receiver models, etc.

With these two books it seems possible that one of the engineers mentioned above could go out and make a living at servicing."—K. H.

Nov. 1935.

MODERN RADIO SERVICING

1300 pages. 706 illus.
723 Review Questions. \$4.

RADIO FIELD SERVICE DATA

Supplement

240 pages. 43
illus. Flexible
binding. \$1.50.

Both Books

\$5.

only if
purchased
together

RADIO & TECHNICAL
PUBL. CO., 45 Astor Place, N. Y. C.
Dept. S-12

Please send your Introductory Combination Offer of both books at \$5.00 postpaid.
 Please send FREE circulars.

Name
Address

Occupation
What kind of information do you need most?
 Test instruments?
 Newest test methods?
 Sales and advertising?
 Case histories?
 Repair methods?

MAIL
TODAY

FREE
CIRCULARS



FEDERATED'S SERVICE

before and
AFTER
the Sale!

TELETYPE SERVICE

Through teletype-linked branches, Federated places the stock of 8 branches at your instant command, giving you speedier service regardless of where you may be located!

TECHNICAL SERVICE

At each of Federated's 8 Branch Stores, and in our Mail Order Department, are trained technical specialists ready, able and willing to help you at all times.

IN-STOCK SERVICE

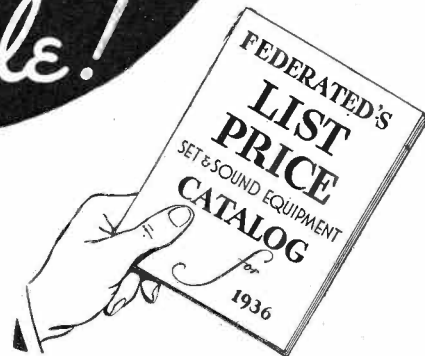
Federated makes a vigorous effort to carry the most complete stock in America, giving you immediate delivery, preventing annoying delays!

PICK-UP SERVICE

Why bother "splitting" orders? Federated's personal shoppers will pick up any item you want. An extra service without extra charge!

MONEY-SAVING SERVICE

"You never pay more at Federated." This is more than a slogan, it's a promise and a guarantee!



PROFIT PROTECTION SERVICE

Here's a practical example showing how far Federated actually goes to cooperate with YOU! No other supply house goes to the trouble and extra expense of printing a special list price catalog. This is typical of the way Federated protects your profits! It is one reason why more and more service men are turning to us for ALL their requirements!

FREE! Send for our LIST PRICE Set and Sound Equipment Catalog S 125 as well as our latest, greatest, 136-page general catalog covering the entire field of radio and sound equipment. Just off the press!

NEW YORK CITY
25 PARK PLACE
BArclay 7-7582

CHICAGO, ILL.
1331 SO. MICHIGAN AVE.
Victory 4444

PHILADELPHIA, PA.
120 NORTH 7th STREET
Walnut 1663

NEWARK, N. J.
230 CENTRAL AVENUE
MArket 2-5390



8 BRANCHES
SPEEDIER SERVICE

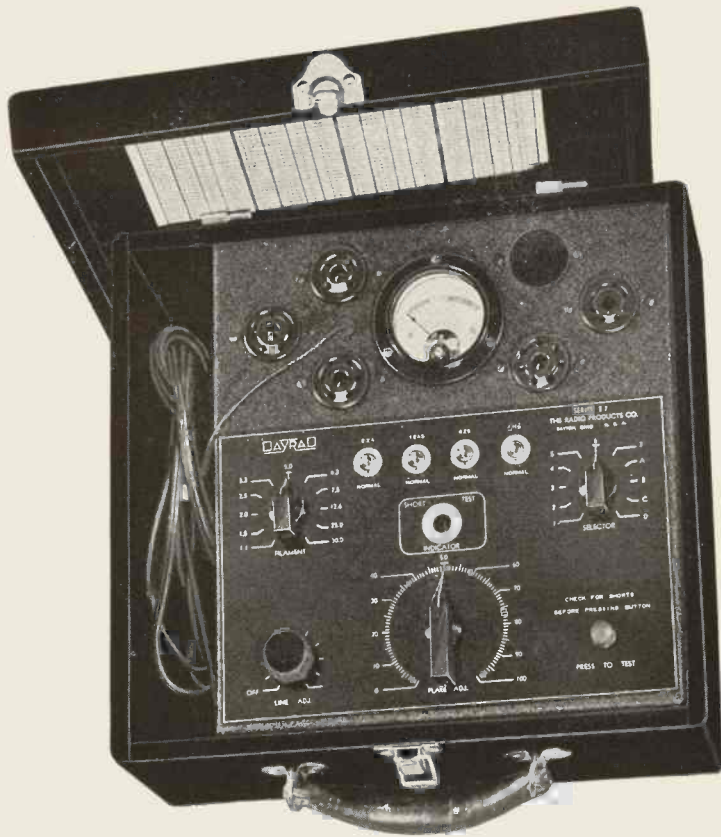
ATLANTA, GA.
546 SPRING STREET, N.W.
Hemlock 4613

PITTSBURGH, PA.
343 BLVD. OF THE ALLIES
Atlantic 9119

BRONX, N. Y.
534 E. FORDHAM ROAD
SEdwick 3-5904

JAMAICA, L. I.
92-26 MERRICK ROAD
166th St. off Jamaica Ave.
REpublic 9-8187

★ **9 FEATURES** make this your "BEST BUY" in a **PORTABLE TUBE TESTER** ... it's the ...



DAYRAD

PORTABLE TUBE TESTER

SERIES 27

What do you demand of a tester? Flexibility? Engineering for future tube developments? Accuracy? Simplified Procedure? Compact size? Moderate price?

Here's a DayraD "Portable" Series 27 that has them all—plus the all-round reliability and sturdiness that you expect in any Radio Instruments bearing the DayraD trade name.

As you read the 9 outstanding features listed below remember that this is the **ONLY** tester offering **ALL** of these features at anywhere near this low price.

DESIGNED TO PROVIDE COMPLETE TUBE CHECK AND QUICK POINT-TO-POINT ANALYSIS

- ★ 1. DAYRAD Micro Leak—shorts and leakage tests, actually picks out noisy and leaky tubes that you previously could not find.
- ★ 2. Shorts test between all elements that will prove to your customer why his set has been noisy and distorted.
- ★ 3. Only three controls, simplifying test procedure, not necessary to make the numerous tests as previously to show your customer a defective tube.
- ★ 4. Calibrated to show a wide difference between good and bad tubes—a DAYRAD feature.
- ★ 5. Meter designed with strong bridge construction—high torque—jewell bearing—D'arsonval movement, no more worry about pivots loosening due to jarring.
- ★ 6. Will test all the METAL tubes plus the newly announced "G" tubes.
- ★ 7. A complete tube service unit in itself and can't be beat at the price.
- ★ 8. Enclosed in leatherette carrying case.
- ★ 9. Remember—DAYRAD—flexibility provides for further types.

SERIES 27

NET TO DEALER

\$24.75

Size 12x11x5½"
Weight 9 lbs.

Write for complete catalogue and give Jobber's name.

THE RADIO PRODUCTS COMPANY

123 Sunrise Place

Subsidiary of Bendix Aviation Corp.

Dayton, Ohio

Another new leader!
RCA UNIVERSAL A.C. BRIDGE



NET
 PRICE \$ **49.65**
 Stock No.
 9600

Complete with tubes and standards.
 Nothing else needed except a high-impedance headphone as null indicator.

Now You Can QUICKLY,
 ACCURATELY MEASURE

INDUCTANCE - 100 Microhenries
 to 10 Henries

CAPACITY - 10 Micro-microfarads
 to 10 Microfarads

RESISTANCE - 1 Ohm to 1 Megohm

ACCURACY -
 5% overall at full scale



HERE is the newest piece of RCA Test Equipment for speeding up service and laboratory work. It gives a quick and accurate check of inductance, capacity and resistance over unusually wide ranges, including the low values that ordinary resistance and capacity meters cannot check. Measurements are made at 1000 cycles per second, and the Bridge includes not only a 1000-cycle oscillator, but also a 2-stage amplifier tuned to 1000 cycles, in order to assure adequate voltage for making any balance required. Service work requires measurement of inductance, capacity and resistance many times daily, and this compact, self-contained Universal A. C. Bridge not only lessens the work of such measurement but greatly increases its accuracy. See it at your RCA Parts distributor.

RCA PARTS DIVISION

RCA Manufacturing Co., Inc., Camden, N. J., a subsidiary of the

RADIO CORPORATION OF AMERICA