

# RADIO LOG and LORE

NEWSDEALER PRICE .....25c

**MARCH**

By MAIL ( for One Year, 12 Issues  
Canada - Foreign, \$1.25 ) .....\$1

## A Dollar Buys a Complete Service for One Year

—a service that is needed in every home where there is a radio. A complete, concise program service of all American networks, lists of all network stations and cross-indexed listings of all North American chain and non-chain stations, as well as all radio stations of the world. Let this magazine help you enjoy your radio more. A subscription coupon, for your convenience, may be found on page 3.

Look at the New  
**Short Wave  
Broadcast  
Directory**  
on pages 28-29

*Complete Program Service of  
North American Networks*

—Please Turn to Pages 8-13

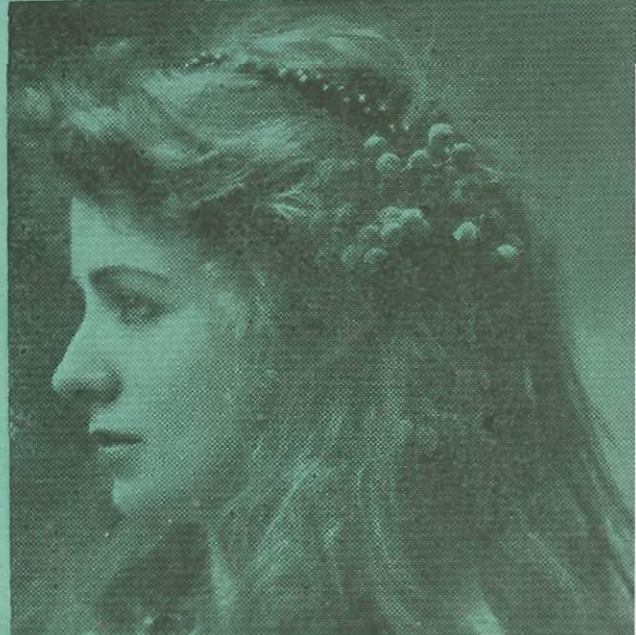
### Katharine Hepburn

said to be the greatest box office attraction in the motion picture world, recently appeared on NBC.

### Radio's Newest Stars

**Gloria Holden**  
radio actress, plays leading dramatic roles over the Columbia Broadcasting System networks.

**Maude Adams**  
came back from stage stardom after a decade to broadcast star roles of her famous successes.





## Complete and Satisfying Service for the Radio Listener

A complete broadcast station log and network program guide; where are the stations, when and where the programs; the answer is here in concise and handy form. This issue of Radio Log and Lore is smaller by number of pages, but in handiness, efficiency and amount of information contained, it has been increased. The prime requisite (the acid test) of a broadcast guide to which thousands look for information, must be its handiness—the ease with which the desired information can be secured. The more hunting—fumbling of pages—the user has to do, the less efficient becomes the guide and on this point Radio Log and Lore rests its case.

The new program setup constitutes a complete listing of the three transcontinental networks from the early afternoon programs of the Eastern Zone, to the late night programs of the Pacific Coast. Included in the list of Evening Programs is the complete schedule of the Canadian Radio Broadcasting Commission network, while two pages devoted to station lists and maps of the transcontinental chains, facilitate the tuning in of the desired program. Nowhere is there so complete, yet simple, a program service, and combined with this is the complete three-way listing of all North American calls, Whitman's Rapid Station Finder (kilocycle) that is in universal use all over North America.

An altogether different specie of radio fan will also find Radio Log and Lore indispensable—the DXer and

the Short Wave enthusiast. During the year, a great variety of Station Lists, Airline Distance Charts and Maps of various sorts, are published, all invaluable for the distance-getter, whether long or short wave, and by preserving each issue, the most complete and comprehensive log and station guide published anywhere in the world may be secured.

Radio Log and Lore covers the radio news events of the world. Pictures and personality news—the human side of the studios—have their place, but are not permitted to crowd out the real news—important happenings in radio culled from the corners of the earth. You will find not only the gossip of the studios, whence come the programs heard at your fireside, but a comprehensive resume of the leading events of the world.

### THIS ISSUE IN NEW DRESS — WE HOPE YOU LIKE IT

<b>PROGRAM SERVICE</b>		<b>STATION DIRECTORY</b>	
Evening (Coast-to-Coast) Programs.....	12-13	Whitman's Rapid Station Finder .....	18-19
<small>Most of the radio listening is done in the evening and this is the chart that gives program service to the people of a continent, as far as the releases of the big networks are concerned. Quarter-hour listings of the four great networks whose programs go from coast to coast. Time in your own zone, too.</small>		<small>This is the double-page kilocycle chart of North America broadcasting stations, now in universal use. Once a user—always a user. Revised edition.</small>	
North American Networks .....	8-9	North America by Sections .....	20-21
Afternoon (Eastern) Programs.....	10	Alphabetical Call List .....	22-25
Night (Pacific Coast) Programs .....	11	<b>SHORT WAVE</b>	
<small>Three networks are running on the Pacific Coast. This page lists them all by quarter-hour periods. Many Eastern nocturnal dialers get a big kick out of these Pacific Coast late night chain programs.</small>		World Broadcast Stations.....	28-29
<b>NEWS-PICTORIAL</b>		<small>Broadcast stations are the ones most short wave fans are interested in. On this double spread is a three-way listing—in frequencies (megacycles), alphabetically by calls and sectionally by location. A world time zone map shows important SW cities.</small>	
Radio News of the Day.....	3	Police Call Stations.....	30
<small>Sarnoff on Television. ** May Abolish Commission.</small>		<small>You may want to look up a police call in any one of several ways. Perhaps you heard the call only, or maybe you have the frequency location on your set. Or perhaps you want to look up the call of a certain city. Anyway we are all set for you with a three-way police listing, and all a single sheet.</small>	
Radio Round the World.....	6-7	Airport Stations.....	31
Radio Goes Opera .....	4	<b>MISCELLANEOUS</b>	
<small>Lucky Strike Tries a New One—Opera Sponsorship.</small>		Airline Distance Map .....	26
The Outdoors Lures .....	5	<small>Any distance map is a little cumbersome to use, although there is a very good one on page 27, but we believe you will prefer this map of North, Central and northern South America. Distances at a glance—with these 500-mile circles and squares.</small>	
<small>Myrt shows her partner when Cupid appears, but the show goes on. * * Stoopnagle and Budd know all about dressing for the frigid temperatures.</small>		Airline Distance Table .....	27
The News in Pictures.....	14-15	How Time Changes .....	32
<small>Just a picture and a story (22 of them) of some of the radio personalities you hear on the air.</small>		<small>How One Man's Family came to be written and how the auto license clerk had fun with Ed Wynn.</small>	
Doings of the Stars .....	16-17		

## And Lastly, You Should Not Overlook This Coupon

This space is set aside for a little talk on distribution—the best way to receive your copy of Radio Log and Lore. First, this magazine is not a magazine of general interest, but rather a class magazine—therefore it is impractical and impossible to get it on sale on every newsstand in the country. We mention this in response to many readers who have written in that they have been disappointed in not being able to find it on sale. It has, however, proved itself intensely interesting to a certain class—those who have a great interest in their radios, the stations and programs it can bring in. This latter fact, however, does not mean that it will be a big seller on the average newsstand. We mention this merely to ask your forbearance if you do not find it on sale at your favorite newsstand, or two or three other stands where you may call, or, in fact, on sale at all in your city. Some newsdealers feature it; others do not carry it at all. General newsstand distribution, however, is a very expensive method of circulation for publishers generally and one

Please Enroll Me for One Year as a Subscriber to Radio Log and Lore; the Dollar Bill Enclosed Herewith

NAME .....

Street .....

CITY .....

STATE .....

the publishers of Radio Log and Lore have found utterly impossible to maintain. So if your location is one where there is not an adequate distribution—there is another and better way—evidenced by the fact that more and more readers are becoming subscribers. Again the newsstand and subscription price of Radio Log and Lore (entirely inconsistent with each other) illustrates the difference between economical and wasteful distribution—yet subscriptions (one dollar for twelve issues) are more profitable than newsstand sales at 25 cents. It is true that the prices are somewhat unfair to the newsdealer, but we refuse to increase the subscription price when it is no wise necessary as far as publication costs are concerned. It is the intention of the publishers to further curtail newsstand distribution to eliminate waste, and we ask those readers who will be effected by this curtailment, to secure their copy by the more satisfactory and economical method—a direct mail subscription. Use the coupon today; it is to your advantage.

# Radio Log and Lore

WHITMAN RADIO PUBLISHING CO.

W. R. WHITMAN, PUBLISHER  
ALICE M. WHITMAN, EDITOR



Published monthly. Entered as second-class matter at post-office at Kirkland, Wash., under the act of March 3, 1879. Entire contents copyrighted. Printed in U. S. A.

[VOLUME FIVE  
NUMBER 2 (MARCH)]

Business and Publication Office:  
KIRKLAND, WASHINGTON, U. S. A.

**\$1.00 per Year**  
**\$1.25 Canada and Foreign**

## SARNOFF TELLS OF RCA PLANS FOR TELEVISION

Quite Possible to Gather the Morning Paper From the Radio Rather Than From the Porch

(New York Correspondence)

Members of the New York Advertising Club, who listened to an address recently, by David Sarnoff, president of the Radio Corporation of America, are certain that not only is television just around the corner, but just around the same corner, a lot of other little things to change our daily lives, may be lurking—among others, an invention that will permit us to go to our radio in the morning, for a copy of the latest news, instead of to the front porch. Another possibility unfolded was the harnessing of static to provide electrical energy.

Mr. Sarnoff announced that the RCA had already secured a license to develop the new discoveries into a nation-wide transmission system, and it has long been known that both the RCA and General Electric have been making rapid strides in their television experiments. It is considered now, that the plans of RCA, in the light of this announcement, include the development of a transmission system wherein these new discoveries can be put to use.

It is realized that it is just a step from television broadcasting of entertainment, to the televising of news dispatches, and there is no secret about the development of a device by which the home owner can

get his morning newspaper by radio. Just goes to the radio set in the morning, and takes out the televised facsimile sheets, thus getting his news hours ahead of the present show-by-comparison process that includes printing and hand-delivery methods.

Newspaper publishers, it is said, have been keeping close watch of the scientific angle—which many believe accounts for the great zeal of the papers in defending their prerogatives as news dispensers from the encroachments of the broadcasting stations. Radio and newspaper executives both agree that television may entirely revolutionize the newspaper industry beyond recognition during the next few years.

## HOW PHIL BAKER FOUND HIS BOTTLE

Now we know where this Bottle character, that appears with Phil Baker in the Armoire program, comes from. It seems that Baker met his thick-witted stooge during the filming of a comedy, and he was so impressed with the antics of the

comedian, that he flung that he might go over pretty good in radio. Baker had the right dope—he did. But now that that is settled, why doesn't the press agent tell us where the mysterious Beetle hailed from.

## Italy Has Extensive Plans for Broadcasting

Schools to Be Equipped With One-Frequency Receiving Sets

(Rome Correspondence)

The Italian government is manifesting a great deal of interest in late in the nation's radio facilities and is lending the heartiest cooperation to the E. I. R. A., in improving the national system. Receiving sets have been installed in all public schools, the sets having been furnished by the government at a very low cost. To insure that they will not be used for purposes other than educational, reception will be possible on one frequency only. Also experimental television transmissions are expected to begin shortly from stations in Turin,

where the headquarters of the E. I. R. A. are situated. The E. I. R. A. hopes in the near future to conduct regular television transmissions. Besides this advancement in new fields, the present system is being enhanced by a special cable being laid under the straits of Messina, in order to link up Palermo with the other Italian stations. The Bolzano transmitters, in the extreme north, were recently connected by cable with Turin, and with the completion of the cable to Palermo, a complete national hookup will be realized.

## PEPSODENT LEADS THE SHOW



Above, Amos 'n' Andy and Gertrude Berg, Author and Portrayer of the Leading Role in the Goldbergs. Below, Eddie Duchin, Orchestra Leader, and Dean Fossler, at the Console of the Organ, Playing Theme Music.

After three consecutive years on the air, with two of broadcasting's most popular serials, Pepsodent has put on its third program—a thrice-a-week broadcast by Eddie Duchin's Orchestra, over an NBC network. All of which makes Pepsodent the leading air advertiser. A competitor, however, Campana, with its First Nighter and Grand Hotel serials, besides occasional orchestra broadcasts, is threatening the Pepsodent supremacy.

Speaking of Amos 'n' Andy and the Goldbergs, it is interesting to note that Dean Fossler, a Chicago organist, who has provided the theme music for these two broadcasts, devoting his talents exclusively to Toselli's Serenade and The Perfect Song, never has seen either Amos 'n' Andy or the Goldbergs broadcast. In the NBC Chicago studios he takes the air from a different studio from the one in which Amos 'n' Andy perform, and the Goldbergs face the microphone in New York, half way across the continent.

Playing four times a day for Amos 'n' Andy—before and after each broadcast—including the repeat performance for western listeners—and twice for the Goldbergs, Fossler estimates that he has played the tunes nearly 2,500 times.

But that doesn't mean that the two selections are all that Fossler can play. Before he began providing the introduction and closing on the Pepsodent programs, Fossler was for seven years a theatre organist in Chicago. He was associated with the famous radio organist, Jesse Crawford, seven or eight years ago at the Chicago theatre and played the dual organ with him there.

## GOVERNMENT MAY DISBAND F. R. C.

(Washington Correspondence)

Those who claim to be in on the know, here—in other words in close touch with administration circles—declare that the Federal Radio Commission will soon be a memory. According to the information that is going around, radio will become an adjunct to the bureau of communication, which in turn will be affiliated with a new department of transportation or made into a part of one of the existing departments. Just when the new move is to be made is not a part of the story but in substantiation the recent attendance at a number of conferences of General Saltzman, former head of the radio commission and frequently

this country's delegate, to international radio conferences, was pointed out. The story is that the former head of the commission was asked to supply the framework for an entirely new radio structure. As a part of the story, the old bugaboo of the strife between radio and the newspapers, has been brought in—to the effect that the new radio authority will be much more favorable to the papers and that broadcasting stations will then be asked to stick to their business of broadcasting and the newspapers allowed to look after theirs of providing the news to the people of the nation.



# Radio Sponsors Turn to Grand Opera

The American Tobacco Co. (Lucky Strike) loves to pioneer. Remember back not so long ago when the stentorian tones of Ed Thorgesen announced the dance music of B. A. Rolfe, on the then famous Lucky Strike dance hour? Young Mr. Hill, scion of the tobacco millions, entered into his work with a great deal of gusto and enthusiasm; Walter Winchell's gossip, Detective Barry Rudd and lastly, Baron Pearl himself, followed in order and contributed their bit and a change of pace in the program. But now a new deal is on at the tobacco company, which has essayed the pretentious task of sponsoring around three hours of broadcast direct from the elite Metropolitan itself, in Radio City. Not one of the NBC networks, mind you; the combined facilities of both the Blue and the Red chains, and all supplementaries, are tied to the microphones at the Metropolitan for several hours. Some money involved in all that.

The whole Metropolitan affair was done up with decorum and eclat. The staid and distinguished voice of Milton Cross conveyed the story of the opera with all of the descriptive highlights. Floyd Gibbons or Ted Husing wouldn't have fitted in on this program as there was an abundance of time for all there was to say and fast talking wouldn't have been in keeping with the occasion. When Cross was through, John B. Kenessey carried on. He added lights even higher than his predecessor; in fact he added punch to the story, highlights and otherwise. The commenting was excellent and the opera itself was, of course, marvelous. Altogether it undoubtedly went over big in the homes of the land and all hands, including particularly the sponsors who laid the money on the line should be given credit for an event certain to enhance the prestige of radio broadcasting generally.

Canada hooked in on the network, but not as a sponsored feature, mind you, because there is no such thing up there (on the national chain). In fact the Canadian Commission was so zealous to see that none of the Lucky Strike blarbs got into the land of the Maple Leaf that they took no chances and pulled the plug as soon as the music stopped. And they undoubtedly have since heard plenty about this from the Canadian listeners, many writing in to ask why they should be deprived of the excellent description and story of the opera that was dished up between the main events. One Canadian paper went so far as to suggest that the commission broadcast the information during the regular evening news broadcast, as long as they couldn't see their way to let it come in via the Metropolitan.

The tobacco company, however, is not alone in thought that the public might possibly be interested in some music of the better class. The Cadillac Motor Car Co., it seems, was similarly minded, although it is operating along a bit different line. The company has inaugurated a series of Sunday evening broadcasts of one hour each, when high-class symphony music by specially formed orchestra has been broadcast, under the baton of world famous guest conductors. Its personnel of sixty members was selected from among the leading symphony players of the country. Among the conductors to wield the baton on this selective aggregation were Bruno Walter of the New York Philharmonic, Arthur Bodanzky of the Metropolitan Opera Company, Eugene Ormandy, of the Minneapolis Symphony, Fritz Reiner of the Rochester Symphony, Ossip Gabrilowitsch of the Detroit Symphony, Tullis Serafin of the Metropolitan, Sir Henry Wood of London and Walter Damrosch of New York City. Quite an array of notables, but the list of most instrumentalists and soloists are equally imposing. Those include Yehudi Menuhin and Efrem Zimbalist, violinists; Josef Hofmann, Josef Turbj and Eileen Horewitz, pianists; and as vocalists—Rosa Ponselle, Lily Pons, Lucrezia Bori, Lotie Lehmann, Elisabeth Resberg, Tito Schipa, and Richard Powell. Thus this series of splendid concerts as well as the more pretentious Lucky Strike-Metropolitan broadcast and both following the fifteen minute programs broadcast by Leopold Stokowski, over Columbia, has caused many observers to believe that radio has many better things in store for those who love better music.

The story of Lily Pons, who is one of the key figures in the Metropolitan setup, and whose voice will be heard frequently during the broadcast, is interesting. Her voice the range of which astounded critics three years ago when she slipped unheralded onto the Metropolitan stage, has since become the most applauded voice of the age. Which brings to mind the thought that no matter what past years have produced in the way of outstanding ability, succeeding years give us other outstanding men and women with talents to equal or even surpass the great ones of the past. Miss Pons can sing with ease from middle C in the lower register to A above high C. The famous singers of other days, such as Patti, Melba and Sembrich, never went above a high F in public. And yet Miss Pons, who weighs only 101 pounds can sing higher than any other living opera singer.



Cornelius Bliss, Wall Street banker (at right in lower picture) is a director and prime mover in Metropolitan Opera management. At the left is President Aylesworth of NBC and Rosa Ponselle, opera prima donna. Above are four stars of the opera. At the left, Maria Chamlee and at right, Queens Maria, Mr. and Mrs. in private life, and in the center, Frank Chapman and Gladys Swarthout, also man and wife.



# Outdoors Lures Radio Stars



( Above: Myrt and Marge of Famous Columbia Serial. Below: Stoopnagle and Budd, Columbia Comedy Team. )



Radio being a comparatively recent development, it seems that things happen quickly, and yet seem to have taken place a long time ago—for instance: A year or so back two young men, Carl Lofner and Phil Harris, were conducting a dance band in San Francisco, and it was getting on the NBC-Pacific network at intervals during the week. Phil used to step out occasionally and do a bit of vocalizing (real imitation Bert Williams style), half talk and half song. It sort of got by but folks didn't pay much attention to it. Then Carl and Phil dissolved and each had his own dance band; Carl stayed (and is still playing) on the Pacific Coast, but Phil, his troupe of dance banders and his blues vocalist de luxe, Leah Ray, hit out for the high places, New York and other points. The rest is current history. It goes easy for the bass drawer now—announced in one of the country's most fashionable hotels, with his contract recently extended, a sponsor on the radio and his dance band, his blues vocalist and his own bass drawing all the rage. Thus is he sitting on top of the world, so to speak. Phil, a westerner, loves his horses and the picture shows Miss Ray and Harris with their mounts, also Harris in riding costume. Another Westerner, Frank Parker of the Revelers and the Chevrolet program, also craves the out-of-doors recreation. Parker (below) among other athletics, has acquired a reputation as a polo player.

The winter has been a bad one—breaking family ties, dividing radio teams. Matrimony has just had to slip in, in both the NBC and CBS studios. In the National it was one of the Pickens sisters and in Columbia, mother gave daughter away in a nice church wedding. Who—you would never guess. The mother, Mort, (Mrs. Myrtle Vail) and the daughter and bride Marge, her radio partner (Miss Donna Damarel). The groom (also identified with radio) was Gene Kretzinger, of the team of Gene and Charlie. But don't worry folks—the show will go on.—The Pickens Harmonizers and the Myrt-Marge series.

Here are Stoopnagle and Budd keeping a radio rendezvous with Admiral Byrd, in the Antarctic regions. The date was arranged before the polar expedition set sail and the pair were right on the date—so was Admiral Byrd. Press Agents are an ingenious lot, and you can never tell just how far they will go. However, this is real. Stoopnagle and Budd (both up-state farmers) walked into the Columbia studios for the Byrd appointment, in their everyday winter attire, brushing aside the press agent discourses on Antarctic background. The latter, however, provided the penguin, which looks phony enough; but we leave it to you if the picture otherwise is not right in keeping with Antarctic or any other sub-zero regions.





**ORDERS AND NEWS FROM THE RADIO COMMISSION**

**BROADCAST STUDIO NEWS AND GOSSIP**

**Germans Plan New Stations**

**Pretentious Program Is Announced**

(Berlin Correspondence)

The postoffice department has announced a rather pretentious program for the improvement of its broadcasting system during the coming year. It includes the new national transmitter, with a power of 150kW, which is to take the place of the present Deutschlandsender, and a new relay station (to be synchronized on the Frankfurt common wave) to be erected at Koblenz. The present relay stations at Dresden, Königsberg and Stettin will be replaced by new ones. In addition, the power of the present 60-kW Langenberg and Hella-berg transmitters is to be increased to 100 kW.

Apart from the program, however, the most important of present developments, is the complete re-grouping of the transmitters. Stations all over Germany have been synchronized in groups.

**ENGLISH GIRL MAKES HIT AS IMPERSONATOR**



(Los Angeles Correspondence)

Many radio listeners have been clamoring for the return of Florence Desmond, impersonator de luxe, ever since her single guest performance several months ago. Her uncanny ability to impersonate all the stars of the silver screen brought her to the attention of motion picture officials, when she appeared at the Embassy Club in New York. Previously she had been brought here from England where her phonograph records impersonating Greta Garbo, Zasu Pitts, Mae West and others, were "best sellers." Radio audiences had the pleasure of hearing her a second time when she appeared on the air recently with the Ipana Troubadours over NBC. It was her engagement with Eddie Cantor in his personal tour of motion picture theaters that prolonged her stay in this country and made it possible for the Troubadours to sign her for their program. Miss Desmond plans to return to England when her engagement with Cantor is finished.

**TUNNEY SPEAKS**



(New York Correspondence)

Gene Tunney, who once forsook the ring long enough to address William Lyon Phelps' literature class on Shakespeare, again was sponsored by the professor, when he spoke on "Youth in America" during the "Voice of America"—in which Phelps is featured—on the Columbia network recently. Phelps is shown at the extreme left and Tunney at the right.

**FREQUENCY AND POWER CHANGES**

**Latest News of the Broadcasting Stations; Orders From the Commission**

(Washington Correspondence)

Judge Eugene O. Sykes, chairman of the Federal Radio Commission, appearing before the House Appropriations Committee, said that the Commission has been considering the extension of broadcasting licenses from six months to one year periods for some time. He further said that action would be taken as soon as the time was propitious.

WBMB, big Chicago key station of Columbia, and KFAB, Lincoln, who have been sharing the cleared channel 77, since the reallocation several years ago, have at last got their plans of synchronization working with government sanction and the latest Bell telephone equipment. Both stations were operating full day time but were having to divide up the valuable night hours. As a preliminary move, KFAB switched from the NBC chain to the Columbia, so that the two stations could be broadcasting the same program.

The Federal Radio Commission has denied WBKB, Detroit, permission to operate full time. The station shares time with WIRM, of Jackson, Mich., at night and operates simultaneously with WIRM in daytime.

Several stations that have been granted permission by the Federal Radio Commission to move the location of their transmitters are: KYW from Chicago to Philadelphia, KFIW from Hopkinsville to Louisville, Ky., KBTM from Paragouli to Jonesboro, Ark., WENC from Memphis to Atlanta, Ga., WJJD from Moonshart to Chicago and WMBR from Tampa to Jacksonville. In Canada CKCR has moved from Waterloo to Kitchener, Ont., and CKPC from Preston to Brantford, Ont.

The commission has granted permission to the following stations to change call letters: WFOJ to WVFV, WOOD to WKBO, WFIW to WAVE, KGIZ to KWTO, KOCW to KTUL and WOPA to WNEW.

The FRC has granted change of channel and increase in power to

**F. R. C. Opens New Channels**

**Broadcasting Will Be Permitted**

(Washington Correspondence)

The Federal Radio Commission has made arrangements for the clearing of all services occupying the channels between 1,500 and 1,600 kilocycles to make available the frequency range, and is prepared to issue temporary experimental licenses on three new channels with 20 kilocycle separation: 1,530, 1,550 and 1,570. The commission has announced that it is ready to issue licenses just as soon as applicants can meet the conditions necessary for qualification. All stations must have the supervision of a qualified research engineer and while the stations will be allowed the use of sponsored programs, the sponsorship must not interfere with the general experimental work of the station. The power must not exceed 10kW.

It will be recalled that the use of these bands for broadcasting was decided upon at the Mexico City conference, and the announcement of the commission seems to indicate its intention to open the new bands up to broadcasting after some experimental broadcasting has been done.

**FLORIDA MISS IS SWEEPED TO FAME BY A HURRICANE**

**New Zealand Pays For Radio Stations**

(Miami Correspondence)

It is an ill-wind that blows no one some good. At least Harriet Lee, blonde-haired blues singer, again on the air over NBC, is a staunch believer in the old adage. Miss Lee was literally blown into radio fame on a Florida hurricane. She was working in a music store by day and attending a music college by night when a tropical storm struck the southern coast.

The radio station over which Miss Lee sang occasionally, was on the air for 72 hours, and her singing during the long stand-by brought many donations for sufferers in the devastated region and a wide reputation for the artist.

Since then she has traveled far. Chosen as Miss Radio at the Radio World's Fair in 1931, she has since been featured on many outstanding programs. She also has appeared extensively in vaudeville and her deep contralto voice has been heard with leading dance orchestras.

(Wellington Correspondence)

The government has bought three of the best known Class B stations, 12Z of Auckland, 22W of Wellington and 22C of Christchurch. This was done because of criticism to the effect that the B stations have been so ringed around with governmental restrictions as to virtually cause their death. As a result the government felt a moral obligation to these stations, though they were no longer necessary. They will be used to transmit alternative programs to the YA stations. The government is adamant on the question of sponsored programs, so the B stations will doubtless gradually fade away. The New Zealand Postmaster General has stated that the government is adopting the attitude of the BBC of England, with regard to sponsored programs.

**BARON; HIS SHADOW**



(New York Correspondence)

Jack Pearl and his Handy Andy straight man, Cliff Hall, slipped out of the Lucky Strike hour, when the tobacco company turned upward, like nobody's business, and right into another sustaining program. It was gossiped by the wisecracks a short time back, that the prevaricating Baron was losing his grip (that he was not tickling with the public) after returning from his picture-making jaunt to Hollywood. So that as it may, the sponsors evidently took no stock in the yarn, and the dauntless Baron and his straight man, better known as "Sharlie," are on the air in a Royal Gelatine Review over an NBC network.

**Border Stations Have Appeal**

**Announcers Assume Intimate Attitude**

(San Antonio Correspondence)

Mexican border stations are coming in for two things. They are coming in for their share of American dial twisting, which is most important to the stations themselves and no doubt to all concerned. Also they are coming in for a fair amount of criticism from certain circles because of merchandising methods and because of their proximity to the dial to many important American stations. No far it seems that the criticism does not do them any harm, and manifestly, the increasing American audience does them no harm either.

There are four important stations now operating on the border adjacent to Texas. These powerful stations varying from 10,000 to 150,000 watts and broadcasting on frequencies from 585 to 1115 kilocycles, are well distributed over the dial. Each is manned by efficient personnel, broadcasting programs pitched to reach the masses. The continuity is clever, entertaining, if it is subtle in its sales talk, that is, in its drawback to most loudspeaker fans. The average listener does not mind advertising in psychological doses, but he is apt to leave a cozy chair to tune out a five minute harangue on the merits of any commodity. The announcers assume an intimate attitude which is liked by the average listener.

The gearing of this program to reach the bulk of listeners, coupled with the channels and the power which they possess makes these border stations a real factor in American broadcasting.

**LATE SONG HIT WRITTEN DURING SPIRIT SEANCE**



(Chicago Correspondence)

Phil Porterfield, who has just returned to the Galaxy of Stars cast, over the NBC-Red network, following an operation for appendicitis, learned for the first time, while convalescing at his home in Fort Wayne, Indiana, the true story of the writing of "My Cabin Home," which Porterfield introduced over the radio.

The author of the song hit is Miss Mary Loos, a fellow towns-woman of the radio star and a believer in things spiritualistic. She confided to Porterfield that she only was the song written during a visit to a spiritualistic medium, but that she through the medium was thoroughly in the clutches of the unknown at the time. She said the medium, when first visited by Miss Loos, informed her that she was soon to become famous and requested that she bring pencil and paper on her next visit. With Miss Loos, through the medium, in touch with the unknown was the song born. The spiritualist elicited 100 per cent when Miss Loos took the song to the publisher the medium suggested and it has elicited the same for Porterfield over the air.

**Canada Radio Law May Be Changed**

(Ottawa Correspondence)

The fact that the Act Amending the Canadian Radio Broadcasting Commission Act expires on March 31, 1934, may bring about important changes in the present plan of radio control. Premier Bennett has promised an investigation in the form of a parliamentary inquiry by the committee of the House of Commons. As far as possible, the original committee which recommended nationalization of radio and its operation by a commission will sit on the committee. A report is expected before March 31.

**Europe Also Has a Graham McNamee**

(Paris Correspondence)

Europe has its own Graham McNamee. He is M. Debortier, a real Frenchman, who was born in London and who is said to be a past master of almost every form of athletics. In spite of the fact that every one knows who he is, he continues to use the name of "le Parleur Inconnu" (Unknown Speaker), which was given to him by the newspapers at the time he did the first job of covering a major sport event and describing it as it progressed—known in Europe as outside broadcasting. The general excellence of his work is attested by the statement in a French newspaper recently that all other French sports broadcasters were under a handicap, and that the handicap was the "Unknown Speaker." Though not born in France, he is said to pass for an ideal Frenchman, and while he pretends not to know English at all, it is recalled that he once added an English interpretation to his description of a major news event.

**HIGH-LOW BASSES**



(Chicago Correspondence)

When Phil Calkin succeeded Norman Cordon as the bass member of the Merrimen, crack NBC quartet for the Chicago studios, when the latter was graduated to the Chicago Civic Opera, there became some confusion as to who and why are high and low basses. Calkin the new bass of the quartet, might be termed a high bass, being a six-footer but still and all he is a lower bass by five inches than his predecessor, Norman Cordon, now leading bass of the Chicago Civic Opera Company.

**Lucerne Plan in Effect**

**All Countries Not in Accord**

(London Correspondence)

The much discussed Lucerne plan with its wavelengths allotment mutually agreed upon by the nations of Europe, to prevent interference of one broadcasting station with another, went into operation at midnight January 15, as per schedule. What the result will be, just how far tedious months of figuring and scheming on the part of the delegates from each country, will go toward meeting the insistent demands of broadcasters, for more and more room on the air, remains to be seen. It is the third and most complete plan worked out since 1925, for the co-ordinating of wavelengths in England and on the continent.

But to understand the plan, one must also understand the situation in Europe. In 1924 it was found necessary to adopt some mutual plan of broadcasting, in order to eliminate the growing confusion due to the increased number of stations broadcasting on independent wavelengths, and the resulting great interference with each other and much confusion generally. A plan, the Geneva, was then worked out, and it coped with the situation satisfactorily until it grew obsolete, and in 1929 a new plan the Prague, adding to and amending the former one somewhat, was put into effect. This plan, like its predecessor, was entirely satisfactory for a time, until it, in turn, grew inadequate.

The new Lucerne plan is workable generally, though not subscribed to by six countries because they were not satisfied with the waves allotted to them under the plan. Naturally, those countries that did not endorse it, do not feel that they should be restricted by it and there will be difficulty here. It is felt, however that a compromise may yet be reached. This is in the hands of the technical committee of the International Broadcasting Union, to suggest how the difficulties can be ironed out so that the plan can be made unanimous.

**DANCE BANDS ON THE MOVE AND PROGRAMS SHIFT**



(Los Angeles Correspondence)

Modern maestros and their dance band troopers are a migratory lot and little hops across the country are all in the day's work. Change of diet in the way of a fresh musical aggregation, is quite necessary to the modern metropolitan hostelry, and this in turn brings about the frequent shifting in dance music broadcasts. Guy Lombardo's Royal Canadians moved in on the elite of the Pacific Coast, through the famous Coconut Grove at Los Angeles recently and the move is said to be highly edifying to the connoisseurs as well as to the radio listeners who get in on the music through a coffee company's sponsorship. Another Easterner to arrive on the Pacific Coast is Herbert Kay, whose Chicago aggregation is spelling Anson Weeks' dance band at the Mark Hopkins in San Francisco, while the latter is taking a jaunt on the road. This music also gets to the fireside listeners over the NRC-Pacific network. To return the favor, Ted Vio Ritz will soon begin a series of Trans-Continental broadcasts over the Columbia and under the sponsorship of Old Gold from the Palace Hotel of this city.

A chance reading of an obscure newspaper notice resulted in George Gorshwin being catapulted to international fame, when he saw that in a few days a new composition by him was to be presented at Aeolian Hall. He had forgotten, but on his father's insistence he wrote the world famous "Rhapsody in Blue".

The Egyptian Broadcasting Commission has decided to inaugurate daily readings of the Koran.

**Europe Also Has a Graham McNamee**

(Paris Correspondence)

Europe has its own Graham McNamee. He is M. Debortier, a real Frenchman, who was born in London and who is said to be a past master of almost every form of athletics. In spite of the fact that every one knows who he is, he continues to use the name of "le Parleur Inconnu" (Unknown Speaker), which was given to him by the newspapers at the time he did the first job of covering a major sport event and describing it as it progressed—known in Europe as outside broadcasting. The general excellence of his work is attested by the statement in a French newspaper recently that all other French sports broadcasters were under a handicap, and that the handicap was the "Unknown Speaker." Though not born in France, he is said to pass for an ideal Frenchman, and while he pretends not to know English at all, it is recalled that he once added an English interpretation to his description of a major news event.

**Poland is Trying Two Announcers**

(Warsaw Correspondence)

An interesting experiment in announcing is being conducted in this city—a dual system by which both a man and a woman announcer officiate at the microphone. So far it is being used chiefly in sponsored programs, and it is believed to possess great possibilities in broadcasts of this type. It is not known whether it will become a regular feature on all types of programs.

**BROADCAST EVENTS OF AUSTRALIA NEW ZEALAND**

**HAPPENINGS IN CAPITALS OF EUROPE**

**Newsreel Next Step in Radio**

**Pathe to Launch the New Service**

(New York Correspondence)

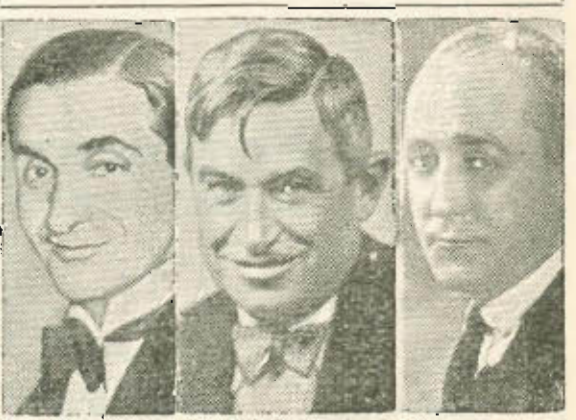
It is considered probable the next great advancing step of radio will be the realization of the long anticipated newsreel of the air. According to its own announcement, Pathe proposes to enter the field, and it is predicted by those in a position to know that as soon as the service is launched listeners will be able to hear actual recordings of happenings of importance and interest, instead of an oral description of them, or at best, a dramatization. These electrical transcriptions, quickly prepared, will be forwarded to broadcasting stations subscribing to the service, for release in a newsreel broadcast.

It is pointed out by those familiar with the project that newsreel men, who have an enviable reputation for alertness and being the first on the spot to record a news event, could be relied upon to see that the new service covered all news events of the country. This coverage of late has been pushing into the far corners of the earth, where a pole is being discovered, or, in fact, wherever history is being made. Hours of course, must elapse before the reel could be relayed on to the public, but it could be counted on to bring out a realism that it is believed would appeal instantly to the public.

The project is not exactly a new one but up until now, broadcasters have never been able to get the ear of the motion picture interests on behalf of anything along the line of a newsreel of the air. Pathe, however, is now said to be much interested in the venture.

The Egyptian Broadcasting Commission has decided to inaugurate daily readings of the Koran.

**REAL HEADLINERS**



(New York Correspondence)

Left to right, Irving Berlin, Will Rogers and George M. Cohan, each occupies his own niche on the American stage—Cohan with his musical shows and Berlin with his popular song hits, both of a decade back, and Rogers with his humor and philosophy. The three will continue to alternate on the Gulf Headliner program, very appropriately titled, on the NBC-Blue network this year.







# Afternoon PROGRAMS (Eastern):

## Let These Pages Help You Find the Programs You Will Enjoy

Because most of the interest in radio programs is in the transcontinental features, attention is paid in these pages only to these releases. An orchestra begins to play in New York City; far away in another time zone, you listen to the music. You hear it regularly each day until you come to fix in your mind a certain hour; yet others are listening in other zones at a different time, and both are still different from the time in the studio where the orchestra is playing. Yet the music that is going across the continent is going on the air at precisely the same second and the answer to this is the changes in standard time that have a great deal to do with radio programs. Time-zone network maps are published frequently in this magazine, showing the time changes that occur, while program time (for the Evening programs that go across the continent) are given in each of the five zones.

Just as the day begins first in the East, so do the first programs appear. On this page are listed the afternoon chain releases, from noon to six in the evening (Eastern time). A few of these programs go across the continent but in the main it is too early for Coast-to-Coast releases. Following these are the Evening Programs, listed on the following double page. Practically this is the entertainment guide of the nation, and the programs listed include shows, the majority of which go from Coast to Coast. The period, however, is a little too early for the Pacific Coast (three in the afternoon to nine in the evening). So on the following page the Pacific Coast networks are shown—from four in the afternoon to midnight (seven to three in the morning Eastern time). While these schedules over-

lap the Evening Program schedules, the Coast networks do not carry all of the Eastern releases, supplanting a part of them with their own attractions. All three schedules are based on 15-minute periods—four to the hour. Three simultaneous releases are listed, one for Columbia and two for NBC (the Blue and Red in the East; the Orange and Gold in the West). The Evening Program schedule includes a fourth network—the Canadian chain. This schedule also gives, where possible, the point of origin of each program, and the zones covered. NBC has but one chain on the Coast (the Orange) but a second program schedule is maintained alternately by the two San Francisco key stations, KGO and KPO, the one broadcasting singly while the other heads the chain on which are carried either Coast NBC programs or Eastern Blue and Red releases.

Quarter Hour Periods in Eastern Standard Time	Sunday	Monday	Tuesday	Wednesday	Thursday	Friday	Saturday
<b>12:00</b> NBC Blue, NBC Red, COLUM.	Don Hall Trio..... Capitol Family..... Salt Lake Organ.....	The Commodores..... Piano Duo..... Voice of Experience.....	U. S. Marine Band..... Piano Duo..... Voice of Experience.....	Eva Taylor, Cronner..... The Commodores..... Voice of Experience.....	The Commodores..... Henrietta Schumann..... Voice of Experience.....	Astrid Fjeld, Soprano..... The Commodores..... Voice of Experience.....	Fireside Songs..... Boy Scouts..... Vincent Travers Orch.....
<b>12:15</b> NBC Blue, NBC Red, COLUM.	Baby Rose Marie..... Home Circle..... Salt Lake Organ.....	Wendell Hall..... Johnny Marvin, Tenor..... Betty Barthell, Song.....	U. S. Marine Band..... Johnny Marvin, Tenor..... Betty Barthell, Song.....	Fireside Songs..... Johnny Marvin, Tenor..... Betty Barthell, Song.....	Wendell Hall..... Johnny Marvin, Tenor..... Betty Barthell, Song.....	Wendell Hall..... Johnny Marvin, Tenor..... Betty Barthell, Song.....	Genia Tonariva..... Boy Scouts..... Vincent Travers Orch.....
<b>12:30</b> NBC Blue, NBC Red, COLUM.	Radio City Concert..... Round Table..... Madison Ensemble.....	Farm and Home Hour..... Rex Battle Orch..... Concert Miniatures.....	Farm and Home Hour..... Rex Battle Orch..... Concert Miniatures.....	Farm and Home Hour..... Rex Battle Orch..... Concert Ensemble.....	Farm and Home Hour..... Rex Battle Orch..... Concert Ensemble.....	Farm and Home Hour..... Rex Battle Orch..... Concert Ensemble.....	Farm Bureau Fed..... Trade Revival Talk..... Enoch Light Orch.....
<b>12:45</b> NBC Blue, NBC Red, COLUM.	Radio City Concert..... Round Table..... Madison Ensemble.....	Farm and Home Hour..... Rex Battle Orch..... Concert Miniatures.....	Farm and Home Hour..... Rex Battle Orch..... Concert Ensemble.....	Farm and Home Hour..... Rex Battle Orch..... Concert Ensemble.....	Farm and Home Hour..... Rex Battle Orch..... Concert Ensemble.....	Farm and Home Hour..... Rex Battle Orch..... Concert Ensemble.....	Farm Bureau Fed..... Rex Battle Orch..... Enoch Light Orch.....
<b>1:00</b> NBC Blue, NBC Red, COLUM.	Radio City Concert..... Russian Choir..... Church of the Air.....	Farm and Home Hour..... Markets, Weather..... George Hall Orch.....	Farm and Home Hour..... Markets, Weather..... French Princess.....	Farm and Home Hour..... Markets, Weather..... French Princess.....	Farm and Home Hour..... Markets, Weather..... French Princess.....	Farm and Home Hour..... Markets, Weather..... French Princess.....	Farm Bureau Fed..... Town Hall Club..... Savitt String Quartet.....
<b>1:15</b> NBC Blue, NBC Red, COLUM.	Radio City Concert..... Russian Choir..... Church of the Air.....	Farm and Home Hour..... Pinky Hunter Orch..... George Hall Orch.....	Farm and Home Hour..... Pinky Hunter Orch..... Joan Marrow Orch.....	Farm and Home Hour..... Close Harmony..... The Playboys.....	Farm and Home Hour..... Close Harmony..... The Playboys.....	Farm and Home Hour..... Close Harmony..... The Playboys.....	Farm Bureau Fed..... Town Hall Club..... Savitt String Quartet.....
<b>1:30</b> NBC Blue, NBC Red, COLUM.	Youth Conference..... Maflex Program..... Minstrel Man.....	Vic and Sade..... Concert Ensemble..... New York Conference.....	Vic and Sade..... Pinky Hunter Orch..... Easy Aces.....	Vic and Sade..... Concert Ensemble..... Easy Aces.....	Vic and Sade..... Concert Ensemble..... Easy Aces.....	Vic and Sade..... Concert Ensemble..... Easy Aces.....	Metropolitan Opera..... Metropolitan Opera..... Harold Knight Orch.....
<b>1:45</b> NBC Blue, NBC Red, COLUM.	Youth Conference..... Maflex Program..... Minstrel Man.....	The Merriemen..... Concert Ensemble..... New York Conference.....	Merry Macs..... Pinky Hunter Orch..... Painted Dreams.....	The Merriemen..... Concert Ensemble..... Painted Dreams.....	The Merriemen..... Concert Ensemble..... Painted Dreams.....	The Merriemen..... Concert Ensemble..... Painted Dreams.....	Metropolitan Opera..... Metropolitan Opera..... Harold Knight Orch.....
<b>2:00</b> NBC Blue, NBC Red, COLUM.	Bar-X Days, Nights..... The Commodores..... Broadway Melodies.....	Musical Originalities..... Revolving Stage..... Ann Leaf, Organ.....	Meredith Willson Orch..... Merry Madcaps..... Ann Leaf, Organ.....	Happy Days in Dixie..... Leo Zello Orch..... Artist Recital.....	Sleepy Hall Orch..... To Be Announced..... Ann Leaf, Organ.....	Musical Originalities..... Magic of Speech..... Mark Warnow Orch.....	Metropolitan Opera..... Metropolitan Opera..... Ann Leaf, Organ.....
<b>2:15</b> NBC Blue, NBC Red, COLUM.	Bar-X Days, Nights..... The Commodores..... Broadway Melodies.....	Musical Originalities..... Revolving Stage..... Ann Leaf, Organ.....	Meredith Willson Orch..... Merry Madcaps..... Ann Leaf, Organ.....	Happy Days in Dixie..... Leo Zello Orch..... Artist Recital.....	Sleepy Hall Orch..... To Be Announced..... Ann Leaf, Organ.....	Musical Originalities..... Magic of Speech..... Mark Warnow Orch.....	Metropolitan Opera..... Metropolitan Opera..... Ann Leaf, Organ.....
<b>2:30</b> NBC Blue, NBC Red, COLUM.	Perfect Circle Program..... Elizabeth Lennox..... Hollywood Show.....	Smack Out..... Revolving Stage..... School of Air.....	Smack Out..... Kath. Palmer, Soprano..... School of Air.....	Smack Out..... Two Seats in Balcony..... School of Air.....	Smack Out..... Two Seats in Balcony..... School of Air.....	Smack Out..... Two Seats in Balcony..... School of Air.....	Metropolitan Opera..... Metropolitan Opera..... Artist Recital.....
<b>2:45</b> NBC Blue, NBC Red, COLUM.	Perfect Circle Program..... Gems of Melody..... Hollywood Show.....	Words and Music..... Revolving Stage..... School of Air.....	Vin Lindo..... Words and Music..... Two Seats in Balcony..... School of Air.....	Words and Music..... Two Seats in Balcony..... School of Air.....	Words and Music..... Two Seats in Balcony..... School of Air.....	Words and Music..... Friday Steeplechase..... School of Air.....	Metropolitan Opera..... Metropolitan Opera..... Artist Recital.....
<b>3:00</b> NBC Blue, NBC Red, COLUM.	International Tid-Bits..... Wayne King's Orch..... Symphony Orchestra.....	Radio Guild..... Ma Perkins..... Oahu Serenaders.....	Rochester Civic Orch..... Ma Perkins..... Metropolitan Parade.....	Joe White, Tenor..... Ma Perkins..... Benumen Musicale.....	Reed Kennedy..... Ma Perkins..... Metropolitan Parade.....	Words and Music..... Ma Perkins..... Artist Recital.....	Metropolitan Opera..... Metropolitan Opera..... Dancing Echoes.....
<b>3:15</b> NBC Blue, NBC Red, COLUM.	Irene Rich, Drama..... Wayne King's Orch..... Symphony Orchestra.....	Radio Guild..... Ray Heatherton..... Voice of Experience.....	Rochester Civic Orch..... Blue Room Echoes..... Metropolitan Parade.....	Helnie's German Band..... The Golden Treasury..... Berumen Musicale.....	U. S. Marine Band..... Ray Heatherton..... Artist Recital.....	U. S. Marine Band..... Ray Heatherton..... Artist Recital.....	Metropolitan Opera..... Metropolitan Opera..... Dancing Echoes.....
<b>3:30</b> NBC Blue, NBC Red, COLUM.	The Yeast Foamers..... Spartan Triolians..... Symphony Orchestra.....	Radio Guild..... Woman's Radio Review..... U.S. Marine Band.....	Rochester Civic Orch..... London Broadcast..... Manhattan Moods.....	Helnie's German Band..... Woman's Radio Review..... Student Federation.....	U. S. Marine Band..... Woman's Radio Review..... Variety Program.....	U. S. Marine Band..... Woman's Radio Review..... Variety Program.....	Metropolitan Opera..... Metropolitan Opera..... Round Towners.....
<b>3:45</b> NBC Blue, NBC Red, COLUM.	The Yeast Foamers..... Spartan Triolians..... Symphony Orchestra.....	Radio Guild..... Woman's Radio Review..... U.S. Marine Band.....	Rochester Civic Orch..... London Broadcast..... Manhattan Moods.....	Helnie's German Band..... Woman's Radio Review..... Student Federation.....	U. S. Marine Band..... Woman's Radio Review..... Variety Program.....	U. S. Marine Band..... Woman's Radio Review..... Variety Program.....	Metropolitan Opera..... Metropolitan Opera..... Round Towners.....
<b>4:00</b> NBC Blue, NBC Red, COLUM.	Dog Drama, Terhune..... To Be Announced..... Symphony Orchestra.....	Betty and Bob..... Headlines in Song..... Bob Nolan Orch.....	Betty and Bob..... Woman's Radio Review..... U. S. Navy Band.....	Betty and Bob..... Pop Concert..... Musical Classics.....	Betty and Bob..... Winters and Weber..... Curtis Institute.....	Betty and Bob..... Horacio Zito Orch..... Grab Bag.....	Dance Masters..... Metropolitan Opera..... Sat. Syncopaters.....
<b>4:15</b> NBC Blue, NBC Red, COLUM.	Organ Recital..... Wildroot Program..... Symphony Orchestra.....	Congress Musicale..... John Martin Program..... Bob Nolan Orch.....	Mouth Health..... Horacio Zito Orch..... U. S. Navy Band.....	Alice Joy, Dream Girl..... Pop Concert..... Musical Classics.....	Alice Joy, Dream Girl..... Winters and Weber..... Curtis Institute.....	Alice Joy, Dream Girl..... Ivy Scott, Soprano..... Grab Bag.....	Dance Masters..... Metropolitan Opera..... Sat. Syncopaters.....
<b>4:30</b> NBC Blue, NBC Red, COLUM.	Dramatic Sketch..... Hoover Sentinels..... Symphony Orchestra.....	Congress Musicale..... Jack-Loretta Clemens..... Artist Recital.....	Music Magic..... Jack-Loretta Clemens..... Science Service.....	Music Magic..... Jack-Loretta Clemens..... American Legion.....	Music Magic..... Jack-Loretta Clemens..... American Legion.....	Music Magic..... Jack-Loretta Clemens..... American Legion.....	Concert Favorites..... Metropolitan Opera..... M. Raginsky Orch.....
<b>4:45</b> NBC Blue, NBC Red, COLUM.	Dramatic Sketch..... Hoover Sentinels..... Symphony Orchestra.....	Congress Musicale..... Lady Next Door..... Artist Recital.....	Harry Owens Orch..... Lady Next Door..... Enoch Light Orch.....	Music Magic..... Lady Next Door..... The Merry-makers.....	Music Magic..... Lady Next Door..... The Merry-makers.....	Music Magic..... Lady Next Door..... The Merry-makers.....	Concert Favorites..... Metropolitan Opera..... M. Raginsky Orch.....
<b>5:00</b> NBC Blue, NBC Red, COLUM.	National Vespers..... Big Ben Dream Drama..... Roses and Drums.....	Your Health..... University Glee Club..... Skippy.....	Harry Owens Orch..... The Music Box..... Skippy.....	Feet, Women's Clubs..... Green Bros. Orch..... Skippy.....	To Be Announced..... Concert Artists..... Pancho Orch.....	To Be Announced..... Concert Artists..... Pancho Orch.....	Piano Duo..... To Be Announced..... Pancho Orch.....
<b>5:15</b> NBC Blue, NBC Red, COLUM.	National Vespers..... Romances of Science..... Roses and Drums.....	Babes in Hollywood..... South Sea Islanders..... The Dictators.....	To Be Announced..... The Music Box..... Madison Ensemble.....	Babes in Hollywood..... Green Bros. Orch..... George Hall Orch.....	Harmony Trio..... The Three Scamps..... Pancho Orch.....	Babes in Hollywood..... Green Bros. Orch..... Enoch Light Orch.....	Harmony Trio..... The Three Scamps..... Pancho Orch.....
<b>5:30</b> NBC Blue, NBC Red, COLUM.	Grand Hotel..... Talkie Picture Time..... Crumit and Sanderson.....	The Singing Lady..... Tom Mix Adventures..... All American Boy.....	To Be Announced..... The Tattered Man..... All American Boy.....	Singing Lady..... Tom Mix Adventures..... Winnie the Pooh..... All American Boy.....	Babes in Hollywood..... Green Bros. Orch..... Enoch Light Orch.....	Singing Lady..... Tom Mix Adventures..... Winnie the Pooh..... All American Boy.....	Babes in Hollywood..... Green Bros. Orch..... Enoch Light Orch.....
<b>5:45</b> NBC Blue, NBC Red, COLUM.	Grand Hotel..... Talkie Picture Time..... Crumit and Sanderson.....	Little Orphan Annie..... Wizard of Oz..... Roses and Drums.....	To Be Announced..... Little Orphan Annie..... Rex Cole Mountaineers..... George Hall Orch.....	Little Orphan Annie..... Rex Cole Mountaineers..... Slamp Club.....	Little Orphan Annie..... Rex Cole Mountaineers..... Slamp Club.....	Little Orphan Annie..... Rex Cole Mountaineers..... Slamp Club.....	Little Orphan Annie..... Rex Cole Mountaineers..... Slamp Club.....

Quarter Hour Periods in Eastern Standard Time	Sunday	Monday	Tuesday	Wednesday	Thursday	Friday	Saturday
<b>4:00</b> NBC Blue, NBC Red, COLUM.	Ted Weems' Orch..... Community Forum..... Newspaper Adventures.....	Dance Masters..... Art and Music..... Hodge Podge Lodge.....	Musical Program..... Family Cook Book..... Correct English.....	Green Brothers Orch..... Society Sidelines..... Melodies Organistic.....	Musical Program..... Family Cook Book..... Recordings.....	Studio Chatter..... Dance Masters..... Hodge Podge Lodge.....	Jack Denny, Orch..... Stringwood Ensemble..... Elder Michaux Cong.....
<b>4:15</b> NBC Blue, NBC Red, COLUM.	Ted Weems' Orch..... Community Forum..... Ace Brigade Orch.....	Dance Masters..... Little Colleen..... Hodge Podge Lodge.....	Your Government..... John and Ned..... Texas Rangers.....	Russo, Oriental Orch..... Tone Portraits..... Texas Rangers.....	Harry Stanton, Bass..... Hodge Podge Lodge.....	Studio Chatter..... Dance Masters..... Hodge Podge Lodge.....	Religion in News..... Tom Coakley, Orch..... Elder Michaux Cong.....
<b>4:30</b> NBC Blue, NBC Red, COLUM.	J. Penner, Comedian..... Silhouettes..... H. V. Kallenborn.....	Mary and Her Garden..... Stringwood Ensemble..... Vidacrin Laboratories.....	Your Government..... Mary and Her Garden..... Vidacrin Laboratories.....	Mary and Her Garden..... Tone Portraits..... Vidacrin Laboratories.....	Mary and Her Garden..... Tone Portraits..... Vidacrin Laboratories.....	Mary and Her Garden..... Tone Portraits..... Vidacrin Laboratories.....	Arion Trio..... Tom Coakley, Orch..... Vidacrin Laboratories.....
<b>4:45</b> NBC Blue, NBC Red, COLUM.	J. Penner, Comedian..... Silhouettes..... Cello and Organ.....	Little Orphan Annie..... Stringwood Ensemble..... Town Topics.....	Little Orphan Annie..... Melody Mixers..... Town Topics.....	Little Orphan Annie..... Alvin Roy, Guitar..... Town Topics.....	Little Orphan Annie..... Alvin Roy, Guitar..... Town Topics.....	Little Orphan Annie..... Alvin Roy, Guitar..... Town Topics.....	News Broadcast..... Tito Guizar.....
<b>5:00</b> NBC Blue, NBC Red, COLUM.	Cantor and Rubinfoff..... Silhouettes..... An Evening in Paris.....	Dramatic Sketch..... Stringwood Ensemble..... Hawaiian Strings.....	Stringwood Ensemble..... Iokel Program..... Theatre of the Air.....	Miscellaneous..... Irv. Kennedy, Tenor..... NBA Speaker.....	Miscellaneous..... Irv. Kennedy, Tenor..... NBA Speaker.....	Miscellaneous..... Irv. Kennedy, Tenor..... NBA Speaker.....	Stringwood Ensemble..... Art in America..... Dance Music.....
<b>5:15</b> NBC Blue, NBC Red, COLUM.	Cantor and Rubinfoff..... Walter Behan's Orch..... An Evening in Paris.....	Dramatic Sketch..... News Broadcast..... H Bar O Rangers.....	Leo Reisman's Orch..... News Broadcast..... H Bar O Rangers.....	Canzonetta..... Children's Corner..... H Bar O Rangers.....	Canzonetta..... Children's Corner..... H Bar O Rangers.....	Canzonetta..... Children's Corner..... H Bar O Rangers.....	Stringwood Ensemble..... Art in America..... To Be Announced.....
<b>5:30</b> NBC Blue, NBC Red, COLUM.	Cantor and Rubinfoff..... Walter Behan's Orch..... Waring's Pennsylvan's.....	Billy Batchelor..... Arion Trio..... Charlie Lung's Gang.....	Billy Batchelor..... Arion Trio..... Charlie Lung's Gang.....	Billy Batchelor..... Arion Trio..... Charlie Lung's Gang.....	Billy Batchelor..... Arion Trio..... Charlie Lung's Gang.....	Billy Batchelor..... Arion Trio..... Charlie Lung's Gang.....	Billy Batchelor..... Boston Symphony..... To Be Announced.....
<b>5:45</b> NBC Blue, NBC Red, COLUM.	Cantor and Rubinfoff..... Henry M. Hyde Ats..... Waring's Pennsylvan's.....	Little Orphan Annie..... Carlos Molina Orch..... Bing Crosby.....	Little Orphan Annie..... Carlos Molina Orch..... Bing Crosby.....	Little Orphan Annie..... Carlos Molina Orch..... Bing Crosby.....	Little Orphan Annie..... Carlos Molina Orch..... Bing Crosby.....	Little Orphan Annie..... Carlos Molina Orch..... Bing Crosby.....	Little Orphan Annie..... Boston Symphony..... Trade and Mark.....
<b>6:00</b> NBC Blue, NBC Red, COLUM.	Man, Merry-Go-Round..... Gunnar Johansen..... Seven Star Revue.....	Eileen Piggot..... Organ Concert..... L. Stokowski Orch.....	Doric Quartet..... Canzonetta..... L. Stokowski Orch.....	Igana Troubadours..... Arion Trio..... L. Stokowski Orch.....	Igana Troubadours..... Arion Trio..... L. Stokowski Orch.....	Igana Troubadours..... Arion Trio..... L. Stokowski Orch.....	Boston Symphony..... Melody Mixers..... L. Stokowski Orch.....
<b>6:15</b> NBC Blue, NBC Red, COLUM.	Man, Merry-Go-Round..... Gunnar Johansen..... Seven Star Revue.....	Chester Rowell..... Organ Concert..... Andre Kostelanetz.....	Chester Rowell..... Organ Concert..... Alexander Woolcott.....	Chester Rowell..... Organ Concert..... Alexander Woolcott.....	Chester Rowell..... Organ Concert..... Alexander Woolcott.....	Chester Rowell..... Organ Concert..... Alexander Woolcott.....	Boston Symphony..... Melody Mixers..... Steeplechase and Boud.....
<b>6:30</b> NBC Blue, NBC Red, COLUM.	Album Familiar Music..... Paul Carson, Organ..... Seven Star Revue.....	Debbie Ship of Joy..... Safety First..... The Big Show.....	Debbie Ship of Joy..... Safety First..... The Big Show.....	Debbie Ship of Joy..... Safety First..... The Big Show.....	Debbie Ship of Joy..... Safety First..... The Big Show.....	Debbie Ship of Joy..... Safety First..... The Big Show.....	Boston Symphony..... Melody Mixers..... Baldwin McGaw.....
<b>6:45</b> NBC Blue, NBC Red, COLUM.	Album Familiar Music..... Paul Carson, Organ..... Seven Star Revue.....	Debbie Ship of Joy..... Safety First..... The Big Show.....	Debbie Ship of Joy..... Safety First..... The Big Show.....	Debbie Ship of Joy..... Safety First..... The Big Show.....	Debbie Ship of Joy..... Safety First..... The Big Show.....	Debbie Ship of Joy..... Safety First..... The Big Show.....	Boston Symphony..... Melody Mixers..... Baldwin McGaw.....
<b>7:00</b> NBC Blue, NBC Red, COLUM.	Chevrolet Program..... Knickerbocker Quartet..... Angelo Patri.....	Contented Program..... Southern Harmony..... Wayne King's Orch.....	Contented Program..... Tarzan of the Apes..... Wayne King's Orch.....	Contented Program..... Tarzan of the Apes..... Wayne King's Orch.....	Contented Program..... Tarzan of the Apes..... Wayne King's Orch.....	Contented Program..... Tarzan of the Apes..... Wayne King's Orch.....	B. A. Rolfe, Orch..... Educational Program..... Byrd Expedition.....
<b>7:15</b> NBC Blue, NBC Red, COLUM.	Chevrolet Program..... Personal Close-Ups..... Angelo Patri.....	Contented Program..... Tarzan of the Apes..... Wayne King's Orch.....	Contented Program..... Tarzan of the Apes..... Wayne King's Orch.....	Contented Program..... Tarzan of the Apes..... Wayne King's Orch.....	Contented Program..... Tarzan of the Apes..... Wayne King's Orch.....	Contented Program..... Tarzan of the Apes..... Wayne King's Orch.....	B. A. Rolfe, Orch..... Cliff Dwellers..... Byrd Expedition.....
<b>7:30</b> NBC Blue, NBC Red, COLUM.	Hall of Fame..... Rainbow Harmonies..... The Merry-makers.....	Demi-Tasse Revue..... Dr. Miles Program..... Columbia News Service.....	Demi-Tasse Revue..... Dr. Miles Program..... Columbia News Service.....	Demi-Tasse Revue..... Dr. Miles Program..... Columbia News Service.....	Demi-Tasse Revue..... Dr. Miles Program..... Columbia News Service.....	Demi-Tasse Revue..... Dr. Miles Program..... Columbia News Service.....	B. A. Rolfe, Orch..... Bal Tabarin Orch..... Columbia News Service.....
<b>7:45</b> NBC Blue, NBC Red, COLUM.	Hall of Fame..... Rainbow Harmonies..... The Merry-makers.....	Demi-Tasse Revue..... Stanford U. Program..... Myrt and Marge.....	Demi-Tasse Revue..... Stanford U. Program..... Myrt and Marge.....	Demi-Tasse Revue..... Stanford U. Program..... Myrt and Marge.....	Demi-Tasse Revue..... Stanford U. Program..... Myrt and Marge.....	Demi-Tasse Revue..... Stanford U. Program..... Myrt and Marge.....	B. A. Rolfe, Orch..... Bal Tabarin Orch..... H. V. Kallenborn.....
<b>8:00</b> NBC Blue, NBC Red, COLUM.	Miscellaneous..... Rudy Seiger's Orch..... The Merry-makers.....	Amos 'n' Andy..... Edna Fischer, Piano..... Shell Show.....	Amos 'n' Andy..... N. LaSalle, Songs..... Harlem Serenaders.....	Amos 'n' Andy..... N. LaSalle, Songs..... Harlem Serenaders.....	Amos 'n' Andy..... N. LaSalle, Songs..... Harlem Serenaders.....	Amos 'n' Andy..... N. LaSalle, Songs..... Harlem Serenaders.....	Variety Program..... Musical Program..... Guy Lombardo Orch.....
<b>8:15</b> NBC Blue, NBC Red, COLUM.	Walter Winchell..... Rudy Seiger's Orch..... The Merry-makers.....	Foot Prince..... Dramatic Sketch..... Shell Show.....	Memory Lane..... Memory Lane..... Red Davis Sketch.....	Memory Lane..... Memory Lane..... Red Davis Sketch.....	Memory Lane..... Memory Lane..... Red Davis Sketch.....	Memory Lane..... Memory Lane..... Red Davis Sketch.....	Variety Program..... Musical Program..... Guy Lombardo Orch.....
<b>8:30</b> NBC Blue, NBC Red, COLUM.	Death Valley Days..... The Master Singers..... Ace Brigade Orch.....	Voice of Firestone..... Magnolia Minstrels..... Shell Show.....	Voice of Firestone..... Magnolia Minstrels..... Shell Show.....	Voice of Firestone..... Magnolia Minstrels..... Shell Show.....	Voice of Firestone..... Magnolia Minstrels..... Shell Show.....	Voice of Firestone..... Magnolia Minstrels..... Shell Show.....	Variety Program..... Musical Program..... Guy Lombardo Orch.....
<b>8:45</b> NBC Blue, NBC Red, COLUM.	Death Valley Days..... The Master Singers..... Ace Brigade Orch.....	Voice of Firestone..... Magnolia Minstrels..... Shell Show.....	Voice of Firestone..... Magnolia Minstrels..... Shell Show.....	Voice of Firestone..... Magnolia Minstrels..... Shell Show.....	Voice of Firestone..... Magnolia Minstrels..... Shell Show.....	Voice of Firestone..... Magnolia Minstrels..... Shell Show.....	Variety Program..... Musical Program..... Guy Lombardo Orch.....
<b>9:00</b> NBC Blue, NBC Red, COLUM.	Reader's Guide..... Musical Program..... Ted Fio Rito's Orch.....	Sealed Power Show..... NBC Drama Hour..... Raymond Paige, Orch.....	Sealed Power Show..... NBC Drama Hour..... Raymond Paige, Orch.....	Sealed Power Show..... NBC Drama Hour..... Raymond Paige, Orch.....	Sealed Power Show..... NBC Drama Hour..... Raymond Paige, Orch.....	Sealed Power Show..... NBC Drama Hour..... Raymond Paige, Orch.....	Hollywood on the Air..... Musical Program..... Hermie King, Orch.....
<b>9:15</b> NBC Blue, NBC Red, COLUM.	Reader's Guide..... Musical Program..... Ted Fio Rito's Orch.....	Sealed Power Show..... NBC Drama Hour..... Raymond Paige, Orch.....	Sealed Power Show..... NBC Drama Hour..... Raymond Paige, Orch.....	Sealed Power Show..... NBC Drama Hour..... Raymond Paige, Orch.....	Sealed Power Show..... NBC Drama Hour..... Raymond Paige, Orch.....	Sealed Power Show..... NBC Drama Hour..... Raymond Paige, Orch.....	Hollywood on the Air..... Musical Program..... Hermie King, Orch.....
<b>9:30</b> NBC Blue, NBC Red, COLUM.	Bal Tabarin Orch..... U. of C. Program..... Ted Fio Rito's Orch.....	Memory Box..... Meredith Willson Orch..... Little Jack Little.....	Memory Box..... Meredith Willson Orch..... Little Jack Little.....	Memory Box..... Meredith Willson Orch..... Little Jack Little.....	Memory Box..... Meredith Willson Orch..... Little Jack Little.....	Memory Box..... Meredith Willson Orch..... Little Jack Little.....	Carefree Carnival..... Herbert Kay Orch..... Abe Lyman, Orch.....
<b>9:45</b> NBC Blue, NBC Red, COLUM.	Bal Tabarin Orch..... U. of C. Program..... Ted Fio Rito's Orch.....	Memory Box..... Meredith Willson Orch..... Little Jack Little.....	Memory Box..... Meredith Willson Orch..... Little Jack Little.....	Memory Box..... Meredith Willson Orch..... Little Jack Little.....	Memory Box..... Meredith Willson Orch..... Little Jack Little.....	Memory Box..... Meredith Willson Orch..... Little Jack Little.....	Carefree Carnival..... Herbert Kay Orch..... Abe Lyman, Orch.....
<b>10:00</b> NBC Blue, NBC Red, COLUM.	Richfield News Flashes..... Smith Ballou Orch..... News Editor of Air.....	Richfield News Flashes..... Piano Pictures..... News Editor of Air.....	Richfield News Flashes..... Pacific Serenaders..... News Editor of Air.....	Richfield News Flashes..... Marshall's Mavericks..... News Editor of Air.....	Richfield News Flashes..... Marshall's Mavericks..... News Editor of Air.....	Richfield News Flashes..... Marshall's Mavericks..... News Editor of Air.....	Carefree Carnival..... Hart Instrumentalists..... News Editor of Air.....
<b>10:15</b> NBC Blue, NBC Red, COLUM.	Paul Carson, Organ..... Smith Ballou Orch..... Griff Williams' Orch.....	Herbert Kay, Orch..... Musical Program..... Bill Fleck Orch.....	Herbert Kay, Orch..... Musical Program..... Bill Fleck Orch.....	Herbert Kay, Orch..... Musical Program..... Bill Fleck Orch.....	Herbert Kay, Orch..... Musical Program..... Bill Fleck Orch.....	Herbert Kay, Orch..... Musical Program..... Bill Fleck Orch.....	Carefree Carnival..... Herbert Kay Orch..... Abe Lyman, Orch.....
<b>10:30</b> NBC Blue, NBC Red, COLUM.	Paul Carson, Organ..... On Wings of Music..... Griff Williams' Orch.....	Herbert Kay, Orch..... Pacific Serenaders..... Ted Fio Rito's Orch.....	Herbert Kay, Orch..... Pacific Serenaders..... Ted Fio Rito's Orch.....	Herbert Kay, Orch..... Pacific Serenaders..... Ted Fio Rito's Orch.....	Herbert Kay, Orch..... Pacific Serenaders..... Ted Fio Rito's Orch.....	Herbert Kay, Orch..... Pacific Serenaders..... Ted Fio Rito's Orch.....	Carefree Carnival..... Herbert Kay Orch..... Abe Lyman, Orch.....
<b>10:45</b> NBC Blue, NBC Red, COLUM.	Paul Carson, Organ..... On Wings of Music..... Griff Williams' Orch.....	Herbert Kay, Orch..... Pacific Serenaders..... Ted Fio Rito's Orch.....	Herbert Kay, Orch..... Pacific Serenaders..... Ted Fio Rito's Orch.....	Herbert Kay, Orch..... Pacific Serenaders..... Ted Fio Rito's Orch.....	Herbert Kay, Orch..... Pacific Serenaders..... Ted Fio Rito's Orch.....	Herbert Kay, Orch..... Pacific Serenaders..... Ted Fio Rito's Orch.....	Carefree Carnival..... Herbert Kay Orch..... Abe Lyman, Orch.....
<b>11:00</b> NBC Blue, NBC Red, COLUM.	Tom Coakley's Orch..... Midnight Melodies..... Ted Fio Rito's Orch.....	Guy Lombardo Orch..... Tom Coakley's Orch..... Jimmy Grier, Orch.....	Guy Lombardo Orch..... Tom Coakley's Orch..... Jimmy Grier, Orch.....	Guy Lombardo Orch..... Tom Coakley's Orch..... Jimmy Grier, Orch.....	Guy Lombardo Orch..... Tom Coakley's Orch..... Jimmy Grier, Orch.....	Guy Lombardo Orch..... Tom Coakley's Orch..... Jimmy Grier, Orch.....	Guy Lombardo Orch..... Tom Coakley's Orch..... Jimmy Grier, Orch.....
<b>11:15</b> NBC Blue, NBC Red, COLUM.	Tom Coakley's Orch..... Midnight Melodies..... Ted Fio Rito's Orch.....	Guy Lombardo Orch..... Tom Coakley's Orch..... Jimmy Grier, Orch.....	Guy Lombardo Orch..... Tom Coakley's Orch..... Jimmy Grier, Orch.....	Guy Lombardo Orch..... Tom Coakley's Orch..... Jimmy Grier, Orch.....	Guy Lombardo Orch..... Tom Coakley's Orch..... Jimmy Grier, Orch.....	Guy Lombardo Orch..... Tom Coakley's Orch..... Jimmy Grier, Orch.....	Guy Lombardo Orch..... Tom Coakley's Orch..... Jimmy Grier, Orch.....
<b>11:30</b> NBC Blue, NBC Red, COLUM.	Tom Coakley's Orch..... Midnight Melodies..... Bill Fleck Orch.....	Stringwood Ensemble..... Organ Concert..... Bill Fleck Orch.....	Stringwood Ensemble..... Organ Concert..... Bill Fleck Orch.....	Stringwood Ensemble..... Organ Concert..... Bill Fleck Orch.....	Stringwood Ensemble..... Organ Concert..... Bill Fleck Orch.....	Stringwood Ensemble..... Organ Concert..... Bill Fleck Orch.....	Emil Polak, Orch..... Organ Recital..... Bill Fleck Orch.....
<b>11:45</b> NBC Blue, NBC Red, COLUM.	Tom Coakley's Orch..... Midnight Melodies..... Tom Coakley's Orch.....	Guy Lombardo Orch..... Tom Coakley's Orch..... Jimmy Grier, Orch.....	Guy Lombardo Orch..... Tom Coakley's Orch..... Jimmy Grier, Orch.....	Guy Lombardo Orch..... Tom Coakley's Orch..... Jimmy Grier, Orch.....	Guy Lombardo Orch..... Tom Coakley's Orch..... Jimmy Grier, Orch.....	Guy Lombardo Orch..... Tom Coakley's Orch..... Jimmy Grier, Orch.....	Emil Polak, Orch..... Organ Recital..... Bill Fleck Orch.....



This table covers six hours of evening broadcasting for each day of the week, each day being in a vertical panel and the six hours of each day are in black horizontal panels, from six to midnight New York time (3 to 9 Pacific Coast). Consider only the time in your own time zone.

IF YOU LIVE IN NORTH AMERICA, HERE'S YOUR

# EVENING PROGRAM

SIX HOURS OF NETWORK RELEASES IN ALL ZONES

Each hour is divided into quarter-hour periods and each of the four transcontinental broadcasts running simultaneously, are listed—the Blue and Red networks of NBC, the Columbia and the CBS of Canada. The origin of each program is at the left; the zones at the right.

In this column time is shown in five zones, each hour divided into quarter-hour periods and each of these showing the four chains whose programs are listed on these pages.

Atlantic Time	7:00
Eastern Time	7:30
Central Time	8:00
Mountain Time	8:30
Pacific Time	9:00

Atlantic Time	8:00
Eastern Time	8:30
Central Time	9:00
Mountain Time	9:30
Pacific Time	10:00

Atlantic Time	9:00
Eastern Time	9:30
Central Time	10:00
Mountain Time	10:30
Pacific Time	11:00

Atlantic Time	10:00
Eastern Time	10:30
Central Time	11:00
Mountain Time	11:30
Pacific Time	12:00

Atlantic Time	11:00
Eastern Time	11:30
Central Time	12:00
Mountain Time	12:30
Pacific Time	1:00

Atlantic Time	12:00
Eastern Time	12:30
Central Time	1:00
Mountain Time	1:30
Pacific Time	2:00

## SUNDAY EVENING PROGRAMS

Origin	TITLE	Zones
NY	Cadillac Concerts	East
NY	Catholic Hour	ECMP
NY	Songs My Mother Sang	East
Ont.	Origin of Our Indians	AtOP
NY	Cadillac Concerts	East
NY	Catholic Hour	ECMP
NY	Songs My Mother Sang	East
NY	Leonard Woolsey, Vocal Recital	AtOP
NY	Cadillac Concerts	East
NY	Our American School	ECMP
NY	Smiling Ed McConnell	East
Hal.	Atlantic Nocturne	AtOP
NY	Cadillac Concerts	East
NY	Our American School	ECMP
NY	Charles Carlie, Tenor	ECMP
Hal.	Atlantic Nocturne	AtOP

Chi.	Ted Weems' Orchestra	ECMP
Chi.	Dramatic Sketch	East
Chi.	The American Revue	East
Mon.	Le Vieil Album	AtOP
Chi.	Ted Weems' Orchestra	ECMP
Chi.	Dramatic Sketch	East
Chi.	Ace Brigade Orchestra	ECMP
Mon.	Le Vieil Album	AtOP
NY	The Bakers' Broadcast	ECMP
NY	Dramatic Sketch	East
NY	H. V. Kattenhorn	ECMP
Mon.	Masters of Music	AtOP
NY	The Bakers' Broadcast	ECMP
NY	The Fitch Program	ECMP
NY	Rin Tin Tin Thrillers	East
Mon.	Masters of Music	AtOP

NY	To Be Announced	East
NY	Chase & Sanborn Hour	ECMP
NY	Evening in Paris	ECMP
Ont.	Chateau Laurier	AtOP
NY	To Be Announced	East
NY	Chase & Sanborn Hour	ECMP
NY	Evening in Paris	ECMP
Ont.	Chateau Laurier	AtOP
NY	To Be Announced	East
NY	Chase & Sanborn Hour	ECMP
NY	Dramatic Guild	ECMP
NY	Angelus Vocal Ensemble	AtOP
NY	To Be Announced	East
NY	Chase & Sanborn Hour	ECMP
NY	Dramatic Guild	ECMP
NY	Angelus Vocal Ensemble	AtOP

NY	Gulf Headliners	East
NY	Manhattan Merry-Go-Round	ECMP
NY	The Seven Star Revue	ECMP
NY	Operetta	AtOP
NY	Gulf Headliners	East
NY	Manhattan Merry-Go-Round	ECMP
NY	The Seven Star Revue	ECMP
NY	Operetta	AtOP
NY	Walter Winchell	East
NY	American Album Familiar Music	ECMP
NY	The Seven Star Revue	ECMP
NY	Operetta	AtOP
NY	Nat Shilkret, Orchestra	East
NY	American Album Familiar Music	ECMP
NY	The Seven Star Revue	ECMP
NY	Operetta	AtOP

NY	To Be Announced	East
NY	Chevrolet Program	ECMP
NY	"Patri's Drama of Childhood"	ECMP
NY	Artist Series	AtOP
NY	To Be Announced	East
NY	Chevrolet Program	ECMP
NY	The Meistersingers	ECMP
NY	Artist Series	AtOP
NY	C. Gardel, Baritone	East
NY	Hall of Fame	ECMP
NY	Conclave of Nations	ECMP
NY	Artist Series	AtOP
NY	C. Gardel, Baritone	East
NY	Hall of Fame	ECMP
NY	Conclave of Nations	ECMP
NY	Artist Series	AtOP
NY	Mendelssohn Choir	AtOP

NY	Girls Harmony Trio	East
NY	To Be Announced	East
NY	Little Jack Little	ECMP
NY	Twilight Echoes From the Fires	ECMP
NY	To Be Announced	East
NY	Ernie Borgognini	East
NY	John Fogarty, Tenor	ECMP
NY	Little Jack Little	ECMP
NY	Twilight Echoes From the Fires	ECMP
NY	Buddy Rogers Orchestra	East
NY	Master Singers	ECMP
NY	Henry Busse Orchestra	ECMP
NY	To Be Announced	East
NY	Buddy Rogers Orchestra	East
NY	Master Singers	ECMP
NY	Henry Busse Orchestra	ECMP
NY	To Be Announced	East

## MONDAY EVENING PROGRAMS

Origin	TITLE	Zones
Wash. U. S. Army Band	.....	East
NY	Xavier Cugat's Orchestra	ECMP
NY	Buck Rogers in 25th Century	East
Wash. U. S. Army Band	.....	East
NY	Xavier Cugat's Orchestra	ECMP
NY	Al and Pete	ECMP
NY	Three X Sisters	East
Chi.	Irene Beasley	East
Chi.	Enoch Light's Orchestra	East
Que.	Musicales	AtOP
NY	Lowell Thomas; News	East
Sch.	Horseshoe Philosophy	ECMP
Que.	Enoch Light Orchestra	East
Que.	Musicales	AtOP

Chi.	Amos 'n' Andy	East
NY	Trio Romantic	East
Chi.	Myrt and Marge	East
Tor.	Organ Recital	AtOP
Chi.	Baby Rose Marie, Songs	East
NY	Billy Batchelor	East
Phil.	Vincent Travers Orchestra	East
Tor.	Organ Recital	AtOP
NY	Potash and Perlmutter	East
NY	The Mollie Show	East
NY	Music on the Air	East
Tor.	Conservatory String Quartet	AtOP
NY	Mme. Frances Alda	ECMP
NY	The Goldbergs	East
Tor.	Boake Carter, News	East
Tor.	Conservatory String Quartet	AtOP

Chi.	Sealed Power Side Show	East
NY	Socoyland Sketches	East
NY	Happy Bakers	East
NY	Al Oliver's Hawaiians	AtOP
Chi.	Sealed Power Side Show	East
NY	Socoyland Sketches	East
NY	Edwin C. Hill, News	East
Mon.	Chas. Donberger's Orchestra	AtOP
NY	Dier Kiss Recital	East
NY	The Voice of Firestone	ECMP
NY	Bing Crosby	AtOP
Tor.	Music, Chatter and Song	ECMP
NY	Red Davis, Dramatic Sketch	East
NY	The Voice of Firestone	ECMP
NY	Bing Crosby	AtOP
Tor.	Music, Chatter and Song	ECMP

NY	Sinclair Greater Minstrels	ECMP
NY	A & P Gypsies	East
NY	L. Stokowski, Philadelphia Orch.	ECMP
Tor.	Gaiety and Romance	AtOP
NY	Sinclair Greater Minstrels	ECMP
NY	A & P Gypsies	East
NY	Andre Kostelanetz, Orchestra	ECMP
Tor.	Gaiety and Romance	AtOP
NY	Jack Frost's Melody Moments	East
NY	Capt. Dobbsie, Ship of Joy	ECMP
NY	The Big Show	ECMP
Tor.	Gaiety and Romance	AtOP
NY	Jack Frost's Melody Moments	East
NY	Capt. Dobbsie, Ship of Joy	ECMP
NY	The Big Show	ECMP
Tor.	Gaiety and Romance	AtOP

NY	To Be Announced	East
Chi.	Contented Program	ECMP
Chi.	Wayne King's Orchestra	ECMP
NY	Herring Mariamba Band	AtOP
NY	To Be Announced	East
Chi.	Contented Program	ECMP
Chi.	Wayne King's Orchestra	ECMP
NY	Herring Mariamba Band	AtOP
Chi.	Henni Dearing, Piano	East
NY	Kay-Seven	East
NY	Columbia News Service	ECMP
NY	Moonlight on the River	AtOP
NY	Father Finn, Choral Music	East
NY	Kay-Seven	East
NY	Myrt and Marge	ECMP
NY	Moonlight on the River	AtOP

Chi.	Amos 'n' Andy	East
NY	John Fogarty, Tenor	ECMP
NY	Evan Evans, Baritone	ECMP
Edm.	The Call of the North	ECMP
NY	Poet Prince	East
Chi.	Ted Weems Orchestra	ECMP
NY	Boswell Sisters	ECMP
Edm.	The Call of the North	ECMP
Chi.	Phil Harris Orchestra	East
Chi.	Clyde Lucas Orchestra	East
Edm.	Abe Lyman Orchestra	ECMP
Edm.	The Call of the North	ECMP
Chi.	Phil Harris Orchestra	East
Chi.	Clyde Lucas Orchestra	East
Edm.	Leon Delasco Orchestra	ECMP

## TUESDAY EVENING PROGRAMS

Origin	TITLE	Zones
NY	Stone Relief Broadcast	East
NY	Mme. Frances Alda	ECMP
NY	Buck Rogers in 25th Century	East
NY	To Be Announced	East
NY	Xavier Cugat's Orchestra	ECMP
NY	Al and Pete	ECMP
Chi.	The Ivory Stamp Club	East
NY	Mid-Week Rymn Sing	ECMP
NY	Charles Carlie, Tenor	East
Hal.	Carefree Harmony	AtOP
NY	Lowell Thomas; News	East
NY	Cherita Musical Mosaics	ECMP
NY	Tito Guizar, Mexican Tenor	ECMP
Hal.	Carefree Harmony	AtOP

Chi.	Amos 'n' Andy	East
NY	Piano Duo	East
Chi.	Myrt and Marge	East
Tor.	Beautiful Lady	AtOP
NY	Gems of Melody	East
NY	Billy Batchelor	East
Phil.	The Canadians	East
Tor.	Rex Battle's Orchestra	AtOP
NY	Radio in Education	ECMP
NY	Fox Fur Trappers Orchestra	ECMP
Phil.	Oliver Naylor Orchestra	East
Hal.	In-er-University Debates	AtOP
NY	Gus Van, Ariene Jackson	East
Chi.	The Goldbergs	East
Hal.	Boake Carter, News	East
Hal.	Inter-University Debates	AtOP

NY	Ero Crime Clues	East
NY	Leo Reisman Orchestra	ECMP
NY	The Columbians	ECMP
Mon.	Chas. Donberger's Orchestra	AtOP
NY	Ero Crime Clues	East
NY	Leo Reisman Orchestra	ECMP
NY	Edwin C. Hill, News	East
Mon.	Chas. Donberger's Orchestra	AtOP
Chi.	Horlick's Adventures in Health	East
Chi.	Lady Esther Serenade	East
NY	Albert Spalding, Violin	ECMP
NY	Studio Presentation	AtOP
NY	Ted Davis, Dramatic Sketch	East
Chi.	Lady Esther Serenade	East
NY	Albert Spalding, Violin	ECMP
NY	Studio Presentation	AtOP

NY	Musical Memories	East
Chi.	Ben Bernie's Orchestra	ECMP
NY	L. Stokowski, Philadelphia Orch.	ECMP
Win.	Seville Fair	AtOP
NY	Musical Memories	East
Chi.	Ben Bernie's Orchestra	ECMP
NY	The Town Crier	ECMP
Win.	Seville Fair	AtOP
NY	Eddie Duchin Orchestra	East
NY	Texaco Fire Chief Program	ECMP
NY	George Jessel	ECMP
Mon.	Gems from the Lyric Stage	AtOP
Chi.	Eddie Duchin Orchestra	East
NY	Texaco Fire Chief Program	ECMP
NY	George Jessel	ECMP
Mon.	Gems from the Lyric Stage	AtOP

NY	Sunshine Cruise	East
Rich.	Cruise of the Seth Parker	ECMP
NY	The Camel Caravan	ECMP
Mon.	Revers c'est l'heure	AtOP
NY	Sunshine Cruise	East
Rich.	Cruise of the Seth Parker	ECMP
NY	The Camel Caravan	ECMP
Mon.	Revers c'est l'heure	AtOP
NY	To Be Announced	East
NY	Madame Sylvia of Hollywood	ECMP
NY	Columbia News Service	ECMP
Mon.	Maudie Meerie's Orchestra	AtOP
NY	To Be Announced	East
NY	Jerry Sears Orchestra	East
NY	Myrt and Marge	ECMP
Mon.	Maurice Meerie's Orchestra	AtOP

NY	Amos 'n' Andy	East
NY	John Fogarty, Tenor	ECMP
NY	Harlem Serenade	ECMP
Win.	Inter-University Debates	AtOP
NY	The Poet Prince	East
Chi.	The King's Jesters	East
NY	Del Campo, Songs	ECMP
Win.	Inter-University Debates	AtOP
NY	Richard Himber Orchestra	East
NY	Paul Whiteman Orchestra	East
NY	Ozzie Nelson's Orchestra	ECMP
Win.	Inter-University Debates	AtOP
NY	Richard Himber Orchestra	East
NY	Paul Whiteman Orchestra	East
NY	Ozzie Nelson's Orchestra	ECMP

## WEDNESDAY EVENING PROGRAMS

Origin	TITLE	Zones
Phil.	Westminster Choir	East
NY	Xavier Cugat's Orchestra	ECMP
NY	Buck Rogers in 25th Century	East
Phil.	Westminster Choir	East
NY	Xavier Cugat's Orchestra	ECMP
NY	Al and Pete	ECMP
Chi.	Irene Beasley	East
NY	George R. Holmes, News	ECMP
NY	Enoch Light's Orchestra	East
Ont.	Children's Corner	AtOP
Chi.	Lowell Thomas; News	East
NY	Cherita Musical Mosaics	ECMP
NY	Tito Guizar, Mexican Tenor	ECMP
Ont.	Children's Corner	AtOP

Chi.	Amos 'n' Andy	East
NY	Mary Small, Juvenile Songs	East
Chi.	Myrt and Marge	East
Tor.	Beautiful Lady	AtOP
NY	Gems of Melody	East
NY	Billy Batchelor	East
Phil.	The Canadians	East
Tor.	Rex Battle's Orchestra	AtOP
NY	Radio in Education	ECMP
NY	Fox Fur Trappers Orchestra	ECMP
Phil.	Oliver Naylor Orchestra	East
Hal.	In-er-University Debates	AtOP
NY	Irene Rich in Hollywood	East
Chi.	The Goldbergs	East
Hal.	Boake Carter, News	East
Hal.	Maritime Presentations	AtOP

NY	Ero Crime Clues	East
NY	The Royal Gelatine Review	East
NY	Happy Bakers	East
Cal.	The Serenaders	AtOP
NY	Ero Crime Clues	East
NY	The Royal Gelatine Review	East
NY	Edwin C. Hill, News	East
Cal.	The Serenaders	AtOP
NY	Dangerous Paradise	East
Chi.	Lady Esther Serenade	East
NY	Albert Spalding, Violin	ECMP
NY	Studio Presentation	AtOP
NY	Ted Davis, Dramatic Sketch	East
Chi.	Lady Esther Serenade	East
NY	Albert Spalding, Violin	ECMP
NY	Studio Presentation	AtOP

NY	Warden Lawes, Dramatic Sketch	East
NY	The Ipana Troubadours	ECMP
Phil.	L. Stokowski, Philadelphia Orch.	ECMP
Mon.	Une heure pres de vous	AtOP
NY	Warden Lawes, Dramatic Sketch	East
NY	The Ipana Troubadours	ECMP
NY	Stoopnagle and Busid, Canadians	ECMP
Mon.	Une heure pres de vous	AtOP
NY	John McCormack, Tenor	ECMP
NY	Fred Allen's Revue	East
Los.	Guy Lombardo's Orchestra	ECMP
Mon.	Une heure pres de vous	AtOP
NY	John McCormack, Tenor	ECMP
NY	Fred Allen's Revue	East
Los.	Guy Lombardo's Orchestra	ECMP
Mon.	Une heure pres de vous	AtOP

Chi.	Vincent Lopez Orchestra	AtOP
Rich.	Corn Cob Pipe Club	ECMP
NY	Old Gold Program	ECMP
Ont.	Echoes from the Old World	AtOP
Chi.	Vincent Lopez Orchestra	AtOP
Rich.	Corn Cob Pipe Club	ECMP
NY	Old Gold Program	ECMP
Ont.	Echoes from the Old World	AtOP
NY	To Be Announced	East
Wash.	National Radio Forum	ECMP
NY	Columbia News Service	ECMP
NY	Joe De Courcy	



**B**ETTY Barthell is back on the job in the CBS studios, following a vacation spent at the old home



in Nashville, Tenn. Her schedule has recently been extended and the singer with the Southland accent, is now heard on Monday, Wednesday and Friday afternoons.

**N**ATHANIEL Shilkret was quite famous as a recording artist, before his debut in radio. He appears



with his orchestra in the Hinds' Hall of Fame series each Sunday, his music forming the background for the parade of stars that is a regular feature on the popular program.



**X**AVIER Cugat and Tullio Serafin, it is recalled here, were fellow members of the Havana Opera Orchestra in this city a number of years ago. Serafin is now at the Metropolitan, while Cugat, pictured here, now heads his own musical organization. Serafin was the director of the organization and Cugat, at the age of ten, was a first violinist. It is recalled that then, as now, he possessed remarkable talents as an artist, attested by his marvelous creation of the curtain for the Chinese theatre in Los Angeles. His orchestra is the only entirely Spanish orchestra now playing in the United States.

# PICTURES IN THE

URES IN THE  
THE

**O**NE of the world's most famous pianists, Jose Itubi, was guest artist recently during the Cadillac



series of concerts. Itubi, who has been heard in concerts in all of the leading cities of the world, is an accomplished conductor as well as pianist often assuming both roles.

**N**IKOLAI Sokoloff, former director of Cleveland's Symphony orchestra, is another noted con-



ductor to be heard over the Cadillac series. Among other highlights of his career, Sokoloff conducted the Cleveland Symphony Orchestra from its inception until last year.

**P**AT Kennedy never studied voice culture and cannot read music, but once he hears a song that



he likes he can sing it. A product of the Big City, his greatest appeal, paradoxically, is of the small communities, where his melodious tenor reaches into countless homes.

**A**WARM voice from the Southland—is Irene Taylor, heard with Glen Gray's Casa Loma Orchestra,



over CBS. She is the attractive headliner that soothes the nerves of listeners from Coast to Coast, when she is heard on Tuesdays and Thursdays, with the Camel Caravan.

**O**NE of the recent occasional visitors to the microphone was Lyda Roberti, one of moviedom's deco-



rative lady comers. Her delightful accented English was heard in several—two or three—current melodies at the time of her recent appearance before the microphone.

**T**HIS city has made a noteworthy contribution to the music of the networks in David Lazarus,



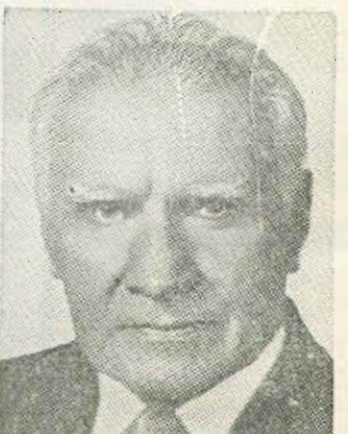
brilliant young baritone of the Cincinnati Conservatory of Music. Lazarus has taken leading roles in the Zoo Opera in Cincinnati and has appeared with the Arco Band.

**F**RED Allen, he of the drawing comedy, with his wife, Portland Hoffa and Ferde Grofe's orches-



tra are again on the NBC chain. Fred, in explaining why he talks through his nose in the manner so familiar to listeners, says it is better than talking through his hat.

**W**ALTER Damrosch, dean of American orchestra leaders, was a guest conductor recently in one of a



series of concerts being sponsored by Cadillac. So important is his music that some schools set aside a period for his broadcasts on the advancement of music appreciation.

**M**ARY Howard, versatile young actress who is heard over NBC in Red Davis sketches, plays many dif-



ferent roles with such success that when a new female character is written into the script the production man automatically sends for Mary. Therefore the young lady never tells her friends to listen for any particular character—for she never knows what character she is going to play. She has played several roles from time to time in the Red Davis series, and always succeeds in making them sound different enough so that when a new female character is written into the script, Mary is called in.

# NEWS PICTURES

NEWS IN PICT

**W**ORLD renowned as a pianist, and an influential figure in American music, Josef Hofmann made an



appearance as another guest soloist in the Cadillac Concert series. Hofmann was playing in public at the age of six and toured Europe, from London and Paris, to Vienna.

**R**AMONA, blues singer de luxe with Paul Whiteman's orchestra, is also a gifted piano player. She



was discovered singing and playing over a local station in the West by the celebrated leader during one of his tours, and later engaged to appear with his famous orchestra.

**E**UGENE Ormandy, conductor of the Minneapolis Symphony Orchestra, makes frequent appear-



ances over NBC. Ormandy came from his native Hungary at an early age to become one of the most successful of the younger conductors engaged in this country.

**S**HIRLEY Howard, a few months ago, was a radio reporter on a Philadelphia newspaper. Rudy



Vallee happened to hear her sing at a social affair and a few weeks later arranged for her debut over NBC. Prompt response from listeners kept her at the microphone.

**R**IPLEY and Rolfe have pooled their talents in a single show, a Saturday Night Dancing Party, over



NBC. Ripley dramatizes outstanding "Believe-It-or-Not's" and discusses other queer truth. His success as guest artist on the same program won him a regular berth.

**Y**EHUDI Menukin, who made his first appearance on the radio during the Cadillac Concert recently,



has appeared in concerts in the United States and Europe since his debut twelve years ago at the age of five, but he has never played before the microphone before.

**E**DWARD Davies left a Colorado coal mine to become one of radio's finest baritones, and is fre-



quently heard over NBC. He paid his way through a music school by selling the same household appliance whose company is now sponsoring his program over the air.

**S**IR Henry Wood, an orchestra conductor of much renown in the British Isles, was guest con-



ductor on the Cadillac program recently. Sir Henry is conductor of the famous London Promenade Concert series and is one of the most popular of London's great musicians.

**H**IND'S Hall of Fame is being broadcast over an NBC network and installed as master of ceremonies,



is John Erskine, noted musician and man of letters. Erskine brings to the microphone not only a sweeping knowledge of music, but an unusual sense of comedy, as well.

**T**HE pleasing voice of Babs Ryan is again heard, the occasion being the new CBS Ford broad-



cast of Fred Waring's Pennsylvanians. She is the diminutive young songstress who you will remember as the feature of the Waring popular presentations during the year.





( Scene from One Man's Family. Barton Yarborough as Clifford, Bernice Berwin as Hazel, Michael Raffetto as Paul. )



( Above: Wheeler and Woolsey in Characteristic Pose. Below: Edgar Guest Reciting His Verse Before the Microphone. )



**S**-0000, they've got Ed Wynn's number over in New Jersey, where the Fire Chief keeps an automobile for his frequent trips down to Atlantic City to visit his mother. Harold Hoffman, Commissioner of Motor Vehicles for New Jersey, is a follower of the Texaco Fire Chief's broadcasts over NBC, and when the comedian applied for his license this year Hoffman was ready for him. S-0000 read the new registration plates that were handed to Wynn and S-0000, right up Fifth Avenue went Wynn, "S-0000" and all, with a big crowd of amused spectators in his wake. Finally Wynn became suspicious, climbed to the back of his car, as in the picture, and noticed the plate that was causing all the commotion. So-o-OO-oo wherever the Fire Chief and his automobile goes this year he will be preceded and followed by his famous tag line. Rumor, incidentally, has it that the real reason Wynn keeps the car in New Jersey is because he is afraid to take it to New York, where Graham McNamee lives. He doesn't want Graham to find out that he has given up his horse. Wynn is actually sensitive about that horse, and he has told Graham so much about it, that—well he just doesn't want his teammate to see him riding around in his car.



Here Are Two Popular NBC Radio Teams. Clara Lu 'n' Em (Louise Starkey, Isobel Carothers and Helen King) of the Chicago Studios, Have Been on the Air So Long They May Be Considered an Institution. Below Are the Harmony Girls from Georgia, the Pickens Sisters (top to bottom) Helen, Jane and Patti. Romance, However, Has Entered Here. A Few Days Ago, Salvatore Curioni Arrived in New York from Hollywood at 8:00 A. M., at 11:00 He Was Married to Helen and the Latter Hurried Away to Keep a Rigorous Radio and Vaudeville Schedule a Few Minutes Later.

In the Picture Above (left to right) is Jascha Heifetz, Famous Violinist, Bruno Walter, Noted Conductor and Lawrence P. Fisher, the Man Responsible for the Calillac Hour of Classical Music.

**C**ARLTON E. MORSE, of the San Francisco NBC studios, enjoys considerable fame as a writer and producer of radio plays, yet when he conceived the idea of writing a story dealing with the home life of the average American family, his bosses at NBC were thumbs down. Morse, however, didn't believe in letting a good thing drop. Finally, he was grudgingly told that the idea might be good enough for a trial, and thus was "One Man's Family" born. No enthusiasm accompanied the permission, but today, after a two year's run, practically the whole Pacific Coast tunes in to hear the latest doings of Henry and Fanny Barber, Paul, Hazel, Claudia, Clifford and Jack. Pacific Coast fans get their Barbers on Fridays, catching Jack, for instance, when he is about done with high school and ready for college. Jack is considerably younger, however, in the early chapters that are heard on the Eastern broadcasts Saturday nights. If you are one of those who like to read the last chapter first, tune in the Pacific Coast on Friday nights. The series is a sincere and thoughtful study of the psychology of family life expressed in dramatic and romantic episodes and the press agent is authority for the assertion that: the members of the cast have been working together for such a long time that they have developed the same loyalty and community feeling toward each other in real life that they portray so convincingly and entertainingly in their series of radio productions.



( Hugo Martini (right) Greets His Friend, Carlos Gardel, South American Singer, on His Arrival in New York )



( Above: The Old Salts That Spin Yarns for Seth Parker. Below: Ed Wynn's S0-0-0-0 is Licensed in New Jersey. )













Call	Location	Owner	Watts	Channel
CFAC	Calgary, Alta.	The Calgary Herald	(100)	93
CFBO	St. John, N. B.	C. A. Munro, Ltd.	(100)	121
CFCF	Montreal, Que.	Canadian Marconi Co.	(500)	60
CFCH	North Bay, Ont.	Northern Supplies, Ltd.	(100)	93
CFCN	Calgary, Alta.	W. W. Grant and H. G. Love	(10,000)	103
CFCO	Chatham, Ont.	John Beardall	(50)	60
CFCT	Victoria, B. C.	Victoria Broadcasting Assn.	(50)	145
CFCY	Charlottetown, P.E.I.	Island Radio Broadcasting Co.	(500)	63
CFJC	Kamloops, B. C.	Review Publishing Co., Ltd.	(100)	131
CFLC	Prescott, Ont.	Radio Association of Prescott	(100)	93
CFNB	Fredericton, N. B.	James S. Neill & Sons, Ltd.	(500)	103
CFPL	London, Ont.	London Free Press & Ptg. Co.	(100)	73
CFQC	Saskatoon, Sask.	The Electric Shop, Ltd.	(500)	123
CFRB	Toronto, Ont.	Rogers Majestic Corp., Ltd.	(10,000)	69
CFRC	Kingston, Ont.	Queen's University	(100)	151
CFTP	Edmonton, Alta.	Taylor & Pearson, Ltd.	(100)	112
CHAB	Moose Jaw, Sask.	Moose Jaw Radio Association	(100)	120
CHCK	Charlottetown, P. E. I.	W. E. Burke & J. A. Gesner	(50)	131
CHGS	Summerside, P. E. I.	R. T. Holman, Ltd.	(50)	112
CHLP	Montreal, Que.	La Patrie Pub. Co., Ltd.	(100)	112
CHML	Hamilton, Ont.	Maple Leaf Radio Co., Ltd.	(50)	101
CHNC	New Carlisle, Que.	Dr. Charles Houde	(100)	121
CHNS	Halifax, N. S.	Maritime Broadcast. Co., Ltd.	(500)	105
CHPR	St. John, N. B.	H. P. Robinson	(100)	137
CHRC	Quebec, Que.	CHRC, Limited	(100)	93
CHWC	Regina, Sask.	H. H. Williams & Sons, Ltd.	(500)	101
CHWK	Chilliwack, B. C.	Chilliwack Broadcasting Co., Ltd.	(100)	78
CJAT	Trail, B. C.	Trail Amateur Radio Ass'n	(50)	120
CJCA	Edmonton, Alta.	The Edmonton Journal, Ltd.	(1000)	73
CJCB	Sydney, N. S.	N. Nathanson	(50)	88
CJGJ	Calgary, Alta.	The Alberta Pub. Co., Ltd.	(500)	69
CJGS	Surbury, Ont.	Geo. McLeod Cootes	(500)	78
CJGX	Yorkton, Sask.	The Winnipeg Grain Exchange	(500)	63
CJKL	Kirkland Lake, Ont.	O. J. Thorpe & Branchaud	(100)	131
CJLS	Yarmouth, N. S.	Laurie & Smith	(100)	131
CJOC	Lethbridge, Alta.	Harold R. Carson	(100)	84
CJOR	Vancouver, B. C.	G. C. Chandler	(500)	60
CJRC	Middlechurch, Man.	James Richardson & Sons	(100)	139
CJRM	Moose Jaw, Sask.	Jas. Richardson & Sons, Ltd.	(1,000)	54
CJRW	Winnipeg, Man.	Jas. Richardson & Sons, Ltd.	(500)	54
CKAC	Montreal, Que.	La Presse Pub. Co., Ltd.	(5000)	73
CKBI	Prince Albert, Sask.	Prince Albert Radio Club	(100)	121
CKCD	Vancouver, B. C.	Vancouver Daily Province	(100)	101
CKCH	Hull, Quebec	Dr. J. L. Chabot	(100)	121
CKCK	Regina, Sask.	Leader-Post, Limited	(500)	101
CKPL	Toronto, Ont.	The Dominion Battery Co.	(500)	58
CKCO	Ottawa, Ont.	Dr. G. M. Geldart	(100)	101
CKCR	Kitchener, Ont.	W. C. Mitchell and G. Liddle	(100)	151
CKCV	Quebec, Que.	Vandry, Inc.	(50)	131
CKFC	Vancouver, B. C.	United Church of Canada	(50)	141
CKGB	Timmons, Ont.	R. H. Thompson	(100)	142
CKIS	Wolfville, N. S.	Acadia University	(50)	101
CKLW	Windsor, Ont.	Western Ontario Bdcst. Co. Ltd	(5000)	84

Call	Location	Owner	Watts	Channel
CKMC	Cobalt, Ont.	R. L. MacAdam	(50)	121
CKMO	Vancouver, B. C.	Sprott-Shaw Radio Co.	(100)	141
CKNC	Toronto, Ont.	Canadian Natl. Carbon Co., Ltd.	(100)	103
CKOC	Hamilton, Ont.	Westworth Broadcast. Co., Ltd.	(500)	112
CKOV	Kelowna, B. C.	J. W. B. Browne	(50)	121
CKPC	Brantford, Ont.	Cyrus Dolph	(100)	93
CKPR	Fort William, Ont.	Dougall Motor Car Co., Ltd.	(50)	78
CKTB	St. Catherines, Ont.	E. T. Sandell	(100)	120
CKUA	Edmonton, Alta.	University of Alberta	(500)	58
CKWX	Vancouver, B. C.	Western Broadcasting Company	(100)	101
CKX	Brandon, Man.	Manitoba Telephone System	(500)	145
CKY	Winnipeg, Man.	Manitoba Telephone System	(5000)	91
CMAB	Pinar del Rio	Jose Silvera	(20)	125
CMAF	Havana	Int. Broadcasting Co.	(1000)	68
CMBC	Havana	Domingo Fernandez Cruz	(150)	127
CMBD	Havana	Luis Perez Garcia	(250)	97
CMBG	Havana	John L. Stowers	(225)	105
CMBJ	Havana	Emilio Perera	(150)	114
CMBK	Havana	Alberto Alvarez	(15)	148
CMBL	Havana	Julio C. Hidalgo	(200)	145
CMBN	Havana	G. de Sequeira	(150)	119
CMBS	Havana	Enrique Arias	(200)	77
CMBW	Havana	Alvarez-Moris	(600)	114
CMBY	Havana	Callejas-Estefani	(250)	123
CMBZ	Havana	Manuel y Guillermo Salas	(150)	101
CMC	Havana	Radio Corp. of Cuba	(500)	84
CMCA	Havana	Manuel Cruz	(150)	123
CMCB	Havana	Antonio Capablanca	(150)	105
CMCD	Havana	Angel Berlematy	(250)	92
CMCF	Havana	Raoul Karman	(250)	87
CMCH	Havana	Wilfredo Fontanals	(20)	141
CMCJ	Havana	Rafael Rodriguez	(400)	118
CMCM	Havana	Aurelio Ballao	(15)	141
CMCN	Havana	Antonio Ginard	(250)	138
CMCP	Havana	Jose A. Yaniz	(150)	127
CMCQ	Havana	Andrez Martinez	(1000)	78
CMCR	Havana	Aurelio Hernandez	(150)	138
CMCU	Havana	Jorge Garcia Serra	(500)	110
CMCW	Havana	Vilarino y Cervantes	(150)	97
CMCY	Havana	M. D. Autran	(500)	59
CMDD	Havana	G. de Sequeira	(150)	93
CMGA	Colon	Leopoldo V. Figueroa	(100)	83
CMGB	Matanzas	Jose Anorga	(30)	121
CMGC	Matanzas	Oscar S. Mechoso	(30)	82
CMGE	Cardenas	Genaro Sabater	(30)	138
CMGF	Matanzas	Bernabe R. de la Torre	(100)	97
CMGH	Matanzas	Oscar J. Alvarez	(15)	104
CMHO	Caibarien	Manuel Alvarez	(500)	95
CMHI	Santa Clara	Laviz y Paz	(250)	104
CMHJ	Cienfuegos	Victorino Lopez	(60)	113
CMHK	Cruces	Virgilio Villanueva Fernandez	(50)	123
CMHL	Cienfuegos	Oscar Zayas	(20)	129

Complete  
for  
North  
America

# Alpha Call

Call	Location	Owner	Watts	Channel
CMHW	Cienfuegos	San Carlos No. 106	(100)	120
CMJC	Camaguey	Felix Sanchez	(150)	138
CMJE	Camaguey	Manuel Fernandez	(50)	117
CMJF	Camaguey	John L. Stowers	(200)	91
CMJG	Camaguey	Jose Antonio Lefran	(50)	105
CMJH	Ciego de Avila	Luis Marauri Mendosa	(50)	115
CMJI	Ciego de Avila	Gilberto Gesso Lopez	(45)	134
CMJL	Camaguey	Enrique Artime	(50)	95
CMJM	Camaguey	Ernesto de Ugarriza	(50)	124
CMJO	Ciego de Avila	Jose M. Rey	(15)	101
CMJP	Moron, Cuba	Uscar Canals	(75)	136
CMK	Havana	Nat. Broadcasting Co. of Cuba	(5,000)	73
CMKC	Santiago de Cuba	Pinol, Battic y Compania	(150)	103
CMKJ	Guantanamo	Luis Morlete	(20)	130
CMQ	Havana	Miguel Gabriel	(500)	63
CMW	Havana	Francisco-Gil	(1400)	60
CMX	Havana	Casa "Lavin"	(1000)	88
CRCA	Moncton, N. B.	Canadian Radio B'd'casting Com.	(500)	58
CRCM	Montreal, Que.	Canadian Radio Broadcast. Com.	(5000)	91
CRCO	Ottawa, Ont.	Canadian Radio B'd'casting Com.	(1000)	88
CRCS	Chicoutimi, Que.	Canadian Radio B'd'casting Com.	(100)	150
CRCT	Toronto, Ont.	Canadian Radio B'd'casting Com.	(5000)	96
CRCV	Vancouver, B. C.	Canadian Radio B'd'casting Com.	(1000)	110
HHK	Port au Prince	Garde d'Haiti	(1000)	92
HIJ	Santo Domingo, D. R.	F. A. Baez	(15)	119
HIL	Santo Domingo, D. R.	J. C. Teixido	(25)	88
HIT	Santo Domingo, D. R.	F. A. Sanabria	(10)	105
HIX	Santo Domingo	Government	(1000)	60
HIZ	Santo Domingo, D. R.	Frank Hatton	(10)	130
HRB	Tegucigalpa	Tropical Radio Telegraph Co.	(2300)	137
JRL	San Pedro Sula	Jose Lopez	(8)	135
KABC	San Antonio, Texas	Alamo Broadcasting Co., Inc.	(100)	142
KALE	Portland, Ore.	KALE, Inc.	(500)	138
KARK	Little Rock, Ark.	Arkansas Radio & Equip. Co.	(250)	89
KASA	Elk City, Okla.	E. M. Woody	(100)	121
KBPS	Portland, Ore.	Benson Polytechnical School	(100)	142
KBTM	Jonesboro, Ark.	W. J. Beard's Temple of Music	(100)	120
KCMC	Texarkana, Ark.	No. Mississippi Brodc. Corp.	(100)	142
KCRC	Enid, Okla.	Enid Radiophone Co.	(100)	137
KCRJ	Jerome, Ariz.	Charles C. Robinson	(100)	131
KDB	Santa Barbara, Cal.	Santa Barbara Broadcasting, Ltd.	(100)	150
KDFN	Casper, Wyo.	Donald Lewis Hathaway	(500)	144
KOKA	Pittsburgh, Pa.	Westinghouse Elec. & Mfg. Co.	(50,000)	98
KOLR	Devils Lake, N. D.	KOLR, Inc.	(100)	121

Call	Location	Owner	Watts	Channel
KOYL	Salt Lake, Utah	Intermountain Brodc. Corp.	(1000)	129
KECA	Los Angeles, Cal.	Earl G. Anthony, Inc.	(1000)	143
KLLW	Burbank, Cal.	Evening Herald Publishing Co.	(500)	78
KERN	Bakersfield, Cal.	The New Bakersfield Brodc. Co.	(100)	120
KEX	Portland, Ore.	The Oregonian Publishing Co.	(5000)	118
KFAB	Lincoln, Neb.	KFAB Broadcasting Co.	(25,000)	77
KFAC	Los Angeles, Cal.	Los Angeles Broadcasting Co.	(1000)	130
KFB	Great Falls, Mont.	Bultry Broadcast, Inc.	(1000)	128
KFBI	Abilene, Kans.	Farmers & Bankers Life Ins. Co.	(5000)	105
KFBK	Sacramento, Cal.	James McClatchy Co.	(100)	131
KFBL	Everett, Wash.	Loess Bros.	(50)	137
KFDM	Beaumont, Texas	Sabine Broadcasting Co., Inc.	(500)	58
KFDY	Brookings, S. D.	South Dakota State College	(1000)	55
KFEL	Denver, Colo.	Eugene P. O'Fallon, Inc.	(500)	92
KFEQ	St. Joseph, Mo.	Serogio & Co. Bank	(2500)	68
KFGQ	Boone, Iowa	Boone Biblical College	(100)	131
KFH	Wichita, Kan.	Radio Station KFH Co.	(1000)	130
KFI	Los Angeles, Cal.	Earl G. Anthony, Inc.	(50,000)	64
KFID	Spokane, Wash.	Spokane Broadcasting Corp.	(100)	112
KFIZ	Fond du Lac, Wis.	The Reporter Printing Co.	(100)	142
KFJB	Marshalltown, Iowa	Marshall Electric Co., Inc.	(100)	120
KFJI	Klamath Falls, Ore.	KFJI Broadcasters, Inc.	(100)	121
KFJM	Grand Forks, N. D.	University of North Dakota	(100)	137
KFJR	Portland, Ore.	Ashley C. Dixon-KFJR, Inc.	(500)	130
KFJZ	Fort Worth, Tex.	Fort Worth Br'dcast'g Co., Inc.	(100)	137
KFKA	Greeley, Colo.	Mid-Western Radio Corporation	(500)	88
KFKU	Lawrence, Kan.	University of Kansas	(500)	122
KFLV	Rockford, Ill.	Rockford Broadcasters	(500)	141
KFNF	Shenandoah, Iowa	Henry Field Co.	(500)	89
KFOR	Lincoln, Neb.	Cornell Broadcasting Corp.	(100)	121
KFOX	Long Beach, Cal.	Nichols & Warinner, Inc.	(1000)	125
KFPL	Dublin, Tex.	C. C. Baxter	(100)	131
KFPM	Greenville, Tex.	The New Furniture Co.	(15)	131
KFPW	Fort Smith, Ark.	Southwestern Hotel Co.	(100)	121
KFPY	Spokane, Wash.	Syrens Broadcasting Co.	(1000)	134
KFQD	Anchorage, Alaska	Anchorage Radio Club, Inc.	(250)	60
KFRG	San Francisco, Cal.	Don Lee Broadcasting System	(1000)	61
KFRU	Columbia, Mo.	KFRU, Incorporated	(500)	63
KFSO	San Diego, Cal.	Airfin Radio Corp., Ltd.	(1000)	60
KFSG	Los Angeles, Cal.	Echo Park Evang. Assn.	(500)	112
KFUO	St. Louis, Mo.	Concordia Seminary	(500)	55
KFV	Los Angeles, Cal.	Los Angeles Broadcasting Co.	(250)	100
KFVS	Cape Girardeau, Mo.	Hirsch Battery & Radio Co.	(100)	121
KFWB	Hollywood, Cal.	Warner Bros. Broadcasting Corp.	(1000)	95

# betical List

Every  
Station  
Listed  
Here

Call	Location	Owner	Watts	Channel
KFWI	San Francisco, Cal.	Radio Entertainments, Inc.	(500)	93
KFXO	Nampa, Idaho	Frank E. Hurt	(100)	120
KFXF	Denver, Colo.	Colorado Radio Corporation	(500)	92
KFXJ	Grand Junction, Col.	Western Slope Broadcasting Co.	(100)	120
KFXM	S. Bernardino, Cal.	J. C. and E. W. Lee	(100)	121
KFXR	Oklahoma City	Exchange Avenue Baptist Church	(100)	131
KFYD	Lubbock, Tex.	Kirksey Bros.	(100)	131
KFYR	Bismarck, N. D.	Meyer Broadcasting Co.	(1000)	55
KGA	Spokane, Wash.	Louis Wasmer (Lessee)	(5000)	147
KGAR	Tucson, Ariz.	Tucson Motor Service Co.	(100)	137
KGB	San Diego, Cal.	Don Lee Broadcasting System	(1000)	133
KGBX	Springfield, Mo.	KGBX, Inc.	(100)	131
KGBZ	York, Neb.	KGBZ Broadcasting Co.	(500)	93
KGBU	Ketchikan, Alaska	Alaska Radio & Service Co., Inc.	(500)	90
KGCA	Decorah, Iowa	Chas. W. Greenley	(100)	127
KGCR	Watertown, S. D.	Greater Kampeska Radio Corp.	(100)	121
KGCU	Mandan, N. D.	Mandan Radio Assn.	(250)	124
KGCX	Wolf Point, Mont.	E. E. Krebsbach	(100)	131
KGOA	Mitchell, S. D.	Mitchell Broadcasting Corp.	(100)	137
KGDE	Fergus Falls, Minn.	Charles L. Jara	(100)	120
KGDM	Stockton, Cal.	E. F. Peffer	(250)	110
KGDY	Huron, S. D.	Velox of So. Dakota	(250)	134
KGEK	Yuma, Colo.	Elmer C. Beehler	(100)	120
KGER	Long Beach, Cal.	Cons. Broadcasting Corp., Ltd.	(1000)	136
KGEZ	Kalispell, Mont.	Donald C. Treloar	(100)	131
KGFF	Shawnee, Okla.	KGFF Broadcasting Co.	(100)	142
KGFG	Oklahoma City	Oklahoma Broadcasting Co., Inc.	(100)	137
KGFI	Corpus Christi, Tex.	Eagle Broadcasting Co., Inc.	(100)	150
KGFI	Los Angeles, Cal.	Ben S. McGlashan	(100)	120
KGFK	Moorhead, Minn.	Red River Broadcasting Co., Inc.	(100)	150
KGFL	Roswell, N. M.	KGFL, Inc.	(100)	137
KGFW	Kearney, Neb.	Central Nebraska Brdcastg Co.	(100)	131
KGFX	Pierre, S. D.	Dana McNeil	(200)	63
KGGC	San Francisco, Cal.	Golden Gate Broadcasting Co.	(100)	142
KGGF	Coffeyville, Kansas	Powell & Platz	(500)	101
KGGM	Albuquerque, N. M.	New Mexico Broadcasting Co.	(250)	123
KGHF	Pueblo, Colo.	Curtis P. Ritchie	(250)	132
KGHI	Little Rock, Ark.	Lloyd Judd Company	(100)	120
KGHL	Billings, Mont.	Northwestern Auto Sup. Co., Inc.	(1000)	95
KGIR	Butte, Mont.	KGIR, Inc.	(500)	136
KGIW	Alamosa, Colo.	Leonard E. Wilson	(100)	142
KGIX	Las Vegas, Nev.	J. M. Heaton	(100)	142
KGKB	Tyler, Tex.	East Texas Broadcasting Co.	(100)	150
KGKL	San Angelo, Tex.	KGKL, Inc.	(100)	137

Call	Location	Owner	Watts	Channel
KGKO	Wichita Falls, Tex.	Wichita Falls Broadcasting Co.	(250)	57
KGKY	Scottsbluff, Neb.	Hilliard Co., Inc.	(100)	150
KGMB	Honolulu, T. H.	Honolulu Brodc. Co., Ltd.	(250)	132
KGNE	North Platte, Neb.	Great Plains Broadcasting Co.	(500)	143
KGNO	Dodge City, Kan.	Dodge City Brodc. Co., Inc.	(250)	134
KGO	San Francisco	National Broadcasting Co., Inc.	(7500)	79
KGOS	Amarillo, Tex.	Gish Radio Service	(1000)	141
KGVO	Missoula, Mont.	Mos		



Call	Location	Owner	Watts	Channel
WAAC	Chicago, Ill.	Drovers Journal Pub. Co.	(500)	92
WAAT	Jersey City, N. J.	Bremer Broadcasting Corp.	(500)	94
WAAX	Omaha, Neb.	Omaha Grain Exchange	(500)	66
WABC	New York, N. Y.	Atlantic Broadcasting Corp.	(50,000)	86
WABI	Bangor, Maine	First Universalist Soc. of Bangor	(100)	120
WACO	Waco, Tex.	Central Texas Broadcasting, Inc.	(100)	142
WADC	Akron, Ohio	Allen T. Simmons	(1,000)	132
WADM	Presque Isle, Me.	Aroostook Broadcasting Corp.	(100)	142
WAIU	Columbus, Ohio	Associated Radiocasting Corp.	(500)	64
WALR	Zanesville, Ohio	WALR Broadcasting Corp.	(100)	121
WAMC	Anniston, Ala.	Raymond C. Hammett	(100)	142
WAML	Laurel, Miss.	The Southland Radio Corp.	(100)	131
WAPI	Birmingham, Ala.	WAPI Broadcasting Corporation	(5,000)	114
WARD	Brooklyn, N. Y.	U. S. Broadcasting Corp.	(500)	140
WASH	Grand Rapids, Mich.	Kunsky-Trendle Broadcast Corp.	(500)	127
WAVE	Louisville, Ky.	WFIW, Incorporated	(1,000)	94
WAWZ	Zarephath, N. J.	Pillar of Fire	(250)	135
WAZL	Hazleton, Pa.	Hazleton Broadcasting Serv. Inc.	(100)	142
WBAA	W. Lafayette, Ind.	Purdue University	(500)	140
WBAK	Harrisburg, Pa.	Pennsylvania State Polls	(1,000)	143
WBAL	Baltimore, Md.	Cons. Gas Elec. Lt. & Power Co.	(10,000)	106
WBAP	Ft. Worth, Tex.	Carter Publications, Inc.	(50,000)	80
WBAX	Wilkes-Barre, Pa.	John H. Stenger, Jr.	(100)	121
WBBC	Brooklyn, N. Y.	Brooklyn Broadcasting Corp.	(500)	140
WBBL	Richmond, Va.	Grace Covenant Pres. Church	(100)	121
WBDM	Chicago, Ill.	WDBM Broadcasting Corp.	(25,000)	77
WBSR	Brooklyn, N. Y.	Peoples Pulpit Assn.	(1,000)	130
WBBX	New Orleans, La.	Samuel D. Reeks	(100)	120
WBBZ	Ponca City, Okla.	C. L. Carrell	(100)	120
WBCM	Bay City, Mich.	James E. Davidson	(500)	141
WBEN	Buffalo, N. Y.	WBEN, Incorporated	(1,000)	90
WBEO	Marquette, Mich.	Lake Superior Broadcasting Co.	(100)	131
WBFS	Huntsville, Ala.	The Hutchins Co.	(100)	120
WBIG	Greensboro, N. C.	Ne. Carolina Broadc. Co. Inc.	(500)	144
WBMS	Hackensack, N. J.	WBMS Broadcasting Corp.	(250)	145
WBNX	New York, N. Y.	Standard Cahill Co., Inc.	(250)	135
WBOV	Terre Haute, Ind.	Banks of Wabash, Inc.	(100)	131
WBRC	Birmingham, Ala.	Birmingham Broadcasting Co.	(500)	93
WBRE	Wilkes-Barre, Pa.	Louis G. Baltimore	(100)	131
WBSD	Needham, Mass.	Broadcasting Service Org., Inc.	(500)	92
WBT	Charlotte, N. C.	Station WBT, Inc.	(50,000)	108
WBTM	Danville, Va.	Piedmont Broadcasting Corp.	(100)	137
WBZ	Boston, Mass.	Westinghouse Elec. & Mfg. Co.	(50,000)	99
WCAC	Starrs, Conn.	Connecticut Agr. College	(250)	60
WCAD	Canton, N. Y.	St. Lawrence University	(500)	122
WCAE	Pittsburgh, Pa.	WCAE, Incorporated	(1,000)	122
WCAH	Columbus, Ohio	Commercial Radio Service Co.	(500)	143
WCAL	Northfield, Minn.	St. Dist. College	(1,000)	125
WCAM	Camden, N. J.	City of Camden	(500)	128
WCAO	Baltimore, Md.	Monumental Radio Co.	(250)	60
WCAP	Asbury Park, N. J.	Radio Industries Broadcast Co.	(500)	128
WCAT	Rapid City, S. D.	S. D. State School of Mines	(100)	120
WCAU	Philadelphia, Pa.	WCAU Broadcasting Co.	(50,000)	117

Call	Location	Owner	Watts	Channel
WCAX	Burlington, Vt.	Burlington Daily News, Inc.	(100)	120
WCAZ	Carthage, Ill.	Superior Broadcasting Service	(50)	107
WCBA	Allentown, Pa.	B. Bryan Musselman	(250)	144
WCBD	Zion, Ill.	Wilbur Glenn Voliva	(5,000)	108
WCBM	Baltimore, Md.	Baltimore Broadcasting Corp.	(100)	137
WCBS	Springfield, Ill.	WCBS, Inc.	(100)	121
WCCO	Minneapolis	Northwestern Broadcasting, Inc.	(50,000)	81
WCFL	Chicago, Ill.	Chicago Federation of Labor	(5,000)	97
WCKY	Covington, Ky.	L. B. Wilson, Inc.	(5,000)	149
WCLO	Janesville, Wis.	WCLO Radio Corporation	(100)	120
WCLS	Joliet, Ill.	WCLS, Inc.	(100)	131
WCMA	Culver, Ind.	General Broadcasting Corp.	(500)	140
WCNW	Brooklyn, N. Y.	Arthur Faske	(100)	150
WCOA	Pensacola, Fla.	Pensacola Broadcasting Co.	(500)	134
WCOC	Meridian, Miss.	Mississippi Broadcasting Co.	(500)	88
WCRW	Chicago, Ill.	Clinton R. White	(100)	121
WCSC	Charleston, S. C.	South Carolina Broadcasting Co.	(500)	136
WCSH	Portland, Maine	Congress Square Hotel Co.	(1,000)	94
WDAE	Tampa, Fla.	Tampa Publishing Co.	(1,000)	122
WDAF	Kansas City, Mo.	Kansas City Star Co.	(1,000)	61
WDAG	Amarillo, Tex.	National Radio Broadc. Corp.	(1,000)	141
WDAH	El Paso, Tex.	Tri-State Broadcasting Co., Inc.	(100)	131
WDAS	Philadelphia, Pa.	WDAS Broadcasting Station	(100)	137
WDAY	Fargo, N. D.	WDAY, Inc.	(1,000)	94
WDBJ	Roanoke, Va.	Times-World Corp.	(500)	93
WDBO	Orlando, Fla.	Orlando Broadcasting Co., Inc.	(250)	58
WDEL	Wilmington, Del.	WDEL, Inc.	(250)	112
WDEV	Waterbury, Vt.	Harry C. Whitehill	(500)	55
WDGY	Minneapolis, Minn.	Dr. Geo. W. Young	(1,000)	118
WDOO	Chattanooga, Tenn.	WDOO Broadcasting Corp.	(1,000)	128
WDRG	Hartford, Conn.	WDRG, Incorporated	(1,000)	133
WDSU	New Orleans, La.	Joseph H. Uhalt	(1,000)	125
WDZ	Tuscola, Ill.	James L. Bush	(100)	107
WDAF	New York, N. Y.	National Broadcasting Co., Inc.	(50,000)	66
WEAN	Providence, R. I.	Shepard Broadcasting Service	(500)	78
WEBC	Superior, Wis.	Head of the Lakes Broadc. Co.	(1,000)	129
WEBC	Harrisburg, Ill.	Harrisburg Broadcasting Co.	(100)	121
WEBR	Buffalo, N. Y.	Howell Broadcasting Co., Inc.	(100)	131
WEDC	Chicago, Ill.	Emil Denmark, Inc.	(100)	121
WEED	Greenville, N. C.	Wm. Avira Wyant	(100)	142
WEFI	Boston, Mass.	Edison Elec. Illum. Co.	(1,000)	59
WEFU	Reading, Pa.	Berks Broadcasting Co.	(1,000)	83
WEHC	Charlottesville, Va.	Community Broadcasting Corp.	(500)	135
WEHS	Chicago, Ill.	WEHS, Inc.	(100)	142
WELL	Battle Creek, Mich.	Equiper-News Co.	(50)	142
WENC	Albany, Ga.	Americus Broadcast Corp.	(100)	142
WENR	Chicago, Ill.	National Broadcasting Co., Inc.	(50,000)	87
WESG	Elmira, N. Y.	Cornell University	(1,000)	104
WEVD	New York, N. Y.	Dubs Memorial Radio Fund, Inc.	(500)	130
WEW	St. Louis, Mo.	St. Louis University	(1,000)	76
WEXL	Royal Oak, Mich.	Royal Oak Broadcasting Co.	(50)	131
WFAA	Dallas, Tex.	Dallas News & Dallas Journal	(50,000)	80
WFAB	New York, N. Y.	57th Avenue Broadcasting Corp.	(100)	130

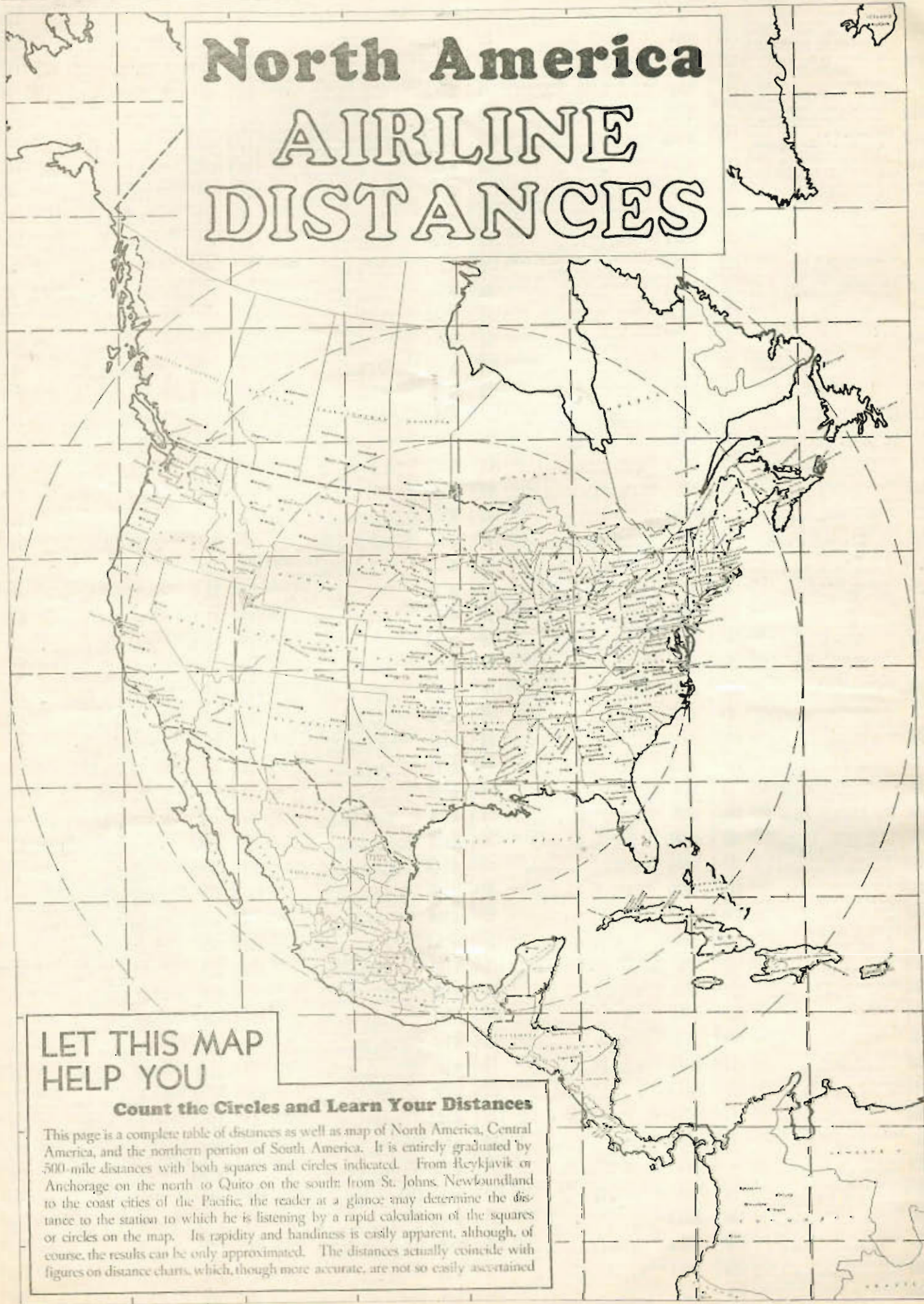
Call	Location	Owner	Watts	Channel
WFAM	South Bend, Ind.	South Bend Tribune	(100)	120
WFAS	White Plains, N. Y.	Westchester Broadcasting Corp.	(100)	121
WFBC	Greenville, S. C.	Greenville News-Piedmont Co.	(100)	120
WFBE	Cincinnati, Ohio	Radio Station WFBE, Inc.	(100)	120
WFBG	Altoona, Pa.	The Gable Broadcasting Co.	(100)	131
WFBL	Syracuse, N. Y.	The Onondaga Broadcasting Co.	(1,000)	136
WFBM	Indianapolis, Ind.	Indianapolis Power & Light Co.	(1,000)	123
WFBT	Baltimore, Md.	Baltimore Radio Show, Inc.	(500)	127
WFOF	Flint, Mich.	Flint Broadcasting Co.	(100)	131
WFOV	Rome, Ga.	Rome Broadcasting Corporation	(100)	150
WFEA	Manchester, N. H.	New Hampshire Broadcast. Corp.	(500)	143
WFI	Philadelphia, Pa.	WFI Broadcasting Company	(500)	56
WFLA	Clearwater, Fla.	Clearwater-St. Petersburg Co. of C.	(1,000)	62
WGL	Lancaster, Pa.	WGL, Inc.	(100)	131
WGAR	Cleveland, Ohio	The WGAR Broadcasting Co.	(500)	145
WGBB	Freeport, N. Y.	Harry R. Garman	(100)	121
WGBF	Evansville, Ind.	Evansville on the Air, Inc.	(500)	63
WGBI	Scranton, Pa.	Scranton Broadcasters, Inc.	(250)	88
WGCM	Mississippi City	Great Southern Lead Co., Inc.	(100)	121
WGCP	Newark, N. J.	May Radio Broadcast Corp.	(1,000)	125
WGES	Chicago, Ill.	Oak Leaves Broadc. Sta., Inc.	(500)	136
WGH	Newport News, Va.	Hampton Roads Broadcasting Co.	(100)	131
WGL	Ft. Wayne, Ind.	Fred C. Zieg	(100)	137
WGLC	Hudson Falls, N. Y.	O. T. Griffin & G. F. Bissell	(100)	137
WGN	Chicago, Ill.	WGN, Incorporated	(50,000)	72
WGNV	Chester Twp., N. Y.	Peter Guellet	(100)	121
WGR	Buffalo, N. Y.	Buffalo Broadcasting Corp., Inc.	(1,000)	55
WGST	Atlanta, Ga.	Georgia School of Technology	(250)	89
WGY	Schenectady, N. Y.	National Broadcasting Co.	(50,000)	79
WHA	Madison, Wis.	University of Wisconsin	(1,000)	94
WHAD	Milwaukee, Wis.	WHAD, Inc.	(250)	112
WHAM	Rochester, N. Y.	Stromberg-Carlson Tel. Mfg. Co.	(50,000)	115
WHAS	Louisville, Ky.	Courier-Journal & Times	(50,000)	82
WHAT	Philadelphia, Pa.	Independence Broadcasting Co.	(100)	131
WHAZ	Troy, N. Y.	Rensselaer Poly. Inst.	(500)	130
WHB	Kansas City, Mo.	WHB Broadcasting Co.	(500)	86
WHBC	Canton, Ohio	Edward P. Graham	(100)	120
WHBD	Mt. Orab, Ohio	Southern Ohio Broadcasting Co.	(100)	137
WHBF	Rock Island, Ill.	Rock Island Broadcasting Co.	(100)	121
WHBL	Sheboygan, Wis.	Press Publishing Co.	(500)	141
WHBQ	Memphis, Tenn.	Broad. Station WHBQ, Inc.	(100)	137
WHBU	Anderson, Ind.	Anderson Broadcasting Corp.	(100)	121
WHBY	Green Bay, Wis.	WHBY, Inc.	(100)	120
WHDF	Calumet, Mich.	Upper Michigan Broadc. Co.	(100)	137
WHDH	Boston, Mass.	Methuen Radio Co., Inc.	(1,000)	83
WHOL	Tupper Lake, N. Y.	Tupper Lake Broadc. Co., Inc.	(100)	142
WHBB	Portsmouth, N. H.	Granite State Broadcasting Corp.	(250)	74
WHCC	Rochester, N. Y.	WHCC, Incorporated	(500)	143
WHCF	Kosciusko, Miss.	Attala Milling & Produce Co.	(100)	150
WHET	Dothan, Alabama	Troy Broadcasting Co.	(100)	137
WHFC	Chicago, Ill.	WHFC, Incorporated	(100)	142

Call	Location	Owner	Watts	Channel
WHIS	Bluefield, W. Va.	Daily Telegraph Printing Co.	(250)	141
WHK	Cleveland, Ohio	Radio Air Service Corp.	(1,000)	139
WHN	New York, N. Y.	Marcus Loew Booking Agency	(250)	101
WHOM	Jersey City, N. J.	New Jersey Broadcasting Corp.	(250)	145
WHP	Harrisburg, Pa.	WHP Incorporated	(500)	143
WIAS	Ottumwa, Iowa	Lancaster Broadcasting Co.	(100)	131
WIBA	Madison, Wis.	Badger Broadcasting Co.	(500)	128
WIBG	Glenside, Pa.	WIBG, Incorporated	(100)	97
WIBM	Jackson, Mich.	WIBM, Inc.	(100)	137
WIBO	Chicago, Ill.	Nelson Bros. Bond & Mfg. Co.	(1,000)	56
WIBU	Poynette, Wis.	William C. Forrest	(100)	121
WIBW	Topeka, Kan.	Topeka Broadcasting Assn., Inc.	(1,000)	58
WIBX	Utica, N. Y.	WIBX, Inc.	(100)	120
WICC	Bridgeport, Conn.	Bridgeport Broadcasting Station	(250)	60
WIL	St. Louis, Mo.	Missouri Broadcasting Corp.	(100)	120
WILL	Urbana, Ill.	University of Illinois	(250)	89
WILM	Wilmington, Del.	Delaware Broadcasting Co., Inc.	(100)	142
WIND	Gary, Ind.	Johnson-Kennedy Radio Corp.	(1,000)	56
WINS	New York, N. Y.	American Radio News Corp.	(500)	118
WIOD	Miami, Fla.	Isle of Dream Broadcasting Co.	(1,000)	130
WIP	Philadelphia, Pa.	Pennsylvania Broad. Co., Inc.	(500)	61
WIS	Columbia, S. C.	WIS, Inc.	(5,000)	105
WISN	Milwaukee, Wis.	American Radio News Corp.	(250)	112
WJAC	Johnstown, Pa.	WJAC, Inc.	(100)	131
WJAG	Norfolk, Neb.	Norfolk Daily News	(1,000)	106
WJAR	Providence, R. I.	The Outlet Co.	(500)	89
WJAS	Pittsburgh, Pa.	Pittsburgh Radio Supply House	(1,000)	129
WJAX	Jacksonville, Fla.	City of Jacksonville	(1,000)	90
WJAY	Cleveland, Ohio	Cleveland Radio Broadc. Corp.	(500)	61
WJBC	LaSalle, Ill.	Kaskaskia Broadcasting Co.	(100)	120
WJBI	Redbank, N. J.	Memmouth Broadcasting Co.	(100)	121
WJBG	Detroit, Mich.	James F. Hopkins	(50)	137
WJBL	Decatur, Ill.	Commodore Broadcasting, Inc.	(100)	120
WJBO	Baton Rouge, La.	Baton Rouge Broadcasting Co.	(100)	142
WJBW	New Orleans, La.	C. Curson	(100)	120
WJBY	Gadsden, Ala.	Gadsden Broadcasting Co., Inc.	(100)	121
WJDX	Jackson, Miss.	Lamar Life Ins. Co.	(1,000)	127
WJEF	Hagerstown, Md.	Hagerstown Broadcasting Co.	(100)	121
WJEM	Tupelo, Miss.	Britt A. Rogers, Jr.	(500)	99
WJJO	Chicago, Ill.	WJJO, Inc.	(20,000)	113
WJMS	Ironwood, Mich.	WJMS, Inc.	(100)	142
WJR	Detroit, Mich.	WJR, The Goodwill Station, Inc.	(10,000)	75
WJSY	Washington, D. C.	Old Dominion Broadcasting Corp.	(10,000)	146
WJTL	Atlanta, Ga.	Dalhousie University	(100)	137
WJW	Akron, Ohio	WJW, Inc.	(100)	121
WJZ	New York, N. Y.	National Broadcasting Co., Inc.	(50,000)	76
WKAQ	San Juan, P. R.	Radio Corp. of Porto Rico	(1,000)	124
WKAR	E. Lansing, Mich.	Michigan State College	(1,000)	104
WKAV	Laconia, N. H.	Lamonia Radio Club	(100)	131
WKBB	East Dubuque, Ill.	Sanders Bros.	(100)	150
WKBC	Birmingham Ala.	R. B. Bryles Furniture Co.	(250)	131

Call	Location	Owner	Watts	Channel
WKBF	Indianapolis, Ind.	Indianapolis Broadcasting, Inc.	(500)	140
WKBH	LaCrosse, Wis.	WKBH, Inc.	(1,000)	138
WKBI	Chicago, Ill.	WKBI, Inc.	(100)	142
WKBN	Youngstown, Ohio	WKBN Broadcasting Corp.	(500)	57
WKBO	Harrisburg, Pa.	Keystone Broadcasting Corp.	(100)	120
WKBY	Richmond, Indiana	Knox Battery and Elec. Co.	(100)	150
WKBW	Buffalo, N. Y.	Buffalo Broadcasting Corp.	(5,000)	148
WKBZ	Ludington, Mich.	K. L. Ashbacher	(100)	150
WKLU	La Grange, Ga.	Radio Station WKLU	(100)	150
WKI	Greenwood, Miss.	J. Pat Seely	(100)	121
WKJC	Lancaster, Pa.	Lancaster Broadcasting Service	(100)	120
WKOK	Sunbury, Pa.	Charles S. Blue	(100)	121
WKRC	Cincinnati, Ohio	WKRC, Inc.	(1,000)	55
WKY	Oklahoma City, Okla.	WKY Radiophone Company	(1,000)	90
WKZO	Kalamazoo, Mich.	WKZO, Inc.	(1,000)	59
WLAC	Nashville, Tenn.	Life & Casualty Ins. Co. of Tenn.	(5,000)	147
WLAP	Louisville, Ky.	Am. Broadc. Corp. of Kentucky	(100)	142
WLB	Minneapolis, Minn.	University of Minnesota	(1,000)	125
WLBC	Muncie, Ind.	Donald A. Burton	(100)	131
WLBF	Kansas City, Kan.	WLBF Broadcasting Co.	(100)	142
WLBL	Stevens Pt., Wis.	Wisconsin Dept. of Markets	(2,500)	90
WLBW	Erie, Pa.	Broadcasters of Penn., Inc.	(500)	126
WLBZ	Bangor, Maine	Maine Broadcasting Co., Inc.	(500)	62
WLEU	Erie, Pa.	Len J. Amelian	(100)	142
WLEY	Lexington, Mass.	Albert S. Moffat	(100)	137
WLIT	Philadelphia, Pa.	Lit Brothers	(500)	56
WLOE	Boston, Mass.	Boston Broadcasting Co.	(100)	150
WLS	Chicago, Ill.	Agricultural Broadcasting Co.	(50,000)	87
WLTH	Brooklyn, N. Y.	Voice of Brooklyn, Inc.	(500)	140
WLVA	Lynchburg, Va.	Lynchburg Broadcasting Corp.	(100)	137
WLW	Cincinnati, Ohio	Crosley Radio Corp.	(50,000)	70
WLWL	New York, N. Y.	Missionary Society of St. Paul	(5,000)	110
WMAI	Washington, D. C.	National Broadcasting Co.	(250)	63
WMAQ	Chicago, Ill.	National Broadcasting Co.	(500)	67
WMAS	Springfield, Mass.	WMAS, Inc.	(100)	142
WMAZ	Macon, Ga.	Southeastern Broadc. Co., Inc.	(500)	118
WMB	Detroit, Mich.	Michigan Broadcasting Co., Inc.	(100)	142
WMBD	Peoria, Ill.	Peoria Broadcasting Co.	(500)	144
WMBG	Richmond, Va.	Havens & Martin, Inc.	(100)	121
WMBH	Joplin, Mo.	W. M. Robertson	(10	



# North America AIRLINE DISTANCES



**LET THIS MAP  
HELP YOU**

**Count the Circles and Learn Your Distances**

This page is a complete table of distances as well as map of North America, Central America, and the northern portion of South America. It is entirely graduated by 500-mile distances with both squares and circles indicated. From Reykjavik or Anchorage on the north to Quito on the south from St. Johns, Newfoundland to the coast cities of the Pacific, the reader at a glance may determine the distance to the station to which he is listening by a rapid calculation of the squares or circles on the map. Its rapidity and handiness is easily apparent, although, of course, the results can be only approximated. The distances actually coincide with figures on distance charts, which, though more accurate, are not so easily ascertained.

# Airline Distances

(United States-Canada)

## TABLE NO. 1

It is possible to arrange only a limited number of cities in a distance table, for quick finding and on this page is a table that is one of a series that embraces

**No. 1: United States-Canada Distances**  
**No. 2: Western Hemisphere Distances**

**No. 3: Eastern Hemisphere Distances**  
**No. 4: All-World Distances**

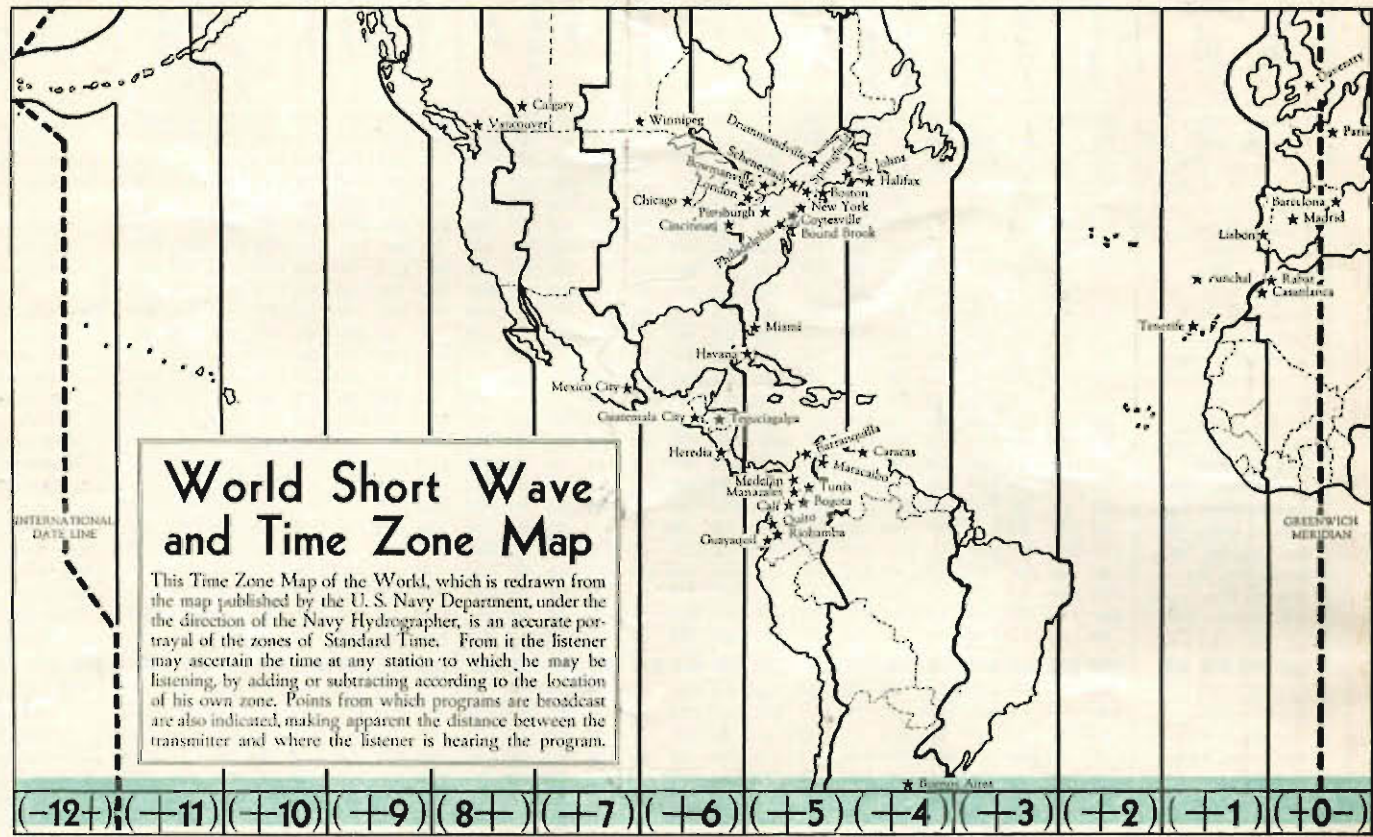
It will be noted that 48 cities are included in this chart and the arrangement places 48 on each side and 24 each on top and bottom. The diagonal row of hands in the upper and lower halves divides the figures applying to the cities at the left and those at the right.

FROM TO	Albuquerque	Atlanta, Ga.	Baltimore, Md.	Bismarck, N. D.	Boise, Idaho	Boston, Mass.	Butte, Mont.	Calgary, Alta.	Casper, Wyo.	Charlotte, N. C.	Chicago, Ill.	Cincinnati, Ohio	Cleveland, Ohio	Dallas, Texas	Denver, Colo.	Des Moines, Iowa	Detroit, Mich.	Edmonton, Alta.	Hot Springs, Ark.	Kansas City, Mo.	Los Angeles, Cal.	Louisville, Ky.	Miami, Fla.	Milwaukee, Wis.	Minneapolis	Montreal, Que.	Nashville, Tenn.	New Orleans, La.	New York, N. Y.	Omaha, Nebr.	Philadelphia, Pa.	Phoenix, Ariz.	Pittsburgh, Pa.	Portland, Ore.	Regina, Sask.	Richmond, Va.	St. Louis, Mo.	Salt Lake City	San Antonio, Tex.	San Francisco	Schenectady	Seattle, Wash.	Toronto, Ont.	Tulsa, Okla.	Vancouver, B. C.	Washington, D. C.	Winnipeg, Man.																																																																																																																																																																																																																														
Albuquerque	1142 1697 1173 664 725 774 1389 1359	680 620 332 1915 680 491 2000 614	639 995 491 2310 959 959 1995 399	675 1855 965 1285 620 946 750 916	1411 2371 1621 705 1151 1395 761 1660	854 1314 824 2595 1251 1302 2068 651	1221 2280 1468 915 1030 1309 576 1465	1330 2495 1629 1231 1245 1550 233 1959	834 1992 1130 391 670 925 860 1180	879 675 344 2110 804 687 2039 522	80 1315 270 1738 418 590 1449 233	323 984 92 1887 541 565 1710 239	338 1119 319 2045 700 786 1690 98	860 1109 725 1241 454 246 1709 1000	910 1728 1032 835 553 755 1088 1150	308 1351 479 1439 184 492 1252 541	252 1191 319 1962 645 768 1598 1000	1381 2600 1708 1470 1370 1692 1602	651 976 478 1438 332 2018 443	143 1251 485 1350 480 1203 863	1746 2330 1825 1100 1190 2028 485	358 840 1679 681 382 2052 957	1297 160 1775 473 368 1782 479	1481 811 2459 1155 1265 1829 516	295 1537 608 1523 418 731 1083 541	295 726 486 934 737 430 689 1461	1481 836 570 1142 1412 1089 1972	946 160 639 651 583 577 1500	701 857 1679 2459 1315 2381 362	1089 1420 479 1100 172 1031 1040	1020 350 768 1185 498 1051 1087	295 1155 614 853 1150 2018 1472	984 412 687 1110 86 1095 1682	1284 2185 1438 1310 2139 1180 2080 672	244 405 428 934 318 308 258 1629	1130 215 1025 1483 255 1310 375 2339	1425 2327 1970 2072 2445 1370 2405 1051	651 1444 1325 1617 1610 762 1591 1267	971 614 528 902 309 1027 215 1953	487 975 258 607 677 356 811 1267	984 1930 1368 1440 1971 829 1919 528	1125 1759 823 504 1599 843 1511 847	1585 2540 1951 1923 2810 1427 2520 669	972 187 835 1279 154 1139 221 2150	1388 2272 1977 2115 2444 1370 2369 1161	689 309 663 1138 350 861 389 2090	634 1332 510 546 1230 362 1161 926	1445 2310 2059 2225 2444 1439 2417 1299	934 512 572 964 209 1015 123 1900	399 1189 1105 1450 1315 607 1302 1365	449 895 1711 934 676 232 1240 1119	1058 1420 2720 2161 860 1081 2095 1142	344 896 1941 1252 454 248 1395 952	2130 2628 885 1364 2282 1364 596 1199	776 1301 1492 827 934 240 816 706	823 1376 1740 1252 897 325 1119 479	1807 2100 744 442 2045 1430 955 1886	215 638 1950 1155 454 454 1481 1249	711 1185 1489 810 901 479 950 881	1376 1653 915 408 307 1394 1044	534 1648 1648 2050 1979 1750 2285 829	1795 1622 602 812 893 842 1800	711 1315 1070 110 259 406 381 1370	1150 590 885 1741 1572 1442 1770 731	964 1569 1298 356 400 864 467 1620	123 490 596 757 622 431 823 559	1020 1622 1379 406 572 713 481 1680	835 1082 436 934 713 843 651 1271	526 1020 615 467 240 406 338 1141	1031 1630 1525 504 720 750 836 1615	233 701 873 627 603 356 947 670	449 895 1711 934 676 232 1240 1119	1058 1420 2720 2161 860 1081 2095 1142	344 896 1941 1252 454 248 1395 952	2130 2628 885 1364 2282 1364 596 1199	776 1301 1492 827 934 240 816 706	823 1376 1740 1252 897 325 1119 479	1807 2100 744 442 2045 1430 955 1886	215 638 1950 1155 454 454 1481 1249	711 1185 1489 810 901 479 950 881	1376 1653 915 408 307 1394 1044	534 1648 1648 2050 1979 1750 2285 829	1795 1622 602 812 893 842 1800	711 1315 1070 110 259 406 381 1370	1150 590 885 1741 1572 1442 1770 731	964 1569 1298 356 400 864 467 1620	123 490 596 757 622 431 823 559	1020 1622 1379 406 572 713 481 1680	835 1082 436 934 713 843 651 1271	526 1020 615 467 240 406 338 1141	1031 1630 1525 504 720 750 836 1615	233 701 873 627 603 356 947 670	449 895 1711 934 676 232 1240 1119	1058 1420 2720 2161 860 1081 2095 1142	344 896 1941 1252 454 248 1395 952	2130 2628 885 1364 2282 1364 596 1199	776 1301 1492 827 934 240 816 706	823 1376 1740 1252 897 325 1119 479	1807 2100 744 442 2045 1430 955 1886	215 638 1950 1155 454 454 1481 1249	711 1185 1489 810 901 479 950 881	1376 1653 915 408 307 1394 1044	534 1648 1648 2050 1979 1750 2285 829	1795 1622 602 812 893 842 1800	711 1315 1070 110 259 406 381 1370	1150 590 885 1741 1572 1442 1770 731	964 1569 1298 356 400 864 467 1620	123 490 596 757 622 431 823 559	1020 1622 1379 406 572 713 481 1680	835 1082 436 934 713 843 651 1271	526 1020 615 467 240 406 338 1141	1031 1630 1525 504 720 750 836 1615	233 701 873 627 603 356 947 670	449 895 1711 934 676 232 1240 1119	1058 1420 2720 2161 860 1081 2095 1142	344 896 1941 1252 454 248 1395 952	2130 2628 885 1364 2282 1364 596 1199	776 1301 1492 827 934 240 816 706	823 1376 1740 1252 897 325 1119 479	1807 2100 744 442 2045 1430 955 1886	215 638 1950 1155 454 454 1481 1249	711 1185 1489 810 901 479 950 881	1376 1653 915 408 307 1394 1044	534 1648 1648 2050 1979 1750 2285 829	1795 1622 602 812 893 842 1800	711 1315 1070 110 259 406 381 1370	1150 590 885 1741 1572 1442 1770 731	964 1569 1298 356 400 864 467 1620	123 490 596 757 622 431 823 559	1020 1622 1379 406 572 713 481 1680	835 1082 436 934 713 843 651 1271	526 1020 615 467 240 406 338 1141	1031 1630 1525 504 720 750 836 1615	233 701 873 627 603 356 947 670	449 895 1711 934 676 232 1240 1119	1058 1420 2720 2161 860 1081 2095 1142	344 896 1941 1252 454 248 1395 952	2130 2628 885 1364 2282 1364 596 1199	776 1301 1492 827 934 240 816 706	823 1376 1740 1252 897 325 1119 479	1807 2100 744 442 2045 1430 955 1886	215 638 1950 1155 454 454 1481 1249	711 1185 1489 810 901 479 950 881	1376 1653 915 408 307 1394 1044	534 1648 1648 2050 1979 1750 2285 829	1795 1622 602 812 893 842 1800	711 1315 1070 110 259 406 381 1370	1150 590 885 1741 1572 1442 1770 731	964 1569 1298 356 400 864 467 1620	123 490 596 757 622 431 823 559	1020 1622 1379 406 572 713 481 1680	835 1082 436 934 713 843 651 1271	526 1020 615 467 240 406 338 1141	1031 1630 1525 504 720 750 836 1615	233 701 873 627 603 356 947 670	449 895 1711 934 676 232 1240 1119	1058 1420 2720 2161 860 1081 2095 1142	344 896 1941 1252 454 248 1395 952	2130 2628 885 1364 2282 1364 596 1199	776 1301 1492 827 934 240 816 706	823 1376 1740 1252 897 325 1119 479	1807 2100 744 442 2045 1430 955 1886	215 638 1950 1155 454 454 1481 1249	711 1185 1489 810 901 479 950 881	1376 1653 915 408 307 1394 1044	534 1648 1648 2050 1979 1750 2285 829	1795 1622 602 812 893 842 1800	711 1315 1070 110 259 406 381 1370	1150 590 885 1741 1572 1442 1770 731	964 1569 1298 356 400 864 467 1620	123 490 596 757 622 431 823 559	1020 1622 1379 406 572 713 481 1680	835 1082 436 934 713 843 651 1271	526 1020 615 467 240 406 338 1141	1031 1630 1525 504 720 750 836 1615	233 701 873 627 603 356 947 670	449 895 1711 934 676 232 1240 1119	1058 1420 2720 2161 860 1081 2095 1142	344 896 1941 1252 454 248 1395 952	2130 2628 885 1364 2282 1364 596 1199	776 1301 1492 827 934 240 816 706	823 1376 1740 1252 897 325 1119 479	1807 2100 744 442 2045 1430 955 1886	215 638 1950 1155 454 454 1481 1249	711 1185 1489 810 901 479 950 881	1376 1653 915 408 307 1394 1044	534 1648 1648 2050 1979 1750 2285 829	1795 1622 602 812 893 842 1800	711 1315 1070 110 259 406 381 1370	1150 590 885 1741 1572 1442 1770 731	964 1569 1298 356 400 864 467 1620	123 490 596 757 622 431 823 559	1020 1622 1379 406 572 713 481 1680	835 1082 436 934 713 843 651 1271	526 1020 615 467 240 406 338 1141	1031 1630 1525 504 720 750 836 1615	233 701 873 627 603 356 947 670	449 895 1711 934 676 232 1240 1119	1058 1420 2720 2161 860 1081 2095 1142	344 896 1941 1252 454 248 1395 952	2130 2628 885 1364 2282 1364 596 1199	776 1301 1492 827 934 240 816 706	823 1376 1740 1252 897 325 1119 479	1807 2100 744 442 2045 1430 955 1886	215 638 1950 1155 454 454 1481 1249	711 1185 1489 810 901 479 950 881	1376 1653 915 408 307 1394 1044	534 1648 1648 2050 1979 1750 2285 829	1795 1622 602 812 893 842 1800	711 1315 1070 110 259 406 381 1370	1150 590 885 1741 1572 1442 1770 731	964 1569 1298 356 400 864 467 1620	123 490 596 757 622 431 823 559	1020 1622 1379 406 572 713 481 1680	835 1082 436 934 713 843 651 1271	526 1020 615 467 240 406 338 1141	1031 1630 1525 504 720 750 836 1615	233 701 873 627 603 356 947 670	449 895 1711 934 676 232 1240 1119	1058 1420 2720 2161 860 1081 2095 1142	344 896 1941 1252 454 248 1395 952	2130 2628 885 1364 2282 1364 596 1199	776 1301 1492 827 934 240 816 706	823 1376 1740 1252 897 325 1119 479	1807 2100 744 442 2045 1430 955 1886	215 638 1950 1155 454 454 1481 1249	711 1185 1489 810 901 479 950 881	1376 1653 915 408 307 1394 1044	534 1648 1648 2050 1979 1750 2285 829	1795 1622 602 812 893 842 1800	711 1315 1070 110 259 406 381 1370	1150 590 885 1741 1572 1442 1770 731	964 1569 1298 356 400 864 467 1620	123 490 596 757 622 431 823 559	1020 1622 1379 406 572 713 481 1680	835 1082 436 934 713 843 651 1271	526 1020 615 467 240 406 338 1141	1031 1630 1525 504 720 750 836 1615	233 701 873 627 603 356 947 670	449 895 1711 934 676 232 1240 1119	1058 1420 2720 2161 860 1081 2095 1142	344 896 1941 1252 454 248 1395 952	2130 2628 885 1364 2282 1364 596 1199	776 1301 1492 827 934 240 816 706	823 1376 1740 1252 897 325 1119 479	1807 2100 744 442 2045 1430 955 1886	215 638 1950 1155 454 454 1481 1249	711 1185 1489 810 901 479 950 881	1376 1653 915 408 307 1394 1044	534 1648 1648 2050 1979 1750 2285 829	1795 1622 602 812 893 842 1800	711 1315 1070 110 259 406 381 1370	1150 590 885 1741 1572 1442 1770 731	964 1569 1298 356 400 864 467 1620	123 490 596 757 622 431 823 559	1020 1622 1379 406 572 713 481 1680	835 1082 436 934 713 843 651 1271	526 1020 615 467 240 406 338 1141	1031 1630 1525 504 720 750 836 1615	233 701 873 627 603 356 947 670	449 895 1711 934 676 232 1240 1119	1058 1420 2720 2161 860 1081 2095 1142	344 896 1941 1252 454 248 1395 952	2130 2628 885 1364 2282 1364 596 1199	776 1301 1492 827 934 240 816 706	823 1376 1740 1252 897 325 1119 479	1807 2100 744 442 2045 1430 955 1886	215 638 1950 1155 454 454 1481 1249	711 1185 1489 810 9



# WESTERN (SHORT WAVE) STATIONS OF THE WORLD HEMISPHERE

Location	Call	Megacycle	Location	Call	Megacycle	Location	Call	Megacycle	Location	Call	Megacycle	Location	Call	Megacycle									
<b>UNITED STATES</b>																							
Boston, Mass.	W1XAL	6.04	New York, N. Y.	W2XE	15.27	Bowmanville, Ont.	VE9GW	11.81	Mexico City, Mexico	XDA	5.86	Barranquilla, Colom.	HKD	6.24	Bogota, Colombia	HJ3ABF	7.61	Vienna, Austria	UOR2	6.07			
Boston, Mass.	W1XAL	21.46	New York, N. Y.	W2XBH	5.50	Bowmanville, Ont.	VE9GW	6.09	Mexico City, Mexico	XEW	6.03	Sydney, Australia	VK2ME	9.59	Bogota, Colombia	HJ3ABF	6.25	Sydney, Australia	VK2ME	9.59	CZECHOSLOVAK		
Boston, Mass.	W1XAL	11.79	New York, N. Y.	W2XBE	6.12	Calgary, Alberta	VE9CA	6.03	Mexico City, Mexico	XDA	14.63	Prague, Czechoslovak	OK1PT	5.14	Denmark			DENMARK					
Bound Brook, N. J.	W3XL	6.39	Philadelphia, Pa.	W3XAU	9.59	Calgary, Alta.	VE9CG	6.11	Mexico City, Mexico	XDA	11.76	Zeezan, Germany	DJC	6.02	Zeezan, Germany	DJA	9.56	ROMANIA					
Bound Brook, N. J.	W3XAL	17.78	Pittsburgh, Pa.	W3XK	11.85	Drummondville, Ont.	VE9DR	11.78	Guatemala City, Guat.	TGW	6.68	Skamlebaek, Denmark	OXY	6.07	Zeezan, Germany	DJB	15.20	Bucharest, Roumania	Y01	13.95			
Chicago, Ill.	W9XF	17.78	Pittsburgh, Pa.	W3XK	17.78	Drummondville, Ont.	VE9DR	6.00	Guatemala City, Guat.	TGX	8.93	Skamlebaek, Denmark	OXY	9.57	Zeezan, Germany	DJE	17.76	Bucharest, Roumania	Y01	13.95			
Chicago, Ill.	W9XAA	6.08	Pittsburgh, Pa.	W3XK	21.54	Halifax, N. S.	VE9HX	6.12	Central America			FRANCE			ITALY								
Chicago, Ill.	W9XF	6.10	Pittsburgh, Pa.	W3XK	15.21	Halifax, N. S.	VE9HX	6.05	Tegucigalpa, Hond.	HRB	6.00	Paris, France	FLE	6.12	Rome, Italy	HVJ	5.97	ROME, ITALY					
Chicago, Ill.	W9XAA	11.83	Pittsburgh, Pa.	W3XK	9.57	London, Ont.	VE9BY	4.79	Heredia, Costa Rica	T14NRH	9.68	Paris, France	FYA	11.90	Rome, Italy	I2RO	6.22	ROME, ITALY					
Cincinnati, Ohio	W8XAL	6.06	Schenectady, N. Y.	W2XAD	15.33	London, Ont.	VE9BY	6.43	Argentina			Paris, France	FYA	15.24	Rome, Italy	I2RO	11.81	ROME, ITALY					
Coytesville, N. J.	W2XAL	15.25	Schenectady, N. Y.	W2XAF	9.53	St. John's, N. B.	VE9BJ	6.09	Buenos Aires, Argen.	LSX	10.35	COLOMBIA			Paris, France	FYA	11.70	Rome, Italy	HVJ	15.14	ROME, ITALY		
Long Island City, N. Y.	W2XV	4.79	Schenectady, N. Y.	W2XAF	9.53	Vancouver, B. C.	VE9BC	6.07	Barranquilla, Colom.	HJ1ABB	5.94	VENEZUELA			DAVENTRY, ENGLAND			Eindhoven, Holland	PHI	11.73	Eindhoven, Holland	PHI	17.77
Miami Beach, Fla.	W4XB	6.04	Springfield, Mass.	W1XAZ	9.57	Winnipeg, Canada	VE9CL	5.71	Barranquilla, Colom.	HKA	6.15	Caracas, Venezuela	YV1BC	6.11	DAVENTRY, ENGLAND			Caracas, Venezuela	YB1BMO	6.13	DAVENTRY, ENGLAND		
New York, N. Y.	W2XE	11.83	CUBA			Winnipeg, Man.	VE9JR	11.72	Barranquilla, Colombia	HKD	6.00	Maracaibo, Vene.	YB1BMO	6.13	DAVENTRY, ENGLAND			Maracaibo, Vene.	YB1BMO	6.13	DAVENTRY, ENGLAND		

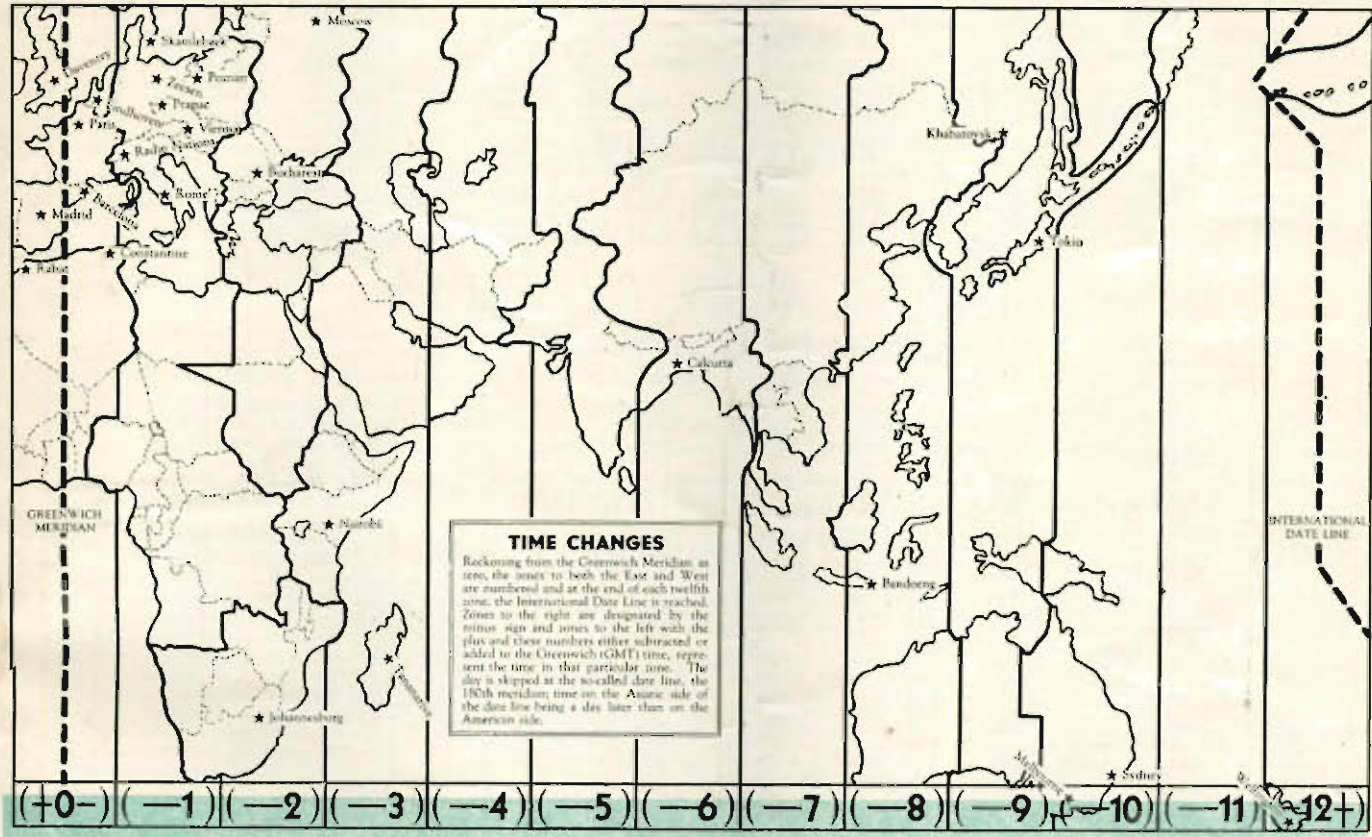


## WORLD BROADCAST STATIONS (Alphabetically by Cities)

Location	Call	Megacycle	Location	Call	Megacycle	Location	Call	Megacycle	Location	Call	Megacycle	Location	Call	Megacycle			
Barcelona, Spain	EAJ25	6.00	Chicago, Ill.	W9XF	17.78	Heredia, Costa Rica	T14NRH	9.68	Paris, France	FLE	6.12	Rome, Italy	I2RO	11.81	Quito Ecuador	HCJB	4.00
Barranquilla, Colom.	HKA	6.15	Chicago, Ill.	W9XAA	17.78	Johannesburg, S. Africa	ZTJ	6.10	Paris, France	FYA	15.24	Schenectady, N. Y.	W2XAF	9.53	Khabarovsk, Russia	RV15	4.27
Barranquilla, Colom.	HKD	6.00	Chicago, Ill.	W9XF	6.10	Johannesburg, S. Africa	ZTJ	6.12	Paris, France	FYA	11.90	Schenectady, N. Y.	W2XO	12.85	London, Canada	VE9BY	4.79
Barranquilla, Colom.	HKO	6.24	Chicago, Ill.	W9XAA	11.83	Khabarovsk, Russia	RV15	4.27	Paris, France	FYA	11.70	Schenectady, N. Y.	W2XAD	15.33	Prague, Czechoslovak	OK1PT	5.14
Barranquilla, Colom.	HJ1ABB	5.94	Chicago, Ill.	W9XAA	6.08	Khabarovsk, Russia	RV15	4.27	Paris, France	FYA	11.70	Schenectady, N. Y.	W2XAF	9.53	Skamlebaek, Denmark	OXY	6.07
Bandone, Java	PMY	5.17	Cincinnati, Ohio	W8XAL	6.06	Lisbon, Portugal	CT1AA	9.60	Paris, France	FYA	15.24	Schenectady, N. Y.	W2XAD	15.33	Skamlebaek, Denmark	OXY	9.52
Bogota, Colombia	HJ3ABF	6.25	Constantine, Algeria	FSKR	6.67	London, Ont.	VE9BY	4.79	Philadelphia, Pa.	W3XAU	9.59	St. John's, N. B.	VE9BJ	6.09	Bandone, Java	PMY	5.17
Bogota, Colombia	HKC	6.20	Coytesville, N. J.	W2XAL	15.25	London, Ont.	VE9BY	6.43	Pittsburgh, Pa.	W8XK	6.14	Vienna, Austria	UOR2	6.07	New York, N. Y.	W2XOH	5.50
Bogota, Colombia	HKF	7.56	Daventry, England	GSC	9.58	London, Ont.	VE9BY	8.65	Pittsburgh, Pa.	W8XK	9.57	Sydney, Australia	VK2ME	9.59	Tananarive, Madagascar	FIUI	5.69
Boston, Mass.	W1XAL	21.46	Daventry, England	GSE	11.75	Long Island City, N. Y.	W2XV	4.79	Pittsburgh, Pa.	W8XK	17.78	Skamlebaek, Denmark	OXY	6.07	Mexico City, Mexico	XDA	5.86
Boston, Mass.	W1XAL	11.79	Daventry, England	GSE	11.86	Springfield, Mass.	W1XAZ	9.57	Pittsburgh, Pa.	W8XK	21.54	Skamlebaek, Denmark	OXY	9.52	Mexico City, Mexico	XDA	11.76
Boston, Mass.	W1XAL	6.04	Daventry, England	GSG	17.77	Tananarive, Madagascar	FIUI	5.69	Pittsburgh, Pa.	W8XK	15.21	Tegucigalpa, Hond.	HRB	6.00	Medellin, Colombia	HJ4ABE	5.93
Bound Brook, N. J.	W3XL	6.39	Daventry, England	GSG	17.77	Tananarive, Madagascar	FIUI	5.69	Pittsburgh, Pa.	W8XK	9.57	Tegucigalpa, Hond.	HRB	6.00	Melbourne, Australia	VK2ME	9.51
Bound Brook, N. J.	W3XAL	17.78	Daventry, England	GSG	6.05	Tananarive, Madagascar	FIUI	5.69	Pittsburgh, Pa.	W8XK	17.78	Tenerife, Canary Isl.	EAR58	7.21	Mexico City, Mexico	XDA	14.63
Bowmanville, Ont.	VE9GW	11.81	Drummondville, Ont.	VE9DR	6.00	Tananarive, Madagascar	FIUI	5.69	Pittsburgh, Pa.	W8XK	21.54	Tokio, Japan	J1AA	7.88	Mexico City, Mexico	XDA	5.86
Bowmanville, Ont.	VE9GW	6.09	Drummondville, Ont.	VE9DR	11.78	Tananarive, Madagascar	FIUI	5.69	Pittsburgh, Pa.	W8XK	15.21	Tokio, Japan	J1AA	15.49	Mexico City, Mexico	XDA	11.76
Bucharest, Roumania	Y01	13.95	Eindhoven, Holland	PHI	11.73	Tananarive, Madagascar	FIUI	5.69	Pittsburgh, Pa.	W8XK	9.57	Tokio, Japan	J1AA	7.88	Mexico City, Mexico	XDA	14.63
Bucharest, Roumania	Y01	13.95	Eindhoven, Holland	PHI	11.73	Tananarive, Madagascar	FIUI	5.69	Pittsburgh, Pa.	W8XK	17.78	Tokio, Japan	J1AA	15.49	Mexico City, Mexico	XDA	11.76
Buenos Aires, Argen.	LSX	10.35	Funchal, Madeira	CT3AQ	11.81	Tananarive, Madagascar	FIUI	5.69	Pittsburgh, Pa.	W8XK	21.54	Tokio, Japan	J1AA	7.88	Mexico City, Mexico	XDA	5.86
Calcutta, India	VUC	6.11	Funchal, Madeira	CT3AQ	11.81	Tananarive, Madagascar	FIUI	5.69	Pittsburgh, Pa.	W8XK	15.21	Tokio, Japan	J1AA	15.49	Mexico City, Mexico	XDA	11.76
Calgary, Alta.	VE9CG	6.11	Guayaquil, Ecuador	HC2JSB	8.00	Tananarive, Madagascar	FIUI	5.69	Pittsburgh, Pa.	W8XK	9.57	Tokio, Japan	J1AA	7.88	Mexico City, Mexico	XDA	14.63
Calgary, Alberta	VE9CA	6.03	Guayaquil, Ecuador	HC2JSB	8.00	Tananarive, Madagascar	FIUI	5.69	Pittsburgh, Pa.	W8XK	17.78	Tokio, Japan	J1AA	15.49	Mexico City, Mexico	XDA	5.86
Call, Colombia	HJ5ABB	6.38	Guayaquil, Ecuador	HC2JSB	8.00	Tananarive, Madagascar	FIUI	5.69	Pittsburgh, Pa.	W8XK	21.54	Tokio, Japan	J1AA	7.88	Mexico City, Mexico	XDA	11.76
Caracas, Venezuela	YV1BC	6.11	Havana, Cuba	CMCI	6.06	Tananarive, Madagascar	FIUI	5.69	Pittsburgh, Pa.	W8XK	15.21	Tokio, Japan	J1AA	15.49	Mexico City, Mexico	XDA	14.63
Casablanca, Morocco	CNSMC	6.25	Havana, Cuba	CM6XJ	15.01	Tananarive, Madagascar	FIUI	5.69	Pittsburgh, Pa.	W8XK	9.57	Tokio, Japan	J1AA	7.88	Mexico City, Mexico	XDA	5.86

# BROADCASTING (THE WORLD) EASTERN HEMISPHERE

Location	Call	Megacycle	Location	Call	Megacycle	Location	Call	Megacycle	Location	Call	Megacycle	Location	Call	Megacycle		
<b>AUSTRIA</b>																
Vienna, Austria	UOR2	6.07	Daventry, England	GSD	11.75	<b>POLAND</b>										
Sydney, Australia	VK2ME	9.59	Daventry, England	GSE	11.86	Poznan, Poland	SRI	9.49	<b>SWITZERLAND</b>							
<b>CZECHOSLOVAK</b>																
Prague, Czechoslovak	OK1PT	5.14	<b>GERMANY</b>		<b>PORTUGAL</b>											
<b>DENMARK</b>																
Skamlebaek, Denmark	OXY	6.07	Zeezan, Germany	DJC	6.02	Lisbon, Portugal	CT1AA	9.60	<b>ROMANIA</b>							
Skamlebaek, Denmark	OXY	9.57	Zeezan, Germany	DJA	9.56	<b>MOROCCO</b>										
<b>FRANCE</b>																
Paris, France	FLE	6.12	Zeezan, Germany	DJB	15.20	<b>SOUTH AFRICA</b>										
Paris, France	FYA	11.90	Zeezan, Germany	DJE	17.76	Khabarovsk, Russia	RV15	4.27	Nairobi, Africa	VQ7LO	6.06	<b>NEW ZEALAND</b>				
Paris, France	FYA	15.24	<b>ITALY</b>		Rome, Italy	HVJ	5.97	Moscow, Russia	RW59	6.00	<b>WELLINGTON, N. Z.</b>					
Paris, France	FYA	11.70	Rome, Italy	I2RO	6.22	Rome, Italy	I2RO	11.81	Moscow, Russia	RW72	6.61	<b>MADIERA</b>				
<b>ENGLAND</b>																
Daventry, England	GSA	6.85	<b>HOLLAND</b>		Eindhoven, Holland	PHI	11.73	<b>ALGERIA</b>								
Daventry, England	GSB	9.51	Eindhoven, Holland	PHI	17.77	<b>MADAGASCAR</b>										
Daventry, England	GSC	9.58	<b>CANARY</b>													



## WORLD BROADCAST STATIONS (Frequency Arrangement)

Location	Call	Megacycle	Location	Call	Megacycle	Location	Call	Megacycle	Location	Call	Megacycle	Location	Call	Megacycle
Quito Ecuador	HCJB	4.00	Havana, Cuba	CMCI	6.06	Barranquilla, Colom.	HKD	6.24	Skamlebaek, Denmark	OXY	9.52	Daventry, England	GSE	11.86
Khabarovsk, Russia	RV15	4.27	Cincinnati, Ohio	W8XAL	6.06	Casablanca, Morocco	CNSMC	6.25	Schenectady, N. Y.	W2XAF	9.53	Pittsburgh, Pa.	W8XK	11.85
London, Canada	VE9BY	4.79	Philadelphia, Pa.	W3XAU	9.59	Bogota, Colombia	HJ3ABF	6.25	Zeezan, Germany	DJA	9.56	Paris, France	FYA	11.90
Long Island City, N. Y.	W2XV	4.79	Nairobi, Africa	VQ7LO	6.06	Call, Colombia	HJ5ABB	6.38	Skamlebaek, Denmark	OXY	6.07	Rabat, Morocco	CNR	12.85
Prague, Czechoslovak	OK1PT	5.14	Wellington, N. Z.	ZL2ZX	6.06	Quito, Colombia	HCIDR	6.38	Skamlebaek, Denmark	OXY	9.52	Schenectady, N. Y.	W2XO	12.85
Bandone, Java	PMY	5.17	Vancouver, B. C.	VE9CS	6.07	Lisbon, Portugal	CT1AA	9.60	Skamlebaek, Denmark	OXY	9.52	Schenectady, N. Y.	W2XAD	15.33
New York, N. Y.	W2XOH	5.50	Vienna, Austria	UOR2	6.07	Heredia, Costa Rica	T14NRH	9.68	Skamlebaek, Denmark	OXY	9.52	Schenectady, N. Y.	W2XAF	9.53
Tananarive, Madagascar	FIUI	5.69	Skamlebaek, Denmark	OXY	6.07	Madrid, Spain	EAR110	6.98	Skamlebaek, Denmark	OXY	9.52	Schenectady, N. Y.	W2XAD	15.33
Mexico City, Mexico	XDA	5.86	Skamlebaek, Denmark	OXY	6.07	Madrid, Spain	EAR110	6.98	Skamlebaek, Denmark	OXY	9.52	Schenectady, N. Y.	W2XAF	9.53
Mexico City, Mexico	XDA	11.76	Skamlebaek, Denmark	OXY	6.07	Madrid, Spain	EAR110	6.98	Skamlebaek, Denmark	OXY	9.52	Schenectady, N. Y.	W2XAD	15.33
Mexico City, Mexico	XDA	14.63	Skamlebaek, Denmark	OXY	6.07	Madrid, Spain	EAR110	6.98	Skamlebaek, Denmark	OXY	9.52	Schenectady, N. Y.	W2XAF	9.53
Mexico City, Mexico	XDA	5.86	Skamlebaek, Denmark	OXY	6.07	Madrid, Spain	EAR110	6.98	Skamlebaek, Denmark	OXY	9.52	Schenectady, N. Y.	W2XAD	15.33
Mexico City, Mexico	XDA	11.76	Skamlebaek, Denmark	OXY	6.07	Madrid, Spain	EAR110	6.98	Skamlebaek, Denmark	OXY	9.52	Schenectady, N. Y.	W2XAF	9.53
Mexico City, Mexico	XDA	14.63	Skamlebaek, Denmark	OXY	6.07	Madrid, Spain	EAR110	6.98	Skamlebaek, Denmark	OXY	9.52	Schenectady, N. Y.	W2XAD	15.33
Mexico City, Mexico	XDA	5.86	Skamlebaek, Denmark	OXY	6.07	Madrid, Spain	EAR110	6.98	Skamlebaek, Denmark	OXY	9.52	Schenectady, N. Y.	W2XAF	9.53
Mexico City, Mexico	XDA	11.76	Skamlebaek, Denmark	OXY	6.07	Madrid, Spain	EAR110	6.98	Skamlebaek, Denmark	OXY	9.52	Schenectady, N. Y.	W2XAD	15.33
Mexico City, Mexico	XDA	14.63	Skamlebaek, Denmark	OXY	6.07	Madrid, Spain	EAR110	6.98	Skamlebaek, Denmark	OXY	9.52	Schenectady, N. Y.	W2XAF	9.53
Mexico City, Mexico	XDA	5.86	Skamlebaek, Denmark	OXY	6.07	Madrid, Spain	EAR110	6.98	Skamlebaek, Denmark	OXY	9.52	Schenectady, N. Y.	W2XAD	15.33



# HERE ARE THE POLICE CALLS

## NUMERICALLY BY MEGACYCLES

Call	City	Frequency	Call	City	Frequency	Call	City	Frequency	Call	City	Frequency	Call	City	Frequency			
<b>.19 Megacycles</b> (190 Kilocycles; 1570 Meters)																	
WBA	Harrisburg, Pa.	.19	WBR	Batler, Pa.	.19	WDX	Wyoming, Pa.	.19	WJL	Greensburg, Pa.	.19	WMB	West Reading, Pa.	.19			
<b>1.53 Megacycles</b> (1534 Kilocycles; 196.1 Meters)																	
KGHO	Des Moines, Iowa	1.53															
<b>1.56 Megacycles</b> (1558 Kilocycles; 192.5 Meters)																	
WEY	Boston, Mass.	1.56	WKDT	Detroit, Mich.	1.56												
<b>1.57 Megacycles</b> (1571 Kilocycles; 194.7 Meters)																	
KGPY	Baton Rouge, La.	1.57	WMP	Fram'gh'm, Mass.	1.57	WPEL	Middleboro, Mass.	1.57	WPEV	Parable, Mass.	1.57	WPEW	N'h'm't'n, Mass.	1.57	WRDS	E. Lansing, Mich.	1.57
<b>1.71 Megacycles</b> (1712 Kilocycles; 175.1 Meters)																	
KGJX	Pasadena, Cal.	1.71															

## ALPHABETICALLY BY CITIES

### MUNICIPAL POLICE STATIONS

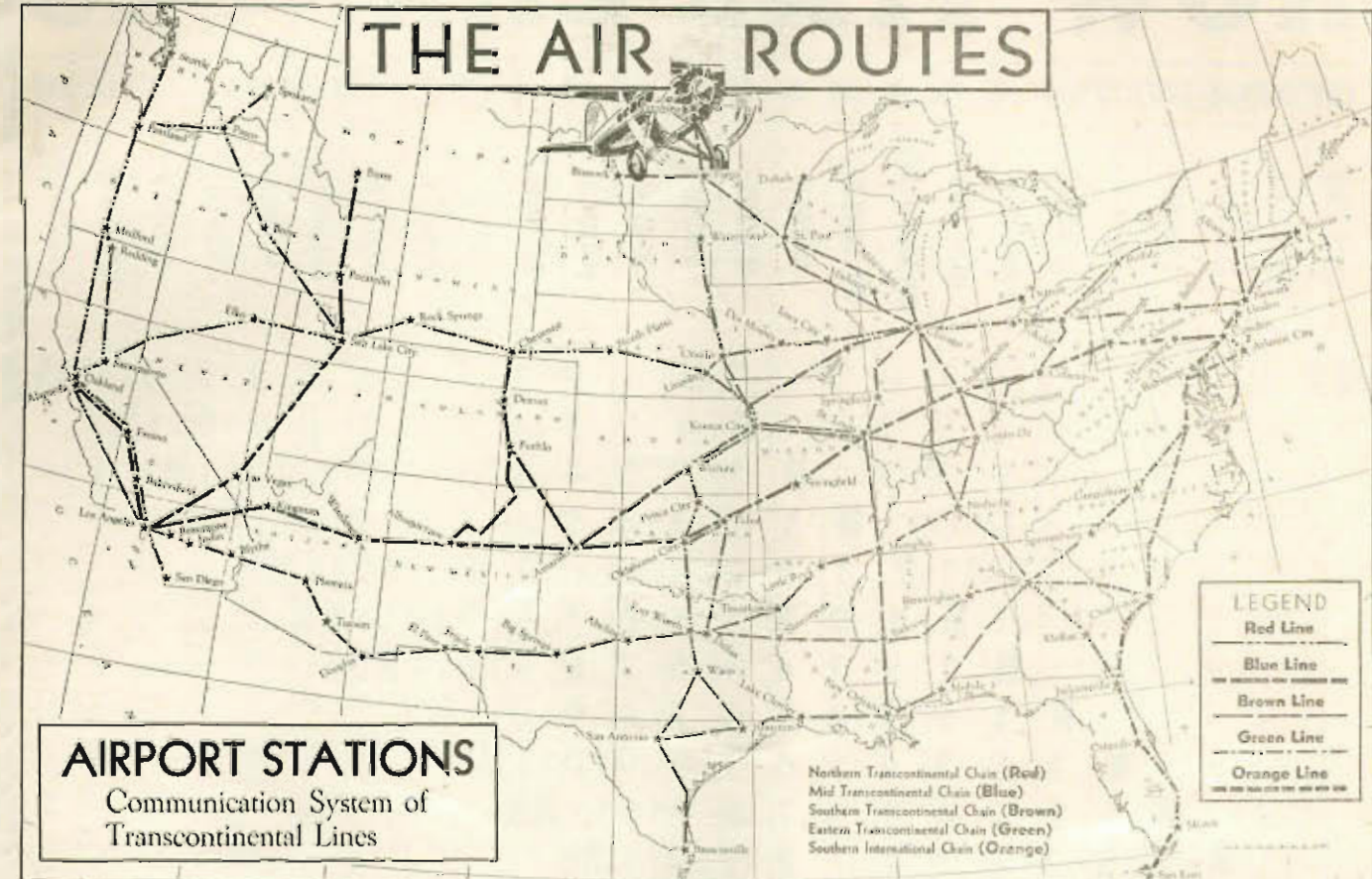
City	Call	Frequency	City	Call	Frequency	City	Call	Frequency	City	Call	Frequency	City	Call	Frequency
Akron, Ohio	WPDO	2.46	Coffeyville, Kans.	KGZP	2.45	High Park, Mich.	WMO	2.41	New York, N. Y.	WPEE	2.45	Shreveport, La.	KGZL	1.71
Arlington, Mass.	WPEE	1.71	Columbus, Ohio	WPDJ	2.43	High'd Park, Ill.	WPFJ	2.43	New York, N. Y.	WPEF	2.45	Sioux City, Iowa	KGPK	2.47
Arlington, Mass.	WPEE	1.71	Columbus, Ga.	WPFJ	2.41	Honolulu, T. H.	KGPO	2.45	New York, N. Y.	WPEG	2.45	Somerville, Mass.	WPEH	1.71
Asheville, N. C.	WPFJ	2.46	Dallas, Tex.	WVP	1.71	Houston, Tex.	KGZB	1.71	Oklahoma City	KGPH	2.45	St. Louis, Mo.	KGPC	1.71
Atlanta, Ga.	WPDY	2.41	Davenport, Iowa	KGPN	2.47	Indianapolis, Ind.	WMDZ	2.44	Omaha, Neb.	KGPI	2.47	St. Paul, Minn.	WPDJ	2.43
Auburn, N. Y.	WPDN	2.46	Dayton, Ohio	WPDW	2.43	Jacksonville, Fla.	WPFJ	2.44	Pasadena, Cal.	KGJX	1.71	Swarthmore, Pa.	WPFJ	2.47
Bakersfield, Cal.	KGPS	2.41	Denver, Colo.	KGPC	2.44	Johnson, Tenn.	WPFJ	2.47	Pawtucket, R. I.	WPFV	2.47	Syracuse, N. Y.	WPEA	2.46
Baltimore, Md.	WPFH	2.41	Des Moines, Iowa	KGHO	2.45	Kansas City, Mo.	KGPE	2.42	Phoenix, Ariz.	KGZJ	2.43	Tacoma, Wash.	KGZN	2.41
Belle Isl'd, Mich.	WCK	2.41	Des Moines, Iowa	KGZG	2.47	Klamath F. Ore.	KGZH	2.44	Pittsburgh, Pa.	WPDW	1.71	Toledo, Ohio	WRDQ	2.47
Berkeley, Calif.	KSU	1.71	Detroit, Mich.	WKDT	1.56	Knoxville, Tenn.	WPFJ	2.47	Philadelphia, Pa.	WPPD	2.47	Toms River, N. J.	WPFJ	2.43
Beaumont, Tex.	KGPI	1.71	East Providence, R.I.	WPEE	1.71	Kokomo, Ind.	WPDZ	2.47	Portland, Ore.	WPEE	2.44	Topeka, Kans.	KGZC	2.42
Birmingham, Ala.	WPFM	2.41	E. Lansing, Mich.	WRDS	1.57	Lansing, Mich.	WPDJ	2.44	Reading, Pa.	WPFJ	2.44	Tulsa, Okla.	KGPO	2.45
Boston, Mass.	WEY	1.56	East Providence, R.I.	WPEI	1.71	Lexington, Mass.	WPEI	1.71	Richmond, Ind.	WPDH	2.44	Vallejo, Cal.	WPEE	2.44
Buffalo, N. Y.	WMIJ	2.42	El Paso, Tex.	KGZM	2.41	Los Angeles, Cal.	KGPL	1.71	Richmond, Ind.	WPDH	2.44	Waco, Tex.	KGZQ	1.71
Cedar Rapids, Iowa	KGZQ	2.47	Fairhaven, Mass.	WPFJ	1.71	Louisville, Ky.	WPEE	2.44	Rocheater, N. Y.	WPDZ	2.46	Washington, D. C.	WPDW	2.42
Charlotte, N. C.	WPDV	2.46	Flint, Mich.	WPFJ	2.44	Memphis, Tenn.	WPEC	2.47	Saginaw, Mich.	WPEE	2.44	Wichita, Kans.	KGZK	2.45
Chicago, Ill.	WPDJ	1.71	Fort Wayne, Ind.	WPDZ	2.47	Milwaukee, Wis.	WPKD	2.45	Salem, Ore.	KGZR	2.44	Woonsocket, R. I.	WPEE	2.45
Chicago, Ill.	WPDJ	1.71	Fresno, Calif.	KGZM	2.41	Minneapolis, Minn.	KGPB	2.43	Salt Lake City	KGJW	2.47	Youngst'n, Ohio	WPDG	2.46
Chicago, Ill.	WPDJ	1.71	Grand Rapids, Mich.	WPEE	2.44	Montreal, Can.	UYR	1.71	S. Barbara, Cal.	KGZQ	2.41			
Cincinnati, Ohio	WKDU	1.71	Groes Pt., Mich.	WRDR	2.41	Mountain, N. Y.	WPFJ	2.43	San Diego, Calif.	KGZD	2.43			
Clarks'gh, W. Va.	WPFJ	2.41	Hackensack, N. J.	WPFK	2.43	Newton, N. Y.	WPFJ	1.71	San Francisco	KGPD	2.41			
Cleveland, Ohio	WRDH	2.46	Hammond, Ind.	WPFJ	1.71	New Orleans, La.	WPEK	2.44	San Jose, Cal.	KGPN	2.47			

### STATE POLICE STATIONS

Baton Rouge, La.	KGPY	1.57	Fram'gh'm, Mass.	WMP	1.57	Harrisburg, Pa.	WBA	.19	N'h'm't'n, Mass.	WPEW	1.57	Wyoming, Pa.	WDX	.19
Batler, Pa.	WBR	.19	Greensburg, Pa.	WJL	.19	Middleboro, Mass.	WPEL	1.57	San Antonio, Tex.	KGZE	2.51	West Reading, Pa.	WMB	.19

## ALPHABETICALLY BY CALLS

Call	City	Frequency	Call	City	Frequency	Call	City	Frequency	Call	City	Frequency	Call	City	Frequency
KGHO	Des Moines, Iowa	2.45	KGZB	Houston, Tex.	1.71	WKDT	Detroit, Mich.	1.56	WPDJ	Pittsburgh, Pa.	1.71	WPFJ	High'd Park, Ill.	2.43
KGJX	Pasadena, Cal.	1.71	KGZC	Topeka, Kans.	2.42	WKDU	Cincinnati, Ohio	1.71	WPDV	Charlotte, N. C.	2.46	WPFJ	Reading, Pa.	2.44
KGZQ	Cedar Rapids, Iowa	2.47	KGZD	San Diego, Calif.	2.43	WNB	West Reading, Pa.	.19	WPDW	Washington, D. C.	2.42	WPFJ	Toms River, N. J.	2.43
KGPA	Seattle, Wash.	2.41	KGZE	S. Antonio, Tex.	2.51	WROZ	Indianapolis, Ind.	2.46	WPDY	Detroit, Mich.	2.41	WPFJ	Jacksonville, Fla.	2.44
KGPH	Minneapolis, Minn.	2.45	KGZF	Chanute, Kans.	2.45	WROJ	Buffalo, N. Y.	2.42	WPDZ	Atlanta, Ga.	2.41	WPFJ	Baltimore, Md.	2.41
KGPC	St. Louis, Mo.	1.71	KGZH	Des Moines, Iowa	2.47	WMO	High Park, Mich.	2.41	WPDZ	Fort Wayne, Ind.	2.47	WPFJ	Columbus, Ga.	2.41
KGPD	San Francisco	2.41	KGZM	Klamath F. Ore.	2.44	WMP	Fram'gh'm, Mass.	1.57	WPEE	Syracuse, N. Y.	2.46	WPFJ	Philadelphia, Pa.	2.47
KGPE	Kansas City, Mo.	2.42	KGZL	Wichita F's, Tex.	1.71	WPDJ	Tulsa, Okla.	1.71	WPEE	Grand Rapids, Mich.	2.44	WPFJ	Hammond, Ind.	1.71
KGPF	Vallejo, Cal.	2.42	KGZJ	Phoenix, Ariz.	2.43	WPDJ	Chicago, Ill.	1.71	WPEC	Memphis, Tenn.	2.47	WPFK	Hackensack, N. J.	2.43
KGPI	Oklahoma City	2.45	KGZK	Shreveport, La.	1.71	WPDJ	Chicago, Ill.	1.71	WPEE	Arlington, Mass.	1.71	WPFJ	Groes Pt., Mich.	2.41
KGPI	Omaha, Neb.	2.47	KGZM	El Paso, Tex.	2.41	WPDJ	Chicago, Ill.	1.71	WPEE	New York, N. Y.	2.45	WPFJ	Portland, Ore.	2.44
KGPK	Sioux City, Iowa	2.47	KGZN	Tacoma, Wash.	2.41	WPDJ	Louisville, Ky.	2.44	WPEE	New York, N. Y.	2.45	WPFJ	Birmingham, Ala.	2.41
KGPL	Los Angeles, Cal.	1.71	KGZP	Chanute, Kans.	2.45	WPDJ	Chicago, Ill.	1.71	WPEE	New York, N. Y.	2.45	WPFJ	Lexington, Mass.	1.71
KGPM	San Jose, Cal.	2.47	KGZQ	Waco, Tex.	1.71	WPDJ	Chicago, Ill.	1.71	WPEE	New York, N. Y.	2.45	WPFJ	East Providence, R.I.	1.71
KGPN	Davenport, Iowa	2.47	KGZR	Salem, Ore.	2.44	WPDJ	Chicago, Ill.	1.71	WPEE	New York, N. Y.	2.45	WPFJ	East Providence, R.I.	1.71
KGPO	Tulsa, Okla.	2.45	KGZS	Berkeley, Calif.	1.71	WPDJ	Chicago, Ill.	1.71	WPEE	New York, N. Y.	2.45	WPFJ	East Providence, R.I.	1.71
KGPP	Portland, Ore.	2.44	KGZT	Dallas, Tex.	1.71	WPDJ	Chicago, Ill.	1.71	WPEE	New York, N. Y.	2.45	WPFJ	East Providence, R.I.	1.71
KGPR	Honolulu, T. H.	2.45	KGZU	Montreal, Can.	1.71	WPDJ	Chicago, Ill.	1.71	WPEE	New York, N. Y.	2.45	WPFJ	East Providence, R.I.	1.71
KGPS	Bakersfield, Cal.	2.41	KGZV	Arlington, Mass.	1.71	WPDJ	Chicago, Ill.	1.71	WPEE	New York, N. Y.	2.45	WPFJ	East Providence, R.I.	1.71
KGPT	Salt Lake City	2.47	KGZW	Batler, Pa.	.19	WPDJ	Chicago, Ill.	1.71	WPEE	New York, N. Y.	2.45	WPFJ	East Providence, R.I.	1.71
KGPU	Denton, Colo.	2.44	WCK	Belle Isl'd, Mich.	2.41	WPDJ	Chicago, Ill.	1.71	WPEE	New York, N. Y.	2.45	WPFJ	East Providence, R.I.	1.71
KGQV	Baton Rouge, La.	1.57	WDX	Wyoming, Pa.	.19	WPDJ	Chicago, Ill.	1.71	WPEE	New York, N. Y.	2.45	WPFJ	East Providence, R.I.	1.71
KGQW	Wichita, Kans.	2.42	WEY	Boston, Mass.	1.56	WPDJ	Chicago, Ill.	1.71	WPEE	New York, N. Y.	2.45	WPFJ	East Providence, R.I.	1.71
KGZM	Fresno, Calif.	2.41	WJL	Greensburg, Pa.	.19	WPDJ	Chicago, Ill.	1.71	WPEE	New York, N. Y.	2.45	WPFJ	East Providence, R.I.	1.71



The government designates the radio communication chain of each of the transcontinental aviation systems by a color, and these communication chains are shown on the map above. The airport stations are grouped by chains, with the frequencies of each chain in megacycles. They are also listed alphabetically by calls. Aside from relating company messages, these stations are in constant contact with the planes enroute, receiving location of the plane, sending weather warnings, etc. They come on the air without notice and while this list comprises airport stations only, plane transmitters can be heard on the same frequencies.

### Red Line STATIONS & Frequencies

2.49 2.61 2.61 3.16 3.17 3.18 3.32  
4.12 5.57 5.58 5.59 5.66 6.49 6.50

KQX... Bakersfield, Cal. KMR... No. Platte, Nebr.  
WRAM... Bellefonte, Pa. KFD... Oakland, Cal.  
KRA... Boise, Idaho KNAV... Okla. City, Okla.  
KOE... Cheyenne, Wyo. KMP... Omaha, Nebr.  
WUCG... Chicago, Ill. KR... Pasco, Wash.  
WNAK... Cleveland, Ohio KGUZ... Ponca C., Okla.  
KNAT... Dallas, Tex. KVO... Portland, Ore.  
KGM... Des Moines, Iowa KTV... Redding, Cal.  
KRD... Elko, Nev. KQC... Rock Springs, Wyo.  
KGT... St. Louis, Mo. KFM... Sacramento, Cal.  
KGT... Fresno, Cal. KOD... Salt Lake, Utah  
KQQ... Iowa City, Iowa KGZ... San Diego, Cal.  
KRAS... Kansas City, Mo. KZJ... Seattle, Wash.  
KRF... Lincoln, Nebr. KGTZ... Spokane, Wash.  
KEU... Los Angeles, Cal. WNAJ... Toledo, Ohio  
KGE... Medford, Ore. KNAU... Tulsa, Okla.  
WNAU... Moline, Ill. KGTC... Watertown, S. O.  
WNAO... Newark, N. J. KGTE... Wichita, Kans.

### Brown Line STATIONS & Frequencies

2.32 2.36 2.67 2.67 2.70 2.85 2.94  
3.00 3.13 3.23 3.24 3.26 3.45 3.46  
3.47 3.47 3.48 4.74 4.92 5.38 5.60  
5.61 5.63 5.82 6.54 6.55 6.56 8.01

KRUL... Abilene, Tex. KGUC... Indio, Cal.  
WSDM... Albany, N. Y. WSDJ... Jackson, Miss.  
WQDP... Atlanta, Ga. KGTU... Lake Charles, La.  
KGTV... Beaumont, Cal. KQUU... Little Rock, Ark.  
KKGU... Big Spr'gs, Tex. KGUU... Los Angeles, Cal.  
WSDJ... Birmingham, Ala. WSDJ... Louisville, Ky.  
KNWD... Bismark, N. D. WSDR... Madison, Wisc.  
KGSU... Blythe, Cal. WSDK... Memphis, Tenn.  
WSDJ... Boston, Mass. WAEH... Milwaukee, Wisc.  
KQUC... Brownsville, Tex. WAEK... Mobile, Ala.  
WSDJ... Buffalo, N. Y. WSDH... Nashville, Tenn.  
WSDJ... Chicago, Ill. WSDC... Newark, N. J.  
WSDS... Chicago, Ill. WQDQ... New Orleans, La.  
WSDI... Cincinnati, Ohio KGTS... Omaha, Nebr.  
WSDQ... Cleveland, Ohio KNWC... Pembina, N. D.  
WSDP... Columbus, Ohio KGUP... Phoenix, Ariz.  
KGFU... Dallas, Tex. KGUI... Fort Worth, Tex.  
WAEI... Detroit, Mich. KNWA... St. Paul, Minn.  
KGVN... Douglas, Ariz. KGUC... S. Antonio, Tex.  
WSDI... Duluth, Minn. KGUC... Shreveport, La.  
KGAU... El Paso, Texas WAEJ... Springfield, Ill.  
KNWB... Fargo, N. D. KGTB... Texarkana, Ark.  
KGVN... Frisco, Tex. KGUC... Tucson, Ariz.  
KGSU... Houston, Texas KGUC... Waco, Tex.  
WSDZ... Indianapolis, Ind.

### Blue Line STATIONS & Frequencies

2.72 2.73 2.90 3.07 3.09 4.11 5.51  
5.54 5.67 5.69 6.51 6.52 6.53 8.01

KGSB... Alameda, Cal. KGTL... Las Vegas, Nev.  
KXS... Albuquerque, N. M. KSI... Los Angeles, Cal.  
KSV... Amarillo, Tex. WAEF... Newark, N. J.  
KBTY... Butte, Mont. KGSC... Okla. City, Okla.  
WAEK... Camden, N. J. WAEK... Cresson, Pa.  
KGTJ... Cheyenne, Wyo. KGTJ... Pocatello, Ida.  
WHG... Columbus, Ohio KGSR... Pueblo, Colo.  
WAEK... Pittsburg, Pa. KGTJ... St. Louis, Mo.  
KGSU... Denver, Colo. KGTH... Salt Lake, Utah  
WAEK... Harrisburg, Pa. KGTQ... Springfield, Mo.  
WHM... Indianapolis, Ind. KSY... Tulsa, Okla.  
KST... Kansas City, Mo. KGTQ... Wichita, Kans.  
KGTJ... Kingman, Ariz. KGTJ... Winslow, Ariz.

### Orange Line STATIONS & Frequencies

2.65 2.87 3.08 3.08 5.40 5.96 6.57  
6.58 8.01 8.22 12.33 16.24 16.44

WDXL... Miami, Fla. WMDU... San Juan, P. R.  
KRW... Brownsville, Tex.

### AIRPORT STATIONS [Alphabetically By Calls]

KBTY... Butte, Mont. KGTJ... Las Vegas, Nev. KGUC... Shreveport, La. KNWA... St. Paul, Minn. KSY... Tulsa, Okla. WEEG... Greensboro, S. C. WQDQ... New Orleans, La.  
KEU... Los Angeles, Cal. KGTL... Kingman, Ariz. KGUC... Abilene, Tex. KNWB... Fargo, N. D. KTU... Redding, Cal. WEEH... McRae, Ga. WSDJ... Jackson, Miss.  
KFM... Sacramento, Cal. KGTU... Springfield, Mo. KGUN... Frisco, Tex. KNWC... Pembina, N. D. KVO... Portland, Ore. WEEJ... Jacksonville, Fla. WSDC... Newark, N. J.  
KFD... Oakland, Cal. KGTJ... St. Louis, Mo. KGUN... Douglas, Ariz. KQWD... Bismark, N. D. KZJ... Seattle, Wash. WEEW... Miami, Fla. WSDJ... Boston, Mass.  
KGE... Medford, Ore. KGTS... Omaha, Nebr. KGUC... Tucson, Ariz. KQUC... Cheyenne, Wyo. WAEK... Pittsburg, Pa. WEEH... Linden, N. J. WSDJ... Birmingham, Ala.  
KGVN... Brownsville, Tex. KGTJ... Cheyenne, Wyo. KGUP... Phoenix, Ariz. KQUC... Rock Springs, Wyo. WAEK... Harrisburg, Pa. WEEW... Orlando, Fla. WSDJ... Louisville, Ky.  
KGSB... San Diego, Cal. KGTU... Lake Charles, La. KGUC... Indio, Cal. KQUC... Salt Lake, Utah WAEK... Camden, N. J. WEEQ... Atlantic C. N. J. WSDJ... Chicago, Ill.  
KQSD... Alameda, Cal. KGTU... Beaumont, Cal. KGUC... Los Angeles, Cal. KQUC... Des Moines, Iowa WAEF... Newark, N. J. WEEH... Richmond, Va. WSDH... Nashville, Tenn.  
KRSC... Okla. City, Okla. KGTU... Pocatello, Ida. KQUC... Blythe, Cal. KQUC... Iowa City, Iowa WAEK... Cresson, Pa. WHG... Columbus, Ohio WSDI... Cincinnati, Ohio  
KGSU... Denver, Colo. KGTU... Spokane, Wash. KQUC... St. Louis, Mo. KQUC... Little Rock, Ark. WAEH... Milwaukee, Wisc. WHM... Indianapolis, Ind. WSDK... Memphis, Tenn.  
KGSU... Pueblo, Colo. KGUC... El Paso, Texas KQUC... Ponca C., Okla. KQUC... Bakersfield, Cal. WAEI... Detroit, Mich. WKDL... Miami, Fla. WSDI... Duluth, Minn.  
KGT... Fresno, Cal. KGUC... Houston, Texas KR... Elko, Nev. KQUC... Boise, Idaho WAEJ... Springfield, Ill. WRDU... San Juan, P. R. WSDM... Albany, N. Y.  
KGT... Winslow, Ariz. KGUC... S. Antonio, Tex. KMP... Omaha, Nebr. KR... Pasco, Wash. WAEK... Mobile, Ala. WRJ... Toledo, Ohio WSDQ... Columbus, Ohio  
KGTB... Texarkana, Ark. KGUC... Brownsville, Tex. KNAU... Kansas City, Mo. KSI... Los Angeles, Cal. WEEA... Atlanta, Ga. WRAM... Bellefonte, Pa. WSDR... Madison, Wisc.  
KGTU... Watertown, S. O. KGUC... Dallas, Tex. KNAT... Dallas, Tex. KNAU... Tulsa, Okla. KSV... Kansas City, Mo. WEEB... Baltimore, Md. WRAO... Newark, N. J. WSDS... Chicago, Ill.  
KGTU... Wichita, Kans. KGUC... Waco, Tex. KNAU... Tulsa, Okla. KNAU... Tulsa, Okla. KSV... Amarillo, Tex. WEEC... Charleston, S. C. WRAU... Moline, Ill. WSDZ... Indianapolis, Ind.  
KGTU... Salt Lake, Utah KGUC... Fort Worth, Tex. KNAV... Okla. City, Okla. KXSX... Albuquerque, N. M. WEEF... Spartan'rg, S. C. WQDP... Atlanta, Ga. WUCG... Chicago, Ill.



# HOW TIME CHANGES

180	165	150	135	120	105	90	75	60	45	30	15	0	15	30	45	60	75	90	105	120	135	150	165	180
DATE LINE	UNALASKA	SEWARD	JUNEAU	SAN FRANCISCO	DENVER	CHICAGO	NEW YORK	BUENOS AIRES	RIO JANEIRO	AZORES	ICELAND	LONDON	BERLIN	MOSCOW	BAGDAD	BAKU	BOMBAY	CALCUTTA	BANGKOK	MANILA	TOKYO	SYDNEY	AUCKLAND	DATE LINE
MN	1	2	3	4	5	6	7	8	9	10	11	M	1	2	3	4	5	6	7	8	9	10	11	MN
1	2	3	4	5	6	7	8	9	10	11	M	1	2	3	4	5	6	7	8	9	10	11	MN	1
2	3	4	5	6	7	8	9	10	11	M	1	2	3	4	5	6	7	8	9	10	11	MN	1	2
3	4	5	6	7	8	9	10	11	M	1	2	3	4	5	6	7	8	9	10	11	MN	1	2	3
4	5	6	7	8	9	10	11	M	1	2	3	4	5	6	7	8	9	10	11	MN	1	2	3	4
5	6	7	8	9	10	11	M	1	2	3	4	5	6	7	8	9	10	11	MN	1	2	3	4	5
6	7	8	9	10	11	M	1	2	3	4	5	6	7	8	9	10	11	MN	1	2	3	4	5	6
7	8	9	10	11	M	1	2	3	4	5	6	7	8	9	10	11	MN	1	2	3	4	5	6	7
8	9	10	11	M	1	2	3	4	5	6	7	8	9	10	11	MN	1	2	3	4	5	6	7	8
9	10	11	M	1	2	3	4	5	6	7	8	9	10	11	MN	1	2	3	4	5	6	7	8	9
10	11	M	1	2	3	4	5	6	7	8	9	10	11	MN	1	2	3	4	5	6	7	8	9	10
11	M	1	2	3	4	5	6	7	8	9	10	11	MN	1	2	3	4	5	6	7	8	9	10	11
M	1	2	3	4	5	6	7	8	9	10	11	MN	1	2	3	4	5	6	7	8	9	10	11	M
1	2	3	4	5	6	7	8	9	10	11	MN	1	2	3	4	5	6	7	8	9	10	11	M	1
2	3	4	5	6	7	8	9	10	11	MN	1	2	3	4	5	6	7	8	9	10	11	M	1	2
3	4	5	6	7	8	9	10	11	MN	1	2	3	4	5	6	7	8	9	10	11	M	1	2	3
4	5	6	7	8	9	10	11	MN	1	2	3	4	5	6	7	8	9	10	11	M	1	2	3	4
5	6	7	8	9	10	11	MN	1	2	3	4	5	6	7	8	9	10	11	M	1	2	3	4	5
6	7	8	9	10	11	MN	1	2	3	4	5	6	7	8	9	10	11	M	1	2	3	4	5	6
7	8	9	10	11	MN	1	2	3	4	5	6	7	8	9	10	11	M	1	2	3	4	5	6	7
8	9	10	11	MN	1	2	3	4	5	6	7	8	9	10	11	M	1	2	3	4	5	6	7	8
9	10	11	MN	1	2	3	4	5	6	7	8	9	10	11	M	1	2	3	4	5	6	7	8	9
10	11	MN	1	2	3	4	5	6	7	8	9	10	11	M	1	2	3	4	5	6	7	8	9	10
11	MN	1	2	3	4	5	6	7	8	9	10	11	M	1	2	3	4	5	6	7	8	9	10	11
MN	1	2	3	4	5	6	7	8	9	10	11	M	1	2	3	4	5	6	7	8	9	10	11	MN
12P	11P	10P	9P	8P	7P	6P	5P	4P	3P	2P	1P	0	1M	2M	3M	4M	5M	6M	7M	8M	9M	10M	11M	12M

This table contains the changes in time, in plainly marked figures, that take place as the time zones of the earth are traversed, and is designed for instant reckoning of time as given in another zone. In this chart, it will be noticed that Greenwich meridian, from whence standard time is reckoned, is in the center and the International Date Line is on either side. While identical in principle and operation with the time zone map, it affords easier reckoning. M indicates noon and MN midnight; the AM figures (from midnight to noon) are printed in lightface type, while the PM figures are dark. The degree figures at the top indicate the meridian while the plus and minus figures (at the bottom) show the hours to be added to or taken from Greenwich time.