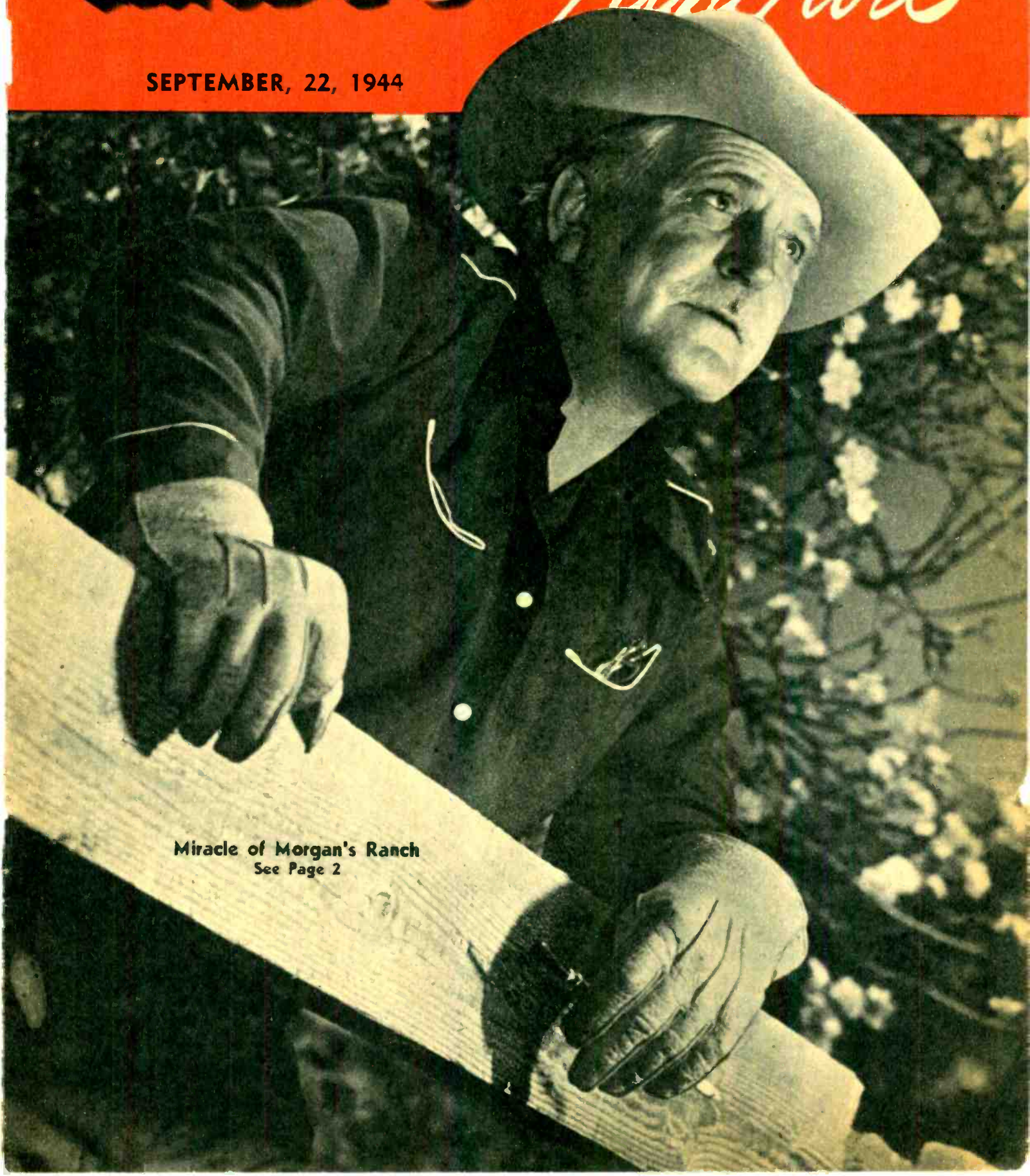


Radio Shifts Into High With New Shows

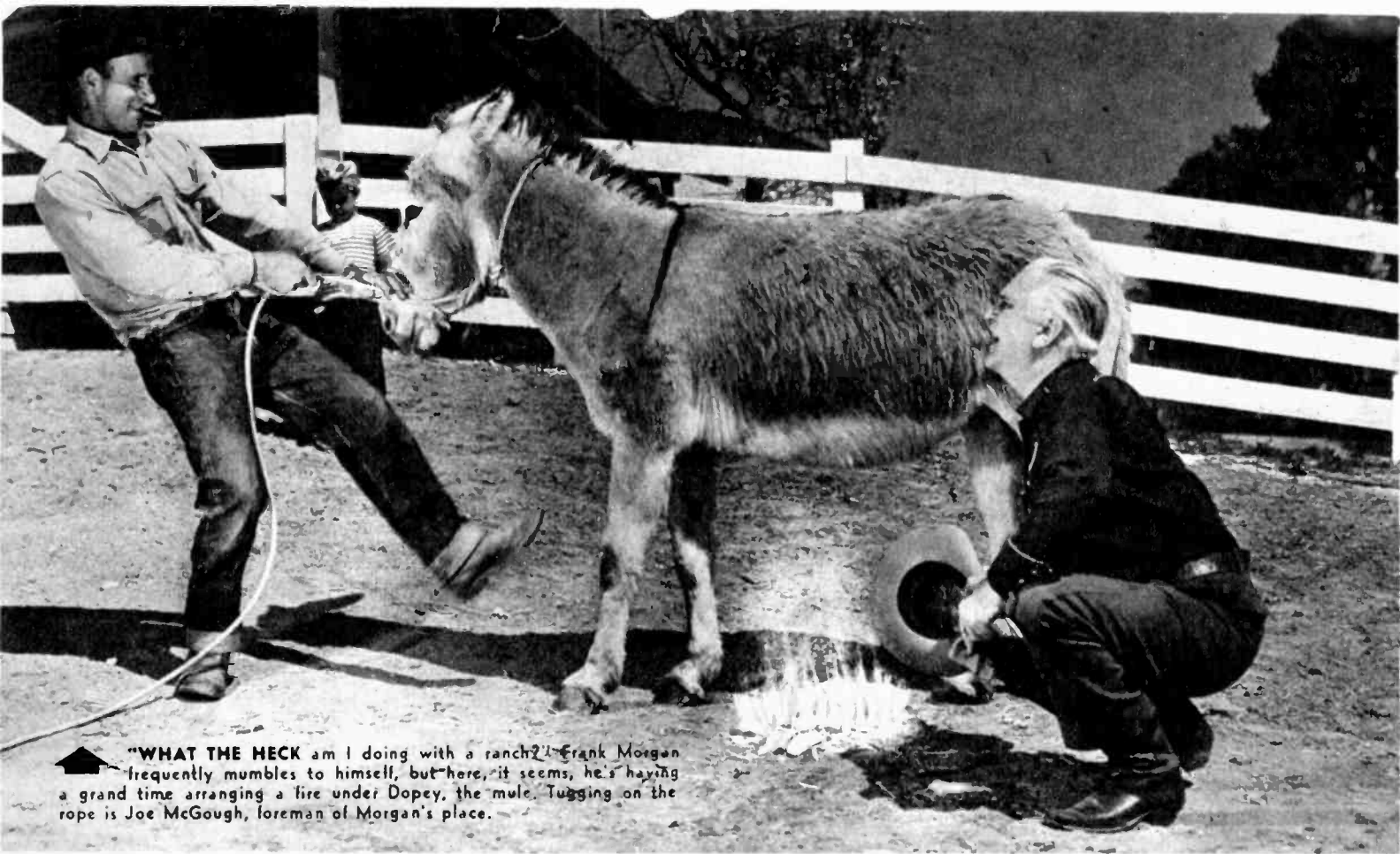
RADIO

Fan Fare

SEPTEMBER, 22, 1944



Miracle of Morgan's Ranch
See Page 2



▲ "WHAT THE HECK am I doing with a ranch?" Frank Morgan frequently mumbles to himself, but here, it seems, he's having a grand time arranging a fire under Dopey, the mule. Tugging on the rope is Joe McGough, foreman of Morgan's place.

Miracle of Morgan's Ranch

By Evelyn Bigsby

Master of Mendacity "Plays It Straight" When It Comes to His Newly-Acquired Acreage at Hemet

Thursday, 8:30 P.M.
NBC-KPO

IDROLLED Frank Morgan, "grow the world's finest coffee on my Brazilian plantation. Since coffee arabica, a Rubiaceae plant, was first introduced into Brazil in 1727, the House of Morgan has devoted itself to its cultivation, from my great-grandfather Senhor Dregs Morgan to my paternal gaffer, Silex Morgan—always in his cups and a bit of a drip.

"When I reached man's estate I began looking for untouched soil on which to found my own coffee dynasty, and explored Brazil from the Amazon to the tip of South America. There I encountered a tribe of wild and beautiful women bearing that name. What a race! But I finally

caught one. I was welcomed by the simple aborigines, save for a dark-skinned tribe of Indians, who were jealous of my light complexion.

"I took out my dice and faded 'em. These amenities over, I set about planting the fertile soil and soon had a bumper crop. Learned the intricate art of planting coffee by just using my bean! As a matter of fact, I developed a coffee that won international acclaim—a special hybrid which I named Gypsy Rose—it outstripped all competition.

Raised Cream

"Later, I expanded my operations to include the raising of cattle—what good is coffee without cream? Giving free réign of my ingenuity, I fed the cattle on the surplus coffee, and they thrived until I could scarce-

ly handle the demand. When I wasn't busy roping the steers, I was over-seeing the shipping. In other words, when I wasn't throwing the bull, I was peddling it!"

A typical Morgan whopper! The kind that has made Morgan the radio fans' master of mendacity and star of his own, bright new show.

In real life, Francis Phillip Wupperman (his real name) "plays it straight," but so accustomed have his friends become to his fabulous ether falsehoods that he has difficulty in making himself believed.

This is especially true of his latest venture, a 600-acre ranch near Hemet.

Until the war, Frank Morgan's favorite pastime was his yacht, The Dolphin. When the Coast Guard took over the yacht, Morgan puzzled for awhile, then brought to surface a thirty-five-year-old ambition—to own a ranch.

"When I was nineteen or twenty," the distinguished looking, fifty-four-year-old actor remembered, "I came west and spent several months in Nevada. Before that, I'd never been as far as Jersey, but life in the open made such an impression on me that I always yearned for a place of my own. Now that I've got it, though, I sometimes 'come to' and think, 'What the heck am I doing with a ranch!'"

Breeds Cattle

Because his place is "small," as ranches go, Morgan devotes most of his efforts to breeding fine cattle, the pedigreed Aberdeen-Angus, and to raising Duroc hogs. But there's room, too, for barley and alfalfa, four or five cats, four dogs, three milch cows, peaches, apples, plums, apricots, almonds, cherries, and avo-

(Please turn to Page 12)

The Ear Inspires the Pen

Mrs. Dorothy White, 1329 Ferris Road, El Monte, Calif.

Sirs: Here's my "two cents worth" on the "Mary Marlin" serial. It is positively one of the most boring serials on the air. I always turn my dial when 12 noon rolls around. As previous critics have written, the serial gets absolutely nowhere. So much for that.

Among the daytime serials, my favorites are "Lorenzo Jones" and "Vic and Sade." They're two programs that bring laughter and peace to one's home. Most of the other serials are full of war, divorces, and those meddling old fools who always stick their noses in everybody's business. We meet enough of these in everyday life, so you see why I criticize them. Not too harshly, but mildly.

All in all, though, I think we're fortunate to have as many fine radio programs as we Americans have. We have a wide selection from which to choose, and we are not compelled to listen to any certain programs.

Thanks, Radio Fan Fare, for being so cooperative in writing up the articles your readers request. I can truthfully say I enjoy every feature article.

★

Patricia LeGrand, Main P. O. Box 1051, Los Angeles 53, Calif.

Sirs: The letter you printed about radio speakers using doubtful word pronunciations of common words pleased me, especially when the word envelope was included. There is no reason for the affected way of saying on-velope for the common envelope. One who persists in so doing wants his listeners to think he's educated, or it's generally a "putting n the dog" when running for office to get the illiterates to think he's a college man.

★

Miss Ione Davis, 8737 Lexington Avenue, Hollywood, Calif.

Sirs: This is what you might call a "gripe" on the changes that have been made on Frankie Sinatra's "Vimms" broadcast. I was very thrilled when I received two passes for the opening night for the new season. Being the first broadcast I have ever had the pleasure to attend I was extremely disappointed when every bobby sox girl who was not an adult was isolated in the balcony where we couldn't hear or see

distinctly. A number of press agents and some servicemen took up the front rows, which was perfectly all right, but rows of good seats were vacant and bobby sox-ers were not allowed to fill them. Is this fair? NO! We're the fans who are financing him—are we to be simply shoved in a corner and like it?

I have heard many wild stories about the so-called "bobby sox brigade"—that they scream, push others, bite, and resort to rough tactics to get seats, etc. But when I was there this was not true. We fans control ourselves as much as humanly possible and we can and will behave ourselves if we can at least get seats which are vacant. Frank looked as surprised as we were when he looked down at his audience and saw his small audience in front and huge audience pushed back in the balcony. Please try to use your influence in putting things back to normal.

★

Hazel E. Johnstone, 111 Hamlet Street, Los Angeles 42, Calif.

Sirs: I was just reading the letter from the lady who thinks the "Mary Marlin" story gets nowhere. And I disagree. It's the only serial I still follow because it's so right up to the minute and with things as they are in real life. I've followed this serial from the first day for over ten years now. I've enjoyed every bit of it and it's the only story I follow. All the others are so namby-pamby and all are the same. I do wish Joan Blane could be back as Mary, though—the voice of the girl who plays her part now doesn't sound a bit like her. I miss the old David, too, but he can't be replaced. He was fine. Joe still sounds very natural as from the very beginning. Do keep this story on the air.

★

Miss Karma Jean Rich, 2638 South Gladys Avenue, Garvey, Calif.

Sirs: Last week a lady wrote that she thought Jack Owens ranked with Sinatra and Crosby. I, too, have a favorite singer whom I feel ranks with Sinatra and Crosby. He is Andy Russell. I think he is one of the finest singers I have ever heard. Will there be a picture of him printed in Radio Fan Fare some time soon?

Andy Russell is in New York at the present time. We're noting your request, though, and hope to do a feature on him when he returns to the West Coast.

★ ★ ★ ★ RADIO fan fare ★ ★ ★ ★
September 22, 1944 • Volume 9, Number 18

Published the second and fourth Fridays of each month by Coast Publications, 333 Montgomery Street, San Francisco 4. Phone SUtter 8157. Southern California Affiliate, RADIO LIFE, 1928 West Washington Blvd., Los Angeles 15, Phone Richmond 5262. Distributed through leading Independent Grocers in Northern California. All material used by RADIO FAN FARE is specially prepared by its own staff writers, and reprinting in whole or in part without publisher's permission strictly forbidden. Publisher, T. W. Anderson; Editor-in-Chief of Radio Fan Fare and Radio Life, Evelyn A. Bigsby; Editor Radio Fan Fare, Helene Peters; Art Director, Allen Ricks; Log Editor, Shirley Gordon. Advertising Representatives RADIO FAN FARE and RADIO LIFE: Northern California, Edwood Carey, H. O. Jackson; Southern California, Culbreth Sudler.

ICE CREAM

AS LOW AS

11¢ a pint

Always delicious

YOU make any flavor in 2 minutes. Please ask your grocer for

LONDON DERRY

835 Howard Street
San Francisco 3, Calif.

No "Flavor Failures" with McCormick Vanilla

Even though your cake doesn't always look 100%, it will taste 100% perfect if you always use McCormick Pure Vanilla. It's tops.

AWARDED BALTIMORE PLANT
AWARDED ROME PLANT

PURE VANILLA EXTRACT
PURE VANILLA

TEAS · SPICES · MUSTARDS



"Truth or Consequences," NBC-KPO



Joan Davis-Jack Haley, NBC-KPO



Kate Smith, CBS-KQW



Nelson Eddy, CBS-KQW

Dale Carnegie, MBS-KFRC



Radio Shifts Into High!

*Here Are Schedules, Pictures
Of Fast-Moving Season Into
Which Kilocycles Are Moving*

DON'T look now—but the fall radio season is swinging into high. Because network time is at a premium and because smart stars realize the value of keeping their names constantly before the public, many air entertainers took only eight weeks' respite from the microphone this past summer, with the result that scores are already back on the ether lanes.

An accompanying time table spotlights a few of your favorites to be found on the dial, some of them in their old familiar niches, others in brand new times and even different networks. For instance, Kate Smith, perennial Friday night favorite, is now to be tuned on Sundays (opposite Jack Benny). Ed Gardner, has moved his tavern, bag and baggage, to NBC, where he'll cavort every Friday night at 8:30. "Man Called X", popular summer replacement for Lux and starring Herbert Marshall, is continuing into the winter season on another chain, the Blue, Saturdays at 7:30 o'clock. Other changes may be noted on the schedule.

New Faces

Perhaps of far more interest to fans is the wealth of new material which will make the coming winter add up to one of radio's lushest. By "new" material is meant, too, several "long-time-no-hear" personalities. In this category falls Rudy Vallee, who hasn't been airing since

he joined the Coast Guard. Fred Waring, replaced in June by Johnny Mercer's Music Shop, is returning with his own half hour weekly program. Nelson Eddy returns to the fold and Harriet Hilliard and Ozzie Nelson star in their own half-hour program of music and situation comedy, built along the lines of a junior Fibber McGee and Molly. Alan Young, who made such a strong impression as Eddie Cantor's summer replacement, was about the only hot weather star to rate a winter show of his own and you'll be hearing him on the Blue starting October 3, 8:30 p.m. Frank Morgan and Fanny Brice, who for the past few seasons have shared billing on the Maxwell House program, mark this season as their time to step out as separate luminaries scintillating in their own air vehicles.

Barrymore, Wynn

Perhaps two of the most exciting personalities who have agreed to broadcast this autumn are Ethel Barrymore and Ed Wynn. The first lady of American theater's royal family will come to listeners in a dramatic series titled "Miss Hattie." Ed Wynn, "the laughing fool," will punch gags on a half hour show called "Happy Island" and will be aided by Songstress Evelyn Knight, Jerry Wayne, baritone, and Mark Warnow's music.

The accompanying table has been compiled for your convenience in tabbing important programs yet to return or debut on the airwaves.

Happy listening!



Wilfred Pelletier, "Met Auditions"
Blue-KGO



Dinah Shore, NBC-KPO



Ethel Barrymore, Blue-KGO

MAJOR NETWORK SHOWS

Sundays:

Ethel Barrymore
Music America Loves Best
You Can't Take It With You
Kate Smith
Bergen-McCarthy
Fanny Brice
Gildersleeve

Mondays:

Lux Radio Theater
Information, Please

Tuesdays:

Burns and Allen
Bob Hope

Wednesdays:

Frank Sinatra

Thursdays:

Sammy Kaye
Fred Waring
Frank Morgan

Fridays:

Ed Wynn
Duffy's Tavern
Aldrich Family
Joan Davis-Jack Haley

Saturdays:

Man Called "X"
Truth or Consequences
Rudy Vallee

Blue-KGO 12:30 p.m.
NBC-KPO 1:30 p.m.
MBS-KFRC 2:00 p.m.
CBS-KQW 4:00 p.m.
NBC-KPO 5:00 p.m.
CBS-KQW 7:30 p.m.
NBC-KPO 8:00 p.m.

CBS-KQW 6:00 p.m.
NBC-KPO 7:30 p.m.

CBS-KQW 6:00 p.m.
NBC-KPO 7:00 p.m.

CBS-KQW 6:00 p.m.

MBS-KFRC 8:00 p.m.
Blue-KGO 8:30 p.m.

NBC-KPO 8:30 p.m.
Blue-KGO 7:30 p.m.
NBC-KPO 8:30 p.m.
CBS-KQW 9:00 p.m.

NBC-KPO 9:30 p.m.
Blue-KGO 7:30 p.m.
NBC-KPO 8:00 p.m.



Dorothy Thompson, Blue-KGO



Ed Wynn, Blue-KGO

Harriet and Ozzie Nelson, CBS-KQW

RETURNING SHOWS

Sundays:

Dorothy Thompson Sept. 24
Jack Benny Oct. 1
"Steel Horizons" Oct. 1
"Those We Love" Oct. 8
Harriett and Ozzie Nelson Oct. 8
Metropolitan Opera Auditions Nov. 26

Blue-KGO, 8:15 p.m.
NBC-KPO, 4:00 p.m.
MBS-KFRC, 6:00 p.m.
NBC-KPO, 11:00 a.m.
CBS-KQW, 3:00 p.m.
Blue-KGO, 1:30 p.m.

Tuesdays:

Fibber McGee and Molly Oct. 3
Alan Young Oct. 3

NBC-KPO, 6:30 p.m.
Blue-KGO, 8:30 p.m.

Wednesdays:

Nelson Eddy Sept. 20
Eddie Cantor Sept. 27

CBS-KQW, 7:30 p.m.
NBC-KPO, 6:00 p.m.

Thursdays:

Bob Burns Oct. 5
Abbott and Costello Oct. 5
Dinah Shore Oct. 5

NBC-KPO, 6:30 p.m.
NBC-KPO, 7:00 p.m.
NBC-KPO, 9:00 p.m.

Fridays:

Amos 'n' Andy Sept. 22
San Francisco Opera Sept. 29

NBC-KPO, 7:00 p.m.
MBS-KFRC, 10:00 p.m.

Saturdays:

Boston Symphony Oct. 7
Metropolitan Opera Nov. 25

Blue-KGO, 5:30 p.m.
Blue-KGO, 11:00 a.m.





◀ **EMOTING IN CHORUS** or Who Got the Last Word? should be the title of this tense scene from "Opportunity Theater's" premiere. Left to right are Monty Margetts, Ray Lewis, Athene Andrews (initial audition winner), Jack Moyles and Marjorie Skipton.

Saturday 11 a.m.
NBC-KPO

ENDLESS LINES of amateurs, starry-eyed and shaky-limbed, have been circling in and out of broadcasting studios for years—since that day back in radio's moppet stage when somebody dreamed up audience participation shows.

But until the recent advent of "Opportunity Theater" there was little place in those lines for would-be actors. Whistlers, yodelers and animal imitators, yes; actors (which probably half of your friends want to be), no.

"Opportunity Theater," heard Saturdays over KPO and the Pacific Coast NBC network, has licked the production problems involved in presenting amateur thespians to a radio audience. What's more, actors who make good are given a three-month membership in the American Federation of Radio Artists and a professional engagement, complete with union salary.

Un-professional actors of both San Francisco and Los Angeles are "in" on the chance—are competitive, in fact, though San Francisco has the outset advantage of numbers. One San Franciscan takes part in each of the three Saturday shows originating at KPO, while Southern Californians get a crack at the one show a month broadcast in Hollywood. Out of the four monthly participants, the board of judges names one Northern Californian to receive an expense-free trip to Hollywood and a professional appearance on the program in which will also be cast the Los Angeles winner. If the latter is the following month's grand winner, he gets a professional engagement, plus a \$50 war bond in lieu of a trip.

Have Rehearsal

Unlike Haven McQuarrie's late "Do You Want To Be an Actor?", this program does not put its amateurs on the air "cold." Winners of twice-weekly tryouts take home scripts for over-night study and are given two thorough rehearsals before program time. And, of course, they are cast opposite top NBC artists, headed by "Opportunity Theater's" regular star, versatile Archie Presby.

And how do these professional

◀ **"YOU'RE BITTER, SEE.** You took a prison rap and you're sore at the world," says Director Ben Harkins, explaining to Shipyard Worker Lee Stone the character he is to portray. In years of programming and writing for NBC, Mutual, CBS and for Warner Bros., Harkins has auditioned and worked with thousands of amateurs. And he loves it because "they're giving all they've got every minute."

Who Wants to be An Actor?

By Helane Peters

Almost Everybody! But Until NBC's New "Opportunity Theater," Amateurs Had Little Chance at the Microphone





▲ **WORK OF AMATEURS IS JUDGED** by a group of person-ages outstanding in the entertainment world. They include Ina Claire, distinguished actress.



▲ **AFFABLE ARCHIBALD**, whose mike chores range from serious "drama" to giga- gleful guiding of an NBC waker-upper, stars here as he does in the new oppor- tunity program for amateurs. Eyes-lefting on Presby are Amateur Athene Andrews and capable dramatist Monty Margetts.

showmen treat the quaking ama- teur? Listen to what Athene An- drews, "Opportunity Theater's" first winner, told us:

"I had studied my script practi- cally all night and when I walked in for the first rehearsal I was all business — very serious about the whole thing and particularly serious about myself. I saw Mr. Pres- by, Monty Margetts and the others and suddenly an awful thought made me go all weak and shaky: 'They're all professionals and I'm just an amateur'.

"Then somebody said: 'Hello, there. Congratulations!' and started to introduce me. Archie broke out with his famous giggle and began wise-cracking with announcer Ray Lewis — about this and that and anything I could be in on. Monty sort of took me under her wing and then Director Ben Harkins and Pro- ducer Don Thompson begin giving me instructions — casually, as though I were really one of them. And the first thing I knew, I felt

like I really 'belonged.' I'd forgot- ten all about being an amateur."

Seemed Professional

As a matter of fact, watching and listening to Miss Andrews' perfor- mance, we, too, forgot she was an amateur. Whether she wins the Hol- lywood' trip or not, we predict this dark-eyed San Franciscan will soon leave her present job as junior

statistician for the Federal Public Housing Service and devote most of her time at the mike.

As for Director Ben Harkins, who has been auditioning and directing radio and picture talent up and down the Pacific Coast for years, his opinion is this: "We won't have an amateur of Athene Andrews' cal- iber each week—but the average

(Please turn to Page 11)

▼ **NOT AS TRUMPED-UP** as it might appear in this photographer's brainchild, It graphically depicts the earnest pleading of countless amateur actors for a chance to be heard over the air. Recipient of the girls' entreaties is James McIntyre, general manager of "Opportunity Theater's" sponsor, West Coast Soap Company.

▼ **ANOTHER MEMBER OF THE JUDGING BOARD**, Joan Davis. Ann Rutherford, producer Joseph Pasternak and George Heinz, American Theater Wing executive and director of San Francisco's Stage Door Canteen, complete the panel.



ENJOY INEXPENSIVE PRIZE - WINNING ORANGE MARMALADE

It's Easy To Make Anytime With This Simple Recipe

- 6 Medium Sized Oranges
(2 lbs. Sliced)
- 6 Cups Water
- ½ Cup Lemon Juice
(About 6 lemons)
- 1 Package M.C.P. Pectin
- 9½ Level Cups Sugar
(Measured ready for use)

1. Cut oranges in cartwheels with very sharp knife to make slices thin as possible. Discard the large flat peel ends. Sliced fruit should weigh 2 pounds.
2. Put sliced fruit in 8-quart kettle. Add the water and lemon juice.
3. Bring to a quick boil; boil gently for 1 hour (uncovered). If peel is not tender in 1 hour, boil until tender.
4. Measure the cooked material. Due to boiling, the volume will be reduced below 7 cups. Add water to make total peel and juice exactly 7 cups.
5. Put back in kettle. Stir in M.C.P. Pectin; continue stirring and bring to a full boil.
6. Add sugar (previously measured). Stir gently until it has reached a full rolling boil, and **BOIL EXACTLY 4 MINUTES**. Remove from fire; skim and stir by turns for 5 minutes.
7. Pour into jars. If you use pint or quart jars, seal hot and invert jars on lids until Marmalade begins to set. Then, shake well and set jars upright. This keeps the peel evenly distributed throughout.

NOTE: This recipe works equally well with Navel Oranges or Valencias. When either variety is over-ripe and peel is soft, use ¾-cup Lemon Juice instead of ½-cup. (Be sure to discard any seeds.) This recipe makes 7 pounds of prize-winning Orange Marmalade.

Amazing

POCKET LOOM

Makes the art of weaving an easy and fascinating pastime

"It Outdoes the Navajos"

WEEVEND WONDERLOOM is an ingenious frameless weaver. You can carry it in your handbag.

Full instructions and patterns with each loom.

FAN FARE MAGAZINE, Dept. HP
333 Montgomery St.
San Francisco 4
Please send me, postage prepaid.....
WEEVEND WONDER LOOMS at \$1.00 with complete instructions and patterns, for which I enclose \$.....
Name

Address

City..... State.....



THE FAMOUS "DAGWOOD SANDWICH" is demonstrated by Arthur Lake, well-known Dagwood Bumstead of the CBS "Blondie" series. Here Lake concocts his famous sandwich in response to a plea from forty United Air Lines reservation girls, so busy handling war-time travel that they are keeping offices open twenty-four hours a day. Because they get hungry at mid-night and have no convenient spot where they may eat, they asked Dagwood for instructions in his specialty. Using the two-finger technique, Arthur typed out his formula, then demonstrated it with a four-decker made of baked beans, pickles, meat (three varieties) tomatoes, cucumbers, lettuce, and seasoning galore. Suggested Lake: "Be bold and inspired, don't be intimidated by tradition; altitude in a sandwich is an asset because it makes possible more flavors and jaw exercise; use multiple seasonings—mustard, catsup, soy sauce, mayonnaise and A-1 give you a combination to be remembered; don't worry about nightmares—these sandwiches will keep you awake."

Tips on Sandwiches

THE SCHOOL lunch should never be a problem as long as mother can figure out a yummy sandwich, because a sandwich that is appealing and at the same time nourishing is the big moment of any lunch box. Too many well-meaning mamas slap together a couple of pieces of uninspired bread and smear it with peanut butter or jelly.

Now there's nothing wrong with peanut butter and jelly, except that the same thing every day gets even a child down. We'd suggest a change by using a chunk style peanut butter and varying the jelly, even to using orange marmalade or jam. Fix this combination up as a three-decker, with salt rising bread, or use alternate slices of white and whole wheat.

Here are a few suggestions that will tempt the young appetite:

RADIO fan fare

Prize winning Paper Troopers



PENNY SINGLETON (CBS' *Blondie*) makes a tasty egg sandwich for the lunch pail of her pretty little daughter, *Doc Gee* (*Dorothy Grace*). Penny adheres to the variety theory, believing that a different type bread and filling every day adds interest and zest to the child's noon-tide repast.



Salmon Sandwiches

Drain the oil from a can of salmon and remove the skin and bones. Shred the salmon fine, using a sturdy fork. Add yolk of hard-boiled egg, which has also been mashed up fine and seasoned with salt, paprika, lemon juice, chopped parsley, and boiled salad dressing. Spread between folds of cracked wheat bread.



Onion Sandwiches

Butter one hundred per cent whole wheat bread. Chop Bermuda or Spanish onion fine and mix with mayonnaise. For a variation, use sardines instead of onion.



Walnut & Cheese Sandwiches

Chop nut meats fine and mix with your favorite soft cheese. Add a dash of salt and pepper, spread generously on slices of potato bread, with plenty of crisp lettuce added.



Cucumber Sandwich

Chop cucumber fine, add a little onion juice, dash of paprika, and mix with mayonnaise. This is a very tasty sandwich.



Ham and Pickle Sandwich

Grind a few slices of boiled ham, add dill pickle and one-quarter teaspoon of mustard. This makes a wonderful spread for rye bread.

September 22, 1944



gets an "energy" lift with
HONEY MAID GRAHAMS

Paper Troopers sure go for Honey Maid Graham Crackers. They're wholesome, easy to digest, extra nourishing, an ideal wartime "energy" food. Children enjoy the crunchy goodness, the delicious sweet flavor of Honey Maid Grahams between meals, at meals. Get an extra package today, and be ready for a "run" on this favorite treat.



BAKED BY NABISCO
NATIONAL BISCUIT COMPANY



THE SWEET WARTIME "Energy" FOOD



FONTANA'S
MACARONI
SPAGHETTI
EGG NOODLES

THE SEALED
PACKAGE IS
FLAVOR-TIGHT



2 Kinds • Both Delicious
Tea Garden Drips... a distinctively different flavor, thicker body.
Tea Garden Cane and Maple Syrup... a delicate blend, the flavor of pure maple sugar.



A WEDGE OF THIS lovely pie will be in the lunch pail of CBStar Penny Singleton's school-girl daughter, Dorothy Grace. This is an apple custard pie. Recipe: Peel three sour apples and stew until soft and no water is left in them. Mash smooth and add a piece of butter the size of an egg while the apples are still hot. After cooling, beat the yolks of two or three eggs with a small cup of sugar, 1/2 cup of milk or cream, a little grated nutmeg, and a little lemon juice. Meringue of three egg whites and two tablespoons of sugar flavored with lemon essence is a nice topper.



Beet & Horseradish Sandwich

To two tablespoons cooked chopped beets add a tablespoon horseradish and spread on buttered white bread. A variation of this may be cold boiled potato, chopped fine, and mixed with one tablespoon of beets. Sardines may also be used as a complement to the beets, which make a very colorful spread.



Carrot and Swiss Cheese

This is a splendid way to get your youngster eating vegetables at noon. Use one large boiled carrot and pass it through the meat grinder. Mix with two tablespoons of grated Swiss cheese and season with celery or seasoning salt. This is very nice on commercial corn bread.



Autumn Delight

Use one-quarter of a raw, peeled apple, two slices of Swiss cheese, one tablespoon chopped celery leaves. Spread nut bread lightly with butter and add this succulent filling.



Watercress and Oranges Sandwich

This is a very crisp, juicy sandwich. Peel and slice one orange. Chop two tablespoons of watercress and spread on buttered white bread, on one side of which the slices of orange have been arranged. Egg is also a nice combination with watercress, but be sure to add a tablespoon of mayonnaise to the finely chopped hard-boiled egg.

Its
Eleventh year
BUDDA'S
MARIN-DELL
AMATEUR HOUR

NEW 9:30 P.M.
TIME SATURDAYS
KFRC

MARIN-DELL
 SOLD ONLY AT INDEPENDENT STORES
 CAL.
 REG.

LISTEN TO BUDDA'S AMATEUR HOUR
 EVERY SATURDAY 9:30 P. M. K. F. R. C.

Who Wants to Be An Actor?

(Continued from Page 7)

standard will be that high. There's a gold mine of available talent."

Unlike many of the other would-be actors who now throng Radio City's corridors, Miss Andrews has been preparing for an acting career most of her life ("since I was five and I'm now 22"). Curiosity obviously motivates some to audition. Others seek an outlet for a pent-up urge previously kept a personal secret.

Both hopeful and discouraging was the fact that, out of the twenty-five persons who participated in "Opportunity Theater's" initial try-outs, only two were judged hopeless. Most frequently noted on the applications of the others was: "good voice; needs coaching." In other words, from the producers' standpoint, the talent outlook is splendid. But from the amateurs' position, competition is terrific and the oft-repeated "Not this week" of Director Harkins might very probably discourage the less determined.

Contestants should keep in mind, however, that the "this" in Harkins' dismissal contains more hope than they might think. At each try-out he is searching for one or two specific voices for as many parts in plays already purchased for use. In Miss Andrews' case, for instance, she was stopped almost before she began to read the try-out scene. So short was she stopped, she confessed, that she was sure she was through. But by the few lines she read, Harkins recognized hers as "the" voice—not for the part she was reading but for another he had in mind.

Sample Applicants

A very small percentage of auditionees have had professional experience. In this group was Tony Pawley who, along with amateur Lee Stone, was given a part in "Opportunity Theater's" second opus. Instantly recognizing Pawley's work as professional, Director Harkins welcomed the opportunity to use him. Pawley is the brother of screen "heavy" William and radio actor Ed and is a screen, stage and radio actor in his own right.

In contrast, Stone, a former salesman, is now an instructor in burning in Mr. Kaiser's Richmond shipyards. (If you heard the broadcast you know Stone seemed as familiar in his dramatic role as in his burner's outfit.)

And so, if you want to take a whirl at becoming a professional actor, you may have more ability than you think—as the following anecdote illustrates. After she had auditioned, one woman confessed she hadn't had the slightest intention of trying out. She had come to the studio for the Radio Institute. But, handed an application and script, what else could she do?

What she probably still doesn't know is this: On her application, carefully filed away, is this comment: "Very unusual voice; good reading; future use."

September 22, 1944

TIME TO TRY-

A-1 Apple Pie



A-1 BAKING SUCCESS Guaranteed

You choose the recipe. Use enriched Globe "A1" Flour. If you are not completely satisfied with the results, list the cost of each ingredient (including the flour) and send it to Globe Mills, Service Dept., Los Angeles 13, Calif. The total amount will be refunded to you.

And Here's the Western Way to Bake This All-American Dessert

Top of the apple season to you, ladies!

This is the time when your family will come to dinner hungry as wolves when they smell the spicy goodness of a home-baked apple pie. Juicy apples and tender, flaky crust—the specially good kind you

make so easily with Globe "A1" Flour and this tested recipe.

Western housewives have baked with Globe "A1" Flour for over 40 years... and the makers guarantee your complete baking success. See the unconditional guarantee above. For perfect baking results every time take a tip from Western cooks—use a tested recipe and guaranteed Globe "A1" Flour.

A-1 APPLE PIE

Flaky Pastry

2 cups Globe "A1" Flour ½ cup vegetable shortening
1 teaspoon salt ½ cup water (approx.)

Sift flour once, measure. Cut shortening into flour and salt (with pastry blender) until about the size of peas. Add water a few drops at a time, mixing with a fork, until particles form a ball when lightly pressed together. Divide into two parts, wrap in waxed paper and chill. Roll each part separately. (Will make one 9-inch two-crust pie or two 9-inch pie-shells.)

Filling

6 large, tart apples ½ cup granulated sugar
¼ to ½ cup brown sugar, firmly packed
½ teaspoon cinnamon ½ teaspoon salt 2 tablespoons butter

Pare, core and slice apples; fill pastry shell generously. Combine sugars (amount depending upon tartness of apples), cinnamon, and salt; sprinkle over apples, dot with butter. Roll out remaining pastry to about ¼-inch thickness for top crust. Cut a few gashes in center to allow escape of steam. Moisten edges of under crust, adjust top crust, trim and seal edges securely with tips of fingers or fork. Dot top crust with a few tiny dabs of butter, and sprinkle just a dash of sugar and flour over the top to get an attractive, uneven brown surface; or brush top with milk or beaten egg white for a glaze. Bake in hot oven (450° F.) for 15 minutes, then reduce heat to moderate (350° F.) and finish baking about 45 minutes longer or until apples are tender. Serve hot or cold.

NOTE: If apples are not very tart, add 1 teaspoon lemon juice and grated rind of 1 lemon, or if apples are known to be dry, add 1 tablespoon water.



“A1”
GLOBE A1 FLOUR

Miracle of Morgan's Ranch

(Continued from Page 2)

Morgan, himself spends the days from Thursday to Wednesday at the ranch, living a typical farm life (up early, hearty breakfast, outside all day, big lunch, early to bed). A foreman and one helper knuckle down to serious work, the foreman's wife helps Mrs. Morgan to put up fruit—last year about twenty cases.

Then, there are horses, which Morgan enjoys. "I've fallen off from every possible direction," he chuckled. And comedy is introduced by Dopey, the mule . . . which doesn't "do anything but eat" . . . Morgan bought Dopey for Mrs. Morgan, who is, incidentally, a great horsewoman.

The ranch house is small—priorities have prevented more than necessary improvements. The place is equipped with its own light plant, but nary a telephone.

"Whenever an urgent call develops, the studio has to get in touch with me by calling the sheriff. He comes up to my place, flashes his badge, and says 'I want you' and I always answer, 'What have I done now,'" laughed Morgan.

Willing to Learn

There's an encyclopedic lot to learn about cattle breeding and Morgan has assumed the attitude of willing student. Journals on livestock have bolstered his knowledge, and visiting shows and talking with other breeders have been beneficial. His stock now numbers twenty-one, including the prize, 1400-pound bull, J. Bordolier, which he purchased at a Chicago livestock show. (Cost ran into four figures and a bargain at that.) Hercules, the big boar (weight about 900 pounds) came from Pennsylvania. Morgan now has about 140 pigs, with 100 going to market soon.

RHEUMATISM

● ARTHRITIS - NEURITIS ●

Get Mendenhall's Number 40 from your druggist or by mail postpaid for \$1.25. Money back if first bottle fails to satisfy.

J. C. MENDENHALL MEDICINE CO.
Dept. 105 Evansville, Indiana

So fine are his Aberdeen-Angus that two of the heifers from the ranch were solicited as anniversary presents for Fibber McGee and Molly when the Wistful Vista couple recently marked the start of their tenth year on NBC.

Sounds Natural

White-haired Morgan, whose ranch-provoked tan accentuates his handsomeness, has apparently gone overboard in enthusiasm for his land venture. Speaking proudly as a breeder of prize stock should, however, he is met with quizzically lifted eye-brows and grain-of-salt acceptance of his Morgan's Ranch miracles. It is all so tremendous, it sounds like one of his Maxwell House fabrications . . . "I have a ten-thousand-acre farm carved from the productive soil of the most fertile and lush valley in California! My farm is a very scientific establishment—the envy of agronomists all over the world. Do I go in for animal husbandry? Well, I never found one that was pretty enough to marr—oh! Animal husbandry! You mean livestock! My herd produces milk with the highest butter-fat content in the world, each cow a pure-bred offspring of Craig's Cutie of Buck's County. I have a thousand pigs who've won blue ribbons at every state fair, including one sow who is so intelligent she can make known her wishes by simple communications—I receive a litter from her once a year!

"I raise very large potatoes.

John Conte: How large?

Morgan: Pretty large. Now here's a picture. Just behind that fence you can see—

Conte: How large are your potatoes, Frank?

Morgan: Large enough. Behind that—

Conte: Are they as large as grapefruit?

Morgan: Larger. Behind that—

Conte: Large as melons?

Morgan: Considerably larger. But what I want to point out—

Conte: How large are your potatoes?

Morgan: You've never seen anything like them.

Conte: Well, I'd like to see them! Will you sell me a hundred pounds?

Morgan: Nonsense! I wouldn't cut a potato in half for anybody!"

DIALECTICIAN

Lu Tobin, who portrays Captain Nils Anderson in the NBC-KPO "Hawthorne House" serial, has played more dialect roles in the past twelve years than any other San Francisco radio artist. He's been starred in almost every transcontinental show to originate in the Bay City.

★ ★

GRACIE SCRIBBLES

CBS Comedienne, Gracie Allen's coverage of the Republican and Democratic conventions for the newspapers was such a howling success that she's now regularly reporting her impressions of the political scene in a nationally syndicated column.

★ ★

NEW MANAGEMENT

"Bill Baldwin's Night Club," nightly platter-spinning session heard over Blue-KGO, is now under new management. George Fenneman is taking over the duties of master of ceremonies while Baldwin serves on the Blue's Pacific overseas staff. Bill is scheduled to report the coming battle for the Philippines as a special correspondent.

★ ★

HORROR HALF-HOUR

Every night Bay City listeners can work themselves into a mystic mood by the stroke of twelve tuning in on NBC's "Midnight Macabre" at 11:30. Grace Cooper authors the scary series, Don Thompson produces it, and George Wright furnishes errie organ accompaniment.

★ ★

HOSTESS

Patsy Garrett, who used to be heard as songstress with Fred Waring's crew, is now singing hostess of CBS' Broadway Matinee.

★ ★

SONG OF YOUTH

Jack Miller, composer-conductor of NBC's "Aldrich Family," has written a popular ballad for early publication suggested by the popular opening theme of the broadcast. Its tentative title is "All the World's A Wonderland When You're In Your Teens."

SURPRISE

When Ken Darby recently returned to his duties as musical director of the NBC's Sunday morning Westinghouse show chorus, after a brief illness, the cast presented him with a smart cream-colored shirt bearing the autographs of all its donors.

★ ★

LURE BY LOUISE

Louise Erickson's sixteen-year-old star of NBC's "A Date With Judy," designs her own clothes and is now dreaming up "personalized creations" for her friends. She has given her sideline business the name "Lure by Louise."

STANDARD FLY SPRAY Protects Health

Has a base so stainless it could be used as a dry cleaner! Highest rated killing power.

STANDARD OF CALIFORNIA

KILLS 'EM DEAD — flies, ants, moths, spiders, silverfish, mosquitoes



Hyphenated Hollywood Czar

Home Movie Maker Cliff Arquette
Writes, Produces, Directs, Acts,
Scores, Films, Edits, and Projects



HERE IS KFRC's HOBBYIST-FILM CZAR, Cliff Arquette, who writes, produces and projects home films. Two epics from his lab are "Fool's Gold" and "Goon with the Wind."

RADIO Fanfare readers know him as "Ben Willet," the chief citizen of Robert L. Redd's "Pt. Sublime" series on KFRC—Don Lee, but most of Hollywood knows Cliff Arquette as a hyphenated-film-czar: motion picture "writer-producer-director-actor-cameraman musical-scorer-film editor-projectionist." He's the film industry's mogul-tycoon who carries his talents into every department of the business but one.

To date, two films have been turned out by "Arquette Productions, Unincorporated and Uninhibited." One is "Fool's Gold," a super-Western-musical, the other is "Isle of Ball," a spectacular South Sea-Island-romance-musical. Each runs one quarter of an hour in length, credits included. Now in production is "Goon with the Wind," a super-war-between-the-states-epic-musical.

With the assistance of Hollywood's embryo actors and actresses and as-yet-undiscovered-stars, Arquette produces his films as a strictly non-profit, non-taxable venture. Showings are at the homes of Arquette and his Hollywood friends, with an occasional special presentation at a Hollywood-personality-party, such as a going-away-to-the-Marines-Corps-farewell.

Same Problems

Speaking as a producer, Arquette says that his pictures entail about the same problems as any conventional Hollywood release. He finds, on checking, that true to form, the first take is usually the best, and that about fifty per cent of his film winds up on the cutting room floor.

As director, Arquette has an edge on his professional prototype. His actors and actresses are seen but not heard, for no sound tracks are cut during the filming. Such things as

flubs or twerps, short memories for lines and inadvertent comments during shooting don't bother director-Arquette.

Because he is both actor and cameraman, he does run into a difficulty not met by many Hollywood players and craftsmen. Actor-cameraman-Arquette sometimes has to be on the double-quick to get from behind, to in front of the camera, to take his own pictures. If the drama is too demanding, Arquette gets one of the other actors to sub as cameraman for him till that scene is completed.

Musical scoring is done while the picture is being shown, so that's a problem that can be handled without strain between shooting and showing, but when it comes to editing his pictures, Arquette really has a job.

That's because Arquette-productions incorporate the use of ready-made and about-to-be-discarded-by-the-film-companies film as well as the film Arquette as producer-director-cameraman shoots.

How He Makes "Epic"

For example, in making "Goon with the Wind," Arquette will utilize old film from "Birth of a Nation." After viewing the reels on hand from this 1920 opus, selecting what he needs from it, Arquette will write the script from which he'll do his own shooting, and then, when he has his own camera work done, will splice the old film with the new to make the finished product.

Well, not quite finished, for there's the sound to do. Arquette is all the voices in his pictures, relating the dialogue while he runs the projection machine and keeping his eye on the turn tables that broadcast

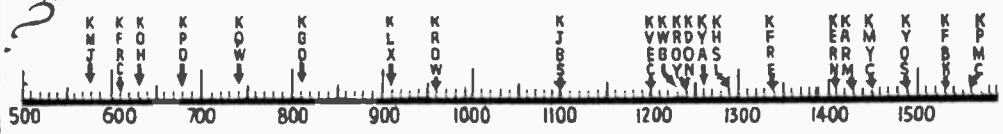
his music and background sound effects. This part of Arquette-productions really takes talent—the same sort of talent required by a window flap-jack artist who calls his own turns.

While Arquette, projectionist, keeps the reels turning, and as sound-man, keeps the tables turning, as "voice" he keeps the dialogue flowing by taking all the lines from the cowboy calling to a four-of-a-kind to the heroine yodeling to the cowboy. All the sound, music, voices and background effects are fed into a microphone and released through a speaker behind the screen on which the picture is shown.

Deviations

While he does try to follow a prepared script for the dialogue, there have been occasions when Arquette has adapted his lines to the audience at hand, and given them a greater topical interest to the production. Suggestions for such deviations from the script usually come from the audience, a procedure which in conventional picture houses would be described as heckling, but in Arquette-productions-on-review is just good clean fun.

This just about sums up Cliff Arquette's picture taking activities, except for one department into which his talents are not carried. The stay-aways who worry Hollywood's film industry have no role in Arquette-productions, for you'll notice that in the title line describing his motion picture production activities, "writer-producer-director-actor-cameraman-musical scorer-film editor-and-projectionist," there's no credit for the box office hawk—the hyphen stops short of comptroller.



MON. THRU FRI
DRAMA, SERIALS

8:00 a.m.—Shady Valley Folks, MBS
8:15 a.m.—Valiant Lady, CBS
8:30 a.m.—Light of World, CBS
8:45 a.m.—David Harum, NBC
8:45 a.m.—Aunt Jenny, CBS
9:15 a.m.—Big Sister, CBS
9:30 a.m.—Helen Trent, CBS
9:30 a.m.—Midland U.S.A., MBS
9:45 a.m.—Gal Sunday, CBS
9:45 a.m.—Jennifer Jones, MBS
10:00 a.m.—Life Beautiful, CBS
10:15 a.m.—Ma Perkins, CBS
10:30 a.m.—My True Story, BLUE
10:45 a.m.—The Goldbergs, CBS
11:00 a.m.—Guiding Light, NBC
11:15 a.m.—Mystery Chef, BLUE
11:00 a.m.—Portia, CBS
11:15 a.m.—Today's Children, NBC
11:15 a.m.—Joyce Jordan, CBS
11:30 a.m.—Women in White, NBC
11:30 a.m.—Dr. Malone, CBS
11:45 a.m.—Perry Mason, CBS
12:00 noon—Mary Marlin, CBS
12:15 p.m.—Ma Perkins, NBC
12:30 p.m.—Pepper Young, NBC
12:45 p.m.—Right Happiness, NBC
12:45 p.m.—Ruth, Children, CBS
1:00 p.m.—Backstage Wife, NBC
1:15 p.m.—Teln Dallas, NBC
1:30 p.m.—Loretta Jones, NBC
1:45 p.m.—Widder Brown, NBC
2:00 p.m.—A Girl Marries, NBC
2:15 p.m.—Love and Learn, NBC
2:30 p.m.—Just Plain Bill, NBC
2:45 p.m.—Freddy Fox, NBC
3:00 p.m.—Road of Life, NBC
3:15 p.m.—Star Playhouse, NBC
3:30 p.m.—Vic and Sade, NBC
3:45 p.m.—Johnson Family, MBS
3:45 p.m.—Aunt Mary, NBC
4:00 p.m.—Lady of the Press, CBS
4:00 p.m.—Dr. Kate, NBC
4:15 p.m.—Safety Legion, MBS
4:45 p.m.—Sea Hound, BLUE
4:45 p.m.—Safety Legion, MBS
5:00 p.m.—Perry & Pirates, BLUE
5:15 p.m.—Thru a Woman's Eyes, NBC
5:15 p.m.—Superman, MBS
5:15 p.m.—Dick Tracy, BLUE
5:30 p.m.—Jack Armstrong, BLUE
5:30 p.m.—Tom Mix, MBS
5:45 p.m.—Capt. Midnight, BLUE
6:55 p.m.—Story Teller, BLUE
8:00 p.m.—I Love a Mystery, CBS
8:15 p.m.—Lynn 'n' Abner, BLUE
9:45 p.m.—Nick Carter, MBS

VARIETY

8:00 a.m.—Americana, CBS
8:00 a.m.—Date at Eight, NBC
8:00 a.m.—Breakfast Club, BLUE
8:15 a.m.—It's Glen Again, NBC
8:30 a.m.—Barbara Lee, NBC
8:45 a.m.—Serutan Musical, MBS
9:15 a.m.—Music Makers, MBS
9:30 a.m.—Breakfast Sardi, BLUE
10:00 a.m.—Archie's Almanac, NBC
10:15 a.m.—Jack Berch, MBS
10:30 a.m.—Lunch with Lopez, MBS
10:55 a.m.—Aunt Jeannine, BLUE
12:00 n.—Morton Downey, BLUE
12:15 p.m.—Neighbors, CBS
12:15 p.m.—Star Time, BLUE
12:30 p.m.—Star Parade, MBS
1:15 p.m.—Radio Parade, BLUE
2:00 p.m.—What's Doing, Ladies, BLUE
2:00 p.m.—Pot Luck Party, CBS
2:30 p.m.—Meet the Missus, CBS
2:45 p.m.—Radio Tour, MBS
3:00 p.m.—Open House, MBS
3:30 p.m.—Baldwin's Mat., BLUE
8:15 p.m.—Screen Test, MBS
4:30 p.m.—Thru a Woman's Eyes, NBC
6:55 p.m.—Coronet Story Teller, BLUE
8:00 p.m.—Johnny Mercer, NBC
7:30 p.m.—Horace Heldt Time, Blue
10:30 p.m.—Bill Baldwin, BLUE
11:15 p.m.—Treasury Salute, MBS

MUSIC

11:30 a.m.—Just For You, BLUE
11:45 a.m.—Kelloz Musical Library, MBS
11:45 a.m.—Hymns of All Churches, NBC
12:45 p.m.—Skyline Serenade, MBS

1:30 p.m.—Music for You, CBS
6:30 p.m.—Spotlight Bands, BLUE
10:30 p.m.—Sweetheart Swingtime, NBC
11:45 p.m.—Dale Jones Orch., CBS
PUBLIC AFFAIRS
10:45 a.m.—Am. Womens Jury, MBS
2:30 p.m.—Home Forum, BLUE
3:00 p.m.—Housewives Protective League, CBS
4:15 p.m.—Bob Andersen, CBS
4:00 p.m.—Win the War, BLUE
NEWS AND COMMENT
8:30 a.m.—O'Connor Moffatt, MBS
9:00 a.m.—Bouke Carter, MBS
9:00 a.m.—Kate Smith, CBS
9:00 a.m.—News, NBC
9:15 a.m.—Larry Smith, NBC

Ed Wynn
returns to the air
as King of
"Happy Island"
7:30 p.m.
Fridays
KGO

9:30 a.m.—Woman's Mag., NBC
10:00 a.m.—Tony Morse, BLUE
10:00 a.m.—Glenn Hardy, MBS
10:30 a.m.—Bernardine Flynn, CBS
10:45 a.m.—Art Baker, NBC
11:00 a.m.—Cedric Foster, MBS
11:00 a.m.—Bookings Talking, Blue
11:15 a.m.—Emily Barton, MBS
11:45 a.m.—News, BLUE
12:00 noon—Woman of Amer., NBC
12:00 noon—News, MBS
12:30 p.m.—Kiernan's Corner, BLUE
1:00 p.m.—Sam Hayes, BLUE
1:00 p.m.—Walter Compton, MBS
1:25 p.m.—Grant Holcomb, CBS
1:30 p.m.—Time Views News, CBS
2:00 p.m.—Faces and Places, MBS
2:45 p.m.—Radio Tour, MBS
3:00 p.m.—Carlson and the News, BLUE
3:00 p.m.—News, CBS
3:45 p.m.—The World Today, CBS
3:55 p.m.—Joseph Harsch, CBS
4:00 p.m.—Fulton Lewis Jr., MBS
4:15 p.m.—Dr. Sweetland, BLUE
4:15 p.m.—News of World, NBC
4:30 p.m.—World's Front Page, MBS
5:00 p.m.—Last Minute News, MBS
5:00 p.m.—Fletcher Wiley, CBS
5:00 p.m.—OK for Release, NBC
5:30 p.m.—Harry Flannery, CBS
5:45 p.m.—Gordon Burke, MBS
5:45 p.m.—Truman Bradley, CBS
5:55 p.m.—Bill Henry, CBS
6:00 p.m.—Gabriel Heatter, MBS
6:00 p.m.—News, BLUE
6:15 p.m.—General Malone, BLUE
7:00 p.m.—Raymond Gram Swing, BLUE
7:15 p.m.—Ted Malone, BLUE
7:15 p.m.—Lawell Thomas, MBS
8:00 p.m.—Watch the World Go By, BLUE
9:00 p.m.—Glenn Hardy, MBS
9:30 p.m.—Fulton Lewis Jr., MBS
10:00 p.m.—Richfield Reporter, NBC
10:00 p.m.—Carlson and the News, BLUE
10:00 p.m.—News, CBS
10:15 p.m.—Henry J. Taylor, BLUE
10:15 p.m.—William Winter, CBS
11:00 p.m.—Carlson and the News, BLUE
11:00 p.m.—News, MBS
11:00 p.m.—Victory News, CBS
11:15 p.m.—Bill Guzman, Sports, BLUE
11:55 p.m.—News, CBS
11:55 p.m.—News, NBC

MONDAY
VARIETY

4:30 p.m.—Open House, CBS
4:30 p.m.—Andy & Virginia, BLUE
6:00 p.m.—A Song Is Born, NBC
6:30 p.m.—Army Air Forces, MBS
7:30 p.m.—Thanks to Yanks, CBS
7:30 p.m.—Horace Heldt, BLUE

8:15 p.m.—Dateline, CBS
8:30 p.m.—Gay Nineties, CBS
9:00 p.m.—Blind Date, BLUE
9:30 p.m.—Yox Pop, CBS
11:15 p.m.—Listen and Live, CBS
DRAMA
6:00 p.m.—Lionel Barrymore, CBS
6:30 p.m.—A Man Named X, CBS
7:00 p.m.—Screen Guild, CBS
7:30 p.m.—Lone Ranger, MBS
8:30 p.m.—Amer. Calvade, NBC
8:30 p.m.—Point Sublime, MBS
9:30 p.m.—Hawthorne House, NBC
WAR
2:15 p.m.—Aberdeen Proving Grounds, MBS
4:00 p.m.—Win the War, Blue
6:30 p.m.—Army Air Forces, MBS
7:15 p.m.—Malone Overseas, Blue

MYSTERY
8:00 p.m.—Sherlock Holmes, MBS
8:30 p.m.—Counteresp., Blue
9:00 p.m.—Suspense, CBS
9:30 p.m.—The Green Hornet, Blue
QUIZ
7:30 p.m.—Dr. I.Q., NBC
8:30 p.m.—Information Please, NBC
MUSIC
12:45 p.m.—Sweet Leilani, BLUE
1:15 p.m.—The Smoothies, MBS
3:15 p.m.—Tropical Moods, BLUE
5:30 p.m.—Frestone Concert, NBC
6:30 p.m.—Spotlight Bands, Blue
7:00 p.m.—Contented Hour, NBC
9:00 p.m.—Telephone Hour, NBC
10:45 p.m.—Bing Crosby, CBS
11:30 p.m.—Lennie Conn Orch., CBS
12:00 m.—Playbacks, NBC

NEWS AND COMMENT
4:15 p.m.—Dr. Sweetland, BLUE
7:00 p.m.—Henry Gladstone, MBS
8:15 p.m.—Roy Maypole, NBC
9:15 p.m.—Cecil Brown, MBS
11:30 p.m.—Charles La Vere, NBC

TUESDAY
VARIETY

6:00 p.m.—Burns & Allen, CBS
6:30 p.m.—Words at War, NBC
7:00 p.m.—Bob Hope, NBC
7:30 p.m.—Let Yourself Go, BLUE
8:30 p.m.—Ransom Sherman, BLUE
8:30 p.m.—Ginny Simms, NBC
8:30 p.m.—Freedom of Oppor., MBS
9:00 p.m.—Romance, CBS
9:00 p.m.—Haynes-Jenkins, NBC
9:00 p.m.—Club Good Cheer, BLUE
9:30 p.m.—Light and Mellow, NBC

DRAMA
5:30 p.m.—Date with Judy, NBC
6:30 p.m.—Doctor Fights, CBS
7:00 p.m.—Salute to France, CBS
7:00 p.m.—Red Ryder, CBS
8:00 p.m.—Count of Monte Cristo, MBS
8:15 p.m.—Passing Parade, CBS
8:30 p.m.—Big Town, CBS
9:00 p.m.—Theater of Today, CBS
9:25 p.m.—Short Story, CBS

MYSTERY
6:00 p.m.—Mystery Theater, NBC
7:30 p.m.—True Detective, MBS
9:30 p.m.—Creeps by Night, BLUE
PUBLIC AFFAIRS
4:45 p.m.—Safety Legion, MBS
6:30 p.m.—Air Forum, MBS

HAVEN OF REST
Tues., Thurs., Sat., 8:00 A.M.
KTKC - KYOS - KHUB - KSAN
KSRO - KMYC - KHSL - KVCV

7:15 p.m.—Geo. Hicks, BLUE
10:30 p.m.—Congress Speaks, CBS
MUSIC
2:15 p.m.—Marine Band, MBS
3:15 p.m.—Harry Horlick, CBS
4:30 p.m.—American Melody Hour, CBS
5:15 p.m.—Melody Parade, CBS
6:30 p.m.—Spotlight Bands, Blue
7:30 p.m.—Pleasant Time, CBS
9:45 p.m.—Diana Gilmore, CBS
10:15 p.m.—Carmen Cavallaro, MBS
11:15 p.m.—Jan Savitt, CBS

11:30 p.m.—Strand Orch., CBS
11:30 p.m.—Ted Weems Orch., NBC
11:30 p.m.—Russ Morgan Orch., Blue

WAR
1:15 p.m.—AWYS, MBS
1:30 p.m.—Full Speed Ahead, MBS
NEWS AND COMMENT
7:15 a.m.—Fulton Lewis, Jr., MBS
8:15 p.m.—Roy Maypole, NBC
9:15 p.m.—Ilex Miller, MBS
9:30 p.m.—Edwin C. Hill, CBS

WEDNESDAY
VARIETY

4:30 p.m.—Andy & Virginia, BLUE
6:00 p.m.—Alan Young, NBC
6:00 p.m.—Frank Sinatra, CBS
6:30 p.m.—Jack Carson, CBS
7:00 p.m.—Kay Kyser, NBC
7:30 p.m.—Nelson Eddy, CBS
8:30 p.m.—My Best Girls, BLUE
8:30 p.m.—Beat the Band, NBC
9:00 p.m.—Dunniger, Blue
9:00 p.m.—Jones-Herman, CBS
9:30 p.m.—Fall Preview, CBS
9:30 p.m.—Music from Hollywood, BLUE
11:15 p.m.—Treasury Salute, MBS
11:15 p.m.—The Gadabouts, CBS

DRAMA
4:30 p.m.—Easy Aces, CBS
6:30 p.m.—Mr. D. A., NBC
8:30 p.m.—First Nighter, MBS
7:30 p.m.—Lone Ranger, MBS
8:00 p.m.—The Main Line, MBS
8:15 p.m.—Lum & Abner, BLUE
8:15 p.m.—John Nesbitt, CBS
8:30 p.m.—Buildog Drummond, MBS
8:30 p.m.—Dr. Christian, CBS
9:00 p.m.—Mr. & Mrs. North, NBC

QUIZ
7:30 p.m.—Scramby Amby, BLUE
WAR
10:00 a.m.—Wings Over West Coast, MBS

1:30 p.m.—Your Army Serv., MBS
7:15 p.m.—Malone Overseas, Blue
7:30 p.m.—Report to the Nation, CBS

MUSIC
2:15 p.m.—Concert, MBS
3:15 p.m.—Lynn Murray, CBS
3:15 p.m.—Tropical Moods, BLUE
7:00 p.m.—Great Moments in Music, CBS
10:15 p.m.—Music of Stars, NBC
10:30 p.m.—Dick Foy, MBS
10:45 p.m.—Dinah Shore, CBS

NEWS AND COMMENT
1:45 p.m.—Jorgenson, BLUE
4:45 p.m.—H. V. Kaitenborn, BLUE
7:00 p.m.—Raymond Swing, BLUE
7:00 p.m.—Royal Gunison, MBS
8:15 p.m.—Roy Maypole, NBC
8:55 p.m.—Dr. Sterling, CBS
9:15 p.m.—Cecil Brown, MBS

THURSDAY
VARIETY

1:30 p.m.—Full Speed Ahead, MBS
1:45 p.m.—Raymond Scott Show, CBS
6:00 p.m.—Music Hall, NBC
6:00 p.m.—Major Bowes, CBS
7:00 p.m.—Harry Savoy, NBC
7:30 p.m.—Here's to Romance, CBS
7:30 p.m.—Joe E. Brown, Blue
8:00 p.m.—Sammy Kaye Varieties, MBS
8:30 p.m.—Fred Waring, BLUE
9:30 p.m.—Royalty In Review, CBS
10:30 p.m.—Life In Bay Area, CBS

DRAMA
4:30 p.m.—Mr. Keene, CBS
6:30 p.m.—Charlie Chan, NBC
6:30 p.m.—Corliss Archer, CBS
7:00 p.m.—The First Line, CBS
7:30 p.m.—Red Ryder, MBS
8:15 p.m.—Lum & Abner, BLUE
8:15 p.m.—John Nesbitt, CBS
8:30 p.m.—Sky Riders, MBS
8:30 p.m.—Death Valley Sheriff, CBS
8:30 p.m.—Coffee Time, NBC
10:00 p.m.—Wings Over West, MBS

NBC stations: KPO, KMJ.
BLUE stations: KGO, KFBK, KWG, KERN, KOH, KPCC, KENO.
MBS stations: KFRC, KFRE, KPMC, KYOS, KDON, KHSI, KVEC, KMYC.
CBS stations: KQW, KARM, KROY, KGDM.

Note: In a few instances, individual stations transcribe network programs for release at a different hour. Since space limitations permit only one listing, the hour given is that of the network release. Program Finder listings were correct at press time; therefore *Fan Fare* cannot assume responsibility for inaccuracies due to subsequent changes.

MYSTERY

- 4:30 p.m.—It's Murder, BLUE
9:00 p.m.—Mystery Time, CBS
9:30 p.m.—Ellery Queen, NBC
10:00 p.m.—True Mysteries, MBS

PUBLIC AFFAIRS

- 4:45 p.m.—Am. Red Cross, MBS
9:00 p.m.—Town Meeting, BLUE

QUIZ

- 6:30 p.m.—Double or Nothing, MBS
8:00 p.m.—Song Quiz, MBS

MUSIC

- 9:15 a.m.—Music Mixers, MBS
2:15 p.m.—Navy Band, MBS
3:30 p.m.—Dream House, CBS
6:15 p.m.—Supper Music, BLUE
6:30 p.m.—Spotlight Ser., MBS
7:15 p.m.—Musical Portraits, BLUE

- 8:00 p.m.—Sammy Kaye, MBS
10:30 p.m.—Dick Foy, MBS
10:45 p.m.—Andrew Sisters, CBS
11:15 p.m.—Jan Savitt, CBS
11:30 p.m.—Ted Weems, NBC
12:00 m.—Merry-Go-Round, CBS

NEWS AND COMMENTS

- 1:45 p.m.—Maj. Gen. Malone, Blue
3:15 p.m.—Oma Munson, CBS
5:45 p.m.—News, Lochner, NBC
7:00 p.m.—Raymond Swing, BLUE
7:30 p.m.—March of Time, NBC
8:55 p.m.—Dr. Sterling, CBS
9:15 p.m.—Rex Miller, MBS
10:15 p.m.—Eye-Witness News, NBC

FRIDAY

VARIETY

- 10:00 a.m.—Benny Walker, NBC
1:45 p.m.—Raymond Scott Show, CBS
2:30 p.m.—Cabbages & Queens, MBS
2:30 p.m.—Meet the Missus, CBS
4:30 p.m.—Andy & Virginia, BLUE
4:30 p.m.—Friday on B'd'y, CBS
6:30 p.m.—Double or Nothing, MBS
6:30 p.m.—People Are Funny, NBC
7:00 p.m.—Moore Durante, CBS
7:30 p.m.—Stg. Door Canteen, CBS
8:15 p.m.—Press Club, CBS
9:00 p.m.—Furlough Fun, NBC
9:00 p.m.—Aldrich Family, CBS
9:00 p.m.—Meet Your Navy, Blue
10:00 a.m.—Benny Walker, NBC
9:30 p.m.—Service to Front, CBS
10:30 p.m.—Life in San Francisco, CBS
11:15 p.m.—The Gadabouts, CBS

DRAMA

- 6:30 p.m.—Brewster Roy, CBS
7:30 p.m.—Lone Ranger, MBS
7:30 p.m.—Ed Wynn, BLUE
8:15 p.m.—Parker Family, BLUE
8:30 p.m.—Gang Busters, BLUE
9:30 p.m.—Hollywood Theater, NBC
9:55 p.m.—Stories of West, CBS
11:30 p.m.—Voice of Army, CBS

QUIZ

- 8:00 a.m.—Know the Answer, CBS
6:00 p.m.—Money on Line, CBS
6:30 p.m.—Double or Nothing, MBS
8:00 p.m.—Two Cities Quiz, MBS
8:30 p.m.—Song Quiz, MBS
8:30 p.m.—Ignorance Pays, CBS

MUSIC

- 1:30 p.m.—Remembrance Music, MBS
2:15 p.m.—Army Band, MBS
3:15 p.m.—Lynn Murray, CBS
9:30 p.m.—Dude Martin, BLUE
10:00 p.m.—Sinfonietta, MBS
10:15 p.m.—Music of Stars, NBC
10:30 p.m.—Carmen Cavallara, MBS
10:45 p.m.—Frank Sinatra, CBS
11:15 p.m.—Treasury Salute, MBS
11:30 p.m.—Sid Hoff, MBS
11:45 p.m.—Dale Jones, CBS

NEWS AND COMMENTS

- 4:45 p.m.—H. V. Kaltenborn, NBC
5:45 p.m.—News, Lochner, NBC
6:15 p.m.—Gen. Malone, BLUE
7:00 p.m.—Dale Carnegie, MBS
7:00 p.m.—Earl Godwin, BLUE
7:30 p.m.—Bill Stern, MBS
8:15 p.m.—Roy Maypole, NBC
9:15 p.m.—Cecil Brown, MBS

SATURDAY

VARIETY

- 8:00 a.m.—Breakfast Club, BLUE
8:00 a.m.—K. C. Jamboree, NBC

You'll find 'What's Cooking' in the world today every Saturday at 10:30 a.m. on KGO

- 8:00 a.m.—Rainbow House, MBS
8:30 a.m.—Fashions-Rations, CBS
8:30 a.m.—Andy Devine, NBC
9:00 a.m.—Scrapbook, MBS
9:30 a.m.—Hello Morn, MBS
9:30 a.m.—Atlantic Spotlight, NBC
10:15 a.m.—Collins Calling, BLUE
10:30 a.m.—What's Cooking, BLUE
11:00 a.m.—Opportunity Theater, NBC

- 12:00 noon—San F. Lge. Svcmn, CBS
12:00 noon—21 Stars, BLUE
12:30 p.m.—Visiting Hour, CBS
2:00 p.m.—Your America, NBC
2:30 p.m.—Mother & Dad, CBS
2:45 p.m.—Hello Sweetheart, BLUE
3:30 p.m.—Hawaii Calls, MBS
3:45 p.m.—Something for the Girls, NBC

- 4:00 p.m.—Victory FOR, CBS
4:30 p.m.—See You, BLUE
4:30 p.m.—Flying High, MBS
4:30 p.m.—Tunes & Tips, NBC
5:00 p.m.—Kenny Baker, CBS
6:00 p.m.—Barn Dance, NBC
6:30 p.m.—Top This?, NBC
7:00 p.m.—Palmolive Party, NBC
7:00 p.m.—Guy Lombardo, BLUE
7:00 p.m.—Amateur Hour, MBS

Radio's newest thrill drama

'The Man Called X'

starring

Herbert Marshall

7:30 p.m. Saturdays KGO

- 7:15 p.m.—Hilly Barn Dance, CBS
7:30 p.m.—Grand Ole Opry, NBC
8:00 p.m.—Downbeat Derby, MBS
8:00 p.m.—Truth or Consequences, NBC
8:30 p.m.—Rudy Vallee, NBC
9:00 p.m.—Hit Parade, CBS
9:30 p.m.—Noah Webster, NBC
9:30 p.m.—Budda Amateur Hr., MBS

DRAMA

- 8:05 a.m.—Let's Pretend, CBS
9:00 a.m.—Fannie Hurst, BLUE
9:00 a.m.—Theater of Today, CBS
9:30 a.m.—Stars of Hollywood, CBS
10:00 a.m.—Grand Central, CBS
10:00 a.m.—Adventure Ahead, NBC
1:00 p.m.—Sampson Parade, CBS
2:00 p.m.—Casey, Photog., CBS
3:15 p.m.—Sports Show, Blue
3:30 p.m.—Storyland Theater, Blue
4:00 p.m.—Call Me Joe, NBC
4:30 p.m.—Mrs. Miniver, CBS
6:30 p.m.—A Good Idea, CBS
7:30 p.m.—Man Called X, BLUE
7:30 p.m.—Red Ryder, MBS
7:45 p.m.—Story Teller, CBS
9:45 p.m.—Don't Believe It, CBS

QUIZ

- 10:30 a.m.—Here's Babe Ruth, NBC
4:15 p.m.—Transatlantic Quiz, Blue
6:55 p.m.—Coronet Quiz, BLUE
8:30 p.m.—Inner Sun-tun, CBS

WAR

- 11:00 a.m.—Women in Blue, BLUE
2:00 p.m.—Navy Bulletins, MBS
3:00 p.m.—Halls of Montezuma, MBS
4:00 p.m.—Am. Eagles, MBS
4:30 p.m.—Minter Field, MBS
9:00 p.m.—Winged Soldiers, BLUE

PUBLIC AFFAIRS

- 9:15 a.m.—Consumers' Time, NBC
10:15 a.m.—Al Williams, MBS
10:45 a.m.—Work Exchange, CBS
11:00 a.m.—Clinic Forum, MBS
3:00 p.m.—Victory Veg'tbils, NBC
5:30 p.m.—Garden Club, MBS
9:15 p.m.—Business Men, NBC
10:45 p.m.—Public Affairs, CBS

MUSIC

- 8:45 a.m.—Orchestra, MBS
10:15 a.m.—Vincent Lopez, MBS
11:30 a.m.—Waltz Time, BLUE
11:30 a.m.—Orchestra, MBS
12:00 noon—Minstrel Melodies, NBC
12:30 p.m.—Ed McConnell, NBC
12:30 p.m.—Jazz Concert, BLUE
1:00 p.m.—Horace Heidt, BLUE
1:15 p.m.—Barbara & Boys, NBC
2:00 p.m.—Concert, BLUE
2:30 p.m.—Orchestra, MBS
2:45 p.m.—Music Room, NBC
3:15 p.m.—Fiesta Time, NBC
3:30 p.m.—Curt Massey, NBC
5:00 p.m.—Ted Weems, NBC
3:15 p.m.—Know Symphony, NBC
5:15 p.m.—Remembrance Music, MBS

- 5:30 p.m.—Gilbert & Sullivan, BLUE
6:00 p.m.—Chicago Theater, MBS
6:30 p.m.—Spotlight Band, BLUE
6:45 p.m.—Sat. serenade, CBS
7:00 p.m.—Guy Lombardo, BLUE
8:00 p.m.—Early American, BLUE

- 9:15 p.m.—Orchestra, MBS
9:30 p.m.—Russ Morgan, BLUE
10:00 p.m.—Orchestra, MBS
10:15 p.m.—Our Bandstand, NBC
10:30 p.m.—Sweetheart Swing, NBC
10:30 p.m.—Sinfonietta, MBS
11:15 p.m.—Joe Garber, CBS
11:30 p.m.—Mauny Strand, CBS
11:30 p.m.—Rex Morgan, BLUE
11:30 p.m.—Hurly Janies, NBC
11:45 p.m.—Dale Jones, CBS
11:45 p.m.—Organ, BLUE

NEWS AND COMMENTS

- 8:00 a.m.—Warren Sweeney, CBS
8:30 a.m.—Frank Hemingway, MBS
9:00 a.m.—Alex Dreier, NBC
10:00 a.m.—Glenn Hardy, MBS
10:25 a.m.—Don Moxley, CBS
10:45 a.m.—Radio Reporter, NBC
11:00 a.m.—Mary L. Taylor, CBS
11:45 a.m.—News, BLUE
12:00 noon—News, MBS
12:15 p.m.—Ira Hayes, CBS
1:00 p.m.—Rupert Hughes, NBC
1:25 p.m.—News, CBS
1:45 p.m.—London Report, CBS
3:00 p.m.—News, BLUE
3:00 p.m.—News, CBS
3:15 p.m.—Business News, CBS
3:30 p.m.—Louise Taber, CBS
3:45 p.m.—World Today, CBS
3:55 p.m.—Bob Trout, CBS
4:00 p.m.—Correspondents, BLUE
4:45 p.m.—News, NBC
5:00 p.m.—Last Min. News, MBS
5:00 p.m.—Newsroom, BLUE
5:15 p.m.—Clater Bowles, BLUE
5:30 p.m.—Harry Flannery, CBS
5:30 p.m.—News, NBC
5:45 p.m.—Nite News Wire, MBS
5:45 p.m.—Louis Lochner, News, NBC

- 5:45 p.m.—Ivan Bradley, CBS
5:55 p.m.—Neal Calmer, CBS
7:00 p.m.—Royal Gunnison, MBS
8:00 p.m.—Maj. Elliot, CBS
8:30 p.m.—Leland Stowe, BLUE
8:55 p.m.—Davy Valle, CBS
9:00 p.m.—Glenn Hardy, MBS
9:00 p.m.—News, NBC
10:00 p.m.—News, NBC
10:00 p.m.—News, CBS
10:30 p.m.—Sports Review, CBS
11:00 p.m.—News, CBS
11:00 p.m.—News, BLUE
11:15 p.m.—Guyman, Sports, BLUE

SUNDAY

VARIETY

- 8:15 a.m.—Serv. Unlimited, BLUE
10:30 a.m.—Bobby Hookey, MBS
11:15 a.m.—University Explorer, BLUE
11:30 a.m.—Westinghouse Show, NBC
12:30 p.m.—Army Hour, NBC
1:00 p.m.—Dress for Dough, BLUE
2:00 p.m.—Mary Small, BLUE
3:00 p.m.—Paul Whitehead, BLUE
3:30 p.m.—America in Air, CBS
4:00 p.m.—Hit Parade, NBC
4:15 p.m.—Something for Girls, BLUE
4:30 p.m.—Fiddle Garr, CBS
5:00 p.m.—Chic McCarthy, NBC
6:00 p.m.—Conrad Nagel, CBS
6:15 p.m.—Basin Street, BLUE
6:30 p.m.—James Melton, CBS
7:30 p.m.—Gleason-Tremayne, NBC
8:00 p.m.—Gladys Lee, NBC
8:30 p.m.—Tonight at Hoagy's, MBS
9:30 p.m.—Francis Craig orch, NBC
10:00 p.m.—In Focus, BLUE

DRAMA

- 11:00 a.m.—Dangerously Yours, CBS
12:00 noon—Listen, the Women, BLUE
12:30 p.m.—Ethel Barrymore, BLUE
5:30 p.m.—Fighting Front Facts, NBC
2:00 p.m.—You Can't Take With You, MBS
2:45 p.m.—Mysterious Travelers, MBS
2:30 p.m.—Hot Copy, BLUE
3:00 p.m.—Roosty of AAF, MBS
3:00 p.m.—Silver Theater, CBS
5:00 p.m.—Burdell, CBS
5:30 p.m.—One Man's Family, NBC
7:00 p.m.—Life of Riley, BLUE
8:00 p.m.—Red Lacquer & Old Jade, MBS

Dr. Pepper Presents DARTS FOR DOUGH with ORVAL ANDERSON Blue Network 1:00 P.M. Sunday—Fun and Money

- 8:30 p.m.—Sky Riders, MBS
9:00 p.m.—Decline Drama, BLUE
9:00 p.m.—Was There, CBS
9:30 p.m.—Human Adv., MBS
10:15 a.m.—Commr. Scott, MBS
10:30 p.m.—Prophecy Marches, CBS
10:30 p.m.—Pacific Story, NBC

RELIGION

- 8:00 a.m.—Wesley League, MBS
8:30 a.m.—Hour of Faith, BLUE
8:30 a.m.—Voice of Prophecy, MBS
9:00 a.m.—Bible Class, MBS
9:30 a.m.—Lutheran Hour, MBS
10:00 a.m.—Baptist Church, CBS
11:00 a.m.—Church in Action, NBC
3:00 p.m.—Catholic Hour, NBC
4:00 p.m.—Old Revival, MBS
10:00 p.m.—Old Revival, MBS
11:00 p.m.—Vng. People's Ch., MBS

QUIZ

- 3:00 p.m.—Quick As A Flash, MBS
7:00 p.m.—Take or Leave It, CBS
8:30 p.m.—Quiz Kids, BLUE

MYSTERY

- 2:30 p.m.—Mystery Traveler, MBS
2:30 p.m.—The Whistler, CBS
8:00 p.m.—Crime Doctor, CBS
9:30 p.m.—Bill Lance, CBS

WAR

- 9:00 a.m.—War Journal, BLUE
10:45 a.m.—G.I. Legal Aid, CBS

PUBLIC AFFAIRS

- 8:30 a.m.—Inv. to Learning, CBS
9:00 a.m.—Round Table, NBC
10:30 a.m.—Your Home, NBC
10:30 a.m.—Sunset Sing for Girls, CBS
12:30 a.m.—Youth Forum, MBS
5:00 p.m.—Meditation Board, MBS
7:15 p.m.—Good Will Hour, MBS
7:30 p.m.—Keep Up with World, BLUE

MUSIC

- 8:00 a.m.—Music You Want, NBC
8:15 a.m.—Blue-Jacket Choir, CBS
9:00 a.m.—Salt Lake Choir, CBS
9:30 a.m.—Golden Melodies, CBS
9:30 a.m.—Stradivari Orch., NBC
10:15 a.m.—Revita, NBC
10:30 a.m.—Sammy Kaye, BLUE
11:00 a.m.—Bund 'oneer, MBS
11:30 a.m.—Remember, BLUE
11:55 a.m.—Songs of America, CBS
12:00 noon—N.Y. Philharmonic, CBS
1:00 p.m.—Cald. Melodies, MBS
1:30 p.m.—Music America Loves, NBC

- 1:30 p.m.—Pavne Refreshes, CBS
1:30 p.m.—World of Song, BLUE
2:00 p.m.—Symphony, NBC
2:00 p.m.—Family Hour, CBS
3:45 p.m.—Music of the Stars, NBC
4:30 p.m.—Sun. Vespers, BLUE
6:00 p.m.—Merry-Go-Round, NBC
6:30 p.m.—Music Alham, NBC
7:00 p.m.—Hour of Charm, NBC
8:00 p.m.—Village Choir, BLUE
8:25 p.m.—Song of Week, CBS
8:30 p.m.—Standard Hour, NBC
8:30 p.m.—Harry Horlick, CBS
9:30 p.m.—Sing With Band, BLUE
10:15 p.m.—Time Out, NBC
10:15 p.m.—Dinning Sisters, CBS
10:30 p.m.—Russ Morgan, BLUE
11:00 p.m.—St. Francis Orch., NBC
11:15 p.m.—Dreamland Bridge, Blue
11:15 p.m.—Jan Savitt, CBS
11:30 p.m.—Manny Strand, CBS
11:30 p.m.—Music in Night, NBC
11:45 p.m.—Dale Jones, CBS

NEWS AND COMMENTS

- 8:00 a.m.—Warren Sweeney, CBS
8:00 a.m.—Newsroom, BLUE
8:30 a.m.—Radio Reporter, NBC
8:45 a.m.—News in Adv., NBC

COMMANDER SCOTT

and The Romance of the Highways M. B. S. 'Unreal Realities' 10:15 A. M. Sundays

- 9:45 a.m.—Ann Holden, BLUE
10:00 a.m.—John B. Kennedy, Blue
10:00 a.m.—Layman Views News, NBC
10:55 a.m.—Leland Stowe, BLUE
11:30 a.m.—The World Today, CBS
12:00 noon—World News, NBC
2:45 p.m.—Wm. L. Shirer, CBS
3:30 p.m.—Upton Close, MBS
4:00 p.m.—Newsroom, BLUE
4:00 p.m.—Report to Nation, CBS
5:30 p.m.—Harry Flannery, CBS
5:30 p.m.—Geo. Fenneman, BLUE
5:45 p.m.—Bob Anderson, CBS
5:45 p.m.—Drew Pearson, BLUE
5:55 p.m.—Ned Utner, CBS
6:00 p.m.—Walter Winchell, BLUE
6:45 p.m.—Jimmie Fidler, BLUE
7:00 p.m.—Cedric Foster, MBS
8:15 p.m.—Dorothy Thompson, BLUE

- 9:00 p.m.—Glenn Hardy, MBS
9:15 p.m.—Rex Miller, MBS
10:00 p.m.—Richie'd Reporter, NBC
11:00 p.m.—Victory News, CBS
11:55 p.m.—News, NBC
11:55 p.m.—News, CBS

Your Convenient Shopping Corner—

ANDREW WILLIAMS *Store*



Suggest You Listen

KGO - Blue Network

12:30 to 12:45

Tuesdays and Thursdays Starting

OCTOBER 3rd

(A New Corner on Radio Entertainment Will Be Presented)



ANDREW WILLIAMS *Stores*

America's Finest

Hillsdale, El Cerrito and Oakland, California