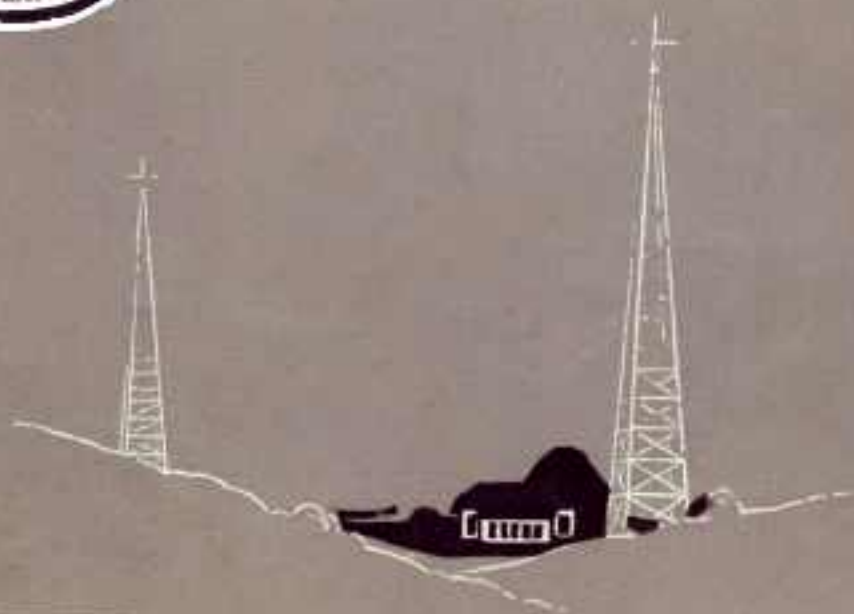


# RADIO Engineering

A Magazine of Technical Accuracy for the  
Radio Set Builder, Engineer and Manufacturer



*Edited by*  
**M.B.SLEEPER**



JULY 1925

VOL. V NO. 7

# Get a good set— and Evereadys

To enjoy radio for the rest of your life, get the best set you can afford. There are receivers at all prices, made by reputable manufacturers; it isn't necessary for anyone to get 'round-the-corner, unproved, unreliable merchandise at any price. That applies to batteries too. Eveready Radio Batteries are made in so many sizes and prices that there is a correct, long-lasting Eveready for every receiver and for every radio home, ship or commercial station. Specify Evereadys for your new radio set. It is false economy to buy nondescript batteries at any time. In the long run you'll find it most economical to buy either the large or extra large Evereadys. Always buy Evereadys and enjoy the knowledge that no one can get any more in batteries for the money than you. There is an Eveready dealer nearby.

*Manufactured and guaranteed by*

**NATIONAL CARBON CO., Inc.**  
New York San Francisco  
Canadian National Carbon Co., Limited, Toronto, Ontario

## EVEREADY Radio Batteries

*—they last longer*

### EVEREADY HOUR EVERY TUESDAY AT 5 P.M.

*Illustrations show the "Eveready Green" Broadcast Transistion Station*

WEAF	New York
WJAB	Providence
WEEI	Boston
WFI	St. Louis
WGB	Buffalo
WCAE	Pittsburgh
WEAR	Cleveland
WSAI	Cincinnati
WJW	Des Moines
WCCO	Minneapolis
WOC	Dayton



Eveready  
Columbia  
Ignitor  
Dry Cell  
for all  
Radio  
Dry Cell  
Tubes  
1.55 volts



No. 766  
22½-volt  
Large  
Horizontal  
Price  
\$1.00



No. 772  
45-volt  
Large  
Vertical  
Price  
\$3.75



No. 771  
4½-volt  
"C"  
Batteries  
improve  
quality,  
save  
"D"  
Batteries  
Price  
60c



WD-11  
WD-12  
UV-199  
UV-200  
UV-201-a

Radiotrons with these model numbers are only genuine when they bear the name Radiotron and the RCA mark.



## Do you believe in Names?

Do you buy things by name because the name tells the quality? Do you ask for a **RADIOTRON**, instead of just a "vacuum tube"—demand the standard by the name that marks it as genuine?

The most important part of a radio set is the tube, and you can't get the best out of any set without putting the best tubes into it. There's a Radiotron for every use, in every kind of set. Look for the name—and the RCA mark—and be sure it is genuine.

Radio Corporation of America

Sales Office: Suite No. 716

233 Broadway, New York

10 So. La Salle St., Chicago, Ill.

28 Geary Street, San Francisco, Cal.

# Radiotron

REG. U.S. PAT. OFF.

PRODUCED ONLY BY RCA



# RADIO ENGINEERING

*Edited by* M. B. SLEEPER

Associate Editor, Alfred A. Ghirardi

Fifth Year

Vol. V, No. 7

## Contents — July, 1925

	Page
The Super-Autodyne . . . . .	333
Some Angles on Tuning Circuits . . . . .	341
Editorial . . . . .	345
Selenium and Photo Electric Cells . . . . .	346
With the Manufacturers . . . . .	350
Data on Batteries, Eliminators, and Chargers . . . . .	351
4-T 3-C Receiver . . . . .	356
A Vacuum Tube Working from Light Instead of Heat . . . . .	360

---

Radio Engineering, July, 1925, Vol. 5, No. 7. Published monthly by M. B. Sleeper, Inc., Publication office, Lyon Block, Albany, New York. Editorial and General offices, 52 Vanderbilt Ave., New York, N. Y. Printed in U. S. A. Yearly subscription \$2.00 in U. S. and Canada; ten shillings in foreign countries. Entered as second class matter at the postoffice at Albany, New York, January 9, 1925, under the act of March 3, 1879.

---

# ULTRA-LOWLOSS CONDENSER



CAP. .0005 mfd.

\$5.00

## Unusual Features Increase Receiving Efficiency

IN LESS than six months the Ultra-Lowloss Condenser has proved its right to leadership by greatly simplified design, greater tuning efficiency, and radically different operating results—not only in the eyes of scientific and engineering men, but with the buying public as well.

These are the predominating Ultra-Lowloss features: (1) Single insulation strip reduces leakage losses materially, (2) Monoblock mounting with plates cast into block reduces series resistance and assures positive contact, (3) Mixture of metal of high resistance material in the lead and frame reduces eddy current losses, (4) Cutlass Stator Plates produce a straight line wavelength curve—separating stations evenly over the dial. Each degree on a 180 degree scale dial represents approximately 2½ meters over the broadcast wave length range.

This even separation applies to both high and low wavelengths! Simplifies tuning materially!

The Ultra-Lowloss Condenser is a recent development of R. E. Lussell, E. E., originator of the famous Ultradyne receiver.

Design of Lowloss Coils furnished free with each Condenser for amateur and broadcast wavelengths showing which will function most efficiently with the Condenser.

At your dealer's, distributor, and purchase price and you will be supplied postpaid.

# ULTRA-LOWLOSS CONDENSER

Write for Descriptive Folder.



Simplifies radio tuning. Pinpoint correct a station on the dial—thereafter, simply turn the slider to your pencil mark to get that station instantly. Easy—quick to mount. Eliminate the fumbling, guessing. Furnished clockwise or anti-clockwise in gold or silver finish. Gear ratio 20 to 1.

Silver \$2.50.  
In gold finish, \$3.50.

ULTRA-VERNIER  
TUNING CONTROL

PHENIX RADIO CORPORATION

116-D East 25th Street

New York



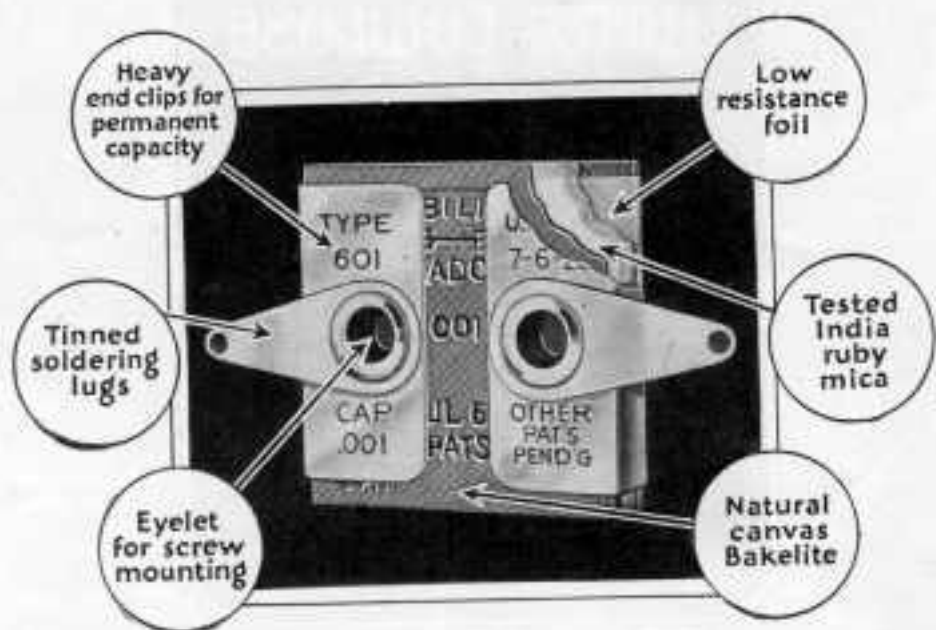
*R. E. Lussell*

To manufacturers who wish to improve their sets

I will gladly consult with any manufacturer regarding the application of this condenser to his circuit for obtaining best possible efficiency.







## What makes for Efficiency in Fixed Condensers?

This diagram indicates the efficient details of construction that have made Micadons the standard\* fixed condensers of radio.

Dubilier engineers have developed these standard condensers of accurate and permanent capacity. Micadons are known the world over—and are used in 90% of all radio sets.

*\*Standard—anything recognized as correct by common consent . . . . . of a high degree of excellence.  
—Webster*

# Dubilier

**CONDENSER AND RADIO CORPORATION**

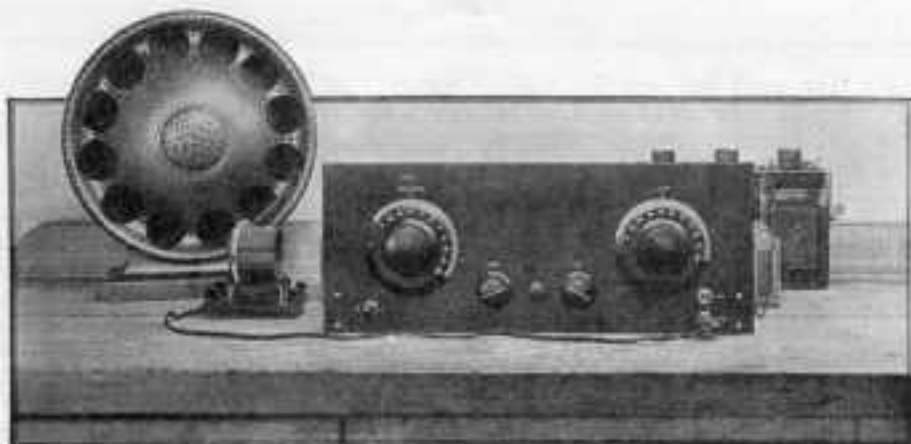


Fig. 1. This is the way we set up the Super-Autodyne to try it out on the antenna and ground, using the secondary of a pickle-bottle coil in place of the loop.

## The Super-Autodyne

Complete assembly and operating instructions for the 6-tube Super Autodyne. This is official data, O. K'd. by McMurdo Silver, by whom the design was developed.

**T**HOSE who have watched the development of the super from its first inception by Major Armstrong down through the 8, 7, and finally 6 tube stages, cannot help marvelling at the great strides made in a comparatively short time. This set at once removes the three strong objections which the average man has always had against the old form of super-heterodyne. First, the cost of the tubes and set is no longer prohibitive. Second, the reduction in the number of tubes, and the use of a negative bias on both the audio amplifiers and the first two stages of intermediate frequency amplification has reduced both the A and B battery consumption to a point where a "power house" is not required for operation. Third, the design of the set has been so worked out that the average man will have no trouble in assembling the outfit as it should be done.

The circuit is shown in Figs. 3 and 4. You will see that the first tube acts as both oscillator and first detector. Following this we have two stages of intermediate frequency amplification, detector and two audio stages.

**Design** The front panel, measuring **Details of** 7 by 18 ins., 3/16-in. thick, **the Set** carries the oscillator condenser on the left, and the loop tuning condenser on the right. In the lower center we have the potentiometer or oscillation control, filament switch and rheostat. At the extreme lower left is the jack switch for cutting in either all or part of the loop. At the right are the two output jacks. The tube panel is made of 3/4-in. Formica and is supported at each end by a Benjamin panel support bracket. The six Benjamin sockets come already fastened to the tube panel in their proper positions. At the rear of the tube panel are the two A.F. transformers and three long wave transformers. Next we have the two Midget condensers and the three loop binding posts. In front of these is the coupler. A 0.5 mfd. by-pass condenser is fastened under the panel support bracket at each end of the front panel. The fixed mica condensers are all fastened to the tube panel by means of screws and nuts. Flexible leads are used to connect directly from the batteries to the proper parts of the set.

**Standard Parts Required** The parts required for building this set are: One 7 by 18 in.-Formica panel, 3/16-in. thick. The key items are the two Silver-Marshall 210 and one 211 long wave transformers and the coupler, the two 0.0005 mfd. S. L. W. condensers, Silver-Marshall gang sockets, Continental Lo-loss Junior condensers, Benjamin panel support brackets and two 0.5 mfd. bypass condensers.

In addition to these items are two 4-in. Kurz-Kasch knobs and dials, one Benjamin filament switch, one United

See that all joints are soldered firmly, for it is a very difficult matter to locate a defective joint after the set is completed.

1. Connect 1, on the coupler, to 7. Connect 2, the other rotor terminal, to 8. Connect 3, on the coupler, to 9. Connect 4, on the coupler, to 10, a lug under the head of the screw which fastens the coupler to the tube panel. Connect 5, on the coupler, to 10, another lug under this same screwhead. Run a wire from 11, the —terminal of the right hand socket, to 12 on the extreme left hand socket, keep-

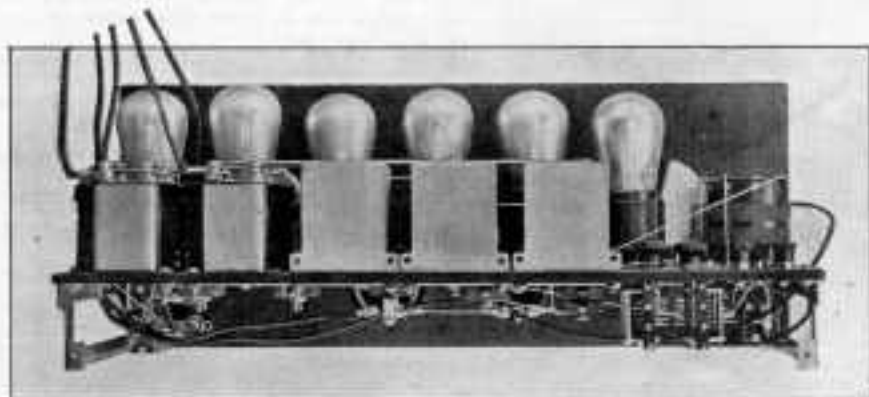


Fig. 2. The transformers are mounted along the rear of the tube panel. Note the arrangement of the balancing condensers.

Scientific Laboratories rheostat, one potentiometer, a 3-spring Carter jack switch, one open circuit jack and one closed circuit jack, one 1/4-megohm and one 2-megohm Durham gridleaks, two 0.00025 mfd., one 0.0075 mfd., and three 0.002 mfd. Muter mica condensers, two Thordarson 3 1/2 to 1 A. F. transformers, three binding posts, varnished tubing, bus bar, flexible leads, lugs, screws and nuts.

**Assembly and Wiring** Figs. 3 and 4 give the picture and wiring diagram in which the various parts and connections have been drawn exactly as they were arranged in the original receiver. The tube panel is shown tipped down, and all wires under the tube panel represented by dotted lines. The various connections are indicated by numbers, etc. Take your time and follow each step in the assembly instructions religiously. They have been prepared in the exact sequence to make the work as simple as possible.

ing it out about 1/4-in. from the edge of the panel. Connect points 14, 16, 18, and 20 on this wire to corresponding terminals 13, 15, 17, and 19 on the sockets. Also run a wire from 21, under the panel, to 22, a lug under the screw which fastens the 211 transformer to the panel. Connect 22 to 23, 24, 25, and 26. Connect 27, the +lug on the right hand socket, to 28, the +lug on the left hand socket, keeping this wire above the connections already made. Connect points 29, 31, 33, and 35, on this wire, to the corresponding lugs 36, 30, 32, and 34, on the sockets. Connect 37, the G terminal of the socket, to 38, the G terminal of the 211 transformer. Connect 39, the P terminal of the socket, to 40, the P terminal of the transformer. Connect 41 to 42, the G terminal to the transformer. Connect 43 to 44, the P terminal of the next transformer. Connect 45, a lug under the screw which fastens the 0.00025 mfd.



condenser to the panel, to 46, the G terminal of the transformer. Connect 47 to 48, the P terminal of the first A.F. transformer. Connect 49, the G terminal of the transformer, to 50. Connect 51, the G terminal of the second A.F. transformer, to 52. Connect 53, the B terminal of the first A.F. transformer, to 54, the +B terminal of transformer 211. Run this wire along the top of the trans-

nut of the coupler fastening screw. Connect 68 to 69, on the 211 tuning condenser. This latter condenser is made up of several condensers supplied with the transformer bolted together. See that the connections from the fixed condensers to the socket eyelets under the panel have been made as shown by the dotted lines in the picture wiring diagram. These are, 70 to 71, 72 to 73,

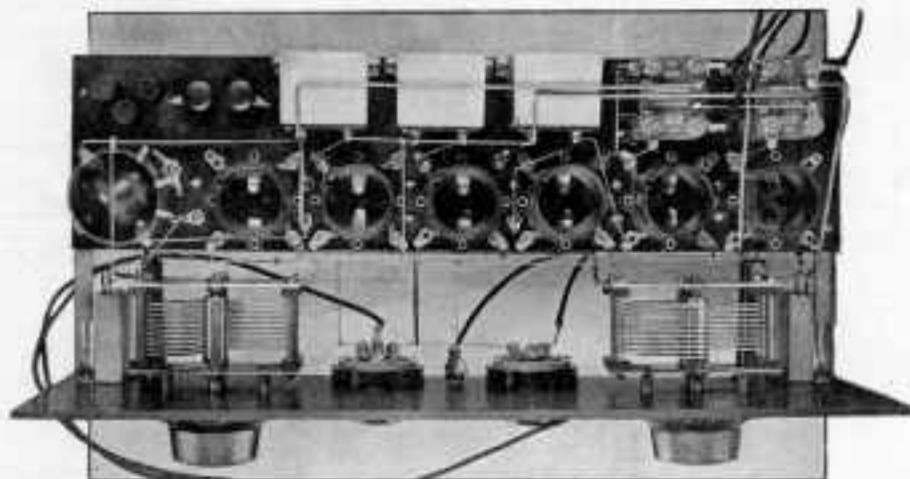


Fig. 5. Hardly a square inch of space is wasted, yet efficiency and ease of assembly have not been sacrificed.

former cases and cover it with varnished tubing. Connect 54 to 55, a lug under the head of the fastening screw of the combination condenser. This is supplied with the Silver-Marshall 211 transformer. Connect 7, the lug under the other screw, to 56, the P terminal of the transformer, covering this wire with varnished tubing. Connect 57 to 58, the -A terminals of the transformers. Connect 59 to 60, the +B terminals of the second and third transformers. Connect 61, the -A terminal of the transformer, to 32. Turn the panel over so that you are facing the under side, and connect 62 and 63, the two rotor terminals of the 0.000022 mfd. condensers together. Connect 64, the stator terminal of the right hand condenser, to 65, a lug under the nut of the fastening screw of the 0.00025 mfd. condenser. Connect 66, the right hand binding post, to 67, a lug under the

74 to 75, 76 to 77, 78 to 79, 80 to 81, and 82 to 83.

2. Mount the filament switch on the front panel, in the center hole. Mount the rheostat and the potentiometer in the proper positions, and fasten the knobs on at the front of the panel. Next mount the jack switch at the left, keeping the frame pointing toward the bottom of the panel. Mount the open circuit jack in the lower hole at the right, and the two-spring jack above it, keeping the frames pointing downward. Now mount the two 0.0005 mfd. variable condensers in the positions shown, and put on the dials so that the 100 division mark on the dial coincides with the mark on the panel when the plates are totally interleaved. Tighten the locking nut, and screw on the knobs. Fasten the tube panel supports to the front panel with the  $\frac{1}{8}$ -in. 6-32 R.H. screws and nuts provided, and slip the mounting lugs on one of the 0.5

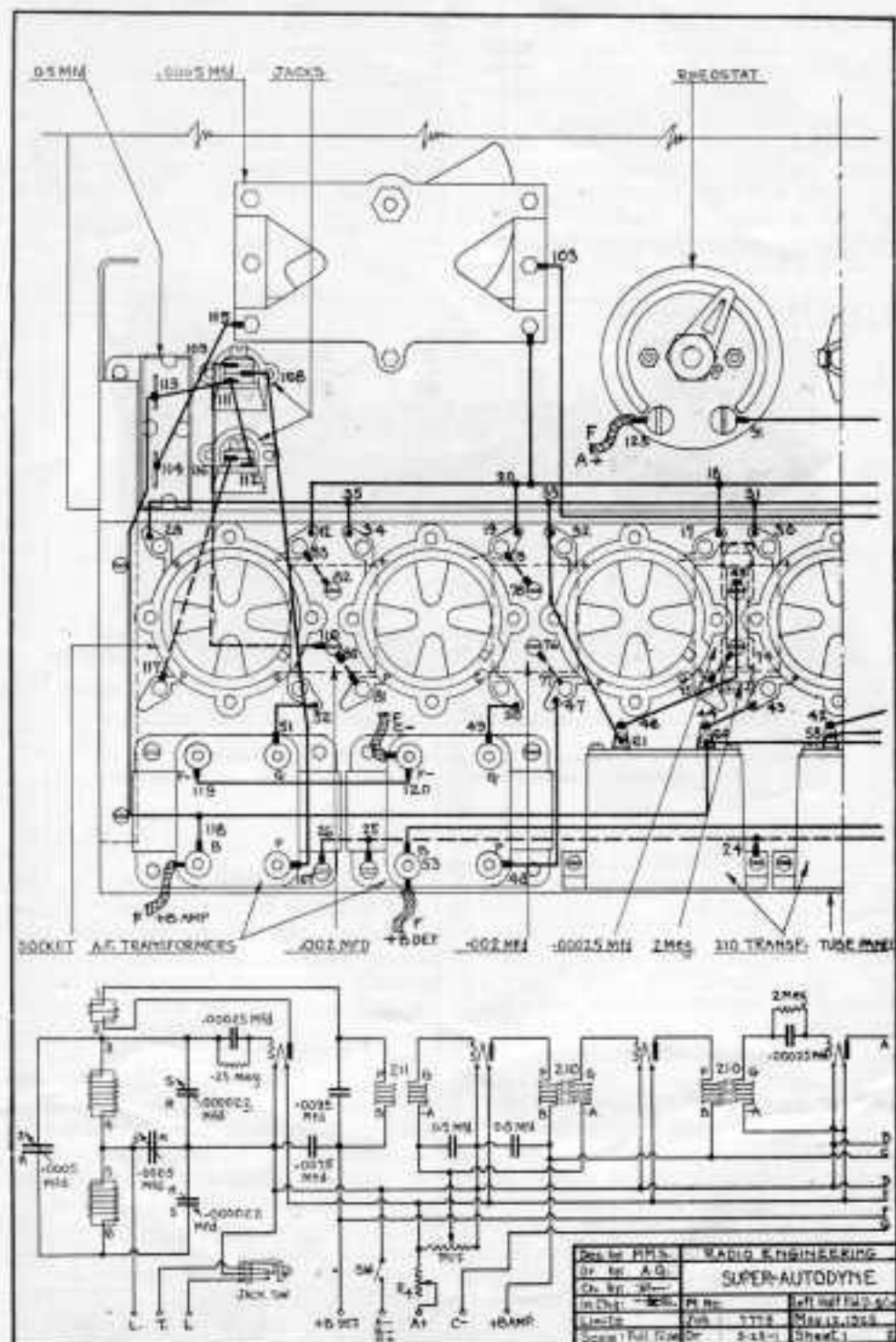


Fig. 3. Left hand half of the picture wiring diagram, looking at the set from the rear, with the tube panel dropped down.

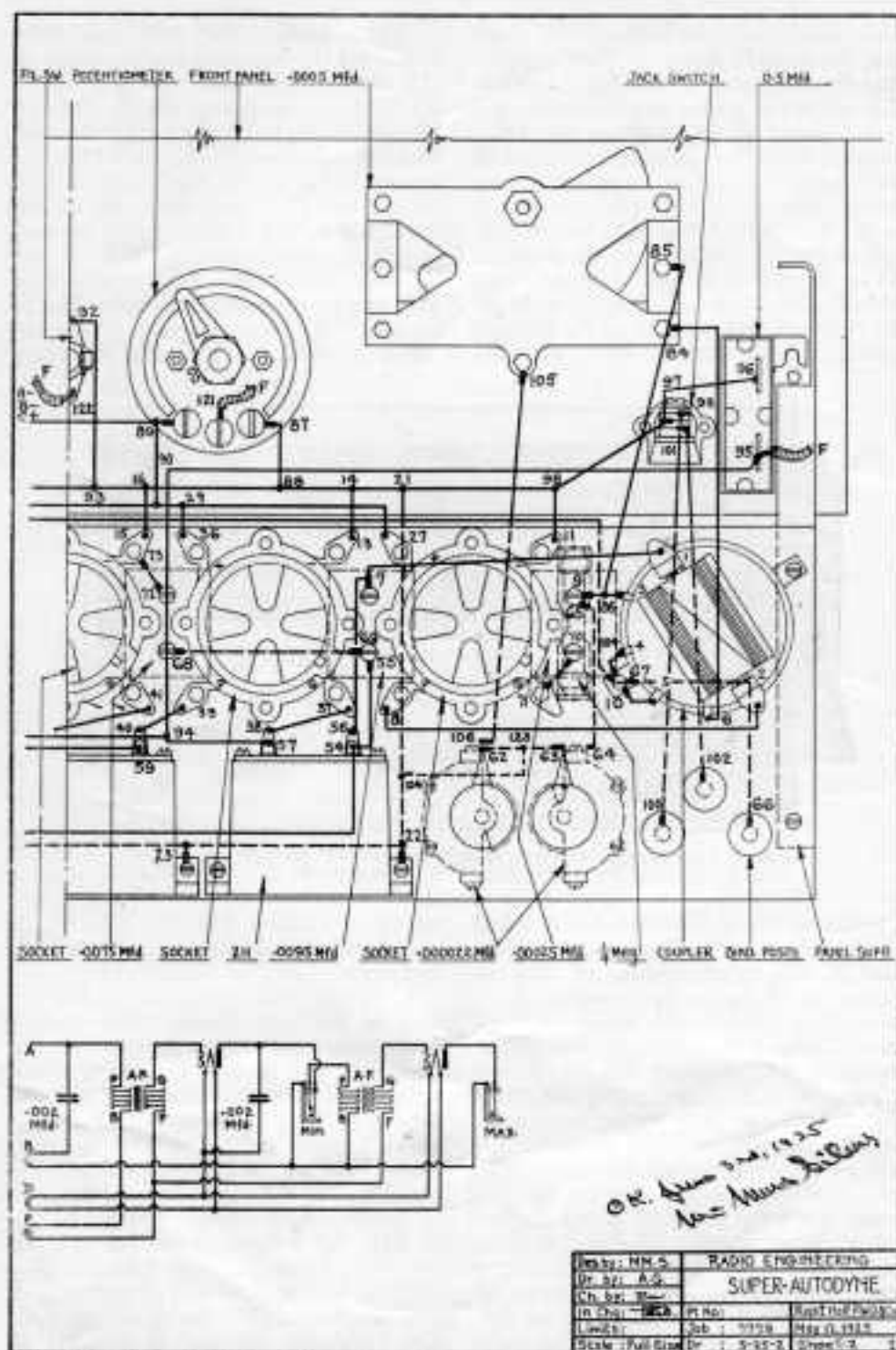


Fig. 4. Left hand half. Check the wiring, also, against the schematic diagram as you proceed. Note that these drawings have been O.K'd by Mr. Silver.

mfd. condensers, in between the panel and the bracket flange in each case, so that the condenser is held firmly in position when the screws are tightened up.

3. Connect 6, the remaining lug on the coupler, to 84, the end plate terminal of the oscillator condenser. Connect 85, the stator terminal, to 86, a point on wire 3 to 9. Connect 87, the right hand terminal of the potentiometer, to 88. Connect 89 to 90, and cover this wire with varnished tubing. Also connect 89 to 91 on the rheostat. Connect 92, on the filament switch, to 93. Connect 94, a point on

to 110, on the 0.002 mfd. condenser. Connect 111, the remaining terminal, to 112, on the lower jack, and 113, on the 0.5 mfd. condenser. Connect 114, on this condenser, to 115, on the 0.0005 mfd. variable condenser. Connect 116, the remaining lug on the lower jack, to 117, the eyelet of the P terminal of the socket. Connect 118, the B terminal of the second A.F. transformer, to 113, on the 0.5 mfd. condenser. Cover this wire with varnished tubing. Connect 118 to 60, the +B terminal of the 210 transformer. Cover this wire with varnished

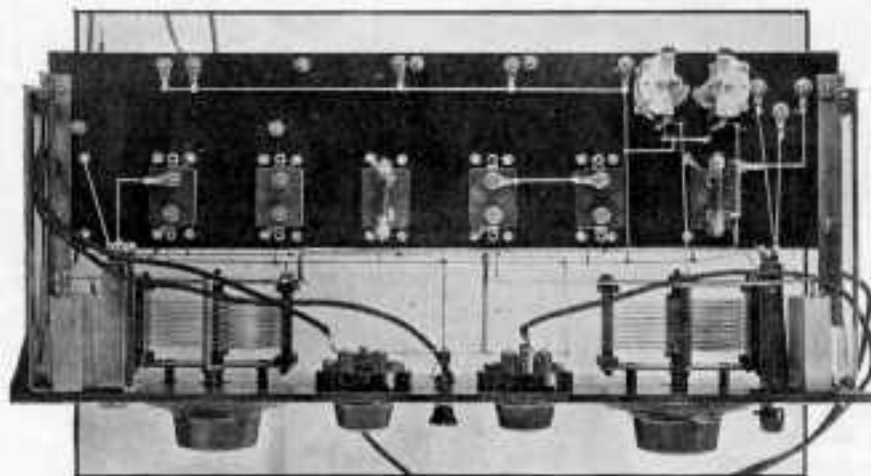


Fig. 6. This shows the wiring on the underside of the tube panel, and the layout of the fixed condensers.

wire 57 to 58, to 95, the lower terminal of the 0.5 mfd. fixed condenser. Connect 96, the upper terminal of the condenser, to 97 on the jack switch. Connect 97 to 98, on the minus filament bus. Connect 99, the upper lug of the switch, to 100. Connect 101, the remaining lug, to 102. Connect 103, the stator terminal of the loop tuning condenser, to 104. 104 is a lug under the nut of the coupler fastening screw. Cover this wire with varnished tubing. Connect 105, the lower end plate terminal of the oscillator condenser to 106, the stator terminal of the left hand 0.000022 mfd. condenser. Connect 107, the plate terminal of the left hand A.F. transformer, to 108, the middle terminal of the 2-spring jack. Cover this wire with varnished tubing. Connect 109, the upper lug of the jack,

tubing. Connect 119 and 120, the F—terminals of the A. F. transformers together.

4. Scrape the insulation from the ends of the seven flexible battery leads, for a distance of about  $\frac{1}{2}$ -in. Tin the wires well and connect one to the lower terminal of the right hand 0.5 mfd. condenser, at 95. The wire is indicated by an F. Connect another at 121, the middle terminal of the potentiometer. Connect one at 122, the lower terminal of the filament switch. Connect one at 123, the left hand terminal of the rheostat. Connect one at 120, the F—terminal of the first A.F. transformer, and another at 53, the B+ terminal. The remaining one goes to 118, the B terminal of the second A.F. transformer. Connect 123 to 124.

Fig. 7. Mr. Silver came on to New York with the Super-Autodyne working with WD-12 tubes, built into a portable case, as you see it illustrated here. The loop is wound in a pancake form on the inside of the cover, protected by a three-ply veneer board. Altho he used phones, the set operated an Amplion Dragon-fly beautifully.



This completes the wiring of the set.

**Testing and Operating** Check over each connection carefully against both the picture wiring diagram and the schematic diagram. Connect the A battery to the two flexible leads. (See picture wiring diagram.) Connect the lead from the center arm of the potentiometer to that from 95 temporarily. Now insert the six tubes and pull out the filament switch. When the rheostat knob is turned up, they should light. Keeping only the negative side of the A battery connected, touch the two +B leads to the +terminal of the A battery. The tubes should not light up when this is done. If everything is all right connect the A battery back correctly and connect on the B battery, of 90 to 120 volts, with a 45-volt tap for the detector. Try  $4\frac{1}{2}$  volts C battery across the C battery terminal. Use a 6-volt storage battery. The B batteries should be of the large type such as the Eveready No. 770, as they are the most economical, in the long run, for a set of this type. For a home installation a Bakelite B, operating on 110 volts A.C., or a 90-volt Gould Unipower B can be used. The C batteries should be of the  $4\frac{1}{2}$ -volt

Eveready type, with taps.

If a loop is to be used, either a Silver-Marshall or Carter type is recommended. The two outside terminals go to the two rear binding posts on the tube panel. The tap goes to the center post. This makes it possible to use the full loop for the high wave lengths, by snapping the jack switch over to the L side, or using half of the loop on the lower wave lengths, by switching over.

Pull out the filament switch and turn up the rheostat until the tubes light up to normal brilliancy. Set the potentiometer at about the center and starting with the loop tuning condenser at 100,

rotate it one small division at a time. For every position of this condenser, rotate the oscillator condenser over a considerable portion of its scale in the vicinity of this setting. If this is done very carefully and slowly, the entire range of the set can be covered and the stations logged. When you pick up a station, try rotating the loop to various positions and adjust the rheostat. This potentiometer can be used as a volume control and as a control for oscillation. When turned too far to the left,

### For the Set Builder

The parts listed below are those which have been chosen for use in the Super-Autodyne set. They are not recommended to the exclusion of other good, equivalent parts, but are listed for the benefit of those working from our construction blue prints which show the correct panel drilling for the original set as it was built at the Darson laboratory.

- 2—Silver-Marshall 305A variable condensers
- 2—4-in. dials
- 1—U. S. L. 6-ohm rheostat
- 3—Binding posts
- 1—101 Carter Jack
- 1—102A Carter Jack
- 1—Silver-Marshall 211 filter with matched capacity
- 2—Silver-Marshall intermediate transformers
- 2—Thordarson 1 to  $3\frac{1}{2}$  A. F. transformers
- 1—Silver-Marshall 101B coupling unit
- 1—Special 6-gang socket shelf
- 2—0.002 mfd. Muter condensers
- 1—0.0075 mfd. Muter condenser
- 2—0.00025 mfd. Muter condensers
- 2—Vernier condensers
- 1—0.25-meg. grid leak
- 1—2.0-meg. grid leak
- 1—No. 3 Carter Jack switch
- 1—Benjamin filament switch
- 1—Belden color cable
- 1—Pair Benjamin brackets
- 2—0.5 mfd. by-pass condensers
- 1—Bakelite panel 7x8x $\frac{3}{16}$  in.



i. e., to the negative side, a pluck will be heard, followed by squeals, and the set will be oscillating. Keep the setting just below this point. Squeals should never be heard in proper operation. If the potentiometer does not seem to affect the reception, connect a C battery with the positive terminal to the flexible lead at 121 and the lead at 95 going to the negative tap which gives best control.

The range of the set can be increased considerably by the use of an aerial about sixty feet long and a ground. This should be connected to the receiver through an ordinary coupling coil as shown in Fig. 1. The aerial and ground go to the primary, the two secondary terminals are connected across the two rear binding posts of the set, and the jack switch thrown over to the L position.

Unless the autodyne circuit is balanced by means of the two .000022 mfd. condensers, clicks will be heard as the two dials are rotated when tuning. Balancing can be best accomplished by removing all tubes but the first detector-oscillator, which should be left in place. A pair of phones should be connected in series with the 45 volt B plus lead, the rheostat barely turned on, the loop condenser set at 50 with the switch in the "L" position, and the oscillator condenser ro-

tated. Assuming both small balancing condensers to be set all in, a click will be heard as this is done. If one balancing capacity is turned out slowly, rotating the oscillator will fail to produce a click, though it may be necessary to reduce the setting of the other instead. Generally one balancing condenser will remain entirely interleaved, while the other will be pretty well all out.

**Details of the Oscillator Coupler** For the benefit of those who want to construct the oscillator coupler, the following data is given on the dimensions of the former and the size of the wire. The oscillator coil is wound on a Formica tube 2 ins. long by 2 ins. in diameter. The winding, of No. 28 D.S.C. wire, is started 5/16 in. from the end of the tube. This is the lead going to the terminal marked 3. Put on 28 turns, and bring a lead out to terminal 4. Leave 1/16 in. space and start another section of 28 turns. The start of the winding goes to terminal 5 and the end to terminal 6.

Mounted inside, at the exact center of the outer tube, is a tube 1 1/2 ins. in diameter by 1 in. long. This carries the coupling coil, of 28 turns, divided at the center by a 1/8 in. space so as to allow for the bearings. One end of the rotor goes to terminal 1 and the other to terminal 2. All the coils should be wound in the same direction.

## Making the Antenna Last Longer

Mr. A. S. Lindstrom, head of one of the largest radio distributing organizations on the Pacific Coast, brought an interesting idea to New York, one which is worth passing on because it has been tried out successfully up and down the West Coast.

Whether oxidization of the antenna wires, evidenced by black coating, actually affects the reception of signals or not, it is unquestionably true that it does bring on corrosion, eventually weakening the wire until it breaks. This is particularly true of stranded bare wire, for the corrosion, eating through two or three of the small wires, reduces the strength and the conductivity.

To prevent this action, almost every one out West is using No. 14 enameled wire. Enamel is apparently impervious to weather conditions and protects the copper. Obviously, corrosion cannot set in as long as the wire is covered by the enamel.

Service companies who are replacing bare wire with the enameled conductor are, at the same time, eliminating all contact joints by soldering them securely. This is the only protection against corrosion where the insulation must be removed.

Much trouble can be avoided in this way, for the average B.C.L. blames his set or tubes when things go wrong, never thinking that the fault might lie in the antenna.

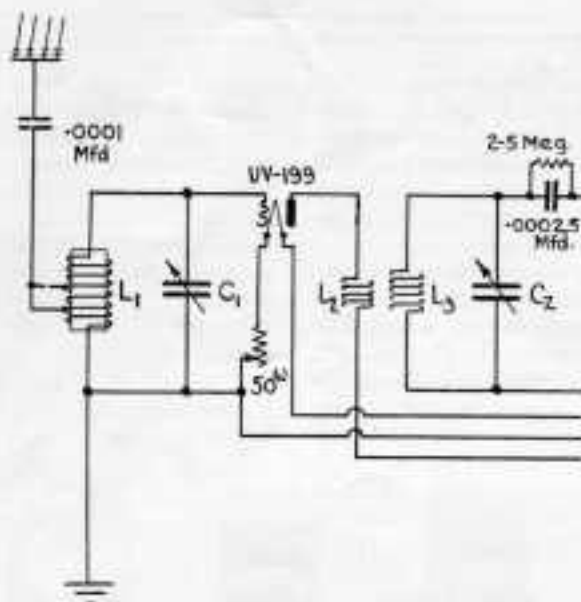


Fig. 1. The RX-1 receiver, tho it has a 20-turn primary in the R. F. transformer, has no neutralizing condenser or reverse feed-back coil.

## Some Angles on Tuning Circuits

Explaining the line of reasoning followed in planning the tuning end of the RX-1 non-regenerative receiver.

**I**F IT were possible to do it, I'd like to take a whisk-broom and brush away the accumulated dust of mistaken ideas about distorted magnetic fields, condenser losses, distributed capacity, neutralizing, and half a dozen other things which, however real, have assumed distorted proportions by reason of arguments brought forward by manufacturers whose sets, not good enough to overcome any of the common troubles, have been described as mastering difficulties which never did exist.

Forget everything you ever knew, except Ohm's Law, and start all over again. You'll be surprised to see how differently you will feel about tuning circuits when you go through the few simple steps which follow. Also, you'll understand the circuit arrangement for the RX-1 receiver.

A tuning circuit comprising a coil and variable condenser, has four factors to be reckoned with—inductance, capacity, inherent distributed capacity in the

coil, and resistance. The wavelength is determined by the capacity of the condenser plus the distributed capacity of the coil and the inductance.

$$\lambda = 59.6 \sqrt{L \times (C_c + C_d)}$$

where  $\lambda$  = wavelength in meters,

$L$  = inductance in cms.<sup>2</sup>

$C_c$  = capacity of the condenser,

and  $C_d$  = distributed capacity of the coil.

Since the primary purpose of a tuning circuit is to regulate the wavelength, let us consider this phase first. In Fig. 1 are four curves which illustrate the control obtained by a variable condenser connected to a fixed coil, as in the ordinary receiving set. If a straight-line-capacity condenser, of 0.00035 mfd. maximum, is connected to a coil of 0.25 mh., if there is no distributed capacity in the coil, the wavelength as the dial is rotated will be given by Curve A. If the coil is wound on a tube, even though it is not shellaced, it will have a

distributed capacity of perhaps 0.00005 mfd. Spider web and woven coils which are shellaced may have as much or more distributed capacity. Then, with 0.00005 mfd. added to the capacity of the variable condenser at any point, the wavelength is shown at B.

Plotting these two curves against frequency instead of wavelength, the frequency curves are shown at A and B in Fig. 2. These curves show that distributed capacity greatly limits the wavelength range which can be covered by the condenser.

the old ones built with molded mud end-plates, any standard make is all right.

A circuit of zero electrical resistance would oscillate forever, just as a wheel, turning without mechanical resistance, would keep on turning always. We can't make a circuit of zero resistance, but for greatest efficiency we must work to approach it. Losses in variable condensers show up as resistance. However, the radio frequency loss in a good condenser is so small that it can be neglected.

The big losses come in the inductance. They are caused by leakage between



Fig. 4. Rathbun condensers are used because it seems more important to prevent losses from dust than insulation.

Curves C and D in Figs. 1 and 2 are plotted for a straight-line-frequency condenser which gives the S. L. F. tuning when the coil has no distributed capacity. In Figs. 1 and 2, curves C and D are for wavelength and frequency respectively when the distributed capacity of the coil is zero, and with 0.00005 mfd. in the coil, the curves change to D and D. This is very serious, for it upsets the S. L. F. characteristics of the condenser.

The efficiency, which is determined by the resistance of the circuit, is not affected by the distributed capacity, but it is necessary to reduce this factor, as shown by the curves, in order to get the best tuning characteristics.

Now for the efficiency of the tuning circuit. That is a matter of resistance, as circuits are now designed. Since we don't tap coils any more, there are no dead-end losses, and condensers are generally so efficient that, barring any of

turns, due to moisture and poor insulation, resistance in the wire itself, and by the tubing on which the coil is wound.

Leakage can be reduced to practically zero by using well insulated wire, and by winding the coil in such a way that no shellac or other binder will be needed. Although most people do not want cotton-covered wire, cotton actually absorbs less moisture than silk.

The resistance due to the wire itself is determined by the diameter and the length of wire used to produce the required resistance. The least resistance for a given inductance is obtained when the diameter is approximately 2.46 times the length.<sup>3</sup> Other factors, however, must be considered. The single layer coil is the most efficient of all types. Spacing the turns, as is done in basket weave or spider web coils, decreases the inductance, requiring more wire for a given inductance.

Tubing introduces losses which show up as resistance. Red rope fibre tubing, for example, causes greater losses than Formica tubing, but, if possible, tubing should be eliminated entirely.

So much for the instruments. Now for the operation. If you have an oscillating receiver, whatever the type, you know how disconcerting it is to have it squeal at every setting, and how much trouble it is to readjust the tickler or rheostat for each station. It is popularly assumed that a set must do these things,

R. F. or neutrodyne set works a little better if the first stage of tuned R. F. is eliminated. This is because the R. F. transformers are made with only 4 or 6 turns on the primaries. Above 350 meters, such transformers produce little amplification, if any, and the reception is almost entirely dependent upon the regeneration obtained by adjusting the rheostat on the R. F. tubes to a point just under oscillation.

What can we do to make a better set than the ordinary types—a set which

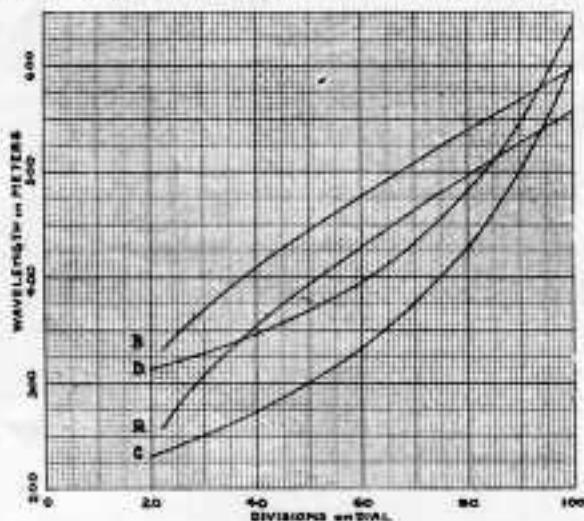


Fig. 1. Showing how a distributed capacity of 0.00005 mfd. alters the wavelength curves of S. L. C. and S. L. F. condensers

because of the inefficiency of plain, non-regenerative circuits, but the ideal set is one that works as quietly as a crystal set.

There are two ways to design a set—Either to make it in such a way that it oscillates unless resistance is introduced to stop it, which is not an efficient method, or to make the set non-regenerative, of high efficiency, which is more reasonable.

Regenerative sets cannot give the undistorted quality of a non-regenerative circuit. There is no need to argue further against the interstation interference caused by radiation, even when the detector is preceded by a stage of tuned R. F.

It has become customary to make sets with two stages of tuned R. F. Actual tests will show that practically any tuned

cannot regenerate or oscillate, which does not radiate, that gives still better quality, range equal to or greater than other sets, lower A and B battery current consumption, only two tuning controls, and real mechanical simplicity?

Let's tackle the tuning circuit first. In Fig. 3 is a schematic wiring diagram of a tuning circuit. There is nothing unusual about it as far as the method of connections is concerned but if you will look at Fig. 4, illustrating the way in which the diagram is applied you will see that there is something very different.

The first variable condenser carries a pickle bottle coil  $2\frac{1}{4}$  inches across the flats, wound with fifty-eight turns of No. 22 D. S. C. wire, tapped on the fifteenth turn. The tap goes to the antenna, putting fifteen turns in the an-

tenna-ground circuit. This is connected to a UV199 tube which serves as the radio frequency amplifier. The plate of the first tube goes to the primary of the second pickle-bottle coil. This unit is made up of a pickle-bottle coil  $2\frac{1}{4}$  inches across the flats, wound with seventy turns of D. S. C. wire for the secondary, with a primary winding inside of twenty turns of No. 40 D. S. C. wire bunched closely together. It is located at the fila-

with the low capacity of the 199, to prevent oscillations. Losses in the grid circuit of the first R. F. amplifier in any set are not particularly important owing to the high losses which are inherent in the antenna circuit.

Unlike any other set in which a large number of turns is used for the primary of the R. F. transformer, there is no balancing, neutralizing, or reverse feedback arrangement to stop the detector

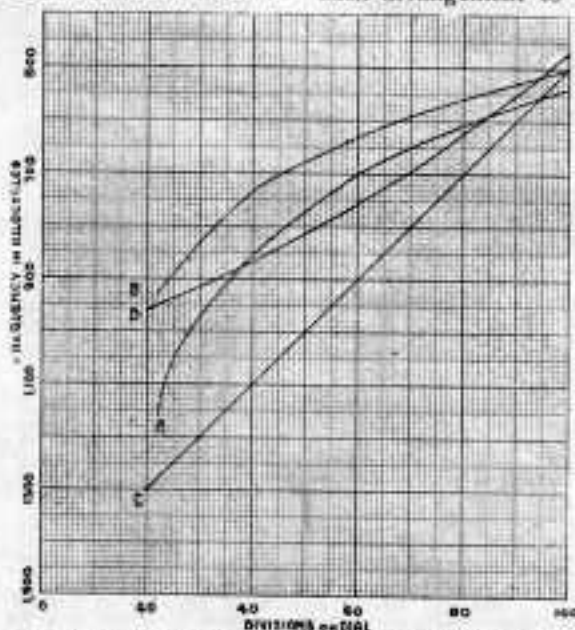


Fig. 2. The effect of 0.00005 mfd. distributed capacity on the frequency curves of S. L. C. and S. L. F. condensers

ment return end of the secondary winding.

Although a rheostat was employed for the first tube in the original model of this set, announced as the RX-1 receiver, an Amperite serves the purpose equally well, for the operation of the R. F. amplifier tube is independent of the filament current. Instead of overloading the filament, as is ordinarily done to bring the R. F. amplifier just under regeneration, the 199 in this set can be operated at a little less than three volts on the filament.

Because of the high inductance in the primary of the R. F. transformer, it might seem that the tube would oscillate. This is not the case in practice for the slight loss introduced by connecting the antenna circuit conductively is sufficient,

from oscillating. The reason that these devices, all of which introduce losses, are not required will be disclosed a little later. The immediate concern is with the effect of the tuning arrangement.

The ordinary non-regenerative receiver, as it has been constructed in the past, does not produce very loud signals nor is it sharp in tuning. In this set, we have not only eliminated the losses due to balancing methods or a potentiometer but we have gone to the other extreme of making the circuit as efficiently electrically as possible through the use of a 20-turn primary and a secondary circuit employing the most efficient type of inductance.

<sup>1</sup> 1,000,000 cmas = 1 millihenry.

<sup>2</sup> Page 299, Bureau of Standards Circular No. 74, 2nd Edition.



# RADIO ENGINEERING

M. B. SLEEPER, Editor  
F. A. SKELTON, Managing Editor

Published monthly by  
M. B. SLEEPER, Inc.  
Publication Office, Lyon Block, Albany, N. Y.  
Editorial and General Offices  
A-52 Vanderbilt Ave., New York, N. Y.  
Chicago Advertising Office  
E. H. Moran, Bell Building  
307 North Michigan Ave., Chicago

---

Twenty cents per copy in the United States and Canada; in foreign countries one shilling. Two dollars per year, twelve numbers in the United States and Canada; ten shillings in foreign countries.  
Copyright 1925 by M. B. Sleeper, Inc.

---

Vol. V                      JULY, 1925                      No. 7

---

## EDITORIAL

**W**HAT will the next season do for the radio set builder? Wait a minute now— You're interested in this, even tho you have been telling everyone that the set builder is a sort of nuisance, and a very unprofitable one at that.

With all the discussion in progress this summer about dealers' franchises, sales plans, consolidations, and a dozen other things that complete set manufacturers have been thrashing out, not a word has been said about parts and the set builders who buy them.

Walter Eckhardt, Jean McDonald, General Harbord, Atwater Kent, Paul Ware, or Powell Crosley don't seem to know what a set builder is, or where he fits into the picture, yet to each one of these men the set builder is as important a factor in the conduct of his business as his bank balance or advertising agency.

A set builder, a development of the pre-broadcast experimenter, is a boy or man who knows the how's and why's of radio from practical experience. He may be short on theory, but he's long on practice, not simply with one kind of set but with most all of them because he has built them, repaired them, learned their good points and their shortcomings.

The set builder put radio broadcasting across in the beginning, simply through

sheer enthusiasm in radio as an endless source of problems which are fun to solve. While manufacturers were putting out junk that would not do justice to the experienced set builder, during that difficult period when they really didn't know what it was all about, the set builders kept things going by assisting the innocent victims of the manufacturers' advertising literature, by writing articles for the newspapers and magazines, and by interesting their friends and acquaintances.

In the last two years, they have done more service work for the manufacturers than the manufacturers have done themselves. They have popularized new circuits on which manufacturers have made hundreds of thousands of dollars, and put them across in months where manufacturers' advertising would have taken years. Every improvement has been initiated and sold to the public by radio set builders. The first knowledge the public had of battery eliminators was from articles written by set builders. They put across the Neutrodyne circuit, the super-heterodyne circuit, tuned R.F., resistance coupled amplification, and they have told the manufacturers more about their equipment than their engineers have been able to do.

They have passed judgment impartially on one new idea after another and on their acceptance or rejection hangs the manufacturers' success.

Radio set builders talk more about the Crosley Radio Company than the Crosley Radio Company talks about itself. If, when the Crosley Cone came out, radio set builders had not accepted it, the dozen Crosley prospects whom every set builder knows would have heard that the Crosley Cone was a failure. However, they O.K.'d it, and its future is assured. If Paul Ware's new set sells successfully, it will not be due as much to the sales plan as to the fact that every set builder who knows about it will tell the B.C.L.'s that it is a good set to buy.

Yet these manufacturers, concentrating on the sale of complete sets, are not only producing nothing of use to the set builders in pursuing his hobby but they are discouraging the parts manufacturers by doing everything possible to force the

*(Concluded on page 349)*

# Selenium and Photo Electric Cells

## Chapter I. The discovery of Selenium and a description of its characteristics—by Samuel Wein

**EDITOR'S NOTE**—*In this issue of Radio Engineering we present the first of a series of articles on selenium and photo-electric cells, written by Samuel Wein. Mr. Wein has devoted the last eighteen years to research on this subject, covering not only the chemical and mechanical development of these devices, but their practical application as well.*

*When Mr. Wein first started this work, he had the scientist's determination to carry through a thorough investigation in a field concerning which there is almost no information of practical value. At that time, Mr. Wein himself had very little idea of the application which he would find for the research he was doing but, as it often happens, developments in other fields brought out uses for selenium and photo-electric cells which did not exist even five years ago.*

*Today, Mr. Wein's photo-electric cells are in use in widely different kinds of devices such as radio and wire telephotography, tele-vision, talking motion pictures, and transatlantic cable communication. The latter is one of the most important commercial applications, for it is saving thousands of dollars a year by speeding up transoceanic telegraphy.*

*The principal reason for publishing this series, however, lies in the fact that the development of the three element photo-electric cell has opened up a new field for radio investigation and for the application of these cells and, to understand the use of the photo-electric cell in radio, a general knowledge of the entire subject is necessary.*

**The Discovery of Selenium.** In the year of 1817 John Jacob Berzelius' and Gotlieb Gahn made an examination of the method of preparing sulphuric acid in use at Gripsholm, Sweden, and during

the course of their examination, they observed in the acid a sediment of a partly reddish, partly clear brown in color, which, under the action of the blow-pipe, gave out a peculiar odor like that attributed by Klaproth to tellurium. As tellurium was an element of extreme rarity, Berzelius attempted its production from this deposit, but was unable to obtain further indications of its presence. He found plentiful signs of sulphur mixed with mercury, copper, zinc, iron, arsenic and lead, but no trace of tellurium.

It was not in the nature of Berzelius to be disheartened by this result. In science, every failure as well as every success advances the boundary of knowledge, and Berzelius felt that if the characteristic odor that has been observed did not proceed from tellurium, it might possibly indicate the presence of some substance unknown to the chemists of that time. Urged on by this hope, he returned to his work with renewed ardor.

He collected a great quantity of the material and subjected the whole to various chemical processes, succeeding in separating successively the sulphur, mercury, copper, tin, and the other known elements whose presence had been indicated by his tests. After all had been eliminated, there still remained a residue which proved upon examination to be what he had sought—a new element.

The chemical properties of this new element were found to resemble those of tellurium in such a remarkable degree that Berzelius gave to the new element the name of "Selenium," from the Greek word "selen" the moon, tellurium as is well known being derived from "tellus" the earth.

Although selenium and tellurium are alike in many respects, they differ in their electrical properties, tellurium be-

ing a good conductor of electricity, and selenium, as Berzelius showed, a non-conductor.

**Where Selenium Is Found.** Selenium is considered to be one of the rare elements. Berschlag, Krusch, and Voigt<sup>2</sup> estimate that it forms about 0.0002 per cent of the known rocks. This may be compared with estimates by the same authors of 4.5 per cent of iron, 0.001 per cent lead, 0.001 per cent zinc, and 0.0000001 per cent of gold. It is possibly too high.

As would be supposed from these figures, minerals carrying selenium are uncommon and are found only in small quantities widely distributed. The following selenium minerals (metallic selenides) are listed by Dana<sup>3</sup>.

Agnilarite .....	$Ag_2S, Ag_2Se$
Berzelianite .....	$Cu_2Se$
Chalcomenite .....	$CuSeO_3$
Clausthalite .....	$PbSe$
Crookesite .....	$(Cu, Tl, Ag)_2 Se$
Eucairite .....	$Cu_2Se, Ag_2Se$
Guanajuatite .....	$Bi_2Se_3$
Lehrbachite .....	$PbSe$ with $HgSe$
Naumannite .....	$(Ag, Pb) Se$
Selenolite .....	$(SeO_2)$
Tiemannite .....	$HgSe$
Zorgite .....	$PbSe$

Selensulphur, native sulphur containing selenium in unknown proportions, has been found on the Islands of Volcano and Lispari. Seleniferous sulphur has also been found at Kilauea, Hawaii, and in Japan. Minerals containing selenium are also found in Hawaii, Japan, the Hartz Mountains, the Vesuvian region, Hungary, Mexico, Australia, Spain, several parts of South America, California, the Paradox Valley, Colorado, and at Thompsons, Utah.

**Extraction<sup>4</sup>.** The commercial sources of selenium are from the flue dusts of metallurgical processes using sulphide ores, and from the anode muds or slimes of the electrolytic copper refineries. The rapid development of the electrolytic methods has made the latter the most important source of supply in the United States. The method used in extraction depends upon the source of material.

**Annual Production<sup>5</sup>.** There are only

three firms in the United States producing selenium. The following annual production figures are accredited to the American Smelting & Refining Co., the United States Smelting Refining Co., and the Raritan Copper Works:

Year	Pounds	Value At
1917 .....	39,630	\$70,000
1918 .....	103,690	206,540
1919 .....	60,025	125,966
1920 .....	92,141	175,808
1921 .....	55,978	89,148
1922 .....	123,565	177,542
1923 .....	60,000	134,400

The production of selenium could be considerably increased if the demand were sufficient to justify its separation. Over 60 per cent of the yearly output is consumed in the glass and ceramic industries.

Selenium as ordinarily placed on the open market, is an amorphous brilliant black substance, looking much like pitch or one of the asphalts. It is sold in small pigs, sticks  $\frac{1}{2}$  inch thick, and about 4 inches long, or in fairly coarse or fine powder.

**Purification of Selenium.** That variety of selenium such as is purchased on the open market, is claimed by the manufacturers to be 99.5 per cent pure. This product is sufficiently pure for the manufacture of selenium cells, as well as for the such other commercial uses as it finds application to in commerce. Some experimenters however, prefer to have an absolutely pure grade of selenium. It is for such workers that the method devised by Dr. Lenher<sup>6</sup> for the purification of selenium is included in the text.

This method consists in dissolving selenium in nitric acid. The resulting selenious acid is evaporated to dry hardness, the dioxide formed being dissolved in distilled water, and barium hydrate added until a permanent precipitate is no longer formed. After filtering, the solution is boiled to dryness in an evaporating dish, and the residue covered by an inverted funnel whose base fits snugly upon the inside of the evaporating dish. Continued heating brings about a sublimation of the dioxide upon the inner walls of the funnel in the form of white

needles. The slightest amount of impurity imparts to the selenium dioxide a reddish color and it is necessary to repeat the process of sublimation until the pure white needles are obtained. These are dissolved in distilled water, and the solution acidified with hydrochloric acid and acid sodium sulphite is added, bringing about a liberation of  $\text{SO}_2$ , which in turn precipitates the selenium in the form of a red powder. By boiling the mass for a few minutes the selenium forms into a hard black lump, which, when washed and dried, is ready for use.

**Chemical And Physical Characteristics.** Selenium, like sulphur, exists in several allotropic forms; of these, five are the most interesting.

(1) Amorphous selenium is a finely divided brick red powder prepared by passing sulphur dioxide into a solution of selenious acid, or by reducing the latter with any suitable agent such as zinc or stannous chloride. Heated to a temperature of  $40^\circ$  to  $50^\circ$  C. this red powder becomes agglomerated into a soft mass, which is hard and brittle when cool. Its specific gravity is 4.26; it is soluble in carbon disulphide, quinoline and aniline. These solvents convert the amorphous selenium to the metallic variety. Amorphous selenium is a non-conductor of electricity.

(2) Semi-colloidal selenium is obtained amorphous or in a semi-colloidal condition as a red solution, which on dilution shows an orange color, by heating solutions of dextrose and selenious acid together. At  $100^\circ$  C. it is partly transferred into the black variety.

(3) Vitreous selenium is formed by heating amorphous selenium to  $217^\circ$  C. and then cooling it rapidly. A brittle

glassy mass is obtained, of a brownish black color, which has a specific gravity of 4.28 and is soluble in carbon disulphide. It is a non-conductor of electricity, and has dielectric properties, being electrified, like glass, by friction.

(4) Metallic selenium is produced when selenium is cooled rapidly to  $210^\circ$  C. and kept at that temperature for some time, when the metallic form, with a melting point of from  $210^\circ$  to  $219^\circ$  C. is obtained. It can also be prepared by

fusing the vitreous variety between carbon plates and allowing it to cool slowly, or by cooling a solution of selenium in potassium hydroxide at  $230^\circ$  C., when long monoclinic needles separate, melting at  $219^\circ$  C. This modification is much more stable than the others, less chemically active, and a better conductor of electricity.

(5) Grey crystalline metallic selenium exists in two modifications, round granular crystals, stable at  $140^\circ$  C. in the dark, and a non-conductor of elec-

tricity. A variation can be obtained by heating it to  $200^\circ$  C. for some time or by exposing it to light. It has longer crystals, somewhat less soluble in carbon disulphide, and is a good conductor of electricity.

The boiling point of selenium<sup>7</sup> is  $690^\circ$  C., its atomic weight is 79.2, and the chemical symbol is Se.

The density<sup>8</sup> of selenium varies from 4.259 to 4.805 in the different varieties.

It is this latter variety of selenium that is of interest to us, and which is the subject of the present writing.

**Discovery of Light Sensitivity In Selenium.** Willoughby Smith, an electrician, in 1873, being desirous of obtaining a more suitable high resistance for



Samuel Wein, author of this series of articles and inventor of the cold vacuum tube



use at the shore station in connection with his system of signalling during submersion of long submarine cables, was induced to experiment with bars of selenium. Several bars were obtained, the sizes varying from 5 to 10 cms., and of a diameter of 1 to 1½ mm. Each bar was hermetically sealed in a glass tube with a platinum terminal wire projecting from each end.

The early experiments did not place the selenium in a very favorable light for the purpose required, although the resistance was all that was required—some of the bars giving 1.00 megohms absolute—yet there was a discrepancy in the tests, and seldom did different operators obtain the same results. While investigating the cause of such great differences in the resistances of bars, it was found that the resistance altered materially according to the intensity of light to which they were subjected. When the bars were fixed in a box with a sliding cover, so as to exclude all light, their resistance was at its highest, and remained very constant, fulfilling all the conditions necessary to the experiments, but immediately the cover of the box was removed, the conductivity increased from 15 to 20 per cent. When the light was intercepted by glass of various colors, the resistance varied according to the amount of light passing through the glass.

(Continued from page 345)

sale of parts out of the dealer's stores, back to the mail order houses.

It doesn't seem right for successful set manufacturers to treat their very best friends in this way. If every set builder in this country should suddenly drop radio and go in for amateur photography, who would sell the fifteen or twenty million dollars' worth of Atwater Kent equipment this fall? Dealers? Oh, no. Invariably the dealer so confuses the customer that he has to go to a set-builder-friend to get the plain, simple truth. Who will install those sets? The dealer? No, again, for the B.C.L. goes to the set builder not only because he trusts him but because it's cheaper. And

To ensure that the temperature was in no way affecting the experiments, one of the bars was placed in a trough of water for the light to pass through, but the results were the same; and when a strong light from the ignition of a narrow band of magnesium was held about 9 inches above the water, the resistance immediately fell more than two thirds, returning to its normal condition immediately the light was extinguished.

It followed naturally that such an important discovery was the subject of discussion by scientists. As a matter of fact, the scientific literature at that time was replete with many papers on the general characteristics of selenium, and many interesting scientific and industrial applications were described at that early period.

#### REFERENCES

- <sup>1</sup> Berzelius, *Schweigg Jour.* vol. 21, pages 309, 410, 1808.
- <sup>2</sup> Benschig, Krusch & Voigt, *Die Lagerstätten der metallischen Mineralien und Gestein*, etc. vol. 1, 2nd. edit. page 157, 1914.
- <sup>3</sup> Dana, *System of Mineralogy*, 6th. edit. 1909.
- <sup>4</sup> Dennis & Koller, *Jour. Amer. Chem. Soc.* vol. 41, page 949, 1919. *Eng. & Min. Jour.* vol. 106, page 441, 1918.
- <sup>5</sup> Hess, U. S. Geological Survey, *Annual Reports* Washington, D. C.
- <sup>6</sup> Lander, *Jour. Amer. Chem. Soc.* vol. 20, page 155, 1898.
- <sup>7</sup> Berthelot, *Compt. Rend.* vol. 134, page 705, 1902.
- <sup>8</sup> Schaffgotsch, *Jour. f. Prakt. Chem.* vol. 14, page 308, 1848.
- <sup>9</sup> Smith, *Jour. Soc. Teleg. Eng.* vol. 2, page 31, 1873. *Amer. Jour. Sci.* (3) vol. 5, page 381, 1873.

what about service? Why, all the dealers in the country couldn't service the output of Atwater Kent alone, nor would the public spend money for the hundred little helps that the set builder gives so freely to his less experienced friends.

If the R.C.A. hadn't had the set builders to service their equipment and keep their customers satisfied they never would have lived down their mistakes, yet R.C.A. has fought the set builder and parts sales from the start.

It's time for the manufacturers to realize that they have a genuine obligation to meet, for they need the continued assistance of the set builder as much as ever.

M. B. SLEEPER,  
*Editor.*





Factory of the Kodel Mfg. Corp., in Cincinnati, O.

WHO'S going to do the big parts business this fall? The only company we have heard about that is planning to put across parts and kits in a big way is Samson Electric, in Canton, Mass. Not content with perfecting the helical wound transformer, they have had some of the best engineering skill in New England at work on a complete line of parts and a brand new kit.

Benjamin Electric, in Chicago, has a new variable condenser which is just as clever as their balloon tire sockets—just the sort of thing that makes you feel that you'd like to build it into a set.

David Grimes Corp. is going to sell direct to dealers under the sales guidance of Harry Taplin, formerly of the Atwater Kent Company. This experiment, also undertaken by two or three other manufacturers, will be watched with much interest. One season ought to decide its success or failure.

With all the radio magazines there is only one which makes a serious attempt to be funny. That's Stanton's Wireless Bulletin, a little paper which reports on radio securities. Almost every report says, "We understand that the \_\_\_\_\_ Company has now disposed of its excess stocks and, if this is so, they should be in sound financial condition." But when the first dividend period arrives we'll know, without asking, how expensive it

was to dispose of those excess stocks.

The Sterling Electric Company has just put out a handy little instrument. It has a milliammeter and socket mounted together, from which comes out a four-wire cord and plug. To measure the current thru any tube in an assembled set the tube is put into the meter, and the cord plugged into the set where the tube belongs.

Speaking of meters, the Jewell Electrical Instrument Company has asked us why the A—and B—terminals shouldn't be connected together. Since there isn't any good reason for not doing it, we're going to wire our sets that way, making it possible for our readers to use a double-range meter for measuring A and B voltage. If everyone adopts that practice, Mr. Eby will have to get out a binding post with the new marking.

Fansteel Products have just announced two new and very clever items—the Balkite Trickle Charger and the Balkite B, the former retailing at \$10.00, and the latter at \$35.00. The Balkite B with which we are already familiar will be continued, but it is now designated as Balkite B II. The Trickle Charger is for small storage batteries or it can be used with big batteries if allowed to float on the line. The B is a small unit, about the size of a 45-volt B battery, for 4- or 5-tube sets.

## Specifications for Batteries, Chargers, and Eliminators

## DRY CELL A BATTERIES

Manufacturer	Dimensions	Weight	Open Circuit Volts	List Price
Burgess Battery Co.	3 1/4 diam. x 6 ins.	2 lb.	1.5	\$0.50
Burgess Battery Co.	1 3/4 diam. x 7	10 oz.	4.5	.60
Burns Boston Battery Works	2 1/4 diam. x 7 1/4	2 1/4 lb.	1.5	1.25
Burns Boston Battery Works	2 1/4 diam. x 6	2 lb.	1.5	.75
Burns Boston Battery Works	4 diam. x 8 1/4	8 lb.	1.5	4.00
Burns Boston Battery Works	2 1/4 diam. x 6	2 lb.	1.5	.45
Champion Carbon Manufacturing Co.	2 1/4 diam. x 6	2 lb.	1.5	.60
Manufacture Electric Supply Co.	2 1/4 diam. x 6	5 lb.	1.5	1.00
Manufacture Electric Supply Co.	2 1/4 diam. x 6	12 oz.	1.5	.40
National Carbon Co.	2 1/4 diam. x 6	2 lb.	1.5	.60
Stuart Products Corporation	2 1/4 diam. x 6	2 lb.	1.5	.60

## STORAGE A BATTERIES

Manufacturer	Dimensions	Weight	Voltage	Container	A.-E. capacity	Chg. Rate	List Price
Advance Battery Mfg. Co.			6	Solid	60	5	\$15.00
Advance Battery Mfg. Co.			6	Solid	83	7	18.00
Electric Storage Battery Co.	4 1/2 x 6 1/2 x 9 1/4	5 lb.	2	Hard rubber	24	2	5.40
Electric Storage Battery Co.	4 1/2 x 6 1/2 x 9 1/4	6 lb.	4	Hard rubber	12	1	7.30
Electric Storage Battery Co.	6 1/2 x 6 1/2 x 9	3 1/2	6	Hard rubber	30	3 1/4	14.00
Electric Storage Battery Co.	8 1/4 x 6 1/2 x 9	2 1/2	6	Hard rubber	75	6	10.90
Electric Storage Battery Co.	9 1/4 x 6 1/2 x 9	4 1/2	6	Hard rubber	100	6	19.15
General Lead Batteries Co.	6 1/4 x 7 1/4 x 9 1/4	30	6	Wood or rubber	40	3	—
General Lead Batteries Co.	6 1/4 x 7 1/4 x 9 1/4	36	6	Wood or rubber	60	5	—
General Lead Batteries Co.	9 1/4 x 7 1/4 x 9 1/4	55	6	Wood or rubber	90	7 1/2	—
General Lead Batteries Co.	10 1/4 x 7 1/4 x 9 1/4	88 1/2	6	Wood or rubber	120	8 1/2	—
General Storage Battery Co.	10 1/4 x 12 1/4 x 7 1/4	32	6	Wood or rubber	30	5-10	21.00
Hardford Battery Mfg. Co.	7 1/4 x 6 1/2 x 9 1/2		6	Rubber	70	7	24.00
Hardford Battery Mfg. Co.	8 1/2 x 6 1/2 x 9 1/2		6	Rubber	90	7	17.40
Hardford Battery Mfg. Co.	9 1/2 x 6 1/2 x 9 1/2		6	Rubber	100	7	19.80
Hardford Battery Mfg. Co.	11 1/2 x 6 1/2 x 9 1/2		6	Rubber	110	11	23.10
Liberty Battery Co.			6	Rubber	60	5	27.20
Liberty Battery Co.			6	Rubber	80	5	—
Marion Storage Battery Co.	6 1/2 x 7 1/4 x 9	28	6	Wood	30	3 1/4	12.50
Marion Storage Battery Co.	9 1/4 x 7 1/4 x 9	41	6	Wood	60	6	16.00
Marion Storage Battery Co.	11 x 7 1/4 x 9	50	6	Wood	110	8 1/4	20.00
Marion Storage Battery Co.	9 1/4 x 6 1/2 x 9 1/4	45	6	Rubber	90	6 1/4	17.50
Marion Storage Battery Co.	10 1/4 x 6 1/2 x 9 1/4	23	6	Rubber	120	9	22.00
National Lead Battery Co.	7 1/4 x 7 1/4 x 8 1/4	30	6	Wood	50	5-8	12.50
Philadelphia Storage Battery Co.		1 1/2	2	Glass	12	—	2.00
Philadelphia Storage Battery Co.	6 1/2 x 8 1/4 x 10	28	6	Wood	60	—	14.50

## STORAGE A BATTERIES

Philadelphia Storage Battery Co.	9 1/2 x 8 1/2 x 10	45	6	Rubber	80	24.00
Philadelphia Storage Battery Co.	4 1/2 x 10 x 0 1/2	30	4	Glass	30	10.00
Philadelphia Storage Battery Co.	2 1/2 x 6 1/2 x 0 1/2	8	4	Glass	1.5	8.00
Frank-White Co., Inc.	2 1/2 x 4 1/2 x 0 1/2	6	2	Hard rubber	30	4.75
Frank-White Co., Inc.	9 1/2 x 7 1/2 x 9	35	6	Wood	4.5	12.20
Frank-White Co., Inc.	10 1/2 x 7 1/2 x 9	40	6	Wood	5	12.95
E. S. Lahr & Heat Corporation	2 1/2 x 7 1/2 x 9 1/2	8	2	Rubber	2 1/2	6.20
E. S. Lahr & Heat Corporation	3 1/2 x 7 1/2 x 9 1/2	16	2	Rubber	3 1/2	7.69
E. S. Lahr & Heat Corporation	5 1/2 x 7 1/2 x 9 1/2	20 1/2	6	Rubber	3 1/2	14.00
E. S. Lahr & Heat Corporation	9 1/2 x 6 1/2 x 9 1/2	42	6	Rubber	7 1/2	18.00
Vicor Storage Battery Co.		45	6	Rubber	7 1/2	10.00
Western Cable & Light Co.		45	6	Wood	6	6.70
Western Cable & Light Co.		58	6	Wood	6	8.95
Westinghouse Union Battery Co.	7 1/2 x 6 1/2 x 8 1/2	26 1/2	6	Composition	60	—
Westinghouse Union Battery Co.	10 1/2 x 6 1/2 x 9 1/2	40	6	Composition	100	8 1/2

## DRY CELL B BATTERIES

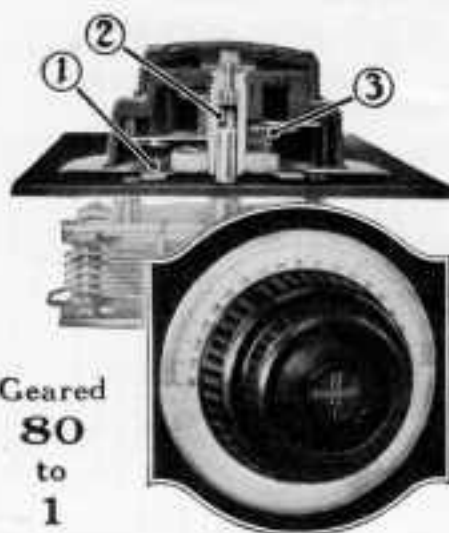
Manufacturer	Dimensions	Weight	Voltage	Last Price
Burgess Battery Co.	3 1/2 x 2 x 2 1/2	1 lb.	22 1/2	\$1.50
Burgess Battery Co.	2 1/2 x 4 1/2 x 2 1/2	1 1/2	22 1/2	1.75
Burgess Battery Co.	2 1/2 x 2 1/2 x 0	2	22 1/2	1.75
Burgess Battery Co.	4 1/2 x 3 1/2 x 7	5	22 1/2	2.00
Burgess Battery Co.	6 1/2 x 4 x 3	5	22 1/2	2.00
Burgess Battery Co.	2 1/2 x 4 1/2 x 2 1/2	2 1/2	45	3.25
Burgess Battery Co.	7 1/2 x 6 1/2 x 3	9 1/2	45	4.00
Burgess Battery Co.	3 1/2 x 8 1/2 x 7	9 1/2	45	4.00
Burgess Battery Co.	3 1/2 x 2 1/2 x 2 1/2	1	22 1/2	1.00
Burgess Battery Co.	4 1/2 x 2 1/2 x 2 1/2	1 1/2	22 1/2	1.00
Burgess Battery Co.	5 1/2 x 3 1/2 x 2 1/2	2 1/2	22 1/2	1.75
Burgess Battery Co.	6 1/2 x 4 1/2 x 3 1/2	4 1/2	22 1/2	2.00
Burgess Battery Co.	7 1/2 x 4 1/2 x 3 1/2	4 1/2	22 1/2	2.00
Burgess Battery Co.	8 1/2 x 6 1/2 x 3 1/2	9 1/2	45	3.75
Burgess Battery Co.	8 x 7 1/2 x 3 1/2	9 1/2	45	3.75
Burgess Battery Co.	6 1/2 x 4 1/2 x 4 1/2	6 1/2	22 1/2	2.50
Burgess Battery Co.	8 1/2 x 6 1/2 x 7 1/2	14	45	4.75
Burgess Battery Co.	3 1/2 x 2 x 2 1/2	1 1/2	22 1/2	1.50
Burgess Battery Co.	4 1/2 x 2 1/2 x 2 1/2	1 1/2	22 1/2	1.50
Burgess Battery Co.	5 1/2 x 2 1/2 x 2 1/2	2 1/2	22 1/2	1.75
Burgess Battery Co.	6 1/2 x 4 1/2 x 3 1/2	5	22 1/2	2.00
Burgess Battery Co.	8 x 6 1/2 x 3 1/2	8 1/2	45	3.75
Burgess Battery Co.	8 1/2 x 3 1/2 x 7 1/2	9	45	3.75
Burgess Battery Co.	8 1/2 x 4 1/2 x 7 1/2	13 1/2	45	4.75

## BATTERY CHARGERS

Manufacturer	Overall Dimensions	Weight, lbs.	Operates from D.C. or A.C.	Charging Rate	Current Consumed by Charger	Type	List Price
The Arma Electric & Manufacturing Co.	5 x 7 x 10	8 lbs.	Bulb	2 1/2	75 W.	Bulb	\$8.50
	7 1/2 x 8 1/2 x 9 1/4	16	Bulb	6	175 W.	Bulb	15.50
	5 x 7 x 10	8	Bulb	2 1/2	75 W.	Bulb	12.50
	7 1/2 x 8 1/2 x 9 1/4	16	Bulb	6	175 W.	Bulb	26.50
	6 x 5 x 5	17	A.C.	2	60 W.	Bulb	12.00
		6	A.C.	7 1/2	60 W.	Vibrating	18.00
		6	A.C.			Vibrating	18.00
	8 1/2 x 7 x 6 1/2	22	A.C.	7	60 W.	Vibrating	18.00
		4	A.C.	5 1/2	75 W.	Chemical	2.00
	6 x 6 1/2 x 8 1/2	21	A.C.	2 1/2	100 W.	Electrolytic	19.50
	6 1/2 x 8 1/2 x 7 1/2	18	A.C.	6	75 W.	Vibrating	18.50
	13 x 10 1/2 x 12		A.C.	6		Bulb	130.00
	13 x 10 1/2 x 12		A.C.	6		Bulb	155.00
	15 x 13 x 15 1/2		A.C.	0		2 bulbs	420.00
	6 3/4 x 6 1/2 x 9	13	A.C.	3-5	80 W.	Vibrating	21.00
		7 1/4	A.C.	8		Vibrating	20.00
		7	A.C.	0		Vibrating	16.00
	7 1/2 x 7 1/4 x 6 1/2	10	A.C.	2	70 W.	Bulb	18.00
	9 1/2 x 7 1/2 x 6 1/2	16	A.C.	5	160 W.	Bulb	28.00
	8 1/2 x 6 1/2	11	A.C.	7	60 W.	Vibrating	18.00
	8 1/2 x 6 1/2	17	A.C.	7	60 W.	Vibrating	16.00
		12	A.C.	2 1/2	90 W.	Bulb	18.00
		10	A.C.	6	200 W.	Bulb	20.00
			A.C.	4	60 W.	Vibrating	20.00
			A.C.	8	80 W.	Vibrating	18.00
			A.C.	1		Chemical	15.00
			A.C.	5 1/2		Chemical	9.75
		4	A.C.	5 1/2	60 W.	Chemical	4.80

## BATTERY ELIMINATORS

Manufacturer	Overall Dimensions	Weight, lbs.	Operates from D.C. or A.C.	Current Consumed	Voltage Delivered	List Price
Arma Engineering Co.	8 1/2 x 7 x 4 1/2	26	A.C. or D.C.	3 Watts	D-0-20 A-0-140v.	\$32.50
Apco Manufacturing Co.	5 x 6 1/2 x 12	16	A.C.	10 W. per hour	D-25-45 A-0-130v.	50.00
Audiola Radio Co.	8 x 9 x 4	31	A.C.	Depends on load	D-15-50 A-0-100v.	94.50
The Doublier Condenser & Radio Corp.	8 1/2 x 3 1/2 x 10		A.C.	25 Watts	D-15-20 A-0-90	47.50
	6 1/2 x 6 x 10	16	D.C.	6-10 Watts	D-15-20 A-0	30.00
	6 1/2 x 7 1/2 x 9	10	A.C.	10 Watts	D-20-30 A-100-120	35.00
			A.C.			50.00
	5 x 8 x 8		A.C.			33.00
	8 1/2 x 7 x 5	8 1/2	A.C.	15 Watts	D-22-45 A-45-130v.	35.00
	6 x 6 1/2 x 6	15	A.C.	15 Watts	D-22 A-0	30.00



Geared  
80  
to  
1

## For Natural Reproduction

Even a genius cannot draw flawless music from an untuned violin. Just so—even the best radio receiver cannot reproduce clear, natural music if it is not sharply tuned.

Every detail of Accuratune Micrometer Controls is designed for extremely close, precise tuning . . . with perfect ease! Sensitive sets are simpler to handle—DX stations can be tuned-in easier—locals much clearer with more volume. Replace ordinary dials without set alterations.

At your dealers, otherwise send price (\$3.50) and you will be supplied postpaid.

*Write for descriptive folder.*

(1) Friction Clutch—the heart of Accuratune Controls. Automatically locks any train for coarse adjustment and throws train into operation for fine adjustment.

(2) Long wear bushing gives maximum shaft-bearing contact and prevents all wear.

(3) New gear mesh assures perfect alignment of the two brass gear trains.

**MYDAR RADIO COMPANY**  
9-E Campbell St., Newark, N. J.

Canadian Representatives: Radio Ltd., Montreal.  
European Branch Office: Dennis E. Marks,  
27 Arning St., London, E. G. 2

**ACCURATUNE**  
MICROMETER CONTROLS

## The beauty of Radion

*is an added advantage  
for set manufacturers*

**F**ROM a purely practical angle, Radion Panels possess the two qualities which make it meet the set manufacturer's requirements 100%:

(1) *It is very easy to drill, saw or cut*

EDGES are smooth and even; holes are trim and clean-cut. Does not chip or peel as do many other panel materials.

(2) *It has the highest insulating qualities*

COMPARED with all commercial insulations, Radion has (1) lowest angle phase difference (2) Lowest dielectric constant (3) Highest resistivity (megohms cm.) (4) lowest moisture absorption (5) lowest power factor loss.

IN ADDITION to these important advantages, Radion Panels have a high-polished, satin-like finish that adds wonderfully to the attractiveness of any set. Radion takes engraving beautifully.

We invite manufacturers to send us samples or specifications of panels and other insulated parts of radio instruments or sets. Radion is used on the leading makes of condensers.

AMERICAN HARD RUBBER COMPANY  
Dept. M N 3, 11 Mercer St., New York City

**RADION**  
*The Supreme Insulation*



# There's A Reason



The fine, clear tone and volume of the Kellogg Symphony Reproducer is due to the Kellogg unit with the magnetic diaphragm control.

This exclusive Kellogg principle has produced wonders in the accurate reproduction of voice and music; piano music is unusually fine, the lowest tones of the saxophone to the highest of the violin are as clear as a bell, the soprano voice can really be admired.

Observe the rigid construction of this unit, the exactness of every detail, the size of the magnets. The *unit is the reason.*

See one at your dealers today.

**KELLOGG SWITCHBOARD & SUPPLY COMPANY**

1666 W. Adams Street, Chicago, Ill.



## An unfailing power supply for both circuits



U. S. Patent Mar 27, 1934  
Balkite Battery Charger.  
Charges 6 volt "A" storage  
batteries.

Price \$19.50  
West of Rockies \$20



U. S. Patent Mar 27, 1934  
Balkite "B"—replaces "B"  
batteries and dry cells. Op-  
erates from light socket.

Price \$55

Here at last is an unfailing power supply for your radio set. Balkite Radio Power Units furnish constant uniform voltage to both "A" and "B" circuits and give your set greater clarity, power and distance. The Balkite Battery Charger keeps your "A" storage battery charged. Balkite "B" replaces "B" batteries entirely and furnishes plate current from the light socket. Both are based on the same principle, are entirely noiseless, and are guaranteed to give satisfaction. Sold by leading radio dealers everywhere.

**FANSTEEL**  
**Balkite** *Radio*  
*Power Units*

BALKITE BATTERY CHARGER—BALKITE "B" PLATE CURRENT SUPPLY

Manufactured by FANSTEEL PRODUCTS COMPANY, Inc., North Chicago, Illinois

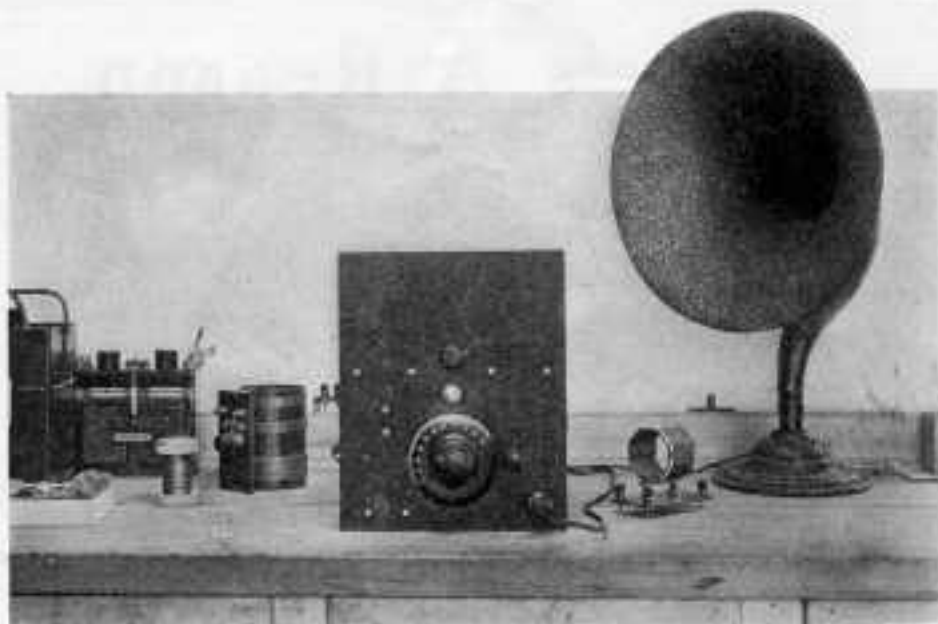


Fig. 1. Hooked up to a Kellogg loud speaker, ready for the final testing

## 4-T 3-C Receiver

Four-tube, three-circuit tuner, with resistance coupled amplification, a set to use out in the country for getting lots of distance with first-class volume and quality.

WE had two things in mind in planning the design for what we have called, for sake of brevity, the 4-T 3-C Set. There has been much interest in equipment for permanent installations in the country. Where there is plenty of space between one station and another, a regenerative receiver is quite satisfactory. It gives a long range, and brings in the signals with enough strength that, amplified by three stages of resistance coupling, broadcasting is loud enough and clear enough for most anyone. The design of this outfit, type 7800, presents these advantages in an extremely simple form which can be built easily at small expense.

At the same time, we wanted to bring out some ideas in mechanical design. Not long ago an announcement was made concerning the possibility of establishing a new series of panel sizes, about

five in number, to supersede the great variety which have been employed in the past. To determine intelligently whether or not the 12-in. height offers definite advantages, it is necessary to see how designs will work out in practice. The type 7800 set illustrates typically the possibilities of the 12-in. panel. We also wanted to show how the Browning-Drake coils can be used for a simplified type of 3-circuit tuner and to illustrate the use of the new Walbert Panelite, a new accessory which, tho not an essential, is a very handy thing to have.

The accompanying illustrations, with the picture wiring diagram and schematic in Fig. 3, show how the design worked out. When the 12-in. panel idea was first discussed, it was pointed out that a special advantage lay in the two-level arrangement of the instruments, that is, the tubes and coupling transformers or

resistances across the top, with the tuning controls centrally located at the bottom. The panel for this set measures 10 by 12 ins. A little figuring will show that a similar outfit on a 7-in. panel would have to be at least 24 ins. long. Comparing the areas, a 7-in. panel requires an increase in area of 40%. That would increase the cost of the panel about one dollar. Where the 12-in. panel can be mounted on a small cabinet suitable for

The outside area of a 7 by 24-in. cabinet, 7 ins. deep, is 602 sq. ins., against 428 for a 10 by 12-in. cabinet, 7 ins. deep. This represents an increase of 41% over the 10 by 12-in. cabinet. The saving in material may be only a small part of the gross price of the cabinet, but weight and space must be considered by the manufacturer, jobber, and dealer in deciding whether or not it is worth while to rearrange the front of the set so as to

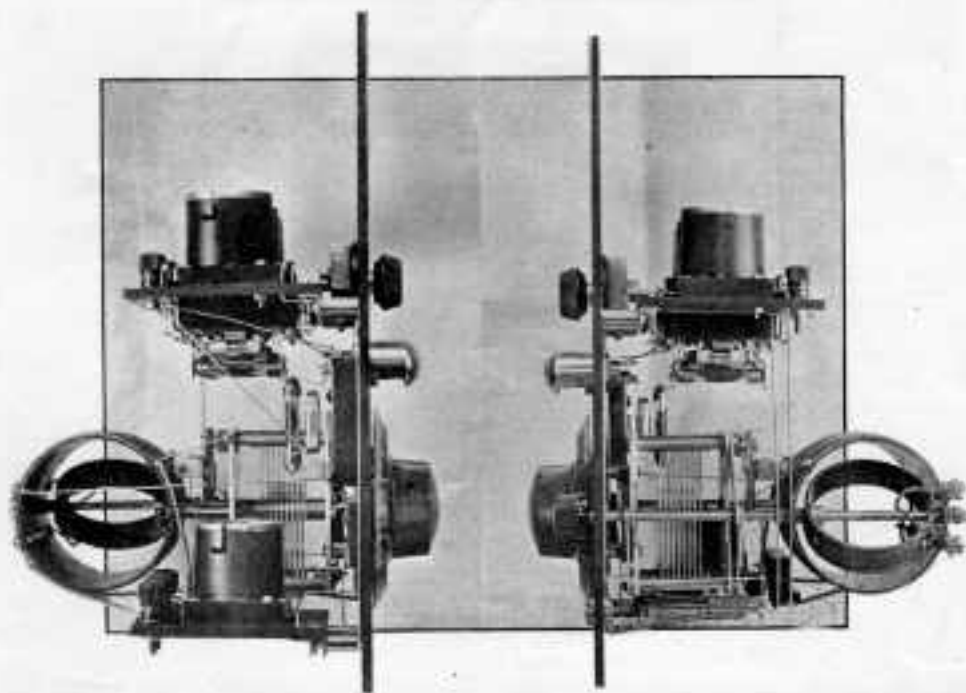


Fig. 2. Left and right hand side views of the set, illustrating the two-level design system

setting up inconspicuously, a 24-in. set generally occupies a whole table all by itself.

As sets are generally built, the tuning controls are at the extreme left of the set though they are operated with the right hand. Using the 2-level design, the controls are centrally located so that they can be reached in a natural position.

Cabinet design lends itself more to the high, narrow panel than to the long, low shape. This is particularly true if the panel is to slant back. The 7-in. size looks very awkward unless it is vertical. The high cabinet is cheaper to build.

reduce the volume of the cabinet. Another factor—12-in. panels are more economical to cut than the 7-in. size, saving by eliminating waste material.

**Circuit of the** As you will see in Fig. 4, this Type 7800 outfit employs one of the conventional hookups. Of course, the Browning-Drake tuned R. F. transformer was not designed as a 3-circuit tuner but it works out very well in this set. The primary winding is not used at all. The leads from the coil to the terminals are cut off right at the tube, and those lugs employed to support connections from the tickler coil. Instead, the

antenna is connected at the neutralizing tap, and the ground brought off at the filament end of the secondary coil. This gives enough coupling for strong signals, yet it is sufficiently loose to make the tuning sharp. Since the coil is mounted right on the variable condenser, the complete unit is very compact and handy.

The front panel carries the tuning unit, the filament control jack, Panelite, and rheostat, with the first resistance coupl-

upper tube panel  $3\frac{1}{2}$  by  $3/16$ -in., lower tube panel  $3\frac{1}{2}$  by  $3\frac{1}{2}$  by  $3/16$ -in., National Browning-Drake transformer unit, four Walbert sockets, three Electrad resistance coupling units, three 0.006 mfd. Micadons, one 0.001 mfd. Micadon, one 0.00025 mfd. New York Coil grid condenser with mounting clips, a 0.00025 mfd. gridleak, a 0.75 Ampere Daven filament ballast, Walbert Panelite, 3-spring Carter jack, 20-ohm Howard rheostat,

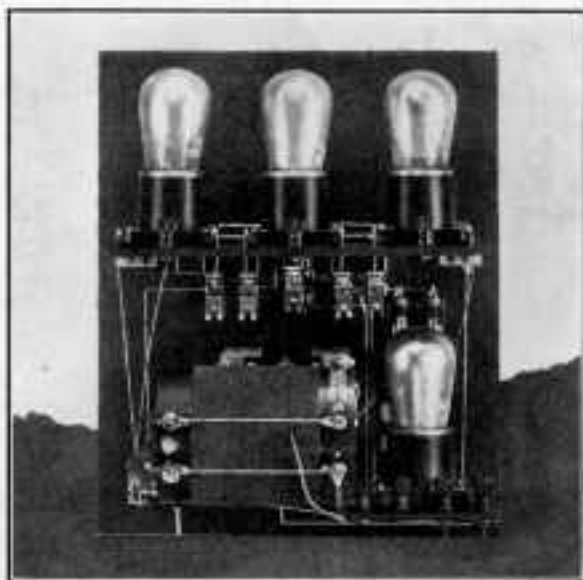


Fig. 3. Here you can see how, by making the panel 5 ins. higher, we can make it 14 ins. shorter. Note the trim and clean-out appearance of the set.

ing unit at the back. The upper tube panel, fastened to the front panel by angle brackets and short pillars, has three binding posts, three sockets, 0.75 ampere Daven ballast resistance, and the second and third coupling units, while below is a small panel, similarly mounted, carrying the detector socket and four binding posts. Detailed views of the set are given in Figs. 2 and 3, with a front view in Fig. 1. The single rheostat controls the detector tube, while the amplifier tubes, since they are not critical in adjustment, are handled by the ballast resistance.

**Standard Parts Required** In the set as we built it at the Darien laboratory, the following parts were used: A front panel, 10 by 12 by  $3/16$ -in.,

the small size, seven Eby Ensign binding posts, six coil mounting pillars,  $5/16$ -in. diameter by  $11/16$ -in. long, threaded for 6-32 screws, and six 1-in. angle brackets.

Equivalent parts of good design can, of course, be substituted by changing the drilling accordingly.

**Assembly** To make the assembly and wiring as easy as possible, the front panel, upper tube panel and lower tube panel should be put together and wired individually, before the three panels are fitted together. Wiring can be followed out easily from the picture wiring diagram and schematic in Fig. 4. Because the second and third coupling units are mounted beneath the panel instead of above it, the terminals are just  
(Concluded on page 361)

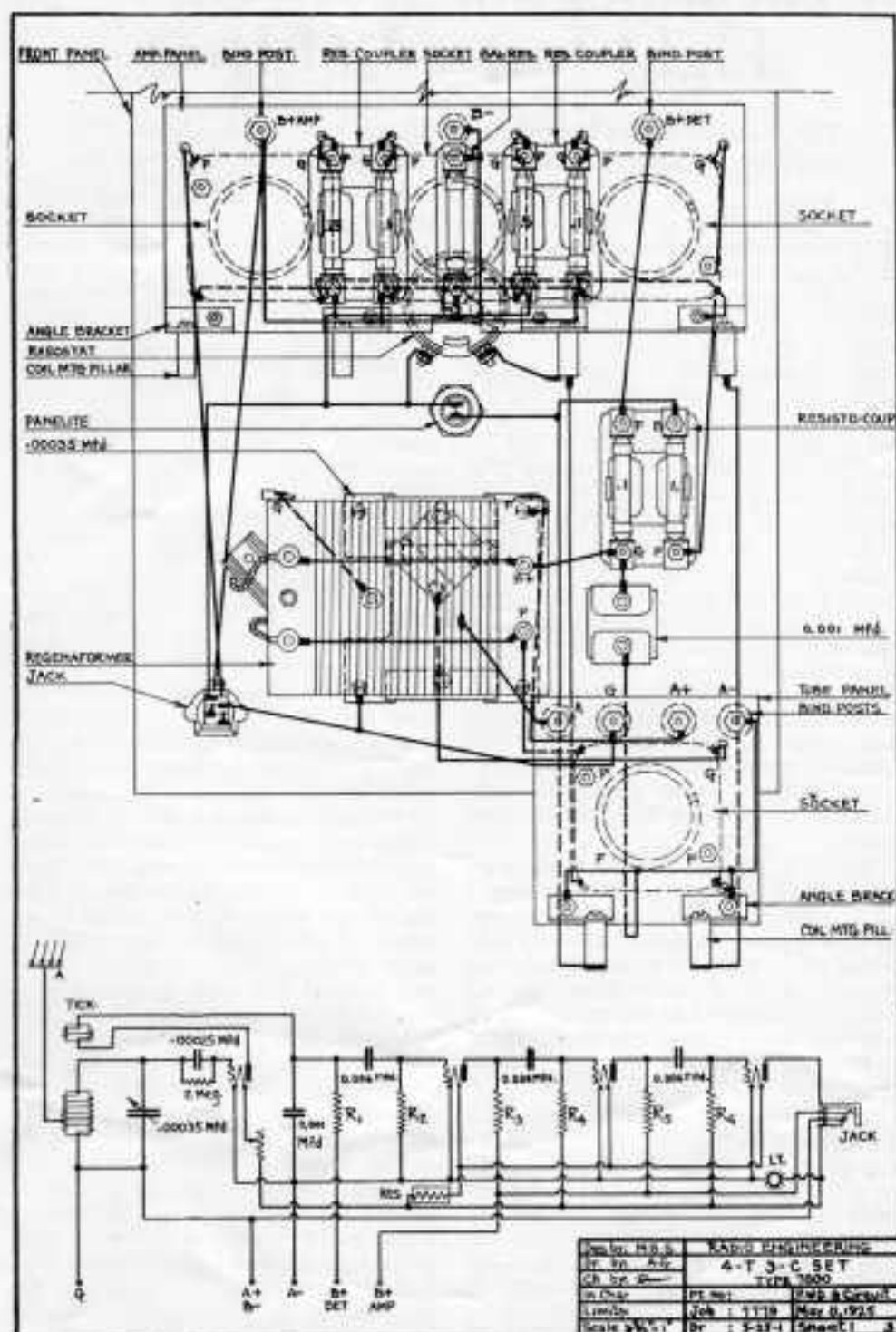


Fig. 3. To make the wiring more clear, the tube panels are shown tipped up. The schematic will clear up any points which are not plain in the picture wiring diagram.



# A Vacuum Tube Working from Light Instead of Heat

The three-element Photo-electric cell, used as a radio detector or amplifier, follows practically all the laws which apply to the hot-filament tube.

**I**N working to perfect a device which has an inherent fault there are two methods to pursue—one is to reduce the effect of the fault to a minimum, the other to work for a device, serving the same purpose, which does not have that fault. If anyone had suggested that the solution of the A battery problem was not to use dry cells, and not to use an A.C. operated heater, but to make a tube which required no heating at all, the answer would have been, "Try to do it!"

Just about the time that Dr. de Forest made his first audions, Samuel Wein, a New York boy who came here from some place no one ever heard of in the middle of Europe, started to eliminate heat from the vacuum tube. He didn't know it. He was too busy thinking about selenium cells and the chemistry and physics of light to be concerned with filaments altho, oddly enough, he has recently produced some remarkable low-current filaments for the ordinary type tubes.

In the last eighteen years, while pure research led him from selenium to photo-electric cells, radio forged ahead, picking, as it progressed, from almost every field of science. And just as the demand for the elimination of the A battery became insistent, Samuel Wein started to wonder why the photo-electric cell fitted with a third element, wouldn't give the answer. And it did.

We had planned to have a construction article ready in time for this issue, showing the Actinion, as Mr. Wein calls it, in actual use, but, at the last minute, we were delayed. However, that will be ready next month. Perhaps you will keep busy, in the meantime, thinking about the operation of the cell itself.

The two-element photo-electric cell is a little easier to understand, so let us

consider that first. This is made up of a plate, about 1 in. square, with a wire grid, of about the same dimensions, parallel to the plate and separated by perhaps  $\frac{1}{8}$ -in. However, the plate is the filament, and the grid is the plate. The filament, as we shall call it to make the action clear, is coated with a chemical compound. When light shines thru the plate onto the filament, electrons are thrown off. If, then, a B battery is connected across the filament and plate, current flows between the elements of the photo-electric cell.

In the darkness, no current flows, but the moment a light is thrown on the plate the current increases with the strength of the light until, at least in the present types, the tube becomes ionized, and turns red.

Many uses have been developed already for the two element cell which, because of its instantaneous response, can be operated where the slower selenium cell is impractical. It excels as a high speed telegraph relay, for example. Dots are made by sending the current thru the line in one direction, and dashes in the other. A mirror on a string galvanometer throws a light on either one of two photo-electric cells, depending upon the polarity of the current in the line. When the light shines on one tube, current flows thru it and a dot is recorded; on the other tube, and a dash is made. Thus dots and dashes are reduced at the sending end to the same time periods, and all spacing is eliminated.

Adding another coarse screen of wires, located between the plate and filament, makes the three-element Actinion. This grid, connected in the usual manner, controls the flow of electrons from the big plate just as the grid regulates the electrons given off by a heated filament.

Since the Actinon is not simply a variation of the hot filament tube, but a device operating on an entirely new principle, much development work lies ahead. The shape of the elements, their spacing, the best kind of light to produce maximum emission, these and other factors are still to be determined.

Another problem, tho one easy of solution, is the supply for the lighting

bulb. Probably the simplest arrangement is a combination 2-volt storage battery and charger which can be left floating on the line. Or a B battery eliminator could be made with a 2- or 4-volt tap from the A.C. supply to run the bulbs.

These matters will be discussed in other articles which will appear from month to month on this most interesting subject—the heatless tube.

### 4-T 3-C Receiver

(Continued from page 358)

opposite from what they are marked, and the gridleaks should be changed accordingly. Reading from right to left, the values should be 0.1, 0.5, 0.1, and 0.25 megohm. The left hand resistor in the first unit should be of 0.1, and the second 1.0 megohm. Values for the fixed condensers are given on the drawing.

**Testing** Insert the tubes and connect **And** the 6-volt storage battery to **Operating** the A+ and A- terminals. The tubes should light when the phone plug is put into the jack. Then disconnect the lead from the storage battery to the A- binding post and touch it to the B+ Det and B+ Amp post. The tubes should not light. If they do, there is a short in the plate circuit. If everything is O. K., put the storage battery back on the A binding post, connect two 45-volt B batteries in series, run the - terminal of the first battery to the B- binding post, +45 on the first battery to the B+ DET post, and +45 of the second B battery to B+ AMP. You may find it necessary to use the full voltage on the detector binding post altho that is not required ordinarily. Connect the ground to the GND terminal and the antenna, a single wire about 50 to 100 ft. long, to the ANT post. Adjust the variable condenser and turn the tickler coil until you pick up a station. Then get a close adjustment with the condenser and bring the signals to maximum strength by turning the tickler a little farther.

If the signals do not seem to be up to full strength, increase the voltage on the detector tube.

### A POSITION OPEN AT THE DARIEN LABORATORY

We need a man at the Darien Laboratory who can learn to handle the design and construction of radio equipment, and to take charge of the new laboratory when it is completed. Preference will be given to those who can fill all the following requirements, altho considerable latitude will be allowed in making the final decision.

Age—18 to 20.

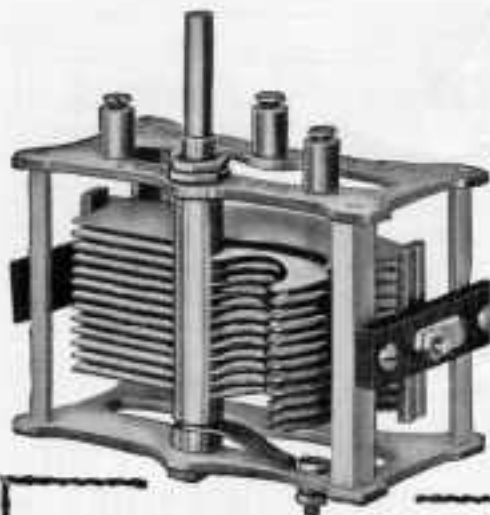
**Experience**—High School education, ability to make good mechanical drawings and operate wood and metal lathes, and grounding in mathematics. Must be able to write plain English correctly. General knowledge of radio, and experience in handling radio telegraph communication up to 20 words a minute.

**Personality**—We would prefer to have an inexperienced man who is able to learn quickly. We'd rather not have a man who knows too much. Most important of all, we want a man who will put forth a sincere and unselfish effort to make a success of his job. We are willing to pay all that the job is worth and, working under the personal supervision of Mr. Sleeper, a capable man can earn a very handsome income over a period of time, but an increase in salary must be earned before it will be paid.

Every opportunity to gain experience and knowledge will be made available. This position offers far more opportunity than the routine of a commercial laboratory, thru acquaintance with the engineers of the radio companies, and the encouragement of original work.

During the first six months, a very small salary will be paid, with an increase at the end of that period, again in six months, and yearly thereafter, the amount depending entirely upon the value of the work performed.

Applications will be accepted until August 1st, and the appointment made on August 15th. Any questions concerning this position should be addressed to M. B. Sleeper, A-52 Vanderbilt Avenue, New York City. This is an exceptional opportunity for a young man as a start to make a big future in the radio industry.



## Ends Trouble on Low Waves

New, exclusive plate shape of the Chelton Variable Condenser prevents crowding of stations at lower end of dial. Curvature arrived at by actual mathematical calculation. Open tuning with either right-hand or left-hand turning.

### CHELTON Variable Condenser

Duralumin structure. Solid brass rotor shafts with milled slots for plates. Plates soldered in. Adjustable end bearings, consisting of steel ball in brass cup. Electrical contact spring separate from bearing, making lubrication possible without touching contacts. Large wiping area provides minimum contact resistance.

Cat. No.	Brass Plates	Aluminum Plates
913-13 plate—0.000250 M.F.	\$4.10	\$2.75
919-19 " —0.000350 M.F.	4.25	3.25
925-25 " —0.000500 M.F.	4.30	3.50

### Chelton Midget

As a vernier, gives hair-line tuning. Used also as a stabilizer in most radio circuits. The Chelton is the original Midget Condenser. All others are imitations.

Write today for  
full information

**CHELTON  
ELECTRIC CO.  
PHILADELPHIA**



## fits Grid Leak any mounting

**FRESHMAN PLUNGER  
TYPE VARIABLE GRID LEAK**  
was designed especially for the non-technical set owner who can replace in an instant the fixed grid leak with this new, efficient cartridge type Variable Grid Leak without requiring the change of a single wire.

Sold by Authorized  
Freshman  
Dealers Only

**65c**

440 W. 42nd St.,  
New York



### CAN YOU SELL ?

We have a high-grade sales prospect and want to see if you can sell more than the average dealer. We can prove that our "B" battery and reactor, all in one case, is better than any other similar construction on the market, far superior to the best "B" battery combination. It is built on the best construction of a manufacturer sold in the business, and is guaranteed to give satisfaction. Write to us, we are permanently engaged. Outside, \$1.00.

This is something to be sold as a side line to your own business. Jobbers' prospects are selected. If willing to work on strictly exclusive basis with

ABCO,

2055 N. Racine Ave., Chicago, Illinois.

## 20 Microfarad

### Mershon Condensers

Just the thing for battery eliminator circuits—can't be burned out. Small in size, to fit nicely in cabinets.

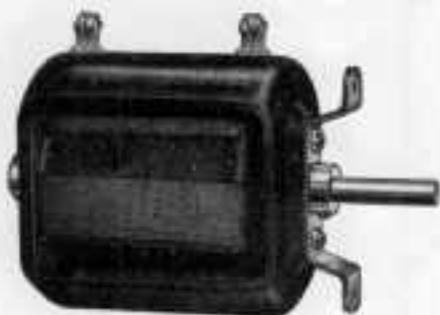
### SPECIAL BARGAIN

While they last, \$4.00 postpaid for the 20 mf. size; \$4.50 for the 40 mf. size. Brand new, guaranteed. Manufactured by the Amrad Company under the Mershon patents.

**C. J. BROWN & CO.**

Room 213, Vanderbilt Concourse Bldg.  
New York City

# Compact and Efficient



General Radio Type 269 Variometer

Price \$5.00

The outstanding features of the type 269 variometer are its size and its efficiency of operation.

It is much smaller than the average variometer which gives it a decided advantage where compactness and portability of the set are considerations.

Terminals are very accessible and a soldering lug is provided for using split variometer connections.

Stator and rotor forms are of genuine moulded bakelite, wound with green silk covered copper wire. Bearings are accurate and smooth running.

The ratio of maximum to minimum inductance is 10 to 1.

## GENERAL RADIO Co

CAMBRIDGE, MASS.

# B.M.S. fan-tail jack

PATENTED U.S.A. and FOREIGN COUNTRIES

B. M. S. Fan-Tail Jacks are unusually rugged and dependable and have other exclusive features that have made them prime favorites with fans.

*Made in all styles and sold by all good dealers.*

#### WARNING!

*The manufacturers of B. M. S. Fan-Tail Jacks will prosecute to the fullest extent of the law any infringements on patent granted by U. S. A. and foreign countries.*

BROOKLYN METAL STAMPING CORP.,

718 Atlantic Ave., Brooklyn, N. Y.



LAST  
A S T  
TITE

THE  
CENTERED  
LUG

*Lastite*  
is Radio's only  
perfect, permanent  
Contact

LOOSE connections will not permit any radio circuit or instrument to function properly.

ANY contact that is not soldered is a potential loose connection! It is merely a matter of time.

SOLDERING is not now difficult, as you will find, when using Lastite Soldering Terminals.

THE most efficient radio instrument can perform no better than is permitted by the poorest connection in its circuit.

INSTRUMENTS, only, that employ Lastite Terminals have a sure chance to function as they are designed to function.

THERE will be no signal losses, that are due to loose connections, in any radio circuit, when Lastite Soldering Terminals are universally used.

EVERY efficient radio assemblage will therefore, eventually be equipped throughout with Lastite Terminals, exclusively; because these Terminals afford the only perfect contact that will endure.



WRITE OR TELEGRAPH

*William Stevens Co.,*

MANUFACTURERS OF LASTITE

27 Hammatt Road,  
Roslindale, Mass.

## The New "Better Tuning" Control

Write for Complete Information

Different

Better



Fully  
Protected by  
Patent Pending

\$2.50

**Bremer-Tully MFG. CO.**

532 S. Canal St., Chicago



# NEW!

Resistance-Coupled  
Amplifier Kit \$5<sup>00</sup>  
for only..... 5

Electrad 3 stage Resistance  
Coupled Amplifier Kit No. 1

Price \$5.00

Write for free diagrams  
and instructions

# ELECTRAD

428 Broadway  
New York City



For Best Results  
on Your  
**A C Circuit**  
use the famous  
**Pacent Audioformer**



Approved and recommended  
by McCullough

PERFECTLY designed for this circuit. High amplification with no single high peak or distortion. Beautifully finished in satin nickel. Ratio  $3\frac{1}{2}$  to 1. Binding posts permit short leads. Price \$5.

(NOTE: Leading authorities on A C Circuit recommend Pacent Jacks.)



Trade Mark

**Pacent**  
**RADIO ESSENTIALS**

PACENT ELECTRIC COMPANY, INC.  
51 Seventh Avenue New York City

Washington	Chicago	Birmingham	Detroit
San Francisco	Boston	Indianapolis	Minneapolis
Philadelphia	St. Louis	Buffalo	Pittsburgh

Canadian License, R. H. White, Buffalo, Hamilton, Ont.

DON'T IMPROVISE - PACENTIZE

**FIL-KO-LEAK** \$1.75  
SCIENTIFICALLY CORRECT  
VARIABLE GRID LEAK \$2.60  
in Canada



its calibrated

Let your FIL-KO-LEAK put as you do your other tuning units. Get station you want heard before. Clear 60% distortion and increase volume. You need FIL-KO-LEAK everywhere in exact terms of the resistor (1/2 to 5 meg) through a pop-hole in the panel. (It's also excellent for base-board mounting.) Resistor is element constant, accurate, not affected by atmospheric conditions. Most in service. Unconditionally Guaranteed.

Fils Standard Customers

**FIL-KO-STAT** \$1.50  
SCIENTIFICALLY CORRECT RADIO RHEOSTAT \$2.10  
with Battery Switch in Canada



with Battery Switch

Turn your tube stations with FIL-KO-STAT and receive stations you cover heard before. Get greater distance, louder signals, clearer tuning, freedom from tube noise. It is the only rheostat that enables you to get maximum sensitivity with any type of tube in any hook-up (full resistance, 50 ohms). The new and improved model is fitted with battery switch that attaches to the regular mounting screws. Unconditionally Guaranteed.

**FIL-KO** \$1.50  
**VARIABLE RESISTOR**  
SCIENTIFICALLY CORRECT  
Unconditionally Guaranteed in New  
\$2.10 in Canada



Eliminates distortion and increases volume when connected across the secondary of audio frequency transformer. Also for use in resistance coupled amplifiers. Individually calibrated from 1,000 to 250,000 ohms. Comes with brackets for base-board or transformer mounting. Unconditionally guaranteed.

**FIL-KO** \$1.50  
**LIGHTNING ARRESTER**  
SCIENTIFICALLY CORRECT  
RADIO LIGHTNING ARRESTER \$2.10  
with the 100% Guarantee in Canada



Absolutely warranted to protect your set from lightning, with a guarantee to pay you \$200 or to repair your set, should it be damaged through faulty operation of the arrester. The "anode" shield keeps dust, moisture, etc., from the Bakelite insulation, preventing leakage losses from aerial to ground. This makes certain that all radio impulses reaching the antenna pass through your set, assuring maximum reception. Listed as Standard under the recommendation service of the National Board of Fire Underwriters' Laboratories.

Send 2 stamps to Dept. RE 725 for interesting literature on Improved Reception.

D. X. INSTRUMENT CO., Harrisburg, Pa.



## Majestic Roll of the Mighty Organ

Mighty tones from the noblest of musical instruments do not tax the resources of Rauland-Lyric. Accurately designed for faultless amplification, this instrument faithfully transmits all organ tones—from those of the piccolo stop down even to the lowest of the open diapason.



Rauland-Lyric is a laboratory-grade audio transformer, designed especially for music lovers. The price is nine dollars. Descriptive circular with amplification curves will be mailed on request. All-American Radio Corporation, 4201 Belmont Ave., Chicago.

**Rauland-Lyric**  
AN  
**ALL-AMERICAN**  
TRADE MARK  
**TRANSFORMER**

The Choice of Noted Music Critics

# “AMAZING!”

Says Everyone Who Has Tried  
This More-Efficient Inductance



95%  
AIR  
DIELECTRIC

They have just received “in a radio’s edge,” being far more selective than other types of tuned radio frequency inductances, however.

95% air-dielectric and total absence of core air winding so greatly diminishes high frequency resistance losses that such are hardly negligible.

For winding, turn in thick, continuous capacity coils. Large wire (22 mils. D. A. C.) and proper coil design cuts down circuit resistance to practically undetectable amounts.

Manufacturers! The “perfect” substitute and the most accurate reproduction which these patented Aero Cops actually give should be of vital importance to you in use. Write for terms.

Fast! Double your present inductance with Aero Cops. The difference will never last longer than the amount. \$5.50 each or \$10.00 the set of 3 with brackets.

**HENNINGER RADIO MANFG. CO.**  
1772 Wilson Avenue, Chicago

# EBY

PATENTED

## BINDING POSTS

Tops  
Don't  
Come Off



25  
Different  
Markings

Since binding posts cost so little and mean so much, why not treat your set to the best?

Practically any dealer can show you why EBY Quality Posts are preferred by most expert set-builders.

15c each—plain or engraved

The H. H. EBY MFG. CO., Phila., Pa.

---

---

# Puzzle 'em

You know that bird down the street, the one with the set that takes two hands and a foot to tune, that says his set is the world's best hound for DX—even if it does howl like a hound until he gets the rheostat adjusted——?

Get him to come over and work a gentleman's set. Tell him he needn't wear rubber-soled shoes because it isn't necessary to sneak up on this one. Dials? What's the use of using three? Tubes? Why, if it had five it would shatter the diaphragm. Rheostats? This set couldn't look a rheostat in the face. Oscillate? Didn't I say this was a gentleman's set?

What do you need to make it? Just a set of RX transformers, a Sodian tube, and whatever parts you have on hand. You have everything that's needed.

DURRANT will supply the RX transformers at \$7.50 for the set, and the Sodian tube for \$5.00. It's the cheapest set you ever built, and it couldn't behave better if you trained it yourself. The circuit blueprint is supplied with the transformers.

## **DURRANT RADIO Ltd.**

652 Vanderbilt Avenue

New York City



## Amsco Quality Parts

The standard of excellence by which all others are judged. Used by many of the leading set manufacturers as well as by foremost radio engineers. They are laboratory instruments.

*At dealers everywhere.  
Free literature on request.*

**AMSCO PRODUCTS, Inc.**

416 Broome Street

New York



**Oh boy**  
**KESTER**  
*Rosin Core*  
**Radio SOLDER**

*Save in Safe and Simple*  
APPROVED BY RADIO ENGINEERS  
A GENUINE SOLDER  
CHICAGO SOLDER COMPANY

4224 Wightwood Av., Chicago, U.S.A.

Organized and Quality Guaranteed  
Approved for Federal and State  
SOLDER HEALTH CAN BE HURT YOU

## EASTERN Pickle bottle COILS



To get the last bit of energy—the bit that makes DX stations come in and ring the bell—use EASTERN Pickle Bottle Coils, designed by M. E. Sleeper. They are endorsed by leading radio editors and engineers as the most efficient low loss winding in existence.

EASTERN Pickle Bottle Coils for the **ROBERTS** circuit \$8.50, for the **SUPERDYNE** \$8, for the **THREE CIRCUIT** \$6, **BROWNING-DRAKE**, \$8 and **TUNED R. F.**, \$2 each.

At your dealer's or direct, postpaid!

**EASTERN COIL CORP.**

22 Warren St.

Dept. R. E.

New York

# OUR RADIO LABORATORY

—and what it is all about

**I**N the past few months we have had a number of letters, some from new readers and some from our old-timers who have been subscribers for the last five years, criticizing the articles in Radio Engineering. They have all said, "Give us more original stuff in the Magazine, articles on new things worked out in the laboratory, solid, down-to-the-ground ideas that we can apply to the work we are doing."

It's a serious matter when a lot of readers ask for the same thing, and we got busy to find out how to do the job in the best way. We found that our laboratory was the stumbling block. Original work calls for laboratory and shop facilities. That means equipment and space to install it.

Take a comparatively simple article like the one on Tuning the Antenna Circuit, in the June issue. This data presents some very interesting information on receiver design. You don't need a laboratory to make use of this data, but to get it called for the construction of an oscillator, a wavemeter to calibrate it, and measuring instruments for making the tests.

That's the sort of thing we like to do, and of which we want to do more. For the designer and constructor we have been working for the last three months on the RX-1 set, for which you will find the first preliminary data in this issue, with the construction article in Septem-

ber. And there's the cold vacuum tube, on which we have planned a whole series of practical articles.

But the old laboratory has reached the point where if we have all the equipment necessary there won't be room for anyone to work, and if we have as many men working there as we need, the equipment will be squeezed out.

We found that the cost of a first class laboratory building and the complete equipment and machinery for it comes to about \$25,000. Frankly, we can't dig into the bank balance for that amount. That's why we worked it out on a 50-50 basis. Radio Engineering isn't a charitable institution—It's a business organization, so we can't ask for contributions.

What we do ask is that you will renew or extend your subscription, or get subscriptions from your fellow workers. The subscriptions you send in will be entered in the usual way, and Radio Engineering will be mailed out each month, but the \$2.00 for each year will be set aside as part of the \$25,000 for the new laboratory. In this way, without any cost to you, you can help build the laboratory which is needed to give you better, more interesting articles in the Magazine.

*Subscriptions sent in to help build the Laboratory should be addressed to Our Radio Laboratory, M. B. Sleeper, Inc., A-52 Vanderbilt Avenue, New York City.*

---

*"To make your radio work more interesting"*

---





## BETTER THAN REQUIRED!

The AmerTran isn't made to appeal where price and cheapness displace value and quality.

It is a safe product, of long standing. Correct scientific design, and the recognition of exact operating conditions are the requirements the AmerTran meets, — truthfully.

Better than required construction means dependable, efficient audio amplification, — the only kind you really want to pay for.

### *Buy AmerTrans by the Pair!*

AmerTran is made in two types, one quality—AF6, ratio, 5:1 and AF7, ratio 3½:1. Price either model, \$7.00 at your dealer's.

AMERICAN TRANSFORMER  
COMPANY

173 Emmet St., Newark, N. J.

"Transformer builders for over 24 years"

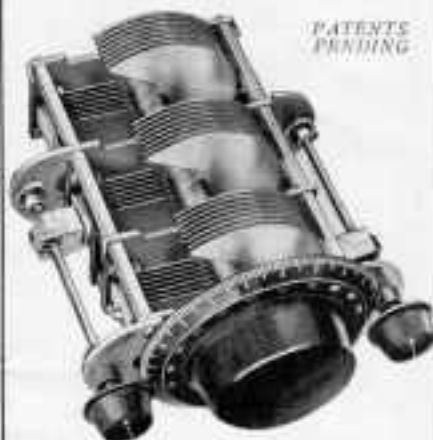
# AMERTRAN

TRADE MARK REGISTERED

*Perfected at Last!*



## COMPENSATED MULTIPLE VARIABLE CONDENSER



Evenly matched and balanced, 100 per cent perfect electrically and mechanically, this new United Scientific Multiple Condenser is the only practical One Dial Control Unit on the market. It can be built into any T. R. F. circuit and is a straight-line, low-loss unit making the sharpest tuning, quick and easy. Capacity—.00035 Mfd. per unit.

*Write for full particulars and prices.*

### MANUFACTURERS

Submit us your specifications and get our prices before placing your parts contracts for the coming season.

United Scientific Laboratories  
82 Fourth Ave., New York

# The Perfect Amplifier *and* *now*—The Perfect Tube

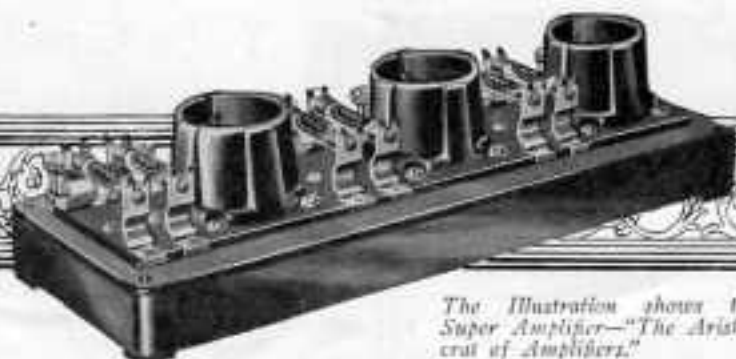
It is in the performance of an amplifier that you get the best test as to its quality. The DAVEN SUPER AMPLIFIER never disappoints, for its quality of reception is the same every day — it never varies. By using the SUPER AMPLIFIER in combination with the DAVEN AMPLIFIER TUBES (High Mu) the results are astonishing. Greater volume of superior quality, plus a saving of one-half to three-quarters of the total plate current consumption, are proven features of this amplifier which add greatly to the enjoyment of reception and economy of operation.

*Ask your Dealer for the new Bulletin describing these tubes or write for free copy.*

## DAVEN AMPLIFIER KITS

A three stage amplifier in Kit form is supplied for those who enjoy the pleasures of self-assembly. It will bring perfection of reception to you.

Read the RESISTOR MANUAL, a complete handbook on Resistance-Coupled Amplification. At your Dealers, 25c, Post paid, 35c.



*The Illustration shows the Super Amplifier—"The Aristocrat of Amplifiers!"*

*The Star of Aired*

**DAVEN RADIO CORPORATION**

*"Amateur Specialists"*

NEWARK, N. J.

Trade Mark Registered  
U. S. Pat. Off.

# DURHAM

*Variable*  
**Grid Leaks**

# 75c



—for  
*all sets*

*for greater DX*

Snap a new style glass cartridge DURHAM *Variable* in place of your present fixed leak. No. 101 for soft tubes; No. 201A for hard tubes.

*for better quality*

Use No. 100 across audio secondaries to bypass noise. Then the true tones ring clear. Results surprising!

*Satisfaction Guaranteed*

**Dealers:** Ask your jobber for details of new leak and sales plan

**DURHAM & CO., Inc.**  
1930 Market St., Philadelphia

Canadian Distributors:  
De Forest Radio Corp., Ltd., Toronto

# MUTER

## DEPENDABLE FIXED CONDENSERS

MICA INSULATION  
BRASS ELECTRODES  
ACCURATE CAPACITIES



*Used by Leading Set Builders*

SAMPLES AND QUOTATIONS  
PROMPTLY FORWARDED

**LESLIE F. MUTER COMPANY**  
76th AND GREENWOOD AVE.  
CHICAGO ILLINOIS



## Jewell Tube-Checker

No. 110

Price \$35.00

The Jewell No. 110 TUBE-CHECKER was designed to meet the demand for an inexpensive outfit for use in quickly checking quantities of tubes. While it does not give the complete characteristic curves possible with the Jewell No. 95 radio test set, it is invaluable in weeding out tubes which do not function or which are too low to be of value.

Send for Jewell  
15-B Radio Catalog

Order from Dealer

### Jewell Electrical Instrument Co.

1650 Walnut St. - - Chicago

# SUPER PARTS



## Announcing— A New S-L-W Condenser

Again S-M Engineering leads the field, this time with a Straight-Line-Wavelength Condenser that sets new standards of mechanical and electrical excellence. Every current-carrying surface is heavily silver-plated. A long cone bearing gives wonderfully smooth control. The plate shape (S-L-W) gives *real* and not imaginary separation of stations—and selectivity. The design and appearance will delight the discriminating lover of fine instruments.

No. 305  
.0005 Cap.  
\$5.00

No. 306  
.00035 Cap.  
\$4.75

No. 307  
.00025 Cap.  
\$4.50

Parts recommended by M. B. Sleeper, and approved by McMurdo Silver for the Super Autodyne. Buy them from your dealer.

2 S-M 205A S-L-W Condensers	\$8.00	2 Thordarson 315-1 Transformers	\$4.00
2 4" Moulded Dials	1.00	2 .002 Condensers	.40
1 U. S. L. 4-Ohm Rheostat	1.00	1 .0075 Condensers	.75
1 U. S. L. 240 Ohm Potentiometer	1.50	2 .005025 Balancing Condensers	1.50
3 Insulated Top Binding Posts	.05	1 S-M .25 Meg. Leak	.50
1 Carter 101 Jack	.75	1 S-M 2 Meg. Leak	.50
1 Carter 102A Jack	.80	1 Carter No. 3 Jack Switch	1.15
1 S-M 251 Filter with Matched Tuning Capacity	8.00	1 Benjamin 883B Switch	.30
2 S-M Chopped Intermediate Transformers	8.30	1 Schlenk Color Cable	.85
1 S-M 101B Coupling Unit	2.50	1 Pair Benjamin 882B Shell Brackets	.70
1 S-M 8-Gang Rocket Shelf (1578-201A, 337-UV199)	10.80	1 Bakelite panel, 7" x 18" x 3/16" drilled, grained and engraved	6.00
		Spaghetti, bus bar, logs, screws, nuts, etc.	1.00

### Silver-Marshall, Inc.

108 S. Wabash Ave.  
Chicago, Ill.

**All the Precision  
Rigidity  
Selectivity  
for which DXL is famous  
found in Model C  
the New  
Single End Plate  
Condenser**

For the first time the permanent qualities found in high priced double end plate condensers are accomplished in Model C, the new Single End Plate Condenser by D X L.

Leading engineers pronounce Model C a marvel of design and workmanship. Great economy in materials and manufacture brings this remarkable condenser within the reach of Receiver manufacturers who want quality.

Performance in all types of sets, built up with D X L Model C's, is vastly improved.

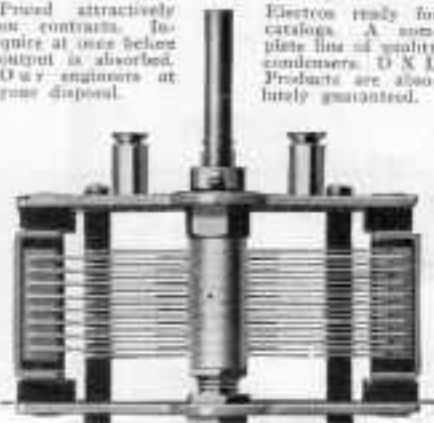
The first glance or long tests will convince you of the quality of Model C. Sturdy and selective.

**Set Manufacturers**

Proud attractively on contracts. Inquire at once before output is absorbed. Our engineers at your disposal.

**Jobbers**

Electron ready for catalogs. A complete line of quality condensers. D X L Products are absolutely guaranteed.



TRADE **DXL** MARK

**RADIO CORPORATION**

5777 Stanton Ave., Detroit, Mich.

*Your tubes know*

The Difference—  
When Using AMPERITE

AMPERITE the "self-adjusting rheostat", automatically controls the flow of current, and makes hand controlled rheostats obsolete. Permits the use of any type of tubes or any combination of tubes. Specified in every popular construction set.

For perfect results you must use AMPERITE for filament control. Price \$1.10 everywhere.

**RADIALL COMPANY**

Dept. R.E.-11, 50 Franklin Street, New York City

Write for  
**FREE**  
Hook-ups



**AMPERITE**  
"means right amperes"



At your dealer  
**\$1.00**

WALBET  
made in U.S.A.

**NOW**

You can put your radio set in that convenient out-of-the-way corner without straining your eyes while tuning—

**LIGHT UP**

your panel with the

**WALBET  
PANELITE**

WALBET MFG. CO., CHICAGO



# I<sup>n</sup>d M REGISTRY

The men whose names are listed below are prepared to handle all emergency work, take care of batteries, and replace tubes. Their charge is \$1.50 per hour, not including travelling time except to unusual distances.

The charge for listing in this section is 50c. for one month, \$2.00 for six months, \$3.00 for twelve months, payable in advance. The \* indicates that we have received letters from six set owners stating that the man after whose name the \* appears has handled their I and M work satisfactorily.

A REGISTRY OF RADIO INSTALLATION and MAINTENANCE SERVICE MEN WHO INSTALL, MAINTAIN, and REPAIR RADIO EQUIPMENT

Conn., South Norwalk—A. GHIRARDI\*  
Rowayton. Tel. Nor. 2724

D. C., Washington—A. C. BURG  
U. S. Soldiers' Home. Tel. Col. 750 Br. 41

Ill., Chicago—WEILAND & CO.  
6711 Stewart Ave. Tel. 1124 Normal

Mass., Boston—H. A. NICKERSON  
201 Devonshire St. Tel. Cong. 5156

Mich., Detroit—J. E. JOHNSON  
91 Gladstone Ave., Tel. Empire 8581j

Mich., Detroit—WM. MILLIGAN  
6545 Woodward Ave. Tel. Northway 5691W

Minn., Minneapolis—GEO. A. BECKER  
4709 Wentworth Ave. Tel. Locust 6291

N. Y., New York—APEX RADIO CO.  
123 Liberty St. Tel. Rector 3176

N. Y., New York—HERBERT MULLER  
954 Lexington Ave. Tel. Rhldr. 3905  
154 Nassau St. Beek. 8040

N. Y., New York—RONALD MAAR  
470 W. 157 St. Tel. Wada. 9799

N. Y., New York—RADIO CONST. LABS.\*  
71 W. B'way. Tel. Walker 2143

O., Kent—KLADAG RADIO LABS.\*  
Kline Bldg. Tel. 127

## SCREW MACHINE PRODUCTS & SPRINGS

Wm. STEINEN & CO.

297 Washington St.

NEWARK - - - N. J.

TEL. MARKET 9077

## POSTER'S PERFECT PANELS

THE RECOGNIZED STANDARD

### Quality or Price?

The radio manufacturer is constantly confronted with the problem, *How can I decrease production costs without a corresponding decrease in quality?*

IF IT'S PANELS, POSTER HAS THE ANSWER.

A post card will bring it to you.  
Chicago Branch - 723-727 Fulton St.

## POSTER & CO. INC.

25 28 BARCLAY ST. NY. TEL. CORT. 4965-6

(WHOLESALE ONLY!)

## TRANSFORMER MANUFACTURERS—

*We specialize in stamping*

## SILICON STEEL LAMINATIONS.

Why worry with this expensive operation when we do it cheaper? Prompt deliveries guaranteed.

May our  
representative call?

FUNK & SHORE  
50 Church St., New York City  
Tel. Cortlandt 1921

# QUALITY RADIO PARTS QUANTITY PRODUCTION

for SET  
MANUFACTURERS



Type B—A.C. Tube Transformer



Type S—A.C. Audio Tube Transformer



Type CSB Unshielded Transformer



Type N—Voltmeter

## A. C. Tube Receivers

A.C. Tube Receivers are using Dongan Type B Step Down Transformers. This was Cockaday's choice and first on the market. Dongan Type B is absolutely essential to successful A.C. Tube performance.

For the special requirements of A.C. Tube circuits Dongan offers Type S Audio Transformers. Special windings and design for smooth reception.

## Audio Transformers 35 Types

Used by many of the big set makers—Type CSB is one of 35 types of Audio Transformers—a complete line for all audio requirements.

## Voltmeters

Voltmeters are the vogue this year—the better sets are equipping with Dongan Type N or one of the other 4 Dongan Voltmeters.

We can furnish transformers and chokes in large quantities for B Battery Eliminators.

## Guarantee Deliveries on Contracts Signed before August First.

We are accepting contracts on guarantee basis. Our production will be large but our list of customers will soon be closed. Get samples and prices instantly. Our engineering department is at your service.

**DONGAN ELECTRIC MANUFACTURING CO.**  
2995 Franklin Street, Detroit, Mich.

# DONGAN

*Transformers of Merit for 15 Years*

# What ACME offers the amateur

DEEPLY appreciating the friendly relations which we have long enjoyed with the amateur, Acme continues to offer high grade transmitting apparatus, even though it would seem that many other lines are no longer made.

## Inspection— Guarantee

ACME Apparatus is constructed by workmen skilled in the art and is put through a rigid inspection before it leaves the factory. It is guaranteed against defective material and workmanship, and we always try to make adjustments, if any are necessary,

to the satisfaction of the customer.

## Acme Engineering Service

IN ORDER to insure the amateur getting results, we maintain an Engineering Service Department to answer whatever questions may be asked. If you think you are not getting proper results with Acme Apparatus, write to Acme Engineering Service, Cambridge, Mass.

## Where to get Acme Apparatus

IF YOU have any difficulty in getting Acme Transmitting Apparatus, write either to the Acme Apparatus Company, New York office, 1270 Broadway, or to the factory, Dept. H6, Cambridge, Mass., and you will be taken care of promptly.

Use coupon below to obtain Bulletin "T", the Acme Catalog of Transmitting Apparatus.

### TRANSMITTING APPARATUS

C. W. Power Transformers.  
Filament Heating Transformers.  
Plate Transformers.  
Choke Coils.  
Modulation Transformers.  
2 m. l. condensers.  
.0001 Short Wave Condensers.  
Power Rheostat.

### ACME APPARATUS COMPANY

Transformer and Radio Engineers and Manufacturers  
Dept. H6, Cambridge, Mass.

# ACME

for  
*transmission*

ACME APPARATUS COMPANY,  
Dept. H6, Cambridge, Mass.

Gentlemen: Please send me a copy of Bulletin "T".

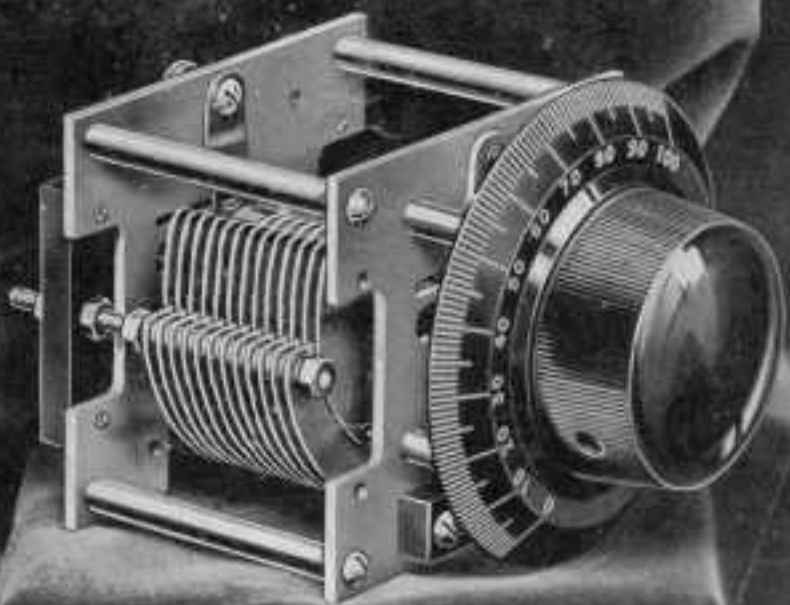
Name .....

Street .....

City ..... State .....

# NATIONAL

**VELVET CONDENSERS  
VERNIER AND DIALS**



Made by the NATIONAL COMPANY, INC.

*Exclusive Manufacturers of the genuine and justly famous*

**NATIONAL  
Browning-Drake TRANSFORMER**

VERNIER UNIT

Write for Bulletin 108 R. E.

NATIONAL COMPANY, INC., 110 Brookline St., Cambridge, Mass.

