



Weekly Review of Radio News-Thought and Opinion

Estimates as to what radio entertainment costs to stage have been made from time to time, but here we believe are the first definite figures.

The eleven most expensive programs on the air, according to the National Broadcasting Company, that is to say the average weekly expenditure for talent, exclusive of station and wire charges, are the following:

Will Rogers and Orchestra.....	\$6,000
Coca Cola Program.....	4,000
Fleishman Sunshine (Rudy Vallee)	
Hour	4,000
True Story Hour, Macfadden Pub- lication, etc.	3,300
General Electric Hour (Damrosch)	2,800
Sieberling Singers	2,700
Chase & Sanborn Program.....	2,500
Eveready Hour	2,500
Majestic Hour	2,500
Empire Builders	2,000
Armour Program	1,320

It will be noted that "Amos 'n' Andy" generally credited with received \$100,000 a year and being the highest paid radio stars, are not included in the above group.

The claim is made that the composer of the Maine Stein Song, which radio has put over with such a bang, is now in Washington—E. A. Fenstad—a member of a theatre orchestra there. According to the story, Fenstad wrote it as a march in 1901, and it was rewritten in 1910 by Prof. A. W. Sprague, of the University of Maine as a song.

Hardly a copy of it had been sold for 20 years and the purchase rights were offered to Maine University but found no takers because the price was too high. Subsequently the National Broadcasting Company acquired the rights and selected it for the purpose of testing radio as a song plugger.

Rudy Vallee, a native of Maine, took it up, as did all broadcasting stations, with the sale now soaring around 350,000 and promising to earn a small fortune for the NBC.

A scheme for the simultaneous broadcasting of radio and television programs from the same studio was unfolded last week at a hearing of the application of the Short Wave and Television Laboratory, Inc., of Boston, before the Federal Radio Commission.

The plan is to erect a broadcasting station that will furnish entertainment for the radio receiver owner or the television set proprietor either. The applicant already operates an experimental television station, and this would be combined with the radio station.

Explaining that the experimental broadcasts by the television unit are being carried on successfully, representatives of the Boston laboratory said that television reception without the accompaniment of music or voice is "purely a novelty."

The application, which was taken under advisement, was for half-time assignment on the 1,370 kilocycle channel with 100 watts at night and 250 watts during the day.

Fifty-four cars of the Canadian National Railways are now equipped with radio reception and 24 cars for trans-continental service now being built will be equipped with electric radio-phonograph sets, according to advices from Commercial Attache Lynn W. Meekius, at Ottawa, to the Department of Commerce.

Over 210,000 passengers listened to radio broadcasts received on the trains of the Canadian National Railways during 1929. The latest development is known as "train-lined radio," in which two cars receiving programs from a single set are linked together.

For the first time since he became a Radio Commissioner, Gen. Charles McK. Saltzman, Chairman of the Federal Commission, will address the radio industry at the Sixth Annual Convention and Trade Show of the Radio Manufacturers' Association the week of June 2nd in Atlantic City.

Announcing for the R. M. A. Trade Show

THE NEW

'Dynamic' Music Box

At a New Price

\$ **49**⁵⁰

Less Tubes



"The Clarion"

Sell Them the Tubes You Stock

A new 6-tube chassis—That will play anywhere, any time—A distance getter—A sturdily built job, that will play from all outlying points—Equipped with Magnavox Dynamic Speaker.



*Exceptional Tone—Exceptional Distance—
Exceptional Volume—Exceptional Price*



Wire for a sample of this New Sensational Radio—New Larger Discounts—Franchises Available—100% Replacement Service—Every Set Guaranteed.



ZANEY GILL CORPORATION

PLasant 3147

5914-20 S. Western Ave.

Los Angeles



STUDIO NEWS

No, not from JOAK, Tokyo, Japan but from the studios of KGFJ, Los Angeles came our front cover picture this week. And we now have a Japanese Radio-tising service which sponsors an hour of authentic Japanese music from 12 to 1 p. m. Members of this group are well known in Japanese musical circles, and although we are not an authority on this type of music, Mr. Kay Kawatchi, who is in charge of the program, assures us that this is a very excellent musical treat and especially popular with the older natives of Japan, now California residents. You will be greatly entertained and we suggest that you tune in any noon except Sunday.

President Hoover will pay tribute to America's war dead when he speaks from the rostrum of the National Cemetery at Gettysburg, Pa., on Memorial Day. Lincoln's Gettysburg address will be read at the opening of the program and an invocation will follow. Selections by the 104th Cavalry Band will precede Governor John S. Fisher's introduction of the President. Both the National Broadcasting Company and the Columbia Broadcasting System will bring the program to the west coast. In Los Angeles, KHJ and KFI will release this feature which is scheduled for 10:45 a. m. and KGO, KHQ, KOMO, KGW, KPO, KVI and KFRC are included in the hook-up.

A special dramatic continuity "The Writing of Yankee Doodle," written and directed by Harry Geise, will be offered on Friday, May 30, at 8:30 p. m., over KMTR, in commemoration of Memorial Day. Several characters of the war and fitting musical background are included in the program.

California Melodies, the first unsponsored regular weekly program to go over the entire Columbia Broadcasting System from KHJ, makes its maiden bow Wednesday night, May 28, 7:15 to 8 o'clock. This is probably the first time that a Far West station has been given an absolutely free hand in the

building of a nation-wide program. Each program will feature songs from Hollywood which have never been heard before. Also comedy recruited from the KHJ regulars or from the studios.

The Slumberbusters program over KVI is proving very popular both with western listeners and DX fans. The time is 12:00 to 1:00 a. m. nightly except Wednesday and Saturday and George Yount is the featured artist playing the Fox Rialto Theatre organ.

Frederick Bitte, whose baritone voice is familiar to Southland radio audiences, is now with KPO, San Francisco, and may be heard on Tuesday night from 8 to 8:30 on Ghirardelli's Scrap Book program.

Mr. Naylor Rogers announces the appointment of Charles H. Gabriel, Jr., as publicity director of KNX. Mr. Gabriel was formerly with the National Broadcasting Company, San Francisco in the capacity of program director and previous to that with KLX, Oakland. Radio fans will remember Mr. Gabriel's Sunday afternoon concerts over the NBC and will anticipate with pleasure his return to the air over KNX.

Don't miss the Violet Ray Merry Makers on Thursday, May 29. They are planning a program of great magnitude for a special occasion and it will be well worth while to give up going out on that date, at least from 8 until 9 p. m. The program originates at KHJ with Lindsay MacHarrie as master of ceremonies, and is released by KFRC, KMJ, KVI, and KOIN.

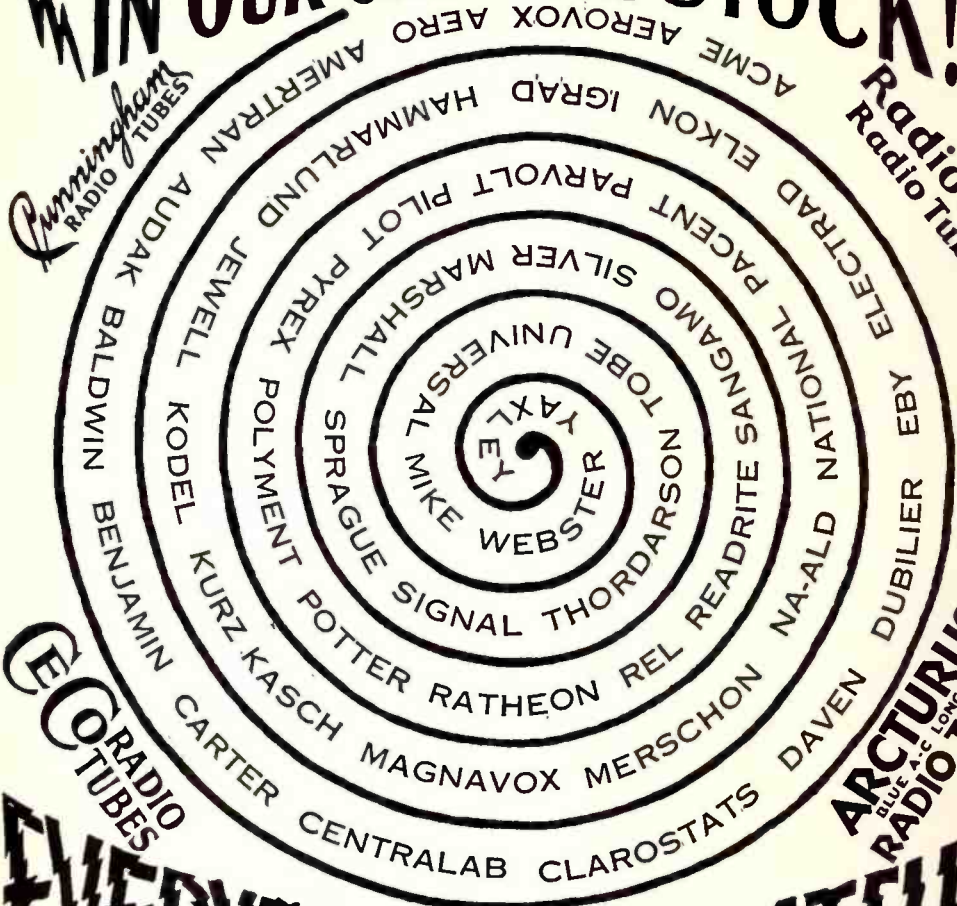
The Classical Concert Hour which is released from KFRC to members of the Don Lee Broadcasting Company every Sunday afternoon at 3:00 p. m. brings Frank Moss, a pianist of rare ability, Margaret O'Dea, contralto, and Herman Reinberg, 'cellist. This is one of the exceptionally fine programs which western listeners may enjoy regularly.

EVERY LEADING RADIO MANUFACTURER REPRESENTED

IN OUR COMPLETE STOCK!

Cunningham
RADIO TUBES

Radiotron
Radio Tubes



EVERYTHING *for the* **AMATEUR**


INSIDE FREE TO OUR PARKING PATRONS

DEALERS BUSINESS SOLICITED

RADIO MANUFACTURERS SUPPLY CO.

1000 So. Broadway

CORNER 10TH ST. "THE FAMOUS RADIO CORNER" LOS ANGELES



Around the Dial

"Around the Dial"

I have added the following stations to my log during the past three weeks: WDAE, Tampa, Florida, 1220 Kc.; KFXM, San Bernardino, 1210 Kc.; KGDM, Stockton, Calif., 1100 Kc.; KJBS, San Francisco, 1070 Kc.; KWJJ, Portland, Ore., 1060 Kc.

I notice in the "Q & A Column" some of our radio friends wish a silent night each week. Now wouldn't that be taking an unfair advantage; sort of picking on a cripple, as it were? It would take a great deal of the kick out of DXing for me, both in my own work and in looking over what the others are doing. With the locals on every night, when some enthusiastic fan says he played a distant station in the next channel to one of our powerful locals, and using a stock model of one of the popular TRF sets, we say "Oh Yeah, I wonder where he took his set to do that." But, if all our locals took a night off each week, you see there would be no element of chance, "he just played it on the silent night."

I can appreciate Mr. Simpson's viewpoint, living as he does so close to KFI and several other high powered locals, but surely there cannot be so much difference in a distance of some five miles or less. I have never operated a set in Los Angeles so cannot speak from experience, but I have seen many logs printed in Radio Doings the past winter that were made by parties living within five miles of the metropolitan district of Los Angeles and they have played WSM, WEA, WBBM, WBAL, WTIC, CFCT, KOIN, WRVA, KOIL, KMJ, KPQ, KRLD, and others all in adjoining channels to our most powerful locals. Boy, page Bill MacDonald. If I could even play half that many hot ones, "I'd never ask for more."

I was calling on a friend of mine one evening last week and we were discussing the idea of a silent night as proposed by some of our brother fans and he said "you know, I used to feel that way about it myself, but since I bought this radio I have now, I wouldn't want a silent night as it would take all the kick out of it for me." "Them's my

sentiments exactly" says I, and I dare say it hits the same spot with a lot of others. Let's hear from some other readers on the subject of this silent night proposal.

R. E. DOMAN,
505 N. Lucia Ave., Redondo Beach, Cal.

"Around the Dial":

I picked up WFAA tonight at 10:15 p. m., on 50,000 watts, broadcasting an insurance program. Their announcer stated this was their first night on their new power, and I must say they came in like a local.

How many Southern California DX fans have listened to the KJBS, of San Francisco, a little 100-watt station? They are on the air every morning, from 12:01 a. m. on. DX season is not quite over yet. WLW, WTAM, KMOX and WENR still came in good Saturday night, from 8:30 p. m., to 10:45 p. m. I listened to reception from ten states, with all the locals on, and while not as loud or clear, as in January, was very good for May reception.

P. E. DONNELLY,
901 Third Avenue,
Los Angeles, Calif.

"Around the Dial":

I have just been wondering about the rulings of the Radio Commission. It seems to me the best thing for radio listeners would be to allow everyone, who wanted to do so, to build a broadcasting station; allow every one all the power each wants; allow everyone any wave length.

Equally divide the twenty-four hours between all the stations on any wave length wanted, and then:

Not allow any two stations any place in the United States to broadcast at the same time that are on the same wave length.

There wouldn't be so much time for such trash as is now being broadcast; and there would be a greater desire to be the best station.

(MISS) A. E. TYLER,
48 N. El Molino Avenue,
Pasadena, Calif.

(Continued on Page 47)

THE ANGELUS

A Sign of Radio Quality and Performance



HEAD AND SHOULDERS ABOVE ALL COMPETITION

*Eye Value, Performance,
Quality, Price*

CHASSIS—Rigid steel, cadmium plated, dye punched.

COILS and TUBES scientifically shielded.

VOLTAGE CONTROL—changeable fuse control from 110-125. Insures set against burn-out and fire.

ELECTROLYTIC CONDENSERS—Self healing, eliminates replacement.

WIRING—All accessible from under side of chassis and scientifically shielded.

A joy for the service department.

The ANGELUS CHASSIS is engineered to three screen grid tubes, with one 227, one 245, one 280. Showing three times the gain over two 245 tubes in push-pull. With a specially wound and balanced ELECTRO-DYNAMIC SPEAKER. You get tone and all the volume you can use.

ENGINEERED to give daylight performance in the so-called tough spots in California and Arizona—you get a real DX set.

ANGELUS Radios have set an enviable record of achievement in the low price, quality field, with all models.

Their one idea is to keep on building the OUTSTANDING RADIOS in quality and performance for the lowest price consistent with a "STAY SOLD" merchandising policy.

WE OPERATE THROUGH DISTRIBUTORS ONLY. Some sections of the U. S. are still open. A letter will bring our real jobbing proposition to you.

*Licensed Under
R.C.A., Hazeltine, and
La Tour Patents*

\$69⁵⁰

Complete

Manufactured by

Davison-Haynes Mfg., Co.

1012 W. Washington Blvd.

Westmore 3808

LOS ANGELES

California Distributors

California Representatives

Listenwalter & Gough

Barrett & Walter Co.

TRinity 9711

701 Allied Crafts Bldg. Los Angeles

819 E. First St. Los Angeles

Douglas 6700

Garfield 3060

871 Folsom St. San Francisco

325 Fifth St.

San Francisco



Questions & Answers

A Weekly Department Conducted by K.G. Ormiston, I.R.E.

QUESTION—There seems to be some argument relative to these new automobile radio sets . . . as to their relative advantages and disadvantages. I understand they have even been legislated against in some sections of the country. What is your opinion of their worth? Are the disadvantages real or imaginary, and has the ignition interference been successfully overcome?

—R. E. J., Los Angeles.

ANSWER—The only disadvantage which has been suggested is that the driver's attention will be distracted by the radio and a car so equipped likely to become a traffic menace. Personally, we think that the driver of a radio-equipped car will have no desire to operate the set under conditions where traffic is heavy, but will find that the real enjoyment of the set will be during long trips outside the congested city area. However, we do not think that the operation of a radio in the car under any conditions is a traffic menace, since it is no more distracting than carrying on a conversation with a passenger, or simply overhearing conversation between passengers. We are inclined to the belief that there will be no legislation against operating radio sets in automobiles, and that such legislation as has been enacted in ultra-conservative sections (Boston, for instance) will shortly be removed.

Residents of Southern California and other sections enjoying a climate so favorable for year-round motoring, spend a great deal of time in their automobiles, particularly during the summer months, and we believe that the pleasure of these many hours can be enhanced by the addition of radio reception. For example, how many people will be torn between the two desires of hearing Amos and Andy, and going out for a drive to the beach these coming summer evenings? The auto-radio enables you to do both simultaneously. It permits you to enjoy the benefits of motoring, while not missing the good things radio has to offer. The disadvantages, we believe, are imaginary.

The electrical interference caused by

the ignition system has been satisfactorily eliminated. The means necessary to do this will be greatly simplified in the future when car manufacturers with vision will totally shield the ignition system of their motors. The leading manufacturers of aviation motors are successfully doing this now. Auto-radio sets are built to withstand the vibration of the car, have high-grade tone quality, and in some cases a surprising distance range.

QUESTION—Why is it that signals from the far distant stations do not get here during the summer months as they do during the winter? They gradually disappear as the warm weather approaches.

—E. H., Pasadena.

ANSWER—You have the wrong idea. Signals from every station in the world get here all the time, day and night, summer and winter. The strength of the signals vary, however, being more greatly attenuated during the day than at night, and somewhat weaker during the summer than during the winter months. The poor reception of DX during the summer is not so largely due to decreased signal strength, however, as it is due to an increased noise level. The signals are somewhat weaker, due to the greater absorption caused by trees being in leaf, etc., but the real detriment is that the signals which are well received in the winter become submerged by the noise level in the summer.

CORRECTION

Somebody made a mistake in the Sheldon Radio Company's advertisement in last week's issue when it was stated that Wm. MacDonald of Chula Vista, California, had logged 62 foreign stations. This should have read 62 foreign countries. We didn't know there were that many foreign countries, but since Bill says so we are quite positive that there are 62 of 'em and, furthermore, that Bill has heard broadcast stations in every one of that number.—K. G. O.



RCA Radiola

MADE BY THE MAKERS OF THE RADIOTRON
Call or telephone today one of the authorized
dealers listed below for a demonstration

DOWNTOWN

EASTMAN KODAK STORES, INC.

RADIOLA MERCHANDISE
EASTMAN SERVICE

643 S. Hill St.

TRinity 0746

DOWNTOWN

Richardson's Music Store

730 W. Seventh St.

TRinity 0194

AUTHORIZED RADIOLA DEALERS AND SERVICE STATION

Bring your radio troubles to us to solve. Prompt, efficient, reasonable—
all work guaranteed.

Our service department is under the supervision of a technician who
was trained for years in the R. C. A. Laboratories.

Telephone
CRestview 4607

J. M. ROUSH

134 Wilshire Blvd.
Beverly Hills, Calif.

KHJ's New Program Director

Stuart Buchanan, appointed KHJ program director last week, from now on will be in charge of all studio activities pertaining to the arrangement and broadcasting of programs. Glenn R. Dolberg continues in his capacity of business manager. Mr. Buchanan will be assisted by a program committee, whose duty it is to determine on studio policies and pass on all programs before they are presented to Mr. Buchanan for the final O.K. Raymond Paige, musical director, and Dick Creedon, feature director, are on the program committee at present. The actual construction of programs will be placed in the hands of Lindsay MacHarrie, Raymond Paige, Leigh Harline, Roy Ringwald, Elvia Allman, Van C. Newkirk and other members of the staff. This has been Don Lee's policy of operation in the past, and his conviction

that no one person is as effective as a group working enthusiastically and harmoniously in the operation of a broadcasting station or in the formulation of even the least important programs has been justified.

Stuart Buchanan comes directly from the Pasadena Playhouse, where he has been acting and directing the past year. Mr. Buchanan's work in "Spindrift" was pronounced the finest piece of acting of the year by Edwin Schallert in the Times. Buchanan is an athlete, a college professor and has had important positions with large Eastern broadcasting stations. He played with Knute Rockne on the Notre Dame football team. He won his letter in track, baseball, basketball, swimming and football at the colleges where the fortunes of war set a young man getting through school on his own hook. He has done much coaching and refereeing. Buchanan was professor of speech at the University of Florida and inaugurated that institution's 5,000-watt broadcasting station.

SPECIAL POWER TRANSFORMERS

Manufactured for All Circuits

8114 South Central

CRITTENDEN TRANSFORMER WORKS

LAfayette 0561



FIRST PRIZE

Sunset Aerial, Courtesy Sunset
Mfg. Co.

Okato, Tasaraki, New Zealand,
April 11, 1930.

DX Club:

Here's to the good little book, Radio Doings. I am a constant reader of the DX Club. Have seen some wonderful logs of stations, including some of our New Zealand stations.

So I thought I would sent in my list for the DX Club. I am operating a Stewart-Warner model 950 screen grid, and she is a whiz for DX reception, considering the distance I am from the States. I use a Sunset ground.

This is my log of stations, including stamps, cards, and verifications from them:

New Zealand: 1YA, 1ZB, 1ZQ, 1FP, 2YA, 2YB, 2ZF, 2ZB, 2ZK, 2ZM, 2ZD, 2ZQ, 2XS, 2ZH, 2HE, 2ZE, 3YA, 3ZC, 4YA, 4ZM, 4ZB, 4ZP, 4ZL, 1XX, 2AQ.

Australia: 2BL, 2FC, 2GB, 2KY, 2UE, 2UW, 2BE, 2HD, 3LO, 3AR, 3UZ, 3BD, 3EF, 3BY, 3EX, 4QG, 5DN, 5CL, 5KA, 6WF, 7ZL, 7UZ.

U. S. A.: KFQU, CMC, WLBG, KFPL, WIAS, WFBR, KGB, KYW, WJR, WBAP, WCCO, WHAS, KOB, KFOX, KGER, KDKA, KGO, KSL, KOMO, 9XF, KPFR, KFVB, KFWM, KFI, KNX, W8XAL, KYA, XEN, KPO, KHQ, KTAB, KEX, KHJ, KDYL, KOL, WENR, CNRV, KGW, WGN, KTM, KFRC, KMPC, KOA, KSTP, KFQB, WMPC, KUOM, KWKH, WTAM, KECA, WEVD, WMBI, CKAC, WJAY, WLBI, WRVA, WTAD, WHK, WOOD.

Japan: JOAK, JOBK, JOCK, JOFK, JOHK, JOIK, JOGK.

India: 7BY, 7CA.

Philippine Islands: KZRM.

No doubt this log will be of interest to DX fans. Here's for a bigger and better Radio Doings.

SPENCE R. ELLIS.

SECOND PRIZE

Sunset Ground, Courtesy Sunset
Mfg. Co.

DX Club:

Having logged a few more stations recently, I am sending in my list of stations for the second time.

I am using a six-tube Philco, bought last December, a home-made screen aerial, a pipe driven eight feet in the earth for a ground, and last, but not least, "The Little Red Book" and Radio Doings' Call Book.

We are not in a very good location, being near a power house, high power lines, and two large gas tanks. Nevertheless, here is my log:

Pacific Coast Stations: KDB, KEX, KFBK, KFQU, KFRC, KFSO, KFWI, KFWM, KGA, KGB, KGGC, KGO, KGW, KHQ, KJR, KLX, KOAC, KOIN, KOMO, KPO, KQW, KRE, KREG, KTAB, KTT, KVI, KXA, KXL, and 18 locals.

DX stations: KDKA, KDYL, KFAB, KFAD, KFDM, KFEQ, KFKB, KFNF, KFRU, KGBZ, KGIQ, KGIR, KGKY, KLO, KMMJ, KMOX, KOA, KOB, KSAC, KSL, KTAR, KWKH, WAAW, WBAP, WBBM, WCCO, WCHI, WCKY, WDAF, WENR, WFAA, WGN, WHAS, WIBO, WIBW, WJR, WKRC, WKY, WLAC, WLS, WLW, WMAQ, WMC, WNAX, WOR, WOS, WOW, WREC, WSB, WSM, CFCT, CKAC, CKMO, CKWX, XEB, XEN, CMK, JOBK, JOCK, JOHK, 2YA; making a total of 109 stations in the whole log.

I have verifications from all the distant points and never log a station until I hear the call letters.

Maybe this log will win me a prize, quien sabe?

STUART WALMSLEY,

1641 West 60th Street,

Los Angeles, Calif.



Miss Becky Evans, attractive bathing beauty, helped select the thousands of carnations that were taken to Chicago on the two special trains that carried 250 Majestic radio dealers eastward last Friday. The blooms will be presented to the feminine employees of the Grigsby-Grunow Company, manufacturers of Majestic radio, whose factories the dealers will visit.

MAJESTIC

The Mighty Monarch of the Air

Go today to one of the authorized Majestic Dealers listed below for a demonstration of the new Majestic Radio Receivers

DOWNTOWN
Majestic Radios
Sold on Terms
AMERICAN RADIO CO.
 817 So. Main St.
Call for Demonstration
 TU. 6028 VA. 9732

Plenty of Room to Park
Open Daily and Sunday to 9 P. M.
Universal Music Co.
Terms to Suit Every Purse
 1632 So. Maple WE. 3859

SOUTH VERMONT
Liberal Trade-In Allowance
Peoples Outfitting Co.
Trade Away from Downtown Congestion
 3990 S. Vermont Ave.
 REpublic 5101-2-3

All Majestic Radios Are the Same
BUT OUR SERVICE IS DIFFERENT
Angelus Radio Shop
"You Must Be Satisfied"
 4208 Santa Monica Blvd. OL. 7745

SOUTH WESTERN AVE.
Robinson Radio Shop
Certified Service—Open Evenings
 4528 S. Western. VERmont 6683

CULVER CITY
Convenient Location—Terms Trade-in Allowance—Service
Blunt Radio Electric Shop
 9620 Culver Blvd. Phone 2286

De Hoog Bros.
RADIO
 OUR BUSINESS — NOT A SIDE LINE —
6120 SOUTH BROADWAY
 Phone THornwall 0224

The essential features of these programs are identical with those sent us by the stations



HOWARD MILHOLLAND

**KFI KECA KPO
KGO KGW KOMO
KHQ KOA KSL**

Howard Milholland
Program Director

Jennings Pierce
Chief Announcer

National Broadcasting Co., Inc.

PACIFIC COAST NETWORK

DAILY EXCEPT SUNDAY

- 7:30 a. m.—The Chanticleers.
7:45 a. m.—Aunt Jemima's Boy.
8:00 a. m.—Financial Service. KGO.
8:00 a. m.—Tap Dancing Lessons.
8:30 a. m.—Cross Cuts of the Day. KGO.
9:00 a. m.—Meet the Folks. KGO.
10:30 a. m.—Woman's Magazine of the Air (except Thursday and Friday).
11:30 a. m.—NBC, Philharmonic Organ (except Thursday). KGO.
11:45 a. m.—The Hour of the Canny Cook.
7:30 p. m.—Amos 'n' Andy.
11:00 p. m.—Laughner-Harris Hotel St. Francis Dance Orchestra (except Thursday and Saturday). KGO.

SUNDAY, MAY 25

- 9:00 a. m.—Bible Stories.
10:00 a. m.—Arion Trio.
11:00 a. m.—National Youth Conference—Dr. Daniel A. Poling; a male octet, and an orchestra.
12:00 noon—Dr. S. Parkes Cadman, non-denominational service.
1:00 p. m.—Sunday Concert, instrumental and vocal numbers.
2:00 p. m.—Catholic Hour, sacred music sung by Paulist Choristers.
3:00 p. m.—Piano Capers, two pianos.
3:30 p. m.—Voice of Pan—Anthony Linder, flutist.
4:00 p. m.—Enna Jettick Melodies, mixed quartet.
4:00 p. m.—Musical Musketees. KGO.
4:15 p. m.—Collier's Radio Hour, dramatized story and speaker.
5:15 p. m.—Atwater Kent Hour, light music.
5:15 p. m.—Candle-light Silhouettes. (KGO only).
5:45 p. m.—The Olympians, male quartet (KGO only).
5:45 p. m.—In the Time of Roses; women's octet, tenor soloist and orchestra.
6:15 p. m.—Studebaker Champions; orchestra playing popular tunes.
6:45 p. m.—Sunday at Seth Parker's.
7:15 p. m.—Hotel St. Francis Salon Orchestra.
8:00 p. m.—World Wanderings take listeners to New Zealand.
8:30 p. m.—Western Artists' Series, classical music.
9:00 p. m.—Borden program; soloist, male quartet and orchestra.
9:30 p. m.—The Reader's Guide.
10:00 p. m.—Concert Jewels; Max Dolin's Orchestra.
11:00 p. m.—Musical Musketees.

MONDAY, MAY 26

- 9:30 a. m.—Radio Rambings.
10:15 a. m.—Josephine B. Gihson, Food Talk.
11:30 a. m.—NBC, Philharmonic Organ Recital.
12:00 noon—Rembrandt Trio.
1:00 p. m.—Musical Musketees.
2:00 p. m.—Mormon Tabernacle Choir and Organ. Program opens with Beethoven's Funeral March.
2:30 p. m.—Pacific Coast School of the Air.
3:00 p. m.—Matinee Time.
3:15 p. m.—The World Today—James G. McDonald.
3:30 p. m.—Roxy and His Gang.
4:30 p. m.—Musical Echoes.
4:45 p. m.—News Service.
5:00 p. m.—Maytag Orchestra.
5:30 p. m.—General Motors Family Party presents Alfeo Tedesco, tenor.
6:00 p. m.—Stromberg-Carlson program, four classical compositions by 50-piece orchestra.
6:30 p. m.—Empire Builders with the "Old Timer."
7:00 p. m.—Hotel Governor Clinton Orchestra.
8:00 p. m.—Rudy Selger's Shell Symphonists, classical.
8:00 p. m.—Musical Musketees. (KGO, KECA only.)

- 9:00 p. m.—Voice of Firestone; Easton Keut, tenor; Max Dolin, violinist.
9:30 p. m.—Harp Harmony.
10:00 p. m.—House of Myths.
10:30 p. m.—Hot Spot of Radio—Henry Starr.

TUESDAY, MAY 27

- 9:30 a. m.—William Don.
9:45 a. m.—The Entertainers. KGO.
10:15 a. m.—Color Harmony program.
11:30 a. m.—NBC, Philharmonic Organ Recital.
12:00 noon—Pacific Vagabonds, under direction of Walter Beban.
1:00 p. m.—The Novelty Five.
1:30 p. m.—Pacific Coast School of the Air presents Tully C. Knoles, Pres. of College of the Pacific.
2:00 p. m.—Black and Gold Room Orchestra.
2:30 p. m.—Bernie Cummins and his Hotel New Yorker Orchestra.
3:00 p. m.—Voters' Service.
3:30 p. m.—Lew White Organ Recital.
4:00 p. m.—Hotel St. Francis Salon Orchestra.
4:45 p. m.—News Service.
5:00 p. m.—Eveready program.
5:30 p. m.—Happy Wonder Bakers.
6:00 p. m.—Westinghouse Salute.
6:30 p. m.—Radio-Keith-Orpheum Hour, with Graham McNamee.
8:00 p. m.—Parks Sisters.
8:15 p. m.—John and Ned.
8:30 p. m.—Pacific National Singers feature western composers.
9:00 p. m.—The Magic Crystal, with H. De Sousa, widely-traveled magician.
9:30 p. m.—Musical Musketees.
10:00 p. m.—Gems of the Drama—Ibsen's "Master Builders."

WEDNESDAY, MAY 28

- 9:30 a. m.—Betty Crocker Gold Medal Home Service Talks.
9:45 a. m.—Betty Kelly.
10:00 a. m.—The Recitalists.
10:15 a. m.—Mary Hale Martin's Household Period.
11:30 a. m.—NBC, Philharmonic Organ Recital.
12:00 noon—Rembrandt Trio.
1:00 p. m.—Series of Talks.
1:15 p. m.—Breen and De Rose.
1:30 p. m.—Tea Timers.
2:00 p. m.—Bernie Cummins and his Hotel New Yorker Orchestra.
2:30 p. m.—John B. Kennedy talk.
2:35 p. m.—Bernie Cummins and his Hotel New Yorker Orchestra.
2:45 p. m.—Musical Musketees.
3:30 p. m.—Back of the News in Washington.
3:45 p. m.—Vincent Lopez and his Hotel St. Regis Orchestra.
4:00 p. m.—Hotel St. Francis Salon Orchestra.
4:45 p. m.—News Service.
5:00 p. m.—Halsey-Stuart program, with the Old Con-seller.
5:30 p. m.—Palmolive Hour—Olive Palmer opens with "Lo, Hear the Gentle Lark."
6:30 p. m.—Coca Cola program, with Orchestra and Grantland Rice Sport Interview.
7:00 p. m.—Phil Spitalny's Music from Hotel Pennsylvania.
8:00 p. m.—Let's Get Associated.
8:00 p. m.—Parisian Quintet offer selections from Bach, Mozart and Schubert. (KGO, KECA.)
8:30 p. m.—Hill Billy Boys.
9:00 p. m.—NBC, Concert Favorites.
9:15 p. m.—Max Dolin and his Violin.
9:30 p. m.—Miniature Biographies—Mary, Queen of Scots.
10:00 p. m.—Cotton Blossom Minstrels.

THURSDAY, MAY 29

- 9:30 a. m.—The Entertainers.
10:00 a. m.—Woman's Magazine of the Air.
11:00 a. m.—Standard School Broadcasts discuss descriptive music.
12:00 noon—The Novelty Five.
1:00 p. m.—Series of Talks.
1:15 p. m.—Breen and De Rose.
1:30 p. m.—John and Ned.
1:45 p. m.—Tea Timers.

(Continued on Page 46)

The essential features of these programs are identical with those sent us by the stations



ROBERT HURD

KFI Los Angeles, Calif.—640 Kc.

5000 WATTS—468.5 METERS

Radio Central Super-Station of Earle C. Anthony, Inc.
1000 S. Hoba. Phone WE. 0331. After 5 P. M., WE. 0337

DAILY EXCEPT SUNDAY

- 6:30 a. m.—Opening Market Quotations by E. A. Pierce & Co.
- 7:30 a. m.—Leslie Brigham, bass (except Saturday).
- 8:00 a. m.—Shell Happy Time, from KPO.
- 9:45 a. m.—Haas-Baruch program (except Tuesday and Saturday).
- 12:00 noon.—U. C. Department of Agriculture.
- 12:15 p. m.—Federal and State Market Reports.
- 4:15 p. m.—KFI News Bureau (except Saturday).
- 4:30 p. m.—Big Brother (except Saturday).
- 5:00 p. m.—Baron Keyes, the Story Man, Union Oil (except Saturday).
- 5:45 p. m.—Stock Market Reports by E. A. Pierce & Co. (except Wednesday).
- 10:30-12:00 midnight—Blax Fisher Cafe Orchestra.

- 7:00 p. m.—Arthur Lang and concert ensemble.
- 7:30 p. m.—Remote control from Ray West Cafe.
- 8:00 p. m.—Adohr Opera of the Air; Chimes of Nermandy.

WEDNESDAY, MAY 28

- 6:45 a. m.—Chester Foster Rand, tenor, with Karl Brandenburg, ballads.
- 7:30 a. m.—Leslie Brigham, bass.
- 9:00 a. m.—Bess Kilmer's Helpful Hints to Housewives.
- 9:30 a. m.—NBC, Betty Crocker, Gold Medal Home Service Talk.
- 9:45 a. m.—The Iris Girl.
- 10:00 a. m.—Kaal Hawaiian Trio.
- 10:15 a. m.—NBC, Mary Hale Martin Talk.
- 10:30 a. m.—NBC, Woman's Magazine of the Air.
- 11:30 a. m.—Grace Mead, ballads.
- 11:45 a. m.—French lesson, Annette Doherty.
- 2:00 p. m.—Remote control from Ray West Cafe.
- 2:30 p. m.—Sylvia's Happy Hour.
- 3:30 p. m.—Noreen Gammill, monologues.
- 3:45 p. m.—Eddie Armstrong, ballads.
- 4:00 p. m.—Eddie Geldmacher, jazz pianist.
- 5:30 p. m.—Della Curley, popular soprano.
- 6:00 p. m.—Leonard Vau Berg, tenor.
- 6:30 p. m.—Sierra Male Quintet.
- 7:00 p. m.—Bob and Monte, "Buggyride program."
- 7:30 p. m.—Remote control from Ray West Cafe.
- 8:00 p. m.—NBC, Let's Get Associated.
- 8:30 p. m.—Clark Plan, Ltd.
- 9:00 p. m.—Three Skippers.
- 9:30 p. m.—Eva Olivotti, James Burroughs and Orch.

THURSDAY, MAY 29

- 6:45 a. m.—Gertrude Gussell, blues, with Paul McNally
- 7:30 a. m.—Leslie Brigham, bass.
- 9:00 a. m.—Herb Scharlin, song and patter.
- 9:30 a. m.—English lesson, Ayria Drew.
- 9:45 a. m.—The Iris Girl.
- 10:00 a. m.—NBC, Woman's Magazine of the Air.
- 11:00 a. m.—NBC, Standard School Broadcast.
- 11:45 a. m.—Grace Mead, ballads.
- 2:15 p. m.—Winnie Fields Moore, Travelogue.
- 2:30 p. m.—Los Angeles Fire Department Orchestra.
- 3:30 p. m.—Sylvia's Happy Time.
- 5:30 p. m.—Will E. Wing, Hollywood.
- 6:00 p. m.—NBC, Radio Victor Hour.
- 7:00 p. m.—Nick Harris.
- 7:45 p. m.—NBC, Standard Symphony Hour.
- 8:45 p. m.—Arthur Lang, baritone and concert ensemble
- 9:15 p. m.—Three Co-eds; vocal harmony.
- 9:55 p. m.—Tom Terris, vagabond movie director.

FRIDAY, MAY 30

- 6:45 a. m.—Chester Foster Rand, tenor, with Karl Brandenburg, ballads.
- 7:30 a. m.—Leslie Brigham, bass.
- 9:00 a. m.—Bess Kilmer's Helpful Hints to Housewives.
- 9:30 a. m.—NBC, Betty Crocker Talk.
- 9:45 a. m.—Grace Mead, ballads.
- 10:00 a. m.—NBC, DuBarry Radio Talk.
- 10:15 a. m.—NBC, Musical Echoes.
- 10:45 a. m.—NBC, Memorial Day Services at Gettysburg. President Hoover speaking.
- 2:15 p. m.—Winnie Fields Moore, Travelogue.
- 2:30 p. m.—Grace Hamilton and Jack Stern, duets.
- 3:00 p. m.—Blake Ennis, "Boy from the Heart of Maryland."

(Continued on Page 33)

Copyright 1930 by Earle C. Anthony, Inc.
See Page 20 for NBC Program

Majestic

LARCHMONT RADIO SALON

139 N. Larchmont Blvd.

HEmpstead 5590



TED HUSING

Columbia Broadcasting System

PACIFIC COAST NETWORK

845 Madison Ave., New York

William S. Paley
PresidentHenry A. Bellows
Vice-President

**KHJ, KFRC, KVI,
KFPY, KOIN,
KOL, KDYL**

1:00 p. m.—The Columbia Grenadiers.
1:15 p. m.—Footnotes.
1:45 p. m.—Aunt Zelena.
2:00 p. m.—"Bill Schudt's Going to Press."
2:30 p. m.—Yoeng's Restaurant Orchestra; Paul Specht and his Manhattan Towers Orchestra.
3:00 p. m.—Adventures of Colonel Powell.
3:15 p. m.—Ben Pollack and his Castillian Royal Orch.
4:00 p. m.—In a Russian Village.
7:00 p. m.—Anson Weeks and his Hotel Roosevelt Orch.
7:15 p. m.—California Melodies from KHJ.

THURSDAY, MAY 29

9:30 a. m.—Harold Stern and Ambassador Orchestra.
10:00 a. m.—Quiet Harmonies.
10:30 a. m.—Ann Leaf at the Organ.
11:00 a. m.—Columbia Ensemble.
11:30 a. m.—Columbia Educational Features—For Your Information.
12:00 noon—U. S. Navy Band.
1:00 p. m.—Columbia Educational Features—The Book Parade, Harry Hansen.
1:15 p. m.—Bert Lown and his Biltmore Orchestra.
2:00 p. m.—Hotel Shelton Orchestra.
2:30 p. m.—Columbia Educational Features—Civic Repository Theatre.
4:00 p. m.—"International Sidelights," Dr. Arthur Torrance.
4:15 p. m.—The Political Situation in Washington Tonight—Frederick William Wile.
4:30 p. m.—U. S. Marine Band.
5:00 p. m.—Arabesque.
6:30 p. m.—National Radio Forum from Washington.
7:00 p. m.—Dream Boat.
7:30 p. m.—Duke Ellington's Cotton Club Band; Will Osborne and his Orchestra, and others.

FRIDAY, MAY 30

9:30 a. m.—Savoy Plaza Orchestra.
10:00 a. m.—The Aztecs.
10:45 a. m.—Memorial Day Exercises from Gettysburg. Address by President Hoover.
11:00 a. m.—Columbia Ensemble.
11:30 a. m.—Today in History.
11:32 a. m.—Columbia Educational Features.
11:55 a. m.—"How Atoms Are Made."
12:00 noon—Light Opera Gems.
12:30 p. m.—Thirty Minute Men.
1:45 p. m.—Aunt Zelena.
2:00 p. m.—The Musical Foursome.
2:30 p. m.—Yoeng's Restaurant Orchestra; Paul Specht and his Manhattan Towers Orchestra; Hotel Paramount Orchestra.
3:00 p. m.—Bernhard Levitow and his Hotel Commodore Orchestra.
3:15 p. m.—Anson Weeks and his Hotel Roosevelt Orchestra.
3:45 p. m.—Ben Pollack and his Castillian Royal Orch.
4:00 p. m.—Nit Wit Tour.
4:30 p. m.—U. S. Army Band.
7:00 p. m.—Bert Lown and his Biltmore Orchestra.
7:15 p. m.—Paul Specht and his Manhattan Towners Orchestra, and others.

SATURDAY, MAY 31

9:00 a. m.—Yoeng's Restaurant Orchestra.
9:30 a. m.—Harry Tucker and his Hotel Barclay Orch.
10:00 a. m.—Ann Leaf at the Organ.
10:30 a. m.—Dominion Male Quartet.
11:00 a. m.—Columbia Ensemble.
11:30 a. m.—Columbia Educational Features—For Your Information.
12:00 noon—The Aztecs.
12:30 p. m.—French Trio.
1:00 p. m.—Paul Specht and his Manhattan Towners.
1:45 p. m.—Columbia Educational Features—Dr. Thatcher Clark's French Lesson.
2:00 p. m.—Hotel Shelton Orchestra.
2:30 p. m.—"Ted Husing's Sportsians."
3:00 p. m.—Melo Maniacs.
4:00 p. m.—Dr. Arthur Torrance, "Exploring the Jungle for Science."
4:15 p. m.—"Romance of American Industry," from Washington.
4:30 p. m.—Dixie Echoes.
5:00 p. m.—Hank Simmons' Show Boat.
7:00 p. m.—Dance Carnival—Anson Weeks and his Hotel Roosevelt Orchestra.
7:15 p. m.—Hotel Paramount Orchestra and others.

DAILY EXCEPT SUNDAY

8:00 a. m.—Columbie Revue (except Saturday).
8:30 a. m.—Yoeng's Restaurant Orchestra.
9:30 a. m.—Midnight Melodies.
2:15 p. m.—Heywood Brown's Radio Column (ex. Sat.).

SUNDAY, MAY 25

8:30 a. m.—London Broadcast.
9:30 a. m.—The Aztecs.
10:00 a. m.—Ballad Hour.
11:00 a. m.—Ann Leaf at the Organ.
4:30 p. m.—Conclave of Nations.
12:00 noon—Cathedral Hour—Sacred Musicale service.
1:00 p. m.—Joint Recital—Toscha Seidel, violinist, and William Hain, tenor.
2:30 p. m.—The Gauchos.
3:00 p. m.—The Globe Trotter.
3:45 p. m.—The World's Business—Dr. Julius Klein.
5:30 p. m.—Jesse Crawford, Poet of the Organ.
7:00 p. m.—Back Home Hour from Buffalo.
8:00 p. m.—Coral Islanders.

MONDAY, MAY 26

9:30 a. m.—Harold Stern and Ambassador Orchestra.
10:00 a. m.—The Honoluluans.
10:30 a. m.—Ann Leaf at the Organ.
11:00 a. m.—Columbia Ensemble.
11:30 a. m.—Columbia Educational Features—Women's Forum.
12:00 noon—U. S. Navy Band.
1:00 p. m.—Tea Time Troubadours.
1:45 p. m.—Aunt Zelena.
2:00 p. m.—Harry Tucker and his Hotel Barclay Orch.
3:00 p. m.—Current Events—H. V. Kaltenborn.
3:45 p. m.—Bernhard Levitow and his Hotel Commodore Orchestra.
6:30 p. m.—Jesse Crawford—Poet of the Organ.
7:00 p. m.—Ben Pollack and his Castillian Royal Orchestra.
7:15 p. m.—Bert Lown and his Biltmore Orchestra and other well-known orchestras.

TUESDAY, MAY 27

9:30 a. m.—Savoy Plaza Orchestra.
10:00 a. m.—Ann Leaf at the Organ.
10:30 a. m.—The Aztecs.
11:00 a. m.—Columbia Ensemble.
11:30 a. m.—Columbia Educational Features—For Your Information.
12:00 noon—U. S. Army Band.
1:00 p. m.—Rhythm Kings Dance Orchestra.
1:30 p. m.—Bert Lown and his Biltmore Orchestra.
2:00 p. m.—Dinner Symphony.
2:30 p. m.—Yoeng's Restaurant Orchestra.
2:45 p. m.—National Security League Broadcast Series.
3:00 p. m.—Hotel Paramount Orchestra and Bernhard Levitow and his Hotel Commodore Orchestra.
2:30 p. m.—Bernhard Levitow and his Hotel Commodore Orchestra and Ben Pollack and his Castillian Royal Orchestra.
4:30 p. m.—Romany Patteran.
5:00 p. m.—Mardi Gras.
7:00 p. m.—Ted Weemn and his Orchestra.
7:30 p. m.—Charlie Straight and his Orchestra.
8:00 p. m.—Anson Weeks and his Hotel Roosevelt Orchestra; Bert Lown and his Biltmore Orchestra.

WEDNESDAY, MAY 28

9:30 a. m.—Harry Tucker and his Hotel Barclay Orch.
10:00 a. m.—Syncopated Silhouettes.
10:30 a. m.—Grace Hyde, soprano, and Columbia Little Symphony.
11:00 a. m.—Columbia Ensemble.
11:30 a. m.—Columbia Educational Features—For Your Information.
12:00 noon—Musical Album—Columbia Symphony Orchestra with soloists.

The essential features of these programs are identical with those sent us by the stations



LEIGH HARLINE

KHJ

Los Angeles, Calif.—900 Kc.

1000 WATTS—333.1 METERS
Don Lee Bldg., 7th and Bixel Sts. Owned and operated by Don Lee,
Calif. Dis. for Cadillac and LaSalle. Phone VA. 7111
Glenn Dolberg, Manager Raymond Paige, Musical Director

Stuart Buchanan
Programs Director
Lindsay MacHarrie
Production Manager
C. M. C. Raymond
Commercial Director
Harold Peery
Chief Engineer
Dick Creedon
Director of Features
Ernest G. Underwood
Technical Director

TUESDAY, MAY 27

- DAILY EXCEPT SUNDAY**
- 7:00 a. m.—Records.
 - 8:40 a. m.—Coal and Coke.
 - 8:30 a. m.—N. Y. Stock Exchange Quotations.
 - 9:30 a. m.—Feminine Fancies, KFRC.
 - 12:00 noon.—L. A. Biltmore Hotel Orchestra.
 - 12:30 and 10:00 p. m.—News Items, courtesy of L. A. Times (except Monday).
 - 1:30 p. m.—Times Forum.
 - 2:00 p. m.—Happy-Go-Lucky Hour, KFRC (ex. Sat.).
 - 4:45 p. m.—World-wide News (except Monday).
 - 4:55 p. m.—Town Topics.
 - 10:05 p. m.—Earl Burnett's Biltmore Hotel Orchestra.
 - 12:00 midnight.—Organ program by Wesley Tourtellotte.

SUNDAY, MAY 25

- 8:00 a. m.—Terpezzone program.
- 9:00 a. m.—Pacific States Savings & Loan Concert.
- 11:00 a. m.—First M. E. Church of Los Angeles.
- 12:30 p. m.—Cathedral Hour, CBS.*
- 1:00 p. m.—Toscha Seidel, violinist, CBS.*
- 1:30 p. m.—Prof. Lindsay and organ.
- 2:00 p. m.—The Blenders (from KFRC).
- 2:30 p. m.—The Gauchos, CBS.*
- 3:00 p. m.—Globe Trotters, CBS.*
- 3:30 p. m.—Colonial Dames.
- 3:45 p. m.—Dr. Julius Klein, CBS.*
- 4:00 p. m.—Tea Time Three (from KFRC).
- 4:30 p. m.—Rabbi Edgar Magnin, Inspiration Talk.
- 5:00 p. m.—Majestic program, CBS.*
- 6:00 p. m.—Will Rogers, for Squibb, CBS.*
- 6:30 p. m.—Los Angeles Brewing Co.
- 7:00 p. m.—Don Lee Symphony.
- 7:30 p. m.—Back Home Hour, CBS.*
- 8:00 p. m.—Cadillac LaSalle Orch. (from KFRC).
- 9:00 p. m.—Melody Hour (from KFRC).
- 9:30 p. m.—Val Valente Orchestra (from KFRC).
- 11:00 p. m.—Organ Recital.

MONDAY, MAY 26

- 8:00 a. m.—Columbia Revue, CBS.*
- 9:15 a. m.—Richardson's Music Lovers' Shop.
- 10:30 a. m.—Leigh Harline and Ted White, songs.
- 11:00 a. m.—Schaefer Hatt Works—Recordings.
- 11:15 a. m.—Scientific Laboratories.
- 11:30 a. m.—Helen Bliss, harpist.
- 11:45 a. m.—Normalizer.
- 12:45 p. m.—U. S. Navy Band.
- 1:00 p. m.—Tea Time Troubadours, CBS.*
- 3:00 p. m.—Colonial Dames Corp.
- 3:15 p. m.—Girl Scouts of America.
- 3:30 p. m.—Matthew Murray, "Home Problems."
- 3:45 p. m.—Boy Scouts.
- 4:00 p. m.—Viennese Quintet.
- 5:00 p. m.—Ill Moulton and Fire Eaters.
- 5:30 p. m.—Bob Swan, for Blvd. Furniture Co.
- 6:00 p. m.—Don Lee Concert Orchestra.
- 6:30 p. m.—Jesse Crawford, CBS.*
- 7:00 p. m.—Inglewood Park.
- 7:30 p. m.—Don Lee Symphony.
- 8:00 p. m.—Golden State Blue Monday Jamboree.
- 10:00 p. m.—Ted Fiorita's Orchestra.
- 11:00 p. m.—Biltmore Orchestra.

- 8:00 a. m.—CBS.*
- 10:30 a. m.—Mona Content, piano.
- 10:45 a. m.—Agnes White, Home Economics.
- 11:00 a. m.—Records.
- 11:15 a. m.—Columbia Ensemble, CBS.*
- 11:30 a. m.—Ted White, ballads.
- 11:45 a. m.—Normalizer Sales Syndicate.
- 12:45 p. m.—Advertising Club Luncheon, from Biltmore.
- 3:00 p. m.—Western Air Express.
- 3:15 p. m.—Midnight Mission.
- 3:45 p. m.—U. S. C. Period.
- 4:00 p. m.—Organ Recital by W. Tourtellotte.
- 5:00 p. m.—CBS.*
- 6:00 p. m.—Graybar, CBS.*
- 6:30 p. m.—Thompson's Malted Milks, CBS.*
- 7:00 p. m.—Don Lee's Symphony.
- 7:30 p. m.—Pelton Motor Co. program.
- 8:00 p. m.—Ice Carnival (from KFRC).
- 8:30 p. m.—Ballad Crooners.
- 9:00 p. m.—Concert Orchestra.
- 9:30 p. m.—Drama.

WEDNESDAY, MAY 28

- 8:00 a. m.—CBS Revue, CBS.*
- 9:00 a. m.—Young's Orchestra, CBS.*
- 9:15 a. m.—Richardson's.
- 10:45 a. m.—Log Cabin Bread, Agnes White.
- 11:00 a. m.—Ted White, songs.
- 11:15 a. m.—Columbia Ensemble, CBS.*
- 11:30 a. m.—June Parker and Nell Larson.
- 11:45 a. m.—Normalizer Sales Syndicate.
- 12:45 p. m.—Optimist Club luncheon, from Biltmore.
- 3:00 p. m.—Fred C. McNabb Garden Talk.
- 3:30 p. m.—L. A. Library Book Review.
- 4:00 p. m.—In Russian Village, CBS.*
- 4:30 p. m.—Records.
- 5:00 p. m.—Nell Larson at Organ.
- 5:15 p. m.—Police Commissioner Thorpe.
- 5:30 p. m.—Blvd. Furniture Co. with Bob Swan.
- 6:00 p. m.—Peggy Hamilton, Romance of Fashions.
- 6:30 p. m.—Prof. Chas. Lindsay and organ.
- 7:00 p. m.—Organ Recital by W. Tourtellotte.
- 7:15 p. m.—California Melodies, CBS.*
- 8:00 p. m.—Standard Oil Co., "Days of '49."
- 8:30 p. m.—KFRC Dance Band and Soloists.
- 9:00 p. m.—Raymond Paige presentation.
- 9:30 p. m.—Musical Suggestions.

THURSDAY, MAY 29

- 8:00 a. m.—CBS.*
- 9:00 a. m.—Young's Orchestra, CBS.*
- 10:30 a. m.—Tintex (to Coast Unit).
- 10:45 a. m.—Agnes White, Home Economics.
- 11:00 a. m.—Ted White and Elvia Allman.
- 11:30 a. m.—Normalizer Sales Syndicate.
- 12:45 p. m.—Jr. Chamber of Commerce Meeting.
- 3:00 p. m.—Walter Brown Murray.
- 3:15 p. m.—U. S. C. Trojan Period.
- 3:30 p. m.—Y. M. C. A.
- 3:45 p. m.—University of the West.
- 4:00 p. m.—Western Auto Electric Corporation.
- 4:30 p. m.—CBS.*
- 5:00 p. m.—Pacific States Savings & Loan Co. organ recital.
- 5:30 p. m.—Manhattan Moods, CBS.*
- 5:45 p. m.—Coast Investor.
- 6:00 p. m.—W. Tourtellotte.
- 6:30 p. m.—Arrowhead Springs Beverage Company.
- 7:00 p. m.—Forest Lawn Memorial Park.
- 8:00 p. m.—Gen. Petroleum Violet Ray Merry Makers.
- 9:00 p. m.—Eastman Kodak, CBS.*
- 9:30 p. m.—Organ Recital, with KHJ singers.

FRIDAY, MAY 30

- 9:15 a. m.—Richardson's.
- (Continued on Page 40)



Rushing a
RADIOLA
from
WATSON RADIO CO.
A X rdge-1581... 4411 5th Broadway.



Pleasant 4092 8558 S. Broadway

**BRING
YOUR
RADIO
BACK TO
LIFE.**



*The
NEXT
BEST
to a
MAJESTIC
RADIO
is a set of*

Majestic Matched Tubes!

Any radio is better with Majestic Matched Tubes. If the reception of your present instrument is "fuzzy," weak, distorted or just ordinary, the fault undoubtedly lies in the tubes. Install a complete set of Majestic Matched Tubes and note the amazing difference. These superior tubes cost no more. Your nearest Majestic dealer has a fresh supply. Insist on Majestic Matched Tubes . . . the same tubes used in every Majestic radio.

FREE TUBE TESTING . . . *without obligation.*

It makes no difference what make set you own . . . your nearest Majestic dealer will gladly send a service man to your home and test every tube in your set. There is no charge. This is a typical Majestic Service to help you get more radio enjoyment.

UNGAR &

Distributors in Southern California and Arizona.

Majestic

PRICES WILL BE ADVANCED

June 1st

Advance news to radio buyers!

An opportunity to buy the finest of radio instruments at a price which will represent a substantial saving a few days hence.

Act promptly. Go to your nearest Majestic dealer today. Ask for a demonstration in your home. There are only a few days left. All Majestic dealers guarantee delivery at current prices on all orders received

until midnight Saturday,

May 31st.

TSO, Inc.

1361-63-65 South Figueroa Street, Los Angeles.

The essential features of these programs are identical with those sent us by the stations



PIERRE MELLONINO

KNX

Hollywood, Calif.—1050 Kc.

5000 WATTS—285.5 METERS—Los Angeles Evening Express
Evening Express
Paramount-Lasky Studio, 5555 Marathon
"The Voice of Hollywood"

Phone HEMPstead 4101

Naylor Rogers
Director-Manager

Pierre Mellonino
Program Director

Charles H. Gabriel, Jr.
Publicity Director

8:00 p. m.—One-act playlet, directed by Georgia Fifield.
8:50 p. m.—Luhoviski Violin Choir and Claire Mellonino, pianist.
9:00 p. m.—Ilio Grande Male Quartet; the Piano Twins
9:30 p. m.—Program presenting the "Radio Detective."

TUESDAY, MAY 27

9:00 a. m.—"Home Remedy Hour;" Pyrol Tenor.
9:15 a. m.—Musical program of popular recordings.
11:00 a. m.—Clinic of the Air.
11:30 a. m.—KNX Symphony with Tudor Williams.
2:30 p. m.—Fireman's Orchestra of the City of L. A.
3:35 p. m.—Clinic of the Air; Questions.
4:00 p. m.—"Hiram and Simpson" at Yapp's Crossing.
6:00 p. m.—Rev. Ethel Duncan, Questions and Answers
6:30 p. m.—Lucie Lee at the Wurlitzer Studio Organ.
7:00 p. m.—"Popular Science" talk by Dr. Mars Boum-gardt
7:30 p. m.—Hap and Sap, the Royal Vagabonds.
8:00 p. m.—Pyrol Orchestra; Peggy Matthews, popular vocalist, and Bill Hatch's Quartet.
9:00 p. m.—"The Nomads."
9:30 p. m.—Walter V. Ferner, 'cellist; Theo. Kittay, tenor, and Neil Sheridan, accompanist.

WEDNESDAY, MAY 28

9:00 a. m.—"Home Remedy Hour."
9:15 a. m.—Musical program of records.
11:00 a. m.—Program presenting the Hungarian Ensemble
11:30 a. m.—Dorothy Chase and the Charis Players.
11:45 a. m.—Beauty secrets given by Georgia Fifield.
2:30 p. m.—Talk by Major Lawrence Mott.
2:45 p. m.—Musical program of popular recordings.
3:05 p. m.—Organ program by Lucie Lee.
4:00 p. m.—"Home Builders."
6:00 p. m.—Lucie Lee at the Wurlitzer Studio Organ.
6:30 p. m.—O'Connell and White present the Hungarian Ensemble.
7:00 p. m.—Mr. and Mrs. Radio Skit.
7:30 p. m.—Sargon Medicine Company courtesy program.
8:00 p. m.—"The Airdales" and Bert Butterworth.
8:30 p. m.—AMORC College, presenting the AMORC Synphony.
0:00 p. m.—Musical program.
0:30 p. m.—Eugenie Elgloff, 'cellist; Rosalie Barker Frye, contralto; Elizabeth Proehl, accompanist.

THURSDAY, MAY 29

8:15 a. m.—Hollywood Breakfast Club by remote control
9:15 a. m.—"Home Remedy Hour" presents the Pyrol Tenor.
11:00 a. m.—The KNX Symphony and Jean Chown.
2:30 p. m.—Prof. Edgard Leon giving French lessons.
3:00 p. m.—Organ program given by Lucie Lee.
3:35 p. m.—Louise Johnson, astro-analyst, vocational dir
4:00 p. m.—"The Nutcracker," with Piano Twins.
6:00 p. m.—Fred Forrest's talk on "Human Interest."
7:00 p. m.—KNX Trio.
7:30 p. m.—"Royal Hidalgos."
8:00 p. m.—Pyrol Synphony; the Pyrol Tenor, and the Pyrol Soprano.
9:00 p. m.—"Five Minute Men and the Musical Mus-keteer."
9:15 p. m.—Ernest Charles in a program of original and unpublished songs.
9:30 p. m.—Musical program.
9:45 p. m.—"Music drama of the Knights of the Round Table."

FRIDAY, MAY 30

8:30 a. m.—Interesting information courtesy Dr. J. Dean
9:00 a. m.—"A Menu for Sunday Dinner."
10:30 a. m.—Musical program of popular recordings.
10:45 a. m.—"Home Remedy Hour."

(Continued on Page 27)

DAILY EXCEPT SUNDAY
6:45 a. m.—"Earlybirds" exercises, Dr. P. M. Seixas.
7:15 a. m.—"Pep and Ginger" exercises.
7:45 a. m.—"Home Folks" exercises Dr. P. M. Seixas.
8:00 a. m.—Inspirational talk and morning prayer.
8:15 a. m.—Musical program of popular recordings.
9:00 a. m.—Time signals from Washington, D. C.
9:30 a. m.—Radio Shopping News.
10:00 a. m.—"Be Young and Be Happy," Eddie Al-bright's Ten O'clock Family.
10:30 a. m.—Home Economics talk given by Kate Brew Vaughn, director of Household Economics Dept.
12:00 noon, 7:00 and 10:00 p. m.—Time Signals.
12:00 noon.—"The Musical Lunch Box."
12:30 p. m.—CPR's Musical program.
1:00 p. m.—Off the Air.
1:30 p. m.—Eddie Alhright's reading of late fiction.
2:00 p. m.—Program, courtesy L. A. Evening Express.
3:30 p. m.—Lost and Found and stock market (3:00 Monday; 4:00 Wednesday).
4:30 p. m.—CPR's musical program.
5:00 p. m.—E. C. Griffith's talk on "Travel."
5:15 p. m.—"Big Brother Ken's Kiddie Hour."
5:45 p. m.—Town Crier's Timely Amusement Tips.
10:00-12:00 midnight—Hotel Ambassador; Johnny Hamp and his Kentucky Serenaders. (10:45 Friday).

SUNDAY, MAY 25

10:00 a. m.—"Home Remedy Hour," Kip Corporation.
10:15 a. m.—Musical program of records.
10:30 a. m.—Chet Mittendorf, presenting a musical pro-gram for U. S. Building and Loan Association.
11:00 a. m.—First Presbyterian Church of Hollywood.
12:30 p. m.—Louise Johnson, astro-analyst, vocational dir
1:00 p. m.—International Bible Students' Association.
2:00 p. m.—City Park Board musical program.
4:00 p. m.—Roberts Golden State Band.
4:30 p. m.—First Radio Church of the Air.
5:30 p. m.—Scriptural Research Bureau, by Jos. Hallinan
6:00 p. m.—Dr. Ernest Holmes.
6:30 p. m.—Dr. Theo. Curtis Abel.
7:00 p. m.—Kip Corp., present the Pyrol Symphony; the Pyrol Tenor, and the Pyrol Soprano.
8:00 p. m.—First Presbyterian Church of Hollywood.
9:00 p. m.—The Booster Orchestra and the American Singers.

MONDAY, MAY 26

8:30 a. m.—Thirty minutes of interesting information.
9:00 a. m.—Organ program given by Lucie Lee.
11:00 a. m.—"Home Remedy Hour," Pyrol Tenor, and Marie Golden, accompanist.
11:15 a. m.—Beauty secrets given by Georgia Fifield.
11:30 a. m.—First Radio Church of the Air.
2:30 p. m.—Musical program of popular recordings.
3:05 p. m.—Organ program by Lucie Lee and Henry Jaworska, violin.
4:00 p. m.—"Home Builders."
6:00 p. m.—Calangis Family.
6:30 p. m.—The Hungarian Ensemble.
7:00 p. m.—"Under the Make Up."
7:30 p. m.—The KNX Symphony.

ATWATER KENT
IN HOLLYWOOD

Expert Radio Service



Call GR 4876

HOLLY-ANGELES
MUSIC CO.

6611-HOLLYWOOD BLVD.

The essential features of these programs are identical with those sent us by the stations



GERALD KING

KFWB

Phone HO. 0315

Gerald L. King
Manager
H. P. Sampson
Program Arranger
Leslie Hewitt
Chief Technician

Hollywood, Calif.—950 Kc.

1000 WATTS—315.6 METERS
WARNER BROS. MOTION PICTURE STUDIOS
Warner Brothers' Theater, 6425 Hollywood Boulevard

THURSDAY, MAY 29

- 10:00 a. m.—Wade Hamilton at the console of the Forum Theater organ.
- 11:30 a. m.—KFWB String Orch.; Nelson Case, soloist.
- 7:10 p. m.—"The Daffodils" with "Daffy" Duke Atterberry as master of ceremonies.
- 8:00 p. m.—KFWB Dance Orchestra; Ann Grey and Buster Dees, soloists.
- 9:00 p. m.—"Etchings in Jazz," continuity program.
- 9:30 p. m.—Southlanders and Vernon Rickard, tenor.
- 10:00 p. m.—Irving Aaronson and his Commanders.
- 11:00 p. m.—Dance music.

FRIDAY, MAY 30

- 10:00 a. m.—Prudence Penny of the Examiner.
- 11:30 a. m.—Bill Van.
- 12:00 noon—KFWB String Orch.; Nelson Case, soloist.
- 7:10 p. m.—Hobart Kennedy, banjoist.
- 7:30 p. m.—507 Orchestra.
- 7:45 p. m.—Mac and Al.
- 8:00 p. m.—Billy Van.
- 8:30 p. m.—National Life Dance Orchestra.
- 9:00 p. m.—Sports Interview by Mark Kelly.
- 9:30 p. m.—Hollywood Revelers.
- 10:00 p. m.—Irving Aaronson and his Commanders.
- 10:30 p. m.—Dance music.

SATURDAY, MAY 31

- 10:00 a. m.—Wade Hamilton at the console of the Forum Theater organ.
- 11:30 a. m.—KFWB String Orch.; Nelson Case, soloist.
- 7:10 p. m.—Julius K. Johnson at Vitaphone organ.
- 7:30 p. m.—Ted Dahl's Band.
- 8:00 p. m.—MonaMotor Oilers; Vernon Rickard, tenor; Boswell Sisters.
- 9:00 p. m.—Don Warner and Ron Wilson, two-piano numbers; Ann Grey, popular songs.
- 9:30 p. m.—Continuity program.
- 10:00 p. m.—Irving Aaronson and his Commanders.
- 11:00 p. m.—Dance music.
- 11:30 p. m.—Wade Hamilton at the console of the Forum Theater organ.
- 12:00 midnight—George Olsen and his music.

KNX Program

(Continued from Page 26)

- 11:00 a. m.—Dr. John Matthews, First Radio Church.
- 11:30 a. m.—Glidden Paint Company courtesy program.
- 11:45 a. m.—Marmola Musicians present "Musical Contrasts."
- 2:30 p. m.—Talk by Major Lawrence Mott.
- 2:45 p. m.—KNX Symphony.
- 3:15 p. m.—Joyce Coad, little movie star.
- 3:30 p. m.—Federation of Women's Clubs program.
- 4:00 p. m.—"The Home Builders."
- 6:00 p. m.—Rev. Ethel Duncan, Ques. and Ans. Lady.
- 6:30 p. m.—O'Connell and White present KNX Symphonette.
- 7:00 p. m.—"Seth Thomas Historical Cameos."
- 7:00 p. m.—Country Jane, vocalist; Stove Poker Ensemble.
- 8:00 p. m.—The Royal Order of Optimistic Do-Nuts.
- 9:00 p. m.—"The Lion Tamers."
- 9:45 p. m.—Main event from Hollywood Legion Stadium

SATURDAY, MAY 31

- 8:30 a. m.—Bundy & Albright courtesy program.
- 9:00 a. m.—Organ program given by Lucie Lee.
- 10:30 a. m.—Records, and "Jay, the Jingle Man"
- 11:00 a. m.—"Home Remedy Hour," Pyrol Tenor.
- 11:15 a. m.—KNX Little Symphony and Marjorie Healy.
- 1:00 p. m.—First Radio Church of the Air.
- 2:30 p. m.—Presenting an Opera (recorded).
- 6:00 p. m.—Paramount Public Hour, CBS.*
- 7:00 p. m.—The Western Ensemble.
- 7:15 p. m.—The KNX Ensemble.
- 7:30 p. m.—Musical program.
- 8:00 p. m.—Musical Comedy Hour.
- 9:00 p. m.—Announcements of L. A. Church Services.
- 9:05 p. m.—The Luboviski Trio; Calmon Luboviski, master violinist; Claire Mellonino, pianist; Walter V. Ferner, cellist.
- 9:45 p. m.—Marmola Musicians present "Musical Contrasts."

- 8:30 a. m.—Orpheum Sextet and Feature Trio (except Wednesday).
- 10:30 a. m.—Jean Cowan and the Dixieland Syncopators (except Wednesday).
- 12:30 p. m.—Variety Serenaders (except Wednesday).
- 2:00 p. m.—Baseball game from Wrigley Field, Oscar Reichow at microphone (except Monday).
- 6:00 p. m.—KFWB Salon Orchestra.
- 6:30 p. m.—Harry Jackson and Entertainers.
- 7:00 p. m.—Cecil and Sally, "The Funniest Things."
- 8:00 p. m.—Time Signals, Bulova Watch Co.

SUNDAY, MAY 25

- 8:30 a. m.—The Funny Paper Man.
- 9:00 a. m.—Program courtesy Continental Life Ins. Co.
- 9:30 a. m.—Program courtesy Mutual Bldg. & Loan.
- 10:30 a. m.—Program courtesy of Dr. Davis, Opt. Dept.
- 11:00 a. m.—Musical program.
- 11:30 a. m.—Late recordings.
- 12:30 p. m.—Spanish music from Moreno Highlands.
- 1:30 p. m.—Doughheader baseball game.
- 6:30 p. m.—Harry Jackson and his Pig'n Whistle Entertainers.
- 7:00 p. m.—Burr McIntosh, the Cheerful Philosopher.
- 7:30 p. m.—Russian Balalaika Orchestra.
- 8:00 p. m.—First National Hour; Leo Forbstein and his Vitaphone Recording Orchestra; First National Stars in person.
- 9:00 p. m.—Cugat's Gigolos; Luis Alvarez, tenor.

MONDAY, MAY 26

- 10:00 a. m.—Home Economics talk, Prudence Penny.
- 11:30 a. m.—Billy Van, courtesy May Company.
- 12:00 noon—KFWB Concert Orch.; Nelson Case, soloist.
- 2:30 p. m.—Ann Grey, popular songs, accompanied by Don Warner.
- 3:00 p. m.—Art and Artie in popular songs.
- 3:30 p. m.—Musical program.
- 4:00 p. m.—Johnny T. Groen's Ensemble with Gus Mack, soloist.
- 7:10 p. m.—507 Orchestra; Buster Dees, tenor.
- 7:30 p. m.—Jean Leonard, "Wizard of the Ivories."
- 7:45 p. m.—Talk on Dogs by Douglas Hertz.
- 8:00 p. m.—KFWB Orchestra, direction of Ray Martinez; Emma Kimmel, soprano; Vernon Rickard, tenor.
- 8:30 p. m.—George Olsen and his music.
- 9:00 p. m.—Spanish program.
- 10:00 p. m.—Irving Aaronson and his Commanders.
- 11:00 p. m.—Dance music.
- 11:30 p. m.—Irving Aaronson and his Commanders.

TUESDAY, MAY 27

- 10:00 a. m.—Wade Hamilton at the console of the Forum Theater organ.
- 11:30 a. m.—KFWB String Orch.; Nelson Case, soloist.
- 7:10 p. m.—Julius K. Johnson at Vitaphone organ.
- 7:30 p. m.—Program presented by Edw. Murphey.
- 8:00 p. m.—KFWB Concert Orch.; Emma Kimmel.
- 9:00 p. m.—Edgworth Plantation Club.
- 9:30 p. m.—Main bout from Olympic Auditorium.
- 10:30 p. m.—Irving Aaronson and his Commanders.

WEDNESDAY, MAY 28

- 8:00 a. m.—Breakfast Club by remote control.
- 10:00 a. m.—Prudence Penny of the Examiner.
- 10:30 a. m.—Orpheus Sextet and Feature Trio.
- 11:30 a. m.—Billy Van, courtesy of May Company.
- 12:00 noon—KFWB String Orch.; Nelson Case, soloist.
- 12:30 p. m.—Jean Cowan and Dixieland Syncopators.
- 7:10 p. m.—Duke Atterberry and Kenneth Gilum.
- 8:00 p. m.—George Olsen and his music.
- 8:30 p. m.—David Percy, baritone; KFWB Salon Orchestra and soloists.
- 9:30 p. m.—"Rainbow Trail to Colorland."
- 10:00 p. m.—Irving Aaronson and his Commanders.
- 11:00 p. m.—Dance music.



HARRY GEISE

KMTR

V. G. Freitag
General Manager
Harry Geise
Program Director
Ray Bailey
Musical Director
Eugene Inge
Press Relations
Tom Scholts
Day Announcer
C. L. Whitney
Technical Director

DAILY EXCEPT SUNDAY

- 6:00 a. m.—The Discovery Hour.
 - 6:30 a. m.—Charlotte de Borde Burgess.
 - 7:00 a. m.—New Idea Man's Wholesome Food Breakfast Club.
 - 8:00 a. m.—Early Stock Reports.
 - 9:00 a. m.—Mildred Kitchen, Home Economics.
 - 9:30 a. m.—Popular program.
 - 10:00 a. m.—Louise Howatt, Happiness Girl.
 - 10:30 a. m.—Ralph Little's Joy Boys (ex. Mon., Wed., Fri.).
 - 11:00 a. m.—Westlake String Ensemble.
 - 11:45 a. m.—Public and Civic Officials' Broadcast, direct from City Hall.
 - 12:00 noon.—"World in Review," News Bulletins.
 - 12:15 p. m.—"Prosperity Hour," Truman Bradley.
 - 1:15 p. m.—Banjo Boys.
 - 2:15 p. m.—Popular program.
 - 2:30 p. m.—Spanish program.
 - 3:00 p. m.—Palais Ballroom Orchestra, remote control.
 - 4:00 p. m.—Popular program.
 - 4:30 p. m.—Trading Post program.
 - 5:30 p. m.—Selected Records.
 - 6:00 p. m.—Financial Talk (except Friday).
 - 10:00 p. m.—Selected Records.
 - 11:00 p. m.—"The 11th Hour Musical Revue."
 - 12:00 midnight—"8 Ball" and Charley Lung.
- SUNDAY, MAY 25**
- 7:00 a. m.—Wholesome Food Breakfast Club.
 - 9:00 a. m.—John Driscoll's Musical Revue.
 - 12:00 noon.—Popular program.
 - 1:00 p. m.—Old Irish and English Ballads.
 - 2:00 p. m.—Songs of a Few Years Ago.
 - 3:00 p. m.—Band Selections and Marches.
 - 4:00 p. m.—Musical Comedy and Light Opera.
 - 5:00 p. m.—Late Popular Hits.
 - 6:00 p. m.—Dare Slaters.

Hollywood, Calif.—570 Kc.

500 WATTS—526 METERS
KMTR Radio Station, 1025 N. Highland Ave., HOLLY 3026.
The Official Broadcasting Station of the
Los Angeles Evening Herald

- 6:30 p. m.—Novelty Rhythm Makers.
- 7:00 p. m.—Favorite Light Classics."
- 7:30 p. m.—M. R. Haigh, violin; D. Compton, piano.
- 8:00 p. m.—"From Behind the Footlights."
- 9:00 p. m.—"Vibrant Melodies," KMTR Orchestra.
- 10:00 p. m.—"The Discovery Hour,"

MONDAY, MAY 26

- 10:30 a. m.—Tom Mitchell.
- 6:30 p. m.—Popular Ballads.
- 7:00 p. m.—Talk, Chamber of Commerce.
- 7:30 p. m.—KMTR Orchestra.
- 7:45 p. m.—"Dances of Nationa."
- 8:30 p. m.—"Rhythms of Today."
- 9:00 p. m.—"Serenaders."
- 9:30 p. m.—"Happy Harry and Rusco Pets."

TUESDAY, MAY 27

- 6:05 p. m.—Talk on Traffic—Judge Valentine.
- 6:30 p. m.—"Novelty Five."
- 7:00 p. m.—Erening Herald Travel Talk.
- 8:00 p. m.—"Light Opera."
- 8:30 p. m.—"Premier of 'Hell's Angels,'"

WEDNESDAY, MAY 28

- 10:30 a. m.—Tom Mitchell.
- 7:00 p. m.—"Hawaiian" Melodies.
- 8:00 p. m.—"Talking Picture Song Hits;" Orchestra.
- 8:30 p. m.—"Sigmond Romberg" program.
- 9:00 p. m.—Popular Waltz program.
- 9:30 p. m.—"Happy Harry and Rusco Pets."

THURSDAY, MAY 20

- 7:00 p. m.—Travel Talk.
- 7:55 p. m.—Fishing Talk—Jack Boag.
- 8:00 p. m.—"Dot and Mary"—piano and songs.
- 8:30 p. m.—Premier of Pantages Theater in Hollywood.
- 9:30 p. m.—Recreated Prize Fights.

FRIDAY, MAY 30

- 10:30 a. m.—Tom Mitchell.
- 6:30 p. m.—"Mickey Mouse" program.
- 7:00 p. m.—Miniature Salon Orchestra.
- 8:00 p. m.—"Heart Throbs"—Humorous Continuity
- 8:30 p. m.—"Writing of Yankee Doodle"
- 9:00 p. m.—"Gems from Broadway."
- 9:30 p. m.—"Happy Harry and Rusco Pets."

SATURDAY, MAY 31

- 6:30 p. m.—"Jane and Jean."
- 7:00 p. m.—"On With the Dance."
- 8:00 p. m.—"Favorite Light Classics"—Orchestra.
- 8:30 p. m.—"Jane and Jean."
- 9:00 p. m.—"Book Review."
- 9:15 p. m.—Palais Ballroom Orchestra—Remote.



PAUL MYERS

KFVD

Empire 1171
Culver City 4517
John W. Swallow
Vice-Pres. & Gen. Mgr.
Paul Myers
Advertising Announcer
Al Welnert
Berton Bennett
Announcera
M. S. Adams
Chief Technician

DAILY EXCEPT SUNDAY

- 6:00 a. m.—Spanish program.
 - 7:00 a. m.—Hal Roach Happy-Go-Lucky Trio.
 - 11:00 a. m.—Beauty Hour.
 - 12:30 p. m.—Tom and Wash.
 - 1:00 p. m.—G. Allison's Radio Home program.
 - 2:30 p. m.—Eldorado program.
 - 3:00 p. m.—Auburn Half Hour.
 - 3:30 p. m.—Pan-American Spanish program.
 - 5:30 p. m.—Health Talk.
 - 5:45 p. m.—Timely Topics.
 - 10:00 p. m.—Tom and Wash.
 - 10:15 p. m.—Organ Recital.
 - 11:00 p. m.—Selected Recordings.
 - 11:30 p. m.—Selected Recordings.
 - 12:00 midnight.—Organ Recital.
- SUNDAY, MAY 25**
- 8:00 a. m.—Popular Recordings.

Culver City, Cal.—1000 Kc.

250 WATTS—299.8 METERS
AUBURN-FULLER COMPANY
Hal E. Roach Motion Picture Studios

- 9:00 a. m.—George Redman, Peggy Price
- 10:00 a. m.—Songs That Never Grow Old.
- 11:00 a. m.—Harmony Hawaiians.
- 12:00 noon.—String Trio.
- 1:00 p. m.—"Inspiration," the Magazine of the Air.
- 2:00 p. m.—Sacred Half Hour.
- 3:00 p. m.—Light Classics on the Organ
- 4:30 p. m.—Selected Recordings.
- 9:15 p. m.—Lloyd S. Nix—City Prosecutor.
- 9:30 p. m.—Community program.
- 11:00 p. m.—Pipe Organ Recital.

MONDAY, MAY 26

- 9:00 a. m.—Helpful Hints to Housewives.
- 12:45 p. m.—Waves of Happiness.

TUESDAY, MAY 27

- 9:00 a. m.—Beauty Hints.
- 12:45 p. m.—Diet Ouestion Box.

WEDNESDAY, MAY 28

- 12:45 p. m.—Waves of Happiness.
- 9:15 p. m.—Happy-Go-Lucky Trio.

THURSDAY, MAY 29

- 9:00 a. m.—Beauty Hints.
- 10:30 a. m.—Helpful Hints to Housewives.
- 12:45 p. m.—Diet Question Box.
- 2:30 p. m.—Happy-Go-Lucky Trio.

FRIDAY, MAY 30

- 12:45 p. m.—Waves of Happiness.
- 2:00 p. m.—Helpful Hints to Housewives.
- 9:15 p. m.—John Wright Contest.

SATURDAY, MAY 31

- 9:00 a. m.—Beauty Hints.
- 12:45 p. m.—Waves of Happiness.

The essential features of these programs are identical with those sent us by the stations



DON WILSON

KECA

Los Angeles, Cal.—1430 Kc.

209.7 METERS—1000 WATTS

EARL C. ANTHONY, INC.

1000 South Hope St.

Westmore 0331

Carl Haverlin
Commercial Manager
Robert Hurd
Program Manager

8:45 p. m.—Nlek Harris.

WEDNESDAY, MAR 28

- 3:00 p. m.—Jerome Powers, pianist.
- 3:15 p. m.—German lesson, Annette Doherty.
- 3:30 p. m.—NBC, Back of the News in Washington.
- 3:45 p. m.—Eddie Geldmacher, jazz pianist.
- 4:00 p. m.—Elmer Herling, baritone.
- 4:30 p. m.—Winslow Allen's Six Clouds of Joy.
- 5:00 p. m.—NBC, Halsey-Stuart.
- 5:30 p. m.—NBC, Palmolive Hour.
- 6:30 p. m.—NBC, Coca Cola program.
- 7:00 p. m.—Theobald and Hilburn, "Radio Undertakers"
- 7:15 p. m.—Yellow Cab Quartet.
- 7:45 p. m.—Anna and Oscar.
- 8:00 p. m.—NBC, Parisian Quintet.
- 8:30 p. m.—Julie Kellar, harp harmony.
- 8:45 p. m.—Winnie Fields Moore, Travelogue.
- 9:00 p. m.—KECA String Ensemble.

- DAILY EXCEPT SUNDAY**
- 7:15 a. m.—Louis Rube, Health Exercises.
 - 7:45 a. m.—NBC, Aunt Jemima Boy.
 - 11:30 a. m.—Mable Lewis, Musical Memories (ex. Fri. and Sat.).
 - 11:45 a. m.—NBC, Hour of the Canny Cook (ex. Fri. and Sat.).
 - 7:30 p. m.—Amos 'n' Andy, for Pepsodent Co.
 - 10:00 p. m.—Ray West Cafe.

SUNDAY, MAY 25

- 2:00 p. m.—NBC, Catholic Services.
- 3:00 p. m.—Yantis String Trio, vocal harmony.
- 3:30 p. m.—Helen Clare Dudley, concert pianist.
- 4:00 p. m.—NBC, Musical Musketeers.
- 5:00 p. m.—Manly P. Hall, "Psychology."
- 5:30 p. m.—Dr. Walter Raymond, lecture
- 6:00 p. m.—Jimmie West and His Campus Orchestra.
- 7:00 p. m.—Grace Hamilton and Jack Stern, duets.
- 7:30 p. m.—KECA Symphonet, with Raine Bennett, "Poet of the Air."
- 8:30 p. m.—NBC, Western Artists Series program.
- 9:00 p. m.—KECA String Quartet, with Lenore Killian.
- 10:00 p. m.—NBC, The Gay Classics.

MONDAY, MAY 26

- 3:00 p. m.—Jerome Powers, pianist.
- 3:15 p. m.—Katherine Spangler, whistler.
- 3:30 p. m.—Inez Small, blues.
- 3:45 p. m.—Leonard Van Berg, ballads.
- 4:15 p. m.—Weldronov, "pianist."
- 4:30 p. m.—Dr. Hirsch, talk on good health.
- 5:00 p. m.—NBC, The Maytag Orchestra.
- 5:30 p. m.—NBC, General Motors Family Party.
- 6:00 p. m.—Buster Wilson's Orchestra.
- 6:30 p. m.—Elton Hey's Virginia Ballroom Orchestra.
- 6:45 p. m.—Betty Robinson's Children's Hour.
- 7:00 p. m.—Elton Hey's Virginia Ballroom Orchestra.
- 7:15 p. m.—Yellow Cab Quartet.
- 7:45 p. m.—Julie Kellar, harp harmony.
- 8:00 p. m.—NBC, Musical Musketeers.
- 9:00 p. m.—Ray Van Dyne Orchestra, with Jean Dunn.

TUESDAY, MAY 27

- 3:00 p. m.—California Cotton Pickers, Orchestra.
- 3:30 p. m.—Frederick V. Bowers, ballads.
- 4:00 p. m.—Carmen Ray, ballads.
- 4:30 p. m.—Winslow Allen's Six Clouds of Joy.
- 5:00 p. m.—NBC, Eveready Hour.
- 5:30 p. m.—NBC, Happy Wonder Bakers.
- 6:00 p. m.—NBC, Westinghouse Salute.
- 6:30 p. m.—NBC, RKO Hour.
- 7:45 p. m.—Winifred Donaldson, contralto.
- 8:15 p. m.—George Porter, baritone.

THURSDAY, MAY 29

- 11:45 a. m.—NBC, The Canny Cook.
- 3:00 p. m.—Jerome Powers, pianist.
- 3:15 p. m.—Marcella Burke, "Hollywood Chatterer."
- 3:30 p. m.—NBC, Half Hour in the Nation's Capital.
- 4:00 p. m.—NBC, Fleischmann Sunshine Hour
- 5:00 p. m.—NBC, Arco Birthday Party.
- 5:30 p. m.—NBC, Maxwell House Melodies.
- 6:00 p. m.—Buster Wilson's Orchestra.
- 6:30 p. m.—Buster Wilson's Orchestra.
- 6:54 p. m.—Betty Robinson's Children's Hour.
- 7:00 p. m.—Wedgwood Nowell, Playgoers' Memories.
- 7:45 p. m.—Bob and Monte.
- 8:00 p. m.—NBC, Lucky Strike Orchestra.
- 9:00 p. m.—NBC, Memory Lane.
- 9:30 p. m.—Eddie Armstrong, ballads.

FRIDAY, MAY 30

- 3:00 p. m.—Armand, popular ballads.
- 3:15 p. m.—NBC, Universal Safety Series.
- 3:30 p. m.—California Cotton Pickers' Orchestra.
- 4:00 p. m.—NBC, Cities Service Hour.
- 5:00 p. m.—NBC, Interwoven Pair.
- 5:30 p. m.—NBC, Armour Hour.
- 6:00 p. m.—Buster Wilson's Orchestra.
- 6:30 p. m.—NBC, Raleigh Revue.
- 7:00 p. m.—NBC, The Elgin program.
- 7:15 p. m.—Bridge lesson.
- 8:00 p. m.—Jolly Leighton's Chefs.
- 8:30 p. m.—Happy Chappies.
- 8:45 p. m.—Anna and Oscar.
- 9:00 p. m.—Winifred Donaldson, contralto.
- 9:15 p. m.—NBC, Kodak Week-end program.
- 9:45 p. m.—Catherine Childs Dixon, concert pianist.

SATURDAY, MAY 30

- 3:00 p. m.—Ray West Cafe Orchestra.
- 3:30 p. m.—NBC, The Fuller Man.
- 5:00 p. m.—NBC, New Business World.
- 4:30 p. m.—Max Mellinger, ballads.
- 4:45 p. m.—Yantis Trio, vocal harmony.
- 5:00 p. m.—NBC, General Electric Hour.
- 6:00 p. m.—Los Angeles Fire Department Orchestra.
- 7:00 p. m.—Jack Parker, tenor.
- 7:45 p. m.—Julie Keller, harpist.
- 8:00 p. m.—NBC, Pacific Serenaders.
- 8:30 p. m.—Helen Guest, ballads.
- 8:45 p. m.—Eddie Armstrong, ballads.
- 9:00 p. m.—Will Rounds String Ensemble, Arthur Lang

See page 20 for detailed NBC Program.



DAVE WARD

KELW

H. Wadsworth Cole
Manager
Dave Ward
Asst. Manager
Stuard Wainwright
Chief Engineer
Dave Ward
Harry Moodie
Announcers

Burbank, Calif.—780 Kc.

MAGNOLIA PARK—500 WATTS—384.4 METERS

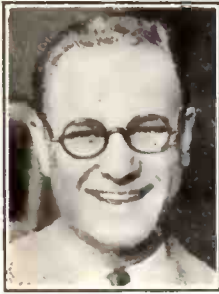
"The White Spot of the San Fernando Valley"

Phones: Burbank 1601—GRanite 3193

DAILY EXCEPT SUNDAY

- 10:00 a. m.—Frank and What's His Name.
- 11:00 a. m.—Mr. Ranko, the Zodiac Man.
- 11:30 a. m.—Announcements and Records.
- 12:00 noon—Coos Bay.
- 5:00 p. m.—The Story of Mortimer Park.
- 5:30 p. m.—Recordings.
- 6:00 p. m.—Roy L. Medcalfe at the Fox Alexander Theater organ.
- 7:00 p. m.—Paris Inn Cafe, La Vida, remote control.

The essential features of these programs are identical with those sent us by the stations



GLEN RICE

KMPC Beverly Hills, Cal.—710 Kc.

500 WATTS—422.3 METERS

Operated by Macmillan Petroleum Co.
Crestview 3101, Wilshire Blvd. at Camden Drive

Glen Rice
Manager
John McIntyre
Margaret Macdonald
Announcers
Ray Howell
Technician
K. G. Ormiston
Technical Supervisor

2:00 p. m.—Dr. Coulter—All About Your Pets.
3:00 p. m.—Band Recordings.
4:00 p. m.—Distinctive Music.
4:30 p. m.—Pipe Organ program.
5:30 p. m.—Lot O' Pep.
9:00 p. m.—Doc Fisher's Orchestra.
9:30 p. m.—Playlet.
10:00 p. m.—Beverly Hill Billies.
11:00 p. m.—Ray Howell, the "And How" Boy.

WEDNESDAY, MAY 28

12:45 d. m.—Melba Toast program.
2:00 p. m.—Southern Melodies.
2:30 p. m.—Classified.
3:00 p. m.—University of Southern California—Lectures.
5:30 p. m.—Cuckoo Clock.
9:00 p. m.—University of Southern California—Lectures.
9:30 p. m.—J. N. Pyle—True Detective Stories.
10:00 p. m.—Beverly Hill Billies.
11:00 p. m.—Ray Howell, the "And How" Boy.

THURSDAY, MAY 29

10:30 a. m.—Geo. Francis.
12:45 p. m.—Melba Toast program.
1:30 p. m.—A. T. Hull—the Young Adventurer.
2:00 p. m.—Musical Comedy.
3:00 p. m.—Red Seal program.
4:00 p. m.—The Ad-Visor.
4:30 p. m.—One-act Play.
9:00 p. m.—Dance Orchestra.
9:30 p. m.—Pelton—Marion Melodies.
10:00 p. m.—Beverly Hill Billies.
11:00 p. m.—Ray Howell, the "And How" Boy.

FRIDAY, MAY 30

1:30 p. m.—Jack Baldwin—the Piano Wizard.
12:45 p. m.—Melba Toast program.
2:00 p. m.—Southern Melodies.
3:00 p. m.—Studio program.
3:30 p. m.—The Very Latest.
4:00 p. m.—Fred C. McNab—Garden Talks.
9:00 p. m.—Two Genes—Piano Duet.
9:30 p. m.—Light and Cook.
10:00 p. m.—Beverly Hill Billies.
11:00 p. m.—Ray Howell, the "And How" Boy.

SATURDAY, MAY 31

12:45 p. m.—Noonday Melodies.
1:30 p. m.—A. T. Hull—the Young Adventurer.
2:30 p. m.—The Ad-Visor.
3:00 p. m.—Saturday Afternoon Jamboree.
5:30 p. m.—Cuckoo Clock.
9:00 p. m.—Jr. Chamber of Commerce program.
10:00 p. m.—Beverly Hill Billies.
11:00 p. m.—Ray Howell, the "And How" Boy.

DAILY EXCEPT SUNDAY

7:00 a. m.—Health Exercises—Haydon Pythian.
7:30 a. m.—The Ad-Visor.
8:00 a. m.—Sooner Birds Exercises—Haydon Pythian.
8:30 a. m.—Classified.
9:00 a. m.—Rolling Radioliers.
10:00 a. m.—Chapel Services—U.S.C.—Remote.
10:15 a. m.—Dan Maxwell—the King of Scotland.
10:45 a. m.—Bunny's Helpful Household Hints.
11:00 a. m.—Morning Musical.
11:30 a. m.—The Ad-Visor.
12:00 noon.—Modes and Fashions.
1:00 p. m.—The Genes—Half Hour of Piano.
1:30 p. m.—Classical and Semi-Classical Recordings.
2:30 p. m.—On the Shores of Hawaii.
5:00 p. m.—Just Kids Club.
5:45 p. m.—Pot O' Gold.
6:00 p. m.—L. W. Barnett program.
6:16 p. m.—At Sunset

SUNDAY, MAY 25

9:00 a. m.—Musical program.
10:00 a. m.—The Very Latest.
11:00 a. m.—Pipe Organ Recordings.
12:00 noon.—Noonday Melodies.
3:00 p. m.—Church of Latter Day Saints.
4:00 p. m.—Red Seal Hour.
5:00 p. m.—Musical Comedy.
6:00 p. m.—Recordings.
9:00 p. m.—Two Genes—Piano Duet.
9:30 p. m.—Light and Cook.
10:00 p. m.—Beverly Hill Billies.

MONDAY, MAY 26

3:00 p. m.—University of Southern California—Lectures.
5:30 p. m.—Cuckoo Clock.
9:00 p. m.—University of Southern California—Lectures.
10:00 p. m.—Ray Howell, the "And How" Boy.

TUESDAY, MAY 27

12:45 p. m.—Melba Toast.
1:30 p. m.—A. T. Hull—the Young Adventurer.

Radio Correspondence Education Division KMPC

University of Southern California

MONDAY, MAY 26

3:00 p. m.—Adjustment of Personality. Dr. E. A. Kayner.
3:30 p. m.—College of Music. Varied Program. Under the direction of Professor Horatio Cogswell.
4:00 p. m.—Motion Pictures. Win. Ray MacDonald. S. C. Semi-Centennial Lecture Series on Contemporary Civilization.
4:30 p. m.—Public's Business. Gordon Whitnal. Director, Manager, City Planning Commission, Los Angeles.
9:00 p. m.—Legal Limitation of Special Assessments Necessary. Roy A. Knox, Director, Bureau of Budget and Efficiency, Los Angeles County.
9:30 p. m.—Chemistry. Prof. Wilfred W. Scott. S. C.

Semi-Centennial Lecture Series on Contemporary Civilization.

WEDNESDAY, MAY 28

3:00 p. m.—Our Helen in Magic Story Land. Helen Hirdsall.
3:30 p. m.—Play—Short Stories. Sixth Annual Univ. Apolliad. School of Speech.
4:00 p. m.—Early Stages of Development in Southern California. Dr. Young. Courtesy of Alpha Eta Rho, Aviation Fraternity.
4:30 p. m.—Socialism. Dr. A. Bruce Anthony. S. C. Semi-Centennial Lecture Series on Contemporary Civilization.
9:00 p. m.—The Machine and the City. Dr. M. H. Neumeyer. S. C. Semi-Centennial Lecture Series on Contemporary Civilization.

SELECTIVE
AERIAL

- SUNSET -

POSITIVE
GROUND

These modern aids to efficient radio reception are used and endorsed by thousands of DX enthusiasts all over the country. If the champion DX fans use them for maximum results, you also should be Sunset equipped. The Aerial, \$5.00; The Ground \$2.25.

Manufactured by

SUNSET MANUFACTURING COMPANY

1114 No. Sycamore Ave.

GRanite 0401

Los Angeles, Calif.

The essential features of these programs are identical with those sent us by the stations



GORDON SMITH

KGFJ Los Angeles, Calif.—1200 Kc.

Ben S. McGlashan
Owner
Duke Hancock
Assistant Manager
Thelma Kirchner
Publicity
John Smithson
Technician
Wm. Miller
Nite Owl
Phone:
WEstmore 7788

100 WATTS—249.9 METERS
J. V. Baldwin Bldg., 15th and Figueroa Sts.
"Keeping Good Folks Joyful 24 Hours a Day"
9:30 p. m.—Mosby's Dixieland Blue Blowers from Apex Night Club.
10:30 p. m.—Organ Recital by Arch Fritz.
11:00 p. m.—Recordings.

SUNDAY, MAY 25
12:00 midnight—Nite Owl program.
7:00 a. m.—Recordings.
10:00 a. m.—Organ Recital by Arch Fritz from Musicians' Club.
11:00 a. m.—KGFJ Orchestra; Hale Hooper, ballads; Blanche Cooper, pianist.
1:50 p. m.—Unique String Quintet; Gladys Parish, blues; Blanche Cooper, pianist.
3:00 p. m.—Harmony Hawaiian Quartet.
5:00 p. m.—Organ Recital by Arch Fritz.
6:00 p. m.—Glen Edmonds' Orchestra from Elks' Club.
7:00 p. m.—Recordings.
9:00 p. m.—Mosby's Dixieland Blue Blowers.
10:00 p. m.—Recordings.

MONDAY, MAY 26
7:00 p. m.—KGFJ Concert Ensemble; Gladys Parish, vocalist.

TUESDAY, MAY 27
12:30 p. m.—Lani McIntire's Harmony Hawaiians.
7:00 p. m.—Concert Ensemble; Gladys Parish, vocalist; Chas. Busteye, pianist.

WEDNESDAY, MAY 28
7:00 p. m.—Meglin Kiddies.
THURSDAY, MAY 29
4:00 p. m.—Mildred Shry, blues and piano numbers.
7:00 p. m.—Concert Ensemble; Gladys Parish, vocalist.

FRIDAY, MAY 30
12:30 p. m.—Harmony Hawaiians; The Yellow Jackets.
7:00 p. m.—KGFJ Concert Ensemble; Gladys Parish, vocalist.

SATURDAY, MAY 31
12:30 p. m.—Harmony Hawaiians.
4:00 p. m.—Mildred Shry, blues.
7:00 p. m.—KGFJ Concert Ensemble.

DAILY EXCEPT SUNDAY
12:00 midnight—Mosby's Dixieland Blue Blowers from Apex Night Club.
1:00 a. m.—Night Owl program.
6:00 a. m.—Gedunkers' Club.
7:00 a. m.—Madame Lawrye's Goodwill program.
8:30 a. m.—Gordon Smith's Shopping Guide.
9:30 a. m.—Dr. Dean Clinics.
10:00 a. m.—Harmony Hawaiian Quartet.
11:00 a. m.—The Health Man.
11:30 a. m.—Spanish program.
12:00 noon.—Japanese Radiotising Service.
12:30 p. m.—The Yellow Jackets from Oaks Tavern.
1:30 p. m.—The Peptomists.
2:00 p. m.—Recordings.
3:00 p. m.—Gainsborough Beauty Shop.
4:00 p. m.—Mildred Shry, blues singer.
4:30 p. m.—Recordings.
5:00 p. m.—Markets Reports; Announcements; El Patio Grill.
5:30 p. m.—Organ Recital by Arch Fritz.
6:00 p. m.—Glenn Edmonds' Orchestra from Elks Club.
7:00 p. m.—Gordon Smith's Radiotising Service.
8:00 p. m.—Organ recital.
8:30 p. m.—String Quintet.



LILAS JOHNSON

KGB San Diego, Calif.—1330 Kc.

Robert G. Binyon
Manager
Luther L. Putnam
Studio Director
Lilas Johnson
Program Director
Fred Stone
Studio Accompanist
Lloyd Snow
Announcer
Willis F. Farnum
Chief Technician
Ralph R. Williams
Technician

225.4 METERS—250 WATTS
Pickwick Terminal Hotel—Franklin 6151-2-3
PICKWICK BROADCASTING CORPORATION
Henry Hohman, Managing Director
12:00 noon.—Theater announcements.
5:00 p. m.—Old-Time Gospel Hour.
5:30 p. m.—Recordings.
6:00 p. m.—Church of Jesus Christ of L.D.S.
7:00 p. m.—Miniature Symphony.
8:00 p. m.—Margie Burns and the Melody Trio.
9:00 p. m.—The Real Mexico.

MONDAY, MAY 26
7:05 p. m.—Dr. Babineo—Bird Imitator.
7:15 p. m.—Belasco Trlg.
8:00 p. m.—Ralph Kellogg, with Tony & Bill.
9:00 p. m.—Highway Highlights.

TUESDAY, MAY 27
7:05 p. m.—Lorelei Ensemble, with Opal Connors.
8:00 p. m.—Helen Kirkham.
8:30 p. m.—Portugeuse program.
9:00 p. m.—Studio program.
9:30 p. m.—Pickwick Air and Bus Boys.

WEDNESDAY, MAY 28
7:05 p. m.—Community Chest program.
7:30 p. m.—Belasco Trio.
8:00 p. m.—Quartette Latece, with Charles Sloan.
9:00 p. m.—Luckv Three and Jack & Jill.

THURSDAY, MAY 29
7:00 p. m.—Johnny Athalde and Lloyd Snow.
7:30 p. m.—"Old Favorites."
8:00 p. m.—Highway Highlights.
9:00 p. m.—Mexican Serenaders.

FRIDAY, MAY 30
7:05 p. m.—Arkansas Old-Timers.
8:00 p. m.—Caliste Conant Hudson.
8:30 p. m.—Classical Interpretations.
9:30 p. m.—Pickwick Air and Bus Boys.

SATURDAY, MAY 31
3:00 p. m.—KGB Movie Club.
3:30 p. m.—Roseleaf Melaney.
7:05 p. m.—Minor Twins and Pewee Hale
8:00 p. m.—KGB Frolic.

DAILY EXCEPT SUNDAY
7:00 a. m.—Popular recordings.
8:30 a. m.—Who's Who.
9:00 a. m.—May Specials.
10:00 a. m.—Recordings.
12:30 p. m.—Recordings.
2:45 p. m.—News, courtesy San Diego Sun.
3:00 p. m.—Recordings (ex. Mon., Tues. & Sat.).
4:00 p. m.—Recordings.
4:50 p. m.—U. S. Department of Agriculture—Farm Talk (except Saturday).
5:00 p. m.—"Air Castles."
5:15 p. m.—Merchants' Air Service.
6:00 p. m.—Lost and Found.
6:30 p. m.—Kiddies Birthday Party.
6:45 p. m.—Put & Jake.
7:00 p. m.—Sports and Late News.
10:00 p. m.—Sponsored program.

SUNDAY, MAY 25
8:00 a. m.—Through the Comics with Uncle Si.
9:00 a. m.—Classical Recordings.
10:00 a. m.—International Bible Students Association.
11:00 a. m.—Selected Recordings.

The essential features of these programs are identical with those sent us by the stations



FRANK GAGE

DAILY EXCEPT SUNDAY

- 6:00 a. m.—The Eye Opener program.
 7:00 a. m.—KTM Ranch Hour.
 8:00 a. m.—Danceland Melodies.
 8:30 a. m.—Nelson's Novelties.
 9:00 a. m.—Bert's Request program.
 10:00 a. m. to 1:00 p. m.—Silent.
 1:00 p. m.—Puritas Water program.
 2:00 p. m.—Popular Melodies.
 2:30 p. m.—The Health Man.
 3:30 p. m.—Cambria Pines program.
 4:30 p. m.—KTM Date Book.
 5:00 p. m. to 8:00 p. m.—Silent.
 10:00 p. m.—Pezel's Popularities.
 12:00 midnight—Spizzerinktum Club.

SUNDAY, MAY 25

- 8:00 a. m.—The Eye Opener.
 10:00 a. m.—I. B. S. A. Watch Tower program.
 1:00 p. m.—Puritas Water program.
 1:30 p. m.—L. B. program.
 2:00 p. m.—Concert Masters' Hour.
 3:00 p. m.—Santa Monica Symphony Orchestra.
 4:00 p. m.—Sacred program by Stuart Blair, baritone; Arthur Shaw, tenor.
 4:30 p. m.—Christian Unity by Walter Raymond.
 8:00 p. m.—Moments with Great Masters; Lou Gordon, tenor; Arthur Shaw, organ.
 9:00 p. m.—Killian Sisters' Vocal Trio.
 9:30 p. m.—Little Readers' Hour.
 10:00 p. m.—Concert Masters' Hour.
 11:00 p. m.—Readers' Hour.
 12:00 midnight—Spizzerinktum Club.

MONDAY, MAY 26

- 2:45 p. m.—Popular Waltzes.
 4:00 p. m.—Organ Echoes.
 8:00 p. m.—Interesting Interviews.
 8:30 p. m.—Patsy and Tom, the Modern Pair.

KTM Los Angeles, Cal.—780 Kc.

1000 WATTS—384.4 METERS
 Municipal Auditorium, Ocean Park, Santa Monica, Calif.
 Los Angeles Studio: 3636 Beverly Blvd. EXposition 1341
 Pickwick Broadcasting Corporation
 Henry A. Hohman, General Manager
 Clarence B. Juneau, Chief Transmission Engineer

- 9:00 p. m.—Highway Highlights.
 10:00 p. m.—Readers' Hour.

TUESDAY, MAY 27

- 1:30 p. m.—Household Hints by Laura Scudder.
 1:45 p. m.—Organ Echoes.
 2:45 p. m.—Popular Melodies.
 4:00 p. m.—Dance Melodies.
 4:15 p. m.—Popular Songs.
 4:30 p. m.—Danceland Melodies.
 4:45 p. m.—Solving Your Problems, by Walter Brown Murray.
 8:00 p. m.—Five Freshmen.
 8:30 p. m.—F. A. G. Moth program.
 8:45 p. m.—Blue Ridge Mountain Duo.
 9:00 p. m.—Pickwick Securities program.
 10:00 p. m.—Readers' Hour.
 10:30 p. m.—El Patio.

WEDNESDAY, MAY 28

- 2:45 p. m.—Popular Fox Trots.
 4:00 p. m.—Popular Melodies.
 4:25 p. m.—Better Business Bureau Talk.
 8:00 p. m.—Arthur Shaw and Stewart Blair.
 8:30 p. m.—Musical Readings.
 9:00 p. m.—Twilight Memories, Loyce Whiteman.

THURSDAY, MAY 29

- 2:45 p. m.—Popular Melodies.
 4:00 p. m.—Popular Melodies.
 4:30 p. m.—Organ Recital.
 8:00 p. m.—Highway Highlights.
 9:00 p. m.—KTM Little Theater.
 9:30 p. m.—Frank and Johnny.

FRIDAY, MAY 30

- 1:30 p. m.—Household Hints by Laura Scudder.
 1:45 p. m.—Organ.
 2:45 p. m.—Records.
 4:00 p. m.—Danceland Melodies.
 8:00 p. m.—Evenings on the Ranch.
 9:00 p. m.—Harrison Good Luck Melodies.
 9:30 p. m.—Lani McIntyre's Hawaiians.
 10:00 p. m.—Little Readers' Hour.
 10:30 p. m.—El Patio.

SATURDAY, MAY 31

- 1:30 p. m.—Children's Playground Hour.
 2:45 p. m.—Popular Melodies.
 4:00 p. m.—Record Variety Hour.
 8:00 p. m.—Frank Gage and his gang.
 9:30 p. m.—Little Readers' Hour.



RODERICK H. MORRISON

DAILY EXCEPT SUNDAY

- 7:00 a. m.—Family Aitar Hour.
 10:00 a. m.—Sunshine Hour.
 11:00 a. m.—Noonday Musicals (except Monday).

SUNDAY, MAY 25

- 8:00 a. m.—Sabbath Sunrise Hour.
 0:00 a. m.—Symphony Orchestra.
 10:30 a. m.—Sunday Morning Worship.
 2:30 p. m.—Dispensational Message.
 6:30 p. m.—Angelus Temple Silver Band.

KFSG Los Angeles, Cal.—1120 Kc.

500 WATTS—267.7 METERS
 Angelus Temple, Echo Park. EX. 1141
 "Four Square Gospel"

Almee Semple McPherson
 Pounder-President
 Roderick H. Morrison
 Station Director
 Noland Tucker
 Announcer
 Maurice E. Kennedy
 Technical Director
 Essie Binkley Lucy
 Program Manager

- 7:00 p. m.—Musical Hour.
 8:00 p. m.—Revival Service.
 10:00 p. m.—Music Lovers' Hour.

MONDAY, MAY 26

- 11:00 a. m.—Bible Drama.
 WEDNESDAY, MAY 28
 2:00 p. m.—L. I. F. E. Band Concert.
 2:30 p. m.—Divine Healing Service.
 4:30 p. m.—Lucille with her program of Smiles.

THURSDAY, MAY 29

- 2:00 p. m.—Pasadena Hour.
 3:00 p. m.—Bethesda Hour.
 4:00 p. m.—L. I. F. E. Jubilee Hour.
 8:00 p. m.—Water Baptismal Service.
 9:30 p. m.—Foursquare Conservatory and Symphony Orchestra.

FRIDAY, MAY 30

- 2:00 p. m.—Angelus Temple News Reel.
 3:00 p. m.—Bethesda Hour.
 4:00 p. m.—Brother Jack and the Kiddies' Hour.

SATURDAY, MAY 31

- 8:00 p. m.—Divine Healing Service.
 9:30 p. m.—Back Home Hour.

The essential features of these programs are identical with those sent us by the stations



HAL G. NICHOLS

KFOX

Long Beach, Cal.—1250 Kc.

"Where Your Ship Comes In"

1000 WATTS—239.9 METERS—HANCOCK OIL STATION
Telephone No. 672-81

Owned and Operated by
Nichols & Warriner, Inc.
220 E. Anaheim St.
Hal G. Nichols
Clarence Cray
Foster Rucker
Cecil Fry
Heini Dornier
Announcers
L. W. McDowell
Chief Technician

5:30 p. m.—Sunset Boys.
6:30 p. m.—The Kaal Hawaiian Trio.
8:00 p. m.—Tavern Club Orchestra.
8:30 p. m.—Texas Cowboys.
9:00 p. m.—Foster and Doris.
9:15 p. m.—Organ—Vera Graham.
9:30 p. m.—Majestic Ballroom.
12:00 midnight—Studio program.

TUESDAY, MAY 27

1:00 p. m.—Kiwanis Luncheon.
6:45 p. m.—Dr. Robert Williams.
8:00 p. m.—The Gossipers.
8:30 p. m.—Cheerio Boys.
8:45 p. m.—Polly Ann.
9:00 p. m.—Foster and Doris.
9:15 p. m.—Organ—Vera Graham.

WEDNESDAY, MAY 28

1:00 p. m.—Rotary Luncheon.
8:00 p. m.—Seth Parker Singing School.
8:30 p. m.—Tavern Club Orchestra.
9:00 p. m.—Pickwick Papers.

THURSDAY, MAY 29

1:00 p. m.—Dr. Clark—Health & Efficiency.
8:00 p. m.—Bennie Light & Mark Cook.
9:00 p. m.—Foster and Doris.
9:15 p. m.—Organ—Vera Graham.

FRIDAY, MAY 30

1:00 p. m.—Masonic Luncheon.
8:00 p. m.—The Song Story.
8:15 p. m.—The Cheerio Boys.
8:30 p. m.—Campus Nights.
9:00 p. m.—Foster and Doris.
9:15 p. m.—Organ—Vera Graham.

SATURDAY, MAY 31

1:00 p. m.—Bill & Co.
8:00 p. m.—Tavern Club Orchestra.
8:30 p. m.—Three Vagabonds.
8:45 p. m.—Polly Ann.
9:00 p. m.—Foster and Doris.
9:15 p. m.—Organ—Vera Graham.

KFI Program

(Continued from Page 21)

3:15 p. m.—Wedgwood Nowell, Playgoers' Memories.
4:00 p. m.—Mother's Legion of the Air.
5:30 p. m.—Talk on gardening.
6:00 p. m.—NBC, Armstrong Quakers.
6:30 p. m.—KFI Symphonet.
7:30 p. m.—Paul Roberts and Schonberger Trio.
8:00 p. m.—Remote control from Ray West Cafe.
8:30 p. m.—Two Shades of Blue, Mart and Lill.
8:45 p. m.—NBC, Tone Pictures.
9:15 p. m.—Three Co-Eds.
9:30 p. m.—Packard Concert Orchestra, with Harold Spaulding, tenor.

SATURDAY, MAY 31

6:45 a. m.—Gertrude Gussell, with Paul McNally.
9:00 a. m.—Della Curley, popular soprano.
9:15 a. m.—Ron Wilson, pianist.
9:30 a. m.—Grace Mead, ballads.
9:45 a. m.—NBC, National Farm and Home Hour.
10:30 a. m.—NBC, Del Ray Fine Foods Feature.
10:50 a. m.—NBC, Woman's Magazine of the Air.
11:30 a. m.—Mahel Lewis, musical memories.
11:45 a. m.—French lesson, Annette Doherty.
2:15 p. m.—Alma and Adele Howell, duets.
3:45 p. m.—Kelly Alexander, tenor.
3:15 p. m.—The Masked Minstrels Hour.
4:45 p. m.—Weldronov, pianist.
5:00 p. m.—Two Shades of Blue, Mart and Lill.
5:15 p. m.—Will E. Wing, Hollywood.
5:30 p. m.—A. Malverne Christie, tenor.
6:00 p. m.—NBC, Lucky Strike program.
7:00 p. m.—James Burroughs and mixed quartet.
7:30 p. m.—James Burroughs and mixed quartet.
8:00 p. m.—Gilmore Circus.
8:30 p. m.—Robert Hurd and Packard Orchestra.
9:00 p. m.—NBC, Del Monte Coffee Company.
9:30 p. m.—Variety Hour, with Three Sisters; Anna Kristina, from Sweden; Happy Chappies and Micky Conti, with his accordion.
12:00 midnight—KFI Midnight Frolic.

DAILY EXCEPT SUNDAY

1:00-3:00 a. m.—The Knight Fox.
5:00 a. m.—The Early Bird.
7:00 a. m.—Hello, Everybody.
7:30 a. m.—Early News Items.
7:45 a. m.—Novelty Musical Numbers.
7:50 a. m.—Bright and Early Hour.
8:20 a. m.—Music.
8:30 a. m.—Health and Efficiency.
8:40 a. m.—Recordings.
9:00 a. m.—Beauty Talk.
9:10 a. m.—Phonograph Music.
10:00 s. m.—Organ Recital by Vera Graham.
11:00 a. m.—Sunset Harmony Boys.
11:30 a. m.—News Reports by Frank P. Gosa.
12:45 p. m.—Cheerio Boys.
1:30 p. m.—Cheerio Boys.
1:50 p. m.—Dr. Harbottle, Clarence and Doris.
2:20 p. m.—Rolly Wray.
2:30 p. m.—Sunset Harmony Boys.
3:00 p. m.—Pianistic Pansy.
3:15 p. m.—Today in History.
3:30 p. m.—Organ Recital.
4:00 p. m.—Late News Report, Press-Telegram.
4:15 p. m.—Rolly and Gene.
4:30 p. m.—Violet's Tiny Tots.
4:45 p. m.—Jones Harmony Four.
6:00 p. m.—Em and Clem.
6:15 p. m.—Percy at the Phone.
7:00 p. m.—Buttercream School Kids.
10:00 p. m.—Young Folks at Home.
11:00 p. m.—Majestic Ballroom Orchestra.

DAILY EXCEPT MONDAY

11:45 a. m.—Hollywood Girls.
5:00 p. m.—Hollywood Girls.
6:30 p. m.—Sunset Harmony Boys.
6:45 p. m.—The Three Vagabonds (ex. Tues.).
7:15 p. m.—Ezra & Ahie.
7:30 p. m.—Vest Pocket Minstrels.
7:45 p. m.—Cheerio Boys.
9:30 p. m.—Everett Hoagland's Troubadors from Rendezvous at Balboa.
12:00 midnight—Everett Hoagland Troubadors.

SUNDAY, MAY 25

5:00 a. m.—The Early Bird.
7:00 a. m.—Music.
8:00 a. m.—Family Circle Hour.
8:30 a. m.—Clover Leaf Program.
9:00 a. m.—Old Time Music.
10:00 a. m.—Angeles Abbey Organ Recital.
11:00 a. m.—St. Luke's Episcopal Church.
12:30 p. m.—Musical Program for Birkel Music Co.
1:00 p. m.—Hollywood Girls—Novelty Trio.
2:00 p. m.—Seth Parker.
2:30 p. m.—Kaal Hawaiians.
3:00 p. m.—Pianistic Pansy.
3:30 p. m.—Organ Recital—Vera Graham.
4:30 p. m.—Everett Hoagland Troubadors.
5:30 p. m.—Hollywood Girls.
6:00 p. m.—"Em & Clem."
6:30 p. m.—Zadah Stoker and Her Kiddies.
6:45 p. m.—Foster and Doris.
7:00 p. m.—Sunset Harmony Boys.
7:30 p. m.—Hollywood Girls.
8:00 p. m.—Services from First Church of Christ Scientist.

MONDAY, MAY 26

9:00 p. m.—Purity Bread Capers.
12:00 midnight—Records.
1:00 a. m.—The Knight Fox.
11:45 a. m.—Steinway Duo-Art.
12:00 noon—Sunset Harmony Boys.
1:00 p. m.—Bill and Co.
5:00 p. m.—Organ Recital.

The essential features of these programs are identical with those sent us by the stations



C. MERWIN DDBYNS

KGER Long Beach, Cal.—1360 Kc.

1000 WATTS—220.4 METERS
435 Pine Avenue Phone 632-75
C. Merwyn Ddbyns, Owner and Director Bill Ray, Manager

Herbert R. Connor
Assistant Manager

Frank C. Bliss
Publicity Director

Dick Dixon
Manager

Jay Tapp
Chief Engineer

Fritz Martin
Jerry Purcell
Jack Strook
Announcers

9:30 p. m.—Rev. Ethel Duncan.
10:00 p. m.—The Senioritas.
10:30 p. m.—Songs of the Islands.

TUESDAY, MAY 27

1:15 p. m.—Dolly Day Dreams.
1:45 p. m.—Popular programs.
4:45 p. m.—Wurlitzer Organ.
7:30 p. m.—The Senioritas.
8:30 p. m.—KGER String Ensemble.
9:30 p. m.—Main bout—Olympic Auditorium.
10:00 p. m.—Penry Selby; Earl Judy.
10:30 p. m.—Diamond Trio; Charlotte Morgan.

WEDNESDAY, MAY 28

1:00 p. m.—Novelties.
1:45 p. m.—Rev. Ethel Duncan.
4:45 p. m.—Wurlitzer Organ.
7:30 p. m.—The Senioritas.
8:30 p. m.—KGER String Ensemble.
9:30 p. m.—Rev. Ethel Duncan.
10:00 p. m.—Rhythm Makers (Dance Orchestra).

THURSDAY, MAY 29

1:00 p. m.—Popular programs.
1:30 p. m.—Audition Clinic.
4:45 p. m.—Wurlitzer Organ.
7:30 p. m.—The Senioritas.
8:00 p. m.—Earl Judy—Request program.
8:30 p. m.—The Musical Typists.
9:15 p. m.—P. C. C. Musicale.
10:00 p. m.—Ken Theonor; Pearl Davis.
10:30 p. m.—Diamond Trio.

FRIDAY, MAY 30

1:15 p. m.—Dolly Day Dreams.
1:45 p. m.—Novelties.
4:45 p. m.—Wurlitzer Organ.
7:30 p. m.—The Senioritas.
8:30 p. m.—KGER Players.
9:15 p. m.—Ole and his Gang.
10:00 p. m.—Rhythm Makers.

SATURDAY, MAY 31

1:00 p. m.—Popular Music.
4:45 p. m.—Wurlitzer Organ.
8:00 p. m.—Melodies of Bygone Days.
8:30 p. m.—Spotlight Review.
10:00 p. m.—Rhythm Makers.

DAILY EXCEPT SUNDAY

7:30 a. m.—Brentwood Revelers.
8:00 a. m.—Foot Comfort Talks.
9:00 a. m.—Home Makers' Hour.
10:45 a. m.—Beauty Talk.
11:45 a. m.—Hi-noon, Hi-Jinks (Rhythm Makers).
2:00 p. m.—Siesta Period.
2:30 p. m.—Long Beach Band.
9:00 p. m.—News Bulletin—Long Beach Sun.
4:00 p. m.—Lost and Found.
10:00 p. m.—Southgate Dance Marathon.
11:00 p. m.—Quiet Time Tunes.

SUNDAY, MAY 25

8:30 a. m.—Comrades of the Air.
9:30 a. m.—Taubman Men's Bible Class.
11:15 a. m.—First Presbyterian Church.
2:30 p. m.—Long Beach Band.
4:00 p. m.—Cathedral Hour.
6:30 p. m.—Aristocrat of the Supper Table.
7:00 p. m.—Harmony Trio.
7:30 p. m.—Diamond Trio.
9:00 p. m.—Reverie Hour.
10:00 p. m.—Sunday Night Frolio to Midnight.

MONDAY, MAY 26

1:15 p. m.—Nature Study Talks.
4:45 p. m.—Wurlitzer Organ.
8:00 p. m.—Aladdins Lamp.
8:30 p. m.—Woman's Music Club.
9:15 p. m.—Pianistic Moods.



HARRY HERDMAN

KTBI Los Angeles, Calif.—1300 Kc.

1000 Watts—230.6 Meters—1300 Kc.—Bible Institute of L. A.
HARRY P. HERDMAN, Announcer. Phone MA. 1641
HOWARD C. WILSON, Technician
GORDON E. HDOKER, Accompanist
JOHN C. PAGE, Program Director

DAILY EXCEPT SATURDAY AND SUNDAY

8:00 a. m.—Uncle Harry's Bible Story.
8:15 a. m.—Devotional Hour.
9:15 a. m.—Radio Bible Course.
10:35 a. m.—Dr. John C. Page.
12:00 noon—Noonday Chimes.
2:00 p. m.—Visiting Pastor.

1:30 p. m.—Book Messages.

WEDNESDAY, MAY 28

8:45 a. m.—Rev. Stanley H. Bailes.
9:45 a. m.—Prof. H. W. Kellogg.
11:30 a. m.—Dr. J. E. Jaderquist.
1:00 p. m.—Musical Half-Hour.
1:30 p. m.—Rev. John A. Hubbard.

THURSDAY, MAY 29

8:45 a. m.—Announcer's Hour.
9:45 a. m.—Missionary Hour.
11:30 a. m.—Pastoral Talks on Heart Problems.
1:00 p. m.—Gordon Hyde, tenor.
1:15 p. m.—Missionary Biographies.

FRIDAY, MAY 30

8:45 a. m.—Correspondence Course Bible Lesson.
9:45 a. m.—Messages in Song.
11:30 a. m.—Dr. J. E. Jaderquist.
1:00 p. m.—Jack Wells, baritone.
1:15 p. m.—Book Messages.
7:00 p. m.—International Sunday School Lesson.
8:00 p. m.—Evening School Lecture.
9:00 p. m.—Program of Gospel Music.

SUNDAY, MAY 25

6:00 p. m.—Studio Vesper Service.
8:00 p. m.—Church of the Open Door.
9:00 p. m.—Bible Institute After Church Service.

MONDAY, MAY 26

8:45 a. m.—Rev. Stanley H. Bailes.
9:45 a. m.—Messages from the Best Books.
11:30 a. m.—Verna Remple, soprano.
1:00 p. m.—Aghayni Hargopian and Dorothy Bonthius.
1:15 p. m.—Faculty Music Hour.
7:00 p. m.—The President's half hour.
7:30 p. m.—Rev. Milo Jamison.
8:00 p. m.—Union Rescue Mission.
9:00 p. m.—Dr. David L. Cooper.

TUESDAY, MAY 27

8:45 a. m.—News of Christian Work.
9:45 a. m.—Bible Question Box, Rev. W. H. Pike.
11:30 a. m.—Dr. W. E. Edmonds.
1:00 p. m.—Hazel Shively and Gordon Hooker

The essential features of these programs are identical with those sent us by the stations



LESLIE ADAMS

KFSD

San Diego, Calif.—600 Kc.

1000 WATTS—499.7 METERS
"The Air Capital of the West"
Telephone Franklin 6353

Leslie Adams
General Manager
Walter B. Neff
Advertising Manager
Glen Litton
Chief Technician
Gene Perry
Announcer
Leah McMahon
Program Director

MONDAY, MAY 26
2:30-5:00 p. m.—Operatic program.
7:00 p. m.—Program from Thearle Music Hall.
8:00 p. m.—Program presenting Ekay Hawaiians.
9:00 p. m.—KFSD Concert Trio with Janet Stanley.

TUESDAY, MAY 27
7:00 p. m.—Claude Kennedy's Orchestra.
8:00 p. m.—Manuel Dehesa.
8:30 p. m.—Leslie Adams.
9:00 p. m.—Feature program.
9:30 p. m.—Yogi Alpha.

WEDNESDAY, MAY 28
3:30 p. m.—Mrs. Craw, Child Psychology.
6:30 p. m.—Graham Stevenson's Orchestra.
7:00 p. m.—Union-Tribune Safety program.
7:45 p. m.—Leah McMahon.
8:00 p. m.—North American Ensemble.
9:00 p. m.—The Story Behind the Song.

THURSDAY, MAY 29
3:30 p. m.—French Lesson.
6:30 p. m.—Manuel Dehesa.
7:00 p. m.—Cramer's Concert Trio.
8:00 p. m.—Ekay's Hawaiians.
9:00 p. m.—Yogi Alpha.
9:30 p. m.—Feature program.

FRIDAY, MAY 30
3:30 p. m.—Concert.
7:00 p. m.—Program from Thearle Music Hall.
8:00 p. m.—Old-Time program.
9:00 p. m.—North American Ensemble.

SATURDAY, MAY 31
3:30 p. m.—Wixie Wir in "Echoes from Artists of the Pen."
6:30 p. m.—Orpheus Male Quartet.
7:30 p. m.—Bailey Warren, tenor; Richard Tetley, piano; Mildred Marini, soprano.
8:30 p. m.—Blanche Wood.
9:00 p. m.—Easley Players.
9:30 p. m.—Feature program.

DAILY EXCEPT SUNDAY

8:45 a. m.—Good Cheer program.
9:00 a. m.—Morning Musical.
10:00 a. m.—Amy Lou Shopping Hour.
11:00 a. m.—Service Hour.
12:00 noon—James Erickson at Console of Fox Call Theatre.
12:30 p. m.—Studio program.
1:00 p. m.—KFSD Matinee Hour.
2:00 p. m.—Story Time (except Saturday).
2:30 p. m.—Balboa Park Organ (except Monday).
4:00 p. m.—Studio program.
5:00 p. m.—Nightly Musical Review.
6:00 p. m.—Late News; Weather Reports.
6:15 p. m.—Your English.
6:30 p. m.—Feature Program.
10:00 p. m.—Sleepy-Time Revelries.
11:00 p. m.—Douglas Nite Club.

SUNDAY, MAY 25

9:30 a. m.—Sponsored program.
10:30 a. m.—Popular Records.
11:00 a. m.—Yogi Alpha.
11:30 a. m.—Studio program.
12:00 noon.—Old-Time program.
2:00 p. m.—Studio program.
2:30 p. m.—Organ concert from Balboa Park.
8:00 p. m.—Sumner McKnight, accordion; Virgilio Rosado, violin.
8:30 p. m.—Hotel Del Coronado Concert Quartet.



FRANK BULL

KMIC

Inglewood, Calif.—1120 Kc.

500 WATTS—267.7 METERS
Chamber of Commerce Bldg., Inglewood, Calif.
Owned and Operated by Dalton's, Inc.

V. G. Fretag
Manager
Tel. TH. 1121
Inglewood 1927
Frank Bull
Cliff Howell
Announcers
Sonny Nupoff
Musical Director
Charles Whitney
Engineer
Barret Cosby
Chief Technician

8:30 p. m.—Lani McIntyre Harmony Hawaiians.
9:30 p. m.—Swifts Palais Ballroom.
10:30 p. m.—Records.
11:00 p. m.—Marathon.

TUESDAY, MAY 27

2:00 p. m.—Popular records.
6:30 p. m.—Sonny Nupoff's Dance Band.
7:30 p. m.—Classical Collegians.
8:00 p. m.—Lani McIntyre Harmony Hawaiians.
9:00 p. m.—Cavalliers Club.
10:00 p. m.—Popular records.
11:00 p. m.—Marathon.

WEDNESDAY, MAY 28

6:00 p. m.—Sonny Nupoff's Studio Boys.
7:00 p. m.—Marie Hockings Organ Recital.
7:30 p. m.—Old Time Music.
8:00 p. m.—Lani McIntyre Harmony Hawaiians.
9:00 p. m.—Magazine of the Air.
9:30 p. m.—Swifts Palais Ballroom.
10:30 p. m.—Records.
11:00 p. m.—Marathon.

THURSDAY, MAY 29

6:30 p. m.—Sonny Nupoff.

FRIDAY, MAY 30

6:00 p. m.—Marie Hockings Organ Recital.
6:30 p. m.—Sonny Nupoff's Studio Boys.
7:30 p. m.—Lani McIntyre Harmony Hawaiians.
8:30 p. m.—Classical Collegians.
9:30 p. m.—Swifts Palais Ballroom.
10:30 p. m.—Records.
11:00 p. m.—Marathon.

SATURDAY, MAY 31

6:30 p. m.—Sonny Nupoff's Studio Boys.

DAILY EXCEPT SUNDAY

6:00 a. m.—Uncle Bim and Andy.
8:00 a. m.—Ethiopian-Oriental Day Club, featuring "g" Ball, Hotsy Totsy Gang, Head Hunters and Oney.
9:00 a. m.—Roll call for 1930 Super Marathon.
9:55 a. m.—News Flashes.
12:00 noon.—American Legion Briefs—News Flashes.
12:15 p. m.—Records.
12:30 p. m.—Loyola University, Educational (ex. Sat.).
1:00 p. m.—Popular Records.
5:00 p. m.—News Flashes—Request Records.
6:00 p. m.—Marie Hocking, organ recital (ex. Wed.).
6:30 p. m.—Sonny Nupoff's Studio Boys.
12:00 midnight—Request Records.

SUNDAY, MAY 25

12:30 p. m.—Records.
4:30 p. m.—Selected records.
11:00 p. m.—Marathon.

MONDAY, MAY 26

2:00 p. m.—Records.
7:00 p. m.—Armstrong's Memory Contest.
7:30 p. m.—Classical Collegians.

The essential features of these programs are identical with those sent us by the stations



J. W. LAUGHLIN

KPO

San Francisco, Calif.—680 Kc.

5000 WATTS—440.9 METERS
HALE BROTHERS AND THE CHRONICLE
"The Voice of San Francisco"

Phone Kearney 0704

J. W. Laughlin
Managing Director
Curtis Peck
Technical Director

DAILY EXCEPT SUNDAY

- 7:00 a. m.—Health Exercises, with Professor Bob.
8:00 a. m.—Shell Happy Time, Hugh Dobbs.
9:30 a. m.—Daily Chat with Walter W. Cribbins.
10:30 a. m.—Woman's Magazine of the Air (except Thursday), NBC.
11:30 a. m.—Ye Towne Crier (ex. Thurs. and Sat.).
11:55 a. m.—Scripture Reading, Weather Reports, etc.
12:05 p. m.—Snap Shots. Programs in Miniature.
1:30 p. m.—Ann Warner's Homemaking Chats (except Tuesday and Friday).
2:00 p. m.—E. A. Pierce, stock reports (except Monday)
2:30 p. m.—The Auburn Girl (except Monday).
2:45 p. m.—Play by Play report of baseball games (except Monday).
4:50 p. m.—E. A. Pierce, stock reports.
4:30 p. m.—Children's Hour.
5:20 p. m.—L. A. Pierce stock reports.
5:30 p. m.—The Date Book.
5:45 p. m.—News Digest, with Scotty Mortland (except Thursday).
6:00 p. m.—KPO Masters of Music.
6:45 p. m.—Cecil and Sally.
7:00 p. m.—North Americans.
9:00 p. m.—Cecil and Sally.

SUNDAY, MAY 25

- 9:00 a. m.—Chronicle Comics of the Air.
9:30 a. m.—Floyd Wright—Organ Recital.
10:30 a. m.—Interdenominational and Nonsectarian (Church Services).
12:00 noon.—Dr. S. Parkes Cadman's Hour, NBC.*
12:30 p. m.—Temple of the Golden Hour, KFI.
1:30-6:15 p. m.—NBC.*
6:15 p. m.—Talk—"Science and Invention," by Elmer Robinson.
6:30 p. m.—Kathryn Julie Trio; KPO Mixed Quartet.
7:30 p. m.—Palace Hotel Concert Orchestra.
8:30 p. m.—Rudy Selger and his Fairmont Hotel Concert Orchestra.
9:00 p. m.—Abas String Quartet, with Allan Wilson.
10:00 p. m.—News Digest, "Scotty" Mortland.
10:30 p. m.—Joe Wright's Silver Slipper Dance Orchestra

MONDAY, MAY 26

- 10:00 a. m.—Ann Warner's Home Making Chat.
1:00 p. m.—Harold Small—Book Review.
2:00 p. m.—Mormon Tabernacle, NBC.*
2:30 p. m.—Pacific Coast School Broadcast, NBC.*
3:00 p. m.—Helen Gordon Barker Art Talk.
3:55 p. m.—California State Chamber of Commerce.
4:00 p. m.—Julia Hayes, "Helpful Hints to Housewives"
8:00 p. m.—Shell Symphonists program, NBC.*
9:00 p. m.—The Toreadors.
10:00 p. m.—Jesse Stafford's Palace Hotel Dance Orch.

TUESDAY, MAY 27

- 10:00 a. m.—Ann Warner's Home Making Chat.

- 1:00 p. m.—Novelty Fire, NBC.*
1:30 p. m.—Pacific Coast School Broadcast, NBC.*
2:10 p. m.—California Crooners.
2:30 p. m.—The Auburn Girl.
2:45 p. m.—Get Associated with Baseball.
8:00 p. m.—Ghvardell's Scrap Book program, with Fredric Bittke, baritone.
8:30 p. m.—Musical Capers.
9:00 p. m.—Meeting in the Tavern.
9:15 p. m.—Roland U. McIntosh in "Plane Journeys."
9:30 p. m.—Earle C. Anthony "Packard program," NBC.*
10:00 p. m.—Joe Wright's Silver Slipper Dance Orch.

WEDNESDAY, MAY 28

- 10:00 a. m.—Julia Hayes, "Helpful Hints to Housewives"
1:00 p. m.—Jerry Jermaine, balladist.
2:10 p. m.—Doug. Richardson.
2:45 p. m.—Get Associated with Baseball.
4:30 p. m.—Children's Hour.
8:00 p. m.—Let's Get Associated.
8:30 p. m.—Nathan Abas, violin recital.
9:00 p. m.—Jesse Stafford's Palace Hotel Dance Orch.
9:30 p. m.—Earle C. Anthony "Packard program," NBC.*
10:00 p. m.—Jesse Stafford's Palace Hotel Dance Orch.
11:00 p. m.—Joe Wright's Silver Slipper Dance Orch.

THURSDAY, MAY 29

- 10:00 a. m.—Woman's Magazine of the Air, NBC.*
11:00 a. m.—Standard School Broadcast, NBC.*
12:30 p. m.—Shrine Luncheon Broadcast from Palace Hotel.
1:30 p. m.—Safe Summer Driving Campaign—Talk.
2:10 p. m.—Dee and Dee.
2:45 p. m.—Get Associated with Baseball.
5:45 p. m.—Federal Business Association Talk.
8:00 p. m.—Lucy Strike Dance Orchestra, NBC.*
9:00 p. m.—KPO Salon Orchestra.
9:30 p. m.—Earle C. Anthony "Packard program," NBC.*
10:00 p. m.—Joe Wright's Silver Slipper Dance Orch.

FRIDAY, MAY 30

- 9:45 a. m.—Woman's Magazine of the Air, NBC.*
10:45 a. m.—Memorial Day Exercises at Gettysburg, address by President Herbert Hoover, NBC.*
12:15 p. m.—Snap Shots—Programs in Miniature.
12:45 p. m.—Commonwealth Club Luncheon at Palace Hotel.
2:10 p. m.—California Crooners.
2:45 p. m.—Get Associated with Baseball.
8:00 p. m.—Caswell Musical Episode.
8:30 p. m.—Out West.
9:00 p. m.—Meeting in the Tavern.
9:15 p. m.—Maurice Gunsky, popular balladist.
9:30 p. m.—Earle C. Anthony "Packard program," NBC.*
10:00 p. m.—Jesse Stafford's Palace Hotel Dance Orch.
11:00 p. m.—Joe Wright's Silver Slipper Dance Orch.

SATURDAY, MAY 31

- 10:00 a. m.—National Home and Farm Hour, NBC.*
1:00 p. m.—A Cappella Choir of Pacific Union College.
2:10 p. m.—The Sequoians.
2:45 p. m.—Get Associated with Baseball.
8:00 p. m.—The Gilmore Circus, NBC.*
8:30 p. m.—KPO Salon Orchestra.
9:30 p. m.—Earle C. Anthony "Packard program," NBC.*
10:00 p. m.—Jesse Stafford's Palace Hotel Orchestra.
11:00 p. m.—Joe Wright's Silver Slipper Dance Orch.

See Page 20 for NBC Program

KGO

Oakland, California—790 Kc.

7500 WATTS—379.5 METERS
PACIFIC COAST STATION, GENERAL ELECTRIC CO.
Phone Fruitvale 5980. 557 Hotel St. Francis
See Page 20 for Detailed Program of KGO

The essential features of these programs are identical with those sent us by the stations



KFRC San Francisco, Calif.—610 Kc. Owned and Operated by Don Lee, Cal. Dist. for Cadillac & LaSalle 1000 WATTS — 491.5 METERS 1000 Van Ness Telephone Prospect 0100

Harrison Holliday Manager
Edwin Wilson Commercial Director
Alan N. Cormack Technical Director
Frank Moss Musical Director

HARRISON HOLLIDAY

DAILY EXCEPT SUNDAY

- 7:00 and 7:32 a. m.—'Simply Fits' from Seal Rocks.
8:00 a. m.—CBS.*
8:30 a. m.—New York Stock Exchange.
8:30 a. m.—Yoeng's Orchestra, CBS.*
9:00 a. m.—S. F. Call-Bulletin's News.
9:15 a. m.—Yoeng's Orchestra, CBS* (ex. Wed.).
9:30 a. m.—Feminine Fancies (except Saturday).
10:30 a. m.—Wyn's Daily Chat (except Saturday).
12:00 noon.—Sherman Clay Concert.
1:00 p. m.—CBS.*
2:00 p. m.—Happy-Go-Lucky Hour (except Saturday).
4:45 p. m.—S. F. Cal-Bulletin's News Items and Town Topics.
12:00 midnight—Dance music.

SUNDAY, MAY 25

- 9:00 a. m.—'Home Sweet Home' concert.
12:00 noon.—Sherman & Clay Noonday concert.
1:00 p. m.—Jean Wakefield—'Jean and Her Shadows.'
2:00 p. m.—'The Blenders'—Male Quartette.
2:30 p. m.—'The Gauchos.' CBS.*
3:00 p. m.—Frank Moss, pianist; Margaret O'Dea.
3:45 p. m.—'The World's Business'—Dr. Julius Klein.
4:00 p. m.—Tea Time Recital.
4:30 p. m.—Inspirational Talk by Dr. Louis I. Newman.
5:00 p. m.—Majestic Theater of the Air, CBS.*
6:00 p. m.—Will Rogers, CBS.*
6:30 p. m.—Twilight Hour—Orchestra and Soloists.
7:00 p. m.—Mahlon Merrick's Modern Melodists.
8:00 p. m.—Cadillac-LaSalle Concert.
9:00 p. m.—'Melody Hour'—Robert Olsen, tenor.
9:30 p. m.—Val Valente and His Roof Garden Orch.
11:00 p. m.—Organ Recital.

MONDAY, MAY 26

- 11:00 a. m.—Domestic Science Talk.
11:30 a. m.—Auditions.
1:45 p. m.—Three Dainty Misses.
3:00 p. m.—H. V. Kaltenborn, Current Events, CBS.*
3:30 p. m.—Western Air Express—Aviation Talk.
3:45 p. m.—CBS.*
4:00 p. m.—Viennese Quintette.
5:00 p. m.—Hi Moulton & his Fire-Eaters.
5:30 p. m.—Walter Kelsey, violinist; Eleanor Allen.
6:00 p. m.—Bobs, noted sports authority.
6:15 p. m.—'Your Financial Problems.'
6:30-8:00 p. m.—CBS.*
8:00 p. m.—'Golden State Blue Monday Jamboree.'
10:00 p. m.—Cecil Wright, 'Little Poison Oak Himself.'
10:15 p. m.—Hotel Mark Hopkins Orchestra.
11:00 p. m.—Earl Burnett's L. A. Biltmore Orchestra.

TUESDAY, MAY 27

- 11:00 a. m.—Columbia Ensemble, CBS.*
11:30 a. m.—For Your Information, CBS.*
1:30 p. m.—CBS.*
3:00 p. m.—Beauty Talks, courtesy Colonial Dames Corp
3:15 p. m.—Recordings.
3:15 p. m.—Something About Everything.
3:30 p. m.—'Herolues of Fiction.'
3:45 p. m.—Dance Carnival, CBS.*
4:00 p. m.—Organ Recital from KHJ.
5:00 p. m.—CBS.*
7:00 p. m.—Edna Fischer—'Piano Moods.'
7:15 p. m.—'The Joy Boys'—Art Fadden and Frank Galvin.
7:30 p. m.—KFRC Dance Band.
8:00 p. m.—Ice Carnival.
8:30 p. m.—Lights and Shadows.
9:00 p. m.—Don Lee Concert Orchestra.
9:30 p. m.—Ballad Crooners.
10:00 p. m.—'Frank Watanabe'—Eddie Holden.
10:10 p. m.—Val Valente's Roof Garden Orchestra.

WEDNESDAY, MAY 28

- 11:00 a. m.—Mary Lewis Haines.

- 11:15 a. m.—Dorothy Chase and the Charis Players.
11:30 a. m.—Glidden So-a-Tone.
11:45 a. m.—Barbara Gould—Beauty Talk.
1:15 p. m.—Foot Notes, CBS.*
1:45 p. m.—Three Dainty Misses.
3:00 p. m.—The Observer—about new books.
3:30 p. m.—Something About Everything.
3:35 p. m.—Your English—Electrical Transcription.
3:40 p. m.—Recordings.
4:00 p. m.—The Crockett Mountaineers, CBS.*
4:30 p. m.—Three Dainty Misses.
5:00 p. m.—KFRC Dance Band.
6:10 p. m.—Seth Thomas Clock Company program.
6:15 p. m.—Shalor Company program (So-a-Tone).
6:30 p. m.—Novelty program from KHJ.
7:00 p. m.—CBS.*
8:00 p. m.—Standard Oil 'Romantic Forty-Niners.'
8:30 p. m.—Stanley program.
9:00 p. m.—Concert Orchestra from KHJ.
9:30 p. m.—'Musical Suggestions.'
10:00 p. m.—Ted Florida, Hotel Mark Hopkins Orchestra.
11:00 p. m.—Earl Burnett's L. A. Biltmore Orchestra.

THURSDAY, MAY 29

- 11:00 a. m.—Old Witch—Electrical Transcription.
11:15 a. m.—Columbia Ensemble, CBS.*
11:30 a. m.—For Your Information, CBS.*
1:15 p. m.—CBS.*
3:00 p. m.—Talk on Popular Psychology.
3:15 p. m.—Beauty Talks.
3:30 p. m.—KFRC Dance Band.
4:00 p. m.—International Sidelights, CBS.*
4:15 p. m.—Frederick William Wile, CBS.*
4:30 p. m.—U. S. Marine Band, CBS.*
5:00 p. m.—Pacific States Organ.
5:30 p. m.—KFRC Dance Band.
6:30 p. m.—National Radio Forum, CBS.
7:00 p. m.—Edna Fischer 'Piano Moods.'
7:15 p. m.—'The Mission Joy Boys.'
7:30 p. m.—Dance Carnival, CBS.*
8:00 p. m.—Violet Ray Merrymakers.
9:00 p. m.—Eastman Kodak.
9:30 p. m.—Organ and Singers from KHJ.
10:00 p. m.—Frank Watanabe—Eddie Holden.
10:10 p. m.—Val Valente and His Roof Garden Orch.
11:10 p. m.—Ted Florida Hotel Mark Hopkins Orchestra.

FRIDAY, MAY 30

- 10:45 a. m.—Pres. Hoover's Memorial Day address. CBS.*
11:00 a. m.—Domestic Science Talk.
11:30 a. m.—Hollywood Gossip.
11:45 a. m.—Auditions.
1:45 p. m.—Three Dainty Maisses.
3:00 p. m.—Dance Carnival, CBS.*
3:30 p. m.—Something About Everything.
3:45 p. m.—CBS.*
4:00 p. m.—Nit Wit Hour, CBS.*
4:30 p. m.—U. S. Army Band, CBS.*
7:00 p. m.—Custo Reue.
6:00-7:30 p. m.—CBS.*
7:30 p. m.—'Mac and Al.'
7:45 p. m.—Walter Kelsey—Violin Recital.
8:00 p. m.—Vedool Vodvil—Dangers of Desdemona.
8:30 p. m.—Bekin's Callfortians—Novelty program.
9:00 p. m.—True Story Hour, CBS.*
10:00 p. m.—Cecil Wright, 'Little Poison Oak Himself.'
10:15 p. m.—Ted Florida Hotel Mark Hopkins Orch.
11:00 p. m.—Val Valente and His Roof Garden Orch.

SATURDAY, MAY 31

- 10:00 a. m.—Song Recital from KHJ.
11:00 a. m.—Auditions and Church Announcements.
1:45 p. m.—Recordings.
2:00 p. m.—Hotel Shelton Orchestra, CBS.*
2:30 p. m.—Norman Nielsen, tenor, and Edna Fischer.
3:00-4:45 p. m.—CBS.*
5:00 p. m.—Hank Simmon's Show Boat, CBS.*
6:00 p. m.—Paramount Public Radio Hour, CBS.*
7:00 p. m.—Edna Fischer 'Piano Moods.'
7:15 p. m.—The Mission Joy Boys.
7:30 p. m.—Dance Carnival, CBS.*
8:00 p. m.—William Oil-O-Matic.
8:30 p. m.—Musical Cocktails.
9:00 p. m.—'Chasin' the Blues.
10:00 p. m.—'Frank Watanabe' Eddie Holden.
10:10 p. m.—Hotel Mark Hopkins Orchestra.
11:10 p. m.—Earl Burnett's Orchestra.

See Page 22 for CBS Program

The essential features of these programs are identical with those sent us by the stations



WALTER J. RUDOLPH

KTAB

Bob Roberts
General Manager
Walter J. Rudolph
Musical Director
Helen O'Neill
Program Director

DAILY EXCEPT SUNDAY

- 6:30 a. m.—Studio program, Frank Wright.
6:45 a. m.—Health program.
7:00 a. m.—Studio program.
7:30 a. m.—Red Hat program.
8:30 a. m.—Town Crier (except Wed. and Fri.).
9:00 a. m.—Morning Prayer Services.
9:30 a. m.—Talk by Doctor.
10:00 a. m.—Household Hour with Alma LaMarr (except Saturday).
10:30 a. m.—Dr. Corley.
11:00 a. m.—Studio program.
1:00 p. m.—Chapel of Chimes.
1:45 p. m.—Dr. Wade Forrester.
2:30 p. m.—Recordings (ex. Mon.).
2:40 p. m.—Baseball from Recreation Park (ex. Mon.).
4:45 p. m.—Records.
5:00 p. m.—The Story Man and His Air Castle.
5:15 p. m.—Brother Boh's Frolic.
6:00 p. m.—Date Book program.
6:15 p. m.—Studio program.
6:30 p. m.—Chapel of Chimes.
10:30 p. m.—Dance Orchestra from Sweet's Ballroom (ex. Mon.).
11:30 p. m.—Dance Records.

SUNDAY, MAY 25

- 9:00 a. m.—Dr. B. L. Corley, Health Talk.
10:00 a. m.—10th Ave. Baptist Church.
12:30 p. m.—Chapel of Chimes.
1:00 p. m.—Church of Latter Day Saints.
1:30 p. m.—Masters Album.
2:30 p. m.—Novelty Records.
3:00 p. m.—Jack Riley, song artist.
3:30 p. m.—Studio program.
4:00 p. m.—Musical Appreciation Hour.
5:00 p. m.—Chapel of Chimes.
6:00 p. m.—Brunswick Hour.
6:30 p. m.—Lecturer for Seven Day Adventists.
7:00 p. m.—Joan Ray, contralto; Jane Sargent Sands.
7:30 p. m.—Chapel of Chimes.
7:45 p. m.—Services from 10th Ave. Baptist Church.

KGEF

C. C. Hooper
Manager
J. Dale Stentz
Announcer
M. J. Hankins
Technician

SUNDAY, MAY 25

- 8:30 a. m.—Morning Watch Quartet.
9:30 a. m.—Radio Sunday School.
10:00 a. m.—Claude L. Heskett.
10:45 a. m.—Trinity Church.
12:00 noon—Signing off.
2:00 p. m.—Tower Class, alt. with Alhamhra Baptist Church.
2:30 p. m.—Free Methodist Church of Santa Monica, alt. with Southwest Conservatory of Music.
3:30 p. m.—W. W. Newberry.
4:00 p. m.—Lutheran Churches of Southern California.
4:30 p. m.—Dorothy Hankins and Associated Artists.
5:00 p. m.—Vesper Hour.
7:00 p. m.—John Brown of Arkansas.

TUESDAY, MAY 27

- 6:00 p. m.—Yette Barber Studio.
6:20 p. m.—John Unfried, Radio Evangelist.
7:00 p. m.—Woman's Civic Hour, Mrs. Stentz.
7:30 p. m.—John Brown of Arkansas.
9:00 p. m.—South Park Christian Church Bereans.

San Francisco—560 Kc.

1000 WATTS—535.4 METERS
Official Pickwick State Station
Owned and Operated by the Associated Broadcasters, Inc.
Pickwick Terminal Hotel, Fifth and Mission Sts.
Telephone Garfield 4700

- 9:15 p. m.—Chapel of Chimes.
9:30 p. m.—Elbert Bellows, tenor; Jane Sands.
10:00 p. m.—Studio program.
10:30 p. m.—Dance Orchestra from Sweet's Ballroom.

MONDAY, MAY 26

- 8:00 a. m.—Selected Classical Records.
2:30 p. m.—Musical Appreciation Hour.
3:00 p. m.—"Organ Echoes" with Alice Blue.
3:30 p. m.—Novelty Records.
7:00 p. m.—Alice Blue, piano.
7:15 p. m.—Records.
7:30 p. m.—Madelaine O'Brien, soprano.
8:00 p. m.—"Poem Pictures."
9:00 p. m.—"Highway Highlights."
10:00 p. m.—Alice Blue, organist.
10:30 p. m.—Dance Records.

TUESDAY, MAY 27

- 8:00 a. m.—Masters Album.
8:30 a. m.—Dr. W. G. Keyes.
7:00 p. m.—Hawaiian program.
7:30 p. m.—Jack Riley, songs and ukulele.
7:45 p. m.—"Would You Believe It?"
8:00 p. m.—"Flashlights of Yesterday."
9:00 p. m.—"Melody Quintet."
10:00 p. m.—Alice Blue at the organ.

WEDNESDAY, MAY 28

- 7:00 p. m.—Recordings.
7:15 p. m.—Studio program.
7:30 p. m.—"Memory Bouquet."
8:30 p. m.—"Pepper Box" program.

THURSDAY, MAY 29

- 8:00 a. m.—Masters Album.
8:30 a. m.—Dr. W. G. Keyes.
7:00 p. m.—Louis Margis, Hawaiian.
7:30 p. m.—Dorothy Nichols, 'cellist; Walter Rudolph.
7:45 p. m.—Medieval program.
8:00 p. m.—"Highway Highlights."
9:00 p. m.—Melody Quintette.
10:00 p. m.—Organ Echoes.

FRIDAY, MAY 30

- 8:00 a. m.—Towne Cryer.
7:00 p. m.—Studio program.
7:15 p. m.—Records.
7:30 p. m.—Cotton Band.
7:45 p. m.—Alice Blue, pianist.
8:00 p. m.—"Miniatures" with Melody Quintette.
10:00 p. m.—"Varieties."

SATURDAY, MAY 31

- 8:00 a. m.—Masters Album.
8:30 a. m.—Dr. W. G. Keyes.
7:00 p. m.—Blue Lahel program; Margi's Hawaiians.
7:30 p. m.—Walter J. Rudolph, concert pianist.
8:00 p. m.—Dorothy Nichols, 'cellist; Alice Blue.
8:30 p. m.—Melody Quintette.
9:30 p. m.—Melody Makers and Alice Blue.

Los Angeles, Calif.—1300 Kc.

1000 WATTS — 230.6 METERS
TRINITY METHODIST CHURCH, BOB SHULER, Pastor
Phone Westmore 8887

- 9:30 p. m.—Torrance Methodist Church.
10:00 p. m.—Mrs. Boh Shuler.
10:30 p. m.—Jess Blankenship, Old Time Fiddlers.

WEDNESDAY, MAY 28

- 6:00 p. m.—Mother Huhhard.
6:40 p. m.—Mrs. J. E. Moore, Soloist.
7:00 p. m.—Conrey Bible Class and Union Rescue Mission.
7:30 p. m.—John Brown of Arkansas.
9:00 p. m.—Old Songs Quartet.
10:00 p. m.—Volunteers of America.

THURSDAY, MAY 29

- 6:00 p. m.—Trinity Church Ensemble, Alt. with Mrs. Tom Murray.
7:00 p. m.—Dr. Fredus Nelson Peters.
7:30 p. m.—John Brown of Arkansas.
9:00 p. m.—The Hired Man.
9:30 p. m.—Devere Nicholson and Martha Spangler Nicholson.
10:00 p. m.—Mrs. Bob Shuler.
10:30 p. m.—Hawaiians.

The essential features of these programs are identical with those sent us by the stations



KEX

Portland, Oregon—1180 Kc.

5000 WATTS—254.1 METERS
Owned and Operated by WESTERN BROADCASTING COMPANY
Member of Northwest Broadcasting System, Inc.

R. A. Case
Station Director
Louis Teegarden
Program Director

R. A. CASE

DAILY EXCEPT SUNDAY

- 7:00 a. m.—Morning Serenaders.
 - 8:00 a. m.—The Clock and Oregon Journal News.
 - 9:45 a. m.—Devotional Service.
 - 10:00 a. m.—Castle Organ Recital.
 - 10:30 a. m.—KEX Shopping Service.
 - 12:00 noon.—Time, weather, etc.
 - 12:05 p. m.—Happy Hour Girls
 - 1:05 p. m.—Newscasting and Piano (except Saturday).
 - 1:30 p. m.—Castle Organ Recital.
 - 2:00 p. m.—Dental Lecture (except Saturday).
 - 2:30 p. m.—The Bookworm (except Monday).
 - 3:00 p. m.—Afternoon Matinee.
 - 5:15 p. m.—Baron Keyes' Air Castle (ex. Saturday).
 - 5:30 p. m.—KEX Bulletin.
 - 10:30 p. m.—Jack and Jill Tavern Orchestra.
 - 11:30 p. m.—Time, Weather, News.
 - 11:40 p. m.—KEX Midnight Matinee.
- SUNDAY, MAY 25**
- 12:00 noon.—Castle Organ Recital.
 - 1:00 p. m.—Popular Concert.
 - 5:30 p. m.—Bits of Harmony.
 - 6:00 p. m.—The Hour on Broadway.
 - 7:00 p. m.—The Hometowners.
 - 8:00 p. m.—Damski's Imperial Grand Orchestra.
 - 9:00 p. m.—Los Gauchos Argentine Band.
 - 10:00 p. m.—Angeles Ensemble.
 - 11:00 p. m.—Harmony Aces.
 - 12:00 midnight.—Time, News.
- MONDAY, MAY 26**
- 11:30 a. m.—Billy's Hawaiians.
 - 2:30 p. m.—Band Concert.
 - 4:30 p. m.—Popular Song Recital.
 - 6:00 p. m.—Hometowners.
 - 7:00 p. m.—Popular music.

- 7:15 p. m.—Musical Musketeers.
 - 9:00 p. m.—The Jewel Box.
 - 9:30 p. m.—Neopolitan Orchestra.
 - 10:00 p. m.—Melvin and Merciful.
 - 10:15 p. m.—Novelty Orchestra.
- TUESDAY, MAY 27**
- 4:30 p. m.—Negro Melodies.
 - 6:00 p. m.—Mandolins at Sunset.
 - 6:30 p. m.—DuBols Motor Playmates.
 - 8:00 p. m.—Popular Dance Concert.
 - 9:00 p. m.—Musical Comedy Hour.
 - 10:00 p. m.—Thomas and Tessie.
 - 10:15 p. m.—Novelty Orchestra.

- WEDNESDAY, MAY 28**
- 11:30 a. m.—Billy's Hawaiians.
 - 4:30 p. m.—Hill Billy Song Recital.
 - 6:00 p. m.—Blue Streaks.
 - 6:30 p. m.—Hometowners.
 - 7:00 p. m.—Song Birds.
 - 9:00 p. m.—Damski's Neopolitan Orchestra.
 - 10:00 p. m.—Melvin and Merciful.
 - 10:15 p. m.—Novelty Recording Hour.
- THURSDAY, MAY 29**
- 8:00 p. m.—Popular Dance Concert.
 - 9:00 p. m.—Clam Diggers.
 - 9:30 p. m.—Hometowners.
 - 10:00 p. m.—Thomas and Tessie.
 - 10:15 p. m.—Novelty Recording Concert.

- FRIDAY, MAY 30**
- 11:30 a. m.—Billy's Hawaiians.
 - 6:00 p. m.—Harmony Aces.
 - 6:30 p. m.—DuBols Motor Playmates.
 - 7:00 p. m.—Dance music.
 - 7:30 p. m.—Crescent Entertainers.
 - 9:00 p. m.—The Jewel Box.
 - 9:30 p. m.—The White Wizard.
 - 10:00 p. m.—Melvin and Merciful.
 - 10:15 p. m.—Novelty Recording Orchestra.
- SATURDAY, MAY 31**
- 1:05 p. m.—Varied salon recordings.
 - 2:00 p. m.—Classic Song Recital.
 - 5:00 p. m.—KEX Bulletin.
 - 6:00 p. m.—Harmony Aces.
 - 7:00 p. m.—Silent.
 - 8:00 p. m.—Popular Dance Concert.
 - 9:00 p. m.—Old-Timers.
 - 10:00 p. m.—Thomas and Tessie.
 - 10:15 p. m.—Novelty Recording Concert.



KQW

San Jose, California—1010 Kc.

CALIFORNIA FARM BUREAU STATION
500 WATTS—296.6 METERS
FRED J. HART, Manager

FRED J. HART

DAILY EXCEPT SUNDAY

- 9:00 a. m.—California Market.
- 9:30 a. m.—Weather Report.
- 9:35 a. m.—Helpful Hour.
- 11:00 a. m.—Bank Credits Service program.
- 11:45 a. m.—Records.
- 12:15 p. m.—Tom and Wash.
- 12:30 p. m.—Market Report and Weather from S. F.
- 1:00 p. m.—Hart's Half-Hour.
- 1:30 p. m.—The Friendly Hour.
- 2:30 p. m.—Musical program.
- 3:00 p. m.—California Market, musical program.
- 4:30 p. m.—Children's program.
- 5:00 p. m.—Baron Keyes Air Castle (ex. Saturday).
- 5:15 p. m.—Music.
- 5:30 p. m.—San Jose Radionics Institute.
- 6:00 p. m.—U. S. D. A. Farm Flashes (ex Sat.).
- 6:10 p. m.—Market Reports.
- 7:00 p. m.—Weather Reports, News.

- 7:30 p. m.—Tom and Wash.
 - 7:45 p. m.—Farm Bureau, Cal. Radio News (ex. Sat.).
- SUNDAY, MAY 25**
- 10:15 a. m.—Sunday School Lessons, by Fred J. Hart.
 - 11:00 a. m.—Morning Services, First Baptist Church.
 - 7:30 p. m.—Evening Services, First Baptist Church.
- MONDAY, MAY 26**
- 2:30 p. m.—Julia Hayes Helpful Hints to Housewives.
 - 6:20 p. m.—Terminal Market Information—Hansen.
 - 8:00 p. m.—Studio programs.
- TUESDAY, MAY 27**
- 10:30 a. m.—Julia Hayes Helpful Hints to Housewives.
 - 6:20 p. m.—Agricultural Minerals.
 - 8:00 p. m.—"You Never Can Tell" program.
- WEDNESDAY, MAY 28**
- 2:30 p. m.—Audition.
 - 6:20 p. m.—Standardization of Calif. Field Crop Prod.
 - 8:00 p. m.—First Baptist Church.
- THURSDAY, MAY 29**
- 6:20 p. m.—Bangs Disease of Cattle—H. P. Bonnicksen.
 - 8:00 p. m.—Songs of the Old Church Choir.
 - 9:00 p. m.—Legends of King Arthur.
 - 9:15 p. m.—Little Symphony.
- FRIDAY, MAY 30**
- 6:20 p. m.—Manufacturing Milk and Cream—J. T. Torrey.
 - 8:00 p. m.—KQW Minstrels.
 - 9:00 p. m.—Leda Gregory Jackson program.
- SATURDAY, MAY 31**
- 7:45 p. m.—4-H Club.
 - 8:45 p. m.—Italian program.

The essential features of these programs are identical with those sent us by the stations



DICK RICKARD

KOL Seattle, Washington—1270 Kc.

1000 WATTS—236.1 METERS
 Operated by THE SEATTLE BROADCASTING CO., INC.
 Northern Life Tower, Seattle. Phone, MAIN 2312
 Mr. E. M. Doernbecher, President John W. Sparling, Gen. Mgr.

Grace Moeger,
 Traffic Manager

Frances L. Whiting
 Studio Director

Dick Rickard
 Chief Announcer

Paul B. Gale
 Engineer

Stan Spiegler
 Public Relations

FRIDAY MAY 30

- 9:30 a. m.—Feminine Fancies.
 10:30 a. m.—Jo Cur.
 10:35 a. m.—Rhyme and Reason.
 10:55 a. m.—Pre-School Council Association.
 12:00 noon—Light Opera Gems; CBS.*
 12:30 p. m.—Chamber of Commerce Luncheon.
 3:15 p. m.—CBS.*
 4:00 p. m.—Nit Wit Hour; CBS.*
 5:45 p. m.—Show News—Sterling Theaters.
 6:00 p. m.—CBS.*
 7:00 p. m.—Van de Kamps Bakery Program.
 7:15 p. m.—Dance Carnival—CBS.*
 7:30 p. m.—"Would You Believe It?"
 7:45 p. m.—Dance Carnival—CBS.*
 8:00 p. m.—Veodol Vodvil.
 8:30 p. m.—Ray Daughters and Varsity Quartet.
 9:00 p. m.—"Mary and Bob," True Story Hour; CBS.*
 10:00 p. m.—Studio program.
 10:15 p. m.—Mark Hopkins Hotel Orchestra.

SATURDAY, MAY 31

- 9:30 a. m.—Rhyme and Reason.
 9:45 a. m.—Studio program.
 10:30 a. m.—Rhyme and Reason.
 12:00 noon—CBS.*
 2:00 p. m.—Hotel Hhelson Orchestra; CBS.*
 2:30 p. m.—"Ted Husing's Sportslants"; CBS.*
 3:30 p. m.—Melo Maniacs; CBS.*
 4:00 p. m.—"Exploring the Jungle for Science; CBS.*
 4:15 p. m.—Romance of American Industry; CBS.*
 5:00 p. m.—Studio program.
 6:00 p. m.—CBS.*
 9:00 p. m.—The Everstate Club.

DAILY EXCEPT SUNDAY

- 7:00 a. m.—Time Signals.
 8:00-10:30 a. m.—1:30-3:00 p. m.—Slogan Contest.
 9:00 a. m.—Thrift Home of the Air.
 10:00 a. m.—Studio program.
 11:00 a. m.—Carnival Hour.
 2:00 p. m.—Happy-Go-Lucky Hour (except Saturday).
 4:30 p. m.—Mr. Fixit and News Items.
 5:00 p. m.—Studio program (except Tuesday).
 5:45 p. m.—Show News (except Tuesday).
 11:00 p. m.—Earl Whaley's Mississippi Syncopators.
 12:00 midnight—Ghost Hour. Rajah Lipp.

SUNDAY, MAY 25

- 5:00 p. m.—Majestic Theatre of the Air; CBS.*
 6:00 p. m.—Will Rogers; CBS.*
 10:00 p. m.—The Everstate Club.

MONDAY, MAY 26

- 9:30 a. m.—Feminine Fancies.
 9:45 a. m.—Household Hints.
 10:30 a. m.—Cynthia Grey.
 12:00 noon—U. S. Navy Band; CBS.*
 1:00 p. m.—Seattle Council of P. T. A.
 3:30 p. m.—CBS.*
 6:30 p. m.—Jesse Crawford, Poet of the Organ; CBS.*
 7:00 p. m.—Van de Kamps Bakery program.
 7:15 p. m.—CBS.*
 9:00 p. m.—Blue Monday Jamboree.
 10:00 p. m.—Mark Hopkins Hotel Orchestra.
 11:07 p. m.—Earl Burnett's L. A. Biltmore Hotel Orch.

TUESDAY, MAY 27

- 9:30 a. m.—Studio program.
 9:45 a. m.—Rhyme and Reason.
 10:30 a. m.—Jo Cur.
 10:35 a. m.—Household Hints; Vivian MacBraun.
 10:45 a. m.—Studio program.
 12:00 noon—U. S. Army Band; CBS.*
 12:30 p. m.—Kiwanis Club Luncheon.
 3:30 p. m.—CBS.*
 6:00 p. m.—CBS.*
 8:00 p. m.—Baxter's Boys.
 8:30 p. m.—Midnight Melodies; CBS.*
 9:00 p. m.—William Coburn's Orchestra.
 10:00 p. m.—Male and Mixed Quartets.
 10:15 p. m.—Val Valente's and Roof Garden Orchestra

WEDNESDAY, MAY 28

- 9:30 a. m.—Feminine Fancies.
 10:30 a. m.—Rhyme and Reason.
 12:00 noon—Musical Album; CBS.*
 12:30 p. m.—Rotary Club Luncheon.
 4:00 p. m.—In a Russian Village; CBS.*
 6:45 p. m.—Melody Mates.
 7:00 p. m.—Dance Carnival—CBS.*
 8:00 p. m.—Jimmie Bigelow's Dance Band.
 10:06 p. m.—Earl Burnett's L. A. Biltmore Hotel Orch.

THURSDAY, MAY 29

- 9:30 a. m.—Rhyme and Reason.
 9:45 a. m.—Feminine Fancies.
 10:30 a. m.—Tintex.
 12:00 noon—U. S. Navy Band; CBS.*
 12:30 p. m.—Shrine Luncheon.
 4:00 p. m.—"International Sidelights"; CBS.*
 4:15 p. m.—"The Political Situation in Washington Tonight"; CBS.*
 6:00 p. m.—William Coburn's Orchestra.
 7:00 p. m.—Dream Boat; CBS.*
 7:30 p. m.—Dance Carnival—CBS.*
 8:00 p. m.—Violet Ray Merrymakers.
 0:00 p. m.—Midweek Kodak Hour.
 10:11 p. m.—Val Valente and his Roof Garden Orch.

KHJ Program

(Continued from Page 23)

- 10:30 a. m.—Neil Larson, organ.
 10:45 a. m.—President Hoover's Memorial Day Address.
 CBS.*
 11:00 a. m.—Scientific Laboratories.
 11:15 a. m.—Motion Picture Magazine.
 11:30 a. m.—Ted White, songs.
 11:45 a. m.—Normalizer Sales Syndicate.
 12:45 p. m.—California Home Extension.
 1:00 p. m.—Don Bigelow Orchestra. CBS.*
 3:00 p. m.—Talk on Dogs by H. M. Robertson.
 3:15 p. m.—School program.
 3:30 p. m.—Council of International Relations.
 4:00 p. m.—Nit Wits, CBS.*
 4:30 p. m.—Records.
 5:00 p. m.—Custo program from KFRC.
 5:30 p. m.—Blvd Furniture Co.
 6:00 p. m.—Quaker State Oil. CBS.
 6:30 p. m.—Gold Medal Fast Freight, CBS.*
 7:00 p. m.—Don Lee Symphony.
 8:00 p. m.—Veodol Vodvil (from KFRC).
 8:30 p. m.—Bekins Van & Storage Company.
 9:00 p. m.—True Story Hour, CBS.*

SATURDAY, MAY 31

- 8:00 a. m.—Adventures of Helen and Mary. CBS.*
 9:00 a. m.—Young's Orchestra, CBS.*
 9:30 a. m.—Harry Tucker's Orchestra, CBS.*
 9:45 a. m.—Recordings.
 10:00 a. m.—Song Recital.
 11:00 a. m.—Records.
 11:15 a. m.—Columbia Ensemble, CBS.*
 11:30 a. m.—"For Your Information," CBS.*
 12:45 p. m.—French Trio, CBS.*
 1:00 p. m.—Paul Specht and Orchestra. CBS.*
 2:00 p. m.—Hotel Shelton Orchestra, CBS.*
 2:30 p. m.—Ted Husing's Sportslants, CBS.*
 3:00 p. m.—Melo Maniacs, CBS.*
 4:00 p. m.—Exploring the Jungle. CBS.*
 4:15 p. m.—Industrial America, CBS.*
 5:00 p. m.—Show Boat, CBS.*
 6:00 p. m.—Paramount Hour, CBS.*
 7:00 p. m.—Don Lee Symphony.
 7:30 p. m.—Anson Weeks Orchestra, CBS.*
 8:00 p. m.—Williams Oil-O-Matics.
 8:30 p. m.—Musical Cocktails.
 9:00 p. m.—"Chasin' the Blues."

KJR Seattle, Washington—970 Kc.

309.1 METERS—5000 WATTS

Northwest Broadcasting System, Inc.

Thomas F. Smart Manager I. Schaefer, Press Relations
 Studio Telephone, Seneca 1515—Office, Main 2495
 Home Savings Building



KEN STUART

Henri Damski
 Musical Director
 John Pearson
 Al Schuss
 Allen Strickfaden
 Ken Stuart
 Announcers
 J. N. Cope
 Technical Director

6:00 p. m.—Harper's Corners.
 6:30 p. m.—Homesteaders' Orchestra; Glen Eaton.
 7:00 p. m.—Kelpine Pair.
 7:30 p. m.—Washington Fireman.
 8:00 p. m.—Harmony Aces.
 9:00 p. m.—Damski's Neapolitans; Betty Anderson.
 9:30 p. m.—Wrestling Match—Ken Stuart, announcer

TUESDAY, MAY 27

11:00 a. m.—Classical program.
 6:00 p. m.—Mandolins at Sunset.
 7:00 p. m.—Orpheus Ensemble.
 8:00 p. m.—Gold and Silver Ensemble.
 9:00 p. m.—Musical Comedy Hour.

WEDNESDAY, MAY 28

6:00 p. m.—American Institute of Banking.
 6:15 p. m.—All Artists Trio.
 6:30 p. m.—Homesteaders; Ragnar Salldin.
 7:00 p. m.—Williams Oil-O-Matics' Harmony Aces.
 7:30 p. m.—Ringletto's Captivators.
 8:00 p. m.—Harper's Corners.
 8:30 p. m.—Spanish Knights Orchestra.
 9:00 p. m.—Neapolitans; Betty Anderson.

THURSDAY, MAY 29

6:00 p. m.—Homesteaders' Orchestra.
 7:00 p. m.—Kelpine Pair.
 7:30 p. m.—Dream Melodies.
 8:00 p. m.—Hits of Yesterday.
 9:00 p. m.—Hour with the Operas; Jean Kantner.
 9:30 p. m.—An Evening in Paris.

FRIDAY, MAY 30

6:00 p. m.—Blue Streaks; Eulala Dean.
 7:00 p. m.—Harper's Corners.
 7:30 p. m.—Musical Potpourri.
 8:00 p. m.—Gold and Silver Ensemble.
 9:00 p. m.—Damski's Neapolitans; Betty Anderson.
 9:30 p. m.—A Night in India with the White Wizard.

SATURDAY, MAY 31

1:15 p. m.—Uncle Frank's Kiddies' program.
 2:30 p. m.—Matinee program.
 5:30 p. m.—Dinner Concert.
 6:00 p. m.—Blue Streaks; Eulala Dean, blues.
 7:00 p. m.—Saturday Knights.
 8:00 p. m.—Song Recital; Northwest Male Quartet.
 9:00 p. m.—The Gondoliers.

DAILY EXCEPT SUNDAY
 7:00 a. m.—Organ Recital.
 9:30 a. m.—Morning Devotional Services (ex. Friday).
 9:40 a. m.—United Team, Sally Jo and Grant.
 10:00 a. m.—Staff Artists.
 10:15 a. m.—Beauty Talk, Helen Andrews.
 12:00 noon.—World in Review.
 1:00 p. m.—Musical Program.
 2:00 p. m.—Arcweld Entertainers.
 3:00 p. m.—Baseball Game (ex. Mon.).
 5:15 p. m.—Aircastles in the Land of Make-believe (ex. Sat.).
 5:30 p. m.—Market Reports (ex. Sat.).
 5:50 p. m.—Garden Talk.
 10:00 p. m.—Ken Stuart, Sunshine Hour (ex. Mon.).
 10:30 p. m.—Whirlwinds.
 11:00 p. m.—Vic Meyers' Club Victor Orchestra.
 12:00 midnight to 3:00 a. m.—Midnight Revelers.

SUNDAY, MAY 25

8:00 a. m.—Musical program.
 12:00 noon.—Classical program.
 2:00 p. m.—Emmanuel Tabernacle.
 3:00 p. m.—Chet Cathers, haritone; Marjorie Robillard.
 4:30 p. m.—Lyric Trio.
 5:30 p. m.—Bits of Harmony.
 6:00 p. m.—Hour on Broadway; Broadway Quintet.
 7:00 p. m.—Homesteaders' Orchestra; Glen Eaton.
 8:00 p. m.—Damski's Imperial Grand Orchestra.
 9:00 p. m.—Los Gauchos Argentine.
 10:00 p. m.—Angelus Ensemble.
 11:00 p. m.—Harmony Aces; Eulala Dean.

MONDAY, MAY 26

3:15 p. m.—Stonewall Jackson, guitar.

KFXM

San Bernardino.—1210 Kc.

100 WATTS—247.8 METERS

California Hotel, Fifth and E. Streets. Phone 4761
 The Voice of the Sunkist Valley



E. W. LEE

J. C. and E. W. Lee
 Owners

Frank Pierce
 Program Director

Bob Ford
 Advertising

E. F. Klernan
 Technical Director

TUESDAY, MAY 27

9:00 a. m.—Campton's Nu-Way.
 9:15 a. m.—Spanish program.
 10:00 a. m.—Dr. Jones' Health Talk.
 7:00 p. m.—The Troubadour.
 8:00 p. m.—Redlands Yucaipa Land Co.
 8:30 p. m.—Rio Grande Serenaders.
 9:00 p. m.—Dance Orchestra.
 10:00 p. m.—Bob and Margery.

WEDNESDAY, MAY 28

8:00 a. m.—Sunshine Hour.
 9:00 a. m.—News Reports.

THURSDAY, MAY 29

9:00 a. m.—News and Dr. Jones' Health Talk.
 6:30 p. m.—New Idea Man of "KMTT."
 8:00 p. m.—Cooley Hardware Trio.
 8:30 p. m.—Harvey Trio, Goodrich Tire Co.
 9:30 p. m.—Half Hour on the Campus.
 10:00 p. m.—Mary and Marjory, Hawaiian Blue Boys

FRIDAY, MAY 30

9:00 a. m.—Ye Fresh Posle Shop.
 7:00 p. m.—The Victor Hour.
 8:00 p. m.—Redlands Yucaipa Land Co.
 8:30 p. m.—Federal Outfitting Co.
 9:00 p. m.—Dr. Johns.
 9:30 p. m.—Angelus-Pictrola Trio.
 10:00 p. m.—End-Of-The-Lane Cafe.

SATURDAY, MAY 31

9:00 a. m.—Spanish program.
 7:00 p. m.—Dance Orchestra.
 8:00 p. m.—Nip & Tuck, Squires' Malahinie Trio.
 9:00 p. m.—Kansas Kal, Old Time Orchestra.
 10:00 p. m.—"KFXM" Frolic.
 11:00 p. m.—Organ Recital.
 12:00 midnight—Midnite Tramps.

DAILY EXCEPT SUNDAY
 8:00 a. m.—Old Timers' Club (except Wednesday).
 10:30 a. m.—Holmes & Edwards program.
 11:00 a. m.—Recordings.
 11:30 a. m.—Program for Al. Fair's.
 12:00 noon.—Fox California Theatre Organ Recital.
 12:30 p. m.—Citizens' Service Bureau.
 5:00 p. m.—Merchants' Air Service.
 5:30 p. m.—Official Nite Ball reports.
 6:15 p. m.—News Reports.
 6:30 p. m.—Recordings (except Thursday).

SUNDAY, MAY 25

3:00 p. m.—Band Concert.
 4:00 p. m.—Vesper Hour, Rev. Tom Olson.
 5:00 p. m.—The Album Hour.

MONDAY, MAY 26

9:00 a. m.—News Reports, Ye Fresh Posle Shop.
 9:30 a. m.—Dr. Jones.
 7:00 p. m.—Gurr-Smith program.
 8:00 p. m.—O. L. Cowen Radio Party.
 8:30 p. m.—Sunkist Harmony Three.
 9:00 p. m.—Good Luck Hour.
 10:00 p. m.—Purple Sash Entertainers.

The essential features of these programs are identical with those sent us by the stations



GEORGE GODFREY

KOMO

Seattle, Wash.—920 Kc.
 FISHER'S BLEND STATION—1000 WATTS—325.9 METERS
 METROPOLITAN CENTER, SEATTLE
 Telephone Elliott 5809

DAILY EXCEPT SUNDAY

- 7:25 a. m.—Inspirational Services.
 7:30 a. m.—Y. M. C. A. Health Exercises.
 7:45 a. m.—Aunt Jemima Boy, NBC.
 8:00 a. m.—Shell Happy Time.
 9:00 a. m.—Gordon and Mary, NBC.*
 10:30 a. m.—NBC, Woman's Magazine of the Air (except Thursday).
 11:45 a. m.—The Hour of the Canny Cook (except Friday and Saturday).
 12:00 noon—U. S. Farm Talk (except Saturday).
 12:15 p. m.—Totem Broadcasters and Prudence Penny.
 12:30 p. m.—Orchestra and Soloists.
 7:00 p. m.—Garden Patch Children's program (except Tues. and Sat., Fri. 7:15).
 7:30 p. m.—Amos 'n' Andy.
 12:00 midnight—Fox Flith Avenue Theater program.

SUNDAY, MAY 25

- 9:00 a. m.—Fox 5th Ave. Theatre, Organ Recital.
 10:00 a. m.—International Bible Students' Association.
 11:00 a. m.—Vocal Recital.
 11:15 a. m.—Plymouth Congregational Church Service.
 12:15-3:00 p. m.—NBC.*
 3:00 p. m.—Artistic Ensemble and Vocalists.
 4:00 p. m.—NBC.*
 5:45 p. m.—Artistic Ensemble and Vocalists.
 6:15 p. m.—NBC.*
 7:15 p. m.—Patch Children's program.
 7:45 p. m.—Vocal Ensemble.
 8:00 p. m.—First Church of Christ, Scientist.
 9:00 p. m.—NBC.*
 10:00 p. m.—Concert Jewels, NBC.*

MONDAY, MAY 26

- 9:15 a. m.—Fox 5th Ave. Theatre Organ Recital.
 10:00 a. m.—Way to a Man's Heart.
 10:15 a. m.—NBC.*
 11:30 a. m.—Novelty program.
 1:00 p. m.—Popular Orchestra.
 1:30 p. m.—Concert Orchestra and Vocalists.
 2:00 p. m.—NBC.*
 2:30 p. m.—Pacific Coast School of Air.
 3:00 p. m.—String Orchestra.
 3:30 p. m.—Concert Orchestra and Vocalists.
 4:00 p. m.—Song Recital.
 4:15 p. m.—Totem Broadcasters; Stock Quotations.
 4:30 p. m.—Out of a Clear Sky.
 5:00 p. m.—NBC.*
 7:45 p. m.—Artistic Ensemble.
 8:00 p. m.—NBC.*
 9:30 p. m.—Totem Broadcasters; News Flashes.
 9:45 p. m.—NBC.*
 10:00 p. m.—University of Washington Hour.
 10:30 p. m.—Popular String Orchestra.
 11:00 p. m.—Olympic Hotel, Dance Orchestra.

TUESDAY, MAY 27

- 9:15 a. m.—Song Recital.
 9:30 a. m.—NBC.*
 10:00 a. m.—Way to a Man's Heart.
 10:15 a. m.—NBC.*
 11:30 a. m.—Accordion Duo.
 1:00 p. m.—Program of Concert Waltzes.
 1:30 p. m.—Pacific Coast School of Air.
 2:00 p. m.—Popular Orchestra.
 2:30 p. m.—Concert Orchestra.
 3:00 p. m.—NBC.*
 3:30 p. m.—Old-Time Orchestra.
 4:00 p. m.—Song Recital.
 4:15 p. m.—Broadcasters; Stock Quotations.
 4:30 p. m.—Out of a Clear Sky.
 5:00 p. m.—NBC.*
 7:45 p. m.—Male Quartet.
 8:00 p. m.—Cycle of Song.
 8:30 p. m.—Uncle Hank from Cliderville Center.
 8:45 p. m.—Totem Broadcasters; News Flashes.
 9:00 p. m.—Gold Shield Little Symphony Hour.
 10:00 p. m.—NBC.*
 11:00 p. m.—Popular Orchestra.

WEDNESDAY, MAY 28

- 9:15 a. m.—Song Recital.
 9:30 a. m.—NBC.*
 9:45 a. m.—Security Public Market, Way to a Man's Heart.
 10:00 a. m.—Banjo Duo.
 10:15 a. m.—NBC.*
 10:30 a. m.—NBC.*
 11:30 a. m.—Dorothy Chase and Charis Players.
 1:00 p. m.—NBC.*
 1:15 p. m.—Associated Oil Co., Vocal Recital.
 2:00 p. m.—Orchestra, program of Old-Time Music.
 2:30 p. m.—Musical Comedy Selections.
 3:00 p. m.—NBC.*
 3:45 p. m.—Totem Broadcasters; Stock Quotations.
 4:00 p. m.—Orchestra and Vocalists.
 4:30 p. m.—Out of a Clear Sky.
 5:00 p. m.—NBC.*
 5:30 p. m.—Palmolive Hour, NBC.*
 7:45 p. m.—Artistic Ensemble.
 8:00 p. m.—NBC.*
 8:30 p. m.—Lesson in Contract Bridge.
 9:00 p. m.—Male Quartet.
 9:15 p. m.—NBC.*
 10:30 p. m.—Totem Broadcasters; News Flashes.
 11:00 p. m.—Olympic Hotel Dance Orchestra.

THURSDAY, MAY 29

- 9:15 a. m.—Vocal Recital.
 9:45 a. m.—Way to a Man's Heart.
 10:00 a. m.—NBC.*
 1:00 p. m.—Song Story.
 1:30 p. m.—Artistic Ensemble and Vocalists.
 2:00 p. m.—NBC.*
 2:15 p. m.—Song Recital.
 2:30 p. m.—NBC.*
 3:00 p. m.—Artistic Ensemble and Vocalists.
 3:30 p. m.—Saxophone Quartet.
 3:45 p. m.—Totem Broadcasters; Stock Quotations.
 4:00 p. m.—NBC.*
 7:45 p. m.—NBC.*
 8:45 p. m.—Mozart Concert Hour.
 9:45 p. m.—Totem Broadcasters; News Flashes.
 10:00 p. m.—Associated Dance Hour.
 11:00 p. m.—Fulops, Herman Kenin's Dance Orchestra.

FRIDAY, MAY 30

- 9:15 a. m.—NBC.*
 10:45 a. m.—Pres. Hoover, NBC.*
 1:00 p. m.—Concert Orchestra and Vocalists.
 1:30 p. m.—Program of Old-Time Music.
 2:00 p. m.—Concert Orchestra and Vocalists.
 3:15 p. m.—NBC.*
 3:30 p. m.—Out of a Clear Sky.
 3:45 p. m.—Totem Broadcasters; Stock Quotations.
 4:00 p. m.—NBC.*
 7:00 p. m.—Elgin Watch program.
 7:45 p. m.—Artistic Ensemble.
 8:00 p. m.—News Reel of the Air.
 8:30 p. m.—'Mac and Al.'
 8:45 p. m.—NBC.*
 9:45 p. m.—Latin Nights.
 10:45 p. m.—Totem Broadcasters; News Flashes.
 11:00 p. m.—Tiny Burnett's Dance Orchestra.

SATURDAY, MAY 31

- 9:15 a. m.—Fox 5th Ave Theatre Organ Recital.
 10:15 a. m.—Vocal Recital.
 11:30 a. m.—Associated Oil Co., Hawaiian Orchestra.
 1:00 p. m.—Concert Orchestra and Vocalists.
 1:30 p. m.—NBC.*
 1:45 p. m.—Vocal Recital.
 2:30 p. m.—Popular Orchestra.
 3:00 p. m.—NBC.*
 4:30 p. m.—Totem Broadcasters; Stock Quotations.
 4:45 p. m.—Mixed Quartet.
 5:00 p. m.—NBC.*
 7:45 p. m.—Male Quartet.
 8:00 p. m.—NBC.*
 8:30 p. m.—Totem Broadcasters; News Flashes.
 8:45 p. m.—Nunn Bush program.
 9:00 p. m.—NBC.*
 9:30 p. m.—Concert Orchestra and Vocalists.
 10:00 p. m.—NBC.*
 11:30 p. m.—Totem Broadcasters; RKO Theatrical Frolle

See Page 20 for NBC Program.

The essential features of these programs are identical with those sent us by the stations

KVI

Willis Higley
Manager and Chief
Edward J. Jansen
Announcer
P. G. Gale
Engineer in Charge

Tacoma, Washington—760 Kc.

1000 WATTS—394.5 METERS
PUGET SOUND BROADCASTING CO., INC.
Tacoma Hotel, Tacoma Broadway 4211, Tacoma
E. M. Doerenbecker, President

DAILY EXCEPT SUNDAY

- 7:00 a. m.—Recordings.
- 8:00 a. m.—Columbia Revue, CBS.
- 8:30 a. m.—Yoen's Orchestra.
- 9:30 a. m.—Feminine Fancies.
- 11:15 a. m.—Columbia Ensemble, CBS.
- 2:00 p. m.—Happy-Go-Lucky Hour.
- 7:45-8:00 p. m.—Silent period.
- 12:00 midnight—Organ Recital.

SUNDAY, MAY 25

- 8:30 a. m.—1:00 p. m.—CBS.*
- 1:30 p. m.—Studio program.
- 2:30 p. m.—The Gauchos, CBS.*
- 3:00 p. m.—The Globe Trotter, CBS.*
- 3:30 p. m.—Recordings.
- 3:45 p. m.—The World's Business, CBS.*
- 4:00 p. m.—Studio program.
- 4:30 p. m.—Jesse Crawford, Poet of the Organ, CBS.*
- 4:45 p. m.—Studio.
- 5:00 p. m.—Majestic Theatre, CBS.*
- 6:00 p. m.—Will Rogers (E. R. Squibb Co.), CBS.*
- 6:30 p. m.—Studio program.
- 7:00-9:00 p. m.—CBS.*
- 9:50 p. m.—Phil Baxter and his Texas Tommies.
- 10:00 p. m.—Val Valente and his Roof Garden Orch.
- 11:00 p. m.—Organ Recital.

MONDAY, MAY 26

- 11:30-2:00 p. m.—CBS.*
- 3:00 p. m.—Current Events, CBS.*
- 3:30 p. m.—Recordings.
- 3:45 p. m.—"TS.*
- 4:00 p. m.—The he announced.
- 6:30-7:45 p. m.—CBS.*
- 8:00 p. m.—Ben Pollack's Castilian Royal Orch. CBS.*
- 8:30 p. m.—Midnight Melodies, CBS.*
- 9:00 p. m.—Bone Dry Blue Monday Jamboree.
- 10:00 p. m.—Ted Florita's Mark Hopkins Orchestra.
- 11:00 p. m.—Earl Burnett's Biltmore Hotel Orchestra.

TUESDAY, MAY 27

- 11:30-2:00 p. m.—CBS.*
- 3:00 p. m.—Organ Recital.
- 3:30 p. m.—CBS.*
- 4:00 p. m.—To be announced.
- 4:30-7:45 p. m.—CBS.*
- 8:00 p. m.—CBS.*
- 8:30 p. m.—CBS.*
- 9:00 p. m.—To be announced.
- 10:10 p. m.—Val Valente and his Roof Garden Orch.

WEDNESDAY, MAY 28

- 10:00 a. m.—Organ Recital.

- 11:30-2:00 p. m.—CBS.*
- 3:00 p. m.—CBS.*
- 3:30 p. m.—Recordings.
- 3:45-8:00 p. m.—President Hoover, CBS.*
- 8:00 p. m.—10th Field Artillery Orchestra.
- 9:00 p. m.—Phil Baxter's Texas Tommies.
- 10:00 p. m.—Hotel Mark Hopkins Orchestra.
- 11:00 p. m.—Earl Burnett's L. A. Biltmore Orchestra.

THURSDAY, MAY 29

- 8:00 a. m.—Breakfast Cluh Broadcast.
- 11:30-2:00 p. m.—CBS.*
- 3:00 p. m.—Recordings.
- 4:00-5:30 p. m.—CBS.*
- 5:30 p. m.—The he announced.
- 6:30-7:45 p. m.—CBS.*
- 8:00 p. m.—Violet Ray Merrymakers Frolic.
- 9:00 p. m.—CBS.*
- 9:30 p. m.—Tales of King Arthur's Round Table.
- 9:45 p. m.—Studio program.
- 10:00 p. m.—K-6 Dude Ranch.
- 11:10 p. m.—Hotel Mark Hopkins Orchestra.

FRIDAY, MAY 30

- 10:45 a. m.—Organ Recital.
- 11:15-2:00 p. m.—CBS.*
- 3:00 p. m.—CBS.*
- 3:30 p. m.—Recordings.
- 3:45-5:00 p. m.—CBS.*
- 5:00 p. m.—Studio.
- 6:00-8:00 p. m.—CBS.*
- 8:00 p. m.—Veedol-Vodvil.
- 8:30 p. m.—Organ Recital.
- 9:00 p. m.—Mary and Boh (True Story Hour), CBS.*
- 10:00 p. m.—Studio.
- 10:15 p. m.—Hotel Mark Hopkins Orchestra.
- 11:00 p. m.—Val Valente's Roof Garden Orchestra.

SATURDAY, MAY 31

- 8:00 a. m.—Adventures of Helen and Mary.
- 9:30 a. m.—Hotel Barclay Orchestra, CBS.*
- 9:45 a. m.—Recordings (MacMillan Bros.).
- 10:00 a. m.—Recordings.
- 11:15-12:30 p. m.—CBS.*
- 12:30 p. m.—French Trio with Kenyon Congdon.
- 1:00-7:50 p. m.—CBS.*
- 8:00 p. m.—CBS.*
- 8:30 p. m.—Midnight Melodies, CBS.*
- 9:00 p. m.—Phil Baxter and his Texas Tommies.
- 10:00 p. m.—Studio program.
- 10:10 p. m.—Mark Hopkins Hotel Orchestra.
- 11:10 p. m.—Earl Burnett's L. A. Biltmore Orchestra.

See Page 22 for Columbia Program.

NBC Program

(Continued from Page 20)

- 2:00 p. m.—Black and Gold Room Orchestra.
- 2:30 p. m.—Phil Spitalny's Music from Hotel Pennsylvania Grill.
- 3:00 p. m.—Matinee Time.
- 3:30 p. m.—"A Half Hour in the Nation's Capital."
- 4:00 p. m.—Fletschmann Hour, with Rudy Vallee and Orchestra.
- 5:00 p. m.—Arco Birthday Party.
- 5:30 p. m.—Maxwell House Melodies—vocal and instrumental music.
- 6:00 p. m.—RCA Hour—Nat Shilkret's Orchestra and soloists.
- 7:00 p. m.—The Speedway to Happiness.
- 7:45 p. m.—Standard Symphony Hour opens with Menhelssohn's "Hehrdes Overture."
- 8:00 p. m.—B. A. Rolfe and his Lucky Strike Orch.
- 9:00 p. m.—Memory Lane.
- 9:30 p. m.—The Olympians—male quartet.
- 10:00 p. m.—The National Concert Orchestra program presents Tom Terris, who will describe the opening of King Tut's Tomb.

FRIDAY, MAY 30

- 9:30 a. m.—Betty Crocker Gold Medal Home Service Talk.

- 9:45 a. m.—Park Sisters.
- 10:00 a. m.—Du Barry program.
- 10:15 a. m.—Musical Echoes.
- 10:45 a. m.—Memorial Day services at Gettysburg. President Hoover will pay tribute to America's war dead.
- 12:15 p. m.—Special Luncheon Concert.
- 1:00 p. m.—Rembrandt Trio.
- 1:30 p. m.—Hotel St. Francis Salon Orchestra.
- 2:00 p. m.—Black and Gold Room Orchestra.
- 2:15 p. m.—"The World in Music"—Pierre Key.
- 2:30 p. m.—Don Bigelow and his Hotel Park Central Orchestra.
- 3:00 p. m.—Genia Zielinska in song recital.
- 3:15 p. m.—Universal Safety Series.
- 3:30 p. m.—Grace Adams East.
- 3:45 p. m.—News Service.
- 4:00 p. m.—Cittles Service Concert Orchestra—Jessica Dragonette and the Cavaliers.
- 5:00 p. m.—Interwoven Pair.
- 5:30 p. m.—Armour program—Josef Koestner leads the orchestra in program of light music.
- 6:00 p. m.—Armstrong Quakers sing sentimental songs.
- 6:30 p. m.—Raleigh Revue features Victor Arden and Phil Ohman with their two pianos.
- 7:00 p. m.—Elgin program—musical and dramatic presentation.
- 7:15 p. m.—Three Violins.
- 8:00 p. m.—Ole and the Girls.
- 8:15 p. m.—Piano Paintings—two-piano team.

(Continued on Page 46)



ALBERT GILLETTE

KGW

Portland, Oregon—620 Kc.

1000 WATTS—483.6 METERS
THE MORNING OREGONIAN
"Keep Growing Wiser"

Paul R. Heltmeyer
Manager

Jane Burns
Program Director

Abe Burkovitz
Director of Music

Vern Haybarker
Chief Engineer

10:15 p. m.—Gold Shield symphony.
11:00 p. m.—Puget Sound Navigation Company.

WEDNESDAY, MAY 28

9:30 a. m.—Betty Crocker, NBC.*
10:15 a. m.—Mary Hale Martin, NBC.*
11:30 a. m.—Dorothy Chase and Charis Players.
1:30 p. m.—Department of Commerce Talk.
1:45 p. m.—Tea Timers, NBC.*
2:30 p. m.—Masterworks.
3:00 p. m.—Movie Club.
3:30 p. m.—NBC.*
4:00 p. m.—Marian Miller.
4:15 p. m.—Hotel St. Francis Orchestra, NBC.*
4:30 p. m.—Palace Laundry features.
5:00-7:00 p. m.—NBC.*
7:00 p. m.—Franz Children's Hour.
7:15 p. m.—Stein's Bakery program.
8:00-9:30 p. m.—NBC.*
9:30 p. m.—Fisher's Blend hour.
10:15 p. m.—Fisher Mills program.
10:30 p. m.—Cotton Blossom Minstrels.
11:00 p. m.—Multnomah Club Dance.

THURSDAY, MAY 29

10:00 a. m.—Woman's Magazine of Air, NBC.*
11:00 a. m.—Standard School Broadcast, NBC.*
1:30 p. m.—Lady Next Door, NBC.*
2:30 p. m.—Vignettes, NBC.*
3:00 p. m.—Masterworks.
3:45 p. m.—Marlan Miller.
4:00 p. m.—Fleischmann Sunshine Hour, NBC.*
5:00 p. m.—Palace Laundry features.
5:30-7:00 p. m.—NBC.*
7:00 p. m.—Songs of Romance.
7:45 p. m.—Standard Symphony Hour, NBC.*
8:45 p. m.—Mac and Al.
9:00 p. m.—Memory Lane, NBC.*
9:30 p. m.—Tommy Luke's Flower Girls.
9:45 p. m.—Boyer the Society Perfumer.
10:15 p. m.—Associated dance band.
11:00 p. m.—Fulops' program.

FRIDAY, MAY 30

9:30 a. m.—Betty Crocker, NBC.*
10:00 a. m.—DuBarry Talk, NBC.*
10:15 a. m.—Helnz Food Talk, NBC.*
11:30 a. m.—Masterworks.
10:45 a. m.—NBC.*
1:30 p. m.—Air Transport Talk.
1:45 p. m.—Rembrandt Trio, NBC.*
2:00 p. m.—Among ourselves.
2:30 p. m.—Masterworks.
3:15 p. m.—Marian Miller.
3:30 p. m.—Palace Laundry Features.
4:00 to 7:15 p. m.—NBC.*
7:15 p. m.—Benefit Savings & Loan.
8:00 p. m.—Seth Thomas Clock program.
8:05 p. m.—Gill Seed Talk.
8:15 p. m.—Walk Over Stroller.
8:45 p. m.—NBC.*
9:45 p. m.—Froskist Ice Cream Co.

SATURDAY, MAY 31

10:30 a. m.—O. M. Plummer, talk.
10:45 a. m.—Woman's Magazine of Air, NBC.*
11:30 a. m.—Masterworks.
11:45 a. m.—O. M. Plummer.
1:30 p. m.—NBC.*
2:30 p. m.—Masterworks.
3:15 p. m.—Marian Miller.
3:30 p. m.—NBC.*
4:30 p. m.—Palace Laundry Tea Timers.
5:00 p. m.—NBC.*
7:00 p. m.—First National Bank.
8:00 p. m.—NBC.*
8:45 p. m.—Yellow Cab Program.
9:00 p. m.—Del Monte Coffee, NBC.*
9:30 p. m.—An Evening in Paria.
10:15 p. m.—Old Fashion Mill.
10:45 p. m.—Hi Jinks.

DAILY EXCEPT SUNDAY
6:45 a. m.—Devotional Exercises.
7:00 a. m.—Organ.
7:45 a. m.—Aunt Jemima, NBC.
8:00 a. m.—Shell Happy Time, NBC (ex. Tuesday).
9:00 a. m.—Columbia National Bank.
9:06 a. m.—Town Crier.
10:30 a. m.—Woman's Magazine of the Air, NBC (ex. Thursday and Saturday).
11:45 a. m.—Hour of the Canny Cook, NBC (except Friday and Saturday).
12:00 noon.—Powers' Pled Piper.
12:30 p. m.—Grand Central Marketeers.
2:00 p. m.—Among Ourselves (except Monday).
7:30 p. m.—Amos 'n' Andy, NBC.
10:00 p. m.—Cecil and Sally (except Monday).

SUNDAY, MAY 25

8:30 a. m.—Organ recital.
9:30 a. m.—American Legion program.
10:00 a. m.—International Bible students.
11:00 a. m.—Dr. Poling's Youth Conference, NBC.*
12:00 noon.—Dr. Cadman's hour, NBC.*
1:00 p. m.—Sunday concert, NBC.*
2:00 p. m.—Catholic hour, NBC.*
3:30 to 7:30 p. m.—NBC.*
7:30 p. m.—Book Chat.
7:45 p. m.—Baker's Enna Jetticks.
8:00 p. m.—Cecil and Sally.
8:15 p. m.—Violin Recital.
8:30 p. m.—Edwards Home Furnisher.
9:00 p. m.—Borden Milk program, NBC.*
9:30 p. m.—Studio.
10:00 p. m.—Little Symphony Hour.
11:00 p. m.—Organ Recital.

MONDAY, MAY 26

10:15 a. m.—Heinz food talk, NBC.*
11:30 a. m.—Glidden program.
1:30 p. m.—Traffic talk.
2:00 p. m.—NBC.*
3:00 p. m.—Among ourselves.
3:30 p. m.—Masterworks.
4:00 p. m.—Marian Miller.
4:15 p. m.—Afternoon musicale, NBC.*
5:00 to 10:00 p. m.—NBC.*
10:00 p. m.—Ben Selling's Boya.
11:00 p. m.—Olympic Hotel Orchestra.

TUESDAY, MAY 27

8:00 a. m.—Portland Breakfast Club.
10:00 a. m.—Ovaltine program.
10:15 a. m.—Bass-Heuter program, NBC.*
11:30 a. m.—Masterworks.
1:30 p. m.—School of the Air, NBC.*
2:30 p. m.—NBC.*
3:30 p. m.—Musical Masterworks.
4:00 p. m.—Marian Miller.
4:15 p. m.—Hotel St. Francis Orchestra, NBC.*
4:30 p. m.—Palace Laundry features.
5:00 to 8:00 p. m.—NBC.*
8:00 p. m.—To be announced.
8:45 p. m.—Nunn Bush program.
9:00 p. m.—Don Amalzo, the Wizard.
9:30 p. m.—Florsheim Frolic, NBC.*
See Page 20 for NBC Program.

C. R. SPENCER

5728 SANTA MONICA BOULEVARD
HOLLYWOOD, CALIF. Gladstone 5781

Just Three Blocks West of Western Avenue
Radio Service in All Parts of California

Write Us About Our Special Mail Order Service to
All Outside Points

◆ GRADE "A" TECHNICIANS
◆ CERTIFIED BY THE RA-
DIO TRADES ASS'N.

◆ We Use the Supreme Diagonometer
◆ In All Service Work

◆ We Maintain a Special Division of
◆ Our Service Dept. for Dealers

The essential features of these programs are identical with those sent us by the stations



KOA

Denver, Colorado—830 Kc.

12,500 WATTS—361.2 METERS GENERAL ELECTRIC CO.

Pacific Standard Time, Telephone York 5090

"Rocky Mountain Broadcasting Station"

Program Furnished by the National Broadcasting Company

DAILY EXCEPT SATURDAY AND SUNDAY

- 6:00 a. m.—Morning Revelers (except Thursday and Saturday).
8:00 a. m.—The Luncheon Five (except Monday and Wednesday).
9:00 a. m.—Three Little Maids (except Thursday and Saturday).
9:30 a. m.—As Heard Over the Telephone.
9:45 a. m.—National Farm and Home Hour, NBC., (including Saturday).
10:45 a. m.—Weather, Stock and Market Reports (except Monday).
11:00 a. m.—Organ Recital, Ogden Theatre (except Monday and Saturday).
11:45 a. m.—National Cannery Association (except Friday).
7:30 p. m.—Amos 'n' Andy (including Saturday).
7:45 p. m.—Literary Digest Prohibition Poll and News Flashes (except Monday).

FREEMAN H. TALBOT

SUNDAY, MAY 25

- 9:50 a. m.—First Church of Christ, Scientist.
10:00 a. m.—Cosmopolitan Luncheon Hour.
12:00 noon.—Dr. S. Parkes Cadman.
1:00 p. m.—National Religious Service.
2:00 p. m.—Catholic Hour.
3:00 p. m.—Los Argentinos.
3:30 p. m.—Williams Oilomatics.
4:00 p. m.—Enna Jettick Melodies.
4:15 p. m.—Collier's Radio Hour.
5:15 p. m.—Atwater Kent Hour.
5:15 p. m.—Studebaker Champions.
5:45 p. m.—Sunday at Seth Parker's.
7:15 p. m.—Russian Cathedral Choir.
7:45 p. m.—Sam Herman.
8:45 p. m.—Everett E. Foster, baritone.
9:00 p. m.—Borden program.
9:30 p. m.—The Reader's Guide.
10:00 p. m.—Concert Jewels.

MONDAY, MAY 26

- 10:00 a. m.—The Recitalists.
10:30 a. m.—Woman's Magazine of the Air.
11:30 a. m.—NBC, Philharmonic Organ Recital.
12:00 noon.—Pacific Vagabonds.
10:02 p. m.—May Time Melodies.
10:45 p. m.—"Above Timberline," Robert J. Neldrach.
11:00 p. m.—Mormon Tabernacle Choir and Organ.
11:30 p. m.—Book Ends—Lessons in French.
11:15 p. m.—The World Today.
11:30 p. m.—Roxy and His Gang.
12:00 p. m.—The Maytag Orchestra.
11:30 p. m.—General Motors Family Party.
12:00 p. m.—Stromberg-Carlson program.
11:30 p. m.—Empire Builders.
12:00 p. m.—Farm Question Box.
12:00 p. m.—Supreme Serenaders.
11:45 p. m.—KOA String Trio.
12:00 p. m.—Voice of Firestone.
11:30 p. m.—Musical Musketeers.
12:00 p. m.—House of Myths.
11:30 p. m.—Hot Spot of Radio.

TUESDAY, MAY 27

- 10:00 a. m.—Your Child.
11:15 a. m.—Radio Calendar.
12:00 noon.—U. S. Navy Band.
1:00 p. m.—The Lady Next Door.
1:30 p. m.—Tea Timers.
12:00 p. m.—Black and Gold Room Orchestra.
12:30 p. m.—Hotel New Yorker Orchestra.
12:00 p. m.—American Chiropractic Association.
12:30 p. m.—Lew White Organ Recital.
12:00 p. m.—Trolka Bells.
12:00 p. m.—Eveready Hour.
12:30 p. m.—Happy Wonder Bakers.
12:00 p. m.—Westinghouse Salute.
12:30 p. m.—Radio-Keith-Orpheum Hour.
12:00 p. m.—Denver Civic Symphony Orchestra.
12:00 p. m.—Magic Crystals.
12:30 p. m.—Musical Musketeers.
12:00 p. m.—Down Through the Years.

WEDNESDAY, MAY 28

- 10:00 a. m.—Radio Calendar.
11:30 a. m.—The Recitalists.
10:00 a. m.—The Twelve O'Clock Trio.
11:15 a. m.—The Luncheon Five.
11:45 a. m.—Mary Hale Martin's Household Period.
12:00 noon.—Radio Guild.
11:15 p. m.—Breen and de Rose.
12:00 p. m.—Tea Timers.
12:00 p. m.—Hotel New Yorker Orchestra.
12:00 p. m.—Kaye Weber—Songs at the Piano.
11:15 p. m.—The Lonesome Cowboy.
11:30 p. m.—Back of the News in Washington.
11:45 p. m.—Hotel St. Regis Orchestra.

- 4:30 p. m.—Mobiloil Concert.
5:00 p. m.—Halsey, Stuart program.
5:30 p. m.—Palmolive Hour.
6:30 p. m.—Coca Cola Topnotchers.
7:00 p. m.—Extension Service, Colo. Agri. College.
8:30 p. m.—Hill Billy Boys.
9:00 p. m.—General Electric Hour.
10:00 p. m.—Cotton Blossom Minstrels.

THURSDAY, MAY 29

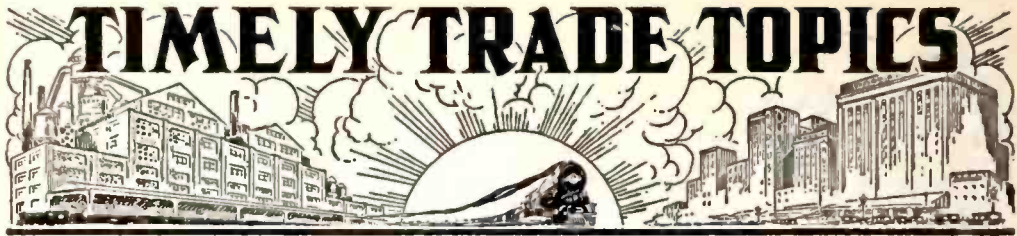
- 9:00 a. m.—The Poet's Corner.
9:15 a. m.—The Clever Co-eds.
10:20 a. m.—Woman's Magazine of the Air.
12:00 noon.—U. S. Army Band.
12:30 p. m.—The Lady Next Door.
1:15 p. m.—Breen and de Rose.
2:00 p. m.—Black and Gold Room Orchestra.
2:15 p. m.—Elementary Bridge Lesson.
3:30 p. m.—Half Hour in the Nation's Capitol.
4:00 p. m.—Fleischmann Hour, Rudy Vallee.
5:00 p. m.—Arco Birthday Party.
5:30 p. m.—Maxwell House Melodies.
6:00 p. m.—RCA Hour.
7:00 p. m.—Conoco Adventurers.
8:00 p. m.—Lucky Strike Dance Orchestra.
9:00 p. m.—The Cellar Mystery.
9:30 p. m.—The Olympians.
10:00 p. m.—National Concert Orchestra.

FRIDAY, MAY 30

- 7:00 a. m.—Blue Streaks.
8:00 a. m.—Morning Musicale.
8:30 a. m.—On Wings of Song.
12:00 noon.—Pacific Feature Hour.
1:00 p. m.—A Recipe a Day.
1:02 p. m.—Decoration Day Program.
1:40 p. m.—Book Ends—Lessons in French.
2:00 p. m.—Black and Gold Room Orchestra.
2:15 p. m.—The World of Music.
2:30 p. m.—Fitzsimons Friday Frolic.
3:30 p. m.—Raybestos Twins.
4:00 p. m.—Cities Service Concert Orchestra.
5:00 p. m.—Interwoven Pair.
5:30 p. m.—Armour program.
6:00 p. m.—Armstrong Quakers.
6:30 p. m.—Raleigh Revue.
7:00 p. m.—Elgin program.
8:00 p. m.—Sally Mason, crooner.
8:15 p. m.—Ralph Hansell, xylophonist.
8:30 p. m.—Colorado Sunshiners.
8:45 p. m.—The Old Stagecoachers.
9:15 p. m.—Kodak Week End program.
9:45 p. m.—John and Ned.
10:00 p. m.—Mystery Serial.
10:30 p. m.—Pacific Nomads.

SATURDAY, MAY 31

- 6:00 a. m.—Hits and Bits.
7:00 a. m.—The Recitalists.
8:45 a. m.—The Children's Hour Organ Recital.
10:30 a. m.—Keystone Chronicle.
11:00 a. m.—The Marionettes.
12:00 noon.—Merry Makers.
1:00 p. m.—The Lady Next Door.
1:30 p. m.—Tea Timers.
2:00 p. m.—Black and Gold Room Orchestra.
2:30 p. m.—Hotel Governor Clinton Orchestra.
3:15 p. m.—RCA Therman Ether Wave Musicale.
3:30 p. m.—The Fuller Man.
4:00 p. m.—The New Business World.
4:30 p. m.—The Silver Flute.
5:00 p. m.—General Electric Hour.
6:00 p. m.—Lucky Strike Orchestra.
7:00 p. m.—Hotel New Yorker Orchestra.
8:00 p. m.—Vassar Chocolates Girl.
8:30 p. m.—International Sunday School Lesson.
9:00 p. m.—Del Monte program.
9:30 p. m.—Penrod Stories.



H. E. Howard, of the Waltham Radio Corporation, makers of the Waltham Midget, is one of the local pioneers in the low priced radio field. He was one of the founders of the Master Radio Company, together with Messrs. Davidson and Reed, several years ago. Mr. Howard now heads his own company, and has associated with him Mr. H. C. Block, vice-president.

The Waltham Company has entered the midget field with a high grade product. It is a seven-tube, screen-grid, push-pull, dynamic speaker job of exceptional merit. Long years of experience in low cost operation has enabled Mr. Howard to include all of the technical features of modern radio and yet market the set in the midget price class.

Robert E. Hopkins & Company of 417 South Hill street, Los Angeles, who have been in the radio financing business for a long time, have just announced that they are in a position to finance for the dealers the popular midget receivers, which are sold retail at \$59.50 and \$69.50.

Mr. Hopkins extends an invitation to all Southern California dealers who have been unable to get satisfactory finance arrangements on this class of receivers to either write or phone him for particulars.

The new U. S. Automobile Radio set, which is distributed in Southern California by the Yale Radio Electric Company, 1111 Wall street, Los Angeles, is an innovation in that it will follow the rest of the company's radio line by being sold complete with tubes at a remarkably low price.

These automobile sets have been tested under all kinds of conditions in actual road tests. Most rigid tests have been given them, the same as is done on automobile "proving grounds" throughout the country. The automobile radio set is just now coming into its own.

NBC Program

(Continued from Page 43)

- 8:45 p. m.—Tone Pictures—The Rounders, vocal ensemble.
- 9:15 p. m.—Kodak Week-End Hour—Gail Kennedy and Irving Kennedy, soloists.
- 9:45 p. m.—John and Ned.
- 10:00 p. m.—Mystery Serial—"The Cross-eyed Parrot."
- 10:30 p. m.—Pacific Nomads.

SATURDAY, MAY 31

- 9:30 a. m.—Eddie Bernard.
- 9:45 a. m.—National Farm and Home Hour.
- 11:50 a. m.—NBC, Philharmonic Organ Recital.
- 12:00 noon—The Novelty Five.
- 1:00 p. m.—Dixie Dandies.
- 1:30 p. m.—Tea Timers.
- 1:45 p. m.—Captain "Bill" Royle.
- 2:00 p. m.—Black and Gold Room Orchestra opens with "Fingal's Cave."
- 2:30 p. m.—Hotel Governor Clinton Orchestra.
- 3:00 p. m.—William Don, English Comedian.
- 3:30 p. m.—The Fuller Man.
- 4:00 p. m.—The New Business World.
- 4:30 p. m.—Matinee Time.
- 4:45 p. m.—News Service.
- 5:00 p. m.—General Electric Hour—an all-Wagner program by Walter Damrosch's Orchestra.
- 6:00 p. m.—B. A. Rolfe and his Lucky Strike Orch.
- 7:00 p. m.—Don Bigelow and his Hotel Park Central Orchestra.
- 8:00 p. m.—Pacific Serenaders—Ballads. (KGO and KECA only.)
- 8:00 p. m.—Gilmore Circus.
- 8:30 p. m.—Melody Memories.
- 9:00 p. m.—Del Monte program presents Bernice Claire and Walter Pidgeon in "Mlle. Modiste."
- 9:30 p. m.—Penrod.
- 10:00 p. m.—Spotlight Review—Humor and Melody.

Radio Financing

ROBERT E. HOPKINS & CO.

417 South Hill St.

Los Angeles

MUtual 6282

Majestic Dealers Take Posies to Chicago

Thousands of California carnations were taken to Chicago last week where they were presented to more than 10,000 pretty feminine employees of the Grigsby-Grunow Company, manufacturers of Majestic radios.

The blooms were the gift of Ungar & Watson, Inc., 1363½ South Figueroa Street, Southern California and Arizona distributors of the radio, who last Friday took more than 250 Southern California and Arizona dealers on a visit to the factory.

The thousands of carnations were taken aboard one of the two special trains that carried the party eastward. A special attendant was in charge to maintain their "California complexion" during the 2000-mile journey.

This is the second time that Ungar & Watson, Inc., have taken their dealers to the factory, with all expenses paid. The first of the two special trains was in charge of W. J. Wilson, vice-president and general manager of the distributing firm, and the second was in charge of C. F. Bouldin, advertising manager of the same firm. Other officials who were present were I. D. Watson, vice-president and secretary of the firm; Griffith P. Ellis, western sales manager for Grigsby-Grunow Co.; D. F. Acheller, district sales manager for the manufacturer.

The party will spend five days in Chicago, where they will inspect the factory and attend the Majestic sales school. The return trip will begin May 30, with stopovers at Kansas City, El Paso, Juarez, and Phoenix, Ariz.

Around the Dial

(Continued from Page 13)

"Around the Dial":

Last Saturday evening and Sunday morning, I heard four stations in the 1420 Kc. channel. They were all on the air at the same time. They were KXL, KFQW, KORE, and KFQU. They caused quite a howl, but at times you could separate them.

A new 50,000-watt transmitter has been installed by WFAA, at Dallas, Texas. They were testing early Sunday morning, May 11, and they came in like any local station does. They announced as the first super-power station of the south, using 50,000 watts. I think any DXer should get them with no difficulty.

GEORGE SCHMIDT,
1642 West 82nd Street,
Los Angeles, Calif.

The appointment of James W. Baldwin, of Indiana, Chief Clerk of the Justice Department, a lawyer, as Secretary of the Federal Radio Commission is unusual in that it was from a Civil Service list, apparently has no political angle, and evidently made on merit.

You're Sitting on Top of the World

when you use



RADIO DOINGS CALL BOOK

for your station guide

The many changes recently made in American and Foreign Broadcasters make this up-to-the-minute station log an absolute necessity.

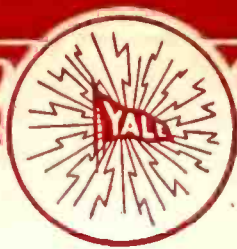
GET THE NEW RADIO DOINGS CALL BOOK AT YOUR
DEALER'S

or send 25c direct to

407 East Pico St.

RADIO DOINGS

Los Angeles, Calif.



THE
KENMORE
MIDGET RADIO



\$59⁵⁰

Complete with Tubes

For living room, patio, mountain cabin, beach home, or when traveling. Make a "pal" of your Kenmore radio.

Not just another mantle type set but a carefully planned, thoroughly engineered compact radio receiver. Equal in performance and tone quality to many of the large conventional type sets.

SPECIFICATIONS:

Beautifully finished walnut cabinet. Illuminated kilocycle dial. Adjustable oscillation control. Large X Core Magnavox Dynamic Speaker. Completely shielded chassis. Six (6) A.C. tubes. Honestly built to give the utmost in performance and value.

Exclusive Wholesale Distributor

Yale Radio Electric Co.

1111 Wall Street, Los Angeles

WEStmore 3351