

# RADIO DOINGS

RED BOOK OF RADIO

**10**¢  
WEEKLY

*The Radio Authority  
of the  
Pacific Coast*

**Complete Call Book of  
U. S. Stations**

**Pictorial Review of  
Pacific Coast Artists**

**Special Rotogravure  
Section**

Vol. XII  
No. 10

MARCH  
4-10, 1928

~~CROSLY RADIO~~  
 "You're there with a Crosley"

*The Powerful New*  
**AC BANDBOX**

*Is Now Available at  
 Your Nearest Crosley Dealer's*

—◆—

The New Crosley stands head and shoulders above competition. It is the most powerful A.C. set on the market. Uses 170-185 volts on the output tube. Compare this with 110 to 140 used in other sets.

New Two-Unit A.C. Bandbox - \$ 99.00

New Single Unit A.C. Bandbox \$104.50

Handsome Console Cabinets - \$38.50, \$71.50, \$93.50

—◆—

EXCLUSIVE CALIFORNIA DISTRIBUTORS:

**KIERULFF & RAVENSCROFT**  
 RADIO EQUIPMENT



1630-32  
 South Los Angeles St.  
 LOS ANGELES

121-131 Ninth St.  
 SAN FRANCISCO

**Quality and Moderate Price CAN Be Combined in  
AC Operation. The Proof is Embodied in the**

# CROSLEY

## BANDBOX RECEIVER

Here are just a few of the many Franchised Dealers who will gladly demonstrate the Crosley Bandbox for you:

### LOS ANGELES

#### Downtown

Figueroa Radio Shop  
937 W. Seventh St.  
TUcker 7031

#### South

De Hoog Brothers  
6120 S. Broadway  
THornwall 0224

Wilkins Radio Mfg. Co.  
5311 S. Broadway  
AXridge 0827

#### Southeast

Nilsson & Nelson  
4320 Avalon Blvd.  
HUmbolt 0827

#### Southwest

L. A. Duncan  
2891 W. Pico St.  
EMpire 1141

Osmond Radio Co.  
3206 W. Washington  
EMpire 2966

Wesenberg Radio Music  
Co.  
3819 S. Western Ave.  
VERmont 7929

### Hollywood

Glow Electric Co.  
5910 Hollywood Blvd.  
HOLlywood 4610

#### Westlake

Arcade Radio Studio  
743 $\frac{1}{4}$  S. Alvarado  
DRexel 6859

### BEVERLY HILLS

P. H. Needham,  
Electragist  
137 $\frac{1}{2}$  S. Beverly Drive  
OXford 5458

### CULVER CITY

Culver City Radio  
Electric Co.  
6716 Washington Blvd.  
Culver City 3490

### EL MONTE

H. T. Allen  
209 West Main St.  
El Monte 306

### GLENDALE

Shuck Music Co.  
211 N. Brand Blvd.  
Glendale 2329

### LONG BEACH

John J. Sawyer  
543 E. Anaheim St.  
Long Beach 636-235  
The Radio Fan  
2831 E. Anaheim St.  
Long Beach 318-250

### MONTEREY PARK

Monterey Park Music  
Co.  
102 E. Garvey Ave.  
Alhambra 1182-M

### NORTH HOLLYWOOD

No. Hollywood Music Co.  
Langlands & Schade  
5317 Lankershim Blvd.  
Lankershim 174

### PASADENA.

#### LAMANDA PARK

Nazarian's Radio Shop  
2480 E. Colorado  
Colorado 5992

### PUENTE

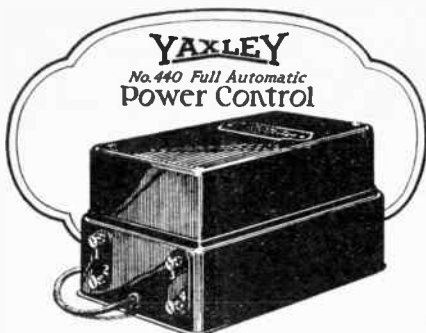
Puente Hardware Co.  
115 Main St.  
Puente 555-51

### VENICE

Venice Electric Co.  
72 Market St.  
Santa Monica 62261

**"You're there with a Crosley"**

*For Switching  
B Eliminator  
and Charger  
or either*



*And  
Automatically  
cutting out  
charger when  
battery is fully  
charged*

**No. 440—Full Automatic Power Control, complete as illustrated  
\$7.50**

Every owner and purchaser of a battery operated set should have the benefits of a fully automatic control.

**Purpose.**—The Full Automatic Power Control is designed to perform a double purpose. First, it controls the switching of the B Eliminator and charger, or either, when the filament of the set is turned on or off. When the set is turned on, the B Eliminator is cut in and the charger cut out. The reverse is true when the set is turned off. Second, when the battery is fully charged, the Full Automatic Power Control cuts out the charger. The Battery will not be overcharged. The electric current to the charger is literally and automatically cut off.

**Application.**—The Full Automatic Power Control is primarily designed for use with a high rate charger, though it also works equally well with chargers of the trickle type.

**Advantages.**—To the radio set owner, the Full Automatic Power Control makes it practical to use a high rate charger without danger of overcharging the battery. This assures the set owner of a fully charged battery, but not overcharged, whether the set is used frequently or only occasionally, and the set will give maximum efficiency at all times.

There is no back flow of current from the battery when the charger is cut off. And when the Full Automatic Power Control cuts out the charger, it cuts it with a quick, positive break.

The No. 440 Full Automatic Power Control will operate in continuous service without care or attention. It switches the B Eliminator and charger automatically and cuts out the charger when the battery is fully charged.

*Factory Representatives*

## **Henger-Seltzer Company**

711 EAST 14TH STREET  
LOS ANGELES

377 BRANNAN STREET  
SAN FRANCISCO

WESTMORE 5258

**YAXLEY**  
APPROVED RADIO PRODUCTS

# Radio Doings

Trade Mark Reg. U. S. Pat. Off.

New York Office  
J. W. HASTIE  
155 East 42nd St.  
Vanderbilt 4661

407 E. Pico St., Los Angeles, Calif.  
Phone Westmore 1401

San Francisco Office  
CONGER & MOODY  
927 Hearst Bldg.  
Kearney 8483

## "The Red Book of Radio"

CLOYD MARSHALL, JR.  
*Editor*

K. G. ORMISTON  
*Technical Editor*

H. C. CHARLES

*Special Representatives*  
J. S. MILLER

H. G. DAVIS

GEORGE W. MARSHALL  
*Business Manager*

MAJ. LAWRENCE MOTT  
*Associate Editor*

PAUL V. PARKER

(Entered as second-class matter, Nov. 25, 1922, Los Angeles, Cal., Post Office, under Act of March 3, 1897.)  
Copyright, 1928, by Horwood Publishing Co.  
Issued Weekly. Ten Cents a Copy, Three Dollars a Year. Canada and Foreign Countries, \$3.50 per Year.

Vol. XII

Los Angeles

MARCH 3, 1928

San Francisco

No. 10

## Contents

	Page	Page	
Studio News .....	12	Special Rotogravure Section, with complete Alphabetical Call Book of U. S. Stations and Gallery of Pacific Coast Artists .....	33-96
DX Club.....	17	Detailed Programs.....	98-125
Last-Minute Wave-Length Changes....	18	Timely Trade Topics.....	126
Technical Manual .....	19		
Time Tables .....	25-31		

### SPECIAL OFFER!

RADIO DOINGS still offers an attractive leatherette binder with each subscription sent in on the coupon printed below. This imprinted binder is ideal for safely keeping the technical manual series of popular circuits now running regularly in RADIO DOINGS each week. Send in your subscription NOW and take advantage of this exceptional and useful offer.

#### THE PACIFIC COAST'S GREAT RADIO WEEKLY

and a Specially Imprinted Leatherette Binder

FOR ONLY \$3.00

RADIO DOINGS, 407 East Pico St.,  
Los Angeles, California.

Enclosed is \$3.00. Please mail RADIO DOINGS each week for one year to my address, and also send me one of the attractive Manual Binders at once.

Name.....

Address.....

# The RADIO SUPPLY CO.

"The Parts Warehouse of the West"

Is ready to fill your requirements for Parts. Our stock is complete and adequate at all times

Watch This List of Parts for Changes

Alco Loops	Dudlo Mfg. Co. Wire	National Co. Parts
Acme Apparatus	Dunham Loops	Polymet Condensers
Acme Wire	Eby Binding Posts	Preston DX Ground
Advance Crystals	Ekko Ground Clamps	QRS Tubes
Aero-Products	Elkcn Chargers	Racon Horns
Aerovox Wireless Products	Essenbee Ball Aerial	Radiall Co. Amperites
Allen Mfg. Co. Parts	Formica Insulation Co.	Rauland Lyric
All-American Products	Franco B Batteries	Transformers
Amertran Products	Electrad Products	Raytheon Tubes
Amperites	Frost Products	REL Apparatus
Amsco Condensers	General Radio Parts	Remler Products
Artco Coils	Genwyn Coils	Samson Transformers
Baldwin Units	Goodrich Rubber Panels	Sangamo Condensers
Balkite Chargers, Etc.	Gosilco Wire	Scranton Hydrometers
Benjamin Elec. Mfg. Products	HFL Transformers	Selectone Transformers
Bodine Loops & Coils	Hammarlund Products	Sensory Insulators
Brandes Phones	Handy Chargers	Silver Marshall Products
Branston Honeycomb Coils	Harkness Kits	Sovereign AC Tubes
Bremer-Tully Products	Hedgehog Transformers	Spaulding Bakelite
Bretwood Leaks	H-K Sodderdip Lugs	Steinite Eliminators
Bruno Coils	Hoosick Parts	Sterling Meters and Testers
Camfield Coils	Infradyne Parts	Stevens Tools
Carborundum Products	Jefferson Products	Thordarson
Cardwell Condensers	Jones Cables	Transformers
Carter Products	Karas Products	Tobe Condensers
CeCo Tubes	Kelbrackets	Tom Mack Products
Celeron Panels	Kellogg Parts	Tower Speakers
C R L Var High Resistance	Kodel Products	Trimm Cone Speakers
Chicago Kester Solder	Kurz-Kasch Dials and Knobs	Tyrman Parts
Clarostat	Kuprox Chargers	Universal Battery Clips
Corning Pyrex	Lynch Leaks	Utah Units
Crescent Transformers	Madison Moore Units	Vesta Power Units
Daven Radio Parts	Magnaformer Units	Victoreen Parts
DeJur Rheostats	Magnatron AC Tubes	Ward Leonard Products
DeLuxe Products	Marco Products	Wesholly Grounds
Dictogrand Speakers	Mignon S. L. F. Cond.	Weston Products
Dubilier Condenser Corp.	Mueller Universal Clips	Webco Power Units
	Mountford Resistance	Willard Batteries
	Naald Parts	X. L. Variodensers
	National Soldering Irons	Yaxley Products

DEALERS: Park Next Door at Our Expense

## RADIO SUPPLY CO.

WHOLESALE

912-914 S. Broadway

VA. 6063

Los Angeles

New 1928 Catalogue Now Ready—Send for it

*Largest Radio Parts Jobber West of Chicago*

---

# KITS AND PARTS IN STOCK

For the Following Famous Receivers



Magnaformer 9-8

New Best 115Kc Super

The Tyrman "70"

4-HFL 9-In-Line

Silver Marshall  
Shielded Grid Six

and S-M Parts

Browning Drake

Single Control

Hammarlund Hi-Q6

*All Parts for Power Packs and Amplifiers*

---

## RADIO SUPPLY CO.

WHOLESALE

912-914 S. Broadway

VA. 6063

Los Angeles

NEW 1928 CATALOGUE NOW READY—MAILED ON REQUEST

*Largest Radio Parts Jobber West of Chicago*

---

# MAGNAVOX

## Type R-4 Unit

A self-contained dynamic unit operating directly from the A battery of your set.

This Speaker has no pitch, other than the sounds that are reproduced.

The principles used in the construction of these Speakers are acknowledged by experts as the only type capable of accurate radio reproduction.

# DYNAMIC

## Type R-5 Unit

A power unit with all the characteristics of the other model.

—◆—

*You Never Have Heard Music Such as Reproduced  
by the*  
**MAGNAVOX DYNAMIC**

—◆—

*Wholesale Distributors*

# C. C. LAWTON CO.

1125 Wall St.

WEStmore 3960

Los Angeles



# Tyrman "70"

Shielded Grid Amplimax



## Going Stronger Than Ever

### Authorized Tyrman Service Stations

#### Los Angeles

LABORATORY OF RADIO STANDARDS  
2408 West Vernon. VERmont 6543

MELROSE RADIO SERVICE CO.  
5563 Melrose Ave. GLadstone 3055

RADIO RECEIVER SERVICE  
801 Allied Crafts. WEStmore 3989

RADIO DOC  
721 S. Main St. TUcker 1301

#### Pasadena

A. J. FORTIER  
1290 Fair Oaks. STerling 2631

#### Oakland

RADIO CONSTRUCTORS CORP'N  
357 Twelfth St.

#### Long Beach

J. R. FOSTER RADIO LAB. & STUDIO  
1102 E. 4th St. Phone 654-151

#### Venice

VENICE RADIO SHOP  
1227 Washington Blvd. Phone 63544

#### San Francisco

MANUFACTURERS RADIO SERVICE  
1160 Howard St. Market 8773

#### Santa Ana

FRED NEWPORT  
411 W. Fifth St.

#### San Diego

HOLCOMB RADIO SHOP  
730 F St.

PACIFIC RADIO CO.  
1222 First St.

#### Fullerton

E. L. PIKE  
208 W. Brookdale

#### Laguna Beach

PHELPS RADIO SERVICE

### Factory Representative

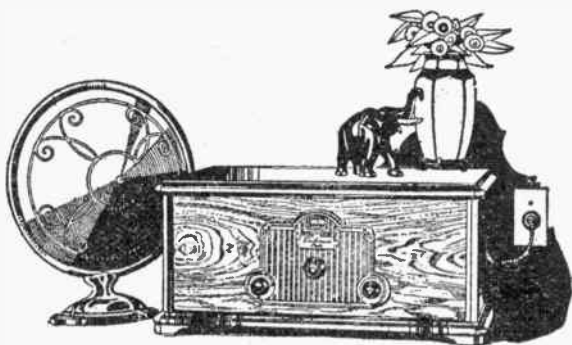
## HENGER-SELTZER COMPANY

711 East 14th St.  
LOS ANGELES

377 Brannan St.  
SAN FRANCISCO

# FREE TRIAL In

*This offer holds good for a short time only  
in order to introduce the new Freed-Eisemann  
Batteryless Electric Radio*



## KNOW THIS!

1. That the new Electric Radio not only does away with all batteries, chargers, liquids, acids—
2. But it is actually CHEAPER than an equivalent battery set with its batteries and chargers.
3. That it costs less than 1c for three hours' use.

**7 TUBE  
SET USING  
NEW  
A.C. TUBES  
NO  
ACIDS  
NO  
LIQUIDS  
NO  
BATTERIES**

*Here Are Just a Few of the Authorized Freed-Eisemann Dealers*

### **LOS ANGELES**

#### ***Downtown***

**Famous Department Store**  
530 South Main Street  
TRinity 8831

#### ***East***

**Henderson's Radio Store**  
3808 Whittier Blvd.  
ANgelus 8748

#### ***Southwest***

**Robinson Radio Shop**  
4528 South Western Avenue  
Vermont 6683

#### ***Hollywood***

**Walter F. Browne  
Radio Service Shop**  
4508 Hollywood Blvd.  
OLympia 4783

# Your Own Home NEW Freed-Eisemann

Completely Self-Contained

## ALL ELECTRIC

Uses NEW A. C. TUBES

USE IT — let your family enjoy it. Get the big games — the opera stars and finest orchestras. Realize the thousand advantages and joys a radio will bring you. If you decide to keep this marvelous radio, you can buy it by paying less weekly than many spend for theater seats. No strings attached to this offer — you are the sole judge — and remember, it operates direct from your light socket, using the new A.C. tubes.

*Just Phone One of the Dealers Listed Below*

*A. J. Tobey Co.*  
RADIO ACCESSORY JOBBER

1145 Wall Street

Phone WE. 4038

*Distributors for Southern California*

*Who Will Gladly Make This Free Demonstration in Your Own Home:*

### *Hollywood-Wilshire*

**Melrose Radio Co.**  
5663 Melrose Avenue  
GLadstone 3055

### *PASADENA*

**F. B. Cole**  
794 East Colorado  
Terrace 5818

### *LONG BEACH*

**Electrique Radio Co.**  
1719 East Anaheim Road  
Long Beach 323-208

### *SAN BERNARDINO*

**Radio Laboratories**  
873 Seventh Street



# STUDIO NEWS

Leslie Adams, the well known announcer of KFI, will leave this station soon to become director of KMTR, Hollywood. Mr. Adams has been the chief announcer of KFI for over three years, and during this time has made many staunch friends in the vast radio audience.

The Abas String Quartet, KPO's stellar unit of excellent musicians, and Alan Wilson, tenor, will present their Hour of Chamber Music on Fridays, from 9:30 to 10:30, instead of on Wednesdays, from 9 to 10.

KHJ is broadcasting every Monday night, from 10 to 11, the Alexandria Hotel Dance Orchestra.

The radio fans of the Pacific Coast will welcome Mac, the popular chief announcer of KFRC, back to his duties of telling the air audience what they will hear next. Mac has been away for over six weeks, due to a throat affliction, which nearly cost him his voice.

KFI and KPO are featuring the Kolster Hour every Tuesday evening from 9 to 10 p. m. The John G. Rapp Corporation, California distributors for the Kolster receiver, are sponsoring this program.

Nick B. Harris, the well-known detective, who has been giving for the past five years a series of interesting detective stories over KFI each Wednesday night, will now continue these talks on Tuesday evening, beginning at 7.

The Pacific States Saving and Loan Company will sponsor an excellent musical program every Sunday night, between 8 and 9 o'clock, from KHJ. These programs are a real treat and are watched for eagerly by many of the radio listeners.

A new dance program, featuring the N. B. C. Dance Orchestra, will be broadcast Tuesday, Wednesday, Thursday and Friday, from 10 to 11 p. m. This program will originate from KOMO, KGW and KPO, on Tuesdays; KGW and KPO on Wednesdays; KOMO, KGW and KPO on Thursdays, and KGW and KPO on Fridays. Having the program coming from these stations means that the audience will get an almost continuous program of music for this entire hour.

Bob Harker and Tod Watterman, the well-known banjo players, will present an hour's program, from 8 to 9 on Tuesday, March 6, from KPLA. Virginia McCoy, contralto, will add to the attractiveness of this program.

KFWC, "The Voice of the Orange Empire," located at Pomona, has just installed a Preston Permanent Broadcast Station Ground. They hope that by installing this new piece of apparatus they will better serve their listeners.

KPO put on an excellent program from their station, February 22, from 8 to 9 p. m. This program boasted of two internationally known singers, Alice Gentle, soprano, and Lawrence Strauss, tenor.

# New Additions to the CeCo Tube Family

The C. E. Manufacturing Company announces vital improvements in the design and construction of certain types of vacuum tubes. These new types are now on the market, and make possible improved performance over a longer period than heretofore obtainable from standard types.

## CeCo Type RF-22 Screen Grid Amplifier

A shielded grid tube, which is offered to the public only after extensive laboratory research and experimentation to produce a tube of this type which will STAND UP. This tube has been kept in the laboratory until perfected, and is now marketed with a 100% guaranteed. Price \$6.50.

## CeCo Types FA and JA Power Tubes

Power tubes of the F and J types, with a filament current of but  $\frac{1}{4}$  ampere. The same characteristics as the famous F and J-71 power tubes, with but half the filament current. Price \$3.50.

## Improved AC Tubes of Entirely New Design

N-27 Detector, \$6.00      N-26 Amplifier, \$3.00  
S-27 3 volt, 1.35 amp., \$5.00  
(Detector and Amplifier)

## AND---Coming Soon

An entirely new tube of the "A" type, with a filament current consumption of but .08 ampere! Superior in performance to the standard "A" type, this new tube will require only  $\frac{1}{3}$  the filament current.

*CeCo produces special duty tubes for every  
radio need, and each is a leader in the field.*

**Don't be "Switched"—Demand CeCo Tubes**

Factory Representatives

**B. KRUGER & CO.**

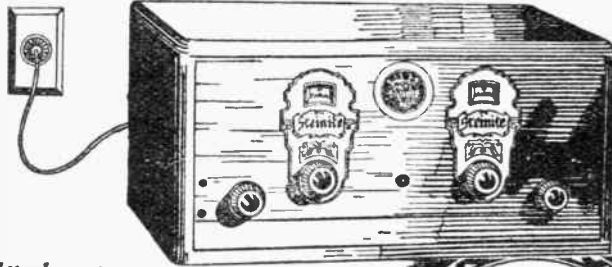
Phone OX. 3897    500 N. Huntley Drive, West Hollywood, Sherman P. O.

# Steinite

## ELECTRIC RADIO

*Time-tested!*

*Complete  
in One Unit*



### *No Attachments*

THE STEINITE ELECTRIC comes to you in one complete unit—absolutely no outside attachment! No unsightly wiring or cables—no intermediate power units to hide—nothing to watch or charge—no acids, liquids or chemicals! Consumes less than a penny's worth of current an hour. Beautiful solid (not veneer) Philippine Mahogany cabinets, Duco finished.

*Licensed under R. C. A. patents and under Patent No. 1014002.*

*Wholesale Distributors*

**National Radio & Supply  
Company**

141 W. Wash. WE 2748 Los Angeles



WHY BUY AN UNTRIED electric set, when you can buy the time-tested STEINITE ELECTRIC at its amazingly low price? STEINITE Electrics have given millions of hours of satisfactory performance in 50,000 American homes—they were introduced as far back as the 1926 Radio Shows—a full year ahead of the others which have been rushed on the market in the last few months!

**NO** Batteries - Eliminators!  
Acids - Water or Attachments!

# Steinlite

## ELECTRIC RADIO

Go to one of these Authorized Dealers TODAY. Hear the clear, pure tone of this remarkable radio. Examine it closely—then BUY—safe in knowing you are buying the BEST.

### LOS ANGELES

The Starr Piano Co.  
Downtown Headquarters  
630 S. Hill St.  
TRinity 3905

Potter Radio Sales Co.  
1817 W. 54th St.  
VERmont 1210

Palmer Radio Co.  
(Established 1923)  
4529 S. Vermont  
VERmont 7883

Frowein's Radio Shop  
5944 S. Main St.  
AXridge 6836

W. C. Hollingsworth  
314 S. Figueroa  
MUtual 9813

Radioelectric Supply Co.  
2077½ W. Jefferson  
(cor. Arlington)  
EMpire 4906  
(Nightly Demonstrations)

### Radio Exchange and Service Co. LONG BEACH

4211 S. Broadway  
AXridge 6652

W. A. Graham  
4355 S. Main St.  
(at Vernon)  
HUMbolt 0609

Jatho Radio Service  
5410 Central Ave.  
AXridge 1961

H. A. Everest  
1032 N. Ogden Dr.  
GRanite 9915  
(Nightly Demonstrations)

### GARDENA and TORRANCE

Gardner Music Co.  
1601 Gramercy  
Phone 312-J

Seaside Electric Co.  
63 S. Magnolia  
Phone: 675-263

Radio Glen  
5203 E. 2nd St.  
Phone 343-230

### POMONA

No Battery Radio Co.  
277 S. Garey Ave.  
Phone: 1245

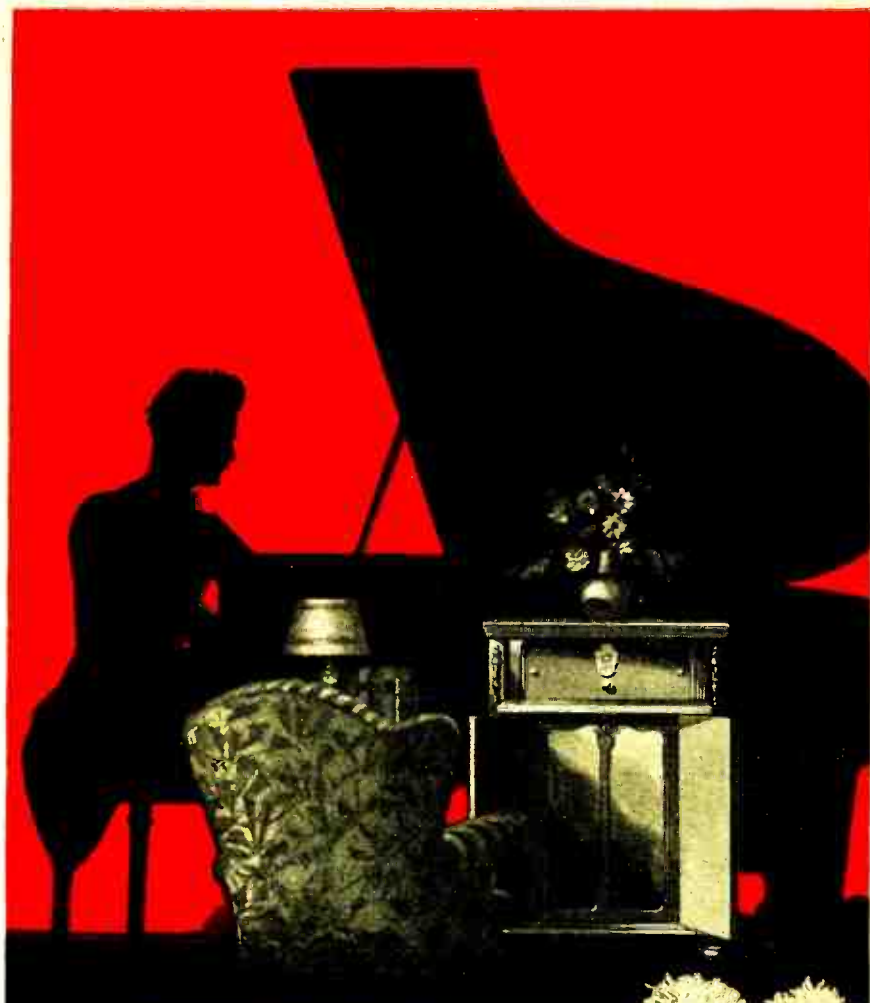
### SAN FERNANDO

Porter Av. Hdwe. Co.  
1040 Porter Ave.  
Main 11

### VENICE

All Electric Radio Shop  
1029 Washington Blvd.  
(opp. Martha Washington School)  
Phone 644-10

“The Greatest Radio Sensation of 1928”



### REFINEMENT

**T**HE far-sighted dealers who joined Sparton in pioneering the field of all-electric radio now reap their reward. As the entire industry swings to alternating current reception, Sparton's "richest of radio voices" sets the Sparton dealers in positions that are envied by the entire trade. Other dealers—write.

The Sparks-Withington Co., Jackson, Mich.  
Pioneers of Electric Radio without batteries of any kind  
(191)

# SPARTON RADIO

*"The Pathfinder of the Air"*





Through the courtesy of the OeCo Manufacturing Company of Providence, Rhode Island, Radio Doings offers as a prize for the best letter to the DX Club one of the famous OeCo type "H" Special detectors. This tube is especially suitable for DX work, as it is a highly sensitive "hard" detector without background noise. And remember, it is not always the big expensive set with the longest list of DX that wins the prize—everybody has a chance.

### FIRST PRIZE

DX Club:

I don't claim to be much of a distance fan, but have had some success with the hard ones. The equipment consists of the following: Model 734, Stromberg-Carlson antenna mast 60 feet high antenna 135 feet long, ground 24"x36"x1/8", copper plate buried three feet, and a Station Isolator. No special tubes or other equipment. Five lbs. blue vitrol on ground.

Last night I listened to 15 rounds of boxing from 2BL. My foreign stations are 2KY, 3LO, 2BL, JOCK, JOAK, 4QG, 5CL, PWK, 1YA, 2FC, 4YA, 7ZL. On Feb. 15th from 1:30 to 3:30 p. m., I played 3XN, 2BL, 3LO, JOAK, 5CL, 2FC, 1YA.

Very truly yours,  
DONALD H. GRAY,  
527 23rd Street,  
Santa Monica, Calif.

DX Club:

I have been reading your DX page in your magazine for quite a while and have read ever so many DX reports from the radio fans all over the west coast.

Now I would like to say a word about the Splitdorf R 560, 5 tubes (UX-301A), 90 volts (B), 4 1/2 volts (C), 6 volts (A). I have logged 102 stations in the past four weeks. They are as follows:

WAIU, WSKC, WKBW, WBBM, WRR, WOC, WHO, WBAP, WCCO, WSM, WOW, WOAI, WTAG, WLBR, WTAM, WKBG, WSL, WJBT, WGN, CFCY, CFCN, CJOR, CKCD, CNRV, CYE.

KGDM, KFWO, KFAU, KGHS, KFXF, KGHM, KTBI, KGFJ, KGFH, KTNT, KDKA, KTBK, KMMJ, KOAC, KOWW, KELW, KWWG, KFEL, KGGM, KFWB, KFQZ, KMIC, KFWM, KTAB, KPSM, KFAD, KSFI, KFXB, KOIN, KFVD,

KFOA, KOMO, KFPY, KWKH, KOIL, KFWI, KFBU, KPLA, KGER, KWON, KFSG, KGEF, KMTR, KNRC, KWSC, KFVC, KJBS, KFRC, KFSD, KFWI, KDYL, KNRC, KSMR, KMOX, KOW, KOA, KMJ, KLZ, KYW, KMO, KFI, KHJ, KNX, KGO, KPO, KLX, KGW, KEX, KWG, KSL, KYA, KOW, KGA, KJR, KHQ, KTW, KOB.

I have verifications on all stations outside of California, and can send them if you so desire.

Yours truly,

F. L. EBERT,  
420 N. Douty St.,  
Hanford, Calif.

DX Club:

I have had my Radiola 20 a little over a month, since Dec 4, and have received 92 different stations. Three are foreign, KGU, Honolulu; PWX, Havana, and 2CX, a 10-watt station in Havana, Cuba. I received 38 stations in California, 4 in Colorado, 8 in Illinois, 5 in Indiana, 6 in Washington, 7 in Oregon, and 2 in Utah. Others include: KWKC, WSAI, KDKA, WDAE, KOB, WRAF, WOF, KFAU, KMMJ, KFAB, WEAF, KFJF, WBAP, KFBU, CFAC and CNRV.

I am using a 4-wire, 22-foot aerial, and find very good results in selectivity. I received KGU with KFWI playing on practically the same wave length.

I have a power team of Sterling "A" and "B" Eliminators, and sure get the best results through them.

I receive your little "Red Book" every week, and certainly get many valuable pointers from it. Here's hoping others with Radiola 20's are getting good results. Let's hear from some of them.

Yours sincerely,  
EARL FOLTZ,  
630 Vincent Park,  
Redondo Beach, Calif.

**BT Counterphase 8—World's Greatest Radio—Sold with a Distance Guarantee. H. A. Everest, 1032 North Ogden Dr. GRanite 9915.**

# Last Minute Changes and Additions to Alphabetical Call Book

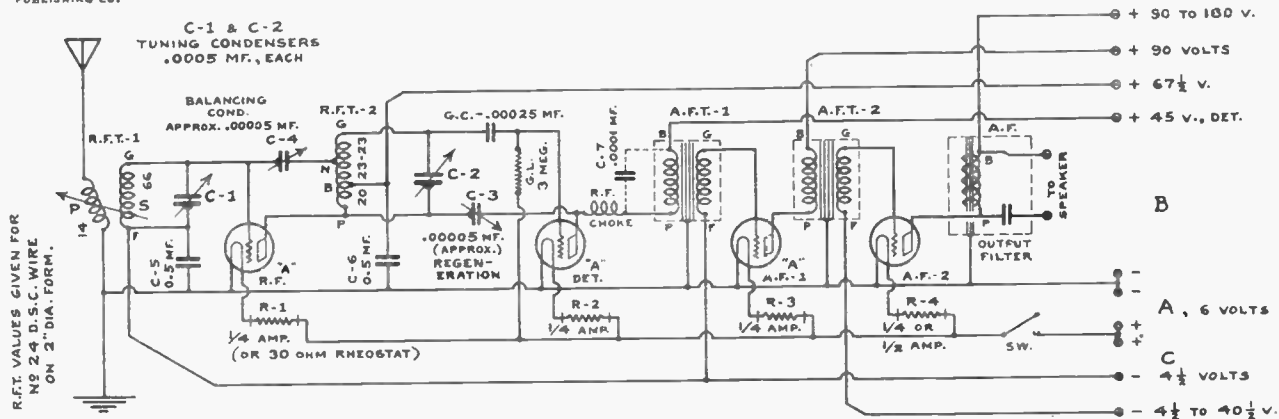
The Federal Radio Commission, acting upon the recommendations of Commissioner Harold Lafount, made many changes in the frequencies, power and hours of operation of Western broadcast stations, just as this issue of Radio Doings went to press. These changes, with some in other parts of the country, are listed below:

- KELW**—Power increased from 250 watts to 500 watts.
- KFBK**—Freq. changed from 560 to 1090 (275.1 meters).
- KFCR**—Power increased from 50 watts to 100 watts.
- KFQU**—Freq. changed from 1200 to 1440 (208.2 meters).
- KFQZ**—Power increased to 250 watts.
- KFSG**—Freq. changed from 1090 to 1190 (252.0 meters).
- KFVD**—Freq. changed from 1440 to 1390 (215.7 meters).
- KFWV**—Power decreased from 500 to 100 watts.
- KFWC**—Freq. changed from 1350 to 1210 (247.8 meters).
- KGBU**—Freq. changed from 1310 to 750 (399.8 meters).
- KGDY**—Call letters changed to KWEA.
- KGEF**—Power increased from 500 to 1000 watts.
- KGEH**—Call letters changed to KIOS.
- KGEU**—Deleted.
- KGFP**—Deleted.
- KGFH**—Freq. changed from 1340 to 1140 (263.0).
- KGTT**—Freq. changed from 1450 to 1360 (220.4 meters).
- KHAC**—Call letters changed to KFBI.
- KHJ**—Power increased from 500 to 1000 watts.
- KLZ**—Freq. changed from 1010 to 850 (296.9 meters).
- KPLA**—Freq. changed from 1190 to 1040 (288.3 meters).
- KPPC**—Freq. changed from 1310 to 950 (315.6 meters).
- KRE**—Freq. changed to 1220 (245.8 meters).
- KRLO**—Freq. changed from 1390 to 1190 (252.0 meters).
- KSOO**—Power increased from 250 to 500 watts.
- KTBI**—Freq. changed from 1040 to 1090 (275.1 meters), 1000 watts.
- KTBR**—Freq. changed from 1060 to 1310 (228.9 meters).
- KWTC**—Freq. changed from 1350 to 1100 (272.6).
- KYA**—Freq. changed from 970 to 830 (361.2 meters), 1000 watts.
- KZM**—Freq. changed from 1220 to 1440 (208.2 meters).
- WAMB**—1350 Kyc. 222.1 meters, 500 watts.
- WRCV**—Call letters changed to WIBA.
- WBAR**—Deleted.
- WBAW**—Freq. changed from 1210 to 1250 (239.9 meters).
- WTAL**—Call letters changed to WSPD.
- WHAR**—Deleted.
- WHBN**—Call letters changed to WRUF.
- WHT**—Location of transmitter should be Deerfield, Ill.
- WIBO**—305.9 meters instead of 305.4.
- WIBS**—204.0 meters instead of 204.4.
- WIBU**—1380 Kcys., instead of 1360.
- WIBW**—Topeka, Kans., 1470 Kcys.—250 watts.
- WJAS**—270.1 meters, instead of 370.1.
- WJBA**—1210 Kcys., instead of 1200.
- WLS**—Transmitter located at Crete, Ill.
- WMBI**—Power increased to 2500 watts.
- WNBL**—Deleted.
- WNAX**—Freq. changed from 990 to 1080 (277.6 meters).
- WOR**—Transmitter located at Kearney, N. J.
- WQBC**—Deleted.
- WRAV**—Deleted.
- WSAI**—Located at Mason, Ohio, instead of Cincinnati, Ohio.
- WRSC**—Deleted.
- WSM**—890 Kcys. to 336.9 (5000 watts).
- WSYR**—1330 Kcys. to 225.4 meters (500 watts.)
- WWRL**—Freq. changed from 1500 to 1180 (267.7 meters).

COPYRIGHT 1928  
BY  
THE MORWOOD  
PUBLISHING CO.

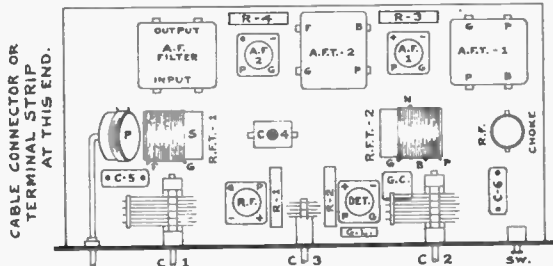
# THE EVERYMAN FOUR

Radio Doings  
TECHNICAL MANUAL



R.F.T. VALUES GIVEN FOR  
NO. 24 D.S.C. WIRE  
ON 2" DIA. FORM.

## ASSEMBLY PLAN



CABLE CONNECTOR OR  
TERMINAL STRIP  
AT THIS END.

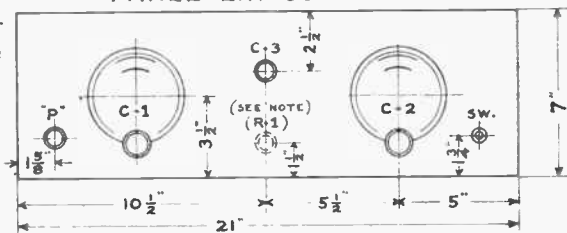
BASEBOARD  
10" X 20" X 3/8" APPROX.

R-1 NOTE—  
APPROX. PANEL  
LOCATION SHOWN  
IF RHEOSTAT  
IS USED.

MARCH  
3  
1928

JEMEAD-LOS ANGELES

## PANEL LAY-OUT



## The Everyman Four

Here is a four-tube receiver for the fan who wants to build an inexpensive set and get the most in the way of performance per dollar invested. Controls have been reduced to a minimum and all unnecessary "trimmings" omitted.

The complete schematic circuit diagram is given on the reverse side of this page. It will be noted that the set comprises a balanced stage of radio frequency amplification, a regenerative detector, and two stages of transformer-coupled audio frequency amplification.

The first RF transformer has a moveable primary or antenna coil, which affords an adjustment of selectivity. The RF tube operates with a  $4\frac{1}{2}$ -volt C grid bias and  $67\frac{1}{2}$  volts on the plate. The plate circuit of the RF tube is coupled to the detector through an auto-transformer, 20 turns of the single winding being common to both circuits. The balance of the winding is tapped at the midpoint for connection to the small balancing condenser.

Regeneration of the detector is accomplished by means of a midget variable condenser connected from the plate of the RF tube to the plate of the detector.

Filament control is entirely automatic, being handled by ballast resistors of the proper resistance in the filament circuit of each tube. There are four panel controls, these comprising the two main wavelength tuning controls, the midget condenser governing regeneration, and the control which varies the coupling between the antenna coil and secondary or grid inductance of the RF tube. The balancing condenser is, of course, located on the sub-panel. This adjustment is made once and for all to eliminate oscillation of the RF tube over the whole scale.

The set is very sensitive, and at the same time possesses a high degree of selectivity, due to the regeneration, vari-

able antenna coupling, and careful balancing of the RF stage.

The audio transformers employed afford a very good tone quality, and an output filter protects the windings of the loud speaker from the plate current of the 171 power tube used in the last stage. For actual placement of the apparatus the pictorial plans furnished with the kit should be followed closely.

### Complete List of Parts Required

#### LESLIE F. MUTER COMPANY

- 1 No. 3300, Supreme A. F. transformer, first stage.
- 1 No. 3320, Supreme A. F. transformer, second stage.
- 1 No. 27, Clarifier, output transformer.
- 1 No. 1600, Push-Pull panel switch.
- 1 No. 3730, Three megohm heavy duty grid leak.
- 1 No. 800, Grid leak mounting.
- 1. No. 305, .00025 moulded Bakelite Condenser.
- 1 No. 301, .0001 moulded Bakelite condenser.
- 2 No. 507, .5 Mfd. by-pass condensers.
- 1 No. 2750, Radio frequency choke.
- 3 No. 1700, Tubestats.
- 1 No. 1730, Tubestat.
- 1 No. 1900, Variable balancing condenser.

#### TWIN COUPLER COMPANY

- 1 7 in. by 21 in. Micarta panel drilled and engraved.
- 1 Set of "Everyman" coils.

#### BENJAMIN ELECTRIC MFG. CO.

- 4 No. 9040, Cle-Ra-Tone sockets.

#### HAMMARLUND MFG. CO.

- 2 .0005 Mfd. ML 23, Variable condensers.
- 1 .50 MMfd. MC 11, Variable condenser.

#### X-L RADIO LABORATORIES

- 11 XL Binding posts.

#### D. H. FRITTS & COMPANY

- 1 Fritts base board ( $20\frac{1}{2}$  in. by 10 in. by  $\frac{3}{4}$  in.).

# NEW Western Electric

CONE SPEAKERS IN STOCK  
OH BOY—WHAT TONE—COME IN OND HEAR IT—THEN BUY IT  
E-Z TERMS ON SPEAKERS  
IN STOCK—NEW ROLA—UTAH—ATWATER KENT—OTHERS

## EVERYMAN "4"

AS DESCRIBED IN THIS WEEK'S RADIO DOINGS  
Made for better results in congested areas—the tone is there, as well as plenty of volume and distance  
EVERYMAN Coils—now in stock : EVERYMAN "4" Kits, complete \$28.25 up  
By all means try out this modern, up-to-the-minute circuit

Get In on the Short Wave Lengths—Great Ranges Can Be Picked Up Complete TWO TUBE Short Wave KITS <b>\$14.95</b>	Complete ONE TUBE Short Wave Converter KITS <b>\$13.40</b>	Complete THREE TUBE Short Wave KITS <b>\$18.60</b>
---	---	---

*These Kits Are Supplied with the Interchangeable Coils, 18-200 Meters*

**THE "PUPPY"**

- 1—7x9 Panel
- 1—Sub Panel
- 2—Jefferson Audio Transformers
- 1—.0005 Variable Cond.
- 1—Pilot Resistorgrad
- 1—Benjamin Switch
- 3—New UX Sockets
- 1—Birnback 3 cct. Tuner
- 1—Pr. Pilot Brackets
- 1—.001 Fix. Cond.
- 2—.00025 Fix. Cond.
- 1—Art Vernier Dial
- 1—Durham Grid Leak
- 1—.25 Mfd. By-Pass.
- 1—30-Ohm Carter Rheo.
- 1—B. P. Strip
- 2—Carter Tip Jacks

**\$15.50**

Build this mighty Midget and get a new kick out of Radio. Uses 99 or "A" Tubes

NOW—BUILD A BROWNING-DRAKE  
Type Set for "A.C." Tubes

Kit of Parts **\$25.95** Complete

SOME SELECTED KITS

ADD A R. F. AMPLIFIER TO YOUR SET.....	\$6.95
PHONOGRAPH PICKUP AMPLIFIER.....	\$14.35
ADD AN R. F. AMPLIFIER TO YOUR SET.....	\$6.95
3-TUBE A.C. REFLEX ALL-LECTRIC.....	\$24.50
3-TUBE BLAX A.C. RADIO FREQ.....	\$13.30
4-TUBE ALL-HENRY SPECIAL.....	\$25.30

The Complete PILOT PARTS Line—Speed.  
EXPERIMENTERS, SET BUILDERS, GET OUR PRICES  
In Stock—ARCTURUS AC TUBES—In Stock

IN STOCK  
SOME SAVING SPECIALS

WIZARD WIRE WINDERS.....	\$3.95
OUTPUT TRANSFORMERS.....	2.95
BRANDES SUPERIOR PHONES.....	\$2.10
45-VOLT LARGE "B" BATTERIES.....	1.25
DOUBLE DRUM VERNIER DIALS.....	4.50
SINGLE DRUM VERNIER DIALS.....	2.25
ENSCO No. 11 CONE KITS.....	11.00
BLUE PRINTS, POPULAR CIRCUITS.....	.25
3/4-1 AUDIO TRANSFORMERS.....	.98
SET OF 3-T. R. F. COILS.....	1.00
22 1/4-VOLT. 4 TAPS, "C" BATTERIES.....	.70
ART VERNIER DIALS.....	.50
210 POWER TUBES.....	4.95
20 FOOT EXTENSION CORD WITH CONNECTORS.....	.45

MAIL ORDERS                      ESTABLISHED 1904                      TRinity 4281

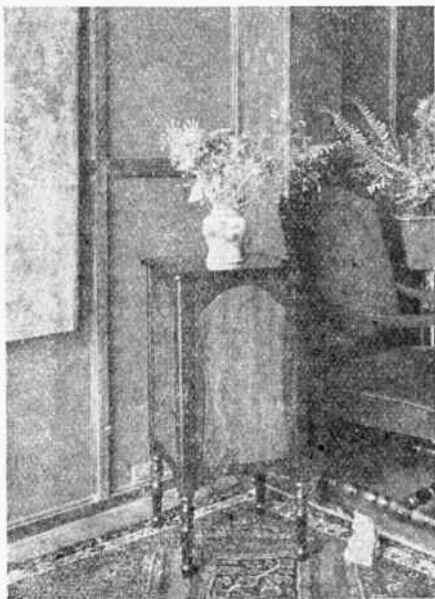
# J. C. RENDLER

625 SO. MAIN ST.                      OPP. P. E. DEPOT                      LOS ANGELES

# BEWARE OF

*THERE IS*

*Golden Bear*  AIR COLUMN  
**SPEAKER**



Model B—\$45

The GOLDEN BEAR AIR COLUMN SPEAKER is used by the leading manufacturers in their Console Creations. Manufacturers who have chosen this wonderful speaker for their receivers are: The Patterson All Electric, Jackson-Bell, Steinite, Jackson-

*Manufactured*

# M. J. CA

1929 South Los Angeles Street

# IMITATIONS!

**ONLY ONE**

**Golden Bear** AIR COLUMN  
**SPEAKER**

Cross, Falck All Electric, Echophone, Kemper Laboratories, Inc., Kemper & Saunders Rawlings Radio Manufacturing Co., and Downs Radio Mfg. Co.



Your Dealer Will Gladly Demonstrate This Wonderful Speaker in Your Home Without Obligation.

by

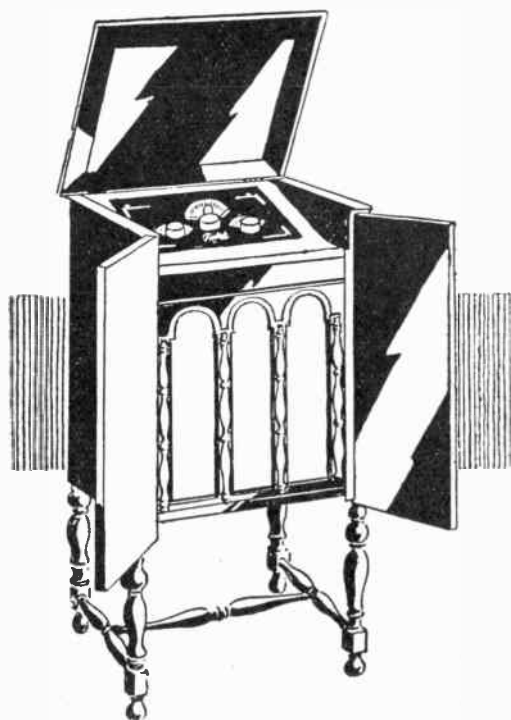
**RLS CO.**



Model C—\$30

**Los Angeles, California**

# They all want THIS Radio!



**B**ECAUSE the Falck is the one moderate-priced receiving set that operates perfectly from the house lighting circuit, without batteries or chargers of any kind.

Because of the Falck's simplified single dial control and fool-proof construction. Impossible to burn out tubes.

Because of the Falck's tone qualities—unsurpassed by the highest-priced sets.

Because of the Falck's expensive-looking console cabinet enclosing all parts, including built-in cone speaker.

See and hear it!  
ADVANCE ELECTRIC  
COMPANY  
1260 West Second St.  
Los Angeles

**\$150**

**Complete**

At any authorized dealer

# The Falck

NO BATTERY RADIO



SUNDAY TIME TABLE

(X) Indicates Station Is On the Air ADJUSTED TO PACIFIC TIME

Table with columns for time slots (10-12 A.M., 12-2 P.M., 2-4 P.M., 4-6 P.M., 6-8 P.M., 8-10 P.M., 10-12 P.M.), STATIONS (CALL, Frequency, Wave Lgha., Power in Watts, STATION), and a grid of 'X' marks indicating station activity.

TUNE IN—Walter Biddick's Certified Air Bulletins, 5 to 5:45 Timely Topics, 5:45 to 6 p. m.

MONDAY TIME TABLE

ADJUSTED TO PACIFIC TIME (X) Indicates Station Is On the Air

Table with columns for time slots (10-12 A.M., 12-2 P.M., 2-4 P.M., 4-6 P.M.), stations, call letters, frequency, wave length, power, and station name. Includes sections for Southern California, Northern California, and Northern and Western States.

TUESDAY TIME TABLE

ADJUSTED TO PACIFIC TIME (X) Indicates Station is On the Air

Table with columns for time slots (10-12 A.M., 12-2 P.M., 2-4 P.M., 4-6 P.M., 6-8 P.M., 8-10 P.M., 10-12 P.M.), STATIONS, CALL, Frequency in Kilocycles, Wave Length, Power in Watts, and STATION. It lists various radio stations across Southern California, Northern California, and Western States.



THURSDAY TIME TABLE

(X) Indicates Station is On the Air ADJUSTED TO PACIFIC TIME

Table with columns for time slots (10-12 A.M., 12-2 P.M., 2-4 P.M., 4-6 P.M., 6-8 P.M., 8-10 P.M., 10-12 P.M.), STATIONS, CALL, Frequency in Kilocycles, Wave Length, Power in Watts, and STATION. Divided into sections: SOUTHERN CALIFORNIA, NORTHERN CALIFORNIA, and NORTHERN AND WESTERN STATES.



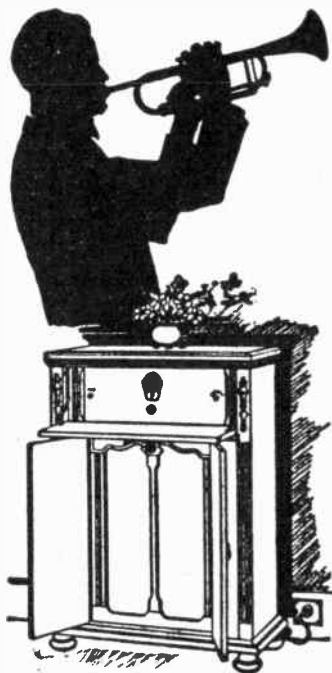
SATURDAY TIME TABLE

(X) Indicates Station Is On the Air ADJUSTED TO PACIFIC TIME

Table with columns for time slots (10-12 A.M., 12-2 P.M., 2-4 P.M., 4-6 P.M., 6-8 P.M., 8-10 P.M., 10-12 P.M.), STATIONS, CALL, Frequency in Kilocycles, Wave Lgth., Power in Watts, and STATION. Sections include SOUTHERN CALIFORNIA, NORTHERN CALIFORNIA, and NORTHERN AND WESTERN STATES.

# SPARTON RADIO

"The Pathfinder of the Air"



## GOLDEN GLORIOUS TONE

†

The crashing crescendo of a full military band . . . the birdlike notes of flute or soprano voice . . . Sparton reproduces all with stirring fullness or delightful clarity. After all, the reason for Sparton's outstanding success is simple. It's just *life-like*. In these two words are summed up the reasons why Sparton satisfies even the critics of radio . . . and why Sparton will delight you, too, no matter how exacting you choose to be.

## ROBERT RECORD

HEMET

CALIFORNIA



# Gallery of Radio Artists



Elsie Montgomery  
KFON



Bill Blake  
Radio Artist



Alice Gentle  
KFI



Major Mott  
KFWO



Nell Larson  
KMIC



Charlie Hamp  
KFRC



Lucille Le Clercq  
KJR



George Lewis  
KFOA



Blanche DaCosta  
KOA



Howard Johnson  
KMTR



Margaret Shontz  
KNRC

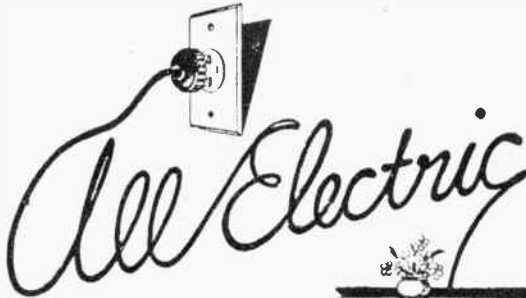


Robert Hurd  
KFI

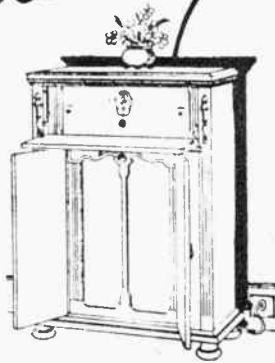
# SPARTON RADIO

*"The Pathfinder of the Air"*

**THE TIME TESTED**



Not new! Sparton *has been* a true electric radio right from the start. Naturally you get something different and better; a radio instrument of wondrous tone that shows the results of years of refinement.



**A DEMONSTRATION WILL CONVINCe YOU**



## H. H. WALKER

1323 Venice Blvd.

LOS ANGELES, CALIF.

BEacon 1311

# SPARTON RADIO

*"The Pathfinder of the Air"*

**Buy Your Radio**

From a Company Equipped to Give  
Modern - Dependable - Accurate  
RADIO SERVICE



Sparton, the Radio that has awakened the public to Real Radio Entertainment. Buyers never before sold on Radio now stop and consider carefully—

**THEN BUY A SPARTON**

**H. H. WALKER**

1323 Venice Blvd.

BEacon 1311

LOS ANGELES, CALIF.

# Gallery of



Felipe Delgado  
KFI



Lilyan May  
Challenger  
KFWB



Horace Heidt  
KLX



Miyoshi Sugimachi  
KFOA



Charlie Wellman  
KHJ



Eva Moses  
KFON



"Mac"  
KFRC



Marguerite Le Grand  
KFWB



Tom Mitchell  
KMTR



Eva Garcia  
KGO



Eddie Albright  
KNX



Ada Morgan O'Brien  
KTAB

# Radio Artists



Jackie Lucas  
KFWB



Calmon Lubovski  
KNX



Phyrue Alston  
KFQZ



Baron Keyes  
KPLA



Virginia Flohri  
KFI



Chas. H. Gabriel, Jr.  
NBC



Walter McCreery  
KGFJ



Clarence Crary  
KFON



Leroy Kullberg  
KMTR



Dr. Ralph L. Power  
KHJ



Georgia Fifield  
KNX

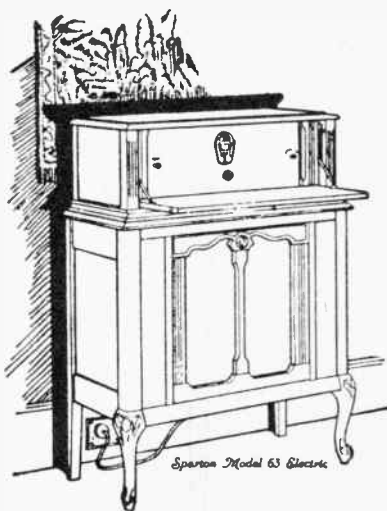


G. Donald Gray  
KOMO

# SPARTON RADIO

*"The Pathfinder of the Air"*

For more than two  
and one-half years  
Sparton has built  
America's success-  
ful A.C. receiver.



*Sparton Model 63 Electric*

Hear the Sparton—in justice to Radio.  
And when you hear it you will never  
be satisfied with less.

**SPARTON THE LEADER**

---

**Harrison-Fitch Electric Co.**

383 D. 2nd St.

Phone 12-50

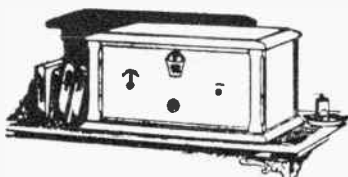
Pomona, Calif.

# SPARTON RADIO

*"The Pathfinder of the Air"*



*LILT-RHYTHM - THE SPIRIT OF MUSIC*



SPARTON'S unusual position in the radio world is first of all recognition of superb musical reproduction, and second an appreciation of cabinet craftsmanship that matches its tone.



*You will be especially interested in  
Sparton Electric Models—No Batteries*

And Remember — Two and a half years of successful all-electric radio manufacture is behind Sparton.

*When You Hear Sparton You Will Never Be Satisfied with Less*

**W. E. WALTERS**

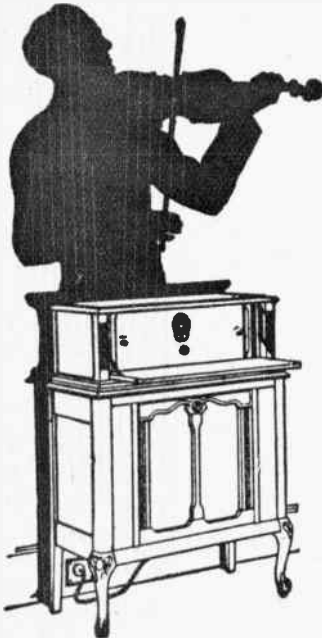
BALDWIN PARK

Phone Covina 674-23

CALIFORNIA

# SPARTON RADIO

*"The Pathfinder of the Air"*



NO "A" BATTERY  
NO "B" BATTERY  
NO "C" BATTERY



Just plug in—take your power from the light socket and enjoy complete independence of batteries, eliminators and chargers. But more! In addition to having this convenience, listen to the richest, clearest, most delightful reception that Radio science has yet achieved.

**DEPENDABLE RADIO RECEPTION**



## ROBINSON'S RADIO SHOP

4528 S. Western    LOS ANGELES, CALIF.    VERMONT 6683



# SPARTON RADIO

*"The Pathfinder of the Air"*



## MARVEL *at* SPARTON'S VOLUME



Music you *feel* as well as hear. Tones that are virile and vibrant . . . that electrify listeners as do the artists themselves. You critics who have been waiting for radio that is true to the ideals of musical art . . . here it is. Let us demonstrate this amazingly different instrument.

SPARTON THE LEADER

---

## McCrery Music Shoppe

228 Pine Ave.      LONG BEACH, CALIF.      Phone 640-14

# Gallery of Radio Artists



Alberta Hay Malotte  
KPLA



Evelyn Kemp  
KNX



Reinold Werrenrath  
KFI



Louise Sullivan  
Radio Artist



Hugh Walton  
KGW



Eunice Wynn  
KFWB



Charles Beauchamp  
KFI



Helen Guest  
KFI



Joseph Diskay  
Radio Artist



Topsy Sackett



Olive Reed  
Hollywood Trio



Anne Greive

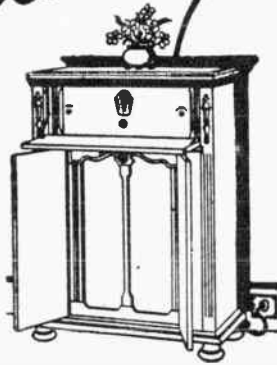
# SPARTON RADIO

*"The Pathfinder of the Air"*

**THE TIME TESTED**



Not new! Sparton *has been* a true electric radio right from the start. Naturally you get something different and better; a radio instrument of wondrous tone that shows the results of years of refinement.



**A DEMONSTRATION WILL CONVINCe YOU**



## F. C. NASH & CO.

Colorado, Broadway and Union Sts.

PASADENA

Phone Colorado 5311

CALIFORNIA



Carrie Jacobs Bond

# Radio and the Muses

By K. G. ORMISTON

It seems to be habitual with us to carry along a radio receiver wherever we go, and we would feel as incomplete without it as though the gas indicator informed us that the liquid contents of the fuel tank was nil. And so when we recently accompanied our good friend, Franklin Richardson, to the picturesque and delightfully situated home of Carrie Jacobs Bond in Hollywood, it was quite natural that there should be a radio set lashed on the running board.

Our gracious hostess permitted us to transport this receiver, which was a

music, we have always trembled lest a single crack of static should somehow get through and mar perfect reception, for we felt that our listeners were musicians first, and radio fans last. To us, static is a part of radio, and while not exactly music to our ears, we have become accustomed to accepting it, and endeavor to isolate it from music by mental processes.

And so, when after listening to a very fine local program, Mrs. Bond asked, "Can we hear Chicago?" it was with an added warmth of understanding that we dived boldly into the realm of

*Thank you very much for giving me the opportunity of hearing the Sparton Radio. It has a most delightful tone, and its long distance reception is almost beyond belief. We got Chicago as easily as San Francisco; but of course we had some static, as it was in the early evening.*—CARRIE JACOBS BOND.

Sparton AC-7, into her charming music room, and to operate it for her. Mrs. Bond was delighted with the tone quality of the instrument, and then answered a question that has long troubled us, by asking for some long-distance reception. We have often wondered if real musicians enjoyed radio solely from the standpoint of good local reception, or whether, like the great majority of radio fans, they also found pleasure in sometimes reaching out over the mountains, deserts, and seas for a far-distant program.

When tuning a receiver in the presence of people who know and love good

"noise," got hold of old WGN by the hair of his head and dragged him out into the open. We discovered in that moment that Carrie Jacobs Bond was a radio fan,—bless her heart!

Mrs. Bond graciously played and sang for us, and one new little number has been running through our mind since. It went something like this, as we remember it—

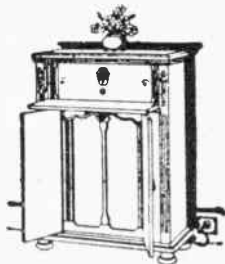
*"Because of the light of the moon,  
Silence is found on the moor.  
Because of the light of the sun,  
There is gold on the walls of the poor.  
Because of the light of the stars,  
Planets are found in the streams.  
Because of the light of your eyes,  
There is lace in the heart of my dreams."*

# SPARTON RADIO

*"The Pathfinder of the Air"*



**NO BATTERIES IN SPARTON**



**W**ONDERFULLY selective, Sparton amazes even seasoned radio fans with its clear, true tone under all ordinary conditions. With Sparton you can *concentrate* on the station you want.



*Electric Models—No Batteries  
Battery Models of superb tone*

**A REAL MUSICAL INSTRUMENT**

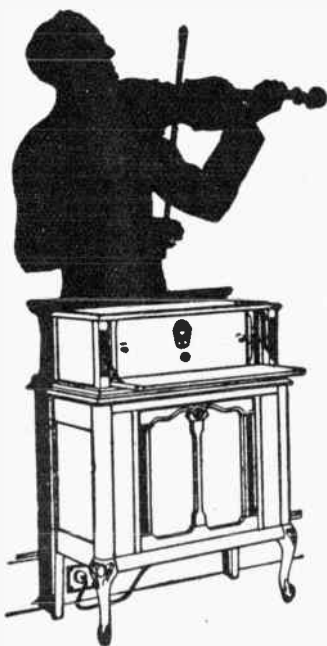


## **RICH'S MUSIC STORE**

7520 Sunset Blvd. LOS ANGELES, CALIF. GRanite 7801

# SPARTON RADIO

*"The Pathfinder of the Air"*



NO "A" BATTERY  
NO "B" BATTERY  
NO "C" BATTERY



Just plug in—take your power from the light socket and enjoy complete independence of batteries, eliminators and chargers. But more! In addition to having this convenience, listen to the richest, clearest, most delightful reception that Radio science has yet achieved.



## A. H. COSTLEY

200 S. Pacific

REDONDO BEACH, CALIF.

Phone 2473

# SPARTON RADIO

*"The 'Pathfinder of the Air'"*



**WITHOUT BATTERIES**

Power to reach out;  
Power to bring in;  
Power to reproduce the thrilling richness of the original. Sparton has developed these to an amazing degree. Hear it.

**DEPENDABLE RADIO RECEPTION**

**C & G Electric and Radio Co.**

1501 W. Santa Barbara Ave.

Vermont 5205

LOS ANGELES, CALIF.



# SPARTON RADIO

*"The Pathfinder of the Air"*



*True electric and all electric, with AC tubes. No batteries or battery makeshifts. The years that Sparton devoted to development of this type of radio are plainly evident in Sparton's rich, resonant tones.*

**THE DEPENDABLE ELECTRIC RECEIVER**



## HARRIS RADIO CO.

1104 Broadway

San Diego

Franklin 3034

# Music Appreciation by Radio

*EDITOR'S NOTE.—On a certain Friday afternoon recently, on the program of the Federated Women's Clubs over KNX, Miss Frances Wright, professor of Music Education, University of California, gave a talk which has resulted in considerable comment and interest in both the realms of music and radio. Miss Wright presented the thought that in radio we have the ideal medium for the furtherance of music appreciation, because of the fact that the listener is able to enjoy music for music's sake, and is unhindered by the multitude of diverting influences ever present when listening directly to the artists in the environment of the theatre or concert hall.*

*Miss Wright believes that music should be listened to for the first time by radio with some direction as to HOW to listen, such as a brief analysis of each piece before it is played. She demonstrated this very effectively in her broadcast address, the enjoyment of the music being greatly enhanced by the thoughts implanted in the mind of the listener relative to the music which followed.*

*Miss Wright was asked to listen to a Sparton AC-7 one day last week and to give us her impressions as to just how radio may be best employed to further Music Appreciation. She very kindly complied.*

By FRANCES WRIGHT

I believe that the way the radio is being used will probably defeat its purpose. How do I think it should be used? Well, in the first place, to me it seems a wonderful opportunity to put over to a large number of people certain ideas I have had as to how music should be listened to the first time. It is an ideal medium for this purpose. What were some of my ideas I outlined in my talk over KNX? For instance, that the personality of the singer, the lights of the theater, the disturbance of the crowd about one, the street noises and so on, and especially the personality and stage conduct of the singer or player, or conductor to some extent divert the listener from direct contact with the music itself. And I tried to show that one could enjoy music by listening to it with very slight direction.

Since then, and especially since listening to the Sparton this afternoon, which amazed me with its faithfulness of musical reproduction, my idea of the method of doing this has been considerably broadened. It seems to me special

groups could be reached by a very simple plan of music appreciation over the radio. Teachers who are teaching Music Appreciation in small towns, women's clubs who are studying music, and children, who are listening in undirected, all could be helped by some coherent scheme. I think that contact with music is best gained by listening to it with all one's minds uninterrupted by movements of persons, street noises and so on, and that this contact with music with very slight direction in connection with each piece will result in true appreciation of the music itself without militating ultimately against the advertising value of the artists.

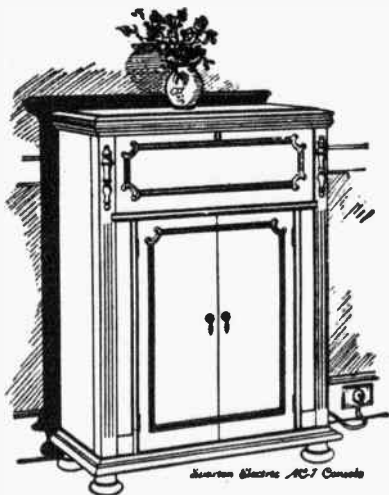
I hope I may have an opportunity of presenting this idea to the Radio Trades Association, for I believe they have the facilities and the power themselves to improve the quality of the programs which are being broadcasted to the point where they will be regarded by the average listener-in, not merely as entertaining, but as of genuine educational value.



Frances Wright

# SPARTON RADIO

*"The Pathfinder of the Air"*



Sparton  
Quality  
Is  
Supreme



Superb musical reproduction combined with elegance of cabinet craftsmanship makes this the finest instrument in the industry.



## H. D. Hatfield & Son

1762 N. Vermont Ave.

LOS ANGELES, CALIF.

OLympia 5220

# SPARTON RADIO

*"The Pathfinder of the Air"*



**S**MOOTH as velvet; rich as a rare old violin. Sparton users never cease to marvel at the true, clear quality of Sparton reception—the unalloyed purity of its tone.



The all-electric models employ the Kellogg AC tubes. Tubes of proven efficiency and longevity. These tubes, together with the engineering skill in set design, have made "Sparton quality" a byword.

Sparton receivers are beautiful in appearance and unsurpassed in quality.



## JENSEN RADIO CO.

107 American Ave. LONG BEACH, CALIF. Phone 667-30

# SPARTON RADIO

"The Pathfinder of the Air"



## NO TROUBLE

No batteries or battery substitutes. A true electric with AC Tubes. Just plug in. Enjoy the marvelous richness of tone that Sparton has developed through the years it *pioneered* the all-electric field.

---

## THE SELECTIVE A. C. TUBE SET

---

# J. M. Loge Radio and Hardware Co.

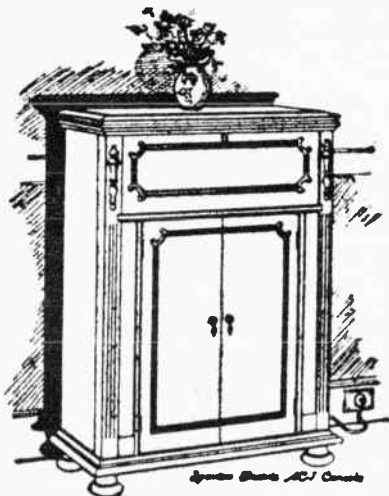
986 S. Western Avenue

LOS ANGELES, CALIF.

EMpire 8177

# SPARTON RADIO

*"The Pathfinder of the Air"*



*The Brilliance of  
Sparton's*

**"RICHEST OF  
RADIO VOICES"**

Its depth and purity of tone have caused the Sparton Voice to be acclaimed an outstanding contribution to musical art.

**LIKE A RARE OLD VIOLIN—RICH, VIBRANT,  
SOUL-STIRRING**

—◆—

You cannot appreciate what Radio Science has achieved until you hear what the Pioneers of Light Socket Radio have done in the

**SPARTON ALL-ELECTRIC RADIO**

**Uses No Batteries of Any Kind**

—◆—

**Elvin E. Webb**

1099 Main St.

RIVERSIDE, CALIF.

Phone 119

# SPARTON RADIO

*"The Pathfinder of the Air"*



**S**MOOTH as velvet; rich as a rare old violin. Sparton users never cease to marvel at the true, clear quality of Sparton reception—the unalloyed purity of its tone.



The all-electric models employ the Kellogg AC tubes. Tubes of proven efficiency and longevity. These tubes, together with the engineering skill in set design, have made "Sparton quality" a byword.

Sparton receivers are beautiful in appearance and unsurpassed in quality.



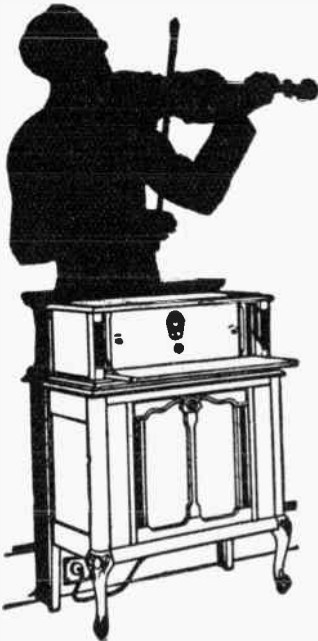
## WILKIN'S RADIO MFG. CO.

5311 S. Broadway    LOS ANGELES, CALIF.    AXridge 0827



# SPARTON RADIO

*"The Pathfinder of the Air"*



**NO "A" BATTERY  
NO "B" BATTERY  
NO "C" BATTERY**



**Just plug in—take your power from the light socket and enjoy complete independence of batteries, eliminators and chargers. But more! In addition to having this convenience, listen to the richest, clearest, most delightful reception that Radio science has yet achieved.**



## PACIFIC RADIO STORE

1102 S. Pacific

SAN PEDRO, CALIF.

Phone 429-W

# SPARTON RADIO

*"The Pathfinder of the Air"*



## MARVEL *at* SPARTON'S VOLUME



Music you *feel* as well as hear. Tones that are virile and vibrant . . . that electrify listeners as do the artists themselves. You critics who have been waiting for radio that is true to the ideals of musical art . . . here it is. Let us demonstrate this amazingly different instrument.

---

SPARTON THE LEADER

---

## FRANK E. CLAYTON

CENTER GARAGE

120-24 E. Foothill Blvd. AZUSA, CALIF. Covina 38334

# SPARTON RADIO

*"The Pathfinder of the Air"*



**NO BATTERIES IN SPARTON**



**W**ONDERFULLY selective, Sparton amazes even seasoned radio fans with its clear, true tone under all ordinary conditions. With Sparton you can concentrate on the station you want.



*Electric Models—No Batteries  
Battery Models of superb tone*

**A REAL MUSICAL INSTRUMENT**



## P. A. DOUGHERTY

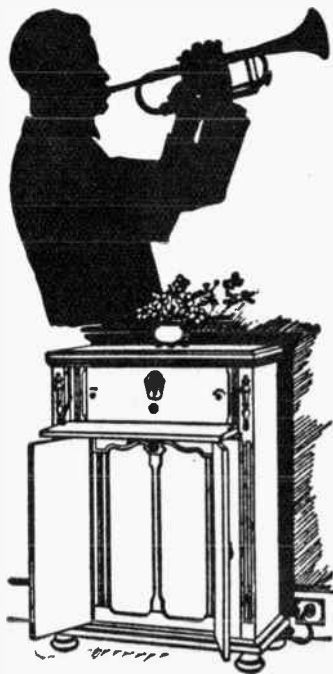
158 S. Pacific, HUNTINGTON PARK, Calif. Phone DE 4852

# Alphabetical Call List

CALL	LOCATION	Meters	Freq.	Power	LOG
KDKA	E. Pittsburgh, Pa.	315.6	950	50000	
KDLR	Devils Lake, N. D.	230.6	1300	15	
KDYL	Salt Lake City, Utah	234.2	1280	500	
KELW	Burbank, California	228.9	1310	250	
KEX	Portland, Oregon	239.9	1250	2500	
KFAB	Lincoln, Nebraska	319.0	940	5000	
KFAD	Phoenix, Arizona	272.6	1100	500	
KFAU	Boise, Idaho	285.5	1050	4000	
KFBB	Havre, Montana	275.1	1090	50	
KFBC	San Diego, California	247.8	1210	100	
KFBK	Sacramento, California	535.4	560	100	
KFBL	Everett, Washington	223.7	1340	50	
KFBU	Laramie, Wyoming	483.0	620	500	
KFCB	Phoenix, Arizona	243.8	1230	125	
KFCR	Santa Barbara, California	211.1	1420	50	
KFDM	Beaumont, Texas	483.6	620	500	
KFDX	Shreveport, Louisiana	236.1	1270	250	
KFDY	Brookings, South Dakota	545.1	550	500	
KFDZ	Minneapolis, Minnesota	215.7	1390	10	
KFEC	Portland, Oregon	214.2	1400	50	
KFEL	Denver, Colorado	247.8	1210	250	
KFEQ	St. Joseph, Missouri	230.6	1300	1000	
KFEY	Kellogg, Idaho	232.4	1290	10	
KFGQ	Boone, Iowa	209.7	1430	10	
KFH	Wichita, Kansas	245.8	1220	500	
KFHA	Gunnison, Colorado	254.1	1180	50	
KFHL	Oskaloosa, Iowa	212.6	1410	10	
KFI	Los Angeles, California	468.5	640	5000	
KFIF	Portland, Oregon	214.2	1400	50	
KFIO	Spokane, Washington	245.8	1220	100	
KFIU	Juneau, Alaska	225.4	1330	10	
KFIZ	Fon du Lac, Wisconsin	267.7	1120	100	
KFJB	Marshalltown, Iowa	247.8	1210	100	
KFJF	Oklahoma City, Oklahoma	272.6	1100	750	
KFJI	Astoria, Oregon	249.9	1200	15	
KFJM	Grand Forks, No. Dakota	333.1	900	100	
KFJR	Portland, Oregon	282.8	1060	100	
KFJY	Fort Dodge, Iowa	232.4	1290	100	
KFJZ	Fort Worth, Texas	249.9	1200	50	
KFKA	Greeley, Colorado	249.9	1200	200	
KFKB	Milford, Kansas	241.8	1240	1500	
KFKU	Lawrence, Kansas	254.1	1180	500	
KFKX	Chicago, Illinois	526.0	570	2500	
KFKZ	Kirksville, Missouri	225.4	1330	15	
KFLV	Rockford, Illinois	267.7	1120	100	
KFLX	Galveston, Texas	270.1	1110	100	

# SPARTON RADIO

"The Pathfinder of the Air"



## GOLDEN GLORIOUS TONE



The crashing crescendo of a full military band . . . the birdlike notes of flute or soprano voice . . . Sparton reproduces all with stirring fullness or delightful clarity. After all, the reason for Sparton's outstanding success is simple. It's just *life-like*. In these two words are summed up the reasons why Sparton satisfies even the critics of radio . . . and why Sparton will delight you, too, no matter how exacting you choose to be.

## Beckman-Round

4279 S. Vermont Ave.

LOS ANGELES

VERMONT 9374

## Alphabetical Call List (Continued)

CALL	LOCATION	Meters	Freq.	Power	LOG
KFMR	Sioux City, Iowa	232.4	1290	100	
KFMX	Northfield, Minnesota	236.1	1270	500	
KFNF	Shenandoah, Iowa	461.3	650	2000	
KFOA	Seattle, Washington	447.5	670	1000	
KFON	Long Beach, California	241.8	1240	500	
KFOR	Lincoln, Nebraska	217.3	1380	100	
KFOX	Omaha, Nebraska	258.5	1160	100	
KFPL	Dublin, Texas	275.1	1090	15	
KFPM	Greenville, Texas	230.6	1300	15	
KFPR	Los Angeles, California	232.4	1290	250	
KFPW	Cartersville, Missouri	263.0	1140	50	
KFPY	Spokane, Washington	245.8	1220	250	
KFQA	St. Louis, Missouri	234.2	1280	1000	
KFQB	Ft. Worth, Texas	333.1	900	1000	
KFQD	Anchorage, Alaska	344.6	870	100	
KFQU	Holy City, California	249.9	1200	100	
KFQW	Seattle, Washington	217.3	1380	100	
KFQZ	Hollywood, California	232.4	1290	100	
KFRC	San Francisco, California	454.3	660	1000	
KFRU	Columbia, Missouri	249.9	1200	500	
KFSD	San Diego, California	440.9	680	500	
KFSG	Los Angeles, California	275.1	1090	500	
KFUL	Galveston, Texas	258.5	1160	500	
KFUM	Colorado Springs, Colo.	282.8	1060	1000	
KFUO	St. Louis, Missouri	545.1	550	500	
KFUP	Denver, Colorado	227.1	1320	100	
KFUR	Ogden, Utah	225.4	1330	500	
KFUT	Salt Lake City, Utah	249.9	1200	50	
KFVD	Venice, California	208.2	1440	250	
KFVG	Independence, Kansas	225.4	1330	50	
KFVI	Houston, Texas	238.0	1260	50	
KFVS	Cape Girardeau, Missouri	223.7	1340	50	
KFWB	Los Angeles, California	361.2	830	500	
KFWC	Pomona, California	222.1	1350	100	
KFWF	St. Louis, Missouri	214.2	1400	250	
KFWI	San Francisco, California	267.7	1120	500	
KFWM	Oakland, California	236.1	1270	500	
KFWO	Avalon, California	299.8	1000	250	
KFXD	Jerome, Idaho	204.0	1470	15	
KFXF	Denver, Colorado	282.8	1060	250	
KFXJ	Edgewater, Colorado	215.7	1390	50	
KFXR	Oklahoma City, Oklahoma	223.7	1340	50	
KFXY	Flagstaff, Arizona	205.4	1460	25	
KFYO	Breckenridge, Texas	211.1	1420	15	
KFYR	Bismarck, North Dakota	249.9	12.00	250	
KGA	Spokane, Washington	260.7	1150	2000	
KGAR	Tucson, Arizona	234.2	1280	100	
KGBU	Ketchikan, Alaska	228.9	1310	500	

# SPARTON RADIO

*"The Pathfinder of the Air"*



## NO TROUBLE

No batteries or battery substitutes. A true electric with AC Tubes. Just plug in. Enjoy the marvelous richness of tone that Sparton has developed through the years it *pioneered* the all-electric field.

---

## THE SELECTIVE A. C. TUBE SET

---

# REYNOLDS RADIO SHOP

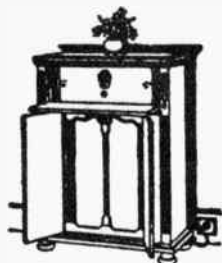
3636 University Ave., SAN DIEGO, CALIF. Hillcrest 7363-J

# SPARTON RADIO

*"The Pathfinder of the Air"*



**JUST "PLUG IN", THAT'S ALL**



**NO BATTERIES** of any kind — no acids — and no chargers. We invite you to call and hear the famous Sparton Electric (light socket) models that have amazed the world with their rich, matchless tone.



**Convenient — Dependable**

*Wholesale Distributors*

## PACIFIC WHOLESALE INC.

WALTER M. FAGAN  
PRESIDENT

433 E. 12th St., Cor. Wall, Los Angeles

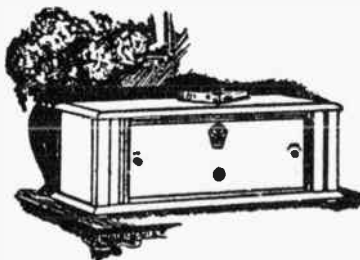
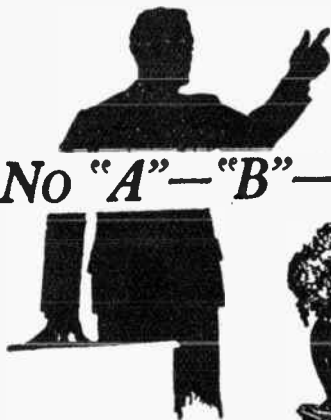
Westmore 4358



# SPARTON RADIO

*"The Pathfinder of the Air"*

**No "A"—"B"—"C" BATTERIES**



**K**ENLY selective, sensitive to the faintest signals, Sparton brings in even the distant stations with marvelous clarity. Hear Sparton and be convinced.



*Hear "the Richest of Radio Voices" from a Sparton Electric—No Batteries of Any Kind*

Two and a half years of successful all-electric radio manufacture is behind Sparton.

*Wholesale Distributors*

## PACIFIC WHOLESALE INC.

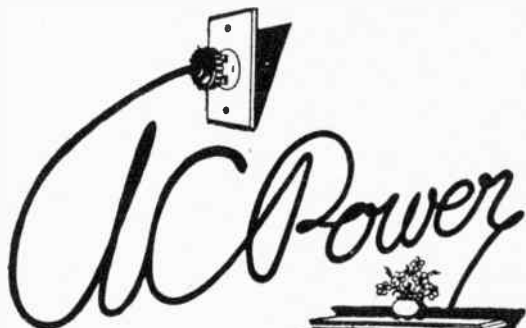


433 E. 12th St., Cor. Wall, Los Angeles

WESTmore 4358

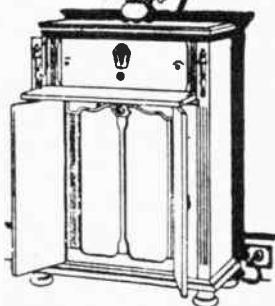
# SPARTON RADIO

*"The Pathfinder of the Air"*



**WITHOUT BATTERIES**

Power to reach out;  
Power to bring in;  
Power to reproduce the thrilling richness of the original. Sparton has developed these to an amazing degree. Hear it.



**DEPENDABLE RADIO RECEPTION**

---

## Wilmington Variety Shop

119 and 716 W. Anaheim

WILMINGTON, CALIF.

Phones 1106 and 455

## Alphabetical Call List (Continued)

CALL	LOCATION	Meters	Freq.	Power	LOG
KGBX	St. Joseph, Missouri	288.3	1040	100	
KGBY	Columbus, Nebraska	222.1	1350	50	
KGBZ	York, Nebraska	212.6	1410	250	
KGCA	Decorah, Iowa	247.8	1210	10	
KGCB	Oklahoma, Oklahoma	215.7	1390	50	
KGCH	Wayne, Nebraska	293.9	1020	250	
KGCI	San Antonio, Texas	220.4	1360	100	
KGCL	Seattle, Washington	230.6	1300	50	
KGCN	Concordia, Kansas	208.2	1440	50	
KGCR	Brookings, South Dakota	208.2	1440	15	
KGCU	Mandan, North Dakota	239.9	1250	100	
KGCX	Vida, Montana	243.8	1230	10	
KGDA	Dell Rapids, So. Dakota	254.1	1180	15	
KGDE	Barrett, Minnesota	205.4	1460	50	
KGDM	Stockton, California	217.3	1380	10	
KGDP	Pueblo, Colorado	223.7	1340	10	
KGDR	San Antonio, Texas	206.8	1450	15	
KGDW	Humboldt, Nebraska	293.9	1020	100	
KGDX	Shreveport, Louisiana	212.6	1410	250	
KGDY	Oldham, South Dakota	206.8	1450	15	
KGEF	Los Angeles, California	263.0	1140	500	
KGEH	Eugene, Oregon	201.2	1490	50	
KGEK	Yuma, Colorado	263.0	1140	10	
KGEN	El Centro, California	225.4	1330	15	
KGEO	Grand Island, Nebraska	205.4	1460	100	
KGEQ	Minneapolis, Minnesota	204.0	1470	50	
KGER	Long Beach, California	215.7	1390	100	
KGES	Central City, Nebraska	204.0	1470	10	
KGEU	Lower Lake, California	227.1	1320	50	
KGEW	Fort Morgan, Colorado	218.8	1370	100	
KGEY	Denver, Colorado	201.2	1490	250	
KGEZ	Kallispell, Montana	293.9	1020	100	
KGFB	Iowa City, Iowa	223.7	1340	10	
KGFF	Alva, Oklahoma	205.4	1460	25	
KGFG	Oklahoma City, Oklahoma	215.7	1390	50	
KGFH	La Crescenta, California	223.7	1340	250	
KGFI	San Angelo, Texas	220.4	1360	15	
KGFK	Los Angeles, California	202.6	1410	100	
KGFK	Hallock, Minnesota	223.7	1340	50	
KGFL	Raton, New Mexico	222.1	1350	50	
KGFN	Aneta, North Dakota	199.9	1500	15	
KGFO	Terre Haute	204.0	1470	100	
KGFP	Mitchell, South Dakota	212.6	1410	10	
KGFW	Ravenna, Nebraska	296.9	1010	10	
KGFX	Pierre, South Dakota	254.1	1180	200	
KGGF	Picher, Oklahoma	206.8	1450	100	
KGGH	Cedar Grove, Louisiana	212.6	1410	50	
KGGM	Inglewood, California	204.0	1470	100	

# SPARTON RADIO

*"The Pathfinder of the Air"*



PICK YOUR  
PROGRAM

*Sparton  
Gets All*



The single dial control that has been developed for Sparton Radio is a marvel even to seasoned radio fans. Keen as a razor's edge, it cuts through local stations, mechanical interference, neighboring sets—everything—catching your station and *nothing more*. But the real thrill is not in selection alone. It is in the truly marvelous fullness of tone with which even distant stations are "brought in". Hear Sparton, and have a new Radio experience.

THE SELECTIVE AC TUBE SET

---

## K. L. PEYTON

105 N. Citrus  
COVINA, CALIF.  
Covina 211-01

108 N. Michigan Ave.  
GLEN DORA, CALIF.  
Covina 450-02

# SPARTON RADIO

*"The Pathfinder of the Air"*



*True electric and all electric, with AC tubes. No batteries or battery makeshifts. The years that Sparton devoted to development of this type of radio are plainly evident in Sparton's rich, resonant tones.*

**THE DEPENDABLE ELECTRIC RECEIVER**



## CLINES ELECTRIC SHOP

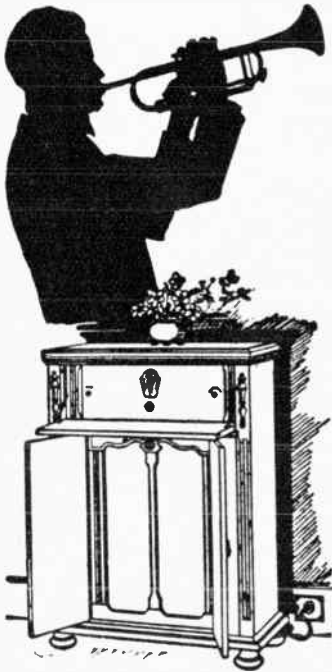
986 Monterey St. SAN LUIS OBISPO, CALIF. Phone 312-W

## Alphabetical Call List (Continued)

CALL	LOCATION	Meters	Freq.	Power	LOG
KGHB	Honolulu, Hawaii	227.1	1320	250	
KGHC	Dayton, Minnesota	209.7	1430	15	
KGHF	Pueblo, Colorado	209.7	1430	250	
KGHP	Harden, Montana	263.0	1140	50	
KGO	Oakland, California	384.4	780	5000	
KGRC	San Antonio, Texas	220.4	1360	100	
KGRS	Amarillo, Texas	243.8	1230	250	
KGTT	San Francisco, California	206.8	1450	50	
KGU	Honolulu, Hawaii	270.1	1110	600	
KGW	Portland, Oregon	491.5	610	1000	
KGY	Lacey, Washington	243.8	1230	50	
KHAC	Portable	204.00	1470	50	
KHJ	Los Angeles, California	399.8	750	500	
KHMC	Harlingen, Texas	236.1	1270	100	
KHQ	Spokane, Washington	370.2	810	1000	
KIAF	Sillitpoc, Minnesota	422.3	710	500	
KICK	Red Oak, Iowa	322.4	930	100	
KJBS	San Francisco, California	220.4	1360	50	
KJR	Seattle, Washington	348.6	860	2500	
KKP	Seattle, Washington	265.3	1130	15	
KLCN	Blytheville, Arkansas	285.5	1050	50	
KLIS	Independence, Missouri	270.1	1110	1500	
KL'T	Portland, Oregon	206.8	1450	10	
KL S	Oakland, California	245.8	1220	250	
KLX	Oakland, California	508.2	590	500	
KLZ	Denver, California	296.9	1010	250	
MA	Shenandoah, Iowa	394.5	760	1000	
MBBC	Kansas City, Missouri	270.1	1110	1500	
KMED	Medford, Oregon	249.9	1200	50	
KMIC	Inglewood, California	223.7	1340	250	
KMJ	Fresno, California	365.6	820	50	
KMMJ	Clay Center, Nebraska	285.5	1050	500	
KMO	Tacoma, Washington	254.1	1180	250	
KMOX	St. Louis, Missouri	299.8	1000	5000	
KMTR	Hollywood, California	526.0	570	500	
KNRC	Santa Monica, California	374.8	800	500	
KNX	Los Angeles, California	336.9	890	500	
KOA	Denver, Colorado	325.9	920	2500	
KOAO	Corvallis, Oregon	270.1	1110	500	
KO'.	State College, New Mex.	394.5	760	5000	
KOCH	Omaha, Nebraska	258.5	1160	250	
KOCW	Chickasha, Oklahoma	252.0	1190	250	
KOIL	Council Bluffs, Iowa	319.0	940	5000	
KOIN	Portland, Oregon	319.0	940	1000	
KOMO	Seattle, Washington	305.9	980	1000	
KOW	Denver, Colorado	247.8	1210	250	
KPCB	Seattle, Washington	230.6	1300	50	
KPJM	Prescott, Arizona	214.2	1400	15	

# SPARTON RADIO

"The Pathfinder of the Air"



## GOLDEN GLORIOUS TONE



The crashing crescendo of a full military band . . . the birdlike notes of flute or soprano voice . . . Sparton reproduces all with stirring fullness or delightful clarity. After all, the reason for Sparton's outstanding success is simple. It's just *life-like*. In these two words are summed up the reasons why Sparton satisfies even the critics of radio . . . and why Sparton will delight you, too, no matter how exacting you choose to be.

## Aylesworth Electric Co.

111 N. Market St.

INGLEWOOD, CALIF.

Phone 113

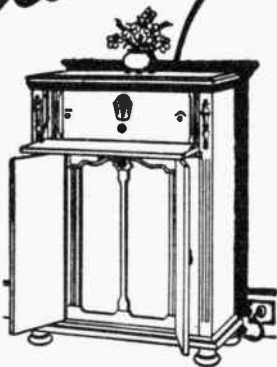
# SPARTON RADIO

*"The Pathfinder of the Air"*

**THE TIME TESTED**



Not new! Sparton *has been* a true electric radio right from the start. Naturally you get something different and better; a radio instrument of wondrous tone that shows the results of years of refinement.



**A DEMONSTRATION WILL CONVINCING YOU**



## LA VERNE RADIO SHOP

2121 Third St.

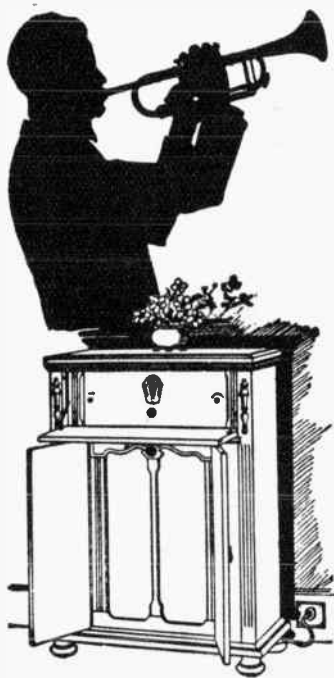
Phone 1847

LA VERNE, CALIF.



# SPARTON RADIO

"The Pathfinder of the Air"



## GOLDEN GLORIOUS TONE

†

The crashing crescendo of a full military band . . . the birdlike notes of flute or soprano voice . . . Sparton reproduces all with stirring fullness or delightful clarity. After all, the reason for Sparton's outstanding success is simple. It's just *life-like*. In these two words are summed up the reasons why Sparton satisfies even the critics of radio . . . and why Sparton will delight you, too, no matter how exacting you choose to be.

---

## RADIO ART STUDIO

SAN YSIDRO, CALIF.

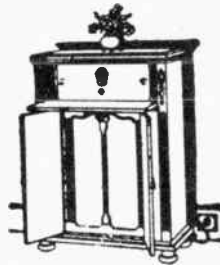
## Alphabetical Call List (Continued)

CALL	LOCATION	Meters	Freq.	Power	LOG
KPLA	Los Angeles, California	252.0	1190	500	
KPNP	Muscatine, Iowa	211.1	1420	100	
KPO	San Francisco, California	422.3	710	1000	
KPPC	Pasadena, California	228.9	1310	50	
KPRC	Houston, Texas	293.9	1020	500	
KPSN	Pasadena, California	315.6	950	1000	
KQV	Pittsburgh, Pennsylvania	270.1	1110	500	
KQW	San Jose, California	296.9	1010	500	
KRAC	Shreveport, Louisiana	220.4	1360	50	
KRE	Berkeley, California	258.3	1170	100	
KRLD	Dallas, Texas	461.3	650	500	
KRLO	Los Angeles, California	215.7	1390	250	
KRSC	Seattle, Washington	211.1	1420	50	
KSAC	Manhattan, Kansas	333.1	900	500	
KSBA	Shreveport, Louisiana	267.7	1120	1000	
KSCJ	Sioux City, Iowa	243.8	1230	500	
KSD	St. Louis, Missouri	545.1	550	500	
KSEI	Pocatello, Idaho	333.1	900	250	
KSL	Salt Lake City, Utah	302.8	990	1000	
KSMR	Santa Maria, California	272.6	1100	100	
KSO	Clarinda, Iowa	227.1	1320	500	
KSOO	Sioux Falls, So. Dakota	209.7	1430	250	
KSTB	St. Paul-Minneapolis, Minn.	222.1	1350	2000	
KTAB	Oakland, California	280.2	1070	500	
KTAP	San Antonio, Texas	228.9	1310	20	
KTBI	Los Angeles, California	288.3	1040	500	
KTBR	Portland, Oregon	282.8	1060	50	
KTHS	Hot Springs, Arkansas	384.4	780	1000	
KTNT	Muscatine, Iowa	256.3	1170	2000	
KTSA	San Antonio, Texas	265.3	1130	2000	
KTUE	Houston, Texas	212.6	1410	5	
KTW	Seattle, Washington	394.5	760	1000	
KUJ	Seattle, Washington	199.9	1500	10	
KUOA	Fayetteville, Arkansas	296.9	1010	500	
KUOM	Missoula, Montana	461.3	650	500	
KUSD	Vermillion, South Dakota	483.6	620	250	
KUT	Austin, Texas	232.4	1290	500	
KVI	Tacoma, Washington	234.2	1280	50	
KVL	Seattle, Washington	202.6	1480	100	
KVOO	Tulsa, Oklahoma	348.6	860	1000	
KVOS	Bellingham, Washington	209.7	1430	50	
KWBS	Portland, Oregon	199.9	1500	15	
KWCR	Cedar Rapids, Iowa	239.9	1250	250	
KWG	Stockton, California	344.6	870	50	
KWJJ	Portland, Oregon	228.9	1310	50	
KWK	St. Louis, Missouri	234.2	1280	1000	
KWKC	Kansas City, Missouri	222.1	1350	100	
KWKH	Shreveport, Louisiana	394.5	760	1000	

# SPARTON RADIO

*"The Pathfinder of the Air"*

**NO BATTERIES IN SPARTON**



**W**ONDERFULLY selective, Sparton amazes even seasoned radio fans with its clear, true tone under all ordinary conditions. With Sparton you can concentrate on the station you want.

*Electric Models—No Batteries  
Battery Models of superb tone*



**A REAL MUSICAL INSTRUMENT**

**F. J. BOBSENE**

421 Santa Monica Blvd., Santa Monica. Santa Monica 25532

## Alphabetical Call List (Continued)

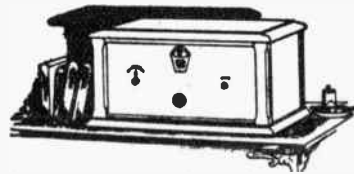
CALL	LOCATION	Meters	Freq.	Power	LOG
KWLC	Decorah, Iowa	247.8	1210	50	
KWSC	Pullman, Washington	394.5	760	500	
KWTC	Santa Ana, California	222.1	1350	100	
KWUC	Le Mars, Iowa	243.8	1230	1500	
KWWG	Brownsville, Texas	277.6	1080	500	
KXA	Seattle, Washington	348.6	860	500	
KXL	Portland, Oregon	220.4	1360	50	
KXRO	Aberdeen, Washington	227.1	1320	50	
KYA	San Francisco, Calif.	352.7	850	500	
KYW	Chicago, Illinois	526.0	570	2500	
KZIB	Manila, Philippine Islands	249.9	1200	20	
KZM	Oakland, California	245.8	1220	100	
KZRM	Manila, Philippine Islands	413.0	726.1	1000	
NAA	Washington, D. C.	434.5	690	1000	
WAAD	Cincinnati, Ohio	230.6	1300	25	
WAAF	Chicago, Illinois	389.4	770	500	
WAAM	Newark, New Jersey	267.7	1120	250	
WAAT	Jersey City, New Jersey	245.8	1220	300	
WAAW	Omaha, Nebraska	440.9	680	500	
WABC	Richmond Hill, New York	309.1	970	2500	
WABF	Kingston, Pennsylvania	205.4	1460	250	
WABI	Bangor, Maine	389.4	770	100	
WABW	Wooster, Ohio	247.8	1210	50	
WABY	Philadelphia, Pa.	247.8	1210	50	
WABZ	New Orleans, Louisiana	238.0	1260	50	
WADC	Akron, Ohio	238.0	1260	1000	
WAFD	Detroit, Michigan	230.6	1300	100	
WAGM	Royal Oak, Michigan	225.4	1330	50	
WAIT	Taunton, Massachusetts	214.2	1400	10	
WAIU	Columbus, Ohio	282.8	1060	5000	
WAIZ	Appleton, Wisconsin	227.1	1320	100	
WALK	Willow Grove, Pa.	201.2	1490	50	
WAPI	Auburn, Alabama	340.7	880	1000	
WASH	Grand Rapids, Michigan	256.3	1170	250	
WATT	Portable	201.2	1490	100	
WBAA	Lafayette, Indiana	272.6	1100	500	
WBAK	Harrisburg, Pennsylvania	299.8	1000	500	
WBAL	Baltimore, Maryland	285.5	1050	5000	
WBAO	Decatur, Illinois	267.7	1120	100	
WBAP	Fort Worth, Texas	499.7	600	5000	
WBAR	Sisht, Wisconsin	270.1	1110	500	
WBAW	Nashville, Tennessee	247.8	1210	100	
WBAX	Wilkes-Barre, Pa.	249.9	1200	100	
WBBC	Brooklyn, New York	227.1	1320	500	
WBBL	Richmond, Virginia	234.8	1280	100	
WBBM	Chicago, Illinois	389.4	770	5000	
WBBP	Petoskey, Michigan	239.9	1250	100	
WBBR	Rossville, New York	256.3	1170	1000	

# SPARTON RADIO

*"The Pathfinder of the Air"*



*LILT-RHYTHM - THE SPIRIT OF MUSIC*



**S**PARTON'S unusual position in the radio world is first of all recognition of superb musical reproduction, and second an appreciation of cabinet craftsmanship that matches its tone.

*You will be especially interested in Sparton Electric Models—No Batteries*



## RUSSELL ELECTRIC CO.

7 W. 8th Street

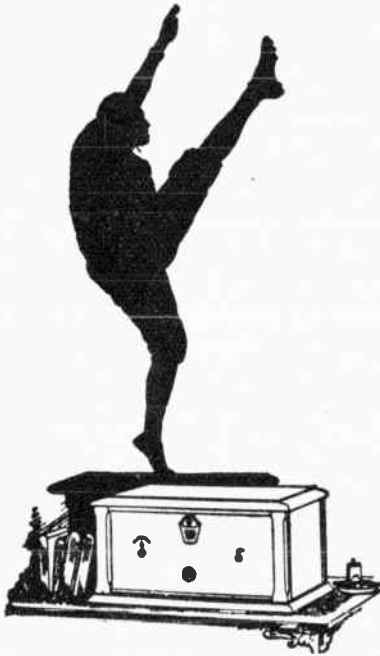
REDLANDS, CALIFORNIA

## Alphabetical Call List (Continued)

CALL	LOCATION	Meters	Freq.	Power	LOG
WBBW	Norfolk, Virginia	236.1	1270	100	
WBBY	Charleston, So. Carolina	249.9	1200	75	
WBBZ	Portable	204.0	1470	100	
WBCN	Chicago, Illinois	288.3	1040	250	
WBES	Takoma Park, Maryland	265.3	1130	100	
WBET	Boston, Massachusetts	288.3	1040	500	
WBIS	Boston, Massachusetts	461.3	650	500	
WBKN	Brooklyn, New York	199.9	1500	100	
WBMH	Detroit, Michigan	211.1	1420	100	
WBMS	Union City, New Jersey	199.9	1500	100	
WBNY	New York, New York	236.1	1270	500	
WBOQ	Richmond Hill, New York	309.1	970	500	
WBRC	Birmingham, Alabama	241.8	1240	250	
WBRE	Wilkes-Barre, Pa.	249.9	1200	100	
WBRL	Tilton, New Hampshire	232.4	1290	500	
WBRS	Brooklyn, New York	211.1	1420	100	
WBSO	Wellesley Hills, Mass.	384.4	780	100	
WBT	Charlotte, North Carolina	258.5	1160	500	
WBZ	East Springfield, Mass.	333.1	900	15000	
WBZA	Boston, Massachusetts	333.1	900	500	
WCAC	Mansfield, Connecticut	535.4	560	500	
WCAD	Canton, New York	243.8	1230	1000	
WCAE	Pittsburgh, Pennsylvania	461.3	650	500	
WCAH	Columbus, Ohio	234.2	1280	250	
WCAJ	Lincoln, Nebraska	379.5	790	500	
WCAL	Northfield, Minnesota	285.5	1050	500	
WCAM	Camden, New Jersey	223.7	1340	500	
WCAO	Baltimore, Maryland	243.8	1230	250	
WCAP	Asbury Park New York	239.9	1250	500	
WCAT	Rapid City, South Dakota	247.8	1210	100	
WCAU	Philadelphia, Pa.	260.7	1150	500	
WCAX	Burlington, Vermont	254.1	1180	100	
WCAZ	Carthage, Illinois	249.9	1200	50	
WCBA	Allentown, Pennsylvania	222.1	1350	100	
WCBD	Zion, Illinois	344.6	870	5000	
WCBE	New Orleans, Louisiana	227.1	1320	5	
WCBM	Baltimore, Maryland	225.4	1330	100	
WCBR	Portable	201.2	1490	100	
WCBS	Springfield, Illinois	209.7	1430	250	
WCCO	Minneapolis, Minnesota	405.2	740	5000	
WCDA	Cliffside, New Jersey	211.1	1420	250	
WCFL	Chicago, Illinois	483.6	620	1500	
WCGU	Coney Island New York	218.8	1370	500	
WCLO	Camp Lake, Wisconsin	227.1	1320	100	
WCLS*	Joliet, Illinois	215.7	1390	150	
WCMA	Culver, Indiana	260.7	1150	500	
WCOA	Pensacola, Florida	249.9	1200	500	
WCOG	Columbus, Mississippi	230.6	1300	250	

# SPARTON RADIO

*"The Pathfinder of the Air"*



## PICK YOUR PROGRAM

*Sparton  
Gets All*



The single dial control that has been developed for Sparton Radio is a marvel even to seasoned radio fans. Keen as a razor's edge, it cuts through local stations, mechanical interference, neighboring sets—everything—catching your station and *nothing more*. But the real thrill is not in selection alone. It is in the truly marvelous fullness of tone with which even distant stations are "brought in". Hear Sparton, and have a new Radio experience.

---

THE SELECTIVE AC TUBE SET

---

## R. J. TOBEY

243 No. Euclid  
Phone 829 Ontario, Calif.

MEHL HARDWARE CO.  
229 Second Ave.  
Phone 33 Uplands, Calif.

## Alphabetical Call List (Continued)

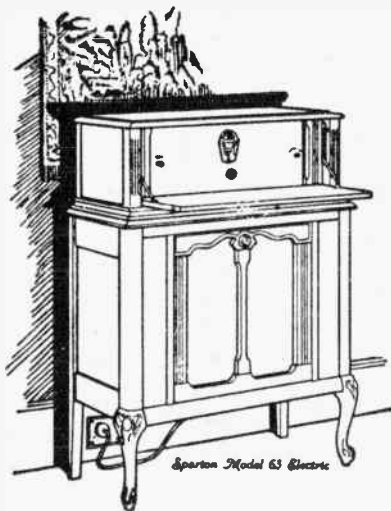
CALL	LOCATION	Meters	Freq.	Power	LOG
WCOT	Providence, Rhode Island	225.4	1300	100	
WCRW	Chicago, Illinois	223.7	1340	500	
WCSH	Portland, Maine	428.3	700	500	
WCSO	Springfield, Ohio	256.3	1170	500	
WCWK	Ft. Wayne, Indiana	214.2	1400	250	
WCWS	Danbury, Connecticut	265.3	1130	100	
WCX-WJR	Pontiac, Michigan	440.9	680	5000	
WDAE	Tampa, Florida	267.7	1120	500	
WDAF	Kansas City, Missouri	370.2	810	1000	
WDAG	Amarillo, Texas	263.0	1140	250	
WDAH	El Paso, Texas	234.2	1280	100	
WDAY	Fargo, North Dakota	545.1	550	250	
WDBJ	Roanoke, Virginia	230.6	1300	250	
WDBO	Orlando, Florida	238.3	1040	500	
WDEL	Wilmington, Delaware	296.9	1010	100	
WDGY	Minneapolis, Minnesota	285.5	1050	500	
WDOD	Chattanooga, Tennessee	243.8	1230	500	
WDRG	New Haven, Connecticut	282.8	1060	500	
WDWF-WLSI	Cranston, Rhode Island	260.7	1150	500	
WDWM	Asbury Park, New Jersey	263.0	1140	500	
WDZ	Tuscola, Illinois	277.6	1080	100	
WEAF	New York, New York	491.5	610	50,000	
WEAM	N. Plainfield, New Jersey	263.0	1140	250	
WEAN	Providence, Rhode Island	275.1	1090	500	
WEAO	Columbus, Ohio	282.8	1060	750	
WEAR	Cleveland, Ohio	399.8	750	1000	
WEBC	Superior, Wisconsin	241.8	1240	250	
WEBE	Cambridge, Ohio	247.8	1210	10	
WEBH	Chicago, Illinois	365.6	820	500	
WEBJ	New York, New York	256.3	1170	500	
WEBQ	Harrisburg, Illinois	223.7	1340	15	
WEBR	Buffalo, New York	241.8	1240	200	
WEBW	Beloit, Wisconsin	258.5	1160	500	
WEDC	Chicago, Illinois	241.8	1240	500	
WEEI	Boston, Massachusetts	508.2	590	500	
WEHS	Evanston, Illinois	215.7	1390	100	
WEMC	Berrien Springs, Michigan	483.6	620	1000	
WENR*	Chicago, Illinois	288.3	1040	500	
WEPS	Gloucester, Massachusetts	296.9	1010	100	
WEVD	Woodhaven, New York	245.8	1220	500	
WEW	St. Louis, Missouri	352.7	850	1000	
WFAA	Dallas, Texas	545.1	550	500	
WFAM	St. Cloud, Minnesota	252.0	1190	10	
WFAN	Philadelphia, Pa.	223.7	1340	500	
WFBC	Knoxville, Tennessee	234.2	1280	50	
WFBE	Cincinnati, Ohio	245.8	1220	250	
WFBG	Altoona, Pennsylvania	280.2	1070	100	
WFBJ	Collegeville, Minnesota	272.6	1100	100	



# SPARTON RADIO

*"The Pathfinder of the Air"*

For more than two  
and one-half years  
Sparton has built  
America's success-  
ful A.C. receiver.



*Sparton Model 63 Electric*

Hear the Sparton—in justice to Radio.  
And when you hear it you will never  
be satisfied with less.

**SPARTON THE LEADER**

**G. H. Messner Electric Co.**

LA JOLLA, CALIF.

## Alphabetical Call List (Continued)

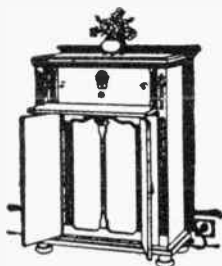
CALL	LOCATION	Meters	Freq.	Power	LOG
WFBL	Syracuse, New York	258.5	1160	750	
WFBM	Indianapolis, Indiana	275.1	1090	1000	
WFBR	Baltimore, Maryland	243.8	1230	200	
WFBZ	Galesburg, Illinois	247.8	1210	50	
WFCI	Pawtucket, Rhode Island	241.8	1240	100	
WFDF	Flint, Michigan	272.6	1100	100	
WFI	Philadelphia, Pa.	405.2	740	500	
WFIW	Hopkinsville, Kentucky	260.7	1156	750	
WFJC	Akron, Ohio	227.1	1320	500	
WFKB	Chicago, Illinois	223.7	1340	500	
WFKD	Frankford, Pennsylvania	247.8	1210	50	
WFLA	Clearwater, Florida	516.9	580	750	
WGAL	Lancaster, Pennsylvania	252.0	1190	15	
WGBB	Freeport, New York	245.8	1220	400	
WGBC	Memphis, Tennessee	228.9	1310	15	
WGBF	Evansville, Indiana	236.1	1270	250	
WGBI	Scranton, Pennsylvania	230.6	1300	250	
WGBS	Astoria (L. I.), New York	348.6	860	500	
WGCP	Newark, New Jersey	267.7	1120	500	
WGES	Chicago, Illinois	241.8	1240	500	
WGHP	Mt. Clemens, Michigan	277.6	1080	750	
WGL	New York, New York	293.9	1020	500	
WGM	Jeannette, Pennsylvania	208.2	1440	50	
WGMS	Minneapolis, Minnesota	245.8	1220	500	
WGMU	Portable	201.2	1490	100	
WGN-WLIB	Chicago, Illinois	416.4	720	15,000	
WGR	Buffalo, New York	302.8	990	750	
WGST	Atlanta, Georgia	270.1	1110	500	
WGWB	Milwaukee, Wisconsin	218.8	1370	500	
WGY	South Schenectady, N. Y.	379.5	790	50000	
WHA	Madison, Wisconsin	333.1	900	750	
WHAD	Milwaukee, Wisconsin	270.1	1110	500	
WHAM	Rochester, New York	280.2	1070	5000	
WHAP	New York, New York	236.1	1270	1000	
WHAR	Atlantic City, New Jersey	272.0	1100	1000	
WHAS	Louisville, Kentucky	322.4	930	500	
WHAZ	Troy, New York	305.9	980	500	
WHB	Kansas City, Missouri	340.7	880	500	
WHBA	Oil City, Pennsylvania	260.7	1150	10	
WHBC	Canton, Ohio	236.1	1270	10	
WHBD	Bellefontaine, Ohio	222.1	1350	100	
WHBF	Rock Island, Illinois	222.1	1350	100	
WHBL	Portable	204.0	1470	100	
WHBM	Portable	201.2	1490	100	
WHBN	Gainesville, Florida	202.6	1480	5000	
WHBP	Johnston, Pennsylvania	228.9	1310	250	
WHBQ	Memphis, Tennessee	232.4	1290	100	
WHBU	Anderson, Indiana	220.4	1360	15	

# SPARTON RADIO

*"The Pathfinder of the Air"*



**NO BATTERIES IN SPARTON**



**W**ONDERFULLY selective, Sparton amazes even seasoned radio fans with its clear, true tone under all ordinary conditions. With Sparton you can concentrate on the station you want.



*Electric Models—No Batteries  
Battery Models of superb tone*

**A REAL MUSICAL INSTRUMENT**

---

**Alvarado Arcade Radio Studio**

743 $\frac{1}{4}$  S. Alvarado

DRexel 6859

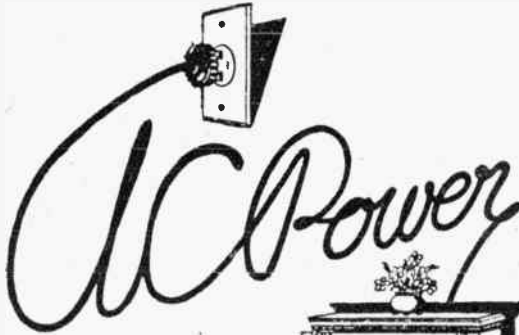
LOS ANGELES, CALIF.

## Alphabetical Call List (Continued)

CALL	LOCATION	Meters	Freq.	Power	LOG
WHBW	Philadelphia, Pa.	220.4	1360	100	
WHBY	West De Pere, Wisconsin	249.9	1200	50	
WHDI	Minneapolis, Minnesota	245.8	1220	500	
WHEC-WABO	Rochester, New York	254.1	1180	500	
WHFC	Chicago, Illinois	215.7	1390	200	
WHK	Cleveland, Ohio	265.3	1130	500	
WHN	New York, New York	394.5	760	500	
WHO	Des Moines, Iowa	535.4	560	5000	
WHPP	New York, New York	206.8	1450	10	
WHT	Chicago, Illinois	305.9	980	5000	
WIAD	Philadelphia, Pa.	288.3	1040	100	
WIAS	Burlington, Iowa	322.4	930	100	
WIBA	Madison, Wisconsin	239.9	1250	100	
WIBG	Elkins Park, Pa.	440.9	680	50	
WIBJ	Chicago, Illinois	201.2	1490	100	
WIBM	Chicago, Illinois	201.2	1490	100	
WIBO	Chicago, Illinois	305.9	980	5000	
WIBR	Steubenville, Ohio	249.9	1200	50	
WIBS	Elizabeth, New Jersey	204.0	1470	250	
WIBU	Poynette, Wisconsin	217.3	1380	20	
WIBW	Portable	204.0	1470	250	
WIBX	Utica, New York	238.0	1260	150	
WIBZ	Montgomery, Alabama	230.6	1300	15	
WICC	Bridgeport, Connecticut	265.3	1130	500	
WIL	St. Louis, Missouri	258.5	1160	250	
WIOD	Miami Beach, Florida	247.8	1210	1000	
WIP	Philadelphia, Pa.	348.6	860	500	
WJAD	Waco, Texas	333.1	900	500	
WJAG	Norfolk, Nebraska	285.5	1050	250	
WJAK	Kokomo, Indiana	234.2	1280	50	
WJAM	Cedar Rapids, Iowa	239.9	1250	250	
WJAR	Providence, Rhode Island	483.6	620	500	
WJAS	Pittsburgh, Pennsylvania	270.1	1110	500	
WJAX	Jacksonville, Florida	340.7	880	1000	
WJAY	Cleveland, Ohio	227.1	1320	500	
WJAZ	Mt. Prospect, Illinois	263.0	1140	5000	
WJBA	Joliet, Illinois	247.8	1210	50	
WJBB	Sarasota, Florida	238.0	1260	250	
WJBC	La Salle, Illinois	277.1	1320	100	
WJBI	Red Bank, New Jersey	263.0	1140	250	
WJBK	Ypsilanti, Michigan	220.4	1360	15	
WJBL	Decatur, Illinois	212.6	1410	250	
WJBO	New Orleans, Louisiana	263.0	1140	100	
WJBT	Chicago, Illinois	389.4	770	500	
WJBU	Lewisburg, Pennsylvania	214.2	1400	100	
WJBW	New Orleans, Louisiana	238.0	1260	30	
WJBY	Gadsden, Alabama	234.2	1280	50	
WJBZ	Chicago Heights, Illinois	208.2	1440	100	

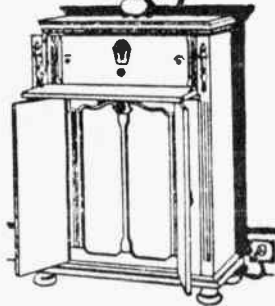
# SPARTON RADIO

*"The Pathfinder of the Air"*



**WITHOUT BATTERIES**

Power to reach out;  
Power to bring in;  
Power to reproduce the thrilling richness of the original. Sparton has developed these to an amazing degree. Hear it.



**DEPENDABLE RADIO RECEPTION**

---

**PIER AVE. RADIO CO.**

**142 Pier Ave. OCEAN PARK, CAL. Santa Monica 610-94**

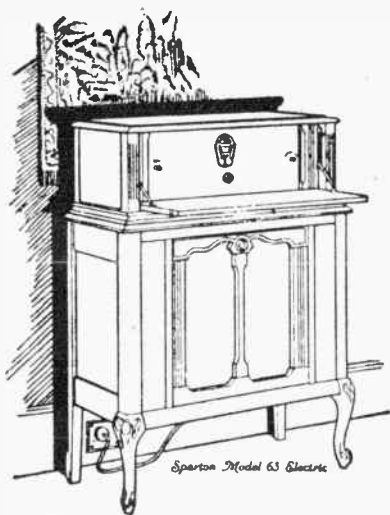
## Alphabetical Call List (Continued)

CALL	LOCATION	Meters	Freq.	Power	LOG
WJJD	Mooseheart, Illinois	365.6	820	1000	
WJKS	Gary, Indiana	232.4	1290	500	
WJPW	Ashtabula, Ohio	208.2	1440	30	
WJR-WCX	Pontiac, Michigan	440.9	680	5000	
WJZ	Bound Brook, New Jersey	454.3	660	40,000	
WKAAQ	San Juan, Porto Rico	322.4	930	500	
WKAR	East Lansing, Michigan	277.6	1080	500	
WKAU	Laconia, New Hampshire	223.7	1340	50	
WKBB	Joliet, Illinois	215.7	1390	150	
WKBC	Birmingham, Alabama	218.8	1370	10	
WKBE	Webster, Massachusetts	228.9	1310	100	
WKBF	Indianapolis, Indiana	252.0	1190	250	
WKBG	Portable	201.2	1490	100	
WKBH	La Crosse, Wisconsin	220.4	1360	500	
WKBI	Chicago, Illinois	215.7	1390	50	
WKBL	Monroe, Michigan	205.4	1460	15	
WKBN	Youngstown, Ohio	214.2	1400	50	
WKBO	Jersey City, New Jersey	218.8	1370	500	
WKBP	Battle Creek, Michigan	212.6	1410	50	
WKBQ	New York, New York	218.8	1370	500	
WKBS	Galesburg, Illinois	217.3	1380	100	
WKBT	New Orleans, Louisiana	252.0	1190	50	
WKBV	Brookville, Indiana	217.3	1380	100	
WKBW	Buffalo, New York	217.3	1380	500	
WKBZ	Ludington, Michigan	199.9	1500	15	
WKDR	South Kenosha, Wis.	247.8	1210	15	
WKEN	Kenmore, New York	204.0	1470	750	
WKJC	Lancaster, Pennsylvania	252.0	1190	50	
WKRC	Cincinnati, Ohio	245.8	1220	500	
WKY	Oklahoma City, Oklahoma	288.3	1040	150	
WLAC	Nashville, Tennessee	225.4	1330	1000	
WLAP	Louisville, Kentucky	267.7	1120	30	
WLB	Minneapolis, Minnesota	245.8	1220	500	
WLBC	Muncie, Indiana	209.7	1430	50	
WLBF	Kansas City, Missouri	209.7	1430	50	
WLBG	Petersburg, Virginia	214.2	1400	100	
WLBH	Farmingdale, New York	232.4	1290	30	
WLBI	Wenona, Illinois	238.0	1260	250	
WLBL	Stevens Pt., Wisconsin	302.8	990	1000	
WLBM	Boston, Massachusetts	230.6	1300	50	
WLBN	Portable	204.0	1470	50	
WLBO	Galesburg, Illinois	217.3	1380	100	
WLBQ	Atwood, Illinois	217.3	1380	100	
WLBK	Belvidere, Illinois	217.8	1210	100	
WLBK	Crown Point, Indiana	247.8	1210	50	
WLBV	Mansfield, Ohio	206.8	1450	50	
WLBW	Oil City, Pennsylvania	272.6	1110	500	
WLBX	Long Island City, N. Y.	204.0	1470	250	

# SPARTON RADIO

*"The Pathfinder of the Air"*

For more than two  
and one-half years  
Sparton has built  
America's success-  
ful A.C. receiver.



Hear the Sparton—in justice to Radio.  
And when you hear it you will never  
be satisfied with less.

**SPARTON THE LEADER**

—♦—  
**L. D. SPENCE**

**COLTON**

**CALIFORNIA**

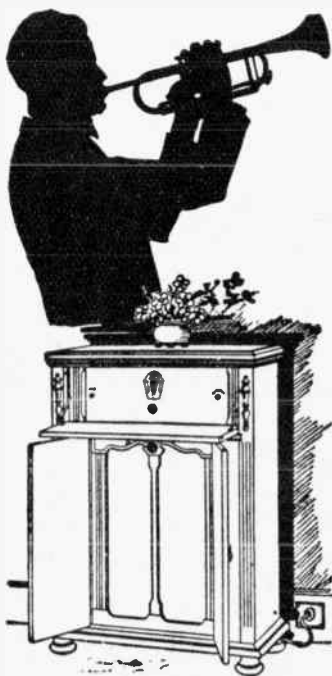
## Alphabetical Call List (Continued)

CALL	LOCATION	Meters	Freq.	Power	LOG
WLBY	Iron Mountain, Michigan	209.7	1430	50	
WLBZ	Dover-Foxcroft, Maine	208.2	1440	250	
WLCI	Ithaca, New York	247.8	1210	50	
WLXN	Lexington, Massachusetts	215.7	1390	50	
WLIB-WGNE	Elgin, Illinois	416.4	720	15,000	
WLIT	Philadelphia, Pa.	405.2	740	500	
WLDE	Chelsea, Massachusetts	211.1	1420	100	
WLS	Chicago, Illinois	314.6	870	500	
WLSI-WDWF	Cranston, Rhode Island	260.7	1150	250	
WLTH	Brooklyn, New York	256.3	1170	250	
WLTS	Chicago, Illinois	483.6	620	100	
WLW	Harrison, Ohio	428.3	700	5000	
WLW	Cincinnati, Ohio	428.3	700	500	
WLWL	New York, New York	370.2	810	1000	
WMAC	Casenovia, New York	225.4	1330	500	
WMAF	South Dartmouth, Mass.	428.3	700	500	
WMAK	Lockport, New York	545.1	550	750	
WMAL	Washington, D. C.	241.8	1240	500	
WMAN	Columbus, Ohio	234.2	1280	50	
WMAQ	Chicago, Illinois	447.5	670	1000	
WMAY	St. Louis, Missouri	234.2	1280	100	
WMAZ	Macon, Georgia	270.1	1110	500	
WMBA	Portable	204.0	1470	100	
WMBB	Chicago, Illinois	252.0	1190	5000	
WMBBC	Detroit, Michigan	243.8	1230	100	
WMBD	Peoria Hts., Illinois	205.4	1460	250	
WMBE	St. Paul, Minnesota	208.2	1440	10	
WMBF	Miami Beach, Florida	384.4	780	500	
WMBG	Richmond, Virginia	220.4	1360	15	
WMBH	Joplin, Missouri	204.0	1470	100	
WMBI	Chicago, Illinois	263.0	1140	5000	
WMBJ	Monessen, Pa.	232.4	1290	50	
WMBL	Lakeland, Florida	228.9	1310	50	
WMBM	Memphis, Tennessee	209.7	1430	10	
WMBO	Auburn, New York	220.4	1360	100	
WMBQ	Brooklyn, New York	204.0	1470	100	
WMBR	Tampa, Florida	252.0	1190	100	
WMBSS	Harrisburg, Pa.	234.2	1280	250	
WMBW	Youngstown, Ohio	214.2	1400	50	
WMC	Memphis, Tennessee	516.5	580	500	
WMCA	Hoboken, New Jersey	370.2	810	500	
WMES	Boston, Massachusetts	211.1	1420	50	
WMPC	Lapeer, Michigan	234.2	1280	30	
WMRJ	Jamaica, New York	206.8	1450	10	
WMSG	New York, New York	236.1	1270	500	
WNAC	Boston, Massachusetts	461.3	650	500	
WNAD	Norman, Oklahoma	239.9	1250	500	
WNAL	Omaha, Nebraska	258.5	1160	250	



# SPARTON RADIO

*"The Pathfinder of the Air"*



## GOLDEN GLORIOUS TONE



The crashing crescendo of a full military band . . . the birdlike notes of flute or soprano voice . . . Sparton reproduces all with stirring fullness or delightful clarity. After all, the reason for Sparton's outstanding success is simple. It's just *life-like*. In these two words are summed up the reasons why Sparton satisfies even the critics of radio . . . and why Sparton will delight you, too, no matter how exacting you choose to be.

## ROGERS RADIO CO.

406 "B" Street

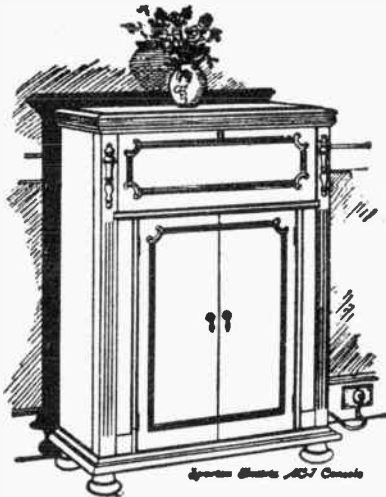
SAN DIEGO, CALIF.

## Alphabetical Call List (Continued)

CALL	LOCATION	Meters	Freq.	Power	LOG
WNAT	Philadelphia, Pa.	288.3	1040	100	
WNAX	Yankton, South Dakota	302.8	990	1000	
WNBA	Forest Park, Illinois	208.2	1440	200	
WNBK	Endicott, New York	206.8	1450	50	
WNBH	New Bedford, Mass.	247.8	1210	250	
WNBK	Knoxville, Tennessee	206.8	1450	50	
WNBL	Bloomington, Illinois	199.9	1500	15	
WNBO	Washington, Pa.	211.1	1420	15	
WNBQ	Rochester, New York	205.4	1460	15	
WNBK	Memphis, Tennessee	228.9	1310	100	
WNBW	Carbondale, Pa.	199.9	1500	5	
WNBX	Springfield, Vermont	241.8	1240	10	
WNBZ	Saranac Lake, N. Y.	232.4	1290	10	
WNJ	Newark, New Jersey	267.7	1120	250	
WNOX	Knoxville, Tennessee	265.3	1130	1000	
WNRC	Greensboro, N. Carolina	223.7	1340	250	
WNYC	New York, New York	526.0	570	500	
WOAI	San Antonio, Texas	499.7	600	5000	
WOAN	Lawrenceburg, Tennessee	239.9	1250	500	
WOAX	Trenton, New Jersey	239.9	1250	500	
WOBR	Portable	204.0	1470	10	
WOBT	Union City, Tennessee	205.4	1460	15	
WOBU	Charleston, West Virginia	267.7	1120	50	
WOC	Davenport, Iowa	374.8	800	5000	
WOCL	Jamestown, New York	223.7	1340	25	
WODA	Paterson, New Jersey	293.9	1020	1000	
WOI	Ames, Iowa	265.3	1130	2500	
WOK	Homewood, Illinois	252.0	1190	5000	
WOKO	Peekskill, New York	215.7	1390	250	
WOKT	Rochester, New York	209.7	1430	500	
WOMT	Manitowoc, Wisconsin	2221	1350	150	
WOO	Philadelphia, Pa.	348.6	860	500	
WOOD	Grand Rapids, Michigan	260.7	1150	500	
WOQ	Kansas City, Missouri	340.7	880	500	
WOR	Newark, New Jersey	422.3	710	3500	
WORD	Batavia, Illinois	252.0	1190	5000	
WOS	Jefferson City, Mo.	422.3	710	500	
WOW	Omaha, Nebraska	508.2	590	1000	
WOWO	Ft. Wayne, Indiana	228.9	1310	5000	
WPAP-WQAO	Cliffside, New Jersey	394.5	760	500	
WPCC	Chicago, Illinois	223.7	1340	500	
WPCH	Hoboken, New York	325.9	920	500	
WPEP	Waukegan, Illinois	215.7	1390	250	
WPG	Atlantic City, New Jersey	272.6	1100	5000	
WPRC	Harrisburg, Pa.	209.7	1430	100	
WPSC	State College, Pa.	299.8	1000	500	
WPSW	Philadelphia, Pa.	206.8	1450	50	
WPTF	Raleigh, North Carolina	545.1	550	500	

# SPARTON RADIO

*"The Pathfinder of the Air"*



Sparton  
Quality  
Is  
Supreme



Superb musical reproduction combined with elegance of cabinet craftsmanship makes this the finest instrument in the industry.



## Robertson Electric Corp.

303 N. Main

SANTA ANA, CALIF.

Phone 2240

## Alphabetical Call List (Continued)

CALL	LOCATION	Meters	Freq.	Power	LOG
WSMB	New Orleans Louisiana	296.9	1010	750	
WSMK	Dayton, Ohio	296.9	1010	500	
WSOE	Milwaukee, Wisconsin	270.1	1110	2250	
WSRO	Middleton, Ohio	236.0	1270	100	
WSSH	Boston, Massachusetts	288.3	1040	100	
WSUI	Iowa City, Iowa	475.9	630	500	
WSUN	St. Petersburg, Florida	516.9	580	750	
WSVS	Buffalo, New York	204.0	1470	50	
WSYR	Syracuse, New York	293.9	1020	500	
WTAD	Quincy, Illinois	236.1	1270	250	
WTAG	Worcester, Mass	516.9	580	500	
WTAL	Toledo, Ohio	239.9	1250	250	
WTAM	Cleveland, Ohio	399.8	750	3500	
WTAQ	Eau Claire, Wisconsin	254.1	1180	500	
WTAR	Norfolk, Virginia	236.1	1270	500	
WTAS	Elgin, Illinois	275.1	1090	3500	
WTAW	College Station, Texas	483.6	620	500	
WTAX	Streator, Illinois	247.8	1210	50	
WTAZ	Richmond, Virginia	220.4	1360	15	
WTIC	Hartford, Connecticut	535.4	560	500	
WTMJ	Brookfield, Wisconsin	293.9	1020	1000	
WTFE	Washington, D. C.	202.6	1480	10,000	
WTFI	Tacooa, Georgia	209.7	1430	250	
WTRL	Midland Park, N. J.	206.8	1450	15	
WWAE	Chicago, Illinois	227.1	1320	500	
WWJ	Detroit, Michigan	352.7	850	1000	
WWL	New Orleans, Louisiana	245.8	1220	500	
WWNC	Asheville, N. Carolina	296.9	1010	1000	
WWRL	Woodside, New York	199.9	1500	100	
WWVA	Wheeling, West Virginia	516.9	580	250	

## Cuba

CALL	LOCATION	Meters	Power	LOG
PWX	Havana	400	500	

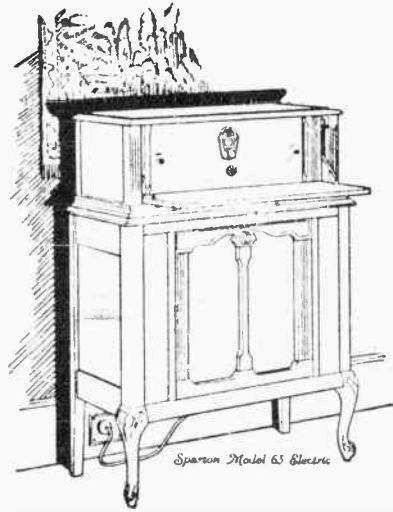
## Australia

CALL	LOCATION	Meters	Power	LOG
5CL	Adelaide	395	1000	
4QG	Brisbane	385	1000	
7ZL	Hobart	525	3000	
3LO	Melbourne	371	1000	
6WF	Perth	1250	1000	
2BL	Sydney	353	1000	
2FC	Sydney	442	2000	
2GB	Sydney	326	1500	

# SPARTON RADIO

*"The Pathfinder of the Air"*

For more than two and one-half years Sparton has built America's successful A.C. receiver.



*Sparton Model 63 Electric*

Hear the Sparton—in justice to Radio.  
And when you hear it you will never be satisfied with less.

**SPARTON THE LEADER**

**PERRY RADIO CO.**

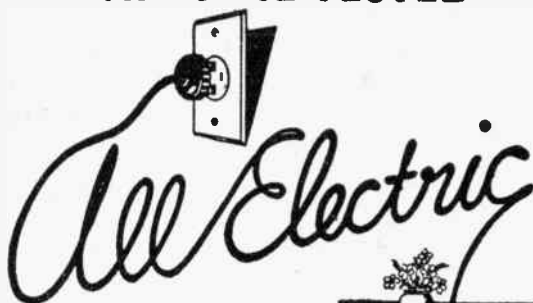
726 D Street

Chino, Calif.

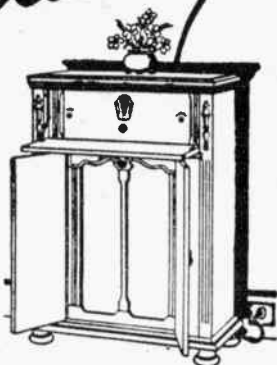
# SPARTON RADIO

*"The Pathfinder of the Air"*

**THE TIME TESTED**



Not new! Sparton *has been* a true electric radio right from the start. Naturally you get something different and better; a radio instrument of wondrous tone that shows the results of years of refinement.



**A DEMONSTRATION WILL CONVINCe YOU**

---

## THE MUSIC BOX

Wm. C. HELVEY

FILLMORE, CALIF.

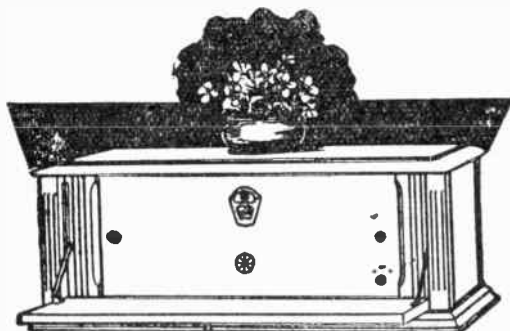
SANTA PAULA, CALIF.

Phone 83

# SPARTON RADIO

*"The Pathfinder of the Air"*

## TONE *That Thrills*



The first resonant notes of a Sparton radio instrument will tell you why Sparton's is so universally known as "Radio's Richest Voice". Call and enjoy a half hour of thrilling music.

A DEMONSTRATION WILL CONVINCe YOU



## RECORD GARAGE

LLOYD RECORD, Prop.

SAN JACINTO

Phone 120

CALIFORNIA



**JENNINGS PIERCE**  
Chief Announcer

# National Broadcasting Co. Inc.

## PACIFIC COAST NETWORK

**KFI - KPO - KGO - KGW - KOMO  
KFOA - KHQ**



**CHAS. H. GABRIEL, JR.**  
Program Director

**DAILY—**  
9:00 p. m.—Time broadcast.

**WEEK COMMENCING SUNDAY, MARCH 4, 1928**

**SUNDAY, MARCH 4**

- 1:00 p. m.—Gold Strand Group, under the direction of Max Dolin. The soloists on this program are Dorothy Talbot, coloratura soprano, and Myron Neisley, tenor. Shubert's "March Militaire," a
- 3:00 p. m.—N. B. C. Concert Orchestra in an entirely classical program. Shubert and Beethoven are featured and the soloists is Easton Kent, known throughout the West Coast musical world through his concert tour. The Orion Trio and the National Mixed Quartet will be heard.
- 4:30 p. m.—Great Moments in History Broadcast will present the story of the massacre at The Alamo.
- 6:30 p. m.—The Standard Symphony Orchestra, under the direction of Nathan Abas, will offer another hour of artistic symphony.
- 9:00 p. m.—Don Amaizo, the wizard of the three B's, will recount his experiences at a party given for him at a beautiful home in Brussels. The story will be told by the interpreted and colored by Don Amaizo with his violin and orchestra.

**MONDAY, MARCH 5**

- 8:00 p. m.—Rudy Seiger's Shell Symphonists are offering a program compiled with two ideas in mind, one to include as many request numbers as possible and the other to voice the spirit of the spring-time, now so near.
- 9:00 p. m.—The Rounders in their weekly "Roundup of Harmony."
- 9:30 p. m.—The "Fisk Time-To-Retire Boys" will be heard in the third of their newly inaugurated programs, which are proving so popular.
- 10:30 p. m.—Broadways and Boulevards carrying the listeners from the routine of daily life into the gayety of the world's capitals.

**TUESDAY, MARCH 6**

- 10:30 a. m.—Johnson Travelogue will take the housewives on a Normandy journey with a musical accompaniment.
- 11:00 a. m.—Royal Baking Powder Menu Hints. Ruth Baker, a prominent Pacific Coast Domestic Science expert, will talk on various things valuable to the housewife.
- 6:30 p. m.—Memory Lane Broadcast brings the annual round-up at Pendleton. Many favorite cowboy songs will be revived and

the hour is certain to call back many good old times.

- 8:00 p. m.—Eveready Salon Orchestra in a semi-classical repertoire.
- 8:30 p. m.—U. S. Bridge Lessons by four Eastern experts will present the nineteenth radio Auction Bridge game.
- 10:00 p. m.—Dance orchestra with staff artists.

**WEDNESDAY, MARCH 7**

- 6:30 p. m.—Musical Fruit Cocktail, featuring Johnson C. Bane, guitarist and composer.
- 8:00 p. m.—"Jack and Ethyl, the Motor Mates," present their second program.
- 8:30 p. m.—Royal Ambassadors offering their third program. This is one of the newest contributions to the radio audience, and one of the most entertaining.
- 9:00 p. m.—Los Angeles Studio Hour presents "The Witch of Salem," by Charles Wakefield Cadman.
- 10:00 p. m.—N. B. C. Dance Orchestra.

**THURSDAY, MARCH 8**

- 8:00 p. m.—Calpet Hour, opening with selections from the musical comedy "Jack O'Lantern."
- 9:00 p. m.—Dodge Brothers presentation.
- 9:30 p. m.—Moon Magic program presenting the Maid of the Moon in solos and the Arion Trio in Mendelssohn's beautiful and beloved "Spring Song."

**FRIDAY, MARCH 9**

- 8:00 p. m.—Wrigley Review. The quartet of Spearmen singing "La Spagnola" will open this program.
- 9:00 p. m.—White Rock Concert. The White Rock Concert Orchestra will open the program with "Lovely Little Silhouette."
- 9:30 p. m.—Retold Tales brings O. Henry's story, "A Lickpenny Lover." The scene is laid in the biggest store in Gotham and Maise was one of the 3,000 girls in the story. How she longed for adventure and what befell her will be broadcast in a most entertaining way.
- 10:00 p. m.—N. B. C. Dance Orchestra.

**SATURDAY, MARCH 10**

- 8:00 p. m.—R. C. A. Hour, featuring music of the land, sea, and the universe, climaxed by the talk on astronomy.
- 9:00 p. m.—Philco Hour broadcast will have as guest artist Elsa Behlow Trautner.
- 10:00 p. m.—The Trocaderans in their regular two-hour broadcast of the latest dance music.



**12 Sizes — WE. 2712  
1929 Los Angeles St., L. A.**



The ever increasing  
popularity of

# Kolster Radio

Has necessitated our moving into  
new and larger quarters.

On and after March 1st our Los  
Angeles Headquarters will be  
located at

1135 Wall St.

John G. Rapp Corporation

*Exclusive California Distributors  
of*

## KOLSTER RADIO

1135 Wall Street  
LOS ANGELES

123 Second Street  
SAN FRANCISCO

Enjoy the Kolster hour every Tuesday from  
9 to 10 p. m. broadcast over KFI and KPO  
simultaneously.



# KFI

## Los Angeles, California—640 Kc.

5000 WATTS—468.5 METERS

Radio Central Super-Station of Earl C. Anthony, Inc.  
1000 S. Hope. Phone WE. 0331. After 5 P. M., WE. 0337  
ROBERT HURD, Program Manager

### DAILY EXCEPT SUNDAY—

- 12:10 p. m.—Federal and State Market Reports.  
12:15 p. m.—U. C. and U. S. Dept. of Agri. Talks, except Friday.  
5:00 p. m.—Big Brother (except Saturday).  
6:00 p. m.—White King Soap Male Quartet Dinner Hour, ex. Wed.

### ROBERT HURD

### WEEK COMMENCING SUNDAY, MARCH 4, 1928

#### SUNDAY, MARCH 4

- 10:00 a. m.—Church services.  
11:00 a. m.—Third Church of Christ, Scientist.  
1:00 p. m.—N. B. C., Gold Strand Group.  
2:00 p. m.—Bernice Morrison—Concert Pianist.  
3:00 p. m.—N. B. C. Program over P. C. N.  
5:00 p. m.—Clen Edmunds Collegians  
6:00 p. m.—Pasquin & Harris.  
6:30 p. m.—N. B. C.—Standard Oil Program.  
7:30 p. m.—Gene Johnston Music Box.  
8:00 p. m.—Aeolian Organ Recital  
9:00 p. m.—N. B. C., American Maize,  
9:30 p. m.—Nellie Callender Mills, violinist;  
Irene Dalton, pianist; Packard Six

#### MONDAY, MARCH 5

- 12:00 noon—Earl La Courte—Blues pianist.  
12:30 p. m.—David Leavitt—Ballads.  
1:00 p. m.—Mme. Irwin Kellogg Talk  
1:15 p. m.—Talks on Traffic Violations.  
2:15 p. m.—Oscar Grofenstein, zither player.  
2:30 p. m.—Edla Laurence, psychologist.  
3:00 p. m.—Virginia McCoy, contra contralto.  
3:30 p. m.—Julanne DeWeese Davis.  
3:45 p. m.—Walter W. Strong.  
5:45 p. m.—Senator George W. Cartwright.  
7:00 p. m.—KFI Symphonette.  
8:00 p. m.—N. B. C.—Shell program  
9:00 p. m.—Packard Concert Orchestra  
9:30 p. m.—Fisk Tire Company.  
10:00 p. m.—KFI Symphonette.

#### TUESDAY, MARCH 6

- 10:30 a. m.—N. B. C.—Johnson Washer Co.  
11:00 a. m.—N. B. C.—Royal Baking Powder  
11:15 a. m.—Modes & Mannequins by "Ivar."  
12:30 p. m.—Irene Dalton.  
1:30 p. m.—Purcell Mayer, violinist.  
1:45 p. m.—Florence Joy, pianist.  
2:30 p. m.—Mme. Jeanne B. Whittaker.  
2:45 p. m.—Irene Whittaker, soprano duets.  
3:00 p. m.—Harold Grayson's Orchestra.  
3:30 p. m.—Betty Thompson.  
4:00 p. m.—Marian Patricia Cavanaugh  
4:30 p. m.—Dragon Hawaiian Trio.  
5:30 p. m.—Prof. Carl S. Knopf.  
7:00 p. m.—Nick Harris Detective Stories  
7:30 p. m.—Henry Starr, vocalist.  
8:00 p. m.—N. B. C.—National Carbon Co.  
8:30 p. m.—N. B. C.—Bridge Games.  
9:00 p. m.—Kolster Radio Co.  
10:00 p. m.—N. B. C., Dance Music Program,

#### WEDNESDAY, MARCH 7

- 10:45 a. m.—Betty Crocker, Gold Medal Talks.  
11:15 a. m.—Modes and Mannequins, by "Ivar."  
12:30 p. m.—Pasquin & Harris.  
1:15 p. m.—Talks on Traffic Violations.  
1:30 p. m.—L. A. Police Quartette.  
2:00 p. m.—Georgia O. George Lab.  
2:30 p. m.—Harry Knabenshue, tenor.  
2:45 p. m.—Dr. O. S. Parrett Talk.

(Copyright by Earle C. Anthony, Inc.)

- 3:00 p. m.—Fred Bruley, musical saw.  
3:15 p. m.—Nora Jorgenson, pianist.  
3:30 p. m.—Bill Henry.  
4:00 p. m.—Baron Keyes, Calif. composer.  
4:45 p. m.—Edith & Herbert Smith, ballads.  
5:30 p. m.—White King Male Quartette.  
6:30 p. m.—N. B. C.—Calif. Fruit Growers'  
7:00 p. m.—Georgia O. George Lab.  
7:30 p. m.—KFI Symphonette.  
8:30 p. m.—N. B. C.—Royal Baking Powder  
9:00 p. m.—The Witch of Salem, over P.C.N.  
10:00 p. m.—N. B. C.—Dance Music Program,

#### THURSDAY, MARCH 8

- 12:30 p. m.—Albers Bros. Milling Company.  
1:00 p. m.—Mme. Irwin Kellogg Talk "Why Breathe."  
2:00 p. m.—Sebastian's Cotton Club Orch.  
3:30 p. m.—Norma West, soprano; Lewis Kerwin, pianist.  
4:00 p. m.—Douglas Hodson, tenor.  
4:30 p. m.—LeRoy Herron and Roy Hellrigel.  
4:45 p. m.—Dr. H. Edward Myers.  
5:30 p. m.—Griffith Jones, attorney.  
5:50 p. m.—Federal Business Ass'n. Talk.  
7:00 p. m.—Georgia O. George Lab.;  
7:30 p. m.—KFI Symphonette.  
8:00 p. m.—N. B. C.—California Petroleum Corporation, over P. C. N.  
9:00 p. m.—N. B. C.—Dodge Bros. Program,  
9:30 p. m.—Purcell Mayer, violinist.  
10:00 p. m.—N. B. C.—Dance Music Program,

#### FRIDAY, MARCH 9

- 10:45 a. m.—Betty Crocker, Gold Medal Talks.  
11:15 a. m.—Modes & Mannequins, by "Ivar."  
12:25 p. m.—Franklin L. Graves' Talk.  
12:45 p. m.—Alma Pratt Kohl, pianist.  
2:00 p. m.—Georgia O. George Lab.  
2:30 p. m.—Clarice Russell.  
5:30 p. m.—Leon Rene and His Southern Syncopaters.  
7:00 p. m.—Program by Paul Roberts  
8:00 p. m.—N. B. C.—Wrigley Program,  
9:00 p. m.—N. B. C.—White Rock Mineral Spring Company, over P. C. N.  
10:00 p. m.—N. B. C.—Dance Music Program,

#### SATURDAY, MARCH 10

- 12:00 noon—Paul McNally, baritone.  
1:30 p. m.—Doris Decker, blues,  
2:00 p. m.—Edward Lynn Talk on Literature.  
3:00 p. m.—Jean Lamph, contralto,  
3:30 p. m.—Si Darling's Arkansas Barn Dance  
4:00 p. m.—Wilfred Fletcher, tenor.  
4:45 p. m.—Hebrew Melody.  
5:00 p. m.—Francis Sullivan—Literary Talks.  
7:00 p. m.—Henry Starr, soloist.  
7:30 p. m.—KFI Symphonette.  
8:00 p. m.—N. B. C.—R. C. A. Hour,  
9:00 p. m.—N. B. C.—Philadelphia Storage Battery Co., over P. C. N.  
10:00 p. m.—Packard Concert Orchestra  
11:00 p. m.—KFI Midnight Frolic.

# GILFILLAN

SALES & SERVICE — HEMPSTEAD 5590  
137 N. Larchmont Open Evenings

# Two New Models

## Light Socket Operation



These new Gilfillan Models 55 and 65, are operated from the house circuit. The cabinets are walnut with a beautiful two-toned finish and very handsomely designed.

Gilfillan Model 55 complete with power supply, tubes and latest improved Rola Speaker. AC operated. \$247.50.



*Gilfillan Model 55*



Gilfillan Model 65 complete with power supply, tubes and Jensen Dynamic Power Speaker. AC operated. \$282.50.

# GILFILLAN RADIO

No Batteries — ONE DIAL — Glorious Tone  
See New Models at Gilfillan Dealers

*Distributors:*

Southern California (except San Diego County)

GILFILLAN BROS., INC., Los Angeles

San Diego County—MOTOR HARDWARE & EQUIPMENT CO., San Diego

Arizona—NIELSEN RADIO & SPORTING GOODS CO., Phoenix



GLENN R. DOLBERG,  
Night Director and Pro-  
gram Manager.

# KHJ

## Los Angeles, California—750 Kc.

500 WATTS—399.8 METERS  
Times Bldg., First and Broadway, Los Angeles  
Owned and Operated by Don Lee  
California Distributor for Cadillac and LaSalle  
Phone MET. 0700

E. K. BARNES, Day-time Director  
GLENN R. DOLBERG, Night-time Director  
PAUL RUBENSTEIN KEPNER, Musical Director  
ERNEST G. UNDERWOOD, Technical Director  
C. M. C. RAYMOND, Commercial Director

### DAILY EXCEPT SUNDAY—

8:00 to 9:00 a. m.—Sperry Flour Reveille Hour, except Saturday.  
12:30 to 1:30 p. m.—L. A. Times World Wide News.  
1:30 to 2:00 p. m.—Charlie Wellman's Request Program.  
2:00 to 2:30 p. m.—Celeste Ryus, "Musical Appreciation," ex. Mon.  
3:00 to 4:00 p. m.—Matinee Melody Masters.  
5:00 to 6:00 p. m.—Sunset Musicales.  
6:00 to 6:15 p. m.—Nightly Doings, except Friday.  
6:15 to 6:45 p. m.—Fitzgerald's Orthophonic and Ampico Concert.  
6:45 to 7:00 p. m.—L. A. Times World Wide News.

### WEEK COMMENCING SUNDAY, MARCH 4, 1928

#### SUNDAY, MARCH 4

9:30 a. m.—Concert Hour.  
10:30 p. m.—First M. E. Church.  
12:30 p. m.—The Viennese Quintette  
4:00 p. m.—Matinee Melody Masters.  
5:00 p. m.—Twilight Musicales.  
6:15 p. m.—Orthophonic and Knabe Ampico  
6:45 p. m.—World Wide News.  
7:00 p. m.—First M. E. Church.  
8:00 p. m.—Howard Griffen Trio  
9:00 p. m.—Don Lee Little Symphony.

#### MONDAY, MARCH 5

9:00 a. m.—Half Hour of Late Recording.  
2:00 p. m.—Elvia Allman's Surprise Package  
4:00 p. m.—C. W. H. Smith.  
4:15 p. m.—M. S. Benesh  
4:30 p. m.—Marye Shannon Harrington  
7:00 p. m.—Georgetown Dance Orchestra.  
8:00 p. m.—General Petroleum Corporation.  
9:00 p. m.—Sun Dodgers.  
10:00 p. m.—Alexandria Hotel Dance Orch.

#### TUESDAY, MARCH 6

9:00 a. m.—Half Hour of Late Recordings  
4:00 p. m.—Dr. Frank McCoy  
4:30 p. m.—Rabbi Edgar Magnin  
7:00 p. m.—L. A. Police Department.  
7:30 p. m.—Sierra Seven.  
8:00 p. m.—Maxwell House Coffee Program.  
9:00 p. m.—KHJ Mixed Quartette  
10:00 p. m.—Cavaliers Dance Band.

#### WEDNESDAY, MARCH 7

9:00 a. m.—Half Hour of Late Recordings.  
4:00 p. m.—Fred C. McNabb, Garden Talk.  
7:00 p. m.—KHJ Dance Band.  
8:00 p. m.—Songs of Yesterday.  
9:00 p. m.—KHJ Symphonic Jazz Band.  
10:00 p. m.—Cadillac-La Salle Concert Eight.

#### THURSDAY, MARCH 8

9:00 a. m.—Half Hour of Late Recordings.  
4:00 p. m.—Dr. Philip M. Lovell  
4:30 p. m.—Florence Dobinson  
7:00 p. m.—Condolers Dance Orchestra.  
8:00 p. m.—KHJ Symphony Orchestra.  
9:00 p. m.—Sierra Seven.  
10:00 p. m.—Caledonians Concert Orchestra

#### FRIDAY, MARCH 9

9:00 a. m.—Half Hour of Late Recordings.  
4:00 p. m.—Stories of American History.  
4:30 p. m.—Council on International Relations.

7:00 p. m.—KHJ Symphonic Jazz Band.  
8:00 p. m.—KHJ Mixed Quartette  
10:00 p. m.—Cavaliers Dance Orchestra.

#### SATURDAY, MARCH 10

9:00 a. m.—Half Hour of Late Recordings.  
2:30 p. m.—Art Pabat and his banjo.  
4:00 p. m.—Rev. Albert Anderson.  
4:30 p. m.—L. A. Playground Dept.  
7:00 p. m.—KHJ Movie Club.  
8:00 p. m.—Beverly Bearcats.  
9:00 p. m.—Cadillac-LaSalle Concert Eight.  
10:00 p. m.—Merrymakers Hour. Let's go.

## Radio Publicity—Results Assured

WALTER BIDDICK  
WEStmore 9137

## Reflex Set Manufacturers

A complete Dry AB Power Pack designed specially for 2 and 3 tube Reflex Sets. At a price that will save you money.

DON'T FAIL TO LOOK INTO THIS

Call VE. 1619 Now

POWELL MANUFACTURING CO

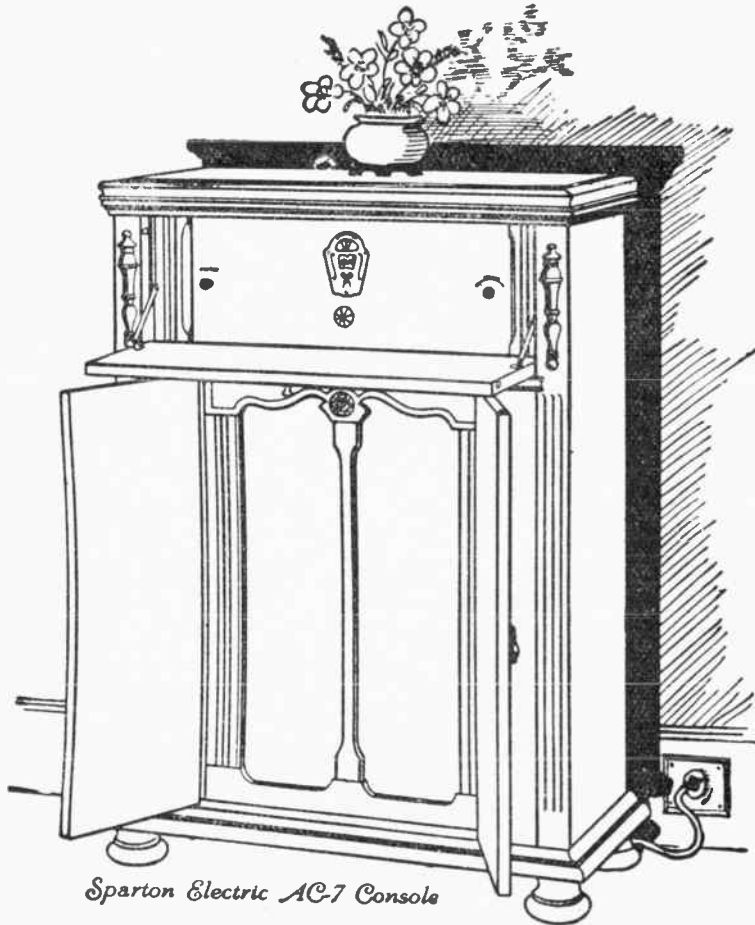
Manufacturers of Radio and Electric Equipment

4009 S. Western Ave.

Los Angeles, Calif.

# SPARTON RADIO

*"The Pathfinder of the Air"*



*Sparton Electric AC-7 Console*

*Exclusive Downtown Distributors*

**Birch-Smith Furniture Co**  
737-41 Hill St. Near 8<sup>th</sup>

Los Angeles, Calif.

Phone TR. 4121



**HAROLD ISBELL**  
Announcer

## Hollywood, Cal.—890 Kc.

# KNX

500 WATTS—337 METERS  
LOS ANGELES EVENING EXPRESS

Paul G. Hoffman's Studebaker Bldg., 6116 Hollywood Blvd., Hollywood. Ph. HEMPstead 4101  
NAYLOR ROGERS, Mgr. and Program Director

N. D. GARVER, Technical Engineer  
"The Voice of Hollywood"



**NAYLOR ROGERS**  
Manager

### DAILY EXCEPT SUNDAY—

- 6:45 to 8:00 a. m.—Gold Seal early bird exercises, courtesy of Sanitary Gold Seal Dairy.  
8:00 a. m.—Inspirational talk and morning prayer.  
8:55 a. m.—Time Signals from Washington, D. C., followed by Birthday Notices.  
9:00 a. m.—Radio Shopping News, conducted by Carrie Preston Rittmeister.  
10:00 a. m.—Town Crier of the Day's morning message.  
10:30 a. m.—Kate Brew Vaughn, director household Economics Department, Evening Express, except Friday and Saturday.  
12:00 noon—Musical program.  
12:30 p. m.—W. F. Alder Travelogue.  
1:30 p. m.—The Bookworm.  
2:00 p. m.—Musical program.  
3:00 p. m.—C. P. R.'s musical program.  
4:15 p. m.—Lost and Found announcements.  
4:25 p. m.—Market reports.  
5:00 p. m.—"Own Your Own Home," by Chet Mittendorf.  
5:45 p. m.—"Amusement Tips."  
6:00 p. m.—Biltmore Hotel Orchestra, broadcast from the Biltmore Dining Room.  
6:30 p. m.—Dinner hour concert, directed by Paul Finstein.

### DAILY EXCEPT SUNDAY AND TUESDAY—

- 10:00 p. m.—Earl Burtnett's Biltmore Hotel Orchestra (except Friday).  
11:00 p. m.—Hotel Ambassador; Gus Arnheim's Coconut Grove Orch., except Tues. & Fri.

### WEEK COMMENCING SUNDAY, MARCH 4, 1928

#### SUNDAY, MARCH 4

- 10:00 a. m.—First Presbyterian Church of Hollywood.  
2:00 p. m.—City Park Board music program.  
6:00 p. m.—Talk by Ernest Holmes.  
6:30 p. m.—First Unitarian Church.  
7:00 p. m.—First Presbyterian Church of Hollywood.  
8:00 p. m.—Circle Theatre Concert Orch.  
9:00 p. m.—Calmon Luboviski, master violinist; Claire Mellonino, pianist.

#### MONDAY, MARCH 5

- 11:00 a. m.—Georgia O. George.  
2:30 p. m.—"Human Nature."  
4:15 p. m.—Talk on Stocks and Bonds.  
4:30 p. m.—Little Jean and the Town Crier.  
6:45 p. m.—15 minutes with Gene Leonard.  
7:00 p. m.—The Hall Room Boys.  
7:30 p. m.—One-act play by KNX players  
8:00 p. m.—Calmon Luboviski, master violinist; Claire Mellonino, pianist.

#### TUESDAY, MARCH 6

- 11:00 a. m.—French lessons by Edgard Leon.  
12:45 p. m.—Advertising Club luncheon from the Biltmore Hotel.  
4:00 p. m.—Little Joyce Coad, movie star.  
7:00 p. m.—Grauman's Chinese Theatre.  
7:30 p. m.—Georgia O. George.  
9:00 p. m.—Earl Burtnett's Biltmore Hotel Orchestra.

#### WEDNESDAY, MARCH 7

- 4:00 p. m.—Garden talk.  
7:00 p. m.—Playgoers Club conducted by Wedgwood Nowell.  
7:30 p. m.—Courtesy program.

#### THURSDAY, MARCH 8

- 11:00 a. m.—French lessons by Edgard Leon.  
1:15 p. m.—Poultry Farming.  
4:00 p. m.—Louise Johnson, Horoscopes.  
7:00 p. m.—Carthay Circle Theatre.  
9:00 p. m.—Zenith Carburator Co.

#### FRIDAY, MARCH 9

- 10:30 a. m.—Georgia O. George.  
2:00 p. m.—L. A. District Federation of Women's Clubs musical program.  
6:45 p. m.—15 minutes with Gene Leonard.  
7:00 p. m.—Georgia O. George.  
8:00 p. m.—Royal Order of Optimistic Do-Nuts.

- 9:00 p. m.—Earl Burtnett's Biltmore Hotel Orchestra.

- 10:00 p. m.—Main Events from Hollywood Legion Stadium.

#### SATURDAY, MARCH 10

- 6:30 p. m.—Announcement of Sunday services of leading L. A. churches.  
7:00 p. m.—Charles W. Hamp.  
7:30 p. m.—Playgoers Club  
8:30 p. m.—Mr. and Mrs. Radio Skit.  
12:00 p. m.—The Midnight Express.

**\$2.50** FIXES ANY SET  
CALL AND DELIVER

**\$1**

3104 S. VERMONT  
BEacon 6582

**Golden Bear** AIR COLUMN  
**SPEAKER**

12 Sizes — WE. 2712  
1929 Los Angeles St., L. A.

# ATWATER KENT A.C. RADIO



*Proved*  
*by*  
**222 TESTS**  
*on*  
*Inspections*

**\$92<sup>00</sup>**

Less Speaker and Tubes

Before Model 37 can leave the Atwater Kent factory, it must be perfect! Each part, as it is made, is constantly tested or inspected.

**YOU'LL FIND IT EASY TO OWN—  
EASY TO OPERATE**

*See the Nearest Atwater Kent Dealer for Demonstration*

**RAY THOMAS INC.**  
*Atwater Kent Distributor*

**1248 S.Hope St. WE 6334**  
**LOS ANGELES**



**BILL RAY**  
Announcer

## Hollywood, Calif. 830 Kc. **K F W B**

500 WATTS—361.2 METERS  
WARNER BROS. MOTION PICTURE STUDIOS  
Warner Bros. West Coast Studios,  
5842 Sunset Blvd.  
Gerald L. King, Mgr. Wm. Ray, Asst. Mgr.  
Florence Israel—Program Arranger  
Phone GL. 9461  
"Movie Land"



**GERALD L. KING**  
Manager

### DAILY EXCEPT SUNDAY—

- 9:15 to 9:40 a. m.—Spanish program, except Wednesday.  
9:40 to 10:30 a. m.—Classified Period.  
10:30 to 11:00 a. m.—Advance Electric Co. program.  
11:00 to 11:15 a. m.—Aunt Sammy Talks, except Wednesday and Saturday.  
11:30 to 12:30 p. m.—Shopping Directory.

### WEEK COMMENCING SUNDAY, MARCH 4, 1928

- SUNDAY, MARCH 4**  
10:00 a. m.—Courtesy program.  
7:20 p. m.—Harry Jackson and entertainers  
7:50 p. m.—Daily News.  
8:00 p. m.—Light Opera Hour  
9:00 p. m.—Daily News Items.  
9:10 p. m.—Lee Scott, songs

- MONDAY, MARCH 5**  
9:00 a. m.—Talk on Diet.  
12:30 p. m.—Program by courtesy of the Carter Automobile Works.  
5:00 p. m.—Radio Travel Tales.  
7:50 p. m.—Daily News.  
8:00 p. m.—Charlotte De Lovelace, blues;  
9:00 p. m.—David Percy, baritone; LeGrand Concert Trio.

- TUESDAY, MARCH 6**  
11:15 a. m.—Lecture on Psychology  
7:30 p. m.—Musical program.  
7:50 p. m.—Daily News.  
8:00 p. m.—Ina Mitchell Butler, soprano;  
9:00 p. m.—Sleepy Time Hour.

- WEDNESDAY, MARCH 7**  
8:00 a. m.—By remote control from Breakfast Club.  
9:30 a. m.—Talk on Diet.  
9:45 a. m.—Spanish program.  
10:10 a. m.—Classified Period.  
11:00 a. m.—Program by courtesy of The Advance Electric Co.

- 5:15 to 5:45 p. m.—Radio Review.  
5:45 to 6:00 p. m.—Town Tattler.  
6:00 to 6:30 p. m.—Dinner music by Ray Bailey's Quartet.  
6:30 to 7:00 p. m.—Harry Jackson and his Entertainers, from Pig n' Whistle, Hollywood.

- 10:00 to 11:00 p. m.—Ed Landry's Orchestra, from Cinderella Roof, except Saturday.

- 2:15 p. m.—Ed Landry's Orchestra.  
5:00 p. m.—Radio Travel Tales.  
7:15 p. m.—KFVB String Quintet.  
7:45 p. m.—Daily News.  
8:00 p. m.—Emma Kimmel, soprano.  
9:00 p. m.—David Percy, baritone; Jack Cronshaw's Concert Orchestra.

### THURSDAY, MARCH 8

- 11:15 a. m.—Lecture on Psychology.  
1:00 p. m.—L. A. Police Dept. Quartet.  
7:00 p. m.—KFVB Concert Quintet.  
7:50 p. m.—Daily News.  
8:00 p. m.—Vernon Rickard, tenor; Leon Belasky's Russian Quartet.  
9:00 p. m.—Ann Grey, blues songs

### FRIDAY, MARCH 9

- 11:15 a. m.—Lecture on Psychology  
4:30 p. m.—A. T. Rainey, Psychic.  
5:00 p. m.—Radio Travel Tales.  
7:50 p. m.—Daily News.  
8:00 p. m.—Ruth Payette, soprano, and Otto Ploetz, tenor, in duets.  
9:00 p. m.—June Parker, blues songs.

### SATURDAY, MARCH 10

- 2:15 p. m.—Ed Landry's Orchestra.  
7:00 p. m.—A one-act play.  
7:30 p. m.—Program in honor of the Illustrated News.  
8:00 p. m.—Mona Motor Oilers  
9:00 p. m.—Ed Landry's Orchestra

**WALTER BIDDICK — Phone Westmore 9137**  
"A Complete Radio Program and Announcement Service"



12 Sizes — WE. 2712  
1929 Los Angeles St., L. A.

## FERBEND "B" ELIMINATORS

90 Volt, \$13.50 "The Last Word in "B" Eliminators" 180 Volt, \$20.50  
Ferbend is again to the fore. See the New Model 180 Volt.

NO LIQUIDS — NO ACIDS — NO HUM

### 9TH AND UNION RADIO SHOP

(Equipped to take care of all service work.)

1605 West 9th St.

Dunkirk 4091

Los Angeles



# The Falck Claroceptor

*Solves the A. C.  
Problem*

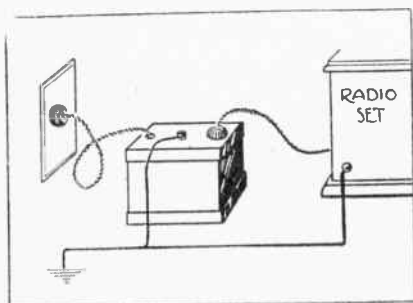


*Demand Already  
Exceeding Production*

*Get Yours Now!*



*Easy to Install*



Stops the electrical interference that enters your set on the A. C. lines.

Lowers the "noise level" and thereby increases DX range.

A vital accessory to every A. C. operated receiver.

**Complete, with Cord and Plug . . . \$7.50**

*Manufactured by*

**ADVANCE ELECTRIC CO.**

1260 West Second St.

Los Angeles



**TOM MITCHELL**  
Business Manager

Hollywood, California,  
570 Kc.

**K M T R**

500 WATTS—526 METERS

KMTR RADIO STATION

1025 N. Highland Ave. Phone HOLLY 3026

FORBES VAN WHY, Chief Engineer

TOM MITCHELL, Business Manager

LOREN POWELL, Musical Director

**DAILY EXCEPT SUNDAY—**

- 7:00 a. m.—Setting-up exercises directed by Prof. Barclay L. Severns.  
 7:30 a. m.—Louise Howatt's Hour of Happiness.  
 8:45 a. m.—Musical selections and time signals from Washington, D. C.  
 9:00 a. m.—Sylvia, the Blind Cook (except Monday, Wednesday and Friday).  
 11:00 a. m.—Al Wellman's Luncheon Bulletin.  
 12:00 noon—Luncheon Program.  
 12:30 p. m.—Walter Biddick's Southern California Program.  
 1:30 p. m.—KMTR Radio Press Agent Hour, featuring business announcements and musical selections.  
 4:30 p. m.—Brother Tom's Smiling Circle.  
 5:00 p. m.—Certified Air Bulletins.  
 5:45 p. m.—Timely Topics—Amusement and Cafe Announcements.  
 6:15 p. m.—Dinner Hour program, featuring the KMTR Concert Orchestra.  
 8:00 p. m.—Loren Powell's Symphony and assisting artists.  
 9:00 p. m.—Courtesy Program.  
 10:00 p. m.—Miller's Cafe Lafayette Dance Orchestra, directed by Ray West.  
 Correct time hourly by the Hancock Oil Company.

**WEEK COMMENCING SUNDAY, MARCH 4, 1928**

**SUNDAY, MARCH 4**

- 6:30 p. m.—Burr McIntosh's Half Hour of Cheer.  
 7:00 p. m.—Miller's Cafe Lafayette Concert Orchestra.  
 8:00 p. m.—Loren Powell's Little Symphony and assisting artists.

**MONDAY, MARCH 5**

- 8:45 a. m.—"Eye Strain and Nervousness."  
 6:00 p. m.—Jack's Turkish Baths courtesy program.  
 7:00 p. m.—Talk by Dr. Mars Baumgardt.

**TUESDAY, MARCH 6**

- 10:00 a. m.—"Hair-A-Gain" program.  
 2:30 p. m.—L. A. Police Quartet.  
 3:15 p. m.—Courtesy program.  
 7:30 p. m.—Game of "Ask Me Another."

**WEDNESDAY, MARCH 7**

- 2:30 p. m.—Hollywood Chamber of Comm.  
 3:30 p. m.—Artists from Carthay Circle Theatre.

- 4:15 p. m.—Walter Brown Murray, "Marriage."

- 6:00 p. m.—Jack's Turkish Baths courtesy program.

- 7:30 p. m.—Overell Furniture Co. courtesy program featuring Overell KMTR Players in a one-act play.

**THURSDAY, MARCH 8**

- 10:15 a. m.—Diet Question Box.  
 2:30 p. m.—"Hair-A-Gain" program.

**FRIDAY, MARCH 9**

- 3:30 p. m.—Artists from Hollywood Playhouse.  
 6:00 p. m.—Jack's Turkish Baths courtesy program.

**SATURDAY, MARCH 10**

- 10:30 a. m.—Gordon Whitnall of City Planning Commission.  
 7:30 p. m.—Talk by a representative of the Sheriff's office.  
 7:40 p. m.—Song recital by Tom Mitchell.

**Tune In** WALTER BIDDICK'S SOUTHERN CALIFORNIA PROGRAM  
**K M T R — 12:30 to 1:30 P. M.**



12 Sizes — WE. 2712  
 1929 Los Angeles St., L. A.

**DE JARNATT RADIO GROUND**

Will positively improve your reception. Without a De Jarnatt Ground you are not receiving what you should from your radio. Order from your Dealer or direct from Manufacturer.

**PRICE, \$7.00**

**B. J. DE JARNATT, 139 No. Alta St., Los Angeles. Capitol 6131**



*The Newest!*  
**SONATRON**  
*- 225 A -*

*To replace the 225 A C!*  
*Rounds out*  
*Sonatronic's A C Line*

**T**HE newest tube in the World's Largest Tube Line—the 225 A! This 3 volt transformer, heater element tube replaces the 225 A C, and has the cathode connections on the sides of the base instead of the prongs on the top of the tube as in the old type. Use it in any set wired for the 225 A C. Price \$5.00.



Sonatronic's 227 A C—designed for Detector and Amplifier purposes, and the 226 A C— for radio and audio frequency am-

plification, are already well-known favorites in the Sonatronic line. Neither requires an "A" Battery. Both will give superior results in tone and volume.

*Your Dealer Carries the Complete*  
**SONATRON Line**

*"The World's Largest Radio Tube Line"*

# SONATRON

WHOLESALE DISTRIBUTORS  
**LISTENWALTER & GOUGH, Inc.**

325 Fifth Street, San Francisco  
 819 E. First Street, Los Angeles

## Santa Monica, California—800 Kc.



MARGARET M. SHONTZ

**K N R C**

500 WATTS—375 METERS

Owned and Operated by  
**KIERULFF & RAVENSCROFT COMPANY**  
 Municipal Auditorium, Ocean Park, Santa Monica, Calif. Phone Santa Monica 63-101.

R. L. RUST, Business Manager  
 MARGARET M. SHONTZ, Program Director  
 C. B. JUNEAU, Transmission Engineer  
 R. W. OLBERT, Advertising



"RUSTY"

**DAILY EXCEPT SUNDAY—**

1:00 to 1:30 p. m.—Shopping Notes.  
 1:30 to 2:30 p. m.—Kierulff and Ravenscroft Courtesy Program.  
 3:00 to 3:30 p. m.—Story Hour.  
 3:30 to 4:30 p. m.—Crosley Preview.  
 6:00 to 7:00 p. m.—Club Casa del Mar Organ Recital.  
 7:00 to 8:00 p. m.—Merchant's Preview.

**WEEK COMMENCING SUNDAY, MARCH 4, 1928****SUNDAY, MARCH 4**

10:45 to 11:45 a. m.—Pilgrim Lutheran Ch. Services.  
 2:30 to 4:00 p. m.—Santa Monica Municipal Band Concert.  
 5:00 to 6:15 p. m.—Ocean Park Radio Co. courtesy program.  
 6:15 to 7:00 p. m.—Vesper Services, Pilgrim Lutheran Church.  
 7:00 to 8:00 p. m.—Club Casa del Mar Organ Recital featuring Frederick Landwehr.  
 8:00 to 9:00 p. m.—Santa Monica Municipal Band Concert.

**MONDAY, MARCH 5**

2:30 to 3:00 p. m.—Joe Waugh, The Booster, Request program.  
 8:00 to 9:00 p. m.—Community Singing, Auspices Bay Cities Music Association.  
 9:00 to 10:00 p. m.—Rendezvous Ballroom Orchestra.

**TUESDAY, MARCH 6**

8:00 to 9:00 p. m.—Joe Smith and his Sea Breeze Beach Club Orchestra.  
 9:00 to 10:00 p. m.—Rendezvous Ballroom Orchestra, direction Art Mace.

**WEDNESDAY, MARCH 7**

8:00 to 8:30 p. m.—Talk by Eugene Bis-

cailluz, Undersheriff of L. A. County.  
 8:30 to 9:30 p. m.—Rendezvous Ballroom Orchestra direction Art Mace.  
 9:30 to 10:30 p. m.—Fights blow by blow from Ocean Park Athletic Club.

**THURSDAY, MARCH 8**

2:30 to 3:00 p. m.—International Bible Students Association.  
 8:00 to 9:00 p. m.—Main studio program featuring artists of the Bay Cities Music Assn.  
 9:00 to 10:00 p. m.—Rendezvous Ballroom Orchestra.

**FRIDAY, MARCH 9**

8:00 to 9:00 p. m.—Main studio program, featuring the Vaughn Hawaiian Trio.  
 9:00 to 10:00 p. m.—Rendezvous Ballroom Orchestra.

**SATURDAY, MARCH 10**

2:30 to 3:00 p. m.—International Bible Students Association.  
 8:00 to 9:00 p. m.—Santa Monica Municipal Band Concert.  
 9:00 to 10:00 p. m.—Rendezvous Ballroom Orchestra.

Major Lawrence Mott  
Announcer

## Avalon, California—1000 Kc.

**KFWO**

AND 5656 KC.—53.07 METERS  
 THE CATALINA ISLAND STATION  
 Power 250 Watts—300 Meters

MAJOR LAWRENCE MOTT, Owner-Operator,  
 MISS FRANCES HEWITT, Studio & Program Dir.

"The Isle with a Smile"

**DAILY EXCEPT MONDAY—**

12:30 to 1:45 p. m.—Hotel St. Catherine Orchestra  
 6:30 to 8:00 p. m.—Hotel St. Catherine Orchestra.

*Rebroadcasting of Other Stations on All Evening Programs*

**SUNDAYS**

5:00 to 6:00 p. m.—Miss Hewitt's Golden Hour.  
 8:15 to 9:15 p. m.—St. Catherine Lobby concert.

**TUESDAYS**

5:00 to 6:00 p. m.—Miss Hewitt's Golden Hour.

**FRIDAY'S**

5:00 to 6:00 p. m.—Miss Hewitt's Golden Hour.

Los Angeles, California

500 WATTS—288.3

1040 Kc.

**K P L A**

Commercial Exchange Building  
Eighth and Olive Streets  
BERTRAM O. HELLER, Business Manager  
LEIGH HARLINE, Program Manager  
ROLAND COLBERT, Engineer  
*Romola Station*  
Phone TRinity 3202

DAILY EXCEPT SUNDAY—

- 10:00 to 10:30 a. m.—Records, courtesy of Barker Bros. (except Tues., Thurs., Sat.).
- 10:30 to 11:00 a. m.—Prudence Penny, courtesy of L. A. Examiner (except. Thurs., Sat.).
- 11:00 to 12:00 a. m.—KPLA Diversities.
- 3:00 to 4:00 p. m.—Palais de Dance, featuring Ralph Markey and his Musical Keys.
- 4:00 to 4:03 p. m.—Health Bulletin (except Saturday).
- 4:03 to 5:00 p. m.—Records, courtesy of Barker Bros.
- 5:00 to 6:00 p. m.—Sundown Frolic (except Mon., Wed. and Fri.).
- 6:00 to 7:00 p. m.—Dinner hour program.
- 10:00 to 11:00 p. m.—Palais de Dance.

WEEK COMMENCING SUNDAY, MARCH 4, 1928

- SUNDAY, MARCH 4**  
8:00 p. m.—Leigh Harline and Romola Theater Orchestra; Billy Barron, Wint Cotton, Kathryn O'Neil.

- MONDAY, MARCH 5**  
5:00 p. m.—Spanish Course.  
5:30 p. m.—Sundown Frolic.  
7:00 p. m.—Hal Chasnoff String Ensemble.  
8:00 p. m.—Semi-Classical Hour.  
9:00 p. m.—Romola Theater Orchestra.

- TUESDAY, MARCH 6**  
6:45 p. m.—Senator George Wilder Cartwright.  
7:00 p. m.—Semi-Classical Hour.  
8:00 p. m.—Bob Harker and Tod Watterman in Banjo Duets; Virginia McCoy  
9:00 p. m.—Bert Fahrquason, Dorothy and Frankie Merlo.

- WEDNESDAY, MARCH 7**  
5:00 p. m.—Spanish Course.  
5:30 p. m.—Sundown Frolic.  
7:00 p. m.—Harry Coe, Kathryn O'Neal.  
8:00 p. m.—Semi-Classical Hour.

- 9:00 p. m.—Ida Schutz, soprano; Pat O'Neil, Irish baritone; Grady T. Sampson.

- THURSDAY, MARCH 8**  
7:00 p. m.—Glen Edmunds and his Collegians.  
8:00 p. m.—Alice Lee Wiley, piano recital.  
8:30 p. m.—G. E. Roletti and James Mulligan.  
9:00 p. m.—Romola Theater Orchestra.

- FRIDAY, MARCH 9**  
2:30 p. m.—Bureau of Public Safety  
5:00 p. m.—Spanish Course.  
5:30 p. m.—Sundown Frolic.  
7:00 p. m.—Helene Delzel.  
8:00 p. m.—Hulda Dietz; Florentine String Trio.  
9:00 p. m.—Cecil Fry and his Blue Three.
- SATURDAY, MARCH 10**  
7:00 p. m.—Studio program.  
8:00 p. m.—Carfagne String Quartet; Emma Kimmell and Glen Pearce.  
9:00 p. m.—Fay Sisters, Billy Barron and Bobby Gross.

Wonderful Publicity for Sponsors  
Good Programs on Many Stations

WALTER BIDDICK  
Phone WESTmore 9137

**RADIOLA SPECIALISTS**

If your Radiola 28 or your Radiola 20 is out of balance, its selectivity and distance is greatly impaired. We make them perform like they should.

The Harmonics on your Radiola 25 can be eliminated. Ask about it!

We Have R. C. A. UX222 Double Grid Tubes in Stock

**LABORATORY OF RADIO STANDARDS**

E. K. HAYES

2408 West Vernon

VERmont 6543

Los Angeles, Calif.



**WALTER MCCREERY**  
Gen. Mgr. & Announcer

# Los Angeles—1410 Kc. K G F J

212.6 METERS

Washington Blvd. at Oak Street  
Owned and Operated by Ben S. McGlashan  
W. K. McCREERY, General Manager  
OTTO HOEG, Musical Director

Phones: Westmore 7777 and Westmore 7788  
"Keep Good Folks Joyful"



**OTTO HOEG**  
Musical Director

**DAILY EXCEPT SUNDAY—**

- 12:00 p. m.—"Nite Owl" program popular music.
- 6:30 a. m.—Breakfast Frolic, Aero-Adds Service.
- 8:30 a. m.—Gordon Smith's Radiotising Service.
- 12:00 p. m.—Uncle Walt's Luncheon Hour.
- 1:00 p. m.—Gordon Smith's Radiotising Service.
- 2:00 p. m.—Studio hour, except Monday.
- 2:30 p. m.—Frank Martin, tenor; Otto Hoeg, pianist.
- 3:30 p. m.—Studio Hour.
- 6:00 p. m.—Aero-Adds Service.
- 7:00 p. m.—Gordon Smith's Radiotising Service.
- 8:00 p. m.—El Patio Ballroom Orchestra, by remote control.

**WEEK COMMENCING SUNDAY, MARCH 4, 1928**

**SUNDAY, MARCH 4**

- 12:01 a. m.—Popular music on the Electrola.
- 10:00 a. m.—U. S. C. Southlanders Orchestra.
- 12:30 p. m.—Merle Holmes Elite Trio.
- 1:30 p. m.—Hoot Gibson's Hawaiian Trio.
- 2:30 p. m.—Otto Hoeg, pianist and vocalist.

**MONDAY, MARCH 5**

- 12:00 p. m.—Peggy Price, blues.
- 2:00 p. m.—L. A. Police Quartet.
- 6:00 p. m.—John Enright Orchestra.
- 7:00 p. m.—Angel City Four Quartet; Charlie Davis, songs.

**TUESDAY, MARCH 6**

- 12:00 noon—Charlie Cole, tenor.
- 3:30 p. m.—Frank and Don; Charlie Cole.
- 7:00 p. m.—Angel City Four Quartet and Two Little Redheads.

**WEDNESDAY, MARCH 7**

- 12:00 noon—Peggy Price, blues singer.
- 3:30 p. m.—Hale Hooper, tenor.
- 7:00 p. m.—Charlie Davis, uke and songs; Skeet Wakefield.

**THURSDAY, MARCH 8**

- 12:00 noon—Peggy Price, blues singer.
- 3:30 p. m.—Frank and Don, harmony team.
- 7:00 p. m.—Angel City Quartet.

**FRIDAY, MARCH 9**

- 12:00 noon—Charlie Cole, tenor.
- 3:30 p. m.—Frank and Don, harmony team.
- 7:00 p. m.—Golden State Hawaiian Trio.

**SATURDAY, MARCH 10**

- 12:00 noon—Charlie Cole, tenor.
- 3:30 p. m.—Frank and Don, harmony team.
- 7:00 p. m.—Keystone String Quartet.

## RAY CAMPBELL

AC Sets, Transformers and Chokes,  
5763 N. Huntington.. GA. 9185.

## Radio Publicity—Results Assured

**WALTER BIDDICK**  
WEStmore 9137



SO THEY COMPROMISED  
—  
—  
SHE GOT THE RADIO



TOM SEXTON

# San Diego, California—680 Kc.

# KFSD

500 WATTS—440.9 METERS  
Grant Hotel, 328 Broadway, San Diego  
Telephone Main 8661  
WM. H. BLACK, President  
TOM SEXTON, General Manager  
"A Kiss from San Diego"

### DAILY EXCEPT SUNDAY—

10:00 to 11:00 a. m.—Amy Lou Shopping Hour.  
12:30 to 1:30 p. m.—Carr Bros. Plata Real Orchestra.  
5:45 to 6:00 p. m.—Late news items, sporting events by San Diego Union and Tribune.  
6:00 to 7:00 p. m.—Musical Review.

### SUNDAY, MARCH 4

11:15 a. m. to 12:15 p. m.—Services 1st Unitarian Church.  
2:00 to 3:00 p. m. — Services International Bible Students.  
3:00 to 4:00 p. m. — Services Theosophical Society.  
8:15 to 10:00 p. m.—Concert program, featuring Hutton's Hotel Del Coronado Concert quartette and John Claire Monteith.

### MONDAY, MARCH 5

7:00 to 8:00 p. m.—All Star Five Orch.  
8:00 to 9:00 p. m.—Studio program.  
9:00 to 10:00 p. m.—San Diego Union and Evening Tribune musical program.

### TUESDAY, MARCH 6

7:00 to 8:00 p. m.—Musical program.  
8:00 to 9:00 p. m.—Thearle's classical or- thophonic.  
9:00 to 10:00 p. m.—Studio artists' hour.

### WEDNESDAY, MARCH 7

7:00 to 7:30 p. m.—Theodore Warfield, De- ris Ridgway.

7:30 to 8:30 p. m.—Concert program, Theo- sophical Society.  
8:30 to 9:00 p. m.—Orthophonic pipe organ.  
9:00 to 10:00 p. m.—Aeolian Quartette.  
10:00 to 11:00 p. m.—Ratliff Dance Acad.

### THURSDAY, MARCH 8

7:00 to 8:00 p. m.—San Diego Police Dept. program.  
8:00 to 9:00 p. m.—Unitarian Church conct.  
9:00 to 10:00 p. m.—Ratliff Academy of Dancing.

### FRIDAY, MARCH 9

7:00 to 8:00 p. m.—Fegan's San Diego Orch.  
8:00 to 8:30 p. m.—Minor Twins, Stubbs Brothers.  
8:30 to 10:00 p. m. — Hutton's Hotel Del Coronado Concert Quartette.

### SATURDAY, MARCH 10

7:00 to 8:00 p. m.—San Diego H. S. prog.  
8:00 to 9:00 p. m.—Franco-American houh.  
9:00 to 10:00 p. m.—Studio program.  
10:00 to 11:00 p. m.—Ratliff Dance Acad.

## Building Goodwill via Radio

For Information Phone  
WALTER BIDDICK WEstmore 9137



12 Sizes — WE. 2712  
1929 Los Angeles St., L. A.



Remember!  
"Radio Owl"  
Can't Forget!



Radio Owl  
2269 E. 51st St.  
Los Angeles  
DElaware 9866



# K M I C

## Inglewood, California

### 1340 Kc.

250 WATTS—224 METERS

Owned and Operated by James R. Fouch

O. B. MILLS, Engineer

Chamber of Commerce Bldg., Inglewood, Calif.

Phone Direct Wire, THornwall 1121

Long Distance, Inglewood 1897



**JAMES FOUCH**  
Manager

**THE "NEW IDEA" MAN**

**"THE NEWSPAPERS OF THE AIR"**—Bulletins on News, Sports, The Theaters, Stock Market and Automobiles

**DAILY EXCEPT SUNDAY—**

- 7:00 a. m.—Shopping List with Records.
- 8:00 a. m.—KMIC Breakfast Club.
- 9:50 a. m.—Mrs. Little Eddie Barnes Cooking Hints.
- 10:00 a. m.—Lake & Terrill Ten Strings of Harmony, except Tuesday, Thursday, Saturday.
- 11:00 a. m.—Organ Recital.
- 12:00 p. m.—Orthophonic Concert.
- 2:45 p. m.—Falk No Battery String Trio.
- 4:00 p. m.—Country Jane old song request, except Tuesday, Wednesday and Saturday.
- 5:00 p. m.—Organ Request Program.
- 10:00 p. m.—Dance Program.

**WEEK COMMENCING SUNDAY, MARCH 4, 1928**

**SUNDAY, MARCH 4**

- 8:15 a. m.—Breakfast Club.
- 10:00 a. m.—Congregational Church Sermon.
- 11:00 a. m.—Centinela Baptist Church.
- 8:00 p. m.—International Bible Students.

**MONDAY, MARCH 5**

- 9:00 a. m.—Little Eddie Barnes.
- 2:00 p. m.—Betty Allison, soprano
- 3:00 p. m.—Smile Club.
- 6:00 p. m.—National String Guitar Trio.
- 7:00 p. m.—City of Inglewood

**TUESDAY, MARCH 6**

- 9:00 a. m.—Matelda Maguire and Nellie McGrath.
- 10:00 a. m.—String Trio.
- 2:00 p. m.—Concert Trio.
- 3:00 p. m.—L. A. County Sheriff.
- 4:00 p. m.—Ka Mulani Murphy Comedians
- 5:00 p. m.—Earl Creedon and Eddie Johnson.
- 6:00 p. m.—Phyrne Alston, soprano
- 7:00 p. m.—Sterling Mixed Quartet.

**WEDNESDAY, MARCH 7**

- 9:00 a. m.—Little Eddie Barnes.
- 2:00 p. m.—Phyrne Alston, soprano
- 3:00 p. m.—L. A. Police Quartette.
- 4:00 p. m.—Kiddie Hour.
- 6:00 p. m.—Josephine Lachmer.
- 7:00 p. m.—California Hijackers
- 7:45 p. m.—Health Talk.

**THURSDAY, MARCH 8**

- 9:00 a. m.—Nellie Callender Mills, violinist
- 10:00 a. m.—String Trio.
- 10:30 a. m.—Tillie, The Toiler.
- 2:00 p. m.—California Poppies and soloist.
- 3:00 p. m.—L. A. Firemen's Orchestra.
- 4:00 p. m.—Health and Diet Talk.
- 5:00 p. m.—Mildred Jean, soprano
- 6:00 p. m.—Lillian Lewis, soprano
- 7:00 p. m.—George D. Fassett Trio
- 8:00 p. m.—B. Natural Syncopaters
- 10:00 p. m.—George Falrigat and Tivoli Orchestra and soloists.

**FRIDAY, MARCH 9**

- 9:00 a. m.—Little Eddie Barnes.
- 2:00 p. m.—Murphy's Comedians.
- 3:00 p. m.—Detective Nock Harris
- 6:00 p. m.—Aeolian Concert Trio.
- 7:00 p. m.—Loyal Order of Goodfellows.

**SATURDAY, MARCH 10**

- 9:00 a. m.—Dorothy Gerst
- 10:00 a. m.—String Trio.
- 10:30 a. m.—Marshall H. Borden.
- 2:00 p. m.—Little Eddie Barnes, vaudeville.
- 5:00 p. m.—Hawaiian String Trio.
- 6:00 p. m.—Dance Orchestra.
- 7:00 p. m.—Ruth Marshall Patterson.
- 9:00 p. m.—Sawtelle Newsboy Harmonica Band; Harry Vonzell

# Standard Radio Co.

Telephone: WESTmore 1560

417 West Pico Street

11 years in the Radio business in Los Angeles. Call on us or phone for free advice in regard to modernizing your Radio set.

*Authorized Sales and Service*

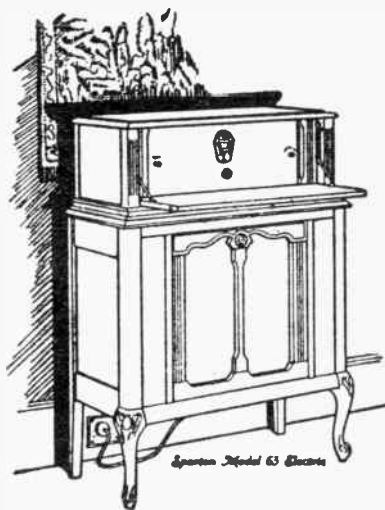
**ATWATER KENT CROSLY SPARTON**  
**PEERLESS, ROLA AND WESTERN ELECTRIC SPEAKERS**



# SPARTON RADIO

*"The Pathfinder of the Air"*

For more than two  
and one-half years  
Sparton has built  
America's success-  
ful A.C. receiver.



Hear the Sparton—in justice to Radio.  
And when you hear it you will never  
be satisfied with less.

*Exclusive Glendale Distributors*

## Shuck Music Company

211 North Brand Boulevard  
GLENDALE, CAL.

Open Evenings

Glendale 2329



**"HAL" G. NICHOLS**  
Manager

# K F O N

Long Beach, California  
1240 Kc.

500 WATTS—242 METERS  
PIGGLY WIGGLY STATION

Owned and Operated by  
NICHOLS & WARINNER, Inc.

Studio: 211 Jergins Trust Bldg. 617-19, 614-60  
Office: 212 Jergins Trust Bldg. 617-19, 614-60  
"Where Your Ship Comes In"



**CLARENCE CARY**  
Announcer

**DAILY EXCEPT SATURDAY AND SUNDAY—**

- 9:30 to 10:00 a. m.—Organ Recital.
- 10:15 to 10:30 a. m.—Devotional Period.
- 10:30 to 11:30 a. m.—Physiology of Beauty, Georgia O. George.

**DAILY EXCEPT SUNDAY—**

- 8:30 to 9:30 a. m.—The "Bright" and "Early" Hour.
- 11:30 a. m. to 12:00 noon—Press-Telegram Early News, by Frank Goss.
- 12:00 noon—Lost and Found Announcements.
- 4:00 to 4:30 p. m.—Press-Telegram Late News, by Frank Goss.
- 4:30 to 6:45 p. m.—Piggly Wiggly Concert Orchestra and Entertainers.

**DAILY EXCEPT MONDAY—**

- 2:30 to 4:00 p. m.—Long Beach Municipal Band Concert.
- 8:00 to 9:00 p. m.—Press-Telegram presenting L. B. Municipal Band.
- 12:00 to 1:00 a. m.—Daily Dance Program.

**WEEK COMMENCING SUNDAY, MARCH 4, 1928**

**SUNDAY, MARCH 4**

- 9:30 a. m.—Capitol Theater organ.
- 11:00 a. m.—Church of Christ.
- 12:30 p. m.—Birkel Music Co.
- 1:30 p. m.—Pacific Coast Club organ.
- 4:00 p. m.—Studio program.
- 4:30 p. m.—Concert Orchestra.
- 6:00 p. m.—Pacific Coast Club.
- 7:00 p. m.—Barkey's Ladies Mandolin Orch.
- 7:45 p. m.—Services First Church of Christ.
- 9:00 p. m.—"Piggly Wiggly" All-Star Night.

**MONDAY, MARCH 5**

- 10:00 a. m.—"Shopping News."
- 12:00 noon—Moore's Apparel Shop.
- 12:30 p. m.—Eastman Furniture Co.
- 1:00 p. m.—"A Street In Spain"
- 1:30 p. m.—Capitol Theater organ.
- 2:00 p. m.—Rialto Radio Co.
- 2:30 p. m.—Capitol Theatre organ.
- 6:45 p. m.—"Recent Books," Mrs. Eileen E. Folsom.
- 7:00 p. m.—Suydam's Buttercream School-house.
- 8:00 p. m.—Truck Tire Service Co.
- 9:00 p. m.—Kiwanis Frolic.

**TUESDAY, MARCH 6**

- 10:00 a. m.—Crime Suppression—J. Allen McManis.
- 12:00 noon—Central Garage.
- 12:30 p. m.—Georgia O. George.
- 1:00 p. m.—Kiwanis Club Luncheon.
- 1:30 p. m.—Harrison's Shoe Store.
- 2:00 p. m.—Capitol Theater organ.
- 6:45 p. m.—Talk on Health, Dr. Robt. Williams.
- 7:00 p. m.—Bear Cafe Jazz Band.
- 9:00 p. m.—Studio Orchestra.
- 10:00 p. m.—Majestic Ballroom.
- 1:00 a. m.—Pacific Coast Club organ.

**WEDNESDAY, MARCH 7**

- 10:00 a. m.—Shopping News.
- 12:00 noon—Moore's Apparel Shop.
- 12:30 p. m.—Eastman Furniture Co.
- 1:00 p. m.—Rotary Club Luncheon.
- 1:30 p. m.—"A Street In Spain"
- 2:00 p. m.—Rialto Radio Co.
- 6:45 p. m.—"Understand Your Child," Clarence H. Woodruff.

- 7:00 p. m.—Church of Christ.
  - 7:30 p. m.—Georgia O. George.
  - 9:00 p. m.—Studio program.
  - 9:30 p. m.—Main Event, Wilmington Bowl, House of Everett.
  - 10:30 p. m.—Capitol Theater organ.
  - 11:00 p. m.—Pacific Coast Club.
- THURSDAY, MARCH 8**
- 10:00 a. m.—Crime Suppression—J. Allen McManis.
  - 12:00 noon—Central Garage.
  - 12:30 p. m.—Georgia O. George.
  - 1:00 p. m.—"A Street In Spain"
  - 1:30 p. m.—Harrison's Shoe Store.
  - 2:00 p. m.—Health and Efficiency.
  - 6:45 p. m.—"Real Estate," Stanley F. Howland.
  - 7:00 p. m.—Piggly Wiggly Snappy Hour.
  - 9:00 p. m.—Masterpiece program.
  - 10:00 p. m.—Majestic Ballroom.
  - 11:00 p. m.—Pacific Coast Club organ.

**FRIDAY, MARCH 9**

- 10:00 a. m.—Shopping News.
- 12:00 noon—Moore's Apparel Shop.
- 12:30 p. m.—Eastman Furniture Co.
- 10:00 p. m.—Masonic Club Luncheon.
- 1:30 p. m.—Rich's Quality Bakery.
- 2:00 p. m.—Rialto Radio Co.
- 6:45 p. m.—"Character Training," Seymour I. Stone.
- 7:00 p. m.—Sunshine Farms Club.
- 9:00 p. m.—"Ye Olde Song Album."
- 10:00 p. m.—Capitol Theater organ.
- 11:00 p. m.—Pacific Coast Club Orchestra.

**SATURDAY, MARCH 10**

- 10:00 a. m.—Crime Suppression—J. Allen McManis.
- 10:15 a. m.—Cloverleaf Chocolate Shop.
- 10:30 a. m.—Capitol Theater organ.
- 12:00 noon—Central Garage.
- 12:30 p. m.—Georgia O. George.
- 1:00 p. m.—Harrison's Shoe Store.
- 1:30 p. m.—Imperial Trio.
- 6:45 p. m.—Parents & Teachers' Ass'n.
- 7:00 p. m.—Pacific Coast Club Orchestra.
- 7:45 p. m.—Trusts and Wills.
- 9:00 p. m.—Pacific Coast Club Orchestra.
- 10:00 p. m.—Masterpiece program.
- 11:00 p. m.—Majestic Ballroom Orchestra.

Supreme  
 Model  
 \$ 69.75  
 complete  
 6 Tubes



# PATTERSON RADIO

ALL ELECTRIC

**S**INGLE Dial Selector (*electrically lighted*) for ease of tuning and selectivity. Modulator Control brings in the stations with powerful volume or faint whisper at will. Built-in Golden Bear Air Column Speaker gives that clear, rich mellow tone which is truly a revelation. Built of the best standard parts. Raytheon equipped. Special A. C. Filament Tubes.



"Dinner Hour Music"

*No Batteries or Chargers*

FACTORY TO YOU

Patterson Radio Mfg. Co.

Factory  
 Guarantee

Vandike 8139  
 239 South Los Angeles St.



**CURTIS PECK**  
Announcer

## San Francisco, California—710 Kc.

# KPO

1000 WATTS—422 METERS  
HALE BROTHERS AND THE CHRONICLE  
J. W. LAUGHLIN, Managing Director  
MRS. FREDERICK CROWE, Program Director  
ALBERT J. HODGES, Technical Director  
Phone Kearney 5777  
"The Voice of San Francisco"

### DAILY EXCEPT SUNDAY—

- 8:45 to 8:00 a. m.—Health and Happiness Period.  
8:00 to 9:00 p. m.—The Shell Happy Time.  
10:30 to 10:45 a. m.—"Ye Town Crier" (Ex. Tues.).  
11:30 to 1:00 p. m.—Kane's Hawaiians, except Friday.  
12:00 noon—Time Signals.  
1:00 to 2:00 p. m.—KPO Concert Orchestra.  
1:15 p. m.—Stock and Fruit Reports. (Ex. Wednesday and Friday).  
4:00 to 5:00 p. m.—KPO Instrumental Trio.  
5:00 to 6:00 p. m.—Children's Hour.  
6:00 to 6:30 p. m.—"Ye Towne Crier."  
6:30 to 7:30 p. m.—Musical Program, except Wednesday and Thursday.  
7:30 to 8:00 p. m.—DX period, except Monday and Saturday.

### WEEK COMMENCING SUNDAY, MARCH 4, 1928

#### SUNDAY, MARCH 4

- 9:45 a. m.—Undenominational and non-sectarian church services.  
1:00 p. m.—N. B. C. program.  
3:00 p. m.—N. B. C. program.  
5:30 p. m.—Studio program.  
6:30 p. m.—Standard Symphony Hour over P. C. N.  
7:30 p. m.—Organ recital by Uda Waldrop.  
8:30 p. m.—Rudy Seiger's Fairmont Hotel Concert Orchestra.

#### MONDAY, MARCH 5

- 7:00 p. m.—Book Review by Harold Small of The Chronicle.  
8:00 p. m.—Program by N.B.C. over P.C.N.

- 9:00 p. m.—N. B. C. program.  
10:00 p. m.—N. B. C. program.  
10:30 p. m.—KPO's Variety program featuring KPO's well known artists.

#### TUESDAY, MARCH 6

- 10:00 a. m.—Activity conducted by Ann Warner, domestic economist.  
10:30 a. m.—N. B. C. program.  
11:00 a. m.—N. B. C. program.  
8:00 p. m.—N. B. C. program.  
8:30 p. m.—Bridge Lesson No. 19 over P. C. N.  
9:00 p. m.—Kolster Radio Hour.  
10:00 p. m.—KPO Dance Orchestra.

#### WEDNESDAY, MARCH 7

- 10:45 a. m.—Betty Crocker's Gold Medal Flour Home Service talk.  
6:30 p. m.—N. B. C. program.  
7:00 p. m.—Gypsy and Marta.  
8:00 p. m.—Atwater Kent Artists under the auspices of Ernest Ingold, Inc.  
9:00 p. m.—Morris Plan Hour.  
10:00 p. m.—KPO Dance Orchestra.

#### THURSDAY, MARCH 8

- 10:00 a. m.—Activity conducted by Ann Warner domestic economist.  
11:30 a. m.—Program by Kane's Hawaiians.  
6:30 p. m.—Recital by Uda Waldrop, organ.  
7:00 p. m.—Poultry talk.  
7:15 p. m.—Sports on the Air by Harry Smith of The Chronicle.  
8:00 p. m.—Program for California Petroleum Corp. over P. C. N.  
9:00 p. m.—N. B. C. program over P. C. N.  
10:00 p. m.—KPO Dance Orchestra.

#### FRIDAY, MARCH 9

- 10:45 a. m.—Betty Crocker's Gold Medal Flour Home Service talk.  
11:00 a. m.—Ninon, fashion critic of The Chronicle.  
11:15 a. m.—Art talk by Helen Gordon Barker.  
11:30 a. m.—Program by Kane's Hawaiians.  
12:45 p. m.—Commonwealth Club luncheon at Palace Hotel.  
1:30 p. m.—KPO Concert Orchestra.  
8:00 p. m.—N. B. C. program over P. C. N.  
9:00 p. m.—N. B. C. program.  
9:30 p. m.—Abas String Quartet, with Allan Wilson, tenor, guest artist.  
10:30 p. m.—KPO Dance Orchestra.

#### SATURDAY, MARCH 10

- 10:00 a. m.—Activity conducted by Ann Warner, domestic economist.  
8:00 p. m.—N. B. C. program over P. C. N.

**RADIO BRACH PRODUCTS**

BRACH RADIO PRODUCTS are the result of over 20 years' experience in the manufacture of fine electrical protective devices.

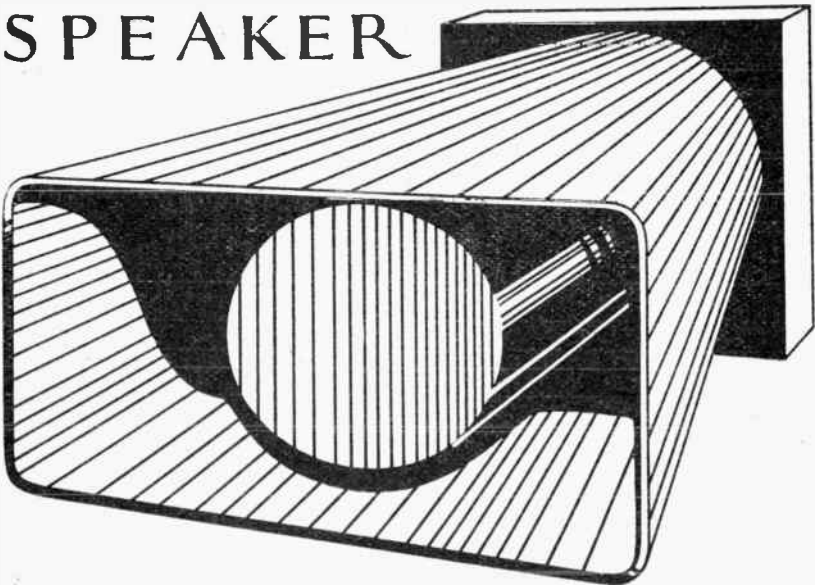
**BRACH**  
Make sure of the best by insisting on

**Lightning Orresters**  
(With \$100 Free Insurance)  
Controlit  
Phone Plugs  
Cord Connectors  
Crystal Insulators  
Window Leads  
Hydrometers  
Complete Aerial Outfits  
Solderall

**L.S. BRACH**  
MFG. CORP.  
NEWARK, N. J.      TORONTO, CAN.

*“Voice of the Air”*

AEROFONIC  
AIR COLUMN  
SPEAKER



*A Revelation in True Tone  
Reproduction*

Amplified Volume with Perfect Clarity and Mellowed Tone

No Metallic Blasting Nor Distortion

Made in 9 Sizes to Replace the Speaker in Your Console  
or Cabinet

*Manufactured Exclusively by*

THE AEROFONIC COMPANY

HILL AT 35TH STREET    PHONE HUMBOLT 5770    LOS ANGELES



**HOWARD MILHOLLAND**  
Announcer

## Oakland, California—780 Kc.

# KGO

5000 WATTS—384 METERS  
PACIFIC COAST STATION, GENERAL ELECTRIC CO.  
Phone Fruitvale 5980

### DAILY EXCEPT SUNDAY—

- 11:30 a. m. to 1:00 p. m.—Luncheon concert.  
12:00 and 1:00 p. m.—Stock and weather reports.  
6:00 p. m.—San Francisco and New York Stocks (ex. Saturday).  
7:00 p. m.—Weather Reports (except Tues. and Wed.).  
9:00 p. m.—Time Signals

### WEEK COMMENCING SUNDAY, MARCH 4, 1928

#### SUNDAY, MARCH 4

- 11:00 a. m.—First Baptist Church service.  
1:00 p. m.—Gold Strand Group, N. B. C.  
3:00 p. m.—N. B. C. Program.  
4:00 p. m.—Vesper service.  
6:30 p. m.—Standard Symphony Hour, N. B. C.  
7:30 p. m.—Weather report.  
7:35 p. m.—First Baptist Church service.  
9:00 p. m.—Don Amaizo musical program.  
9:30 p. m.—"Moon Magic," N. B. C.

#### MONDAY, MARCH 5

- 3:30 p. m.—California Federation of Women's Clubs.  
4:00 p. m.—Hotel St. Francis  
5:30 p. m.—Aunt Betty (Ruth Thompson)  
6:35 p. m.—Rembrandt Trio.  
8:00 p. m.—Rudy Seiger's Shell Symphonists.  
9:00 p. m.—Western Artists Series concert.  
9:30 p. m.—Fiske Program.  
10:00 p. m.—"Broadways and Boulevards,"

#### TUESDAY, MARCH 6

- 10:30 a. m.—Johnson Washer program, N. B. C.  
11:00 a. m.—Royal Baking Powder program.  
11:15 a. m.—"Everyday Living," Christina Madison.  
6:30 p. m.—Dinner concert.  
8:00 p. m.—Eveready Hour, N. B. C.  
8:30 p. m.—U. S. Bridge Lessons, N. B. C.  
9:00 p. m.—"Retold Tales," N. B. C. program.  
9:30 p. m.—"The Rounders," N. B. C.

#### WEDNESDAY, MARCH 7

- 11:15 a. m.—Freda Bayley; "The Home."

#### THURSDAY, MARCH 8

- 6:30 p. m.—"Sunkist Melodists."  
7:00 p. m.—Farm program.  
8:00 p. m.—Vaudeville.  
9:00 p. m.—N. B. C. program.  
10:00 p. m.—Hotel St. Francis dance orchestra and soloists.  
6:30 p. m.—Dinner concert.  
8:00 p. m.—Calpet program.  
9:00 p. m.—Dodge Brothers program, N. B. C.  
9:30 p. m.—Royal Baking Powder Half Hour.  
10:00 p. m.—Hotel St. Francis dance orch.

#### FRIDAY, MARCH 9

- 11:10 a. m.—Elmer Martin, "Home Economics."  
5:30 p. m.—Da-Ra-O, wise man from the Land-O-Health.  
6:25 p. m.—"Weekly Financial Review."  
6:35 p. m.—Parisian Quintette.  
8:00 p. m.—Wrigley Hour  
9:00 p. m.—White Rock program, N. B. C.  
9:30 p. m.—"In Memory Lane," N. B. C.  
10:00 p. m.—Girvin-Beale's Hotel Oakland dance orchestra.

#### SATURDAY, MARCH 10

- 6:00 p. m.—Kohler & Chase dinner concert.  
7:00 p. m.—"A Chat About New Books."  
7:15 p. m.—Weekly sport review, Al Sontoro.  
8:00 p. m.—"RCA Hour," N. B. C.  
9:00 p. m.—"Philco Hour," N. B. C.  
10:00 p. m.—N. B. C. program.  
11:00 p. m.—Hotel St. Francis dance orch.

**Golden Bear** AIR COLUMN  
**SPEAKER**

12 Sizes — WE. 2712  
1929 Los Angeles St., L. A.

# SILVER THE KING

24 Kt Gold  
Pure Silver  
Soft  
Copper

## Gosilco Super Aerial Wire Gold over Silver on Copper

Greatly Increased DX Range, 35% More Volume—Clearer Tone—25% Sharper Tuning—Non-Corrosive. Lacquered to Retail Brilliancy. Used and approved by Tech. Engrs., broadcasters and DX fans everywhere. 100 ft., \$4.00; 75, \$3.25; 50, \$2.50. Bus Wire, 10c per 2-foot lengths. Pat. App'd for.

At All Dealers, Or Write

**GOSILCO RADIO PRODUCTS CO.**

320 Marbrisa Ave.

Huntington Park, Cal.

RADIO IS BETTER WITH BATTERY POWER

# FLAT cells make the Layerbilt last longest of all EVEREADYS

UNTIL the Eveready Layerbilt "B" Battery was invented, the one-and-one-half-volt cylindrical flashlight dry cell was the unit of construction. Fifteen of these cells connected in series and sealed in a package make a 22½-volt "B" battery and 30 of them make a 45-volt battery.

The only way these cylindrical cells can be assembled in a box is to stand them side by side, connecting them electrically by soldered wires. This assembly unavoidably leaves open spaces between the cells. To hold the cells in place and prevent breaking the connecting wires, the spaces customarily are filled with pitch. Fully one-half of the cubic contents of such a battery is wasted.

To avoid these disadvantages of the cylindrical cell type of construction the Eveready

*Illustrated to the right is the cylindrical cell type of "B" battery construction. Note the waste space between the cells.*



Layerbilt was designed. In place of the round cell we invented and perfected a square-cornered, flat cell. Such cells packed tightly together make the Eveready Layerbilt solid as a brick, no wires to break. Moreover, the flat cells are more efficient — active materials produce more current when in the flat shape than the same quantity of materials produce in the old-type cylindrical cell.



*This is the patented Eveready Layerbilt, the unique "B" battery that contains no waste spaces.*

For modern sets, use the Eveready Layerbilt, which contains these highly efficient, patented cells. This is the longest-lasting, most economical and convenient Eveready "B" Battery ever produced. Like all other

Eveready Radio Batteries, it provides Battery Power, which is pure Direct Current, silent, uniform, the only kind of current that gets the best out of a radio set. Insist on the Eveready Layerbilt.

National Carbon Co., Inc.  
New York San Francisco



Unit of Union Carbide and Carbon Corporation

Tuesday night is Eveready Hour  
Night

East of the Rockies  
9 P. M., Eastern Standard Time  
Through WJAF and associated  
N. B. C. stations

On the Pacific Coast  
8 P. M., Pacific Standard Time  
Through N. B. C. Pacific Coast  
network

**EVEREADY**  
**Radio Batteries**  
—they last longer

The air is full of things you shouldn't miss



STEPHEN I. GAYLORD

Portland, Oregon—610 Kc.

**KGW**

1000 WATTS—491.5 METERS  
THE MORNING OREGONIAN  
"Keep Growing Wiser"

DAILY EXCEPT SUNDAY—

10:00 to 11:30 a. m.—Town Crier, weather reports, news items.  
6:00 to 6:30 p. m.—Dinner Concert except Monday and Friday.  
9:00 p. m.—Longine Watch Time Signals.

- SUNDAY, MARCH 4**  
6:30 a. m.—Auntie Blossom,  
11:00 a. m.—Morning services  
3:00 p. m.—P. C. N. program.  
6:30 p. m.—Standard Symphony Hour  
7:30 p. m.—The Two Steinway Artists.  
8:00 p. m.—Wm. A. Grout concert.  
9:00 p. m.—Don Amaizo program, N. B. C.  
9:30 p. m.—N. B. C. program.  
10:00 p. m.—Concert.
- MONDAY, MARCH 5**  
7:15 a. m.—Y. M. C. A. Health Exercises.  
7:00 p. m.—Demi tasse program.  
8:00 p. m.—P. C. N.  
9:00 p. m.—Maxwell House Coffee Orchestra  
10:00 p. m.—Spotlight Hour over P. C. N.
- TUESDAY, MARCH 6**  
6:30 p. m.—Checker Cab Co. program.  
7:00 p. m.—Sealy Sam program.  
7:30 p. m.—Concert.  
8:00 p. m.—Eveready Hour, N. B. C.  
8:30 p. m.—Bridge games,  
9:00 p. m.—Retold Tales, N. B. C.  
9:30 p. m.—The Rounders, N. B. C.
- WEDNESDAY, MARCH 7**  
7:15 a. m.—Y. M. C. A. Health Exercises.  
6:30 p. m.—California Fruit Growers Exch.,

- 7:00 p. m.—Concert.  
7:45 p. m.—Catholic Truth Society lecture.  
8:00 p. m.—The Oregonians.  
8:30 p. m.—Royal Baking Powder program.  
9:00 p. m.—The Tarola Venetian Hour.  
10:00 p. m.—Oregonian Studio presentations.  
11:00 p. m.—George Shelton's Olympic Hotel Orchestra.
- THURSDAY, MARCH 8**  
6:30 p. m.—Golden West Girl.  
8:00 p. m.—Calpet Hour, P. C. N.  
9:00 p. m.—Dodge Bros. program, P. C. N.
- FRIDAY, MARCH 9**  
7:15 a. m.—Y. M. C. A. Health Exercises.  
7:00 p. m.—Concert Orchestra and soloist.  
8:00 p. m.—P. C. N. Wrigley Spearman.  
9:00 p. m.—"Memory Lane" program, P. C. N.  
10:00 p. m.—Motor Coach Entertainers.  
10:30 p. m.—Frolic of Keep Growing Wiser Order of Hoot Owls.
- SATURDAY, MARCH 10**  
6:45 p. m.—Peoria Life Insurance talk.  
7:00 p. m.—Concert from KOMO, Seattle.  
8:00 p. m.—N. B. C. R.C.A. program.  
9:00 p. m.—Philco Hour over P. C. N.  
10:00 p. m.—N. B. C. Saturday Night Dance Orchestra.

Presented by  
**Georgia O. George**  
*Originator, Inventor and Sole Manufacturer of*  
**"HAIR-A-GAIN"**  
*Scalp and Hair Shampoo*

A delightful series of programs broadcast from the following stations at the hours shown below:

<p><b>KFI</b> Wed.—2:00 to 3:00 p. m. 7:00 to 7:30 p. m. Thursday — 7:00 to 7:30 p. m. Friday—2:00 to 2:30 p. m.</p> <p><b>KNX</b> Monday — 11:00 a. m. to 12:00 Noon. Tuesday — 7:30 p. m. to 8:00 p. m. Friday — 10:30 a. m. to 11:30 a. m.; 7:00 to 7:30 p. m.</p>	<p><b>KFON</b> 10:30 to 11:30 a. m. daily except Saturday and Sunday. 12:30 to 1:00 p. m. Tuesday, Thursday and Saturday.</p> <p><b>KTAB</b> 1:20 to 1:50 p. m. Tuesday and Thursday.</p>	<p><b>KMTR</b> Tuesday — 10:00 a. m. to 11:00 a. m. Thursday — 2:30 p. m. to 3:30 p. m.</p> <p><b>KFRC</b> Daily except Saturday and Sunday — 9:00 to 9:30 a. m.</p> <p><b>KYA</b> Monday — 10:00 to 10:30 a. m. Wed.—10:30 to 11:00 a. m.</p>
---	---	--

Also Broadcasting During Shopping News and Dinner Hour Programs from Stations KLZ Denver and WHK Cleveland.






# Browning Drake

FACTORY  
BRANCH

Beverly at Vermont

3817 BEVERLY BOULEVARD  
OLYMPIA 7503  
LOS ANGELES

*Superior!*

## TRUVOLT

**AN ALL WIRE VARIABLE VOLTAGE CONTROL**

Unsurpassed for B-Eliminators and power devices. Kept cool by air, this unit does not break down.

(1) Made entirely of wire; permanently accurate; lasts indefinitely. (2) Potentiometer control; positive metallic contact. (3) Nichrome wire resistance — very low temperature coefficient.

Eight stock types with resistance up to 50,000 ohms. All rated at 25 watts. List \$3.50 each. Also full line of fixed wire resistances.

Write for Free Resistance Circular.  
"This is an Eliminator Year!"  
Pacific Coast Representatives:

**UNIVERSAL AGENCIES**  
Los Angeles San Francisco Seattle  
905 Mission St.

# ELECTRAD

175 Varick St., New York, N. Y.



## RADIO GROUND

When C. H. Preston, less than two years ago, developed his Permanent Radio Ground, he little realized the furore it would create among radio enthusiasts.

In this short time thousands of radio owners have installed this efficient ground connection... a number of broadcasting stations have bought special models for use with their transmitting apparatus... engineers throughout the country have testified as to its merits.

The Preston Ground will, regardless of the age or cost of your radio, give you more volume on both locals and distant stations, sharpen tuning, improve tone, and eliminate resistance noises.

### IT'S GUARANTEED

Ask your dealer about the Preston Ground today

**UNGAR & WATSON, Inc.**  
Manufacturers  
1366 South Figueroa Street  
Los Angeles Phone Westmore 2411

**THE SEROY COMPANY**  
Dist. No. Calif., Oregon, Washington  
132 Broadway, Oakland, Calif.

# KJR

604 HOME SAVINGS BUILDING  
 1520 WESTLAKE AVE.  
 348.6 METERS

Phone Elliott 6288  
 VINCENT KRAFT, President  
 Mrs. S. Webster Hoover, Program Director

### DAILY EXCEPT SUNDAY—

- 9:00 to 9:45 a. m.—Mary Cooke, KJR Better Homes Girl.
- 9:45 to 10:00 a. m.—Devotional Service.
- 10:00 to 12:00 Noon—Shopping Service and Musical Program.
- 12:00 noon, 6:00 p. m. and 10:00 p. m.—Pacific Standard Time.
- 12:00 to 12:30 p. m.—Studio Program.
- 12:30 to 1:30 p. m.—Luncheon Prog. from New Washington Hotel.
- 1:30 to 5:00 p. m.—Varied Studio Program.
- 5:00 to 5:30 p. m.—KJR Junior Hours (Ex. Tues., Thurs.).
- 5:30 to 5:45 p. m.—Studio Program.
- 5:45 to 6:00 p. m.—New York Closing Stock Quotations.
- 6:00 to 6:30 p. m.—Sports, News Items, Theater.
- 6:30 to 7:30 p. m.—Vic Meyer's Dinner Hour Concert.
- 10:00 to 12:00 p. m.—Vic Meyer's Dance Orchestra, except Monday.

### WEEK COMMENCING SUNDAY, MARCH 4, 1928

#### SUNDAY, MARCH 4

- 9:00 a. m.—Time Signals; musical program.
  - 10:00 a. m.—International Bible Students
  - 11:00 a. m.—Morning service of First M. E. Church.
  - 12:30 p. m.—Studio program.
  - 6:15 p. m.—International Bible Students
  - 7:15 p. m.—Organ recital by Arthur Biggs.
  - 7:30 p. m.—Evening service of First M. E. Church.
  - 9:00 p. m.—Home Savings Building Trio.
- #### MONDAY, MARCH 5
- 7:25 p. m.—Dr. Edwin J. Brown.
  - 7:30 p. m.—Soprano solos by Mrs. C. E. Baltzo.
  - 8:30 p. m.—Seattle Pacific College.

- 10:30 p. m.—Helen Ardelle Goofy Bird Frolic.

#### TUESDAY, MARCH 6

- 7:30 p. m.—Marjorie Young and Adnan Regan, piano.
- 8:00 p. m.—Lundquist-lilly Two-Pant Twins.
- 9:00 p. m.—Studio program.

#### WEDNESDAY, MARCH 7

- 8:30 p. m.—Casey-Bowyer Knight-en-gales.

#### THURSDAY, MARCH 8

- 7:30 p. m.—Sears, Roebuck & Co.
- 8:30 p. m.—"ABC Chain Broadcast.

#### FRIDAY, MARCH 10

- 7:30 p. m.—Seattle Old Time Dance Orch.

#### 8:00 p. m.—Studio program.

#### SATURDAY, MARCH 10

- 7:30 p. m.—Studio program.



## Don't Put Your Set Away For the Summer!

*Install a*

### WESHOLLY POSITIVE GROUND

# \$2.25

You can then continue to tune in your favorite stations. The Wesholly will sharpen your set, increase the volume and give greater distance.

(SOLD ON AN ABSOLUTE GUARANTEE)

**AT YOUR DEALER**

or write direct

## THE SUNSET MFG. CO.

7404 Melrose      OR. 4702      Los Angeles



**FREEMAN H. TALBOT**  
Announcer

**Denver, Colorado—920 Kc.**

**KOA**

2500 WATTS—326 METERS  
GENERAL ELECTRIC COMPANY  
Pacific Standard Time

"Rocky Mountain Broadcasting Station"

DAILY EXCEPT SUNDAY—

- 10:45 a. m.—Weather, Stock and Produce Reports.
- 11:00 a. m.—Time Signals.
- 11:05 to 12:05 p. m.—Organ Recital.
- 4:00 p. m.—Stock and Market Reports (except Mon. and Sat.).
- 4:25 p. m.—Road Reports, courtesy Rocky Mountani News and Denver Evening News (except Monday and Saturday).

**SUNDAY, MARCH 4**

- 10:00 a. m.—Service of First Church of Christ, Scientist.
- 3:20 p. m.—Organ recital
- 4:20 p. m.—N. B. C. program.
- 6:15 p. m.—Brown Palace Hotel Orchestra.
- 7:00 p. m.—Service of First Church of Christ, Scientist.

**MONDAY, MARCH 5**

- 10:15 a. m.—Program by Reese School
- 4:30 p. m.—N. B. C. program, Roxy Theater.
- 5:30 p. m.—Stocks, markets, livestock.
- 6:00 p. m.—Brown Palace Hotel Orchestra.
- 7:00 p. m.—Scheuerman's Colorado Orch.
- 7:15 p. m.—The Koa Koons.
- 8:15 p. m.—KOA Orchestra
- 9:00 p. m.—Reese School of Saxophone.

**TUESDAY, MARCH 6**

- 2:30 p. m.—Housewives matinee.
- 3:30 p. m.—Radiograms by Denver Post.
- 4:30 p. m.—N. B. C. program.
- 6:00 p. m.—Dinner concert.
- 6:30 p. m.—Farm Question Box.
- 7:00 p. m.—Radio instruction in auction bridge.

**WEDNESDAY, MARCH 7**

- 4:30 p. m.—N. B. C. program.
- 6:30 p. m.—Brown Palace Hotel Orchestra.
- 7:00 p. m.—Scheuerman's Colorado Orch.
- 7:15 p. m.—"Can England and America be Friends?"
- 8:30 p. m.—Lucile Fowler, contralto; Ralph Freese, tenor; George T. Richie, piano.
- 9:00 p. m.—Chief Gonzales and his orchestra.

**THURSDAY, MARCH 8**

- 2:30 p. m.—Rural Schools, State Department of Public Instruction.
- 3:00 p. m.—Housewives' matinee.
- 4:30 p. m.—N. B. C. program.

**FRIDAY, MARCH 9**

- 2:30 p. m.—Housewives' matinee.
- 3:30 p. m.—Radiograms by Denver Post.
- 4:30 p. m.—N. B. C. program.
- 7:00 p. m.—Extension service, Colorado Agricultural College, Fort Collins, Colo.
- 7:30 p. m.—A Cappella Choir

**SATURDAY, MARCH 10**

- 4:00 p. m.—N. B. C. program.
- 8:00 p. m.—Dance program.

**HOW MANY MILES**

**Do You Get for Your Dollar in Radio?**



My policy is not to tie up permanently with any type or make of set, but by continual testing to pick the best in each price class. Further than this, it is my policy to recommend only that radio equipment which is suited to the user in his particular locality.

*A Specialized Advisory Service for Radio Buyers*

**H. A. EVEREST**

*"Radio Specialist"*

Nightly Demonstrations 1032 N. Ogden Drive, Hollywood GRanite 9915

## Timely Trade Topics

Mr. Gage of the Precision Electric Company announces that he has started suit against Durkee Thomas, manufacturers of batteries, for damages for defective material delivered to the Precision Electric Company.

Harold Kaiser, formerly with the Coast Radio Company of Long Beach, is now an instructor in the Health and Strength Gymnasium, located at 227 12th street, Los Angeles. Harold wants all of his old friends and acquaintances to come over and see him, for he says that he can take the kinks out of the muscles and the bulge out of the waist lines as easy and quickly as he used to take the squawk and howls out of the radio receivers. Harold incidentally teaches boxing and wrestling in this finely-equipped gymnasium.

Mr. Carl Johnson, sales manager of the Pacific Wholesale, Inc., well known distributors of the Sparton Radio Receiver, announces that Mr. Elvin E. Webb of 1099 Main street, Riverside, California, telephone 199, has just been appointed an authorized Sparton Radio dealer. Mr. Webb is equipped to give excellent service to radio users.

Messrs. Hastings and Ormiston came to grief in a smashup while en route to demonstrate a Magnaformer somewhere

or other one night last week. A severed artery in Hastings' arm made necessary a blood transfusion in order to save his life, but we are happy to report that he is now as good as new. During the period when he was lingering on that shadowy line between here and there, his only thought, feebly whispered, was: "I want to sell some 'Maggies' before I kick off." He'll have his wish.

Mr. Mitchell, general manager of Kierulff & Ravenscroft of Los Angeles and San Francisco, announces that they have just been appointed exclusive Crosley distributors for the State of California. Kierulff & Ravenscroft have been merchandizing Crosley equipment in California for the last four years.

Mr. Felden E. May, President of the United Radio Corp. of Rochester, N. Y., manufacturers of the famous Peerless Reproducers, arrived in Los Angeles on Feb. 15. He is paying a visit to their California distributors, Kierulff & Ravenscroft.

Messrs. Stevens, Speicher and Kountz, running the Radio Service Shop at 6209 Santa Monica Blvd., must take their fun during the sunny hours, for they are making a deliberate appeal for business after 7 p. m., which is really the time when the average set owner craves quick service, after all.

### NOTICE TO OWNERS OF HEXADYNE

And Other Portable Radios

We specialize in service and repair parts for all portables. Give us a ring and we will call for your set, diagnose the trouble, and put set in good working order.

Phone HEMPstead 5509

Dependable Radio Service Shop.  
1154 North Western Ave. Room 217  
Hollywood, Calif.

### \* EVENING SERVICE \*

IS WHAT WE LIKE!

No matter what make of set, we'll keep her running like new!

Get On Our Monthly Inspection List

PHONE GRANITE 0874

Radio Service Shop, 6209 Santa Monica Boulevard, Los Angeles, Calif.

## Building Goodwill via Radio

For Information  
WALTER BIDDICK

Phone  
WEStmore  
9137

*the New*



**ALL-AMERICAN**  
TRADE MARK  
**Electric**  
**RADIO**

An AC  
 Operated  
 Receiver  
 Using the  
 New AC  
 Tubes



Price  
 Complete  
 with Tubes  
 and Speaker  
**\$166**

**TABLE MODEL**

Many Other Models to Select From

*All-American Franchise Dealers*

**LOS ANGELES**  
 Radio Vibratone Co.  
 Beverly and La Brea  
 Radio Exchange &  
 Service  
 4211 S. Broadway  
 Seymour's  
 1310 S. Grand  
 Shearf & Adams  
 5852 W. Pico  
 Karl's Radio Shop  
 1047 S. Valencia

**HOLLYWOOD**  
 Hansen Radio  
 7575 Sunset Blvd.  
 O. L. Doolittle  
 1641 Cherokee  
**LONG BEACH**  
 Cohler Radio Shoppe  
 216 Pine Ave.  
 Rialto Radio  
 430 American Ave.  
 Ward Bros.  
 2909 Anaheim Blvd.

**LYNWOOD**  
 Wylde Electric Co.  
 11425 Long Beach  
 Blvd.  
**OCEAN PARK**  
 Pier Avenue Radio  
 142 Pier Ave.  
**PASADENA**  
 Ries Radio Service  
 975 E. Colorado  
**RIVERSIDE**  
 H. R. Wilson  
 846 Walnut

**SHERMAN**  
 Janssen & Iverson  
 8739 Melrose  
**SANTA MONICA**  
 J. C. Suits  
 825 Wilshire Blvd.  
**SAN DIEGO**  
 C. B. Shephard  
 4655 Ohio Ave.  
**SAN PEDRO**  
 Rialto Radio  
 817 S. Pacific Ave.

**SAWTELLE**  
 Wally's Radio Shop  
 11332 Santa Monica  
 Blvd.

**TUJUNGA**  
 Valley Auto Supply  
 Michigan and Pine

**WHITTIER**  
 K. D. Miller  
 248 S. Greenleaf Ave.

Southern California Distributor

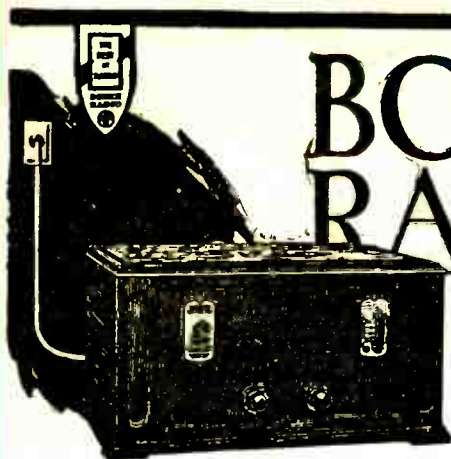
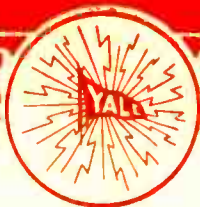
**HERBERT H. HORN**

1629 S. Hill St.

Los Angeles

WE. 6331





# BOSCH RADIO

**OPERATES  
FROM THE  
LIGHT SOCKET**

**MODEL 126**  
**\$119.00, Less Tubes**

**USES NEW  
AC  
TUBES**

You will be delighted with the New AC Bosch Receivers. No batteries. No trouble. Just plug into a convenient light socket and listen to your favorite program at its best.

Bosch Radio Receivers are priced so as to relieve all strain on your pocketbook. For instance, the Model 126, shown above, comes complete at \$119, except for tubes and speaker.

Many other models to choose from.  
All electrically operated.

## Yale Radio Electric Co.

*Exclusive Wholesale Distributors*

1111 Wall Street

LOS ANGELES

WEStmore 3351