

RADIO DOINGS

RED BOOK OF RADIO

10¢
WEEKLY

*The Radio Authority
of the
Pacific Coast*



Goat Island Goats, KTAB

NSE

Vol. XI

NOVEMBER 20-26, 1927

No. 21

KOLSTER RADIO

Is Dependable, Efficient and Will Afford the Greatest
Amount of Pleasure

LOS ANGELES

Downtown

Barker Bros.
7th and Figueroa
Southern Calif. Music Co.
806 S. Broadway
Parmelee-Dohrmann Co.
741 S. Flower St.
Sullivan's, Inc.
436 S. Broadway
Schwabacher-Frey Co.
736 S. Broadway
Eastern Outfitting Co.
620 S. Main St.
Metropolitan Radio
Supply Co.
134 W. 7th St.

Hollywood

Otto K. Olesen Illumi-
nating Co.
6548 Hollywood Blvd.
Barker Bros.
6676 Hollywood Blvd.
C. H. Hauser
4310 Melrose
H. D. Hatfield
1762 N. Vermont
Larkin Radio Co.
4285 Beverly Blvd.
Sunset Electric Co.
7767 Santa Monica Blvd.
Sunset Electric Co.
1568 Sunset Blvd.

South

Harmon Radio Co.
4366 S. Vermont
Holloway Hardware Co.
1003 W. Manchester

Curtis J. Mosby
2315 S. Central
Wesenberg Radio
Music Co.
3819 S. Western
West Coast Radio Co.
2407 W. Slauson

West

L. A. Duncan
2891 W. Pico
LaBrea Electric Co.
5222 Wilshire
The Radio Electric Shop
762 S. Vermont Ave.

Westlake

Arcade Radio Studio
743 1/2 S. Alvarado

Highland Park

McNeil Music Co.
5711 Pasadena Ave.

East

Brooklyn Radio Co.
1521 Brooklyn Ave.
Los Angeles Hardware
& Elec. Co.
717 E. Fifth St.

SOUTHERN CALIFORNIA

ALHAMBRA

Alhambra Radio Elec. Co.
1855 W. Main St.

ANAHEIM

E. R. Caverly
134 W. Center
Schmidt Madlener
Music Co.
175 W. Center

ARTESIA

Edw. M. Corcoran

BALBOA

Eldredge Electric Co.
704 Central Ave.

BELL

G. C. Pyle

BELLFLOWER

Bellflower Electric Co.

BRAWLEY

Archie G. Little
510 Main St.

BURBANK

Collins Hardware Co.
223 E. San Fernando

CULVER CITY

Blunt's Radio Co.
6808 Culver Blvd.

EAGLE ROCK

Weaver & King
5059 Eagle Rock Blvd.

EL CENTRO

Barbara Worth Garage

ELSINORE

E. M. Wilson, Jr.

ESCONDIDO

B. A. Sweet

FILLMORE

Hallstead Auto Electric

GLENDORA

F. A. Seimers

HEMET

McArthur Radio Co.

HUNTINGTON PARK

F. A. Dougherty
158 S. Pacific

LOMPOC

Lompoc Music Store

JOHN G. RAPP

Successor to

H. Earl Wright, Incorporated

Sole California Distributors

LOS ANGELES

SAN FRANCISCO

KOLSTER DEALERS

Are Carefully Picked to Render You Real Satisfaction

- LONG BEACH**
Barker Bros.
222 American Ave.
Cobler Radio Shoppe
216 Pine St.
Prest & Dean
4th & American Aves.
Reliable Radio Store
208 E. 4th St.
Virginia City Elec. Co.
5354 Long Beach Blvd.
- MOJAVE**
C. C. Moore
- MONROVIA**
Claude Chess
- MONTEREY PARK**
Monterey Park Music Co.
102 E. Garvey
- NEEDLES**
Kane's Radio Shop
- ONTARIO**
Powell & Harper
227 N. Euclid
- ORANGE**
E. L. Cossairt
100 W. Chapman
- OXNARD**
H. C. Marvin
137 Fifth St.
- PASADENA**
Ashton Radioelectric
1762 E. Colorado
Nazarian's Music House
2480 E. Colorado
Parmelee-Dohrmann Co.
242 E. Colorado
C. M. Sayers
55 W. Colorado
- POMONA**
John Burnley
120 E. Second St.
L. G. Gilbert
333 W. Second St.
- PUEBLO**
Puente Hardware Co.
- REDLANDS**
Munzig Radio Co.
74 Citrus St.
- REDONDO**
J. H. Thorpe
124 S. Pacific
- RESEDA**
Prior Radio Shop
- RIVERSIDE**
F. E. Shirtzinger
773 W. 7th St.
- SAN FERNANDO**
Marsden Electric Co.
- SAN BERNARDINO**
Thew Radio Co.
514 4th St.
- SAN DIEGO**
Parmelee-Dohrmann Co.
7th and C Sts.
Thearle Music Co.
640 Broadway
- SAN GABRIEL**
Murphy & Hendrickx
- SAN JACINTO**
San Jacinto Drug Co.
- SAN LUIS OBISPO**
Rogers Radio Shop
699 Higuera St.
- SAN PEDRO**
San Pedro Electric Co.
263 6th St.
- SANTA ANA**
Hawley Sport. Goods Co.
305 N. Sycamore
Turner Radio Co.
118 E. 4th St.
- SANTA BARBARA**
James E. Wiley
San Marcos Bldg.
- SANTA MARIA**
Saladin Music Store
128 E. Main St.
- SANTA MONICA**
Radio Service Co.
14th and Montana
Radio Service
4th and Broadway
- SANTA PAULA**
Ventura County Ignition Co.
- SATICOY**
H. H. Wright
- SIERRA MADRE**
Sierra Madre Elec. Co.
- SOUTH PASADENA**
The Radio Electric Shop
1161 Fair Oaks St.
- TORRANCE**
DeBra Radio Co.
- TUJUNGA**
Tujunga Radio Co.
419 S. Sunset Blvd.
- VAN NUYS**
Marsden Electric Co.
- VENICE**
Venice Radio Shop
1227 Washington Blvd.
- VENTURA**
Moore & Fazzio
733 Main St.
- WHITTIER**
H. C. Oldham
Whittier Hardware Co.
- WILMAR**
Wilmar Radio Co.
- WILMINGTON**
Wilmington Hardware Co.
300 Canal St.

JOHN G. RAPP

Successor to

H. Earl Wright, Incorporated

Sole California Distributors

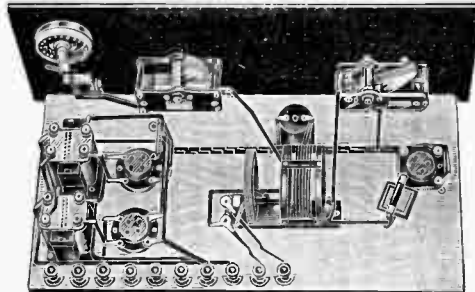
LOS ANGELES

SAN FRANCISCO

Build the AERO

Short Wave Receiver and Transmitter

Range
13 to 550
Meters
with
Extra Coils



Receives
Regular
Broadcast
with Coils
No. 4 and 5

Rear View of Aero Short Wave Receiver

Receiver Specifications

LIST OF PARTS — AERO SHORT WAVE SET

1 Aero Foundation Unit for Short Wave...	\$ 5.75
1 Aero Short Wave Tuner Kit LWT 125...	12.50
1 Aero R. F. Choke Coil No. 60.....	1.50
2 National Style B Dials.....	5.00
1 Hammarlund ML-7 .00014 Condenser....	4.75
1 Hammarlund ML-11 .00025 Condenser....	5.00
1 Yaxley Battery Switch.....	.50
1 Yaxley 25-Ohm Rheostat.....	1.35
2 Silver-Marshall No. 511 Sockets.....	1.00
1 Benjamin Socket.....	.75
1 Yaxley No. 669 Cable Connector Plug....	3.25
1 Carter .0001 Mfd Condenser with Clips..	.50
1 Yaxley 2-Ohm Resistance.....	.15
1 Tobe 5-Meg. Tipon Grid Leak.....	.50
2 Thordarson 6-1 Audio Transformers.....	9.00
Screw Assortment and Bus Bar.....	.25
	\$51.75

OPTIONAL:

1 Aero Int-4 125 to 250 meters.....	\$4.00
1 Aero Int-5 225 to 550 meters.....	4.00
1 Aero Int-Zero 13 to 29.4 meters.....	4.00

BROKEN KIT PRICES

One Int-1—Range 15 to 33.5 meters. Each..	\$4.00
One Int-2—Range 31.5 to 68 meters. Each..	4.00
One Int-3—Range 57 to 133 meters. Each..	4.00
One LWT Mounting Base. Each.....	3.00

Transmitter Specifications

LIST OF PARTS—TRANSMITTER

1 Set Aero Interchangeable Transmitter Kits, 2010K, 4080K, or 9018K, including two Mounting Bases and two Aero No. 248 Choke Coils	\$12.00
3 500 Picofarad (.0005 mmf.) Receiving Variable Condensers	15.00
3 Dials	7.50
1 Carter P-4000,—25, List .50; or 1 Carter P-5000—25, List .55; or 1 Carter T.P. 10,000—25, List .85; Ohm Grid Leak Wire Wound (Latter Center Tapped) ..	.55
2 Carter .0001 or .00025 Fixed Mica Receiving Condensers	1.00
2 Carter .001 or .00025 Fixed Mica Receiving Condensers (Paper can be used) ..	1.00
1 Silver-Marshall UX Type Tube Socket....	.50
7 Binding Posts	1.05
1 Micarta Front Panel (Vestinghouse), 10x 18 or 7x18, depending upon wether meters used, 1/4 Stock, List, \$2.70 or 1.96	2.70
1 Micarta Subpanel (West'house), 10x18x1/4	.70
2 Aero Subpanel Brackets70
Hookup Wire, Mounting Screws, etc.....	.30
	\$44.26

Let Us Send You a Free Copy of the Aero Complete Booklet

Factory Representatives

Henger-Seltzer Co.

LOS ANGELES
711 East 14th St.
Westmore 5258

SAN FRANCISCO
377 Brannan Street

Radio Doings

Trade Mark Reg. U. S. Pat. Off.

New York Office
J. W. HASTIE
155 East 42nd St.
Vanderbilt 4661

407 E. Pico St., Los Angeles, Cal.
Phone WESTmore 1401

San Francisco Office
CONGER & MOODY
Sharon Building
Kearney 8483

"The Red Book of Radio"

CLOYD MARSHALL, JR.
Editor

GEORGE W. MARSHALL
Business Manager

K. G. ORMISTON
Technical Editor

MAJ. LAWRENCE MOTT
Associate Editor

H. C. CHARLES

Special Representatives
J. S. MILLER

H. G. DAVIS

(Entered as second-class matter, No. 25, 1922, Los Angeles, Cal., Post Office, under Act of March 3, 1897.)
Copyright, 1926, by Horwood Publishing Co.
Issued Weekly. Ten Cents a Copy, Three Dollars a Year. Canada and Foreign Countries, \$3.50 per Year.

Vol. XI Los Angeles NOVEMBER 19, 1927 San Francisco No. 21

Contents

	PAGE
Radio Topics of the Day	13
Bears—Big and Little	17
Technical Manual—Short Wave Receivers	19-20
Studio News	31
DX Club Correspondence	33
Questions and Answers	37
Channel List of Stations	38
Times Tables	41 to 47
Detailed Programs	50 to 88
Trade Notes	94

THE PACIFIC COAST'S GREAT RADIO WEEKLY FOR ONLY \$3.00

RADIO DOINGS, 407 East Pico St.,
Los Angeles, California.

Enclosed is \$3.00. Please mail RADIO DOINGS each week for one year to my address,

NEW
RENEWAL

Name.....

Address.....



RCA RADIOLA 16
Less accessories
\$69.50
With Radiotrons
\$82.75

LOS ANGELES

Downtown

Eastman Kodak Stores,
Inc.
510 S. Broadway
TRinity 0746

The Electrical Appli-
ance Shop
336 S. Broadway
TUcker 2932

Electric Lighting &
Supply Co.
216 W. Third St.
MUtual 2335

Martin Music Co.
734 S. Hill St.
TRinity 9621

Richardson's
730 West Seventh St.
TRinity 2303

More Than Ever

The Radio Corporation of America has always felt secure in its position as Pioneer and Leader in the World of Radio. But this season of 1927-28, with the addition of the new All-Electric Models 17, 30-A and 32, the popular-priced 16 (table model) and the 100-A Loudspeaker, the RCA line reaches new heights of completeness and perfection. A Radio Buyer who could

Echo Park

Mohawk Radio & Music
Company
2115-17 Sunset Blvd.
DRexel 1112

Highland Park

F. & H. Radio Shop
5011 York Blvd.
GARfield 8962
Holland Electric Shop
5632 Pasadena Ave.
GARfield 3912

Hollenbeck Heights

Worobieff Music Shop
2038 East First St.
ANGelus 6349

Hollywood

Craig Radio Service
7022 Melrose
WHitney 7312

Hollywood Music Co.
6019 Hollywood Blvd.
HOLLYwood 0364

Lincoln Heights

Frank Graves Sash,
Door & Mill Co.
2012 Pasadena Ave.
CApitol 2071

South

De Hoog Brothers
6120 S. Broadway
THornwall 0224

Southwest

C. & G Elec. & Radio
Company
1501 W. Santa Barbara
VERmont 5205
L. A. Duncan
2891 W. Pico St.
EMpire 1141



RCA RADIOLA 30-A
Complete with
Radiotrons
\$495

Buy
with
Confidence



Where You
See
This Sign

RCA Radiola

MADE BY THE MAKERS OF THE RADIOTRON

Radiola Excels

not suit his purse and taste in some Radiola receiver would indeed be hard to please.

Every Authorized RCA Dealer appreciates the privilege of handling Radiola, and adds the priceless ingredient of Conscience to his work. Listed below are just a few of the Southern California Dealers who will gladly demonstrate Radiola for you in your own home:

Young's Radio Store
516 W. Santa Barbara
Humbolt 7041

Southeast

Central Electric Co.
3802 Central Ave.
Humbolt 2337

West Adams District

H. H. Walker
1323 Venice Blvd.
BEacon 1311

ALHAMBRA

Fred B. Gillenwater
Radio Studio
127 W. Main St.
Alhambra 2032

EL MONTE

Weir's Coast Radio
(Formerly Coast Radio)
308 West Main St
El Monte 110

FULLERTON

J. J. Farley Electric Co.
310 North Spadra
Fullerton 404

NORTH HOLLYWOOD

**North Hollywood Music
Company**
Langlands & Schade
5317 Lankershim Blvd.
Lankershim 174

PASADENA

Lee Radio Shop
922 E. Colorado St.
Wakefield 5951

The McNally Co.
106 W. Colorado St.
Terrace 0547



RCA RADIOLA 17
Less accessories . \$130.00
With Radiotrons . \$157.50

SOUTH PASADENA

The Radio Electric
1165 Fair Oaks
Colorado 6574

POMONA

Harrison Fitch Elec. Co.
383 West Second St.
Pomona 1250

VENICE

Venice Radio Shop
1227 Washington Blvd.
Santa Monica 63544

WATTS

Thos. J. Stevens & Son
1668 E. 103rd St.
Delaware 6824

WHITTIER

F. B. Gillet
110 South Greenleaf
Whittier 425-291

EARL BURTNETT'S BILTMORE ORCHESTRA

Broadcasts nightly over KNX, sponsored by Authorized RCA Dealers. Don't miss this rare musical treat! Here is the schedule:

Monday, 10-11 P.M. Thursday, 10-11 P.M.

Tuesday, 8-9 P.M. Friday, 9-9:45 P.M.

Wednes., 10-11 P.M. Saturday, 10-11 P.M.



RCA RADIOLA 32
Complete with
Radiotrons
\$895

RCA Radiola

MADE BY THE MAKERS OF THE RADIOTRON

Parts and Accessories

Alco Shielded Coils
 Acme Transformers
 Acme Chargers & B Eliminators
 Advance Crystals
 Aero Coils
 Aero Products
 Aerovox Products
 Air King Transformers
 Alden Mfg. Co. Parts
 All-American Mfg. Trans.
 All Henry Inductances
 Am. Beauty Soldering Irons
 Amertran Products
 Amertran Transformers
 Amperites
 Artco Coils
 Benjamin Brackets
 Benjamin Sockets
 Carborundum Products
 Carter Products

Hoosick Products
 Jefferson Reactivators
 Jefferson Transformers
 Johnson Chargers
 Kingston "B" Eliminators
 Kodel Products
 Kroblack Resistors
 Kuprox Replacement Units
 Kurz-Kasch Knobs & Dials
 Lynch Resistors
 McMillan Sets
 Muter Products
 Multipoint Crystals
 Na-ald Adapters
 National Co. Products
 No Korode Soldering Paste
 Polymet Condensers
 QRS Tubes
 Ray-O-Vac Batteries
 Raytheon Tubes

SILVER-MARSHALL SUPER PARTS

CeCo Tubes
 Centralab High Resistance
 Chicago Kester Solder
 Clarostats
 Crescent Magnet Wire
 Crescents Transformers
 Daven Radio Products
 DeJur Products
 Dubilier Products
 Dudlo Antenna Wire
 Eagle Chargers and Eliminators
 Ebby Binding Posts
 Ekko Ground Clamps
 Elec-Tru-Tone Pickups
 Electrad Products
 Formica Panels
 Freas and Moran Hydrometers
 Gen-win Coils
 Hammarlund Products

Readrite Meters
 Sampson Chokes
 Samson Transformers
 Sangamo Condensers
 Sensory Insulators
 Silver-Marshall Products
 Sterling Products
 Thordarson Chargers
 Thordarson Transformers
 Tobe Condensers
 Trico Fuses
 Tyrman Drum Dials
 Tyrman Shielded Sockets
 United Console Cabinets
 Utah Speakers
 Universal Battery Clips
 Walbert Isofarad Sets
 Weston Meters, Plugs
 Yaxley Products

This is only a partial list of the well-known lines we carry

C. C. LAWTON CO.

1125 Wall St.

Westmore 3960

Los Angeles

You Get the Most from your radio set

when you use the new-type
pitchless, longer-life



"The Master"

RAY-O-VAC

The new Master Ray-O-Vac has **TWICE THE LIFE** of ordinary 45-volt battery types. Thirty extra large cells give 45 volts, with one intermediate tap at 22½ volts; screw post terminals. This famous Master Ray-O-Vac Radio "B" Battery is recommended for all radio sets using four or more tubes. Size, including terminals: 8"x4½"x7½".

RAY-O-VAC

RADIO "B" BATTERIES

You get the most in every possible way.

(1) You get better radio reception. Natural, clear rounded tones come from the loud speaker when you use the New Ray-O-Vac "B" Battery, noted for possessing the low internal resistance so necessary to good reception.

(2) You get a battery that lasts longer. Because there has been no hot, devitalizing pitch poured over the individual dry cells in the new type of Ray-O-Vac battery, the dry cells give all of their life in actual current. Therefore, the life of Ray-O-Vac Batteries is from 10 to 15% longer than that of the old pitch type.

(3) You therefore get more **ACTUAL MONEY VALUE** in Ray-O-Vac Radio Batteries . . . more for every radio dollar invested.

Good judgment will govern you in your choice of Radio Batteries. They will, therefore, be Ray-O-Vacs. Your dealer has them . . . or can get them for you.

FRENCH BATTERY COMPANY

Factory: Madison, Wisconsin

LOS ANGELES
737 Terminal Street

SEATTLE
Eyres Storage & Dist. Co.

SAN FRANCISCO
625 Third Street

BUILD IT YOURSELF!

Parts for the Finest Receivers Are Now Available in
Kit Form

We Can Supply You With Kits or Parts for These
Famous Sets

INFRADYNE - MAGNAFORMER 9-8

HFL NINE-IN-LINE

SILVER-MARSHALL LAB. SUPER

KARAS EQUAMATIC & KNICKERBOCKER

HAMMARLUND HI-Q SIX

STROBODYNE - AERO SEVEN

SILVER-MARSHALL AC SHIELDED SIX

TYRMAN TEN - ROFFY CIRCUIT

NEW TOWER SPEAKERS IN STOCK

Priced at

\$9.75, \$12.95, \$15.00, \$17.50 — On the Coast

Dealers—Park Next Door at Our Expense

RADIO SUPPLY CO.

WHOLESALE

912-914 S. Broadway

VA. 6063

Los Angeles

New 1928 Catalogue Now Ready—Send for It

LARGEST RADIO PARTS JOBBER WEST OF CHICAGO

The RADIO SUPPLY CO.

"The Parts Warehouse of the West"

Is ready to fill your requirements for parts. Our stock is complete and adequate at all times.

Watch This List of Parts for Changes

Alco Loops	Dunham Loops	Polymet Mfg. Co.
Acme Apparatus	Eby Binding Posts	Condensers
Acme Wire	Ekko Ground Clamps	Preston DX Ground
Advance Crystals	Electrad Products	QRS Tubes
Aero Products	Elkon Chargers	Racon Horns
Aerovox Wireless Products	Essenbee Ball Aerial	Radiall Co. Amperites
Alden Mfg. Co. Parts	Formica Insulation Co.	Rauland Lyric
All-American Products	Franco B Batteries	Transformers
Amertran Products	Frost Products	Raytheon Tubes
Amperites	General Radio Parts	REL Apparatus
Amsco Condensers	Genwyn Coils	Remler Products
Artco Coils	Goodrich Rubber Panels	Samson Transformers
Baldwin Units	Gosilco Wire	Sangamo Condensers
Balkite Chargers, Etc.	HFL Transformers	Scranton Hydrometers
Balsa Wood Speakers	Hammarlund Products	Selectone Transformers
Benjamin Elec. Mfg. Products	Handy Chargers	Sensory Insulators
Bodine Loops & Coils	Harkness Kits	Silver Marshall Products
Brandes Phones	Hedgehog Transformers	Sovereign AC Tubes
Bremer-Tully Products	H-K Sodderdipt Lugs	Spaulding Bakelite
Bretwood Leaks	Hoosick Parts	Steinitz Eliminators
Bruno Coils	Infradyne Parts	Sterling Meters and Testers
Camfield Coils	Jefferson Products	Stevens Tools
Carborundum Products	Jones Cables	Thordarson
Cardwell Condensers	Karas Products	Transformers
Carter Products	Kelbrackets	Tobe Condensers
CeCo Tubes	Kellogg Parts	Tom Mack Products
Celeron Panels	Kodol Products	Tower Speakers
C R L Var High Resistance	Kurz-Kasch Dials and Knobs	Trimm Cone Speakers
Chicago Kester Solder	Kuprox Chargers	Tyrman Parts
Clarostat	Lynch Leaks	Universal Battery Clips
Corning Pyrex	Madison Moore Units	Utah Units
Crescent Transformers	Magnaformer Units	Vesta Power Units
Daven Radio Parts	Marco Products	Victoreen Parts
DeJur Rheostats	Mignon S. L. F. Condensers	Ward Leonard Products
DeLuxe Products	Mueller Universal Clips	Weston Products
Dictogrand Speakers	Mountford Resistances	Webco Power Units
Dubilier Condenser Corp.	Naald Parts	Willard Batteries
Dudlo Mfg. Co. Wire	National Soldering Irons	X. L. Variodensers
	National Co. Parts	Yaxley Products

DEALERS: Park Next Door at Our Expense

RADIO SUPPLY CO.

WHOLESALE

912-914 S. Broadway

VA. 6063

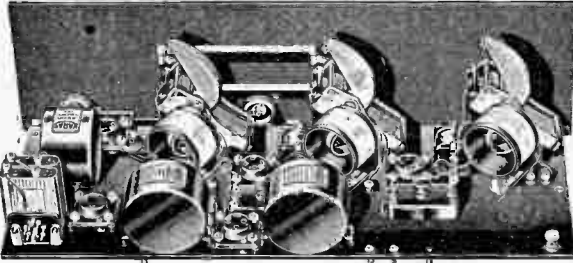
Los Angeles

New 1928 Catalogue Now Ready—Send for It

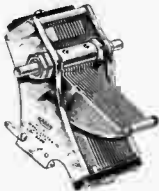
LARGEST RADIO PARTS JOBBER WEST OF CHICAGO

KARAS 2-Dial Equamatic

Is Remarkable Distance Getter



(D) The NEW Karas Output Filter. Price \$8.00.



(B) The NEW Karas S. F. L. Condenser, with removable shaft. Price: .00025 mfd., \$5; .00037 mfd., \$5.25; .0005 mfd., \$5.50.



(E) Karas Micrometric Vernier Dial. Price \$3.50 each.

Pacific Coast radio listeners are enthusiastic over the remarkable distance-getting record of the NEW Karas 2-Dial Equamatic. With this marvelously sensitive and tremendously powerful receiver Coast stations come in with great volume—Eastern stations are heard with clarity and purity of tone rare in any 5-tube set.

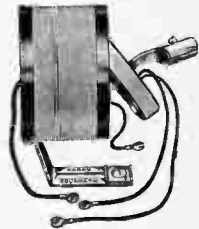
Completely Balanced and Neutralized

The Karas 2-Dial Equamatic is the perfected product of the Karas engineering department, who have brought to a high degree of development the Equamatic principle, which gives great selectivity, wonderful tone, tremendous volume and simplicity of tuning. There are but two dials to use in tuning. These are fitted with Karas Micrometric Vernier Dials, insuring split-second control of tuning.

The NEW Karas Parts 2-Dial Equamatic uses the Type 28 Impregnated Audio Transformer, the NEW Karas S. F. L. Removable Variable Condensers, the NEW Karas Output Filter, also Karas Equamatic Inductance Coils, Karas Dials, and Karas Sub-Panel Bracket and 2-Dial Control System. These parts are revolutionary in their design, give finer results than any others you could possibly use, and insure a receiver of superb quality. You can secure these Karas Parts and other standard parts needed to build this receiver, from your dealer. Mail the coupon below for complete data on this receiver—also write for complete wiring diagram and full information about the NEW KNICKERBOCKER 4. Be sure to mail the coupon today.



(A) The NEW Karas Type 28 Audio Transformer. Price \$8.00.



(C) Karas Equamatic Inductance Coils. Set of 3 used in the 2-Dial Equamatic. Price \$12.00.

KARAS ELECTRIC CO.

4035-I North Rockwell Street, Chicago

MARSHANK SALES CO.
224 East 16th St.
Los Angeles, Cal.
JAMES P. HERMANS COMPANY
585 Mission Street
San Francisco, Cal.
H. M. NISBET
53 Fourth Street
Portland, Oregon

KARAS ELECTRIC CO.,
4035-I North Rockwell Street, Chicago.

Send me complete information about the NEW Karas Equamatic 5-Tube Receiver—and wiring diagram and data on the Karas Knickerbocker 4.

Name _____
Address _____
City _____ State _____

Radio Topics of the Day

A Weekly Review of Radio News, Thought and Opinion

Increased Power Tells Fight Story

Although the Dempsey-Tunney fight is past history, it is only now that a perspective is being gotten on the magnitude of the event from a radio standpoint and the record-breaking use which was made of radio on that memorable night. This was brought to mind in a recent talk over the radio by Arthur Williams, vice-president of the New York Edison Company, who said:

"It will be remembered that the radio service on the night of the fight was announced to begin at about 10 o'clock. The records of our plants show by the increased loads that radio users began to tune in for the fight at about nine o'clock; at ten o'clock the plants were carrying about 12,000 kilowatts more than their normal load for that hour, at eleven o'clock about 20,000 kilowatts, and at twelve o'clock, just after the contest ended, the excess reached 51,000 kilowatts. At one o'clock it continued at about 15,000 kilowatts, and the excess load did not fade entirely away until almost three o'clock in the morning—indicating the extent to which those who had been listening in stayed up to discuss the results. In all, more than a hundred thousand kilowatt hours were used by our New York customers.

Everybody in at Finish

"The curve itself is very interesting; the most acute rise began at eleven o'clock, when apparently great numbers of listeners-in returned from dining or the play, and as the output continued to increase acutely until twelve o'clock,

it would seem that by far the largest number came on the air toward the end of the contest. This excess load above the normal indicated a connection of perhaps one and a half million incandescent lamps in this immediate section alone. All evidently were used in the homes of customers and indicate something of the extent to which radio service is entering into the daily life of New York as a means of quickly acquiring the important news of the day, of education and entertainment."

Farmers' Strength Increases in Wave Length Battle

If anything gets the worst of it in the merry war of further clearing up the ether this fall, it surely will not be the programs of the agricultural colleges. The first suggestion of this was a letter from Secretary of Agriculture Jardine to the Radio Commission. He suggested that they refuse to grant wavelengths or increased power to any stations which might interfere with farm programs.

Another bit of handwriting on the wall was the appointment by President Coolidge to the Radio Commission of Sam Pickard of Kansas, formerly in charge of the U. S. Agricultural Radio Service, and who is for the farmers first, last, and all the time.

Likewise, strong reinforcements will come from Congressmen and Senators—and even the Presidential candidates—who, especially ahead of the great

(Continued on Page 93)

Magnaformer 9-8

Commander-in-Chief of the Air

Mr. H. Dallas Johnson, of 1033 Concha Street, Altadena, Calif., took a Magnaformer 9-8 to Alpine Lodge, near Lake Arrowhead, on November 12th and in one night tuned in the following distant stations:

CJOR, CHCY, CKWX, CNRV, CFCT, CFCN, CYE, WGY, WABC, KDKA, WTAM, WGN, WLIB, WLS, WCFL, WEBH, KYW, WBBM, WFIW, WDAG, WENR, WSM, KFJF, WJAG, WCCO, KFAB, KRLD, WHO, KMOX, WBAP, KOB, KVOO, KOIN, KFEL, KLZ, KSL, KOA, WJAZ, KWKH, KGW, KEX, KJR, KOMO, KFOA, KHQ, KGA, KMA, KMOX, WOAI, JOAK, JOBK, JOCK, 2BL, 5CL.

This is typical Magnaformer 9-8 performance. It is being done every night by fans who have built the Commander-in-Chief of the Air!

This is evidence of Magnaformer 9-8 selectivity and range. As for quality, you must hear and judge for yourself. Your ear will tell you that the Magnaformer 9-8 reproduction is unsurpassed.

Experience the pleasure and satisfaction of building your own, or, if you prefer, phone us for the names of competent, reliable professional set builders.

Wholesale Distributors

YALE RADIO ELECTRIC CO.
1111 Wall St., Los Angeles

SUNSET ELECTRIC CO.
1141 First St., San Diego

RADIO SUPPLY
912-14 S. Broadway, Los Angeles

COAST RADIO SUPPLY CO.
648 Howard St., San Francisco

SCOTT SALES CO.

Factory Agents

433 S. San Pedro St.

VA. 3297

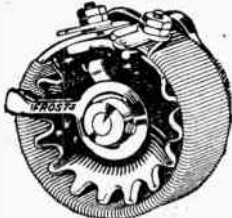
Los Angeles

Manufactured by Radiart Laboratories, 19 S. LaSalle St., Chicago

FROST-RADIO

Demand these famous parts for whichever receiver you build

Magnaformer, Infradyne, and Others



FROST-RADIO

Don't merely ask your dealer for a "rheostat," or a "high resistance unit." Demand and command quality parts for whatever receiver you build by asking for Frost-Radio Parts by name.

Ask your dealer for a Frost De Luxe Bakelite Rheostat, a Frost De Luxe Variable High Resistance Unit, or a Frost Metal Frame, Gem, Rheostat or Fixed Resistance, Cord Tip Jack, etc.

When you demand and obtain Frost Parts you not only save money but you obtain the highest quality parts made. You insure the best possible operation of your set, guarantee that it will give you long and perfect service, and eliminate all bother due to imperfect workmanship or material.



FROST-RADIO



FROST-RADIO

De Luxe Bakelite Rheostats
2 to 75 ohms, \$1.00. With Switch, \$1.25. Potentiometers, 200 to 6000 ohms, \$1.25 to \$2.50.

De Luxe Variable Resistances
2 or 3 terminals, \$1.25. With Switch, \$2.10. (All resistances, 0 to 500,000 ohms.)

De Luxe Gem Rheostats
3 to 30 ohms, 75c. With Switch \$1.00. 200 and 400 ohm Potentiometers, \$1.00.

• **Fixed Resistances and Cord Tip Jacks**

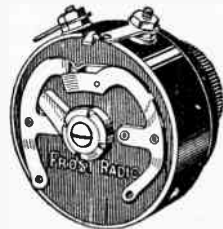
4 to 50 ohm Fixed Resistances, 15c. 100 to 1000 ohms, 25c. Cord Tip Jacks, per pair, 30c.



FROST-RADIO



FROST-RADIO



FROST-RADIO

HERBERT H. FROST, INC.

SCOTT SALES CO., Representatives

443 South San Pedro Street

Los Angeles

Dubilier

Veteran of Radio "Battles"

While the master minds of radio have fought a hundred wars in their effort to prove the supremacy of one circuit over another, Dubilier has always been ready to meet each new theory and experiment with condensers of correct design, rugged construction and a dependably high factor of safety. These advantages are found today in every condenser marked—Dubilier.



The Official Condenser Block for Power-Units

One of the most important and expensive elements of battery eliminators are the condenser blocks. Play safe and use Dubilier—the blocks approved by such well-known manufacturers as Raytheon, Acme, Thordarson, General Radio, etc. Sold by all the better radio stores. Circuit diagrams upon request.

No More Outdoor Aerials

Connect a Dubilier Light-Socket Aerial to your set, plug in, and note the improved reception. Uses no current, requires no attention and completely removes the lightning hazard. Price \$1.50.

Rely On Micadon

A compact, handsome and efficient fixed condenser for all small capacities. Moulded Bakelite case of modern design. Terminals adapted to screwed or soldered connections. Prices 45c to \$1.50.



The Dubilier Metaleak

A tubular grid leak you can back on for accurate resistance value and noiseless operation. Your dealer has them in all values from 20,000 ohms to 5 meg. ohms. Prices 50c and 75c.

DUBILIER CONDENSER CORPORATION

4377 Bronx Blvd., New York

Bears—Big and Little

By K. G. ORMISTON

Big Bear Lake at Sunset!

Colors that never can be daubed on canvas—Impossible reds, blues and purples that change before your eyes and then are gone!

The unrippled bosom of the lake bordered with towering pines—the first snow tracing absurd figures upon the mountain peaks—the cleanness of the air—and over all the utter silence!

Even a radio nut forgets his dials to marvel!

* * *

Having described thrill number one we pass on to number two. Bacon and eggs by lamplight in the little cabin hidden away 'neath the pines! While there was nothing particularly original about this menu, the surroundings glorified the victuals and no monarch in Babylonian halls ever took on his nourishment with greater relish!

Then we hooked up the radio set in anticipation of thrill number three. Wow—watta shock! We were greeted with a terrific roar from one end of the dials to the other. If all the diathermy gadgets, violet, gamma, X-ray, and other infernal machines in seven countries were running in unison they couldn't rival that din! One-eye Connelly himself couldn't crash through it on a bet. We fought it for hours, mystified.

Far from the marts of trade with its elevators, trolleys and power leaks and yet with a racket belching from the loudspeaker that exceeded all that one could expect in his wildest dreams and made the imps of King Static green with envy! How come, Oh, how come?

It was a pair of disgusted radio nuts, more convinced than ever of their "nut-

tinness," that finally gave it up and rolled into the blankets.

Came the dawn and a determination to find the source of the noise that almost equalled sopranos in radio ruination. We started hoofing it around the cabin in circles of increasing diameter. And since such determination must eventually be crowned with success, we found it! Behind a clump of pines—a nice little clearing surrounded by a pretty barbed-wire fence and there they sat, durn 'em! Three of the cutest power transformers you ever saw, strutting their stuff to the accompaniment of a very audible crackle as the juice leaked over the surface of the insulators on the pole above. There were the poles of the transmission line, the high voltage coming into the valley from the east, and the transformed low voltage line continuing on down to the Big Bear settlement. And we had made a long hard drive, brought our grub and blankets and radio set to get some choice DX, and had come to roost within 500 yards of this highly efficient static producer. Huh! Seventh and Broadway is a far better location!

Neither of us spoke a word as we hurried back to the cabin, and in mute sympathy and understanding packed up everything and departed. There were no pangs of sadness as we waved a more or less profane farewell to those innocent looking demons in the barbed-wire enclosure.

Little Bear looked as though it were well shielded by mountains. Such a lot of mountains around everywhere. Seems as though God must of had a lot of material left over and just dumped

(Turn to Page 91)

COUNTERPHASE-8

Franchise Dealer in Huntington Park
S. E. CUMMINS, Phone DE 7764
Real DX Radios 708 Mortimer Ave.

MAGNAFORMER-9

The TEMPLE air column speaker



The Ideal Christmas Gift

Nothing will give greater pleasure in radio than a TEMPLE—the speaker that has been the sensation of every radio show, the joy of thousands of fans all over the country. Do your Christmas shopping early—buy a TEMPLE—Console or Drum Type Model. Either will bring you a richness and purity of tone reproduction that is far beyond what you ever thought was possible. Ask your dealer for a demonstration on the TEMPLE COMPARATOR.

Temple Models Priced at
\$32.00—\$55.00—\$75.00

TEMPLE, INC., 213 S. Peoria St., Chicago

Distributors

HERBERT H. HORN
1629 S. Hill St., Los Angeles
KIERULFF & RAVENS CROFT
1630-32 S. Los Angeles St. Los Angeles

NEW COMMISSIONER AP- POINTED

The appointment of Harold A. Lafount of Utah, as Federal Radio Commissioner, has just been announced from the White House. Mr. Lafount succeeds the late Col. J. F. Dillon as the representative on the commission from the Rocky Mountain and Pacific coast states.

Power PLUS!



Polymet Block Condensers

The foremost Power Unit Manufacturers, as well as Radio Fans, who know, all use Polymet Block Condensers. Why? Because they have stood the test of time and use — their rugged construction and high voltage capacity are the Power Unit Builder's guarantee against break-down and grief.

At All Dealers

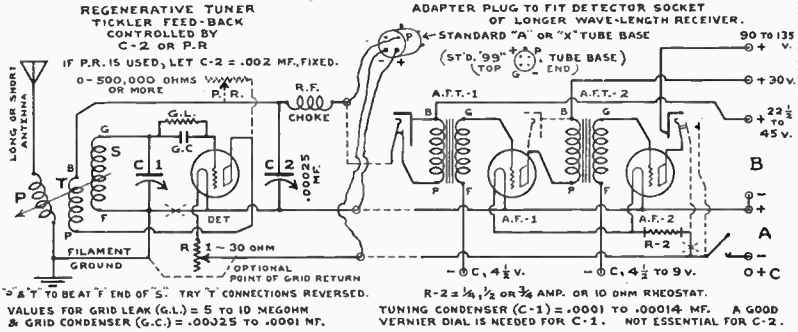
Write for complete information regarding Polymet Condensers and Catalog of all Polymet Radio Essentials.

POLYMET MANUFACTURING CORP.
595 Broadway, New York City

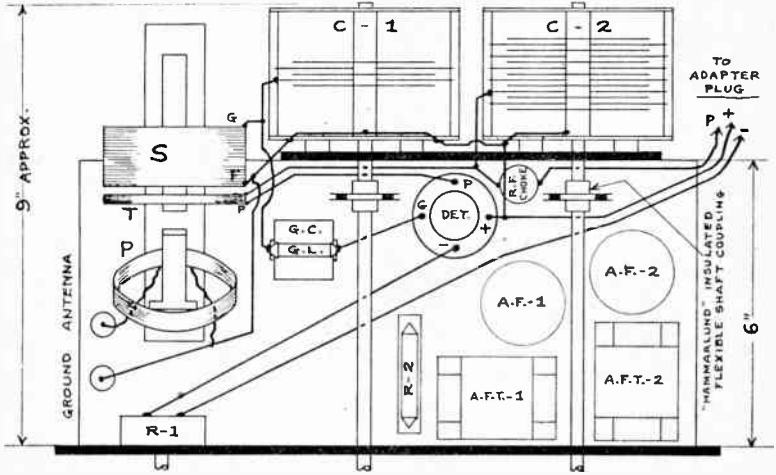
POLYMET

Short Wave

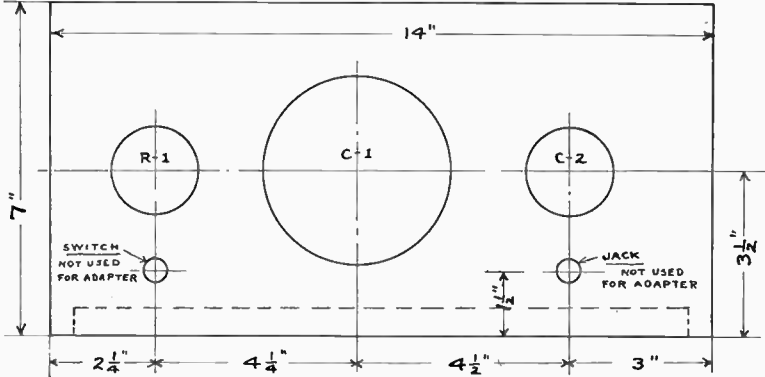
CIRCUIT FOR ADAPTER OR COMPLETE RECEIVER



ASSEMBLY PLAN



PANEL LAY-OUT



CUT OFF HERE

Short-Wave Adapter and Complete Receiver

When Uncle Sam assigned the wave-length band below 200 meters to the wireless telegraph amateurs it was giving them the crumbs from the table so to speak,—the wave-lengths that nobody wanted; an unexplored and supposedly inefficient region to try to penetrate with radio transmission.

The amateurs, undaunted by this misfortune, developed transmitters and receivers of marvelous efficiency that enabled them to cover great distances on low power and have demonstrated the fact that the low waves are, after all, the most desirable of all. While the various governments and commercial companies were building great stations of 100 kilowatts and more to smash through on the high wave-lengths the amateurs proved the error of such methods. Now there has been a reversal, and the transoceanic commercial stations are coming down into the amateur band. Marconi himself, after being instrumental in the expenditure of millions of dollars in the long-wave high-power field, freely admits his mistake and has turned his attention to the short-wave zone.

Very little radio broadcasting has been done on the short waves. KDKA in Pittsburgh has been the pioneer, and now WLW of Cincinnati has joined in. Both these stations transmit their regular entertainment programs simultaneously on both the usual broadcast wave and the short wave. WGY transmits tests at irregular intervals. WGY's short-wave transmission has been so well received in Australia that it has been re-broadcast there, enabling crystal sets in Melbourne to listen to the Schenectady program. The short-wave transmission of KDKA can easily be received in Los Angeles in the afternoon every day in the year.

For the listener who understands the International Morse code the short-wave field is one of gripping interest, as stations all over the world may be received. For the listener who only wants voice and music his stations are limited to WGY, KDKA, WLW, and

harmonics of the local and some distant stations. Amateurs with transmitting sets sometimes use voice also, but for the most part they prefer to "pound the brass," as code transmitting is called.

There is very little static on the short waves and room for a vast number of stations without interference. For example, in the one meter between 5 meters and 6 meters there is room for exactly one thousand broadcast stations, with 10 kilocycles separation between them! In the present band of 350 meters we have only 96 channels! Wouldn't our friends of the Federal Radio Commission like to have just one meter down there to dole out to broadcasters?

On the reverse side of this page the schematic and pictorial diagrams of a complete short-wave receiver are given. The modifications for a converter or adapter are also indicated in the schematic diagram when it is desired to utilize the audio amplifying units in any standard broadcast receiver.

A set of this nature is very susceptible to "body capacity" effects. That is, working at the tremendous frequencies which correspond to the short waves, the presence of the hand in tuning can cause considerable variation in the frequency. Hence, as indicated in the pictorial layout, it is advisable to mount the tuning condensers several inches behind the front panel and connect to the dials through extension shafts and flexible couplings.

The circuit is a very simple one, being merely an efficient low-loss regenerative detector with fixed tickler feedback and variable condenser control, followed by two stages of audio amplification. It is advisable to provide more than the usual degree of cushioning for the detector tube, and there are several other refinements which have been worked out for this particular arrangement which will be discussed in detail next week. Next week's article will also give the complete list of parts required and constructional information. We are going into this subject so fully because of the large amount of interest which resulted from a previous article on short-wave reception.

(To be continued)

Up In the Air



Misses Jean Douglas and Billy Copeland take their new Atwater Kent radio from: Ray Thomas, Inc., on their first trip by air to San Diego.

**NO OTHER
TOOL
WILL DO
THIS!**

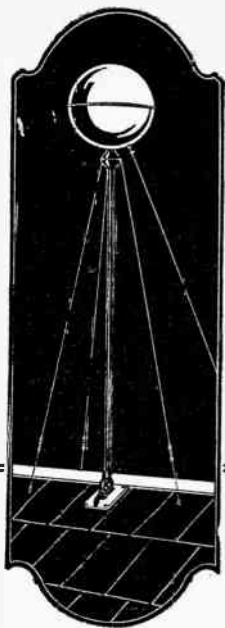


**“GRIP-
SCRU”
DRIVER**

Over All Lengths:
4-inch
6-inch
8-inch
12-inch

*Tell Your Dealer He Can Get
Them From*

EMSEE RADIO CO.
1129 MAPLE AVE. LOS ANGELES
WEStmore 5907



**The “Brains” of
Your Radio**

Your aerial is the “brains” of your radio. The programs your loud speaker reproduces are simply those messages that this “brain” (the aerial) picks up and delivers.

The Super-Ball Antenna is the “Brainiest” of all aerials because it sees and hears in all directions with the same efficiency. No matter where the broadcasting station is, the Super-Ball Antenna points toward it—receives all wave lengths from all directions. Gives your set greater selectivity and broader reception range. It is backed by our unqualified 30-day guarantee.

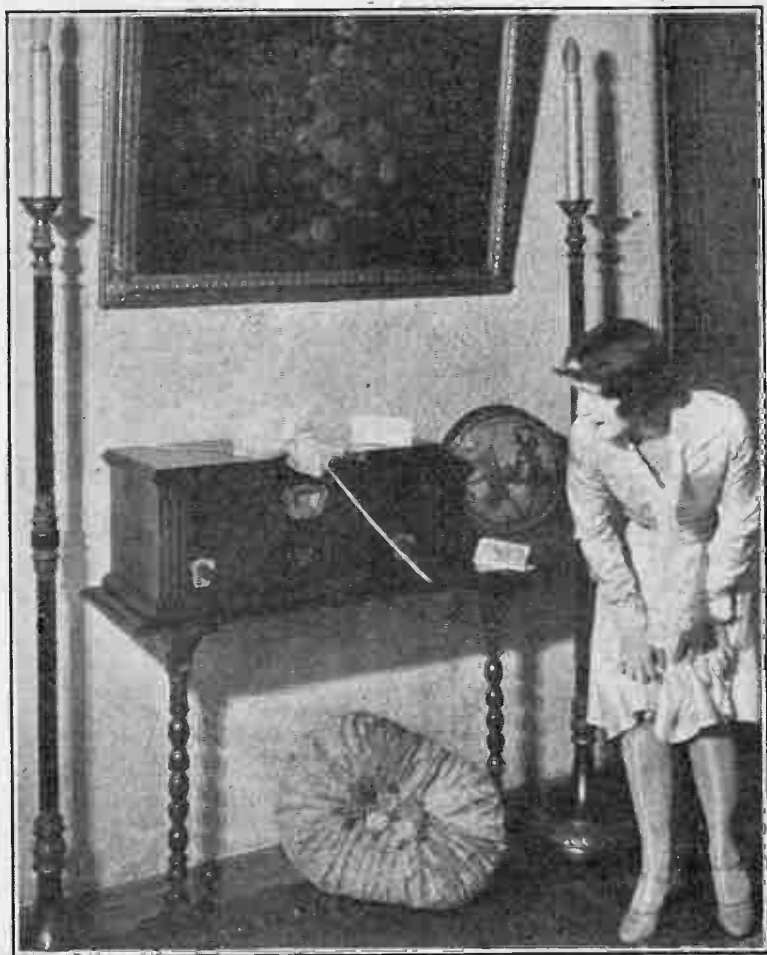
Ask your radio dealer to install a Super-Ball Antenna on your home.

Coast Sales Representatives:

UNIVERSAL AGENCIES
905 Mission St. San Francisco, Cal.

YAH-R-LANGE
MILWAUKEE INCORPORATED WISCONSIN

"Make It a Radio Christmas" Says Billie Barnes



Miss Billie Barnes, well known picture actress who, as the Stewart-Warner Radio Girl, was a feature of the last Radio Show, believes that an efficient radio is the ideal Christmas gift. A Stewart-Warner owner herself, she naturally recommends Matched Unit Radio. She is here pictured with the Stewart-Warner Shielded Six and the S.W Organ Voiced Reproducer.

Don Lee Buys KHJ

The news that KHJ has been sold to Don Lee came as a distinct surprise to the radio public. Mr. Lee is not a new member of the broadcast fraternity, as he already owns and operates KFRC, San Francisco.



"UNCLE JOHN" identified with the automotive trade for the past twenty-five years.

The same high class programs will be broadcast over KHJ as are being sent out over the San Francisco station.

With the change in ownership, one of the outstanding figures in the broadcast field, who has been with KHJ since it first came on the air will, we understand, no longer be associated with this station, namely, "Uncle John."

"Uncle John" is known all over the country for his Children's Hour, and his voice will be missed not only by the thousands of "Lads and Lassies of Radioland," but by many of the grownups, who have delighted to tune in to KHJ and enjoy, almost as much as the children, the entertainment he has furnished us for so long.

We have all marveled at his juvenile stars and have often wondered how he was able to get the confidence of his small artists; they are never shy or nervous with him and plainly show that each and every one of them love and trust him.

We shall all miss that well known voice—KHJ, The Times; Los Angeles, California.

SEE PAGE 87

for
**IMPORTANT
ANNOUNCEMENT**



*Make your
LAST change*

Radio Fans spend thousands of dollars every year changing Resistors and Grid Leaks—needlessly! Make your last change now—replace your resistors with

GLASTOR

THE TRANSPARENT RESISTOR

with the complete knowledge and confidence that the resistor will be the value the label says it is—that it will be absolutely noiseless—that it will be permanent. Daven Glastors will not change in value while the glass remains intact. The resistance material is not on the inside of the glass—it is in the glass itself.

The DAVEN BALLAST

Won't Burn Out.

The Daven Ballast, the standard filament control, will not burn out, or change its characteristics no matter what the service.



Replace your filament control with Daven Ballasts and forget them—they will perform perfectly, for the life of the set. Made in $\frac{1}{4}$, $\frac{1}{2}$, $\frac{3}{4}$, 1 and $1\frac{1}{2}$ amperes. Supplied with or without the special mounting as illustrated.

FREE CATALOG

The new Daven Catalog describing the complete line of Daven Products, will be sent free upon request. Your copy is ready. address.

The Sine of Merit

DAVEN RADIO CORPORATION

TRADE MARK "Resistor Specialists" REG. U.S. PAT. OFF.

190 SUMMIT STREET

NEWARK, N. J.

Fliers Visit Station

KFI was made the scene of the capricious capers of four "Australians," recently, in the persons of Capt. Charles Kingford-Smith, Keith V. Anderson, Wm. V. Anderson, Wm. A. Todd and Charles C. T. Ulm, the flying quartette, who were in Los Angeles getting their plane, "Southern Cross," ready for the Australian hop. They were accompanied by Lieut. George Pond, U. S. N., supervisor of the flight preparations, who gave the radio fans an interesting summary of the vital points of the attempt.

Auditions in the Southern California section of the Atwater Kent Foundation quest for young voices will be held at the Evening Express radio station, KNX, this week. The winning boy and girl will go to San Francisco to compete against winners in the other districts.

The victor at San Francisco will go East to compete in the national contest.

Chicago Meeting Scheduled

Arrangements are being completed for holding the mid-winter meeting of the Radio Division of the National Electrical Manufacturers' Association at Chicago, Nov. 28 to Dec. 2.

The tentative program includes subjects which deserve immediate attention from the manufacturer, such as growth and development of the industry, merchandising, the relation of radio to the electrical industry, standardization of radio broadcast program copy for newspapers, numbering of radio broadcast channels, and technical matters affecting the design of sets, standardization work, committee reports, and discussion of ways and means for expediting sectional and divisional work.

More Money in Electricity

Mail the Coupon for free book. Find out about National, the million-dollar training institution, and your opportunity in electricity. Cut and mail coupon NOW!



Earn \$50 to \$125 Week As Electrical Expert!

Become an expert in the most fascinating profession in the world—*Electricity!* It offers you amazing opportunities to earn more money easier, and in a more interesting way.

Train at National

National training will qualify you as electrical or radio expert. Our system gives you practical experience, knowledge and practice. Expert instructors make electricity simple and easy. You practice on every modern type of electrical equipment. There is no other sure way to learn electricity. And your training time is spent in California, where you can enjoy the real pleasures of life, where the tremendous electrical development is creating big-pay jobs for men who know electricity.

National Electrical School,
Dept. 518, 4006 S. Figueroa, Los Angeles
Gentleman: Please send me without obligation your FREE illustrated book on opportunities in the electrical industry.

**Free
Book**

Name

Address

City

**NATIONAL
ELECTRICAL SCHOOL**
4000 S. Figueroa, Los Angeles

A Super-Oscillator Without Harmonics

(Continued from last week)

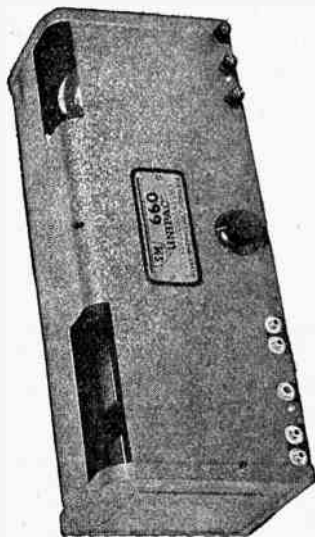
The general features of the circuit are not at all unusual, a small rotatable pick-up coil $\frac{1}{2}$ being connected in the receiver circuit at the customary point. This pick-up coil is supported in a moulded coil from carrying grid winding 3-4 and tickler 5-6. The .00035 modified self condenser C-1, tunes the grid coil 3-4. Condenser "C-2" of 1 mf. is a grid circuit bypass, while condenser "C-3" of 1 mf. is a plate circuit bypass (C-3 probably will be found in the receiver's circuit—and, if so, should only have its physical location shifted inside the stage shield.) The tube used as an oscillator may be any type regularly employed, such as UX-199, or UX-201A. Resistance R-2 may be the regular master rheostat, an Amperite or a special rheostat, though it requires no special adjustment. R-1 is a potentiometer used for adjusting the grid bias. Jack J-1 is used for testing purposes only.

Assuming the oscillator to be wired up in the receiver and the battery connections made, the operation is as follows: With a jumper between binding posts C—(minus) and C+ (plus), and with the arm of potentiometer R-1 turned to the "minus" end, the oscillator will be found to operate exactly as was the case with the original oscillator used in the receiver. A milliammeter with a scale range of 0-10 or 0-120 mils. should be connected to a cord and plug, the plug being inserted in Jack J-1. Thus it is possible to read the plate current of the oscillator tube. It will then be found that if condenser C-1 is short-circuited by touching both stator and rotor plate sections with the fingers, that the reading of the meter will change. The arm of R-1 should then be moved to the positive end, and as this is done, the plate current will be found to increase slightly, but change less as condenser C-1 is periodically shorted. A "C" battery should then be connected to the posts marked C— (minus) and C+ (plus)—it may be from $4\frac{1}{2}$ to 9 volts in value. It will now be noticed that if R-1 is adjusted, a point can be found where the reading of the milliammeter plugged into Jack J-1, will not change, with the fingers on the plate sections of C-1, and then the oscillator will be

(Continued on Page 28)

Marshall

Don't forget the new All-Wave S-M Super 8—it's incomparable. All Silver Kits and parts in stock. Our prices are right. Dealers and set builders write for discounts. Open evening until 8.



Silver

You have not heard real tone if you haven't heard the S-M 660 Unipac. We have two models: 171 or 210. Come in and hear the best.

"B" eliminator and amplifier combination at prices most reasonable.

AMERICAN RADIO CO.
LOS ANGELES

108 East 8th St.

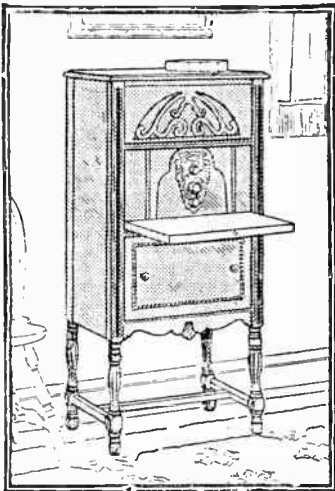
TUcker 6028

Mohawk

One Dial Radio

Electric Radio! Mohawk is First to Offer It at a Price
Within Reach of Every Purse.

*These Franchised Mohawk Dealers Are at Your Service.
Ability. Call Upon One Today*



The Iroquois

This beautiful console is of rich Walnut, hand rubbed, piano finish, duo tone, built-in loud speaker.

Price for Electric Operation (Complete) . . . **\$217.00**

LOS ANGELES

Schwabacher-Frey

736 South Broadway
TRinity 1291

L. A. Duncan

2891 West Pico
EMpire 1141

HOLLYWOOD

Holly-Angeles Music Co.

6611½ Hollywood Blvd.
GRanite 4876

PASADENA

Ashton's Radioelectric

1762 E. Colorado St.
Colorado 4042

Earl Sanders

100 N. Fair Oaks
Terrace 3623

BEAUTY -- PERFORMANCE --

LOWER PRICES-- HIGHER QUALITY

--*The Pioneer Still Leads!*

Using the New 226 and 227 RCA Tubes. No Other Radio
Can Offer You Quite as Much.

*Selected for Their Expert Knowledge and Excellent Business
for Demonstration in Your Home.*

HUNTINGTON PARK

Glen W. Cadwell

"Everything Musical"

217 S. Pacific Blvd.
DElaware 6915

SANTA MONICA

Remington & Rhoades

408 Broadway
Phone 257-58

LONG BEACH

Houlette Music Co.

622 Pine Ave.
Phone 673-285

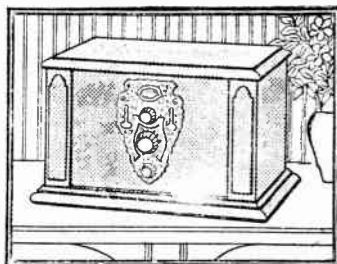
SAN PEDRO

Port Electric Co.

145 N. Pacific St.
Phone 1990

RIALTO

J. O. Weller Hardware Co.



The Navajo

This table model of five-ply
Walnut veneer, with curly
Maple overlay, duo tone, beau-
tiful in design.

Price for Electric
Operation..... **\$149.50**

Other One-Dial All-Electric Radios

\$174.50—\$252.00—\$282.00
\$367.00

Same Models for Battery
Equipment—\$77.00 less

- SIMPLICITY -- ECONOMY

Why spend more than

\$18⁷⁵

for a "B" battery eliminator when that amount buys the best? Buys, in fact, the

Powell

POWER UNIT

**QUIET
CONSISTENT
DEPENDABLE
ECONOMICAL
and
NEAT**

Ask your dealer to demonstrate it to you.

Powell Mfg. Co.
4009 South Western Avenue
LOS ANGELES
VE. 1619

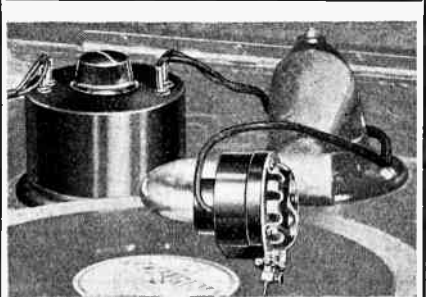
Super Oscillator

(Continued from Page 25)

practically free of harmonics. The C battery and the potentiometer adjustment should not again be tampered with, and the millimeter need only be used from time to time to determine that the oscillator plate current is the same. (The fingers touched to both plate sections of C-1 prevents the tube from oscillating.)

If a millimeter is not available, a good 0-8 or 0-10 volt-meter, such as a Jewel or Weston, may be used in its place, since the readings required are only comparative.

The builder who will replace his present super-oscillator with the one described herein, will certainly enjoy a degree of selectivity not theretofore experienced with his super, and, in addition, he will have an oscillator wavelength range of 30 to 1500 meters without going to the trouble of winding a single coil. Needless to say, as the baseboard space, occupied by the shielded oscillator unit is but 4 by 7½ inches, it may easily be incorporated in existing receivers, with resulting freedom from harmonics.



The Most "Tinpany" Portable Phonograph

will sound like the expensive modern machines when connected to your radio set through

ELEC-TRU-TONE

THE PHONOGRAPH MODERNIZER

All you need is the motor and turntable, Elec-tru-tone, and a radio set, and electrical reproduction is yours.

Only \$19.50

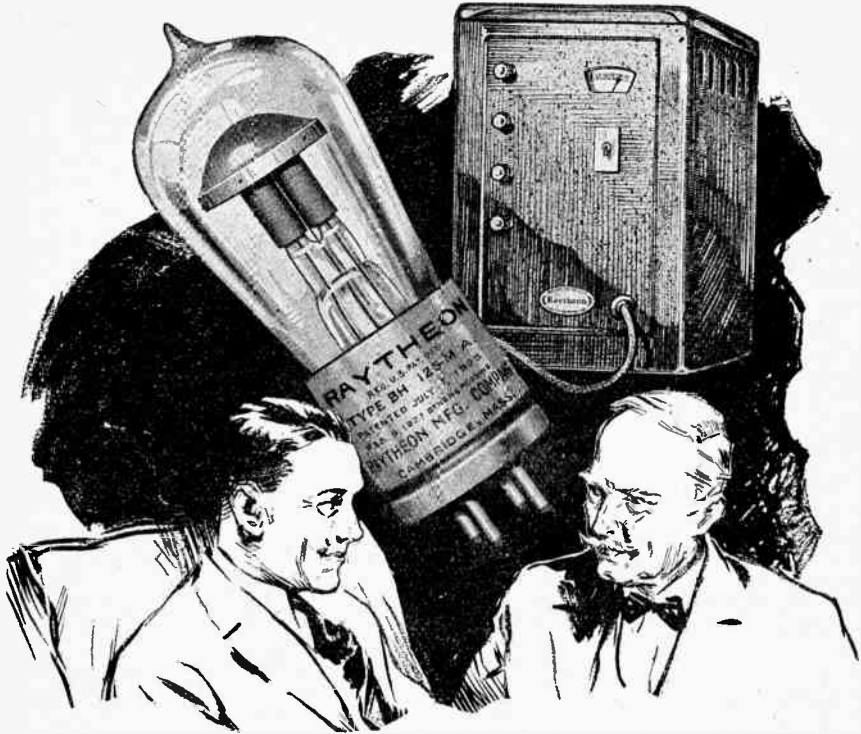
Hear It at Any Radio Store

THE ELEC-TRU-TONE CORP.

Hibernian Bldg., Los Angeles

Jobbers:

Herbert H. Horn C. C. Lawton Co.
Pacific Wholesale, Inc.



When You Offer Your Opinion On Light Socket Power Units

TYPE BH

An improved rectifier for universal use in all B-power units with outputs up to 300 volts.

Rating: 125 m. a. at 300 V.
List Price, \$4.50

TYPE BA

For power units which completely eliminate all batteries, chargers and outside power accessories.

Rating: 350 m. a. at 250 V.
List Price, \$7.50

TYPE A

A simple, compact, unbreakable metal cartridge. Type A is the efficient rectifier for battery chargers and A power units.

Rating: 2½ Amps.
List Price, \$4.50

TYPE R

Voltage Regulator—maintains constant voltage output from B power units regardless of line and load conditions.

Rating: 90 V., 60 m. a.
List Price, \$4.00

—be sure you recommend a Raytheon-equipped power unit which will maintain a constant flow of smooth, silent power night after night and month after month.

The performance of any power unit depends upon the rectifying tube. There are nearly a million Raytheon gaseous rectifying tubes, which have no liquids or fragile filaments, now doing service.

When you recommend Raytheon your opinion is backed by the engineering departments of over 40 leading manufacturers who have designed their power units for the Raytheon long-life rectifying tube and have the approval of Raytheon Research Laboratories.

RAYTHEON MANUFACTURING CO.
Kendall Square Bldg. Cambridge, Mass.



Raytheon
THE HEART OF RELIABLE RADIO
POWER





Peerless Reproducer Makes Any Radio Better

The Peerless Reproducer gets more low notes that most radio loud speakers miss. Reading this won't convince you—but learning the Peerless WILL! Ask your radio dealer for a demonstration—if he doesn't stock Peerless write us for name of nearest dealer.

*Once you hear the new Peerless
no other Loud Speaker will satisfy you.*

*Wholesale
Distributors*

KIERULFF & RAVENSCROFT

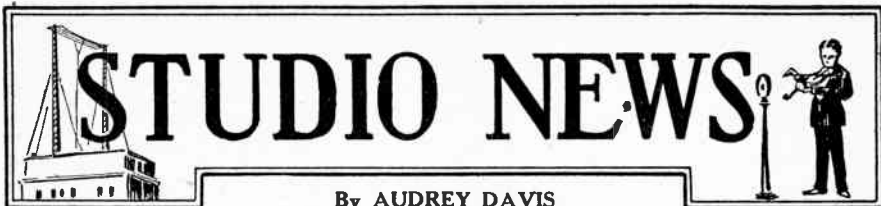
*Wholesale
Distributors*

RADIO EQUIPMENT



1630-32 S. Los Angeles St.
LOS ANGELES

121-131 Ninth Street
SAN FRANCISCO



STUDIO NEWS

By AUDREY DAVIS

The Philadelphia Storage Battery Company are to be commended for the most excellent programs they are sponsoring weekly on Saturdays, from 9 to 10 p. m., over the National Broadcast chain. These are the kind of programs that help radio all over the country, both the public and trade.

Their program for Saturday, November 26, is a fair sample of their regular offerings.

KPLA has started a Spanish course to be given every Monday, Wednesday and Friday, from 5 to 5:30 p. m. William F. Race, R. A. Mirez, F. Biera Jamba, Antonia Herras and Henry C. Niesa, professors at the University of Southern California, are conducting the classes.

Really good orchestras are few and far between, but occasionally we find an undiscovered band doing some real work, and so it is with Georgie Fabregat and his Tivoli orchestra, making their aerial appearance over KMIC every Thursday evening, from 9 to 10 p. m. This is a request program, and the management states that Georgie can play any popular number asked for. No doubt Georgie's peppy orchestra will be heard extensively, as KMIC has been receiving mail from distant points in Alaska.

Radio listeners will welcome the news that Frank Gage, well-known pianist and entertainer of the East, has been

engaged to contribute popular music to the more classical programs of the Pacific Coast Network. Beginning this week, Mr. Gage will be scheduled for pianologues for Saturday nights and one other night of each week. He plays his own accompaniment and sings in a happy, rollicking vein. Mr. Gage comes to the West with a record of popularity over Stations WEAJ, New York, and WEEL, Boston. He is also well known as an entertainer for banquets, dances, and college parties.

Warner Brothers' Motion Picture Company recently bought a \$50,000 library of music for the vitaphone, which will be of great benefit for their radio station, KFVB.

Have you that secret desire to own and fly your own airplane?

Almost everyone has after reading of the heroic feats of courage recently displayed by America's eaglemen and women. Realizing the interest in aviation at the present time, KFRC will soon give flying lessons over the radio, a feature that has met with the greatest success in Eastern broadcasting circles.

Lieutenant Blaine Stubblefield, one of the country's best known and highly acclaimed pilots, will prepare the material for the lessons

The lessons are scheduled to start on KFRC Thursday, November 17th, at 9:45 p. m., and will be given weekly at this hour, according to the station's management.

30 NICK HARRIS

Detective Stories. Send \$2 to 272 Chamber of Commerce Bldg., for his book, "In the Shadows." Police Whistle Free.



for the
Top Peak
of performance

Gold Seal Radio Tubes

FOR that extra clearness, that added fulness of volume, and longer service without replacements, even the finest receiving set needs the best of tubes.

The Gold Seal mark on a tube is the guarantee of a company with great resources keeping faith with you to give you the fullest measure of satisfaction.

*All
Standard
Types*

Manufactured by
GOLD SEAL
ELECTRICAL CO.
Incorporated

250 Park Ave. New York

J. C. RENDLER

625 South Main Street

"Radio Supplies"

Los Angeles, California

*"Money can't buy better
Radio Tubes than Gold Seal"*



Through the courtesy of the Gold Seal Electrical Company of 250 Park Avenue, New York, two prizes are offered each week for the best letters to the DX Club. The first prize consists of two Gold Seal tubes. The prize winner may have his choice of one power tube of either type and one tube of either the 199 or 201A type. The second prize is one Gold Seal tube of either the 199 or 201A type. It is not always the big expensive set with the longest list of DX that wins—everybody has a chance.

FIRST PRIZE

DX Club:

I have been using an Atwater Kent open model set for three years, with no attachment.

My log contains 361 stations. The last month and a half have held many early morning radio parties, playing JOCK and JOBK, Japan; 2BL, 4QG and 3LO, Australia, that could be heard outside of the house. Last winter I played 5WA, Cardiff, England, and I expect some new surprises this winter.

Also extend an invitation to any one interested in hearing Japan and Australia, drop around any morning about 2 or 2:30 a. m.

L. D. MANZER,
1611 Ft. Stockton Dr.,
San Diego, Calif.

SECOND PRIZE

DX Club:

I am sending in another little contribution which is pretty fair so far for a 5-tube Radiola 20. Space forbids giving my complete log, so put down about 30 stations for the Pacific Coast, then we will travel north to CNRV, CKWX, CKCD, CFCT, then east to KSL, KDYL, KOA, KFAU, GFVR, KOW, KMOX, KSD, WHT, KFKX, KFKX, KOB, KFXF, KFAD, WORD, WBBM, WCFL, KFAB, WTAM, WCCO, WLW, KMMJ, WOW, WHO, WCB, WOC, KLZ, then south to WFAA, WBAP, KWKH, KRLD, KFQB, WSB, then to the Atlantic Coast, KDKA and 3XN, then out to PWX at Havana. I have tuned in PWX four consecutive Sunday evenings at 6 p. m. to 7 p. m. I also have a verification from PWX. I have never tried for

Japan or Australia, as I need the sleep, but do not doubt that I could tune them in. Well, old DX'ers, will sign off.

RAY SKAGGS,
402 Brett St.,
Inglewood, Calif.

THE TRUTH—NOTHING ELSE BUT!

DX CLUB:

Your letter contest for DX fans interests me since it allows the man with weaker set into the competition on an equal footing with the rest. The following list is submitted because of the set and location; a freak radio frequency set, four tubes and crystal detector operated on B eliminator and the location is high up in Altadena. The set was designed by Norman I. Prosser of Pasadena.

Two evenings of fishing brought in the following: KGW, KFRC, KFSD, KOB, KJR, KWPC, KMOX, CNRV, KQW, KOA, KOIN, KYA, KFWI, KFAU, and last but not least, KOMO and WGN broadcasting at the same time.

Very truly yours,
FLOYD L. HANES.

STATE OF CALIFORNIA }
COUNTY OF LOS ANGELES } ss.

Subscribed and sworn to before me this 22nd day of October, 1927.

ROBERT M. McCURDY,

Notary Public.

My commission expires June 19, 1931.

(Continued on Page 92)

BT Counterphase 8—World's Greatest Radio—Sold with a Distance Guarantee. H. A. Everest, 1032 North Ogden Dr. Granite 9915.

ZENITH

TRADE MARK REG.

→ LONG DISTANCE ← RADIO

TRADE MARK REG.

Sets the Pace!

Ask any owner what he thinks of **Zenith** performance. Make comparisons with any other Receiver.

Note the musical quality—the simplicity of operation.

And—

Zenith "AC" operation means **All-Electric**—not "Almost Electric"!

Ask any **Zenith** Dealer to make these comparisons!

And don't forget: **Zenith** IS getting long distance—right now—here in Los Angeles.

CHANSLOR & LYON CO.

*Pacific Coast Distributors
for Zenith Radio and R.C.A. Tubes*

LOS ANGELES

FRESNO

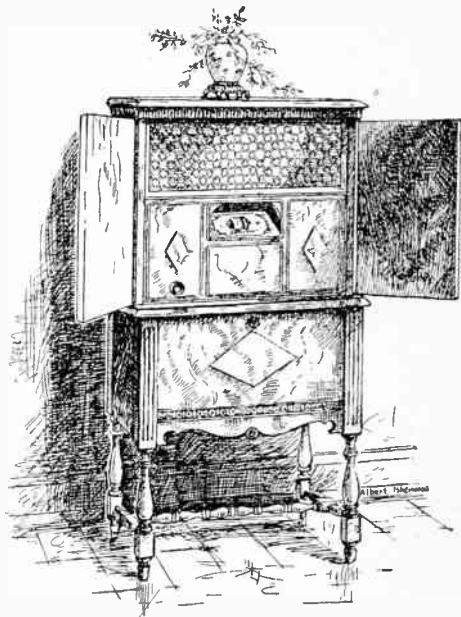
SAN FRANCISCO

OAKLAND

PORTLAND

TACOMA

SEATTLE



Model 14-E, A. C. Electric, \$307.00

There Is Only One Way to Prove the Claims of



And that is to HEAR IT PERFORM!

Just call up or visit one of these "Honor Roll" Dealers and arrange for a free demonstration of ZENITH in your own home:

In DOWNTOWN L. A. See:

Birkel Music Co.

446 South Broadway
VAndike 1241

In DOWNTOWN L. A. See:

Martin Music Co.

734 South Hill Street
TRinity 9621

In HOLLYWOOD See:

Zenith Radio Agency

(F. Clay McConnell)
1242 Vine Street
HEmpstead 2504

In WILSHIRE See:

Thomas Radio Co.

3610 West Sixth Street
WAshington 2760

In ALHAMBRA See:

**Fred B. Gillenwater Radio
Studio**

127 West Main Street
ALhambra 2032

In OCEAN PARK See:

Ocean Park Radio Service

(J. C. Williams)
177 Pier Avenue
Santa Monica 624-23

In SAN PEDRO See:

Zenith Radio Store

(Jack Moskovita)
462 Sixth Street
San Pedro 519

In TORRANCE See:

DeBra Radio Co.

Carson, Cor. Cravens
Torrance 73-J

In SANTA ANA See:

Robert S. Gerwing

312 Broadway
Santa Ana 475-J

In PASADENA See:

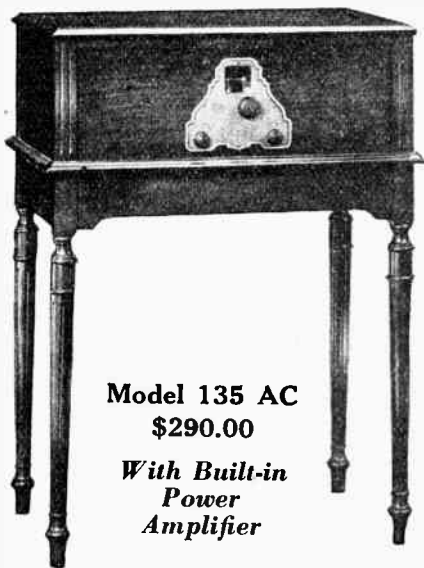
Radio Doc

1581 East Walnut Street
Colorado 1671

"The Quality Goes In Before the Name Goes On"

The Howard

*Electrically
Operated
Radio
Receiver
and
Musical Instrument*



Model 135 AC
\$290.00

***With Built-in
Power
Amplifier***

Manufactured By
HOWARD RADIO COMPANY
Chicago, Ill.

A SINGLE SWITCH A SINGLE CONTROL

Not merely a lamp socket set, but one that embodies the latest development in radio—the *alternating current tube*.

These new Howard Electric Radio Receivers have a tube arrangement which is a distinct departure from the common practice. A design, which makes possible the use of that fine Power Tube, the 210—a tube that will easily give undistorted output to the loud speaker of more than two times that of the 171 Power Tube.

The owner of a Howard Radio Receiver possesses not only an instrument of the finest mechanical construction and workmanship, but one which is rich, mellow and amazingly wonderful in tone reproduction. It becomes at once the proud possession of all music lovers, and the eye as well as the ear is charmed by its marvelous performance and beauty.

Distributors

HOWARD RADIO DISTRIBUTING CO., Inc.
6229 Banner Place GLadstone 0807 Los Angeles, Cal.

? Questions and Answers ?

● A Weekly Department Conducted by K. G. Ormlston, I.R.E. ●

QUESTION—What is the cause of motor-boating, and how may it be eliminated?

J. S. M., Los Angeles.

ANSWER—The term "motor-boating" has been applied to the "put-put" noise sometimes produced in the output of a set, because of the resemblance between this noise and that produced by the exhaust of a motor boat. It often occurs when B eliminators are used, particularly with resistance and impedance coupled amplifiers.

It is a low-frequency oscillation, primarily caused by the high impedance of the B eliminator. The current in the plate circuit of the audio amplifier tubes varies as signals are received, the greatest variation being, of course, in the last stage. The variation in current required for the last stage on strong signals is considerable, and if the eliminator is of high impedance and not provided with means of maintaining constant voltage (such as a glow tube), the voltage will vary with the current drain. That is, as a heavy surge of current is required by a loud, sustained or bass note, the voltage will drop somewhat. This variation in the voltage output of the eliminator in turn causes a variation in the plate current of the detector tube. The variation will be amplified and passed along through the whole audio amplifying system. This will cause another surge of current in the last stage with its corresponding voltage drop, and the cycle repeats itself, the voltage given by the eliminator rising and falling and the loud speaker giving out the "put-put" noise. The rapidity of the "puts"

will depend upon the electrical characteristics of the audio amplifier and eliminator.

Eliminators which are equipped with "constant voltage" devices, or types, which have sufficient capacity in the condensers to provide for heavy surges of current drain without materially affecting the voltage, will not motor-boat. With the types which do give this trouble it is usually possible to eliminate it by shunting the eliminator output with a large condenser of from 8 to 12 microfarads capacity. This condenser must, of course, have a working voltage rating considerably in excess of the eliminator output voltage.

Perhaps the easiest and most satisfactory method, however, is to isolate the detector plate circuit from the audio tubes and use a 45-volt B battery for detector plate supply. The current drain for the one tube at 45 volts is very small and the battery should last a long time. With the detector thus receiving a perfectly steady plate voltage, there will be no more "putting."

QUESTION—Can you furnish me with information on the construction of a B eliminator without variable controls in which the voltages at the various terminals will hold to their specified values regardless of the load?

R. J. HOWARD, Hollywood.

ANSWER—An eliminator which fills your requirements is shown in the accompanying diagram. It incorporates the new Raytheon type R voltage regulator tube.

(Continued on Page 92)

CROSLEY SPECIALISTS REPAIRING — BALANCING — SERVICE
 CHILDS' LAB., 2310 S. Union Av., L. A.

FREQUENCY CHANNEL LISTING

250 Watts and Up—Corrected to November 19th

Chn.	Freq. Meters	Stations	Chn.	Freq. Meters	Stations
1—	550—545.1	KSD, WMAK, KFUF.	54—	1080—277.6	KOIL, KWWG, WHAM.
2—	560—535.4	WHO, WCAC, WTIC.	55—	1090—275.1	KFSG, WORD, WTAS.
3—	570—526.0	KMTR, KYW, WNYC, KFXX.	56—	1100—272.6	KFAD, KFJF, WBAA, WHAR, WPG, WRM, WSKC.
4—	580—516.9	WCAE, WMC, WTAG.	57—	1110—270.1	KGU, KOAC, KQV, WGST, KLD, WJAS, WMAZ, WSOE, WHAD.
5—	590—508.2	KLX, WIP, WOO, WOW.	58—	1120—267.7	KFWI, KLSA, WDAE.
6—	600—499.7	WBAP, WFAA, WAAW.	59—	1130—265.3	KTSA, WHK, WNOX, WOI, WBET.
7—	610—491.5	KGW, WEAJ.	60—	1140—263.0	KGEF, WDAG, WJAZ, WMBI, WSEA, WDWL.
8—	620—483.6	KUSD, WCFI, WEMC, KFDM, WTAW, WCSH, WSB, WSUI.	61—	1150—260.7	KGA, WDG, WCAU, WDW, WNBH, WOOD, WRHM.
9—	630—475.9	KFI, WRC.	62—	1160—258.5	KSUL, WOCH, WBT, WDMA, WBEW, WFBL, WIL, WNAL.
10—	640—468.5	KFNF, KRDL, WEEI, KUOM, WRR, WHAS.	63—	1170—256.3	KTNT, WASH, WBBR, WCO, WEBJ, WLTH.
11—	650—461.3	KPRC, WJZ.	64—	1180—254.1	KFKU, KMO, WREN, WRVA, WTAQ.
12—	660—454.3	KFOA, WMAQ, WQJ.	65—	1190—252.0	KOCW, KPLA, WMBB, WOK, WKBF.
13—	670—447.5	KFSD, WJR, WSBF, KFDY, WAAW.	66—	1200—249.9	KFRU, WCOA.
14—	680—440.9	KFBW, WLW.	67—	1210—247.8	KOW, KFEL, WIOD.
16—	700—428.3	KPO, WOR, WOS.	68—	1220—245.8	KFH, KFPY, KLS, WEVD, WAA, WDD, WFBE, WGBB, WKRC, WHDI, WLB.
17—	710—422.3	WHT, WIBO, KHJ, WMAF, WHAZ.	69—	1230—243.8	KSCJ, KWUC, WBRC.
18—	720—416.4	WCCO, WFI, WLIT.	70—	1240—241.8	KFKB, KFON, WEBC, WEDC, WMAL, WGES.
20—	740—405.2	WEAR, WTAM, PWX, KLZ.	71—	1250—239.9	KEX, KFJR, WEAM, WNAD, WJAM, KWCR, WOAX.
21—	750—399.8	KOB, KTW, KWKH, KWSC, WHN, WQAO, KMA.	72—	1260—238.0	KLDS, WLBI, WRBC, WBSB.
22—	760—394.5	WAAF, WBBM, WJBT, KGO, KTHS, WCAO, WMBF.	73—	1270—236.1	KFDX, KFMX, KFWM, WBNY, WCAJ, WGBF, WHAP, WMSG, WTAR, WTAD.
23—	770—389.4	WCAJ, WGY.	74—	1280—234.2	WCAH, KFVE, WMBS.
24—	780—384.4	KNRC, WOC, WJAR, KHQ, WDAF, WLWL, WMA.	75—	1290—232.4	KBRL, KFPR, KUT, WJKS, WSBC.
25—	790—379.5	WCAD, WEBH, WJDD.	76—	1300—230.6	KFEQ, WDBJ, WGBI, WQAN.
26—	800—374.8	KFWB, WDAY, WSAI.	77—	1310—228.9	WCOC, KELW, KGBU, WOWO, WHBP.
27—	810—370.2	WEW, WWJ.	78—	1320—227.1	KSO, WARS, WBBC, WJAY, WSDA, WVAE.
28—	820—365.6	KJR, KVOO, WGBS, KXA.	79—	1330—225.4	WFBM, KFUR, WAMD, WDD, WMAC, WSYR.
29—	830—361.2	WCBD, WJBB, WLS.	80—	1340—223.7	KGFH, KMIC, WCAM, WCRW, WABQ, WFKB, WNR, WPC, WSAJ.
31—	850—352.7	WKAQ, WSM.	82—	1360—220.4	WKBB.
32—	860—348.6	KNX, WHB, WJAX, WWVA, WQQ.	83—	1370—218.8	WCGU, WGW, WKBO, WKBO.
33—	870—344.6	KSAC, KSEI, WBZ, WKRC, WJAD, WBZA, KFQB, WHA, WLBL.	84—	1380—217.3	WKWB, WCO.
34—	880—340.7	KOA, WABC, WAPI, WBOQ.	85—	1390—215.7	KRLO, WKO, WPEP, WQAA.
35—	890—336.9	WQAM, WSMB.	86—	1400—214.2	KFWF, WICC, WCWK, KGDX, WJBL, WRAX.
36—	900—333.1	KOIN, WGHP, WOAI.	87—	1410—212.6	WCD, WRST.
38—	920—325.9	KPSN, KDKA.	88—	1420—211.1	KSOC, WCBS, WOKT, WTFI.
39—	930—322.4	KFAB, KYA, WPCH, WRNY.	89—	1430—209.7	KFV, WLBZ, KGFJ.
40—	940—319.0	KOMO, WGN, WLBI.	90—	1440—208.2	WABF, WMBD.
41—	950—315.6	KSL, WGR, WNAX, WHA, WLBI.	92—	1460—205.4	WAKN, WLX.
42—	960—312.8	KFWO, KMOX, KOWW, WBAK, WPSC.	93—	1470—204.0	WKEN, WLBZ.
43—	970—308.1	KQW, KUOA, WADC, WUNC.	95—	1490—201.2	KGEY.
44—	980—305.9	KGCH, WPCR, WGL, WLWB, WODA, WTMJ, WLEW, WODA, WTMJ.	96—	1500—199.9	WRAH.
45—	990—302.8	KTBI, WBCN, WDBO, WNAT, WENR, WNAC, WEAN.			
46—	1000—299.8	KFAU, KFOY, WBAL, WJAG, WKAR, WOAN, KMMJ.			
47—	1010—296.9	KFXF, WAIU, WDRC, WEAQ, KFUM.			
48—	1020—293.9	KTAB, WFIW, WGCP, WNJ.			
50—	1040—288.3				
51—	1050—285.5				
52—	1060—282.8				
53—	1070—280.2				

ROFFY'S

New Superfine 3-Tube Circuit Is Going Over Big. Kit Only \$50.
J. T. Roffy, 155 Olive St., Walnut Park, Calif. Phone DE. 2756.

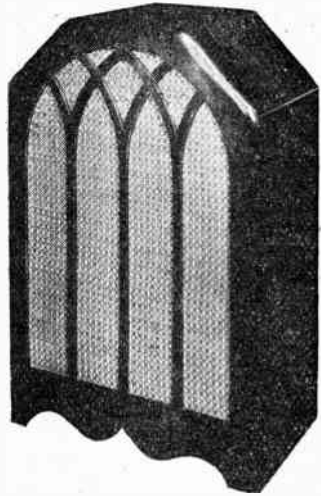
As the Massive Pipe Organ

succeeded its forbear, the little reed organ, so has the mighty Cathedral Reproducer supplanted its predecessors, horn type loudspeakers and cones, which have blazed the trail to the ultimate—Cathedral reproduction. You could read volumes about the Cathedral's long, winding air column, the perfect harmony of its construction, the marvelous tonal grandeur of its reproduction—but there is only one way you can comprehend—and that is to *hear* it.

*And you may, at any store
with the Cathedral
Franchise.*

The Cathedral Reproducer

35" high—23" wide—13" deep



EXCLUSIVE WHOLESALE DISTRIBUTORS:

The Daniel Specialty Co.

"The House for Better Reproduction"

5234 Melrose Ave.

LOS ANGELES, CALIF.

HEmpstead 3491

Established 1923

Saturday, November 26, 1927

U.S.C.? NOTRE DAME?

KFI in the South, KPO in the North will handle the broadcast. Jack Keough, the KFI-KPO crack football announcer will go to Chicago to broadcast the game direct from the field and give you all the thrills of the contest for the football championship of the United States.



The Station Isolator Cuts Through Interference Like Morley Drury Cuts Through the Line.

Thousands of dollars are being spent to bring to you this football broadcast. Why not insure your own complete enjoyment by attaching a Sargent-Raymont Station Isolator to your set? This will prevent all overlapping of locals if you live in a congested area, thus "isolating" the station you want to hear. Or, if you are near the edge of the daylight range of KFI, KPO or any other station that will be linked up for the game, the Station Isolator will give your set the "goal line punch" that will enable it to get through so you can hear about all the touchdowns.

Hear stations you never heard before. Increase selectivity — Prevent overlapping. Double your distance range. Try it yourself and be convinced.

5-Day Money Back Guarantee—Dealers Write

PRICES

MODEL "A." For Apex, Crosley Band Box, New Freshman Equaphase and Atwater Kent No. 30, 32, and 35. (No Tube required).....

\$10.00

MODEL "T." For all neutrodyne and tuned R. F. Receivers. Requires one CX-301-A tube. If tube is wanted, add \$1.75 to remittance.....

\$17.50

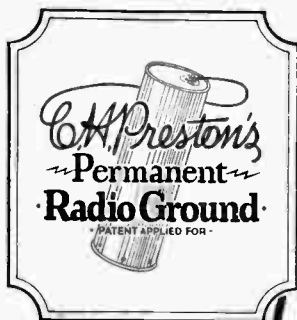
ORDER BLANK

RD

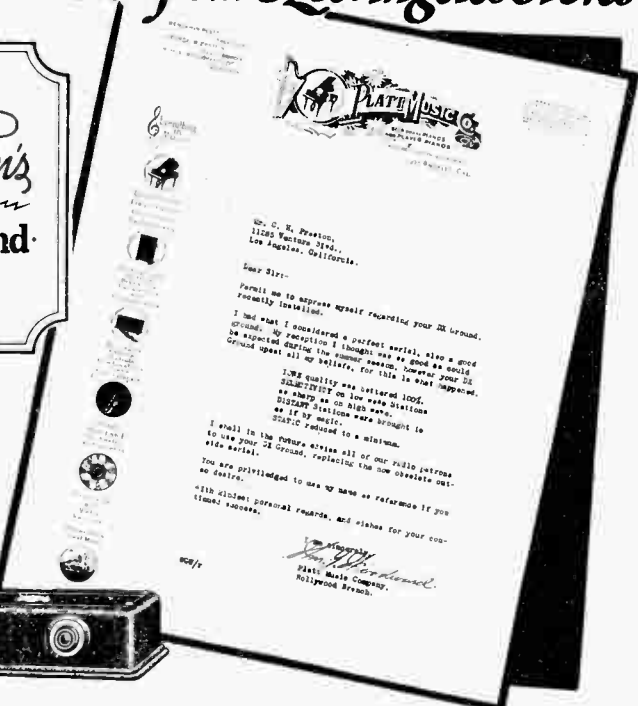
Radio Constructors Corporation,
357 Twelfth Street, Oakland, Calif.

Enclosed find \$.....for which you will please ship me at once one Model.....Station Isolator. This is to be used with a.....
..... (State here make and model of your receiver.)
Name.....
Street and No.....
City and State.....

Platt Music Company Sells ATWATER KENT from 8 Los Angeles Stores



Price —
\$8.00



The Preston Permanent Radio Ground has given the radio world something to think about. Radio dealers have long realized that a radio receiver must be installed with an efficient aerial and ground combination if the receiver is to give good and satisfactory service.

They have found, in a Preston Ground, a positive and permanent ground connection that is 100% efficient... that increases volume... sharpens tuning... improves tone... eliminates static-like resistance noises... and is, for local reception, an efficient underground antenna as well as a ground. That's why so many radio dealers recommend it.

Ask your radio dealer today about the "money-back guarantee" under which the Preston Ground is sold.

UNGAR & WATSON, INC.

Manufacturers

1366 South Figueroa St.

Phone WESTmore 2411

THE SEROY COMPANY

Distributors Northern California, Oregon, Washington
122 Broadway, OAKLAND, Calif.





.....It's Time To Think of Christmas Gifts!.....

There is no Christmas remembrance you could possibly buy that would give the recipient more year-round pleasure than an efficient radio receiver and a reproducer that will effectively handle the programs it brings in.

There is no radio equipment yet built that will give better performance than Stewart-Warner Matched Unit Radio. Receivers, reproducers and tubes are carefully matched in the factory so that the performance of one is carefully synchronized with the others . . . the result is a radio ensemble that is making noteworthy records for performance in all parts of the world.

The Model 705 S-W Shielded Six receiver pictured here sells for \$128 without accessories...the Model 425 Organ Voiced Reproducer is priced at \$26. There's a Stewart-Warner dealer near you who will gladly demonstrate Matched Unit Radio in your own home. Ask us for his name.

UNGAR & WATSON, Inc.

Wholesale Distributors Stewart-Warner Radio

1366 South Figueroa St. Westmore 2411 LOS ANGELES



ROBERT HURD

Los Angeles, California—640 Kc.

KFI

5000 WATTS—468.5 METERS

Radio Central Super-Station of Earl C. Anthony, Inc.
1000 S. Hope. Phone WE. 0331. After 5 P.M., WE. 0337
ROBERT HURD, Program Manager

WEEK COMMENCING SUNDAY, NOVEMBER 20, 1927

SUNDAY, NOVEMBER 20

- 10:00 to 11:00 a.m.—Services under the L. A. Church Federation.
11:00 a.m. to 12:30 p.m.—Temple Baptist Church.
5:30 p.m.—Johnnie Dull and his Melody Boys; Jeane Cowan, blues singer.
6:30 p.m.—N. B. C. Standard Symphony program for Standard Oil Co. Standard Symphony Orchestra.
7:30 p.m.—Father Ricard's Sunspot Weather Forecast.
7:35 p.m.—Bob Buckner's Sole Killers Orchestra.
8:00 p.m.—Aeolian Organ Recital; Alex Reilly at the console.
9:00 p.m.—N. B. C., Great Moments of History, "Lewis and Clark Expedition," over P. C. N.
10:00 p.m.—Bill Funk's Packard Six Orchestra; Dolly McDonald, Esther Walker.

MONDAY, NOVEMBER 21

- 5:30 p.m.—Glenn Edmund's Orchestra.
6:15 p.m.—George Wilder Cartwright Radiatorial Period.
6:30 p.m.—Gamut Male Quartet.
7:00 p.m.—Gene Johnston's Music Box Hour.
8:00 p.m.—N. B. C. Spotlight Hour.
9:00 p.m.—Program of famous Musical Masterpieces. Maurine Dyer, contralto; James Burroughs, tenor.
10:00 p.m.—Metropolitan Dance Orchestra; Red Wyatt and his Uke.

TUESDAY, NOVEMBER 22

- 5:30 p.m.—The Dragon Hawaiians.
6:00 p.m.—Florence Sanger, Piano Moods.
6:15 p.m.—Music Appreciation Chat.
6:30 p.m.—Mary Rosetti and Don Parker.
7:00 p.m.—L. A. Fire Dept. Orchestra; Helen Guest, popular singer.
8:30 p.m.—U. S. Playing Card Co. broadcast over P. C. N.
9:00 p.m.—N. B. C. National Carbon Co. Eveready Hour, broadcast over P. C. N.
10:00 p.m.—N. B. C., Retold Tales, "Ransom of Mack," O. Henry, under direction of Eugene Blanchard, over P. C. N.

WEDNESDAY, NOVEMBER 23

- 10:45 a.m.—Betty Crocker, Gold Medal Talk.
5:30 p.m.—Sebastian's Cotton Club Orch.
6:15 p.m.—Griffith Jones Radiatorial Period.
6:30 p.m.—Hal Chasnoff's Orchestra.
7:30 p.m.—Nick Harris, Detective Stories. "The Acquittal of Danny Green."
8:00 p.m.—California Petroleum Corp. Calpet String Quartet; Chico De Verdi, director; Vernon Rickard, tenor.

9:00 p.m.—N. B. C., the Vagabonds in the Cumberlands, broadcast over P. C. N.

10:00 p.m.—Nellie Callender Mills, violinist; Virginia McCoy, baritone; Zelma Rogers McCauley, accompanist; Earl Askam, tenor; Irene Dalton, pianist.

THURSDAY, NOVEMBER 24

- 5:30 p.m.—Bill Kuehl and his Harmony Collegians.
6:15 p.m.—Police Commissioner Thorpe.
6:30 p.m.—Henry Starr.
7:00 p.m.—Program by University of Sou. Calif.
8:00 p.m.—Drama program; Louise Bowden.
8:30 p.m.—Eric Strothmere, baritone.
9:00 p.m.—N. B. C. popular program; Nuner's Hawaiian Trio; Campbell's Movie Studio Orchestra; Gamut Male Quartet; Vernon Rickard, tenor.
10:00 p.m.—Program of Modern Classical Music; Purcell Mayer, violinist; Shirley Mirkin, concert pianist.

FRIDAY, NOVEMBER 25

- 10:45 a.m.—Betty Crocker Gold Medal Talk.
5:30 p.m.—Bill Henry & Katherine O'Neill; Carl Hanson, saw artist.
6:00 p.m.—Florence Sanger, Piano Moods.
6:15 p.m.—Griffith Jones Radiatorial Period.
6:30 p.m.—Grace Mead, comic opera soprano; Rae Friedburg, pianist.
7:00 p.m.—Program by Paul Roberts; Harold Muihollen and Yorke Coplen, violin duets; Harold Bayne Myers, accompanist; Eva Olivotti.
8:00 p.m.—Ira D. Morgan, baritone; Boris Myronoff, concert pianist.
9:00 p.m.—N. B. C., An Hour in Memory Lane, broadcast over P. C. N.
10:00 p.m.—Norma West, mezzo soprano; Edward Jaron, tenor; John Slingerland, baritone.

SATURDAY, NOVEMBER 26

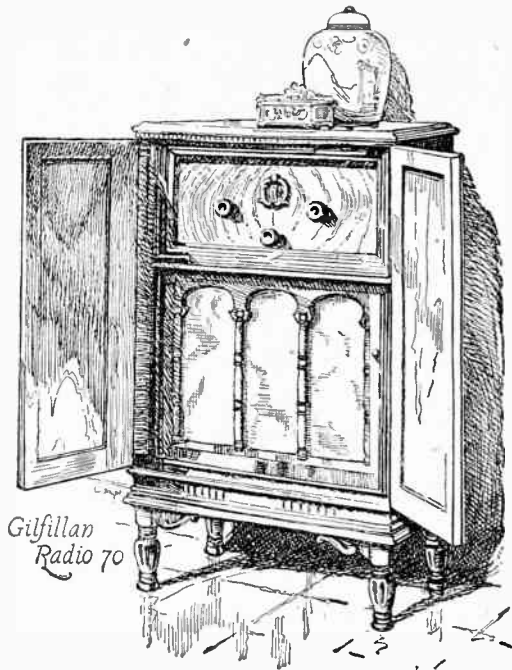
- 5:30 p.m.—Strangers Social Club Orch.
6:15 p.m.—Francis Sullivan presenting Literary Talk.
6:30 p.m.—Tarvin Sisters, harmony singers.
7:00 p.m.—Verna Arvey, pianist; a half hour with Beethoven; Felipe Delgado, baritone; Ida Marston, pianist.
8:00 p.m.—N. B. C., Grand Opera, "La Favorita," Max Dolin, director, broadcast over P. C. N.
9:00 p.m.—N. B. C., Philadelphia Storage Battery Co., "Philo Hour," over P. C. N.
10:00 p.m.—Packard program.
11:00 p.m.—KFI Midnight Frolic.

GILFILLAN

SALES & SERVICE — HEMPSTEAD 5590
137 N. Larchmont Open Evenings

This
Model
\$350
complete

Other
Gilfillans
\$65.00 up



Gilfillan Radio

Needs No Batteries

ONE DIAL to tune. Easiest thing in the world to get station you want. Both wave lengths and kilocycles are indicated. Just turn that dial and *enjoy!* These new Gilfillans are the sensations of the year. No batteries, solutions, acids, or chargers. Chassis is aluminum-shielded—minimum interference by other stations! Rola loud-speaker is built into the consoles. The hand-carved walnut cabinets are superb.

SEE THESE NEW MODELS AT GILFILLAN DEALERS

Distributors:

Southern California (except San Diego County)

GILFILLAN BROS., INC., Los Angeles

San Diego County—MOTOR HDWE. & EQUIPMENT CO., San Diego

Arizona—NIELSEN RADIO & SPORTING GOODS CO., Phoenix



WILLIAM RAINEY
Announcer

National Broadcasting Co., Inc.

PACIFIC COAST NETWORK

KFI - KPO - KGO - KGW - KOMO - KFOA - KHQ

Program for Week Commencing Sunday, November 20

Sunday, Nov. 20—6:30 to 7:30 P. M.

The fifth of the series of Symphony Concerts by the Standard Oil Symphony Orchestra under the direction of Nathan Abas.

Sunday, November 20—9 to 10 P. M.

The "Great Moment of History" is the "Lewis and Clark Expedition." It will be presented by a cast of National Players headed by Jean Paul King and William Rainey.

This is the story of the two great Captains, Lewis and Clark, who traveled from the source of the Missouri River across the country to the Pacific Ocean during the years from 1803 through 1805. They were the first to cross this territory, and it was their fortune to discover the Valley of the Saskatchewan.

Mouday, November 21—8 to 9 P. M.

Musical comedies and light opera of other years furnish the one-time "hits" that make up the program of the Spotlight Hour. On tonight's hour, the orchestra, under the direction of Max Dolin, will share honors with the vocal soloists in presenting selections from "Mary," "Belle of New York" and "Oh Kay."

Tuesday, Nov. 22—8:30 to 9 P. M.

The National Broadcasting Company presents the fourth of the seasons series of Auction Bridge Games, broadcast by America's foremost experts.

Tuesday, November 22—9 to 10 P. M.

The Eveready Orchestra, under the direction of Max Dolin, and the Rounders, those five close harmony artists, directed by Dudley Chambers, will entertain the radio audience of the Pacific Coast Network with a program of light concert favorites and popular melodies of the day.

Tuesday, November 22—10 to 11 P. M.

"The Ransom of Mack," an O. Henry drama, will be the title of the Retold Tales Hour presented by the National Players.

"The Ransom of Mack" is the story of two old prospectors, Mack and Andy, who have struck gold in the far West. They later move to a modern cabin in a more civilized country, where Mack uses "Buckles History of Civilization" as his sole recreation and diversion. Andy, on the other hand, uses "Sep Winner's Self-Instructor for the Banjo" to while away his lonely hours. Mack learns too much about history, and women, from the book he is reading, and decides to marry. This quite inevitably causes an eruption in their friendship, but Andy, always loyal to his friend and partner, decides

to save Mack from himself. The complications that ensue are particularly unusual and amusing.

Wednesday, Nov. 23—9 to 10 P. M.

"The Vagabonds in the Cumberland"

This week the Vagabonds are going to take the National Broadcasting Company listeners with them to the Cumberland. The wanderings of the Vagabonds have become very famous in radio circles.

Thursday, November 24—9 to 10 P. M.

George Campbell's Orchestra, well known favorites of Mary Pickford, playing in the Los Angeles studio. The dance numbers will include "Nothing Could Be Sweeter Than You" from the musical comedy, "Hit the Deck," and the popular success, "My Blue Heaven." In addition to the program of dance music Vernon Rickard, tenor, formerly of the Duncan Sisters, Topsy and Eva Company, will be heard in several solos, including Gershwin's "Life of a Rose" and "Forever" from Moonlight.

The evening's entertainment will also feature the Gamut Male Quartet, the best known male quartet in Los Angeles.

Friday, November 25—9 to 10 P. M.

Some real old-timers for the old folks will be offered on the Memory Lane Program. As the wheels of time turn back and carry us down Memory Lane to the days of our youth we will thrill again to the song, "Alice Blue Gown" from "Irene," and surely happily recall "In the Gloaming." Among other old favorites we will have one, "Take Back the Heart" and "Comrades."

Saturday, November 26—8 to 9 P. M.

A balanced program of orchestral and vocal music will be offered in the R. C. A. Hour. This hour of melody is a newly inaugurated feature for the N. B. C.'s radio audience, and is sponsored by the Radio Corporation of America.

Saturday, November 26—9 to 10 P. M.

Russian music of more than ordinary distinction will be the feature of the Philco Hour over the Pacific Coast Network. The Russian Cathedral Choir of 16 voices, the most prominent church choir on the Pacific Coast, will offer two Russian folk songs and two typical church numbers.

Saturday, November 26—10 to 11 P. M.

The Saturday Night Revue Program offers an hour of musical variety and is one of the most attractive programs presented over the Pacific Coast Network by the National Broadcasting Company.

Golden Bear  AIR COLUMN
SPEAKER

Free Demonstration in Your
Home. Phone WEStmore 2712

ACE HIGH



KEMPER

**RADIO PEER OF
PORTABLES AND
THE NEW
DUOPHONIC**

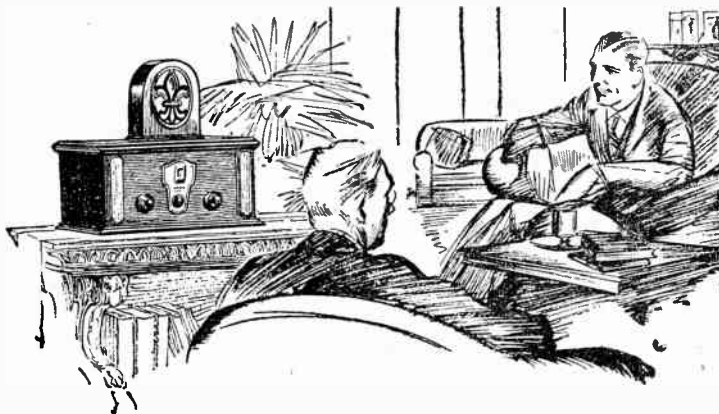
Los Angeles, California—720 Kc.

KHJ

500 WATTS—416.4 METERS
 Times Bldg., First and Broadway, Los Angeles
 Owned and Operated by Don Lee
 California Distributor for Cadillac and LaSalle
 Phone MEt. 0700

Daily Except Sunday, 6 to 10 P. M.
 Sunday, 7 to 10 P. M.

*Owing to the change in ownership of this station
 no detailed program can be given for this week.
 Full particulars of future programs will appear
 weekly hereafter.*



GET YOUR **KOLSTER** RADIO HERE!

TERMS: A Year to Pay

Table Model, as Shown Above
 \$89.50, Less Accessories

RADIO DEPT.

SCHWABACHER-FREY

736 South Broadway ~ TRinity 1291

LOS ANGELES

BROADWAY KOLSTER HEADQUARTERS



Right Now

is the Time to get Your
Pemco

WHY continue to fuss along with antiquated batteries. Sooner or later you will use light socket power. That's *the thing* in radio today. Nothing else gives perfect reception. Have a Pemco installed today and notice the wonderful difference in the tone and strength of your radio tonight.

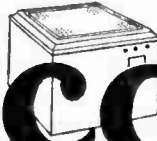
Run Your Radio with "Pemco"
Light Socket Power

Any dealer will gladly demonstrate a Pemco on your own set. No change of wiring necessary. Entirely automatic — no switches. Invaluable where distance is desired. Small down payment and balance on easy terms.

Tonight

Satisfaction Guaranteed

Pemco
Automatic
"A" and "B" Power Unit



Distributed in Los Angeles by

RAY THOMAS, INC.

PACIFIC WHOLESALE, INC.

Manufactured by PRECISION ELECTRIC MANUFACTURING CORP., Los Angeles

Hollywood, Cal.—890 Kc.

KNX

500 WATTS—337 METERS

LOS ANGELES EVENING EXPRESS

Paul G. Hoffman's Studebaker Bldg., 616 Hollywood Blvd., Hollywood. Ph. HEMPstead 4101

NAYLOR ROGERS, Mgr. and Program Director

GLEN RICE, Assistant Manager

N. D. GARVER, Technical Engineer



EDDIE ALBRIGHT

"Town Crier of the Day"



NAYLOR ROGERS

Manager

DAILY EXCEPT SUNDAY—

6:45 to 8:00 a. m.—Gold Seal early bird exercises, courtesy of Sanitary Gold Seal Dairy.

8:00 a. m.—Inspirational talk and morning prayer.

8:55 a. m.—Time Signals from Washington, D. C., followed by Birthday Notices.

9:00 a. m.—Radio Shopping News, conducted by Carrie Preston Rittmeister.

10:00 a. m.—Town Crier of the Day's morning message.

10:30 a. m.—Kate Brew Vaughn, director Household Economics Department, Evening Express, except Friday and Saturday.

12:00 noon.—Musical program.

12:30 p. m.—W. F. Alder Travelogue.

1:30 p. m.—The Bookworm.

2:00 p. m.—Musical program.

3:00 p. m.—C. P. R.'s musical program.

4:15 p. m.—Lost and Found announcements.

4:25 p. m.—Market reports.

5:00 p. m.—"Own Your Own Home," by Chet Mittendorf.

5:45 p. m.—"Amusement Tips."

6:00 p. m.—Biltmore Hotel Orchestra, broadcast from the Biltmore Dining Room.

6:30 p. m.—Dinner hour concert, directed by Paul Finstein.

DAILY EXCEPT SUNDAY AND TUESDAY—

10:00 p. m.—Earl Burtnett's Biltmore Hotel Orchestra, except Friday.

11:00 p. m.—Hotel Ambassador; Gus Arnheim's Coconut Grove Orchestra.

WEEK COMMENCING SUNDAY, NOVEMBER 20, 1927**SUNDAY, NOVEMBER 20**

10:00 a. m.—First Presbyterian Church of Hollywood, Rev. Stewart P. MacLennan.

2:00 to 4:00 p. m.—City Park Board musical program.

5:15 p. m.—All Souls Church

6:30 p. m.—First Unitarian Church.

7:00 p. m.—First Presbyterian Church of Hollywood, Rev. Stewart P. MacLennan.

8:00 p. m.—Circle Theatre Concert Orchestra, Carli D. Elinor, director, and organ recital by Stanley Bentley, courtesy of Electric Lighting Supply Co.

9:00 p. m.—Calmon Luboviski, master violinist; Claire Mellonino, pianist, courtesy of Los Angeles Soap Co.

MONDAY, NOVEMBER 21

11:30 a. m.—French lessons, Edgard Leon.

2:30 p. m.—"Human Nature," Wm. Benton.

4:30 p. m.—Little Jean and Town Crier of the Day.

6:45 p. m.—Gene Leonard, courtesy of Platt Music Co.

7:30 p. m.—One-act play by KNX players.

8:00 p. m.—Feature program.

TUESDAY, NOVEMBER 22

11:30 a. m.—French lessons by Edgard Leon.

12:45 p. m.—Advertising Club Luncheon from Biltmore Hotel.

4:00 p. m.—Little Joyce Coad, movie star.

7:00 p. m.—Feature program.

7:30 p. m.—Birkel Music Co. presenting the Steinway Duo-Art.

8:00 p. m.—Earl Burtnett's Biltmore Hotel Orchestra, courtesy of Radiola Dealers of Southern California.

9:00 p. m.—Grauman's Chinese Theatre program.

10:00 p. m.—Hotel Ambassador, Gus Arnheim's Coconut Grove Orchestra.

WEDNESDAY, NOVEMBER 23

4:00 p. m.—Garden talk by Dewey R. Kruckeberg of Theodore Payn's Nurseries.

7:00 p. m.—Feature program.

7:30 p. m.—Charles Hamp, through courtesy of Strausskas Toothpaste Co.

8:00 p. m.—Feature program.

THURSDAY, NOVEMBER 24

11:00 a. m.—Talk on insects by H. W. McSpadden, manfr. of Marvel Ant Gelatin.

4:00 p. m.—Louise Johnson, horoscopes.

7:00 p. m.—Carthay Circle Theatre organ recital, courtesy Overall Furniture Co.

8:00 p. m.—Calmon Luboviski, master violinist; Claire Mellonino, pianist.

9:00 p. m.—Zenith Carburetor Co. courtesy program.

FRIDAY, NOVEMBER 25

4:00 p. m.—L. A. District Federation of Women's Clubs musical program.

6:00 p. m.—Dinner program, courtesy Merit H. Adamson of Adohr Stock Farms.

6:45 p. m.—Gene Leonard, through courtesy of Platt Music Co.

7:00 p. m.—Desmond's College Rally program.

8:00 p. m.—Davis Perfection Bread Co. courtesy program, presenting Royal Order of Optimistic Do-Nuts.

9:00 p. m.—Earl Burtnett's Biltmore Hotel Orchestra, courtesy of Radiola Dealers of Southern California.

10:00 p. m.—Broadcasting main events from Hollywood Legion Stadium.

SATURDAY, NOVEMBER 26

2:15 p. m.—Broadcasting football game from L. A. Coliseum, courtesy of Richfield Oil Co.

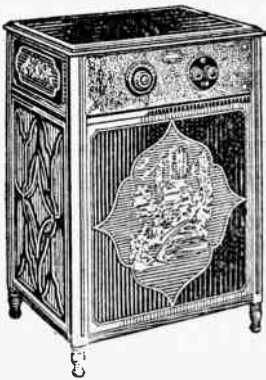
7:00 p. m.—Stories of insect life by Harry W. McSpadden.

7:15 p. m.—Announcement of Sunday services of leading Los Angeles churches.

8:00 p. m.—Feature program.

12:00 p. m.—The Midnight Express.

A Winning Combination



"Arm Chair" model with Oriental decoration, built-in floating horn with Atwater Kent reproducing unit\$ 90

With Atwater Kent Model 30 receiver 154

With Atwater Kent Model 33 receiver 164

Beauty of design combined with honest craftsmanship, true and pleasing tones makes the Pooley "Arm Chair" radio cabinet a fit companion for the marvelous Atwater Kent radio. See them — hear them at your nearest Atwater Kent dealer's store today.

RAY THOMAS INC.
Atwater Kent Distributor

1248 S. Hope St. WE 6334
LOS ANGELES



BILL RAY
Announcer

Hollywood, Calif.
830 Kc.
K F W B

500 WATTS—361.3 METERS
WARNER BROS. MOTION PICTURE STUDIOS
Warner Bros. West Coast Studios,
5842 Sunset Blvd.
Gerald L. King, Mgr. Wm. Ray, Asst. Mgr.
Florence Israel—Program Arranger
Phone GL. 9461
"Movie Land"



GERALD L. KING
Announcer

DAILY EXCEPT SUNDAY—

10:00 to 10:30 a. m.—Air Circus, except
Thursday.
10:30 a. m.—Aunt Sammy Talks, except
Saturday.
11:45 to 12:30 p. m.—Shopping Directory.
12:30 to 1:30 p. m.—Who's Who.
1:30 to 2:30 p. m.—Classified Hour.

4:45 to 5:15 p. m.—Air Circus.
5:15 to 5:45 p. m.—Radio Review.
5:45 to 6:00 p. m.—Town Tattler.
6:00 to 7:00 p. m.—Dinner Hour Concert.
7:50 to 8:00 p. m.—Daily News, except
Saturday.
10:00 to 11:00 p. m.—Dance program.
11:00 to 12:00 midnight—Dance music.

WEEK COMMENCING SUNDAY, NOVEMBER 20, 1927

SUNDAY, NOVEMBER 20

7:30 to 7:50 p. m.—Musical program.
7:50 to 8:00 p. m.—Daily News.
8:00 to 9:00 p. m.—Light Opera program by
courtesy of the Overell Furniture Co.,
featuring Emma Kimmel, soprano; Ralph
Reilley, tenor, and Jack Cronshaw's Or-
chestra.
9:00 to 9:10 p. m.—Daily News.
9:10 to 10:00 p. m.—Ragtime Review.

MONDAY, NOVEMBER 21

7:00 to 7:20 p. m.—Robert Cheatham, bar-
itone; Lucille Scott, pianist.
7:20 to 7:50 p. m.—Musical program.
8:00 to 9:00 p. m.—Warner Bros. Hawaiian
Trio; June Parker, blues songs.
9:00 to 10:00 p. m.—Vernon Rickard, tenor;
Leon Belasky's Concert Quartette.

TUESDAY, NOVEMBER 22

7:00 to 7:30 p. m.—Hugh Wellington Mar-
tyn, baritone; Marguerite Musche, so-
prano; Don Warner, pianist.
7:30 to 8:00 p. m.—Program by courtesy of
Strasska Laboratories, featuring Charlie
Hamp, entertainer.
8:00 to 8:10 p. m.—Daily News.
8:10 to 9:00 p. m.—Ann Grey, blues songs;
Warner Bros. Dance Orchestra.
9:00 to 10:00 p. m.—Emma Kimmel, so-
prano; Jack Cronshaw's Concert Quartette.

WEDNESDAY, NOVEMBER 23

2:30 to 4:45 p. m.—The Landry-Dooley Or-
chestra by remote control from the Cin-
derella Roof Ballroom.
7:00 to 7:50 p. m.—Program presented by
Radio Doings, featuring Audrey Davis in
ballads; Glenn Edmunds and his Col-
legians.
8:00 to 9:00 p. m.—Archie Ruggles, tenor;
Cyril Codwin's Concert Trio.

9:00 to 10:00 p. m.—Gene Johnston's Hour,
featuring his trio and vocal soloists.

THURSDAY, NOVEMBER 24

7:00 to 7:20 p. m.—Musical program.
7:20 to 7:50 p. m.—Program by courtesy of
the Elec-True-Tone Corporation.
8:00 to 9:00 p. m.—Morris Sisters, har-
mony numbers; Warner Bros. Hawaiian
Trio.
9:00 to 10:00 p. m.—David Percy, baritone;
Louise Sullivan's Trio.

FRIDAY, NOVEMBER 25

4:15 to 4:45 p. m.—A. T. Rainey, Psychic.
7:00 to 7:30 p. m.—A one-act play pre-
sented by the Playshop Players.
7:30 to 7:50 p. m.—Musical program.
8:00 to 9:00 p. m.—Ann Grey, blues songs;
The Hollywood Serenaders.
9:00 to 10:00 p. m.—Wm. Franklin, tenor;
Warner Bros. Concert Quartette.

SATURDAY, NOVEMBER 26

2:30 to 3:30 p. m.—Harry Owens and his
orchestra by remote control from Rain-
bow Isle of the Mayfair Hotel.
3:30 to 3:45 p. m.—Musical program.
3:45 to 4:45 p. m.—The Landry-Dooley Or-
chestra by remote control from the Cin-
derella Roof Ballroom.
7:00 to 7:30 p. m.—Musical program.
7:30 to 8:00 p. m.—Program in honor of the
Illustrated Daily News.
8:00 to 9:00 p. m.—Program by courtesy of
the MonoMotor Oil Company, featuring
the MonoMotor Oilers; Lilyan May Chal-
lenger, contralto.
9:00 to 10:00 p. m.—The Landry-Dooley Or-
chestra by remote control from the Cin-
derella Roof Ballroom.

STEINITE HEADQUARTERS

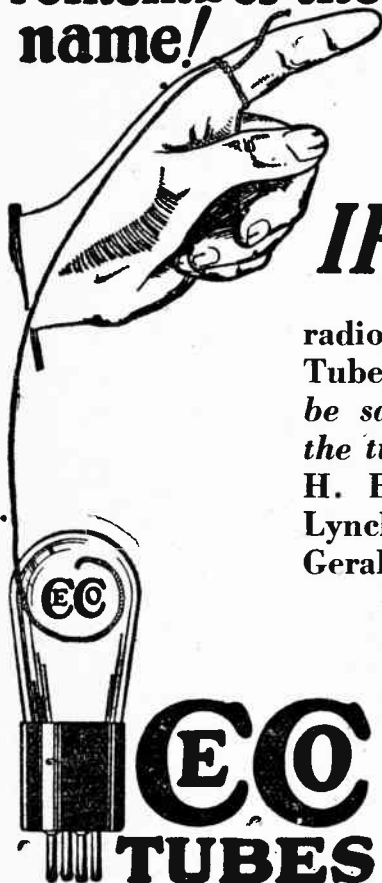
CHILDS LABORATORY
2310 S. Union BEacon 7445

Golden Bear  **AIR COLUMN**
SPEAKER

Free Demonstration in Your
Home. Phone WESTmore 2712

remember the
name!

CECO



IF Glenn H. Browning, of Browning Drake fame and a recognized national radio authority, specified CeCo Tubes for your set. *Wouldn't you be satisfied that CeCo was really the tube to use?* Not only Glenn H. Browning, but Arthur H. Lynch, Lawrence M. Cockaway, Gerald M. Best, Kenneth Harkness, Volney Hurd, K. G. Ormiston, Herman Bernard, Keith Henney and James Millen have ALL specified and have endorsed CeCo Tubes, and they, all authorities of repute, **KNOW** that CeCo is THE QUALITY TUBE.

*Those Who KNOW Specify CeCo
Don't Be "Switched" Demand CeCo Tubes*

Authorized Wholesale Distributors

Myers Electric Supply Co.
1729 S. Los Angeles St.
Los Angeles

Herbert H. Horn
1629 S. Hill St.
Los Angeles

Stiefel-Harrison
Company
1627 S. Hill St.
Los Angeles

C. C. Lawton Co.
1125 Wall Street
Los Angeles

Radio Supply Co.
912-914 S. Broadway
Los Angeles

Holmes & Crane
Oakland, Calif.

Sunset Electric Co.
San Diego, Calif.

Pacific Coast Representatives

B. KRUGER & CO.

500 N. Huntley Drive, West Hollywood, Sherman P. O. Phone OX. 3897



G. Allison Phelps
Manager and Announcer

Hollywood, California 570 Kc.

K M T R

500 WATTS—526 METERS
KMTR RADIO STATION
1028 N. Highland Ave. Phone HOLLY 3026
FORBES VAN WHY, Chief Engineer
E. K. BARNES, Asst. Mgr.
EVA BURKHARDT, Commercial Mgr.
"Your Friend in Hollywood"
"The Station that Tops the List"



E. K. Barnes
Asst. Mgr.

DAILY EXCEPT SUNDAY—

- 7:00 to 7:30 a. m.—Setting-up exercises by Professor Barclay L. Severns
7:30 to 8:30 a. m.—Louise Howatt's Hour of Happiness.
8:45 to 9:00 a. m.—Time signals from Washington, D. C., and musical numbers
11:00 a. m. to 12:00 noon—"Don't Go 'Way, Folks," Hour, directed by Charlie Wellman.
12:30 to 1:00 p. m.—Rose Russell's Luncheon Bulletins.
1:30 to 2:30 p. m.—KMTR Press Agent Hour.
4:00 to 4:30 p. m.—Walter Biddick's Certified Air Bulletin.
5:30 to 6:00 p. m.—White King Male Quartet and Mona Content, concert pianist;
6:00 to 6:15 p. m.—Nightly Doings.
6:15 to 6:45 p. m.—Dinner hour program, featuring the Marguerite Le Grand Trio.
6:45 to 7:30 p. m.—Fitzgerald Music Company courtesy program, featuring Ampico and Panatrope.
10:00 to 11:00 p. m.—Miller's Cafe Lafayette Dance Orchestra, Ray West, director

WEEK COMMENCING SUNDAY, NOVEMBER 20, 1927

SUNDAY, NOVEMBER 20

- 5:30 to 6:15 p. m.—White King Male Quartet, courtesy Los Angeles Soap Company.
6:15 to 6:30 p. m.—Nightly Doings.
6:30 to 7:00 p. m.—Burr McIntosh's Half-Hour of Cheer.
7:00 to 8:00 p. m.—Miller's Cafe Lafayette Concert Orchestra.
8:00 to 10:00 p. m.—KMTR feature program, presenting Loren Powell's Little Symphony and assisting artists.
1:00 to 1:30 p. m.—Hollywood Chamber of Commerce.
5:15 to 5:30 p. m.—Chiropractic Health talk by Dr. T. F. Ratledge.
7:30 to 8:00 p. m.—Overell's Furniture Company courtesy program, featuring Overell KMTR Players in a one-act play, directed by Edward Murphey.
8:00 to 9:00 p. m.—Walker's courtesy program.
9:00 to 10:00 p. m.—Courtesy program.

MONDAY, NOVEMBER 21

- 5:15 to 5:30 p. m.—Chiropractic Health Talk by Dr. T. F. Ratledge.
7:30 to 8:00 p. m.—Thirty Minutes of Sunshine, with Charles Hamp, representing Dr. Strasska's Tooth Paste.
8:00 to 8:30 p. m.—Adelanto Cider Co., courtesy program.
8:30 to 10:00 p. m.—Courtesy program.

TUESDAY, NOVEMBER 22

- 9:00 to 10:00 a. m.—Sylvia, the Blind Cook.
10:00 to 11:00 a. m.—Hair Again program.
3:30 to 4:00 p. m.—Police Commissioner W. G. Thorpe and the L. A. Police Quartet.
5:15 to 5:30 p. m.—Talk on health by Dr. Robert T. Williams.
7:30 to 8:00 p. m.—Game of "Ask Me Another," Edward Murphey.
8:00 to 9:00 p. m.—Maxwell House Coffee Co., courtesy program featuring the Maxwell House Coffee Orchestra and Eleanor Bryan, contralto, in popular opera program.
9:00 to 10:00 p. m.—C. E. Toberman Company courtesy program.

WEDNESDAY, NOVEMBER 23

- 9:30 to 10:00 a. m.—Travel talk by Dr. S. J. Mathleson.

THURSDAY, NOVEMBER 24

- 7:30 to 8:00 p. m.—Thirty Minutes of Sunshine with Charles Hamp, representing Dr. Strasska's Tooth Paste.
8:00 to 10:00 p. m.—Ruth Roland Night.

FRIDAY, NOVEMBER 25

- 10:00 to 11:00 a. m.—Thirty Minutes of Sunshine with Charles Hamp, representing Dr. Strasska's Tooth Paste.
1:15 to 1:30 p. m.—Walter Brown Murray, "How to Make Children Behave."
3:30 to 4:00 p. m.—Pacific Electric Art.
5:15 to 5:30 p. m.—Chiropractic Health Talk by Dr. T. F. Ratledge.
8:30 to 9:00 p. m.—Courtesy program.
9:00 to 10:00 p. m.—C. E. Toberman Company courtesy program.
10:00 to 12:00 noon—Miller's Cafe Lafayette Dance Orchestra.

SATURDAY, NOVEMBER 26

- 9:00 to 10:00 a. m.—Sylvia, the Blind Cook.
10:30 to 11:00 a. m.—Gordon Whitnall of the City Planning Commission.
7:30 to 7:40 p. m.—M. D. Benesh of the Sheriff's Office.
7:40 to 8:00 p. m.—KMTR Movie Club.
8:00 to 10:00 p. m.—Courtesy program.



Free Demonstration in Your Home. Phone WESTmore 2712



You Can't Forget

RADIO OWL won't let you—it watches, while in solid comfort you enjoy your favorite program—

THE PROGRAM GOES ON

Go to bed if you like, let your Radio lull you to slumber, and when you are deep in sleep, RADIO OWL does the trick—completely and automatically turning off your set—A Battery, B Eliminator, and yes, it turns on the trickle charger, all in one operation automatically after you are asleep—

IT MAKES NO DIFFERENCE

To RADIO OWL all sets look alike—it stays awake and turns it off, whether battery, socket power or battery and eliminator. AN AUTOMATICALLY TIME CONTROLLED RELAY SWITCH. A useful, practical ornament in the form of an Owl attached to any set like a desk phone—

SIMPLY PRESS THE OWL DOWN

For the length of time you wish the Radio to run. At the expiration of the time, it automatically turns off the set. Nothing to wind, nothing to get out of order, and will last as long as the cabinet.

SOLID COMFORT

At the price of one night's entertainment, and you get it back many times in battery and tube savings.

Orders will be accepted for delivery after December 1st. Consult your dealer; if he cannot supply you, use the coupon.

Dealers phone or write—do it today—this is the most wonderful Christmas Gift you have ever seen—the demand will be heavy and the time is limited.

RADIO OWL,
2269 E. 51st St.,
Los Angeles, Calif.

Without obligation on my part I would like to see the Radio Owl.

.....
(Print Name)

Address.....

My nearest dealer is.....

Address.....

Call up the RADIO OWL DE. 9866

2269 East 51st St.

Los Angeles, Calif.



“A Radio Owl on every set”





BARON KEYES

Los Angeles, California 1190 Kc.

KPLA

500 WATTS—252 METERS

Commercial Exchange Bldg., 8th and Olive Sts.

Los Angeles, TRINITY 3202

LEIGH HARLINE, Program Manager

BERTRAM O. HELLER, Engr. and Asst. Mgr.

BARON KEYES, Announcer

"In the Center of Greater Los Angeles"

LEIGH HARLINE

DAILY EXCEPT SUNDAY—

11:00 to 12:00 a. m.—Baron Keyes Diversities.

3:00 to 4:00 p. m.—Palais de Dance by remote control, featuring Ralph Markey and his Musical Keys.

4:00 to 4:30 p. m.—Records, through courtesy of Barker Bros.

4:30 to 5:00 p. m.—Air Castle.

5:00 to 6:00 p. m.—Sundown Frolic, conducted by Baron Keyes.

6:00 to 6:55 p. m.—Dinner Hour Program.

6:55 to 7:00 p. m.—Sports Review from the "Referee."

7:00 to 8:00 p. m.—Dean McCluskey and his Oregon Aggravators and other KPLA artists.

10:00 to 11:00 p. m.—Palais de Dance by remote control, featuring Ralph Markey and his Musical Keys.

WEEK COMMENCING SUNDAY, NOVEMBER 20, 1927**SUNDAY, NOVEMBER 20**

6:30 to 7:00 p. m.—Dr. David Edstrom, Art lecture.

7:00 to 8:00 p. m.—Romola Theatre

8:00 to 10:00 p. m.—Dean McCluskey and his Oregon Aggravators—

MONDAY, NOVEMBER 21

8:00 to 8:30 p. m.—Doris Decker, LeRoy Hullberg.

8:30 to 9:30 p. m.—Ida Schuets, Coral Atkins, Fred Clint.

9:30 to 10:00 p. m.—Red Allen and his Paulais Orchestra.

TUESDAY, NOVEMBER 22

8:00 to 8:30 p. m.—Bob Harker and Tod Watterman in banjo duets.

8:30 to 9:00 p. m.—Virginia McCoy and Edward Oversby.

9:00 to 9:30 p. m.—Bert Fahrquason, Frankie Merlowe, Charlie Ilch, Mildred Procter and Wint Cotton.

9:30 to 10:00 p. m.—Round by round returns

of the main event from Olympic Audt

WEDNESDAY, NOVEMBER 23

8:00 to 8:30 p. m.—Billy Barron, Sam Roland in Vibraphone solos.

8:30 to 9:00 p. m.—Mable Lenahan and Red Wyatt.

9:00 to 10:00 p. m.—Kanner String Trio;

THURSDAY, NOVEMBER 24

8:00 to 8:30 p. m.—Hi Meyers and the Dare Sisters.

8:30 to 9:00 p. m.—Ricardo Statero

9:00 to 10:00 p. m.—Florentine String Trio;

FRIDAY, NOVEMBER 25

8:00 to 8:30 p. m.—Waikiki Hawaiian Trio.

8:30 to 9:00 p. m.—Hulda Dietz and Neil Russell.

SATURDAY, NOVEMBER 26

8:00 to 9:00 p. m.—Carfagne String Quartette: Emma Kimmell and Glen Pearce.

9:00 to 9:30 p. m.—Wint Cotton and Leigh Harline.

9:30 to 10:00 p. m.—Waiwiwi Hawaiian Trio.

Golden Bear AIR COLUMN **SPEAKER**

Free Demonstration in Your Home. Phone WESTmore 2712



GOOD LONG LIFE

Is assured by the scientific construction and high quality of materials used in "Blue Diamond" Batteries.

RADIO DEALERS: For the most agreeable surprise of your career, phone

Faber 4835

For "Blue Diamond" Prices!

WESTERN ELECTRIC NOVELTY CO., Mfrs., 1258 E. 6th St., Los Angeles

Authorized Radiola Dealer

*Courteous
Competent
Salesmen*



*Servicing
by
Experts*

Where Selectivity Is Important

The **RADIOLA 20** Is Still Supreme
Plus **EASTMAN SERVICE** Makes An Ideal Combination

A PHONE CALL WILL ARRANGE A DEMONSTRATION
IN YOUR HOME

Convenient Terms Arranged

Phone TRinity 0746

Eastman Kodak Stores, Inc.

510 South Broadway

Los Angeles, Calif.



Aimee Semple McPherson

Los Angeles, California—1090 Kc.

KFSG

500 WATTS—275.1 METERS
 ANGELUS TEMPLE, ECHO PARK. Fitzroy 5121
 AIMEE SEMPLE MCPHERSON, Founder, President
 P. S. LUCAS, Technician in Charge
 "Four Square Gospel"

DAILY EXCEPT SUNDAY AND MONDAY—

10:30 to 11:30 a. m.—Sunshine Hour.
 11:30 a. m. to 12:30 p. m.—Noonday Musical.
 2:30 to 3:30 p. m.—Grey Studio Program, except Wednesday.
 6:30 to 7:30 p. m.—Angelus Hour.

WEEK COMMENCING SUNDAY, NOVEMBER 20, 1927

SUNDAY, NOVEMBER 20

10:30 a. m. to 12:30 p. m.—Sunday morning
 Worship—Aimee Semple McPherson.
 2:30 to 4:40 p. m.—Sunday afternoon—Dis-
 pensational—Aimee Semple McPherson.
 6:30 to 9:30 p. m.—Revival service—Aimee
 Semple McPherson.
 10:00 to 11:00 p. m.—Organ Recital—Esther
 Fricke Greene.

TUESDAY, NOVEMBER 22

3:30 to 4:30 p. m.—Vesper Hour.
 7:30 to 9:15 p. m.—Evangelistic Service—
 Evangelist John Goben.

WEDNESDAY, NOVEMBER 23

2:30 to 4:30 p. m.—Divine Healing Service
 —Aimee Semple McPherson.

7:30 to 9:30 p. m.—Regular Midweek Prayer
 Service—Aimee Semple McPherson.

THURSDAY, NOVEMBER 24

3:30 to 4:30 p. m.—Vesper Hour.
 7:30 to 9:15 p. m.—Water Baptismal Serv-
 ice—Aimee Semple McPherson.
 9:15 to 10:00 p. m.—Grey Studio Program.
 10:00 to 11:00 p. m.—Organ Recital—Esther
 Fricke Greene.

FRIDAY, NOVEMBER 25

3:30 to 4:30 p. m.—Vesper Hour.
 7:30 to 9:30 p. m.—Crusader Rally—Aimee
 Semple McPherson.

SATURDAY, NOVEMBER 26

3:30 to 4:30 p. m.—Children's Happy Hour.
 7:30 to 9:30 p. m.—Divine Healing Service
 Aimee Semple McPherson.

Los Angeles, California—1040 Kc.

KTBI

500 WATTS—288.3 METERS
 BIBLE INSTITUTE OF LOS ANGELES
 PROF. H. G. TOVEY, Director of Programs
 Phone ME. 6701

DAILY EXCEPT SATURDAY AND SUNDAY—

8:45 to 9:15 a. m.—Devotional Hour.
 2:00 to 3:00 p. m.—Inspirational Hour, except Monday.
 8:00 to 9:00 p. m.—Biblical Exposition.

DAILY EXCEPT FRIDAY AND SUNDAY—

7:15 to 8:00 p. m.—Aunt Martha's Children's Hour.

WEEK COMMENCING SUNDAY, NOVEMBER 20, 1927

SUNDAY, NOVEMBER 20

10:45 a. m. to 12:30 p. m.—Regular service
 of the Church of the Open Door. Organ
 prelude.
 3:00 to 4:00 p. m.—Jewish Radio Hour.
 6:00 to 7:00 p. m.—Radio Vesper Service.

7:15 to 9:30 p. m.—Regular evening service
 of the Church of the Open Door.

MONDAY, NOVEMBER 21

2:00 to 3:00 p. m.—Monday Club. Special
 speaker. Herbert G. Tovey, soloist and
 song leader. Keith L. Brooks, pianist.

Ferbend Products are "Maker to User"—no jobber's profit. You get this benefit.
 You may pay much higher prices, but will not get better than

FERBEND "B" ELIMINATORS

Samuel J. Paul, Distributor

90 Volts, \$13.50 - 180 Volts, \$18.75

1605 W. Ninth St.

DU 0185

Los Angeles

KGFJ

Los Angeles, California—1440 Kc.

208.2 METERS

Washington Blvd. at Oak Street, Los Angeles, California

Owned and Operated by BEN S. McGLASHAN

Phones: WEStmore 7593 and WEStmore 7777

"Keeping Good Folks Joyful"

DAILY EXCEPT SUNDAY—

- 6:30 to 8:30 a. m.—Breakfast Hour, courtesy of the Aero-Ads Service, with Teddy Greenwaldt and his Early Birds Orchestra.
- 8:30 to 9:30 a. m.—Gordon Smith's Radiotising Service with Electrola.
- 12:00 to 1:00 p. m.—Classical Hour through courtesy of the Merchants Radio Advertising Bureau.
- 1:00 to 3:30 p. m.—Merchants Radio Advertising Bureau program featuring Lou Parker, contra-contralto, and Miss Joan Billings, pianist; J. K. Carden, guest announcer.
- 3:30 to 4:30 p. m.—Gordon Smith's Radiotising Service featuring Jack Brooks, novelty songs with guitar; Whispering Jack Don.
- 8:00 to 9:00 p. m.—El Patio by remote control from the ballroom.
- 12:00 midnight to 6:30 a. m.—Studio broadcast featuring the Electrola.

WEEK COMMENCING SUNDAY, NOVEMBER 20, 1927

SUNDAY, NOVEMBER 20
9:00 a. m. to 2:30 p. m.—Studio broadcast featuring semi-classical, popular records on the Electrola.

MONDAY, NOVEMBER 21
6:00 to 7:00 p. m.—Aero-Adds Service; Vernon Draper, tenor; Billy Eaves and Otto Hoeg, pianist.
7:00 to 8:00 p. m.—Imperial Orchestra playing a request program.

TUESDAY, NOVEMBER 22
6:00 to 7:00 p. m.—Aero Adds Service; Billy Eaves, tenor; Otto Hoeg, pianist.
7:00 to 8:00 p. m.—Gordon Smith's Radiotising Service; Imperial Orchestra.

WEDNESDAY, NOVEMBER 23
6:00 to 7:00 p. m.—Aero-Adds Service; Marjorie Murrey, blues singer; Margaret Mucario, pianist; Billy Eaves and Otto Hoeg.

7:00 to 8:00 p. m.—Inez Small, blues singer, and Rae Friedberg, pianist.

THURSDAY, NOVEMBER 24
6:00 to 7:00 p. m.—Aero-Adds Service featuring the Huesenstamm Trio.
7:00 to 8:00 p. m.—Gordon Smith's Radiotising Service; Studio Hour.

FRIDAY, NOVEMBER 25
6:00 to 7:00 p. m.—Aero-Adds Service; Metropolitan School of Music presenting Kiddies' Revue of 1927.
7:00 to 8:00 p. m.—Gordon Smith's Radiotising Service; Hawaiian String Trio.

SATURDAY, NOVEMBER 26
6:00 to 7:00 p. m.—Aero-Adds Service; Billy Eaves, tenor; Otto Hoeg, pianist.
7:00 to 8:00 p. m.—Gordon Smith's Radiotising Service, featuring Mr. Harson, baritone.



New A-1 GALENA CRYSTAL

KLARO CRYSTAL

"Clear as a Bell"

K. O. PYRITES CRYSTAL

All Points Sensitive

Your Dealer Stocks These.

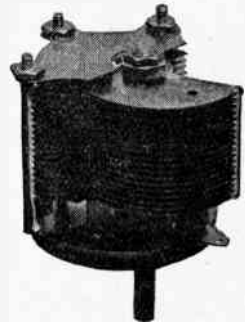
Local Jobber Stock
Carried By

EMSEE RADIO CO.

1129 MAPLE AVE. LOS ANGELES
WEStmore 5907

ARMO S.L.F. CONDENSERS

Adjustable
to
Max.
Min.
Mid.



.0005
.00035
.00025
\$2.75

The only condenser now being manufactured that can be adjusted to conform to any capacity, regardless of the circuit.

Given thorough laboratory test before passing out of the factory.

Sold On a Positive Guarantee

Armo Radio Laboratories

WE. 9610

1666 Tarleton St. Los Angeles



A. R. AINSWORTH
Announcer

K M I C

Inglewood, California
1340 Kc.

250 WATTS—224 METERS

Owned and Operated by James R. Fouch
O. B. MILLS, Engineer
Chamber of Commerce Bldg., Inglewood, Calif.
Phone Direct Wire, THornwall 1121
Long Distance, Inglewood 1897



JAMES FOUCH
Manager

DAILY EXCEPT SUNDAY—

- 7:00 to 8:00 a. m.—Shopping List with Happy Jack.
8:00 to 9:00 a. m.—Little Eddie Barnes hour.
9:00 to 10:00 a. m.—Frank Martin and Ethel Goldsmith request hour.
10:00 to 10:15 a. m.—Studio Mail over the air.
10:15 to 10:30 a. m.—New Idea Main's Market Travels.
11:00 to 12:00 a. m.—Guitar and banjo, Tiny and Jack, popular numbers.
12:00 to 1:00 p. m.—Announcement hour.
1:00 to 2:00 p. m.—Orthophonic concert.
2:00 to 3:00 p. m.—Classical hour.
3:00 to 3:45 p. m.—Old-time popular request program, except Wednesday.
3:45 to 4:00 p. m.—Latest News Bulletins, courtesy of Inglewood Daily News.
4:00 to 5:00 p. m.—Old-time popular request program, except Tuesday.
5:00 to 6:45 p. m.—Studio organ recital, except Tuesday, Thursday and Saturday.
6:45 to 7:00 p. m.—Latest News Bulletins.
10:00 to 12:00 p. m.—Dance program from Rubiatat Ballroom at Huntington Park, except Monday.

SUNDAY, NOVEMBER 20

- 11:00 to 12:15 a. m.—Centinela Baptist Church, by remote control.

- 8:00 to 9:15 p. m.—International Bible Students' Association, Questions and Answers.

MONDAY, NOVEMBER 21

- 7:00 to 8:00 p. m.—Roberts' Golden State Band, courtesy City of Inglewood.

TUESDAY, NOVEMBER 22

- 4:00 to 5:00 p. m.—Beauty Talk by Mae Day Beauty Salon.

- 5:00 to 6:45 p. m.—Geo. Fassett's String Trio.

- 7:45 to 8:00 p. m.—Dr. Sherer's Health Talk.

WEDNESDAY, NOVEMBER 23

- 3:00 to 3:45 p. m.—Police Dept. Safety Talk with Police Quartet.

- 4:00 to 4:15 p. m.—Dr. Neil's Talk on Psychology.

- 7:45 to 8:00 p. m.—Bridge lessons by A.

Fred Federlin.

THURSDAY, NOVEMBER 24

- 5:00 to 6:45 p. m.—Geo. Fassett's String Trio.

- 7:45 to 8:00 p. m.—Dr. J. Barton, dietician.

- 8:00 to 8:30 p. m.—Travelogue, courtesy L. A. Steamship Co.

- 9:00 to 10:00 p. m.—"Radio Doings" courtesy program, with Dick Ross' Virginians and Audrey Yvonne Davis.

FRIDAY, NOVEMBER 25

- 4:00 to 4:15 p. m.—Dr. Neil's talk on Psychology.

- 7:45 to 8:00 p. m.—Bridge lessons by A. Fred Federlin.

SATURDAY, NOVEMBER 26

- 7:45 to 8:00 p. m.—Dr. Meyers on Dental Hygiene.

- 8:00 to 10:00 p. m.—Redondo Merchants program, with Dick Ross' Collegians.

BT Counterphase 8—World's Greatest Radio—Sold with a Distance Guarantee. H. A. Everest, 1032 North Ogden Dr. GRanite 9915.

Pasadena, California—950 Kc.

KPSN

PASADENA STAR-NEWS
1000 WATTS—315.6 METERS
GEORGE CECIL COWING, Managing Director
GEORGE FRENKER, Program Manager
HERSHEL SATTERFIELD, Chief Technician
PERCY C. PRYOR, Studio Office
Phone Wakefield 3111

DAILY EXCEPT SUNDAY—

- 12:15 p. m.—News Bulletin.
6:00 p. m.—News Bulletin.

WEEK COMMENCING SUNDAY, NOVEMBER 20, 1927

SUNDAY, NOVEMBER 20

- 11:00 a. m.—Services from The First Baptist Church.

MONDAY, NOVEMBER 21

- 8:00 to 9:00 p. m.—Southern California Artists' Ensemble.

TUESDAY, NOVEMBER 22

- 8:00 to 9:00 p. m.—Star-News concert, with

James H. Shearer, organist; Frederick MacMurray, viola soloist, and George Frenker, tenor soloist.

THURSDAY, NOVEMBER 24

- 8:00 to 9:00 p. m.—Pasadena Chamber of Commerce Concert.

SATURDAY, NOVEMBER 26

- 8:00 to 9:00 p. m.—Star-News Concert.



ALLAN FAIRCHILD

Los Angeles, California—1290 Kc.

KFQZ

232 METERS
1417 South Figueroa St., Los Angeles, California
Westmore 3001
ALLAN FAIRCHILD, Program Director and
Announcer
L. E. TAFT, Technical Engineer
WALTER KING, General Manager

DAILY EXCEPT SUNDAY—

- 11:00 a. m.—Sohmer Welte Mignon Popular Hour, courtesy Barker Bros.
1:00 to 2:00 p. m.—Panatropé Hour.
2:00 to 3:00 p. m.—Frank Martin and Hazel McCauley in Popular Numbers.
3:00 to 4:00 p. m.—KFQZ Studio Orchestra
4:00 to 5:00 p. m.—Welte Mignon Popular Hour.
5:00 p. m.—Booster Hour, courtesy Southern California Mfrs. Exhibit.
6:00 p. m.—Panatropé Dinner Hour, courtesy Barker Brothers. . .
8:00 to 9:00 p. m.—J. V. Baldwin Hour, with J. V. Baldwin Chevrolet Orchestra, under direction of Jack Lee
2:00 p. m.—Tryouts (not broadcast). THURSDAY ONLY.

WEEK COMMENCING SUNDAY, NOVEMBER 20, 1927

SUNDAY, NOVEMBER 20

- 7:00 to 8:00 p. m.—Jack Lee and orchestra; Madge McConnell, soloist.
8:00 to 9:00 p. m.—Columbia Viva Tonal Records.
9:00 to 11:00 p. m.—Lou Goldwater's Melody Boys; Charlie Cole, soloist; Jock McGilp, Scotch comedian; Winnie Petrie.

MONDAY, NOVEMBER 21

- 12:00 to 1:00 p. m.—Jack Lee and Orchestra; Art Schwartz, Hazel McCauley, Lucia Ruiz Jay.
7:00 to 8:00 p. m.—Calawajia Hawaiian Trio, Don Stephens, Lee Fenton, and Phyrne Alston.
9:00 to 10:00 p. m.—Myra Bell Vickers Vocal Hour.
10:00 to 11:00 p. m.—Rae Silverman and the California Banjo Boys; Fred Thomasson and Hawaiian Entertainers.

TUESDAY, NOVEMBER 22

- 12:00 to 1:00 p. m.—Art Schwartz, Lucia Jay, Hazel and the Handy Man, Jack Lee and orchestra.
7:30 to 8:00 p. m.—Lucia Ruiz Jay, Slatel Duo.
7:00 to 7:30 p. m.—Madam Virginia Rovere's Classical Half Hour.
9:00 to 10:00 p. m.—Morris Sisters, Doris Decker, blues; Charlie Cole, soloist; Jerry Grant and his Elite Dance Orchestra.
10:00 to 11:00 p. m.—Fred Wesley, soloist; Walter Hargesheimer, pianist; Jerry Grant and his Elite Dance Orchestra.

WEDNESDAY, NOVEMBER 23

- 12:00 to 1:00 p. m.—Jack Lee and his Orchestra; Lucia Ruiz Jay.
7:00 to 8:00 p. m.—Clint Stevenson's Ha-

waiian Trio; Don Stephens and Margaret Ruth Kernan.

- 9:00 to 10:00 p. m.—Van Sisters Trio; Semi-Classical Hour, and Phyrne Alston; Wendell McCracken, basso; Al Flanigan, Joe Edmiston.
10:00 to 11:00 p. m.—Fred Wesley, soloist; Wesley Van Doren, Melody Pianist, and Beverly Play Boys.

THURSDAY, NOVEMBER 24

- 12:00 to 1:00 p. m.—Lucia Ruiz Jay, Hazel and the Handy Man; Jack Lee and his orchestra.
2:00 to 3:00 p. m.—Tryouts, not broadcast.
7:00 to 8:00 p. m.—Leslie E. Taft on Radio Technology.
9:00 to 10:00 p. m.—Clayton Lunham, Chas. Veneman and Viola Mayot; Cyril Goodwyn Concert Trio.
10:00 to 11:00 p. m.—Frank Clark and his orchestra.

FRIDAY, NOVEMBER 25

- 12:00 to 1:00 p. m.—Cafe Diable Orchestra.
7:00 to 8:00 p. m.—Playgoers Club, founded and conducted by Wedgwood Nowell.
9:00 to 10:00 p. m.—Frank Martin, Neva Negus, Lucile Anderson and Hale Hooper and the Two Radio Nuts. Johnny Dull and his Melody Boys.
10:00 to 11:00 p. m.—Johnny Dull and his Melody Boys.

SATURDAY, NOVEMBER 26

- 12:00 to 1:00 p. m.—Paris Inn Cafe Orchestra under direction of Chas. Offenber.
7:00 to 8:00 p. m.—Louise Moody Trio and Don Stevens, baritone.
9:00 to 10:00 p. m.—Leonard Van Berg and Tivoli Four.
10:00 to 11:00 p. m.—Jack Lee and his orchestra and Leonard Van Berg. Betty Möffet and her Sisters.

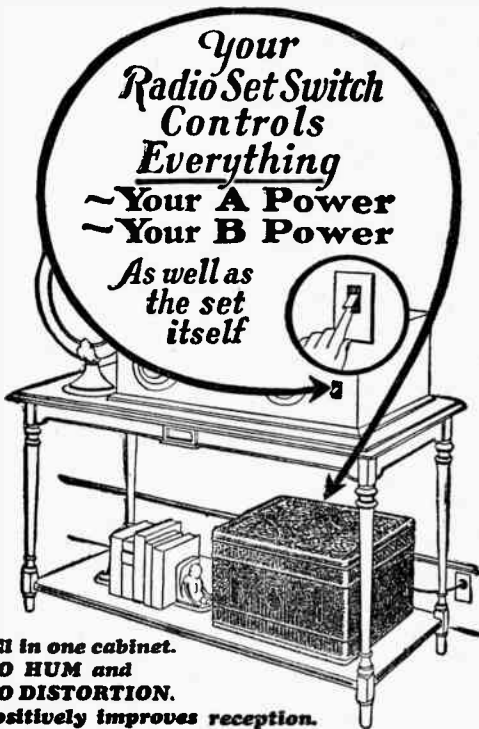
Western Electric Speakers — Amplifiers
Childs' Lab., 2310 So. Union

The
Marvelous
New
Model

PHILCO

Radio **AB** Socket Power

Operates ANY Radio Set from the Electric Light Socket



Built for all Radio Power Tubes and will deliver 180 volts at 60 milli-amperes

Philco Socket Power

gives you all the Advantages of both battery and AC operation without the Disadvantages of either.

Console-Cabinet Models

are built to fit INSIDE the cabinets of practically all well-known radio sets, including:

Atwater Kent Fada
Mohawk
Freed-Eisemann
Radiola 28
Victrola-Radiola
Brunswick-Radiola

Call upon any Radio Dealer. He will be glad to furnish complete information and arrange for a demonstration.

PHILCO VARIETY HOUR Over Entire N.B.C. NETWORK
9 to 10 P.M. Each Saturday

Don't Go To A Tailor For Shoes — But
GO TO

J. M. Andrews Co.

The Original

Philco Sales & Service

1818 S. Grand Ave.

WE. 9065

Los Angeles

FOR YOUR



RADIO AB SOCKET POWER

FREE DEMONSTRATION

on Your Own Radio

Let Us Prove These Benefits

*Clearer, Sharper Reception — No Hum — No Distortion.
Your Radio Switch Controls Everything.*

Installed Free :: Positively Guaranteed

Mail This Coupon Today

or

Phone **WEstmore 9065**



For Free Demonstration in Your Home

Also Headquarters For

**ARBORPHONE AND
FREED-EISEMANN
RADIO**

CECO TUBES

**RAY-O-VAC BAT-
TERIES**

**AUTOMOBILE
STORAGE
BATTERIES**

NAME..... MAIL THIS COUPON

ADDRESS.....

MAKE-OF SET.....

PLACES YOU UNDER
NO OBLIGATION



TOM MITCHELL
Announcer

Santa Monica, California—800 Kc.

KNRC

500 WATTS—375 METERS
Owned and Operated by
KIERULFF & RAVENSCROFT COMPANY
Municipal Auditorium, Ocean Park, Santa Monica,
Calif. Phone Santa Monica 63-101.
TOM MITCHELL, Studio Manager and Announcer.
C. B. JUNEAU, Transmission Engineer
R. L. RUST, Advertising Manager
"The Station with a Smile"

DAILY EXCEPT SUNDAY—

- 1:30 to 2:30 p. m.—Kierulff & Ravenscroft courtesy program.
- 3:00 to 3:30 p. m.—Story Hour.
- 3:30 to 4:30 p. m.—Crosley Preview.
- 6:00 to 7:00 p. m.—Casa DeDi Mar organ.
- 7:00 to 8:00 p. m.—Merchants' Preview.

WEEK COMMENCING SUNDAY, NOVEMBER 20, 1927

SUNDAY, NOVEMBER 20

- 10:45 to 11:45 a. m.—Pilgrim Lutheran Church services.
- 2:30 to 4:00 p. m.—Band concert.
- 7:00 to 8:00 p. m.—Casa del Mar organ.
- 8:00 to 9:00 p. m.—Band concert.

MONDAY, NOVEMBER 21

- 1:30 to 2:30 p. m.—Kierulff & Ravenscroft courtesy hour.
- 2:30 to 3:00 p. m.—Request program.
- 8:00 to 10:00 p. m.—Studio program.

TUESDAY, NOVEMBER 22

- 2:30 to 3:00 p. m.—International Bible Students Association.
- 4:00 to 4:30 p. m.—F. C. Gardner, Seventh Day Adventist Church.
- 4:30 to 5:00 p. m.—Crosley preview.
- 8:00 to 10:00 p. m.—Studio program featuring Hal Denny Trio.

WEDNESDAY, NOVEMBER 23

- 2:30 to 3:00 p. m.—Rev. Charles Watson, the Optimistic Parson.
- 8:15 to 8:30 p. m.—Eugene Biscailuz.
- 8:30 to 10:30 p. m.—Prize fights from Ocean Park Athletic Club.

THURSDAY, NOVEMBER 24

- 2:30 to 3:00 p. m.—International Bible Students Association.
- 8:00 to 10:00 p. m.—Studio program featuring Vaughn Trio.

FRIDAY, NOVEMBER 25

- 2:30 to 3:00 p. m.—Request program.
- 8:00 to 10:00 p. m.—Studio program.

SATURDAY, NOVEMBER 26

- 2:30 to 3:00 p. m.—International Bible Students Association.
- 8:00 to 9:00 p. m.—Band concert.
- 9:00 to 10:00 p. m.—Gables Club.



Major Lawrence Mott
Announcer

Avalon, California—1000 Kc.

KFWO

THE CATALINA ISLAND STATION
(Non-Commercial)
Power 250 Watts—300 Meters
MAJOR LAWRENCE MOTT, Owner-Operator
MISS FRANCES HEWITT, Studio & Program Dir.
"The Isle With a Smile"

DAILY EXCEPT MONDAY—

- 12:30 to 1:45 p. m.—Hotel St. Catherine Orchestra.
- 6:30 to 8:00 p. m.—Hotel St. Catherine Orchestra.

Rebroadcasting of Other Stations on All Evening Programs

SUNDAYS

- 5:00 to 6:00 p. m.—Miss Hewitt's Golden Hour.
- 6:00 to 6:30 p. m.—Riviera Theatre Organ.
- 6:15 to 9:15 p. m.—St. Catherine Lobby concert.

MONDAYS

Silent.

TUESDAYS

- 5:00 to 6:00 p. m.—Miss Hewitt's Golden Hour.
- 6:00 to 6:30 p. m.—Riviera Theatre Organ.

FRIDAYS

- 5:00 to 6:00 p. m.—Miss Hewitt's Golden Hour.
- 6:00 to 6:30 p. m.—Riviera Theatre Organ.

BT Counterphase 8—World's Greatest Radio—Sold with a Distance Guarantee. H. A. Everest, 1032 North Ogden Dr. Granite 9915.



TOM SEXTON

San Diego, California—680 Kc.

KFSD

500 WATTS—440.9 METERS
 Grant Hotel, 326 Broadway, San Diego
 Telephone Main 8661
 WM. H. BLACK, President
 TOM SEXTON, Gen. Mgr.
 "A Kiss from San Diego"

DAILY EXCEPT SUNDAY—

10:00 to 11:00 a. m.—Amy Lou shopping hour.
 5:45 to 6:00 p. m.—Late news items, sporting events by San Diego Union and Tribune.
 6:00 to 7:00 p. m.—Musical Review.

WEEK COMMENCING SUNDAY, NOVEMBER 20, 1927

SUNDAY, NOVEMBER 20

11:15 a. m. to 12:15 p. m.—Services 1st Unitarian Church.
 2:00 to 3:00 p. m.—Services International Bible Students.
 3:00 to 4:00 p. m.—Services Theosophical Society.
 8:15 to 10:00 p. m.—Concert program featuring Hutton's Hotel Del Coronado Concert quartette and assisting artists.

MONDAY, NOVEMBER 21

7:00 to 8:00 p. m.—All Star Five Orch.
 8:00 to 9:00 p. m.—Studio program.
 9:00 to 10:00 p. m.—San Diego Union and Evening Tribune musical program.

TUESDAY, NOVEMBER 22

7:00 to 8:00 p. m.—Musical program.
 8:00 to 9:00 p. m.—Thearle's classical orthophonic.
 9:00 to 10:00 p. m.—Studio artists' hour.

WEDNESDAY, NOVEMBER 23

7:00 to 7:30 p. m.—Theodora Warfield, Doris Ridgway.
 7:30 to 8:30 p. m.—Concert program, Theosophical Society.

8:30 to 9:00 p. m.—Orthophonic pipe organ recital.
 9:00 to 10:00 p. m.—Aeolian Quartette.
 10:00 to 11:00 p. m.—Ratliff Academy of Dancing.

THURSDAY, NOVEMBER 24

7:00 to 8:00 p. m.—San Diego Police Dept. program.
 8:00 to 9:00 p. m.—Unitarian Church concert.
 9:00 to 10:00 p. m.—Ratliff Academy of Dancing.

FRIDAY, NOVEMBER 25

7:00 to 8:00 p. m.—Fegan's San Diego Orch.
 8:00 to 8:30 p. m.—Minor Twins, Stubbs Brothers.
 8:30 to 10:00 p. m.—Hutton's Hotel Del Coronado Concert Quartette.

SATURDAY, NOVEMBER 26

7:00 to 8:00 p. m.—San Diego High School program.
 8:00 to 9:00 p. m.—Franco-American hour.
 9:00 to 10:00 p. m.—Studio program.
 10:00 to 11:00 p. m.—Ratliff Academy of Dancing.

RADIOLA SPECIALISTS

If your Radiola 28 or your Radiola 20 is out of balance, your selectivity and distance is greatly impaired.

We make them perform like they should.

The Harmonics on Your RADIOLA 25 Can Be Eliminated.
 —Ask About It!

LABORATORY OF RADIO STANDARDS

E. K. HAYES
 2408 West Vernon VERmont 6543 Los Angeles, Calif.



"HAL" G. NICHOLS
Manager

K F O N

Long Beach, California
1240 Kc.

500 WATTS—242 METERS
PIGGLY WIGGLY STATION
Owned and Operated by
NICHOLS & WARNER, INC.

Studio: 211 Jergins Trust Bldg. 617-19, 614-60
Office: 212 Jergins Trust Bldg. 617-19, 614-60

"Where Your Ship Comes In"



CLARENCE CRARY
Announcer

DAILY—

4:30 to 7:00 p. m.—Piggly Wiggly Concert Orchestra and Entertainers.

DAILY EXCEPT SATURDAY AND SUNDAY—

9:30 to 10:00 a. m.—Organ Recital, Second Church of Christ, Scientist.

10:15 to 10:30 a. m.—Devotional period.

10:30 to 11:30 a. m.—Physiology of Beauty, Georgia O. George.

DAILY EXCEPT SUNDAY—

11:30 a. m. to 12:00 noon—Press-Telegram Early News, by Frank Goss.

12:00 noon—Lost and Found Announcements.

4:00 to 4:30 p. m.—Press-Telegram Late News, by Frank Goss.

DAILY EXCEPT MONDAY—

2:30 to 4:00 p. m.—Long Beach Municipal Band Concert.

8:00 to 9:00 p. m.—Press-Telegram, presenting Long Beach Municipal Band.

WEEK COMMENCING SUNDAY, NOVEMBER 20, 1927

SUNDAY, NOVEMBER 20

9:30 to 11:00 a. m.—Capitol Theatre organ;

11:00 to 12:30 p. m.—Second Church of Christ, Scientist.

12:30 to 1:30 p. m.—Birkel Music Company.

1:30 to 2:30 p. m.—Pacific Coast Club organ; Herbert Nixon.

4:00 to 4:30 p. m.—Studio program.

7:00 to 7:45 p. m.—Barkey's Mandolin Orchestra and "The Eskimo Twins."

7:45 to 9:00 p. m.—Services First Church of Christ, Scientist.

9:00 to 1:00 midnight—"All Star Nite."

MONDAY, NOVEMBER 21

10:00 to 10:11 a. m.—"Shopping News."

12:00 to 12:30 p. m.—Moore's Apparel Shop.

12:30 to 1:30 p. m.—Spencer-Kennelly

1:00 to 1:30 p. m.—Harris Fur Co.

1:30 to 2:00 p. m.—Capitol Theatre Organ.

2:00 to 2:30 p. m.—Rialto Radio Co.

2:30 to 3:00 p. m.—Capitol Theatre Organ.

3:00 to 4:00 p. m.—Women's Music Study

7:00 to 8:00 p. m.—Suydam's Buttercream Schoolhouse.

8:00 to 9:00 p. m.—"The Melody Boys";

9:00 to 12:00 midnight—Kiwani's Frolic.

TUESDAY, NOVEMBER 22

10:00 to 10:15 p. m.—Piano recital (Cloverleaf Chocolates).

12:00 to 12:30 p. m.—Spencer-Kennelly

12:30 to 1:00 p. m.—Georgia O. George,

1:00 to 1:30 p. m.—Kiwani's Club luncheon.

1:30 to 2:30 p. m.—Capitol Theatre Organ.

7:00 to 8:00 p. m.—Bear Cafe Jazz Band.

9:00 to 10:00 p. m.—"Ye Olde Song Album."

10:00 to 11:00 p. m.—Breakers Hotel Orch-

11:00 to 12:00 midnight—Majestic Ballroom

WEDNESDAY, NOVEMBER 23

10:00 to 10:15 a. m.—"Shopping News."

12:00 to 12:30 p. m.—Moore's Apparel Shop.

12:30 to 1:00 p. m.—Spencer-Kennelly Used Cars; Hawaiian.

1:00 to 1:30 p. m.—Rotary Club luncheon.

1:30 to 2:00 p. m.—Harris Fur Company,

2:00 to 2:30 p. m.—Rialto Radio Company.

7:00 to 8:00 p. m.—Hirshfield's Fashion Review.

9:00 to 10:00 p. m.—"Piggly Wiggly Flyer."

10:00 to 11:00 p. m.—Capitol Theatre Organ.

11:00 to 12:00 midnight—Pacific Coast Club.

THURSDAY, NOVEMBER 24

10:00 to 10:15 a. m.—Piano recital (Cloverleaf Chocolates).

12:00 to 12:30 p. m.—Spencer-Kennelly Chevrolet Co., Inc.

12:30 to 1:00 p. m.—Georgia O. George, "Hair-A-Gain Twins."

1:00 to 2:00 p. m.—Studio program.

2:00 to 2:30 p. m.—Health and Efficiency.

7:00 to 8:00 p. m.—"Old - Time Barn Dance at Sunshine Acres"

9:00 to 10:00 p. m.—Long Beach Opera.

10:00 to 11:00 p. m.—Masterpiece program.

11:00 to 12:00 midnight—Majestic Ballroom.

FRIDAY, NOVEMBER 25

10:00 to 10:15 a. m.—"Shopping News."

12:00 to 12:30 p. m.—Moore's Apparel Shop.

12:30 to 1:00 p. m.—Spencer-Kennelly Used Cars; Hawaiians.

1:00 to 1:30 p. m.—Masonic Club luncheon.

2:00 to 2:30 p. m.—Rialto Radio Co.

7:00 to 7:30 p. m.—Church of Christ.

7:30 to 8:00 p. m.—Chas. Hamp, courtesy

Strasska Toothpaste Laboratories.

9:00 to 10:00 p. m.—"Ye Olde Song Album."

10:00 to 11:00 p. m.—Capitol Theatre Organ.

11:00 to 12:00 midnight—Pacific Coast Club.

SATURDAY, NOVEMBER 26

9:30 to 10:30 a. m.—Studio program.

10:30 to 11:30 a. m.—Capitol Theatre Organ.

12:00 to 12:30 p. m.—Spencer-Kennelly Chevrolet Co., Inc.

12:30 to 1:00 p. m.—Georgia O. George.

1:00 to 1:30 p. m.—Musical program.

1:30 to 2:30 p. m.—"Moonlight Serenaders."

7:00 to 8:00 p. m.—"Piggly Wiggly Hawaii."

8:00 to 10:00 p. m.—Masterpiece program.

10:00 to 11:00 p. m.—Pacific Coast Club.

11:00 to 12:00 midnight—Majestic Ballroom Orchestra.

Golden Bear AIR COLUMN SPEAKER

Free Demonstration in Your Home. Phone Westmore 2712



BOSCH RECEIVERS



For Satisfaction

Drop in and see your nearest Dealer

LOS ANGELES

Downtown

Acme Radio Store
709 Main St.
TUcker 1728

Mattern Electric Co.
950 West 12th St.
ATlantic 7009

Southwest

General Supply Store
46th, cor. Western Ave.
VERmont 6683

Nesa Radio Sales & Service
2565 W. Pico, near Vermont
BEacon 2723

Radio Electric Shop
1428 W. Santa Barbara
VERmont 7440

Wm. H. Shepherd
4402 Avalon Blvd.
AXridge 6925

Southeast

Manchester Radio Electric
1522 E. Manchester
DElaware 0460

South

Jenkins Radio Shop
8450 South Broadway
THornwall 4460

Hollywood

Bob Lloyd
262 N. Vermont Ave.
WAShington 7933

Shepherd's Radio
7562 Sunset Blvd.
GRanite 7482

East Hollywood

Quimby's Radio Service
1860 N. Vermont Ave.
OLympia 5501

Highland Park

F. & H. Radio Shop
5011 York Blvd.
GARfield 8962

West Hollywood

Motley Electric
7761 Santa Monica Blvd.
GLadstone 9602

GLENDALE

Broadway Radio Electric
Willard F. Hellman
202 E. Broadway
GLEndale 3064

HUNTINGTON PARK

P. A. Dougherty
158 South Pacific Ave.
DElaware 4852

OCEAN PARK

Pier Ave. Radio Co.
142 Pier Ave.
Santa Monica 610-94

PASADENA

Kadley & Yeisley Music Co.
1447 North Lake Ave.
Niagara 2510

Thomas & Sommerville
41 North Broadway
Terrace 0815

POMONA

Halvorson Electric Shop
274 E. Monterey

SANTA BARBARA

Radio Sales & Service Shop
1015 State St.

UPLANDS

Ross Auto Electric Shop
376 Second Ave.

Exclusive Wholesale Distributors

YALE RADIO ELECTRIC CO.

1111 Wall St.

WEstmore 3351

Los Angeles



CURTIS PECK
Announcer

San Francisco, California—710 Kc.

KPO

1000 WATTS—422 METERS
HALE BROTHERS AND THE CHRONICLE
J. W. LAUGHLIN, Managing Director
MRS. FREDERICK CROWE, Program Director
ALBERT J. HODGES, Technical Director
Phone Kearney 5777
"The Voice of San Francisco"

DAILY EXCEPT SUNDAY—

- 8:45 to 9:00 a. m.—Health and Happiness Period.
10:30 to 10:45 a. m.—"Ye Towne Crier."
11:30 to 1:00 p. m.—Kane's Hawaiians.
12:00 noon—Time Signals.
1:15 p. m.—Stock and Fruit Reports, except Friday.
1:00 to 2:00 p. m.—KPO Orchestra.
4:00 to 5:00 p. m.—KPO Orchestra, except Saturday
- 5:00 to 6:00 p. m.—Children's Hour.
6:00 to 6:30 p. m.—"Ye Towne Crier."
6:30 to 7:30 p. m.—Orchestra, except Tuesday, Friday and Saturday.
7:30 to 8:00 p. m.—DX period.

WEEK COMMENCING SUNDAY, NOVEMBER 20, 1927

SUNDAY, NOVEMBER 20

- 9:45 to 10:30 a. m.—Undenominational and non-sectarian church service.
6:00 to 6:30 p. m.—States Restaurant Orchestra, Waldemar Lind, director.
6:30 to 7:30 p. m.—Standard Symphony Hour.
7:30 to 8:30 p. m.—Organ recital by Uda Waldrop.
8:30 to 10:00 p. m.—Rudy Seiger's Fairmont Hotel Concert Orchestra.

MONDAY, NOVEMBER 21

- 8:00 to 9:00 p. m.—Program by N. B. C. over P. C. N.
9:00 to 10:00 p. m.—Program for San Francisco branch of manufacturers of White King and Mission Bell Soaps.
10:00 to 12:00 midnight—KPO's Variety Hour, featuring KPO's well known artists.

TUESDAY, NOVEMBER 22

- 10:00 to 10:30 a. m.—Activity, conducted by Ann Warner, domestic economist.
8:00 to 8:30 p. m.—Studio program.
8:30 to 9:00 p. m.—Bridge lesson No. 4.
9:00 to 11:00 p. m.—N. B. C. program over P. C. N.

WEDNESDAY, NOVEMBER 23

- 10:45 a. m.—Betty Crocker's Gold Medal Flour Home Service Talk.
8:00 to 9:00 p. m.—Program by Atwater Kent artists under the auspices of Ernest Ingold, Inc.
9:00 to 10:00 p. m.—N. B. C. program over P. C. N.
10:00 to 11:00 p. m.—States Restaurant Orchestra, Waldemar Lind, director.

THURSDAY, NOVEMBER 24

- 10:00 to 10:30 a. m.—Activity, conducted by Ann Warner, domestic economist.
8:00 to 9:00 p. m.—Chickering Hour.
9:00 to 10:00 p. m.—N. B. C. program over P. C. N.
10:00 to 11:00 p. m.—States Restaurant Orchestra, Waldemar Lind, director.

FRIDAY, NOVEMBER 25

- 10:40 a. m.—Fashion talk by Ninon, fashion critic of The Chronicle.
10:45 a. m.—Betty Crocker's Gold Medal Flour Home Service Talk.
12:45 p. m.—Address from the Commonwealth Club luncheon at the Palace Hotel.
6:30 to 7:00 p. m.—Program by Board of Education.
7:00 to 7:15 p. m.—Book review by Harold Small of The Chronicle.
7:15 to 7:30 p. m.—"Sports on the Air" by Harry B. Smith, sporting editor, Chronicle.
8:00 to 9:00 p. m.—Program for California Petroleum Corp., featuring Calpet Orchestra, John Wolohan directing.
9:00 to 10:00 p. m.—Program of chamber music by Abas String Quartet.
10:00 to 11:00 p. m.—KPO Dance Orchestra.

SATURDAY, NOVEMBER 26

- 10:00 to 10:30 a. m.—Activity, conducted by Ann Warner, domestic economist.
2:00 to 5:00 p. m.—Play by play broadcast of football game for Associated Oil Co.
8:00 to 10:00 p. m.—Program by N. B. C. over P. C. N.
10:00 to 11:00 p. m.—KPO Dance Orchestra.

The Ideal Set for Tone & Distance

The VALLEYTONE

5 Tubes, \$87.50

7 Tubes, \$97.50

(Less Accessories)

Distributed by

RIALTO RADIO CO.

430 American Avenue

Long Beach, California

A New Sensation *in* Radio Entertainment



Your Radio
set deserves
the best tubes

Equip your set with perfectly matched SONATRON tubes... each adopted for a particular purpose. Then note the new life and pep of your set.

In come the stations . . .
clear . . . bell-like in tone . . .
brilliant in volume.

With SONATRONs you're
in command of the air.

Your Dealer Carries the Complete SONATRON Line

"The World's Largest Radio Tube Line"

SONATRON

WHOLESALE DISTRIBUTORS

LISTENWALTER & GOUGH, Inc.

325 Fifth Street, San Francisco 819 E. First Street, Los Angeles



Howard Milholland
Announcer

Oakland, California—780 Kc.

KGO

5000 WATTS—384 METERS
PACIFIC COAST STATION, GENERAL ELECTRIC CO.
Phone Fruitvale 5980

DAILY EXCEPT SUNDAY—

- 11:30 a. m. to 1:00 p. m.—Hotel Leamington concert.
12:30 and 7:00 p. m.—Stock and weather reports. Baseball scores.
6:00 to 6:45 p. m.—Dinner hour concert, except Monday.
9:00 p. m.—Time Signals, except Saturday.

WEEK COMMENCING SUNDAY, NOVEMBER 20, 1927

SUNDAY, NOVEMBER 20

- 11:00 a. m.—First Baptist Church service, Oakland.
4:00 p. m.—Vesper services, Grace Cathedral, San Francisco.
6:30 p. m.—Standard Symphony Hour, N. B. C.
7:30 p. m.—Weather report.
7:35 to 9:00 p. m.—First Baptist Church service, Oakland.
9:00 p. m.—Time signal.
9:00 to 10:00 p. m.—"Great Moments of History," N. B. C.

MONDAY, NOVEMBER 21

- 3:30 to 4:00 p. m.—Calif. Fed. of Women's Clubs.
4:00 to 5:00 p. m.—Frank Ellis and his Hotel St. Francis dance orchestra.
5:30 to 6:00 p. m.—Aunt Betty (Ruth

- Thompson) stories; KGO Kiddies' Klub.
6:00 to 6:45 p. m.—Norman Woodside's Roberts-at-the-Beach Orchestra.
6:45 p. m.—"What's Happening in the World," John D. Barry.
8:00 to 9:00 p. m.—Grand opera program, N. B. C.
9:00 to 9:20 p. m.—Joseph Henry Jackson, "Chats About New Books."
TUESDAY, NOVEMBER 22
8:00 to 8:30 p. m.—"HM" and "JP" entertain.
8:30 to 9:00 p. m.—U. S. Bridge Lessons, N. B. C.
9:00 to 10:00 p. m.—Eveready Hour, N. B. C.
10:00 to 11:00 p. m.—"Retold Tales," N. B. C.

WEDNESDAY, NOVEMBER 23

- 6:30 p. m.—Weather.
6:35 to 7:30 p. m.—Farm program.
8:00 to 9:00 p. m.—Vaudeville.
9:00 to 10:00 p. m.—"The Vagabonds," N. B. C.
10:00 to 11:00 p. m.—Frank Ellis and his Hotel St. Francis Dance Orchestra, San Francisco.

THURSDAY, NOVEMBER 24

- 5:00 to 5:15 p. m.—"Mental Measurement"; Dr. Virgil E. Dickson, University of California.
5:15 to 6:00 p. m.—George W. Ludlow, "Friend to Boys."
8:00 to 9:00 p. m.—"The Pilgrims."
9:00 to 10:00 p. m.—Miscellaneous musical program, N. B. C.
10:00 to 11:00 p. m.—Frank Ellis and his Hotel St. Francis Dance Orchestra, San Francisco.

FRIDAY, NOVEMBER 25

- 5:30 p. m.—Da-Ra-O, wise man from the Land-O-Health.
6:45 to 6:55 p. m.—"Weekly Financial Review," Fred Brandt.
8:00 to 9:00 p. m.—Program by the KGO Players under the direction of Wilda Wilson Church. Music, Rembrandt Trio.
9:00 to 10:00 p. m.—"An Hour in Memory Lane," N. B. C.
10:00 to 11:00 p. m.—Girvin-Beale's Hotel Oakland Dance Orchestra.

SATURDAY, NOVEMBER 26

- 7:00 to 7:15 p. m.—Weather and news.
7:15 to 7:30 p. m.—Weekly sport review, Al Santoro.
8:00 to 9:00 p. m.—Revue program, N. B. C.
9:00 to 10:00 p. m.—Philco Hour, N. B. C.
10:00 to 11:00 p. m.—Frank Ellis and his Hotel St. Francis Dance Orchestra, San Francisco.
11:00 to 12:00 p. m.—Dance music.

Never Mind the Address

JUST CALL

DRexel 4161

FOR

DEPENDABLE

Service

ON

**RADIO SETS
PANATROPES
ELECTROLAS**

GUARDIAN RADIO SERVICE

"The House that Troubles Built"



YALE
RADIO
Batteries
cost less per
radio hour!



During service hours Yale Batteries deliver a steady stream of pulsing power. Because of their exceptional recuperative powers while idle, they yield a premium—a PLUS supply of power! That's why Yale Batteries cost you less per hour of reception.



HOLLY-ANGELES MUSIC CO.

6611½ Hollywood Blvd.

GRanite 4876

Los Angeles



"MAC"

San Francisco, California—660 Kc.

KFRC

Owned and Operated by Don Lee
California Distributor for Cadillac and LaSalle
1000 WATTS—454.3 METERS
HARRISON HOLLIWAY, Manager
FRANK MOSS, Musical Director
"Keep Forever Radiating Cheer"

DAILY EXCEPT SUNDAY—

- 7:00 to 8:00 a. m.—Seal Rock Program by Simpy Fitts; Granite Time.
8:00 to 9:00 a. m.—Musical Program.
10:00 to 11:00 a. m.—Musical Program, except Monday, Tuesday and Wednesday.
11:30 to 12:00 noon—Amateur Tryouts, except Saturday.
12:00 to 1:00 p. m.—Sherman Clay Concert.
4:30 to 5:15 p. m.—Organ Recital by Theodore Strong, except Sat.
5:30 to 6:20 p. m.—Mac and his Gang, except Monday.
6:20 to 6:30 p. m.—Stage, Screen, Police and Lost and Found.
6:30 to 7:00 p. m.—Western Motors Co. presents the Cecilians, except Monday, Tuesday and Thursday.
7:00 to 7:30 p. m.—Program by the Cecilians.
10:00 to 12:00 p. m.—Program of Dance Music, except Tuesday.

WEEK COMMENCING SUNDAY, NOVEMBER 20, 1927

SUNDAY, NOVEMBER 20

- 12:00 noon to 1:00 p. m.—Services and sermon from Paulist Fathers' Old St. Mary's Church; Rev. Edward T. Mallon, pastor.
5:00 to 6:00 p. m.—Organ recital by Theodore Strong.
6:00 to 6:30 p. m.—"Looking at the World" by Dr. Frederick W. Clappett.
6:30 to 8:30 p. m.—Hotel Mark Hopkins Concert Orchestra.
8:30 to 10:00 p. m.—Walter Krausgrill's Balconades Ballroom Orchestra.
10:00 to 11:00 p. m.—KFRC Dance Orchestra sponsored by California Baking Co.
11:00 to 12:00 p. m.—KFRC Dance Orchestra sponsored by Helen Ardelle Candy Co.

MONDAY, NOVEMBER 21

- 9:00 to 9:10 a. m.—Weinstock-Lubin & Co. Shopping Service.
10:00 to 11:00 a. m.—Georgia O. George.
11:00 to 11:30 a. m.—Household Hints, Mary Lewis Haines of The Call.
5:15 to 5:45 p. m.—Mac and his Gang.
5:45 to 6:20 p. m.—Joe Mendel and his Pep Band from the Lido Cafe.
6:30 to 7:00 p. m.—Sports talk by "Bobs."
8:00 p. m.—Historical Facts.
8:00 to 10:00 p. m.—Blue Monday Jamboree.

TUESDAY, NOVEMBER 15

- 10:00 to 11:00 a. m.—Georgia O. George.
11:00 to 11:30 a. m.—Doings of Dorothy.
6:10 to 6:25 p. m.—Fifteen Minutes with Stamp Collectors, by Norman Shepard.
6:30 to 6:50 p. m.—Russell-Colvin presents the Cecilians.
6:50 to 7:00 p. m.—"Investment Securities," a talk by Agnes N. Aywyn.
8:00 p. m.—Historical Facts.
8:00 to 9:00 p. m.—Shell Oil Co. Serenaders.
9:00 to 10:00 p. m.—KFRC's Dance Orchestra presented through courtesy of Weinstock-Lubin & Co., Sacramento's finest department Store.

WEDNESDAY, NOVEMBER 23

- 9:00 to 9:10 a. m.—Weinstock-Lubin & Co. Shopping Service.
11:00 to 11:30 a. m.—Household Hints, Mary Lewis Haines, of The Call.
8:00 to 9:00 p. m.—Maxwell House Coffee Co. presents Maxwell House Coffee Orchestra and soloists in opera selections.
9:00 to 10:00 p. m.—Fancies of Former Days with Andrew Roberts, basso; Juanita Tennyson and Lucille Atherton Harger, soloists, and KFRC Little Symphony Orchestra.

THURSDAY, NOVEMBER 24

- 11:00 to 11:30 a. m.—Doings of Dorothy.
8:00 to 9:00 p. m.—Mona Motor Oil. Company program of music.
9:00 to 9:45 p. m.—WFRC Movie Club and Joe Benson's Musical Memory Contest.
9:45 to 10:00 p. m.—Flying lessons by Lt. Blaine Stubblefield of Boeing Air Transport Co. and U. S. Air Mail Service.

FRIDAY, NOVEMBER 25

- 9:00 to 9:10 a. m.—Weinstock - Lubin & Company Shopping Service.
11:00 to 11:30 a. m.—Hints to Home-makers by Aunt Martha.
3:30 to 4:30 p. m.—Students' Hour by the "Observer."
8:00 to 10:00 p. m.—Program of Christmas music presented by the Emporium.

SATURDAY, NOVEMBER 26

- 11:00 to 11:15 a. m.—Amateur try-outs.
11:45 to 12 noon—Announcements of Sunday Church sermons.
7:25 to 7:30 p. m.—Football scores.
8:00 to 9:00 p. m.—Shell Oil Company Serenaders.
8:00 p. m.—Historical facts.
8:00 to 10:00 p. m.—Anson Weeks' Hotel Mark Hopkins Dance Orchestra.

Golden Bear AIR COLUMN SPEAKER

Free Demonstration in Your Home. Phone WESTmore 2712

400%

INCREASE IN OUR SALES

There's a Reason!

Big Radio Stocks of Standard Manufacture Sold At Much Lower Prices Has Built This Business from a "Hole in the Wall" to Los Angeles' Fastest Growing Radio House.

MR. RADIO BUILDER!

VISIT WITH US — GET OUR PRICES

You'll Save Money!

Radio Manufacturers Supply Co.

1000 South Broadway

Corner 10th Street

Los Angeles



R. M. BITZER
Announcer

Oakland, California—1070 Kc.

KTAB

THE ASSOCIATED BROADCASTERS
EFFIE MERRILL RINEHART
Program Director

DAILY EXCEPT SUNDAY—

- 6:45 to 8:00 a.m.—Health and Good Cheer Hour.
8:30 to 9:00 a.m.—"The Hour of Prayer."
10:00 to 10:30 a.m.—Shopping hour, except Tuesday and Thurs.
11:30 a.m. to 1:00 p.m.—Noonday concert.
4:00 to 5:00 p.m.—Uncle Charley, Aunt Belle, except Saturday.
5:00 to 6:00 p.m.—"Who's Who" hour.
6:00 to 6:45 p.m.—Musical program by the Individual Grocers of Alameda County.
6:45 to 7:30 p.m.—Shopping hour.

WEEK COMMENCING SUNDAY, NOVEMBER 20, 1927

- 9:45 to 10:45 a.m.—Prof. E. G. Linsley's Bible Class.
11:00 a.m.—Services of Tenth Ave. Baptist Church.
1:30 to 2:30 p.m.—KTAB Symphonic Hour
7:00 to 7:45 p.m.—Vesper Service broadcast from Mills College.
7:45 p.m.—Services of Tenth Ave. Baptist Church.
- 9:00 to 11:00 p.m.—Novelty program

WEDNESDAY, NOVEMBER 23

- 9:00 to 9:45 a.m.—Special educational lecture from Mills College.
10:30 to 11:00 a.m.—Special educational lecture from Mills College.
11:00 to 11:30 a.m.—Special educational lecture from Mills College.
8:00 to 10:00 p.m.—Program through the courtesy of the California Crematorium.

THURSDAY, NOVEMBER 24

- 9:00 to 9:45 a.m.—Educational lecture
10:30 to 11:00 a.m.—Prof. E. G. Linsley on "The Romance of Astronomy."
11:00 to 11:30 a.m.—Special educational lecture from Mills College.
1:00 to 1:20 p.m.—Lecture by Dr. R. Bristol Bell.
8:00 to 9:00 p.m.—"The Weavers" present selections from Oratorio.
9:00 to 10:00 p.m.—"The Weavers" present the song cycle, "In a Persian Garden," by Liza Lehmann.
- 9:00 to 10:00 a.m.—"The Town Tattler."
10:30 to 11:00 a.m.—Special educational lecture from Mills College.
11:00 to 11:30 a.m.—Special educational lecture from Mills College.
8:00 to 8:30 p.m.—Special educational lecture from Mills College.
8:30 to 9:00 p.m.—Special educational lecture from Mills College.
9:00 to 10:00 p.m.—Studio program

FRIDAY, NOVEMBER 25

- 8:00 to 8:30 a.m.—Dr. J. D. Thompson on "Diet and Health."
9:00 to 10:00 a.m.—"The Town Tattler."
10:30 to 11:00 a.m.—Special educational lecture from Mills College.
11:00 to 11:30 a.m.—Special educational lecture from Mills College.
8:00 to 8:30 p.m.—Special educational lecture from Mills College.
8:30 to 9:00 p.m.—Special educational lecture from Mills College.
- 9:00 to 10:00 a.m.—The Town Tattler.
10:30 to 11:00 a.m.—Special educational lecture from Mills College.
11:00 to 11:30 a.m.—Special educational lecture from Mills College.
1:00 to 1:20 p.m.—Lecture by Dr. R. Bristol Bell.
8:00 to 10:00 p.m.—KTAB Zooks.

SATURDAY, NOVEMBER 26

- 9:00 to 10:00 a.m.—The Town Tattler.
8:00 to 9:00 p.m.—Special educational lecture from Mills College.

ROFFY'S New Superfine 3-Tube Circuit Is Going Over Big. Kit Only \$50.
J. T. Roffy, 155 Olive St., Walnut Park, Calif. Phone DE. 2756.

RADIO INSURANCE

That Is What You Get When You Phone
DUnkirk 6072

30-MINUTE SERVICE

You have your car overhauled once in a while—give your radio the same treatment. The results will surprise you.

DEALERS. We have a service proposition for you.

EXCLUSIVE RADIO SERVICE

607 S. Hoover St.

DUnkirk 6072

Los Angeles, Cal.

No
Batteries

Steinite

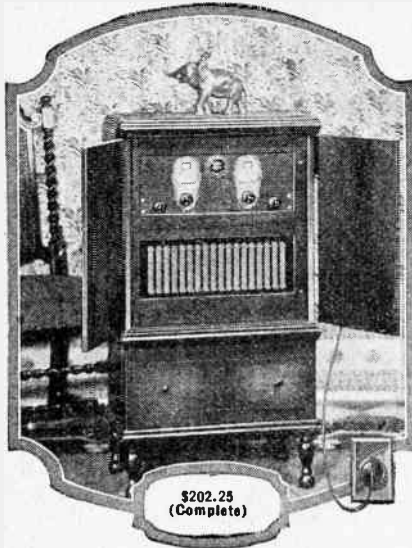
All
Electric

(Licensed under RCA)

America's Lowest Priced Most Popular Electric Radio

Hi-boy console of beautiful solid mahogany, with built-in air column speaker having Nathaniel Baldwin unit. The doors swing back entirely out of the way when receiver is not in use.

Also table model at \$130.75 (with tubes). Compact model with built-in air column speaker with Baldwin unit, priced at \$169.25 (complete).



The Steinite line of receivers have six tubes, three stages of tuned radio frequency. Illuminated two-dial control. Genuine solid Philippine mahogany cabinets. Duco finish throughout.

The steady, un-failing, limitless power supply of your electric light socket enables the Steinite to bring in distant stations with plenty of volume.

All models come to you in one single unit **READY TO GO** the instant you plug into the light socket.

STEINITE CONSOLE

Have a STEINITE Demonstrated in Your Home

Exclusive Distributors

National Radio & Supply Co.

141 W. Washington St., Los Angeles

Westmore 2748

Hear the STEINITE At One of These Dealers Today

LOS ANGELES

Birkel Music Co.
446 S. Broadway
Phone VA. 1241

American Radio Co.
108 E. 8th St.
TUcker 6028

Potter Radio Sales Co.
1817 W. 54th St.
Phone VE. 1210

Frowein's Radio Shop
5944 S. Main
Phone AX. 6836

HOLLYWOOD

Shepherd Radio Service
7562 Sunset Bldg.
Phone GR. 7482

H. A. Everest
1032 N. Ogden Dr.
Phone GR. 9915
Nightly Demonstrations

CULYER CITY

Wagner Radio Co.
6444 1/2 Washington
Phone 3449

PASADENA

Radio Doc
1581 E. Walnut
Colorado 1671

LONG BEACH

Seaside Electric Co.
1756 Atlantic
63 S. Magnolia
Phone 688-238

CARDENA AND TORRANCE

Gardner Music Co.
1601 Gramercy
Phone 312-J

SAN PEDRO

J. Moskovita
462 Sixth St.
Phone 519

"Let the Tone Test Tell You"



STEPHEN I. GAYLORD
Announcer

Portland, Oregon—610 Kc.

KGW

1000 WATTS—491.5 METERS
THE MORNING OREGONIAN

"Keep Growing Wiser"

DAILY EXCEPT SUNDAY—

10:00 to 11:30 a. m.—Town Crier, weather reports, news items.

8:00 to 7:00 p. m.—Dinner Concert, except Friday.

WEEK COMMENCING SUNDAY, NOVEMBER 20, 1927

SUNDAY, NOVEMBER 20

- 8:30 to 9:15 a. m.—"Aunt Blossom" reading the Sunday comic strips; songs by Winnie Winkle.
- 11:00 to 12 noon—Morning services from the Hinson Memorial Baptist Church.
- 3:00 to 4:00 p. m.—Concert by Town Crier Orchestra.
- 4:00 to 5:00 p. m.—Concert trio, courtesy of Enke's City Dye Works.
- 5:00 to 5:30 p. m.—Concert, courtesy Levin Furnace Co.
- 5:30 to 6:30 p. m.—Mixed Quartet and Salon Orchestra, courtesy of Fields Motor Car Co.
- 6:30 to 7:30 p. m.—Standard Oil program over P. C. N.
- 7:30 to 8:00 p. m.—The Two Steinyway Artists presented by Sherman Clay Co.
- 8:00 to 9:00 p. m.—"Neighborhood Drug Store ouHr."
- 9:00 p. m.—Longine Time Signals from N. B. C.
- 9:00 to 10:00 p. m.—N. B. C. program, Great Moments of History, "Lewis and Clark Expedition."
- 10:00 to 11:00 p. m.—Public Service Little Symphony Orchestra.

MONDAY, NOVEMBER 21

- 7:15 to 7:30 a. m.—Y. M. C. A. Health Exercises.
- 7:00 to 7:30 p. m.—Salon Orchestra, with singer, presented by Edwards Dependable Coffee Co.
- 7:30 to 7:45 p. m.—"Better Flowers" talk.
- 7:45 to 8:00 p. m.—"Travel Talk," presented by American Express Co.
- 8:00 to 9:00 p. m.—P. C. N. program, "Spotlight Hour."
- 9:00 to 10:00 p. m.—"Venetian Hour," a program of Italian music.
- 10:00 to 11:00 p. m.—Herman Kenin and his Multnomah Hotel Orchestra.

TUESDAY, NOVEMBER 22

- 7:00 to 7:10 p. m.—"Educational Talk," presented by Northwestern School of Commerce.
- 7:20 to 7:30 p. m.—Utility Service.
- 7:30 to 7:45 p. m.—Thrift Talk.
- 8:00 to 8:30 p. m.—"Sealy Sam Program."
- 8:30 to 9:00 p. m.—Bride Games, courtesy of U. S. Playing Card Co., over P. C. N.
- 9:00 to 10:00 p. m.—"Eveready Hour," courtesy of the National Carbon Co., N. B. C.
- 10:00 to 11:00 p. m.—N. B. C., Retold Tales, "Ransom of Mack."

WEDNESDAY, NOVEMBER 23

- 7:15 to 7:30 a. m.—Y. M. C. A. Health Exercises.
- 7:00 to 7:30 p. m.—Brown and White Taxicab concert.
- 7:30 to 7:45 p. m.—Poultry Talk, courtesy of Albers Bros.
- 7:45 to 8:00 p. m.—Catholic Truth Society lecture.
- 8:00 to 9:00 p. m.—White King Orchestra, courtesy of Los Angeles Soap Co.
- 9:00 to 10:00 p. m.—P. C. N., "The Vagabonds in the Cumberlands."
- 10:00 to 12:00 p. m.—Dance music from the Gold Room of the Multnomah Hotel.

THURSDAY, NOVEMBER 24

- 7:00 to 7:30 p. m.—Good Humor Orchestra, presented by the Good Humor Ice Cream Co.
- 7:30 to 7:40 p. m.—Utility Service.
- 7:40 to 8:00 p. m.—Tommy Luke's Flower Girls.
- 8:00 to 9:00 p. m.—Concert by the Maxwell House Coffee Orchestra, with soloists, presented by the Cheek-Neal Co.
- 9:00 to 10:00 p. m.—P. C. N., "A Popular Program."
- 10:00 to 11:00 p. m.—Ferman Kenin and his Multnomah Hotel Orchestra.

FRIDAY, NOVEMBER 25

- 7:15 to 7:30 p. m.—Y. M. C. A. Health Exercises.
- 6:00 to 7:00 p. m.—"Golden West Girl," presented by manufacturers of Golden West Coffee.
- 7:00 to 7:30 p. m.—G. G. Gerber entertainers.
- 7:30 to 7:45 p. m.—Utility Service.
- 7:45 to 8:00 p. m.—Albers Bros., "Dairy Talk."
- 8:00 to 9:00 p. m.—Shell 400 Magic Theater Party, "Phantoms of Broadway," courtesy of Shell Co. of California.
- 9:00 to 10:00 p. m.—P. C. N. program from San Francisco, "Memory Lane."
- 10:00 to 10:30 p. m.—Concert.
- 10:30 to 12:00 p. m.—Frolic of the Keep Growing Wiser Order of Hoot Owls.

SATURDAY, NOVEMBER 26

- 7:00 to 8:00 p. m.—Concert from KMO, Seattle.
- 8:00 to 9:00 p. m.—N. B. C., R. C. A. program from San Francisco, Grand Opera, "La Favorita."
- 9:00 to 10:00 p. m.—"Philco Hour," P. C. N.
- 10:00 to 11:00 p. m.—N. B. C., "Saturday Night Review."
- 11:00 to 12:00 p. m.—Dance music from the Indian Grill of the Multnomah Hotel.

RAY CAMPBELL

AC Sets, Transformers and Chokes,
1217 Dwiggins St., L. A., GA. 7891

Which radio selling under \$200 has the finest tone?

The Falck

NO BATTERY RADIO

*Factory
Guaranteed
for
One Year*



*\$150⁰⁰
Complete
all features
built in.*

ADVANCE ELECTRIC CO., 1260 W. 2nd St., Phone Mutual 3159.

Powerize Your Radio

PEMCO "AB"

POWER SUPPLY Will Do It

Just **\$7.50** Down

Then **\$6.00** Month

No Bother—Just Hook It On

JUST ARRIVED!

MAJESTIC

POWER "A" SUPPLY

Variable Voltage and Bone Dry—
Gives Perfect Reception

TERMS

Majestic B Supply, \$5 Down, \$5 Mo.

\$14⁹⁰

Short-wave 20-220 meter stations on your radio by plugging this popular converter into detector socket!
SHORT WAVE CONVERTER KIT, COMPLETE

\$14⁹⁰

- 45-volt 'B' Batteries \$1.95
- \$6 Brandes Navy Phones 2.95
- \$4 Brandes Aud. Transformers 1.95
- Diana 'A' Tubes 1.00
- Cabinets 1.95

- Complete Short Wave Inter-
Changable Coil Kits 4.75
- \$10 Dictagraph Fono Units . . \$ 4.95
- Ensco 3-ft. Cone Kits 10.00
- 6-volt, 13 Pl. Stor. Batteries. 6.95

In Stock: Gold Seal, Cunningham, CeCo, Radiotron, Diana and Zetka Tubes.

"Approved Parts, Kits, Sets, Service—Priced Right"

Tel. TR. 4281
Los Angeles

J. C. RENDLER

625 S. Main
Opp P. E. Depot

MAIL ORDERS

"Radio Set Builders' Headquarters"

OPEN EVENINGS



G. DONALD GRAY
Announcer

Seattle, Washington—980 Kc.

KOMO

FISHER'S BLEND STATION
METROPOLITAN CENTER, SEATTLE

DAILY EXCEPT SUNDAY—

- 10:00 a. m.—Seattle Council of Churches, Inspirational Services.
 10:15 a. m.—Y. M. C. A. Health Exercises.
 10:30 a. m.—“What to Prepare for Dinner,” by Prudence Penny.
 10:45 a. m.—Varied program, except Tuesday, Wednesday and Sat.
 12:00 n.—U. S. Dept. of Agri. Farm Flashes.
 12:15 p. m.—Grain report, except Saturday.
 12:27 p. m.—U. S. Weather report.
 5:00 to 5:15 p. m.—Silent period.
 5:15 p. m.—Kiddies' program.
 5:45 p. m.—Stock and Bond quotations.
 6:00 p. m.—News Flashes and Sports.
 6:15 p. m.—Totem Concert Orchestra.
 7:57 p. m.—U. S. Weather Bureau report.
 9:00 p. m.—Longine Time Signals through N. B. C.

WEEK COMMENCING SUNDAY, NOVEMBER 20, 1927

SUNDAY, NOVEMBER 20

- 10:00 a. m.—International Bible Students' Association, studio program.
 11:00 a. m.—Plymouth Congregational Church, Morning service.
 2:00 p. m.—Studio program under the auspices of the Everson Tabernacle.
 6:30 p. m.—Standard Oil Company of California program by the N. B. C. through P. C. N.
 7:30 p. m.—International Bible Student's Association, studio program.
 8:00 p. m.—First Church of Christ, Scientist, Evening service.
 9:00 p. m.—“Longines correct time,” through N. B. C.
 9:00 p. m.—N. B. C. program.

MONDAY, NOVEMBER 21

- 12:30 p. m.—Varied program.
 4:00 p. m.—Totem Concert Orchestra.
 4:45 p. m.—U. S. Dept. of Agriculture Farm School.
 5:00 p. m.—Health Talk.
 8:00 p. m.—Program by N. B. C.
 9:00 p. m.—Totem Concert Orchestra and Totem soloists.
 10:45 p. m.—Late news flashes.
 11:00 p. m.—Totem Concert Orchestra

TUESDAY, NOVEMBER 22

- 11:00 a. m.—Meat Talk, arranged by National Farm Radio Council.
 11:15 p. m.—Varied program by Totem staff artists.
 12:45 p. m.—Totem Concert Orchestra and Totem soloists.
 7:45 p. m.—“A Fifteen-Minute Period Practicing Good English.”
 8:00 p. m.—Totem Concert Orchestra and Totem soloists.
 8:30 p. m.—Bridge Lessons, conducted by U. S. Playing Card Co., through N. B. C.
 9:00 p. m.—N. B. C. program, “Eveready Hour.”
 10:00 p. m.—N. B. C. program, Retold Tales.
 11:00 p. m.—Late news flashes.
 11:15 p. m.—Herb Wiedoeft and his Recording Orchestra.

WEDNESDAY, NOVEMBER 23

- 12:30 p. m.—Varied program.
 1:00 p. m.—Totem Concert Orchestra and Totem soloists.
 4:45 p. m.—U. S. Dept. of Agriculture Farm School.
 7:45 p. m.—“Opening the Mail.”
 8:00 p. m.—Totem Concert Orchestra and Totem soloists.
 9:00 p. m.—N. B. C. program, “The Vagabonds in the Cumberland.”
 10:00 p. m.—Varied program.
 10:30 p. m.—Late news flashes.
 11:00 p. m.—Totem Concert Orchestra and Totem soloists.
 11:15 p. m.—U. S. Dept. of Agriculture Farm School.
 8:00 p. m.—Superior Service Dance Orch.
 9:00 p. m.—N. B. C. program.
 12:15 p. m.—Varied program.
 10:00 p. m.—Varied program by Totem staff artists.
 10:30 p. m.—Late news flashes.
 11:00 p. m.—Herb Wiedoeft and his Recording Orchestra, playing from the Trianon Ballroom, Third avenue and Wall street, by remote control.
 12:00 m.—Varied program.

FRIDAY, NOVEMBER 25

- 11:45 p. m.—Totem Concert Orchestra.
 4:45 p. m.—U. S. Dept. of Agriculture Farm School.

FRIDAY, NOVEMBER 25

- 8:00 p. m.—Superior Service Dance Orch.
 9:00 p. m.—N. B. C. program.
 12:15 p. m.—Varied program.
 10:00 p. m.—Varied program by Totem staff artists.
 10:30 p. m.—Late news flashes.
 11:00 p. m.—Herb Wiedoeft and his Recording Orchestra, playing from the Trianon Ballroom, Third avenue and Wall street, by remote control.
 12:00 m.—Varied program.

SATURDAY, NOVEMBER 26

- 11:00 a. m.—Varied program by Totem staff artists.
 12:30 p. m.—Totem Concert Orchestra and Totem soloists.
 7:00 p. m.—Totem Concert Orchestra and Totem soloists in joint broadcast with KGW.
 8:00 p. m.—R. C. A. Hour; Grand Opera through N. B. C.
 9:00 p. m.—N. B. C. program, “Philco Hour.”
 10:00 p. m.—N. B. C. Saturday Night Review program.
 11:00 p. m.—Late news flashes.
 11:15 p. m.—Olympic Hotel Venetian Room Orchestra; remote control.

Silent Magic

Here is the Eveready Layerbilt "B" Battery No. 486, Eveready's longest-lasting provider of Battery Power.



Radio is better with *Battery* Power

IF A radio set is to work at its very best, attracting no attention to itself, creating for you the illusion that can be so convincing, you must pay a little attention to the kind of power you give it. There is but one direction, a simple one—use Battery Power. Only such power is steady, uniform, silent. It is called by scientists pure Direct Current. Any other kind of current in your radio set may put a hum into the purest note of a flute, a scratch into the song of the greatest singer, a rattle into the voice of any orator.

Don't tamper with tone. Beware of interfering with illusion. Power that reveals its presence by its noise is like a magician's assistant who gives the trick away. Use batteries—use the Eveready Layerbilt "B" Battery No. 486, the remarkable battery whose exclusive, patented construction makes it last longest. It offers

you the gift of convenience, a gift that you will appreciate almost as much as you will cherish the perfection of reception that only Battery Power makes possible.

NATIONAL CARBON CO., INC.
New York  San Francisco

Unit of

Union Carbide and Carbon Corporation

Tuesday night is Eveready Hour Night

Pacific Coast Stations—
9 P. M., Pacific Standard Time

KPO—KGO—San Francisco
KFOA—KOMO—Seattle
KFI—Los Angeles
KGW—Portland

EVEREADY
Radio Batteries
—they last longer

The air is full of things you shouldn't miss



W. C. ("Doc") Gordon
Announcer

Seattle, Washington—860 Kc.

KJR

NORTHWEST RADIO SERVICE CO.
TERMINAL SALES BUILDING
348.6 METERS
Phone Elliott 6288

Vincent I. Kraft, Manager,
Ross W. Swift, Program Director.

DAILY EXCEPT SUNDAY—

9:00 to 10:00 a. m.—Studio program.
10:00 to 10:30 a. m.—Piano recital.
10:30 to 12:00 noon.—Shopping service and music.
12:00 noon.—Time Signals.
5:00 to 5:30 p. m.—KJR Junior Club.
5:30 to 5:45 p. m.—Studio program.
5:45 to 6:00 p. m.—New York Stock Quotations.
6:00 p. m.—Time Signals.
6:00 to 6:30 p. m.—News and amusement notices.
6:30 to 7:30 p. m.—Dinner hour concert.
7:30 to 10:00 p. m.—Studio program.
10:00 p. m.—Time Signals.
10:00 to 12:00 p. m.—Vic Meyers' dance orchestra.

WEEK COMMENCING SUNDAY, NOVEMBER 20, 1927

SUNDAY, NOVEMBER 20

11:00 a. m. to 12:30 p. m.—Morning Services
First M. E. Church.
2:00 to 2:30 p. m.—Classical Piano Recital.
7:15 to 7:30 p. m.—Twilight Organ Hour.
7:30 to 9:00 p. m.—Evening services First
M. E. Church.
9:00 to 10:30 p. m.—Puget Sound Savings
& Loan Assn. Concert Orchestra.

WEDNESDAY, NOVEMBER 23

7:30 to 8:30 p. m.—Studio program.

8:30 to 9:00 p. m.—Casey Bowyer's Knight-
en-gales.

9:00 to 10:00 p. m.—Studio program.

THURSDAY, NOVEMBER 24

7:30 to 9:00 p. m.—Studio program.
9:00 to 10:00 p. m.—Puget Sound Savings
& Loan Concert Orchestra.

FRIDAY, NOVEMBER 25

7:30 to 8:00 p. m.—Studio program.
8:00 to 9:00 p. m.—Woodlawn Flower Shop
Instrumental Trio.
9:00 to 10:00 p. m.—Studio program.

STOP - LOOK - LISTEN

DETSCH & CO.,
555 Turk Street,
San Francisco, California.
Gentlemen:

*Wish to advise that since installing THE MORRIS GROUND
on my set, reception has been marvelous.
It Certainly was 15c well spent.*

*Yours truly,
C. C. HUSE.*

Standard Radio Co.

Telephone: Westmore 1560

417 West Pico Street

11 years in the Radio business in Los Angeles. Call on us or phone for
free advice in regard to modernizing your Radio set.

Authorized Sales and Service

ATWATER KENT CROSLY FEDERAL FADA
ROLA AND WESTERN ELECTRIC SPEAKERS



The 1928 Call Book

—giving the very latest wave lengths confirmed by the Federal Radio Commission and published by RADIO DOINGS.

NOW ON SALE

Now that the broadcasters' licenses, wave lengths and powers have been established by the National Radio Body, the RADIO DOINGS' CALL BOOK is ready for Pacific Coast and national distribution. It contains a complete cross-indexed list of all broadcasting stations, both alphabetically and by wave length and kilocycles. The pages are conveniently arranged to allow dial settings and various notations.

Dealers are urged to send in their orders AT ONCE on the attached coupon for this latest and most up-to-date RADIO CALL BOOK. The regular dealer discount prevails. Set users are referred to their nearest radio or news dealer.



RADIO DOINGS

407 EAST PICO STREET

LOS ANGELES, CALIFORNIA

PLEASE SEND US.....RADIO CALL BOOKS OF THE NOVEMBER, 1927, EDITION, WITH THE UNDERSTANDING THAT ALL UNSOLD COPIES CAN BE RETURNED FOR FULL CREDIT WITHIN SIX MONTHS.

DEALER.....

ADDRESS.....



Seattle, Washington—670 Kc.



ARTHUR W. LINDSAY
Announcer

KFOA

447.5 Meters—1000 Watts

Owned and Operated by Rhodes Department Store
Arcade Square, Seattle, Washington
Phone MAIN 8000

P. B. GALE, Station Manager
ARTHUR W. LINDSAY, Program Director and
Announcer

DAILY EXCEPT SUNDAY

10:00 to 10:30 a. m.—Rhodes' Air News, except Tues., Thurs., Sat
1:30 to 2:00 p. m.—Home-making Helps, by Margaret Knowles
except Saturday.
4:30 to 5:00 p. m.—News Items.
5:30 to 6:30 p. m.—Children's Hour by Big Brother of KFOA, ex-
cept Saturday and Tuesday.
9:00 p. m.—Longines Time Signals.

WEEK COMMENCING SUNDAY, NOVEMBER 20, 1927

SUNDAY, NOVEMBER 20

6:30 to 7:30 p. m.—Standard Symphony Hour
over the P. C. N.

MONDAY, NOVEMBER 21

6:30 to 7:15 p. m.—Studio program pre-
sented by the Taggart Motor Co.
7:15 to 7:30 p. m.—Industrial news of the
Manufacturers' Association of Washington.
7:30 to 8:00 p. m.—Sunde & d'Evers popular
vocal trio, "Under the Awning."
8:00 to 9:00 p. m.—N. B. C. Spotlight Hour.
9:00 to 9:30 p. m.—Classical program
10:30 to 10:30 p. m.—Elks Glee Club.
10:30 to 12:00 p. m.—Coyotes Frolic from
KHQ, Spokane.

TUESDAY, NOVEMBER 22

12:30 to 1:30 p. m.—Seattle Kiwanis Club
6:30 to 7:30 p. m.—Doc Proelss Optical De-
partment presenting concert trio.
7:30 to 8:00 p. m.—KFOA Radio Movie Club.
8:15 to 8:30 p. m.—Pantages Theatre feature
act.
8:30 to 9:00 p. m.—Bridge Game by the U. S.
Playing Card Co., over P. C. N.
9:00 to 10:00 p. m.—Everready Hour by Na-
tional Carbon Co., over the P. C. N.
10:00 to 11:00 p. m.—N. B. C. program.

WEDNESDAY, NOVEMBER 23

12:30 to 1:30 p. m.—Seattle Rotary Club
7:30 to 7:45 p. m.—Albers Bros. Poultry
Talk to KGW.
7:45 to 8:00 p. m.—Book Chat
8:00 to 9:00 p. m.—White King Concert Or-
chestra and soloists.
9:00 to 10:00 p. m.—N. B. C. program.

THURSDAY, NOVEMBER 24

12:30 to 1:30 p. m.—Shrine Club luncheon
program from the Chamber of Commerce.
1:30 to 4:30 p. m.—Washington-Oregon foot-
ball game from the Stadium by direct wire.
6:30 to 7:30 p. m.—E. R. Butterworth &
Sons Concert Orchestra
8:00 to 9:00 p. m.—Maxwell House Coffee
Orchestra and soloists from KGW.
9:00 to 10:00 p. m.—N. B. C. program.

FRIDAY, NOVEMBER 25

12:30 to 1:30 p. m.—Members Council lunch-
eon program from the Chamber of Com-
merce.
6:45 to 7:00 p. m.—Touring information
7:00 to 8:00 p. m.—Sherman Clay & Co. Con-
cert Orchestra,
8:00 to 9:00 p. m.—Crescent Old Time Trio.
9:00 to 10:00 p. m.—An hour in Memory
Lane, from San Francisco over the P. C. N.
10:00 to 10:30 p. m.—Shiftless Sam and Pe-
tunia the Scrub Woman in half hour of
blackface comedy.
10:30 to 12:00 p. m.—Hoot Owls from KGW,
Portland.

SATURDAY, NOVEMBER 26

6:00 to 6:15 p. m.—Sport review.
7:00 to 7:30 p. m.—Boy Scout program.
7:30 to 8:00 p. m.—Camp Fire Girls' pro-
gram.
8:00 to 9:00 p. m.—N. B. C., R. C. A. Hour.
9:00 to 10:00 p. m.—Philco Hour by the Phil-
adelphia Storage Battery Co. over the
P. C. N.
10:00 to 11:00 p. m.—Saturday Night Revue
program from San Francisco over the
P. C. N.

E. J. PACE, Electrical Laboratories

HEAVY DUTY

TRANSFORMERS

For Filaments

— ALL KINDS OF TRANSFORMERS BUILT TO ORDER

TUcker 5755. 418 Stimson Bldg., 129 W. Third, Los Angeles, Cal.

OUR EXCEPTIONAL OFFER

*Get Two Great Magazines For Almost
the Price of One!*

SAVE \$2.00

RADIO NEWS—The National Radio Monthly
with the largest circulation and following of
any Radio publication in the world—

or

SCIENCE AND INVENTION

or

AMAZING STORIES

Regular Price \$2.50

and

RADIO DOINGS—The Leading Pacific Coast
Radio Weekly—the Radio authority of the
Pacific Coast—

Regular Price \$3.00

These leaders in their respective fields—the great National
Monthly, Radio and Scientific Magazines and the great
Pacific Coast Weekly—

BOTH NOW FOR \$3.50

You Can's Afford to Pass This Offer By

Attach Money Order, Check or Currency to the Coupon and Mail to Us
Right Now

RADIO DOINGS,
407 E. Pico Street,
Los Angeles, Calif.

*Or Conger & Moody,
Sharon Bldg., San Francisco, Calif.*

Send me **RADIO DOINGS** and "**RADIO NEWS,**" **SCIENCE & INVENTION** or **AMAZING STORIES** for one year. I enclose \$3.50.

Name.....

Address.....

City and State.....

(Specify **NEW** or **RENEWAL**)

R-1

Our Aim—

A Consistently Good Program Hour After Hour

Reliable sponsors and a minimum of
publicity on musical programs

—◆—

APPEARING REGULARLY ON KFVB PROGRAMS—

VERNON RICKARD, *Tenor*

DAVID PERCY, *Baritone*

EMMA KIMMEL, *Soprano*

LILYAN MAY CHALLENGER,
Contralto

GAMUT MALE QUARTET

ARCHIE RUGGLES, *Tenor*

ROBERT CHEATHAM, *Baritone*

CHARLES BEAUCHAMP, *Tenor*

RALPH REILLY, *Tenor*

EUNICE WYNN, *Soprano*

MORRIS SISTERS

WILL GARROWAY, *Pianist*

ORCHI-ALBI ENSEMBLE

BOROWSKY'S ROYAL RUSSIANS

BAFFA BROS. TRIO

ANNE GRAY, *Blues*

DON WARNER, *Studio Accompanist*

JACK CRONSHAW'S ORCHESTRA

RAY BAILEY QUARTET

LANDRY-DOOLEY ORCHESTRA

THE SERENADERS

CYRIL GODWIN, *Violinist*

HARRY OWENS and *His Orchestra*

DON WARNER'S ORCHESTRA

LOUISE SULLIVAN TRIO

HARMONY TRIO

MONTY JOCKERS and *His
Orchestras*

CHICO DE VERDE QUARTET

LEON BELASKY QUARTET

SOL COHEN, *Violinist*

—◆—

Warner KFVB Brothers

361.2 Meters — 830 Kys.

One of a Series of Advertisements Appearing in Radio Doings

Bears—Big and Little

(Continued from Page 17)

it down here in one big pile! We climbed up to what appeared to be a ridge of the Rim of the World and there found a wee house which would provide shelter and warmth for the night. We frantically hooked up the set to discover if there was any little joker in this location.

The first voice to speak from the Newcomb-Hawley was that of WGN, Chicago, and it was only just 4 o'clock and very much bright sunshine yet (sech gremmer!). It had the earmarks of a good location and our fallen spirits began to rise. After all, an optimist won't stay down long.

From 4 p. m. to 4 a. m. we ran up and down the scale, stopping here and there to listen to programs, waiting for announcements, maligning announcers who refused to tell the world who and where they were, and in general having what a radio nut calls a wonderful time.

The log of stations who insisted on making themselves heard was rather an extensive one—more than 60 of them beyond the borders of our own California. Seven in Canada, two in New York, eight in Chicago, three in Japan, two in Australia, etc. In many cases stations supposed to be in the same

channel were non-interfering, such as KYW and KMTR. WGY boomed in between KGO and KNRC. KVOO and KJR did not conflict, nor did KFAB and KYA, KOMO and WLIB, etc. Pittsburgh and several of the Chicago boys were every bit as strong as Los Angeles, while "Shreveport on the air, Shreveport everywhere!" who remained on the air all night, turned out to be a real pest. In all, we heard "Me and My Shadow" sung with variations by every broken down tenor between the Atlantic and Pacific, and as for "I'm Gonna Dance Wit de Guy Wat Brung Me"—we got that from a night club on "west fortieth street just a few steps off Broadway" and at regular intervals from half a dozen other parts of the country.

At 3 a. m. we were dismissed with the rest of the congregation from an Adelaide church and tried to make ourselves believe it was 9 p. m. Sunday night! JOAK, JOBK and JOCK fairly monopolized the ether till we quit at 5 a. m. yelling their announcements with gusto and specializing on long-winded speeches which we hopelessly failed to comprehend.

On the morrow we slid down the mountain side in a rainstorm and very reluctantly came back to worry along with linotype machines, printing presses and decrepit typewriters like this one. Oh, well—.

Official MAGNAFORMER LABORATORY

The Magnaformer, Wired, Tested and Guaranteed, \$150.00
 We Will Test, Assemble and Wire Your Kit for \$35.00
 Our Workmanship Is in a Class by Itself

WE BUILD THE SHORT-WAVE ADAPTOR AS DESCRIBED
 IN "RADIO DOINGS"

LABORATORY OF RADIO STANDARDS

E. K. HAYES
 2408 West Vernon Vermont 6543 Los Angeles, Calif.

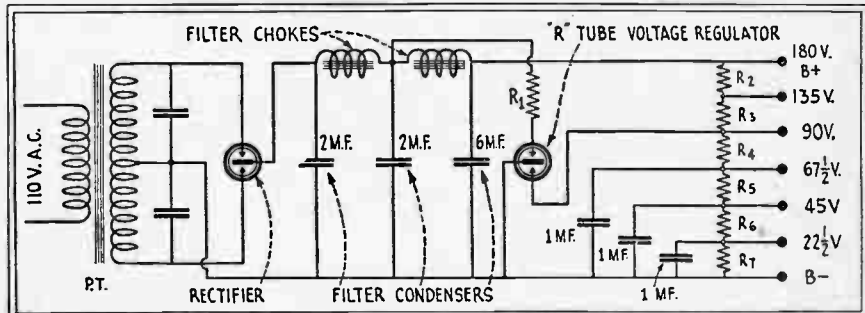
Q. and A.

(Continued from Page 37)

This device is a gaseous tube, provided with a large cathode and a small anode, the former being connected with

tor tube as long as the necessary energy is available.

The eliminator as shown is similar to the usual gaseous-rectifier types with the addition of the "R" tube. This type



the negative side and the latter with the positive side of the circuit to be controlled. Subjected to the necessary voltage, which is usually around 125 volts at the start, the gas in the regular tube breaks down or becomes ionized, so as to offer a conduction path to current. Its bright luminescence when in this condition has caused it to be called a "glow tube." The resistance of the conduction path offered by the tube is such that a definite voltage drop is maintained across it. In the case of the usual regulator tube for radio use, this voltage drop is 90, and the regulator tube is therefore connected across the minus B and the plus B 90, thereby controlling the 90-volt tap, as well as the 45 and 22½-volt taps.

The regulator tube is an automatic resistance, therefore, shunted across the circuit to be controlled. The regulator tube, together with the resistances across it and the load, provides a steady current drain on the filter circuit of the radio power unit, although the respective currents in the regulator tube, the fixed resistances and the load may vary. The regulator tube, acts as the compensating resistance, handling more or less of the current according to whether the load is less or more. The gas remains ionized in the regula-

tor tube as long as the necessary energy is available.

DX Club

(Continued from Page 33)

DX Club:

Here is a mark for someone to shoot at. In sixty minutes by the watch I got the following, outside of California: KOA, KDKA, WOAI, KSL, WGN, WSAI, WOC, PWX, WHT, KGW, WFAA, WOW, a total mileage of 17,700 in round figures. Began at 5:45 and quit at 6:45 p. m., Sunday, Nov. 6. I used a B-T Counterphase "8," 100-foot single aerial and Preston Ground.

H. A. EVEREST.

DX Club:

I have had such good results since I wrote in before that I cannot resist writing again.

Using the same three (3) tube Roffy and my new prize "Gold Seal" tubes, I have acquired quite a list. Some of them are:

WBAP, WFAA, WOW, WSB, WOS, WJZ, WLW, KFBU, 3XN, WHT, WCCO, WLB, WTAM, PWX, KOB, KVKH, KMA, DBBM, 5CL, JOAK, WLS, WSMB, KDKA, WGN, WLIB, KMOX, KOIL, WAAO, WJAZ, KGRS, WEDC, and many others. They are still coming in, and I hope to have quite a list before the season is over.

NELSON HARSHMAN,

2007 Preston Ave., Los Angeles, Calif.

A Progressive Jobber

A concern that has forged rapidly to the front in the radio jobbing business during the past year is that of Herbert H. Horn, 1629 South Hill St., Los Angeles.

when customers are in a hurry for goods.

A number of new items are added to the stock carried each month to keep up with any innovations.



This firm is the exclusive Southern California distributors for the All-American line of receivers, including the new AC operated sets, which have proven fast sellers. They also carry a very complete stock of the better known radio parts, accessories and supplies, which are nationally advertised. A list of some of the lines carried appears on the inside back cover of this issue.

Herbert H. Horn is specializing on prompt delivery to the dealer; all orders in the metropolitan district are delivered by their own truck daily; out-of-town orders are shipped the same day the order is received. This is of great help to dealers at this time of year

The personnel of the sales force is: Howard Saul; Steve Winsor; R. C. Carr; Ernie Brooks and Woodie Holliman.

Farm Stations Upheld

(Continued from Page 13)

election next year may be expected to champion the farmers' cause with unusual vigor.

However, it looks as if Secretary Jardine has beaten them all to it, for, although as far as anyone can recall the Federal Radio Commission has not refused any farm station anything it has asked for, he has evidently adopted a "you've gotta quit kickin' my houn' dog around" attitude.

Timely Trade Topics

Owing to Armistice Day, the last meeting of the Radio Manufacturers' Agents was postponed to Friday, November 18. The hour is noon, and the place the Elite Cafe, 633 South Flower Street.

On page 72 of our last issue an advertisement appeared headed "STOP—LOOK—LISTEN," in which the body of the advertisement was printed upside down. Do not blame us for this apparent error; however, you will see this ad repeated correctly set up in this issue on page 86.

The death of K. M. Turner, which occurred last week, is a great loss to us all. Mr. Turner was the inventor of appliances which has made the present-day microphone such a marvelous instrument and, without which, broadcasting would be impossible.

Station KMTR, which was started by the K. M. Turner Radio Company, will be a lasting memorial to our departed friend.

The C E Manufacturing Company, manufacturers of CeCo tubes, regret their inability to supply the demand for the R-80 and R-81 rectifier tubes, but they are pleased to report that, owing to increased production, that they are now able to make prompt deliveries on these items.

The J. M. Andrews Co., Philco Sales and Service, are now occupying their new quarters at 1818 S. Grand Ave., opposite the Olympic Auditorium. Their radio demonstration room, located on the second floor, is one of the finest in

Southern California, very beautifully and richly furnished, special attention having been given its acoustical properties.

The E. J. Pace Electrical Laboratories, located at 418 Stimson Bldg., Los Angeles, have brought out a new 6-volt Transformer for filament service. Their design is unique in that these transformers are not filled with the customary tar or compound and can be rewound any time the coils burn out. Another feature is the heavy secondary winding, insuring the least drop in voltage under heavy load. They are also manufacturers of transformers built to your own specification.

CORRECTION

In our last issue we incorrectly stated that the Breakfast Club meeting of the Radio Trades Association was broadcast from KNX. It should have read KFWL.

ALLTRON TUBES

Guaranteed One Year

ALLTRON TUBES are absolutely guaranteed against defects of any kind.

From actual VOICE tests and comparison **ALLTRON TUBES** stand out as a better radio tube.

Install **ALLTRON TUBES** in your set today and note the perfect reception.

ALLAN MFG. COMPANY

1151 South Broadway Los Angeles

Southern California Jobber:

GREEN SPECIALTY CO.

Wholesale Exclusively

1315 W. Jefferson Street Los Angeles

Phone BEacon 1264

Salesman Wanted

Experienced outside salesman. Must have radio experience. One acquainted with trade preferred.

Apply **HERBERT H. HORN**
1629 S. Hill St. Los Angeles



**We Carry Only Standard, Nationally Ad-
vertised Radio Merchandise That Sells,
Gives Satisfaction and Stays Sold**



AALCO Shielded Coils
ACME Apparatus, Eliminators, Parts,
Speakers
ACME Celastite Wire
ACME Raytheon Chargers
ADVANCE Crystal Detectors
AERIAL Balls
AERO Coils
AEROVOX Products
AIR KING Transformers
ALL AMERICAN Receivers, A. C. and
Battery Operated, also Transformers,
Eliminators and Speakers.
AMATEUR and Broadcast Books
AMERICAN Radio Hardware, Sub-Panel
Brackets
AMERTRAN DE LUXE, Regular and
Power Transformers
AMPLEX Receivers
ARTCO Coils
BALDWIN (Nathaniel) Units and
Speakers
BALSA Wood Speakers and Speaker
Kits
BATTERY Mats
BELDEN Fused Cables and Fuses
BRACH Phone Plugs
BREAKNOT Hydrometers
BRIDGEPORT Screw Drivers
BROWNING Antenaliminators
CARTER RADIO CO. Parts, Rheostats,
Switches, Etc.
CANNON BALL Headsets and Speakers
CARBORUNDUM Crystals and Units
CELASTITE Wire and Buss Bar
CE-CO Tubes
CENTRALAB Products
CERTIFIED Condensers
CHARGE-A-MATIC Chargers
CHIEF Crystals
CLAROSTATS—Regular and Heavy Duty
CRESCENT Magnet Wire
CRESCENT Transformers
DAVEN Parts
DICTOGRAPH Units
DUBILIER Condensers
DUDLO Wire
EBY Products
EKKO Ground Clamps
EKKO Phonograph Attachments
ELECTRAD Products
ELEC-TRU-TONE Phonograph Attach-
ment
EXTENSION Cords and Connectors
FILTROLA Station Selectors
FONETEX Cone Paper
FORMICA Panels
FRANCO Batteries
FRICTION Tape
FROST Products
FUSES
GEE VEE Ground Clamps
HART & HAGEMAN Products
HOOD Panels

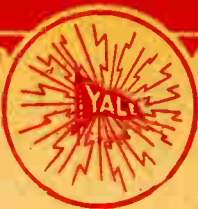
HOOSICK Products
HYATT Portable Radios
HYDROMETER Floats
JEFFERSON Products
KELLOGG Units
KESTER Solder
KUPROX Units and Chargers
KURZ-KASCH Products
LA MORE Set Controls
LANSING Cone Speakers
LENK Solder and Blow Torches
LINCOLN Crystals
LITTLE WONDER Screw Drivers
LYNCH Resistors and Products
McDONALD Howl Arresters
MAGNATRON Tubes
MARCO Products
MASTER Craft Tube Rejuvenators
MELODY Ship Speakers
MODERN Tube Shields
NAALD Products
NATIONAL Dials, Kits, Etc.
NEWCOMB-HAWLEY Speakers
NEWCOMB-HAWLEY Horns
NOKORODE Soldering Paste
PACENT Phonovox Phonograph
Attachments
PENN Cone Speaker Kits
PHASATROLS
POLYMET Plugs
PORTABLE Phonographs
POWERIZER, B Eliminators, Power
Amplifiers
PRESTON DX Grounds
RADIO Cables, 100-ft. Spools
RADIO Ribbon, Talking Tape
RAY-O-VAC Batteries
RAYTHEON Tubes—B, BH, BA 350,
also Cartridges
RCA Radiotron Tubes
READRITE B Battery Meters and
Testers
SHIP MODELS
SILVER-MARSHALL, Full Line
SILVER BEAUTY Chargers
SOVEREIGN Tubes
SPAULDING Bakelite Panels and Tubing
SPEEDWAY Electric Drills
STEINITE Aerial and Station Eliminators
STERLING Products
SUPER Antenna Balls
TAB Rechargeable A and B Dry
Batteries
TEMPLE Speakers
THORDARSON Audio Power Transfor-
mers, Chokes and Chargers
TOM MACK Crystals and Detectors
TRAV-LER Portable Sets
UNIVERSAL Battery Clips
VACUUM Grip Pliers
WESTON Plugs and Meters
WINDSOR Table and Cone Speakers
WIRELESS RADIO Products
YAXLEY Products



HERBERT H. HORN
Prompt Service and Courteous Treatment
Mail Orders Promptly Filled

Phones: WEStmore 1713, 1543
1629 S. Hill St. Los Angeles, Cal.





BOSCH RADIO



Model 76—
Six Tubes

Dance Tonight To A Famous Orchestra

Bosch Radio allows full, powerful orchestra volume for dancing—with every note clear and undistorted. It can also be tuned down to mellow, shadowy tones for those quiet evenings at home. The single station selector, electrically lighted, makes program seeking a pleasure with Bosch Radio—

Priced from \$68.50 to \$340

Electric Operation If Preferred

Yale Radio Electric Co.

Exclusive Wholesale Distributors

1111 Wall Street

LOS ANGELES

WEStmore 3351