

RADIO DOINGS

RED BOOK OF RADIO

10¢
WEEKLY

*The Radio Authority
of the
Pacific Coast*



The Zoellner Quartet—KHJ

COMPLETE LIST OF NEW WAVELENGTHS

Vol. X

JUNE 5-11, 1927

No. 23

For the Outdoor Days— Get a Portable Radiola!



Radiola 26, with Six Radiotrons. List \$225.00

With the outdoor days coming—the picnics and camp trips and tours—get a Radiola 26, that can forget it's a home set, and change in a moment to a portable, to carry the music and the sports news with you!

Radiola 26 is famous as a portable—it has traveled nearly half the world! But it is not just a portable. It is a six-tube super-heterodyne, finely made to the last screw—and beautifully cased in walnut. On the finest program, it is clear and real. In the smartest living room, it fits luxuriously.

But when the out-o'-door days come, your Radiola 26 cleverly fills a double purpose. Small portable batteries go inside the back. The loop is in the cover, and you need take along no antenna. The loudspeaker is built in. Just pick it up from its battery cabinet—and take it along. The separate cabinet is made to hold either batteries or battery eliminators, when you listen in at home.

It pays to get a Radiola 26—not only for fine performance—but for double service—and double value! Wherever you are, in a city skyscraper or a lonely mountain top, it goes with you—brings along the music and the news!

Radio  **Corporation**
of America

Ask One of These Authorized

RCA-Radiola

MADE BY THE MAKERS OF RADIOTRONS

DEALERS

To Demonstrate the Portable Radiola 26 and Other
RCA Models:

LOS ANGELES

Beverly Hills

Crawford's Radio-Music
445 Beverly Drive
OXford 6801

Echo Park

Mohawk Battery &
Radio Co.
2115 Sunset Blvd.
DRexel 1112

Hollywood

Hollywood Music Co.
6019 Hollywood Blvd.
HOLlywood 0364

Lincoln Heights

Frank Graves Sash,
Door & Mill Co.,
2012 Pasadena Ave.
CApitol 2071

Southwest

C & G Elec. & Radio
Co.
1501 W. Santa Barbara
VERmont 5205

L. A. Duncan
2891 W. Pico St.
EMpire 1141

Schrader-Ross
3206 W. Washington
EMpire 2966

Hollenbeck Heights
Phonograph Repair
Shop
(N. E. Worobieff)
1826 E. First St.
ANgelus 6349

Northeast

Norton & Norton
2211 N. Broadway
CApitol 0484

Southeast

Central Electric Co.
3802 Central Ave.
HUMbolt 2337

Wilshire

Wolfe Radio Co.
543 S. Western Ave.
WASHington 5711

Downtown

Eastman Kodak Stores,
Inc.
510 S. Broadway
TRinity 0746

The Electrical Appli-
ance Shop
336 S. Broadway
TUcker 2932

Harry W. Harrison
848 S. Flower St.
TRinity 9777

Martin Music Co.
734 S. Hill St.
TRinity 9621

ALHAMBRA

Fred B. Gillenwater
Radio Studio
127 W. Main St.
ALhambra 2032

BELL

Baker Ave. Electric Co.
910 Baker Ave.
DElaware 1871

BELLFLOWER

W. W. Werner
517 Somerset Ave.
Downey 7265

EL MONTE

Coast Radio Co.
308 W. Main St.
EL Monte 110

PASADENA

Lee Radio Shop
922 E. Colorado St.
Terrace 1420

Buy With Confidence
Where You See
This Sign



Consult These Men, Too,
for Service on All
Radiola Models

Resistless



Gold Seal's Resistless Progress

You can't resist the proof that Gold Seal tubes are superior in tone quality, volume and long life.

Prove it yourself — bring your set up to date by installing Gold Seal Special Purpose tubes. Then you'll know what real radio reception is.

Ask the nearest Gold Seal Dealer or send coupon for descriptive folder.

Distributed by
UNION HARDWARE & METAL COMPANY
411 East First Street
Los Angeles, Cal.

GOLD SEAL ELECTRICAL CO.
Incorporated
250 Park Ave., New York

Gold Seal
Radio Tubes

Be sure to visit our
Booth No. 97 at the
R. M. A. Trade
Show, Stevens
Hall, Chicago,
week of
June 13

All Standard Types



Type 68X-112
High power tubes
for use in last
stage of audio am-
plification give
increased volume.
List price \$4.50

**Types 68X-201a
and
68-201a**

The popular gen-
eral purpose type,
for amplifier or de-
tector. Long life
and high efficiency.
List price \$3.75



Type 68X-218B
For use in battery aligning
circuit to rectify alternating
current — advantageous in
supplying the higher cur-
rent required by power
tube equipped sets.
List price \$7.50



Type 68X-200A
For use as detector
only, giving super-
ior strength on
weak signals — es-
pecially desirable
for distance
List price \$4.00



—FILL OUT AND MAIL—

Gold Seal Electrical Co., Inc.
250 Park Ave., New York
Gentlemen:

Please send me descriptive
folders on Gold Seal Radio
Tubes.

Name.....

Address.....

City.....

6-3-27

New York Office
J. W. HASTIE
155 East 42nd Street
Vanderbilt 4661

Chicago Office
A. G. RUDOLPH
500 N. Dearborn St.

San Francisco Office
CONGER & MOODY
Sharon Building
Kearney 3483

Radio Doings

Trade Mark Reg. U. S. Pat. Off.

407 East Pico Street, Los Angeles, Calif.

"The Red Book of Radio"

H. C. CHARLES
Editor

Phone WEStmore 1401

KENNETH G. ORMISTON
Technical Editor

J. S. MILLER
Associate Editor

MAJ. LAWRENCE MOTT
Associate Editor

(Entered as second-class matter, Nov. 25, 1922, Los Angeles, Cal., Post Office, under Act of March 3, 1897.)
Copyright, 1926, by Horwood Publishing Co.
Issued Weekly. Ten Cents a Copy, Three Dollars a Year. Canada and Foreign Countries, \$3.50 per Year.

Vol. X

Los Angeles

JUNE 4, 1927

San Francisco

No. 23

Special Notice!

The new wavelength assignments of the Federal Radio Commission were to have become effective June 1st.

Just as this issue goes to press, notification comes from Washington that the date has been postponed to June 15th. It is stated by the Commission that this is being done to give broadcast stations sufficient time to make the necessary changes in equipment for operation under their new assignments. Meanwhile certain stations who are dissatisfied with their assignments will be granted a hearing before the Commission.

These advices reached us too late to make the necessary changes in the Time Tables and Detailed Programs, hence the new wavelengths which will not be used until June 15th are given in this issue.

We therefore beg the indulgence of our readers and request that the previous issue be consulted for the correct wavelengths on which the programs of this issue will be broadcast.

ONLY \$3.00 A YEAR

Have RADIO DOINGS mailed to your home every week. Fill out blank below. Either mail to us, or your dealer will be glad to take care of it for you. Please indicate whether NEW or RENEWAL.

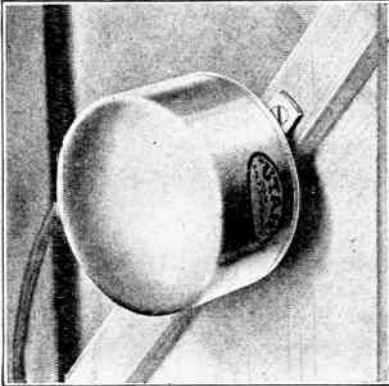
HORWOOD PUBLISHING CO., 407 E. Pico St., Los Angeles.
CONGER & MOODY, Sharon Building, San Francisco, Calif.

Gentlemen: I enclose \$3.00, for which send me RADIO DOINGS for one year.
NEW—RENEWAL.

Name.....

Address.....

UTAH
 Made in Salt Lake City
 Trade Mark Registered



Piano Speaker

Makes a Radio Reproducer out of any piano. Uses the full musical resonance of the sounding board of the piano to achieve the most marvelous orthophonic tone qualities Radio has ever known.

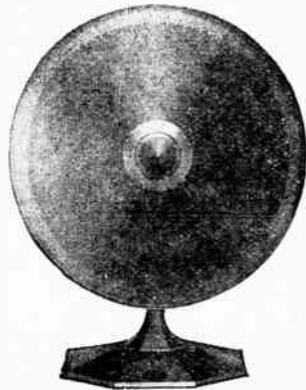
Price \$10.00

Utah Junior Cone

GUARANTEE
 Buy a **Utah** and use it for two weeks. Compare its tone with the best the others are able to produce. **If the Utah does not give better reception return it to your dealer and he will refund your money.**

Another sensation, will operate on any set. Splendid tone quality with plenty of volume.

Price
\$10.00



C. W. SMITH CO.

Home of Utah Speakers

Westmore 3291

Los Angeles

1125 Wall

Your Radio Set Equipped with The H. M. Radio Power Unit

Makes It Efficient and Inexpensive



6 in. x 7 in. x 9 in.

No Liquid
No Trickle Charger
No Battery Trouble

The New

Silver Cockaday II Assembly

Equipped With the H. M. RADIO POWER UNIT

Will Make a Wonderful A. C. Radio Set — Ask Your Dealer

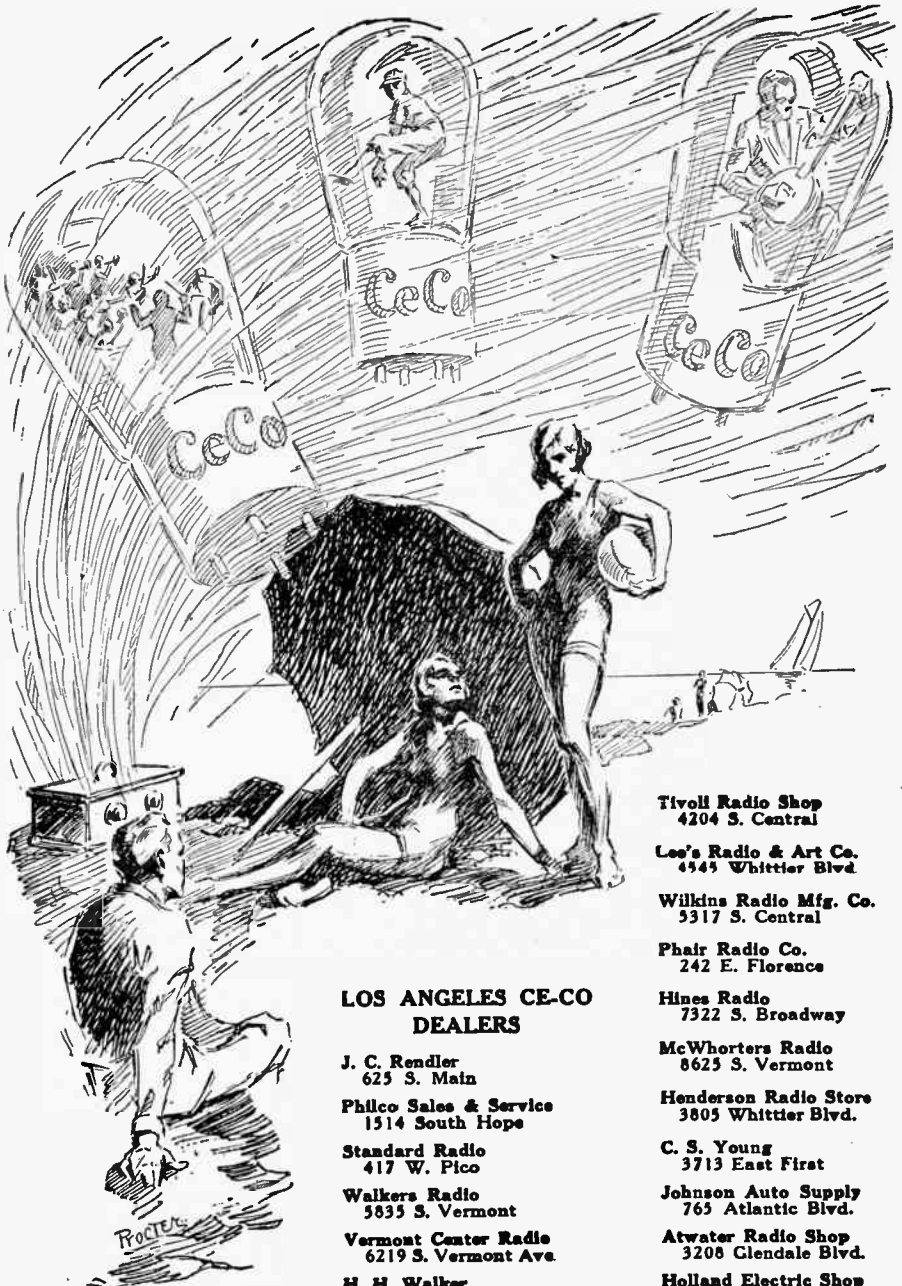
Phone or Write Us for Full Information

RADIO SUPPLY CO.

912-914 So. Broadway. Phone VAndike 6063 Los Angeles

E. A. ANDERSON, Inc., Manufacturers
1954 South Vermont Phone BEacon 2223.

Los Angeles



LOS ANGELES CE-CO DEALERS

J. C. Rendler
625 S. Main

Philco Sales & Service
1514 South Hope

Standard Radio
417 W. Pico

Walkers Radio
5835 S. Vermont

Vermont Center Radio
6219 S. Vermont Ave.

H. H. Walker
1323 Venice Blvd.

Sturgis Music
4713 S. Broadway

Nilson & Nelson
4320 Avalon

Tivoli Radio Shop
4204 S. Central

Lee's Radio & Art Co.
4545 Whittier Blvd.

Wilkins Radio Mfg. Co.
5317 S. Central

Phair Radio Co.
242 E. Florence

Hines Radio
7322 S. Broadway

McWhorters Radio
8625 S. Vermont

Henderson Radio Store
3805 Whittier Blvd.

C. S. Young
3713 East First

Johnson Auto Supply
765 Atlantic Blvd.

Atwater Radio Shop
3208 Glendale Blvd.

Holland Electric Shop
5632 Pasadena Ave.

McNeil Music Co.
5711 Pasadena Ave.

Eriong & Bushard
1717 W. Adams

CeCo TUBES SHINE IN SUMMER TIME

Your radio is one of the greatest sources of entertainment while vacationing. You can while away your leisure moments up in the mountains or at the seashore with the assurance of quality reception

when your set is equipped with CeCo tubes.

Your nearest dealer will gladly fit your set with the proper CeCo tubes to give you greater all-around radio enjoyment.

"There's a CeCo Tube for Every Socket"

15th and Hope Sts.

A. J. Tobey Co.

Westmore 4038

HOLLYWOOD

- Hollywood Radio
709 N. Western
- Hollywood Electric
6656 Hollywood Blvd.
- Mohawk Battery & Radio
2115 Sunset Blvd.
- Doran Electric Chop
7515 Sunset Blvd.
- Lovinger-Melrose Radio
4426 Melrose
- Melrose Radio
5663 Melrose
- Wesholly Radio
7406 Melrose
- Carmel Radio
8165 Santa Monica Blvd.
- Doran Electric Shop
8030 Santa Monica Blvd.

OUT-OF-TOWN CE-CO DEALERS

- ALHAMBRA
Baird Radio Shop
226 W. Main St.
- MONTEREY PARK
Monterey Park Music Co.
102 E. Garcy
- GARDEN GROVE
W. E. Ashley
- PASADENA
Thomas & Summerville
41 N. Broadway
Webster Electric Garage
100 E. Union
- Service Radio
1172 E. Colorado
- GLENDORA
F. A. Sedmers
- LANKERSHIM
Lankershim Music Co.
5317 Lankershim Blvd.
Lankershim Radio and
Service Shop
5241 Lankershim Blvd

VAN NUYS

- Van Nuys Music Co
- Maradena Electric
- CULVER CITY
H. E. Blunt
4208 Putman
- INGLEWOOD
Inglewood Mercantile Co.
120 N. Commercial St
- AVALON
Avalon Radio
607 Crescent
- WILMINGTON
Wilmington Variety
716 W. Anaheim

LONG BEACH

- Kelm Radio
Cor. 4th and Locust
- Coast Radio
245 E. 7th St.
- HUNTINGTON BEACH
Fowler Music Co.
324 Eleventh St.
- HUNTINGTON PARK
H. L. "Radio" King
116 E. Irvington
- P. A. Dougherty
158 Pacific Blvd.

SELLFLOWER

- H. L. Peterson Shopp
Pacific and Mayne
- DOWNEY
Darnell Electric Shop
1182 Crawford St.
- POMONA
Falls Tire & Battery Co
201 E. 2nd St.

COLTON

- H. C. Bliss
- SAN BERNARDINO
Thew Radio.
- ELSIKORE
Elsikore Plumb. & Elec.
- REDLANDS
Dale E. Slinger
414 Orange St

CROWN CITY

- Crown City Garag
- ANAHEIM
Caverley Radio
217 W. Center

BREA

- Bennet's Radio
- Murray Garage & Service
Station
- NEWPORT BEACH
Sanders Electric
109 22nd St.

CARLSBAD

- Carlshad Pharmacy
- EL CAJON
El Cajon Electric
Lyon Appliance

CORONADO

- W. C. Bechtel Liberty
Garage & Batt. Serv.
718 Third St.
- PACIFIC BEACH
Sunset Super Service
Station
1002 Garnett

PALM CITY

- A. C. McBride
Palm City Garage

SAN DIEGO

- College Service
Park and El Cajon
- Maryland Auto Supply
7th and F St.
- Market St. Radio Store
1529 Market St.
- Kinney Bros.
30th and A St.
- Radio Dept., Southern
California Music
720 Broadway.
- United Radio Elect.
2807 University.

There are Many

Very good kits on the market from which you can build yourself a set that will out-perform most factory built sets.

SILVER-MARSHALL SHIELDED SIX
MADISON MOORE SUPER
INFRADYNE
BROWNING-DRAKE
KARAS EQUIMATIC
HAMMARLUND HI Q
QUADRAFORMER KITS

We Have a Full Line of Parts for the New

SILVER-COCKADAY II

This new assembly by McMurdo Silver and Lawrence Cockaday is sweeping the country. Ask for descriptive booklet.

RADIO SUPPLY CO.

WHOLESALE

912-914 S. Broadway

VA. 6063

Los Angeles

New 1927 Catalogue Now Ready—Send For It

LET THE RADIO SUPPLY CO.

Fill your Parts orders. We distribute the best known quality lines and carry large stocks at all times to handle your needs.

READ OVER THIS LIST OF PARTS

Alco Loops	Dabiller Condenser Corp.	Naaid Truphonic Units, Etc.
Accuratune Dials	Dudlo Mfg. Co. Wire	National Co. Parts
Acme Trickle Chargers	Dunham Loops	Pacent Products
Advance Crystals	Eby Binding Posts	Penetrola Kits
Aero Products	Eight-in-Line Super Unit	Polymet Mfg. Co. Condensers
Aerovox Wireless Products	Ekko Ground Clamps	Premier Parts
Alden Mfg. Co. Parts	Electrad Products	Raco Aerial Wire
All-American Products	Electrohot Soldering Irons	Radfall Co. Amperites
Amertran Products	Elkon Chargers	Rauland Lyric Transformers
Amperites	Formica Insulation Co.	Raytheon Tubes
Amsco Condensers	Franco B. Batteries	Remler Products
Artco Coils	Frost Products	Samson Transformers
Balkite Chargers, Etc.	General Radio Parts	Sangamo Condensers
Benjamin Elec. Mfg. Products.	Goodrich Rubber Panels	Sensory Insulators
Bodine Loops	Hammerlund Products	Sillite Trickle Chargers.
Boulderadio Eight-in-Line Super Unit	Harkness Kits	Silver Marshall Products
Branston Coils	Hedgehog Transformers	Spaulding Bakelite
Bremer-Tully Products	H-K Sodderdip Lugs	Steinle Eliminators
Bruno Coils	Hoosick Parts	Sterling Meters and Testers
Camfield Coils	Jefferson Products	Stevens Tools
Carborundum Products	Karas Products	Testrite Hydrometers
Cardwell Condensers	Kelbrackets	Thordarson Transformers
Carter Prodncets	Kellogg Parts	Thorola Coils
Ceco Tubes	Kodel Products	Tobe Condensers
C R L Var High Resistance	Kurz-Kasch Dials and Knobs	Tom Mack Products
Chicago Kester Solder	Leaf-Burkhard Cone Speakers	Tower Speakers
Clarostat	Lemco Transformers	Trimam Cone Speakers
Crescent Transformers	Madison Moore Units	Universal Battery Clips
Daven Radio Parts	Marco Products	Vesta Power Units
DeJur Rheostats	Mignon S. L. F. Condensers	Victoreen Parts
DeLuxe Products	Mueller Universal Clips	Weston Products
Dictogrand Speakers	Muter Lightning Arrestors	Willard Batteries
		X. L. Vurlodensers
		Yaxley Products

**THORDARSON, ALL-AMERICAN AND MAGNAVOX
REPLACEMENT TRANSFORMERS IN STOCK**

VESTA 35 and 50 Amp. and HOBCO A Power Units

**ACME, GENERAL RADIO, ALL-AMERICAN, KODEL,
BALKITE, SILVER MARSHALL, STERLING and
WEBSTER ELIMINATORS**

**ACME, STERLING, VESTA, BALKITE, TUNGAR and
SILITE TRICKLE CHARGERS**

DEALERS: Park Next Door at Our Expense

RADIO SUPPLY CO.

WHOLESALE

912-914 S. Broadway

VA. 6063

Los Angeles

New 1927 Catalogue Now Ready—Send For It

WARNING—

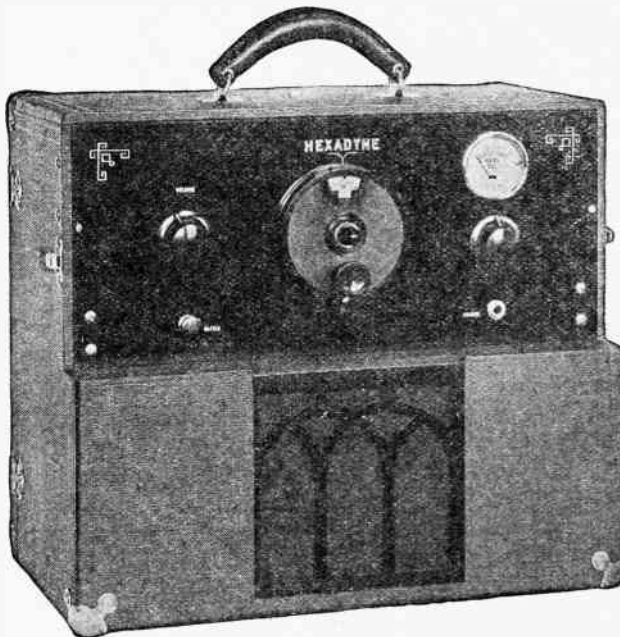
Each year some concerns try to copy the HEXADYNE 6-Tube Portable, but these are all imitations. Do not be deceived by exterior appearances—they are easy to copy—the quality parts and workmanship in the HEXADYNE cannot be equalled for less money. Make comparisons in every detail of operation.

It is very complimentary to us to be imitated, but the public should be warned to insist on the HEXADYNE, which is a well known, reliable Portable radio made by one of the pioneer manufacturers of the Pacific Coast.

HEXADYNE SIX TUBE PORTABLE

Single Dial Control

Loop Operated



W. D. HUNT CO., Inc., Mfgs., 4961 Sunset Blvd., Los Angeles
Pacific Coast Distributors

C. W. Smith Co., 1125 Wall St.....Los Angeles
 Pacific Wholesale, Inc., 1320 San Pedro St.....Los Angeles
 C. T. Mudge Co., 329 E. Morrison St.....Portland, Ore.
 Pacific Wholesale Radio, Inc.....San Francisco
 Piper & Taft Co.....Seattle, Wash.

Radio Topics of the Day

A Weekly Review of Radio News, Thought and Opinion

THE NEW WAVELENGTHS

The new licenses are all for sixty days, during which period the new allocations can be tested by actual practice. The law provides that any broadcaster who is dissatisfied with his allocation may have a public hearing before the commission, and at such a hearing his claim for a specific frequency or power will be considered in all its relations.

The commission recognizes that no scheme of reallocation, which does not at the very outset, eliminate at least four hundred broadcasting stations, can possibly put an end to interference. Accordingly, it regards the new allocations, not as creating in any sense an ideal broadcasting situation, but as providing for the first time a sound basis for radio service to the listener. With the co-operation of the public and the broadcasters, the commission believes that it will be possible to improve conditions progressively by an orderly process of actual experience.

Until such experience has been gained, both the listeners and the broadcasters are urged to exercise patience. The listener will, of necessity, have to "re-log" his receiving set, and may find considerable difficulty in locating all the stations he desires to hear. The broadcasters will doubtless find that many of their listeners are at first somewhat bewildered by the changes in frequencies so as to clear most of the broadcasting channels, and the decrease of power for stations in residential districts, will combine to render radio reception in general very much better than it has been in a long time.

BIG NEW CHAIN REPORTED

Although confirmation and details are lacking, there is reported to be a new broadcasting network in the making which will sell time and compete with the present chains of the National Broadcasting Company. A representative of the undertaking, Bernard Hefferman, has conferred with members of the Federal Radio Commission in Washington and has now returned to New York to work on other details. Mr. Hefferman said a statement regarding the enterprise might be expected soon.

The names of the backers of the enterprise have not been divulged, but are said to be motion picture interests. One source of information indicates that it is the Famous Players-Lasky and another the Paramount people. The name of Clarence Mackay of the Postal Telegraph Company has been mentioned as among those interested. It was reported the new network would be known as the Keystone chain.

About a dozen stations in the East and middle West are said to be interested, among them KMOX in St. Louis, WHT, in Chicago, and WMAK, at Lockport, N. Y. It apparently, therefore, is not the idea to construct new stations but to effect arrangements similar to those now made by the National Broadcasting Company and at competing points with the Red and Blue network. At present the new chain is said to be negotiating with the American Telephone and Telegraph Company for the use of its wires between cities

The World at Your Hearth



The design of the new six-tube Bosch Console is bringing enthusiastic comment from the radio trade. Its beautiful Gothic lines add a touch of refinement to the up-to-date home.



Ten Reasons Why



ACME A-B POWER UNIT IS IN DEMAND

AB-1

For 5 & 6 Tube
Sets, Including
Power Tubes,
160 V.
at 40 Mills.

60 Cycle \$69.50
50 Cycle \$1.00
Add'l



AB-2

For 7 to 12 Tube
Sets, Including
Power Tubes,
Maximum
Capacity 180 V.
at 60 Mills.

60 Cycle \$75.00
50 Cycle \$1.00
Add'l

AB-1 AND AB-2

1. "B" rectification is by the new QRS 85 milliamper tube; BH Raytheon can be used.
2. Filter condensers are NOT electrolytic. They are oversize and tested to 500 volts.
3. There are three variable "B" controls on Model AB-2. Clarostats are used.
4. "B" Output is 40 milliamperes at 160 volts; 60 mills. at 180 volts.
5. Sealed-in wiring of Acme "B" eliminator prevents corrosion and the noisy reception which would result.
6. "A" battery is of 60 ampere-hour capacity.
7. "A" charger has two rates— $\frac{1}{2}$ and $1\frac{1}{2}$ amperes.
8. Built-in control relay makes the unit entirely automatic.
9. Compact—measuring 10 in. x 12 in. x $9\frac{1}{2}$ in.
10. Two convenient carrying handles.

Manufactured by
ACME ELECTRIC & MFG. COMPANY
CLEVELAND, OHIO

Pacific Coast Representative
N. F. ANDRUSS

426 Larkin Street

San Francisco



More Power to You



Lina Cousins, attractive employee of Ungar & Watson, Inc., 1366 South Figueroa Street, distributors of Majestic "B" Current Supply Units, displays the latest Majestic Unit, the Majestic Master Special.

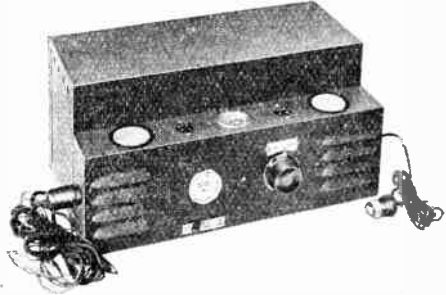
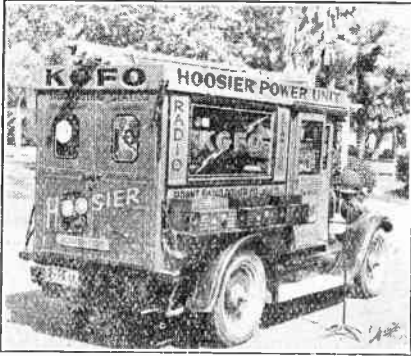
This new current supply unit, delivering 60 milliamperes of "B" power at 180 volts, is "the last word" in light socket power units, according to the manufacturers. It was specially designed for receivers requiring more than the usual amount of power.

Portable KGFO

Here is the rolling broadcaster who is on the air nightly in Los Angeles and vicinity on 204 meters. The power is 100 watts and the little station goes out with considerable volume and good

Power Units, manufactured by the Terre Haute concern. It is being used in cooperation with the Hoosier dealers.

The second picture illustrates one of the models of the Hoosier line. It incorporates any desired voltage in storage A and B batteries, complete with charging apparatus for both batteries, a



quality. It is owned by the Brant Radio Power Company of Terre Haute, Indiana, and is being operated by the Pacific Hoosier Sales Company, who are the distributors of the Hoosier

tube tester, a tube reactivator, the necessary meters and switches, connecting cables, etc. In fact, it is a complete radio power unit of the battery type.

The convenient switching arrangement (Continued on page 74)

SM

OFFICIAL SILVER-MARSHALL SERVICE STATION SC II

We will thoroughly test the units and assemble the SC II in our laboratory, guaranteeing that you will get the utmost from this efficient receiver which has become so popular throughout the East.

Phone, Call or Write for Complete Information

RADIO RECEIVER SERVICE

402 Allied Crafts Bldg. - Westmore 1402 - Los Angeles

The R. M. A. Trade Show

Probably no other single movement has done so much to stabilize the radio industry as the Radio Manufacturers' Association. Starting in Chicago in 1923 with a very modest organization, it has developed in the past four years to the point where it now includes practically every established radio manufacturer in the country.

Now we find them sponsoring a project which will prove to be a big factor in helping the industry reach the desired goal of stability. At the Stevens Hotel in Chicago, from June 13 to 17, inclusive, a trade show is being conducted for an advance showing of manufacturers' products for the 1927-28 season.

The advantages to the radio industry are manifold. Manufacturers can formulate plans for the development, production, distribution and merchandising of their products to greater advantage. Supply and demand can be better gauged by the manufacturers, which will greatly lessen the serious problem of over-production, which has had such bad effect in the past.

The trade show forms a hub or anchor about which all branches of the industry can safely center their activities. It eliminates the wild hit-or-miss plans, puts more certainty into sales budgets, places schedules on a firmer basis and actually is an important step in that ultimate and necessary goal—stability.

Two special cars are to leave Los Angeles on the Union Pacific Gold Coast

Limited, June 8th, at 11 a. m. At Ogden a special car from San Francisco and one from Seattle will join the Los Angeles delegation, and from there to Chicago the Pacific Coast "Radio Special" will stop only for ice when necessary.

Among those who will represent Los Angeles at the Trade Show and and convention are the following: C. C. Lawton, of the C. C. Lawton Company; C. W. Smith, of C. W. Smith Company; W. D. Scott, of the Scott Sales Company; Carl A. Stone, of the Carl A. Stone Company; B. R. Hassler, of B. R. Hassler Company; Waldo T. Tupper, managing director of the Fifth Annual National Radio Exposition; Dave Marshank, of Marshank Sales Company; Lyman Gage, of Precision Electric Mfg. Company; Lombard J. Smith; Herbert H. Horn; J. Hirsch, of Radio Manufacturers Supply Co.; T. C. Bowles, of the Western Auto Supply Company; E. R. Patterson, of Patterson Radio Manufacturing Company; F. W. Falck, of Advance Electric Company; S. A. Windsor, representing Gearheart-Schluetter Company; J. D. Colford, representative of Kodel Radio Corporation; S. W. Carter, of the Eclipse Manufacturing Company; W. Burroughs, of the Burroughs Radio Manufacturing Company; C. B. Smith, of the Echophone Radio Manufacturing Company; L. E. Taufenbach and L. G. Roff, of the Western Radio, Inc.; E. N. Burnham, of Burnham Phonograph Corporation; H. Friedman, of the Western Electric Novelty Company.

Vocal Coach for Radio

JOSEPHINE LACHMAR

Studio: 710 So. Cal. Music Building
(Mondays Only)

Res. Studio: 1229 Fuller Ave., Hollywood

Telephone GRanite 5449

SAVE MONEY!

Have your old set rebuilt into a Five Tube
Combination Set

\$25.00 Does It

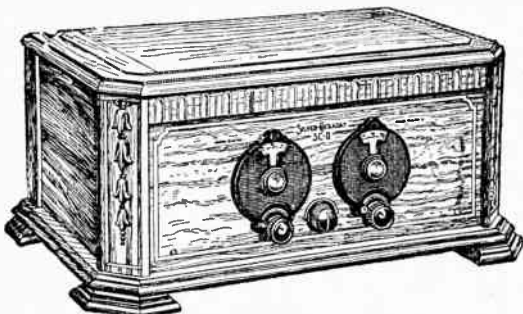
FREMONT RADIO SHOP

7621 So. San Pedro St.

Los Angeles


SM

Results Plus with the S-C II



The S-C II receiver designed by McMurdo Silver and Laurence M. Cockaday is astounding Los Angeles with its performance. Kenneth Ormiston, operating his S-C three blocks from a powerful local station, is able to cut through to San Francisco, Seattle, Denver, Portland and beyond. Another builder finishing his set at

three o'clock in the afternoon, pulled in Vancouver right off the bat!

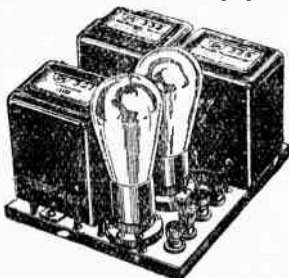
Take home a set of parts—your dealer has them—and after a couple of hours' fun in the kitchen, hook 'er to your speaker and listen to the stations pound in.

And as you lean back and pull on the old pipe, you get a sense of satisfaction and money saved as the family, one and all, say, "There, that's real music."

Then as you look with pride at the S-C II you've built all yourself, you'll appreciate its big value—complete individual shielding, sturdy steel chassis and panel, its two simple tuning dials, tone quality that pleases even the neighbors—real value and satisfaction just sticking out all over, and it cost you only \$64.35, plus lots of fun.

Ask your dealer for a booklet on the S-C II, or write direct.

THE B SUPPLY WITH A PUNCH



The Reservoir B supply, enthusiastically chosen by Keith Henney, Director of Radio Broadcast Laboratories, for his personal use, is setting new standards of B supply performance, for it is free from "hum," "motor-boating," or "putting" noises.

You can connect one up in an hour or two, hook it to your set—any set—and enjoy reception with the positive assurance of constant, even voltages. The 652 will deliver up to 10 milliamperes at 45 volts, up to 45 milliamperes at 90 volts with less than 5 per cent voltage variation and plenty of juice on the 180 volt tap for a 171 power tube or two!

And remember—the 652 B is guaranteed to give more satisfactory results than you've ever had with any B eliminator—day in and day out to work exactly as will fresh new batteries.

Price \$34.50, less one CX-374 and one CX-313 tube.

SILVER-MARSHALL, INC.

Factory Representative

ERNEST WALKER SAWYER

487 Chamber of Commerce Bldg.

LOS ANGELES

STUDIO NEWS



The publishers of an eastern radio magazine recently conducted a Popularity Contest to determine which broadcast stations are the favorites. The votes received came largely from the great eastern centers of population, and the list of winners very naturally is headed by WJZ, WEAJ, and KDKA, the three outstanding eastern stations. However, it is very interesting to read further down the list. The fourth prize went to WLS, then comes WGY, WBEM, WPG, and—hold your breath—KFI, Los Angeles. WBZ and WOC trail along behind our local station. Among the ten prize winners, there is but one station west of Davenport, Iowa, and that is our own KFI. This should prove exceedingly gratifying to the Anthony organization, as well as Los Angeles as a whole.

It demonstrates what high power can do. That the listeners of the East should vote KFI as eighth in their list of pet stations is due to the driving power behind high quality programs.

There is no longer any doubt that through the medium of radio an artist may gain fame as far-reaching as that obtainable via the concert stage. In fact, the public heart may be reached through radio more readily than by any other means, because the artist comes to the listener in the quiet and comfort of the home where there are no disturbing influences.

Perhaps the two most outstanding examples of artists who have gained widespread recognition solely through their radio appearances are Virginia Flohri and Joseph Diskay. Virginia Flohri recently was engaged as soloist at a concert of the Los Angeles Philharmonic Orchestra. That this honor should have

been bestowed upon a radio artist demonstrates the standing which it is possible to obtain through the new modern medium.

Joseph Diskay, known as the Hungarian tenor, though he is now an Amer-



JOSEPH DISKAY

ican, after gaining fame over a local radio station, recently completed a tour of the Orpheum circuit. Press comments throughout the country heralded him as "the voice of Hollywood," and the theatrical magazine "Variety" has this to say: "That it pays to book radio names was proved by the appearance of Joseph Diskay. The mob knew him from his ether reputation and gave him a great reception."

Improve Your
Summer Reception
with a
POWELL
"B" ELIMINATOR



\$12.25

No tubes, no acids, absolutely
no hum. Gives more volume.
Neat in appearance.

H. E. Satterfield, Chief Engr. KPSN,
says:

"The 'B' Eliminator recently purchased from you has, to my opinion, operated wonderfully well and I am more than pleased with the satisfactory operation from an eliminator that is sold at such a low figure.

"The workmanship is good and the eliminator itself is fully up to all requirements. I thank you for your prompt service."

ABSOLUTELY GUARANTEED

Dealers and Set Manufacturers: Get our prices on "B" Eliminator Kits for use in your own set.

Call VERMONT 1619
For Information

POWELL MFG. CO.
4009 S. Western LOS ANGELES



"COAST TO COAST"
WITH A
SUPER BALL ANTENNA

Features of Superiority

Super-Ball Antenna gives increased selectivity, improved summer reception, and a minimum of static. It is impervious to ice or snow, and unaffected by heat. Therefore, gives unqualified reception in all climates. Easy to install and less costly than others to erect.

**SUPER BALL ANTENNA
KIT**



Is neatly packed in an attractive corrugated labeled container. This accommodation set is complete for the installation of the "Super-Ball Antenna."

- | | |
|---------------------------------|----------------------|
| 50' No. 14 Lead-in wire | 1 Super-Ground Clamp |
| 50' Guide wire (Copper) | 1 Brach lead-in |
| 10' 1/2" Conduit pipe (Economy) | 4 Nail-it knobs |
| 1 Super-Ball Antenna Base | 4 Eye screws |
| | 3 Insulators |
| | 4 Screws |

Price \$5.00

YAHR-LANGE

INCORPORATED
Milwaukee, Wis. Detroit, Mich.

Distributed by
PACIFIC WHOLESALE INC.
ELECTRIC CORPORATION
RADIO SUPPLY CO.
HERBERT H. HORN
Los Angeles
THEARLE MUSIC CO.
San Diego

Western Representatives
UNIVERSAL AGENCIES
San Francisco—Los Angeles—Seattle
Tel. ROchester 7989



TRIRDYN RESULTS

DB Club:

I noticed a letter in your magazine of the week May 22-28. It was the log of a Crosley owner, and so I thought I would send in some of my log. I have a three-tube Crosley Trirdyn, and it sure is a success. In all, I have logged one hundred and three stations. I have forty in California alone, six in Oregon, eleven in Washington, and many back East. Among them are: WBBM, Chicago; WREO, Lansing, Mich.; WLIB, Chicago; KDKA, Pittsburgh; WSMB, New Orleans; WJAZ, Chicago; WLS, Chicago; CZE, Mexico City; WEBH, Chicago; WOAI, San Antonio; CVJ, Mexico City; WLW, Cincinnati; CFCN, Calgary; KLDS, Independence, Mo.; WQL, Chicago; WFAA, Dallas, Texas; KFQB, Ft. Worth; WCX, Detroit; WHO, Des Moines; WOW, Omaha; KVW, Chicago; WDAF, Kansas City; CFAC, Calgary; KMOX, St. Louis; WWJ, Detroit. There are seven in Illinois, three in Michigan, two in Mexico, two in Calgary and many in B. C. that I have not listed. Pittsburgh is about the farthest I have received. All of these come in with good volume on the loud speaker.

WAYNE LENZ,

Box 639, Rt. 1, San Jose, Cal.

SIX NEW YORKERS IN A MONTH

DX Club:

I guess I will write a line for the DX Club, it having been about a year since my last letter.

I have received verification for the following New York stations, heard during April, 1927: WJZ, WEA, WFBL, WHAM, WMAK, WBBR, on a five-tube set purchased in 1924. The name of which I will not mention, as I am not advertising.

The recent order of the Radio Commissioners, directing station to announce their call letters more often, is the best thing that has happened yet.

FRANK K. PARKER, Little Lake, Cal.

MORE 4-TUBE RESULTS

DX Club:

I have a 4-tube Crosley, model 4-29, and I'm more than satisfied with it. I am of the same opinion as Billie Walker of Sacramento, "For a small set, none is better."

My log of distant stations consists of KLX, KGW, KEX, KPO, KFXX, KFRC, KFRC, KHQ, KJR, KGO, KQW, KFWM, KOA, KOIN, CYE, KDKA, KOMO, KOIL, KTAB, WLIB, KSL, KNRV, KFJF, KFKX, KYA, KOWW, KMOX, KSMR, KWTC, KSEI, KFEL, KFWI, KFSD and KFQU.

I think this is a very good log for a 4-tube set. I get them all on the loud speaker.

Well, good luck to all Crosley owners and Radio Doings.

F. W. STRINGER, JR.

4676 Glen Albyn Dr., Los Angeles.

HUNT AND FIND

DX Club:

My hat is off to the 9, 10 and 11 tube DX fan, but owing to limited income and location, a three tube reflex and Thorola speaker help to increase the joys of life for me. The wall above the radio is covered with cards, letters and pictures received from courteous and congenial owners and operators of stations located in Canada, Mexico, Hawaii and the United States.

The greatest pleasure for me while on the DX hunt is to tune in a 5, 10, 50 or 100 watt station hundreds of miles away. Any standard set can and will tune in the higher powered stations, but it takes time, careful tuning and a fair set to secure results at the DX game of "Hunt and maybe you'll find."

R. F. SMITH.

Route 4, Box 55, Salem, Ore.

(Note—Mr. Smith's list includes six stations on the East Coast, twenty-two in Canada, three in Mexico, one in Hawaii, while his Middle Western and Western list reads like a call book. Fine work!)

Vee Dee

**Metal Panel
and
Assembly
Unit
for the
S. C. II.
Receiver**



**Approved
and
Adopted**



Including all necessary screws, nuts, bolts and bushings, individually packed in convenient container. **\$5.00**

**COMPLETE
AT YOUR DEALER'S
or Direct**

The Van Doorn Company
160 N. La Salle St., Chicago, Ill.

LESTER PORTABLE



**6 Tubes with Power Tube
Selectivity—Distance—Quality**

**Reason—Acme, Kellogg, Frost, Carter,
Cunningham, Utah.**

\$89.50 Complete
Guaranteed 1 year

LESTER'S RADIO
(Since 1920)

423 South Hill, Store 5
109 North Broadway Los Angeles

SM

Official Service Station

**Let Us Build the SC II
for You**

You will be assured of maximum results and efficiency.
You are invited to call and hear this set perform.
Also complete kits for the home-constructor.

EXPERIENCE AND EQUIPMENT, OUR GREATEST ASSETS

TECHNICAL LABORATORY OF

N. E. BROWN

6805 S. Western Ave. LOS ANGELES Phone THornwall 0270

Open Until 9 P. M. Tuesday, Thursday and Saturday.



TECHNICAL SERVICE DEPARTMENT

Conducted by K. G. ORMISTON

The SC II

(Editor's Note—Our readers have requested that constructional articles and diagrams be given from time to time on the popular sets for the home-constructor. Accordingly we are presenting a series of three articles on the new SC II receiver and the SM push-pull amplifier and power pack.)

The SC II, designed by McMurdo Silver and Lawrence Cockaday, is a five-tube set which incorporates mechanical

tivity and quality of reproduction that is most satisfying.

The set comprises two stages of tuned radio frequency amplification, so designed that they may be adjusted to peak efficiency for each wave-length received. This is considered by the designers to make for greater efficiency than any fixed method of neutralization which results in peak amplification only at the short wave-lengths.

The second RF stage and the detector are completely shielded individually; the cans covering the tuning condensers, RF coils and tubes. The detector grid is biased with C battery, instead of using the customary grid condenser and grid leak. This permits of a greater handling capacity in the detector without overloading and distortion.

The audio amplifier is of particularly high quality. The Type 220 transformers provide a fairly uniform amplification characteristic from the bass notes to an upper limit of 5000 cycles per second. At 5000, the curve drops sharply, blocking many of the extraneous noises which are not a part of speech and music.

The set uses a 171 power tube in the last audio socket, provision being made for proper grid biasing throughout, and the volume thus obtained without distortion is favorably comparable with that to be had from the most expensive factory-built sets.

Figure 1 is a view of the completed set with the two shield cans removed. Figure 2 is the schematic wiring diagram. The following description of the

(Continued on page 26)

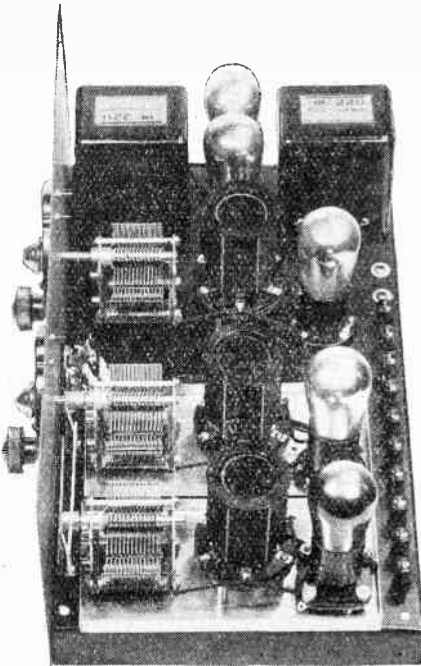
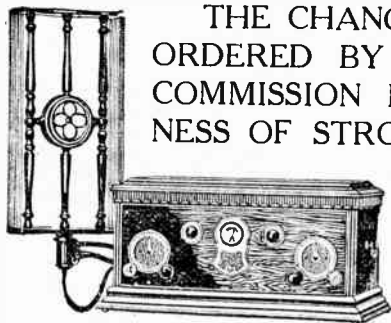


Fig. 1—The SC II with shields removed and electrical details usually found only in expensive factory built sets, and is capable of a degree of sensitivity, selec-

Stromberg-Carlson



THE CHANGES IN WAVE LENGTHS ORDERED BY THE FEDERAL RADIO COMMISSION PROVE THE CORRECTNESS OF STROMBERG-CARLSON TUNING DESIGN. THEIR RECEIVERS ARE PERFECTLY ADAPTED TO THE NEW WAVE BANDS AND PERFECT PERFORMANCE IS ASSURED.

Authorized Stromberg-Carlson Dealers:

LOS ANGELES

DONNEL'S Music Co.
3831 Wilshire Blvd.

CHAPMAN-HOUSE
RADIO Co.
4377 South Figueroa

BOULEVARD FURNITURE Co.
1568 West Washington

HEATH ELECTRIC Co.
5203 Beverly Blvd.
1052 North Western

SHEPHERD RADIO SERVICE
7562 Sunset Blvd.

STONE ELECTRIC Co.
710 West Pico St.

LOS ANGELES

FITZGERALD MUSIC Co.
727 South Hill St.

LONG BEACH

HUMPHRIES MUSIC Co.
431 Pine Ave.

FULLERTON

E. B. FINSETH
150 E. Commonwealth

MONROVIA

MACK MUSIC Co.
516 Myrtle Ave.

SAN PEDRO

McWHINNIE ELECTRIC Co.
1825 S. Pacific

PASADENA

PREMIER RADIO CORP.
11 California St.

ASHTON'S RADIOELECTRIC
STORE
1762 East Colorado

VENTURA

A. B. WHITE
409 California

SANTA PAULA

FAY HARWOOD

VENICE, OCEAN PARK SANTA MONICA

VENICE RADIO SHOP
1227 Washington Blvd.

*Stromberg-Carlson Receivers can be purchased on convenient terms.
Your present set accepted in trade from one of the above dealers.*

Western Radio, Inc.

WHOLESALE DISTRIBUTORS FOR SOUTHERN CALIFORNIA

Technical Service Department

(Continued from Page 24)

set makes use of the designating letters and figures of the diagram.

The first radio frequency amplifier consists of an antenna coil, "O," tuned by a variable condenser, "I-1," and so designed that it will cover the wavelength range of 200 to 550 meters, and allow for the use of either a long or short antenna. This first RF stage includes a UX201A tube, the plate circuit of which is connected to the second radio frequency transformer "P-1," the secondary of which (similar to that of the antenna coil "A"), is tuned by a second variable condenser "I-2." This second RF stage, consisting of transformer "P-1" with its socket "L-2," condenser "I-2" and tube "M-2" is housed in a complete aluminum box "Q-1," which effectually prevents the transfer of undesired energy between this stage and any other portion of the receiver and also eliminates the pick-up of extraneous interference upon the coils, condensers, and wiring of the stage itself. This second stage, incorporating also a UX201A tube, leads into the detector stage, similarly designed and constructed, and housed in the second aluminum shield "Q-2."

The sensitivity of the radio frequency amplifier, as well as the volume, is controlled by a 200-ohm potentiometer "B," integral with which is an on-off switch which completely turns the receiver on and off.

The output of the detector tube is fed into an audio amplifier consisting of two audio transformers "N-1" and "N-2," a CX301A and a CX371 tube. The audio amplifier is extremely interesting and, in a sense, original, for its frequency range is from 30 to approximately 5,000 cycles, above which frequency it provides practically no amplification. This is desirable since the

(Continued on Page 74)

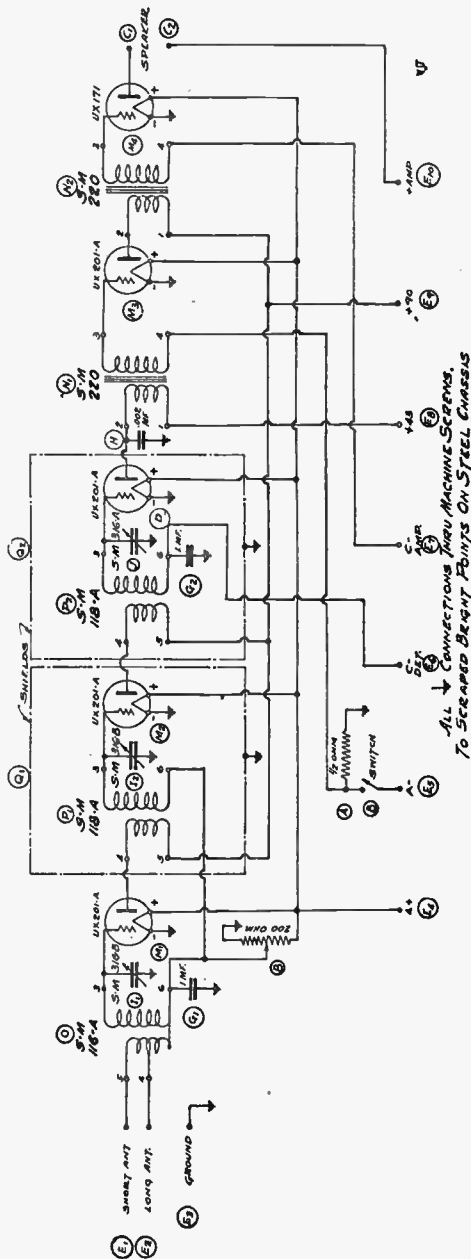


Fig. 2—Schematic wiring diagram

MAJESTIC 'B' POWER WILL MODERNIZE YOUR RADIO

[*New Low
Prices That
Public Demand
Made Possible*]



[*A Majestic "B"
Power Unit for
Every Make
of Receiver*]

Buy Your Majestic "B" Current Supply Unit NOW!

Tremendous public demand for Majestic Units has made possible a decrease in the Western prices that puts this efficient "B" Current Unit within the reach of all radio owners.

Buy your Majestic NOW...do away forever with the nuisance of "B" batteries of rapidly fading power...note the improved reception on both local and distant stations...admire the smooth, even flow of "B" current coming direct from your light socket.

All Stewart-Warner dealers sell Majestic "B" Current Supply Units. Ask one of them, or any other Majestic dealer, to demonstrate on your own set.

Majestic Standard-B

Capacity Nine
201-A tubes or
equivalent. 45
milliamperes at
135 volts.

\$26.50

*Raytheon Tube
\$4.50 extra*

Majestic Super-B

Capacity 1 to 12 tubes, including the use of power tubes.
45 mils. of 150 volts.

\$29.00

(as illustrated)

Raytheon Tube \$4.50 extra

Majestic Master-B

Positive control of all output voltage taps. For sets having high current draw or heavy biasing batteries. 60 mils. at 150 volts.

\$31.50

*Raytheon Tube
\$4.50 extra*

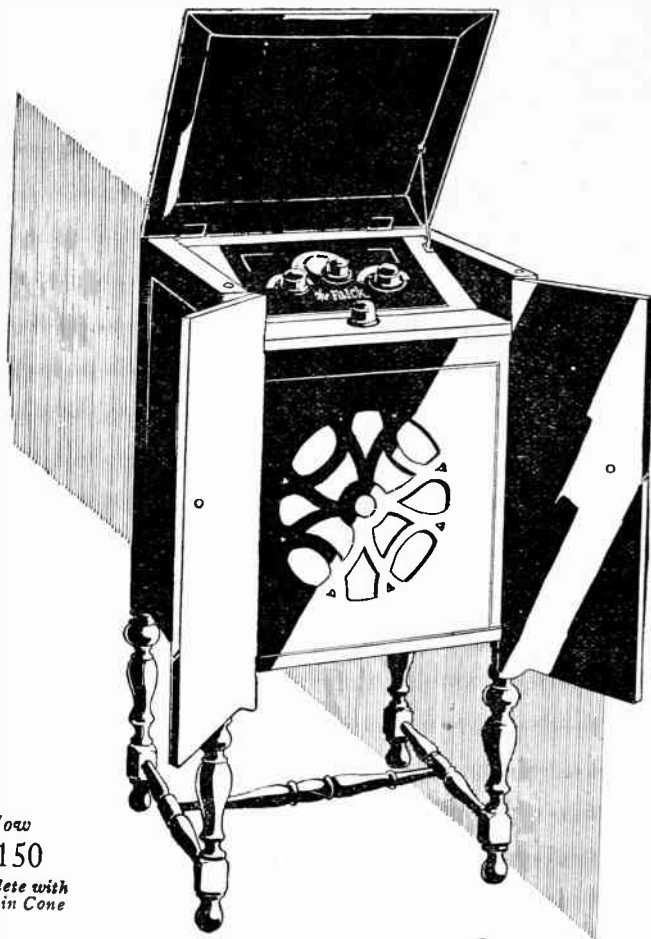
FULLY GUARANTEED — SOLD ON EASY TERMS

Manufactured by GRIGSBY-GRUNOW-HINDS CO., Chicago

Southern California Distributors:

Ungar & Watson, Inc., 1366 S. Figueroa, Los Angeles
Pacific Wholesale, Inc., 1320 S. San Pedro St., Los Angeles
Ray Thomas, Inc., 1248 S. Hope St., Los Angeles

MAJESTIC 'B' POWER UNITS SOLD ON EASY TERMS



Now
\$150
Complete with
Built-in Cone

The Falck

THE REASONS FOR THE FALCK'S POPULARITY WILL BE PLAIN TO YOU WHEN YOU SEE AND HEAR IT. NO OTHER RADIO INCORPORATES ALL THE MOST ADVANCED IMPROVEMENTS AT SUCH A MODERATE PRICE. THE FALCK OPERATES FROM THE LIGHT SOCKET WITHOUT BATTERIES OR TRICKLE CHARGERS OF ANY KIND, AND WITHOUT AN AERIAL. IT HAS AN UNUSUALLY SELECTIVE ONE-DIAL CONTROL, AN IMPROVED BUILT-IN CONE SPEAKER, ENTIRELY ENCLOSED IN A GRACEFUL CONSOLE CABINET OF SOLID MAHOGANY. ASK TO HEAR THE FALCK AT ANY AUTHORIZED DEALER. IT HAS NO EQUAL.

ADVANCE ELECTRIC CO., 1260 WEST SECOND ST., LOS ANGELES

The Falck

No Battery Radio

Will be Demonstrated for You Without Obligation by Any One
of These Franchised Dealers:

LOS ANGELES

Hollywood

Allen & Pursel
1225 Vine St.
HOLlywood 3096

Paramount Radio &
Electric Co.
5515 Santa Monica Blvd.
HEmpstead 8473

East Hollywood

Brandy Glass Co.
2214 Alessandro St.
OLympia 3616

Larchmont

Harding & Goodan
150 N. Larchmont Blvd.
HOLlywood 5085

Lincoln Heights

Frank Graves Sash,
Door & Mill Co.,
Hdwe. Dept.
2012 Pasadena Ave.
CApitol 2071

South

Long's Radio Co.
2812 S. Main St.
HUmboldt 1323

Highland Park

F. & H. Radio Shop
5011 York Blvd.
GARfield 8962

South-Southwest

West States Electric Co.
4751 S. Broadway
AXridge 2786

Southwest

Monarch Radio Co.
2189 W. Washington
EMpire 3268

West Adams

H. H. Walker
1323 Venice Blvd.
BEacon 1311

Wilshire

Wolfe Radio
543 S. Western Ave.
WAshington 5711

ALHAMBRA

Le Roy Radio Elec. Co.
15 N. Garfield Ave.
ALhambra 1179

CULVER CITY

Culver City Radio
Electric Co.
6716 Washington Blvd.
Culver City 3490

HERMOSA BEACH

Newcomb's Electric
Shop
2nd and Manhattan
Redondo 4814

LONG BEACH

Rialto Radio
430 American Ave.
LONG Beach 653-171

WATTS

Clark & Ischer
9625 Holmes Ave.
DElaware 1254-R-1

"Beautiful in Tone and Appearance"

CALL LETTERS	Freq. Kilo.	Wave Length	Power	CALL LETTERS	Freq. Kilo.	Wave Length	Power	CALL LETTERS	Freq. Kilo.	Wave Length	Power
KFQD	870	345	100	KGDY	1410	213	250	KOLO	1500	200	5
KFQU	1200	250	100	KGEF	1450	207	15	KOMO	980	306	1000
KFQW	1380	217	100	KGEH	1140	263	500	KOWW	1000	300	500
KFQZ	1290	232	100	KGEK	1490	201	50	KPCB	1300	231	50
KFRK	660	454	50	KGEN	1470	204	10	KPJM	1400	214	15
KFRU	1200	250	500	KGEO	1330	225	15	KPNP	1420	211	100
KFSJ	680	441	500	KGEQ	1460	205	100	KPO	710	422	1000
KFSG	1090	275	500	KGER	1480	203	50	KPPC	1310	229	50
KFUL	1160	258	500	KGES	1390	216	100	KPRC	1020	294	500
KFUM	1270	236	100	KGEU	1470	204	10	KPSN	950	316	1000
KFUO	550	545	500	KGEV	1320	227	50	KQW	1110	270	500
KFUP	1320	227	100	KGEW	1370	219	10	KRAC	1360	220	50
KFUR	1330	225	50	KGEY	1490	201	15	KRE	1170	256	100
KFUS	1170	256	50	KGEZ	1460	205	100	KRLD	1350	222	250
KFUT	900	500	50	KGFB	1340	224	10	KRLO	1390	216	500
KFVJ	1440	208	250	KGFC	1460	205	25	KROX	1420	211	50
KFVE	1280	234	1000	KGFE	1390	216	50	KRSC	1420	211	50
KFVG	1330	225	50	KGFH	1340	224	100	KSAC	900	333	500
KFVJ	1260	238	50	KGFI	1360	220	15	KSBA	1120	268	1000
KFVR	630	476	250	KGFJ	1440	208	100	KSCJ	1230	244	500
KFVS	1340	224	50	KGFK	1340	224	50	KSD	550	545	500
KFWB	830	361	500	KGFL	1350	222	50	KSEI	900	333	250
KFWC	1350	222	100	KGFN	1420	211	15	KSL	990	303	1000
KFWF	1400	214	250	KGFN	1500	200	15	KSMR	1100	273	100
KFWH	1180	254	100	KGFO	1470	204	100	KSO	1320	227	500
KFWI	1120	268	500	KGFP	1410	213	10	KS00	1430	210	250
KFWM	1270	236	500	KGO	780	384	5000	KTAB	1070	280	500
KFWO	1370	219	250	KGRC	1360	220	50	KTBI	1310	229	10
KFWV	1310	229	50	KGRS	1230	244	150	KTBP	1040	288	500
KFXB	1190	252	500	KGRT	1450	207	50	KTBR	1060	283	50
KFXF	1060	283	500	KGU	1110	270	600	KTCL	1080	278	500
KFXH	1240	242	100	KGV	610	491	1000	KTHS	880	341	750
KFXJ	1390	216	15	KHW	1230	244	50	KTNT	1170	256	3500
KFXR	1390	216	15	KHJ	740	405	500	KTSA	1130	265	2000
KFXZ	1400	214	15	KHK	810	370	1000	KTUE	1410	213	5
KFYX	1460	205	25	KICK	650	461	100	KTW	730	394	1000
KFYF	1260	238	25	KJBS	1360	220	50	KUJ	1500	200	10
KFYR	1250	240	250	KJR	860	349	2500	KUOA	1010	297	500
KGA	1150	261	2000	KKP	1130	265	15	KUOM	800	375	500
KGAR	1280	234	100	KLDS	1260	238	1500	KUSD	620	484	250
KGBS	1480	203	100	RLIT	1450	207	10	KUT	1290	232	500
KGBU	1310	229	500	KLS	1220	246	250	KV1	1280	234	50
KGBX	1040	288	100	KLX	590	508	500	KV00	860	349	1000
KGBY	1480	203	50	KLZ	1120	268	250	KVOS	1430	210	50
KGBZ	1410	213	100	KMA	1110	270	500	KWBS	1500	200	15
KGCA	1480	203	10	KMED	1120	268	50	KW70	780	384	250
KGCB	1390	216	50	KMIC	1340	224	250	KWG	870	345	50
KGCC	1340	224	100	KMJ	820	366	50	KWKV	1350	222	100
KGGG	1020	294	250	KMMJ	1310	229	500	KWKH	760	394	1000
KGCI	1480	203	15	KMO	1180	254	250	KWLC	1210	248	50
KGCL	1300	231	50	KMOX	1000	300	5000	KWTC	760	394	500
KGCN	1440	208	50	KMR	570	526	500	KWSD	880	341	5
KGCR	1440	208	15	KNR	800	375	500	KWUC	1230	244	1500
KGCU	1440	208	100	KNX	890	337	500	KWVG	1080	278	500
KGCX	1230	244	10	KOA	920	326	5000	KXL	1380	220	50
KGDA	1280	234	15	KOAC	1110	270	500	KYA	970	309	500
KGDE	1460	205	50	KOB	760	395	5000	KYW	570	526	2500
KGDJ	1480	203	10	KOC	1160	258	250	KZM	1220	246	100
KGDM	1380	217	10	KOCW	1190	252	250				
KGDP	1340	228	10	KOIL	1080	278	1500				
KGDR	1480	203	15	KOIN	940	319	1000				
KFDW	1450	207	100								

'Individualized' Bosch Reproducers—Western Electric Amplifying Eqpm't.

RADIOLA SPECIALISTS

We make any RCA SUPER-HETERODYNE include in its tuning range the stations between 200 and 230 meters, at a nominal cost. Not an attachment, but a fundamentally sound improvement in the circuit.

PUBLIC DEMAND

Has caused our Technical Department to adapt our "Tone Filter" for electro-magnetic phonograph reproduction, for use in a radio receiver. This equipment is now available for installation in your radio set.

Makers of the Professional Model Receiver

LABORATORY OF RADIO STANDARDS

E. K. HAYES
2408 W. Vernon

VERmont 6543

V. M. BITZ
Los Angeles, Calif.

Sterling Dependable Socket-Power Units

SUNDAY TIME TABLE

ADJUSTED TO PACIFIC TIME
(X) Indicates Station Is On the Air

10-12 A.M.		12-2 P.M.		2-4 P.M.		4-6 P.M.		STATIONS	6-8 P.M.		8-10 P.M.		10-12 P.M.																
10.00-10.30	10.30-11.00	11.00-11.30	11.30-12.00	12.00-12.30	1.00-1.30	1.30-2.00	2.00-2.30	2.30-3.00	3.00-3.30	3.30-4.00	4.00-4.30	4.30-5.00	5.00-5.30	5.30-6.00															
CALL		Wave Length Meters	Power in Watts	STATION					6.00-6.30	6.30-7.00	7.00-7.30	7.30-8.00	8.00-8.30	8.30-9.00	9.00-9.30	9.30-10.00	10.00-10.30	10.30-11.00	11.00-11.30	11.30-12.00									
SOUTHERN CALIFORNIA																													
.								X K M T R	526	500	Hollywood		X	X	X	X	X	X	X										
.							X	X			K F I	468	5000	Los Angeles		X	X	X	X	X	X	X	X	X	X	X	X	X	
.									X	X	K F W B	441	500	San Diego															
X	X	X	X	X							K H J	405	500	Los Angeles				X	X	X	X	X	X	X					
.	X	X	X				X	X		X	X K N R C	375	500	Santa Monica		X	X	X	X	X	X	X	X	X	X	X			
X					X	X					K F W B	361	500	Hollywood							X	X	X	X	X				
.											K W T C	341	5	Santa Ana		X	X												
X	X	X	X			X	X	X	X	X	K N X	337	500	Los Angeles		X	X	X	X	X	X	X	X	X	X				
X	X										K P S N	316	1000	Pasadena		X	X												
X	X	X	X					X	X		K T B I	288	500	Los Angeles		X	X	X	X	X	X	X	X						
X	X	X	X				X	X	X	X	K F S G	275	500	Los Angeles		X	X	X	X	X	X	X	X	X	X				
X		X	X						X	X	K G E F	263	500	Los Angeles				X	X	X	X	X	X	X	X				
X	X	X	X	X	X	X			X	X	X K F X B	252	500	Los Angeles		X	X	X	X	X	X	X	X	X	X				
X		X	X	X			X	X	X	X	K F O N	242	500	Long Beach		X	X	X	X	X	X	X	X	X	X	X	X	X	
.											K F O Z	232	100	Hollywood				X	X	X	X	X	X	X	X				
X	X	X	X								K P P C	229	50	Pasadena		X	X	X											
.						X	X	X	X		K E L W	229	250	Burbank															
X	X	X									K M I C	224	250	Inglewood				X	X	X	X								
.			X	X					X	X	X K F W O	219	250	Catalina		X	X	X	X	X	X	X	X	X					
.	X	X									K F C R	211	50	Santa Barbara				X	X										
X											K F V D	208	250	Venice		X	X	X	X	X	X	X	X	X	X	X	X	X	
NORTHERN CALIFORNIA																													
X	X						X	X	X K F R C	454	50	San Francisco		X	X	X	X	X											
X	X	X			X	X	X	X	K P O	422	1000	San Francisco		X	X	X	X	X	X	X	X	X	X	X	X	X	X	X	
X	X	X			X	X	X		K G O	384	5000	Oakland		X	X	X	X	X	X										
X	X	X	X						K Y A	309	500	San Francisco				X	X	X											
X	X	X	X	X					K Q W	297	500	San Jose				X	X	X	X										
X	X	X	X	X					K T A B	280	500	Oakland				X	X	X	X										
.			X	X	X				K F W I	268	500	San Francisco		X	X	X	X	X	X										
X	X								K R E	256	100	Berkeley																	
NORTHERN AND WESTERN STATES																													
X	X	X	X				X	X	X K G W	491	1000	Portland				X	X	X	X	X									
X	X	X							C F A C	435	2000	Calgary																	
X	X	X							K J R	349	2500	Seattle				X	X	X	X	X	X	X	X						
X	X	X	X					X	X	X K O A	326	5000	Denver				X	X	X	X	X	X	X	X	X	X	X	X	
.									K O I N	319	1000	Portland		X	X		X	X	X	X	X								
X	X	X	X	X	X				K O M O	306	1000	Seattle		X	X	X	X	X	X	X									
X	X				X	X			K S L	303	1000	Salt Lake City				X	X	X	X										
X	X	X							K L Z	268	250	Denver				X	X	X	X										
X	X	X							K M O	254	250	Tacoma		X	X														
.					X	X	X	X	X K E X	240	2500	Portland		X	X	X	X	X	X	X	X	X	X	X	X	X	X	X	

ATTENTION, YOU DX HOUNDS!

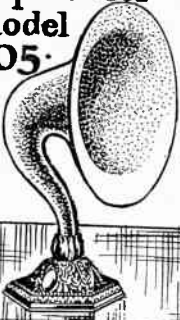
Kill Old Man Static and Keep Your Distance This Summer by Installing the
BOB ROBINSON BLUE VITRIOL GROUND

Shipped Anywhere for \$5.00 or Installed for \$6.00

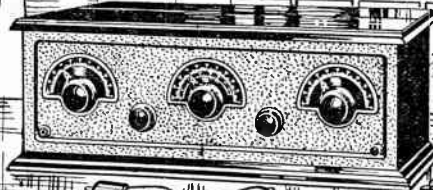
N. H. (BOB) ROBINSON 2618 N. Main St., Los Angeles

Capitol 7310

Reproducer ~
Model
405



Stewart-Warner
Receiver -
Model 325

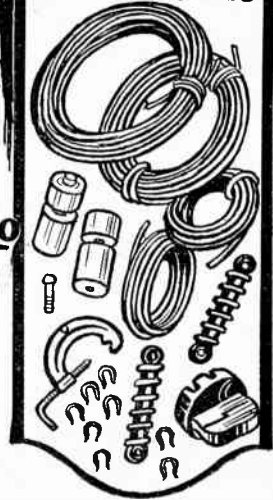


5 Tubes



This Complete
Stewart-Warner
Radio can be
purchased for \$76⁵⁰

Stewart-Warner
Antenna Kit



In order to demonstrate the extreme inexpensiveness of Stewart-Warner Matched Unit Radio we show here a complete radio ensemble (except for batteries, which are not manufactured by Stewart-Warner), that can be purchased from any Stewart Warner dealer on the monthly payment plan.

The receiver shown is the famous 5-tube unit with which Japan and Australia were heard nightly during the past "DX" season... the reproducer, tubes and antenna equipment articles of like quality.

You need not buy an expensive set to get radio efficiency. Ask us for the name of the Stewart-Warner dealer nearest you. He will gladly demonstrate Matched Unit Radio in your own home.

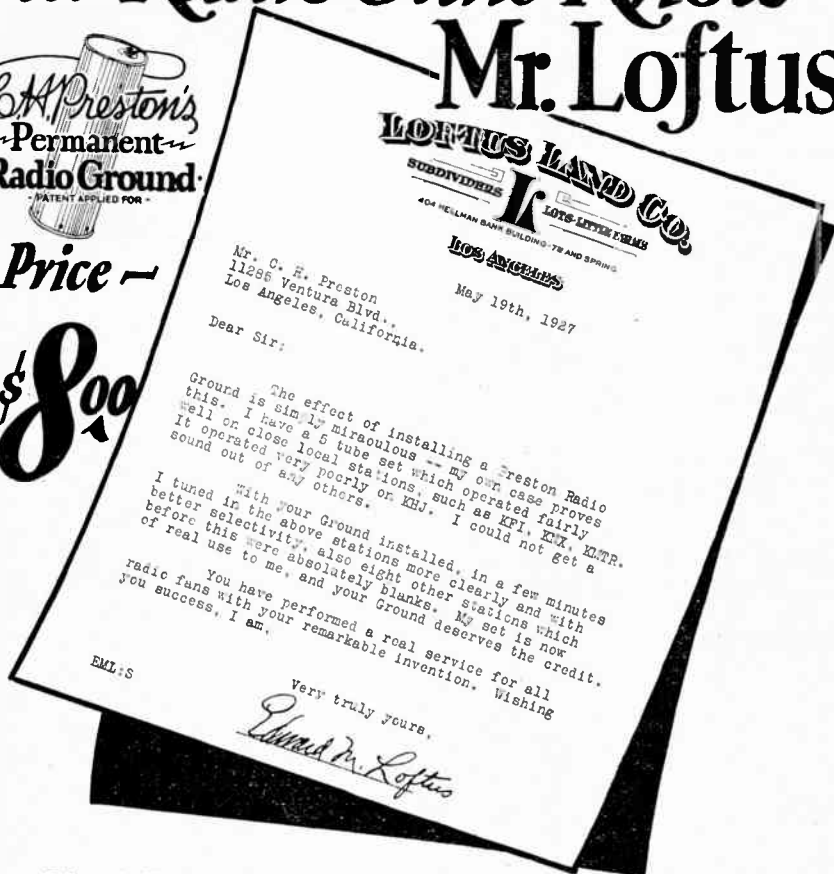
Stewart-Warner Products Service Station
{ Wholesale Distributors Stewart-Warner Radio }
1366 South Figueroa Street ~ LOS ANGELES

All Radio Fans Know Mr. Loftus!



Price —

\$8.00



Edward M. Loftus, well known Southern California real estate operator, whose radio programs featuring Sunshine Valley Farms were greatly appreciated by thousands of radio fans a few months ago, tells in this letter what he thinks about the Preston Permanent Radio Ground.

His experiences are typical of those of thousands of other radio enthusiasts who have tried the Preston invention and found it to be all that is claimed for it . . . and more.

The Preston Permanent Radio Ground will improve the performance of your radio. Our guarantee of absolute satisfaction makes it impossible for you to lose by trying it. Ask your dealer about the Preston Ground NOW.

UNGAR & WATSON, INC.
Manufacturers

1366 South Figueroa St., Los Angeles

THE SEROY COMPANY

Distributors Northern California, Oregon and Washington 122 Broadway, Oakland, Calif.



Announcer
LESLIE ADAMS

Los Angeles, California—468.5 Meters

KFI

Class "B" 5000-Watt W. E. Sta.
Radio Central Super-Station of Earle C. Anthony, Inc.
1000 S. Hope. Phone WE. 0331. After 5 P.M., WE. 0337
Class "B" 5000-Watt W. E. Sta., Operating on 4000 Watts
ROBERT HURD, Program Manager

WEEK COMMENCING SUNDAY, JUNE 5, 1927

SUNDAY, JUNE 5

- 10:00 a. m.—Morning services under L. A. Church Federation direction.
1:00 a. m.—Third Church of Christ, Scientist.
5:00 p. m.—Southland Mixed Quartet.
6:00 p. m.—Classical Hour.
6:58 p. m.—Father Ricard's Sunspot Weather Forecast.
7:00 p. m.—Aeolian Organ Recital; Alex Reilly at the console.
8:00 p. m.—Packard Classic Hour; Grace Mead, soprano; Dorothy Alcock, pianist; Lucille Whitson, concert pianist; Wilfred Fletcher, tenor.
9:00 p. m.—National Broadcasting Co. Program, Biblical drama, "Cain and Abel," with symphonic setting, over the Orange Network.
10:00 p. m.—Billy Cox and his Packard Eight Orchestra; Dolly MacDonald, soloist; Esther Walker, pianist.

MONDAY, JUNE 6

- 5:30 p. m.—Glenn Edmund's Lake Arrowhead Orchestra.
6:15 p. m.—George Wilder Cartwright.
6:30 p. m.—Gamut Male Quartet.
7:00 p. m.—Gene Johnston's Music Box hour. Craig Leitch, tenor; Gene Johnston Trio.
8:00 p. m.—National Broadcasting Co. Program, tabloid version of "Barber of Seville," by Rossini, over Orange Network.
9:00 p. m.—Classical Music arranged by Alma Frances Gordon, contralto.
10:00 p. m.—Program by Pastel Trio.

TUESDAY, JUNE 7

- 5:30 p. m.—The Dragon Hawaiians.
6:00 p. m.—Dean Metcalf.
6:15 p. m.—Prof. Carl S. Knopf.
6:30 p. m.—Bertha Miller English, pianist; Katherine and Malcolm Gurney; Dorothy MacKerral, mezzo soprano.
7:00 p. m.—Los Angeles Fire Dept. Orchestra and Whiteman Sisters, duets.
8:00 p. m.—Gattone String Quartet; James Burroughs, tenor.
9:00 p. m.—National Broadcasting Co. "Hits and Bits," over the Orange Network.
10:00 p. m.—Azure Music Club; Edna Cook and Collegiate Aeolians Dance Orchestra.

WEDNESDAY, JUNE 8

- 5:30 p. m.—Sebastians Cotton Club Orch.
6:15 p. m.—Radiatorial Period.
6:30 p. m.—Anita Holt, violinist; Agnes Buisseret, pianist.
7:00 p. m.—Ray Fisher's Original Victorians Dance Orchestra.

- 7:30 p. m.—Nick Harris, Detective Stories.
7:45 p. m.—Helen Guest, ballad singer.
8:00 p. m.—Calpet String Quartet; Chico De Verde, director; Calpet Male Quartet; Paul Roberts, tenor, on the California Petroleum Corporation program.
9:00 p. m.—National Broadcasting Co. drama, "Peer Gynt," by Ibsen, with symphonic accompaniment, over Orange Network.
10:00 p. m.—Glenna Gould, pianist; Virginia McCoy, contra-contralto; Mrs. Edward C. Crossman, contralto.

THURSDAY, JUNE 9

- 5:30 p. m.—Legion Night Club Orchestra.
6:15 p. m.—Radiatorial Period.
6:30 p. m.—Mary Christine Albin Trio.
7:00 p. m.—Holland Glee Club with soloists.
8:00 p. m.—KFI Drama Hour.
8:30 p. m.—Ida Krupp, soprano; Wilfred Fletcher, tenor.
9:00 p. m.—National Broadcasting Co. light opera, "Daughter of Madam Angot," by Lecocq, over the Orange Network.
10:00 p. m.—Program arranged by Norma West, soprano.

FRIDAY, JUNE 10

- 5:30 p. m.—Henry Starr, pianist, vocalist.
6:15 p. m.—Madame Nelson, Psychologist.
6:30 p. m.—Starke Sisters, Bill Henry.
7:00 p. m.—Aeolian Organ Recital, Alex Reilly at the console.
8:00 p. m.—Program by Paul Roberts and Leslie Adams.
9:00 p. m.—National Broadcasting Co., "An Hour in Memory Lane," broadcast over the Orange Network.
10:00 p. m.—Program by the Dresden Girls Trio.

SATURDAY, JUNE 11

- 5:30 p. m.—Matinee Program.
6:15 p. m.—Francis Sullivan, Literary Talk.
6:30 p. m.—Bill Funk and his Packard Six Orchestra; Irene Langley, uke and singer.
7:30 p. m.—Felipe Delgado, Edna Clark Muir, pianist; Media Hora Espanola.
8:00 p. m.—National Broadcasting Co., Saturday Night Review, over Orange Network.
9:00 p. m.—Virginia Flohri and Robert Hurd in an hour of concert music, with Nellie Callender Mills and Louise Klos.
10:00 p. m.—Packard Radio Club; Esther Walker, pianist; Helen Guest and Hale Hooper, Red Wyatt and his uke.
11:00 p. m.—KFI Midnight Frolic; Mosby's Dixieland Blue Blowers, and soloists.

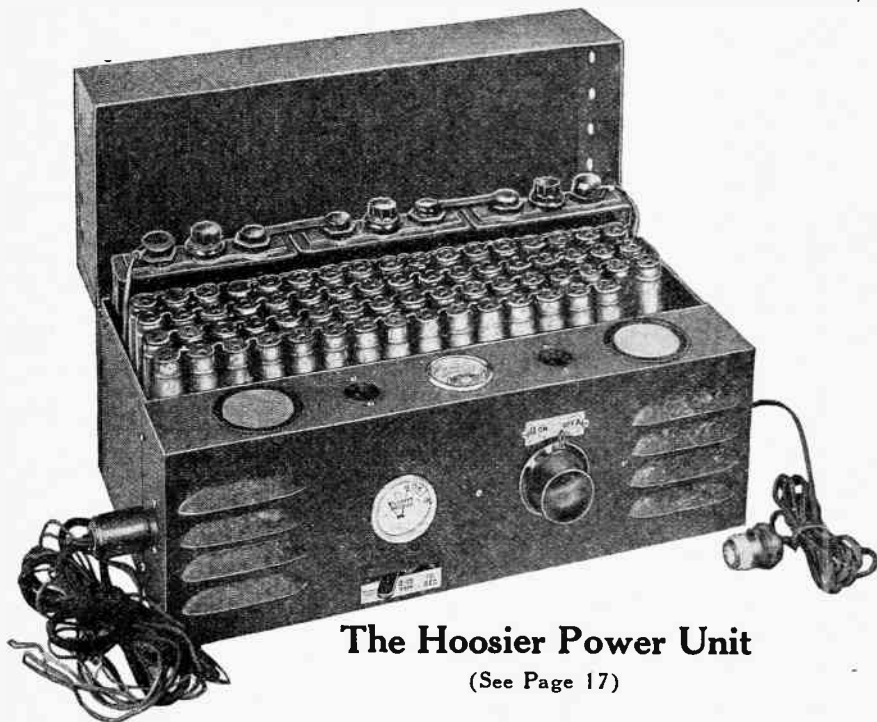
Copyright 1927 by Earle C. Anthony, Inc.

Program Published as Submitted by the Station

See Page 44 for detailed program of National Broadcasting Company

The Ultimate in Radio Power Supply

For Those Who Demand
Perfection in Radio Reception



The Hoosier Power Unit

(See Page 17)

Did you ever wonder why all broadcast stations use battery equipment? Why every famous DX-getter uses batteries? Why all rebroadcast work is done with batteries?

THERE IS A REASON

Call or Write for Full Particulars

Manufactured by BRANT RADIO POWER CO., Terre Haute, Ind.

Distributors for Pacific Coast

PACIFIC HOOSIER SALES CO.

1547 W. Pico

WA. 6983

Los Angeles

National Broadcasting Co., Inc.

ORANGE NETWORK

KFI - KPO - KGO - KGW - KOMO - KFOA

Program for Week Commencing Sunday, June 5

Sunday, June 5—9 to 10 P. M.

"Cain and Abel," the dynamic story taken from the Bible will be the Bible story with symphonic orchestral accompaniment presented by the National Broadcasting Company over the Orange Network, Sunday, June 5 from 9:00 to 10:00 p. m.

This is the story of the beginning of hatred in the world and the tragedy of the first murder.

The first scene is laid on a mountainside where Cain has gone to offer a sacrifice to the Lord. In the valley below him Cain sees his brother Abel watching his sheep. He envies his brother's prosperity and longs for the luxuries that wealth procures. He leaves the mountainside with bitterness in his heart and approaches his brother with the demand that he turn over his flocks to him. Cain tells his brother that he hates him but Abel does not understand the meaning of hate. Cain slays Abel and steals his sheep, taking them into the hills, but is followed by the voice of conscience. The voice of conscience tells him that he is the author of war, of hate and of murder and that men will curse his name for all time.

Monday, June 6—8 to 9 P. M.

The National Opera Company, under the direction of Max Dolin will present the "Barber of Seville" over the Orange Network of the National Broadcasting Company, Monday, June 6th, from 8:00 to 9:00 p. m.

The "Barber of Seville" is by Rossini, who also composed William Tell. Rossini was unique among composers because of his rapid success and great facility, his ready wit and his extraordinary laziness, his fondness for cooking, and for the fact that with the world at his feet he stopped writing operas before he was forty, and he lived to be seventy-six. The only music he wrote was his sacred "Stabat Mater" and some piano pieces, which he himself admitted to be fourth rate, dedicating them to his parrot.

Many famous melodies are heard in this opera, including Figaro's air, "Largo al factotum" (Room for the Factorum), Rosina's coloratura air, "Una voce Poco fa" (A Little Voice I Hear), and "La Calumnia" (The Calumny Song).

The cast of "The Barber of Seville" will include Gwynfi Jones, Mynard Jones, Dorothy Reagan Talbot and others.

Tuesday, June 7—9 to 10 P. M.

Tuesday night, June 7th, the usual weekly feature, "Hits and Bits," will be offered by the National Broadcasting Company under the direction of Glenhall Taylor.

The feature of the program will be "The Radio Music Makers," conducted by Glenhall Taylor. Popular dance musical ballads, comic songs and blues songs will be featured. The latest song hits are reviewed and those, in the opinion of the director, that would be most acceptable to radio audiences are used during this weekly feature of the Orange Network.

Wednesday, June 8—9 to 10 P. M.

The Radio Drama, "Peer Gynt," by Henrik Ibsen, will be broadcast over the Orange Network Wednesday, June 8th, from 9 to 10 p. m., under the direction of William Rainey. The

drama will be presented with a Symphonic Orchestral setting, with music by Grieg that was written especially for this play.

Of all the works of Henrik Ibsen, the Norwegian dramatist, none has been so widely recognized as the epic, "Peer Gynt." It depicts the life story of Peer, who forsakes his home, his mother and his sweetheart to wander the world in search of adventure and the solution of the problem of life.

When Ibsen wrote this play he commissioned a hitherto unknown composer to write the musical background. The composer produced a score that made him world famous. His name was Edward Grieg.

Thursday, June 9—9 to 10 P. M.

The National Light Opera Company, under the direction of Max Dolin, will broadcast "Daughter of Madame Angot," by Lecocq, on Thursday night, June 9th, from 9 to 10 p. m.

Lecocq was trained at the conservatory of Paris, and was very capable in composing sparkling musical comedy. His first claim to distinction was in sharing a prize offered by Offenbach. In later years he became a rival of Offenbach.

He wrote many famous comic operas, but this is his best known work. Madame Angot's daughter, "Clairette," is engaged to marry a hairdresser, but considers him below her station in life. After many vain attempts to further her aims in the matrimonial field, she finally marries the faithful hairdresser.

The cast will include Mary Groom Richards, Gwynfi Jones, Harrison Ward, Elfrida Wynne and Dorothy Regan Talbot.

Friday, June 10—9 to 10 P. M.

"Memory Lane," a weekly feature of the National Broadcasting Company, will be offered on Friday, June 10th, from 9 to 10 p. m. The Memory Lane program is unique among radio offerings, being designed to rouse old memories and associations through the medium of a varied musical program, built around a central theme described in a specially written musical recitation at the opening of the program.

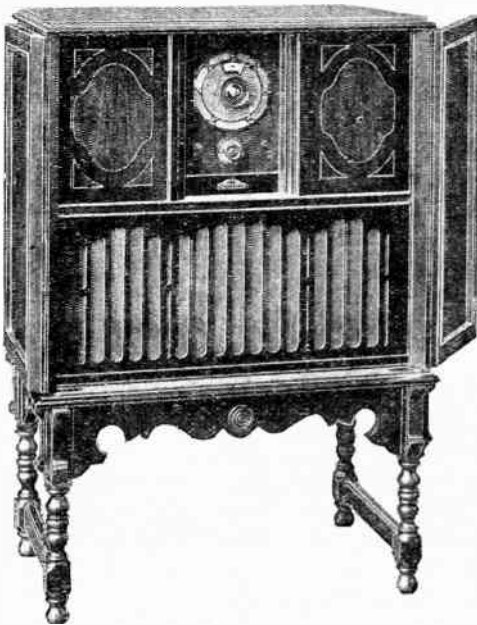
Tonight's program has to do with old legends, ghost stories and fairy tales. There will be orchestral numbers, choruses, songs and recitations, in a three-part program. The music includes among its legends the "Legend of the Bells," from the "Chimes of Normandy," and Schubert's "Erl-King" in the novel form of a vocal trio, with a voice assigned to each character in the song. The ghost stories include an old humorous song, "The Sneak"; recitation, "What's That Knocking at My Door?" by Riley, and the orchestra will play Saint-Saens' "Danse Macabre." The fairy tales include the comic song, "At the Story Book Ball," some nursery rhymes in a novel presentation, and an orchestral performance of Weber's fair overture, "Oberon."

Saturday, June 11—8 to 9 P. M.

Saturday night, June 11th, from 8 to 9 p. m., will continue to be devoted to a review of the week's events that have been broadcast over the Orange Network of stations of the National Broadcasting Company. The outstanding hits of the program, the numbers that have proved most popular with radio fans, will be grouped together and presented during the hour.

ECLIPSE

R A D I O



A truly one-dial control calibrated in wave lengths, fully illuminated. A beautifully finished American Black Walnut Cabinet with self-contained Rola cone speaker and ample room for batteries or eliminator.

Six Tubes



Commodore

One Dial Calibrated in Wavelengths

Broadcast stations have been allotted new wave lengths. With the Commodore you will simply turn 1 dial to the wave length of the station you want. Commodore's dial covers the entire commercial wave band. If you want a station at 350 meters, turn to 350 on the dial—true simplicity.

ECLIPSE Dealers will gladly demonstrate the Commodore. And remember all Eclipse Radios are backed by an absolute guarantee of one year against any defects in material or workmanship.

MANUFACTURED BY ECLIPSE MANUFACTURES, INC.

Southern California Distributors

PACIFIC WHOLESALE INC.

WALTER M. FAGAN
PRESIDENT
1210-20 SOUTH
SAN PEDRO STREET
RADIO AND ELECTRICAL APPLIANCES
LOS ANGELES, CALIF.

DEALERS — THERE ARE A FEW TERRITORIES STILL OPEN



"Uncle John" Daggett
Announcer

Los Angeles, California—405.2 Meters

KHJ

500 WATTS—740 KILOCYCLES
Times Bldg., First and Broadway, Los Angeles
Owned and Operated by Los Angeles Times
JOHN S. DAGGETT, Manager and Program Announcer
Phone MEt. 0700

"Kindness, Happiness and Joy"

All Programs Pacific Standard Time

NIGHTLY EXCEPT SUNDAY AND MONDAY—

- 6:00 to 6:30 p. m.—KHJ Concert Trio.
7:30 p. m.—Scripture reading.
8:00 p. m.—World-wide news items.
9:00 p. m.—Time signals and weather reports.

WEEK COMMENCING SUNDAY, JUNE 5, 1927

SUNDAY, JUNE 5

- 10:00 a. m.—KHJ sermon by Dr. H. C. Culbertson, pastor of the Plymouth Congregational Church.
10:30 a. m.—Morning services from the First Methodist Episcopal Church; Arthur Blakeley, organist.
7:00 to 8:00 p. m.—Evening services from the First Methodist Episcopal Church.
8:00 to 9:30 p. m.—Studio program presenting Frederick MacMurray, viola; Louise Miller, pianist; Aspre and his Dynamic Synco-Symphonist, Los Angeles Service Concert Orchestra.
9:30 to 11:00 p. m.—Orpheus Four Male Quartet.

MONDAY, JUNE 6

Silent all day.

TUESDAY, JUNE 7

- 6:30 to 7:30 p. m.—Children's hour with Sandman as guest announcer. Program will present Marguerite Bringham, "Night-ingle"; Playground Department Harmonica Band; George Kerr, mandolin soloist; Lois Jane Campbell, "Brown Eyes," and Baby Jeannette James, reader.
7:40 p. m.—H. M. Robertson, "Dogs."
8:00 to 10:00 p. m.—Musical program.
9:00 p. m.—Swami Paramananda of La Crescenta.

WEDNESDAY, JUNE 8

- 1:00 to 2:00 p. m.—Special program for Los Angeles city schools.
2:30 p. m.—Fred C. McNabb, "Garden Talk."
6:30 to 7:30 p. m.—Children's program with Viola Essen, "B. B."; Dick Winslow, screen juvenile; Glenn Fitz, "Optimistic Mascot"; Patricia Eccleston, "Little Daffodill"; Vivian Marple, "Blue Bell of KHJ."
7:15 to 9:00 p. m.—F. G. Smith and his Greater Los Angeles Band.
7:40 p. m.—Dr. Mars Baumgardt.
9:00 to 10:00 p. m.—Lal Chand Mehra, lecturer from India, talk of "Psychology of Life," and Samuel Furede, 'cello virtuoso, and others.

- 10:00 to 11:00 p. m.—Los Angeles Railway Orchestra.

THURSDAY, JUNE 9

- 6:30 to 7:30 p. m.—Children's hour with Dickie Brandon, reader; June Brandon, contralto; George Cook, saxophonist; Jeanne De Bard, "Bonnie Jeanne of Radioland"; Rosetta Lewin, "Curly Locks," and Joyce Coad, "Red Riding Hood."
7:40 p. m.—Dr. Philip M. Lovell, talk on "Care of the Body."
8:00 to 10:00 p. m.—Feature program presenting Zoellner quartet; Leo H. Sansiper, Russian baritone, and Louise Miller, pianist.
9:00 p. m.—Arthur Edwin Wake, vice-president and general manager for the Abraham Lincoln School for Boys.
10:00 to 11:00 p. m.—Glenn Edmunds and his Varsity Four.

FRIDAY, JUNE 10

- 6:30 to 7:30 p. m.—Children's program with Roberta Bush, "Firefly of KHJ"; Henrietta Poland, "Forget-Me-Not"; Richard Headrick, "Little Minister"; Bettiemae Pfefferkorn, "Bob-O-Link"; Catherine Cotter, "Sweetheart of Radioland"; Margaret Bond, violinist; Billy Lord, "Police Comrade."
7:40 p. m.—Thomas F. Ford, "Book Reviews."
8:00 to 10:00 p. m.—Continuation of travelogues "In the Old World," with music and talks.
9:00 p. m.—Talk on International Relations.

SATURDAY, JUNE 11

- 6:30 to 7:30 p. m.—Children's program with Nona Clapp, "Sunshine Fairy"; Dolly Wright, "Dolly of Radioland"; Arthur Stevens, "King Arthur of Radioland"; Marjorie Genevieve Lowe, "June Bug"; Mercedes Marlowe, "Boy Girl," and Eugenia Abriel, singer.
7:40 p. m.—Salvation Army Temple Band.
8:00 to 10:00 p. m.—Frolic program with KHJ favorites.

CROSLEY SPECIALISTS HAVE YOUR CROSLEY BALANCED CHILDS' LAB., 2310 S. Union St., L. A.

Alternating Current Transformers

A B C Power
Plant

\$35.00

I Specialize on Operating Sets
Without Batteries

RAY CAMPBELL

Power Pack
Amplifier

\$75.00

1217 Dwiggins Street, near N. Huntington Drive, Two Blocks from Sierra Vista Station
LOS ANGELES, CALIF. Phone GARfield 7891

GUILTY!



The Kelly Jury take a few moments' relaxation in their rooms in the Hotel Rosslyn

IF IT'S A PORTABLE, BE SURE IT'S A KEMPER

On display in Los Angeles at the following locations:

621 South Hill St.
Ambassador Hotel
Biltmore Hotel
1553 N. Wilcox
Subway Terminal Waiting Room
14 Mercantile Arcade

1225 North Vine St.
124 Pacific Ave., Long Beach
208½ S. Brand Blvd., Glendale
257 E. Colorado St., Pasadena
745 E. Seaside Blvd., Long Beach
6833 Hollywood Blvd.

RADIO STUDIOS, 1207 Fourth Ave., Seattle, Wash.
JOHNSTONE RADIO CO., 688 Geary St., San Francisco
KEMPER RADIO DISTRIBUTORS, 172 Tenth St., Portland, Ore.

Phone for a Demonstration

KEMPER RADIO CORPORATION

1236 Santee Street

Westmore 1439

Los Angeles, Calif.

"Keep your Temple with a Kemper"



HAROLD ISBELL
Announcer

Hollywood, California—337 Meters

KNX

500 WATTS—890 KILOCYCLES
LOS ANGELES EVENING EXPRESS
Paul G. Hoffman's Studebaker Bldg., 6116 Hollywood
Blvd., Hollywood. Phone HEMstead 4101
NAYLOR ROGERS, Manager and Program Director
GLEN RICE, Asst. Manager
"The Voice of Hollywood"

DAILY EXCEPT SUNDAY—

- 6:45 p. m.—"Mission Orange Earlybirds" exercises given by Dr. P. M. Seixas, through the courtesy of the Producers of Mission Orange Juice.
7:15 p. m.—"Pep and Vigor" exercises given by Dr. P. M. Seixas, through the courtesy of the Producers of Mission Orange Juice.
7:45 p. m.—"Orange Mission Home Folks" exercises given by Dr. P. M. Seixas, through the courtesy of Producers of Mission Orange Juice.
8:00 a. m.—Inspirational talk and morning prayer.
8:55 a. m.—Time signals from Washington, D. C., followed by Birthday notices.
9:00 a. m.—Radio Shopping News.
10:00 a. m.—Town Crier of the Day's morning message.
10:30 a. m.—Kate Brew Vaughn, Director Household Economics Department, Evening Express, except Friday and Saturday.
12:00 p. m.—Musical program.
12:30 p. m.—W. F. Alder Travelogue.
1:30 p. m.—The Bookworm.
2:00 p. m.—Radio Trades Association musical program.
4:00 p. m.—Lost and Found Column.
4:55 p. m.—Market reports.
5:30 p. m.—Howard Clark.
5:45 p. m.—The Town Tattler.
6:00 p. m.—Biltmore Hotel Orchestra broadcast from the Biltmore Dining Room.
6:30 p. m.—Dinner hour concert, presenting the Yale Radio Battery Orchestra.

DAILY EXCEPT SUNDAY AND TUESDAY—

- 11:00 p. m.—Hotel Ambassador; Gus Arnheim's Coconut Grove Orchestra.

WEEK COMMENCING SUNDAY, JUNE 5, 1927

- 10:00 a. m.—First Presbyterian Church of Hollywood, Rev. Stewart P. MacLennan.
2:00 to 4:00 p. m.—City Park Board musical program.
4:00 p. m.—Roberts Golden State Band.
5:15 p. m.—All Souls Church; Dr. Charles F. Aked speaking.
6:30 p. m.—Hollywood Unitarian Church.
7:00 p. m.—Circle Theatre Concert Orchestra; Carli D. Elinor, director, and organ recital by Fred Scholl.
9:00 p. m.—Feature program.
MONDAY, JUNE 6
12:45 p. m.—C. P. R.'s musical program.
3:00 p. m.—First Presbyterian Church of Hollywood.
7:00 p. m.—George J. Birkel Music Co. presenting the Brunswick Panatropé.
7:30 p. m.—Playlet, courtesy Overell Furniture Co.
8:00 p. m.—L. W. Stockwell Co. courtesy program, presenting Calmon Luboviski, master violinist, and Claire Mellonino, concert pianist.
10:00 p. m.—Earl Burtnett's Biltmore Hotel Orchestra.

TUESDAY, JUNE 7

- 12:45 p. m.—Broadcasting Advertising Club luncheon from Hotel Biltmore.
4:00 p. m.—C. P. R.'s musical program.
7:00 p. m.—Playgoers Club,
7:30 p. m.—Fitzgerald Music Co. presenting the Ampico Knabe Piano.
8:00 p. m.—Tufts-Lyon Arms Co.
10:00 p. m.—Hotel Ambassador; Gus Arnheim's Coconut Grove Orchestra.

WEDNESDAY, JUNE 8

- 12:45 p. m.—C. P. R.'s musical program.
3:00 p. m.—Paul Hugon.
3:30 p. m.—Don Warner, popular pianist.
4:00 p. m.—Garden talk by D. R. Kruckeberg of Theodore Payn's Nurseries.

- 4:15 p. m.—Joyce Coad.
7:00 p. m.—Birkel Music Co., presenting the Brunswick Panatropé.
7:30 p. m.—Wilshire Ionaco Co. courtesy program presenting Charles Hamp
8:00 p. m.—Feature program.
10:00 p. m.—Earl Burtnett's Biltmore Hotel Orchestra.

THURSDAY, JUNE 9

- 12:45 p. m.—C. P. R.'s musical program.
4:25 p. m.—Louise Johnson, horoscopes.
7:00 p. m.—Carthay Circle Theatre organ recital.
8:00 p. m.—H. Jevne & Co.
9:00 to 10:00 p. m.—Grovenor-Enges Corp., formerly George A. Bray & Co.,
10:00 p. m.—Earl Burtnett's Biltmore Hotel Orchestra.

FRIDAY, JUNE 10

- 11:45 p. m.—Charles Weeks, talking on "Intensive Little Farms."
3:00 p. m.—L. A. District Federation of Women's Clubs musical program.
4:00 p. m.—C. P. R.'s Musical Program.
7:00 p. m.—Playgoers Club,
7:30 p. m.—Fitzgerald Music Co. presenting the Ampico Knabe Piano.
8:00 p. m.—Davis Perfection Bread Co. courtesy program.
10:00 p. m.—Broadcasting main events from Hollywood Legion Stadium.

SATURDAY, JUNE 11

- 12:45 p. m.—C. P. R.'s Musical Program.
3:00 p. m.—Town Crier of the Day and pals.
7:00 p. m.—Stories of Insect Life by Harry W. McSpadden.
7:15 p. m.—Announcement of Sunday services of leading L. A. churches.
7:30 to 10:00 p. m.—Feature program.
10:00 p. m.—Earl Burtnett's Biltmore Hotel Orchestra.
12:00 midnight—Midnight Express.

Program Published as Submitted by the Station

ATWATER KENT RADIO

ONE DIAL

Any More is Unnecessary

This is the opinion of hundreds of thousands of owners throughout the world after months of use.

Speed, accuracy and convenience in the One Dial Atwater Kent combined with the many other proven superiorities make this model supreme.

Model 32
Atwater Kent
Receiver with
One Dial, \$145
(less accessories)



Radio
Speaker
Model H
\$

RAY THOMAS INC.
Atwater Kent Distributor
1248 S. Hope St. WE 6334
LOS ANGELES



BILL RAY
Announcer

Hollywood, California—361 Meters

KFWB

500 WATTS—830 KILOCYCLES
WARNER BROS. MOTION PICTURE STUDIOS
Warner Bros. West Coast Studios, 5842 Sunset Blvd.
GERALD L. KING, Mgr. WM. RAY, Asst. Mgr.
Phone GL 9461
"Movie Land"

DAILY EXCEPT SUNDAY—

9:30 to 10:30 a. m.—M-I-L-A Hour.
12:30 to 1:30 p. m.—Classified Hour.
5:00 to 5:15 p. m.—Vacation Days.
5:15 to 5:30 p. m.—Emil Farnlund, Vibraphone.
5:30 to 6:00 p. m.—Radio Review.
6:00 to 7:00 p. m.—Pontiac Six Dinner Hour.
10:00 to 11:00 p. m.—Musical program from Mayfair Hotel.

MONDAY, TUESDAY AND WEDNESDAY—

5:00 to 5:40 p. m.—Children's Hour.

WEEK COMMENCING SUNDAY, JUNE 5, 1927

SUNDAY, JUNE 5

8:30 to 9:00 p. m.—Program by courtesy of the Southern California Music Company.
9:00 to 11:00 p. m.—Warner Bros. Frolic, introducing Rollins Sisters, harmony numbers; J. Kennard Hamilton, tenor; Byrle Colby, ballads; Frances St. George, KFWB Jazzmania Girl; Harry G. Keiper and his Movieland Orchestra.

MONDAY, JUNE 6

9:30 to 10:30 a. m.—M-I-L-A Hour.
11:30 to 12:00 noon—Pacific Electric Art.
7:00 to 7:30 p. m.—Courtesy program.
7:30 to 7:45 p. m.—Howard Clark, popular songs, by courtesy of Dan Parker, tailor.
8:00 to 8:00 p. m.—Sol Hoopii's Hawaiian Trio; June Parker, blues songs.
9:10 to 10:00 p. m.—John Ganton, tenor; Warner Bros. European Novelty Orchestra, under direction of Chico DeVerde.

TUESDAY, JUNE 7

9:30 to 10:30 a. m.—M-I-L-A Hour.
12:00 to 12:30 p. m.—KFWB Shopper's Directory.
1:30 p. m.—Mabel Leonard's Surprise program.
7:00 to 7:30 p. m.—Thirty minutes of sunshine by Charles W. Hamp.
7:30 to 8:00 p. m.—Program by courtesy of the Southern California Music Company.

WEDNESDAY, JUNE 8

8:10 to 9:00 p. m.—Ann Grey, blues songs; California Banjo Boys Trio.
9:10 to 10:00 p. m.—Julius Phillips, tenor; LeGrand Concert Ensemble.
12:00 noon to 12:30 p. m.—KFWB Shopper's Directory.
7:00 to 7:50 p. m.—Charlotte DeLovelace, blues songs; Warner Bros. Dance Orchestra.
8:00 to 9:00 p. m.—Program by courtesy of Stewart-Warner Products, Inc., featuring

concert orchestra and soloists.
9:00 to 10:00 p. m.—Ray Bailey's Trio; Emma Kimmel, soprano.

THURSDAY, JUNE 9

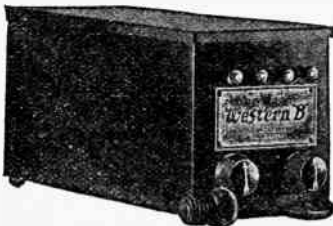
12:00 noon to 12:30 p. m.—KFWB Shoppers' Directory.
1:30 p. m.—Mabel Leonard's Surprise program.
7:00 to 7:50 p. m.—Metropolitan Dance Orchestra; Jackie Lucas, blues songs.
8:00 to 9:00 p. m.—Program by courtesy of the Southern California Music Company.
9:10 to 10:00 p. m.—Leon Belasky's Salon Ensemble; Lilyan May Challenger, contralto.

FRIDAY, JUNE 10

12:00 noon to 12:30 p. m.—KFWB Shoppers' Directory.
7:00 to 7:30 p. m.—Program by courtesy of the Southern California Music Company.
7:30 to 7:45 p. m.—Howard Clark in popular songs by courtesy of Dan Parker, tailor.
8:00 to 9:00 p. m.—Dan Santos' Hawaiian Trio; Dare Sisters, harmony numbers.
9:10 to 10:00 p. m.—Van Sisters Trio; John Ganton, tenor.

SATURDAY, JUNE 11

12:00 noon to 12:30 p. m.—KFWB Shoppers' Directory.
7:00 to 8:00 p. m.—Sol Hoopii's Hawaiians; Ann Grey, blues songs.
8:00 to 9:00 p. m.—Program by courtesy of the Cona Motor Oil Company, introducing Vernon Rickard, tenor; Mono Motor Oil Company's String Trio.
9:00 to 11:00 p. m.—Rainbow Hours, by remote control from the Rainbow Isle Room of the Mayfair Hotel, by courtesy of Bundy & Albright, owners and developers of Cahuenga Park.



Western B[®] POWER UNIT

OUTPUT 6-180 VOLTS. OPERATES ANY
SET. TWO VOLTAGE CONTROLS.
NO HUM OR DISTORTION

Price \$18.50

ASHWORTH & GALLOP, 5845 S. Broadway, Los Angeles, Calif.

Phone THorwall 3393

SM

Silver-Marshall

SM Parts in Stock

SILVER-MARSHALL Specified for

- SILVER-SHIELDED SIX-TUBE
- SILVER-ROCKAWAY II
- INFRA-ROCKAWAY II
- BEST S.A.C. BROWNING DRAMA
- CLOUD SUPER HETERODYNE
- LOFTIN-WHITE
- ULTRA FIVE
- L.C. 27 JUNIOR POWER PACK
- RESERVOIR "B"
- CITIZENS SUPER RADIO NEWSBATH SERVICES RECEIVED
- BEST 1937 SUPER-POWER

SILVER-MARSHALL, INC.
Chicago, U.S.A.

Type 210 Long Wave Transformer

This transformer is so well known to experimenters as to require no introduction. Provided with an iron core, its frequency range is ideal for undistorted long wave reception and its amplification is extremely high. The operating peak falls between 40 and 65 kilocycles. Any number of transformers peaking at practically any frequency in this range can be obtained if desired.

Type 220 Audio Transformer

This transformer is guaranteed to be the finest ever produced, barring none. It gives approximately 90 per cent of the amplification at 3C cycles that is obtained at 1,000 cycles. From 1,000 cycles on, the response falls off to compensate for commercial loud-speakers and broadcast station transmission. Its turn ratio is 3:1, and it should be used in any and all stages. It is guaranteed to give more satisfactory quality than any other practical amplifying device. Recommended for UX201A, UX112, UX171, or UX210 tubes, but may be used with any standard types.

Type 221 Output Transformer

An output transformer should be used (optionally) between the last power tube and loud speaker in any audio amplifier. In this position, it will improve low note reproduction and increase the loud-speaker capacity for strong signals several hundred per cent. It is especially recommended to improve quality on factory-manufactured sets, when connected in series with loud-speaker cord.

S M Interchangeable Coils

Designed for extremely low losses and permanent uniformity. They may be used for a variety of purposes, in practically all circuits, to cover any frequency range in common use.

Each type except the "D" size has its grid (stator) winding composed of No. 26 enameled wire wound upon six threaded ridges located about the moulded bakelite coil form. This winding has each turn spaced a fixed distance from its neighbor, thus assuring an extremely efficient, practically air-supported inductance. Small adjustable rotor windings are located on spring clips inside the stator forms so that they may be easily adjusted. In some types, concentrated primary windings are located in slots at the bottom ends of the grid coils.

The coils are particularly suited to unicontrol receivers, since their uniformity is to within one-quarter to one-half of one per cent. All S-M inductances are interchangeable, fitting the six-contact type 515 socket. Windings terminate in six contacts at the bottom of the coil form. All types except 113 and 117 are designed at 316A or 316 (.00035 mfd.) condensers. With grid coils only tuned, ranges are as below:

A types—190 to 550 meters
B types—70 to 200 meters

C types—30 to 75 meters
D types—500 to 1500 meters
(500 to 1900 meters with .0005 mfd.)

Distributed by

C. C. LAWTON CO.

1125 Wall St.

Phone WEStmore 3960

Los Angeles



G. ALLISON PHELPS
Manager and Announcer

Hollywood, California—526 Meters

KMTR

500 WATTS

KMTR RADIO STATION

1025 N. Highland Avenue. Telephone HOLLY 3026
FORBES VAN WHY, Chief Engineer

DAILY EXCEPT SUNDAY—

- 7:00 to 7:30 a. m.—Prof. Barclay Stevens' Setting-up Exercises.
8:45 to 9:00 a. m.—Time Signals from Washington, D. C.,
12:00 to 12:30 p. m.—Broadcasting from U. S. C. except Saturday.
12:30 to 1:30 p. m.—Who's Who and What's Happening.
1:30 to 2:30 p. m.—KMTR Tea Dance.
3:00 to 4:00 p. m.—Extension Courses from U. S. C., except Saturday.
5:30 to 6:00 p. m.—White King Male Quartet and Mona Content, concert pianist,
6:00 to 6:15 p. m.—Nightly Doings.
6:15 to 6:45 p. m.—Dinner hour program featuring Le Grande Trio.
6:45 to 7:30 p. m.—Fitzgerald Music Co. program.
10:00 to 11:00 p. m.—Miller's Cafe Lafayette Dance Orchestra,

WEEK COMMENCING SUNDAY, JUNE 5, 1927

SUNDAY, JUNE 5

- 5:30 to 6:15 p. m.—White King Male Quartet.
6:15 to 6:30 p. m.—Nightly Doings.
6:30 to 7:00 p. m.—Half-hour of Cheer
7:00 to 8:00 p. m.—Miller's Cafe Lafayette Concert Orchestra.
8:00 to 9:30 p. m.—Dept. of Water and Power.

MONDAY, JUNE 6

- 10:00 to 11:00 a. m.—Home Hour.
11:00 to 12:00 p. m.—Madame Alem's Hour.
4:00 to 4:15 p. m.—Talk on voting.
4:15 to 4:45 p. m.—J. P. Redding, representing at Ionaco Co.
7:30 to 8:00 p. m.—Vandegrift Shoe Company courtesy program.
8:00 to 9:00 p. m.—A. V. Shotwell program.
9:00 to 10:00 p. m.—Ford Dealers' courtesy program.

TUESDAY, JUNE 7

- 9:00 to 9:45 a. m.—Sylvia the Blind Cook.
9:45 to 10:00 a. m.—Charles Hamp representing the Iona Company.
10:00 to 11:00 a. m.—Georgia O. George "The Psychology and Physiology of Beauty."
11:00 to 12:00 noon—Shopping Hour.
12:00 to 12:30 p. m.—Talk on voting.
4:00 to 4:30 p. m.—Police Commissioner W. G. Thorpe and L. A. Police Quartet.
4:30 to 5:15 p. m.—Le Roy Parry's Orch.
5:15 to 5:30 p. m.—Talk on health by Dr. Robert T. Williams.
7:30 to 8:00 p. m.—L. A. Investment Co.
8:00 to 9:00 p. m.—Hollywood Storage Co.'s program.
9:00 to 10:00 p. m.—C. E. Toberman Co.

WEDNESDAY, JUNE 8

- 9:00 to 9:30 a. m.—Diet Question Box.
9:30 to 10:00 p. m.—Travel Talk.
10:00 to 11:00 a. m.—Home Hour.
5:00 to 5:30 p. m.—Dr. Wesley M. Barrett.
7:30 to 8:00 p. m.—Overell's Furniture Co. courtesy program, featuring the Overell KMTR Players,

- 8:00 to 9:00 p. m.—Sidney Glass Shoe Co.'s courtesy program.

THURSDAY, JUNE 9

- 9:00 to 10:00 p. m.—Hollywood Storage Co.
9:00 to 10:00 a. m.—Sylvia, the Blind Cook.
10:00 to 10:15 a. m.—Charles Hamp, representing the Iona Company.
10:15 to 12:00 noon—Georgia O. George, "The Psychology and Physiology of Beauty."
4:45 to 5:15 p. m.—"Cleanings of a Book-worm," by Lloyd Luckham.
6:15 to 6:30 p. m.—Platt Music Co. courtesy program.
7:30 to 8:00 p. m.—Winslow B. Felix, Chevrolet courtesy program.
8:00 to 10:00 p. m.—Ruth Roland night.

FRIDAY, JUNE 10

- 8:15 a. m.—Broadcasting from the Breakfast Club.
10:00 to 11:00 a. m.—Home Hour.
4:00 p. m.—Pacific Electric Art.
7:30 to 8:00 p. m.—Charles Hamp.
8:00 to 9:00 p. m.—Tucker and Charles.
9:00 to 9:30 p. m.—L. A. Investment Co.
9:30 to 10:00 p. m.—C. E. Toberman Co.

SATURDAY, JUNE 11

- 9:00 to 10:00 a. m.—Sylvia, the Blind Cook.
10:00 to 10:15 p. m.—Charles Hamp, representing the Iona Co.
10:15 to 11 a. m.—Home Hour.
4:00 p. m.—Radio Talk to Radio Fans by Forbes W. Van Why,
7:30 to 7:40 p. m.—Talk by M. D. Benesh of the Sheriffs office.
7:40 to 8:00 p. m.—KMTR Movie Club.
8:00 to 8:30 a. m.—Luna Park courtesy program.
8:30 to 9:00 p. m.—L. A. Investment Co
9:00 to 10:00 p. m.—L. A. Police Department program.
10:00 to 12:00 p. m.—Miller's Cafe Lafayette Dance Orchestra,

BT Counterphase 8—World's Greatest Radio—Sold with a Distance Guarantee. H. A. Everest, 1032 North Ogden Dr. Granite 9915.

Presenting
The ECHOPHONE Six Tube
Console Receiver



This Beautiful Model is Operated from the Light Socket
Without Batteries or Trickle Charger, Using All-Electric
A, B and C Elimination. Enclosed in this Handsome
Mahogany Console.

Our Salesmen will demonstrate on request without obligation

We have the most completely equipped factory on the
Pacific Coast, occupying 7,500 square feet of floor space.

ECHOPHONE RADIO
MANUFACTURING COMPANY

968 NORTH FORMOSA ST. PHONE GRANITE 9808 LOS ANGELES



LEIGH HARLINE

Los Angeles, California—252 Meters

KFXB

500 WATTS—1190 KILOCYCLES
Commercial Exchange Bldg., Eighth and Olive Sts.
Los Angeles

MERLE J. GRINDLE, Manager
LEIGH HARLINE, Program Manager
BARON KEYES, Announcer
BERTRAM O. HELLER, Technical Director
"In the Center of Greater Los Angeles"

DAILY EXCEPT SUNDAY—

- 10:00 to 11:00 a. m.—Hatch Graham's Oddities.
11:00 to 12:00 a. m.—Baron Keyes diversities.
2:00 to 4:00 p. m.—Program by remote control from Palais de Dance, featuring Ralph Markey and his Musical Keys.
4:00 to 5:00 p. m.—Educational hour.
5:00 to 5:45 p. m.—Sundown Frolic.
5:45 to 6:00 p. m.—Amusement suggestions.
6:00 to 7:00 p. m.—Pipe organ recital by remote control from the studio of Albert Hay Malotte.
10:00 to 11:00 p. m.—Palais de Dance and Ralph Markey and his Musical Keys.
11:00 to 12:00 p. m.—Cinderella Roof—by remote control.

WEEK COMMENCING SUNDAY, JUNE 5, 1927

SUNDAY, JUNE 5

- 6:00 to 7:00 p. m.—Angelus String Trio; Lucy May Story, child soprano.
7:00 to 8:00 p. m.—Request hour with Al Rattray, Red Wyatt, Wint Cotton, Edna Cook, Leonrd Van Berg, Baron Keyes, Kay Palmer.
8:00 to 9:00 p. m.—Bud Riley's Honolulu Conservatory of Music Program.
9:00 to 10:00 p. m.—KFXB Trio; Ruth Donegan, soprano.

MONDAY, JUNE 6

- 12:00 to 1:00 p. m.—Oregon Agitators Orch.
7:00 to 7:30 p. m.—Frank Barry, tenor, and Adrean Lee, pianist.
7:30 to 8:00 p. m.—Charlie Diamond, steel guitar artist.
8:00 to 9:00 p. m.—Pope and his Californians.
9:00 to 10:00 p. m.—Simultaneous broadcast with KYA, San Francisco, program originating at KFXB.

TUESDAY, JUNE 7

- 12:00 to 1:00 p. m.—Oregon Agitators Orch.
7:00 to 7:30 p. m.—Star Furniture Program, Bill Hatch, Ray Kellogg, Peggy Mathews.
7:30 to 8:00 p. m.—Billy Barron, Wint Cotton.
8:00 to 9:00 p. m.—Polytechnic High Alumni Program.
9:00 to 10:00 p. m.—Pirate Band, Red Wyatt.

WEDNESDAY, JUNE 8

- 7:00 to 8:00 p. m.—Dick Rosse's Virginians,

- 8:00 to 8:30 p. m.—Santa Anita Trio.

- 8:30 to 9:00 p. m.—R. E. Rowe, Phyrne Alstyne and Claudia Wayne.

- 9:00 to 10:00 p. m.—Request Hour, with Al Rattray, Red Wyatt, Edna Cook, Leonard Van Berg, Wint Cotton, Kay Palmer, Adrean Lee, Baron Keyes, and others.

THURSDAY, JUNE 9

- 12:00 to 1:00 p. m.—Oregon Agitators Orch.
7:00 to 7:30 p. m.—Frank Martin, Victor Lydon.
7:30 to 8:00 p. m.—Edward Pose, LaMont Stetzer, Clara Hannaford.
8:00 to 9:00 p. m.—Fred Wesley, Mabel and Billy, Catherine O'Neil.
9:00 to 10:00 p. m.—Angelus String Trio;

FRIDAY, JUNE 10

- 12:00 to 1:00 p. m.—Oregon Agitators Orch.
7:00 to 8:00 p. m.—Jack Lempkes Radio Boys; KFXB Girl Friends.
8:00 to 9:00 p. m.—Crooners Quartet; Frank Barry, Adrean Lee, pianist.
9:00 to 10:00 p. m.—Simultaneous broadcast with KYA, San Francisco, program originating at KYA.

SATURDAY, JUNE 11

- 12:00 to 1:00 p. m.—Oregon Agitators Orch.
7:00 to 7:30 p. m.—Carl Dye and Melody Makers.
7:30 to 8:00 p. m.—Studio Program.
8:00 to 10:00 p. m.—Police Frolic

BUY YOUR PHILCO DIRECT—WE. 9065

TRinity 2914

EST. 1903



24

Years In
Business

SEE AND HEAR

The Portable Radiola 26—
A Super-Het

A Knockout in City or Wilderness

NEWBERY ELECTRIC CORP.

726 South Olive St.

TRinity 2914



Los Angeles, Cal.

KUPROX

No Bulbs • No Liquids • No Noise

Type "A" Replacement Unit

*Doubles Charging Rate and Eliminates Jars
On All Electrolytic Trickle Chargers and
"A" Power Socket Units*

This revolutionary new dry metallic disc rectifier is produced solely by the manufacturers of the well known "Kodel" Socket Power Devices.

For more satisfactory performance from any Radio equipped with either Trickle Charger or "A" Power Socket Unit... replace your electrolytic jar with a "KUPROX" unit, and forget charging troubles.

"KUPROX" doubles the charging rate of any electrolytic charger, and by eliminating jars does away with the danger of spilled acids and the necessity of watering.

"KUPROX" units are unaffected by climatic extremes, and once installed will operate indefinitely without attention.

"KUPROX" operates entirely through heavy copper discs in which the atomic structure has been rearranged by intense heat vaporization to produce "unilateral conductivity." There being neither mechanical, chemical or ionic action, "KUPROX" units do not deteriorate and are practically everlasting.

You can get "KUPROX" at any "Western Auto" store for only \$4.50

\$4.50



"Western Air Patrol" 5 and 6 Tube Radios are unequalled at our low prices

-More than 150 Stores in the West-
Western Auto Supply Co.
Main Store - 1100 South Grand Ave. - LOS ANGELES



Headquarters for high-grade, fully guaranteed Radio Accessories



Los Angeles, California—275.1 Meters

KFSG

ANGELUS TEMPLE, ECHO PARK. Filtray 5121
 AIMEE SEMPLE McPHERSON, Founder, President
 P. S. LUCAS, Technician in Charge
 "Four Square Gospel"

DAILY EXCEPT SUNDAY AND MONDAY—

10:30 to 11:30 a. m.—Sunshine Hour.
 11:30 a. m. to 12:30 p. m.—Noonday Musical.
 6:30 to 7:30 p. m.—Angelus Hour.

DAILY EXCEPT SUNDAY, MONDAY, WEDNESDAY, SATURDAY—

2:30 to 3:30 p. m.—Gray Studio Program.

WEEK COMMENCING SUNDAY, JUNE 5, 1927

Aimee Simple McPherson

SUNDAY, JUNE 5

10:30 a. m. to 12:30 p. m.—Sunday morning worship; A. C. Roberts, Evangelist; Thomas Johnson, soloist; Temple organ and chimes played by Roy Reed Brignal; quartets and soloists.
 2:30 to 4:30 p. m.—Afternoon Dispensational service by A. C. Roberts.
 6:30 to 9:30 p. m.—Revival service by A. C. Roberts, preceded by musicale hour.
 10:00 to 11:00 p. m.—Organ recital by Roy Reed Brignal.

TUESDAY, JUNE 7

3:30 to 4:30 p. m.—Vesper hour. Organ recital by B. Earnest Ballard.
 6:30 to 7:30 p. m.—Angelus Hour. Gray Studio program arranged by H. C. Meilander.
 7:30 to 9:15 p. m.—Evangelistic services by Student Evangelists.

WEDNESDAY, JUNE 8

6:30 to 7:30 p. m.—Angelus Hour. Gray Studio program arranged by H. C. Meilander.
 7:30 to 9:30 p. m.—Regular mid-week prayer service by A. C. Roberts.

THURSDAY, JUNE 9

3:30 to 4:30 p. m.—Vesper Hour. Organ recital by B. Earnest Ballard.
 6:30 to 7:30 p. m.—Angelus Hour program from Gray Studio.
 7:30 to 9:30 p. m.—Regular Water Baptismal service by A. C. Roberts.
 9:15 to 10:00 p. m.—Gray Studio program. Herbert Morley, tenor; Ladies' Quartette.
 10:00 to 11:00 p. m.—Organ recital by Roy Reed Brignal.

FRIDAY, JUNE 10

3:30 to 4:30 p. m.—Vesper Hour. Organ recital by Roy Reed Brignal.
 6:30 to 7:30 p. m.—Angelus Hour program from the Gray Studio.
 7:30 to 9:30 p. m.—Crusader Rally. Sermon by A. C. Roberts.
 10:00 to 11:00 p. m.—Back Home Hour. Angelus Temple Band. Mrs. C. D. Smith, xylophonist.

SATURDAY, JUNE 11

3:30 to 4:30 p. m.—The Children's Happy Hour. Program arranged by Children's Evangelist Estelle Jones.
 6:30 to 7:30 p. m.—Gray Studio program.
 7:30 to 9:30 p. m.—Divine Healing Service, conducted by A. C. Roberts, Evangelist.



M. E. CARRIER
Announcer

Los Angeles, California—288 Meters

KTBI

500 WATTS—1040 KILOCYCLES
 BIBLE INSTITUTE OF LOS ANGELES
 MR. M. E. CARRIER, Manager
 PROF. H. G. TOVEY, Director of Programs
 Phone ME. 6701

DAILY EXCEPT SUNDAY—

8:45 to 9:15 a. m.—Devotional Hour.
 2:00 to 3:00 p. m.—Inspirational Hour.

DAILY EXCEPT FRIDAY AND SUNDAY—

7:15 to 8:00 p. m.—Aunt Martha's Children's Hour.

WEEK COMMENCING SUNDAY, JUNE 5, 1927

SUNDAY, JUNE 5

10:45 a. m. to 12:30 p. m.—Regular service of the Church of the Open Door.
 3:00 to 4:00 p. m.—Jewish Radio Hour. Bible Exposition by Rev. David L. Cooper.
 6:00 to 7:00 p. m.—Radio Vesper Service. Inspirational address by Rev. Wm. H. Pike.
 7:15 to 9:30 p. m.—Regular evening service of the Church of the Open Door. Sermon by Dr. John McNeill.

MONDAY, JUNE 6

8:00 to 9:00 p. m.—Biblical Exposition by Rev. C. A. McDonald.

TUESDAY, JUNE 7

8:00 to 9:00 p. m.—Biblical Exposition by Rev. C. H. Gaskell.

WEDNESDAY, JUNE 8

8:00 to 9:00 p. m.—Biblical Exposition by Dr. John McNeill, pastor of the Church of the Open Door.

THURSDAY, JUNE 9

8:00 to 9:00 p. m.—Biblical Exposition by Rev. C. H. Gaskell.

FRIDAY, JUNE 10

6:15 to 7:00 p. m.—Aunt Martha's Children's Hour.
 7:00 to 8:00 p. m.—Exposition of International Sunday School lesson by Rev. John A. Hubbard.
 8:00 to 9:00 p. m.—United Glee Club concert.



Dave Ward

Hollywood, California—232 Meters

KFQZ

1641 North Argyle Ave., Hollywood, California
 GLadstone 3196; GLadstone 3197
DAVE WARD, Program Director and Announcer
 L. E. TAFT, Technical Engineer
 "The Palace Bungalow Studio"

DAILY EXCEPT SUNDAY—
 8:00 to 7:00 p.m.—Panatrophe Dinner Hour.

MONDAY, TUESDAY, WEDNESDAY, THURSDAY—
 12:00 to 1:00 p.m.—Hazel McCauley and the Office Boy.
 3:30 p.m.—Thursday. Try-outs (not broadcast).

WEEK COMMENCING MONDAY, JUNE 6, 1927

MONDAY, JUNE 6
 7:00 to 8:00 p.m.—Sylvia Harding Trio,
 Florence Purdy.
 8:00 to 9:00 p.m.—Myra Belle Vickers Semi-
 Classical Hour.
 9:00 to 11:00 p.m.—Dixie Demons, Helen
 McColl, Frank Martin.

TUESDAY, JUNE 7
 7:00 to 8:00 p.m.—Hleen Shephard Peabody,
 Clayton A. Lunham, Ed Pose, E. Ruth
 Donigan.
 8:00 to 9:00 p.m.—Katherine Williamson,
 Elnora Swall, Irene Stone, Esther Lerette.
 9:00 to 11:00 p.m.—Southern Serenaders,
 Minnie Petrie, Net Miller, Billie Sullivan,
 Ted Haller.

WEDNESDAY, JUNE 8
 7:00 to 8:00 p.m.—Sylvia Harding Trio,
 Florence Purdy.
 8:00 to 9:00 p.m.—Popular Songs, Interna-
 tional Trio.
 9:00 to 11:00 p.m.—Jack Reinhart's Orches-
 tra, Virginia King, Wm. Mitnick and Carl
 Fisher.

THURSDAY, JUNE 9
 7:00 to 8:00 p.m.—Leslie E. Taft, Talk on
 Radio.

8:00 to 9:00 p.m.—Jean Talbot, Robt. Stowe,
 Jack Goode.
 9:00 to 11:00 p.m.—Studio Park Trio, Al-
 len Dale, Don Stevens.

FRIDAY, JUNE 10
 12:00 noon—Greenwich Village Orchestra.
 1:00 to 1:30 p.m.—Bureau Public Safety,
 L. A. Police Dept.
 7:00 to 8:00 p.m.—Clint Stevenson's Trio,
 Al Flanigan, Margaret Ruth Kernan.
 8:00 to 9:30 p.m.—Novelties, Bea Currie,
 Buddy Helwig.
 9:30 to 10:00 p.m.—Entertainers from the
 Cliff Dwellers.
 10:00 to 11:00 p.m.—Art Bridges Orchestra,
 Helen McColl, Hale Hooper.

SATURDAY, JUNE 11
 12:00 noon—Dave Mack and his Paris Inn
 Cafe Orchestra.
 7:00 to 8:00 p.m.—Philip Tronitz Classical
 Hour.
 8:00 to 8:30 p.m.—Jamgochian Radio Play-
 ers.
 8:30 to 9:00 p.m.—Jean Talbot and others.
 9:00 to 11:00 p.m.—Los Angeles Railway
 Orchestra, soloists.

Program Published as Submitted by the Station.

BUY YOUR PHILCO DIRECT--WE. 9065



GEORGE FRENGER
 Announcer

Pasadena, California—316 Meters

KPSN

PASADENA STAR-NEWS
 1000 WATTS—950 KILOCYCLES
GEORGE CECIL COWING, Managing Director
GEORGE FRENGER, Program Manager
HERSHEL SATTERFIELD, Engineer-in-Charge
PERCY C. PRYOR, Studio Office
 Phone, Wakefield 3111

DAILY EXCEPT SUNDAY—
 12:15 p.m.—News Bulletin.
 6:00 to 6:15 p.m.—Late News Review.

WEEK COMMENCING SUNDAY, JUNE 5, 1927
SUNDAY, JUNE 5
 10:30 a.m.—Family Altar Service by the
 United Church Brotherhoods.

MONDAY, JUNE 6
 6:00 p.m.—News bulletins and David Law-
 rence talk on "Our Government."
 8:00 to 9:00 p.m.—Program by California
 Institute of Technology Band.

TUESDAY, JUNE 7
 8:00 to 9:00 p.m.—Star-News concert with
 James H. Shearer, organist; Frederick

MacMurray, violinist, and George Frenger,
 tenor.

THURSDAY, JUNE 9
 8:00 to 9:00 p.m.—Star-News concert; with
 van Praag Trio and soloists.

FRIDAY, JUNE 10
 8:00 to 9:00 p.m.—Program by the Pasa-
 dena Sciots Band and soloists.

SATURDAY, JUNE 11
 8:00 to 9:00 p.m.—Star-News concert with
 van Praag Trio and soloists.

Program Published as Submitted by the Station.



JACK DUCKWORTH
Announcer

KMIC

Inglewood, California 224 Meters

1340 K. C.—250 Watts
Owned and Operated by James R. Fouch
M. B. RICE, Commercial Manager
NELL LARSON, Studio Accompanist
O. B. MILLS, Engineer
Chamber of Commerce Bldg., Inglewood, Cal.
Phone Direct Wire, THornwall 1121
Long Distance, Inglewood 80
"The Willard Storage Battery Station"



CHARLIE WELLMAN
Announcer

WEEK COMMENCING SUNDAY, JUNE 5, 1927

SUNDAY, JUNE 5

11:00 to 12:15 p. m.—Centinela Baptist Church by remote control;

MONDAY, JUNE 6

5:30 to 7:00 p. m.—Request program, Charlie Wellman; Paul Miller's Dance Orchestra: courtesy of the Radio Sponsoring Bureau.
7:00 to 7:20 p. m.—Charlie Wellman and the Cauldron Quartet.

7:55 to 8:00 p. m.—Final U. S. weather report and forecast;

8:00 to 9:00 p. m.—City of Inglewood courtesy program with the KMIC Concert Orchestra under the direction of Tom Martin; Don Minor, tenor.

9:00 to 9:30 p. m.—Geo. M. Sutton Ford Agency courtesy program, with the Metropolitan Dance Orchestra; Geraldine Gordon, contralto; Don Miner, tenor.
9:30 to 10:00 p. m.—DX program.

TUESDAY, JUNE 7

5:30 to 7:00 p. m.—Request program; Charlie Wellman; Paul Miller's Dance Orchestra; courtesy the Radio Sponsoring Bureau.

7:00 to 7:20 p. m.—Charles Wellman's own program.

7:20 to 7:50 p. m.—Grovenor Inglis Co.
7:45 to 7:55 p. m.—Hardin Pharmacy request program.

7:55 to 8:00 p. m.—Final U. S. weather report and forecast; courtesy Col. E. H. Hersey.

8:00 to 8:15 p. m.—Studio announcements, with Bill Henry and Nell Larson; courtesy the Little Ant Man.

8:30 to 9:00 p. m.—Studio program with Helen McColl, the Gyco Girl; Walter Smith, singing tenor of the Oil Fields; Neva Negus, our Warbler; Abe Jacobson, Bad Time stories.

9:00 to 10:00 p. m.—Studio program, with the L. A. R. R. Orchestra; courtesy the L. A. R. R.; Bill Henry, popular soloist.

WEDNESDAY, JUNE 8

5:30 to 7:00 p. m.—Request program; Charlie Wellman; Paul Miller's Dance Orchestra; courtesy of the Radio Sponsoring Bureau.

7:00 to 7:20 p. m.—Charlie Wellman's own program.

7:20 to 7:50 p. m.—Malloy Clint courtesy program, with Gerldine Gordon and Don Miner.

7:50 to 8:00 p. m.—N. E. Brown, technical talk on radio broadcasting.

8:00 to 8:30 p. m.—Lambert Sales Co. courtesy program, with Mack's Collegians

8:30 to 9:00 p. m.—Inglewood Furniture So. courtesy program, with Walter Smith, Hellen McColl, Neva Negus.

9:00 to 10:00 p. m.—Studio program, with George and Von Harmony Aces; Louise White, soprano.

THURSDAY, JUNE 9

5:30 to 7:00 p. m.—Request program; Charlie Wellman; Paul Miller's Dance Orchestra: courtesy of the Radio Sponsoring Bureau.

7:00 to 7:20 p. m.—Charlie Wellman's own program.

7:20 to 7:0 p. m.—Ross O. Porter Tile Co. courtesy program, with Jack Tenny.

7:50 to 8:00 p. m.—The Toggery courtesy program.

8:00 to 9:00 p. m.—Buy Better in Torrance, with Milt Gardner and his Merry Makers; request program.

9:00 to 10:00 p. m.—Studio program.

FRIDAY, JUNE 10

5:30 to 7:00 p. m.—Request program; Charlie Wellman; Paul Miller's Dance Orchestra; courtesy Radio Sponsoring Bureau.

7:00 to 7:20 p. m.—Charlie Wellman's own program.

7:20 to 7:50 p. m.—Western Auto Electric Co. courtesy program.

7:50 to 8:00 p. m.—J. C. Masters, courtesy program.

8:00 to 8:30 p. m.—Program featuring two nationally advertised pure food products—Skinner's Macaroni and Raisin Bran.

8:30 to 8:45 p. m.—Fifteen Minutes of Sunshine; courtesy Little Ant Man.

8:45 to 9:00 p. m.—Don Miner, request program.

9:00 to 9:30 p. m.—Star Ford Body Exchange Co. courtesy program.

9:30 to 11:30 p. m.—American Legion Frolic, courtesy H. A. McCallister Realty Co.; Dr. L. M. Shride, chiropractor; "Go Get 'Em Wilson," Clothier; Inglewood Pharmacy.

SATURDAY, JUNE 11

5:30 to 7:00 p. m.—Request program, Charlie Wellman; Paul Miller's Dance Orchestra; courtesy the Radio Sponsoring Bureau.

7:00 to 7:20 p. m.—Charlie Wellman's own program.

7:20 to 7:50 p. m.—Studio program, with Bill Henry.

7:50 to 8:55 p. m.—Hickman-Wise Printing and Engraving Co. courtesy program.

8:00 to 10:00 p. m.—Studio program. Every one welcome.

BT Counterphase 8—World's Greatest Radio—Sold with a Distance Guarantee. H. A. Everest, 1032 North Ogden Dr. GRanite 9915.

"FAN" Time

Now is the time to buy your electric fans. Summer and hot days are practically here. Be comfortable—in your home or in your office.

BUY A "SIGNAL" FAN

For the dealer the Signal Fan with the Dual Wound Motor provides both A. C. and D. C. requirements. You need no longer carry duplicate stocks. It has an economic value. It is a beautiful fan, sturdy and dependable. Sells easy.

12-inch Blades List \$24.00

16-inch Blades List 28.00

THE SIGNAL JUNIOR FAN WILL ROUND OUT YOUR LINE

Straight Type, 9-in. Blades List \$ 7.50

Oscillating Type, 9-in. Blades List 12.00

COOK-NICHOLS COMPANY

411 South San Pedro Street
Los Angeles, Calif. FAber 4487, TUcker 6657

482 South Fair Oaks Avenue
Pasadena, Calif. Fair Oaks 1578

KGFJ**Los Angeles, California—208 Meters**

1440 KILOCYCLES

Washington Blvd. at Oak Street, Los Angeles, California

Owned and Operated by **DARRELL DIAMOND** and **BEN S. McGLASHAN**

Phones: Westmore 6509 and Westmore 8855

*"Keeping Good Folks Joyful!"***DAILY EXCEPT SUNDAY—**

- 6:30 to 8:30 a. m.—Breakfast Hour. Popular music by Joey Starr's KGFJ's Orchestra.
 8:30 to 9:30 a. m.—Gordon Smith's Hour.
 1:30 to 2:30 p. m.—Studio Program.
 5:00 to 6:00 p. m.—Roy M. Johnson Motor Co. Program.
 6:00 to 7:00 p. m.—Popular music played by the California Joymakers!
 8:00 to 9:00 p. m.—El Patio Ballroom by remote control.
 9:00 to 11:00 p. m.—Program from the main studio; music, popular and classic.
 11:00 to 12:00 p. m.—El Patio Ballroom by remote control.

WEEK COMMENCING MONDAY, JUNE 5, 1927**MONDAY, JUNE 5**

- 9:30 to 9:45 a. m.—Psychology Talk given by Florenz Norris, Venice, Calif.
 2:30 to 3:30 p. m.—Gordon Smith's Radio-tising Service; George Wood, songs; Jack Martin's Red Hot Aces from Pal's Tavern;
 3:30 to 4:00 p. m.—Bureau of Public Safety program.
 7:00 to 8:00 p. m.—Studio Program, featuring "Brooks and Houser."
 12:00 p. m. to 2:00 a. m. — "Blue Monday Frolic."

TUESDAY, JUNE 6

- 2:30 to 3:30 p. m.—Gordon Smith's Radio-tising Service; studio program.
 4:00 to 5:00 p. m.—Program of popular music, arranged by Lou Parker.
 7:00 to 8:00 p. m.—Stupid program, featuring "Brooks and Houser."
 9:00 to 10:00 p. m.—Joey Starr's KGFJ orchestra.
 10:00 to 11:00 p. m.—Studio program.

WEDNESDAY, JUNE 7

- 2:30 to 3:30 p. m.—Gordon Smith's Radio-tising Service; Jack Martin's Red Hot Aces from Pal's Tavern;
 3:30 to 4:00 p. m.—Studio program.
 4:00 to 5:00 p. m.—Georgia O. George program, featuring King Collins, entertainer.
 7:00 to 8:00 p. m.—Hermosa Club Orchestra from Hermosa Beach, California.

THURSDAY, JUNE 8

- 9:30 to 9:45 a. m.—Psychology Talk, given by Florenz Norris.
 2:30 to 3:30 p. m.—Gordon Smith's Radio-tising Service; Homer Gane, ballads; Gene Smith, tenor; Frank Martin, songs.
 7:00 to 8:00 p. m.—Studio program
 8:00 to 10:00 p. m.—Program, featuring the California Banjo Boys and Cassie Gay.
 4:00 to 5:00 p. m.—Program arranged by Lou Parker.

FRIDAY, JUNE 9

- 2:30 to 3:30 p. m.—Gordon Smith's Radio-tising Service; Jack Martin's Red Hot Aces from Pal's Tavern; Mercedes Marlowe, blues singer; Billy Benton, popular songs; Gene Smith, tenor;
 3:30 to 4:00 p. m.—Studio program.
 4:00 to 5:00 p. m.—Georgia O. George program, featuring King Collins, entertainer.
 7:00 to 8:00 p. m.—Studio program, with Brooks and Houser.

SATURDAY, JUNE 10

- 2:30 to 3:30 p. m.—Gordon Smith's Radio-tising Service; The Venetian Joymakers;
 7:00 to 8:00 p. m.—Studio program; program with "Brooks and Houser."
 9:00 to 10:00 p. m.—Studio program, featuring Gladys Mae Aker, reader; Helen Minaryard, songs; Thomas Ransom, tenor; Miss Eislfeiler, violin.

**E. C. Hutchins****Los Angeles, California—263 Meters****KGEF**500 WATTS—1140 KILOCYCLES
TRINITY METHODIST CHURCH

BOB SHULER, Pastor

Phone Westmore 9834

C. C. HOOPER, Manager

M. J. HANKINS, Technician

WEEK COMMENCING SUNDAY, JUNE 5, 1927

SUNDAY, JUNE 5

- 10:45 a. m. to 12:30 p. m.—Morning service.
 5:00 to 6:00 p. m.—Vesper hour.
 7:00 to 8:00 p. m.—Trinity Choir musical program.
 8:00 to 9:00 p. m.—Bob Shuler's Prelude, Questions and Sermon.

6:45 to 7:45 p. m.—Conrey Bible Class.

7:45 to 8:30 p. m.—Maude Burnett's Studio program.

8:30 to 9:30 p. m.—Bob Shuler's Question Hour.

9:30 to 10:00 p. m.—J. T. Rumbles, Scotch baritone; Berenice Morrison Brubaker, concert pianist.

FRIDAY, JUNE 10

6:30 to 7:00 p. m.—Panatrophe program.

7:00 to 7:30 p. m.—Fredus Nelson Peters.

7:30 to 8:00 p. m.—Stars Sunday School Class.

8:00 to 8:30 p. m.—Bob Shuler's Civic Talk.
 8:30 to 9:30 p. m.—Southern California Homeliness Association.

9:30 to 10:00 p. m.—Theophilus Fitz studio.

- 9:00 to 10:00 p. m.—Old Songs Quartette.
 10:00 to 10:30 p. m.—Bob Shuler's Family Altar Service.

TUESDAY, JUNE 7

- 6:30 to 7:00 p. m.—Panatrophe concert.
 7:00 to 7:30 p. m.—Dr. J. A. B. Fry.
 7:30 to 8:00 p. m.—Mrs. Thos. Bunn's Sunday School Class.
 8:00 to 8:30 p. m.—Los Angeles Church Federation.
 8:30 to 9:00 p. m.—Everett Sanderson and studio musical program.
 9:00 to 9:30 p. m.—Bob Shuler's Doctrinal Talk.
 9:30 to 10:30 p. m.—Engineers No. 72.

WEDNESDAY, JUNE 8

- 6:00 to 6:45 p. m.—Dorothy Spencer's Children's Hour.

SERVICE DIRECTORY

There is a Service Man in Your Neighborhood. Call or see him.

SOUTHEAST	S E R V I C E	SOUTHWEST
6120 South Broadway TH. 0224 <small>(Equipped to handle any job)</small> DE HOOG BROS. RADIO COMPANY		1806 S. Hoover WE. 9650 <small>("Porta-Tester")</small> Haddaway Mfg. Co. <small>(Established 1923)</small>
WEST HOLLYWOOD		HOLLYWOOD
7562 Sunset Boulevard GRanite 7482 SHEPHERD RADIO SERVICE		4745 Fountain Ave. <small>(One Block West of Vermont)</small> OLympia 6405 Have Your Set Wired for No A, B or C Batteries LLEWELLYN RADIO
LONG BEACH		HERMOSA BEACH
430 American Ave. Phone 653-171 RIALTO RADIO CO.		19 Pier Ave. PHONE Hermosa 114-01 If It Is for the Air We Have It FREE SERVICE "Radio Strong"

STANDARD RADIO CO.
417 West Pico St., Los Angeles, Calif.

FADA, ATWATER KENT, FEDERAL AND WESTERN ELECTRIC DEALER

We Carry a Complete Line

Open Model Atwater Kent Wave Length Cut Down to 200 Meters.
We Are Also Making a Specialty of Sharpening Tuning in Any Radio Set.
Two-Tube Harkness Changed to 3-Tube, Guaranteed Perfect Tune-out on Local Stations

Telephone WEstmore 1560 Open Saturday Evenings Until 9 o'clock

Those listed on this page are competent and efficient Radio Technicians and are recommended to you for your patronage.



"HAL" G. NICHOLS
Announcer

Long Beach, California—242 Meters

KFON

1240 KILOCYCLES—500 WATTS
PIGGY WIGGLY STATION
Owned and Operated by
NICHOL & WARINNER, INC.
Studio—211 Jergins Trust Bldg. 617-19, 614-60
Office—212 Jergins Trust Bldg. 617-19, 614-60
"Where Your Ship Comes In"

DAILY—

4:30 to 6:00 p. m.—Piggly Wiggly Concert Orchestra.
6:00 to 6:15 p. m.—Request Period by Doris & Clarence.
6:15 to 7:00 p. m.—Piggly Wiggly Concert Orchestra.

DAILY EXCEPT SATURDAY AND SUNDAY—

10:15 to 10:30 a. m.—Devotional Period.
10:30 to 11:30 a. m.—Physiology of Beauty, Georgia O. George.

DAILY EXCEPT SUNDAY—

11:30 to 12:00 a. m.—Press-Telegram Early News.
12:00 noon—Lost and Found announcements.
4:00 to 4:30 p. m.—Press-Telegram late news.

DAILY EXCEPT MONDAY—

9:30 to 10:15 a. m.—Pacific Coast Club Organ—Herbert Nixon at the console.
2:30 to 4:00 p. m.—Long Beach Municipal Band.
8:00 to 9:00 p. m.—Press-Telegram presenting Long Beach Municipal Band.

WEEK COMMENCING SUNDAY, JUNE 5, 1927

SUNDAY, JUNE 5

11:00 to 12:00 p. m.—Church of the Nazarene. Rev. L. A. Reed.
12:30 to 1:00 p. m.—Musical program, sponsored by Markwell Salt Water Taffy Shop.
1:00 to 2:00 p. m.—Musical program, sponsored by Birkel Music Co.
2:00 to 2:30 p. m.—Pacific Coast Club Organ, Herbert Nixon at the console.
4:00 to 5:00 p. m.—Vesper hour.
7:00 to 7:45 p. m.—Gaskill Mfg. Co. & Missman Radio Co., musical program.
7:45 to 9:00 p. m.—Services from First Church of Christ, Scientist, by remote control.
9:00 to 12:00 p. m.—"Studio Frolics."

MONDAY, JUNE 6

12:00 to 12:30 p. m.—Moore's Apparel Shop, sponsoring musical program.
12:30 to 1:00 p. m.—American Markets, sponsoring musical program.
1:00 to 2:30 p. m.—Studio program.
7:00 to 8:00 p. m.—Bell Post, American Legion.
9:00 to 12:00 p. m.—"Kiwanis Frolic."

TUESDAY, JUNE 7

12:00 to 12:30 p. m.—Eastman Furniture Co., sponsoring musical program.
12:30 to 1:00 p. m.—Georgia O. George and Authorized Hair-A-Gain Shops, featuring Doris and Clarence.
1:00 to 1:30 p. m.—Kiwanis Club luncheon.
1:30 to 2:30 p. m.—Women's Music Study Club, direction of Ruth Parkinson.
7:00 to 7:30 p. m.—Studio program.
7:30 to 8:00 p. m.—"Chas for Booklovers," presented by Hewitt's Bookstore.
9:00 to 10:00 p. m.—Piggly Wiggly Hour, presenting Piggly Wiggly Girls' Trio.
10:00 to 12:00 p. m.—Majestic Ballroom Orchestra, by remote control.

WEDNESDAY, JUNE 8

12:00 to 12:30 p. m.—Moore's Apparel Shop, sponsoring musical program.
12:30 to 1:00 p. m.—American Markets, sponsoring musical program.
1:00 to 1:30 p. m.—Rotary Club luncheon.
1:30 to 2:00 p. m.—Studio program.
2:00 to 2:30 p. m.—Capitol Theatre Organ, Dick Dickson at the console.
4:30 to 6:00 p. m.—Piggly Wiggly Concert Orchestra, sponsored by Long Beach business men.
6:00 to 6:15 p. m.—Request period, by Doris and Clarence.

6:15 to 7:00 p. m.—Piggly Wiggly Concert Orchestra.
7:00 to 8:00 p. m.—Texas Cowboys
9:00 to 10:00 p. m.—Studio program.
10:00 to 12:00 p. m.—Pacific Coast Club Orchestra, by remote control.

THURSDAY, JUNE 9

12:00 to 12:30 p. m.—Eastman Furniture Co., musical program.
12:30 to 1:00 p. m.—Georgia O. George and Authorized Hair-A-Gain Shops, featuring Doris and Clarence.
1:00 to 2:00 p. m.—Capitol Theatre Organ.
2:00 to 2:30 p. m.—Health and Efficiency, Dr. Elmer S. Clark.
7:00 to 8:00 p. m.—Studio program.
9:00 to 10:00 p. m.—Program of dance music.
10:00 to 11:00 p. m.—Capitol Theatre Organ.
11:00 to 12:00 p. m.—Majestic Ballroom Orchestra, by remote control.

FRIDAY, JUNE 10

12:00 to 12:30 p. m.—Moore's Apparel Shop, sponsoring musical program.
12:30 to 1:00 p. m.—American Markets, sponsoring musical program.
1:00 to 1:30 p. m.—Studio program.
1:30 to 2:00 p. m.—Rich's Quality Bakery, musical program.
2:00 to 2:30 p. m.—Capitol Theatre Organ.
7:00 to 7:30 p. m.—Church of Christ, by Rev. Earnest Beam.
7:30 to 7:45 p. m.—Studio program.
7:45 to 8:00 p. m.—"Lucky Jim" Investment Chat, by Seaboard Bond & Mortgage Co.
9:00 to 10:00 p. m.—Majestic Ballroom Orchestra, remote control.
10:00 to 12:00 p. m.—Elks' Frolic, Lodge No. 888.

SATURDAY, JUNE 11

12:00 to 12:30 p. m.—Eastman Furniture Co., musical program.
12:30 to 1:00 p. m.—Musical program.
1:30 to 2:30 p. m.—Capitol Theatre Organ.
7:00 to 8:00 p. m.—Piggly Wiggly Minstrels.
9:00 to 10:00 p. m.—Studio program.
10:00 to 11:00 p. m.—Capitol Theatre Organ, Dick Dickson at the console.
11:00 to 12:00 p. m.—Pacific Coast Club Orchestra, by remote control.

Naturally!

By virtue of actual merit, NOMAD has NATURALLY taken its place among leading radio receivers of the world. Made of the best procurable parts, assembled in a hitherto untried manner with results which speak of absolute success. Are we happy? NATURALLY!

NOMAD

Portable Radio

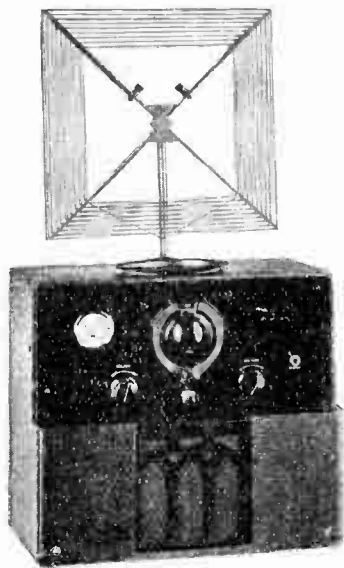
ONLY

\$89.00

COMPLETE

Nothing Else to Buy

NOMAD will surprise you with its VOLUME, TONE, and SELECTIVITY. Beautiful, durable, correct for home use and unmatched for vacationing. No ground or aerial wires necessary. Brings in your favorite station NATURALLY!



NOMAD

6 Tubes, Including Power Tube

*There is Nothing
"Exactly like Nomad"*

Manufactured by

The Savoy Radio Company

713½ South Main Street, Los Angeles, California

Telephone: Tucker 2605

An Interesting Offer to Responsible Dealers



TOM MITCHELL
Announcer

Santa Monica, California—375 Meters

KNRC

500 WATTS
Owned and Operated by KEIRULFF & RAVENS-
CROFT COMPANY
Municipal Auditorium, Ocean Park, Santa Monica,
Calif. Phone Santa Monica 63-101.
TOM MITCHELL, Studio Manager and Announcer.
C. B. JUNEAU, Transmission Engineer.
"The Station with a Smile"

DAILY EXCEPT SUNDAY—

4:00 to 4:45 p. m.—Smiling Circle with Tom.
6:00 to 7:00 p. m.—Club Casa Del Mar.
7:00 to 8:00 p. m.—Merchants Preview Hour.
10:00 to 11:00 p. m.—Club Casa Del Mar.

DAILY EXCEPT MONDAY—

2:30 to 4:00 p. m.—Santa Monica Municipal Band.
8:00 to 9:00 p. m.—Band Concert.
2:30 p. m.—Band Concert.

3:00 to 3:15 p. m.—Bay Builders' Exchange Booster program.

WEEK COMMENCING SUNDAY, JUNE 5, 1927

SUNDAY, JUNE 5

10:45 to 11:45 a. m.—Pilgrim Lutheran Church services, remote control.
5:15 to 6:15 p. m.—The Pirate Band.
6:15 to 7:00 p. m.—Pilgrim Lutheran Church services.
7:00 to 8:00 p. m.—Club Casa Del Mar organ concert, remote control.
9:00 to 10:00 p. m.—Club Casa Del Mar

MONDAY, JUNE 6

7:30 to 8:00 p. m.—Charles Hamp, representing the Iona Company.
8:00 to 8:15 p. m.—"Little Ant Man."
8:00 to 10:00 p. m.—Main Studio program.

TUESDAY, JUNE 7

9:00 p. m.—Public Safety Talk by Judge Louis P. Russill.
9:00 to 10:00 p. m.—Main Studio program,

WEDNESDAY, JUNE 8

7:45 p. m.—Talk by Eugene Biscailuz.
9:00 to 9:30 p. m.—Club Casa Del Mar Orchestra.
9:30 to 10:30 p. m.—Boxing matches, courtesy Ocean Park Athletic Club.
10:30 to 11:00 p. m.—Club Casa Del Mar Orchestra.

THURSDAY, JUNE 9

9:00 to 10:00 p. m.—Main Studio program, featuring Julius K. Johnson.

FRIDAY, JUNE 10

9:00 to 10:00 p. m.—Main Studio program.

SATURDAY, JUNE 11

9:00 to 10:00 p. m.—Main Studio program.
11:00 to 12:00 p. m.—Gables Casa, remote control.

BUY YOUR PHILCO DIRECT—WE, 9065



Major Lawrence Mott
Announcer

Avalon, California—219 Meters

KFWO

THE CATALINA ISLAND STATION
(Non-Commercial)
Power 250 Watts—Western Electric Equipment
"Katalina for Wonderful Outings"
MAJOR LAWRENCE MOTT, Owner-Operator
MISS FRANCES HEWITT, Studio & Program Dir.
"The Isle with a Smile"

DAILY EXCEPT MONDAY—

12:30 to 1:30—Hotel St. Catherine Orchestra.
6:30 to 8:00—St. Catherine Orchestra.

DAILY EXCEPT MONDAY, THURSDAY AND SUNDAY—

8:00 to 8:30—Studio.

MONDAYS

Silent.

TUESDAYS

5:30 to 6:00 p. m.—Miss Hewitt's Golden Hour.
6:00 to 8:00 p. m.—Studio.

WEDNESDAYS

8:00 to 9:00 p. m.—Studio Program
9:00 to 12:00 Midnight—Overseas.

THURSDAYS

8:00 to 9:00 p. m.—Studio Program

FRIDAYS

5:00 to 6:00 p. m.—Miss Hewitt's Golden Hour.
6:00 to 6:30 p. m.—Wrigley Chimes.

SATURDAYS

3:00 to 4:30 p. m.—Rebroadcast of KNX.
9:15 to 10:00 p. m.—Studio.

SUNDAYS

5:00 to 6:00 p. m.—Miss Hewitt's Golden Hour.
6:00 to 6:30 p. m.—Wrigley Chimes.
8:00 to 9:15 p. m.—Lobby Concert.

Victor Electrolas used during all programs.

BT Counterphase 8—World's Greatest Radio—Sold with a Distance Guarantee. H. A. Everest, 1032 North Ogden Dr. Granite 9915.

The City's Power and Light Business Is YOUR Business

**APPROVAL OF PROPOSITIONS 3 AND 4
At the June 7th Election**

**WILL ENABLE YOUR POWER AND LIGHT
SYSTEM TO GIVE YOU BETTER ELEC-
TRIC SERVICE AND LOWER RATES**

Proposition 3:

Will enable the State Railroad Commission to complete its work of making a valuation of the electric system of the Los Angeles Gas and Electric Corporation. This is a valuation only—and not a purchase proceeding.

All expenses incidental to the making of this valuation will be paid directly from revenues of the Power Bureau and not from taxes.

Proposition 4:

Will enable the Harbor Department to lease to your Municipal Power Bureau a parcel of vacant tide land as a site for a vitally necessary stand-by steam plant. This steam plant must be built in order to protect power and light consumers against interruptions in service.

The steam plant is to be built from Power Bureau funds. No new bond issues will be necessary.

THE "COMPETITION" BOGEY

Remember These Facts:

1. You are now being served gas by two "competing" gas companies in Los Angeles. These "competing" companies recently increased their rates from 68 cents to 92 cents per 1000 cubic feet.
2. Your Municipal Water Bureau has a monopoly of the water business in Los Angeles—and your Water Bureau is selling water for 13 cents per 100 cubic feet, as compared with the rate of 28 cents per 100 cubic feet charged by the private water company in San Francisco.

Do not be hoodwinked by the prophecy that purchase of the Gas Company's electric system will burden the taxpayers with a "huge bond issue." The city purchased the Edison Company's electric distributing system in Los Angeles in 1922, and not one dollar in taxes has been collected on account of the Edison purchase bonds since your Power Bureau took over the former Edison system. All charges on Power Bonds are paid from earnings of the Power Bureau—and not from taxes.

**APPROVAL OF PROPOSITIONS 3 AND 4 WILL NOT
COST THE TAXPAYERS ONE DOLLAR
DEPARTMENT OF WATER AND POWER
CITY OF LOS ANGELES**



Venice, California—208 Meters

KFVD

250 WATTS—1440 KILOCYCLES

"The Voice by the Sea"

McWHINNIE ELECTRIC CO., VENICE BALLROOM

Venice, Cal. Phone 65969

MARY ELIZABETH CARTER, Mgr. and Announcer

Donald Peters and John Winn, Technicians

DAILY EXCEPT SUNDAY—

9:00 to 11:00 a. m.—Music and "Trade Winds."

11:00 a. m. to 12:00 m.—Mary Elizabeth's Garden.

5:30 to 7:00 p. m.—Music and "Trade Winds."

8:00 p. m. to 10:00 p. m.—Studio program.

10:00 p. m. to 12:00 m.—Cush Branch and Orchestra

Mary Elizabeth Carter WEEK COMMENCING MONDAY, JUNE 6, 1927

MONDAY, JUNE 6

8:00 to 10:00 p. m.—Geo. Thieme and Harry Von Zell; Tiny, Jack and Buck, the KFVD Harmony Trio; Elnora Swall and Catherine Williamson, Venetian Joymakers; Pete, piano accordion; Estelle Kendig, soprano; Juanita Kennedy, contralto; Fred Wesley, tenor; Cliff Moore and his College Cronies.

TUESDAY, JUNE 7

8:00 to 10:00 p. m.—Dorothy Berry, Harmony Girl; Hal Denny, violinist; Scott McConnell, tenor; Edith Hancock, soprano; Cliff Gorman and his guitar and songs; Esther and Carlotta Jacobson, whistler and songs.

WEDNESDAY, JUNE 8

4:00 to 5:30 p. m.—Children's Hour, conducted by Ursula March Largey.

8:00 to 10:00 p. m.—Harry R. Knabenshue, tenor; Elizabeth Blair Davis, mezzo soprano; Roy T. Davis, whistler; Arcadian Ramblers Orchestra; Nina Fry, soprano; Calla Gialand, contralto.

12:00 midnight to 2:00 a. m.—Tommy Jacobs and his Ship Cafe, by remote control.

THURSDAY, JUNE 9

8:00 to 10:00 p. m.—Vic Smith and his Se-

bastian Night Club Entertainers; Paul Patton; Minnie Petrie, soprano; Clyde Waller, tenor; KFVD String Quartet; Jay Howland and his Musical Saw; Marvin Christensen, tenor.

FRIDAY, JUNE 10

4:00 to 5:30 p. m.—Children's Hour, conducted by Ursula March Largey; courtesy program by Marbelite Corporation of America; The Black Cat Orchestra, Al Applegate, director; Fremont High School Quartet.

8:00 to 10:00 p. m.—Lauraine C. Smith, soprano; Morris Lensky, Russian baritone; Dr. Delevanti, pianist; Mme. Tessie Weiss, operatic soprano; C. Leavitt Browne, pianologues; Frances Harnion, soprano; Chas. Robertson, tenor.

SATURDAY, JUNE 11

8:00 to 9:00 p. m.—Junior Hour with Eva Day Dixon; Doty Twins and Harl, and others.

9:00 to 10:00 p. m.—Melody Makers Orchestra; Tiny, Jack and Buck, the KFVD Harmony Trio; Roy King, singing engineer;

SUNDAY, JUNE 12

Cush Branch and his Orchestra from the Venice Ballroom.

BUY YOUR PHILCO DIRECT—WE. 9065



JACK W. PILLEY

Santa Barbara, California—211 Meters

KFCR

50 WATTS—1420 KILOCYCLES

LAMB ELECTRIC CO., 1200 Anacapa Street

JACK W. PILLEY, Manager and Program Announcer

GORDON E. SAWYER, Technical Engineer

DAILY EXCEPT SUNDAY—

12:00 to 1:00 p. m.—Studio concert.

6:145 to 7:00 p. m.—Merchants' Musical Review.

7:00 to 7:15 p. m.—Weather, special news items.

7:15 to 7:20 p. m.—lost and found notices.

7:20 to 7:30 p. m.—What's doing in town.

WEEK COMMENCING SUNDAY, JUNE 5, 1927

SUNDAY, JUNE 5

7:15 to 8:15 p. m.—Sunday evening concert.

8:15 to 9:15 p. m.—KFCR Concert Orchestra and Cousin Jack.

MONDAY, JUNE 6

7:30 to 8:30 p. m.—KFCR Concert Trio in courtesy program.

8:30 to 9:30 p. m.—Home Merchants, courtesy program.

TUESDAY, JUNE 7

7:30 to 8:30 p. m.—KFCR Orchestra, courtesy program and Cousin Jack.

8:30 to 9:30 p. m.—Home merchants courtesy program.

WEDNESDAY, JUNE 8

7:30 to 8:30 p. m.—KFCR Orchestra and

8:30 to 9:30 p. m.—Dance Orchestra.

THURSDAY, JUNE 9

7:30 to 8:30 p. m.—KFCR Studio Concert Orchestra in courtesy program.

8:30 to 9:30 p. m.—Home merchants courtesy program and Cousin Jack.

FRIDAY, JUNE 10

7:30 to 8:30 p. m.—KFCR Syncopators.

8:30 to 10:00 p. m.—Studio Frolic.

SATURDAY, JUNE 11

12:00 to 1:00 p. m.—Studio Concert.

6:15 to 7:30 p. m.—Merchants Musical Review.

OUR EXCEPTIONAL OFFER

*Get two Great Magazines For Almost
the Price of One!*

SAVE \$2.00

RADIO NEWS—The National Radio Monthly
with the largest circulation and following of
any Radio publication in the world—

or
SCIENCE AND INVENTION

or
AMAZING STORIES

Regular Price \$2.50

and

RADIO DOINGS—The Leading Pacific Coast
Radio Weekly — The Radio authority of the
Pacific Coast—

Regular Price \$3.00

These leaders in their respective fields—the great National
Monthly, Radio and Scientific Magazines and the great
Pacific Coast Weekly—

BOTH NOW FOR \$3.50

You Can't Afford to Pass This Offer By

Attach Money Order, Check or Currency to the Coupon and Mail to Us
Right Now

RADIO DOINGS,
407 E. Pico Street
Los Angeles, Calif.

*Or Conger & Moody,
Sharon Bldg., San Francisco, Calif.*

*Send me RADIO DOINGS and "RADIO NEWS," or SCIENCE &
INVENTION or AMAZING STORIES for one year. I enclose \$3.50.*

Name.....

Address.....

City and State.....

(Specify NEW or RENEWAL)

R-1



CURTIS PECK
Announcer

San Francisco, California—422 Meters

KPO

1000 WATTS—710 KILOCYCLES
HALE BROTHERS AND THE CHRONICLE
J. W. LAUGHLIN, Managing Director
MRS. FREDERICK CROWE, Program Director
ALBERT J. HODGES, Technical Director
Phone Kearney 5777

"The Voice of San Francisco"

DAILY EXCEPT SUNDAY—

- 6:45, 7:15 and 7:45 a.m.—Daily health drill by Hugh Barrett Dobbs.
- 10:30 a.m.—"Ye Towne Cryer."
- 10:45 a.m.—Cooking Hints.
- 12:00 noon—Time signals and Scripture reading.
- 1:00 to 2:00 p.m.—Rudy Seiger's Fairmont Hotel Orchestra.
- 2:30 to 4:30 p.m.—Baseball.
- 4:30 to 5:30 p.m.—Palace Hotel Concert Orchestra.
- 5:30 to 6:15 p.m.—Children's Hour.
- 6:15 to 6:30 p.m.—"Ye Towne Cryer."
- 6:30 to 7:00 p.m.—States Restaurant Orchestra.
- 7:00 to 7:30 p.m.—Rudy Seiger's Fairmont Hotel Orchestra.
- 7:30 to 8:00 p.m.—Silent.
- 10:00 to 11:00 p.m.—Dance Program.

WEEK COMMENCING SUNDAY, JUNE 5, 1927

SUNDAY, JUNE 5

- 10:45 a.m.—"Ye Towne Cryer," giving the United States weather forecast and general information.
- 2:45 to 4:30 p.m.—Play-by-play broadcast of baseball game from Recreation Park, sponsored by San Francisco branch of the manufacturers of White King and Mission Bell soaps.
- 6:00 to 6:30 p.m.—States Restaurant Orchestra, Waldemar Lind, director.
- 6:30 p.m.—"Ye Towne Cryer" giving general information.
- 6:35 to 8:35 p.m.—Palace Hotel Concert Orchestra, Cyrus Trobde, director.
- 8:35 to 10:00 p.m.—Rudy Seiger's Fairmont Hotel Concert Orchestra.

MONDAY, JUNE 6

- 8:00 to 9:00 p.m.—Program by National Broadcasting Company.
- 9:00 to 10:00 p.m.—Studio program.
- 10:00 to 12:00 p.m.—KPO's variety hour, featuring KPO's well known artists.

TUESDAY, JUNE 7

- 8:00 to 9:00 p.m.—Uda Waldrop hour, featuring Uda Waldrop, KPO's official organist, at the organ of the First Unitarian Church.
- 9:00 to 10:00 p.m.—National Broadcasting Company program.

- 10:00 to 11:00 p.m.—Palace Hotel Rose Room Dance Orchestra, Gene James, director.

WEDNESDAY, JUNE 8

- 8:00 to 9:00 p.m.—Program by the Atwater Kent Artists under auspices of Ernest Ingold, Inc.
- 9:00 to 10:00 p.m.—National Broadcasting Company program.
- 10:00 to 11:00 p.m.—States Restaurant Orchestra, Waldemar Lind, director.

THURSDAY, JUNE 9

- 8:00 to 9:00 p.m.—Studio program.
- 9:00 to 10:00 p.m.—National Broadcasting Company.
- 10:00 to 11:00 p.m.—Palace Hotel Rose Room Dance Orchestra, Gene James, director.

FRIDAY, JUNE 10

- 8:00 to 9:00 p.m.—Studio program.
- 9:00 to 10:00 p.m.—National Broadcasting Company program.
- 10:00 to 11:00 p.m.—States Restaurant Orchestra, Waldemar Lind, director.

SATURDAY, JUNE 11

- 8:00 to 9:00 p.m.—Studio program.
- 9:00 to 12:00 p.m.—Goodrich Silvertown Cord Dance Orchestra, under direction of Cyrus Trobde.
- 12:00 p.m. to 1:00 a.m.—Palace Hotel Rose Room Dance Orchestra, Gene James, director.



R-94 "A"
Power Supply

STERLING "A" POWER UNIT

FOR

RADIOLA 20—25—28

And Other 4-Volt Tube Sets

NO TROUBLE — NO ATTENTION

Telephone UNIVERSITY 3371 or write for demonstration in your own home. Unlimited guarantee.

DETSCH & CO.

1939 E. 16th St.
LOS ANGELES

555 Turk St.
SAN FRANCISCO

“A” and “B” POWER For Your Radio Set



WILLARD “A” POWER UNIT



WILLARD “B” POWER UNIT

Each of these units represents the best in engineering in the Power Unit field. Workmanship and materials are of the highest quality. No hum or distortion from them. They connect with the house lighting circuit.

Ask about our Time Payment Plan. Why not buy them now?

Willard Service Stations

OF SOUTHERN CALIFORNIA
OR
YOUR NEAREST RADIO DEALER



Howard L. Milholland
Announcer

Oakland, California—384 Meters

KGO

5000 WATTS—780 KILOCYCLES
PACIFIC COAST STATION, GENERAL ELECTRIC CO.
Phone Fruitvale 5980

DAILY EXCEPT SATURDAY AND SUNDAY—

- 1:30 and 6:00 p. m.—Stock and weather reports. Base ball scores.
6:00 to 6:55 p. m.—Bem's Little Symphony Orchestra.
6:55 to 7:30 p. m.—Weather and stock reports.

WEEK COMMENCING SUNDAY, JUNE 5, 1927

SUNDAY, JUNE 5

- 11:00 a. m.—First Methodist Episcopal Church service, Rev. Edgar Allen Lowther, D.D., pastor.
4:00 p. m.—Vesper service, Grace Cathedral.
6:30 to 7:30 p. m.—Concert by Bem's Little Symphony Orchestra.
7:30 p. m.—Weather bureau report.
7:30 to 9:00 p. m.—First Methodist Episcopal Church service, Oakland. Rev. Edgar Allen Lowther, D.D., pastor.
9:00 to 10:00 p. m.—National Broadcasting Company program.

MONDAY, JUNE 6

- 11:30 a. m. to 12:00 noon—Nat Vincent half hour.
12:00 to 1:00 p. m.—Rembrandt Trio.
4:00 to 5:00 p. m.—Frank Ellis and his Hotel St. Francis Dance Orchestra.
5:30 to 6:00 p. m.—KGO Kiddies' Klub.
9:00 to 9:00 p. m.—National Broadcasting Company program.
9:00 to 9:20 p. m.—Joseph Henry Jackson, "Chats About New Books."

TUESDAY, JUNE 7

- 11:30 a. m. to 12:00 noon—Orrin Leon Padel, tenor; Alice Gray Padel, piano.
12:00 to 1:00 p. m.—Damonte Novelty Trio.
4:00 to 5:00 p. m.—Ed Fitzpatrick and his Hotel St. Francis Concert Orchestra.
8:00 to 9:00 p. m.—The Pilgrims. Eveready program by National Carbon Company.
9:00 to 10:00 p. m.—National Broadcasting Company program.
10:00 to 10:30 p. m.—"HM" and "JP" entertain.
10:30 to 11:00 p. m.—Surprise broadcast.

WEDNESDAY, JUNE 8

- 11:30 a. m. to 12:00 noon—Waterman Piano School program.
12:00 to 1:00 p. m.—Rembrandt Trio.
4:00 to 5:00 p. m.—Ed Fitzpatrick and his Hotel St. Francis Concert Orchestra.
8:00 to 9:00 p. m.—Vacation program. W. O. W. Male Trio and "fish stories."
9:00 to 10:00 p. m.—National Broadcasting Company program.

THURSDAY, JUNE 9

- 11:30 a. m. to 12:00 noon—Nat Vincent half hour.
12:00 to 1:00 p. m.—Damonte Novelty Trio.
4:00 to 5:00 p. m.—Ed Fitzpatrick and his Hotel St. Francis Concert Orchestra.
5:00 to 6:00 p. m.—George W. Ludlow, "Friend to Boys."
8:00 to 9:00 p. m.—Drama hour. Program by the KGO Players, Wilda Wilson Church directing. Music, Rembrandt Trio.
9:00 to 10:00 p. m.—National Broadcasting Company program.
10:00 p. m. to 12:00 midnight—Jack Coakley's Band, Collegiate Ball Room, Hotel Leamington, Oakland.

FRIDAY, JUNE 10

- 11:10 to 11:30 a. m.—Prudence Penny, Home-making talk.
11:30 to 12:00 a. m.—Anita Romano, steel guitar; Waterman Piano School program.
12:00 to 1:00 p. m.—Rembrandt Trio.
4:00 to 5:00 p. m.—Ed Fitzpatrick and his Hotel St. Francis Concert Orchestra.
5:30 p. m.—Da-Ra-O, wise man from the Land-O-Health.
8:00 to 9:00 p. m.—Annual Mills College dinner program, Hotel Oakland. General subject, "Mills and the Spanish Succession." (Early foundation for Mills College laid in Benicia, California, 1852.)
9:00 to 10:00 p. m.—National Broadcasting Company program.
10:00 to 11:00 p. m.—Frank Ellis and his Hotel St. Francis Dance Orchestra.

SATURDAY, JUNE 11

- 11:30 a. m. to 12:00 noon—Nat Vincent half hour.
12:00 to 1:00 p. m.—Damonte Novelty Trio.
4:00 to 5:00 p. m.—Ed Fitzpatrick and his Hotel St. Francis Concert Orchestra.
8:00 to 9:00 p. m.—National Broadcasting Company program.
9:00 to 10:00 p. m.—Popular program by the International Four.
10:00 p. m. to 1:00 a. m.—Wilt Gunzendorf's Hotel Whitcomb Band, San Francisco. Intermission solos by Rose Lind and Rod Smith.

See Page 44 for detailed program of National Broadcasting Company

\$1

**RADIO BATTERIES RECHARGED
RENTAL BATTERIES FURNISHED**

Called For and Delivered—Within 4-Mile Radius
Small Added Charges over 4 Miles

LU DLUM & STEELE, Willard Dealers

965 Venice Blvd.

Call WEstmore 6974

Los Angeles

\$1



Built to Make Radio Tubes Work Better and Last Longer



Here is a new "A" battery made especially for Radio use. An exclusive formula used in its construction enables it to deliver steady, level voltage and gives it extraordinary long life.

Like all Ray-O-Vac batteries, it has staying power. It retains its strength when not in use, and after being used it starts to rebuild its strength the instant the current is turned off.

The best way to be sure of getting radio "A" batteries with uniform voltage and staying power is to ask for Ray-O-Vacs No. 1211 by name and number.

You can buy Ray-O-Vac batteries at the better Radio, Electrical dealers, music stores, and Auto Supply houses.



FRENCH BATTERY COMPANY

MADISON, WIS.

737 Terminal Street

Los Angeles

Also Makers of Flashlights and Flashlight Batteries

SC II

(Continued from Page 26)

radio frequency portion of the receiver preceding the audio amplifier is designed to pass a 10 kilo-cycle band, which means that after rectification only frequencies up to 5,000 cycles (the range of frequencies employed in music and speech is from about 27 to 4,192 cycles), will be fed from the detector to the audio amplifier. However, the very sharp cut-off above 5,000 cycles of the audio amplifier results in the elimination of background hiss, and possibly more important, heterodyne squeals frequently heard in present-day broadcasting when some 600 stations are simultaneously operating in channels which will accommodate, at the most, only one-third this number of stations without pronounced interference.

The S-C II receiver is designed for operation with either batteries or battery eliminators, and will be found quite satisfactory when so used.

Parts Specified for the S-C II Receiver

1 Carter H $\frac{1}{2}$ resistor.....	\$.25
1 Carter M-200-S potentiometer.....	1.25
2 Carter tipjacks @ 10c.....	.20
1 Benjamin No. 9040 UX spring socket75
10 Eby binding posts @ 15c.....	1.50
2 National B vernier dials, clockwise, @ \$2.50	5.00
2 Polymet 1 mf. condensers @ \$1.00.....	2.00
1 Polymet .002 condenser.....	.40
2 Silver-Marshall 316B condensers @ \$4.50	9.00
1 Silver-Marshall 316A condenser.....	4.50
1 Silver-Marshall 637 link motion.....	2.00
3 Silver-Marshall 515 coil sockets @ \$1.00	3.00
4 Silver-Marshall 511 tube sockets @ 50c.....	2.00
2 Silver-Marshall 220 transformers @ \$6.00	12.00
1 Silver-Marshall 116A coil.....	2.50
2 Silver-Marshall 118A coils @ \$2.50	5.00
2 Silver-Marshall 631 stage shields @ \$2.00	4.00
1 Van Doorn* S-C chassis unit (including pierced formed steel panel, chassis and nuts, screws and insulators)	5.00
	\$60.35

(To be continued next week)

Serious Young Man, making conversation with Flapper: "Do you enjoy Kipling?"

Flapper: "I don't know; how do you kipple?"

General Manager of Aerovox Wireless Corporation visits Pacific Coast

Samuel I. Cole, Vice President and General Manager of the Aerovox Wireless Corporation, large manufacturers of Condensers and Resistances is making his initial visit to the Pacific Coast. W. C. "Bill" Hitt, local Aerovox Representative, has Mr. Cole in tow, and is endeavoring to instill in Mr. Cole the spirit of business enthusiasm so prevalent on the coast and, at the time time, show the "boss" a good time.

"Bill's" itinerary will probably include everything from the Oregon line to Tia Juana; after which Mr. Cole (if able) will depart for Chicago to attend the R. M. A. Convention.

Hoosier Power

(Continued from Page 17)

ment permits of easily keeping both batteries fully charged at all times, and hence supplying a perfectly steady, smooth direct current such as only batteries can give.

The different models incorporate both 4 and 6-A voltages with B voltages ranging from 90 to 180. A Jones plug and cable facilitates connection to the radio set, and a second cord and plug connects to the lighting circuit socket. For the set owner who demands perfectly steady and smooth A and B supply, quiet operation and the utmost in DX, this type of equipment is the ideal arrangement.

Loud Speaker Units Repaired OR REWOUND

Use Parcel Post

Baldwin Type	\$2.00
Two Spool Units—	
One Spool	1.50
Both Spools	2.00

Elmer A. Burlingame

1139 Santa Cruz
San Pedro



Built to Make Radio Tubes Work Better and Last Longer



Here is a new "A" battery made especially for Radio use. An exclusive formula used in its construction enables it to deliver steady, level voltage and gives it extraordinary long life.

Like all Ray-O-Vac batteries, it has staying power. It retains its strength when not in use, and after being used it starts to rebuild its strength the instant the current is turned off.

The best way to be sure of getting radio "A" batteries with uniform voltage and staying power is to ask for Ray-O-Vacs No. 1211 by name and number.

You can buy Ray-O-Vac batteries at the better Radio, Electrical dealers, music stores, and Auto Supply houses.



FRENCH BATTERY COMPANY

MADISON, WIS.

737 Terminal Street

Los Angeles

Also Makers of Flashlights and Flashlight Batteries



STEPHEN I. GAYLORD
Announcer

Portland, Oregon—491.5 Meters

KGW

1000 WATTS—610 KILOCYCLES
THE MORNING OREGONIAN
"Keep Growing Wiser"

DAILY EXCEPT SUNDAY—

7:15 a. m.—Setting up exercise.
9:45 to 10:00 a. m.—Women's health exercises.
10:00 to 11:30 a. m.—Town Crier, weather reports, news items
12:30 to 1:30 p. m.—Noon concert.
6:00 to 7:00 p. m.—Dinner Concert.
7:30 to 7:45 p. m.—Weather and market reports.

WEEK COMMENCING SUNDAY, JUNE 5, 1927

SUNDAY, JUNE 5

10:55 a. m. to 12:30 p. m.—Morning services from the Church of Our Father (Unitarian).
7:30 to 9:00 p. m.—Evening services from the First Presbyterian Church.
9:00 to 10:00 p. m.—N. B. C. program, Biblical Drama, "Cain and Abel," with Symphonic Orchestral Setting.
10:00 to 11:00 p. m.—Public Service Little Symphony Orchestra.

MONDAY, JUNE 6

7:00 to 7:30 p. m.—Concert Trio.
7:45 to 8:00 p. m.—Musical program.
8:00 to 9:00 p. m.—N. B. C. program from San Francisco—Opera, "The Barber of Seville," directed by Max Dolin.
9:00 to 10:00 p. m.—Venetian Hour.
10:00 to 12:00 midnight—Dance music by Cole McElroy's Spanish Ballroom Dance Band.

TUESDAY, JUNE 7

2:00 to 3:00 p. m.—Women's matinee.
7:00 to 7:30 p. m.—Concert Trio, presented by National Mortgage & Bond Co.
7:30 to 9:00 p. m.—Educational program.
9:00 to 10:00 p. m.—N. B. C. program, "Hits and Bits."
10:00 to 12:00 p. m.—Dance music, featuring Herman Kenin and his orchestra.

WEDNESDAY, JUNE 8

7:00 to 8:00 p. m.—Utility Service and Concert Trio with soloist.
8:00 to 9:00 p. m.—Concert by Maxwell House Coffee Orchestra and soloist.

9:00 to 10:00 p. m.—National Broadcasting Company program—Radio drama, "Peer Gynt," with symphonic orchestral setting.

THURSDAY, JUNE 9

7:45 to 8:00 p. m.—Lecture, given under the auspices of the Catholic Truth Society of Oregon.
8:00 to 9:00 p. m.—Vaudeville entertainment.
9:00 to 10:00 p. m.—N. B. C. program from San Francisco, "Daughter of Mme. Angot," by National Light Opera Company.
10:00 to 12:00 midnight—Cole McElroy's Spanish Ballroom Dance Band.

FRIDAY, JUNE 10

2:00 to 3:00 p. m.—Women's matinee.
7:00 to 7:30 p. m.—Concert Trio with soloist.
7:30 to 8:00 p. m.—Neighborhood Drug Store Four.
8:00 to 9:00 p. m.—Concert.
9:00 to 10:00 p. m.—National Broadcasting Co. program from San Francisco, "An Hour in Memory Lane."
10:00 to 10:30 p. m.—Edwards Golden Jubilee Entertainers with soloist.
10:30 to 12:00 midnight—Weekly frolic of the Keep Growing Wiser Order of Hoot Owls.

SATURDAY, JUNE 11

7:00 to 8:00 p. m.—Concert.
8:00 to 9:00 p. m.—National Broadcasting Company program from San Francisco, "Saturday Night Review."
10:00 to 12:00 midnight—Dance music, featuring Herman Kenin and his orchestra.

Program Published as Submitted by the Station.

See Page 44 for detailed program of National Broadcasting Company

RADXGROUND

A Better
Ground

"The Super Ground"

Proven by
Test

RADXGROUND insures clearer reception, better tone, selectivity and distance. The RADXGROUND has a core of Gosilco and is supplied with a 30-foot continuous Gosilco wire for connection direct to your set, eliminating all chance of lost efficiency due to high resistance connections.

Price **\$4.50** Complete

APEX SPECIALTY CO., 1038 Beacon Ave., Los Angeles



This high-rate and trickle charger meets the requirements of the present day radio set

The advantages of trickle (continuous) charging with its freedom from attention are so obvious that practically all set owners today insist on it. This means a low-rate charger. But suppose the battery should sulphate so that a more rapid rate is required. Or that a power tube is added. Or that the set is for some reason used much more than usual. This calls for a much higher rate.

A charger to meet the requirements of the present day radio sets must have both a high and a low charging rate. That is why the Bal-

kite Charger, Model J, with its low trickle and high rapid rates is rapidly becoming the most popular charger in the entire radio field. It combines the advantages of both trickle and high rate charging. In sections where it is best known it is being sold almost to the exclusion of all other types. Whatever type of set you own equip it with Balkite Model J. It will serve not only your present receiver, but any you may purchase in future. Models for both 25-40 and 50 or 60 cycles. Price \$20.

Manufactured by FANSTEEL PRODUCTS CO., Inc., North Chicago, Ill.

District Sales Representatives—A. S. Lindstrom Company, San Francisco, 274 Brannan Street—Los Angeles, 324 North San Pedro Street—Portland, 146½ North 10th Street—Seattle, 95 Connecticut Street—Salt Lake City, 221 South West Temple Street—Denver, Jack L. Hursch Company, 1641 Stout Street.

Balkite *Radio* Power Units

SC II

(Continued from Page 26)

radio frequency portion of the receiver preceding the audio amplifier is designed to pass a 10 kilo-cycle band, which means that after rectification only frequencies up to 5,000 cycles (the range of frequencies employed in music and speech is from about 27 to 4,192 cycles), will be fed from the detector to the audio amplifier. However, the very sharp cut-off above 5,000 cycles of the audio amplifier results in the elimination of background hiss, and possibly more important, heterodyne squeals frequently heard in present-day broadcasting when some 600 stations are simultaneously operating in channels which will accommodate, at the most, only one-third this number of stations without pronounced interference.

The S-C II receiver is designed for operation with either batteries or battery eliminators, and will be found quite satisfactory when so used.

Parts Specified for the S-C II Receiver

1 Carter H½ resistor.....	\$.25
1 Carter M-200-S potentiometer.....	1.25
2 Carter tipjacks @ 10c.....	.20
1 Benjamin No. 9040 UX spring socket75
10 Eby binding posts @ 15c.....	1.50
2 National B vernier dials, clockwise, @ \$2.50	5.00
2 Polymet 1 mf. condensers @ \$1.00.....	2.00
1 Polymet .002 condenser.....	.40
2 Silver-Marshall 316B condensers @ \$4.50	9.00
1 Silver-Marshall 316A condenser.....	4.50
1 Silver-Marshall 637 link motion.....	2.00
3 Silver-Marshall 515 coil sockets @ \$1.00	3.00
4 Silver-Marshall 511 tube sockets @ 50c	2.00
2 Silver-Marshall 220 transformers @ \$6.00	12.00
1 Silver-Marshall 116A coil.....	2.50
2 Silver-Marshall 118A coils @ \$2.50	5.00
2 Silver-Marshall 631 stage shields @ \$2.00	4.00
1 Van Doorn* S-C chassis unit (including pierced formed steel panel, chassis and nuts, screws and insulators)	5.00
	<hr/> \$60.35

(To be continued next week)

Serious Young Man, making conversation with Flapper: "Do you enjoy Kipling?"

Flapper: "I don't know; how do you kipple?"

General Manager of Aerovox Wireless Corporation visits Pacific Coast

Samuel I. Cole, Vice President and General Manager of the Aerovox Wireless Corporation, large manufacturers of Condensers and Resistances is making his initial visit to the Pacific Coast. W. C. "Bill" Hitt, local Aerovox Representative, has Mr. Cole in tow, and is endeavoring to instill in Mr. Cole the spirit of business enthusiasm so prevalent on the coast and, at the time, show the "boss" a good time.

"Bill's" itinerary will probably include everything from the Oregon line to Tia Juana; after which Mr. Cole (if able) will depart for Chicago to attend the R. M. A. Convention.

Hoosier Power

(Continued from Page 17)

ment permits of easily keeping both batteries fully charged at all times, and hence supplying a perfectly steady, smooth direct current such as only batteries can give.

The different models incorporate both 4 and 6-A voltages with B voltages ranging from 90 to 180. A Jones plug and cable facilitates connection to the radio set, and a second cord and plug connects to the lighting circuit socket. For the set owner who demands perfectly steady and smooth A and B supply, quiet operation and the utmost in DX, this type of equipment is the ideal arrangement.

Loud Speaker Units Repaired

OR REWOUND

Use Parcel Post

Baldwin Type\$2.00
Two Spool Units—

One Spool 1.50

Both Spools 2.00

Elmer A. Burlingame

1139 Santa Cruz
San Pedro

Statement of Wm. Mulholland

MR. MULHOLLAND, builder of the city's Owens River Aqueduct and father of the new aqueduct project that will bring domestic water to Los Angeles and neighboring cities from the Colorado River, stated that approval of Propositions 3 and 4 will greatly benefit every citizen of Los Angeles and will cost the Los Angeles taxpayer nothing. He declared that he particularly wished to refute the contention emanating from certain quarters that approval of these measures may in some way endanger the city's Colorado River Aqueduct project.

"Proposition 4 will enable the Harbor Department to realize a large annual rental from another city department, the Municipal Power Bureau, by leasing a site for a stand-by steam plant," said Mr. Mulholland. "The Power Bureau will use its own funds to construct this plant, and it therefore will not involve any sort of new bond issue.

"Approval of Proposition 3 will in no way interfere with or endanger the city's program of water and power development from the Colorado River. On the contrary, it will greatly assist the city in securing water and power from the Colorado.

"Proposition 3 authorizes a step that will put the people in possession of valuation facts to be considered when the question of buying the company's electric system is submitted for their decision. However, should bonds be voted at a later date to finance the purchase of this system, it cannot affect, otherwise than beneficially, the financing of the city's Colorado River water and power projects.

"Bonds voted to purchase the gas company's electric system, of course, would be classed as City Power Bonds. Those bonds are revenue producing securities, and the city charter provides that such revenue producing bonds do not affect the city's bonding limit.

"It truthfully may be said that the city's power business has a vital relation to the success of the Colorado River project. Under the Swing-Johnson bill, the Government will require the entire cost of the project to be fully financed by cities and communities interested, before a dollar of Government money is expended. Obviously, this means that Los Angeles must be prepared to sign up for the greater part of the power output of the project.

"In short, acquisition by the city of the electric properties of the gas company is good business for the city and its citizens."

All-Wood Speaker

Mr. Charles W. Taylor, Chief Acoustical Engineer of the Woodlark Radio Manufacturing Company, of 10 Breeze Street, Venice, California, announces that after three years of constant study, experimentation and the manufacturing of all-wood speakers, they have finally perfected a reproducer that is supreme in its field.

The Woodlark is constructed entirely of wood. From the base to the outer sound board there is no metal whatever, therefore no sound distortion. In it is incorporated the better features of both cone and reflex sound amplifiers. It is entirely new in principle.

There is no sound confusion or distortion, even under amplification. Though small, the volume is unbelievably great—in fact, surpassing any speaker more than twice its size.

The Woodlark is compact, though extremely light, gives a rich and mellow tone in a lower scale, and reproduces perfectly clear high tones of the soprano or the violin.

The Woodlark Radio Manufacturing Company, during the last three years, has produced many thousands of all-wood speakers, and are now contemplating going into a greatly increased production, supplying the demand of the Summer and Fall.

"WHO'S WHO" In RADIO —and the reasons why

A. E. Anderson, Inc.

A. E. Anderson is comparatively a newcomer to the radio business having been associated for some years past with Mr. Adolph L. Bernheimer, the well



A. E. ANDERSON

known financier of Santa Monica. Realizing the great possibilities of the manufacture of an efficient power unit, and noting the tendency of the industry towards A-C operated sets, Anderson became interested with Henry S. de Malaussene in the perfection and manufacture of the H. M. Radio Power Unit.

Anderson is a western man and is thoroughly conversant with the business conditions and requirements of this territory. It is his aim to offer to the radio public nothing but quality products, and an examination of the Power

Unit that his company is turning out will convince the most skeptical of its merits.

Henry S. de Malaussene, the engineer of the concern, is a native of France and has devoted his life to electrical and radio research. A graduate of two of the best known French universities, he is well qualified to act in this capacity. During the World War, de Malaussene was appointed by his government on



H. S. De MALAUSSENE

radio research work and was sent to England to co-operate with their radio experts. De Malaussene has been a resident of this country for the past eight years and has lived in Los Angeles most of this time.

Timely Trade Topics

C. W. Smith and C. C. Lawton are leaving on June 6 to attend the RMA Show in Chicago. They are leaving ahead of the Radio Trade Association special, which leaves on June 8, so that they can visit factories in New York before the Chicago show opens. They will be away about three weeks.

S. A. Lindstrom of San Francisco, the well-known representative of Balkite, Dudlo, etc., was a recent visitor in Los Angeles. He, with many members of the trade from the Bay City, will attend the RMA show in Chicago June 13.

The next regular meeting of the Radio Manufacturers' Agents Association will be held at the Elite, 633 So. Flower St., at noon, Friday, June 3.

The Aerovox Wireless Corporation, manufacturers of Aerovox "Built Better" condensers and Resistances, are now distributing a new and complete catalog to the trade. This catalog illustrates their latest products, such as Mica Condensers, moulded in Bakelite; Pyrohm Resistances in current carrying capacities of 20, 40 and 100 watts, and Metalohm Grid Leaks and Resistances; the size of each part is shown in a diagram form, which will be a great benefit to manufacturers and amateurs in building Radio Receivers.

These catalogs are being distributed on the Pacific Coast by the W. C. Hitt Company, Aerovox Representatives, with offices at No. 324 North San Pedro St., Los Angeles, California.

Mr. M. J. Carls, the manufacturer of the famous Golden Bear loud speaker, left for the East on May 28th.

He will first visit at his old home in Buffalo, New York, and will then visit New York, Philadelphia, Boston and other eastern cities, and will then go on to spend a week at the R. M. A. Trade Show in Chicago.

R. B. Yale of the Yale Radio Electric Company leaves for a three weeks' vacation to the Hawaiian Islands on June 4, traveling on the maiden voyage of the S. S. City of Honolulu, Mrs. Yale will accompany him. R. B. has promised all his friends a present of the latest style of grass skirts when he returns. If you don't get yours, call around to his place of business and raise a howl.

Cook-Nichols Company of 411 South San Pedro street, Los Angeles, Calif., had a very disastrous fire the night of May 25. Mr. Homer Cook, the president of the company, estimates that their loss will be about \$20,000.

They are doing business as usual, but the entrance to their store has been changed from 411 South San Pedro street to 338 East Fourth street, which is just around the corner.

Mr. Cook requests that his customers continue to send their orders and come in and do business with him as usual, for even though they have had a most disastrous fire, they are still carrying a large enough stock to supply the demands of their customers.

Mr. Waldo G. Tupper, Managing Director of the Los Angeles Radio Show, reports that all the exhibiting space for the fifth annual exposition is already sold.

He and Mr. Lombard J. Smith, the Chairman of the Radio Show Committee, are now working on a plan to try and care for the many other applicants for space. There will be important announcements to the trade about the Radio Show soon, according to Tupper.

Mr. Walter Fagen, president of Pacific Wholesale, Inc., announces that they have appointed Mr. Robert Riddell manager of their San Diego business. They are equipped to give excellent service to their trade.

Broadcasters' Digest

Radio station KHQ at Spokane, Wash., will be definitely connected up with the National Broadcasting company, June 1, receiving the program from the orange network, according to Louis Wasmer, owner and operator of KHQ, after a telephone conversation with George J. Podeyn, manager of the Pacific Coast division of the National Broadcasting company, from his San Francisco headquarters. Mr. Podeyn assured Mr. Wasmer that he had confirmation from their New York office that the loop now being constructed between Spokane and Seattle for their special use would be in service by June 1.

Unusual broadcast reception for this time of the year is reported by L. L. Cradrick, resident of Casino, New South Wales, Australia, who on the evening of March 28 tuned in a late-hour program being broadcast from KPO. The announcement of the station's call letters and name was perfectly distinct and audible, reported the Australian. While the volume of reception from San Francisco was sufficient to have worked a loud speaker, static interfered to a large extent, reported Cradrick. KPO's call letters, however, were heard clearly at least six times, he said. The Australian has logged six American broadcasters. Casino, in Australia, is more than 6,000 miles from San Francisco "as the crow flies."

Considerable mystery has surrounded the lightning speed with which radio station KFI in this city switches from its main studio to its various remote control points, and back again, according to Curtis Mason, technician at KFI. Certain secret cue words are given and signals flashed by the announcer in the KFI studio, so that the announcer at the remote control point knows that in exactly fifteen seconds he will have the

air and must start talking.

"The announcements are timed to the second, and the instrument board is set with an alarm stop-watch attachment," explains Mason, "so that when one announcer gives the warning to 'stand by for a program from the Aeolian studio,' for instance, the current is then automatically switched, a light flashes, and the other announcer remarks that 'this is the Aeolian Studio.'

The "Mr. and Mrs." series is being presented once a week over the Evening Express radio station, KNX. This feature is a little different from the ordinary run. The couple represent the average married combination of everyday life, and the trials and tribulations of the pair make things interesting for listeners.

SPECIAL!

THIS BEAUTIFUL CONSOLE



Model 50

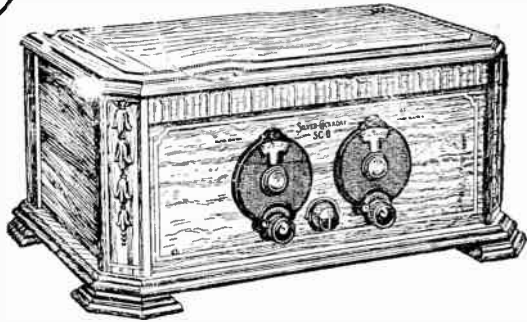
Price \$12.50
(F.O.B.)

(Lacquer Finish)

Accommodates Panel
7x12-30 in.

Mail Orders Given Prompt Attention
JOHNSON'S CABINET WORKS
3635 Avalon Blvd. AX. 8662. Los Angeles
(Open Evenings Till 6:15)

A 8471.65-1553


SM


The Essential Requirements of a Good Receiver
Are

**SENSITIVITY—SELECTIVITY—
QUALITY—VOLUME**

The SC II HAS THEM ALL

Here Are a Few of the Outstanding Features

Metal panel; steel chassis.

Second RF stage and detector completely shielded.

No detector grid-condenser or leak. Grid biased by C battery, increasing handling capacity without distortion.

Uses Type 220 SM audio transformers, famous for quality.

Type 171 power tube in last stage, gives surplus power.

Potentiometer regeneration control gives maximum sensitivity at all wave-lengths.

Two illuminated vernier dials for tuning.

Distributed by

HERBERT T. HORN

1629 So. Hill St.

Phones: WEStmore 1713-1543

Los Angeles



Bosch Radio



The new Bosch Radio Receivers are truly a revelation and incorporate the latest radio engineering principles.

A Single Station Selector and Bosch Line-o-lite tuning assure simplicity in operation.

The improved balanced bridged circuit is the latest development and has been brought to a near perfection by Bosch engineers.

Beautiful cabinet work on all Bosch models is an outstanding feature, no matter what set you may favor.

WAIT TILL YOU SEE AND HEAR BOSCH RADIO

Reasonable priced from \$89.50 to \$298.50

Five, six and seven tube sets

Light socket operation optional.

Wholesale Distributors

Yale Radio Electric Co.

LOS ANGELES

1111 Wall Street

WEStmore 3351