

RADIO DOINGS

RED BOOK OF RADIO

*The Radio Authority
of the
Pacific Coast*

10¢
WEEKLY

Callert. Edw in A
2301 W 29th Place
1-30-28

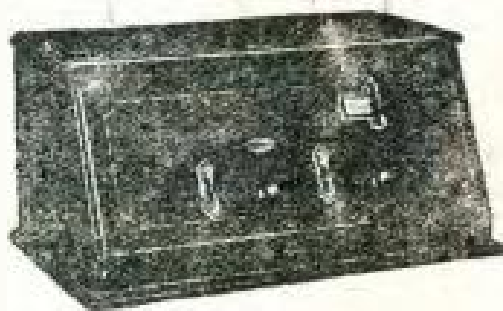


Albert Hay Malotte, Organist—KFXB

Vol. X

APRIL 17-23, 1927

No. 16



\$55
for the
CROSLEY
5-50

is again proof positive that this famous manufacturer can and does give a solid, lasting radio value obtainable nowhere else.

Check the Features that make the 5-50 a milestone in radio history:

1. All metal shielded chassis.
2. Crescendon for increasing weak signals.
3. Acuminators for sharp tuning.
4. Graphic drum station selector.
5. Power tube adaptability.

Crosley Dealers Are Reliable. They are building for the future.
KOLSTER - CROSLEY - BRANDES - BURGESS BATTERIES
RADIOTRONS - TUNGAR - AMRAD - VESTA - ACME
KODEL - MODERN - WESTINGHOUSE "A" AUTOPOWER

Distributed by

H. Earle Wright, Incorporated

123-129 Second Street
SAN FRANCISCO

415 East Eighth Street
LOS ANGELES

Any One of These Authorized

CROSLEY

DEALERS

Will be glad to show you why the Famous "5-50" and other
Crosley models are holding their place in the
Front Ranks of Radio:

LOS ANGELES

South

DAVIS RADIO Co.
2817 S. Main St.
WEatmore 6948

DE HOOG BROTHERS
6120 S. Broadway
THornwall 0224

STURGIS Music Co.
4711 S. Broadway
AXridge 7106

Downtown

FRANK RADIO Co.
715½ S. Main St.
T'icker 3347

Hollywood

OTTO K. OLESEN
ILLUMINATING Co.
6548 Hollywood Blvd.
GLadstone 5194

Southwest

CHILDS LABORATORY
1187 W. 24th St.
BEacon 7445

CLARK'S RADIO STORE
9114 S. Vermont Ave.
YORk 1914

WESENBERG RADIO MUSIC

Co.
3819 S. Western Ave.
VERmont 7929

Northeast

BROOKLYN RADIO SHOP
1521 Brooklyn Ave.
ANGelus 3296

NORTON & NORTON
2211 N. Broadway
CAPitol 0484

Glassell

GEORGE F. CONFER
2932 W. Ave. 37
ALbany 5443

ALHAMBRA

ALHAMBRA RADIO ELECTRIC
1855 W. Main St.
Alhambra 2366

ARTESIA

EDWARD M. CONCORAN
Artesia 5159

BELL

G. C. PYLE ELECTRIC Co.
605 Baker Ave.
DElaware 2287

GLENDALE

BUDWIG RADIO Co.
201 N. Brand Blvd.
Glendale 1801

LONG BEACH

JOHN J. SAWYER
543 E. Anaheim St.
Long Beach 636-235

RIALTO RADIO Co.
430 American Ave.
Long Beach 653-171

RELIABLE RADIO SHOP
208 E. 4th St.
Long Beach 636-450

PASADENA

MODEL RADIO SHOP
2336 E. Colorado St.
Colorado 5992

SANTA BARBARA

J. E. WILEY
San Marcos Bldg.
Santa Barbara 3971

CROSLEY RADIOS

"Selectivity—Tone Quality—Distance"



Master of the Air

Now You Can Enjoy Modern Radio

Keep pace with the new developments in radio broadcasting and reception by bringing your set up to date.

INSTALL GOLD SEAL SPECIAL PURPOSE RADIO TUBES

They make a wonderful improvement in tone quality, volume and distance at little cost. You will be surprised and delighted. Treat yourself and your family to this new luxury of radio.

Ask your local Gold Seal Dealer or write us for details.

GOLD SEAL ELECTRICAL CO.
Incorporated
250 Park Ave., New York



All Standard Types



Type 6AR5 100
High power tubes that give the best signal-to-noise ratio with minimum grid current.
List price \$4.50

Type 6AR5 200

Same as Type 6AR5 100 but with a different filament.
List price \$1.75



Type 6AL 250

Provides better performance than the ordinary 6AL 250 tube. It is a better all-around tube, especially in the higher frequency range.
List price \$7.50



Type 6BD 250

Has same characteristics as the ordinary 6BD 250 tube but with a different filament.
List price \$6.00



—FILL OUT AND MAIL—

Gold Seal Electrical Co., Inc.
250 Park Ave., New York
Gentlemen:

Please send me full particulars of the Gold Seal Special purpose radio tubes.

Name.....

Address.....

City.....

R 4-16-37

New York Office
J. W. HASTIE
155 East 42nd Street
Vanderbilt 4661

Chicago Office
A. G. RUDOLPH
500 N. Dearborn St.

San Francisco Office
CONGER & MOODY
Sharon Building
Kearney 3483

Radio Doings

Trade Mark Reg. U. S. Pat. Off.

407 East Pico Street, Los Angeles, Calif.

"The Red Book of Radio"

H. C. CHARLES
Editor

Phone WESTmore 1401

KENNETH G. ORMISTON
Technical Editor

J. S. MILLER
Associate Editor

MAJ. LAWRENCE MOTT
Associate Editor

(Entered as second-class matter, Nov. 25, 1922, Los Angeles, Cal., Post Office, under Act of March 3, 1879.)
Copyright, 1924, by Horwood Publishing Co.
Issued Weekly. Ten Cents a Copy. Three Dollars a Year. Canada and Foreign Countries, \$3.50 per Year.

Vol. X Los Angeles APRIL 16, 1927 San Francisco No. 16

IN THIS ISSUE

Radiograms - - - - -	13
Radio Topics of the Day - - - - -	15
Kuprox - - - - -	17
Picked Out of the Air - - - - -	18
An Efficient R. F. Amplifier - - - - -	22
Trouble Shooting - - - - -	24
Woman's Page - - - - -	26
Koo-Koo Kolyum - - - - -	27
DX Club Correspondence - - - - -	28
Time Tables - - - - -	33 to 39
DX Stations - - - - -	42
Detailed Programs - - - - -	44 to 74
Who's Who in Radio - - - - -	76
Timely Trade Topics - - - - -	77
Broadcaster's Digest - - - - -	78

ONLY \$3.00 A YEAR

Have RADIO DOINGS mailed to your home every week. Fill out blank below. Either mail to us, or your dealer will be glad to take care of it for you. Please indicate whether NEW or RENEWAL.

HORWOOD PUBLISHING CO., 407 E. Pico St., Los Angeles.
CONGER & MOODY, Sharon Building, San Francisco, Calif.

Gentlemen: I enclose \$3.00, for which send me RADIO DOINGS for one year.
NEW—RENEWAL.

Name _____

Address _____

UTAH
 Made in Salt Lake City
 Trade Mark Registered



CREATES
 ANOTHER
 SENSATION
 WITH
 THEIR

New Piano Unit

*Convert your piano into
 a wonderful loud speaker
 at the small cost of*

\$10

Installed in five minutes

C. W. SMITH CO.

Home of Utah Speakers

WEstmore 3291

Los Angeles

1125 Wall



Latest Products

New "A-B" Socket Power Units



AB-1 AND AB-2

GREATER "A" CAPACITY

"A" Battery of 40 ampere-hour capacity. Two Rate Charger. 1/2 or 1 1/2 ampere.

GREATER "B" POWER

Will deliver 45 milliamperes at 150 volts. Ample power for the largest sets.

GREATER CONVENIENCE

Automatic Control Switch included. Filament switch on your set controls everything.

POWERFUL - COMPACT - EFFICIENT

Enclosed in an attractive lacquered case. Bulbs, cord and sockets included

Type AB-1, Complete

\$69.50

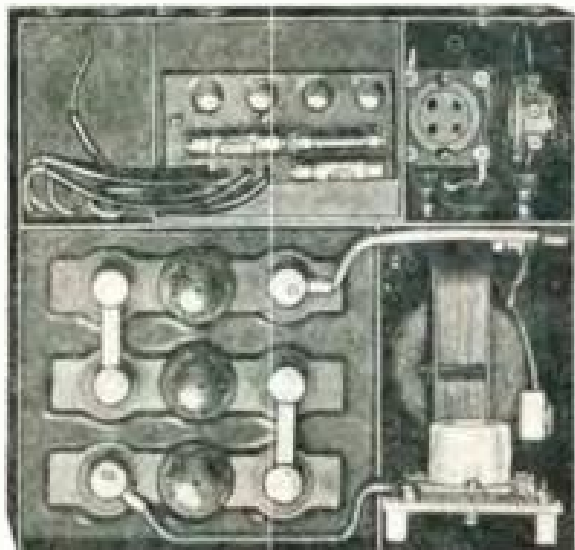
For five and six tube sets
50-60 Cycle

Type AB-2, Complete

\$75.00

For seven and eight tube sets
50-60 Cycle

Manufactured by
Acme Electric & Mfg. Co.
CLEVELAND, OHIO



TOP VIEW—COVER REMOVED

Stock for the Jobber Carried by Pacific Coast Special Representative



N. F. ANDRUSS

426 Larkin Street

San Francisco



PERFORMANCE

New

MAP OF U.S. SHOWING
CROWDED CONDITION
OF BROADCASTING
STATIONS



LOS ANGELES CE-CO
DEALERS

J. C. Rendler
625 S. Main
Philco Sales & Service
1514 South Hope
Standard Radio
417 W. Pico
Walkers Radio
5835 S. Vermont
Glen H. Deamer
6507 S. Kansas
Vermont Center Radio
6219 S. Vermont Ave.
Rogers Electric
1263 S. Norton
H. H. Walker
1123 Venice Blvd.
Sturgia Music
4713 S. Broadway
Nilsson & Nelson
4320 Avalon
Tivoli Radio Shop
4204 S. Central
Wilkins Radio Mfg. Co.
5217 S. Central
Phear Radio Co.
242 E. Florence
Hines Radio
7322 S. Broadway
McWhorters Radio
8625 S. Vermont
Henderson Radio Store
3605 Whittier Blvd.
C. S. Young
3713 East First
Johnson Auto Supply
765 Atlantic Blvd.
Awater Radio Shop
3206 Glendale Blvd.
Holland Electric Shop
5632 Pasadena Ave.
McNeil Music Co.
5711 Pasadena Ave.
Briong & Bushard
1717 W. Adams

PERFORMANCE

Is What CeCo "K" Tubes Offer

The improved performance of your
set will astound you. See
your nearest CeCo
dealer today.

15th and Hope Sts.

A. J. Tobey Co.

Westmore 4038

HOLLYWOOD

Cutter Radio
730 N. Western
Hollywood Radio
709 N. Western
Hollywood Electric
6636 Hollywood Blvd.
Mohawk Battery & Radio
2115 Sunset Blvd.
Doran Electric-Chop
7515 Sunset Blvd.
Lovinger-Melrose Radio
431 Melrose
Melrose Radio
5663 Melrose
Washally Radio
7406 Melrose
Carmel Radio
8165 Santa Monica Blvd
Hetzl Radio
7915 Santa Monica Blvd.

OUT-OF-TOWN CE-CO DEALERS

ALHAMBRA
Baird Radio Shop
226 W. Main St.
MONTEREY PARK
Monterey Park Music Co.
102 E. Garey
GARDEN GROVE
W. F. Ashley
PASADENA
Thomas & Summerville
41 N. Broadway
Webster Electric Garage
100 E. Union
Service Radio
1172 E. Colorado

GLENORA

F. A. Setmra
LANKERSHIM
Lankershim Music Co.
Lankershim Radio and
Service Shop
5241 Lankershim Blvd
VAN NUYS
Van Nuys Music Co.
Maradan Electric
CULVER CITY
H. E. Blunt
6808 Putman

INGLEWOOD

Inglewood Mercantile Co.
120 N. Commercial St.
Radio Strong
19 Pier Ave
Hermosa Beach
AVALON
Avalon Radio
601 Crescent

WILMINGTON

Wilmington Variety
716 W. Anahelm
LONG BEACH
Kelm Radio

COR. 4th and Locust

HUNTINGTON PARK
H. L. "Radio" King
116 E. Irvington
P. A. Donoherty
158 Pacific Blvd.

BELLFLOWER

H. L. Peterson Shoppe
Pacific and Mayne

DOWNEY

Darnell Electric Shop
1127 Crawford St.

POMONA

Falls Tire & Battery Co.
201 E. 2nd St.

COLTON

H. C. Bliss

TUSTIN

Williams Super Service
Coast Highway

ELSINORE

Elsinore Plumb. & Elec.
Dale El Slinger

REDLAND

State and Third St.

ANAHEIM

Coverley Radio
217 W. Center

BREA

Bennet's Radio
Murray Garage & Service
Station

CARLSBAD

Carlsbad Pharmacy
El Cajon

EL CAJON

El Cajon Electric

CORONADO

W. C. Bechtel Liberty
Garage & Batt. Serv.

718 Third St.

PACIFIC BEACH

Sunset Super Service
Station

1002 Garnett

SAN DIEGO

College Service
Park and El Cajon

Maryland Auto Supply
7th and F St.

E. C. Grube

5th and Imperial
Kinney Bros.
10th and A St.

There are Many

Very good kits on the market from which you can build yourself a set that will out-perform most factory built sets.

SILVER-MARSHALL SHIELDED SIX
 SILVER COCKADAY II
 MADISON MOORE SUPER
 INFRADYNE
 BROWNING-DRAKE
 KARAS EQUIMATIC
 BOULEDADIO EIGHT-IN-LINE
 HAMMARLUND HI Q

Your Dealer Has These Kits — Let Him Help You Pick
 Your Set.

We can also offer you a very large assortment of Battery Power Units—for both A and B Batteries. Trickle Chargers. Also Horn type of Cone Speakers.

DEALERS: Park Next Door at Our Expense

RADIO SUPPLY CO.

WHOLESALE

920 S. Broadway

VA. 6063

Los Angeles

New 1927 Catalogue Now Ready—Send For It

LET THE RADIO SUPPLY CO.

Fill your Parts orders. We distribute the best known quality lines and carry large stocks at all times to handle your needs.

READ OVER THIS LIST OF PARTS

Anteo Loops
Accuratune Dials
Acme Apparatus
Acme Trickle Chargers
Advance Crystals
Aero Products
Aerovox Wireless Products
Alden Mfg. Co. Parts
All-American Products
American Products
Amperites
Amoco Condensers
Arco Coils
Balkite Chargers, Etc.
Benjamin Elec. Mfg. Products
Bodine Loops
Boulderadio Eight-in-Line Super Unit
Branston Coils
Bremer-Tully Products
Bruno Coils
Camfield Coils
Carborundum Products
Cardwell Condensers
Carter Products
Ceco Tubes
C R L Var High Resistances
Chango Kester Solder
Clarostat
Crescent Transformers
Daven Radio Parts
DeJur Rheostats
DeLuxe Products
Dictogrand Speakers

Dublier Condenser Corp.
Dudlo Mfg. Co. Wire
Dunham Loops
Eby Binding Posts
Eight-in-Line Super Unit
Ekko Ground Clamps
Electrad Products
Electrohot Soldering Irons
Elkon Chargers
Formica Insulation Co.
Franco B. Batteries
Front Products
General Radio Parts
Goodrich Rubber Panels
Hammerlund Products
Harkness Kits
Hedgehog Transformers
H-K Solderdip Lugs
Hosick Parts
Jefferson Products
Kuras Products
Kelbrackets
Kelllogg Parts
Kodel Products
Kurz-Kasch Dials and Knobs
Leaf-Burkhard Cone Speakers
Lemco Transformers
Madison Moore Units
Marco Products
Mignon S. L. F. Condensers
Mueller Universal Clips
Muter Lightning Arrestors

Naaid Truphonic Units, Etc.
National Co. Parts
Pacnet Products
Penetrol Kits
Polymet Mfg. Co. Condensers
Premier Parts
Raco Aerial Wire
Radial Co. Amperites
Rauland Lyric Transformers
Raytheon Tubes
Remler Products
Samson Transformers
Sangamo Condensers
Sensory Insulators
Silite Trickle Chargers
Silver Marshall Products
Spaulding Bakelite
Steinite Eliminators
Sterling Meters and Testers
Stevens Tools
Testrite Hydrometers
Thordarson Transformers
Thorola Coils
Tobe Condensers
Tom Mack Products
Tower Speakers
Trimm Cone Speakers
Universal Battery Clips
Vents Power Units
Victoreen Parts
Weston Products
Willard Batteries
X. L. Variocensers
Yaxley Products

**THORDARSON, ALL-AMERICAN AND MAGNAVOX
REPLACEMENT TRANSFORMERS IN STOCK**

VESTA 35 and 50 Amp. and HOBICO A Power Units

**ACME, GENERAL RADIO, ALL-AMERICAN, KODEL,
BALKITE, SILVER MARSHALL, STERLING and
WEBSTER ELMINATORS**

**ACME, STERLING, VESTA, BALKITE, TUNGAR and
SILITE TRICKLE CHARGERS**

DEALERS: Park Next Door at Our Expense

RADIO SUPPLY CO.

WHOLESALE

920 S. Broadway

VA. 6063

Los Angeles

New 1927 Catalogue Now Ready—Send For It

The New

Hexadyne 6-Tube

PORTABLE



**NEW IMPROVEMENTS WITH BEAUTY AND
SIMPLICITY**

**SINGLE DIAL CONTROL
OPERATES WITH A LOOP
EXCEPTIONAL DISTANCE**

The Hexadyne stands today not only as the leader in the portable field but the recognized standard of advanced radio engineering. No other portable radio on the market compares with the Hexadyne for beauty of tone and simplicity of operation.

List Price \$125.00 Complete with All Accessories
Including the New Power Tube

Dealers Write at Once for Attractive Proposition

Manufactured by W. D. Hunt Co., Inc., 4961 Sunset Blvd., Los Angeles
Telephone OL. 3104

WHOLESALE DISTRIBUTORS

C. W. Smith Co.
1125 Wall St., Los Angeles

Pacific Wholesale, Inc.
1320 S. San Pedro, Los Angeles

Radiograms

From

CLOYD MARSHALL, JR.

Murder?

It almost makes one lose faith in human nature when he finds that some public officials who have been entrusted with upholding the laws of our country wantonly run amuck. Such an irreparable disgrace occurred last week when two Federal Prohibition officers drank too much of the boo leg stuff they should have been Sherlocking. They climbed into a government automobile, started down the wrong side of the street, side-swiped one car and crashed head-on into another. This finished the ride and netted them a man's life and a dangerously injured woman.

It's serious pastime when an ordinary citizen breaks a law, but for an official to do so who has solemnly sworn upon his life and honor to maintain that law, it is a higher crime not only for the violation but for the shaken faith in law on the part of the people. Let's hope those officer-murderers haven't enough pull to escape conviction for first degree murder.

Useless Laws!!

Every nation and individual seems to go through a period of foolishness when their thoughts are turned from the worthwhile things of life to the ridiculous, to the ludicrous and the absurd.

One hundred and fifty years ago we had very few laws to guide our youthful nation. The Congressmen and Legislators realized that they would have to quickly pass a set of laws for the guidance of the people. They went at their job with so much enthusiasm and kept it up so long that they formed the habit of passing new measures. Before long they had passed a law to cover every real need of the people, and when this period arrived they became quite dismayed, for not only were they not able to gratify the habit which they had formed, but they were fearful that they might have to forego a lively and cherished pastime.

The lawmakers, upon looking around to find something which they could use

as a basis to inflict more laws on the people, struck upon the subject of personal liberty. They reasoned that the people had forgotten that their fathers had fought for this personal liberty, so they said, "Let us start curtailing their actions." We can put this over with ease, for we will tell them that they should be happy to crimp their personal tendencies for the good of all. This might have been very fine, if they had stopped with just a few personal liberty laws, but having formed the habit of law multiplication they were loathe to stop.

In each new Congress and Legislature there would be enough of the old members to show the way to the newer members, so that in time the new members would also form the habit, and on down to our time, when the habit has become an obsession.

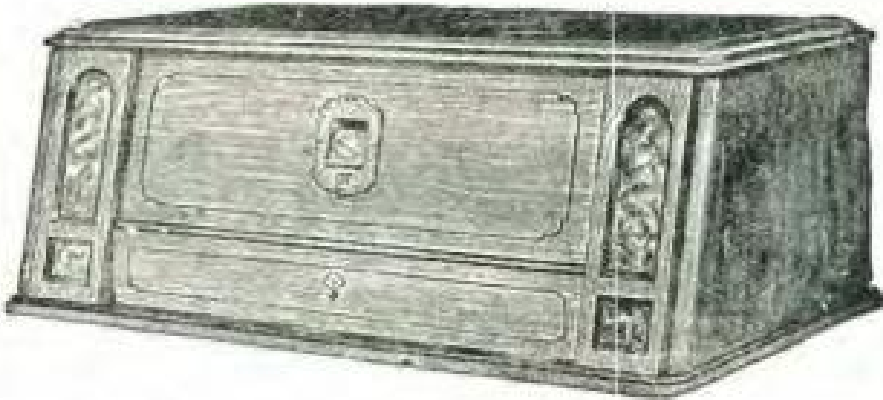
The lawmakers are ably assisted in this pernicious habit by the small cliques of busy-body men and women who have apparently nothing else to do but to lobby for their pet measures and to force their ideas upon other people.

An incident occurred in Los Angeles last week which showed how ludicrous our laws are becoming. A young woman appeared on the streets of Los Angeles dressed in men's clothing and, according to reports, was arrested for attiring in such a manner. If there were other circumstances they were not mentioned. Now, what difference does it make to any of us how people dress as long as they are modestly covered. The women of Turkey wear trousers and the men wear skirts. Here in our country and some European countries the mode is just reversed, so it only goes to prove that it is nothing more than convention and what we are used to.

It is about time that we demand that our lawmakers stop curtailing our personal liberty and actions and confine their efforts to passing measures that are really beneficial. Incidentally, they might spend some time nullifying a tremendous number of obsolete laws.

BREMER-TULLY

Counterphase - Eight



HERE are a few of the features of the Counterphase-Eight. Any one of them is enough to command your attention. Combined in one Receiver, they account for the performance which has caused so many users to write enthusiastic testimonials.

- | | |
|--|--|
| 1—REJECTOR STAGE, for Selectivity. | 5—COUNTERPHASE CIRCUIT. Covered by B-T patents. |
| 2—SIMPLICITY. One Selector. | 6—LONG RANGE. Recognizes no superior. |
| 3—VISUAL INDICATOR. Each set Calibrated. | 7—TONE. Equal to any reproducing instrument known. |
| 4—UNIQUE CABINET DESIGN. Controls concealed when not in use. | 8—SUPERIOR WORKMANSHIP. The B. T. standard. |

"A Demonstration Will Convince You"

SOLD BY FRANCHISED DEALERS ONLY

Factory Representatives

McCLELLAND-FELTHOUSE
CORPORATION

515-517 Eddy Street
San Francisco
Tel. Franklin 6226

1358-60 South Figueroa St.
Los Angeles
Tel. Westmore 5586 - 6519

Radio Topics of the Day

A Weekly Review of Radio News, Thought and Opinion

Radio Commission Will Reduce Number of Stations on Air

Eventually the Federal Trade Commission, like the radio listeners, manufacturers, engineers and experts, will arrive at the unavoidable conclusion that the total broadcasting stations now on the air must be reduced. This conclusion was manifest unmistakably by all radio interests at the recent hearings, when it was shown that there was no additional room in the ether; it was also successfully demonstrated that the broadcast band should not be widened and that the broadcast channel repartitions could not be decreased.

The radio fans and the operators of good broadcast stations need have no fear that the Commission will fail to arrive at the above conclusion. If that body attempted to relicense all the active stations it would fail in its prime duty. Congress authorized the licensing of the stations which serve the public, and manifestly only a limited number of reliable stations can be permitted to broadcast if the public is to be benefited. All of them would continue the congestion; therefore, only the best of them can be relicensed. The Commission is going about its business slowly and surely. The reaction upon the four Commissioners in Washington, and upon Admiral Bullard, is psychological. Probably we would all react the same if we were the judges instructed to pronounce death sentence on two or three hundred individuals. It would be natural to sympathize with the unfortunate and make a careful survey of the situation to see if there was not some way to avoid executions. We would try to substitute life imprisonment or some less drastic form of punishment. This is what the Commissioners—the radio judges—are trying to do,

and some way to ameliorate the publicly demanded death sentences of some two or three hundred broadcasters. Sooner or later the Commissioners will realize that there is nothing to do but sign the death warrants—or refuse to sign new license papers, thus establishing a real national radio broadcast service, as they were authorized to do by Congress, and were expected to do by the President when he appointed them. The Department of Justice will defend the Commission if law suits follow.

This action will not be precipitate; applications will be studiously examined, qualifications carefully considered, and all possible allocations attempted, before the sentences are pronounced. In the meantime, present active stations which file applications will be authorized to continue to broadcast temporarily beyond April 24th, the present deadline, if their individual cases are not acted upon prior to that date.

Applications Coming In Slowly

To date the Radio Commission has received 118 applications for broadcast licenses from existing stations. It is assumed that most of them are the older and first established stations, but the names of owners who have already applied and the channels and power sought are not to be made public until the Commission has examined the applications. It is assumed that every active broadcaster will file applications prior to April 24th, at which time the two-month period of "lea-way" established by Congress expires. If the Commission is unable to pass judgment on the applications received by that date, extensions of the present licenses will be granted, it is understood.

A Big Step in Radio



The Orthoformer, \$17.50
(In Canada, \$21.00)

Orthoformer

The Best of the New Sets
Will Have It Tomorrow

You Can Have It Today

It will cost you nothing, ob-
ligate you in no way, to hear,
over your present set, the very
best that Radio can give you
. . . . more than Radio ever
has given you before.

Return the coupon below,
and have an ORTHOFORMER
hooked up to your set. No
re-wiring or re-building of any
kind is necessary. Simply
plug in this unit, and you are
ready to go.

Then hear Radio as you never

have heard it before; broaden
your range of reception to a
point where you are getting
high tones and low tones
you've never brought in be-
fore. Put an end to wave
losses and distortion; clarify
and purify the tone of your
set. Hook up with any type
of "B" Eliminator you want;
hook up with any type of
high-grade cone speaker you
want; have the receiving set
you've always dreamed of.

CAN YOU DO IT?

It will cost you nothing to find out.

SIMPLY RETURN THE COUPON BELOW.

CLIP THIS COUPON

Paste it on a
Postal Card
and mail it.
Send no
money; assume
no obligation.

International Distributors' Corp.,
626 Union Insurance Bldg.,
Sixth and Broadway, Los Angeles, Calif.

Without expense or obligation to me, you may have
dealer plug in the latest type of ORTHOFORMER to my set
for a free trial.

| NAME.....

| ADDRESS.....

| TYPE OF SET.....

| PHONE NUMBER

Kuprox

By K. G. ORMISTON

Many scientists the world over are devoting their researches to the problem of discovering and harnessing a new source of energy. This is one of the crying needs of the world as the natural fuels of the earth which now constitute the chief source of energy will, according to statisticians, be depleted in a comparatively short time.

Hundreds of millions of dollars are being spent in hydro-electric development, but this energy source, even though harnessed to the utmost is incapable of supplying the power needs of the world.

An inviting field, where there is energy in tremendous and inconceivable quantities, is within the molecules and atoms of all matter. The atomic energy, could it be released and so harnessed as to do useful work, would constitute an unlimited source. Scientists have been doing extensive research work upon the atomic and electronic construction of matter, hoping to strike upon the secret of releasing the enormous store of energy contained therein.

In the course of their experiments certain scientists have discovered means of rearranging the atomic structure of a given metal so as to give it entirely new properties. This sounds like a fairy tale,—as though we were speaking of the attempts of the alchemists of old who aspired to convert to gold metals of lesser value.

In this process of atomic juggling many interesting by-products have resulted. One of these, which has been named "Kuprox," has been found to possess the property of "unilateral electrical conductivity." That mouthful means that through this new element an electric current can pass in one direction but not in the opposite direction. It can therefore be used as a rec-

tifier, not only in radio but in general electrical practice.

Copper is used in the making of Kuprox. The pure copper is heated to a very high temperature in an electric furnace; heated to the point where the metal vaporizes. It is then condensed in an intense magnetic field, the magnetism serving to rearrange the electrons and atoms as the metal again solidifies. The finished product offers a very low resistance to an electric current in one direction and a very great resistance in the opposite direction,—strange as this may seem.

In Kuprox we have a rectifier which is noiseless, permanent and dry as a bone. It will be used immediately in battery chargers and eliminators for radio as well as many applications in general electricity. Scientists who have developed Kuprox tell us that by using any desired amount of the new metal, voltages and current of any magnitude may be successfully rectified.

The local representatives of the Kodel Radio Corporation who own the Kuprox formula and rights submitted a sample to the writer last week for test. This small solid unit connected between a small step-down transformer and a storage battery passed .7 ampere of direct current through the battery. An oscillograph picture of the wave-form showed the rectification to be perfect.

It is believed that it is but another step from the small battery chargers and eliminators now ready for the market to larger Kuprox units which may replace entire electrical sub-stations, permit the operation of interurban trolley cars directly from high tension AC lines, reduce the cost of electric current by minimizing transmission losses, etc.

MORE DISTANCE

Greater Selectivity
Increased Volume
With the

"DX"

LONG DISTANCE GROUND



No matter what make of Radio you have, or where you are located, you cannot afford to be without this latest Radio Improvement.

PRICE

\$8⁰⁰ Complete
Postpaid
Anywhere

Shipment Made Same Day Order Is
Received

ORDER NOW

DEXTER SUPPLY CO.

487 Chamber of Commerce Bldg.

1151 South Broadway

WEstmore 9137 Los Angeles

Note: Snappy Service to Dealers

Picked Out of the Air

By HEARL LA VERN CROWTHERS

A man is never a failure until he himself admits it.

The bird with the most beautiful plumage seldom has the prettiest song.

Getting hot under the collar is bound to raise a blister some place.

As a man thinketh in his own heart so is he. Ah! "in his own heart," there's the rub.

Heaven surely could be nothing finer than a peaceful state of mind. Hell describes itself.

The eyes are the windows of the soul. If one, in passing, glance in let him feel refreshed.

If a man say to you, "Do you really want me to tell you something?" he is just naturally dying to tell you.

It is really surprising at times how large a body is seemingly required to carry around a small mind.

The Chinese situation is naturally a Chinese puzzle. Let China find the solution.

A battle cannot be won by running away from the scene of the conflict. The enemy always gains strength while you believe you are leaving him behind.

Try to understand the true meaning of these words, "Let the dead past bury its dead," then make the future secure by creating nothing that must be buried.

The Man on the Cover

One of the newest artists to be heard over KFXB is Albert Hay Malotte, who is broadcasting a series of nightly dinner-hour programs from his studio of the modern pipe-organ in the Wurlitzer building.

Malotte was formerly solo organist at the Metropolitan theater, where his clever work at the console built for him a huge following. He left the theater in order to devote his full time to his studio, which has been open only a few weeks.

Burgess Batteries Cunningham Tubes

FIGUEROA RADIO SHOP RADIOTRICIANS KOLSTER

Crosley Sets and Speakers
Expert Service on All Makes of Sets
TUcker 6763 747 S. Figueroa St.

WEBSTER B and C Socket Power

Raytheon Equipped
5 Controls

Easily set to exact current value needed for every tube in receiver to get best tone, greatest distance and most volume. Gets amazing results out of H.F.L. 11 (8 standard, 2 No. 112 and 1 No. 171 tubes) and other high power sets.

Before buying an eliminator write for FREE booklet, "Improving Your Radio."

THE WEBSTER COMPANY
854 Blackhawk Street
Chicago, Ill.

SCOTT SALES CO.
443 South San Pedro St.
Los Angeles

BLUE and GOLD Cannon-Ball Cone Speaker

This Cone Speaker is 16" and formed at an angle of 30 degrees, consequently, its vibrating surface is as great as a 17½" cone formed at the ordinary angle.



MODEL 2
\$10.00

It has extra heavy Marvellum paper and large, powerful, adjustable unit; combines all the desirable qualities of a speaker—tone, quality, volume, appearance.

Makes very attractive appearance with its artistic metal stand, finished in dark navy blue, to blend with color scheme of the cone.

Also Model 3, Table and Wall Type
Price \$18.00

A beautifully designed cone in high-grade Mahogany frame; enclosed, Mahogany back, having an eye-pleasing effect, and will harmonize with the furniture in any home. Height over all, 21"; width, 20½".

Cannon & Miller Co., Inc.
SPRINGWATER, N. Y.

California Distributor

W. J. PLATT

418 E. Cypress Ave. Phone 623-J
Glendale, Calif.

Sold by All Leading Radio Dealers

The "DX" Radio Ground is the Original Blue Vitriol Ground!

C. H. PRESTON'S

"DX"
Long Distance
Radio Ground

PATENT APPLIED FOR.

PRICE \$8.00

NOTICE
TO DEALERS

Jobbers all over the Pacific Coast are now wholesaling the Preston "DX" Radio Ground. If your wholesaler has not yet stocked this fast selling accessory send us his name NOW. We will send you full particulars about our liberal dealer plan.

When C. H. Preston, after more than two years of experimenting was satisfied that he had perfected a positive ground connection of merit, he made up several of them and gave them to friends for testing. He called his newly developed ground the "Blue Vitriol Ground," because copper sulphate, commonly known as blue vitriol, was one of the ingredients of his secret chemical formula.

Preston's friends tested the new ground and many of them, as well as Preston himself, wrote letters to the publishers of Radio Doings in which they gave lists of stations received by them after installing the Preston Ground. These letters, some of them published in Radio Doings... some of them in various newspapers... created a widespread desire on the part of radio enthusiasts to try the new ground connection.

When, after more than six months of practical tests, Preston decided to market his invention, a new name was sought and the product offered for sale under the name of the Preston "DX" Radio Ground. As such it has created more favorable comment, we believe, than any radio accessory ever offered for sale on the Pacific Coast.

Radio owners who have installed the Preston "DX" Radio Ground are unanimous in saying that it gives them more volume, better selectivity, and clearer signals from distant stations than ever experienced before. Their experiences will be duplicated with your receiver when you install the "DX" Radio Ground. See your dealer today.

UNGAR & WATSON, Inc.
Manufacturers -
1366 So. Figueroa St. Los Angeles
THE SEROY CO.
Distributors for No. Calif. Oregon & Washington -
122 Broadway - Oakland, Calif.

THE TROUBLE SHOOTER



Ask K.G.O.
The Answer Man

KENNETH G. ORMISTON
Technical Editor



Blue Vitriol Ground

This department daily receives inquiries as to whether or not the Preston "DX" ground advertised in our Technical Editor is the same as the "blue vitriol" ground so often referred to in the letters which appear in our DX Club.

When Preston first developed his ground it was called a blue vitriol ground, because at that time all it comprised was a copper plate and blue vitriol. However, blue vitriol used alone in contact with copper quickly acquires its chemical name, the copper, with which comes conspicuous by its absence. Hence, the original blue vitriol ground is now referred to as the blue vitriol ground.

This is not to be confused with the marketed Preston DX Ground, in which the inventor has worked out a chemical formula wherein neutralizing chemicals in conjunction with blue vitriol serve the copper in its original preparation to grow new spongy copper on the buried in moist earth the original vitriol creates the surrounding soil and raises the conductivity.

If our readers will therefore note that the "DX" ground, plus the very vital improvement of permanency, it will perhaps save me the necessity of writing so many letters to that effect.

Intermediate Eliminator Voltages

Readers sometimes run up against the problem of requiring an intermediate voltage from an eliminator for the purpose. This can be answered by simply connecting a Clarc-

stat or other suitable variable resistance unit from the maximum voltage section on the set, and by adjustment of the resistance any voltage may be had.

For example, it is often desirable to use 67½ volts on the plates of RP amplifiers. When the eliminator is furnished with 65 and 50 volt taps only, in addition to the power tap, fans have had to choose whichever of these gave the best results and let it go at that. Hence, this little tip, concerning the use of a Clarcostat, will, in many cases, improve over-all efficiency.

What is the Orthoformer?

Whenever an advertiser springs some "thing new" our friends seem to feel that K.G.O. will give them the low-down on it and they waste no time writing, "is it any good?" "What is it?" "What will it do?" etc.

The Orthoformer is an audio frequency amplifier unit. It uses three 201A or 202A tubes. It plugs into the first audio socket in your set. It incorporates an entirely new method of tube coupling. Engineers have long struggled with transformer coupling, resistance coupling, impedance coupling, etc., their aim always being the production of a straight-line amplification curve over the entire band of audio frequencies. No audio amplifier has yet achieved this aim, though approximating it more or less closely.

In the Orthoformer, none of the standard transformer or resistance tube coupling are used. The Orthoformer is designed to give quality over a very wide audio range and sufficient volume without distortion for all practical purposes.

(Dist. Price 7c)

Your dealer probably has the Preston "DX" Radio Ground in stock. If he has not yet ordered, please send us his name and we will immediately see that you are supplied. The Preston "DX" Radio Ground should be on every radio set. Get yours now and enjoy radio reception that you can tell the neighbors about.

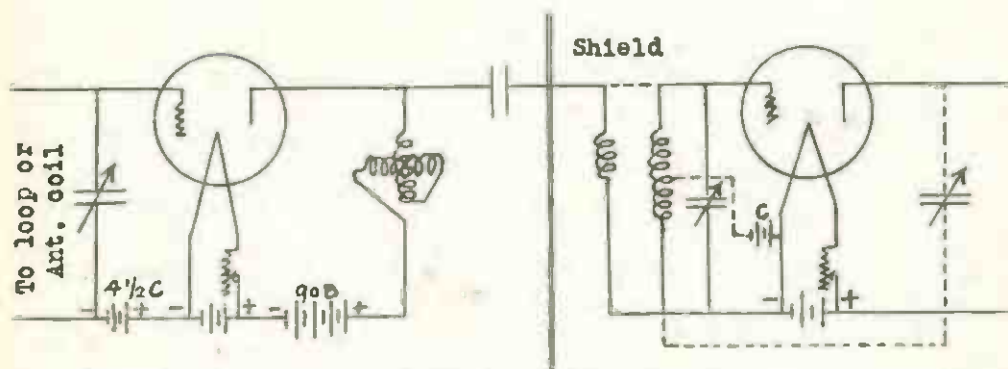
An Efficient R. F. Amplifier

By E. K. HAYES and V. M. BITZ*

With many broadcast stations struggling nightly for supremacy of the air, numerous queries are received as to how the efficiency of a receiver may be increased. Some sets may be improved by circuit tricks that may not be applicable to other sets, therefore, probably the most practical way of minimizing the shortcomings of the average receiver is to install a properly designed stage of R. F. amplification in the loop or antenna circuit as the case may be.

The R. F. amplifier herein described is applicable to most receivers, and particularly so to the super-heterodyne whose superfluous heterodyne points are the bane of the operators existence. This amplifier properly designed when

possible and still keep the circuits practically independent of each other as the plate variometer will have a tendency to tune the grid circuit of the following stage if it is too tightly coupled. The variometer is considered a more or less obsolete piece of equipment, but nevertheless, it offers the smoothest form of regeneration control in use today, and does not have the detuning effect of the three tap loop or tuning coil arrangement using a feedback condenser. By changing a couple of connections in a General Radio variometer, the shaft may be insulated away from the circuit eliminating hand capacity, another undesirable characteristic of the midget condenser.



used ahead of the "first detector" in a super eliminates the unnecessary heterodyne points. Impedance coupling is employed. A variometer is used in the plate circuit to control regeneration, and while accomplishing this, it also raises the impedance of that circuit at the low frequencies keeping the coupling between the R. F. stage and the following stage practically constant over the range of the receiver.

The amplifier is coupled to the following circuit through a capacity which may vary from 5 mmf. to 100 mmf. The idea is, to use as large a capacity as

In receivers using an antenna coil, couple the amplifier to the antenna connection and connect the ground tap of the coil to the filament end of the secondary. In three tap loop circuits, replace the loop with three tap coil and couple the amplifier to the grid end. (See dotted lines.) In either case, some experimenting will be necessary to determine the right amount of capacity to use in the coupling condenser to obtain the correct degree of coupling. Better results have been obtained with this circuit designed by the writers than with any method which has been brought to their attention. A description of a special application of this circuit will be published in a later issue.

*Lab. of Radio Standards.

West Ahead of East

On a per capita basis, there are 50 per cent more radio users on the Pacific Coast than in the east or middle west.

That is the belief of Lyman J. Gage, Jr., president of the Precision Electric Manufacturing Corporation of Los Angeles, who has just returned from a six weeks' trip to New York and intermediate points.

He made a careful study of radio conditions in Chicago, Denver, Salt Lake, St. Louis, Omaha, Kansas City, Philadelphia and New York, spending several days in each city. As the head of a plant producing the Pemco power unit, which eliminates A and B batteries, Mr. Gage was particularly interested in that phase of the industry, but he also included in his survey a study of other matters.

"Radio on the Pacific Coast is looked upon as an entertainment necessity—in the east it is a doubtful luxury, due to the extreme chaos of the air," he said. "This situation is attributed to the lack, up to this time, of control of broadcasting stations. Easterners hope the new Federal Commission will remedy this condition, but are doubtful about it."



Cruise in the Wake of the Pirates

LET your thoughts take you back to the land of dreams where Romance rides swiftly on the wings of adventure. Drink deeply in the enjoyment of your favorite Radio program as your thoughts cruise the Spanish Main.

The Enchanter Radio Reproducer will help you to this solace and comfort. The design alone is sufficient incentive, but the perfect tone—reproduced in its full tonal quality and color—will give you rich, mellow reproduction without the usual interruptions and harshness.

The Enchanter combines an art metal design—Spanish motif—of exceptional beauty and decoration, with perfect radio reproduction. Gives you all that a good speaker can, plus that wonderful invitation to cruise with your thoughts.

BAKER-SMITH CO., Inc.

Exclusive Distributors
New Call Bldg. San Francisco

THE ENCHANTER
CONE  SPEAKERS
Highest grade reproducers

Blue Vitriol Ground

Increases Volume — Improves
Tone and Adds Selectivity

Endorsed by Radio Engineers

Price \$8.50 Installed

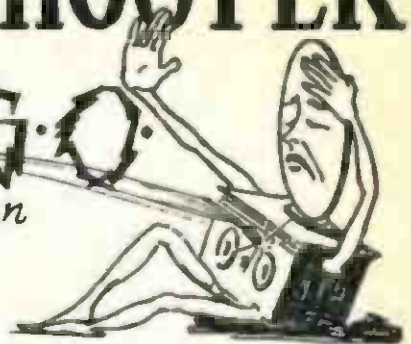
N. H. ROBINSON
GROUND EXPERT

2618 North Main Los Angeles, Calif.
Phone CApitol 7310

THE TROUBLE SHOOTER



ASK K.G.O.
The Answer Man



KENNETH G. ORMISTON
Technical Editor

Technical inquiries are answered directly by mail. There is no fee for this service. Explain your problem fully so that an intelligent and comprehensive answer may be given.

The Grid Leak

The grid leak is an extremely important unit in any receiver. Small and apparently insignificant, it is often overlooked when an "efficiency hound" starts in to get the very best possible results from his set.

The purpose of the leak is, as its name applies, to provide a path of high resistance from the grid to filament, to permit a certain degree of leakage. Without the use of the leak the charge which accumulates upon the grid of the tube due to the discharging of the grid condenser would pile up until the normal tube action would be "choked." The polarity of the grid must be maintained in order that the tube may function as a detector on the proper portion of its characteristic curve.

In the early sets the grid leak usually consisted of a pencil line, the tiny graphite particles providing a path of high resistance. The pencil line could be made heavier when less resistance was desired and partly erased for higher resistance. This method was unsatisfactory for the reason that the value of resistance varied with temperature, and furthermore was often very noisy; a noise usually blamed to static.

Much research and experimentation has been done on resistors since those days, and now we have leaks of accurate and permanent values, long life and noiseless operation. The proper value for the different types of detector tubes varies somewhat with the B voltage used; the higher the plate voltage, the higher the grid leak value. Also, the leak value which gives the best quality and volume on loud signals is not the

leak value which will give the best weak or DX signals.

In this connection, the engineering staff of the International Resistance Company, gives the following table:

Tube Type	Aver. Grid Leak	For DX
200A	1 to 3 megs	2 to 5 megs
201A	2 to 5 megs	5 to 9 megs
199	2 to 5 megs	5 to 9 megs
WD11 or 12	2 to 4 megs	4 to 7 megs

Don't Use Filament Rheostats for Volume Control!

Many set operators make the mistake of reducing volume by turning back one or more of the filament rheostats. Especially do they use the R F rheostat for this purpose. Such practice is detrimental to tube-life. It is almost as harmful to operate your tubes with too little voltage as with too much. Too little filament current in time makes the crystalline formation of the filament brittle, and too much current causes an excessive emission and quick exhaustion.

Long tube life is dependent upon the tube being always operated at its rated voltage. The rheostats should be set so that the voltage across the filament of the tube is 5 or 3 volts, as the case may be. Any variation, in addition to being harmful to the tube, also introduces distortion in the output.

Volume control can be accomplished by changing the degree of regeneration if an adjustment is provided for this; by a variable resistance unit in shunt with the secondary of the first A F transformer, or by detuning the first tuned circuit.

The "Porta-Tester"

Radio set owners formerly when trouble arose in their receivers, disconnected their sets, carried them out to their cars and took them to a radio store that was equipped with the old cumbersome testing apparatus.

Now all is changed.

The "Porta-Tester" is a small, compact and easily handled portable tester that does all and more than the laboratory arrangement. It is the invention of John G. Haddaway of the Haddaway Manufacturing Company at 1806 West Hoover street, Los Angeles.

**Burned-out Audio Transformers
Repaired—\$1.50**

SPECIAL PRICE IN QUANTITY

A. W. COOPER

1315½ W. 39th St. Los Angeles, Cal.

Free for your name on a postcard

C.H. PRESTON'S

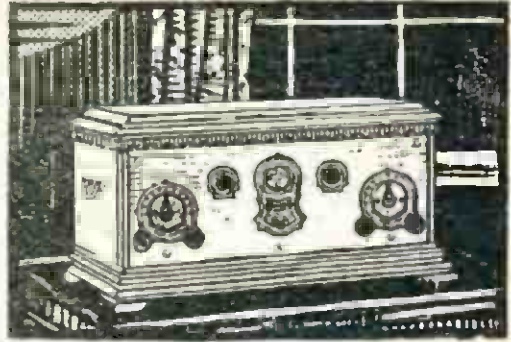
"DX"
Long Distance
Radio Ground
PATENT APPLIED FOR

Don't fail to get
full information
about this sen-
sational Radio
Discovery. Send
your name
in Now

Radio Test Laboratories
3036 Fifth Ave. Los Angeles

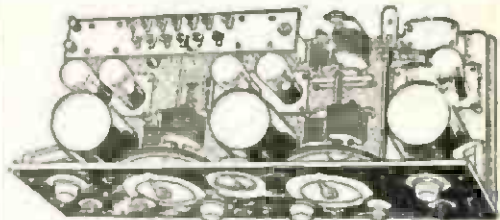
Every radio owner naturally wants to get full information regarding the Preston "DX" Radio Ground, the original "Blue Vitriol Ground" that has had so much publicity in Radio Doings.

Write today for free literature, and letters from owners that tell of the improved volume, selectivity and distant reception they have had since installing the "DX" Ground. Or, if you prefer, send \$8.00 for one of the grounds postpaid to your home.



STROMBERG-CARLSON LEADERSHIP CONFIRMED

By Unbiased Judges



The Sesqui-Centennial International Exposition, by its Gold Medal Award, has endorsed every claim made by the Stromberg-Carlson Company for scientific total shielding which is the basis for the famed Stromberg-Carlson selectivity, distance ability and accuracy of tone.

The Radio-Art Studio

Authorized Dealer

Stromberg-Carlson

3831 Wilshire Blvd.

Between Western and Manhattan

Phone WASHINGTON 4095

Open Evenings Until Nine



By CAREY PRESTON RITTMEISTER



"C. P. R."

Maybe you have noticed in the stores of Southern California a poster of real beauty, suggesting the "Easter gift" idea. Not a bad idea, from many a standpoint. This year Easter is very late, and an Easter-giving will help through what would be a dull period between the Winter tourist exodus and the opening of the Summer season. Then, we all love to give, and it might help carry the Christmas spirit through the year. A suggestion is to choose gifts made in Southern California—and there are lovely things made here—hosiery of the finest silk and best make; knit sports clothes that cannot be surpassed by any Eastern mills; underwear and lingerie most exquisite; pajamas of beauty and utility; and by the way, pajamas make the very best outfit for housewear and work.

An article descriptive of my work at KNX, in a recent issue of the Christian Science Monitor has brought to me a flood of letters from all over the country written by women and girls asking me to tell them how they can do the same work in their city; two of these inquiries are from New York City and Washington, D. C. In all the inquiries the interest seems to be inspired by the idea that it is something that's "easy." It reminds me of a very smart girl of my acquaintance; she has a bright idea and she talks about it; the next day she has another one and she talks about it; the first idea is forgotten. And I wonder as I see her from time to time,

when she will begin to work. It seems to take so long to learn that "dogged does it," to use a Cockney phrase.

I've found another happy memory in my file—a recipe labelled "Alice Giffel-son's Chicken Dinner"—the memory, a studio in Greenwich Village seven years ago, where the dinner was served, then "Uncle Billy's" studio nearby, where several famous musicians, painters and sculptors gathered, Heifetz coming in later and playing just because he felt like playing. This is the recipe, and it's good enough for the very best Easter Dinner.

Cut up and salt a stewing chicken. Cut into small pieces half a green pepper, one onion, one tomato, one carrot, three stalks of celery; brown in a stewpan in one table spoonful of butter. Add $\frac{1}{2}$ of a teaspoonful of paprika; $\frac{1}{8}$ teaspoonful of nutmeg; $\frac{1}{4}$ teaspoonful ginger, a bit of cayenne, black pepper, thyme, celery salt, and 1 clove of garlic, cut very small. Then brown the chicken slightly in the butter, and add a pint of water. Cook chicken and vegetables together until the chicken is tender. Thicken the gravy and add chopped parsley.

These cream cakes make a nice dessert. Beat together yolks of 5 eggs, juice of half a lemon and grated rind and 1 cup of sugar. Fold in lightly the beaten whites of the 5 eggs and $\frac{3}{4}$ of a cup of flour with $\frac{1}{2}$ teaspoonful of baking powder. Bake in deep muffin pans in a moderate oven. When done, roll in powdered sugar and cool. Split the cakes and fill with whipped cream.

The first word of this article reminds me of a true story. A friend has two

(Turn to Page 75)

Koo-KoO KolyuM

By HAL DAVIS

CRUEL AND UNUSUAL PUNISHMENT INFLICTED BY THE OFFICIALS OF LOS ANGELES COUNTY, as reported by our esteemed and dignified contemporary, the *Los Angeles Times*: "As the jurist's opinion prevails, Jessie Ramirez must spend some little time in the COUNTY PAIL"(!)

STATION KOKO BROADCASTING ON A WAVELENGTH OF 1864 2/3 TAXIMETERS:

"Good evening, folks! Your old pal, Horace Hairoil denouncing—pardon me, AN.nouncing.

"It gives me great pleasure to tell you that at 7:63 sharp this evening we will put on the air Mr. O. Wotta Hamon and his company of Shameless Players, fresh from their phenomenal run of nine days in the Watts Opera House. Mr. Hamon's all.star organization (if sober) will favor you with that wonderful old classic, "Cast Up by the Sea—In Six Parts." As an inducement to our many friends in Radio Land to see this thing through, we offer a special prize of one "Improved Static Producer" to the first listener.in who telephones the studio and gives us the middle three words of the fourth speech from the end of the play. No kidding, now, folks!

"Following the play we will swing into our very remote control from Bill Loftus' Auto Park, where you will hear Miss Aileen Riggin in her famous high diving act. Miss Riggin leaps rather hurriedly from a live telegraph wire into a coffee percolator furnished by the Neverlite Electric Company. Listen intently for the splash.

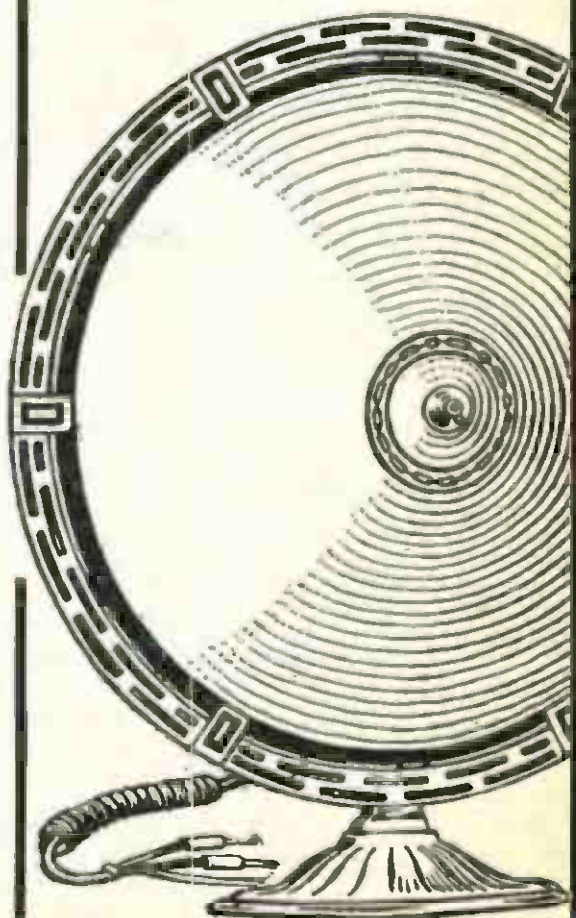
"After this our listeners.in (if any) will be favored by Madame Human.Screech, the coloraphoto soprano, whose first (and possibly last), number will be that famous old drinking song by Jimini, "When the Swallows Homeicard Fly."

"Please stand by till we slip our Wave-Length."

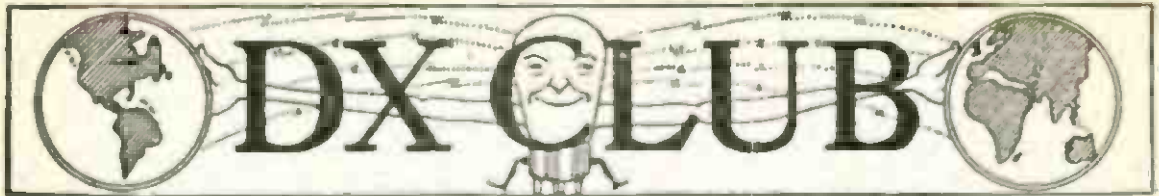
Herald

\$13.75

A FREE-EDGED cone speaker, 18 inches high, with protecting metal frame. Compare this handsome new Herald for volume and tone with any higher priced speaker at your dealer's.



BAKER-SMITH CO., INC.
Call Bldg., San Francisco, Cal.
Selling Representatives for Pacific Coast



DX HOUND, PURE AND SIMPLE!

DX Club:

Being a constant reader of your magazine, I always turn to the DX Club page first, as that is the part that interests me the most. I am a DX hound, pure and simple. I have a Splitdorf, five-tube set. I use no antenna, but have a Preston DX ground, connected to antenna post on set. I have never yet seen a log in your book from a Splitdorf owner, so here goes. I received the following 32 stations, all on loud speaker, during a period of about six weeks:

KGW, WCCO, KSD, KYA, CNRV, KOAC, KLX, KJR, KFDY, KPO, KFXF, KFQB, KGO, KEX, KOIN, WOW, KYW, KFEL, KOA, KFRC, KOMO, WHO, KTAB, KFRU, KSL, KFJF, AMB, KHQ, KOWW, KFSO, KMOX, KWTC.

Besides all locals and Catalina Island. I would like very much to hear from other owners of Splitdorf sets. Would be glad to have any DX hound drop in any time and listen-in with me.

HARRY STRAIN.

Rt. 1, Box 501A,
Venice, Calif.

3935 Lyceum St.

WELL EQUIPPED

DX CLUB:

While I read your correspondence every week, I have never written you as to some DX work I have been doing recently. This may be of benefit to owners of the BT Counterphase Power Six, of which I am glad to say I am a proud owner. Up until about 6 weeks ago I was using a seven stranded copper wire for aerial. I heard so much about this Gosilco aerial wire that I tried it out and the first time I used it I got KDKA on the loud speaker, something I was never able to do with my former aerial. In all, I have 168 distant stations on loud speaker, with plenty of volume. Since I have installed this Gosilco aerial, as well as used the Gosilco bus bar throughout my set, and one

of those DX grounds, with Gosilco wire from ground to set, I have logged PWX, CYJ, WJR, KMOX, KGU, WCCO and many others. I find that with this arrangement I have added 35 per cent in volume and selectivity, and can recommend it as an ideal combination. Would also add that I use CeCo tubes entirely. Would be glad to hear from other BT owners.

S. E. CUMMINGS.

708 Mortimer Ave.,
Huntington Park, Calif.

REAL SELECTIVITY

DX CLUB:

Trust I may be admitted to your DX column once again. Here is a feat that some of the DX fans might wish to try. I have tuned in the following stations which are listed as on the same wave with both stations on the air at the same time: WFBH, Chicago, and KMTR, Hollywood; WJAX, Jacksonville, Fla., and KNX, Hollywood; WHT, Chicago, and KYA, San Francisco; WNBA, Forest Park, Ill., and KNRC, Santa Monica. Have been able to cut all the above Eastern stations through on the loud speaker. Use Super-Zenith set and Worthington speaker.

I wonder if all the fans are familiar with Ekko stamps. I am an ardent collector, and believe it a very nice way to secure certifications. I know of no better proof of your DX claims than to say "here is my album." I have more than paid for Ekko stamps with DX prizes.

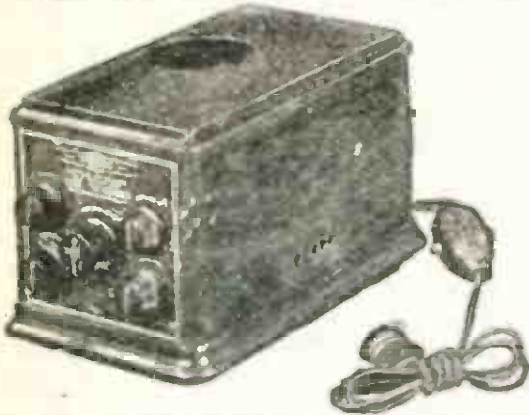
Sincerely,

MRS. CARL NEWCOMB,
Oxnard, California.

In our issue of April 2nd, a letter in the DX Club from a Sonora owner was printed without a signature as the writer omitted to sign his letter. He has since written, giving his name, in order that any other club members may correspond with him if they should so desire. He is Mr. J. A. Slough, 806 N. Vista St., Hollywood, Calif.

Webster "BC" Unit

The combination of C voltage supply in a B eliminator is advantageous for the reason that the C voltage supplied the set varies with any variation in B voltage, due to fluctuation of the AC supply. This keeps the ratio of C to B



voltage constant and insures the preservation of tone quality and tube efficiency.

In the "Little Giant" pictured there are five controls. All three of the B voltages, detector, intermediate amplifier, and power amplifier, are variable, as are also the intermediate and power C voltages.

RADIOLA SPECIALISTS

We make any RCA SUPER-HETERODYNE include in its tuning range the stations between 200 and 230 meters, at a nominal cost. Not an attachment, but a fundamentally sound improvement in the circuit. We have also developed improvements for the Radiola 20.

Our Electrical Phonograph

is creating a furor among the music lovers who demand the last word in quality reproduction. We build portable and console models, or this equipment can be installed in your old phonograph. Furthermore we guarantee as faithful reproduction as that given by any machine offered to the public.

Makers of the Professional Model Receiver

Laboratory of Radio Standards

E. K. Hayes

V. M. Bitz

2408 W. Vernon—VERmont 6543
Los Angeles, Calif.

Free for your name on a postcard

C.H. PRESTON'S

"DX"
Long Distance
Radio Ground
PATENT APPLIED FOR

Don't fail to get full information about this sensational Radio Discovery. Send your name in Now

Every radio owner naturally wants to get full information regarding the Preston "DX" Radio Ground, the original "Blue Vitriol Ground" that has had so much publicity in Radio Doings.

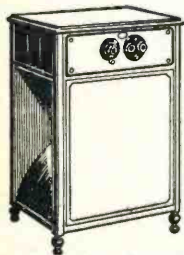
Write today for free literature, and letters from owners that tell of the improved volume, selectivity and distant reception they have had since installing the "DX" Ground. Or, if you prefer, send \$8.00 for one of the grounds post-paid to your home.

Radio Test Laboratories
3036 Fifth Ave. Los Angeles

ATWATER KENT RADIO

with the

Pooley Armchair Model Cabinet



Armchair Model Pooley Cabinet
Atwater-Kent Model 30 Receiver
\$170 (Less Accessories)

Simplified Radio Reception has found its ultimate goal in this amazing combination of Pooley Armchair Cabinet and One Dial Atwater-Kent Receiver.

The luxury of sitting at ease in your favorite armchair and changing instantly from station to station, using only the finger tips of one hand, without even leaning over, is a radio sensation unsurpassed.

On display at your Dealer's!

RAY THOMAS INC.
Atwater Kent Distributor

1248 S. Hope St. WE 6334
LOS ANGELES

ATWATER KENT RADIO

Owners of "20 Compact" and "30" Models, attention! Ask one of these Dealers to show you how admirably your set will fit into the "Pooley Armchair Model Cabinet" described on the opposite page, thus giving you Radio's latest luxury. Prospective Radio buyers should look into this, too. Call on one of these Authorized Dealers:

LOS ANGELES

Wesholly Radio Service
7406 Melrose
ORegon 4702

GLENDALE

Glendale Music Co.
(Salmacia Bros.)
118 S. Brand Blvd.
Glendale 90

Downtown

Harry W. Harrison, Inc.
848 S. Flower St.
TRinity 9777

Wilshire

Bimini Electric &
Radio Co.
109 S. Vermont Ave.
DRexel 2990

Martin Music Co.
734 S. Hill St.
TRinity 9621

South

Los Angeles Music Co.
4410 S. Broadway
AXridge 5479

Starr Piano Co.
630 S. Hill St.
TRinity 3905

Southwest

Stone Elec. Supply Co.
710 W. Pico St.
WEstmore 5149

Chapman House

J. M. Loge
986 S. Western
EMpire 8177

Sales Co.
4379 S. Figueroa St.
AXridge 8382

Highland Park

Thale Radio Shoppe
103 S. Avenue 57
GARfield 9613

Collinge Hardware Co.
3425 S. Vermont Ave.
BEacon 7025

C.D. Tanner Co.
4154 S. Vermont Ave.
VERmont 7905

Hollywood

Herbert L. Jackson
5117 Hollywood Blvd.
OLympia 2555

Southeast

Hill Electric Co.
2705 S. San Pedro St.
HUMbolt 1138

SAN PEDRO

McWhinnie Electric Co.
(K F V D)
1817 S. Pacific Ave.
San Pedro 375

PASADENA

Brady-Patterson Co.
817 E. Colorado St.
Terrace 5155

Hancock Music Co.
331 E. Colorado St.
Wakefield 3171

SOUTH PASADENA

So. Pasadena Elec. Co.
1509 Mission St.
ELiot 2088
Terrace 5829-J

"Perfect At a Whisper — Perfect At Full Volume"

Results Like This

Can Be Obtained
with an



Los Angeles, Calif.,
April 5th, 1927.

Palmer Radio Co.
4529 S. Vermont Ave.,
Los Angeles, Calif.

Gentlemen:

About one month ago I had you build for me one of those INFRADYNES, and I have had so much success with it and am so well pleased that I just had to sit down and give you some of the results I have had. It is without any exaggeration when I say that I am able to get WENR, Chicago; KYW, Chicago; WTAM, Cleveland; CNRV, Vancouver; WBAP, Fort Worth; KMOX, St. Louis, without any difficulty whatever, and all these on loud speaker with excellent quality and volume. As far as all our local stations are concerned, I cut right through them. I have had two, what I thought were real sets, before I had this INFRA-DYNE, but the set I have now is all that anyone would wish for.

Wishing you your continued success, I am,

Yours truly,
J. C. SMITH.

3752 LaSalle Ave.

We Specialize in the Construction of This Efficient Receiver

PALMER RADIO LABORATORY

Established 1923

OPEN EVENINGS

4529 S. Vermont

VERmont 7883

Los Angeles

SUNDAY TIME TABLE

ALL TIME TABLES ADJUSTED TO PACIFIC TIME
(X) Indicates Station Is On the Air

10-12 A.M.		12-2 P.M.		2-4 P.M.		4-6 P.M.		STATIONS				6-8 P.M.		6-10 P.M.		10-12 P.M.															
10 00-10 30	10 30-11 00	11 00-11 30	11 30-12 00	12 00-12 30	12 30-1 00	1 00-1 30	1 30-2 00	2 00-2 30	2 30-3 00	3 00-3 30	3 30-4 00	4 00-4 30	4 30-5 00	5 00-5 30	5 30-6 00	CALL	Wave Length Meters	Power In Watts	STATION	6 00-6 30	6 30-7 00	7 00-7 30	7 30-8 00	8 00-8 30	8 30-9 00	9 00-9 30	9 30-10 00	10 00-10 30	10 30-11 00	11 00-11 30	11 30-12 00
SOUTHERN CALIFORNIA																															
				X	X	X	X									KELW	535	250	Burbank.....												
	X	X											X	X		KGEF	517	1000	Los Angeles.....			X	X	X	X	X	X	X			
X	X	X	X					X	X							KFI	467	4000	Los Angeles.....	X	X	X	X	X	X	X	X	X	X	X	
		X	X													KFCR	413	50	Santa Barbara...					X	X						
X	X	X	X	X												KHJ	405	500	Los Angeles.....			X	X	X	X	X	X				
	X	X														KMIC	327	500	Inglewood.....			X	X	X	X						
																KFBC	390	50	San Diego.....			X									
												X	X	X	X	KMTR	370	500	Hollywood.....	X	X	X	X	X	X	X					
X	X	X	X	X	X	X	X					X	X	X	X	KFXB	353	1000	Los Angeles.....	X	X	X	X	X	X	X	X				
X	X	X	X				X	X	X	X	X	X				KNX	337	750	Los Angeles.....			X	X	X	X	X					
	X	X														KPSN	316	1000	Pasadena.....	X	X										
X	X	X	X									X	X			KFWC	295	200	San Bernardino							X	X	X	X	X	
X	X	X	X						X	X						KTBI	294	750	Los Angeles.....	X	X	X	X	X	X	X					
X	X	X	X					X	X	X	X					KFSG	275	500	Los Angeles.....			X	X	X	X	X	X		X	X	
																KWTC	283	250	Santa Ana.....			X	X								
X					X	X										KFWB	252	500	Hollywood.....						X	X	X	X	X		
										X	X					KFSD	246	1000	San Diego.....												
X	X	X					X						X	X		KNRC	238	1000	Santa Monica...	X	X	X	X	X	X	X	X	X	X	X	
	X	X	X				X	X	X	X	X	X	X	X	X	KFON	233	750	Long Beach.....	X	X	X	X	X	X	X	X	X	X	X	
X	X	X	X													KPPC	229	50	Pasadena.....			X	X	X	X						
																KFOZ	226	500	Hollywood.....						X	X	X	X	X	X	
				X	X								X	X		KFWO	211	250	Catalina.....	X	X	X	X	X	X	X	X				
X																KFVD	205	500	Venice.....	X	X	X	X	X	X	X	X	X	X	X	
NORTHERN CALIFORNIA																															
X	X						X	X	X	X						KPO	428	1000	San Francisco...	X	X	X	X	X	X	X	X	X	X	X	
	X	X		X	X											KYA	400	1000	San Francisco...				X	X	X						
	X	X	X				X	X	X							KGO	361	4000	Oakland.....			X	X	X	X	X	X				
X	X	X	X	X												KQW	333	500	San Jose.....				X	X	X	X					
X	X	X	X	X												KTAB	303	1000	Oakland.....				X	X	X						
												X	X			KFRC	268	500	San Francisco...	X	X	X	X	X							
	X	X														KFUS	256	50	Oakland.....				X	X	X						
X	X															KRE	256	100	Berkeley.....												
				X	X	X										KFWI	250	500	San Francisco	X	X	X	X	X	X	X	X				
NORTHERN AND WESTERN STATES																															
X	X	X	X					X	X	X	X	X	X	X	X	KGW	491	1000	Portland.....			X	X	X	X	X	X	X	X	X	
								X	X	X	X	X	X	X	X	KEX	447	5000	Portland.....	X	X	X	X	X	X	X	X	X	X	X	
X	X	X														CFAC	435	2000	Calgary.....												
	X	X														KJR	384	20M	Seattle.....				X	X	X	X	X	X			
																KLZ	384	500	Denver.....			X	X	X	X						
X	X	X	X									X	X	X		KOA	322	5000	Denver.....			X	X	X							
																KOIN	319	1000	Portland.....	X	X		X	X	X	X	X				
X	X	X	X	X	X	X										KOMO	306	1000	Seattle.....	X	X	X	X	X	X	X	X				
X	X				X	X										KSL	300	1000	Salt Lake City...				X	X	X	X					
X	X	X														KMO	250	500	Tacoma.....	X	X										

Hours Shown as Submitted by These Stations. For DX Schedule See Page 42

COUNTERPHASE for DX: H. A. Eyrest, 1032 N. Ogden Dr. GR. 9915

WILL SACRIFICE a \$150 a month, well-appointed, two-room office suite in the I. N. Van Nuys Building, Seventh and Spring Streets, Los Angeles, for \$100 per month. Lease has one year to run.

Inquire at
RADIO DOINGS

407 East Pico St.

WEstmore 1401

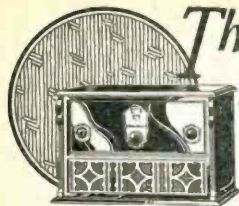
Los Angeles, Calif.

THURSDAY TIME TABLE

ALL TIME TABLES ADJUSTED TO PACIFIC TIME
(X) Indicates Station Is On the Air

10-12 A.M.		12-2 P.M.		2-4 P.M.		4-6 P.M.		STATIONS				6-8 P.M.		8-10 P.M.		10-12 P.M.															
10:00-10:30	10:30-11:00	11:00-11:30	11:30-12:00	12:00-12:30	12:30-1:00	1:00-1:30	1:30-2:00	2:00-2:30	2:30-3:00	3:00-3:30	3:30-4:00	4:00-4:30	4:30-5:00	5:00-5:30	5:30-6:00	CALL	Wave Length Meters	Power in Watts	STATION	6:00-6:30	6:30-7:00	7:00-7:30	7:30-8:00	8:00-8:30	8:30-9:00	9:00-9:30	9:30-10:00	10:00-10:30	10:30-11:00	11:00-11:30	11:30-12:00
SOUTHERN CALIFORNIA																															
																	KELW	535	250	Burbank	X	X	X	X	X	X	X	X			
																	XKFI	467	4000	Los Angeles	X	X	X	X	X	X	X	X	X	X	
		X	X														KFCR	413	50	Santa Barbara					X	X					
																	KHJ	405	500	Los Angeles		X	X	X	X	X	X	X	X		
																	XKMIC	397	500	Inglewood	X	X	X	X	X	X	X	X			
			X	X													KFBC	360	50	San Diego					X	X	X	X	X		
X	X	X	X	X	X	X	X	X	X	X	X	X	X	X	X	X	KMTR	370	600	Hollywood	X	X	X	X	X	X	X	X	X	X	
			X	X	X	X	X	X	X	X	X	X	X	X	X	X	KFXB	353	1000	Los Angeles	X	X	X	X	X	X	X	X			
X	X	X										X	X	X	X	X	KNX	337	750	Los Angeles	X	X	X	X	X	X	X	X	X	X	
		X	X														KGER	325	100	Long Beach	X	X									
																	KPSN	316	1000	Pasadena	X	X			X	X	X				
		X	X	X	X	X	X	X	X	X	X	X	X	X	X	X	JAMB	301	100	Tia Juana, Mex											
		X	X									X	X	X	X	X	KFWC	295	100	San Bernardino						X	X	X	X	X	
								X	X								KYBI	294	750	Los Angeles		X	X	X	X						
X	X	X	X					X	X	X	X						KFSG	275	500	Los Angeles		X	X	X	X	X	X	X	X		
																	KWTC	267	250	Santa Ana	X	X			X	X	X	X			
X				X	X												KFWB	252	500	Hollywood	X	X	X	X	X	X	X	X	X	X	
																	KFSD	248	1000	San Diego	X	X	X	X	X	X	X	X	X	X	
							X	X	X	X	X	X					KNRC	238	1000	Santa Monica	X	X	X	X	X	X	X	X	X	X	
X	X	X	X				X	X	X	X	X	X	X	X	X	X	KFON	233	750	Long Beach	X	X	X	X	X	X	X	X	X	X	
			X	X													KFQZ	226	500	Hollywood	X	X	X	X	X	X	X	X	X	X	
				X	X												KFWO	211	250	Catalina	X	X	X	X	X	X					
X																	KFVD	205	500	Venice	X	X	X	X	X	X	X	X	X	X	
NORTHERN CALIFORNIA																															
																	KFBK	636	100	Sacramento			X	X	X	X	X				
																	KLX	508	500	Oakland		X									
X		X	X	X					X	X	X	X	X	X	X	X	KPO	428	1000	San Francisco	X	X	X	X	X	X	X	X	X	X	
			X	X	X												KYA	400	1000	San Francisco		X	X					X	X		
		X	X	X	X							X	X	X	X	X	KGD	351	4000	Oakland	X	X	X		X	X	X	X	X	X	
X																	KQW	333	500	San Jose	X	X	X	X	X						
												X	X	X	X	X	KTAB	303	1000	Oakland		X	X								
																	KSMR	283	100	Santa Maria	X	X	X	X	X	X	X				
X	X	X	X	X	X	X	X				X	X	X	X	X	X	KFRG	268	500	San Francisco	X	X	X		X	X	X	X	X	X	
		X															KRE	256	100	Berkeley					X	X	X	X			
X	X			X			X										KFWH	254	100	Eureka					X						
				X	X												KFWI	250	500	San Francisco	X	X	X		X	X	X	X	X	X	
																	KZM	240	100	Oakland		X									
																	KFOU	231	250	Holy City, Calif					X	X					
NORTHERN AND WESTERN STATES																															
X	X	X		X	X												KGW	491	1000	Portland	X	X	X	X	X	X	X	X	X	X	
X	X		X	X	X												XWBAP	478	1500	Fort Worth	X			X	X	X	X	X	X		
			X	X	X							X					KFOA	454	1000	Seattle		X	X	X	X	X	X	X	X	X	
																	XKEX	447	4000	Portland	X	X	X	X	X	X	X	X	X	X	
			X	X													CFAC	435	2000	Calgary	X	X			X	X	X				
							X	X									KHO	394	1000	Spokane	X	X				X	X				
X	X	X										X	X	X	X	X	KJR	384	20M	Seattle	X				X	X	X	X	X	X	
			X	X								X	X	X	X	X	KOIN	319	1000	Portland	X	X	X		X	X	X	X			
X	X	X	X	X	X	X	X	X	X	X	X	X	X	X	X	X	KOMO	306	1000	Seattle	X	X		X	X	X	X	X	X	X	
		X	X	X	X							X	X	X	X	X	KOA	322	5000	Denver											
																	KSL	300	1000	Salt Lake City	X	X	X	X	X						
																	KOWW	288	500	Walla Walla			X		X	X	X	X	X	X	
X	X						X	X	X	X							KMO	250	500	Tacoma			X	X	X	X	X				

Hours Shown as Submitted by These Stations. For DX Schedule See Page 42



Model 350—\$115.00
with built-in Reproducer

The New Stewart-Warner 6-Tube receiver with separate or enclosed reproducer



Model 345—\$82.50 with the
New Model 415 Reproducer—\$31.50

For radio enthusiasts who prefer a receiver that stresses the "simplicity of operation" feature, Stewart-Warner offers several models with single dial control. These efficient receivers, to be secured in both table and console types, have a six-tube receiving circuit of proved efficiency.

The Model 350, a table receiver with enclosed reproducer, and the Model 355, a magnificent console attractively priced, have been praised by acoustic experts for their splendid tone. The reproduction unit used in these models is the same as that

employed in the Stewart-Warner Model 415 Reproducer . . . an exclusive Stewart-Warner development that has done much to establish the splendid reputation of Matched Unit Radio.

Any Stewart-Warner dealer will gladly demonstrate either the five or six tube Stewart-Warner receivers in your own home. Arrange for a demonstration today . . . You'll be surprised at their efficiency . . . at the exceptionally moderate terms on which they can be purchased.

Los Angeles Dealers

ATWATER RADIO & ELEC. CO.
3885 Glendale Blvd.
DEAN K. BARRIS
3100 S. Vermont Ave.
BENSON HARDWARE COMPANY
412 South Broadway
BIRONG & BUSHARD
3717 W. Adams St.
CALIFORNIA RADIO SHOP
6017 South Figueroa St.
CHAPMAN HOUSE SALES CO.
4274 W. E. Figueroa St.
CLIFF'S RADIO SERVICE
2635 Dayton Ave.
DON FINKE
2207 West Jefferson
A. W. COOPER
1215 W. 26th St.
HARRY SAVOY
828 W. Jefferson St.
HOLLAND ELECTRIC SHOP
5612 Pasadena Ave.
HIDLEY RADIO & BIKE HOUSE
817 South Main St.
HINES RADIO
7327 South Broadway
INTERPHONE ELECTRIC CO.
3510 Monte Vista St.
LESTER RADIO ELEC. CO.
452 South Broadway
LOVERING W. H. GIBSON RADIO
SHOP
4108 Wilshire Ave.
RAY LYON
719 Compton Ave.
RAY LYON
1428 E. Florence Ave.

MANCHESTER RADIO CO.
1522 E. Manchester Ave.
MOORE RADIO SALES CO.
2827 44th Avenue Blvd.
MOHAWK BAY & RAD. CO.
915 Sunset Blvd.
NILSSON & NILSSON
359 Skidmore Blvd.
NORTON & NORTON
2211 N. Broadway
POTTER RADIO SALES CO.
1817 W. 54th St.
R. & R. ELECTRIC CO.
137 South Vermont Ave.
RADIO SUPER SERVICE CO.
2614 Venice Blvd.
RADIO SUPER SERVICE CO.
4618 Russell Ave., N. Vermont
CHAS. A. ROBINSON
4582 E. Normandie
RADIO ELECTRIC SHOP
765 E. Vermont Ave.
RADIO CABINET DIST. CO.
450 South Broadway
A. G. SINGER
812 Seward Ave.
SOUTHWEST ELECTRIC &
RADIO CO., 907 W. Figueroa St.
WEST STATES ELEC. CO.
3713 South Broadway
WILKINS RADIO MFG. CO.
3377 Central Avenue

Hollywood Dealers

THE BARROWS COMPANY
5645 Sunset Blvd.
EAGLE ELECTRIC SHOP
7513 Sunset Blvd.
DORAN ELECTRIC SHOP
6909 Santa Monica Blvd.
MELROSE RADIO SHOP
5652 Melrose Ave.

C. H. PRESTON & SON
12245 Ventura Blvd.
North Hollywood

South California Dealers

ALHAMBRA, LeRoy G. Franklin
841 W. Main
ARROYO GRANDE, J. D. Witt
Arroyo Grande Plumbing and
Electric Shop
ARTESIA, Wm. B. Hayes
325 N. Main St.
BAKERSFIELD: Chilton-Grant
Radio Co.
1816 Thronteth St.
BARSTOW, Barstow Radio Shop
BELLFLOWER, Standard Radio Shop
501 Somerset St.
BURLA, Bennett's Radio Shop
329 B. Panama Ave.
CHINA, Woods Radio Company
112 24th St.
COLTON, M. C. Bliss
210 West "F" St.
COVINA, Harold R. Mouser
116 Colledge St.
DULVER CITY, Culver City Radio &
Elec. Co.
6712 Washington Blvd.
DOWNEY, W. M. Breaker
5th and Crawford
EAGLE ROCK, Weaver & King
6112 Eagle Rock Blvd.
EL SEGUNDO, B. W. McAllister
310 Grand Ave.
EL MONTE, Weaver & King
121 Monte Ede. (CA.)

FULLERTON, Radio Studio
1124 North Beadra
GARDENA, Don Spears
728 W. 165th St.
GLENDALE, Willard Hellman
(Broadway Elec.)
202 E. Broadway
GLENDORA, James H. Reed
HERMOSA BEACH, Rose Radio Store
246 Camino Real
HUNTINGTON PARK, M. L. (Radio)
King
116 E. Irvington St.
HYNES, Van & Jenkins
INGLEWOOD, R. D. Aylesworth
111 N. Market St.
LANCASTER, E. A. Keisig
BISHOP, Griffith Bros.
LONG BEACH, Griffith Bros.
LONG BEACH, Alday & Crandall
114 American Ave.
LONG BEACH, The Electricus
Radio Co.
1719 E. Anaheim
LONG BEACH, W. L. Morrill
710 Pine St.

LODLOW: Reed & Gilbert
LYNWOOD, Lynwood Elec. Co.
204 N. Long Beach Blvd.
NEWALL, C. E. Graham
OCEAN PARK, Crescent Tire and
Supply Co.
Bay and Main Sts.
ORANGE, Roy Dee Larzer
115 N. Glassell St.
PALMS, Grickell Radio Elec. Co.
17261 Washington Blvd.
PASADENA, Wyckoff & Vander
1447 North Lake St.
PASADENA, Premier Radio
11 California St.
PASADENA, DeVilbiss Radio
Laboratory
3018 East Colorado Ave.
PASO ROBLES, R. C. Heaton
PICO, Pico Radio Shop
POMONA, George W. Hiett
118 N. Third St.
REDLANDS, J. L. Young
105 W. Citrus Ave.

SAN BERNARDINO, Gurr, Smith
479 Fourth St.
SAN FRANCISCO, Willis Row
SAN GABRIEL, A. Burman
3549 E. Hamilton Dr.
SAN LUIS OBISPO, Cline Elec. Co.
800 Monterey St.
SANTA ANA, Shaffer's Music Store
415 N. Main St.
SANTA BARBARA, Val Falger
732 State St.
SANTA MARIA, Ford & Smart
115 E. Main St.
SANTA MONICA, J. S. Sultz
822 Wilshire
SANTA PAULA, The Music Shop
101 W. Main St.
SATCOW, D. H. Wright
Ninth and D Sts.
TAFT, L. H. Bird
613 Center St.
TONOPAH, NEVADA
Tonopah Electric Company
UPLAND, Jay M. Ross
VENICE, Stewart-Warner Radio
Bldg.
1079 Washington Blvd.
WALNUT PARK, Terminal Electric
1009 Seville St.
WESTMINSTER, Martin Enzal
WHITTIER, M. C. Oldham
125 N. Glassell St.
WILMINGTON, B. F. Clausing
718 W. Anaheim St.

Remember—Stewart-Warner Radio Uses
the Famous U.S. Navy Receiving Circuit—
Stewart-Warner Products Service Station
{ Wholesale Distributors Stewart-Warner Radio }
1366 South Figueroa Street ~ LOS ANGELES

Schedule of DX Stations

Call Letters	Location	W. L. Meters	Power Watts	Schedule of Concert and Dance Music						
				Sun.	Mon.	Tue.	Wed.	Thu.	Fri.	Sat.
WBBM...	Chicago	226	1500	6-10	S.	6-10	6-10	6-10	6-7	6-10
WIBO...	Chicago	226	1000		4-5				10-12	
WOWO...	Ft. Wayne, Ind.	227	1000		5-9		6-9	5-9		
WHT...	Chicago	238-400	3500		S.	8-10	8-10	8-10	8-10	8-10
WWAE...	Plainfield, Ill.	242	5000	S.	6-9	6-9	6-9	6-9	6-9	6-9
WOOD...	Grand Rapids, Mich.	242	1000						8-10	8-10
WBAL...	Baltimore, Md.	246	1000	5-6	5-9	5-9	S.	5-9	5-9	S.
WRVA...	Richmond, Va.	256	1000		6-8		6-8	6-8	6-8	
WKAJ...	Milwaukee	261	5000		6-8		6-8	6-8	6-8	
WCAR...	San Antonio, Tex.	263	6000		8-9		8-9		8-10	
WENR...	Chicago	266	1000		6-8	6-8	6-8	6-8	6-8	6-8
WGHP...	Detroit	270	1500		S.	5-6	6-6	5-6	5-7	6-6
KGU...	Honolulu	270	500	4-6	5-7	5-7	5-7	6-9	6-9	S.
WHK...	Cleveland	273	1000	9-11	9-11	11-12		9-11	9-11	9-11
KFAL...	Boise, Idaho	280	750	5-7	S.	5-8	5-7	5-8	5-6	5-8
KMOX...	St. Louis	280	5000			7-9		7-9		
WSM...	Nashville, Tenn.	282	1000	4-11	4-11	4-11	4-11	S.	4-11	4-11
WMBF...	Miami, Fla.	284	5000		8-10		8-10			8-10
WPG...	Atlantic City	300	5000	5-10	5-9	5-9	5-10	6-9	S.	5-10
WGN...	Chicago	303	1000	6-8	5-9	5-9	S.	5-9	5-9	5-9
WLIB...	Chicago	303	4000	6-8	8-9	6-9	6-9	6-9	6-9	6-9
KOIL...	Council Bluffs	306	500			6-9	6-9	6-9	6-9	6-9
KDKA...	Pittsburg	309	1000		5-11	8-10	8-10	8-10	8-10	8-10
WABC...	New York	316	5000	S.	6-9	S.	6-9	S.	S.	9-11
WJAZ...	Chicago	330	1500	5-7		6-10	5-9	6-7	6-7	5-7
WBZ...	Springfield, Mass.	333	2000			6-9	6-9	6-9	6-9	6-10
KFAB...	Lincoln, Neb.	341	1000	4-7	5-8	5-9	5-9	5-9	5-9	5-9
WLS...	Chicago	345	5000			6-9		6-9		
WWJ...	Detroit	353	1000	6-9		6-9	6-9	6-9	6-9	6-9
WDAF...	Kansas City	366	1000	4-7	6-7	5-7	5-8	5-8	5-8	5-8
WJJD...	Mooseheart, Ill.	370	1000	S.	6-11	6-11	6-11	6-11	6-11	6-11
KFBU...	Laramie, Wyo.	375	500			6-11	6-11	6-11	6-11	6-11
KTHS...	Hot Springs, Ark.	375	1000		8-10		8-10		8-10	
WGY...	Schenectady, N. Y.	380	5000	7-10	7-10	7-10	7-9	7-9	7-10	7-9
WEAR...	Cleveland	389	1000	6-7	S.	6-9	5-9	5-9	5-9	5-9
WTAM...	Cleveland	389	1000	5-9	5-6	5-9	6-10	5-9	5-9	6-10
WOAI...	San Antonio, Tex.	394	5000	5-7	S.	6-8	6-8	6-8	6-8	S.
PWX...	Havana, Cuba	400	1000	5-7	5-9	5-8	5-8	5-8	5-8	5-7
CYJ...	Mexico City	410	1000	6-7		5-8		5-8	5-8	
KFQB...	Ft. Worth, Tex.	412	2500		6-10	6-10		6-10	6-10	6-10
WCCO...	St. Paul, Minn.	416	5000		5-8	5-8	5-8	5-8		5-8
KFXF...	Denver	422	500	S.	5-11	5-11	5-11	S.	5-11	5-11
WLW...	Cincinnati	422	5000	4-6	4-7	4-7	4-9	4-10	S.	4-7
WSB...	Atlanta, Ga.	428	1000	4-6	5-9	5-9	5-9	5-9	6-9	5-9
WQJ...	Chicago	447	500	5-7	S.	7-11	7-11	7-11	7-11	7-12
WMAQ...	Chicago	448	1000	S.	4-5	4-8	4-8	4-8	4-9	4-9
WJZ...	New York, N. Y.	454	50000	4-8	5-9	5-9	5-9	5-9	5-9	5-9
WBAP...	Ft. Worth, Tex.	476	1500	7-9	7-10	7-9	S.	7-10	7-10	7-10
CYL...	Mexico City	480	1000		7-9	7-9	7-10	7-9	7-9	7-10
WOC...	Davenport, Iowa	484	5000	4-9	S.	5-9	5-9	5-9	5-9	5-8
WEAF...	New York City	491	5000		5-9	5-9	5-9	5-9	5-9	5-9
WJR...	Detroit	517	5000	7-8	S.	6-7	7-9	6-7	S.	8-9
WOW...	Omaha	526	1000	7-9	7-9	7-9	S.	7-9	7-9	7-9
WNYC...	New York City	526	1000		6-8	5-8	5-8	5-8	5-8	5-6
WHO...	Des Moines	526	5000	5-8	5-10	5-10	5-10	5-10	5-10	S.
KYW...	Chicago	536	3500	6-9	4-5	6-10	6-10	6-10	6-10	6-10
KSD...	St. Louis	545	500	5-7	6-8	5-7		6-7	5-8	5-8

Hours Shown as Submitted by These Stations Adjusted to Pacific Standard Time

DISTANCE-SELECTIVITY "DX FILTER" ACHIEVES BOTH
CHILDS LAB., 1187 W. 24th ST., L. A.

Free Trial Installation \$1 Down

Easiest of Terms

Here is your opportunity to buy the wonderful PEMCO automatic "A" and "B" socket power unit on the easiest terms you ever dreamed of. PEMCO'S super-efficiency makes this deal possible.

No more fuss or bother with batteries—PEMCO power is as dependable as your electric light current—Runs any radio, no matter what size or make—No switches on a Pemco.

Prompt delivery is assured if you act at once.

Los Angeles Music Co.
4410 South Broadway
Los Angeles

Pemco

Automatic

"A" and "B" Power Unit

LOS ANGELES MUSIC CO.,
4410 So. Broadway,
Los Angeles—Phone AXridge 5479.

Please send me full details about the Pemco Deal.

Name.....

Address.....





LESLIE ADAMS
Announcer

Los Angeles, California—467 Meters

KFI

4000 WATTS—640 KILOCYCLES

Radio Central Super-Station of Earle C. Anthony, Inc.
1000 S. Hope. Phone WE. 0331. After 5 P.M., WE. 0337
Class "B" 5000-Watt W. E. Sta., Operating on 4000 Watts

ROBERT HURD, Program Manager

DAILY EXCEPT SUNDAY—

6:15 p. m.—Radiatorial

MONDAY, WEDNESDAY AND FRIDAY—

KFI Woman's Interest Dept. Under the Direction of Agnes White.
10:20 to 10:40 a. m.—Furnishings for the home by Agnes White,
director of the Dept.

10:40 to 11:00 a. m.—Betty Crocker—Home Service Talks.

WEEK COMMENCING SUNDAY, APRIL 17, 1927

SUNDAY, APRIL 17

Fifth anniversary of KFI's going on the air.
Program from 4:00 a. m. to 12:00 midnight,
continuous

4:00 a. m.—Virginia Flohr, soprano; Robert Hurd, tenor; Ray Hastings.

5:00 to 6:00 a. m.—Easter Sunrise service—Virginia Flohr, Robert Hurd, Philharmonic Orchestra, Emil Oberhoffer, conductor; Ray Hastings—services broadcast from the Coliseum, at Los Angeles, and broadcast by the National Broadcasting Company, over the Pacific Coast Network.

6:00 a. m.—Irene Wynn, contralto; Belle Levinson and Lewis A. Kerwin, pianist; Nellie Callender Mills, violinist; Sam Iskowitz, violinist; Angelus Mixed Quartet.

8:00 a. m.—Program arranged by Norma West, soprano.

9:00 a. m.—Program by the University of Southern California—direction of Hal Williamson.

10:00 a. m.—Church services given by the Los Angeles Church Federation.

11:00 a. m.—Temple Baptist Church services.

12:30 p. m.—Louis Klos Trio, Louise Caselotti, with Guido Caselotti.

2:00 p. m.—Grace Mead, soprano; Leo Rabitz, violinist.

3:00 p. m.—Beverly Hills Presbyterian Community Church Choir, with soloists.

4:00 p. m.—Louise Klos, harpist; Evelyn Pickrell, violinist, and Virginia Flohr, soprano, and Robert Hurd, tenor.

5:00 p. m.—Vesper hour, by Mayflower Congregational Church Choir.

6:00 p. m.—Mary Christine Albin Trio.

6:58 p. m.—Father Ricard's Sunspot Weather forecast.

7:00 p. m.—Aeolian Organ Recital, Alex Reilly at the console;

8:00 p. m.—Packard Classic Hour, Kitty Short, soprano.

9:00 p. m.—Sunday Night Concert, by the National Broadcasting Company, over the Pacific Coast Network.

10:00 p. m.—Program presented by Alma Frances Gordon, contralto.

11:00 p. m.—Ballad Hour.

MONDAY, APRIL 18

5:30 p. m.—Matinee Program.

6:30 p. m.—Gamut Male Quartet.

7:00 p. m.—Johnston and Farrell's Music Box Hour, direction of Gene Johnston.

8:00 p. m.—Song Recital, by William Pilcher, tenor; Lilyan Ariel, pianist.

9:00 p. m.—Mary Christine Albin Trio.

10:00 p. m.—Program by Melklejohn Bros.

TUESDAY, APRIL 19

5:30 p. m.—The Dragon Hawaiians Trio.

6:30 p. m.—Elsie Ruth, Katherine Spangler,

Bertha Miller English, pianist.

7:00 p. m.—Los Angeles Fire Department Orchestra.

8:00 p. m.—Gattone String Quartet.

9:00 p. m.—Emma Kimmel, soprano; John C. Abbott, violin; Robert Hurd, pianist.

10:00 p. m.—Azure Music Club, Edna Cook, Blues singer; Glenn Edmunds and his Collegians Dance Orchestra.

WEDNESDAY, APRIL 20

5:30 p. m.—Sebastian's Cotton Club

6:30 p. m.—Harold Shick and his Rose Room Orchestra.

7:00 p. m.—Ray Fisher's Original Victoriana Dance Orchestra.

7:00 p. m.—Nick Harris Detective Stories.

8:00 p. m.—Calpet Male Quartet, Calpet String Quartet, Chico De Verde, director, and Paul Roberts, tenor.

9:00 p. m.—Program by the National Broadcasting Company, over Coast Network.

10:00 p. m.—Sunset Instrumental Quartet, Dorothy Ruth Miller, concert pianist;

THURSDAY, APRIL 21

5:30 p. m.—Legion Night Club Orchestra.

6:30 p. m.—Clarice Russell, Blues Singer.

7:00 p. m.—Program by the University of Southern California.

8:00 p. m.—KFI Program Hour.

9:10 p. m.—Program arranged by Norma West, soprano.

10:00 p. m.—Program of Modern Classical Music, with Lorelle Fierstad, violinist.

FRIDAY, APRIL 22

5:30 p. m.—Eugene Blacalluz Program

6:10 p. m.—Madame Nelson, psychologist.

6:30 p. m.—Program of classics by the Mary Christine Albin Trio.

7:00 to 9:00 p. m.—American Shakespearean Foundation presents John Barrymore, and musical program, which will be remroadcast by KOA, KFKX, WOC, WBY and 2LO, London.

9:00 p. m.—Program arranged by Alma Frances Gordon, contralto.

10:00 p. m.—Packard Ballard Hour

SATURDAY, APRIL 23

5:30 p. m.—Del Monte Orchestra.

6:15 p. m.—Francis Sullivan, Literary Talks.

6:30 p. m.—Collegiate Aeolians Orchestra, with Parks Sisters (Frances and June)

7:30 p. m.—Felipe Delgado, Spanish baritone.

8:00 p. m.—Los Angeles Philharmonic Orchestra, Emil Oberhoffer, conductor, by the Standard Oil Company of California, broadcast by KFI, Los Angeles, and KPO.

9:30 p. m.—Thomas Wallace, baritone.

10:00 p. m.—Packard Radio Club, Ecsther Walker, pianist; Helen Guest, ballad singer; Red Wyatt and his uke; Hale Hooper, tenor.

Copyright 1927 by Earle C. Anthony, Inc.
Program Published as Submitted by the Station

Anten-A-Liminator

Why Bother with an Unsightly Antenna?

The Anten-A-Liminator, easily and quickly installed on any radio, regardless of make or model, makes it possible to secure 100% radio performance without using unsightly cage aerials . . . make-shift antennae installations.

This tested and guaranteed antennae eliminator will, without question, increase both volume and selectivity of your radio. It will make it possible for you to tune in short wave stations without background or distortion.

Small—Compact—Easily Installed

The Anten-A-Liminator is the biggest radio value ever offered in a small package . . . it is but 5 inches in diameter . . . only $1\frac{1}{4}$ inches thick . . . it will even fit inside your radio receiver. It is sold on a guarantee of satisfactory performance . . . you have nothing to lose by trying it. Ask your dealer.

Manufactured by George E. Browning Co., Ogden, Utah

SCOTT SALES COMPANY

Distributors

443 South San Pedro Street

LOS ANGELES

Phone VAndike 3297

\$8.50

Performance Guaranteed

NOTICE TO DEALERS

Write, wire or telephone NOW for full details regarding the Anten-A-Liminator. Sales and profits on this number will surprise you. DON'T DELAY.





"Uncle John" Daggett
Announcer

Los Angeles, California—405.2 Meters

KHJ

500 WATTS—740 KILOCYCLES

Times Bldg., First and Broadway, Los Angeles
Owned and Operated by Los Angeles Times

JOHN S. DAGGETT, Manager and Program Announcer
Phone ME. 0700

"Kindness, Happiness and Joy"

NIGHTLY EXCEPT SUNDAY AND MONDAY—

6:00 to 6:30 p. m.—KHJ Concert Trio and J. Walter Leopold,
7:30 p. m.—Scripture Reading.
8:00 p. m.—World-wide news items.
9:00 p. m.—Time signals and weather reports.

WEEK COMMENCING SUNDAY, APRIL 17, 1927

SUNDAY, APRIL 17

10:00 a. m.—Sermon from the KHJ Studio by Dr. H. C. Culbertson, pastor of Plymouth Congregational Church.
10:30 a. m.—Morning service from the First Methodist Episcopal Church, Arthur Blakeley, organist.
7:00 to 8:00 p. m.—Evening services from the First Methodist Episcopal Church.
8:00 to 10 p. m.—Studio program, presenting Frederick MacMurray, viola and violin; Grace Currey, harpist, and a special speaker for Easter; Louise Miller, pianist, and others.

MONDAY, APRIL 18

Silent all day.

TUESDAY, APRIL 19

6:30 p. m.—Children's program, with Queen Titania and her sandman; Playground Department Harmonica Band; George Kerr, mandolin soloist; Marguerite Bringham, "Nightingale;" Margaret, cellist, and Earl Voorhees, young pianist.
7:40 p. m.—H. M. Robertson, "Dogs."
8:00 to 10:00 p. m.—Special classical program.
9:15 p. m.—Harold Roberts' Golden State Band.
10:00 to 11:00 p. m.—Los Angeles Railway Orchestra.

WEDNESDAY, APRIL 20

12:30 p. m.—Fred C. McNabb, "Garden Talk."
6:30 p. m.—Children's program, including Dick Winslow, screen juvenile; Vivian Marple, "Blue Bell of KHJ;" Glenn Fitz, "Optimistic Mascot;" Patricia Eccleston, "Little Daffodil;" Lois Jane Campbell, "Brown Eyes;" Viola Essen, "B.B.," and pupils of Marshall Stedman.
7:40 p. m.—Dr. Mars Baumgardt.
8:00 to 10:00 p. m.—Program De Luxe, presenting Dr. Sigmund Spaeth, well-known lecturer and authority on musical literature; also special artists.

THURSDAY, APRIL 21

6:30 p. m.—Children's program, presenting Nellta Bennett, "Ginger Bread Girl;" Joyce Coad, "Little Red Riding Hood;" Dickie Brandon, reader; June Brandon, contralto; Jeanne De Bard, "Bonnie Jeanne of Radioland;" Rosetta Lewin, "Curly Locks," and others.
7:40 p. m.—Dr. Phillip M. Lovell.
8:00 to 10:00 p. m.—Program, featuring the internationally known artists of Zoellner Quartet and Leo H. Sansiper, Russian baritone; Louise Miller, pianist.
9:00 p. m.—Arthur Edwin Wake, assistant pastor of the Wilshire Presbyterian Church.
10:00 to 11:00 p. m.—Glenn Edmunds and his Varsity Four.

FRIDAY, APRIL 22

6:30 p. m.—Children's hour, including Roberta Bush, "Firefly of KHJ;" Richard Hendrick, "Little Minister;" Henrietta Poland, "Little Forget Me Not;" Collins twins, Katherine and Ellen; Davis Durand, "Little Boy Blue," and other favorites.
7:40 p. m.—Thomas F. Ford, "Book Reviews."
9:00 p. m.—Talk on International Relations.
9:00 to 10:00 p. m.—An evening of Spanish music.

SATURDAY, APRIL 23

6:30 p. m.—Children's program, with Helen Berta Hanson, "Music Child;" Nona Clapp, "Sunshine Fairy;" Dolly Wright, "Dolly of Radioland;" Arthur Stevens, "King Arthur of Radioland;" Marjorie Genevieve Lowe, "June Bug;" Clark Paschal, 18-year-old saxophonist, and the Joy sisters, Elaine and Marguerite.
8:00 to 10:00 p. m.—Saturday Night Frolic program, with Mr. and Mrs. Benjamin Sears and the Husking Bee dancers; E. A. Mulford, "Dixie Dan and Mammy Lou of KHJ."
9:00 p. m.—Talk on Educational Banking.

\$5 PUTS A PHILCO IN YOUR HOME—Call WE. 9065



SCHRADER-ROSS

EXPERT RADIO SERVICE

3206 W. Washington, Los Angeles, Cal.
Day or Night Phone EMpire 2966



The San Francisco Sales Organization of the Kemper Radio Corporation



San Francisco Sales Force

The Johnstone Radio Company, 688 Geary Street, exclusive distributors of the Famous Kemper Portable Radio and the Kemper Ampliphonic Console in that territory.

On display in Los Angeles at the following locations:

Ambassador Hotel
Biltmore Hotel
509½ S. Western Ave.
1553 N. Wilcox
Subway Terminal Waiting Room
14 Mercantile Arcade Bldg.
2015 West Seventh

124 Pacific Ave., Long Beach
208½ S. Brand Blvd., Glendale
257 E. Colorado St., Pasadena
1436 Third St., Santa Monica
6611 Washington Blvd., Culver City
745 E. Seaside Blvd., Long Beach

Radio Studios, 1207 Fourth Ave., Seattle, Wash.

There is an exclusive Kemper Radio Shoppe near you.

KEMPER RADIO CORPORATION

1236 Santee Street

Westmore 1439

Los Angeles, Calif.

*Makers of the Famous Kemper Portable Radio and the
Kemper Ampliphonic Console.*



HAROLD ISBELL
Announcer

Hollywood, California—337 Meters

KNX

750 WATTS—890 KILOCYCLES
LOS ANGELES EVENING EXPRESS
Paul G. Hoffman's Studebaker Bldg., 6116 Hollywood
Blvd., Hollywood. Phone HEmpstead 4101
NAYLOR ROGERS, Manager and Program Director
GLEN RICE, Asst. Manager
"The Voice of Hollywood"

DAILY EXCEPT SUNDAY—

8:45 to 9:00 a. m.—Exercises by Dr. P. M. Selznig, courtesy of Producers of Mission Orange Juice.
9:00 a. m.—Inspirational talk and morning prayer.
9:55 a. m.—Time signals from Washington, D. C.
9:00 a. m.—Radio Shopping News by Carey Preston Rittmeister.
10:00 a. m.—Town Crier of the Day's morning message.
10:30 a. m.—Kate Brew Vaughn, Director Household Economics Dept., Evening Express, except Friday and Saturday.

12:00 noon—KNX Trio, courtesy Suburban Realty Co.

12:30 p. m.—W. F. Alder Travelogue.

2:00 p. m.—Radio Trades Association Program.

4:00 p. m.—Lost and Found Column.

4:55 p. m.—Market reports.

5:30 p. m.—Howard Clarke.

5:45 p. m.—The Town Tattler.

6:00 p. m.—Biltmore Hotel Orchestra, broadcast from the Biltmore Dining Room.

6:30 p. m.—Dinner hour concert presenting the Yale Radio Battery Orchestra.

DAILY EXCEPT SUNDAY AND TUESDAY—

11:00 p. m.—Hotel Ambassador, Gus Arnheim's Coconut Grove Orchestra.

WEEK COMMENCING SUNDAY, APRIL 17, 1927

SUNDAY, APRIL 17

10:00 a. m.—First Presbyterian Church of Hollywood, Rev. Stewart P. MacLennan.

2:00 to 4:00 p. m.—City Park Board musical program.

5:15 p. m.—All Souls' Church.

6:30 p. m.—Hollywood Unitarian Church.

7:00 p. m.—First Presbyterian Church of Hollywood, Rev. Stewart P. MacLennan.

8:00 p. m.—Circle Theatre Concert Orchestra and organ recital.

9:00 p. m.—Feature program.

MONDAY, APRIL 18

12:45 p. m.—C. P. R.'s musical program.

3:00 p. m.—First Presbyterian Church of Hollywood.

4:30 p. m.—"Own Your Own Home."

7:00 p. m.—George J. Birkel Music Co. presenting the Brunswick Panatropes.

7:30 p. m.—Playlet, courtesy Overell Furniture Company.

8:00 p. m.—L. W. Stockwell Co. courtesy program, presenting Calmon Lubovicki, master violinist, and Claire Mellonino, concert pianist.

9:00 p. m.—Feature program.

10:00 p. m.—Biltmore Hotel Orchestra.

TUESDAY, APRIL 19

11:00 a. m.—Dr. R. H. Gerber, specialist, Eye strain and Nervous Diseases.

12:45 p. m.—Advertising Club Luncheon from Biltmore Hotel.

4:00 p. m.—Radio Matinee with Louise Howatt, contralto.

4:30 p. m.—C. P. R.'s Musical Program.

7:00 p. m.—Willshire Ionaco Company courtesy program presenting Charles Hamp.

7:30 p. m.—Fitzgerald Music Co. presenting the Ampico Knabe Piano.

8:00 p. m.—Tufts-Lyon courtesy program.

9:00 p. m.—Spagy Heights courtesy program.

10:00 p. m.—Hotel Ambassador; Gus Arnheim's Coconut Grove Orchestra.

WEDNESDAY, APRIL 20

12:45 p. m.—C. P. R.'s musical program.

3:00 p. m.—Paul Hugon.

3:30 p. m.—Don Warner, pianist.

4:00 p. m.—Garden talk, Dewey Kruckeberg.

7:00 p. m.—George J. Birkel Music Co. courtesy program.

7:30 p. m.—Security Trust & Savings Bank courtesy program.

8:30 p. m.—Opera "Pinafore" through courtesy of Broadway Dept. Store.

10:00 p. m.—Earl Burtnette's Biltmore Hotel Orchestra.

THURSDAY, APRIL 21

12:45 p. m.—C. P. R.'s musical program.

7:00 p. m.—Carthay Circle Theater organ recital, courtesy Overell Furniture Co.

8:00 p. m.—National Home Equipment Co. courtesy program.

9:00 to 10:00 p. m.—Tucker and Charleson.

10:00 p. m.—Earl Burtnette Biltmore Orch.

FRIDAY, APRIL 22

12:45 p. m.—Charles Weeks, talking on "Intensive Little Farms."

3:00 p. m.—L. A. District Federation of Women's Clubs musical program.

4:00 p. m.—C. P. R.'s musical program.

7:00 p. m.—Fitzgerald Music Co., presenting the Ampico Knabe Piano.

7:30 p. m.—Feature program.

8:00 p. m.—Davis Perfection Bread Company courtesy program, presenting the Royal Order of Optimistic Do-Nuts.

9:00 p. m.—Feature program.

10:00 p. m.—Main events from the American Legion Stadium.

SATURDAY, APRIL 23

12:45 p. m.—C. P. R.'s musical program.

3:00 p. m.—Town Crier of the Day.

7:00 p. m.—Stories of insect life by Harry W. McSpadden.

7:15 p. m.—Announcement of Sunday services of the leading Los Angeles churches.

7:30 p. m. to 10:00 p. m.—Feature program.

10:00 p. m.—Earl Burtnette's Biltmore Hotel Orchestra, courtesy Mullen & Bluett.

12:00 midnight—KNX Frolic from the Main Studio.



*"Turn One
Dial to Get
Everything
On the Air"*

The Radio Surprise of the Season

Everyone has been waiting for it—a dependable set which combined *everything* in one cabinet, yet a radio set which was *simple*—and now it is on the market. A famous set that sweeps the ether with one dial, combined with nationally recognized equipment. It is known as the

Holmes ^{ONE} DIAL Combination

A five-tube tuned radio-frequency set which has already made thousands of friends. This is combined in a beautiful cabinet with a HOLMES sweet-toned Cone Speaker, five tested and matched CeCo "long distance" tubes, and a PHILCO Socket Power unit. No batteries—no wires—all in one cabinet. The price complete, with installation, is \$245.00.

Use the Coupon NOW!

The Coupon below will bring you at once full information regarding this remarkable combination. SEND IT IN TODAY. In the meantime, get in touch with your dealer, who will arrange a free demonstration in your own home. If he hasn't one in stock, call WESTMORE 4038 and we will send a factory expert to install one in your home.

-----TEAR OUT AND MAIL TO-----

A. J. Tobey Co.

Fifteenth and Hope Streets, Los Angeles

Please send me full information about the HOLMES Combination Offer.

Name.....

Address.....

City..... State.....

Dealer's Name..... Address.....



BILL RAY
Announcer

Hollywood, California—252 Meters

KFWB

500 WATTS—1190 KILOCYCLES
WARNER BROS. MOTION PICTURE STUDIOS
Warner Bros. West Coast Studio, 5842 Sunset Blvd.
GERALD L. KING, Mgr. WM. RAY, Asst. Mgr.
Phone GL. 9461
"Movie Land"

DAILY EXCEPT SUNDAY—

- 12:30 to 1:30 p. m.—Classified Hour.
5:40 to 6:00 p. m.—Beauty Talk.
6:00 to 7:00 p. m.—Pontiac Six Dinner Hour.
10:00 to 11:00 p. m.—Musical program from Mayfair Hotel.
Courtesy of Bundy & Albright.
11:00 to 12:00 p. m.—Dance music from El Patio Ballroom.
- MONDAY, TUESDAY AND WEDNESDAY—**
5:00 to 5:40 p. m.—Children's Hour.

WEEK COMMENCING SUNDAY, APRIL 17, 1927

SUNDAY, APRIL 17

- 2:00 to 3:00 p. m.—Organ Recital on the world's mightiest organ, located in Roosevelt Memorial Park, Los Angeles.
8:30 to 9:00 p. m.—Program by courtesy of Southern California Music Company.
9:00 to 11:00 p. m.—Warner Bros. Frolic, introducing Kenneth Gillum, popular songs; Charlotte DeLovelace, blues songs; Byrle Colby, ballads; Frances St. George, KFWB Jazzmania Girl; Harry G. Kelper and his Movieland Orchestra.

MONDAY, APRIL 18

- 12:00 to 12:30 p. m.—Pacific Electric Art.
7:00 to 8:00 p. m.—Program by courtesy of J. N. Pyles National Detective Service, introducing Vernon Rickard, tenor; Pyles National Detectives Concert Orchestra. Mr. J. N. Pyles will give a brief talk.
8:00 to 9:00 p. m.—Program by courtesy of Suburban Realty Co., Glendale, featuring the Suburban Estates Concert Orchestra and soloists.
9:00 to 10:00 p. m.—John Canton, tenor, accompanied by Mina Hellikson; Warner Bros. European Novelty Orchestra under direction of Chico DeVerde.

TUESDAY, APRIL 19

- 4:45 to 5:00 p. m.—Dr. L. P. Clarke on "Diet."
7:00 to 7:30 p. m.—Program by courtesy of Southern California Music Company.
7:30 to 8:00 p. m.—Program by courtesy of Molo Laboratories, introducing the Molo Melody Maids and Ernest Burley, tenor.
8:00 to 8:30 p. m.—Program by courtesy of the Consolidated Cleaners.
8:30 to 8:45 p. m.—Daily News.
8:45 to 10:00 p. m.—Lilyan May Challenger, contralto; Hollywood Orchestra Quartet.

Program Published as Submitted by the Station.

WEDNESDAY, APRIL 20

- 10:45 to 11:00 a. m.—Enid Garnett on "Feminine Fads and Fancies."
6:00 to 7:00 p. m.—Dinner hour concert.
7:00 to 7:30 p. m.—Thirty minutes of sunshine by Charles W. Hamp.
7:30 to 7:45 p. m.—Warner Bros. Orchestra.
8:00 to 9:00 p. m.—Program by courtesy of Stewart-Warner Products, Inc., featuring concert orchestra and soloists.
9:00 to 10:00 p. m.—Franklyn Colson, dramatic tenor; LeGrand Concert Ensemble.

THURSDAY, APRIL 21

- 7:30 to 8:00 p. m.—Program by courtesy of Molo Laboratories, featuring the Molo Melody Maids and Vernon Rickard, tenor.
8:00 to 9:00 p. m.—Dan Santos' Hawaiian Trio; Mabel Leonard and Howard Stevenson in double piano numbers; Jackie Lucas, blues songs.
9:00 to 10:00 p. m.—Alma Brown, soprano; Ray Bailey's String Trio.

FRIDAY, APRIL 22

- 7:00 to 7:50 p. m.—Warner Bros. Orchestra; Ruth Michaelson, blues songs; LeRoy Kullberg and his ukulele.
8:00 to 9:00 p. m.—Alma Manson, soprano; Ray Hull and Earl Taylor, violin and organ.
9:00 to 10:00 p. m.—Sol Hoopii's Hawaiian Quartet; Ann Grey, blues songs; Studio Chatter at 9:30.

SATURDAY, APRIL 23

- 7:00 to 8:00 p. m.—Carl Dye and his Melody Makers; Art Goodstein, popular songs.
8:00 to 9:00 p. m.—Program by courtesy of the Mona Motor Oil Co., introducing Pat O'Neill, baritone; Mona Motor Oil Co. String Orchestra.

TO JOBBERS AND MANUFACTURERS

Spaulding Fibre, Spaulding Bakelite, Hope Talking Tape, Irvington Spaghetti and Wire

Factory Stocks and Cutting Equipment—Ample Stocks in Los Angeles

Panels, Washers, Discs, Special Shapes

CLAPP & LaMOREE

1325 San Julian Street, Los Angeles

LOS ANGELES

SAN FRANCISCO

PORTLAND

Over 50,000 Users

Have Proven That The
NEW IMPROVED

Ferbend "B" Battery Eliminator

IS THE MOST REASONABLE



ATTACH THIS ELIMINATOR TO YOUR LIGHT SOCKET and positively avoid any further expense for "B" Batteries. It is so easy to obtain permanent and efficient "B" current supply that every one will sooner or later adopt the use of an Eliminator with perfect satisfaction. Herein the Famous Ferbend Eliminators will be found all that has been eagerly sought for by the millions of radio set owners. Here will be found a perfect source of "B" current, with a clorostat control which adjusts the voltage; noiseless in operation, with constant and uniform power, for the first time economical enough for each and every radio set owner.

Tested and approved by the laboratories of Radio News, Popular News and Daily News.

\$25.00 — 180 Volts
\$17.50 — 90 Volts

*Cost of Operation Less
than 50c per Year*

SOLD ON AN ABSOLUTE MONEY BACK GUARANTEE

We Will Gladly Install Eliminator in Your Home
FREE OF CHARGE

DEALERS: Territorial rights now being allotted; write for
our attractive proposition.

Exclusive California Distributor

NATIONAL ELECTRIC COMPANY

416 W. 9th St.

TUcker 9776

Los Angeles



G. ALLISON PHELPS
Manager and Announcer

Hollywood, California—370.2 Meters

KMTR

500 WATTS
KMTR RADIO STATION
1036 N. Highland Avenue. Telephone HOLLY 3026
Owned and Operated by C. C. JULIAN
FORBES W. VAN WHY, Engineer-in-Charge

DAILY EXCEPT SUNDAY—

- 7:00 to 7:30 a. m.—Prof. Barclay L. Severn's Setting-Up Exercises.
8:45 to 9:00 a. m.—Time signals and musical selections.
12:00 to 12:30 p. m.—Leighton's Arcade Cafeteria Orchestra.
12:30 to 1:30 p. m.—Who's Who and What's Happening.
1:30 to 2:30 p. m.—KMTR Tea Dinner Program.
5:30 to 6:00 p. m.—White King Male Quartet courtesy Los Angeles Soap Co.
6:00 to 6:15 p. m.—Nightly Doings.
6:15 to 6:45 p. m.—Rancho Vista Avocado courtesy program.
6:45 to 7:30 p. m.—Fitzgerald Music Company, courtesy program.
10:00 to 11:00 p. m.—Miller's Cafe Lafayette Dance Orchestra.

WEEK COMMENCING SUNDAY, APRIL 17, 1927

SUNDAY, APRIL 17

- 5:30 to 6:15 p. m.—White King Male Quartet, courtesy of Los Angeles Soap Company.
6:15 to 6:30 p. m.—Nightly Doings.
6:30 to 7:00 p. m.—Half hour of Cheer with Burr McIntosh.
7:00 to 8:00 p. m.—Miller's Cafe Lafayette Concert Orchestra.
8:00 to 9:30 p. m.—Walker's Fifth Street Store courtesy program.

MONDAY, APRIL 18

- 11:45 to 12:00 noon—Golf talk by S. E. Connolly of the Los Angeles Athletic Club.
12:30 to 1:30 p. m.—Who's Who and What's Happening in Pomona.
4:00 to 4:30 p. m.—Talk by J. P. Redding, representing the Iona Company.
7:30 to 8:00 p. m.—Ohrmund Bros., furnace manufacturers, courtesy program.
8:00 to 9:00 p. m.—Eureka Vacuum Cleaner Co. courtesy program.
9:30 to 10:00 p. m.—Hollywood Storage Co. courtesy program.

TUESDAY, APRIL 19

- 9:00 to 9:45 a. m.—Sylvia, the Blind Cook.
9:45 to 10:00 a. m.—Charles Hamp, representing the Iona Company.
10:00 to 11:00 a. m.—Georgia O. George, "The Psychology and Physiology of Beauty."
11:00 to 12:00 noon—Madame Alene's talk.
12:30 to 1:30 p. m.—Who's Who and What's Happening in Whittier.
4:00 to 4:30 p. m.—Advance Elect. Co. courtesy program.
4:30 to 5:15 p. m.—LeRoy Parry and his dance orchestra.
5:15 to 5:30 p. m.—Talk on health by Dr. Robert T. Williams.
7:30 to 8:00 p. m.—Overell Furniture Co. courtesy program.
8:00 to 9:00 p. m.—Maxwell House Coffee Co. courtesy program.
9:00 to 10:00 p. m.—Hollywood Storage Co. courtesy program.

WEDNESDAY, APRIL 20

- 10:00 to 10:30 a. m.—Travel talk by Dr. S. J. Mathieson.
12:30 to 1:30 p. m.—Who's Who and What's Happening in Anaheim.
5:00 to 5:30 p. m.—Dr. Wesley M. Barrett, "Perfect Eyesight Without Glasses"

- 7:30 to 8:30 p. m.—Walker's Fifth Street Store courtesy program.

- 8:30 to 10:00 p. m.—Suburban Realty Company courtesy program.

THURSDAY, APRIL 14

- 9:00 to 10:00 a. m.—Sylvia, the Blind Cook.
10:00 to 10:15 a. m.—Charles Hamp, representing the Iona Company.
10:15 to 10:45 a. m.—"Diet Question Box."
10:45 to 11:45 a. m.—Georgia O. George, "Psychology and Physiology of Beauty."
11:45 to 12:00 noon—Golf talk by S. E. Connolly of the Los Angeles Athletic Club.
4:00 to 4:30 p. m.—Talk by J. P. Redding, representing the Iona Company.
7:30 to 8:00 p. m.—Winslow B. Falls, Chevrolet dealer, courtesy program.
8:00 to 9:00 p. m.—A. D. Shotwell Corp. courtesy program.
9:00 to 10:00 p. m.—Hollywood Storage Co. courtesy program.

FRIDAY, APRIL 22

- 8:00 to 10:00 a. m.—Broadcast from "Breakfast Club."
12:30 to 1:30 p. m.—Who's Who and What's Happening in Santa Ana.
4:00 to 4:30 p. m.—Advance Elect. Co. courtesy program.
5:00 to 5:30 p. m.—Dr. Wesley M. Barrett, "Perfect Eyesight Without Glasses."
7:30 to 8:00 p. m.—Thirty Minutes of Sunshine with Charles Hamp.
8:00 to 9:00 p. m.—Walker's Fifth Street Store courtesy program.
9:00 to 10:00 p. m.—Hollywood Storage Co. courtesy program.

SATURDAY, APRIL 23

- 9:00 to 10:00 a. m.—Sylvia, the Blind Cook.
10:00 to 10:15 a. m.—Charles Hamp, representing the Iona Company.
11:30 to 12:00 noon—Gordon Whitnall of the City Planning Commission.
4:00 p. m.—Radio talk to Radio Fans by Forbes Van Why, Chief Engineer KMTR.
7:30 to 7:40 p. m.—Talk by Mr. Benesh of the Sheriff's Office.
7:40 to 8:00 p. m.—KMTR Movie Club.
8:00 to 8:30 p. m.—Lun Park courtesy program; Loren Powell's Little Symphony.
8:30 to 10:00 p. m.—Hollywood Storage Co. courtesy program.
10:00 to 12:00, midnight—Miller's Cafe Lafayette Dance Orchestra.

Selling Like Hot Cakes

The Powell 'B' Eliminator

Uncondition-
ally
Guaranteed



\$12²⁵

Absolutely No Hum

Operates any set from light socket without the use of expensive and troublesome "B" batteries. A large surplus of power at 100 volts and at a cost of only a few cents a year.

MORE VOLUME - - MORE DISTANCE
GREATER SATISFACTION
BETTER QUALITY - - BETTER PRICE

No Tubes, No Acid and Nothing Else to Buy

A ten-day trial with absolute satisfaction or money back

GUARANTEE

This instrument is the result of months of experimenting and exhaustive tests. The best of materials and workmanship have been combined to insure its satisfaction with the user and it is guaranteed unconditionally for one year. If for any reason it fails to perform satisfactorily it should be returned to the seller, who is instructed to repair or replace, free of charge.

Call or Telephone VERmont 1619 for Information

Will deliver and install Eliminator in any part of the city free of charge

-Powell Manufacturing Co.

4009 S. Western Ave.

Los Angeles, Calif.



Allan Fairchild

Los Angeles, California—352.7 Meters

1000 WATTS—850 KILOCYCLES

Commercial Exchange Bldg., Eighth and Olive Sts.,
Los Angeles

MERLE J. GRINDLE, Manager

Announcers: Chas. W. Hamp, ALLAN FAIRCHILD,
LITTLE EDDIE BARNES

BERT O. HELLER, Technical Director

KFXB**DAILY EXCEPT SUNDAY—**
1:00 to 2:00 p. m.—Program by remote control from the studio
of the Wurlitzer Co., 816 South Broadway.2:00 to 4:00 p. m.—Program by remote control from Palais de
Dance, featuring Ralph Markey and his Musical Keys.

4:00 to 5:00 p. m.—Educational hour.

5:00 to 5:45 p. m.—Request program of old popular songs by Lit-

5:45 to 6:00 p. m.—Amusement Suggestions.

6:00 to 7:00 p. m.—Pipe organ recital by remote control from the studio of Albert Hay
Malotte.10:00 to 11:00 p. m.—Palais de Dance and Ralph Markey with his Musical Keys by re-
mote control.**WEEK COMMENCING SUNDAY, APRIL 17, 1927****SUNDAY, APRIL 17**4:00 to 5:00 p. m.—Program by Bud Riley's
Hawaiian Conservatory of Music.5:00 to 6:00 p. m.—KFXB Collegians with
Red Wyatt, singer of Blues, and Fred Lee-
dom Scott, tenor.6:00 to 7:00 p. m.—Grace St. Claire—West-
lake School of Music.7:00 to 8:00 p. m.—Jonnie Mitch-hell's
Ebony Idols.8:00 to 9:00 p. m.—Moody String Trio, with
Ida Schuetz and Clotilde Ferte.9:00 to 10:00 p. m.—LeRoy Parry and his
orchestra—Frank Martin.**MONDAY, APRIL 18**4:00 to 5:00 p. m.—Chas. Offenberg's Or-
chestra and Bert Rovera, vocalist.7:00 to 8:00 p. m.—Redell's King Players—
Isabell Block—Trio.8:00 to 8:30 p. m.—Delmonte String Trio—
Lucille Ray.8:30 to 9:00 p. m.—Charlie Diamond—Steel
Guitar—OL, 5640.9:00 to 10:00 p. m.—Pope and His Califor-
nians.**TUESDAY, APRIL 19**7:00 to 7:30 p. m.—Star Furniture Co.—
Glen Pierce (tenor). Angelus String Trio—
Lou Parker.

7:30 to 8:00 p. m.—KFXB Collegians.

8:00 to 9:00 p. m.—Adelaide Gosnell Lee
and pupils in piano numbers—Lenore Kil-
lian—contralto.

9:00 to 10:00 p. m.—Lou Parker.

WEDNESDAY, APRIL 20

4:00 to 4:30 p. m.—Dr. Gerber.

4:30 to 5:00 p. m.—Wurlitzer Music Lessons
by Allene Curwet.

7:00 to 7:30 p. m.—KFXB Collegians.

7:30 to 8:00 p. m.—Cactus Kid (Smith).

8:00 to 8:30 p. m.—Jimmy Collins—Irene
Wynn.8:30 to 9:00 p. m.—Octavin Marks and Ruth
Pratt.9:00 to 10:00 p. m.—Arthur Clark and Band
—Jimmy Kessel.**THURSDAY, APRIL 21**7:00 to 7:30 p. m.—Radio Mfg. Supply Co.
—Hall and Varian.7:30 to 8:15 p. m.—Louis N. Meyer and Or-
chestra.

8:15 to 9:00 p. m.—Stark Sisters.

9:00 to 10:00 p. m.—Bell Post American Le-
gion.**FRIDAY, APRIL 22**

7:00 to 8:00 p. m.—KFXB Collegians.

8:00 to 9:00 p. m.—Kjerolf Trio—Flute—
Voice—Piano.9:00 to 9:30 p. m.—Novelty duo—Earl Law-
rence—Marion Boogar.9:30 to 10:00 p. m.—Jacques LeQuesne and
Rafael Zarvey.**SATURDAY, APRIL 23**7:00 to 8:00 p. m.—Taylor and Taylor—
Stark Sisters.

8:00 to 10:00 p. m.—Police Frolic.

11:00 p. m. to 1:00 a. m.—Lucky 13 Club.

FORGET BATTERY TROUBLES—CALL WE. 9065

PALMER RADIO LABORATORY

Established 1923

Specializing in

SUPER-HETERODYNES AND INFRADYNES

Intermediate Transformers Made and Calibrated

Also all other types of receivers made to operate efficiently

Satisfaction Guaranteed or No Charge

Advice Free

Open Evenings Till 9 P. M.

Courtesy to All

4529 S. Vermont, Los Angeles. Phone VERmont 7883

He Thought It Was Rachmaninoff

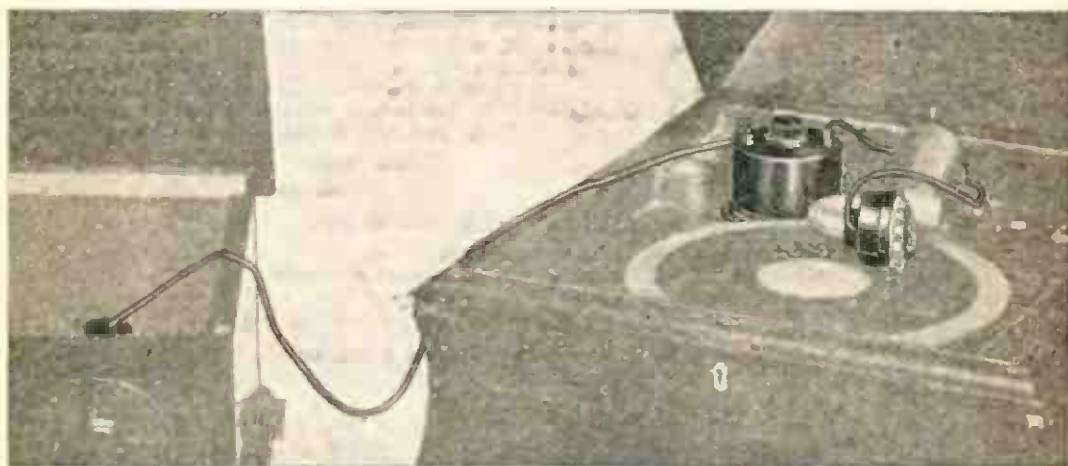
A prominent motion picture actor, conversing with one of Hollywood's best known directors in the latter's home, was suddenly startled by the strains of Rachmaninoff's Prelude in C Sharp Minor coming from an adjoining room.

The picture star was a personal friend of the great pianist and composer, and had heard him play his famous Prelude on several occasions. The masterful execution was so much like that of the composer, that the actor rushed into the next room to see if it could possibly be Rachmaninoff himself at the piano.

To his utter astonishment, he found no piano in the room. The marvelous music came from one of the new electric reproducing phonographs.

The perfection of electric reproduction made such an impression upon him that he immediately purchased one of these phonographs for himself at a cost of over \$900.00.

Through the perfection of the Elec-Tru-Tone, the Phonograph Modernizer, you can now enjoy the marvels of electric reproduction on your old phonograph in conjunction with your radio set without going to the great expense of purchasing a complete new electric machine.



ELEC-TRU-TONE

THE PHONOGRAPH MODERNIZER

\$17.50 — Two Models — \$25.00

Western Jobbers

LOS ANGELES
Yale Radio Electric Co.
Electric Corporation
Herbert H. Horn
SAN FRANCISCO
Kierulff & Ravenscroft
Pacific Motor Supply Co.

OAKLAND
Electric Supply Co.
SAN DIEGO
Coast Electric Co.

SEATTLE
Fobes Supply Co.
SALT LAKE CITY
Intermountain Electric Co.
OGDEN, UTAH
Geo. E. Browning Co.

THE ELEC-TRU-TONE CORP.

Hibernian Bldg., Los Angeles. Phone MUtual 8153

BAKER-SMITH CO., Inc., Call Bldg., San Francisco, National Distributors



M. E. CARRIER
Announcer

Los Angeles, California—294 Meters

KTBI

750 WATTS—1020 KILOCYCLES
BIBLE INSTITUTE OF LOS ANGELES
MR. M. E. CARRIER, Manager
PROF. H. G. TOVEY, Director of Programs.
Phone ME. 6701

DAILY EXCEPT SUNDAY—

8:45 to 9:15 a. m.—Devotional Hour.
2:00 to 3:00 p. m.—Inspirational Hour.

DAILY EXCEPT FRIDAY AND SUNDAY—

7:15 to 8:00 p. m.—Aunt Martha's Children's Hour

WEEK COMMENCING SUNDAY, APRIL 17, 1927

SUNDAY, APRIL 17

10:45 a. m. to 12:30 p. m.—Regular service of the Church of the Open Door.
3:00 to 4:00 p. m.—Jewish Radio Hour.
6:00 to 7:00 p. m.—Radio Vesper Service.
7:15 to 9:30 p. m.—Regular evening service of the Church of the Open Door.

MONDAY, APRIL 18

8:00 to 9:00 p. m.—Bible Exposition by Rev. J. A. V. Pieters.

TUESDAY, APRIL 19

6:00 to 9:00 p. m.—Bible Exposition by Rev. J. A. V. Pieters.

WEDNESDAY, APRIL 20

8:00 to 9:00 p. m.—Biblical Exposition by Dr. John McNeill.

THURSDAY, APRIL 21

8:00 to 9:00 p. m.—Bible Exposition by Rev. Ralph C. Isbell.

FRIDAY, APRIL 22

6:15 to 7:00 p. m.—Aunt Martha's Children's Hour.

7:00 to 8:00 p. m.—Exposition of International Sunday School lesson.

8:00 to 9:00 p. m.—Biblical Exposition by Dr. John McNeill.

Program Published as Submitted by the Station.

Los Angeles, California—275.1 Meters

KFSG

ANGELUS TEMPLE, ECHO PARK. Fitzroy 5121
AIMEE SEMPLE McPHERSON, Founder, President
RODERICKE MORRISON, Program Manager
ESTHER FRICKE GREENE, Organist
GLADWYN N. NICHOLS, Musical Director & Announcer
P. S. LUCAS, Technician in Charge
"Four Square Gospel"

DAILY EXCEPT SUNDAY AND MONDAY—

10:30 to 11:30 a. m.—Sunshine Hour.
11:30 a. m. to 12:30 p. m.—Noonday Musical.
6:30 to 7:30 p. m.—Angelus Hour.

DAILY EXCEPT SUNDAY, MONDAY, WEDNESDAY, SATURDAY—

2:30 to 3:30 p. m.—Gray Studio Program.

WEEK COMMENCING SUNDAY, APRIL 17, 1927

SUNDAY, APRIL 17

10:30 a. m. to 12:30 p. m.—Sunday morning worship by Aimee Semple McPherson.
2:30 to 4:30 p. m.—Afternoon Service.
6:30 to 8:00 p. m.—Musical Hour. Angelus Temple Band and choir.
8:00 to 9:30 p. m.—Revival service by Aimee Semple McPherson.
10:00 to 11:00 p. m.—Organ Recital by Esther Fricke Greene.

TUESDAY, APRIL 19

3:30 to 4:30 p. m.—Vesper Hour. Organ Recital by B. Earnest Ballard.
6:30 to 7:30 p. m.—Angelus Hour. Program arranged by Rodericke H. Morrison.
7:30 to 9:30 p. m.—Evangelistic services by Student Evangelists.

WEDNESDAY, APRIL 20

2:30 to 5:30 p. m.—Divine Healing Service
6:30 to 7:30 p. m.—Angelus Hour. Program arranged by Rodericke H. Morrison.
7:30 to 9:30 p. m.—Regular mid-week prayer service by Aimee Semple McPherson.

Program Published as Submitted by the Station.

THURSDAY, APRIL 21

3:30 to 4:30 p. m.—Vesper Hour. Organ recital by B. Earnest Ballard.
6:30 to 7:30 p. m.—Angelus Hour.
7:30 to 9:30 p. m.—Regular Water Baptismal Service. Aimee Semple McPherson.
9:15 to 10:00 p. m.—Gray Studio Program.
10:00 to 11:00 p. m.—Organ Recital by Esther Fricke Greene.

FRIDAY, APRIL 22

3:30 to 4:30 p. m.—Vesper Hour. Organ Recital by Esther Fricke Greene. Angelus Hour. Angelus Temple Band.
7:30 to 9:30 p. m.—Crusader Rally Sermon by Aimee Semple McPherson.
10:00 to 11:00 p. m.—Back Home Hour.

SATURDAY, APRIL 23

3:30 to 4:30 p. m.—The Children's Happy Hour.
6:30 to 7:30 p. m.—Angelus Hour.
7:30 to 9:30 p. m.—Divine Healing Service. Conducted by Aimee Semple McPherson.



G. N. NICHOLS
Announcer



Dave Ward

Hollywood, California—226 Meters

KFQZ

1641 North Argyle Ave., Hollywood, California
 Gladstone 3197; Gladstone 3198
DAVE WARD, Program Director and Announcer
L. E. TAFT, Technical Engineer
 "The Palace Bungalow Studio"

DAILY EXCEPT SUNDAY—

6:00 to 7:00 p. m.—Panatrophe Dinner Hour.

MONDAY, TUESDAY, WEDNESDAY, THURSDAY—

12:00 to 1:00 p. m.—Hazel McCauley and the Office Boy.

3:30 p. m.—Thursday. Try-outs (not broadcast).

WEEK COMMENCING SUNDAY, APRIL 17, 1927

SUNDAY, APRIL 17

8:00 p. m.—Columbia Viva-Tonal Recordings

9:00 p. m.—Aram Galanian's Orchestra, Virginia King.

MONDAY, APRIL 18

7:00 p. m.—Leslie E. Taft on Radio Technology.

7:30 p. m.—Lincoln High Triple Quartet.

8:00 p. m.—Barrows Motor Co. courtesy program.

9:00 p. m.—Semi-Classical Hour. presented by Myra Belle Vickers.

10:00 p. m.—Yellow Jackets, Mendell Smith.

TUESDAY, APRIL 19

7:00 p. m.—Marion Boogar and Earl Lawrence. "The Novelty Duo." Peterson, Overbeck and Shery, the Campus Trio.

8:00 p. m.—Neapolitan Four; Katherine Williamson.

9:00 p. m.—Yellow Jackets and Ned Miller.

WEDNESDAY, APRIL 20

12:00 noon—Sam Kalanis Hawaiian Trio.

7:00 p. m.—Clint Stevenson's Hawaiian Trio and Ed Pose.

8:00 p. m.—Charlie Dimond and soloists; Art Goodstein, Lee Bolin.

9:00 p. m.—Yellow Jackets; Jack Goode and Virginia King, accompanied by Mable King.

THURSDAY, APRIL 21

7:00 p. m.—Leslie E. Taft on Radio Technology.

7:30 p. m.—Novelties.

8:00 p. m.—Barrows Motor Co. courtesy program.

9:00 p. m.—Los Angeles Railway Orchestra; Frankie and Eddie.

FRIDAY, APRIL 22

12:00 noon—Greenwich Village Orchestra and Babette Barker.

7:00 p. m.—American Hawaiian Trio; Margaret Kernan, Al Flanigan.

8:00 p. m.—Chuck Henry's Collegians and Buddy Helwig.

9:00 p. m.—Buckner's Sole Killers.

SATURDAY, APRIL 23

12:00 noon—Paris Inn Cafe Orchestra; Bert Roverre, soloist.

7:00 p. m.—Jamgochian Radio Players.

8:00 p. m.—Jimmy Husted's Orchestra and Dick Powers.

9:00 p. m.—Yellow Jackets; Bud Riley, Don Stevens and Royal Wallace, and E. Ruth Donigan.

Signing off nightly at 11 o'clock.

Program Published as Submitted by the Station.



GEORGE FRENGER
 Announcer

Pasadena, California — 315.6 Meters

KPSN

PASADENA STAR-NEWS
 1000 WATTS—950 KILOCYCLES
GEORGE CECIL COWING, Managing Director
GEORGE FRENGER, Program Manager
HERSHEL SATTERFIELD, Engineer-in-Charge
PERCY C. PRYOR, Studio Office
 Phone, Wakefield 3111

DAILY EXCEPT SUNDAY—

12:00 to 12:15 p. m.—News Bulletin.

6:00 to 7:00 p. m.—Dinner-time News Report.

WEEK COMMENCING SUNDAY, APRIL 17, 1927

SUNDAY, APRIL 17

10:30 a. m.—Family Altar Service by the United Church Brotherhoods.

11:00 a. m.—Services from the Pasadena Presbyterian Church.

6:00 to 7:00 p. m.—Star-News concert, with Adolf Tandler and the Ensemble.

MONDAY, APRIL 18

8:00 to 9:15 p. m.—Star-News concert, with Adolf Tandler and the Ensemble.

TUESDAY, APRIL 19

8:00 to 9:15 p. m.—Star-News concert, with Adolf Tandler and the Ensemble.

THURSDAY, APRIL 21

8:00 to 9:15 p. m.—Star-News concert, with Adolf Tandler and the Ensemble.

FRIDAY, APRIL 22

8:00 to 9:15 p. m.—Star-News concert, with Adolf Tandler and the Ensemble.

SATURDAY, APRIL 23

8:00 to 9:15 p. m.—Star-News concert, with Adolf Tandler and the Ensemble.

Program Published as Submitted by the Station.



Jack Duckworth
Announcer

Inglewood, California—387 Meters

KMIC

500 WATTS—775 KILOCYCLES

Owned and Operated by JAMES R. FOUCH
Chamber of Commerce Building, Inglewood, Cal.

DAILY EXCEPT SUNDAY—

6:00 to 7:00 p. m.—Shopping news, with Victor Electrola Review

WEEK COMMENCING SUNDAY, APRIL 17, 1927

SUNDAY, APRIL 17

11:00 a. m. to 12:15 p. m.—Centinella Baptist Church.

Wes Woodford and his Bachelor Four;
Geraldine Gordon, baritone;

THURSDAY, APRIL 21

7:00 to 7:30 p. m.—Studio program.

7:30 to 8:00 p. m.—Ross O. Porter Tire Co. courtesy program, with the Six Syncopetts, Larry and Verne Cannon, harmony; Bill Henry and Helen McCall; Fred Wesley, 8:00 to 8:30 p. m.—Inglewood Furniture Co. courtesy program, with Waterbury's Syncopettes: Jimmie Collins, tenor; Doc Williams, the wandering minstrel of the air; Neva Negis, warbler.

8:30 to 10:00 p. m.—Studio program.

FRIDAY, APRIL 22

7:00 to 7:30 p. m.—Studio program.

7:30 to 8:00 p. m.—Skinner Mfg. Co., courtesy program.

8:00 to 8:30 p. m.—H. R. McCellen Duco Co. courtesy program, with Jack Lempe and his Radio Boys; Geo. and Harry, ukes and harmony; Fred Wesley, blues; Carol Agnew, pianist.

8:30 to 9:45 p. m.—The Little Ant Man.

8:45 to 10:00 p. m.—Studio program.

10:00 to 12:00 p. m.—Inglewood Post No. 188, American Legion Frolic.

SATURDAY, APRIL 23

7:00 to 8:00 p. m.—Studio program; Larry and Verne Cannon, buddies in harmony; Bud Riley, tenor guitar.

8:00 to 9:00 p. m.—Bill Livingston and his Radio Boys; Evie and Peggy, KMIC harmony girls; Neva Negis, warbler.

9:00 to 10:00 p. m.—Studio program: Bill Henry and Doc Williams.



E. C. Hoeksema

Los Angeles, Calif.—517 Meters

KGEF

1000 WATTS—580 KILOCYCLES
TRINITY METHODIST CHURCH

BOB SHULER, Pastor

Phone Westmore 9834

C. C. HOOPER, Manager

M. J. HANKINS, Technician

WEEK COMMENCING SUNDAY, APRIL 17, 1927

SUNDAY, APRIL 17

10:45 a. m. to 12:30 p. m.—Morning service.

5:00 to 6:00 p. m.—Vesper service with Dr. McCulloch.

7:00 to 8:00 p. m.—Sunday evening program with the Trinity Male Quartet.

8:00 to 9:00 p. m.—Bob Shuler's sermon.

7:45 to 8:30 p. m.—Beebower Orchestra.

8:30 to 9:30 p. m.—Bob Shuler's Question Hour.

9:30 to 10:00 p. m.—Musical program.

FRIDAY, APRIL 22

6:30 to 7:00 p. m.—Brunswick Panatrophe concert.

7:00 to 7:30 p. m.—Dr. Briegleb's Radio Bible Class.

7:30 to 8:00 p. m.—The Lotus Girls' Trio.

8:00 to 8:30 p. m.—Bob Shuler's Civic Talk.

8:30 to 9:30 p. m.—The Southern California Holiness Association.

9:30 to 10:00 p. m.—Musical program.

9:00 to 10:00 p. m.—Old Songs Quartet.

10:00 to 10:30 p. m.—Bob Shuler's family altar service.

TUESDAY, APRIL 19

6:30 to 7:00 p. m.—Musical program.

8:00 to 8:30 p. m.—L. A. Church Federation.

8:30 to 9:00 p. m.—Musical program.

9:00 to 9:30 p. m.—Bob Shuler's doctrinal talk.

9:30 to 10:00 p. m.—Alma Edwards and Gertrude Alter, music.

WEDNESDAY, APRIL 20

6:00 to 6:45 p. m.—Dorothy Spencer's children's hour.

SERVICE DIRECTORY

There is a Service Man in Your Neighborhood. Call or see him.

SOUTHEAST	S E R V I C E	SOUTHWEST
6120 South Broadway TH. 0224 <small>(Equipped to handle any job)</small> DE HOOG BROS. RADIO COMPANY		1806 S. Hoover WE. 9650 <small>("Porta-Tester") See Page 25</small> Haddaway Mfg. Co. <small>(Established 1923)</small>
WILSHIRE		DOWNTOWN
214 South Western Ave. WA. 5413 HENSEL ELECTRIC STORE		221 West Second St. ME. 4832 <small>OPEN EVENINGS</small> LESTER Radio and Electric Store
LONG BEACH		? ? ? ? ? ?
430 American Ave. Phone 653-171 RIALTO RADIO CO.		This Is YOURS CALL WE. 1401 FOR FULL PARTICULARS

SHEPHERD RADIO SERVICE

Authorized Dealer for

Stromberg-Carlson, Federal Ortho-Sonic Receiving Sets

We specialize in correcting balky receivers. Super-Heterodynes, Infradynes, Roberts, etc., made to perform efficiently.

Transformers Matched, Coils Balanced

Phone Us Your Troubles. Our Service Will Please

Batteries Changed, Tubes Reactivated. Work Called for and Delivered

GRanite 7482

7562 Sunset Boulevard

Hollywood, California

Those listed on this page are competent and efficient Radio Technicians and are recommended to you for your patronage.



TOM MITCHELL
Announcer

Santa Monica, California—238 Meters

KNRC

1000 WATTS CAPACITY
Owned and Operated by KEIRULFF & RAVENS-
CROFT COMPANY
Municipal Auditorium, Ocean Park, Santa Monica,
Calif. Phone Santa Monica 63-101.
TOM MITCHELL, Studio Manager and Announcer.
C. B. JUNEAU, Transmission Engineer.
"The Station with a Smile"

DAILY EXCEPT SUNDAY—

- 4:00 to 4:45 p. m.—Smiling Circle with Tom.
- 2:00 to 2:30 p. m.—Shopping Tour.
- 2:30 to 4:00 p. m.—Santa Monica Municipal Band.
- 6:00 to 7:00 p. m.—Club Casa Del Mar.
- 7:00 to 8:00 p. m.—Merchants Preview Hour.
- 10:00 to 11:00 p. m.—Club Casa Del Mar.
- 11:00 to 12:00 p. m.—La Monica Ballroom Orchestra.

DAILY EXCEPT MONDAY—

- 8:00 to 9:00 p. m.—Band Concert.
- 2:30 p. m.—Band Concert.

WEEK COMMENCING SUNDAY, APRIL 17, 1927

SUNDAY, APRIL 17

- 10:45 to 11:45 a. m.—Pilgrim Lutheran Church Services, remote control.
- 2:30 to 4:00 p. m.—Santa Monica Municipal Band Concert.
- 5:15 to 6:15 p. m.—The Pirate Band.
- 6:15 to 7:00 p. m.—Pilgrim Lutheran Church Services, remote control.
- 7:00 to 8:00 p. m.—Club Casa Del Mar, remote control.
- 8:00 to 9:00 p. m.—Santa Monica Municipal Band Concert.
- 9:00 to 10:00 p. m.—Club Casa Del Mar, remote control.
- 10:00 to 11:00 p. m.—La Monica Ballroom Orchestra, remote control.

MONDAY, APRIL 18

- 8:00 to 10:00 p. m.—Main Studio program, featuring the Black and Tan Orchestra.

TUESDAY, APRIL 19

- 3:00 to 3:15 p. m.—Bay Builders' Exchange Booster program.
- 8:00 to 9:00 p. m.—Santa Monica Municipal Band Concert.
- 9:00 to 10:00 p. m.—Main Studio program, featuring the Southern Dons Orchestra; Novelty Duo, Marion Boogar and Earl Lawrence.

WEDNESDAY, APRIL 20

- 3:00 to 3:15 p. m.—Bay Builders' Exchange Booster program.
- 7:30 p. m.—Talk by Undersheriff Eugene Biscailuz.
- 8:00 to 9:00 p. m.—Santa Monica Municipal Band Concert.
- 9:00 to 9:30 p. m.—Club Casa Del Mar.
- 9:30 to 10:30 p. m.—Broadcasting of the Fights from the Ocean Park Arena.

THURSDAY, APRIL 21

- 8:00 to 9:00 p. m.—Santa Monica Municipal Band Concert.
- 9:00 to 10:00 p. m.—Main Studio program.

FRIDAY, APRIL 22

- 3:00 to 3:15 p. m.—Bay Builders' Exchange Booster program.
- 8:00 to 9:00 p. m.—Santa Monica Municipal Band Concert.
- 9:00 to 10:00 p. m.—Main Studio program.

SATURDAY, APRIL 23

- 3:00 to 3:15 p. m.—Bay Builders' Exchange Booster program.
- 8:00 to 9:00 p. m.—Santa Monica Band.
- 9:00 to 10:00 p. m.—Main Studio program, featuring Clyde Pearson, soprano; Kathleen Williamson, blues singer, accompanied by Eleanor Swall.



Major Lawrence Mott
Announcer

Avalon, California—211.1 Meters

KFWO

THE CATALINA ISLAND STATION
(Non-Commercial)
Power 250 Watts—Western Electric Equipment
"Katalina for Wonderful Outings"
MAJOR LAWRENCE MOTT, Owner-Operator
MISS FRANCES HEWITT, Studio & Program Dir.
"The Isle with a Smile"

DAILY EXCEPT MONDAY—

- 12:30 to 1:30—Hotel St. Catherine Orchestra.
- 6:30 to 8:00—St. Catherine Orchestra.

DAILY EXCEPT MONDAY, THURSDAY AND SUNDAY—

- 6:00 to 6:30—Studio.

MONDAYS

Silent.

TUESDAYS

- 5:30 to 6:00 p. m.—Miss Hewitt's Golden Hour.
- 6:00 to 8:00 p. m.—Studio.

WEDNESDAYS

- 8:00 to 9:00 p. m.—Studio Program.
- 9:00 to 12:00 Midnight—Oversens.

THURSDAYS

- 8:00 to 9:00 p. m.—Studio Program.

FRIDAYS

- 5:00 to 6:00 p. m.—Miss Hewitt's Golden Hour.
- 6:00 to 6:30 p. m.—Wrigley Chimes.

SATURDAYS

- 3:00 to 4:30 p. m.—Rebroadcast of KNX.
- 9:15 to 10:00 p. m.—Studio.

SUNDAYS

- 5:00 to 6:00 p. m.—Miss Hewitt's Golden Hour.
- 6:00 to 6:30 p. m.—Wrigley Chimes.
- 8:00 to 9:15 p. m.—Lobby Concert.

Victor Electro used during all programs.

"A" and "B" POWER For Your Radio Set



WILLARD "A" POWER UNIT



WILLARD "B" POWER UNIT

Each of these units represents the best in engineering in the Power Unit field. Workmanship and materials are of the highest quality. No hum or distortion from them. They connect with the house lighting circuit.

Ask about our Time Payment Plan. Why not buy them now?

Willard Service Stations

OF SOUTHERN CALIFORNIA
OR
YOUR NEAREST RADIO DEALER



Venice, California—208 Meters

KFVD

1440 KILOCYCLES—500 WATTS

"The Voice By the Sea"

McWHINNIE ELECTRIC CO., VENICE BALLROOM
Venice, Cal. Phone 65959

MARY ELIZABETH CARTER, Mgr. and Announcer

DAILY EXCEPT SUNDAY—

- 9:00 to 11:00 a. m.—Music and shopping news.
11:00 a. m. to 12:00 m.—Mary Elizabeth's Garden.
5:30 to 7:00 p. m.—Music and shopping news.
8:00 p. m. to 10:00 p. m.—Studio program.
10:00 p. m. to 12:00 m.—Cush Branch and Orchestra from Venice

Mary Elizabeth Carter WEEK COMMENCING MONDAY, APRIL 18, 1927

MONDAY, APRIL 18

8:00 to 10:00 p. m.—The Doty Twins and Harl; Roy T. Davis, whistler; Jimmie Collins, lyric tenor; Elizabeth Blair Davis, mezzo soprano; Eddie Hoffman and his Knights of Syncopation; Elnora Swall and Catherine Williamson. Venetian Joymakers; Fred Wesley; Tiny, Jack and Buck.

TUESDAY, APRIL 19

8:00 to 10:00 p. m.—Scott McConnell, tenor; Edith Hancock, soprano; Harry Dinnawitzer, violinist; Gorman's String Band;

WEDNESDAY, APRIL 20

4:00 to 5:30 p. m.—Children's Hour, conducted by Ursula March Largey.

8:00 to 10:00 p. m.—Lyman Wood, baritone; Nina Fry, mezzo soprano; Grace Widman, blues; Harmony Kids.

THURSDAY, APRIL 21

8:00 to 10:00 p. m.—Bob Davis, Welsh baritone; Sally J. Shull, pianist; Ansley Graham, tenor; Clyde Waller and Jack Yates, the Texas boys; California Colonial Band,

FRIDAY, APRIL 22

4:00 to 5:30 p. m.—Children's Hour.
8:00 to 10:00 p. m.—Marbelite Corporation of America, featuring Morris Lensky, Russian baritone; Dr. Delevanti, pianist; Marvin Christensen, tenor; Tessie Weiss, operatic soprano; C. Leavitt Browne, pianologue; Charles Robertson, tenor; Fances Harnlon, soprano.

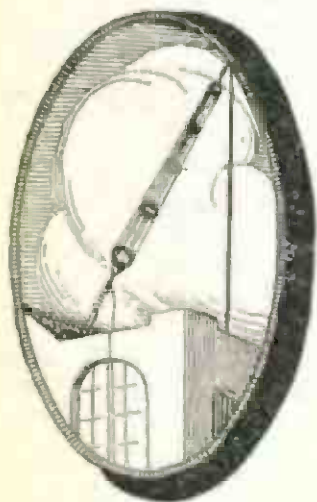
SATURDAY, APRIL 23

1:00 to 2:00 p. m.—Harry Judson's Entertainers Hour.
8:00 to 10:00 p. m.—Merchants of Venice Frolic, featuring Hal, Ted and Buzz, the Harmoniacs; Juanita Kennedy, blues; Ed. Bergin and his Jazzy Boys; Tiny, Jack and Buck, the KFVD Harmony Trio.
12:00 m. to 2:00 a. m.—Tommy Jacobs and his Ship Cafe.

SUNDAY, APRIL 24

6:00 to 12:00 p. m.—Cush Branch and his Melody Orchestra

Program Published as Submitted by the Station.



Price

\$7⁵⁰

AFTER THE RAIN

Water rusts copper wire. A rusty aerial distorts reception. WESCO Low Loss Antennae are coated with Egyptian Lacquer, a perservity that has been in use since the days of King Tut-Ankh-Amen four thousand years ago. If you want greater volume on distant stations and clearer tone quality on local broadcasting you should discard your present rusty aerial and install a "WESCO" antenna. It comes complete and is easily installed, requiring but a single 20-foot pole.

If your dealer does not stock them he will be glad to get one for you, or you may order direct.



LOW LOSS ANTENNA

WEST COAST RADIO CO.

PHONE YERMLONT 1833

2407 WEST CLAYSON AVE

LOS ANGELES.

OUR EXCEPTIONAL OFFER

*Get Two Great Magazines For Almost
the Price of One!*

SAVE \$2.00

RADIO NEWS—The National Radio Monthly
with the largest circulation and following of
any Radio publication in the world—

or
SCIENCE AND INVENTION

or
AMAZING STORIES

Regular Price \$2.50

and

RADIO DOINGS—The Leading Pacific Coast
Radio Weekly — the Radio authority of the
Pacific Coast—

Regular Price \$3.00

These leaders in their respective fields—the great National
Monthly, Radio and Scientific Magazines and the great
Pacific Coast Weekly—

BOTH NOW FOR \$3.50

You Can't Afford to Pass This Offer By

Attach Money Order, Check or Currency to the Coupon and Mail to Us
Right Now

RADIO DOINGS,
407 E. Pico Street,
Los Angeles, Calif.

Or Conger & Moody,
Sharon Bldg., San Francisco, Calif.

*Send me RADIO DOINGS and "RADIO NEWS," SCIENCE &
INVENTION or AMAZING STORIES for one year. I enclose \$3.50.*

Name.....

Address.....

City and State.....

(Specify NEW or RENEWAL)

R-1



"HAL" G. NICHOLS
Announcer

Long Beach, California—233 Meters

KFON

1290 KILOCYCLES—750 WATTS

NICHOLS & WARINNER, INC.

Studio 211 Jergins Trust Bldg. Phones 617-19, 614-60

Business Office, 212 Jergins Trust Bldg.

Phones: 617-19, 614-60

"Where Your Ship Comes In"

DAILY EXCEPT SUNDAY—

- 9:30 to 10:15 a. m.—Pacific Coast Club organ.
10:15 to 10:30 a. m.—"Devotion Period."
10:30 to 11:30 a. m.—Physiology of Beauty, Georgia O. George.
11:30 a. m. to 12:00 noon—Press-Telegram news.
12:00 noon—Lost and found announcements.
12:00 to 12:30 p. m.—Musical program.
2:30 to 4:00 p. m.—Long Beach Municipal Band.
4:00 to 4:30 p. m.—Press-Telegram Late News.

4:30 to 6:00 p. m.—KFON Concert Orchestra.

6:00 to 6:15 p. m.—Request Program by Clarence and Doris.

6:15 to 7:00 p. m.—KFON Concert Orchestra.

10:00 to 11:00 p. m.—Capital Theater Organ Recital.

11:00 to 12:00 p. m.—Majestic Ball Room Orchestra by remote control.

DAILY EXCEPT SUNDAY AND MONDAY—

8:00 to 9:00 p. m.—Press-Telegram presenting Long Beach Municipal Band.

WEEK COMMENCING SUNDAY, APRIL 17, 1927

SUNDAY, APRIL 17

- 11:00 a. m. to 12:30 p. m.—Church of the Nazarene; Rev. L. A. Reed.
12:30 to 1:00 p. m.—Musical program, sponsored by Markwell Talt Water Taffy Shop.
1:00 to 2:00 p. m.—Musical program, sponsored by Birkel Music Co.
2:00 to 2:30 p. m.—Pacific Coast Club Organ, Herbert Nixon at the console.
4:00 to 5:00 p. m.—Vesper Hour.
5:00 to 6:00 p. m.—Piggly Wiggly Concert Orchestra.
7:00 to 7:45 p. m.—Studio program.
7:45 to 9:00 p. m.—Services from the First Church of Christ, Scientist.
9:00 to 12:00 p. m.—"Everybody's Night."

MONDAY, APRIL 18

- 7:00 to 8:00 p. m.—Thirty Sandy Program.
8:00 to 8:15 p. m.—Lure of the Sky.
8:15 to 9:00 p. m.—"Piggly Wiggly Haymakers"—featuring old-time dance music.
9:00 to 12:00 p. m.—"Kiwanis Frolic."

TUESDAY, APRIL 19

- 12:30 to 1:00 p. m.—Beauty Talk and Musical Program.
1:00 to 1:30 p. m.—Kiwanis Club Luncheon.
1:30 to 2:30 p. m.—Woman's Music Study Club—direction of Ruth Parkinson.
7:00 to 7:30 p. m.—Poly High School Oral Expression Class.
7:30 to 8:00 p. m.—"Chat for Booklovers"
9:00 to 10:00 p. m.—Piggly Wiggly Hour.

WEDNESDAY, APRIL 20

- 1:00 to 1:30 p. m.—Rotary Club Luncheon.
1:30 to 2:00 p. m.—Wilshire Ionoca Company program.

2:00 to 2:30 p. m.—Department of Numerology.

7:00 to 7:30 p. m.—Texas Cowboys in old-time dance music.

7:30 to 8:00 p. m.—Press-Telegram, presenting Long Beach Municipal Band.

8:00 to 8:15 p. m.—"The Woman and the Law"—by Herbert Middleditch.

9:00 to 10:00 p. m.—Pacific Coast Club Orchestra.

THURSDAY, APRIL 21

2:00 to 2:30 p. m.—Health and Efficiency.

7:00 to 8:00 p. m.—Studio Program.

9:00 to 10:00 p. m.—Shell Oil Company's Orchestra.

FRIDAY, APRIL 22

1:00 to 1:30 p. m.—Wilshire Ionoca Co.

2:00 to 2:30 p. m.—Department of Numerology.

7:00 to 7:30 p. m.—Church of Christ.

7:30 to 7:45 p. m.—"A Selina Sizer Program."

7:45 to 8:00 p. m.—"Lucky Jim" Investment Chat—by Seaboard Bond & Mortgage Co.

9:00 to 10:00 p. m.—Gaskill Manufacturing Co., and Missman Radio Co.

10:00 to 12:00 p. m.—Elks' Frolic.

SATURDAY, APRIL 23

1:30 to 2:30 p. m.—Studio Program.

7:00 to 8:00 p. m.—"Piggly Wiggly Minstrels."

9:00 to 10:00 p. m.—Los Angeles District of the Federation Program.

10:00 to 12:00 p. m.—Pacific Coast Club Orchestra.

Willy's Over-Air Practical Radio Laboratory

Is Located Four Blocks from KFSG, and We Cut This Station by 2 Degrees!

The best Radio Engineers own the finest sets in the world, because they use in their construction only the patented principles which have been thoroughly tested and proven to be the best. If you desire the same benefits, come and see us.

We calibrate all frequencies and match your coils at any wave-length. We have the only true instrument with amplifier for calibrating L. R. F. T. for ALL FREQUENCIES on Super-Heterodynes.

WILLY'S OVER-AIR PRACTICAL RADIO LABORATORY

2021 Temple St., Near Alvarado,

Los Angeles, Calif.

Phone Fitzroy 1781

Open Evenings Until 10 o'Clock



TOM SEXTON
Announcer

San Diego, California—245.8 Meters

KFSD

1000 WATTS—1220 KILOCYCLES
AIRFAN RADIO CORPORATION
U. S. Grant Hotel, 326 Broadway, San Diego. Main 8661
H. C. ROGERS, President and General Manager
TOM SEXTON, Announcer

"Kiss From San Diego"

DAILY EXCEPT SUNDAY—

8:00 to 7:00 p. m.—Nightly musical review.

10:00 to 11:00 p. m.—Harvey Ball and his U. S. Grant Hotel Orches

DAILY EXCEPT SUNDAY AND MONDAY—

9:00 to 10:00 p. m.—La Bohemian Dance Program.

WEEK COMMENCING SUNDAY, APRIL 17, 1927

MONDAY, APRIL 18

3:00 to 4:00 p. m.—Temple service of the Theosophical University.

SUNDAY, APRIL 17

7:00 to 8:00 p. m.—Studio hour.

8:00 to 9:00 p. m.—First Unitarian Church program, Howard B. Brnd.

9:00 to 10:00 p. m.—Mixed musical program.

TUESDAY, APRIL 19

7:00 to 8:00 p. m.—Studio hour.

8:00 to 9:00 p. m.—Union Title Company "Classic Hour" program.

9:00 to 10:00 p. m.—Mixed musical program.

WEDNESDAY, APRIL 20

7:00 to 7:30 p. m.—Courtesy program by Willshire's Ionaco Company.

7:30 to 8:30 p. m.—Concert program furnished by the Theosophical University.

8:30 to 9:30 p. m.—Request Program.

9:30 to 10:00 p. m.—Request Program.

THURSDAY, APRIL 21

7:00 to 8:00 p. m.—Police program, dance music and concert music.

8:00 to 9:00 p. m.—Mixed musical program.

FRIDAY, APRIL 22

7:00 to 8:00 p. m.—Studio hour.

8:00 to 9:00 p. m.—Studio program.

SATURDAY, APRIL 23

7:00 to 8:00 p. m.—San Diego Senior High School program.

8:00 to 9:00 p. m.—Mme. de Beauviere. "Franco-American hour."

Program Published as Submitted by the Station.

Radio Salesmen!

Make Big Money Through Training

You can make bigger money selling radios if you know how they're built, what makes them work, and how to fix them when they break. The "Service expert" is the man of the hour. He's making the big money. YOU can, too, with the intensive radio course at National Electrical School.

Visit the West's Largest and Finest Electrical School and See for Yourself

See for yourself! Come and see the \$100,000 equipment on which many students are preparing for bigger opportunity and more money through National training. Take the boys aside and ask them what they think of their course—then draw your own conclusions. Send the coupon for full details, then come and visit the biggest, finest Electrical School in the West.

NATIONAL Electrical School

4006 South Figueroa St., Dept. 617, Los Angeles.

MAIL THIS TODAY

NATIONAL ELECTRICAL
SCHOOL, DEPT. 617
4006 So. Figueroa St.
Los Angeles, California.

Gentlemen: Mail me full details at once regarding your training for Radio Service Men and Salesmen.

Name _____

Address _____

City _____ State _____



Edward J. Ludec
Announcer

San Francisco, Calif.—399.8 Meters

"At the Golden Gate"

KYA

1000 WATTS—750 KILOCYCLES
Headquarters at the Clift Hotel
CLAIR MORRISON, Mgr. EDWARD LUDER, Announcer

DAILY EXCEPT SUNDAY—

12:30 to 2:00 p. m.—Solite Heilbrommer's Clift Hotel Trio.
6:30 to 7:30 p. m.—Solite Heilbrommer's Clift Hotel Trio.
10:00 to 11:00 p. m.—Herb Meyerinck's Clift Hotel Orchestra.

WEEK COMMENCING SUNDAY, APRIL 17, 1927

SUNDAY, APRIL 17

11:00 a. m.—Services from the Central Methodist Episcopal Church. Dr. Walter John Sherman, Pastor.
12:30 p. m.—Services from Old St. Mary's Church, conducted by the Paulists Fathers.
7:30 p. m.—Services from the Central Methodist Episcopal Church.

MONDAY, APRIL 18

8:00 to 10:00 p. m.—KYA Popular Night in the studio.
10:00 to 11:00 p. m.—Herb Meyerinck's Clift Hotel Orchestra.

TUESDAY, APRIL 19

9:30 to 10:30 a. m.—KYA Shopping Service conducted by Elsie Connitt
10:30 to 10:45 a. m.—Diet and Health Talk by Dr. Buren L. Corley.
8:00 to 9:00 p. m.—Studio program.
9:00 to 10:00 p. m.—Eduardo Abdo, Arabian tenor; Joan, pianist, and his artists.

WEDNESDAY, APRIL 20

8:00 to 10:00 p. m.—Program under direction of A. K. Blotchy

9:00 to 10:00 p. m.—Annae K. Blotchy will offer a program under her personal supervision.

THURSDAY, APRIL 21

7:00 to 7:15 p. m.—Mr. Pep's "Pep Meeting" for Salespeople.
7:15 to 7:30 p. m.—Solite Heilbrommer's Clift Hotel Concert Trio
8:00 to 9:00 p. m.—Studio program.
9:00 to 10:00 p. m.—Roberta Leitch, lyric soprano, and other KYA Artists.

FRIDAY, APRIL 22

9:30 to 10:30 a. m.—KYA Shopping Service.
10:00 to 10:45 a. m.—Diet and Health Talk.
8:00 to 9:00 p. m.—Beethoven Memorial Concert given by the Sunset Club, Oakland.
8:00 to 10:00 p. m.—Studio program.

SATURDAY, APRIL 23

4:00 to 5:30 p. m.—Herb Meyerinck's Clift Hotel Dance Orchestra, playing the Tea Dansant.
8:00 to 12:00 p. m.—Herb Meyerinck's Clift Hotel Dance Orchestra

MAKE YOUR RADIO REALLY SELECTIVE THE SELECTATONE

Will Eliminate These Interfering Stations and Enable You to Get Stations You Have Never Heard Before.

Connected to Antenna and Radio in One Minute.

SOLD ON A POSITIVE GUARANTEE

SEASIDE ELECTRIC CO.

63 S. Magnolia Ave.

Phone 668-238

Long Beach, Calif.

SILVER THE KING

24 Kt Gold
Pure Silver
Soft
Copper

Gosilco Super Aerial Wire Gold over Silver on Copper

DX Reception Assured—30% More Volume—Clearer Tone—20% Sharper Tuning—Permanently Efficient.

No. 14 Gauge, 100 ft. \$1.00—75 ft. \$2.50—50 ft. \$1.75.

Soft Round Bus. Ins. 2 ft. length. Flexible Bus and Lead, 50 ft.

Sold by Dealers or direct, prepaid or C. O. D., Checks Accepted. Endorsed by Best, Cockaday, All-American, Radio Corp., KNX Lab., Radio News, Radio Broadcast, Popular Radio.

GOSILCO RADIO PRODUCTS CO.

Patent Applied for

526 Marbrin Ave., Huntington Park, Calif.

SATISFACTION GUARANTEED



CURTIS PECK
Announcer

San Francisco, California—428.3 Meters

KPO

1000 WATTS—700 KILOCYCLES
HALE BROTHERS AND THE CHRONICLE
J. W. LAUGHLIN, Managing Director
MRS. FREDERICK CROWE, Program Director
ALBERT J. HODGES, Technical Director
Phone Kearney 5777

"The Voice of San Francisco"

DAILY EXCEPT SUNDAY—

- 6:45, 7:15 and 7:45 a.m.—Daily health drill by Hugh Barrett Dobbe.
- 10:30 a. m.—"Ye Towne Cryer."
- 10:45 a. m.—Cooking Hints.
- 12:00 noon—Time signals and Scripture reading.
- 1:00 to 2:00 p. m.—Rudy Seiger's Fairmont Hotel Orchestra.
- 3:30 to 5:30 p. m.—Palace Hotel Concert Orchestra.
- 5:30 to 5:45 p. m.—Children's Hour.
- 5:45 to 6:30 p. m.—"Ye Towne Cryer."
- 6:30 to 7:00 p. m.—States Restaurant Orchestra.
- 7:00 to 7:30 p. m.—Rudy Seiger's Fairmont Hotel Orchestra
- 7:30 to 8:00 p. m.—Silent.
- 10:00 to 11:00 p. m.—Dance Program.

WEEK COMMENCING SUNDAY, APRIL 17, 1927

SUNDAY, APRIL 17

- 9:45 to 10:45 a. m.—Undenominational and non-sectarian church service.
- 10:45 a. m.—Ye Towne Cryer.
- 2:45 to 4:30 p. m.—Play-by-play broadcast of baseball game from Recreation Park.
- 6:00 to 6:30 p. m.—States Restaurant Orchestra, Waldemar Lind, director.
- 6:30 p. m.—Ye Towne Cryer, giving general information.
- 6:35 to 8:35 p. m.—Palace Hotel Concert Orchestra.
- 8:35 to 10:00 p. m.—Rudy Seiger's Fairmont Hotel Concert Orchestra.
- 10:00 to 12:00 p. m.—John Waldman and his Californians at the Trianon Ballroom.

MONDAY, APRIL 18

- 8:00 to 9:00 p. m.—Program by National Broadcasting Company.
- 9:00 to 10:00 p. m.—Studio program. Neapolitan Quartet and KPO Trio.
- 10:00 to 11:00 p. m.—Art Wladner's Cabiriana
- 11:00 to 12:30 p. m.—KPO's Variety Hour, featuring KPO's well known artists.

TUESDAY, APRIL 19

- 8:00 to 8:30 p. m.—Studio program.
- 8:30 to 9:00 p. m.—Uda Waldrop Hour, featuring Uda Waldrop, KPO's official organist, at the organ of the First Unitarian Church.

- 9:00 to 9:30 p. m.—Bridge Lesson No. 16.
- 9:30 to 10:00 p. m.—Studio program.
- 10:00 to 11:00 p. m.—Palace Hotel Rose Room Dance Orchestra, Gene James, director.

WEDNESDAY, APRIL 20

- 8:00 to 9:00 p. m.—Program by the Atwater Kent artists, under the auspices of Ernest Ingold, Inc.
- 9:00 to 10:00 p. m.—Studio program.
- 10:00 to 11:00 p. m.—States Restaurant Orchestra, Waldemar Lind, director.

THURSDAY, APRIL 21

- 8:00 to 9:00 p. m.—Studio program.
- 9:00 to 10:00 p. m.—Studio program.
- 10:00 to 11:00 p. m.—Palace Hotel Rose Room Dance Orchestra, Gene James, director.

FRIDAY, APRIL 22

- 8:00 to 10:00 p. m.—Walter Krausgrill's Balconades Ballroom Orchestra.
- 10:00 to 11:00 p. m.—States Restaurant Orchestra, Waldemar Lind, director.

SATURDAY, APRIL 23

- 8:00 to 9:00 p. m.—Studio program.
- 9:00 to 10:45 p. m.—Simultaneous broadcast of Los Angeles Philharmonic Orchestra, KPO and KFI.
- 10:45 p. m. to 1:00 a. m.—Walter Krausgrill's Balconades Ballroom Orchestra.

Program Published as Submitted by the Station.

A PHILCO INSTALLED IN YOUR HOME—WE. 9065

Is Your Radio Doing Its Stuff?

We are equipped to render prompt and efficient service in Balancing and Repairing Super-Heterodynes, Infradynes and all other Receivers.

GUARANTEED RESULTS—OR NO CHARGE

Hear Our Four-Tube Set Working Without Antenna or Ground

SNIDER'S RADIO SERVICE

4682 Hollywood Blvd. (Just East of Vermont Ave.)

Phone OLympia 4111

Los Angeles, Calif.

OPEN EVENINGS

NOW THE **SUPREME R-F 5** IS SOLD
FACTORY DIRECT TO YOU
5-Tube Console Complete



\$59

Built-in speaker, large tubes, 100 A. H. Rubber Case Battery even the inside aerial is included—nothing else to buy.

Selectivity :: Quality :: Distance

New Modified S. L. F. condensers allow ample separation of low wave lengths and gives absolute selectivity on all stations. Using Kellogg's laboratory grade transformers assures you of tone perfection, and for distance the utmost in sensitivity has been achieved through proper design of condensers and inductance.

Made of Finest Parts Obtainable

The Supreme—Made of the finest of material such as Kellogg, Yaxley, Carter, C. R. L., Benjamin, Bakelite coils.

Order Your Set Today

and you'll say, like everyone else that hears the Supreme, "That's the best receiver I ever heard—it's wonderful." It's simply not equalled for purity of tone or fidelity of reproduction. Remember every part is guaranteed to you—you take no chances.

THE PATTERSON FACTORY TO YOU SALES PLAN

puts a guaranteed \$155 console, 5-tube receiver in your home for cash at about \$35 less than the actual wholesale price. Volume production is the answer.

Patterson Radio Manufacturing Co.

Established 1921

239 S. Los Angeles St.—VA. 8139

Los Angeles, Calif.



Howard I. Milbolland
Announcer

Oakland, California—361.2 Meters

KGO

4000 WATTS—630 KILOCYCLES
PACIFIC COAST STATION, GENERAL ELECTRIC CO
Phone Fruitvale 6860

DAILY EXCEPT SUNDAY—

11:30 a. m. to 1:00 p. m.—Hotel Leamington concert.

DAILY EXCEPT SATURDAY AND SUNDAY—

1:30 and 6:00 p. m.—Stock and weather reports. Base ball scores

6:00 to 6:55 p. m.—Bem's Little Symphony Orchestra.

6:55 to 7:30 p. m.—Weather and stock reports.

WEEK COMMENCING SUNDAY, APRIL 17, 1927

SUNDAY, APRIL 17

- 11:00 a. m.—First Presbyterian Church service.
- 4:00 p. m.—Vesper service. Grace Cathedral.
- 6:30 to 7:30 p. m.—Concert by Bem's Little Symphony Orchestra
- 7:30 p. m. Weather Bureau report.
- 7:35 p. m.—First Presbyterian Church
- 9:00 to 10:00 p. m.—Concert by Bem's Little Symphony Orchestra

MONDAY, APRIL 18

- 4:00 to 5:00 p. m.—California Federation of Women's Clubs
- Silent Night.

TUESDAY, APRIL 19

- 5:0 p. m.—"Mental Measurements."
- 6:00 to 9:00 p. m.—The Pilgrims. Eveready program by National Carbon Company.
- 9:00 p. m.—Joseph Henry Jackson: "Chats About New Books"
- 9:20 p. m.—Surprise broadcast.

WEDNESDAY, APRIL 20

- 8:00 p. m.—Farm program.

THURSDAY, APRIL 21

- 10:40 a. m.—Classroom instruction. Oakland Public Schools

5:00 to 6:00 p. m.—George W. Ludlow.

"Friend to Boys"

6:00 p. m.—Concert by KGO Little Symphony Orchestra. Carl Rhodehamel conducting.

9:30 to 12:00 midnight.—Dance music program by Jack Cookley's Band. Collegiate Ball Room, Hotel Leamington, Oakland

FRIDAY, APRIL 22

11:10 a. m.—Prudence Penny. Homemaking talk.

5:30 p. m.—Day-Ray O. children's story-teller from Land O'Health.

8:00 p. m.—Western Artist Series concert by the California Singers, under the direction of Uda Waldrop. Grace Northrup, soprano; Eva Gruninger Atkinson, contralto; Easton Kent, tenor; E. Hatold Dana, baritone

SATURDAY, APRIL 23

6:00 p. m.—"Weekly Sport Review" by Al Santoro.

8:15 to 9:15 p. m.—Studio program.

9:15 p. m. to 1:00 a. m.—Dance music, Will Gunzendorfer's Hotel Whitcomb Band, San Francisco. Rose Lind, contralto.

Program Published as Submitted by the Station.

Oakland, California—508.2 Meters

KLX

500 WATTS—508.2 Meters
OAKLAND TRIBUNE RADIOPHONE
Phone Lakeside 6015

"Oakland, Where Rail and Water Meet"



Chas. E. Gabrielle, Jr.
Announcer

DAILY EXCEPT SUNDAY—

7:00 to 7:30 p. m.—News broadcast

WEEK COMMENCING MONDAY, APRIL 18, 1927

MONDAY, APRIL 18

- 10:30 a. m.—Martha Lee
- 7:00 to 7:30 p. m.—News broadcast.
- 8:00 to 9:00 p. m.—Pleasant Windy Hawaiian program.
- 9:00 to 10:00 p. m.—Weekly meeting of Lake Merritt Ducks.

TUESDAY, APRIL 19

- 3:00 p. m.—Baseball.
- 5:30 to 6:30 p. m.—Brother Bob.
- Silent after 7:30 p. m.

WEDNESDAY, APRIL 20

- 10:30 a. m.—Martha Lee.
- 3:00 p. m.—Baseball.
- 5:30 to 6:30 p. m.—Brother Bob
- 6:30 to 7:00 p. m.—Athens Athletic Club dinner concert.

8:00 to 9:00 p. m.—Educational program.

9:00 to 10:00 p. m.—Special program.

THURSDAY, APRIL 21

- 3:00 p. m.—Baseball
- 5:30 to 6:30 p. m.—Brother Bob.
- Silent after 7:30 p. m.

FRIDAY, APRIL 22

- 10:30 a. m.—Martha Lee
- 3:00 p. m.—Baseball.
- 5:30 to 6:30 p. m.—Brother Bob
- 8:00 to 8:30 p. m.—Motor chats.
- 8:30 to 10:30 p. m.—Athens Athletic Club Orchestra.

SATURDAY, APRIL 23

- 3:00 p. m.—Baseball.



"MAC"

San Francisco, California—268 Meters

KFRC

Owned and Operated by Don Lee,
California Distributor for Cadillac Motor Car.
50 WATTS — 1120 KILOCYCLES
HARRISON HOLLIWAY, Manager
FRANK MOSS, Musical Director
"Keep Forever Radiating Cheer"

DAILY EXCEPT SUNDAY—

- 7:00 to 8:00 a. m.—Breakfast concert.
- 10:00 to 11:00 a. m.—Sherman-Clay concert.
- 11:00 to 11:30 a. m.—Household Hints.
- 11:30 a. m. to Noon—Tryouts.
- 12:00 to 2:00 p. m.—Mark Hopkins Concert Orchestra.
- 4:00 to 5:30 p. m.—Mark Hopkins Dance Orchestra.
- 5:30 to 6:30 p. m.—Mac and his Gang. Stage and Screen
- 6:30 to 7:00 p. m.—Cecilian Trio.

WEEK COMMENCING SUNDAY, APRIL 17, 1927

SUNDAY, APRIL 17

- 5:00 to 6:00 p. m.—Twilight Recital. Vocal and instrumental selections.
- 6:00 p. m.—Stage. Screen and Police Reports.
- 6:30 to 8:30 p. m.—Hotel Mark Hopkins Concert Orchestra.

MONDAY, APRIL 18

- 7:00 to 7:30 p. m.—Western Motors Hawaiians.
- 8:00 to 10:00 p. m.—Blue Monday Jamboree.
- 10:00 to 12:00 p. m.—Eddie Harkness Mark Hopkins Hotel Dance Orchestra.

TUESDAY, APRIL 19

- 7:00 to 7:20 p. m. — Russell-Colvin Trio: Mary Pasmore, violinist; Frank Moss, pianist; Herman Reinberg, cellist.
- 8:05 to 8:40 p. m. — KFRC Radio Movie Club, with Bill Hawley and "Puss" Donahoo, comedy duo.
- 8:40 to 8:50 p. m.—Prof. Herman Schnitzel
- 8:45 to 12:00 p. m.—Eddie Harkness' Mark Hopkins Dance Orchestra.

WEDNESDAY, APRIL 20

- 7:00 to 8:00 a. m.—Breakfast concert.
- 7:00 to 7:30 p. m.—"Puss" Donahoo and his Orchestra.

- 5:00 to 10:00 p. m.—Sherman, Clay & Co. presents the grand opera "Carmen" by Bizet, direction Frank Moss.
- 10:00 to 12:00 p. m.—Eddie Harkness' Mark Hopkins Dance Orchestra.

THURSDAY, APRIL 21

- 7:00 to 7:03 p. m.—Western Motors Trio.
- 8:00 to 9:00 p. m.—MonaMotor Oil program.
- 9:00 to 10:00 p. m. — Organ Recital by Theodore Strong at Aeolian Duo-Art Pipe-Organ.
- 10:00 to 12:00 p. m.—Eddie Harkness' Mark Hopkins Dance Orchestra.

FRIDAY, APRIL 22

- 7:00 to 7:30 p. m.—KFRC Encyclopedia Period.
- 8:00 to 10:00 p. m. — Gilfillan Neutrodyne Evening of Music.
- 9:00 to 10:00 p. m.—Program, featuring selections from grand opera "Faust."
- 10:00 to 12:00 p. m.—Eddie Harkness' Mark Hopkins Hotel Dance Orchestra.

SATURDAY, APRIL 23

- 7:00 to 7:30 p. m.—Club Carlton Orchestra.
- 8:00 p. m. to 1:00 a. m. — Eddie Harkness' Mark Hopkins Dance Orchestra.

Program Published as Submitted by the Station.

\$5 PUTS A PHILCO IN YOUR HOME—Call WE. 9065

\$1 Down

Will place a
MAJESTIC
—"B" SUPPLY—
In Your Home

Then **\$1** A Week

- \$15.00 Baldwin Speakers . . . \$7.50
- \$4.00 Brandes Transformers..\$1.95
- \$12.50 Aero Loops at 3.95
- \$2.50 Montrose SLF Condnsrs 1.25

Write for Special Radio Circular

ESTAB. 1904

625 So. Main
Opposite
P. E. Depot
OPEN EVENINGS

J. C. RENDLER
Radio Parts—Kits—Sets

TRinity 4281
Los Angeles
MAIL ORDERS



STEPHEN L. GAYLORD
Announcer

Portland, Oregon—491.5 Meters

KGW

1000 WATTS—610 KILOCYCLES
THE MORNING OREGONIAN
"Keep Growing Wiser"

DAILY EXCEPT SUNDAY—

7:18 a. m.—Setting up exercises.
9:45 to 10:00 a. m.—Women's health exercises.
10:00 to 11:30 a. m.—Town Crier, weather reports, news items.
12:30 to 1:30 p. m.—Neon concert.
6:00 to 7:00 p. m.—Dinner Concert.
7:30 to 7:45 p. m.—Weather and market reports.

WEEK COMMENCING SUNDAY, APRIL 17, 1927

SUNDAY, APRIL 17

10:55 a. m. to 12:30 p. m.—Morning services from St. Stephen's Pro-Cathedral.
1:00 to 2:00 p. m.—Mock Crest "Home and Fireside Hour, presented by Henderson Bankus, Inc.
7:30 to 9:00 p. m.—Evening services from Hinson Memorial Baptist Church.
9:00 to 10:00 p. m.—Public Service Little Symphony Orchestra.

MONDAY, APRIL 18

8:00 to 9:00 p. m.—National Broadcasting Co. program from San Francisco.
9:00 to 10:00 p. m.—Venetian Hour.
10:00 to 12:00 midnight—Dance music by Cole McElroy's Spanish Ballroom Dance Band.

TUESDAY, APRIL 19

2:00 to 3:00 p. m.—Women's Matinee.
7:30 to 7:45 p. m.—Utility service.
8:00 to 9:00 p. m.—Educational program.
9:00 to 10:00 p. m.—National Broadcasting Co. program from San Francisco.
10:00 to 12:00 midnight—Dance music, featuring Herman Kenin and orchestra.

WEDNESDAY, APRIL 20

7:00 to 7:15 p. m.—Utility service.
8:00 to 9:00 p. m.—Concert. Maxwell House Coffee Orchestra, and vocal artists, simultaneously with KFOA and KHQ.
9:00 to 10:00 p. m.—National Broadcasting Co. program from San Francisco.

Program Published as Submitted by the Station.

THURSDAY, APRIL 21

7:00 to 7:15 p. m.—Old Hickory Smoked Salt talk.
7:30 to 7:45 p. m.—Utility service.
7:45 to 8:00 p. m.—Lecture given under the auspices of the Catholic Truth Society of Oregon.
8:00 to 9:00 p. m.—Vaudeville entertainment.
9:00 to 10:00 p. m.—National Broadcasting Co. program from San Francisco.
10:00 to 12:00 midnight—Cole McElroy's Spanish Ballroom Dance Band.

FRIDAY, APRIL 22

7:30 to 8:00 p. m.—Albers Bros. Poultry talk.
8:00 to 9:00 p. m.—Concert by the Mission Bell Orchestra with soloists, courtesy Los Angeles Soap Co., from KGW, KFOA and KHQ.
9:00 to 10:00 p. m.—National Broadcasting Co. program from San Francisco.
10:30 to 12:00 midnight—Weekly Frolic of the Keep Growing Wiser Order of Hoot Owls.

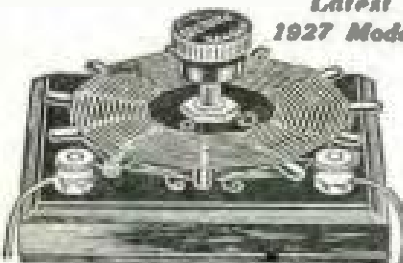
SATURDAY, APRIL 23

8:00 to 9:00 p. m.—National Broadcasting Co. program from San Francisco.
10:00 to 12:00 midnight—Dance music featuring Herman Kenin and his orchestra.

TREAT YOUR SET TO THE BEST—CALL WE. 9065

Steinite Interference Eliminator

Latest
1927 Model 600,000
Sold



Assembled complete; attach to aerial in 2 minutes. No tools. Doesn't disturb broadcast log. No additional tubes or batteries.

\$1 Full time reception of your station without ailer.

NOTICE: If your dealer cannot supply you, send Dollar Bill direct and we will ship prepaid.

NO RADIO SET COMPLETE WITHOUT IT! Essentially necessary for 1 and 2 dial controlled sets. Under present conditions the average set fails to bring in the desired stations properly.

Select Stations at Will. Cut out interference and undesired stations. Tune to loud and clear listening results—Tube or Crystal, except where loop antenna used. Particularly absorbs static—increases volume.

STEINITE LABORATORIES

514 So. Olive St. Los Angeles, Calif.
Phone TUCKER 4706

New Steinite Light Archer No-Battery Radio, \$11.00; with built-in Speaker, \$127.00; Console, built-in Speaker, \$143.00. Hear and see them at your dealer. Crystal Set, \$6; Aerial Eliminator, \$1; Noise Eliminator, \$1; Crystals, 50¢ each, 3 for \$1.

STATEMENT OF THE OWNERSHIP, MANAGEMENT, CIRCULATION, ETC. REQUIRED BY THE ACT OF CONGRESS OF AUGUST 24, 1912

OF RADIO DOINGS, published weekly at Los Angeles, California, for April 1, 1927

STATE OF CALIFORNIA,
COUNTY OF LOS ANGELES.

Before me, a Notary Public in and for the State and County aforesaid, personally appeared G. W. MARSHALL, who having been duly sworn according to law, deposes and says that he is the Business Manager of the HORWOOD PUBLISHING CO., and that the following is, to the best of his knowledge and belief, a true statement of the ownership, management (and if a daily paper, the circulation), etc., of the aforesaid publication for the date shown in the above caption, required by the Act of August 24, 1912, embodied in section 411, Postal Laws and Regulations, printed on the reverse of this form, to-wit:

1. That the name and address of the publisher, editor, managing editor and business manager are:
 Publisher, HORWOOD PUBLISHING CO., 407 East First Street.
 Editor, H. C. CHARLES, 2750 Francis Street.
 Managing Editor, H. C. CHARLES, 2750 Francis Street.
 Business Manager, G. W. MARSHALL, San Dimas, Calif.
2. That the owner is: (If owned by a corporation, its name and address must be stated and also immediately thereunder the names and addresses of stockholders owning or holding one per cent or more of total amount of stock. If not owned by a corporation, the names and addresses of the individual owners must be given. If owned by a partnership, or other unincorporated firm, its name and address, as well as those of each individual member, must be given.)
 Marshall & Co., L. A., Calif.
 H. C. Charles, L. A., Calif.
 J. T. Perdon, L. A., Calif.
 J. C. Penley, L. A., Calif.
 G. G. Beechel, L. A., Calif.
3. That the known bondholders, mortgagees, and other security holders owning or holding 1 per cent or more of total amount of bonds, mortgages, or other securities are: (If there are none, so state.)
 None.
4. That the two paragraphs next above, giving the names of the owners, stockholders, and security holders, if any, contain not only the list of stockholders and security holders as they appear upon the books of the company but also, in cases when the stockholder or security holder appears upon the books of the company as trustee or in any other fiduciary relation, the name of the person or corporation for whom such trustee is acting, is given; also that the said two paragraphs contain statements embracing affiant's full knowledge and belief as to the circumstances and conditions under which stockholders and security holders who do not appear upon the books of the company as trustees, hold stock and securities in a capacity other than that of a bona fide owner; and this affiant has no reason to believe that any other person, association or corporation has any interest direct or indirect in the said stock, bonds, or other securities than as so stated by him.
5. That the average number of copies of each issue of this publication sold or distributed, through the mails or otherwise, to paid subscribers during the six months preceding the date above shown is: (This information is required from daily publications only.)
 G. W. MARSHALL, Business Manager.

Sworn to and subscribed before me this 1st day of April, 1927.
(Initials)

Form 3526.—Ed. 1024.

CLOYD MARSHALL,
Notary Public in and for the State of California, expires Feb. 26, 1928.

demand


AEROVOX

FILTER CONDENSER BLOCKS

For Working Voltages of 200, 300,
400, 600 and 1000 Volts D. C.

Flexible leads for connections eli-
minate all possibilities of leakage
from soldering.

AEROVOX WIRELESS CORPORATION
60-72 Washington Street
Brooklyn, N. Y.



Stock Carried in Los Angeles
Office

W. C. HITT CO.
324 N. San Pedro St.
Los Angeles, Calif.



FRYMAN H. TALBOT
Announcer

Denver, Colorado—322.4 Meters

KOA

930 KILOCYCLES—5000 WATTS
GENERAL ELECTRIC COMPANY
Pacific Standard Time

"Rocky Mountain Broadcasting Station"

DAILY EXCEPT SATURDAY AND SUNDAY—

10:45 a. m.—Weather, Stock and Produce Reports
5:00 p. m.—Stock and Market Reports
5:30 p. m.—Musical Program.

DAILY EXCEPT SUNDAY—

11:15 a. m.—Organ recital.

WEEK COMMENCING SUNDAY, APRIL 17, 1927

SUNDAY, APRIL 17

- 10:00 a. m.—Services of Central Presbyterian church, Denver. Sermon—"The Kinship of Christ," Rev. Martin E. Anderson, D.D., pastor.
4:30 p. m.—Organ recital from Central Presbyterian church, Denver; Clarence Reynolds, organist.
6:30 p. m.—Dinner concert, Brown Palace orchestra. Howard Tillotson, director.
6:45 p. m.—Service of Central Presbyterian church, Denver. Sermon—"The Primacy of the Cross," Rev. Martin E. Anderson, D.D., pastor.

MONDAY, APRIL 18

- 6:30 p. m.—Children's hour.
7:00 p. m.—Instrumental program by Scheuerman's Colorado orchestra.
7:15 p. m.—D. & H. Theaters program, featuring the Egyptian Theater orchestra.

TUESDAY, APRIL 19

- 2:15 p. m.—Talk—"The Gentle Art," given by Anne McKeen Schuler.
2:15 p. m.—Talk—"The Gentle Art," given by Anne McKeen Schuler.
2:30 p. m.—Housewives' matinee, arranged by Helen Olin Roberts.
3:30 p. m.—Question box.
3:45 p. m.—Fashion review, given by the Cano-Downs company, Denver.
6:30 p. m.—Farm question box. George C. Wheeler, editor, Western Farm Life.
8:00 p. m.—Radio instruction in auction bridge, conducted by studio players.

WEDNESDAY, APRIL 20

- 6:30 p. m.—Wynken, Blynken and Nod time.
7:00 p. m.—Instrumental program by Scheuerman's Colorado orchestra.
7:15 p. m.—Public Service company program.

THURSDAY, APRIL 21

- 2:15 p. m.—Talk—"The Gentle Art," given by Anne McKeen Schuler.
2:30 p. m.—Housewives' matinee, "The Little Poor Man," presented by Jefferson Dramatic Society of St. Elizabeth's church.
3:30 p. m.—Fashion review, given by the Cano-Downs company, Denver.
4:00 p. m.—Stocks, markets, livestock, produce and news bulletin.
Silent Night.

FRIDAY, APRIL 22

- 10:00 a. m.—Lenten service in the studio. Sermon—"The Religion of the Cross," Rev. Robert Hopkins, pastor of First Congregational church, Denver.
11:15 p. m.—Instrumental concert by Denver Union Pacific Shop Employees' band.
12:00 Noon—Organ recital. Aladdin theater.
6:00 p. m.—"Aggie Kickoffs," Colorado Agricultural college.
6:30 p. m.—Preview of International Sunday school lesson.
7:00 p. m.—Good Friday service, a cantata, "The Crucifixion," by Sir John Stainer, to be presented at Central Presbyterian church, Denver.

SATURDAY, APRIL 23

- 9:15 p. m.—Dance program, Scheuerman's Colorado orchestra, from the Cathedral ballroom, Albany hotel, Denver.

**CROSLEY SPECIALISTS HAVE YOUR CROSLEY BALANCED
CHILDS' LAB., 1187 W. 24th St., L. A.**

STANDARD RADIO CO.

417 West Pico St., Los Angeles, Calif.

**FADA, ATWATER KENT, FEDERAL AND
WESTERN ELECTRIC DEALER**

We Carry a Complete Line

Open Model Atwater Kent Wave Length Cut Down to 200 Meters.

We Are Also Making a Specialty of Sharpening Tuning in Any Radio Set.
Two-Tube Harkness Changed to 3-Tube, Guaranteed Perfect Tune-out on
Local Stations

Telephone Westmore 1560

Open Saturday Evenings Until 9 o'clock

Woman's Page

(Continued from Page 26)

children, a boy aged 5, and a girl of 3. The children were quite anxious to go to a picture show and begged their mother to take them. Her reply was "Maybe."

"Jimmy, what does 'Maybe' mean?" asked the 3-year-old.

"Maybe means a little bit of yes and a whole lot of no," answered wise 4-year-old.

\$1 Get Distance Amazing Discovery For Any Radio

Why confine your radio programs to a few local stations when the expensive concerts, dance music and lectures of hundreds of big cities are ready for you? With every order for our treatise, "The Distance Getter," we include FREE our wonderful new Distance Transformer. Tune your set according to our special instructions and presto — note the distant stations roll in!

Satisfaction Guaranteed

Your money instantly refunded if you are not satisfied. The attachment furnished FREE with the "Distance Getter" alone is worth the price.

"Results beyond all expectations. Cuts through local stations like a knife." — writes Galloway of Chicago, Ill.

"Send three more for my friends. I got Denver and Calif. easily," says Homes, Palau, Ill. "I also get stations in Canada, Chicago, Miami, all on loud speaker with sufficient volume to be heard all over the house," says Precker of Swampscott, Mass.

"Thus far I've pulled in many stations I formerly only read about!" Praddel of Ohio.



Hazleton Laboratories.
4554 Maiden St., Dept. 241, Chicago, Illinois

- Send me "The Distance Getter" postpaid. Enclosed find \$1 (i. e., stamps or check).
- Send C. O. D., plus small postage added.

Name

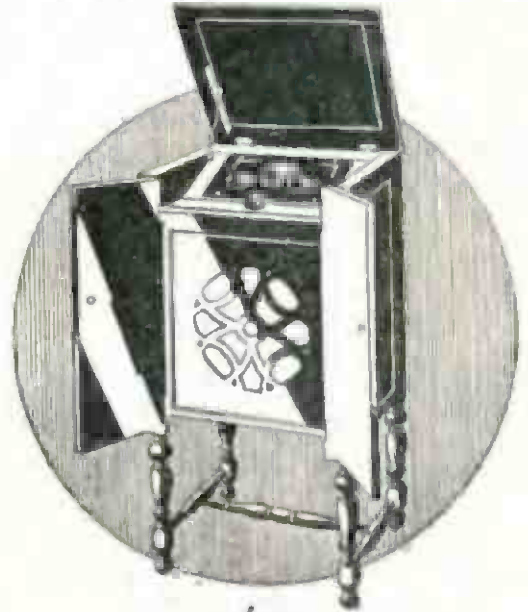
Address

City

State

MAIL COUPON TODAY

The Falck NO-BATTERY RADIO



for
TONE
BEAUTY
ECONOMY
SIMPLICITY
SELECTIVITY
PERMANENCE

Absence of hum and distortion is only one of the many reasons why the FALCK No-Battery Radio has become the choice of radio purchasers who know. Falck tone is always delightful, for every single note is transmitted to the listener in its original tone beauty.

Hear the Falck at any authorized Falck dealer, or phone MUtual 1724 for free demonstration in your home.

\$150 complete

FALCK RADIO SALES CO.

1260 W. Second St., Los Angeles

"WHO'S WHO"

In RADIO

—and the reasons why

Orval Peterson

Orval Peterson, whose picture appears on this page, is the vice president and general manager of the Pacific Wholesale, Inc., 1310 South San Pedro street, Los Angeles, California.

Before coming to Los Angeles he was for five years the vice president and

the subject of radio merchandising. For many years before entering the radio merchandising field he was connected with the United States Government doing special radio and experimental work. He is a veteran of the World War, and served the most of his time as a special communication officer in Europe.

Upon a pleasure trip to Los Angeles he had the pleasure of meeting Mr. Walter Fagan, who was then general sales manager of the Electric Corp. Upon exchanging views, they found that each had an intense desire to get into the distributing business for themselves so decided that if they combined their efforts they could conduct a radio distributing business that could be of real service to the dealers of Los Angeles and Southern California.

Mr. Peterson and Mr. Fagan purchased the entire Los Angeles interest of the Pacific Wholesale Radio, Inc., from the former owners, and have started a special service to the retail trade of Southern California. Mr. Fagan is taking care of the outside sales, and Mr. Peterson is in charge of the inside sales and management of their establishment.

It is very seldom that two such brilliant men are connected together in one concern, and we predict that it will be but a short time until the Pacific Wholesale, Inc., is one of the best known and largest radio jobbers in the West. Mr. Peterson sends a cordial invitation to all the dealers in this district to come and visit him.



sales manager of the Rocky Mountain Radio Corp., of Denver, which is one of the largest and best known radio jobbers in the Rocky Mountain region.

Mr. Peterson was an accepted authority in the Rocky Mountain Region on

Timely Trade Topics

Richard L. "Dick" Strong has opened an exclusive radio store at 19 Pier avenue, Hermosa Beach, and will feature Holmes and Arborphone sets, Philco Power Units; CeCo tubes and Golden Bear speakers. The official opening will take place on Saturday, April 16, when entertainment will be furnished by Uncle Remus and Little Boy Blue and refreshments will be served. The store will be known as "Radio Strong."

G. W. Stackman, the new branch manager for Bosch, was a recent visitor to Los Angeles. The Pacific coast branch office of this company is located at 1262 Post St., San Francisco. T. C. Miller is field sales manager in this territory.

Last week the appointment of Hall Berringer, for many years intimately identified with the California Radio Trade, as sales manager of H. Earle Wright, Incorporated, was announced by M. G. Sues, secretary-treasurer of that organization.

Berringer brings with him to his new position a wide acquaintanceship with both the wholesale and retail trade, and has a detailed knowledge of the major items distributed by H. Earle Wright, Incorporated. He will make his headquarters in San Francisco and will maintain a close contact with radio retail outlets in the north.

The Los Angeles Sales Organization of the Kemper Radio Corporation held its monthly banquet at the Palomar Tennis Club, Monday, April 4th.

Harold H. Cluff, general sales manager, gave a forceful sales talk to the sixty members present.

Entertainment was furnished by a number of KMTR artists, including "Whispering" Jack Don, June Parker, Bill Hatch and Louise Howatt.

Herbert H. Horn, 1629 South Hill St., Los Angeles, will be pleased to mail to all dealers requesting same a printed list of all lines carried by him.

J. C. Lester announces the opening of a new store at 452 So. Broadway, where they will handle a complete line of Stewart Warner sets and also all lines of radio accessories and equipment. The store will be open till 9 p. m. daily.

B. R. Hassler, representative of Valley Electric; Brach and Sentinel Manufacturing Co., is now making his headquarters in Los Angeles, and has opened offices in the Allied Crafts building. He was previously located in the New Chronicle building, San Francisco.

The Advance Electric Company, 1260 West Second street, Los Angeles, California, the ~~manufacturers~~ of the famous Falck Battery-Less Receiver, are broadcasting from KMTR every Tuesday and Friday afternoon, from 4 to 5 p. m.

The programs are being arranged and taken care of by Mr. Jeffries of the Waters & McLeod Advertising Agency, Detwiler Building, Los Angeles, California.

The Allied Crafts building is becoming quite a headquarters for the radio trade. We are glad to welcome Carl A. Stone, representative of All-American; Shamrock Manufacturing Co.; Trimm Manufacturing Co.; and Hoosick Falls products who has opened offices at 305 Allied Crafts building, he was previously located at 1050 South Los Angeles street.

Clarke A. Rasey, formerly with the DeForest Company, is now with the Pacific Distributors. Rasey has been associated with Virgil C. Crites in the development of the Orthoformer, which is now on the market

Broadcasters' Digest

A tri-weekly hour of cheer and melody, for the special benefit of "shut-ins," was recently inaugurated from KPO, the Hale-Chronicle station of San Francisco, and is already receiving considerable response from the listeners. These programs are known as the "Happy Hours," and are broadcast on Tuesday, Thursday and Friday mornings from 8 to 9 o'clock. They are under the direction of Hugh Barrett Dobbs, KPO'S physical culture mentor, who has made KPO'S early morning health drills one of the most popular features of the station.

With the signing off of KHJ at Los Angeles on the completion of its fifth anniversary program on April 13 the pioneer station of the west coast completed 10,000 hours on the air during its first five years of broadcast. The present daily schedule omits the afternoon hours, but the station is on the air Tuesdays to Saturdays, inclusive, from 6 to 10 p. m.; Sundays from 10:30 to noon and from 7 to 10 p. m., and Monday is silent day.

That the vogue of the one-man entertainer is not waning is proven, in the opinion of the management of KFXB, by the popularity of the daily request half-hour from 5:15 to 5:45 o'clock, when "Little Eddie Barnes" holds forth with his piano and vocal numbers, and dialect offerings. It is stated that he keeps the phone busy while on the air.

The popularity of KFWO, Catalina Island, is shown by the fact that several of our local Los Angeles stations have arranged with the genial Major to transport to his flower-filled studio groups of

their star performers. For instance, on Wednesday night, the 13th, there was a gala program that included such well-known entertainers as the famous Collegians Orchestra; the Three Little Barnes (Eva, May and Eddie); the Stark Sisters (Linnie and Maude); Miss Ditra Flame; Jack Z. Smith, popularly known as the Catcher's Kid. That delightful Novelty Duo—Miss Marion Bongar and Earl Lawrence, and the celebrated Baron Keyes, who writes "the words and music while you wait," were also on the program. All of the above artists are from KFXB, Los Angeles.

Every Saturday is popular night in the Los Angeles station of KHJ, and a big part of the feature broadcast is the Husking Bee Dancers who appear in the studio in costumes of 1861. Ed Parr announces the dances, Benjamin Sears is the old-time fiddler, and Mrs. Sears plays the piano chords. The dancers perform in the studio, while radioland hears the shuffle of their feet, the squeak-squeak of the fiddler, and the calling of the dances.

For Sale

Proprietor of first class, fully equipped, up-to-date and attractively appointed Radio Studio in excellent location with valuable franchise wishes to dispose of half interest or will consider full sale.

\$1000 Can Handle This Proposition

ADDRESS

BOX "S"

RADIO DOINGS

DO AWAY WITH BATTERIES—CALL WE. 9065



ELEC-TRU-TONE

THE PHONOGRAPH MODERNIZED

Consists of a highly efficient electro-magnetic pick-up, with marvelous tone and volume, readily attachable to the phonograph tone arm; a smooth volume control, scratch-filter and blocking condenser; and a plug for the detector socket of a radio set for making a quick, simple connection to the audio amplifier.

LIST, \$25.00—TWO MODELS—LIST, \$17.50

THE POWERIZER



Unsightly and
Expensive
"B" Batteries
Eliminated

Changes lifeless and
colorless sounds to
vibrant brilliancies of
tone and volume.

Hear it!

Price \$51.50

(Without Tube)

Ask our Representative or write us for a printed list of the Radio Items we carry in stock.

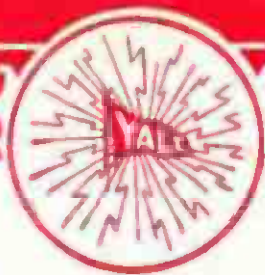
Distributed by

HERBERT H. HORN

1629 South Hill St., Los Angeles

Phone Westmore 1713 — Westmore 1543

WHOLESALE ONLY



FEDERAL Ortho-Sonic

*You will be Satisfied
With*

Federal value

Federal tone quality

Federal performance

and best of all with

Federal service offered
by authorized dealers
all over Southern Cali-
fornia.



PRICED FROM \$100 TO \$1000

We Recommend

Eliminators

Elkon
Modern
Sterling
Balkite

Cunningham
RADIO TUBES

Since 1915-
Standard for all Sets
In the orange and blue carton

Speakers

Amplion
Enchanter
Herald
Acme

Wholesale Distributors

Yale Radio Electric Co.

LOS ANGELES

1111 Wall Street

WEstmore 3351

This file including all text and images are from scans of a private personal collection and have been scanned for archival and research purposes. This file may be freely distributed, but not sold on ebay or on any commercial sites, catalogs, booths or kiosks, either as reprints or by electronic methods. This file may be downloaded without charge from the Radio Researchers Group website at <http://www.otrr.org/>

Please help in the preservation of old time radio by supporting legitimate organizations who strive to preserve and restore the programs and related information.