

Proceedings of The Radio Club of America, Inc.



Founded 1909

Volume 26, No. 2

1949

**GERMANIUM CRYSTAL DIODE
AND TRIODE DEVELOPMENTS**

*by Dr. Stuart T. Martin
Harold Heins*

THE RADIO CLUB OF AMERICA

11 West 42nd Street ★ ★ ★ New York City

The Radio Club of America, Inc.

11 West 42nd Street, New York City

Telephone — LOnacre 5-6622

Officers for 1949

President

Jerry B. Minter

Vice President

George C. Connor

Treasurer

Joseph J. Stantley

Corresponding Secretary

John H. Bose

Recording Secretary

Perce B. Collison

Directors

R. M. Aiken, Jr.
Ernest V. Amy
Edwin H. Armstrong
Ivan G. Easton

Alan Hazeltine
L. C. F. Horle
Harry W. Houck
C. J. LeBel
Paul Ware

Bernard D. Loughlin
O. James Morelock
Harry Sadenwater
B. F. Shackelford

Committee Chairmen

Entertainment

Harry W. Houck

Papers

Ivan G. Easton

Advertising

Paul Ware

Medal

Lawrence C. F. Horle

Publications

O. James Morelock

Affiliation

Ernest V. Amy

Membership

F. A. Klingenschmitt

Publicity

Austin C. Lescarbours

Budget

Joseph J. Stantley

Yearbook

George E. Burghard

Legal Counsellor

George E. Burghard

MEETINGS

Technical meetings are held on the second Thursday evening each month from September through May at either Havemeyer or Pupin Hall, Columbia University, Broadway and 116th Street, New York. The public is invited.

MEMBERSHIP

Application blanks for membership are obtainable at the Club office. For the Member grade the invitation fee is one dollar and the annual dues are three dollars.

PUBLICATIONS

Subscription: Four dollars per year, or fifty cents per issue. Back numbers to members, twenty-five cents each.

**PROCEEDINGS
OF THE
RADIO CLUB OF AMERICA**

Volume 26

1949

No. 2

GERMANIUM CRYSTAL DIODE AND TRIODE DEVELOPMENTS

A summary of a talk given to the Radio Club
of America on January 15, 1949 by *Dr. Stuart
T. Martin, and **Harold Heins

During the war much research was done on crystals for radar detectors since they were found to be superior to vacuum tubes as a microwave mixer. One of the materials, germanium, researched by S. Benzer under the direction of Dr. L. Horowitz of Purdue University, was found to be unsatisfactory as a microwave mixer, but, when suitably treated, to have the remarkable property of maintaining high reverse resistance at voltages ranging from 50 to 150 volts.

The combined properties of high forward conductance and high reverse resistance made germanium of interest as a general purpose diode material for lower frequency applications. After the war, a high voltage type 1N34 was introduced commercially by Sylvania Electric.

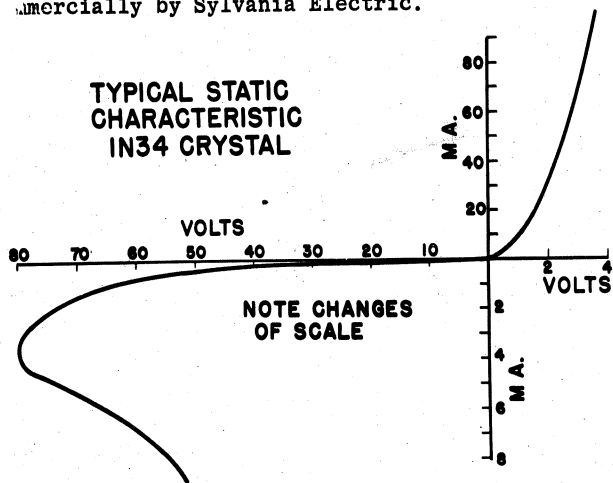


Fig. 1

Typical static characteristics of the 1N34 germanium diode are shown in Figure 1. At sufficiently high reverse voltage the dynamic resistance becomes zero and then negative. This characteristic suggests the possibility of making simple negative resistance oscillators by operating the diode in these regions.

Figure 2 shows a semi-log plot of resistance versus voltage for several germanium diode types and reveals that between zero and a current limited by allowable diode dissipation, the forward and re-

verse static resistances vary over wide limits. Forward resistance drops rapidly as forward voltage is increased and reaches a value of about 100 ohms at one volt.

Back resistance increases rapidly with reverse voltage to a peak between -3 and -100 volts depending on diode type. If reverse voltage is increased beyond the peak, back resistance decreases. Maximum resistance is produced in the 1N34 at about -3 volts; in the 1N38 at about -10 volts; and in the 1N39 between -75 and -100 volts. Generally speaking, the higher the peak back voltage rating, the higher the reverse voltage at which peak resistance occurs.

The shape of the diode curve shown in Figure 2

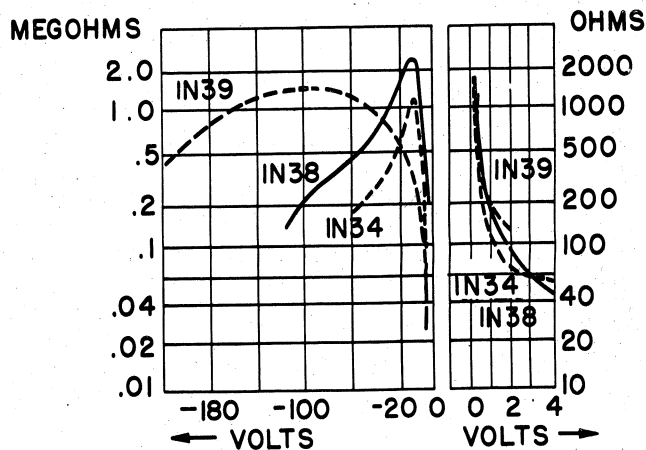


Fig. 2

indicates that static and dynamic resistances are very low above approximately 0.2 volts and that the current-voltage curve is essentially linear down to small values. This curve passes through the point 0 where contact potential and initial velocity effects are absent.

Comparison with vacuum tube diodes shows that the germanium diode is superior with respect to increased conductance and reduced interelectrode capacitances, the latter due to small, effective, point contact area. The superior characteristics

* Chief Engineer,
** Engineer,
Electronics Division, Sylvania Electric Products, Inc.

of the germanium diode provide greatest benefit in video detection where bandwidth requirements limit load resistance to relatively low values.

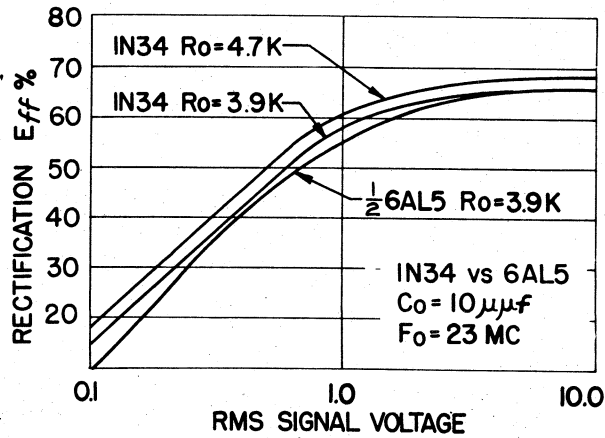


Fig. 3

Figure 3 shows measured rectification efficiencies with typical values of load resistance. The IN34 curve of $R_o = 4700$ ohms, $C = 10$ uuf indicates results obtainable in a typical 4.5 mc video detector for television receivers. Data on the 6AL5 detector, having the same video bandwidth and a load resistor at 3900 ohms is shown for comparison. The much more linear characteristic of the IN34 in television applications may result in better white and near white values in the received video image.

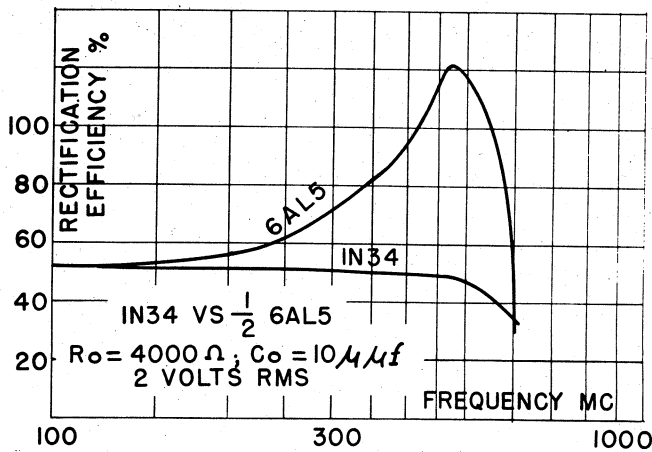


Fig. 4

Figure 4 shows a further comparison between the IN34 and the 6AL5 on relative frequency response in the 100 to 600 mc region in the same video detector circuit. The 6AL5 shows a definite resonance peak around 450 mc and a sharp drop thereafter while the IN34 response is flat up to 500 mc.

In common with all semi-conductors, reverse to front resistance of the germanium diode deteriorates with increasing temperature. This is shown

in Figure 5 where variations of forward and reverse currents with temperature are plotted on a semi-log scale. Greatest increase in current or decrease in

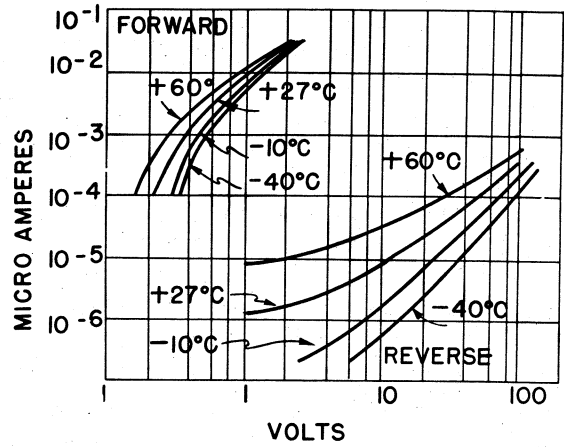


Fig. 5

resistance occurs at low voltages and, as voltage is increased, current changes become considerably smaller.

Figure 6 (on page 5) shows three IN34 germanium diodes in a conventional d-c restorer-sync separator arrangement for television receivers. Use of the germanium diodes shown in the d-c restorer CRL improves operation by providing a more secure clamp at the blanking level due to higher diode conductance. This reduces the tendency toward shift in black level toward white when video content is dark. In this service germanium diode life tests at 100 volts on a 15% duty cycle have shown no deterioration or failure after 3600 hours.

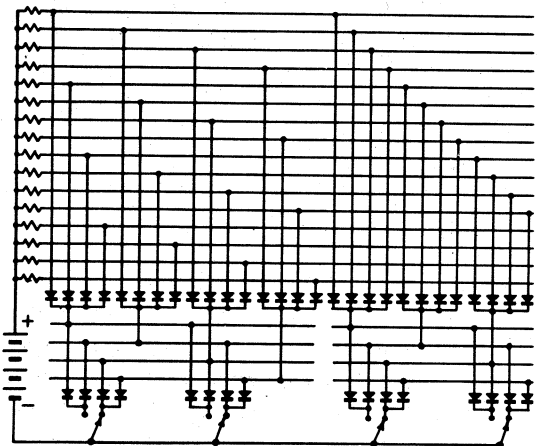


Fig. 7

Figure 7 shows a typical application of a multiposition switching diode network in the computer field. Each of sixteen possible combinations of the input switch settings selects one particular output channel. This type of matrix has been expanded to sixty-four channels with a switching rate from channel to channel corresponding to 1 mc.

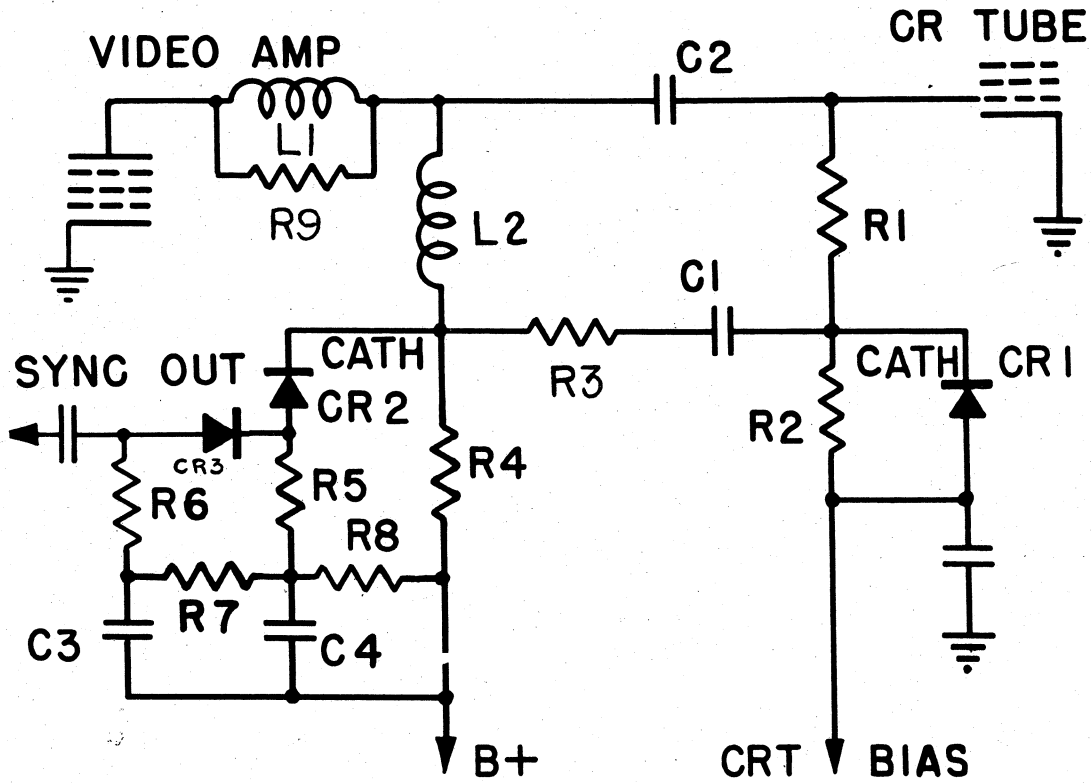


Fig. 6

GERMANIUM DIODE DC RESTORER AND SYNC SEPARATOR

Typical Values

- R1 Grid Resistor - 100K
- R2 Restorer load resistor - 1 Meg.
- R3 Isolating resistor - 10 K
- R4 Video load resistor - 3.3 K
- R5 Sync load resistor - 5.6 K
- R6 Sync load resistor - 6.8 K
- R7 Sync bias resistor - 220 K
- R8 Sync bias resistor - 100 K
- R9 Damping resistor - 22 K
- L1 Peaking inductor - 200 uh
- L2 Peaking inductor - 95 uh
- C1 Coupling capacitor - .05 uf
- C2 Coupling capacitor - .05 uf
- C3 Sync bias capacitor - .01 uf to 1 uf. See note.
- C4 Sync bias capacitor - .01 uf to 1 uf. See note.
- CR1 Sylvania 1N38 germanium diode - restorer diode.
- CR2, CR3 Sylvania 1N34 germanium diodes - separator diodes.
- Video amplifier tube 6V6GT.

Note: larger values of C3 and C4 increases sync amplitude but may introduce low frequency jitter or picture bounce. These capacitors should be as large as possible consistent with stability.

With 40 volt peak composite video signal at plate of last video amplifier, sync amplitude 5.2 volts at input of sync amplifier. Video leakage less than 1% at 10 volt input level, and essentially zero at higher levels. Sync pulse rise time and pulse shape unaffected by separator action.

TYPE	IN54	IN55	IN56	IN57	IN58	IN59	IN60
I _F IV	5.0	3.0	15.0	3.6	5.0	3.0	5.0
I _R -10V	.01	—	—	—	—	—	—
I _R -20V	—	—	—	—	—	—	0.4
I _R -30V	—	—	0.3	—	—	—	—
I _R -75V	—	—	—	0.3	—	—	—
I _R -100V	—	0.3	—	—	0.8	—	—
I _R -150V	—	0.8	—	—	—	—	—
I _R -250V	—	—	—	—	—	0.8	—
I _{PEAK}	50	150	40	100	115	275	60

Fig. 8

Figure 8 shows the characteristics of some of the newer types of standardized germanium diodes which have resulted from demand for a wide variety of applications. Many other types are being developed for special applications requiring a wide range of rated voltage and back resistance.

*Germanium Triodes

The germanium triode consists merely of a germanium diode with an additional catwhisker or contact on the germanium block. With the application of suitable applied potentials a change of value in one contact will modify current flow in the other contact, resulting in power amplification.

Actually the crystal amplifier is an exceedingly complex device involving many mechanical, chemical, physical and electrical problems. Theoretical explanation of the phenomenon underlying action of the device is in the province of the competent mathematical physicist who is well versed in present theories of the physics of the solid-state.

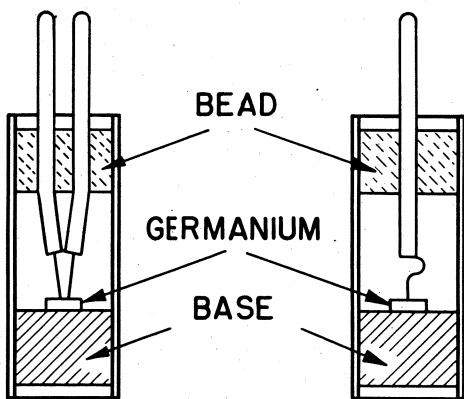


Fig. 9

Construction of a model crystal amplifier is shown in Figure 9. The two whisker contacts with a separation of one or two mils, are fitted with springs to provide contact pressure and mechanical *Transistors

stability. "Interaction" or power amplification is a function of the whisker contact separation.

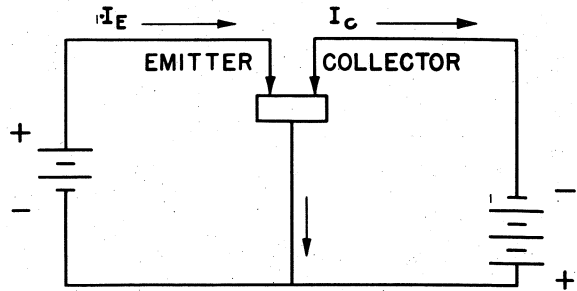


Fig. 10

Figure 10 shows the crystal amplifier as a circuit element. The input electrode, called the "emitter" is made a few tenths of a volt positive with respect to the germanium while the output or "collector" electrode is made from 10 to 50 volts negative. Currents drawn by the emitter range from a fraction to several ma. and flows in a manner normal for a positive anode in a diode.

Collector currents range from 1 to 4 ma. and flow in the opposite direction to emitter currents. They are a function of the collector voltage with various emitter potentials as a parameter. Characteristic curves are obtained which roughly resemble those of a conventional triode with a positive grid.

The outstanding characteristic of the germanium triode is that it functions only with a positive input potential, and, in contrast to vacuum tube triodes, draws power from the signal source. Input impedance is in the order of several hundred ohms while output impedance ranges from 10,000 to 30,000 ohms. Also in contrast to the thermionic triode, the germanium triode functions with a positive input and a negative output electrode.

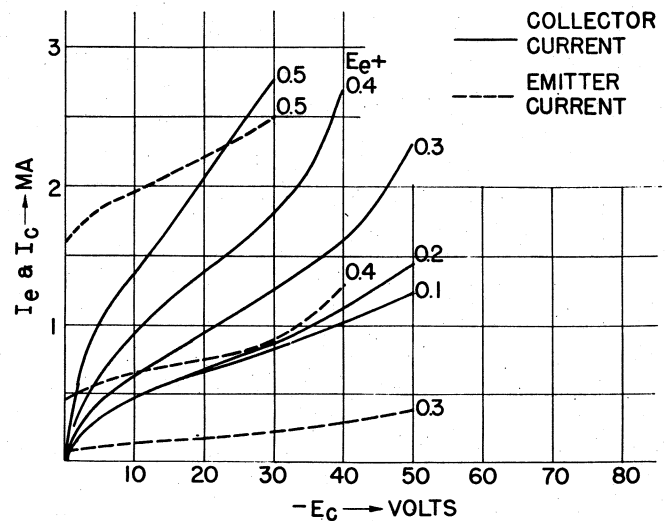


Fig. 11

Characteristics of a typical crystal triode are shown in Figure 11. Collector current I_C and

and emitter current I_e are plotted against collector voltage $-E_c$ with emitter potential $-E_e$ as an independent parameter. Emitter current curves are shown dotted. At an operating point of $E_c = -30$ volts and $E_e = -0.5v.$, the computed transconductance is approximately 7000 micromhos and the amplification factor approximately 75.

It must not be assumed that the characteristics are symmetrical with respect to the input and output electrodes. In general they are far from symmetrical due to the differences in electrical treatments usually required to optimize power gain.

In contrast with vacuum tube triodes there is no phase change in the input voltage with respect to the input signal. A positive going signal input produces a positive going output voltage which is important in connection with self biasing arrangements. For instance a resistance in the branch of the circuit common to both emitter and collector produces regeneration.

Crystal amplifiers, generally speaking, cannot be completely cut off with respect to output current. Plate current can be cut off in a vacuum tube triode when sufficient bias is used but in crystals collector current bottoms sharply on the normal inverse diode characteristic. Occasionally a crystal unit may be found which operates best close to zero input bias. This indicates control with slightly negative emitter potentials, but even then collector current bottoms sharply and overdrive causes clipping.

$-E_c$ V	E_e V	I_c MA	I_e MA	E_s V	L_s MA	R_L KΩ	E_L V	$-$ G_V	$-$ G_I	G_p DB	P_o MW
35	.50	4.0	.8	.03	.12	11	1.4	47	1.17	17.5	1.8
28	.48	3.6	.8	.15	.65	15	8.0	53	89	16.8	4.3
27	.51	4.2	1.5	.30	1.35	12	11.9	39.5	.81	15.1	11.8

G_V = VOLTAGE GAIN

G_I = CURRENT GAIN

G_p = POWER GAIN

Fig. 12

Typical dynamic operating data taken on the unit described above are summarized in the table in Figure 12, showing current gain in the order of .8 to 1.2. High power gains are still feasible even though current gains are low.

Power output of transistors or germanium triodes has been stated by the Bell Telephone

Laboratories to be 25 mw, but our experience indicates that this value is not compatible with power gains of the order of 15 db or more. By optimizing the load, bias and driving power it is possible to realize 25 mw but gain will be down. The table in Figure 13 summarizes the data on one of the highest gain amplifiers obtained by Sylvania to date.

$-E_c$ V	E_e V	I_c MA	I_e MA	E_s V	I_s MA	E_L V	$-$ G_V	$-$ G_I	G_p DB	P_o MW
29	1.6	3.3	1.6	.01	.19	4.5	450	1.47	28.4	1.18
31.5	1.5	3.2	1.5	.02	.36	7.8	390	1.39	27.4	3.55
33	1.5	3.3	1.5	.05	.75	14.7	295	1.26	25.7	12.8
45	1.0	2.7	1.0	.10	.95	18.0	180	1.15	23.2	19.0

$R_L = 17 KΩ$

Fig. 13

The germanium used in diodes and triodes is one of a class of materials known as semi-conductors. These materials all have lattice imperfections required for efficient rectification. In copper oxide rectifiers lattice imperfections arise from a stoichiometric deficiency of copper in the lattice produced by appropriate heat treatment. Not so well known is the fact that the oxide-cathode is also a semi-conductor with lattice imperfections due to an excess of barium atoms in the crystal structure.

In germanium diodes lattice imperfections are artificially introduced into the lattice by adding a slight trace of a suitable donor with appropriate valence. In the triode an additional surface treatment is given to enhance surface layer properties. Both diodes and triodes receive an electroforming treatment which is probably related to the electroforming of copper oxide rectifiers and oxide cathodes.

Treatment of germanium diodes is adjusted to produce the highest possible inverse resistance and peak back voltage, consistent with low forward resistance. In the triode it is usually necessary to adjust the electrical treatment, or pulsing, to reduce inverse impedance to reasonable values for optimum power gain.

Although we have seen a tendency of some crystals to progressively deteriorate, our experience with diodes and triodes leads us to believe that increased life, stability and uniformity will result from further research and development. The triode is somewhat noisier than vacuum tube

triodes but it should prove useful for many applications since noise level is sufficiently low to permit two or more stages of amplification in the audio region.

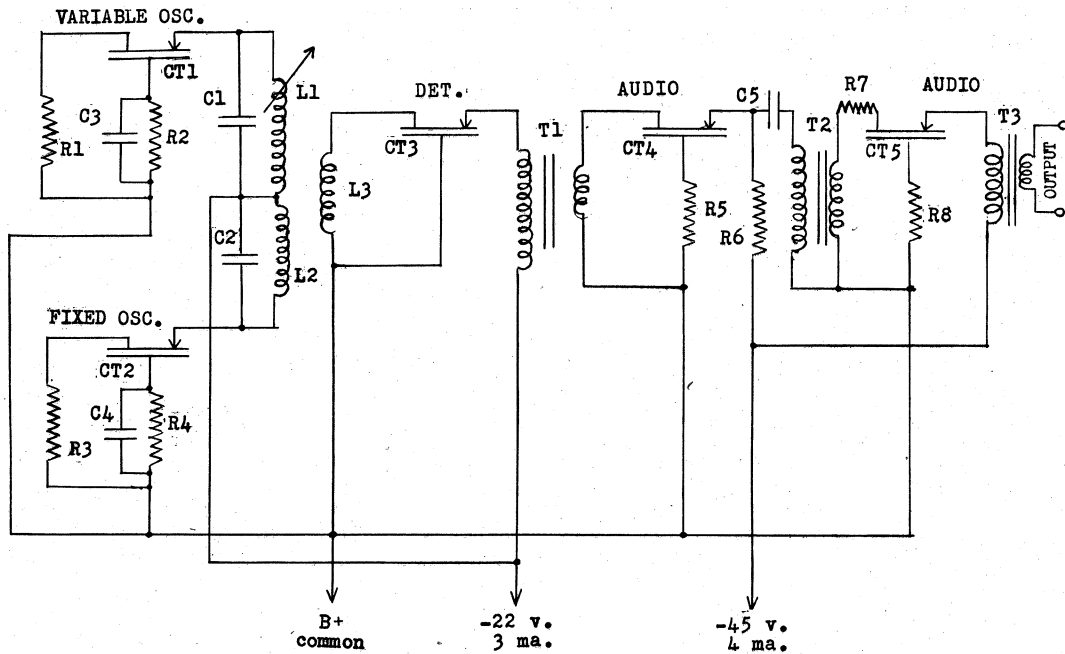
Limit of frequency is a greater consideration

since an amplifier will exhibit a declining gain in the vicinity of 3 mcs. This may be due to mobility of the positive holes and the relatively large two mil spacing of electrodes. Limitations on frequency, noise and power output appear to be fundamental.

EDITOR'S NOTE:

After the presentation of his Germanium Crystal paper, Dr. Martin demonstrated a Transistor Beat-Frequency Oscillator. The oscillator, connected to a loud speaker, attracted considerable interest, therefore, the following data is being reproduced with Dr. Martin's permission.

TRANSISTOR BEAT-FREQUENCY OSCILLATOR



Typical Values

- R1 oscillator grid resistor - 22K
- R2 oscillator bias resistor - 3.9K
- R3 oscillator grid resistor - 22K
- R4 oscillator bias resistor - 3.9K
- R6 audio load resistor - 15K
- R7 stabilizing resistor - 120 ohms
- C1 tuning capacitor - 510 uuf
- C2 tuning capacitor - 510 uuf
- C3 osc bias bypass - .01 uf
- C4 osc bias bypass - .01 uf
- C5 audio coupling capacitor - .01 uf
- T1 15000 ohm to 500 ohm audio transformer
- T2 15000 ohm to 500 ohm audio transformer.
- T3 15000 ohm to voice coil transformer.
- CT1 through CT5 Sylvania GT372 transistors.

R5 and R8-audio bias resistors. See note below.

NOTE: audio bias resistors must be adjusted to the particular transistor in use and transistors in general are not replaceable without adjustment of operating conditions. Bias to be adjusted for maximum gain consistent with stability and values will range between 47 ohms and 270 ohms for average units.

The power output obtained will range between 2.0 and 5.0 milliwatts across a reflected load of 15,000 ohms. Audio frequency range will be from 300 cps to 30,000 cps approximately with waveform distortion of approximately 10% at 1000 cps. The RF oscillators operate in the vicinity of 250 kilocycles and deliver from 3 to 5 volts RMS. No attempt has been made to minimize locking in of the oscillators at low frequency separations, and this effect limits the low frequency end of the range to that specified.

RADIO CLUB PLANS IBCG MEMORIAL

President Jerry B. Minter has announced that the IBCG Memorial Committee, headed by George E. Burghard, is now planning for the placement of a suitable marker on the site of the first amateur radio station to transmit a complete radio message across the Atlantic Ocean.

It has been suggested that the IBCG "Ham Shack" be reconstructed and equipped with as much of the original gear as can be collected. Such an installation would prove of great interest to the amateur fraternity and would be a fitting memorial to the pioneers who built and operated IBCG. A full report and the recommendations of the Committee be made to the Board in the near future.

MEGACYCLE METER - Model 59

THE Model 59 Megacycle Meter is essentially the familiar "grid-dip" oscillator, however, it is the first commercial instrument of this type to cover such a wide frequency range and to incorporate important features that make it useful for so many different applications.

USES:

For the measurement of capacitance inductance, relative "Q", mutual inductance; resonant frequency of tuned circuits, antennas, transmission lines; as an auxiliary signal generator; for signal tracing; as a marker for use with a sweep-frequency generator, etc.

Frequency Range: 2.2 megacycles to 400 megacycles with seven plug-in coils.

Frequency Accuracy: Individually calibrated dial, direct reading to an accuracy of $\pm 2\%$.

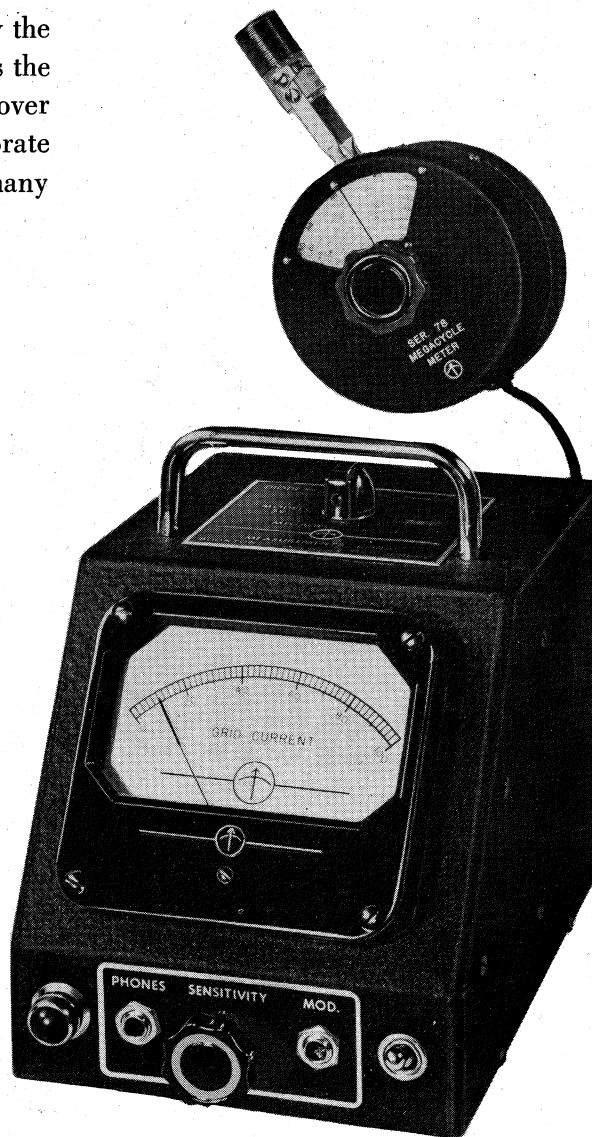
Output: CW or MCW. Modulation fixed at approximately 30%, 120 cycles.

Tubes: 1—Type 955
1—Type OD3/VR150
1—Type 5Y3GT

Dimensions: Power unit: 5 $\frac{1}{8}$ " wide, 6 $\frac{1}{8}$ " high, 7 $\frac{1}{2}$ " deep.
Weight: approximately 6 $\frac{1}{2}$ lbs.

Oscillator unit: 3 $\frac{3}{4}$ " diameter, 2" deep.
Weight: approximately 1 lb.

Power Supply: 117 volts, 50-60 cycles, 20 watts.
Step-down transformer available for 220 volts, 50 cycle operation.

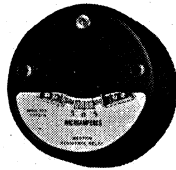


MEASUREMENTS CORPORATION

BOONTON · NEW JERSEY



(Model 901) **PORTABLE TEST INSTRUMENTS** available in DC, Model 901—and AC, Model 904, single and multiple ranges of wide coverage. Excellent scale readability and shielding. Accuracy within 1/2 of 1%.



SENSITIVE RELAYS a line of sensitive relays including the Model 705 which provides positive control at levels as low as 1/2 microampere. Non-chattering magnetic contacts handle up to 10 watts at 120 volts.



(Model 622) **ULTRA-SENSITIVE INSTRUMENTS** portable DC and AC Thermo instruments for precision measurement of potentials and minute currents involving electronics, thermo-couples or laboratory research.

INSTRUMENTS

**TO SPEED AND SIMPLIFY
ELECTRONIC PRODUCTION
AND MAINTENANCE**

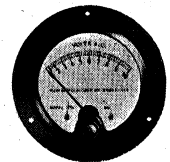
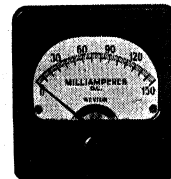
Illustrated are but a few of the many specialized instruments available from WESTON . . . all designed to simplify and speed-up electrical and electronic installations, production testing, and maintenance. For details, see your local representative, or write Weston Electrical Instrument Corporation, 618 Frelinghuysen Avenue, Newark 5, New Jersey.

WESTON *Instruments*

ALBANY • ATLANTA • BOSTON • BUFFALO • CHARLOTTE • CHICAGO
CINCINNATI • CLEVELAND • DALLAS • DENVER • DETROIT • HOUSTON
JACKSONVILLE • KNOXVILLE • LITTLE ROCK • LOS ANGELES
MERIDEN • MINNEAPOLIS • NEWARK • NEW ORLEANS • NEW YORK
ORLANDO • PHILADELPHIA • PHOENIX • PITTSBURGH • ROCHESTER
SAN FRANCISCO • SEATTLE • ST. LOUIS • SYRACUSE • TULSA
IN CANADA, NORTHERN ELECTRIC CO., LTD., POWERLITE DEVICES, LTD.



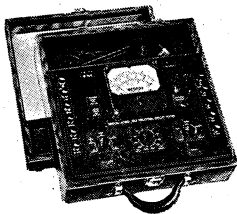
(Model 798) **MULTI-PURPOSE TUBE-CHECKER** offering provision for testing Receiving Tubes—Voltage Regulator Tubes—Light Duty Thyatron Tubes such as 2A4-6D4-884-885-2051. Scale is calibrated "Good-Bad" as well as in mutual conductance range.



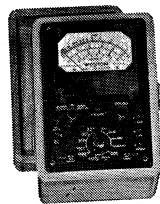
PANEL and SWITCHBOARD INSTRUMENTS a complete line of instruments in all types, sizes and ranges required for switchboard and panel needs . . . including DC, AC power frequencies and radio frequency, rectifier types and D.B. meters.



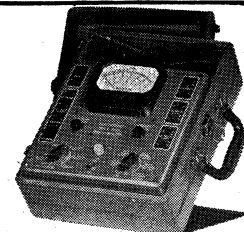
(Model 697) **VOLT-OHM MILLIAMMETER** one of a line of pocket-size meters, Model 697 combines a selection of AC and DC voltage, DC current, and resistance ranges. Ideal for maintenance testing and many inspection requirements.



(Model 785) **INDUSTRIAL CIRCUIT TESTER** a versatile, portable tester for laboratory or maintenance needs, where an ultra-sensitive instrument is required. Provides 27 AC and DC voltage, AC and DC current, and resistance ranges. (DC sensitivity 20,000 ohms per volt.)



(Model 779, Type 1) **SUPER-SENSITIVE ANALYZER** small, light, compact, 26 range Volt-Ohm-Milliammeter with 5 DC voltage ranges, sensitivity of 1000 or 20,000 ohms per volt. AC temperature compensated. Self-contained power supply. Ideal for many production and test requirements.



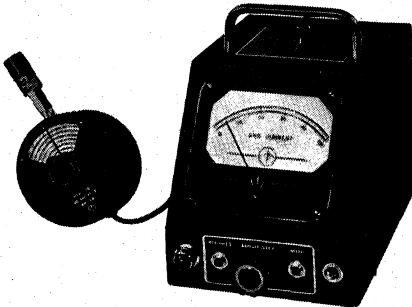
(Model 769) **ELECTRONIC ANALYZER** incorporating a conventional Volt-Ohm-Milliammeter with self-contained power source—a high-impedance electronic Volt-Ohmmeter using 115 volt, 60 cycle power—a stable, probe-type, Vacuum Tube Voltmeter, for use to 300 megacycles.

Laboratory Standards

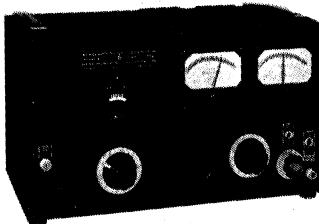
FOR PRECISION MEASUREMENTS
5 CYCLES TO



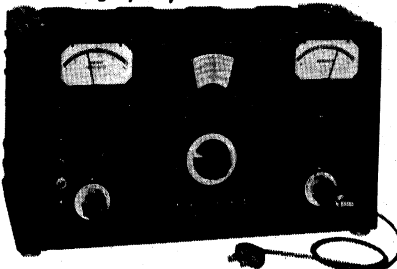
IN THE FREQUENCY RANGE OF
1000 MEGACYCLES



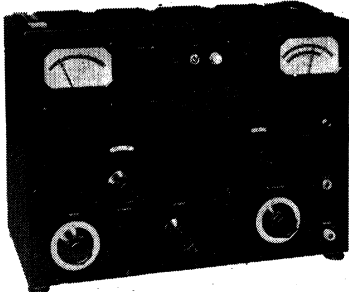
MODEL 59 MEGACYCLE METER
2.2 to 400 megacycles in seven coil ranges



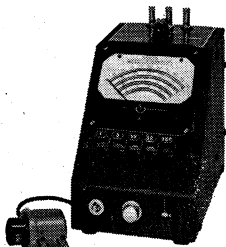
MODEL 80 STANDARD SIGNAL GENERATOR
2 to 400 megacycles, AM and Pulse Modulation



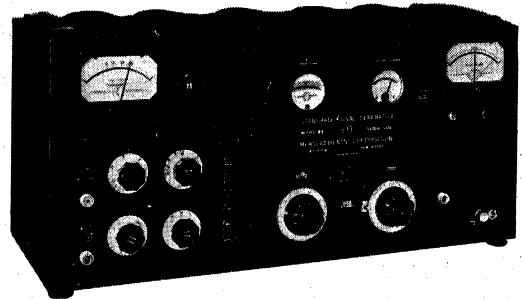
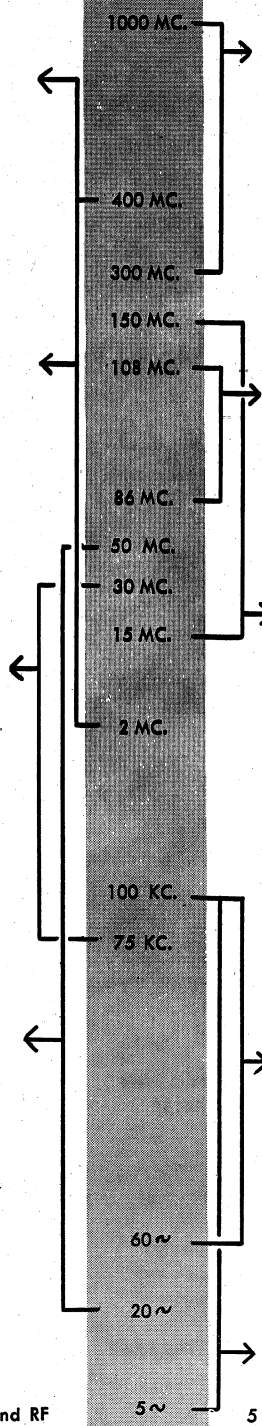
MODEL 65-B STANDARD SIGNAL GENERATOR
75 to 30,000 kilocycles M.O.P.A., 100% Modulation



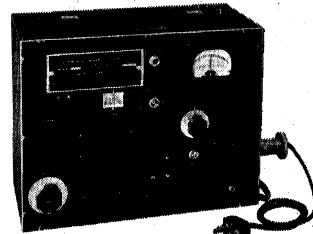
MODEL 82 STANDARD SIGNAL GENERATOR
20 cycles to 50 megacycles, AM



MODEL 62 VACUUM TUBE VOLTMETER
0 to 100 volts AC, DC and RF



MODEL 84 U.H.F. STANDARD SIGNAL GENERATOR
300 to 1000 megacycles, AM and Pulse Modulation



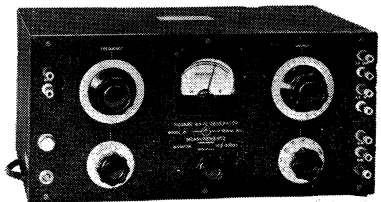
MODEL 78-FM STANDARD SIGNAL GENERATOR
86 to 108 megacycles, 0 to 300 KC. deviation



MODEL 58 U.H.F. RADIO NOISE AND FIELD STRENGTH METER 15 to 150 megacycles



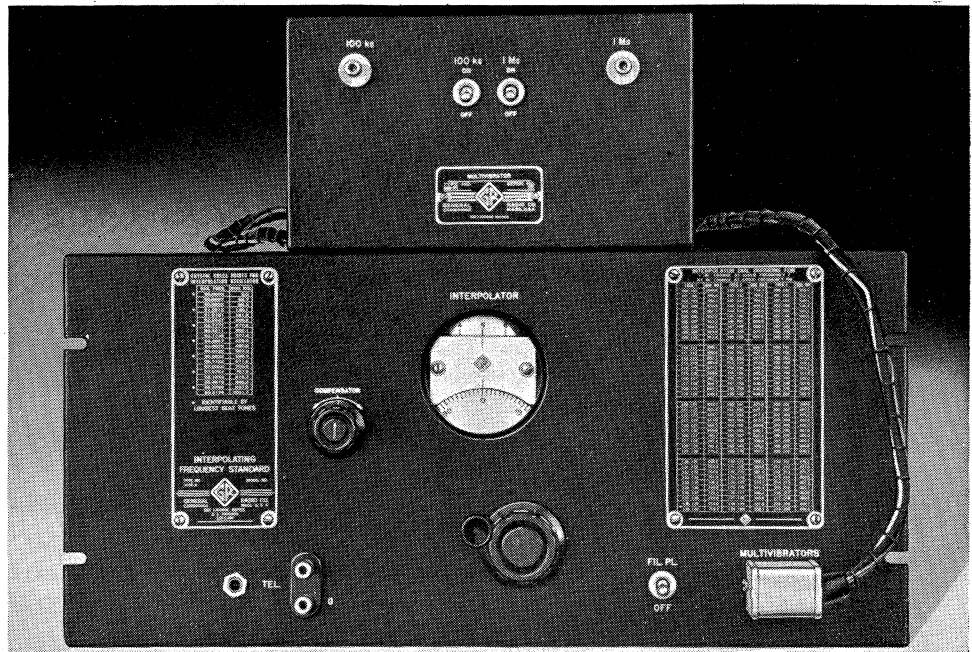
MODEL 79-B PULSE GENERATOR
60 to 100,000 cycles 0.5 to 40 microsecond pulse width



MODEL 71 SQUARE WAVE GENERATOR
5 to 100,000 cycles

MEASUREMENTS CORPORATION

BOONTON · NEW JERSEY



FREQUENCY MEASUREMENTS UP TO 3,000 MC WITH ACCURACY OF ± 25 PARTS PER MILLION

• Between 100 and several thousand megacycles, the present accuracy of heterodyne frequency meters ranges between 0.01 and 0.1 per cent. Continually increasing importance of frequencies within this range call for increased accuracy of measurements.

A reference standard and precise interpolation offer the simplest, most inexpensive and most direct method of increasing the accuracy of heterodyne frequency meters.

The Type 1110-A Interpolating Frequency Standard is composed of two units: a frequency standard variable over a range of 1000 to 1010 kc (1%), and a multivibrator unit for frequencies of 1 Mc and 100 kc. The frequency standard consists of a temperature-controlled 950 kc crystal oscillator, a highly-stable 50-60 kc bridge-type variable-frequency L-C oscillator, a modulator and a filter for selecting the sum of the two frequencies at the final output.

When the 100 kc multivibrator is used, the 100th harmonic has a range of 1% as the standard frequency is changed over the full range of the dial, covering 10.0 to 10.1 Mc. The multivibrator harmonics give complete frequency coverage from 100 Mc upward for the 1 Mc unit, and from 10 Mc upward for the 100 kc unit.

FEATURES

ACCURACY OF MEASUREMENT: over-all accuracy is ± 25 parts per million using oscillator dial directly. If oscillator is carefully trimmed in terms of the crystal, the over-all accuracy is limited principally by the error of the crystal, or about ± 10 parts per million at room temperatures.

SIMPLE TO CHECK ABSOLUTE ACCURACY: harmonics of multivibrators fall at all WWV standard frequencies. With suitable receiver the absolute accuracy, including that of the 950-kc crystal, may be checked readily.

ZERO BEAT ADJUSTMENTS: no need for wide-band circuits or wide-band interpolating methods.

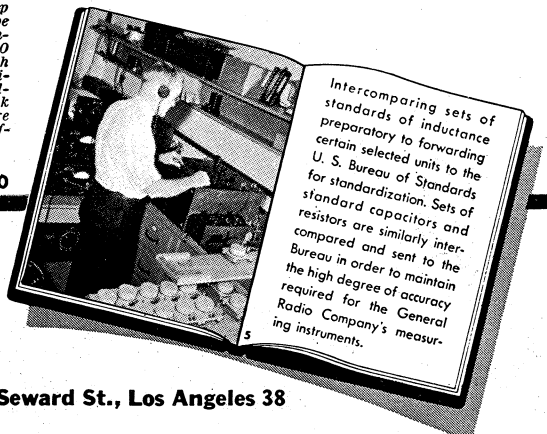
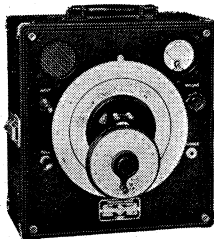
The Type 1110-A Interpolating Frequency Standard can be used for frequency measurements with high-frequency receivers provided the receiver calibrations can identify frequencies if separated by as little as 1 per cent.

TYPE 1110-A INTERPOLATING FREQUENCY STANDARD \$725.00

TYPE 720-A HETERODYNE FREQUENCY METER

As a companion to the Type 1110-A instrument, this heterodyne frequency meter will be found to be particularly useful at frequencies up to at least 3000 Mc. It employs a butterfly-type tuning circuit, the oscillator frequency being continuously adjustable and direct-reading, from 100 to 200 Mc. A silicon crystal detector is used, with a 3-stage audio amplifier. The output of the amplifier operates a panel meter and a built-in loud-speaker. For head-telephone detection of weak signals, a jack is provided on the panel. The entire unit is battery-operated and completely self-contained.

**TYPE 720-A HETERODYNE
FREQUENCY METER \$360.00**



GENERAL RADIO COMPANY

Cambridge 39, Massachusetts

90 West St., New York 6 920 S. Michigan Ave., Chicago 5 1000 N. Seward St., Los Angeles 38