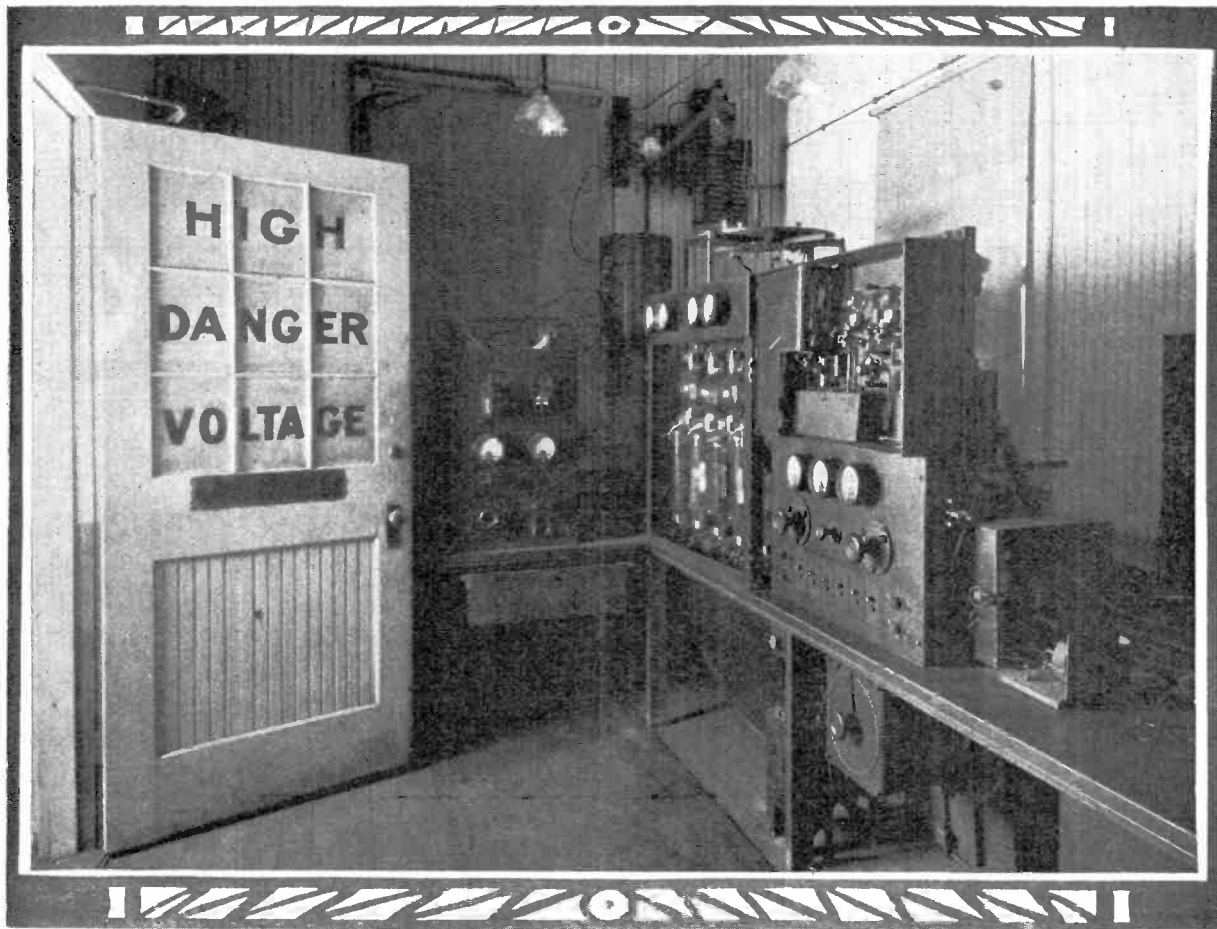


RADIO BROADCASTING NEWS

Vol. 2

NOVEMBER 4, 1922

No. 23.



Operating Room of KDKA, Pioneer Broadcasting Station of Westinghouse Electric & Manufacturing Company, at East Pittsburgh, Pa.



The Willard 6-volt All-Rubber Radio "A" Battery has a one-piece rubber case—Threaded Rubber Insulation—special Radio plates.

Check Up Your Batteries

"Lister! There's a male quartet—no; it's a xylophone solo—." It takes a good guesser to tell what's coming in if connections aren't *tight* or batteries aren't *right*! Ask your dealer or the nearest Willard Battery Station to show you the Willard Radio "A" and "B" Batteries. They're *real Radio Batteries*!

The Willard Radio "B" Battery is a 24-volt rechargeable battery. Glass jars—Threaded Rubber Insulation.

WILLARD STORAGE BATTERY COMPANY, CLEVELAND, OHIO

Willard THREADED RUBBER BATTERY.

Radio Weather Is Here Again

*Your Friends will appreciate Radio Broadcasting News.
Tell them about it.*

RADIO BROADCASTING NEWS,
1205 Keenan Building, Pittsburgh, Pa.

Please enter my subscription to RADIO BROADCASTING NEWS for which I am enclosing

\$ { cash
money order
check

Name

Street Address

City

State

Subscription Price, \$1.00 a year—52 Issues.

USE
THIS
FORM

RADIO BROADCASTING NEWS

Published Weekly to increase interest and enjoyment in Radio Broadcasting

Address all communications to

EDITOR, RADIO BROADCASTING NEWS, 1205 Keenan Building, Pittsburgh, Pa.

SUBSCRIPTION ONE DOLLAR PER YEAR

FIVE CENTS PER COPY

Vol. 2

November 4, 1922

No. 23

How Can We Best Serve You?

PERHAPS never again shall we see a public service sweep over the country so rapidly, nor be received with the same degree of enthusiasm as has radio broadcasting. Two years ago it was only a vague idea in the minds of a very few men if thought of at all. Today it covers our land with a service, that to many is indispensable. To others it has given a new hope in life and has brought sunshine where only clouds were known before. It has linked itself with business and education as well as with science and art and entertainment. It has removed isolation and inaccessibility from thousands of communities.

With the establishment of so many broadcasting stations all over our country a feast of good things is constantly made available for the radio enthusiast, wherever he may be, and it is sometimes hard to know just where to look for the most suitable offerings for any special occasion. It is here that RADIO BROADCASTING NEWS can give you assistance by telling you in advance what you may expect from some of the most important stations. When you are having guests you may know where to tune your set to get the entertainment which will be most appreciated by them.

Persons differ in tastes and in their interests, but present broadcasting programs provide something for everyone.

RADIO BROADCASTING NEWS is endeavoring to keep you in touch with the broadcasting stations and what they are doing. Some of these stations are so far from our place of publication that it is impossible to receive their detailed programs in time for publication, but it is almost always possible to give the broadcasting schedule of such a station.

With so many stations operating it is not always easy to choose the favorite of everyone, and if your

station has been overlooked, tell us about it. If there is any way we can make our little magazine serve its purpose more completely, give us the help of your suggestions.

This season will be the greatest that radio broadcasting has yet seen, if present signs can be depended upon. We want you and your friends to look upon RADIO BROADCASTING NEWS as a personal friend, whose mission is to give you real assistance in getting the best that radio broadcasting has to offer.

Steinmetz Scouts Fire Risk In Radio Installations

DURING the recent Radio congress held in Chicago, Dr. Steinmetz was asked to express an expert opinion on the fire risk of radio installations. He replied as follows:

"There is no hazard in the amateur radio receiving station. It involves no fire risk nor risk to life. It is merely a harmless toy, but is a great deal more than a toy. It is one of the most valuable developments of the last years, by its instructive and educational value and the recreation and pleasure which it supplies. It would, therefore, be very regrettable if by a misguided public opinion obstructions were placed in the way of the fullest and freest developments of the amateur radio station. With regard to the possible lightning risk from the grounded antenna, first—the lightning risk in the city is very remote in any case, and second—the grounded antenna rather acts like a lightning rod and exercises a protective action against lightning. Any danger from the radio power received by the amateur station obviously is ridiculous when considering that the energy of a single pound of coal would be more than enough to operate the radio receiving station continuously for over a thousand years. Certainly this is not enough energy to do harm."

Programs for the Week

Pittsburgh District

WESTINGHOUSE RADIO STATION KDKA

360 Meters East Pittsburgh, Pa.

Eastern Standard Time

Sunday, November 5, 1922

- 10:45 A. M. Services of Point Breeze Presbyterian Church, Fifth and Penn Avenues, Pittsburgh, Pa. Dr. P. H. Barker, Minister.
- 3:00 P. M. Radio Chapel at Westinghouse Station KDKA, conducted by Rev. James Delaney, Pastor, St. Peters Roman Catholic Church, McKeesport, Pa.
- 4:30 P. M. Children's Bible Story, by Rev. W. A. Logan, Pastor, Alpha Lutheran Church, Turtle Creek, Pa.
- 4:45 P. M. Vesper Services of Shadyside Presbyterian Church, Amberson Avenue near Fifth Ave., Pittsburgh, Pa. Dr. Hugh Thomson Kerr, D.D., Pastor.
- 7:30 P. M. Services of Calvary Episcopal Church, Shady Avenue, Pittsburgh, Pa. Rev. E. J. Van Etten, Rector.

Monday, November 6, 1922

- 7:00 P. M. News. Weekly Survey of Business Conditions, prepared by the National Industrial Conference Board. Tri-Weekly Letter from FARM AND HOME. The Nast Group of Radio Articles No. 29: "Negligees and the More Formal Tea Gowns of the Season"—VOGUE; "The Smartly Dressed Man Seen in the Latest New York Plays"—VANITY FAIR; "How to Group Furniture"—HOUSE & GARDEN.
- 8:00 P. M. Bed Time story for the children.
- 8:30 P. M. Special addressés by Prominent Business Men.
- 9:00 P. M. The entire program this evening will be rendered by the Cecilia Choir of the Western Theological Seminary, of Pittsburgh, Pa.

It is now in its twentieth consecutive year of special church music performance. It was originally organized to furnish examples of church music for the special courses at the Western Theological Seminary, but its work has extended to such a degree that the choir has much more than a local reputation. In its entire history it has sung only two or three compositions to secular words.

It has given many performances of church music, representing all the schools of church music and practically all the leading composers from the time of Palestrina. In recent years the choir has specialized in Russian church music, which is always sung without accompaniment, and much experience in this work has given the choir an independence and facility not often associated in this country with unaccompanied singing.

The members of the choir are all choir singers from different Pittsburgh churches, and nearly as many churches as singers are represented. Following is the membership—Charlotte Brewer, Mrs. J. B. Conrad, Margaret Krebs, Mrs. William T. Mitchell, Mrs. Arthur Owen, sopranos; Josephine Clark, Margaret A. Fingal, Gertrude Goeddel, Elizabeth L. Reuter, contraltos; Joseph DeHaven, Frank Hill, William Kottman, Charles V. Moss, William Stephens, tenors; Frank Eaches, Carl Ruhe, Herbert M. Love, Ralph K. Merker, Marius R.

Suliot, Ross H. Gauger, bass. Chas. N. Boyd organized the choir and has been the director throughout its existence.

Program: "Cherubim Song," Dimitri Bortnianski; "How Blest are They," Peter Ilich Tchaikovsky; "Hear, Lord our God," Peter Ilich Tchaikovsky; "The Beautitudes," P. Tschesnokov, Tenor solo, Mr. Kottman; "Glory Be to God on High," Michael Ippolitov-Ivanov; "Give Rest, O Christ," Kiev Melody; "Praise Ye the Name of the Lord," A. Nickolsky; "A Legend," Tchaikovsky; "Of Thy Mystical Supper," Alexis Lvov; "The Song of the Archangel," H. Tolstiyakov; "As the Waves of the Sea," Grechaninov; "Cherubim Song," Tchaikovsky.

Tuesday, November 7, 1922

- 7:00 P. M. News. Weekly Fashion Talk of interest to women, prepared by The Joseph Horne Company, Pittsburgh, Pa. United States Semi-Weekly Public Health Bulletin.
- 8:00 P. M. Bed Time Story for the Children.
- 8:30 P. M. Special Addresses by Prominent Business Men.
- 9:00 P. M. Concert by the members of the Pittsburgh Musical Institute. Earl B. Collins, piano; Mary Merker, soprano, John Sedlacek, violin.

Program: Piano solo, "One More Day My John," Grainger; "Ballet of the Happy Shades," Gluck-Friedman; "Old Vienna," Godowsky; "The Crapshooters," Eastwood Lane; violin solos—"Symphonie Espagnole, First Movement," Lalo; "Andantino from Concerto," Saint-Saens; "Vivace from Sonata," Vivaldi; soprano solos—"Trees," Fergus; "By the Lake;" "A Birthday," Woodman; "Lullaby," Le Baron; "My Lover He Comes on a Ski;" and soprano solo with violin obligato, "Spring Song," Wilde.



"COPPERWELD"
THE IDEAL RADIO ANTENNA

COPPERWELD IS 50% STRONGER than Copper. can be strung taut, stays up when other wires stretch and break, and gives 100% electrical efficiency

COPPER CLAD STEEL COMPANY
BRADDOCK P. O. RANKIN, PA.
Directions for Antenna construction on reverse side of carton

100-150-200 Ft. Per Carton

Has the Underwriters' O. K.

COPPER CLAD STEEL COMPANY
NEW YORK SALES OFFICE: 30 CHURCH STREET, NEW YORK
CHICAGO SALES OFFICE: 129 S. JEFFERSON ST., CHICAGO
MAIN OFFICE AND WORKS: BRADDOCK P. O. RANKIN, PA.

November 4, 1922



The Broadway Orchestra has been heard several times from Station KDKA.

Wednesday, November 8, 1922

7:00 P. M. News. Tri-weekly Letter from FARM AND HOME. Weekly Summary of the Iron and Steel Industries, Prepared by THE IRON AGE.

8:00 P. M. Bed Time story for the Children.

8:30 P. M. Special addresses by Prominent Business Men.

9:00 P. M. Program of original compositions by Marianne Genet under personal direction. Elizabeth Lloyd Kirkpatrick, soprano; Robert Tilton, tenor; Reese R. Reese, baritone; Leo Kruczek, violin; John Ingram, flute; Marianne Genet, composer-accompanist.

Miss Genet is organist at St. Stephens Episcopal Church, Wilkesburg, Pa. She studied piano and composition with Hermann O. C. Korthener of Cleveland, Ohio, and Guiseppi Ferrata of Pittsburgh, both pupils of the great Liszt, who instilled in Miss Genet the ideals of the great master. A few years ago she found inspiration in collaborating with Nelle Richmond Eberhart, who also lives in Pittsburgh, and together they wrote the cycle, "First Love" and "Invocation of Isis," which numbers are included in her program. The "Invocation of Isis" is dedicated to Olive Fremstad. "The Serenade in Tavira" is arranged for violin, flute and piano.

Program: Piano solos, "I Dream at Set of Moon," and "Comes Ecstasy," from the cycle "First Love;" violin solos, "Romance," and "A Scotch Lullaby;" "Serenade in Tavira." Tenor solos, "If I could Only Know;" "Nocturne of the Honeysuckle." Soprano solos, "The Invocation of Isis;" "The Maiden and the Weathercock." Baritone solos, "Out of the Deep;" and "Life and Love." All the numbers on this program are original compositions of Miss Genet.

For Wireless—

ROME MAGNET WIRE

Plain Enamel

Single Cotton Covered

Double Cotton Covered

ROME ANTENNA WIRE

Stranded or Solid



Ask Your Dealer

ROME WIRE COMPANY

ROME, N. Y.

BUFFALO, N. Y.

Thursday, November 9, 1922

- 7:00 P. M. United States Semi-weekly Public Health Bulletin.
- 8:00 P. M. Bed Time story for the Children.
- 8:30 P. M. Hints on Modern and Practical Home Furnishing, prepared by Miss Harriet Webster, of The Joseph Horne Company, Pittsburgh, Pa.
An address of interest to the agriculturalist, prepared by THE NATIONAL STOCKMAN AND FARMER, Pittsburgh, Pa.
- 9:00 P. M. Concert by the Fellows Club of Pittsburgh, with Jack Thompson, humorist. The program will consist of a number of popular and semi-classical numbers, including solos and chorus work.

Friday, November 10, 1922

- 7:00 P. M. News. Tri-Weekly Letter from FARM AND HOME.
- 8:00 P. M. Bed Time Story for the Children.
- 8:30 P. M. Special Addresses by Prominent Business Men.
- 9:00 P. M. An evening of original German compositions, by George Ahl, of Pittsburgh. The program will consist of violin, piano and vocal numbers.

Saturday, November 11, 1922—ARMISTICE DAY

- 3:00 P. M. Musical concert of Popular and Patriotic Numbers. Football Scores.
- 7:00 P. M. News. Football Scores.
- 7:30 P. M. "Under the Evening Lamp", courtesy of YOUTH'S COMPANION;
Program: "The Face of the Rising Sun," an Indian adventure story by Charles A. Hoyt; "He Got the License," the assistant postmaster's amusing error; "A Community Birthday Party," how to conduct a novel entertainment; "Illuminating Irritation," an impossibly alliterative narrative; "It Was a Good Gun," what happened the first time the homesteaders' boy pulled the trigger.
- 8:00 P. M. Bed Time Story for the Children.
- 8:30 P. M. Special Addresses by Prominent Business Men.
- 9:00 P. M. Rodrigues of Pittsburgh will present two acts of the opera "Aida", including principals and choruses.

Program of "Aida".

The Cast

- Aida—Leone Marguis Franco
- Anneris—Mrs. F. L. Fraefel
- Radames—Will Rhodes and Vincent A. Kroen
- Amonasro—Max Kroen
- Ramphis—C. A. Gerst and Wilson McCalmont
- The King—Samuel I. L. Hosack
- Messenger—Albert Creelman
- Priestess—Mabel Shaw

John Lawrence Rodrigues, General Director; Gertrude Mohr, accompanist.

Program—Act I.

- Prelude—Piano
- 1. Introduction—Ramphis
- 2. Celeste Aida—Radames
- 3. Duet followed by Trio—Anneris, Radames, Aida
- 4. Scene followed by Chorus—King, Messenger, Ramphis and Chorus
- 5. Aria—Riterna Vincitor Aida
- 6. Chorus of Priestesses and Priests.



Enjoyable Radio Concerts and maximum receiving range are obtained only when your battery is fully charged. Don't be bothered with the inconvenience and expense of taking your battery to a service station every few days for recharging.

**THE
RADIO
HOMCHARGER
DE LUXE**

has been designed especially for this purpose. It charges your "A" or "B" battery over night without removing from the living room—gives taper-charge—cannot harm your battery in any way. Simplicity itself. Only two wearing parts, replaceable after several thousand hours use for One Dollar.

AN ORNAMENT FOR YOUR LIVING ROOM

Beauty has been combined with utility in the NEW RADIO HOMCHARGER DE LUXE. The body is beautifully finished in rich Antique Mahogany—the base and fittings in a handsome dull gold. Equipped with rubber feet, it cannot mar polished surfaces. It harmonizes with the finest living room.

OVER 50,000 HOMCHARGERS IN USE

50,000 users have heartily endorsed the HOMCHARGER. Beware of imitations when buying and insist on obtaining the genuine which bears our registered trade name, HOMCHARGER.

Furnished Complete. No extras to buy. Price \$18.50 (\$25.00 in Canada) at all good dealers, or shipped prepaid upon receipt of purchase price.

Booklet illustrating the NEW RADIO HOMCHARGER DE LUXE in actual colors is FREE for the asking. Send for your copy today.

DEALERS—JOBBER: Over 150,000 HOMCHARGERS will be sold this fall and winter. Send for your copy of "HOMCHARGER Business Builders" and see how you can get your share of this business.

CAUTION

When buying a Rectifier insist upon the following:

- 1—SELF-POLARIZING feature, otherwise your battery may be ruined through reverse charging.
- 2—AT LEAST FIVE AMPERE CHARGING RATE, otherwise it will require several days to fully charge your battery.
- 3—UNDER WRITERS' APPROVAL, otherwise in case of fire your insurance may be void.

The HOMCHARGER is the only Rectifier at any price which combines the above, three NECESSARY HOMCHARGING features.

The Automatic Electrical Devices Co.

136 West Third St. CINCINNATI, OHIO

Branch Offices:

- New York Chicago Pittsburgh Detroit Dallas
- Philadelphia Baltimore Minneapolis Atlanta
- Los Angeles St. Louis Kansas City

*Largest Manufacturers of Vibrating Rectifiers
in the World*



TYPE "A" FOR WALL MOUNTING

— OVER 50,000 IN USE —

November 4, 1922

Sunday, November 12, 1922

- 10:45 A. M. Services of First Presbyterian Church, Pittsburgh, Pa. Rev. Maitland Alexander, D.D., Pastor.
- 2:30 P. M. Miss Sophie Levin, Director of the Sixth Roll Call, American Red Cross, will make the closing address regarding this Roll Call.
- 3:00 P. M. Special Semi-Sacred Musical Concert.
- 4:30 P. M. Children's Bible Story, by Rev. W. A. Logan, Pastor, Alpha Lutheran Church, Turtle Creek, Pa.
- 4:45 P. M. Vesper Services of Shadyside Presbyterian Church, Amberson Avenue near Fifth Avenue, Pittsburgh, Pa. Dr. Hugh Thomson Kerr, D.D., Pastor.
- 7:30 P. M. Services of Emory Methodist Episcopal Church, North Highland Avenue at Rippey Street, Pittsburgh, Pa. Rev. W. Wofford T. Duncan, Minister.

KDKA'S WEEK-DAY SCHEDULE

- 10:00 to 10:15 A. M. Music.
 - 12:30 to 1:00 P. M. Music.
 - 3:00 P. M. Saturdays Broadcasting of the University of Pittsburgh football games, play by play, direct from Forbes Field. Scores of College football games at 7:00, 8:00 and 10:00 P. M.
 - 7:00 to 7:15 P. M. Late news and other features.
 - 7:15 to 7:45 P. M. Theatrical Features.
 - 7:45 to 8:00 P. M. Government Market Report and a Summary of the New York Stock Exchange.
 - 8:00 to 8:30 P. M. Bedtime Story and an Uncle Wiggily Story for the Kiddies.
 - 8:30 to 9:00 P. M. Special addresses.
 - 9:00 to 9:55 P. M. Musical program.
 - 9:55 to 10:00 P. M. Arlington Time Signals.
- Steinway Duo-Art Reproducing Piano and Rolls and Aeolian Orchestrelle—courtesy of C. C. Mellor Company, Pittsburgh, Pa.
- Brunswick Phonograph and Records procured from Grey and Martin, Pittsburgh, Pa.
- Edison Phonograph and Records—courtesy of J. E. Bumbera, Swissvale P. O., Pittsburgh, Pa.
- Victor Records—courtesy of S. Hamilton & Company, Wilkensburg, Pa.

We Specialize in

**Brass Rod and Tubing
Sheet Copper, Aerial Wire
and Binding Posts**

For Radio—Retail and Wholesale

McKenna Brass and Mfg. Co.

First Ave. & Ross St. - Pittsburgh, Pa.

Phone, Court 637

**DOUBLEDAY-HILL ELECTRIC COMPANY
STATION KQV**

360 Meters

Pittsburgh, Pa.

Eastern Standard Time

Broadcasting each day, except Sundays, from 12 to 12:30, Noon, and from 4:30 to 5 P. M.

Evening Artists' Programs, Monday, Wednesday and Friday—from 10:00 to 10:55.

Six Minute Talks for Red Cross Drive; for the week of November 5.

Tuesday 12:00 Noon .. Royal S. Goldsbury

Wednesday 10:00 P. M. Leo G. Griffith

Friday 4:30 P. M. Rev. R. N. Meade

Saturday 12:00 Noon Alan Davis, Esq.

(KQV Detail Program on page 13)



Judge J F Rutherford, whose famous lecture, "Millions Now Living Will Never Die," was broadcasted complete from Station KQV.

**New York and Eastern District
RADIO CORPORATION—WESTINGHOUSE
STATION WJZ**

**360 Meters Newark, N. J.
Eastern Standard Time
Sunday, November 5, 1922**

- 10:30 A. M. Musical program.
- 11:55 A. M. Standard Time Signals from Arlington.
- 12:00 M. Musical program.
- 3:00 P. M. Radio Chapel Services conducted by Rev. S. M. Powell of the Mt. Pleasant Baptist Church, Newark, N. J. Sacred Musical Program.
- 3:40 P. M. "Books for Boys" by Wadsworth Camp, author of "The Hidden Road"; courtesy National Association of Book Publishers.
- 4:00 P. M. Recital by Leroy Fisher, baritone; Adella W. La Rue, accompanist.
Program: Baritone solos, "Nita Gitana," DeKoven; "Morning," Speaks; "Creole Lover's Song," Buck; "Longing Dear for You," Densmore. Piano solos, "Witches Dance," MacDowell; "Polonaise Brilliante" Spross.
- 4:30 P. M. Joint Recital by Elsa Louise Cobb, mezzo contralto, who has been a soloist in Brooklyn Churches for fourteen years; and

Artists Please WJZ Listeners



Top—Marie Deutscher, violinist;
Bottom, left to right—Grace Marcella Liddane, dramatic soprano;
Frederick Cromweed, pianist; Donald Fiser, baritone.

Dealers

We are Distributors for
Radio Corporation of America
Westinghouse
General Electric

Frost Remler Fada
Murdock General Radio
Brandes Baldwin Burgess
Hippo Chelsea Kellogg
Holtzer-Cabot Acme
Homcharger Signal Pacent
Rhamstine Connecticut
Arkay Radio Service Tuska
Brach Clapp-Eastham

and other
leading manufacturers
Write for Catalog 200-G

LUDWIG HOMMEL & CO.
530 Fernando Street
Pittsburgh,
Penna.

- Frank Kaltenborn, violinist, of the Kaltenborn String Quartet, well known in Greater New York; Ethel Harrison Wichelstetter, from Milwaukee, Wisconsin, at the piano.
- 6:30 P. M. Readings and records from the "Bubble Books that Sing" by Ralph Mayhew; courtesy of Harper & Bros.
- 7:00 P. M. Adventure Stories for older boys and girls. Reading from "My Life with the Eskimo" by Wilhjalmur Stefansson; courtesy the MacMillan Company.
- 7:30 P. M. "Gargoyles" Ben Hecht, a book review by Grace Isabel Colbron.
- 7:45 P. M. "What is an Intelligent Test" by Ruth S. Clark, Vocational Service for Juniors.
- 8:15 P. M. Concert by Marie Deutscher, violinist, who after years of successful appearances on the concert platform both in Europe and in the United States, has established herself as a virtuoso of unusual brilliancy.
Program: "Air on G String," Bach; "Madrigal," Simonetti; "Praeludium and Allegro," Pugnani; Kreisler; "Concerto," Wieniawski; "Andante," "Spanish Dance," Rehfeld, Miss Deutscher's accompanist will be Harry Suchman.
- 9:30 P. M. "Julius Caesar" by Mona Morgan, who is considered one of the foremost interpreters of the Shakespearean plays and has been responsible for interesting many school children in these classics.
- 9:55 to 10:00 P. M. Arlington Time Signals. Official Weather Forecast.

November 4, 1922

WJZ Artist Sings in Nine Languages



Effie Briggs, Soprano

Monday, November 6, 1922

- For Regular Daytime Features see End of Program.
- 5:30 P. M. Closing prices on stocks, bonds, grains, coffee and sugar.
 - 5:45 P. M. Resumé of Sporting Events.
 - 6:00 P. M. Business and Industrial Conditions in the United States as observed by the National Industrial Conference Board.
 - 7:00 P. M. Stories from the St. Nicholas Magazine.
 - 8:30 P. M. Concert by the Aida Quartet; Clara Haven, solo trumpeter; Eleanor Betts, second trumpeter; Ethel Clark, French horn; and Cora Sauter, E-Flat Horn.
- The Aida Quartet has appeared at Ocean Grove, Round Lake, Winona Lake, Thousand Island Park, Redpath Lyceum, and in 39 states of the United States, also in Canada. The Aida Quartet is the "Original Brass Quartet" which was organized in Ocean Grove and appeared there for six consecutive years. Cora Sauter, manager of the quartet is one of the original members.
- 9:15 P. M. "Camping in Canada" by Rev. Thomas Travis, of the Congregational Church, Montclair, N. J.
 - 9:30 P. M. Concert under the direction of Chas. D. Isaacson of the New York Evening Mail.

"Oratorio Music" by Chas. D. Isaacson; "Wolfram's first Song at the Tournament" from "Tannhauser", Richard, Wagner, John Alfred De Casati, baritone, Louis Sugarman, at the piano; (a) "On the Wings of Song", Mendelssohn-Achorn; (b) "Spanish Dance", Rehfeld; Rudolph Joskowitz, violinist; Mr. Sugarman, at the piano; (a) "Love's Old Sweet Song", Malloy; (b) "Love's Philosophy", Bruno Huhn; (c) "The Roses Fade and Pass Away", Merrill; (d) "A Birthday", Woodman; Mme. Mary Hissem De Moss, soprano; Mrs. George Folsom Granberry, of the Granberry Piano School at the piano; "Face to Face with Wagner" from "Face to Face with Great Musicians", Charles D. Isaacson, author; "Kashmiri Song", Amy Woodforde Finden, Mr. De Casati; "Zigeunerweisen" (Gypsy Airs), Sarasate, Mr. Joskowitz; (a) "In the Time of Roses", Reichardt; (b) "O for the Wings of a Dove", Mendelssohn; (c) "He Cares for the Sparrow and I Know He Cares for Me", Mme De Moss.

9:55 to 10:00 P. M. Arlington Time Signals; Official Weather Forecast.

Tuesday, November 7, 1922

- For Regular Daytime Features see End of Program.
- 5:30 P. M. Closing prices on stocks, bonds, grains, coffee and sugar.
 - 5:45 P. M. Resumé of Sporting Events.
 - 6:00 P. M. Musical Program.
 - 9:00 P. M. "Broadcasting Broadway" by Bertha Brainard.
 - 9:15 P. M. Dance music by the Club Sterling Dance Orchestra, of White Plains, N. Y., composed of the following members: Frank H. Cureau, piano; Arthur Ferris, violin; Edward J. Duggan, banjo; William T. Graff, Jr., cornet; and Herbert M. Foxwell, drums.
- Program: "Truly," "Don't Bring Me Posies," "Stumbling," "Coal Black Mammy," "Out of the Shadows," "When the Finale Hoppers," "Night," "By Gones," piano solo, "Kitten on the Keys," by Frank H. Cureau, "Do it Again," Georgia, "Hawaiian Nightingale," "Coo Coo," "Hot Lips," "Neath the South Sea Moon," "Blue," "Tomorrow," "Three o'clock in the Morning."
- 9:55 to 10:00 P. M. Arlington Time Signals. Official Weather Forecast.
 - 10:01 P. M. Election Returns.

Wednesday, November 8, 1922

- For Regular Daytime Features see End of Program.
- 5:30 P. M. Closing prices on stocks, bonds, grain, coffee and sugar.
 - 5:45 P. M. Resumé of Sporting Events.
 - 5:55 P. M. "Iron and Steel Review". by the Iron Age.
 - 6:00 P. M. "How to Look Smart in the Rain", by VOGUE. Musical program.
 - 7:00 P. M. "Animal Stories" by Florence Vincent Smith, of the New York Evening Telegram.
 - 9:00 P. M. "Ask Adventure Man", by Mr. Green, of Adventure Magazine.
 - 9:15 P. M. Concert by the National Biscuit Company Band under the direction of Frank Blanco.
- The band was developed from the Fife and Drum Corps about fifteen years ago, and is composed of twenty pieces. Every Friday noon the band renders open-air concerts for the 7000 employees of the National Biscuit Company's New York factories.

- Program: "Mlle Modiste" Victor Herbert; "Egyptian," Luigini; cornet solo, "Van Alessio; clarinet solo, "Ave Maria," Gounod; "Star Spangled Banner,"
- 9:45 P. M. "Thrift" National Association of Savings Banks.
- 9:55 to 10:00 P. M. Arlington Time Signals. Official Weather Forecast.
- 10:01 P. M. Concert continued.

Thursday, November 9, 1922

For Regular Daytime Features see End of Program.

- 5:30 P. M. Closing prices on stocks, bonds, grain, coffee and sugar.
- 5:45 P. M. Resumé of Sporting Events.
- 6:00 P. M. "Winter Ulsters and Fur Lined Coats" by VANITY FAIR. Musical Program.
- 7:00 P. M. "Jack Rabbit Stories", by David Cory, of the New York Evening Mail.
- 8:30 P. M. "Gold Currency" by Dr. A. Lorenz.
- 8:45 P. M. "The Business Outlook", by Dr. Warren F. Hickernell, Economist of the Alexander Hamilton Institute.
- 8:50 P. M. A recital to prove the revival of the lost art of violin making by Julius D. Horvath, violin expert, whose activities are well known to New Yorkers.

He will seek to prove that his invention "Philamona" enables the violinist to produce equally as beautifully and sonorous a tone as is possible only on the famous Stradivarius. Mr. Horvath will discuss the life and work of Antonius Stradivarius.

Michael Banner the nationally known violinist, man of reputation and ability, owner of a fine Stradivarius violin, will play the Horvath Philamona violin jointly with his Strad. A similar contest and recital will be given before musicians, experts and critics in Aeolian Hall to prove that the American made violin embodies the secrets of the old violins of the Italian School. Edith Friedman will be at the piano.

Program: "Andante," Mendelssohn; "Ciaccona," Bach; "Ave Maria," Schubert-Wilhelmj; "Mighty Lak' A Rose," Nevin-Banner; "Adagietto" Bizet.

- 9:30 P. M. "Esperanto", by D. A. Klazen.
- 9:45 P. M. A program of negro folk songs and spirituals will be given by the Bordentown Male Quartet (colored) from the New Jersey Manual Training School at Bordentown, N. J. The members of the male quartet are also members of the famous Glee Club. Ira Goodwin, leader, tenor; M. Burgess, baritone; J. Hamilton, tenor; George Doshier, bass; who will be remembered by his deep rolling voice coming with startling effectiveness over the air route when he appeared on WJZ's program about a year ago. The program includes songs by negro composers.

Program: "Get on Board," "Little David," "Walking in the Light," "Oh, Mary, Don't You Weep," "Mighty Day," "Aint it a Shame," "Go Ask Papa," "Just Smile," "Honey," "The Rosary," "Bye and Bye," "Heaven," "Old MacDonald," "Old Kentucky Home," "Hard Trials."

- 9:55 to 10:00 P. M. Arlington Time Signals; Official Weather Forecast.
- 10:01 P. M. Continuation of the program by the Bordentown Male Quartet.

Friday, November 10, 1922

For Regular Daytime Features see end of Program.

- 5:30 P. M. Closing prices on stocks, bonds, grain, coffee and sugar.
- 5:40 P. M. Conditions of the leading industries, by R. D. Wychoff, Magazine of Wall Street.

- 5:45 P. M. Resumé of Sporting Events.
- 6:00 P. M. "Appointments of a Music Room", by House & Garden. Musical Program.
- 7:00 P. M. "Bedtime Stories" by Thornton Burgess, author.
- 7:15 P. M. "Talk on Dogs", Frank Dole, one of the most eminent authorities on dogs, in America.

His admiration for dogs caused him to found the Edgewood Kennels, which during their existence took more than 5000 prizes. Mr. Dole will inform the radio audience how to tell a thoroughbred from a mutt, and to interest the public in putting the dog into the place he belongs.

- 8:30 P. M. Literary evening conducted by the editorial staffs of the Scientific American, Outlook, and Harper & Bros.
- 8:40 P. M. Concert by the 105th Artillery Band of New York City under the baton of Lieut. Elmer P. Resseguie, by courtesy of Col. Robt. Marshall.

Program: "Stars and Stripes Forever;" "Three O' clock in the Morning;" "If I were King;" "Hot Lips;" "Babes in Toyland;" "Coal Black Mammy;" "Intermezzo," "After Sunset;" "Wake up Little Girl;" "The Times of Liberty;" "Why Should I cry Over You;" "Stumbling;" "A Whistle of His Day;" "Virginia Blues;" "Venetian Love Boat;" "Good Bye Shanghai;" "Star Spangled Banner."

- 9:55 to 10:00 P. M. Arlington Time Signals. Official Weather Forecast.
- 10:01 P. M. Continuation of program by 105th Military Band.

Saturday, November 11, 1922

- 2:00 P. M. Play by play results of the Cornell University—Dartmouth College football game, direct from Polo Grounds.
- 5:30 P. M. Closing prices on stocks, bonds, grain, coffee and sugar.
- 5:45 P. M. Resumé of Sporting Events.
- 5:50 P. M. "Fashions" by an editor of Harper's Bazar.
- 7:00 P. M. "Uncle Wiggily Stories" by Howard R. Garis, author.
- 8:45 P. M. U. S. Navy Night. Prominent naval officials will speak, including possibly Admiral Hillary P. Jones, and Secretary Denby. Musical Program.
- 9:20 P. M. "Current Topics", by the Institute for Public Service.
- 9:55 to 10:00 P. M. Arlington Time Signals. Official Weather Forecast.
- 10:01 P. M. Continuation of musical program.

Sunday, November 12, 1922

- 10:30 A. M. Musical Program.
- 11:55 A. M. Standard Time Signals from Arlington.
- 12:00 M. Musical Program.
- 3:00 P. M. Radio Chapel Services conducted by Dr. Washbaugh Wesley, Methodist Episcopal Church at Paterson, N. J. Sacred music by the church choir.
- 3:40 P. M. "Children's Book Week" by Frederic G. Melcher, chairman of the Children's Book Week Committee.
- 6:30 P. M. Readings and Records from "The Bubble Books That Sing", by Ralph Mayhew, Harper & Bros.

November 4, 1922

- 7:00 P. M. Adventure Stories for older boys and girls, reading from "A Maid of Old Manhattan", by Dr. and Mrs. Knipe; courtesy Macmillan Company.
- 7:30 P. M. "Story of the Prevention of "Cruelty to Children", by Chas. H. Warner, Superintendent and Attorney of the Brooklyn Society for the Prevention of Cruelty to Children.
- 7:45 P. M. Talk by Commissioner Lewis of Trenton, N. J.
- 8:00 P. M. Concert by Walter Mills, baritone, of the Betty Tillotson Concert Bureau.
Concert by Helen Sinigalliano, violinist, of Newark, N. J.
- 8:45 P.M. "Unique Characters of Screendom", by Mary Alden, motion picture star.
- 9:00 P. M. Continuation of program by Helen Sinigalliano, violinist.
- 9:30 P. M. "As You Like It" by Mona Morgan.
- 9:55 to 10:00 P. M. Arlington Time Signals; Official Weather Forecast.
- 10:01 P. M. Continuation of the program by Mona Morgan.

WJZ'S REGULAR DAYTIME FEATURES

- 9:00 A. M. Early morning reports and prices on farm products.
- 11:55 A. M. Arlington Time Signals. Official Weather Forecast.
- 12:00 to 1:00 P. M. Opening prices on active bonds and stocks, grain, coffee and sugar. Midday reports and prices of farm products. Musical Program.
- 4:00 P. M. Closing prices on stocks, bonds, grain, coffee and sugar.
- 4:10 P. M. "Fashions" from Women's Wear.
- 9:55 P. M. Arlington Time Signals.
- 10:00 P. M. Official Weather Forecast.

GENERAL ELECTRIC CO. STATION WGY

400 Meters Schenectady, N. Y.

Eastern Standard Time

Sunday, November 5, 1922

- 10:30 A. M. Morning service of Schenectady Church.
- 4:30 P. M. Vesper service from WGY studio.

Monday, November 6, 1922

- 11:55 A. M. U. S. Naval Observatory time signals.
- 12:30 P. M. Noon stock market quotations.
- 12:45 P. M. Weather report on 485 meters wavelength.
- 2:00 P. M. Music and special features for the housewife.
- 6:00 P. M. Produce market quotations and reports; closing stock market quotations; news bulletins.
- 7:45 P. M. Musical program as follows:

Violin solos, (a) "Passepied, Delibes-Elman, (b) "Ballet Music from "Rosamunde" Schubert-Kreisler, Alexander Koszalka; Reading, "The Mock Wedding," Kate Boshier, Alice Naylor; Piano solo, "Moonlight Sail," Bendel, Peter Gerstung, Jr.; Violin solo, "Indian Lament," Dvorak-Kreisler, Alexander Koszalka; Address, "Factors Affecting the Range of Radio Transmission," B. R. Cummings, Radio Engineer; Violin

solo, "Tango," Albeniz-Elman, Alexander Koszalka; Reading, "The Night Wind," Eugene Field, Alice Naylor; Piano solo, "Le Papillon," Grieg, Peter Gerstung, Jr.; Violin solos (a) "Andante Cantabile," Tschalkowsky-Auer, (b) "Spanish Dance," Granados-Kreisler, Alexander Koszalka; Readings, (a) "A Modern George Washington," Joseph Lincoln, (b) "The Radio," Edgar Allen Guest, Alice Naylor; Violin solos, (a) "Serenade" Schubert-Elman, (b) "Caprice, No. 24," Paganini-Auer, Alexander Koszalka.

Tuesday, November 7, 1922

- 11:55 A. M. U. S. Naval Observatory time signals.
- 12:30 P. M. Noon stock market quotations.
- 12:45 P. M. Weather report on 485 meters wavelength.
- 2:00 P. M. Music and subjects of interest to women.
- 6:00 P. M. Produce and stock market quotations; news bulletins.
- 7:45 P. M. Musical program. Election returns will be announced between numbers.

Violin solo, "Spanish Dance," Saraste, Miss De Groot; Contralto solo, "Pirate Dreams," Hueter, Arvilla Bateholts Bullock; Address, "Red Cross Activity for Ex-Service Men;" Piano solo, "Caprice," Raff, Irving Bullock; Violin solo, "Adagio Allegro," from Sonata No. 2 Handel, Miss De Groot; Contralto solo, "My Lover He Comes on a Ski," Leichter, Arvilla Bateholts Bullock; Violin solo, "Souvenir de Moscow," Wienawski, Miss De Groot; Contralto solo, "Sort o' Miss You," Bond, Arvilla Bateholts Bullock; Violin solo, "Perpetual Mobile," Bohm, Miss De Groot; Contralto solos, (a) "Baby," from "Lullaby Songs," Siemann, (b) "A Resolve," Fontenailles, Arvilla Bateholts Bullock; Piano solo, "Sea Pieces," Op. 55 MacDowell, Irving Bullock.

Wednesday, November 8, 1922

- 11:55 A. M. U. S. Naval Observatory time signals.
- 12:30 P. M. Noon stock market quotations.
- 12:45 P. M. Weather report on 485 meter wavelength.
- 2:00 P. M. Music and subjects of interest to women.
- 6:00 P. M. Produce and stock market quotations; news bulletins.

Thursday, November 9, 1922

- 11:55 A. M. U. S. Naval Observatory time signals.
- 12:30 P. M. Noon stock market quotations.
- 12:45 P. M. Weather report on 485 meters wavelength.
- 2:00 P. M. Music and subjects of interest to women.
- 6:00 P. M. Produce and stock market quotations; news bulletins.
- 7:45 P. M. Drama "The Sign of the Four" by Arthur Conan Doyle, music by the WGY Orchestra.

The Cast

Sherlock Holmes Edward H. Smith
Dr. Watson F. H. Oliver
Mary Morstan Viola Karwowska
Major Shelto James S. B. Mullarkey
Jonathan Small Frank Finch
Mrs. Mordecai Smith Ida Myreck
Wiggins, of the Baker Street Irregulars
. Henry Miller

Instrumental Selection, "Dance of the Skeletons," Therren, WGY Orchestra; "The Sign of the Four," First Episode; In Sherlock Holmes study; the science

of deduction; the statement of the case; in quest of the solution. The story of the dwarf and the wooden legged man.

Instrumental Selection, "Valse Triste," Sibelius, WGY Orchestra; "The Sign of the Four," Second Episode: the tragedy of the Pondicherry Lodge. Holmes gives a demonstration. Instrumental selection, "The Erlking," Schubert, WGY Orchestra; "The Sign of the Four" Third Episode: The episode of the barrel; the Baker Street Irregulars; the break in the chain. Instrumental selection, "Dance Mysterious," Staintin, WGY Orchestra; "The Sign of the Four," Fourth Episode: Holmes awaits developments at Smith's boat house. The end of the Islander; the great Agra treasure; the strange story of Jonathan Small. Instrumental selection, "Marceline," Francis, WGY Orchestra.

Friday, November 10, 1922

- 11:55 A. M. U. S. Naval Observatory time signals.
- 12:30 P. M. Noon stock market quotations.
- 12:45 P. M. Weather report on 485 meters wavelength.
- 2:00 P. M. Music and talks of interest to women.
- 6:00 P. M. Closing produce and stock market quotations; news bulletins.
- 6:30 P. M. Reading from "Grimm's Fairy Tales", Kolin D. Hager, reader.
- 7:40 P. M. Health Talk "Fats—Should They Be Eaten or Not?" by Dr. Herman M. Biggs, Health Commissioner of New York State.
- 7:45 P. M. Musical program as follows:

Instrumental selection, "Opus 125-No. 1," First Movement, "Allegro Moderato," Schubert, Rice String Quartet; Baritone solo, "Smile Through Your Tears," Hamblen, Walter Treveres; Instrumental selection, (a) "Andante Cantabile," Tschaiakowsky, (b) "Spirit of the Eighteenth Century," Pochon, Rice String Quartet; Violin solo, "Hejre Kati," Hubay, T. De Stephano; Baritone solo, "Even the Bravest Heart," from "Faust," Gounod, Walter Treveres; Instrumental Selection, Opus 125-No. 1 Second Movement, Scherzo, Third Movement, Adagio, Schubert, Rice String Quartet; Baritone solo, "Yesteryear," Crist, Walter Treveres; Violin solo, "Minuet," Mozart, T. De Stephano; Instrumental Selections, (a) "In der Heimath," Grieg, (b) "Berceuse," Ilijnski, Rice String Quartet; Piano solo, "Praeludium," Sibelius, O. G. Yettru; Instrumental Selection, Opus 125-No. 1, Last Movement, Allegro, Schubert, Rice String Quartet.

10:30 P. M. Musical program as follows:

Orchestra, "Flower Song," Lange, WGY Orchestra; Piano solo, "Hunting Song," Mendelssohn, O. G. Yettru; Orchestra, "Minuet," Paderewski, WGY Orchestra; Soprano solo, "Could I," Tosti, Mrs. W. C. White; Violin solo, "Air Alsacien," Moffat, E. Rice; Piano solo, "Nocturne in E Minor," Chopin, O. G. Yettru; Soprano solo, "Au Printemps," Grieg, Mrs. W. C. White, E. A. Rice, violin obligato; Violin duet, "The Alpine Maiden's Dream," Labitsky, Edward Rice and Leo Kliwen; Cello solo, "The Swan," (by request) St. Saens, Ernest Burleigh, with orchestra accompaniment; Soprano solo, "Cradle Song," Tschaiakowsky, Mrs. W. C. White; Orchestra, "Serenade," from "Les Millions d'Arlequin," Brigo, WGY Orchestra.

Saturday, November 11, 1922

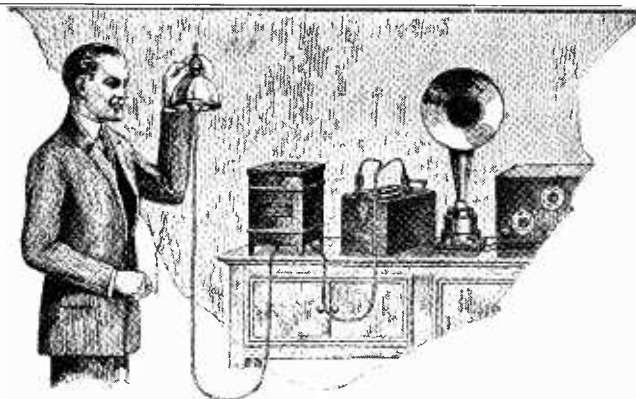
- 6.00 P. M. Results of football games.

WESTINGHOUSE STATION WBZ

360 Meters Springfield, Mass.

Eastern Standard Time

- 11:55 to 12:00 M. Arlington Time Signals
- 7:30 P. M. Sport News; Bedtime Story.
- 7:45 P. M. Prominent speaker, market and weather reports, and late news.
- 8:00 to 9:00 P. M. Program of music.
- 8:00 P. M. Sunday—Radio Church Services



Tungar
BATTERY CHARGER

**Charging Storage Batteries
Easy as Turning on the Light**

Tube sets require storage batteries, and they in turn require charging. You can do this at home merely by turning on the electricity, if you have a Tungar Battery Charger.

Tungar is a device for changing alternating to direct current. It allows the current to flow only in one direction. It requires no attention while operating. Its first cost is not high and its cost of operation is extremely low.

Tungar Battery Chargers were developed in the Research Laboratory of the General Electric Company over six years ago. Thousands have been in successful operation ever since.

Do you prefer to carry your battery to a charging station, wait a couple of days or more, and then pay three times what it would cost you to charge it at home? Our new booklet on the application of Tungars to radio batteries will give you the details. Ask us for Booklet B-3640, if your dealer cannot give you one. Address Merchandise Dept., General Electric Company, Bridgeport, Conn.

General Electric Company
General Office Schenectady, N.Y. Sales Offices in all large cities 35A-76X

(Program of Doubleday Hill Station KQV
continued from page 7.)

ARTISTS for RADIO WEEK—on KQV 4:30 P. M. Daily program will be selected from the long list of those frequently requested by KQV listeners. This program will be a feature of the Electrical Exposition, Pittsburgh, each day. These programs will be specially prepared to please the hundreds of visitors to the Exposition.

Monday, November 6, 1922

4:30 P. M. Music. Roger V. Babson's Weekly Economic Report.

10:00 P. M. Program by Artists from the studio of Charles S. Niesen, Pittsburgh. Kathryn McKee, soprano; Eleanor Cheyne, contralto; Harry Hahn, baritone; Beatrice Rickerby Collins, soprano and Harriet Dally, of Crafton, accompanist.

Charles S. Niesen is one of the most prominent teachers of voice in Pittsburgh and one of the pioneer members of the teaching fraternity. His work in voice training and preparation for professional work is notable in the Pittsburgh field. The artists on this program all hold prominent church choir positions and will present numbers of highest artistic excellence.

Program Numbers: Duet "Oh, Moment that I Bless," Demree, Mrs. Collins and Miss Cheyne; baritone solos, "When Shadows Gather," Marshall; "If Flowers Could Speak," Mana Zucca, Mr. Hahn; soprano solo, "Come Sing to Me," Jack Thompson, Miss McKee; Duet, "Calm as the Night," Bohm, Mrs. Collins and Mr. Hahn; contralto solo, "Vale," Kennedy Russell, Miss Cheyne; soprano solo, "My Mother Bids Me Bind My Hair," Haydn, Mrs. Collins; Duet, "Whispering Hope," Hawthorne, Mrs. Collins and Miss Cheyne.

Wednesday, November 8, 1922

12:00 M. Music. Agriogram from U. S. Department of Agriculture.

10:00 P. M. Program by—Associated Clubs Octet—selected from members of the Purchasing Agents Association, of Pittsburgh, the Kiwanis Club and the Advertising Club. Frank P. Adams, baritone and manager; Harry Llewlyn and Walter Close, first tenors; Charles Johnson and John L. Hanan, second tenors; Frank P. Adams and Robert Lloyd, baritones; John Harman and Walter Reuter, bass. Charles Meredith, accompanist.

This singing organization filled a very successful visiting engagement in Cleveland, on October 18, with the Purchasing Agents Association of Cleveland and are now considering similar dates in Chicago, Buffalo and Philadelphia. As a feature of the prominent business associations of the city of Pittsburgh this Octet takes important place.

Program: "Winter Song," Bullard; "A Little Close Harmony," O'Hara; "Honey Time," Parks; "Hie Away Home," Rowles; "Jolly Blacksmith," Geibel; "Swing Along," Cook; "Ole Uncle Moon," Scott; "Until the Dawn," Parks; Tenor solo, selected, Walter Close; Baritone solo, selected, Frank P. Adams; Bass solo, selected, Walter Reuter.

Thursday, November 9, 1922

4:30 P. M. Music. Weekly Library Letter on "Good Reading and the New Books."

Friday, November 10, 1922

10:00 P. M. Program by Miss Anna George, dramatic soprano, and William Herman, lyric tenor.

Miss George is a student in repertoire and interpretation with Blanche Sanders Walker, of Pittsburgh, and Mr. Herman has but lately come to Pittsburgh from New York city where he was a student in the Pamrosch Institute and pupil of Adrian Freni, who, this season, is head of the voice department of the Pittsburgh Musical Institute. Miss George has a voice of fine caliber, immense range, and her interpretations are exceedingly interesting. Mr. Herman's voice is of rich lucious quality, though lyric in type, and full of the color and intensity of youth. His singing from Station KQV four weeks ago was a complete success and his return on this weeks' program is arranged that more of the radio listeners may enjoy his lovely singing. Alvin J. Adams, will accompany both artists.

Program: Soprano solos, "The World is Waiting for the Sunrise," Seitz; "Kashimiri Song," Woodford-Finden; "In my Garden," Liddle; "The Soldier's Bride," Rachmaninoff; "Ah, Love but a Day," Protheroe; "My Lover Comes on the Ski," Clough-Leigher. Tenor solos, "Grusenia," Rachmaninoff; "The Cloud and the Mountain," and "Eastern Romance," Rimsky-Korsakoff; "Serenade," Schubert.

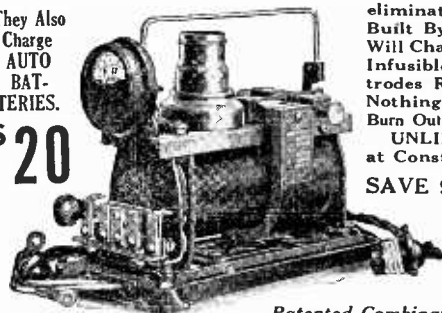
ON TUESDAY AFTERNOON, November 7, at 4:30 o'clock, Mr. C. Fred Henne, Head of the Department of Research, of the International Correspondence Schools of Scranton, Pa. will give a ten minute talk from Station KQV on, "The Future of Radio as I see it". Mr. Henne is one of the well-known men in the educational field of eastern Pennsylvania and was formerly in the editorial force of the Scranton Times. His radio message will be of uncommon interest.

F-F RADIO RECTIFIER

Charges 6 Volt "A" & Up to 120 Volts Of "B" & Loud Speaker Storage Batteries In Series Inductively, for Few Cents at Home From Lamp Socket Overnight. Disconnecting & Multiple Connections Unnecessary. Charging Circuits Separate. No chance For Grounds or Short circuits. **NOTHING LIKE IT MADE. AMMETER**

They Also Charge AUTO BATTERIES.

\$20



eliminates Guess Work. Built By Master of Art. Will Charge Dead Battery. Infusible Carbon Electrodes Rectify Current. Nothing to Slop Over. Burn Out or Cause Trouble. **UNLIMITED LIFE.** at Constant Efficiency. **SAVE 90c a Charge.**

POPULAR PRICES. F. O. B. CLEVELAND

Patented Combination OHIO

For 100-130 Volt, 60 cycle. Furnished for other Cycles also.
TYPE 6 for 6 Volt "A" Battery, Charging at 6 Amperes... \$15.00
TYPE B Charges Radio "B" Batteries Up to 120 Volts... 15.00
TYPE "A-B" Combination Radio Rectifier for Charging 6 Volt "A" & Auto Batteries and 6 to 120 Volts of "B" Storage Batteries in Series 20.00
TYPE 12 for 12 Volt Battery, Charging at 5 Amperes... 15.00
TYPE 166 for 6 Volt Battery, Charging at 12 Amperes... 20.00
TYPE 1612 for 12 Volt Battery, Charging at 7 Amperes... 20.00
TYPE 1626 a Combination of Types 166 & 1612 Charges both 28.00 Shipping Weights, 11 to 15 lbs. On Sale in Principal Cities. Purchase from Your Dealer, or send remittance for Immediate Shipment, giving us your Dealer's name at same time. Write for **FREE Descriptive RADIO & AUTO Bulletin No. 28.**

THE FRANCE MFG. CO., CLEVELAND, OHIO

WESTINGHOUSE STATION KYW

400 Meters

Chicago, Ill.

Central Standard Time

Sunday, November 5, 1922

3:30 P. M. Radio Chapel Services.

Monday, November 6, 1922

8:00 P. M. Concert by Louise Messenie, soprano, Nellie Gordon, accompanist; Emil Taflinger, baritone; Ethel Cline Taflinger, soprano; Walter Michels, piano.

Program: Soprano solos by Mrs. Taflinger, "To the Sun," Curran; "Summer, Winter, Spring," Moren; "The World is Waiting for the Sunrise," Seitz; "Come to the Fair," Martin. Baritone solos, "Life," Curran; "Mate O' Mine," Elliott; "The Little Lad," Taflinger, and "Good Morning, Brother Sunshine," Lehmann. Piano solos, "Just One More Dance," Curtis; and "Brazilian Eyes," Michels; "Some Little Bird," McPhail, and "San," Michels. Soprano solos by Miss Messenie, "The Little Clouds," Logan, and "Pale Moon," Logan; "Red Rose of Love," Gladwin, and "E'en as a Flower," Logan. Baritone and soprano duets, "Sunrise and You," Penn, and "Waters of Minnetonka," Lieurance.

Tuesday, November 7, 1922

2:35 P. M. Afternoon Concert, courtesy Lyon & Healy Co. from Lyon & Healy Concert Hall.

8:00 P. M. Program arranged through the courtesy of Lyon and Healy Concert and Artist Department, the details of which will be announced by radiophone.

Wednesday, November 8, 1922

8:00 P. M. Musical Program to be rendered by Mrs. Esther Bowker, contralto, W. G. Tuite, accompanist; Ridgely Fletcher, baritone; Rose Chircus, pianist; and Jessie Royce Landis, dramatic reader.

Program: Piano solos, "Rhapsodie," Gohanyi; "Waltz in C Sharp Minor" Chopin, and "Waltz in E Flat" Chopin. Baritone solos, "The Gypsy Trail," Galloway, and "The Rosary," Nevin; "Ashore," Trottere, and "Lucky Jim," Bowers. Contralto solos, "His Lullaby" Bond, and "Hunt of the Witches," Cassard; "Danny Boy," Weatherly, and "Dusk With its Mystic Charm" Finch.

Readings, "The Bride's Thanksgiving Dinner," Arrg. Landis, and "Home" Guest.

9:05 P. M. Talks on correct wearing apparel, for men and women, and suggestions for the home. These articles are furnished by Nast Publications, Vanity Fair, Vogue, and House and Garden.

Thursday, November 9, 1922

2:35 P. M. Afternoon concert furnished by Lyon & Healy Company, and broadcasted from Lyon & Healy Concert Hall.

8:00 P. M. Concert by Theresa Lockman, soprano; H. B. Bartholomew, accompanist; R. Lee Osburn, baritone; Mrs. R. Lee Osburn, accompanist; Camillo Ceaserano, French horn; Sallie Menkes, accompanist; Lorraine Morse, pianist.

Program: Soprano solos, "Lovely Celia" Monroe, and "Will O' Wisp," Straus; "O Sleep, Why Dost Thou Leave Me," Handel, and "A Robin Song," Chase. French horn selections, "Venetian Love Song," Nevin, and "O Solo Mio," DiCapua; "Aria from Il Travatore" Verdi. Baritone solos, "My Homeland," Speaks, and "Roadways," Densmore; "The Blind Ploughman," Clarks, and "In An Old Fashioned Town," Squires. Piano solos, Selected.

9:05 P. M. "Twenty Minutes of Good Reading", by Rev. Claude J. Pernin, S. J., Head of Department of English, Loyola University.

Friday, November 10, 1922

8:00 P. M. Program arranged through the courtesy of Lyon and Healy Concert and Artist Department. Complete program will be announced by radiophone.

9:05 P. M. Reviews of the latest books given by Llewellyn Jones, literary editor of the Chicago Evening Post.

11:00 P. M. to 12:00 Midnight,—Midnight Show.

Saturday, November 11, 1922

2:30 P. M. Word picture of football games played at Stagg field, University of Chicago, broadcasted from the field of KYW.

Summaries of all important games played in United States.

This service is continuous from 2:30 P. M. until the close of all games.

8:00 P. M. "Anniversary Night". At this hour a Musical Guessing Contest will be held, the details of which will be announced by radiophone.

—for clear and accurate

Reception

of

RADIO
Broadcasting

use

FROST
ONES

A QUALITY
ACHIEVEMENT

Your local
dealer has them



2000 Ohm Set No. 162	3000 Ohm Set No. 163
\$5.00	\$6.00



HERBERT H. FROST

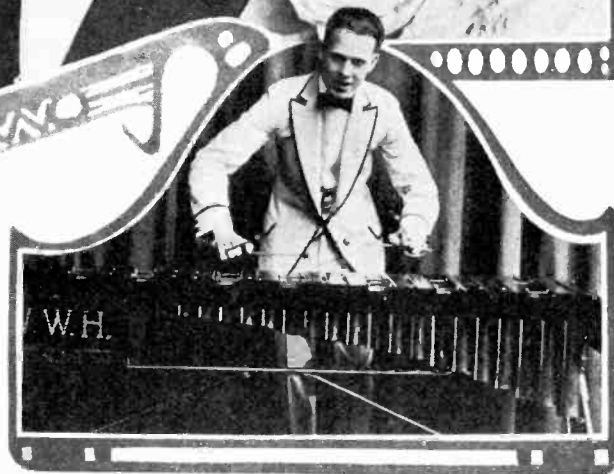
NATIONAL FACTORY DISTRIBUTORS
TO THE ELECTRICAL-RADIO JOBBER

154 W. LAKE ST. CHICAGO, ILL.



Chicago Artists at Station KYW

Left to Right:—Ward H. Pound, tenor, Milan Lusk, Bohemian violinist; Mark Oster, baritone; Alice Mead Pound, pianist. Lower Right:—Klendall W. Hall, singing xylophonist, composer of "My Carolina Rose" "Mellow Moon" and other popular songs.



9:05 to 9:25 P. M. "Under the Evening Lamp", a service including stories, articles, and humorous sketches furnished by the Youth's Companion.

Sunday, November 12, 1922

3:30 P. M. Radio Chapel Services conducted by Rev. Chas. Kristian Osborn, pastor of the River Forest Presbyterian Church of River Forest, Ill.

Rev. Osborn was born in Christiana, Norway, of English parents. He attended grammar and high school of London, England, and is a graduate of the following colleges and seminaries in this country: The Moody Bible Institute of Chicago, Blackburn College Illinois, with the degree of A.B. and the McCormack Theological Seminary of Chicago, with the degree of B.D. He was an honor man at the McCormack Seminary, winning scholarships in the Historical and Old Testament Departments, and was awarded the Nettie F. McCormack Hebrew Fellowship cash prize of \$1,500.

Rev. Osborn also took post-graduate courses at the Universities of Chicago and Toronto. He was pastor of the Carlinville, Illinois, Church for eighteen months, and is

now Pastor of the River Forest Presbyterian Church. Program: Anthem "Praise the Lord, O Jerusalem" Mauder.

Scripture, Psalm 19

Anthem, "Breast the Wave, Christian," Miller

Prayer

Duet "I Will Extol Thee" Homer, by Messrs. Cuthbertson and Osborn, tenor and bass.

Sermon "The Story of the Trail," Rev. Osborn

Bass solo, "How beautiful Upon the Mountains," Har-ker, Mr. Osborn.

Anthem, "The Spirit in our Hearts" Shelly.

The music is furnished by the church quartette composed of Mrs. Paul Fox, soprano; Hazel Meisterling, contralto; George Cuthbertson, tenor; R. Lee Osborn, bass, and director; and Owen W. Brown, accompanist.

KYW'S DAILY BROADCASTING SCHEDULE

- 9:25 P. M. Opening Market Quotations, Chicago Board of Trade.
- 10:00 A. M. Market quotations, Chicago Board of Trade. Quotations every half hour thereafter until 1:00 P. M.
- 1:20 P. M. Closing market quotations, Chicago Board of Trade.
- 2:15 P. M. News and Market Reports.
- 2:30 P. M. Closing Quotations, Chicago Stock Exchange.
- 3:00 P. M. News and Sports.
- 3:30 P. M. News and Sports (Except Mondays, Wednesdays, and Fridays.)
- 4:00 P. M. News and Sports.
- 4:15 P. M. News, Market and Stock Reports.
- 4:30 P. M. News and Sports.
- 5:00 P. M. News and Sports.
- 6:30 P. M. News, Financial and Final Market, and Sport Summary. "Topics of the Day" furnished by Pathe Exchange—Mondays only.
- 6:50 P. M. Children's Bedtime Stories.
- 8:00 P. M. Musical Program.
- 9:00 P. M. News and Sports.
- 9:05 P. M. Special Features announced by Radio-
phone.

News of the business world furnished at 6:30 P. M. by the Chicago Journal of Commerce.

News, Sports and Children's Bedtime Stories, furnished by the Chicago Evening American.

CANADIAN BROADCASTING STATIONS

Name	Situation of Station	Wavelength in Meters	Call Signal
Manitoba Free Press	Winnipeg, Man.	410	CJCG
G. Melrose Bell	Vancouver, B.C.	430	CHCA
G. Melrose Bell	Calgary, Alta.	430	CFAC
G. Melrose Bell	Regina, Sask.	420	CKCK
G. Melrose Bell	Winnipeg, Man.	430	CHCF
Vancouver Sun	Vancouver, B.C.	420	CJCE
Van. Daily Province	Vancouver, B.C.	410	CKCD
Can. Indep. Tel. Co.	Toronto, Ont.	450	CKCE
Marconi W. T. Co.	Montreal, Que.	440	CFCF
Star Pub. & Prin. Co.	Toronto, Ont.	400	CFCA
Tribune Newspaper Co.	Winnipeg, Man.	400	CJNC
T. Eaton Co. Ltd.	Toronto, Ont.	410	CJCD
Salton Radio Eng. Co.	Winnipeg, Man.	420	CKZC
Northern Electric Co.	Montreal, Que.	410	CHYC
Marconi W/T. Co.	Halifax, N.S.	440	CFCE
Marconi W/T. Co.	Toronto, Ont.	440	CHCB
Marconi W/T. Co.	Vancouver, B.C.	440	CFCB
Dupuis Freres	Montreal, Que.	420	CJBC
Metropolitan Motors	Toronto, Ont.	410	CHVC
Edmonton Journal	Edmonton, Alta.	450	CJCA
McLean, Holt & Co. Ltd.	St. John, N.B.	400	CJCI
J. R. Booth, Jr.	Ottawa, Ont.	400	CHXC
Western Radio Co.	Calgary, Alta.	400	CHCQ
V. W. Ollum	Vancouver, B.C.	400	CFYC
La Presse Pub. Co.	Montreal, Que.	430	CKAC
Albertan Pub. Co.	Calgary, Alta.	410	CHBC
Int. Radio Development Co.	Fort Frances	400	CFPC
London Free Press Printing Co.	London, Ont.	430	CJGC
Wentworth Radio Supply Co.	Hamilton, Ont.	410	CKCC
Simons, Agnew & Co.	Toronto, Ont.	410	CJCN
J. C. Bennett	Nelson, B.C.	400	CJCD
Eastern Telephone & Telegraph Co.	Halifax, N. S.	410	CJCS
Radio Supply Co. of London.	London, Ont.	410	CKQC
London Radio Shop	London, Ont.	410	CHCS
The Evening Telegram	Toronto, Ont.	430	CJSC
The Bell Telephone Co.	Montreal, Que.	...	CKCS
The Bell Telephone Co.	Toronto, Ont.	...	CFTC

10. Paid.

East Pittsburgh, Pa.
Permit No. 102.

Mar. 4, 1922

Canadian List

W. S. BEDELL JR.
143 W. MITCHELL AVE.
CLAIRTON PA. 1293
6-23

Important

RADIO BROADCASTING NEWS

Weekly Radio Programs

Return Postage Guaranteed by
RADIO BROADCASTING NEWS
1205 Keenan Building
Pittsburgh, Pa.