

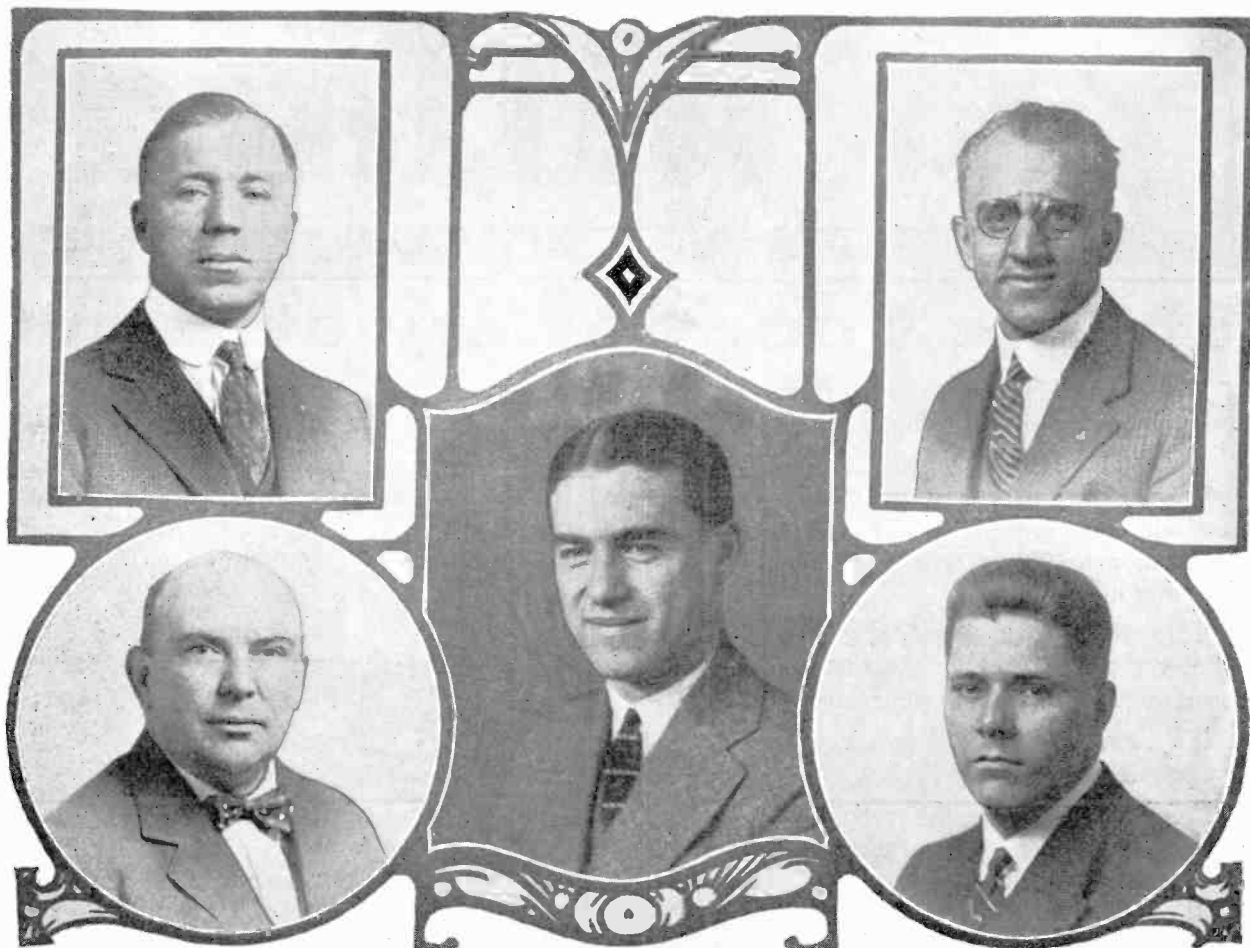


Vol. 2

SEPTEMBER 30, 1922

No. 18

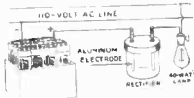
### The Pittsburgh Male Quartet



Upper Left—John S. Morgan, second bass; Upper Right—Walter R. Vogel, accompanist; Lower Left—David J. George, first bass;  
Center—Peter A. Higgins, first tenor; Lower Right—Cad C. Morgan, second tenor



The leak-proof feature of the Willard "B" Battery eliminates annoying ground "hissing" and "irying" noises. Makes concerts more enjoyable!



This rectifier keeps your battery charged. Costs practically nothing to use.

## The "ABC" of Radio

The very first essential, whether your V. T. set is big or little, factory-made or home-built, is to have "A" and "B" Batteries that are really *built for radio*.

*The Willard All-Rubber Radio "A" Battery has a one-piece rubber case—Threaded Rubber Insulation, special Radio plates.*

Willard Storage Battery Company, Cleveland, O.

# Willard

THREADED RUBBER BATTERY.

## Charge Your Battery at Home

**K**EEP pep in the battery for your vacuum tube receiving set by using the Rectigon Battery Charger.

The Rectigon is a small, inexpensive device that will charge your radio battery over night. It is entirely automatic in operation and needs no attention after it is started.

The Rectigon is portable—it can be placed wherever desired. The absence of oil or grease assures against damage to your floor or rugs.

It is as indispensable to your vacuum tube wireless equipment as the battery itself.

For details regarding the various sizes of this type of battery charger, write for our Folder F-4491, "Charging the Radio Battery at Home."



Westinghouse Electric & Manufacturing Co.

East Pittsburgh, Pa.

Sales Offices in All Principal American Cities

# Westinghouse

# RADIO BROADCASTING NEWS

Published Weekly to increase interest and enjoyment in Radio Broadcasting.

Address all communications to the

EDITOR, RADIO BROADCASTING NEWS, 1205 Keenan Building, Pittsburgh, Pa.

Subscription One Dollar Per Year.

Five Cents Per Copy.

Vol. 2

September 30, 1922

No. 18

## Broadcasting Schedules Arranged for Second District.

A very important schedule for broadcasters in the Second Radio District will go into effect October 1, arranged to eliminate as far as possible the interference in the air.

The management of WJZ had the privilege of broadcasting on 360 meters, sharing the time with the less powerful stations or going in with the Class B, the most powerful stations in the Second District and operating on 400 meters.

The Class A stations consisting of WWZ, John Wanamaker, New York; WBS, D. W. May, Newark; WHN, Ridgewood Times, Ridgewood, L. I.; WRW, Koenig Bros., Tarrytown, N. Y.; WBAN, Wireless Telephone Company, Paterson, N. J.; WAAT, Jersey Review, Jersey City, N. J.; W-AM, I. R. Nelson Company, Newark; and WFAF, Shotton Elec. Co., Poughkeepsie, N. Y., agreed to stand by on special occasions should WJZ, the Radio Corporation-Westinghouse Station at Newark, N. J. want to broadcast concerts such as the Stadium Concerts of the N. Y. Philharmonic Orchestra, play by play results of the World's Series, and the Saturday afternoon football games from September 23rd to the end of the season, also, to permit WJZ to broadcast every evening.

So the management of WJZ decided to stay on 360 meter wave length. The bedtime stories as usual will be broadcasted every evening from 7:00 to 7:30 P. M. by WJZ. This station will then stand by for an hour on Monday, Thursday, Friday and Saturday evenings, and for an hour and a half on Tuesday and Wednesday evenings for the other Class A Stations in the second district. Probably the next issue of the Broadcasting News will be able to publish WJZ's program in detail as usual.

Class B stations of the second district, New York are supposed to keep up a continuous daytime and evening program on 400 meters.

Present Class B Stations in the Second District are WOR, L. Bamberger & Co., Newark; WGY, General Electric Company, Schenectady; WHAZ, Rennselaer Polytechnic School, Albany; WBAY, American Telephone & Telegraph Co., New York.

If all the broadcasters will keep their sending apparatus in first class condition, and the invisible audience will also pay attention to details and adjustments of their receiving sets it is thought that very little interference will result from the operation of the Class A and Class B stations broadcasting at the same time in the New York district.

The proposed arrangement will provide continuous entertainment on two separate and distinct wave lengths from eight o'clock in the morning to eleven at night and on 400 meters sometimes until midnight.

## Former Secretary of Treasury McAdoo Takes Radio Set on Vacation.

William Gibbs McAdoo and a number of friends recently returned from a rafting trip down the Snake River.

Although they have made this trip for the past twelve years, this is the first time they have had any means of communication with the outside world, for the raft on which they were travelling was fitted up with a radio receiving set.

The start of this trip was from the famous Jackson's Hole country in the Teton Mountains, and as the raft floated down the river its occupants enjoyed the hunting, fishing and outdoor life. In their leisure moments radio provided them with music, entertainment, baseball scores, and other news, in a country where newspapers are practically unknown. Members of the party are enthusiastic over the service they received by radio.

## Programs for the Week

These programs are prepared some time in advance of the dates and are subject to change. Programs in detail are published daily in your favorite newspaper.

### Pittsburgh District

WESTINGHOUSE RADIO STATION KDKA

360 Meters East Pittsburgh, Pa.

Eastern Standard Time

Sunday, October 1, 1922.

- 11:00 A. M. Services of Emory Methodist Episcopal Church, North Highland Avenue at Rippey Street, Pittsburgh, Pa. Rev. W. Wofford T. Duncan, Minister.
- 2:45 P. M. Children's Bible Story — "Trimmed Lamps."
- 3:00 P. M. Radio Chapel at Westinghouse Station KDKA, conducted by Rev. Stanley A. Hunter, Pastor, North Presbyterian Church, Galveston and North Lincoln Avenues, North Side, Pittsburgh, Pa.
- 7:30 P. M. Services of Calvary Episcopal Church, Shady Avenue, Pittsburgh, Pa. Rev. E. J. Van Etten, Rector. Harvey B. Gaul, Organist.

Monday, October 2, 1922.

- 7:00 P. M. Weekly Survey of Business Conditions. National Industrial Conference Board. Tri-weekly letter from FARM AND HOME. The Nast Group of Radio Articles No. 24; "Shoes and Slippers for Street and Evening"—VOGUE; "The Custom-Made Touch to Ready Made Clothes" — VANITY FAIR; "Modern Rugs"—HOUSE AND GARDEN.
- 8:00 P. M. Bed-time Stories for the Kiddies.
- 9:00 P. M. Concert by Minard Lozier, tenor; Fred. E. Webber, bass-baritone; George Muth, violinist; Ruth MacGowan Craig, accompanist.

Reversing the usual order of migration, Minard Lozier came from New York to Pittsburgh and for the last nine years has been identified with matters musical in this locality, serving continuously as a prominent church soloist and filling numerous engagements in the concert field. For this work he prepared himself during a fourteen years' residence in the East, where he studied with two Boston teachers and was under the tutelage successively of five New York voice instructors. To the eminent Franz Arens of the latter city he ascribes credit primarily for his success. Mr. Lozier sings for the joy of it and puts a certain individuality into all his work. The Pittsburgh Gazette Times has said of him, "He delivers the message of the song." This will be his third appearance at KDKA within a year, and he always brings us selections not previously presented to our audiences.

Fred E. Webber has been at KDKA several times as a member of the Mozart Quintet, but this is his first appearance in a strictly solo capacity. Mr. Webber is a Bostonian and began his musical education in the East. He is now studying with J. L. Rodrigues of Pittsburgh, and has been given important assignments in the operatic productions staged by the Rodrigues Studios. His voice has the remarkable range of two and a half octaves and is of exceptional quality. On this program he will employ numbers embracing a wide compass. Mr. Webber is associated with Mr. Lozier in the quartet of the Second Presbyterian Church of Wilkinsburg, one

## Furnished a Treat from KDKA



Rose Raymond, pianist

of the most active and prominent religious organizations of the Pittsburgh district. KDKA fans will be glad to form a closer acquaintance with Mr. Webber and his work.

Pittsburgh abounds in youthful musicians of great promise, and one of these is George Muth, a violin pupil of Karl Malcherek. He scarcely needs an introduction to KDKA listeners, having entertained them several times during the last year. In addition to his solo numbers he will grace the present program with several violin obligati. Mr. Muth will play upon a very rare and valuable old Italian violin.

No individual artist has contributed more of genuine merit to KDKA service, nor done it with a finer degree of modesty than Mrs. Paul Craig

(KDKA Program continued on page 5)

## Artists on Program of Pittsburgh Station KDKA



Elmer C. Stephan, tenor; Helen Couffer, soprano; Lina Barcoli, violinist

*(KDKA Program continued from page 4)*

(nee Ruth MacGowan), who has consented to play the accompaniments for this program—a fact which in itself will add greatly to the delight of the entertainment. Mrs. Craig, who is organist of Calvary Lutheran Church, Wilkinsburg, and a member of the Pittsburgh Musical Institute faculty, says she has not kept track of the times she has been at KDKA, both as piano soloist and accompanist; but it is certain that no one could be more welcome to those who listen in. Her delicacy of touch and interpretive instinct fit her peculiarly for the work of an accompanist. She is a recognized artist.

Program: (a) "The Wanderer," Schubert; (b) "Elegie," Massenet, (violin obbligato); Mr. Webber. (a) "Alas, That Spring Should Vanish With The Rose," (Persian Garden) Lehman; (b) "Ah, Love But A Day," Protheroe; Mr. Lozier; "Romance," Wieniawski, Mr. Muth; (a) "Beyond the Sunset," Tours; (b) "Sweet Little Woman O' Mine," Bartlett; Mr. Webber; (a) "Design," Vanderpool; (b) "Nuthin'," Carpenter; (c) "Brown Eyes," Del Riego, Mr. Lozier. (a) "Indian Lament," Dvorak-Kreisler; (b) "Song of India," Rimsky, Korsakow-Kreisler, Mr. Muth; "Love's Old Sweet Song," Molloy, Mr. Webber; "I'll Remember You, Love, In My Prayers," Hays, (violin obbligato), Mr. Lozier; Duet: "Old Dog Tray," Foster, (violin obbligato), Messrs. Webber and Lozier.

**Tuesday, October 3, 1922.**

7:00 P. M. Weekly Fashion Talk (of interest to women) prepared by Joseph Horne Company, Pittsburgh, Pa. United States Public Health Semi-weekly Bulletin.

8:00 P. M. Bed-time Stories for the Kiddies.

9:00 P. M. Elizabeth Berland, pianist. Miss Berland studied with G. Beclemisher (who is a pupil of Buzony). She is a graduate of the Kief (Russian) Conservatory of Music.

"Vallee D'Oberman," Liszt; "Rhapsodie Hongroise No. 8," Liszt; "Doumka—Scene Rustique—Russe," Tschaikowsky; "Ballada No. 3—Asdur," Chopin; "Valse No. 14," Chopin; "Papillons," Schumann.

Burt Mustin, dialect-monologues and songs. Mr. Mustin is a great favorite with KDKA's invisible audience—he has appeared on several previous programs.

Miss Caroline Hoechstaeetter, soprano. Miss Hoechstaeetter is a pupil of the R. B. Savage Studio, Pittsburgh.

Program: "Rachen," Mona-Zucca; (a) "Calm as the Night," Bohm; (b) "Persian Serenade," Cooke; (c) "Sonny Boy," Curran.

**Wednesday, October 4, 1922.**

7:00 P. M. Tri-weekly letter from FARM AND HOME. Weekly Summary of the "IRON AGE."

8:00 P. M. Bed-time Stories for the Kiddies.

8:30 P. M. "Savings versus Strikes." Samuel Bailey, Jr., Secretary, Dollar Savings Bank of Pittsburgh, Pa.

9:00 P. M. Concert by The Gordon Concert Company. Estelle Healy Close, soprano; Mabel

*(KDKA Program continued on page 6)*

*(KDKA Program continued from page 5)*

King, contralto; Lessel S. Jamieson, tenor; John W. Lawther, baritone; Miss Katherine Grundman, accompanist. Scotch bagpipe selections by "Piper" Finnie.  
Program: Scotch Bagpipe solo, "Piper" Finnie; "There Was a Lad Born in Tyle," quartet; Soprano solo, "Coming Thro' The Rye," tenor solo, "Mary of Argyle," duet, "The Crookit Bawbee," Miss King and Mr. Lawther; bagpipe solo, selected; "Annie Laurie," quartet; contralto solo, "Barnien Cuddle Doon," duet, "Come Under Ma Plaidie," Miss Close and Mr. Jamieson; baritone solo, "Scotland Yet," quartet.

**Thursday, October 5, 1922.**

- 7:00 P. M. United States Public Health Service Semi-weekly Bulletin.
- 8:00 P. M. Bed-time Stories for the Kiddies.
- 8:30 P. M. "Home Furnishing—Modern and Practical." Miss Harriet Webster of the Joseph Horne Company, Pittsburgh, Pa. An address of interest to the Farmer, prepared by THE NATIONAL STOCKMAN AND FARMER, Pittsburgh, Pa.
- 9:00 P. M. Concert by the Miami Banjo Orchestra, under the direction of George McNemry. Members of the orchestra: Earl Eckert, Arthur Eckert, Frank Gatz, Mack Stetson, Virgil Stetson, Gilbert Kessling, Edward Kessling, Gilbert Voltz. The program will be announced by Radio Telephone.

**Friday, October 6, 1922.**

- 7:00 P. M. Tri-weekly letter from FARM AND HOME. Detours and Conditions of Highways within a radius of 150 miles of Pittsburgh
- 8:00 P. M. Bed-time Stories for the Kiddies.
- 8:30 P. M. "The Life of George Westinghouse," by E. H. Sniffin, Manager Power Department, Westinghouse Electric & Mfg. Co., East Pittsburgh, Pa.
- 9:00 P. M. Concert by the Quartet from the Eighth United Presbyterian Church, Perrysville Avenue, North Side, Pittsburgh, Pa. Miss Lillian M. Vetter, soprano; Mrs. W. H. Norris, contralto; Emil Bingle, tenor and F. Robert Coe, bass; Mrs. W. A. Lafferty, accompanist.  
Program: "Carmena," Wilson, quartet; soprano solos—(a) "The Old Road," Speaks; (b) "Lindy Lou," Strickland; contralto solos (a) "I Passed by Your Window," Brake; (b) "Cradle Song," Vannah; tenor solos—(a) "If With All Your Hearts," from Elijah, Mendelssohn; (b) "Still Wie die Nacht," Bohm; bass solos—(a) "Drink to me Only With Thine Eyes," Old English; (b) "The Great Awakening," Kramer; "Fear Not Ye, Oh Israel," Spicker.

**Saturday, October 7, 1922.**

- 2:00 P. M. Popular concert. Name of orchestra and the program will be announced by Radio Telephone.
- 3:00 P. M. Results, play by play, of the Pitt-Lafayette Football game at Forbes Field, Pittsburgh.
- 7:30 P. M. "Under the Evening Lamp," prepared by YOUTH'S COMPANION.  
Program: "A Crowded Half Minute"—a flying instructor's experience with a "ground shy" cadet; "Old Smoky"—a poem by Gertrude West. "The Pupil and Discipline"—suggestions for the

Sunday School teacher; "High Living"—an Englishman's amusing mistake; "Moonshine War"—an American Naval adventure from the days before the Civil War.

- 8:00 P. M. Bed-time Stories for the Kiddies.
- 9:00 P. M. Xylophone solos by Miss Leotta McNemry, accompanied on the piano by her mother, Mrs. George L. McNemry.  
Program: "Overture—Zampa," Herold; "La Rose Intermezzo," Ascher.

**Sunday, October 8, 1922.**

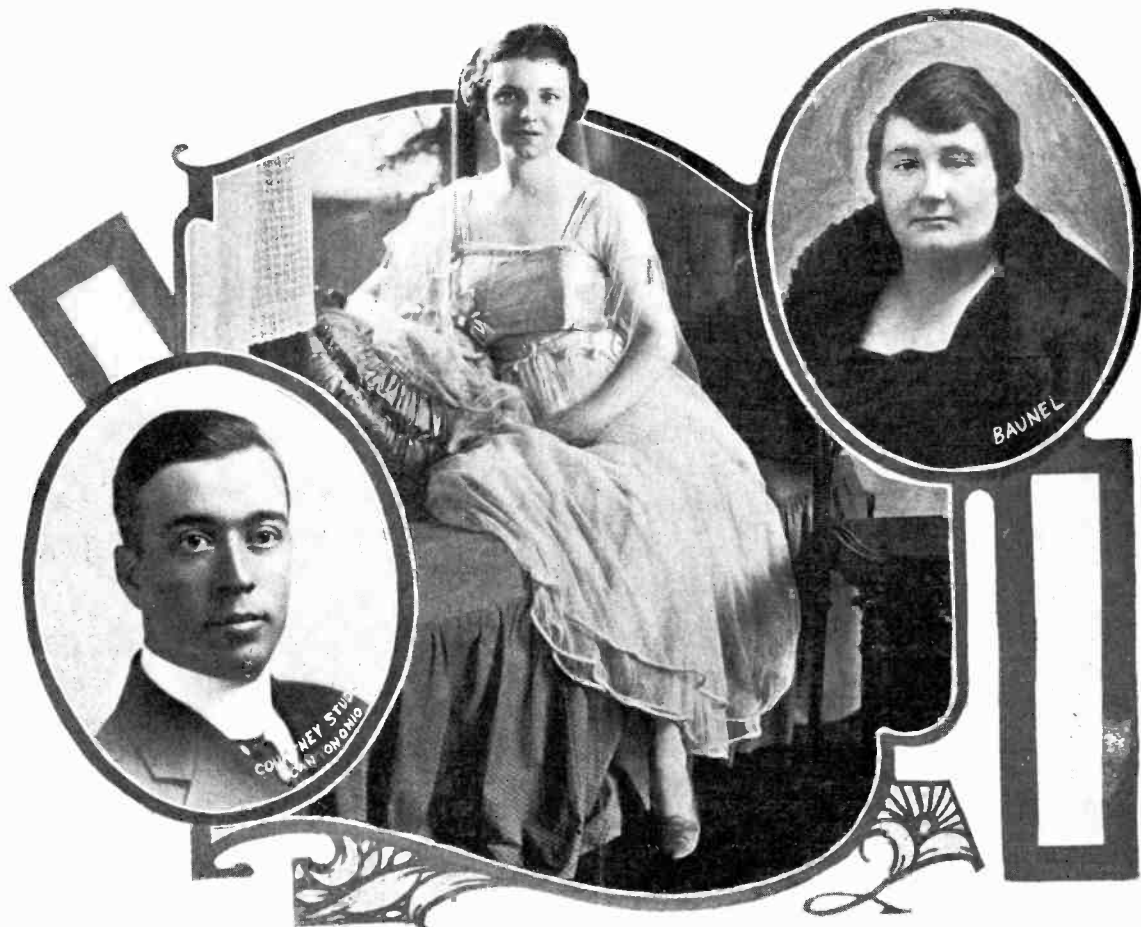
- 10:45 A. M. Services of Calvary Episcopal Church, Shady Avenue, Pittsburgh, Pa. Rev. E. J. Van Etten, Rector. Harvey B. Gaul, Organist.
- 2:45 P. M. Children's Bible Story—"The Raven and the Dove."
- 3:00 P. M. Radio Chapel at Westinghouse Station KDKA, conducted by Rev. Edward C. McGown, D.D., Pastor, Mt. Lebanon Presbyterian Church, Washington Road, Mt. Lebanon, Pittsburgh, Pa.
- 7:30 P. M. Services of Point Breeze Presbyterian Church, Fifth and Penn Avenues, Pittsburgh, Pa. Dr. P. H. Barker, Minister.

**KDKA'S WEEK-DAY SCHEDULE**

- 10 to 10:15 A. M. Music.
- 12:30 to 1:00 P. M. Music.
- 3:30 P. M. Results of baseball games by innings. At 7:00, 8:00 and 10:00 P. M. scores will be repeated and those of the International and American Association leagues will be included. Final scores each day will include all runs, hits and errors.  
On Saturday, baseball scores and a special popular concert beginning at 3:00 o'clock.
- 7:00 to 7:15 P. M. Baseball scores, late news and other features.
- 7:15 to 7:45 P. M. Theatrical Features.
- 7:45 to 8:00 P. M. Government Market Report and a Summary of the New York Stock Exchange.
- 8:00 to 8:30 P. M. Bed-time Story and an Uncle Wiggily Story for the Kiddies.
- 8:30 to 9:00 P. M. Baseball scores and special addresses.
- 9:00 to 10:00 P. M. Musical program. Baseball scores.
- 10:55 to 11:00 P. M. Arlington Time Signals.  
All baseball scores are transmitted from the Pittsburgh Post Studio of Westinghouse Station, KDKA.  
Steinway Duo-Art Reproducing Piano and Rolls and Aeolian Orchestrelle—courtesy of C. C. Mellor Company, Pittsburgh, Pa.  
Brunswick Phonograph and Records procured from Grey and Martin, Pittsburgh, Pa.  
Edison Phonograph and Records—courtesy of J. E. Bumbera, Swissvale P. O., Pittsburgh, Pa.  
Victor Records—courtesy of S. Hamilton & Company, Wilkinsburg, Pa.  
NOTE: Many artists whose names are contained in these pages are available for both public and private entertainment.

*(Pittsburgh District Schedules continued on page 7.)*

# Musicians Recently Heard from Station KDKA



Left to right—E. B. Senter, violinist; Regina Spilker, soprano; Jessie Wise Greenwald, concert soprano

## FEDERAL TELEPHONE & TELEGRAPH CO. STATION WGR

360 Meters Buffalo, New York.

Eastern Standard Time

Wave Length—485 meters

12:15 P. M. Weather and Market Reports.

4:30 P. M. Weather and Market Reports.

Wave Length—360 meters

4:40 P. M. Closing prices of New York Stock Exchange and Chicago Board of Trade.

7:00 P. M. Bedtime Stories and short talk on Buffalo by High School Boy.

7:10 P. M. Baseball scores and digest of the day's news.

7:20 P. M. Musical Program.

## DOUBLEDAY-HILL ELECTRIC COMPANY STATION KQV

360 Meters Pittsburgh, Pa.

Broadcasting each day, except Sundays, from 1:00 P. M. to 1:30 P. M., and from 3:30 to 4:00 P. M.

Musical programs Monday, Wednesday, and Friday, from 10:00 to 10:55 P. M.

**New York and Eastern District**

**WESTINGHOUSE-RADIO CORPORATION  
STATION WJZ**

**360 Meters Newark, N. J.  
Eastern Standard Time**

**Sunday, October 1, 1922.**

- 10:30 to 1:00 P. M. Musical program.
- 3:00 P. M. Radio Chapel Services.
- 3:45 to 5:00 P. M. Musical program.
- 6:30 to 10:30 P. M. Lectures and musical program.

**Monday, October 2, 1922.**

- 7:00 to 7:10 P. M. Final baseball scores of the American, National and International League games.
- 7:10 to 7:30 P. M. Adventures of the Radio Boys by Gerald Breckenridge.
- 8:30 P. M. Business and industrial conditions in the United States as observed by the National Industrial Conference Board. "Location of Ships at Sea," by the Radio Corporation of America. Final baseball scores. Closing prices on stocks, bonds, grain, coffee and sugar.
- 8:45 to 9:52 P. M. Musical program rendered by prominent artists.
- 9:52 to 10:00 P. M. Standard Time Signals from Arlington; Weather forecast.
- 10:00 to 10:30 P. M. Musical program rendered by prominent artists.

**Tuesday, October 3, 1922.**

- Daytime program 9:00 to 9:15 A. M.; 11:55 to 1:00 P. M.; 4:00 to 4:15 P. M.; 7:00 to 7:10 P. M. (See regular daily schedule).
- 7:10 to 7:30 P. M. Man in the Moon Stories, (c) Newark Sunday Call.
- 9:00 P. M. "Location of Ships at Sea," by the Radio Corp. of America. Closing prices on stocks, bonds, grain, coffee and sugar.
- 9:10 P. M. "Broadcasting Broadway," by Bertha Brainard.
- 9:20 P. M. Musical program, rendered by prominent artists.
- 9:55 to 10:00 P. M. Standard Time Signals from Arlington; Weather Report.
- 10:00 to 10:30 P. M. Musical program rendered by prominent artists.

**Wednesday, October 4, 1922.**

- Daytime program 9:00 to 9:15 A. M.; 11:55 to 1:00 P. M.; 4:00 to 4:15 P. M.
- 7:00 to 7:10 P. M. Review of the Iron and Steel Industries and their Relation to General Business Conditions by the Iron Age.
- 7:10 to 7:30 P. M. Animal stories by Florence Smith Vincent, New York Evening Telegram.
- 9:00 P. M. "Location of Ships at Sea," by the Radio Corporation of America; closing prices on stocks, bonds, grain, coffee and sugar.
- 9:20 P. M. Musical program, rendered by prominent artists.
- 9:55 to 10:00 P. M. Standard Time Signals from Arlington; Weather forecast.
- 10:00 to 10:30 P. M. Musical program rendered by prominent artists.

**Thursday, October 5, 1922.**

- Daytime program 9:00 to 9:15; 11:55 to 1:00 P. M.;

**Here It Is!**

**DISTRIBUTORS FOR**  
Radio Corporation of America.  
Westinghouse  
Coca Electric  
Inala  
Feno  
Teco  
Branco  
Pacora  
Vergara  
Ligo  
Kido  
S. Gao  
Arico  
Kamamoto  
Rehling  
Heller, C. G.  
Conover, J. H.  
Gibson, J. H.  
Radio Service  
Hochstetler  
Brach  
Chico  
Artson  
Chapman  
and other leading manufacturers



**Send for it NOW**

**LUDWIG HOMMEL & CO.**  
530-534 FERNANDO ST. PITTSBURGH, PENNA.

- 4:00 to 4:15 P. M.; 7:00 to 7:10 P. M. (See regular daily schedule.)
  - 7:10 to 7:30 P. M. Jack Rabbit Stories, by David Cory of the New York Evening Mail.
  - 8:30 P. M. "Location of Ships at Sea," by the Radio Corporation of America; Final baseball scores; Closing prices on stocks, bonds, grain, coffee and sugar.
  - 8:45 P. M. Musical program rendered by prominent artists.
  - 9:52 to 10:00 P. M. Standard Time Signals from Arlington; Weather forecast.
  - 10:00 to 10:30 P. M. Musical program rendered by prominent artists.
- Friday, October 6, 1922.**
- Daytime program 9:00 to 9:15; 11:55 to 1:00 P. M.; 4:00 to 4:15 P. M.; 7:00 to 7:10 P. M. (See regular daily schedule.)
  - 7:10 to 7:30 P. M. Bed-time Stories by Thornton Burgess.
  - 8:30 P. M. Weekly reports on conditions of leading industries by R. D. Wyckoff, Editor of the Magazine of Wall Street; Final baseball scores; "Location of Ships at Sea," by the Radio Corporation of America; Closing prices on stocks, bonds, grain, coffee and sugar.
  - 8:45 to 9:52 P. M. Musical program rendered by prominent artists.
  - 9:52 to 10:00 P. M. Standard Time Signals from Arlington; Weather forecast.
  - 10:00 to 10:30 P. M. Musical program rendered by prominent artist.

Mention Radio Broadcasting News when writing to Advertisers



# Radio Fans Pleased by These Artists from Newark Station WJZ



Top Row, left to right:—Olive Nevin, soprano; Louise D. Best, accompanist and pianist. Center:—Helen Malmar, soprano.  
Bottom Row, left to right:—Mary S. Withers, whistler; Helen L. Sibsey, soprano.

### Saturday, October 7, 1922.

- Daytime program 9:00 to 9:15; 11:55 to 1:00 P. M.; 4:00 to 4:15 P. M.; 7:00 to 7:10 P. M. (See regular daily schedule.)
- 7:10 to 7:30 P. M. Uncle Wiggily Stories, by Howard R. Garis.
  - 8:30 P. M. "Fashions," by an editor of Harpers Bazaar.
  - 8:35 P. M. "Location of Ships at Sea," by the Radio Corporation of America.
  - 8:45 P. M. "Current Topics," by the Institute of Public Service of N. Y.
  - 8:50 P. M. Dance Music by prominent orchestra.
  - 9:52 to 10:00 P. M. Standard Time Signals from Arlington; Weather forecast.
  - 10:00 to 11:00 P. M. Dance music by a prominent orchestra.

### Sunday, October 8, 1922.

- 10:30 to 1:00 P. M. Musical program.
- 3:00 P. M. Radio Chapel Services.
- 3:45 to 5:00 P. M. Musical program.
- 6:30 to 10:30 P. M. Lectures and musical program.

### Regular Day Time Schedule

- 9:00 to 9:15 A. M. Early morning reports and prices on farm products by the New York, New Jersey and Federal Agricultural Bureaus; musical program.
- 11:55 to 12:00 M. Standard Time Signals from Arlington; Weather Report.
- 12:00 to 1:00 P. M. Midday prices on active bonds and stocks by the New York Stock Exchange; grain, by the Chicago Board of Trade; coffee and sugar, by the New York Coffee and Sugar Exchange (closing prices at this hour on Saturdays); schedule of baseball games for American, National and International Leagues; musical program.
- 4:00 to 4:15 P. M. Scores by innings of the American, National and International League games. Closing prices on active stocks and bonds, authority of the New York Stock Exchange; grain, by Chicago Board of Trade; coffee and sugar, by the New York Coffee and Sugar Exchange. Musical program.

**GENERAL ELECTRIC CO.—STATION WGY**  
360 Meters Schenectady, N. Y.  
Eastern Standard Time

Monday, October 2, 1922.

- 11:55 A. M. U. S. Naval Observatory time signals.  
12:30 P. M. Noon stock market quotations.  
12:40 P. M. Music.  
12:45 P. M. Weather report on 485 meters wave-length.  
2:00 to 2:30 P. M. Music and special features for the housewife.  
6:00 P. M. Produce market quotations and reports; closing stock market quotations; news bulletins.  
7:45 P. M. Musical program as follows:  
Piano solo—"Reverie," Debussy, O. G. Yettru; Instrumental Trio for Violin, piano and cello—"Serenade," Pache, American Trio; Soprano solo—"Mary of Argyll," Old Scotch, Julia Edick; Violin solo—"Little Song," D'Ambrosio, Edward Rice; Orchestra—"Shepherd's Tale," Nevin, WGY Orchestra; Trio for Violin, Viola and Piano—"The Miller's Sweetheart," Raff, American Trio; Soprano solo—"Villanelle," Dell 'Acqua, Julia Edick; Viola solo—"Tears," Reinecke, Leo Klüwen. Piano solo—"Moonlight Wandering," Schytte, O. G. Yettru; Instrumental Trio—"Lullaby," Nevin, American Trio; Soprano solo—"Comin' Through the Rye," Old Scotch, Julia Edick; Instrumental Trio—"Butterfly Dance," Miles, American Trio.

Tuesday, October 3, 1922.

- 11:55 A. M. U. S. Naval Observatory time signals.  
12:30 P. M. Noon stock market quotations.  
12:40 P. M. Music.  
12:45 P. M. Weather report on 485 meters wave-length.  
2:00 to 2:30 P. M. Music and subjects of interest to women.  
6:00 P. M. Produce and stock market quotations; news bulletins.  
7:45 P. M. Production of "H. M. S. Pinafore," a comic opera by Gilbert & Sullivan.  
The Cast—The Rt. Hon. Sir Joseph Port, K. C. B., Francis Quinlan; Capt. Corcoran, James Williamson; Ralph Rackstraw, Joseph Culhane; Dick Dead-eye, James Johnson; Josephine, Miss Ethel Thomas; Little Buttercup, Miss Rose Mountain; and WGY Orchestra.

Program: Opening chorus, men's voices, "We Sail the Ocean Blue;" Contralto—"I'm Called Little Buttercup;" Tenor—"A Maiden Fair to See;" Baritone and Men—"My Gallant Crew, Good Morning;" Soprano—"Sorry Her Lot," Women's voices—"Over the Bright Blue Sea;" Baritone—"I am the Monarch of the Sea;" Baritone—"When I was a Lad;" Tenor and two baritones—"Admiral's Song;" Soprano and tenor—"Refrain, Audacious Tar;" Entire cast—"Can I Survive this overbearing?" ACT. II—Baritone—"Fair Moon;" Contralto and Baritone—"Things are Seldom what they Seem;" Soprano—"The Hours Creep on Apace;" Soprano and two baritones—"Bell Trio;" Baritone duet—"Merry Maiden and the Tar;" Soprano, tenor; Two Baritones—"Carefully on Tiptoe Stealing;" Baritone and chorus—"For He is an Englishman;" Tenor, soprano; two baritones—"Farewell, My Own;" Contralto—"Baby Farming Song;" Finale—"Oh Joy, Oh Rapture."

Wednesday, October 4, 1922.

- 11:55 A. M. U. S. Naval Observatory time signals.  
12:30 P. M. Noon stock market quotations.  
12:40 P. M. Music.  
12:45 P. M. Weather report on 485 meters wave-length.

2:00 to 2:30 P. M. Music and subjects of interest to women.

6:00 P. M. World Series baseball game. Produce and stock market quotations; news bulletins.

Thursday, October 5, 1922.

- 11:55 A. M. U. S. Naval Observatory time signals.  
12:30 P. M. Noon stock market quotations.  
12:40 P. M. Music.  
12:45 P. M. Weather report on 485 meters wave-length.  
2:00 to 2:30 P. M. Music and subjects of interest to women.  
6:00 P. M. World Series baseball game. Produce and stock market quotations; news bulletins.  
7:45 P. M. Drama "Paid in Full," by Eugene Walters, music by the WGY Orchestra.  
The Cast—Joe Brooks, James S. B. Mullarkey; Emma Brooks, Viola Karwowska, Jimsy Smith, Frank Finch; Captain Williams, Edward H. Smith; Sato, Henry Miller.  
Program: Orchestra—"Lustspiel Overture," Keler Bela, WGY Orchestra. Drama—"Paid in Full," Eugene Walters; First Episode, Brooks Apartment; Time: Evening. Instrumental selection—"Basket of Roses," Albers, WGY Instrumental Quartet. Second Episode of "Paid in Full"—Brooks Apartment; Time: Twelve Month's Later; Orchestra—"Impassioned Dream," Rosas, WGY Orchestra. Third Episode of "Paid in Full"—Captain Williams Apartment; March—"Miss Liberty," Leroy, WGY Orchestra. Fourth Episode of "Paid in Full"—Brooks Apartment; Time: Same Evening, Orchestra—"Every Little Miss Must Have a Mister," from Letty Pepper, Jansen, WGY Orchestra.

Friday, October 6, 1922.

- 11:55 A. M. U. S. Naval Observatory time signals.  
12:30 P. M. Noon stock market quotations.  
12:40 P. M. Music.  
12:45 P. M. Weather report on 485 meters wave-length.  
2:00 P. M. Music and talks of interest to women.

**WGY Hears Drama by Wireless**



Edward H. Smith and players in scene from "The Wolf"

6:00 P. M. Closing produce and stock market quotations; news bulletins.  
 6:30 P. M. "The Sing Sing of Old Man Kangaroo" from Kipling's "Just So Stories," Kolin D. Hager, reader.

7:40 P. M. Health Talk "Keeping Well In Cold Weather," by Dr. Herman M. Biggs, health Commissioner of New York State.

7:45 P. M. Musical program as follows:

Fox trot—"Don't Bring Me Posies," Rose, Windsor Novelty Orchestra, of Cochoes, N. Y.; Waltz—"While the Years Roll By," J. Austin, Orchestra; Contralto solo—"Old Fashioned Town," Squires, Mrs. L. Williams; Fox trot—"Love Among the Roses," Courtney, Windsor Novelty Orchestra; Piano solo—"Melodie," Huertter, Robert Armbruster, Duo-Art; Waltz—"In Maytime," Snyder, Windsor Novelty Orchestra; Contralto solo—"Oh, Promise Me," from Robinhood, DeKoven, Mrs. L. Williams; Fox trot—"Just One More Dance," Curtis, Windsor Novelty Orchestra; Piano solo—"Turkish March," from "Ruins of Athens," Beethoven, Josef Hofmann; Duo-Art; Fox trot—"Truly," Rose, Windsor Novelty Orchestra; Fox trot—"Lonesome Mama Blues," Brown, Orchestra; Contralto solo—"Bid Me Good-bye," Weatherly-Tosti, Mrs. L. Williams; Waltz—"Call Me Back Pal O'Mine," Simmons, Windsor Novelty Orchestra; Fox trot—"Swanee Bluebird," Conrod, Orchestra.

10:30 P. M. Musical program as follows:

Orchestra—"Barcarolle," "Tales from Hoffmann" Offenbach, WGY Orchestra; Piano solo—"Notre Dame," MacDowell, O. G. Yettru; Soprano solo—"My Laddie," Thayer, Jane Kugler; Orchestra—"La Zingana," C. Bohm, WGY Orchestra; Violin solo—"Tints," Burleigh, Edward A. Rice; Soprano solo—"The Last Rose of Summer," Old English, Jane Kugler; Trio—"Gavotte" in style of Louis XIII, Fisher, WGY Trio; Piano solo—"Pastorale," Sibelius, O. G. Yettru; Cello solo—"The Palms," Faure, Ernest Burleigh. Soprano solo—"The World in June," Spross, Jane Kugler; Violin solo—"Ballet Music from Rosamunde," Schubert-Kreisler, Edward Rice; Trio—"La Serenata," Braga, WGY Trio.

**WESTINGHOUSE STATION WBZ**

**360 Meters Springfield, Mass.**  
 Eastern Standard Time

7:30 P. M. Uncle Wiggily Bedtime Story from the Springfield Union.

7:45 P. M. Prominent speaker, market and weather reports.

8:00 to 9:00 P. M. Program of music.

3:00 P. M. Sunday—Radio Chapel.

8:00 P. M. Sunday—Church Services.

**AMERICAN RADIO AND RESEARCH CORPORATION STATION WGI**

**360 Meters Medford Hillside, Mass.**

1:55 P. M. Music.

2:00 P. M. Current Events. (Boston Traveler.)

6:30 P. M. Baseball scores; late news. (Boston American) Tuesdays and Thursdays, 6:45 P. M.

6:45 P. M. Boston Police Reports, except Tuesday and Thursday at 6:55 P. M.

7:00 P. M. Special Talks.

7:30 P. M. Program of Music.

**Proposed Schedule for Class A Stations Second District, New York Operating on 360 Meter Wave**

Time	Mon.	Tues.	Wed.	Thurs.	Fri.	Sat.	Sun.
7:00-8:00 AM	WHN	WHN	WHN	WHN	WHN	WHN	
8:00-9:00 AM	TESTING AT THIS PERIOD						
9:00-9:15 AM	WJZ	WJZ	WJZ	WJZ	WJZ	WJZ	
9:15-9:45 AM	WBAN	WBAN	WBAN	WBAN	WBAN	WBAN	
9:15-11:00 AM	WHN	WHN	WHN	WHN	WHN	WHN	
10:30-11:00 AM	WBAN	WBAN	WBAN	WBAN	WBAN	WBAN	WJZ
10:00-10:30 AM	WFAF	WFAF	WFAF	WFAF	WFAF	WFAF	
11:30-11:45 AM	WFAF	WFAF	WFAF	WFAF	WFAF	WFAF	WJZ
11:00-11:55 AM	WAAM	WAAM	WAAM	WAAM	WAAM	WAAM	WJZ
11:55-1:00 PM	WJZ	WJZ	WJZ	WJZ	WJZ	WJZ	WJZ
1:00-1:15 PM	WBAN	WBAN	WBAN	WBAN	WBAN	WBAN	
	WHN	WHN	WHN	WHN	WHN	WHN	
1:15-2:15 PM	WWZ	WWZ	WWZ	WWZ	WWZ	WWZ	
2:15-2:30 PM	WBAN	WBAN	WBAN	WBAN	WBAN	WBAN	
	WHN	WHN	WHN	WHN	WHN	WHN	
2:30-3:00 PM	WHN	WHN	WHN	WHN	WHN	WHN	
	WRW				WRS		
3:00-4:00 PM	WAAM	WAAM	WAAM	WAAM	WAAM	WAAM	WJZ
4:00-4:15 PM	WFAF	WFAF	WFAF	WFAF	WFAF	WFAF	WJZ
	WJZ	WJZ	WJZ	WJZ	WJZ	WJZ	WJZ
4:15-4:30 PM	WHN	WHN	WHN	WHN	WHN	WHN	WJZ
4:30-5:30 PM	WHN	WHN	WHN	WHN	WHN	WHN	
	WBAN	WBAN	WBAN	WBAN	WBAN	WBAN	
5:00-5:30 PM	WRW		WRW			WRW	
5:30-6:15 PM	WJZ	WJZ	WJZ	WJZ	WJZ	WJZ	
6:15-7:00 PM	WRW	WRW	WRW	WRW	WRW	WRW	
6:30-6:45 PM	WBAN	WBAN	WBAN	WBAN	WBAN	WBAN	WJZ
7:00-7:30 PM	WJZ	WJZ	WJZ	WJZ	WJZ	WJZ	WJZ
	WAAT			WAAT		WAAT	WJZ
7:30-8:30 PM	WHN			WHN	WJZ	WHN	WJZ
	WRW			WRW		WRW	WJZ
	WBS			WBS		WBS	WJZ
	WBAN			WBAN		WBAN	WJZ
7:30-9:00 PM		WWZ	WRW				
			WBS				
			WHN				
			WAAT				
			WBAN				
			WAAM				
8:00-9:00 PM							
8:30-10:30 PM	WJZ			WJZ	WJZ		WJZ
8:30-11:00 PM							WJZ
9:00-10:30 PM		WJZ	WJZ				
10:30-12:00 PM	WRW	WRW	WRW	WRW	WRW	WRW	
	WHN	WHN	WHN	WHN	WHN	WHN	

NOTE:—WJZ, Radio Corp.—Westinghouse Station, Newark, N. J.; WWZ, John Wanamaker, New York; WBS, D. W. May, Newark, N. J.; WHN, Ridgewood Times, Ridgewood, L. I.; WRW, Koenig Bros., Tarrytown, N. Y.; WBAN, Wireless Telephone Company, Paterson, N. J.; WAAT, Jersey Review, Jersey City, N. J.; WAAM, I. R. Nelson Company, Newark, N. J.; WFAF, Shotton Elec. Co., Poughkeepsie, N. Y.

**Proposed Schedule for Class B Stations Second District, New York Operating on 400 Meter Wave**

**EVENING SCHEDULE**

Time	Mon.	Tues.	Wed.	Thurs.	Fri.	Sat.	Sun.
7:38-9:30 PM			WGY		WGY		
7:40-9:30 PM		WGY		WGY			
8:00-9:00 PM					WOR		
8:00-9:30 PM		WOR					
8:55-9:30 PM	WHAZ						
10:28-11:45 PM					WGY		

NOTE:—WBAY, American Tel. & Tele. Co. of New York, will also have an evening schedule. The daytime schedule has not been decided. WOR, L. Bamberger & Co., Newark, N. J. WGY, General Elec. Co., Schenectady, N. Y. WHAZ, Rennsaler Polytech. School, Albany, N. Y.

Chicago and Mid-West District

WESTINGHOUSE-RADIO STATION KYW

360 Meters Chicago, Ill.

Central Standard Time

Sunday, October 1, 1922.

3:30 P. M. Radio Chapel Services conducted by Rev. David E. Gibson, priest-in-charge of the Episcopal Cathedral Shelter, a home for homeless men, 117 North Peoria Street, Chicago, Ill.

Monday, October 2, 1922.

8:00 P. M. Musical program by Zita Norpell, soprano and violinist; J. Edson Farrar, tenor; Dora M. Owens, reader.

Program: "The Rosary" Nevin, and "Happy Days" Strelzki, by Zita Norpell; "The Lost Pocketbook" Guest, and "Husbands" by Dora M. Owens; "Springtime of Love" Foster, and "If I Forget," sung by J. Edson Farrar; "Believe Me If All Those Endearing Young Charms" Harris, and "Souvenir" Drdla, by Zita Norpell; "Some-day, Sometime" Clark, and "Robin, Robin Sing me a Song" sung by Zita Norpell; "Procrastination" and "Payment" read by Dora M. Owens; "Homing" Del Reigo and "Morning" Speaks, by J. Edson Farrar; "Ave Maria" Gounod, and "Souvenir De Wieniawski" Haesche, played by Zita Norpell.

Tuesday, October 3, 1922.

8:00 P. M. Program arranged through the courtesy of Lyon & Healy Concert and Artists' Department. Program will be announced by radio telephone.

Wednesday, October 4, 1922.

8:00 P. M. Concert by Lillian Aileen Landwer, soprano, with Edith Valentine, accompanist; Frank J. Flood, baritone, with Mary O'Donnell, accompanist; Welcome B. Kirby, flute, and Merles Stassen Kirby, accompanist; and Benedict Saxe.

Program: "My Heart At Thy Sweet Voice," Saint-Saens, and "I Dreamt I Dwelt in Marble Halls" Balfé, by Lillian Aileen Landwer; "Entre Acte" Quensel, and "Call Me Back Pal Of Mine" sung by Welcome B. Kirby; "The Deathless Army" Trottere, and "Requiem" Homer, by Frank J. Flood; "Rondo in A Minor" Mozart, and "Polichinelle" Rachmaninoff, by Benedict Saxe; "Sweet Alice, Ben Bolt," Old English, and "Just a Song at Twilight" Molloy, by Lillian Aileen Landwer; "Blue Bells of Scotland with Variations," Richardson, "Believe Me If All Those Endearing Young Charms" Moore, by Welcome B. Kirby; "Shipmates O' Mine" Sanderson; "Absent" Metcalf, by Frank J. Flood; and "Hungarian Rhapsodie No. 8" Liszt, by Benedict Saxe.

Thursday, October 5, 1922.

8:00 P. M. Musical program by Brader's Hungarian Gypsy Orchestra, Prof. Gyula Brader, director; Ethel Gillen, soprano, with Clementine Gillen, accompanist.

Program: "Pique Dame Overture" Suppe, by Prof. Brader and his Orchestra; "My Country March" Brader, by the Orchestra; "Love Me and the World is Mine" Ball, by Ethel Gillen; "Hungarian Fantasia" Brader, with cello solo, by Prof. Brader and his Orchestra; "Csardas Hungarian Dance" Brader, by the Orchestra; "Happy Moments" Polonaise, Brader, by the Orchestra.

Friday, October 6, 1922.

8:00 P. M. Concert arranged through the courtesy of Lyon & Healy Concert and Artists' Department. Program will be announced by radio telephone.

Saturday, October 7, 1922.

8:00 P. M. Musical program with Marie McConnell, soprano, and Mrs. John P. Fitzpatrick, accompanist; Theodore Becker, clarinet, with Elsa Becker, accompanist; Eugenia McShane, pianist.

Program: "Slave Song" Del Reigo, and "Barcarolle," Offenbach, by Marie McConnell; "Beneath Thy Window," Le Thiere, and "Serenade," Moszkowsky, by Theodore Becker; "Cholla Dance" Grunn, and "Dance of the Young Maidens" Strickland, by Eugenia McShane; "I Love You Truly" Bond, and "My Wild Irish Rose" Olcott, by Marie McConnell; "Cavatina" Raff, and "In Rose Time" Phillips, by Theodore Becker; "To Spring" Grieg, "To My Beloved" Schutt, by Eugenia McShane.

Sunday, October 8, 1922.

3:30 P. M. Radio Chapel Services conducted by Rev. Joseph Croft Dent, pastor of the Judson Baptist Church, North Austin Boulevard, Oak Park, Ill. The subject of his sermon is "The Most Powerful Thing in the World." The Judson Male Quartet and other notable singers will furnish the music.

Weekday Schedule

- 9:25 A. M. Opening Market Quotations, Chicago Board of Trade.
- 10:00 A. M. Market Quotations, Chicago Board of Trade. Quotations every half-hour thereafter until 1:00 P. M.
- 1:20 P. M. Closing Market Quotations, Chicago Board of Trade.
- 2:15 P. M. News and Market Reports.
- 2:30 P. M. Closing Quotations, Chicago Stock Exchange.
- 3:00 P. M. American and National League Baseball Team Line-ups; progress of games every half-hour thereafter until close of all games.
- 4:15 P. M. News, Market and Stock Reports.
- 6:30 P. M. News, final Market, Financial and Baseball Reports.
- 7:15 P. M. Baseball Report, Children's Bedtime Story.
- 8:00 to 9:00 P. M. Musical Program. (See daily programs.)
- 9:00 P. M. News and Sports.
- 9:05 P. M. Special Features (as announced by radio-  
phone.)  
News of the business world furnished at 6:30 P. M. by Chicago Journal of Commerce.  
News and baseball returns furnished by Chicago Evening American.

Talks on correct wearing apparel for men and women and suggestions for the home are broadcasted each Wednesday evening from 9:05 until 9:25. These articles are furnished by the Nast Publications: Vanity Fair, Vogue, and House and Garden.

"Editorials on Timely Topics" from the Chicago Herald and Examiner, are broadcasted each Thursday night from 9:05 until 9:25 P. M.

Reviews of the latest books given every Friday night from 9:05 until 9:25 by Llewellyn Jones, literary editor of the Chicago Evening Post.

"Under the Evening Lamp," a service including stories, articles and humorous sketches, is given from 9:05 until 9:25 each Saturday evening. This service is furnished by the Youth's Companion.

## Artists at Chicago Station KYW



Upper Left to right—Rosemary Hughes, soprano; Sylvia Neikrug, violinist; Kathleen Morris, accompanist  
Lower Left—Giselle Roth, soprano; Lower Right—Elsie Victoria Daley, zither soloist

### THE PALMER SCHOOL OF CHIROPRACTIC STATION WOC

360 Meters Davenport, Iowa  
Central Standard Time

#### Sunday Schedule

- 9:00 A. M. Sacred Chimes Concert.
- 1:00 P. M. Popular and Concert Selections by The P.S.C. Orchestra.
- 6:00 P. M. Organ concert.
- 6:30 P. M. Baseball Finals.
- 7:00 P. M. Church Service.
- 8:00 P. M. The P.S.C. Orchestra and Musical Novelties.

#### Weekday Schedule

- 10:55 A. M. Time Signals (485 Meters).
- 11:00 A.M. Weather and Agriograms (485 Meters).
- 12:00 M. Chimes Concert.
- 1:30 P. M. Closing Stocks and Markets.
- 3:30 P. M. Educational Talk, by J. K. Hawkins.
- 5:45 P. M. Chimes Concert.
- 6:30 P. M. Baseball Scores.
- 7:00 P. M. Music Program.

WOC has completed the installation of the new transmitting apparatus and in three week's testing has reached every state in the Union except three.

### KESSELMAN-O'DRISCOLL CO. THE MUSIC CENTER OF WISCONSIN STATION WCAY

360 Meters Milwaukee, Wisconsin

#### Week-day Program

- 8:30 to 9:00 A. M. And hourly thereafter on the half-hour to 6 P. M., special concert, novelty and test programs as announced.
- 8:30 to 9:30 P. M. Regular concert program. Artists announced in daily papers.

#### Sundays

- 7:30 to 8:30 P. M. Radio Chapel. Sermons and sacred music.

### ST. LOUIS POST-DISPATCH, STATION KSD 360 Meters St. Louis, Mo.

Central Standard Time

Broadcasts Daily at 4:00 P. M. and 7:45 P. M.

#### Special Features

- 6:55 P. M. Monday—Weekly Business Report.
- 6:30 P. M. Tuesday and Thursday—Bedtime Stories.
- 7:00 P. M. Sunday—Radio Church Service.

**Southern District**

**ATLANTA JOURNAL STATION WSB**

360 Meters **Atlanta, Georgia**  
Central Standard Time

**Week-day Schedule**

- 12:00-1:00 P. M. Music (360 meters) and Weather (485 meters.)
- 2:30-2:35 P. M. Markets (485 meters.)
- 4:00-4:30 P. M. Howard Theater Overture.
- 5:00-6:00 P. M. Baseball scores, Southern, National and American Leagues: late news flashes, daily bedtime story, and musical selections.
- 7:00-8:00 P. M. Concert of vocal and instrumental music.
- 10:45-11:15 P. M. Musical Program.

**Sunday Schedule**

- 10:54-12:30 A. M. Service from First Presbyterian Church, Atlanta.
- 5:00- 6:00 P. M. Services from Journal Studio,
- 8:00- 9:00 P. M. Services from Wesley Memorial Church, Atlanta.

**REICHMAN-CROSBY MEMPHIS PRESS STATION WKN**

360 Meters for Amusements Memphis, Tenn.  
485 Meters for Government

**Central Standard Time**

- 11:45 A. M. Weather Reports.
- 2:30 P. M. Bureau of Markets and Crop Estimates.
- 6:00 P. M. Baseball scores.
- 8:15 P. M. Music, Lectures, etc.
- 11:00 A. M. Sunday, Sermon.

**THE ALABAMA POWER COMPANY STATION WSY**

360 Meters **Birmingham, Alabama**  
Central Standard Time

**Week-day Schedule**

- 2:30 P. M. Closing Quotations of New York Stock Exchange, New York Cotton Exchange, New Orleans Cotton Exchange, Chicago Board of Trade. (Wheat, corn and oats.) Quotations (Morris Avenue, Birmingham) on fruits, produce, live stock, beef, hides and tallow, and poultry. Also local (Birmingham) securities and Liberty Bonds.
- 8:00 P. M. Concert Program by local artists, Monday, Wednesday, and Friday. Phonograph and reproducing piano, Tuesday, Thursday, and Saturday.

**Sunday Schedule**

- 8:00 P. M. Chapel services by pastors and choirs of Birmingham District.

**New Southern Station**



Station WFAA, of the Dallas News

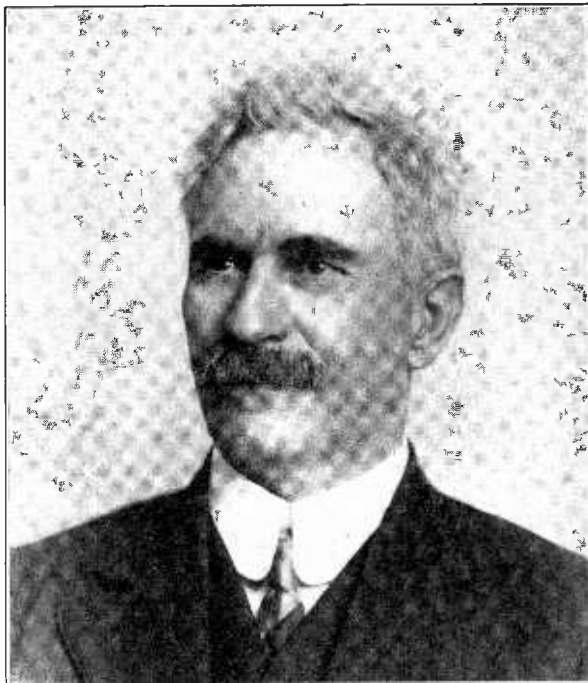
Broadcasting the Government Weather Report on 485 Meters, at 10:15 A. M., WFAA, the radio plant of The Dallas News and The Dallas Journal, gives a comprehensive program each day. Sunday services are marked by the Radio Chapel service. The Rev. William M. Anderson, Jr., pastor of the First Presbyterian Church, speaks each Sunday at 2:30 P. M. Baseball scores and a religious concert in the evening are the only other Sunday radio features from this plant.

During the week an effort is made to entertain the public with helpful lectures, market reports, baseball scores, news bulletins and musical programs. Local speakers are selected to make a fifteen minute talk each day at noon on some timely subject. A daily health talk by Dr. Wilson T. Davidson is read each day. The best of local talent and frequently visiting artists are obtained for the musical programs.

The weekly schedule from WFAA is as follows:

- 10:15 A. M. United States Weather forecast and cotton region bulletin on 485 meters.
- 12:30 to 12:45 P. M. Music.
- 12:45 to 1:00 P. M. Fifteen minute talk.
- 2:00 to 2:30 P. M. Markets and news.
- 3:30 to 3:45 P. M. Market reports and early baseball scores.
- 6:45 to 7:00 P. M. Baseball finals American and National leagues.
- 7:30 to 8:00 P. M. "Uncle Wiggily" bedtime story and late news.
- 8:00 to 8:30 P. M. Musical program.

**RADIO CHAPEL**



F. J. Stinson, B. A., D. Ph.

Radio Chapel at KDKA, September 24, was conducted by the Reverend Doctor F. J. Stinson, pastor of the First Christian Church, McKeesport, Pa.

Dr. Stinson is of Scotch descent and is a graduate of Toronto (Canada) University from which he received his Master's degree. He studied theology in the Knox College Theological Seminary of Toronto from which he received his Doctor's degree.

Some of the most prominent churches in his denomination have been his pastorates in Missouri, Iowa and Pennsylvania.

Dr. Stinson is a well-known lecturer, having toured the country under the direction of the Redpath Lyceum Bureau.

The address given by radio on "Vital Needs of the Hour" is one of his most popular ones, and though he has given it before great congregations, we feel safe in saying that his audience by radio was far greater than any to which he had previously spoken.

**RADIO GOLF**

**RULES**—Tube detector with regenerative circuit allowed, but no amplification is to be used.

Each person keeps his own score, by estimating distance of stations heard and totalling results. No station should be counted more than once.

Only stations should be reported which have been heard since July 1, 1922, and only stations sending voice or music.

Some of the scores recently received are listed below:

Paul Insley, Sylvania, Ohio.....	3,800
Louis S. Isbell, North Anson, Maine....	7,640
L. A. Nickell, Edina, Mo.....	13,935
W. R. Hinshaw, Windfall, Ind.....	18,955
Norman E. Day, Southern Pines, N. C....	28,864

**Comes Back for Radio Chapel**

Dr. Stanley A. Hunter will be welcomed October 1, by thousands who heard him conduct Radio Chapel on a previous occasion. He is one of Pittsburgh's most active ministers holding important positions in civic organizations and on the Boards of his own denomination. He is author of Religious Ideals of President Wilson.

Before coming to Pittsburgh in 1916, Dr. Hunter held pastorates in New York and Brooklyn.



Rev. Stanley A. Hunter  
North Presbyterian Church, North Side, Pittsburgh, Pa.

# Broadcast Bill's Radiolays

By William E. Douglass

Some people seem to think our pastor hasn't any right to do as others do except to work with all his might. He has to lead the Sunday School, an' preach the sermons too. On week days he has calls to make on neighbors sick or blue. There's marriages an' christ'nings an' a fun'ral now an' then. It keeps the parson



"The Secret of my Scheme wuz this"

busy an' I'll swear I don't know when he's had a bit of time that he could really call his own. But he's a mighty cheerful chap, you never hear him moan about the work he's doin'; never asked for a vacation. That's why us deacons figgered that he needed recreation. So, after much persuasion, parson took a trip out West to visit all his home folks there an' meanwhile get some rest. We left it up to Deacon Stiles to get a substitute to preach to us on Sunday, if he could get one to suit. The Deacon tried his level best; his efforts were in vain, until he came aroun' to me. I told him it wuz plain that if he couldn't get someone to speak here in our church I had a substitute that wouldn't leave us in the lurch. "The Rev'rend Jones of Pittsburgh will be glad to help us out; I know that I can get him so you needn't start to doubt." "That's fine," sez Deacon Stiles, "I'll leave it strictly up to you to get someone to preach for us; go see what you can do." The secret of my scheme wuz this, a talk by radio. The funny part about it wuz I didn't let them know. On Sunday when 'twus time fer church, the Deacon sez to me, "I haven't seen yer preacher yet." "You'll hear him, wait an' see," I sez, "go start the singin' now, an' when it's time to preach I'll have the Rev'rend talk to us. They say that he's a peach." (On Saturday I'd fixed my set an' tried it out that night, so I'd be sure that everything would operate all right.) When the time came fer the sermon, I announced that Rev'rend Jones would talk to us by wireless on the subject, "Rollin' Stones." The paper said next day that it wuz quite an innovation. I ain't so sure what that means, but it pleased the congregation.

(Copyright 1922. Westinghouse Electric & Mfg. Co.)

**Important**

**RADIO BROADCASTING NEWS**

Weekly Radio Programs

Return Postage Guaranteed by  
RADIO BROADCASTING NEWS  
1205 Keenan Building Pittsburgh, Pa.

PRINTED IN U. S. A.

W.S. BEDELL JR.  
143 W. MITCHELL AVE.  
CLAIRTON PA.

