

RADIO DIAL

REGISTERED

Volume I, No. 23

WEEK ENDING OCTOBER 30, 1931

Price 5c

Hoover, Roosevelt, John McCormack, Al. Smith Will Broadcast This Week

Commander Ellsberg Will Dramatize Story of Fatal S-51 Sinking

Commander Edward Ellsberg, whose work in directing the raising of the submerged U. S. Submarine S-51 won for him world-wide praise and the Distinguished Service Medal, will take part in a radio dramatization of "On the Bottom," his own story of the fatal submerging and salvaging of the S-51.

The drama will be presented over the Columbia network and WKRC in two episodes of the "Romances of the Sea." The first will be this Sunday (October 25) and the second on Sunday, November 1, both at 9:30 p. m.

Ellsberg, who was elevated to the rank of Commander by a special act of Congress in 1929 for his heroic work in connection with the raising of the S-51 and the salvage operations on the S-4, will tell the story of the submerging of the S-51 by the steamship "The City of Rome" 150 miles at sea and the heroic work of the men aboard the Fulton, the vessel sent to the rescue.

Commander Ellsberg has contributed to leading periodicals, and "On the Bottom," his story of the S-51, was translated into Danish, Argentine and Spanish. His other books are "Thirty Fathoms Deep" and "Salvage Operations on the S-51."

Ellsberg is the inventor of an underwater torch for cutting steel and is the designer of the system now used by the United States Navy in the salvaging of submarines.

Dr. John Dewey to Use Radio for Education Talk

Dr. John Dewey, philosopher, author and teacher, will discuss education in an address over WSAI and a National Broadcasting Company network Sunday (October 25) at 7 p. m. Professor Dewey is the second speaker of the "Men of America" series presented periodically under auspices of the National Advisory Council on Radio in Education. Dr. Dewey, for 27 years a teacher of philosophy at Columbia University, has taught in numerous American universities, is the author of various philosophical works, and has headed America's philosophical societies at various times.

Madame Ernestine Schumann-Heink says her grandchildren refuse to be taken to the movies on Friday mornings because they insist on hearing the Danrose Musical Appreciation Hour at 11 o'clock (NBC through WSAI).

Eminent German Economist Speaks From Berlin Sun.

Professor Moritz J. Bonn, one of Germany's most eminent economists and widely known authority on world finance, will be heard in the international broadcast scheduled for 12:30 p. m. Sunday (October 25) over the Columbia network (try WABC-860ke.). Professor Bonn, who will speak from Berlin, has taken as his subject "German Hopes and German Fears." Dr. Bonn was German economic adviser at the Versailles Peace Conference in 1919, and became professor of economics at the Berlin School of Commerce the following year.

Danger Fighters is Radio Sketch Based on Disease

Listeners who glory in case histories of distressing and unusual diseases, will find a radio program to their taste in "Danger Fighters," a series of broadcasts based on Paul de Kruif's books, "Microbe Hunters," and "Hunger Fighters." Each broadcast will tell the story of the inroads some disease has made on human life. The first one, on Saturday (October 24) at 8 p. m., is titled "The Red Butterfly." It deals with a disease that follows the appearance on the arm of a red butterfly-shaped mark. WHAS (720 kc.) is the nearest outlet.

See Page 6 for NBC and CBS Programs not broadcast by Greater Cincinnati radio stations. & Complete radio programs begin on page 7.

Lillian Roth is Linit Star



Lillian Roth, motion picture actress who is both singer and comedienne, will be guest entertainer on the Linit program at 7:30 p. m. Monday, Wednesday and Friday of this week (October 26, 28 and 30), with WKRC broadcasting in connection with the Columbia network. Miss Roth recently appeared in "The Love Parade," "Animal Crackers," and "The Vagabond King." Maximilian Pilsner and his symphonic dance orchestra will accompany her.

Bill Steinke, ex-newspaperman and cartoonist, heard in NBC's "Jolly Bill and Jane" skit through WSAI at 7:45 a. m. daily, also is heard as guest announcer and animal imitator on other programs. Recently he

President Hoover Speaks Sunday

President Hoover, addressing the sixth Methodist Ecumenical Conference, will be heard on National Broadcasting Company and Columbia stations at 4:45 p. m., Sunday (October 25). WKRC will carry the talk locally. WHAS (720 kc.) probably will carry the NBC version.

Although the conference will be held in Atlanta, Ga., Mr. Hoover will speak from his office in the White House.

Roosevelt, Smith Will Dedicate N. Y. Memorial

Ceremonies in connection with the laying of the cornerstone of the New York State Roosevelt Memorial in New York City will be broadcast over WKRC and the Columbia network from 2:30 to 3:15 Tuesday afternoon (October 27), the seventy-third anniversary of the birth of the late Theodore Roosevelt.

Addresses by Governor Franklin D. Roosevelt of New York, former Governor Alfred E. Smith of New York, Mayor James J. Walker of New York, and Dr. Henry Fairfield Osborn, President of the American Museum of Natural History, will be heard during the 45-minute broadcast. The memorial, being erected by the people of the State of New York, is an education building, chiefly for the youth of the State, adjacent to the American Museum of Natural History.

John McCormack Is G. E. Soloist

John McCormack, who is to Irish tenors what Anns 'n' Auddy are to black-face acts, will sing Sunday (October 25) at 5:30 p. m. in the new General Electric Twilight program which WSAI will carry from the NBC network.

McCormack is one of many operatic stars who are to sing in the series, introduced a week ago by Geraldine Farrar. Maria Jeritza is to appear soon. Instead of singing arias from the operas in which they have been starred, they will sing homey songs familiar to everyone.

Weekly RADIO DIAL

Published every Thursday by the Radio Dial Publishing Co., 22 East 12th St., Cincinnati, Ohio. Contents copyrighted.

Entered as second-class matter July 29, 1931, at the post office at Cincinnati, Ohio, under the Act of March 8, 1879.

NATALIE GIDDINGS, Editor E. E. HARRIS, Bus. Mgr.
VOL. I WEEK ENDING OCTOBER 30, 1931 No. 23

IN MEMORIAM



Dorothea Barlow's lovely voice is silent.

At WLW her friends were stunned with the suddenness with which Death took her from among them. A week ago she was on the air as Honey Adams in Heatrolatown, in the Crosley Follies, in the Crosley Theater. A sudden cold sent her to the hospital, where a complication of pneumonia and diphtheria was fatal and where last Saturday (October 17) she passed away.

Dorothea was one of the loveliest of girls; lovely to look at, charming to talk to, friendly and democratic to all. She was one of the few who was always calm and serene in the midst of the bustle of broadcasting. Everyone admired her, everyone was fond of her. No storms of "temperament" ever annoyed her friends or her directors. She was always ready to do her share, always able to do any work that was given her as her part in the business of entertaining millions.

In her two years at WLW she played many parts on the air. She must have made many people happy who heard her. She certainly made happy those who worked with her. She is gone, but the sound of her voice will ring long in their ears.

BIRTH OF JAZZ

Old timers of the San Francisco Symphony orchestra recall that back in the days when Nikolai Sokoloff, now leader of the Cleveland Symphony, was their director, a young violinist in the ensemble, was a headache to him. He was always a beat behind the baton. Finally, they say, Sokoloff threatened to fire him unless he started on time. For two nights thereafter the violinist tried to obey—and he didn't fall behind. He was, indeed, always one beat ahead. Sokoloff finally called him aside and said: "Young man, perhaps you are an excellent violinist, but you have no business playing in an orchestra. You are fired, and may someone bless you. I can't."

So Paul Whiteman was out of a job and had to form his own orchestra.

Joe Sanders of Coon-Sanders and their Night Hawks (broadcasting from Hotel New Yorker for NRC) is an amateur photographer and has a photographic record of every date the orchestra has played. He's three years behind in pasting up his scrap books and plans to spend the winter catching up on his home work.

McNamee Must Mind His Words or Fans Respond

Graham McNamee had to mind what he said while announcing the World Series games.

In 1925, announcing a game in Pittsburgh, he remarked that soot had soiled his collar. The next mail brought a shower of all sorts of neckwear—white, colored, linen, celluloid.

Another time it rained during a World Series game. "Gosh, I'm wet," said McNamee. Fans everywhere sent raincoats, scarfs, overshoes, slickers.

At the conclusion of a game at Pittsburgh he said, "I hope the hotel in Washington hasn't forgotten to reserve me a room. I'll be in the capital in the morning." As soon as the program was over the Washington hostility was flooded with phone calls and telegrams asking reservations for McNamee.

Porous pillows that allow a hospital patient to listen to radio without disturbing other patients are a part of the radio installation in Bellevue Hospital, New York City. Either of two programs can be heard; one is received in each end of the pillow. Complete radio receiving systems will be installed in each of New York's 26 municipal hospitals.

Sophie Braslau Sings Sunday



Sophie Braslau, one of America's leading contraltos, sings at 1 p. m. every Sunday on the NBC network headed by WFAA (660 kc.) in the NBC Artist Service program.

Adult Education Gets Its Chance

Adult education on a national scale is taking to the air. Here is something with the earmarks of being more than just incidental.

Not that educational broadcasting itself is uncommon. Programs intended as a supplement to classroom instruction have become familiar. But educational broadcasting aimed at the adult audience is comparatively rare, and for the most part limited to individual stations.

So the series of Saturday night programs being launched over the NBC Red network (including WSAI) by the National Advisory Council On Radio In Education promises to attract interested attention. For, besides being the most pretentious effort at adult education by radio thus far undertaken, it reaches a nation-wide audience.

Naturally, there is a sharp divergence of opinion regarding the demand for broadcast educational material. Venturing to add our views to the collection, we should say that the demand is considerably more brisk than some believe.

Learning (the real heart of education) is one of the most interesting and stimulating of man's pursuits. The widespread urge for self-improvement clinches that. Moreover, as far as radio is concerned, the marked preponderance of light entertainment makes something more meaty a welcome variety.

But the important thing is not so much whether there is a demand for adult education by radio. Rather, the more pertinent query is whether broadcasting can adapt its methods to meet this demand in a satisfactory way.

Thus far, serious doubts on that point have been raised in several quarters. Accordingly, the new series of programs should go far toward providing a conclusive answer.

Further, every listener is placed in the interesting position of being able to judge the results intelligently for himself. Determining the efficacy of broadcasting intended for school use must, of course, be left to teachers, since classroom pedagogy is a specialty. However, in the adult education field the layman's opinion means something.

So, now that adult education by radio has its chance, it should be doubly interesting to see what it does with it.

Heavyweight Beauty Makes Debut—Wrapped in Cellophane!



Strong men wept and women swooned when, at the annual party of the Columbia Broadcasting System given recently in New York, the curtains parted to disclose the new Heavyweight Beauty Queen of WABC and her attendant quintet of dainty, dancing damosels. As a precaution against malign night vapours, the delicate little charmer was wrapped in cellophane as shown. Left to right, standing they are: Teddy Bergman of "Henry and George," Jacques Renard, conductor of the Camel program, and F. Chas. Taylor, alias "Colonel Stoopnagle." Kneeling: Bud Hulick, Stoopnagle's partner, Jack Smart of "Dutch Masters" and Nat Brusiloff, orchestra leader.

U. S. Short Wave Stations

- W2KAD—Schenectady, 6,020 kc. (19.56 m.) Gen. Elec. Co.
- W2WE—Jamaica, 11,840 kc. (25.34 m.) Atlantic Broadcast. Corp.
- W3XAL—Bound Brook, N. J., 6,100 kc. (49.18 m.). N. B. C.
- W3XAL—Bound Brook, N. J., 11,720 kc. (25.60 m.). R. C. A. Communication.
- W6XAL—Westminster Col., 15,230 kc. (19.67 m.). Pacific Broadcast.
- KZRM—Merrill, P. I., 9,570 kc. (31.35 m.).
- W8XAL—Cincinnati, O., 6,660 kc. (49.50 m.). Crosley Radio Corporation.

Succeeding Bing Crosby at 11 p. m. daily on Columbia is the Street Singer—Arthur Tracy by name—who accompanies himself on the accordion.

Scouting for ideas in engineering, programs, and architecture for New York's Radio City, a party of NBC executives have gone to Europe. Included are O. B. Hanson, manager of plant operations and engineering; S. L. "Rosy" Rothafel, theater man and producer; Gerald Chaffin, NBC technical art director, and L. Andrew Reinhardt and Wallace K. Harrison, architects.

Around the Dial

By THE DIAL TWISTER

Well, well! So WLW took Texas Guinan off the air because listeners swamped the station with telephoned protests. Here's one for anybody's book. The hangar that turns the dial has a lot to do with programs after all. Yes, and just who's the "sucker" now? * * *

Put down that program by the New York Philharmonic Orchestra (WKRC, Sunday at 3 p. m.) among the week's high spots, if you're a lover of symphonic music. It's the real thing; full-length and with chatty comments by Olin Downes, music critic, during the intermission to make it still more interesting. * * *

The American Album Of Familiar Music (WSAI, Sunday at 9:15 p. m.) is just the kind of program listeners have come to expect from Gus Haenschen. Splendidly varied concert numbers by a corking orchestra. It will be sidetracked by the occasional Atwater-Kent Hours. But when it's on, it's worth a listen. * * *

Who says listeners don't notice things? There's the recent illness of "Amos" to prove they're wrong. So many people wanted to know why he sounded different, that the sponsor had to ditch his sales talk and explain. Which is "something" sure enough. Yes, and here's handing it to Freeman H. Gosden for the courage to carry on. * * *

If the first program is a fair sample, those concerts by the Philadelphia Orchestra (WKRC, under the Philco sponsorship) are going to be the big moments of the winter's broadcasting. The tone quality is better than ever, and Stokowski had the best before. Besides, the programs are full length, which makes the difference between a sandwich and a meal. * * *

Those who follow the international situation have a hearty welcome for James G. McDonald and his series of talks on The World Today (WSAI, Thursday at 7:15 p. m.). He's concise, up-to-the-minute, and informed. That's just about an unbeatable combination. * * *

The new Hart, Schaffner and Marx program (WKRC, Thursday at 10 p. m.) picked a winner in Edwin C. Hill. This veteran New York Sun reporter is keenly interesting. * * *

The Florsheim Frolic is back on the air (WSAI, Friday at 10 p. m.) with a leading popular act set off by Drs. Pratt and Sherman. These

guaranteed laugh-makers came over to NBC along with WMAQ. * * *

Those Regal Radio Reproductions (WKRC, Friday at 9 p. m.) are an interesting novelty. Some of the imitations of air personalities are so good you wonder if they aren't slipping over the real thing on you. * * *

For a program of real variety, not just a jumble, here's nominating the Armour Hour (WLW, Friday at 9:30 p. m.). The orchestra and vocalists are top-notch. It's another fine program from the NBC Chicago studios. The Windy City headquarters of NBC seem to be stealing the show from New York these days. * * *

The Boswell girls are singing for Baker's Chocolate (WKRC, Monday, Wednesday and Friday at 7:30 p. m.). Which insures their being heard. It's a good break, too, because their harmonizing is the genuine article. * * *

Billy Jones and Ernie Hare, who sock you on the Interwoven program (WCKY, Friday at 9 p. m.) are still just about the class of the harmony experts in the male division. Besides, their gags are good for plenty of laughs. * * *

The Eno Crime Club is complete in one issue now (WKRC, Wednesday at 9:30 p. m.). That's a break for those who simply can't wait to know who the villain is. * * *

A program of real music that's getting an appreciative hearing is the Morning Musicals (WLW, Sunday at 11:30 a. m.). An excellent string group and an able tenor make mighty profitable use of the 30 minutes. * * *

Gene Arnold, NBS announcer whose "Beautiful Thoughts" program is heard daily now on WLW at 9:30 a. m., is gaining fame as a song writer. His "Little Old Church in the Valley" has mounted to be the best seller class, and he's soon to publish another song, "Blue Ridge Moon," written in collaboration with Gus Kahn and Egbert Van Alstyne. * * *

When Gene Tunney won the world's heavyweight championship from Jack Dempsey, Eddie East and Ralph Dunke, NBC's Corliss Sisters of the Skillet, were inspired to do a bit of boxing themselves. Before a vaudeville performance in Buffalo, they bought two pairs of cheap boxing gloves and boxed in their dressing room. When their stage cue came, Eddie's nose was bleeding and Ralph had a black eye.

Our Dially Dozen

By
DON BECKER

Sunday Afternoon at Two, we waited for the Crosley Theatre, little knowing that the Players had lost a trouper... little knowing that tears were in the eyes of hard-boiled musicians, and the never failing throat of Robert Brown was rendered almost speechless from grief.

Dorothea Barlow had left WLW. And my typewriter won't work... and my eyes are red... and I'm sad. But as Bob Brown said, "trite as it may seem, nevertheless it is true... THE SHOW MUST GO ON!"—and Doty Barlow will listen to us in another land... one of the few lands from which WLW hasn't received a Fan letter.

As a former colleague of Dorothea, The Crosley Players and Station WLW, I want to extend my heartfelt sympathy to her grief-stricken mother, and even though these words are futile things, surely it must be a comfort to Mrs. Barlow to know her daughter's memory is cherished by a league of persons fortunate enough to have claimed Doty's friendship.

The other night I stuck the wrong end of a cigarette in my mouth. It burned me. And I was hot! Eddie Cantor (you know Eddie Cantor) piped up and said, "That reminds me. That was my Ainee Sempie MacPherson got married!" "How come?" "She was called 'Hutton-Bothered'!"

Speaking of Eddie Cantor reminds of a mistake Ford Bond of NBC made the other night on the Gold Medal Express program. He referred to "Palmy Days" as Al Jolson's newest talking picture. We saw "Palmy Days" and derided it we remember seeing anything of Al Jolson in it, but we do think Eddie Cantor came on the screen once or twice!

AND NOW WE HEAR THAT:

Rudy Vallee is trying for a Vice-Presidency chair at NBC. We just can't imagine Rudy crooning a suggestion through a megaphone to Mr. Aylesworth.

Morton Downey's weekly (weakly) salary is \$9,000 a week. They wanted me to work for that, but I said \$25.00 or nothing!

Eugene Perazzo's Piano Playing in the WLW Revue at Taft Auditorium last Saturday and Sunday, absolutely "stunned" the audience. And he wasn't even mentioned on the program!

Silt and Pennants are joining Jerry Foy and Jack Foy at Station KDKA in Pittsburgh. Who's next?

Jimmy Krautter is carrying on with the "Lavender Network" and the Crosley Players. And doing a grand job of it too!

What we would like to know is this:

If an entertainer played on a radio program in New York City in the afternoon, and then flew to Ireland and played on a radio program there in the evening—

Would that be called "DUBLIN"?'
DIALAUGHINGLY YOURS,
DON BECKER

Florence Frey, WLW's beauty expert, and Announcers Sid Ten Eyck and Bob Burdette are to be judges for a bathing beauty contest at a Halloween party at Music Hall, October 30, for the benefit of the unemployed.

PROGRAM JOTTINGS

Friday, October 23
11 a. m. WSAI (NBC). "Molly on the Shore," by Percy Grainger and "Spiritual Motion," by Johann Strauss will be heard in the Musical Appreciation Hour directed by Walter Damrosch.



9:30 p. m. WSAI (NBC). Bernice Claire, musical comedy and motion picture star, will be guest artist on the Pond Dance Program. Miss Claire has appeared in many light opera and picture productions, including screen versions of "Mlle. Modiste" and "The Song of the Flame."

10 p. m. WLW. The Songsmiths quartet, which is heard during all the Maxwell House Tune Blenders programs, will sing one of their best comic numbers "Truthful Parson Brown," and an unusual arrangement of "Lazy Waters."

10 p. m. WKRC (CBS). Caprice "Ala Saltarello" by Wieniawski, Polish composer and violinist, will be one of the offerings by Tschca Seidel, concert violinist, in the Pillsbury Pageant.

10:30 p. m. WLW (NBC). Clara, Lou, and Em are now back on the schedule on both Friday and Saturday nights.

10:30 p. m. WSAI (NBC). Governor Ritchie, of Maryland, and humorist Irvin S. Cobb will speak in the RKO Theatre of the Air dedicated to the Southern Society of New York. Film, radio, and vaudeville stars will make whoopee.

12:30 a. m. William Steoss is getting a break he has long deserved as WLW's musical director in directing his orchestra in a program WLW sends to an NBC network.

Saturday, October 24

10 p. m. WKRC (CBS). "Never Too Late to Mend," a four-act domestic drama based on the novel of the same name written in the 19th century by Charles Reade, will be presented by the Hank Simmons Show Boat Dramatic Company.

11 p. m. WSAI. Midnight, WLW. Five celebrated jazz bands will fight a Battle of Music when they successively take the air from the Grey Stone Ballroom. Included are Blanche Calloway's Jazz Boys, Benny Moten's orchestra, Chick Webb, Johnson's Happy Pals, and Zack White's Beau Brummels.

Sunday, October 25

1:30 p. m. WKRC (CBS). Selected parts of Beethoven's beautiful "Mass in C" will be an offering of the Cathedral Hour.

3:00 p. m. WLW. Milan Petrovic, Serbian baritone and opera star, will give the Cincinnati Conservatory of Music artist faculty program. Petrovic who has appeared in opera in Vienna, Budapest, and with the Russian Opera Co. in Paris, will sing "Les Bercceaux," by Faure; two Strauss numbers, "Zueignung" and "Allerseelen"; "Do Not Go, My Love," by Hagenan; and "Song of the Volga Boatman," by Koenevan.

7:30 p. m. WCKY. Nellie Belle York, contralto, and Dorothy Franklin, pianist, will appear on the College of Music student recital.

8:15 p. m. WKRC. Harry Salter's Philco orchestra will play latest dance hits, and the xylophonist of the orchestra will play a solo version of the flashy "Raggin' the Scales."

9 p. m. WKRC (CBS). Radio listeners with a soft spot for a song that made its debut between "the gay nineties" and "the jazz twenties" may hear it played when the Dutch Masters present more than a score of such old favorites as "Lazy

Moon" and "Goodbye Girls, I'm Through."

10 p. m. WABC (860 kc.) Ernest Hutcheson, concert pianist, will play the first movement of Tschaiakovsky's "Concerto in B Flat Minor." The symphony orchestra which accompanies him also will play the Polovetzian Dances from Borodin's opera, "Prince Igor."

Merle Tucker of Waco, Texas, and Dave Roberts of WJAY in Cleveland are now announcers at WLW.

Monday, October 26

MORE SPORT TALKS
9:45 p. m. WFBE.



Bob Bishaw, manager of the Fountain News Shop, on Monday (October 26) will begin a series of sport talks he will continue at 9:45 p. m. every Monday for the next 16 weeks. Bishaw will review the most spectacular incidents in World Series games of the past. Titles of some of his talks include "Muffs and Catches at \$3,000 apiece," "Pirate-Tiger Feud of 1909," "Mighty Casey at the Bat," and "Baseball's Most Brutal Lining."

2 p. m. WLW. OHIO SCHOOL OF THE AIR. Current Events. 1:20. Civil Government, by Governor's Cabinet. 2:40. Nature Study; "Insects that Destroy Other Insects"; H. E. Eswine.

7:15 p. m. WKRC (CBS). Lillian Roth, movie comedienne and singer, is guest star in the Linft program. Also Wednesday and Friday (October 30).

9 p. m. WLW. Frank Simons, on-time boy cornetist with Sousa's band, will play the cornet solo "Willow Echoes" in the Armo Band concert which he also will conduct. Band numbers include Finale from

Welcome News



Welcome Lewis, who often has been mentioned before in these columns because of appearances as the Coty Melody Girl on Columbia, will be starred Tuesday night (October 27) in the Chevrolet Chronicles WLW will broadcast at 10 o'clock. Although under five feet in height, Miss Lewis has a voice almost baritone in quality. Fred Allen, stage comedian; Ohman and Arden, piano team, and other radio entertainers will share the program with Miss Lewis.

Tschaiakovsky's "Fourth Symphony" and "Anchors Aweigh."

9 p. m. WKRC (CBS). The Make-Up Box orchestra will present a program of hits from the newest Broadway shows, during the Pompeian program.

9:15 p. m. WABC (860 kc.). The Mills Brothers will offer another of their orchestra-less programs of symphonies on the Columbia network.

Philharmonic Will Interpret Schumann Work

Schumann's first symphony will be the principal work chosen by Erich Kleiber for performance in the concert by the New York Philharmonic-Symphony Orchestra, to be broadcast from 3 to 5 p. m. Sunday (October 25) through the Columbia network, including WKRC.

The complete program follows: Andante from a Pasthousum Symphony Bruckner Three Extracts from Lyric Suite, Arranged for String Orchestra Berg Menuet Antique Ravel Symphony No. 1 in B-flat Major, Opus 38 Schumann "Among Bohemia's Meadows and Flowers" Smetana

During the intermission Olin Downes, music critic, will describe the music, which will be broadcast from the stage of Carnegie Hall.

They include China Town; I'm No Account Anymore; Doin' the New York; Black and White (Fiddle and guitar); Red-Headed Baby.

9:30 p. m. WKRC (CBS). Rita Burgess Gould, lately seen at the RKO Albee here, will be the guest star on the "Evening in Paris" program.

9:30 p. m. WSAI (NBC). Arizona is honored in the General Motors Parade of the States with a cowboy quartet; a chorus, orchestra, and Elizabeth Lennox, contralto, as soloist.

12:45 p. m. WCKY. Mrs. James C. Layne, of Covington, will talk on "Tree Planting" in the program of the Kentucky Federation of Women's Clubs. Miss Louise Lee will play two violin solos, accompanied by Mrs. James Tarvin.

Tuesday, October 27

2 p. m. WLW. OHIO SCHOOL OF THE AIR. Literature and English: Rip Van Winkle. 2:30. Little Journeys in Ohio: B. A. Aughlinbaugh.

8:30 p. m. WLW. Werk Bubble Blowers play campus music including "Washington and Lee Swings," "College Medley," "Sweetheart of Sigma Chi," Melville Ray is soloist.

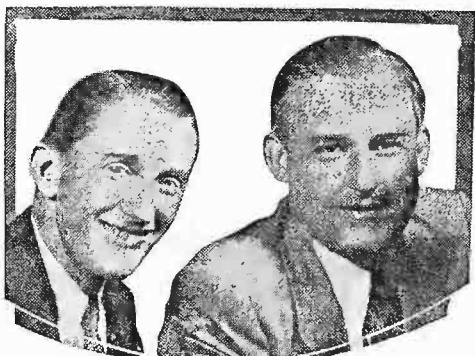
8:45 p. m. WKRC (CBS). Kate Smith will be Walter Winchell's guest star on the Gerardine program of Broadway gossip and Broadway entertainment. She sings Winchell's favorite song, "Star Dust." In addition to her regular radio appearances as La Palina entertainer, Kate has just completed a sensational run of 11 weeks at the Palace Theatre in New York City.

10 p. m. WLW. Chevrolet Chronicles present Welcome Lewis, Fred Allen (stage comedian) and Ohman and Arden, piano team.

Wednesday, October 28

2 p. m. WLW. OHIO SCHOOL OF THE AIR. Physics: "The Production and Uses of a High Vacuum," D. A. Wells. 2:20. "History Dramalogy," "Dutch Exploration." (Continued on Page 5)

MEET GENE AND GLENN, WITH JAKE AND LENA



Strange as it seems, here are Gene and Glenn and Jake and Lena just as they broadcast at 8 a. m. weekdays over WSAI and the NBC network from the WTAM studios in Cleveland.

You count only two, because Gene Carroll takes the part of Jake and Lena as well as playing "straight" to the two characters with Glenn (Rowell). The story has been told too many times to need repeating here of how Gene teamed with Ford (Rush) and Glenn after his partner, Jack Grady, lost his voice while singing at WLW. Three was a crowd, so Ford pulled out to become musical director of KMOX and later to come to WLW as Old Man Sunshine. At WTAM Gene and Glenn has been the same kind of a smash hit that Ford and Glenn were at WLW almost five years ago. They have just signed a five-year contract with Quaker Oats, their present sponsor.

If We Had Our Own Radio Station

By JACK SNOW
ANNOUNCER:
Good evening, Ladies and Gentlemen!
Tonight we are happy to present the program of the Matilda Washington Candy Company, featuring those three great artists, Ta-lolly-pop, England, Clark-bis, Gable and Sophie Sucker. The program opens with the Matilda Washington Candy Company theme song, "Sticky Fingers!"

NEW ANNOUNCER



Fred Utal is a new Columbia network announcer. He began his public career at the age of 10 in motion pictures. Later he sang in the Metropolitan Opera Company chorus. He was brought to Columbia to do special announcing from Jones beach and progressed to a regular place on the staff.

RADIO—TELEVISION

Complete technical training in radio, television, broadcasting, and the new field of "Electronics." All work supervised by leading engineers, men working with leading radio concerns. Tuition only \$5.00 month. Write immediately. Care RADIO DIAL, Box 100, Cincinnati.

If We Had Our Own Radio Station

By JACK SNOW

ANNOUNCER:

Ladies and Gentlemen: We are pleased to present the program of the Equine Mechanical Hobby Horse Company, manufacturers of the Equine Mechanical Reducing Horse. Our program of Equine Melodies opens with the theme song, "Give a Man a Horse He Can Ride!"

The New York Life program (WLW, Tuesday at 9:30 p.m.) is worth watching. Rosario Bourdon's crack orchestra and Frazier Hunt's interesting inserts make an admirable combination. Cal, the not now so silent, officiated on the premiere.

Sir Hubert Wilkins, the explorer, will tour the United States as a lecturer under NBC direction.

Here's Aileen's Latest Picture



Aileen Clark, who sings every Saturday night on the Club Val-spar broadcasts (WSAI 9:30 p.m.) just had this new picture made to please the fans who have fallen for her voice. She's the St. Louis girl who found herself booked for this commercial program 18 hours after she had her first NBC audition.

New York Notes

Your editor is no exception to the rule that when Cincinnatians go to New York, they come home and describe minutely the things they saw. Here are your editor's notes from Wednesday to Saturday in New York:



MORTON DOWNEY

Morton Downey is unbelievably young in appearance, a little plump, and very Irish. To watch him broadcast and to hear him at the same time is entertainment par excellence. He cups his right hand over his right ear to assure himself of fidelity of pitch. . . . Jacques Renard (Carnegie orchestra director) is perfectly round. He looks so exactly like his pictures that we greeted him like an old friend, to his surprise and our amazement.



TONY WONS

Tony Wons was referring slightly to his salary. It's a thousand dollars a week for the few words he says for Camel every day (he goes on at 11:30 p.m. too for western Columbia station). His morning Scrap Book periods are extra and are paid for by CBS. Tony is about to sue J. P. McEvoy because of the latter's "Are You Listening?" in Collier's. Tony is writing a book called "Are You Listening?" after the radio phrase he has been coming on the air with for years. He thinks he'll collect. . . . Ray Perkins has been thrust upon him by press agents and he's afraid of saying something awfully silly to his friends in keeping with the pose. He does his act at the piano, surrounded with microphones and pleasant Ezra McIntosh, his announcer, and leans his head on his hand and propped up by an elbow leaned against the piano music rack where he keeps his script. Untangle that sentence if you can.

CANTOR CARTOON



As Eddie Cantor with his banjo eyes faced the microphone a week ago as master of ceremonies for the Chase and Sanborn program (WSAI 7 p.m.), Fred Morgan, cartoonist, sketched this picture of him and Rubinoff, conductor of the orchestra.

to give a background of Oriental conversation.

Arthur Tracy, the Street Singer of Columbia's 11 p.m. programs, went up in a blimp to broadcast as a publicity stunt and got very seasick during the program. . . . Everyone is talking about "those marvelous Mills Brothers." Some thought they'd go on the new "Wrigley" program soon to start on Columbia at the Amor 'n' Andy hour, but Bing Crosby seems to have it "in the bag." Wrigley plans to spend a million on radio advertising—may have both.

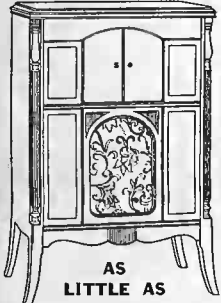
NBC has dyed its hangings different colors for different studios. They used to be neutral, like the walls. NBC has progressed down to the third floor of 711 Fifth Avenue—now occupies 10 or more floors. Statistics flew around so fast we can't remember. . . . Edward Cohan, CBS chief engineer, was complaining because expansion had put him down on the eighth floor of 485 Madison Avenue. "When I get into the sub-basement, I'll know Mr. Paley doesn't want me around any more and I'll leave," said he. . . . Mr. Paley, by the way, just turned 30, is reported to have the most expensive pent house in New York. He's CBS president.

GENERAL MOTORS RADIOS AT ABOUT 1/2 PRICE

Hepplewhite Model No. 120

Regularly \$136
\$69.50

COMPLETE WITH 8 MATCHED RCA RADIOTRON TUBES



\$2 Weekly Small Down Payment

Note these Important Features

- TRIPLE SCREEN GRID
- POWER DETECTION
- VOLUME CONTROL
- TONE INDICATOR
- FOUR TUNED CIRCUITS
- FULL SIZE PERIODIC CONSOLE

FREE HOME DEMONSTRATION

Hear this new General Motors Radio in your own home. Mail coupon to:

KRAUSS RADIO STORES
111 East Fifth St.

Name

Address

or Phone MAin 0568
R.D. 10-23-31.

FREE SERVICE—DELIVERY INSTALLATION

LIBERAL TRADE-IN ALLOWANCE FOR YOUR OLD RADIO AT KRAUSS'

FOR QUICK SERVICE CALL MAIN 0768

ATLAS RADIO KRAUSS STORES

111 EAST FIFTH STREET

Phone MAin 0768

NORTHSHIRE 4033 Hamilton Ave.

HAMILTON, OHIO 150 High St.

A LUCKY FIND



The four-leaf clover, horseshoe and penny are all out of it. Without a doubt RADIO DIAL readers put the DIAL up as their luckiest of lucky finds.

They tell us since they "found" the DIAL, there's no more searching and guessing for what's on the air—and they NEVER have to say, "I didn't know they were on; I wouldn't have missed them for anything."

Yes, they all agree they rely upon RADIO DIAL for all the latest radio information. We want to do the same for you. The cost is only one dollar for six months, delivered every Thursday, and the coupon makes it handy.

RADIO DIAL
22 E. 12th Street
Cincinnati, Ohio

I want to find RADIO DIAL in my mailbox for six months. Here's my dollar.

New Renewal

Name

Address

City

State

JANE GREY and The Kampf Artists
Mon., Wed., Fri. 11:45 A.M.
Sponsored by The A. W. Kampf Jewelry Co.
Diamond Remounting Specialists
18 West Sixth St.

Republican Radio Talks

The Candidates Present Important Issues of the Day

WKRC, WFBE,

TUES., OCT. 27, 9:15 P. M.
THURS., OCT. 29, 7:15 P. M.
SAT., OCT. 24, 7:45 P. M.
TUES., OCT. 27, 7:45 P. M.
THURS., OCT. 29, 7:45 P. M.

See Times-Star Radio Page for Announcement of Speakers over these Stations

Program Jottings
CONTINUED

2:30. Art Appreciation: "Children of the Sea." Wm. H. Vogel.

7:30 p.m. WLW. Crosley Follies burlesque "King Arthur and the Round Table." Music by Henry Thies.



8:15 p.m. WCKY (NBC). Guy Robertson, baritone, who sang this summer with the St. Louis Opera company, will sing operatic and musical comedy numbers in the Brown Shoe Program.

9:30 p.m. WKRC (CBS). Philip MacDonald's story, "Murder Gone Mad," wherein a ruthless slayer of youth is brought to retribution, will be reenacted by the Eno Crime Club.

Thursday, October 29

2 p.m. WLW. OHIO SCHOOL OF THE AIR. Geography: "A Lesson on the Great Lakes," W. R. McConnell. 2:20. Geography: "China and the Chinese," W. R. McConnell. 2:30. Stories: Bessie Gabbard.



8 p.m. WSAI (NBC). Frances Williams, blues-singing star of former editions of George White's "Scandals" and of the recent "The New Yorkers," will be guest star with Rudy Vallee and his Connecticut Yankees in the Fleischmann program.

7:45 p.m. WCKY (NBC). Merle Thorpe's talks on Famous Fallacies in Business now come through the Kentucky station.

8:30 p.m. WLW. Hollingsworth Slumber Music includes Dvorak's "New World Symphony," and Cui's "Orientele."

7:15 p.m. WSAI (NBC). "Great Britain's Choice" will be James G. McDonald's subject in his weekly series "The World Today." McDonald will point out that Great Britain is undergoing a profound transformation, the issue of which is still in doubt.



George Jessel, who played "The Jazz Singer" on the New York stage, will be guest entertainer with the Nestle Chocolaters Friday (October 23) at 8 p.m. WCKY is the local NBC outlet.



THE EDITOR
GOSSIPS

Who Cares?

From the effusions of publicity writers we have gathered these pearls of information: Paul Whiteman sleeps only four hours a night. . . Lee Sims' father is 71, lives with him, and walks five miles every day. . . Vaughn de Leath, pioneer radio editor, had to walk home from a nud hole into which her chauffeur drove her. Then she discovered her cook had walked out leaving a handful of guests and no dinner. . . Bing Crosby wears gaiters only with evening clothes.

Columbia has taken over control of WGN in Chicago and will begin putting its programs on the 720 kilocycle band November 1. This gives CBS a Chicago outlet which it lost when WMAQ's control went to NBC a short while ago. WGN carried NBC programs heretofore.

Mildred Bailey, "blues" crooner with Paul Whiteman and his orchestra, sang in a music store as a "song demonstrator" after graduating from the St. Joseph's Academy in Spokane, Wash., her birthplace.

The family name of Lee Morse NBC songstress, was Lee Taylor. In private life she is Mrs. Robert Downey, wife of her accompanist.

So the story goes—the other day someone at NBC asked Paul Whiteman if he were going to Venice on his European tour next winter. "No," he replied. "The last time I was there the whole town was flooded."

This may give a hint of the mannerisms of New York announcers. In an announcer's bulletin room is a big sign reading: "This is not a lunch room."

Freddie Rich, Columbia conductor, is completing work on a symphonic jazz composition entitled "Penthouse 34." It will depict penthouse life with the sounds emerging from the street distinguishable to its occupants, and presenting a 24-hour panorama of the city below.

Bing Crosby at the microphone . . . Wings Brown left his feet . . . rhythmically to the music while singing . . . Often closes eyes . . . Rarely smiles . . . Fidgets with the tuning orchestra number . . . Stares at clock . . . Never directs gaze towards control room . . . Has music stand on which there is no music . . . Smiles as he finishes his last song.

Gertrude Berg always has eighteen scripts prepared in advance for her NBC family skit, "The Goldbergs," yet she takes no vacation. It's a precaution against illness. There is no script insurance.

Lee Sims abstractedly walked into the NBC studios with his pipe in his mouth, and began his program of piano meowds. Smoking in the studios is an inexcusable offense but what could the announcer who works his program do? He couldn't talk to Lee for fear of breaking into the "pipe dream" nor could he take the pipe out of his mouth for the same reason. The program finally ended with Sims still emitting great clouds of smoke. No one was more surprised than Lee Sims himself when he found that he had gone through an entire program smoking his pipe.

During a recent weekend visit, Kate Smith, after writing several cards to friends, left the hotel to buy some stamps. When she went back,



George Breakstone, juvenile NBC artist, was chosen "Prince" of the Radio-Electrical World's Fair, held at Madison Square Garden in New York City recently. Breakstone is nine years old and is heard regularly on the Children's Hour every Sunday morning at 9 o'clock through Station WLW.

Her ensemble coat was gone. A thorough search by the hotel staff failed to reveal it. So Kate went back to New York sans coat.

Later, she received the following letter:

"Dear Miss Kate Smith,
"I am writing you this because I feel you ought to know what happened to your blue coat. I have a fondness for collecting souvenirs of my favorite celebrities, and had watched you for several hours waiting to add something that belonged to you, to my collection. I hope you didn't mind much as I'm one of your loyal fans. Good luck to you."
"An Admirer."

There was no return address, and Kate can only hope that she won't encounter any more of her "loyal" fans with taking ways.

F. & H. CAPACITY AERIAL



Price \$1.00 Complete, postpaid
Every Instrument Tested on Actual 1127 Mile Reception
A LARGE NUMBER ARE IN USE BY GOVERNMENT, IN NAVY HOSPITAL

The F. & H. Capacity Aerial Eliminator has the capacity of the average 75-foot aerial, 50 feet high. It increases selectivity and full reception on both local and long distance stations is absolutely guaranteed. It eliminates the outdoor aerial along with the unsightly poles, guy wires, mutilation of woodwork, lightning hazards, etc. It does not connect to the light socket and does not cause fire operation. Installed by anyone in a minute's time and is fully concealed within the set. Enables the radio to be moved into different rooms at houses, as easily as a piece of furniture.

WE PREDICT THIS TYPE OF AERIAL WILL BE USED PRACTICALLY ENTIRELY IN THE FUTURE. 3,000 dealers handle our high quality, over 100 leading jobbers carry our line or other sample direct. Write for proposition.

Name _____ Send coupon if protects you
Address _____ State _____
City _____ State _____

Send one F. & H. Capacity Aerial with privilege of returning after 30-day trial to me satisfactorily, for which enclosed find check M. O. or dollar bill, or send C. O. D. Send Literature. Dealer's proposition.

F. & H. RADIO LABORATORIES
FARGO, N. DAK., DEPT. 22

Art Jarrett is
Florsheim Star



Art Jarrett, who used to play the banjo with Ted Weems' orchestra and sing so feelingly "Love Me or Leave Me" in the Hotel Gibson floor show, will be featured on the Florsheim Frolic through WSAI at 10 p.m. Friday (October 23.) Jane Frouman and Pratt and Sherman, "the two perfect beels," will be heard with Ferdie Grofe's orchestra also in for honors. Jarrett is featured, too, on the Columbia network from WBBM.

Eddie Cantor (Chase and Sanborn Hour, WSAI, 8 p.m. Sunday) thought he was a tenor until he began broadcasting. "When I go up to the fifteenth floor, my voice drops," he says. He rolls his ball-bearing eyes before the microphone just as though he were on the stage. He does it to entertain the musicians and to get laughs from the studio guests.

The Mills Brothers, those four Negro boys whose perfectly blended voices sang red hot rhythm and imitated various musical instruments, went to New York recently and have turned up on the Columbia network. They have taken the place of Miller and Lyles at 7:30 p.m. on Monday and Wednesday and of the Modern Male Chorus at 10 p.m. Tuesdays. More programs may be announced later.

Irene Bordoni is such an unconscious mimic that her association with Americans threatens to destroy her French accent. She spends her summers in Paris, speaking as little English as possible. Her Gallic intonation is part of her box-office appeal.

Irene Bordoni is such an unconscious mimic that her association with Americans threatens to destroy her French accent. She spends her summers in Paris, speaking as little English as possible. Her Gallic intonation is part of her box-office appeal.

Radio Rounds Up
Lillian Shade



Lillian Shade, comely Broadway songstress soon to appear in a new Irving Berlin show, will make her radio debut on the Radio Round-up on WABC (860 kc.) and the Columbia network at 11:30 p.m. Thursday (October 29).

Henry Busse and his orchestra have stepped up with the best of orchestras. They have signed with Music Corporation of America, booking agency which manages Lopez, Weems, Fred Waring, Lombardo, Ben Bernie, and most of the other "name" bands. Busse wrote "Hot Lips," and "Wang Wang Blues."

Tune in

The nationally famous
"PROFESSOR" FREDDIE MILLER
"BARON" GEORGE LLOYD
The RB Aristocrat of Humor and Song
now on
WKRC
Tonight and every night except Saturday and Sunday
6:45 to 7 p.m.

There's nothing more to say "unless it be, we hope that you drive your cars away!" tra—da . . .
"Also tune in "Professor" Miller and "Baron" Lloyd every morning except Sundays—8:15 to 8:45, over WKRC.

The Rg Clothing Co.
EST. 1903 MANUFACTURING RETAILERS

HERBERT F. KOCH WSAI, 8-8:15 p.m., Sat., Oct. 24--**Hom.** **RUSSELL WILSON**
CANDIDATE FOR PRESIDING JUDGE
GEORGE E. TEBBS WSAI, 8-8:15 p.m., Mon., Oct. 26--**AUGUST RENDIGS, JR.**
CANDIDATE FOR JUDGE, MUNICIPAL COURT
WFBF, 8:45-9 p.m., Tue., Oct. 27--Mrs. BEN LOEWENSTEIN
INDORSED BY THE CINCINNATI BAR ASSOCIATION AND LAWYERS' CLUB. **Morison R. Waite, Chairman.**

NETWORK PROGRAMS

FRIDAY, OCTOBER 23

WABC (860 kc.) CBS-6 p. m.—Dave Abrams' Orchestra. 6:30—Bert Lown's Orchestra. 6:45—Bird and Wash, Comedy Sketch. 9—Radio Reproductions. 10:45—Fray and Braggiotti, Piano Team. 11—Street Singer. 11:15—Enric Madriguera's Orchestra. 11:30—Eddie Duchin Orchestra. 12—Ben Bernie Orchestra. 12:30—Nocturne; Ann Leaf with Ben Alley. 1—Connie's Inn Orchestra. 1:30—Dave Abrams' Orchestra.

WEAF (660 kc.) NBC-6 p. m.—Waldorf-Astoria Orchestra. 6:30—Ray Perkins. 7—Major Bowes' Family (WENR-870kc). 11—Vincenzo Lopez Orchestra. 12:30—Wet Hogan Orchestra. 1:30 a. m.—Henry Tobias Orchestra (WENR).

WJZ (760 kc.) NBC-6 p. m.—Raising Junior. 6:15—Coon. 6:30—Savando Bonnie Laddles. 7:15—Boscell Moments with Aida. 7:30—Phil Cook (KDKA-980kc). 7:45—"Believe It or Not" Ripley (KDKA). 8:30—Smith Brothers. 10—Paul Whitman's Paint Men (WHAS-820kc). 11—Slumber Music. 11:30—Jack Denny, Orchestra. 12—Russ Columbo, Songs. 12:15 a. m.—Cab Calloway's Orchestra.

SATURDAY, OCTOBER 24

WABC (860 kc.) CBS-6 p. m.—Anthony Trini Orchestra. 6:30—Bert Lown Orchestra. 6:45—Bird and Wash. 7:15—The Political Situation in Washington Tonight. Frederic William Wile. 7:30—Arbur Murray Dance Lesson. 8:45—Tastyest Gloom Chasera. 9:30—Carborandum Hour, Indian Legend. 9:35—National Radio Forum. 11:00—Jack Miller. 11:15—Enric Madriguera's Orchestra. 11:30—St. Moritz Orchestra. 12:00—Guy Lombarda Orchestra. 12:30 a. m.—Nocturne. 1:00—Red Nichols Orchestra. 1:30—Dave Abrams' Orchestra.

WEAF (660 kc.) NBC-6 p. m.—Waldorf-Astoria Orchestra. 7—Lee Morse, Songs. 11:15—Jesse Crawford, Organ. 11:30—Coon Sanders Orchestra (WTAM-1070kc). 12—Rudy Valle and Connecticut Yankees (WTAM). 12:30 a. m.—Vincent Lopez Orchestra (WTAM).

WJZ (760 kc.) NBC-6 p. m.—Raising Junior. 6:15—Little Buster's Circus Parade (WENR-870kc). 6:30—Breyer Leaf Boys, Comedy. 7:30—Sonata Recital (KDKA-980kc). 8—Dancer Fighters (KDKA). 9—Careless Love, Negro Sketch. 10:30—Clara.

Lu and Em (KDKA. WGN-720kc). 10:45—Benrus Program. Orchestra. 11—Slumber Music. 11:30—Russ Columbo, Songs. 11:45—Low White, Organ. 12—Silver Tone Quartet. 12:15 a. m.—Paul Whitman Orchestra.

SUNDAY, OCTOBER 25

WABC (860 kc.) CBS-6:30 p. m.—Barnsdahl Musical Memories. 7—The World's Business, by Dr. Julius Klein. 8:15—Music Along the Wires: Symphony Orchestra. 10—Ernest Hutchison, Pianist, and Orchestra. 10:30—The Gauchos. 11—Continental String Quartet. 12:30 a. m.—Nocturne.

WEAF (660 kc.) NBC-9:45 p. m.—Through the Opera Glass (WENR-870kc). 11:15—Ralph Kirby, Baritone. 11:30—Jesse Crawford, Organ. 12—Henry Tobias Orchestra.

WJZ (760 kc.) NBC-4:45 p. m.—President Hoover in Washington. 5:30—International Gypsy Orchestra. 6—Raising Junior. 6:30—My Portrait Gallery of Famous Britons. 10:15—Harbor Lights (WENR-870kc). 10:45—Land of Wonder and Fear. 11—Witherspoon Church (KDKA). 11:30—Russ Columbo. 11:45—South Sea Islanders.

MONDAY, OCTOBER 26

WABC (860 kc.) CBS-6 p. m.—Current Events. H. V. Kallenborn. 6:30—Rita and Dora, Comedy and Songs. 6:45—Bird and Wash, Comedy Sketch. 8:45—Tastyest Gloom Chasera. 9:15—The Mills Brothers. 10:30—Savino Tone. 11—Enric Madriguera's Orchestra. 11:30—Red Nichols Orchestra. 12:30 a. m.—Nocturne; Ann Leaf, Organ, and Ben Alley, Tenor. 1—Anthony Trini Orchestra. 1:30—Dave Abrams' Orchestra.

WEAF (660 kc.) NBC-6 p. m.—Waldorf-Astoria Orchestra. 6:30—Vaughn de Leath, Contralto. 7:15—Othman and Arden, Pianists. 8—Soconyls and Sketches. 11—Coon Sanders Orchestra. 11:30—Jesse Crawford, Songs. 11:45—Cab Calloway Orchestra. 12—Paul Whitman Orchestra. 12:30 a. m.—Twee Hogan Orchestra.

WJZ (760 kc.) NBC-6 p. m.—Raising Junior. 6:15—Paer van Steeden, Orchestra. 7:30—Phil Cook. 8—Archer Bigan, Organ. 8:30—Death Valley Days, Drama (WLS-870kc). 10—Gold Medal Express, Othman and Arden (KDKA-980kc). 11—Slumber Music. 11:30—Russ Columbo, Songs. 11:45—Low White, Organ. 12—Jane Proman and Orchestra (WENR). 12:15 a. m.—Henry Tobias Orchestra (WENR).

TUESDAY, OCTOBER 27

WABC (860 kc.) CBS-6 p. m.—National Security League. 6:15—Connie Boswell. 6:45—Bird and Wash, Comedy Sketch. 9:15—The Columbians. 10—The Mills Brothers. 10:30—Arabesque. 11—Jack Miller. 11:15—Enric Madriguera's Orchestra. 12:30 a. m.—Nocturne; Ann Leaf, Organ, with Ben Alley, Tenor. 1—Hotel Bossert Orchestra. 1:30—Roseland Ballroom Orchestra.

WEAF (660 kc.) NBC-6 p. m.—Waldorf-Astoria Orchestra. 6:30—Vaughn de Leath,

JACK FOY



Jack Foy, the yodeling "hill billy" boy from Dukedom, Tenn., who used to sing and announce with McCormick's Fiddlers at WLW, now is on the air at KDKA every day except Sunday. At the moment, his schedule is not available but will be announced in the next issue of RADIO DIAL. When Jack first came to WLW, he confessed that the thought of singing with 50,000 watts of power behind him instead of the 100 watts he was used to in Tennessee, plumb scared the fear 'nto him. Now he has published a song book to prove that he is a hardened 50,000-watter.

Contralto (WENR-870kc). 11—Lee Morse, Songs (WGY-790kc). 11:15—Jesse Crawford, Organ. 11:30—Jack Denny Orchestra. 12—Rudy Valle Orchestra (WHAS-820kc). 12:30 a. m.—Joe Moss Orchestra.

WJZ-760 kc.) NBC-6 p. m.—Raising Junior. 6:15—Rameses Program, Pollock and Lawnhurst. 6:30—Savannah Lingers Orchestra. 7:30—Phil Cook (WENR-870kc). 7:45—Back of the News in Washington (WHAS-820kc). 8:30—Heel Hugger Harmonies (WLS-870kc). 8:45—Sisters of the Skillet (KDKA-980kc). 9—Household Romance (KDKA; WGN-720kc). 10:30—Clara, Lu and Em. 10:45—Paris Night Life (KDKA). 11—Slumber Music. 11:30—Russ Columbo, Songs. 11:45—Dream Pictures. 12:15 a. m.—Paul Whitman Orchestra.

You Don't Have To Be a Detective



to find the trail of good radio entertainment. All that guessing at radio programs and missing what you wanted to hear most, because you didn't know, has gone... yes'r, the way of the head phones. And in their place we have RADIO DIAL and the modern receiver.

Rely on RADIO DIAL to give you ALL the information you need to get the most from your radio. Use the coupon to get "all set" for the next six months.

RADIO DIAL
22 E. 12TH STREET, CINCINNATI, OHIO
Send me RADIO DIAL for the next six months, to reach me every Thursday. Enclosed is \$1 (currency, check, money order).

Name _____
Address _____
City _____ State _____

WEDNESDAY, OCTOBER 28

WABC (860 kc.) CBS-6 p. m.—"BM Schudt's Going to Press." 6:15—Bert Lown's Orchestra. 6:30—The Bon Bons, Negro Quartet. 6:45—Bird and Wash, Comedy Sketch. 8:45—Tastyest Gloom Chasera. 8:45—Waldemna Choral Club. 10:15—Coon Sanders Program, Dora Borgoli and Lumbia Concert Program. 11—Street Singer. 11:15—Red Nichols Orchestra. 11:30—St. Moritz Orchestra. 12:30 a. m.—Nocturne; Ann Leaf, with Ben Alley. 1—Connie's Inn Orchestra. 1:30—Dave Abrams' Orchestra.

WEAF (660 kc.) NBC-6 p. m.—Waldorf-Astoria Orchestra. 6:30—Ray Perkins. 11:15—Jesse Crawford. 11:30—Vincent Lopez Orchestra. 12—Low Conrad's Orchestra.

WJZ (760 kc.) NBC-6 p. m.—Music Treasury Box. 6:15—Rameses Program; Musical Pollock and Vee Lawnhurst, Pianist. 6:30—"Exploring the Jungles for Science," Dr. Torrence. 7:15—Lanny Ross, Songs (WENR-870kc). 7:30—Phil Cook. 7:45—"Believe It or Not" Ripley (KDKA-980kc). 10—Rochester Civic Orchestra (KDKA). 10:30—Clara, Lu and Em. 10:45—Radio's Greatest Lover (WENR-870kc). 11—Slumber Music. 11:30—Russ Columbo, Songs. 11:45—Low White, Organ. 12—Jane Proman and Orchestra (WENR; KDKA). 12:15 a. m.—Coon Sanders Orchestra (KDKA). 12:30 a. m.—Ernie Holst, Orchestra.

THURSDAY, OCTOBER 29

WABC (860 kc.) CBS-6 p. m.—Frank Ross, Songs. 6:15—Hotel Bossert Orchestra. 6:45—Bird and Wash, Comedy Sketch. 7:15—Tony Parenti and His Singing Saxophones. 9—Toscha Seidel, Violinist. 10:30—Tito Guizar, Spanish Tenor. 11—Jack Miller. 11:15—St. Moritz Orchestra. 11:30—Radio Round-up. 12:30 a. m.—Nocturne; Ann Leaf, with Ben Alley. 1—Anthony Trini Orchestra. 1:30—Roseland Ballroom Orchestra.

WEAF (660 kc.) NBC-6 p. m.—Waldorf-Astoria Orchestra. 6:30—Vaughn de Leath. 11—Ralph Kirby, Baritone. 11:15—Coon Sanders Orchestra. 11:30—Jesse Crawford, Organ. 11:45—Cab Calloway Orchestra. 12—Florence Richardson and Melody Boys. 12:30 a. m.—Joe Moss Orchestra.

WJZ (760 kc.) NBC-6 p. m.—Raising Junior, Wheelena. 6:15—Paer van Steeden, Orchestra. 6:25—John B. Kennedy. 6:30—Breyer Leaf Boys. 7:30—Phil Cook (KDKA-980kc). 8:30—F a m o u s Football Figures: Foot and Reper. 8:45—Sisters of the Skillet (KDKA). 10:30—Clara, Lu and Em. 10:45—Paris Night Life. 11—Slumber Music. 11:30—Russ Columbo, Songs. 11:45—Low White, Organ. 12—Silver Tone Quartet (WENR-870kc).

FRIDAY, OCTOBER 30

WABC (860 kc.) CBS-6 p. m.—Dave Abrams' Orchestra. 6:30—Bert Lown's Orchestra. 6:45—Bird and Wash, Comedy Sketch. 9—Radio Reproductions. 10:45—Fray and Braggiotti, Piano Team. 11—Street Singer. 11:15—Enric Madriguera's Orchestra. 11:30—Eddie Duchin Orchestra. 12—Ben Bernie Orchestra. 12:30 a. m.—Nocturne; Ann Leaf, with Ben Alley. 1—Connie's Inn Orchestra. 1:30—Dave Abrams' Orchestra.

Frank Black, William Wirges, Vincent Lopez and Jack Shilkrut are four NBC orchestra directors who occasionally play the piano at broadcasts.

WSMK Features

FRIDAY, OCTOBER 23

1380 kc.—Dayton, O.
6:15 P. M.—The Three Gyphes.
Helen Supensky, Barbara Runyan and Louisa Freeze sing popular songs in close harmony.

SATURDAY, OCTOBER 24

6:45 P. M.—Marion McKay's Orchestra from the Biltmore Hotel. Also 11:30 p. m.

SUNDAY, OCTOBER 25

3:45 P. M.—Salon String Quartet; Bryson Burns, conductor.

MONDAY, OCTOBER 26

Poems by Eugene Field, James Whitcomb Riley combine with familiar waltz melodies.

TUESDAY, OCTOBER 27

1:45 P. M.—Dr. Victor C. Laughlin talks on Child Health.

WEDNESDAY, OCTOBER 28

11:45 A. M.—"Adventures of Oscar." A Pomeranian pup gets in and out of scrapes every day at this time. Jack Snow writes the script.

THURSDAY, OCTOBER 29

7:00 P. M.—Andrus' Aimee. Prichilla Stuckbottom gives ladies advice that would be disastrous to follow.

Frank A. Arnold, director of development of the National Broadcasting Company, is giving a week course on Radio Broadcast Advertising at the College of the City of New York. This is the first two credit college course on broadcasting yet offered.

Clementine is Bit of Spain



This Spanish senorita is Clementine Torella, who lends a romantic touch to the "Lady Next Door" program (5:15 p. m. weekdays) on WEAF-660 kc. and other juvenile programs of the National Broadcasting Company. Clementine is eight years old, sings in Spanish, and does the Spanish tango expertly.

French-Bauer, Incorporated brings the nationally famous

Hank Simmons Show Boat

to you every Saturday night over Station WKRC from 10:00 to 11 o'clock

French-Bauer INCORPORATED

"Better Dairy Products Since 1842"

Radio Thriller Has New Star



Helen Dumas left the legitimate stage to star in the Blue Coal Radio Revue mystery thrillers. They are broadcast on the Columbia network, with WABC (860 kc.) as the best bet locally, at 5:30 p. m. Sundays. Miss Dumas' most recent Broadway appearance was in "Mendel, Inc."

HERO

NBC has a new baseball hero. He's M. F. Parker, sports writer for the St. Louis Globe Democrat, and his quick thinking kept NBC stations on the air during an exciting part of the World Series. A fast foul tip from the bat of Andy High, Cardinal third baseman, cracked into the press stand headed for the NBC amplifier. Parker in the row below reached up his hand, deflected the ball and saved the day.

DEVILS' AID

Arthur Van Harvey, the father in Keeping Up with Daughter (WSAI, 11 a. m. Wednesday) gave up vaudeville ten years ago because his mother regarded all actors as emissaries of the devil. A successful radio audition took him out of advertising five years ago and made him an actor again.

Russ Columbo, NBC's new baritone, is being billed as "The Valentine of Radio." They say he is sometimes mistaken for William Tilden 2nd, the tennis star. He looks like a Latin Tilden or Tilden made up for the stage.

The British Broadcasting Company is said to have turned over sample of the handwriting of 100,000 listeners to a European graphologist to aid him in his study of handwriting.

Jonesport, Me., the locale of the Seth Parker programs written by Phillips Lord ("Stebbins Boys," "Uncle Abe and David") is a real town. Lord has just bought a home there for his summer vacations. He calls it Seth Parker's Place.

Finis Farr, WLW's new playwright, won't write murder stories or love stories. He wrote one detective story for NBC. Within two months, the actor who played the part of the murdered man actually

**FRIDAY
October 23**

WCKY (202m.—1490 kc.)

- A. M.
- 7:00—"Alarm Clock Melodies"—Kentucky Mountaineer
- 7:30—Organ Reveries
- 8:00—Mountain Ballads
- 8:15—Morning Devotions (NBC)
- 8:30—Cherio (NBC)
- 9:00—Waltzes, Old and New
- 9:15—Hot Dance Tunes
- 9:30—Vocal Varieties
- 9:45—Concert Music
- 10:00—Ray Perkins, Prince of Pineapple (NBC)
- 10:15—Hamilton (Ohio) Merchants' Program
- 10:45—Lebanon (Ohio) Program
- 11:15—Williamstown (Kentucky) Merchants
- 11:45—Skillet Lickers
- Noon—Phlags Melodies
- P. M.
- 12:30—Norris Brock Live Stock Reports
- 12:35—Luncheon Concert
- 1:00—Sign off
- 5:45—Story Book Hour
- 6:15—Lucille Fox
- 6:30—Tommie and Willie
- 6:55—Ayers News Report
- 7:00—Amos 'n' Andy (NBC)
- 7:15—Latonia Jockey Club—Kentucky Mountaineer
- 7:30—Cumberland Crooners
- 7:45—Saunders Trio
- 8:00—Nestles Program (NBC)
- 8:30—Earl Arnold's Orchestra From Look-out House
- 9:00—Intervenor Pair (NBC)
- 9:30—Sun Dodgers

WFBE (250m.—1200 kc.)

- A. M.
- 7:00—Break of Day
- 8:00—Birthday Party Program
- 8:15—Concert Hour
- 9:00—Our Daily Thought
- 9:15—Morning Melodies
- 9:45—Hawaiian Dreams
- 10:00—Housenews Preig
- 10:20—Better Brushes Brevities
- 10:35—WFBE-RKO Theatre Party
- 10:50—Mrs. Evans' Questions and Answers
- 11:00—Shopping with Betty and Bob
- 11:30—Happiness Club
- Noon—Organ Recital
- P. M.
- 12:30—How It Began
- 12:45—Luncheon Musicals
- 1:00—Around the Clock
- 1:15—Matinee Musicals
- 2:00—Novelty Notes
- 2:30—Community Radio Revue
- 2:45—Moods in Blue
- 3:00—Story Telling Time
- 3:15—Garden of Melody

was killed in a hold-up. That cured Farr. He keeps away from love stories because he feels he might be the victim.

Ilo May Bailey's favorite radio entertainer is Lee Simms. He's also her husband. She sings with Ted Weems' band on Best Sellers (WSAI 10:15 p. m. Sunday). He is solo pianist with Yeast Foamers (WLW 2:30 p. m. Sunday).

Floyd Gibbons, NBC headline hunter, has written an RKO war film, "The Turn of the Tide," using his eye-witness experiences in some of the greatest battles of the World War.

**STEWART-WARNER
Short Wave
Converter**

**\$23.95
COMPLETE**

Free demonstration in your home any time, anywhere. Terms, \$5 down. We will call at your home, inspect your radio, test your tubes and furnish an estimate of the cost.

Our services charges on any kind of a job will not exceed \$5.

UP-TOWN RADIO SHOP
WILLIAM THREM, Prop.
66 E. McMicken Avenue
CHerry 7985

WFBE

- Friday, October 23
- 3:45—Bill Reith's Cincinnati Panthers
- 4:15—Julius Monk
- 4:30—Violin Solos, Mrs. Hahn
- 4:45—Afternoon Dance Melodies
- 5:15—Story Telling Time
- 5:30—Spirituals
- 5:45—Spirita Program
- 6:00—Little Black Joe
- 6:15—Ben Bernan
- 6:20—Variety
- 6:45—Bering Ford Travelogue
- 7:00—Julius Sien
- 7:15—Post Question Box
- 7:30—Original Idol Sport Review
- 7:45—Labor Conference Program
- 8:00—Hub Clothing Co. Players
- 8:15—David Lorchbach Campaign, Judge Edward T. Dixon
- 8:30—Dry Ridge Health Hints
- 8:45—Aldridge Apple
- 9:00—Lucky Boys
- 9:15—Wrestling Matches

WKRC (545m.—550 kc.)

- A. M.
- 6:45—God's Bible School—Sunrise Worship
- 7:00—Clayton Catron, Organist
- 8:00—Heland Gaines and His Mountain Rangers
- 8:15—Grab Bag Boys
- 8:45—The Old Dutch Girl (CBS)
- 9:00—"Pine" Automatic Winterfront
- 9:15—Super Maid Program
- 9:30—Consolidated Merchants' Program
- 10:00—Oxol Feature (CBS)
- 10:15—Time by Lange
- 10:17—Woman's Hour—Tremlette Tully
- 10:45—Don and Betty (CBS)
- 11:00—Rhythm Kings (CBS)
- 11:15—Blue Moon Program (CBS)
- 11:30—Melody Parade (CBS)
- 11:45—Jane Grey and "Kampf, the Jeweler, Artists"
- Noon—Radio Television Program
- P. M.
- 12:15—Big Store Mid-day Music
- 12:30—Cincinnati Merchants' Program
- 1:00—Pabstette Varieties (CBS)
- 1:15—Julia Hays, Household Hints
- 1:45—Pyol Program
- 2:00—Artists Recital (CBS)
- 2:15—Buck-Bauer Organ Melodies
- 2:30—Huston Ray's Orchestra (CBS)
- 3:00—Vi-Zey Organ Program
- 3:30—Grease-off Program
- 3:45—Bond Clothes Program
- 4:00—Auto-Rad Stewart Warner Program
- 4:20—Spritz Clothing Program
- 4:30—Webb Fuel Program
- 4:45—Meyer Grape Juice
- 5:00—A. O. Rust—Happy Feet
- 5:15—Mabley & Carew Contest
- 5:30—Cincinnati Trade School Program
- 5:45—Hub Clothing Company Musicals
- 6:00—Re-Nu—Pat Gillick, Organist
- 6:16—Allied Florists—Alec McQueen
- 6:20—Stocks Coble & Tyre
- 6:21—Eureka Program Suggestions
- 6:25—Sports Review
- 6:30—Republican Judicial Committee
- 6:45—R. B. Clothes—Grab Bag Boys
- 7:00—Home Furniture—Bing Crosby (CBS)
- 7:15—Lilker Program—Gene Austin (CBS)
- 7:30—Baker Bar Boswell Sisters (CBS)

WKRC

- Friday, October 23
- 7:45—Camel Quarter Hour (CBS)
- 8:00—Pryor's Cremo Band (CBS)
- 8:15—Singin' Sam, Barbaol Man (CBS)
- 8:30—March of Time (CBS)
- 9:00—Regal Shoe Program (CBS)
- 9:15—Liberty Magazine Program (CBS)
- 9:45—Friendly Five Footnotes (CBS)
- 10:00—Pillsbury Pageant (CBS)
- 10:30—Talk by Football Coaches (CBS)
- 10:45—Mabley & Carew Contest
- 11:00—Green Answer Man
- 11:05—Weather; Sports Review
- 11:15—Pyol—Wesley Fox and Jimmy Leaver
- 11:30—Pat Gillick Studio
- 11:45—Ben Bernie's Orchestra (CBS)
- 12:30—Nenta-Movie Period

WLW (428m.—700 kc.)

- A. M.
- 6:30—International Fiddlers
- 7:00—Physical Exercises
- 7:15—Delivery Boys
- 7:30—Arthur Chandler, Jr., Organ
- 7:45—Jolly Bill and Jane (NBC)
- 8:00—Morning Devotions
- 8:15—Ford Rush
- 8:30—Bised Pick-ups (NBC)
- 8:45—Physical Exercises
- 9:00—Housekeeper's Chats
- 9:15—Recipes by Famous Chefs
- 9:30—Beautiful Thoughts (NBC)
- 9:45—Premium Man
- 10:00—Live Stock Reports
- 10:10—Piano Solos
- 10:15—A. & P. Orchestra
- 10:30—Colonel Goodbody
- 10:45—Stokely Program
- 11:00—Rumford School of Cookery
- 11:15—Talk on Mouth Hygiene
- 11:25—Pollyanna Spoe Talk
- 11:30—WLW Stock Reports
- 11:45—River and Weather Report
- 11:55—Tune Signals
- Noon—Tuxedo Fiddlers
- P. M.
- 12:15—Swift Program, Pat Barnes (NBC)

WLW

- Friday, October 23
- 12:30—Hotel Gibson Orchestra
- 12:45—Market Reports
- 12:50—Live Stock Reports
- 1:00—National Farm and Home Period (NBC)
- 1:31—Johnny Hamp's Orchestra, Netherland Plaza
- 2:00—Ohio School of the Air
- 3:00—Matinee Players Orchestra
- 3:00—Rochester Philharmonic Orchestra (NBC)
- 4:00—A. & P. Orchestra
- 4:30—Village Rhythmster
- 4:45—Delivery Boys
- 5:00—Words and Music
- 5:15—Mildred Lawlor and her Orchestras
- 5:30—Old Man Sunshine
- 5:45—Little Orphan Annie (NBC)
- 6:00—Old Man Sunshine
- 6:15—The Chatter
- 6:30—Mall Pouch Program
- 6:45—Lowell Thomas (NBC)
- 7:00—Amos 'n' Andy (NBC)
- 7:15—Shoosing the Blues Away
- 7:30—Famous Beauties of History
- 7:45—Old Reliable Singers
- 8:15—Natural Bridge
- 8:30—Variety
- 8:45—Sisters of the Skillet (NBC)
- 9:00—Heartalotown
- 9:30—Armour Program (NBC)
- 10:00—Maxwell House Dixie Ensemble
- 10:30—Cara, Lu and Em (NBC)
- 10:45—Bob Newhall Sports Slices
- 10:58—Estate Weather Man
- 11:00—Johnny Hamp's Orchestra
- 11:30—Vox Celeste
- 11:45—Hotel Gibson Orchestra
- 12:15—William Stoess Orchestra

WSAI (225m.—1330 kc.)

- A. M.
- 8:00—Gene and Glenn (NBC)
- 8:15—McCormick's Old-Time Piddler

are worth looking into

We offer you our 26 years' experience in solving your eye problems — you will find our prices always the most reasonable

GIBSON OPTICAL CO.
DR. F. E. REUSCH - OPTOMETRIST

430 Walnut St. Near Opposite
5th St. Hotel Gibson

Bring Your Radio Up-to-Date
WITH A
STEWART-WARNER
Short Wave Converter

**WORLD
WIDE
RECEPTION**

**REAL
RADIO
THRILLS**

COMPLETE WITH TUBES
\$23.95

Listen in on Police Calls, Foreign Countries, Airplanes and Ships at Sea.

Call your nearest Stewart-Warner dealer or
AUTO-RAD SUPPLY CO.
COURT AND SYCAMORE
CHerry 8234

**UNITED
RADIO, INC.**
1103 VINE STREET
We service and repair every make radio; also carry a complete line of Parts.
CHERRY 6531

WSAI Friday, October 23

8:45—Records
 9:15—Odas Maddox, banjo
 9:30—Records
 9:45—A. & P. Orchestra (NBC)
 10:00—Mrs. Blake's Radio Column (NBC)
 10:15—Dr. Royal S. Copeland (NBC)
 10:30—National Home Hour (NBC)
 10:45—Savory Program (NBC)
 11:00—Music Appreciation (NBC)
 Noon—General Electric Circle (NBC)

P. M.
 12:15—Sign off
 12:50—Live Stock Reports
 1:00—Sign off
 3:00—Women's Radio Review (NBC)
 4:00—Betsy Moore Decorating Notes (NBC)
 4:15—Crosley Dealers' Salute
 4:30—Records
 5:30—Odas Maddox, Guitar
 5:45—Records
 6:30—Talk by Alice Richards
 6:45—The Stebbins Boys (NBC)
 7:00—Records
 7:45—Trials of the Golbergas (NBC)
 8:00—Cities Service Concert (NBC)
 9:00—Cliecut Club (NBC)
 9:15—Pond's Dance (NBC)
 10:00—Pleasant—Fralica (NBC)
 10:30—RKO Theater of the Air (NBC)
 11:00—Seger Ellis
 11:15—Hotel Gibson Orchestra
 11:30—Sign off

SATURDAY
 October 24

WCKY (202m.—1490 kc.)

A. M.
 7:00—"Alarm Clock Melodies"—Kentucky Mountaineer
 7:30—Organ Reveries
 7:45—Mountain Ballads
 8:15—Morning Devotions (NBC)
 8:30—Cherlie (NBC)
 9:00—Band Concert
 9:15—Tunes in Blue
 9:30—Vocal Variety
 9:45—Hawaiian Melodies
 10:00—Willy's Music School of the Air
 10:30—Classic Hour
 11:00—Musical Novelties
 11:30—Skillet Lickers
 Noon—Phigias Melodies

P. M.
 12:30—Morris Brock Live Stock Reports
 12:35—Luncheon Concert
 1:00—Sign off
 1:45—Story Book Hour
 5:15—Ladies and Young
 6:30—Kentucky Mountaineer
 6:45—Kapua's Hawaiians

RADIO TUBE SPECIALISTS
 Any Type of Tube for Any Make of Radio
LINK'S TUBE SHOP
 607 WALNUT STREET
 RADIO REPAIRING Parkway 6415

THIS GREAT SUPER-HETERODYNE
GLORITONE RADIO

Complete **\$39.95** with Tubes

\$1.00
 Down
\$1.00
 A Week

Delivers Set to Your Home



Full Range Mu and Pentode Tubes
 Full Vision
 Dial
 Dynamic Speaker
 Spotlight Tuning

This Coupon is good for 6 months' subscription to Radio Dial on purchase of a Gloritone Radio.

3 Doors Above 6th **DANEMAN'S** Phone Parkway 3639
608 RACE ST.

WCKY Saturday, October 24

5:55—Ayers News Report
 7:00—Anson 'n' Andy (NBC)
 7:15—Tantonyan Jesters (NBC)
 7:30—Show Boat Boys
 7:45—Radio's Greatest Lover (NBC)
 8:00—Lucille Fox
 8:15—Cumberland Crooners
 8:30—Earl Arnold's Orchestra From Look-out House
 9:00—Audition Nite on the Air
 9:30—Sun Dodgers

WFBE (250m.—1200 kc.)

A. M.
 7:00—Break of Day
 8:00—Birthdays Party Program
 8:15—Concert Hour
 9:00—Our Daily Thought
 9:15—Waltz Time
 9:45—Hawaiian Melodies
 10:00—Housewives' Frolic
 10:25—ADVBE-RKO Theatre Party
 10:50—Ruth Neely
 11:00—Shopping with Betty and Bob
 11:30—Happiness Club
 Noon—Organ Recital

P. M.
 12:30—How It Began
 12:45—Luncheon Musicale
 1:00—Around the Clock
 1:15—Two Irish Boys and Chas. Schaefer
 1:45—Chas. Daunt, tenor
 7:15—Post Question Box
 7:30—Original Bold Sport Review
 7:45—Republican Campaign Committee
 8:00—"The Mansion Dance Orchestra"
 8:30—Murdoch Football Scores
 8:45—Dry Ridge Health Hints
 9:00—Lucky Boys
 9:15—Republican Judicial Campaign
 9:30—Evening Chimes
 9:45—Song Hit Time
 10:00—Mansion Dance Orchestra
 10:30—Dream Fantasy

WCKY (202m.—1490 kc.)

A. M.
 7:00—"Alarm Clock Melodies"—Kentucky Mountaineer
 7:30—Organ Reveries
 7:45—Mountain Ballads
 8:15—Morning Devotions (NBC)
 8:30—Cherlie (NBC)
 9:00—Band Concert
 9:15—Tunes in Blue
 9:30—Vocal Variety
 9:45—Hawaiian Melodies
 10:00—Willy's Music School of the Air
 10:30—Classic Hour
 11:00—Musical Novelties
 11:30—Skillet Lickers
 Noon—Phigias Melodies

P. M.
 12:30—Morris Brock Live Stock Reports
 12:35—Luncheon Concert
 1:00—Sign off
 1:45—Story Book Hour
 5:15—Ladies and Young
 6:30—Kentucky Mountaineer
 6:45—Kapua's Hawaiians

WKRC (545m.—550 kc.)

A. M.
 6:45—God's Bible School—Sunrise Worship
 7:45—Gladys Cairns, Organist
 8:00—Roland Gattone and His Mountain Rangers
 8:15—Grab Bag Boys
 8:45—Radio Television Program
 9:00—Commuters (CBS)
 9:30—Consolidated Merchants' Program
 10:05—Woman's Hour—Tremette Tully
 10:30—Hub Clothing Company Musicale
 10:45—New World Salon Orchestra (CBS)
 11:00—Julia Hayes, Household Hints
 11:30—Bond Clothes—Columbia Review (CBS)
 11:45—Talk on Boys' Week
 11:50—Studio
 Noon—Blackberry Dudes

P. M.
 12:15—Big Store Mid-day Music
 12:30—Cincinnati Merchants' Program
 1:00—Football Game—Yale vs. Army (CBS)

Letter Box

Radio Dial is interested in the opinions of its readers. It will endeavor to answer questions. Unsigned letters will not be considered but signatures will be withheld when the request is made.

Radio Dial:
 This is a plea for better commercial programs.
 Commercial programs as they are presented today depend on two things for their appeal. First, if the sponsor has enough money, famous names are hired to put the program over, and by putting it over the sponsor does not mean making the program a success as a radio program, but simply attracting listeners. Second, there is a vast difference. Second, the sponsor demands that his program be popular in appeal. Classics to a commercial program mean Victor Herbert and Rudolph Friml.
 There is no good reason why this should be. Both the chains and the independent stations are offering excellent sustaining programs, that wise sponsors should seize as quickly as possible. One of the most outstanding of these is Harbor Lights a blue net work Sunday evening feature. There is no end to the really fine list of sustaining programs that go along vindicating radio, while the commercials offer their jazz and farce comics to pull it down to the level of a tabloid or comic sheet. Is it any wonder that the radio public resents radio advertising? Let the commercial sponsors present really fine programs instead of hiring the largest jazz orchestras and the latest night club entertainers, and radio advertising will progress mightily.
 Directors will no longer be afraid to offer new music—thousands of selections that have never been used on the air, because the sponsors demanded "familiar" selections. Here we find the real reason for radio occasionally going stale and monotonous.

JACK SNOW,
 Continuity Director WSMK,
 Dayton, Ohio.

I. N., Cincinnati: The Medley Five and Wally the Happy Troopdore of WCKY are off the air at present.

Margie: The Skillet Lickers are heard only from WCKY and broadcast under no other name. You may be confusing them with the WLW Georgia Wildcats, of whom two are former Skillet Lickers.

Miss E. S., Covington: Little Red Riding Hood has been off the air with a severe cold, but is back at WCKY now. Alice Rowlette is the Story Book Lady of Kiddie Klub Hour. Miss Ascraft is awfully sweet and under 25, we suspect.

J. W.: Curiosity consumes us all for Tick and Tack refuse to disclose their identity.

Miss K. S., Mt. Healthy: Moonshine and Honeysuckle will be on the air Sunday (October 25) at 2:30 p. m. over WEA-F (660 kc.). Gene and Glenn are on WSAI at 8 a. m. daily.

A. G. W., Dayton, O.: See above for Moonshine and Honeysuckle.

Mrs. F. S.: Kentucky Belle is at home in Milford, Kansas, and can be heard over KFBI.

Rex: Can't venture to say why

LESTER SINGER RADIO SERVICE CO.
 Cincinnati's Best Equipped Radio Service Station
 All Makes of Radios Serviced
 Power Packs and Sound Equipment
 2126 Madison Road
 Woodburn 3788

DAVID LORBACH
 Democratic Candidate for Congress
WFBE
 Fri. 8:15 p. m. JUDGE EDWARD T. DIXON
 Mon. 8:15 p. m. DAVID LORBACH
 Wed. 8:15 p. m. JANE CLARK
 Fri. 8:15 p. m. DAVID LORBACH
 Democratic Campaign Committee
 Alfred G. Allen, Chairman

WKRC Saturday, October 24

4:15—Pool Program
 4:30—Webb Fuel Program
 4:45—Spanish Serenade (CBS)
 5:00—Auto-Rad Stewart Warner Program
 5:15—Mabley & Carey Program
 5:30—Cincinnati Trade School
 5:45—Tropic-Aire, Inc.—Football Scores (CBS)
 6:00—Re-Mu Program—Pat Gillick, Organ
 6:15—Allied Piano—Alex McQueen
 6:20—Stocks—Cohle & Tyree
 6:21—Eureka Program Suggestions
 6:25—Sports Review
 6:30—Studio
 9:00—Today in Cincinnati, by Dr. Glenn Adams
 7:00—Home Furniture Company—Bing Crosby (CBS)
 7:15—Junior Chamber of Commerce Prog.
 7:45—Csmad Quarter Hour (CBS)
 8:00—Pryor's Crema Band (CBS)
 8:15—Abe Lyman, Sterling Products (CBS)
 8:30—Cook Smith-La Palma Prog. (CBS)
 8:45—The Old Wurzburg Malt Program
 9:00—Republican Judicial Committee
 9:15—Spanish War Veterans
 9:30—Hortensia Gardens—Chiff Burns
 10:00—Hank Simonson's Show Boat (CBS—French-Bauer)
 11:00—Time and Weather
 11:05—Live Review
 11:08—Studio
 11:15—Pyol—Wesley Fox and Jimmy Seaver
 11:30—Pat Gillick Studio
 Midnight—Guy Lombardo Orch. (CBS)

WLW (428m.—700 kc.)

A. M.
 6:30—International Fiddlers
 7:00—Physical Exercises
 7:15—Delivery Boys
 7:30—Organ, Arthur Chandler, Jr.
 7:45—Jull Ball and Jane (NBC)
 8:00—Morning Devotions
 8:15—Ramona
 8:30—Tick, Tack and Toe
 8:45—Physical Exercises
 9:00—Girls' Program
 9:05—Lucky Boy
 9:10—Organ Interlude
 9:20—Cook Smith, Violin Recital
 9:30—Beautiful Thoughts (NBC)
 9:45—WLW Mail Bag
 10:00—Live Stock Reports
 10:10—Piano Solo
 10:15—A. & P. Orchestra
 10:30—Colonel Goodbody
 10:45—Seger Ellis
 11:00—Motoring Time
 11:15—Ethel Brock, Violin Recital
 11:30—Live Stock Reports
 11:45—River and Weather Reports
 11:55—Time Signals
 Noon—Governmental Glimpses, Gilbert Bettman, Attorney General of Ohio

P. M.
 12:15—Swift Program—Pat Barnea (NBC)
 12:30—Hotel Giban Orchestra
 12:45—National Farm and Home (NBC)
 1:30—Johnny Hamp's Orchestra, Netherland Plaza
 2:00—Organ Matinee

Cliff interrupts—Bing. Mildred Bailey is with Paul Whiteman's Paint Men and can be heard Friday night at 10 o'clock through WHAS (720 kc.).

Kentucky Night Owl Club, Ross, Ky.: WKRC has not had Selma Harden on the air for some time and has lost track of her.

N. J. K., Cincinnati: Fred Roehr is still with WLW. Don Becker has left the station and is in the midst of mysterious travels.

"Let me take this opportunity to praise the program of the Philadelphia Symphony Orchestra Monday night over WKRC. It is seldom that so fine a program is heard in full over the air. Let's have more of them. W. R., Jr."

J. C., Cincinnati: Try W. R.'s plan for a jazz remedy. Pencil writing is excused on grounds of jazz-fitters.

J. J. B., Avondale, and Miss V. S., Reading: The Mills Brothers are on the Columbia network now. See Columbia programs this week for their schedule.

L. E. W.: Odas Mattox has left WCKY to sing with McCormick's Fiddlers at WLW, to replace Jerry Foy who has gone to KDKA to appear with Jack, also Foy. Jack Moore is living in Middletown, Ohio, and is not broadcasting.

DAVID LORBACH
 Democratic Candidate for Congress
WFBE
 Fri. 8:15 p. m. JUDGE EDWARD T. DIXON
 Mon. 8:15 p. m. DAVID LORBACH
 Wed. 8:15 p. m. JANE CLARK
 Fri. 8:15 p. m. DAVID LORBACH
 Democratic Campaign Committee
 Alfred G. Allen, Chairman

DAVID LORBACH
 Democratic Candidate for Congress
WFBE
 Fri. 8:15 p. m. JUDGE EDWARD T. DIXON
 Mon. 8:15 p. m. DAVID LORBACH
 Wed. 8:15 p. m. JANE CLARK
 Fri. 8:15 p. m. DAVID LORBACH
 Democratic Campaign Committee
 Alfred G. Allen, Chairman

WLW Saturday, October 24

2:30—Delivery Boys
 2:45—Navy-Princeton Football Game (NBC)
 4:00—A. & P. Orchestra
 4:30—Crosley Hawkins
 5:00—Socratic Dealer
 5:30—Dickinson Seed Program
 5:45—Little Orphan Annie (NBC)
 6:00—Old Man Sunshine
 6:15—The Chatter
 6:30—Johnny Hamp's Orchestra, Netherland Plaza
 6:45—Lowell Thomas (NBC)
 7:00—Anson 'n' Andy (NBC)
 7:15—Hotel Gibson Orchestra
 7:30—Crosley Theater of the Air
 7:45—Odey Saturday Knights
 8:00—Dancing With Countess Dorsay (NBC)
 9:00—King Edward Cigar Band
 9:30—"The First Nighter" (NBC)
 10:00—Korn and Parchie
 10:30—Clara, Lu and Em (NBC)
 10:40—Bob Newhall Sports Slides
 11:00—Estate Weather Man
 11:05—The Amigos
 11:30—Doodleticks
 Midnight—"Battle of Music" from Greystone Ballroom
 12:30—Johnny Hamp's Orchestra, Netherland Plaza
 1:00—Hotel Gibson Orchestra

WSAI (225m.—1330 kc.)

A. M.
 8:00—Gene and Glenn (NBC)
 8:15—McCormick Old-Time Fiddlers
 8:45—Records
 9:05—Odas Maddox, banjo
 9:30—Records
 9:45—A. & P. Program (NBC)
 10:00—Mrs. Blake's Radio Column (NBC)
 10:15—Seger Ellis
 10:30—Records
 11:30—Live Stock Reports
 11:45—Records
 Noon—Sign off

P. M.
 1:45—Army-Vale Football Game (NBC)
 3:00—Dancing Melodies (NBC)
 4:00—Records
 4:15—Crosley Dealers' Salute
 4:30—Records
 5:00—Southern Singers and Raymond Mithem
 5:30—Records
 6:30—Mr. Boga and Co. (NBC)
 7:00—John Fogarty, tenor (NBC)
 7:15—Laws That Safeguard Society (NBC)
 7:30—Prince Albert Program (NBC)
 7:45—Trials of the Golbergas (NBC)
 8:00—Judicial Campaign, Hon. Russell Wilson
 8:15—Johnny Hamp's Orchestra, Netherland Plaza
 8:30—National Advisory Council on Radio in Education (NBC)
 9:00—Nation Orchestra (NBC)
 9:30—Club Valspar (NBC)
 9:45—Studio of Dance Orchestra (NBC)
 10:00—Johnny Hamp's Orchestra, Netherland Plaza
 11:15—Records
 11:30—"Battle of Music" from Greystone Ballroom

SUNDAY
 October 25

WCKY (202m.—1490 kc.)

A. M.
 10:00—Mexican Typica Orchestra (NBC)
 10:30—Tommy Ott, novelty piano
 10:45—Lena Fogt, juvenile soprano
 11:00—Puzalis Singers (NBC)
 11:30—Kentucky Mountaineer
 11:45—Lucille Fox
 Noon—Kapua's Hawaiians

P. M.
 12:15—Echoes of the Orient (NBC)
 12:30—Buckeye Hoedowners
 1:00—Sign off
 5:45—Buckeye Hoedowners
 6:15—Cumberland Crooners
 6:30—Lawson's Hawaiians
 7:00—Willys-Overland Program (NBC)
 7:15—Kentucky Mountaineer
 7:30—"Battle of Music" from Greystone Ballroom
 8:00—Charlene and Tommy
 8:15—Rusael and Grady Hodges
 8:30—Earl Arnold's Orchestra From Look-out House
 9:00—Randall Fryer, Tenor
 9:15—Settlement Quartet
 9:30—Sun-dodgers

WFBE (250m.—1200 kc.)

A. M.
 8:00—Break of Day
 8:30—Concert Hour
 9:15—Birthdays Party Program
 9:30—Studio of Dance Orchestra (NBC)
 10:15—Dry Ridge Health Hints
 10:30—Vocal Varieties
 11:00—Excerpts from the Operas
 11:30—Studio of Dance Orchestra (NBC)
 11:45—Echoes from Germany

CALL Kirby 1253
 Guaranteed Radio Service at the right price. We call anywhere in the city without additional charge.
 Cincinnati Radio Service Co.

WFBE Sunday, October 25

- P. M.
- 12:30—UFA Theatre
- 12:45—Luncheon Melodies
- 1:00—Jewish Hour
- 1:30—Jubilee Singers
- 1:45—Around the Clock
- 2:00—James A. Dorsey
- 2:15—The Orioles
- 2:30—Bill Reith's Cincinnati Panthers
- 3:00—Ralph Pinkston
- 3:15—Moods in Blue
- 3:45—Male Quartet
- 4:00—Sleepy Nothings
- 4:15—Patels in Prase
- 4:30—Variety, Bee Campbell
- 4:45—Pott Symphony Hour
- 5:45—Mrs. Lloyd Hoshaw, Book Review
- 6:00—Musical Interlude
- 6:30—Church Federation Hour
- 7:00—Dinner Dance Music
- 7:15—With the Scouts
- 7:30—Crime Talk by Alfred Bettman
- 7:35—Original Ibold Sport Review
- 7:45—Old Time Fights—Harry Hartman, Announcer
- 8:30—Mansion Dance Orchestra
- 9:00—Evening Stars
- 9:30—Novelty Notes
- 9:45—Double Tonguedly, basso
- 10:00—Mansion Dance Orchestra
- 10:30—Dream Fantasy

WKRC (545m.—550 kc.)

- A. M.
- 6:45—God's Bible School—Sunrise Worship
- 9:00—God's Bible School
- 10:00—Watchtower Program
- 11:00—First Church of Christ Scientist (CBS)
- Noon—American Legion Program
- P. M.
- 1:00—Jewish Community Program
- 1:30—Cathedral Hall Hour (CBS)
- 2:00—Wallace Silver—Eight Sons of Eli
- 2:30—Columbia Church of the Air—Rev. Milo Gates (CBS)
- 3:15—New York Philharmonic Symphony (CBS)
- 3:45—President Hoover's Address (CBS)
- 5:00—Rev. Donald Gray Barnhouse (CBS)
- 5:30—Xavier—Twenty Minutes of Good Reading
- 6:00—United Knights (CBS)
- 6:15—United Woolens Period
- 6:20—Eureka Program Suggestions
- 6:25—Sports Review
- 6:30—Donald J. Dempsey Talk
- 6:45—Arch Preserver Band
- 6:50—Studio
- 7:00—Walker Millard, "Cincinnati's Example to a Nation"
- 7:15—Sole and Oscar (CBS)
- 7:30—Luden's Program (CBS)
- 8:00—Devils, Drugs and Doctors (CBS)
- 8:15—Philo Program—Tri-State Ignition
- 8:45—Arch Preserver Band
- 9:00—"The Dutch Master" (CBS)
- 9:30—Romances of the Sea (NBC)
- 10:00—Street Slumber Program
- 10:15—Serge Sings Gardens—Cliff Burns
- 11:00—String Quartet (CBS)
- 11:30—Ben Bernie's Orchestra (CBS)
- Midnight—Eddie Duchin Orchestra (CBS)
- 12:30—Rent-a-Movie Period

WLW (428m.—700 kc.)

- A. M.
- 9:00—Church Forum
- 9:30—Children's Program (NBC)
- 10:00—Organ, Arthur Chandler, Jr.
- 10:25—River Report
- 10:30—Fiddlers Three (NBC)
- 10:45—Songs for Today (NBC)
- 11:00—Stuyvesant String Quartet
- 11:30—Morning Musicale (NBC)
- P. M.
- 12:30—Island Serenaders
- 1:00—Over Jordan (NBC)
- 1:30—Henry Thies' Orchestra
- 2:00—Chevy Theatre of the Air
- 2:30—Fleet Poamers (NBC)
- 3:00—Concertatory of Music Recital
- 3:30—Vox Celeste
- 4:00—League of Little Flower (WJR)
- 5:00—Sharon Musical Showman
- 5:30—Croley Reamies
- 6:00—Croley Auto Stockers
- 6:15—The Chatter
- 6:45—Vanity Fair Program (NBC)
- 7:00—Songs for Today (NBC)
- 7:15—Jolly Time Revue (NBC)
- 7:30—The Three Bakers (NBC)
- 8:00—Enna Jettick Melodies (NBC)
- 8:15—Collier's Radio Hour (NBC)
- 9:15—Bayuk Stag Party (NBC)
- 10:15—Kaffee Hag Slumber Music (NBC)
- 10:45—Gold Medal Express (NBC)
- 11:02—Frank Williams' Oklahoma University Orchestra, Greystone Ballroom
- 11:30—The Singing Violin
- Midnight—Henry Thies' Orchestra (NBC)
- 1:00—John Hamp's Orchestra, Netherlands Plaza

WSAI (225m.—1330 kc.)

- P. M.
- 2:15—Sunday Bright Spots (NBC)
- 2:30—Serenonette and Hymn Time
- 3:00—Wayne King Orchestra (NBC)

"Raising Junior" Sketch is Written from Principals' Life



Peter Dixon and Aline Berry play the principal roles in the Raising Junior sketch which can be heard at 6 p. m. daily except Wednesday through station WJZ (760 kc.) and other NBC stations. This domestic skit is written by Dixon who bases it largely on the experiences of himself and Aline (Mrs. Berry) in raising their own small son. Recently a second baby was born to the Dixons and now he too is mentioned in the radio programs.

WSAI Sunday, October 25

- 3:30—National Religious Services (NBC)
- 4:00—Manhattan Guardmen (NBC)
- 4:30—The Wonder Program (NBC)
- 5:00—Gilbert and Sullivan Gems (NBC)
- 5:30—General Electric Program (NBC)
- 6:00—Catholic Hour (NBC)
- 7:00—"Education," by Prof. John Dewey (NBC)
- 7:30—Identical Club of the Air (NBC)
- 8:00—Chase & Sanborn (NBC)
- 9:00—"Our Government—David Lawrence (NBC)
- 9:15—Bayer and Company (NBC)
- 9:45—Johnny Hamp's Orchestra from Netherlands Plaza
- 10:15—Johnson Wax Program (NBC)

MONDAY
October 26

WCKY (202m.—1490 kc.)

- A. M.
- 7:00—"Alarm Clock Melodies"—Kentucky Mountaineer
- 7:30—Organ Reveries
- 8:00—Mountain Ballads
- 8:15—Morning Devotions (NBC)
- 8:30—Cheerio (NBC)
- 9:00—Waltzes, Old and New
- 9:15—Tunes in Blue
- 9:30—Vocal Varieties
- 9:45—Hawaiian Medleys
- 10:00—Popular Dance Melodies
- 10:30—Classic Hour
- 11:00—Musical Novelties
- 11:30—Skillet Lickers
- Noon—Phyllis Melodies
- P. M.
- 12:15—Tuneful Melodies
- 12:30—Norris Breck Live Stock Reports
- 12:35—Luncheon Concert
- 12:45—Kentucky Federation of Women's Clubs
- 1:00—Sign off
- 5:45—Sory Book Hour
- 6:15—Waldorf-Astoria Empire Room Orchestra (NBC)
- 6:30—Tommy and Willie
- 6:55—Ayers News Report
- 7:00—Arson 'n' Girl (NBC)
- 7:15—Tastyeast Jesters (NBC)
- 7:30—Lucille Fax
- 7:45—Paris Night Life (NBC)
- 8:00—Crown Prince of Pep
- 8:15—Louise Ryder, Contralto
- 8:30—Mystery Drama, "Castle Quaint"
- 9:00—Steve Bates
- 9:15—Arson 'n' Girl
- 9:30—Sun-dodgers

WANTED
BOYS TO
SELL RADIO DIAL
MAKE GOOD MONEY IN SPARE TIME
See Mr. Sirlin at Central News Co.,
320 E. Third St. Main 3115

WFBE Monday, October 26

- 10:00—Mountain Red
- 10:15—Dream Fantasy
- 10:30—Republican Judicial Committee

WKRC (545m.—550 kc.)

- A. M.
- 6:45—God's Bible School—Sunrise Worship
- 7:00—Cladis Castro, Organist
- 8:00—Roland Gaines Mountain Rangers
- 8:15—Grab Bag Boys
- 8:45—The Old Dutch Girl (CBS)
- 9:00—Commuters (CBS)
- 9:30—Consolidated Merchants Program
- 10:45—Woman's Hour—Therlette Tully
- 10:30—Art Dry Cleaners
- 7:45—Salishan Program (CBS)
- 11:00—Melody Parade (CBS)
- 11:45—Jane Grey and "Kampf the Jeweler Artists"
- Noon—Radio Television Program
- 12:15—Big Store Mid-Day Musical
- 12:30—Cincinnati Merchants Program
- 1:00—Kenton Pharmaceutical Prog. (CBS)
- 1:15—Pines Automatic Winterfront Program
- 1:30—Pyel Program
- 1:45—Hub Clothing Co. Musicale
- 2:00—Ann Leaf (CBS)
- 2:15—Buck-Bauer Program (CBS)
- 2:30—Rhythm Kings (CBS)
- 3:00—Vi-Zoy Program
- 3:30—Arbur Jarrett (CBS)
- 3:45—Auto-Rad Stewart-Warner
- 4:00—Bert Lowen's Orchestra (CBS)
- 4:15—Ben Berman Talk
- 4:20—Springer Program
- 4:30—Wahby Fuel Program
- 4:45—Studio
- 5:00—A. O. Rust—Happy Feet
- 5:15—Mabley & Carew Contest
- 5:30—Cincinnati Trade School
- 5:45—Quincy Quarter Hour (CBS)
- 6:00—Re-NU Program—Pat Gillick, Organ
- 6:16—Allied Florists—Alex McQueen
- 6:20—Stokers—Coble & Tyree
- 6:21—Eureka Program Suggestions
- 6:25—Sports Review
- 6:30—Union Gas and Electric Program
- 6:45—R. B. Clothes—Grab Bag Boys
- 7:00—Hans Puritance Company—Bing Crosby (CBS)
- 7:15—Linit Program—Lillian Roth (CBS)
- 7:30—Baker Bar—Howell Sisters (CBS)
- 7:45—Cantel Quarter Hour (CBS)
- 8:00—Pryor's Crema Band (CBS)
- 8:15—Singing's Sam, Barbaso Man (CBS)
- 8:30—Kate Smith, La Palina (CBS)
- 8:45—Old Wurlburg Malt Program
- 9:00—Pompeian Program (CBS)
- 9:15—Today in Cincinnati by Dr. Glenn Adams
- 9:30—An Evening in Paris (CBS)
- 10:00—Robert Burns Panatella Program (CBS)
- 10:30—Mabley and Carew Program
- 10:45—Republican Judicial Committee

WKRC (545m.—550 kc.)

- P. M.
- 12:30—How It Began
- 12:45—Luncheon Musicale
- 1:00—Around the Clock
- 1:15—Day Dreams
- 2:00—Dixie Tunes
- 2:30—Community Radio Revue
- 2:45—Afternoon Dance Polle
- 3:15—Menory Lane
- 3:45—Julius Monk
- 4:00—Voice of the Strings
- 4:30—Hot Rhythms
- 4:45—Hits from the Shows
- 5:15—Story Telling Time
- 5:30—Tea Time Times
- 5:45—Sprite Program
- 6:00—Little Black Joe
- 6:15—Musical Interlude
- 6:30—Frank Aston
- 6:45—Berning Ford Travelogue
- 7:00—Dinner Music
- 7:15—Post Question Box
- 7:30—Original Ibold Sport Review
- 7:45—Labor Conference Program
- 8:00—Hub Clothing Co. Players
- 8:15—David Lorbach Campaign, David Lorbach
- 8:30—WFBE Players
- 9:00—Luckey Boys
- 9:15—Dry Ridge Health
- 9:30—Julius Sen
- 9:45—Highlights of the World Series, Bob Bishow

MONDAY
October 26

WCKY (202m.—1490 kc.)

- A. M.
- 7:00—"Alarm Clock Melodies"—Kentucky Mountaineer
- 7:30—Organ Reveries
- 8:00—Mountain Ballads
- 8:15—Morning Devotions (NBC)
- 8:30—Cheerio (NBC)
- 9:00—Waltzes, Old and New
- 9:15—Tunes in Blue
- 9:30—Vocal Varieties
- 9:45—Hawaiian Medleys
- 10:00—Popular Dance Melodies
- 10:30—Classic Hour
- 11:00—Musical Novelties
- 11:30—Skillet Lickers
- Noon—Phyllis Melodies
- P. M.
- 12:15—Tuneful Melodies
- 12:30—Norris Breck Live Stock Reports
- 12:35—Luncheon Concert
- 12:45—Kentucky Federation of Women's Clubs
- 1:00—Sign off
- 5:45—Sory Book Hour
- 6:15—Waldorf-Astoria Empire Room Orchestra (NBC)
- 6:30—Tommy and Willie
- 6:55—Ayers News Report
- 7:00—Arson 'n' Girl (NBC)
- 7:15—Tastyeast Jesters (NBC)
- 7:30—Lucille Fax
- 7:45—Paris Night Life (NBC)
- 8:00—Crown Prince of Pep
- 8:15—Louise Ryder, Contralto
- 8:30—Mystery Drama, "Castle Quaint"
- 9:00—Steve Bates
- 9:15—Arson 'n' Girl
- 9:30—Sun-dodgers

WANTED
BOYS TO
SELL RADIO DIAL
MAKE GOOD MONEY IN SPARE TIME
See Mr. Sirlin at Central News Co.,
320 E. Third St. Main 3115

WKRC Monday, October 26

- 11:00—Gruen Answer Man
- 11:15—Time Weather, Sports Review
- 11:30—Byol—Wesley Fox and Jimmy Leaver
- 11:45—Pat Gillick, Organist
- Midnight—Ben Bernie's Orchestra (CBS)
- 12:30—Rent-A-Movie Period

WLW (428m.—700 kc.)

- A. M.
- 6:31—International Piddlers
- 7:00—Physical Exercises
- 7:15—Deliverance
- 7:30—Organ, Arthur Chandler, Jr.
- 7:45—Jolly Bill and Jane (NBC)
- 8:00—Morning Devotions
- 8:15—Deliverance
- 8:30—Blissful Pick-ups (NBC)
- 8:45—Physical Exercises
- 9:00—Musical Portrait
- 9:20—Child Care and Training, Dr. Ada Arlit
- 9:30—Beautiful Thoughts (NBC)
- 9:45—Radio Polks
- 10:00—Live Stock Reports
- 10:10—Piano Solos
- 10:15—A. & P. Orchestra
- 10:30—Colonel Goodbody
- 10:45—McCormick's Piddlers
- 11:00—Rumford School of Cookery
- 11:15—Island Serenaders
- 11:30—WLW Stars
- 11:45—Tivv and Weather Reports
- 11:55—Time Signals
- Noon—Ninth Annual Convention of National Association of Broadcasters (NBC)
- P. M.
- 12:15—Swift Program—Pat Barnes (NBC)
- 12:30—Hotel Gibson Orchestra
- 12:45—Market Reports
- 12:50—Live Stock Reports
- 1:00—National Park and Home (NBC)
- 1:30—Johnny Hamp's Orchestra, Netherlands Plaza
- 2:00—Columbia School of the Air
- 3:00—Interviews by Alice Cory
- 3:15—Singer Ella
- 3:30—Ramona
- 3:45—Tivv, Tack, Tee
- 4:00—A. & P. Orchestra
- 4:30—Village Rhythmer
- 4:45—Delivery Boys
- 5:00—Clash with Peggy Winthrop (NBC)
- 5:15—Mildred Law and her Orchestra
- 5:45—Little Orphan Annie (NBC)

QUEEN CITY RADIO SERVICE CO.
628 Broadway, Cincinnati, Ohio
Radios Repaired Aerials Installed
Expert guaranteed service on all makes of radios and phonographs by Cincinnati's oldest exclusive radio service company.
PHONE CHRY 2440

This little girl is getting a great big hand



WELCOME LEWIS

—whose seductive contralto voice has made her one of the biggest hits in radio. Miss Lewis is featured in every broadcast of the

CHEVROLET MUSICAL CHRONICLES

If you haven't heard Miss Lewis sing, you are missing one of the most enjoyable experiences that radio can offer. Yet she is only one of a brilliant list of features broadcast weekly in the Chevrolet Musical Chronicles.

Hour this famous star over
Station WLW every Tuesday, 10:00 P. M.

UNIVERSAL RADIO SHOP
1008 ORCHARD STREET
Guaranteed Radio Service
No Job Too Large—No Job Too Small
Phone South 1726 NEWPORT, KY.

Consumers Poultry & Egg Co.
Poultry and Eggs (Wholesale and Retail)
Phone Parkway 6748 318 W. 6th St.
Between Plum and Central Aves.
Telephone orders will be promptly filled.
To accommodate our customers store will be open from 7 a. m. to 10 p. m. and Sunday 7 a. m. to 12 m.

WLW Monday, October 26

6:00—Old Man Sunbabe
 6:15—The Chatter
 6:30—Radio and Television Institute
 6:45—Lowell Thomas (NBC)
 7:00—Amos 'n' Andy (NBC)
 7:15—Sunset Melodies
 7:30—Variety
 7:45—Selling Rubber Program
 8:00—Smilin' Ed McConnell
 8:30—Hollingsworth Hall
 8:45—Vick's Chemical Program
 9:00—Ames Band
 9:30—Musical Domains (NBC)
 10:00—Korn and Paré (Jim and Walt)
 10:15—Bob Newhall Sports Slices
 10:30—Real Folks (NBC)
 11:00—Estate Weather Man
 11:02—Chime Reverbs
 Midnight—Hotel Gibson Orchestra
 12:30—Johnny Hamp's Orchestra, Netherland Plaza

WSAI (225m.—1330 kc.)

A. M.
 8:00—Gene and Glenn (NBC)
 8:15—McCormick's Fiddlers
 8:45—Records
 9:15—Bradley Kincaid
 9:30—Records
 9:45—A. & P. Program (NBC)
 10:00—Mrs. Blake's Radio Column (NBC)
 10:15—Dr. Royal S. Copeland (NBC)
 10:30—Jean Carroll—Please Tell Me (NBC)
 10:45—Organ Program
 11:00—McCormick's Old Time Fiddlers
 11:30—Records
 Noon—Ninth Annual Convention of National Association of Broadcasters (NBC)

P. M.
 12:30—Sign off
 12:50—Live Stock Reports
 1:00—Sign off
 3:00—Woman's Radio Review (NBC)
 4:00—Records
 4:15—Crosley Dealers' Salute
 4:30—Records
 4:45—Minnabelle and Chick
 5:00—Crosley Singers
 5:30—Salt and Peanuts
 5:45—Records
 6:30—Everyday Poems by George Eliason
 6:45—The Stebbins Boys (NBC)
 7:00—Vermont Lumberjacks (NBC)
 7:15—Ohman and Arden, Piano (NBC)
 7:30—Prince Albert Program (NBC)
 7:45—Trials of the Goldbergs (NBC)
 8:00—August Rendigs, Jr.
 8:15—Hotel Gibson Orchestra
 8:30—Voice of Firestone (NBC)
 9:00—A. & P. Gyants (NBC)
 9:30—Records
 10:00—True Story Program (NBC)
 10:45—Simoniz Guardsman (NBC)
 11:00—Segot Ellis
 11:15—Hotel Gibson Orchestra

LISTEN IN on WKRC—5:30 P. M. Request Numbers by MISS RUTH REEVES Courtesy of CINCINNATI TRADE SCHOOL

TUESDAY October 27

WKCY (202m.—1490 kc.)

A. M.
 7:00—"Alarm Clock Melodies"—Kentucky Mountain
 7:30—Organ Melodies
 8:00—Mountain Ballads
 8:15—Morning Devotions (NBC)
 8:30—News (NBC)
 9:00—Band Concert
 9:15—Tunes in Blue
 9:30—Vocal Variety
 9:45—Piano Novelties
 10:00—Popular Dance Tunes
 10:30—Classic Hour
 11:00—Musical Novelties
 11:30—Skillet Lickers
 Noon—Philas Melodies

P. M.
 12:15—Tuneful Topics
 12:30—Norris Brock Live Stock Reports
 12:35—Luncheon Concert
 12:45—Elmer Hurdle—Dramatic Reader
 1:00—Sign off
 1:05—Story Book Hour
 1:15—Siddi and Young
 6:30—Tommie and Willie
 6:35—Ayers News Report
 7:00—Amos 'n' Andy (NBC)
 7:15—Mrs. Evans' Question and Answer
 7:30—Charlotte and Tommy
 7:45—Back of the News in Washington (NBC)
 8:00—Piano Recital by Fay Tarvin
 8:15—Maurice Thompson, baritone
 8:30—Earl Arnold's Orchestra From Look-out House
 9:00—Randall Fryer, Tenor
 9:15—Cumberland Crooners
 9:30—Buckeye Hoedowners

WFBE (250m.—1200 kc.)

A. M.
 7:00—Break of Day
 8:00—Birthday Party Program
 8:15—Concert Hour
 9:00—Our Daily Thought
 9:15—Hits and Bits
 9:45—Morning Melodies
 10:00—Housewives' Frolic
 10:15—WFE Beauty Helps
 10:35—WFE-RKO Theatre Party
 10:50—Sister Mary's Kitchen
 11:00—Shopping with Betty and Bob
 11:30—Happiness Club
 Noon—Organ Recital

P. M.
 12:30—How It Began
 12:45—Luncheon Musicale
 1:00—Around the Clock
 1:15—Two Irish Boys
 1:30—Day Dreams
 2:00—Ralph Pinkston
 2:15—Vocal Varieties
 2:30—Louis Freeze
 2:45—Afternoon Melodies
 3:15—Novelty Notes
 3:30—Bee Campbell
 3:45—Moods in Blue
 4:00—Prof. Briol

WFBE Tuesday, October 27

4:15—Tea Time Tunes
 4:30—Lucille Bauch, soprano
 4:45—The Islanders
 5:15—Story Telling Time
 5:30—Musical Interlude
 6:15—Ben Herman
 6:20—Variety
 6:45—Berning Ford Travelogue
 7:00—Dinner Dance Music
 7:15—Morning Devotions
 7:30—Original Ibold Sport Review
 7:45—Republican Campaign Committee
 8:00—Mansion Dance Orchestra
 8:30—Dry Ridge Health Hints
 8:45—Mrs. Ben Lowenstein
 9:00—Lucky Boys
 9:15—Republican Judicial Campaign
 9:30—Murdock Williams
 9:45—Adelaide Apfel
 10:00—Mansion Dance Orchestra
 10:35—Dream Fantasy

WKRC (545m.—550 kc.)

A. M.
 6:45—God's Bible School—Sunrise Worship
 7:45—Glady's Catron, Organist
 8:00—Roland Gaines' Mountain Rangers
 8:15—Grab Bag Boys
 8:45—Radio Television Program
 9:00—Commuters (CBS)
 9:30—Consolidated Merchants Program
 10:00—Cool Feet (CBS)
 10:18—Woman's Hour—Tremlette Tully
 10:45—Julia Hayes Household Hints
 11:15—Face the World With A Smile (CBS)
 11:30—Grab Bag (CBS)
 11:45—Stage and Screen Stars—Blossom Seely and Benny Fields
 Noon—Blackberry Dudes

P. M.
 12:15—Big Store Mid-Day Music
 12:30—Cincinnati Merchants Program
 1:00—Pabstette Varieties (CBS)
 1:15—Farm Network Program (CBS)
 2:00—Artists Recital (CBS)
 2:15—Columbian Artists' Recital (CBS)
 2:30—Laying of Cornerstone in New York State Roosevelt Memorial (CBS)
 3:15—Columbia Salon Orch. (CBS)
 3:30—Great-Old Program
 3:45—Pyol Program
 4:00—Four Club Men (CBS)
 4:30—Webb Fuel Program
 4:45—Phil Fisher's Orchestra (CBS)
 5:00—Auto-Rad Stewart-Warst
 5:15—Mabley & Carew Concert
 5:30—Cincinnati Trade School Program
 5:45—Hub Clothing Company Musicale
 6:00—Re-Nu—Bill Gillick, Organ
 6:15—Allied Florists—Alex McQueen
 6:20—Stocks—Cable & Tysse
 6:21—Eureka Program Suggestions
 6:25—Sports Hub Gillick, Organ
 6:30—Hygrade Program—Charlie and Oscar (CBS)
 6:45—R. B. Clothes—Grab Bag Boys
 7:00—Home Furniture Company—Bing Crosby (CBS)
 7:15—Icecast Program (CBS)
 7:30—Kaltenbrun Edits the News (CBS)
 7:45—Camel Quarter Hour (CBS)
 8:00—Pryor's Radio Military Band (CBS)
 8:15—Abe Lyman's Sterling Products Program (CBS)
 8:30—Red Goose Adventures (CBS)
 8:45—Lo Gerardin Program—Walter Winchell, Morton Downey (CBS)
 9:00—Ben Bernie's Blue Ribbon Orchestra (CBS)
 9:15—Republican Campaign Committee
 9:30—Remnants of the Sea (CBS)
 10:00—United Woollens Period
 10:03—Today in Cincinnati, by Dr. Glenn Adams
 10:15—Star Brand Shoe Revue (CBS)
 10:30—Eddie Schoelwer—Horses Neck
 10:45—Studio
 11:00—Time and Weather
 11:03—Sports Review
 11:08—Jack Miller (CBS)
 11:15—Pyol Program—Wesley Pox, Jimmy Leaver
 11:30—Pat Gillick, Studio
 Midnight—Schroder Hotel Orch. (CBS)

ROELL & QUEHL RADIO SALON

"Our Service Sells 'Em"

Any Make Radio Expertly Repaired

25-27 E. 6th Street
 Just West of Moonmouth
 South 6865 NEWPORT, KY.

WLW (428m.—700 kc.)

A. M.
 6:30—International Fiddlers
 7:00—Physical Exercises
 7:15—Delivery Boys
 7:30—Organ Program, Arthur Chandler, Jr.
 7:45—Jolly Bill and Jane (NBC)
 8:15—Morning Devotions
 8:15—Bradley Kincaid
 8:30—Bissell Pick-ups (NBC)
 8:45—Physical Exercises
 9:00—Tack, Tack, Toe
 9:15—Fashionette
 9:30—Beautiful Thoughts (NBC)
 9:45—Premium Plan
 10:00—Live Stock Reports
 10:10—Piano Solo
 10:15—A. & P. Orchestra
 10:30—Colonel Goodbody
 10:45—Davis Mystery Chef (NBC)
 11:00—Mrs. A. M. Goudiss (NBC)
 11:15—Ramona
 11:30—Through the Looking Glass With Frances Ingraham
 11:45—River and Weather Reports
 1:55—Time Signals
 Noon—Tuxedo Entertainers

P. M.
 12:15—Swift Program—Pat Barnes (NBC)
 12:30—Hotel Gibson Orchestra
 12:45—Market Reports
 12:50—Live Stock Reports
 1:00—National Farm and Home (NBC)
 1:30—Johnny Hamp's Orchestra, Netherland Plaza
 2:00—School of the Air
 3:00—Matinee Players
 3:30—Crimelights
 4:00—A. & P. Orchestra
 4:30—Village Rhapsody
 4:45—Delivery Boys
 5:00—Matinee Story Hour (NBC)
 5:30—Mildred Lawlor and Her Orchestra
 5:45—Little Organ Annie (NBC)
 6:00—Old Man Sunshine
 6:15—The Chatter
 6:30—Interview With Rear Admiral Walter F. Crosley
 6:45—Lowell Thomas (NBC)
 7:00—Amos 'n' Andy (NBC)
 7:15—Gaynes' Orchestra, Odette Myrtil (NBC)
 7:30—Famous Beauties of History
 7:45—American Girl Program
 8:00—Armstrong Quakers (NBC)
 8:15—Crosley Auto-Slickers
 8:30—Werk Bubble Blowers
 8:45—Maxwell House Diete Ensemble
 9:00—Great Personalities: Frazier Hunt (NBC)
 10:00—Chevrolet Chronicles
 10:30—Variety
 10:45—Bob Newhall Sports Slices
 11:00—Estate Weather Man
 11:02—Crimelights
 11:25—Around the World With Jeff Davis
 11:45—Macon River
 Midnight—Hotel Gibson Orchestra
 12:30—Johnny Hamp's Orchestra, Netherland Plaza

WSAI (225m.—1330 kc.)

A. M.
 8:00—Gene and Glenn (NBC)
 8:15—McCormick's Fiddlers
 8:45—Records
 9:15—Odus Maddox, banjo
 9:30—Records
 9:45—A. & P. Program (NBC)
 10:00—Mrs. Blake's Radio Column (NBC)
 10:15—Records
 11:00—"Your Child"—Dr. Ella Oppenheimer (NBC)
 11:15—Radio Household (NBC)
 11:30—Records
 Noon—G. E. Circle (NBC)

P. M.
 12:15—Sign off
 12:50—Live Stock Reports
 1:00—Sign off
 2:30—Laying of Cornerstone, New York State Roosevelt Memorial (NBC)
 3:00—Woman's Radio Review (NBC)
 3:15—Waman's Radio Review (NBC)
 4:00—Records
 4:15—Crosley Dealers' Salute
 4:30—Records
 5:00—Dave Roberts, banjo
 5:15—Records
 5:30—Rimso Talvik—What Happened to Jane (NBC)

WSAI Tuesday, October 27

5:45—Records
 6:30—Vocal Solos
 6:45—The Stebbins Boys (NBC)
 7:00—Midweek Federation Hymn Time (NBC)
 7:30—Prince Albert Program (NBC)
 7:45—The Trials of the Goldbergs (NBC)
 8:00—Blacks' Plantation (NBC)
 8:30—Goodyear Tire Program (NBC)
 9:00—McKeason Musical Magazine (NBC)
 9:30—Fuller Brush Man (NBC)
 10:00—Lucky Strike Dance Orchestra (NBC)
 11:00—Netherland Plaza Orchestra

WEDNESDAY October 28

WKCY (202m.—1490 kc.)

A. M.
 7:00—"Alarm Clock Melodies"—Crooning Guitarist
 7:30—Organ Reverbs
 8:00—Mountain Ballads
 8:15—Morning Devotions (NBC)
 8:30—News (NBC)
 9:00—Walzes, Old and New
 9:15—Tunes in Blue
 9:30—Vocal Variety
 9:45—Piano Music
 10:00—Mary Hale Martin's Household Period (NBC)
 10:15—Popular Dance Music
 10:30—Classic
 11:00—Mrs. A. M. Goudiss (NBC)
 11:15—Musical Novelties
 11:30—Skillet Lickers
 Noon—Philas Melodies

P. M.
 12:15—Tuneful Topics
 12:30—Norris Brock Live Stock Reports
 12:35—Luncheon Concert
 1:00—Sign off
 1:05—Story Book Hour
 1:15—Sister Mary's Kitchen
 6:15—Waldorf-Astoria Empire Room Orchestra (NBC)
 6:30—Tommie and Willie
 6:55—Ayers News Report
 7:00—Amos 'n' Andy (NBC)
 7:15—Tommy Ott, pianist
 7:30—Kapua's Hawaiians
 7:45—Mollie Moore, soprano
 8:00—National Bartery Co., Collage Memories (NBC)
 8:15—Brown Shoe Program—Guy Robertson (NBC)
 8:30—Earl Arnold's Orchestra Prom Look-out House
 9:00—Duke, His Uke and His Sisters
 9:15—Steve Bates, with uctofone
 9:30—Sun Dodgers

WFBE (250m.—1200 kc.)

A. M.
 7:00—Break of Day
 8:00—Birthday Party Program
 8:15—Concert Hour
 9:00—"Our Daily Thought"
 9:15—Hot Rhythms
 9:45—Housewives' Frolic
 10:00—Better Bruses Brevities
 10:35—WFE-RKO Theatre Party
 10:50—Mrs. Evans' Question and Answer
 11:00—Shopping with Betty and Bob
 11:30—Happiness Club
 Noon—Organ Recital

P. M.
 12:30—How It Began
 12:45—Luncheon Musicale
 1:00—Around the Clock
 1:15—Matinee
 2:15—Waltz Time
 2:30—The Community Radio Revue
 2:45—Afternoon Melodies
 3:15—Bill Reih's Cincinnati Panthers
 3:45—Marion Melos
 4:00—Dr. Cadman
 10:10—Venetian Memories
 4:30—Tea Time Tunes
 5:15—Story Telling Time
 5:45—Spritz Program
 6:00—Little Black Joe
 6:15—Musical Interlude
 6:30—Novelty Notes
 6:45—Berning Ford Travelogue
 7:00—Dinner Music
 7:15—Post Question Box
 7:30—Original Ibold Sport Review
 7:45—Labor Conference Program
 8:00—Hub Clothing Co. Players
 8:15—David Lorbach Campaign—James Clark
 8:30—Dry Ridge Health Hints
 8:45—Julius Sein
 9:00—Lucky Boys
 9:15—Evening Chimes
 9:30—Zack Whyte's Orchestra
 10:00—Macon River
 10:15—Dream Fantasy

FLORENCE FREY BEAUTY EXPERT

on the air
 Every Thursday
 9:45 A. M. WLW

PERMANENT WAVE \$5.00

Positively Harmless—Painless—Quick
FLORENCE FREY STUDIO
 631 Walnut Street Cherry 6365



LISTEN TO Your Favorite **WLW** ARTIST on a **CROSLEY RADIO** 5 and 8 Tube Super **\$36.36 to \$95.00**

All Good Dealers Stock and Sell **CROSLEY**

SAVE UP TO \$600!

Brand New. Latest Current Models, Willy's 6's and 8's

Sedans, Coupes, Coaches and Sport Coupes. (Illustrated) latest 6-Cyl. Sport Coupe with trunk, wire wheels, fender wells; nothing to buy. A Sport Sedan delivered to you at

All models to choose from. Free wheeling. Every latest feature. Only a limited number to sell. Full size 6-Cyl. Sport Sedan with trunk, wire wheels, fender wells. A Sport Coupe, delivered.

\$498.00 6-Cylinder Sport Coupe **\$498.00**

TRADE OR TERMS OPEN EVENINGS

WILLY'S MOTORS, INC.
 AUTHORIZED DEALERS
 2350 GILBERT AVENUE Woodburn 7987

Wednesday, October 28 WKRC (545m.—550 kc.)

- A. M. 6:45—God's Bible School—Sunrise Worship 7:45—Gladys Catron, Organist 8:45—Roland Gaines Mountain Rangers 8:15—Grab Bag Boys 8:45—The Old Dutch Girl (CBS) 9:00—Pines Automatic Winterfront 9:15—Super Maid Program 9:30—Consolidated Merchants Program 10:00—The Oval Feature (CBS) 10:15—Woman's Hour—Tremlette Tully 10:45—Julia Hayes Household Hints 11:15—Three Men in a Tub (CBS) 11:30—Musical Alphabet (CBS) 11:45—Jane Grey and "Kampf der Jeweler Arden" Nonn—Synol Contest Program P. M. 12:15—Big Store Mid-Day Music 12:30—Cincinnati Merchants' Program 1:00—Kenton Pharmaceutical Program (CBS) 1:15—Pyro Program 1:30—Farm Network (CBS) 2:00—Rhythm Kings (CBS) 2:15—Burch-Bauer Organ Melodies 2:30—Needle Work Guild Period 2:45—Houston Ray's Orchestra (CBS) 3:00—Julia Hayes Household Hints 3:15—Vi-Zoy Program 3:45—Radio Television Program 4:00—Auto-Rad Stewart-Warner 4:15—Ben Berman Talk 4:20—Sprite Clothing 4:30—Webb Fuel Program 4:45—Artists Recital (CBS) 5:00—A. O. Rust—Happy Feet 5:10—Mabley & Carew Program 5:30—Cincinnati Trade School 5:45—Hub Clothing Company Musicale 6:00—Re-NU—Pat Gillick, Organ 6:15—Allied Florists—Alex McQueen 6:20—Stocks—Coble & Tyree 6:21—Eureka Program Suggestions 6:25—Sports Review 6:30—Cincinnati & Lake Erie Program 6:45—R. B. Clothes—Grab Bag Boys 7:00—Home Furniture Company—Bing Crosby (CBS) 7:15—Lino Program (CBS) 7:30—Baker Bar—Boswell Sisters (CBS) 7:45—Camel Quarter Hour (CBS) 8:00—Pryor's Crema Band (CBS) 8:15—Singing Sam, Barbasol Man (CBS) 8:30—La Palma Program—Kate Smith (CBS) 8:45—The Old Wurzburg Malt Program 9:00—Gold Medal Post Freight (CBS) 9:30—Ena Cime Club: "Dead Man Twice" (CBS) 10:00—Vitality Personalities 10:15—Mabley & Carew Program 10:30—Republican Judicial Committee 10:45—Today in Cincinnati, by Dr. Glenn Adams 11:00—Time, Weather, Sports Review 11:00—Street Sign of the Day 11:15—Patol—Wesley Fox, Jimmy Leaver 11:30—Pat Gillick, Organist Midnight—Romanelli's Orchestra

WLW (428m.—700 kc.)

- A. M. 6:30—International Fiddlers 6:45—Physical Exercises 7:00—Organ Program, Arthur Chandler, Jr. 7:45—Jolly Bill and Jane (NBC) 8:00—Morning Devotions 8:15—Theodore Le Fevre, Graphologist 8:30—Biswell Pick-ups (NBC) 8:45—Physical Exercises 9:00—Musical Etchings 9:15—Theodore Le Fevre, Graphologist 9:30—Beautiful Thoughts (NBC) 9:45—Art Talk 10:00—Live Stock Reports 10:10—National Farm and Home (NBC) 10:15—A. & P. Orchestra 10:30—Colonel Goodbody 10:45—Marley Personalities Performes (NBC) 11:00—Dorothy Chase and the Charis Players 11:15—Mouth Hygiene Talk 11:25—Ramona 11:45—River and Weather Report 11:55—Time Signals Nonn—Seger Ellis P. M. 12:15—Swift Program (NBC) 12:30—Hotel Gibson Orchestra 12:45—Market Reports 1:00—National Farm and Home (NBC) 1:30—Johnny Hamp's Orchestra 2:00—Ohio School of the Air 3:00—Matinee Players 3:30—Great Composers 4:00—A. & P. Orchestra 4:30—Wesley Fox, Jimmy Leaver 4:45—Delivery Boys 5:00—Chats with Peggy Winthrop (NBC) 5:15—Mouth Health (NBC) 5:30—Singer Singers and Raymond Mitchem 5:45—Little Orphan Annie (NBC) 6:00—Old Man Sunshine 6:15—The Charter 6:30—Dr. Glenn Adams Dog Talk 6:45—Lowell Thomas (NBC) 7:00—Amos 'n' Andy (NBC) 7:15—John Ruskin Dance Orchestra 7:30—Crosby Pollack 8:00—R. P. D. Hour

RADIO REPAIR SPECIALIST Guaranteed Service on All Makes of Radios. LESTER E. YOUNG (Formerly Krauss' Inspector) PHONE KIRBY 4435

- Wednesday, October 28 8:15—Remington Rhythm Rounders 8:30—Jack Frost's Melody Moments (NBC) 9:00—Adventures of Sherlock Holmes 9:30—Dutch Masters Minstrals (NBC) 10:00—Horn and Parcube 10:15—Variety 10:30—Vic's Chemical Program 10:45—Bob Newhall Sports Slices 11:00—Estate Washer Man 11:00—Crosley Theater of the Air 11:30—Greystone Ballroom Orchestra 12:00—Hotel Gibon Orchestra 12:30—Johnny Hamp's Orchestra, Netherland Plaza

WSAI (225m.—1330 kc.)

- A. M. 8:00—Gene and Glenn (NBC) 8:15—McCormick's Piddlers 8:45—Records 9:15—Dr. Royal S. Copeland (NBC) 9:30—Records 9:45—A. & P. Program (NBC) 10:00—Mrs. Blake's Radio Column (NBC) 10:15—Jane Grant's Stereo Hour (NBC) 10:30—National Home Hour (NBC) 11:00—Keeping Up With Daughter (NBC) 11:15—Radio Household Institute (NBC) 11:30—Records Nanni—G. E. Circle (NBC) P. M. 12:15—Sign off 12:30—Live Stock Reports 1:00—Sign off 3:00—Woman's Radio Review (NBC) 4:00—Records 4:15—Crosley Dealers' Salute 4:30—Records 5:00—Sam Wilson, Baritone 5:15—Records 5:25—Civil Service Talk 5:30—Records 6:30—Larry Greuter, Accordionist 6:45—The Stebbins Boys (NBC) 7:00—John Fogarty, tenor (NBC) 7:15—Sonop and Peg (NBC) 7:30—Prince Albert Program (NBC) 7:45—The Trials of the Goldbergs (NBC) 8:00—Silver Plute (NBC) 8:15—Kobold Concert (NBC) 9:00—Halsey-Stuart Program (NBC) 10:15—Tunes in Blue 9:30—Palmoive Hour (NBC) 10:30—Coca Cola Program (NBC) 11:15—Hotel Gibson Orchestra

THURSDAY October 29

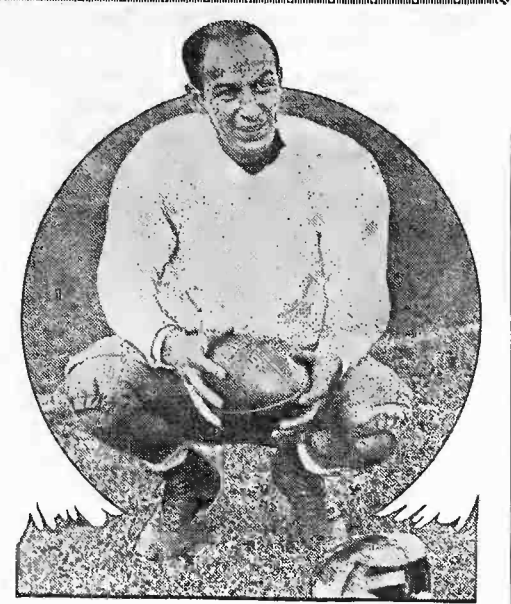
WKCY (202m.—1490 kc.)

- A. M. 7:00—"Alarm Clock Melodies"—Kentucky Mountaineer 7:30—Organ Reveries 8:00—Mountain Ballads 8:15—Morning Devotions (NBC) 8:30—Cherilo (NBC) 9:00—Band Concert 9:30—Latoia, Ky., Merchants' Program 10:00—Ray Perkins of Pineapples (NBC) 10:15—Tunes in Blue 10:30—Classic Hour 11:00—Mrs. A. M. Goudias (NBC) 11:15—Musical Novelties 11:30—Skillet Lickers Nonn—Phluga Melodies P. M. 12:15—Tuneful Topics 12:30—Norris Brock Live Stock Reports 12:45—Lunchen Concert 12:45—Rev. Vandermeulen 1:00—Sign off 5:45—Story Book Hour 6:15—Siddell and Young 6:30—Tommy and Willie 6:55—Ayers News Report 7:00—Amos 'n' Andy (NBC) 7:15—Teatrest Jesters (NBC) 7:30—Cumberland Greenets—Latoia Jockey Club Program 7:45—Pamphus Fallacies of Business (NBC) 8:00—Earl Spiritual Singers (NBC) 8:15—Charlene and Tommy 8:30—Dixie Arnold's Orchestra From Look-out House 9:00—Blackstone Plantation (NBC) 9:20—Buckeye Hoedowners

Call Avon 3095

When your radio goes wrong, have RADIO ENGINEERS Fix it Rates Low Expert Service Best Results JAMES FRENKEL LEON BASS

Husing Has Dress Rehearsal



Not content with reading football rule books, Ted Husing, CBS sports announcer, spent some time working out with the Army team at West Point in preparation for his heavy schedule of football announcing. He's shown here going through his paces at the West Point grounds, reviewing what he learned when he himself played football in college.

Thursday, October 29 WFBE (250m.—1200 kc.)

- A. M. 7:00—Break of Day 8:00—Birthday Party Program 8:15—Concert Hour 9:00—Our Thought Today 9:15—Strike Up the Band 9:45—Hawaiian Melodies 10:00—Housewives' Frolic 10:20—WFBE Beauty Helps 10:35—WFBE-RKO Theatre Party 10:50—Sister Mary's Kitchen 11:00—Shopping with Betty and Bob 11:30—Happiness Club Nonn—Organ Recital P. M. 12:30—How It Began 12:45—Lunchben Musicale 1:00—Around the Clock 1:15—Two Irish Boys 1:30—Matinee Musicale 2:00—Ralph Pinkston 2:15—Vocal Varieties 2:45—Moods in Blue 3:15—Bee Campbell 3:30—Sweet and Hot Tunes

WKRC (545m.—550 kc.)

- A. M. 6:45—God's Bible School—Sunrise Worship 7:45—Gladys Catron, Organist 8:00—Roland Gaines Mountain Rangers 8:15—Grab Bag Boys 8:45—Radio Television Program 9:00—Consumers (CBS) 9:30—Consolidated Merchants Program 10:00—Dr. Copeland—Ceresota Flour (CBS) 10:15—Machine Age Housekeepers 10:30—Tub Clothing Musical 10:45—Barbara Gould Beauty Talk (CBS)

BEN BERMAN (Former State Senator) Candidate for BOARD OF EDUCATION LISTEN IN WKRC - Mon, Wed, 4:15-4:20; Sat, 6:30 WFBE - Tues., Thurs., Fri., 6:15-6:20 - Issued by Eric Schulte, Chairman

Thursday, October 29 WFBE (250m.—1200 kc.)

- 4:00—Prof. Briot 4:15—Tea Time Tunes 4:30—Serenade 5:00—Moon Melodies 5:15—Story Telling Time 5:30—Musical Interlude 6:15—Ben Berman 6:20—Variety 6:45—Berland Ford Travelogue 7:00—Dinner Music 7:15—Post Question Box 7:30—Original Ibold Sport Review 7:45—Republican Campaign Committee 8:00—Mansion Dance Orchestra 8:15—David Lorbach Campaign—David Lorbach 8:30—Murdock Williams 8:45—Dry Ridge Health Hints 9:00—Lucky Boys 9:15—Republican Judicial Campaign 9:30—Post Tenor 9:45—Variety 11:00—Mansion Dance Orchestra, 11:30—Dream Fantasy

WKRC (545m.—550 kc.)

- A. M. 6:45—God's Bible School—Sunrise Worship 7:45—Gladys Catron, Organist 8:00—Roland Gaines Mountain Rangers 8:15—Grab Bag Boys 8:45—Radio Television Program 9:00—Consumers (CBS) 9:30—Consolidated Merchants Program 10:00—Dr. Copeland—Ceresota Flour (CBS) 10:15—Machine Age Housekeepers 10:30—Tub Clothing Musical 10:45—Barbara Gould Beauty Talk (CBS)

A NEW Radio Inspection Service

AGAIN THIS WEEK we will call at your home and test all your radio tubes, voltages and make a general inspection of your entire radio for— 50c We offer you this service for a limited time only on Radios of all makes and types. Years of experience, expert knowledge of Radio circuits and up-to-date equipment make it possible for us to analyze your entire Radio system quickly and correctly. PHONE US NOW Get your call in immediately. Enjoy the satisfaction of dealing with a concern that really knows Radio. Remember, a phone call brings an ENP.ERT. A-B-C Radio Sales & Service Phone CHerry S230, 1S11 Race St.

WKRC Thursday, October 29

- 11:02—Woman's Hour—Tremlette Tully 11:15—Acme Sunshine Melodist 11:30—Wesley Fox—Tremlette Tully 11:45—Stage and Screen Stars (CBS) Noon—Blackberry Dudes P. M. 12:15—Big Store Mid-Day Music 12:30—Cincinnati Merchants' Program 1:00—Pratt—Helps to Feeders (CBS) 1:15—Pyro Program 1:30—Julia Hayes 1:45—Singing Waldo (CBS) 2:15—Salon Orchestra (CBS) 3:15—Synol Conies Program 3:30—Grease-off Program 3:45—Studio 4:00—Melody Parade (CBS) 4:30—Webb Fuel Program 4:45—Hotel Tuff Orchestra (CBS) 5:00—Auto-Rad Stewart-Warner Program 5:15—Mabley & Carew Program 5:30—Cincinnati Trade School Program 5:45—Sweetheart Quarter Hour (CBS) 6:00—Re-NU—Pat Gillick, Organist 6:15—Allied Florists—Alex McQueen 6:20—Stocks—Coble & Tyree 6:21—Eureka Program Suggestions 6:25—Sports Review, Weather 6:30—Committee and Candidates 6:45—R. B. Clothes—Grab Bag Boys 7:00—Home Furniture Company—Bing Crosby (CBS) 7:15—Republican Campaign Committee 7:30—Kaltenborn Edits the News (CBS) 7:45—Camel Quarter Hour (CBS) 8:00—Pryor's Crema Band (CBS) 8:15—Abe Lyman—Sterling Products Program (CBS) 8:30—La Palma Program—Kate Smith (CBS) 8:45—Angelo Patri—"Your Child" (CBS) 9:00—Today in Cincinnati, by Dr. Glenn Adams 9:15—Horse Shoe Gardens—Cliff Burns 9:30—Love Story Program (CBS) 10:00—Hart, Schaffner & Marx (CBS) 10:30—Horse Shoe Winter Gardens—Cliff Burns 10:45—Peter's Parade (CBS) 11:00—Time, Weather, Sports Review 11:00—Jack Miller (CBS) 11:15—Pyrol—Wesley Fox, Jimmy Seaver 11:30—Pat Gillick, Organist Midnight—Guy Lombardo and His Orchestra (CBS) 12:30—Rent-a-Movie

WLW (428m.—700 kc.)

- A. M. 6:30—International Piddlers 7:00—Physical Exercises 7:15—Delivery Boys 7:30—Organ Program, Arthur Chandler, Jr. 7:45—Jolly Bill and Jane (NBC) 8:00—Morning Devotions 8:15—Bradley Kincaid 8:30—Biswell Pick-ups (NBC) 8:45—Physical Exercises 9:00—Goodbody 9:10—Organ Interlude 9:20—Health Talk by Dr. Carl A. Wilzbach 9:30—Beautiful Thoughts (NBC) 9:45—Florence Frey Good Looks Workshop 10:00—Live Stock Reports 10:10—Piano Solos 10:15—A. & P. Orchestra 10:30—Colonel Goodbody 10:45—Davis Mystery Chef (NBC) 11:00—Moto Ironing Time 11:15—Organ, Program by Arthur Chandler, Jr. 11:30—WLW Stars 11:45—River and Weather Reports 11:55—Time Signals Nonn—Ramona P. M. 12:15—Swift Program (NBC) 12:30—Hotel Gibson Orchestra 12:45—Market Reports 1:00—National Farm and Home (NBC) 1:30—Johnny Hamp's Orchestra, Netherland Plaza 2:00—Ohio School of the Air 3:00—Interviews by Alice Cary 3:15—Ohio Federation of Woman's Club 3:30—Ramona 3:45—Tack, Tack, To 4:00—A. & P. Orchestra 4:30—Village Rhythmer 4:45—Delivery Boys 4:50—Brazilian Coffee (NBC) 5:30—Estate Washer Man 5:45—Little Orphan Annie (NBC) 6:00—Old Man Sunshine 6:15—The Charter 6:30—Radio News Reel of Hollywood 6:45—Lowell Thomas (NBC) 7:00—Amos 'n' Andy (NBC) 7:15—Southern Singers 7:30—Variety 7:45—American Girl Program 8:00—Phoenix Hooley 8:15—Rin-Tin-Tin Thriller (NBC) 8:30—Estate Washer Man 8:45—Sisters of the Skillet (NBC) 9:00—Cotton Queen Minstrals 10:30—Crosley Auto Stokers 10:45—Bob Newhall Sport Slices 11:00—Estate Washer Man 11:02—Moon River 11:30—Moon River Midnight—Hotel Gibson Orchestra 12:30—Johnny Hamp's Orchestra, Netherland Plaza

WKRC (545m.—550 kc.)

- A. M. 6:45—God's Bible School—Sunrise Worship 7:45—Gladys Catron, Organist 8:00—Roland Gaines Mountain Rangers 8:15—Grab Bag Boys 8:45—Radio Television Program 9:00—Consumers (CBS) 9:30—Consolidated Merchants Program 10:00—Dr. Copeland—Ceresota Flour (CBS) 10:15—Machine Age Housekeepers 10:30—Tub Clothing Musical 10:45—Barbara Gould Beauty Talk (CBS)

IF IT'S ELECTRIC WE CAN FIX IT

PRUES ELECTRIC AND RADIO SHOP 408 York Street South 2751, NEWPORT, KY.

Thursday, October 29
WSAI (225m.—1330 kc.)
 A. M.
 8:00—Gene and Glenn (NBC)
 8:15—McCormick's Fiddlers
 8:45—Records
 9:15—Odus Maddox, banjo
 9:30—Records
 9:45—A. & P. Program (NBC)
 10:00—Mrs. Blask's Radio Column (NBC)
 10:15—Records
 10:45—Organ Program
 11:00—Records
 11:15—Radio Household Institute (NBC)
 11:30—Records
 Noon—G. E. Circle (NBC)
 P. M.
 12:30—Live Stock Reports
 1:00—Sign off
 1:00—Woman's Radio Review (NBC)
 4:00—Mona Motor Organ Recital
 4:30—Crosley Dealers' Salute
 4:45—Records
 5:00—Travel Talk
 5:15—Records
 5:30—Rinsio Talkie—What Happened to Jana (NBC)
 5:45—Records
 6:25—Better Business Bureau Talk
 6:50—Vocal Solos
 6:45—The Stebbins Boys (NBC)
 7:00—Vermont Lumberjacks (NBC)
 7:15—"The World Today," by James G. McDonald (NBC)
 7:30—Prince Albert (NBC)
 7:45—The Trials of the Goldbergs (NBC)
 8:00—Leichmann Hour (NBC)
 8:00—Arco Dramatic Musical (NBC)
 9:30—Adventures of Sherlock Holmes (NBC)
 10:00—Lucky Strike Dance Orchestra (NBC)
 11:00—Hotel Gibson Orchestra

FRIDAY
October 30

WCKY (202m.—1490 kc.)
 A. M.
 7:00—"Alarm Clocks Melodies"—Kentucky Mountaineer
 7:30—Organ Recital
 8:00—Mountain Ballads
 8:15—Morning Devotions (NBC)
 8:30—Circle (NBC)
 9:00—Waltzes, Old and New
 9:15—Hot Dance Tunes
 9:30—Vocal Varieties
 9:45—Concert Music
 10:00—Ray Perkins, Prince of Pineapple (NBC)
 10:15—Hamilton (Ohio) Merchants Program
 10:45—Luhann (Ohio) Program
 11:15—Williamstown (Kentucky) Merchants
 11:45—Skillet Lickers
 Noon—Phyllis Melodia
 P. M.
 12:30—Norris Brock Live Stock Reports
 1:00—Luncheon Concert
 1:00—Sign off
 5:45—Story Book Hour
 6:15—Lucille Fox
 6:50—Tommie and Willie
 6:55—Ayers News Report
 7:00—"Ma of Andy" (NBC)
 7:15—Kentucky Mountaineer
 7:30—Cumberland Crooners
 7:45—Saunders Trio
 8:00—Nesley's Program (NBC)
 8:50—Earl Arnold's Orchestra from Look-out House
 9:00—Intervenor Pair (NBC)
 9:30—Sun Dodgers

WFBE (250m.—1200 kc.)
 A. M.
 7:00—Break of Day
 7:30—Hill Billy Kid and Ldg Cabin Boy
 7:45—Strike Up the Band
 8:00—Holiday Party Program
 8:15—Concert Hour
 9:00—Our Dally Thought
 9:15—Morning Melodies
 9:45—Hawaiian Echoes
 10:00—Housewives Frolic
 10:20—Better Business Briefings
 10:35—WFBE-RKO Theatre Party
 10:50—Mrs. Evans' Questions and Answers
 11:00—Shopping with Betty and Bob
 11:50—Happiness Club
 Noon—Organ Recital
 P. M.
 12:30—How It Began
 1:00—Luncheon Musicale,
 1:00—Around the Clock
 1:15—Matinee Musicale
 2:00—Novelty Notes
 2:30—Community Radio Revue
 2:45—Moods in Blue
 3:15—Garden of Melody
 3:45—Dancy Partners
 4:15—Julius Monk
 4:30—Violin Solos, Mrs. Hahn
 4:45—Afternoon Dance Melodies
 5:15—Story Telling Time
 5:30—Spirituals
 5:45—Sprits Program
 6:00—Little Black Joe
 6:15—Betty Bernam
 6:20—Musical Interlude
 6:45—Berning Ford Travelogue
 7:00—Julius Sien
 7:15—Post Question Box
 7:30—Original Infield Sport Review
 7:45—Labor Conference Program
 8:00—Hub Clothing Co., Players
 8:15—David Lorback Campaign
 8:30—Dry Ridge Health Hims
 8:45—Adelele Apfel
 9:00—Lucky Boys
 9:15—Wrestling Matches

Misses "Stewit" and "Fryit" Exchange Household Hints



Eddie Esst (left) and Ralph Dumke, radio's "Sisters of the Skillet," put on their "bungie" aprons while they considered household problems which they will solve in their broadcasts over associated NBC stations.

Through the door of their research laboratory on the art of housekeeping, the photographer caught them the other day just as they discovered how to preserve warm weather for use during winter.

"Stew it," said Eddie, in his character as "Miss Stewit." "Or fry it," suggested Ralph, as "Miss Fryit." They can be heard on WLW at 8:45 p. m., Thursday, and on WLS (870 kc.) on Tuesday and Friday at the same time, and on WSAI at 10 a. m., Wednesday in Mrs. Blask's Radio Column.

Friday, October 30
WKRC (545m.—550 kc.)
 A. M.
 6:45—God's Bible School—Sunrise Worship
 7:45—Gladya Catron, organist
 8:01—Roland Gaines and His Mountain Rangers
 8:15—Grab Bag Boys
 8:45—The Old Dutch Girl (CBS)
 9:00—Pines Automatic Winterfront Program
 9:15—Radad—Super Maid Program
 9:30—Consolidated Merchants' Program
 10:00—Oxol Feature (CBS)
 10:17—Woman's Hour—Tremette Tully
 10:45—Martin Senour—Don and Betty (CBS)
 11:00—Rhythm Kings (CBS)
 11:15—Blue Moon Cheese—Ida Bailey Allen (CBS)
 11:50—Melody Parade (CBS)
 11:45—Jane Grey and Kampel the Jeweler Artists
 Noon—Radio Television Program
 P. M.
 12:15—Big Store Mid Day Musicale
 12:30—Cincinnati Merchants' Program
 1:00—Pabst-et Varieties (CBS)
 1:15—Julia Hayes
 1:45—Spartan Contest Program
 2:00—Studio
 2:15—Burck-Bauer Organ Melodies
 2:30—Huston Ray's Orchestra (CBS)
 3:00—Vi-Zay Organ Melodies
 3:30—Grease Off Program
 3:45—Pyol Program
 4:00—Auto-Rad Stewart Warner Program
 4:15—Talk on Boys' Week
 4:20—Sprits Clothing Program
 4:30—Webb Fuel Program
 4:45—Edis Thomas (CBS)
 5:00—A. O. Bus—Happy Feet Program
 5:15—Mabley and Carew Program
 5:30—Cincinnati Trade School Program

LISTEN TO
WALTER MILLARD
 FIELD SECRETARY OF THE NATIONAL MUNICIPAL LEAGUE
"Cincinnati's Example to the Nation"
WKRC, 7 to 7:15 P. M.,
Sunday, October 25th
 ISSUED BY CITY CHARTER COMMITTEE,
 Henry Bentley, Chairman, 706 Ingalls Bldg.

WLW Friday, October 30
 8:00—Morning Devotions
 8:15—Georgia Wildcats
 8:30—Bissel Pick-ups (NBC)
 8:45—Physical Exercises
 9:00—Housekeepers' Chats
 9:15—Recipes by Famous Chefs
 9:50—Beautiful Thoughts (NBC)
 10:45—Premium Man
 10:00—Live Stock Reports
 10:10—Piano Solos
 10:15—A. & P. Orchestra
 10:30—Colonel Goodbody
 10:45—Stokely Program
 11:00—Barnford School of Cookery
 11:15—Talk on Mouth Hygiene
 11:25—Pollyanna Shoe Talk
 11:30—WLW Stars
 11:45—River and Weather Report
 11:55—Time Signals
 Noon—Tuxedo Fiddlers
 P. M.
 12:15—Swift Program, Pat Barnes (NBC)
 12:30—Hotel Gibson Orchestra
 12:45—Market Reports
 12:50—Live Stock Reports
 1:00—National Farm and Home Period (NBC)
 1:31—Johnny Hamp's Orchestra, Netherland Plaza
 2:00—Ohio School of the Air
 3:00—Matinee Players Orchestra
 3:30—Ramona
 3:45—Tuck, Tack, Toe
 4:00—A. & P. Orchestra
 4:30—Village Rhymerster
 4:45—Delivery Boys
 5:00—Words and Music
 5:15—Mildred Lawlor and her Orchestra
 5:30—Old Man Sunshine
 5:45—Little Orphan Annie (NBC)
 6:00—Old Man Sunshine
 6:15—The Chatter
 6:30—Mail Pouch Program
 6:45—Lowell Thomas (NBC)
 7:00—Amos 'n' Andy (NBC)
 7:15—Kinney Shoe Program
 7:30—Famous School of History
 7:45—Old Reliable Singers
 8:15—Natural Bridge
 8:30—Murray Horton's Orchestra
 8:45—Sisters of the Skillet (NBC)
 9:00—Hearst Stars
 9:30—Armour Program (NBC)
 10:00—Maxwell House Dixie Ensemble
 10:30—Variety
 10:45—Bob Marshall Sports Slides
 11:00—Netherland Plaza Orchestra
 11:30—Vox Celeste
 Midnight—Hotel Gibson Orchestra
 12:15—Wm. Steoss and His WLW Orchestra (blue network)

Friday, October 30
WKRC (545m.—550 kc.)
 5:45—Hub Clothing Company Musicale
 6:00—Radio Program—Pat Gillick
 6:15—Allied Florists—Alex McQueen
 6:30—Republican Judicial Committee
 6:45—R. B. Clothes—Grab Bag Boys
 7:00—Home Furniture Company—Bing Crosby (CBS)
 7:15—Limit Program—Lillian Roth (CBS)
 7:30—Baker Chocolate Program—Boswell Sisters (CBS)
 7:45—Camel Quarter Hour (CBS)
 8:00—Pryor's Crema Band (CBS)
 8:15—Singin' Sam—Barbasol Program
 8:30—Time Magazine Hour (CBS)
 9:00—Regal Shoe—Radio Reproductions (CBS)
 9:15—Liberty Magazine Hour (CBS)
 9:45—Jarmen Show—Friendly Five Footnotes (CBS)
 10:00—Pillsbury Pageant (CBS)
 10:30—Williams Manufacturing—Talk by Football Coaches (CBS)
 10:45—Mabley and Carew Program
 11:00—Green Answer Man (E. T.)
 11:05—Time—Weather
 11:08—Sports Review
 11:12—United Woolens Period
 11:15—Pyol—Wesley Fox and Jimmy Seaver
 11:30—Pat Gillick, studio
 Midnight—Ben Bernie and His Orchestra (CBS)
 12:30—Rent-A-Movie

ACTUALLY REDUCED
 Most washers advertised at new low prices are machines built to sell for prices at which they are advertised. This Universal Washer is the same model, no changes, but actually in price.

Formerly Sold For \$109.50
 Now Sold For **\$69.50**

Any of the following dealers carry a complete line of Universal Washers:

Clauss Electric Service, Inc.
 21 W. 7th St., Parkway 3778

John R. Coppin Co.
 7th and Madison, Covington, Ky.
 HEmlock 1500

I. L. Greenwald, Inc.
 4739 Main Ave., Norwood
 MEIroce 0293

Lehr Radio & Refr. Co.
 Harrison and Spring Grove
 WEst 0890

I. L. Greenwald, Inc.
 9th and Race Sts., Parkway 4402

Harry Solway
 Elder and Elm Sts., CHerry 2850

Electric Appliance Shop
 110 E. 8th St., CHerry 6741

Williams-Markland
 843 Main St., CHerry 7222

Friday, October 30
WSAI (225m.—1330 kc.)
 A. M.
 8:00—Gene and Glenn (NBC)
 8:15—McCormick's Old-Time Fiddlers
 8:45—Records
 9:15—Georgia Wildcats
 9:30—Records
 9:45—A. & P. Orchestra (NBC)
 10:00—Mrs. Blask's Radio Column (NBC)
 10:15—Dr. Royal S. Copeland (NBC)
 10:30—National Home Hour (NBC)
 10:45—Savory Program (NBC)
 11:00—Music Appreciation (NBC)
 Noon—General Electric Circle (NBC)
 P. M.
 12:15—Sign off
 12:50—Live Stock Reports
 1:00—Sign off
 3:00—Woman's Radio Review (NBC)
 4:00—Betty Moore Decorating Notes (NBC)
 4:15—Crosley Dealers' Salute
 4:30—Records
 5:30—Odus Maddox, guitar
 5:45—Records
 6:30—Talk by Alice Richards
 6:45—The Stebbins Boys (NBC)
 7:00—Records
 7:45—Trials of the Goldbergs (NBC)
 8:00—Circle Service Concert (NBC)
 9:00—Clicquot Club (NBC)
 9:30—Pond's Dance (NBC)
 10:00—Florsheim Frolics (NBC)
 10:50—RKO Theater of the Air (NBC)
 11:00—Seger Ellis
 11:50—Hotel Gibson Orchestra
 11:50—Sign off

"Schwartz Leads Again"
 LOWEST PRICE IN YEARS
 COMPLETE INSPECTION OF
 YOUR RADIO
50c
 by our expert in your home
SCHWARTZ RADIO SHOP
 ESTABLISHED 10 YEARS
 Liberty and Race CHerry 5946