

Long Wave  
Short Wave  
News Spots  
& Pictures

# MICROPHONE



5  
Cents  
the Copy  
\$1.50 Year

Volume III, No. 25

WEEK ENDING JUNE 29, 1934

\* Published Weekly

## This and That

By Morris Hastings

THOSE who still shudder at the prospect of governmental supervision of radio are referred to an article on French radio, published in last week's MICROPHONE.

This article stated that in France, where radio is government controlled, some \$4,800,000 has been collected during the past year from light taxes imposed on owners of radio sets.

The point to note is the use that will be made of the money so collected. More than a million dollars of it will be spent in maintaining an 80-piece orchestra consisting of first prize winners of the Paris Conservatory.

Another portion will be used to pay for regular broadcasts from the Comedie Francaise, the Opera and the Opera Comique.

The remainder will go toward the technical improvement of French radio stations, which undoubtedly are in greater need of improvement than those in America.

This indicates an altogether admirable intelligence and respect for public taste on the part of the French government.

\* \* \*

RADIO's failure to pay more than passing tribute to RICHARD STRAUSS on the occasion of that composer's 70th birthday, June 11th, was rather disgraceful, inas-

(Continued on Page 15)

## Pictures

- Mr. and Mrs. JAMES MELTON on their boat *Front Cover*
- JOHN A. HOLMAN, manager of WBZ and WBZA *Page 1*
- JACK OWENS *Page 2*
- RAYMOND KNIGHT, NBC comedian *Page 3*
- ALICE HILL, radio actress *Page 4*
- RICHARD GRANT *Page 5*
- PORTLAND HOFFA *Page 5*
- ROBERT SIMMONS, vocalist *Page 6*
- "UNCLE BOB" SHERWOOD and the Dixie Circus program *Page 7*
- VIVIENNE SEGAL *Page 8*
- DEANE MOORE, vocalist *Page 10*
- GOGO DELYS, vocalist *Page 12*
- SAWDUST and MOONSHINE, blackface comedians, and GEORGE HAAB, champion harmonica player *Page 13*
- Countess OLGA ALBANI, soprano *Page 14*
- ELLSWORTH VINES, Jr., tennis player *Page 15*
- IRVING KAUFMAN, comedian, *Back Cover*

# Vigorous Scramble For Jobs On The Federal Communications Commission

## British News Broadcasting Is Closely Associated With Press

### But Papers Disregard the Listing

While no real progress is being made in this country toward co-operation of newspapers and radio, England has brought its news broadcasting from a very highly censored product to a liberalized medium of news dissemination closely associated with the press.

GERALD COCK, the British Broadcasting Corporation's outside broadcast director, in an article published in *The Radio Times*, says:

"If I were asked to name the greatest landmark in the development of outside broadcasting (spot news) I should unhesitatingly quote the press agreement of January, 1927, the Magna Carta of our activities, which made it possible to broadcast commentaries and other topicalities direct from the spot, with all that this implies."

Attacks by newspapers against radio such as that which recently occurred when the Columbia Broadcasting System broadcast an account of the Chicago fire, do

(Continued on Page 15)

### "Radio Must Keep Clean" Says Holman

JOHN A. HOLMAN, who has just arrived upon the stage of New England radio, does not pose as a Messiah come to deliver broadcasting out of the wilderness or, unconditionally, into the hands of the money-changers of advertising.

He is a New Dealer, but he tends neither to the right nor to the left.

He believes that radio is essentially sound and is headed in the right direction. But progress in anything calls for change. Change begets action, and action suits JOHN HOLMAN, manager of WBZ and WBZA.

JOHN HOLMAN comes among friends. JOSEPH B. GROCE of WEEI is one of his old cronies. HOLMAN formed this friendly attachment when, as manager of WEAJ in 1923, he interested GROCE in making WEEI the first link of a great network.

Born and reared in Chicago, HOLMAN finds New Englanders are not hard-shelled, aloof and self-sufficient.

A measure of NBC's new head in New England may be gleaned from his predilections in broad-

### NBC Official



JOHN A. HOLMAN, manager of station WBZ in Boston, and WBZA in Springfield.

cast entertainment. His tastes run strongly to LOWELL THOMAS' program of "Today's News," the Chicago University Round Table Discussions, and concerts by symphony orchestras.

HOLMAN insists, too, upon having laughs from his radio set,

(Continued on Page 15)

## Roosevelt to Make Recess Appointment

By The MICROPHONE'S Special Washington Correspondent

President ROOSEVELT is being deluged with applications for appointment to the new Federal Communications Commission.

The scramble for jobs on the Commission which is to take over duties of the Federal Radio Commission and those of the Interstate Commerce Commission over telephone and telegraph companies became vigorous.

White House indications had been that the President would wait until Congress adjourned before naming the seven men who will administer the act. They will be recess appointments, depending on Senate confirmation when that body meets again next January.

Since the new Commission is to have jurisdiction over the telephone and telegraph companies, expectations were that not more than four men especially well informed on radio affairs would be named.

July 1 has been set as the date for the new Commission to get under way. About 100 employees of the present Commission are wondering whether they will have jobs under the new Commission, whose members will receive \$10,000 salary annually.

All of the members of the present Radio Commission are candidates for the new one. Rep. AN-

(Continued on Page 7)

## Parliament Broadcasts

A portion of the "Pageant of Parliament," dramatized review of the history of England's governing body, will be shortwaved from Albert Hall in London to the NBC-WJZ network on July 2, beginning at 6 P. M.

A new poem, by RUDYARD KIPLING, written for the occasion, and set to music by ROGER QUILTER, will be performed during the broadcast.

The performance also includes a procession of peer and peeresses which will be described for the radio audience.

The procession will be accompanied by CALLENDER'S Band playing "Knightbridge March."

In addition to the band, an orchestra directed by LESLIE BRIDGEWATER will participate in the program.

The broadcast will come to this country through the facilities of the British Broadcasting Corporation.

## News Flashes

- A.M.
- 7.15 WNAC
  - 8.00 WAAB WEAN WORC WMAS WICC WLBZ WNBH
  - 10.45 WBZ
  - 10.30 WABC network, WEAJ Network (Tues., Thurs. 10.45)
  - 10.45 WJZ Network

- P.M.
- 12.01 WBZ
  - 12.20 WNAC
  - 1.30 WEAN WICC WFEA WORC WLBZ WNBH WMAS
  - 3.00 WAAB
  - 6.00 WNAC WICC WFEA WORC WMAS WLBZ
  - 6.30 WEAN WNBH
  - 7.00 WAAB WLBZ
  - 9.45 WAAB
  - 11.00 WNAC WEAN WICC WFEA WORC WMAS WLBZ WNBH
  - 11.00 WBZ
  - 11.15 WEAJ Network; WABC Network
  - WJZ Network (Wed. 11.45, Sat. 11.30)

## SUNDAYS

- A.M.
- 8.45 WNAC WEAN WICC WFEA WMAS WLBZ WNBH
  - 11.00 WBZ WEAJ-WJZ Network

- P.M.
- 6.00 WNAC WEAN WICC WFEA WLBZ WMAS WORC WNBH
  - 6.45 WAAB
  - 9.45 WAAB
  - 10.45 WBZ
  - 11.15 WNAC WEAN WICC WFEA WORC WMAS WLBZ WNBH

## Hampden Is Guest on Air

WALTER HAMPDEN, distinguished American actor-producer, will be heard in a scene from the play "Richelieu," when he makes a guest appearance on the Family Theatre program over the WABC-Columbia network at 9 P. M. on Sunday, June 24.

"Richelieu" has been one of the most successful plays in HAMPDEN'S touring repertoire and will be included in his forthcoming engagement in New York.

The radio presentation will be the scene dealing with the Chevalier de MAUPRAT'S return to France after RICHELIEU had instructed him to expose himself to death in the war against Spain because of his revolutionary activities against LOUIS XIII of France. MAUPRAT is brought as a prisoner before RICHELIEU.

WALTER HAMPDEN is known all over the world for his portrayal of SHAKESPEARIAN and IBSEN roles. He has toured vaudeville as well as the legitimate stage.

## Contents

- JOHN A. HOLMAN, manager of WBZ and WBZA, insists that radio must be kept clean *Page 1*
- This and That, by MORRIS HASTINGS *Page 1*
- RAYMOND KNIGHT counsels the radio aspirant *Page 3*
- Station Directory *Page 4*
- Educational Box *Page 4*
- Radio Lane, by JIMMIE J. LEONARD *Page 5*
- Stodiosity, by LES TROY *Page 5*
- Editorials *Page 5*
- Dixie Circus program and its color *Page 7*
- WEEI Page *Page 11*
- Police Radio Box *Page 12*
- Short Wave Directory *Page 13*
- The Corn Cob Pipe Club program goes on the air without rehearsals *Page 13*
- Reflections, by DIANA HERBERT *Page 15*
- Nimblewits, by EVERETT SMITH *Page 15*

Saturday, June 23 - Midsummer's Eve Program, WEAF, 4.30 P.M.

Highlights

- P.M.
4.30—Midsummer's Eve Program from London, NBC-WEAF
6.45—John Herrick, baritone, NBC-WJZ
9.00—Grete Stueckgold, CBS-WABC
9.30—Detroit Symphony Orchestra, CBS-WABC
10.00—Raymond Knight's Cuckoos, NBC-WEAF
10.15—Guy Lombardo, NBC-WEAF
10.45—Siberian Singers, NBC-WEAF
A.M.
12.15—Carefree Carnival, NBC-WEAF

(All programs are listed in Eastern Daylight Saving Time. Eastern Standard Time is one hour earlier; Central Time is two hours earlier.)

- 8 A.M. EDT; 7 EST; 6 CT
Radio City Organ, WEAF, 30 m. (WEEI from 8.15)
8.15 A.M. EDT; 7.15 EST; 6.15 CT
Don Hall Trio, WJZ WBZ WHAM
Tommy and Sherlock, KDKA
Mornine Devotions, WLW
Health Exercises, WPG
8.30 A.M. EDT; 7.30 EST; 6.30 CT
Cheerio, WEAF WEEI WGY WLW, 30 m.
Low White at the organ, WJZ WBZ WHAM KDKA, 30 m.
Paul and Bert, WSM
Studio Orchestra, WOR
Organists, WPG, 30 m.
8.45 A.M. EDT; 7.45 EST; 6.45 CT
Bronco Busters, WSM
Dog stories, WOR
The Ambassadors, WABC
9 A.M. EDT; 8 EST; 7 CT
Morning Glories, WEAF WGY WLW
Breakfast Club, WJZ, 1 h. (WBZ WSM from 9.15)
Virginia Reade, talk, WBZ
Devotions, WSM
Story Teller's House, WOR
Luxembourg Gardens, WABC, 45 m.; WCAU, 15 m.; WPG from 9.30
Asbury College Devotions, WHAS
9.15 A.M. EDT; 8.15 EST; 7.15 CT
Lundt Trio and White, WEAF WEEI WGY WLW
Children's Programs, WOR, 30 m.
Minute planners, WCAU
9.30 A.M. EDT; 8.30 EST; 7.30 CT
Taters and Mule, WEAF WEEI WGY
Style Notes, KDKA
Hymns, WLW
Georgia Wildcats, WHAS
9.45 A.M. EDT; 8.45 EST; 7.45 CT
Banjo players, WEAF WEEI WGY WLW
News, WEEI KDKA
Lonely Cowboy, WOR
The Meistersinger, WABC WCAU WHAS WPG
Food Flashes, Virginia Clark, WGN
10 A.M. EDT; 9 EST; 8 CT
Annette McCoullough, blues singer, WEAF WEEI WGY
Edward MacHugh, WJZ WSM
Cooking School, WBZ, 30 m.
Kiddies' Kooking Klass, WOR
Mail Bag, WLW
This and That Revue, WABC WCAU WHAS, 30 m.
Home Hour, WPG, 30 m.
Keep Fit Club, WGN
10.15 A.M. EDT; 9.15 EST; 8.15 CT
Morning Parade, News at 10:30; WEAF WGY, 45 m.; WEEI (WSM, 15 m.)
Singing String, WJZ WBZ WBAL, 30 m.
KDKA Home Forum, KDKA
Children's program, WOR, 30 m.
Organ, WLW
Shopping Guide, WHAS
Robert Ball, readings, WGN
10.30 A.M. EDT; 9.30 EST; 8.30 CT
Organ, WEEI
Rhythm Jesters, WLW
News and Let's Pretend, WABC WCAU, WHAS, 30 m.
News, home hour, WPG, 30 m.
Market Reports, WGN, 30 m.
10.45 A.M. EDT; 9.45 EST; 8.45 CT
News and Originalities, WJZ WBAL
News and Piano, WBZ
Bobby Sue, KDKA
Organ, WSM
Antoinette West, songs, WLW
Bob Atcher, WHAS
11 A.M. EDT; 10 EST; 9 CT
Alma Schirmer, pianist, WEAF
Food Hour, WEEI, 30 m.
Galaxy of Stars, WGY WLW
Honeymooners, WJZ WBZ KDKA WHAM WSM
Cheer Up, WABC WCAU WHAS WPG, 30 m.
Movie Personalities, WGN
11.15 A.M. EDT; 10.15 EST; 9.15 CT
The Vass Family, seven harmony children, WEAF WGY WSM
Spanish Idylls, WJZ WBZ WHAM, 30 m.
Kiddies Club, KDKA, 45 m.
Market Reports, WLW
The Friendly Neighbor, WGN
11.30 A.M. EDT; 10.30 EST; 9.30 CT
Glora La Vey, soprano, piano duo, WEAF WEEI WSM, 30 m.
Children's Theatre, WGY, 30 m.
Heinie's Grenadiers, WJZ WBZ WHAM, 30 m.
Ponce Sisters, WLW
Brooklyn Lutheran Choir, WABC WCAU
Melody Men, WGN

- 11.45 A.M. EDT; 10.45 EST; 9.45 CT
Concert Miniatures, WABC WCAU WHAS WPG
Painted Dreams, WGN WLW
12 N. EDT; 11 A.M. EST; 10 CT
Armchair Quartet, WEAF WEEI WGY WSM, 30 m.
Dick Teala, Gwyneth Neal, songs, WJZ KDKA
Monitor Views the News, WBZ
Johnny Muldowney, songs, WLW
Jan Savitt's Orchestra, WABC WCAU WHAS WPG
Poetry and Bird Calls, WOR
Hal Kemp's Orchestra, WGN
Luc Song Hit Man, WMCA
12.15 P.M. EDT; 11.15 A.M. EST; 10.15 CT
Genia Fonariva, soprano, WJZ WHAM Weather, WBZ
Romance of Dan and Sylvia, KDKA
Bob Albright, WLW
Pete Woolery's Canadians, WABC WHAS WPG
Orchestra, WOR
Harold Turner, pianist, WGN
Nicholas Garagusi, violin, WMCA
12.30 P.M. EDT; 11.30 A.M. EST; 10.30 CT
Merry Madcaps, WEAF, 30 m.
Jack, Del and Ray, WEEI, 30 m.
Vic and Sade, WJZ WBZ KDKA WHAM WSM
Bond of Friendship, WLW
Al Kavelin's Orchestra, WABC WCAU, 30 m.; WPG from 12.45
Huger Elliot, WOR
Market Reports, WGN
Josane Trio, WMCA, 30 m.
12.45 P.M. EDT; 11.45 A.M. EST; 10.45 CT
The Sizzlers, WJZ WBZ WBAL WHAM WSM
Fidler's Orchestra, KDKA
The Texans, WLW
Harold Turner, pianist, WGN
1 P.M. EDT; 12 N. EST; 11 A.M. CT
Ted Black's Orchestra, WEAF, 30 m.; WEEI from 1.10; WGY from 1.15
Stocks, WEEI
Stocks, WGY
Words and Music, WJZ KDKA WSM, 30 m.
Farm News, WBZ
Esther Velas Ensemble, WABC WCAU WHAS, 30 m.
Charles Sawyer, Lt. Governor of Ohio, WLW
Weather, Hotel Morton Orchestra, WPG, 30 m.
Health Talk, WOR
Mid-Day Service, WGN
Stocks, WMCA, 30 m.
1.15 P.M. EDT; 12.15 EST; 11.15 A.M. CT
4-H Club, WBZ
Madison Ensemble, WABC WCAU WHAS 30 m.
Nora Thumann, songs, WLW
John Stein's Orchestra, WOR
1.30 P.M. EDT; 12.30 EST; 11.30 A.M. CT
Bruenesco's Ensemble, WEAF WEEI, 30 m. m.; WTIC from 1.45
Farmer's Union Program, WJZ WBZ WBAL WHAM KDKA WSM, 1 h.
Harold Knight's Orchestra, WABC WCAU WHAS
Books Rosalind Genet, WOR
Organ, WMCA
Market Reports, WGN
1.45 P.M. EDT; 12.45 EST; 11.45 A.M. CT
Harold Knight's Orchestra, WABC WCAU, 30 m.
Guy Hunter, entertainer, WOR
Rik's Hungarian Orchestra, WGN
Daisy Miller, "Dogs," WMCA
2 P.M. EDT; 1 EST; 12 N. CT
Dick Fidler's Orchestra, WEAF WEEI WGY, 30 m.
Artist Recital, WABC WCAU WPG
Weather, stocks, WHAS
Waltz Program, WOR
Garden Club Speaker, WGN
Theatre Review, WMCA
2.15 P.M. EDT; 1.15 EST; 12.15 CT
Emery Deutsch's Orchestra, WABC WCAU WPG
Piano Duo, WOR
Georgia Wildcats, WHAS
Rik's Orchestra, WGN
Dorothy Allyn, soprano, WMCA
2.30 P.M. EDT; 1.30 EST; 12.30 CT
The Confidence Man, WEAF WEEI WGY, Hessberger's Bavarian Orchestra from Century of Progress, WJZ WBZ WHAM



Jack Owens got his start in a Wichita, Kansas, radio studio by doing double duty as janitor and vocalist. Now he is featured on the Breakfast Club programs broadcast weekly over the NBC-WJZ network.

- KDKA WSM, 30 m.
Crosley Business News, WLW
Memories Garden, WABC WCAU WHAS WPG, 30 m.
Martha Deane, fashions, WOR
Low White, organist, WGN
Bob Stanley, tenor, WMCA
2.45 P.M. EDT; 1.45 EST; 12.45 CT
Musical Program, WEEI, 45 m.
The Low Down, WLW
Century of Progress Orchestra, WGN
Prof. Roy Hanaway, WMCA
3 P.M. EDT; 2 EST; 1 CT
Green Brothers' Orchestra, WEAF WEEI WGY WLW, 30 m.
Dan Russo's Orchestra, WJZ WHAM KDKA WSM
Smith College program, WBZ
Columbia Salon Orchestra, WABC WCAU WHAS WPG, 30 m.
Chanticleer Trio, WOR
Ensemble, WGN
Walter Garbutt, baritone, WMCA
3.15 P.M. EDT; 2.15 EST; 1.15 CT
Ross McLean, baritone, WOR
Emil Thaviu's Orchestra, WGN
William Bardey, baritone, WMCA
3.30 P.M. EDT; 2.30 EST; 1.30 CT
Week-End Revue, WEAF WEEI WGY WLW WSM, 1 h.
Saturday's Songsters, WJZ WBZ WHAM KDKA, 30 m.
Dancing Echoes, WABC WHAS WPG
Pinto Pete, WCAU, 30 m.
Afternoon Musicals, WOR, 1 h.
Margaret Libbe, soprano, WGN
Trudy Thomas, songs, WMCA
3.45 P.M. EDT; 2.45 EST; 1.45 CT
Chicago Cubs vs. Boston, WGN, 2 h., 15 m.
Jack Orlando's Orchestra, WMCA
4 P.M. EDT; 3 EST; 2 CT
Miniature Theatre, WJZ WBZ KDKA, 30 m.
Dwyer Stakes, from Aqueduct, WABC WHAS WPG, 30 m.
The Pickard Family, WCAU, 30 m.
Malda Fani, soprano, WMCA, 30 m.
4.30 P.M. EDT; 3.30 EST; 2.30 CT
Midsummer's Eve Program, from London, WEAF WEEI WGY, 30 m.
Kaltenmeyer's Kindergarten, WJZ WBZ WHAM KDKA, 30 m. (WLW from 4.45)

Upward!

- Rhythm Jesters, WLW
Ann Leaf, organ, WABC WHAS WPG
Sweet Sixteen Revue, WCAU, 30 m.
Gus Steck's Chanticleers, WOR
Phil and Irma Osornoe, duo, WMCA
4.45 P.M. EDT; 3.45 EST; 2.45 CT
Carrie's Club, WMCA
Round Towners, WCAU WHAS WPG
5 P.M. EDT; 4 EST; 3 CT
Don Bigelow's Orchestra, WEAF WEEI WGY WLW, 30 m.
Palmer Clark's Orchestra, WJZ WBZ WHAM WBAL WSM, 30 m.; KDKA from 5.15
Velazco's Orchestra, WABC WHAS WPG, 30 m.
Studio Party, WMCA, 30 m.
5.15 P.M. EDT; 4.15 EST; 3.15 P.M.
The Vagabonds, WGY
Bernard Gabriel, piano, WOR
5.30 P.M. EDT; 4.30 EST; 3.30 CT
Musical Variety, WEEI, 30 m.
Martha and Hal, WGY
Platt and Nerman, WJZ WBZ
Bill and Alex, KDKA
John Batker, baritone, WLW
Jack Armstrong, All American Boy, WABC WCAU
James Sheehy, tenor, WHAS
Mattie Curran, songs, WPG
French Class, WOR, 30 m.
Italian Talk, WMCA
5.45 P.M. EDT; 4.45 EST; 3.45 CT
Little Orphan Annie, WJZ WBZ WHAM KDKA WLW WGN
Mischa Raginsky's Ensemble, WABC WCAU WHAS WPG, 30 m.
Friend of Youth, WCAU, 30 m.
Baseball Talk, WMCA
6 P.M. EDT; 5 EST; 4 CT
Al Pearce's Gang, WEAF WLW WSM, 30 m.
The Evening Tattler, WEEI, 30 m.
Angelo Ferdinand's Orchestra, WJZ WBAL WHAM
"Wings," George Mason, WBZ
Weather, baseball, KDKA, 30 m.
Mischa Raginsky Ensemble, WABC WHAS
Uncle Don, WOR, 30 m.
Jack Armstrong, WLW
Nicholas Garagusi, violin, WMCA
Dick Hayes, baritone, WGN
6.15 P.M. EDT; 5.15 EST; 4.15 CT
Baseball Scores, WBZ
Billy Hays' Orchestra, WABC WCAU, 30 m., WHAS, 15 m.
Emil Thaviu's Orchestra, WGN
Jane Clifton, songs, WMCA
6.30 P.M. EDT; 5.30 EST; 4.30 CT
Tom Coakley's Orchestra, WEAF WGY, 30 m.
Baseball scores and Current Events, WEEI
Stamp Club, WJZ
Sports, weather, WBZ
Jack Armstrong, WLW
Charles Carlisle, WABC
Penn A. C. Orchestra, WCAU
Talk on Americanism, WHAS
Lil and Avon, song duo, WMCA
Motor Tips, WOR
Tony D'Orazi, cartoonist, WGN
Bob Newhall, WLW
6.45 P.M. EDT; 5.45 EST; 4.45 CT
John Herrick, baritone, WJZ WBAL KDKA WHAM
Frederick William Wile, WCAU
Concert, Edward MacHugh, baritone, WBZ
Orphan Annie, WSM
Joe Williams, sports, WABC
Phil Cook, WOR
Little Orphan Annie, WGN
Eli Dantzig's Orchestra, WMCA
7 P.M. EDT; 6 EST; 5 CT
Baseball Resume, WEAF
The Three Scamps, WEEI
Male Quartet, WGY
Captain Al Williams, WJZ KDKA
World in Review, WBZ
Piano, WSM
Margaret Carlisle, songs, WLW
N. C. A. A. Track finals, WABC WCAU, 30 m.
Five O'Clock Melodies, WHAS
Ford Frick, sports, WOR
Palmer House Ensemble, WGN
Eli Dantzig's Orchestra, WMCA
7.15 P.M. EDT; 6.15 EST; 5.15 CT
Dr. William Fouls, "Homespun," WEAF WGY WEEI
Pickens Sisters, trio, WJZ WBZ WSM
Fidler's Orchestra, KDKA, 30 m.
German Band, WLW
Studio Program, WPG
Harry Hershfield, WOR
Musical Dessert, WGN
Natalie Norman, WMCA
7.30 P.M. EDT; 6.30 EST; 5.30 CT
Eddie Peabody, banjo, Richard Himer's Orchestra, WEAF, 30 m.
After Dinner Revue, WEEI
Johnny Johnson's Orchestra, WGY, 30 m.
Don Bestor's Orchestra, WJZ WBZ KDKA WSM, 30 m.
Bob Newhall, WLW
Betty Barthell and Melodeers, WABC WCAU WHAS
American Legion Band, WOR, 30 m.
Sports, WGN
Meyer Davis Orchestra, WMCA
7.45 P.M. EDT; 6.45 EST; 5.45 CT
Isham Jones' Orchestra, WABC WCAU WHAS
Street Scenes, WCAU
King, Jack and Jester, WLW
Quin Ryan, reporter, WGN
Bob Fallon's Orchestra, WMCA
8 P.M. EDT; 7 EST; 6 CT
Teddy Bergman, Betty Queen, Harold Stern's Orchestra, WEAF, 30 m.
U. S. Marine Band, WEEI, 30 m.
General Electric Program, WGY
R. F. D. Hour, WLW, 30 m.
International Sunday School Lesson, WSM
Morton Downey's Studio Party, WABC, 45 m.
WPG from 8.15; WHAS from 8.30
Philadelphia High School Music Festival, WCAU, 1 h.
Dinner Concert, WHAS, 30 m.
Sisters of the Uke, WPG
City Government Talk, WOR
Agnew's Orchestra, WGN
Three Little Funsters, WMCA
8.15 P.M. EDT; 7.15 EST; 6.15 CT
Bavarian Peasant Band, WJZ WHAM WBAL
Advertisers Federation, WBZ
Glee Club, WGN
All-Star Trio, WOR
Wynn Astrologer, WMCA

- 8.30 P.M. EDT; 7.30 EST; 6.30 CT
U. S. Marine Band, WEAF WEEI WGY, 1 h.
Orpheus Choir, KDKA, 30 m.
Hands Across the Border, Lombardo's Music, WJZ WBZ WBAL WHAM KDKA
Arthur Warren's Orchestra, WOR, 30 m.
Seymour Simon's Orchestra, WGN, 30 m.
U. S. Marine Band, WMCA, 30 m.
8.45 P.M. EDT; 7.45 EST; 6.45 CT
Tessie, the Typist, WBZ
Monkey Hollow, WLW
"Fats" Waller, WCAU WABC WHAS WPG
9 P.M. EDT; 8 EST; 7 CT
Comedy team, WEEI
Jamboree, WJZ WHAM, 30 m.; KDKA from 9.15
Golf Talk, KDKA
New England Community - Singing Clubs, WBZ
Grete Stueckgold, Andre Kostelanetz' Orchestra, WABC WCAU WHAS WPG, 30 m.
Freddie Farber, Variety Act, WOR
Palmer Clark's Orchestra, WGN, 30 m.
Bob Haring's Orchestra, WMCA
9.15 P.M. EDT; 8.15 EST; 7.15 CT
Lillian Bucknam, soprano, WEAF WEEI WGY
The Monitor Views the News, WBZ
Orchestra, WSM
Fred Berren's Orchestra, WOR, 30 m.
9.30 P.M. EDT; 8.30 EST; 7.30 CT
Beatrice Fairfax, WEAF WEEI WGY WLW, 30 m.
Edward Davies, baritone, WJZ WBZ KDKA WHAM, 30 m.
Delmore Brothers, WSM
Detroit Symphony Orchestra, direction of Victor Kolar, Strauss' "Blue Danube Waltz," Offenbach's Overture to "Orpheus," Liszt's "Liebestraum," Bizet's "L'Arlesienne" suite, Punctellius "Dance of the Hours," WABC WCAU WHAS, Aldrich's Hawaiians, WPG, 30 m.
Fisher's Orchestra, WMCA
Anson Week's Orchestra, WGN
9.45 P.M. EDT; 8.45 EST; 7.45 CT
Jack Shook, WSM
Mountain Moments, WOR
Cummings' Orchestra, WGN
Goshin Sisters, vocal duo, WMCA
10 P.M. EDT; 9 EST; 8 CT
Raymond Knight's Cuckoos, WEAF WEEI WGY WLW WSM
Tim Ryan's Place, WJZ WHAM
Rines' music, WBZ (Weather at 10:15)
Behind the Law, KDKA
"Romance in Song," WOR
News and Emil Thaviu's Orchestra, WGN
Old Time Tunes, WMCA
10.15 P.M. EDT; 9.15 EST; 8.15 CT
Guy Lombardo, WEAF WEEI WGY
10.30 P.M. EDT; 9.30 EST; 8.30 CT
Guy Lombardo, WEAF WEEI WGY
WLS Barn Dance, WJZ WBZ WHAM KDKA WLW, 1 h.
Elder Michaux and his Congregation, WABC WCAU, 30 m.
Steel Pier Orchestra, WPG, 30 m.
Organ Recital, WOR, 30 m.
Greater Louisville Ensemble, WHAS, 30 m.
Florence Richardson Orchestra, WMCA
10.45 P.M. EDT; 9.45 EST; 8.45 CT
Siberian Singers, WEAF WEEI WGY
Nap and Dee, WSM
11 P.M. EDT; 10 EST; 9 CT
"Gully Jumpers," WSM
Sylvia Froos, songs, WABC WCAU WHAS WPG
Berger's Orchestra, WOR
Earl Burnett's Orchestra, WGN
Radio Scandals, WMCA
11.15 P.M. EDT; 10.15 EST; 9.15 CT
'Lasses and Honey, WSM
News and Glen Gray's Orchestra, WABC WCAU WHAS WPG, 30 m.
Remember Way Back When, WGN
11.30 P.M. EDT; 10.30 EST; 9.30 CT
One Man's Family, WEAF WEEI WGY, 30 m.
News and Brito's Orchestra, WJZ WBZ WHAM, 30 m.; KDKA from 11.45
News and Fidler's Orchestra, KDKA
Gibson Orchestra, news, WLW, 30 m.
Anthony Trini's Orchestra, WOR, 30 m.
Traymore Grille Orchestra, WPG, 30 m.
Weeks, Cummings', Weems Orchestras, WGN, 3 h.
Jimmy Lunceford's Orchestra, WMCA
11.45 P.M. EDT; 10.45 EST; 9.45 CT
Delmore Brothers, WSM
Johnnie Johnson's Orchestra, WABC WCAU WHAS
12 M. EDT; 11 P.M. EST; 10 CT
Dan Russo's Orchestra, WEAF WEEI WLW, 30 m.
Johnson's music, WGY
Jack Denny's Orchestra, WJZ WBZ WHAM KDKA, 30 m.
Jack Denny's Orchestra, WJZ WBZ, 30 m.
Doc Peston's Orchestra, WGY
Big Yank Southerners, WSM
Buddy Welcome's Orchestra, WABC WCAU WHAS WPG, 30 m.
Osborne's Orchestra, WOR, 30 m.
Bob Fallon's Orchestra, WMCA, 30 m.
12.15 A.M. EDT; 11.15 P.M. EST; 10.15 CT
Carefree Carnival, WEAF WEEI WLW, 45 m.
Dixie Clodhoppers, WSM
12.30 A.M. EDT; 11.30 P.M. EST; 10.30 CT
Lopez' Orchestra, WJZ WBZ KDKA, 30 m.
Marty Gregor's Orchestra, KDKA
Dixie Liners, WSM
Carol Lofner's Orchestra, WABC WCAU WHAS WPG, 30 m.
Teddy Hill's Orchestra, WMCA, 30 m.

Andre's Uncle Kay

KOS-TE-LA-NETZ!



ANDRE KOSTELANETZ, radio orchestra leader, was advised to change his name when he entered radio to make it easier for other people, but his Uncle IRVING advised against it; said he should keep the family name. Recently Uncle IRVING went into the brokerage business and shortened his name to "KAY." His excuse was that by the time a rush customer on the 'phone got his name straight the stock had fluctuated a point.

STATION DIRECTORY Page 4

# Both Sides of British Broadcasting; The Good And The Bad Points

## Radio Times And Listener Heard From

This editorial comment appears in the June 1st issue of *The Radio Times*, official organ of the British Broadcasting Corporation:

"Radio methods in the United States are no direct concern of ours, but American experience has many lessons for us. The possibility of drastic changes in the organization of American broadcasting, following on so many other sweeping reforms, cannot pass unnoticed on this side of the water.

"We have often been told that American radio, even with all the disadvantages involved in programmes sponsored by commercial firms, was more speedy, more varied, and more exciting than the programmes provided for British listeners.

"It is particularly interesting, therefore, to find in *The Microphone*, a radio newspaper published in Boston, Mass., a leader headed 'We Learn Slowly.' 'American listeners,' it says, 'have been led to believe that American radio was far superior, in every respect, to that offered by the British Broadcasting Corporation, which bars all advertising from the air... The short-wave set has changed the picture in the American mind... We learn slowly, but we learn.'

"It goes on to advise every American who is sufficiently interested in the subject of public versus commercial broadcasting to get a copy of *The Radio Times* and judge British programmes for himself.

"We feel honoured by the compliment, and we hope that those American listeners who take *The Microphone's* advice will also share its opinion as a result." Under date of June 4, *The Microphone* is in receipt of the following letter from A. E. TOWL of Plymouth, England:

"In this week's issue of *The Radio Times*, there is a reference to a leader in *The Microphone* implying that the American radio was inferior to the BBC in this country. While I cannot give any opinion on that point, I should like to draw your attention to the miserable programme and service we get here in Plymouth, which we have to pay for, or incur severe penalties.

"If you will turn to the programmes allotted to Plymouth in *The Radio Times*, you will see that we are condemned to one, which you can analyze for yourself. I have written to the BBC concerning this, and pointing out I can already get the same programme, if I want it, through the Long Wave Daventry, but I cannot get the Regional programme.

"Now at (14 hrs.) 2 o'clock, school broadcasts are inflicted on me. I have seen on several occasions the

(Continued on Page 15)

## How To Become A Comedian In Ten Awfully Easy Lessons

### Raymond Knight, An Authority, Explains

[EDITOR'S NOTE: This exceptional opportunity to our readers is furnished through the co-operation of RAYMOND KNIGHT, the National Broadcasting Company, the S. P. C. A., and the Little Women's Tattling and Crocheting Club of Revere Beach. RAY KNIGHT is not only creator and master of ceremonies of the Cuckoo Hour, but he is the BILLY BATCHELOR of the "Wheatena-ville" sketches and also their author.]

By RAYMOND KNIGHT

**D**O YOU feel uncomfortable in the presence of a loud-speaker? Do people cry instead of laugh when you pull a joke? Are you a failure in your local stamp collectors' club?

This is the first and last of a series of instructions for would-be radio comedians which I shall conduct.

Lesson Number One is a simple, easy lesson. If you pay attention, you too can make others laugh or laff, depending on what part of the country you come from... A service which no other Radio Comedian gives—mind you.

The class will please come to order. We begin with Lesson One—The Association of Ideas—or Left-handed Mashie Joke No. 22. In this one the student works out the gag himself. Please note how easy it is.

Q. What is a gag, Mr. KNIGHT?

A. Something I should have had long ago!

Ah, there's an example of the Unintended or Isn't He Clever Joke No. 135. Those are usually attempted only by graduates of my correspondence course. Now to resume... the reader works out this joke himself. I ask the questions and you answer them and before you know—out pops the joke!

Ready—Students will write the answer and then compare theirs with mine.

Q. What kind of a fish goes "woof woof"?



RAYMOND KNIGHT, producer of the Cuckoo Hour and Writer of "Wheatena-ville," tells in the accompanying article how to become a comedian, if you want to.

- A. Dog fish.
- Q. What kind of a bird goes "Meow"?
- A. Cat bird.
- Q. What kind of a lily goes "Gr-r-r-r"?
- A. Tiger lily.
- Q. What kind of a frog goes—"Moo"?
- A. Cow Frog.
- Q. That is a wrong answer. If that is what you gave, go to the rear of the class and give yourself a bad mark. The question is repeated:
- What kind of a frog goes "Moo"?
- A. Bull Frog.
- Q. Correct this time—and—now watch this one. This is where the lesson gets difficult. What kind of a toad goes—"Coo-coo—Coo-coo"?
- A. (Silence)
- Q. What kind of a toad goes "Coo-coo"?
- A. (Deeper silence)
- Q. Give up?
- A. (Shamed) Yes. (Correct answer—"Pigeon-toed!")
- See how easy it is? After you finish my correspondence course you can make jokes right

### Radio Croquet



**A** SPORTING note from the National Broadcasting Company says that the LANDT Trio and WHITE are beginning their serious Summer sport. They are holding croquet tournaments every Sunday at the New Rochelle home of BREEN and DE ROSE.

### The First And The Last Lessons Are Here

at home, just as funny as that one... or worse. And now for the home work. Next week's problem is a study of The Variation Theme Joke—For example:

Q. Take an old favorite—Who was that lady I seen you with last night?

A. That was no lady—that was my wife.

Q. You've been peeking at the answers. The well-educated radio comedian can use this joke for weeks. For example—Variation No. 2698.

Who was that lady I scene you with last night?

A. That was no scene—that was an act.

Q. Or—Who was that lady I seen you with last night?

A. That was not last night—that was RAY KNIGHT.

Now, pupils, you have the idea. Here is next week's lesson: Take Standard Joke No. 8344 Series of 1889—known as "There's A Man At The Door" Gag. It goes like this—

Q. There's a blind man at the door.

A. Tell him we use curtains. Another example is:

Q. There's a man with a moustache at the door.

A. Tell him I've got a moustache.

This is always good and is used regularly once a week by all accredited radio comedians. Write in your variation and teacher will mark the home work. Send it to RAY KNIGHT, care of the Cuckoo Hour, Radio City—and the brightest pupil will have his answer printed right out loud in our next issue.

On second thought, *don't* send them in. I'm too busy.

### Blue Eagle Looks Into Broadcasting

By The MICROPHONE'S Special Washington Correspondent

Are engineers, operators and other technical employes of radio broadcasting stations overworked?

The NRA Blue Eagle wants to know. Arguments were heard at Washington June 20 by Deputy Administrator WILLIAM P. FARNSWORTH.

Radio is permitted in its code, adopted last November, to work its technical employes 48 hours a week, because of peculiar conditions in the industry.

Provision was made in the code for a survey to find out whether radio technicals are overworked.

The code authority questioned 600 stations and reported that since the code became effective there had been an increase of 11 per cent in employment of broadcast technicians, weekly hours had been reduced 9.8 per cent and weekly payrolls had increased 21.1 per cent.

Any increase in wages or reduction in working hours "will oppress and eliminate small radio broadcasting enterprises and promote monopolies," the code authority reported.

## Summer Concerts for Radio

The second series of Summer concerts presented by musicians of the Philadelphia Orchestra in Robin Hood Dell, Fairmount Park, Philadelphia, will begin to be broadcast over the WABC-Columbia network on Thursday, July 5, at 8.30 P. M.

The orchestra this year will be under the direction of six conductors. ALEXANDER SMALLENS will conduct the opening concert. He will be followed by JOSE ITURBI, Spanish pianist; EUGENE ORMANDY, conductor of the Minneapolis Symphony Orchestra; HANS KINDLER, eminent 'cellist; FRITZ REINER, former conductor of the Cincinnati Symphony, and PAUL CASTON, member of the Philadelphia Orchestra.

The programs of these Summer concerts were broadcast for the first time last year. These concerts are recognized as the highlights of Philadelphia's Summer music season.

Because of the remarkable acoustics of the natural auditorium, the broadcast transmission is unusually good.

### Two European Programs Aired

On Saturday, June 23, a novel musical fantasy celebrating Midsummer's Eve will be broadcast from the British Broadcasting Corporation studios over the NBC-WEAF network at 4.35 P. M.

A broadcast from Holland with music by the Royal military band and the famous Schola Cantorum will be heard here over the NBC-WJZ network on Sunday, June 24, at 12.05 P. M.

### Jacobsen Is Soloist

SASCHA JACOBSEN, second violinist of the GORDON String Quartet, will be soloist with FRANK BLACK'S NBC Orchestra on Monday, June 25th. The concert will be broadcast over the WJZ network, beginning at 10 P. M.

### For Southern Listeners

The programs of WEAf or WJZ may be heard over:

- WFLA-WSUN Clearwater, Florida
- WSB Atlanta, Georgia
- WSMB New Orleans, La.
- WQAI San Antonio, Tex.
- WSM Nashville, Tenn.

The programs of WABC may be heard over:

- WQAM Miami, Florida
- WJWV Washington, D. C.
- WBT Charlotte, N. C.
- WTAR Norfolk, Va.
- WBIG Greensboro, N. C.

### Middle Western Listeners

The programs of WEAf may be heard over:

- KSD St. Louis, Mo.
- KYW Chicago, Ill.
- WMAQ Chicago, Ill.
- WTAM Cleveland, Ohio

The programs of WJZ may be heard over:

- WENR-WLS Chicago, Ill.
- WJAR Cleveland, Ohio
- WJR Detroit, Mich.

The programs of WABC may be heard over:

- WBBM Chicago, Ill.
- WHK Cleveland, Ohio
- WCCO Minneapolis, Minn.
- KMOX St. Louis, Mo.
- WHAS Louisville, Ky.

NOTE: Outstanding local programs of these stations are regularly listed in *The MICROPHONE*.

Sunday, June 24 - Claudette Colbert on NBC-WFAF, 10.30 P.M.

Highlights

- P.M.
12-Royal Military Band from Holland, NBC-WJZ
6.30-Egon Petri, pianist, NBC-WJZ
8.00-Jenny Concert, WEEL "Voice of Columbia," with George Jessel, CBS-WABC
9.00-Walter Hampden, CBS-WABC
Will Rogers, WJZ
9.30-Album of Familiar Music, NBC-WFAF
Tom Powers, Leona Hogarth, NBC-WJZ
Waring's Pennsylvanians, CBS-WABC
10.00-Mme. Schumann Heink, NBC-WJZ
Wayne King's Orchestra, CBS-WABC
10.30-Claudette Colbert, movie star, NBC-WFAF

(All programs are listed in Eastern Daylight Saving Time. Eastern Standard Time is one hour earlier; Central Time is two hours earlier.)

- 10.30 A.M. EDT; 9.30 EST; 8.30 CT
Mexican Orchestra, WFAF WEEL WLW, 30 m.
Samovar Serenade, WJZ WBAL WHAM
10.45 A.M. EDT; 9.45 EST; 8.45 CT
Alexander Semmler, pianist, WABC WCAU WPG WHAS
11 A.M. EDT; 10 EST; 9 CT
News and Vagabonds, WFAF WGY WSM WFLA
Service from Old South Church, WEEL 1h., 15 m.
News and Morning Musicale, WJZ WBZ WHAM WBAL KDKA WLW
Children's Program, WABC, 1 h.
Rhoda Arnold, and Taylor Buckley, WHAS Children's Hour, WCAU
Colton Manor Ensemble, WPG, 30 m.
11.15 A.M. EDT; 10.15 EST; 9.15 CT
Hall and Gruen, WFAF WGY WSM WFLA
Safety Crusaders, WBZ
11.30 A.M. EDT; 10.30 EST; 9.30 CT
Guardsmen, WFAF WGY, 1 h.; WSM, 15 m.
The Poet Prince, Anthony Frome, tenor, WJZ WBZ WLW WHAM KDKA
Salt Lake City Tabernacle Choir, 1 h., WHAS, 30 m.; WABC from 12.15
11.45 A.M. EDT; 10.45 EST; 9.45 CT
Phantom Strings, WJZ WBZ WLW WHAM KDKA
First Baptist Church, WSM, 45 m.
12 N. EDT; 11 A.M. EST; 10 CT
Broadcast from Holland, Royal Military Band, WJZ WBZ WBAL WHAM WLW Watchtower Program, WCAU
U. of Chicago Chapel Service, WGN, 1 h.
St. Paul's Episcopal Church, WHAS, 30 m.
12.15 P.M. EDT; 11.15 A.M. EST; 10.30 CT
Weather, schoolmaids, WGY
Gould and Sheffer, WJZ WBAL WHAM KDKA WLW
Time, Weather, Temperature, WBZ
Ben Greenblatt, WCAU
Variety, WMCA
12.30 P.M. EDT; 11.30 A.M. EST; 10.30 CT
University of Chicago Round Table, WFAF WEEL WGY
Music Hall Symphony Concert, WJZ WBZ WBAL KDKA WHAM WFLA, 1 h.; WSM, 30 m.
Madison Ensemble, WABC WCAU WPG WHAS, 30 m.
Poetry, WOR, 30 m.
Memorial Services, Jewish War Veterans of America, Samuel Untermeyer, James W. Gerard, Royal S. Copeland, WMCA, 30 m.
1 P.M. EDT; 12 N. EST; 11 A.M. CT
Road to Romany, WFAF WGY, 30 m.
Vine Street Church, WSM, 1 m.
Church of the Air, Most. Rev. Bernard J. Sheil, D.D., WABC WCAU WPG WHAS, 30 m.
Perole String Quartet, WOR, 1 h.
Piano Duo WMCA
1.15 P.M. EDT; 12.15 EST; 11.15 A.M. CT
The Music Weaver, WGY
Six Accordions, WMCA
1.30 P.M. EDT; 12.30 EST; 11.30 A.M. CT
Surprise Party, Mary Small, WFAF WEEL WGY
Church in the Hills, WLW, 30 m.
Sunday Forum, Dr. Norman V. Peale, WJZ WBAL WHAM
Old Songs of the Church, KDKA
Melody's Garden, WFLA
Compinsky Trio, WABC WCAU WPG WHAS, 30 m.
Rhythm Boys, WPG
News, WMCA
1.45 P.M. EDT; 12.45 EST; 11.45 A.M. CT
Mildred Dilling, harpist, WFAF WEEL WGY
Orchestra, KDKA
Dr. Paul V. Winslow, WMCA

- 2 P.M. EDT; 1 EST; 12 N. CT
Gene Arnold's Orchestra, WFAF WEEL WGY WLW WFLA, 30 m.
South Sea Islanders, WJZ WBZ WBAL KDKA
String Music, WSM, 30 m.
Edith Murray, songs, WABC WPG WHAS
Instrumental Trio, WMCA, 30 m.
Palmer House Ensemble, WGN
2.15 P.M. EDT; 1.15 EST; 12.15 CT
Abram Chasins, piano, WABC WCAU WHAS
Mark Love, bass, and Allan Grant, pianist, WGN
2.30 P.M. EDT; 1.30 EST; 12.30 CT
Landt Trio and White, WFAF WEEL WGY, 30 m.
Concert Artists, WJZ WBZ WHAM WBAL WLW KDKA WSM, 30 m.
Windy City Revue, WABC WCAU WHAS, 30 m.
Memories, Alice Remsen, WOR, 30 m.
Three Little Funsters, WMCA, 30 m.
Paris Trio, WGN
2.45 P.M. EDT; 1.45 EST; 12.45 CT
Lutheran Choir, WPG
Palmer House Ensemble, WGN
3 P.M. EDT; 2 EST; 1 CT
Talkie Picture Time, June Meredith, WFAF WEEL WGY WSM WFLA, 30 m.
Bar X Days and Nights, WJZ WBZ KDKA, 30 m.
Detroit Symphony Orchestra, from Century of Progress, Victor Kolar directing, Verdi's Sicilian Vespers, Franck's Symphony in D Minor, Liszt's Polonaise No. 2, WABC WCAU WHAS, 1 h.
Rev. Thomas E. Little, WOR, 30 m.
Gospel Message, WPG
Songs, music, WMCA, 30 m.
Don Baker, tenor, WGN
3.15 P.M. EDT; 2.15 EST; 1.15 CT
Bob Pacellis Orchestra, WGN
3.30 P.M. EDT; 2.30 EST; 1.30 CT
Dancing Shadows, Dolin's Orchestra, William Hain, tenor, WFAF WEEL WGY WLW WSM, 30 m.
Spanish Anaguinos Torres de Galicia, WJZ WBZ KDKA WHAM WBAL, 30 m.
Pauline Alpert, piano, WOR
Oratorio from Calvary Baptist Church, J. T. Thurston Noe, organist, 60-voice choir, WMCA, 1 h., 30 m.
Quartette, WGN
3.45 P.M. EDT; 2.45 EST; 1.45 CT
Baseball, Brooklyn vs. Chicago, WGN, 2 h., 15 m.
4 P.M. EDT; 3 EST; 2 CT
Dramatic Sketch, WFAF WEEL WGY
Organ, WJZ WHAM WSM (WFLA from 4.15)
Wesley Boynton, tenor, WLW
Trio, WFLA
4.15 P.M. EDT; 3.15 EST; 2.15 CT
Lillian Buckman, soprano, WFAF WEEL WGY
Buffalo Variety Workshop, WABC WCAU WHAS
Musicale, WOR, 30 m.
The Texans, WLW
4.30 P.M. EDT; 3.30 EST; 2.30 CT
Palmer Clark's Orchestra, WFAF WEEL WGY WLW WFLA, 30 m.
Drama, WJZ WBZ WHAM KDKA, 30 m.
Violin, WSM
Oregon on Parade, WABC WCAU WPG, WHAS, 30 m.
Lee Conrad, Marjorie Tremont, piano, WOR
5 P.M. EDT; 4 EST; 3 CT
John B. Kennedy, WFAF WEEL WGY
National Vespers, Dr. Paul Sherer, WJZ WBZ WHAM WSM WFLA, 30 m.
Vespers, KDKA, 1 h., 15 m.
The Playboys, WABC WCAU WHAS
Erva Giles, soprano, WOR
Family Prayer Period, WLW
Young People's Church of the Air, WMCA, 1 h.
5.15 P.M. EDT; 4.15 EST; 3.15 P.M.
Sylvan Trio, WFAF WEEL WGY
Tony Wons, WABC WCAU WPG WHAS
"Current Legal Topics," WOR
Afternoon Musicale, WGN
5.30 P.M. EDT; 4.30 EST; 3.30 CT
Hoover Sentinels, Edward Davies, baritone, Chicago Capella Choir, WFAF WEEL WGY WLW, 30 m.
Igor Gorin, WJZ WBZ WHAM WFLA, 30 m.
Male Chorus, WSM
Frank Crumit and Julia Sanderson, WABC WCAU WHAS, 30 m.
President Hotel Ensemble, WPG
Robert Reid, WOR, 30 m.
6 P.M. EDT; 5 EST; 4 CT
Catholic Hour, WFAF WEEL WGY WSM WFLA, 30 m.
Baltimore Municipal Band Concert, WJZ WHAM WBAL, 30 m.
Nick Lucas, songs, WABC WCAU
Organ, Herbert Koch, WHAS
"Arround the 19th Hole," WPG
Uncle Don, WOR, 30 m.
Sally's Party WMCA, 30 m.
Allan Grant, piano, WGN
6.15 P.M. EDT; 5.15 EST; 4.15 CT
Quartet, WBZ
Sports, KDKA
Ponce Sisters, WLW
Summer Musicale, WABC WCAU WHAS
William Saalman, baritone, WPG
Louise Brabant, soprano, WGN
"Criminal Court," drama, WMCA, 30 m.
6.30 P.M. EDT; 5.30 EST; 4.30 CT

Leading Lady



ALICE HILL, leading lady with the Princess Pat Players whose programs are broadcast over the NBC-WJZ chain Sundays at 4.30 P.M. and on Mondays at 9.30 P.M.

- Our American Schools, WFAF WGY WFLA WSM, 30 m.
Musical Tunes, WEEL
Egon Petri, pianist, WJZ WBAL WHAM, 30 m.
Time, Weather, WBZ
Carlile and London, WABC Orchestra, KDKA
Voices and Organ, WLW, 30 m.
Smiling Ed McConnell, WABC WCAU
The Abels, WPG
Harold Stern's Orchestra, WOR, 30 m.
Herbert Koch, organist, WHAS
6.45 P.M. EDT; 5.45 EST; 4.45 CT
Stars of Hollywood, WEEL
Jaysnoff Sisters, WBZ
Joe Williams, sports, WABC
Carlile and London, with Warwick Sisters, WCAU WHAS
CCC Quartette, WPG
7 P.M. EDT; 6 EST; 5 CT
"K-7" Drama, WFAF WGY, 30 m.
Merry-Go-Round, WEEL
Chas. Previn's Orchestra, Mme. Gitta Gradvova, pianist, WJZ WBZ WHAM WLW KDKA WSM WFLA, 30 m.
"Peter, the Great," drama, WABC WPG WHAS, 30 m.
Comedy Stars of Hollywood, WCAU
Milban String Trio, WOR
Heroes of Israel, "Maharan," WMCA
7.15 P.M. EDT; 6.15 EST; 5.15 CT
Around the Console, WCAU
Current Jewish Events, WMCA
7.30 P.M. EDT; 6.30 EST; 5.30 CT
Marion McAfee, songs, WFAF WGY
Garden talk, WEEL, 30 m.
Joe Penner, Harriet Hilliard and Ozzie Nelson's Orchestra, WJZ WBZ WHAM KDKA WLW WSM WFLA, 30 m.
Chicago Knights, WABC WCAU, 30 m.
Bob Pacellis's Orchestra, WGN
Hotel Morton Orchestra, WPG, 30 m.
Times Ensemble, WHAS
The Bible Camera, WOR
Ted Black's Orchestra, WMCA
7.45 P.M. EDT; 6.45 EST; 5.45 CT
Irene Beasley, songs, WFAF WGY
Baseball scores, WEEL
Baseball scores, weather reports, WHAS
Piano Duo, WOR
Leon Friedman's Orchestra, WMCA
Palmer House ensemble, WGN
8 P.M. EDT; 7 EST; 6 CT
Jimmy Durante and Rubinoff's Orchestra, WGY WBZ WLW WSM WFLA, 1 h.
The Jenny Concert, WEEL, 1 h.
"Goin' to Town," Ed Lowry, WJZ WHAM KDKA, 1 h.
Book talks, WGN
Voice of Columbia, George Jessel, and Revue, Mary McCormic, WABC WCAU WHAS, 1 h.
"Melodoscope," WOR, 1 h.
Three Little Funsters, WMCA
8.15 P.M. EDT; 7.15 EST; 6.15 CT
Debut Night, KDKA, 45 m.
Emil Thavii's Orchestra, WGN
Natalie Norman, songs, WMCA
8.30 P.M. EDT; 7.30 EST; 6.30 CT
Golden's Orchestra, WMCA
Concert Hour, WGN, 30 m.
8.45 P.M. EDT; 7.45 EST; 6.45 CT
Main St. Songwriter, WMCA
9 P.M. EDT; 8 EST; 7 CT
Merry-Go-Round, Tamara, WFAF WGY, 30 m.
Fox Revue, WEEL
Headliners with Will Rogers, WJZ WBZ WHAM KDKA WBAL WLW WSM WFLA, 30 m.

- Family Theatre, Walter Hampden "Riche-lieu," WABC WCAU, 30 m.
Songs in My Heart, WHAS
Songs, music, WMCA, 30 m.
Charlie Agnew's Orchestra, WGN
9.30 P.M. EDT; 8.30 EST; 7.30 CT
Album of Familiar Music, Frank Munn, Virginia Rea, WFAF WEEL WGY WSM WFLA, 30 m.
Purcell's Orchestra, WLW
Drama, "The Sire of Maletroit's Door," Tom Powers, Leona Hogarth, WJZ WHAM WBAL KDKA WLW
Bill Williams, baseball, WBZ
Waring's Pennsylvanians, WABC WCAU WHAS WPG, 30 m.
Arthur Henning, WGN
"Success," Harry Balkin, WOR
Bob Fallon's Orchestra, WMCA, 30 m.
9.45 P.M. EDT; 8.45 EST; 7.45 CT
Ralph Kirberry, baritone, WJZ WBZ WHAM KDKA
Unbroken Melodies, WLW
Los Chicos, WOR
Orchestra, WGN
10 P.M. EDT; 9 EST; 8 CT
Victor Young's Orchestra, William Hain, tenor, WFAF WEEL WGY WLW WSM WFLA, 30 m.
Madame Schumann-Heink, WJZ WBZ WHAM KDKA
Wayne King's Orchestra, WABC WCAU WHAS, 30 m.
Kingsland-Ponzi Orchestra, WPG, 30 m.
News and Ted Weems' Orchestra, WGN
"Chansonette," WOR, 30 m.
Mauro Cottone at the organ, WMCA, 30 m.
10.15 P.M. EDT; 9.15 EST; 8.15 CT
Mrs. Montague's Millions, drama, WJZ WHAM KDKA
St. Cecilies Glee Club, Associated French Societies, WBZ
Orchestra, WGN
10.30 P.M. EDT; 9.30 EST; 8.30 CT
Hall of Fame, Claudette Colbert, "The Romantic Lady," WFAF WEEL WGY WSM WFLA, 30 m.
L'Heure Exquise, Keith McLeod, WJZ WBAL WHAM WFLA, 30 m.
45 Minutes in Hollywood, Ned Sparks, WABC WCAU, 45 m.
Palmer Clark's Orchestra, WGN, 30 m.
Charles Leland, WOR, 30 m.
The Wandering Poet, WPG
Concert Silhouettes, WHAS, 45 m.
Florence Richardson's Orchestra, WMCA
Russian Cathedral Choir, KCAC, 30 m.
10.45 P.M. EDT; 9.45 EST; 8.45 CT
Y. M. C. A. Program, KDKA
Steel Pier Orchestra, WPG, 30 m.
Ben Pollack's Orchestra, WMCA
11 P.M. EDT; 10 EST; 9 CT
Baseball Scores, WFAF
Canadian apers, WEEL WGY WSM, 30 m.; WFAF WFLA from 11.15
Roxanne Wallace, WJZ WHAM WFLA
Organ, WBZ
Zero Hour, WLW, 30 m.

Educational

Tuesday, June 26

7.30 P.M.—"The Federal Finance As an Aid to Cities," talk by Joseph D. McGoldrick, Comptroller of the city of New York, NBC-WJZ

Wednesday, June 27

3.30 P.M. "Home Economist, What Does It Mean," talk by Frances Zuill, president American Home Economics Association, NBC-WFAF

Sports, News, KDKA
Ted Weem's Orchestra, WGN
"Moonebeams," WOR, 30 m.
Zero Hour, WLW

11.15 P.M. EDT; 10.15 EST; 9.15 CT

Ennio Bolognini, 'cellist, WJZ KDKA
Eventide Singers, WBZ
Little Jack Littles Orchestra, WABC WPG, 30 m.; WCAU WHAS from 11.30
Organ, Herbert Koch, WHAS
Lum and Abner, WGN
News, WCAU
Udo's Tango Orchestra, WMCA

11.30 P.M. EDT; 10.30 EST; 9.30 CT

Broadcast of Byrd Expedition, WFAF WGY WLW WSM WFLA, 30 m.
Musical, WEEL, 30 m.
News and Berrens' Orchestra, WJZ WBZ WHAM KDKA, 30 m.
Tea Leaves and Jade, WLW, 30 m.
Charles Barnett's Orchestra, WMCA, 30 m.
Week's Cummin's and Weems' Orchestras, WGN, 1 h.
Jimmy Lunceford's Orchestra, WMCA, 30 m.

11.45 P.M. EDT; 10.45 EST; 9.45 CT

Johnny Johnson's Orchestra, WABC WCAU WPG WHAS

12 M. EDT; 11 P.M. EST; 10 CT

News and Frankie Masters' Orchestra, WFAF WGY WSM WFLA
Jimmy Lunceford's Orchestra, WJZ WBZ WHAM WBAL KDKA, 30 m.
News, Castle Farm Orchestra, WLW
Red Nichol's Orchestra, WABC WCAU WPG WHAS
Anthony Trini's Orchestra, WOR
Bob Fallon's Orchestra, WMCA, 30 m.

12.15 A.M. EDT; 11.15 P.M. EST; 10.15 CT

Russ Olumbo, baritone, WFAF WLW WSM WFLA

12.30 A.M. EDT; 11.30 P.M. EST; 10.30 CT

Hollywood on the Air, WFAF WLW WFLA
Clyde Lucas' Orchestra, WJZ WBZ WHAM KDKA, 30 m.
Henry Busse's Orchestra, WABC WCAU Hidden Lake Orchestra, WSM
WPG
Vee Davidson's Orchestra, WHAS, 30 m.
Teddy Hill's Orchestra, WMCA, 30 m.
Agnew's, Thaviu's, Garber's and Weems' Orchestras, WGN, 1 h., 30 m.

Station Directory

Table with 5 columns: Station, Chain, K.C. Watts, Location. Lists various radio stations across the country and their frequencies and power ratings.

CHAINS: NBC, National Broadcasting Company; CBS, Columbia Broadcasting System; YN, Yankee Network; DIX, Dixie Network; FBC, Federal Broadcasting Corporation; CRC, Canadian Radio Commission; NEN, New England Network.

# Radio Lane

By Jimmy J. Leonard

NUMEROUS REQUESTS filter to this desk for enlightenment on the question: "Where does the Yankee Network News Service get its news?" The Yankee Network News Service employs a score of full time men in and around Boston. They are located in courthouses, police and fire headquarters, the State House, City Hall and other buildings where news is made. Some have regular beats to cover, while others are on general assignment.

This procedure is patterned after the staff of a metropolitan newspaper.

In every town in New England of any size, DICK GRANT, head of the news service, has placed a "space" man. This man is paid for the number of his words delivered over the air.

"This takes care of New England," you say, "but what about the news of the rest of the country and of other countries?"

The Yankee Network News Service has an open line between its offices and the Trans-Radio News Service. The Trans-Radio Service operates from New York. It is something like The Associated Press, which supplies news solely to newspapers. Trans-Radio receives news from all parts of this country and shoots it over the wires to independent radio news stations.

Trans-Radio Service is a subscriber to a French international news service, the Havas system. Suppose HITLER were shot in Germany; the Havas system would flash the news to the Trans-Radio Service, and that would send it to radio stations broadcasting news. "Hitler was shot today!" would be read over the air probably 30 minutes after the actual happening and before any newspaper could get to its readers.

When EDWIN C. HILL was interviewed by The MICROPHONE in Boston recently, he frankly admitted that radio would have a tough tussle when it tried to wrest news from the news-sheets. Evidently it is doing the unexpected, because Mr. HILL was a news reporter for 28 years and he should know.

Mr. HILL thinks that in time radio will be a great aid to the newspapers, because machines will be devised to print the newspapers without any type whatever. You will see ED HILL in the movies soon; he starts making pictures this month.

ALEC (CAMERON) STEELE, head of WNAC Artists Bureau, is off for a three months vacation to Glasgow, Scotland, the homeland he has not seen since a wee laddie. BO2 DONAHUE, Shepard publicity director, will vacation at Revere Beach. "Where's Elmer?" Why, haven't you heard that WHDH's Uncle ELMER and his Hymn Singers went to fulfill engagements "Down East?"

CBS plans to build a temporary station in northern Alaska where it will try contacting BYRD at the South Pole. Then WABC will cavedrop on the conversation between the two parties. Party line call, and we listen in on July 11. That funny fellow, ED LOWRY, is practicing penmanship for the new contract's dotted line. JACQUES RENARD has had his contract renewed for the next six months. MAE WEST will be on soon.



RICHARD GRANT

# THE ORIGINAL U.S. NEWSPAPER MICROPHONE

VOLUME III Saturday, June 23, 1934 NUMBER 25

Publisher, JOHN K. GOWEN, Jr. Business Manager, PHILIP N. HOBSON Editor, G. CARLETON PEARL Managing Editor, MORRIS HASTINGS A weekly newspaper, The MICROPHONE is published every Saturday at Boston, Massachusetts, by The MICROPHONE, Inc.

Entered as second class matter August 11, 1933, at the post office at Boston, Massachusetts, under the Act of March 3, 1879.

The MICROPHONE will not be responsible for unsolicited manuscripts unless they are accompanied by return postage.

Subscription for one year, \$1.50 postpaid. Single copies, five cents each.

Advertising rates on application to the Business Manager.

Offices, No. 34 Court Square, Boston, Massachusetts.

Telephones (connecting all departments) LAFayette 2860 and 2861.

## A Public Agency

HERE ARE words to which the printing press gave little publicity, although they came from Franklin D. Roosevelt, President of the United States:

"Radio today is enjoyed in the humble as well as the palatial home and contributes greatly to the enrichment of life. In co-operation with the government, radio has been conducted as a public agency. It has met the requirements of the letter and spirit of the law that it function for 'public convenience and necessity.' To permit radio to become a medium for selfish propaganda of any character would be shamefully to abuse a great agent of public service. Radio broadcasting should be maintained on an equality of that freedom which has been and is the keystone of the American press."

This is both a statement and a friendly warning to selfish interests who would pervert radio to their own ends.

## On The Right Track

THE MICROPHONE, on behalf of New England radio listeners, welcomes to Boston John A. Holman, new manager of WBZ and WBZA. Mr. Holman realizes that he has his spurs to win, and he is militantly determined to win them. Elsewhere in The MICROPHONE, space is devoted to Mr. Holman's aims and ambitions. Here we are concerned with a broader outlook. He has, we learn immediately, high ethical standards:

"Radio, in whatever it does, has to be absolutely clean, without any vestige of vulgarity or bad taste. And by bad taste I mean this: Radio is a guest in the home. It is under the same obligations of conduct and behavior. It should not violate any of the ideals of the home."

Mr. Holman is on the right track. Nastiness leads nowhere. Least of all over the air.

Other managers of radio stations, other broadcasting officials, should realize this.

## Frank Black's Prophecies Come True

By DICK TEMPLETON  
New York Correspondent

IT BEGINS to become evident again that radio's best, truest and greatest prophet is FRANK J. BLACK, NBC general musical director. Over a year ago BLACK prophesied that good music would rule, and then we had Chesterfield cigarettes sponsoring the Philadelphia orchestra and Lucky Strike sponsoring the Metropolitan Opera.

Now comes news that with three noted operatic voices and a fine choir and orchestra, Chesterfield has renewed and that it has been practically decided by astute G. W. HILL that the Metropolitan Opera will be sponsored by Lucky Strike again next Fall.

But more than that: Over a year ago BLACK pointed out that if music were dug up in obscure corners of the earth and sent in to one central point, there still wouldn't be enough

music. And now *Metronome*, a musical magazine, has come out with the same statement.

BLACK also said that "comedy will start to fade and that legitimate singers and actors will come into their own." This is happening and several noted actors are letting price stand between them and long air contracts at the moment. When TIBBETT and CROOKS departed from the Firestone program, it was a good singer, GLADYS SWARTHOUT, of the Metropolitan Opera, who stepped in for them.

As for comedy, the funniest thing about DURANTE is still his overlarge beak and nobody has yet found a way to broadcast that. Columbia is making a frantic effort to get someone steamed up over the nasalities of GEORGE JESSEL—a funny man to some New Yorkers.

And ED LOWRY, famous as a master of ceremonies who stayed long in St. Louis, also is

being waved in front of advertisers by another network. In the effort to save comedians from joining the bush leagues, both CBS and NBC have been a little unfortunate in their choice.

Some of what we now call the "old line" comics like JOE PENNER, sputtering ED WYNN and EDDIE CANTOR will hold on for a while.

# Studiosity

By Les Troy

SHOTGUN SHELLS for a radio station? Impossible! But wait until you hear this one. A couple of days ago HARRY STONE, manager of station WSM at Nashville, Tenn., was looking over some bills. On one of them he noticed an item for shotgun shells. Mr. STONE, all of a dither, grabbed a phone, called the transmitter and asked what the foolishness was all about. Then the truth came out.



PORTLAND HOFFA

The men at the transmitter were forced to load up their trusty old shotguns to shoot the woodpeckers who were gnawing holes in the telegraph poles which support the lines from the studios in Nashville to the transmitter outside of the town. So persistent and thorough have been said woodpeckers that a couple of the poles were bending

badly in the breeze.

Therefore, in addition to raising a little corn and wheat during off hours, the boys are now engaged in shooting woodpeckers. Whereupon Mr. STONE remarked that very soon the station will have to furnish baby food to keep the youngsters quiet during the minstrel show.

The following comes from GLUPPY, our personal New York correspondent: GUNTHER DECKER of the NBC Singfellows quartet once ruined many feet of movie film. The script called for the quartet to inhale cigarettes and then exhale with a great deal of satisfaction. Inhaling was something new at the time for GUNTHER. He swallowed the smoke instead, breaking up the scene.

Although PORTLAND HOFFA (Mrs. FRED ALLEN) acts the part of a girl who is mentally anaemic, she is really not so dumb. When she was a little girl a fire broke out in her home and what do you think she saved? The fire insurance policy.

Two of Uncle Sam's sightseeing sailors dropped into Columbia's radio playhouse the other day during a Chesterfield rehearsal. ANDRE KOSTELANETZ was trying to build up a Hawaiian melody with the sound of surf breaking on a beach. The production man thought it should be a long ssssssssh. An engineer held out for a short shoosh.

KOSTELANETZ wasn't satisfied and called one of the sailors into consultation (they must have been to Hawaii).

The sailors said it should be a long, drawn out ssshish.

That settled it.

HELEN MENKEN, stage star now appearing on the air, comes forward with an idea for broadcasting plays. She thinks that all radio drama ought to be set to music. The idea being that music would be the "scenery" of the radio play.

## To Subscribe to The Microphone

Fill out the blank and mail with cash, money order or check to The MICROPHONE, 34 Court Square, Boston, Mass.

(Please print)

Name.....

Street.....

City or Town.....

State.....

(Subscription \$1.50 per year, postpaid)

Monday, June 25 - George M. Cohan, Guest, NBC-WEAF, 10 P.M.

Highlights

P.M. 8.00—Soconyland Sketch, NBC-WEAF 8.30—Gladys Swarthout, NBC-WEAF 9.00—Rosa Ponselle, CBS-WABC 9.30—Helen Menken, CBS-WABC Joe Cook and Don Voorhees Orchestra, NBC-WEAF 10.00—George M. Cohan, NBC-WEAF

(All programs are listed in Eastern Daylight Saving Time. Eastern Standard Time is one hour earlier; Central Time is two hours earlier.)

8 A.M. EDT; 7 EST; 6 CT Morning Devotions, WJZ KDKA E. B. Rideout and current events, WEEI

8.15 A.M. EDT; 7.15 EST; 6.15 CT Devotions, WLW

Don Hall Trio, WJZ WBZ WHAM WBAL Tommy Sherlock, KDKA Health Exercises, WPG

8.30 A.M. EDT; 7.30 EST; 6.30 CT Cheerio, WEA WEEI WGY WLW, 30 m. Lew White at the dual organ, WJZ WHAM WBAL, KDKA, 30 m.

Weather, WBZ Organ, WSM Breakfast music, WFLA Sunny Melodies, WABC, 30 m. Organists, WPG, 30 m.

8.45 A.M. EDT; 7.45 EST; 6.45 CT Strolling Tom, WBZ

9 A.M. EDT; 8 EST; 7 CT Morning Glories, WEA WEEI WLW

Bradley Kincaid, songs, WGY Breakfast Club, orchestra, WJZ WBAL, r h. WHAM KDKA WSM from 9.15 (WBZ from 9.30) Deane Moore, tenor, WABC WCAU

9.15 A.M. EDT; 8.15 EST; 7.15 CT Landy Trio and White, WEA WEEI WGY WLW

Madison Ensemble, WABC 9.30 A.M. EDT; 8.30 EST; 7.30 CT Nancy Noland, songs, WEA WGY Hymns of All Church, WLW

Style and Shopping Service, KDKA Metropolitan Parade, WABC, 45 m.; WPG, 30 m.; WCAU from 9.45

9.45 A.M. EDT; 8.45 EST; 7.45 CT Matinatas, chorus, WEA WLW

Devotions, WGY News, KDKA WGN Keep Fit Club, WGN 10 A.M. EDT; 9 EST; 8 CT

Breen and de Rose, WEA WEEI WGY WLW Harvest of Songs, WJZ WBZ WBAL KDKA WSM WFLA

Home Hour WPG, r h.; News at 10.30 Lawrence Salerno and String Trio, WGN 10.15 A.M. EDT; 9.15 EST; 8.15 CT

Clara, Lu 'n' Em, WEA WEEI WLW WGN WSM Holman Sisters, WJZ WHAM Duke Dewey's Orchestra, WBZ

Sammy Fuller, KDKA Birthday Club, WFLA Bill and Ginger, WABC WCAU 10.30 A.M. EDT; 9.30 EST; 8.30 CT

News and Morning Parade, WEA WEEI WGY WLW (WEEI from 10.34) WGY from 10.45 Market Basket, WGY

Bridge talk, WEEI Organ, WLW Today's Children, drama, WJZ WBZ WHAM WBAL KDKA WFLA

News and The Metrymakers, WABC WCAU Mail Box, WGN 10.45 A.M. EDT; 9.45 EST; 8.45 CT

Skip, Step and Happiana, WGY News and NBC Kitchen, WJZ WBZ Jester's, WLW

Bob Atcher, WHAS Morning Melodies, KDKA National Convention Knight's of St. John, WABC WCAU

Lovely Ladies, WGN 11 A.M. EDT; 10 EST; 9 CT U. S. Navy Band, WEA WTAM WGY

WSM, r h.; WEEI from 11.15 (WFLA from 11.30) Radio School of Cookery, WEEI

Violinist, WLW The Wife Saver, WJZ The Honey-mooners, Grace and Eddie Albert, WBZ WHAM

Uncle Tom and Betty, KDKA 1/4 Hour in 3/4 Time, WABC WCAU

WABC WCAU Your Friendly Neighbor, WGN 11.30 A.M. EDT; 10.30 EST; 9.30 CT

Charioteers, WLW Melody Mixers, WJZ KDKA WBAL, 30 m. (WBZ WHAM from 11.45) Metropolitan Stage Show, WBZ Tony Wons, WABC Fur Trappers, WCAU

11.45 A.M. EDT; 10.45 EST; 9.45 CT Joan Marrow, music, WABC

Three Aces, WPG Etta Graubart, KDKA Sanders Sisters, WHAS Painted Dreams, WGN, WLW

12 N. EDT; 11 A.M. EST; 10 CT Fields and Hall, WEA WEEI WGY

Mary Alcott, vocalist, WLW Smackout, WJZ WHAM WSM The Monitor Views the News, WBZ Romance of Dan and Sylvia, KDKA Ralph Waldo, WFLA

12.15 P.M. EDT; 11.15 A.M. EST; 10:15 CT Rex Battle's Ensemble, WEA WEEI WFLA

Musical Program, WGY Morin Sisters, WJZ WHAM Weather; MSC Farm Forum, WBZ Quartette, WLW

Weather, Markets, WEA Vic and Sade, WJZ WBZ WHAM KDKA WSM WFLA

12.45 P.M. EDT; 11.45 A.M. EST; 10.45 CT Prominent Women in Washington, WEA WJZ

1 P.M. EDT; 12 N. EST; 11 A.M. CT Lotus Garden Orchestra, WEA WJZ

1.30 P.M. EDT; 12.30 EST; 11.30 A.M. CT Hotel Plaza Ensemble, 30 m. New England Kitchen, WEEI, 30 m.

1.45 P.M. EDT; 12.45 EST; 11.45 A.M. CT String Ensemble, WOR Hungarian Orchestra, WGN

2 P.M. EDT; 1 EST; 12 N. CT Revolving Stage, WEA WEEI, 30 m. Lauren Bell, baritone, WGY

2.15 P.M. EDT; 1.15 EST; 12.15 CT N. E. Kitchen, WEEI Household Chat, WGY

2.30 P.M. EDT; 1.30 EST; 12.30 CT Hillbilly Quartet, WEA WEEI WLW

2.45 P.M. EDT; 1.45 EST; 12.45 CT Ma Perkins, WEA WEEI WGY WLW

3 P.M. EDT; 2 EST; 1 CT Spotlight Memories, WEA WEEI WLW WFLA

3.15 P.M. EDT; 2.15 EST; 1.15 CT The Wise Man, WEA WEEI WFLA

3.30 P.M. EDT; 2.30 EST; 1.30 CT Women's Radio Review, WEA WEEI WGY WFLA, 30 m.

3.45 P.M. EDT; 2.45 EST; 1.45 CT King, Jack, jester, WLW Mandoliers, WMCA

3.55 P.M. EDT; 2.55 EST; 1.55 CT The Monitor Views the News, WBZ KDKA Kiddies' Klub, KDKA

Substitutes



ROBERT SIMMONS who replaces FRANK PARKER as first tenor of the Revelers Quartet while PARKER is in Hollywood. He also sings with the A. & P. Gypsies.

5.30 P.M. EDT; 4.30 EST; 3.30 CT

Yascha Bunchuk, cellist, WEA WEEI WGY WSM The Singing Lady, WJZ WBZ WHAM

5.45 P.M. EDT; 4.45 EST; 3.45 CT Bunkhouse Songs, WEA WEEI WGY WSM

6 P.M. EDT; 5 EST; 4 CT Davis' Music, WEA WFLA

6.15 P.M. EDT; 5.15 EST; 4.15 CT Joe and Eddie, WGY

6.30 P.M. EDT; 5.30 EST; 4.30 CT Horsensense Philosophy, WEA

6.45 P.M. EDT; 5.45 EST; 4.45 CT Horse Sense Philosopher, WEA

7 P.M. EDT; 6 EST; 5 CT Baseball Resume, WEA

7.30 P.M. EDT; 6.30 EST; 5.30 CT Shirley Howard and the Jesters, WEA WGY

7.45 P.M. EDT; 6.45 EST; 5.45 CT The Goldbergs, WEA WEEI WGY WTAM

8 P.M. EDT; 7 EST; 6 CT Soconyland Sketches, "The Dog Catcher,"

8.15 P.M. EDT; 7.15 EST; 6.15 CT Edwin C. Hill, WABC WCAU

8.30 P.M. EDT; 7.30 EST; 6.30 CT William Daly's Orchestra, Gladys Swarth-

Lillian Roth, Edward Nell, Jr., Ohman and Arden, WABC

8.45 P.M. EDT; 7.45 EST; 6.45 CT Babe Ruth, baseball comment, WJZ WBZ

9 P.M. EDT; 8 EST; 7 CT A. & P. Gypsies, Robert Simmons, WEA

9.30 P.M. EDT; 8.30 EST; 7.30 CT House Party, Joe Cook, Donald Novis,

9.45 P.M. EDT; 8.45 EST; 7.45 CT Magic Strings, WBZ

10 P.M. EDT; 9 EST; 8 CT Gene Arnold, Lullaby Lady, male quartet,

10.15 P.M. EDT; 9.15 EST; 8.15 CT Ranny Weeks' Orchestra, WEEI

10.30 P.M. EDT; 9.30 EST; 8.30 CT Gothic Echoes, Radio City Chorus, WEA

10.45 P.M. EDT; 9.45 EST; 8.45 CT Siberian Singers, WJZ WBZ WBAL KDKA

11 P.M. EDT; 10 EST; 9 CT News and Mary Courtland, WEA WGY,

11.15 P.M. EDT; 10.15 EST; 9.15 CT Harold Stern's Orchestra, WEA WGY

11.30 P.M. EDT; 10.30 EST; 9.30 CT Spanish Mixed Chorus, WEA WEEI, 30 m.

11.45 P.M. EDT; 10.45 EST; 9.45 CT "Public Housing in Action," talk by Mayor

12 M. EDT; 11 P.M. EST; 11 CT Ralph Kirby and Don Bestor's Orchestra,

12.30 A.M. EDT; 11.30 P.M. EST; 10.30 CT Roger Wolf Kahn's Music, WEA WLW,

12.45 P.M. EDT; 11.45 EST; 10.45 CT Reggie Childs Orchestra, WABC, 30 m.

12.55 P.M. EDT; 11.55 EST; 10.55 CT Hesseberger's Bavarian Peasant Band, WJZ

13 P.M. EDT; 12 P.M. EST; 11 CT Jimmy Gallagher's music, WSM, 30 m.

13.15 P.M. EDT; 12.15 EST; 11.15 CT

# Dixie Circus Brings Roars and Cries of Sawdust Ring to the Radio

## Sherwood A Circus Man Since 1865

By JUNE AULICK

Cries of peanut vendors. The hokey-pokey man, lemonade and balloon sellers (all imitated by "Uncle" BOB SHERWOOD).

The piping notes of a calliope played by CLEMENTINE HEINEMAN. A lusty circus band rendering "Dixie" under the direction of FRANK NOVAK.

Children in clown costumes sitting to the right of the control room. BRADLEY BARKER holding a small wooden plank in his mouth to aid in simulating the roar of lions and barking of dogs.

Production and agency men behind the large glass windows of the control room set their stop watches and the "Dixie Circus" rehearsal begins.

This program, which goes out over a WABC-Columbia network every Monday at 6.45 P.M., EDST, is one of the most colorful presentations on the air.

Boys and girls on "Uncle" BOB's program, who were with him last Summer on his Show Boat plying the Hudson River, carrying their gay balloons, have more fun than at the liveliest Sunday School picnic—and the fans are increasing weekly.

As the sounds subside, the genial voice of "Uncle" BOB, who recently celebrated his 78th birthday, is heard announcing:

"L-a-d-e-e-s and gentlemen, immediately after the procession there will be a grand fr-r-e-e high wire exhibit-i-o-n on the show grounds; Everybody follow the parade to the show grounds."

The head ring-master runs his fingers through his bushy grey hair and pauses a moment as a whistle blows and the band plays louder.

### The Sawdust Ring

Studio 1 of the CBS building has been transformed into a sawdust ring. The atmosphere set, CARLYLE STEVENS, talking in the manner of a circus vendor selling ice-cream cups to children and adults and a youthful-looking fellow who impersonates a grandfather inject the commercial advertisement so that the listener is hardly aware that the circus show has been interrupted.

Then the two leading children, curly-haired BETTY RICE, and blonde EDWARD MELVIN, Jr., acting as DOROTHY and DICK, ask "Uncle" BOB to tell them stories of his circus days.

"Uncle" BOB has been around circuses since he was nine years old when he ran away from home in Columbus, Ohio, to become a clown.

So he has an endless fund of circus lore with which to entertain his young listeners.

Thrilling accounts of a tiger that escaped from its cage while troupe and animals were in winter quarters; vivid explanations of why lions are more afraid of four-legged stools than guns; incidents that prove elephants do remember and think; all sorts of romantic and adventurous yarns are recounted by the enthusiastic leader of the Dixie Circus.

When the tale is told and DOROTHY and DICK have thanked

## "The Circus Is In Town"



READY for a broadcast. In the foreground, "Uncle BOB" SHERWOOD, veteran circus man; CLEMENTINE HEINEMAN, calliope player; EDWARD MELVIN, Jr., leading-boy player. In the background are the children who furnish lively atmosphere for the programs.

"Uncle" BOB for his story, the band strikes up "Marche Militaire," or some other lively composition.

After a few minutes of the rather repetitious phrases of this score, the production man presses the button which carries his voice into the studio.

"Cut," he says. FRANK NOVAK, the band leader, puts down his baton and walks across the room to the control section.

"I'm going to insert 'Dinah' there, and kill 'Marche Militaire.' It's too long. 'Dinah' will save seven seconds."

"But 'Dinah' isn't a circus

piece," objects one of the agency men.

"Popular music is played at lots of circuses," contributes another bystander.

"O.K. Change 'Marche Militaire' to 'Dinah.'"

Pencils hurriedly scratch out the number originally scheduled on the scripts which are held by all chief performers.

NOVAK returns to his place at the head of the band and the show goes on, until all cuts have been made and noted.

### Circus Career

The life story of "Uncle" BOB is as colorful and varied as the show he stages for the radio au-

dience. Known simply as "Feathers" in his childhood, he did nothing exceptional for about four years following his birth in St. Clairsville, Ohio, on April 18, 1856.

Then he started going places, playing a part in every amateur and professional show presented in the village, and gaining local fame by organizing circuses with boy performers.

SHERWOOD attended school for three years, but acquired his real education and knowledge of people and countries by subsequent travel around the world.

During his early days "Feathers" helped support himself by taking care of a neighbor's horses

## Man Mimics Noises of a Menagerie

and cows, for which he received \$1.50 a week.

Love of adventure runs in the SHERWOOD family. SHERWOOD pere was largely responsible for promoting the National Turnpike, leading from Cumberland, Md., to Columbus, Ohio.

A brother of BOB's pioneered in developing the X-ray in this country.

So it is not surprising to find BOB, at the age of nine, running away from home to join a circus, an act which his father, who was a combination lawyer, farmer and promoter, never fully forgave.

Four years of trapezing and clowning with DAN RICE's circus and BOB was ready to join ORRIN Brothers in Mexico City. This engagement lasted two years, and then, from 1873 to 1893, he was with the BARNUM show.

For 25 years he alternated circus appearances with dramatic work, playing with THOMAS W. KEENE, JOE JEFFERSON, Sr., MINNIE MADDERN FISKE and RICHARD MANSFIELD.

When his circus days were over he married the daughter of a Lutheran minister and retired to the business of selling books at retail.

In 1921 "Pop," as he was called by this time, was located around the corner from a broadcasting studio. When scheduled entertainers failed to arrive on time, the former circus artist was summoned to keep listeners amused by ad libbing until the regular performers appeared.

### Human Menagerie

BRADLEY BARKER, who becomes "Samson," the elephant, or Gruno, the bear, in the stories told by "Uncle" BOB, is radioland's official menagerie.

A big, dark-eyed, dark-haired, good-humored individual, his performance amuses both children and adults in the studio, while it thrills the unseen hearers.

BARKER's childhood ambition was to become an actor, and after enduring youthful struggles and family opposition, he landed on Broadway.

He quickly became a leading man and then pioneered in films, appearing with ALICE BRADY, BILLIE BURKE, LIONEL BARRYMORE, OLGA PETROVA and PAULINE FREDERICK.

When sound effects were introduced to the movies, BARKER supervised their production. Later he became a director.

When radio offered another outlet for a dramatist's talents, BARKER was ready to make his contribution. His first task for the microphone was to reproduce the sound of seals being killed. His imitation was so life-like that he was launched on his career as an animal imitator.

Ten-year-old BETTY RICE shakes her long black curls and snaps her brown eyes as she reads her script, but never shows nervousness.

The daughter of BILLY RICE, prominent circus artist, and the former SEPPIE MCNEIL, who came here from London with the original English Pony Ballet, she is completely at ease while performing.

EDWARD MELVIN, Jr., is 13 years old, a handsome lad with blonde hair and blue eyes, who also is thoroughly at home in front of the microphone.

## Scramble for Jobs on New Radio Board

(Continued from Page 1)

NING S. PRALL, New York Democrat, who was appointed some months ago to a vacancy on the Commission but preferred to wait until the new Commission was created, is believed certain of appointment.

There is a law which prohibits a member of Congress from serving on a commission during the period for which he was elected to serve in Congress. PRALL must wait until January before he can take office.

President ROOSEVELT was expected to name a temporary commissioner to serve until PRALL is eligible. Other candidates are:

MILO R. MALTBIE, chairman of the New York State Public Service Commission.

WILLIAM C. GREEN of St. Paul, Minn., special counsel to the Senate Interstate Commerce Committee in its radio investigation from 1929 to 1931.

Capt. S. C. HOOPER, chief of naval communications. He is eligi-

ble for retirement from the Navy, radio expert of the Department of State. He hails from Texas and has the support of Representative RAYBURN of Texas, co-author of the act.

ORVILLE SMITH, Cleveland attorney.

HOMER HOCK, ex-Congressman from Kansas.

J. H. BICKLEY, chief accountant of the Wisconsin Public Service Commission.

Warfare in the new Commission was foreshadowed when educational and other non-profit organizations opened fire for more time on the air for such groups.

The DILL-RAYBURN act, creating the new Commission contains the following provision:

"The Commission shall study the proposal that Congress by statute allocate fixed percentages of radio broadcasting facilities to particular types or kinds of non-profit radio programs or to persons identified with particular types or kinds of non-profit activities, and shall re-

port to Congress, not later than February 1, 1935, its recommendations, together with the reasons for the same."

Senators HATFIELD (R) of West Virginia and WAGNER (D) of New York, failed in efforts to have Congress allocate a proportion of the time of radio broadcasting companies to the so-called educational programs.

Few new powers are given to the new Commission under the act. It is directed to submit recommendations to the next Congress.

Among the new grants of power is authority to regulate stock transfers by radio companies; permission to authorize more 100 watt stations without regard to state quotas; broadcasts of lotteries or schemes of chance are prohibited; broadcasts from foreign countries originating in studios in this country, Mexico for instance, are prohibited unless the Commission gives its consent; Federal District Courts are authorized to enforce orders of the Commission.

Tuesday, June 26 - "Parade of the Champions", WABC, 9.30 P.M.

Highlights

- P.M. 4.00—Detroit Symphony Orchestra, CBS-WABC 8.30—Lady Esther Program, NBC-WEAF...

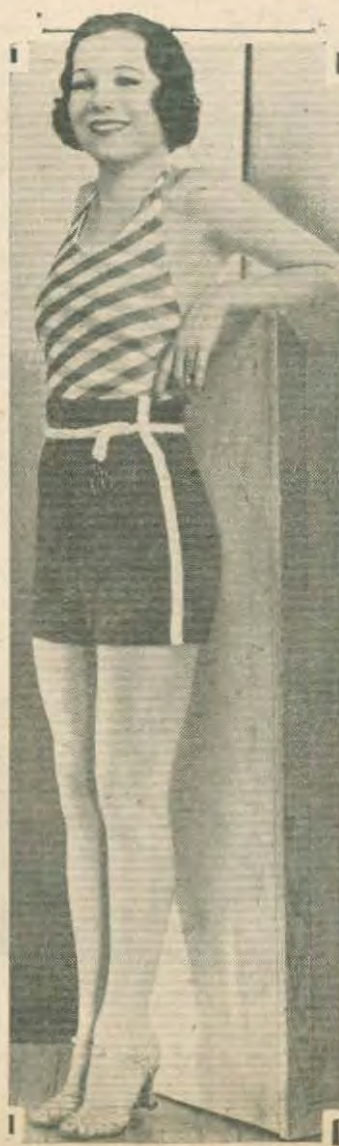
(All programs are listed in Eastern Daylight Saving Time. Eastern Standard Time is one hour earlier; Central Time is two hours earlier.)

- 9 A.M. EDT; 8 EST; 7 CT Sam Herman and Frank Banta, WEAF WGY WLW...

- 11.30 A.M. EDT; 10.30 EST; 9.30 CT Three Shades of Blue, WEAF WEEI WGY Spirituals, WLW...

- Connie Gates, songs, WABC WCAU WPG WHAS Harold Turner, pianist, WGN...

For The Beach



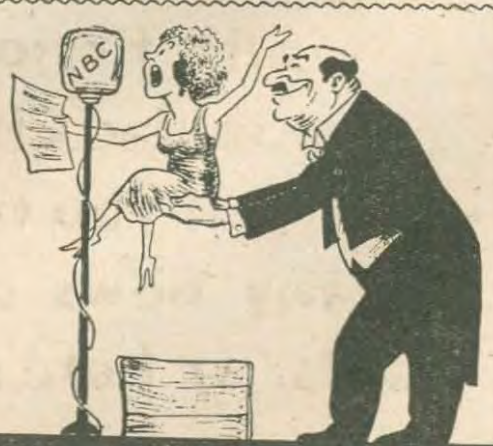
VIVIANNE SEGAL, soloist with LYMAN'S orchestra Tuesdays at 8.30 P.M. on the CBS-WABC chain, displays the latest in beach costumery.

- 3.15 P.M. EDT; 2.15 EST; 1.15 CT Voices of the Past, WGY Low Down, WLW...

- Dukas' "The Sorcerer's Apprentice," Wolfe-Ferrari, "The Secret of Suzanne," Humperdinck's "Hansel and Gretel,"...

- Melody Masters, WLW Tony Grande, WHEB 8 P.M. EDT; 7 EST; 6 CT Leo Reisman's Orchestra and Phil Ducey...

The Height Of Arlene



LITTLE ARLENE JACKSON, four-foot-eleven blonde singer on the NBC, has her shoes made with extra high heels. This is not because she likes the effect of being on stilts, but because she can get nearer the microphone. Even at that, the production man makes her stand on a box to sing.

- 7 P.M. EDT; 6 EST; 5 CT Goodrich Baseball Review, WEAF Piano Duo, WEEI...



**Do You Read Books? And**  
**Do You Like To Read About**  
**Books? You Should Have**

**NOW**

*The Magazine That Has Something To Say - And Says It*

**Books At Home**

— and —

**Books Abroad**

*Are Featured Every Month in NOW*

**Q.—Who conducts the book pages in NOW? A.—L. A. Sloper, one of the few Americans who has earned the right to be called a competent literary critic.**

**Q.—What does he discuss in NOW for June? A.—The Pulitzer prizes and American letters, in Books At Home, and Reichstag fire and English divorce law, in Books Abroad.**

**Circulation Manager,  
 NOW,  
 No. 34 Court Square,  
 Boston, Massachusetts.**

**I'd like the next twelve issues of NOW.  
 I am inclosing \$1.50 (Cash, check or  
 money order.)**

**Name** \_\_\_\_\_

**Street** \_\_\_\_\_

**City or Town** \_\_\_\_\_

**State** \_\_\_\_\_

**Q.—Only heavy, important stuff, eh? A.—No; Jean West Maury, who writes juvenile fiction, conducts the popular Children's Corner. But you can get NOW at any news stand for 15 cents, or here's a blank.**

**The MICROPHONE, Inc.**

Wednesday, June 27 - Adolphe Menjou in Drama, WJZ, 9.30 P.M.

Highlights

P.M.
8.30—Everett Marshall, CBS-WABC
9.00—Nino Martini, CBS-WABC
Goldman's Band, NBC-WJZ
9.30—Adolphe Menjou in "Cavalier of the Streets," NBC-WJZ
10.00—Broadcast to and from Byrd Expedition, CBS-WABC
10.30—Albert Spalding, violinist, CBS-WABC

(All programs are listed in Eastern Daylight Saving Time. Eastern Standard Time is one hour earlier; Central Time is two hours earlier.)

8.15 A.M. EDT; 7.15 EST; 6.15 CT
Resume and Don Hall Trio, WJZ WBZ WHAM WBAL
Tommy Sherlock, KDKA
Health Exercises, WPG
8.30 A.M. EDT; 7.30 EST; 6.30 CT
Cheerio, WEAF WEEI WGY WLW, 30 m.
Lew White, organist WJZ WBZ WHAM WBAL, KDKA, 30 m.
Sunny Melodies, WABC, 30 m.
Organairs, WPG
9 A.M. EDT; 8 EST; 7 CT
Herman and Banta, WEAF WEEI Scissors and Paste, WGY
Breakfast Club, WJZ WBZ WBAL 1 h. WHAM 45 m., KDKA 30 m.
Dean Moore, tenor, WABC WCAU
9.15 A.M. EDT; 8.15 EST; 7.15 CT
Landt Trio and White, WEAF WEEI WGY WLW
Madison Ensemble, WABC
Words and Music, WCAU, 30 m.
9.30 A.M. EDT; 8.30 EST; 7.30 CT
Morning Glories, dance tunes, WEAF Bradley Kincaid, WGY
Hymns, WLW
Morning Melodies, WEEI
Metropolitan Parade, WABC WPG, 30 m.; WCAU from 9.45
9.45 A.M. EDT; 8.45 EST; 7.45 CT
Southernaires quartet, WEAF WLW News, Trio, WEEI
Mid-Morning Devotions, WGY
Adrian O'Brien, WGN
Keep Fit Club, WGN
10 A.M. EDT; 9 EST; 8 CT
Breen and De Rose, WEAF WEEI WGY Harvest of Song, WJZ WBZ WHAM KDKA Mrs. Littleford, WLW
In the Luxembourg Gardens, WABC WCAU Home Hour, WPG, 1 h.; News at 10.30 Rondoliers, WGN
10.15 A.M. EDT; 9.15 EST; 8.15 CT
Clara, Lu 'n' Em, WEAF WEEI WGY WLW WGN
Fiorenda Trio, WJZ WHAM
Duke Dewey's Orchestra, WBZ
Sammy Fuller, KDKA
Bill and Ginger, WABC WCAU
10.30 A.M. EDT; 9.30 EST; 8.30 CT
News and Three Scams, WEAF The Market Basket, WGY
Organ, WEEI
Today's Children, WJZ WBZ WBAL, KDKA, 30 m.
News and Gypsy Music Makers, WABC WCAU, 30 m.
Jack Berch, WLW
Markets and Mail Box, WGN
10.45 A.M. EDT; 9.45 EST; 8.45 CT
Betty Crocker, WEAF WGY WLW Musical Turns, WEEI
Morning Melodies, KDKA
Lovely Ladies, WGN
Bob Atcher, WHAS
11 A.M. EDT; 10 EST; 9 CT
Juan Reyes, pianist, WEAF Edison Friendly Kitchen, WEEI Skip, Step and Harmonica, WGY The Wife Saver, WJZ
The Honeymooners, WBZ
Uncle Tom and Betty, KDKA News, WLW
Movie Personalities, WGN
Cooking Close-ups, WABC WCAU Farm Talk, WPG
Sanders Sisters, WHAS
11.15 A.M. EDT; 10.15 EST; 9.15 CT
Sweetheart Melodies, DeMarco Sisters and Jack Arthur, baritone, WEAF WEEI WGY WLW
Merry Macs, WJZ WHAM WBAL KDKA Women's Club News, WBZ
Your Friendly Neighbor, WGN
Pedro Cordoba, Will Osborne's Orchestra, WABC WCAU
Loretta Adams, soprano, WPG
11.30 A.M. EDT; 10.30 EST; 9.30 CT
Betty Moore, WEAF WEEI WGY WLW U.S. Army Band, WJZ WHAM WBAL KDKA
Love Making, Inc., WGN
Tony Wons, WABC WCAU WPG
11.45 A.M. EDT; 10.45 EST; 9.45 CT
Fields and Hall, WEAF WEEI WGY Painted Dreams, WLW WGN
Magic Recipes, WABC WCAU
R. K. O. Trio, WPG

12 N. EDT; 11 A.M. EST; 10 CT
Al and Lee Reiser, WEAF WEEI WLW Smackout, WJZ WHAM WSM
The Monitor Views the News, WBZ
Mary Alcott, songs, WLW
Dan and Sylvia, KDKA
Hal Kemp's Orchestra, WGN
"The Voice of Experience," WABC, WCAU Home Sweet Home, WPG
Songs, WMCA
12.15 P.M. EDT; 11.15 A.M. EST; 10.15 CT
Carlos Spaventa and Roberta Moya, WEAF WEEI
Martha and Hal, WGY
Wendell Hall, songs, ukelele, WJZ WBAL WSM
Time, weather, temperature, WBZ
Midday Songs, KDKA
Betty Barthell, WCAU WPG
Texans, trio, WLW
Oran Music, WGN
12.30 P.M. EDT; 11.30 A.M. EST; 10.30 CT
Gloria LaVey, soprano, WEAF WGY WTAM, 30 m.
Stocks, Produce, WEEI, 30 m.
Vic and Sade, WJZ WBZ, 30 m.; KDKA WHAM from 1.30; WSM 15 m.
Bond of Friendship, WLW
Market Reports, WGN
Concert Miniatures, WABC WCAU, 30 m.; WPG from 12.45
Alexander Haas' Ensemble, WOR, 30 m.
Dance Music, WTIC, 45 m.
12.45 P.M. EDT; 11.45 A.M. EST; 10.45 CT
This and That, WEEI
The Vagabonds, WGY
Words and music, WJZ WBZ WHAM
Dick Fidler's Orchestra, KDKA
String music, WSM
The Texans, WLW
June Baker talking on home management, WGN
1 P.M. EDT; 12 N. EST; 11 A.M. CT
Market and Weather Reports, WEAF, 1 h., 30 m.
Radio Gang, WGY
Weather, agriculture, WBZ, 30 m.
Markets, KDKA
Peggy Keenan and Sandra Phillips, piano, WABC WCAU WPG WHAS
Mid-day Service, WGN, 30 m.
String Trio, WMCA
Dr. H. I. Strandhagen, WOR
1.15 P.M. EDT; 12.15 EST; 11.15 A.M. CT
Dick Fidler's Orchestra, WEAF Orchestra, WEEI
Miracle Esmond, WGY
The Honorable Archie, WJZ WSM
Siesta, KDKA
Artist Recital, WABC
New Jersey Women's Clubs, WPG
Ariel Ensemble, WOR
Mirror Reflections, WMCA
Weather, WLW
1.30 P.M. EDT; 12.30 EST; 11.30 A.M. CT
Jan Brunesco's Gypsy Ensemble, WEAF WEEI WTIC WGY
National Farm and Home Hour, WJZ WBZ WHAM KDKA WSM WFLA, 1 h.
Harold Knight's Orchestra, WABC WCAU WPG, 30 m.
Palmer House Ensemble, WGN
Beauty Guild, WMCA, 30 m.
Rosalind Jewet, books, WOR
1.45 P.M. EDT; 12.45 EST; 11.45 A.M. CT
Harold Knight Orchestra, WABC String Trio, WOR
Hungarian Orchestra, WGN
2 P.M. EDT; 1 EST; 12 N. CT
Two Seats in the Balcony, WEAF Melody Parade, WABC WPG, 30 m.
Irene Thompson's Orchestra, WCAU
Dr. Arthur Frank Payne, WOR
Just Plain Bill, WGN
Dog Talk, WMCA
2.15 P.M. EDT; 1.15 EST; 12.15 CT
Romance of Helen Trent, WABC WCAU WGN
Virginians, male quartet, WOR
Sports, WMCA
2.30 P.M. EDT; 1.30 EST; 12.30 CT
Hillbilly, quartet, WEAF WGY WLW The Sizzlers, WJZ WHAM
Home Forum, KDKA
Markets, WSM
Ann Leaf, organ, WABC WPG, 30 m.
Woman's Club, WCAU, 30 m.
"The Homemaker," WOR, 30 m.
Century of Progress Music, WGN WLW WFLA
Orchestra, WMCA, 30 m.
2.45 P.M. EDT; 1.45 EST; 12.45 CT
Ma Perkins, WEAF WEEI WGY WGSB WLW WFLA
Colette Carlay, songs, WJZ WHAM WSM Clifford Wood, WTAG
Palmer House ensemble, WGN
3 P.M. EDT; 2 EST; 1 CT
Marion McAfee, songs, WEAF WTIC WLW WSM
Organ, WEEI
Albany on Parade, WGY
Joe White, tenor, WJZ WHAM Musicale, WBZ
Camay Minstrels, WLW
La Forge Berumen Musicale, WABC WPG, 30 m.
Bud Shays, songs, WCAU
Show Boat Boys, WOR
Palmer House Ensemble, WGN
Musical raconteur, WMCA
3.15 P.M. EDT; 2.15 EST; 1.15 CT
"Wise Man," WEAF WEEI WGY WSM WFLA
"Happy Days in Dixie," Bradley Kincaid, WJZ WHAM, 30 m.
Pianologue, WMCA
Taximeter Listens, WCAU
Roxie, "Your Lover," WOR
Low Down, WLW
Emil Thaviu's Orchestra, WGN
3.30 P.M. EDT; 2.30 EST; 1.30 CT
Woman's Radio Revue, WEAF WGY WSM WFLA, 30 m.
Home Forum Cooking School, WBZ, 30 m.
Modernistic Melodies, WABC WCAU WPG
Sputter and Whine, WLW
Afternoon Musicale, WOR, 1 h.
Salerno and Grant, WGN
3.45 P.M. EDT; 2.45 EST; 1.45 CT
Visits to Foreign Villages, Century of Progress, WJZ WBZ WHAM

Three In One



DEANE MOORE announces, plays and sings his own arrangements of popular songs of the past 20 years over the CBS-WABC network on Mondays, Wednesdays and Fridays at 9 A.M.

Bobby Benson and Sunny Jim, WABC WCAU
6.30 P.M. EDT; 5.30 EST; 4.30 CT
Yascha Davidoff, basso, WEAF
Jurrent Events and baseball scores, WEEI
Ma Frasier's Boarding House, WGY
Three X Sisters, WJZ WBZ WHAM
Time, weather, WBZ
Comedy Stars of Hollywood, KDKA
Jack Armstrong, WLW
String Music, WSM
Jerry Cooper, baritone, WABC
John Randolph, baritone, WCAU
Harold Stern's Orchestra, WOR, 30 m.
Singing Lady, WGN
Screen revue, WMCA, 30 m.
6.45 P.M. EDT; 5.45 EST; 4.45 CT
Martha Mears, contralto, WEAF WTIC WGY
Studio Chorus, WEEI
Lowell Thomas, news, WJZ WBZ WHAM WLW KDKA WFLA
Joe Williams, sports, WABC
Ben Pollack's Orchestra, WCAU
Little Orphan Annie, WGN WSM
Five Star Final, WMCA
7 P.M. EDT; 6 EST; 5 CT
Baseball Resume, WEAF
Comedy Stars of Hollywood, WEEI
Thru the Hollywood Looking Glass, WGY WHAM
Amos 'n' Andy, WJZ WBZ WHAM WLW KDKA WFLA
Piano, WSM, 30 m.
Gene Kardos' Orchestra, WABC WCAU
Ford Frick, sports, WOR
Ben Potter, sketch, WGN
Melody Boys, WMCA
Five O'Clock Melodies, WHAS, 30 m.
7.15 P.M. EDT; 6.15 EST; 5.15 CT
Gene and Glenn, WEAF WGY WFLA
Dick Tracy, detective, WEEI
Literary Digest Poll, Graham McNamee, WJZ WBZ WHAM WBAL KDKA
Emerson's Orchestra, WLW
Morton Downey, WABC WCAU
Dance Tunes, WOR
Musical Dessert, WGN
Melody Ambassadors, WMCA
Radio School, WNBX
7.30 P.M. EDT; 6.30 EST; 5.30 CT
Lillian Bucknah, soprano, WEAF
After Dinner Review, WEEI
Historical Play, WGY
Irene Rich, WJZ WBZ WHAM KDKA WSM
Bob Newhall, WLW
Music on the Air, WABC WCAU
Cowboy Songs, WOR
Melody Masters, WLW
Sports reporter, WGN
7.45 P.M. EDT; 6.45 EST; 5.45 CT
The Goldbergs, WEAF WEEI WGY
Grace Hayes, WJZ WBAL KDKA
Melody Masters, WLW
Violin, WSA
Boake Carter, news, WABC WCAU
True Stories of the Sea, WOR
World's Fair news, WGN
Fallon's Orchestra, WMCA
8 P.M. EDT; 7 EST; 6 CT
The Baron, WEAF WEEI WGY WSM WFLA, 30 m.
Crime Clues, Spencer Dean, WJZ WBZ WFLA, 30 m.
Phil Spitzlany's Ensemble, WABC WCAU
Emma Rausch, songs, WPG
Palmer House Ensemble, WGN
Three Funsters, WMCA
Dinner Concert, WHAS, 30 m.
"The Champions," WOR, 30 m.
8.15 P.M. EDT; 7.15 EST; 6.15 CT
Easy Aces, WABC, WCAU
Rinco Aita, tenor, WPG
Rochester School of the Air-Physics, WHAM
Harry Hershfield, humorist, WOR
Orchestra, WGN
Gravelle's Orchestra, WMCA
8.30 P.M. EDT; 7.30 EST; 6.30 CT
Lady Esther program, WEAF WGY WSM, 30 m.
Unemployed Musicians Concert, direction of Will Dodge, WEEI, 30 m.
Gene Arnold's Commodores, WJZ WBZ WHAM KDKA
Unbroken Melodies, WLW
Everett Marshall's Broadway Vanities, WABC WCAU, 30 m.
Jane and Jimmy Cullen, WPG
The Lone Ranger, WGN, 30 m.
Ramblers, WMCA
8.45 P.M. EDT; 7.45 EST; 6.45 CT
Babe Ruth, baseball comment, WJZ WBZ KDKA WHAM
Sketch, WLW
Maple Leaf Sextette, WPG
"More Than News," WMCA
9 P.M. EDT; 8 EST; 7 CT
Hour of Smiles, Fred Allen, Theodore Webb, Marshall Bartholomew, singers; Lennie Hayton's Orchestra, WEAF WEEI WGY WLW WSM, 1 h.
Goldman's Band, WJZ WBZ WHAM WBAL KDKA, 30 m.
Nino Martini, tenor, Andre Kostelanetz, WABC WCAU WPG, 30 m.
Orchestra, WOR, 30 m.

Agnew's Orchestra, WGN
Baritone, tenor, WMCA, 30 m.
9.15 P.M. EDT; 8.15 EST; 7.15 CT
Earl Burnett's Music, WGN
Concert, WHAS, 30 m.
9.30 P.M. EDT; 8.30 EST; 7.30 CT
Adolphe Menjou in Michael Arlen's "Cavalier of the Streets," WJZ WBZ WHAM KDKA, 30 m.
Aldrich's Hawaiians, WPG, 30 m.
Roy Melton "Looking at Life," WABC WCAU WHAS
Harry H. Balkin, WOR
Lawrence Salerno's Orchestra, WGN
Naumberg Concert, WMCA, 1 h.
9.45 P.M. EDT; 8.45 EST; 7.45 CT
Emery Deutsch's Orchestra, WABC WCAU WHAS
"That's Life," News drama, WOR, 30 m.
10 P.M. EDT; 9 EST; 8 CT
Corn Cob Pipe Club, WEAF WEEI WGY WLW, 30 m.
Musical Cruiser, WJZ WBZ WHAM KDKA WSM WFLA, 30 m.
Broadcast to and from Byrd Expedition, WABC WCAU
Stanley Roberts, tenor, WPG
News and Thaviu's Music, WGN, 30 m.
10.30 P.M. EDT; 9.30 EST; 8.30 CT
"The Other Americans," Edward Tomlinson, WEAF WEEI WGY
Jack Denny's Orchestra, Harry Richman and John B. Kennedy, WJZ WHAM, 30 m.
Off the Beaten Path, WBZ
Henry Thien's Orchestra, WLW
Romance of Dan and Sylvia, KDKA
Minstrel Show, WSM, 30 m.
Albert Spalding, violinist, Conrad Thibault, Joan Field, WABC WCAU, 30 m.
Willard Robinson's Orchestra, WOR, 30 m.
The Andersons, WPG
Bob Becker's dog chat, WGN
Richardson's Orchestra, WMCA
10.45 P.M. EDT; 9.45 EST; 8.45 CT
Pinkie Terry, songs, WPG
Ivan Petrov's Russians, WLW
Dream Ship, WGN
Pollack's Orchestra, WMCA
11 P.M. EDT; 10 EST; 9 CT
Angelo Ferdinando's Orchestra, WEAF WGY WFLA
E. B. Rideout, news and baseball scores, WEEI
Larry Lee's Music, WLW
Pickens Sisters, WJZ WBAL
Oran, WBZ
Amos 'n' Andy, WSM
Nick Lucas, songs, WABC
Boake Carter, WCAU
"Moonbeams," WOR, 30 m.
Sports, KDKA
Orchestra, WGN, 3 h., 30 m.
Tom Devodier's Orchestra, WMCA
11.15 P.M. EDT; 10.15 EST; 9.15 CT
Enric Madriguera's Orchestra, WEAF WGY, 30 m.
News, William Scott's Orchestra, WEEI
Don Bestor's Orchestra, WJZ WHAM WSM
Joe Rines' Orchestra, WBZ
Around the Cracker Barrel, KDKA
Gene and Glenn, WSM
News and Little Jack Little's Orchestra, WABC WPG, 30 m.; WCAU from 11.30
Billy Hays Orchestra, WCAU
Lum and Abner, WGN
Raymond Knight's Cuckoos, WLW
WHAS Concert Orchestra, WHAS
Orchestra, WMCA, 3 hrs. 45 m.
11.30 P.M. EDT; 10.30 EST; 9.30 CT
Charlie Davis' Hollywood Restaurant Orchestra, WEAF
Herman Cronc's Orchestra, WJZ WHAM
Cormier Sisters, WBZ
William Penn's Orchestra, KDKA
Orchestra, WGN, 3 h.
11.45 P.M. EDT; 10.45 EST; 9.45 CT
News, WEAF
News and Ben Pollack's Orchestra, WJZ WBZ KDKA WSM
Dance Music, WHAM
Cargoes, drama, WLW, 30 m.
Frank Dailey's Orchestra, WABC WCAU WPG
12 M. EDT; 11 P.M. EST; 10 CT
Buddy Rogers' Orchestra, WEAF WEEI 30 m.
Emil Coleman's Orchestra, WJZ WBZ WHAM KDKA, 30 m.
George Hall's Orchestra, WABC WCAU Johnny Johnson's Orchestra, WGY
1 A.M. EDT; 12 M. EST; 11 P.M. CT
Roseland Ballroom Orchestra, WABC
Rapp's music, WLW, 30 m.
Charles Boucett's Orchestra, WOR, 30 m.
Orchestra, WGN, 1 h. 30 m.

Um-m-m Yum-m-m !!
After the Theatre
Barbecued Chicken
Golden Rod Beer
In a quiet nook at
SLADES BARBECUE
958 TREMONT STREET, BOSTON
Open All Night
Tune in on WHDH Tuesday and Thursday at 5.20 P. M.

# "Radio Is Automobile's Finest Accessory," According to Burton

## Conveniences You May Have Overlooked

Have you ever left your car in a public parking space at 9 A. M., and found it in the same spot at 5 o'clock? Of course you haven't. Other cars have come in and gone out, necessitating the moving of yours. Probably you have circled the place in an effort to spot your automobile's position, then sidestepped between a dozen pairs of muddy fenders, climbed over a bumper or two, and smeared your favorite light grey suit in an effort to reach your bus. Then, as often as not, the car you finally climb into proves to be similar to yours in make and body style, but the property of Mrs. Uriah Q. Gibbs of South Wagonwheel. Then you have to go through it all over again.

Experiences like this led Charles W. Burton, manager of WEEI, to install a motor radio, he says, and now things are different. He doesn't have to look for his car. He just listens for it. The parking space attendant is certain to be comfortably ensconced in the front seat with the set going full blast. Furthermore, Burton doesn't have to leap over seventeen pairs of bumpers and then maneuver his car out into the street. The attendant, having been caught in the act, can't very well conveniently hide. He offers to do the job for him.

## Jack, Ted, Bud and Roy—After Dinner Reviewers



Another thing, says Burton, if you have a car radio and want to park in a street, do so near a cop and leave the set tuned in to the ball game. Nobody will steal your car, and the cop won't tag it, because he'll be right there enjoying himself when you return.

Of course, a set may embarrass its owner once in a while. Burton recalls the time he did a little weird steering while turning it on. A traffic cop immediately made a few cutting remarks. As he finished, the tubes had just completed their warming up process, and out of the speaker came the phrase, "Nuts to you!" Actually they were spoken by Jack Pearl, the Baron Munchausen,

but Burton had to let the cop hear the remainder of the program in order to convince him of his own innocence.

However, an auto radio is so valuable in other respects, a little trouble like that is nothing.

If your kids insist on tuning in Frank Merriwell, or Tom Mix's Straight Shooters, or Little Orphan Annie, and shoving on all the amplication there is while they eat their evening dish of cereal, all you have to do is go out in the garage and tune the car set to what you want to hear. Either that or make the kids eat their supper in the garage.

All in all, says Burton, automobile radio is the finest accessory ever placed in a car.

## Harmonies That Please Digestion

mands strictly "class" to register with the fickle public. Jack is Jack Francis; Bud is Mrs. Peters' boy and pride; Ted answers to the name of Miller; and Roy is Mr. Richards, suh!

Originally starting out as a harmony duo some five years ago, with Jack and Bud combining their talents, the trio with the help of Ted was developed when the latter and his hot clarinet were found to blend perfectly with the singing voices of Jack and Bud. The trio idea was fine for a while until the boys decided there was nothing like a good quartette, so Roy Richards received the nod for himself and his big bass fiddle, which he plays like the little red drum.

Although the boys do considerable entertainment work outside the circle of the microphone, they also find time to devote to a workaday job of one sort or another. For instance, Jack gets his inspiration for the After Dinner Review by conducting a road side food emporium on the Stoughton Turnpike. Bud is a draftsman; Roy an electrician; while Ted is a builder and operator of shortwave receivers, W1WO being his private air-call letters.

## ANNOUNCING NEW TIME

### "THE NEW ENGLAND PURE FOOD INSTITUTE"

with

SYLVIA WINTERS

2:00 to 2:30 MON. and WED.

11:00-11:30 A.M. SATURDAY

over

WTIC WTAG WCSH WJAR

and

WEEI

The Friendly Station

## NEWS WEEI BRIEFS

"Lady of Leisure" with Irene Hanify presiding at the WEEI organ console is a new daytime interlude for presentation Mondays, Wednesdays and Fridays at 1:25 P. M. beginning June 25th . . . WEEI's cool, gay Don who keeps a keen weather eye on things astronomical is now, 'tis said, breakfasting in his boudoir . . . The Boston Industrial Home's "Silver Lining Hour" broadcast on Thursday has changed time to 3 P. M. instead of the former two o'clock period . . . Lloyd Sigmon, WEEI transmitter operator, is now wending his way to his native heath in Oklahoma with his bride of just a year . . . Caroline Cabot has been assisting Irene Castle at the R. H. White Company . . . With Joe Weed, N. Y. office representative of the New England Network, opening a new branch office for NEN in Chicago, Hal Fellows, WEEI commercial manager, is currently operating the N. Y. headquarters . . . Carrie Mae—eldest daughter of boss man Lewis S. Whitcomb, is now Mrs. Wm. Anderson—congratulations . . . The National Safety Council offers another educational broadcast feature over WEEI on Monday, June 25th, at 4:15 o'clock . . . Dotty



Franklin offers the interesting comment that it is more temper than mental with most so-called temperamental radio artists she has seen . . . Beginning today the "Night Dream Hour" featuring the U. S. Marine Band will be heard for a full hour on Saturday evenings from eight to nine P. M. . . . John Rushworth is back in the fold after taking the sun cure for a troublesome ear ailment . . . And Mr. program director Edes sails blissfully on the briny—West Indies



bound . . . A new device has been developed by WEEI control operator Ed Philbrick to produce the oft heard musical note—no takers to date . . . One additional Sunday program in the series "World Pictures" will be presented Sunday at 12:15 o'clock when Dean Edward F. Wright of the Harvard School of Business Administration will speak on the subject "The New Deal In Education" . . . Will the bass fiddle player who made off with one of Ed Jardon's sneakers with which to clothe his musical instrument kindly return it so Ed

can continue with his gym work? . . . Lots of listener appreciation for the Thursday period with the Riviera Orchestra under the direction of Freddy Berrens from 11:35 to midnight . . . The Merry Music Makers, instrumental and harmony group from Lawrence, very impressive in audition, get an airing on the Evening Tattler program Thursday evening . . . Roger Wheeler has one of his scripts scheduled for the "First Nighter" broadcast featuring June Meredith on July 6th over the Red Network . . . Mrs. Endicott P. Saltonstall to be heard over WEEI at five o'clock on the 25th speaking on "The Country Week," having to do with providing vacation time in the country for under-privileged children . . . Plough's Musical Airship, a new network feature for weekly presentation, will be heard for the first time at 10:00 P. M. on July 11 . . . Mrs. Gow has decided Frank's second short wave set will have no place in the Gow household . . .

And don't hesitate in sending in your request numbers for the "Studio Chorus" programs heard twice weekly . . . Landt Trio and White but one of many first calibre daytime bits over WEEI.



## GOLDEN GEMS

from the

TREASURE CHEST

of

MELODIES

6:40 O'CLOCK TUES., THURS. AND SATURDAY

'GOLDEN MOMENTS'

Sponsored by

THE GOLD REDEEMING CORPORATION

over

STATION WEEI

The Friendly Station

Thursday, June 28 - "Twenty Crowded Years", WABC, 8.30 P.M.

Highlights

- P.M. 8.00—Rudy Vallee, NBC-WEAF 8.30—"Twenty Crowded Years," CBS-WABC 9.00—Captain Henry's Show Boat, NBC-WEAF 9.30—Waring's Pennsylvanians, CBS-WABC 10.00—"Conflict," T. S. Stripling, CBS-WABC

(All programs are listed in Eastern Daylight Saving Time. Eastern Standard Time is one hour earlier; Central Time is two hours earlier.)

- 6.45 A.M. EDT; 5.45 EST; 4.45 CT Tower Health Exercises, WEAF WEEI WGY, 1 h., 15 m. 7 A.M. EDT; 6 EST; 5 CT Musical Clock, WBZ KDKA, 1 h. 7.30 A.M. EDT; 6.30 EST; 5.30 CT Yoichi Hiraoka, xylophonist, WJZ McCormick Fiddlers, WLW Organ Reveille, WABC, 30 m. 7.45 A.M. EDT; 6.45 EST; 5.45 CT Pollock and Lawnburst, WEAF WGY Train Catcher, WEEI Jolly Bill and Jane, WJZ Musical Clock, WGY Resume and Salon Musicale, WABC, 45 m. Good Morning, WGN, 1 h., 45 m. 8 A.M. EDT; 7 EST; 6 CT Radio City Organ, WEAF E. B. Rideout, weather, WEEI Morning Devotions, WJZ KDKA Morning Melodies, WPG 8.15 A.M. EDT; 7.15 EST; 6.15 CT Don Hall Trio, WJZ WBZ WHAM Songs, KDKA Exercises, WPG 8.30 A.M. EDT; 7.30 EST; 6.30 CT Cheerio, WEAF WEEI WGY WLW, 30 m. Lew White, organist, WJZ WBZ WHAM WBAL KDKA, 30 m. Organ, WPG 8.45 A.M. EDT; 7.45 EST; 6.45 CT Caroline Gray, pianist, WABC 9 A.M. EDT; 8 EST; 7 CT Resume and Herman and Banta, WEAF WEEI WLW Willis, McCullough, songs, WGY Breakfast Club, WJZ WHAM KDKA, 30 m. Virginia Reade, talk, WBZ Eton Boys, quartet, WABC WCAU 9.15 A.M. EDT; 8.15 EST; 7.15 CT Landt Trio and White, WEAF WEEI WGY WLW In the Luxembourg Gardens, WABC, 30 m.; (WPG from 9.30) 9.30 A.M. EDT; 8.30 EST; 7.30 CT Morning Glories, WEAF WEEI Little Jack Little's music, WGY Hymns, WLW 9.45 A.M. EDT; 8.45 EST; 7.45 CT The Sylvan Trio, WEAF WEEI Sylvan Trio, WLW Skip, Step and Happiana, WGY News, KDKA Mystery Chef, WABC WCAU Bright Lights, WPG Keep Fit Club, WGN Jean Gravelle's Orchestra, WMCA 10 A.M. EDT; 9 EST; 8 CT Breen and de Rose, WEAF, 30 m. Del Castillo, organist, WEEI, 30. Amsterdam Salute, WGY Dead Letter Office, WJZ WBZ WHAM KDKA, 30 m. Health Talk, WLW Bill and Ginger, WABC WCAU Home Hour, 1 h., news at 10.30, WPG Variety, WGN Pure Food Hour, WOR, 1 h. 10.15 A.M. EDT; 9.15 EST; 8.15 CT Clara Lu 'n' Em, WEAF WGY WLW WEEI WGN Castles of Romance, WJZ WHAM KDKA Duke Dewey's Orchestra, WBZ Ida Bailey Allen, WABC 10.30 A.M. EDT; 9.30 EST; 8.30 CT Today's Children, WJZ WBZ KDKA Markets and Mail Box, WGN, 30 m News and Artist Recital, WABC WCAU 10.45 A.M. EDT; 9.45 EST; 8.45 CT News and Morning Parade, WEAF WTIC, 30 m. Musical Program, WEEI Shopping Bag, WGY News and Radio Kitchen, WJZ WBZ Sammy Fuller, KDKA Organ, WLW Tenor, WGN Dr. Russell L. Cecil, "Rheumatism and Arthritis," WABC Bob Atcher 11 A.M. EDT; 10 EST; 9 CT Galaxy of Stars, WGY, WLW U. S. Navy Band, WJZ WBZ WHAM KDKA, 30 m. Sunny Side Up, WABC WCAU WPG 11.15 A.M. EDT; 10.15 EST; 9.15 CT Frances Lee Barton, WEAF WGY WEEI Your Friendly Neighbor, WGN 11.30 A.M. EDT; 10.30 EST; 9.30 CT Jules Landt, violinist, WEAF WEEI, 30 m. Cimalene Carnival, WGY, 30 m. Jack Arthur, baritone, WJZ WBZ WBAL KDKA Market Reports, WLW Melody Men, WGN Madison Ensemble, WABC WCAU WPG, 30 m. 11.45 A.M. EDT; 10.45 EST; 9.45 CT Al and Lee Reiser, WJZ WBZ WHAM KDKA Painted Dreams, WGN WLW

- 12 N. EDT; 11 A.M. EST; 10 CT Trio Romantique, WEAF WEEI WGY Smackout, WJZ WSM Dan and Sylvia, KDKA Mary Alcott, songs, WLW "Voice of Experience," WABC WCAU Home Sweet Home, WPG "Around the Wheel of Events," WOR Hal Kemp's Orchestra, WGN Burns and Reid, songs and patter, WMCA 12.15 P.M. EDT; 11.15 A.M. EST; 10.15 CT Lucy Monroe, soprano, WEAF WEEI Martha and Hal, WGY Wendell Hall, songs, WJZ KDKA WSM WFLA Connie Gates, WABC WPG Texans, trio, WLW Variety, WOR Harold Turner, pianist, WGN Chuck Richards, songs, WMCA 12.30 P.M. EDT; 11.30 A.M. EST; 10.30 CT Rex Battle's Ensemble, WEAF WGY, 30 m. Vic and Sade, WJZ KDKA WSM WFLA 30 m. (WPG from 12.45) Bond of Friendship, WLW Roger Robinson, baritone, WGN Jules Bauduc's Orchestra, WABC WCAU, 30 m. (WPG from 12.45) Stocks, WMCA, 30 m. 12.45 P.M. EDT; 11.45 A.M. EST; 10.45 CT Bradley Kincaid, WGY Words and Music, WJZ WSM Wm. Penn Orchestra, KDKA Home Management Talk, WGN The Texans, WLW 1 P.M. EDT; 12 N. EST; 11 A.M. CT Markets, weather, WEAF KDKA Vagabonds, WGY, 30 m. Variety, WFLA, 30 m. Do, Re Mi trio, WABC Velasco's Orchestra, WABC WHAS, 30 m. Weather, music, WPG, 45 m. Dr. H. I. Strandhagen, WOR Lyric Strings, WMCA Mid-day Service, WGN, 30 m. 1.15 P.M. EDT; 12.15 EST; 11.15 A.M. CT Pedro Via's Orchestra, WEAF WEEI The Honorable Archie, WJZ KDKA WSM River and Markets, WLW Ariel Ensemble, WOR 1.30 P.M. EDT; 12.30 EST; 11.30 A.M. CT Orlando's Orchestra, WEAF, 30 m. WEEI Reading Circle, WEEI, 30 m. WGY Farm Program, WGY, 30 m. National Farm and Home Hour, WJZ WBZ WHAM KDKA WLW WSM WFLA, 1 h. Blues, WABC WCAU Beauty Guild, WAAB WMCA, 30 m. Markets, music, WGN Theatre Club of the Air, WOR 1.45 P.M. EDT; 12.45 EST; 11.45 A.M. CT Tony Wons, WABC WCAU Contraltos, WPG Otis Holley, soprano, WOR Hungarian music, WGN 2 P.M. EDT; 1 EST; 12 N. CT Stones of History, WEAF WEEI, 15 m. NEN Pure Food Institute, WEEI, 30 m. Paul Curtis, tenor, WGY Ann Leaf, organist, WABC WCAU WPG Dr. Arthur Frank Payne, WOR Just Plain Bill, WGN Theatre Notes, WMCA 2.15 P.M. EDT; 1.15 EST; 12.15 CT Household Chat, WGY School of the Air, Social Study, WHAM Romance of Helen Trent, WABC WCAU WGN Mildred Cole and Tom Davis, WOR Sports talk, WMCA 2.30 P.M. EDT; 1.30 EST; 12.30 CT Hillbilly Quartet, WEAF WEEI WLW WFLA Three School Maids, WGY Scamps, WJZ WHAM Poetic Strings, WABC WPG Time, weather, WBZ Home Forum, KDKA, 30 m. Markets, WSM Century of Progress Music, WGN "The Homemaker," WOR, 30 m. Handwriting Expert, WMCA 2.45 P.M. EDT; 1.45 EST; 12.45 CT Ma Perkins, WEAF WEEI WGY WLW WFLA Edwin Otis, baritone, WBZ Palmer House Orchestra, WGN Popular Songs, WMCA 3 P.M. EDT; 2 EST; 1 CT Yascha Davidoff, basso, WEAF Hawaiian Band, WEEI Albany on Parade, WGY Sleepy Hall and Orchestra, WJZ WBZ KDKA WSM, 30 m. (WFLA from 3.15) Collegians, WFLA Camay Minstrel, WLW Metropolitan Parade, WABC WCAU WPG Sally and Sue, WOR Music, WGN Song and piano, WMCA 3.15 P.M. EDT; 2.15 EST; 1.15 CT The Upstater's Quartet, WEAF WEEI WGY Low Down, WLW Piano Recital, WOR Emil Thaviu's Orchestra, WGN Natalie Norman, singer, WMCA 3.30 P.M. EDT; 2.30 EST; 1.30 CT Woman's Radio Review, WEAF WEEI WGY, 30 m. Roy Shields' Orchestra, Vernon Craig, WJZ WHAM KDKA WSM WFLA Home Forum Cooking School, WBZ, 30 m. Spatter and Whine, WLW Emery Deutsch's Orchestra, WABC WCAU Stamp talk, WPG Afternoon Musicale, WOR, 1 h. Stratford Johnson, basso, WGN Stocks, WMCA 3.45 P.M. EDT; 2.45 EST; 1.45 CT Musical Keys, WJZ WHAM Federation Pa. Women, KDKA Charles Dameron, WLW The Ambassadors, WABC WCAU WPG Musicale, WGN, 2 hrs., 15 m. George Spaulding, songs, WMCA 4 P.M. EDT; 3 EST; 2 CT Chick Webb's Orchestra, WEAF WGY, 30 m. Stocks, Markets, WEEI



GOGO DELYS, of French-Canadian birth, is the vocal star of the Carefree Carnival, broadcast Sunday mornings at 12.15.

- Carefree 6.30 P.M. EDT; 5.30 EST; 4.30 CT John B. Kennedy, WEAF WGY WSM Baseball scores, current events, WEEI Stamp Club, WJZ Jack Armstrong, WLW Pinto Pete, WFLA Time, weather, WBZ Beale Street Boys, WABC Pauline Alpert, pianist, WOR Singing Lady, WGN Dream Sweetheart, WMCA Trumpeters, WHEB 6.45 P.M. EDT; 5.45 EST; 4.45 CT Mary Small, songs, WEAF WGY Sailor Riley, WEEI Lowell Thomas, news, WJZ WBZ WHAM KDKA WLW Little Orphan Annie, WSM Joe Williams, sports, WABC Charles Barnet's Orchestra, WHAS Phil Cook, WOR Little Orphan Annie, WGN Five Star Final, WMCA 7 P.M. EDT; 6 EST; 5 CT Baseball Resume, WEAF Male quartet, WEEI Headline Highlights, WGY Amos 'n' Andy, WJZ WBZ WHAM KDKA WLW WFLA Beale Street Boys, WABC WCAU Ford Frick, sports, WOR Ben Potter, sketch, WGN Florence Richardson's Orchestra, WMCA 7.15 P.M. EDT; 6.15 EST; 5.15 CT Gene and Glenn, WEAF WEEI WGY WFLA Ed Lowry, WJZ WHAM Boston Fire Department, WBZ Organ, KDKA Emerson's Orchestra, WLW Sylvia Froos, songs, WABC WCAU Musical Dessert, WGN String Ensemble, WHAS Silver-voiced Lovers, WMCA 7.30 P.M. EDT; 6.30 EST; 5.30 CT Shirley Howard; the Jesters, WEAF WGY Teddy Bergman, WEEI Vincent Lopez' Orchestra, WJZ WBZ WBAL WHAM, 30 m. Bob Newhall, WLW Memory Program, WFLA Paul Keast and Rollo Hudson's Orchestra, WABC WCAU Ray Perkins' Orchestra, WOR Sports Reporter, WGN Folk Singer, WMCA 7.45 P.M. EDT; 6.45 EST; 5.45 CT The Goldbergs, WEAF WEEI WGY Boake Carter, WABC WCAU WHAS Melody Masters, WLW World's Fair News, WGN Leon Friedman's Orchestra, WMCA 8 P.M. EDT; 7 EST; 6 CT Rudy Vallee and guest artists, WEAF WEEI WGY WLW WSM WFLA, 1 h. Grets and Gravy, mountain sketch, WJZ WBZ KDKA, 30 m. The Columbian, WABC WPG Girls' School Band, WPG, 30 m. Dinner Concert, WHAS Ford Frick, WOR Orchestra, WGN, 30 m. Three Little Funsters, WMCA 8.15 P.M. EDT; 7.15 EST; 6.15 CT Easy Aces, WABC WCAU Mattie Curran, songs, WPG Jean Gravelle's Orchestra, WMCA 8.30 P.M. EDT; 7.30 EST; 6.30 CT Gale Page, WJZ KDKA Gleason T. Archer, Dean, Suffolk Law School, WBZ "Twenty Crowded Years," Historical Review of period since start of World War, WABC WCAU WPG, 1 h. Palmer House Ensemble, WGN Dinner Concert, WHAS, 30 m. Crazy Range Ramblers, WMCA 8.45 P.M. EDT; 7.45 EST; 6.45 CT Igor Gorin, baritone, WJZ WHAM Quartet, WBZ Sam, Gil, Louie, WHAS Al and Pete, KDKA Earl Burnett's Orchestra, WGN "More Than News," WMCA 9 P.M. EDT; 8 EST; 7 CT Captain Henry's Show Boat, WEAF WEEI WGY WSM WFLA, 1 h. (WLW from 9.30) Death Valley Days, drama, WJZ WBZ WHAM KDKA WLW, 30 m. Variety, WHAS Orchestra, WGN, 30 m. Rod and Gun Club, WOR Bob Haring's Orchestra, WMCA, 30 m. 9.15 P.M. EDT; 8.15 EST; 7.15 CT Voice, organ, WHAS "Romance in Song," WOR 9.30 P.M. EDT; 8.30 EST; 7.30 CT Goldman's Band, WJZ WHAM Squire Hawkins, KDKA Waring's Pennsylvanians, WABC WCAU WPG Harry H. Ballin, WOR Anson Weeks' Orchestra, WGN Ernie Golden's Orchestra, WMCA 9.45 P.M. EDT; 8.45 EST; 7.45 CT "The Witches Tale," WOR, 30 m. Bernie Cummins' Orchestra, WGN Trudy Thomas, songs, WMCA 10 P.M. EDT; 9 EST; 8 CT Paul Whiteman Music Hall, Deems Taylor, WEAF WEEI WGY WLW, 1 h. Parade of the Provinces, WJZ WHAM KDKA WBAL WSM Prison Drama, WBZ, 30 m. "Conflict," T. S. Stripling, WABC WCAU WPG News and Thaviu's Orchestra, WGN 30 m. Manhattan Singers, WMCA 10.15 P.M. EDT; 9.15 EST; 8.15 CT Fray and Braggiotti, WABC WCAU WPG Louisville program, WHAS Current Events, WOR "Romance of the Violin," WMCA Sports Parade, WGY Bill Williams, WBZ Baseball, KDKA Bobby Benson and Sunny Jim, WABC WCAU

- Police Radio Station Meters Location WPFV 121.5 Pawtucket, R. I. WPEM 121.5 Woonsocket, R. I. WPDR 122.05 Rochester, N. Y. WPEA 122.05 Syracuse, N. Y. WPEF 122.4 Bronx, N. Y. WPEE 122.4 Brooklyn, N. Y. WPEG 122.4 New York City WMJ 123.8 Buffalo, N. Y. WPGG 124.37 Albany, N. Y. WPED 175.23 Arlington, Mass. WPEI 175.23 East Providence, R. I. WPPA 175.23 Newton, Mass. WPGF 175.23 Providence, R. I. WMP 190.66 Framingham, Mass. WPEW 190.66 Northampton, Mass. WPEL 190.66 Bridgewater, Mass. WPGC 195.57 Albany, N. Y. WEY 630.00 Boston, Mass. (Fire) 10.30 P.M. EDT; 9.30 EST; 8.30 CT Echoes of the Palisades, WJZ WBZ KDKA WBAL WSM, 30 m. Evan Evans, WABC Tenor, WGN String Music, WHAS "Ramblin' Round," WOR, 30 m. Organ, WPG Melody Boys, WMCA 10.45 P.M. EDT; 9.45 EST; 8.45 CT Nancy Martin, KDKA Dean Roscoe Pound, Harvard Law School, WABC WCAU Sen. Wm. G. McAadoo, "The Future of the American Nation," WPG Three Blue Notes, WBZ Dream Ship, WGN Ben Pollock's Orchestra, WMCA 11 P.M. EDT; 10 EST; 9 CT Your Lover, songs, WEAF E. B. Rideout, WEEI Johnny Johnson's Orchestra, WGY, 30 m. The Cavaliers, WJZ WBAL Weather, temperature, sports, WBZ Time, weather, KDKA Champions Orchestra, WLW, 30 m. Amos 'n' Andy, WSM Vera Van, soprano, WABC Srenaders, WPG "Moonbeams," WOR, 30 m. Ted Weem's Orchestra, WGN Tom Devochier's Orchestra, WMCA 11.15 P.M. EDT; 10.15 EST; 9.15 CT Jack Berger's Orchestra, WEAF News, Musical Twins, WEEI Gene and Glenn, WSM Vagabonds, WGY Richard Maxwell, WJZ WBZ KDKA WFLA Reggie Childs Orchestra, WABC News, Casa Loma Orchestra, WABC Art Farrar's Orchestra, KDKA Lum and Abner, WGN Polly Andrews' Orchestra, WMCA 11.30 P.M. EDT; 10.30 EST; 9.30 CT Freddie Berren's Orchestra, WEAF WEEI WGY WSM WFLA, 30 m. News and Guy Lombardo's Orchestra, WJZ WBZ WHAM KDKA Isham Jones' music, WPG Crosley Roanios, WLW, 30 m. Brifo's Orchestra, WOR, 30 m. Henry Biagini's Orchestra, WHAS, 30 m. Orchestras, WGN, 3 hrs. Orchestras, WMCA, 2 hrs., 30 m. 11.45 P.M. EDT; 10.45 EST; 9.45 CT Musical Twins, WEEI Henry Busse's Orchestra, WABC WCAU 12 M. EDT; 11 P.M. EST; 10 CT Dream Singer and Jimmy Lunceford's Orchestras, WEAF WEEI WGY WFLA, 30 m. Milwaukee Philharmonic Orchestra, WJZ WBZ WHAM KDKA, 30 m. Los Amigos, WLW, 30 m. Gallagher's music, WSM, 30 m. Jack Berger's Orchestra, WOR, 30 m. Ben Pollock's Orchestra, WABC WCAU WPG, 30 m. 12.30 A.M. EDT; 11.30 P.M. EST; 10.30 CT Harold Sterns' Orchestra, WEAF WGY WLW Dancing in the Twin Cities, WJZ WBZ WHAM KDKA WSM WFLA Castle Farm Orchestra, WLW, 30 m. Ben Pollock's Orchestra, WABC WCAU WPG, 30 m.

- Composer Feted on Air On Monday, June 25, a program over the NBC-WJZ network at 4.15 P. M. will celebrate the birthday anniversary of PEARL CURRAN, composer of concert songs. Among her compositions are "Dawn," "Life," "Nocturne" and "Nursery Rhymes." EVERY subscriber to or other purchaser of The MICROPHONE is entitled to share its benefits with a friend. Write to Circulation Manager, The MICROPHONE, No. 34 Court Square, Boston, Massachusetts, giving the names and addresses of those you'd like to become familiar with The MICROPHONE. A sample copy will be sent promptly to each name given, without obligation.

# Corn Cob Pipe Club Broadcasts Aim for Spontaneous Humor

## Programs On Air Without Rehearsals

On Wednesday night, June 6, the Corn Cob Pipe Club, down at the old Virginia Crossroads, celebrated the second anniversary of its inauguration over a national network.

The Fiddlers, the colored singers who compose the Tobacco Boys, PAT BINFORD, the genial master of ceremonies, and all of the rest of the mimics made merry for the birthday party.

And over the country some 200,000 members of the club, many of them organized in their own chapters, participated in the birthday party and help to start off another year's fun and frolic.

The party was not actually the club's second birthday because it was organized five years before going over the national network.

Up to that time it came only over the Richmond station, WRVA, and its success there brought in so many friends and admirers that its territory and membership was increased.

### Unique Program

The Corn Cob Pipe Club is now not only one of the oldest programs, from the point of continuous activity on the air, but it is unique.

It is given in an informal station, filled with the club members, and it lacks the formality and stiffness of the usual radio presentation.

No one is told to keep quiet, or refrain from applauding or joining in the fun and the attitude of the audience is one of guests at a party rather than listeners at a broadcast.

PAT BINFORD, who started years ago as a local announcer for WRVA, takes things in hand from the start. He leads the group in singing, he passes candy to be eaten during the show, and he generally teases the audience and the actors alike until they are all in the spirit of the show.

### Country Atmosphere

No attempt has ever been made to break away from the country atmosphere of the show. If there are blackface sketches, and old time songs, it is not because they've been carefully rounded up and selected, but because they come natural to the environment.

Long before "hick" songs and dialogue became popular in the New York studios of the broadcasting chains, the Corn Cobbers were doing them with relish because they always had done them.

If the fiddlers at the country hall on Saturday night played "Comin' Round the Mountain," why shouldn't they play it over the air on Wednesday?

The club has been responsible for any number of innovations and novelties. Many of them, such as an oil can solo or a gas pipe chorus, would have instilled horror into the heart of an ordinary radio producer.

The club takes them as a matter of course, and they often have proved so amusing that hundreds of listeners have asked that they be repeated.

While some of the entertainers, such as BINFORD, GEORGE HAAB, who is Virginia's harmonica champion, SAWDUST and MOONSHINE, BUCK BANNISTER, who can imitate any kind of a barnyard animal ever known and the Tobacco Boys, are regular guests on the program, others come and go.

The directors are always on the look-out for new material that fits

## Two Dark Comies



SAWDUST and MOONSHINE, blackface comedians of the weekly Corn Cob broadcast.

into the program and frequently bring in new talent, always from the district, to add a new note.

If a band of wandering gypsies comes strolling along a dusty road near Richmond they are, likely as not, to be called in to sing some of their songs.

Singers have come in from every county around and local thespians have organized their own Very Small Drama League, to present blood-curdling, heart-rending one-act plays, from time to time.

In discussing the informality of the program BINFORD recently said that the producers long ago had decided it was no use trying to tell local entertainers what they are supposed to do in advance, especially on a show of this type where, if the spirit moves them, performers and listeners might easily break into a dance and keep it up through the entire 30 minute period.

### Without Rehearsal

It is on this philosophy that BINFORD

has conducted the club through its vicissitudes for almost seven years, gained an audience that now numbers millions and produced the program week after week without ever having a rehearsal.

"You can't rehearse a program like this," says Pat. "In the first place, the thing we are trying to achieve is spontaneity and if we go over it time after time in advance and think out each move, we will lose the whole thing."

"If we are putting on a camp meeting or a barn dance, I can't tell whether or not the audience is going to join in, and if they do, it's a sure thing I can't stop them at the end of two minutes."

The result of this psychology is that PAT himself doesn't know what he is going to say before the program starts. He has no idea of

## Late Programs Criticized In Letter to Microphone

The questions of late programs and studio applause are brought up in an interesting letter addressed to the Editor of THE MICROPHONE by WILLIAM C. TAYLOR of Springfield, Mass.

Mr. TAYLOR writes:

"I have often wondered why a lot of the best programs on the air are put at such late hours.

"I notice in your fine paper today that a piano ensemble is to be broadcast Tuesday, June 12, at 11.30 P. M. This is all right for lots of people I suppose in New York, Boston and all the large cities, but there are a great many who would like to hear it but don't sit up that late.

"Here in Springfield we older people go to bed earlier than that hour. There are a lot of apartment homes here that do not allow radios after 11 o'clock, and so a lot of people have to go without hearing many fine

things.

"It does seem as if they put, I won't say all, but a lot of the best concerts at a late hour.

"I am delighted to see that you think that jazz is going and classical music is coming on more. Now if they could only put on programs of classical music between 8 and 10, and then have jazz from 10 on, it would suit a lot of people.

"I am also, and I know many feel as I do, glad that you want applause omitted at broadcasts. If they want to applaud at the end of a program, that is all right; but it takes up so much of the time that we all get tired of it."

the order in which the numbers will be called and often he ends up dancing, singing, passing out candy and playing the comedian in general just because he likes it and it "goes."

All of the performers on the program come from Richmond or nearby. Many of them never have been out of Virginia and their dialect and slang are really Southern.

The Tobacco Boys, who have revived most of the old time spirituals from week to week, all work in the local tobacco factories where they sing during their work in much the same fashion as they do over the air. They have had no professional training.

Admission to the Corn Cob Pipe Club meetings is by ticket only. Local and neighboring residents drive by the studio in advance to secure tickets. Visitors, and there are many of them from all parts of the country, usually write in advance for seats.

On Wednesday nights, the street in front of the studio is packed with cars, buggies and sometimes wagons, an hour in advance of the show. It's "Hello, Bill" and "Hi there, John," up and down the place. They come to have a good time and they do.

Often as many as a hundred visitors will arrive without tickets in the hope of getting into the studio at the last minute if there is still an empty seat.

Membership in the club is obtained by sending the wrapper of a tin of tobacco. Thousands come in each week and in return the member receives his membership certificate and an old-fashioned corn cob pipe. In the cities where there are group clubs, a charter, bearing the name of all of the members, is issued.

For seven years the club has gone

## Champion



GEORGE HAAB, champion harmonica player of Virginia, appears regularly on the Corn Cob Pipe Club programs.

on, making steady progress, gaining new friends and members. During that time, dozens of similar programs have been inaugurated and discontinued.

The one thing that makes the Corn Cob Pipe Club a success is its naturalness, its spontaneity and the fact that it is produced and presented without pretence and without tricks.

It is supposed to be a meeting of local entertainers, come together to do their own stunts as best they can.

That is exactly what they do and the fact that now, after seven years, it is going stronger than ever, proves that they do it well.

## Short Wave Directory

| Station  | Metres                                    | Location                          | Time (E.D.T.)                           |
|----------|---|-----------------------------------|---|
| GSH      | 13.97                                     | Daventry, England                 | 7-9.30 A. M.                            |
| FYA      | 19.68                                     | Pontoise, France                  | 8 A. M.-2 P. M.                         |
| DJB      | 19.73                                     | Zeesen, Germany                   | 8-11 A. M.                              |
| GSF      | 19.82                                     | Daventry, England                 | 10 A. M.-1.45 P. M.                     |
| HVJ      | 19.84                                     | Vatican City, Rome                | 6-6.15 A. M. (Sat. 11)                  |
| CNR      | 23.38                                     | Rabat, Morocco                    | 8.30-10 A. M. (Sun.)                    |
| RNE      | 25.00                                     | Moscow, U. S. S. R.               | 7-8, 11-12 A. M. (Sun.)                 |
| FYA      | 25.20                                     | Pontoise, France                  | 3-6 P. M.                               |
| GSE      | 25.28                                     | Daventry, England                 | 10 A. M.-1.45 P. M.                     |
| 2RO      | 25.40                                     | Rome, Italy                       | 2.15-7 P. M.                            |
| DJD      | 25.51                                     | Zeesen, Germany                   | 1.45-5.30 P. M. and 8.45-12.30 P. M.    |
| GSD      | 25.53                                     | Daventry, England                 | 2-9 P. M.                               |
| EAQ      | 30.40                                     | Madrid, Spain                     | 6.15-8 P. M. (Sat. 1-3) 6-9 P. M. Sats. |
| CT1AA    | 31.25                                     | Lisbon, Portugal                  | 5.30-8 P. M., Tues., Fri.               |
| HLB      | 31.27                                     | Geneva, Switzerland               | 6.30-7.15 P. M., Sat.                   |
| VK2ME    | 31.29                                     | Sydney, Australia                 | 1-11 A. M., Sun.                        |
| DJA      | 31.38                                     | Zeesen, Germany                   | 6-8.30 P. M.                            |
| VK3ME    | 31.55                                     | Melbourne, Australia              | 6-8 A. M., Sat.                         |
| GSB      | 31.55                                     | Daventry, England                 | 2-6.30 P. M.                            |
| CNR      | 37.33                                     | Rabat, Morocco                    | 3.30-6 P. M., Sun.                      |
| HKE      | 41.55                                     | Bogota, Colombia                  | 7-9 P. M., Tues.                        |
| HAS      | 43.86                                     | Budapest, Hungary                 | 4-6.30 P. M.                            |
| PRADO    | 45.31                                     | Riobamba, Ecuador                 | 10-12 P. M., Thurs.                     |
| REN      | 45.38                                     | Moscow, U. S. S. R.               | 2-7 P. M.                               |
| HJ1ABB   | 46.51                                     | Barranquilla, Colombia            | 8-11 P. M.                              |
| ZGE      | 48.92                                     | Kuala Lumpur, Malay States        | Daily 8-10 A. M., Tues., Fri.           |
| PK1WK    | 49.02                                     | Bandoeng, Java                    | 6-7.30 A. M.                            |
| VUC      | 49.10                                     | Calcutta, India                   | 10.30-1 P. M.                           |
| CP5      | 49.34                                     | La Paz, Bolivia                   | 7.30-11 P. M.                           |
| HIX      | 49.50                                     | Santo Domingo                     | 9.10-11.10, Tues., Fri.                 |
| VQ7LO    | 49.50                                     | Nairobi, Africa                   | 12-3 P. M.                              |
| DJC      | 49.83                                     | Zeesen, Germany                   | 10-12.30 P. M.                          |
| RV59     | 50.00                                     | Moscow, U. S. S. R.               | 3-7 P. M.                               |
| HVJ      | 50.26                                     | Vatican City, Rome                | 3-3.15 P. M. (5-5.30 A. M., Sun.)       |
| TGX      | 50.50                                     | Guatemala City, S. A.             | 3-6 A. M.                               |
| HJ4ABA   | 51.49                                     | Colombia, S. A.                   | 2-3 P. M.                               |
| RV15     | 73.00                                     | Quito, Ecuador                    | 8.30-10.45 P. M.                        |
| 67.87 to | 73.17                                     | All Ships                         | Heard Irregularly                       |
| HCJB     | 70.65                                     | Khabarovsk, U. S. S. R.           | 2-10 A. M.                              |
| KFZ      | 45.34, 31.57, 25.30, 23.19, 64, 17 and 14 | Byrd Expedition at Little America |   |

NOTE: All times given are week-day schedules, unless indicated otherwise. The stations listed are regular broadcasters at the times indicated. Other stations which you may hear or which are used for international telephone have been purposely omitted.

# Friday, June 29 - Phil Baker, Comedian on NBC-WJZ at 9.30 P.M.

## Highlights

- P.M.**
- 3.00—Lanny Ross, Conrad Thibault, Mary Lou, NBC-WEAF
  - 8.00—Cities Service Concert, NBC-WEAF
  - Ethel Shutta, Walter O'Keefe, NBC-WJZ
  - 9.00—Leah Ray, NBC-WJZ
  - 9.30—Johnny Green, CBS-WABC
  - Phil Baker, NBC-WJZ
  - 10.00—"Spotlight Revue," CBS-WABC
  - 10.30—Jack Benny, NBC-WEAF
  - String Symphony, NBC-WJZ

(All programs are listed in Eastern Daylight Saving Time. Eastern Standard Time is one hour earlier; Central Time is two hours earlier.)

- 6.45 A.M. EDT; 5.45 EST; 4.45 CT  
Tower Health Exercises, WEA/WEEI/WGY, 1 h.
- 7 A.M. EDT; 6 EST; 5 CT  
Musical Clock, WBZ/KDKA
- 7.30 A.M. EDT; 6.30 EST; 5.30 CT  
Yoichi Hiraoaka, xylophone, WJZ/WBAL/McCormick's Fiddlers, WLW, 30 m.  
Organ Reveille, WABC, 30 m.
- 7.45 A.M. EDT; 6.45 EST; 5.45 CT  
Pollock and Lawnhurst, WEA/WGY  
Train Catcher, WEEI  
Jolly Bill and Jane, WJZ/WBAL
- 8 A.M. EDT; 7 EST; 6 CT  
Organ Rhapsody, WEA/W  
E. B. Rideout, WEEI  
Morning Devotions, WJZ/KDKA  
Good Morning, WGN, 1 h., 45 m.  
Resume, Ambassadors, WABC  
Echoes, WPG
- 8.15 A.M. EDT; 7.15 EST; 6.15 CT  
Summary and Don Hall Trio, WJZ/WBZ/WBAL/WHAM  
Tommy, Sherlock, KDKA  
Sunny Melodies, WABC, 30 m.  
Exercises, WPG
- 8.30 A.M. EDT; 7.30 EST; 6.30 CT  
Cheerio, WEA/WEEI/WGY/WLW, 30 m.  
Sunny Melodies, WABC, 45 m.  
Organ, WPG/WSM  
Lew White at Dual organ, WJZ/KDKA, 30 m., WBZ, 15 m. (WHAM from 8.45)  
Breakfast Program, WFLA
- 8.45 A.M. EDT; 7.45 EST; 6.45 CT  
Junior High School Program, WBZ/Delmore Brothers, WSM
- 9 A.M. EDT; 8 EST; 7 CT  
Summary and Sam Herman, xylophonist, WEA/WFLA  
Hal Levey's Orchestra, WGY  
Breakfast Club, WJZ/WBZ/WBAL/WLW, 1 h.  
Devotion, WSM  
Deane Moore, tenor, WABC/WCAU
- 9.15 A.M. EDT; 8.15 EST; 7.15 CT  
Landt Trio and White, WEA/WEEI/WGY/WLW  
Metropolitan Parade, WABC, 30 m. (WPG from 9.30)
- 9.30 A.M. EDT; 8.30 EST; 7.30 CT  
Taters and Muff, negro comedians, WEA/W  
Billy Rose, tenor, WGY  
Breakfast Club, WJZ/WHAM/WSM/WFLA  
Hymns, WLW  
Helen Barr, Edward Jordan, WEEI
- 9.45 A.M. EDT; 8.45 EST; 7.45 CT  
Cyril Tobin, violin, WEA/WEEI/WLW  
Skip, Step and Happiana, WGY  
News, KDKA  
Keep Fit Club, WGN
- 10 A.M. EDT; 9 EST; 8 CT  
Breen and de Rose, WEA/WEEI/WGY  
Edward MacHugh, baritone, WJZ/WBZ/KDKA/WSM/WFLA  
Mis. Littleford, WLW  
Madison Singers, WABC/WCAU  
Home Hour (news at 10.30) WPG, 1 h.  
Emily Post, speaker, Sydney Nesbitt, baritone, Muriel Pollack, Salada Strings, WOR, 30 m.  
Rondoliers, WGN
- 10.15 A.M. EDT; 9.15 EST; 8.15 CT  
Clara, Lu 'n' Em, WEA/WEEI/WGY/WLW/WGN/WSM  
Hazel Arth, contralto, WJZ/WHAM  
Duke Dewey, WBZ  
Sammy Fuller, KDKA  
Birthday Club, WFLA  
Bill and Ginger, WABC/WCAU
- 10.30 A.M. EDT; 9.30 EST; 8.30 CT  
News and Joe White, tenor, WEA/WSM  
Del Castillo, organist, WEEI  
Today's Children, sketch, WJZ/WBZ/WBAL/KDKA/WFLA  
Jack Berch, WLW  
News and Round Towners Quartet, WABC/WCAU  
Markets, weather, WGN
- 10.45 A.M. EDT; 9.45 EST; 8.45 CT  
Betty Crocker, cooking talk, WEA/WEEI/WGY/WLW/WFLA  
News, WJZ/WSM  
News, time, weather, WBZ  
Lovely Ladies, WGN  
Carolyn Gray, WABC  
Bob Atcher, WHAS
- 11 A.M. EDT; 10 EST; 9 CT  
Morning Parade, WEA/WEEI/WLW, 1 h.  
U. S. Marine Band, WJZ/WBZ/KDKA/WSM, 1 h.; WHAM (30 m. and from 11.45)  
Spiritual Singers, WLW  
Movie Personalities, WGN  
Cooking Close Ups, WABC/WCAU  
Wandering Poet, WPG, 30 m.

- 11.15 A.M. EDT; 10.15 EST; 9.15 CT  
Will Osborne's Orchestra, WABC/WCAU  
News, WLW  
Morning Topics, WFLA  
Your Friendly Neighbor, WGN
- 11.30 A.M. EDT; 10.30 EST; 9.30 CT  
Sandra Roberts, songs, WLW  
Tony Wons, WABC/WHAS  
Farm Talk, WPG
- 11.45 A.M. EDT; 10.45 EST; 9.45 CT  
The Captivators, WABC  
Martha and Hal, WGY  
Painted Dreams, WGN, WLW  
Ben Alley, music, WABC  
Sanders Sisters, WHAS
- 12 N. EDT; 11 A.M. EST; 10 CT  
Down the Song Trail, WEA/WEEI/WGY  
Smackout, WJZ/WHAM/WSM  
Monitor Views the News, WBZ  
Dan and Sylvia, KDKA  
Johnny Muldowney, songs, WLW  
Ralph Waldo, WFLA  
Hal Kemp's Orchestra, WGN  
Voice of Experience, WABC/WCAU  
Home Sweet Home, WPG  
Girl's Trio, WOR  
Lyric Strings, WMCA
- 12.15 P.M. EDT; 11.15 A.M. EST; 10:15 CT  
Lucy Monroe, soprano, WEA/WEEI  
Martha and Hal, WGY  
Wendell Hall, kukulele, WJZ/WSM/WFLA  
Time, weather, temperature, WBZ  
Midday Sons, KDKA  
Alice Michot, soprano, WLW  
The Four Showmen, WABC/WCAU/WPG  
Variety, WOR  
Harold Turner, pianist, WGN  
Chick Richards, songs, WMCA
- 12.30 P.M. EDT; 11.30 A.M. EST; 10:30 CT  
Rex Battle's Ensemble, WEA/W, 30 m., WGY, 15 m.  
Stocks, Markets, WEEI  
Vic and Sade, WJZ/WBZ/WHAM/KDKA/WSM/WFLA  
Esther Velas, ensemble, WABC, 30 m.; WCAU/WPG from 12.45  
Bonds of Friendship, WLW  
Organ, WOR, 30 m.  
Markets, organ, talk, WGN, 30 m.  
Two pianos, tenor, WMCA, 45 m.
- 12.45 P.M. EDT; 11.45 A.M. EST; 10:45 CT  
Cabot and Castillo, WEEI, 30 m.  
Radio Gang, WGY  
Words and music, WJZ/WBZ/WHAM/WSM/WFLA  
Wm. Penn music, KDKA  
The Texans, WLW
- 1 P.M. EDT; 12 N. EST; 11 A.M. CT  
Markets, weather, WEA/W  
Vagabonds, WGY  
Weather and N. E. Agricultural Report, WJZ/WBZ  
Markets, KDKA  
Noonday Dance, WFLA  
Al Kavelin's Orchestra, WABC/WCAU, 30 m.  
Hotel Morton music, WPG, 45 m.  
Dr. H. I. Standhagen, WOR  
Mid-day Service, WGN, 30 m.
- 1.15 P.M. EDT; 12.15 EST; 11.15 A.M. CT  
Dick Fidler's music, WEA/W  
Health Review, WEEI  
Peeping Tom and George, WGY  
The Honorable Archie, WJZ/WSM  
Siesta, KDKA  
Markets, WLW  
Ariel Ensemble, WOR  
News, WMCA
- 1.30 P.M. EDT; 12.30 EST; 11.30 A.M. CT  
Airbreaks, WEA/W, 30 m.  
N. E. Kitchen, WEEI  
Farm Program, WGY  
National Farm and Home Hour, WJZ/WBZ/WHAM/KDKA/WLW/WSM/WFLA, 1 h.  
Velazco's Orchestra, WABC/WCAU, 30 m.  
Markets, music, WGN, 30 m.  
String Trio, WOR
- 2 P.M. EDT; 1 EST; 12 N. CT  
Maeis of Speech, Vida Ravenscroft Sutton, WEA/WEEI, 30 m.  
Antoinette Hausted, WGY  
Bill Huggins, songs, WABC/WCAU  
Dr. Arthur Frank Payne, WOR  
Just Plain Bill, WGN
- 2.15 P.M. EDT; 1.15 EST; 12.15 CT  
N. E. Radio Kitchen, WEEI  
School of the Air—art appreciation, WHAM  
Romance of Helen Trent, WABC/WCAU/WBAL/WGN  
Virginians, male quartet, WOR  
Sports spotlight, WMCA
- 2.30 P.M. EDT; 1.30 EST; 12.30 CT  
Hillbillies, WEA/WEEI/WLW  
Albany on Parade, WGY  
Mary Phillips, WJZ  
Books and Authors, WBZ  
Home Forum, KDKA, 30 m.  
Markets, WSM  
Theatre Talk, WFLA  
Ann Leaf, organ, WABC  
"The Homemaker," WOR, 30 m.  
Century of Progress music, WGN  
Dinner Club, WMCA
- 2.45 P.M. EDT; 1.45 EST; 12.45 CT  
Ma Perkins, WEA/WGY/WLW  
WGY/WLW/WFLA  
Alden Edkins, bass-baritone, WJZ/WBZ/WSM  
Palmer House Ensemble, WGN  
Bob Stanley, tenor, WMCA
- 3 P.M. EDT; 2 EST; 1 CT  
Maria's Matinee, Lanny Ross, Mary Lou, Conrad Thibault, WEA/WEEI/WGY, 1 h.  
Margaret Santry interviews, WJZ/WBZ/WHAM/KDKA/WSM/WFLA  
Billy Dauscha, WOR  
Baseball talk, WMCA
- 3.15 P.M. EDT; 2.15 EST; 1.15 CT  
Visits to Foreign Villages at Century of Progress, WJZ/WBZ/KDKA/WHAM/WSM/WFLA  
The Eton Boys, WABC/WCAU  
Henry and Edward Peterson, WOR  
Mona Lowe, contralto, WMCA

## Of Sunny Spain



COUNTESS OLGA ALBANI, young Spanish soprano, now soloist on the Cities Service concerts broadcast by the NBC-WEAF network Fridays at 8 P. M.

- 3.30 P.M. EDT; 2.30 EST; 1.30 CT  
Temple of Song, WJZ/WHAM/KDKA/WSM/WFLA, 15 m.  
Home Forum Cooking School, WBZ, 30 m.  
The Grab Bag, WABC/WCAU/WPG  
Stock Quotations, WMCA  
Garden Club, WOR
- 3.45 P.M. EDT; 2.45 EST; 1.45 CT  
Afternoon Musicals, WOR, 45 m.  
Natalie Page, mezzo soprano, WMCA
- 4 P.M. EDT; 3 EST; 2 CT  
Your Lover, songs, WEA/WGY/WSM/WFLA, 15 m.  
Betty and Bob, sketch, WJZ/WBZ/WHAM/KDKA/WLW  
Dictators, WABC/WPG  
Soprano, tenor, organ, WMCA, 30 m.
- 4.15 P.M. EDT; 3.15 EST; 2.15 CT  
Nellie Revell at Large, WEA/WEEI  
"Books," Levere Fuller, WGY  
Singing Stranger, WJZ/WBZ/WHAM/KDKA/WSM/WFLA  
Matinee Highlights, WLW
- 4.30 P.M. EDT; 3.30 EST; 2.30 CT  
Norman Cloutier's Orchestra, WEA/WEEI/WSM/WFLA  
Vagabonds, WGY  
Jackie Heller, tenor, WJZ/WBZ, 30 m.  
Markets, KDKA  
U. S. Army Band, WABC, 30 m. (WPG from 4.45)  
Marimba Orchestra, WOR, 30 m.  
Street Forum, WMCA
- 4.45 P.M. EDT; 3.45 EST; 2.45 CT  
Stocks, WGY  
William Lundell's Interviews, WJZ  
William Hargrave, baritone, WOR  
Mystery Girl, advice, WMCA
- 5 P.M. EDT; 4 EST; 3 CT  
Madame Sylvia, WEA/WEEI/WGY, 15 m.  
Palmer Clark's Orchestra, WJZ/KDKA, 30 m.  
Agricultural Markets, WBZ  
Music, WSM  
Three Star Voices, WLW, 30 m.  
Musicals, WGN, 1 h.  
Resume and Frank Dailey's Orchestra, WABC  
Safety Talk, WPG  
"Dogs," WOR  
Sally's Party, WMCA, 30 m.
- 5.15 P.M. EDT; 4.15 EST; 3.15 P.M.  
Oswald Mazzucci, 'cellist, WEA/W  
Lawrence Cumming, WEEI  
The Monitor Views the News, WBZ  
Kiddies' Klub, KDKA  
Soprano, WPG  
Fay Hammond, WFLA  
Skippy, WABC/WCAU  
"Cocktail Hour," WOR
- 5.30 P.M. EDT; 4.30 EST; 3.30 CT  
Frank Merriwell, WEA/WEEI/WTAG/WTAM/WGY  
Singing Lady, WJZ/WBZ/WHAM/KDKA/WLW  
Ralph Watters, WFLA  
Jack Armstrong, All-American Boy, WABC/WCAU  
Nick Nickerson, WPG  
Christine Ridge, WHAS  
Robert Rand, WOR  
Piano, WMCA
- 5.45 P.M. EDT; 4.45 EST; 3.45 CT  
"Alice in Orchestra," WEA/WEEI/WSM/Bradley Kincaid, WGY  
Little Orphan Annie, WJZ/WBZ/WHAM/KDKA/WLW/WFLA  
Billy Dauscha, WOR  
Baseball talk, WMCA
- 6 P.M. EDT; 5 EST; 4 CT  
Horatio Zito's Orchestra, WEA/WLW/WSM/WFLA, 30 m.  
Evening Jattler, WEEI, 30 m.  
Evening Brevities, WGY  
Dorothy Page, songs, WJZ/WHAM  
O'Leary's Irish Minstrels, WBZ  
Time, weather, KDKA  
Round Towners, WABC  
Uncle Don, WOR, 30 m.  
Orchestra, WGN, 30 m.  
Ted Black's Orchestra, WMCA, 30 m.

- 6.15 P.M. EDT; 5.15 EST; 4.15 CT  
Joe and Eddie, WGY  
Angelo Ferdinando's Music, WJZ/WHAM  
Bill Williams, WBZ  
Baseball, KDKA  
Bobby Benson and Sunny Jim, WABC/WCAU
- 6.30 P.M. EDT; 5.30 EST; 4.30 CT  
Musical Mosaics, WEA/W  
Scores, current events, WEEI  
Frolics, WGY, 30 m.  
O'Leary's Irish Minstrels, WJZ/WHAM  
Temperature, weather, WBZ  
Comedy Stars, KDKA  
Jack Armstrong, WLW  
Nap and Dee, WSM  
Nick Lucas, songs, WABC  
Boys' Club, WOR  
The Singing Lady, WGN  
Heat Wave Trio, WMCA
- 6.45 P.M. EDT; 5.45 EST; 4.45 CT  
William Hain, tenor, WEA/W  
Studio Chorus, WEEI  
Lowell Thomas, news, WJZ/WBZ/WHAM/KDKA/WLW/WFLA  
Orphan Annie, WSM  
Sam Robbins Orchestra, WCAU/WHAS  
Joe Williams, sports, WABC  
Ray Perkins, WOR  
Little Orphan Annie, WGN  
Five Star Final, WMCA
- 7 P.M. EDT; 6 EST; 5 CT  
Baseball Resume, WEA/W  
Comedy Stars, WEEI  
Orchestra, WGY, 30 m.  
Amos 'n' Andy, WJZ/WBZ/WHAM/KDKA/WFLA  
Piano, WSM  
Charles Barnett's Orchestra, WABC/WCAU  
Ford Frick, sports, WOR  
Ben Potter, sketch, WGN  
Dinner Concert, WHAS, 30 m.  
Florence Richardson's Orchestra, WMCA
- 7.15 P.M. EDT; 6.15 EST; 5.15 CT  
Gene and Glenn, WEA/WEEI/WFLA  
E. A. Filene "Merchandising," WJZ  
Dick Tracy, detective, WBZ  
Joe Emerson, songs, WLW  
Just Plain Bill, WABC/WCAU  
String Trio, WGN  
Front Page Drama, WOR
- 7.30 P.M. EDT; 6.30 EST; 5.30 CT  
Fur Trappers, WEA/W  
After Dinner Revue, WEEI  
Utica Club Singers, WGY  
Bob Newhall, WLW  
Arlene Jackson, songs, WJZ/KDKA  
Three X Sisters, WSM  
WCAU/WHAS  
Gardens of Melody, WFLA  
Music on the Air, Jimmy Kemper, WABC  
Jack Arthur, baritone, WOR  
Sports Talk, WGN  
Fishermen's Guide, WMCA
- 7.45 P.M. EDT; 6.45 EST; 5.45 CT  
The Goldbergs, WEA/WEEI/WGY  
Sports Stories, WJZ/KDKA/WSM/WCAU/WHAS  
Melody Masters, WLW  
Boake Carter, WABC/WCAU  
Sea Stories, WOR  
World's Fair Reporter, WGN  
Fallon's Orchestra, WMCA
- 8 P.M. EDT; 7 EST; 6 CT  
Cities Service Concert, Countess Olga Albani, soprano, quartet, Banta and Rettenberg, piano duo, WEA/WEEI, 1 h., WGY, 30 m.  
Ethel Shutta, Walter O'Keefe, Dolan's Orchestra, WJZ/WBZ/WHAM/WBAL/KDKA, 30 m.  
Modern Treasury Hunt, WLW  
Songs, WSM  
Mary Eastman and Evan Evans, with Howard Barlow's Orchestra, WABC/WCAU  
Chalfonte-Haddon Hall Trio, WPG, 1 h.  
Billy Jones, Selvin's Orchestra, WOR, 30 m.  
Palmer House Music, WGN  
Dinner Concert, WHAS  
Funsters, WMCA
- 8.15 P.M. EDT; 7.15 EST; 6.15 CT  
String Music, WSM  
"Guilty or Not Guilty?" WFLA  
Easy Aces, WABC/WCAU  
Orchestra, WGN  
Roth Andrew's Orchestra, WMCA
- 8.30 P.M. EDT; 7.30 EST; 6.30 CT  
Farm Forum, WGY, 30 m.  
Gene Arnold's Commodores, WJZ/WBZ/KDKA  
Unbroken Melodies, WLW  
True Story Court, WABC/WCAU, 45 m.  
Varieties of 1934, WOR, 30 m.  
Lone Ranger, WGN  
Dinner Concert, WHAS, 30 m.  
Ramblers, WMCA
- 8.45 P.M. EDT; 7.45 EST; 6.45 CT  
Babe Ruth, baseball comment, WJZ/WBZ/WHAM/WBAL/KDKA  
Sam, Gil and Louie, WHAS  
Skit, WLW  
"Lasses and Honey," WSM  
"More Than News," WMCA
- 9 P.M. EDT; 8 EST; 7 CT  
Waltz Time, Frank Munn and Vivienne Segal, Abe Lyman's Orchestra, WEA/WEEI/WGY/WLW, 30 m.

- Phil Harris Orchestra, Leah Ray, WJZ/WBZ/WHAM/WBAL/KDKA, 30 m.  
Will Osborne's Orchestra, WOR, 30 m.  
Attilio Baggio, WGN  
Songs, music, WMCA, 30 m.
- 9.15 P.M. EDT; 8.15 EST; 7.15 CT  
Little Jack Little's Orchestra, WABC/Movie Broadcast, WPG
- 9.30 P.M. EDT; 8.30 EST; 7.30 CT  
One Night Stands, Pick and Pat, Blackface comedians, WEA/WGY, 30 m.  
Scott's Variety, WEEI  
Phil Baker, WJZ/WBZ/WHAM/KDKA/WSM/WFLA, 30 m.  
Jack Denny's Orchestra, Jeannie Lang and Johnny Green, WABC/WCAU, 30 m.  
Hotel Traymore Orchestra, WPG, 30 m.  
"The Champions," WOR, 30 m.  
Anson Week's Music, WGN  
Jack Douglas' variety, WMCA, 30 m.
- 9.45 P.M. EDT; 8.45 EST; 7.45 CT  
Armand Program, WLW  
Bernie Cummins' Orchestra, WGN
- 10 P.M. EDT; 9 EST; 8 CT  
The First Nighter, June Meredith, WEA/WEEI/WSM  
"Stories That Should Be Told," Fulton Oursler, WJZ/WBZ/KDKA/WLW  
"Spotlight Revue," Stoopnagle and Budd, Frank Crumit, WABC/WCAU, 45 m.  
News and Emil Thaviu's Orchestra, WGN, 30 m.  
Dance Orchestra, WPG  
"1/4 hr. in 3/4 time," WOR  
Piano, WMCA
- 10.15 P.M. EDT; 9.15 EST; 8.15 CT  
Lucille Manners, WJZ  
Billy Lossez' Orchestra, WBZ  
Francis Ingrah, KDKA  
Henry Thies and Pepsters, WLW  
Clark's Music, WGN, 30 m.  
Organ, WMCA
- 10.30 P.M. EDT; 9.30 EST; 8.30 CT  
Jack Benny, Mary Livingston and Don Bestor's Orchestra, WEA/WEEI/WGY/WLW/WSM/WFLA, 30 m.  
String Symphony, Frank Black, director, WJZ/WHAM, 30 m.; WBZ from 10.45  
Singers, WPG  
Enchanted Violin, WOR  
Melody Boys, WMCA
- 10.45 P.M. EDT; 9.45 EST; 8.45 CT  
Carlile and London and Warwick Sisters, WABC/WCAU  
Comedy Stars, WGN  
The Phantom, WPG  
Pollock's Orchestra, WMCA
- 11 P.M. EDT; 10 EST; 9 CT  
George R. Holmes, International News Service, Washington Bureau head, WEA/WFLA  
E. B. Rideout, WEEI  
Doc Peyton's Orchestra, WGY, 30 m.  
Roger Wolfe Kahn's music, WJZ  
Time, weather, sports, WBZ/KDKA  
"Unsolved Mysteries," WLW, 30 m.  
Amos 'n' Andy, WSM  
Edith Murray, songs, WABC  
"Moonbeams," WOR  
Seymour Simon's Orchestra, WGN  
U. of Louisville Musicals, WHAS  
Devodiers' Orchestra, WMCA
- 11.15 P.M. EDT; 10.15 EST; 9.15 CT  
Ben Pollack's Orchestra, WEA/WEEI/News and Poet Prince, KDKA  
Isham Jones Orchestra, WABC/WPG (WCAU from 11.30)  
Lum and Abner, WGN
- 11.30 P.M. EDT; 10.30 EST; 9.30 CT  
News and Vincent Lopez' Orchestra, WEA/WEEI/WGY/WFLA, 30 m.  
News, WJZ  
Orchestra, WBZ  
Little's music, WPG  
Joseph Nuano's Hawaiians, WLW, 30 m.  
Bud Fisher's Orchestra, WOR, 30 m.  
Anson Week's, Cummins', and Ted Weem's Orchestras, WGN, 1 h.  
Lloyd Huntley's Orchestra, KDKA
- 11.45 P.M. EDT; 10.45 EST; 9.45 CT  
String Music, WSM  
Ben Pollack's music, WABC/WCAU
- 12 M. EDT; 11 P.M. EST; 10 CT  
Dream Singer and Harold Stern's Orchestra, WEA/WEEI/WJAR/WGY, 30 m.  
Orchestra, WJZ/WBZ/KDKA/WSM  
Leon Belasco's Orchestra, WABC/WCAU/WPG  
Jack Petger's Orchestra, WOR
- 12.15 A.M. EDT; 11.15 P.M. EST; 10.15 CT  
Charles Barnett's Orchestra, WABC/WCAU/WPG
- 12.30 A.M. EDT; 11.30 P.M. EST; 10.30 CT  
Frankie Masters' Orchestra, WEA/WEEI/WLW, 30 m.  
Sam Robbins' Orchestra, WABC/WCAU/WPG  
Ted Black's Orchestra, WJZ/WBZ/KDKA/WSM  
Orchestras, WGN, 1 h.  
Centennial Program, WHAM, 30 m.

## POWERS' Asthma Relief



has been a boon to the afflicted for over 50 years. 6 oz. 60c - 18 oz. \$1.20.

Buy at Your Local Druggist's or Write Direct  
**E. C. POWERS COMPANY**

Box 62, Dorchester Center Station, Boston

# Reflections

By Diana Herbert

The MICROPHONE'S Fashion Observer

**G**OLD IS the choicest of metals! How this came about, after years of being relegated to the use of the very old or the very young, we cannot hope to explain. The vagaries of Fashion are most often unjustifiable as well as unpredictable.

In this case gold jewelry was launched by CHANEL, immediately sponsored by smart women here and abroad, and gold wedding-rings are now being ordered by many of our ultra-modern brides. Parisiennes are wearing wing-shaped clips of gold that hide the entire lobe of their pretty ear. The gold bracelets of childhood today adorn sophisticated arms. Very wide bracelets are in evidence—and only one to an arm. Diminutive, round, gold watches are being shown at an internationally famous jeweler's.

*MASSIVE, ANTIQUE gold jewelry is striking when properly assembled. ALICE MOCK wears a simple dark dress with a square neckline and graceful three-quarter sleeves, to set off her long earrings, her elaborately carved medal, hung on a cord around the neck, and matching, wide bracelet.*

ORIGINAL AND INTRINSICALLY beautiful jewelry is produced in Toledo, Spain, by applying steel on gold in unbelievably delicate tracery. The designs have more than a suggestion of Moorish, or Arabic, about them and the workmanship is skillful to a degree. With the newly manifest interest in Spain as a sartorial inspiration, we shall probably see more of this characteristic jewelry.

*AN INNOVATION in brooches is cleverly constructed to allow flowers or a scarf to be pulled through it and held securely. It is made of alternating bands of red and white gold.*

SOME TYPES of women find pearls their most becoming adornment. Especially is this true of delicately-colored blondes, who find metals and brilliant stones appear too hard and almost garish in conjunction with their own pastel exquisiteness. Pearls are always lovely and permanently fashionable. HELEN JEPSON, radio songstress for whom an operatic career is predicted, chooses a long rope of pearls, knotted, and falling below the waist, creating a mediæval effect, which is enhanced by her severe black dress and blonde coronet coiffure.

## This and That

(Continued from Page 1)

much as he is the most distinguished of living composers.

NBC devoted a half-hour to his music on that day from 5 to 5:30 P. M., an inconvenient time for many who would have liked to listen; ERNO RAPEE presented the striking and little-known STRAUSS "Burleske" on his Radio City concert the preceding Sunday.

Columbia, so far as I know, ignored him.

The excuse that STRAUSS' music is not popular hardly holds water. His tone-poems "Death and Transfiguration" and "Don Juan" rank high on any "all-request" symphonic program.

And certainly the waltzes from STRAUSS' "Rosenkavalier" are almost as captivating as those by "the Waltz King."

STRAUSS deserved at least the tribute of an hour's program in the evening on both networks.

## Instructor



ELLSWORTH VINES, Jr., noted tennis player, talks on the fine points of the game over the NBC-WEAF network Sundays at 9.30 A. M.

## How British Press Treats Radio News

(Continued from Page 1)

not take place. Although the press co-operates with the B. B. C. in broadcasting news events as they happen, English newspapers still, like American newspapers, do not print announcements of such spot news broadcasts.

Mr. COCK continues in his article:

"In view of our close co-operation with the press, of which our agreements are examples, it seems a pity that many newspapers maintain a policy of masterly inactivity in commenting upon or drawing attention to actuality broadcasts, which usually appear in small type, and have to be ignored by the critics.

"There seems to be the impression that such programs are in direct competition with the columns of the papers. This point of view may be valid with news that is given out during a broadcast, but it seems a little unreasonable in programmes such as 'Night on London's River,' which covered a subject dealt with in special articles from time to time."

The hold which the press did have on radio in England is illustrated by an incident which Mr. COCK relates.

"There are still painful memories of the pre-agreement era. The Derby of 1926 is such a memory. At Tattenham Corner, drenched to the skin, in a deluge of rain and a sea of mud, a collection of broadcasters attempted a somewhat futile Derby 'sketch' as the field flashed by on its way to the winning post.

"In no circumstances could any one of us mention the name of the winner — truly a test of our powers of reticence."

## Q. and also A.

Q. What is the matter with the RUDY VALLEE program? I asked for a ticket to his show and was told I must wait three weeks.

N. T., Brooklyn, N. Y.

A. RUDY VALLEE has changed his studio. The one he occupies now is able to accommodate but half the people formerly admitted.

Q. Is LEAH RAY a New Jersey girl?

V. C., Perth Amboy, New Jersey

A. No. Miss RAY was born and brought up in Norfolk, Va.

Q. Is PHIL BAKER married?

Mrs. E. A. McK., Worcester, Mass.

A. Yes. He is married to the former Miss MABEL ALBERTSON. She takes part in his radio programs.

## Both Sides Of British Radio

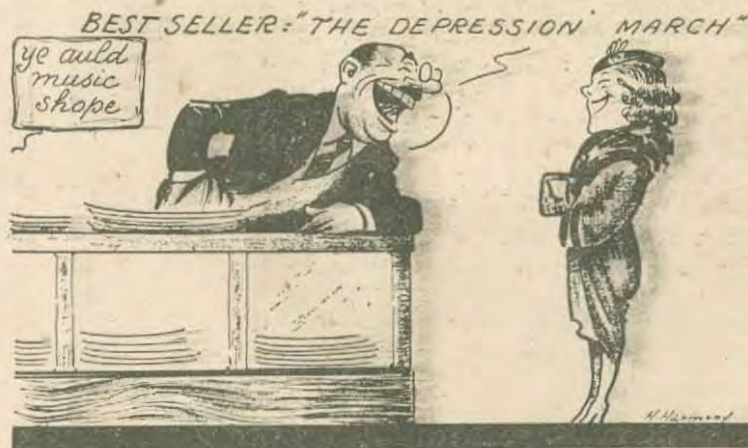
(Continued from Page 3)

BBC giving themselves a pat on the back, and I feel annoyed after the experiences of the last seven or eight years.

"I do not think the American people would put up with such service.

"I have written this to show you there are two sides to every question, and a short study of The Radio Times, should make what I have said clear."

## Popularity Check



ANNETTE HANSHAW, Showboat star, used to run a music shop in Mt. Kisco, N. Y. Now, when she wants to find out what her public would like to hear, she makes a tour of the music stores in New York City and looks at sales reports,

# Nimblewits

By Everett Smith

"Wit Teasers" on Sunday at 11.30 A.M. from WBZ

**N**O. 1. (no time limit) Another Cryptogram for the Nimblewits: EBKKQS.GCA.HJDET.IGCF.GLLSCLMNC; DNB.GJS.HNJA.MGQQD.MCOMLSA.LN.PSSL.ISQQNR.EBKKQSJF.MC.TNFLNC.NC.QGTNJ.AGD.

No. 2. (3 minutes) Try juggling, or transposing the letters in each of the words below to form another word:

HAPPIEST CHARTS

No. 3. (4 minutes) A chance for you to move from the CITY to a TOWN. Changing only one letter at a time, and forming a proper word each time, change CITY to TOWN in nine moves.



EVERETT SMITH

No. 4. (3 minutes) If there are 25 stations on a railroad, how many different tickets are required to connect every station with every other station?

No. 5. (2 minutes) Do you enjoy fruits? Here is an opportunity to find two kinds. Add and subtract as indicated:

OAR + PAN + EGG - APE - ELL - LEG =  
CAP + PLANE - CAN =  
\* \* \*

## Answers to Last Week's Nimblewits

No. 1. Members of the American Cryptogram Association will meet at Boston Convention on Labor Day. You should plan to attend.

No. 2. Knives, forks, spoons, colanders, pans, pots, kettles, strainers, etc.

No. 3. One.

No. 4. (Example). Steamer, Re-mate, Tamer, Rate, Rat, At, A.

No. 5. Rags, Sags, Sans, Sins,

## Six Stars Are On New Air Parade

A Summer "Parade of the Champions" will be broadcast over the WABC-Columbia network on Tuesday, June 26, at 9:30 P. M. The revue will last one hour.

Artists to be featured are MORTON DOWNEY, JANE FROMAN, DAVID ROSS, FRAY and BRAGGIOTTI and RICHARD HIMBER and his orchestra.

## Tony Wons' New Show For Fall

TONY WONS may abandon his famous Scrapbook after eight years of broadcasting with it. TONY spent three days in Chicago last week conferring with his sponsors about a new Fall program.

All that was divulged was that TONY will be heard on Sunday evenings at approximately 6 o'clock, that a large orchestra will be used and that a dramatic sketch will replace the Scrapbook.

## Football To Be Sponsored

The cigarette company which sponsored the Metropolitan Opera last Winter is planning to broadcast some of the leading football games next Fall.

## STATION DIRECTORY

Page 4

## Manager Of WBZ Attacks Dirt on Radio

(Continued from Page 1)

but he prefers the adroit and subtle punning of DEEMS TAYLOR, JOE COOK or FRED ALLEN to the stultified, artificial grist of machine-made jokes and gags.

Wisecracks of the double entendre and those smacking of suggestiveness are under a rigorous ban. Upon the cryptic, unwholesome gags of "Big Time" comedians, HOLMAN trains his heaviest fire.

"Radio," he exclaims, "in whatever it does, has to be absolutely clean, without any vestige of vulgarity or bad taste.

"And by bad taste I mean this: Radio is a guest in the home. It is under the same obligations of conduct and behavior. It should not violate any of the ideals of that home.

"A greater attempt should be made to deliver to the radio audience a well-balanced program throughout the broadcasting day.

"It would be ideal if a listener in any given community could be as discriminating as he liked and yet always find the variety and diverse interests that he seeks.

"Talk should be cut to the minimum. Only those discussions obviously of general interest to the radio audience should be used.

"I lean toward a higher program content of good music. Good music, in my definition, is that which contains harmony."

Examining other phases of broadcast entertainment today, the NBC manager says:

"Vaudeville on the air is a passing phase, but good showmanship demands that we recognize it. Crime dramas are also a phase and not fundamental. We need more of the humor of Deems Taylor."

Mr. HOLMAN entertains no apprehensions about foreign stations, through transatlantic short wave, replacing the interest in programs of local origin:

"The foreign tongues in which those programs are presented will militate against their popularity."

He does not look for broadcasting, even with the possibility of the added dimension of television, to engulf other arts in the amusement world. They will continue to exist side by side, for:

"Radio is a new force that can and should be operated toward the end of its own success and without detracting from the success of any other activity. In its success radio can, in most instances, be employed to add to the welfare of motion picture, stage and newspaper."

# "De Workines' Man"

By Lazy Dan

**B**RRR-rrr-rr-r (telephone).  
Oh, please go 'way and let me sleep. Brrr-rrr-rrr-rr-r.

Oh, aw right, aw right, I'se comin'. But ah wish dey'd let me sleep.

Hello. Who? Mistah Microphone? Well, dis heah's Lazy Dan. Yassuh. Das right. De lazies' man in de world. Whut kin ah do fo you? Not too much, ah hopes. Hew, hew, hew.

Oh, you wants to know who plays mah part on de radio? Why dat's Mistah Irving Kaufman, dat's who tis. An he ain't de lazies' man in de world A-tall. No, suh. He is jes' about de workines' man ah evah did see. Yeah, man. Plumb makes me all wo' out jes' thinkin' 'bout it.

Yeah. Mistah Kaufman he plays mah boss, Mistah Jim, on de radio too. So he jes' talks back an' foth to hisself, fust as me an' den as Mistah Jim, mah boss who runs de hardweah sto'. Quick, too. Jes' changes his voice so fas'.

Whussat? Yo' say he's a vocal quick-change ahtist. Well, he ain't nevvah said nothin' to me 'bout bein' a ahtist, but ah tell you' one thing, he sho can change his voice fas'. An' anohtah thing. Mistah Kaufman he sings as me an' he sings as Mistah Jim too.

An' dat's sumpin', aint it?

No, dat ain't all, neithah. No sah! He plays lots of othah pahts on dat dere Lazy Dan program. 'Sides me an' Mistah Jim, he do de Dutchman, Mistah Schnitzelbaum, who allus tries to sell me life

insurance—hew, hew, hew, 'magine me buyin' life insurance!—an' othah charactahs evvy now an' den.

Lots of folks jes' won't believe one man do it all. Whussat? How come Mistah Kaufman he kin do all dat? Well, Mistah Microphone, fo' yeahs an' yeahs he was a minstrel man. Yassuh. An' he got to doin' all kind of pahts, like cullud an' Irish an' Dutch, an' Jewish, an' sech. An' when dis heah radio business come along he jes' up an' hop an' holler an' say, "Man, oh man, dis heah is sumpin' whut's jes' natcherly made fo' me! Dis heah radio is jes' my meat,"



LAZY DAN. In real life and without the blackface he is known as IRVING KAUFMAN. His programs are featured on the CBS-WABC network.

Cause den he kin throw away all his blackface and his make-up an' kin jes' stand up at dat little black box an' talk right back an' foth to hisself an' be all dem diffrent people without no fuss an' no bothah. He got a practicin' an' a practicin' so befo' long he kin jes' talk right back an' foth to hisself so fas' dat nobody kin tell it ain't sevrul people.

An', Mistah Microphone, dey's sumpin' else ah mos' forgot. On dem programs he hop to de buck—tap dancin', dat is—an' play de bones too.

Whussat? Yassuh. Dat's right. He used to play Salty Sam, de Sailah man. Yeah. He been on de radio undah lots of othah names—aliases he call 'em. He was Charlie an' Oscar, an' he was de Singin' Chef an' lots of othah's ah doan' reckerlec'.

De funny thing 'bout Mistah Irving: He hardly evah puffoms as hisself. Mos' always work undah some names like Lazy Dan an' Mistah Jim. A few times he done some one-man minstrel shows, so any folks whut's heard dem know right off dat he sho' nuff is both me an' Mistah Jim.

An' Mistah Kaufman, he was mastah-of-ceremonies fo' a long while las' yeah with Mistah Abe Lyman's band. Yassuh.

You say kin' he do enythin' else? Yassuh, he sho' kin. Talk 'bout personatin' folks, he is one of de personatines' folks yo' evah did see. Yeah, man. He kin 'personate Rudy Vallee, Bing Crosby, Amos an' Andy, Al Jolson, and lots

mo' people like dat jes' to puffection. He sho' kin. He's done dat on de radio too lots of times.

Whussat? You wants a pitcher of Mistah Kaufman as me? Well, dat sho' is a funny thing, Mistah. Fo' two yeahs de radio folks has been tryin' to git Mistah Irving to black hisself up an' take a pitcher like dat, but he say, "No, man. Ah done throw away mah blackface when ah come to radio and fum now on ah jes' talks blackface. Das' all."

But so many folks dey want to see a pitcher of Mistah Irving as me dat he has at las' capitulated. Yassuh.



5¢

Radio Weekly

# MICROPHONE

THE ORIGINAL U.S. RADIO NEWSPAPER

Programs For Week Ending June 29



Mr. and Mrs. James Melton