

38

Local-National
Programs
In this Issue

MICROPHONE



3

Cents
the Copy
\$1.00 per Year

Vol. 11, No. 15

WEEK BEGINNING OCTOBER 7, 1933

Published Weekly

This and That

By Morris Hastings

THE radio symphony season begins tomorrow with CBS-WNAC broadcasting the New York Philharmonic Sunday afternoon concert in Carnegie Hall.

Bruno Walter, noted German conductor, directs the orchestra until December 16 when Arturo Toscanini takes his place.

The program Herr Walter has chosen for tomorrow's concert is notable for the fact that it contains only music by masters. The first work to be played is Beethoven's overture to "Coriolanus," which briefly and dramatically traces the fall of the Roman hero.

Following the overture comes the same composer's sixth symphony, commonly called the "Pastoral Symphony." It is supposed to have been inspired by the joyous days Beethoven spent in the country near Vienna. Beethoven himself wrote that certain portions of it describe a rustic dance, a forest stream, and a thunder storm.

After the intermission the orchestra will play Richard Strauss' tone-poem, "Death and Transfiguration," which probably is this composer's most poignant tone-poem. According to Strauss' accredited biographer, the music

(Continued on Page 11)



MORRIS HASTINGS

Dr. Serge Koussevitzky Pays Tribute to Radio As Musical Appreciation Aid

Gershwin for Strict Control to Save Songs

Radio must exercise strict control over the air performance of popular music.

This is for the sake of the composer and of radio itself, George Gershwin, well-known American composer, told The MICROPHONE.

"Radio is almost as powerful as a package of TNT," Mr. Gershwin declared. "By repeated performances it can kill popular music, good or bad, inside of three weeks."

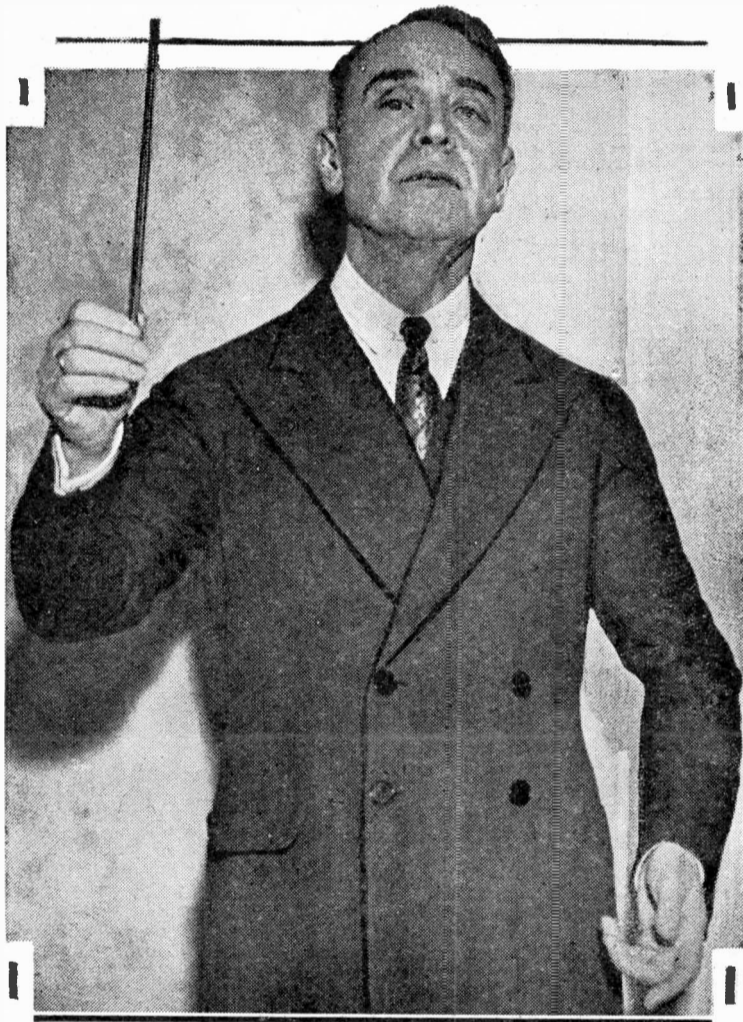
"Such a condition is obviously bad for the poor composer. It's bad for radio and the commercial sponsor, too, because radio audiences simply shut off a program that features popular music that has run its course."

"It is up to radio to do something about regulating the performance of popular music on the air. It could be done, for example, by setting a limit on the number of times a popular piece can be played during the week."

Mr. Gershwin is in town to supervise the first performances of "Let 'Em Eat Cake," musical

(Continued on Page 11)

"Radio Plays an Important Part"



DR. SERGE KOUSSEVITZKY, noted conductor of the Boston Symphony Orchestra, declares in the accompanying exclusive interview that bearing the best in music raises the taste of listeners.

Noted Conductor Tells His Plans

Radio has a share in the amazing development of musical appreciation in this country, Dr. Serge Koussevitzky, conductor of the Boston Symphony Orchestra, declared in an exclusive interview with The MICROPHONE.

"The development of musical taste in America within the last decade has surpassed that of any other country," Dr. Koussevitzky said.

"Americans support and patronize the three outstanding orchestras of the world. They listen to music with more genuine understanding and enthusiasm than do any other peoples with whom I am familiar."

"Radio plays an important part in this development because it now brings the concerts of these three outstanding orchestras into homes which would not otherwise be able to hear them. Naturally, hearing the best in music raises the taste of listeners."

"However, I do not believe that radio ever will replace the concert hall. Overtones are lost in radio broadcasts, also the intangible, electric impulse that passes through an audience assembled in a concert hall."

(Continued on Page 11)

Dr. Hugo Eckener to Speak From Graf Zeppelin at Sea

The first broadcast of a voice from an airship at sea will be heard over National Broadcasting Company networks late this month. Dr. Hugo Eckener, commander of the dirigible, *Graf Zeppelin*, and Dr. Max Jordan, NBC European representative, will speak from the airship while en route from Friedrichshafen, Germany, to Chicago.

The *Graf Zeppelin* has been fitted with short wave transmitting equipment with a 2,000-mile range. The first broadcast will be made from a point approximately 1,200 miles off Miami, Fla., which will be the first point reached by the dirigible in this country.

Subsequent broadcasts from the Graf will be heard over NBC networks as she is landing at Miami and at Akron, her second stop. Her arrival at Chicago also will be described.

Dr. Eckener, in an interview with Dr. Jordan while the airship is at sea, will describe how the dirigible is handled. Dr. Jordan also will interview some of the passengers.

The *Graf Zeppelin* is scheduled to leave Friedrichshafen on October 14 and is due at Pernambuco, Brazil, on October 17.

Stops will be made at Buenos Aires and Rio de Janeiro, and the ship will return to Pernambuco on October 20 to leave for Miami the same evening.

The first broadcast will be heard on October 21 or 22.



DR. HUGO ECKENER

Contents

DEPARTMENTS

<i>This and That</i>	Page 1
by Morris Hastings	Page 5
<i>Studiosity</i> by Les Troy	Page 5
Radio Lane	Page 5
by Jimmy J. Leonard	Page 5
Editorials	Page 5
News Flash Box	Page 6
Reflections	Page 11
by Diana Herbert	Page 11
Nimblewits	Page 11
by Everett Smith	Page 11
Questions and Answers	Page 11

FEATURES

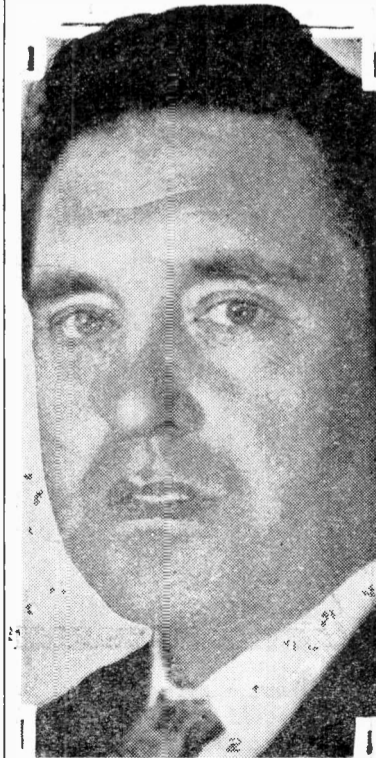
Dr. Serge Koussevitzky, conductor of the Boston Symphony, gives his opinion of radio	Page 1
Sam Curtis' two-way radio	Page 3
Rear Admiral Henry H. Hough tells of the use made of radio in the United States Navy	Page 11
Paul Whiteman Tells All	Back Cover

PICTURES

Diana Chase, Boston girl chosen as Miss Radio of 1933	Front Cover
Henry Harmony Cartoons	Pages 2, 4, 7, 10
Fritzi Scheff	Page 8

John McCormack Begins Radio Series Wednesday

John McCormack, celebrated Irish tenor, begins his first extended series of radio concerts over an NBC-WBZ network next Wednesday evening at 9.30.



JOHN MCCORMACK

McCormack will be accompanied by a 14-piece string orchestra under the direction of William Daly. The series is sponsored by the makers of Vince.

McCormack's repertory will include popular ballads and arias which have endeared him to concert audiences throughout the world. Each program doubtless will include an operatic aria, which will serve as reminder of the fact that the tenor was at one time a member of the Metropolitan Opera Company.

Since deciding to take up radio work, McCormack has made a careful study of the technique of broadcasting. He has made a number of voice tests on various types of songs with a view to selecting those he feels will be most effective on the air.

McCormack returned to this country recently, after attending the wedding of his daughter in London, at which ceremony he sang the Schubert "Ave Maria."

Saturday, October 7 - The Baron Again Tells Tall Stories on WEEI at 9 P.M.

Highlights

A.M.

10.30—Pres. Roosevelt, NBC-WEEI

P.M.

1.15—World Series, NBC-WEEI; CBS-WNAC
 2.15—Football, Boston College vs. Loyola, WAAB
 5.45—Football Scores, WNAC
 7.00—John Herrick, NBC-WBZ
 8.00—Maria Kousevitzsky, WEEI
 9.00—Little Symphony, WHAM
 9.30—Leo Reisman's Orchestra, NBC-WEEI
 Symphonic Strings, CRC-WNAC
 10.00—Saturday Dancing Party, NBC-WEEI
 Public Affairs Institute, CBS-WNAC
 10.30—George Jessel, CBS-WAAB

6.30 A.M. Sunrise Melodies, organ, WNAC, 45 m.
 6.45 A.M. Tower Health Exercises, WEAFF WEEI WGY, 1 h., 15 m.
 7.00 A.M. Musical Clock, WTIC, 1 h.
 Musical Clock, orchestra, WBZ, 1 h.
 Morning Melodies, WHDH
 7.15 A.M. Farm news, time, WNAC
 The Musical Alarm Clock, WHDH, 30 m.
 7.30 A.M. Jolly Bill and Jane, WJZ
 Organ Reveille, WABC, 30 m.
 Morning Watch, WNAC
 Morning Devotions, WEAN
 7.45 A.M. Yoichi Hiraoka, xylophone, WJZ
 Records and shopping news, WNAC, 1 h., 15 m.
 Records and shopping news, WEAN, 45 m.
 Organ tones, WHDH
 8.00 A.M. Radio City Organist, WEAFF WJAR WTAG, 30 m.; WCSH, 15 m. (WEEI WGY from 8.15)
 E. B. Rideout; news, WEEI
 Collin Driggs, organist, WTIC, 30 m.
 Morning Devotions, WJZ WBZ WHAM
 Salon Musicale, WABC, 45 m.
 Morning Watch, WORC
 Duke Dewey's Nut Crackers, WHDH, 30 m.
 8.15 A.M. Morning Devotions, WCSH
 Don Hall Trio, WJZ WBZ WHAM
 Musical Time Table, WORC, 45 m.
 Minute Man, WHEB
 8.30 A.M. Cheerio, WEAFF WEEI WJAR WCSH WTAG WTIC WGY, 30 m.
 Lew White at the organ, WJZ WHAM, 30 m. (WBZ from 8.33)
 Time, weather and temperature, WBZ
 Cronin at the Console, WAAB WEAN WLBZ, 30 m.
 Nancy Lee program, WHDH
 A Glance at the Headlines, WBSO
 Morning Devotions, WHEB, 30 m.
 8.45 A.M. The Ambassadors, WABC
 Popular Hits, WBSO
 Bill Vickland's Cadets, WHDH
 9.00 A.M. The Morning Glories, dance orchestra, WEAFF WJZ WTAG WGY
 Filene's Clothes Institute, WEEI
 Outlet Store news, WJAR
 Radio Bazaar, WTIC, 30 m.
 Breakfast Club, orchestra, WJZ, 1 h. (WBZ WHAM from 9.15)
 Virginia Reed, talk, WBZ
 Luxembourg Gardens, Deutsch, conductor, WABC WICC WFEA WORC WLBZ, 45 m. (WEAN from 9.15; WNAC from 9.30)
 The Shopper's Special, WAAB, 1 h.
 Shepard's Nine O'clock Revue, WNAC, 30 m.
 News Tribune Globe Trotter, WEAN
 Needham Paramount Organ, WBSO, 1 h.
 Nancy Lee program, WHDH, 30 m.
 Stop and Shop, WHEB, 30 m.
 9.15 A.M. Landt Trio and White, WEAFF WEEI WJAR WCSH WGY
 Capitol Theatre Organ, WTAG
 9.30 A.M. Bradley Kincaid, the Mountain Boy, WEAFF WEEI WJAR WCSH WTAG WTIC WGY
 The Four Guardsmen, ABS, WHDH
 Gems from the Masters, WHEB, 30 m.
 9.45 A.M. The Wife Saver, WEAFF WEEI WJAR WCSH WTAG WTIC WGY
 Reis and Dunn, WABC WNAC WEAN WICC WFEA WORC
 10.00 A.M. Breen and De Rose, WEAFF WEEI WJAR WCSH WTAG WGY
 The Mixing Bowl, WTIC, 30 m.
 Pollock and Lawnhurst, piano duo, WJZ WHAM
 Home Forum Cooking School, WBZ, 30 m.
 Frank Winegar's Orchestra, WABC WAAB WEAN WICC WFEA WORC WLBZ, 30 m.
 Buddy Clark, WNAC
 Question and Answer Man, WHDH, 30 m.
 Mrs. Geissler's bridge talk, WBSO
 A Good Morning Cheer, WLOE
 Omega Gamma Dance, WHEB, 30 m.
 10.15 A.M. Morning Parade, WEAFF WEEI WJAR WCSH WTAG WGY
 Singing Strings, WJZ WHAM
 Mirth Parade, WNAC
 Lost and found program, WLOE
 Parade of Dance Tunes, WBSO
 10.30 A.M. Dedication of Samuel Gompers Memorial, Pres. Roosevelt, speaker, WEAFF WEEI WJAR WCSH WTAG WTIC WGY, 1 h.
 Happy Jack songs, WJZ WBZ WHAM
 Top of the Morning, WABC WNAC WEAN WICC WFEA, 30 m.; WORC, 15 m.
 Memory Lane, baritone, WAAB, 30 m.
 Broadcast to Fishermen, WHDH, 30 m.
 Stocks; K.V.O. Kiddie Revue, WBSO, 30 m.
 Greater Boston school children in variety program, WLOE, 1 h.
 Barber Shop Chords, WHEB, 30 m.
 10.45 A.M. Larry Larsen, organist, WJZ WHAM, 30 m. (WBZ from 11.00)
 Boy Scout Sketch, WBZ
 Morning Melodies, WORC
 Bamberger Stamp Club, WOR

11.00 A.M. Adventures of Helen and Mary, WABC WNAC WEAN WFEA WDRS WORC WLBZ, 30 m.
 The Feature Forecaster, WAAB
 Junior Radio School, WHDH, 1 h.
 Stocks; Pageant of Music, WBSO
 Aunt Sammy, WHEB
 11.15 A.M. Rhythm Ramblers, WJZ WHAM, 30 m.
 Mass. State Federation of Women's Clubs, WBZ, 30 m.
 Shopping with Dorothy Dean, WAAB, 45 m.
 Herb Slaney, tenor, WBSO
 Waringisms, WHEB, 30 m.
 11.30 A.M. Carefree Carnival, WEAFF WEEI WJAR WTAG WTAM, 30 m. (WCSH from 11.45)
 Public Health talk, WCSH
 Morning Melodies, WTIC, 30 m.
 Children's Theatre of the Air, WGY, 30 m.
 Concert Miniatures, WABC WFEA WPG WCAU, 30 m.; WNAC WEAN, 15 m.
 Stocks; Merchants Air Revue, WBSO, 30 m.
 Shopping news, WLOE, 1 h.
 11.45 A.M. Spanish Idylls, WJZ
 Monitor Views the News, WBZ
 News, time, weather, WNAC WEAN
 12.00 N. Martha and Hal, comedy, WEAFF WEEI WJAR WTAG WTIC WGY
 News, WCSH
 Marion and Jim Jordan, WJZ WHAM
 Stamp talk, WBZ
 Vincent Travers and orchestra, WABC WNAC WDRS WORC WLBZ WCAU, 30 m.; WEAN, 15 m.
 Organ Musicale, WAAB, 30 m.
 News, 5 m.; dial revue, 15 m.; N.H. extension service, 10 m.; WFEA
 Mid-Day Melodies, ABS, 30 m. (WHDH from 12.15)
 Farm flashes, WHDH
 Stocks; Flying Fingers, WBSO, 30 m.
 Luncheon Dance Music, WLEY, 30 m.
 Dorothy Bradford, WHEB, 30 m.
 12.15 P.M. American Legion Trade Revival Campaign, WEAFF
 News, 10 m.; organ, 35 m.; WEEI
 Musical program, WJAR
 Farm flashes, stocks, weather, WCSH
 N.R.A. address, WTAG
 Farm and Home Forum, WTIC, 45 m.
 The Widow and Angel, WJZ
 Weather; New England Agriculture, WBZ
 Around the Town, WEAN
 12.30 P.M. On Wings of Song, string trio, WEAFF, 30 m.; WJAR WCSH, 15 m.
 Produce markets, WTAG
 Farm program, WGY, 30 m.
 National Farm and Home Hour, WJZ WBZ WHAM, 1 h.
 News; Enoch Light's Orchestra, WABC WFEA WDRS WPG, 30 m.; WNAC WEAN, 5 m. (WORC from 12.40)
 The Shopper's Exchange, WNAC, 40 m. from 12.35
 News, stocks, WAAB WORC
 Going Forward with Pawtucket, WEAN, 35 m. from 12.35
 Luncheon music, WBSO
 Dental Clinic, WLOE, 30 m.
 Junior Radio Club, direction Don Vaughan, WHEB, 30 m.
 12.45 P.M. Farm chat, WJAR
 School Librarian, WCSH
 Chester Gaylord, songs, WTAG
 Weather; organ, WBZ
 Farm flashes, WAAB
 Dick Edwards, WHDH
 Walter Marvin, Elva Morgan, WBSO
 1.00 P.M. Ernie Hilst orchestra, WEAFF WCSH WTIC
 Stock market quotations, WEEI
 News, weather, WJAR WTAG WGY
 Harold Knight's Orchestra, WABC WFEA WDRS WLBZ WCAU
 Circus Marathon, WAAB
 Produce markets, WEAN, from 1.10
 Plainfield Community program, WORC
 Hotel Morton Concert Orchestra, WPG, 30 m.
 Daisy Allen, soprano, WBSO
 Certified bargains, WLOE
 Miss Charm, beauty hints, WLEY
 Harlan Ober, current events; news, WHEB, 30 m.
 1.15 P.M. World Series, Washington Senators vs. New York Giants, WEAFF WEEI WJAR WCSH WTAG WTIC WGY WABC WNAC WEAN WICC WFEA WDRS WORC WLBZ, 2 h., 45 m.
 Copley Plaza luncheon music, WAAB
 Yen Ho New Yorkers, WHDH
 Famous Personalities, WBSO
 Request program, WLOE
 Afternoon dance rhythms, WLEY
 1.30 P.M. Merrie-Men, quartet, WJZ WBZ WHAM
 Matinee Notes, WAAB, 40 m.
 Tune Parade, ABS WHDH, 30 m.
 Bert Muller, piano, WBSO
 Tea dance music, WLEY, 30 m.
 1.45 P.M. Smackout, comedy, WJZ WHAM
 Jack and Jerry Foy, WBZ
 Timely Topics, WBSO

Blonde Charm

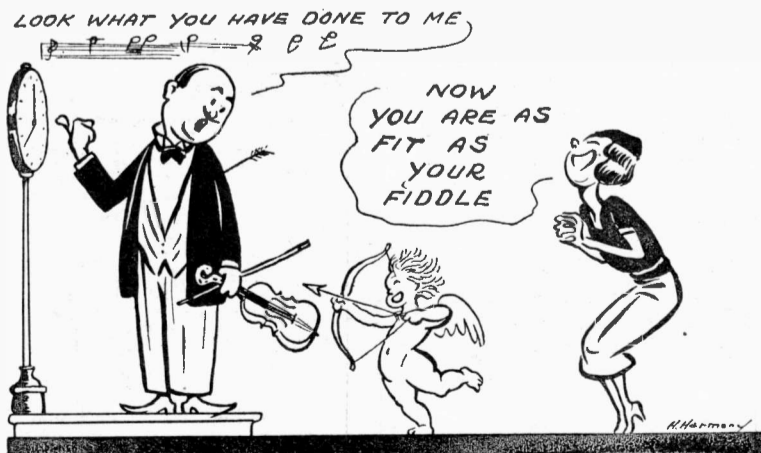


VERA VAN, CBS songstress, who will be on George Jessel's program to-night at 10.30. Her other broadcasts occur on Mondays at 6.30 p.m., and on Fridays at 5.15 p.m.

2.00 P.M. Musical Originalities, WJZ WBZ WHAM, 30 m.
 Y. M. C. A. Job Counselling Service, WAAB from 1.10
 Joseph Heller, violin, WHDH
 Amateur program, WBSO, 30 m.
 Voice of Waltham, WLEY, 30 m.
 2.15 P.M. Football, Boston College, vs. Loyola, WAAB, 1 h., 45 m.
 2.30 P.M. Joseph Galliccio's Concert Echoes, WJZ WBZ WHAM, 30 m.
 Circus Marathon, WHDH
 Nip and Tuck, WBSO
 Melody Moments, WLEY, 30 m.
 Football, Montreal Big 4 vs. Toronto Argonauts, CKAC, 1 h., 45 m.
 2.45 P.M. Herb Perry, baritone, WBSO
 3.00 P.M. Words and Music, WJZ WBZ WHAM, 30 m.
 Nancy Lee program, WHDH, 30 m.
 Frederic Provest, tenor, WBSO
 3.15 P.M. Harmonica Twins, WBSO
 3.30 P.M. Wealth of Harmony, WJZ WHAM, 30 m.
 Springfield College Choral, WBZ, 30 m.
 Arthur Holmberg, tenor, WBSO
 Red River Ramblers, WHEB
 3.45 P.M. Mischa Hoffman, violinist, ABS WHDH
 Three's a Crowd, WBSO
 Musical Skippers, WHEB, 30 m.
 4.00 P.M. Week End Revue, WEAFF WJAR WCSH WTAG WGY, 1 h. (WEEI from 4.10)
 News, WEEI
 Dance Masters, WJZ WBZ WHAM, 30 m.
 Mischa Raginsky's Ensemble, WABC WNAC WEAN WICC WFEA WLBZ, 30 m.
 Hits and Encores, WAAB, 1 h.
 Milford Hill Billies, WBSO
 4.15 P.M. Don Lang, original stories, ABS WHDH
 William Tuttle, tenor, WBSO
 Eddie O'Brien, mountain and plains music, WHEB
 4.30 P.M. Concert Favorites, WJZ WBZ WHAM, 30 m.
 News; Saturday Synopators, WABC WNAC WEAN WICC WFEA WDRS WLBZ, 30 m.
 Broadcast to the Fishermen, WHDH
 Ahlberg Brothers, accordians, WBSO
 Tea Dance Music, 20 m.; Andrew Canavan, 10 m.; WLOE
 Radio Pals, WHEB, 30 m.
 4.45 P.M. Charles Matteson, harmonica king, WBSO
 Pat Gaffney, Irish fiddler, WHDH
 5.00 P.M. The Lady Next Door, WEAFF WEEI WJAR WTAG WGY, 30 m.
 Going Ahead with Lewiston, WCSH, 1 h.
 Casino Orchestra, WJZ WBAL, 30 m.; WBZ, 15 m. (WHAM from 5.15)
 Fletcher Henderson's Orchestra, WABC WNAC WEAN WFEA WDRS WORC, 30 m.
 Melody Mart, WAAB
 Dental Clinic, WLOE, 30 m.
 Bell Ringer, WHEB
 5.15 P.M. The Monitor Views the News, WBZ
 Meyer Davis' Orchestra, WAAB, 30 m. (WICC WFEA WORC from 5.30)
 Walter McKeon, baritone, WHEB
 5.30 P.M. The Three Scamps, WEAFF WEEI WJAR WTAG WGY
 Neil Sisters, harmony trio, WJZ WBZ WHAM
 Jack Armstrong, All-American Boy, WABC WNAC WEAN WDRS WCAU
 Circus Marathon, WHDH
 Greater Boston Merchants, WLOE, 30 m.
 French course, WOR, 30 m.
 N. H. Hill Billies, WHEB, 30 m.
 5.45 P.M. Caroline Rich, songs, WEAFF WJAR WTAG WGY
 How to Prepare a Speech, WEEI
 Little Orphan Annie, WJZ WBZ WHAM
 Vincent Sorey's Spanish Serenade, WABC WAAB WEAN WICC WDRS WORC
 Football scores, WNAC
 Dial Revue, WFEA
 Song Pictures, Orrin White, WHDH
 6.00 P.M. Viennese Ensemble, WEAFF WCSH WTAG
 The Evening Tattler, WEEI, 30 m.
 Essex House Ensemble, WJZ WBAL, 30 m.; WBZ, 15 m. (WHAM from 6.15)
 "Meet the Artist"—Helen Morgan, WABC WAAB WICC WFEA WDRS WORC, 30 m. (WEAN WLBZ from 6.15)
 Sports, weather, news, WJAR WNAC WEAN
 Mother Goose Club, WLOE, 30 m.
 Carnival of Rhythm, WLEY.
 6.15 P.M. World Series Resume, WEAFF WJAR WCSH WTAG
 O'Leary's Irish Minstrels, WBZ
 Yankee Singers, WNAC
 Miss Charm, beauty hints, WLEY
 6.30 P.M. Balkan Melodies, WEAFF WJAR WGY, 30 m. (WTAG from 6.36)
 News, WEEI WTAG
 Benoit program; news, WCSH
 Three X Sisters, WJZ WHAM WBAL
 Sports, weather, WBZ
 Football Reporter, Eddie Dooley, WABC WNAC WEAN WICC WDRS WORC WLBZ
 Perley Stevens' Orchestra, WAAB
 Sport talk, WLOE
 Leo Hannon's Orchestra, WHDH
 Emil Coleman's Orchestra, WOR, 30 m.
 Thirty Minutes with Famous Orchestras of the Air, WLEY, 30 m.
 6.45 P.M. Reese and White, minstrels, WEEI
 Roger McGrath, WCSH
 Wing Dope, Capt. Al Williams, speaker, WJZ WBAL
 Program review, WBZ
 Old Timers, WHAM, 30 m.
 Tito Guizar, tenor, WABC WAAB WEAN WICC WFEA WDRS WLBZ
 Motor Parade, WNAC
 Scores, CBS program WORC
 Dr. Fleischer, news, ABS WHDH
 Radio Re-Employment Service, WLOE
 7.00 P.M. Myer Davis' Orchestra, WEAFF WJAR WTAG, 30 m.; WEEI, 15 m.
 Wayside Philosopher, WCSH
 John Herrick, baritone, WJZ WBZ WBAL
 Frederick William Wile, WABC WNAC WEAN WICC WFEA WDRS WLBZ
 Weather, news, time, WAAB
 Heralding the News, WORC
 The Oaks Orchestra, WHDH
 Junior Players, WLOE, 30 m.
 Farm flashes, WLEY
 7.15 P.M. After Dinner Revue, WEEI
 Joe and Eddy, comedy, WGY
 Treasure Island, drama, WJZ WBZ WHAM
 Mildred Bailey, WABC WAAB WEAN WICC WFEA WDRS WORC WLBZ
 The Merry-Go-Round, WNAC
 Emily Reines, contralto, WLEY
 7.30 P.M. Optimistic Mrs. Jones, sketch, WEAFF WJAR WCSH WTAG WGY
 Frederick W. Mansfield, talk, WEEI
 Katenmyer's Kindergarten, WJZ WHAM WBAL, 30 m.
 World in Review, news, WBZ
 Netherland Plaza Orchestra, WLW, 30 m.
 The King's Henchmen; Jane Froman, Charles Carille and Fred Berrens' orchestra, WABC WNAC WEAN WFEA WDRS WLBZ, 30 m.
 Circus Marathon, WAAB
 The Three Troubadors, WLOE
 George Seigel, pianist, WLEY

7.45 P.M. Jack and Loretta Clemens, WEAFF WEEI WJAR WCSH WTAG WGY, 30 m.
 Bradford organ, WBZ
 Hotel Brunswick orchestra, WAAB, 30 m.; WICC WORC, 15 m.
 Cinema Serenaders, WLOE
 American Magazine of the Air, WLEY
 8.00 P.M. K-7, secret service spy story, WEAFF WJAR WCSH WTAG WGY, 30 m.
 Maria Kousevitzsky, soprano, Moses Smith, speaker, WEEI, 30 m.
 Ray Perkins, Shirley Howard and orchestra, WJZ, 30 m.
 Jack Denney's Orchestra, WBZ WHAM, 30 m.
 Crosley Follies, skits, WLW, 1 h.
 Connie Boswell, WABC WNAC WEAN WICC WFEA WDRS WORC WLBZ
 Novelty Rhythm Trio, WLOE
 Little Symphony Orchestra, with Veronica Wiggins, contralto, WOR, 1 h.
 Joseph Lyons, baritone, WLEY
 8.15 P.M. Antobal's Cubana, WEAFF WJAR WCSH WTAG WGY
 People's Symphony Orchestra, WEEI, 30 m.
 Brown and Llewellyn, comedians, WJZ WHAM
 Guardsmen, quartet, WBZ
 Hughie Connor's Orchestra, WAAB, 30 m.
 Cambridge Lyceum Debating Society, WLOE, 30 m.
 "Romance of the Heavens" WLEY, 30 m.
 8.45 P.M. American Magazine of the Air, WEEI
 Jack Denney's Orchestra, WJAR WTAG WGY
 Rheingold program, WCSH
 Annie, Judie and Zeke, WJZ WHAM WBAL
 Herbert Marsh's Orchestra, WBZ
 Gertrude Niesen, songs, WABC WNAC WEAN WICC WFEA WDRS WORC WLBZ
 9.00 P.M. Baron Munchausen, WEAFF WEEI WJAR WCSH WTAG WGY, 30 m.
 Jamboree, WJZ WBAL, 1 h.; WBZ 45 m. (WHAM from 9.30)
 Stromberg Carlson Little Symphony, WHAM, 30 m.
 Triple Bar X Days and Nights, WABC WNAC WEAN WICC WFEA WDRS WORC WLBZ, 30 m.
 Rodgers at the Console, WAAB
 The Decorators, WLOE, 30 m.
 Ozzie Nelson's Orchestra, WOR, 30 m.
 9.15 P.M. Meyer Davis' Orchestra, WAAB, 30 m.
 Aldrich Imperial Hawaiians, WPG, 30 m.
 9.30 P.M. Leo Reisman's Orchestra and Yacht Club Boys, WEAFF WEEI WJAR WCSH WTAG WGY, 30 m.
 Over the Rhine, German band, WLW
 Exchange Program from Canada—"Symphonic Strings," WABC WNAC WEAN WICC WFEA WDRS WORC WLBZ CKAC, 30 m.
 Spanish Gables Orchestra, WLOE, 30 m.
 9.45 P.M. News, weather, WAAB
 10.00 P.M. B. A. Rolfe and Orchestra, WEAFF WEEI WJAR WCSH WTAG WGY, 1 h.
 Tales of the Titens, WJZ WBZ WHAM, 30 m.
 Columbia Public Affairs Institute—Robert Fechner, director, C.C.C., speaker, WABC WAAB WEAN WICC WFEA WDRS WORC WLBZ
 Hotel Brunswick Orchestra, WNAC
 Earl Hills' Orchestra, CKAC, 30 m.
 10.15 P.M. Leon Belasco's Orchestra, WABC WAAB WEAN WICC WFEA WDRS WORC WLBZ
 Street of Dreams, songs, WNAC
 10.30 P.M. Cuckoo program, WJZ WHAM WBAL, 30 m.
 Springfield Republican News, WBZ
 George Jessel, Vera Van, Melodiers and Freddie Rich's orchestra, WABC WAAB WEAN WICC WFEA WDRS WORC WLBZ
 Riverview orchestra, WNAC
 10.45 P.M. Time, weather, sports, WBZ
 Willard Robison's Orchestra with Betty Barthel and chorus, WABC WAAB WEAN WICC WFEA WDRS WORC WLBZ
 Weather, news, WNAC
 11.00 P.M. One Man's Family, WEAFF WJAR WCSH WTAG, 30 m.
 E. B. Rideout; news, WEEI
 WLS Barn Dance, WJZ WBZ WHAM, 1 h.
 Isham Jones' Orchestra, WABC WAAB WEAN WICC WFEA WDRS WORC WLBZ
 Meyer Davis' Orchestra, WNAC, 30 m.
 Auditorium Dance Orchestra, WPG, 30 m.
 Roger Gerston's Orchestra, WOR, 30 m.
 11.15 P.M. Musical program, WEEI
 Georgia Wildcats, WGY
 Columbia News Service, WABC WAAB WEAN WFEA WORC WLBZ

A Pound of Flesh



PAUL WHITEMAN, jazz leader, recently lost 150 pounds so he could marry Margaret Livingston. But this wasn't the first time he had reduced. When he left the Navy in 1918 he weighed 303 pounds. Four months later he weighed 150 pounds less. Illness did the reducing that time.

The Manning Manse Tea Tavern

Built in the Year 1696
North Billerica - Massachusetts

A charming, old-fashioned New England homestead serving unusual food to discriminating families.

Special attention given to bridge parties. Cards and tables are furnished; gifts, too, when there are more than twelve persons.

Our \$1.50 dinner is the same as we served for \$2.50 two years ago. Special menus also at lower and higher prices.

For information and reservations, kindly write or telephone our hostess, Mrs. Wilma Morris, telephone Billerica 564.

Located four miles the Boston side of Lowell, just above Billerica.

Jack Benny, His Cigar and Also His Knee

Jack Benny, suave comedian of the new Chevrolet program, which started last Sunday over the NBC-WEEI network, looks more like Ben Bernie, than does the "Old Maestro" himself. He smokes cigars with the same gusto, talks more, but makes fewer wise cracks



JACK BENNY

when he is out of character. Mr. Benny was playing at a Boston theatre. He engaged in some stage rough house that was a little too gusty for one of his tottery years and hurt his knee.

Said Mr. Benny as he limped along Washington Street, towing a portion of The MICROPHONE in his wake:

"I hurt my knee." Continuing his enlightening conversation Mr. Benny turned to less personal subjects. "Broadcasting is more difficult than playing on the stage because there is more mental strain. Instead of having a routine to do at each theatre for weeks on end you have to get up something new every time you're on the air."

Mr. Benny is very determined in his preference for radio.

"I like both the stage and the radio equally well," he said.

The procession halted in front of a theatre that was showing "Emperor Jones" with Paul Robeson.

"I have to go in here," said Mr. Benny, shuffling from side to side in a perturbed manner, "I saw the first of this picture this morning between my shows and this is the first chance I've had to see the last part."

"I'm going to do a burlesque of it for my radio show in a couple of weeks and I have to find out what it's all about. My gag-man Freddie Conn and I do the writing for our program."

Mr. Benny shuffled again. A sign on a theatre next door caught his eye. It had to do with Edward G. Robinson, who was playing in a picture.

"That's funny," said Mr. Benny, with a blank expression on his face, "Robinson came and played on the radio with me last year. We had a good time swapping gags."

"Well," said Mr. Benny, "I've got to go." And he limped slowly in to see "Emperor Jones."

Radiophone In Car Keeps Sam Curtis With Wife Even When He's Driving

Radio Engineer Takes Orders Over Air

THERE is a new sight to be seen around Boston — a man talking earnestly into a French-style telephone as he drives his car.

The man is Sam Curtis, radio engineer, who gives the radio chats heard Sundays on WEEI. The telephone is connected to a small radio apparatus behind the driver's seat.

"The time probably will come," said Mr. Curtis, "when all autos can have two-way radio communication. Research will develop apparatus for the ultra high frequencies below one meter wave length."

"Such apparatus would be inexpensive and would operate from the ordinary car battery. There is no static on such frequencies, and there would be little interference between cars because the frequency band is so wide."

"Noisy auto horns would be eliminated, because drivers would signal with their radios. High speed driving at night would be made safe by inexpensive automatic radio guides along the curb line."

"Repair men would be routed from call to call by radio. The telephone company would operate broadcasting stations and page those on the road who were



SAM CURTIS, Boston radio engineer, with his two-way radio equipped car that attracts much attention. The telephone is connected with a radio apparatus behind the driver's seat.

wanted on the 'phone, and connect them with ships at sea, passengers in airplanes, or people driving along the road in foreign countries."

Mr. Curtis' predictions are based on successful experiments made with police cruising cars and on his own apparatus, which is similar to police equipment.

His radio-equipped car at-

tracts much attention — particularly from policemen. They talk "just for the fun of hearing an answer come out of a telephone that isn't connected to anything."

Driving home to Quincy, Mr. Curtis leaves the loud speaker connected and usually hears his wife calling: "Don't forget to bring the potatoes for supper."

President Heads Speakers At Annual Women's Parley

Both the President and Mrs. Franklin D. Roosevelt will be heard in broadcasts over the NBC-WBZ network on October 12 and 13. The occasion is the third annual Women's Conference on Current Problems to be held at the Waldorf Astoria, New York.

Mrs. Roosevelt will be heard from New York at 4 o'clock on the afternoon of October 12 and the President will speak from the White House at 10 p.m., Friday, October 13.

The series of broadcasts will in addition present prominent speakers from foreign countries, over the NBC-WEEI network.

Mrs. Ruth Bryan Owen, United States Minister to Denmark, will talk from London at 11 a.m., October 12.

She will be followed at 12.15 by Countess Margherita Sarfatti, Italian feminist, who discusses from Rome "Women Under Fascist Rule." Miss Ishbel MacDonald speaks from London at 2.45 p.m. on "Young England."

The conference this year is being held under the general subject "This Crisis in History." The Conference will be opened for the radio audience on Thursday morning at 10.45 by Walter Lippman, who will talk on world trade.

Sevitzyk's New Program

The first in a series of bi-weekly concerts, featuring Fabien Sevitzyk, conductor, Maria Koussevitzky, soprano, and Professor Robert E. Rogers, was presented last Tuesday evening in the WNAC studios in Boston. The programs will be presented each Tuesday and Thursday evenings at 10.

Mystery Solved

JANE FROMAN, radio soprano, has a maid who always accompanies Jane to the studio. The maid carries a package too big to be a jewel case and too small to be a piano. People began to wonder. But the mystery has been solved. The package is a thermos bottle to hold the coffee that Jane drinks before she sings.

McGraw Predicts

John McGraw, former manager of the New York Giants, will analyze the World Series play to date over the WABC-Columbia network, from 7.30 to 8 tonight.

New "Radio Typewriter" is Automatic

The latest device for radio transmission, the Kinematic Radio Printer, permits wireless transmission of printed matter automatically at 75 words per minute, 15 words faster than ordinary wired teletype.

Alfred H. Pote, co-inventor of the device and member of the Kinematic Corporation of America explained the machine and its uses to The MICROPHONE:

"The Kinematic Printer is operated on four musical notes in a very narrow sound frequency. Consequently the wave sent out by the transmitter is not subject to the static which you hear on a broadcast receiver."

"The machine is arranged so that a person can sit at a keyboard, similar to that of a typewriter, and simply type the message he wants to send. At the receiving end his message is reproduced exactly on a strip of telegraph paper. The receiving is automatic, requiring no operator."

"There is no limit to the distance the Kinematic will carry. It can be received when the signals are so faint they can't be heard," continued Mr. Pote.

"The sets are small and easily portable. A cabinet eight inches square holds the entire transmitter and receiver. A six volt battery supplies all the power necessary."

The advantages of the Kinematic Printer are easily seen. There is said to be no chance for error as the receiver prints exactly what is sent. Due to the narrow wave cycle eight messages can be sent simultaneously in the wave space used for one radio message.

The combination of the four musical notes used to actuate the receiving mechanism can be scrambled so they will operate only the receiving machine to which they are directed.

People's Symphony

As their first musical program of the season the People's Symphony will present the Haydn Trio, with Josef Zimmler as cellist in a half-hour program beginning at 8.30 this evening on WEEI.

Moses Smith, music critic of the Boston Evening American and Fabien Sevitzyk, conductor of the People's Symphony Orchestra will speak.

Madame Maria Koussevitzky will sing.

"THEY SAY ANNUITANTS NEVER DIE"

An annuity (comes from a Latin word meaning year) is a contract given to you in exchange for \$1,000 or its multiple by a life insurance company, wherein it guarantees to pay you a fixed yearly income as long as you live. Part of this income is principal, part is interest. The size of it depends upon your age and your expectancy of life. In other words, it is an orderly distribution of your principal accumulations with interest.

For \$1,000, at age 65 the yearly income to a male is about \$108 — to a female about \$96. Women are longer lived than men.

Which would you rather have — peace of mind and a sure income as long as you live, or a continuance of principal losses, with their worries and heartaches?

Send for my leaflet

"They Say Annuitants Never Die"

It tells why four people I know, now have peace of mind.

EARL G. MANNING, General Agent
BUSINESS AND ESTATE ENGINEERING
JOHN HANCOCK MUTUAL LIFE INSURANCE CO.
ONE FEDERAL STREET BOSTON, MASS.

RADIO PROGRAM PRODUCTION

A UNIQUE COURSE FOR MEN AND WOMEN

MONDAY EVENINGS, 7 to 9

27 GARRISON STREET, BOSTON

The Boston University College of Practical Arts and Letters announces a new course in writing and producing radio programs.

The instruction of the first semester includes the psychology of radio dramatization, the adaptation of plays and stories, and the presentation of class work on the air; while the work of the second semester covers advanced technique of radio dramatization, creation of original plays and continuities, the presentation of class work on the air, merchandising, and future possibilities in radio programs.

The course should make a strong appeal to young college men and women who wish to enter the ever expanding field of radio work. To the employed man or woman who wishes to look upon the work as a vocation or avocation, this particular opportunity for profitable evening study undoubtedly will prove to be of compelling interest.

REGISTER NOW

For particulars address DR. T. LAWRENCE DAVIS, Dean, 27 Garrison Street, Boston

Sunday, October 8 - New York Philharmonic Season Starts on WNAC at 3 P.M.

Highlights

A.M.

11.30—Salt Lake Tabernacle Choir, CBS-WNAC

P.M.

12.30—Radio City Concert, NBC-WBZ
 2.30—Hollywood Show, CBS-WNAC
 3.00—National Opera Concert, NBC-WBZ
 4.30—Sentinels, NBC-WEEI
 7.00—Vincent Lopez' Orchestra, NBC-WBZ
 8.00—Jenny Concert, WEEI Light Opera, NBC-WBZ
 Freddie Rich, CBS-WABC
 8.30—Choir Invisible, WOR
 9.00—Seven Star Revue, CBS-WNAC
 9.30—Walter Winchell, NBC-WBZ
 10.00—Jack Benny, NBC-WEEI
 Angelo Patri, CBS-WAAB

8.00 A.M. Melody Hour, WEAJ WTAM, 1 h. Tone Pictures, WJZ WBZ, 30 m. Organ Revue, WABC, 30 m. Dudley Radio Carolers, WNAC WEAN WICC WLBZ, 45 m. Happy Jack Smith, evangelist, WBSO, 45 m.

8.30 A.M. Lew White at the dual organ, all-Tchaikovsky program, WJZ, 30 m. (WBZ from 8.33) Time, weather, temperature, WBZ Charlotte Harriman, contralto, WABC

8.45 A.M. Radio Spotlight, WABC Time, news and weather, WNAC Last of the Mohicans, WEAN Marjien Peavy, contralto, WBSO

9.00 A.M. The Balladeers, WEAJ WJAR WCSH WGY 30 m. Children's Hour, WJZ WBZ WBAL, 1 h. (WHAM from 9.30) Columbia Junior Ensemble, WABC WNAC WEAN WICC WORC WLBZ, 1 h. Church of the Nazarene, Rev. Selden Dee Kelley, WBSO, 1 h.

9.15 A.M. Morning Melodies, WHDH

9.30 A.M. One Man Band, WEAJ WJAR WCSH WGY Uncle Elmer's Song Circle, WHDH, 30 m.

9.45 A.M. Alden Edkins, bass, WEAJ WJAR WCSH WGY

10.00 A.M. South Sea Islanders, WEAJ WJAR WCSH WTAG WGY, 30 m. Southland Sketches, male quartet, WJZ WBZ WHAM, 30 m. Columbia Church of the Air, Congregational service conducted by Dr. Albert B. Coe of Oak Park, Ill., WABC WAAB WEAN WFEA WDRS WORC WLBZ, 30 m. Watch Tower, Judge Rutherford, WNAC WICC WBSO, 30 m. Russian program, WLOE, 30 m.

10.15 A.M. Hickory Nuts, WHDH Uncle Bob Houghton, WNAC, 30 m.

10.30 A.M. Mexican Marimba Band, WEAJ WJAR WGY, 30 m. State Street Congregational Church, WCSH, 1 h., 30 m. Capital Theatre Organ, WTAG, 30 m. Sgnavar Serenade, WJZ WBAL, 30 m. (WBZ from 10.48) Safety Crusaders, juvenile sketch, WBZ Lake Ave. Baptist Church, WHAM, 1 h., 30 m. Melody Parade, WABC WICC WFEA WDRS WLBZ WCAU WPG Morning Service, Tremont Temple Baptist Church, WAAB, 1 h., 30 m. Bjarme Erickson, tenor, WEAN Park St. Church, WHDH, 1 h., 30 m. Spiritual Church of the Air, WBSO, 30 m. Watch Tower program, WORC Armenian program, WLOE, 30 m.

10.45 A.M. Services from Trinity Church, WEEI, 1 h., 30 m. Time, weather, temperature, WBZ Tony Wons, philosophy, with two-piano team, WABC WEAN WCAU Salon Grets, WNAC Franklin Street Church Service, WFEA, 1 h., 15 m. Services from Salem Square Swedish Congregational Church, WORC, 1 h., 15 m.

11.00 A.M. Hall and Gruen, piano duo, WEAJ WJAR First Baptist Church, WTAG, 1 h., 15 m. Union College Chapel Service, WGY, 1 h. Morning Musicales, NBC String Quartet, WJZ WBZ WBAL, 30 m. Children's Hour, WABC WCAU, 1 h. Morning Service, All Saints' Memorial Church, Providence, WEAN, 1 h., 15 m. Rhoda Arnold and Taylor Buckley with orchestra, WNAC WICC WDRS WLBZ, 30 m. Colton Manor Hotel Ensemble, WPG, 30 m. Records, WBSO, 1 h., 15 m. English program, WLOE, 30 m.

11.15 A.M. Major Bowes' Capitol Family Revue, WEAJ WJAR, 1 h. (WGY from 12.00)

11.30 A.M. The Rondoliers, WJZ WBAL Arthur Martel, organ recital, WBZ, 30 m. Salt Lake City Tabernacle Choir, WNAC WDRS WHAS, 1 h.; WLBZ WPG, 30 m. (WICC, 15 m. and from 12.00; WABC WORC from 12.00; WEAN from 12.15) Jewish Hour, WLOE, 1 h.

11.45 A.M. Antobal's Cubans, WJZ WBAL, 30 m. (WBZ WHAM from 12.00)

12.00 N. Watchtower, WCSH WFEA, 30 m. Symphonic Album, WAAB, 30 m. Carol Lenore Wolfe, soprano, WHDH

12.15 P.M. "Seeing the Other Americas", WEAJ WJAR WTAG WGY Sam Curtis' Radio Chat, WEEI Baby Rose Marie, WJZ WBZ WHAM Watch Tower Lecture, WHDH Bert Muller, piano, WBSO

12.30 P.M. International Tid Bits, WEAJ WEEI WJAR WCSH WTAG WGY, 30 m. Radio City Concert, Roxy, WJZ WBZ WHAM, 1 h. Tito Guizar, tenor, WABC WNAC WEAN WFEA WORC WLBZ Madison Ensemble, WFEA WPG, 30 m.; WNAC WEAN WLBZ WORC, 15 m. Central Chain Grocers Musical Program, WAAB Carl Vernon, pianist, WHDH Watch Tower program, WBSO Popular Hits, WLOE, 30 m.

12.45 P.M. Happiness on Melody Lane, WABC In the Masters' Music Room, WAAB Kalua Hawaiians, WHDH Will and Wern, Gospelites, WBSO

1.00 P.M. Little Marilyn Mack, WEAJ Russian Symphonic Choir, WJAR WTAG WGY, 30 m. (WEAF from 1.15) Morey Pearl's Orchestra, WEEI, 30 m. First Radio Parish, WCSH, 30 m. Columbia Church of the Air, Catholic service conducted by Rev. Philip J. Furlong of New York, WABC WDRS WPG, 30 m. Catholic Truth Period, WNAC WEAN WICC WFEA WORC WLBZ, 1 h. Italian Melodies, WAAB, 30 m. Jewish Program, WHDH, 45 m. Records, WBSO, 30 m. Italian Hour, WLOE, 1 h. Perole String Quartet, WOR, 1 h.

1.30 P.M. Sonata Recital, WEAJ WEEI WJAR WTAG WGY, 30 m. Pete the Singing Master, WCSH, 30 m. "Highlights of the Bible," Dr. Frederick K. Stamm, mixed quartet and music, WJZ WBZ, 30 m. Rochester Catholic Hour, WHAM, 30 m. Lazy Dan, Minstrel, WABC WCAU WHAS, 30 m. The Italian Serenaders, WAAB, 30 m. Swedish Radio Service, WBSO, 30 m.

1.45 P.M. Phil Saltman, pianist, WHDH

2.00 P.M. Gene Arnold's Orchestra, WEAJ WEEI WJAR WCSH WTAG WGY Autumn Idyll, WJZ WBZ WBAL, 30 m. Down Melody Lane, WHAM, 30 m. Broadway Melodies with Helen Morgan, WABC WNAC WDRS WLBZ WCAU, 30 m. Italian Melodies, WAAB, 30 m. Artists' Recital, WEAN, 30 m. Vanity Hour, WORC, 1 h. Hotel Morton Concert Orchestra, WPG, 45 m. Polish Songs, WHDH, 30 m. Sunshine Singers, WBSO, 30 m. Kremlin Art Quintet, vocal, WOR, 30 m.

2.15 P.M. Pop Concert, WEAJ WEEI WJAR WTAG WGY, 45 m. (WCSH, 15 m. and from 2.45)

2.30 P.M. Jan Garber's Orchestra, WJZ WBZ WHAM, 30 m. Hollywood Show with Abe Lyman, WABC WNAC WEAN WDRS, 30 m. Songs of Greece, WHDH, 30 m. Audrey Lynn, soprano, WBSO, 30 m.

2.45 P.M. Watch Tower, WFEA

3.00 P.M. Wayne King's Orchestra, WEAJ WEEI WJAR WCSH WTAG WGY, 30 m. National Opera Concert, WJZ WBZ WHAM, 1 h. New York Philharmonic Symphony Orchestra, Bruno Walter, conductor, "Carolanus" overture, Beethoven; Symphony No. 6; Beethoven; "Death and Transfiguration," Richard Strauss; "Dance of the Sprites," "Dance of the Sylphs," "Rakoczy" March, Berlioz, WABC WNAC WEAN WFEA WDRS WORC WLBZ, 2 h. (WICC, 45 m. and from 4.00) Ital Radio Hour, WHDH, 1 h. Little Mother of the Air, WBSO

3.15 P.M. Norwood Men's Glee Club, WBSO

3.30 P.M. The Radio Pulpit, WEAJ WJAR WCSH WTAG WGY, 30 m. United Missionary Conference, WEEI, 45 m. Theatre of the Air, WLW, 30 m. Doris Courtmanche, soprano, WBSO

3.45 P.M. Allen Coleman Griffin, WBSO Dance music, WLOE

4.00 P.M. Fiddlers Three, instrumental trio, WEAJ WEEI WJAR WCSH WTAG WGY Morton Gould, Bert Shefter, piano duo, WJZ WHAM Radio Nimbulewits, conducted by Everett Smith, MICROPHONE columnist, WBZ Hal Kagan, Ensemble, WHDH, 30 m. Eventide Singers, WBSO, 30 m. Dental Clinic, WLOE, 30 m.

"Uncle Elmer"



ELMER HERSKIND, who conducts the popular "Uncle Elmer's Song Circle" over WHDH each Sunday at 9.30 a.m.

4.15 P.M. Vee & Johnny, WEAJ WEEI WJAR WCSH WTAG WGY WTAM Morin Sisters, WJZ WBZ WHAM

4.30 P.M. Hoover Sentinels, choir and chorus, WEAJ WEEI WJAR WCSH WTAG WGY, 30 m. Dion Kennedy, organ, WJZ WBZ WHAM, 30 m. Adventures of Don Santos, WHDH, 30 m. Lost and found program; Pio Z. de Luca, WLOE

4.45 P.M. Vernon Thompson, baritone, WLOE

5.00 P.M. Big Ben, drama, WEAJ WEEI WJAR WCSH WTAG WGY The Friendly Hour, WJZ WBZ WHAM, 30 m. Hymn Sing, WLW, 30 m. Willard Robinson's Synopated Sermon, WABC WAAB WFEA WDRS WLBZ Carl Moore's orchestra with Alice O'Leary, WNAC WEAN WORC, 30 m. Hotel President Trio, WPG, 30 m. Shep Wolan's orchestra, WHDH, 30 m. Portuguese Hour, WLOE, 1 h.

5.15 P.M. Paul Ash's Orchestra, WEAJ WJAR WCSH WTAG WGY Jerry Knox and Mimi, WEEI Vera Van, contralto, WABC WAAB WFEA WDRS WLBZ

5.30 P.M. Dale Carnegie, "Facts about People," WEAJ WEEI WJAR WCSH WTAG WGY, 30 m. Grand Hotel, drama, WJZ WBZ WHAM, 30 m. Frank Crumit and Julia Sanderson, WABC WAAB WEAN WICC WDRS WORC, 30 m. Joan Martin, soprano, WNAC WFEA, 30 m. Ethel Coolidge, soprano, WHDH

5.45 P.M. Francisco Scarpetti, baritone, WHDH

6.00 P.M. Catholic Hour, WEAJ WEEI WJAR WCSH WTAG WGY WTAM, 30 m. Essex House Ensemble, WJZ WBZ WHAM, 30 m. Songs My Mother Used to Sing, Muriel Wilson, Oliver Smith and Jacques Renard's orchestra, WABC WCAU, 30 m. The Cleercoalers, WNAC WEAN WICC WFEA WORC, 30 m. Tom Anderson's Orchestra, WAAB WLBZ WHDH Ensemble, WHDH, 30 m. Bob Kelly, pianist, WLOE Red Lacquer and Jade, orchestra and narrator, WOR, 30 m.

6.15 P.M. Time, news, WAAB Concord Four, male quartet, WLOE

6.30 P.M. Our American Schools, WEAJ WGY, 30 m.; WTAG, 15 m. Edison program, WEEI Henri Deering, pianist, WJZ WHAM Weather, sports, WBZ Gene Burchell's Orchestra, WLW, 30 m. Wayne King's Orchestra, WGN, 1 h. "Smiling Ed" McConnell, WABC WAAB WEAN News, weather, WNAC Bernadine O'Gorman, Violinist, WORC Warren L. Moulton, baritone, WLOE Song Pictures with Orrin White, WHDH Margaret Anglin Presents, poetry readings, WOR, 30 m.

6.45 P.M. The Flufferettes, WEEI WJAR WTAG Trio Romantique, WJZ Ye Happy Minstrel, WABC WCAU Barney Rapp's orchestra, WAAB WEAN WICC WFEA WDRS WORC Music: garden talk, WNAC Lyric Male Quartet, WHDH Radio Re-Employment Service, WLOE

7.00 P.M. Harry and Ed, commuters, with Spitalny's orchestra, WEAJ WEEI WJAR WTAG WGY, 30 m. Vincent Lopez' Orchestra, WJZ WBZ WHAM, 30 m. H. F. Kaltenborn, current events, WABC WNAC WEAN WICC WFEA WDRS WORC WLBZ Service, Tremont Temple Baptist Church, WAAB, 1 h., 30 m. Memory Land, WHDH, 30 m. Lotus Hawaiians, WLOE, 30 m. "WOR Spotlight," orchestra, quartet and soloists, WOR, 30 m.

7.15 P.M. The Gauchos, WABC WNAC WEAN WICC WFEA WDRS WORC WLBZ

7.30 P.M. Horse Sense Philosophy, WEAJ WJAR WTAG WGY Breck's garden talk, 20 m.; news, 10 m., WEEI Joe Penner and Ozzie Nelson's orchestra, WJZ WBZ WHAM, 30 m. Roses and Drums, Civil War drama, WABC WNAC WDRS, 30 m. What's on the Air, WFEA Evening Service, Calvin Presbyterian Church, WICC, 1 h. Kalima Hawaiians, WORC Hotel Morton Orchestra, WPG, 30 m. Principato's Hawaiian Orchestra, WHDH, 30 m.

7.45 P.M. Wendell Hall, songs, WEAJ WJAR WCSH WTAG WGY Fire Prevention Week speaker, WEAN Words and Music, WORC Concert Orchestra, WGN, 45 m.

8.00 P.M. Jimmy Durante with Rubinoff's Orchestra, WEAJ WJAR WCSH WTAG WTIC WGY WTAM, 1 h. The Jenny Concert, WEEI, 1 h. Light Opera Nights, WJZ WBZ WHAM, 1 h. Freddie Rich, Mildred Bailey, Do-Re-Mi, WABC WDRS WORC WLBZ, 1 h.; WCAU 45 m.; WFEA, 30 m. (WAAB WICC from 8.30) Walter Smith's Band, WNAC WEAN, 1 h. (WFEA from 8.30) Evening Reveries, WHDH

8.30 P.M. Choir Invisible, WOR 30 m.

9.00 P.M. Manhattan Merry-Go-Round, WEAJ WJAR WTIC WGY WTAM, 30 m. Fox Fur Trappers, WEEI, 30 m. Sears Roebuck program, WCSH, 30 m. Town Talk, WTAG Gulf Headliners with Fred Stone and family, tabloid version of "Stepping Stones," WJZ WBZ WHAM, 30 m. Seven Star Revue: Nino Martini, Jane Froman, Julius Tannen, Ted Husing, Vagabond Glee Club and Erno Rapee's symphony orchestra, WABC WNAC WEAN WFEA WDRS WORC WLBZ, 1 h. Beethoven Memorial Society, WAAB, 30 m.

9.15 P.M. Buccaneers, WTAG

9.30 P.M. Album of Familiar Music, with "Olive Palmer" and "Paul Oliver," WEAJ WEEI WJAR WCSH WTAG WGY, 30 m. New Deal on Main St., WTIC, 30 m. Walter Winchell, WJZ WBZ WHAM Organ, WAAB

9.45 P.M. Novellers Quartet, WJZ WBZ Time, news, weather, WAAB

10.00 P.M. Jack Benny, Mary Livingston and Frank Black's orchestra, WEAJ WEEI WJAR WCSH WTAG WTIC WGY, 30 m. Mountain Music, WJZ WBZ WHAM Angelo Patri, "Your Child," WABC WAAB WFEA WDRS WLBZ WCAU, 30 m. Joe Rines and the Scott Unique Fur Club Orchestra, WNAC WEAN, 30 m. The Corn Huskers, WORC New York Opera Association, operetta and concert hour, WOR, 1 h.

10.15 P.M. Phil Ducey, baritone, WJZ Joe and Batteese, WBZ

10.30 P.M. Colonel Howe, Secretary to President Roosevelt—interview, WEAJ WEEI WJAR WTAG WTIC WGY Green Brothers Novelty Orchestra, WJZ WHAM, 30 m. Bradford Organ Recital, WBZ Madison Singers, and organ, WABC WEAN WICC WFEA WDRS WORC WLBZ, 30 m.; WNAC, 15 m.

10.45 P.M. Sunday at Seth Parker's WEAJ WEEI WJAR WCSH WGY, 30 m. (WTAG from 10.55) News, WTAG The Merry Madcaps, WTIC, 30 m. Springfield Republican News, WBZ Weather, temperature, news, WNAC

11.00 P.M. Miss Willie Bird, drama, WJZ WHAM Time, weather, sports, WBZ Gene Burchell's Orchestra, WLW, 30 m. Guy Lombardo's Orchestra, WABC WNAC WEAN WICC, 30 m. Boake Carter, WCAU Moonbeams, WOR, 30 m.

11.15 P.M. Orchestral Gems, WEAJ WTAG WTIC WGY, 45 m. (WJAR WCSH from 11.30) News, WEEI WJAR Roxanne Wallace, contralto, WJZ WBZ WHAM

11.30 P.M. News, WBSO Dick Messner's Orchestra, WJZ WBZ WHAM, 30 m. Tom Gerun's Orchestra, WABC WNAC WEAN WICC, 30 m. Wayne King's Orchestra, 20 m.; Bernie Cummin's Orchestra, 20 m.; Richard Cole's Orchestra, 20 m., WGN

12.00 M. William Scott's Orchestra, WEAJ WNAR WTIC WGY, 30 m. William Stoess' Orchestra, WJZ WBZ WHAM, 30 m. Pancho's Orchestra, WABC WNAC WEAN WICC, 30 m. Roger Gerston's Orchestra, WOR, 30 m.

12.30 A.M. Bud Shay's Orchestra, WEAJ WJAR WTIC, 30 m. Carlos Molina's Tango Orchestra, WJZ WBZ WHAM, 30 m. Clyde Lucas' Orchestra, WABC WNAC WEAN WICC, 30 m. Jan Garber's Orchestra, Richard Cole's Orchestra, Bernie Cummin's Orchestra, Charlie Agnew's Orchestra, WGN, 2 h.

1.00 A.M. Gene Burchell's Orchestra, WLW, 30 m.

Station Directory

38—Programs This Week—38

Station	Chain	K.C.	Watts	Location
CKAK	CBC	730	5,000	Montreal
WAAB	CBS & YN	1410	500	Boston
WABC	CBS Key	860	50,000	New York
WBAL	NBC	1060	10,000	Baltimore
WBSO		920	500	Needham
WBZ	NBC	990	25,000	Boston
WCAU	CBS & DIX	1170	50,000	Philadelphia
WCAZ	ABS	1200	100	Burlington, Vt.
WCSH	NBC & NEN	940	100	Portland, Me.
WDRS	CBS & YN	1330	500	Hartford
WEAF	NBC Key	660	50,000	New York
WEAN	CBS & YN	780	500	Providence
WEEI	NBC & NEN	590	1,000	Boston
WFEA	CBS & YN	1430	500	Manchester, N. H.
WGN	CBS & NBC	720	25,000	Chicago
WGY	NBC	790	50,000	Schenectady, N. Y.
WHAM	NBC	1150	25,000	Rochester, N. Y.
WHAS	CBS & DIX	820	25,000	Louisville, Ky.
WHDH	ABS	830	1,000	Boston
WHEB		740	250	Portsmouth, N. H.
WICC	CBS & YN	600	250	Bridgeport, Conn.
WJAR	NBC & NEN	890	500	Providence
WJZ	NBC Key	760	50,000	New York
WLBZ	CBS, YN, ABS	620	500	Rangor, Me.
WLEY		1370	100	Lexington, Mass.
WLOE		1500	100	Boston
WLW	NBC	700	50,000	Cincinnati
WNAC	CBS & YN	1230	1,000	Boston
WNBH	ABS	1310	250	New Bedford
WOR		710	5,000	Newark, N. J.
WORC	CBS & YN	1200	100	Worcester
WPRO	ABS	1100	5,000	Atlantic City
WSAR	ABS	1210	100	Providence
WSYB	ABS	1450	250	Fall River
WTAG	NBC & NEN	1500	100	Rutland, Vt.
WTAM	NBC	580	250	Worcester
WTIC	NBC & NEN	1070	50,000	Cleveland
		1060	50,000	Hartford

Radio-Loving Bees



A nest of bees almost upset the Country Club program on CBS. At the Sound View golf course, on Long Island, four members of Jack Golden's orchestra, among them Harry Bluestone, were playing golf. Harry came into contact with a bee's nest. Harry's violin solo that evening was something of a burden.

Radio Lane

By Jimmy J. Leonard

WHILE chatting with a prominent Boston radio executive recently, we touched upon the fact that the radio stations in Boston are using entirely too many phonograph records in their spare periods. I asked him why he did not correct this, and he replied that he alone could do nothing about the situation. He is working to place local talent on shopping news programs, advertising periods and spots where programs run short of the time. The *Tattler*, WEEI'S magazine of the air, is one of the best of the short advertising plug programs. In time to come, it is believed that local talent, seeking no money but only the experience of broadcasting, will be given enough chance to keep the everlasting grinding of tiresome records off the airways . . .



JIMMY J. LEONARD, from a sketch by Henry Harmony.

Thirty minutes before Ray Gerardin was to be married he looked about the house of his bride-to-be for his most important guests, his Mother and Father. They were missing. He discovered that he had forgotten to tell them where his bride lived. He dashed from the house, into his car, and sped down the street (much to the anxiety of the bride). As he was rushing through Cambridge, he was ordered to the curb by a motorcycle officer. The usual bawling out took place, and while the policeman was catching his second breath Ray explained his situation. The officer seemed dubious so Ray plied him with, "Officer, have you ever been married?" The officer lost his second wind hurriedly and murmured a gasping "Yes." "Well," asked Ray, "don't you think I have enough trouble for one day?" He escaped the ticket, but not the marriage.

Billy Payne is on the air once more with the Frim Sisters over The New England Network Sunday eves. Last Sunday eve he dashed from WNAC to the WEEI studios to do the Cleercoal spot in 11 minutes flat. This sets a new record for Inter-Studio Racing. Incidentally the Frim Sisters, veterans of the air, have never received so much mail with as many compliments therein as they got last week. Warren Hull and Harry Michaels, WBZ's Grin & Bearit skit, are doing better in New York than they have done in Boston, and that is tremendous. Warren Hull rushes madly between here and New York to cover both engagements.

The straight man for Tessie the Typist, Mr. Coffin, has fallen into the job of announcer for Fox Furriers on Friday evening. And speaking of the Fox Furriers, Buddy Clarke is winning much praise for his jazz singing. Buddy's Father, a Cambridge tailor, has changed the name of his establishment from "Goldbergs Tailoring" to "Clarke The Tailor." He, too, is doing a thriving business.

The Federal Radio Commission has been searching the air for a non-licensed broadcaster in or around Bangor. The gentleman who operates this station has the Commission biting their finger-nails, because he has enough power to drown the legitimate stations. The gentleman calls the station PDQ, and broadcasts whenever and whatever he so desires. The good people of Bangor murmur, "Thank God he has a clean mind."

Alice O'Leary, Paul White-man's former protege, will appear at the State Theatre, October 13. Mary Phillips, song maker on the Summerfield's dance parade over WEAN, has just turned 19. Last year she was a guest star on the midnight frolics and the Fox Fur Trapper spots in Boston. While singing here she was known as Gloria Gay. She now is Rhode Island's "Queen of the Air."

THE MICROPHONE

NEW ENGLAND'S RADIO NEWSPAPER

VOLUME II Saturday, October 7, 1933 NUMBER 15

Publisher, JOHN K. GOWEN, JR. Business Manager, PHILIP N. HOBSON
 Editor, G. CARLETON PEARL Managing Editor, MORRIS HASTINGS
 Adv. Mgr., CLARENCE N. COOK Circulation Mgr., SAMUEL F. SMITH
 National Representative, E. W. PARSONS, 247 Park Ave., New York

A weekly newspaper, THE MICROPHONE is published every Saturday at Boston, Massachusetts, by THE MICROPHONE, INC.

Entered as second class matter August 11, 1933, at the post office at Boston, Massachusetts, under the Act of March 3, 1879.

THE MICROPHONE will not be responsible for unsolicited manuscripts unless accompanied by return postage.

Subscription for one year, \$1.00 postpaid.

Advertising rates on application to the Advertising Manager.

Offices, No. 244 Washington Street, Boston, Massachusetts.

Telephone (connecting all departments) LAFayette 6910.

Hultman Baiting

BLANDLY ignoring many more burning issues, The DAILY RECORD, Boston tabloid, returns to its favorite sport of Hultman baiting. The head of Boston's police commissioner is demanded on a charger, because, according to our esteemed contemporary:

"He refuses to abide by the mandate of the people of Boston, as expressed through their elected municipal authorities, and install police radio."

Brief inquiry by The DAILY RECORD would reveal the fact that the Boston City Council has voted Commissioner Hultman an appropriation of only \$75,000. When sufficient funds have been made available modern, TWO-WAY radio will be installed in Boston police cars.

Backed by Governor Ely and the disinterested press of Boston, Commissioner Hultman has declared for two-way radio.

Funds must be made available. Hultman baiting will not help.

Radio a Profession

FOR the first time, two educational institutions in Boston have added courses in radio to their curricula.

There have been courses dealing with the technical side of radio. There have been schools for training voices for radio.

But that Boston University and the Emerson College of Oratory should look with seriousness upon radio program production and the possibilities of radio as a profession is significant.

Radio has become a profession distinct in itself and deserves such recognition. It is no longer a haphazard occupation, but one the technique of which is worthy of specialized study.

"Little Names" Succeed "Big Names" in Radio

By Dick Templeton
 New York Correspondent

WHEN a big name succeeds a little name in radio, that isn't news. But when a smaller name succeeds a couple of very big Broadway names, it is equal to a man walking up to a huge mastiff and nipping a hunk out of the dog's neck.

And that is precisely what is happening in radio today. Milton Berle and Harry Richman, two lads who are certain to draw stage salaries in excess of \$1000 weekly, are being shunted off the Old Gold program and two vets who made radio history once and then were quietly washed up, Moran and Mack, are staging a comeback. And that isn't all.

The sponsor who once counted the days until Eddie Cantor returned to his program is having a slight case of the jitters because of the caustic comment hurled at Mr. Cantor's thick-necked self-

advertisement on a recent NRA program.

And by the same token the men who sign the name of Texaco to the large checks Mr. Wynn draws each week are wondering if Ed will come back to please an audience beyond the 13-week period set for his "triumphant" return.

Mr. Wynn has been fussing with the movies, and Eddie and Ralph, Sisters of the Skillet, have been doing a great job entertaining the customers who are still loyal to the Tuesday night hour. So good, in fact, has been their job that there is talk of the sponsors holding on to them long beyond the period ending October 31 when Wynn is due back.

Jack Pearl is coming back, but to a half hour instead of his customary hour and it is not entirely because his sponsor lacks confidence in him. Quite the contrary. Of all the established big name comics in radio, Pearl's sponsor is loyal and most certain that

der Baron will hold up for at least another year.

But trends are trends and the departure of Milton Berle and Harry Richman is noteworthy solely because it marks a turning point in ideas held by those who foot the bills for radio programs. A year ago the cry was all for Broadway comics, but now unknowns are springing up to bring laughs.

To Subscribe to The Microphone

Fill out the blank and mail with dollar bill, money order or check to THE MICROPHONE, 244 Washington Street, Boston, Massachusetts.

(please print)

Name

Street

City or Town

State

Subscription \$1.00 per year, postpaid.

Studiosity

By Les Troy

NOTE with extreme pleasure that the eminent Doctor Rockwell, known to the careless world as Doctor Rockwell, is to be a radio guest artist. The good Doctor, the bard of Boothbay Harbor and inventor of 101 ways to stay out of a straight jacket while you are still out of your mind, has been keeping himself well in the background these long years past.

When they were making the new Jack Pearl picture out in Hollywood this summer the producers found they needed some more laughs. So they sent a plane up to Maine to get Dr. Rockwell. Doc packed his typewriter and toothbrush and away he went. The day after he got to Hollywood they wanted him to turn movie actor as well, but the doughty Doc refused.

"No," he said, "I came from Maine to be a writer and I'm going to be a writer. If you want me as an actor you'll have to wait until I return and then send for me as a movie actor."

In spite of hail and high water, however, Doc Rockwell will positively appear in person next Wednesday on the radio. If you listen carefully to WEEI at 9 o'clock of the evening on that day you will probably wish you had not.

The best golf story of the year comes to us through the courtesy of one Dick Teela, an NBC tenor. At a golf course near Oskosh, Wisconsin, Mr. Teela swung mightily and drove the pill out of sight down a 220 yard hole. Whistling merrily Teela tripped across the sward to the green. He didn't see his ball where it should have been.

Then he had that sinking feeling which comes to every golfer when he has made a shot that to him is a miracle. Teela thought he had made a hole in one. So he sidled gingerly up to the cup and looked in. His ball wasn't there. But it was in a hole two feet away which the greens-keeper had forgotten to fill up after he had moved the official can.

So Dick walked away and put a three down on his card.

Singin' Sam, that old bassoloist of the airwaves, astonishes us by making a joke. Sam wants to know if this new ditty, "Who's Afraid of The Big Bad Wolf," is dedicated to the NRA and whether it has taken the place of the prosperity song, "I've Grown So Lonesome, Thinking of You."

Boston's first long term network show, "The Blackstone Plantation" with Frank Crumit and Julia Sanderson, started last Tuesday evening. One unusual thing about it is that, although the show was heard over WEEI, the actual proceedings took place in the ballroom of the Hotel Bradford.

The audience who witnessed the show wondered why they were not able to hear the voices of the entertainers more clearly.

The trouble was that the public address system installed in the hall broke down. It was not turned off, because it was spoiling the broadcast.

There's a man on the radio, a sound man, who can make a noise like a frying egg.

Monday, October 9 - Isham Jones' Orchestra in Big Show on WNAC at 9.30 P.M.

Highlights

P.M.

4.00—Radio Guild, drama, NBC-WBZ
 8.00—Soconyland Sketches, NBC-WEEI
 8.00—Leventon and Harrison, recital, WHAM
 9.00—A & P Gypsies, NBC-WEEI
 Sinclair Minstrels, NBC-WJZ
 10.00—Hour Glass, NBC-WJZ
 10.45—Columbia Symphony Orchestra, CBS-WAAB
 11.15—The King's Jesters, NBC-WEEI

6.30 A.M.
 Gene and Glenn, patter, WBZ, 1 h.
 Sunrise Melodies, WNAC, 45 m.

6.45 A.M.
 Tower Health Exercises, WEA WEEI-WGY
 1 h. 45 m.

7.00 A.M.
 Morning Melodies, WHDH

7.15 A.M.
 Weather, news, time, WNAC
 Musical Alarm Clock, WHDH, 30 m.

7.30 A.M.
 Rise and Shine, orchestra, WEA WGY, 30 m.
 Jolly Bill and Jane, WJZ
 Musical Clock, orchestra, WBZ, 30 m.
 Organ Reveille, WABC, 30 m.
 Morning Watch, WNAC
 The Gospel of Good News, WEAN

7.45 A.M.
 Yoichi Hiraoka, xylophonist, WJZ
 Shopping around the Town, WNAC, 1 h., 15 m.
 Records and shopping news, WEAN, 45 m.
 Flying Fingers, WHDH

8.00 A.M.
 Organ Rhapsody, WEA WJAR WTAG
 30 m.; WCSH, 15 m.
 E. B. Rideout, news, WEEI
 Morning Devotions, WJZ WBZ WHAM
 Salon Musicale, WABC, 30 m.
 Morning Watch, WORC
 Hickory Nuts, WHDH, 30 m.

8.15 A.M.
 Caroline Cabot shopping news, WEEI
 Morning Devotions, WJZ
 Don Hall Trio, WJZ WBZ WHAM
 Musical time table, WORC, 45 m.
 Minute Man, WHEB

8.30 A.M.
 Cheerio, WEA WEEI WJAR WCSH WTAG
 WGY, 30 m.
 Lew White at the dual organ, WJZ WHAM
 30 m. (WBZ, 12 m. from 8.33)
 Time, weather, temperature, WBZ
 Sunny Melodies, WABC, 30 m.
 Cronin at the Console, WAAB, 30 m. (WEAN
 from 8.45)
 Current Events, WEAN
 Organ Melodist, WHDH
 News, Mal Hammond, WBSO
 Morning Devotions, WHEB, 30 m.

Women's Home Companion, Jean Abbey, talk,
 WBZ
 Jim Mason, minstrel, WHDH
 Musical Gazette, WBSO

9.00 A.M.
 Morning Glories, dance orchestra, WEA W
 WJZ WTAG WGY
 Filene's Clothes Institute, WEEI
 Shopping News, WJAR
 The Breakfast Club, dance orchestra, WJZ
 WBAL, 1 h. (WHAM from 9.15; WBZ from
 9.30)
 Shopping news, Virginia Reade, WBZ, 30 m.
 The Playboys, WABC WAAB WEAN WICC
 WFEA WDRG WORC WLBZ
 Shepard's Nine O'clock Revue, WNAC, 30 m.
 Nancy Lee program, WHDH, 1 h.
 Needleham Paramount Organ, WBSO, 1 h.
 Stop and Shop, WHEB, 30 m.

9.15 A.M.
 Landt Trio and White, WEA WEEI WJAR
 WCSH, WGY
 Organ recital, WTAG
 The Three Gems, WABC
 Goldy and Dusty, WDRG WORC WCAU
 Records and shopping news, WAAB
 News, WEAN
 Aunt Sammy, WFEA

9.30 A.M.
 Hill Billy songs, WEA WJAR WCSH WTAG
 WGY WTAM
 New England Kitchen of the Air, WEEI
 Metropolitan Parade, WABC WAAB WICC
 WFEA WDRG WORC WCAU, 45 m.
 (WEAN, 15 m., and from 10.00)
 Keeper of the Keys, soloist and accordion,
 WNAC
 Gems from the Masters, WHEB, 30 m.

9.45 A.M.
 Florenda Trio, WEA WEEI WJAR WCSH
 WTAG WGY
 Joan Martin, soprano, WNAC
 R. I. Congress of Parent-Teachers, WEAN

10.00 A.M.
 Breen and de Rose, WEA WEEI WJAR WCSH
 Housewives Exchange, WJAR, 30 m.
 WTAG Radio Kitchen, WTAG
 Four Southern Singers, WJZ WBZ WBAL
 Buddy Clark, WNAC
 Question and Answer Man, WHDH, 30 m.
 Melody Express, WBSO
 A Good Morning Cheer, WLOE
 Bell Ringer, WHEB

10.15 A.M.
 Morning Parade, variety musicale, WEA W
 WJZ WTAG, 45 m. (WEEI, 30 m.;
 WJAR from 10.30; WGY from 10.45)
 Clara, Lu n' Em, WJZ WBZ WHAM
 Bill and Ginger, songs, WABC WNAC WEAN
 WCAU
 The Crockerville Mountainers, WAAB WICC
 WFEA WORC
 Parents' Question Box, WBSO
 Lost and found program: "Local Communities,"
 talk, WLOE
 Music Master, WHEB

10.30 A.M.
 Today's Children, drama, WJZ WBZ WBAL
 The Merry Makers, WABC WAAB WEAN
 WFEA WDRG WORC WLBZ WCAU
 Beauty talk, WNAC
 Broadcast to Fishermen, WHDH, 30 m.
 Stock quotations and news, WBSO
 East Boston Community Program, WLOE, 45
 m.
 Women's Forum, WHEB, 30 m.

10.45 A.M.
 Contract Bridge lessons by Mrs. Geissler,
 WEEI
 Irma Glen, organist, WJZ WBZ WHAM
 Pedro De Cordoba, WABC WNAC WEAN
 Coconut Grove Ambassadors, WAAB WFEA
 WORC WLBZ
 Parade of Dance Tunes, WBSO

Court Violinist



JULES LANDE, once "court violinist" to President Harding, is heard over an NBC-WEEI network, Mondays at 10.30 p.m.

11.00 A.M.
 U. S. Navy Band, WEA WJAR WCSH
 WTAG, 1 h. (WEEI WGY from 11.15)
 Edison Friendly Kitchen, WEEI
 Singing Strings, WJZ WBZ WHAM, 30 m.
 Kitchen Closeups, WABC WNAC WEAN
 WDRG
 Martha Lee's Cooking School, WAAB
 Fashion Review, WFEA
 Morning Melodies, WORC
 Big Brother Bob Emery, WHDH, 30 m.
 Stocks; health talk, WBSO
 Whitemanovers, WHEB, 30 m.

11.15 A.M.
 Morning Moods, WABC WNAC WEAN
 WFEA WDRG WORC WLBZ
 Question and Answer Man, WAAB
 Chelsea Community Program, WLOE, 45 m.
 Merchant's Air Revue, WBSO

11.30 A.M.
 Rhythm Ramblers, WJZ WHAM WBAL, 30 m.
 Metropolitan Stage Show—Joe Laurie's Old
 Time Stars, WJZ
 Tony Wons with Peggy Keenan and Sandra
 Phillips, piano, WABC WNAC WEAN
 Shopping news, WAAB, 30 m.
 Tuneful Topics, WORC
 The Music Forum, WHDH
 Stocks; Merchants Air Revue, WBSO
 Organ Tones, WHEB, 30 m.

11.45 A.M.
 The Monitor Views the News, WBZ
 Happiness on Melody Lane, WABC
 Rhythm Kings, WEAN WFEA WDRG WORC
 News, weather, WNAC
 Business Fundamentals, talk, WBSO

12.00 N.
 Martha and Hal, comedy, WEA WEEI
 WJAR WTAG WGY
 News, WCSH WGY
 Gene Arnold and the Commodores, WJZ
 WBZ WHAM
 "Voice of Experience," WABC WNAC WEAN
 WDRG
 Noonday organ musicale, WAAB WORC
 WLBZ
 News, 5 m.; dial revue, 15 m.; N. H. extension
 service, 10 m., WFEA
 Stocks; Flying Fingers, WBSO, 30 m.
 Somerville Community Program, WLOE 30 m.
 Dorothy Bradford, WHEB, 30 m.
 Luncheon Dance Music, WLEY, 30 m.

12.15 P.M.
 Johnny Marvin, tenor, WEA WJAR WGY
 WTAM
 News, 10 m.; stocks, 10 m.; produce markets,
 10 m., WEEI
 Farm Flashes, WJZ
 Raymond Morin, pianist, WTAG
 March of Transportation, drama, WJZ WBZ
 WHAM
 Gypsy Nina, songs, WABC WAAB WEAN
 WDRG WORC
 Stories from Real Life, WNAC
 Melody Parade, organ, WHDH, 30 m.

12.30 P.M.
 Rex Battle Concert Ensemble, WEA WCSH
 WTAM, 30 m. (WTAG from 12.45)
 Talk music, WJAR
 Farm flashes, WTAG
 Farm program, WGY, 30 m.
 National Farm and Home Hour, WJZ WBAL
 WHAM, 1 h. (WBZ from 12.45)
 Weather; N. E. Agriculture, WBZ
 News; Concert Miniatures, WABC WFEA
 WDRG WLBZ WPG, 30 m. (WNAC, 5 m.
 and from 12.30; WEAN 5 m. and from 12.45;
 WDRG from 12.45)
 Health Talk, WNAC, 5 m.
 Stocks, news, WAAB WORC
 Temperatures, weather, news, WEAN
 Stocks; Mikado, opera, WBSO, 1 h.
 Dental Clinic, WLOE, 30 m.
 Rockingham Co. Co-op. Ext. Bureau, WHEB

12.45 P.M.
 Caroline Cabot, WEEI, 30 m.
 Housewives' chat, WJAR
 Farm flashes, WAAB
 Dick Edwards, WHDH
 Dancing to Health, WHEB

1.00 P.M.
 Market reports, WEA W
 News, WJAR WTAG
 Albany on Parade, WGY, 30 m.
 Beauty talk, WCSH
 George Hall Orchestra, WABC WFEA WDRG
 WORC WLBZ, 30 m. (WAAB from 1.15)
 Circus marathon, WAAB
 Records and shopping news, WNAC, 1 h.
 Around the Town, WEAN
 Hotel Morton Orchestra, WPG, 30 m.
 Yeh He Orchestra, WHDH, 30 m.
 People Who Make News; news, WHEB, 30 m.
 Miss Charm, beauty talk, WLEY

1.15 P.M.
 Lotus Garden orchestra, WEA WEEI WJAR
 WCSH WTAG
 Going Forward with Providence, WEAN, 30 m.
 Afternoon Dance Rhythms, WLEY

1.30 P.M.
 Hotel Plaza Concert Ensemble, WEA WEEI
 WJAR WCSH WTAG WGY, 30 m.
 Jesters, vocal trio, WJZ
 Highway safety talk; MSC Forum, WBZ
 School of the Air—Science, WHAM, 30 m.
 Gene Burchell's orchestra, WLW, 30 m.
 Hotel Edison Ensemble, WABC WAAB
 WDRG WORC WLBZ, 30 m.
 Phil Bayon, songs, WHDH
 Stocks; Varieties, WBSO, 30 m.
 Watch Tower, WLEY

1.45 P.M.
 "Smackout," sketch, WJZ
 Jack and Jerry Foy, WBZ
 Going Forward with Taunton, WEAN, 30 m.
 Home Sweet Home, WHDH
 Uncle Sam at your Service, WLEY

2.00 P.M.
 The Revolving Stage, sketches, WEA WJAR
 WCSH WTAM, 1 h.; WEEI, 30 m. (WGY
 from 2.30)
 Musical Originalities, WJZ WBZ, 30 m.
 WHAM, 15 m.
 Ohio School of the Air, WLW, 1 h.
 Round Towners Quartet, WABC WAAB
 WFEA WDRG WORC WLBZ
 Spotlighting Municipal Affairs, WNAC WICC
 Peter Kaha's Serenaders, WHDH
 Stocks; Emerald Gems, WBSO, 30 m.
 Matinee Melodies, WLEY

2.15 P.M.
 School of the Air—Social study, WHAM
 Hawaiian Serenaders, WABC WNAC WEAN
 WICC WFEA WDRG WORC WLBZ
 Matinee Notes, WAAB, 45 m.
 Romance and Recipes, WLEY

2.30 P.M.
 New England Kitchen, WEEI, 30 m.
 Rudolph S. Fried, Talk on Children, WJZ
 WHAM WBAL
 Mason and Hamlin Concert, WBZ, 30 m.
 The Captivators, WABC WNAC WEAN
 WICC WFEA WDRG WLBZ WORC
 Mary Burns, WHDH
 Stocks; The Music Room, WBSO, 30 m.
 Melody Moments, WLEY

2.45 P.M.
 Happy Jack, WJZ WHAM
 Ann Leaf at the organ, WABC WNAC WEAN
 WICC WFEA WDRG WORC WLBZ, 30 m.
 Zabelle Sarkisian, soprano, WHDH
 Farm flashes, WLEY

6.00 P.M.
 Viennese Ensemble, WEA WCSH WTAG
 WTAM, 30 m. (WJAR from 6.15)
 News, WJAR
 The Evening Tattler, WEEI, 30 m.
 Wrightville Clarion, WTIC, 30 m.
 The Essex House Ensemble, WJZ WBZ, 30 m.
 Buck Rogers in the 25th century, WABC
 WAAB WEAN WFEA WDRG WLBZ
 Scores, news, WNAC
 Sweet Music, WORC
 The Monitor Views the News, WHDH
 Mother Goose Club, WLOE, 30 m.
 Lowell Prosperity Program, WLEY, 1 h.

6.15 P.M.
 H-Bar-O Rangers, cowboy drama, WABC
 WAAB WEAN WDRG WORC WLBZ
 Yankee Singers, WNAC
 The Puzzle Man, WHDH

6.30 P.M.
 Tune Vendors, WEA WTIC
 News, WEEI WTAG
 Rhythm Five, WTIC
 Household Highlights, WJAR
 Three X Sisters, WJZ WHAM
 Time, sports, weather, WBZ
 Vera Van, contralto, WABC WAAB WFEA
 WDRG WORC WLBZ
 "Detectives Black and Blue," WNAC
 American Legion program, WEAN
 Song Pictures, WHDH
 Sport talk, WLOE WCSH

6.45 P.M.
 Twenty Fingers of Harmony, WEA W
 Daniel H. Coakley, talk, WEEI
 Tenor, WJAR
 Moe and Nell, WCSH
 Powers Coker, WTAG
 Five Sharps, WTIC
 Red Davis, WGY
 Lowell Thomas, today's news, WJZ WBZ
 WHAM
 Russian Gypsy Orchestra, WABC WAAB
 WDRG WLBZ
 Gofkauf's Legion Band, WFEA
 Marvelous Melodies, WNAC WEAN
 Bill Kiddy, songs, WORC
 Yen Ho orchestra, WHDH
 Radio re-employment service; N.R.A. talk,
 WLOE

7.00 P.M.
 Charlie Leland, comedian, WEA WEEI
 WJAR WTAG WCSH WGY WTIC
 Amos n' Andy, WJZ, WBZ WHAM
 Myra and Marge, WABC WNAC WEAN
 WDRG
 Scores, news, weather, WAAB WORC
 Hotel Westminster orchestra, WHDH
 Cinema Serenaders, WLOE
 Thirty Minutes with Famous Orchestras,
 WLEY, 30 m.

7.15 P.M.
 Billy Bachelor's Adventures, WEA WJAR
 WTAG
 After Dinner Revue, WEEI
 John Fay, pianist, WCSH
 Baby Rose Marie, WJZ WBZ WHAM
 Just Plain Bill, WABC WNAC WDRG WCAU
 Musical Interlude; E. E. Nazzaro, WAAB
 Time, news, WEAN
 The Gossipers, WHDH
 Charlotte Klayman, contralto, WLOE

7.30 P.M.
 Lum and Abner, WEA WEEI WJAR WCSH
 WTAG WGY
 Merry Madcaps, WTIC
 Richfield Country Club, Grantland Rice and
 guest artists with orchestra, WJZ, WBZ
 WHAM, 30 m.
 Armbruster's Ensemble and mixed chorus,
 WABC WNAC WEAN WICC WFEA
 WDRG WORC WLBZ
 Circus marathon, WAAB
 To be announced, WHDH
 Mayor John H. Burke of Medford, WLOE
 Woburn program, WLEY, 1 h.

7.45 P.M.
 The Goldbergs, WEA WEEI WJAR WCSH
 WTAG WGY WTAM
 Walter Hapgood on Sports, WTIC
 Boake Carter, news, WABC WNAC WCAU
 Hotel Brunswick orchestra, WAAB WICC
 WFEA WORC
 Billy Lassez concert ensemble, WEAN
 Chamber of Commerce Loyalty Dinner,
 WFEA, 30 m.
 Larry Thornton tenor, WHDH
 Edward J. Downey, tenor, WLOE

8.00 P.M.
 Soconyland Sketches, drama, WEA WEEI
 WJAR WCSH WTAG WTIC WGY, 30 m.
 The Nomads, WJZ, 30 m. (WBZ from 8.05;
 WHAM from 8.15)
 Dramas from Real Life, WBZ
 Joint Recital, Alexander Leventon, violinist
 and Guy Fraser Harrison, pianist, WHAM
 The Happy Bakers with Harriet Lee, WABC
 WNAC WICC WDRG WORC
 National Sojourners, WAAB
 Three's Company, WEAN
 Evening Reveries, WHDH
 Christine Young, pianist, WLOE

8.15 P.M.
 Edwin C. Hill, WABC WNAC WEAN WDRG
 WCAU
 Paul Shirley, viola d'amore, WAAB WORC
 WLBZ
 Ted Gaffney, tenor, WLOE

8.30 P.M.
 Floyd Gibbons and orchestra, WEA WTAG
 WTIC WEEI WJAR WGY WCSH, 30 m.
 Potash and Perlmutter, WJZ WHAM
 Moe and Nell, sketch, WBZ
 Manhattan Serenaders, WABC WAAB WEAN
 WICC WDRG WORC WLBZ, 30 m.
 News; CBS program, WFEA
 Milton Post American Legion Band, WNAC,
 30 m.

Camera Club, Direction Luis Marden, MI-
 CROPHONE Staff Photographer, WLOE
 Back Stage with Boris Morros, WOR, 30 m.
 Helen McFee, blues singer, WLEY

8.45 P.M.
 Red Davis, drama, WJZ WBZ WHAM
 Farm Flashes, WLOE
 Cy Harris, pianist, WLEY

News Flashes

Week Days

A. M.
 7.16 WNAC
 8.05 WEEI
 8.30 WBSO
 9.16 WEAN (Sat. 9.01)
 11.45 WBZ (Fri. 12.00)

P. M.
 12.15 WEEI (Ex. Thurs.)
 12.30 CBS
 1.00 WTAG-WJAR
 3.00 WAAB (Ex. Sat.)
 4.00 WEEI (Ex. Thurs.)
 5.00 WHAM
 5.15 WBZ
 6.00 WNAC-WJAR
 6.30 WEEI-WTAG
 7.00 WAAB-WORC
 9.45 WAAB (Thurs. 9.15)
 10.47 WNAC
 11.00 WJAR
 Ex. Sat. WCSH-WTAG
 11.30 WEEI
 11.15 CBS
 8.05 MICROPHONE
 Fri. (Radio News, WFEA)

Sundays

A. M.
 8.46 WNAC

P. M.
 6.16 WAAB
 6.31 WNAC
 7.50 WEEI
 8.30 WFEA
 9.45 WAAB
 10.15 WHAM
 10.45 WBZ-WNAC-WTAG
 11.15 WEEI-WJAR
 11.30 WCSH

9.00 P.M.
 A. & P. Gypsies, WEA WEEI WJAR WCSH
 WTAG WTIC WGY, 30 m.
 Sinclair Greater Minstrels, WJZ WBZ WHAM,
 30 m.
 An Evening in Paris, WABC WNAC WEAN
 WLBZ
 Hughie Connor orchestra, WAAB WORC
 Manchester N.R.A. program, WFEA, 1 h.
 WLOE's Little Show, WLOE, 30 m.
 Enchanting Hour, WOR, 30 m.

9.15 P.M.
 Kate Smith, WABC WNAC WEAN WICC
 WORC
 At the console, WAAB

9.30 P.M.
 Ship of Joy, WEA WEEI WJAR WCSH
 WTAG WGY, 30 m.
 Travelers Hour, WTIC 30 m.
 Melody Moments, mixed quartet and Josef
 Pasternack's orchestra, WJZ WHAM WLW,
 30 m.
 The Big Show, Isham Jones' orchestra, Ger-
 trude Niesen and Lulu McConnell, WABC
 WNAC WEAN WICC WDRG WLBZ,
 30 m.
 Meyer Davis Orchestra, WAAB
 Hotel Traymore Concert orchestra, WPG, 30 m.
 Spanish Gables Orchestra, WLOE, 30 m.

9.45 P.M.
 Scores, news, weather, WAAB
 "The Witch's Tale," WOR, 30 m.

10.00 P.M.
 Gene Arnold, variety, WEA WEEI WJAR
 Contented Program, WGY WTAM WLW
 30 m.
 The Hour Glass, WJZ, 1 h., WHAM 15 m.
 Gene and Glenn, patter, WBZ, 30 m.
 Andre Kostelanetz presents Gladys Rice, so-
 prano, Evan Evans, baritone, and orchestra,
 WABC WAAB WFEA WDRG WLBZ, 30 m.
 (WICC WORC from 10.15)
 Talk by Hugh D. Eutler, WNAC WEAN
 WICC WORC

10.15 P.M.
 Street of Dreams, songs, WNAC WEAN

10.30 P.M.
 Jules Lande, violinist, WEA WEEI WJAR
 WCSH WTAG WGY, 30 m.
 WTIC Playhouse, WTIC, 30 m.
 Metropolitan Platinum Syncopators, WBZ
 Zero Hour, WLW, 30 m.
 N. R. A. Speaker, WABC WAAB WEAN
 WFEA WICC WDRG WORC WLBZ
 Nick Parkyakakas, speech, WNAC

10.45 P.M.
 News, WBZ
 Howard Barlow and the New World Symphony
 Orchestra, WABC WAAB WEAN WICC
 WFEA WDRG WORC WLBZ, 30 m.
 Scores, news, weather, WNAC

11.00 P.M.
 Henry King's orchestra, WEA WTIC
 E. B. Rideout; news, WEEI
 News, WCSH WJAR WTAG
 Major Sharp and Minor, WJZ WHAM
 Weather, temperature, sports, WBZ
 Gene Burchell's Orchestra, WLW, 30 m.
 Hotel Brunswick Orchestra, WNAC, 30 m.
 Moonbeams, WOR, 30 m.

Um-m-m Yum-m-m !!

After the Theatre

Barbecued Chicken

Golden Rod Beer

In a quiet nook at

SLADES BARBECUE

958 TREMONT STREET, BOSTON

Open All Night

Tuesday, October 10 - Madame Sylvia of Hollywood on WEA F at 10.30 P.M.

Highlights

P.M. 8.00—Frank Crumit and Julia Sanderson, NBC-WEEI. Eno Crime Clues, NBC-WBZ. 8.30—Wayne King and Orchestra, NBC-WEEI. 9.30—Nino Martini, CBS-WNAC. 10.30—Boswell Sisters, CBS-WNAC. 10.45—New World Symphony Orchestra, CBS-WAAB. 6.30 A.M. Gene and Glenn, patter, WBZ, 1 h. Cronin at the Console, WNAC, 45 m. 6.45 A.M. Tower Health Exercises, WEA F WEEI WGY, 1 h. 15 m. 7.00 A.M. Musical Clock, WTIC, 1 h. Morning Melodies, WHDH. 7.15 A.M. Weather, news, time, WNAC. Musical Alarm Clock, WHDH, 30 m. 7.30 A.M. Jolly Bill and Jane, WJZ. Musical Clock, orchestra, WBZ, 30 m. Organ Reveille, WABC, 30 m. Morning Watch, WNAC. Morning Devotions, WEAN. 7.45 A.M. Yelohi Hiraoka, xylophonist, WJZ. Shopping Around Town, WNAC, 1 h., 15 m. The Shopper's Exchange, WEAN, 45 m. Flying Fingers, WHDH. 8.00 A.M. Radio City organ, WEA F WJAR WTAG 30 m.; WCFH, 15 m. (WGY from 8.15). E. B. Rideout; news, WEEI. Collin Driggs, organ, WTIC, 30 m. Morning Devotions, WJZ WBZ. Salon Musicale, WABC, 45 m. Morning Watch, WORC. Hickory Nuts, WHDH, 30 m. 8.15 A.M. Caroline Cabot, Shopping news, WEEI. Morning Devotions, WJZ WBZ. Don Hall Trio, WJZ WBZ WHAM. Musical Time Table, WORC, 45 m. Minute Man, WHEB. 8.30 A.M. Cheerio, WEA F WEEI WJAR WCHS WTAG WTIC WGY, 30 m. Lew White at the organ, WJZ WHAM, 30 m. (WBZ from 8.33). Time, weather, temperature, WBZ. Cronin at the Console, WAAB WEAN WLWBZ, 30 m. Organ Melodies, WHDH. News, Mal Hammond, WBSO. Morning Devotions, WHEB, 30 m. 8.45 A.M. Havens and Mack, WABC. Bill Vickland and Cadets, WHDH. Popular Hits, WBSO. 9.00 A.M. The Morning Glories, WEA F WCHS WTAG WGY. Filene's Clothes Institute, WEEI. Outlet Store news, WJAR. Radio Bazaar, WTIC, 30 m. Breakfast Club, WJZ, 1 h. (WHAM, 30 m. from 9.15; WBZ from 9.30). Virginia Reade, talk, WBZ, 30 m. Do Re Mi, Trio, WABC WAAB WEAN WICC WFEA WDRS WDRS WLBZ. Shepard's Nine O'Clock Revue, WNAC, 30 m. Nancy Lee program, WHDH, 1 h. Needham Paramount Organ, WBSO, 1 h. Stop and Shop, WHEB, 30 m. 9.15 A.M. Landt Trio and White, WEA F WEEI WJAR WCHS WTAG. Goldy and Dusty, WABC WDRS WORC WCAU. The Shopper's Special, WAAB, 30 m. News, weather, WEAN. Aunt Sammy, WFEA. 9.30 A.M. Bradley Kincaid, hill billy, WEA F WEEI WJAR WCHS WTAG WTIC WGY. Luxembourg Gardens, WABC WNAC WEAN WICC WFEA WDRS WORC. Gems from the Masters, WHEB, 30 m. 9.45 A.M. The Wife Saver, skit, WEA F WEEI WJAR WCHS WTAG WTIC WGY. Mystery Chef, WABC WAAB WEAN WFEA WLBZ. Song Album, WNAC WICC. Tuneful Topics, WORC. 10.00 A.M. Brean and De Rose, WEA F WEEI WJAR WCHS WTAG WGY WTAM. Pop Concert, WTIC, 30 m. Four Southern Singers, WJZ WBZ WHAM Bill and Ginger, WABC WAAB WEAN Jane and John, drama, WNAC WICC WORC Mrs. Gelsler's bridge talk, WBSO. A Good Morning Cheer, WLOE. Garden Club News, WHEB. 10.15 A.M. Morning Parade, musicale, WEA F WEEI WJAR WCHS, 45 m. (WTIC WTAG from 10.30; WGY from 10.45). Shopping Around, WTAG. Clara Lu 'n' Em, WJZ WBZ WHAM. Morning Moods, WABC WAAB WICC WDRS WORC WCAU. Gretchen McMullen Food and Homemaking School, WNAC WEAN, 30 m. Italian Christian Mission, WBSO. Lost and found program, WLOE. Music Master, WHEB. 10.30 A.M. Today's Children, drama, WJZ WBZ. The Crazy Buckaroos, WABC WAAB WICC WDRS WCAU. Modern Melodies, WORC. East Boston Community program, WLOE, 45 m. Stock market quotations, WBSO. Women's Forum, WHEB, 30 m. 10.45 A.M. Singing Strings WJZ WBZ, 30 m.; WHAM 15 m. The Frivolities, WABC WNAC WEAN WFEA WLBZ, 30 m.; WICC, WORC, 15 m. Organ, WAAB. Poetry Talk, Rev. Albert Spence, WBSO. 11.00 A.M. Your Child, Dr. Ella Oppenheimer, WEA F WJAR WCHS WTAG WTIC. Edison Friendly Kitchen Program, WEEI. School of Clothes, WAAB. Morning Melodies, WORC, 30 m. Millie and Archie, skit, WHDH. Stocks; Pageant of Music, WBSO. "Naomi," WHEB.

11.15 A.M. Radio Household Institute, WEA F WEEI WJAR WCHS WTAG WTIC WGY. Morin Sisters, trio, WJZ WHAM. Edward MacLugh, baritone, WBZ. Big Freddie Miller, WABC WNAC WEAN WFEA WDRS. Question and Answer Man, WAAB. Lillian Baird, soprano, WHDH. Stories of the Fishing Industry, WBSO. Chelsea Community Program, WLOE, 45 m. Thos. Brennan, tenor, WHEB. 11.30 A.M. Piano recital, WEA F WEEI WJAR WCHS WTAG WGY. Band Box Revue, WTIC. Rhythm Ramblers, orchestra, WJZ WHAM, 30 m.; WBZ, 15 m. Tony Wons, WABC WNAC WEAN WFEA WDRS. Shopping with Dorothy Dean, WAAB, 30 m. Hank Penny and his old cronies, WHDH, 30 m. Stocks, Merchants Air Revue, WBSO. Etiquette Lady, WHEB. 11.45 A.M. The Minstrel Man, WEA F WEEI WJAR WCHS WTAG WGY. Rhythm Five, WTIC. Monitor Views the News, WBZ. Carlisle and London, two pianos, WABC WEAN WFEA WDRS WORC WLBZ WCAU. News, time, temperature, WNAC. Economic Sidelights, talk, WBSO. Dancing to Health, WHEB. 12.00 N. Martha and Hal, comedy team, WEA F WEEI WJAR WTAG WTIC. News, WCHS. Mrs. Curtis Burnley Railing, impersonations, WJZ WBZ. The Voice of Experience, WABC WNAC WEAN WDRS. Nonday Musicale, WAAB, 30 m.; WORC, WLBZ, 15 m. News; dial review; N. H. extension service, WFEA, 30 m. Stocks; Flying Fingers, WBSO, 30 m. Shopping news, WLOE, 30 m. Somerville Community program, WLEY, 30 m. Dorothy Bradford, WHEB, 30 m. 12.15 P.M. Johnny Marvin, tenor, WEA F WJAR WTAG WTIC. News, stocks, markets, WEEI, 30 m. Farm flashes, stocks, weather, WCHS. The Widow and Angel, WJZ. Weather; agricultural market reports, WBZ. Connie Gates, songs, WABC WNAC WDRS WORC WLBZ. Vincent Lopez; shopping news, WEAN. Melody Parade, organ, WHDH, 30 m. 12.30 P.M. Rex Battle's Concert Ensemble, WEA F WCHS, 30 m.; (WTAG from 12.45). Markets, WJAR WTAG. Farm and Home Forum, WTIC, 30 m. WGY farm program, WGY, 30 m. National Farm and Home Hour, WJZ WBZ, 1 h.; WHAM, 30 m. News; U. S. Marine Band, WABC WFEA WDRS WLBZ WPG, 30 m.; WNAC WEAN, 5 m. (WORC from 12.45). Stocks and news, WAAB WORC. Health Talk; CBS; Vincent Lopez, WNAC, 25 m. from 12.35. News, weather, WEAN, from 12.35. Stocks; Moments with the Masters, WBSO 1 h. Dental Clinic, WLOE, 30 m. N. H. Farm Reporter, WHEB. 12.45 P.M. Caroline Cabot, WEEI, 30 m. Farm Chat, WJAR. Farm flashes, WAAB. Around the Town, WEAN, 30 m. Dick Edwards, WHDH. Glee Songs, WHEB. 1.00 P.M. Market and weather report, WEA F Popular Varieties, WCHS WTIC, 30 m. (WEA F WEEI WJAR WTAG from 1.15). News, weather, WJAR WTAG. Albany on Parade, WGY, 30 m. Marie, the Little French Princess, WABC WNAC WCAU. Circus Marathon, WAAB. Matinee, WORC. Hotel Morton Concert Orchestra, WPG, 45 m. Yen Ho Orchestra, WHDH, 30 m. Miss Charm, beauty hints, WLEY. Rhyming Philosopher; news, WHEB, 30 m. 1.15 P.M. Reis and Dunn, comedy, WABC WAAB WICC WFEA WDRS WORC WLBZ. The Shopper's Exchange, WNAC, 45 m. Going Forward with Woonsocket, WEAN, 1 h. Interior Decorating, talk, WLOE. Melody Moments, WLEY. 1.30 P.M. Lotus Gardens Orchestra, WEA F WEEI WJAR WCHS WTAG WTIC WGY, 30 m. The Merrie-Men, quartet, WJZ. Highway safety talk; organ, WBZ. School of the Air, science, WHAM, 30 m. Gene Burchell's Orchestra, WLW, 30 m. Easy Aces, WABC WCAU. Copley Plaza Luncheon music, WAAB WORC. Hugh McGuinness, songs, WHDH. Stocks; Varieties, WBSO, 30 m. White Mountain Travelogue, WLEY, 30 m. 1.45 P.M. Smackout, comedy, WJZ. Jack and Jerry Foy, WBZ. Painted Dreams, WABC WCAU. Sam Bittell's Orchestra, WAAB, WORC. Home Sweet Home, skit, WHDH. 2.00 P.M. Merry Madcaps, WEA F WEEI WJAR WCHS WTAG WTIC, 30 m. Musical Originalities, WJZ WBZ, 30 m.; WHAM, 15 m. Ohio School of the Air, WLW, 1 h. Madison Ensemble, WABC WNAC WICC WDRS, WORC, 30 m. (WEAN from 2.15). Matinee Notes, WAAB, 1 h. Radio Stagers, playlet, WHDH, 30 m. Stocks; Romancing in Melodyland, WBSO, 25 m. Matinee Melodies, WLEY. 2.15 P.M. School of the Air, social study, WHAM. Tea Dance Music, WLEY. 2.30 P.M. The Harmonians, WEA F WEEI WJAR WCHS WTAG WGY. Mrs. Charles Brusie, talk, WTIC. Syncopators, dance music, WJZ WBZ WHAM. Ann Leaf, organist, WABC WNAC WEAN WICC WDRS WORC, 30 m. Stocks; The Music Room, WBSO, 30 m. Styles in New York, WLEY. 2.45 P.M. Happy Jack Turner, WJZ WBZ WHAM. 3.00 P.M. Blue Room Echoes, orchestra, WEA F WJAR WCHS WTAG WTIC WGY, 30 m. Del Castillo, organist, WEEI, 30 m. Betty and Bob, dramatic sketch, WJZ WBZ WHAM. Metropolitan Parade, WABC WNAC WEAN WICC WDRS WORC, 30 m. Weather, news, WAAB. Nancy Lee program, WHDH, 1 h. Garden Club, WBSO. 3.15 P.M. Words and Music, WJZ WHAM, 30 m.; WBZ, 15 m. Donald Van Wart, pianist, WAAB. Closing stock quotations, WBSO. Farm flash, WHEB. 3.30 P.M. Women's Radio Review, WEA F WJAR WCHS WTAG WGY, 30 m. WEEI Reading Circle, WEEI, 30 m. Home Forum Cooking School, WBZ, 30 m. Jack Brook's Orchestra, WABC WNAC WEAN WICC WDRS WORC, 30 m. Hi-de-ho Orchestra, WAAB, 30 m. Good Cheer Service, First Church of Christ Scientist, WBSO, 30 m. Living Messages, WHEB, 30 m. 3.45 P.M. Jack Walton's Orchestra, WJZ WHAM, 30 m. 4.00 P.M. The Golden Treasury, WEA F WJAR WCHS WTAG WGY, 30 m. (WEEI from 4.15). News, stocks, WEEI. U. S. Navy Band, WABC WNAC WEAN WICC WFEA WDRS WORC, 30 m. Hits and Encores, WAAB, 1 h. Tea Time Tunes; WBSO, 45 m. Melody Maker, WHEB. 4.15 P.M. Meredith Wilson's Orchestra, WJZ WHAM, 30 m. Mrs. Joseph B. Ely, talk, WBZ. Florence Ingram, soprano, WHEB. 4.30 P.M. Tea Dansant, WEA F WJAR WCHS WTAG WGY. Marjorie Possell, violinist, WEEI, 30 m. Through the Hollywood Looking Glass, WBZ. News; Enoch Light Orchestra, WNAC WEAN WICC WFEA WDRS WORC, 30 m.; WABC, 15 m. Tea Dance Music, 20 m.; Dr. Wells Allen Ruble, 10 m., WLOE. Beth Trask, pianist, WHEB. 4.45 P.M. Lady Next Door, WEA F WJAR WTAG. Going Forward with Lewiston, WCHS, 1 h. Speaker, WJZ WHAM. Lillian Bernstein, pianist, WBZ. Ye Happy Minstrel, WABC WCAU. Roger's Mother, WBSO. Bass Notes, WHEB. 5.00 P.M. Ortiz Tirado, WEA F WJAR WTAG, 30 m.; (WEEI WGY from 5.15). George Allen, tenor, WEEI. Casino Orchestra, WJZ WBAL, 30 m. (WHAM from 5.15). Agricultural markets, WBZ. Skippy, children's program, WABC WAAB WEAN WDRS WCAU. Organ Recital, WNAC WICC WFEA WORC. Dental Clinic of the Air, WLOE, 30 m. Value Hunter, WHEB. 5.15 P.M. The Monitor Views the News, WBZ. Phil Regan, tenor, WABC WNAC WEAN WFEA WDRS WORC. Melody Mart, WAAB. Daffy Dilly, WHEB. 5.30 P.M. Alma Schirmer, pianist, WEA F WJAR WTAG WGY. Principato's Hawaiian Orchestra, WEEI. Singing Lady, WJZ WBZ WHAM. Jack Armstrong, "All-American Boy," WABC WNAC WEAN WDRS WCAU. Sam Bittell's Orchestra, WAAB WICC WFEA WORC. Greater Boston Merchants Program, WLOE, 25 m. The Home Singer, WHEB. 5.45 P.M. Nursery Rhymes, WEA F WEEI WJAR WTAG WTAM. Mahdi the Magician, WCHS. Little Orphan Annie, WJZ WBZ WHAM. George Hall and Orchestra, WABC WAAB WEAN WICC WDRS WORC WLBZ. Cosmopolitans, trio, WNAC. Dial Revue, WFEA. Silver Strings, instrumental, WHDH. Profile Mystery, WHEB. 6.00 P.M. Viennese Ensemble, WEA F WCHS WTAG WTAM, 30 m. (WJAR from 6.15). The Evening Tattler, WEEI, 30 m. News, WJAR. Dick Messner and Orchestra, WJZ WBAL, 30 m. (WHAM from 6.15). Otto Gray's Oklahoma Cowboys, WBZ. Buck Rogers, WABC, WAAB WEAN WFEA WDRS. Football; news, WNAC. Sweet Music, WORC. Mother Goose Club, WLOE, 30 m. Carnival of Rhythm, WLEY. 6.15 P.M. Happy Landings—Mitzi Green, WBZ. H-B-A-O Rangers, cowboy drama, WABC WAAB WEAN WFEA WDRS WORC WLBZ. Yankee Singers, WNAC. "What's on the Air," WFEA. Miss Charm, beauty hints, WLEY. 6.30 P.M. Mid-Week Hymn Sing, WEA F News, WEEI WTAG WCHS. Mitzi Green—Happy Landings, WJAR. Kathryn Newman, soprano, WJZ WHAM WBAL. Temperature, sports, weather, WBZ. Betty Barthel, WABC WAAB WEAN WFEA WDRS WORC. Henry Parkman, Jr. (political), WNAC. Sport talk, WLOE. Edna Lavery, soprano, WLEY. 6.45 P.M. Shirley Howard, songs, WEA F WEEI WJAR WTAG. White Cross Nite Club, WCHS. Lowell Thomas, WJZ WBZ WHAM. Little Italy, sketch, WABC WAAB WEAN WFEA WDRS WLBZ. David J. Kelly (political), WNAC. Life of Reilly WORC. Radio R. employment Service; N. R. A. talk, WLOE. Dance Music, WLEY. 7.00 P.M. Rex Cole Mountaineers, WEA F WCHS. House of Eden, WEEI. The Sizzlers, WJAR WTAG. Amos 'n' Andy, WJZ WBZ WHAM. Myrt and Marge, WABC WNAC WEAN WDRS WLBZ. Scores, weather, news, WAAB. News, WORC. Bergeron Choral Society, WLOE. Famous Orchestras, WLEY, 30 m. 7.15 P.M. Billy Bachelor's Adventures, WEA F WJAR WTAG. After Dinner Revue, WEEI. Happy Landings—Mitzi Green, WCHS. National Advisory Council, WJZ WBZ WHAM, 30 m. Just Plain Bill, WABC WNAC WCAU. Palais d'Or Orchestra, WAAB WICC WORC. Time, news, weather, WEAN. Westminster Orchestra, WHDH. Kathleen McAllister, pianist, WLOE. 7.30 P.M. Lum and Abner, WEA F WEEI WJAR WCHS WTAG WGY. Fox Fur Trappers, WABC. Gladys Rice and Charles Carlisle, WFEA WDRS WLBZ. Talk by Francis J. W. Ford, WNAC WEAN. Circus marathon, WAAB. Major John Burke of Medford, WLOE. Harlem Madness, WLEY. 7.45 P.M. The Goldbergs, WEA F WEEI WJAR WCHS WTAG WGY WTAM. Don Carney's Dog Chats, WJZ WBZ WHAM. Boake Carter, WABC WNAC WCAU. Hotel Brunswick Orchestra, WAAB WEAN WICC WFEA WORC. Inverness Serenaders, WHDH. Herb Perry, baritone, WLOE. Hal Cummings, tenor, WLEY. 8.00 P.M. Frank Crumit and Julia Sanderson, WEA F WEEI WJAR WCHS WTAG WGY, 30 m. Eno Crime Clues, WJZ WBZ WHAM, 30 m. Elmer Everett Yess, WABC WNAC WEAN WICC WFEA WORC WLBZ. Bette Brooks, contralto, WAAB. Evening Reveries, WHDH. Eva Brahm's, soprano, WLOE. Alice and Arthur Sheehan, WLEY, 30 m. 8.15 P.M. Singin' Sam, WABC WNAC WEAN WDRS. Master of Mystery series, WAAB WICC WFEA WORC WLBZ, 30 m. Rosalind Galli, violinist, WLOE. 8.30 P.M. Wayne King and Orchestra, WEA F WEEI WJAR WCHS WTAG WGY, 30 m. Health talk; WJZ WBZ WHAM. The Voice of Experience, WABC WNAC WEAN WDRS. News, WFEA. James Blake, tenor, WLOE. Eddy Brown, violinist and Miniature Symphony Orchestra, WOR, 30 m. Golden Melody Entertainers, WLEY, 30 m. 8.45 P.M. Trade and Mark, songs, WJZ WBZ WHAM. Kate Smith's Swanee Serenaders, WABC WNAC WICC WFEA WORC WLBZ. Rhythm Twins, WAAB. Mo and Nel, WEAN. Boston Spiritual Singers, WLOE. 9.00 P.M. Ben Bernie and orchestra, WEA F WEEI WJAR WCHS WTAG WGY, 30 m. Household Musical Memories, Edgar A. Guest, poet, WJZ WBZ WHAM, 30 m. California Melodies, WABC WNAC WEAN WICC WFEA WDRS WORC WLBZ, 30 m. Organ Recital, WAAB. Serenaders, WLOE, 30 m. 9.15 P.M. Willie and Eugene Howard, WABC WNAC WEAN WFEA WDRS WLBZ, 30 m. Copley Plaza Orchestra, WAAB, 30 m. 9.30 P.M. Fire Chief program, WEA F WEEI WJAR WCHS WTAG WGY, 30 m. Pedro Via's Orchestra, WJZ WBAL, 1 h. (WHAM 30 m. from 9.45). Barn Dance, WBZ, 30 m. B. A. Rolfe's Orchestra, WHAM. Nino Martini and the Columbia Symphony Orchestra, WABC WNAC WEAN WICC WFEA WDRS WORC WLBZ, 30 m. Spanish Gables Orchestra, WLOE, 30 m. Footlight Echoes, soloists and orchestra, WOR, 30 m. 9.45 P.M. News, weather, WAAB. 10.00 P.M. Lives at Stake, musical and drama, WEA F WEEI WJAR WCHS WTAG WGY, 30 m. Gene and Glenn, patter, WBZ, 30 m. Legend of America, drama, WABC WAAB WICC WFEA WDRS WORC WLBZ, 30 m. Fabien Sevitzky and orchestra, Prof. Rogers of M.I.T., WNAC WEAN, 30 m. 10.30 P.M. Madame Sylvia of Hollywood, WEA F WJAR WTAG WGY. Phil Saltman's Baystaters, WEEI, 30 m. Miniature Theatre, WJZ WBAL WHAM, 30 m. Bradford Organ Recital, WBZ. The Boswell Sisters, WABC WAAB WICC WDRS WORC WLBZ. Over the Cameraman's Shoulder, WNAC. 10.45 P.M. Robert Simmons, tenor, WEA F WJAR WCHS WTAG WGY. News, WBZ. Howard Barlow and the New World Symphony, "Siegfried Idyl," finale of "Gottterdammerung," WABC WAAB WEAN WICC WDRS WORC WLBZ, 30 m.; WFEA, 15 m. Scores, weather, news, WNAC. 11.00 P.M. Weather news, WEEI WJAR WCHS WTAG. Larry Adler and Pauline Albert, WJZ WHAM. Weather, temperature, sports, WBZ. Gene Burchell's Orchestra, WLW, 30 m. Hotel Brunswick Orchestra, WNAC, 30 m. Moonbeams, WOR, 30 m. 11.15 P.M. Benny Meroff's Orchestra, WEA F WEEI WJAR WCHS WTAG. The Poet Prince, WJZ WHAM. Herbert Marsh's Orchestra, WBZ. Columbia News, WABC WAAB WEAN WDRS WORC WLBZ. 11.30 P.M. Talkie Picture Time, WEA F WEEI WJAR WCHS WTAG WGY, 30 m. Ernie Holst's Orchestra, WJZ WBZ WHAM, 30 m. Isham Jones' Orchestra, WABC WNAC WEAN WORC, 30 m. Wayne King's Orchestra, 20 m.; Bernie Cummins' Orchestra, 20 m.; George Devron's Orchestra, 20 m.; WGN. Ozzie Nelson's Orchestra, WOR, 30 m. 12.00 M. Meyer Davis Orchestra, WEA F WJAR WGY, 30 m. Phil Harris' Orchestra, WJZ WBZ WHAM, 30 m. Tom Gerun's Orchestra, WABC WNAC WICC, 30 m. Roger Gerston's Orchestra, WOR, 30 m. 12.30 A.M. Reggie Childs Orchestra, WEA F WGY, 30 m. Mark Fisher's Orchestra, WJZ WBZ WHAM, 30 m. Clyde Lucas's Orchestra, WABC WNAC WICC, 30 m. Charlie Agnew's Orchestra, WGN, 30 m. 1.00 A.M. Gene Burchell's Orchestra, WLW, 30 m. Fletcher Henderson's Orchestra, WABC, 30 m. Bernie Cummins' Orchestra; Richard Cole's Orchestra; Jan Garber's Orchestra, WGN, 1 h., 30 m. 1.30 A.M. Moon River, WLW, 30 m.

Glamorous



GERTRUDE NIESEN, CBS songstress, featured on the "Big Show" programs on Mondays and also on a number of sustaining programs throughout the week.

1.45 P.M. Smackout, comedy, WJZ. Jack and Jerry Foy, WBZ. Painted Dreams, WABC WCAU. Sam Bittell's Orchestra, WAAB, WORC. Home Sweet Home, skit, WHDH. 2.00 P.M. Merry Madcaps, WEA F WEEI WJAR WCHS WTAG WTIC, 30 m. Musical Originalities, WJZ WBZ, 30 m.; WHAM, 15 m. Ohio School of the Air, WLW, 1 h. Madison Ensemble, WABC WNAC WICC WDRS, WORC, 30 m. (WEAN from 2.15). Matinee Notes, WAAB, 1 h. Radio Stagers, playlet, WHDH, 30 m. Stocks; Romancing in Melodyland, WBSO, 25 m. Matinee Melodies, WLEY. 2.15 P.M. School of the Air, social study, WHAM. Tea Dance Music, WLEY. 2.30 P.M. The Harmonians, WEA F WEEI WJAR WCHS WTAG WGY. Mrs. Charles Brusie, talk, WTIC. Syncopators, dance music, WJZ WBZ WHAM. Ann Leaf, organist, WABC WNAC WEAN WICC WDRS WORC, 30 m. Stocks; The Music Room, WBSO, 30 m. Styles in New York, WLEY. 2.45 P.M. Happy Jack Turner, WJZ WBZ WHAM. 3.00 P.M. Blue Room Echoes, orchestra, WEA F WJAR WCHS WTAG WTIC WGY, 30 m. Del Castillo, organist, WEEI, 30 m. Betty and Bob, dramatic sketch, WJZ WBZ WHAM. Metropolitan Parade, WABC WNAC WEAN WICC WDRS WORC, 30 m. Weather, news, WAAB. Nancy Lee program, WHDH, 1 h. Garden Club, WBSO. 3.15 P.M. Words and Music, WJZ WHAM, 30 m.; WBZ, 15 m. Donald Van Wart, pianist, WAAB. Closing stock quotations, WBSO. Farm flash, WHEB. 3.30 P.M. Women's Radio Review, WEA F WJAR WCHS WTAG WGY, 30 m. WEEI Reading Circle, WEEI, 30 m. Home Forum Cooking School, WBZ, 30 m. Jack Brook's Orchestra, WABC WNAC WEAN WICC WDRS WORC, 30 m. Hi-de-ho Orchestra, WAAB, 30 m. Good Cheer Service, First Church of Christ Scientist, WBSO, 30 m. Living Messages, WHEB, 30 m. 3.45 P.M. Jack Walton's Orchestra, WJZ WHAM, 30 m. 4.00 P.M. The Golden Treasury, WEA F WJAR WCHS WTAG WGY, 30 m. (WEEI from 4.15). News, stocks, WEEI. U. S. Navy Band, WABC WNAC WEAN WICC WFEA WDRS WORC, 30 m. Hits and Encores, WAAB, 1 h. Tea Time Tunes; WBSO, 45 m. Melody Maker, WHEB. 4.15 P.M. Meredith Wilson's Orchestra, WJZ WHAM, 30 m. Mrs. Joseph B. Ely, talk, WBZ. Florence Ingram, soprano, WHEB. 4.30 P.M. Tea Dansant, WEA F WJAR WCHS WTAG WGY. Marjorie Possell, violinist, WEEI, 30 m. Through the Hollywood Looking Glass, WBZ. News; Enoch Light Orchestra, WNAC WEAN WICC WFEA WDRS WORC, 30 m.; WABC, 15 m. Tea Dance Music, 20 m.; Dr. Wells Allen Ruble, 10 m., WLOE. Beth Trask, pianist, WHEB. 4.45 P.M. Lady Next Door, WEA F WJAR WTAG. Going Forward with Lewiston, WCHS, 1 h. Speaker, WJZ WHAM. Lillian Bernstein, pianist, WBZ. Ye Happy Minstrel, WABC WCAU. Roger's Mother, WBSO. Bass Notes, WHEB. 5.00 P.M. Ortiz Tirado, WEA F WJAR WTAG, 30 m.; (WEEI WGY from 5.15). George Allen, tenor, WEEI. Casino Orchestra, WJZ WBAL, 30 m. (WHAM from 5.15). Agricultural markets, WBZ. Skippy, children's program, WABC WAAB WEAN WDRS WCAU. Organ Recital, WNAC WICC WFEA WORC. Dental Clinic of the Air, WLOE, 30 m. Value Hunter, WHEB. 5.15 P.M. The Monitor Views the News, WBZ. Phil Regan, tenor, WABC WNAC WEAN WFEA WDRS WORC. Melody Mart, WAAB. Daffy Dilly, WHEB. 5.30 P.M. Alma Schirmer, pianist, WEA F WJAR WTAG WGY. Principato's Hawaiian Orchestra, WEEI. Singing Lady, WJZ WBZ WHAM. Jack Armstrong, "All-American Boy," WABC WNAC WEAN WDRS WCAU. Sam Bittell's Orchestra, WAAB WICC WFEA WORC. Greater Boston Merchants Program, WLOE, 25 m. The Home Singer, WHEB. 5.45 P.M. Nursery Rhymes, WEA F WEEI WJAR WTAG WTAM. Mahdi the Magician, WCHS. Little Orphan Annie, WJZ WBZ WHAM. George Hall and Orchestra, WABC WAAB WEAN WICC WDRS WORC WLBZ. Cosmopolitans, trio, WNAC. Dial Revue, WFEA. Silver Strings, instrumental, WHDH. Profile Mystery, WHEB. 6.00 P.M. Viennese Ensemble, WEA F WCHS WTAG WTAM, 30 m. (WJAR from 6.15). The Evening Tattler, WEEI, 30 m. News, WJAR. Dick Messner and Orchestra, WJZ WBAL, 30 m. (WHAM from 6.15). Otto Gray's Oklahoma Cowboys, WBZ. Buck Rogers, WABC, WAAB WEAN WFEA WDRS. Football; news, WNAC. Sweet Music, WORC. Mother Goose Club, WLOE, 30 m. Carnival of Rhythm, WLEY. 6.15 P.M. Happy Landings—Mitzi Green, WBZ. H-B-A-O Rangers, cowboy drama, WABC WAAB WEAN WFEA WDRS WORC WLBZ. Yankee Singers, WNAC. "What's on the Air," WFEA. Miss Charm, beauty hints, WLEY. 6.30 P.M. Mid-Week Hymn Sing, WEA F News, WEEI WTAG WCHS. Mitzi Green—Happy Landings, WJAR. Kathryn Newman, soprano, WJZ WHAM WBAL. Temperature, sports, weather, WBZ. Betty Barthel, WABC WAAB WEAN WFEA WDRS WORC. Henry Parkman, Jr. (political), WNAC. Sport talk, WLOE. Edna Lavery, soprano, WLEY. 6.45 P.M. Shirley Howard, songs, WEA F WEEI WJAR WTAG. White Cross Nite Club, WCHS. Lowell Thomas, WJZ WBZ WHAM. Little Italy, sketch, WABC WAAB WEAN WFEA WDRS WLBZ. David J. Kelly (political), WNAC. Life of Reilly WORC. Radio R. employment Service; N. R. A. talk, WLOE. Dance Music, WLEY. 7.00 P.M. Rex Cole Mountaineers, WEA F WCHS. House of Eden, WEEI. The Sizzlers, WJAR WTAG. Amos 'n' Andy, WJZ WBZ WHAM. Myrt and Marge, WABC WNAC WEAN WDRS WLBZ. Scores, weather, news, WAAB. News, WORC. Bergeron Choral Society, WLOE. Famous Orchestras, WLEY, 30 m. 7.15 P.M. Billy Bachelor's Adventures, WEA F WJAR WTAG. After Dinner Revue, WEEI. Happy Landings—Mitzi Green, WCHS. National Advisory Council, WJZ WBZ WHAM, 30 m. Just Plain Bill, WABC WNAC WCAU. Palais d'Or Orchestra, WAAB WICC WORC. Time, news, weather, WEAN. Westminster Orchestra, WHDH. Kathleen McAllister, pianist, WLOE. 7.30 P.M. Lum and Abner, WEA F WEEI WJAR WCHS WTAG WGY. Fox Fur Trappers, WABC. Gladys Rice and Charles Carlisle, WFEA WDRS WLBZ. Talk by Francis J. W. Ford, WNAC WEAN. Circus marathon, WAAB. Major John Burke of Medford, WLOE. Harlem Madness, WLEY. 7.45 P.M. The Goldbergs, WEA F WEEI WJAR WCHS WTAG WGY WTAM. Don Carney's Dog Chats, WJZ WBZ WHAM. Boake Carter, WABC WNAC WCAU. Hotel Brunswick Orchestra, WAAB WEAN WICC WFEA WORC. Inverness Serenaders, WHDH. Herb Perry, baritone, WLOE. Hal Cummings, tenor, WLEY. 8.00 P.M. Frank Crumit and Julia Sanderson, WEA F WEEI WJAR WCHS WTAG WGY, 30 m. Eno Crime Clues, WJZ WBZ WHAM, 30 m. Elmer Everett Yess, WABC WNAC WEAN WICC WFEA WORC WLBZ. Bette Brooks, contralto, WAAB. Evening Reveries, WHDH. Eva Brahm's, soprano, WLOE. Alice and Arthur Sheehan, WLEY, 30 m. 8.15 P.M. Singin' Sam, WABC WNAC WEAN WDRS. Master of Mystery series, WAAB WICC WFEA WORC WLBZ, 30 m. Rosalind Galli, violinist, WLOE. 8.30 P.M. Wayne King and Orchestra, WEA F WEEI WJAR WCHS WTAG WGY, 30 m. Health talk; WJZ WBZ WHAM. The Voice of Experience, WABC WNAC WEAN WDRS. News, WFEA. James Blake, tenor, WLOE. Eddy Brown, violinist and Miniature Symphony Orchestra, WOR, 30 m. Golden Melody Entertainers, WLEY, 30 m. 8.45 P.M. Trade and Mark, songs, WJZ WBZ WHAM. Kate Smith's Swanee Serenaders, WABC WNAC WICC WFEA WORC WLBZ. Rhythm Twins, WAAB. Mo and Nel, WEAN. Boston Spiritual Singers, WLOE. 9.00 P.M. Ben Bernie and orchestra, WEA F WEEI WJAR WCHS WTAG WGY, 30 m. Household Musical Memories, Edgar A. Guest, poet, WJZ WBZ WHAM, 30 m. California Melodies, WABC WNAC WEAN WICC WFEA WDRS WORC WLBZ, 30 m. Organ Recital, WAAB. Serenaders, WLOE, 30 m. 9.15 P.M. Willie and Eugene Howard, WABC WNAC WEAN WFEA WDRS WLBZ, 30 m. Copley Plaza Orchestra, WAAB, 30 m. 9.30 P.M. Fire Chief program, WEA F WEEI WJAR WCHS WTAG WGY, 30 m. Pedro Via's Orchestra, WJZ WBAL, 1 h. (WHAM 30 m. from 9.45). Barn Dance, WBZ, 30 m. B. A. Rolfe's Orchestra, WHAM. Nino Martini and the Columbia Symphony Orchestra, WABC WNAC WEAN WICC WFEA WDRS WORC WLBZ, 30 m. Spanish Gables Orchestra, WLOE, 30 m. Footlight Echoes, soloists and orchestra, WOR, 30 m. 9.45 P.M. News, weather, WAAB. 10.00 P.M. Lives at Stake, musical and drama, WEA F WEEI WJAR WCHS WTAG WGY, 30 m. Gene and Glenn, patter, WBZ, 30 m. Legend of America, drama, WABC WAAB WICC WFEA WDRS WORC WLBZ, 30 m. Fabien Sevitzky and orchestra, Prof. Rogers of M.I.T., WNAC WEAN, 30 m. 10.30 P.M. Madame Sylvia of Hollywood, WEA F WJAR WTAG WGY. Phil Saltman's Baystaters, WEEI, 30 m. Miniature Theatre, WJZ WBAL WHAM, 30 m. Bradford Organ Recital, WBZ. The Boswell Sisters, WABC WAAB WICC WDRS WORC WLBZ. Over the Cameraman's Shoulder, WNAC. 10.45 P.M. Robert Simmons, tenor, WEA F WJAR WCHS WTAG WGY. News, WBZ. Howard Barlow and the New World Symphony, "Siegfried Idyl," finale of "Gottterdammerung," WABC WAAB WEAN WICC WDRS WORC WLBZ, 30 m.; WFEA, 15 m. Scores, weather, news, WNAC. 11.00 P.M. Weather news, WEEI WJAR WCHS WTAG. Larry Adler and Pauline Albert, WJZ WHAM. Weather, temperature, sports, WBZ. Gene Burchell's Orchestra, WLW, 30 m. Hotel Brunswick Orchestra, WNAC, 30 m. Moonbeams, WOR, 30 m. 11.15 P.M. Benny Meroff's Orchestra, WEA F WEEI WJAR WCHS WTAG. The Poet Prince, WJZ WHAM. Herbert Marsh's Orchestra, WBZ. Columbia News, WABC WAAB WEAN WDRS WORC WLBZ. 11.30 P.M. Talkie Picture Time, WEA F WEEI WJAR WCHS WTAG WGY, 30 m. Ernie Holst's Orchestra, WJZ WBZ WHAM, 30 m. Isham Jones' Orchestra, WABC WNAC WEAN WORC, 30 m. Wayne King's Orchestra, 20 m.; Bernie Cummins' Orchestra, 20 m.; George Devron's Orchestra, 20 m.; WGN. Ozzie Nelson's Orchestra, WOR, 30 m. 12.00 M. Meyer Davis Orchestra, WEA F WJAR WGY, 30 m. Phil Harris' Orchestra, WJZ WBZ WHAM, 30 m. Tom Gerun's Orchestra, WABC WNAC WICC, 30 m. Roger Gerston's Orchestra, WOR, 30 m. 12.30 A.M. Reggie Childs Orchestra, WEA F WGY, 30 m. Mark Fisher's Orchestra, WJZ WBZ WHAM, 30 m. Clyde Lucas's Orchestra, WABC WNAC WICC, 30 m. Charlie Agnew's Orchestra, WGN, 30 m. 1.00 A.M. Gene Burchell's Orchestra, WLW, 30 m. Fletcher Henderson's Orchestra, WABC, 30 m. Bernie Cummins' Orchestra; Richard Cole's Orchestra; Jan Garber's Orchestra, WGN, 1 h., 30 m. 1.30 A.M. Moon River, WLW, 30 m.

Two Kinds of Change



HARRY McNAUGHTON, heard with Phil Baker on the Armour program on NBC, tells of a Scotsman who laid down a \$20 bill at the ticket office in Washington for a ticket to New York. "Change at Jersey City," said the ticket seller. "Not on your life," protested the Scot, "you give me my change right here."

Nurse Wanted

French or Swiss, for child eighteen months old, at year round country home. Must be in on quota. Apply by letter, giving copies of references to

Department B THE MICROPHONE 244 Washington St., Boston

Wednesday, October 11 - John McCormack, Noted Tenor, on WBZ at 9.30 P.M.

Highlights

P.M.

- 7.15—Lady Astor, BBC-WBZ
- 7.30—Cyrena Van Gordon, NBC-WBZ
- 8.00—Bert Lahr, NBC-WEEI
- 8.30—Albert Spalding, CBS-WNAC
- 9.00—Irvin Cobb, CBS-WNAC
- 9.30—Warden Lawes, NBC-WBZ
- 9.30—Burns and Allen, CBS-WNAC
- 10.00—Fred Waring's Pennsylvanians, CBS-WNAC

- 6.30 A.M.**
Gene and Glenn, patter, WBZ, 1 h.
Sunrise Melodies, organ, WNAC, 45 m.
- 6.45 A.M.**
Health Exercises, WEAF WEEI WGY, 1 hr. 15 m.
- 7.00 A.M.**
Morning Melodies, WHDH
- 7.15 A.M.**
Weather report, news, time, WNAC
Musical Alarm Clock, WHDH, 30 m.
- 7.30 A.M.**
Jolly Bill and Jane, WJZ
Musical Clock, orchestra, WBZ, 30 m.
Organ Reveille, WABC, 30 m.
Morning Watch, WNAC
Morning Devotions, WEAN
- 7.45 A.M.**
Yoichi Hiraoka, xylophonist, WJZ
Records and shopping news, WNAC, 1 h., 15 m.
Shopper's Exchange, WEAN, 45 m.
Flying Fingers, WHDH
- 8.00 A.M.**
Organ Rhapsody, WEAF WJAR WTAG 30 m.;
WCSH, 15 m. (WGY from 8.15)
E. B. Rideout; news, WEEI
Morning Devotions, WJZ WBZ WHAM
Salon Musicale, WABC, 30 m.
Morning Watch, WORC
Hickory Nuts, WHDH, 30 m.
- 8.15 A.M.**
Caroline Cabot's Shopping Service, WEEI
Morning Devotions, WCSH
Don Hall Trio, WJZ WBZ WHAM
Musical Time Table, WORC, 45 m.
Minute Man, WHEB
- 8.30 A.M.**
Cheerio, WEAF WEEI WJAR WCSH WTAG
WGY WTAM, 30 m.
Lew White, organist, WJZ WBAL WHAM,
30 m. (WBZ from 8.33)
Time, weather, temperature, WBZ
Sunny Melody, WABC, 30 m.
Cronin at the Console, WAAB WEAN, 30 m.
Organ Melodies, WHDH
News, Mal Hammond, WBSO
Morning Devotions, WHEB, 30 m.
- 8.45 A.M.**
Jim Mason, minstrel, WHDH
Popular Hits, WBSO
- 9.00 A.M.**
Morning Glories, WEAF WCSH WTAG WGY
Filene's Clothes Institute, WEEI
Time; shopping news, WJAR
Breakfast Club Dance, WJZ WBAL, 1 h.
(WHAM from 9.15; WBZ from 9.30)
Virginia Reade, talk, WBZ, 30 m.
Reis and Dunn, comedy team, WABC WAAB
WEAN WICC WFEA WDRG WORC WLBZ
Shepard's Nine O'clock Revue, WNAC, 30 m.
Nancy Lee program, WHDH, 1 h.
Needham Paramount Organ, WBSO, 1 h.
Stop and Shop, WHEB, 30 m.
- 9.15 A.M.**
Laudt Trio and White, WEAF WEEI WJAR
WCSH WGY
Capitol Theatre organ, WTAG
Goldy and Dusty, WDRG WORC WCAU
The Three Gems, WABC
The Shopper's Special, WAAB, 45 m.
News, weather, WEAN
Aunt Sammy, WFEA
- 9.30 A.M.**
Bradley Kincaid, WEAF WJAR WCSH WGY
WTAM
New England Kitchen of the Air, WEEI, 30 m.
Organ, WTAG
Metropolitan Parade, WABC WNAC WEAN
WICC WFEA WDRG WORC, 30 m.
Gems from the Masters, WHEB, 30 m.
- 9.45 A.M.**
Florinda Trib, WEAF WJAR WCSH WGY
Radio Kitchen, WTAG
- 10.00 A.M.**
Mystery Chef, WEAF WEEI WJAR WCSH
WTAG WTAM WGY
Four Southern Singers, WJZ WBZ WBAL
Oxol Feature, WABC WAAB WEAN
Buddy Clark, WNAC
Tuneful Topics, WORC
Question and Answer Man, WHDH, 30 m.
Mass. Federation of Churches, WBSO
A Good Morning Cheer, WLOE
Double Four Spades, WHEB
- 10.15 A.M.**
Young Artists Trio, WEAF WEEI WJAR
WCSH WTAG WGY
Jack and Jerry Foy, WBZ
Painted Dreams, WABC WCAU
Sam Bittell's Orchestra, WAAB WORC
Home Sweet Home, WHDH
Matinee Melodies, WLEY
- 10.30 A.M.**
The Three Scamps, WEAF WEEI WJAR
WCSH WTAG WTAM
Today's Children, WJZ WBZ WBAL
In the Luxembourg Gardens, WABC WAAB
WEAN WICC WFEA WDRG WORC
V. E. Meadows, beauty talk, WNAC
Broadcast to Fishermen, WHDH 30 m.
Stock market quotations, WBSO
East Boston Community Program, WLOE,
45 m.
Women's Forum, WHEB, 30 m.
- 10.45 A.M.**
Cooking Talk—Betty Crocker, WEAF WEEI
WJAR WCSH WTAG WGY
Singing Strings, WJZ, 30 m. (WBZ from 11.00)
Home Making Hints, WBZ
Pedro de Cordoba, WABC WNAC WEAN
Cocoanut Grove Ambassadors, WAAB WFEA
Parade of Dance Tunes, WBSO
- 11.00 A.M.**
Juan Reyes, pianist, WEAF WJAR WCSH
WTAG
Edison Friendly Kitchen, WEEI
Kitchen Close-ups, WABC WNAC WEAN
WDRG
Martha Lee's Cooking School, WAAB
What's on the Air, WFEA
Morning Melodies, WORC
Watch Tower Lecture, WHDH
Stocks; Pageant of Music, WBSO
Music Appreciation, WHEB, 30 m.

- 11.15 A.M.**
Radio Household Institute, WEAF WEEI
WJAR WCSH WTAG WGY
Marion and Jim Jordan, WJZ WHAM
Women's Club News, WBZ
Four Showmen, quartet, WABC WNAC
WEAN WFEA WDRG WORC
Question and Answer Man, WAAB
Waggin' Tongues, skit, WHDH
Merchant's Air Revue, WBSO
Chelsea Community Program, WLOE, 45 m.
- 11.30 A.M.**
Betty Moore, WEAF WEEI WTAG WGY
Musical program, WJAR WCSH
U. S. Army Band, WJZ WBAL, 30 m.; WBZ,
15 m.
Tony Wons, WABC WNAC WEAN WFEA
WDRG WORC
Shopping with Dorothy Dean, WAAB, 30 m.
Frank Broughton, tenor, WHDH
Stocks, Merchants' Air Review, WBSO
Barber Shop Chords, WHEB, 30 m.
- 11.45 A.M.**
Fields and Hall, WEAF WEEI WJAR WTAG
WGY
News, WCSH
The Monitor Views the News, WBZ
Happiness on Melody Lane, WABC
Dancing Echoes, WFEA WORC
News, weather, WNAC
Street Singer; shopping news, WEAN
Edna Glukas, soprano, WHDH
Your Investments, Leroy D. Peavey, WBSO
- 12.00 N.**
Gene Arnold and Commodores, WEAF WEEI
WJAR WCSH WTAG WGY
Vic and Sade, WJZ WBZ WBAL
Voice of Experience, WABC WNAC WEAN
WDRG
Noonday Musicale, organ, WAAB, 30 m.;
WLBZ WORC, 15 m.
News; dial revue, WFEA
Farm flashes, WHDH
Stocks; Flying Fingers, pianist, WBSO, 30 m.
Somerville Community Program, WLOE, 30 m.
Luncheon Dance Music, WLEY, 30 m.
Dorothy Bradford, WHEB, 30 m.
- 12.15 P.M.**
Johnny Marvin, tenor, WEAF WJAR WTAM
News, stocks, markets, WEEI, 30 m.
Farm flashes, WCSH
Skip, Step and Happiana, WTAG
The Widow and Angel, WJZ WBAL
Weather; agricultural markets, WBZ
Smiling "Ed" McConnell, WABC WNAC
WEAN WFEA WDRG WORC WLBZ
Melody Parade, organ, WHDH, 30 m.
- 12.30 P.M.**
On Wings of Song, string trio, WEAF WCSH
30 m.; WJAR, 15 m. WTAG from 12.45
Farm flashes, WTAG
WGY Farm Program, WGY, 30 m.
National Farm and Home Hour, WJZ WBZ
WHAM, 1 h.
News; Mischa Raginsky Ensemble, WABC
WDRG WPG, 30 m.; WNAC WEAN, 5 m.
(WORC WFEA from 12.45)
Health talk; CBS; Street Singer, WNAC,
25 m. from 12.35
Stocks; news, WAAB WORC
Temperature, news, weather, WEAN
N. H. Extension Service, WFEA
Stocks; Contemporary Composers, WBSO,
30 m.
Dental Clinic of the Air, WLOE, 30 m.
Fletcher W. Taft, news, WLEY
N. H. Farm Manuscript, WHEB
- 12.45 P.M.**
Caroline Cabot, WEEI, 30 m.
Housekeepers' Chat, WJAR
Farm flashes, WAAB
Around the Town, WEAN, 30 m.
Dick Edwards, WHDH
Dance music, WLEY
Dancing to Health, WHEB
- 1.00 P.M.**
Market and weather reports, WEAF
News, WJAR, WTAG
Church Federation Service, WCSH, 30 m.
Albany on Parade, WGY, 30 m.
Marie, the little French princess, WABC
WNAC WPG
Circus marathon, WAAB
Matinee, WORC
Yen Ho Orchestra, WHDH, 30 m.
Miss Charm, beauty hints, WLEY
Telespins; news, WHEB, 30 m.
- 1.15 P.M.**
The Four Horsemen, quartet, WEAF WEEI
WJAR WCSH WTAG WGY
The Playboys, WABC WAAB WICC WDRG
WORC
The Shopper's Exchange, WNAC, 45 m.
Going Forward with Providence, WEAN, 1 h.
Afternoon Dance Rhythms, WLEY
- 1.30 P.M.**
Concert Ensemble, WEAF WEEI WJAR
WCSH WTAG WGY, 30 m.
The Merrie-Men, quartet, WJZ
Highway safety talk; organ, WBZ
School of the Air, science, WHAM, 30 m.
Gene Burchell's Orchestra, WLW, 30 m.
Easy Aces, WABC WCAU
Luncheon Music from Copley Plaza, WAAB
WORC
Phil Bayon, WHDH
Stocks; Brockton Novelty program, WBSO,
30 m.
Watchtower, Judge Rutherford, WLEY
- 1.45 P.M.**
Smackout, comedy, WJZ
Jack and Jerry Foy, WBZ
Painted Dreams, WABC WCAU
Sam Bittell's Orchestra, WAAB WORC
Home Sweet Home, WHDH
Matinee Melodies, WLEY
- 2.00 P.M.**
Dick Fiddler's Orchestra, WEAF WEEI
WJAR WCSH WTAG WGY
Musical Originalities, WJZ WBZ, 30 m.;
WHAM, 15 m.
Ohio School of the Air, WLW, 1 h.
Ann Leaf, organist, WABC WNAC WICC
WDRG WORC WPG, 30 m. (WEAN from
2.15)
Matinee Notes, WAAB, 1 h.
Ted Sands orchestra, WHDH, 30 m.
Stocks; Romancing in Melody Land, WBSO
Melrose Community Program, WLEY, 1 h.
- 2.15 P.M.**
School of the Air, social science, WHAM
Bud, Buddy, impersonations, WBSO
- 2.30 P.M.**
Two Seats in the Balcony, WEAF WJAR
WCSH WTAG WGY, 30 m.
New England Kitchen, WEEI, 30 m.
Syncoaters, dance orchestra, WJZ WHAM
WBAL
Chickering Program, WBZ, 30 m.
Husk O'Hare's Orchestra, WABC WNAC
WEAN WICC WDRG WORC
Studio program, WHDH
Stocks; Studio Chatterbox, WBSO
- 2.45 P.M.**
Happy Jack Turner, songs, WJZ WHAM
WBAL
The Captivators, WABC WNAC WEAN WICC
WDRG WORC, 30 m.
The Music Room, WBSO
Tommy Moran, songs, WHDH

"Mlle. Modiste"




FRITZI SCHEFF, beloved star of opera and musical comedy, appears as guest with Ipana Troubadours on an NBC-WEAF network Wednesday at 9 p.m.

- 5.45 P.M.**
Wizard of Oz, WEAF WEEI WJAR WTAG
WCSH WGY WTAM
Salon Trio, WTIC, WAAB
Little Orphan Annie, WJZ WBZ WHAM
Cowboy Tom and Indian Chief, WABC WAAB
WDRG
Yankee Mixed Quartet, WNAC WEAN WICC
WORC
Dial revue, WFEA
Silver Strings, instrumental, WHDH
- 6.00 P.M.**
Viennese Ensemble, WEAF WCSH WTAG
The Evening Tattler, WEEI, 30 m.
News, weather, WJAR
Wrightville Clarion, WTIC, 30 m.
Dick Messner's Orchestra, WJZ, 30 m. (WHAM
from 6.15)
Otto Gray's Oklahoma Cowboys, WBZ, 30 m.
Buck Rogers, WABC WAAB WEAN WFEA
WDRG
Vincent Lopez; news, WNAC
Sweet Music, WORC
Mother Goose Club, WLOE, 30 m.
Waltham Prosperity program, WLEY, 1 h.
- 6.15 P.M.**
H-Bar-O Rangers, cowboy drama, WABC
WAAB WEAN WDRG WORC WLBZ
Henry Parkman, Jr., political, WNAC
What's on the Air, WFEA
The puzzle man, WHDH
- 6.30 P.M.**
Back of the News, WEAF WGY
Columbus Day speaker, WJAR
News, WEEI WCSH
Merry Madcaps, WTIC
Tune Vendors, WJZ
Sports, weather, WBZ WTAG
Vera Van, contralto, WABC WAAB WEAN
WDRG WORC WLBZ
Detectives Black and Blue, WNAC
Pariseau's Style Show, WFEA, 30 m.
Song Pictures, WHDH
Sport talk, WLOE
- 6.45 P.M.**
John Pierce, tenor, WEAF
Uncle Ned, weather man, WEEI WJAR
WCSH WTAG WTIC
Lowell Thomas, news, WJZ WBZ WHAM
Jennie Lang and Scrappy Lambert, WABC
World Founders Day of Y. M. C. A., WAAB
WDRG
Marvelous Melodies, WNAC WEAN
Warren Stanton, tenor, WORC
Y. M. C. A. New Yorkers Orchestra, WHDH
Radio Re-employment Service; N.R.A. talk,
WLOE
- 7.00 P.M.**
Charlie Leland, comedian, WEAF WEEI
WJAR WTAG WTIC WGY
Amos n' Andy, WJZ WBZ WHAM
Myrt and Marge, WABC WNAC WEAN
WDRG
Scores, weather, news, WAAB WCSH WORC
Watch Tower, WFEA
Westminster Orchestra, WHDH
Polish Fantasy, WLOE, 45 m.
Thirty Minutes with Famous Orchestras,
WLEY, 30 m.
- 7.15 P.M.**
Billy Bachelor's Adventures, WEAF WJAR
WTAG
After Dinner Review, WEEI
Your request program, WTIC
Moe and Nell, WCSH
Founders Day Y. M. C. A. Lady Nancy
Astor, speaker, WJZ WBZ WHAM
Just Plain Bill, WABC WNAC WCAU
Palais d'Or Orchestra, WAAB WORC WLBZ
News, sports, weather, WEAN
The Gossipers, WHDH
- 7.30 P.M.**
Lum and Abner, comedy, WEAF WEEI
WJAR WCSH WTAG WGY
Cyrena Van Gordon, WJZ
Dramas from Real Life; organ, WBZ
Robert Armbruster's Ensemble and chorus,
WABC WNAC WEAN WICC WFEA
WDRG WORC WLBZ
Circus marathon, WAAB
Studio program, WHDH
Arlington N.R.A. program, WLEY, 1 h. 30 m.
- 7.45 P.M.**
The Gobbers, WEAF WEEI WJAR WCSH
WTAG WGY WTAM
Irene Rich, WJZ WBZ WHAM
Boake Carter, news, WABC WNAC WCAU
Hotel Brunswick Orchestra, WAAB WICC
WFEA WORC
With the Governor on Capitol Hill, WEAN
Rhythm Rebels, WHDH
Hon. Francis X. Tyrrell, WLOE
- 8.00 P.M.**
Fannie Brice, WEAF WEEI WJAR WCSH
WTAG WTIC WGY, 30 m.
Eno Crime Clues, WJZ WBZ WHAM, 30 m.
Happy Bakers, with Harriet Lee, WABC
WNAC WICC WDRG WORC
Twentieth Century Ensemble, WAAB
The Serenaders, WEAN WLBZ
Evening Reveries, WHDH
Texas Rangers, WLOE
- 8.15 P.M.**
Edwin C. Hill with Singin' Sam, WABC
WNAC WEAN WDRG
Clara Bee and Eda, WAAB WICC WFEA
WORC
Paul Joyce, baritone, WLOE
- 8.30 P.M.**
Abe Lyman's Orchestra, WEAF WJAR WCSH
WTAG, 30 m.
New Deal on Main Street, WTIC, 45 m.
Conrad's Stage Show, WEEI, 30 m.
Marion Williams, songs, WGY
Potash and Perlmutter, WJZ WHAM
Golden Glow program, WBZ
Honey Adams and Gang, WLW, 30 m.

- Albert Spalding, violinist, Andante Cantabile
from Tchaikovsky's First String Quartet,
WABC WNAC WEAN WFEA WORC
WDRG WLBZ, 30 m.
Philadelphia Orchestra recordings, WAAB
30 m.
Toomey's Pipers, WLOE
- 8.45 P.M.**
Red Davis, drama, WJZ WBZ WHAM
Jack Granville, songs, WLOE
- 9.00 P.M.**
Ipana Troubadours, WEAF WJAR WCSH
WTAG WGY, 30 m.
Edward Jardon, tenor, WEEI, 30 m.
Russian Orchestra, WTIC
20,000 Years in Sing Sing, Warden Lawes,
WJZ WBZ WHAM, 30 m.
Irvin S. Cobb, WABC WNAC WEAN WICC
WFEA WDRG WORC WLBZ
Perley Stevens' Orchestra, WAAB
Victor Herbert Club, WLOE, 30 m.
- 9.15 P.M.**
Jack Denny's Orchestra, WTIC
Kate Smith, WABC WAAB WEAN WICC
WFEA WDRG WORC
David J. Kelly, political, WNAC
Aldrich's Imperial Hawaiians, WPG, 30 m.
- 9.30 P.M.**
Conrad Thibault, Leo Reisman's Orchestra
WEAF WJAR WCSH WTAG, 30 m.
Summerfield, WEEI, 30 m.
Travelers Hour, WTIC, 30 m.
General Electric presents Rice String Quartet,
a male vocal quartet and Antoinette Halstead,
contralto, WGY, 30 m.
John McCormack, tenor, WJZ WBZ WHAM,
30 m.
Cotton Queen Minstrels, WLW, 30 m.
Burns and Allen, WABC WNAC WEAN
WFEA WDRG WORC WLBZ, 30 m.
Meyer Davis Orchestra, WAAB
Truman Carewe's Orchestra, WLOE, 30 m.
- 9.45 P.M.**
Scores, news, weather, WAAB
- 10.00 P.M.**
Corn Cob Pipe Club of Virginia, WEAF WEEI
WJAR WCSH WTAG WTIC WGY, 30 m.
Ortiz Tirado, WJZ, 30 m., WHAM, 15 m.
Gene and Glenn, patter, WBZ, 30 m.
Fred Waring's Pennsylvanians with Harry
Richman and Milton Berle, WABC WNAC
WICC WFEA WDRG WORC
WBZ, 30 m.
Hughie Connor's Orchestra, WAAB, 30 m.
- 10.30 P.M.**
National Radio Forum, WEAF WEEI WJAR
WTAG WTIC WGY, 30 m. (WCSH from
10.45)
Music Magic, WJZ WHAM, 30 m.
Platinum Syncopators, WBZ
Alexander Woolcott, the town crier, WABC
WAAB WEAN WICC WFEA WDRG
WORC
Sid Reinherz' Orchestra, WNAC
- 10.45 P.M.**
Springfield Republican, news, WBZ
Evan Evans, WABC WAAB WEAN WFEA
WDRG WORC, 30 m.
Weather, news, WNAC
- 11.00 P.M.**
Meyer Davis and Orchestra, WEAF
E. B. Rideout; news, WEEI
News, WJAR WCSH WTAG
Merry Madcaps, WTIC
Annie, Judie and Zeke, WJZ WHAM
Weather, temperature, sports, WBZ
Gene Burchell's Orchestra, WLW, 30 m.
Meyer Davis' Orchestra, WNAC, 30 m.
Charlie Agnew's Orchestra, WGN
Moonbeams, WOR, 30 m.
- 11.15 P.M.**
The King's Jesters, WEAF WEEI WJAR
WTAG WCSH
The Poet Prince, WJZ WHAM
Herbert Marsh's Orchestra, WBZ
Columbia News Service, WABC WAAB WEAN
WFEA WDRG WORC
- 11.30 P.M.**
Ted Weems' Orchestra, WEAF WEEI WJAR
WCSH WTAG WTIC WGY, 30 m.
Jack Denny's Orchestra, WJZ WBZ WHAM,
30 m.
Ozzie Nelson's Orchestra, WABC WNAC
WEAN WICC WORC WLBZ, 30 m.
Wayne King's Orchestra, 20 m.; Bernie Cum-
mins' Orchestra, 20 m.; Don Carlos' Orches-
tra, 20 m.; WGN
William Scott's Orchestra, WOR, 30 m.
- 12.00 M.**
Dream Singer, 5 m.; Ben Bernie's Orchestra,
25 m. WEAF WJAR WTIC
Cab Calloway's Orchestra, WJZ WBZ WHAM
30 m.
Barney Rapp's Orchestra, WABC WNAC
WEAN WICC, 30 m.
Sam Robbins' Orchestra, WOR, 30 m.
- 12.30 A.M.**
Mark Fisher's Orchestra, WEAF WJAR WTIC
WLW, 30 m.
Henry King's Orchestra, WJZ WBZ WHAM,
30 m.
Pancho's Orchestra, WABC WNAC WEAN
WICC, 30 m.
Bernie Cummins' Orchestra; Jan Garber's
Orchestra; George Devron's Orchestra,
Richard Cole's Orchestra, WGN, 2 h.
- 1.00 A.M.**
Gene Burchell's Orchestra, WLW, 30 m.
Enoch Light's Orchestra, WABC, 30 m.
- 1.30 A.M.**
Moon River, WLW, 30 m.

POWERS'

Asthma Relief



has been a boon to the afflicted for over 50 years.

6 oz. 60c - 18 oz. \$1.20.

Buy at Your Local Druggist's or Write Direct

E. C. POWERS COMPANY

Box 62, Dorchester Center Station, Boston

Thursday, October 12 - International Speakers on NBC from 10.45 A.M. to 4.15 P.M.

Highlights

P.M.
4.15—Stanley Baldwin, BBC-WJZ
7.30—Fray and Braggiotti, CBS-WABC
8.00—Rudy Vallee, NBC-WEEI
8.00—Captain Diamond's Adventures, NBC-WBZ
9.00—Captain Henry's Show Boat, NBC-WEEI
9.30—Wayne King's Orchestra, NBC-WBZ
"Androcles" drama, CBS-WAAB
10.00—Jolson, Whiteman, Taylor, NBC-WEEI
10.30—Boswell Sisters, CBS-WAAB
Echoes of the Palisades, NBC-WJZ
6.30 A.M.
Gene and Glenn, patter, WBZ, 1 h.
Sunrise Melodies, organ, WNAC, 45 m.
6.45 A.M.
Tower Health Exercises, WEAFF WEEI WGY, 1 h., 15 m.
7.00 A.M.
Musical Clock, WTIC, 1 h.
Morning Melodies, WHDH
7.15 A.M.
Weather, time, news, WNAC
Musical Alarm Clock, WHDH, 30 m.
7.30 A.M.
Jolly Bill and Jane, WJZ
Musical Clock, orchestra, WBZ, 30 m.
Organ Revue, WABC, 30 m.
Morning Watch, WNAC
Morning Devotions, WEAN
7.45 A.M.
Yoichi Hiraoka, xylophonist, WJZ
Records and shopping news, WNAC, 1 h., 15 m.
Records and shopping news, WEAN, 45 m.
8.00 A.M.
Radio City Organ, WEAFF WJAR WTAG WGY 30 m.; WCHS, 15 m.
E. B. Rideout; news, WEEI
Collin Driggs, organist, WTIC, 30 m.
Morning Devotions, WJZ WBZ
Salon Musicale, WABC, 45 m.
Morning Watch, WORC
Hickory Nuts, WHDH, 30 m.
8.15 A.M.
Caroline Cabot, WEEI
Morning Devotions, WCHS
Don Hall Trio, WJZ WBZ WHAM
Musical Time Table, WORC, 45 m.
Minute Man, WHEB
8.30 A.M.
Cheerio, WEAFF WEEI WJAR WCHS WTAG WTIC WGY, 30 m.
Lew White, organist, WJZ WHAM, 30 m. (WBZ from 8.33)
Time, weather, temperature, WBZ
Cromin at the Console, WAAB WLBZ, 30 m. (WEAN from 8.45)
Providence school committee program, WEAN
Organ Melodies, WHDH
News, Mal Hammond, WBSO
Morning Devotions, WHEB, 30 m.
8.45 A.M.
Havens and Mack, WABC
Bill Vickland and Cadets, WHDH
Popular Hits, WBSO
9.00 A.M.
The Morning Glories, WEAFF WCHS WTAG Filene's Clothes Institute, WEEI
Outlet Store news, WJAR
Radio Bazaar, WTIC, 30 m.
Forrest Willis, WGY
Breakfast Club, dance, WJZ, 1 h. (WHAM, 30 m. from 9.15; WBZ from 9.30)
Virginia Reade, talk, WBZ, 30 m.
Eton Boys, quartet, WABC WAAB WEAN WICC WFEA WDRG WORC
Shepard's Nine O'Clock Revue, WNAC, 30 m.
Nancy Lee program, WHDH, 1 h.
Needham Paramount Organ, WBSO, 1 h.
Stop and Shop, WHEB, 30 m.
9.15 A.M.
Landt Trio and White, WEAFF WEEI WCHS WTAG WGY
Elementary School broadcast, WJAR
Goldy and Dusty, WDRG WORC WCAU
Records and shopping news, WAAB, 30 m.
News Tribune Globe Trotter, WEAN
Aunt Sammy, WFEA
In the Luxembourg Gardens, WABC, 30 m. (WNAC WEAN WICC WFEA WDRG WORC from 9.30)
9.30 A.M.
Bradley Kincaid, Hill Billy, WEAFF WEEI WJAR WCHS WTAG WTIC WGY
Gems from the Masters, WHEB, 30 m.
9.45 A.M.
The Wife Saver, skit, WEAFF WEEI WJAR WCHS WTAG WTIC WGY
Mystery Chef, WABC WAAB WEAN
The Mirth Parade, WNAC WORC
10.00 A.M.
Breen and De Rose, WEAFF WJAR WCHS WTAG WGY
Jerry Knox and Mimi, impersonations, WEEI
Banjo Twins, WTIC
Four Southern Singers, WJZ WHAM
Carl Lamson Musicale, WBZ
Bill and Ginger, WABC WAAB WEAN WICC WFEA WDRG WORC WLBZ
The Voice of the Apothecary, WNAC
Question and Answer Man, WHDH, 30 m.
Bridge, Mrs. Charles Geissler, WBSO
A Good Morning Cheer, WLOE
Dancing to Health, WHEB
10.15 A.M.
Morning Parade, WEAFF WEEI WJAR WCHS WTIC
Shopping Around, WTAG
Clare Lu' n' Em, WJZ WBZ WHAM
Visiting with Ida Bailey Allen, WABC WAAB WHAS
Food and Homemaking School, WNAC WEAN WICC WFEA WORC WLBZ, 30 m.
Parents' Question Box, WBSO
Lost and found program; "Local Communities," talk, WLOE
Music Master, WHEB
10.30 A.M.
Happy Rambler, WEAFF WEEI WJAR WCHS WTAG WTIC
Today's Children, WJZ WBZ
The Crazy Buckaroos, WABC WAAB WCAU
Broadcast to Fishermen, WHDH, 30 m.
East Boston Community Program, WLOE, 45 m.
Women's Forum, WHEB, 30 m.

10.45 A.M.
Walter Lippman, "World Trade"; Hon. Ruth Bryan Owen from London, "The Place of Women in the Present Crisis," WEAFF WEEI WJAR WCHS WTAG WGY, 30 m.
Pop Concert, WTIC, 30 m.
Magic Moments, WJZ WBZ
Melody Parade, WABC WAAB WEAN WICC WFEA WDRG WORC
Joan Martin, soprano, WNAC
Parade of Dance Tunes, WBSO
11.00 A.M.
Singing Strings, WJZ, 30 m.; WHAM, 15 m.
Hank Keene and hill billies, WBZ
Sunny Side Up, WABC WNAC WEAN WFEA WDRG WLBZ, 30 m. (WORC from 11.15)
Cocanut Grove Ambassadors, WAAB
Morning Melodies, WORC
The Blues Chasers, WHDH
Pageant of Music, WBSO
Rudimentals, WHEB, 30 m.
11.15 A.M.
Frances Lee Barton, WEAFF WEEI WJAR WCHS WTAG WTIC WGY
Edward MacHugh, baritone, WBZ
Question and Answer Man, WAAB
Ben Thewlis, baritone, WHDH
The Holy Quest Lady, WBSO
Chelsea Community Program, WLOE, 45 m.
11.30 A.M.
U.S. Navy Band, WEAFF WEEI WJAR WCHS WTAG WGY WTAM
Salon Trio Household Hints, WTIC, 30 m.
Rhythm Ramblers, WJZ WHAM, 30 m.; WBZ, 15 m.
Tony Wons, WABC WNAC WEAN
Records and shopping news, WAAB, 30 m.
People Who Make News, WFEA
Edna Brevard, piano, WORC
Bella Gaffen, pianist, WHDH
Merchants Air Revue, WBSO
Organ Tones, WHEB, 30 m.
11.45 A.M.
Col. Theodore Roosevelt, "Peace Problems of Our Foreign Possessions," WEAFF WEEI WJAR WCHS WTAG WGY
The Monitor Views the News, WBZ
Academy of Medicine talk, Dr. Wendell Phillips, WABC WEAN WFEA WDRG WORC WLBZ
News, weather, WNAC
Herb Perry, songs, WHDH
"Working Our Way Out of the Depression," Creighton Hill, WBSO
12.00 N.
Piano duo, WEAFF WEEI WJAR WTAG WTIC WGY
News, WCHS
Gene Arnold and the Commodores, WJZ WBZ WHAM
Voice of Experience, WABC WNAC WEAN WDRG
Going Forward with Lynn, WAAB, 1 h.
News, dial revue, N. H. extension service, WFEA, 30 m.
Francis J. Cronin, organ, WORC
Farm flashes, WHDH
Flying Fingers, WBSO, 30 m.
Shopping news, WLOE, 30 m.
Saugus Community program, WLEY, 1 h.
Dorothy Bradford, WHEB, 30 m.
12.15 P.M.
Countess Sarfatti speaks from Rome, "Women under Fascist Rule," WEAFF WEEI WJAR WTAG
Farm flashes, weather, WCHS
The Widow and Angel, WJZ
Weather; agricultural markets, WBZ
Connie Gates, songs, WABC WNAC WEAN WDRG WORC
Melody Parade, organ, WHDH, 30 m.
12.30 P.M.
On Wings of Song, WEAFF WEEI WCHS Farm and forum, WTIC, 30 m.
Markets, WTAG WJAR
WGY Farm Program, WGY, 30 m.
National Farm and Home Hour, WJZ WBZ WHAM, 1 h.
News; Russian Gypsy Orchestra, WABC WNAC WDRG WLBZ WPG, 30 m.; WEAN, 5 m. (WORC from 12.45)
Time, news, WEAN from 12.35
Manchester Ministerial Association, WFEA, 30 m.
News, WORC
Symphony Hour, WBSO, 1 h.
Dental Clinic, WLOE, 30 m.
Market Review, WHEB, 30 m.
12.45 P.M.
Knights of Columbus program, WEAFF WCHS WTAG
Caroline Cabot, WEEI, 30 m.
Farm chat, WJAR
Around the Town, WEAN, 30 m.
Tenor Tones, WHEB
1.00 P.M.
Market, weather reports, WEAFF
Weather; news, WJAR WTAG
Westbrook Hour, WCHS
Blue Room Echoes, WTIC, 30 m.
Albany on Parade, WGY
Marie, the little French princess, WABC WNAC WCAU
Circus marathon, WAAB
Matinee, WORC
Hotel Morton Orchestra, WPG, 45 m.
Yen Ho Orchestra, WHDH, 30 m.
Miss Charm, beauty hints, WLEY
Grand Daddy's Portsmouth; news, WHEB, 30 m.
1.15 P.M.
Pedro Via Orchestra, WEAFF WEEI WJAR WCHS WTAG WGY
Reis and Dunn, comedy and songs, WABC WICC WFEA WCAU WDRG WORC WLBZ
Farm flashes, WAAB
Records and shopping news, WNAC, 45 m.
Going forward with Providence, WEAN, 1 h.
Interior Decorating, talk, WLOE
Afternoon Dance Rhythms, WLEY
1.30 P.M.
Close Harmony, WEAFF WEEI WCHS WTAG WTIC, 30 m.
Housewives Radio Exchange, WJAR, 30 m.
Rex Battle's Ensemble, WJZ, 30 m.
Highway safety talk; organ, WBZ
School of the Air, Science, WHAM, 30 m.
Gene Burchell's Orchestra, WLW, 30 m.
Easy Aces, WABC WCAU
Luncheon music from Copley Plaza, WAAB WORC
Paul Joyce, baritone, WHDH
James Taylor, baritone, WBSO
Melody Moments, WLEY, 30 m.
1.45 P.M.
Jack and Jerry Foy, WBZ
"Painted Dreams," WABC WCAU
Sam Bittell's Orchestra, WAAB WORC
Varieties, WBSO
2.00 P.M.
Lotus Garden Orchestra, WEAFF WJAR WCHS WTAG WGY
Musical Originalities, WJZ WBZ, 30 m.; WHAM, 15 m.
Silver Lining Hour, WEEI
Ohio School of the Air, WLW, 1 h.
The Merry-makers, WABC WNAC WICC WDRG WORC, 30 m. (WEAN from 2.15)
WTIC Playhouse, WTIC, 30 m.
Matinee Notes, WAAB, 1 h.
Eleanor Kline, pianist, WHDH
Emerald Gems, WBSO, 30 m.
Matinee Melodies, WLEY, 30 m.
2.15 P.M.
School of the Air, Social Study, WHAM
John Lyons, tenor, WHDH
American College of Surgery, WEAFF WEEI WJAR WCHS WTAG WGY



FANNIE BRICE, comedienne, who has been replaced by Bert Labr on the Wednesday night NBC broadcast at 8.

2.30 P.M.
Trio Romantique, WEAFF WEEI WCHS WTAG WGY
Mrs. W. B. Malony, WJAR
Daytime Dancers, WTIC, 30 m.
The Pioneers, quartet, WJZ WBZ WHAM
Ann Leaf, organist, WABC WNAC WEAN WDRG WORC, 30 m.
Studio program, WHDH
John Colonna, baritone, WBSO, 30 m.
Tea Dance Music, WLEY, 30 m.
2.45 P.M.
Carl and McKensie, patter, WJZ WHAM WBZ
George Snelling, baritone, WHDH
Ishbel MacDonald, speaker from London; "Young England," WEAFF WEEI WJAR WCHS WTAG
3.00 P.M.
Mrs. Nicholas Brady, talk, WEAFF WEEI WJAR WCHS WTAG WTIC
Betty and Bob, drama, WJZ WBZ WHAM
Metropolitan Parade, WABC WNAC WDRG WORC, 30 m.
Nancy Lee program, WHDH, 1 h.
Bible Institute of the Air, WBSO
3.15 P.M.
The Upstaters, WEAFF WEEI WJAR WCHS WTAG WTIC WGY
Words and Music, WJZ WHAM, 30 m.
Edward Otis, baritone, WBZ
Piano recital, WAAB
Farm flash, WHEB
3.30 P.M.
Woman's Radio Review, Columbus Day Creemonies, WEAFF WEEI WJAR WCHS WTAG WGY, 30 m.
The Mixing Bowl, WTIC, 30 m.
Home Forum Cooking School, WBZ, 30 m.
National Student Federation program, WABC WNAC WICC WDRG WORC
Hi-De-Ho Orchestra, WAAB, 30 m.
Good Cheer Service, WBSO, 30 m.
Coon-Sanderings, WHEB
3.45 P.M.
Francis S. Hamon, general secretary, International Y. M. C. A., WJZ WHAM
Jack Brooks' Orchestra, WABC WNAC WEAN WICC WDRG WORC
Melody Maker, WHEB
4.00 P.M.
Winters and Weber, organists, WEAFF WEEI WJAR WTAG, 30 m.; WGY, 15 m.
Y. W. C. A. program, WCHS, 30 m.
Mrs. Franklin D. Roosevelt, "Young America," talk, WJZ WBZ WHAM
U. S. Army Band, WABC WNAC WEAN WICC WFEA WDRG WORC WLBZ, 30 m.
Hits and Encores, WAAB, 1 h.
Marion Jenkins, contralto, WHDH
Tea Time Tunes, WBSO, 45 m.
The Contralto Voice, WHEB
4.15 P.M.
Stanley Baldwin, political discussion, WJZ WHAM WBAL, 30 m. (WBZ from 4.30)
Mrs. Joseph B. Ely, talk, WBZ
The Concert Album, WHDH, 30 m.
Lois Hall, piano, WHEB
4.30 P.M.
Drake's Drums, drama, WEAFF WJAR WTAG, 30 m.; WCHS, 15 m.
WEEI Hostess, WEEI
News; American Legion Trade Revival Campaign, WABC WNAC WEAN WICC WFEA WDRG WORC WLBZ
Tea Dance Music, WLOE
Blue Barron, WHEB
4.45 P.M.
Going Ahead with Auburn, WCHS, 1 h.
Thursday Special, WJZ WBZ WHAM
Ye Happy Minstrel, WABC WCAU
Rhythm Kings, WNAC WEAN WICC WFEA WDRG WORC WLBZ
Flying School of the Air, WHDH
Animal Rescue League, WLOE
Mellodettes, WBSO
Dorothy Cook, violin, WHEB

5.00 P.M.
Musical Varieties, WEAFF WEEI WJAR WTAG WGY, 30 m.
General Federation of Women's Clubs, WJZ WBAL
Skippy, WABC WAAB WEAN WDRG
Organ, WNAC WICC WFEA WORC
The Three Co-Eds, WHDH
Dental Clinic, WLOE, 30 m.
Value Hunter, WHEB, 30 m.
5.15 P.M.
Casino Orchestra, WJZ WHAM
The Monitor Views the News, WBZ
Phil Regan, WABC WNAC WEAN WFEA WDRG WORC
Melody Mart, WAAB
Jack Cameron, songs, WHDH
5.30 P.M.
Jack and Loretta Clemens, WEAFF WEEI WJAR WTAG
Singing Lady, WJZ WBZ WBAL
Jack Armstrong, All-American Boy, WABC WNAC WEAN WDRG
Sam Bittell's Orchestra, WAAB WORC
Circus Marathon, WHDH
Greater Boston Merchants program, WLOE, 30 m.
Dover's New Deal, WHEB, 30 m.
5.45 P.M.
Ray Heatherton, baritone, WEAFF WJAR WTAG
National Society of Puritan Descendants, WEEI
Mahdi the Magician, WCHS
Little Orphan Annie, WJZ WBZ WHAM
Stamp Adventurers Club, WABC WAAB WEAN WDRG WORC
Cosmopolitans, WNAC WLBZ
The Dial Revue, WFEA
Silver Strings, instrumental, WHDH
6.00 P.M.
Viennese Ensemble, WEAFF WCHS 30 m. (WJAR WTAG WGY from 6.15)
The Evening Tatler, WEEI, 30 m.
Sizzlers, WTAG
News, weather, WJAR
Reggie Child's Orchestra, WJZ WBAL, 30 m. (WHAM from 6.15)
Otto Gray's Oklahoma Cowboys, WBZ
Buck Rogers WABC WAAB WEAN WDRG
Football; news, weather, WNAC
Sweet Music, WORC
Mother Goose Club, WLOE, 30 m.
Carnival of Rhythm, WLEY
6.15 P.M.
Happy Landings, Mitzi Green, WBZ
H-Bar-O Rangers, cowboy drama, WABC WAAB WEAN WDRG WORC WLBZ
Yankee Singers, WNAC
The "Y" and You, WFEA
Gypsy Fiddles, instrumental, WHDH
Miss Charm, beauty talk, WLEY
6.30 P.M.
John B. Kennedy, WEAFF
Mitzi Green, WJAR
News, WEEI WTAG WCHS
Old Songs of the church, WJZ WBAL
Time, sports, weather, WBZ
Football Reporter, Eddie Dooley, WABC WNAC WEAN WFEA WDRG WORC WLBZ
Perley Stevens' Orchestra, WAAB
Song Pictures with Orrin White, WHDH
Sport talk, WLOE
Ethel Brown Trio, WLEY, 30 m.
6.45 P.M.
Roger Gerston's Orchestra, WEAFF WJAR
Leopold Morse program, WEEI
Henley Kimball program, WCHS
Powders Coke, WTAG
Richfield Country Club, WGY, 30 m.
Lowell Thomas, today's news, WJZ WBZ WHAM
"Little Italy," script act, WABC WAAB WEAN WDRG
The Merry-Go-Round, WNAC
Gotkauf's Legion Band, WFEA
Yen Ho Orchestra, WHDH
Radio Re-employment Service; N.R.A. talk, WLOE
7.00 P.M.
Twenty Fingers of Harmony, WEAFF WJAR WCHS WTAG
Edison program, WEEI
News, WORC
Amos n' Andy, WJZ WBZ WHAM
Myrt and Marge, WABC WNAC WEAN WDRG
Organ, WAAB
What's On the Air, WFEA, 30 m.
The Oaks Orchestra, WHDH
Dan O'Brien, political, WLOE
Dance music, WLEY
7.15 P.M.
Billy Bachelor's Adventures, WEAFF WJAR WTAG WGY
After Dinner Revue, WEEI
Happy Landings, WCHS
Treasure Island, drama, WJZ WBZ WHAM
Just Plain Bill, WABC WNAC WCAU
Jimmie Gallagher's Orchestra, WAAB WICC WORC
Summerfield's Parade, WEAN, 30 m.
Westminster Orchestra, WHDH
Mayor John H. Burke, talk, WLOE
Newton Show of the Air, guest artists and speakers, WLEY, 1 h. 45 m.
7.30 P.M.
Lum and Abner, WEAFF WEEI WJAR WCHS WTAG WGY
Concert Footlights, WJZ WHAM
Hotel Bradford Organ, WBZ, 30 m.
Fray and Braggiotti, WABC WICC WFEA WDRG WORC WLBZ
David J. Kelly, political, WNAC
Circus marathon, WAAB WHDH
7.45 P.M.
The Goldbergs, WEAFF WEEI WJAR WCHS WTAG WGY
Tune Detective, WJZ WHAM
Boake Carter, WABC WNAC WCAU
Hotel Brunswick Orchestra, WAAB WFEA 30 m.; WICC WORC WLBZ, 15 m.
News, weather, WEAN
Plectrum Players, WHDH
Paul Cameron, WLOE

8.00 P.M.
Rudy Vallee and guest artists, WEAFF WEEI WJAR WCHS WTAG WGY 1 h.
Captain Diamond Adventures, WJZ WBZ WHAM, 30 m.
Elmer Everett Yess, WABC WNAC WEAN WICC WFEA WDRG WORC WLBZ
O'Leary's Irish Minstrels, WHDH
Oriental Hour, WLOE, 1 h.
8.15 P.M.
Singin' Sam, WABC WNAC WEAN WDRG N. E. Council, WAAB WICC WORC
8.30 P.M.
Adventures in Health, WJZ WBZ WHAM
Harlem Serenade, WABC WNAC WICC WFEA WDRG WORC WLBZ, 30 m.; WEAN, 15 m.
Negro Artists program, WAAB, 30 m.
8.45 P.M.
Crooning Choir, WJZ WHAM WBAL
Malkin Conservatory Program, WBZ
Mo and Nel, WEAN
9.00 P.M.
Captain M. Henry's Maxwell House Show Boat, WEAFF WEEI WJAR WCHS WTAG WGY, 1 h.
Death Valley Days, drama, WJZ WBZ WHAM, 30 m.
Presenting Mark Warnow, WABC WNAC WEAN WICC WFEA WDRG WORC WLBZ, 30 m.
Hughie Connor's Orchestra, WAAB
Walter V. Doucette, banjo, WLOE, 30 m.
9.15 P.M.
Scores, news, weather, WAAB
9.30 P.M.
Wayne King's Orchestra, WJZ WBZ WHAM, 30 m.
Columbia Dramatic Guild presents "Androcles," WABC WAAB WEAN WICC WDRG WORC, 30 m.
Knights of Columbus program, WNAC, 30 m.
Hotel Traymore Concert Orchestra, WPG, 30 m.
Truman Carewe Orchestra, WLOE, 30 m.
10.00 P.M.
Al Jolson, Paul Whiteman and Deems Taylor, WEAFF WEEI WJAR WCHS WTAG WGY, 1 h.
Hands Across the Border, WJZ, WBAL, 30 m.; WHAM, 15 m.
Gene and Glenn, patter, WBZ, 30 m.
Deep River Orchestra, WABC WAAB WICC WEAFF WDRG WORC WLBZ WCAU, 30 m.
Fabien Sevitzky, orchestra and Professor Rogers of M. I. T., WNAC WEAN, 30 m.
"As I See It," Dick Grant, WFEA
Merle Johnston's Saxophone Quartet, WOR
10.30 P.M.
Echoes of the Palisades, WJZ WHAM WBAL, 30 m.
Metropolitan Platinum Syncopators, WBZ
The Boswell Sisters, WABC WAAB WEAN WDRG WLBZ
Over the Cameraman's Shoulder, WNAC
10.45 P.M.
Springfield Republican News, WBZ
Gladys Rice, soprano and concert orchestra, WABC WAAB WEAN WICC WDRG WORC WLBZ, 30 m.; WEA, 15 m.
Weather, news, WNAC
11.00 P.M.
Just Relax, comedy, WEAFF WGY
E. B. Rideout, news, WEEI
News, WJAR WCHS WTAG
The Three Jesters, WJZ WHAM WBAL
Weather, temperature, sports, WBZ
Hughie Connor's Orchestra, WNAC, 30 m.
Moonbeams, WOR, 30 m.
11.15 P.M.
Terrace Gardens Orchestra, WEAFF WEEI WJAR WCHS WTAG
Georgia Wildcats, WGY
Poet Prince, WJZ WBZ WHAM
Columbia News Service, WABC WAAB WEAN WDRG WORC WLBZ
11.30 P.M.
Jack Denny's Orchestra, WEAFF WEEI WJAR WCHS WTAG WGY, 30 m.
U. S. Army Band, WJZ WBZ WHAM, 30 m.
Isham Jones' Orchestra, WABC WNAC WEAN WICC WORC WLBZ, 30 m.
Wayne King's Orchestra, 20 m.; Bernie Cummins' Orchestra, 20 m.; Don Carlos Marimba Band, 20 m.; WGN
Ozzie Nelson's Orchestra, WOR, 30 m.
12.00 M.
Dream Singer, 5 m.; Cob Calloway's Orchestra, 25 m.; WEAFF WJAR WGY
Ernie Holst's Orchestra, WJZ WBZ WHAM, 30 m.
Ozzie Nelson's Orchestra, WABC WNAC WEAN WICC
Sam Robbins' Orchestra, WOR, 30 m.
12.30 A.M.
William Scott's Orchestra, WEAFF WJAR WGY, 30 m.
Dancing in the Twin Cities, WJZ WBZ WHAM, 30 m.
Charlie Agnew's Orchestra, WGN, 30 m.
Clyde Lucas' Orchestra, WABC WNAC WEAN WICC, 30 m.
1.00 A.M.
Gene Burchell's Orchestra, WLW, 30 m.
Enoch Light's Orchestra, WABC, 30 m.
George Devron's Orchestra, Richard Cole's Orchestra; Jan Garber's Orchestra, Bernie Cummins' Orchestra, WGN, 1 h. 30 m.
1.30 A.M.
Moon River, WLW, 30 m.

JORDAN HALL
SEASON TICKETS \$5, \$7.50, \$10
FOR THE
10 Sunday Afternoon Concerts
BY THE
People's Symphony Orchestra
FABIEN SEVITZKY*
Conductor
(*By courtesy of the Metropolitan Theatre)
Are Now on Sale at Jordan Hall
Tickets for Single Concerts, 50c, 75c, \$1.00, tax exempt, will go on sale on Oct. 12, at the Hall

CARVER - NEW ENGLAND PRESS
Printing - Designing - Binding - Mailing
610 Atlantic Avenue, Boston
Telephone LIBerty 9673

STATION DIRECTORY
Page 4

Friday, October 13 - President Roosevelt Addresses Women on WJZ at 10 P.M.

Highlights

P.M.
2.30—John Erskine, NBC-WEAF
8.00—Cities Service Concert, NBC-WEAF
8.30—The March of Time, CBS-WNAC
9.00—Fred Allen's Revue, NBC-WEAF
9.30—Fox Fur Trappers, WEEL
10.30—"Men of WOR," WOR

8.00 A.M. Organ Rhapsody, WEAF WJAR WTAG
8.15 A.M. Caroline Cabot, WEEL
8.30 A.M. Lew White at the dual organ, WJZ WHAM
8.45 A.M. Havens and Mack, WABC
9.00 A.M. Green Brothers Novelty Orchestra, WEAF
9.15 A.M. Landl, Trio and White, WEAF WEEL WJAR
9.30 A.M. Hill Billy, WEAF WEEL WJAR WCGH WGY
9.45 A.M. Al and Lee Reiser, piano duo, WEAF WEEL
10.00 A.M. The Mystery Chef, WEAF WEEL WJAR
10.30 A.M. The Happy Rambler, WEAF WEEL WJAR
10.45 A.M. Betty Crocker, cooking talk, WEAF WEEL
11.00 A.M. Walter Damrosch, Music Appreciation Hour
11.15 A.M. "Big Freddie Miller," WABC WNAC WEAN
11.30 A.M. Tony Wons, WABC WNAC WEAN WFEA
11.45 A.M. Dancing Echoes, WABC WAAB WEAN
12.00 N. Gene Arnold, the Commodores, WEAF WEEL

12.15 P.M. Johnny Marvin, tenor, WEAF WJAR WTAG
12.30 P.M. On Wings of Song, WEAF WCGH
12.45 P.M. Caroline Cabot, WEEL
1.00 P.M. Market reports, WEAF
1.15 P.M. Dick Fiddler's Orchestra, WEAF WJAR
1.30 P.M. Orlando's Concert Ensemble, WEAF WEEL
1.45 P.M. Smackout, sketch, WJZ
2.00 P.M. Magic of Speech, WEAF WEEL WJAR
2.15 P.M. School of the Air—art appreciation, WHAM
2.30 P.M. Dr. John Erskine, talk, "Knowledge, Information and Opinion," WEAF WJAR WCGH
2.45 P.M. Happy Jack, WJZ WHAM
3.00 P.M. Organ, WEEL
3.15 P.M. Shirley Howard, songs, WEAF WEEL WTAG
3.30 P.M. Margaret Whittier, WCGH
3.45 P.M. Little Star, Joan Ruth, WBZ
3.55 P.M. Alex Seimier, pianist, WABC WNAC WEAN
4.00 P.M. Piano recital, WAAB
4.15 P.M. Closing stock market quotations, WBSO
4.30 P.M. Farm flash, WHEB
4.45 P.M. Loring Short and Harmon program, WCGH
4.55 P.M. Norman Cloutier's Symphonic Dance Orchestra, WEAF WJAR WTIC
4.55 P.M. Radio Health Forum, pianist WEEL
4.55 P.M. Y. W. C. A. news; pianist, WEEL
5.00 P.M. Norman Cloutier's Symphonic Dance Orchestra, WEAF WJAR WTIC
5.15 P.M. Y. W. C. A. news; pianist, WEEL
5.30 P.M. Adventures of Tom Mix, WEAF WEEL WJAR
5.45 P.M. Wizard of Oz, WEAF WEEL WJAR WCGH
6.00 P.M. Viennese Ensemble, WEAF WTAG WCGH
6.15 P.M. H-Bar-O Rangers, cowboy drama, WABC
6.30 P.M. Tune Vendors, WEAF WTIC WGY
6.45 P.M. Uncle Ned, the weather man, WEEL WJAR
7.00 P.M. Charles Leland, comic, WEAF WEEL WJAR
7.15 P.M. Billy Bachelor's Adventures, WEAF WJAR
7.30 P.M. Fox Fur Trappers, WEAF
7.45 P.M. The Goldbergs, WEAF WEEL WJAR WCGH
8.00 P.M. Cities Service Concert, WEAF WEEL WJAR
8.15 P.M. Edwin C. Hill, WABC WNAC WEAN WDRG
8.30 P.M. Potash and Perlmutter, WJZ WHAM
8.45 P.M. Red Davis, dramatic sketch, WJZ WBZ
9.00 P.M. Fred Allen's Salad Bowl Revue, WEAF WEEL
9.15 P.M. Threads of Happiness, WABC WNAC WEAN
9.30 P.M. Pond's Program, comedy, songs and orchestra
9.45 P.M. Scores, news, weather, WAAB
10.00 P.M. The First Nighter, WEAF WEEL WJAR
10.30 P.M. Lum and Abner's oldtime Friday night so- cial, WEAF WEEL WJAR WCGH WTAG
10.45 P.M. Charles Leland, comic, WEAF WEEL WJAR
11.00 P.M. Meyer Davis' Orchestra, WEAF WGY 30 m.
11.15 P.M. Autumn's Stars, astronomy, WJZ WHAM
11.30 P.M. The March of Time, WABC WNAC WEAN

Friendliness



BETTY BARTHELL, NBC soprano, from the South, whose many pro- grams during the week are popular.

3.30 P.M. Women's Radio Review, WEAF WEEL WJAR
3.45 P.M. Morin Sisters, WJZ WHAM
4.00 P.M. May We Present, WEAF WJAR WCGH
4.15 P.M. Modern Columbus, WEAF WTAG WGY
4.30 P.M. Arcadians, string ensemble, WJZ WHAM
4.45 P.M. Health Clinic, piano, WBZ
4.55 P.M. Y. W. C. A. news; pianist, WEEL
5.00 P.M. Norman Cloutier's Symphonic Dance Orchestra, WEAF WJAR WTIC
5.15 P.M. Radio Health Forum, pianist WEEL
5.30 P.M. Adventures of Tom Mix, WEAF WEEL WJAR
5.45 P.M. Wizard of Oz, WEAF WEEL WJAR WCGH
6.00 P.M. Viennese Ensemble, WEAF WTAG WCGH
6.15 P.M. H-Bar-O Rangers, cowboy drama, WABC
6.30 P.M. Tune Vendors, WEAF WTIC WGY
6.45 P.M. Uncle Ned, the weather man, WEEL WJAR
7.00 P.M. Charles Leland, comic, WEAF WEEL WJAR
7.15 P.M. Billy Bachelor's Adventures, WEAF WJAR
7.30 P.M. Fox Fur Trappers, WEAF
7.45 P.M. The Goldbergs, WEAF WEEL WJAR WCGH
8.00 P.M. Cities Service Concert, WEAF WEEL WJAR
8.15 P.M. Edwin C. Hill, WABC WNAC WEAN WDRG
8.30 P.M. Potash and Perlmutter, WJZ WHAM
8.45 P.M. Red Davis, dramatic sketch, WJZ WBZ
9.00 P.M. Fred Allen's Salad Bowl Revue, WEAF WEEL
9.15 P.M. Threads of Happiness, WABC WNAC WEAN
9.30 P.M. Pond's Program, comedy, songs and orchestra
9.45 P.M. Scores, news, weather, WAAB
10.00 P.M. The First Nighter, WEAF WEEL WJAR
10.30 P.M. Lum and Abner's oldtime Friday night so- cial, WEAF WEEL WJAR WCGH WTAG
10.45 P.M. Charles Leland, comic, WEAF WEEL WJAR
11.00 P.M. Meyer Davis' Orchestra, WEAF WGY 30 m.
11.15 P.M. Autumn's Stars, astronomy, WJZ WHAM
11.30 P.M. The March of Time, WABC WNAC WEAN

A Timely Chase



ARTHUR PRYOR, JR., director of the March of Time program, is hunting for a man who has a voice like General Hugh S. Johnson. Up to now no one has been found who sounds exactly like the chief of the N.R.A.

5.30 P.M. Adventures of Tom Mix, WEAF WEEL WJAR
5.45 P.M. Wizard of Oz, WEAF WEEL WJAR WCGH
6.00 P.M. Viennese Ensemble, WEAF WTAG WCGH
6.15 P.M. H-Bar-O Rangers, cowboy drama, WABC
6.30 P.M. Tune Vendors, WEAF WTIC WGY
6.45 P.M. Uncle Ned, the weather man, WEEL WJAR
7.00 P.M. Charles Leland, comic, WEAF WEEL WJAR
7.15 P.M. Billy Bachelor's Adventures, WEAF WJAR
7.30 P.M. Fox Fur Trappers, WEAF
7.45 P.M. The Goldbergs, WEAF WEEL WJAR WCGH
8.00 P.M. Cities Service Concert, WEAF WEEL WJAR
8.15 P.M. Edwin C. Hill, WABC WNAC WEAN WDRG
8.30 P.M. Potash and Perlmutter, WJZ WHAM
8.45 P.M. Red Davis, dramatic sketch, WJZ WBZ
9.00 P.M. Fred Allen's Salad Bowl Revue, WEAF WEEL
9.15 P.M. Threads of Happiness, WABC WNAC WEAN
9.30 P.M. Pond's Program, comedy, songs and orchestra
9.45 P.M. Scores, news, weather, WAAB
10.00 P.M. The First Nighter, WEAF WEEL WJAR
10.30 P.M. Lum and Abner's oldtime Friday night so- cial, WEAF WEEL WJAR WCGH WTAG
10.45 P.M. Charles Leland, comic, WEAF WEEL WJAR
11.00 P.M. Meyer Davis' Orchestra, WEAF WGY 30 m.
11.15 P.M. Autumn's Stars, astronomy, WJZ WHAM
11.30 P.M. The March of Time, WABC WNAC WEAN

STATEMENT OF THE OWNERSHIP, MANAGEMENT, CIRCULATION, ETC., REQUIRED BY THE ACT OF CONGRESS, AUGUST 24, 1912, OF THE MICROPHONE, published weekly at Boston, Mass., for Oct. 1, 1933, State of Massachusetts, County of Suffolk, ss:
Before me, a Notary Public, in and for the State and county aforesaid, personally appeared Philip N. Hobson, who, having been duly sworn according to law, deposited with me in writing the following statement of the ownership, management and circulation of the MICROPHONE and that the following is, to the best of his knowledge and belief, a true statement of the ownership, management (and if a daily paper, the circulation), etc., of the aforesaid publication for the date shown in the above caption, required by the Act of August 24, 1912, embodied in section 4112, Postal Laws and Regulations, printed on the reverse of this form, to wit:
1. That the names and addresses of the publisher, editor, managing editor, and business managers are:
Publisher, John K. Gowen, Jr., 244 Washington St., Boston, Mass.
Editor, G. Carleton Pearl, 244 Washington St., Boston, Mass.
Managing Editor, Morris Hastings—244 Washington St., Boston, Mass.
Business Manager, Philip N. Hobson—244 Washington St., Boston, Mass.
2. That the owner is: (If owned by a corporation, its name and address must be stated and also immediately thereunder the names and addresses of stockholders owning or holding one per cent or more of total amount of stock. If not owned by a corporation, the names and addresses of the individual owners must be given. If owned by a firm, company, or other unincorporated concern, its name and address, as well as those of each individual member, must be given.)
The MICROPHONE, Inc., 244 Washington St., Boston, Philip N. Hobson, 244 Washington St., Boston, John K. Gowen, Jr., 244 Washington St., Boston, Morris Hastings, 244 Washington St., Boston, G. Carleton Pearl, 244 Washington St., Boston, Clarence N. Cook, 244 Washington St., Boston.
3. That the known bondholders, mortgages, and other security holders owning or holding 1 per cent or more of total amount of bonds, mortgages, or other securities are: (If there are none, so state.)
The Corporation has only demand notes outstanding which are held by Philip N. Hobson, 244 Washington St., Boston.
4. That the two paragraphs next above, giving the names of the owners, stockholders, and security holders, if any, contain not only the list of stockholders and security holders as they appear upon the books of the company but also, in cases where the stockholder or security holder appears upon the books of the company as trustee or in any other fiduciary relation, the name of the person or corporation for whom such trustee is acting, is given; also that the said two paragraphs contain statements embracing affiant's full knowledge and belief as to the circumstances and conditions under which stockholders and security holders who do not appear upon the books of the company as trustees, hold stock and securities in a capacity other than that of a bona fide owner; and this affiant has no reason to believe that any other person, partnership, association, or corporation has any interest direct or indirect in the said stock, bonds, or other securities than as so stated by him.
5. That the average number of copies of each issue of this publication sold or distributed, through the mails or otherwise, to paid subscribers during the six months preceding the date shown above is: (This information is required from daily publications only.)
Philip N. Hobson, (Signature of Business Manager.)
Sworn to and subscribed before me this 7th day of September, 1933.
Robert R. Thurber,
(SEAL)
(My commission expires January 22, 1937)

Reflections

By Diana Herbert

The MICROPHONE'S Fashion Observer

THIS FALL materials are of more importance than ever. It is, thanks to them, that the designers manage to give such apparently endless variety to the simple form-clinging silhouette.

NEW WOOLENS appear in all weights and textures; from the sheer soft ones for sophisticated town dresses, to the roughest tweeds for warm sports coats. There are lots of different versions of angora, rabbits' hair and other "hairy" wools. Many have small woven patterns, reminiscent of necktie designs; others narrow stripes or plaids in softly blended colors.



DIANA HERBERT

Then there is an entirely new material that looks like wool on the outside and feels like silk on the inside. It comes in discreet herringbone patterns and in not so discreet checks and plaids.

COAT MATERIALS are divided into two categories: the rough and the smooth. Included in the first group are the classic tweeds, the nubby weaves and also the ribbed surfaces, which are very smart. The other group is composed of duvetyns, wool velvets, needle-point wools and this year's broadcloth, which is much more supple and manageable than heretofore.

SILKS are most often ribbed. There are fewer crinkled surfaces than last year, but many interesting weaves combining artificial and natural silks. Taffeta, moire and stiffened or lacquered satin have returned for afternoon and evening.

LAME is appearing on daytime dresses now. It comes in fascinating designs including faint pastel plaids. A collar and ruffled jabot of plain gold or silver is a new way to brighten up your last year's best black.

VELVET is worn for all occasions. Cotton velvet sports suits and bright colored blouses or shirts; irregularly ribbed corduroys; lots of plaids and checks in this, as in every other material, a shirred, puckered velvet for hats, accessories and "evening sweaters"; and for dressy costumes a crinkled tree-bark velvet that is the last word in chic.

Koussevitzky Gives Opinion of Radio

(Continued from Page 1)

turned from a vacation in Europe to begin his tenth season as conductor of the Boston Symphony. He told of plans for the ensuing season. He added:

"I have under consideration a number of works by American composers, among them a new symphony by the Californian, Roy Harris and a suite by Aaron Copland, one of your ablest composers."

"Navy Can't Do Without Radio" Hough

The United States Navy cannot get along without radio, according to Rear Admiral Henry H. Hough, Commandant First Naval District and Navy Yard, Boston, in an exclusive interview with The MICROPHONE:

"All our ships are radio equipped and we rely upon radio now more than ever before," continued Admiral Hough.

"Years ago I used to go to sea for 50 or 60 days at a time. During the whole cruise we had no means of communication with headquarters. We had to wait until we put into some port where there was cable or telegraph communication.

"But this has all changed now because of radio. When we have fleet manoeuvres we give written orders to the ships. As the cruise proceeds occasions arise when it is advisable to recall a ship or to change its course. This order is given by radio and consequently executed promptly. The result is greater efficiency.

"One of the greatest services radio renders," said Admiral Hough, "is time signals. These signals are sent out every few minutes by shore stations so that chronometers are checked and longitude determined with little trouble.

"Radio has done away with much written correspondence and its attendant delay.

"In addition to radios on our ships, the Naval Air Force is completely equipped. When a Navy plane is away from its base it sends out signals every 15 minutes, giving its course and position. Should these signals stop we know there is trouble and help is sent directly to the spot from which the last signal came. So by following the course last given from the plane, it will be found in a very short time.

"There is one great drawback to radio. When a ship sends out a radio signal anyone can hear it and although he may not understand the message can ascertain a ship's position with a direction finder. Consequently, in the event of war ship radios are used sparingly.

"Silence rather than communication is essential in that case."

Speaks For Navy



REAR ADMIRAL HENRY H. HOUGH, Commandant of the Boston Navy Yard at Charlestown.

Q. and also A.

Q. There is a similarity in the names of Dr. Serge Koussevitzky and Fabien Sevitzyk. Are they related?

T. J. B., West Newton.

A. Fabien Sevitzyk is Dr. Serge Koussevitzky's nephew.

Q. Can there be any possible excuse for putting "Torch Singers" on radio programs?

D. H., Rye, N. H.

A. Can YOU think of one?

Q. Do you believe that story published about the "Human Radio" out in the State of Washington?

G. N. M., Charleston, S. C.

A. Wasn't there a picture to prove it?

Nimblewits

By Everett Smith

"Wit Teasers" on Sunday at 4 p. m. from WBZ

No. 1. (2 minutes). Herein lie six words. Six words, each in proper order, may be found in the word "HEREIN." Can you find them all?

No. 2. (5 minutes). Do you know your radio stars by their initials? See if you can guess these 10 in 5 minutes.

"E. W." "K. S." "F. C. and J. S." "A. and A." "P. C." "B. and A." "J. D." "P. W." "R. V." "P. B."



EVERETT SMITH

No. 3. (2 minutes). And do you know your cities by their nicknames? Two minutes to find these:

"Queen," "Windy," "Brotherly Love," "Smoky," "Hub," "Flower," "Heart of Commonwealth," "Brass."

No. 4. (3 minutes). Five different words can be made from the six letters given below. Can you find them?

E-I-P-R-S-T

No. 5. (3 minutes). How good are you at changing colors? Change the word BROWN to BLACK in five moves, making a proper word each time.

Answers to last week's Nimblewits

No. 1. "Courage brother, do not stumble, though thy path be dark as night. There's a star to guide the humble. Trust in God and do the right."

No. 2. Poser, Pores, Spore, Prose.

No. 3. 64 Eyes.

No. 4. Buck, Luck, Lick, Link Line. Long, Song, Sung, Pung, Punt.

No. 5. Geography. Arithmetic.

Radio and Stage Apart, Says Julia

Frank Crumit, Julia Sanderson, Captain Blackstone and the Plantation orchestra under Shilkret's direction, made their stage broadcast debut Tuesday evening at the Grand Ballroom of the Hotel Bradford. Miss Sanderson said:

"Radio and the stage are two entirely separate means of entertainment. You can't mix them. When we play in a studio we know exactly what is going to happen and are prepared for it. But with an audience there is an element of uncertainty, to which we will have to get used."

Pryor Lauds Patience of Time Actors

Arthur Pryor, Jr., director of the March of Time program, which will be heard for the first time this Fall on Friday, October 13, over WNAC, has nothing but praise for the personnel of his program.

Mr. Pryor, who also produces the Blackstone Plantation program, was in Boston for the debut of the Crumit-Sanderson show.

In speaking of the March of Time, Mr. Pryor said:

"The rehearsal for the Time program begins at nine o'clock Thursday morning and often lasts until two o'clock Friday morning.

"After this rehearsal the whole script has to be rewritten to bring it up to date and the latest news added.

"As a matter of fact," concluded Mr. Pryor, "the March of Time is never finished until 15 minutes before it goes on the air."

Gershwin Seeks Strict Control

(Continued from Page 1)

show at the Shubert for which he wrote the score.

Asked why outstanding American composers do not write music especially for the radio, he said:

"Radio doesn't want new stuff. It wants familiar music. It would be unfair to ask a composer to write something new each week, anyway."

Paul White Heads New Columbia News Service

The Columbia Broadcasting Company has formed its own news gathering organization, under the direction of Paul W. White, former publicity director of the Columbia network. This is the first definite step made by radio since the Associated Press passed its resolution against the use of news for broadcast purposes.

The Columbia News Service is organized to make world-wide news available for sponsors and for regular news broadcasts. The News Service is establishing bureaus at all of the Columbia broadcasting stations.

Ever since the Associated Press has limited news broadcasts to 30 words, both of the big networks have been forced to get their news through their own staffs and member stations. So far Columbia is the only network to formally organize the news gathering machine. The National Broadcasting Company has not as yet indicated that it will form a similar one.

This and That

(Continued from Page 1)

pictures the sick room of a poet, his recollections of the passions and struggles of his life, and finally his transfiguration.

The broadcast from London last Sunday of portions of the new musical show, "Nymph Errant," was as informal, pleasant an affair as one could imagine. It showed the remarkable strides made in international broadcasting. With the exception of a little fading, the program was very clear.

AUDITIONS

for Radio Talent

Tuesday and Thursday afternoons from 2 to 5

Station W L O E

HOTEL BELLEVUE

(Please bring your own music.)

Designers and Printers

of books, periodicals, and all kinds of

Advertising

Catalogs and Direct Mail Pieces

We print The MICROPHONE

PINKHAM PRESS

286 Congress St., Boston LIBerty 4206

DOCTORS
FOOD EXPERTS
HOSPITALS
CHEFS

Recommend

ANGOSTURA

BITTERS

Same formula since 1824

A BOWL OF RICH GRAVY 5c

Delicious thick brown meat gravy ready to serve in 5 minutes — only water needed.



THE MICROPHONE

is the FIRST publication in New England printed with

INKS, Inc., INK

There is no waste to this quick-drying economy printing ink. It never forms skin in can or fountain. You can PRINT and SHIP the same day if you use

INKS, Inc., INK

CLARENCE NICKERSON COOK
New England Manager,

INKS, Inc.

263 Summer Street
Boston

Liberty 1844 Room 405

★ Paul Whiteman Tells All ★

I PAUL WHITEMAN likes to eat alone; he doesn't know anything about radio, anything new at least.

Because he hasn't any pertinent stories, he can't give a good interview.

The MICROPHONE has this staggering information on the popular band leader's own reluctant authority.

"How should I know anything about radio?" Whiteman leaned over the balustrade of the stairs leading to his dressing room at the Keith-Boston, where he and his band appeared in person, and frowned down at his persistent interviewer.

"I do know that I'm hungry and that I want to eat alone. Here I have been touring the country for the past five or six weeks, giving three or four shows a day. In between shows we rehearse for our Thursday night NBC broadcasts.

"Wherever we are, we have to dash to New York on Wednesday for dress rehearsal with Al Jolson and Deems Taylor, then back to where we're making our personal appearance; then, the next day, comes the actual radio program. I haven't any time to have any thoughts about radio.

"Any way," Whiteman's frown grew deeper, "I'm too old for this sort of life. You've never experienced it, you don't understand. I get to bed at 11.30 at night and get up the next morning at 5.30 to play golf.

"All the rest of the time is work, nothing but work. Do you wonder I want to be alone when I eat? If I think about business then, I get sick.

"I can't give a good interview. Any good one with me you may have read has probably been written up beforehand by someone."

For the first time during the conversation Mr. Whiteman smiled.

"Why don't you go home and make up an interview with me? That would be swell."

Mr. Whiteman waved his hand and disappeared

by Morris Hastings



PAUL WHITEMAN, who freely admits he knows nothing about radio, especially when he's hungry.

into the privacy of his dressing room.

And so here is what Mr. Whiteman might have said if he hadn't been hungry and if he hadn't wanted to eat alone.

"Radio and the theatre are not at sword's point, as some people believe. That is, I can't think they are when I see the big audiences that come to hear us. In fact I should say that broadcasts stimulate interest in 'personal appearances' of radio artists.

"It seems that radio is developing a brand of entertainment that more and more resembles the theater—the vaudeville stage, at least.

"Take our program, for example. Dance music by the orchestra, popular ballads by Jack Fulton and Ramona, comedy by Jolson and merry, literate comment by Deems Taylor. Something, if I may coin a phrase, to suit almost every taste.

"Look at the other stage people that have gone into radio. Fred Allen, Phil Baker, Ethel Shutta, Rudy Vallee and a good many others. Naturally we like radio because there's money in it for us. It's good publicity, too, because, I think, when we do make stage tours after radio appearances we draw larger audiences.

"The day of the 'hot-cha' jazz band is dead, on the stage as well as on the radio. Jazz is becoming more melodious. Audiences of today like jazz in the sort of symphonic arrangements that Ferde Grofe does for me.

"At the same time that jazz is becoming symphonic modern symphonic music is becoming jazzy. Ravel, for example, uses jazz rhythms in his recent piano concerto.

"I still believe that George Gershwin's 'Rhapsody in Blue' is one of the outstanding combinations of jazz and staid forms of music. I like his 'An American in Paris,' too. He's one of the cleverest composers we have in this country; and he has it in him to do something better than he has ever done."

Remember, this is what he *might* have said.



3¢

RADIO WEEKLY

MICROPHONE



Week Beginning October 7th

Published Weekly



Diana Chase (Beatrice Bola)