

ATWATER KENT RADIO





TWENTY years before the first radio broadcasting station was opened, the Atwater Kent name-plate on an electrical precision instrument was accepted as a mark of quality.

Today, on Radio, the Atwater Kent name-plate is our assurance of your complete satisfaction, for it is the mark of a reputation earned by strict adherence to rigid standards of quality. It is the symbol of our pledge—that these standards have not been lowered.

Atwater Kent Tuned Radio Frequency Receivers are licensed only for Radio Amateur, Experimental and Broadcast Reception.

ATWATER KENT MFG COMPANY
4700 Wissahickon Avenue
Philadelphia

COPYRIGHT, 1928, BY ATWATER KENT MANUFACTURING CO.



A. ATWATER KENT

PRESIDENT AND FOUNDER OF THE
ATWATER KENT MFG COMPANY

Philadelphia

EVER since I have been interested in Radio, this idea has been uppermost in my mind—Compactness with Simplicity.

Our ability to make powerful radio sets in compact cabinets is now a well-established fact. Hundreds of thousands of satisfied owners testify to that.

And now the second part of my ideal has been accomplished—in our Full Vision ONE Dial House Current Receiving Sets. They are so simple that a child can operate them. Stations can be brought in perfectly with the use of but one hand and without looking at the dial!

Yet nothing has been sacrificed to gain this simplicity of operation or smallness in size. Our present Models are more powerful, more sensitive and have better tone qualities than any Receiving Sets we have ever made.

It has always been our policy to avoid novelties and to give the public only those things in Radio that will stand the test of time. The Receiving Sets and Radio Speakers listed in this catalog are in complete accord with this policy.

I am told that we are too conservative in the claims we make in our advertising. That is a pleasing compliment. I feel sure that our friends, both old and new, will continue to find that our radio instruments will do more than we say they will.

A. Chester Kuhl

Design

THE DESIGN of all Atwater Kent Radio is carried out by a staff of expert Radio Engineers who have at their command the facilities of a completely equipped and up-to-date Radio Laboratory.

Here is devised the very latest in modern radio apparatus. But each new development, every new piece of mechanism, must pass through a series of exhaustive tests—often covering many months' time—before it is turned over to the Production Department to be made up in quantities and put on public sale.

This rigorous “laboratory appraisal,” before any apparatus is offered to the public, is the basis on which the success of all Atwater Kent products has been built.



A view of the commodious Radio Laboratory which forms such an important part of the Atwater Kent manufacturing plant.

Manufacture

THE MANUFACTURE of Atwater Kent Radio is carried on in the largest and finest factory in the world devoted exclusively to the making of radio apparatus. Built especially for this purpose, this plant is the last word in manufacturing efficiency — a veritable embodiment of speed and accuracy.

Here automatic machines, with almost human intelligence, turn long brass tubes and bars into countless small screws, nuts, binding posts and the like; hundreds of thousands of miles of fine copper wire is wound on solid and hollow cores to form magnets and transformers; sheet metal is stamped and pressed and spun to various shapes and forms; metal parts are either polished and then double lacquered or are finished in attractive colors of baked enamel.

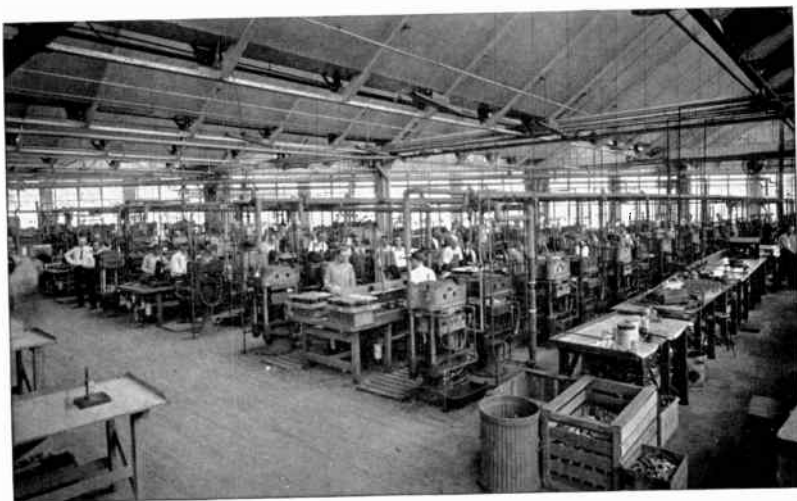


Looking down this aisle gives some idea of the multitude of machines that cover the vast floor space in the Atwater Kent plant.

Here tons of powdered Bakelite are moulded under tremendous heat and pressure, into gleaming dials, panels and other parts; while the sturdy metal cabinets are formed in huge presses, lacquered in various colors and baked in immense automatic ovens, ready to house the electrical units which complete the assembly of the receiving sets.

While these are but a few of the materials used, and this is but the barest glance at the multitude of delicate and complicated operations necessary in making Atwater Kent Radio, it will suffice, perhaps, to give you some idea of the hum of activity that covers the fifteen acres of floor space in the Atwater Kent factories.

But the most noteworthy feature having to do with the manufacture of Atwater Kent Radio, is the



Bakelite moulding department—the largest privately owned Bakelite moulding plant in the world.

time and attention devoted to inspections and tests—not merely to the finished apparatus, but to each of the various parts as they progress through the plant to the final assembly benches.

When you are told that one out of every ten employees in the Atwater Kent plant is an inspector, and that a typical receiving set is subjected to a total of 222 inspections and electrical tests before it is allowed to leave the factory, you will appreciate the care that is taken to insure perfection in the finished product.

It is this extreme care *in the factory* that makes Atwater Kent Radio so dependable in action—so perfect in the home.



A few of the thousands of highly trained operatives that are required to make Atwater Kent Radio.

Tone

THE most significant word in Radio today is “tone.” By “tone” in Radio is meant the truthfulness with which a Receiving Set and Radio Speaker re-create the voices and music that enter the microphone.

Every voice, every musical instrument—in fact every sound—has its own particular tone, and the slightest deviation from the original is just that much loss to the Radio listener.

That so many people regard the tone of Atwater Kent Receiving Sets and Atwater Kent Radio Speakers as their outstanding feature is not surprising to those who witness the amount of care and attention bestowed on this phase of Atwater Kent Radio.



Volume

VOLUME in a Radio Receiving Set means the power with which it is capable of transforming the broadcasting it receives from near and far into audible sound.

All Atwater Kent Radio Receivers are *powerful* and will operate one or more Atwater Kent Radio Speakers under all conditions where broadcasting reception is at all practicable. Not only is unusual volume attainable with Atwater Kent Radio Equipment, but the quality of the human voice and the distinguishing tones of all musical instruments are reproduced with unerring fidelity. Thus a single person or a whole room full of people can listen to a talk or a concert with equal enjoyment.

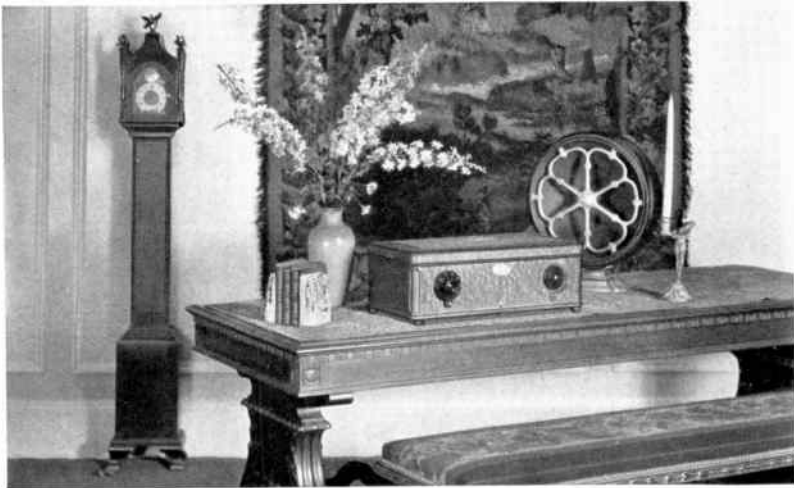


Selectivity

MANY types of radio receiving sets deliver a sufficient “volume” of sound from distant broadcasting stations, but they are not selective—that is, they cannot separate two stations, both broadcasting at the same time on waves of nearly the same length.

The remarkable “selectivity” of all Atwater Kent Receiving Sets is due, not only to the extreme care devoted to their design, but even more to the accuracy of their manufacture.

Particularly is this true of these new Atwater Kent FULL VISION One Dial Receivers. Their speed, accuracy and clearness of bringing in desired stations, enable the merest beginner to select stations with the greatest ease, speed and certainty.



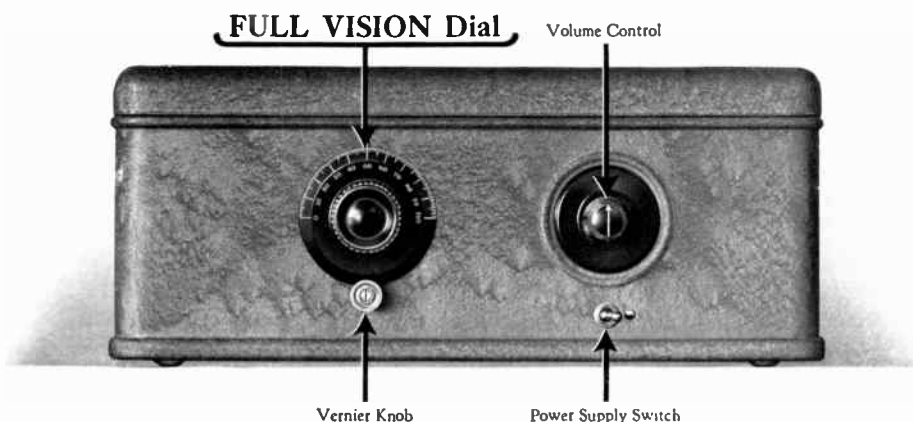
Range

JUST as the better type of automobile manufacturer of today does not enter his cars in speed contests, so the makers of the better grade of radio apparatus do not stress the records their equipment has made in the way of reception from far distant points, for both automobile and radio manufacturers realize that *dependability* and low maintenance cost are of much more interest to the public than claims of records of speed or distance, which are usually the results of most careful planning and particularly advantageous conditions.

While standard Receiving Sets taken from our regular stocks have repeatedly enabled their users to span the continent, and even the oceans, we discourage all attempts to sell our equipment based on any such claims. We prefer to have stressed the fact that Atwater Kent Receivers present a unique combination of Tone, Volume, Selectivity and Range.

If you were to ask a million* Atwater Kent Radio owners what features they admired most in their Atwater Kent Radio, the sum of their replies would spell *DEPENDABILITY*, and if you will accept our word for it and buy now—*today*—an Atwater Kent outfit, you not only will be saved considerable trouble and expense, but *you will be able to start right in and entertain your family and friends with the best that Radio has to offer.*

*Now—in more than 1,600,000 homes.



† Atwater Kent Full Vision Dial Receivers

THE operation of Atwater Kent One Dial Receiving Sets is of the utmost simplicity.* When you bring in a station with the Atwater Kent One Dial you will readily appreciate its advantages — because it is a FULL VISION Dial, you see it all at a glance. A touch of the fingers selects the station you want without fumbling or delay. This speed and ease in selecting stations is due to this FULL VISION Dial, one of the features of Atwater Kent Receiving Sets.

The use of the Volume Control is only necessary in order to reduce or increase the volume of music or voices. The complete operation of the set is instantly stopped or started by the Power Supply Switch without touching either of the other controls.

*Licensed under Hogan Patent No. 1,014,002

†Reg. U. S. Pat. Off.

The dial setting of any station can be “logged” (written down) and by moving the dial to this reading can be readily returned to.

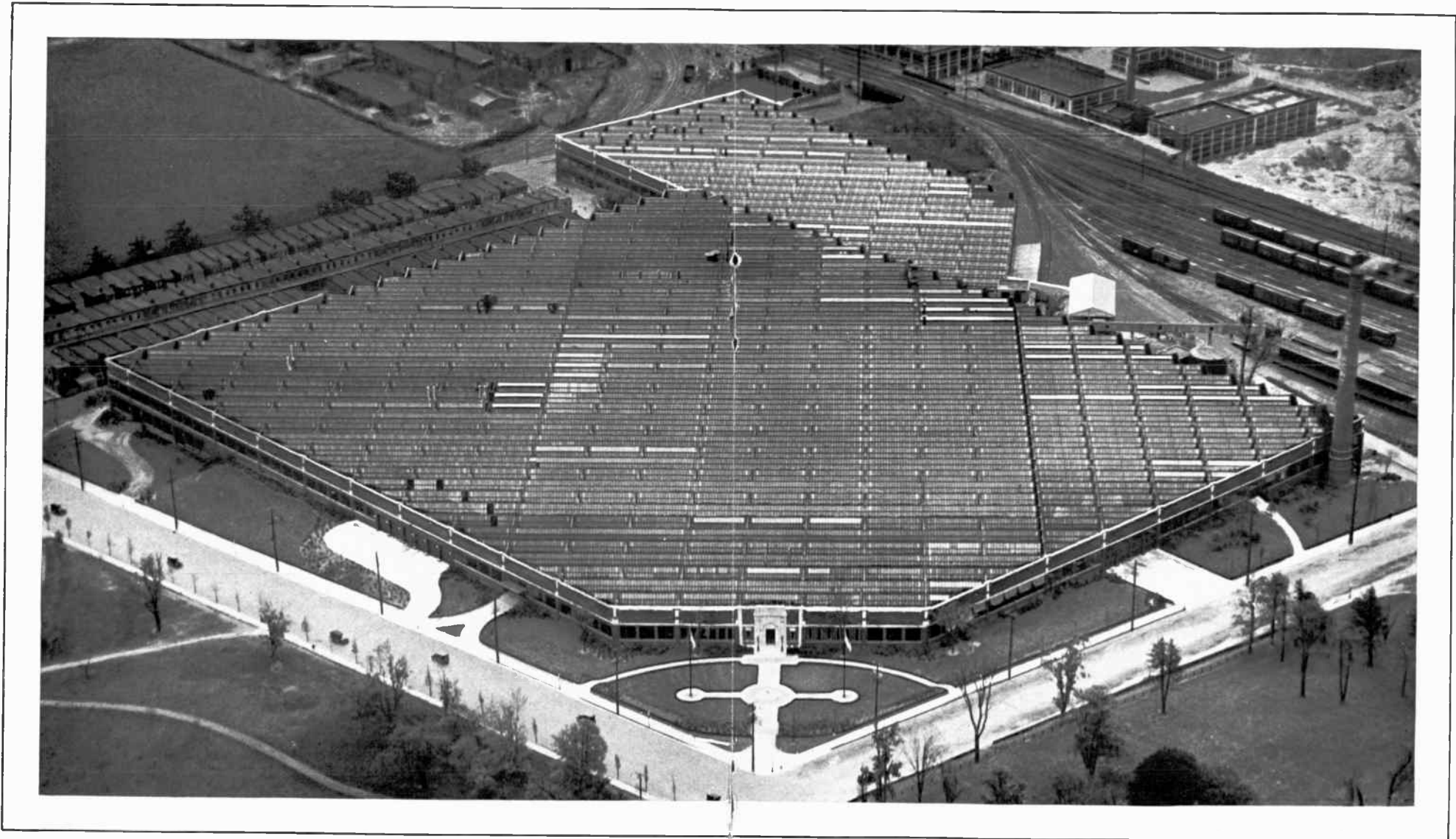
But with the FULL VISION Dial a log is of little use except as a means of identification. With the FULL VISION Dial all stations within range can be sampled and any one of them selected for a few moments, or a whole evening’s entertainment.

Atwater Kent Receiving Sets embody true One Dial control based on features which cannot be copied without infringing on Atwater Kent Patents.



One hand is all that is needed to operate an Atwater Kent Full Vision Dial Receiver, and it is not even necessary to look at the dial when changing from one station to another. What could be simpler?





The Factory Behind the Product

This is an aeroplane photograph taken from an altitude of 900 feet. It shows the vast area of the skylighted roof. The floor area covers fifteen and one-half acres. It is the largest plant in the world devoted exclusively to the manufacture of radio. By comparing nearby objects, such as motor cars, freight cars, etc., one gets an inkling of the immensity of this factory.

ATWATER KENT MFG COMPANY
4700 Wissahickon Avenue
Philadelphia

their neat markings etched in brilliant gold. The interior presents a marvelously compact and ingenious electrical assembly, every part of which has been tested for accuracy — many to a fraction of a thousandth part of an inch, with all working parts scientifically matched.

The cabinet of this unique receiver is so constructed that it shields completely the electrical assembly inside. This careful shielding insures the smooth, mellow, life-like *tone* for which all Atwater Kent Receivers are justly celebrated.

Every part of the Model 40 is so fully guarded against deterioration that it should last a lifetime. In addition to the FULL VISION Dial feature it has many other exclusive features and refinements which place it in a class by itself.

Notwithstanding its unusually low price, it contains only the finest craftsmanship and materials; mass production, with its resultant economies, brings this receiver within the reach of all.

The Model 40 comprises Two Stages of Tuned Radio Frequency Amplification in conjunction with the Atwater Kent Coupling Circuit, a Detector and Two Stages of Audio Frequency Amplification and is



Model 40 AC Receiver

AN unusually powerful, selective and compact receiving set which takes its power directly from the AC house circuit by simply inserting the attachment plug into any convenient electric light socket. Due to its small size it can be placed in any room without disturbing its present furnishings.

One FULL VISION Dial, a single Volume Control and a small snap switch are the only moving parts required to operate the Model 40. The efficient Volume Control permits a variation from elfin softness to full volume.

The exterior of the Model 40 is truly beautiful with the gleam of its golden name plate, in an artistically modern design, resting on the two-toned lid; with the warm, rich tones of the satin finished cabinet and the coal-black control knobs with



INTERIOR VIEW OF MODEL 40

designed to use six Alternating Current Tubes and a Rectifying Tube for the Power Supply.

Finish: A choice of two beautiful color combinations: rich dark brown and gold or deep golden bronze and gold, both in the new satin finish.

Dial and Volume Control in brilliant black with gold markings. Name Plate and Vernier Knob in gold.

Dimensions: Length, $17\frac{1}{4}$ in.; Depth, $10\frac{1}{4}$ in.; Height, $7\frac{1}{2}$ in.

Part No. 9800, Model 40 Receiver, for use with 110-120 volt, 60 cycle Alternating Current, complete with $10\frac{1}{2}$ feet of Flexible Attachment Cord and Two-Piece Attachment Plug, but without Tubes, \$77.

NOTE: For details of additional necessary equipment see page 30.





Model 41 DC Receiver

IN power, selectivity, range and tone the Model 41 is the twin of the famous Model 40 described on pages 15, 16, and 17. It has the same beautiful exterior and interior finish, the same ease and certainty of operation; the only notable difference is that its electrical assembly is designed for the use of Direct Current.

Model 41 comprises Two Stages of Tuned Radio Frequency Amplification in conjunction with the Atwater Kent Coupling Circuit, a Detector, One Stage of Audio Frequency Amplification and Two Stages of Power Amplification. It is designed for the use of Seven Direct Current Tubes.

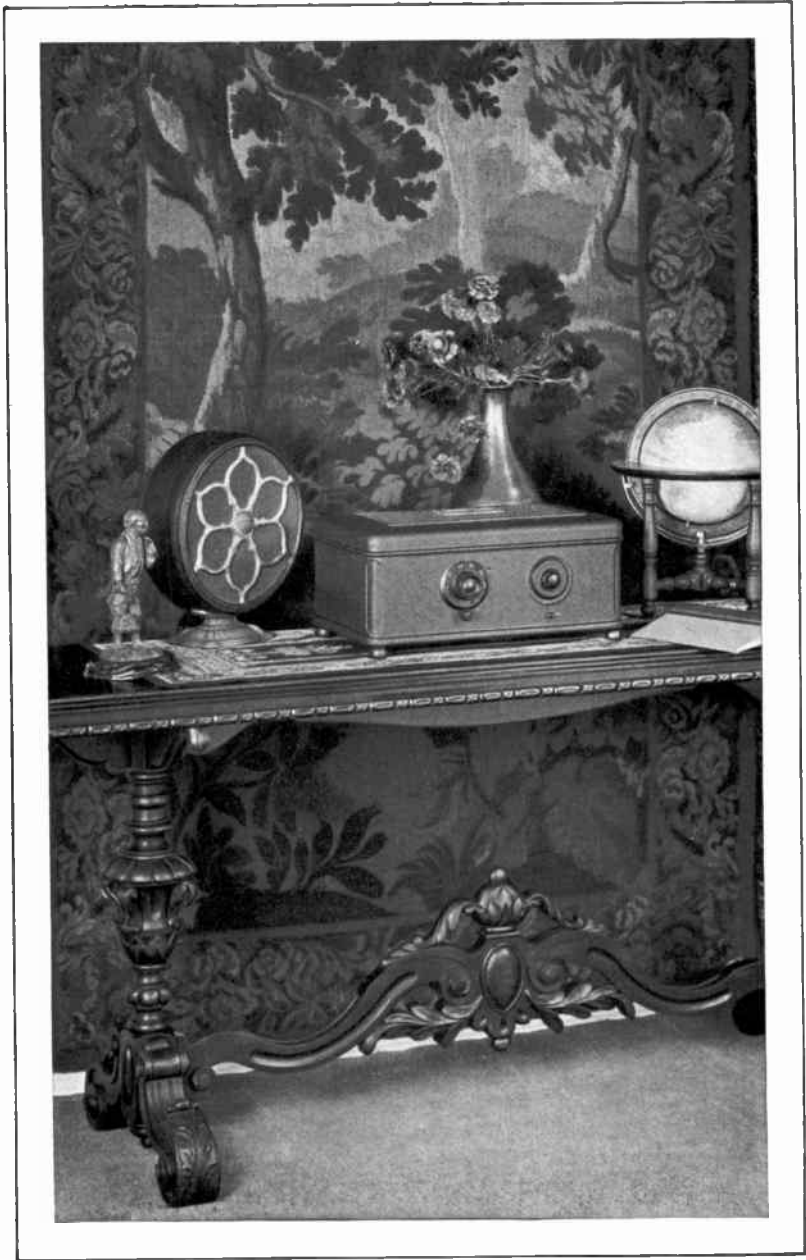
Finish : A choice of two beautiful color combinations: rich dark brown and gold or deep golden bronze and gold, both in the new satin finish.

Dial and Volume Control in brilliant black with gold markings. Name Plate and Vernier Knob in gold.

Dimensions: Length, $17\frac{1}{4}$ in.; Depth, $10\frac{1}{4}$ in.; Height, $7\frac{1}{2}$ in.

Part No. 9910, Model 41 Receiver, for use with 110-120 volt Direct Current, complete with $10\frac{1}{2}$ feet of Flexible Attachment Cord and Two-Piece Attachment Plug, but without Tubes, \$87.

NOTE: For details of additional necessary equipment see page 30.





Model 42 AC Receiver

ELECTRICALLY the Model 42 is the same as the Model 40 with one addition—an automatic line voltage control. It embodies, however, several distinct refinements in the design and contours of the cabinet: The use of cleverly designed ball feet; neat panel-beading of the four corners of the cabinet; a distinctively modern nameplate affixed to the gently crowned lid; oversize figures on the FULL VISION Dial—all contribute their share in making this an ideal set when judged from an artistic as well as an electrical viewpoint.

The Model 42 comprises Two Stages of Tuned Radio Frequency Amplification in conjunction with the Atwater Kent Coupling Circuit, a Detector and Two Stages of Audio Frequency Amplification, and is designed to use Six Alternating Current Tubes and a Rectifying Tube for the Power Supply.

Finish: Dark brown and gold or deep golden bronze and gold in the new satin finish. Dial, Vernier and Volume Control in brilliant black with gold markings. Name Plate in gold. Dimensions: Length, $17\frac{1}{4}$ in.; Depth, $10\frac{1}{4}$ in.; Height, $7\frac{7}{8}$ in.

Part No. 9850, Model 42 Receiver, for use with 110-120 volt, 50 to 60 cycle Alternating Current, complete with $10\frac{1}{2}$ feet of Flexible Attachment Cord and Two-Piece Attachment Plug, but without Tubes, \$86.

NOTE: For details of additional necessary equipment see page 30.



ALL FURNITURE BY COURTESY OF J. B. VAN SCIVER CO., CAMDEN, N. J.



Model 44 AC Receiver

IN appearance, the Model 44 is the same as Model 42, but it is of necessity slightly larger, due to additions to the electrical assembly inside. These additions add very considerably to the range of this set, making it of particular value for use where distance getting is essential or where an inside antenna is necessary.

It has the beautiful tone quality and simplicity of operation for which all Atwater Kent Receivers are admired, combined with exclusive features which make its unusual range and selectivity possible.

Model 44 comprises Three Stages of Tuned Radio Frequency Amplification in conjunction with the Atwater Kent Coupling Circuit, a Detector and Two Stages of Audio Frequency Amplification. Automatic Line Voltage Control Device.

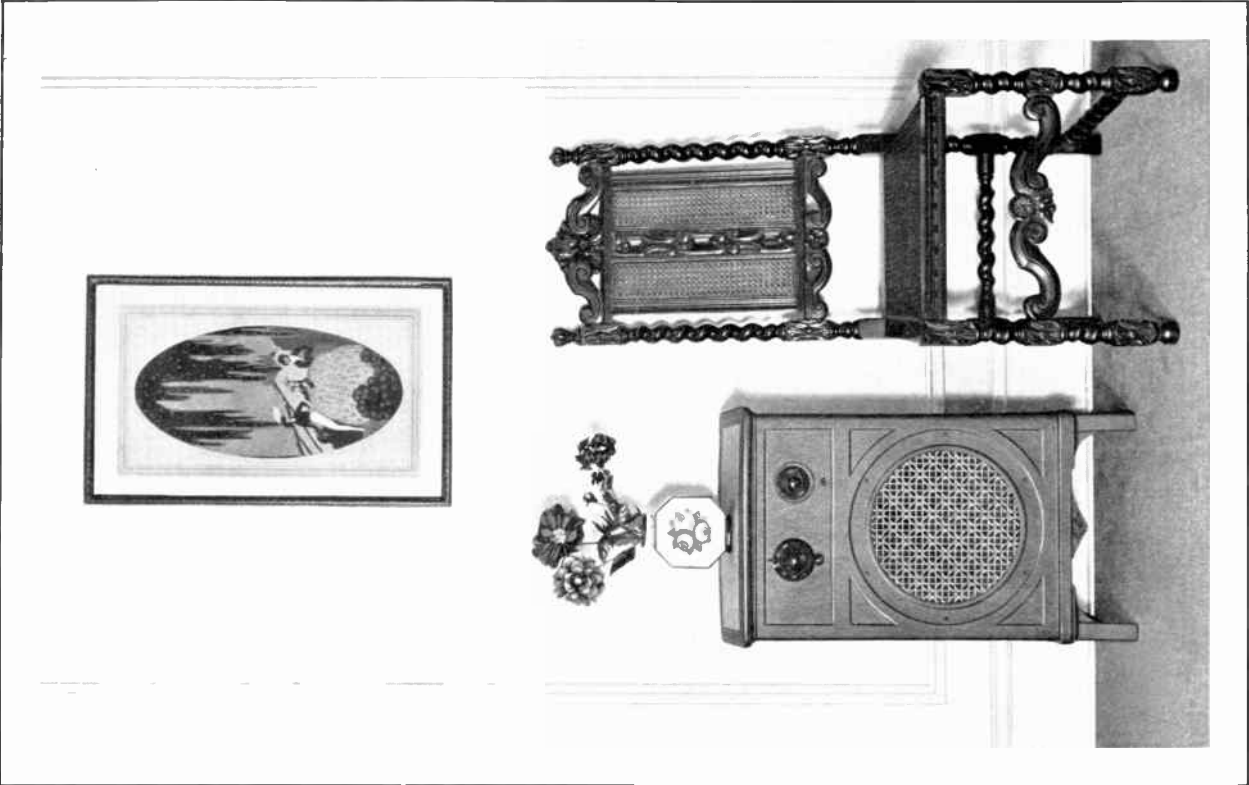
It is designed to use seven Alternating Current Tubes and a Rectifying Tube for the Power Supply.

Finish: A choice of two beautiful color combinations: Rich dark brown and gold or deep golden bronze and gold—both in the new satin finish. Dial, Vernier and Volume Control in brilliant black with gold markings. Artistic Modern Name Plate in gold.

Dimensions: Length, $21\frac{1}{4}$ in.; Depth, $10\frac{3}{4}$ in.; Height, $7\frac{7}{8}$ in.

Part No. 9900, Model 44 Receiver, for use with 110-120 volt, 60 cycle Alternating Current, complete with $10\frac{1}{2}$ feet of Flexible Attachment Cord and Two-Piece Attachment Plug, but without Tubes, \$106.

NOTE: For details of additional necessary equipment see page 30.



Model 52 AC Radio

AN unusually compact radio in which receiver and speaker have been brought together in a complete, all electric, cabinet type unit, having the same unusual power, selectivity and tone quality that is typical of all Atwater Kent Radio.

It fits cosily into any small space or can be placed in corners where nothing else would do. It can be moved about as easily as a chair for it is only 30 inches high, 11 inches deep and 18 inches wide.

This Radio is of such compact size that it is unobtrusive wherever placed and will harmonize with the furnishings of any room. It is satin finished on all four sides and music issues equally well from the back or front.

Model 52 comprises Two Stages of Tuned Radio Frequency Amplification in conjunction with the Atwater Kent Coupling Circuit, a Detector and Two Stages of Audio Frequency Amplification, and is designed to use Six Alternating Current Tubes and a Rectifying Tube for the Power Supply. Automatic Voltage Control Device.

Finish: A choice of three beautiful color combinations. Rich dark brown and gold, deep golden bronze and gold or a soft taupe and gold, all in the new satin finish. FULL VISION Dial, Vernier and Volume Control in brilliant black with gold markings. Artistic Modern Name Plate in gold.

Dimensions: Length, 18 in.; Depth, 11 in.; Height, 30 in.

Part No. 9930, Model 52 Radio, for use with 110-120 volt, 60 cycle Alternating Current, complete with 10½ feet of Flexible Attachment Cord and Two-Piece Attachment Plug, but without Tubes, \$117.

NOTE : For details of additional necessary equipment see page 30.



Model 48 Receiver (Battery Model)

THE Model 48 is a powerful Six Tube Receiver comprising Two Stages of Tuned Radio Frequency Amplification in conjunction with the Atwater Kent Coupling Circuit, a Detector and Two Stages of Audio Frequency Amplification. Solid Mahogany Cabinet in dark brown. Front panel of metal, satin finished in golden bronze. Brown Dial, Vernier and Rheostat. Name Plate and Battery Switch, gold plate. Dimensions: Length, $19\frac{3}{4}$ in.; Depth, $6\frac{5}{8}$ in.; Height $6\frac{1}{8}$ in.

Part No. 9840, Model 48 Receiver, Solid Mahogany Cabinet, hand-rubbed finish, with 10-foot Power Supply Cable, without Tubes, \$49.

Part No. 9940, Model 48-C Receiver, Poplar Wood Cabinet, less expensively finished, with 5-foot Power Supply Cable, without Tubes, \$44.



Model 49 Receiver (Battery Model)

THE main difference between this Receiver and the Model 48 (described above) is the addition of an antenna adjustment device, which assures unusual selectivity.

The Model 49 is a powerful Six Tube Receiver comprising Three Stages of Tuned Radio Frequency Amplification, a Detector and Two Stages of Audio Frequency Amplification with One FULL VISION Dial and an Antenna Adjustment Device. Dimensions: Length, $21\frac{1}{8}$ in.; Depth, $6\frac{5}{8}$ in.; Height, $6\frac{1}{8}$ in.

Part No. 9860, Model 49 Receiver, Solid Mahogany Cabinet, hand-rubbed finish, with 10-foot Power Supply Cable, without Tubes, \$68.

Part No. 9950, Model 49-C Receiver, Poplar Wood Cabinet, less expensively finished, with 5-foot Power Supply Cable, without Tubes, \$63.

NOTE: For details of additional necessary equipment see page 30.

Radio Speakers

THE apparatus which transforms the electrical impulses generated in the Receiving Set into audible sound, is called a Radio Speaker.

This wonderful piece of mechanism is a most important part of a radio installation, for it must be capable of *re-creating* the music, voices and other sounds *exactly* as they are broadcast, otherwise false notes, distorted voices and noisy vibrations will be the result.

For this reason we particularly recommend Atwater Kent Speakers to owners of Atwater Kent Receivers.

Only after very extensive scientific research and almost endless tests and experiments were Atwater Kent Radio Speakers offered to the public. As a result, their ability to re-create voices, music and other sounds is truly marvelous.

Atwater Kent Radio Speakers are made complete in the Atwater Kent Factory and each Radio Speaker is thoroughly tested and adjusted to give best results before being packed for shipment.



Atwater Kent Speakers

"RADIO'S TRUEST VOICE"



Model E-3 Speaker

Finished in dark brown and gold or deep golden bronze and gold. Height over all, $13\frac{1}{4}$ inches; Diameter of Speaker, $11\frac{1}{4}$ inches, with 9 feet of flexible cord.

Part No. 9810 Price, \$20.00

Model E-2 Speaker

Finished in dark brown and gold or deep golden bronze and gold. Height over all, $15\frac{3}{8}$ inches; Diameter of Speaker, $13\frac{3}{8}$ inches, with 9 feet of flexible cord.

Part No. 9790 Price, \$20.00



Model E Speaker

Finished in deep golden bronze and gold. Height over all, $18\frac{1}{4}$ inches; Diameter of Speaker, $15\frac{3}{4}$ inches, with 9 feet of flexible cord.

Part No. 8670 Price, \$20.00



Equipment for Alternating House Current Receivers Models 40, 42 and 52

TUBES. Four (4) UX 226 or CX 326 tubes. One (1) UY 227 or C 327 tube. One (1) UX 171A or CX 371A tube. One (1) UX 280 or CX 380 rectifying tube.

Model 41 (Direct Current)

TUBES. Five (5) CX 112A or UX 112A tubes, two (2) CX 371A or UX 171A tubes.

Model 44

TUBES. Five (5) UX 226 or CX 326 tubes. One (1) UY 227 or C 327 tube. One (1) UX 171A or CX 371A tube. One (1) UX 280 or CX 380 rectifying tube.

Equipment for Battery Models 48 and 49

TUBES. Except for use in the last audio amplification socket, all tubes for Battery models of Atwater Kent Receiving sets should be UX 201A or CX 301A. The type of tube recommended for the last audio socket is a UX 171A or CX 371A.

BATTERY EQUIPMENT. Three kinds are necessary, viz.: "A," "B" and "C." For the "A" current we recommend a first class 6 volt storage battery of not less than 80 ampere hour capacity.

For the "B" current we recommend a set of dry cell "B" batteries. Three (3) 45 volt heavy duty "B" batteries will be necessary.

The proper "C" battery voltage for the UX 171A or CX 371A power tube is printed in the instructions packed in each tube carton.

Warranty

All Atwater Kent Receiving Sets and Radio Speakers are warranted to be perfect when they leave our plant. A printed warrant and guarantee covering the terms on which we will replace or repair defective equipment accompanies each piece of Atwater Kent Apparatus.

*Prices of all Atwater Kent Radio Equipment
subject to change without notice.*

Prices slightly higher from the Rockies west

FORM No. 141. PRINTED IN U.S.A. SEPTEMBER, 1928

